

-1413-  
NAME EL CAJON

Class \_\_\_\_\_ Course \_\_\_\_\_ Party A&ID#7

Topography

**301**  
**FIELD NOTES**

No. 403P

ESPECIALLY ADAPTED  
TO THE USE OF  
ENGINEERING STUDENTS

---

---

**EUGENE DIETZGEN Co.**

MANUFACTURERS

**DRAWING MATERIALS  
MATHEMATICAL AND SURVEYING INSTRUMENTS  
MEASURING TAPES**

CHICAGO    SAN FRANCISCO    NEW YORK  
NEW ORLEANS    PITTSBURGH



MICROFILMED

DEC 23 1964

INDEX

Topo El. Cajon Blvd

1-33





1



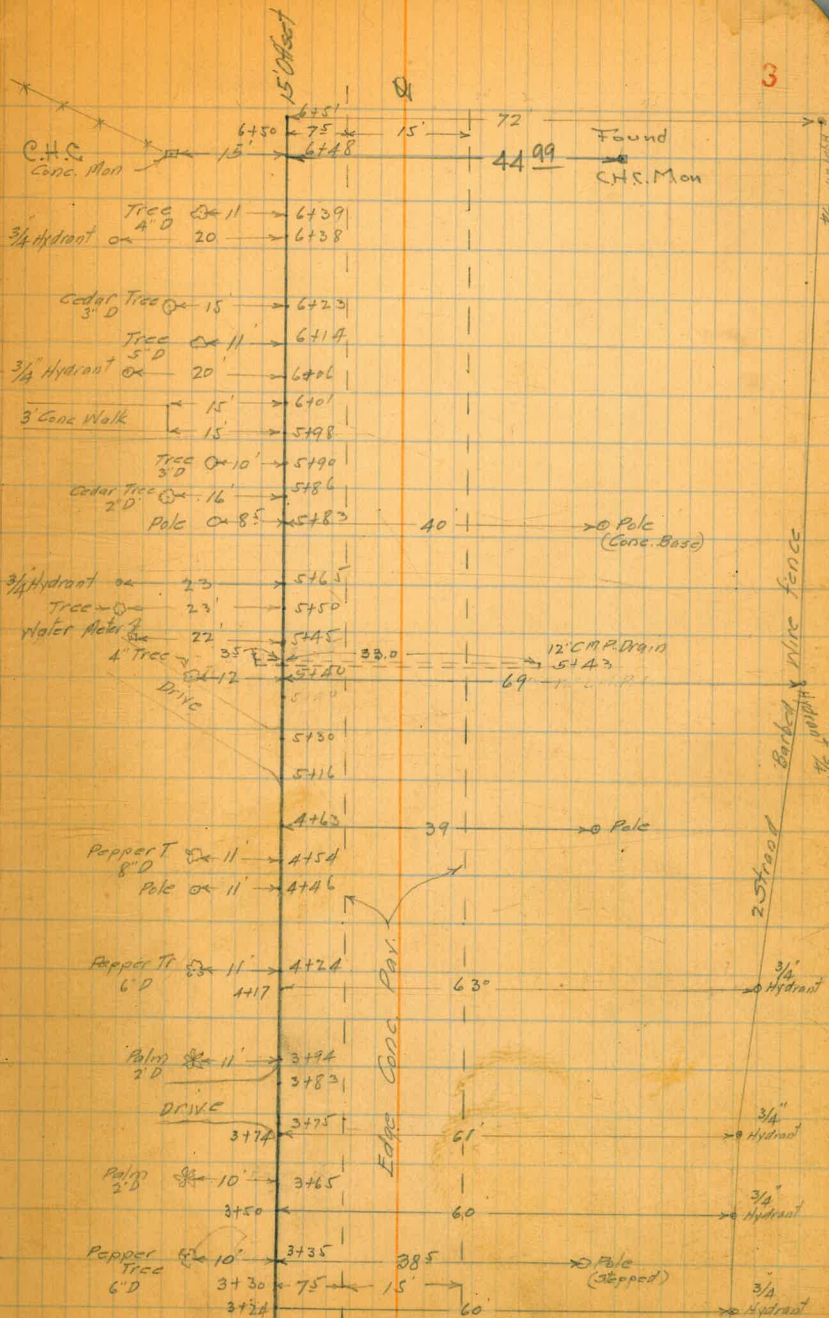




6+4825  
6+4856 PC.

Set 2x2

.741.91 17x50°08'E





1128.29  
N60°48'E

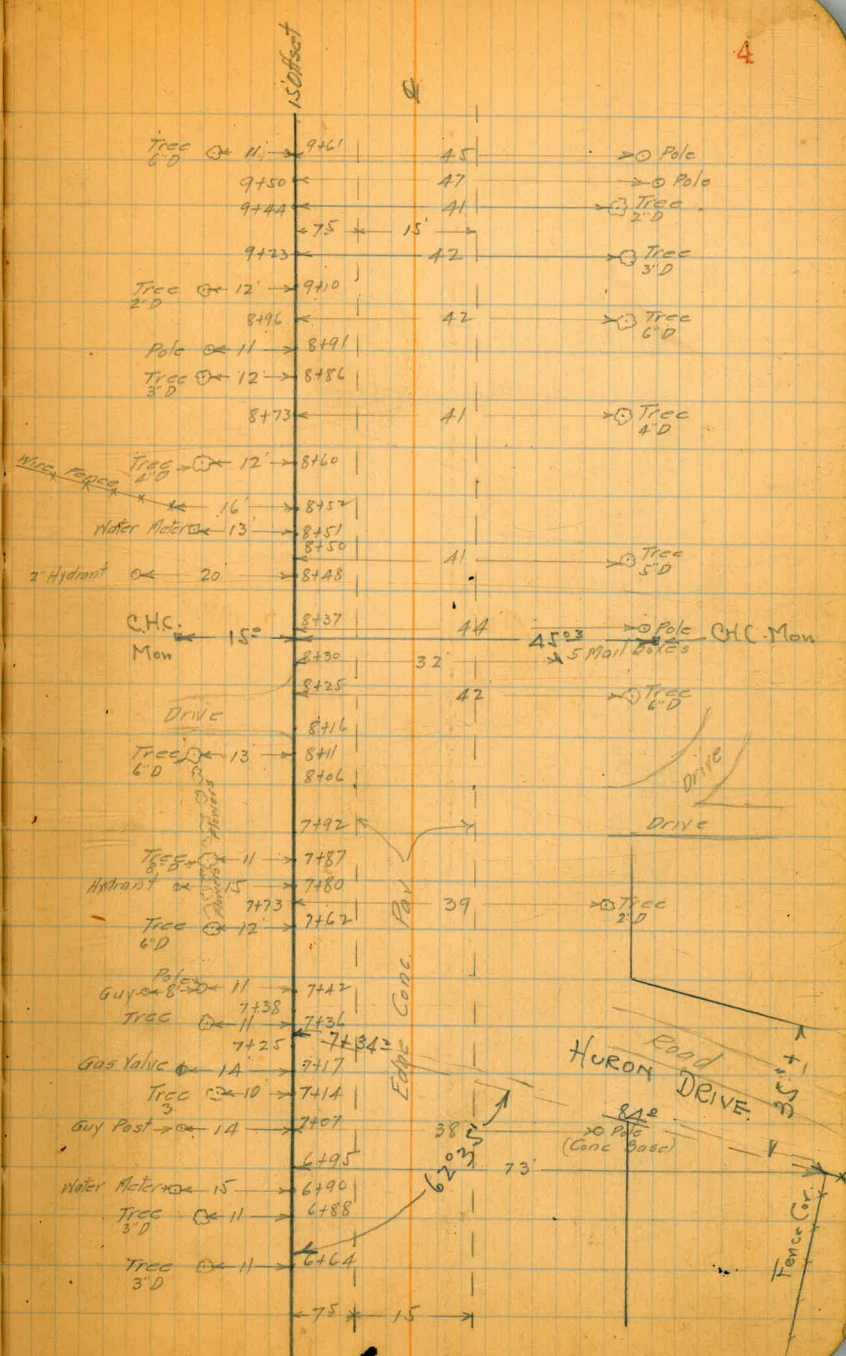
8+34<sup>42</sup> RT.

Set 2 n

7+41<sup>60</sup> RI.

10°40' RT

741.91  
N50°08'E







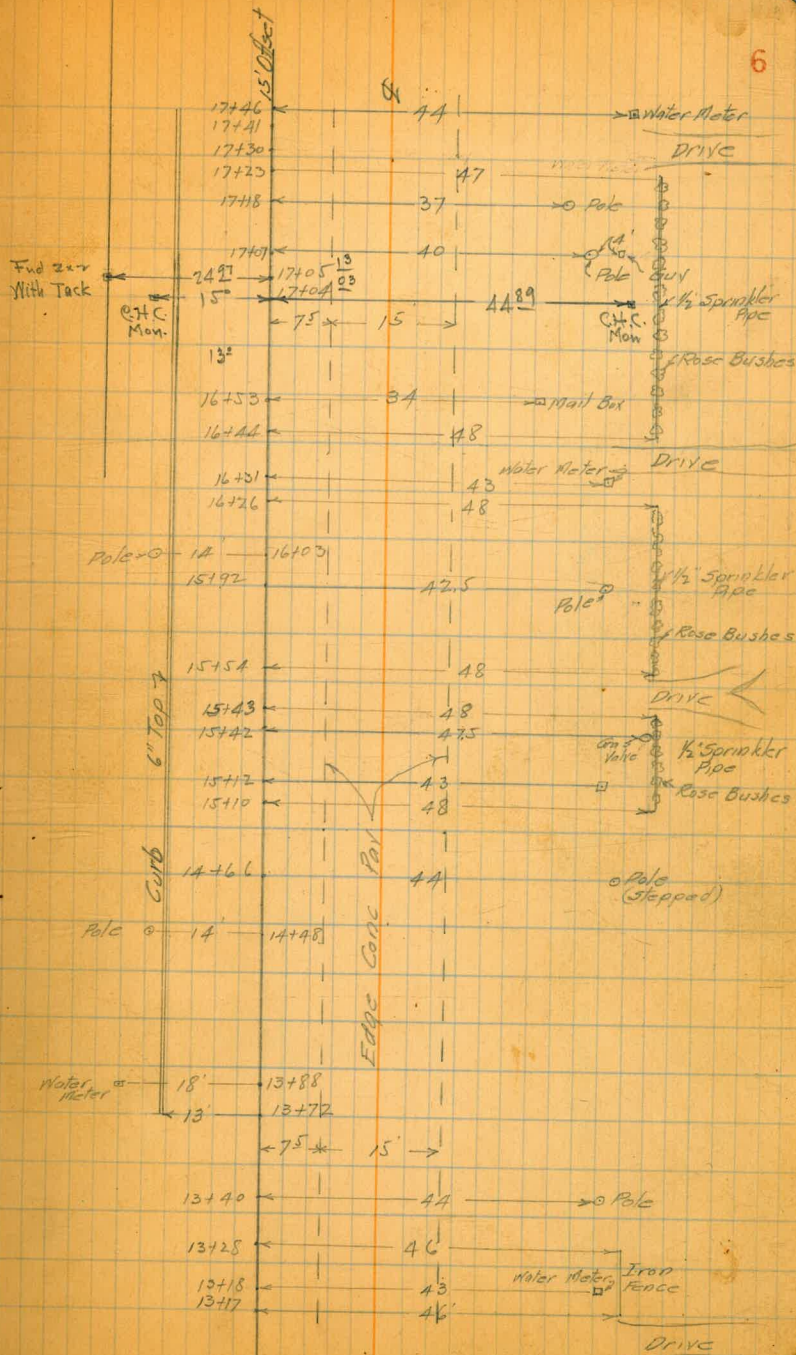


17+04<sup>03</sup>  
17+04<sup>32</sup> P.C.

1/28.29 N 60° 48' E

Mar 17-27  
Clark  
Culver  
Rodier

Set 2x2





20+3186  
20+31957 P.T.

995.12 N42°28'E

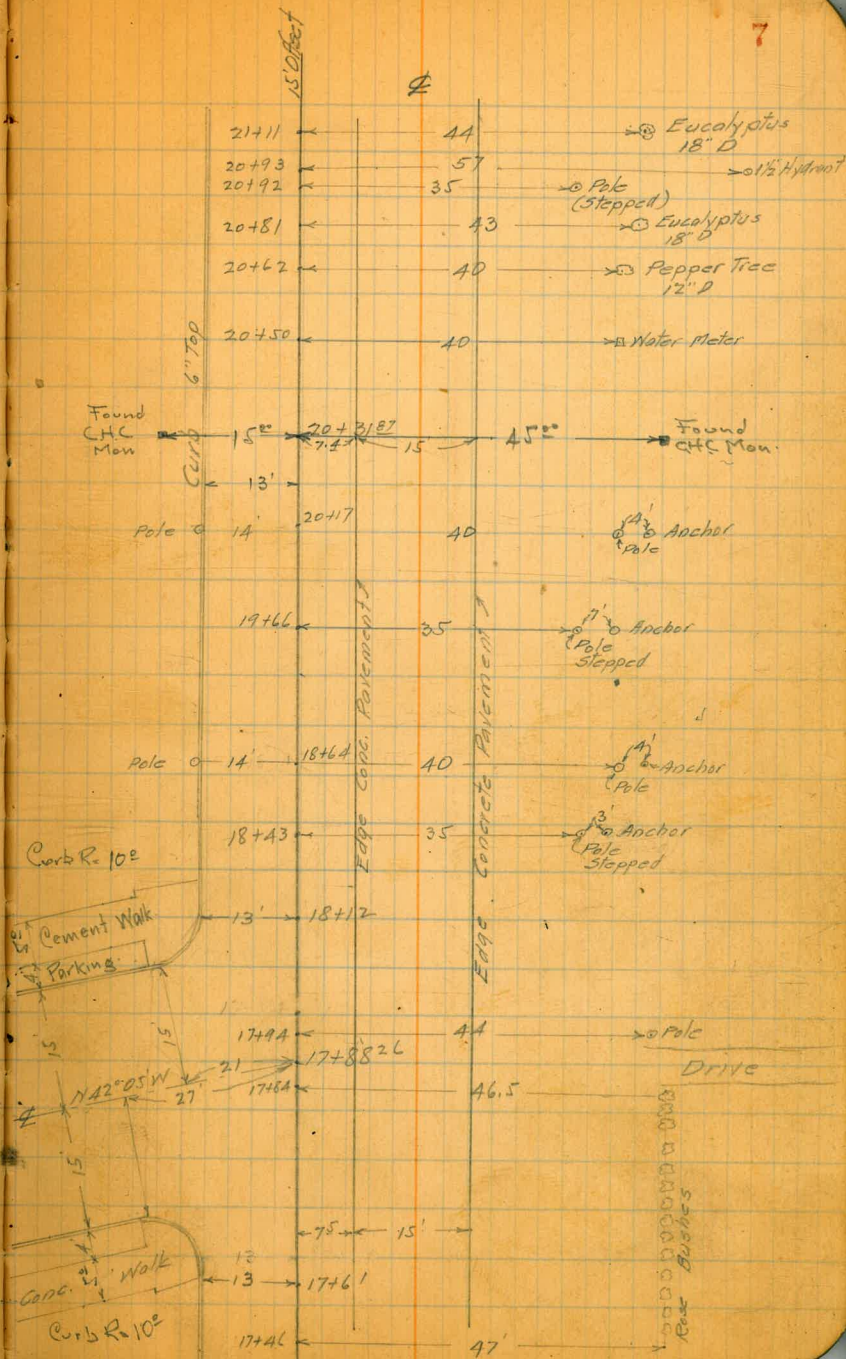
18+6907 PI

16°20' Lt

112829 N60°48'E

Choctaw  
DRIVE

Set 2x2

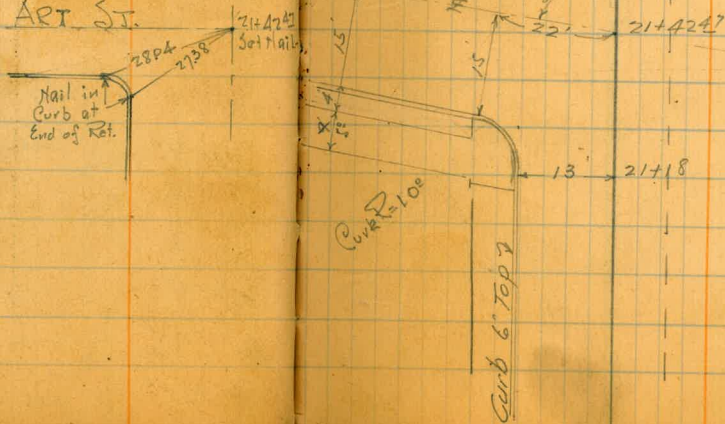




N 44° 28' E

995.12

ART ST.

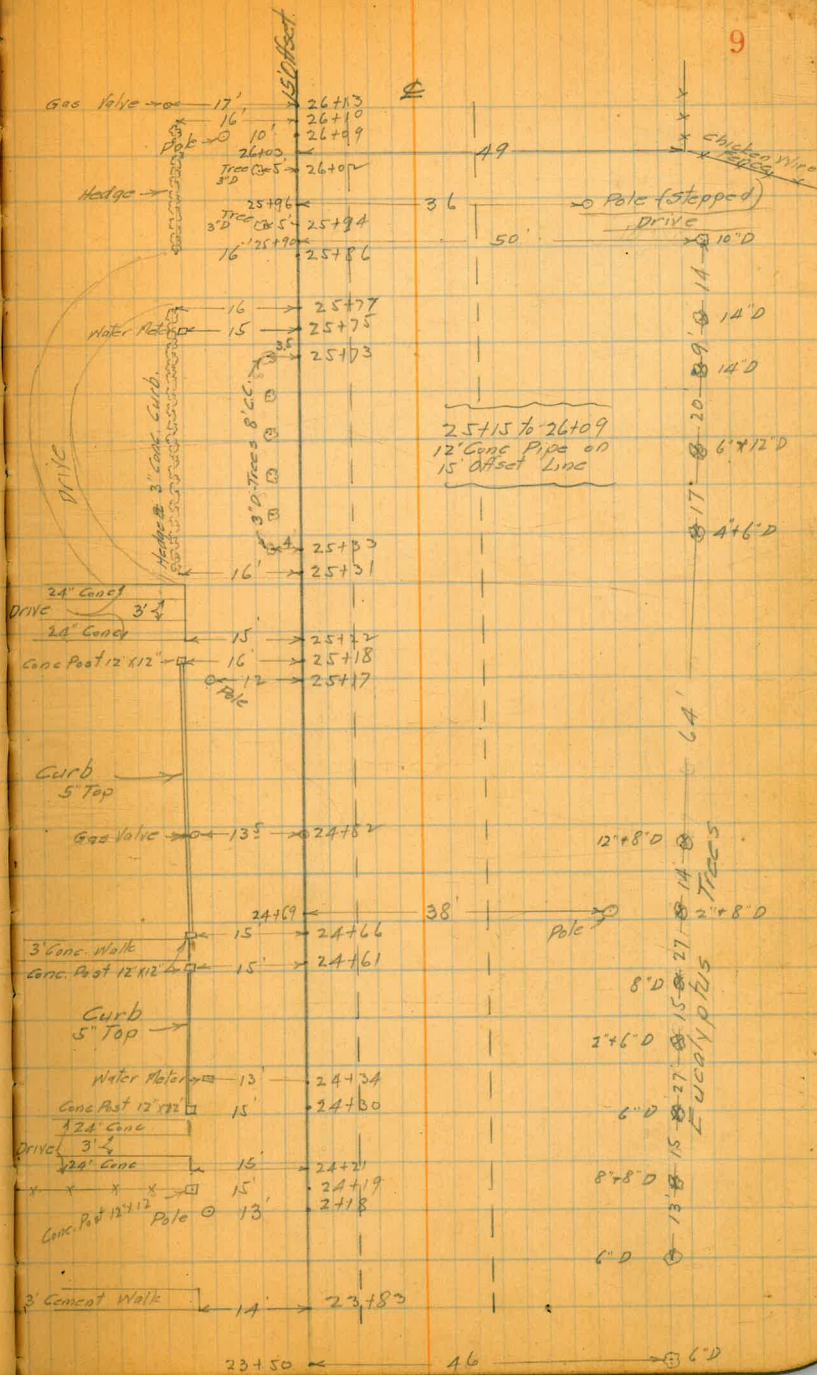


150 Feet		10	8
23450	46	6" D	
23442	39	o Pole	18" D
Water Meter	14	→ 23433	18" D
Chicken Wire Fence	16	→ 23419	8" D
Pole	14	→ 23418	8" D
			6" D
			18" D
			18" D
			18" D
22450	45	Eucalyptus	18" D
22436	45	Euc. Tree	21" D
22422	43	Double Euc. Tree	8" D
22420	37	o Pole	
22407	43	Euc. Tree	18"
21494	64		
Pole	145	21475	63
21470			
21465	45	Eucalyptus	21" D



N 44° 28' E

995.17





29+5444 P.T.

N 69° 10' 30" E  
835.34

28+3722 P.I.

24° 42' 30" Rt

2840096  
Post.

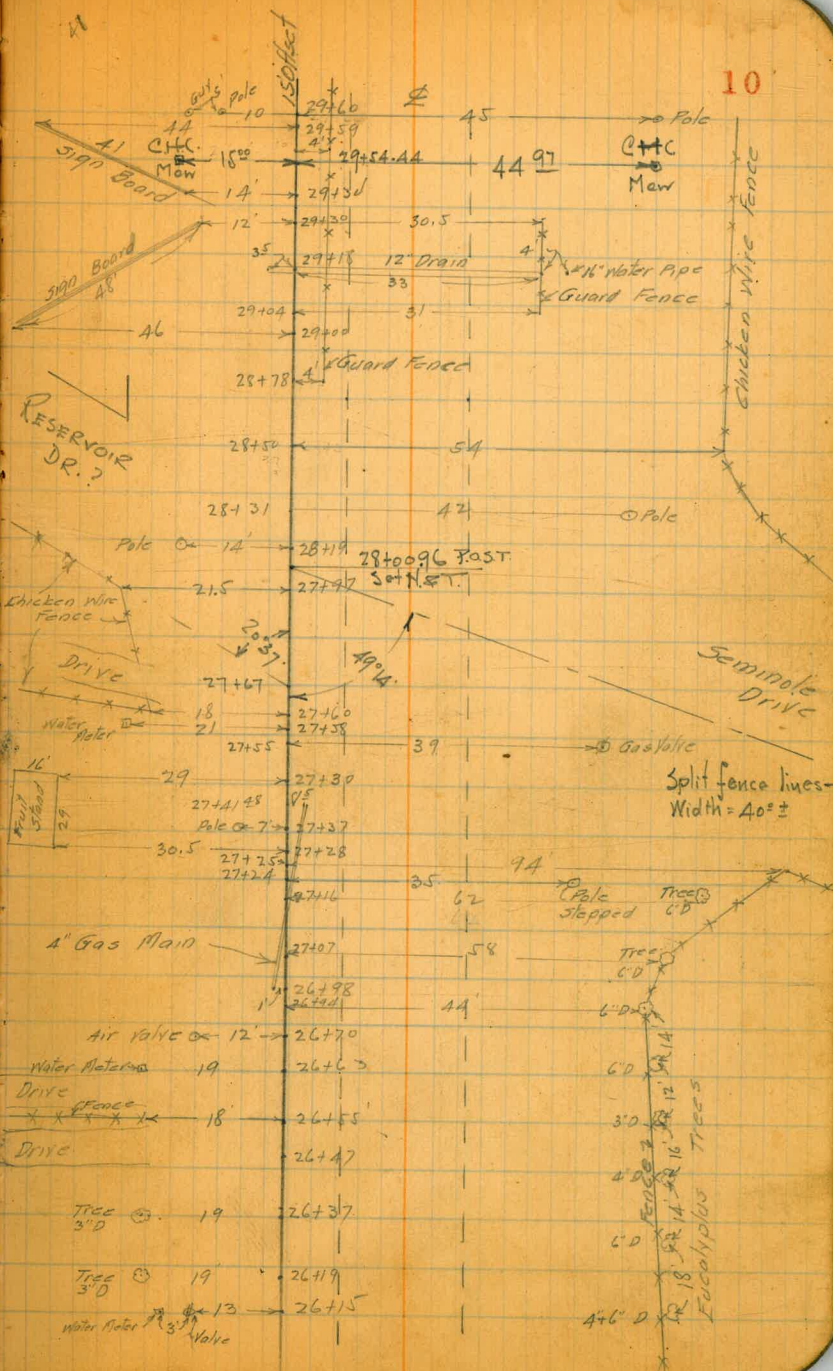
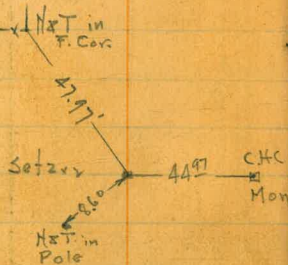
N 44° 28' E

27+1726  
27+4148 P.C.

995.12

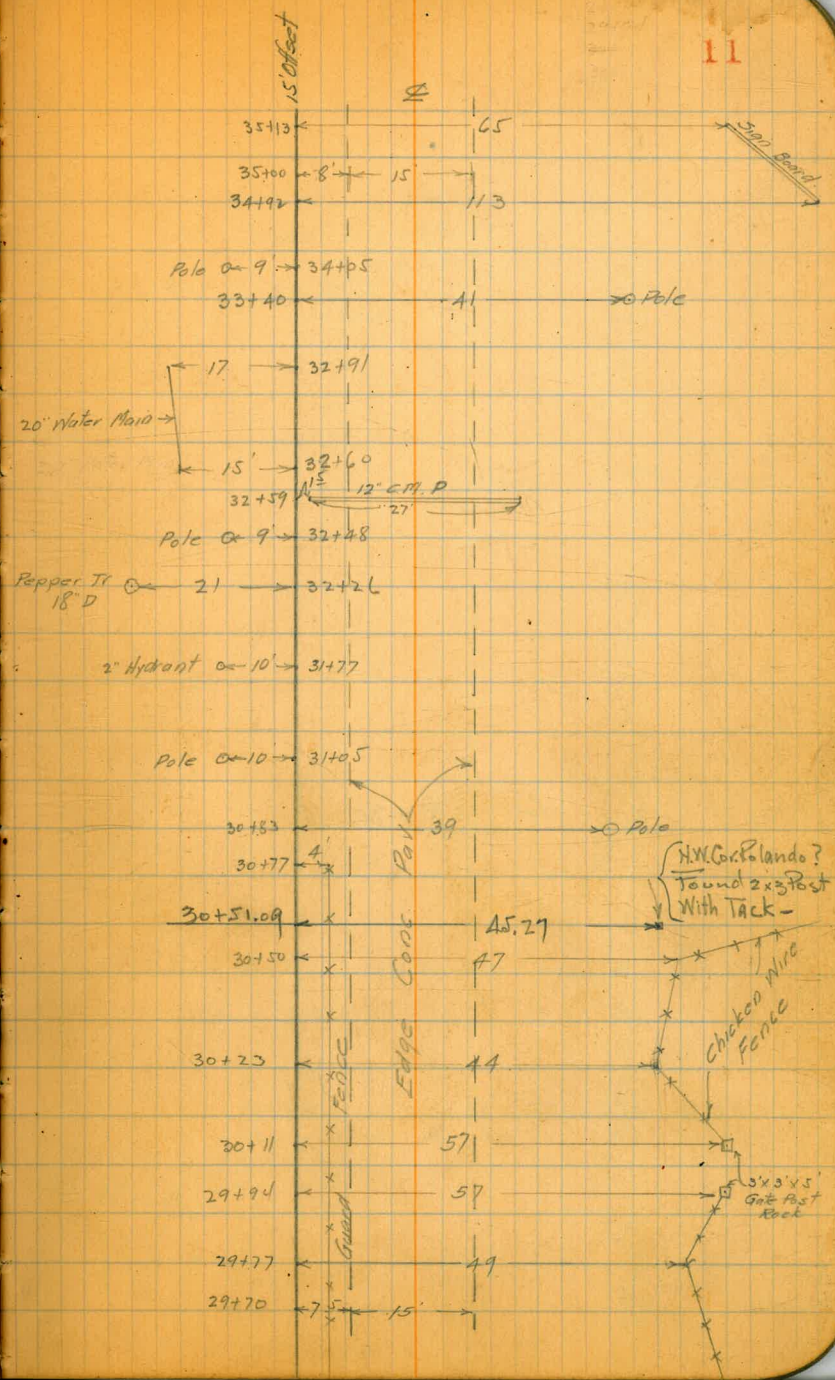
Setzer

Note:  
Reservoir Dr  
looks as though  
vacated.





N 69° 10' 30" E 835.34





38+36.41  
38+37.50  
P.T.

1004.80

N60°59'E

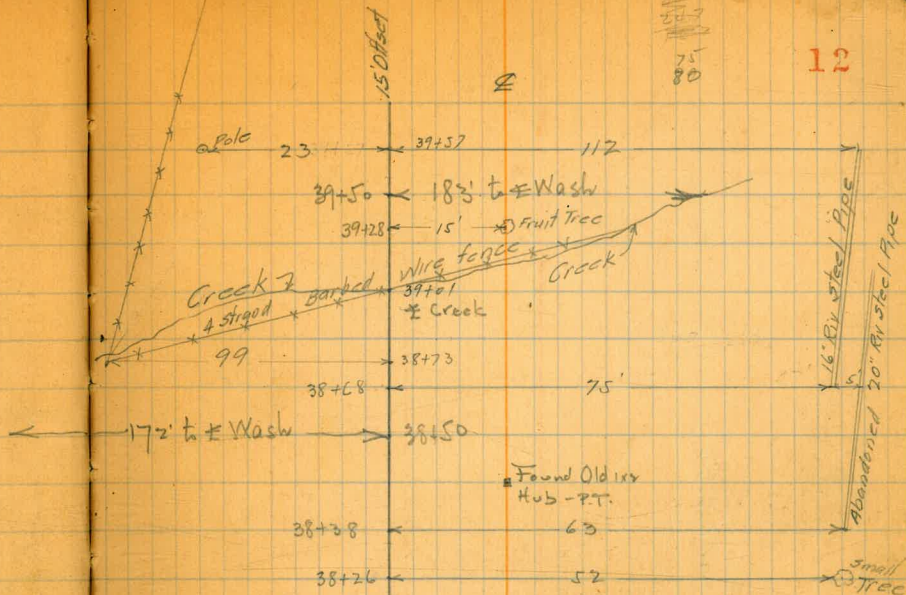
36+93.22 P.I.

8°11'30" LT

N69°10'30"E

35+50.50  
35+26.10

S35.34



Pole on 24 → 38+05

Found Old iron  
P.I. Hub Marked  
36+93.72

Pole on 20 → 36+91  
22 → 36+89

36+50 → 24.7

10' → 36+42

Pole on Pole

36+28 → Pole

36+18 → Pole

36+00 → 10.2 → 15

10' → 35+97

24 → 35+94

12' → 35+84

35+61

Pole on 9 → 35+59

35+50.5 → 8 → 15

35+58.77 P.O.S.T.  
40 Find Nail in Pole  
Pole

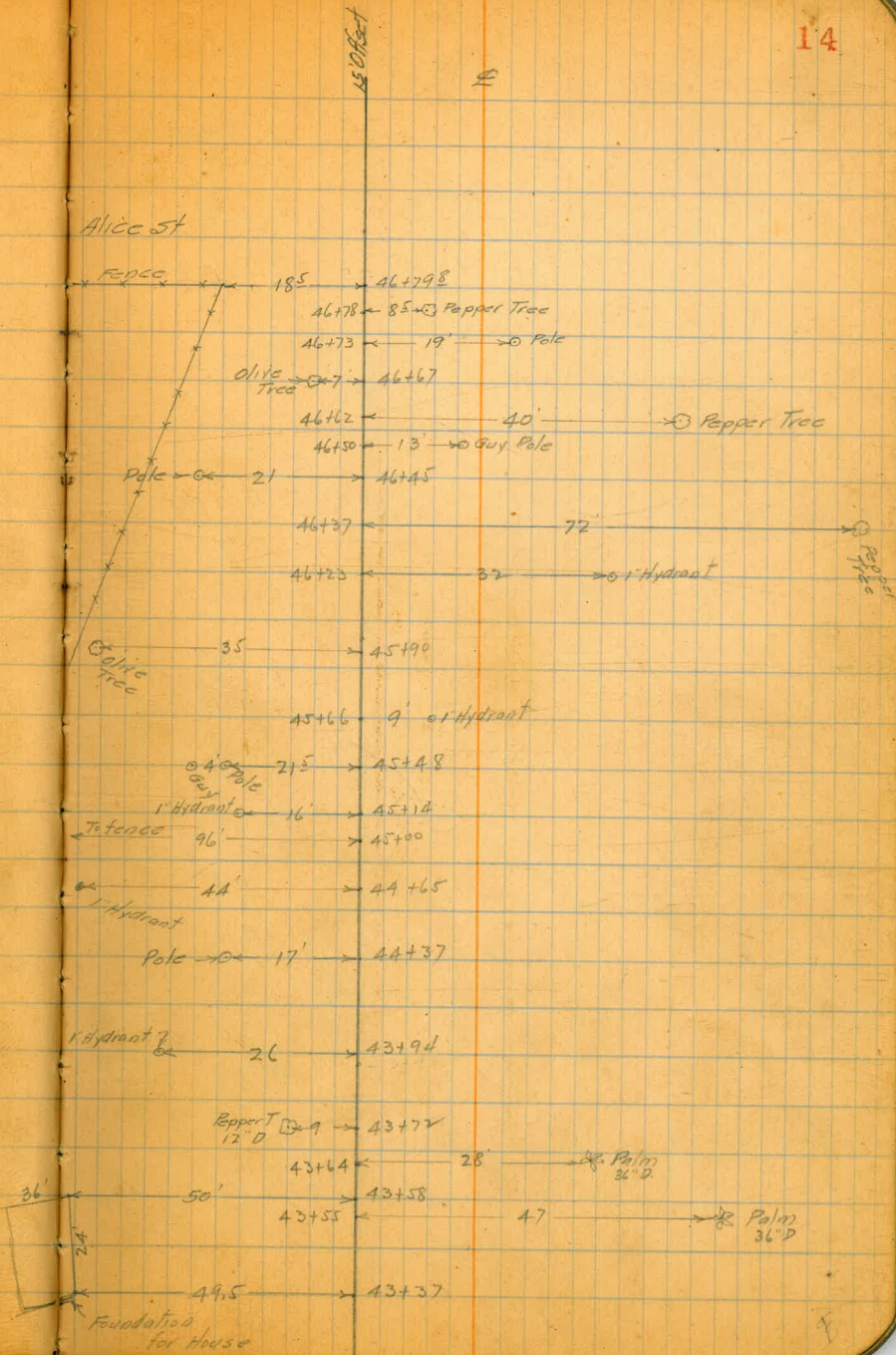






N 60° 59' E 1004.80

44+4923<sup>1</sup> P.C.  
44+4933<sup>7</sup>

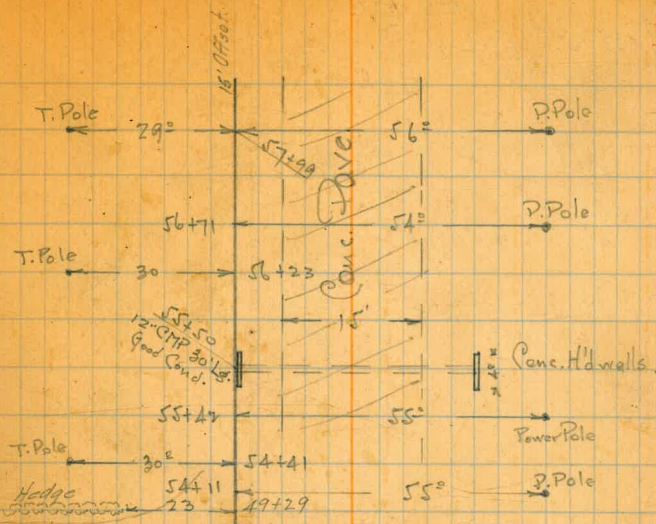




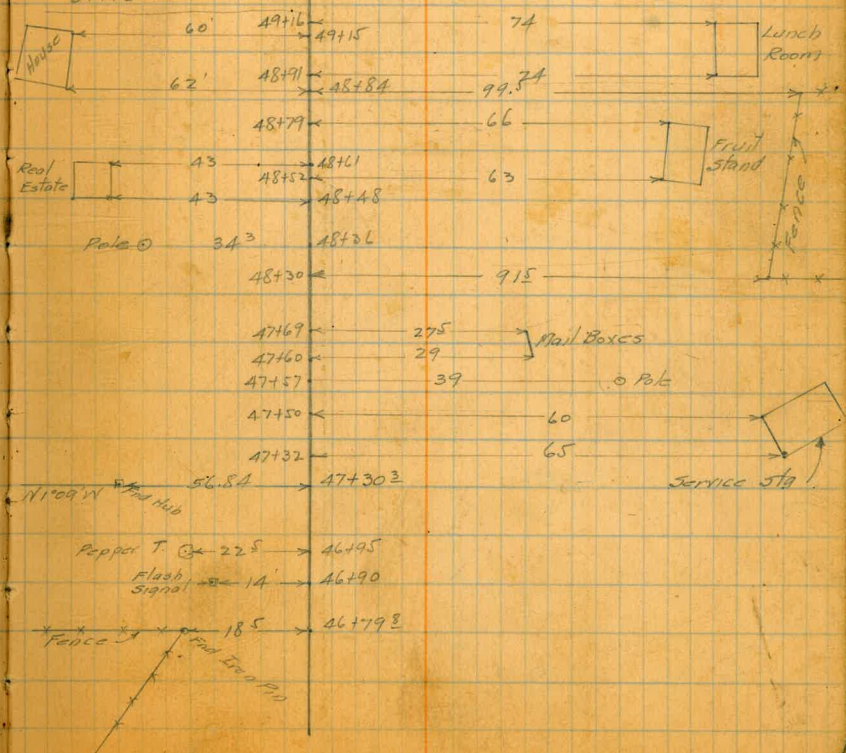
Mar 17-27

Clark  
Culver  
Rodier

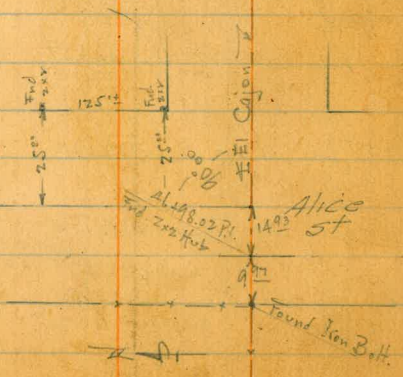
54+06.85  
49+36.29 y P.T.



DRIVE



46+98.02 P.I.



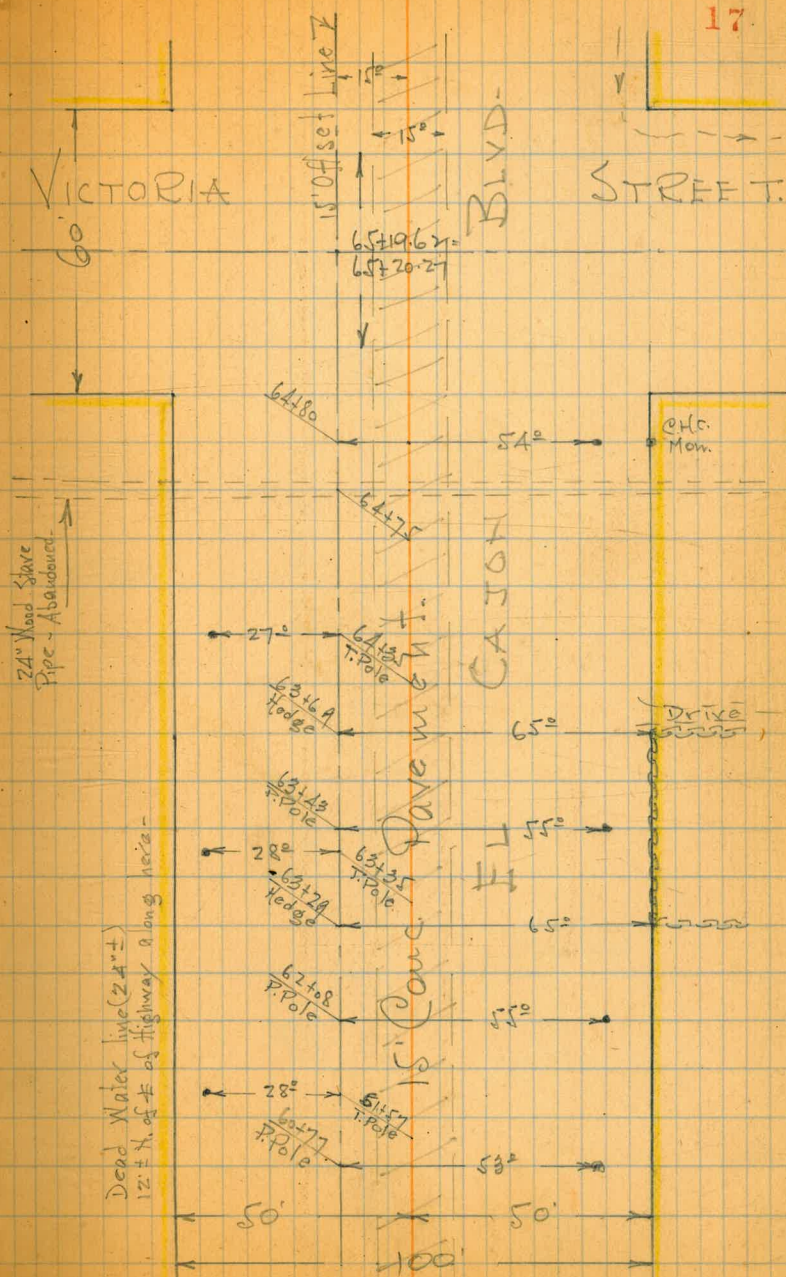






65+19.62  
65+20.27

Equation

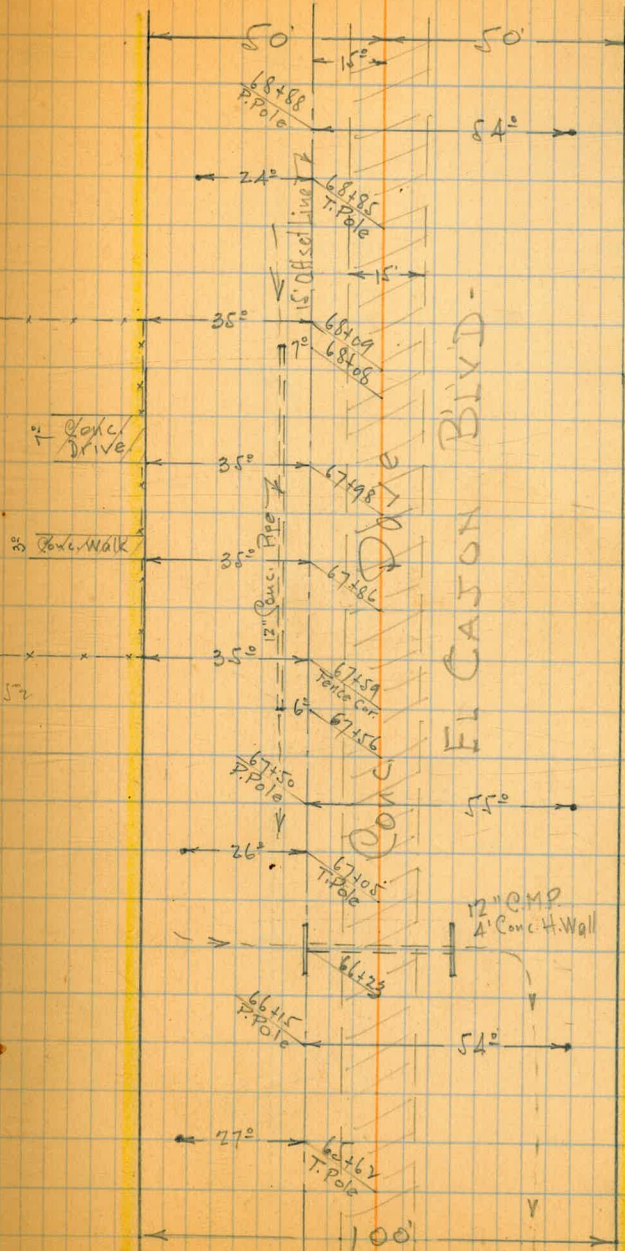




# Topog.

18

65762

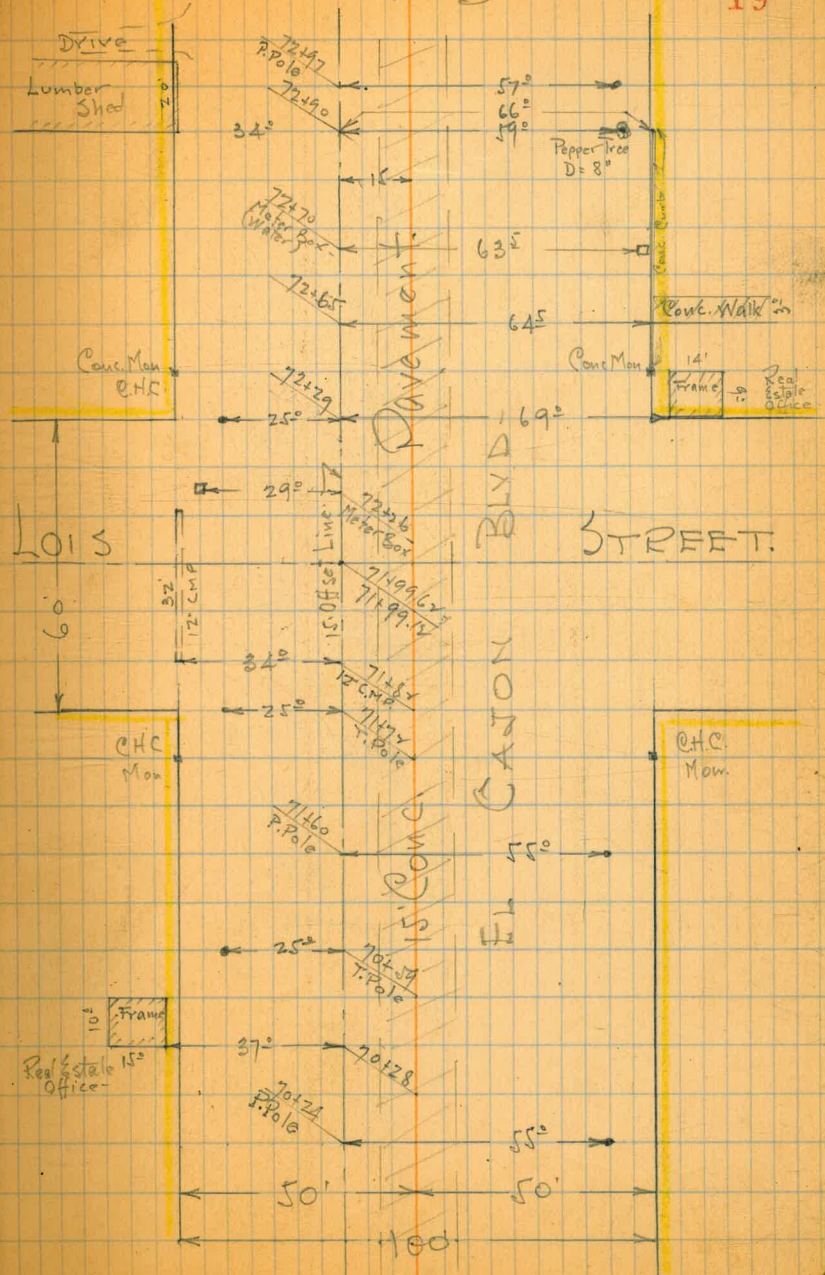




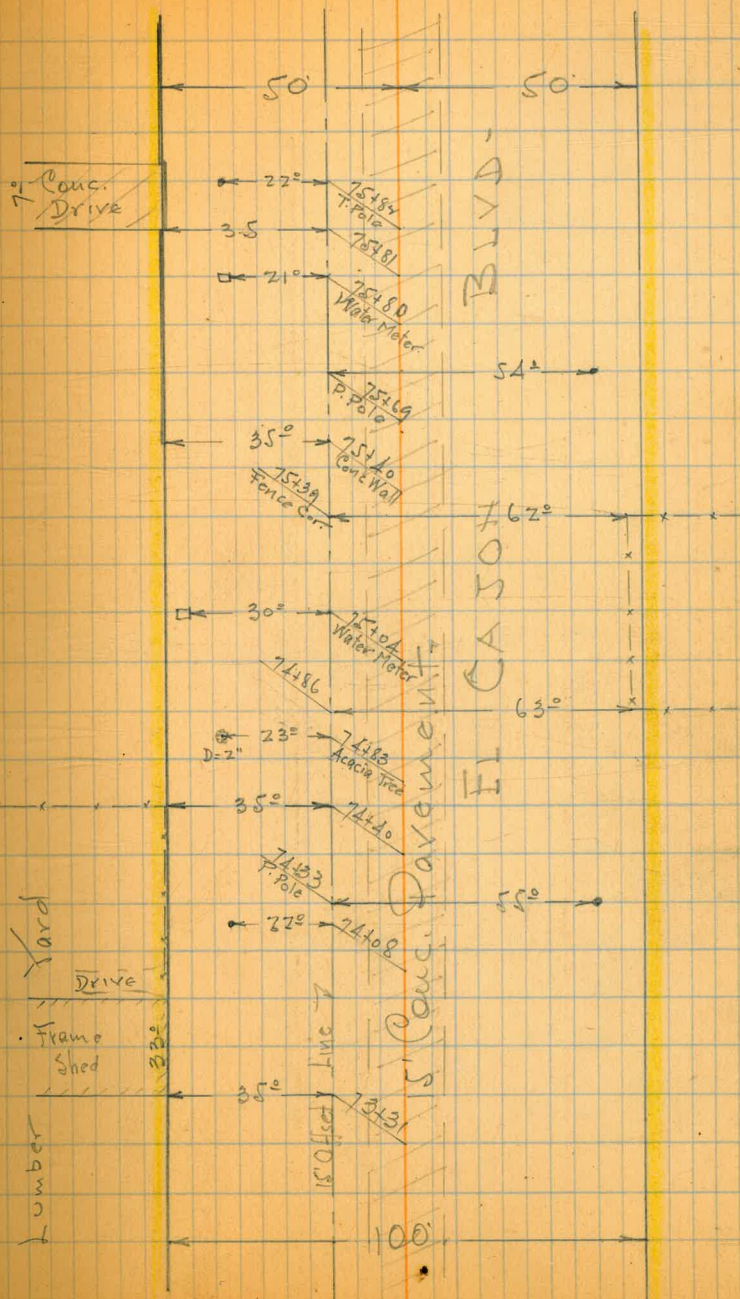
Topo

72+97  
5

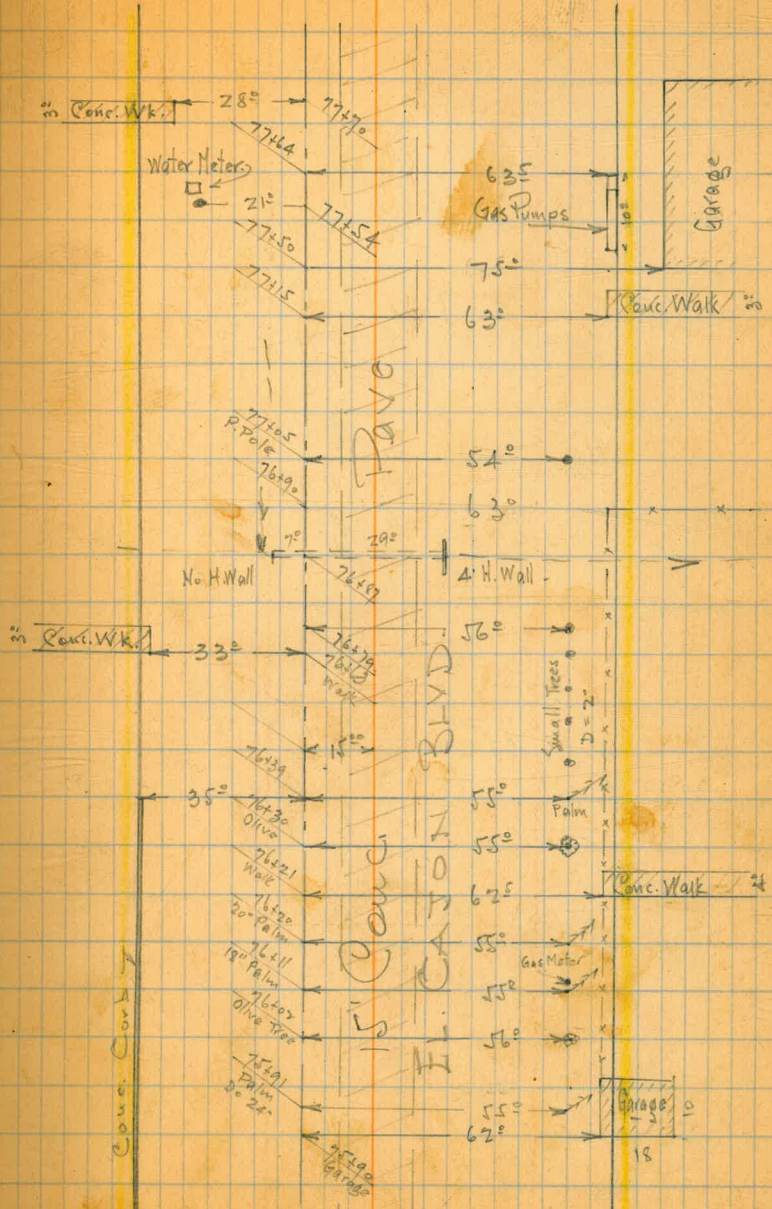
71+99.63  
71+99.12





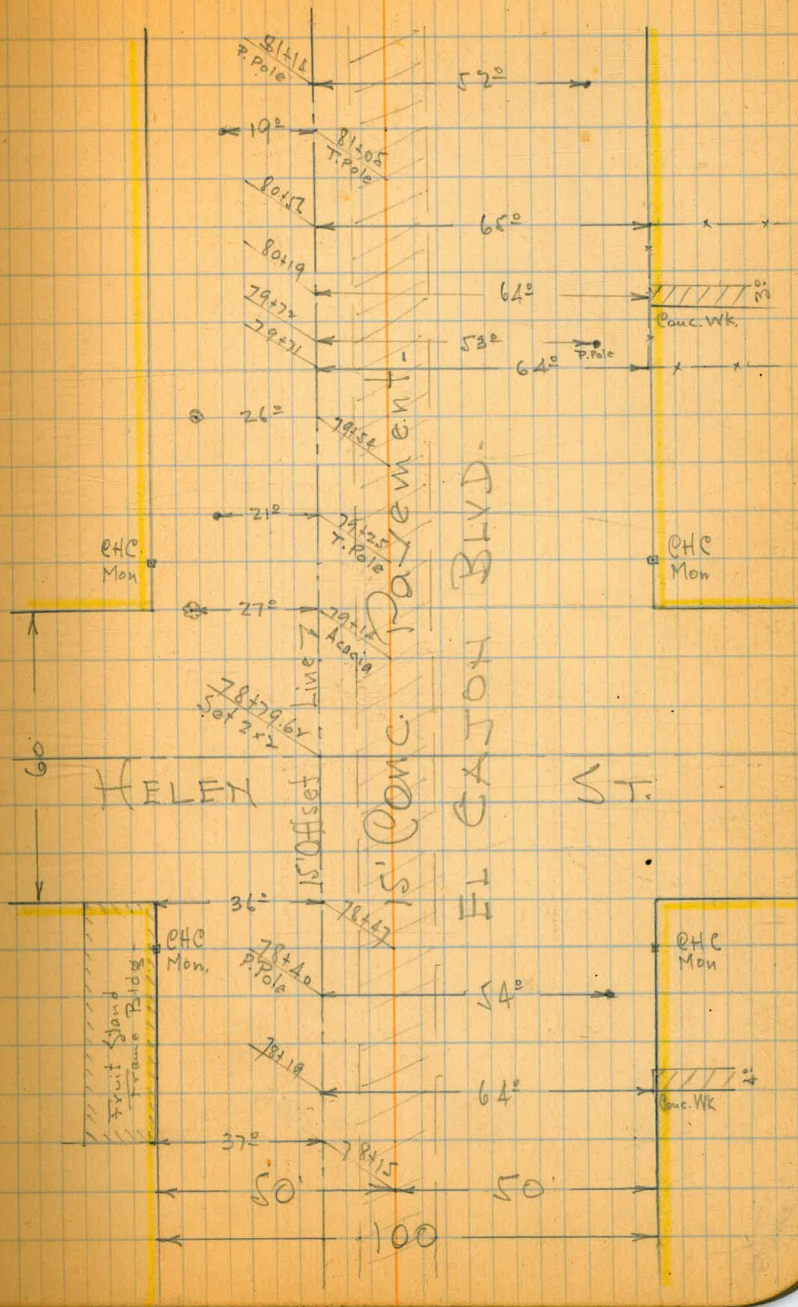








78+79.62  
P.O.T.



EHC  
Mon

EHC  
Mon

EHC  
Mon

EHC  
Mon

Frame Bldg

Conc. Wk

60

50

50

100

81+18  
P. Pole

52°

19°

81+05  
T. Pole

65°

80+52

64°

80+19

53°

64°

P. Pole

Conc. Wk

26°

79+52

21°

79+25  
T. Pole

27°

79+12  
A. Pole

78+79.62  
Sed 2 x 2

36°

78+40  
P. Pole

54°

78+18

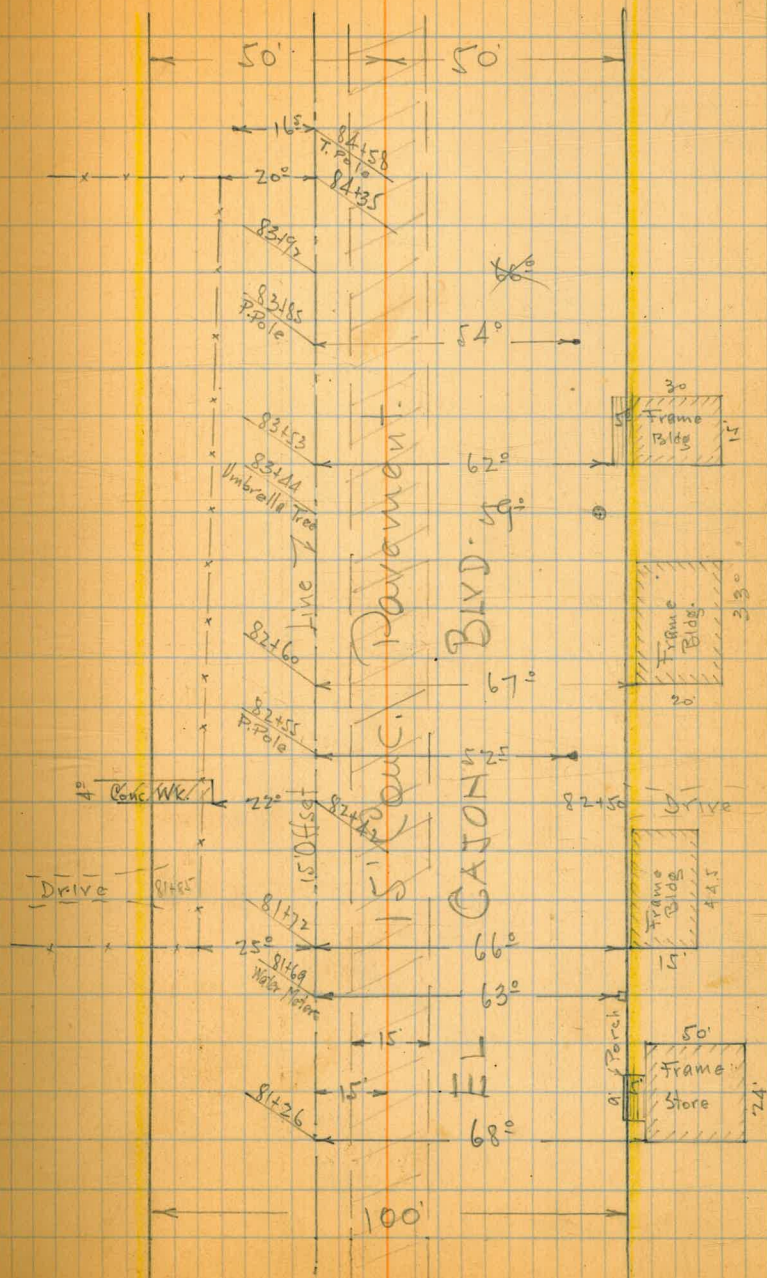
64°

37°

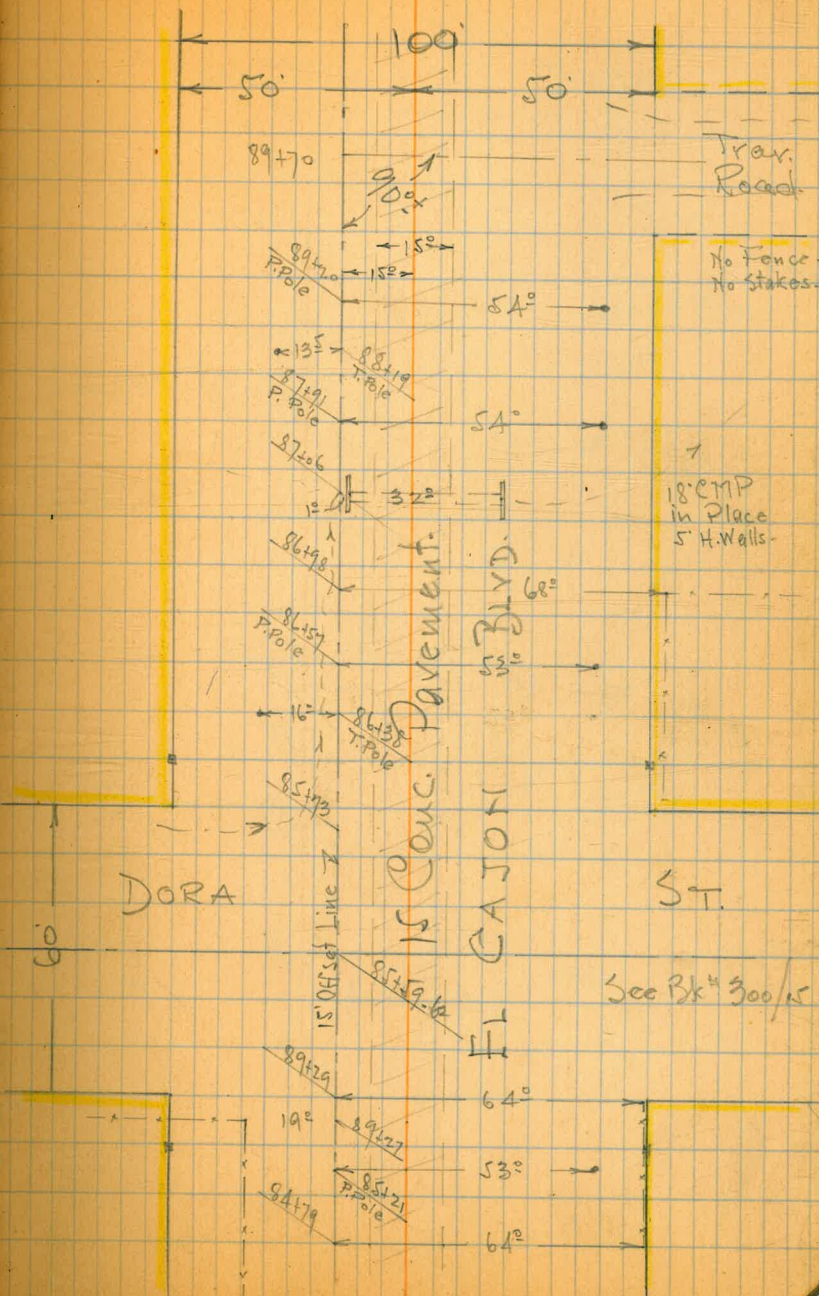
78+15

100



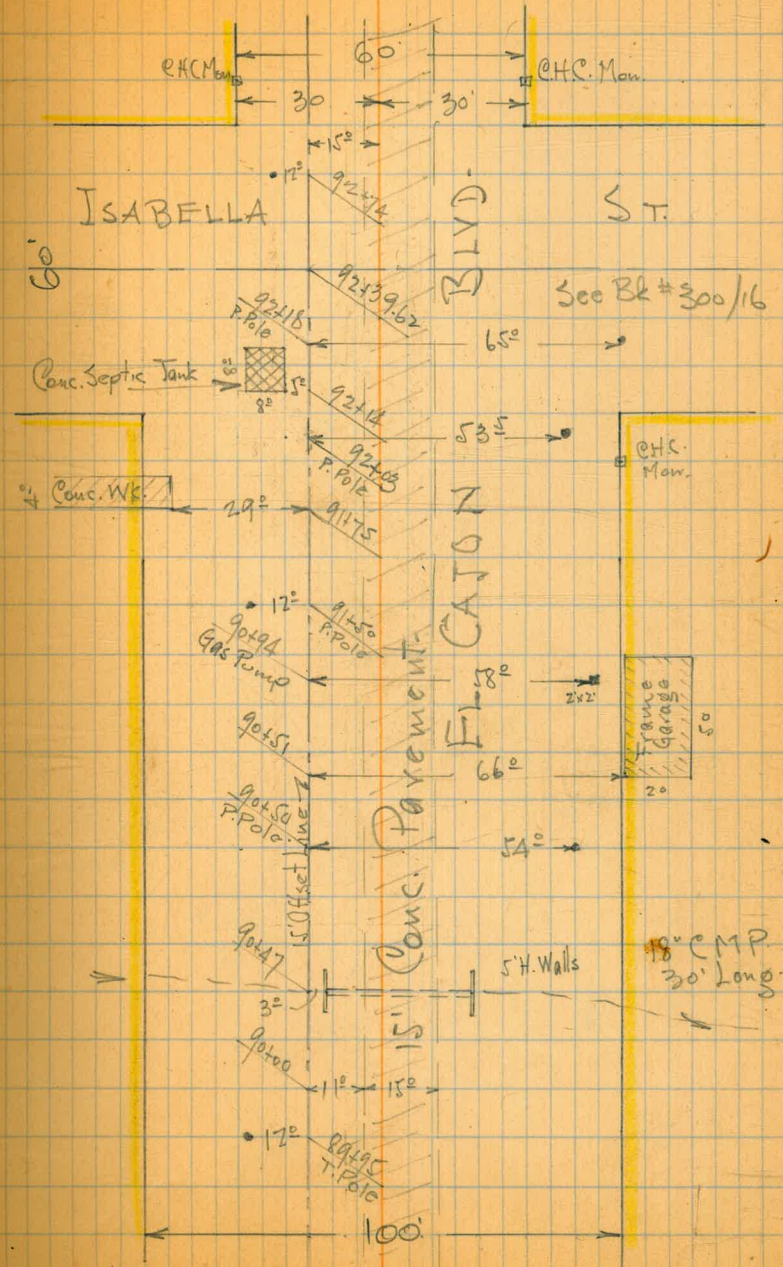




85+59.62  
P.O.T.



92439.62



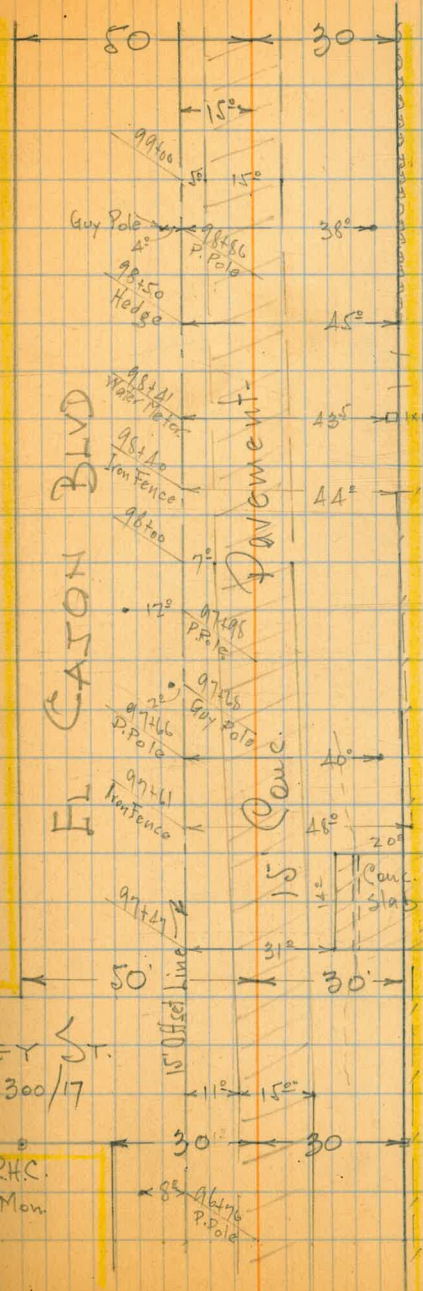












EL CAYON BLVD

Pavement

KEENEY ST.  
Sec. Bk\* 300/17

"ROSE VILLA"

C.H.C.  
Mon.

C.H.C.  
Mon.

to here

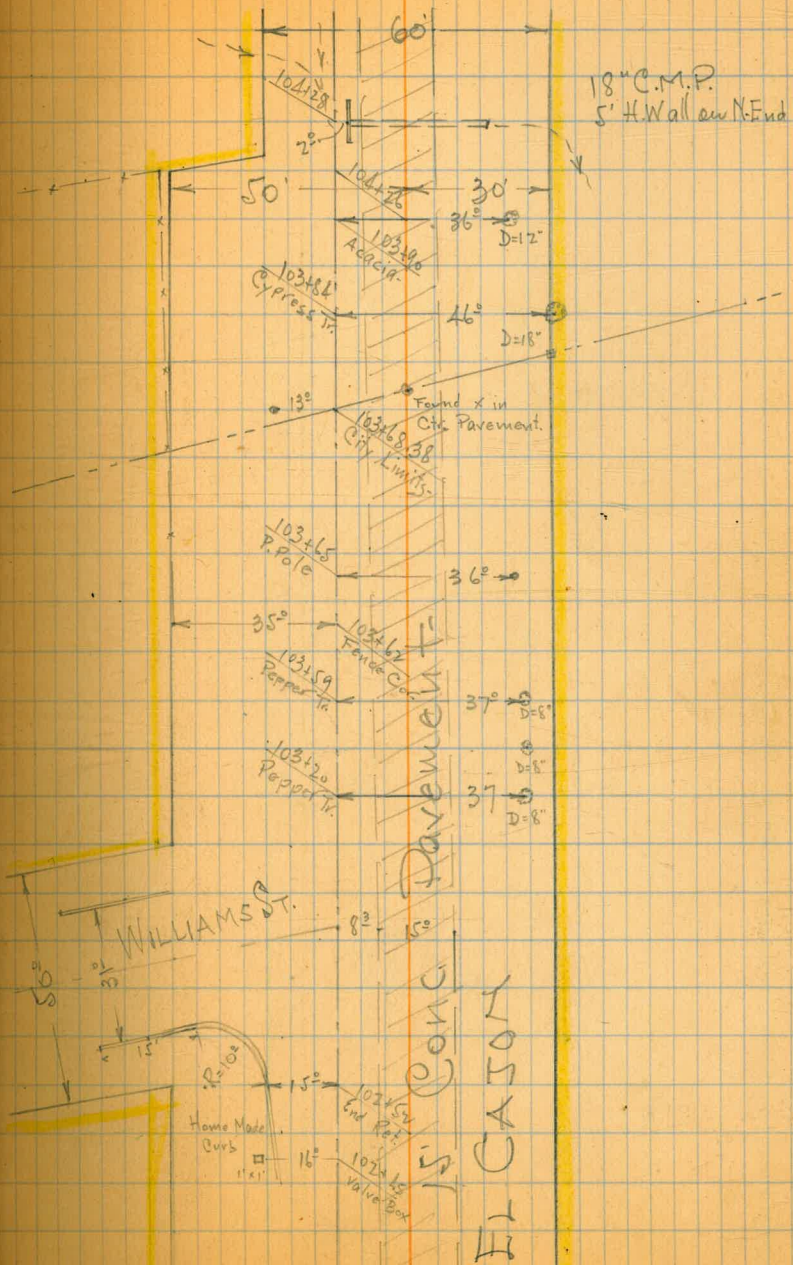
96+96.75  
P.C.





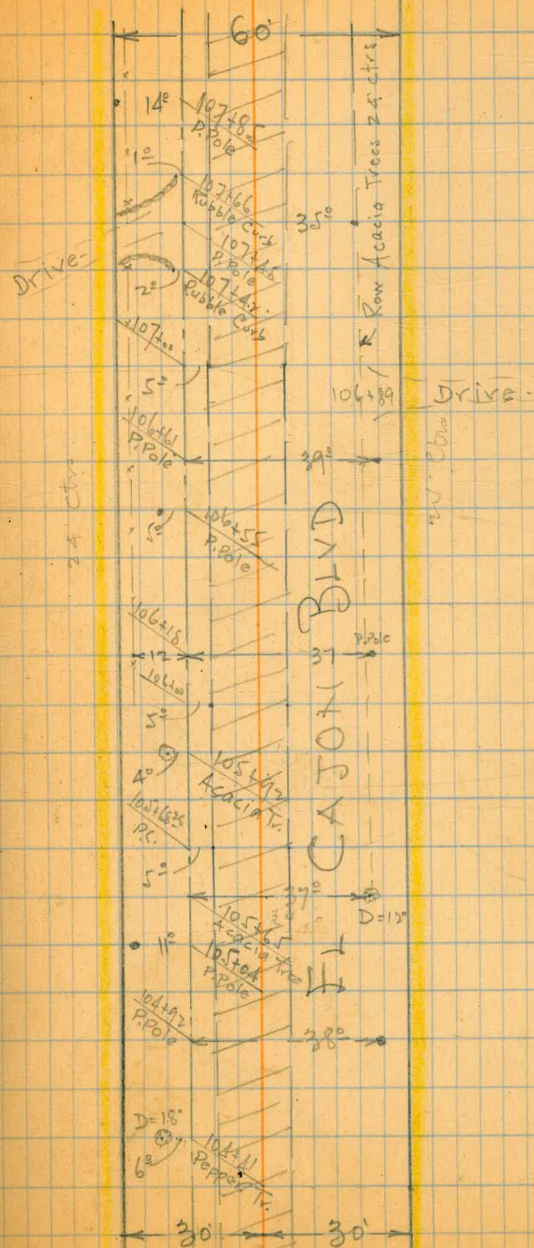


102+86.00

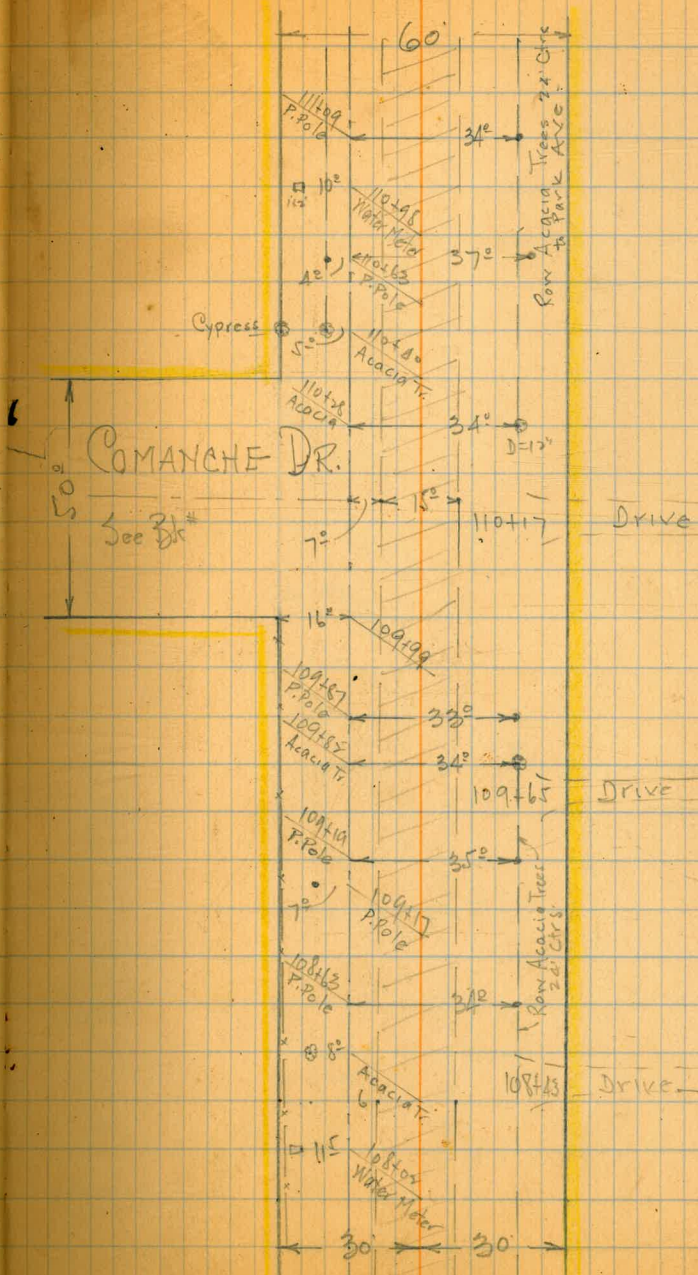




105+68.28  
P.C.

















1123.56

1740.03

27+17.26

83.70

28+00.96

1099

40.89

59.88

30+51.67

53

30+51.09

159-23

20-37

180-00

27+17.26

50

27+17.26

66-57  
133-53

88-48.30  
112.30

88-48.30

90-00.30

112.30

90-00.30

88-48.30

112.30

89-58.30

88-48.30

89.30