

-1415+

NAME **ROSEVILLE**

Class \_\_\_\_\_ Course \_\_\_\_\_ Party \_\_\_\_\_

X-Sections

**523**

ENGINEERING DEPARTMENT,  
CITY OF SAN DIEGO,  
CALIFORNIA.

**FIELD NOTES**

No. 403P

ESPECIALLY ADAPTED  
TO THE USE OF  
ENGINEERING STUDENTS

**EUGENE DIETZGEN Co.**

MANUFACTURERS

DRAWING MATERIALS

MATHEMATICAL AND SURVEYING INSTRUMENTS

MEASURING TAPES

CHICAGO SAN FRANCISCO NEW YORK  
NEW ORLEANS PITTSBURGH

MICROFILMED

DEC 23 1964

- INDEX -

Page

X-Sections - CARLETON - 7-29

X-Sections - Addison - 30-33

Byron - X-Sect. 34 fwd

Plum - X-Sect. - 1-only

Sta. + H.I. - Elev

5+40 = (S. Line of Hugo)

5+05

4+80

9.97 116.54

T.P. 0.57 106.57

4+35

3+85

12.04 107.14

T.P. 0.20 95.10

3+58

3+40 = (N. Line of Garrison)  
9.09 (95.30) 86.21

Left

±

Right

Ahead  
(See Book - 526-17)

1

52 45 48 57 62  
50 35 35 50

59 42 68 81 91  
50 35 28 32 50

H.I. = 116.54

66 53 93 131 100 108  
50 20 9 11.6 17 34 50

71 70 82 70 102 90 60 65  
50 38 18 6 8.8 10 31 39 50

H.I. = 107.14

76 74 82 134 113 118  
50 35 10 11.5 30 37 50

23 25 53 71 67 30 37  
50 35 18 6.4 26 35 44 60

H.I. = 95.30



See Book 529 Page 9

← GARRISON →

Sta + H.I. - Elev.

4.50

+

H.I.

-

Elev.

Left 15.11  
433.01

6.13

653.14

5.45

7.50

8.0

7.50

8.1

7.50

756.6

7.50

Left

←

Right

2

200	15	10	50	25.0
200	20	10	50	25.0

200	17	10	50	25.0
200	20	10	50	25.0

200	10	11	50	25.0
200	20	10	50	25.0

200	15	10	50	25.0
200	20	10	50	25.0

200	17	10	50	25.0
200	20	10	50	25.0

200	10	10	50	25.0
200	20	10	50	25.0

200	12	10	50	25.0
200	20	10	50	25.0

200	9	10	50	25.0
200	20	10	50	25.0

200	10	10	50	25.0
200	20	10	50	25.0

Sta. + H.I. - Elev.

1170 2.82

2.82

420.83

1170

420.83

Left

4

Right

3

1170

1170

1170

1170

1170

1170

1170

1170

1170

1170

4-12-19-6



CARLETON St

Left

±

Right

7

Sto. + H.I. - E/cv

-(0+35) 25.4 Rt. 4.48 134.08

25.4 Rt Buried

23' Rt. Buried

± 138.56 4.3 134.3

23' Left Buried

25.4 Left Buried

-(0+35) 25.4 Left 4.45 134.11

7.10 138.56

T.P. 1.27 131.46

11.32 132.73

T.P. 0.32 121.41

11.86 121.73

T.P. 0.09 109.87

12.16 109.96

T.P. 0.43 97.80

11.83 98.23

B.M. 86.40

0+59.5

129.08

9.11

129.10

129.31

129.29

8.90

131.19

7.00

135.15

25.4

25.4

131.36

6.83

132.97

5.22

132.99

0+35

132.98

0+00

± Plum.

-(0+35)

134.11

4.08

134.11

134.89

3.30

135.62

2.57

25.4

134.08

4.12

134.79

3.40

135.34

2.85

134.07

132.98

5.21

138.19

17 x 17

Plug. J.W. Co. Carleton + Willow.

Carleton St.

Sta. + H.I. - Elev.

0+35	45' Rt.	4.4	134.2
	35' Rt.	5.5	133.1
	25.4 - Rt.	5.57	132.99
	25.4 Rt.	6.35	132.21
	23' Rt.	6.31	132.25
	17' Rt.	6.3	132.3
	∅ (138.56)	6.3	132.3
	17' Lt.	6.1	132.5
	22.0 - Lt.	6.51	132.05
	24.8 - Lt.	6.43	132.13
	24.8 Lt.	5.58	132.98
0+35	35' Lt.	5.7	132.9

0+00	45' Rt.	4.4	134.2
	35' Rt.	5.4	133.2
	17' Rt.	5.7	132.9
	∅	4.9	133.7
	17' Lt.	5.6	133.0
	35' Lt.	4.3	134.3
0+00	45' Lt.	3.1	135.5



Carleton

Sta.	+	H.I.	-	Elev.
			2.0	124.70
			3.9	122.8
			3.81	122.89
			4.58	122.12
			4.48	122.28
		(126.70)	4.8	121.9
			4.73	121.97
			4.93	121.77
			4.10	122.60
1+00			3.8	122.9

0.19 (126.70)  


---

 12.05 126.51

(138.56)

0+59.5			6.8	131.8
			9.5	129.1
			9.25	129.31
			9.97	128.59
			9.88	128.74
		(138.56)	10.0	128.6
			10.07	128.49
			10.29	128.27
			9.46	129.10
0+59.5			9.3	129.3

Carleton St.

Sta.		H.I.	-	Elev.
0	4		9.1	106.1
	10'-Lt.		9.5	105.7
	14.5 Lt.		9.19	106.01
	17'-Lt.		9.38	105.82
	12'-Lt.		8.55	106.65
2+00	35'-Lt.		7.5	107.7

0.31 (115.20)

0 (126.70) 11.81 114.89

0	1+50	36'-Rt.	4.1	122.6
	↑	35'-Rt.	9.8	116.9
		30'-Rt.	11.6	115.1
		17'-Rt.	11.69	115.01
		17'-Rt.	12.61	114.09
		14.5 Rt.	12.41	114.29
	4	(126.70)	12.7	114.0
		14.5 Lt.	12.63	114.07
		17'-Lt.	12.83	113.87
		17'-Lt.	12.03	114.67
1+50	35'-Lt.		11.6	115.1
1+00	37'-Rt.		(+1.3)	128.0

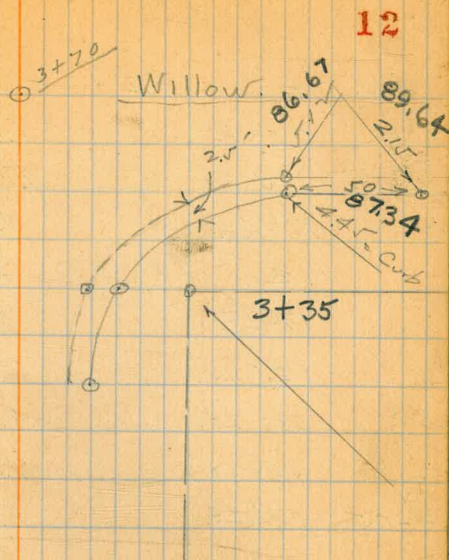
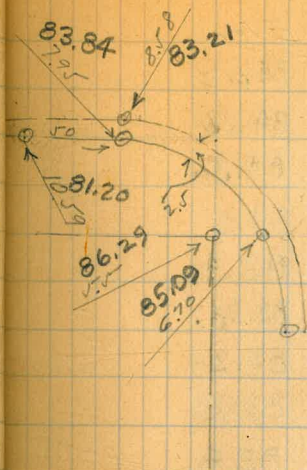
Carleton St.

Sta.	+	H.I.	-	Elev.
2150			1.9	101.7
↑			4.1	99.5
			4.8	98.8
			4.26	99.38
			5.06	98.58
			4.91	98.73
			5.3	98.34
		(103.62)	5.2	98.44
			5.57	98.07
			5.79	97.85
			4.99	98.65
			5.6	98.0
2150			4.3	99.3
		(103.64)	0.04	
○			11.60	103.60
2100			(+1.2)	116.4
↑			6.1	109.1
			7.7	107.5
			7.99	107.21
		(115.20)	8.80	106.40
			8.61	106.59
			9.3	105.9

Carleton

Sta.		H.I.	-	Elev.
0	17L-Rt		5.5	86.3
	↳		5.6	86.2
	17L-Lt		6.6	85.2
	22.5 Lt.		Buried	
	25-Lt.		7.46	84.33
	25-Lt.		6.70	85.09
3+35	35-Lt.		5.5	86.3
3+12	35-Rt.		0.4	91.4
	30-Rt.		1.6	90.2
	17-Rt.		2.02	89.77
	17-Rt.		2.78	89.01
	14-Rt.		2.65	89.14
	13-Lt.		3.3	88.5
	↳	(91.79)	2.9	88.9
	11-Lt.		3.9	87.9
	14.5 Lt.		3.61	88.18
	17-Lt.		3.76	88.03
	17-Lt.		2.96	88.83
	27-Lt.		3.3	88.5
3+12	35-Lt.		2.6	89.2
	0.04	(91.79)		
			11.89	91.75

103.64



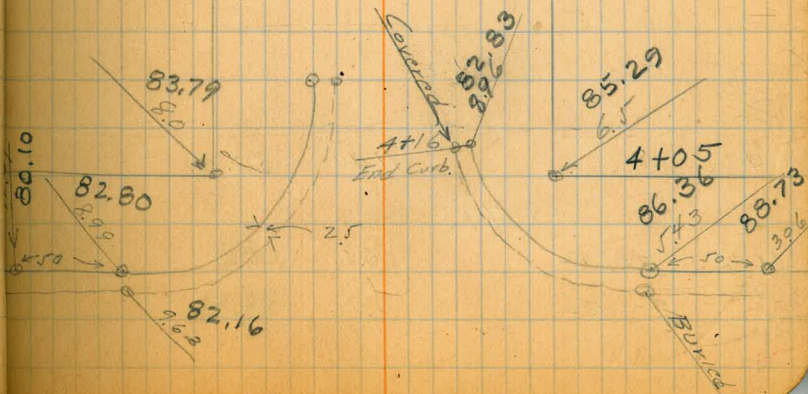
Carleton

Sta.	+	H.I.	-	Elev.
			7.79	84.00
			7.73	84.06
			7.5	84.39
	±	(91.79)	7.8	84.0
			8.4	83.4
			8.41	83.38
			8.55	83.24
			7.81	83.98
4+05			8.0	83.8

3+70			3.7	88.1
			6.0	85.8
			6.5	85.3
	±		6.7	85.1
			7.3	84.5
3+70			7.8	84.0

(91.79)

3+35			3.9	87.9
			5.0	86.8
			5.67	86.12
			Buried	
			Buried	



Carlton

14

Sta.	+	H.I.	-	Elev.
		17'-Lt.	3.8	65.43
		25'-Lt.	4.1	65.2
		30'-Lt.	3.8	65.5
5+00		35'-Lt.	4.0	65.3

0.09 (69.25)

⊙		(80.60)	11.44	69.16
4+31		35'-Rt.	1.9	78.7
↑		31'-Rt.	0.3	80.3
		17'-Rt.	0.7	79.9
		11'-Rt.	1.6	79.0
		4 - (80.60)	1.9	78.7
		14.5'-Lt.	2.31	78.29
		17'-Lt.	2.5	78.08
		17'-Lt.	1.71	78.89
		25'-Lt.	1.5	79.1
4+31		35'-Lt.	1.3	79.3

0.21 (80.60)

⊙			11.40	80.39
		(91.79)		
4+05		35'-Rt.	6.5	85.3
↑		25'-Rt.	6.96	84.83

Corleton

15

Sta.		H.I. -	Elev
5786	17'-Rt.	8.67	49.41
5768	17'-Rt.	5.33	52.75
	(5808)		
5750	35'-Rt.	1.3	56.8
↑	17'-Rt.	2.0	56.1
	12'-Rt.	2.4	55.7
	11'-Rt.	2.8	55.3
	∅	2.8	55.3
	14.5 Lt.	3.24	54.84
	17 Lt.	3.41	54.67
↓	17 Lt.	2.73	55.35
5750	35 Lt.	2.8	55.3
	0.37	(58.08)	
0		11.54	57.71
	(69.25)		
5720	- 30'-Rt.	6.2	63.1
5700	35'-Rt.	2.6	66.7
↑	17'-Rt.	3.3	66.0
	∅	(69.25)	65.4
	14.5 Lt.	4.41	64.83
	17 Lt.	4.60	64.65

Top Curb = End Curb } Curb Seems OK  
 Top Curb = Begin Curb }

No Curb

(Floor Garage Entrance)

Carleton

Sta	H.F.	Elev.
6+50 35'-Rt.	9.4	37.3
↑ 20'-Rt.	9.8	36.9
12'-Rt.	10.7	36.0
11'-Rt.	11.0	35.7
∅ (46.69)	10.8	35.9
145'-Lt.	11.44	35.25
17'-Lt.	11.63	35.06
17'-Lt.	10.85	35.84
6+50 35'-Lt.	11.3	35.4

(No Curb Rt.)

6+00 35'-Rt.	0.5	46.5
↑ 20'-Rt.	0.0	46.7
12'-Rt.	0.5	46.2
11'-Rt.	1.0	45.7
∅	1.2	45.5
145'-Lt.	1.57	45.12
17'-Lt.	1.84	44.85
17'-Lt.	1.08	45.61
6+00 35'-Lt.	1.5	45.2

(No Curb Right.)

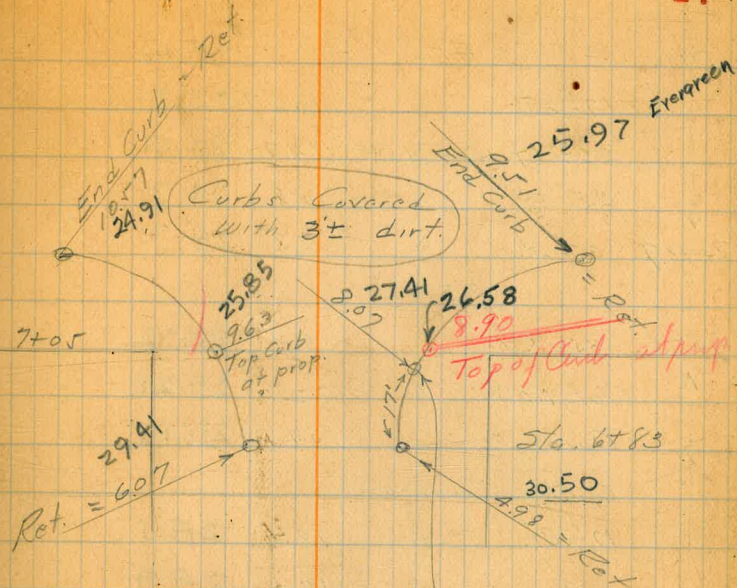
0.51 (46.69)

∅ (58.08) 11.90 46.18



Carleton St.

Sta.	H.T.	Elev.
7+05	35' Rt.	28.3
	17' Rt.	28.0
	±	28.2
	17' Lt.	27.9
7+05	35' Lt.	26.9
6+83	35' Rt.	30.9
	17' Rt. Curb.	30.50
	11' Rt.	30.0
	± (35.48)	30.0
	16' Lt.	30.0
	17' Lt. Curb.	29.91
6+83	35' Lt.	28.7
6+66.7	17' Rt.	33.20
	0.54 (35.48)	
○		11.73 34.96
	(46.69)	



- Note -  
 (this point is not necessarily a break in grade)

Corrected Elev?  
 See actual in Red

(Begin Curbs)



Carleton

Sta.	+	HI	-	Elev.
	17' Rt	Curb	2.48	24.32
	17' Rt	Gutter	3.52	23.28
	14.5' Rt	Gutter	3.04	23.76
	±		2.2	24.6
	17' Lt	Curb	3.53	23.27
	22.5' Lt	Out Walk	3.43	23.37
↓	25' Lt		2.4	24.4
8+50	35' Lt		2.2	24.6

2.42

(26.80)

35.48  
1285  
2263

11.10 24.38

(35.48)

7+98.7 35' Rt 9.3 26.2

1 22.5 Rt 10.46 25.02

17.5 Rt 10.71 24.77

17' Rt 11.93 23.55

14.5 Rt 11.30 24.18

± (35.48) 11.0 24.5

14.5 Lt 12.2 23.3

11.0

11.5

7+98.7 17' Lt 12.85 22.63

Deep Gutter = (Outlet of Pipe)

Edge Gutter

Edge Gutter

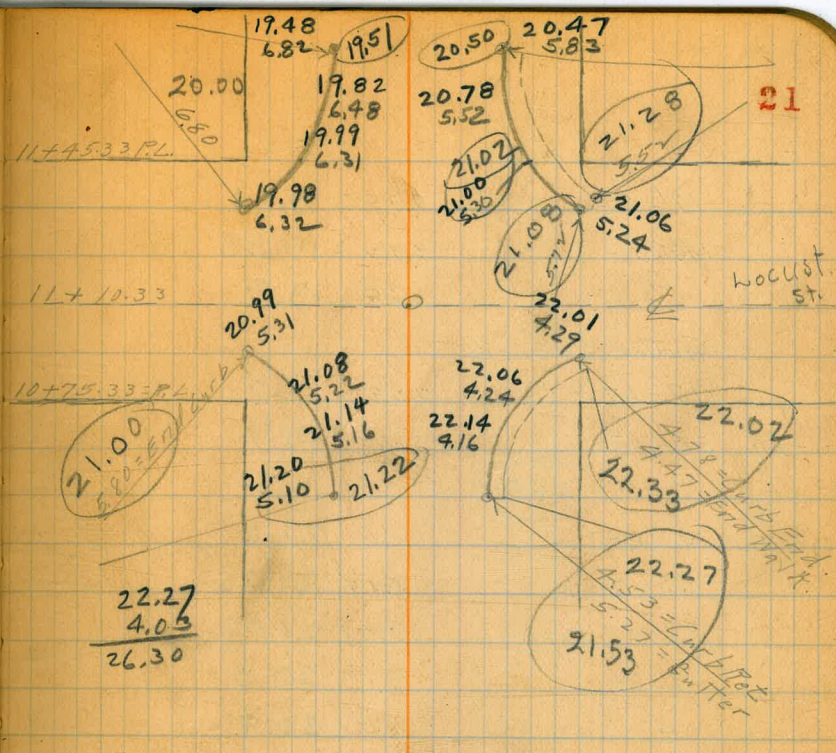
(Gutter at Outlet of Pipe)

Carlton

Sta.	+	H.I.	-	Elev
		Gutter	Covered	
		16' Lt	4.7	22.1
		17' Lt	Curb	5.02 21.78
		18' Lt	4.4	22.4
		22' Lt	3.8	23.0
10+00		35' Lt	3.8	23.0
		(26.80)		
9+00		35' Rt	1.7	25.1
		22.5' Rt	Out Walk	2.83 23.97
		17' Rt	Curb	2.98 23.82
		17' Rt	Gutter	3.77 23.03
		14.5' Rt	Gutter	3.61 23.19
		±	2.4	24.4
		Gutter Covered		
		12' Lt	Curb	4.02 22.78
		18' Lt		3.1 23.7
9+00		35' Lt	2.7	24.1
		22.5' Lt	Out Walk	3.60 23.20
End Walk		8+76	17' Lt	Gutter 3.77 23.03
		35' Rt	1.3	25.5
8+50		22.5' Rt	Out Walk	2.27 24.53

Carleton

Sta.	+	H.I.	-	Elev.
	35' RT		3.1	23.7
	17' RT		4.8	22.0
	±	(26.80)	5.0	21.8
	17' LT		5.8	21.0
10+75.33-35' LT			5.3	21.5
11+53	35' RT		3.5	23.3
↑	22.5' RT	Out Walk	4.34	22.46
	17' RT	Curb	4.52	22.27
	17' RT	Gutter	5.27	21.53
	14.5' RT	Gutter	5.11	21.69
	±		4.6	22.2
	17' LT	Curb	5.58	21.22
↓	17' LT		4.8	22.0
10+53	35' LT		5.0	21.8
	±	(26.80)		
10+00	35' RT		3.0	23.8
↑	22.5' RT	Out Walk	3.80	23.00
	17' RT	Curb	3.99	22.81
	17' RT	Gutter	4.80	22.00
↓	14.5' RT	Gutter	4.62	22.18
10+00	±		3.8	23.0



Sta	+ H.I.	-	Elev.
	17' Rt.	7.39	19.41
	14.5 Rt.	6.9 ✓	19.88
	¢	6.9	19.9
	Gutter Covered		
	17' Lt.	7.29	19.51
11+69	35' Lt.	7.1	19.7
	(26.80)		
11+45	35' Rt.	5.5 ✓	21.6
	Out Walk	5.54	21.26
	Curb (Top)	5.78	21.02
	17' Rt.	6.0	20.8
	¢	6.4	20.4
	19' Lt.	6.8	20.0
	21' Lt.	5.9	20.9
	23' Lt.	6.3	20.5
11+45.33	35' Lt.	6.7 ✓	20.6
11+10.33	85' Rt.	3.4	23.4
	35' Rt.	4.7	22.1
	17' Rt.	5.5	21.3
	¢	5.6	21.2
	17' Lt.	5.8	21.0
	35' Lt.	5.6	21.2
11+10.33	85' Lt.	7.5	19.3

Sta.	+ H.I.	-	Elev
	ϕ	10.6	16.2
	14.5 Lt.	11.7 ✓	15.08
	17' Lt.	11.85	14.95
	17' Lt.	11.07	15.73
	22.5 Lt.	10.8 ✓	15.98
13+46	35' Lt.	11.0	15.8
	(26.80)		
12+46	35' Rt.	7.1	19.7
^	22.5 Rt.	7.69	19.11
	17' Rt.	7.95	18.85
	17' Rt.	8.76	18.04
	14.5 Rt.	8.58	18.22
	ϕ	8.7	18.1
	14.5 Lt.	9.57	17.23
	17' Lt.	9.7 ✓	17.08
	17' Lt.	8.90	17.90
↓	22.5 Lt.	8.68	18.12
12+46	35' Lt.	8.4	18.4
	(26.80)		
11+69	35' Rt.	5.7	21.1
^	22.5 Rt.	6.22	20.58
	17' Rt.	6.30	20.50

Sta.	+	H.I.	-	Elev
------	---	------	---	------

14+19	35' RT.		3.1	15.7
	17' RT.	3.71?	3.17	15.65
	17' RT.		Covered	
	14.5 RT.		Covered	
	4	18.82	4.3	14.5
	14.5 LT.		5.38	13.44
	17' LT.		5.45	13.37
	17' LT.		4.70	14.12
14+19	35' LT.		4.4	14.4

2.67 18.82

10.65 16.15

26.80

13+46	35' RT.		8.5	18.3
	22.5 RT.		9.80	17.00
	17' RT.		10.04	16.76
	17' RT.		10.84	15.96
	14.5 RT.		10.66	16.14





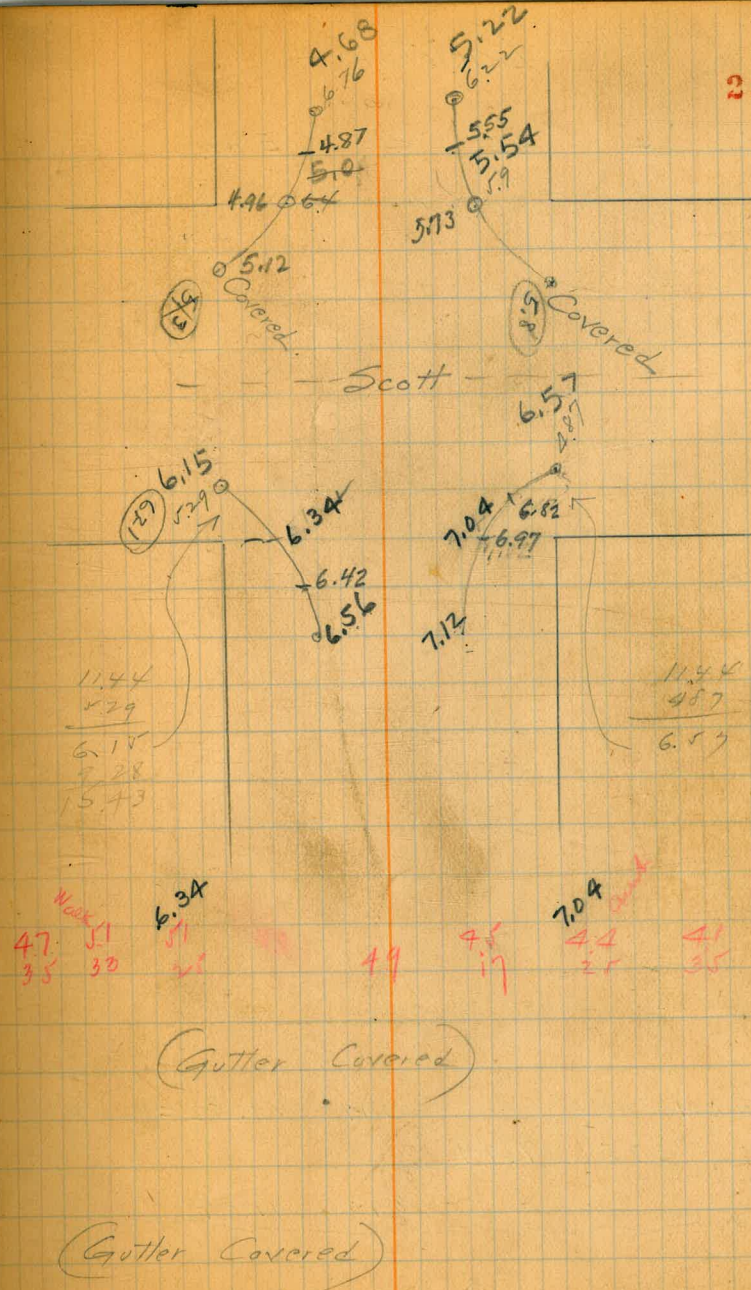
Sta.	+ H.I.	-	Elev
16+96	17' Lt.	10.28	8.54
	17' Lt.	9.47	9.35
	22' Lt. Out Walk	9.41	9.41
	35' Lt.	8.8	10.0
16+40	35' Rt.	7.1	11.7
	17' Rt.	7.49	11.33
	17' Rt.	8.28	10.54
	14.5 Rt.	8.08	10.74
	± (18.8v)	7.8	11.0
	14.5 Lt.	8.95	9.87
	17' Lt.	9.09	9.73
	17' Lt.	8.27	10.55
	22' Lt. Out Walk	8.2v	10.60
	35' Lt.	8.1	10.7
15+71	35' Rt.	5.1	13.7
	17' Rt.	5.88	12.94
	17' Rt. = Ground	6.4	12.4
	± (18.8v)	6.1	12.7
	14.5 Lt.	7.35	11.47
	17' Lt.	7.57	11.31
	17' Lt.	6.71	12.11
35' Lt.	6.6	12.2	

(Gutter Covered)

Sta.	H.I.	-	Elev.
240	(11.44)		
	18.84	9.78	09.04
17+46	35° Rt.	9.5	10.3
	22.5 Rt. (Out-Walk)	9.68	9.14
	17° Rt.	9.86	8.96
	17° Rt.	10.68	8.14
	14.5 Rt.	10.48	8.34
	⊥ (18.82)	10.3	8.5
	14.5 Lt.	11.22	7.60
	17° Lt.	11.41	7.41
	17° Lt.	10.61	8.21
	22° Lt. (Out-Walk)	10.57	8.25
17+46	35° Lt.	9.7	9.12
16+96	35° Rt.	8.0	10.8
	22.5 Rt. (Out-Walk)	8.54	10.28
	17° Rt.	8.72	10.10
	17° Rt.	9.54	9.28
	14.5 Rt.	9.41	9.41
	⊥ (18.82)	9.1	9.72
	14.5 Lt.	10.09	8.73

Carlton

Sta.		HI.	-	Elev.
19415	25' Lt.		5.9	5.5
	↓		5.9	5.5
	25' Lt. Curb		6.4	5.0
19415	35' Lt.		6.4	5.0
18480	85' Rt.		4.4	7.0
	↑		4.9	6.5
	↓	(11.44)	5.4	6.0
	35' Lt.		6.0	5.4
18480	85' Lt.		6.1	5.3
18455	35' Rt. Curb		4.87	6.57
	↑		4.7	6.7
	↓		5.0	6.4
	17' Lt.		5.5	5.9
18455	35' Lt. Curb		5.29	6.15
18423	35' Rt.		3.4	8.0
	↑		4.37	7.12
	↓	(11.44)	4.5	6.9
	17' Lt. Curb		4.88	6.56
	22' Lt. (Out. Walk)		4.81	6.63
18423	35' Lt.		4.1	7.3



Carleton

Sta. + H.I. - Elev.

Ch. 07 BM 3.47 14.52 =  
6.95 17.99

S.W. Cor Rosekranz + Carleton

T.P. 0.40 11.04

19415 35' Rt. (1144) 5.4 6.0

- Addison -

Sta + HI. - Elev.

30

[See Shafter X-Sections for balance of X-Sections Easterly.]

18480.67 = W. Line "Shafter"

17450 (14.80)

16450

15480.57

(14.80)

15445.57 = E Street

174 = E Intersection [Scott & Addison]

15+10.57

2.58 (14.80)

11.60 12.22

3.15 23.82

B.M. -

20.67

1.3	1.2	1.6	2.1
13.5	13.6	13.7	14.7
3.5	1.2	3.5	3.5
5.1	4.7	5.5	5.5
9.7	10.1	9.3	9.5
3.5	1.2	6.6	3.5
7.8	7.5	8.2	8.4
7.0	7.3	9.7	6.4
3.5	1.2	5.1	10.0
9.5		10.2	4.8
5.3		4.6	3.5
3.5		10.5	11.8
8.7	10.1	11.0	3.0
6.1	4.7	3.8	8.5
8.5	3.5	3.5	

10.7

4.1

3.5

10.50

4.30

11.0

3.8

11.8

3.0

3.5

Plug in curb S.W. Cor. Rosecrans + Cannon Rd.

Addison

Sta.	+	H.I.	-	Elev.
	0.03	65.97		
T.P.			11.26	65.94
1+65		77.20		
1+50				
1+00				

0+70 = East Prop Line

7.02	(77.20)		
10.10	71.38	1.20	70.18
B.M.	"Canyon Rd & Willow"		61.28

Left

69.6  
76  
35

68.5  
82  
20

62.9  
14.3

63.9  
132  
22

62.8  
144  
35

70.5  
62  
35

68.9  
82  
17

68.7  
85  
6

65.7  
11.5

66.4  
102  
11

64.6  
126  
35

73.9  
32  
35

72.2  
52  
25

70.5  
6.7

69.2  
82  
7

69.2  
82  
17

69.6  
76  
20

69.2  
82  
31

67.9  
83  
35

74.2  
32  
35

73.0  
42  
17

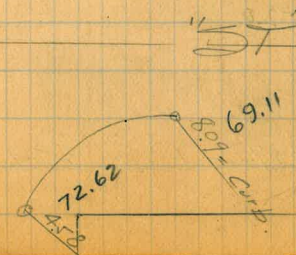
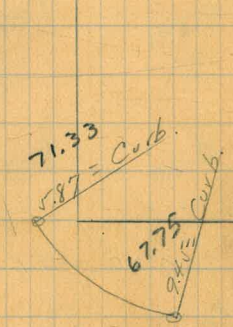
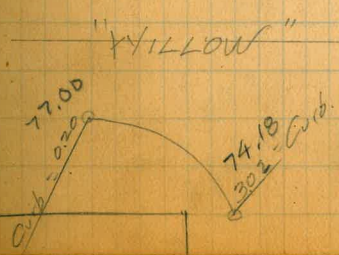
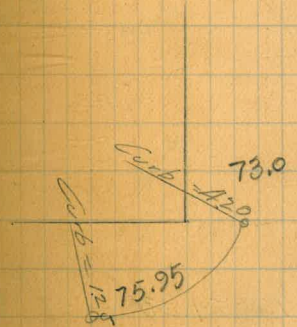
71.9  
5.3

72.1  
54  
8

72.8  
44  
14

71.3  
52  
17

70.8  
64  
35



- Addison -

Sta.	+	H.F.	-	Elev
3+00		54.80		
2+73				
2+72				
2+67				
2+55				
2+52	0.30	54.80		
T.P.			11.47	54.50
2+20				
1+87		65.97		

Left ± Right 32

47.7 74 35	47.2 76 20	38.3 165 14	37.4 174 10	48.1 62 7	49.0 5.8				48.8 60 35
51.8 52 35	49.5 52 29	50.1 42 14	48.7 62 6	39.7 15.1	49.7 52 8	50.2 46 21	50.9 39 25	50.8 40 35	
51.8 32 35	49.5 52 29	50.1 42 14	48.7 62 6	39.7 15.1	39.2 156 8	39.7 151 21	41.9 129 25	41.3 135 34	50.8 40 35
53.2 16 35	50.5 43 19	49.2 56 12	47.6 72 10	44.8 10.0	41.1 132 21	42.9 119 24	40.2 146 35		
54.6 02 35	51.5 33 11			47.5 7.3	50.7 41 5	42.2 126 35	41.3 135 50		
54.9 40 35	51.7 34 11			48.8 6.0	51.2 36 5	49.8 50 35	41.3 135 50		
59.9 62 35		56.7 93 14		55.6 10.4			53.3 127 23	53.6 124 35	
61.3 42 35	59.3 62 9			58.3 7.7				55.6 104 35	



"Addison"

Sta. + H.I. - Elev.

0.73 43.41

T.P.  
4+40 54.80 12.12 42.68

4+15 E. Evergreen

3+70

3+29

3+24

3+08

54.80

Left

±

Right

33

41.4

13.4  
3.5

41.7

13.4  
5.5

44.6

10.2  
3.5

37.6

17.2  
5.0

37.6

17.2  
5.0

37.5

17.2  
5.0

42.2

12.6  
3.5

37.6

17.2  
3.5

37.5

17.2  
3.5

37.5

17.2  
3.5

44.9

9.9  
3.5

45.9

8.2  
1.7

37.6

17.2  
1.5

46.6

8.2  
1.2

46.6

8.2  
1.2

42.5

12.3

43.9

10.9

44.5

10.3

46.6

8.2

46.6

8.2

48.0

6.8

42.2

12.6  
1.5

44.0

10.8  
3.5

45.5

9.2  
2.5

47.5

7.2  
2.5

47.6

7.2  
2.5

47.8

7.2  
2.5

42.8

12.0  
3.5

44.9

10.4  
8.5

46.5

8.3  
3.5

48.2

6.6  
3.5

48.3

6.6  
3.5

48.6

6.3  
3.5

BYRON

Sta. + HI - Elev

6135

5447

5401

4440

4440

0-00 38.65

12.07 38.65

0. 1.21 50.75

B.M. 49.51

Left

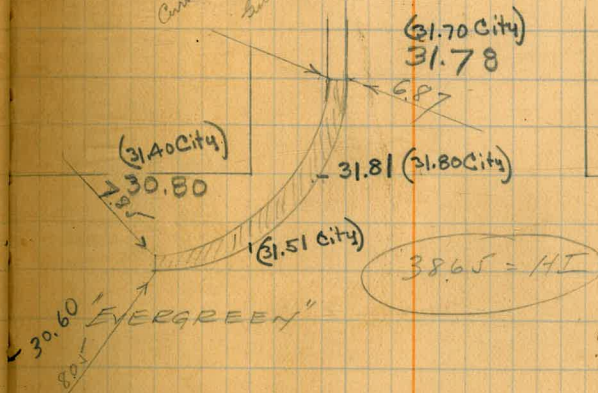
±

Right

34

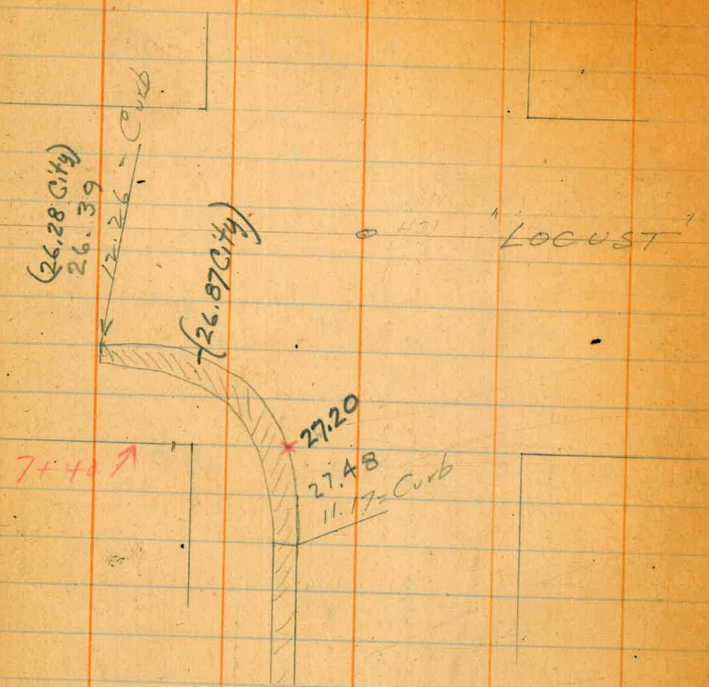
See next page

29.4 9.3 8.5	29.09 9.6 23 walk	Drine 17	28.30 10.35 14.5	28.9 9.8	30.1 8.6 3	27.4 11.3 15	32.2 4.5 20	31.2 7.5 3.5
30.9 7.8 3.5	30.4 8.3 17	cut	29.80 8.85 14.5	30.3 8.4	31.1 7.0 3	32.1 6.6 1.5	32.9 5.8 3.5	33.00 5.65 3.5 Dr.
31.5 7.2 3.5	31.08 7.57 17	cut	30.54 8.11 14.5	31.3 7.4	32.4 6.3 3	33.7 5.0 3.5	34.00 4.65 3.5	Drine
32.3 6.4 3.5	31.81 6.84 2.5	cut	31.18 7.47 2.5	32.3 6.4	33.7 5.0 3	35.3 3.4 3.5		



S.W. Corb. Plug - Canion and Evergreen

BYRON



38.65

86.21	98.30
7.07	12.04
93.38	117.34
89.25	106.37
20.53	95.87
	116.54

Sta.      Left      &      Right

(7+40) =	27.7	27.20	26.55	<del>27.2</del>	28.2	28.5	29.1
	11.0 35	11.45 25	12.10 25	11.5	12.5 3	10.2 15	9.6 35
(6+79) =	28.6	28.12	27.56	28.9	29.4	29.7	30.1
	10.1 35	10.53 17	11.09 14.5	10.3	9.3 3	9.0 20	8.6 35