

1427

MISSION BEACH

X-SEC.



LEVEL BOOK

No. 380F

ENGINEERING DEPARTMENT,  
CITY OF SAN DIEGO,  
CALIFORNIA

MICROFILMED

DEC 23 1964

Our Leather Bound Engineers Note Books are carried in the following rulings:

- No. 380 LEVEL BOOK. Left and Right Hand Page the same as Left Hand Page of this Book.
- No. 382 FIELD BOOK. Left Hand Page as in this Book, Right Hand Page 4 x 4 to the inch, Center Line Red.
- No. 384 MINING TRANSIT BOOK. Left Hand Page as in this Book, Right Hand Page 8x8 to the inch, Center Line Red.
- No. 385 FIELD BOOK. Left Hand Page as in this Book, Right Hand Page 8 vertical and 4 horizontal lines to the inch, Center Line Red.

We also carry the Note Books listed above, bound in extra strong Fabri-Hide (otherwise the same quality of book), which can be furnished at a somewhat lower price.

In ordering Fabri-Hide covered books, add the letter "F" to catalog number.

**THE FREDERICK POST CO.**

*ENGINEERING and DRAFTING SUPPLIES*

IRVING PARK STATION

CHICAGO, ILL.

INDEXED

*Completely*

20' wide  
Strand Way X Sec.  
Queensdown Court to Santa Clara Place

4-18-31  
Miller  
Sommermeier  
Osborne.

Top Sea Wall  
S. Santa Clara

B.M. BP	5.26	12.45	7.19
oo: S. line Queensdown Court.			
W		4.7	7.8
⊕	INDIVID	4.8	7.7
E		4.8	7.7
o+50 N. line Alley			
E		5.3	7.2
⊕		4.7	7.8
W		4.7	7.8
o+46 S. line Alley			
W		4.7	7.8
⊕		4.7	7.8
E		5.1	7.4
o+87 garage on W			
W-6.3 dirt floor		4.7	7.8 ✓
o+96 garage on W.			
W-5.1 Wood floor		4.7	7.8 ✓
1+16 N. line Pismo Court.			
E		4.7	7.6
⊕		4.8	7.7
W		4.8	7.7
1+26 S. line Pismo Court.			
W		4.9	7.6
⊕		4.7	7.8
E		5.0	7.5

12.45

1+48

01

⊕	E-5.5 garage dirt floor	4.8	7.7 ✓
		1+67	
W-6.5 garage wood	4.8	7.7 ✓	
1+76 N. line Alley			
E		4.8	7.7
⊕		4.6	7.9
W		4.7	7.8
1+92 S. line Alley			
W		4.7	7.8
⊕		4.8	7.7
E		4.9	7.6
2+42 N. line Portsmouth Court			
E		5.0	7.5
⊕		5.0	7.5
W		5.1	7.4
2+52 S. line Portsmouth Court.			
W		4.9	7.6
⊕		4.9	7.6
E		5.0	7.5
2+86			
E		5.1	7.4
⊕		4.9	7.6
W		4.9	7.6
W+1.8 garage dirt floor	4.9	7.6 ✓	

2+97.

E-5.5 garage dirt floor 5.5 70 ✓

3+02 N. line Alley

W 5.0 75

E 5.0 75

E 5.2 73

3+18 S. line Alley

E 5.2 73

E 5.0 75

W 5.0 75

3+56

W 5.3 72

E 5.0 75

E 5.3 72

E+1.4 garage dirt floor 5.3 72 ✓

3+98 N. line Santa Clara Place

E 5.7 68

E 5.2 73

W 5.2 73

4+22 S. line Santa Clara Place

W 5.3 72

E 5.3 72

E 5.4 71

Top cent. Blk.  
T.P. SE. Alley S. of Pismo.

4.47 7.98

10 wide  
6' Board walk  
1h center

Queenstown Court & Sec  
Mission Blvd. to Bulkhead

I.P. Page R. 4.07 12.05 7.98

INDEXED

00 = W. line Mission Blvd.			
S on W. edge ent. walk	11.64	0.37 ✓	
⊕ " " " " "	11.63	0.42 ✓	
N " " " " "	11.69	0.36 ✓	
0.5 W			
N dirt	12.4	-0.3	
+2 N. edge Boardwalk	11.95	0.1	
+2 dirt	12.4	-0.3	
+8 " & walk	11.99	0.06	
S	12.0	0.1	
45.7 W			
S. on E. end. ent. walk	11.85	0.20 ✓	
+2 " " " " " Board N. End. walk	12.00	0.05	
+8 Board walk	12.00	0.05	
N. dirt	12.2	-0.1	
60' W			
N. dirt	12.5	-0.4	
+2 "	12.5	-0.4	
+2 Board walk	11.94	0.11	
+8 " "	11.94	0.11	
+8 N. End. w. edge ent. walk	12.11	-0.06 ✓	
S " " " " + dirt	12.11	-0.06	
78' W			
S. Board walk to S.	11.96	0.09 ✓	
S. dirt.	12.3	-0.2	

Plotted 4-20-31  
G.S.H.

12.05

+2 dirt	12.3	-0.2
+2 Board walk	11.86	0.19
+8 " "	11.86	0.19
+8 dirt	12.3	-0.2
N. " "	12.3	-0.2
88' W.		
N. dirt	12.7	-0.6
+2 " "	12.3	-0.2
+2 Board walk	11.78	0.27
+8 " " "	11.79	0.26
+8 dirt	12.3	-0.2
S. " "	12.3	-0.2
S. door of house - floor	11.18	0.87 ✓
100' W		
S. dirt	11.9	0.2
S. Board walk	11.57	0.48
+2 " "	11.58	0.47
+8 " "	11.58	0.47
+8 dirt	12.3	-0.2
N. " "	12.5	-0.4
112' W.		
N. dirt	11.2	0.9
+2 " "	11.2	0.9
+2 Board walk	11.04	1.01
+8 " " "	11.03	1.02
S " " "	11.00	1.05
S dirt	13.00	-0.95

12.05

122.5 W.

N. dirt	10.5	1.6
+2' "	10.5	1.6
+2' Board walk	10.12	1.93
+8 " "	10.14	1.91
+8 dirt	10.5	1.6
S " "	10.8	1.3
S. doorway floor	9.19	2.86 ✓

137.8

S. e. Edge board platform	8.45	2.60 ✓
S dirt	9.2	2.9
+2' "	9.2	2.9
+2' N. End E. edge platform	8.48	3.57
+2' Board walls	8.7.9	3.26
+8 " "	8.7.2	3.33
+8 dirt	9.5	2.6
N " "	9.5	2.6

148' W

N dirt	8.3	3.8
+2' "	8.3	3.8
+2' Board walk	7.68	4.37
+8 " "	7.72	4.33
+8 N. End. W. edge Board platform	7.87	4.18 ✓
+8 dirt	8.2	3.9
S " "	8.2	3.9

12.05

Queens town Court.

4

160' W.

S. dirt to E	7.6	4.5
S. " " W	7.0	5.1
+2' " " W	7.0	5.1
+2 " " E	7.4	4.5
+2 Board walk	6.53	5.52
+3 dirt E+W.	7.06	4.99
+8 Board walk	6.46	5.59
+8 dirt	7.1	5.0
N. " "	7.1	5.0

166.5 W.

N. dirt	6.2	5.9
+2' " "	6.2	5.9
+2' Board walk	5.89	6.16
+8 " "	5.91	6.14
+8 dirt	6.8	5.3
+8 = E. End - N. edge porch to W.	3.79	8.16 ✓
S = " " " " W.	3.79	8.16
S. dirt	6.8	5.3

180.8 W

S. dirt	4.5	7.6
+2' dirt	4.5	7.6
+2 W. End. N. Edge porch to E.	3.73	8.32 ✓
+2 board walk	4.43	7.62
+8 " "	4.40	7.65
+8 dirt	4.5	7.6
N " "	4.5	7.6

12.05

183'3" W = 2. line Strand Way

N. dirt	4.6	7.5
S. "	4.4	7.7
0.0 = W. line Strand Way.		
s. dirt	4.4	7.7
+ 2. "	4.4	7.7
+ 2. Boardwalk	3.96	8.09
+ 8. " "	3.92	8.03
N. " " to N.	3.92	8.03
N. dirt in Strand way	4.4	7.7
	4.3 W.	
N. dirt	4.4	7.7
N. boardwalk to N.	3.96	8.09
+ 2. " " "	3.96	8.09
+ 2. " " W.	4.12	7.93
+ 2. dirt	4.4	7.7
+ 8. " + Boardwalk	4.14	7.91
S. "	4.2	7.9

40' W.

S. floor of house	5.24	6.78 ✓
S. dirt	5.7	6.4
+ 2. "	5.7	6.4
+ 2. boardwalk	5.55	6.50
+ 8. " "	5.55	6.50
+ 8. dirt	6.0	6.1
N. "	6.0	6.1

12.05

50' W.

N - 5 dirt	7.2	4.9
N. "	7.2	4.9
+ 2. "	7.2	4.9
+ 2. Boardwalk	6.00	6.05
+ 8. " "	5.95	6.10
+ 8. dirt under walk to S.	6.9	5.2
S. " " " " "	6.9	5.2

68'3" W.

S - 4 dirt	9.4	2.7
S. "	9.4	2.7
+ 2. "	9.2	2.9
+ 2. Boardwalk +	6.63	5.42
+ 5. dirt	8.7	3.4
+ 8. Boardwalk + S.E. Cor Building	6.67	5.38
+ 8. dirt	8.9	3.2
N. "	10.0	2.1
+ 5. "	9.3	2.8

72'2" W.

N. - dirt	9.0	3.1
N. "	10.4	1.7
+ 2. "	9.0	3.1
+ 2. Boardwalk	6.77	5.28
+ 5. dirt	9.0	3.1
+ 8. Boardwalk + platform to S+W.	6.75	5.30 ✓
+ 8. dirt	9.1	3.0
S. "	9.1	3.0
+ 4. "	9.1	3.0

80.2 W = E. side N<sup>o</sup> 5. Boardwalk

s. dirt	8.7	3.4
S. E. Edge Boardwalk	7.07	4.98
+ 2' dirt	8.5	3.6
+ 2' Boardwalk	7.05	5.00
+ 8' Boardwalk S.N. cor Building	7.05	5.00 ✓
+ 8' dirt	9.6	2.5
N. dirt	9.0	3.1

90.2 W = W. edge N<sup>o</sup> 5. Boardwalk

N. dirt	7.5	4.6
N. Boardwalk	7.09	4.96
S " "	7.07	4.98
S dirt	7.5	4.6

92.0 W = E. Edge cmt. walk at Ocean Front.

s. dirt	7.5	4.6
s. cmt. walk	7.44	4.61 ✓
N " "	7.44	4.57 ✓
N dirt	7.5	4.6

Pismo Court.

H. 11.47

4.6 E. of E. line Strand Way.

3' S. of N. line	S. E. cor. Gas Co. M. H.	4.41	7.06
0.5 S. of N. line	N. E. cor. Gas Co. M. H.	4.41	7.06
	2.1 E. of E. line Strand Way.		
0.5 S. of N. line	N. W. cor. Gas Co. M. H.	4.22	7.25
3' " " " "	S. W " " " "	4.22	7.25



10' wide Pismo Court X Sec  
 6' Boardwalk in center Mission Blvd to Sea wall

IMPROVED

T.P. Page 2	3.49	11.47	7.98
		oo = W. line Mission Blvd.	
S. on W. edge emb. walk		11.22	0.25
N. " " " "		11.21	0.26
		0.5 W	
N. dirt		11.7	-0.2
+ 2 "		11.6	-0.1
+ 2 B. walk		11.46	0.01
+ 8 "		11.40	0.07
+ 8 dirt		11.6	-0.1
S "		11.6	-0.1
		38.1 W	
S. dirt		11.4	0.1
+ 2 " + walk		11.40	0.07
+ 8 " " " + S.E. core emb. walk		11.36	0.11 ✓
N. dirt to E.		11.26	0.21
N. emb. walk to W.		11.4	0.1
		47.5 W	
N. emb. walk to E.		11.25	0.22
N. dirt		11.6	-0.1
+ 2 "		11.6	-0.1
+ 2 Board walk + S.W. core emb. walk		11.27	0.20 ✓
+ 8 " + dirt		11.28	0.19
S "		11.2	0.3

Plotted 4-22-31

11.47  
70' W

S. dirt		11.7	-0.2
+ 2 "		11.7	-0.2
+ 2, Boardwalk		11.08	0.39
+ 8 " "		11.11	0.36
+ 8 dirt		11.3	0.2
N "		11.3	0.2
N. wood patch		10.37	1.10 ✓
		87.5 W	
N. dirt		11.2	0.3
N. wood step		9.63	1.84 ✓
+ 2 " " "		10.32	1.15
+ 2' dirt		11.2	0.3
+ 2' Boardwalk		10.95	0.52
+ 8' " "		10.92	0.55
+ 8 dirt		11.2	0.3
S "		11.3	0.2
		92' W	
S. on S. edge emb. step		10.63	0.84 ✓
+ 2 " N " " " + B. walk		10.79	0.68
		100' W	
S. dirt		10.90	0.57
+ 2 "		10.90	0.57
+ 2 B. walk		10.60	0.87
+ 8 " "		10.68	0.79
+ 8 dirt		10.8	0.7
N "		10.8	0.7

113.8 W.

N. dirt	10.0	1.5
+ 2' "	10.0	1.5
+ 2' B. walk	9.75	1.72
+ 8' " "	9.75	1.72
+ 8' dirt	10.2	1.3
+ 8' N.E. cor wood porch.	7.97	3.50 ✓
S. dirt	10.2	1.3

115.8 W

2' s. of N. line = S.E. cor. wood porch	7.94	3.53 ✓
---	------	--------

121.8 W

2' N. of S. line = N.W. cor wood porch	7.87	3.58 ✓
--	------	--------

132' W

N. dirt	8.4	3.1
+ 2' "	8.4	3.1
+ 2' S.W. cor wood porch.	8.04	3.43 ✓
+ 2' B. walk	8.73	3.34
+ 8' " "	8.18	3.29
+ 8' dirt	8.7	2.8
S. " "	8.7	2.8

140.5 W.

S. dirt	8.0	3.5
+ 2' "	8.0	3.5
+ 2' N.E. cor wood porch	6.09	5.38 ✓
+ 2' B. walk	7.35	4.12
+ 8' " "	7.43	4.04
+ 8' dirt	8.2	3.3
N " "	8.2	3.3

144.5 W.

2' s. of N. line = S.E. cor. wood porch	5.23	6.24 ✓
---	------	--------

148' W.

2' N. of S. line = N.W. cor wood porch	6.10	5.27 ✓
--	------	--------

151' W

N. + 1' = S.W. cor wood porch.	5.21	6.26 ✓
--------------------------------	------	--------

N.H. dirt	7.0	4.5
-----------	-----	-----

N + 2' "	7.0	4.5
----------	-----	-----

+ 2' B. walk	6.32	5.15
--------------	------	------

+ 8' " "	6.58	4.89
----------	------	------

+ 8' dirt	7.2	4.3
-----------	-----	-----

S " "	7.2	4.3
-------	-----	-----

168' W.

S. dirt	5.6	5.9
---------	-----	-----

+ 2' "	5.6	5.9
--------	-----	-----

+ 2' W. end. B. walk	4.65	6.82
----------------------	------	------

+ 8' " " "	4.50	6.97
------------	------	------

+ 8' dirt	5.3	6.2
-----------	-----	-----

N " "	5.3	6.2
-------	-----	-----

185.5 W. = S. Line Strand Way.

N. dirt	4.0	7.5
---------	-----	-----

S. " "	4.0	7.5
--------	-----	-----

oo = W. line strand way

N. dirt	3.8	7.7
---------	-----	-----

S. " "	3.9	7.6
--------	-----	-----

11.47  
4.3 W.

S. dirt	4.0	7.5
+2. "	3.8	7.7
+2. B. walk	3.55	7.92
+8. " "	3.53	7.94
+8 dirt	3.8	7.7
N. "	3.7	7.8
19.6 W.		
N. floor House	3.26	8.21 ✓
N dirt	4.4	7.1
+2. "	4.4	7.1
+2 B. walk	4.16	7.31
+8. " "	4.12	7.35
+8 dirt	4.9	6.6
S. "	5.0	6.5
32. W.		
S. dirt	5.0	6.5
+2. "	5.0	6.5
+2 B. walk	4.52	6.95
+8. " "	4.61	6.86
+8 dirt	5.1	6.4
N. "	5.2	6.3
50 W.		
-5 dirt	8.0	3.5
N. "	8.0	3.5
+2. "	8.0	3.5
+2 B. walk	5.08	5.39

11.47

Pismo Court

9

+8. B. Walk + N.E. Corwood platform	5.13	6.34 ✓
+8. dirt	6.9	4.6
S. "	6.9	4.6
+5. "	7.1	4.4
60' W.		
S. dirt	5.7	5.8
+2. "	5.7	5.8
+5. "	6.0	5.5
N. "	7.8	3.7
+5. "	7.8	3.7
70.8' W.		
N. dirt	6.8	4.7
+2. "	6.8	4.7
+2. B. walk	6.15	5.32
+8. B. " + dirt	6.31	5.26
+8. N.W. cor wood platform	6.31	5.26 ✓
S. dirt	6.4	5.1
80' W.		
S. dirt	6.6	4.9
+2. "	6.6	4.9
+2 B. walk	6.47	5.00
+8. " "	6.32	5.15
+8. dirt	6.5	5.0
N. "	6.7	4.8
92. W. = Edge Cmt. Walk Ocean Front.		
N. cmt. walk + dirt	6.88	4.59
S. " " " "	6.86	4.61

10 wire Portsmouth Court X 500.  
Ocean Front Walk To Bay side walk

**INDEXED**

5-19-31  
Miller  
Sommeringer  
@burke.

T.R. Page 2 3.93 11.91 7.98

23. W. of E. line Ocean front - E. edge Boardwalk

S	7.40	4.51	W. edge of walk
⊕	7.41	4.49	" " " "
N.	7.42	4.49	" " " "

12. W. of E. line Ocean front - E. edge of walk

N	7.23	4.68	E. edge of walk
⊕	7.24	4.67	" " " "
S.	7.24	4.67	" " " "

11.8 W. of E. line Ocean Front.

S sand	7.7	4.2	
N sand	7.6	4.3	

0+00 = E. line Ocean front.

N sand	7.7	4.2	
+2. Boardwalk	6.6	5.3	
+6. " "	6.6	5.3	
S. sand	7.5	4.4	

0+16. E.

S. sand	6.5	5.4	
+3.6 Boardwalk	5.9	6.0	
+7.6	5.9	6.0	
N. sand.	6.8	5.1	

Plotted May 21-31 1931

Ⓞ

11.91  
0+26.3 E

10

N. sand	6.7	5.2	
+1.5 Boardwalk To E	5.9	6.0	
+2.5 " " To W	5.5	6.4	
+6.5 " " To W	5.9	6.0	
+7.5 " " " E	5.9	6.0	
S. sand.	6.7	5.2	
	0+30		
S sand.	6.3	5.6	
+2.5 walk	5.8	6.1	
+7.5 "	5.8	6.1	
N	7.1	4.8	
	0+31		
N sand.	5.8	6.1	
+2.4 sand	5.8	6.1	
+2.6 "	6.9	5.0	
S " "	7.4	4.5	
	0+40		
0.3 N. of S. = Mudge porch.	5.1	6.8	'
" " " sand.	6.3	5.6	
+2. Boardwalk	5.6	6.3	
+8 " "	5.5	6.4	
N. sand	7.2	4.7	
N. Floor of house	4.7	7.2	↓

11.91

0+55

N. sand	6.5	5.4
Boardwalk	4.8	7.1
" "	5.0	6.9
S. sand	5.5	6.4

0+70

S. on N. edge porch	4.0	7.9
S. Brick walk	4.5	7.4
Board walk	4.5	7.4
+ 2 sand.	5.0	6.9
B. walk.	4.4	7.5
N. sand.	5.5	6.4

0+79 = E. End walk.

N+1.8 walks	4.0	7.9
+ 7.8 walks	4.0	7.9

0+80 = W. line S/Fand way

S	4.6	7.3
S	4.6	7.3
N	4.6	7.3

0+00 = E. line S/Fand way.

S	4.5	7.4
+ 2 B. walk	4.4	7.5
+ 8 " "	4.4	7.5
N.	4.4	7.5

11.91

Portsmouth Court.

0+25

N. on W. edge mt. walk	7.04	4.87 ↓
+ 2. " " " "	7.05	4.86
+ 2 B. walk	6.4	5.5
+ 8 " "	6.3	5.6
S sand.	6.9	5.0

0+30

S. sand.	7.3	4.6
+ 2.2 B. walk	6.6	5.3
+ 8.2 " "	6.7	5.2
+ 8.2 E. edge mt. walk	7.11	4.80
N. " " " "	7.11	4.80

0+36

S. on N. edge porch	6.73	5.18 ✓
---------------------	------	--------

0+50'

N. sand	8.1	3.8
+ 1.8	8.1	3.8
+ 7.8	8.0	3.9
S	8.5	3.4

0+51

S sand	8.6	3.3
N "	8.7	3.2

0+75

S sand	10.1	1.8
+ 2.2 B. walk	9.6	2.3
+ 8.2 " "	9.7	2.2
N. sand	10.3	1.6

11

11.91  
0+80.

N. sand 10.8 1.1  
S. " 10.8 1.1

0+87

S on N. edge porch 9.7 2.2

1+00

S. sand 11.7 0.2  
+2' B. walk 11.0 0.9  
+8 " " 11.0 0.9  
N. sand 11.5 0.4

1+25

N. sand 12.0 -0.1  
+2' B. walk 11.8 0.1  
+8' B " 11.8 0.1  
S. sand 12.0 -0.1

1+50

S. sand 12.1 -0.2  
+2' B. walk 11.9 0.0  
+8 " " 11.9 0.0  
N. sand 12.0 -0.1

1+70

N. floor of cafe 11.6 0.3 ✓  
N. sand 12.1 -0.2  
+2' B. walk 12.0 -0.1  
+8' B " 12.0 -0.1  
S. sand 12.3 -0.4

11.91

1+83  $\frac{1}{2}$  = W. Lin + Mission Blvd

12

S. on. w. edge cmt. walk 11.73 0.18 ✓  
4 " " " " B. walk 11.74 0.17 ✓  
N " " " " " 11.71 0.20 ✓

T.P. 4.24 4.49 11.66 00.25

0+00 = E. Lin + Mission Blvd.

0+01 = E. edge cmt. walk.

N. E. edge cmt. walk 4.70 -0.21 ✓  
4 " " " " 4.69 -0.20 ✓  
S. " " " " 4.68 -0.19 ✓

0+01<sup>10</sup>

S. sand 5.4 -0.9  
+2' B. Walk 4.9 -0.4  
+8' B. Walk 4.8 -0.3  
N. sand 5.6 -1.1

0+15.

N. sand 5.6 -1.1  
+2' B. Walk 4.8 -0.3  
+8' " " 4.8 -0.3  
S. sand 5.9 -1.4

0+40

S. sand 5.0 -0.5  
+2' B. walk 4.6 -0.1  
+8' " " 4.6 -0.1  
N. sand 4.6 -0.1  
+2.7 floor house 3.5 1.0 ✓

4.49  
0+65.

N. - 2.6 floor House	3.5	1.0	✓
N. sand	4.3	0.2	
+ 2' B. walk	4.3	0.2	
+ 8' " "	4.3	0.2	
S. sand.	4.6	-0.1	
+ 0.8 floorhouse	3.1	1.4	✓
	0+88		
S - 1' porch.	3.5	1.0	✓
S. sand	4.6	-0.1	
+ 2' B. Walk	4.2	0.3	
+ 8' " "	4.1	0.4	
N. sand.	4.3	0.2	
	1+00		
N. sand	4.3	0.2	
+ 2' B. walk	4.1	0.4	
+ 8' " "	4.2	0.3	
S. sand.	5.3	-0.8	
	1+16		
S. sand.	4.5	0.0	
+ 2' B. walk	4.0	0.5	
+ 8' " "	4.1	0.4	
N. sand	4.3	0.2	
N. on s. edge stoop.	2.9	1.6	✓

4.49  
1+40

- 1.1 on s. edge Veranda.	2.8	1.7	✓
N. sand.	4.5	0.0	
+ 2' B. walk	4.3	0.2	
+ 8' " "	4.2	0.3	
S. sand.	4.6	-0.1	
	1+63		
S + 1.4 N. edge piazza	3.5	1.0	✓
S. sand.	4.5	0.0	
+ 2' B. Walk.	4.3	0.2	
+ 8' B. "	4.4	0.1	
N. sand.	5.0	-0.5	
	1+89.		
N - 0.3 s. edge cnt. porch.	3.94	0.55	✓
N - 0.2 N. end. of cnt walk	4.48	0.01	✓
N sand	4.60	-0.11	
+ 2' B. Walk + s. end. cnt. walk.	4.60	-0.11	✓
+ 8' " "	4.6	-0.1	
+ 8' = N. edge porch.	4.2	0.3	✓
	2+00		
S. sand	5.4	-0.9	
+ 2' B. walk	4.7	-0.2	
+ 8' " "	4.7	-0.2	
N. sand.	4.8	-0.3	

4.49

R+25

N. sand.	4.8	-0.3
+2. B. Walk	4.8	-0.3
+8 " "	4.8	-0.3
S. sand.	5.8	-1.3

R+38

S-1.5 floorhouse	4.4	0.1
------------------	-----	-----

R+45 = E. End B. Walk

S. sand	5.5	-1.0
+2. B. walk	4.8	-0.3
+8. B. "	4.8	-0.3
N. sand	5.1	-0.6

R+46<sup>1/2</sup> = W. Line Bayside Lane, 16' wide

N. Roadway	5.5	-1.0
S. " "	5.5	-1.0

0+00 = { w. end. B. walk.  
E. Line Bayside Lane

S. Roadway	6.0	-1.5
B. walk.	5.2	-0.7
B. walk	5.1	-0.6
N. Roadway	6.0	-1.5

0+05

N. sand.	5.5	-1.0
S. "	5.8	-1.3

0+40

S. sand	6.2	-1.7
B. walk.	5.2	-0.7
" "	5.1	-0.6
N. sand	6.0	-1.5

4.49

Portsmouth Court

14

0+82.30 = W. edge Bayside B. Walk, 6' wide

N. sand	5.2	-0.7
N. on Bayside B. Walk.	4.40	0.09
Portsmouth B. walk.	4.40	+0.1 0.09
" " "	4.40	0.09
S. on Bayside " "	4.40	0.09
S. sand.	5.3	-0.8
B.M.	4.99	-0.50
T.P.	11.57 11.82	4.24 +0.25
chk original B.M.	3.82	7.99 = 7.98



16' wide Dayside Lake X see. Queenstown Court to Ostend Court

5-20-31 mill

BM Page 14	3.98	3.48	-0.50
N. Line Queenstown Court, 10' wide			
W.	4.5		-1.0
⊥	4.6		-1.1
E	4.6		-1.1
S. Line Queenstown Court.			
E	4.6		-1.1
⊥	4.6		-1.1
W.	4.5		-1.0
50'.S = N. Line Alley 16' wide			
W	4.6		-1.1
⊥	4.5		-1.0
E	4.5		-1.0
S. Line Alley			
E	4.4		-0.9
⊥	4.5		-1.0
W	4.6		-1.1
7'.5 Garage on Wood floor 5'.5 Back			
E-5.5 floor	4.0		-0.5 ✓
50'.S = N. Line Pismo Court 10' wide			
W	4.7		-1.2
⊥	4.7		-1.2
E	4.7		-1.2

Plotted  
MAY  
22  
1931

R = 2453.39 N. Line of 0

3.48

15

⊥

S. Line Pismo Court.		
E	4.6	-1.1
⊥	4.5	-1.0
W.	4.5	-1.0
50'.S = N. Line Alley 16' wide		
W	4.6	-1.1
⊥	4.5	-1.0
E	4.6	-1.1
S. Line Alley		
E	4.5	-1.0
⊥	4.6	-1.1
W.	4.6	-1.1
50'.S. N. Line Portsmouth Court 10' wide		
W	4.5	-1.0
⊥	4.7	-1.2
E	4.9	-1.4
S. Line Portsmouth Court.		
E	5.0	-1.5
⊥	4.8	-1.3
W	4.5	-1.0
16'.5. garage on E. dirt floor 2'. Back		
E-2'. floor	4.9	-1.4 ✓
50'.S = N. Line Alley 16' wide		
N.	4.8	-1.3
⊥	4.7	-1.2
E.	5.0	-1.5

3.48  
S. line Alley N. of Santa Clara

E	4.6	-1.1
±	4.6	-1.1
W.	4.8	-1.3

40' S

W	5.1	-1.6
±	4.9	-1.4
E	4.9	-1.4

80.5 S. = N. line Santa Clara Place 24 wide

E	4.6	-1.1
±	4.6	-1.1
W	4.7	-1.2

+12.5 = E Santa Clara Place

W.	4.2	-0.7
±	4.3	-0.8
E.	4.1	-0.6

S. Line Santa Clara Place

E	4.2	-0.7
±	4.3	-0.8
W.	4.2	-0.7

40' S.

W	4.9	-1.4
±	4.5	-1.0
E.	4.5	-1.0

3.48 Bayside Lane. 16  
68' S. garage on E. Dirt floor 6' Back ✓<sub>89</sub>

E-6' floor	4.5	-1.0
E	4.5	-1.0
±	4.4	-0.9
W.	4.6	-1.1

99.35 = N. line Alley 16' wide

W	4.2	-0.7
±	4.2	-0.7
E	4.5	-1.0

M.H. ± Alley and E. Lane

Top M.H.	4.20	-0.72 ✓
----------	------	---------

8-3' garage dirt floor S. line Alley.

E	4.3	-0.8 ✓
±	4.4	-0.9
±	4.3	-0.8
W.	4.4	-0.9

21' S. ± Double garage on E. dirt floor 6' Back ✓<sub>89</sub>

W.	4.7	-1.2
±	4.5	-1.0
E	4.6	-1.1

E+6' floor.	4.7	-1.2 ✓
-------------	-----	--------

66.5. garage on E. dirt floor 7' Back ✓

E-7' floor	4.7	-1.2 ✓
E	4.7	-1.2
±	4.6	-1.1
W.	4.8	-1.3

89' S. = N. line Ostend. Court. 10' wide

w.	4.6	-1.1
±	4.5	-1.0
ε	4.6	-1.1

S. Line Ostend Court.

ε	4.6	-1.1
±	4.5	-1.0
w	4.6	-1.1
chk B.M.	3.98	-0.50 ✓

6. wide Bay side Walk X 5 sec.  
Queenstown Court to Ostend Court.

B.M. Page 14. 4.45 3.95 -0.50  
Bag sidewalk located by Measurements from Mission Blvd. at Courts + Place  
N. Line Queenstown Court

3.4 W. of W. line = w. edge B. walk + sand 3.8 0.1  
W. line on B. walk 3.8 0.1  
+ 2.6 E. edge " " 3.7 0.2  
E. sand 4.1 -0.2

INDEXED

S. line Queenstown Court  
E. sand 4.0 -0.1  
+ 3.4 = E. Edge B. Walk 3.6 0.3  
W. on " " 3.7 0.2  
+ 3.4 = W. edge " " 3.7 0.2  
+ 3.5 sand 4.0 -0.1

Plotted May.  
28-1931.

58.2 S.  
W. line B. Walk sand 3.8 0.1  
" " " " on walk 3.6 0.3  
E " " " " " 3.7 0.2  
E. " " " " sand 3.8 0.1  
66 of " " " " " 4.0 -0.1

116.0 S. = N. Line Pismo Court.  
E. sand 4.2 -0.3  
W. " 3.8 0.1

121.3 S. = G. Pismo Court 10' wide  
7.8 W. of W. line = w. edge B. Walk 3.4 0.5  
1.8 " " " = E " " " 3.4 0.5  
1.8 " " " sand 4.6 -0.7  
W. " 4.6 -0.7  
E. " 5.2 -1.3

3.95  
10.5 of E Pismo Court.

18

E sand 4.1 -0.2  
W " 3.9 0.0

50.5  
W sand 4.1 -0.2  
E " 4.1 -0.2

126.2 S. = E Portsmouth Court.  
E sand 4.8 -0.9  
+ 4.2 " 4.8 -0.9  
+ 4.2 E. edge B. walk 3.8 0.1  
W. on " " 3.8 0.1  
+ 4.2 W " " " 3.8 +0.1 0.1  
+ 4.2 sand 4.8 -0.9

50.5  
W sand 5.3 -1.2  
B. walk 4.4 -0.5  
E. sand 4.8 -0.9

100.5  
E sand 5.0 -1.1  
B. walk 4.6 -0.7  
W. sand 5.4 -1.5  
T.P. 2.06 1.54 4.47 -0.52

152.5 = N Line Santa Clara Place 24' wide  
W. sand to N. 2.6 -1.1  
W. Roadway to SW. 2.1 -0.6  
W. = W. edge B. Walk 2.0 -0.5  
E. E. " " " 2.0 -0.5  
E. sand 2.8 -1.3

## Santa Clara Place

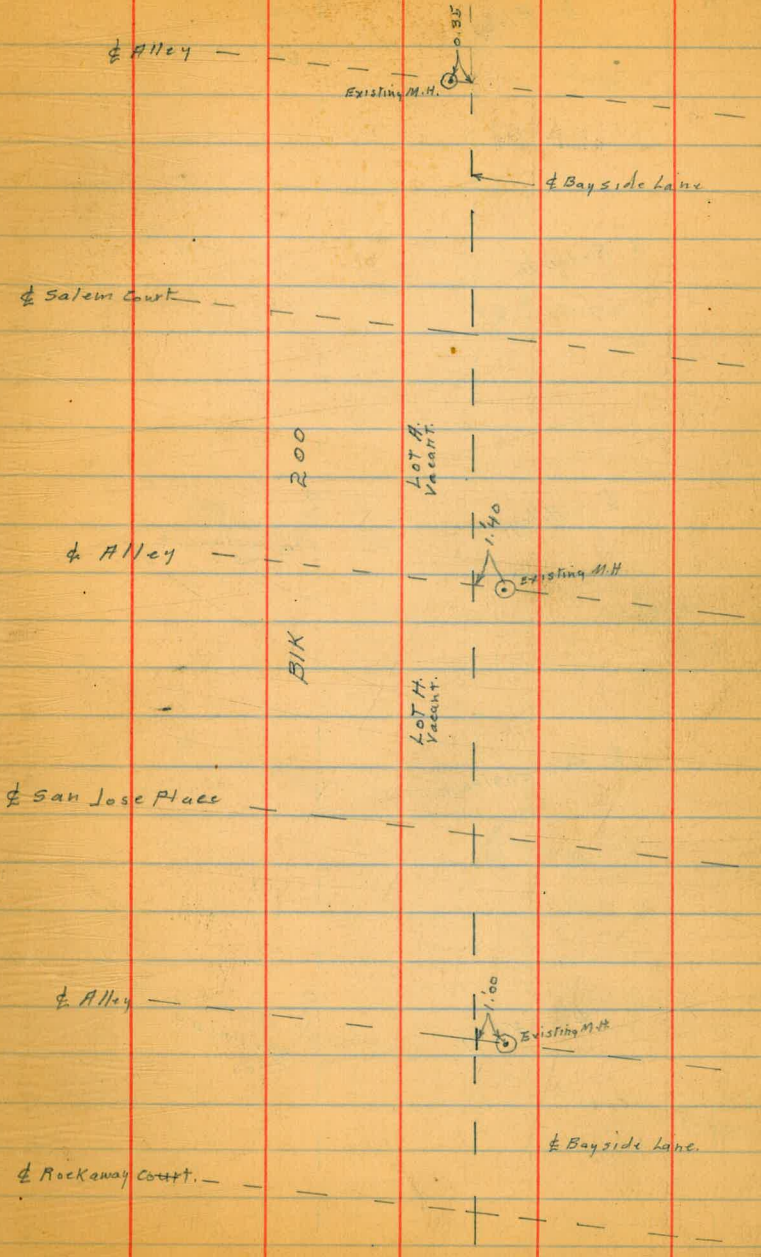
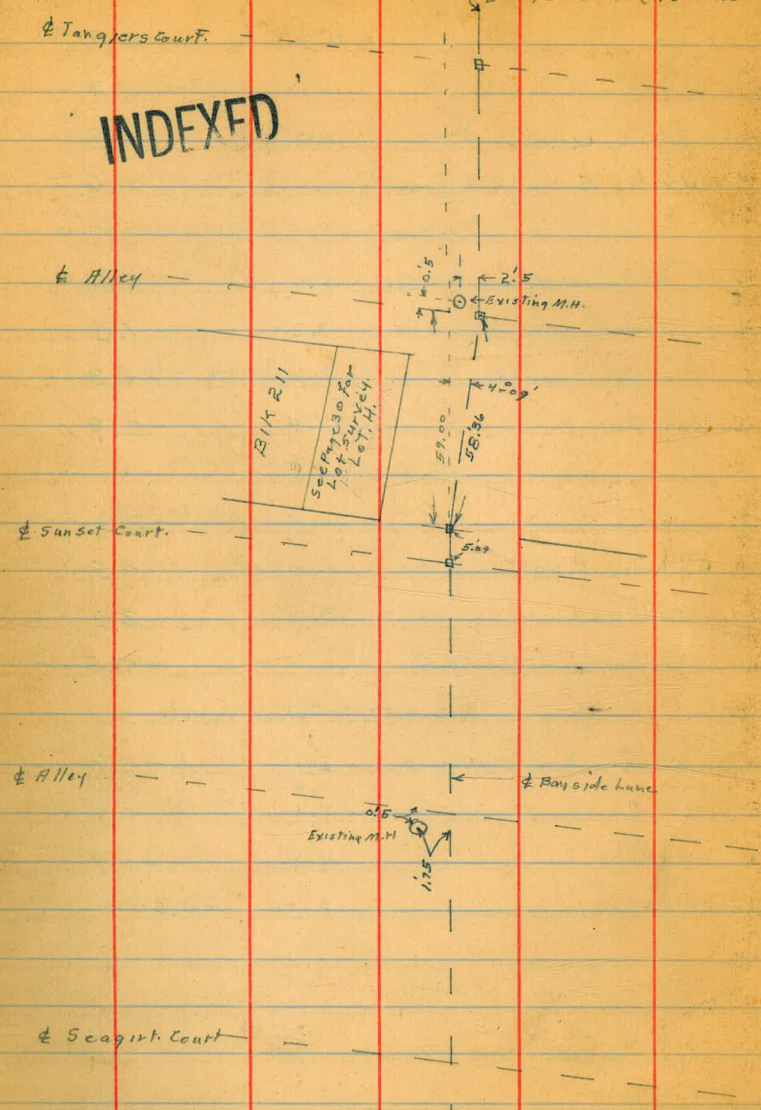
E. = E. edge B. walk + sand.	1.9	-0.4
W. = W. " " " + Roadway	2.0	-0.5
5. Line Santa Clara Place		
W. on W. edge B. walk - sand + Roadway	2.0	-0.5
E. " E. " " " + " "	2.0	-0.5
40' S		
E. = E. edge B. walk + sand.	2.1	-0.6
W. = W. " " " " " "	2.0	-0.5
50' S		
W. = W. edge B. walk + sand.	2.0	-0.5
+ 5' sand. under B. walk	2.6	-1.1
E. = E. edge " "	2.1	-0.6
E. on sand.	3.2	-1.7
75' S.		
E. sand	3.5	-2.0
E. = E. edge B. walk	2.2	-0.7
+ 2' sand. under walk	2.5	-1.0
W. = W. edge B. walk.	2.1	-0.6
100' S.		
W. = W. edge B. walk + sand.	2.0	-0.5
+ 1. sand. under B. walk	3.2	-1.7
E. = E. edge B. walk	2.1	-0.6
E. sand	4.0	-2.5

E. sand	4.3	-2.8
E. = E. edge B. walk	1.8	-0.3
+ 5' sand. under walk	3.3	-1.8
W. = W. edge B. walk + sand	2.1	-0.6
130' S.		
W. = W. edge B. walk + sand	2.1	-0.6
+ 4' sand. under walk	3.3	-1.8
E. = E. edge B. walk	1.8	-0.3
E. sand.	4.4	-2.9
175' S.		
E. sand	4.4	-2.9
E. on E. edge B. walk	2.0	-0.5
+ 1. sand. under " "	3.8	-2.3
W. = W. edge B. walk + sand.	2.0	-0.5
212.45 = # Ostend Court.		
W. on W. edge B. walk + sand	2.1	-0.6
+ 1. sand under " "	3.0	1.5
E. " E. " " " "	2.1	0.6
E. sand.	4.4	-2.9
chk. B.M. Page 14	2.04	-0.50 ✓

Miller  
Walker  
Bliss  
Prebort

Location of Sewers in Bayside Lane indexed  
Tie Pt. Book 25 for alignment.

INDEXED



Alley - Bayside Lane 16. wide  
Existing M.H. 1.7

Redondo - Court.

Alley - Existing M.H. 0.5

Quochstown - Court.

Alley - Existing M.H. 0.4

Pismo - Court.

Alley - Existing M.H. 4.0

Portsmouth - Court.

Alley - Existing M.H. 0.5

Santa Clara - Place.

Cross Section of Rickard Court  
Mission Blvd. to Bay side Walk

Indexed c.s.k.

16' Wide

Station on E of Board Walk

BM	0555	763	708
TP	3.46	3.69	7.40

5/4 of  
S. of Post +  
S. of Wall

0+0 - 2.5 = Ely Edge Conc Walk

S	07 Walk	3.88	-0.19
E	"	4.00	-0.31
H	"	4.00	-0.31

INDEXED

0+0 = Ely Mission Blvd

H		4.23	-0.6
+2	= N Edge Existing Board Walk	4.12	-0.43
+8	- S " " "	4.20	-0.51
+10.5	Ground	4.30	-0.61
S	Conc Walk	3.83	-0.14

0+22

S		4.5	-0.8
+2	= S Edge Board Walk	4.2	-0.5
+8	= H " " "	4.2	-0.5
H		4.3	-0.6

0+44 = Ely Board Walk on N 2' Wide

H		4.09	-0.40
+2	07 Board Walk	4.16	-0.47
+8	" " "	4.17	-0.48
S		4.5	-0.8

0+52.80 = Ely Conc Walk on N 2' Wide

S		4.6	-0.9
+2	07 Board Walk	4.24	-0.55

Plotted on 10/10

3.69

+8	= S End Conc Walk	4.19	-0.50
H	" " "	4.23	-0.54

0+83.40 = Ely Brick Walk on S

H		4.3	-0.6
+2	07 Board Walk	4.30	-0.61
+8	" " "	4.35	-0.66
S	07 Brick Walk	4.43	-0.74
+2	= Ely on Floor of Ho.	3.25	+0.44
TP	3.37	3.47	3.59

0+99.2 = Ely Conc Walk on N 2' Wide

S		4.3	-0.8
+2	07 Board Walk	4.19	-0.70
+8	= S 1/4 of Conc Walk	4.14	-0.67
H	07 " "	4.15	-0.68

1+01.7 = Ely Walk Board on S 4' Wide

H		4.27	-0.80
+2	= H 1/4 Board Walk	4.15	-0.68
+8	= S 1/4 " " "	4.12	-0.65
+8	= H 1/4 of Board	3.42	+0.05
S		3.31	+0.16
+2	= Floor House	3.57	+0.90

1+11.5 = Ely Board Walk on N 10' Wide

S		4.4	-0.9
+2	on Board Walk	4.12	-0.65
+8	= S 1/4 of Board Walk Front	4.17	-0.70
H		4.05	-0.58
+35	House Floor	3.37	+0.10

July 831  
Moore  
S. 1907  
North 1/2



3.47

1+23.5 = 2 Board Walk S

H	• 1.9	-0.9
+2 on Board Walk	4.17	-0.70
+8 " " "	4.18	-0.71
S on Board Walk	4.15	-0.68
+2.5 = House Floor	3.15	+0.32

1+39.6 = 1/4 Board Walk on S

S on Board Walk	4.23	-0.76
+2 on " "	4.22	-0.75
+8 " " "	4.21	-0.74
H	4.2	-0.75

1+47.70 = 1/4 Board Walk on N

H on Board Walk	4.10	-0.63
+2 " " "	4.21	-0.74
+8 " " "	4.25	-0.78
S " " "	4.23	-0.76

1+52.8 = 1/4 Steps in Court

S+2.5 = Top Step	3.67	-0.20
on Board Walk	4.24	-0.77

1+60 = Fly of Walk on N

H on Board Walk	4.20	-0.73
+2 " " "	4.27	-0.80
+7.5 " " "	4.25	-0.78
+7.5 = Top Lower Step	3.67	-0.20
S = House Floor	3.01	+0.37

3.47

1+63.4 = Fly Steps in Court

S Top Top Step	3.01	+0.46
+2.5 Top Lower Step	3.66	-0.19
+2.5 on Board Walk	4.22	-0.75
+8 " " "	4.32	-0.85
H	4.5	-1.00

1+68.80 = 2 Board Walk on N

+6 House Floor	3.70	-0.23
H on Walk	4.31	-0.84
+2 " " "	4.35	-0.88
+8 " " "	4.23	-0.76
S " " "	4.24	-0.77

1+76.8 = Fly of Board Walk on S

S on Board Walk	4.29	-0.82
+2 " " "	4.28	-0.81
+8 " " "	4.35	-0.88
H	4.80	-1.33

1+79.70 = 1/4 of Walk on S

H	4.8	-1.33
+2 on Board Walk	4.21	-0.81
+8 " " "	4.27	-0.80
S " " "	4.22	-0.75

1+89.70 = Fly of Board Walk on S

S on Board Walk	4.25	-0.88
+2 " " "	4.27	-0.70
+8 " " "	4.28	-0.91
H	4.8	-1.33

2+03.42 = N L Bayside Lane

N	02 Board Walk	430	-0.83
N	02 Ground	480	-1.33
+2		43	-0.8
+8		44	-0.9
S	02 Top Header	44	-0.9
S	" Ground	48	-1.3

0+0 F Line Bayside Lane

S		50	-1.5
+2	02 Board Walk	417	-0.8
+2	" Ground	49	-1.4
+8	" "	49	-1.4
+1	02 Board Walk	414	-0.67
N		49	-1.4

0+12.10 = L Board Walk on N 15' side

-2'	= House Floor	35.0	-0.03
N	02 Board Walk	403	-0.56
+2	" "	414	-0.67
+8	" "	418	-0.71
+8	02 Ground	52	-1.7
S		52	-1.7

0+26.9 = L Board Walk on N 25' side

S		50	-1.5
+2	02 Gr.	49	-1.4
+2	02 Board Walk	410	-0.63
+8		407	-0.60

Plotted REB

N	02 Board Walk	406	-0.59
N	" Ground	50	-1.5

0+31.2

N		49	-1.4
+2	02 Gr.	48	-1.3
+2	02 Walk	402	-0.55
+8	" "	408	-0.61
+8	02 Gr.	49	-1.4
+9	= N 1/4 Edge House	50	-1.5

0+47.70

N+03	= N 1/4 Edge House	45	-1.0
+2	02 Gr.	44	-0.9
+2	02 Walk	391	-0.44
+8	" "	381	-0.34
+8	" Gr.	44	-0.9
N		44	-0.9

0+58.0 = L Board Walk on 3' side

N		43	-0.8
+2	02 Gr.	43	-0.8
+2	02 Walk	371	-0.24
+8	" "	381	-0.37
S	02 Walk	364	-0.17
S	" Gr.	44	-0.9

078070 = H Edge 6 Board Walk - Boyside Walk

S	03 Board Walk		3.43	+0.04
+2	" " "		3.43	+0.04
+8	" " "		3.40	+0.02
H	" " "		3.41	+0.06
TP	887	7.62	4.72	-1.25
BM			0.55	7.07

SWBP  
Soul's Ex  
708

Cross Section Salem Court  
 From East Line Ocean Walk to West Line 10' Wide  
 of Bayside Walk

Indexed c.s.k. 9.83

26  
 July 18-21

BM	Stationing	SNBP	Surface	Interior	0+50.30 = Ely	Porch	on N
BM	1.02 11.10	7.08	-1.0	5.8	4.0		
	0+0 -12 = E Line Conc Walk		N	Ground	5.6	4.2	
S	on Conc Walk	6.39 4.71	N	on Porch	3.10	6.73	
TP	5.15 9.83	6.42 4.68	+1	5.6	4.2		
N	on Conc Walk	5.17 4.66	+1	on Board Walk	3.00	6.83	
	0+0 = E Line Ocean Walk		+9	" "	3.07	6.76	
N		5.1 4.4	S		5.6	4.2	
S		5.3 4.5					
	0+22		S		5.0	4.8	
S		5.4 4.4	+1	on Ground	4.9	3.9	
N		5.8 4.0	+1	Board Walk	3.27	6.56	
+5		6.4 3.4	+9	" "	3.14	6.69	
	0+31 = W of Board Porch end		+9	Ground	5.0	4.8	
-10		8.6 1.2	N		5.0	4.8	
N	on Ground	6.6 3.2	+5		4.0	5.8	
N	on Board Porch	3.21 6.62					
S		5.8 4.0	N		4.0	5.8	
	0+47 = N End of S Board Walk		+1	Ground	3.9	5.9	
S		5.6 4.2	+1	on Walk	3.48	6.35	
+1.0	Ground	5.6 4.2	+9	" "	3.41	6.42	
+1.6	S of Board Walk	3.00 6.83	+9	Ground	3.9	5.9	
+9	" " " "	3.15 6.68	S		3.9	5.9	
N	on Board Porch	3.18 6.65					
N	Ground	5.5 4.3					

Plotted MEB

0+79.2 E End of Board Walk west line Board Walk

July 13 - 31

983

East Line Strand May - 040

S		3.6	6.2
+1 - S Edge Board Walk		3.51	6.32
+9 - N " " "		3.57	6.26
N		3.9	5.9
	0+7 = 1/2 of Parch on S		
N		3.9	5.9
+1 on Board Walk		3.79	6.04
+9 " " "		3.79	6.04
+9.5 Top Parch		3.33	6.50
S Ground		4.1	5.7
	0+20 = 1/2 of Parch on S		
S		4.8	5.0
S = Top Parch		3.45	6.38
+1 Board Walk		4.39	5.44
+9 " " "		4.40	5.43
N		4.8	5.0
	0+26		
N		5.0	4.8
+1 - Board Walk		4.65	5.18
+9 " " "		4.62	5.21
+9 Ground		5.6	4.2
S		5.7	4.1
	0+39.1 = 1/2 Board Walk on S		
S on Walk		5.12	4.21

983

27

+1 Board Walk		5.14	4.69
+9 " " "		5.2	4.6
N		5.2	4.6
	0+6.4 = 1/2 32 Wide Board Walk on S		
N		6.4	3.4
+1 Board Walk		6.4	3.4
+9 " " "		6.31	3.62
S on Walk		6.25	3.58
	1+00		
S		7.9	1.9
+1 Board Walk		7.92	1.90
+9 " " "		7.98	1.85
N		8.0	1.8
	1+19.2 = 1/2 of House on S		
N		8.6	1.2
+1 Board Walk		8.62	1.21
+9 " " "		8.62	1.21
+9 Ground		9.5	0.3
S		9.5	0.3
+3 - 1/2 Do of Facing Wall		9.45	0.38
	1+30.5 = 1/2 House Par on S		
S - 1/2 26 Door on Floor		9.35	0.48
70.4 - Door Sill		9.41	0.39
+1 on Board Walk		9.11	0.72
+9 " " "		9.13	0.70
N		9.1	0.7

Fit This Door

1 + 448 = East End Board Walk =  
W.L. Mission Blvd

N		96	0.2
+1	Board Walk	9.60	0.23
+9	"	9.55	0.28
S		10.0	-0.2

1 + 47.3 = Fly Edge Core Walk

S	on Core Walk	9.62	0.21
N	"	9.59	0.24
TP	385 4.01	9.67	0.16

2.5' W of E.L. Mission Blvd = Fly Edge Core Walk

N	on Core Walk	4.34	-0.33
S	"	4.31	-0.30

East Line Mission Blvd = 0.10

S		4.7	-0.7
N		4.6	-0.6

0 + 35

N		4.5	-0.5
S		4.7	-0.7

0 + 63.8 = W/L of Porch on S

S	on Ground	4.7	-0.7
+ad	N Edge Porch Top	3.19	+0.82
N		4.6	-0.6

0 + 76.5 = Fly of Porch on S

N		5.0	-1.0
+9.2	on Ground	4.9	-0.9
+9.2	on Top Porch	3.10	-0.91

S 50 -1.0

0 + 92.2 = 2' Wide Porch on S

S	on Top Porch	3.96	+0.05
+1.0	on Bottom Step	4.41	-0.40
+2.0	Ground	4.9	-0.9
N		5.0	-1.0

1 + 14 = 2' Board Walk on N

N	of Door on Floor	4.00	+0.01
N	on Board Walk	4.50	-0.49
S		5.1	-1.1

1 + 26.3 = 2' Board Walk on N 2' Wide

S		5.3	-1.3
+6	Fly Board Walk	4.70	-0.69
N	on " "	4.74	-0.73

1 + 32.5 = 2' Board Walk on N

N	on Bottom Step	4.25	-0.24
+1	on Board Walk	4.75	-0.74
S		5.2	-1.2

1 + 52.2 = 2' 5' Board Walk on N

S		5.2	-1.2
+6	S End Walk	4.73	-0.72
N	on Board Walk	4.72	-0.71

1 + 59.2 = 2' 4' Board Walk on N

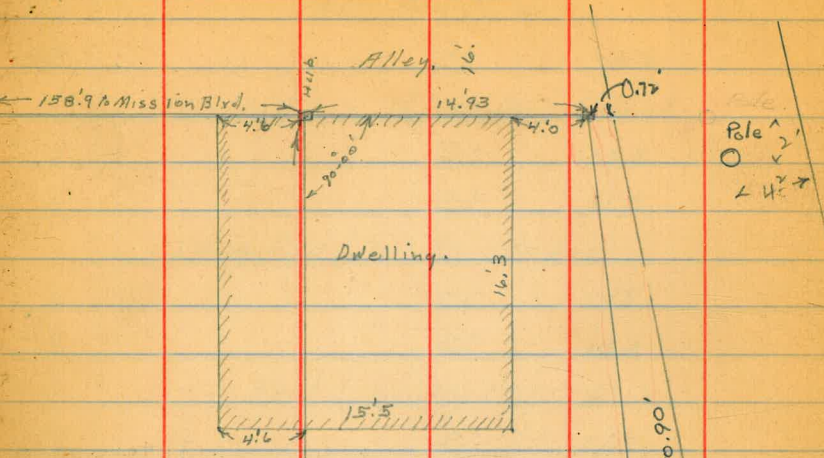
N + 0.4	of Door on Floor	4.12	-0.11
+0.4	on Board Walk	4.5	-0.5
2	on " "	4.80	-0.8

4.01 Ford Page 31

S		5.2	-1.2
	1+810 = N Line	Boyside Lane	
S		5.3	-1.3
N		5.3	-1.3
	1/2 of East Line	Boyside Lane	
N		5.5	-1.5
S		5.3	-1.3
	East Line	Boyside Lane: 0+0	
S		5.2	-1.2
N		4.8	-0.8
	0+134 = 2 1/2	Rock Walk	
N		4.8	-0.8
S	07	Rock Walk	4.8 -0.8
	0+25		
S		5.10	-1.09
N		5.1	-1.1
	0+50		
N		4.4	-0.4
S		5.1	-1.1
	0+81 = N Line	Boyside Walk	
S	07	Ground	4.5 -0.5
S	"	Guard Walk	3.91 +0.05
N	"	"	3.91 +0.05
N	Ground	4.0	0.0

indexed c.s.k.

Walker  
Bliss  
6-19-31

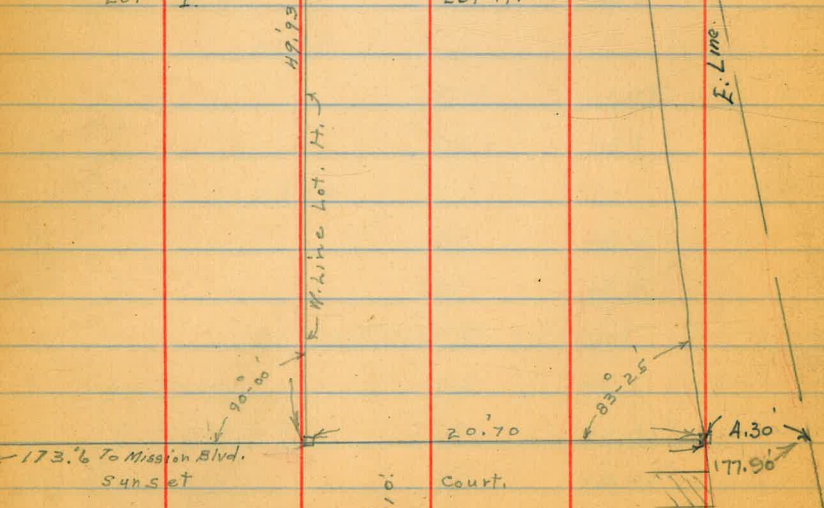


Pole  
 O  
 x  
 < 47°

INDEXED

Lot I.

Lot H.





Cross Section Bay Side Lane  
From Queenstown to  $\frac{1}{2}$  Alley N of Seagirt 16' wide

Indexed c.s.k.

31  
July 13-21

Stationing	4.01	Hl Bl Ford From 29	
TP	4.76	354	523 -1.22
TP	4.04	3.25	123 -0.69
	$\frac{1}{2}$ Queenstown		
F		44	-1.0
L		45	-1.1
H		44	-1.0
	6335 N = $\frac{1}{2}$ Alley Block 187		
H		42	-0.8
L	<b>INDEXED</b>	42	-0.8
F		42	-0.8
	$\frac{1}{2}$ Redondo		
F		42	-0.8
L		43	-0.9
H		42	-0.8
	6376 N $\frac{1}{2}$ Alley Block 192		
H		44	-1.0
L		45	-1.1
E		45	-1.1
	$\frac{1}{2}$ Rickaway		
F		48	-1.4
L		47	-1.3
H		47	-1.3
	6391 $\frac{1}{2}$ Alley Block 195		
H		46	-1.2
L		45	-1.1

Plotted HEB

			3.35	
F			45	-1.1
			$\frac{1}{2}$ San Jose	
F			46	-1.2
L			46	-1.2
H			44	-1.0
			711 N = $\frac{1}{2}$ Alley Block 200	
H			45	-1.1
L			46	-1.2
F			48	-1.4
			$\frac{1}{2}$ Salem	
F			48	-1.4
L			47	-1.3
H			46	-1.2
			$\frac{1}{2}$ Alley Block 203	
H			44	-1.0
L			45	-1.1
F			46	-1.2
			$\frac{1}{2}$ Seagirt	
F			47	-1.3
L			46	-1.2
H			47	-1.3
			$\frac{1}{2}$ Alley N of Seagirt	
H			46	-1.2
L			46	-1.2
F			46	-1.2

3.35  
1.69  
-1.21 = TP 192

Cross Sect 107 Strand Way  
 2 Seagirt to 2 Toulon

2011 do

S.M.B.P.  
 See Sect 1  
 2011 do

BM 433 1141 708  
 TP 472 1068 545 596

2 Seagirt = 0+0

W 48 5.9  
 2 47 6.0  
 F INDEXED 47 6.0

0+50 = 2 Conc Apron on W

W 480 5.88

0+129 = 2 Alley Block 207

W 48 5.9

2 49 5.8

F 50 5.7

0+75 = 2 Garage Conc Floor on F

F = Conc Floor 500 5.68

0+79 = 2 Dr Garage Conc Floor on W

W = Conc Floor 473 5.95

1+25.85 = 2 Sunset

W 47 6.0

2 48 5.9

F 49 5.8

20 ft of 2 Sunset = 2 Garage on W of W.L.

4 ft of W.L. Conc Floor 49 5.8

50 ft of 2 Sunset = 2 Garage on East

E.L. = Conc Floor 459 6.09

Indexed c.s.k.

1068

32  
 7-13-81

2 Alley Block 212

F 47 6.0

2 47 6.0

W 48 5.9

15 ft of 2 Alley Block 212 = 2 Garage on F

F on Conc Apron 444 6.24

2 Tangiers

W 49 5.8

2 49 5.8

F 49 5.8

2 Alley Block 215

F 49 5.8

2 49 5.8

W 49 5.8

2 Toulon

W 51 5.6

2 50 5.7

F 50 5.7

Cross Section Ormond Court  
Ocean Front Walk to Bayside Walk

10' Wide

Station 179

BM	172	891	719	B.P. Top of Walk Santa Clara
				12' N of East Line of Ocean Walk = Ely of Cove Walk
N		421	9.70	
S		422	9.69	
				East Line Ocean Front Walk = 0+0
S		45	9.41	
N		46	9.31	
	0+40			
N		45	9.41	
S		42	9.71	
	0+80 = W.L. Strand May 20 1910			
S		36	5.31	
N		39	5.01	
	0+100 = F.L. Strand May = E End of Board Walk			
N		39	5.00	
+1	W Edge Board Walk	390	5.00	
+9	S "	390	5.00	
S		39	5.00	
	0+155 = E End of Board Walk			
S	07 Walk	608	2.83	
+1	" "	608	2.83	
+9	" "	608	2.83	
N		61	2.81	

INDEXED

Plotted  
B.P.P.

Indexed c.s.k.

891

	0+722 = E 2' Cove Walk 0711			
N	07 Cove Walk	745	1.46	
+1	07 Board "	746	1.45	
+9	" " "	745	1.46	
S		8.0	.91	
	0+882 = E 4' Cove Walk 0711			
S		8.5	.41	
+1	07 Board Walk	8.04	.87	
+9	" "	8.07	.84	
N	1 Cove "	8.05	.86	
	1+038 = E 2' Cove Walk 0711			
N	07 Cove Walk	8.50	.41	
+1	07 Board "	8.50	.41	
+9	" "	8.45	.46	
S		8.7	.21	
	1+3257 = W.L. Mission Blvd = E End of Board Walk			
S		8.8	.11	
+1	07 Board Walk	8.80	.11	
+9	" "	8.90	.01	
N				
	1+35.07 = W Edge Cove Walk			
N	07 Cove Walk	876	.15	
S	" "	876	.15	
TP	833 247	877	0.14	

53  
7-14-31  
Floor  
S. 100  
Northway

C.T. Ormond  
W.L. Mission  
Blvd

317

22 H of E.L. Mission Blvd = E.L. Can Walk

S of Can Walk 379 -.32

H " " 382 -.35

E.L. Mission Blvd = 020 = Mt of Board Walk

H 430 -.83

+1 = Edge Board Walk 389 -.42

+9 " " 398 -.51

S " " 42 -.73

0+12.4 = 2 3' Board Walk or 1

S of Board Walk 420 -.73

+1 " " 420 -.73

+9 " " 408 -.61

H " " 41 -.63

0+35.8 = 2 33' Tile Walk or 1

H 44 -.93

+1 Board Walk 437 -.90

+9 " " 438 -.91

S of Tile " 438 -.91

0+51.2 = 2 3' Br. Walk or 1

S 46 -1.13

+1 of Board Walk 412 -1.15

+9 " " 459 -1.12

H of " " 459 -1.12

0+76.5 = 2 3' Board Walk or 1

H of Board Walk 482 -1.35

+1 " " 467 -1.20

317

+9 of Board Walk 477 -1.30

S " " 50 -1.53

0+87.5 = E.L. 2' Br. Walk or 1 + E.L. 4' Br. Walk or 1

S of Board Walk 490 -1.43

+1 " " 490 -1.43

+9 " " 487 -1.40

H " " 490 -1.43

1+08.3 = 2 4' Board Walk or 1

H 51 -2.13

+1 of Board Walk 502 -1.55

+9 " " 506 -1.59

S " " 506 -1.59

1+31.5 = 2 4' Board Walk or 1

S of Ground 59 -2.43

S of Board Walk 506 -1.59

+1 " " 506 -1.59

+9 " " 502 -1.55

H " " 58 -2.33

1+44.8 = 2 2' Board Walk or 1 = Mt. 4' Br. Walk or 1

H 59 -2.43

+1 of Board Walk 505 -1.58

+9 " " 508 -1.61

S " " 508 -1.61

S Ground 59 -2.43

1+49.5 = E.L. 2' Board Walk or 1

S Ground 58 -2.33

+1 of Board Walk 514 -1.67

34

+9	07 Beard Walk	5.05	-1.58
H	" " "	5.05	-1.58
H	Ground	5.9	-2.43
	1+54 = H.L. 3 Beard Walk or H.L. 4 Beard Walk		
H	" " "	5.9	-2.43
+1	07 Beard Walk	5.06	-1.59
+9	" " "	5.17	-1.70
S	" " "	5.17	-1.70
S	Ground	5.8	-2.33
	1+72 = 4 Beard Walk or H		
S	" " "	5.8	-2.33
+1	07 Beard Walk	5.20	-1.73
+9	" " "	5.11	-1.64
H	" " "	5.11	-1.64
H	07 Ground	6.1	-2.63
	1+90.8 = 3 Beard Walk or H		
H	" " "	6.1	-2.63
H	07 Beard Walk	5.8	-1.65
+1	" " "	5.12	-1.65
+9	" " "	5.21	-1.74
S	" " "	5.8	-2.33
	2+35 = 3 Beard Walk or H		
S	" " "	5.1	-1.63
+1	07 Beard Walk	5.01	-1.54
+9	" " "	5.00	-1.53
H	" " "	5.00	-1.53

H	Ground	5.90	-2.43
	2+48.33 = H.L. Bay side Lane - End Beard Walk		
H	" " "	4.90	-1.43
+1	07 Beard Walk	4.90	-1.43
+9	" " "	4.95	-1.48
S	" " "	5.0	-1.53
	0+0 E.L. Bay side Lane = H End 8 Beard Walk		
S	" " "	4.8	-1.33
+1	07 Beard Walk	4.77	-1.30
+9	" " "	4.85	-1.38
H	" " "	4.9	-1.43
	0+30.7 = 2 Beard Walk or H		
H	" " "	5.0	-1.53
+1	07 Beard Walk	4.61	-1.19
+9	" " "	4.69	-1.22
S	" " "	4.69	-1.22
	0+50		
S	" " "	4.4	-0.93
+1	07 Beard Walk	4.40	-0.93
+9	" " "	4.36	-0.89
H	" " "	4.6	-1.13
	0+81.22 = H.L. Bay side Walk		
H	Ground	4.5	-1.03
+1	07 Beard Walk	3.90	-0.43
+9	" " "	3.93	-0.46
S	07 Ground	5.0	-1.53

Cross Section Bay Side Lane  
 San Juan Place to Santa Clara 16 wide  
 See Map and the Point Book 25  
 For Stationing

Indexed c.s.k.

	3.47		
TP	5.00	3.37	5.10
		San Juan Place	
H		5.1	-1.73
F		5.0	-1.63
		Alley Block 160	
F		5.1	-1.73
H		5.1	-1.73
		Newport Court	
H		5.1	-1.73
F		5.0	-1.63
		Alley Block 163	
F		5.0	-1.63
H		5.0	-1.63
		Ormond	
H		4.9	-1.53
F		4.8	-1.43
		Alley Block 168	
F		4.4	-1.03
H		4.2	-.83
		Ostend	
H		4.5	-1.13
F		4.5	-1.13
		Alley Block 171	
F		4.2	-.83
H		4.1	-.73

INDEXED

Plotter AFB

San Santa Clara

		3.37					
H			4.0				-1.63
F			4.0				-1.63
TP	10.14	9.34	4.17				-0.80
BM			2.21			7.63	BP Santa Clara Ave 7.19

INDEXED

Cross Section Ostrad Court  
Ocean Front Walk to Strand Way

Existing 5' Conc Walk North of 1/2 Court

BM 1.90 9.09 7.19 BP Detail  
Dante Class

12 W of East Line Ocean Walk - 1/4 of Conc Walk

1/2 of 5' Conc Walk 1.25 W of 1/2 Court 4.41 4.68

0+0 Fast Line Ocean Walk

1/2 of 5' Conc Walk 1.23 W of 1/2 Court 4.28 4.81

R.V. Hub 6' Conc Walk 2.23 W of 1/2 Court

INDEXED

0+40

1/2 of 5' Conc Walk 1.07 W of 1/2 Court 3.89 5.20

Sty Tile Wall 6.07 W of 1/2 Court

0+80 - N. L. Strand Way

1/2 of 5' Conc Walk 0.93 W of 1/2 Court 3.48 5.61

R.V. Hub 5.92 W of 1/2 Court

0+80.5 - East End of 5' Conc Walk

TP 4.44 10.04 3.49 5.60

Plotted  
H.E.B

10.04

Stationing

0+0 of San Juan Place

**INDEXED**

F	18	5.24
M	46	5.44
	0+88 = 2 Door Garage on W	
M	410	5.94
	<sup>1400</sup> 0+96 = 2 Alley	
M	41	5.94
F	42	5.84
	1+06 = 2 3 Door Garage on W Conc Floor	
	-1.6 on Conc Floor	3.47 6.57
M	02 Conc Floor	3.77 6.27
	1+94.35 = 2 Next post	
F	49	5.14
M	49	5.14
	2+75.3 = 2 Do Garage Conc Floor on W	
	3' W of W.L. on Conc Floor	4.81 5.23
	2+88.33 = 2 Alley	
M	47	5.34
F	47	5.34
	3+83.51 = 2 Ormond	
F	50	5.04
M	49	5.14
	4+76.49 = 2 Alley	
M	49	5.14
F	48	5.24

5+30.5 = 2 3 Door Garage on W

	2' W of W.L. Conc Floor	4.50 5.54
	5+70.51 = 2 Octob	
F	45	5.54
M	47	5.34
M	02 Top Conc Floor	4.41 5.63
TP	6.45 12.05	4.44 5.60
	6+09.5 = 2 4 Door Garage on W	
	1' W of W.L. on Conc Floor	6.43 5.62
	6+64.49 = 2 Alley	
M	5.8	6.25
F	5.7	6.35
	7+67.51 = 2 Santa Clara	
F	50	7.05
M	48	7.25
BM	4.88	7.17

Note: This Garage Floor is to be finished by Grade Conting.

Santa Clara  
+ San Hill  
7.19

Plotted  
7/15/31  
AEB



Cross Section of Ostend Cr. 10' wide  
 E. STA. Strandway to Baywide Walk

Top cem walk 1.03 6.64 5.61 page 37 1.700

EL Strandway = 0.0

S		1.2	5.2
+ 0.6	S edge board walk	1.2 <sup>~</sup>	5.42
N		1.3	5.3
+ 0.7	N " " "	1.3	5.3

**INDEXED**

	0+45		
N	- 0.6	2' wide board walk	3.05 3.59
N	+ 9.4	S edge board walk	3.0 <sup>~</sup> 3.62
S		on ground	3.3 3.3

	0+61		
S	= w line cem lawn	3.44	3.20
S	+ 0.9	edge board walk	3.44 3.20
N		3.45	3.09

	+ 0.5	" " "	3.45 3.09
	" "	on ground	4.0 2.6

	0+78.5		
N	- 0.5	2' wide cem walk	4.1 2.53
N		B. walk	4.1 2.53
	+ 9.6	" "	4.04 2.60

S		on Cem Lawn	4.04 2.60
---	--	-------------	-----------

	0+87		
S		2' cem walk 3' wide	4.4 <sup>~</sup> 2.22
N			4.5 2.1
	+ 0.5	N edge board walk	4.6 2.0

Plotted #5 B 8-6-31

6.64

11/31/31  
 17000  
 Northern **39**

- 0.5		5.06	1.58
N	edge board walk	5.06	1.58
+ 9.6	" " "	5.0	1.6
S	ground	5.0	1.6
	1+25		

S		5.8	0.8
+ 0.4	edge board walk	5.73	0.91
N		5.65	0.99
N	+ 0.5	" " "	5.65 0.99

1+55.27 = WL Mission

N	edge board walk	6.45	0.19
S		6.4 <sup>~</sup>	0.22

	1+55.27 + 2.5		
S	w edge cem walk	6.45	0.19
N		6.44	0.20

EL	- 4.5	- east edge cem sidewalk	
N			6.97 - 0.35
S			6.93 - 0.29

EL Mission = 0.0

S	ground	7.5	- 0.9
S	edge board walk	7.4	- 0.6
N	" "	7.4	- 0.6

	0+38		
N	on ground	8.4	- 1.6
N	edge walk	7.78	- 1.14

S	2' wide Cem walk	7.7	-1.1
	0+6°		
S	ground	8.3	-1.7
S	edge bd. walk	7.9	-1.3
N	"	7.88	-1.24
N	on ground	8.2	-1.6
T.P.	4.95 3.43	8.16	-1.52
	0+9.5	#1343	
N	ground	5.4	-2.0
N	board walk	4.96	-1.51
S	2' wide Cem walk	4.98	-1.55
	1+03.5		
S	ground	5.3	-1.9
S	board walk	4.98	-1.55
N	2' wide board walk	5.00	-1.57
	1+08.5		
N	ground	5.3	-1.9
N	board walk	4.98	-1.55
S	2' wide Cem walk	5.05	-1.62
	1+36		
S	edge board walk	4.91	-1.48
N	2' wide board walk	4.92	-1.49
	1+50		
N	edge board walk	4.92	-1.49
S	3' wide Cem "	4.91	-1.48

	1759		
S	board walk	4.87	-1.44
N	2' wide brick walk	4.90	-1.47
	1+72		
N	edge board walk	4.95	-1.52
S	2' wide "	4.89	-1.46
	1+84		
S	edge board walk	4.82	-1.39
N	2' wide "	4.84	-1.41
	2+08		
N	edge board walk	4.75	-1.42
S	2' wide Cem "	4.80	-1.47
	2+16		
S	board walk	4.70	-1.37
N	2' wide Cem walk	4.67	-1.24
	2+29		
N	1.5' wide Cem walk	4.64	-1.21
S	board walk	4.66	-1.23
	2+56.43 = wL Bayside Lane		
S	board walk	4.57	-1.14
N	"	4.54	-1.11
	EL Bayside Lane = 00		
N	"	4.43	-1.00
+0.8	board walk	4.37	-0.94
S	"	4.42	-0.99
+0.8	"	4.42	-0.99

0+29

S edge board walk 4.33 -0.90

N 4' wide r r 4.40 -0.97

0+63

N 4' inside cem walk 4.10 -0.67

S edge board walk 4.13 -0.70

0+80.57 - w L Boyside walk

S top board walk 4.00 -0.57

N " " " 3.98 -0.55

TP 7.46 9.37 1.5<sup>n</sup> 1.91

SWBP 4.20 7.17 7.19 seam/

0.2<sup>n</sup> Sanjo Clara  
error

Sta. Cross Section of Nantasket Ct. 10' wide  
Ocean Front Walk to Bay Side Walk

N	ceem walk	4.73	4.65
S	" "	4.75	4.63
EL Ocean Front Walk = 00			
S	edge bd. walk	4.6	4.8
N	" "	4.65	4.73
0+40			
N	edge bd. walk	4.46	4.92
S	" "	4.46	4.92
0+80 = WIL strandway			
S	edge bd walk	4.26	5.02
N	" "	4.26	5.12
EL strandway = 00			
N	edge bd. walk	3.96	5.42
S	" "	4.13	5.25
0+40.95			
S	edge bd walk	6.73	2.63
N	" "	6.75	2.63
0+80.97 = WIL Mission			
N	edge bd walk	9.21	0.13
S	" "	9.28	0.10
25' E = wedge ceem walk			
S	" "	9.20	0.18
N	" "	9.21	0.13
T.P.	2.96	2.57	9.77
			-0.39

INDEXED

Plotted AFB  
8-7-31

EL Mission - 2.5 HI 257			
N	Top ceem walk	2.98	-0.41
S	" " "	3.00	-0.43
EL Mission - 1.5			
1.5 N of E Court = Top Ceem M.H.			
		2.97	-0.40
EL Mission = 00			
S	Top edge bd walk	3.05	-0.48
N	" " "	2.96	-0.39
0+10			
N	edge bd walk	3.14	-0.57
S	" " "	3.23	-0.66
S	2 3/4 wide bd. walk	2.67	-0.10
0+19			
S	edge bd walk	3.34	-0.77
N	" " "	3.20	-0.63
N	2 9/16 wide bd. walk	2.65	-0.08
0+50			
N	edge bd walk	3.90	-1.33
S	" " "	3.85	-1.28
0+75			
S	edge bd. walk	4.17	-1.60
N	" " "	4.18	-1.61
N	2 3/4 wide bd. walk	4.00	-1.43
0+89.5			
N	2 9/16 wide bd. walk	4.03	-1.46
N	edge bd walk	4.23	-1.66
S	" " "	4.21	-1.64

80  
80.97  
180.96  
16.25  
81.74

	1700		
S	edge bd. walk	4.29	-1.72
N		4.37	-1.80
	1735		
N	4' wide Cent walk	4.50	-1.93
S	edge bd walk	4.41	-1.84
S	ground	4.8	-2.2
	1769.78	- WL Bayside Lane	
S	edge bd walk	4.73	-2.16
N	" " "	4.66	-2.09
	FL Bayside = 00		
N	edge bd walk	4.78	-2.21
S	" " "	4.77	-2.20
	0 + 4.87		
S	edge bd. walk	3.93	-1.36
S	ground	4.6	-2.0
N	edge bd walk	4.02	-1.45
N	ground	4.6	-2.0
	0 + 8.74 = WL Bayside walk		
N	ground	3.1	-0.6
N	Top walk	2.7 <sup>n</sup>	-0.15
S	" "	2.67	-0.10
S	ground	3.1	-0.50

180.96  
 11.18  
 169.78

± STA 2.57  
± San Juan H=00 INDEXED

W		4.3	-1.7
C		4.3	-1.7
E		4.4	-1.6
0+12.0 = SL San Juan Pl			
E		4.5	-1.9
C		4.5	-1.9
W		4.5	-1.9
0+75			
W		4.8	-2.2
C		4.6	-2.0
E		4.8	-2.2
+N	± Cem Garage floor	4.67	-2.10
	1+0 ~ ± alley		
E		4.8	-2.2
C		4.6	-2.0
W		4.7	-2.1
1+10			
W		4.6	-2.0
C		4.6	-2.0
E	+N Cem apron	5.00	-2.43
+N	" Garage floor	4.40	-1.83
1+50			
E		5.1	-2.5
C		4.8	-2.2
W		5.2	-2.6

Plotted A.E.B. 8-7-31

W	1797.0 ~ ground	4.8	-2.2
C	"	4.8	-2.2
E	"	4.8	-2.2
2+40			
E		3.0	-2.4
C		4.9	-2.3
W		5.0	-2.4
2+70			
W		4.7	-2.1
C		4.7	-2.1
E		4.7	-2.1
E	+N Cem apron	4.70	-2.13
	2+90 approx ± alley		
E		4.8	-2.2
C		4.7	-2.1
W		4.5	-1.9
3+00			
W		4.7	-2.1
C		4.6	-2.0
E		4.8	-2.2
+N	Cem apron	4.84	-2.27
3+45			
E		4.7	-2.1
C		4.5	-1.9
W		4.7	-2.1

Garage

Garage

257

3487 approx  $\phi$  Nahant CT

H 4.5 -1.9

C 4.5 -1.9

E 4.5 -1.9

4+00

E 4.6 -2.0

C 4.5 -1.9

W 4.6 -2.0

4+35

W 4.7 -2.1

C 4.5 -1.9

E 4.6 -2.0

+4 Cent Apron 4.30 -1.77 Garage

4+81 approx  $\phi$  alley

E 4.50 -2.4

C 4.3 -1.7

W 4.4 -1.8

T.P. 960 9.21 2.96 -0.39

San Juan Pl 2.12 7.07 7.07 BT

Cross Section Strand Way

SL Block 389 Pacific Beach to SL Pacific 20' wide  
 For Sketch See 1429 Page 3

6.13 H. Ford From 1429 Page 4

SL Block 389 Pacific Beach

W	07 Paving	493	1.50
L	"	548	0.95
F	"	542	1.01

25' H

F	07 Paving	520	1.23
L	"	529	1.14
W	"	476	1.67

50' H

W	07 Paving	456	1.87
L	"	507	1.36
F	"	491	1.52

75' H

L	07 Paving	462	1.81
L	"	486	1.57
W	"	448	1.95

100' H

W	07 Paving	420	2.23
L	"	463	1.80
F	"	444	1.99

125' H - SL End of Paving

F	07 Paving	417	2.26
L	"	442	2.01
W	"	404	2.39

149-43/46  
 Moore  
 Gibson  
 Harbor

145' H - N. E. W. Alley

W	07 Paving	396	2.47
L	"	434	2.09
F	"	410	2.33

175' H

F	07 Paving	398	2.45
L	"	417	2.26
W	"	375	2.68

200' H

W	07 Paving	357	2.86
L	"	397	2.46
F	"	381	2.62

225' H

F	07 Paving	360	2.83
L	"	374	2.69
W	"	330	3.13

270' H - N End of Paving

W	"	300	3.43
L	"	346	2.97
F	"	327	3.16



Cross Section Hill/Block 389 Pacific Beach  
Strand Way to Mission Blvd 20' wide

643

F.L. Strand Way

INDEXED

N on Paving	411	2.32
L .. ..	416	2.27
S .. ..	416	2.27

25' E of F.L. Strand Way

S on Paving	459	1.84
L .. ..	486	1.57
H .. ..	450	1.93

50' E

H on Paving	496	1.47
L .. ..	526	1.17
S .. ..	500	1.43

75' E

S on Paving	534	1.09
L .. ..	565	0.78
H .. ..	531	1.12

100' E

H on Paving	571	0.72
L .. ..	607	0.36
S .. ..	573	0.70

125' E

S on Paving	612	0.31
L .. ..	645	-0.02
H .. ..	603	0.40

643

150' E

H on Paving	651	-0.08
L .. ..	686	-0.43
S .. ..	651	-0.08

173.75' E

S on Paving	688	-0.45
L .. ..	721	-0.78
H .. ..	688	-0.45

200' E

H on Paving	728	-0.85
L .. ..	761	-1.18
S .. ..	727	-0.84

239.88' E - H.L. Mission Blvd

S on Top 6	771	-1.28
S on Paving	773	-1.29
L .. ..	804	-1.61
H .. ..	785	-1.42
H on Top 6	784	-1.41

H.C. Line of Mission

H on Paving	865	-2.22
L .. ..	863	-2.20
S .. ..	859	-2.16

TP 544 13.84'	803	-1.60
Grating SW. Cor. Pacific Ave + Mission Blvd	635	-2.51

BM

556

-1.72

NEBP  
Pacific Ave +  
Mission Blvd  
-1.72

Cross Section Strandway  
San Juan to Hill South of Nantasket

25' wide

48  
Aug. 1-31  
Moore

BM 303 10.10 7.07

1/2 San Juan

H 4.5 5.6

INDEXED  
L 4.7 5.4

I 4.8 5.3

12 S of 1/2 San Juan

E 4.9 5.2

L 4.8 5.3

H 4.7 5.4

50 S of 1/2 San Juan

H 4.8 5.3

L 4.6 5.5

I 4.9 5.2

90 S

E 4.8 5.3

L 4.6 5.5

H 4.7 5.4

+ 1/2 Garage Conc Floor 4.9 5.40

100 S = 1/2 Hill

H 4.7 5.4

L on MH Cover 4.53 5.57

E 4.8 5.3

148 S

E 5.0 5.1

L 4.9 5.2

STOP  
See Log at  
Bottom

1010

H = Conc Floor 4.87 5.23

192.95 = 1/2 Nantasket

H 5.2 4.9

L 5.2 4.9

E 5.2 4.9

245 S

E 5.2 4.9

L 5.1 5.0

H 5.2 4.9

+ 1/2 Garage Dirt Floor 5.2 4.9

286 S

H = 1/2 Garage Conc 4.90 5.20

L 4.90 5.20

E 5.1 5.0

300 S

E on Conc Cb 5.02 5.08

L 5.2 4.9

H 5.1 5.0

TP 4.43 9.57 4.96 5.14

342 S

H 4.8 4.8

L 4.7 4.9

E 4.4 5.0

E on Conc Cb 4.43 5.14

9.57

373755 = N.L. Hankland

F 0206 - S.F. 2d 436 5.21

F 46 5.0

S 46 5.0

W 47 4.9

100'S

W 47 4.9

S 45 5.1

F 47 4.9

172'S - S Alley

F 47 4.9

S 44 5.2

W 47 4.9

RM For Check 246 7.11

B.P.  
El Carmel  
Sea Wall

49

76

Cross Section Liverpool Court  
Mission Blvd to Ocean Front Walk

INDEXED

Stationing

57.89  
FL Corridor P14  
Sea Wall

BM 229 9.38 9.09

-25' Fly Edge Conc Walk Mission Blvd

S 29 Conc Walk 7.81 1.54

L " " 7.83 1.55

H " " 7.80 1.58

Fly Line of Mission Blvd - Fly Board Walk

H " " 7.8 1.6

L " " 8.0 1.4

S " " 7.9 1.5

41.3' H - F.L. Strand Wall - Fly Board Walk

S " " 4.6 4.8

L " " 4.6 4.8

H " " 4.5 4.9

2 Strand Wall

H " " 4.6 4.8

L " " 4.6 4.8

S " " 4.6 4.5

S Top Board Walk H.L. Strand Wall - Fly Board Walk

S " " 4.0 5.38

L " " 4.5 4.9

H " " 4.4 5.0

H Top Board Walk 4.15 5.23

40' H of H.L. Mission Blvd

S " " 4.8 4.6

L - Top Walk 4.25 5.13

1.833  
Moat  
S. 1100  
Northway

H Ground & Board Walk 4.30 5.08

45' H of H.L. Mission Blvd. Entrance to Deck House

H Top Board Walk 4.24 5.14

68' H - End of Board Walk

H Top Board 3.90 5.48

L " " 3.90 5.48

S " " 3.80 5.58

80' H - F.L. Ocean Front Walk

S " " 4.9 4.5

L " " 5.0 4.4

H " " 4.9 4.5

13' H - Fly Edge Conc Walk on Ocean Front Walk

L 29 Conc Walk 4.82 4.56

L " " 4.80 4.58

S " " 4.76 4.62

H 4.63 9.61 4.40 4.98

14' H of H.L. Liverpool - 2' Dr Garage Conc Floor

3' H of H.L. Strand Wall 4.47 4.91

Cross Section Hobart Court  
Ocean Front Walk to Bayside Walk

intended  
c/sk 16' wide

9.18

Oct 21/32  
Moore  
S. H. 102  
Hartberg

51

Station	Date	East of Beach	West of Beach	Notes	Height	Distance
B.M.	3.11	9.18	7.07	24' Conc Walk	28.5	3.18
				12' W of E.L. Ocean Front Walk - Fly Conc Walk		3.2
N		4.57	4.61			3.2
L		4.57	4.61		6.56 F = W.L. Mission Blvd	
S		4.59	4.59			0.6
				E.L. Ocean Front Walk		0.7
S		4.6	4.6			0.7
L		4.9	4.3		6.81 F = W.L. Edge Conc Walk	
N		5.2	4.0		07 Conc Walk	0.66
				40' F of E.L. Ocean Front Walk		0.66
N		4.5	4.7			0.68
L		4.7	4.5		3.65 3.77	0.72
S		4.8	4.4		2.5' W of E.L. Mission Blvd - Fly Edge Conc Walk	
				80' F = W.L. Strand Way		0.07
S		4.3	4.9		07 Conc Walk	0.07
L		4.3	4.9			0.05
N		4.3	4.9		E.L. Mission Blvd	
				E.L. Strand Way		-0.2
N		3.99	5.19			-0.0
L		4.1	5.1			-0.1
S		4.1	5.1		12' F of E.L. Mission Blvd	
				16' F of E.L. Strand Way		-0.75
S		5.2	4.0		80' Conc Walk	-0.83
L		5.2	4.0			-0.8
N		5.03	4.15			

INDEXED

377  
 61' E of E.L. Mission 2 B

H		48	-1.0
L		47	-0.9
S	L 21' Conc Walk	478	-1.01
	74' E		
S	L 5' Conc Walk	483	-1.04
L		49	-1.1
H		484	-1.07
	76' E		
H	L 4' Conc Walk	485	-1.08
	85' E		
H	L 3' Conc Walk	487	-1.10
	100' E		
H		51	-1.3
L		50	-1.2
S		52	-1.4
	143.66' E = 1st Bay Side Lane		
S	Top Board Walk	54	-1.6
S	Ground	58	-2.0
L	Top Walk	54	-1.5
L	Ground	58	-2.0
H	Top Walk	535	-1.58
H	Ground	57	-1.9

377  
 E.L. Bay side Lane

52

H	Top Board Walk	530	-1.53
H	Ground	58	-2.0
L	"	58	-2.0
L	Top Walk	535	-1.58
S	"	540	-1.63
S	Ground	58	-2.0
	15' E of E.L. Bay side Lane		
S	L 4' Conc Walk	525	-1.48
L		52	-1.5
H		54	-1.6
	4087' E		
H		55	-1.7
L	07' Walk	51	-1.3
S		52	-1.4
	8174' E = 1st Bay Side Lane		
S	Ground	50	-1.2
S	Top Board Walk	472	-0.95
L	"	478	-1.01
H	"	478	-1.01
H	Ground	51	-1.3
TP		214	1.63

Occas Front Walk to Bayside Walk		10' wide	
BM	2.88	9.95	7.07
12' W of E.L. Occas Front Walk Fly Edge Road Walk			
S	on Case Walk	5.28	4.67
L	" "	5.28	4.67
H	" "	5.28	4.67
E.L. Occas Front Walk			
H	INDYFD	5.4	4.6
L		5.5	4.5
S		5.7	4.3
40' E of E.L. Occas Front Walk			
S		5.7	4.3
L		5.6	4.4
H		5.3	4.7
62' E of E.L. Occas Front Walk			
H	= L 4 Case Walk	4.86	5.09
L		5.2	4.8
S		5.4	4.6
80' E = W.L. Strand Way			
S		4.9	5.1
L		4.9	5.1
H		4.9	5.1
E.L. Strand Way			
H		4.8	5.2
L		4.8	5.2
S		4.8	5.2

995		
10' E of E.L. Strand Way		
S	= L 4 Board Walk	5.23
L		5.3
H		5.27
16' E of E.L. Strand Way		
H	= L 2 Board Walk	5.4
L		5.1
S		5.1
31' E		
S		6.3
L		6.3
H	= L 2 Board Walk Ground	6.2
H	on " "	5.7
53' E		
H	= L Board Walk	7.05
L		7.3
S		7.3
61' E		
S	= L 4 Board Walk	7.75
L		7.7
H		7.7
100' E		
H		9.4
L		9.4
S		9.4

J.W. BP  
San Juan  
Springs

9.95

113.3 F = 1/2 Mississ Blvd.

S		99	+0.1
L		10.0	00
H		10.0	00

115.8 F = 1/4 of Conc Walk

H	07	Conc Walk	970	+0.25
L	"	"	970	+0.25
S	"	"	974	+0.21
TP	240	2.79	956	0.39

2.5 M of E.L. Mississ Blvd. = Fly Conc Walk

S	07	Conc Walk	3.13	-0.34
L	"	"	3.13	-0.34
H	"	"	3.11	-0.32

E.L. Mississ Blvd

H	07	Board Walk	3.25	-0.46
L	"	"	3.25	-0.46
S	"	"	2.3	-0.5

40 F of E.L. Mississ Blvd

S		39	-1.1
L		39	-1.1
H		42	-1.3

60 F

H		43	-1.4
L		42	-1.3
S	1/4 of Board Walk	42	-1.3

2.79

80 F

S	= Fly Board Walk	41	-1.8
L		43	-1.5
H	Top Walk	43	-1.5
H	Ground	48	-2.0

100 F

H		44	-1.6
L		44	-1.6
S		44	-1.6

109 F

S		45	-1.7
L		44	-1.6
H	1/3 Conc Walk	440	-1.61

125 F

H		47	-1.9
L		45	-1.7
S	1/3 Board Walk	41	-1.6

150 F

S		50	-2.2
L		45	-1.6
H		50	-2.2

183 F

H		50	-2.2
L		44	-1.6
S	1/3 Board Walk	435	-1.56
S	Ground	46	-1.8

54



198 F

S		4.4	-1.6
L		1.3	-1.5
H	Board Walk	1.4	-1.6
H	Ground	4.9	-2.1

225.49 F = HL Boyside Lane

H		1.4	-1.6
L		1.6	-1.8
S		1.6	-1.8

FL Boyside Lane

S		4.4	-1.6
L		4.4	-1.6
H		4.4	-1.6

41 F of FL Boyside Lane

H		4.2	-1.4
H	Top Walk	3.6	-0.8
L		3.6	-0.8
S		3.6	-0.8

82.0 F = F = HL Boyside Walk

S	Ground	2.4	+0.4
S	Top Board Walk	2.2	+0.6
L	"	2.3	+0.5
H	"	2.25	+0.74
H	Ground	3.0	+0.2
TP	Sum TP Page 52	1.15	1.64 = 58 1.63

Cross Section Monterey Court  
Ocean Front Walk to Bayside Walk 16' wide

Stationing

BM	2.50	9.59	7.09	5x8 B.P. El Car m19 Scout
12' N of E.L. Ocean Front Walk = E.L. Edge Conc Walk				
S	on Conc Walk	5.00	4.59	
L	" " "	5.01	4.58	Note: - No Board Walk Bld
H	" " "	5.03	4.56	Ocean Front Walk + Strand Way
E.L. Ocean Front Walk				
N		5.2	4.4	
S		5.2	4.4	
10' E of E.L. Ocean Front Walk				
S		4.8	5.8	
H		4.7	4.9	
80' E of E.L. Ocean Front Walk = El Strand Way				
H	INDEXED	4.6	5.0	
S		4.3	5.3	
1' E of El Strand Way				
S		4.8	4.8	
H		4.7	4.9	
E.L. Strand Way				
N	on Board Walk	4.30	5.27	
"	Ground	4.7	4.9	
S	" " "	4.7	4.9	
S	on Board Walk	4.27	5.32	
7' E of E.L. Strand Way				
H	Wly of Conc Walk	4.4	4.95	

Indexed  
c.s.f.

		9.59		1-28-33 Moore Sisson Northey
11' E of E.L. Strand Way				
N	Wly of Conc Walk	4.90	4.69	
20' E				
N	on Board Walk	5.60	3.99	
S	Wly of Board Walk to House	5.61	3.98	
38' E				
S	Wly of Board Walk to House	7.20	2.39	
50.2' E = El. Mission Bld				
S	on Board Walk	8.12	1.47	
H	" " "	8.11	1.48	
52.7' E = El. Edge Conc Walk				
H	on Conc Walk	7.98	1.61	
S	" " "	7.91	1.68	
215' N of E.L. Mission Bld = E. Edge Conc Walk				
S	on Conc Walk	8.55	1.04	
H	" " "	8.56	1.03	
E.L. Mission Bld				
H	on Board Walk	8.57	1.02	
S	" " "	8.54	1.05	
6' E of E.L. Mission Bld				
S	Wly of Board Walk to Hse	8.74	0.85	
H	on Board Walk	8.74	0.85	
50' E of E.L. Mission Bld				
H	on Board Walk	9.93	-0.34	
S	" " "	9.83	-0.24	

9.59

## 91 E of FL Missions Blvd

S = 2' Board Walk to House 10.80 -1.21

N = 07 Board Walk 10.71 -1.17

107.5 E

N = 2' 3' Brick Walk 10.98 -1.39

S = 2' 27' Concrete " 11.00 -1.41

## 125.5 E - W.L. Bayside Lane

S = 07 Board Walk 11.06 -1.47

S = Ground 11.5 -1.9

N = " 11.5 -1.9

N = 07 Board Walk 11.20 -1.61

## FL Bayside Lane

N = 07 Board Walk 11.19 -1.60

N = Ground 11.7 -2.1

S = " 11.4 -2.0

S = Board Walk 11.10 -1.51

## 40.35 E of FL Bayside Lane

S = 07 Board Walk 10.83 -1.24

S = Ground 11.4 -1.8

N = " 11.5 -1.9

N = 07 Board Walk 10.87 -1.28

## 80.70 E - W.L. Bayside Walk

N = 07 Board Walk 10.13 -0.54

N = Ground 10.6 -1.0

S = " 10.6 -1.0

S = 07 Board Walk 10.13 -0.54

57

INDEXED

SWBP	2.16	9.24	7.08	San Jose Seawall
	00-12 carz edge Sidewalk			
N		4.63	4.61	
J		4.65	4.59	
	0700 = Fl. Ocean Front Walk			
S		4.4	4.8	
C	Board walk	4.4	4.8	
N	"	4.4	4.8	
N	sand	4.8	4.4	
	0410			
N	Bd. walk	4.9	5.3	
C	"	4.8	5.4	
+1	Nedge Toilet	4.8	5.4	
	0450			
S		2.55	6.69	
+4	Nedge Toilet	2.55	6.69	
C	Bd walk	2.55	6.69	
N		2.45	6.79	
	0780 WJ Strand Way			
N	ground	1.4	7.8	
C	Bd walk	1.4	7.9	
S	ground	1.6	7.6	
T.P.	0.75	0.44	NS	7.86

	0400 =	EL Strand Way		
S	ground	1.3	7.3	
C	Bd walk	0.78	7.86	
N		1.3	7.3	
	0450			
N	ground	6.3	2.3	
C	Bd walk	5.96	2.68	
S	ground	6.6	2.0	
	0475			
S	ground	7.2	1.4	
C	Bd walk	7.16	1.48	
N	ground	7.2	1.4	
	1700			
H	ground	7.8	0.8	
C	Bd walk	7.57	1.07	
S	2 1/2 wide Bd. walk	7.60	1.04	
	1720			
S	ground	8.2	0.4	
C	Bd walk	7.80	0.84	
N		7.80	0.84	
	1730			
N	door step	7.95	0.69	
C	ground	8.0	0.6	
S	"	8.4	0.2	

8.64

88	1444.		
S	ground	8.5	0.1
C		8.2	0.4
N	door step	7.87	0.77
	1456		
N	door step	7.90	0.74
C	ground	8.3	0.3
S		8.6	0.04
	1467		
S	door step	7.93	0.71
S	ground	8.5	0.14
C	"	8.5	0.14
N	"	8.5	0.14
	1476		
N	ground	8.6	0.04
N	Top cone walk	8.24	0.40
C	" " "	8.21	0.43
S	" " "	8.21	0.43
S	ground	8.6	+0.04
T.P.	263 295	8.22	0.22
	0400 EL Mission Blvd.		
S	Cono. side walk	4.27	-0.32
C		4.28	-0.33
N		4.27	-0.32
	0450		
N	ground	4.5	-0.55

3.9

59

C	bd. walk	4.81	-0.36
S	ground	4.5	-0.55
	0480		
S		4.30	-0.35
C		4.36	-0.41
N	tile walk	4.50	-0.55
	1400		
N		5.0	-1.05
C	bd walk	4.38	-0.43
S		4.5	-0.55
	1450		
S		4.8	-0.85
C	bd walk	4.67	-0.72
N		4.7	-0.75
	1466		
N	bd walk	4.28	-0.33
C	bd walk	4.25	-0.60
S		4.9	-0.95
	1487		
S		4.9	-0.95
C	bd walk	4.58	-0.53
N		4.6	-0.65
	21704		
	21704		
	WL Bay side Lane		
N		4.9	-0.95
C	bd walk	4.60	-0.65
S		4.8	-0.85

0700 - El Bayside Lane

S		5.0	- 1.05
C	Ad. walk	4.76	- 0.81
N		4.9	- 0.95
0710			
N		4.63	- 0.68
C	Ad. walk	4.66	- 0.71
S		5.0	- 1.05

0738

S		4.6	- 0.65
C	Ad. walk	4.46	- 0.51
N		4.5	- 0.55
+v	door step	3.23	+ 0.62

0748

N-3	9' Ad walk	4.45	- 0.50
C		4.57	- 0.42
S		4.5	- 0.55

0780 N.L. Bayside Walk

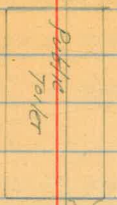
S	ground	4.7	- 0.75
S	Ad walk	3.94	+ 0.01
C	"	3.94	+ 0.01
N	"	3.94	+ 0.01
N	ground	4.3	- 0.35

T.P. 6.89 9.33 1.41 2.44

07.30 AM 2.24 7.09 7.08  
0.01

0710

0750



Ocean Front Walk

Strandway

Mission Blvd.

X Sec. Manhattan Court. 10' wide  
 Ocean Front. Walk. to Bayside Walk.

8-14-36  
 Miller,  
 Walker,  
 Blinn  
 Northerh.

B.M. Top				Ocean Front. +
B.M. Sea wall	2.49	9.58	7.09	El. Carmel Pla
	00-12' = E. Edge Ocean Front Cmt. Walk			
N	cmt. Walk	4.98	4.60	
⊕	" "	5.00	4.58	
S	" "	5.01	4.57	
	0+00 = E. Line O. F. W.			
S	sand	5.9	3.7	
⊕	"	5.7	3.9	
N	"	5.8	3.8	
	0+17 INDEXED			
N	Sand	5.8	3.8	
⊕	"	5.9	3.7	
S	"	6.0	3.6	
	36" wide			
S+68 = ⊕	- N. End. cmt. walk			
	4.78 4.80			
	0+80 = W line Strand. Way 20' wide			
S	sand	4.5	5.1	
⊕	"	4.5	5.1	
N,	"	4.5	5.1	
	0+82			
N	Roadway	4.8	4.7	
⊕	"	4.8	4.7	
S	"	4.8	4.7	
	0+97.5			
S	Roadway	4.8	4.7	
⊕	"	4.8	4.7	
N	"	4.8	4.7	

9.58  
 0+98 = W. End. Board. walk = B.W.  
 0+98 = Wooden Fence N. of Court.  
 B.W. + ground 4.1 5.5

61

N				
⊕	" "			4.0 5.6
S	" " + ground			4.0 5.6
	1+00 = E. line Strand Way = 0+00			
S	B.W. + dirt			4.2 5.5
⊕	B.W			4.25 5.33
N	B.W + Dirt.			4.24 5.34
	0+17			
	N. on S. End ⊕ cmt. walk 36" wide.			5.66 3.92
N.	B.W.			6.06 3.52
⊕	" "			6.14 3.44
S.	" " + dirt			6.06 3.52
	0+31.48 = W Line Mission Blvd. 80' wide.			
S	B.W. + dirt.			7.50 2.08
⊕	" "			7.63 1.95
W	" " + dirt.			7.54 2.00
	0+34 = Wedge cmt. Walk.			
N.	cmt. Walk			7.53 2.05
⊕	" "			7.51 2.02
S	" "			7.49 2.09
T.P.	1.46	3.47		7.57 2.01
	0+60 - 2.5 = E. edge cmt. Walk			
S	cmt. walk			2.03 1.44
⊕	" "			2.05 1.42
N.	" "			2.01 1.46

3.47  
 0+00 = E. Line - Mission Blvd  
 N. B.W. + dirt. 2.10 1.37  
 ♀ " " 2.14 1.33  
 S. " " 2.05 1.42  
 S dirt 2.3 1.2

0+46  
 S B.W. + dirt. 3.27 0.20  
 ♀ " " 3.26 0.21  
 N = S. End. ♀ 36" wide cmt. walk 3.18 0.29

0+76  
 40" wide  
 N = S. End. ♀ cmt. walk 3.83 -0.36  
 ♀ B.W. 3.91 -0.44  
 S " " 3.95 -0.48  
 S. dirt. 4.2 -0.90

1+19 1/2 = E. End. B.W.  
 S B.W. + dirt. 4.8 -1.3  
 ♀ " " + " 4.81 -1.34  
 N " " ♀ dirt 4.8 -1.3

1+20 1/2 = W. Line Bay Side Lane 16' wide.  
 N Roadway. 5.1 -1.6  
 ♀ " " 5.1 -1.6  
 S " " 5.1 -1.6

1+36 1/2 = E. Line Bay Side Lane = 0+00  
 S Roadway 5.3 -1.8  
 ♀ " " 5.3 -1.8  
 N " " 5.3 -1.8

3.47  
 0+01 = W. End. B.W.  
 N B.W. + dirt. 4.81 -1.34  
 ♀ " " 4.90 -1.43  
 S " " + dirt. 4.87 -1.40

0+17 1/2  
 S dirt 4.8 -1.3  
 S B.W. 4.61 -1.14  
 ♀ " " 4.64 -1.21  
 N = S. End. ♀ 48" wide cmt. walk 4.71 -1.24

0+37 1/2  
 N = S. End. ♀ cmt. walk 60" wide 4.43 -0.96  
 ♀ B.W. 4.54 -1.02  
 S. " " + dirt. 4.54 -1.02

0+81 = W. edge. Boardwalk on Bay Side Walk  
 S B.W. + dirt. 4.20 -0.23  
 ♀ " " 4.18 -0.21  
 N " " ♀ dirt. 4.14 -0.62

T.P. 7.67 1.47 2.00  
 orig. B.M. 2.58 7.09



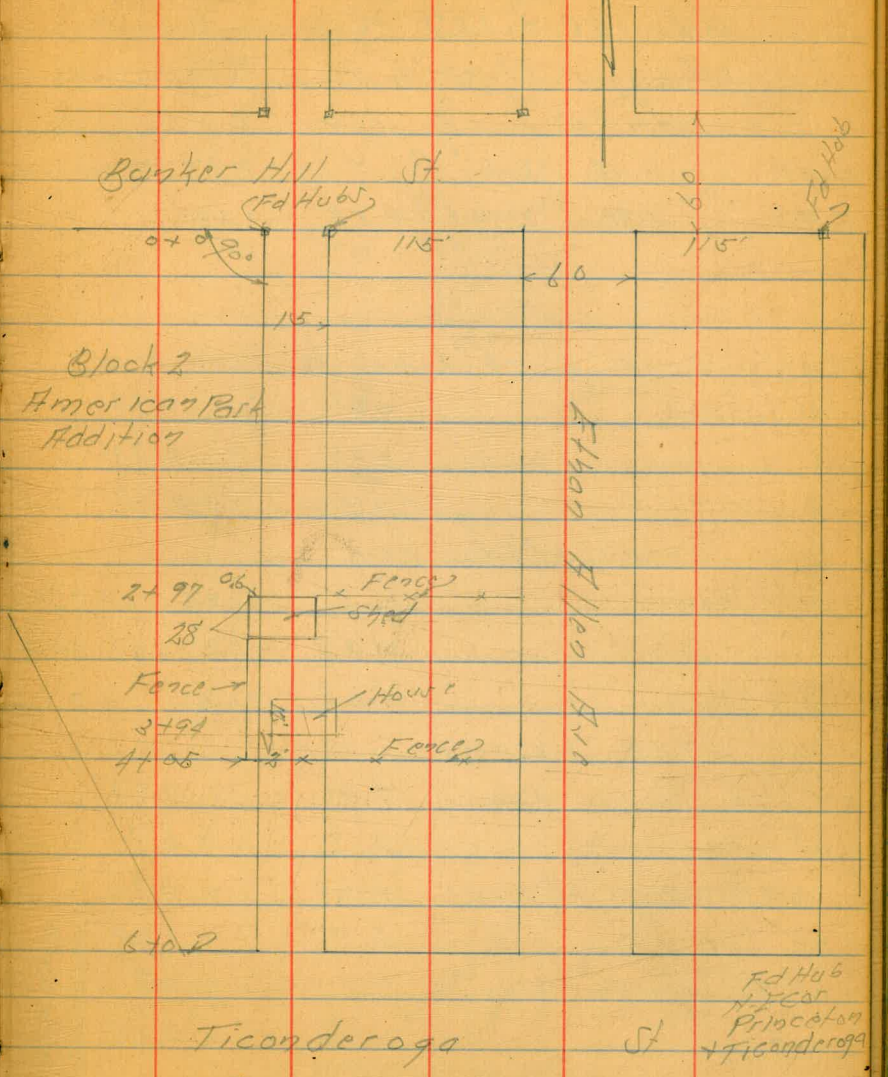
Location Alley Block 2  
American Park Add.

April 6-10  
Simon  
Northern  
H Moore

INDEXED  
EFB

63

INDEXED



Fd Hub  
115  
60  
15

2+97  
28  
Fence  
Hour  
3+94  
1+05  
Fence

Fd Hub  
Hour  
Ticonderoga  
Ticonderoga

INDEXED  
c.s.k.

# INDEXED

Xsec of IC' alley  
Blks 186 + 187 Mission Beach  
Mission Blvd. to Bayside walk

NOTE :- 9 STA.

NEBP	4.48	3.66		-0.82	Santa Clara Bayside Lane
T.P.	4.88	3.99	4.55	-0.89	

0-10 E. cb. line Mission Blvd.

N	pav	4.71	-	0.72
C	"	4.71	-	0.72
S	"	4.72	-	0.73

0-0.35 edge pav.

S	pav	4.87	-0.88	-0.87
C	"	4.81	-0.84	-0.80
N	"	4.85	-0.86	-0.82

0+0 E.L. Mission Blvd.

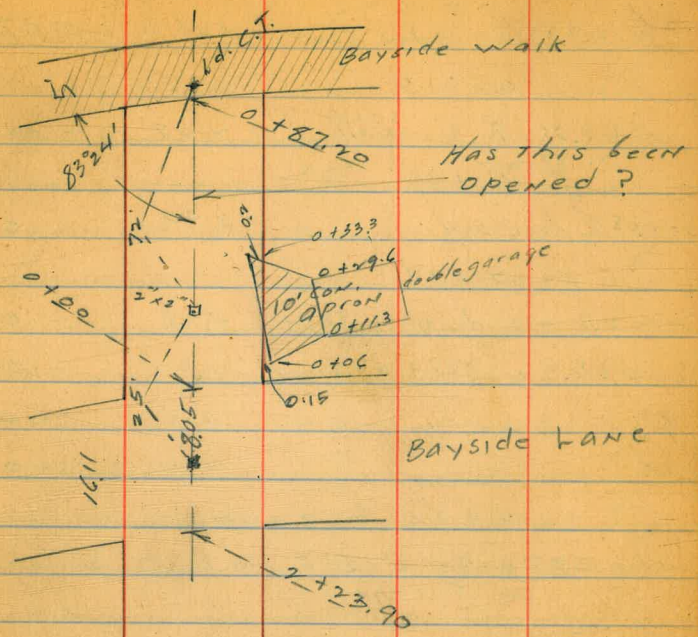
N	cb	San Con Bldg	4.31	-	0.32
N	dir.T.		4.7	-	0.7
	+4.5	grove of Sunp	4.84	-	0.85
C	dir.T.		5.0	-	1.00
	+7.9	dir.T. NW Cor. Bldg	4.7	-	0.7
S	cb		4.20	-	0.21

0+2.6

S	-0.05	Bldg	4.3	-	0.3
C			4.5	-	0.5

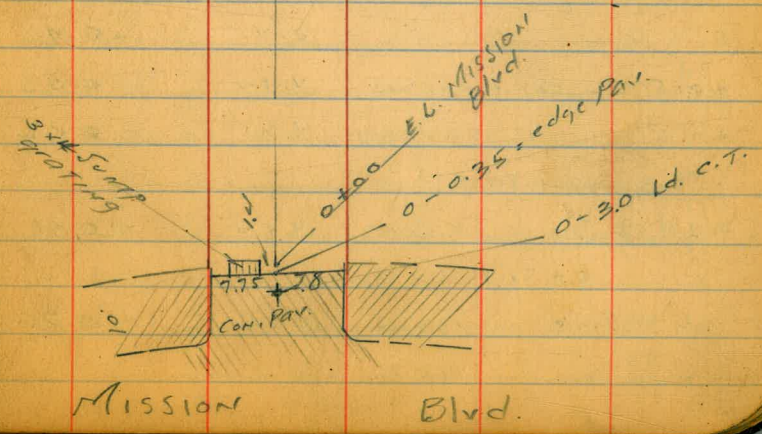
Reduced & Plotted  
Jan. 21-1942 C.B.H.

MISSION BAY YACHT CLUB.



1430-19

8 8



C + 7.95	1' E of wk. 3rd side cement	4.41	-0.42	drainage on this walk
	0 + 31.5			
N + 0.05	2' 0" cement walk	4.27	-0.28	✓
	0 + 36			
S - 0.05	door sill	3.90	0.09	✓
	0 + 39			
S - 2.7	wk do. gar. cement	4.28	-0.29	✓
S - 0.05	1' cement apron	4.52	-0.53	✓
C		4.6	-0.6	
N		4.4	-0.4	
	0 + 35 to 0 + 70			
N - 0.35	7-6 x 8 Guard Posts = 5 edge " "	2' High		
	0 + 51.5			
N - 1.8	2' 6" cement walk	4.31	-0.32	✓
	0 + 55			
N		4.4	-0.4	
C		4.7	-0.7	
S		4.4	-0.4	
+ 0.15	EL cement apron	4.52	-0.53	✓
+ 2.6	" " garage	4.41	-0.42	✓
	0 + 70.5			
S - 3.9	2' Sim. gar. cement	4.40	-0.41	✓
	0 + 71.5			
N - 2	2' 4.5" cement walk	4.25	-0.26	✓

	0 + 81.5			
S + 1.3	10" PP	✓		
S	beg. picket fence outside			
S - 0.05	beg. 2' cement walk <sup>4.37</sup> parallel with alley		-0.38	✓
	1 + 06 = 2' of 12" Ret. wall of Court			
S - 0.05	Cement Ret. wall	4.16	0.83	✓
S		4.3	-0.3	
C		4.5	-0.5	
N		4.6	-0.6	
	1 + 26.5			
N - 3.15	wk cement apron	4.42	-0.43	✓
N - 4.85	" do gar.	4.31	-0.32	✓
	1 + 31			
S - 0.05	end above 2' cement walk	4.37	-0.38	Parallel with alley ✓
	1 + 46			
N - 3.4	EL cement apron	4.54	-0.55	✓
N - 4.85	" do gar.	4.29	-0.30	✓
	1 + 54.5			
N - 2.6	wk cement apron	4.60	-0.61	✓
N - 5.05	" do gar.	4.21	-0.22	✓
	1 + 69.3			
N - 4.65	EL cement apron	4.51	-0.52	✓
N - 5.15	" do gar.	4.25	-0.26	✓
	1 + 74.3			
S - 1.1	2' Sim. gar. cement	4.48	-0.69	✓
S - 0.05	2' cement apron	4.85	-0.86	✓

S	dist	4.7	-0.7
c		4.8	-0.8
N		4.7	-0.7
	1+81		
S	+0.3 10" P.P. ✓		
	2+00		
N		4.9	-0.9
c		4.9	-0.9
S		4.9	-0.9
	2+23.90 w/ Bayside lane		
S		4.9	-0.9
c		4.9	-0.9
N		4.9	-0.9
	0+0 E.L. Bayside		
N		4.8	-0.8
c		4.9	-0.9
S		4.8	-0.8
	0+02		
S	-5.4 12" P.P. ✓		
	0+06		
S	-0.15 w/ Cor. <sup>CEM</sup> apron	4.99	-1.00 ✓
	0+11.3		
S	-10 w/ L. do. garage	4.36	-0.37 ✓ CEM.
	0+20.5		
S	on edge apron	4.88	-0.89

	0+29.6		
S	-10 E.L. do. gar.	4.37	-0.38 ✓ CEM.
	0+33.3		
S	+0.4 E. Cor. <sup>CEM</sup> apron	4.85	-0.86 ✓
c		4.8	-0.8
N		4.6	-0.6
	0+58.73 end of alley P.		Don't think this has been opened
N		4.4	-0.4
c		4.4	-0.4
S		4.4	-0.4
	0+87.20		
c	w/ 5' Sidewalk on Bayside "	4.38	-0.37 ✓

Moore  
Rand  
Mayne

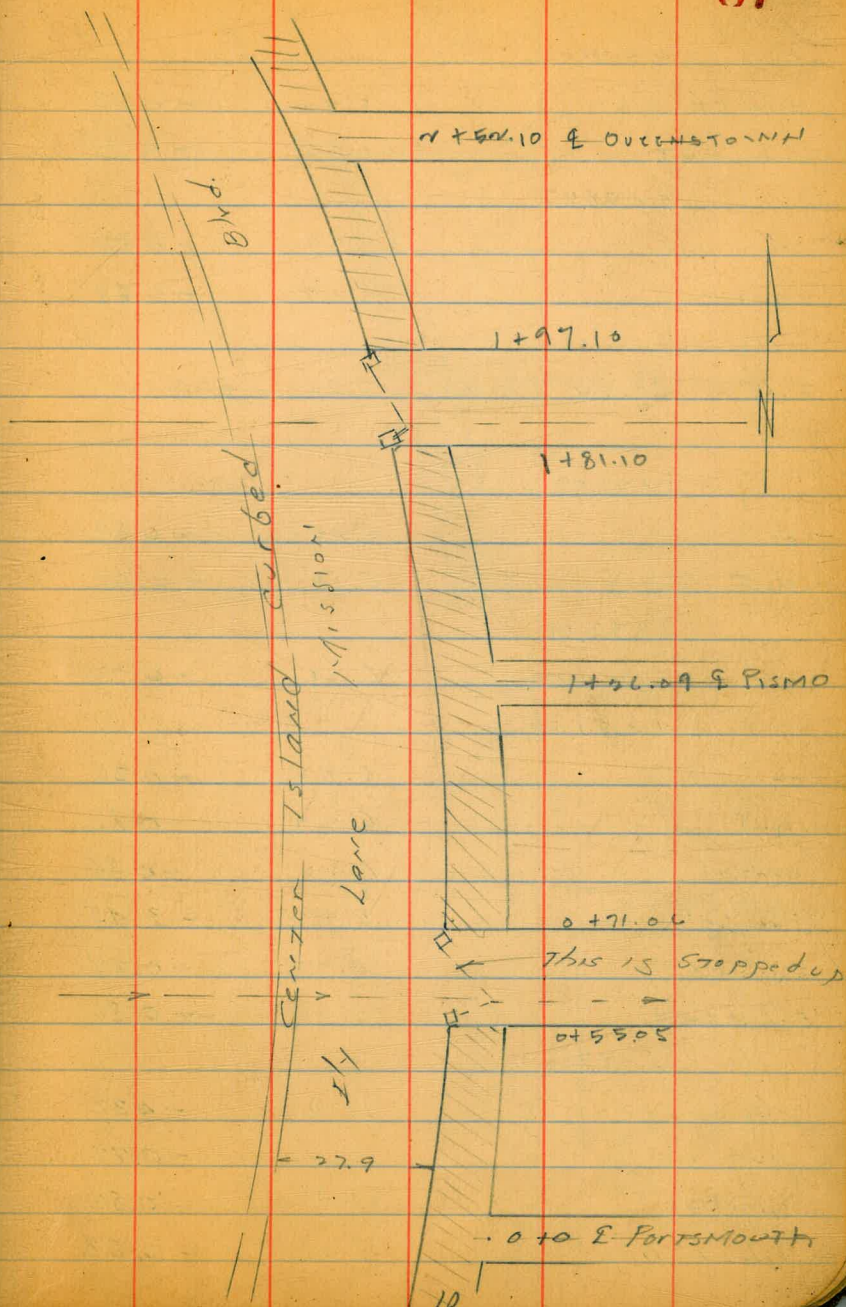
Indexed  
C.S.K.

# INDEXED

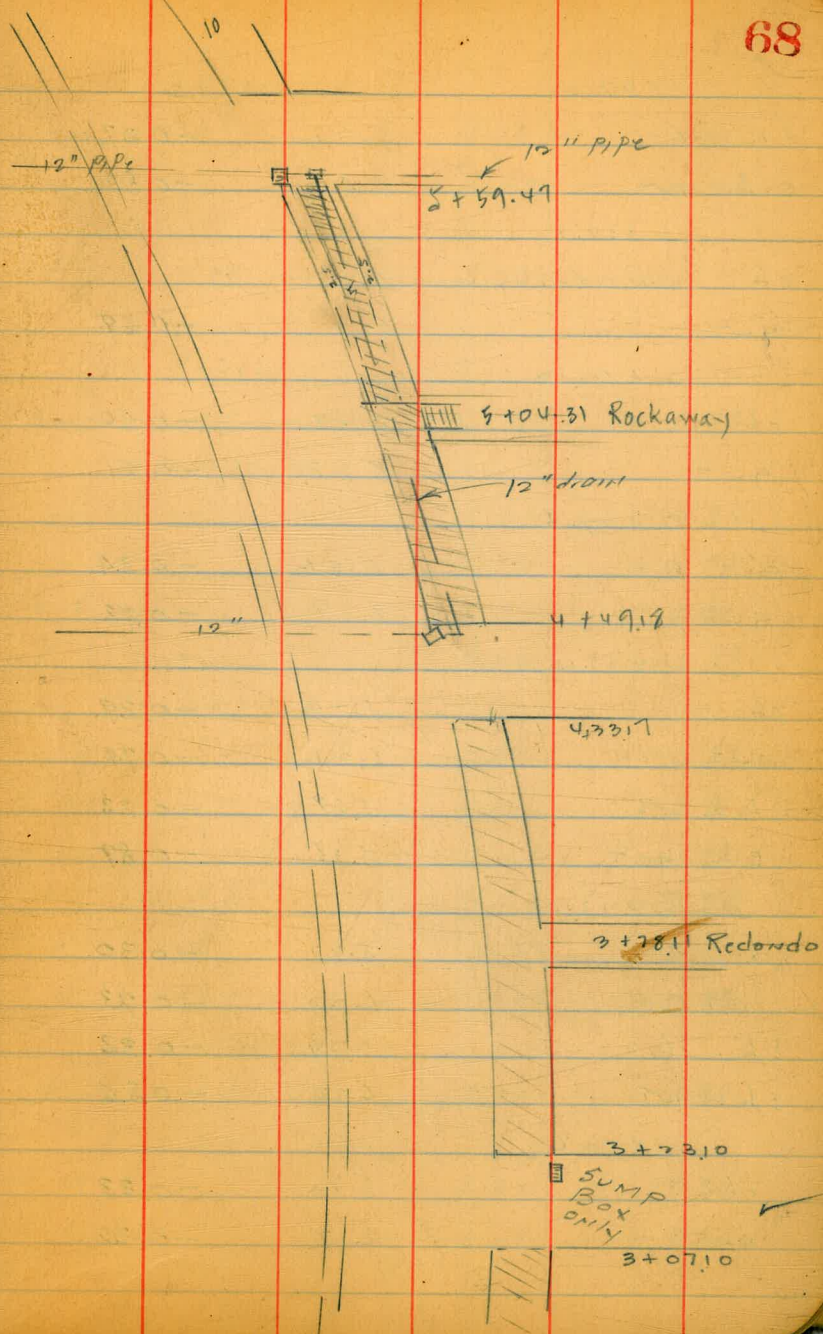
67

Ely curb & gutter levels  
of Ely Lane of Mission Blvd.  
Portsmouth Ct. to alley north  
of Rockaway Ct.

					Santa Clara Bay side Lane
NEBP	438	3.56		-0.82	
T.P.	577	5.48	3.85	-0.29	
	0+100				
cb			5.84	-0.36	
gvt			6.10	-0.62	
	0+27.50				
cb			5.82	-0.34	
gvt			6.16	-0.68	
	0+55.05				
cb			5.83	-0.35	
gvt			6.29	-0.81	
grate			6.34	-0.86	
E.L. 8" Pipe			8.38	-2.90	
e.h. cb			5.79	-0.31	
E.L. gvt			6.43	-0.95	
	0+71.06				
cb			5.80	-0.32	
gvt			6.26	-0.78	
grate			6.31	-0.83	
E.L. 8" Pipe			7.96	-2.48	



	0+71.26			
E.L. cb		5.70	-0.22	
E.L. gut		6.35	-0.87	
	0+98.57			
cb		5.83	-0.35	
gut		6.17	-0.69	
T.P.	5.84	5.47	5.85	-0.37
	1+26.09			
cb		5.86	-0.39	
gut		6.10	-0.63	
	1+53.59			
gut in drive		6.21	-0.74	
	1+81.10			
cb		5.83	-0.36	
gut		6.29	-0.82	
grate		6.33	-0.86	
E.L. 12" pipe		8.92	-3.45	
E.L. cb		5.76	-0.29	
E.L. gut		6.22	-0.86	
	1+97.10			
cb		5.79	-0.32	
gut		6.24	-0.77	
grate		6.29	-0.82	
E.L. 8" pipe		7.99	-2.52	



1+9710			
EH cb	5.74	-0.27	
E.L. gut	6.30	-0.83	
2+22x.6			
cb IN driveway			
gut	6.15	-0.69	
2+5210			
cb	5.87	-0.40	
gut	6.08	-0.61	
2+79.6			
cb	5.81	-0.34	
gut	6.19	-0.72	
3+07.10			
cb	5.76	-0.29	
gut	6.21	-0.74	
EH cb	5.69	-0.22	
EH gut	6.36	-0.89	
3+2310			
cb	5.77	-0.30	
gut	6.20	-0.73	
EH cb	5.79	-0.32	
EH gut	6.33	-0.86	
3+50.5			
cb	5.80	-0.33	
gut	6.17	-0.70	

3+78.11			
cb	5.78	-0.31	
gut	6.09	-0.62	
T.P.	5.84	5.52	5.79 -0.32
4+05.64			
gut IN driveway	6.16	-0.64	
4+33.17			
cb	5.86	-0.34	
gut	6.26	-0.74	
EH cb	5.83	-0.31	
EH gut	6.40	-0.88	
4+49.18			
cb	5.89	-0.37	
gut	6.33	-0.81	
grate	6.38	-0.86	
EH 12" Pipe	8.78	-3.26	
EH cb	5.59	-0.07	
EH gut	6.34	-0.82	
4+76.73			
gut IN DRIVE	6.27	-0.75	
5+04.31			
cb	5.88	-0.36	
gut	6.17	-0.65	

5231.89

cb 5.87 -0.35

gut 6.21 -0.69

5+59.47

cb 5.87 -0.35

gut 6.34 -0.82

grate 6.42 -0.90

F.L. 9.65 -4.13

F.L. cb 5.78 -0.26

F.L. gut 6.31 -0.79

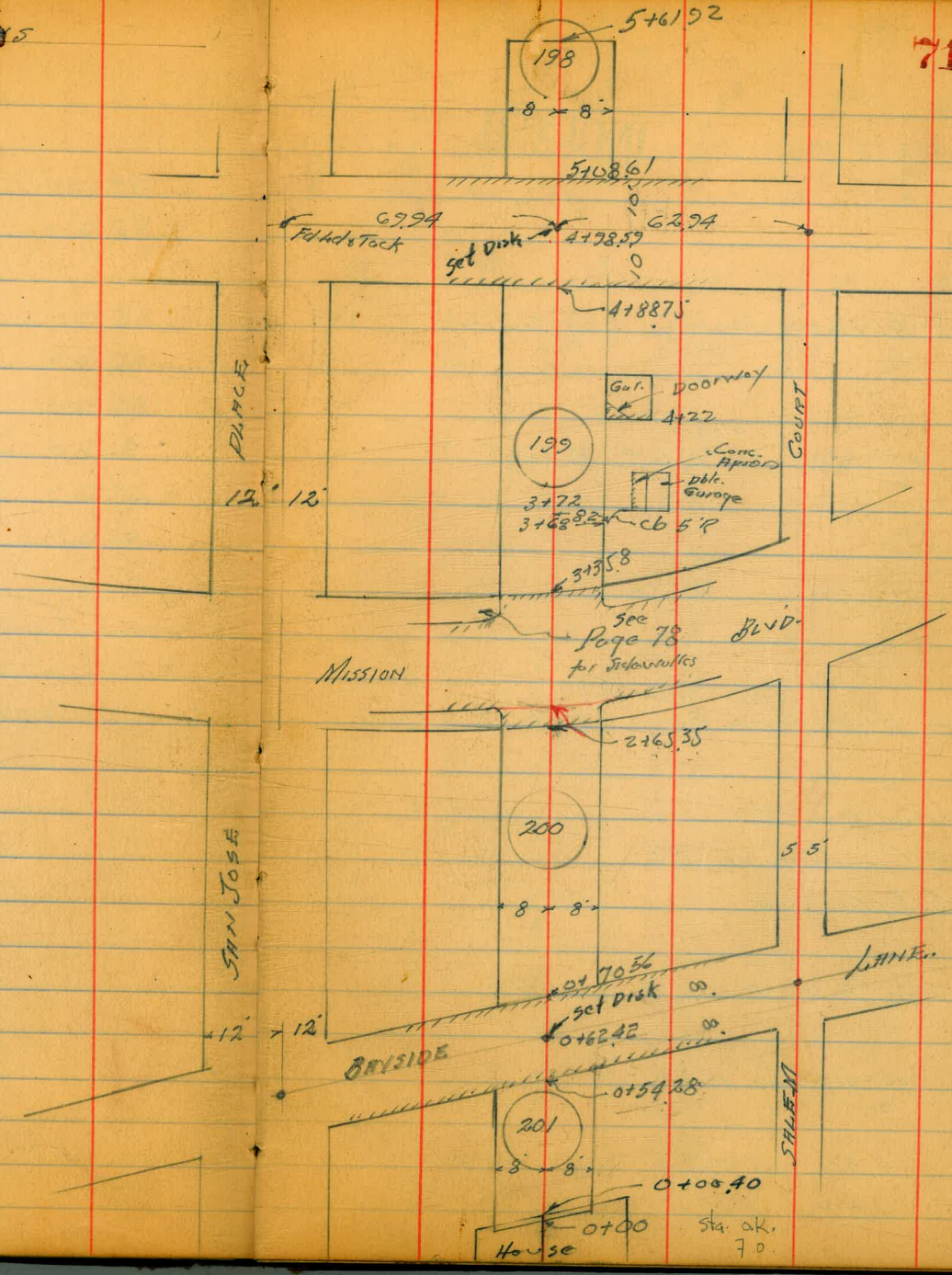
T.P. 3.95 4.04<sup>✓</sup> 5.43 +0.09check to BMBP re cor 5.34 -1.28 -1.27  
San Jose Pl & Bayside Lane 4.07 0.01



Walker Johnson  
 Pope  
 Ground Block 198 to 201  
 4-4-49 IN MISSION BEACH

INDEXED  
 WK  
 APR 5 1949

71



House 0+00 Sta. OK. 70.

0+62.42 = 1/2 Bayside

INDEXED

0+54.28 = Fly Line Par. 129 Diag. Sections

Elec. +  
0+52 10.2 Lt = 1/2 Tel Pole # P-9809

0+50

0+33 = Pole Anchor 9.3 Lt.

0+30

(West Entrance)

0+29 to 0+49 = Frame Garage 8 Ft. Dirt Floor

0+24.5 = End Conc. Floor 2 Car Gar on Lt

0+20 = 1/2 Garage on Rt

0+08.5 = Beg. Conc. Floor

0+03.5 = Beg. 2 Car Gar. on Lt. 7.5 Lt.

0+00 = Sec Fly Line Alley

TR 4.30 3.99 8.46 - 0.31  
1.07 8.15 7.08 ✓

LT	R	RT	72
-1.53	-1.13	-1.50	-1.48
5.52	5.52	5.49	5.47
50	39	18	8.14
Par.	Par.	Par.	Par.
			-1.49
			-1.50
			-1.50
			-1.54
			5.53
			50
			Par.

-1.39	-1.26	-1.27	-1.41	-1.22	-1.28	-1.36
5.38	5.28	5.26	5.40	5.21	5.27	5.35
50	16	8.14	07 Par.	8.14	23	50
Par.	Par.	Par.		07 Par.	Par.	Par.

-1.0	-1.1	-1.3	-1.3	-1.5
4.7	5.0	5.2	5.2	5.4
13	8	8	8	13
				Dirt Floor Garage
-1.1	-1.9	-1.2	-1.2	
5.0	4.8	5.1	5.1	
13	8	8	8	
				97.861

-1.97		-1.08
4.76		
9.3		
	-1.95	
	4.94	
	8	
	07 Floor	
		5.07
		10.3
		Conc. Floor

-1.2	-1.2	-1.1	-1.0	-1.1
5.1	5.1	5.0	4.9	5.0
13	8		8	13

3.99

PM SWBP. Cur. Loge & Sec Wall P-26

1+81.5 = End 6' Board Fence 7.7' Lt.

1+73.5 = Beg. Conc. Slab = Beg. 6' Board Fence 7.7' Lt.

INDEXED

1+73

	.05	.45	.9	-.9	-.8
	3.94	4.44	4.8	4.8	4.7
	11.8	8		8	12
	Floor	Toe Conc. Apron			

1+60 = Beg. Garage on Lt. Conc. Floor & Apron

	0	.43	1.0	-.9	-1.0
	3.99	4.42	4.7	4.8	4.7
	11.8	8		8	12
	Conc. Floor	on Toe Conc. Apron			at House

1+31

	.48	-.9	-1.1	-1.2	-1.3
	4.47	4.8	5.0	5.1	5.2
	8.5	8		8	13
	Conc. Floor				

1+00

	-1.0	-1.0	-1.3	-1.0	
	4.9	4.9	5.2	4.2	
	13	8		8	
				at Garage	

0+87 = East end Garage Dirt Floor East Entrance

	-1.3	-1.0	-1.3	-1.1	-1.1
	5.2	4.9	5.2	5.0	5.0
		8		8	13
				at Car Garage	at Doorway

0+70.56 = W. By-side on Edge of Conc. Paving

3.99

	-1.30	-1.29	-1.31	-1.46	-1.35	-1.29	-1.37
	5.29	5.26	5.30	5.45	5.34	5.28	5.36
	80	20	814	Parway	Par.	20	50
	Par.	Par.	Par.	3.99	814	Par.	Par.

INDEXED

2+65.35 = E. cb Mission Blvd sec on Pav.

<sup>39</sup>	<sup>66</sup>	<sup>29</sup>	<sup>70</sup>	<sup>74</sup>	<sup>76</sup>	<sup>32</sup>	<sup>70</sup>	<sup>34</sup>
7.12	7.22	7.02	7.51	7.47	7.49	7.05	7.43	7.07
50 Cb.	50 cut	8 cb.	8 cut.	on black top patch	8 cut	8 cb.	50 cut	50 cb.

2+55.48 = Exist Pav. Mission Blvd. Diag. sec

<sup>28</sup>	<sup>88</sup>	<sup>82</sup>	<sup>96</sup>	<sup>31</sup>
7.01	7.61	7.55	7.69	7.04
8.2 Cb.	8.2 cut.	6.73 Pav.	7.8 cut.	7.8 Cb.

T.P. 7.04 6.73 4.30 -0.31

2+45

<sup>2</sup>	<sup>5</sup>	<sup>6</sup>	<sup>3</sup>	<sup>1</sup>
4.1	4.4	4.5	4.2	3.8
13	8		8	13

2+25

<sup>2</sup>	<sup>2</sup>	<sup>A</sup>	<sup>6</sup>	<sup>A</sup>	<sup>0</sup>
3.7	4.1	4.3	4.5	4.3	3.9
13	8	6		8	13

2+10

<sup>A</sup>	<sup>2</sup>	<sup>7</sup>	<sup>8</sup>	<sup>6</sup>	<sup>A</sup>	<sup>2</sup>
3.5	3.7	4.6	4.7	4.5	4.3	4.1
13	8	3		6	8	13

2+00

<sup>5</sup>	<sup>5</sup>	<sup>8</sup>	<sup>9</sup>	<sup>8</sup>	<sup>3</sup>
4.4	4.4	4.7	4.8	4.7	4.2
13	8	5		8	13

1+89 = Elec Pole # A-824 7.4 ft.

1+98.7 shed on Lt.  
1+81.55 - 7.7 ft.

399

3.99

Cross Sections - Alleys 198-201  
Mission Beds

3+97 = East end Garage Conc. Floor East Entrance

INDEXED

3+89 = End 2 Car Garage on Rt.

3+72 Beg. 2 Car Garage Conc. Floor & Apron

3+68

3+40

3+35.8 = Mission Blvd. West edge Easting Conc. Paving = East Rim Mt. (West Same Elev.) = Rim Mt.

3+25.75 = W. cb. Line Mission Blvd.

6.73

	L7	2	157	75
3+97	2.40 1.8 13	1.8 4.9 9	1.8 4.9 8	1.7 5.0 8
	Conc. Floor	Car Garage	Ground	
3+89	2.0 4.7 13	1.6 5.1 8	1.6 5.1 8	1.4 5.45 12.5 Conc. Apron
3+72	1.1 5.6 13	1.1 5.6 8	1.0 5.7 8	.8 5.9 13 Conc. Apron
3+68			.8 5.9 8.2 Gut. at cb. Rd.	1.30 5.14 20.9 Conc. Floor
3+40	x.5 6.2 13	x.4 6.3 8	x.2 6.5 4	x.2 6.5 8
3+35.8		+14 6.59 8 Pav.	+15 6.58 8 Pav.	+12 6.61 8 Gut.
3+25.75	+11 6.62 50 Cb.	+31 7.04 50 Gut.	+21 6.82 8 Cb.	+8 7.21 8 Gut.
		+18 7.37 27 Landmg. Sump	+64 7.25 8 Gut.	+52 7.17 8 Gut.
			+4 6.73	+18 6.55 8 Cb.
				+37 7.10 47 Gut.
				+12 6.61 47 Cb.

Cross Sections  
Alleys 198-201 - Mission Beach

INDEXED

5+15

5+10 =  $\frac{1}{2}$  Tel. Pole } P-3808 8.8' Lt = 4  
=  $\frac{1}{2}$  Elec.

5+08.61 = West edge Existing Conc. Pav. way

4+98.59 =  $\frac{1}{2}$  Strandway

4+88.75 = East edge Pav. Strandway

4+65 = West edge Conc. Walls

4+63 = East edge Conc. Walls

T.P. 5.14 11.04 0.83 5.90

4+22 = East end Garage Conc. Floor. <sup>S East</sup> Entrance  
4+11 7.8 Lt. = Elec. Pole #P.R-736

6.73

ft. 76

6.3 4.7 99 at 81d.	6.2 4.8 8	6.1 4.7	5.9 5.1 8	5.9 5.1 13
-----------------------------	-----------------	------------	-----------------	------------------

6.11 4.93 25 Pav.	6.02 5.02 8 Pav.	5.99 5.05 Pav.	5.96 5.08 8 Pav.	5.91 5.13 25 Pav. way
----------------------------	---------------------------	----------------------	---------------------------	--------------------------------

5.82 5.22 25 Pav.	5.72 5.32 8 Pav.	5.69 5.35 Pav.	5.67 5.37 8 Pav.	5.62 5.42 25 Pav.
----------------------------	---------------------------	----------------------	---------------------------	----------------------------

6.01 5.03 25	5.92 5.12 8	5.91 5.13 Pav.	5.87 5.17 8 Pav.	5.86 5.18 25 Pav.
--------------------	-------------------	----------------------	---------------------------	----------------------------

5.06  
5.98  
9  
Walls

4.95 6.09 9 Conc. Wall	4.7 6.3 8	4.7 6.3 11.04 3	4.8 6.2 7.7 Fence
---------------------------------	-----------------	--------------------------	----------------------------

3.1 3.6 11	2.9 3.8 3	2.7 4.0 6.73 7	2.8 3.9 8	2.96 3.77 8.6 Conc. Floor.
------------------	-----------------	-------------------------	-----------------	-------------------------------------

Cross Section Alleys 198-201  
Mission Beach

INDEXED

				<sup>001</sup>
				708
Chk. Starting BM	314			707
T.P.	563	1021	646	4.58

6+00.6<sup>ft</sup> = East edge Conc. Walk

5+88

5+61.92 = End of Alley Block 128

5+51 = Garage on Lt. Dirt Floor

5+45 = Elec. Pole # 710 - 8' Lt. = 2

5+35

11.04

Lt.

Rt.

Rt.

77

4.60  
6.44  
on walk

	3.6	3.6	3.9	4.5
	7.4	7.4	7.1	6.5
	1.7		8	13
	at House			

	5.1	5.1	5.3	5.5
	5.9	5.9	5.7	5.5
	8		8	13

	5.4	5.4	5.5	5.6	5.6
	5.6	5.6	5.5	5.4	5.4
	8.5	8			13
	Dirt Floor				

	6.3	6.1	5.9	5.8	6.0
	4.7	4.9	5.1	5.2	5.0
	9.9	8		8	13
	at Bld.				

11.04

V-Section-Alleys Blocks 198-201

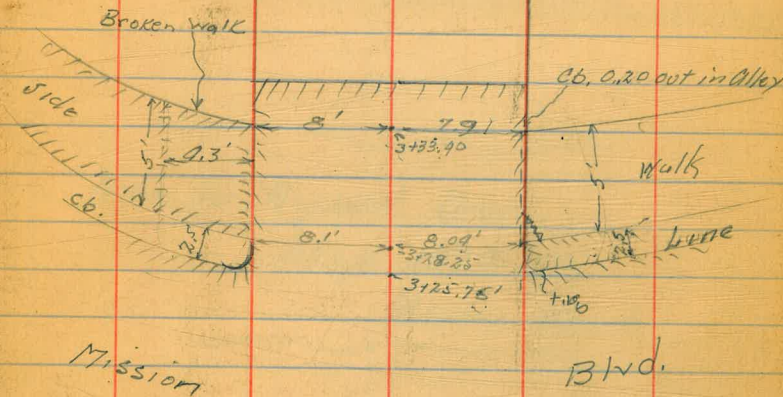
Mission Beach-

INDEXED

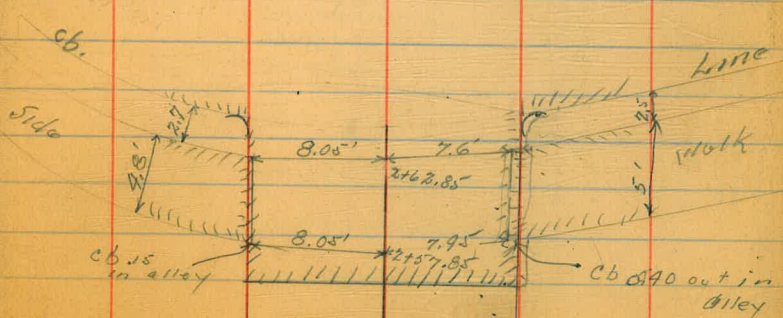
	<sup>.20</sup>	<sup>.26</sup>	<sup>.21</sup>	<sup>.32</sup>
	<u>5.46</u>	<u>5.40</u>	<u>5.45</u>	<u>5.34</u>
3133.40	17.54+	12.54+	12.34+	8.11

	<sup>x.31</sup>	<sup>x.20</sup>
	<u>5.29</u>	<u>5.46</u>
	7.9'RT.	16.48+

	<sup>.20</sup>	<sup>.23</sup>	<sup>.18</sup>	<sup>.26</sup>	<sup>.21</sup>	<sup>.37</sup>
	<u>5.46</u>	<u>5.43</u>	<u>5.48</u>	<u>5.40</u>	<u>5.45</u>	<u>5.29</u>
3128.25	16.84+	11.91+	11.61+	8.14	16.54RT	8.14RT



	<sup>.28</sup>	<sup>.28</sup>	<sup>.33</sup>	<sup>.90</sup>
	<u>5.94</u>	<u>5.94</u>	<u>5.99</u>	<u>5.96</u>
2162.85	13.05+	8.01+	7.62+	12.61+



	<sup>.19</sup>	<sup>.24</sup>	<sup>.29</sup>	<sup>.27</sup>
	<u>5.85</u>	<u>5.90</u>	<u>5.95</u>	<u>5.93</u>
2157.85	13.01+	8.01+	7.43RT	12.45RT

5.97 5.66 -0.31

200  
\$



cht  
ler

6-34 S. D. BINDERY

BENT #3

DATE

ON

Over or Under  
Expenditure

BENT #1

Notes for Proposed Drain -  
 Alleys 187 & 186  
 Mission Beach.

Indexed  
C.S.K.

Moore  
3-26-43

Account No.

Title of Account

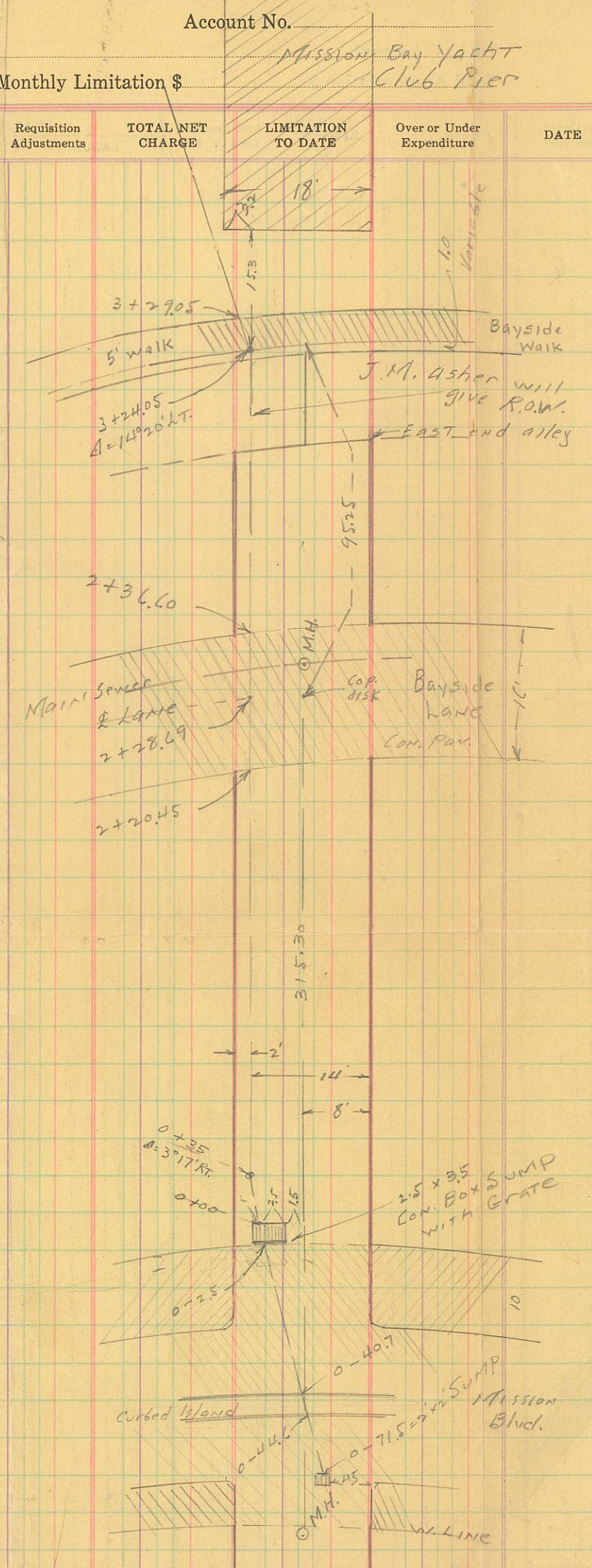
Total Appropriation \$

Monthly Limitation \$

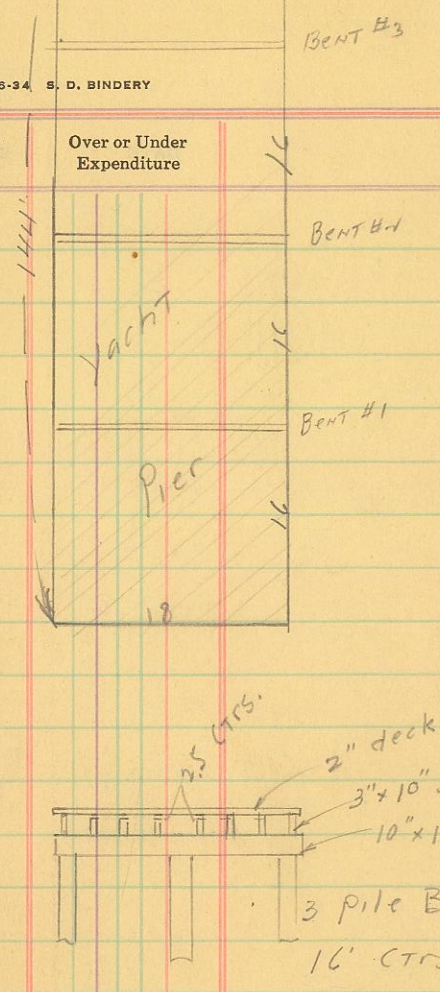
MISSION Bay Yacht Club Pier

1000 6-34 S. D. BINDERY

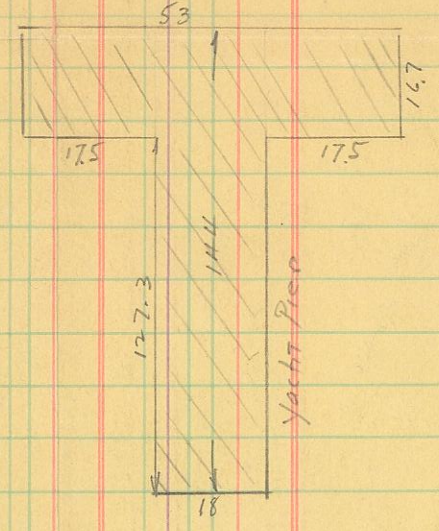
DATE	REQ. NO.	Aud. Transfer, Cash Cr., Etc.	CHARGE	Requisition Adjustments	TOTAL NET CHARGE	LIMITATION TO DATE	Over or Under Expenditure
			LABOR MATERIAL				
BLK 18C-187 Mission Beach						18'	
Levels for proposed drain in alley							
BET. QUEENSTOWN and Redondo Cts.							
MISSION Blvd. to Bay							
SW. Top Soil	252	9.60	7.08				
T.P.	247	5.25	4.84				
T.P.	297	4.30	3.92				
M.H. RIM on Miss. Blvd.	4.22		0.08				
" FL.			6.32				
0-71.5 Sump Grate	4.97		-0.67				Sump on West gutter
" " Bot.	8.84		-2.52				Mission Blvd.
0-44.6 Pav.	4.20		0.10				
" Top ls. Co.	3.57		0.73				
0-40.7 " "	3.75		0.55				
" Pav.	4.43		-0.13				
0-13 "	5.02		-0.72				
0-2.5 W. edge 2.5 x 3.5 Sump	5.14		-0.82				grate E. line
0+00 E " "	5.17		-0.87				Mission Blvd.
" Bot. Sump	8.74		-9.49				
0+35 Δ=3°17' Rt.	4.7		-0.2				
0+70	4.8		-0.5				
1	4.7		-0.9				
+50	5.0		-0.7				
2	5.3		-1.0				
+20.45 W. Pav. edge	5.07		-0.77				
+18.69 E " "	5.23		-0.93				Bayside Lane
+36.60 E " "	5.01		-0.71				
M.H. RIM on Lane	5.19		-0.89				
" FL. from West	9.72		-5.42				
" " " EAST	9.67		-5.32				
" " Main Lane	11.04		-6.74				
2+50	5.1		-0.8				
3	4.6		-0.3				
3+24.05 Δ=14°20' Lt. Wedgewalk	4.67		-0.37				
3+29.05 E " "	4.79		-0.49				Bayside Walk
3+40	4.9		-0.6				
3+55	6.9		-2.6				



DATE	REQ. NO.	Aud. Transfer, Cash Cr., Etc.	CHARGE	Requisition Adjustments	TOTAL NET CHARGE	LIMITATION TO DATE	Over or Under Expenditure
			LABOR MATERIAL				
			4.1				
			4.30				
	3485		8.8		-9.5		
	4400		10.1		-5.8		
	Top Pier deck		4.16		0.19		
	Set B.M. Cap. disk		5.21		-0.91		alley and Bayside Lane
	TP	916	9.5		3.94	0.36	
	TP	219	9.68		2.03	7.49	
	check to Orig. B.M.		2.60		7.08	7.08	



4/13/43 -  
Moore phoned - Top of 6" Sewer Pipe in Alley - 192  
at E. Line Mission Beach Blvd = -2.47 Top Pipe -  
2" Water main - Same Place - -3.10 Top Pipe







1914  
MAY 10 1914

ENGINEERING DEPARTMENT,  
SAN DIEGO,  
CITY OF CALIFORNIA.