

1435

Home Avenue Extension

PASTS

LEAF BOOK

No. 380 F

1435

MICROFILMED

DEC 23 1964

60125
38 A+B Books

Our Leather Bound Engineers Note Books are carried in the following rulings:

- No. 380 LEVEL BOOK. Left and Right Hand Page the same as Left Hand Page of this Book.
- No. 382 FIELD BOOK. Left Hand Page as in this Book, Right Hand Page 4 x 4 to the inch, Center Line Red.
- No. 384 MINING TRANSIT BOOK. Left Hand Page as in this Book, Right Hand Page 8x8 to the inch, Center Line Red.
- No. 385 FIELD BOOK. Left Hand Page as in this Book, Right Hand Page 8 vertical and 4 horizontal lines to the inch, Center Line Red.

We also carry the Note Books listed above, bound in extra strong Fabri-Hide (otherwise the same quality of book), which can be furnished at a somewhat lower price.

In ordering Fabri-Hide covered books, add the letter "F" to catalog number.

THE FREDERICK POST CO.
ENGINEERING and DRAFTING SUPPLIES
IRVING PARK STATION
CHICAGO, ILL.

Euclid BM's

1-

Home Ave. Ext.

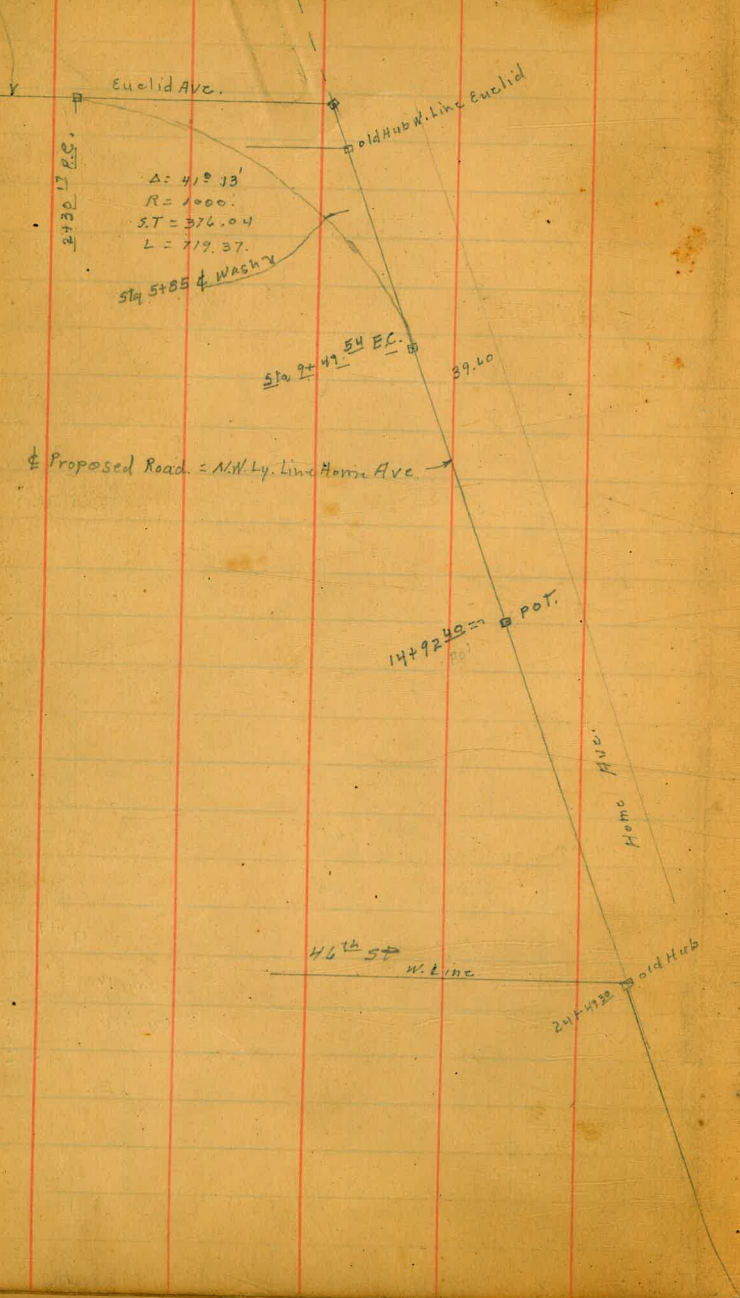
2- 78

- - Grades

79

Sta 25+56.42
 P.C. Euclid Ave
 Proposed Main Plans
 Sta 0+00
 P.T. Slip Pavmt
 Sta 25+56.42

Proposed Road = $\frac{1}{2}$ 2d. Strip Pavmt
 on Euclid Ave Produced South



$\Delta = 41^\circ 13'$
 $R = 1000.$
 $S.T. = 376.04$
 $L = 719.37$

Sta 5+85 $\frac{1}{2}$ WASHY

Sta 2+49 $\frac{54}{EC.}$

Proposed Road = NW Ly. Line Home Ave.

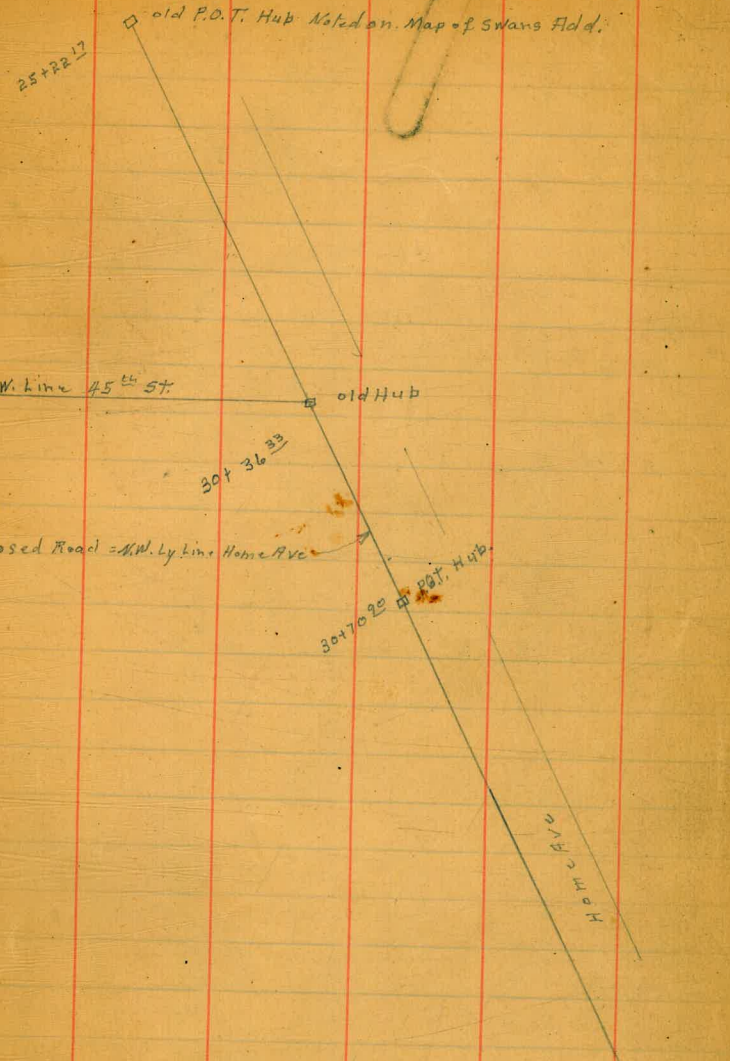
14+92.48 POT.

46th St W. Line

24+49.22 old Hub

Home Ave.

Home Ave Extension 2



old P.O.T. Hub Noted on Map of Swans Field.

W. Line 45th St

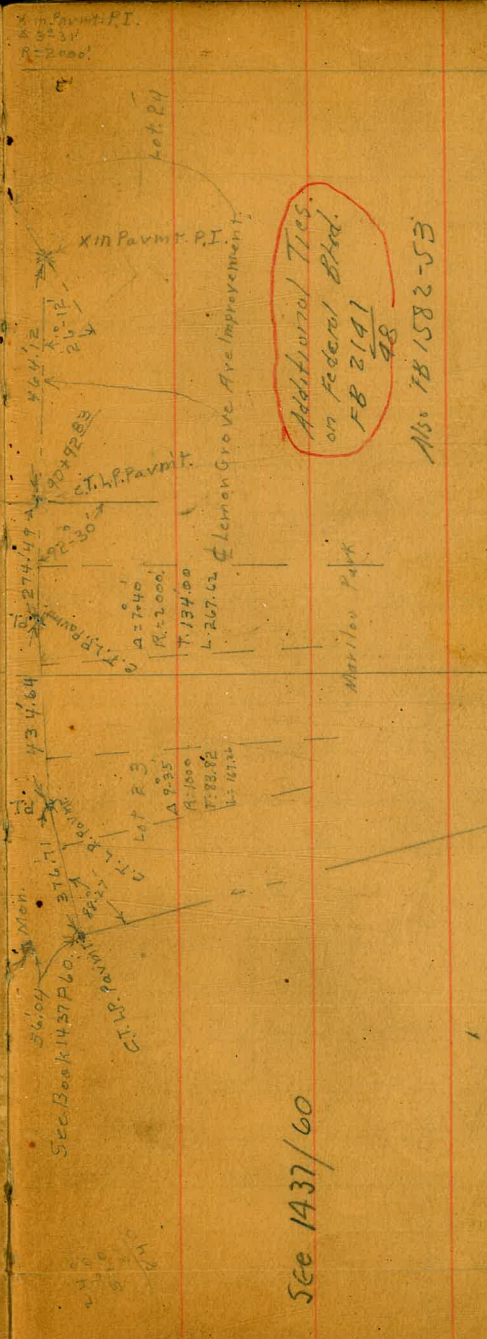
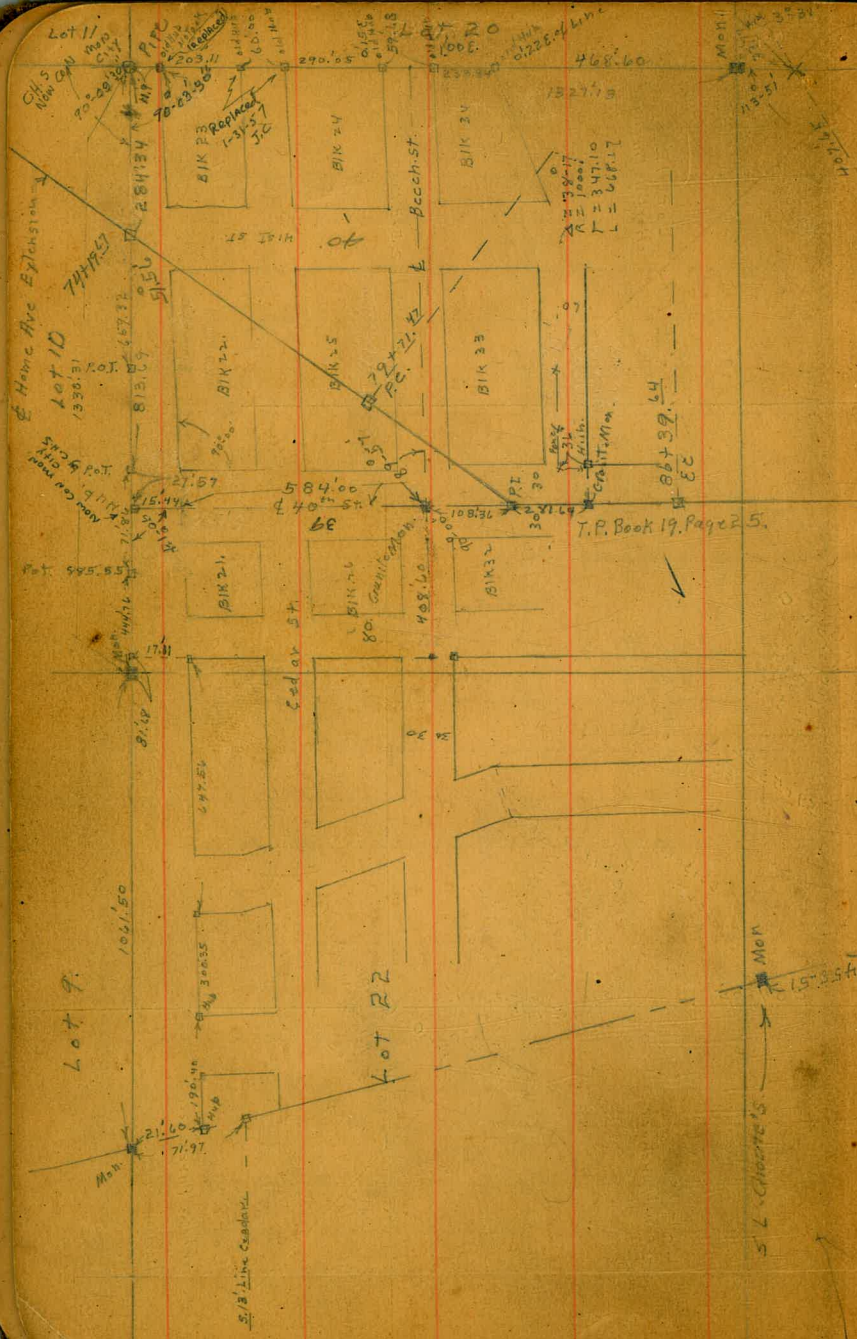
old Hub

30+36.33

Proposed Road = NW Ly. Line Home Ave.

30+70.20 POT. Hub.

Home Ave



See 1437/60

Additional Ties
on Federal Blvd.
FB 2141
98

Ms. 781582-53

Home Ave Extension

XIII Pavmt. P.I.

XIII Pavmt. P.I.

XIII Pavmt.

XIII Pavmt.

XIII Pavmt.

XIII Pavmt.

S. L. CHAMBER'S

T.P. Book 19, Page 25.

Lot 9.

Lot 10

Lot R2

Lot 23

Lot 24

Lot 25

Lot 26

Lot 27

Lot 28

Lot 29

Lot 30

Lot 31

Lot 32

Lot 33

Lot 34

Lot 35

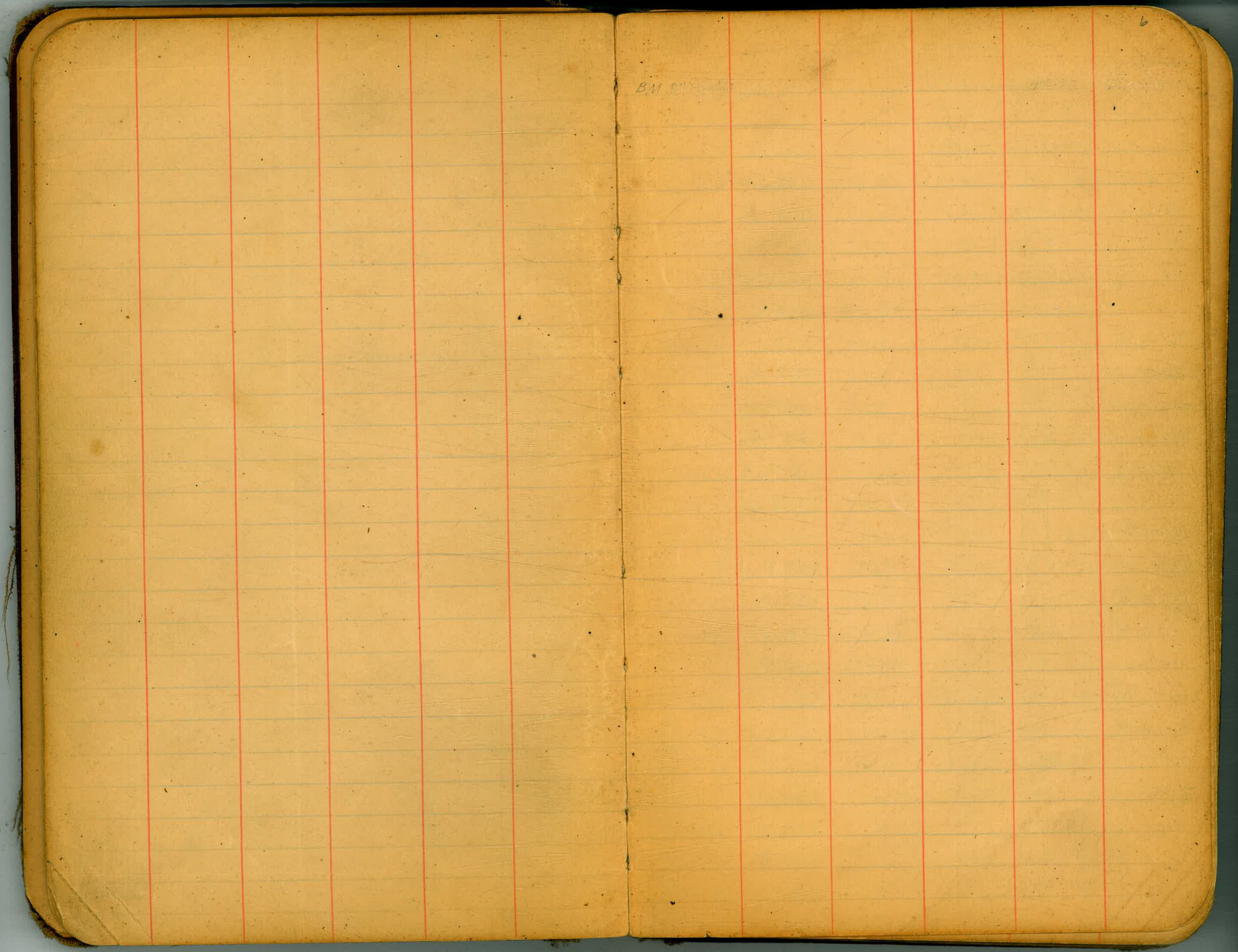
Lot 36

Lot 37

Lot 38

Lot 39

Lot 40



B.M. 1000

6

Levels Home Ave., Extension
Euclid Ave to Lemon Grove Ave.

12-17-31
Miller
Walker
Bliss.

B.M. CT. in L.P. of 20' strip Pav. Euclid Ave. Improvement Sta 43+06 47 PC
274.98 N. of M. Lincoln of Quince St

Above B.M.	9.31	238.74		229.13	
100. N. of 0+00			2.94	235.50	d. Pavmt
75' " " "			5.12	233.32	" "
65' " " "			5.90	232.48	" "
52' " " "			6.88	231.56	" "
39' " " "			7.62	230.8	" "
25'			8.29	230.1	
13'			8.84	229.6	
0+00 = CT. Arc. Imp. Plans.			9.31	229.13	
0+67.8 W. edge paymt. on curv.			10.77	227.67	
1+10			11.3	227.14	
1+19			6.4	232.0	
1+31 ²⁴ Rot. Hub.			4.85	233.59	
1+45			5.5	232.9	
1+62			10.5	227.9	
1+87			12.9	225.6	
2+00			13.0	225.4	
2+30 ¹⁷ P.C. Hub $\Delta 41^{\circ}13'$ Rad 1000'			11.87	226.57	Def Δ .
2+50			12.4	226.04	0 ^o -34.10
T.P.	0.43	225.92	13.15	225.29	
2+75			3.4	222.5	
3+00			6.4	219.5	2 ^o 00.04
3+25			7.1	218.8	
3+50			5.2	220.7	3 ^o -25.98

Sta 43+06 47 P.C. Euclid.

Home Ave Extension 7

225.92

3+80			4.7	219.2	Def Δ .
4+00			6.5	219.4	4 ^o -51.92
4+25			9.5	216.4	
T.P.	0.45	213.52	12.85	213.07	
4+50			4.7	208.82	6 ^o -17.86
4+75			10.4	203.1	
4+91			13.3	200.2	
T.P.	4.94	206.60	11.86	201.66	
5+00			6.6	200.00	7 ^o -43.80
5+50			8.5	198.1	9 ^o -09.74
5+76 Top Bank			8.7	197.9	
5+79 E. edge wash			10.7	195.9	
5+91 W " "			10.2	196.4	
5+92 Top Bank			8.7	197.9	
6+00			8.8	197.8	10 ^o -35.68
6+50			10.2	196.4	12 ^o -01.62
7+00			10.3	196.3	13 ^o -27.56
7+50			13.0	193.6	14 ^o -53.50
T.P.	0.86	194.95	12.51	194.09	
8+00			2.2	192.75	16 ^o -19.44
8+50			4.4	190.5	17 ^o -45.38
9+00			5.4	189.5	19 ^o -11.32
9+49 ⁵⁴ P.C. Hub			5.22	189.73	20 ^o -36.50
10+00			5.4	189.35	
10+40			6.2	188.75	
10+42			7.7	187.25	

194.95

10+50		8.2	186.75
10+75	N. edge wash.	9.0	185.95
11+00	5' in wash S. of N. edge wash.	9.6	185.35
11+50	8' in wash S. of N. edge "	11.0	183.95
12+00	30' in wash S. of N. Bank	10.4	184.55
12+50	30' in wash S. of N. Bank	11.6	183.35
13+00	35' in wash S. of N. Bank.	12.2	182.75
T.P.	3.76	186.99	11.72
13+50	37' in wash S. of N. Bank	4.2	182.8
14+00	25' in wash S. of N. Bank.	4.8	182.2
14+50	15' N. of N. Bank & wash	7.7	182.3
14+78		2.4	184.6
14+92	40' R.O.T. Hub	3.53	183.46
15+00		3.7	183.29
15+50		6.3	180.69
16+00		8.0	178.99
16+50		8.6	178.39
17+00		9.3	177.69
17+50		10.2	176.79
17+88	Top N. Bank	10.6	176.39
17+90	N. edge wash	12.7	174.29
T.P.	2.50	177.42	12.07
18+00	5' in wash S. of N. Bank.	3.1	174.32
18+50	14' in wash S. of N. Bank	3.9	173.52
19+00	14' in wash S. of N. Bank	4.2	173.22
19+15	13' in wash S. of N. Bank	4.6	172.82

177.42

Home Ave Extension

19+25	N.W. edge wash	6.0	171.42
19+27	Top Bank	3.6	173.82
19+50	in small side wash	5.4	172.0
6'	N. of 19+50 Natural ground	3.4	174.0
10'	S. of 19+50 " "	3.5	173.9
20+00	in small side wash	6.1	171.3
10'	N. of 20+00 Natural ground.	4.0	173.4
8'	S. of 20+00 " "	4.0	173.4
20+50		5.2	172.2
21+00		5.6	171.8
21+50		6.3	171.1
21+60	Top Bank	6.8	170.6
21+63	N. edge wash.	8.0	169.4
22+00	15' in wash S. of N. Bank	9.0	168.4
22+35	16' in wash S. of N. Bank	10.3	167.1
22+50	5' in wash S. of N. Bank.	10.5	166.9
22+64	N.W. side wash	10.5	166.9
22+65	Top Bank	7.0	170.4
22+85		5.0	172.4
23+00		4.5	172.9
23+35		2.0	175.4
T.P.	6.20	181.36	2.26
23+50		6.8	174.5
23+65		9.8	171.5
24+00		10.2	171.1
24+20	Top Bank	10.4	170.9

		181.36		
24+27	E. side Wash from N	12.4	168.9	
24+36	W " " " "	12.4	168.9	
24+37	W Bank	10.8	170.5	
24+49 ³⁰	old Hub + Home Ave N.W. Cor 46 th St.	10.18	171.18	
24+79		9.2	172.16	
25+00		3.7	177.6	
25+12		2.2	179.16	
25+22 ¹⁷	old P.O.T. Hub of Swans. Add. Noted on Map	1.93	179.43	
25+37		4.0	177.36	
25+68		12.2	169.16	
T.P.	0.79	169.48	12.67	168.69
26+00		2.8	166.6	
26+50		6.5	162.9	
26+90		6.1	163.38	
27+00		6.8	162.6	
27+50		7.0	162.4	
28+00		7.6	161.8	
28+50		8.2	161.2	
29+00		7.2	162.2	
29+50		7.0	162.4	
30+00		4.7	164.7	
30+36 ³³	old Hub W. Line 45 th + N.W. Line of Home Ave.	5.0	164.3	
30+53	E. Bank	5.1	164.4	
30+55	Wash from N	6.2	163.3	
30+58	" " "	6.7	162.8	
30+60	W. Bank	5.2	164.3	

		169.48		Home Ave Extension
30+70 ²⁰	P.O.T. Hub.	5.57	163.91	
T.P.	1.39	165.30	5.57	163.91
31+00		2.9	162.4	
31+40		6.3	159.0	
31+60		6.1	159.2	
32+00		9.2	156.1	
32+50		10.3	155.0	
33+00		11.7	153.6	
33+40	Top Bank	13.0	152.3	
T.P.	1.54	153.83	13.01	152.29
33+67	N. edge wash	4.1	149.73	
34+00 = 32' S. of N. edge wash		3.8	150.03	
34+50 = 59' S. of N. " "		3.7	150.1	
35+00 = 71' S. " " " "		4.6	149.2	
35+44 ²⁴ RC = 67' " " " "		5.30	148.53	on @ Hub
36+00 = 57' " " " "		6.2	147.63	$\Delta 5^{\circ} 33' RT$
36+50 = 67' " " " "		6.7	147.1	R = 2000'
37+00 = 64' " " " "		7.8	146.0	ST = 96.96
37+37 ²⁷ EC = 63' " " " "		8.15	145.68	L = 193.73
38+00 = 60' " " " "		9.3	144.53	on @ Hub
38+44 = N. edge wash		9.2	144.63	
38+45	Top Bank	5.4	148.4	
38+60		3.3	150.5	
38+85		3.0	150.8	
39+00		5.9	147.9	
T.P.	9.45	157.77	5.51	148.32

157.77

39+50		11.4	146.37
40+00		4.9	145.9
+25		12.2	145.6
135 E. Berm Fairmont.		5.4	152.4
+43 ² E. edge pavmt.	"	5.84	151.93
+53 ² " " "	"	5.85	152.42
20's. of +53 ² on E Pavmt.		6.50	151.27
40's. " +53 ² " " "		7.50	150.27
20 N " +53 ² " " "		4.01	153.76
40 N " +53 ² " " "		2.44	155.33
40+63 ² : wedge pavmt.		4.96	152.81
+68 : W. Berm.		4.6	153.2
+73		7.2	150.6
ch B.M. B.P. ^{North} E 1/4 Cor Box Culvert.		9.55	148.22 = 148.05
41+00		8.8	149.0
+50		8.1	149.7
42+00		9.7	148.1
+50		12.1	145.7
43+00		12.3	145.5
T.P.	2.15	147.43	12.49.
+06		4.3	143.1
+50		6.9	140.5
44+00		8.1	139.3
+40		9.5	137.9
+75		9.2	138.2
45+00		10.0	137.4

Home Ave. Extension

10

147.43

+50		8.7	139.7
46+00		5.6	141.8
+30		5.4	142.0
46+40 P.O.T. Hub		6.43	141.00
47+00		10.5	136.9
+10		13.3	134.1
+50		13.9	133.5
T.P.	0.68	135.31	12.80
48+00		2.2	133.1
+50		3.5	131.8
49+00		4.5	130.8
+50		5.7	129.6
50+00		5.9	129.4
50+36 ⁶⁴ P.C. Hub	A 139.22 Lt. R = 100.0 S.T. = 117.18 L = 233.29	7.93	128.28
+50		7.4	127.9
51+00		7.2	128.1
+50		7.1	128.2
52+00		8.5	126.8
52+69 ⁷³ E.C. Hub		9.16	126.15
53+00		9.3	126.0
+50		10.3	125.0
54+00		10.0	125.3
+50		10.9	124.4
55+03 ⁶⁵ P.C. Hub	A = 25.46 RT. R = 100.0 S.T. = 228.72 L = 449.71	9.21	126.10
+50		11.1	124.2
56+00		12.0	123.3

13E 31

56+50			8.3	122.0
57+00			10.5	124.8
+50			12.2	123.1
T.P.	2.85	128.45	9.71	125.60
T.P.	7.22	124.99	10.68	117.77
58+00			6.1	118.9
+50			8.1	116.9
59+00			8.4	116.6
59+53 ³⁶	E.E. Hub		9.54	115.45
60+00			10.0	115.0
+50			9.2	115.8
61+00			9.2	115.8
+50			9.3	115.7
+55			10.4	114.6
62+00			11.3	113.7
+25			9.2	115.8
+50			9.5	115.5
+80			6.7	118.3
63+00			6.2	118.8
+50	P.O.T. Hub		7.05	112.94
64+00			8.1	116.9
+12	Bank		9.0	116.0
64+18 ⁶³	P.C. Hub	$\Delta = 20-10$ $R = 1480'$ $ST = 177.83$ $L = 351.97$	11.36	113.63
+23	Wash from North		11.4	113.6
+26	Bank		9.4	115.6
+50			7.2	115.8

Home Ave Extension 11

124.99

65+00			10.0	115.0
+50			9.6	115.4
66+00			10.6	114.4
+50			11.8	113.2
67+00			13.7	111.3
T.P.	1.10	113.70	12.39	112.60
+50			4.0	109.7
67+70 ⁶⁴	E.C. Hub		4.19	109.51
68+13			5.9	108.8
+18			9.0	104.7
+50			10.4	103.3
69+00			9.9	103.8
+50			9.3	104.4
70+00			10.8	102.9
+50			11.6	102.1
71+00			11.9	101.8
T.P.	1.46	103.39	11.77	101.93
+50			2.1	101.3
72+00			2.6	100.8
+18	Top Bank		3.1	100.3
+22	1 Wash		4.9	98.5
+50	{ 11' wash 13' from N.W. Bank		5.0	98.4
+80	{ 11' wash 15' from N.W. Bank		6.6	96.8
+87			6.6	96.8
+91	Top Bank		4.6	98.8
73+00			4.4	99.0

103.39

73+38 Top Bank	5.0	98.4
+50 In Main Wash	6.2	92.2
+87 " " "	6.9	96.5
74+00 " " "	8.5	94.9
+13 " " "	8.3	95.1
74+79.67 Top Bank	6.45	96.94
74+50	6.4	92.0
75+00	5.8	96.6
+50	6.3	92.1
76+00	6.8	96.6
+50	7.4	96.0
T.P. 11.23 106.90	7.72	95.67
77+00	11.4	95.5
+50	11.9	95.0
78+00	14.0	92.9
+50	13.6	93.3
79+00	13.3	93.6
+15	11.3	95.6
+35	7.5	99.4
+50	4.0	102.9
+60	1.3	105.6
79+71.47 PC.Hub	0.94	105.96
80+00	3.7	103.2
+50	6.7	100.2
81+00	9.4	92.1
+50	11.8	95.1

Δ 38-17 Lt.
 R. = 1000.
 S.T. = 347.10
 L = 666.17

P.O.J. Hub N.W.
 Marilee Park.

106.90

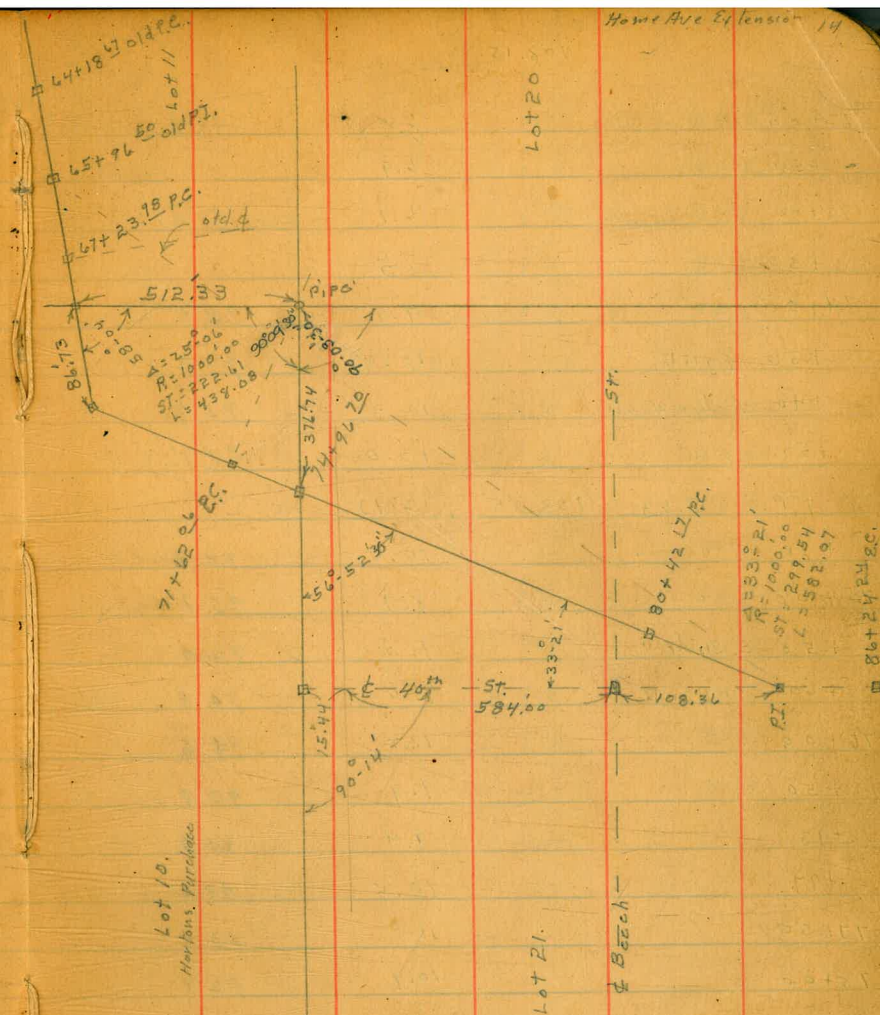
Home Ave Extension 12

T.P. 1.40 95.11	13.19	93.71
82+00	3.5	91.6
+20	5.7	89.4
+35	9.3	85.8
+50	10.3	84.8
83+00	8.6	86.5
+50	10.3	84.8
84+00	10.8	84.3
+50	10.3	84.8
85+00	10.0	85.1
+50	12.7	82.4
T.P. 9.39 91.83	12.67	82.44
86+00	11.5	80.3
86+39 ¹⁴ E.C.	11.81	80.02
87+00	12.7	79.1
+50	13.0	78.8
88+00	13.3	78.5
+40	13.9	77.9
+60	15.3	76.5
89+00	14.8	72.0
+13 Top Bank	14.1	72.7
+23 Sedge Wash	18.6	73.2
+50	20.1	71.7
+72 Sedge Wash	17.2	74.6
+85 Top Bank	13.3	78.5
+90	7.4	84.4

Change of Alignment
Home Ave Extension
from sta. 64+18.57 P.C. to

1-13-32
Miller
Walker
Bliss

Station	PC	PT	Offset	Station	PC	PT
63+50	300	120.94		117.74	Page 11	
64+18.57	old P.C.	7.31		113.63		
+23	Wash from North	07.3		113.6		
+26	Bank	5.3		115.4		
+50		5.1		15.8		
65+00		5.8		15.1		
+50		5.8		15.1		
+96.50	old P.I. Hub	6.25		14.7		
64+35		4.4		16.3		
+50		6.3		14.6		
67+00		6.1		14.8		
67+23.98	PC Hub	5.45	115.49	15.4		
+50		6.2		14.7		
68+00		7.1		12.8		
+20		8.4		12.5		
+23		10.7		12.2		
150		13.5		07.4		
+65		13.5		07.4		
+68		10.8		10.1		
69+00		13.4		07.3		
T.P.	0.38	108.15	13.17	107.77		
+50			2.8	105.3		
70+00			4.0	104.1		
+50			5.7	102.4		
71+00			6.6	101.5		
+62.05	E.C. Hub	6.45	101.30	101.3		



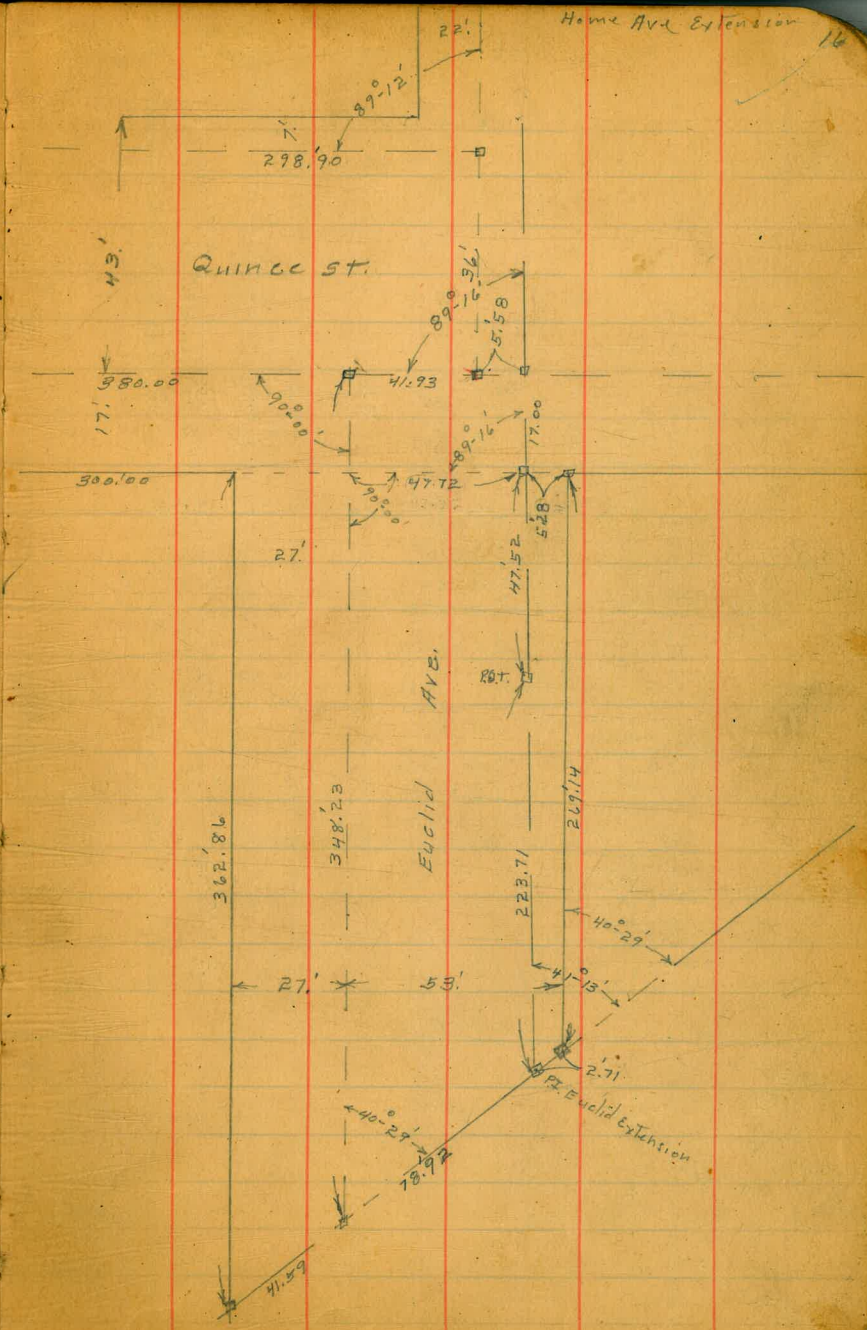
108.15

72+00	6.8	101.3
+50	6.9	
73+00	6.7	101.4
+50	7.5	
74+00	9.8	98.3
+36 Bank	10.8	97.3
+40 Nidge wash	12.4	95.7
+50 in "	13.0	95.1
T.P. 8.63	103.85	12.93 95.22
+70 " "	10.4	93.4
75+00 " "	8.7	95.1
+50 S. Side "	9.5	94.3
+60 on Bank	9.0	94.8
76+00	9.2	94.6
+50	9.9	93.9
+93	9.4	94.4
+97	10.5	93.3
77+50	11.1	92.7
78+00	10.9	92.9
+50	10.1	93.7
+80	10.9	93.0
79+00	12.1	91.7
+50	12.2	91.6
+63	12.2	91.6
+93	9.5	94.3
80+00	8.3	95.5

Home Ave Extension 15

103.85

80+15	4.0	99.8
+32	3.6	100.2
80+42 ¹⁷ P.C. Hub	4.72	99.13 99.1
81+00	7.6	96.2
+50	9.7	94.1
T.P. 0.93	92.70	12.04 91.77
82+00	2.0	90.7
+50	5.3	87.4
83+00	7.3	85.4
+50	7.2	85.5
84+00	8.2	84.5
+50	8.8	83.9
85+00	9.1	83.6
+50	9.2	83.5
86+00	11.4	81.3
86+24 ²⁴ E.C. Hub	12.19	80.51
86+71 ⁸⁰ = 86+39 ⁶⁴ old E.C.	12.69	80.101



7/23/32
Miller
Walker
Bliss
B.M.C.J.L.P.
X Sec Home Ave Extension
"B" Line

8.76	237.89	229.13	
0+00. P.C. Existing Pavmt.			
40' E. of ϕ	2.0	235.9	=
30' "	7.4	230.5	
22' "	11.0	226.9	
15' "	8.8	229.1	
10' " = E. edge parmt.	9.47	228.42	
ϕ on " "	8.76	229.13	-
16' W of ϕ W " "	8.28	229.61	
15' " " "	7.3	230.6	
27.95 W of ϕ = W. Line Euclid	16.0	221.9	
39.6 " " "	22.2	215.7	-
50' " " "	22.2	215.7	
0+25			
50.0 W of ϕ	23.5	214.4	
39.6 " " "	23.5	214.4	-
35' " " "	22.5	215.4	
28' W. " " = W. Line Euclid	17.4	220.5	
15' " " "	9.0	228.9	
13' " " "	8.0	229.9	
8.2 " " " = W. Pav.	9.11	228.78	
ϕ on " "	9.51	228.38	-
11.4 E. " " = E. "	10.33	227.56	
15' " " "	10.2	227.7	
20' " " "	10.0	227.9	
30' " " "	5.5	232.4	

P.C. Euclid Ave
20' Strip Pavt.

40' E

40' E.

30' "

24' "

20' "

15' " = E. Pav

ϕ on " "

5.2 W = W " "

11' "

15' "

28' " = W. Line Euclid.

31' "

39.6 "

55' "

55' W.

39.6 "

28' " = W. Line Euclid

20' "

15' "

6' "

ϕ on W. edge parmt

15' E " parmt.

20.40 " E. edge parmt.

25' "

237.89

0+46.4

0+68

+1.0

+3.0

2.0

5.6

10.8

10.94

9.91

9.65

8.8

11.2

19.5

21.7

23.1

24.2

24.2

23.0

20.9

18.3

14.7

9.3

10.20

11.16

11.61

11.5

238.9

240.9

235.9

232.3

227.1

226.95

227.98

228.24

229.1

226.7

218.4

216.2

214.8

213.7

213.7

214.9

217.0

219.6

223.2

228.6

227.69

226.73

226.28

226.4

18

237.89

0+68(con)

29' E	2.2	235.7	
40' "	+3.7	241.6	-
	0+81.		
40' E. Top. Cut.	+5.0	242.9	-
30' " Toe "	12.0	225.9	
24.9' " = E. Edge Pavmt.	12.04	225.85	
15' E on "	11.27	226.62	
4' E = W. edge "	10.64	227.25	-
⊕	9.9	228.0	-
8' W.	11.1	226.8	
15' W.	15.8	222.1	
28' " = W. line Euclid	19.6	218.3	
39.6 "	22.1	215.8	-
55' "	23.9	214.0	
	7+03		
55' W.	24.7	213.2	
39.6 "	22.8	215.1	-
28' " = W. line Euclid	19.8	218.1	
15' "	14.8	223.1	
9' "	10.0	227.9	
⊕	10.6	227.3	-
12.9 E. = W. edge pavmt.	11.33	226.56	
15' E	11.41	226.48	
35' E = E. edge pavmt.	12.78	225.11	
40' E. = Toe. Cut.	12.7	225.2	-

237.89

15' Home Ave

19

1407#

15' E. of ⊕ = W. edge Pavmt.	11.47	226.42	
	1+12.4		
40' E. of ⊕ = E. Edge pavmt.	13.11	224.78	
	1+20		
40' E. on pavmt.	13.06	224.83	-
21.62 = W. edge Pavmt.	11.87	226.02	
15' E	11.9	226.0	
3' E. Toe Cut.	11.5	226.4	
⊕ Top "	5.4	232.5	-
15' W.	13.1	224.8	
20' W.	16.8	221.1	
28' W. = W. line Euclid	19.4	218.5	
39.6 "	23.6	214.3	-
45' "	26.5	211.4	
55' "	26.7	211.2	
	1431.		
55' W.	26.2	211.7	
45' "	26.4	211.5	
39.6 "	24.2	213.7	-
28' " = W. line Euclid	19.5	218.4	
24' "	17.4	220.5	
15' "	12.8	225.1	
⊕	4.3	233.6	-
4' E = Top Cut.	2.7	235.2	
7' E = Toe "	11.2	226.7	
15' E	11.8	226.1	
28.3 E. = W. Edge Pavmt	12.31	225.58	
40' E on "	12.93	224.96	-

237.89

1+482

40' E. = W. Edge Paymt.	12.83	225.06	-
15' "	12.2	225.7	
10' " = Toe cut.	12.0	225.9	
8' " Top. cut.	2.8	235.1	
4.	6.2	231.7	-
15' W.	14.5	223.4	
26' "	19.0	218.9	
28' " = W. Line Euclid	21.3	216.6	
39.6 W.	26.1	211.8	-
55' "	27.0	210.9	

1+70

55' W. in Wash.	29.8	208.1	
48' " " "	29.6	208.3	
47' " Top Bank	27.2	210.7	
39.6 "	27.5	210.4	-
34. "	26.3	211.6	
28' " = W. Line Euclid	20.7	217.2	
15' "	16.8	221.1	
4.	11.0	226.9	-
13' E. Top Cut.	5.0	232.9	
14' E Toe "	12.1	225.8	
15' "	12.2	225.7	
40' E.	12.5	225.4	-

1+74

40' E. = Toe cut.	12.5	225.4	-
35' E = " "	12.5	225.4	

237.89

"B" Home

Ave

20.

20' E.	2.6	235.3	
15' E.	4.5	233.4	
4.	11.5	226.4	-
15' W	17.5	220.4	
21' W.	19.9	218.0	
28' W	24.0	213.9	
39.6 W	27.0	210.9	-
43' " E. Bank Wash	27.7	210.2	
44' W. in "	30.0	207.9	
58' " " "	30.0	207.9	
60' " = W Bank	27.7	210.2	

1+82

4.	12.0	225.9	-
15' E.	4.8	233.1	
35' E Top. cut.	45.3	243.2	
40' E	0.0	237.9	-
60' E Toe cut.	12.5	225.4	
T.P. 20.00	257.89	0.00	237.89

1+87

65' E = Toe Cut.	32.5	225.4	
50' E. = Top Cut.	8.2	249.7	
40' " E. " Cut.	12.4	245.5	-
15' "	25.3	232.6	
4.	32.0	225.9	-
15' W	28.0	219.1	
22' W.	41.2	216.7	

257.89

1+87

28' W.	45.0	212.9
35 " E. Bank Wash	47.6	210.3
39.6 " 2 side "	50.1	207.8 -
50. " W " "	49.5	208.4
51. " W Bank	47.5	210.4
2+00		
50' W. W Bank	47.6	210.3
46 " = W side wash	49.5	208.4
39.6 "	50.3	207.6 -
33' W = E. side Wash.	50.3	207.6
32' W = E. Bank	48.0	209.9
28' W	45.5	212.4
15' W	39.3	218.6
⊥	32.4	225.5 -
15' E.	25.0	232.9
40' E.	11.4	246.1 -
50' "	6.6	251.3
57 " Top cut.	5.2	252.7
64. " "	12.3	245.6
80' E. Toe cut.	34.5	223.4
210.		
92' E. Toe cut.	34.9	223.0
76' E.	12.0	245.9
64' E.	8.2	249.7
65' E. Top cut	3.1	254.8
57' E.	4.9	253.0
47' E.	7.5	250.4

257.89

B Home Ave

21

40' E.	11.4	246.5 -
15' E.	25.0	232.9
⊥	32.3	225.6 -
15' W.	39.9	228.0
28' W.	45.8	212.1
31' W = E. Bank wash.	47.6	210.3
32' W = 2 side "	50.6	207.3
39.6 "	50.0	207.9 -
50' W. W. Bank	48.7	209.2
2+29.		
55' W. 1m Wash. Heading West.	51.0	206.9
42' W = E. edge Wash.	50.5	207.4
39.6 W = E Bank -1	49.0	208.9 -
28' W.	46.9	211.0
15' W	40.0	217.9
⊥	31.1	226.8 -
15' E.	23.6	234.3
40' E.	10.5	247.4 -
52' E	5.6	252.3
68' E	1.9	256.0
80' E Top cut.	0.9	257.0
100' E. " "	7.5	250.4
130' E. Toe cut.	35.6	222.3

257.89

171

2+33

160' E			37.2	220.7
137' E = Top cut s. side graded Road.			35.9	222.0
115' E Top cut			13.8	244.1
80' E			1.6	256.3
45' E			2.5	255.4
30' E			6.0	251.9
40' E			10.4	247.5 -
T.P.	0.80	248.20	10.49	247.40
15' E			13.7	235.5
4			21.6	227.6 -
15' W			30.6	217.6
22' W			35.0	213.2
28' W			36.9	211.3
39.6 W			39.6	209.6 -
50' W = S.E. Bank Wash			39.8	209.4
52' W = S.E. edge "			41.6	206.6
60' W = S. " "			42.3	205.9
		2+43		
50' W			40.3	207.9
39.6 W			40.0	208.2 -
28' W			37.3	210.9
22' W			34.4	213.8
15' W			29.4	218.8
4			21.8	226.4 -
15' E			14.1	234.1
40' E			1.3	246.9 -

248.20

15" Home Ave

22

47' E			+ 1.4	249.6
64' E			+ 7.1	255.3
75' E			+ 7.6	255.8
115' E			7.5	240.7
137' E Top cut			18.2	230.0
160' E Top cut s. side present Rd.			27.2	221.0
		2+50		
160' E			30.0	218.2
137' E			21.0	227.2
115' E			10.5	237.7
72' E			+ 7.2	255.4
62' E			+ 7.0	255.2
40' E			2.6	245.6 -
15' E			14.6	233.6
4			22.1	226.1 -
15' W			29.2	219.0
28' W			35.9	212.3
39.6			39.5	208.7 -
50' W			40.3	207.9
		2+75		
50' W			39.3	208.9
39.6 W			38.3	209.9 -
28' W			35.7	212.5
15' W			31.2	217.0
4			24.7	223.5 -
15' E			18.2	230.0

248.20

2775. (con)

40' E.	6.9	241.3
53' E.	1.4	246.8
72' E.	0.6	247.6
80' E.	2.7	245.5
96' E.	9.4	238.8
115' E.	18.2	230.0
125' E.	21.6	226.6
140' E.	24.5	223.7
150' E.	28.2	220.0
157' E.	30.5	217.7

T.P.

18.46

245.03

21.63

226.57

old P.C. Hub Sta
226.57 (2775)2790²⁷ P.C. Rt. A 41-13 Q.R. 1000.

150' E.	28.8	216.2
145' E.	26.3	218.7
125' E.	22.5	222.5
80' E.	5.6	239.4
63' E.	1.8	243.2
50' E.	3.0	242.0
40' E.	6.3	238.7
15' E.	17.2	227.8
4	24.0	221.0
15' W.	29.2	215.8
39.6 W.	36.5	208.5
50' W.	37.1	207.9

245.03

3710 ♀

50' W.	37.1	207.9
39.6 W.	35.4	209.4
15' W.	29.6	215.4
4	25.1	219.9
15' E.	19.3	225.7
40' E.	11.1	223.9
58' E.	10.0	235.0
46' E.	11.0	234.0
115' E.	24.9	220.1
125' E.	28.8	216.2
150' E.	35.0	210.0

3735 ♀

115' E.	33.0	212.0
80' E.	22.5	222.5
60' E.	18.3	226.7
40' E.	17.1	227.9
25' E.	17.7	227.3
15' E.	19.5	225.5
4	23.7	221.3
T.P.	2.79	227.82
15' W.	12.2	215.6
30' W.	17.1	210.7
39.6 W.	18.6	209.2
50' W.	20.4	207.4
64 W = N.E. Ban Kof Wash	22.0	205.8
66 W	26.0	201.8

"B" Home Ave

23

227.82
3750 ϕ . Def Δ 12.42.66

73' W = W. side wash.	25.5	202.3	
62' W = E " "	25.5	202.3	
61' W = E. Bank "	23.0	204.8	
39.6 W	18.5	209.3	-
15' W.	10.5	217.3	
ϕ	5.5	222.3	-
9' E	3.2	224.6	
15' E.	2.5	225.3	
30' E	2.4	225.7	
40' E	3.9	223.9	-
55' E	6.6	221.2	
80' E.	11.5	216.3	
100' E.	16.7	211.1	
3775 ϕ D-F Δ			
80' E.	19.3	208.5	
40' E.	10.6	217.2	-
28' E	7.1	220.7	
15' E	5.2	222.6	
ϕ	5.1	222.7	-
15' W.	10.0	217.8	
39.6 W	18.3	209.5	-
58' W	23.2	204.6	
66' W = E. Bank Wash	24.6	203.2	
67' W = E side "	26.9	200.9	
80' W = W " "	26.0	201.8	

227.82

4700 ϕ

"B" Home Ave.

24

80' W = W side wash	27.4	200.4	
61' W = E. " "	26.5	201.3	
40' W = E. Bank "	25.9	202.9	
50' W	24.8	203.0	
45' W	21.0	206.8	
39.6 W	18.1	208.7	-
15' W	9.1	218.7	
ϕ	7.2	220.6	-
15' E.	10.0	227.8	
40' E.	17.4	210.4	-
55' E.	20.3	207.5	
4725 ϕ			
50' E	24.1	203.7	
40' E	22.6	205.2	-
30' E	20.5	207.3	
15' E.	15.9	212.0	
ϕ	12.8	215.0	-
15' W.	13.1	214.7	
T.P.	0.37	215.46	
39.6 W.	7.9	207.6	-
45' W = E. Bank Wash.	12.9	202.6	
50' W = E. side "	14.3	201.2	
78' W = W " "	14.3	199.2	
80' W = W. Bank "	13.3	202.2	

215.46

4+50 ¢

67' W = W. Bank Wash	13.6	202.0	
66' W = " Side "	16.9	198.6	
50' W = E " "	15.2	200.3	
49' W = E. Bank "	12.9	202.6	
39.6 W	11.0	204.5	-
15' W	6.7	208.8	
¢	6.7	208.8	-
15' E	9.4	206.1	
30' E	12.4	203.1	
40' E	13.6	201.9	-
T.P.	4.83	207.36	12.93
		202.53	

4+75 ¢

40' E	7.9	199.5	-
15' E.	6.0	201.4	
¢	4.4	203.0	-
15' W	4.1	203.3	
39.6 W.	5.6	201.8	-
52' W = E. Bank Wash.	5.6	201.8	
53' W = E side "	9.0	198.4	
69' = W " "	7.3	200.1	
70' = W Bank "	6.4	201.0	

5+00 ¢

69' W = W. Bank Wash	5.5	201.9	
67' W = W side "	9.6	197.8	
58' W = E. " "	7.7	199.7	
57' W = E Bank "	6.3	201.1	

207.36

78' Home Ave.

25

39.6 W	6.8	200.6	-
15' W.	7.6	199.8	
¢	8.3	199.1	-
15' E.	9.1	198.3	
40' E.	10.2	197.2	-
	5+25 ¢		
40' E	10.5	196.9	-
15' E	9.8	197.6	
¢	8.7	198.7	-
15' W.	8.6	198.8	
39.6 W	7.2	200.2	-
53' W = E. Bank Wash.	8.0	199.4	
55' W = E side "	10.3	197.1	
68' W = W " "	8.7	198.7	
69' W = W Bank "	7.5	199.9	
	5+50 ¢		
63' W = W. Bank Wash	8.4	199.0	
62' W = W side "	9.6	197.8	
45' W = E " "	10.1	197.3	
44' W = E Bank "	7.9	199.5	
39.6	8.0	199.4	-
15' W	9.0	198.4	
¢	9.5	197.9	-
15' E.	9.8	197.6	
40' E.	10.3	197.1	-

207.36

5+75 ¢

40. E.	10.6	196.8	-
15' E	10.9	196.5	
¢	10.3	197.1	-
15' W.	9.6	197.8	
25' W = E. Bank wash	9.6	197.8	
27' W = E side "	10.7	196.7	
39.6 W = W. " "	11.3	196.1	
40' W = W Bank "	9.3	198.1	-
50' W	9.0	198.4	

5+90 ¢

39.6 W.	8.9	198.5	-
28' W = W Bank wash	9.4	198.0	
27' W = W Edge "	11.3	196.1	
15' W " " "	11.4	196.0	
¢ = N edge wash running S.E.	11.4	196.0	-
15' E = N " " " "	11.7	196.3	
40' E.	10.7	196.7	-

6+00

50' S.E. of ¢	11.0	196.4	
40' " " " = N.E. Bank wash	11.2	196.2	-
38' " " " = N.E. edge "	12.9	194.5	
15' " " " " " "	12.2	195.2	
¢ " " " " " "	11.9	195.5	-
15' N.W.	11.8	195.6	
12' " " = S.W. side "	11.6	195.8	
15' " " = S.W. Bank "	9.7	198.7	
39.6 " "	9.3	198.1	-

207.36

6+04.

39.6 to Rt. of ¢	9.4	198.0	-
15' " RT.	9.6	197.8	
3' " = SW. Bank wash	10.0	197.4	
¢ " = SW edge "	9.0	198.4	-
15' Lt = " " "	12.9	194.5	
40' Lt. " " "	13.1	194.3	-

6+06

40' Lt	13.2	194.2	-
21' " SW. side wash	12.7	194.7	
20' " SW Bank "	10.9	196.5	
15' " SW " "	10.7	196.7	
¢ " " " "	9.9	197.5	-
15' RT	9.6	197.8	
39.6 "	9.4	198.0	-

6+25 ¢

39.6 RT	10.0	197.4	-
15' "	10.4	207.0	
¢	10.4	197.0	-
15' Lt.	10.7	196.7	
40' Lt. = SW. Bank wash	11.5	195.9	-
48' " = S.W. side "	12.9	194.5	

18th Home Ave

26

207.36

6+50 ♀

40' Lt.	12.2	195.2	-
15' Lt.	11.3	196.1	
♀	11.2	196.2	-
15' Rt.	11.1	196.3	
31' Rt.	10.7	196.7	
39.6 Rt.	9.7	197.7	-

6+75 ♀

39.6 Rt.	8.0	199.4	-
25' "	11.2	196.2	
15' "	11.4	196.0	
♀	11.6	195.8	-
15' Lt.	11.8	195.6	
40' Lt.	12.5	194.9	-

T.P. Hub 6.30

201.87 ✓

11.79

195.57

N.W. Line Home
+ W. 13' " Euclid

7+00 ♀

40' Lt.	7.6	194.3	-
35' "	7.1	194.8	
15' "	7.0	194.9	
♀	6.9	195.0	-
15' Rt.	6.5	195.4	
27' "	5.3	196.6	
35' "	4.9	197.0	
39.6 "	2.9	199.0	-

7+25 ♀

39.6 Rt.	5.0	196.9	-
34' Rt.	5.9	196.0	

201.87

B Home Ave

27

15' Rt.	7.1	194.8	
♀	7.6	194.3	-
15' Lt.	7.4	194.3	
30' Lt.	7.4	194.1	
40' Lt.	8.3	193.6	-

7+50 ♀

40' Lt.	9.8	192.1	-
30' "	8.8	193.1	
15' "	8.4	193.5	
♀	8.4	193.5	-
15' Rt.	8.4	193.5	
39.6 "	6.7	195.2	-

7+75 ♀

39.6 Rt.	7.7	194.2	-
15' "	9.2	192.7	
♀	9.4	192.5	-
15' Lt.	9.4	192.3	
40' "	10.5	191.4	-

8+00

46' Lt = Rt. side Main Wash	12.1	189.8	
40' " = Rt. Bank " "	10.6	191.3	-
15' "	10.6	191.3	
♀	9.8	192.1	-
15' Rt.	9.5	192.4	
39.6 "	8.4	193.3	-

201.87

8+25 ¢

39.6 Rt	9.5	192.4	-
15' "	10.5	191.4	
¢	11.0	190.9	-
15' Lt.	11.1	190.8	
29' " = Rt. Bank Main Wash	10.8	191.1	
30' " = " side " "	12.9	189.0	
40' " " " "	12.7	189.2	-

8+50

40' Lt	In Main Wash	14.1	187.8	-
22' "	= Rt. side wash	13.0	188.9	
18' "	= " Bank "	10.9	191.0	
15' "		11.0	190.9	
¢		11.4	190.5	-
15' Rt.		11.5	190.4	
39.6 "		10.2	191.7	-

8+75

39.6 Rt	11.6	190.3	-
15' "	12.0	189.9	
¢	11.6	190.3	-
15' Lt. = Rt Bank Wash	11.3	190.6	
22' Lt = Rt side "	13.4	188.1	
40' " " "	14.2	187.7	-
42' " = Lt side "	13.0	188.9	
64' " = Lt Bank "	11.6	190.3	

201.87

9+00 ¢

53' Lt = Lt Bank Wash	11.6	190.3		
52' " = " side "	13.3	188.6		
40' " " "	13.8	188.1	-	
16' " = Rt. side "	14.7	187.2		
15' " = Rt. Bank "	11.8	190.1		
¢	12.1	189.8	-	
15' Rt.	12.3	189.6		
39.6 "	12.3	189.6	-	
T.P.	4.57	193.94	✓	
		12.50	189.37	✓

9+05 ¢

39.6 Rt	4.4	189.5	-
15' "	4.3	189.6	
¢	4.0	189.9	-
14' Lt = Rt. Bank wash	4.1	189.8	
15' " = " side "	7.1	186.8	
40' " "	6.1	187.8	-
51' " = Lt side "	5.7	188.2	
52' " = " Bank "	3.9	190.0	

9+25 ¢

46' Lt = Lt. Bank Wash	4.2	189.7	
45' " = " side "	6.3	187.6	
40' "	6.3	187.6	-
15' "	7.0	186.9	
11' " = Rt. side Wash	7.1	186.8	
9' " = " Bank	4.4	189.5	
¢	4.0	189.9	-

"B" Home Ave

28

193.94

9+25¢ (con)

15' Rt.		4.4	189.5
39.6 "		4.2	189.7 -
		9+50¢	
39.6 Rt		4.0	189.9 -
15' "		4.7	189.2
4. =	Rt Bank wash	4.5	189.4 -
2' Lt =	" side "	6.9	187.0
15' "		7.2	186.7
3.6 "	= Lt side Wash	2.0	186.9
38' "	= " Bank	4.7	189.2
40' "		4.7	189.2 -
		9+55	
40' Lt		4.8	189.1 -
35' "	= Lt Bank Wash	4.8	189.1
33' "	= " side "	7.0	186.9
15' "	in "	7.0	186.9
4	= Rt. side "	6.8	187.1
2' Rt =	" Bank "	4.6	189.3
15' "		4.9	189.0
39.6		4.1	189.8 -
		9+75	
39.6 Rt.		4.4	189.5 -
15' "		4.9	189.0
9' "	= Rt Bank wash	4.8	189.1
8' "	= " side "	7.0	186.9
4	in "	6.7	187.2 -

193.94

"B" Home Ave

29

15' Lt	in Wash.	7.4	186.5
25' "	= Lt side wash.	7.7	186.2
26' "	= " Bank "	4.8	189.1
40' "		4.7	189.2 -
60' "		4.6	189.3
		9+93	
70' Lt		4.9	189.0
40' Lt.		5.0	188.9 -
19' "	= Lt Bank wash	4.9	189.0
18' "	= " side "	8.2	185.7
15'		8.2	185.7
4	in "	7.1	186.8 -
14' Rt =	Rt. side "	7.0	186.9
15' "	= " Bank "	5.1	188.8
39.6 "		4.5	189.4 -
		9+97	
39.6 Rt.		4.5	189.4 -
17' "	= Rt. Bank wash	5.0	188.9
15' "	= " side "	7.0	186.9
7' "	in "	6.8	187.1
4	" "	7.2	186.7 -
15' Lt =	Lt side "	8.2	185.7
16' "	= " Bank "	5.1	188.8
40' "		5.0	188.9 -
70' "		4.9	189.0
		10+00	
70' Lt.		4.9	189.0
40' "		5.0	188.9 -
15' "	= Lt. Bank wash	5.0	188.9

193.94

10+00 (con)

14' Lt = Lt side wash	8.3	185.6	
4 " "	7.4	186.5	-
75 Rt.	7.1	186.8	
19' " = Rt side wash.	7.2	186.7	
20' " = " Bank "	5.0	188.9	
39.6 "	4.6	189.3	-
10+09 ⁴⁷ E.C.			
39.6 Rt. on Hub.	4.56	189.38	-
23' " = Rt. Bank wash	5.0	188.9	
22' " = " side "	7.3	186.6	
10' " In "	7.0	186.9	
4 " " "	8.2	185.7	-
9' Lt = Lt. side wash	8.1	185.8	
10' " = " Bank "	5.2	188.7	
15' " "	5.1	188.8	
40' " on Hub	5.38	188.56	X
80' " "	5.5	188.4	
cht 9+49 ⁵⁴ old E.C. Hub	4.21	189.73 = 189.73	
T.P.	5.81	195.54	

10+25

70' Lt.	7.3	188.2	
40' " "	7.1	188.4	-
15' " "	6.9	188.6	
2' " Lt. Bank wash	7.9	187.6	
4 " Lt side "	10.5	185.0	-
15' Rt	8.9	186.6	

195.54

"B" Home Ave

30.

27' Rt = Rt. side wash	7.0	186.5	
28' " = " Bank "	6.6	188.9	
39.6 "	6.4	189.1	-
10+50			
39.6 Rt	6.6	188.9	-
33' " = Rt. Bank wash	6.9	188.6	
32' " = " side "	9.3	186.2	
15' " "	10.0	185.5	
4' " = Lt. side wash	9.6	185.9	
4 " = " Bank "	7.8	187.7	-
15' Lt.	7.4	188.1	
40' " "	7.6	187.9	-
70' " "	7.6	187.9	
10+70			
70' Lt	8.4	187.1	
40' " "	8.1	187.4	-
15' " "	7.5	188.0	
4 " = Lt. Bank wash.	7.7	187.8	-
2' Rt = " side "	9.3	186.2	
15' " "	9.8	185.7	
32' " = Rt. side wash	10.6	184.9	
34' " = " Bank "	9.4	186.1	
39.6 "	8.7	186.8	-

195.54
10+90

39.6	RT		9.5	186.0	-
30.	"	= RT Bank Wash	10.4	185.1	
39.	"	= " side "	11.5	184.0	
20.	"		10.4	185.1	
15.	"		9.8	185.7	
Φ		= Lt. side wash	9.1	186.4	-
15	Lt	= " Bank "	8.1	187.4	
30'	"	= " " "	8.3	187.2	
40'	"	= " side "	9.1	186.4	-
65'	"	= " " "	10.1	185.4	
75.	"	= " Bank "	9.3	186.2	

11+00

75'	Lt	= Lt side wash	10.1	185.4	
40'	"	" " "	9.3	186.2	
15'	"	= Lt side "	9.5	186.0	
Φ		" " "	9.0	186.5	-
15'	RT	" " "	9.7	185.8	
32'	"	= RT " "	11.4	184.1	
39.6	"	= " Bank "	9.9	185.6	-

11+25

50.	RT	= RT Bank wash	9.4	186.1	
39.6	"	= " side "	10.9	184.6	-
25.	"	" " "	10.9	184.6	
15.	"	" " "	9.6	185.9	
Φ		" " "	9.0	186.5	-
3.	Lt.		8.4	187.1	

This is N. Main
Wash. from 1100
Bottom of Canon
is all wash.This is RT side
of Main wash.

195.54

"B" Home Ave
31

15.	Lt.		9.3	186.2	
40	"		9.1	186.4	-
75'	"		9.3	186.2	
			11+50		
75'	Lt.		9.7	185.8	
40	"		9.7	185.8	-
30'	"		10.6	184.9	
26	"		8.3	187.2	
15.	"		8.5	187.0	
Φ			10.4	185.1	-
15'	RT.		10.2	185.3	
39.6	"		12.0	183.5	-
44	"	= RT side wash	12.0	183.5	
45	"	= " Bank "	10.9	184.6	
55'	RT		9.8	185.7	
			11+75		
55'	RT		10.2	185.3	
49	"	= RT Bank Wash	10.2	185.3	
48'	"	= " side "	12.3	183.2	
39.6	"		11.5	184.0	-
30'	"		10.7	184.8	
15.	RT		10.7	184.8	
Φ			10.5	185.0	-
15.	Lt.		10.6	184.9	
40'	"		11.0	184.5	-
42	"		9.0	186.5	

195.54

11+75 (Zon)

55' Lt	9.1	186.4
70' "	10.5	185.0
12+00		
70' Lt.	10.7	184.8
40' "	10.2	185.3 -
35' "	11.8	183.7
15' "	11.1	184.4
♀	11.4	184.1 -
15' Rt.	11.1	184.4
27' "	10.5	185.0
39.6' "	12.1	183.4 -
45' "	12.3	183.2
55' "	11.3	184.2
70' " = Rt. side wash	10.8	184.7
12+20		
75' Rt = Rt. side wash	11.1	184.4
52' "	11.6	183.9
44' "	10.3	185.2
39.6' "	12.2	183.3 -
27' "	12.0	183.5
15' "	11.5	184.0
♀	11.8	183.7 -
15' Lt	11.8	183.7
27' "	12.0	183.5
30' "	9.6	185.9
40' "	10.1	185.4 -

195.54

5th Home Ave

32

50' Lt	11.0	184.5
70' "	11.7	183.8
12+30		
70' Lt	11.3	184.2
40' "	10.5	185.0 -
28' "	10.1	185.4
26' "	10.9	184.6
15' "	10.9	184.6
♀	11.0	184.5 -
15' Rt.	11.8	183.7
35' "	12.3	183.2
39.6' "	10.6	184.9 -
55' "	11.7	183.8
70' " = Rt. side Wash.	11.5	184.0
from 12+50 to W. Main wash well defined		
12+50		
70' Rt = Rt. side Wash	11.7	183.8
53' "	12.0	183.5
39.6' "	11.3	184.2 -
29' "	11.7	183.8
27' "	11.5	184.0
15' "	12.5	183.0
11' " S. side Wash.	12.8	182.7
9' " S. Banks "	11.1	184.4
♀	11.0	184.5 -
15' "	10.9	184.6

195.54

12+50 (con)

20' Lt	10.2	185.3
40' "	10.9	184.6 -
70' "	11.0	184.5

12+75

70' Lt	12.1	183.4
40' "	11.6	183.9 -
15' "	11.0	184.5
⊕	10.7	184.8 -
4' Rt = Lt Bank Wash	10.8	184.7
6' " = " side "	13.6	181.9
15' "	12.9	182.6
39.6 "	12.3	183.2 -
70' " = Rt side wash	12.6	182.9

13+00

70' " = Rt. Bank wash	13.2	182.3
60' " = " side "	14.4	181.1
39.6 "	13.7	181.8 -
15' "	13.9	181.6
12' " = Lt. side Wash	13.9	181.6
11' " = " Bank "	11.5	184.0
⊕	11.5	184.0 -
15' Lt.	11.6	183.9
40' "	11.9	183.6 -
70' "	11.6	183.9

195.54

13+06

"B" Home Ave

33

70' Lt.	11.6	183.9
40' "	11.8	183.7 -
15' "	11.3	184.2
⊕	11.7	183.8 -
14' Rt = Lt Bank wash	11.5	184.0
15' " = Rt. side "	13.9	181.6
39.6 "	13.6	181.9 -
60' "	14.1	181.4
70' " = Rt. side Wash	14.8	180.7
75' " = " Bank "	12.4	182.7

13+07

39.6' Rt.	13.6	181.9 -
16' " = Lt. side wash	13.9	181.6
15' " = " Bank "	11.5	184.0
⊕	11.7	183.8 -
15' Lt.	11.3	183.2
40' "	11.8	183.7 -

13+17

70' Lt	12.1	183.4
40' "	13.3	182.2 -
27' "	13.2	182.3
15' "	11.7	183.8
⊕	11.7	183.8 -
15' Rt.	12.3	182.2
30' Rt = Lt. Bank	11.6	183.9
31' " = " side	14.1	181.4

195.54

13+17 (cont)

39.6	RT	14.4	181.1	-
65'	"	14.3	181.2	
75'	" = RT side wash	15.3	180.2	
80'	" = " Bank Wash	13.3	182.2	
13+25				
82'	RT = RT Bank wash	13.3	182.2	
80'	" = " side "	15.8	179.7	
62'	" = Lt. " "	13.4	182.1	
58'	" = " Bank "	12.3	183.2	
39.6	"	11.8	183.7	-
15'	"	12.2	183.3	
ϕ		12.3	183.2	-
15'	Lt.	11.8	183.7	
40'	"	13.9	181.6	-
50'		14.2	181.3	
55'	"	12.3	183.2	
70'	"	12.1	183.4	
13+50				
70'	Lt.	13.4	182.1	
40'	"	13.6	181.9	-
15'	"	12.9	182.6	
ϕ		12.6	182.9	-
15'	RT	12.0	183.5	
39.6	"	12.5	183.0	-
54'	" = Lt Bank wash	12.6	182.9	
55'	" = " side "	14.2	181.3	

195.54

Bth Home Ave

34

70' RT	14.2	180.8
80' " = RT side wash	15.5	180.0
82' " = " Bank "	12.6	182.9
13+75		
79' RT = RT Bank wash	12.4	183.1
77' " = " side "	14.4	180.7
53' " = Lt " "	14.7	180.8
51' " = " Bank "	13.0	182.5
39.6 RT	13.3	182.2
26' "	14.0	181.5
15' "	12.5	183.0
ϕ	12.7	182.8
15' Lt	13.0	182.5
23' "	12.7	182.8
40' "	13.6	181.9
70' "	13.3	182.2
14+00		
70' Lt	13.5	182.0
40' "	13.3	182.2
15' "	13.2	182.3
ϕ	12.7	182.8
15' RT	13.1	182.4
20' " = RT Bank wash	13.7	181.8
21' " = " side "	14.7	180.8
39.6 "	15.5	180.0
47' "	15.4	179.7

195.54

14+00 (con)

53. Rt = Rt. side wash 16.7 178.8
 63. " = " Bank " 13.0 182.5

14+18

39.6 Rt = Rt. Bank wash 13.9 182.6 -
 39.0 Rt = " side " 15.5 180.0
 16 " = Lt " " 15.8 179.7
 15 " = " Bank " 13.6 181.9
 4 " 13.5 182.0 -
 15 Lt 13.7 181.8
 40 " 13.6 181.9 -
 70 " 13.9 181.6

14+20

70 Lt. 13.9 181.6
 40 " 13.7 181.8 -
 15 " 13.7 181.8
 4 " 13.5 181.0 -
 14. Rt = Lt. Bank wash 13.6 181.9
 15 " = Lt. side " 15.9 179.6
 38 " = Rt " " 15.6 179.9
 39.6 " = " Bank " 13.7 181.8 -

14+40

39.6 Rt 13.7 181.8 -
 30 " = Rt. Bank wash 14.1 181.4
 29 " = " side " 15.0 180.5
 15 " 16.0 179.5
 1 " = Lt side Wash 16.5 179.0

195.54

"B" Home Ave

35

4 = Lt. Bank wash 14.6 180.9 -
 15 Lt 13.7 181.8
 40 " 14.0 181.5 -
 45 " 15.2 180.3
 70 " 13.6 181.9

14+45

70 Lt 13.6 181.9
 40 " 15.5 180.0 -
 35 " 14.0 181.5
 15 " 14.4 181.1
 7 " = Lt. Bank Wash 14.8 180.7
 4 " = " side " 16.5 179.0 -
 15 " Rt 15.8 179.7
 28 " = Rt side wash 15.5 180.0
 29 " = " Bank " 14.0 181.5
 39.6 Rt 13.6 181.9 -

14+65

39.6 Rt. 13.3 182.2 -
 25 " = Rt. Bank wash 13.7 181.8
 24 " = " side " 15.5 180.0
 15 " 14.1 179.4
 4 " 16.0 179.5 -
 14 Lt = Lt. side wash 16.5 179.0
 15 " = " Bank " 14.2 181.3
 23 " 14.3 181.2
 27 " 16.2 179.3

195.54

14+85 (con)

40' Lt		14.8	180.7	-
70' "		15.0	180.5	
		14+75		
70' Lt		13.9	181.6	
40' "		15.0	180.5	-
20' "	= Lt Bank wash	15.8	179.7	
15' "	= " side "	16.6	178.9	
±		16.1	179.4	-
15' Rt.		16.5	179.0	
19' "	= Rt. side Wash	16.6	178.9	
20' "	= " Bank "	13.8	181.7	
39.6 "		12.4	183.1	-
		14+83		
39.6 Rt		12.2	183.3	-
"	= Rt. Bank wash	13.8	181.7	
15' "	= " side "	16.6	178.9	
±		16.4	179.1	-
15' Lt		16.6	178.9	
23' "	= Lt side Wash	17.0	178.5	
25' "	= " Bank "	15.6	179.9	
40' "		15.0	180.5	-
50' "		13.8	181.7	
70' "		13.8	181.7	
		14+86		
70' Lt		13.8	181.7	
40' "		14.5	181.0	-

195.54

"B" Hom Ave

36

26' Lt.	= Lt. Bank Wash	15.6	179.9	
24' "	= " side "	17.0	178.5	
15' "		16.8	178.7	
±		17.0	178.5	-
13' Rt.	= Rt. side wash	16.5	179.0	
15' "	= " Bank "	13.8	181.7	
39.6 "		12.2	183.3	-
		15+07 ²⁹ P.O.T.		
39.6 Rt	on Hub	12.02	183.52	-
15' "	= Rt. Bank Wash	14.2	181.3	
13' "	= " side "	15.8	179.7	
±		17.0	178.5	-
15' Lt		17.0	178.5	
25' "	= Lt. side wash	17.3	178.2	
26' "	= " Bank "	14.7	180.8	
40' "		14.1	181.4	-
70' "		14.0	181.5	
		15+12		
70' Lt		14.0	181.5	
40' "		14.1	181.4	-
26' "	= Lt. Bank wash	14.7	180.8	
25' "	= " side "	17.3	178.2	
15' "		17.0	178.5	
±		16.6	178.9	-
15' Rt.	= Rt side wash	15.7	179.8	
17' "	= " Bank "	14.2	181.3	
39.6 "		12.2	183.3	-

195.54

15+35

39.6 Rt.		13.1	182.4	-
30' "	= Rt. Bank wash	14.1	181.4	
18' "	= " side	17.0	178.5	
15' "		16.4	179.1	
4		16.3	179.2	-
10' Lt.		16.6	178.9	
15' "		17.6	177.9	
24' "	= Lt. side Wash	18.3	177.2	
27' "	= " Bank "	16.0	179.5	
40' "		16.4	179.1	-
50' "		15.1	180.4	
70' "		15.0	180.5	
T.P.	5.83	189.35	12.02	183.52
70' Lt.		15+60		
70' Lt.		8.9	180.5	
40' "		10.3	179.1	-
34' "	= Lt. Bank Wash	10.5	179.9	
32' "	= " side "	12.0	177.4	
26' "		12.5	176.9	
15' "		10.6	178.8	
4		10.3	179.1	-
7' Rt.		10.3	179.1	
15' "	Rt. side Wash	11.2	178.2	
19' "	" Bank "	9.5	179.9	
25' "		8.5	180.9	
39.6 "		8.1	181.3	-

189.35

15+75

39.6 Rt.		9.1	180.3	-
16' "	= Rt. Bank Wash	9.5	179.9	
15' "	= " side "	11.0	178.4	
4		10.6	178.8	-
15' Lt.		10.3	179.1	
20' "		10.3	179.1	
22' "		12.1	177.3	
30' "		12.1	177.3	
40' "		10.9	178.5	-
58' "	= Lt. side wash	11.1	178.3	
60' "	= " Bank "	9.4	180.0	
70' "		9.8	179.6	
70' Lt.		15+76		
70' Lt.		9.8	179.6	
60' "	= Lt. Bank Wash	9.4	180.0	
59' "	= " side "	11.1	178.3	
40' "		10.9	178.5	-
30' "		12.1	177.3	
22' "		12.1	177.3	
20' "		10.3	179.1	
15' "		10.3	179.1	
4		10.6	178.8	-
14' Rt.	= Rt. side wash	11.0	178.4	
15' "	= " Bank "	9.5	179.9	
39.6 "		9.1	180.3	-

"B" Home Ave

37

189.35

16+07

39.6 Rt.			10.3	179.1	-
15' "			9.6	179.8	
1' "	Rt. Bank	Wash	9.1	180.3	
4' "	"	side "	12.0	177.4	-
15' Lt.	in	"	11.1	178.3	
25' "	"	"	11.0	178.4	
29' "	"	"	11.9	177.5	
40' "	"	"	12.0	177.4	-
51' "	"	"	10.9	178.5	
70' "	"	"	11.1	178.3	

16+09

70' "	in	Wash	11.1	178.3	
51' "	"	"	10.9	178.5	
40' "	"	"	12.0	177.4	-
29' "	"	"	11.9	177.5	
25' "	"	"	11.0	178.4	
15' "	"	"	11.1	178.3	
1' "	= Rt. side	"	12.0	177.4	
4' "	= " Bank	"	9.1	180.3	-
15' Lt.			9.6	179.8	
39.6 "			10.3	179.1	-

16+17.

39.6 Lt.			10.3	179.1	-
15' "			9.5	179.9	
4' "			9.9	179.5	-
13' Rt.	= Rt. Bank	Wash	9.8	179.6	

189.35

15' Home Ave
34

15' Lt.	= Rt. side	Wash	11.7	177.7	
40' Lt.	in	"	12.0	177.4	-
70' "	"	"	11.2	178.2	
16+19					
70' Lt.	in	Wash	11.2	178.2	
40' "	"	"	12.0	177.4	-
17' "	= Rt. side	"	11.7	177.7	
15' "	= " Bank	"	9.8	179.6	
4' "			9.8	179.6	-
15' Rt.			9.5	179.9	
39.6 "			10.3	179.1	-

16+25

39.6 Rt.			10.5	178.9	-
15' "			10.2	179.2	
4' "			10.1	179.3	-
15' Lt.			10.3	179.1	
34' "	= Rt. Bank	Wash	11.0	178.4	
35' "	= " side	"	12.5	176.9	
40' "			12.5	176.9	-

16+50

52' Lt.	= Rt. side	Wash	12.5	176.9	
50' "	= " Bank	"	11.4	178.0	
40' "			11.4	178.0	-
15' "			10.5	179.9	
4' "			10.6	178.8	-
15' Rt.			10.8	178.6	
39.6 "			10.9	178.5	-

189.35

16+75

39.6 Rt		11.3	178.1	-
15' "		11.0	178.4	
±		11.1	178.3	-
15' Lt.		11.1	178.3	
38' "	= Rt. Bank wash	11.8	177.6	
40' "	= " side "	13.0	176.4	-
50' "	" "	12.0	177.4	

17+00

40' Lt.	In wash	13.0	176.4	-
16' "	= Rt. side "	13.5	175.9	
15' "	= " Bank "	12.5	176.9	
±		11.4	178.0	-
15' Rt		11.4	178.0	
39.6 "		11.6	177.8	-

17+02

39.6 "		11.6	177.8	-
15' "		11.4	178.0	
±		11.4	178.0	-
14' Lt	= Rt. Bank Wash	12.5	176.9	
15' "	= " side "	13.5	175.9	
40' "	" "	13.0	176.4	-

17+09

40' Lt	" "	13.0	176.4	
15' "	" "	13.5	175.9	
2' "	= Rt side "	14.0	175.4	
±	= " Bank "	12.1	177.3	

189.35

"B" Home Ave

39

15' Rt		11.6	177.8	
39.6 "		11.7	177.7	
	17+ "			
39.6 Rt		11.7	177.7	
15' "		11.6	177.8	
2' "	= Rt. Bank wash	13.1	176.3	
±	= " side "	14.0	175.4	
15' Lt	" "	13.7	175.7	
40' "	" "	13.6	175.8	
70' "		14.0	175.4	

17+25

73' Lt	= Lt. Bank wash	11.2	178.2	
71' "	= " side "	14.3	175.1	
40' "	" "	13.3	176.1	
15' "	" "	13.8	175.6	
±	" "	14.2	175.2	
12' Rt	= Rt. side "	14.9	174.5	
15' "	= " Bank "	12.8	176.6	
39.6 "		11.7	177.7	

17+30

39.6 Rt		11.8	177.6	
20' "	= Rt. Bank Wash	11.9	177.5	
15' "	= " side "	15.0	174.4	
±		14.0	175.4	
15' Lt		14.0	175.4	
40' Lt	= Lt. Side Wash	13.5	175.9	
70' "	= " " "	14.1	175.3	
71' "	= " Bank "	11.4	178.0	

189.35

17+32

70' Lt. = Lt. Bank Wash	11.4	178.0
40' " = " " "	11.4	178.0
15' "	13.3	176.1
ϕ	14.0	175.4
15' Rt	15.3	174.1
27' " = Rt. side Wash	14.6	174.8
29' " = " Bank "	12.0	177.4
39.6 "	11.8	177.6

17+50

39.6 Rt.	12.1	177.3
33' " = Rt. Bank Wash	12.3	177.1
31' " = " side "	16.0	173.4
15' "	15.1	174.3
7' "	15.1	174.3
ϕ	13.2	176.2
15' Lt = Lt side Wash	12.9	177.5
18' " = " Bank "	12.0	177.4
40' "	11.5	177.9
70' "	11.4	178.0

17+70

70' Lt	11.5	178.9
40' "	11.7	177.7
15' "	11.8	177.6
ϕ = Lt. Bank Wash	12.2	177.2
5' Rt = " side "	14.9	174.5
15' "	15.3	174.1

189.35

"B" Horn Ave

40

21' Rt	15.0	174.4
25' "	13.1	176.3
39.6 "	12.4	177.0

17+85

39.6 Rt	12.5	176.9
31' " = Rt. Bank Wash	12.7	176.7
29' " = " side "	14.8	174.6
15' "	15.0	174.4
2' " = Lt. side Wash	15.0	174.4
ϕ = " Bank "	12.4	177.0
15' Lt	12.2	177.2
40' "	11.6	177.8
70' "	11.6	177.8

17+90

70' Lt	11.6	177.8
40' "	11.7	177.7
17' "	12.3	177.1
15' "	14.1	175.3
ϕ = Lt. Bank Wash	13.5	175.9
2' Rt = " side "	15.2	174.2
15' "	15.2	174.2
32' " = Rt side Wash	13.9	175.5
33' " = " Bank "	12.7	176.7
39.6 "	12.7	176.7

		189.35	
		18+00	
39.4	Rt = Rt Bank Wash	12.8	177.6
37.	" = " side "	14.4	175.0
28	"	14.7	175.7
15.	"	15.8	173.6
2	" = Lt. side wash	16.0	173.4
4	" = " Bank "	12.7	177.7
15'	Lt	12.4	177.0
40	"	12.1	177.3
70	"	12.2	177.2

18+07

70	"	12.2	177.2
40	"	12.6	176.9
15	"	12.4	177.0
4	" Lt. Bank wash	13.1	176.3
3	" Rt = " side "	16.3	173.1
15	" Rt = " " "	17.5	171.9
23	"	17.3	172.1
27	"	15.9	173.5
32	"	14.5	174.9
39.6	" = Rt. side wash	14.4	175.0
41	" = " Bank "	13.0	176.4
50	"	13.0	176.4

18+10

50	Rt	13.0	176.4
41	" = Rt. Bank wash	13.0	176.4
39.6	" = " side "	14.4	175.0

12.12 1.50

189.35

"B" Home Ave 41

32	Rt	14.5	174.9
27	"	15.9	173.5
18	" = Lt. side wash	17.0	172.4
15	" = " Bank "	13.1	176.3
4	"	13.1	176.3
15	Lt.	12.4	177.0
40	"	12.5	176.9
70	"	12.2	177.2

T.P.

1.50

178.73

12.12

177.23

18+

R5

70	Lt	2.3	176.4
40	"	2.5	176.2
15	"	3.0	175.7
4	"	3.1	175.6
15	Rt	2.9	176.8
18	" = Lt. Bank Wash	3.1	175.6
20	" = " side "	4.8	173.9
39.6	"	4.9	173.8
47	" = Rt. side Wash	4.5	174.2
48	" = " Bank "	2.8	175.9
55	"	3.0	175.7

18+50

55	" Rt	3.1	175.6
52	" Rt = Rt. Bank Wash	3.1	175.6
50	" = " side "	6.2	172.5
39.6	"	5.2	173.5
15	" = Lt. side Wash	3.5	175.2
10	" = " Bank "	3.0	175.7

178.73

18+50 (con)

±	3.0	175.7
15' Lt.	3.0	175.7
35' "	4.3	174.4
40' "	3.1	175.6
70' "	3.1	175.6

18+75

70' Lt.	3.4	175.3
40' "	3.8	174.9
33' "	6.3	172.4
30' "	4.2	174.5
15' "	3.4	175.3
±	3.4	175.3
10' Rt = Lt. Bank wash	3.4	175.3
15' " = " side "	4.2	174.5
39.6 "	4.9	173.8
59' " = Rt. " "	6.3	172.4
47' " = " Bank "	3.5	175.2
70' "	3.4	175.3

19+00

70' Rt.	3.2	175.5
61' " = Rt. Bank wash	3.5	175.2
59' " = " side "	6.2	172.5
39.6 "	5.6	173.1
33' "	4.8	173.9
15' "	4.9	174.0
5' " = Lt. side "	4.8	173.9

178.73

"B" Home Ave

42

± = Lt. Bank wash	4.0	174.7
15' Lt.	3.8	174.9
30' "	4.1	174.6
37' "	6.7	172.0
40' "	6.2	172.5
46' "	3.7	175.0
70' "	3.5	175.2

19+25

70' Lt.	3.8	174.9
46' "	4.9	173.8
40' "	6.3	172.4
37' "	6.8	171.9
32' " Lt. Bank "	4.8	173.9
16' " = Lt. Bank wash	5.0	173.7
± = " " "	5.3	173.4
15' Lt.	5.8	172.9
39.6 "	5.4	175.3
55' " = Rt. side wash	4.0	172.7
57' " = " Bank "	3.6	175.1

19+31

55' Rt = Rt. Bank Wash	3.6	175.1
53' " = " side "	6.1	172.6
39.6 "	5.5	173.2
15' "	5.8	172.7
± = Lt. side "	6.0	172.7
15' Lt = " " "	6.6	172.1

178.73
19+31

30' Lt. = Lt. side wash	7.0	171.7
33' " = " Bank "	5.4	173.3
40' "	5.4	173.3
44' "	4.6	174.1
70' "	3.8	174.9

19+55

70' Lt	4.4	174.3
45' " = Lt. Bank Wash	4.8	173.9
40' " = " side "	7.3	171.4
15' "	5.6	173.1
⊕	6.1	172.6
15' Rt = Rt side wash	6.2	172.5
39.6 " = Rt. side wash	6.8	171.9
45' " " Bank "	4.7	174.0
55' "	3.8	174.9

19+65

55' Rt	4.0	174.7
45' "	5.3	173.4
39.6 "	6.8	171.9
28' " = Rt Bank wash	5.1	173.6
15' " = " side "	4.2	174.5
14' " = " side "	5.9	172.8
⊕	6.0	172.7
15' Lt	6.1	172.6
25' "	6.1	172.6
40' "	7.2	171.5

178.73

"B" Home Ave

43

44' Lt = Lt. side wash	7.2	171.5
45' " = " Bank "	4.5	174.2
70' "	4.4	174.3

19+77

70' Lt	4.1	174.6
57' " = Lt. Bank Wash	4.8	173.9
53' " = " side "	7.0	171.7
40' "	6.9	171.8
35' "	6.1	172.6
27' "	6.9	171.8
15' "	6.6	172.1
⊕ " = Rt. side Wash	6.0	172.7
2' Rt = " Bank "	4.6	174.1
15' "	4.7	174.0
31' "	4.7	174.0
34' "	6.0	172.7
39.6 "	5.9	172.8

19+78

39.6 Rt	5.9	172.8
34' "	6.0	172.7
31' "	4.7	174.0
15' "	4.7	174.0
⊕ = Rt Bank Wash	4.6	174.1
1' Lt = " side "	6.2	172.5
15' " = " " "	6.4	172.1
27' "	6.9	171.8

178.73
19+78 (con)

35' Lt.	6.1	172.6
40' "	6.9	171.8
53' " = Lt. side wash	7.0	171.7
57' " = " Bank "	4.8	173.9
70' "	4.1	174.6

19+85

70' Lt	4.5	174.2
59' " = Lt. Bank wash	4.6	174.1
58' " = " side "	7.6	171.1
40' "	6.8	171.9
17' " = Rt. side wash	6.5	172.2
15' Lt = " Bank "	4.8	173.9
⊕	4.9	173.8
75' Rt	4.8	173.9
32' "	5.0	173.7
39.6 "	6.2	172.5
44' "	5.1	173.6

20+25

47' Rt.	5.8	172.9
39.6 "	6.5	172.2
30' "	5.4	173.3
15' "	5.3	173.4
⊕	5.5	173.2
15' Lt	5.4	173.3
19' " = Rt. Bank wash	5.4	173.3
23' " = " side "	6.3	172.4

178.73

"B" Home Ave

44

40' Lt	6.1	172.6
50' "	6.4	172.1
57' "	8.1	170.6
65' " = Lt. side wash	8.3	170.4
67' " = " Bank "	6.3	172.4
70' "	6.3	172.4

T.P.	3.38	176.96	5.15	173.58
------	------	--------	------	--------

Top hat at
20+50 ⊕

20+50

70' Lt	4.7	172.3
63' " = Lt. Bank wash	4.8	172.2
62' " = " side "	7.1	169.9
40' " " " "	4.6	172.4
21' " = Rt side "	4.7	172.3
79' " = " Bank "	4.0	173.0
15' "	4.2	172.8
⊕	4.2	172.8
15' Rt	4.1	172.9
39.6 "	4.0	173.0

20+75

39.6 Rt	4.3	172.7
15' "	4.5	172.5
⊕	4.7	172.3
15' Lt	4.6	172.4
17' " = Rt. Bank wash	4.6	172.4
19' " = " side "	5.9	171.1
40' " " " "	6.3	170.7

176.96		
20+75 (con)		
52' Lt = Lt. side Wash	7.1	169.9
" = " Bank "	5.8	171.2
70' "	4.9	172.1
20+80		
70' Lt	4.9	172.1
51' " = Lt. Bank Wash	4.2	172.8
50' " = " side "	7.5	169.5
40' " " "	7.9	169.1
28' " " "	6.2	170.8
18' " = Rt side "	7.0	170.0
15' " = " Bank "	5.5	171.5
⊥	4.8	172.2
15' Rt.	4.6	172.4
39.6 "	4.6	172.4
20+85		
39.6 Rt	4.6	172.4
15' "	4.9	172.1
⊥	5.2	171.8
15' Lt. = Rt. Bank Wash	4.5	172.5
16' " = " side "	7.9	169.1
32' " = Lt " "	7.0	170.0
40' " = " Bank "	4.7	172.3
70' "	4.5	172.5
20+90		
70' Lt	4.5	172.5
40' " = Lt "	4.9	172.1

176.96		
"B" Home Ave		
48		
35' Lt = Lt. Bank Wash	4.9	172.1
28' " = " side "	6.8	170.2
15' " = " " "	8.0	169.0
14' " = " Bank "	4.4	172.6
⊥	5.0	173.0
15' Rt.	4.8	172.2
39.6 "	4.6	172.4
21+25		
39.6 Rt	5.3	171.7
15' "	5.0	172.0
⊥ = Rt. Bank Wash	5.0	172.0
5' Lt = " side "	7.0	170.0
15' "	7.2	169.8
30' " = Lt. side + Bank Wash	5.5	171.5
40' "	4.6	172.4
70' "	5.0	172.0
21+35		
70' Lt	5.0	172.0
40' "	4.8	172.2
32' " = Lt Bank Wash	4.7	172.3
31' " = " side "	5.5	171.5
15' " " "	7.3	169.7
⊥ = Rt. side "	4.8	170.2
2' Rt = " Bank "	5.7	171.3
15' "	5.1	171.9
39.6 "	5.2	171.8

176.96

21+50

39.6 RT.	5.4	171.6
24' " = Rt. Bank Wash	5.7	171.3
22' " = " side "	6.8	170.2
15' "	6.8	170.2
9' "	6.8	170.2
5' "	7.8	169.2
¢ 6	6.5	170.5
10' Lt.	6.9	170.1
15' "	8.8	168.2
19' " = Lt. side wash	8.8	168.2
22' " = " Bank "	6.0	171.0
40' "	5.4	171.6
70' "	5.4	171.6

21+85

70' Lt.	5.5	171.5
40' "	5.5	171.5
16' " = Lt. Bank Wash	5.3	171.7
15' " = " side "	7.9	169.1
¢	8.0	169.0
5' RT	6.8	170.2
15' "	6.8	170.2
24' "	6.8	170.2
30' "	7.7	169.3
39.6 "	7.7	169.3
42' " = Rt. side wash	7.7	169.3
43' " = " Bank "	6.7	170.3

176.96

21+87

44' RT = Rt. Bank Wash	6.7	170.3
43' " = " side "	7.7	169.3
39.6 "	7.7	169.3
30' "	7.7	169.3
28' "	6.8	170.2
15' "	6.8	170.2
5' "	6.8	170.2
¢	8.0	169.0
14' Lt = Lt. side wash	7.9	169.1
15' " = Lt. Bank "	5.3	172.7
40' "	5.5	171.5
70' "	5.5	171.5

22+00

70' Lt	6.2	170.8
40' "	6.1	170.9
15' "	5.8	171.2
12' " = Lt. Bank Wash	5.8	171.2
11' " = " side "	8.1	168.9
¢	8.5	168.5
5' RT	7.4	169.6
15' "	7.0	170.0
37' "	7.0	170.0
39.6 "	8.6	168.4
50' " = Rt. side wash	7.2	169.8
55' " = " Bank "	6.3	170.7

"B" Home Ave

46

176.96

22+25

52'	RT = Rt. Bank wash	7.2	169.8
50 "	= " side "	8.2	168.8
39.6 "		8.1	168.8
15 "		8.4	168.6
♀	= Lt side wash	8.9	168.1
7' Lt.	= " Bank	6.4	170.6
15' "		6.2	170.8
40' "		6.7	170.3
70' "		6.3	170.7

22+29

70' Lt		6.3	170.7
40' "		7.0	170.0
15' "		6.3	170.7
♀	= Lt Bank wash	6.4	170.6
1' RT =	" side "	8.9	168.1
15' "		8.3	168.7
39.6 "		7.9	169.1
50' "	= RT side wash	9.1	167.9
52' "	= " Bank "	7.7	169.3

22+45

56' RT =	Rt. Bank wash	5.2	171.8
53' "	= " side "	9.4	167.6
39.6 "		9.2	167.8
15' "	= Lt. side "	9.2	167.8
12' "	= " Bank "	6.8	170.2
♀	= " " "	6.5	170.5

176.94

15' Lt.		7.0	170.0
40' "		7.0	170.0
70' "		7.2	169.8

22+55

70' Lt		7.2	169.8
40' "		7.2	169.8
15' "	= Lt. Bank wash	6.9	170.1
♀	= " side "	8.3	168.7
15' RT	= " " "	7.9	169.1
22' "	" " "	9.8	167.2
39.6 "		8.8	168.2
53' "	= Rt. side wash	9.8	167.2
60' "	= " Bank "	0.0	177.0

22+60

55' RT =	Rt. Bank wash	1.0	176.0
48' RT =	" side "	9.7	167.3
39.6 "		9.5	167.5
32' "		10.2	166.8
30' "		7.0	170.0
15' "		8.0	169.0
♀		8.4	168.6
15' Lt =	Lt side wash	8.8	168.2
16' "	= " Bank "	8.0	169.0
35' "		8.4	168.6
40' "		7.6	169.4
70' "		7.4	169.6

176.96

22+80

70' Lt		7.4	169.6
110' "		7.5	169.5
27' "	= Lt. Bank Wash	7.4	169.6
26' "	= " side "	9.4	167.6
15' "		9.0	168.0
⊕		8.1	168.9
15' Lt		8.0	169.0
16' "		8.7	168.3
29' "		9.2	167.8
37' "	= Rt. side Wash	10.2	166.8
39.6 =	" Bank "	6.2	170.8

22+92

39.6 Rt.		5.2	171.8
28' "	= Rt. Bank Wash	7.8	169.2
27' "	" side "	10.5	166.5
15' "		9.8	167.2
⊕		9.8	167.2
15' Lt	= Lt. side Wash	10.4	166.6
26' "	= " Bank "	7.6	169.4
40' "		7.3	169.7
70' "		7.8	169.2
T.P.	9.84 180.11	6.69	170.27

23+15

70' Lt	= Lt. Bank wash	11.4	168.7
68' "	= " side "	12.7	167.4
40' "		14.1	166.0

180.11

"B" Home Ave

48

25' Lt.		13.5	166.6
15' "		12.4	167.7
5' "		12.0	168.1
⊕		13.0	167.1
15' Rt	= Rt. Bank Wash	12.1	168.0
18' "	= " side "	10.5	169.6
30' "		8.9	171.2
39.6 "		7.4	172.7

23+32

39.6 Rt		6.9	173.2
30' Rt		8.9	171.2
15' "		9.9	170.2
2' "	= Rt. Bank Wash	10.9	169.2
⊕	= " side "	13.0	167.1
15' Lt		12.4	167.7
35' "		12.8	167.3
40' "		13.9	166.2
70' "	1h. Wash	13.0	167.1

23+33

70' Lt	1h. Wash	13.0	167.1
40' "		13.9	166.2
37' "		12.8	167.3
15' "		12.4	167.7
2' "	= Rt. side wash	13.0	167.1
⊕	= " Bank "	11.0	169.1
15' Rt.		9.9	170.2

180.11

30' RT.		8.9	171.2
39.6 "		6.5	173.6
	23+50		
39.6' RT		4.5	175.6
25' "		9.0	171.1
15' "		10.1	170.0
ϕ		10.7	169.4
14' LT = Rt. Bank Wash		10.8	169.3
15' " = " Side "		13.8	166.3
40' " " "		12.9	167.2
55' " " "		13.5	166.6
70' " " "		14.1	166.0
	23+51		
70' LT " Wash		14.1	166.0
55' " " "		13.5	166.6
40' " " "		12.9	167.3
16' " = Rt. side Wash		13.8	166.3
15' " = " Bank "		10.7	169.4
ϕ		10.7	169.4
15' RT		10.3	170.0
25' "		9.0	171.1
39.6 "		4.5	175.6
	23+65		
39.6 RT		5.6	174.5
17' "		10.4	169.7
15'		10.4	169.7

180.11

"B" Home Ave

49.

ϕ		10.8	169.3
15' LT		10.1	170.0
39' " = Rt. Bank Wash		11.6	168.5
40' " = " side "		14.0	166.1
70' " " "		14.0	166.1
	23+85		
70' LT = Rt. side Wash		14.6	165.5
67' " = " Bank "		12.7	167.4
40' " " "		11.3	168.8
15' " " "		11.0	169.1
8' " " "		10.6	169.5
ϕ		10.5	169.6
5' RT		10.5	169.6
15' " " "		10.5	169.6
39.6 "		8.8	171.3
	23+87		
39.6 RT		8.9	171.2
15' " " "		10.5	169.6
6' " " "		10.6	169.5
5' " " "		12.1	168.0
ϕ		12.1	168.0
7' LT		12.3	167.8
8' " " "		10.7	169.4
15' " " "		11.0	169.1
40' " " "		11.3	168.8

180.11

24+00

40' Lt.	11.2	168.9
15' Lt.	10.3	169.8
13' "	10.3	169.8
11' "	12.6	167.5
4	12.4	167.5
12' Rt.	12.9	167.2
15' "	11.6	168.5
18' "	10.0	170.1
39.6 "	9.2	170.9

24+11

39.6 Rt.	8.7	171.4
15' "	10.7	169.4
13' "	10.4	169.3
8' "	13.6	166.5
4	12.8	167.3
5' Lt.	12.8	167.3
6' "	10.1	170.0
15' "	10.1	170.0
40' "	11.2	168.9

24+15

40' Lt = E. Bank of cross wash.	11.4	168.7
15' " = E " " " " "	10.8	169.3
6' "	10.4	169.7
4	10.2	169.9
8' Rt.	10.0	170.1
15' "	9.6	170.5
39.6 "	8.8	171.3

180.11

24+17

39.6 Rt.	8.8	171.3
15' "	9.6	170.5
4	10.2	169.9
15' Lt = E. side cross Wash	13.0	167.1
40' " = E " " " "	13.4	166.7

24+23

40' Lt. = W. side cross wash	13.5	166.6
15' " in " " "	13.0	167.1
5' " = E side " " "	12.5	167.6
4 = E. Bank " " "	10.9	169.2
15' Rt.	9.6	170.5
39.6 "	8.9	171.2

24+25

39.6 Rt.	8.9	171.2
15' "	9.5	170.6
3' " = E. Bank cross wash	10.7	169.4
4 = E. side " " "	12.5	167.6
15' Lt = W. " " " "	12.7	167.4
20' Lt = W. " " " "	11.9	168.2
40' " = W. Bank " " "	11.8	168.3

24+32

40' Lt	11.0	169.1
15' " = W. Bank cross Wash	11.0	169.1
2' " = W. side " " "	10.7	169.4
4 = W side " " "	12.6	167.5
15' Rt = E " " " "	12.5	167.6

'B' Home Ave

50.

180.11
24+32 (con)

17' RT = E. Bank cross Wash	10.2	169.9
39.6 "	9.0	171.1
T.P. Hub 0.15	179.57	0.69 179.92

N. Lin. Home Ave
old sta. 25+22

24+34

39.6 RT = E. Bank cross wash	8.5	171.1
27 " = E. Bank cross wash	8.7	170.9
15 " = E. side " "	11.5	168.1
2 " = W " " "	12.0	167.6
⊕	10.0	169.6
15' Lt	10.1	169.5
40 "	10.6	169.0

24+38

40 "	10.5	169.1
15 "	9.5	170.1
⊕	9.9	169.7
15' RT = W. Bank cross Wash	9.9	169.7
22 " = W. side " "	11.5	168.1
39.6 " = E " " "	10.9	168.7
43 " = E Bank " "	8.5	171.1

24+50

50' RT ⊕ cross Wash	10.7	168.9
39.6 " = W. side " "	10.4	169.2
38 " = W Bank " "	8.8	170.8
15. " "	8.8	170.8
⊕	8.9	170.7
15' Lt	9.6	170.0
40 "	10.5	169.1

179.57
24+53

40' Lt.	10.6	169.0
15 "	9.7	169.9
⊕	9.1	170.5
15 RT	9.1	170.5
39.6 " = W. Bank Cross Wash	9.0	170.6
40. " = W side " "	10.1	169.5
50 " Th Wash	10.6	169.0

24+75

39.6 RT	8.2	171.4
15. "	9.0	170.6
⊕	9.8	169.8
15' Lt.	10.3	169.3
40 "	11.1	168.5

25+00

40' Lt	11.1	168.5
15 "	11.1	168.5
⊕	10.2	169.4
15' RT.	9.4	170.2
39.6 "	7.3	172.3

25+15

39.6 RT	2.0	177.6
15. "	4.6	175.0
⊕	7.7	171.9
15' Lt	10.8	168.8
20 "	11.4	168.2
40 "	11.5	168.1

"B" Home Ave
51

179.57

25+25

40' Lt.	11.8	168.8
24 "	11.2	168.4
23 "	12.4	167.2
15 "	11.3	168.3
⊕	7.3	172.3
15' Rt	4.1	175.5
39.6 "	0.7	178.9

25+50

39.6 Rt	1.5	178.1
28' "	2.9	176.7
15' "	5.6	174.0
⊕	9.0	170.6
10' Lt.	11.2	168.4
15' "	12.4	167.2
23 "	13.7	165.9
24 "	12.0	167.6
40' "	12.5	167.1

25+68

40' Lt	13.1	166.5
22' "	13.3	166.3
20' "	14.2	165.4
15' "	12.8	166.8
⊕	12.1	167.5
15' Rt	10.2	169.4
39.6 "	7.1	172.5

179.57

"B" Home Ave

52

25+82

39.6 Rt	10.7	168.9
15' "	12.6	167.0
⊕	12.9	166.7
15' Lt	13.3	166.3
20' "	14.3	165.3
22' "	13.0	166.6
40' "	13.8	165.8

26+00

40' Lt	13.7	165.9
21' "	13.8	165.8
20' "	15.4	164.2
15' "	13.8	165.8
⊕	13.7	165.9
15' Rt	13.6	166.0
39.6 "	12.1	167.5

26+20

39.6 Rt	13.1	166.5
15' "	15.0	164.6
⊕	14.5	165.1
15' Lt.	14.8	164.8
19' "	15.3	164.3
21' "	14.1	165.5
40' "	14.3	165.3

179.57 -

26 + 32

40' Lt.	14.6	165.0
20' "	14.7	164.9
15' "	15.0	164.6
Φ	16.0	163.6
15' Rt.	15.7	163.9
39.6 "	15.4	164.2

26 + 50

39.6 Rt.	16.1	163.5
15' "	16.8	162.8
Φ	16.6	163.0
15' Lt.	16.1	163.5
40' "	14.9	164.7

26 + 75

40' Lt.	15.2	164.4
15' "	15.6	164.0
Φ	17.1	162.5
15' Rt.	16.9	162.7
39.6 "	16.9	162.7

27 + 00

39.6 Rt.	16.3	163.3
15' "	17.2	162.4
Φ	17.3	162.3
15' Lt.	16.8	162.8
40' "	15.4	164.2

179.570

27 + 25

40' Lt.	15.7	163.9
15' "	16.6	163.0
Φ	16.2	163.31
12' Rt.	16.5	163.1
15' "	17.6	162.0
27' "	16.4	163.2
39.6 "	17.4	162.2

27 + 50

39.6 Rt.	17.2	162.4
15' "	16.9	162.7
Φ	17.1	162.47
15' Lt.	17.9	161.7
30' "	14.3	163.3
40' "	16.7	162.9

27 + 75

40' Lt.	17.2	162.4
15' "	17.2	162.4
Φ	17.0	162.57
15' Rt.	17.1	162.5
39.6 "	17.3	162.3

T.P.

3.53

170.200

12.90

166.67

28 + 00

39.6 Rt.	8.1	162.1
15' "	7.8	162.4
Φ	7.9	162.30
15' Lt.	7.4	162.8
40' "	8.0	162.2

"B" Home Axe

53

170.20

28+25

40' Lt.	8.4	161.8
15' "	8.2	162.0
⊕	8.2	162.00
15' Rt.	8.3	161.9
39.6 "	8.4	161.8

28+50

39.6 Rt.	8.8	161.4
15' "	8.6	161.6
⊕	9.0	161.20
15' Lt.	8.8	161.4
40' "	8.8	161.4

28+75

40' Lt.	9.6	160.6
15' "	9.1	161.1
9' "	10.0	160.2
⊕	9.9	160.30
15' Rt.	9.5	160.7
20' "	9.1	161.1
39.6 "	8.8	161.4

28+90

39.6 Rt.	8.5	161.7
15' "	8.5	161.7
10' "	10.0	160.2
⊕	10.2	160.00
5' Lt.	9.2	161.0
15' "	9.3	160.9
40' "	9.0	161.2

170.20

29+00

"B" Home Ave

54

40' Lt.	9.0	161.2
25' "	9.9	160.3
23' "	9.3	160.9
15' "	9.5	160.7
10' "	9.3	160.9
8' "	10.4	159.8
⊕	10.4	159.80
10' Rt.	10.8	159.4
15' "	8.8	161.4
22' "	9.9	160.3
32' "	8.6	161.6
39.6 "	8.2	162.0

29+25

39.6 Rt.	7.8	162.4
33' "	8.5	161.7
27' "	9.2	161.0
15' "	8.5	161.7
⊕	9.3	160.90
11' Lt.	10.3	159.9
15' "	9.2	161.0
20' "	9.3	160.9
25' "	10.4	159.6
40' "	10.3	159.9

170.20

29+37

40' Lt	10.7	159.5
25' "	10.6	159.6
20' "	9.3	160.9
15' "	9.0	161.2
11' "	10.3	159.9
⊕	10.1	160.10
15' RT	10.1	160.1
28' "	9.8	160.4
30' "	7.8	162.4
38' "	7.8	162.4
39.6' "	9.2	161.0

29+50

39.6 RT	8.6	161.6
36' "	7.2	163.0
28' "	7.4	162.8
25' "	8.6	161.6
15' "	7.8	162.4
⊕	8.2	162.00
4' Lt	8.2	162.0
6' "	8.6	161.6
11' "	10.5	159.7
13' "	10.5	159.7
15' "	9.0	161.2
20' "	9.2	161.0
28' "	10.5	159.7
40' "	10.6	159.6

170.20

"B" Home Ave

55

29+70

40' Lt	10.6	159.6
20' "	9.6	160.6
15' "	8.8	161.4
11' "	10.1	160.1
7' "	10.1	160.1
4' "	8.1	162.1
⊕	8.8	161.40
15' RT	8.7	161.5
23' "	8.2	162.0
29' "	6.6	163.6
33' "	7.6	162.6
39.6 "	7.6	162.6

30+00

39.6 RT	5.7	164.5
32' "	5.9	164.3
29' "	7.5	164.7
15' "	7.0	163.2
13' "	8.2	162.0
⊕	8.7	161.50
5' Lt	9.8	160.4
9' "	8.6	161.6
15' "	9.1	161.1
17' "	9.9	160.3
40' "	10.9	159.3

170.20

30+20

40' Lt	10.7	159.5
15' "	9.5	160.7
8' "	8.5	161.7
⊕	9.1	161.10
5' Rt	7.7	162.5
15' "	6.9	163.3
39.6 "	4.9	165.3

30+30

39.6 Rt.	5.1	165.1
26' "	6.0	164.2
15' "	7.3	162.9
⊕	8.0	162.20
15' Lt.	9.6	160.6
40' "	10.7	159.5

30+50

40' Lt	10.5	159.7
15' "	9.5	160.7
⊕	8.1	162.10
15' Rt	8.0	162.2
35' "	5.8	164.4
39.6 "	5.5	164.7

30+68

39.6 Rt.	5.8	164.4
15' "	7.3	162.9
⊕	8.1	162.10
15' Lt	8.9	161.3

170.20

Bⁿ Hom Ave

56

20' Lt	9.8	160.4
40' "	11.1	159.1
T.P. Pot Hub 2.73	166.64 ✓	6.29
		163.91 ✓

30+93

40' Lt	7.6	159.0
15' "	5.6	161.0
⊕	5.8	160.84
15' Rt	5.2	161.4
39.6 "	3.6	163.0

30+97

39.6 Rt	3.8	162.8
15' "	5.4	161.2
⊕	6.1	160.54
15' Lt	6.6	160.0
30 "	6.9	159.7
40' "	10.4	156.2

31+19

40' Lt	10.2	156.4
32' "	10.0	156.6
30 "	7.6	159.0
15' "	7.0	159.6
⊕	6.4	160.24
15' Rt	6.3	160.3
39.6 "	4.5	162.1

old hwy
Sta 30+70.20

166.64

31+23

39.6 RT	4.5	162.1
15' "	6.3	160.3
Φ	6.4	160.24
15' LT	7.0	159.6
40' "	8.0	158.6

31+40

40' LT	8.2	158.4
35' "	8.2	158.4
20' "	9.4	157.2
15' "	7.7	158.9
Φ	7.9	158.74
15' RT	7.0	159.6
36' "	6.2	160.4
39.6 "	7.2	159.4

31+51.6² P.C., 5² 33 RT. R=2000.

39.6 RT	7.5	159.1
35' "	7.0	159.6
15' "	7.2	159.4
Φ	7.6	159.04
15' LT	8.5	158.1
35' "	9.6	157.0
40' "	9.0	157.6

31+60

40' LT	9.0	157.6
15' "	9.6	157.0
Φ	9.7	156.94

166.64

"B" Home Ave
57

12' RT	9.1	157.5
15' "	7.5	159.1
39.6 "	7.4	159.2

31+75

39.6 RT	7.4	159.2
22' "	9.0	157.6
15' "	10.2	156.4
Φ	10.1	156.54
15' LT	10.0	156.6
40' "	9.6	157.0

32+00

40' LT	11.2	155.4
35' "	9.9	156.7
15' "	9.8	156.8
13' "	10.8	155.8

Φ	10.4	156.24
15' RT	10.1	156.5
39.6 "	9.0	157.6

32+25

39.6 RT	10.3	156.3
20' "	10.4	156.2
15' "	11.2	155.4
Φ	11.3	155.34
15' LT	10.7	155.9
18' "	11.4	155.2
40' "	11.5	155.1

166.64

32+50

40' Lt	11.2	155.4
15' "	11.5	155.1
¢	11.5	155.14
15' Rt	11.3	155.3
39.6 "	11.2	155.4

32+75

39.6 Rt	12.0	154.6
15' "	12.4	154.2
¢	12.0	154.64
15' Lt	11.9	154.7
40' "	11.5	155.1

33+00

83' Lt = Rt. Bank wash	11.8	154.8
40' Lt	11.8	154.8
15' "	12.3	
¢	12.3	154.34
15' Rt	12.4	154.2
39.6 "	12.7	153.9

33+30

39.6 Rt	13.2	153.4
15' "	12.8	153.8
¢	12.6	154.04
15' Lt	12.1	154.5
40' " = Rt. Bank wash	12.0	154.6
50' " = " side "	16.2	150.4
70' " " " "	14.0	150.6

166.64

33+40

"B" Home Ave

58

70' Lt	14 Wash	16.0	150.6
40' " = Rt. side	"	16.4	150.2
24' " = " Bank	"	12.5	154.1
15' "		12.5	154.1
¢		12.8	153.84
15' Rt		13.5	153.1
39.6 "		13.3	153.3

33+45 ³⁵ = E.C. ✓

39.6 Rt		13.1	153.5
15' "		13.3	153.3
¢		13.3	153.34
15' Lt		13.0	153.6
23' " = Rt. Bank wash		13.6	153.0
28' " = " side "		17.0	149.6
40' "	14 "	16.6	150.0
70' "	" "	14.7	151.9

33+50

70' Lt	14 Wash	14.7	151.9	
40' "	" "	16.4	150.2	
21' " = Rt. side	"	17.0	149.6	
15' " = " Bank	"	13.5	153.1	
¢		13.5	153.14	
15' Rt		13.3	153.3	
39.6 "		13.2	153.4	
T.P.	3.26	156.93 ✓	12.97	153.67

156.93

33+54

39.6	RT		4.0	152.9
15.	"		3.4	153.5
Φ			3.3	153.63
7.	LT. = Rt. Bank Wash		3.5	153.4
15.	" = " side		6.6	150.3
25.	"	1h "	7.2	149.7
40.	"	" "	4.4	150.5
70.	"	" "	5.2	151.7

33+61

70.	LT	1h Wash	5.6	151.9
40.	"	" "	5.7	151.2
15.	"	" "	7.1	149.8
2.	LT = Rt. side	" "	6.4	150.5
Φ	= " Bank	" "	3.6	153.33
15.	RT.		3.6	153.3
39.6	"		3.9	153.0

33+63

39.6	RT		3.9	153.0
15.	"		3.6	153.3
3.	" = Rt. Bank Wash		3.6	153.3
Φ	= " side	" "	6.1	150.83
15.	LT		7.2	149.7
40.	"		5.7	151.2
70.	"		5.0	151.9

156.93

33+70

70.	LT	1h Wash	5.1	151.8
40.	"	" "	6.2	150.7
15.	"	" "	6.3	150.6
Φ		" "	7.5	149.43
9.	RT	" "	7.1	149.8
13.	" = Rt. side	" "	5.7	151.2
15.	" = " Bank	" "	3.7	153.2
39.6	"		3.9	153.0

33+73

39.6	RT		3.9	153.0
18.	" = Rt. Bank Wash		3.7	153.2
15.	" = " side	" "	5.8	151.1
12.	"	1h "	7.1	149.8
Φ		" "	7.5	149.43
15.	LT	" "	6.3	150.6
40.	"	" "	5.6	151.3
70.	"		4.3	152.6

33+93

70.	LT		4.0	152.9
40.	"	1h Wash	5.4	151.5
25.	"	" "	5.2	151.7
15.	"	" "	6.0	150.9
Φ		" "	6.6	150.33
15.	RT	" "	6.9	150.0
37.	RT = Rt. side	" "	7.5	149.4
39.6	" = " Bank	" "	4.3	152.6

'B' Home Ave

59

156.93

34+00

43' Rt. = Rt. Bank Wash	4.3	152.6
39.6 Rt = " side "	7.5	149.4
15' " " "	6.8	150.1
⊕	6.8	150.13
7' Lt	6.6	150.3
15' " " "	5.4	151.5
40' " = Lt. side Wash	5.6	151.3
50' " = " Bank "	5.0	151.9
70' Lt.	4.2	152.7

34+25

70' Lt	3.3	153.6
65' "	4.7	152.2
40' " = Lt. Bank Wash	5.3	151.6
35' " = " side "	6.8	150.1
30' "	6.8	150.1
27' "	5.7	151.2
15' "	6.1	150.8
⊕	6.0	150.93
15' Rt	6.5	150.4
39.6 "	7.5	149.4
57' " = Rt. side Wash	8.0	148.9
59' " = " Bank "	4.4	152.5

34+73

78' Rt = Rt. Bank Wash	3.0	153.9
75' " = " side "	8.9	148.0
39.6 "	7.3	149.6

156.93

"B" Home Ave

60

15' Rt	6.8	150.1
⊕	6.8	150.13
15' Lt.	6.9	150.0
25' "	7.3	149.6
38' " = Lt. side Wash	6.8	150.1
40' " = " Bank "	4.3	152.6
70' "	4.0	152.9

34+77

70' Lt	4.0	152.9
40' " = Lt. Bank Wash	4.3	152.6
39' " = " side "	6.8	150.1
25' "	7.3	149.6
15' "	7.0	149.9
9' "	7.0	149.9
7' "	5.3	151.6
⊕	4.8	152.13
5' Rt	4.8	152.1
7' "	6.8	150.1
15' "	6.8	150.1
39.6 "	7.3	149.6
76' " = Rt. side Wash	8.9	148.0
79' " = " Bank "	3.0	153.9

34+95

156.93

34 + 95

83' RT	= Rt. Bank wash	2.8	154.1
79' "	= " side "	8.8	148.1
39.6 "		7.9	149.0
25' "		7.1	149.8
15' "		7.4	149.5
9' "		7.7	149.2
7' "		5.7	151.2
⊕		5.4	151.53
9' Lt		5.5	151.4
11' "		7.0	149.9
15' "		7.0	149.9
38' "	= Lt. side Wash	6.9	150.0
40' "	= " Bank "	4.8	152.1
70' "		4.3	152.6
		35 + 06	
70' Lt		4.3	152.6
40' "	= Lt. Bank wash	4.8	152.1
37' "	= " side "	7.1	149.8
15' "		6.9	150.0
2' "		7.2	149.7
⊕		5.7	151.23
7' RT		5.7	151.2
9' "		7.7	149.2
15' "		7.3	149.6
28' "		7.3	149.6
39.6 "		8.0	148.9

6.10

156.93

"B" Home Ave

61

84' RT	= Rt. side Wash	8.8	148.1
86' "	= " Bank "	3.5	153.4
		35 + 10	
87' RT	= Rt. Bank wash	3.5	153.4
85' "	= " side "	8.8	148.1
39.6 "		8.0	148.9
28' "		7.3	149.6
15' "		7.3	149.6
10' "		8.4	148.5
6' "		7.2	149.7
⊕		7.2	149.73
15' Lt		7.0	149.9
38' "	= Lt. side Wash	7.1	149.8
40' "	= " Bank "	4.4	152.1
70' "		4.3	152.6
		35 + 50	
70' Lt		6.2	150.7
40' "		6.2	150.7
32' "	= Lt. Bank wash	6.5	150.4
30' "	= " side "	8.3	148.6
15' "		7.5	149.4
20' "		7.5	149.4
5' "		8.6	148.3
⊕		8.7	148.23
15' RT		8.2	148.7
30' "		7.7	149.2

156.93

35 + 50 (cont.)

39.6 RT	8.4	148.5
81. " = RT. side wash	9.3	147.6
83. " = " Bank "	4.3	152.6

35 + 75

80. RT = RT. Bank wash	8.0	148.9
79. " = " side "	9.5	147.4
39.6 "	9.5	147.4
36. "	8.3	148.6
15. "	8.3	148.6
⊕	8.9	148.03
15. Lt.	7.5	147.4
18. " = Lt. side wash	9.4	147.5
21. " = " Bank "	6.2	150.7
40. "	7.3	149.6
50. "	6.4	150.5
70. "	6.4	150.5

36 + 00

70. Lt.	6.4	150.5
40. "	6.4	150.5
27. " = Lt. Bank wash	6.4	150.5
25. " = " side "	9.8	147.1
15. "	9.5	147.4
⊕	9.0	147.93
15. RT	8.6	148.3
32. "	8.4	147.5
39.6 "	10.2	146.7

156.93

36 + 35

"B" Home Ave

62

65. RT = RT side Wash	10.2	146.7
68. " = " Bank "	8.6	148.3

36 + 25

65. RT = RT. Bank wash	7.0	149.9
63. " = " side "	9.7	147.2
39.6 "	11.0	145.9
34. "	8.9	148.0
15. "	8.6	148.3
⊕	9.3	147.63
15. Lt.	10.0	146.9
29. " = Lt. side Wash	9.9	147.0
31. " = " Bank "	7.2	149.7
40. "	6.8	150.1
70. "	6.8	150.1

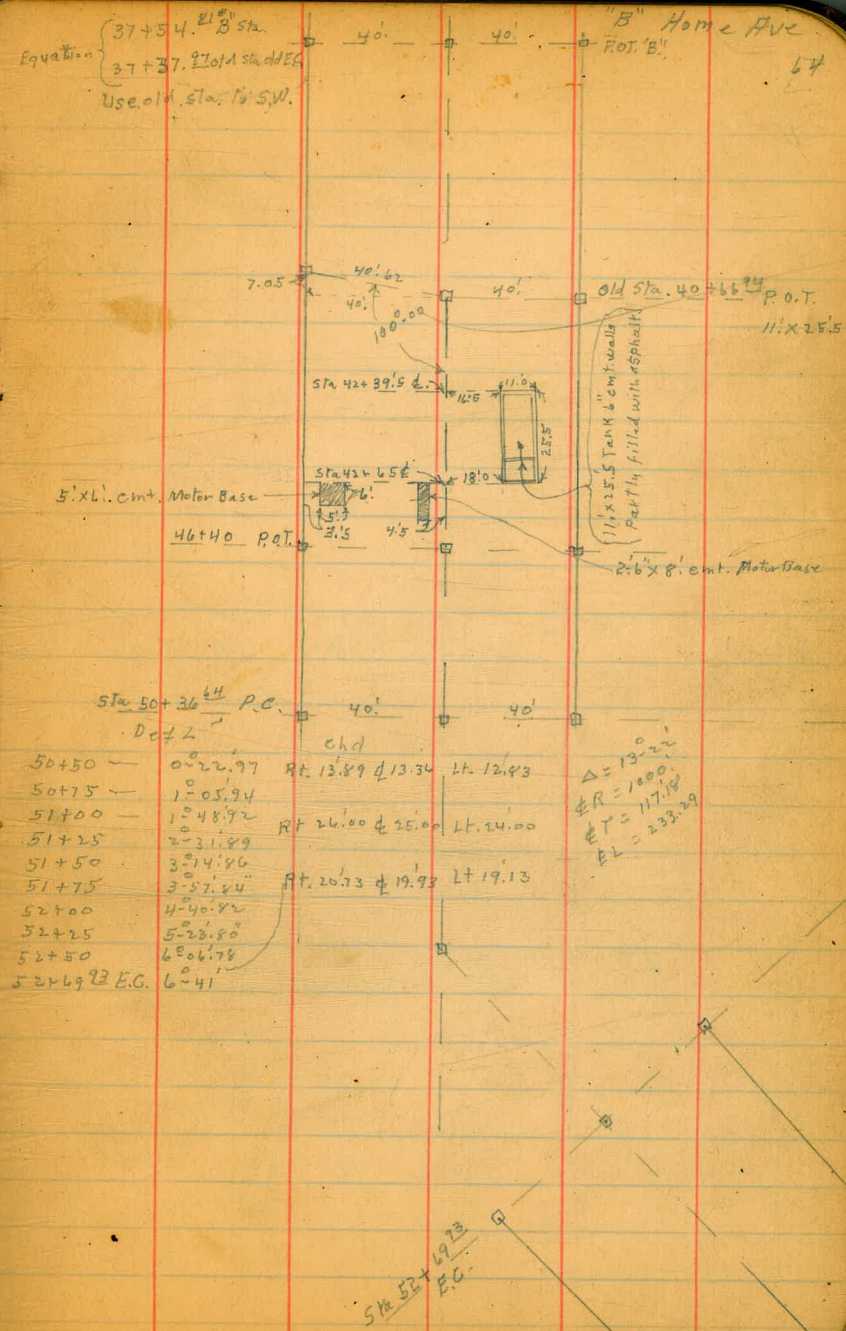
36 + 40

70. Lt.	6.8	150.1
40. "	6.8	150.1
37. "	7.7	149.2
36. Lt = Lt. side wash	9.8	147.1
15. "	9.9	147.0
⊕	9.4	147.53
7. RT.	9.2	147.7
8. "	7.1	149.8
15. "	7.1	149.8
16. "	9.0	147.9
28. "	9.0	147.9

		156.93		
		36+40		
31' RT		11.2	145.7	
39.6 "		10.9	146.0	
65' "	= Rt. side Wash	9.8	147.1	
70' "	= " Bank "	5.4	151.5	
		36+65		
69' RT	= Rt. Bank Wash	6.9	150.0	
66 "	= " side "	10.4	146.5	
39.6 "		10.7	146.2	
29' "		10.9	146.0	
26 "		9.6	147.3	
15' "		9.5	147.4	
12' "		8.4	148.5	
2' "		8.3	148.6	
Σ		9.6	147.33	
T.P.	9.91	156.94	9.90	147.03 old P.I. Hub
15' Lt			10.1	146.8
40' "	= Lt. side Wash		11.2	145.7
42' "	= Lt. Bank "		8.1	148.8
70' "			8.1	148.8
		36+75		
70' Lt		8.3	148.6	
47' "	= Lt. Bank Wash	8.4	148.5	
45' "	= " side "	7.3	149.6	
40' "		11.4	145.5	
15' "		10.1	146.8	
Σ		9.8	147.13	

		156.94	"B" Home Ave	
			63	
15' RT		9.7	147.2	
23' "		10.0	146.9	
30' "		10.9	146.0	
39.6 "		10.9	146.0	
67' "	= Rt. side wash	10.4	146.5	
69' "	= " Bank "	6.8	150.1	
		36+79, 33 K.W. line 40' from E		
		37+00		
67' RT	= Rt. Bank wash	7.2	149.7	
66' "	= " side "	10.6	146.3	
40' "		10.9	146.0	
31' "		10.9	146.0	
27' "		9.9	147.0	
15' "		10.3	146.6	
Σ		10.4	146.54	
15' Lt		10.3	146.6	
34' "		10.8	146.1	
40' "		11.7	145.2	
51' "	= Lt. Side Wash	11.9	145.0	
53' "	= " Bank "	8.7	148.2	
		37+17		
70' Lt		8.5	148.4	
53' "	= Lt. Bank wash	9.0	147.9	
52' "	= " side "	12.2	144.7	
42' "		12.1	144.8	
40' "		11.2	144.7	
15' "		10.7	146.2	

		156.94	
		37+17	
E		10.8	146.14
15'	RT	10.5	146.4
30'	"	10.3	146.6
40'	"	10.9	146.0
65'	" = Rt. side Wash	11.4	145.5
66'	" = " Bank "	7.7	149.2
		37+32	
65'	RT = Rt. Bank wash	7.5	149.4
64'	" = " side "	11.7	145.2
40'	"	10.4	146.3
32'	"	10.3	146.6
15'	"	10.8	146.1
E		11.1	145.84
15'	LT	10.9	146.0
40'	"	11.4	145.5
54'	" = Lt. side wash	12.4	144.5
56'	" = " Bank "	9.1	147.8
70'	"	4.2	152.7
82'	"	5.0	151.9
90'	"	7.3	149.6
		Equation 37+54.21 P.O.T. B = 37+37.22	EC. Use old sta from old line here on.
100'	LT,	9.8	147.1
90'	"	8.1	148.8
76'	"	7.3	149.6
68'	" = Lt. Bank wash	9.3	147.6
66'	" = " side "	12.3	144.6



Location of Concrete Wall
West Side of Langley North of K St

Sept 24 '93
5:00 PM
81.55
899

indexed
c.s.k.

65

1+01.6 East Face of Wall 0.90 E of W.L. Langley Bottom
" " " " 0.80 " " " " Top

0+55 " " " " W.L. Langley at Bottom
" " " " 0.30 E of W.L. " at Top

0+33 East Face of Wall 0.27 N of W.L. Langley Bottom
" " " " 0.15 " " " " Top

0+0

Island Rd. Hub

7

Langley

090

1+01.6

0+55

0+33

027

040

0+07

0530

X 30

Fd Lnt.

K St.

Concrete Wall

Fd Lnt.

156.94
P.O.T. 37+37⁹⁷ old E.C.

47'	Lt.	12.8	144.1
45'	"	11.8	145.1
40'	"	11.6	145.3
15'	"	11.6	145.3
±		11.3	145.64
15'	Rt	11.9	145.0
23'	"	11.4	145.5
28'	"	10.2	146.7
40'	"	10.9	146.0
64'	" = Rt. side wash	12.6	144.3
65'	" = " Bank "	7.1	149.8
37+75			
63'	Rt. = Rt. Bank wash	7.1	149.8
62'	" = " side "	12.2	144.7
40'	"	11.1	145.8
15'	"	11.5	145.4
±		11.7	145.24
15'	Lt.	12.5	144.4
40'	"	12.3	144.6
80'	" = Lt. side wash	12.9	144.0
38+00			
40'	Lt. in wash	13.4	143.5
15'	"	12.7	144.2
±		12.3	144.64
15'	Rt	12.1	144.8
40'	"	12.0	144.9

156.94

"B" Home Ave
66

40'	Rt = Rt. side wash	7.2	149.7
62'	" = " Bank "	12.1	144.8
38+30			
45'	RE = Rt. Bank wash	9.0	147.9
40'	" = " side "	12.3	144.6
15'	"	12.4	144.1
±		12.8	144.14
15'	Lt.	13.2	143.7
40'	"	13.8	143.1
38+42			
40'	Lt	13.0	143.9
15'	"	12.5	144.4
±		12.9	144.04
15'	Rt. = Rt. side wash	13.1	143.8
29'	" = " " "	12.3	144.6
39'	" = " Bank "	11.2	145.7
40'	"	8.9	148.0
38+45			
40'	Rt. in side wash	10.4	146.5
30'	"	11.4	145.5
29'	" = Rt. Bank wash	6.6	150.3
15'	" = " " "	7.7	149.2
4'	" = " " "	8.4	148.5
±	" = " side "	12.8	144.14
15'	Lt	12.6	144.3
40'	"	13.2	143.7

156.94

39+48

40' Lt	13.0	143.9
15' "	12.7	144.2
3' " = RT side Wash	12.7	144.2
± = " Bank "	8.4	148.54
15' RT	6.8	150.1
30' "	6.4	150.5
31' "	11.2	145.7
40' "	10.6	146.3

38+52

40' RT	5.4	151.5
31' "	5.9	151.0
15' "	4.9	150.0
±	7.4	149.54
10' Lt = RT. Bank wash	8.2	148.7
12' " = " side "	11.9	145.0
15' "	12.8	144.1
40' "	13.2	143.7

38+56

40' Lt	13.6	143.3
15' " = RT. side wash	12.0	144.9
13' " = " Bank "	8.3	148.6
±	6.7	150.24
15' RT	5.8	151.1
40' "	5.5	151.4

156.94

38+59

B Home Ave

67

40' RT	5.4	151.5
30' "	4.1	152.8
15' "	4.9	152.0
±	6.4	150.54
15' Lt = RT. Bank Wash	8.3	148.6
" = " Side "	12.1	144.8
40' " =	13.5	143.4

38+75

60' Lt	13.5	143.4
40' " = RT. side Wash	13.5	143.4
30' Lt = " Bank "	7.5	149.4
15' "	7.6	149.3
±	6.9	150.04
15' RT	5.3	151.6
40' "	2.7	154.2

38+83

40' Lt RT	2.7	154.2
15' "	5.7	151.2
6' "	7.5	149.4
±	6.0	150.94
6' Lt	7.5	149.4
15' "	7.5	149.4
34' " = RT. Bank Wash	8.6	148.3
40' " = " side "	13.5	143.4
60' "	13.8	143.1

156.94

38 + 90

60' Lt	13.8	143.1
40' " = Rt. side wash	13.5	143.4
33' " = " Bank "	8.4	148.5
15' "	7.7	149.2
13' "	9.1	147.8
⊕	8.4	148.54
15' Rt.	7.3	149.6
25' "	6.7	150.2
30' "	4.8	152.1
40' "	3.6	153.3

39 + 00

40' Rt.	4.0	152.9
25' "	7.1	149.8
15' "	7.9	149.0
⊕	8.6	148.34
15' Lt	9.6	147.3
17' "	8.2	148.7
32' "	9.1	147.8
35' "	13.5	143.4
46' "	13.7	143.2
50' " = Rt. Bank wash	14.0	142.9
55' " = " side "	15.2	141.7

39 + 15

40' Lt.	14.0	142.9
35' "	13.3	143.6
33' "	9.4	147.1

156.94

B Home Ave

68

23' Lt	9.4	147.5
22' "	10.4	146.5
15' "	10.7	146.2
⊕	10.0	146.94
15' Rt	8.5	148.4
25' "	7.8	149.1
40' "	4.6	152.3

39 + 25

40' Rt	5.2	151.7
25' "	7.3	149.6
15' "	8.3	148.6
⊕	9.9	147.04
15' Lt	10.4	146.1
23' "	11.0	145.9
26' "	9.7	147.2
40' "	12.4	144.1

39 + 40

40' Lt	13.2	143.7
25' "	10.6	146.3
15' "	11.4	145.1
⊕	10.6	146.34
15' Rt	8.8	148.1
40' "	6.4	150.5

156.94

39+50

40' RT	8.8	148.1
25' "	7.5	149.4
15' "	7.4	147.5
ϕ	10.5	146.44
15' LT	11.6	145.3
21' "	11.6	145.3
23' "	10.5	146.4
40' "	13.0	143.9

39+55

40' LT	12.6	144.3
25' N	11.1	145.8
15' "	11.8	145.1
ϕ	10.7	146.24
10' RT	10.0	146.9
15' "	8.0	148.9
25' "	7.3	149.6
26' "	8.7	148.2
40' "	9.1	147.8

T.P.B.M.B.P.

5.81

154.03

8.72

148.22

Ely, Cor. Box
Calverton Farm

39+70

40' RT	6.0	143.0
22' "	6.4	147.6
20' "	4.7	149.3
15' "	5.3	148.7
ϕ	6.6	147.43
6' LT	8.2	145.8

154.03

13 Home Ave

69

15' LT	8.7	145.3
36' "	8.7	145.3
40' "	7.7	144.3

39+75

40' LT	9.0	145.0
15' "	7.2	146.8
2' "	6.4	147.6
ϕ	8.3	145.73
7' RT	8.3	145.7
15' "	5.3	148.7
20' "	6.5	147.5
35' "	6.5	147.5
40' "	5.8	148.2

39+78

40' RT	5.6	148.4
35' "	6.5	147.5
15' "	7.4	146.6
ϕ	8.3	145.73
3' LT	6.7	147.3
15' "	7.2	146.8
18' "	7.2	146.8
22' "	9.9	144.1
40' "	9.3	144.7

154.03

39+81

40' Lt	9.3	144.7
21' "	10.1	143.9
17' "	7.0	147.0
15' "	7.0	147.0
13' "	8.8	145.2
⊕	8.3	145.73
15' Rt	7.5	146.5
27' "	4.6	147.4
40' "	5.4	148.6

40+00

40' Rt	6.2	147.8
15' "	7.5	146.5
⊕	8.0	146.03
15' Lt	8.6	145.4
40' "	9.3	144.7

40+18

40' Lt.	8.7	145.3
15' "	8.5	145.5
⊕	8.0	146.03
15' Rt	7.5	146.5
30' "	6.9	147.1
40' "	4.2	149.8

40+23

40' Rt	1.7	152.3
15' "	7.5	146.5
⊕	8.0	146.03

154.03

B Home Ave

70

15' Lt.	8.3	145.7
40' "	8.7	145.3

40+27

40' Lt	8.2	145.8
15' "	8.0	146.0
⊕	8.1	145.93
15' Rt	5.5	148.5
40' " E. Edge Berm Fairmont Ave	+1.1	155.1

40+30

40' Rt	+1.1	155.1
27' " E. Edge Berm.	+0.3	154.3
15' "	3.1	150.9
⊕	6.7	147.33
15' Lt	7.6	146.4
40' "	7.9	146.1

40+34⁵⁰

40' Lt.	6.9	147.1
15' "	4.7	149.3
⊕	2.8	151.23
15' Rt E. edge berm	0.7	153.3
T.P.	2.07	159.91
40' Rt. = E. edge cmt. Pavmt.	4.93	152.84
		154.98

40+37

40' Rt on pavmt	4.8	155.1
15' "	6.8	153.1
⊕ = E. Edge Berm.	7.7	152.21

159.91

40+37 (con)

15' Lt = E. Edge Berm. 8.9 151.0

40' " = " " " 10.3 149.6

40+40⁵⁰15' Rt. of ϕ on E. Edge Pavmt 7.02 152.8940+43³⁰ ϕ on E. Edge Pavmt. 7.96 151.95 \checkmark

40+45

15' Lt. of ϕ on E. edge pavmt. 8.90 151.0140+46³⁰40' Lt. of ϕ on E. edge pavmt. 10.32 149.59

40+55

40' Rt. of ϕ on W. edge Fairmont Pavmt 4.17 155.7440+60²⁰40' Rt. of ϕ W. edge Berm. 4.0 155.9

15' " " on W. edge pavmt. 6.14 153.77

 ϕ on " " 7.2 152.71 \checkmark

15' Lt " " 8.1 151.8

40' " " " 9.4 150.5

40+63²⁰ ϕ on W. edge Pavmt 7.11 152.8040+64²⁰15' Lt. of ϕ on W. edge pavmt. 8.01 151.90

40+66

40' Lt. of ϕ on W. edge pavmt 9.18 150.73

159.91

"B" Home Ave

40+68

71

40' Lt 9.1 150.8

15' " 7.7 152.2

 ϕ on W. edge Berm 6.7 153.21

15' Rt. " " " 6.2 153.7

40' " Toe slope 7.6 152.3

40+71

40' Rt. 8.3 151.6

15' " Toe slope 8.7 151.2

 ϕ " " " 8.7 151.21

15' Lt W. edge Berm 8.1 151.8

40' " " " " 9.0 150.9

40+79

40' Lt Toe slope 13.6 146.3

18' " " " 12.0 147.9

15' " " " 9.8 150.1

8' " " " 8.8 151.1

 ϕ " " " 9.6 150.31

15' Rt. 9.1 150.8

40' " 7.7 152.2

41+00

40' Rt. 8.4 151.5

15' " 9.0 150.9

 ϕ " " " 10.0 149.91

15' Lt. 11.4 148.5

22' " 11.8 148.1

40' " 13.8 146.1

159.91

41+15

40' Lt.	12.7	147.2
15' "	10.7	149.2
♀	9.6	150.31
15' Rt.	8.8	151.1
40' "	8.2	151.7

41+25

40' Rt.	8.3	151.6
15' "	8.9	151.0
♀	9.8	150.11
12' Lt.	10.7	149.2
15' "	11.4	148.5
40' "	12.9	147.0

41+36

40' Lt.	13.2	146.7
23' "	12.4	147.5
15' "	11.0	148.9
♀	10.1	149.81
15' Rt.	9.1	150.8
	7.8	152.1

41+45

40' Rt.	8.3	151.6
15' "	9.9	150.0
♀	10.2	149.71
15' Lt.	11.1	148.8
40' "	12.3	147.6

36-45

159.91

1/8" 170m c Ave

72

41+55

40' Lt.	12.5	147.4
15' "	11.1	148.8
10' "	11.7	148.2
♀	11.7	148.21
6' Rt.	9.5	150.4
15' "	8.8	151.1
21' "	10.1	149.8
40' "	9.1	150.8

41+60

40' Rt.	9.0	150.9
21' "	9.1	150.8
15' "	10.4	149.5
10' "	8.4	151.5
♀	11.0	148.91
15' Lt.	11.2	148.7
33' "	12.2	147.7
40' "	10.7	149.2

41+70

40' Rt.	9.7	150.2
25' "	11.7	148.2
15' "	11.8	148.1
♀	11.3	148.61
15' Lt.	10.4	149.5
30' "	10.5	149.4
40	9.4	150.5

159.91

41+85.

40' RT.	9.8	150.1
25' "	11.2	148.7
ϕ	11.5	148.41
15' LT	12.0	147.9
25' "	12.0	147.9
35' "	9.6	150.3
40' "	9.6	150.3

42+00

40' LT.	12.8	147.1
15' "	12.6	147.3
ϕ	11.9	148.01
15' RT.	11.5	148.4
40' "	10.4	149.5

42+25

40' RT	11.5	148.4
15' "	12.3	147.6
ϕ	12.8	147.11
15' LT	13.1	146.8
40' "	14.1	145.8

42+39

40' LT	14.6	145.3	
27.5' " = S.E. cor Tank	13.1	146.8	ground
27.5' " = " " " "	12.6	147.3	Top ext. wall
27.5' " = " " " "	16.7	143.2	on asphalt in Tank
16.5' " = N.E. " "	16.7	143.2	" " " "
16.5' " = " " " "	12.6	147.3	on Top ext wall & ground

159.91

15 Home Ave

73.

15' LT	12.8	147.1
ϕ	13.8	146.11
15' RT	12.7	147.2
40' "	12.2	147.7

42+50

40' RT.	12.8	147.1
15' "	13.5	146.4
9' "	14.0	145.9
ϕ	14.8	145.11
15' LT.	12.9	147.0

17.2' " = Side of Tank	12.6	147.3	Top of wall & ground
" " = " " "	16.7	143.2	Bottom
28.2' " = " " "	16.7	143.2	"
28.2' " = " " "	12.6	147.3	Top of wall
28.2' " = " " "	15.0	144.9	ground.
34' "	15.5	144.4	
40' "	14.8	145.1	

42+65

40' LT	15.0	144.9	
32' "	15.8	144.1	
29' " = S.W. Cor Tank	15.5	144.1	ground.
29' " = " " "	12.6	147.3	Top wall
29' " = " " "	17.1	142.8	Bottom
18' " = N.W. " "	17.1	142.8	"
18' " = " " " "	12.6	147.3	Top wall
18' " = " " " "	13.0	146.9	ground

159.91

42+65 (con)

15' Lt.		13.0	146.9	
11' "		13.3	146.6	
6' "		16.1	143.8	
♀		15.6	144.31	
5' Rt	on ground.	14.3	145.6	
5' "	on Top Motor Base	11.8	148.1	no yardage
15' "		13.4	146.5	
34' "	on ground	13.6	146.3	
34' "	" Motor Base	12.4	147.5	no yardage
40' "		13.6	146.3	
T.P.	1.09	148.76	147.67	Bolt on Motor Base.

42+75

40' Rt		2.5	146.3	
15' "		2.8	146.0	
4' "		3.1	145.7	
♀		3.9	145.86	
5' Lt.		5.2	143.6	
9' "		3.4	145.4	
15' "		4.7	144.1	
25' "		5.2	143.6	
29' "		7.4	141.4	
40' "		6.7	142.1	

42+87

40' Lt		7.1	141.7	
15' "		6.5	142.3	
9' "		3.2	145.6	

87.90

148.76

B Home Ave

74

5' Lt.		6.1	142.7	
4' "		3.6	145.2	
♀		3.5	145.26	
15' Rt		2.8	146.0	
40' "		2.3	146.5	
		42+90		
40' Rt.		3.1	145.7	
16' "		3.0	145.8	
15' "		5.0	143.8	
♀		5.3	143.46	
5' Lt		6.2	142.6	
9' "		3.3	145.5	
15' "		6.6	142.2	
40' "		7.1	141.7	
		42+95		
40' Lt.		7.2	141.6	
15' "		6.1	142.7	
♀		5.7	143.06	
15' Rt		5.2	143.6	
18' "		2.8	146.0	
40' "		3.6	145.2	
		43+10		
40' Rt.		3.2	145.6	
15' "		5.4	143.4	
♀		5.6	143.16	
15' Lt.		4.5	142.3	
40' "		6.8	142.0	

148.76

43+20

40' LT	6.9	141.9
15' "	6.9	141.9
±	7.0	141.76
15' RT	6.4	142.4
37' "	5.8	143.0
40' "	3.5	145.3

43+35

40' RT	7.3	141.5
15' "	8.0	140.8
±	7.8	140.96
15' LT	7.9	140.9
40' "	7.6	141.2

43+75

40' LT	8.8	140.0
15' "	8.6	140.2
±	8.6	140.16
15' RT	9.0	139.8
40' "	9.0	139.8

44+00

40' RT	9.8	139.0
15' "	9.3	139.5
±	9.4	139.36
15' LT	9.2	139.6
40' "	9.0	139.8

148.76

44+25

40' LT	9.7	139.1
15' "	10.0	138.8
±	10.1	139.66
15' RT	10.2	138.6
40' "	10.0	138.8

44+60

40' RT	10.9	137.9
15' "	11.2	137.6
±	11.3	137.46
15' LT	11.0	137.8
33' "	11.5	137.3
40' "	10.0	138.8

44+70

40' LT	10.3	138.5
39' "	11.6	137.2
20' "	11.7	137.1
18' "	10.3	138.5
15' "	10.3	138.5
±	10.4	138.36

15' RT	9.5	139.3
25' "	8.3	140.5
40' "	7.8	141.0

44+82

40' RT	7.8	141.0
15' "	8.5	140.3
±	10.6	138.16

"B" Home Ave

75

148.76

44+82 (200)

15' Lt	10.7	138.1
20' "	10.7	138.1
22' "	11.6	137.2
38' "	11.4	137.4
40' "	10.0	138.8

44+85

40' Lt	10.0	138.8
38' "	10.0	138.8
20' "	10.6	138.2
15' "	10.8	138.0
⊕	10.6	138.16
15' Rt	8.9	139.9
40' "	7.8	141.0

44+91

40' Rt.	7.8	141.0
15' "	8.6	140.2
⊕	9.9	138.86
15' Lt.	10.2	138.6
40' "	10.0	138.8

44+97

40' Lt.	10.3	138.5
16' "	10.0	138.8
15' "	11.3	137.5
⊕	11.3	137.46
8' Rt	11.2	137.6
15' "	9.0	139.8
40' "	8.0	140.8

91-97

148.76

45+15

"B" Home Avo

76

40' Rt.	7.8	141.0
15' "	8.2	140.6
8' "	11.3	137.5
⊕	11.4	137.36
15' Lt.	11.2	137.6
27' "	10.7	138.1
40' "	10.7	138.1

45+25

40' Lt	10.9	138.9
15' "	10.1	138.7
13' "	11.5	137.3
⊕	11.3	137.46
8' Rt	9.4	139.4
15' "	9.1	139.7
34' "	8.0	140.8
40' "	5.9	142.9

45+35

40' Rt	5.1	143.7
29' "	8.3	140.5
15' "	9.7	139.1
⊕	10.2	138.56
15' Lt.	10.1	138.7
40' "	10.6	138.2

45+45

40' Lt.	10.4	138.4
15' "	9.9	138.9

148.76

45+45 (con)

40' Lt	10.0	138.76
15' Rt	9.0	139.8
26' "	7.4	141.4
40' "	4.4	144.4

45+62

40' Rt	4.7	144.1
26' "	6.6	142.2
15' "	6.9	141.9
40' Lt	8.7	140.06
15' Lt	9.5	139.3
40' "	10.7	138.1

45+68

40' Lt	10.9	138.1
15' "	10.5	138.3
40' Rt	9.6	139.16
15' Rt	8.4	140.4
21' "	6.8	142.0
40' "	4.5	144.3

45+80

40' Rt	4.0	144.8
29' "	4.8	144.0
23' "	7.2	141.6
15' "	7.8	141.0
40' Lt	9.2	139.56
15' Lt	10.1	138.7
40' "	11.6	137.2

148.76

45+95

"B" Home Ave

77

40' Lt	11.8	137.0
33' "	10.4	138.4
19' "	9.7	139.1
15' "	8.7	140.1
40' Rt	8.0	140.76
15' Rt	6.2	142.6
27' "	5.9	142.9
35' "	3.2	145.6
40' "	2.8	146.0

46+03

40' Rt	2.2	146.6
30' "	3.6	145.2
27' "	5.5	143.3
15' "	6.3	142.5
11' "	5.4	143.4
40' Lt	6.5	142.26
15' Lt	9.2	139.6
40' "	10.4	138.4

46+10

40' Lt	10.4	138.4
15' "	8.7	140.1
40' Rt	4.3	142.46
15' Rt	4.9	143.9
40' "	1.8	147.0

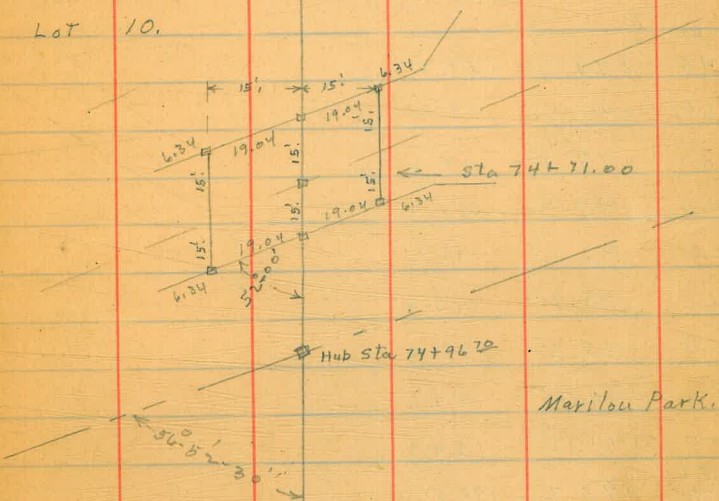
	148.76	
	46+25	
40' Rt.	2.2	146.6
15' "	4.9	143.9
⊕	6.3	142.46
15' Lt.	8.2	140.6
40' "	10.6	138.2
T.P.	7.76	141.00 ✓

Continued in F.B. 1437-17

Bridge Location

"B" Home Ave
76

Lot 10.



Marilou Park.

Home Ave Grades

13 Home Ave

79

		PaVmt	
0+00	229.13 ✓	229.13	.6
0+20	228.54 ✓	228.5	.4
+40	228.1 ✓	228.1	.4
+60	227.5	227.7	.5
+80	226.9	227.2	.6
1+00	226.1	226.6	.8
1+20	225.3	225.8	.8
↑ 520'	26' 50% Grade		
↓	pkc.		
6+40	199.9	199.8	.8
+60	199.1	199.0	.8
+80	198.2 ✓	198.2	.8
7+00	197.4 ✓	197.4	.8
20	196.6 ✓	196.6	.7
40	195.9 ✓	195.9	.6
60	195.3 ✓	195.3	.6
80	194.7 ✓	194.7	.5
8+00	194.2 ✓	194.2	.4
120'	193.7	193.8	.4
8+40	EVE 193.4 ✓		
↑ 760'	1.6% grade		
↓			
16+00	181.0	181.2	

Euclid Tree Pt 3

BM. NW. T. C. T.

3.79

339.64

335.85

Euclid
+ Rose Lawn
NW. Euclid
+ Dwight

BM. P. P.

6.84

332.80

25 + 0.0 169.4

35 + 0.0 152.75

DIRECTIONS FOR USE OF TABLES

TABLE No. 1.

Distance of slope stake from side or shoulder
stake for any width roadway, slope 1% to 1.
If ground is nearly level, the cut or fill at side
stake is located by the double entry method in
left column and top row. The number in body

IMPROVED TABLES

AND

INFORMATION

TABLE No. 2.

To find Tangent and External for curve of
any other degree, divide by degree of curve and
add correction found in column of corrections.
Degree of curve with a given L may be found
by dividing tangent (or external) opposite L by
given tangent (or external).
The distance from a point on the tangent to
the curve is very nearly the square of the tangent
length divided by twice the radius.

70-54
141.52

179.60
84.25
95.35
191.10

214.61
175
39.61

41.75
40.29
.44

200 feet Cont Cont