

1439

Traffic Tunnels

POSTS

FIELD BOOK

No. 385F

1439 Tunnels

2013

Our Leather Bound Engineers Note Books are carried in the following rulings:

- No. 380 LEVEL BOOK. Left and Right Hand Page the same as Left Hand Page of this Book.
- No. 382 FIELD BOOK. Left Hand Page as in this Book, Right Hand Page 4 x 4 to the inch, Center Line Red.
- No. 384 MINING TRANSIT BOOK. Left Hand Page as in this Book, Right Hand Page 8x8 to the inch, Center Line Red.
- No. 385 FIELD BOOK. Left Hand Page as in this Book, Right Hand Page 8 vertical and 4 horizontal lines to the inch, Center Line Red.

We also carry the Note Books listed above, bound in extra strong Fabri-Hide (otherwise the same quality of book), which can be furnished at a somewhat lower price.

In ordering Fabri-Hide covered books, add the letter "F" to catalog number.

**THE FREDERICK POST CO.**  
*ENGINEERING and DRAFTING SUPPLIES*  
IRVING PARK STATION  
CHICAGO, ILL.

MICROFILMED

DEC 23 1964

$$\begin{array}{r} 347.34 \\ 4.77 \text{ rim M.H.} \\ \hline 342.57 \\ 8.70 \\ \hline 333.87 = \text{flowline} \end{array}$$

347.34

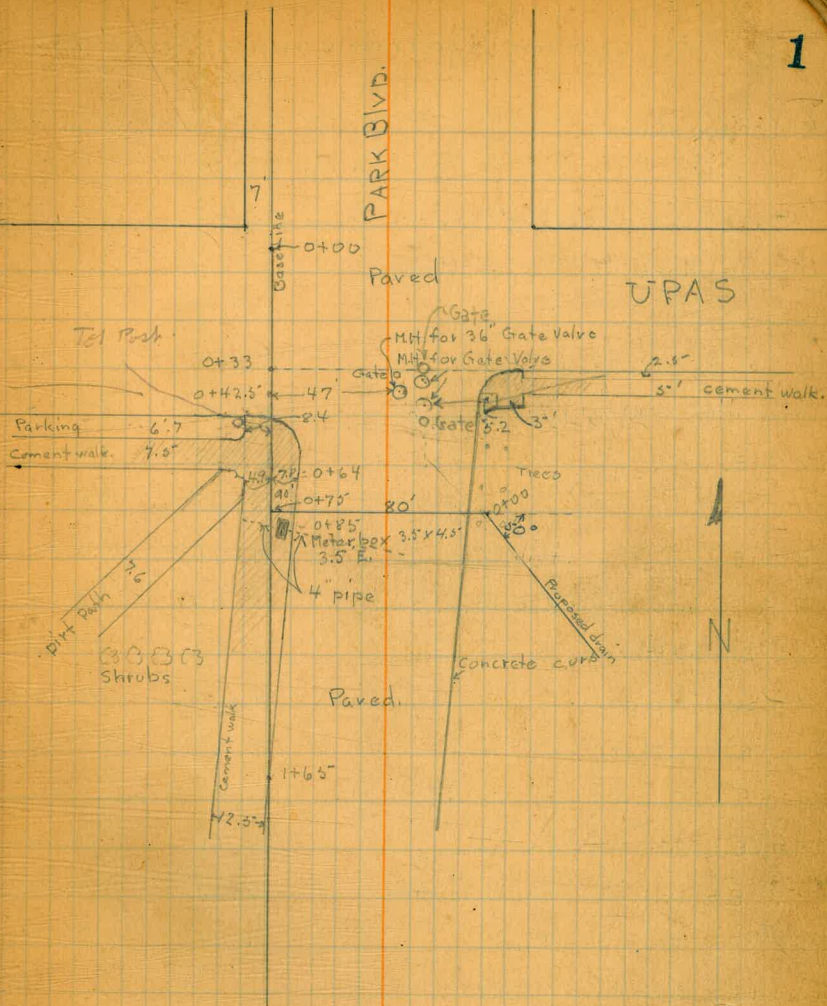
1

	1-21
Add. Levels Park Blvd. N. of ECAVON	22-32.
Tunnel Construction	34-35
Sketch	36
Drains from Tunnel	40
Stains ✓	41

alk.

Wallace	SD Ave. to Calhoun	47
Calhoun	Mason to Tyler	50
Alley Blk 40	Resub Normal Hts <sup>(Blk 40)</sup>	52-54
Alley Blk 25	Normal Hts	54-56
Alley Blk 152	U. Hts.	57-61
Florence Lane	32-35.	62-73

Benches  
 Park & Upas S.W. Cor B.P. 295.80  
 Campus & Normal  
 front Drive to School S.E. ret. 343.582



X Sections for traffic tunnel - Park + Uipas

	H.I.	Rod.	
B.M. Park + Uipas	296.80		N.W. Cor. B.P.
	300.68	4.88	

Base line = West 7' line of Park Blvd.

0+00 = North 7' line of Uipas

0+33

10' W. of Base line on Paving

Line 5.13 295.55

20' E. 5.15 95.53

45' E. 4.80 95.88

60' E. 4.70 95.98

73' E. opposite E. cb. Park Blvd. 4.71 95.97

82' E. = gutter 5.04 95.64

92' E. = top cb. 5.21 95.47

100' E. = gutter. 4.63 96.05

0+42.5

47' E. = M.H. on Rim 5.25 95.43

52' E. = M.H. top of 10" pipe 4.71 95.97

52' E. = M.H. Rim 8.28 92.40

0+48 = S. cb. line Uipas

10' W. = gutter 4.74 95.94

" top cb. 5.53 95.15

Line 4.89 95.79

20' E. 5.46 95.22

40' E. 4.98 95.70

60' E. 4.69 95.99

80' E. 4.83 95.85

3/3/32 - 8 hours

Osborne  
Sommermeier  
Isable  
Shea

H.I.

300.68

72' E. = gut.

INDEXED  
CSK. 2

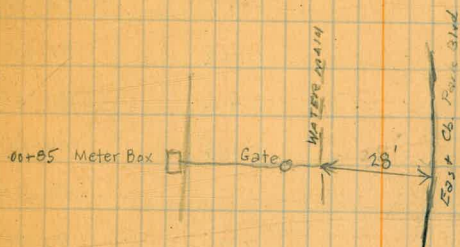
16" Water Main at 0+42.5 = 1' E center of M.H. 47' E

+52' Gut.

300.68

72' E. = gut.	5.22	295.46
" = Top Cb.	4.68	96.00
79' E. = Tree 12' diam.		
90' E. = dirt.	4.7	95.98
0+50.5 = Sign Post 4"x4" 74' E.		
0+54.5		
79' E. Tree 8' diam.		
86.6' E. Tree 8' diam.		
0+64		
16.5' W. = Palm tree 1 1/2" diam.	4.8	95.88
15' W. = Mail Box Post. 6"x6" concrete		
8.5' W. = edge of sidewalk.	4.70	95.98
7.7' E. = W curb line Park Blvd.	4.97	95.71
" = gut.	5.62	95.06
25' E.	5.29	95.39
40' E.	5.06	95.62
55' E.	5.16	95.52
72' E. = E. cb. line Park Blvd. gut.	5.62	95.06
" " " " top. cb.	5.01	95.67
95' E.	5.1	95.58
0+66 - 76.5' E. = 10" tree		
0+71 - 79.5' E. = 6" tree		
0+72 - 76.5' W. = 1 1/2' Palm tree		
0+75 - 75' E. = 1' tree		

0+85			
40' W. = Wedge dirt Path.	5.4	295.28	
27' W. = E. edge " "	5.2	95.48	
6.6' W. = E. edge Sidewalk	5.22	95.46	
3.5' E. = Meterbox 3.5' x 4.5' Run.	5.44	95.24	
Top of 4" Pipe - E. & W.	7.92	92.76	
Bottom of concrete box	8.67	92.01	
6.1' E. = Top Cb	5.43	95.25	
= gut.	6.06	94.62	
2.5' E. = Paving	5.70	94.98	
40' E. "	5.52	95.16	
5.5' E. "	5.60	95.08	
7.1' E. = gut.	6.00	94.68	
= top Cb.	5.34	95.29	
75.5' E. = 6" tree			
9.5' E. dirt.	5.9	94.78	
0+90 - 74' E. = 1' tree			
0+98 - 74' E. = 8" tree			
1+09.			
72' W. = Wedge of dirt path.	5.9	94.78	
66' W. E. " " " "	5.8	94.88	
10.5' W. = 1" water hydrant.			
8.5' W. = Wedge Sidewalk	5.73	94.95	
4.4' E. E. " " = top cb	5.87	94.81	
" " " " = gut.	6.47	94.21	



1+09			
30' E		6.05	294.63
35' E		5.97	94.71
50' E		6.02	94.66
68.6 E. = gut.		6.46	94.22
" top cb.		5.90	94.78
81' E.		6.1	94.58
95' E.		7.7	92.98 ✓
1+14	83.5' E. = 7" tree		
1+16	= 74' E. = 8" tree		
1+18	= 2' E. = 2" Pipe sign Post.		
1+21	= 80' E. = 7" tree		
1+33			
10.3 W. = E. edge Sidewalk		6.17	94.51 ✓
2.5' E. = Top cb.		6.39	94.29 ✓
gut.		6.97	93.71 ✓
15' E. = paving		6.67	94.01 ✓
35' E.		6.40	94.28 ✓
50' E.		6.45	94.23 ✓
65.2 E. = E. cb. line Park Blvd. - gut.		6.78	93.90 ✓
" top cb.		6.23	94.45 ✓
69.5' E. = 7" tree			
77' E. = 8" tree			



X Section for traffic tunnel Park Blvd. + Normal  
 El. Cajon 150' street 20' cbs.

sta. H.I.

+ 376

B.M. Campus + Normal front drive to school S.E. ret. BP 343.58

0+00 = E. line Park Blvd. 347.34 + 376

- 15

S.L. ?

W.L. El Cajon 7.8 339.54 ✓

top cb. 8.33 339.01 ✓

gut. on paving 9.09 338.25 ✓

cb. + 30' 8.83 338.51 ✓

cb + 55' = 8 8.42 338.72 ✓

cb + 80' 9.00 338.34 ✓

N. cb. in gut 10.19 337.15 ✓

N. cb. top cb. 9.48 337.86 ✓

0+00

N. cb. 8.39 338.95

gut 9.27 338.07

cb + 30 8.05 339.20

cb + 55 7.62 339.72

cb + 80 7.62 339.72

S. cb. line - gut 8.20 339.14

" " - top cb 7.28 340.06

S.L. 6.95 340.39

+ 40 6.83 340.51

Base line = S.L. El Cajon Produced.

3/4/32

Osborne  
 Sommeringer  
 Teale  
 Shea

3/4/32 - 8 hrs.

3/5/32 - 4 hrs

3/7/32 - 4 hrs.

6



SL. +10' N.	top cl	7.34	340.00
	put	7.90	339.44
+20'		7.74	339.60
+30		7.39	339.95
+40'		7.21	340.13
+50'		7.10	340.24
+60		7.05	340.29
+70		7.02	340.32
+75		7.05	340.29
+90		7.17	340.17
0+27.2			
126' N. = telephone Co. Mt. - on rim		7.48	339.86
	flow line	15.40	331.94
0+30			
+40's at sh. E. Cajon - on paving		6.91	340.43
+20's		7.00	340.34
+13	line	7.11	340.23
+10' N.		7.07	340.27
0+	20	6.99	340.99
40	30	6.87	340.47
	40	6.84	340.50
20'	50	6.82	340.52
	60	6.78	340.56
SL	70	6.76	340.58
	75 = E	6.77	340.57

Cable 4' down

+ 90' N.		6.88	340.46
0+40			
40' S. of Sh. El Cajon		6.43	340.91
20' S		6.55	340.79
Line		6.58	340.76
+10' N.		6.56	340.78
+20		6.50	340.84
+30		6.49	340.85
+40		6.48	340.86
+50		6.50	340.84
+60		6.47	340.87
+70		6.45	340.89
+75 = Sewer M.H.	on rim	6.44	340.99
	flow line	12.75	334.59
+90'		6.53	340.81
0+50			
-40' S.		5.92	341.42
-20		6.03	341.31
Line		6.06	341.28
+10' N.		6.03	341.31
20		6.02	341.32
30		6.07	341.27
40		6.11	341.23
50		6.15	341.19
60		6.14	341.20

+70		6.13	341.21
+75 = #		6.13	341.21
+90		6.13	341.21
0 + 55.8 = E. edge of Saffey Island			
+ 13.1 N. = 5. "	Paving	5.80	341.54
+ 45.1 N. = 5. "	top Cement	4.80	342.54
+ 45.1 N. = N. edge of Saffey Island paving		5.87	341.47
	top Cement	4.91	342.43
0 + 60			
- 40' s		5.65	341.69
- 20' s		5.70	341.64
line		5.71	341.63
+ 10 N.		5.73	341.61
+ 13.1 = S. edge Island.	paving	5.70	341.64
	top	4.88	342.46
+ 45.1 = N. " "	top	5.02	342.32
	paving	5.77	341.57
+ 50 N.		5.80	341.54
60		5.81	341.53
70		5.82	341.52
75 = #		5.79	341.55
+ 90		5.77	341.57
+ 107 = E. rail of E. track		5.78	341.56
+ 75 = # 324' W. to E. rail of E. track		5.65	341.69
+ 70 354' W. " " " "		5.64	341.70
+ 60 4' W. " " " "		5.64	341.70

+50'	4.56' W. to E. tail of E. track	5.63	341.71
+60	4.7' W. " " " " "	5.65	41.69
+30	4.7' W. " " " " "	5.65	41.69
+20	4.7' W. " " " " "	5.62	41.70
Line	4.7' W. " " " " "	5.58	41.76
-30' s.	4.7' W. " " " " "	5.51	41.83
0+62.4	= W. edge of Saffey Island		
+13.1 N. = S.	" " " " " gut	5.62	41.72
	top cement	4.95	42.39
+45.1 N. = N.	" " " " " gut	5.71	41.63
	top	5.05	42.29
0+70		5.47	
-30' s		5.49	41.85
-20'		5.50	41.84
-10'		5.54	41.80
Line		5.53	41.81
+10' N.		5.53	41.81
+20'		5.53	41.81
+30'		5.58	41.76
+40'		5.52	41.82
+50'		5.51	41.83
+60'		5.48	41.86
+70'		5.46	41.88
+75'		5.47	41.87
+90'		5.50	41.84

0+80				
-30' S		5.13	342.21	
-20' S		5.16	42.18	
-10		5.18	42.16	
line		5.22	42.12	
+10' N.		5.24	42.10	
+20		5.31	42.03	
+30		5.34	42.00	
+40		5.40	41.94	
+50		5.41	41.93	
+60		5.45	41.89	
+70 = E. rail of W. track		5.51	41.83	
+75		5.53	41.81	
+90		5.54	41.80	
+119 = W. rail of W. track		5.63	41.70	
+90' N. 3.2 W. = W. rail of W. track.		5.48	41.86	
+75' 4.5 W. " " " " "		5.42	41.92	
+70' 4.8 W. " " " " "		5.41	41.93	
+60' 5.2 W. " " " " "		5.39	41.95	
+50 5.5 W. " " " " "		5.35	41.99	
40 5.6 W. " " " " "		5.33	42.01	
30 5.6 W. " " " " "		5.31	42.03	
line 5.6 W. " " " " "		5.20	42.14	
-30' S. 5.6 W. " " " " "		5.12	42.22	
0+90				
-30' S.		5.13	42.21	

H.I.  
347.34

13

-20' S	5.16	347.18
-10'	5.19	
Line	5.20	
+10'	5.25	
+20	5.25	
+30	5.29	
+40	5.33	
+50	5.35	
+60	5.38	
+70	5.37	
+75 = E	5.41	
+90	5.38	
T.P. on bench	- 3.76	343.58
+ 6.65		350.23

+100		
-130' S. Sh.	7.89	
-20'	7.96	
-10'	8.00	
Line	8.05	
+10' N.	8.08	
+20'	8.09	
+30	8.14	
+40	8.14	
+50	8.10	
+60	8.15	
+70	8.21	



+75' = R	8.22
+90'	8.20
+10	
-30' S	7.85
-20	7.90
-10	7.90
line	7.86
+10 N	7.94
+20	7.96
+30	7.97
+40	8.00
+50	8.04
+60	8.07
+70	8.05
+75' = R	8.07
+90	8.15
+100	8.13
+120	
-30 S	7.73
-20	7.74
-10	7.78
line	7.76
+10' N.	7.77
+20	7.84
+30	7.86

350.23

15

+40' N.	7.87	
+50'	7.93	
+60'	7.96	
+70'	7.99	
+75'	7.96	
+90'	7.98	
+105'	7.94	
+120'		
-30' S	7.55	
-20'	7.58	
-10'	7.59	
-3' S. = $\frac{1}{2}$ of Sewer M.H. - on rim	7.67	342.56
flow line	16.37	333.86
line	7.65	
+10' N.	7.68	
+20'	7.76	
+30'	7.80	
+40'	7.80	
+50'	7.82	
+60'	7.82	
+70'	7.79	
+75' = $\frac{1}{2}$	7.80	
+90'	7.86	
+100'	7.84	
+110'	7.90	

1+40	
-20' S.	7.51
-10'	7.49
line	7.58
+10' N.	7.61
+20	7.66
+30.	7.65
+40	7.72
+50	7.74
+60	7.74
+70	7.75
+75 = #	7.75
+90	7.80
+100	7.83
+110	7.91
1+50	
-20' S	7.31
-10'	7.39
line	7.47
+10' N.	7.46
+20	7.55
+30	7.61
+32 - 2 West = Water Valve	
+40	7.63
+50	7.69
+60	7.70

+70' N.	7.74	
+75' = <del>W.</del>	7.77	
+90	7.90	
+100	7.94	
+110 = W. cb. Park Blvd. gut	7.95	
top cb.	7.36	342.87
+154 - 104' N. = Light Pole		
+160		
-20' S.	7.33	
-10'	7.39	
Line	7.44	
+10' N.	7.45	
+20	7.47	
+30	7.54	
+40	7.61	
+50	7.68	
+60	7.72	
+70	7.78	
+75' = <del>W.</del>	7.81	
+85 = W. cb. Park gut	7.76	
top cb.	7.24	
+100.5' = E. edge side walk	7.25	
+121 = W. " " "	7.09	
+167		
-20' S.	7.34	

-10' S		7.37
line		7.41
+10' N.		7.45
+20'		7.48
+30		7.55
+40		7.57
+50		7.69
+60		7.74
+68.8 = Center of N. ret. Side drive to School - gut.		7.73
+75 = top cb.		7.08
+75 = E. on dirt parking		7.4
+85' = E. edge sidewalk		7.21
+106.2 = W. " " "		7.08
+76		
-20' S		7.34
-10		7.37
line		7.43
+10' N.		7.54
+20'		7.55
+30		7.64
+40		7.68
+47.5 = Middle of S. return of Side drive to school gut.	17' wide	7.73
	top cb.	7.09
+60' N	N. cb. on drive to school	7.48
+67.9 =	gut.	7.36

+67.9'	N. = N. cb. to school drive - top <del>cb.</del>	7.06	
+75'	= F on sidewalk	7.05	
83	= W edge sidewalk	6.98	
+90	- on grass	6.9	
100	" "	6.4	
1+80			
+42.5'	M. = Fire Hydrant		= 1.5' palm tree
1+83	- 37.5' N. drive top		
1+86.2	- 67.4 N. = E. end of 6" cb. on N. of <del>st</del>	6.20	
1+90			
-10' s.	on paving	7.48	
line		7.62	
+10' N		7.68	
+13.9'	= W. cb. of Park Blvd. - gut.	7.68	
	top cb.	7.07	
+20'	dart	7.2	
+29.1'	= E. edge sidewalk	7.02	
+40	on walk.	6.96	
+50	= S. cb. of drive top cb.	6.93	
	gut.	7.12	
+60		6.46	
+67.4'	= 6" cb. on N. side of drive - gut.	6.44	
	top cb.	5.95	
+75'	= on grass	6.0	
90	" "	5.6	
T.P.	on bench	6.6	- 6.65 343.58

on bench + 6.68	350.26
1 + 92.5	
+ 15' N. = Water meter 2" pipe	
1 + 96.6	
+ 4.7 N. = 1.5' Palm tree	
2 + 00	
- 10' S = E. cb. Park Blvd. gut.	7.68
top cb.	7.07
line - on dirt	7.2
+ 5.3 N. = E. edge sidewalk	6.98
+ 20' N.	6.92
+ 25.3 N. = W. edge of sidewalk	6.86
+ 26.8 = E. 1' drainage gutter back of walk - flow line	7.09
+ 29 Backedge "	6.67
+ 40	6.1
+ 51.5 = S. edge of school drive on paving	5.88
+ 60	5.57
+ 68 =	5.76
top 6" cb. N. side of drive	5.30
- 75 = E. on grass	5.3
2 + 01.5 = 7' S. = <sup>Arc.</sup> light pole	
2 + 10	
- 18' S = E. edge walk on cement	6.88
line	6.78
+ 1.2 N. = Wedge walk	6.77

+2.7 N. = E drainage gut. flow	7.04
+ 4.3 backedge "	6.66
+ 10' grass	6.3
+ 20'	5.7
+ 30'	5.3
+ 52' = S. edge drive	5.14
+ 60'	4.98
+ 67.3 = N. edge drive	5.07
+ 18.5' - 9' s. = 1.5' Palm tree	
+ 20'	
- 21' s. = W. edge walk on cement	6.67
- 19.5' s. = gut.	6.94
- 18' = back edge	6.59
Line on grass	5.7
+ 10' N.	5.3
+ 20'	5.0
+ 35'	4.9
+ 52' = S. edge drive on paving	4.78
+ 60'	4.67
+ 67.5' = N. edge drive on paving	4.74



# Additional levels on Park Blvd.

North of EL Cajon - See Page 6

H.I.

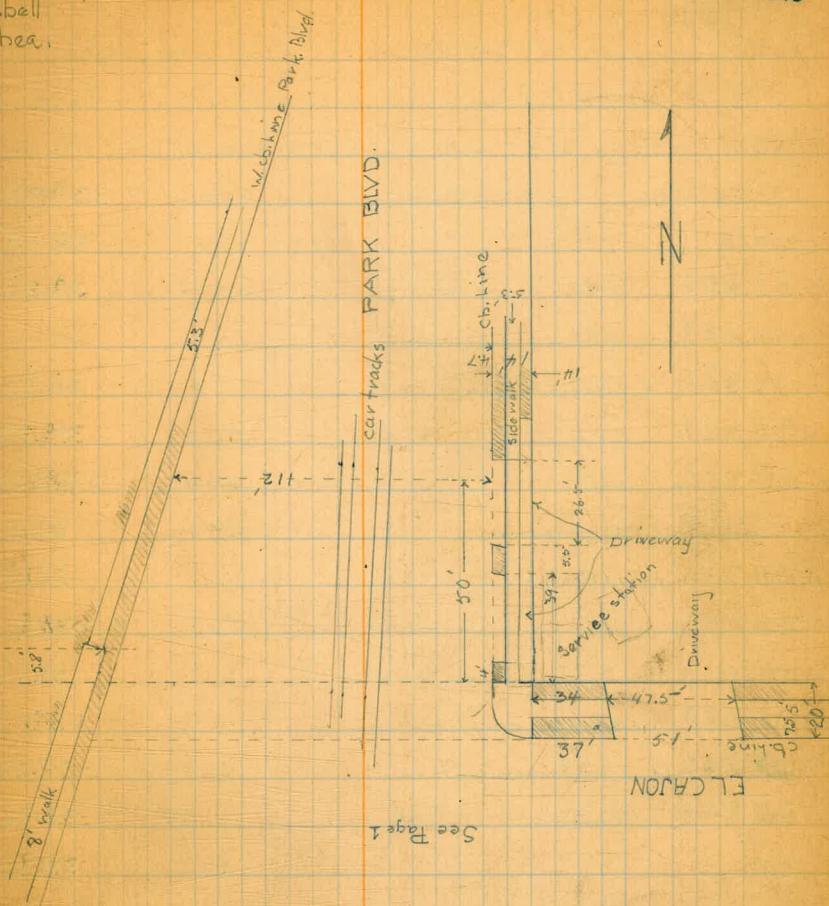
N.L. EL Cajon is the base line

0+00 = E.L. Park Blvd.

B.M.	+ 0.52	344.10 347.10	343.58
100' E. of E.L. Park Blvd. on N.cb. EL Cajon			
top cb.	11.36		37.74
gutter	11.98		37.12
88' E. of E.L. = E. end of driveway to S. Station			
top do	10.57		33.53
gutter - in driveway	11.22		32.88
81.5' E. = E. edge of driveway at N. edge of sidewalk			
7.6' S. of N.L. = N. edge walk + driveway	9.89		34.21
20' S. = N.cb. EL Cajon - driveway	10.83		33.27
37' E.			
7.5' S. = edge of walk + driveway	7.24		36.86
top ch. at W. end of driveway	7.46		36.64
gut. " " " "	8.09		36.01
34' E. = W. end of driveway at N. edge walk	7.02		37.08
28' E.			
17' S. = Inlet pipe for Gas tank 7.7' deep			
22' E. - 16' S. = 1.5' tree			
15' E.			
N.L. on dirt	5.4		38.70
7.5' S. = N. edge walk	5.95		38.15
12.5' S. = S. " "	5.99		38.11

3/10/37  
Osborne  
Sommermeyer  
Isbell  
Shea.

22



See Page 1

344.10

3' E. - 18.5' S. = Pole

0+00 Note. all t's are N. of N.L. EL Cajon Produced-all-'s - South.

N.L. EL Cajon - on cement - Back edge of driveway 4.82 339.22

+25' N. " " " 4.75 39.35

+50' N. " " " 4.77 39.33

0+9.3 = Wedge of line of sidewalk

-18.6 S = top cb. on Return 5.18 38.92

gut. 5.77 38.33

N.L. on cement 5.00 39.10

+4' N. = S edge driveway 4.99 39.11

+6' N. in driveway 5.21 38.89

+25' 5.19 38.91

+32 5.16 38.94

+36 = N edge of driveway 4.96 39.14

+44 = S edge of driveway 4.82 39.22

46 - in driveway 5.14 38.96

50 - " " 5.20 38.90

0+12.5 + 40' N. = Pole

0+11.5 = +1' N. = Meter box

0+12.6 - 7.5' = Fire Hydrant

0+14 - E. cb. line Park Blvd.

+50' N. in driveway 5.41 38.69

+44.5' N. S. edge driveway - gut. 5.45 38.65

top cb. 4.83 39.27

+39' N. N. " " " gut. 5.45 38.65

543.52  
374  
347.32  
12.79  
334.53  
2.98  
337.46

23

Levels along N. cb. of El. Cajon for drainage Outlet  
E. of E.L. of Park Blvd. See Page 22 for 100' E.

B.M. 3.74 - H.I. 347.32 ✓ 343.58

- 12.79 334.53

+0.93 335.46 ELEV.

100' E. of E.L. Park top cb. 2.73 332.73 ✓

" " " gut 3.26 332.10 ✓

150' E. " " " top 6.01 329.45 ✓

" " " gut 6.47 328.99 ✓

175' E. = ± 10' Alley - on paving 7.98 327.48 ✓

200' E. top 9.18 326.28 ✓

" " " gut 9.51 325.95 ✓

238.5' E. - outlet? top 11.38 324.08 ✓

" " " gut 11.86 - EL 323.60 ✓

250' E. top 11.98 323.48 ✓

" " " gut 12.56 322.90 ✓

300' E WL gut 15.54 319.92 ✓

	344.10		
	top cb.	4.78	339.32
+25' N.	- gut.	5.42	38.68
+12'	- gut	5.49	38.61
+04	- gut	5.55	38.55
	top cb. - start of High cb.	4.91	39.19
N.L.	- top of extra high cb.	4.38	39.72
-6.7' S	= High cb. slopes down to here	5.11	38.99
-10' S	top cb.	5.03	39.07
	gut.	5.64	38.46
-20' S	on paving	5.34	38.76
0+20			
-30' S		4.48	39.62
-20' S		4.85	39.25
-10		5.02	39.08
line		4.94	39.16
+12' N.		4.94	39.16
+25		4.86	39.24
+50		4.60	39.50
0+27.2	28' N. = Water Valve		
0+30			
+50' N.		3.60	40.49
+25' N.		3.84	40.26
line		4.15	39.95
-3' S.	= Water Valve		
-20' S.		3.99	40.11

	344.10		
-40' 6	3.76	340.34	
0+40			
-40	3.37	40.73	
-20	3.46	40.64	
Line	3.42	40.62	
+25	3.18	40.92	
+50	3.08	41.02	
0+42.7			
+50 N. = E. rail of E. track	3.05	41.05	
0+47.6			
+50' N. = W. rail of E. track	3.09	41.01	
0+50			
+50	3.02	41.08	
+38' = W. on Rail	2.99	41.11	
+25	2.82	41.22	
+14' = E. rail	2.89	41.21	
Line	2.88	41.22	
-20	2.95	41.15	
-40	2.93	41.17	
-50	2.89	41.21	
0+53			
Line = E. rail of E. track	2.72	41.32	
0+57.7			
Line = W. rail of E. track	2.67	41.43	
+50' N. E. " " W. "	2.78	41.32	

344.10

0+60		
-50	3.57	341.53
-43 = E. rail	2.55	41.55
-20	2.60	41.50
-12.8 = W. rail	2.58	41.52
line	2.62	41.48
+15 = 1' W. = Pole		
+25	2.71	41.39
+41.6 = E. rail of W. track	2.75	41.35
+50	2.80	41.30
0+62.7		
+50 = W. rail of W. track	2.85	41.25
0+69.85 =		
line = E. rail of W. track	2.60	41.50
0+70		
+50	2.68	41.42
+25	2.63	41.47
+21.5 = W. rail	2.63	41.47
line	2.60	41.50
-0.8 = E. rail	2.60	41.50
-20	2.48	41.62
-50	2.27	41.83
0+74.65 = W. rail of W. track		
	2.52	41.58
0+80		

344.10

-50	2.34	341.76
-32.6 = W. rail	2.38	41.74
-20	2.40	41.70
line	2.42	41.62
+25	2.44	41.66
+50	2.48	41.62
0+90		
+50	2.31	41.79
+25	2.31	41.79
line	2.27	41.83
+20 S.	2.25	41.85
-50	2.19	41.91
1+00		
-50	2.13	41.97
-20	2.50	41.60
line	2.13	41.97
+25	2.16	41.94
+50	2.14	41.96
1+10		
+50	2.13	41.97
+25	2.03	42.07
line	2.06	41.04
-20	1.99	41.11
-40	1.99	41.11

344.10  
 1.16  
 342.94  
 5.60  
 348.54  
 4.92  
 343.62

344.10

1+12  
 +50 = W. cb. of Park Blvd. top 1.46 342.64  
 gut. 2.12 41.98  
 T.P. - 1.16 342.94 ✓  
 + 5.60 348.54

1+20  
 +50 = E. edge of walk 5'3" wide 5.70 42.84  
 +41.3 = End of walk in front of store - cb. to walk 5.74 42.80  
 +30.2 = W. cb. Park Blvd. top 5.86 42.68  
 gut 6.48 42.06  
 +25 6.50 42.04  
 Line 6.39 42.15  
 -20 6.34 42.20  
 -40 6.26 42.28

1+23.5 - +27' = Pole  
 1+27.5 - +21' = Palm tree  
 1+25.8 +50' = Wedge of walk

1+30  
 -40 6.19 42.35  
 -20 6.29 42.25  
 Line 6.39 42.15  
 +6.9 = W. cb. line gut 6.32 42.21  
 top 5.65 42.89  
 +26.4 = E. edge walk 5.73 42.81  
 +40.5 = W. " " 5.63 42.91

348.54

1+31 - +11.5' N. = abandoned gas pump

1+34.5 +5' N. = Palm tree

1+40

+13.6 = W. edge walk 5.55 342.99

+5.8 = N. end of 8' walk 5.64 42.90

Line on walk 5.72 42.82

-2' = E. edge 8' walk 5.72 42.82

-9.7 = Palm tree

-16.3 = W. cb. Park top 5.67 42.87

guts 6.32 42.22

-30 6.23 42.31

1+50

-4.5' S = W. edge walk 5.46 43.07

-25' = E. " " 5.55 42.99

T.P. on Bench - 4.96 343.58 L



# Levels for proposed drain at

Park Blvd. + Upas. See page 1

H.I.

3/14/32  
Osborne  
Sommermeier  
Isbell  
Shea

0+00 = point 20' E. of 0+75 on base line at 90° - See Page 1

- 8.6 W. of 0+00 = E. cb. line of Park Blvd.

B.M. + 3.90 299.70 sw. B.P. Park + Upas. 295.80

Levels taken for topography Left + right of E.

0+00			
E		4.3	295.4
0+25			
12' Right		5.8	93.9
E			
10' L: = 4 10" tree		5.0	94.7
0+28 - 9' L. = 1' tree			
0+30 - 2.5' R. = 1' tree			
0+33			
15' L.		5.2	94.5
E		5.0	94.7
10' R.		6.4	93.3
17' R.		6.2	93.5
0+42 - 11' R. = 6" tree			
0+45			
20' R.		6.7	93.0
9' R.		7.3	92.4
E		5.9	93.8
3' L		5.2	94.5
15' L		5.3	94.4
0+50 - 9' R. = 9" tree			

299.70

31

0+59 - 13.5' R. = 4" tree

0+60

15' L. 5.6 94.1

E 6.0 93.7

9' R. 6.7 93.0

R. 2 to Park Blvd.

12' R. = shot on 4" pipe exposed here runs 7.6 92.1

30' R. 7.2 92.5

0+63 - 19' R. = 1' tree

0+70

45' R. 6.6 93.1

17' R. 8.1 91.6

8' R. 6.6 93.1

2' R. = 4" tree

E 7.0 92.7

15' L. 5.9 93.8

0+77 - 3' R. = 2' Pepper tree

0+84

15' L. 6.0 93.7

9' L. 5.8 93.9

E 7.4 92.3

25' R. 9.0 90.7

40' R. 7.6 92.1

0+90

40' R. 8.0 91.7

29' R. 9.0 90.7

299.70

32

15' R.	8.2	291.5
±	9.4	90.3
4' L.	7.0	92.7
11' L.	5.6	94.1
15' L.	6.0	93.7
T.P.	-11.75	287.95
+ 6.29	294.24	
1+00		
14' L.	0.2	294.0
±	6.7	87.5
7' R.	9.9	84.3
12' R.	9.8	84.4
18' R.	7.2	87.0
32' R.	4.4	89.8
1+07		
35' R.	4.5	89.7
27' R.	7.2	87.0
20' R. = Outlet 8" culvert from basin on - ground	8.1	86.1
Park Blvd.		
flowline	8.2	86.0
13' R.	11.1	83.1
7' R.	11.9	82.3
±	8.2	86.0
6' L.	6.4	87.8
12' L.	1.5	92.7
1+18		

294.24

5' L.		10.1	84.1	
E		13.0	81.2	
6' R.		16.6	77.6	
11' R.		18.0	76.2	
12' R.		14.8	79.4	
T.P.		-0.29	293.97	293.95
	+5.70			
				299.65
				299.67
on bench		-3.87	295.78	
			295.80	

Levels For Tunnel Const.  
PARK BLVD <sup>And</sup> Upas.

Station.

507 300.87 295.80 <sup>BM SW Park and Upas</sup>

<sup>top on floor</sup>

22.3 West of East 20 tie 10.27 290.60 284.60 +16.00

58.3 " " " " = low point. 12.65 288.22 282.22 +16.00

GRADES FOR 6" Sewer Floor Line cuts.

0+00 10.27 290.60 280.90 +9.70

+46 6.05 294.82 280.58 +14.24

1+00 9.35 291.52 280.20 +11.32

+16 = End

Additional Grades East Stairway

301.40

15.80 285.60 284.60 +1.00

5.30 296.10 296.10

<sup>x</sup>  
301.44

5.34 296.10 296.10

15.53 285.91 284.60 +1.31

WEST STAIRS

3.76 East of Stairs <sup>300.65</sup> 10.89 289.76 284.76 +5.00

of stairs & Tunnel 10.85 289.80 284.80 +5.00

3.5 North of " " 284.81

23.67 " " <sup>Back top step</sup> 5.53 295.12 295.81 -0.69

J.W. B.R. Upas <sup>And</sup> BM 295.80  
5.60 +  
301.40 = x

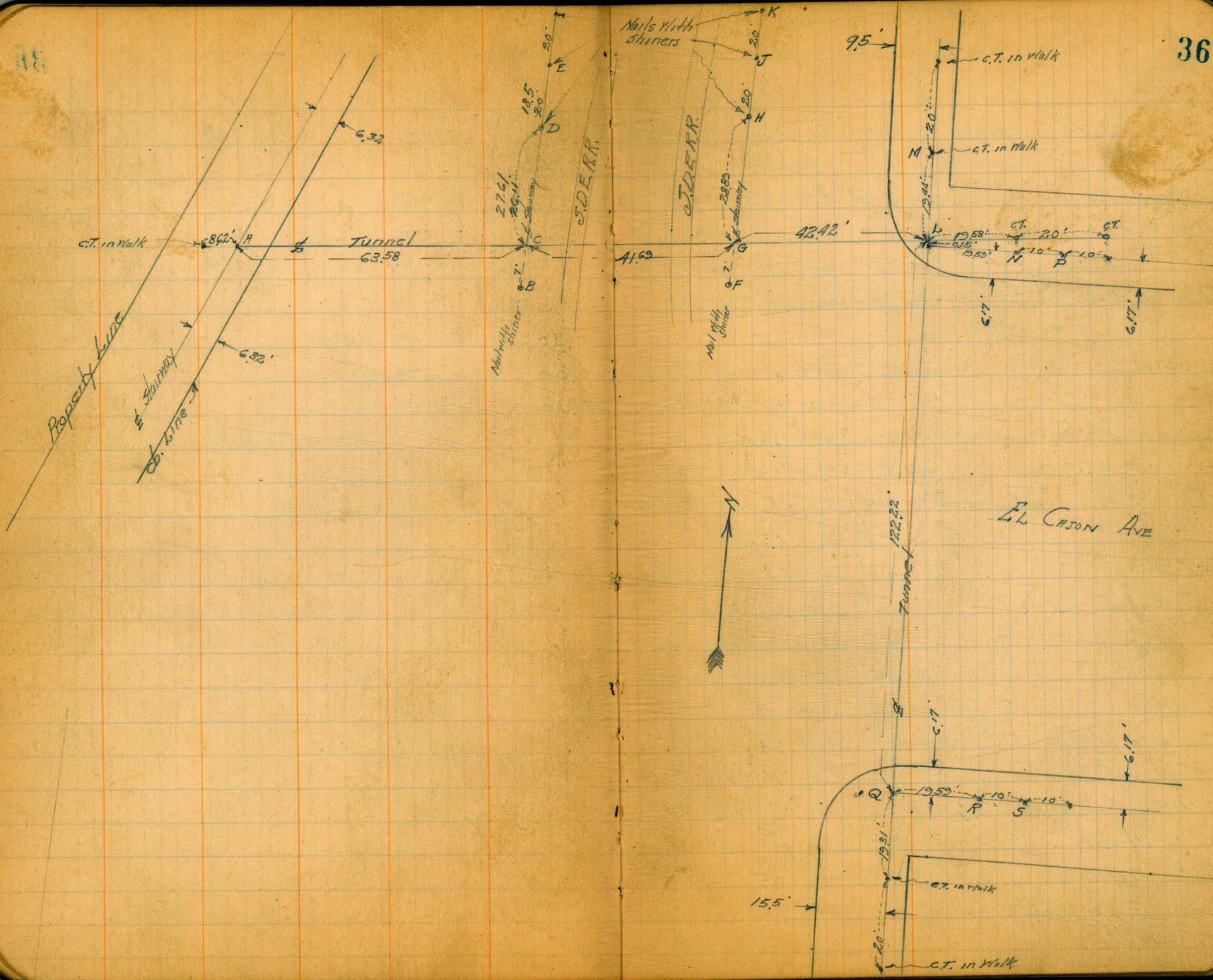
11.52  
201  
15.53

BM 295.80  
5.60 +  
301.44 = x

295.80 = BM.  
4.85 +  
300.65 = x

"TUNNEL"  
 PARK BLVD AND El Cajon Ave

			BM B.P. 5E Ret. Campus Normal P-6	
4.73	348.31	343.58		
Int. of Tunnel with 1st Stairway on West.			Elm. top Conc.	Cuts.
	8.24	340.07	334.07	+6.00
	12.08	336.23	330.23	+6.00
4.66	348.24	343.58 = B.M.		
Int. tunnel with Stairway on West.			334.07	
= 0+00				
+1.4	14.25	333.99	333.99	0.00
+26.8	15.73	332.51	332.51	0.00
+60.1	17.78	330.46	330.46	0.00
+63.58 = Intersection 1st Stairway on North				



LEVELS FOR TUNNEL  
PARK BLVD AND E/COJON AVE

37

		BM. P-6			
	4.75	348.33	343.58	Flow Line Grade	Cuts
A			ELEV.	GRADES.	
1A East of A on E	14.34	333.99	333.99		+0.00
26.8 " " " "	15.82	332.51	332.51		0.00
60.1 " " " "	17.87	330.46	330.46		0.00
B on shiner	6.50	341.89	330.23		+11.60
C out					
D on shiner	6.66	341.67	342.20		
E " "	6.73	341.60	342.20		-0.60
F " "	7.28	341.05	327.71		+13.34
G " "	7.35	340.98	327.71		+13.27
H " "	7.52	340.81	341.21		-0.40
J " "	7.58	340.75	341.21		-0.46
K " "	7.64	340.69	341.21		-0.52
L " Cross in Walk	9.36	338.97	329.60		+9.37
M " Copper tack	9.29	339.04	329.60		+9.44
N " Stub.	10.34	337.99	338.10		-0.11
N " Walk	10.29	338.04			
5' East of N on Walk	10.55	337.78			
P on stub	10.95	337.38	338.10		-0.72
Q on Cross in Walk	8.26	340.07	330.60		+9.47
R on stub.	9.28	339.95	339.10		-0.05
R " Walk	9.28	339.05			
5' East of R on Walk	9.62	338.71			
J on stub.	9.79	338.54	339.10		-0.56

on Stairway #2 And 7 South of E Tunnel

on Stairway #3 And 7 South of E of Tunnel

on E " #3 And " " "

on Stairway #3 at top of Stairs



	+	344.32	-	Elev.	Flow Line Grades	Cuts.
3' South of $\frac{1}{2}$ Tunnel						
N $\frac{1}{2}$ 3A = 0+00			4.72	339.60	329.60	+10.00
0+36.5			4.59	339.73	328.67	+11.06 ✓
+73 = break - low point			4.31	340.01	327.75	+12.26
1+19.22 = Q P-37			4.25	340.07	330.60	+9.47
Q Nail in Pole			3.72	340.60	330.60	+10.00

Elev. of Shiner H-on P-37 = 340.81  
 251+  
 344.32 -  
 6.34 -  
 337.98  
 337.99 - N  
 0.01 - Error.

chk. on stub N P-37

Additional Grades for Tunnel	Flow Line	Cuts	
Q Int. tunnel and stairway <sup>343.48</sup> 12.88	330.60	330.60	0.00
Q offset on Walk to West line stairway <sup>346</sup>	340.02	330.60	+9.42

B.M. Elev. Stub N

337.99  
 5.49+  
 343.48 -

Elev. stub N

337.99  
 6.73+  
 344.72 -  
 4.99 -

chk. 0+36.5

339.73 ✓

	+	344.72			
on E Water Main 432 North of Q	8.94	335.78	✓		
3.67 West of $\frac{1}{2}$ Tunnel on Water Main	8.77	335.95	✓		
3.60 East " " " "	9.09	335.63	✓		
3.60 East " " Bell " "	8.89	335.83	✓		
3.76 East " " on Flange Gate	8.71	336.01	✓		
4.31 East " " Stem Gate Valve	6.99	337.73	✓		
4.5 " " " on Paving	5.05	339.67	✓		
4.5 West " " " "	4.78	339.94	✓		

Range of GRADE  
Tunnel # 38.

	π	Flow Line Grade	Cuts
L <sub>0+00</sub>	345.20	329.60	
3' South of L <sub>0+00</sub>		329.60	
+36.5		548 339.72 328.31	+11.41
+76.22 = Break in Grade		943 335.77 326.90	+8.87
+86.22 Point South of Break		1282 332.38 327.68	+4.70
+16.22 = 3' North of L <sub>0+00</sub> Stairway		15.20 330.00 330.00	
+19.22 = L <sub>0+00</sub>		330.00	
20.5' East of L <sub>0+00</sub> Tunnel on L <sub>0+00</sub> Stairway and top step	6.15	339.05 339.05	0.00

Elev. Sub N = 337.99  
7.21 +  
345.20 π

on Iron Pipe

Additional Grades for Tunnel 38.

L <sub>0+00</sub>	π		
3' South of L <sub>0+00</sub>	331.51	329.60	
+36.5		328.31	
+58.22		3.97 327.54 327.54	0.0
+76.22		4.61 326.90 326.90	0.0
+16.22 = 3' North of L <sub>0+00</sub> Stairway		1.51 330.00 330.00	0.0
+19.22 = L <sub>0+00</sub> Stairway and L <sub>0+00</sub> Tunnel		1.51 330.0 330.00	0.0

Elev. on Iron Pipe

332.38  
- 87 = minus  
7.1  
331.51 π

Final Grades Stairway N41

L <sub>0+00</sub> Tunnel and Stairs	348.24	14.12 334.12 334.07	0.0
2.79' South of L <sub>0+00</sub> Tunnel		14.09 334.15 334.15	0.0
19.29' " " " = top step		5.09 343.15 343.10	0.0

1412 1409  
332 332  
10.8 107.7  
32

Elev. Shiner F P-37 = 341.05  
7.19 +  
348.24 π



Levels for Tunnel Stairs No. 5

S.E. cor. Park Blvd. & El. Cajon

Pierce  
McCarty

41

B.M. P-6  
343.58

2.75 346.33

A 6.16 340.17<sup>19</sup> Gr Top Wall 340.44 F. 0.25

B 6.32 340.01<sup>03</sup> 340.44 F. 0.41

C 7.30 339.03<sup>05</sup> 340.44 F. 1.39

D 7.36 338.97<sup>99</sup>

C 3.29 342.32 339.03<sup>05</sup>

S 3.80 338.52 338.54 P. 9.31

338.54

C 3.80 342.34

F 11.97 330.37 Gr = 330.05 C 0.32

D 3.35 338.99 Gr = 339.05 F 0.06

E 3.41 338.93 Top wall 340.44 F. 1.51

Top step 339.05 F 0.12



void.  
curb to be  
parallel to street grade

Levels for West Stairway  
Park Blvd. & Upas

5.03 300.83X

B.M. 295.80

A 5.13 295.70

B 5.41 295.42

C 4.96 295.87

D 5.27 295.56

E 5.50 295.33 Top Steps 295.81 F. 0.48

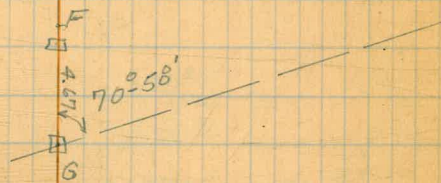
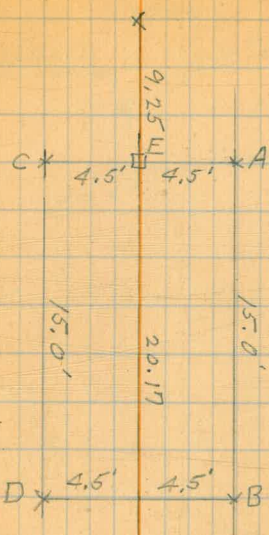
0.90 296.23

F 11.46 284.79 Bot. Steps 284.81 F. 0.04

G 11.65 284.58 @ Int. 284.80 F. 0.22

Pierce  
McCarty

42



Levels on 6" Sewer across Tunnel 3A  
Park Blvd. @ El Cajon

4.96 343.93 338.97

6 Tunnel 3A  
at 6" Sewer

8.58 335.35

Top sewer 371N

8.57 335.36

Top sewer 375S

8.60 335.33

June.

Point "L"  
338.97

B.M. 5.02 348.60

343.58 Page 6

ck on. Point "L"

9.63 338.97

Stairway 4th Step

12.60 336.00

Top floor

1.48 337.48

6.88 330.60 at 6"

on sleeper.

7.70 329.78

1.49 337.49

336.00

10.73 327.36

6" Stairway + 6" tunnel -

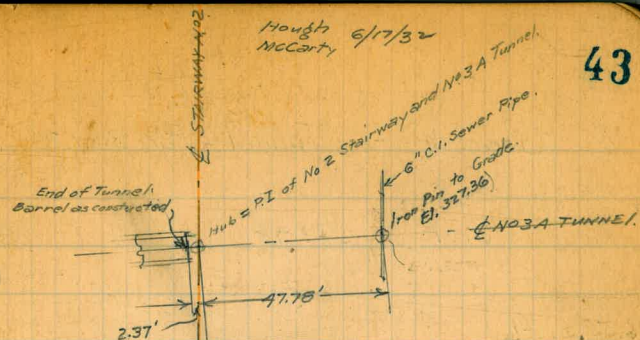
8.54 329.45

Pt "L" Pg 40

Pierce  
McCarty  
6/9/32

Hough  
McCarty  
6/17/32

43



6.34  
5.1  
317.0

7.9  
47  
54.9

330.54  
328.96  
337.49  
326.96  
8.53

Tunnel 3-B

327.36  
32

47.05

327.68

.73

337.49  
327.68

2.37

9.81

50.15

S'back

337.49  
327.36

10.13

63.55  
54.73

8.82

330.60  
327.36

330.54  
327.36

63.24  
3.4

3.18

50.15 / 318.00  
300.90

17.10  
150.45

20.55

Grades for Tunnel - Park Blvd. @ El Cajon

Pierce  
McCarty 6/9/32

5.01 343.98 338.97

Pt "L" Pg. 40

36.55' S. of L

on E Tunnel - Iron pin

16.60 327.38

F.L. Tunnel  
328.41

E. 1.03

$$\begin{array}{r} 329.60 \\ 36.55 \times 2.7 = 1.19 \\ \hline 76.22 \quad 328.41 \end{array}$$

F.L. Drain  
324.84

C. 2.54

$$\begin{array}{r} 324.21 \\ 36.55 @ 1.72 \% = 0.63 \\ \hline 324.84 \end{array}$$

3.03 342.07

339.04

Pt "M" Pg. 36-37

7-8-32

7' N. of "L" on S.W.

3.06 339.01

"L"

13.83 328.24 329.38

F. 1.14

4.41 343.45

339.04

7/13-32

Top N. Sleeper  
opp. "L"

14.72 328.73  
.69

F.L. = 329.40 G. 329.38

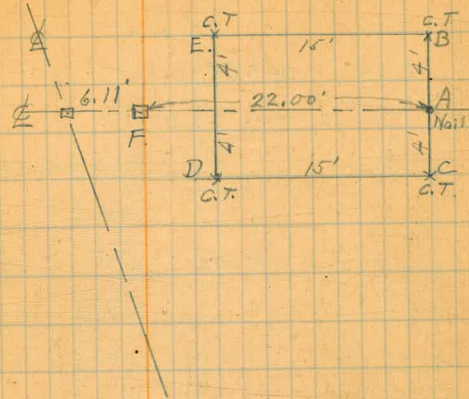
Grades for Stairs - Tunnel No. 3A

7/13/32 Pierce  
McCarthy

Stairway No. 2

	0.74	346.78		Pt. "M." 8729 339.04
A	5.18	341.60	Top Step	341.90 342.40
B	5.08	341.70	Top Wall	342.40
C	5.24	341.54	"	"
D	5.17	341.61	"	"
E	5.06	341.72	"	"
	1.39	342.99		341.60
F. (1st step)	12.59	330.40	G.	330.40

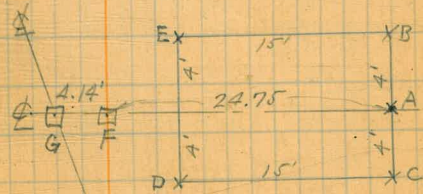
F. 0.30 =  $3\frac{5}{8}$ "  
 F. 0.70 =  $8\frac{3}{8}$ "  
 F. 0.86 =  $10\frac{3}{8}$ "  
 F. 0.79 =  $9\frac{1}{2}$ "  
 F. 0.66 =  $8\frac{1}{8}$ "



Stairway No. 3

'A = Pt. "H" Pg. 36-37	4.60	345.41		B.M.	Top step	340.81	341.22
B	4.38	341.03	Top Wall	341.39			
C	4.86	340.55	"				
D	4.81	340.60	"				
E	4.39	341.02	"				
	0.35	341.16		340.81	B.M.		
T.P.	2.61	331.78	11.99	329.17			
F (1st step)	4.50	327.28	6r =	329.72			
G (@ intersect)	4.91	326.87					
Top floor pg. 43	1.19	330.59 =	330.60				

F. 0.41 =  $4\frac{1}{2}$ "  
 F. 0.36 =  $4\frac{3}{8}$ "  
 F. 0.84 =  $10\frac{1}{8}$ "  
 F. 0.79 =  $9\frac{1}{2}$ "  
 F. 0.57 =  $4\frac{1}{2}$ "  
 F. 0.44 =  $5\frac{1}{4}$ "



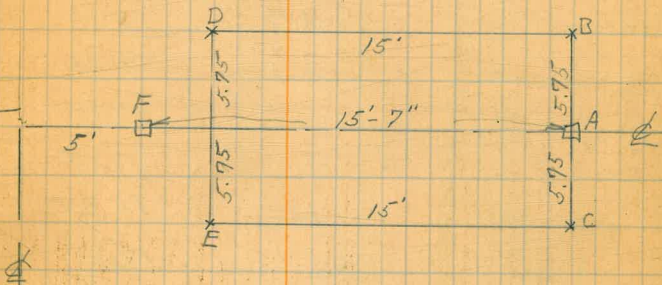


Grades on Stairway No. 4

	2.64	341.68		339.04	
A	5.05	336.63	Top step	337.95	F. 1.32
B	3.64	338.04		338.60	F 0.56
C	3.75	337.93	Top Wall	338.60	F 0.67
D	2.72	338.96		339.49	F 0.53
E	2.86	338.82	Top Wall	339.49	F 0.67
F (bot. 1st step)	13.09	328.59		329.45	F 0.86
top sleeper	13.10	328.58			

$$\begin{array}{r} 328.58 \\ .67 \\ \hline 329.25 \\ .20 \\ \hline 329.45 \end{array}$$
 bot. 1st step

$$\begin{array}{r} 337.95 \\ 338.04 \\ \hline 339.04 \\ 6.09 \end{array}$$





Walker St

52

18.51

Gutter	47	13.8
1/4	44	14.1
1/2	42	14.3
1/4	42	14.3
Gutter	39	14.6
Cb Top	319	15.32
F	30	15.5
+5: Tile Wall	29	15.6

0+19

F = 2.5' Euc Tree	3.0	15.5
Cb	40	14.5
1/4	41	14.4
1/2	41	14.4
1/4	43	14.2
Cb	45	14.0
+0.6 = Existing Cb Top	417	14.34
W	42	14.3

0+53 = 8' Walk on F

W	40	14.5
+0.6 = Existing Cb in Drive	4.6	<del>14.9</del> 13.9
Cb	41	14.4
1/4	40	14.5
1/2	41	14.4
1/4	40	14.5
Cb	40	14.5
F = 2.8' Walk To P620	3.8	14.7

18.51

0+70 = End Cb & Walk on F

F	31	15.4
+2 = Euc Tree 17010m	3.8	14.7
Cb	42	14.3
1/4	40	14.5
1/2	42	14.3
Cb	46	13.9
+3.4 = End + Existing Cb & Walk	4.6	13.9
+3.4 " " Top	391	14.60
W	41	14.4

0+86

W	44	14.1
Cb	45	14.0
1/4	42	14.3
1/2	41	14.4
1/4	42	14.3
Cb	40	14.5
1.4 = Euc Tree 3.5' diam	3.0	15.5
F	3.0	15.5
1+0.4 = 2.8' Walk on F	3.0	15.5
F = 2.8' Walk	3.85	14.66
Cb	43	14.2
1/4	43	14.2
1/2	41	14.4
1/4	42	14.3
Cb	46	13.9
43	47	13.8
W	3.9	14.7

+6.9 = Sly Line Congress Hall

1+20

H	4.4	14.1
+3	4.9	13.6
Cb	4.8	13.7
1/4	4.5	14.0
1/2	4.2	14.3
1/4	4.3	14.2
Cb	4.4	14.1

+5.6 = Pepper Trees Diam

F	3.3	15.2
---	-----	------

1+37

-5 = Tele Hall

F	3.2	15.3
---	-----	------

+5 = Euc Tree 35 Diam

Cb	3.9	14.6
+2	4.4	14.1
1/4	4.5	14.0
1/2	4.6	13.9
1/4	4.8	13.7
Cb	5.1	13.4
+3	5.1	13.4
H	4.5	14.0

1+115

7.9' W of W.L. = Sly Line Congress Hall

1+45.8

S.E. of E.L. = Sly Line Hall

1+49.79 = SL Call 5000

H	4.8	13.7		
+3	5.5	13.0		
Cb	5.4	13.1		
1/4	4.8	13.7		
1/2	4.5	14.0		
1/4	4.5	14.0		
Cb	4.4	14.1		
F	3.6	14.9		
TP	7.22	24.05	1.68	16.83

Cross Section Calhoun  
Mason to Taylor

Indexed  
E.S.M.

40' wide

24.05

3+06.5 = W.L. Mason

H	1.0	23.1
L	1.4	22.7
S	1.7	22.4
2+50		
S	3.4	20.7
L	3.5	20.6
H	3.0	21.1
2+0		
H	4.8	19.3
L	5.2	18.9
S	4.9	19.2
1+50		
S	6.4	17.7
L	6.6	17.5
+12	6.6	17.5
H	5.3	18.8
1+0		
H	7.2	16.9
L	7.8	16.3
S	7.9	16.2
+5 = Tile Wall		
0+50		
S	9.0	15.1
L	8.7	15.4

2-27-33

50

24.05

8.3

15.8

0+0 = E.L. Wallace From 1

H	9.1	15.0
L	9.6	14.5
+15	9.9	14.2
S	9.2	14.9
L Wallace		
S	10.2	13.9
L	10.0	14.1
H	9.9	14.2
0+0 W.L. Wallace		
H	10.1	14.0
L	10.5	13.6
+15	11.1	13.6
S	10.3	13.8
0+68.61 = E.L. Wallace From 1		
S	12.0	12.1
L	11.9	12.2
H	11.9	12.2
TP	0.99	13.00
	12.04	12.04
0+0 = H Wallace From 1		
H	17	
L	19	
S	19	

12.00

0x50

S 2.6  
 L 2.9  
 H 2.6

1x0

H 3.5  
 L 3.8  
 S 3.5

1x50

S 4.4  
 L 4.5  
 H 4.5

2x0

H 5.1  
 L 5.4  
 S 5.5

2x50

S 6.2  
 L 6.4  
 H 6.4

3x0

H 7.2  
 L 7.2  
 S 7.1

13.00

3x50

S 7.8  
 L 8.0  
 H 7.9

4x0

H 8.5  
 L 8.7  
 S 8.6

4x25 = EL Taylor

Sch Top 9.07 393  
 Gutter or Paving 9.73  
 L " " 9.34  
 H Gutter " 9.23  
 H Cl Top 8.97 403

Xsec alley 20' wide  
 Resub. of Blk 40 Normal HFS

SEBP	6.72	399.50	392.78	adams & Mansfield
10' E of 2 Hawley = 0+00	on paving	7.53	391.97	5' S of alley
0+15 = Gutter line	"	8.03	391.47	" " "
	0+40 = EL Hawley			
N	6.4 paving	7.21	392.29	
E	"	7.24	392.26	
+5	"	7.15	392.35	
S	paving	6.94	392.56	
	0+55			
S		6.4	393.1	
+1	- Water Meter	6.4	393.1	
+5		6.6	392.9	
E		6.6	392.9	
N		6.3	393.2	
	1+00			
N		5.9	393.6	
E		6.0	393.5	
+5		6.1	393.4	
S		6.1	393.4	
	1+44			
S	Carage Cerr. floor	5.23	394.27	on line
+5		5.4	394.1	
E		5.4	394.1	
N		5.5	394.0	
	2+00			
N		5.0	394.5	

indexed  
 c.s.k.

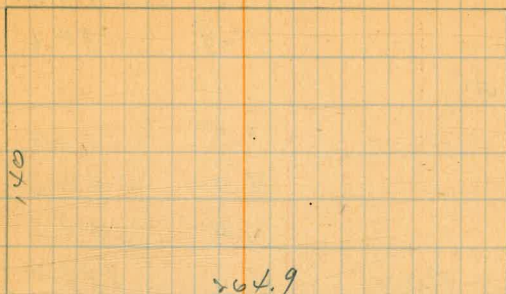
Moore  
 S. 1850N  
 Northern  
 5-22-32

52

ADAMS

Ave

Blvd



N

Hawley

E		5.1	394.4	
+5		5.2	394.3	
5		4.9	394.6	
	2+56			
5		4.5	395.0	
+5		5.0	394.5	
E		5.0	394.5	
N	Water Meter	5.0	394.5	
	2+56 meter on N/L			
	2+68			
N		5.2	394.3	
E		5.6	393.9	
+5		5.3	394.2	
+9		5.1	394.4	
+9.2	bot. cem step	4.32	395.18	4' wide
	3+04.9 = WL Mansfield			
S	cb	5.82	393.66	
S	par.	6.33	393.17	
+5	"	6.44	393.06	
E	"	6.51	392.99	
N	"	6.37	393.13	
N	cb	6.00	393.5	
	3+16.9 Gut. par.	6.57	392.93	5' S of E alley
	→ 3+44.9 " "	6.27	393.23	" " "
	10' E of E Mansfield			



Xsec of alleys 15' wide  
Blk 25 Normal Hrs

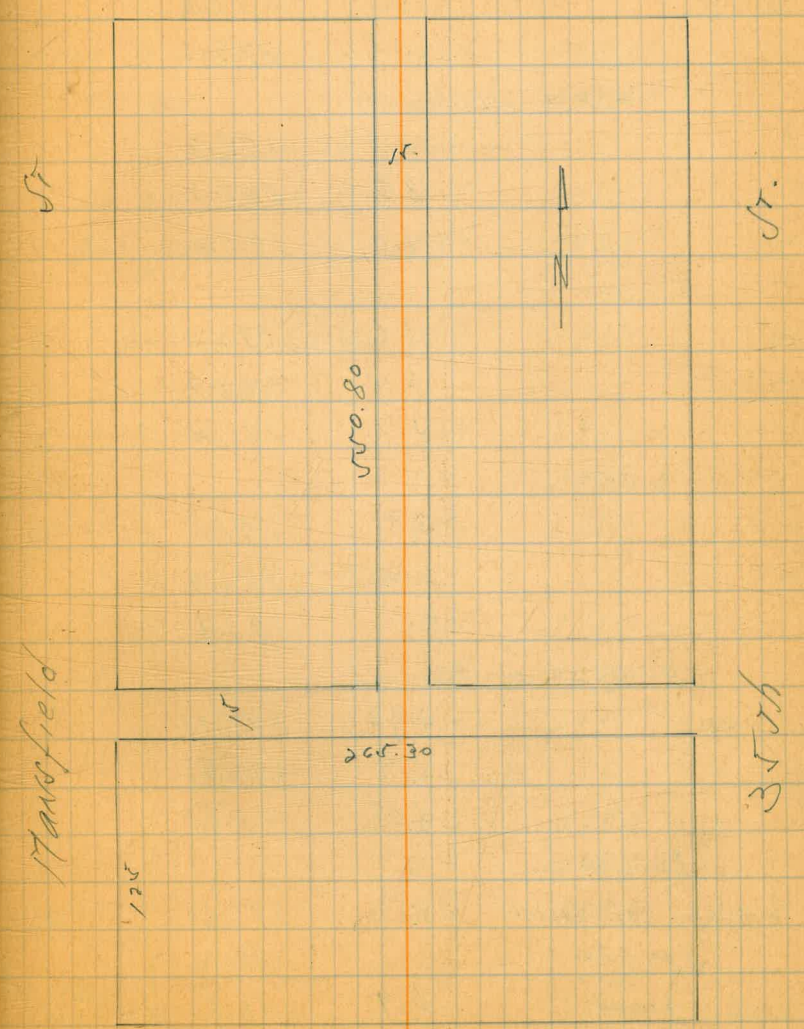
Indexed  
c.s.k.

54

E + W alley

SEBP	433	397.11	390.78	Adams Mansfield
10' E of NW 76=0+00=paving	5.25	391.86		Alley
0+28 cur. paving	5.58	391.55		" "
√ 0+40=WL 3576				
S	par.	4.83	392.28	
C	"	5.05	392.06	
N	"	4.85	392.26	
√ 0+50				
N		4.3	392.8	
C		4.2	392.9	
S		4.2	392.9	
√ 1+00				
S		3.8	393.3	
C		3.7	393.4	
N		3.8	393.3	
√ 1+55				
-3	& double Gar dirt floor	3.7	393.4	
N		3.7	393.4	
C		3.8	393.3	
S		3.8	393.3	
√ 1+65.15 EL. N alley				
S		3.9	393.2	
C		3.9	393.2	
N		3.7	393.4	

Collier Not paved St.



Adams Ave.

397.11

1+72.65 &amp; alley north

N	4.9	393.2
C	3.7	393.4
S	3.8	393.3

↓ 1+80.15 wtl north

S	3.9	393.2
C	3.8	393.3
N	4.0	393.1

↓ 2+00

N	3.6	393.5
C	3.4	393.7
S	3.7	393.4

↓ 2+50

S	3.3	393.8
C	3.2	393.9
N	3.5	393.6

↓ 3+05.30 EL Mansfield

N par.	4.93	393.17
C "	4.19	392.92
S "	4.04	393.07

↓ 3+17.30

& alley par. gutter	4.51	392.60
---------------------	------	--------

↓ 3+25.30

alley facing	4.29	392.82	10' E. of Mansfield
--------------	------	--------	---------------------

T.P.	4.09	397.49	3.71	393.40
------	------	--------	------	--------

N + S alley N'wide

55

397.49

T.P.	4.50	398.01	3.98	393.51
------	------	--------	------	--------

S.E.L. Mansfield + Collier

Collier St  
Not paved

Top cb	Sub Collier	4.04	393.97
--------	-------------	------	--------

gut par.		4.56	393.45
----------	--	------	--------

S.W.L. 25th + Collier

Top cb	Sub Collier	5.18	392.83
--------	-------------	------	--------

gut par.		5.54	392.47
----------	--	------	--------

10' S of Collier	(0+00 & alley)	4.7	393.3	gn.
	0+08 S cb			

E Top cb		4.69	393.32
----------	--	------	--------

C		5.2	392.8
---	--	-----	-------

W Top cb		4.80	393.21
----------	--	------	--------

↓ 0+70 S.L. Collier

W Top cb		4.31	393.70
----------	--	------	--------

C		4.5	393.5
---	--	-----	-------

E " "		4.43	393.58
-------	--	------	--------

0+50

E		3.6	394.4
---	--	-----	-------

C		3.7	394.3
---	--	-----	-------

W		3.6	394.4
---	--	-----	-------

-10' car.	0+80 dirt floor	3.2	394.8
W		3.6	394.4

C		3.7	394.3
---	--	-----	-------

E		3.6	394.4
---	--	-----	-------

39801

	✓ 1+00		
E		3.8	394.2
C		3.9	394.1
W		3.7	394.3
	1+50		
W		4.3	393.7
C		4.6	393.4
E		4.5	393.5
	✓ 2+00		
E		4.7	393.3
C		4.7	393.3
W		4.6	393.4
	✓ 2+50		
W		4.8	393.2
C		4.9	393.1
E		5.0	393.0
	2+62		
E-6	Gar. dirt floor	4.7	393.3
	✓ 3+00		
E		5.1	392.9
C		5.1	392.9
W		5.1	392.9
	✓ 3+50		
W		5.3	392.7
C		5.4	392.6
E		5.2	392.8

24 house

56

		398.01		
T.P.	5.4	398.05	5.27	392.64
	✓ 4+00			
E			5.2	392.5
C			5.3	392.8
W			5.4	392.7
	✓ 4+50			
W			5.1	393.0
C			5.2	392.9
E			5.5	392.6
	✓ 5+00			
E			5.0	393.1
C			4.8	393.3
W			4.9	393.2
	✓ 5+50			
W			5.0	393.1
C			5.0	393.1
E			4.9	393.2
	✓ 5+70.8 = NL of E + W alley			
E			4.7	393.4
C			4.8	393.3
W			4.9	393.2
T.P.	3.31	397.06	4.30	393.75
ch. to SEBP	adams		4.27	392.79
	transford			392.78
				0.01

9/2/39 X Sec Alley BIK. +52. U.H. indexed  
c-s-k.

Miller  
Walker  
Bliss B.M.

4.53 — 374.49 — 369.96 + Idaho. s.e. Polk.

14 S. of N. = N. ch. line Polk. St

w. d	5.05	369.44
w. G	5.52	368.97
ϕ	5.62	368.87
E. c	5.71	368.78
E. d	5.25	369.24

0+00 = N. line Polk. St.

0.1 W of E ch.	N. End	5.15	369.34
" " " "	" "	5.29	369.20
ϕ	" "	5.45	369.04
+9.9	" "	5.26	369.23
+9.9	ch	4.96	369.53

0+22

9.3' E of ϕ = E. edge Tol Polk

0+50

w	5.0	369.5
ϕ	4.9	369.6
E	5.6	369.5

0+58

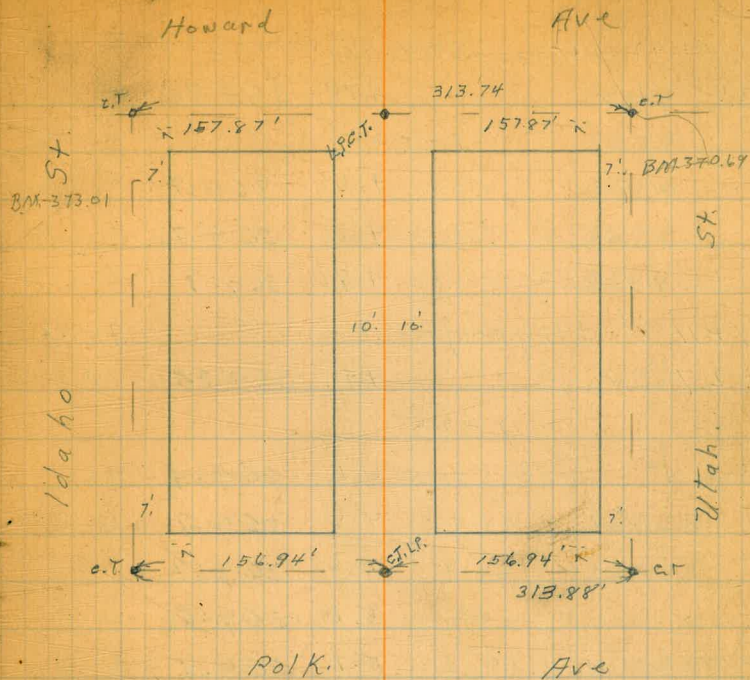
9.3' W of ϕ = W. edge E. ch Polk

0+83 Garage on W. conc floor 4.8 Buck.

W+4.8' floor	4.68	369.81
W+2. conc. apron	4.90	369.59

Platted on Profile #1902  
10-2-39 E.B.H.

57



1+92 garage on E. conc. floor 2.6 Back

E+2.6 = floor 4.79 369.70 ✓

1+00

E 4.4 369.7

E 4.8 369.7

W 4.8 369.7

1+11 double garage on E. conc. floor 2.7 Back

E+2.7 4.91 369.58 ✓

1+25

-5 4.6 369.9

W 4.8 369.7

E 4.8 369.7

E 5.0 369.5

+10 5.1 369.4

1+42 garage on W. conc. floor 6.8 Back

W+2.4 apron 4.54 369.91 ✓

W+6.8 floor 4.57 369.92 ✓

1+49 8.8' E. of E. Tel Pole

1+50 9.8' W. of E. Elec. U.

1+50

E-10 5.3 369.2

E 5.1 369.4

E 5.0 369.5

W 5.0 369.5

1+27 6.3' E. of E. = N. End. Tile drain emptying in gutter ✓  
of P.H. E. of E. Line Alley

FL 5.7 368.8 ✓

17.85

-1. 4.7 369.8

W 5.1 369.4

E 5.1 369.4

E 5.4 369.1

+10 5.4 369.1

T.P. 6.14 - 375.65 - 4.92 - 369.51 -

1+93 garage on W. conc. floor 7.0 Back

W+4.5 apron 5.97 369.68 ✓

W+7.0 floor 5.60 370.05 ✓

2+11 garage on E. conc. floor 3.3 Back

E-3.3 floor 5.80 369.85 ✓

E-1.3 apron 6.23 369.42 ✓

E 6.4 369.3

E 6.2 369.5

W 6.0 369.7

2+35

W 5.7 370.0

E 6.0 369.7

E 6.2 369.5

+10 6.2 369.5

2+50

E-10 5.5 370.2

E 5.5 370.2

E 5.5 370.2

W

375.65

2+50 con

F 4 5.4 370.3

W 4.3 371.4

2+51-9.8' W. of  $\phi$  = Wedge Elec Pole

2+51.5 End. Fence on E. 0.8' in Alley

2+67-8.9' E. of  $\phi$  = E. side Tel Pole

2+80

W 4.7 371.0

$\phi$  4.9 370.8

+9.7 = Fence 4.7 371.0

3+00

E = fence 4.2 371.5

$\phi$  4.0 371.7

$\phi$  S.E. Cor Top. M.H. 3.69 371.96 ✓

W 4.0 371.7

3+20

W 4.2 371.5

$\phi$  4.5 371.2

E = Fence 4.5 371.2

3+39 - W line = W. edge Elec Pole

3+50

0.6 W. of E = Fence 3.9 371.8

$\phi$  4.2 371.5

W 4.1 371.6

3+65 - 9.9' W of  $\phi$  = Elec. Guy wire Dead. Man.

3+75 Fence on E. 1.0 in Alley

3+95 " " 4.0.5 " " N. End.

375.65

4+00

59

W 3.7 372.0

$\phi$  3.8 371.9

E 3.7 372.0

+0.2 S. End. W. edge Cypress. Tree Trunk., Hedge

4+15 - 8.9' E of  $\phi$  = E. edge Tel Pole

4+42. Trunk of Cypress. Hedge on E. 0.6' in Alley

4+46 N. End. Hedge on E.

4+46 S. " Fence on E. 0.6 in Alley

4+50

E 3.3 372.4

$\phi$  3.4 372.3

W 3.4 372.3

4+73 9.6' E of  $\phi$  = W. end. 24" conc. Walk. = Fence

2.88 372.77 ✓

4+76 - 9.5 W. of  $\phi$  = W. edge Elec. Pole

4+83 Fence on E. Line

4+93 - 8.8' W of  $\phi$  = Elec. Guy wire Dead. Man.

5+00

W 2.9 372.8

$\phi$  3.1 372.6

E 3.0 372.7

T.P. - 5.93 - 378.48 - 3.10 - 372.55

378.48

5+25

E 5.2 373.3

± 5.3 373.2

W 5.1 373.4

5+41 - 8.8' E. of ± = E. edge Tel Pole

5+60

W 5.1 373.4

± 5.0 373.5

E 4.7 373.8

5+62 - 8.2' E of ± = Tel Guy Wire Dead Man.

5+85

E 4.2 374.3

± 4.9 373.6

W 4.7 373.8

5+95

W 4.8 373.7

± 5.0 373.5

E 4.7 373.8

6+00 = S. Line Howard.

E. d. S. End: 4.82 373.66

E. per " " 5.30 373.15

± " " " 5.58 372.90 ✓

W " " " 5.40 373.08

W cl. " " 4.91 373.57

378.48

14' N of S. = S. cl. Line Howard.

60

W cl. 5.03 373.45

W g. 5.55 372.93

± 5.48 373.00

E G 5.34 373.10

E cl. 4.91 373.57

B.M. S.W. Cor. Howard & Ullah 4.54 373.94 = 373.95

Addition of Sections

Oct 5-39  
S. 15' 00"  
North 26.00

BM 3.71 373.67 369.96

Drain Outlet at Floor line 4.93 368.74

3' E of E.L. Alley in Gutter TP 4.51 374.38 3.80 369.87

1+0

20' N of XL 5.3 369.1

50' N of XL 4.5 369.9

25' E of E.L. 4.9 369.5

50' E of E.L. 4.8 369.6

1+25

25' E of E.L. 5.1 369.3

50' E " " 5.1 369.3

25' N of XL 4.6 369.8

50' N " " 4.4 370.0

1+50

25' E of E.L. 5.3 369.1

50' E " " 5.2 369.2

25' N " XL 4.7 369.7

50' N " " 4.7 369.7

JFBP  
Palt & Co.

374.38

1+85

25' E of E.L.	5.2	369.2
50' E " " "	5.0	369.4
25' W of W.L.	4.5	369.9
50' W " " "	3.8	370.6

2+35

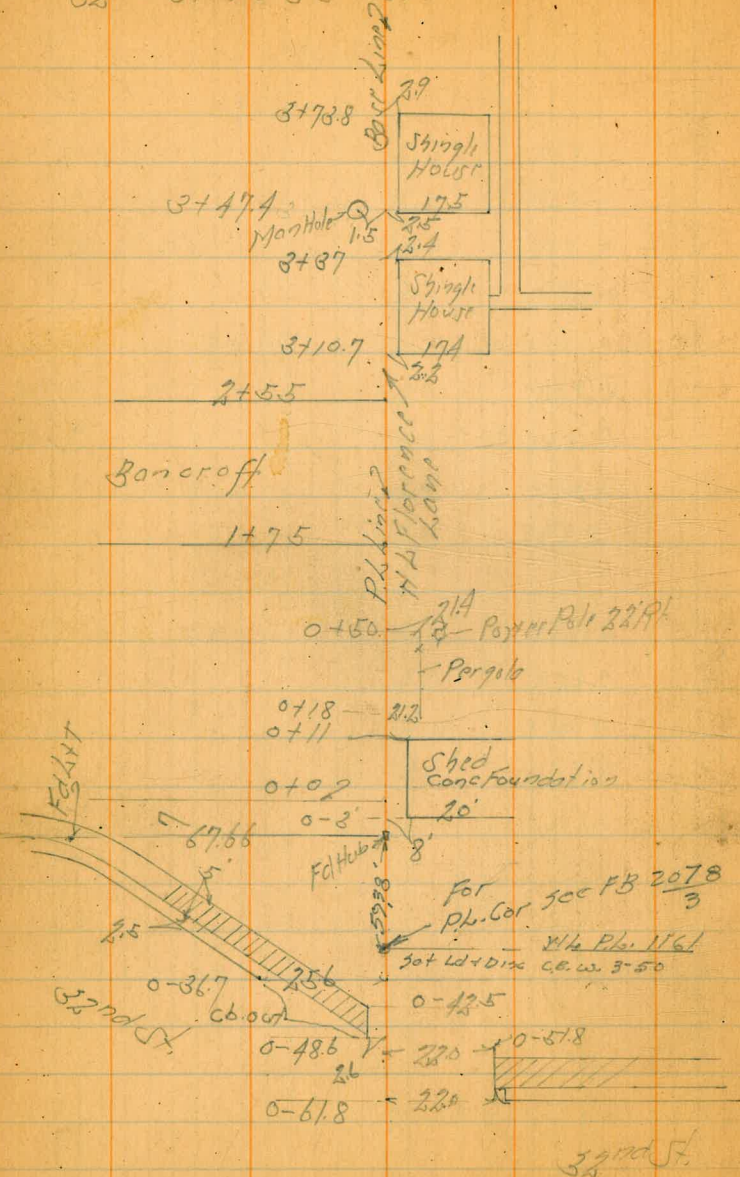
25' E of E.L.	4.6	369.8
50' E " " "	4.7	369.7
25' W " " W.L.	3.6	370.6
50' W " " "	3.2	371.2

2+50

25' W of W.L.	3.8	370.6
50' W " " "	3.1	371.3
25' E " " E.L.	4.4	370.0
50' E " " "	4.6	369.8



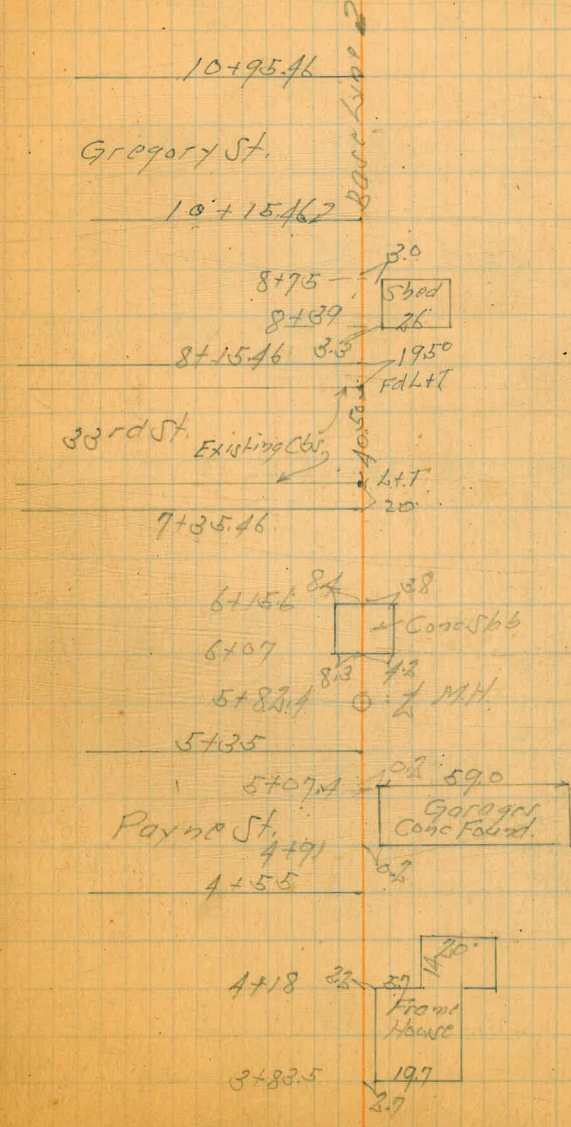
Cross Section Florence Lane  
32nd St to 35th St.



INDEXED  
EFB

Oct 15-46  
Sutton  
Northgrove  
St Moore. 62

Sketch Cont Page 73



511 Cross Section Florence Lane

Lt-N R Pt-S

0-3				
0-24				
TP	6.20	4517	1.34	38.97
0-36.7				
0-42.5				
0-48.6				
0-51.8				
0-61.8				
TP	0.88	4031	11.93	39.43
BM	0.29	51.36		51.07

Red 10-19-40 } QPH  
Profile 10-21-40 }

N.W.B.P  
Leopold + 32<sup>nd</sup>

36.8 8.4 20	40.1 5.1	41.2 1.0 2	42.9 2.3 25			
39.0 6.7 28	41.0 4.2		43.0 2.2 25			
		45.17				
32.24 8.07 256-63 <sup>rd</sup>	33.3 9.0 11	40.6 7.3 3	40.9 7.6		43.3 7.3 25	
32.1 8.2 17	33.1 7.2 14	34.32 5.99 265 <sup>th</sup> Walk	36.5 3.8	39.1 1.2 10	42.5 7.2 14	43.2 7.9 25
32.3 8.0 14	34.3 6.0 6	34.41 5.90 265 <sup>th</sup> Cont. Walk	34.5 5.8	34.9 5.4 6	42.3 7.0 18	42.7 7.4 22
			34.8 5.5	35.3 5.0 10	38.1 2.2 22	37.04 3.27 22-11/6
			36.2 6.1	36.2 4.1 22	36.89 3.42 22	

4031

TP 0.70 21.81 12.20 31.11

210

TP 0.32 33.31 12.18 32.99

1775 - W.L. Bancroft.

1765

1746 - Sky Power Pole 21.2 RT ✓

170

0750

0718

45.17

Lt

B

Rt

64

12.5	13.5	24.4	24.8	28.1
20.6	19.6	8.7	8.3	5.0
38	23	7		25

33.31

14.2	28.1	30.4	32.4	34.4	36.8
31.0	17.1	14.8	12.8	10.8	8.4
32	16	12		14	25

14.0	27.1	31.9	36.0	37.0	39.1
31.2	18.1	13.3	9.2	8.2	6.1
37	17	14		12	25

23.1	32.7	34.4	37.5	41.2	42.1
21.1	12.5	8.8	7.7	4.0	3.1
25	15	6		14	25

30.7	33.5	37.9	38.6	41.7
14.5	11.7	7.3	6.6	3.5
25	16	5		25

36.0	37.7	38.5	39.6	41.6	42.6
9.2	7.5	6.7	5.6	3.6	2.6
20	10		2	20	25

35.4	37.9	39.0	39.1	40.4	42.0
9.8	7.2	6.2	6.1	4.8	3.2
20	13		2	13	25

45.17

Florence Lane

4+55: W.L. Payne

4+35

TP 0.81 10.83 11.79 10.02

3+80

3+40

3+0

2+55 = F.L. Bancroft

2+30

21.81

Lt.

B

Rt

65

6.3	6.8	8.2	8.2	7.9
4.5	4.0	3.6	2.6	3.9
3.5	2	5		2.5

7.6	8.1	8.3	8.2
3.2	2.7	2.5	2.6
3.5	1.3		2.5

10.83

9.9	9.9	8.88
11.9	11.9	12.93
13		25.3

114  
30m walk ✓

10.5	10.2	9.6	9.37
11.3	11.6	12.2	12.44
15	5		25 = 114

30m walk ✓

9.5	10.4	12.1	11.1	10.8	10.8	11.5
13.03	10.4	9.9	10.7	11.0	11.0	10.3
3.5	15	8	5		2.5	3.5

10.5	12.5	11.8	13.5	13.3	14.3
11.3	9.3	10.0	8.3	8.5	7.5
3.5	11		9	2.5	3.5

12.3	13.1	17.4	19.0	19.8
9.5	8.7	4.4	2.8	2.0
3.5	1.3		2	2.5

21.81

6415

640

57824 = 1/2 MH on Riv

5772

5763

5735 = Fl Payne = Sty Paper 29.5 Pt. ✓

5710

1191

10.83

6.3	6.2	5.1	6.56	4.9	4.8	7.0	5.3
4.5	4.6	5.7	4.77	5.9	6.0	3.8	5.5
30	21	15	102	11	13	19	25

*on top of*

5.5	4.4	4.4	4.9	4.5
5.3	6.4	6.7	5.9	6.3
25	18	18	5	30

6.35  
4.48

5.6	5.6	5.0	4.7	1.9	3.9
5.7	5.2	5.8	6.1	8.9	6.0
38	15	8	8	20	33

5.2	3.3	2.6	2.6	4.1	6.0
5.6	7.5	8.2	8.2	6.7	5.8
25	18	21	21	30	45

3.5	2.5	2.1	2.5	8.4	6.2
7.3	8.8	8.7	8.3	2.4	4.6
25	20	16	16	19	30

5.7	5.4	4.0	5.2	8.5	7.5	5.8
5.1	5.4	6.8	5.6	2.3	3.8	5.0
25	17	14	14	17	18	25

5.7	5.8	5.1	6.6	7.03	7.0
5.2	5.0	5.7	4.2	3.7	3.8
25	14	17	1	10.83	25

*on top of*

8+1546 = EL 33rd

7+9546 = FCB 33rd

7+5546 = WCB 33rd

TP 5.02 11.93 3.92 6.91  
 0.747  
 FCB of 33rd  
 4 P.L. 2.120

7+3546 = W L 33rd 51

7+0

6+58

6+50

10.83

Lt.

R

PA

67

6.9	6.7	7.4	8.9	9.0	7.3
5.0	5.2	1.5	3.0	2.9	4.6
2.5	2		5	1.4	2.5

7.05	6.89	9.2	8.9	7.0
1.88	5.04	2.7	3.0	4.9
150-cb top	50-cb top	7	13	2.5

7.03	6.93	9.2	9.2	8.2
1.90	5.00	2.7	2.7	3.6
150-top CB	70-top CB	5	12	2.5

11.93

6.8	6.9	7.5	9.3	9.4	8.1	8.2
1.0	3.9	3.3	1.5	1.4	2.7	2.6
2.5	10		7	11	17	30

6.9	6.5	7.3	9.7	9.8	6.2	5.5
3.9	4.3	3.5	1.1	1.0	4.6	5.3
2.5	15		2	11	20	30

7.0	6.6	6.8	7.3	9.8	9.8	6.7	5.1
3.8	4.2	1.0	3.5	1.5	1.0	4.1	5.7
2.5	17	21		15	13	18	30

6.8	6.6	4.8	3.7	3.2	5.8	5.8
1.0	4.2	6.0	7.6	7.6	5.0	5.0
2.5	3		6	17	23	30

10.83

11 + 50

10 + 98 = Sly Power Pole 19.2 Rt. ✓

10 + 95.46 - EL Gregory

10 + 55.46

10 + 15.46 - W L Gregory

10 + 0

9 + 50

9 + 09 = Sly Power Pole 21.7 Rt. ✓

9 + 0

9 + 50

11.93

Lt.

R

R1

5.8

5.8

5.5

5.9

 $\frac{6.1}{25}$ 

6.1

 $\frac{6.4}{12}$  $\frac{6.0}{25}$ 

5.7

6.2

5.4

5.7

6.2

 $\frac{6.2}{25}$  $\frac{5.7}{2}$  $\frac{6.5}{3}$  $\frac{6.2}{3}$  $\frac{5.7}{25}$ 

5.9

6.3

5.5

6.0

8.1

7.9

5.8

 $\frac{6.0}{25}$  $\frac{5.6}{8}$  $\frac{6.4}{4}$ 

5.9

 $\frac{3.8}{16}$  $\frac{4.0}{25}$  $\frac{6.1}{35}$ 

6.0

6.4

5.6

6.5

8.4

8.3

7.2

7.2

 $\frac{5.9}{25}$  $\frac{5.5}{13}$  $\frac{6.3}{5}$ 

5.6

 $\frac{2.5}{7}$  $\frac{3.6}{17}$  $\frac{4.7}{22}$  $\frac{4.7}{35}$ 

6.1

6.4

5.5

6.5

8.5

8.3

6.7

6.7

 $\frac{5.8}{25}$  $\frac{5.5}{12}$  $\frac{6.4}{6}$ 

5.4

 $\frac{3.4}{5}$  $\frac{3.6}{15}$  $\frac{5.2}{20}$  $\frac{5.2}{25}$ 

6.4

6.0

7.9

8.7

8.3

7.9

 $\frac{5.5}{25}$  $\frac{5.9}{7}$ 

4.0

 $\frac{3.2}{3}$  $\frac{3.6}{14}$  $\frac{4.0}{25}$ 

6.6

6.3

7.8

8.5

8.4

5.8

 $\frac{5.3}{25}$  $\frac{5.6}{3}$ 

4.1

 $\frac{3.4}{2}$  $\frac{3.5}{11}$  $\frac{6.1}{25}$ 

6.8

6.5

7.4

8.6

8.6

6.6

6.6

 $\frac{5.1}{25}$  $\frac{5.4}{3}$ 

4.5

 $\frac{3.3}{3}$  $\frac{3.2}{12}$  $\frac{5.2}{18}$  $\frac{5.2}{25}$ 

11.93

Florence Lane

13+48 - 2.3 Conc Walk 320 R1

13+20.83 = Baseline 37th St

13+0

TP 11.54 27.66 0.41 16.06

12+75

12+60

12+35

12+20

12+0

TP 9.95 16.47 5.41 6.52  
11.93

Lt

B

Rt  
23.45

7.15  
32.3 Conc Walk ✓

17.34 17.9 17.8  
10.26 9.7 9.8  
0.766 1.15 1.25

16.6 16.3 15.7  
11.0 11.3 11.9  
15 25

27.60

8.0 9.0 11.4 11.1 11.0 14.6  
8.5 7.5 5.1 5.4 5.5 1.9  
25 12 8 18 36

7.0 7.6 10.2 9.7 9.7 7.5 7.7  
9.5 8.9 6.3 6.8 6.8 9.0 8.8  
25 11 4 6 17 36

6.3 6.5 9.6 10.0 9.5 7.5 6.7  
10.2 10.0 6.9 6.5 7.0 9.0 9.8  
30 19 5 13 14 36

6.1 6.3 5.5 4.9 5.1  
10.4 10.2 11.0 11.5 11.4  
30 7 15 36

6.1 6.1 5.6 6.1  
10.4 10.4 10.9 10.4  
35 15 35

16.47



15713

TP 9.80 4739 0.77 37.59

1570

14780 = 2 Dr. Garage 18 Wide on N

14778 = Sky Power Pole 23.5 Rt ✓

14764

14725

13788 = Sky Power Pole 23.0 Rt ✓

13784

TP 11.23 3836 0.47 27.13

1374922 = FL 24th on N

3760

Lt.

B

Rt.

38.45

8.92  
244-Width  
Case 1011 ✓

47.39

38.17 37.5 37.2 37.1 36.3

✓ 0.19  
22-210 on 1011 0.9 17 13 21  
22 22 30

37.2 36.6 36.0 35.7 36.2 36.1

✓ 1.7-2.00 on  
Dr. Garage 1.8 24 27 22 23  
27 17 22 30

35.9 35.7 34.9 35.2 35.1

✓ 2.5-2.00 on  
Dr. Garage 27 25 27 33  
27 27 30

33.53 32.4 32.0 32.2 32.4

✓ 4.83  
2 Garage  
Case 1011 6.0 6.7 6.2 6.0  
18 22 30

27.9 27.9 27.2 27.3 28.3 28.9

✓ 10.5  
5.2-1 Garage  
Case 1011 10.5 11.2 11.1 10.1 9.5  
16 19 22 30

38.36

22.0 21.4 21.6 22.2 23.8

3.8 6.2 6.0 5.4 3.8  
8 19 22 30

37.60

17+02

16+64 = Sly Powder Pole 22.3 Pt

16+56

16+32

16+06

15+73

15+65 = Sly Powder Pole 22.1 Pt

15+53

15+43

4739

4+

B

PA

45.0 44.7 45.09 45.27

2.4 2.7 2.30 2.17  
13 20.4 23.1 = 2  
Garage  
Conc. Floor

44.54 43.92 43.9 43.2 43.9 43.7

2.85 3.47 3.5 4.2 3.5 3.7  
3.7 = 2 Garage  
Conc. Floor 14 = Sly Conc  
Apron 18 22

43.3

4.1 25.2 = 2 Garage  
Dirt Floor

42.9 42.8 42.2 42.6

4.5 4.6 5.2 4.8  
18 = 2 Garage  
Dirt Floor 18 23

42.24 41.9 41.5 41.7

5.15 5.5 5.9 5.7  
2.6 = 2 Garage  
Conc. Floor 14 22

40.6 40.0 40.3 40.27

6.8 7.4 7.1 7.12  
25.5 = 2 Garage  
Dirt Floor 22

39.69

7.70 12.7 = 2 Garage  
Conc. Floor

39.6 38.8 39.0 39.32

7.8 8.6 8.4 8.07  
14 = 2 Garage  
Conc. Floor 22

4739

18470 = Sky Power Pole 224 RT ✓

18472 = 17 1/2 inch or Pole on B line ✓

18466

18462 24-1/2 x 35 7/8 Ft. on So.

18450

18418

1840

17465 Sky Power Pole 227 RT ✓

174615

TP 9.69 56.77 0.81 47.08

17440

4739

LF

B

RT

52.65

4.12  
0.2 - Garage  
Circ. Floor

52.6	51.0	51.3
42	58	55
	18	22

51.6	50.6	50.9
56	62	59
	19	22

50.2	50.2	50.0	49.9
6.6	6.6	6.8	6.9
		10	22

0.5 - Garage  
Dir. Floor

49.8	49.1	49.2
70	77	76
	12	22

48.22	48.12	48.1	47.5	47.4	47.8
8.55	8.65	8.7	9.3	9.4	9.0
			7	16	22

48.06  
47.94  
8.34 - 20 Garage  
Circ. Floor  
14 inch

56.77

46.9	46.6	46.9
0.6	0.8	0.5
	15	22

4739

BM 7.67 68.20 SE Top of Hill  
Occasionally  
351657  
68.38

TP 12.20 75.87 0.17 63.67

TP 12.46 63.84 0.71 51.38

BM 1.29 52.09 NW BP  
Florence Lane  
351657

BM 7.93 50.91 NW BP  
Florence Lane  
351657  
50.80

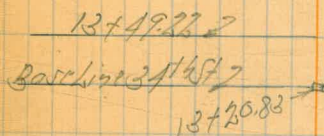
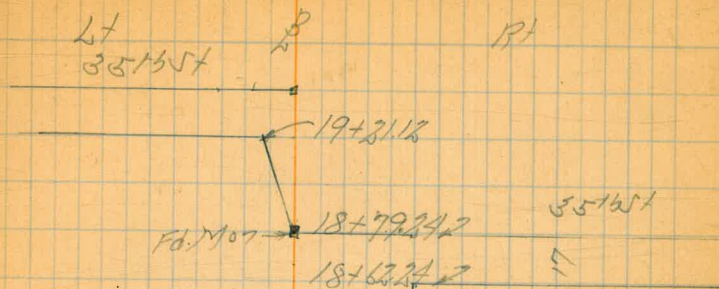
TP 2.54 58.84 0.47 56.30

19+2112 - N L 351657 From N

19+0

18+7924 = Mag on Ph. Unit

56.77



54.0 53.9 53.4  
2.8 2.9 3.4  
6 22

54.42 53.2 52.7 52.8  
2.35 3.6 4.1 4.0  
18.2 = NE 360 ft  
Cor. Floor

53.50 52.6 52.09 51.6 51.6  
3.37 4.2 4.68 5.7 5.7  
8.5 = NW 360 ft  
Cor. Floor  
56.77

76

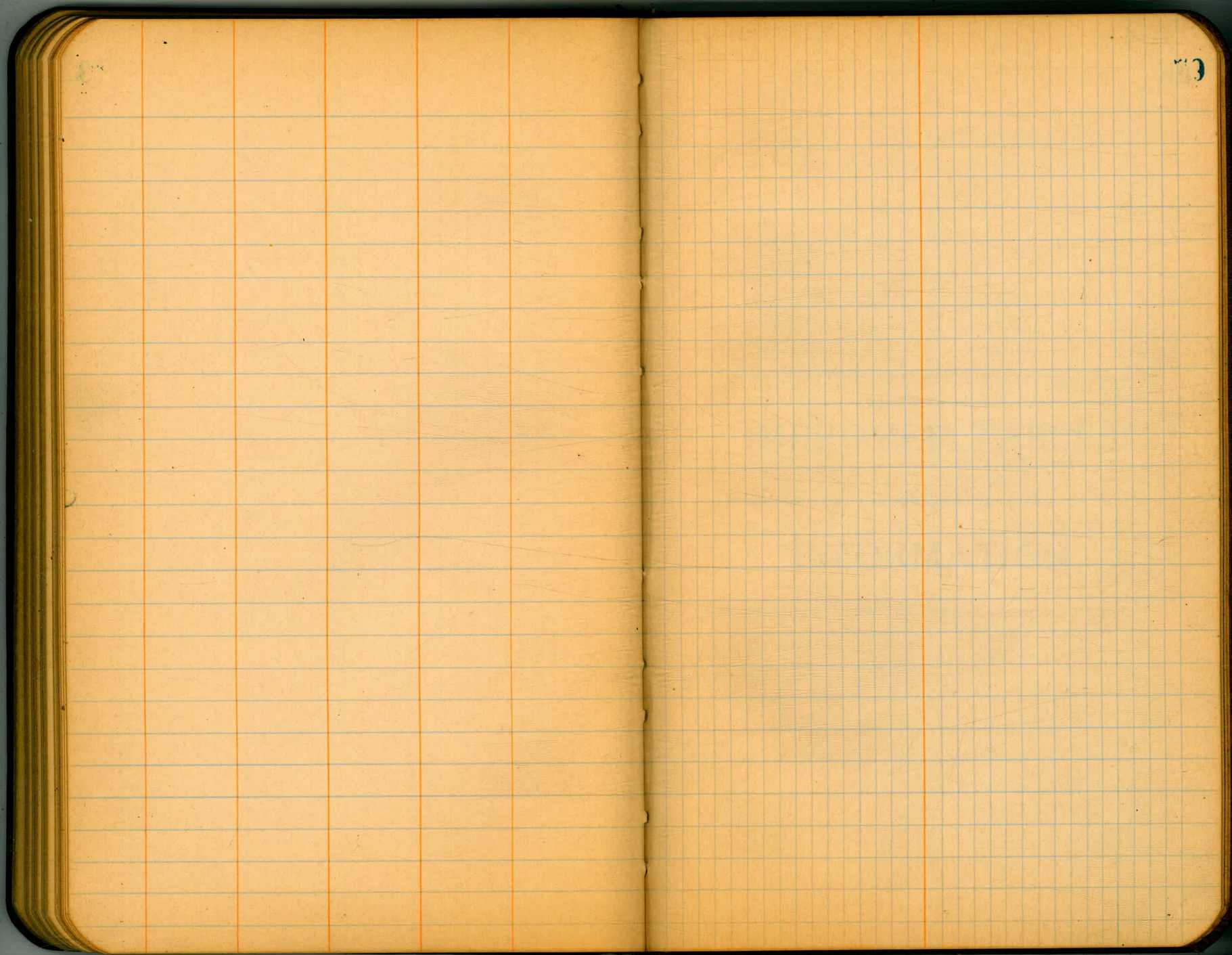












DIRECTIONS FOR USE OF TABLES

TABLE No. 1.

Distance of slope stake from side or shoulder stake for any width roadway, slope 1 1/2 to 1. If ground is nearly level, the cut or fill at side stake is located by the double entry method in left column and top row. The number in body of table is taken from column giving distance from side stake to slope stake. If ground is not

**IMPROVED TABLES**

AND INFORMATION

TABLE No. 2.

To find Tangent and External for curve of any other degree, divide by degree of curve and add correction found in column of correction. Degree of curve with a given T may be found by dividing tangent (or external) opposite T by given tangent (or external). The distance from a point on the tangent to the curve is very nearly the square of the tangent length divided by twice the radius.

16.5  
27.9  
1929

47.05  
3.104  
50.154

83  
7  
.6667  
.0624  
7292

2.42  
.8333  
.0417  
.3750  
7292  
1.1042  
2  
3.104

48.5  
5.31  
48.4  
6.1

1520  
285  
12.35  
28.59  
20.5  
9.09

300.65 x  
284.80  
15.85

34105-F  
7.19  
348.24

1414 1417  
332 332  
1082 10.85

29.59  
20.50  
9.09  
2  
7.09

34.07  
3022  
635 13.840 6  
3810 3810  
14.6  
.086

334.65  
7.87  
326.78

1086  
332  
14.18  
348.24  
418  
334.06  
334.00

338.97  
9.27  
348.24

N. E. cor Park Blvd & El Cajon  
exit to tunnel 15' curb falls 6.13  
5.21  
0.92