

1452

1952

1952

1952

MICROFILMED

MICROFILMED

ENGINEERING DEPARTMENT
CITY OF CALIFORNIA
SAN DIEGO

Our Leather Bound Engineers Note Books are carried in the following rulings:

- No. 380 LEVEL BOOK. Left and Right Hand Page the same as Left Hand Page of this Book.
- No. 382 FIELD BOOK. Left Hand Page as in this Book, Right Hand Page 4 x 4 to the inch, Center Line Red.
- No. 384 MINING TRANSIT BOOK. Left Hand Page as in this Book, Right Hand Page 8x8 to the inch, Center Line Red.
- No. 385 FIELD BOOK. Left Hand Page as in this Book, Right Hand Page 8 vertical and 4 horizontal lines to the inch, Center Line Red.

We also carry the Note Books listed above, bound in extra strong Fabri-Hide (otherwise the same quality of book), which can be furnished at a somewhat lower price.

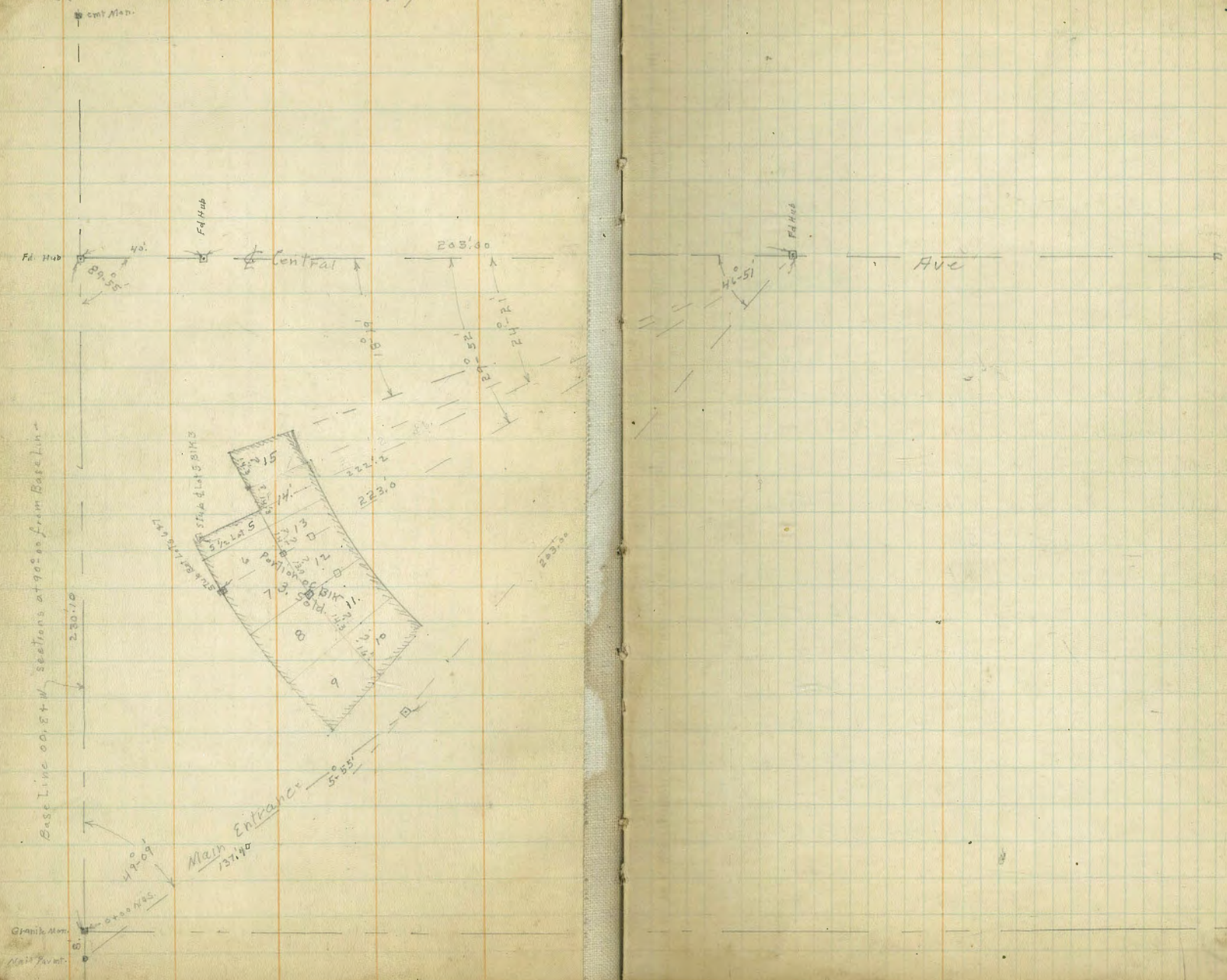
In ordering Fabri-Hide covered books, add the letter "F" to catalog number.

THE FREDERICK POST CO.
ENGINEERING and DRAFTING SUPPLIES
IRVING PARK STATION
CHICAGO, ILL.

1-27-33
Walker
Bliss

Survey of Blks 3, V. + Office I.O.O.F. Cemetary.

Indexed
c.s.Kr



7 Sec BIRs 3-V 4 Office

I.O.O.F. Cemetery

B.M. B.P. 4.02 122.40 118.38
 0+00 E+W } = Mon S.W. Cor I.O.O.F. Cemetery
 0+00 N+S }

5' S=N. Line Imperial Ave Pavmt.

160' E	7.68	114.72
120' E	8.70	113.70
90' E	9.51	112.89
75' E	10.21	112.19
60' E	10.98	111.42
35' E	12.33	110.07
17.7 E	13.28	109.12
T.P.	8.98	119.49
00 E+W = Base Line	11.40	108.1
16.2 W	12.28	107.21
30' W	13.00	106.49

R.S.

30' W	12.9	106.6
16.2	12.28	107.4
0+00	11.2	108.3
17.7 E	10.5	109.0
35' E	9.9	109.6
60' E	8.1	111.4
75' E	7.1	112.4
90' E	7.7	111.8
120' E	5.6	113.9
160' E	4.5	115.0

Indexed
CSK

119.49
0+00 N+S

160' E	1.6	117.9
120' E	2.1	117.4
90' E	3.0	116.5
75' E	3.7	115.8
60' E	4.7	114.8
35' E	7.0	112.5
17.7 E	9.8	109.7
0+00 E+W at Mon	10.9	108.6
16.2 W	12.1	107.4
30' W	13.0	106.5

1.3 N.
S.E. Side Main Entrance

17.7 E = S.W. End. Curb	8.98	110.51
17.7 E		

ground E
Top. Curb

This curb extends from 17.7 E } To { 45' N. } = 6' ent'd.
 on tangent 51.3 N }
 73' E }

1.5 N.

20' E Cypress Tree 5" Diam	8.8	110.7
35.7 E " " 1" "	7.0	112.5
66' E " " 2" "	4.5	115.0
95.5 E " " 2" "	2.8	116.7
126' E " " 3" "	2.0	117.5
156' E " " 4" "	1.8	117.7

5' N = S. Edge Lawn

160' E	1.2	118.3
120' E	2.1	117.4
90' E	3.0	116.5
75' E	3.7	115.8

119.49

5' N. (con)

60' E	4.7	114.8
35' E	7.1	112.4
22' E	8.5	111.0
21' E	9.3	110.2
17.7 E	9.6	109.9
50' E W	10.7	108.8
16.2 W	12.4	107.1
16.2 W on E. end. Extending West	11.94	107.55
30' W on wall	12.70	107.79

6.2 N.

73.4 E-S.W. Cor office	3.5	116.0	ground
" " " " "	1.8	117.7	floor

6.4 N

91.5 E S.E. Cor. Office	3.0	116.5	ground
" " " " "	1.8	117.7	floor

18' N

11' E S.W. Cor. Lawn BKV.	10.1	109.4
---------------------------	------	-------

20' N.

11.4 E. ctr. Meter Box	9.8	109.7	Top Box
23' N. - 55' E. Date Palm 3' Diam.			

24' N.

8' W. { S. End Granite Curb Extending N. to 20' W. 7' 6" W.	10.50	108.99	Top cl.
--	-------	--------	---------

8' W. = W. edge Road.	11.2	108.3	gutter.
-----------------------	------	-------	---------

0700 E+W	10.4	109.1
----------	------	-------

E. edge Rd.		
11' E W. Edge Lawn	10.1	109.4

18' E on Lawn	8.6	110.9
---------------	-----	-------

23' E = edge lawn	9.1	109.4
-------------------	-----	-------

119.49

3

35' E in Rd.	7.8	111.7	
47 S.E. gutter	7.1	112.4	
47.3 S.E. cl.	6.2	113.3	
60' E.	4.4	115.1	
73' E.	3.2	116.3	
92' E	2.4	117.1	
120' E	1.2	118.3	
153.5 E = { Granite Curb Extending N.W. to 50' N - 111' E	0.5	119.0	ground
" " " " "	0.15	119.34	Top cl.

24' 6" N

73.2 E = N.W. Cor Office	3.2	116.3	ground
" " " " "	1.8	117.7	floor

24' 8" N

91.3 E = N.E. Cor. Office	2.4	117.1	ground
" " " " "	1.8	117.7	floor

42' 5" N

79' E Date Palm 3' Diam		
-------------------------	--	--

43' 0" N

38' E Date Palm. 3' Diam		
--------------------------	--	--

45' N.

117' E	0.9	118.6
--------	-----	-------

89' E	2.3	117.2
-------	-----	-------

73' E { S.E. Curb Main Entrance Apparent. Pic. toward S.	3.80	115.69	ground to Sq Top cl.
---	------	--------	-------------------------

"	4.5	115.0	gutter
---	-----	-------	--------

60' E	5.2	114.3
-------	-----	-------

50' E N.W. Edge Main Entrance	6.5	113.0
-------------------------------	-----	-------

119.49

45' N. cur

44' E on Lawn	6.0	113.5
30' E " "	7.0	112.5
20' E	8.2	111.3
11' E = E. " W. edge Lawn Rd.	9.8	109.7
0 to 0 E+W	10.1	109.4
7.6 W = W. gutter	10.6	108.9
7.6 W = Top cb.	10.6	109.4

46' N
Main Entrance

89' E = E. End. S.E. Curbs

2.1 117.4

48.3 N.

82' E. S. E. Curbs Main Entrance on Curve

2.7 116.8

50' N.

111' E ^{San curb extending} [S. E. to 24' N - 153.5 E]

0.3 119.2

" " " " " " " " ground. W.

1.0 118.5

89' E

2.5 117.0

82' E

3.6 115.9

67' E

4.4 115.1

60' E

5.3 114.2

75' N

100' E

1.2 118.3

86' E = S. E. edge Lawn. N. W. edge Main Entrance.

2.6 116.9

75' E

1.8 117.7

60' E

2.7 116.8

45' E

4.8 114.7

30' E

7.3 112.2

12' E = W. edge Lawn. E. edge Rd.

9.7 109.8

119.49

4

0 to 0 E+W. 10.2 109.3

7.6 W = W. gutter 10.3 109.2

7.6 W = W. cb 9.9 109.6

100' N

7.6 W = W. cb 9.7 109.8

7.6 W = W. gutter 10.0 109.5

00 E+W 9.4 110.1

12' E = E. Rd. 9.1 110.4

30' E 7.0 112.5

60' E 2.0 117.5

T.P. 1.34 118.78 2.05 117.44

125' N

60' E 1.3 117.5

48' E 2.6 116.2

30' E 5.7 113.1

13' E = E. Rd 8.3 110.5

00 E+W 8.9 109.9

7.6 W = W. gutter 9.2 109.6

7.6 W = W. cb 8.8 110.0

150' N

7.6 W = W. cb 9.2 109.6

7.6 W = W. gutter 9.7 109.1

00 E+W 9.4 109.4

13' E = E. Rd 8.8 110.0

30' E 5.9 112.9

40 4.5 114.3

50 3.1 115.7

60 2.3 116.5

118.78

150' N. Con.

80' E e. edge lawn 1.4 117.4

175' N

70' E = e. edge lawn 4.1 114.7

60' E 4.4 114.4

45' E 5.6 113.2

30' E 7.1 111.7

14' E = E. Rd. 9.7 109.1

00 E+W 10.3 108.5

7.6 W = W. gutter 10.3 108.5

7.6 W = W. cl. 9.9 108.9

200' N

7.6 W = W. cl. 10.5 108.3

7.6 W = W. gutter 11.0 107.8

0100 E+W 11.3 107.5

15' E = E. Rd 10.6 108.2

30' E 8.9 109.9

45' E 7.9 110.9

60' E 7.2 111.6

43' E = e. edge lawn 7.4 111.4

210' N

60' E e. edge lawn or 9.8 110.0

45' E 9.1 109.7

30' E 10.4 108.4

26' E = W. edge lawn 11.1 107.7

15' E 11.2 107.6

0100 E+W 11.8 107.0

118.74

220' N.

5

00 E+W 12.1 106.7

15' E 11.9 106.9

30' E 11.5 107.3

45' E = W. edge lawn 11.3 107.5

60' E = e. edge W 10.2 108.6

223' N.

60' E = N. E. Cor. lawn

230' 10 N = Central Ave.

60' E 10.9 107.9

45' E 11.7 107.1

501. B.M. Hub 40' E 12.24 106.54

30' E 12.4 106.4

15' E 12.9 105.9

00, E+W 13.0 105.8

Miller
Walker
B. Lines
2-20-33

Curb status 100.F. Cemetery.

857
107.52
108.03
-0.49

Indexed
CSK

106.54 BM. Hub Page 5.
9.58

116.12
5.64
110.48
5.05
115.53

4.1 8.41 8.67 11.47 6.92
112.0 107.51 107.45 104.70 109.20

110.20	110.45	110.80	110.72	110.14
5.38	5.08	4.73	4.87	5.34
4.96	3.45	2.97	2.75	3.24
+0.37	+1.63	+1.76	+1.86	+2.15

109.15	108.16	108.00	108.66
6.38	7.37	7.53	7.48
4.53	7.87	8.02	6.10
+1.85	-0.50	-0.49	+1.33

104.54
9.55
114.09

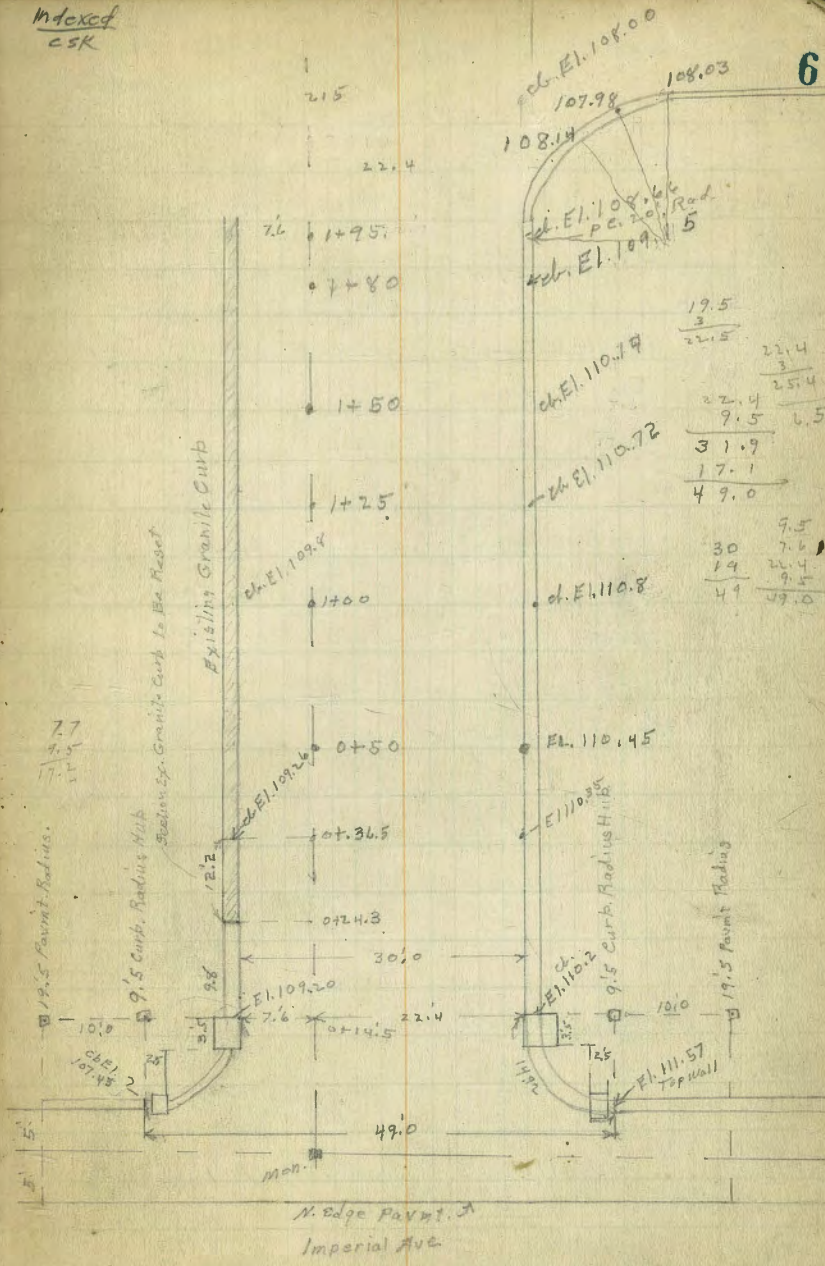
108.14	107.98	108.03
7.95	8.11	8.06
6.97	7.17	6.44
+0.98	+0.94	+1.38

116.96

110.20	110.45	110.80	110.72	110.14
6.76	6.51	6.16	6.24	6.82
6.32	4.83	4.34	4.32	4.61
+0.44	+1.68	+1.46	+1.92	+2.21
109.15	108.66	108.14	107.98	108.03
7.81	8.30	8.82	8.98	8.93
5.96	6.36	7.84	8.04	7.35
+1.85	+1.34	+0.98	+0.94	+1.38

9.38
107.58 W. end Curb.
109.20
7.76
8.92
-1.16

110.20
6.76
5.70
+1.06



IMPERIAL Ave Wall.

	TYPE	El. Top TOP	F. L. Tosh.	Base to E.	B.M. 52394 Imp
W. End wall 0+00		111.60	108.1		118.34
		6.25			7.42
		5.25			125.80
		+0.40			8.32
0+37.5	C-3.5	114.50	111.00	110.50	117.44
		3.35			0.37
35.0	D-4.0	111.15			117.85
		+1.50			
0+72.5 Brk		116.00	112.00		
		9.40			
40.	D-4.0	111.60			
		8.32			
		+1.48			
1+12.5		116.75	112.75		
		9.05			
40	D-4.0	111.70			
		7.40			
		+1.65			
1+52.5		117.50	113.50	114.00	
		8.30			
50.	C-3.5	111.20			
		6.77			
		+1.53			
2+02.5		114.50	115.00	115.50	
		7.30			
50.6	B-3.0	111.20			
		6.05			
		+1.25			
2+53.1 Brk		119.40	116.40		
		6.40			
51.3	B-3.0	111.00			
		5.62			
		+0.78			
3+04.4		119.40	116.40		
		6.40			
49.3	B-3.0	111.00			
		5.27			
		+1.13			
3+53.2		120.37	117.37		
		5.43			
49.3	B-3.0	111.94			
		4.90			
		+0.53			
4+03.		121.34	114.37		
		4.46			
49.4	B-3.0	111.88			
		3.84			
		+0.62			
4+52.4 Brk		122.30	119.3		
		3.50			
44.	B-3.0	111.80			
		2.83			
		+0.67			
4+96.4		123.02	120.02		
		2.74			
44	B-3.0	111.28			
		2.15			
		+0.63			
5+40.4		123.75	120.75		
		2.05			
Wall at Benbough Museum		1.32			
		+0.73			

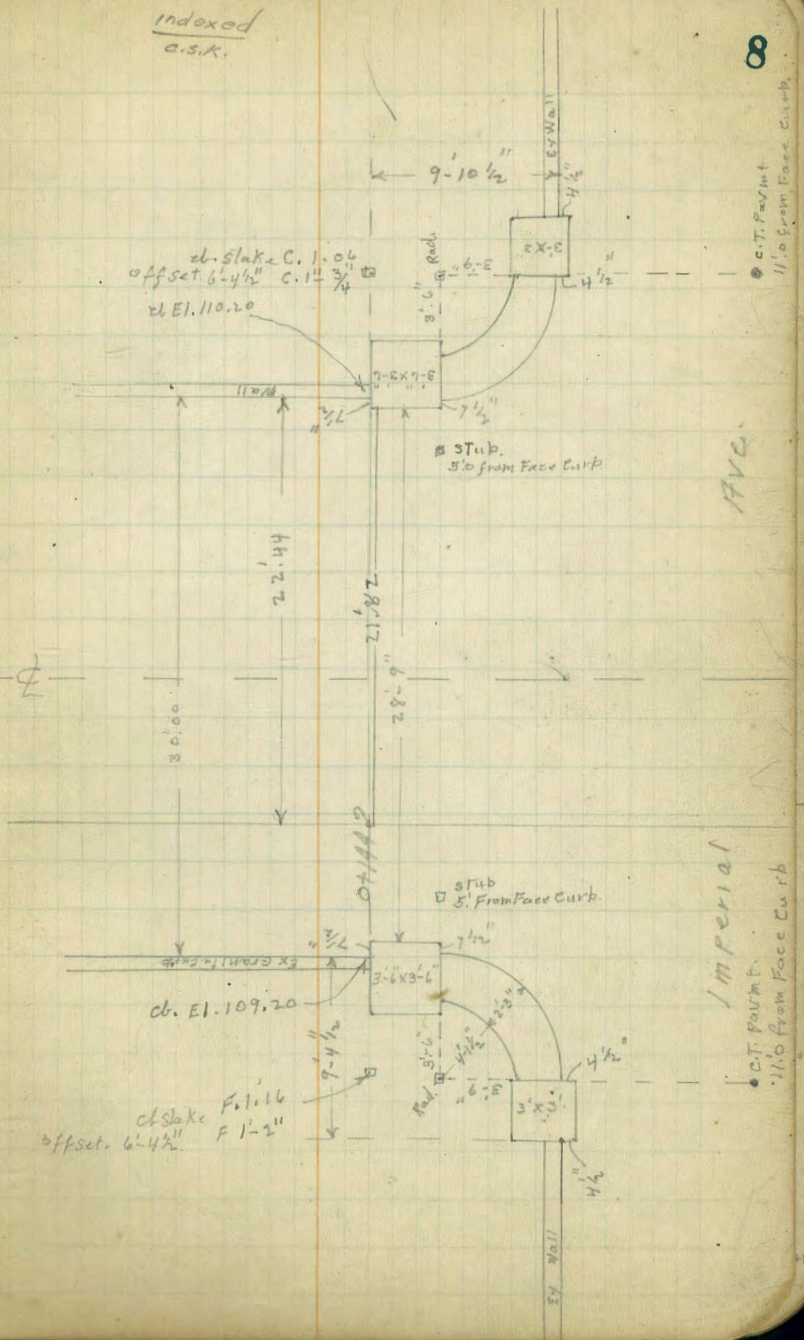
Indexed
CSK

107.89
107.55
0.34

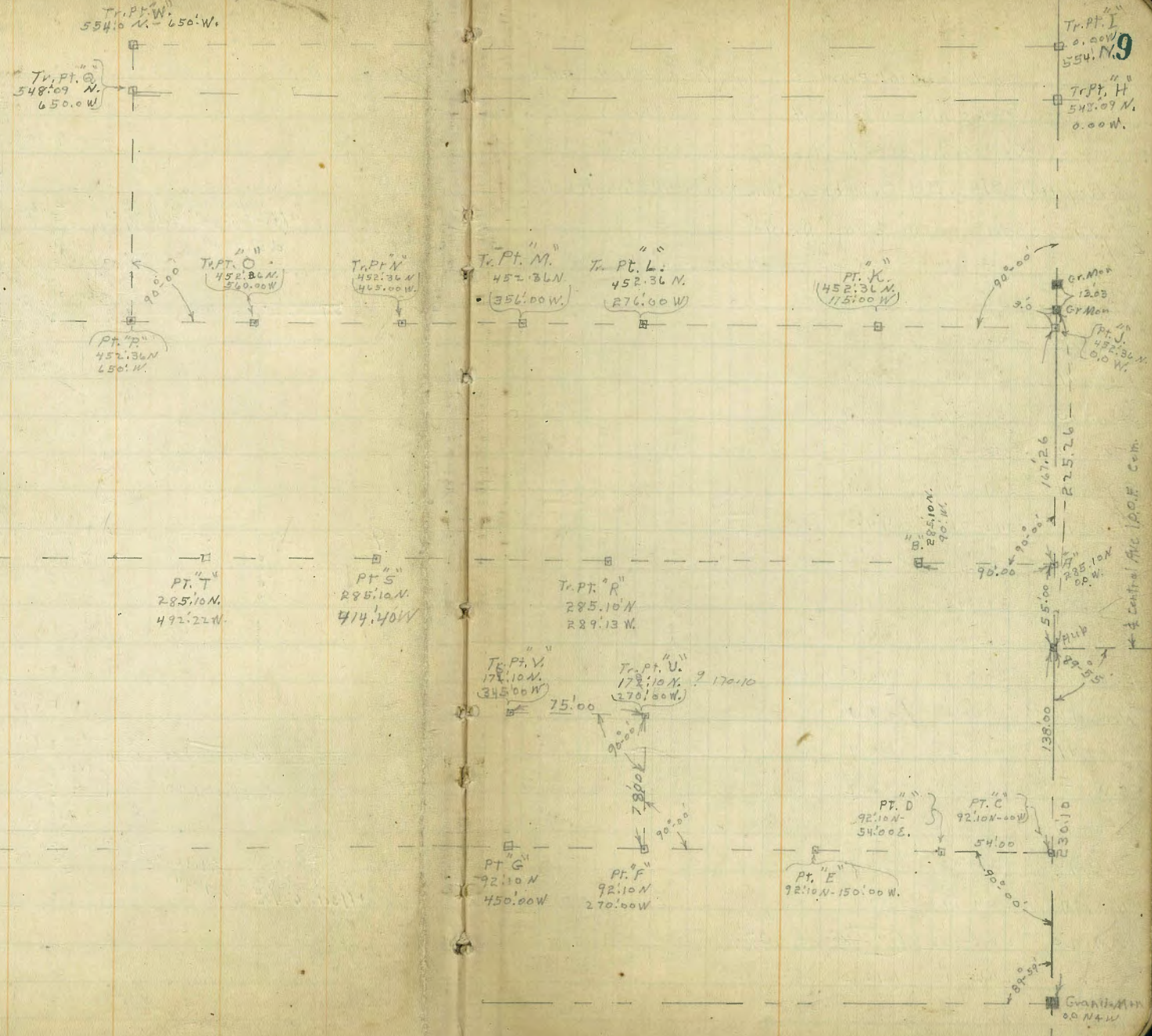
106.95
10.90

Main Entrance 10.97 Conclory

Indexed
c.s.k.



Masonic Cemetery



Masonic Cemetery
Location of Existing Lot Corners

Instrument at Point "B" Page 9 285.10 N. 90.00 W.

Fore-sight on Point "A" 285.10 N. 0.00 W.

As Measured to Left, or Counterclockwise

Regular BIKs. B. & C. Loebenstein, Map. & additional Lots

14 to 30 Laid out in Cyrus Drive

Description of Corner	— BIK, C. —		Hubs Found
	Δ	Dist.	
N.W. 14	127°59'	30.4	✓
N.E. 11	23°28'	88.6	✓
S.E. 13	38°49'	103.9	✓
S.E. 10	352°49'	82.5	✓
S.E. 14	351°54'	43.1	✓
N.E. 15	342°51'	44.3	✓
S.W. 9	334°14'	81.8	✓
S.E. 8	330°45'	81.1	✓
S.E. 7	313°00'	73.9	✓
S.E. 16	300°18'	46.5	✓
N.W. 16	276°11'	19.4	✓
N.E. 17	261°58'	20.4	✓
S.W. 5	253°04'	73.2	✓
N.W. 17	225°42'	32.7	✓
N.E. 18	221°05'	36.9	✓
N.E. 19	204°14'	57.6	✓
S.W. 20	206°35'	108.8 107.7	✓
S.W. 1	206°11'	142.0	✓
N.W. 1	204°37'	130.1	✓

Dec 33.

— BIK, C. — Hubs Found

Lot	Δ	Dist	Indexed as K.
SW. 21	203°41'	122.0	✓
N.W. 20	201°35'	104.1	✓
N.E. 20	201°03'	83.0	✓
N.W. 19	201°13'	78.0	✓
N.W. 7	297°25'	51.7	✓
N.W. 18	206°28'	53.2	✓

Additional Pts BIK C. Page 13.

Instrument at Pt. "B" 285.10 N. - 90.00 W. - Fore-sight Pt. "A" 285.10 N. - 0.00 W.
Δ to Lt.

Lot	Δ	Dist	Hubs Found
S.E. 1	174°45'	93.0	✓
N.E. 12	151°43'	108.9	✓
N.W. 10	138°50'	88.7	✓
N.W. 4	147°01'	47.0	✓
N.E. 4	125°05'	33.4	✓
N.E. 8	86°46'	62.6	✓
N.E. 7	70°14'	70.2	✓
S.E. 7	54°33'	44.6	✓
N.E. 6	50°05'	41.0	✓
S.E. 5	18°01'	8.3	✓
S.E. 3	172°27'	41.8	✓

Con Page 15

Same Lot 7. BIK C. 23.8

Lots Laid out in Cyrus Drive Hubs Found

Instrument at Pt. B 285.10 N. 90. W. - Foresight at Pt. A 285.10 N. 90 W

	As to Lt.	Dist.	
N.W. Lot 14 =			
= N.E. Lot 7	70°-14'	70.2	✓
N.W. 17			
N.E. Lot 14	62°-16'	75.0	✓
N.E. 17	56°-56'	80.9	✓
cor			
14-15-17-18	58°-51'	66.5	✓
cor			
15-16-18-19	53°-13'	58.6	✓
S.E. 16 =			
= S.W. 19	46°-01'	51.5	✓
S.W. 14 =			
N.W. 15	66°-27'	61.3	✓
S.W. 15 =			
N.W. 16	61°-30'	52.7	✓
S.E. 7 =			
= S.W. 16	54°-33'	44.6	✓
N.W. cor 22			
Bet. 21 & 22	46°-53'	32.9	✓
N.W. cor 23			
Bet. 22 & 23	41°-28'	23.7	✓
W. cor 23			
E. 14 cor 22	34°-38'	15.0	✓
Bet. 21 & 22			
E. 14 cor 23	26°-05'	40.2	✓
Bet. 22 & 23	15°-42'	32.2	✓
E. 14 cor 24			
S.E. 17	359°-15'	24.3	✓
N.E. 18	53°-35'	71.5	✓
S.E. 14			
N.E. 19	49°-19'	62.5	✓
N.E. 20			
S.E. 19	43°-39'	54.0	✓
N.E. 20 on			
S. line 11	37°-21'	56.2	✓
S.E. 20			
N.E. 21	32°-45'	48.7	✓
S.W. 20			
N.W. 21	50°-27'	42.6	✓
W. cor 24			
on S.W. 14 Line 23	17°-56'	16.8	✓
W. cor 24			
N. 14 " 25	344°-46'	10.3	✓
S. 14 cor 24			
E. 14 cor 25	328°-51'	17.5	✓

This's Lot 11. Noted on Page 13.

Hubs Found.

S.W. cor 25			
S.E. " 24	288°-49'	18.3	✓
N.W. " 25			
on E. line 26	282°-12'	8.6	✓
N.E. cor 26	265°-55'	3.8	✓
S.W. " 26			
S.E. " 27	255°-33'	21.6	✓
N.W. " 26			
N.E. " 27	213°-51'	11.1	✓
S.W. " 27			
S.E. " 28	234°-21'	27.5	✓
N.W. " 27			
N.E. " 28	202°-31'	20.0	✓
S.W. " 28			
S.E. " 29	221°-58'	36.1	✓
N.W. " 28			
N.E. " 29	198°-20'	29.2	✓
S.W. " 29			
S.E. " 30	212°-26'	44.7	✓
N.W. " 29			
N.E. " 30	193°-44'	38.4	✓
S.W. " 30			
S.W. " 30	206°-28'	53.2	✓
N.W. " 30	191°-44'	48.3	✓

Lots 1 to 28 Laid out. in Cyrus Drive

Lot 1. abutting lot 30. Page 11, on West. Hubs Found.

Instrument at "B" 285.10 N. - 96.00 W. - Foresight at "A" 285.10 N. on W

As to Left. or counter clock wise.

S. E. 1	206-28	53.2	✓
S. E. 2	205-05	55.6	✓
S. E. 3	204-00	58.5	✓
S. E. 4	203-17	61.6	✓
S. E. 5	202-41	64.7	✓
S. E. 6	202-14	67.7	✓
S. E. 7	201-50	70.9	✓
S. E. 8	201-30	74.0	✓
S. E. 9	201-15	77.2	✓
S. E. 10	201-10	80.1	✓
S. E. 11	201-04	83.4	✓
S. E. 12	201-02	86.5	✓
S. E. 13	201-02	89.6	✓
S. E. 14	201-05	92.7	✓
S. E. 15	201-09	95.9	✓
S. E. 16	201-17	99.0	✓
S. E. 17	201-27	102.3	✓
S. E. 18	201-40	105.3	✓
S. E. 19	202-00	108.4	✓
S. E. 20	202-13	109.9	✓
S. E. 21	203-20	119.5	✓
S. E. 25	204-30	129.1	✓
S. E. 28	205-44	138.6	✓
SW. 28 = SW. 1. BKE	206-11	142.0	✓

Hubs Found.

N. E. 28.	201-52	142.0	✓
N. E. 25.	199-55	132.4	✓

Instrument at Pt. B 285.10 N. 90. W. Foresight at A 285.10 N. 00 W.

As to Lt. or Counter Clock wise.

set. Hub.	Dir	Dist	Dist	✓
Nly Cor 13	50°-20'	126.1		✓
S.W. 13	47°-27'	88.3		✓
N.W. 12	43°-23'	87.5		✓
N.E. 12	36°-36'	100.7		✓
S.E. 12	26°-20'	90.6		✓
N.W. 11	30°-20'	69.3		✓
S.W. 12	33°-34'	72.5		✓
Fd "	Nly Cor 14	37°-20'	56.1	✓
set "	S.W. 11	41°-24'	51.4	?
" "	S.W. 11	14°-13'	41.0	✓
" "	N.W. 10	9°-29'	59.8	✓
" "	S.E. 11	10°-23'	82.8	✓
" "	N.E. 10	7°-00'	82.1	✓
" "	N.E. 9	349°-25'	82.8	✓
" "	S.W. 10	349°-55'	59.6	✓
" "	N.W. 9	345°-18'	60.7	✓
" "	S.W. 9	339°-06'	62.8	✓
" "	N.E. 8	336°-32'	54.9	✓
" "	S.E. 15	332°-57'	46.4	✓
" "	N.W. Wly Cor 8	325°-12'	52.8	✓
" "	N.E. 7	319°-41'	52.5	✓
Fd "	Nly Cor 15	6°-04'	26.9	✓
" "	N.W. 15	346°-10'	21.3	✓
" "	N.E. 16	335°-50'	20.1	✓

S.W. Lot 11. of Tier of Lots Laid out in Cyrus Dr. East of Tier located on Page 11. This Cor is on E. line of Lot 20

23 Hubs

set Hub	S.W. 8	316°-38'	75.5	✓
Fd "	S.W. 15	306°-26'	45.8	✓
set "	N.W. 7	302°-14'	53.1	✓
" "	N.E. 6	297°-12'	50.8	✓
" "	S.W. 7	294°-12'	69.6	✓
" "	S.E. 4	290°-00'	69.0	✓
" "	S.W. 16	274°-15'	41.7	✓
" "	S.E. 17	267°-20'	41.9	✓
" "	N.W. 6	273°-52'	46.6	✓
" "	S.W. 6	273°-08'	68.7	✓
" "	S.E. 5	268°-58'	69.0	✓
" "	N.E. 5	267°-43'	46.9	✓
" "	S.W. 17	242°-51'	48.6	✓
" "	N.W. 5	245°-28'	53.0	✓
" "	S.E. 4	249°-33'	74.9	✓
" "	N.E. 4	240°-55'	55.5	✓
" "	S.E. 18	238°-04'	51.3	✓
" "	S.W. 18	223°-44'	64.9	✓
" "	N.W. 4	226°-51'	68.3	✓
" "	S.W. 4	237°-04'	84.6	✓
" "	S.E. 3	234°-26'	87.5	✓
" "	N.E. 3	224°-09'	72.1	✓
" "	S.E. 19	221°-04'	68.8	✓
" "	S.W. 19	212°-56'	85.6	✓
" "	N.W. 3	215°-43'	88.3	✓
" "	S.W. 3	224°-43'	100.3	✓

25 Hubs

Set, Hub	S.E. 2	222-42	103.7	✓
" "	N.E. 2	214-04	92.6	✓
" "	S.E. 20	211-24	90.0	✓
" "	N.W. 2	208-58	110.1	✓
" "	S.W. 2	215-29	117.8	✓
" "	S.E. 1	213-48	121.3	✓
" "	N.E. 1	207-50	114.5	✓
" "	S.E. 21	205-35	112.4	✓
Fd "	N.E. 21	202-11	110.0	✓

8. Hubs.

Instrument at Pt. B. 285.10 N. - 90° W Foresight. at Pt. A. 285.10 N - 00° W.

As to Left.

Set Hub	N.W. 13.	166°-35'	144.7	✓
" "	N.E. 13	160°-52'	125.5	✓
" "	S.E. 13	168°-57'	121.0	✓
" "	S.W. 12	168°-13'	116.4	✓
Ad. "	N.W. 12	159-17	121.4	✓
Set "	N.W. 1	170°-07'	112.6	✓
" "	N.E. 1	167°-30'	98.9	✓
" "	S.E. 12	164°-45'	97.5	✓
" "	N.W. 11	149°-35'	105.6	✓
" "	S.W. 11	163°-35'	92.7	✓
" "	N.W. 2	166°-34'	91.2	✓
" "	S.W. 2	176°-13'	87.6	✓
" "	S.E. 2	183°-31'	66.5	✓
" "	N.E. 2	161°-35'	72.4	✓
" "	S.E. 11	158°-03'	74.5	✓
" "	N.E. 11	141°-11'	92.1	✓
" "	S.W. 10	156°-09'	70.0	✓
" "	N.W. 3	159°-53'	67.9	✓
" "	S.W. 3	183°-12'	61.5	✓
" "	N.E. 3	150°-28'	51.0	✓
" "	S.E. 10	146°-00'	53.8	✓
" "	N.E. 10	127°-45'	76.1	✓
" "	N.W. 9	124°-32'	73.3	✓
" "	S.W. 9	142°-24'	50.1	✓

23. Hubs.

Set Hub	S.W. 4	194°-12'	36.9	✓
" "	S.E. 4	203°-53'	18.4	✓
" "	S.E. 9	121°-18'	37.8	✓
" "	N.E. 9	109°-23'	64.8	✓
" "	N.W. 8	105°-00'	63.6	✓
" "	S.W. 8	113°-55'	35.9	✓
" "	N.W. 5	116°-58'	31.2	✓
" "	S.W. 5	209°-38'	13.6	✓
" "	N.E. 5	78°-42'	30.2	✓
" "	S.E. 8	80°-48'	35.2	✓
" "	N.W. 7	82°-08'	63.7	✓
" "	S.W. 7	73°-08'	36.6	✓
" "	N.W. 6	70°-00'	31.9	✓
F.d. Hub	S.W. 6	34°-38'	15.0	✓

13. Hubs

Unlettered BIK. East of BIK. A.
 Instrument at Pt. "K" 452.36 N - 115.00 W
 Foresight at Pt. "J" 452.36 N - 0.0 W.
 Δ: to Lt. or Counterclockwise

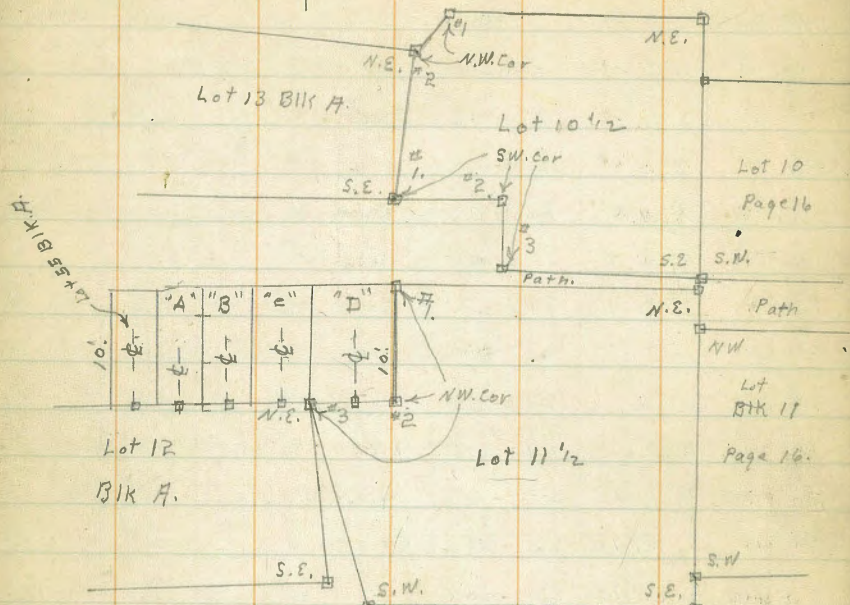
Set	Lot.	Δs	Dist		
Set Hub	N.W. 1	√ 348°32'	√ 64.2	✓	
Fd "	S.E. 1	√ 346°33'	√ 89.5	✓	
" "	S.W. 1	√ 331°47'	√ 75.8	✓	
" "	Wly Corr	√ 331°08'	80.3	✓	X ✓
" "	N.E. Cor 2	√ 344°49'	92.5	✓	X ✓
" "	S.E. 2	√ 332°44'	√ 104.0	✓	✓
" "	S.E. 3	√ 330°37'	√ 104.9	✓	✓
" "	S.W. 3	√ 316°55'	√ 97.3	✓	✓
" "	N.W. 3	√ 327°34'	79.9	✓	X
Set "	N.E. 4	√ 324°57'	√ 76.5	✓	
" "	S.E. 4	√ 314°03'	√ 95.3	✓	
Fd "	SW. 4	√ 302°53'	√ 86.5	✓	
" "	NW. 4	√ 311°56'	√ 64.6	✓	
Set "	S.W. 5	√ 314°48'	√ 60.1	✓	
" "	S.E. 5	√ 327°47'	√ 73.1	✓	
Fd "	N.E. 5	√ 346°34'	√ 59.9	✓	
Set "	NW. 5	√ 335°29'	√ 42.3	✓	
" "	N.E. 6	√ 332°30'	√ 39.2	✓	
" "	N.W. 6	√ 305°24'	√ 25.9	✓	
" "	S.W. 6	√ 290°54'	√ 50.4	✓	
" "	S.E. 6	√ 310.51	√ 57.6	✓	
" "	N.E. 7	√ 308.00	√ 62.0	✓	
" "	S.E. 7	√ 300°20'	√ 85.5	✓	
" "	SW. 7	√ 286°53'	√ 81.2	✓	

Set	Lot	Δs	Dist	
Set Hub	N.W. 7	√ 289°28'	√ 55.6	✓
" "	N.E. 8	√ 284°18'	√ 54.8	✓
" "	S.E. 8	√ 281°13'	√ 80.2	✓
Fd "	S.W. 8	√ 267°15'	√ 81.4	✓
" "	N.W. 8	√ 263°57'	√ 56.9	✓
Set "	S.W. 9	√ 262°49'	√ 52.0	✓
Fd "	S.E. 9	√ 285°17'	√ 50.0	✓
" "	N.E. 9	√ 297°48'	√ 24.7	✓
Set "	N.W. 9	√ 250°03'	√ 26.2	✓
" "	N.E. 10	√ 242°00'	√ 29.7	✓
Fd "	N.W. 10	√ 219°57'	√ 42.6	✓
" "	S.W. 10	√ 237°39'	√ 60.0	✓
Set "	S.E. 10	√ 256°36'	√ 52.6	✓
" "	N.E. 11	√ 257°54'	√ 57.6	✓
" "	S.E. 11	√ 261°59'	√ 82.3	✓
Fd "	SW. 11	√ 248°48'	√ 87.0	✓
Set "	NW. 11	√ 240°08'	√ 64.3	✓

S. H. H. E. I.

10. Hubs

Lots 10 1/2 & 11 1/2 Laid out E. of
BIK A.
& Lots A. To D. N. of Lot 12 BIK A.



Lot 10 1/2

Fd. Hub	Bearing	Δs	Dist.	
Fd. Hub	N.E.	212°40'	38.9	✓
" "	N.W. #1	202°45'	49.9	✓
" "	N.W. #2	205°17'	53.5	✓
" "	S.W. #1	217°33'	68.6	✓
" "	S.W. #2	222°17'	61.6	✓
" "	S.W. #3	228°30'	68.3	✓
" "	S.E.	237°59'	60.00	✓

Instrument at Pt. "K."

Foresight at Pt. "J."

As to Lt.

Lot 11 1/2

Instrument at Pt. "M."

Foresight at Pt. "J"

As to Lt.

Fd. Hub	Bearing	Δs	Dist.	
Fd. Hub	N.E.	238°10'	60.9	✓
" "	S.E.	248°53'	87.5	✓
" "	S.W.	238°00'	96.4	✓
" "	N.W. #3	227°01'	86.2	✓
" "	N.W. #2	228°37'	83.2	✓
" "	N.W. #1	223°38'	76.3	✓

Lots A, B, C, D. Hubs are on S. line of Lots.
Lots are 10' Long N & S.

Fd. Hub	Bearing	Δs	Dist.	
Fd. Hub	S. + d "D"	227°47'	84.5	✓
" "	S. + d "C"	226°05'	87.4	✓
" "	S. + d "B"	224°29'	90.5	✓
" "	S. + d "A"	222°58'	93.8	✓

BIK. "A"
Instrument at Pt. "K"
Fore sight at Pt. "J"
As. turned to Lt.

	Lot.	As.	Dist.	
Fd Hub	N.E. 12	227°-01'	86.2	✓
Set "	N.W. 12	221°-05'	103.8	✓
" "	S.W. 12	230°-49'	112.2	✓
Fd "	S.E. 12	237°-27'	97.10	✓
Set "	S.E. 38	229°-51'	115.5	✓
Fd "	S.W. 38	226°-33'	133.5	✓
Set "	N.W. 38	218°-06'	127.9	✓
" "	N.E. 38	220°-12'	108.5	✓

Hubs on Lots 55 to 122, are on S + S.W. End.

+ ♀ of Graves. Lots 10' Long

Fd. Hub	♀ 55	221°-33'	97.1	✓
" "	♀ 56	220°-19'	100.2	✓
" "	♀ 57	219°-53'	104.1	✓
" "	♀ 58	219°-26'	108.0	✓
" "	♀ 59	219°-00'	112.0	✓
" "	♀ 60	218°-34'	115.9	✓
" "	♀ 61	218°-07'	119.7	✓
" "	♀ 62	217°-41'	123.6	✓
" "	♀ 63	217°-17'	127.5	✓
" "	♀ 64	216°-50'	131.4	✓
Set Hub	N.E. 37	217°-53'	130.5	✓
" "	S.E. 37	226°-10'	136.0	✓
Fd. "	S.E. 13	217°-33'	68.6	✓
" "	N.E. 13	205°-17'	53.5	✓

7. Hubs.

Set Hub	S.W. 13	205°-28'	82.1'	✓
" "	N.W. 13	194°-38'	67.7'	✓
" "	N.E. 14	192°-38'	71.3'	✓
" "	S.E. 14	203°-33'	85.0'	✓
" "	S.W. 14	195°-58'	100.3'	✓
Fd "	N.W. 14	185°-51'	88.9'	✓
Set "	N.E. 15	184°-22' 182°-22' 180°	93.3	✓
Fd. "	S.E. 15	193°-49'	106.2	✓

9. Try 184°-22'
O.K.

Hubs. on Lots 128 to 197 are on N End

+ ♀ Graves. Lots 10' Long

Fd Hub	♀ 197	220°-51'	66.1'	✓
" "	♀ 196	218°-00'	68.3'	✓
" "	♀ 195	215°-26'	70.6'	✓
" "	♀ 194	212°-47'	73.2'	✓
" "	♀ 193	210°-25'	75.7'	✓
" "	♀ 192	208°-11'	78.5'	✓
" "	♀ 191	206°-08'	81.4'	✓
" "	♀ 190	204°-14'	84.2'	✓
" "	♀ 189	202°-29'	87.2'	✓
" "	♀ 188	200°-49'	90.3'	✓
" "	♀ 187	199°-20'	93.4'	✓
" "	♀ 186	197°-48'	96.5'	✓
" "	♀ 185	196°-23'	99.7'	✓
" "	♀ 184	195°-01'	103.0'	✓
" "	♀ 183	193°-49'	106.2'	✓

6. Hubs

BIK "A" (Con)

Instrument at Pt. "L" 452.36 N - 276.00 W.
 Foresight at Pt. "J"
 AS, Turned To Lt. or Counter clockwise.

	lots	A.	Dist.	
Fd. Hub	φ 182	336.14?	59.2	✓
" "	φ 181	336.04	55.2	✓
" "	φ 180	335.58	51.2	✓
" "	φ 179	336.03	47.3	✓
" "	φ 178	336.05	43.3	✓
" "	φ 177	336.32	39.1	✓
" "	φ 176	337.09	35.1	✓
" "	φ 175	337.57	31.1	✓
" "	φ 174	339.00	27.1	✓
" "	φ 173	340.27	23.3	✓
" "	φ 172	342.28	19.3	✓
" "	φ 171	346.16	15.3	✓
" "	φ 170	353.32	11.8	✓
" "	φ 169	6.51	8.5	✓
" "	φ 168	34.07	6.4	✓
" "	φ 167	70.39	6.5	✓
" "	φ 166	95.52	9.0	✓
" "	φ 165	109.00	12.2	✓
" "	φ 164	116.03	15.9	✓
" "	φ 163	119.52	19.8	✓
" "	φ 162	122.06	23.8	✓
" "	φ 161	123.47	27.8	✓
" "	φ 160	125.00	31.9	✓
" "	φ 159	125.53	35.7	✓

Fd. Hub	φ 158	126.26	39.7	✓
" "	φ 157	126.55	43.7	✓
" "	φ 156	127.22	47.6	✓
" "	φ 155	127.52	52.3	✓
" "	φ 154	128.34	56.5	✓
" "	φ 153	129.17	60.5	✓
" "	φ 152	129.54	64.8	✓
" "	φ 151	130.40	69.8	✓
" "	φ 150	131.35	72.9	✓
" "	φ 149	132.28	77.0	✓
" "	φ 148	133.25	81.0	✓
" "	φ 147	134.22	85.2	✓
Set "	S. E. 21	133.24	85.5	✓
" "	N. E. 21	121.45	95.3	✓
" "	N. W. 20	119.57	90.4	✓
" "	S. W. 20	132.44	83.0	✓
" "	S. E. 20	128.10	64.6	✓
" "	N. E. 20	112.42	72.8	✓
Fd. "	N. W. 19	110.26	66.5	✓
" "	S. W. 19	127.50	62.7	✓
Set "	S. E. 19	126.02	42.7	✓
" "	N. E. 19	101.50	48.5	✓
" "	N. W. 18	98.13	44.4	✓
Fd "	S. W. 18	125.09	37.9	✓
Set "	S. E. 18	117.16	18.1	✓
" "	N. E. 18	77.01	32.1	✓

11. Hubs

BIKA (Con)
 Instrument at Pt. "L"
 Foresight at Pt. "J"
 As To Lt.

	Lot	As	Dist.	
Set Hub	N.W.17	64°-35'	30.0	✓
" "	S.W.17	100°-46'	10.5	✓
" "	S.E.17	352°-06'	13.5	✓
" "	N.E.17	32°-01'	29.2	✓
Fd. "	N.W.16	28°-14'	31.2	✓
Set. "	S.W.14	344°-23'	19.5	✓
" "	S.E.16	338°-39'	37.3	✓
" "	N.E.16	3°-23'	45.2	✓
" "	N.W.15	0°-41'	49.6	✓
Fd. "	S.W.15	337°-48'	44.8	✓
" "	☉ 65.	303°-06'	95.8	✓
" "	☉ 66	300°-24'	95.1	✓
" "	☉ 67	297°-49'	94.6	✓
" "	☉ 68	294°-52'	94.2	✓
" "	☉ 69	291°-51'	93.8	✓
" "	☉ 70	289°-08'	93.7	✓
" "	☉ 71	286°-25'	93.6	✓
" "	☉ 72	283°-04'	93.2	✓
" "	☉ 73	280°-00'	92.5	✓
" "	☉ 74	276°-54'	91.6	✓
" "	☉ 75	274°-31'	90.9	✓
" "	☉ 76	271°-30'	90.2	✓
" "	☉ 77	268°-31'	89.5	✓
" "	☉ 78	265°-33'	88.6	✓

8. Hubs.

Fd Hub	☉ 79	262°-30'	87.5	✓
" "	☉ 80	259°-29'	86.5	✓
" "	☉ 81	256°-24'	85.2	✓
" "	☉ 82	253°-16'	83.9	✓
" "	☉ 83	250°-12'	82.7	✓
" "	☉ 84	247°-29'	81.1	✓
" "	☉ 85	244°-49'	79.7	✓
" "	☉ 86	242°-00'	78.0	✓
" "	☉ 87	239°-04'	76.4	✓
" "	☉ 88	236°-10'	75.4	✓
" "	☉ 89	233°-05'	74.2	✓
" "	☉ 90	229°-31'	73.1	✓
" "	Ely Cor 32	236°-44'	77.2	✓
Set "	Sly Cor 32	232°-55'	96.5	✓
" "	Wly " 33	236°-20'	97.5	✓
" "	Nly " 33	238°-13'	77.8	✓
" "	Ely " 33	251°-45'	83.7	✓
" "	Sly " 33	247°-32'	102.1	✓
Fd. Hub	Wly " 34	250°-17'	103.2	✓
Set "	Nly " 34	253°-05'	84.5	✓
" "	Ely " 34	265°-27'	91.0	✓
" "	Sly " 34	261°-25'	108.4	✓
" "	S.W. 35	267°-05'	110.4	✓
Fd. "	N.W. 35	266°-00'	91.6	✓
Set "	N.E. 35	278°-16'	94.0	✓
Fd. "	S.E. 35	276°-41'	113.7	✓

10. Hubs.

BIK 4 (con)
 Instrument at pt. "L"
 Fore sight at pt J
 As to Lt.

	Lot	As	Dist	
Set Hub	S.W. 36	282°-06'	114.5	✓
" "	N.W. 36	280°-41'	94.5	✓
" "	N.E. 36	292°-47'	94.5	✓
" "	S.E. 36	292°-10'	114.5	✓
" "	S.W. 37	294°-40'	115.0	✓
" "	N.W. 37	294°-19'	94.8	✓
Fd. "	E. 14 39	329°-40'	100.4	✓
Set "	S.W. 39	312°-35'	82.5 (92.5)	✓ <small>9 is length 10'000? Dist. 10' Long.</small>
" "	N.W. 39	324°-31'	71.8	✓
" "	N.E. 40	323°-24'	67.4	✓
" "	S.E. 40 = N.E. 41	315°-50'	73.4	✓
Fd. "	S.E. 41	309°-33'	80.7	✓
" "	S.W. 41	290°-39'	76.7	✓
Set "	N.W. 41 = S.W. 40	298°-33'	57.2	✓
" "	N.W. 40	315°-25'	39.0	✓
" "	N.E. 54	313°-36'	35.5	✓
" "	N.W. 54	298°-51'	20.8	✓
" "	W. 14 54	260°-44'	36.5	✓
" "	S.W. 54	262°-40'	46.6	✓
Fd. "	S.E. 54	298°-34'	50.5	✓
Set. "	N.E. 42	296°-28'	54.0	✓
" "	S.E. 42	288°-10'	76.1	✓
" "	S.W. 42 = S.E. 43	276°-50'	73.9	✓
Fd. "	S.W. 43	265°-15'	74.4	✓
Set. "	N.W. 43	263°-16'	50.5	✓

20. Hubs

Set. Hub	N.E. 43 = N.W. 42	280°-15'	49.9	✓
" "	E. 14 53	294°-28'	18.4	✓
" "	S.E. 44	261°-17'	72.0	✓
" "	S. 14 53	255°-35'	36.4	✓
" "	N. 14 53	212°-48'	10.6	✓
" "	W. 14 53	223°-37'	35.2	✓
" "	S. 14 52	218°-00'	31.4	✓
" "	E. 14 52	199°-14'	12.0	✓
" "	N. 14 52	157°-36'	27.5	✓
" "	W. 14 52	185°-38'	37.4	✓
" "	S. 14 51 1/2	177°-15'	41.8	✓
" "	E. 14 51 1/2	155°-32'	30.0	✓
" "	N. 14 51 1/2	149°-58'	39.6	✓
" "	W. 14 51 1/2	148°-28'	49.0	✓
" "	S. 14 51	164°-38'	50.1	✗
" "	E. 14 51	148°-47'	42.1	✗
" "	N. 14 51	143°-32'	61.5	✗
Fd. "	E. 14 50	143°-26'	64.3	✗
Set. "	S. 14 50	153°-33'	70.3	✗
" "	W. 14 51	154°-22'	68.0	✓
" "	W. 14 50	150°-43'	89.0	✗
" "	N. 14 50	145°-02'	86.7	✓
" "	E. 14 49	145°-41'	91.6	✗
" "	S. 14 49	155°-07'	96.5	✗
" "	W. 14 48	157°-22'	92.8	✗
" "	N. 14 48	152°-00'	89.6	✗

25. Hubs

BIK. "A." (Con)
 Instrument at Pt. "L" - Foresight at Pt. "J"
 Δs. Turned to Lt.

Set Hub	S. 14 48	164°-41'	81.5	X
"	E 14 48	154°-55'	71.3	X
"	N 14 47 1/2	155°-52'	69.3	X
"	W 14 47 1/2	165°-48'	80.2	X
"	S 14 47 1/2	176°-48'	70.3	X
"	E 14 47 1/2	164°-49'	55.6	X
"	N 14 47	166°-13'	54.2	✓
Fd.	W 14 47	178°-17'	69.5	✓
Set	S 14 47	194°-04'	61.3	✓
"	E 14 47	186°-00'	42.9	✓
"	N 14 46	189°-27'	41.8	✓
"	W 14 46	196°-41'	60.4	✓
Fd.	S 14 46	215°-43'	57.8	✓
Set.	E 14 46	217°-57'	37.8	✓
Fd.	N 14 45	224°-02'	38.2	✓
Set.	W 14 45	222°-05'	58.2	✓
"	"	240°-37'		
"	S 14 45	(241°-37')	62.9	✓
"	E 14 45	249°-53'	45.3	✓
Fd.	N.E. 44	253°-24'	47.3	✓
"	W 14 44	246°-11'	64.8	✓

1-5-34
 This Az. m. y. is corrected.

15. Hubs

BIK. "A." (Con)

Instrument at Pt. M. 452.36' 356.00 W.
 Foresight at Pt. "J" 452.36 N - 0.0 W.
 Δs. Turned to Lt. = Counter Clockwise.

22

Hubs on lots 128 to 197, on N. End of Graves. Lots 10' Long

Fd Hub	φ 146	75°-26'	64.8	✓
"	φ 145	79°-26'	65.7	✓
"	φ 144	83°-22'	66.7	✓
"	φ 143	87°-19'	67.8	✓
"	φ 142	90°-28'	68.8	✓
"	φ 141	93°-38'	69.8	✓
"	φ 140	96°-43'	71.0	✓
"	φ 139	99°-51'	72.4	✓
"	φ 138	102°-56'	74.5	✓
"	φ 137	105°-55'	76.3	✓
"	φ 136	109°-22'	78.4	✓
"	φ 135	112°-04'	79.6	✓
"	φ 134	114°-44'	81.1	✓
"	φ 133	117°-15'	82.6	✓
"	φ 132	119°-43'	84.3	✓
"	φ 131	122°-08'	86.0	✓
"	φ 130	124°-30'	87.9	✓
"	φ 129	126°-43'	89.8	✓
"	φ 128	128°-56'	91.8	✓
"	N.W. 21	82°-40'	89.2	X
Set	S.W. 21	86°-31'	68.7	X
"	S.E. 22	88°-09'	69.0	X
"	N.E. 22	85°-49'	90.1	X
"	N.W. 22	97°-31'	95.2	X

Instrument, at Pt. M. Foresight at pl. "J."

BIK "A"

23

Fd Hub	S.W. 22	102°-15'	74.9	✓	
Set "	S.E. 23	104°-05'	75.7	✓	
" "	N.E. 23	99°-34'	96.0	✓	
" "	N.W. 23	111°-10'	101.1	✓	
" "	S.W. 23	117°-27'	83.2	✓	
" "	S.E. 24	119°-06'	84.3	✓	
" "	N.E. 24	113°-51'	102.5	✓	
" "	N.W. 24	121°-20'	108.0	✓	
" "	S.W. 24	127°-50'	91.1	✓	
Fd "	S.E. 25	129°-37'	93.0	✓	20' Radius
Set "	N.E. 25	123°-57'	110.3	✓	
" "	S.W. 25	139°-30'	103.6	✓	
Fd "	W. by Cor 49	113°-00'	63.2	✓	
Hubs on lots 55 to 122 arc on S + S.W. End. of Grave Lots 10, 14, 49					
Fd. Hub	£ 91	299°-34'	59.9	✓	
" "	£ 92	299°-05'	56.0	✓	
" "	£ 93	298°-30'	52.0	✓	
" "	£ 94	297°-56'	48.0	✓	
" "	£ 95	297°-11'	43.9	✓	
" "	£ 96	296°-14'	38.8	✓	
" "	£ 97	295°-16'	35.7	✓	
" "	£ 98	294°-14'	31.6	✓	
" "	£ 99	292°-51'	27.5	✓	
" "	£ 100	290°-56'	23.4	✓	
" "	£ 101	289°-36'	19.5	✓	

10 Hubs

Fd Hub	£ 102	286°-08'	15.3	✓	
" "	£ 103	281°-37'	11.2	✓	
" "	£ 104	272°-13'	7.4	✓	
" "	£ 105	247°-04'	4.1	✓	
" "	£ 106	184°-43'	3.5	✓	
" "	£ 107	148°-05'	6.3	✓	
" "	£ 108	136°-21'	10.1	✓	
" "	£ 109	131°-18'	14.0	✓	
" "	£ 110	128°-05'	17.8	✓	
" "	£ 111	126°-11'	21.8	✓	
" "	£ 112	125°-09'	25.8	✓	
" "	£ 113	124°-33'	29.8	✓	
" "	£ 114	124°-13'	33.8	✓	
" "	£ 115	124°-11'	37.8	✓	
" "	£ 116	124°-27'	41.9	✓	
" "	£ 117	124°-45'	46.9	✓	
" "	£ 118	125°-02'	50.0	✓	
" "	£ 119	125°-25'	54.1	✓	
" "	£ 120	125°-40'	58.0	✓	
" "	£ 121	126°-01'	62.0	✓	
" "	£ 122	126°-18'	66.0	✓	
Set "	N. by Cor 32	297°-42'	55.0	✓	
Fd "	W. by " 32	279°-08'	61.7	✓	
Set "	S. by " 31	276°-46'	57.6	✓	
" "	E. by " 31	297°-05'	50.0	✓	
" "	N. by " 31	292°-46'	31.2	✓	
Fd "	W. by " 31	263°-03'	41.2	✓	

4 Hubs

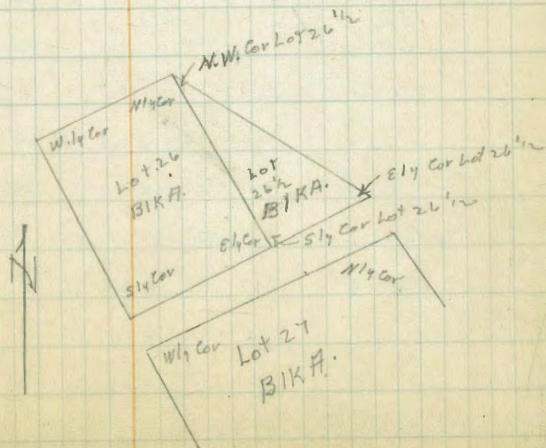
Instrumental Pt. "M."
Foresight at Pt. "J"

BIKA.

24

set. Hub	Sly Cor 30	260°05'	39.0	✓
"	" Ely " 30	292°00'	29.4	✓
"	" Nly " 30	269°50'	10.6	✓
"	" Wly " 30	227°32'	28.2	✓
"	" Sly " 29	221°24'	27.5	✓
"	" Ely " 29	263°18'	8.8	✓
"	" Nly " 29	140°27'	13.8	✓
Fd	" Wly " 29	181°32'	30.6	✓
set.	" Sly " 28	177°27'	31.8	✓
"	" Ely " 28	135°30'	18.8	✓
"	" Nly " 28	129°23'	38.3	✓
"	" Wly " 28	155°20'	45.5	✓
"	" Sly " 27	153°04'	48.0	✓
Fd	" Ely " 27	128°40'	44.6	✓
set	" Nly " 27	127°45'	62.5	✓
"	" Wly " 27	145°51'	65.0	✓
Fd	" Sly " 26	145°01'	68.0	✓
set	" Ely " 26	134°25'	66.8	✓
"	" Nly " 26	136°24'	82.2	✓
"	" Wly " 26	142°50'	81.7	✓
"	" Sly " 26 1/2	134°25'	66.8	✓
"	" N.W. " 26 1/2	136°24'	82.2	✓
Fd	" Ely " 26 1/2	128°02'	67.0	✓

19. Hubs.



BIK. K.

Instrument at Pt. "B" 285.10 N. - 289.13 W.
 Foresight at Pt. "A" 288.10 N. - 0.0 W.
 As To Lt. or Counter clockwise.

Set. Hub	N.W. 1	160°-34'	88.6	X
Fd. "	N.E. 1	165°-48'	59.2	X
Set. "	S.E. 1	189°-08'	69.8	✓
Fd. "	S.W. 2	192°-53'	66.8	✓
Set. "	S.E. 2	211°-37'	58.1	✓
" "	N.E. 2 } = S.E. 3 }	197°-56'	44.6	✓
" "	N.W. 2 } = S.W. 3 }	181°-24'	59.2	✓
" "	N.W. 3	167°-25'	54.4	✓
" "	N.E. 3	175°-01'	35.6	✓
" "	N.W. 4	177°-47'	30.8	✓
" "	S.W. 4 } = N.W. 5 }	203°-05'	41.5	✓
" "	S.W. 5	216°-33'	56.7	✓
" "	S.E. 5	236°-35'	50.3	✓
" "	N.E. 5 } = S.E. 4 }	230°-04'	30.8	✓
" "	N.E. 4	203°-51'	13.0	✓
" "	N.W. 7	223°-39'	9.9	✓
" "	S.W. 7 } = N.W. 6 }	239°-16'	29.6	✓
" "	S.W. 6	242°-26'	49.7	✓
" "	S.E. 6	266°-00'	50.4	✓
" "	N.E. 6 } = S.E. 7 }	277°-20'	31.9	✓
" "	N.E. 7	311°-00'	17.7	✓
" "	N.W. 8	317°-37'	22.2	✓
" "	S.W. 8 } = N.W. 9 }	284°-43'	34.6	✓
Fd. "	S.W. 9	271°-34'	51.6	✓
" "	S.E. 9	290°-45'	59.5	✓

21. Hubs.

Set. Hub	N.E. 9 } = S.E. 2 }	366°-03'	47.9	✓
" "	N.E. 8	328°-52'	41.4	✓
" "	N.W. 11	330°-14'	46.2	✓
" "	S.W. 11 } = N.W. 10 }	309°-40'	51.8	✓
" "	S.W. 10	294°-51'	62.1	✓
" "	S.E. 11 } = S.W. 12 }	307°-49'	74.9	✓
Fd. "	= N.E. 10 }	319°-12'	48.9	✓
Set. "	N.W. 12 } = N.E. 11 }	333°-28'	46.0	✓
" "	N.E. 12	334°-04'	82.9	✓
" "	S.E. 12	312°-12'	81.6	✓
" "	S.W. 14	343°-24'	92.8	✓
" "	N.E. 14	352°-56'	120.7	✓
" "	N.W. 14	359°-02'	77.4	✓
Fd. "	N.E. 15	0°-11'	93.8	✓
Set. "	S.E. 15 } = N.E. 13 }	351°-33'	90.2	✓
Fd. "	S.E. 13	340°-41'	88.7	✓
Set. "	S.W. 13	342°-03'	71.0	✓
" "	N.W. 13 } = S.W. 15 }	354°-17'	74.4	✓
" "	N.W. 15	5°-01'	80.4	✓
" "	N.E. 16	6°-55'	76.6	✓
" "	S.E. 16 } = N.E. 17 }	355°-30'	69.7	✓
" "	S.E. 17	342°-09'	66.0	✓
" "	S.W. 17	342°-31'	46.0	✓
" "	N.W. 17 } = S.W. 16 }	2°-23'	50.5	✓
" "	N.W. 16	17°-30'	59.8	✓

22. Hubs

BIK "K" (Con)

Instrument at Pt. R

Set	Hub	N.E. 19	20°-49'	55.9	✓
"	"	S.E. 19 = N.E. 19	4°-50'	45.7	✓
"	"	S.E. 18	342°-40'	40.9	✓
"	"	S.W. 18	344°-19'	21.0	✓
"	"	N.W. 18 = S.W. 19	20°-31'	28.2	✓
Ed	"	N.W. 19	38°-01'	41.3	✓
"	"	N.E. 20	44°-07'	38.6	✓
"	"	S.E. 20 = N.E. 21	26°-23'	24.5	✓
Ed	"	S.E. 21	345°-02'	15.9	✓
Set	"	S.W. 21	145°-00'	4.0	✓
"	"	N.W. 21 = S.W. 20	81°-30'	16.4	✓
"	"	N.W. 20	75°-03'	30.2	✓
"	"	N.E. 23	84°-24'	30.6	✓
"	"	S.E. 23 = N.E. 22	97°-08'	17.8	✓
"	"	S.E. 22	154°-15'	8.9	✓
"	"	S.W. 22	158°-46'	28.9	✓
"	"	N.W. 22 = S.W. 23	130°-21'	32.4	✓
"	"	N.W. 23	112°-29'	41.0	✓
Ed	"	N.E. 24	116°-56'	44.7	✓
Set	"	S.E. 24 = N.E. 25	133°-33'	37.1	✓
"	"	S.E. 25	158°-34'	33.9	✓
"	"	S.W. 25	156°-48'	53.3	✓
"	"	N.W. 25 = S.W. 24	140°-50'	55.2	✓
"	"	N.W. 24	126°-52'	61.0	✓

19. Hubs.

Set	Hub	N.E. 27	128°-28'	65.7	✓
"	"	S.E. 27 = N.E. 26	141°-27'	60.2	✓
"	"	S.E. 26	156°-09'	58.4	✓
"	"	S.W. 26	155°-02'	72.4	✓
"	"	N.W. 26 = S.W. 27	141°-55'	77.6	✓
"	"	N.W. 27	129°-35'	87.6	✓
"	"	N.E. 28	129°-47'	93.4	✓
"	"	S.E. 28 = N.E. 29	142°-10'	82.8	✓
"	"	S.E. 29	154°-41'	77.5	✓
"	"	S.W. 29	153°-56'	91.4	✓
"	"	N.W. 29 = S.W. 28	143°-23'	100.2	✓
"	"	N.W. 28	130°-24'	116.4	✓

12. Hubs.

BIK "L"

Instrument at Pt. "S" 285.10N - 414.40W.
 Foresight at Pt. "H" 285.10N - 0.0W.

N.B. → S. to Rt. or clockwise. ←

Hub	N.W. Lot 1				
"	S.W. " 1				
"	S.E. " 1				
"	N.E. " 1				
Fd.	" Nly Cor 2				
"	" Ely " 2				
set.	" Sly " 2				
set	" Wly " 3				
Fd	" Nly " 3				
"	" Ely " 3				
"	" Sly " 3				
set.	" Wly " 4				
Fd	" Nly " 4				
"	" Ely " 4				
"	" Sly " 4				
set	" Wly " 5	238°30'	102.3	✓	
Fd	" Nly " 5	249°18'	105.0	✓	
"	" Ely " 5	252°58'	85.4	✓	
"	" Sly " 5	238°58'	82.0	✓	
set.	" Wly " 6	239°05'	76.9	✓	
Fd.	" Nly " 6	254°05'	80.8	✓	
"	" Ely " 6	259°16'	41.4	✓	
Fd	" Sly " 6	239°28'	57.0	✓	
set	" Wly " 7	239°15'	52.1	✓	
Fd	" Nly " 7	261°01'	56.9	✓	

Lot 1, Elmfield
 Included in Lot 2

See Page 30

3. Hubs.

Fd Hub	Ely Cor 7	271°48'	38.0	✓	
"	" Sly " 7	237°32'	32.0	✓	
set.	" Wly " 8	236°20'	27.0	✓	
Fd	" Nly " 8	276°14'	33.9	✓	
"	" Ely " 8	314°08'	20.0	✓	
"	" Sly " 8	209°30'	7.2	✓	
set	" Wly " 9	166°18'	4.2	✓	
Fd	" Nly " 9	328°23'	18.0	✓	
set	" Sly " 9	76°06'	26.0	✓	
set.	" Nly " 10	86°24'	27.3	✓	
"	" Ely " 10	82°56'	33.0	✓	
"	" Sly " 10	97°00'	47.4	✓	
Fd	" Wly " 10	116°52'	44.0	✓	
"	" Sly " 11	122°10'	41.0	✓	
"	" Ely " 11	90°41'	22.5	✓	
set	" Nly " 11	158°33'	9.2	✓	
"	" Wly " 11	153°30'	33.6	✓	
Fd	" Sly " 12	162°03'	33.8	✓	Corrected 1-5-34
"	" Ely " 12	186°28'	10.7	✓	
set	" Nly " 12	226°03'	27.8	✓	
"	" Wly " 12	190°34'	40.6	✓	
Fd	" Sly " 13	196°03'	43.7	✓	
"	" Ely " 13	228°44'	32.5	✓	
set	" Nly " 13	233°48'	52.1	✓	
"	" Wly " 13	210°50'	58.5	✓	

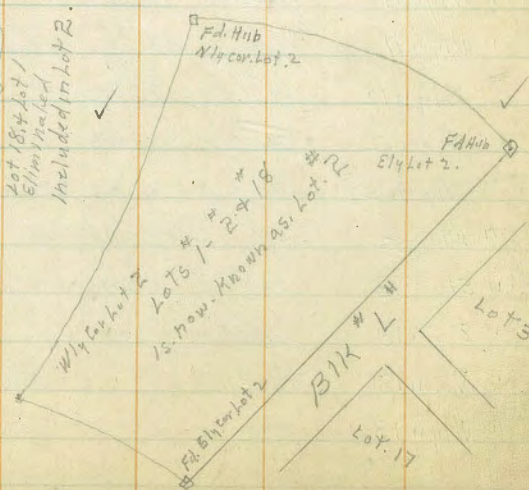
12. Hubs.

BIK "L" (COW)
Instrument at Pt "S"

Fd Hub	Sly Cor. 14	213° 24'	62.5	✓
" "	Ely " 14	234° 26'	57.1	✓
Set "	Nly " 14	235° 13'	76.9	✓
" "	Wly " 14	220° 43'	80.0	✓
Fd "	Sly " 15	222° 00'	84.6	✓
" "	Ely " 15	235° 30'	82.0	✓
Set "	Nly " 15	235° 41'	102.4	✓
" "	Wly " 15	224° 43'	104.8	✓
Fd "	Sly " 16	225° 12'	109.7	✓
" "	Ely " 16			
Set "	Nly " 16			
" "	Wly " 16			
Fd "	Sly " 17			
" "	Ely " 17			
Set "	Nly " 17			
" "	Wly " 17			
Fd "	Sly " 18			

See page 30

4 Hubs



BIK "N"
Instrument at Tr. Pt. "S" Foresight at A.
- L.s. to Rt. Clockwise

Set Hub	Sly Cor 9	309° 26'	31.1	✓
" "	Wly " 9	272° 19'	56.4	✓
" "	Nly " 9	289° 20'	85.9	✓
Fd "	Ely " 8	287° 53'	92.0	✓
" "	Sly " 8	284° 53'	84.3	✓
Set "	Wly " 8	275° 30'	97.4	✓
" "	Nly " 8	283° 21'	117.1	✓
" "	Nly " 10	273° 27'	93.7	✓
" "	Wly " 10	262° 23'	78.8	✓
Fd "	Sly " 10	269° 39'	60.8	✓
" "	Ely " 10	282° 59'	80.2	✓
" "	Sly " 11	260° 50'	83.2	✓
" "	Ely " 11	272° 05'	98.5	✓
Set "	Wly " 11	255° 41'	102.0	✓
" "	Nly " 11	267° 14'	117.5	✓
" "	Wly " 7	269° 01'	120.9	✓
" "	Nly " 7	276° 17'	138.0	✓
Fd "	Ely " 7	281° 52'	121.5	✓
" "	Sly " 7	274° 01'	102.0	✓

Lots Laid out in Pine Path. 4' x 10'
stakes on E. End. of Graves

Fd Hub &	28	255° 27'	103.0	✓
" "	29	256° 18'	99.0	✓
" "	30	257° 16'	95.3	✓
" "	31	258° 17'	91.5	✓
" "	32	259° 23'	87.8	✓

11 Hubs

Instrument at Tr. Pt. S. Foresight at Tr. Pt. A.

Ls. to Rt. = Clockwise.

Lots in Pine Path (con)

Fd Hub	±	33	260°35'	84.0	✓
"	"	34	261°42'	80.4	✓
"	"	35	262°54'	76.6	✓
"	"	36	264°11'	72.9	✓
"	"	37	265°37'	69.3	✓
"	"	38	267°11'	65.6	✓
"	"	39	268°59'	62.1	✓
"	"	40	270°56'	58.6	✓
"	"	41	273°02'	55.2	✓
"	"	42	275°28'	51.8	✓
"	"	43	278°13'	48.6	✓
"	"	44	281°25'	45.2	✓
"	"	45	284°55'	42.3	✓
"	"	46	288°54'	39.6	✓
"	"	47	293°23'	37.0	✓
"	"	48	298°34'	34.6	✓
"	"	49	304°25'	32.6	✓

Instrument at Tr. Pt. "N." 452°36'N - 465°00'W

Foresight at Tr. Pt. "J" 452°36'N 0.0'W.

Ls to Rt. or clockwise

Lots in Pine Path (con) Bat Biks. L & N.

Fd. Hub	±	27	70°48'	68.2	✓
"	"	26	71°51'	64.5	✓
"	"	25	73°01'	60.7	✓
"	"	24	74°22'	57.0	✓

Instrument at Tr. Pt. N.

Lots in Pine Path (con)

29

Fd Hub	±	23	75°53'	53.2	✓
"	"	22	77°24'	49.6	✓
"	"	21	79°38'	46.0	✓
"	"	20	82°14'	42.5	✓
"	"	19	85°30'	39.1	✓
"	"	18	89°21'	36.0	✓
"	"	17	94°05'	33.1	✓
"	"	16	99°39'	30.6	✓
"	"	15	106°07'	28.2	✓
"	"	14	113°26'	26.4	✓
"	"	13	121°51'	25.0	✓
"	"	12	130°54'	24.2	✓
"	"	11	140°13'	24.1	✓
"	"	10	149°46'	24.5	✓
"	"	9	158°12'	25.7	✓
"	"	8	165°44'	27.2	✓
"	"	7	172°22'	29.5	✓
"	"	6	178°07'	31.7	✓
"	"	5	183°00'	34.5	✓
"	"	4	187°06'	37.3	✓
"	"	3	190°40'	40.4	✓
"	"	2	193°41'	43.8	✓
"	"	1	196°22'	47.1	✓

Instrument at Tr. Pt. N. Foresight at "J"

BIK "L" (con)

Fd Hub	Nly cor 2	182°-12'	53.0	✓
" "	Ely " 2	129°-50'	34.6	✓
" "	Sly " 2	137°-59'	76.0	✓
Set "	Wly " 2	150°-15'	78.0	✓
Set "	Wly " 3	129°-45'	53.1	✓
Fd "	Nly " 3	121°-54'	35.4	✓
" "	Ely " 3	95°-21'	45.2	✓
" "	Sly " 3	110°-26'	59.7	✓
Set "	Wly " 4	106°-17'	62.2	✓
		(61.2 MC)		Corrected 1-6-34
Fd "	Nly " 4	91°-26'	49.0	✓
" "	Ely " 4	80°-45'	65.9	✓
" "	Sly " 4	94°-26'	76.0	✓
" "	Ely " 6	97°-15'	79.3	✓
Set "	Nly " 6	109°-03'	66.2	✓
" "	Wly " 6	117°-26'	83.0	✓
Fd "	Sly " 7	120°-40'	81.0	✓
" "	Ely " 7	112°-52'	63.8	✓
Set "	Nly " 7	130°-57'	58.0	✓
" "	Wly " 7	134°-11'	76.2	✓

BIK "N"

Fd Hub	Ely cor 6	22°-10'	68.2	✓
" "	Sly " 6	42°-15'	62.3	✓
Set "	Wly " 6	34°-09'	43.0	✓
" "	Nly " 6	8°-07'	53.5	✓

9. Hubs.

Instrument at Pt "N"

BIK "N" (con)

30

Fd Hub	Ely cor 5	3°-53'	50.3	✓
" "	Sly " 5	31°-38'	38.4	✓
Set "	Wly " 5	16°-48'	20.5	✓
" "	Nly " 5	340°-42'	40.2	✓
Fd "	Ely " 4	333°-41'	38.8	✓
" "	Sly " 4	8°-10'	16.2	✓
Set "	Wly " 4	279°-10'	12.6	✓
" "	Nly " 4	303°-50'	37.1	✓
Fd "	Ely " 3	296°-36'	38.3	✓
" "	Sly " 3	264°-20'	16.0	✓
Set "	Wly " 3	240°-49'	33.8	✓
" "	Nly " 3	272°-59'	48.1	✓
Fd "	Ely " 2	268°-23'	51.5	✓
" "	Sly " 2	238°-20'	38.6	✓
Set "	Wly " 2	232°-22'	58.0	✓
" "	Nly " 2	252°-58'	65.0	✓
Fd "	Ely " 1	250°-00'	68.8	✓
" "	Sly " 1	230°-58'	63.0	✓
Set "	Wly " 1	227°-51'	78.4	✓
Edge Lawn	Nly Line 1	233°-36'	79.0	✓
" "	" " 1	239°-21'	77.0	✓
" "	" " 1	144°-42'	73.3	✓
Set Hub	Nly cor 7	224°-26'	76.8	✓
Fd "	Ely " 7	226°-31'	62.8	✓
" "	Sly " 7	206°-47'	66.2	✓

10. Hubs.

Instrument at Tr. Pt. "N." Foresight at Tr. Pt. J.

↳ s. clock wise.

BIK^N" (con)

31

Set	Hub	Wly cor 16	203°-05'	62.5	✓
"	"	Nly " 16	227°-17'	57.7	✓
Fd	"	Ely " 16	230°-58'	37.9	✓
"	"	Sly " 16	194°-07'	44.2	✓
Set	"	Wly " 15	170°-15'	40.0	✓
"	"	Nly " 15	232°-26'	32.9	✓
Fd	"	Ely " 15	247°-45'	13.6	✓
"	"	Sly " 15	163°-41'	26.8	✓
Set	"	Wly " 14	153°-20'	25.0	✓
"	"	Nly " 14	260°-08'	9.2	✓
Fd	"	Ely " 14	24°-53'	13.9	✓
"	"	Sly " 14	106°-07'	28.2	✓
Set	"	Wly " 13	98°-20'	31.0	✓
"	"	Nly " 13	30°-48'	18.7	✓
Fd	"	Ely " 13	39°-02'	37.3	✓
"	"	Sly " 13	80°-22'	44.8	✓
Set	"	Wly " 12	77°-42'	49.4	✓
"	"	Nly " 12	40°-44'	42.4	✓
Fd	"	Ely " 12	46°-51'	62.2	✓
"	"	Sly " 12	70°-48'	68.2	✓

10. Hubs.

BIK "E"

Instrument at Tr. Pt. "D" 92.10N - 54.0W.
 Fore-sight at Tr. Pt. "C" 92.10N - 0.0W.
 2s. clock wise to Rt.

Set. Hub.	N.E. 15	291-35	123.7	✓
" "	S.E. 15	295-55	104.6	✓
" "	S.W. 15	275-06	95.7	✓
" "	N.W. 14	276-25	90.6	✓
" "	N.E. 14	297-10	100.1	✓
" "	S.E. 14	303-30	82.8	✓
" "	S.W. 14	281-56	71.5	✓
Fd "	N.W. 13	283-13	66.8	✓
Set "	N.E. 13	305-32	78.6	✓
" "	S.E. 13	316-15	63.3	✓
" "	S.W. 13	289-47	47.3	✓
" "	N.W. 12	292-30	42.8	✓
" "	N.E. 12	319-44	60.0	✓
" "	S.E. 12	337-58	49.3	✓
" "	S.W. 12	312-57	26.4	✓
Fd "	N.W. 11	322-06	23.5	✓
Set "	N.E. 11	343-32	47.7	✓
" "	S.E. 11	7-42	46.1	✓
Fd "	S.W. 11	15-13	20.5	✓
Set "	N.W. 10	27-41	22.2	✓
" "	N.E. 10	14-04	47.1	✓
" "	S.E. 10	34-32	55.5	✓
" "	S.W. 10	57-29	34.0	✓
" "	N.W. 9	61-37	40.2	✓
" "	N.E. 9	38-42	58.3	✓

This Alley is included in lot 10 BIK G.

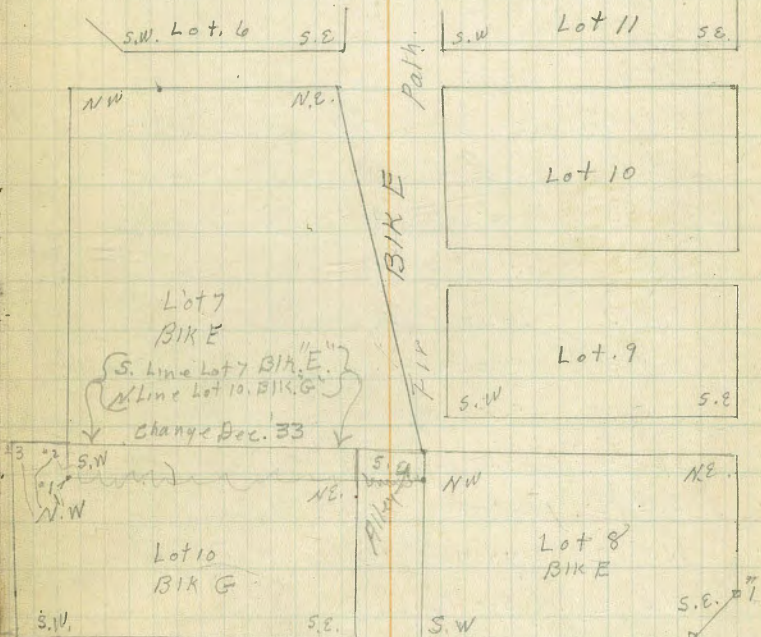
Lot 9.
BIK G.

22. Hubs

BIK "E"

Set Hub	S.E. 9.	48-20	68.6	✓
Fd "	S.W. 9.	70-08	53.1	✓
Set "	N.W. 8.	75-54	56.4	✓
" "	N.E. 8.	50-57	72.3	✓
" "	S.E. 8	55-48	81.2	✓
" "	S.E. 8	67-02	89.6	✓
" "	S.W. 8	80-37	83.6	✓

O.K. Dec '33.
 S.E. Cor. Lot 7
 2/8 L/line Lot 7.
 N.G.J.



Set. Hub	S.E. 7.	77-08	61.5	✓
" "	S.W. 7	97-41	60.5	✓
" "	N.W. 7	142-05	15.0	✓
" "	N.E. 7	45-25	13.9	✓

changed
 Dec 33.

10 Hubs.

BIK "E" (con)
Instrument at Tr. Pt. "D" 92.10N. - 54. W.

Set	Hub.	S.E. 6	27°-15'	10.9	✓
"	"	S.W. 6	155°-02'	10.4	✓
Fd.	"	N.W. 6	212°-55'	28.9	✓
"	"	N.E. 6	300°-24'	17.0	✓
Set	"	S.E. 5	233°-04'	25.6	✓
"	"	S.W. 5	217°-12'	34.4	✓
"	"	N.W. 5	229°-55'	53.3	✓
"	"	N.E. 5	249°-04'	43.1	✓
"	"	N.W. 4	258°-11'	41.3	✓
"	"	S.W. 4	242°-48'	22.8	✓
"	"	S.E. 4	293°-05'	21.5	✓
"	"	N.E. 4	279°-29'	40.2	✓
"	"	S.E. 3	277°-57'	45.1	✓
Fd.	"	N.E. 3	274°-43'	64.8	✓
Set	"	N.W. 3	See Page. 34	✓	X
"	"	S.W. 3	See Page. 34	✓	X
"	"	S.E. 2	251°-08'	47.9	✓
"	"	S.W. 2	233°-32'	57.0	✓
"	"	N.W. 2	248°-41'	70.1	✓
"	"	N.E. 2	See Page. 34	✓	X
"	"	S.W. 1.	253°-00'	73.5	✓
"	"	N.E. 1.	269°-58'	90.3	✓
"	"	S.E. 1.	273°-29'	69.7	✓

20. Hubs.

BIK "G."
Instrument at Tr. Pt. "D." Foresight at Tr. Pt. "C."
Ls. clockwise

33

X Set	Hub	N.E. 10	84°-23'	60.2	✓	Changed Dec. 33
"	"	S.E. 10	85°-17'	82.6	✓	
"	"	S.W. 10	99°-08'	83.4	✓	
"	"	Change	5-8-33	60.5	✓	N.C. = S.W. Lot 7, BIK E
"	"	2 N.W. 10	97°-41'	60.5	✓	S.W. " " " "
"	"	2 N.W. 10	98°-24'	57.1	✓	W. line " " " " N.C.
"	"	3 N.W. 10	103°-16'	57.7	✓	
"	"	N.E. 9.	108°-05'	58.7	✓	= N.W. 10
"	"	S.E. 9.	102°-28'	84.3	✓	= S.W. 10
"	"	S.W. 9.	115°-15'	91.0	✓	
"	"	N.W. 9.	125°-31'	66.8	✓	
"	"	N.E. 8	128°-52'	68.8	✓	
"	"	S.E. 8	117°-38'	93.0	✓	con. Page. 35
"	"	N.E. 10	84°-06'	55.6	✓	O.K. Dec. 33

BIK "F."

Set	Hub	N.E. 3	126°-55'	31.0	✓	
"	"	N.W. 3	147°-26'	45.8	✓	
"	"	S.W. 3	131°-16'	58.9	✓	
Fd.	"	S.E. 3	101°-32'	46.9	✓	
"	"	N.W. 2	183°-35'	38.4	✓	
Set	"	S.E. 4	133°-07'	29.9	✓	
"	"	S.W. 4	150°-43'	44.2	✓	con Page 34

17. Hubs.

Lots in Oak Path bet BIKs. F & G,
10' Long. stakes on N. End. of Groves
Instrument at Tr. Pt. "D." Fore sight at Tr. Pt. "C."

Fd	Hub	N. End	Dist	Reading	Angle	Check
Fd	Hub	N. End	101-32	47.3	✓	
"	"	"	105-13	48.0	✓	
"	"	"	109-04	48.5	✓	
"	"	"	112-45	49.5	✓	
"	"	"	116-17	50.5	✓	
"	"	"	119-47	52.0	✓	
"	"	"	123-02	53.5	✓	
"	"	"	126-08	55.4	✓	
"	"	"	128-57	57.2	✓	
"	"	"	131-51	59.1	✓	

Instrument at Tr. Pt. "E." 92.10 N - 150.00 W.

Fore sight at "C."

Fd	Hub	N. End	Dist	Reading	Angle	Check
Fd	Hub	N. End	39-14	68.9	✓	
"	"	"	40-29	65.7	✓	
"	"	"	41-31	62.6	✓	
"	"	"	42-45	59.3	✓	
"	"	"	44-18	56.3	✓	
"	"	"	45-49	53.3	✓	
"	"	"	47-34	50.5	✓	
"	"	"	49-22	47.6	✓	
"	"	"	51-13	44.6	✓	
"	"	"	53-08	41.6	✓	
"	"	"	55-14	38.7	✓	
"	"	"	57-40	35.5	✓	
"	"	"	60-25	32.6	✓	

no Hubs

Instrument at Tr. Pt. "E"

34

Fd	Hub	N. End	Dist	Reading	Angle	Check
Fd	Hub	N. End	24	63-37	29.7	✓
"	"	"	25	67-24	26.9	✓
"	"	"	26	72-00	24.1	✓
"	"	"	27	77-30	21.4	✓
"	"	"	28	84-36	19.2	✓
"	"	"	29	92-57	17.1	✓
"	"	"	30	103-35	15.5	✓
"	"	"	31	116-02	14.4	✓
"	"	"	32	129-23	14.2	✓
"	"	"	33	142-53	14.6	✓

Instrument at Tr. Pt. "E"

BIK "E" con. from Page 33

Set	Hub	N. W.	Dist	Reading	Angle	Check
Set	Hub	N. W.	3	32-45	107.5	✓
"	"	S. W.	3	32-14	96.8	✓
"	"	N. E.	2	32-02	103.7	✓

Instrument at Tr. Pt. "E"

BIK "F" con. from Page 33

Set	Hub	S. E.	Dist	Reading	Angle	Check
Set	Hub	S. E.	2	39-25	68.5	✓
"	"	S. W.	2	48-15	49.6	✓
"	"	N. W.	2	23-14	36.0	✓
"	"	N. E.	2	15-39	55.0	✓
Fd	"	S. E.	4	11-31	54.0	✓
Set	"	N. E.	4	351-49	53.3	✓
"	"	N. W.	4	331-39	37.3	✓
Fd	"	S. W.	4	17-06	34.6	✓

9. Hubs.

BIK "F." con. Page 34.
Instrument at Tr. Pt. "E"

Set.	Hub	S.E. 5	19°-57'	29.4'	✓
Fd.	"	N.E. 5	330°-33'	31.5'	✓
Set.	"	N.E. 7			
	"	N.W. 5	356°-37'	8.5'	✓
"	"	S.W. 5			
	"	S.E. 7	47°-57'	12.8'	✓
Fd.	"	N.W. 1			
	"	E. Line 7	57°-43'	16.0'	✓
Set.	"	S.W. 1			
	"	S.E. 7	70°-12'	25.1'	✓
"	"	Wly cor 7.	125°-12'	14.1'	✓
"	"	N.E. 1	27°-02'	31.0'	✓
"	"	S.E. 1	51°-24'	44.2'	✓

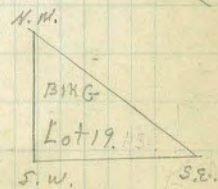
BIK "G." con. from page 33

Set	Hub	S.W. 8	68°-07'	88.6'	✓
Fd.	"	N.W. 8	54°-54'	57.5'	✓
Set	"	N.E. 7	65°-14'	67.0'	✓
"	"	S.E. 7	71°-06'	86.5'	✓
"	"	S.W. 7	84°-18'	81.9'	✓
"	"	N.W. 7	82°-10'	61.4'	✓
"	"	N.E. 6	86°-50'	60.8'	✓
"	"	S.E. 6	87°-43'	81.5'	✓
"	"	S.W. 6	101°-38'	82.5'	✓
"	"	N.W. 6	105°-11'	63.0'	✓
"	"	N.E. 5	109°-29'	64.5'	✓
"	"	S.E. 5	105°-00'	83.7'	✓
"	"	S.W. 5	147°-08'	90.8'	✓
"	"	N.W. 5	124°-14'	73.5'	✓
"	"	N.E. 4	127°-22'	76.5'	✓
"	"	S.E. 4	119°-54'	93.2'	✓
"	"	S.W. 4	129°-25'	104.5'	✓

23. Hubs.

BIK "G."
Instrument at Tr. Pt. E.

Set	Hub	N.W. 4	137°-27'	90.0'	✓
"	"	S.E. 3	131°-27'	107.9'	✓
Fd	"	N.E. 3	139°-30'	93.8'	✓
Set	"	S.E. 15	141°-26'	91.1'	✓
"	"	N.E. 15	153°-58'	79.3'	✓
"	"	N.W. 14	153°-14'	74.3'	✓
Fd.	"	S.W. 14	139°-24'	87.2'	✓
"	"	S.E. 14	129°-12'	73.5'	✓
"	"	N.E. 14	149°-37'	53.7'	✓
Set	"	N.W. 13	138°-08'	55.5'	✓
"	"	S.W. 13	126°-02'	70.5'	✓
"	"	S.E. 13	110°-38'	61.0'	✓
"	"	N.E. 13	120°-01'	42.9'	✓
"	"	N.W. 12	113°-51'	40.5'	✓
"	"	S.W. 12	106°-08'	59.3'	✓
"	"	S.E. 12	86°-08'	57.0'	✓
Fd	"	N.E. 12	84°-30'	37.2'	✓
"	"	N.W. 11	77°-04'	37.9'	✓
Set	"	S.W. 11	81°-39'	57.6'	✓
"	"	S.E. 11	63°-45'	63.5'	✓
"	"	N.E. 11	58°-10'	53.2'	✓
Fd	"	S.E. 19	83°-11'	33.9'	✓
"	"	N.W. 19	139°-24'	23.6'	✓
Set	"	S.W. 19	115°-55'	37.4'	✓
Set	"	S.E. 18	122°-30'	39.8'	✓
Fd	"	N.E. 18	142°-00'	26.8'	✓
Set	"	N.W. 18	148°-43'	48.5'	✓
Fd	"	S.W. 18	141°-04'	53.1'	✓



18. Hubs.

BIK "G." (Con)

Instrument at Tr. Pt. "F" 92.10 N - 270.00 W
 Foresight at Tr. Pt. "C" 92.10 N - 0.0 W.
 Ls. to Rt. = Clockwise

Set Hub	S.W. 3	70°-26	85.7	✓	
"	"	N.W. 3	64°-42	67.1	✓
"	"	N.E. 2	68°-38	65.3	✓
"	"	S.E. 2	73°-41	84.2	✓
"	"	S.W. 2	87°-21	80.9	✓
"	"	N.W. 2	86°-22	61.0	✓
Fd.	"	N.E. 1	91°-08	61.0	✓
Set.	"	S.E. 1	90°-54	80.7	✓
"	"	S.W. 1	104°-54	83.6	✓
"	"	N.W. 1	109°-11	64.3	✓
"	"	S.W. 17	110°-19	60.6	✓
"	"	N.W. 17	121°-55	39.8	✓
"	"	N.E. 17	91°-13	38.3	✓
"	"	S.E. 17	91°-05	56.9	✓
Fd.	"	S.W. 16	86°-05	57.1	✓
Set.	"	N.W. 16	84°-24	38.9	✓
Fd.	"	N.E. 16	58°-50	46.3	✓
Set.	"	S.E. 16	67°-21	61.8	✓
"	"	S.W. 15	63°-11	63.9	✓
"	"	N.W. 15	53°-22	48.3	✓

17. Hubs

BIK "H."

Instrument at Tr. Pt. "F" - Foresight at Tr. Pt. "C" 36

Set Hub	N.E. 6	133°-01	45.6	✓	
"	"	S.E. 6	118°-41	64.8	✓
Fd.	"	S.W. 6	127°-10	71.3	✓
"	"	N.W. 6	141°-58	54.7	✓
"	"	N.E. 7	144°-27	59.3	✓
Set	"	S.E. 7	130°-18	74.4	✓
Fd.	"	S.W. 7	140°-08	88.5	✓
Set	"	N.W. 7	150°-22	78.3	✓
Fd.	"	N.E. 8	151°-20	83.1	✗
Set	"	S.E. 8	142°-08	92.4	✗
"	"	S.W. 8	148°-44	109.2	✗
Fd.	"	N.W. 8	154°-11	103.7	✓
Set	"	N.E. 9	154°-35	109.0	✓
"	"	S.E. 9	150°-04	113.7	✓
"	"	N.E. 2	148°-22	115.4	✓
"	"	S.E. 2	140°-37	127.0	✓
"	"	S.W. 3	139°-10	123.0	✗
"	"	N.W. 3	147°-01	111.1	✗
"	"	N.E. 3	140°-15	94.7	✗
"	"	S.E. 3	132°-03	108.5	✗
"	"	S.W. 4	130°-01	105.1	✓
"	"	N.W. 4	138°-12	91.0	✓
"	"	N.E. 4	128°-25	77.4	✓
"	"	S.E. 4	120°-45	93.9	✓

18. Hubs

BIK "H"

Instrument at Tr. Pt. "F" Foresight at "C"

Set Hub	S.W. 5	117° 58'	91.4	✓
" "	N.W. 5	125° 17'	74.5	✓
" "	N.E. 5	117° 10'	68.3	✓
" "	S.E. 5	111° 20'	86.5	✓

BIK "H" (con.)

Instrument at Tr. Pt. "G" 92.10 N - 450.00 W.

Foresight at Tr. Pt. "C" 92.10 N. - 00. W.

Set Hub	N.W. 9.	41° 07'	81.9	✓
" "	S.W. 9.	42° 32'	83.8	✓
Fd "	N.W. 2	44° 25'	86.5	✓
Set "	S.W. 2	52° 25'	101.7	✓
" "	S.E. 1	54° 40'	98.6	✓
" "	N.E. 1	46° 47'	83.0	✓
" "	N.W. 1	52° 31'	76.1	✓ = Cor Lots 10-11 & 17 BIK V.
" "	S.W. 1.	60° 00'	92.9	✓ = S.E. Cor BIK V Page.

Lots Laid out in path N. of BIK H. 9.0 long

Instrument at Tr. Pt. "G"

Foresight at Tr. Pt. C.

Set Hub	S. End of 23	37° 34'	84.8	✓
" "	" " of 24	39° 55'	82.8	✓

Lots 22 to 1 see Page 38.

13 Hubs.

childrens Graves laid out in BIK "I"
North of Lots Nos. XX-0.1 to 24 in Path
North of BIK "H" Lots 5.0 long
See Plat Page 38.

Instrument at Tr. Pt. "G" Foresight at Tr. Pt. "C"

Ls. Clockwise.

Set Hub	S. End of Grave Lot.	44.	23° 20'	91.8	✓
" "	" "	41.	24° 30'	90.0	✓
" "	" "	38.	25° 41'	87.9	✓
" "	" "	30.	26° 49'	86.0	✓
" "	" "	32.	28° 05'	84.0	✓
" "	" "	31.	29° 30'	82.5	✓
" "	" "	35.	30° 36'	81.2	✓
" "	" "	36.	31° 52'	79.5	✓
" "	" "	37.	33° 25'	78.2	✓
" "	" "	39.	34° 24'	76.5	✓
" "	" "	40.	36° 29'	75.2	✓

childrens Lots N. of Lots 44-41-38-30 above 5.0 long.

Set Hub	S. End of Grave Lot.	43.	20° 50'	88.7	✓
" "	" "	42.	22° 10'	86.6	✓
" "	" "	40.	23° 27'	84.3	✓
" "	" "	34.	24° 57'	82.0	✓

15 Hubs

Lots Laid out in Path North of BIK H. 9.0 Long.
 Instrument at Tr. Pt. F. Foresight at Tr. Pt. C
 Hubs on S. End. Lots = S. Line Path & Graves.

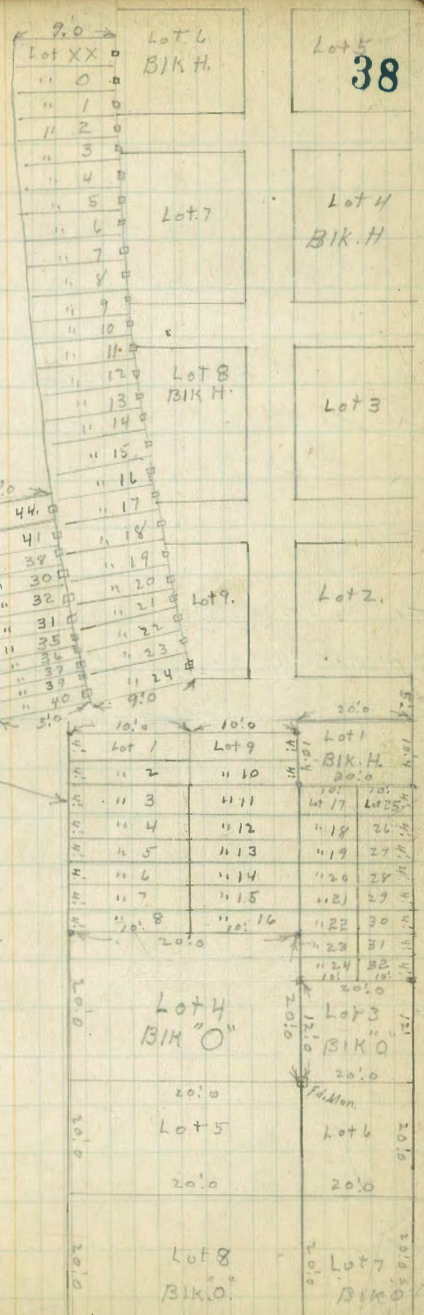
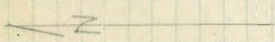
Set	Hubs	Lot XX	135-51	47.9	✓
"	"	" 40	138-12	50.2	✓
"	"	" 41	140-19	52.6	✓
"	"	" 42	Location of Culvert.		
"	"	" 43	144-12	58.8	✓
"	"	" 44	145-28	61.2	✓
"	"	" 45	146-32	63.8	✓
"	"	" 46	147-37	67.0	✓
"	"	" 47	148-33	70.2	✓
"	"	" 48	149-28	73.6	✓
"	"	" 49	150-12	77.0	✓
"	"	" 410	150-49	80.4	✓
"	"	" 411	151-20	83.1	✓
"	"	" 412	151-55	86.3	✓
"	"	" 413	152-26	89.2	✓
"	"	" 414	152-54	92.1	✓
"	"	" 415	153-20	95.0	✓
"	"	" 416	153-43	99.0	✓
"	"	" 417	154-08	103.4	✓
"	"	" 418	154-22	106.7	✓
"	"	" 419	154-38	109.8	✓
"	"	" 420	154-51	113.1	✓
"	"	" 421	155-05	116.3	✓
"	"	" 422	155-13	120.1	✓
"	"	" 423	See Page 37		
"	"	" 424	" " "		

26 Hubs.

39 Hubs.



Lots 7-10-32
 4'0" x 10'0" BIK V.



Lot 5
 38

Lot 4
 BIK H.

Lot 3

Lot 2.

Lot 1
 BIK H.

Lot 3
 BIK O

Lot 6

Lot 7
 BIK O

Lot 4
 BIK O

Lot 5

Lot 8
 BIK O

BIK V. Laid out in Drive Bet.

BIKs. H. " & O. " see Plat Page 38.

Instrument at Tr. Pt. G. Foresight at Tr. Pt. "E"

Ls. Clockwise

Set. Hub	S.E. Lot 25.	60°-00'	92.9	= S.W. Lot 1. BIK. H. ✓
" "	NE " 17	52°-31'	76.1	= NW. " " " " ✓
" "	SE " 9	48°-02'	81.4	on N. Line Lot 1 BIK. H. ✓
" "	NE " 1.	36°-45'	67.8	✓
" "	NW " 8	60°-57'	45.9	= N.E. Lot. 4 BIK. "O" ✓
" "	SW " 16	69°-35'	64.2	= SE " 4 " " ✓
" "	NW " 24	76°-35'	62.0	= NE " 3 " " ✓
" "	SW " 32	79°-52'	81.7	= SE " 3 " " ✓

BIK "O"

Set. Hub	S.W. Lot 3.	88°-18'	80.4	= SE. 6 BIK "O" ✓
Fd. Mon.	car Lots 3-4-5+6	87°-44'	60.4	✓
Set. Hub	N.W. Lot 4.	86°-51'	40.4	= N.E. 5 BIK "O" ✓

10. Hubs.

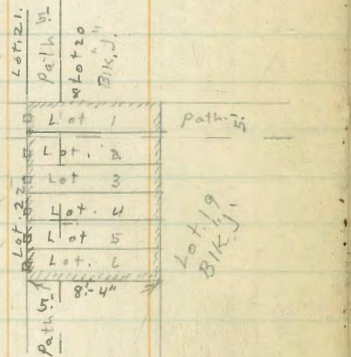
BIK. "J"

Instrument at Tr. Pt. "E" 92.10 N - 150. W.
 Foresight at Tr. Pt. "C" 92.10 N - 00 W.
 Ls. clockwise

Set Hub.	S. E.	19	267.06'	31.4	✓
" "	N. E.	19	282.39	42.0	✓
" "	N. W.	19	258.27	48.5	✓
" "	S. W.	19	246.38	36.4	✓

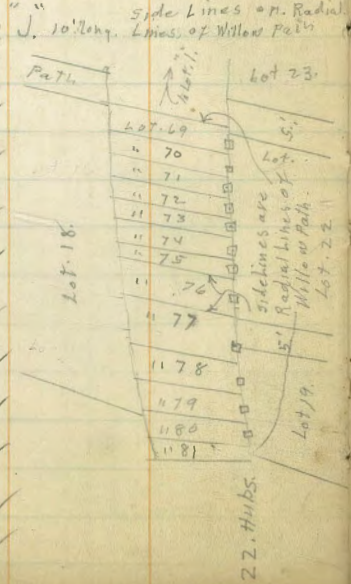
Results of Lot 19. + Path to N. + Path to W. of Lot 19

Set Hub W. End of Lot 1	255.48	54.1	✓
" " " " " 2	253.55	51.6	✓
" " " " " 3	251.53	49.0	✓
" " " " " 4	249.24	46.4	✓
" " " " " 5	246.41	43.9	✓
" " " " " 6	243.49	41.6	✓



Lots Laid out in Willow Path BIK. "J"

Set Hub N. End of	81	262.04'	32.1	✓
Set Hub N. End of	80	256.42	33.3	✓
" " " " "	79	251.34	34.6	✓
" " " " "	78	246.34	36.4	✓
" " " " "	77	242.35	38.0	✓
" " " " "	76	238.50	40.4	✓
" " " " "	75	235.27	42.5	✓
" " " " "	74	232.40	44.9	✓
" " " " "	73	229.54	47.5	✓
" " " " "	72	227.25	50.3	✓
" " " " "	71	225.23	52.9	✓
" " " " "	70	223.27	55.9	✓



Willow Path (con)

Set Hub N. End of	69	221.47	58.6	✓
" " " " "	68	220.01	61.6	✓
" " " " "	67	219.45	64.5	✓
" " " " "	66	217.33	67.1	✓
" " " " "	65	216.32	69.8	✓
" " " " "	64	215.35	72.7	✓
" " " " "	63	214.43	75.3	✓

con. Page: 43

Regular Lots BIK. "J"

Set Hub S. E.	22	240.35	39.3	✓
" " N. E.	22	253.39	51.2	✓
" " N. W.	22	238.59	64.8	✓
Set " S. W.	22	224.16	54.6	✓
" " S. E.	21	256.22	58.4	✓
" " N. E.	21	264.30	72.2	✓
" " N. W.	21	253.34	86.8	✓
" " S. W.	21	242.13	68.2	✓
" " N. W.	20	267.52	68.9	✓
" " S. W.	20	261.10	52.9	✓
" " S. E.	20	283.17	47.0	✓
" " N. E.	18	241.12	26.4	✓
" " N. W.	18	214.04	50.8	✓
" " S. W.	18	184.22	50.2	✓
" " N. E.	17	181.28	56.0	✓
" " S. E.	16	184.57	55.1	✓
Set " N. E.	16	212.07	55.5	✓

22 Hubs

BK "J" (con)
 Instrument at Tr. Pt. E.
 Foresight at " " G.
 Ls. clockwise

Set.	Hub	S.E. 23	221-35	58.9	✓
"	"	N.E. 23	236-16	68.8	✓
"	"	S.E. 24	239-26	72.0	✓
"	"	N.E. 24	251-20	90.5	✓

BK "J" (con)

Instrument at Tr. Pt. "F" 92.10N - 270.00W
 Foresight " " "C" 92.10N - 0.0W

Set.	Hub	N.W. 24	307-23	119.4	✓
"	"	S.W. 24	313-05	94.0	✓
"	"	N.W. 23	314-30	89.5	✓
"	"	S.W. 23	322-22	71.0	✓
"	"	N.W. 16	327-28	63.2	✓
"	"	S.W. 16	347-05	47.1	✓
"	"	N.W. 17	350-54	45.5	✓
"	"	S.W. 17	7-55	41.2	✓
"	"	S.E. 14	11-20	35.9	✓
"	"	S.W. 14	39-33	16.1	✓
"	"	N.W. 14	327-02	23.8	✓
Fd.	"	N.E. 14	347-36	40.4	✓
"	"	S.E. 15	343-44	42.9	✓
"	"	S.W. 15	320-23	27.9	✓
"	"	N.W. 15	305-34	49.1	✓
Set.	"	N.E. 15	324-07	59.9	✓
"	"	S.E. 26	317-02	68.0	✓
Fd.	"	S.W. 26	302-39	58.6	✓
Set.	"	N.W. 26	298-34	81.7	✓

= 4.54 Willow Path.

18. Hubs

Set.	Hub	N.E. 26	311-34	87.3	✓
Fd.	"	S.E. 25	310-11	92.0	✓
Set.	"	N.E. 25	305-02	118.1	✓
"	"	N.W. 25	295-30	114.4	✓
"	"	S.W. 25	297-58	86.8	✓
"	"	N.E. 28	293-00	114.2	✓
"	"	N.W. 28	282-47	112.8	✓
Fd.	"	S.W. 28	281-09	86.3	✓
Set.	"	S.E. 28	299-39	86.0	✓
Fd.	"	N.E. 27	295-05	81.0	✓
Set.	"	N.W. 27	280-47	81.5	✓
Fd.	"	S.W. 27	277-37	57.1	✓
Set.	"	S.E. 27	297-59	57.5	✓
Fd.	"	N.E. 12	299-59	47.9	✓
Set.	"	N.W. 12	275-38	47.4	✓
Fd.	"	S.W. 12	264-22	25.0	✓
Set.	"	S.E. 12	310-41	25.5	✓
Fd.	"	N.E. 13	316-14	20.8	✓
Set.	"	N.W. 13	258-46	20.6	✓
"	"	S.W. 13	151-10	14.4	✓
"	"	S.E. 13	54-31	12.2	✓
"	"	S.E. 10	163-02	18.2	✓
"	"	S.W. 10	184-49	36.4	✓
"	"	N.W. 10	224-30	39.5	✓
Fd.	"	N.E. 10	247-46	23.3	✓

17. Hubs

B14 "J" (con)
 Instrument at Tr. Pt. "F."
 Foresight " " " " "C"

Set. Hub	S.E. 11	254 ⁰ 36	27.5	✓
" "	S.W. 11	230 ⁰ 46	42.0	✓
" "	N.W. 11	252 ⁰ 06	60.2	✓
Fd "	N.E. 11	269 ⁰ 57	48.9	✓
Set "	S.E. 30	272 ⁰ 55	58.3	✓
" "	S.W. 30	257 ⁰ 00	68.5	✓
" "	N.W. 30	264 ⁰ 35	88.5	✓
" "	N.E. 30	277 ⁰ 21	82.2	✓
" "	S.E. 29	277 ⁰ 55	87.2	✓
" "	S.W. 29	265 ⁰ 50	93.2	✓
" "	N.W. 29	270 ⁰ 21	115.6	✓
" "	N.E. 29	280 ⁰ 11	112.9	✓
" "	N.E. 32	267 ⁰ 55	116.7	✓
" "	N.W. 32	See Page 44	✓	
Fd "	S.W. 32	253 ⁰ 09	105.6	✓
Set "	S.E. 32	263 ⁰ 04	95.3	✓
" "	N.E. 31	261 ⁰ 40	90.7	✓
" "	N.W. 31	251 ⁰ 33	101.5	✓
" "	S.W. 31	244 ⁰ 10	87.1	✓
" "	S.E. 31	253 ⁰ 52	71.8	✓
" "	N.E. 8	248 ⁰ 43	63.7	✓
" "	N.W. 8	239 ⁰ 05	80.0	✓
Fd "	S.W. 8	224 ⁰ 58	67.7	✓
Set "	S.E. 8	229 ⁰ 01	47.1	✓
" "	N.E. 9	223 ⁰ 30	44.6	✓
" "	N.W. 9	220 ⁰ 55	65.4	✓

23. Hubs

Set. Hub	S.W. 9	197 ⁰ 21	60.3	✓
" "	S.E. 9	187 ⁰ 51	41.0	✓
" "	S.E. 6	199 ⁰ 05	65.7	✓
" "	S.W. 6	204 ⁰ 13	85.3	✓
" "	N.W. 6	See Page 44	✓	
Fd "	N.E. 6	220 ⁰ 31	70.7	✓
Set "	S.E. 7	214 ⁰ 12	71.8	✓
" "	S.W. 7	See Page 44	✓	
Fd "	N.W. 7	See Page 44	✓	
Set "	N.E. 7	237 ⁰ 22	84.2	✓
" "	S.E. 34	242 ⁰ 38	91.4	✓
" "	S.W. 34	236 ⁰ 50	109.8	✓
" "	N.W. 34	See Page 44	✓	
Fd "	N.E. 34	249 ⁰ 49	104.8	✓
Set "	S.E. 33	251 ⁰ 27	108.9	✓
Fd "	S.W. 33	See Page 44	✓	
Set "	N.W. 33	See Page 44	✓	
" "	N.E. 33	See Page 44	✓	
Set "	N.E. 5	See Page 44	✓	
" "	S.E. 5	205 ⁰ 15	90.7	✓

11. Hubs

B.K. J. (con)

Instrument at Tr. Pt. "F"

Fore sight " " " " " " " "

Lots Laid out in Willow Path. 10' Long. side lines on Radial Lines of Path. Hubs on N. End of Graves

Con. from Page 40.

Set Hub N. End of	62	321°-43'	70.3	✓
" " " " " "	61	319°-48'	68.6	✓
" " " " " "	60	317°-39'	66.9	✓
" " " " " "	59	315°-29'	65.2	✓
" " " " " "	58	313°-10'	63.6	✓
" " " " " "	57	310°-41'	62.2	✓
" " " " " "	56	308°-13'	60.9	✓
" " " " " "	55	305°-25'	59.7	✓
" " " " " "	54	302°-39'	58.6	✓ = S.W. 26
" " " " " "	53	299°-50'	57.9	✓
" " " " " "	52	296°-41'	57.1	✓
" " " " " "	51	293°-35'	56.8	✓
" " " " " "	50	290°-16'	56.4	✓
" " " " " "	49	287°-06'	56.4	✓
" " " " " "	48	283°-26'	56.4	✓
" " " " " "	47	280°-15'	56.6	✓
" " " " " "	46	276°-56'	57.2	✓
" " " " " "	45	273°-38'	58.0	✓
" " " " " "	44	270°-40'	59.4	✓
" " " " " "	43	267°-45'	60.6	✓
" " " " " "	42	264°-59'	62.2	✓
" " " " " "	41	262°-21'	64.0	✓
" " " " " "	40	260°-11'	66.0	✓
" " " " " "	39	257°-35'	67.9	✓
" " " " " "	38	255°-25'	70.1	✓

25. Hubs

B.K. J. con.

Instrument at Tr. Pt. "F"

Fore sight " " " " " " " "

Lots in Willow Path

43

Set Hub N. End of	37	253°-20'	72.4	✓
" " " " " "	36	251°-20'	74.8	✓
" " " " " "	35	249°-33'	77.3	✓
" " " " " "	34	247°-55'	80.0	✓
" " " " " "	33	246°-20'	82.8	✓
" " " " " "	32	244°-54'	85.5	✓
" " " " " "	31	243°-40'	88.3	✓
" " " " " "	30	242°-41'	90.9	✓
" " " " " "	29	241°-24'	94.0	✓
" " " " " "	28	240°-26'	97.2	✓
" " " " " "	27	239°-30'	100.1	✓

Instrument at Tr. Pt. "V." 170.10 North - 345.00 West

Fore sight " " " " " " " " 170.10 North - 270.00 West

Lots in Willow Path

Set Hub N. End of	26	335°-25'	23.7	✓
" " " " " "	25	328°-23'	22.0	✓
" " " " " "	24	320°-12'	20.8	✓
" " " " " "	23	311°-20'	19.9	✓
" " " " " "	22	301°-55'	19.7	✓
" " " " " "	21	291°-50'	19.8	✓
" " " " " "	20	282°-55'	20.7	✓
" " " " " "	19	274°-18'	22.0	✓
" " " " " "	18	267°-26'	23.7	✓
" " " " " "	17	261°-23'	25.6	✓
" " " " " "	16	256°-10'	27.8	✓

BIK J (con)
 Instrument at Tr. Pt. "V."
 Foresight " " " " "U."

44

Lots in Willow Path. (con)

Set Hub N. End of	15	251-23	30.5	✓
" " " " "	14	247-41	33.0	✓
" " " " "	13	244-18	35.8	✓
" " " " "	12	241-33	38.6	✓
" " " " "	11	239-21	41.4	✓
" " " " "	10	237-20	44.5	✓
" " " " "	9	235-29	47.5	✓
" " " " "	8	234-06	50.7	✓
" " " " "	7	232-54	53.8	✓
" " " " "	6	231-46	57.0	✓
" " " " "	5	230-46	60.1	✓
" " " " "	4	229-58	63.3	✓
" " " " "	3	229-11	66.5	✓
" " " " "	2	228-34	69.8	✓
" " " " "	1	227-58	73.0	✓

Regular Lots BIK J.

Instrument at Tr. Pt. "V."
 Foresight " " " " "U."

Set Hub N.W. 32	319-30	67.3	✓
" " N.W. 6	77-45	20.6	✓
" " S.W. 7	68-39	16.2	✓
Fd " N.W. 7	341-52	12.3	✓
Set " N.W. 34	303-14	37.4	✓
Fd " S.W. 33	301-31	41.8	✓

Set Hub N.W. 33	297-31	58.4	✓
" " N.E. 33	316-11	65.1	✓
" " N.E. 5	89-31	17.1	✓
" " N.E. 36	293-04	58.1	✓
" " N.W. 36	274-07	62.4	✓
" " S.W. 36	269-42	49.2	✓
" " S.E. 36	295-02	42.1	✓
" " N.E. 35	295-57	37.5	✓
" " N.W. 35	267-33	44.6	✓
Fd " S.W. 35	254-13	29.0	✓
" " S.E. 35	303-32	19.7	✓
Set " N.E. 4	320-08	10.0	✓
" " N.W. 4	238-10	21.5	✓
" " S.W. 4	184-46	17.2	✓
" " S.E. 4	81-55	12.3	✓
" " S.W. 5	138-52	33.9	✓
" " N.W. 5	169-28	19.2	✓
" " S.E. 2	148-21	34.7	✓
" " S.W. 2	177-29	44.5	✓
" " N.W. 2	195-48	41.2	✓
Fd " N.E. 2	178-46	23.2	✓
Set " S.E. 3	191-30	21.8	✓
" " S.W. 3	203-04	41.2	✓
" " N.W. 3	223-40	45.0	✓
Fd " N.E. 3	233-16	26.0	✓

Instrument		BIK "J" (con)	at Tr. Pt. "V."	"U."	
Fore sight.					
set.	Hub	S.E. 38	248 ⁰ -07 ¹	32.7	✓
Fd.	"	S.W. 38	234 ⁰ -17 ¹	50.0	✓
set.	"	N.W. 38	247 ⁰ -50 ¹	61.8	✓
Fd.	"	N.E. 38	262 ⁰ -28 ¹	47.5	✓
set.	"	S.E. 37	264 ⁰ -58 ¹	52.0	✓
"	"	S.W. 37	250 ⁰ -53 ¹	65.8	✓
"	"	N.W. 37	258 ⁰ -07 ¹	78.6	✓
"	"	N.E. 37	270 ⁰ -06 ¹	64.9	✓
"	"	N.E. 40	255 ⁰ -53 ¹	83.0	✓
"	"	N.W. 40	247 ⁰ -42 ¹	104.5	✓
"	"	S.W. 40	239 ⁰ -18 ¹	89.5	✓
"	"	S.E. 40	248 ⁰ -13 ¹	69.8	✓
Fd.	"	N.E. 39	245 ⁰ -08 ¹	65.9	✓
set.	"	N.W. 39	236 ⁰ -34 ¹	85.9	✓
"	"	S.W. 39	227 ⁰ -24 ¹	76.8	✓
"	"	S.E. 39	232 ⁰ -33 ¹	54.9	✓
"	"	N.E. 1	222 ⁰ -43 ¹	50.0	✓
"	"	N.W. 1	220 ⁰ -07 ¹	72.0	✓
"	"	S.W. 1	197 ⁰ -52 ¹	64.9	✓
"	"	S.E. 1	183 ⁰ -02 ¹	48.2	✓

BIK. M.

Instrument at Tr. Pt. "W" 554.00 N. - 650.00 W.

Fore-sight at Tr. Pt. "I" 554.00 N. - 0.00 W.

Ls. clockwise

Set	Hub	S.W. 16	212°-16'	44.7	✓	
"	"	S.E. 16	212°-16'	24.4	✓	
"	"	S.W. 3	212°-16'	17.4	✓	
"	"	S.E. 3	32°-16'	0.3	✓	
"	"	S.W. 4	32°-16'	5.3	✓	
Fd.	"	S.E. 4	32°-16'	24.9	✓	
Set.	"	S.W. 5	32°-16'	29.9	✓	
"	"	S.E. 5	32°-16'	49.7	✓	
"	"	S.W. 6	32°-16'	54.7	✓	
"	"	S.E. 6	32°-16'	74.6	✓	
"	"	S.W. 7	32°-16'	79.6	✓	
"	"	S.E. 7	32°-16'	99.2	✓	
"	"	S.W. 8	32°-16'	104.2	✓	
"	"	S.E. 8	32°-16'	126.7	✓	
"	"	N.E. 8	7°-00'	118.0	✓	S. line St Johns Dr.
"	"	N.W. 8	6°-36'	114.1	✓	" " " "
"	"	N.E. 7	6°-01'	109.2	✓	" " " "
"	"	N.W. 7	2°-23'	90.1	✓	" " " "
"	"	N.E. 6	1°-09'	85.3	✓	" " " "
"	"	N.W. 6	354°-56'	66.5	✓	" " " "
"	"	N.E. 5	352°-55'	62.1	✓	" " " "
"	"	N.W. 5	341°-41'	45.3	✓	" " " "
Fd.	"	N.E. 4	337°-30'	41.5	✓	" " " "
Set.	"	N.W. 4	313°-04'	29.3	✓	" " " "

BIK. M. "Con.

Instrument at Tr. Pt. "W." + Fore-sight at Tr. Pt. "I."

46

Set.	Hub	N.E. 3	303°-00'	27.3	✓	S. Line St. Johns Dr.
"	"	N.W. 3	261°-00'	28.3	✓	" " " "
"	"	N.E. 16	251°-47'	30.6	✓	" " " "
"	"	N.W. 16	227°-12'	45.0	✓	" " " "
"	"	N.E. 1	222°-50'	49.4	✓	" " " "
N. Line Lot	1		214°-52'	58.9	✓	" " " "
"	"	1	200°-56'	81.5	✓	" " " "
Fd. Mon.						S. line St. Johns Dr.
Set.	"	S.W. 1	193°-21'	96.63	✓	" " " "
"	"	S.E. 1	182°-53'	57.9	✓	" " " "
"	"	S.W. 2	180°-35'	53.4	✓	" " " "
"	"	S.E. 2	165°-22'	37.1	✓	" " " "
"	"	S.W. 15	159°-19'	34.9	✓	" " " "
"	"	S.E. 15	121°-59'	27.5	✓	" " " "
"	"	S.W. 14	111°-45'	28.1	✓	" " " "
"	"	S.E. 14	80°-10'	38.4	✓	" " " "
"	"	S.W. 13	75°-31'	42.1	✓	" " " "
"	"	S.E. 13	63°-07'	59.3	✓	" " " "
"	"	S.W. 12	61°-17'	63.9	✓	" " " "
Fd.	"	S.E. 12	56°-22'	82.7	✓	" " " "
Set.	"	S.W. 11	55°-35'	87.7	✓	" " " "
"	"	S.E. 11	53°-16'	107.4	✓	" " " "
"	"	S.W. 10	52°-51'	112.4	✓	" " " "
"	"	S.E. 10	51°-37'	131.5	✓	" " " "
Fd.	"	S.W. 9	51°-23'	136.5	✓	" " " "
Set.	"	S.E. 9	50°-47'	153.1	✓	" " " "
on E. Line	9		44°-07'	147.3	✓	" " " "

B.H. "M." (con)

Instrument at Tr. Pt. "Q" 548.09 N. - 650. W
 Foresight " " " "H" 548.09 N. - 0.00 W.

Set	Hub	Nly. Cor.	Lg. clockwise			
Fd.	Hub.	N. E. 10	32-16	126.2	✓	
"	"	N. W. 10	32-16	101.2	✓	
"	"	N. E. 11	32-16	96.2	✓	
"	"	N. W. 11	32-16	76.4	✓	
"	"	N. E. 12	32-16	71.4	✓	
"	"	N. W. 12	32-16	51.7	✓	
"	"	N. E. 13	32-16	46.7	✓	
"	"	N. W. 13	32-16	26.9	✓	
"	"	N. E. 14	32-16	21.9	✓	
"	"	N. W. 14	32-16	2.1	✓	
"	"	N. E. 15	212-16	2.9	✓	
"	"	N. W. 15	212-16	22.7	✓	
"	"	N. E. 2	212-16	27.7	✓	
"	"	N. W. 2	212-16	47.5	✓	

Culvert Levels
 Plat. Page 48.

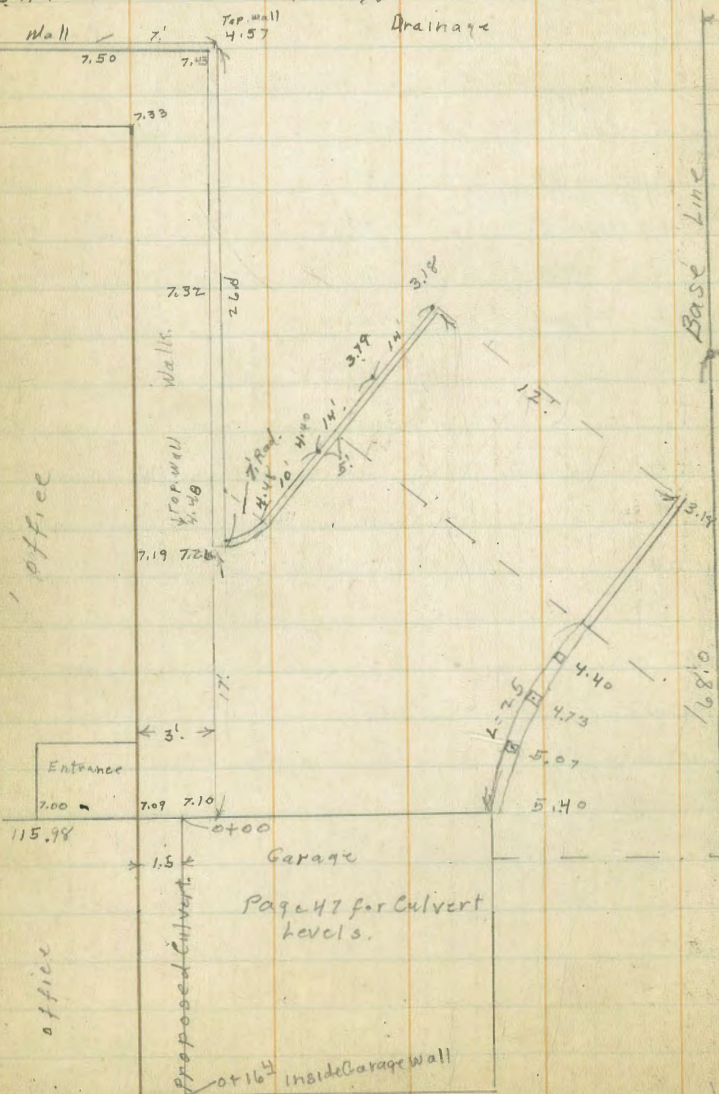
47

	H.I.		
0+00 S. End cnt. walk	7.04		
S. End. Proposed Catch Basin			
0+16 4° { N. side wall	6.9		dirt floor.
{ Inside of Garage			
T.P. 3.91 120.77	6.12	116.86	
0+17 { S. side wall	4.8		
{ outside Garage			
0+33	5.2		
0+38 2° { S. face Wall N. Line	6.30		Top.
{ Imperial Ave			N.
0+39 Bottom of wall	9.1		Roadway
0+49 N. Edge Pavmt.	8.90		

Administration Building
100.F Cemetery

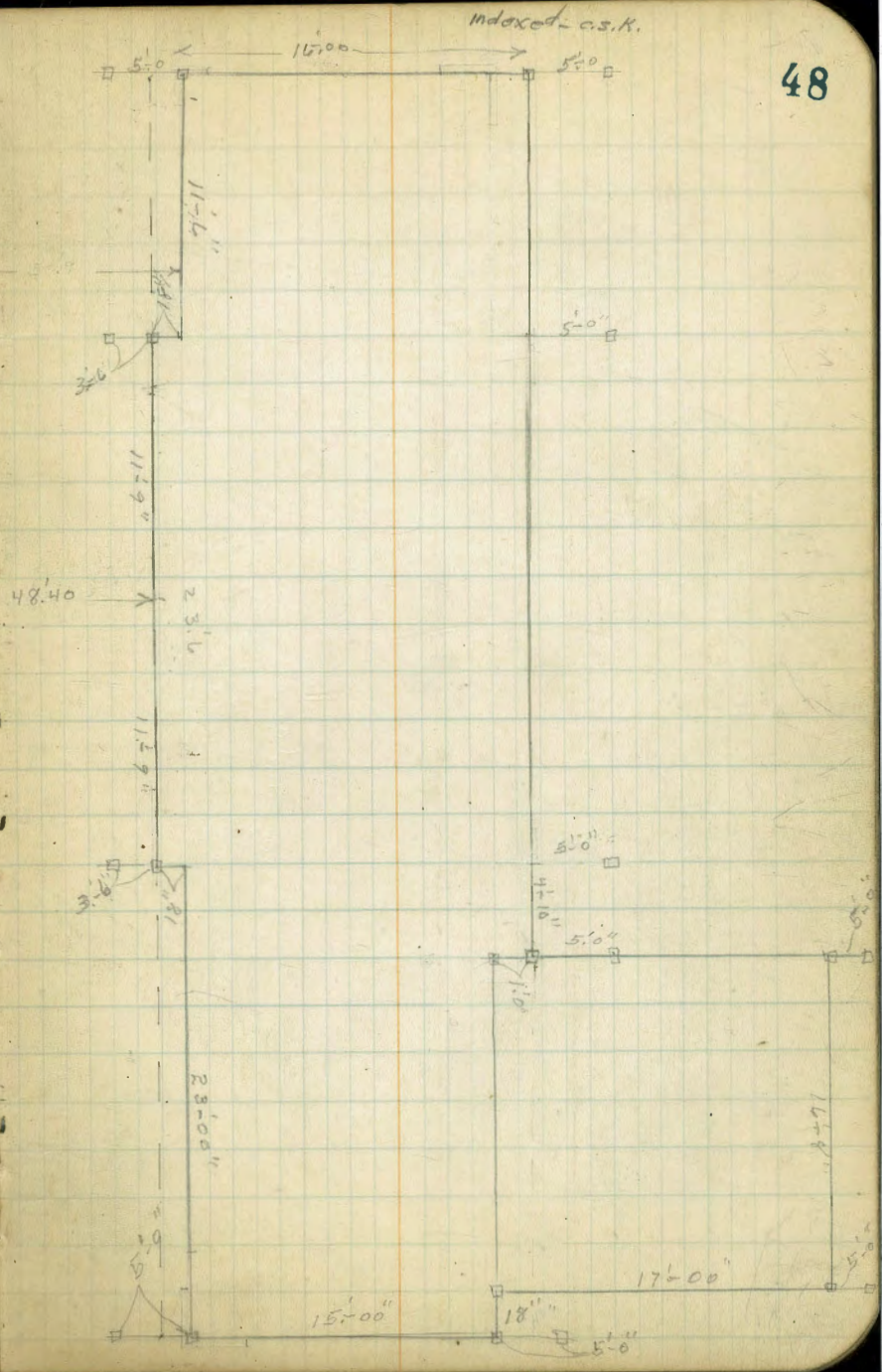
BM.	3.59	121.97	118.38
ET. Top wall main bldg		6.47	115.50
BM.	4.60	122.98	118.38

S. 2.39th Imperial



Page 47 for Culvert levels.

0+16⁴ Inside Garage wall



Indexed as K.

Feb 1934
7 miles
Walker
13-Lex

MT Hope Cemetery

Section 5. Division 7.

Additional lots on West

Row. 22 is last Row on Map. 5012

Row 37	Row 36	Row 35	Row 34	Row 33	Row 32	21.0	10.0	index		
10.92	9.50	9.0	9.0	9.0	9.0	4.0	9.0	C. S. K.		
9.74	1	1	1	1	1	4.0	9.0	Platted on Map		
8.55	2	2	2	2	2	4.0	10.0	5012, C. S. K.		
7.37	3	3	3	3	3	4.0	11.0	Row 30 Row 29 1/2 Row 29		
6.18	4	4	4	4	4	4.0	12.0	10.0 x 10.0 x 10.0		
5.00	5	5	5	5	5	4.0	13.0	10.0 9.0 8.0		
4.17	6	6	6	6	6	4.0	14.0			
3.06	7	7	7	7	7	4.0	15.0			
12.81	8	8	8	8	8	4.0	16.0			
11.63	9	9	9	9	9	4.0	17.0			
10.45	10	10	10	10	10	4.0	18.0			
9.26	11	11	11	11	11	4.0	19.0			
8.08	12	12	12	12	12	4.0	20.0			
6.89	13	13	13	13	13	4.0	21.0			
5.71	14	14	14	14	14	4.0	22.0			
4.52	15	15	15	15	15	4.0	23.0			
12.34	16	16	16	16	16	4.0	24.0			
11.15	17	17	17	17	17	4.0	25.0			
9.97	18	18	18	18	18	4.0	26.0			
8.78	19	19	19	19	19	4.0	27.0			
7.59	20	20	20	20	20	4.0	28.0			
6.40	21	21	21	21	21	4.0	29.0			
5.21	22	22	22	22	22	4.0	30.0			
4.04	23	23	23	23	23	4.0	31.0			
2.85	24	24	24	24	24	4.0	32.0			
1.66	25	25	25	25	25	4.0	33.0			
0.47	26	26	26	26	26	4.0	34.0			
0.28	27	27	27	27	27	4.0	35.0			
1.09	28	28	28	28	28	4.0	36.0			
19.92	29	29	29	29	29	4.0	37.0			
10.68	30	30	30	30	30	4.0	38.0			
9.49	31	31	31	31	31	4.0	39.0			
8.30	32	32	32	32	32	4.0	40.0			
7.11	33	33	33	33	33	4.0	41.0			
5.92	34	34	34	34	34	4.0	42.0			
4.73	35	35	35	35	35	4.0	43.0			
3.54	36	36	36	36	36	4.0	44.0			
2.35	37	37	37	37	37	4.0	45.0			
1.16	38	38	38	38	38	4.0	46.0			
0.00	39	39	39	39	39	4.0	47.0			
	40	40	40	40	40	4.0	48.0			
	41	41	41	41	41	4.0	49.0			
	42	42	42	42	42	4.0	50.0			

index

C. S. K.

Platted on Map

5012, C. S. K.

Row 30 Row 29 1/2 Row 29

10.0 x 10.0 x 10.0

10.0 9.0 8.0

22 21 20

10.0 10.0 10.0

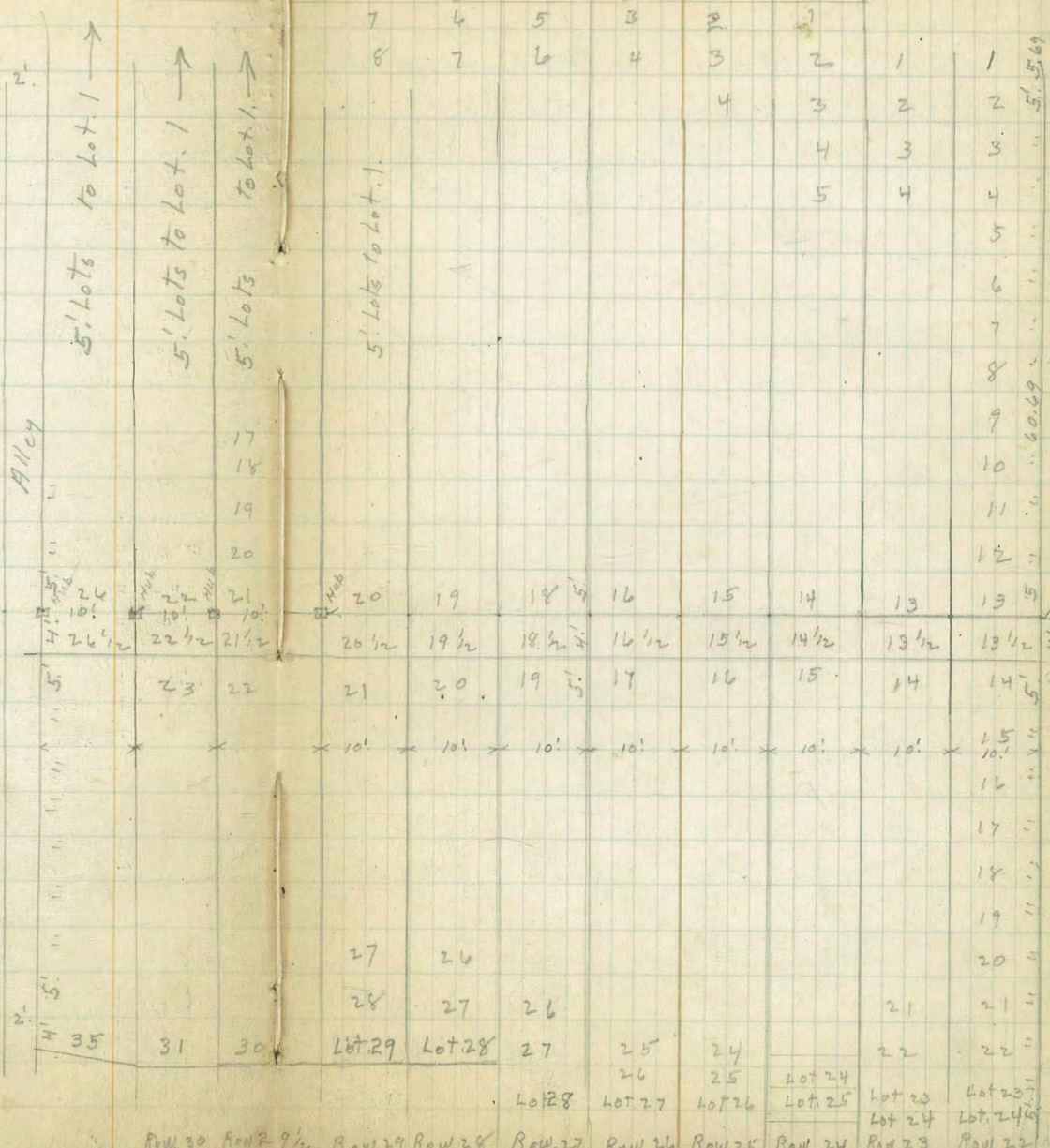
22 1/2 path 21 1/2 20 1/2

23. 22 21

Row 31 Row 30 Row 29 1/2 Row 29

10.0 10.0 10.0

31 30 29



2	1	1			
3	2	2			
4	3	3	1		
5	4	4	2	1	
6	5	5	3	2	1
7	6	6	4	3	2
8	7	7	5	4	3

Row 30 Row 29 1/2 Row 28 Row 27 Row 26 Row 25 Row 24 Row 23 Row 22

Elevation Tee 17 Golf Course
Balboa Park

10-18-34
Moore

52

BM	13.00	100.59		87.59	Set Pole Perobizol, & Pwyder Holman
TP	7.76	106.55	1.80	98.79	
		4+0			
65 Lt			8.1		
90 Lt - SW 1/4 End Tee			5.0		
135 Lt			9.2		
		4+50			
75 Lt			14.1		
105 Lt			4.8		
140 Lt			6.6		
		5+0			
130 Lt			11.0		
145 Lt			6.6		
165 Lt - Driving Tee 17			6.5		

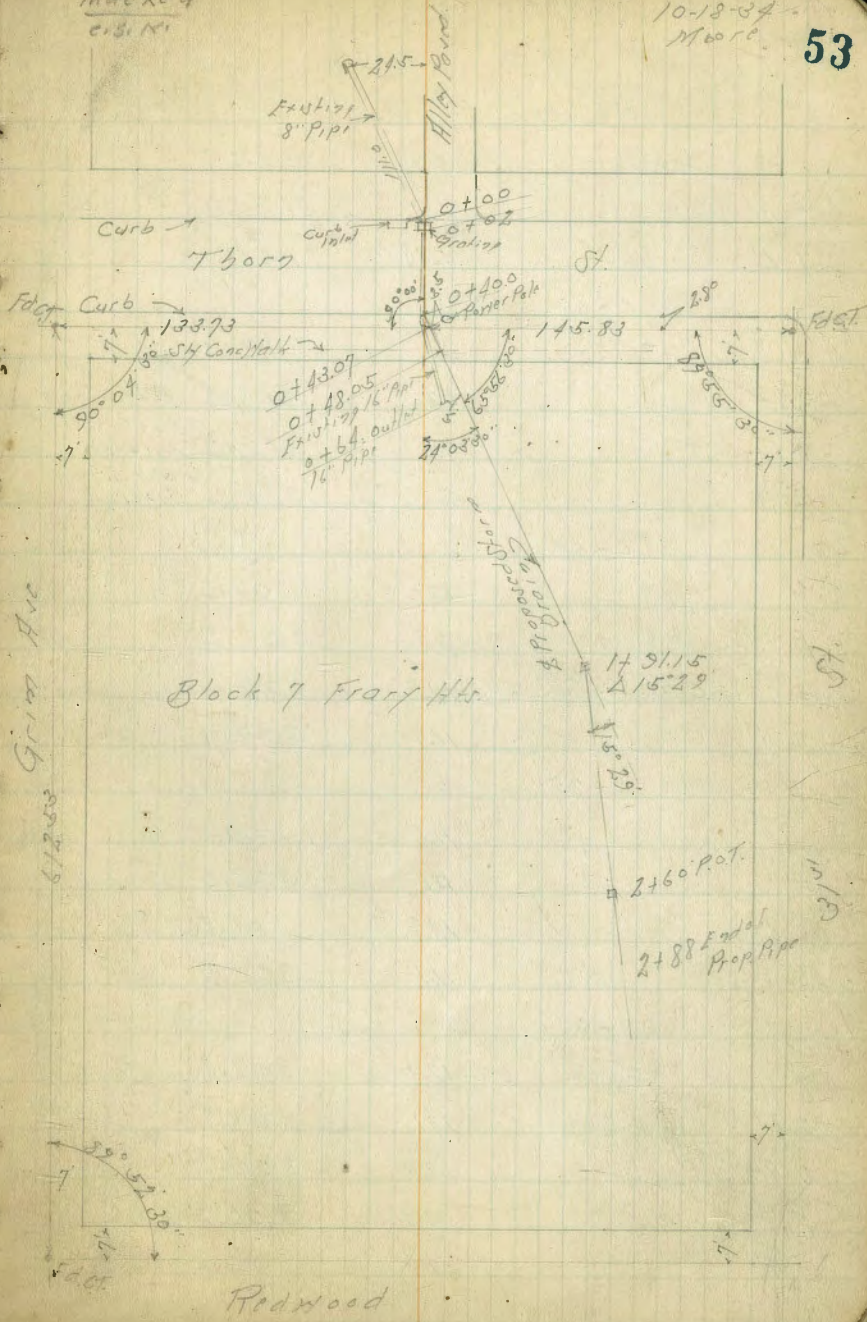
Proposed Storm Drain Block 7 Frary Heights
Between Grimstie + 31st St. South of Thorn

Indexed
C.S. N.

10-18-34
More

53

BM	0.59	319.57	318.98	N.Y. & P. Thorn + Grimstie
	0-7.8			
Gutter on Alley Pav.	4.82	314.75		
Top Ch. 1 st Rct.	4.54	315.03		
	0-2 = B.C. Alley Return			
Gutter on Pav.	5.37	314.20		
Top Ch.	4.82	314.75		
	0+00			
2 nd on Pav.	5.51	314.06		
2 nd Rct. on Pav. B.C. Alley Rct.	5.51	314.06		
2 nd Rct. Top Ch.	4.92	314.85		
10 ^{ft} Rct. Gutter	5.00	314.57		
10 ^{ft} Rct. Top Ch.	4.34	315.23		
15 ^{ft} Lt. Gutter	4.88	314.69		
	0+20			
2 nd on Pav.	4.97	314.60		
10 ^{ft} Lt. " "	4.65	314.92		
10 ^{ft} Rct. " "	4.64	314.93		
	0+40			
2 nd Gutter on Grating	6.05	313.52		
2 nd Top Ch.	5.24	314.33		
4.5 ^{ft} Rct. " "	5.02	314.55		
4.5 ^{ft} Rct. Gutter on Pav.	5.82	313.75		
15 ^{ft} Lt. Gutter on Pav.	5.44	314.13		
15 ^{ft} Lt. Top Ch.	4.80	314.77		



3/9/57

07.48.05 - Sly Edge Core Stalk

1/2 on stalk	4.95	314.59
7' Rt	4.89	314.68
7' Lt	4.78	314.79

07.60

1/2	7.3	312.3
5' Lt	6.2	313.4
3' Rt	7.3	312.3
5' Rt	8.0	311.6

07.64

1/2	12.0	307.6
5' Lt	9.8	309.8
5' Rt - 2 Outlet Cond. Culi. 16 Pipe	13.2	306.4
7' Rt	11.7	307.9

07.75

1/2	11.6	308.0
5' Lt	11.1	308.5
5' Rt	12.8	306.8
8' Rt	11.1	308.5

17.0

1/2	12.3	307.3
5' Lt	12.1	307.5
2' Rt	12.2	306.3
4' Rt	13.3	306.3
10' Rt	11.4	308.2

3/9/57

54

17.10

1/2	13.3	306.3
1' Lt	13.3	306.3
2' Lt	12.5	307.1
8' Lt	12.5	307.1
1' Rt	13.3	306.3
2' Rt	12.3	307.3
8' Rt	12.0	307.6

17.20

1/2	12.6	307.0
5' Lt	12.6	307.0
6' Lt	12.6	306.0
5' Rt - Avocado Tree Don't Disturb	12.4	307.2

17.25

1/2	12.6	307.0
5' Lt - Avocado Tree Don't Disturb	12.6	307.0
TP	11.16	318.84

17.38 = Prop. Inlet 30 Pipe

1/2	12.1	306.7
4' Rt - Foot Cobble Wall	12.0	306.8
6' Rt Top	8.8	310.0
10' Lt	12.4	306.4

17.40

1/2 - Foot Cobble Wall	12.2	306.6
------------------------	------	-------

17.42

1/2 Top Cobble Wall	8.2	310.0
---------------------	-----	-------

17.30
3' Rt Avocado
Tree to be
Transplanted
to opposite
direction

Note:
17.42
Rebuild
Cobble Wall

31884

10' Lt Parl. with Hot Liner Top Cobble Wall	83	310.0
10' Rt Parl. with Hot Liner Top Cobble Wall	85	310.3

1+65

1/2	76	311.2
10' Rt	68	312.0
10' Lt	77	311.1

1+75

1/2	57	313.1
10' Lt	53	313.5
10' Rt	62	312.6

1+94.15 Δ 15' 30"

1/2	49	313.9
10' Lt	48	314.0
10' Rt	49	313.9

2+30

1/2	60	312.8
10' Rt	58	313.0
10' Lt	61	312.7

2+60

1/2	100	308.8
10' Rt	106	308.2
10' Lt	92	309.6

TP	0.78	307.05	12.57	306.27
----	------	--------	-------	--------

307.05

2+88 = Out/let of Prop 30' Pipe

1/2	14.9	292.2
10' Lt	12.6	294.5
10' Rt	13.9	293.2

3+0

1/2 - Old Natural Creek Bed	15.4	291.7
-----------------------------	------	-------

3+50

1/2 - Creek Bed	19.2	287.9
-----------------	------	-------

TP	12.81	319.08	0.78	306.27
----	-------	--------	------	--------

BM			0.11	318.97
----	--	--	------	--------

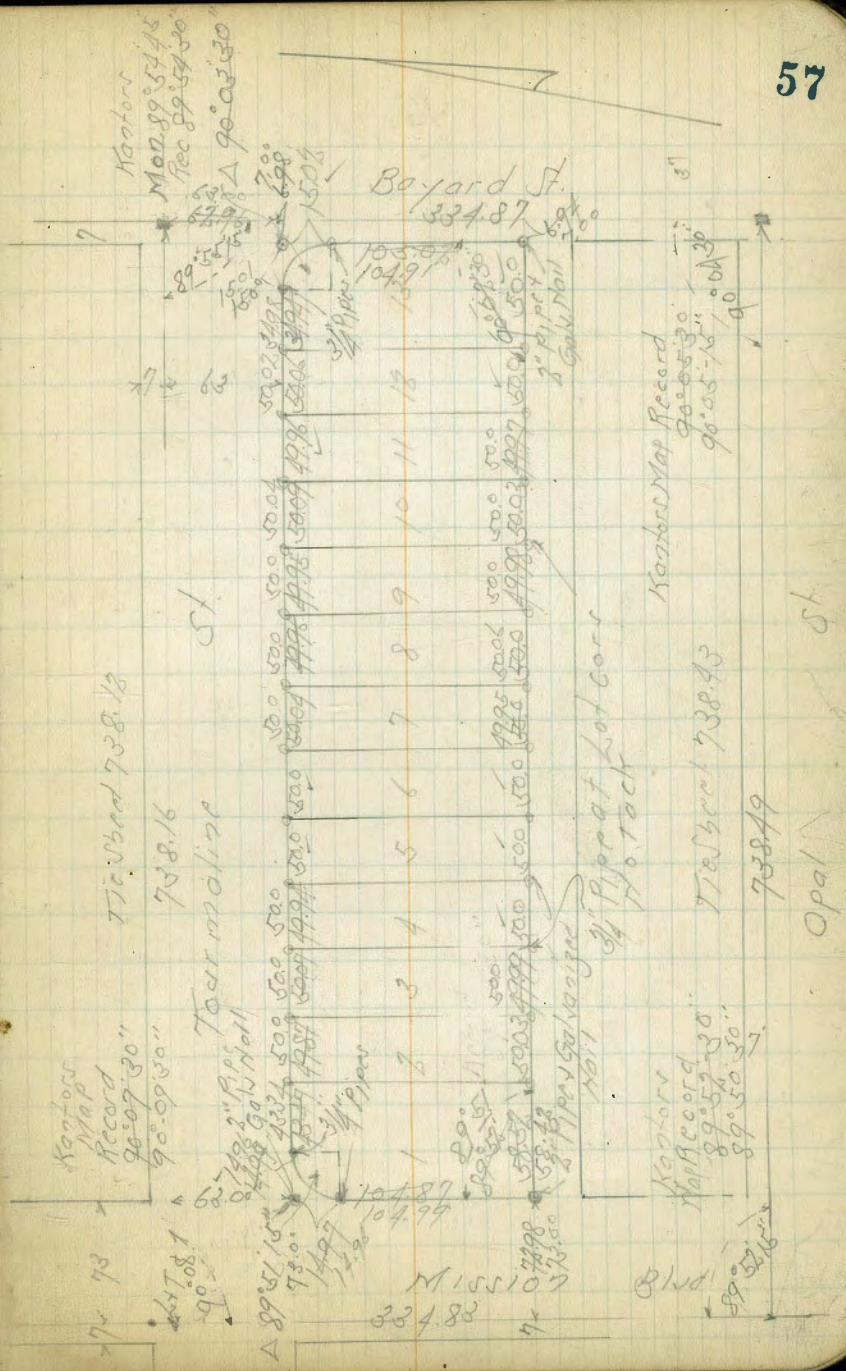
NW 80
T30N R43W
318.78

BM	0.77	319.75	318.98	N.W. B.P. T 3000 + 0.1 st
	0.02			
Flow Line 16" Pipe		14.83		3049.2
Outlet 16" Pipe		13.65		306.10

Check of Hegg's Ocean View Add

2nd check
Dec. 11-41

Nov. 27-41
Sisson
Northwood
W Moore



Kantors
Map
Record
90°09'30"

Tie Wood 738.13

90°09'30"

738.16

Tourmaline St

2 1/2" Pipe
104.97
104.97

3 4 5 6 7 8 9 10 11 13

Miss 109
324.82

Boyard St
334.87

Kantors
Map Record
89°52'30"
89°50'30"

Tie Wood 738.43
738.19

Kantors Map Record
90°05'30"
90°05'15"

Opal St

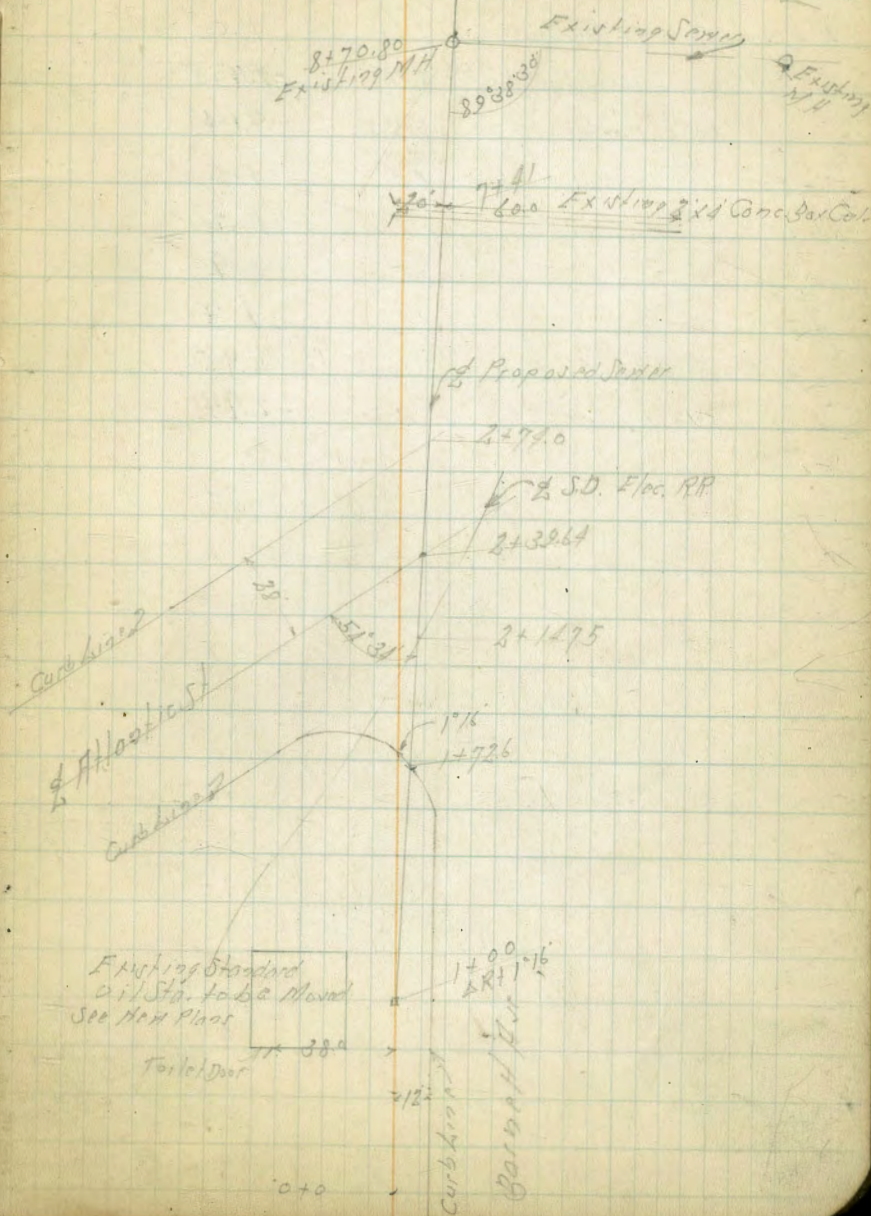
1/2" x 5/8" Opal

Proposed Sewer For
Standard Oil Co.
Barnett Ave + Atlantic St

BM	5.59	5.41	-0.18	5 ft Man Barnett + Atlantic
0+0		4.0	1.4	
12'S - Top Cb		3.96	1.45	
+50		4.1	1.3	
1+0 = 1" 1/2 R#		3.9	1.5	
12'S - Top Cb		3.555	1.86	
+72.6 = Top Cb + Gutter = Edge Block Pav.		3.13	2.28	
2+0 = 2" Black Pav.		3.06	2.35	
+04.15 = 1/2 R# Conc Crossing		3.08	2.33	
+14.75 = 1/2 S.D. Elec RR		3.03	2.38	
+26 = 1/2 R# Conc Crossing		3.03	2.38	
+39.64 = 1/2 Atlantic Pav		2.96	2.45	
+74 Gutter on Pav		3.18	2.23	
Top Cb		2.94	2.47	
+90		3.0	2.4	
3+0		5.2	0.2	
+50		5.1	0.3	
4+0		5.0	0.4	
+50		4.9	0.5	
5+0		4.8	0.6	
+50		5.0	0.4	
6+0		4.8	0.6	
+150		5.0	0.4	
7+0		4.8	0.6	

Indexed
C.S.K.

1-8-35
Moore 59



5.41

7+41	- 2x4 Concrete Curb	44	1.0
	20' H - 10' x 10' Curb	8.76	-3.35
	60' H - Outlet	9.55	-4.14
+50		44	1.0
8+5		42	1.2
+25		35	1.9
+50		41	1.3
+70.80	- Existing M.H. Rise	2.46	2.95
	Floor Line	8.35	-2.94

5-14-35 30th St X Sec.
 Miller
 Walker. Main St. to 150' S. of Cotton

80' wide
 14' els
 13' 44"

indexed
 cis.N.

43.15

61

B.M. B.P.	3.07	51.12	48.05	5. W. 30 th + Boston
chk B.M. Top. FireHudt	8.81	42.31	42.30	5.2, 30 th + Main
T.P.	0.84	43.15	8.81	42.31
	0+00 = S. Line Main St			
E		3.0	40.2	
+ 4.5 = E. side S. End. emt. walk		3.01	40.14	
+ 9.5 = W " " " " "		3.02	40.13	
emt. ch. S. End		3.17	39.98	
Butter pav		3.94	39.21	
1/4 "		3.76	39.39	
1/2 "		3.64	39.51	
1/4 "		3.69	39.46	
gutter "		3.86	39.29	
emt. ch. S. End.		3.15	40.00	
+ 4.5' E. side emt. walk S. End		3.00	40.15	
+ 9.5' W " " " S. "		2.91	40.24	
W		3.4	39.8	
	0+07			
W		3.9	39.3	
ch		3.8	39.4	
1/4		3.8	39.4	
1/2		3.6	39.6	
1/4		3.6	39.6	
ch in emt. gutter N.G.		4.1	39.1	
+ 5		3.4	39.8	
E		2.9	40.3	

	0+37		
E	3.3	39.9	
+ 9	3.6	39.6	
ch. in emt. gutter N.G.	4.4	38.8	
1/4	4.2	39.0	
1/2	4.2	39.0	
1/4	4.2	39.0	
ch.	4.2	39.0	
W	4.4	38.8	
W + 2.5	4.43	38.72	semi. floor at Accelerator Plant
	0+51 S. End. emt. Gutter		
E. ch. in emt. gutter N.G.	4.58	38.57	
	0+75		
W	7.0	36.2	
ch	6.0	37.2	
1/4	5.4	37.8	
1/2	5.4	37.8	
1/4	4.7	38.5	
ch	4.5	38.7	
E	4.5	38.7	
	1+00		
E	5.3	37.9	
ch.	5.5	37.7	
1/4	5.7	37.5	
1/2	4.3	36.9	
1/4	6.9	36.3	
ch	7.6	35.6	

43.15

W. cl + 5.	8.7	34.5
W	8.7	34.5
	1+25	
W.	9.6	33.6
cl	10.0	33.2
¹ / ₄	9.1	34.1
⊕	8.5	34.7
¹ / ₄	6.8	36.4
cl	6.4	36.8
E.	6.1	37.1
	1+50	
-80	4.8	38.4
-30	6.3	34.9
E	6.8	36.4
cl	7.2	36.0
¹ / ₄	7.6	35.6
⊕	9.6	33.6
¹ / ₄	11.2	32.0
cl	11.5	31.7
W	12.0	31.2
	1+75	
-5	13.7	29.5
W	13.5	29.7
cl	13.0	30.2
¹ / ₄	12.8	30.4
⊕	11.1	31.1

43.15

30th ST.

¹ / ₄		9.2	34.0
cl		8.0	35.2
E.		7.0	36.2
	2+00		
E		10.0	33.2
cl.		10.7	32.5
¹ / ₄		11.4	31.8
⊕		12.6	30.6
T.P.	0.44	30.79 ⁶⁹	12.90
			30.25 ✓
¹ / ₄		2.0	28.7
cl		3.1	27.6
W		3.6	27.1
+5		3.4	27.3
	2+45		
-5		6.7	24.0
W.		6.4	24.3
cl		7.0	23.7
¹ / ₄		6.9	23.8
⊕		5.8	24.9
¹ / ₄		4.5	26.2
cl.		4.0	26.7
E		2.5	28.2
	2+70		
E.		3.2	27.5
cl		4.3	26.4
¹ / ₄		5.2	25.5

69
30.79
2+70

±	7.2	23.5
1/4	9.5	21.2
cb.	9.4	21.3
W	9.4	21.3
+5	9.0	21.7
3+00 = N. Line Colton Ave. { 80' width 14' curb 13' 1/4' }		
W-25	11.0	19.7
W-15	11.8	18.9
W.	11.7	19.0
cb.	12.2	18.5
1/4	11.5	19.2
±	8.7	22.0
1/4	7.0	23.7
cb.	5.8	24.9
E.	5.6	25.1
+25	2.5	28.2
N. cb. Line		
E.	6.0	24.7
cb.	7.8	22.9
1/4	9.4	21.3
±	11.0	19.7
1/4	12.9	17.2
cb.	13.2	17.5
W.	12.5	18.2
+15	11.8	18.9

67
30.79
N. 1/4

30th ST.

63

W-15	12.8	17.9
W.	13.3	17.4
cb.	14.4	16.3
1/4	14.1	16.6
±	13.0	17.7
1/4	11.5	19.2
cb.	9.7	21.0
E.	7.9	22.8
±. Colton Ave.		
E-25	5.1	25.6
E.	9.0	21.7
cb.	10.7	20.0
1/4	12.7	18.0
±	14.7	16.0
1/4	15.5	15.2
cb.	14.9	15.8
W.	14.5	16.2
±12.	14.0	16.7
+25	11.1	19.6
3. 1/4		
W-12	14.5	16.2
W.	16.9	14.7
cb.	16.2	14.5
1/4	16.4	14.3
±	16.0	14.7
1/4	14.0	16.7

30.79

S. 1/4

E. cl	12.2	18.5
E	9.5	21.2
S. cl. Line		
E.	9.4	21.3
cl.	12.4	18.3
1/4	14.4	16.3
⊕	16.3	14.4
1/4	17.3	13.4
cl.	17.2	13.5
W.	17.0	13.7
+10	16.4	13.9
0+00 = S. Line Colton Ave.		
N-25	16.1	14.6
-10	18.5	12.2
W.	18.0	12.7
cl.	18.1	12.6
1/4	18.0	12.7
⊕	16.3	14.4
1/4	13.4	17.3
cl.	9.6	21.1
E	6.9	23.8
+25	4.9	25.8
0+25		
E.	4.1	24.6
cl	6.2	24.5
+7.	7.2	23.5

30.79

30th St.

64

1/4	9.0	21.7
⊕	13.5	17.2
1/4	18.8	12.0 11.9
T.P. 1.93	19.88 19.98	17.75 18.05
cl.	9.7	10.2
W.	9.7	10.2
+15.	10.3	9.6
0+40		
N-15.	13.3	6.6
W	12.6	7.3
cl.	10.7	9.2
1/4	5.2	14.7
⊕	1.3	18.6
1/4	+2.3	22.2
+7	+3.3	23.2
cl.	+2.3	22.2
E.	+0.7	20.6
T.P. 2.88	10.48 10.38	7.50 7.60
0+65		
-5	3.2	7.2
E.	2.9	7.5
cl.	1.8	8.6
1/4	2.0	8.4
⊕	2.4	8.0
1/4	4.7	5.7
cl.	5.6	4.8

38
10.48

0+65 (con)

W	6.6	3.8
+10	6.8	3.6
→		
0+90		
W-10	11.0	-0.6
W	11.5	-1.1
el	11.9	-1.5
'4	12.2	-1.8
±	11.9	-1.5
'4	11.5	-1.1
el.	11.8	-1.4
E.	11.4	-1.0
+10	11.3	-0.9

0+69

12' W. of ± Ex. M.H. 5.0 5.4 Top. Rim

1+20

E-10	14.0	-3.6
E	14.0	-3.6
el	14.0	-3.6
'4	13.9	-3.5
±	13.8	-3.4
'4	13.7	-3.3
el	13.5	-3.1
W.	13.4	-3.0
	13.4	-3.0

38
10.48

30th St

65

1+50

-40			13.8	-3.4
W			13.8	-3.4
el			13.8	-3.4
'4			13.9	-3.5
±			14.0	-3.6
'4			14.0	-3.6
el			14.0	-3.6
E			14.0	-3.6
+10			14.0	-3.6
T.P.	13.00	22.90 ⁸⁰	0.58	9.90 ⁸⁰
T.P.	13.00	35.50 ⁴⁰	0.40	22.50 ⁴⁰
T.P.	8.32	43.68 ⁵⁸	0.14	35.36 ²⁶
BM, Top. Hydt. S. E. 30 ¹⁴ / ₉ Main			1.36	42.32 ³² = 42.31

Reduced 5-16-35 R.E.L.

XVPC of Alley N. wide
 BIK 60 Normal H.C.
 For 10" WATER LINE

Moore
 WAILED
 Northern
 7-29-35

INDEXED
 C.S.R.

Alley

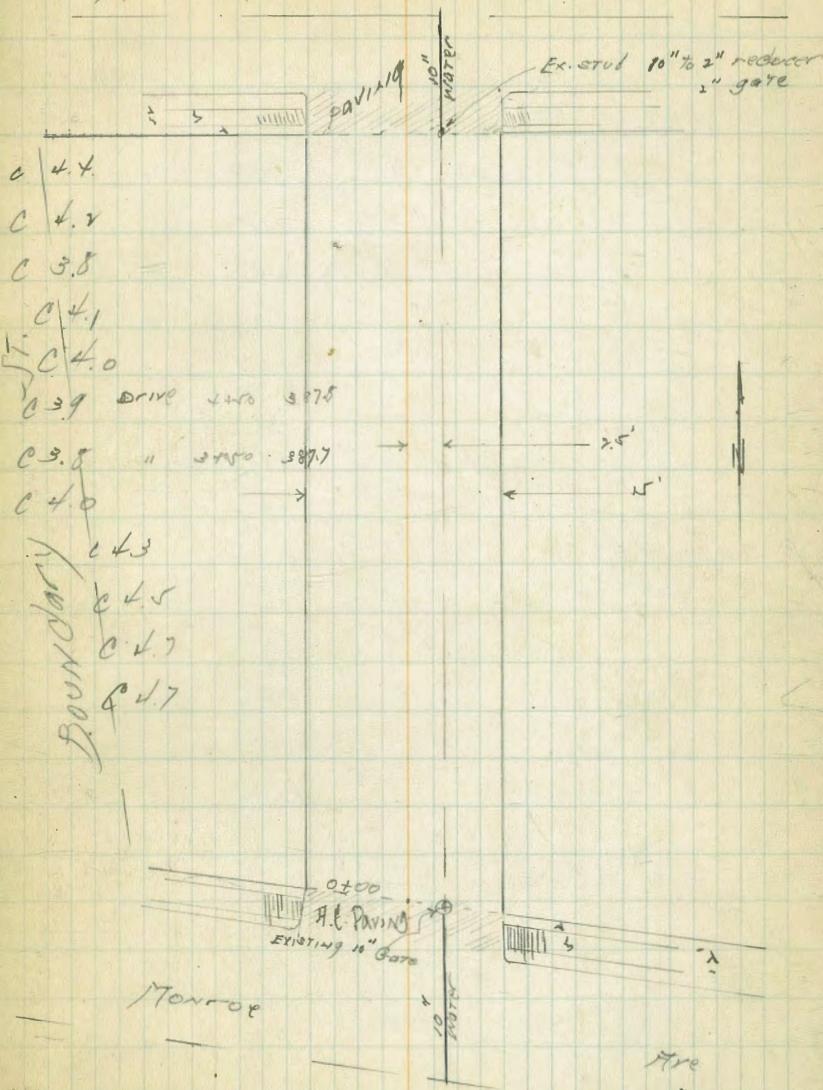
66

EL. STA.		OTUBROD	EL.	SEAP MONROE BOUNDARY GRADE
510	390.21		385.21	380.8
00=NL Monroe		5.8	384.5	380.8
+50		4.7	385.6	381.4
1		4.5	385.8	381.6
+50		4.5	385.8	382.0
2		3.9	386.4	382.3
+50		3.6	386.7	382.7
3		3.3	387.0	383.1
+50 Break		3.0	387.3	383.5
4		2.9	387.4	383.4
+50		2.7	387.6	383.3
5		2.6	387.7	383.2
+50		2.5	387.8	383.1
6		2.5	387.8	383.1
+29		3.0	386.7	383.0

CITY WATER DEPT. JOB

Madison

Ave.



x sec alley 20' wide
 B/K 78 Ocean Beach

Moore
 2-17-57
 Indexed
 c.s.k.

67

NW 8P 678 12.28 5.50

176077
 Saratoga

00 - wly Abbott

S cb	4.94	7.34
S par	5.06	7.22
C "	5.45	6.83
N "	5.05	7.23
N cb	4.67	7.61

0+20

N	3.8	8.5
C	4.0	8.3

+ 8 House wally	3.9	8.4
-----------------	-----	-----

0+45

S	3.4	8.9
C	3.5	8.8
N	3.5	8.8

+ 8 S.N. Gar wood floor	3.1	7.2
-------------------------	-----	-----

T.P. 5.16 14.60 2.84 9.44

0+67

N	5.4	9.2
---	-----	-----

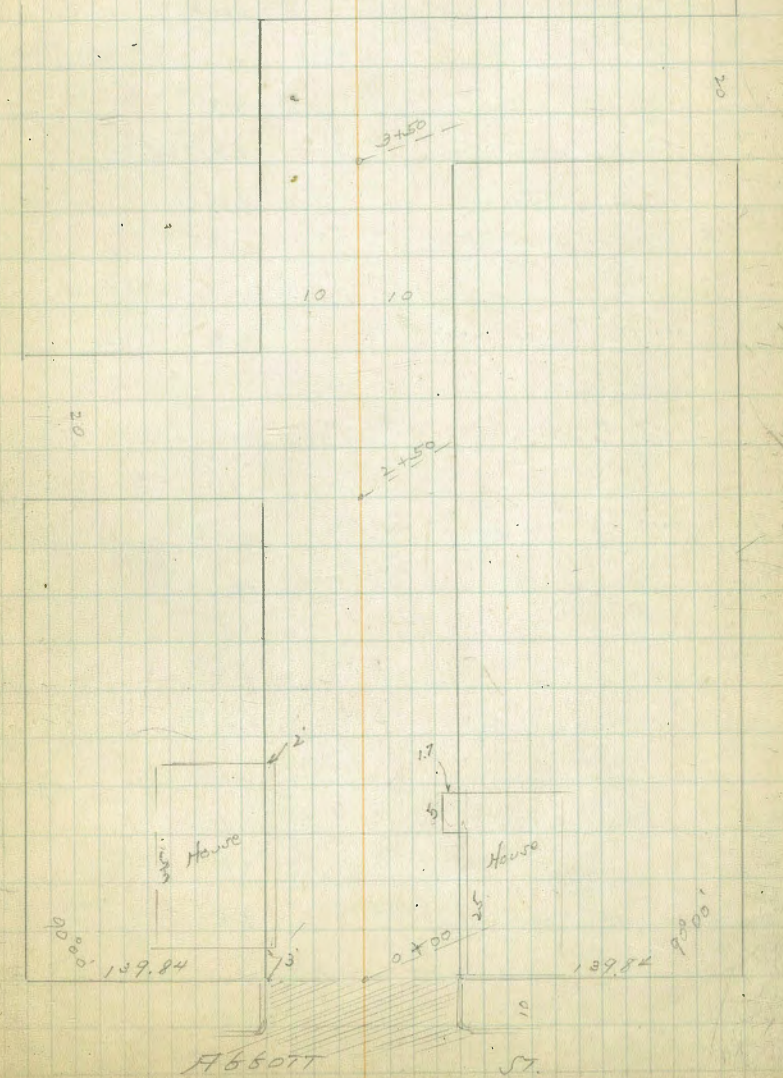
C	5.2	9.4
---	-----	-----

S	5.1	9.5
---	-----	-----

+ 5 S.N. Gar dirt	5.0	9.1
-------------------	-----	-----

Saratoga

Ave.



14.60

	0+78		
S-4	beg. double Car. dirt	4.2	10.2
	0+97		
S-4	end of above "	2.3	10.3
	1+00		
S		4.8	9.8
C		4.9	9.7
N	5 car Garage	4.7	9.9
	+0.8 beg on Cem. Apron	4.50	10.10
	1+04		
S-4	beg double Car. dirt	4.6	10.0
	1+24		
S-4	end above Car.	4.6	10.0
	1+48		
-0.8	end 5 car Car. on Cem. Apron	4.54	10.04
N		4.5	10.1
C		4.8	9.8
+7		5.4	9.3
S		6.2	8.2
	1+42		
S		7.5	7.1
C		7.0	7.6
N		5.5	9.1
	1+80		
N		7.2	7.4
C		8.7	5.9

14.60

68

S		10.2	4.4
+4	ground	10.2	4.2
+4	floor El. of House	7.7	6.9
	1+91		
	1.079' wide Porch of above house of Nalley ?		
	2+00		
S		9.6	5.0
C		9.0	5.6
N		7.9	6.7
	2+50 Fly of Alley to South		
N		8.0	6.6
C		7.6	2.0
S		8.0	6.6
	2+70 Wly " "		
S		9.3	5.3
C		9.0	5.6
N		8.8	5.8
	3+00		
N		9.0	5.6
C		8.8	5.8
S		9.5	5.1
	3+15		
S		10.1	4.5
C		9.7	4.9
N		9.0	5.6

12.60

3+50 Ely alley to North

N	9.1	5.5
C	9.2	5.4
S	8.3	6.3

3+70 Wly " to North

S	7.4	7.2
C	8.1	6.5
N	8.8	5.8

T.P. 4.92 11.57 7.95 6.05

S alley levels

50' S of SE of W alley

W	6.2	5.4
C	5.7	4.9
E	5.7	4.9

100' S

E	5.1	6.5
C	5.5	6.1
W	6.1	5.5

15984 S - Nly Saratoga

N	6.1	5.5
C	5.4	6.2
E	4.5	7.1

15984 - Nly 26 Saratoga

E on ground 7.4 4.3

11.57

69

E Top corr curb	8.12	3.48
C	7.5	4.1
W	7.8	3.8

T.P. 3.94 10.57 4.92 6.25

N alley levels

50' N of SE of W alley

W	5.4	5.2
C	5.0	5.5
E	5.0	5.5

60' N

E - 4 60g double gate	4.40	5.97	corr floor
E	5.2	5.4	
C	5.4	5.4	
W	5.5	5.1	

81' N

W	5.4	6.2
C	4.8	5.8
E	5.6	6.0
+4 end above Cor.	4.60	6.0

100' N

E	5.5	6.1
C	4.6	6.0
W	4.0	6.6

13984 N. Sly of Cape May Ave

W		4.1	6.5
C		4.9	5.7
E		4.6	6.0

15984 N. Sly " " "

E	Top cb	4.80	5.77
W	" "	4.99	5.58

T.P. 7.84 1429 3.94 6.04

T.P. 497 1178 7.08 6.81

check to 217		4.28	5.50	5.50
				0.00

X. Sec. Alley BIK. 33. Higgins 2-25-37
 RLth to 27th Between B & C Sts.

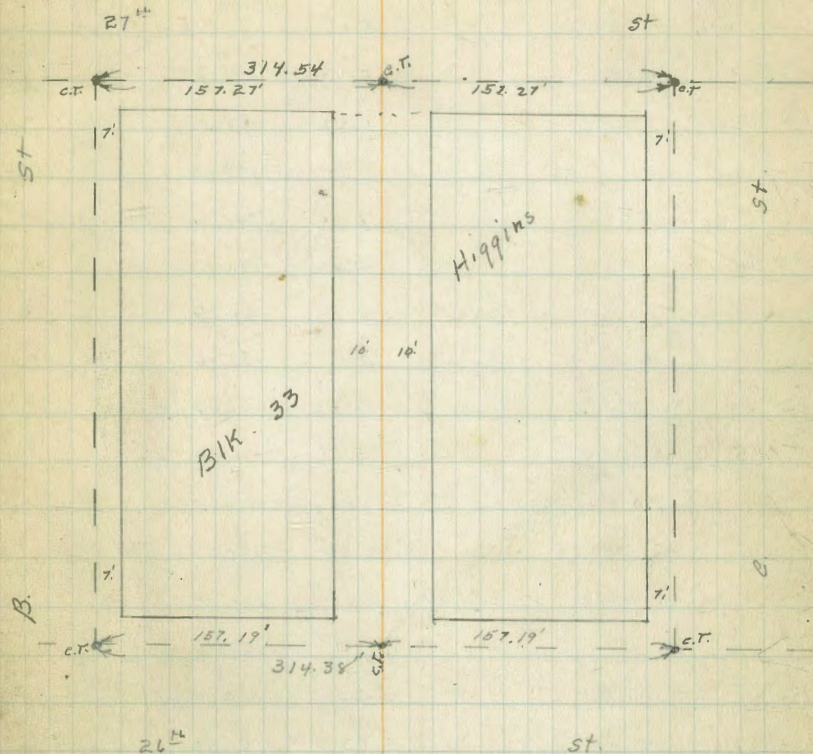
Miller
 Walker
 Blinn

N.W. 26th
 & E. Sts.

indexed
 C.S.K.

71

B.M. B.P.	4.47	201.47	197.00	N.W. 26 th & E. Sts.
10' w. of 0+00 = E. Curb line of 26 th St.				
S-25	gutter pav	6.36	195.11	
S-25	Top. ch.	5.88	195.59	
S.	" "	5.68	195.79	
S.	gutter pav	6.14	195.33	
¢	" "	6.16	195.31	
¢	Top. ch.	5.82	195.65	
N.	" "	5.94	195.53	
N.	gutter pav	6.17	195.30	
(N + 9.6	" "	6.14	195.33	
(N + 9.6	Top. ch.	5.95	195.52	
(N + 15.5	" "	5.78	195.69	
(N + 15.5	gutter pav	6.07	195.40	
(N + 20.	" "	6.03	195.44	
(N + 20	Top. ch.	5.72	195.75	
(N + 28	" "	5.49	195.98	
(N + 28	gutter pav	5.94	195.53	
(N + 34	" "	5.85	195.62	
(N + 34	Top. ch.	5.35	196.12	
(N + 44	" "	5.36	196.11	
(N + 44	gutter Pav	5.80	195.67	
(N + 60	" "	5.65	195.82	
(N + 60	Top. ch.	5.22	196.25	



201.47

7.33 W. of 0+00 = W. side emb walk		
N - 60.	5.16	196.31
N - 44.	5.26	196.21
N - 34.	5.13	196.34
N - 28.	5.37	196.16
N - 20.	5.45	196.02
N - 15.5	5.32	196.15
N - 9.6	5.80	195.62
N	5.60	195.87
±	5.57	195.96
S	5.53	195.94
S + 25	5.77	195.70

R.O. W. of 0+00 = E. edge emb walk

S - 25	5.58	195.89
S.	5.31	196.14
±	5.34	196.13
N	5.30	196.17
N + 9.6	5.53	195.94
N + 15.5	5.20	196.27
N + 20.	5.34	196.13
N + 28.	5.26	196.21
N + 34.	5.07	196.46
N + 44.	5.12	196.35
N + 60	5.00	196.47

1.9 W. of 0+00 = E. Line 26th St

N - 60.	7.0	194.5
N - 44.	7.6	193.9
N - 39.	5.2	196.3
N - 9.6	5.9	195.6

201.47

Alley Blk 33 Higgins

72

N.	6.1	195.4
±	6.4	195.1
S.	5.6	195.9
+ 25'	5.6	195.9
0+00 = E. Line of 26 th St		
- 25'	6.6	194.9
S	6.2	195.3
±	7.3	194.2
N	7.1	194.4
+ 11.1' Base of Wall	7.1	194.4
+ 11.2' Top of "	5.50	195.97
+ 15'	5.5	196.0

0 + 11.2 Ex. M.H.

± Top.	12.22	189.25
--------	-------	--------

0 + 16

N - 15 W. side House	5.5	196.0
N - 11.4 = { Top wall S.W. Cor House	5.5	196.0

T.P. 0.76 190.01 12.22 189.25

N - 11.3: base of wall = ground under porch	4.6	185.4
N - 11.3 Wooden Porch	3.0	187.0
N - 7.3 " "	3.0	187.0
N	4.9	185.1
±	5.0	185.0
S	5.3	184.7
+ 20	5.1	184.9

190.01

0+19 5' S. of S. line Pepper Tree 22" Diam
 0+28 3' N of S. " Date Palm Tree 24" Diam

0+33.5

S - 25'	9.4	180.6
S	10.6	179.4
± ground	11.1	178.9
± Top 6" C.I. Sewer Main = connection 4" C.I. Lateral to North.	9.84	180.17
N. ground.	10.8	179.2
N. Top 4" C.I. sewer lateral	9.50	180.51
N. + 7.5 under S. Side Porch Top C.I. Box 9.35		180.66
N + 7.5 " " " " ground	11.0	179.0
N + 11.5 { s. side House ground under wooden Porch. }	11.0	179.0
T.P.	5.36	184.67
	10.70	179.31

0+40 5' S. of ± Pepper Tree 24" Diam
 0+41 6' N of ± Fig Tree 5" "
 0+43 14' N " " Oleander Bush.

0+50 E.

N - 11.6 s. side House under Porch	5.5	179.2
N	7.5	172.2
± ground	7.8	176.9
± Top 6" C.I. Sewer Main.	4.92	179.75
S.	8.8	175.9

Alley Bk 33 Higgins

73

184.67

S + 25 8.7 176.0

0+58.3

N + 7.6 s. e. Cor. Porch = ground	- 5.7	179.0
N + 7.6 s. e. Cor " on porch floor	+ 3.7	188.4 9
N + 11.6 { N.E. " " " " " " " " " " S.E. " House " " " " " " " " " }	+ 3.7	188.4 9
N + 11.6 ground.	- 4.0	180.7

0+70

S - 25.	10.7	174.0
S	10.5	174.2
± ground	8.2	176.5
± Top 6" Sewer Main	5.32	179.35
N	5.6	179.1
N + 15	2.6	182.1

0+85

N - 13	0.0	184.0
N	4.1	180.0
±	6.9	177.8
± Top 6" C.I. Sewer Main	5.73	178.94
S	9.9	174.8
+ 10	10.9	173.8
+ 30	11.2	173.5

184.67

		1+00	
S-25		8.6	176.1
S.		6.1	178.6
+1.6 = W. End. Board Fence		5.5	179.2
⊕		3.2	181.5
N.		1.7	183.0
+2.3 S.W. Cor Shed.		1.2	183.5
T.P.	8.69	190.78	2.58
			182.09

1+17 E. End. E. Entrance Garage Dirt floor 2 1/2 N. of line

N-2.0 = S. side floor 4.9 185.9

		1+25	
N.		4.9	185.8
⊕		5.4	185.4
S. = Fence		8.2	182.6
S+10		10.2	180.6
		1+49	✓
S-10		9.0	181.8
S-1		8.1	182.7
S = Fence		6.7	184.1
S+3		6.7	184.1
S+8		5.2	185.6
⊕		5.2	185.6
N		4.8	186.0
+0.7 = W. End. crit. wall ground		4.0	186.8
+0.7 = " " " " Topwall		2.80	187.98

190.74

Alley BIK. 33. Higgins

74

1+74 garage on S. Nat. in use dirt-floor 0.5 Back
S-0.5 floor 6.6 184.2

		1+73	
N-0.6 Top. Wall E. End.		2.72	188.06
N-0.5		3.6	187.2
N		3.7	187.1
+5		4.9	185.9
⊕		5.2	185.6
S.		6.5	184.3
+10		10.0	180.8

1+75

S-10		12.6	178.2
S-6		11.7	179.1
S-5		7.8	183.0
S		6.5	184.3
⊕		5.2	185.6
+5		5.0	185.8
N		3.7	187.6

1+90

N		3.3	187.5
+6		5.0	185.8
⊕		5.4	185.4
+8		6.0	184.8
S		7.6	183.2
+2		10.7	180.1
+10		12.0	178.8

190.78

2+10

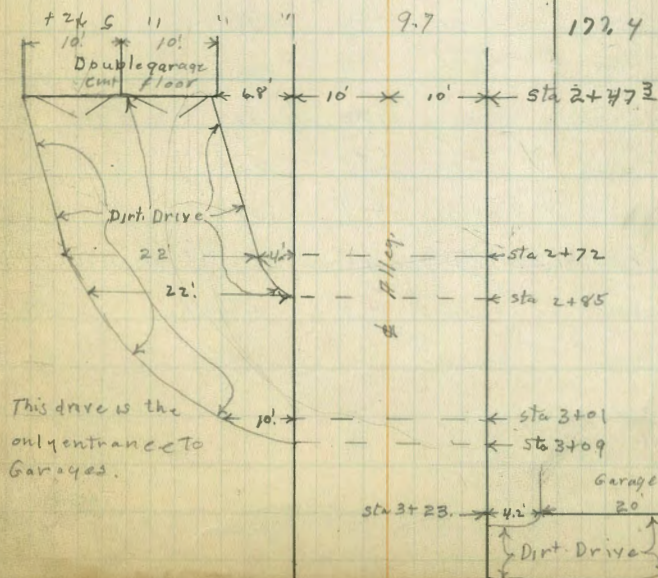
S-10	11.8	179.0
S-7	10.3	178.5
S	6.7	184.1
+1	6.0	184.8
±	5.4	185.4
+5	5.6	185.2
N.	4.6	186.2
2+29.3		
N	3.5	187.3
±	4.6	186.2
+9	5.6	185.2
S	7.1	183.7
+3	10.2	180.6
+5	12.8	178.0
+7 = S.W. Cor E. Entrance Garage.	12.9	177.9
2+47.3 = E. End. Double Garage cnt. floor, E. Entrance 6.85 of S line		
S-22 ± S. garage floor	13.3	177.5
S-12 ± of N. " "	13.3	177.5
S-6.8 = N.E. Cor garage	13.3	177.5
S-6.	13.3	177.5
S-3.	10.4	180.4
S.	8.2	182.6
+1	6.2	184.6
±	5.6	185.2
N	5.6	185.2

190.78

75

T.P. 2.03 187.12 5.69 185.09

2+52 = W. End double garage on N. cnt. floor 6.0' Back		
N+4.5' S. side cnt. apron	1.70	185.42
N+6.0' floor,	1.54	185.58
2+72 = E. End above garage		
N-6.0' floor	1.46	185.66
N-4.5' S. side cnt. apron	1.64	185.46
N.	3.1	184.0
±	4.4	182.7
+9	4.3	182.8
S.	5.0	182.1
+4 N. Edge dirt. drive	9.0	178.1
+24.5 " " "	9.7	177.4



187.12

2+85

S-22 = s. edge dirt drive	10.0	177.1
S-4	8.9	178.2
S	8.0	179.1
+5	6.6	180.5
⊕	6.3	180.8
N	5.4	181.2

3+01

N	6.4	180.0
+6	7.3	179.8
⊕ Top Ex. M.H	7.4	179.74
S	8.8	178.3
+10 = S. Lim. Drive	9.3	177.8
3+16 garage on S. cmt. floor	5.4	Back
S-5.4 = floor	7.4	179.7
S	7.6	179.5
⊕	7.3	179.8
+5.	6.7	180.4
N.	5.9	181.2

3+23 = E. Side. ~~Entrance~~ garage dirt floor 4.2 N of line

N+4.2 floor	4.3	182.8
-------------	-----	-------

187.12

76

3+51 = ⊕ garage on S. wooden floor	0.5 in Alley.	
N	4.1	183.0
⊕	4.8	182.3
+5	4.9	182.2
+9.5 ground	4.2	182.9
+9.5 floor.	3.5	183.6
This garage extends from 3+39 to 3+60		

T.P. 11.03 195.11 3.04 184.08

3+80 = W. End, ^{double} garage on N cmt. floor	4.2	Back
N-4.2 = floor	8.57	186.54
N+1.7' = s. edge cmt. apron	8.74	186.33
N	9.6	185.5
+9	11.0	184.1
⊕	11.0	184.1
S	10.8	184.3
3+83 W. End, ^{double} garage on S. wooden floor	0.5 S. line	
S. = floor	10.6	184.5
S. ground	11.0	184.1
4+00 = E. End. double garage on N		

T.P. 12.43 196.51 11.03 184.08

S.	12.0	184.5
⊕	12.0	184.5
+5	11.6	184.9
N	10.4	186.1
+1.7 = S. edge cmt. apron	10.24	186.33
+4.2 = floor	10.05	186.46

196.51

4+02 = E. End. above double garage 0.3' in alley		
9.7 S. 4 1/2 = wooden floor	12.0	184.8
9.7 S. 4 1/2 = W. End Fence		
4+07 garage on N. emt floor 8.7 Back		
N+5.2 = S. side emt apron	8.98	187.53
N+8.7 = floor	8.57	182.94
4+50		
0.5 N of S. = Fence	9.3	182.2
⊕	9.3	182.2
+4	9.3	182.2
N.	8.2	188.3
T.P. 11.12	202.00	5.63 190.88
4+74 = E. End of Fence on S. 0.8' in Alley		
4+77 = W. End. double garage on S. emt. floor 3.0 Back		
N	11.0	191.0
+5	12.2	189.8
⊕	12.3	189.7
+4	12.0	190.0
S	10.6	191.4
+3 = floor	10.15	191.85
4+94 garage on N. dirt floor 1.8' Back		
N-1.8 = floor	10.5	191.8
4+97 E. End above double garage on S.		
S-3	10.20	191.80
S	10.3	191.78
⊕	10.5	191.5

202.00

77

N.	10.5	191.5
W. End. double garage on S. emt. floor 3.0' Back		
5+03 = 1 garage		
N	9.2	192.8
+5	9.9	192.1
⊕	9.9	192.1
S	9.3	192.7
S+3 ground	9.1	192.9
S+3 = floor	8.65	193.35
5+21 = E. End above double garage		
S-3 = floor	8.14	193.82
S-3 ground	8.2	193.8
S	8.2	193.8
⊕	8.1	193.9
N	7.4	194.6
5+50		
N.	5.9	196.1
⊕	6.1	195.9
+5	5.9	196.1
S	5.4	196.6
5+76		
S.	3.7	198.3
+5	7.2	197.8
⊕ Top. Ex M.H.	4.02	197.98
N	4.6	192.4

5+90

N	4.1	192.9
E	4.0	198.0
+7	3.6	192.4
S	2.5	199.5

5+98

S	2.6	199.4
+3	4.2	192.8
E	4.8	192.2
+5	4.9	192.1
N	4.2	192.8

6+01 = W. Line 27th St

N. cont. dr. W. End	4.63	192.37
N. pav " "	4.86	192.14
E " " "	5.17	196.83
S " " "	4.80	192.20
S cont. dr " "	4.51	192.49

Alley Return on S.

14' E of W. Line = W. ch. of 27th St

S. cont. dr	4.22	192.28
S. gutter Pav	5.29	196.71
E " "	5.37	196.83
N " "	5.48	196.52
N cont. dr	4.87	192.13
T.P. 5.86	203.85	4.01 197.99
chk. on B.M.	4.85	197.00 ✓

add. notes alley 33 Higgins

Moore

4-22-41

0+24 S 2' palm

0+34 S+5 24" pepper tree = 5'50x2

0+40 S p. & Tel. Pole

0+48 N+1 Guy Pole

1+27 S+1.5 1.5 Eucal Tree

1+36 S+1 1' pepper tree

1+44 S+1 " " "

1+54 S+2 Group of 3 or 4 3" acacia trees

1+75 S+0.5 14" P.P.

2+44 S+2.0 4" pepper tree

2+52 S+2.4 8" " "

2+72 S+1.8 12" " "

2+75 S+0.8 12" P.P.

2+70 beg. Lattice fence N - 1.1

3+01 end " " N - 1.0

Levels for proposed drain

3+01	0.48	18000	179.72	P. 70 TOP M.H.
------	------	-------	--------	-------------------

0+0	Railway	0.2	122.5	80.0
-----	---------	-----	------------------	------

+10		1.9	122.8	79.3
-----	--	-----	------------------	------

+20		2.5	122.0	77.7
-----	--	-----	------------------	------

+50	Remove 3 rose bushes Replace	3.5	126.2	76.1
-----	---------------------------------	-----	------------------	------

+59	2.5 LT = 6" Cedar tree			
-----	------------------------	--	--	--

+81	N edge 17 wk	4.94	124.78	75.2
-----	--------------	------	-------------------	------

+82.8	S " " "	4.99	124.73	75.2
-------	---------	------	-------------------	------

+85	E " 3.7 "	5.06	124.66	75.4
-----	-----------	------	-------------------	------

1+02.2 W	" " "	5.51	124.27	74.5
----------	-------	------	-------------------	------

+16	3 RT = 8" Fig tree			
-----	--------------------	--	--	--

1+20 to 1+37	Remove + Replace 3 rose bushes			
--------------	--------------------------------	--	--	--

1+40	beg. Lattice	5.7	124.0	74.5
------	--------------	-----	------------------	------

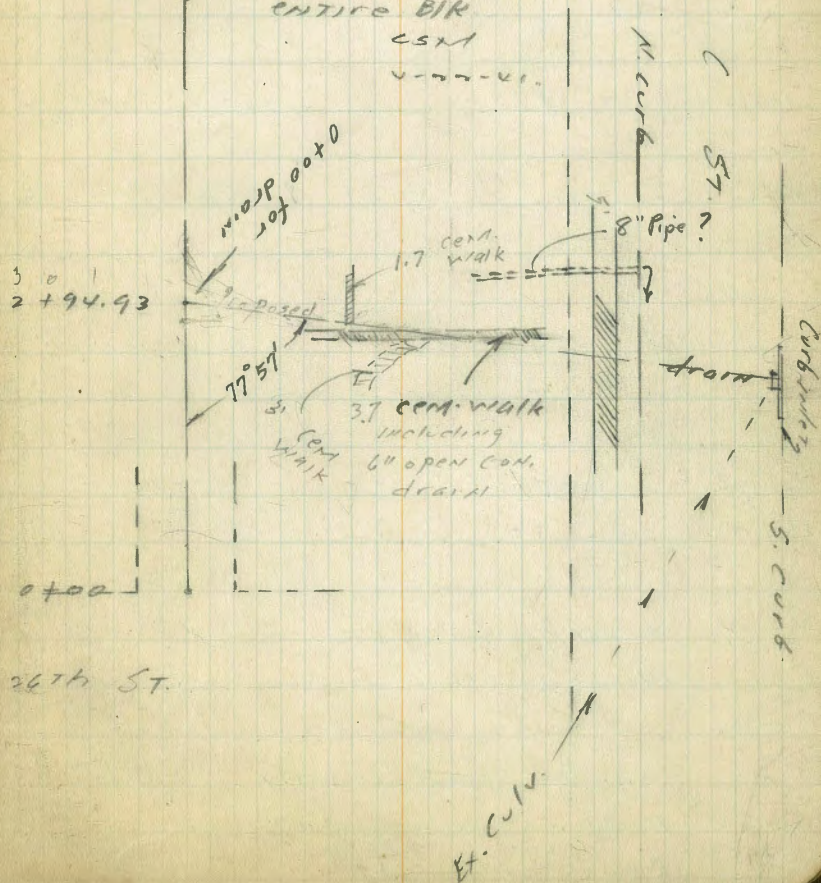
1+48	on " "	6.4	123.5	73.8
------	--------	-----	------------------	------

1+57.7	N edge Cem walk	8.60	121.0	71.60
--------	--------------------	------	------------------	-------

1+62.8	S " "	8.72	121.00	71.42
--------	-------	------	-------------------	-------

3+20

Owner says, will give Rowl.
if drain will be deep enough
to NOT give him trouble, and
the cost be distributed to
ENTIRE BIR



		180.20		
1+67	Top cb	8.73	170.99	71.47
"	gut	9.13	120.59	71.07
1+95	H.C. Pav Top	9.44	120.28	70.76 Con. Base
2+18.7	Top Wedge ^{iron} grate	9.74	169.98	70.46
"	Bot. Box	15.04	164.68	165.16
4+21.1	Top curb	8.57	124.75	171.63

3+01 5.32 185.04 179.72 Top M.H.

3+16 2 Singar ^{COM} floor 5.51 179.53 5-5.7

3+51 old garage on S is to be removed
and new one built about 3' back

4+03 S + 0.4 ^{14"} P.P.

4+02 on S + 0.1 beg. Lat. fence

4+19 N-7.8 Lat. fence

4+24 N + 0.1 " " Δ

4+32 end fence on S + 0.4

" beg. Bd shed S + 0.4

4+50 End " " S + 0.5

" Fence N + 0.1

4+50 beg. Lat fence S + 0.5

4+73 " " " S + 0.8

4+83 fence Δ N-0.1

4+87 end " " N-0.8

TR 5+76 1.21 199.19 197.98 TOP
S.M.H.

4+88 wedge ^{S.M.} gar. 7.46 | 191.73
191.68 N-0.8
apron
" " " " N-1.8 gar
cent

4+99.5
Edge apron 7.37 | 191.82 N-0.8
" gar cent N-1.8

5+00 16" P.P. S + 0.7

3+01 8.94 188.68 179.72 TOP M.H. ^{P.76}

3+83 was old garage with wood floor

5-6 wedge do. gar 3.35 | 188.33 Cent (1)

5-4.8 " " cent apron 3.42 | 185.26

4+00

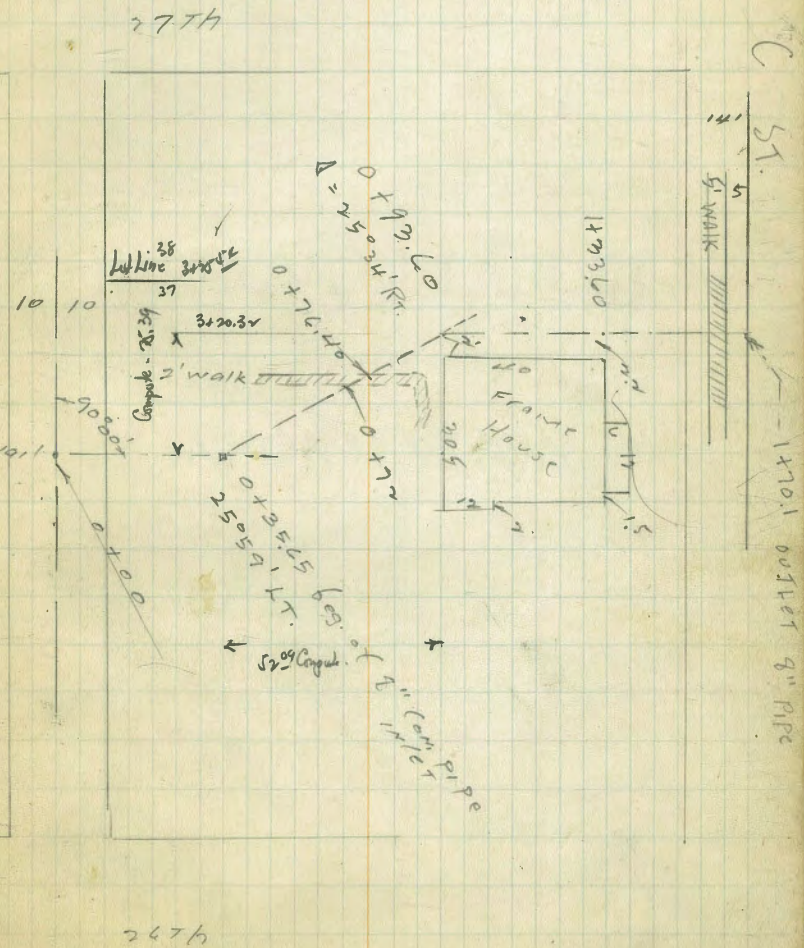
5-6 Edge do. gar 3.23 185.45 " "

5-4.8 " " apron 3.25 185.43
cent

Moore 7-23-41
Torrans

Notes on Existing 8" Con. Pipe Drain
Alley Bk 33 Higgins

Top M.H.	1.25	180.97	179.79	3+01 P.76
0+00 Alley	1.0	180.0		
0+10 sk "	2.6	78.9		
0+35.65 A 5'59' LT. Fl.	4.80	176.17		inlet 8" pipe
" " "	3.4	77.6		ground
0+72 Wedge n' Walk	4.97	176.00		
0+76.4E " "	5.6	75.81		
0+93.6 A 25'30" RT	5.8	75.2		ground
" " "	6.65	74.37		Top 8" pipe
T.P.	160	176.74	583	175.14 7+94.93 = 1101
1+33.6	ground lawn	2.2	70.5	
1+50	Lawn	2.8	73.9	
1+60.1	edge sidewalk	4.62	72.12	
1+65.1	" "	4.74	172.00	
1+70.1	Top Curb	4.82	171.92	
"	FL. 8" pipe	5.57	171.17	
"	POV. gutter	5.27	171.97	
"	5' E curb	4.68	172.06	0+00
"	5' E gut	5.13	171.61	
"	5' W "	5.38	171.36	
"	5' W curb	4.91	171.83	
"	20' W gutter	5.64	171.10	



DIRECTIONS FOR USE OF TABLES

TABLE No. 1

Distance of slope stake from side or shoulder
stake for any width roadway, slope 1 to 1
If ground is nearly level, the cut or fill at any
stake is located by the double-entry method in
left column and top row. The number in body

IMPROVED TABLES

AND

INFORMATION

To find Tangent and External for curve of
any other degree divide by degree of curve and
add correction found in column of corrections.
Degree of curve with a given L may be found
by dividing tangent (external), opposite L by
given tangent (external).
The distance from a point on the tangent to
the curve is very nearly the square of the tangent
length divided by twice the radius.

Top

0 +

0 -

0

0

0

0

7

1

1

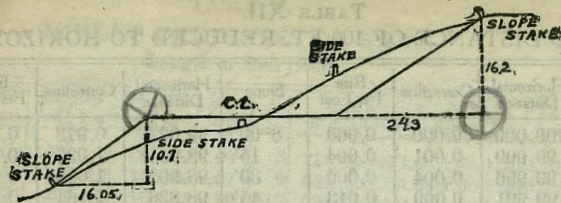
1

1

1

1

1



DISTANCES FROM SIDE STAKES FOR CROSS-SECTIONING.

SLOPE 1 1/4 TO 1. ROADWAY OF ANY WIDTH.

	0	.1	.2	.3	.4	.5	.6	.7	.8	.9	
0	0 00	0 15	0 30	0 45	0 60	0 75	0 90	1 05	1 20	1 35	0
1	1 50	1 65	1 80	1 95	2 10	2 25	2 40	2 55	2 70	2 85	1
2	3 00	3 15	3 30	3 45	3 60	3 75	3 90	4 05	4 20	4 35	2
3	4 50	4 65	4 80	4 95	5 10	5 25	5 40	5 55	5 70	5 85	3
4	6 00	6 15	6 30	6 45	6 60	6 75	6 90	7 05	7 20	7 35	4
5	7 50	7 65	7 80	7 95	8 10	8 25	8 40	8 55	8 70	8 85	5
6	9 00	9 15	9 30	9 45	9 60	9 75	9 90	10 05	10 20	10 35	6
7	10 50	10 65	10 80	10 95	11 10	11 25	11 40	11 55	11 70	11 85	7
8	12 00	12 15	12 30	12 45	12 60	12 75	12 90	13 05	13 20	13 35	8
9	13 50	13 65	13 80	13 95	14 10	14 25	14 40	14 55	14 70	14 85	9
10	15 00	15 15	15 30	15 45	15 60	15 75	15 90	16 05	16 20	16 35	10
11	16 50	16 65	16 80	16 95	17 10	17 25	17 40	17 55	17 70	17 85	11
12	18 00	18 15	18 30	18 45	18 60	18 75	18 90	19 05	19 20	19 35	12
13	19 50	19 65	19 80	19 95	20 10	20 25	20 40	20 55	20 70	20 85	13
14	21 00	21 15	21 30	21 45	21 60	21 75	21 90	22 05	22 20	22 35	14
15	22 50	22 65	22 80	22 95	23 10	23 25	23 40	23 55	23 70	23 85	15
16	24 00	24 15	24 30	24 45	24 60	24 75	24 90	25 05	25 20	25 35	16
17	25 50	25 65	25 80	25 95	26 10	26 25	26 40	26 55	26 70	26 85	17
18	27 00	27 15	27 30	27 45	27 60	27 75	27 90	28 05	28 20	28 35	18
19	28 50	28 65	28 80	28 95	29 10	29 25	29 40	29 55	29 70	29 85	19
20	30 00	30 15	30 30	30 45	30 60	30 75	30 90	31 05	31 20	31 35	20
21	31 50	31 65	31 80	31 95	32 10	32 25	32 40	32 55	32 70	32 85	21
22	33 00	33 15	33 30	33 45	33 60	33 75	33 90	34 05	34 20	34 35	22
23	34 50	34 65	34 80	34 95	35 10	35 25	35 40	35 55	35 70	35 85	23
24	36 00	36 15	36 30	36 45	36 60	36 75	36 90	37 05	37 20	37 35	24
25	37 50	37 65	37 80	37 95	38 10	38 25	38 40	38 55	38 70	38 85	25
26	39 00	39 15	39 30	39 45	39 60	39 75	39 90	40 05	40 20	40 35	26
27	40 50	40 65	40 80	40 95	41 10	41 25	41 40	41 55	41 70	41 85	27
28	42 00	42 15	42 30	42 45	42 60	42 75	42 90	43 05	43 20	43 35	28
29	43 50	43 65	43 80	43 95	44 10	44 25	44 40	44 55	44 70	44 85	29
30	45 00	45 15	45 30	45 45	45 60	45 75	45 90	46 05	46 20	46 35	30
31	46 50	46 65	46 80	46 95	47 10	47 25	47 40	47 55	47 70	47 85	31
32	48 00	48 15	48 30	48 45	48 60	48 75	48 90	49 05	49 20	49 35	32
33	49 50	49 65	49 80	49 95	50 10	50 25	50 40	50 55	50 70	50 85	33
34	51 00	51 15	51 30	51 45	51 60	51 75	51 90	52 05	52 20	52 35	34
35	52 50	52 65	52 80	52 95	53 10	53 25	53 40	53 55	53 70	53 85	35
36	54 00	54 15	54 30	54 45	54 60	54 75	54 90	55 05	55 20	55 35	36
37	55 50	55 65	55 80	55 95	56 10	56 25	56 40	56 55	56 70	56 85	37
38	57 00	57 15	57 30	57 45	57 60	57 75	57 90	58 05	58 20	58 35	38
39	58 50	58 65	58 80	58 95	59 10	59 25	59 40	59 55	59 70	59 85	39
40	60 00	60 15	60 30	60 45	60 60	60 75	60 90	61 05	61 20	61 35	40
41	61 50	61 65	61 80	61 95	62 10	62 25	62 40	62 55	62 70	62 85	41
42	63 00	63 15	63 30	63 45	63 60	63 75	63 90	64 05	64 20	64 35	42
43	64 50	64 65	64 80	64 95	65 10	65 25	65 40	65 55	65 70	65 85	43
44	66 00	66 15	66 30	66 45	66 60	66 75	66 90	67 05	67 20	67 35	44
45	67 50	67 65	67 80	67 95	68 10	68 25	68 40	68 55	68 70	68 85	45
46	69 00	69 15	69 30	69 45	69 60	69 75	69 90	70 05	70 20	70 35	46
47	70 50	70 65	70 80	70 95	71 10	71 25	71 40	71 55	71 70	71 85	47
48	72 00	72 15	72 30	72 45	72 60	72 75	72 90	73 05	73 20	73 35	48
49	73 50	73 65	73 80	73 95	74 10	74 25	74 40	74 55	74 70	74 85	49
50	75 00	75 15	75 30	75 45	75 60	75 75	75 90	76 05	76 20	76 35	50

Computed by L. Leland Locke.

To find

5.18 4.85
4.09 1.09
1.09 5.94

267
533
800
533
2
733
267

13.6
78
58

196.97
4.03
4

4.14
3.5

4.79

7 98

E

27
3.5
23.5
2.1
21.4
3.5
17.9
3.5
14.4
4.2
10.2
4.2
6.0

W

26.5
3.5
23.0
2.1
20.9
3.5
17.4
3.5
13.9
4.2
9.7
4.2
5.5

1.4
10
2.10

6.2 3.0 91.3 71.5 230.10
6.4 9.8 73.2 93.7 50
24.8 11.8 78.1 77.1 290.10

24.6 230.10
18.4 138.00
18.4 92.10

225.26 356.01
55 285.10
180.26 92.10

285.10 193.00
13 167.26
452.36 138.00

199.13 55.00
20 193.00
289.13 356

203.69 14
492.21 37.0

157-15
29
14

149-06
144-36
36
-82

452.36 27
285.10 34.4
167.26 10.4

691.24
244
760

452.36 601.3
106.64 254
554.00 760

87.69 7.6
13 124
100.59 0
150
98.78
776
106.55