

1477

WISCONSIN

LEVEL BOOK

No. 580F

ENGINEERING DEPARTMENT,
CITY OF SAN DIEGO,
CALIFORNIA.

MICROFILMED

Dec. 23 1964

Our Leather Bound Engineers Note Books are carried in the following rulings:

- No. 380 LEVEL BOOK. Left and Right Hand Page the same as Left Hand Page of this Book.
- No. 382 FIELD BOOK. Left Hand Page as in this Book, Right Hand Page 4 x 4 to the inch, Center Line Red.
- No. 384 MINING TRANSIT BOOK. Left Hand Page as in this Book, Right Hand Page 8x8 to the inch, Center Line Red.
- No. 385 FIELD BOOK. Left Hand Page as in this Book, Right Hand Page 8 vertical and 4 horizontal lines to the inch, Center Line Red.

We also carry the Note Books listed above, bound in extra strong Fabri-Hide (otherwise the same quality of book), which can be furnished at a somewhat lower price.

In ordering Fabri-Hide covered books, add the letter "F" to catalog number.

THE FREDERICK POST CO.
ENGINEERING and DRAFTING SUPPLIES
IRVING PARK STATION
CHICAGO, ILL.

Moller.
Bliss
1923-33

CROSS SECTION
E. of CANYON AVE.
Between 42nd Street ^{1/40'} and EUCLID AVE.
Continued from F.B. 1476-78

SW. 3rd Street
42nd Street
42nd Street
42nd Street

4.00 368.47 364.47
0+10 = 10' E.E. line 42nd on South East line on North ^{42nd St}

J. top cb.	4.42	364.05
J. Gutter.	4.97	363.50
+10'	4.89	363.58
+25	4.59	363.88
L	4.43	364.04
+125	4.48	363.99
+275	4.92	363.55
N. Gutter.	5.07	363.40
N. top cb.	4.34	364.13
0+35		
N. top cb.	4.35	364.12
" Gut.	5.15	363.32
+10'	4.95	363.52
+25	4.50	363.97
L	4.55	363.92
+125	4.73	363.74
+275	4.94	383.53
S. Gutter.	5.18	363.29
S. top cb.	4.62	363.85
0+50		
S. top cb.	4.66	363.81
" Gutter.	5.24	363.23

368.47

1

+10'	5.01	363.46
+25'	4.76	363.71
L	4.65	363.82
+125	4.60	363.87
+275	5.10	363.37
N. Gutter.	5.09	363.38
N. top cb.	4.30	364.17
0+70		
N. Top cb.	4.43	364.04
N. Gutter.	5.25	363.22
+10	5.10	363.37
+25	4.59	363.88
L	4.58	363.89
+125	4.75	363.72
+275	5.08	363.39
S. Gutter.	5.27	363.20
S. top cb.	4.67	363.80
0+85		
S. top cb.	4.69	363.78
S. Gutter.	5.34	363.13
+10	5.17	363.30
+25'	4.92	363.55
L	4.74	363.73
+125	4.62	363.85
+275	5.09	363.38
N. Gutter.	5.22	363.25
N. top cb.	4.50	363.97

368.47

1+00

N. top cb.	4.53	363.94
" Gut.	5.26	363.21
+10	5.10	363.37
+25	4.54	363.93
$\frac{1}{2}$	4.52	363.95
+125	4.86	363.61
+275	5.21	363.26
S. Gut.	5.30	363.17
S. top cb.	4.75	363.72

1+12

S. top cb.	4.78	363.69
S. Gutter.	5.40	363.07
+10	5.14	363.33
+25	4.96	363.51
$\frac{1}{2}$	4.68	363.79
+125	4.55	363.92
+275	5.10	363.37
N. Gutter.	5.24	363.23
N. top cb.	4.52	363.95

1+18.5 = B.C. Alley Returns on North

N. top cb.	4.49	363.98
" Gutter.	5.22	363.25

1+17.2 = B.C. Alley Return on South

S. top cb.	4.78	363.69
S. Gut.	5.38	363.09
S. top cb. 1+17.3	5.00	363.47

368.47

2

1+20.3 = N. cb. Line Alley on North + South.

N. on cb.	4.28	364.19
" " Gut.	4.44	364.03
+10' on cb.	4.37	364.10
" " Gut.	4.58	363.89
+18" cb.	4.40	364.07
" " Gut.	4.69	363.78
N. Gut.	5.25	363.22
S. Gut.	5.43	363.04
+7' on cb.	4.72	363.75
" " Gut.	5.09	363.38
+13' on cb.	4.66	363.81
" " Gut.	4.88	363.59
S. L. on cb.	4.60	363.87
" " Gut.	4.78	363.69

1+27.8 = S. Alley on South bet. cbs. = 1+27.8 bet. cbs. on N.

S. L.	5.13	363.34
+7	5.27	363.20
+13	5.40	363.07
S. Gut.	5.44	363.03
+10	5.26	363.21
+25	5.06	363.41
$\frac{1}{2}$	4.74	363.73
+125	4.74	363.73
+275	5.15	363.32
N. Gut.	5.34	363.13

368.47

+4'	5.27	363.20
+7'	5.17	363.30
+15'	5.00	363.47
N.H. -3'	4.83	363.64
N.H.	4.76	363.71

1+35.3 = E. cb. Line Alley on North.

N.H. on cb.	4.51	363.96
" " Gut.	4.68	363.79
+10' on cb.	4.53	363.94
" " Gut.	4.73	363.74
+18' on cb.	4.60	363.87
" " Gut.	4.90	363.57
N. Gutter.	5.22	363.25

1+37.4 = E.C. Alley Return on North.

N. top cb.	4.54	363.93
" Gutter	5.23	363.24

1+35.1 = East cb. Line Alley on South.

S. Gut.	5.39	363.08
+7' on cb.	4.80	363.67
" " Gut.	5.10	363.37
+13' on cb.	4.74	363.73
" " Gut.	4.98	363.49
S.H. on cb.	4.70	363.77
" " Gutter.	4.85	363.62

1+36.5 = E.C. Alley Return on South.

S. top cb.	4.81	363.66
S. Gutter.	5.36	363.11

368.47

3

1+57

S. top cb.	4.91	363.56
" Gutter	5.46	363.01
+10'	5.34	363.13
+25'	5.09	363.38
L.	4.76	363.71
+12.5'	4.73	363.74
+27.5'	5.15	363.32
N. Gutter.	5.35	363.12
N. top cb.	4.68	363.79

1+71

N. top cb.	4.72	363.75
N. Gut.	5.40	363.07
+10'	5.20	363.27
+25'	4.85	363.62
L.	5.00	363.47
+12.5'	5.19	363.28
+27.5'	5.41	363.06
S. Gutter.	5.62	362.85
S. top cb.	5.07	363.40

1+89

S. top cb.	5.06	363.41
" Gut.	5.62	362.85
+10'	5.45	363.02
+25'	5.12	363.35
L.	4.81	363.66

368.47

+125	4.80	363.67
+275	5.26	363.21
N. Gut.	5.46	363.01
N top cb	4.78	363.69
Z+00		
N. top cb.	4.82	363.65
" Gut.	5.46	363.01
+10'	5.27	363.20
+25'	4.85	363.62
L	4.99	363.48
+125'	5.16	363.31
+275	5.52	362.95
S. Gutter.	5.62	362.85
" top cb.	5.07	363.40
Z+15'		
S. top cb.	5.19	363.28
S. Gut.	5.67	362.80
+10'	5.53	362.94
+25'	5.21	363.26
L	4.92	363.55
+125	4.88	363.59
+275	5.29	363.18
N. Gutter.	5.47	363.00
N. top cb	4.81	363.66
Z+47		
N. cb.	4.68	363.79
" Gut.	5.34	363.13

368.47

+10	5.38	363.09
+25	5.01	363.46
L	5.21	363.26
+125	5.27	363.20
+275	5.56	362.91
S. Gutter.	5.74	362.73
S. top cb	5.35	363.12
Z+60 Z = W. line Copeland Ave. 10' cbs. 10' 145.		
S. top cb.	5.34	363.13
" Gutter.	5.73	372.74
+10'	5.58	362.89
+25'	5.43	363.04
L	5.32	363.15
+125	5.33	363.14
+275	5.41	363.06
N. Gutter.	5.45	363.02
N. top cb.	4.80	363.67
W. cb. line Copeland Ave		
-50' on cb.	4.78	363.69
-50' on Gut.	5.32	363.15
-25' on cb.	4.77	363.70
" " Gut.	5.27	363.20
-10' on Gut.	5.30	373.17
N. top on cb.	4.87	363.60
" " Gutter.	5.35	363.12
+6' on Gut.	5.36	363.11

36847

+15' on cb.	4.79	363.68
" " Gut.	5.36	363.11
N. Gut.	5.44	363.03
+10'	5.50	362.97
+25'	5.52	362.95
do	5.54	362.93
+12.5	5.59	362.88
+27.5	5.68	362.79
S. Gut.	5.74	362.73
+10' on cb.	5.89	363.08
+10' " Gut.	5.84	362.63
S. L. on cb.	5.48	362.99
" " Gut.	5.92	362.55
+10' on Gut.	5.93	362.54
+25' on cb.	5.41	363.06
" " Gut.	5.90	362.57
+50' on cb.	5.57	362.90
" " Gut.	6.02	362.45

W 1/4 Copeland

-50'	5.55	362.92
-25'	5.55	362.92
-10'	5.46	363.01
S. L.	5.62	362.85
+10'	5.63	362.84
S. Gut Har.	5.60	362.87
+10	5.49	362.98

36847

5

+25	5.36	363.11
do	5.27	363.20
+12.5	5.26	363.21
+27.5	5.40	363.07
N. Gutter.	5.42	363.05
+10'	5.31	363.16
N. L. - 6	5.15	363.32
N. L.	5.03	363.44
+10'	5.01	363.46
+25'	5.05	363.42
+50	5.05	363.42
E. Copeland Ave		
-50'	5.03	363.44
-25'	4.96	363.51
-10'	4.94	363.53
N. L.	4.90	363.57
+6'	5.05	363.42
+15	5.21	363.26
N. Gutter.	5.42	363.05
+10	5.28	363.19
+25'	5.11	363.36
do	5.08	363.39
+12.5	5.21	363.26
+27.5	5.36	363.11
S. Gutter.	5.46	363.01
+10'	5.49	362.98

368.47

S.L.	5.46	363.01
+10'	5.38	363.09
+25'	5.48	362.99
+50'	5.46	363.01
E 1/4		
-50'	5.57	362.90
-25'	5.61	362.86
-10'	5.58	362.89
S.L.	5.61	362.86
+10'	5.59	362.88
S. Gutter.	5.51	362.96
+10'	5.39	363.08
+25'	5.18	363.29
∫	5.03	363.44
+125'	4.96	363.51
+275'	5.26	363.21
N. Gutter	5.42	363.05
+10'	5.25	363.22
+19'	5.07	363.40
N.L.	4.92	363.55
+10'	4.92	363.55
+25'	4.98	363.49
+50	4.91	363.56
E. ob. Line		
-50' on cb.	4.70	363.77
-50' Gutter	4.96	363.51

368.47

6

-25' on cb.	4.74	363.73
" " Gut.	4.94	363.53
N.L. on cb.	4.61	363.86
" " Gut.	5.00	363.47
+6' on Gutter	5.08	363.39
+15' on cb.	4.51	363.96
" " Gut.	5.12	363.35
N. Gut.	5.25	363.22
+10	5.19	363.28
+25'	4.98	363.49
∫	5.01	363.46
+125'	5.16	363.31
+275'	5.44	363.03
S. Gut.	5.62	362.85
+10' on cb.	5.32	363.15
" " Gutter	5.78	362.69
S.L. on Gut. in Dine	5.90	362.57
+10' " " " "	6.02	362.45
+25' " " " "	6.00	362.47
+50' on cb.	5.60	362.87
" " Gut.	6.17	362.30
check B.N. SW Copeland	5.46	363.01
0 + 00 = E. Line Copeland		
S top cb.	5.25	363.22
" Gut.	5.68	362.79
+10	5.56	362.91

368.47

+25'	5.16	363.31
↳	4.88	363.59
+12.5'	4.89	363.58
+27.5'	5.06	363.41
N. Gut.	4.99	363.48
N. top cb.	4.41	364.06
0+10		
N. top cb.	4.55	363.92
N. Gutter.	4.99	363.48
+10'	5.10	363.37
+25'	4.92	363.55
↳	4.95	363.52
+12.5'	5.16	363.31
+27.5'	5.62	362.85
S. Gutter.	5.69	362.78
S. top cb.	5.27	363.20
0+25		
S. top cb.	5.33	363.14
S. Gutter.	5.78	362.69
+10'	5.58	362.89
+25'	5.11	363.36
↳	5.02	363.45
+12.5'	4.94	363.53
+27.5'	5.07	363.40
N. Gutter.	5.12	363.35
N. top cb.	4.67	363.80

368.47

0+50		
N. top cb.	4.49	363.98
" Gutter.	5.06	363.41
+10'	5.04	363.43
+25'	4.85	363.62
↳	4.93	363.54
+12.5'	5.13	363.35
+27.5'	5.47	363.00
S. Gutter.	5.76	362.71
S. top cb.	5.34	363.13
1+00		
S. top cb.	5.25	363.22
S. Gutter.	5.69	362.78
+10'	5.42	363.05
+17'	5.13	363.34
+25'	4.85	363.62
↳	4.75	363.72
+12.5'	4.91	363.56
T.P.	5.60	368.62 ✓
+27.5'	5.06	3.56
N. Gutter.	5.08	363.54
N. top cb.	4.48	364.14
1+227 = B.G. Alley Return on North		
N. top cb.	4.35	364.27
" Gutter.	4.92	363.70
1+25.3 = W. cb. Alley on North		

363.02 = SW. BR
Copeland
& El Cajon.

368.62

N.L. on cb.	4.24	364.38
" " Gut.	4.30	364.32
+10' on cb.	4.28	364.34
" " Gut.	4.44	364.18
+15' on cb.	4.35	364.27
+ " " Gut.	4.59	364.03
N. Gut.	4.95	363.67
1+232 = B.C. Alley Return on South		
S. top cb.	5.34	363.28
" " " 1+233	5.38	363.24
" " Gut.	5.80	362.82
1+251 = W. cb. Alley on South.		
S. Gutter.	5.78	362.84
+7' on cb.	5.33	363.29
" " Gut.	5.58	363.04
+13' on cb.	5.18	363.44
" " Gut.	5.39	363.23
S.L. on cb.	5.10	363.52
" " Gut.	5.34	363.28
1+327 = E. Alley cbs.		
S.L.	5.54	363.08
+7	5.64	362.98
+13	5.74	362.88
S. Gut.	5.78	362.84
+4'	5.75	362.87
+10	5.47	363.15

368.62

+25	5.07	363.55
9.	4.82	363.80
+125	4.82	363.80
+275	4.95	363.67
N. Gutter	5.06	363.56
+10'	4.83	363.79
+15'	4.70	363.92
+22'	4.55	364.07
N.L.	4.40	364.22
1+402 = East cb Alley on North		
N.L. on cb.	3.86	364.76
" " Gut.	4.07	364.55
+10' on cb.	4.07	364.55
" " Gut.	4.27	364.35
+15' on cb.	4.18	364.44
" " Gut.	4.42	364.20
N. Gut.	4.95	363.67
1+424 = E.C. Alley Return on North.		
N top cb.	4.33	364.29
" Gut.	4.95	363.67
1+40 = E.L. Alley cb. on South.		
S. Gut.	5.80	362.82
+7' on cb.	5.15	363.47
" Gut.	5.51	363.11
+13' on cb.	5.05	363.57
+13' on Gut.	5.33	363.29

8

368.62

J. on cb. 4.94 363.68

" " Gut 5.07 363.55

1+42 = E.S. Alley Return on South

S. on cb. 5.27 363.35

" " Gut 5.71 362.91

1+50

J. top cb. 5.23 363.39

S. Gutter 5.69 362.93

+10' 5.48 363.14

+25' 5.03 363.59

L 4.76 363.86

+12.5 4.70 363.92

+27.5 4.87 363.75

N. Gutter in Drive 4.98 363.64

2+00

N. top cb. 4.36 364.26

N. Gutter 4.92 363.70

+10' 4.71 363.91

+25' 4.49 364.13

L 4.55 364.07

+12.5 4.87 363.75

+27.5 5.34 363.28

J. Gut. 5.67 362.95

S. top cb. 5.14 363.48

2+41

J. top cb. 5.03 363.59

368.62

9

J. Gut. 5.54 363.08

+10' 5.24 363.38

+25' 4.68 363.94

L 4.47 364.15

+12.5 4.43 364.19

+27.5 4.49 364.13

N. Gut. in Drive 4.86 363.76

2+55

N. Gut. in Drive 4.81 363.81

+10 4.59 364.03

+25' 4.32 364.30

L 4.24 364.38

+12.5' 4.60 364.02

+27.5 5.23 363.39

S. Gutter 5.55 363.07

S. top cb. 5.00 363.62

2+65.2 = N. line Van Dyke 10' obs. 10' 1/4's

S. top cb. 4.98 363.64

" Gut. 5.53 363.09

+10 5.25 363.37

+25 4.65 363.97

L 4.30 364.32

+12.5 4.38 364.24

+27.5 4.54 364.08

N. Gut. 4.67 363.95

N. top cb. 4.11 364.51

36862

West Ch. Line Van Dyke Ave

-50' on cb	4.17	364.95
-50' " Gutter	4.77	363.85
-25' " cb	4.13	364.49
" " Gut.	4.60	364.02
N.L. - 4' on Concrete Pav.	4.50	364.12
N.L. on Gut. in Drive	4.53	364.09
+6' " "	4.54	364.08
+15' on cb	3.95	364.67
" " Gut	4.49	364.13
N. Gut.	4.73	363.89
+10	4.56	364.06
+25	4.41	364.21
E	4.59	364.03
+7'	4.57	364.05
+12.5'	4.72	363.90
+27.5'	5.16	363.46
S. Gutter	5.43	363.19
+10' on cb	4.92	363.70
" " Gut.	5.55	363.07
S.L. on cb	4.98	363.64
" " Gut.	5.66	362.96
+25' on cb	5.19	363.43
" " Gutter	5.79	362.83
-50' on cb	5.26	363.36
-50' " Gut	5.84	362.78

36862

W 1/4 Van Dyke Ave

-50'	5.55	363.07
-25	5.53	363.09
S.L.	5.40	363.22
+10	5.44	363.18
+16'	5.38	363.24
S. Gut.	5.24	363.38
+10	5.12	363.50
+25	4.79	363.83
+30	4.66	363.96
E	4.69	363.93
+12.5	4.55	364.07
+27.5	4.71	363.91
N. Gut.	4.91	363.71
+10	4.73	363.89
+19'	4.55	364.07
N.L.	4.44	364.18
+3' on Concrete paving	4.31	364.31
+25'	4.45	364.17
+50'	4.65	363.97
E. Van Dyke Ave		
-50'	4.66	363.96
-25'	4.43	364.19
-2' on Concrete Pav.	4.24	364.38
N.L.	4.35	364.27
+6	4.58	364.04

10

36862

+15'	4.80	363.82
N. Gut	5.05	363.57
+10'	4.90	363.72
+25'	4.64	363.98
$\frac{L}{2}$	4.77	363.85
+12.5'	4.91	363.71
+27.5'	5.12	363.50
S. Gutter	5.27	363.35
+10'	5.43	363.19
S.L.	5.41	363.21
+25'	5.47	363.15
+50'	5.48	363.14
E. $\frac{1}{2}$ Van Dyke Ave.		
-50'	5.74	362.88
-25'	5.73	362.89
S.L. -10'	5.67	362.95
S.L.	5.80	362.82
+10'	5.67	362.95
S. Gutter	5.46	363.16
+10'	5.26	363.36
+25'	5.03	363.59
$\frac{L}{2}$	4.92	363.70
+12.5'	4.78	363.84
+18.5'	4.78	363.84
+27.5'	5.01	363.61
N. Gutter	5.16	363.46

36862

11

+10'	4.99	363.63
+19'	4.76	363.86
N.L.	4.61	364.01
+1' on Concrete	4.61	364.01
+25' " "	4.82	363.80
+50' " "	4.97	363.65
14.5' East of Van Dyke - East edge Concrete Paving on North.		
-50' on E. edge Concrete Pav.	5.11	363.51
-25' " " " " "	4.95	363.67
-1' " " " " "	4.74	363.88
N.L.	4.81	363.81
E. cb. Lane Van Dyke		
N.L. on cb	4.70	363.92
" " Gutter	5.12	363.50
+6' " "	5.09	363.53
+15' " cb	4.60	364.02
" " Gut.	5.06	363.56
N. Gut.	5.22	363.40
+10'	5.08	363.54
+25'	4.91	363.71
$\frac{L}{2}$	5.01	363.61
+8'	5.07	363.55
+12.5'	5.17	363.45
+27.5'	5.50	363.12
S. Gut.	5.76	362.86
+10' on cb	5.48	363.14
" " Gutter	6.00	362.62

368.62

S.L. on cb	5.45	363.17
+0.1 " "	5.51	363.11
S.L. on Gut.	6.13	362.49
+25' on cb.	5.59	363.03
+25' "Gut	6.29	362.33
+50' on " in DRIVE	6.33	362.29
0 + 00 = E. Lane Van Dyke		
S. top cb	5.45	363.17
S. gutter.	5.90	362.72
+10'	5.63	362.99
+25'	5.26	363.36
± 5'	5.14	363.48
±	5.08	363.54
+12.5'	4.97	363.65
+16.5'	4.96	363.66
+27.5'	5.15	363.47
N. Gutter.	5.18	363.44
N top cb.	4.62	364.00
0 + 15		
N. top cb.	4.80	363.82
" Gut.	5.43	363.19
+10'	5.20	363.42
+17'	5.04	363.58
+25'	5.02	363.60
±	5.00	363.62
+12.5'	5.20	363.42

368.62

12

+27.5'	5.71	362.91
S. Gutter.	5.93	362.69
S. top cb	5.43	363.19
0 + 30		
S. top cb.	5.35	363.27
S. Gutter.	5.85	362.77
+10'	5.63	362.99
+20'	5.31	363.31
+25'	5.27	363.35
+32'	5.04	363.58
±	5.01	363.61
+12.5'	4.89	363.73
+19.5'	4.96	363.66
+27.5'	5.32	363.30
N. Gutter.	5.46	363.16
N top cb.	4.88	363.74
0 + 50		
N top cb.	5.04	363.58
N. Gutter.	5.64	362.98
+10'	5.55	363.07
+18'	5.07	363.55
+25'	5.02	363.60
±	5.17	363.45
+8'	5.23	362.39
+12.5'	5.38	363.24
+27.5'	5.57	363.05

368.62

S. Gutter in Drive Way	5.80	362.82
1+00		
S. top cb.	4.83	363.79
S. Gutter.	5.51	363.11
+10'	5.44	363.18
+25'	5.40	363.22
↳	5.45	363.17
+12.5	5.47	363.15
+27.5	5.83	362.77
N. Gutter	6.14	362.48
N. top cb.	5.57	363.05
1+07.5		
N. top cb.	5.66	362.96
N. Gutter	6.27	362.35
+10	5.96	362.66
+17'	5.67	362.95
+25'	5.49	363.13
↳	5.48	363.14
+12.5	5.41	363.21
+27.5	5.51	363.11
S. Gutter	5.53	363.09
S. top cb.	4.87	363.75
1+23=B.G. Alley Return on South		
S. top cb.	5.07	363.55
S. Gutter.	5.73	362.89
+10'	5.66	362.96

368.62

13

+25'	5.47	363.15
↳	5.53	363.09
+12.5'	5.72	362.90
+27.5	6.26	362.36
N. Gutter.	6.67	361.95
N. top cb. = 1+23.6 = B.G. Alley Ret. on N.	6.01	362.61
check SWBP	4.98	363.64
TP	5.16	367.78
1+25.4 = N. cb. Alley Return on North.		
N. on cb.	5.09	362.69
" " Gutter.	5.19	362.59
+10' on cb.	5.13	362.65
" " Gutter.	5.38	362.40
+15' on cb.	5.21	362.57
" " Gutter.	5.55	362.23
N. Gutter	5.87	361.91
1+28 = N. cb. Alley on South.		
S. Gutter.	4.95	362.83
+7' on cb.	4.17	363.61
" " Gutter.	4.49	363.29
+13' on cb.	4.07	363.71
" " Gutter.	4.25	363.53
S. on cb.	3.97	363.81
" " Gutter.	4.12	363.66
1+32.9 = S. Alley on South	1+32.5 = S. on North. bet. obs.	
S. L. on Pav.	4.52	363.26

SWBP
Van Dyke
El Cajon.

367.78

+7'	4.74	363.04
+13'	4.98	362.80
S. Gutter.	5.09	362.69
+10'	5.04	362.74
+25'	4.87	362.91
$\frac{1}{2}$	4.93	362.85
+12.5	5.17	362.61
+27.5	5.64	362.14
N. Gutter.	6.08	361.70
+10'	5.69	362.09
+15	5.56	362.22
N.L.	5.43	362.35

1+40 = E. cb. Alley on North

N.L. on Gut. in Drive	5.36	362.42
+10 " " " "	5.54	362.24
+15 " " " "	5.73	362.05
N. Gut.	6.29	361.49

1+40 = E. cb. Alley on South

S. Gutter.	5.18	362.60
+7' on cb.	4.42	363.36
" " Gutter.	4.69	363.09
+13' on cb.	4.36	363.42
" " Gut.	4.53	363.25
Sh. on cb.	4.34	363.44
" " Gut.	4.47	363.36

1+42 = E.C. cb. Radius. Alley on South

367.78

14

S. top cb	4.50	363.28
S. Gutter.	5.21	362.57
1+50		
S. top cb	4.82	362.96
S. Gutter.	5.45	362.33
+10	5.49	362.29
+25'	5.41	362.37
+30	5.34	362.44
$\frac{1}{2}$	5.41	362.37
+12.5	5.70	362.08
+27.5	6.11	361.67
N. Gut. in Drive	6.43	361.35

1+57.5

N. top cb	6.03	361.75
" Gutter.	6.57	361.21
+10'	6.30	361.48
+25'	5.95	361.83
$\frac{1}{2}$	5.70	362.08
+12.5	5.74	362.04
+27.5	5.72	362.06
S. Gutter	5.74	362.04
S. top cb	5.07	362.71

1+72

S. Gut. in Drive	6.21	361.57
+10	6.27	361.51
+25	6.27	361.51

367.78

L	6.26	361.52
+12.5	6.45	361.33
+27.5	6.80	360.98
N. Gutter	7.06	360.72
N. top cb	6.58	361.20
1+76		
S. top cb	5.80	361.98
" Gutter	6.43	361.35
2+00		
N. top cb	7.70	360.08
N. Gutter	8.19	359.59
+10'	7.77	360.01
+16'	7.60	360.18
+25	7.55	360.23
L	7.38	360.40
+12.5	7.46	360.32
+27.5	7.53	360.25
S. Gutter	7.57	360.21
S. top cb	6.91	360.87
2+50		
S. top cb	9.23	358.55
S. Gutter	9.87	357.91
+10'	9.70	358.08
+25'	9.50	358.28
+32	9.36	358.42
L	9.35	358.43

367.78

15

+12.5	9.50	358.28
+22.5	9.57	358.21
+27.5	9.60	358.18
N. Gut	10.11	357.67
N. top cb	9.66	358.12
2+57		
N. top cb	9.91	357.87
N. Gutter	10.32	357.46
+10'	9.92	357.86
+13	9.78	358.00
+25'	9.72	358.06
L	9.57	358.21
+12.5	9.70	358.08
+27.5	10.04	357.74
S. Gutter	10.27	357.51
S. top cb	9.56	358.22
2+65.3 = 1/2 line 43rd street		10' db. 10' 1/48.
S. top cb	9.96	357.82
S. Gutter	10.62	357.16
+10'	10.40	357.38
+25	10.07	357.71
+32	9.94	357.84
L	10.05	357.73
+12.5	10.02	357.76
+27.5	10.31	357.47
N. Gutter	10.62	357.16
N. top cb	10.20	357.58

367.78

5' East of N. Line 43rd

N. Gutter	10.62	357.16
+10	10.51	357.27
+25'	10.19	357.59
$\frac{L}{2}$	10.13	357.65
+125	10.21	357.57
+275	10.49	357.29
S. Gut.	10.77	357.01
T.P	5.25 363.03	10.00 357.78
West cb. Line 43rd Street		
-50' on cb.	5.01	358.02
" " Gutter	5.63	357.40
-25' on cb.	5.15	357.88
" " Gutter	5.76	357.27
S. Line on cb.	5.24	357.79
" " Gutter	5.90	357.13
+10' on cb.	5.26	357.77
" " Gutter	5.97	357.06
S. Gut.	6.09	356.94
+10	5.83	357.20
+25	5.58	357.45
$\frac{L}{2}$	5.48	357.55
+125	5.58	357.45
+275	5.83	357.20
N. Gutter	5.94	357.09
+10' on cb.	5.45	357.58

SWBP
43rd Street
4th E. Cajon Ave.

363.03

16

+10' on Gut.	5.98	357.05
+19' " "	6.10	356.93
N. Line on cb.	5.47	357.56
" " Gutter	6.05	356.98
+25' on cb.	6.02	357.01
" " Gut.	6.70	356.33
+38' on cb.	6.30	356.73
+ " " Gut.	7.00	356.03
W 1/4		
-38'	7.00	356.03
-25'	6.66	356.37
N. L.	5.92	357.11
+6'	5.94	357.09
+15'	5.85	357.18
N. Gutter	5.91	357.12
+10'	5.90	357.13
+25'	5.80	357.23
$\frac{L}{2}$	5.77	357.26
+125	5.80	357.23
+275	5.95	357.08
S. Gutter	6.16	356.87
+10'	5.90	357.13
S. L.	5.61	357.42
+25'	5.38	357.65
+50'	5.21	357.82

 $\frac{L}{2}$ 43rd Street

-50'	5.10	357.93
-25'	5.28	357.75
S.L.	5.57	357.46
+10'	5.91	357.12
S. Gutter	6.25	356.78
+10'	6.12	356.91
+25'	6.03	357.00
L	6.03	357.00
+125'	6.09	356.94
+27.5'	6.10	356.93
N. Gutter	6.10	356.93
+10'	6.08	356.95
+19'	6.08	356.95
N.L.	5.98	357.05
+25'	6.80	356.23
+38'	7.18	355.85
E. 1/4 431 ^d Street		
-38'	7.73	355.30
-25'	7.38	355.65
N.L.	6.51	356.52
+6	6.55	356.48
+15	6.62	356.41
N. Gutter	6.54	356.49
+10	6.50	356.53
+25	6.35	356.68
L	6.29	356.74

+125	6.23	356.80
+27.5	6.29	356.74
+36.5	6.38	356.65
S. Gutter	6.34	356.69
+10'	6.07	356.96
S.L.	5.86	357.17
+25'	5.59	357.44
+50'	5.42	357.61
East cb. Line 431 ^d Street		
-50' on cb.	5.49	357.54
" " Gutter	6.04	356.99
-25' on cb.	4.63	358.40 357.40?
" " Gutter	6.18	356.85
S.L. on cb.	5.78	357.25
" " Gutter	6.35	356.68
+10' on cb.	5.48	357.25
" " Gutter	6.37	356.66
S. Gutter	6.50	356.53
+10'	6.38	356.65
+25'	6.42	356.61
L	6.53	356.50
+125	6.63	356.40
+27.5	6.91	356.12
N. Gutter	7.10	355.93
+10' on cb.	6.84	356.19
" " Gutter	7.32	355.71

+19' on Gut	7.31	355.72
N. L. on cb.	6.86	356.17
" "Gut.	7.24	355.79
+25' on cb.	7.48	355.55
" "Gut.	8.12	354.91
+38' on cb.	7.84	355.19
+38' "Gutter.	8.45	354.58

East line 43rd Street = 0+00

N. top cb.	6.82	356.21
N. Gutter.	7.36	355.67
+40	7.40	355.63
+10	7.14	355.89
+25	6.90	356.13
±	6.80	356.23
+12.5	6.74	356.29
+27.5	6.55	356.48
S. Gutter.	6.61	356.42
S. top cb.	5.82	357.21
T.P. 2.43 360.21	5.25	357.78

0+15

S. top cb.	3.53	356.68
S. Gutter	4.28	355.93
+10	4.10	356.11
+20	4.24	355.97
+25	4.35	355.86
±	4.27	355.94

+12.5	4.48	355.73
+27.5	4.79	355.42
N. Gutter	5.09	355.12
N. top cb.	4.46	355.75
0+35		
N. top cb.	5.12	355.09
N. Gutter.	5.70	354.51
+10	5.29	354.92
+25	5.07	355.14
±	4.84	355.37
+12.5	4.92	355.29
+27.5	4.81	355.40
S. Gutter	4.98	355.23
S. top cb.	4.21	356.00
0+70		
S. top cb.	5.44	354.77
S. Gutter.	6.13	354.08
+10	5.97	354.24
+25	5.96	354.25
±	5.89	354.32
+12.5	6.10	354.11
+27.5	6.35	353.86
N. Gutter.	6.76	353.45
N. top cb.	6.16	354.05
1+00		
N. top cb.	7.09	353.12
N. top Gutter	7.68	352.53

5th St.
43rd Street
+ E/Cy 100 Ave

360.21

+10'	7.27	352.94
+25	6.99	353.22
L	6.76	353.45
+12.5	6.79	353.42
+27.5	6.95	353.26
S. Gutter	7.16	353.05
S. top C.	6.55	353.66

1+23.4 = B.S. Alley Returns on North & South.

S. top C.	7.35	352.86
S. Gutter	7.94	352.27
+10	7.72	352.49
+25'	7.46	352.75
L	7.44	352.77
+12.5	7.63	352.58
+27.5	7.87	352.34
N. Gutter	8.30	351.91
N. top C.	7.73	352.48

1+25.3 = W. cb. Alley on North.

N.H. on cb.	7.23	352.98
" " Gutter	7.35	352.86
+10' on cb.	7.42	352.79
" " Gut.	7.61	352.60
+15' on cb.	7.55	352.66
" " Gut.	7.78	352.43
N. Gutter	8.34	351.87

1+25.6 = W. cb. Alley on South

360.21

19

S. Gut.	7.99	352.22
+7' on cb.	7.26	352.95
" " Gut.	7.53	352.68
+13' on cb.	7.15	353.06
" " Gut.	7.28	352.93
Sto. on cb.	7.02	353.19
" " Gut.	7.18	353.03

1+32.8 on North and 1+33.1 on South = Ben. obs. ^{2.411 of}

S. L.	7.54	352.67
+7	7.77	352.44
+13	7.93	352.28
S. Gutter	8.10	352.11
+4'	8.09	352.12
+10'	7.96	352.25
+25	7.70	352.51
L	7.68	352.53
+6	7.71	352.50
+12.5	7.83	352.38
+27.5	8.16	352.05
N. Gutter	8.50	351.71
+10	8.21	352.00
+15	8.02	352.19
+21	7.90	352.31
N. L.	7.82	352.39
1+28.7 = L. M.H. Gas + Elec. Co.	8.13	352.08
1+29.7 = L. Junior M.H.	7.81	352.40
1+31.5 = L. " "	7.76	352.45

31.2'
North of E
3.3' North
of E
15' NE

1+40.2 = East edge Paving on North Alley.
 Note: no curb in from E.C. Return to N/R line on E.

N.L. on Paving.	7.82	352.39
+10' " "	8.02	352.19
+15' " "	8.14	352.07
+19' " "	8.33	351.88
N. Gutter.	8.56	351.65

1+43 = E.C. Alley Return on North.

N. top cb.	8.07	352.14
" Gutter.	8.59	351.62

1+40.5 = East cb Line Alley on South

S. Gutter.	8.27	351.94
+7' on cb.	7.57	352.64
" " Gutter.	7.91	352.30
+13' on cb.	7.48	352.73
" " Gutter.	7.68	352.53
S.L. on cb.	7.40	352.81
" " Gutter.	7.56	352.65

1+42.5 = E.C. Alley Return on South

S. top cb.	7.67	352.54
" Gut.	8.29	351.92

1+50

S. top cb.	7.71	352.50
S. Gutter.	8.37	351.84
+3	8.37	351.84
+10	8.13	352.08

+25	7.96	352.25
2	7.85	352.36
+12.5	8.04	352.17
+27.5	8.41	351.80
N. Gutter.	8.75	351.46
N. top cb.	8.14	352.07

1+75

N. top cb.		
N. Gutter in Drivc	8.85	351.36
+10'	8.60	351.61

+25	8.20	352.01
2	7.98	352.23
+12.5	8.05	352.16
+27.5	8.13	352.08
S. Gutter.	8.40	351.81
S. top cb.	7.78	352.43

2+00

S. top cb.	7.85	352.36
S. Gutter.	8.44	351.77
+10'	8.28	351.93
+19	8.14	352.07
+25	8.14	352.07

2	8.05	352.16
+12.5	8.24	351.97
+27.5	8.65	351.56
N. Gutter.	9.14	351.07
N. top cb.	8.55	351.66

360.21

2. + 50.

N. Gutter on Drive	9.52	350.69
+10	9.02	351.19
+25'	8.55	351.66
↳	8.26	351.95
+12.5'	8.29	351.92
+27.5'	8.40	351.81
S. Gutter.	8.59	351.62
S. top cb.	7.95	352.26

2. + 65.5 = N. line Fairmount Ave

S. top cb.	7.95	352.26
S. Gutter.	8.63	351.58
+10'	8.67	351.54
+25'	8.62	351.59
↳	8.68	351.53
+12.5'	8.90	351.31
+27.5'	9.26	350.95
N. Gutter.	9.45	350.76
N. top cb.	8.97	351.24

T.P. 5.06 357.35 7.92 352.29

West cb Line Fairmount

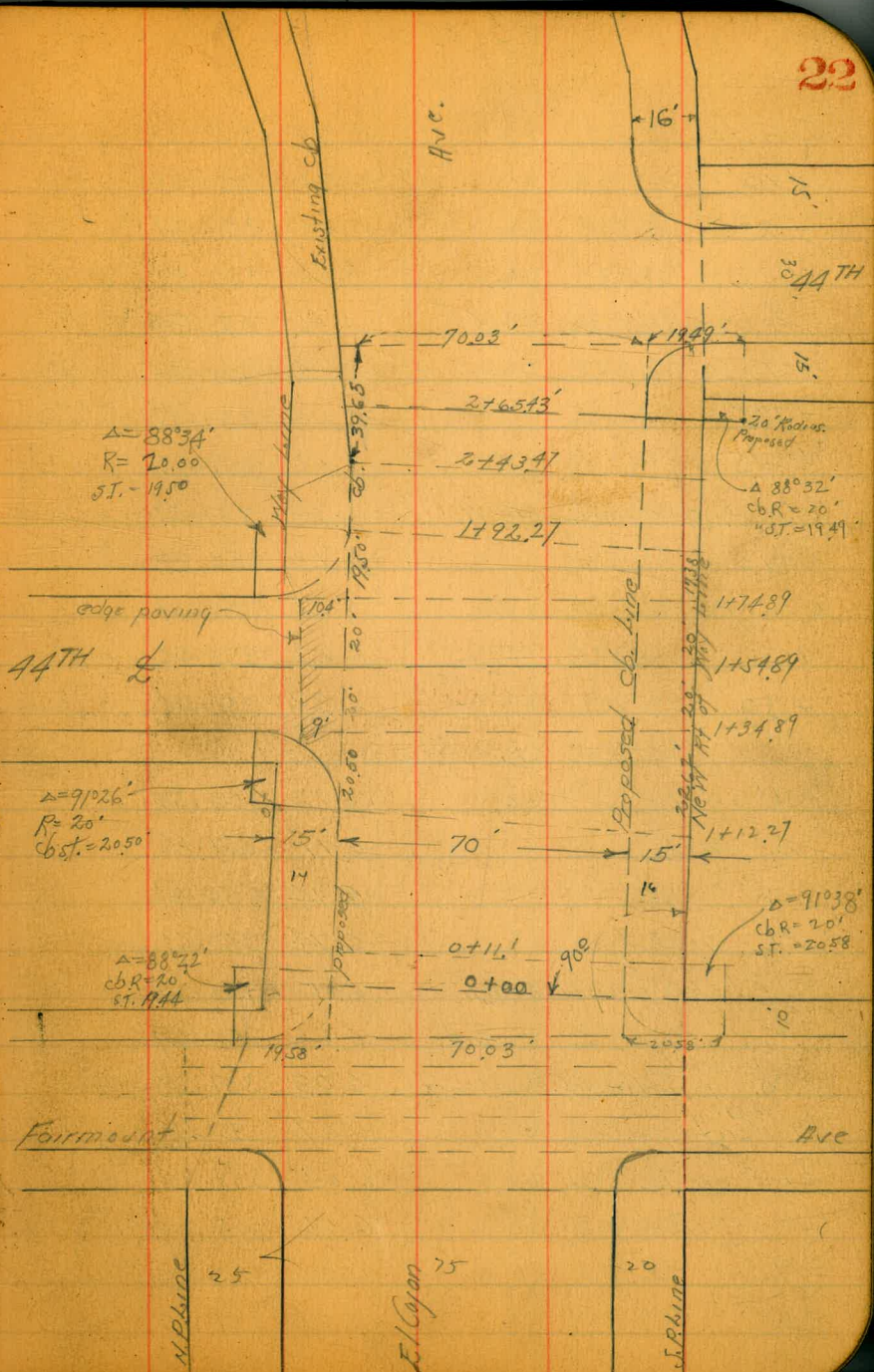
-50' on cb.	6.31	351.04
" " Gutter.	6.98	350.37
-25' on cb.	6.28	351.07
-25' " Gutter.	6.93	350.42
N. Produced on cb.	6.18	351.17
" " " Gutter.	6.80	350.55

357.35

21

+15' on cb.	6.15	351.20
" " Gutter.	6.66	350.69
N. Gut.	6.55	350.80
+10	6.44	350.91
+25'	6.23	351.12
↳ Produced	6.17	351.18
+12.5	6.07	351.28
+27.5	5.97	351.38
S. Gut.	5.88	351.47
+10' on cb.	5.11	352.24
" " Gutter.	5.81	351.54
S. on Gut. in Drive.	5.80	351.55
+25' " " " "	5.53	351.82
+50' " cb.	4.49	352.86
" " Gutter.	5.19	352.16
N. Fairmount		
-50'	4.62	352.73
-25'	4.94	352.41
S. Produced from West.	5.11	352.24
+10'	5.49	351.86
S. Gut. = S. cb. Produced from West	5.83	351.52
+10'	5.88	351.47
+25'	5.79	351.56
↳	5.85	351.50
+12.5	6.00	351.35
+27.5	6.11	351.24

N. Gut. = N. cb. line produced.	6.17	351.18
+10	6.25	351.10
N.L. produced.	6.35	351.00
+25	6.43	350.92
+50	6.46	350.89
<i>↳ Roadway</i>		
-50	6.24	351.11
-25	6.19	351.16
N.L. Produced from West.	6.10	351.25
+15	6.01	351.34
N. Gut.	5.95	351.40
+10	5.88	351.50
+25	5.78	351.60
<i>↳ produced from West.</i>	5.59	351.76
+175	5.56	351.79
+275	5.72	351.63
S. Gut.	5.75	351.60
+10	5.36	351.99
S.L.	5.06	352.29
+25'	4.72	352.63
+50	4.45	352.90
<i>10' East.</i>		
-50'	4.64	352.71
-25'	4.99	352.36
S.L.	5.47	352.08
+10'	5.30	351.85



357.35

S. Gut.	5.75	351.60
+10'	5.68	351.67
+25	5.44	351.91
+32	5.48	351.87
L. produced from West	5.56	351.79
+125	5.84	351.51
+195	6.03	351.32
+275	6.07	351.28
N. Gut. produced from W.	6.04	351.31
+10	6.13	351.22
N.L. produced from W.	6.21	351.14
+25'	6.29	351.06
+50	6.39	350.96
East cb. Fairmount		
-50' on Gut. in Drive.	6.78	350.57
-28' on cb	6.19	351.16
-28' " Gut.	6.74	350.61
N.L. on Gut.	6.74	350.61
+15' = B.C. proposed Return on cb.	6.25	351.30
" " " " Gut.	6.66	350.69
N. cb. produced from West on cb.	6.03	351.32
" Gut.	6.67	350.68
+10' on cb.	6.03	351.32
" " Gut.	6.56	350.79
+19	6.50	350.85
+25	6.20	351.15

357.35

23

+31	5.85	351.50
L. Produced from West	5.63	351.72
+125	5.40	351.95
+195	5.40	351.95
+275	5.58	351.77
S. Gut. produced from West	5.74	351.61
+4.8' = proposed south cb on East on Gut.	5.73	351.62
+10' on Gut. S.L. produced from West.	5.73	351.62
S.L. on Gut.	5.74	351.61
+5.4' = B.C. proposed Ret on cb.	5.00	352.35
" on Gut.	5.72	351.63
+25' on cb	4.74	352.61
+25' " Gut.	5.54	351.81
+50' on cb.	4.37	352.98
" " Gut.	5.25	352.10
0+00 = see sketch	70' Roadway.	15' cbs.
S.L. = New Rt. of Way line	4.5	352.85
+15' = proposed cb	5.1	352.25
cb + 6.5 = exist. cb. on top	5.14	352.21
" on Gut.	5.70	351.65
+10	5.67	351.68
+20	5.34	352.01
+30	5.27	352.08
+35 = L.	5.37	351.98
+5'	5.57	351.78
+15'	6.00	351.35

357.35

+23.5 = exist. cb on top	6.05	351.30
" " " on Gut.	6.53	350.82
+25	5.9	351.45
+35 = proposed cb line	5.7	351.65
+50 = " N line	5.9	351.45
0 + 11.1' = E.C. proposed Return on South		
H.L.	5.9	351.45
cb.	5.7	351.65
+11.2 on exist. cb.	5.90	351.45
" " Gut.	6.53	350.82
+20	5.95	351.40
+30	5.52	351.83
2	5.32	352.03
+5	5.22	352.13
+15'	5.29	352.06
+25	5.58	351.77
+28' on Gut. at exist. cb.	5.56	351.79
" " cb.	5.02	352.33
S. cb.	4.9	352.45
S.L.	4.5	352.85
0 + 50		
S.L.	4.2	353.15
cb.	4.6	352.75
+8.8' on exist. cb.	4.66	352.69
" " Gut.	5.33	352.02
+10'	5.32	352.03

357.35

24

+20	5.10	352.25
+30	4.96	352.39
2	5.01	352.34
+5'	5.15	352.20
+15	5.59	351.76
+25	6.20	351.15
+26 on Gut. at exist. cb.	6.20	351.15
" " cb.	5.51	351.84
N. cb.	5.4	351.95
H.L.	5.2	352.15
0 + 78		
H.L.	5.0	352.35
cb.	5.1	352.25
+7.8' on exist. cb.	5.29	352.06
" " Gut.	5.87	351.48
+10'	5.84	351.51
+20'	5.23	352.12
+30'	4.78	352.57
2	4.72	352.62
+5	4.70	352.65
+15	4.83	352.52
+25 on Gut. at exist. cb.	5.08	352.27
" " cb.	4.36	352.99
S. cb.	4.3	353.05
S.L.	3.8	353.55
1 + 12.2' = B.C. proposed Return on North		

357.35

1+12.27

S.L.	3.7	353.65
S. cb.	3.9	353.45
+10'	4.1	353.25
+11.8 on East cb.	4.14	353.21
" " Gut.	4.76	352.59
+20	4.61	352.74
+30	4.45	352.90
L	4.45	352.90
+5	4.55	352.80
+15	4.82	352.53
+25	5.40	351.95
+28.8 = on Gut. at exist. cb.	5.56	351.79
" " " cb.	4.97	352.38
N. cb.	5.0	352.35
N.L.	4.8	352.55
N.L. - 5.5	1+34.89 = section on N. cb. line 44th on North	
= on B.C. proposed Return on top of cb.	4.75	352.60
N.L. + 6 = edge exist paving	4.79	352.56
" " on Gut.	5.30	352.05
N. cb. on Pav.	5.33	352.02
+5	5.30	352.05
+10	5.11	352.24
+20	4.60	352.75
+30	4.30	353.05
L	4.25	353.10
+5	4.28	353.07

357.85

25

115	4.36	352.99
+17.8 on Gut. at exist. cb.	4.55	352.80
" " cb.	3.92	353.43
+25	3.8	353.55
S. cb.	3.5	353.85
S.L.	3.2	354.15
1+54.89 = E. cb. 44th on North.		
S.L.	3.3	354.05
cb.	3.5	353.85
+10	3.6	353.75
+13.7 = exist. cb.	3.68	353.67
" on Gut.	4.33	353.02
+20	4.23	353.12
+30	4.01	353.34
L	4.02	353.33
+5 = B. N.H.	4.06	353.29
T.P.	6.04	359.39
+15	6.32	353.07
+25	6.75	352.64
+31	6.90	352.49
N. cb.	6.82	352.57
+9.5 = edge existing paving	6.53	352.86
1+74.89 = E. cb. 44th on North.		
B.C. cb. proposed Radius		
= 19.5' N. N. cb.	5.90	353.49
10' N. N. cb.		
= edge existing paving	5.96	353.43
" on gutter.	6.57	352.82

359.39

N. cb.	6.65	352.74
+ 5'	6.69	352.70
+ 10'	6.40	352.99
+ 20'	6.01	353.38
+ 30'	5.84	353.55
5'	5.83	353.56
+ 5'	5.88	353.51
+ 15'	6.09	353.30
+ 20.5' = at East cb. on Gut.	6.12	353.27
" on top cb.	5.46	353.93
+ 25'	5.3	354.09
S. cb.	5.4	353.99
S. line.	4.9	354.49
	^{proposed} 149.27 = E.C. cb Return on North	
S.L.	4.9	354.49
S. cb.	4.9	354.49
+ 10'	5.2	354.19
+ 15.4' = top East cb.	5.33	354.06
" " on Gut.	6.00	353.39
+ 20'	5.90	353.49
+ 30'	5.64	353.75
5'	5.60	353.79
+ 5'	5.57	353.82
+ 15'	5.72	353.67
+ 25'	6.17	353.22
+ 31.7' of East cb. on Gut.	6.57	352.82
" on cb.	5.98	353.41

359.39

26

N. cb.	6.0	353.39
N.L.	5.6	353.79
	2.743.47 = ^{Proposed} Δ in cb line on North	
N.L.	5.4	353.99
+ 15' = N. cb.	5.46	353.93
" on Gut.	6.02	353.37
cb + 10'	5.54	353.85
+ 20'	5.15	354.24
+ 30'	5.04	354.35
5'	5.09	354.30
+ 5'	5.17	354.22
+ 15'	5.38	354.01
+ 17' = East cb. in Drive	5.36	354.03
+ 25'	4.6	354.79
S. cb.	4.4	354.99
S.L.	4.3	355.09
	2.765.43 = B.C. proposed cb Return on South	
S.L.	4.4	354.99
S. cb.	4.4	354.99
+ 10'	4.4	354.99
+ 19.8' = East cb.	4.62	354.77
" " on Gut.	5.26	354.13
+ 30'	4.99	354.40
5'	4.87	354.52
+ 5'	4.86	354.53
+ 15'	4.95	354.44

359.39

+25	5.28	354.11	
N. cb.	5.81	353.58	
+1' at exist cb. on gut.	5.81	353.58	
" on " " on cb.	5.20	354.19	
N.L.	4.9	354.49	
Check BM 461	359.41	354.80	SW 8P
	4.61	354.78	44th 4th Cajon
West cb. line 44th Street			
N. top cb.	5.01	354.40	
N. Gutter.	5.68	353.73	
+10'	5.26	354.15	
+20'	4.89	354.52	
+30'	4.72	354.69	
+35' = $\frac{1}{2}$	4.69	354.72	
+5'	4.76	354.65	
+15'	4.95	354.46	
+17'	4.96	354.45	
+25'	5.01	354.40	
on top cb.			
S. cb. on E. produced to West	4.62	354.79	
" " on Gut.	5.04	354.37	
+6' " "	5.09	354.32	
S. cb. on East produced to West cb.	4.60	354.81	
" " Gut.	5.04	354.37	
+5.1' = BC proposed Road. on cb.	4.59	354.82	
" " " " " Gut.	5.00	354.41	
+25' on Gut. 10 Drive 1/2 of	4.80	354.61	
+50' on cb.	4.31	355.10	
+50' " Gutter.	4.70	354.71	

359.41

27

7.5' East of N. cb. 44th			
-50'	4.08	355.33	
-25'	4.28	355.13	
S. cb. produced from East.	4.49	354.92	
+10'	4.48	354.93	
+16' = S. cb. on E.	4.43	354.98	
cb +10'	4.88	354.53	
to 44th Street			
-50'	3.85	355.56	
-25'	4.03	355.38	
S. cb. produced from E.	4.09	355.32	
+10'	4.25	355.16	
+16' = S. cb. produced from East	4.58	354.83	
cb + 7'	4.78	354.63	
+10'	4.75	354.66	
+20'	4.64	354.77	
+30'	4.57	354.84	
2	4.54	354.87	
75'	4.55	354.86	
+15'	4.74	354.67	
+25'	5.13	354.28	
N. Gut.	5.55	353.86	
N. top cb.	4.87	354.54	
7.5' East of S. 44th			
S.L. -50'	3.90	355.51	
S.L. -25'	4.00	355.41	

359.41

St.	4.12	355.29
+5'	4.21	355.20
+10'	4.44	354.97
+16' = S cb. produced from E.	4.64	354.77
East cb line 44th Street		
-50' on cb.	3.90	355.51
-50' "Gutter.	4.33	355.08
-25' on cb.	4.04	355.37
-25' "Gutter.	4.49	354.92
S cb. on cb.	4.12	355.29
" "Gut.	4.63	354.78
+10' on Gut.	4.65	354.76
+16' on cb. line	4.73	354.68
cb +10	4.58	354.83
+20	4.42	354.99
+30	4.38	355.03
2	4.39	355.02
+5'	4.46	354.95
+15	4.65	354.76
+25	5.02	354.39
N. Gut.	5.46	353.99
N. cb.	4.72	354.69
Stations are on S. line from High East 0 + 00 = East line 44th Street.		
N. cb.	4.54	354.87
Gut.	5.17	354.24
+10	4.92	354.49

359.41

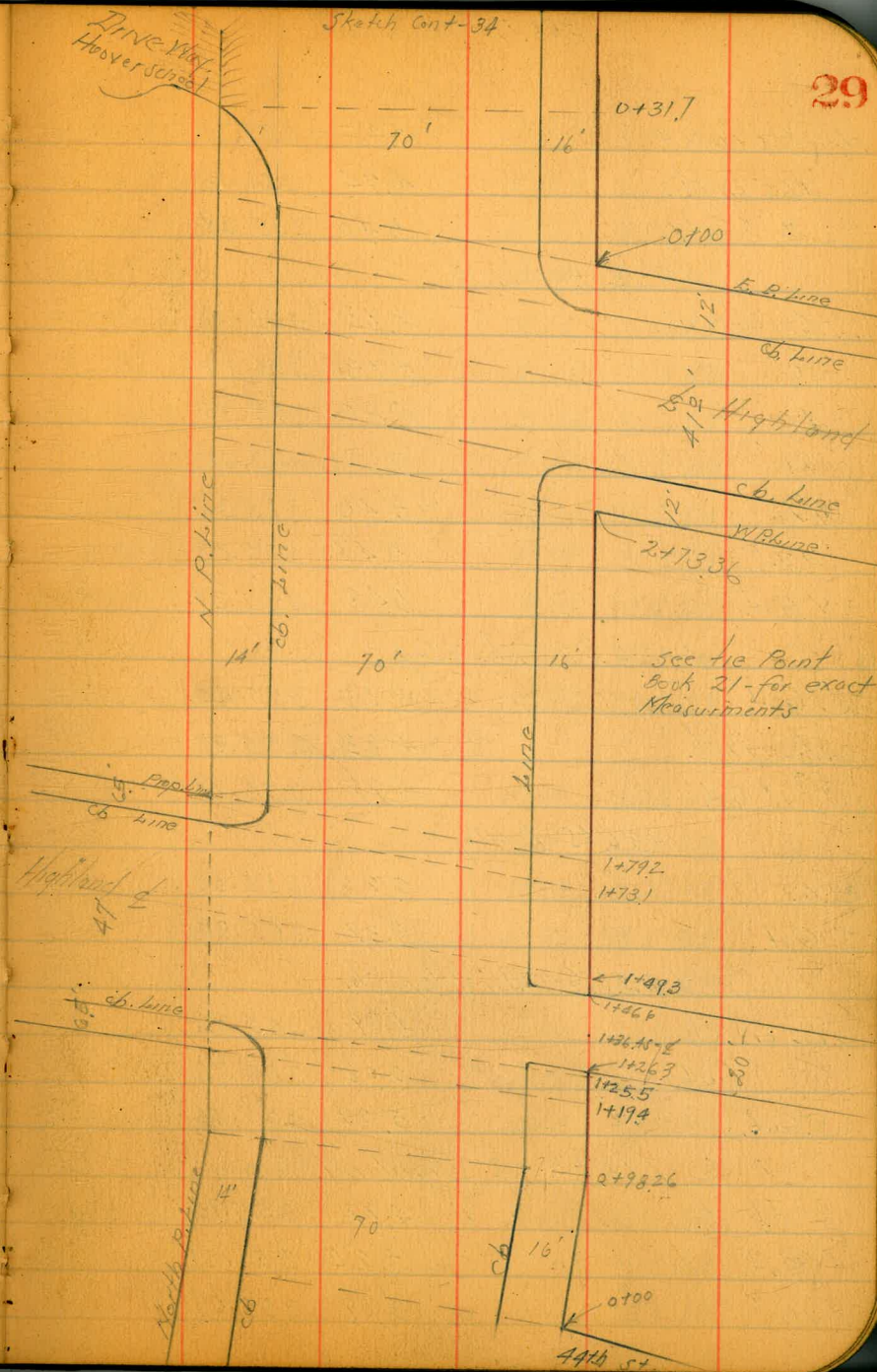
28

+20	4.51	354.90
+30'	4.77	355.14
2	4.22	355.19
+5'	4.23	355.18
+15'	4.25	355.16
+25'	4.41	355.00
+35' = South cb. on Gut.	4.64	354.77
"Gutter.	4.22	355.19
TP	5.95	360.75
0 + 45		
5 top cb.	5.32	355.43
Gut.	5.78	354.97
+10	5.47	355.28
+20	5.38	355.37
+30	5.28	355.47
2	5.27	355.48
+5	5.23	355.52
+15	5.53	355.22
+25	5.90	354.85
N. Gut.	6.28	354.47
job. on top	5.45	355.30
0 + 98.26 = Δ section on bisector		
N top cb	5.04	355.71
N. Gut.	5.86	354.89
+10.03	5.50	355.25
+20.06	5.17	355.58

SW. BP
44th
Cajons.

360.75

+30.08	5.01	355.74
ℓ	4.99	355.76
+5.02	5.00	355.75
+15.05	5.11	355.64
+25.08	5.21	355.54
S. Gut.	5.42	355.33
Stop cb.	4.83	355.92
1+23.8		
Stop cb. B.C. Alley	5.05	355.70
S. Gut. on Gut.	5.32	355.43
1+25.5 = N. cb. Highland on North. produced		
S. Gut.	5.33	355.42
+10.14	5.12	355.63
+20.3	4.96	355.81
+30.4	4.82	355.93
ℓ	4.84	355.91
+5.1	4.86	355.89
+15.2	5.00	355.75
+25.4	5.34	355.41
N. Gut.	5.60	355.15
+7 on Gut.	5.47	355.28
1+42.2 = N. on cb.	4.88	355.87
N. on Gut.	5.48	355.27
+20' on cb.	4.82	355.93
" " Gut.	5.49	355.26
+40' on "	5.43	355.32



36075

N.H. +50' on Gut.	5.45	355.30
+60' on cb.	4.74	356.01
" " Gut.	5.40	355.35
N 1/4 Highland		
-60' from N.H.	4.73	356.02
-50'	4.73	356.02
-40'	4.80	355.95
-20'	5.07	355.68
N.H.	5.40	355.35
+7'	5.47	355.28
N Gut.	5.48	355.27
1+26.3 = N. cb. Alley		
S. Gut.	5.35	355.40
S.H. on cb.	4.83	355.92
" " Gut.	4.97	355.78
1+36.45 = S Alley		
S.H.	5.23	355.52
S. Gut.	5.37	355.38
1+46.6 = N.H. Alley cb.		
S.H. on cb.	4.89	355.86
" " Gut.	5.02	355.73
S. Gut.	5.29	355.46
1+49.3 = S Highland		
S. cb.	4.99	355.76
Gut.	5.24	355.51
+10'	5.08	355.67

36075

30

+20.3	4.85	355.90
+30.4	4.70	356.05
S. on N.H.	4.75	356.00
+50'	4.78	355.97
+15'	4.90	355.85
+25.35	5.17	355.58
N. Gut.	5.46	355.29
+7'	5.36	355.39
N.H.	5.21	355.54
+20'	4.84	355.91
+40'	4.80	356.25
+50	4.46	356.29
+60	4.42	356.33
11.9' East S = E 1/4		
-60'	4.64	356.11
-50'	4.67	356.08
-40'	4.60	356.15
-20'	4.80	355.95
N.H. - 6'	5.10	355.65
N.H.	5.20	355.55
+7'	5.25	355.40
N. Gut.	5.40	355.35
1+73.1		
-60' on cb.	4.47	356.28
-60' " Gut.	5.12	355.63
-50' " "	5.13	355.62
-40' " "	5.15	355.60

-20' on Gut.	5.20	355.55
-20' 'cb.	4.61	356.14
1/2 on cb.	4.62	356.13
" " Gut.	5.20	355.55
+7' on Gut.	5.26	355.49
N. Gut.	5.33	355.42
+10.14	5.02	355.73
+20.3	4.76	355.99
+30.4	4.60	356.15
L	4.58	356.17
+5.7	4.59	356.16
+15.21	4.78	355.97
+25.25	5.05	355.70
S. Gutter.	5.29	355.46
S. top cb.	4.95	355.80
1479.2		
Stop cb.	4.93	355.82
S. Gutter	5.28	355.47
+10.10	5.02	355.73
+20.3	4.73	356.02
+30.4	4.56	356.19
L	4.57	356.18
+5.7	4.58	356.17
+15.?	4.74	356.01
+25.3	4.96	355.79
N. Gut.	5.29	355.46

2100 R/A to SL.

N. top cb.	4.62	356.13
" Gut.	5.24	355.51
+10	4.87	355.88
+20'	4.72	356.03
+30	4.49	356.26
L	4.48	356.27
+5'	4.50	356.25
+15'	4.56	356.19
T.P.	4.76	360.96
+25'	5.10	355.86
S. Gut	5.42	355.54
S. top cb.	5.10	355.86

SWBP
Highland
4210.00

2450 R/A to Shine

Stop cb.	4.91	356.05
S. Gutter.	5.28	355.68
+10'	4.96	356.00
+20'	4.73	356.23
+30	4.64	356.32
L	4.61	356.35
+5'	4.61	356.35
+15'	4.68	356.28
+25	4.86	356.10
N. Gut.	5.21	355.75
N. top cb.	4.69	356.27

247336 = Section on Mt. Highland

36096

N. top cb.	4.56	356.40
N. Gut.	5.17	355.79
+10.14	4.76	356.20
+20.3	4.59	356.37
+30.4	4.53	356.43
L	4.51	356.45
+5.07	4.51	356.45
+15.2	4.62	356.34
+25.3	4.89	356.07
S. Gut.	5.22	355.74
S top cb.	4.76	356.20
West cb. Highland on South.		
-50' on cb.	4.95	356.01
-50' "Gut.	5.60	355.36
-25' on cb.	4.92	356.04
" " Gut.	5.55	355.41
S.L. on cb.	4.79	356.17
" " Gut.	5.42	355.54
+8' " "	5.26	355.70
S. Gut.	5.11	355.85
+10.14	4.75	356.21
+20.3	4.54	356.42
+30.4	4.45	356.51
L	4.48	356.48
+5.1	4.48	356.48
+15.2	4.51	356.45

36096

32

+25.3	4.61	356.35
N. Gut.	5.09	355.87
1 cb.	4.51	356.45
W 1/4		
S. Gut.	4.69	356.27
+8'	4.76	356.20
Stair	4.84	356.12
+25'	4.95	356.01
+50	5.01	355.95
E Highland		
-50'	4.77	356.19
-25'	4.70	356.26
S.L.	4.54	356.42
+8	4.52	356.44
S. Gut.	4.50	356.46
+10.1	4.45	356.51
+20.2	4.38	356.58
+30.4	4.31	356.65
L	4.38	356.63
+5.1	4.32	356.64
+15.2	4.40	356.56
+25.3	4.65	356.31
N. Gut.	4.98	355.98
N top cb.	4.41	356.55
E 1/4		
S. Gut.	4.58	356.38

36096

+8'	4.62	356.84
S.L.	4.68	356.28
+25'	4.78	356.18
+50'	4.84	356.12
E. cb. line Highland		
+50 on cb.	4.76	356.20
" " Gut.	5.53	355.43
-25' " " in Drive	5.35	355.61
S.L. on cb.	4.46	356.50
" " Gut.	5.01	355.95
+8' "	4.88	356.08
S. Gut.	4.83	356.13
+10.1'	4.54	356.42
+20.2'	4.30	356.66
+30.3'	4.20	356.76
L.	4.22	356.74
+5.1'	4.23	356.73
+15.2'	4.35	356.61
+25.3'	4.54	356.42
N. Gut.	4.93	356.03
N. top cb.	4.27	356.69
10+00 = E.L. Highland	Stations on S.L.	
N top cb.	4.23	356.73
N. Gut.	4.80	356.16
+10.1'	4.53	356.43
+20.2'	4.32	356.64
+30.3'	4.19	356.77

36096

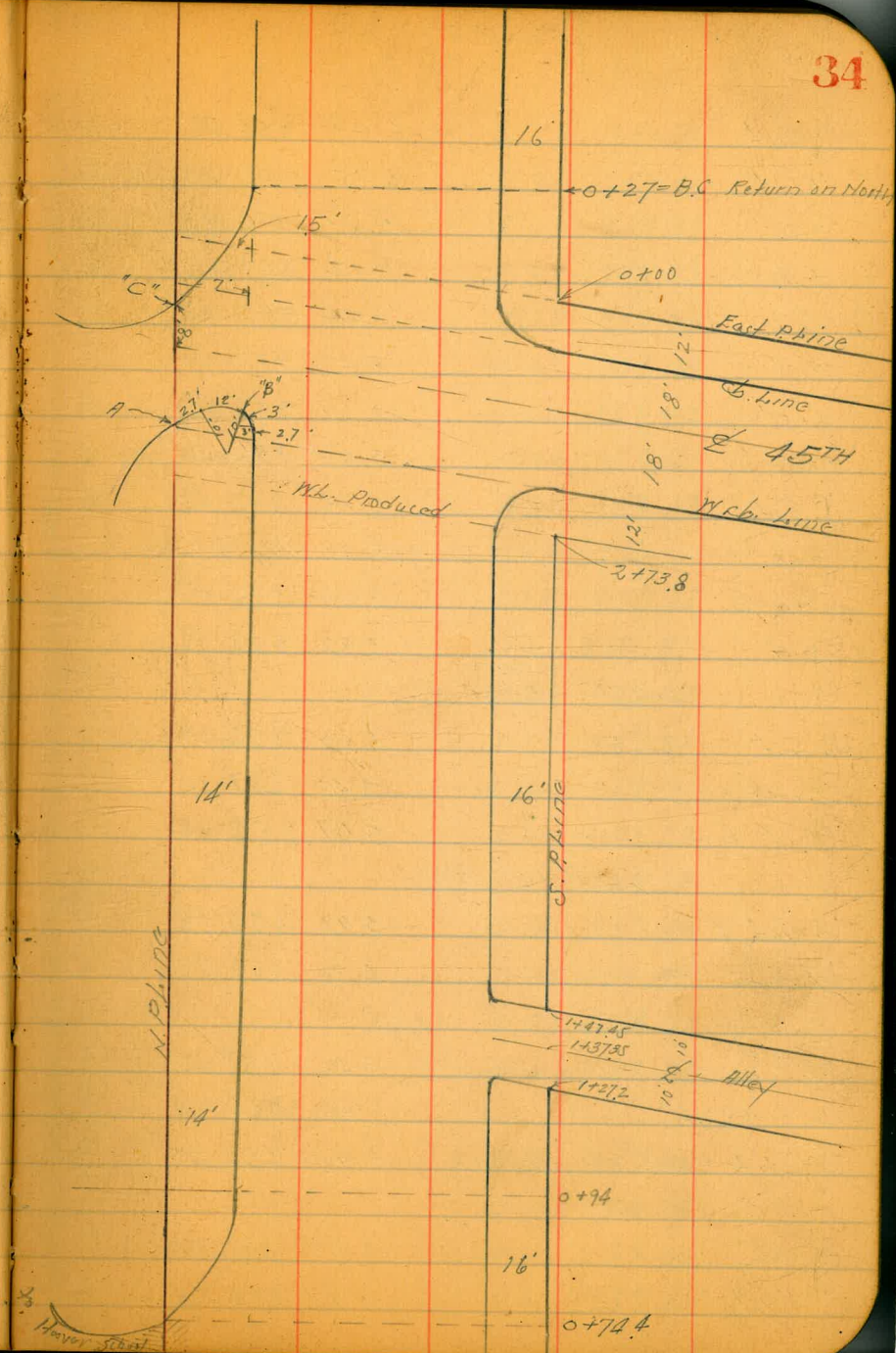
33

L.		4.23	356.73
+5.1'		4.21	356.75
+15.2'		4.27	355.69
+25.3'		4.55	356.41
S. Gut. in Drive.		4.85	356.11
2' west above on cb.		4.47	356.49
T.P.	6.07	362.27	4.76 356.20
	0+31.7	Rt. A to S.L.	
S. Gut. in Drive		6.06	356.21
+10'		5.78	356.49
T.P.	6.35	362.55	6.07 356.20
+20'		5.83	356.72
+30'		5.72	356.83
35-L		5.71	356.84
+5'		5.73	356.82
+15'		5.81	356.74
+25'		5.99	356.56
+35 = N. Gut. in Drive to School		6.33	356.22
N.L. on Gut at cb.		6.18	356.37
" " Cb.		5.70	356.85
	0+50		
N.L. on Pav in Drive		6.10	356.45
N. Gut. " " "		6.25	356.30
+10'		5.92	356.63
+20'		5.74	356.81
+30'		5.61	356.94

S.W. B.P.
Highland
& El Cajon

362.55

L		5.60	356.95
+5		5.65	356.90
+15'		5.77	356.78
+25		5.97	356.58
S. Gut		6.25	356.30
S. top cb.		5.96	356.59
	0+74.4		
S. top cb.		5.90	356.65
S. Gut		6.22	356.33
+10'		5.90	356.65
+20		5.70	356.85
+24'		5.72	356.83
+30'		5.57	356.98
L		5.52	357.03
+5'		5.54	357.01
+11'		5.68	356.87
+15'		5.69	356.86
+25'		5.82	356.73
N. Gut.		6.11	356.44
N. h. on Gut.		5.84	356.71
" " cb.		5.40	357.15
	0+94		
N. cb.		5.47	357.08
N. Gut		6.11	356.44
	1+00		
N. cb.		5.48	357.07



362.55

N. Gut	6.09	356.46
+10'	5.75	356.80
+20'	5.61	356.94
+30'	5.47	357.08
6	5.44	357.11
+75'	5.48	357.07
+15'	5.61	356.94
+25'	5.87	356.68
S. Gut.	6.13	356.42

1+27.2 St. A to S. = cb. B.C. Alley Returns on West.

S. top cb.	5.68	356.87
S. Gut.	5.99	356.56

1+27.2 ^{sl. sta.} = W. cb. Alley.

S. Gut.	6.00	356.55
Sh. on cb.	5.45	357.10
" " Gut.	5.57	356.98

1+37.35 = 2 Alley

S. Gut & Alley	5.97	356.58
Sh. " "	5.78	356.77

1+47.5

Sh. +2' on cb. No cb. at line	5.40	357.05
" " Gut.	5.57	356.98

S. Gut. = Int. Alley cb + S. cb.	5.95	356.60
----------------------------------	------	--------

1+52

S. cb.	5.61	356.94
S. Gut.	5.97	356.58

362.55

35

+10'	5.79	356.76
+20'	5.55	357.00
+30	5.28	357.27
6	5.22	357.33
+5'	5.25	357.80
+15	5.37	357.18
+25	5.65	356.90
N. Gut.	5.88	356.67
N. top cb.	5.18	357.37

2+00

N. top cb.	5.03	357.52
" Gut.	5.70	356.85

+10	5.47	357.08
-----	------	--------

+20	5.23	357.32
-----	------	--------

+30	5.24	357.31
-----	------	--------

6	5.23	357.32
---	------	--------

15	5.27	357.28
----	------	--------

+15'	5.34	357.21
------	------	--------

+25'	5.57	356.98
------	------	--------

S. Gut.	5.94	356.61
---------	------	--------

S. top cb.	5.62	357.02
------------	------	--------

2+50

S. cb.	5.34	357.21
--------	------	--------

S. Gut.	5.76	356.79
---------	------	--------

+10	5.55	357.00
-----	------	--------

+20'	5.23	357.32
------	------	--------

362.55

+30			5.08	357.47
∅			5.03	357.52
+5'			5.00	357.55
T.P.	6.19	363.51	5.23	357.32
+15'			6.09	357.42
+25'			6.20	357.31
N. Gutter.			6.37	357.14
N. top cb.			5.75	357.76
	3+73.8 = St. Sta. = N/W. 45th		Sections in this Intersect. are parallel to 45th	
N. top cb.			5.59	357.92
N. Gut.			6.21	357.30
+10.14			6.09	357.42
+20.3			5.94	357.57
+30.4			5.92	357.59
+35.5 = ∅			5.92	357.59
+5.1			5.92	357.59
+10.2			5.91	357.60
+15.2			5.99	357.52
+25.3			6.29	357.22
S. Gutter.			6.64	356.87
S. cb.			6.19	357.32
	W cb.			
-25 on cb.			6.45	357.06
-25' " Gutter.			7.07	356.44
S.L. on cb.			6.24	357.27
" " Gutter.			6.86	356.65

363.51

36

+8.1 on Gut			6.72	356.79
S. Gut.			6.48	357.03
+10.1			6.15	357.36
+20.2			5.92	357.59
+30.3			5.84	357.67
∅			5.84	357.67
+5.1			5.83	357.68
+15.2			5.87	357.64
+25.3			6.03	357.48
N. Gut.			6.24	357.27
N. top cb.			5.56	357.95
N.W. on cb. at A			5.30	358.21
N.W. on Pav. at A			5.77	357.74
on cb. at "B"			5.56	357.95
" Gut " "B"			6.14	357.37
	West 1/4 45th Street.			
S. Gut.			6.11	357.40
+8.1			6.23	357.28
S.L.			6.33	357.18
+25'			6.52	356.99
	∅ 45th Street			
-25'			6.31	357.20
S.L.			6.15	357.36
+8'			6.13	357.38
S. Gut.			6.04	357.47
+10.1			5.98	357.53

363.51

+20.2	5.83	357.68
+30.3	5.75	357.76
L	5.74	357.77
+5.1	5.72	357.79
+15.2	5.79	357.72
+25.3	5.94	357.57
N. Gut.	6.12	357.39
N. on Paving in Drive to School	5.81	357.70
E. 1/4 45th Street ✓		
S. Gut.	6.19	357.32
+8.1	6.25	357.26
S.L.	6.28	357.23
+25.1	6.42	357.09
E. Cb.		
-25' on Cb.	6.25	357.26
" " Gut.	6.89	356.62
S.L. on Cb.	6.03	357.48
" " Gut.	6.63	356.88
+8' on !	6.52	356.99
S. Gutter	6.46	357.05
+10.1	6.09	357.42
+20.2	5.82	357.69
+30.3	5.70	357.81
L	5.63	357.88
+5.1	5.60	357.91
+15.1	5.69	357.82

363.51

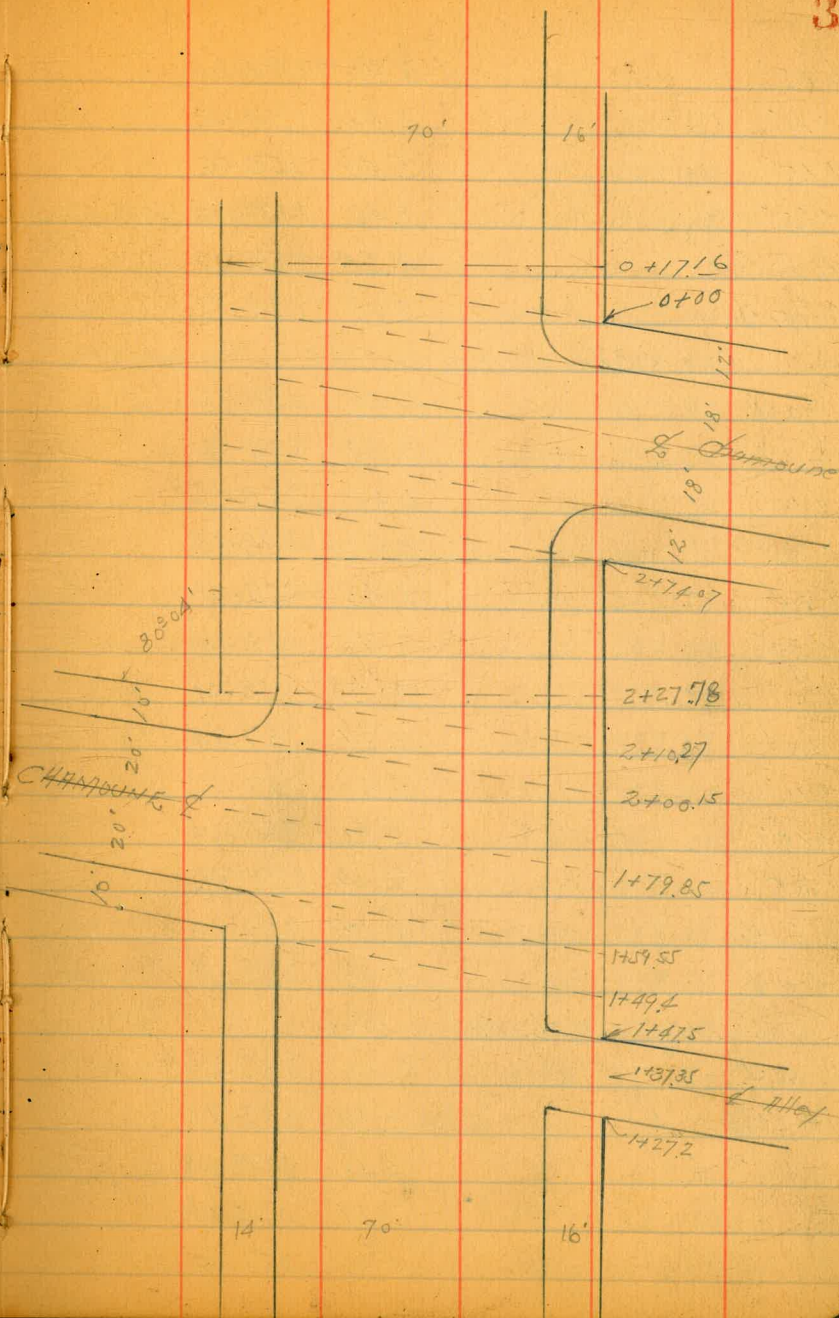
37

+25.3	5.83	357.68
N. Gut.	5.97	357.54
+6.4' on Gut at Cb.	5.79	357.72
" " Cb.	5.32	358.19
on Cb. at "C"	5.26	358.25
" Gut " "C"	5.87	357.64
0+00 = S. Line El Cajon & E. 45th		
E. 1/4 45th Street - diag. Section.		
-1.5' on Cb.	5.33	358.18
" " Gut.	5.96	357.55
N. Gut.	6.00	357.51
+10.1	5.78	357.73
+20.2	5.63	357.88
+30.3	5.59	357.92
L	5.64	357.87
+5.1	5.66	357.85
+15.2	5.81	357.70
+25.3	6.10	357.41
S. Gut.	6.46	357.05
S. top Cb.	5.99	357.52
T.P.	6.23	363.55
0+27 Sta to S. Plume = B.C. Return on North		
S. top Cb.	5.93	357.62
S. Gutter.	6.45	357.10
+10.1	6.05	357.50
+20.1	5.82	357.73
+30.1	5.67	357.88

363,55

38

$\frac{1}{2}$	5.60	357.95
+5'	5.60	357.95
+15'	5.63	357.92
+25'	5.75	357.80
N. Gut. at BC. cb	5.97	357.58
N. top cb	5.40	358.15
0 + 50		
N. top cb.	5.27	358.28
N. Gutter.	5.87	357.68
+10'	5.70	357.85
+20'	5.56	357.99
+30'	5.50	358.05
$\frac{1}{2}$	5.53	358.02
+5'	5.62	357.93
+10'	5.75	357.80
+15'	5.86	357.69
+25'	6.08	357.47
S. Gutter.	6.35	357.20
S. top cb.	5.83	357.72
1 + 00		
S. top cb.	5.67	357.88
S. Gutter.	6.24	357.31
+10'	6.03	357.52
+20'	5.85	357.70
+30'	5.67	357.93
$\frac{1}{2}$	5.53	358.02



363.55

Lo +5'	5.46	358.09
+11'	5.53	358.02
+15'	5.49	358.06
+25'	5.46	358.09
H. Gutter.	5.65	357.90
H. top cb.	5.02	358.53
1+27.2 N. Δ to S.L. = cb. B.C. Alley on south		
H. top cb.	4.83	358.72
H. Gutter.	5.49	358.06
+10'	5.43	358.12
+20'	5.42	358.13
+24'	5.48	358.07
+30'	5.46	358.09
Lo	5.51	358.04
+5'	5.61	357.94
+11'	5.80	357.75
+15'	5.86	357.69
+25'	6.09	357.46
S. Gutter.	6.25	357.30
S. top cb.	5.58	357.97
1+27.2 = W. cb. Alley on diag.		
S. Gut.	6.28	357.27
+6' on Gut.	5.84	357.71
" " cb.	5.45	358.10
S.L. on cb.	5.37	358.18
" " Gut.	5.56	357.99

363.55

39

1+37.35 = S. Alley on diag.		
S.L.	5.92	357.63
+7'	6.11	357.44
S. Gutter. on S. Alley	6.37	357.18
1+47.5 = E. cb. Alley on diag.		
S.L. on cb.	5.57	357.98
" " Gut.	5.69	357.86
+6' on cb.	5.65	357.90
" " Gutter.	5.86	357.69
S. Gut. on E. b. Alley.	6.50	357.05
1+49.4 = W. L. Champagne produced sections in this S. on diag.		
S. top cb. = E. L. Alley Return	5.80	357.75
" Gut.	6.51	357.04
+10'	6.20	357.35
+20'	5.88	357.67
+30'	5.65	357.90
Lo	5.55	358.00
+5'	5.46	358.09
+15'	5.40	358.15
+25'	5.39	358.16
H. Gut.	5.34	358.21
" top cb.	4.66	358.89
1+59.55 = W. cb.		
H. line on top cb.	4.81	358.74
" " " Gut.	5.22	358.33
+7' on Gut.	5.20	358.35

363.55

N. Gut.	5.30	358.25
+5'	5.40	358.15
+10.1'	5.40	358.15
+20.2	5.48	358.07
+30.3	5.53	358.02
L.	5.59	357.96
+5.1'	5.68	357.87
+15.2	5.92	357.63
+25.3	6.25	357.30
S. Gut.	6.67	356.88
S top cb	5.90	357.65
1+69.7 = H/4 on H.		
H/Gutter, Pas.	5.29	358.26
+7'	5.17	358.38
H.L.	5.17	358.38
1+79.85 = $\frac{1}{2}$ Chemoune		
H.L.	5.08	358.47
+7	5.17	358.38
N. Gut.	5.31	358.24
+10.1'	5.48	358.07
+14.	5.52	358.03
(13' West of Above Shot = $\frac{1}{2}$ Cas. M.H.)	5.45	358.10
+20.2	5.58	357.97
+30.3	5.65	357.90
L.	5.67	357.88
6' West and 1' South above shot,	5.71	357.84 = $\frac{1}{2}$ M.H.

363.55

40

L +5.1'	5.75	357.80
+15.2	5.96	357.60
+25.3	6.33	357.22
S. Gut.	6.80	356.75
S cb.	6.12	357.43
1+90.90 = $\frac{1}{4}$		
N. Gutter	5.46	358.09
+7'	5.36	358.19
H.L.	5.29	358.26
2+00.15 = E cb.		
H.L. on cb.	5.13	358.42
" " Gut.	5.67	357.88
+7' on Gut.	5.63	357.92
N. Gutter	5.64	357.91
+10.1'	5.63	357.92
+20.2	5.67	357.88
+30.3	5.71	357.84
L.	5.75	357.80
+5.1'	5.85	357.70
+15.2	6.12	357.43
+25.3	6.49	357.06
S. Gutter.	6.99	356.56
S top cb.	6.34	357.21
2+10.3 = E.L. Chemoune		
S top cb.	6.43	357.12
" Gut.	7.07	356.48

+10.1'	6.58	356.97
+20.2	6.20	357.35
+30.3	5.86	357.69
$\frac{L}{L}$	5.78	357.77
+5.1	5.76	357.79
+11.2	5.74	357.81
+15.2	5.73	357.82
+25.3	5.73	357.82
N. Gut.	5.81	357.74
N. top cb.	5.19	358.36

$Z + 27.78 = S.L. Sta. = Rt. \Delta$ to S.L. = opp N.E. Cor.

N. top cb.	5.18	358.37
N. Gutter.	5.80	357.75
+10.0	5.77	357.78
+20.1	5.76	357.79
+30.1	5.73	357.82
$\frac{L}{L}$	5.80	357.75
+5.1	5.93	357.62
+11.1	6.17	357.38
+15.1	6.27	357.28
+25.1	6.65	356.90
S. Gutter.	7.17	356.38
S. top cb.	6.61	356.94

$Z + 50 = Rt. \Delta$ to S.L.

S. top cb.	6.82	356.73
S. Gutter.	7.26	356.29

+10	6.85	356.70
+20	6.50	357.05
+30	6.21	357.34
$\frac{L}{L}$	6.13	357.42
+5'	6.05	357.50
+15'	5.95	357.60
+20'	5.93	357.62
+25'	5.93	357.62
N. Gutter.	6.07	357.48
N. top cb.	5.48	358.07

$Z + 74.07 = Rt. \Delta$ to S.L. at SW. Cor. Chamoune

N. top cb.	5.71	357.84
N. Gutter.	6.32	357.23
+10.1	6.25	357.30
+20.1	6.23	357.32
+30.1	6.24	357.31
$\frac{L}{L}$	6.29	357.26
+5.1	6.40	357.15
+10.1	6.56	356.99
+15.1	6.71	356.84
+25.1	7.09	356.46
S. Gutter.	7.43	356.12
S. top cb.	7.04	356.51

$Z + 74.07$ on Mt. Chamoune produced ^{N. sections} _{this st.} on diag.

S. top cb.	7.02	356.53
S. Gutter. Humped up a little here	7.38	356.17

S. Gut +10.1	7.09	356.46
+20.2	6.74	356.81
+30.3	6.51	357.04
6	6.38	357.17
+5.1	6.32	357.23
+11	6.32	357.23
+15.2	6.33	357.22
+25.3	6.42	357.13
N. Gut.	6.48	357.07
N top cb.	5.92	357.63
West cb. Chamoune on South.		
N top cb.	6.03	357.52
N. Gut.	6.58	356.97
+10.1	6.56	356.99
+20.2	6.52	357.03
+30.3	6.50	357.05
2	6.50	357.05
+5.1	6.57	356.98
+10.2	6.71	356.84
+15.2	6.80	356.75
+23.3	7.04	356.51
S. Gut.	7.33	356.22
+8' on Gut.	7.53	356.02
S. Line on cb.	6.95	356.60
" " " Gut.	7.62	355.93
+25' on cb.	7.16	356.39
" " Gut.	7.77	355.78

W 1/4 Chamoune Street.		
-25'	7.43	356.12
S.L.	7.27	356.28
+8.1'	7.23	356.32
S. Gut.	7.17	356.38
E Chamoune Street.		
-25'	7.43	356.12
S. Line	7.30	356.25
+8.1'	7.28	356.27
S. Gut.	7.26	356.29
+6'	7.20	356.35
+10.1'	7.11	356.44
+20.2'	6.94	356.61
+30.3	6.77	356.78
2	6.70	356.85
+5.1'	6.70	356.85
+15.1'	6.71	356.84
+25.3	6.75	356.80
N. Gut.	6.75	356.80
N top cb.	6.18	357.37
E 1/4 Chamoune		
S. Gut.	7.53	356.02
+8.1'	7.63	355.92
S. Line	7.66	355.89
+25	7.76	355.79
East cb line Chamoune St.		

363.55

-25' on cb.	7.83	355.72
" " Gut.	8.47	355.08
Spine on cb.	7.71	355.84
" " Gut.	8.25	355.30
+8.1' "	8.23	355.32
S. Gutter.	8.00	355.55
+10.1'	7.57	355.98
+20.2	7.23	356.32
+26.2	7.13	356.42
+30.3	7.05	356.50
↳	7.00	356.55
+5.1	6.98	356.57
+15.2	6.93	356.62
+25.3	6.93	356.62
N. Gut.	7.02	356.53
N. top cb.	6.40	357.15
0 + 0.0 = Spine Sta. Chamoune produced. See on diag.		
N. top cb.	6.50	357.05
N. Gut.	7.13	356.42
+10.1'	7.02	356.53
+20.2	7.03	356.52
+30.3	7.08	356.47
↳	7.15	356.40
+5.1	7.23	356.32
+10.2	7.35	356.20
+15.2	7.45	356.14

363.55

43

+25.3	7.80	355.75
S. Gut.	8.35	355.20
S. top cb.	7.69	355.86
T.P.	3.61	360.23'
0 + 17.16 = Rt. Δ to S. Line		
J. top cb.	4.53	355.70
S. Gutter.	5.13	355.10
+10'	4.66	355.57
+20'	4.28	355.95
+30'	3.98	356.25
↳	3.82	356.41
+5'	3.74	356.49
+15'	3.71	356.52
+25'	3.74	356.49
N. Gutter.	3.86	356.37
N. top cb.	3.20	357.03
0 + 50 Rt. Δ to S. L.		
N. top cb.	3.58	356.65
N. Gut.	4.27	355.96
+10	4.13	356.10
+14'	4.19	356.04
+20'	4.14	356.09
+30'	4.15	356.08
↳	4.24	355.99
+5'	4.35	355.88
+11'	4.51	355.72

SKY BP
Chamoune
+ El. Cyan.

360.23

+15	4.64	355.59
+25'	4.99	355.24
S. Gutter.	5.98	354.75
S. top cb.	4.85	355.38

1+00

S. top cb	5.34	354.89
S. Gut.	6.02	354.21
+10'	5.54	354.69
+20'	5.12	355.11
+24'	5.01	355.22
+30'	4.85	355.38
S.	4.75	355.48
+5'	4.68	355.55
+15'	4.63	355.60
+25'	4.72	355.51
N. Gut.	4.86	355.37
N top cb.	4.15	356.08

1+27.5 = Rt. Δ to S.L. at N. cb Alley

N top cb.	4.49	355.74
N. Gut.	5.14	355.29
+10'	5.02	355.21
+20'	4.89	355.34
+30'	4.99	355.24
S.	5.07	355.16
+5'	5.18	355.05
+15'	5.10	354.83

360.23

44

+25	5.82	354.41
S. Gut.	6.27	353.96
S. top cb.	5.64	354.59

1+27.5 on N. cb Alley = diag.

S. Gut.	6.31	353.92
+8' on cb.	5.51	354.72
+8' "Gut.	5.96	354.27
S.L. on cb.	5.40	354.83
" "Gut.	5.64	354.59

1+37.55 = S. Alley bet. obs. on diag.

S.L.	6.04	354.19
+8	6.26	353.97
+12	6.37	353.86
S. Gut.	6.38	353.85

1+47.8 = E. cb. Alley

S. Gut.	6.44	353.79
+8' on cb.	5.73	354.50
" "Gut.	6.16	354.07
S.L. on cb.	5.51	354.72
" "Gut.	5.84	354.39

1+52 Rt. Δ to S.L. = E.C. Alley Return on E

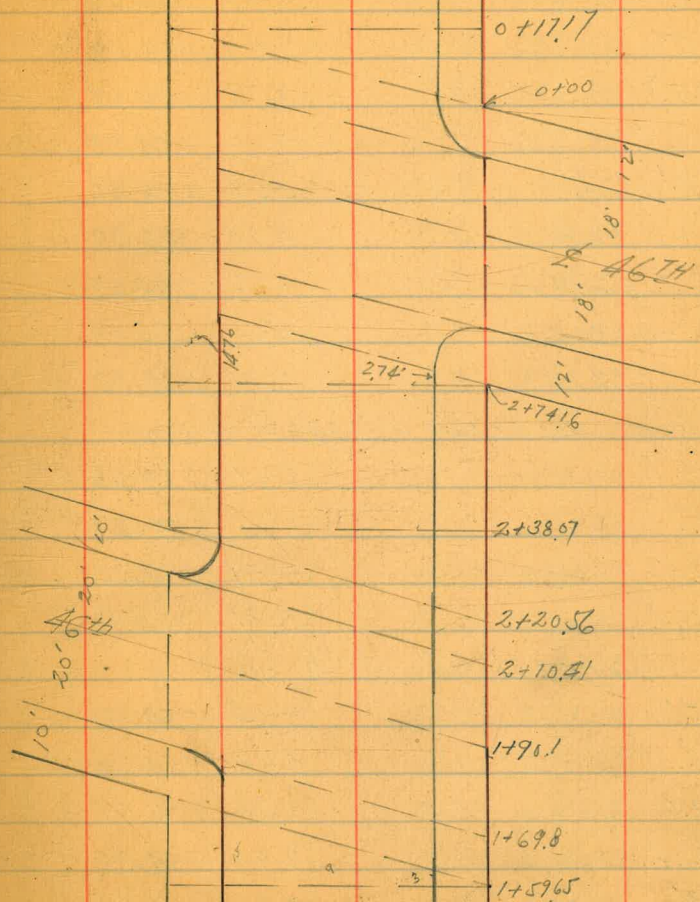
S top cb.	5.89	354.34
S. Gut.	6.48	353.75

1+59.65 = Rt. Δ to S.L.

S top cb.	5.96	354.27
S. Gutter.	5.58	354.65

353.65(?)

+10'	6.13	354.10
+20'	5.72	354.51
+30'	5.43	354.80
0	5.35	354.88
+5'	5.31	354.92
+15'	5.27	354.96
+25'	5.39	354.84
N. Gut.	5.46	354.77
N. top C.	4.88	355.35
1+59.65 on drag = N.H. 46th Produced.		
N. top C.	4.98	355.25
N. Gut.	5.59	354.64
+10'	5.51	354.72
+20'	5.40	354.83
+30'	5.43	354.80
0	5.49	354.74
+5'	5.54	354.69
+15'	5.81	354.42
+25'	6.22	354.01
S. Gutter.	6.64	353.59
S. top C.	5.99	354.24
1+69.8 = N.C. 46th		
S. top C.	6.13	354.10
S. Gutter.	6.76	353.47
+10'	6.42	353.81
+20'	5.96	354.27



360.23

+30.3	5.72	354.51
2	5.66	354.57
+5.1	5.58	354.65
+15.2	5.50	354.73
+25.3	5.58	354.65
N. Gut.	5.71	354.52
+7.1 on Gut.	5.67	354.56
N.L. on cb.	4.98	355.25
" " Gut.	5.66	354.57
+25' on cb.	5.07	355.16
" " Gut.	5.71	354.52
1+79.95 = N 1/4 46th on diag.		
-25'	5.61	354.62
N.L.	5.66	354.57
+7.1'	5.59	354.64
N. Gut.	5.81	354.42
1+90.1 = 2/4 46th on diag.		
-25'	5.64	354.59
N.L.	5.49	354.74
+7.1'	5.68	354.55
N. Gut.	5.91	354.32
+3'	5.91	354.32
+10.1'	5.75	354.48
+20.2	5.68	354.55
+30.3	5.78	354.45
2	5.93	354.30

360.23

+1.5' on Rim MH	5.97	354.26	2 = 0.6' West of this sec.
+5.1'	5.96	354.27	
+15.2	6.16	354.07	
+25.3	6.54	353.69	
S. Gut.	6.98	353.25	
S top of cb.	6.35	353.88	
2+100.25 = E 1/4 46th on North.			
N. Gut.	5.96	354.27	
+7.1	5.86	354.37	
N.L.	5.76	354.43	
+25	5.90	354.33	
2+104.1 = East cb 46th on North.			
-25' on cb.	5.65	354.58	
-25' "Gutter.	6.15	354.08	
N.L. on cb.	5.56	354.67	
" " Gutter.	6.07	354.16	
+7' on "	6.07	354.16	
N. Gut.	6.09	354.14	
+10.1'	5.90	354.33	
+20.2	5.88	354.35	
+30.3	5.93	354.30	
2	5.99	354.24	
+5.1'	6.05	354.18	
+15.2	6.32	353.91	
+25.3	6.72	353.51	
S. Gut.	7.17	353.06	

46

360.23

S. top cb	6.58	353.65	353.87
T.P.	5.33	358.37	7.19 353.04
	2 + 20.56 = E. line 46th on North = diag. section		
S. top cb	4.84	353.53	
S. Gutter	5.43	352.94	
+10.1'	5.00	353.37	
+20.2'	4.57	353.80	
+30.3'	4.28	354.09	
L	4.21	354.16	
+5.1'	4.20	354.17	
+15.2'	4.07	354.30	
+25.3'	4.07	354.30	
N. Gutter	4.25	354.12	
N. top cb	3.68	354.69	
	2 + 38.07 = RT Δ to Sh. of N.E. Cor 46th		
N. top cb	3.68	354.69	
N. Gutter	4.28	354.09	
+10'	4.10	354.27	
+20'	4.12	354.25	
+30'	4.24	354.13	
L	4.30	354.07	
+5'	4.37	354.00	
+11'	4.57	353.80	
+15'	4.72	353.65	
+25'	5.10	353.27	
S. Gutter	5.57	352.80	

358.37

47

S. top cb	4.97	353.40	
	2 + 74.16 = RT to Sh. of S.E. Cor. 46th		
S. top cb	5.31	353.06	
S. Gutter	5.89	352.48	
+10'	5.44	352.93	
+20'	4.98	353.39	
+30'	4.65	353.72	
L	4.57	353.80	
+5'	4.52	353.85	
+15'	4.45	353.92	
+25'	4.44	353.93	
N. Gutter	4.61	353.76	
N. top cb	3.93	354.44	
	N.E. 46th on South. diag section.		
N. top cb	4.06	354.31	
N. Gutter	4.68	353.69	
+10.1'	4.58	353.79	
+20.2'	4.57	353.80	
+30.3'	4.60	353.77	
L	4.66	353.71	
+5.1'	4.73	353.64	
+15.2'	5.02	353.35	
+25.3'	5.51	352.86	
S. Gutter	5.92	352.45	
S. top cb	5.33	353.04	
	N. cb 46th on South.		

-25' on cb.	5.24	353.13
-25' "Gut.	5.86	352.51
-5' on "	5.91	352.46
S.L. on cb.	5.32	353.05
" " Gut.	5.90	352.47
+8.1' " "	5.92	352.45
S. Gut. Hor.	5.98	352.39
+10.1'	5.61	352.76
+20.2	5.18	353.19
+30.3	4.85	353.52
L	4.76	353.61
+5.1'	4.70	353.67
+15.2	4.65	353.72
+25.3	4.68	353.69
N. Gut.	4.79	353.58
N top cb.	4.14	354.23
N 1/4 on South. 46th		
J. Gut.	6.03	352.34
+8.1	5.86	352.51
S.L.	5.71	352.66
+5'	5.59	352.78
+25	5.60	352.77
L 46th on South		
-25'	5.59	352.78
-5'	5.56	352.81
S.L. -1	5.68	352.69
S.L.	5.70	352.67

+8.1	5.92	352.45
S. Gut.	6.05	352.32
+10.1	5.67	352.70
+20.2	5.32	353.05
+30.3	5.01	353.36
L -1' on Run MH.	4.95	353.42
L	4.89	353.48
+5.1	4.82	353.55
+15.2	4.78	353.59
+25.3	4.81	353.56
N. Gut. in Drive	4.94	353.43
E 1/4 46th on South. - dug section		
S. Gut. Hor.	6.08	352.29
+8.1	5.99	352.38
S.L.	5.82	352.55
+5	5.75	352.62
+25	5.80	352.57
E. cb. line 46th on South		
-25' on cb.	5.71	352.66
-25' "Gut.	6.11	352.26
-5' " "	6.13	352.24
S.L. on cb.	5.73	352.64
" " Gut.	6.13	352.24
+8.1 " "	6.16	352.21
S. Gut.	6.16	352.21
+10.1'	5.81	352.56

+20.2	5.35	353.02
+30.3	5.11	353.26
\int	5.05	353.32
+5.1'	4.96	353.41
+15.2	4.87	353.50
+25.3	4.92	353.45
N. Gut. in Drive	5.02	353.35
E. line - 46 th on South - diag. sections		
N. top cb	4.43	353.94
N. Gut.	5.14	353.23
+10.1	4.98	353.39
+20.2	4.98	353.39
+30.3	5.06	353.31
\int	5.14	353.23
+5.1	5.20	353.17
+15.2	5.44	352.93
+25.3	5.86	352.51
S. Gutter.	6.30	352.07
S. top cb	5.69	352.68
0 + 17.17 = RA & to SL.		
S. top cb	5.81	352.56
S. Gutter.	6.38	351.99
+10	5.93	352.44
+20	5.49	352.88
+30	5.23	353.14
\int	5.15	353.22

+5'	5.07	353.30
+11	5.05	353.32
+15	5.02	353.35
+25	5.02	353.35
N. Gut.	5.11	353.26
" top cb	4.45	353.92
0 + 50		
N. top cb	4.72	353.65
" Gut.	5.43	352.94
+10	5.31	353.06
+20'	5.20	353.17
+24'	5.25	353.12
+30	5.33	353.04
\int	5.43	352.94
+5	5.50	352.87
+15	5.73	352.64
+25	6.17	352.20
S. Gut.	6.57	351.80
S. top cb	6.04	352.33
1 + 00		
S. top cb	6.22	352.15
S. Gut.	6.83	351.54
+10	6.40	351.97
+20	6.02	352.35
+30	5.77	352.60
\int	5.71	352.66

358 37

+5	5.66	352.71
+15	5.59	352.83
+25	5.60	352.77
N. Gut.	5.68	352.69
N. top cb	5.01	353.36
1+50		
N. top cb	5.30	353.07
N. Gutter	5.95	352.42
+10'	5.82	352.55
+20'	5.82	352.55
+30'	5.84	352.53
ℓ	5.90	352.47
+5	6.01	352.36
+15'	6.30	352.07
+25'	6.67	351.70
S. Gut.	7.09	351.28
S. top cb.	6.50	351.87
2+00		
S. top cb.	6.77	351.60
S. Gutter	7.33	351.04
+10'	6.92	351.45
+20'	6.57	351.80
+30	6.34	352.03
ℓ	6.22	352.15
+5'	6.15	352.22
+11	6.12	352.25

358 37

50

+15	6.12	352.25
+25	6.14	352.23
N. Gutter	6.29	352.08
N top cb.	5.63	352.74
2+50		
N top cb.	6.00	352.37
N. Gutter	6.56	351.81
+10'	6.50	351.87
+20'	6.40	351.97
+30	6.43	351.94
ℓ	6.57	351.80
+5'	6.64	351.73
+11'	6.80	351.57
+15	6.80	351.57
+25'	7.21	351.16
S. Gutter	7.60	350.77
S. top cb.	7.07	351.30
2+75.08 = N. h. Menlo on South.		
T.P.	5.00	356.22
S. top cb.	7.15	351.22
S. Gutter	5.00	351.22
+10	5.50	350.72
+20'	5.25	350.97
+30'	4.82	351.40
ℓ	4.59	351.63
+5'	4.52	351.70
	4.41	351.81

Pt. Δ to S.E. Cor.

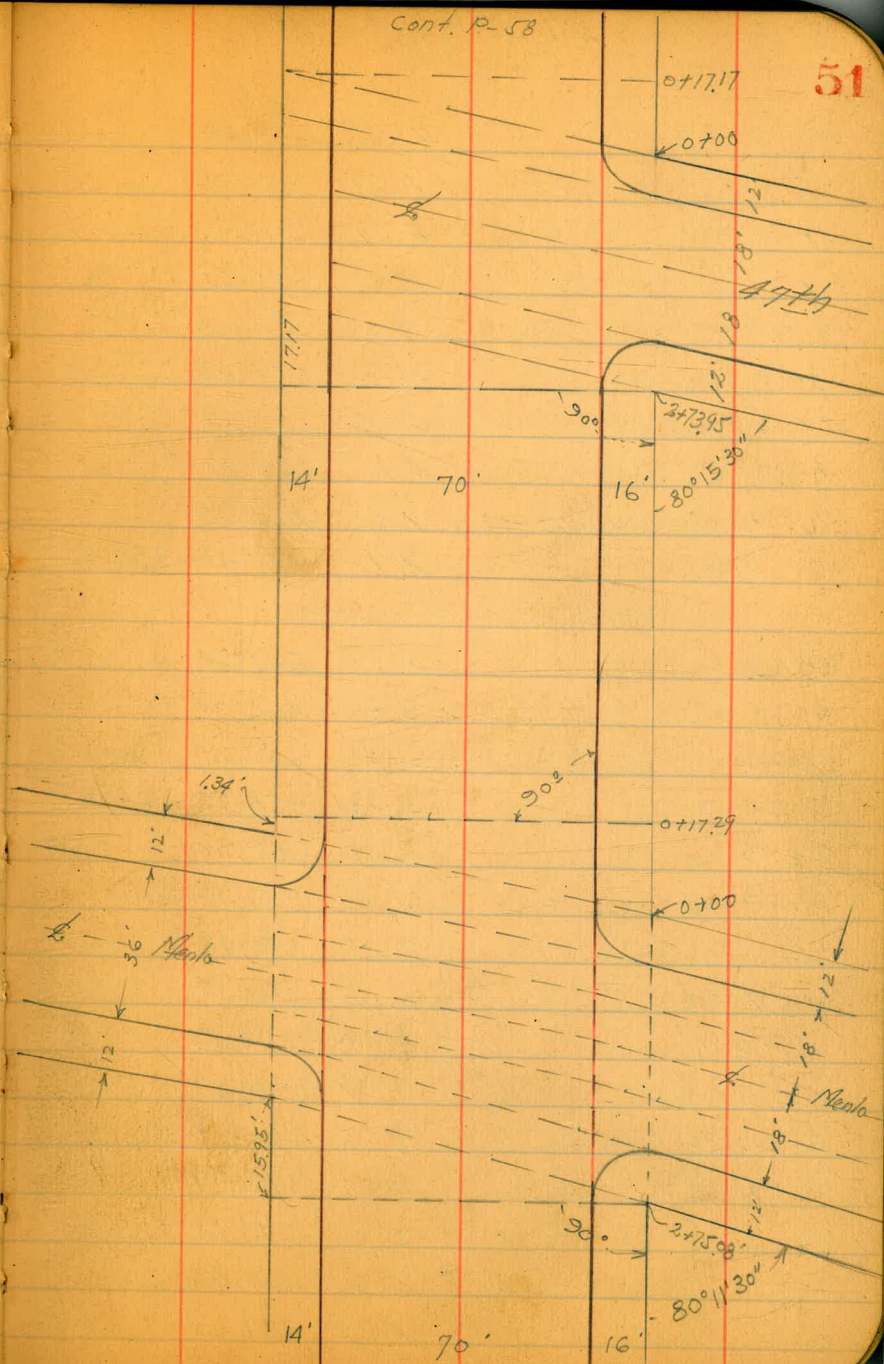
SW BR
Menlo
4 E1 Cajon.

356 22

+15	4.43	351.79
+25	4.52	351.70
N. Gutter	4.65	351.57
N. top cb	4.07	352.15
W.L. Menlo on diag		
N. top cb	4.12	352.10
N. Gutter	4.73	351.49
+10.1	4.62	351.60
+20.2	4.49	351.73
+30.3	4.49	351.73
So	4.56	351.66
+51	4.60	351.62
+15.2	4.86	351.36
+25.3	5.25	350.97
S. Gutter	5.48	350.74
S. top cb	4.99	351.23
West cb line Menlo Ave.		
-25' on cb	4.49	351.73
" " Gutter	5.05	351.17
-5' on "	5.50	350.72
S.L. on cb	5.05	351.17
" " Gutter	5.69	350.53
+8.1 on gut	5.65	350.57
S. Gut.	5.67	350.55
+10.1	5.34	350.88
+20.2	4.97	351.25

Cont. p. 58

51



+30.3	4.74	351.48	
6	4.66	351.56	
+5.1	4.61	351.61	
+9.1	4.61	351.61	
+15.2	4.60	351.62	
+25.3	4.73	351.49	
N. Gut.	4.85	351.37	
+7.1	4.75	351.47	
N.L. on Gut. = end Paving	4.07	352.15	
" " (b)	4.77	351.45	352.45?
W/4 Menlo Ave			
N.L.	4.68	351.54	
+7.1	4.81	351.41	
N. Gut.	4.97	351.25	
+10.1	4.90	351.32	
+20.2	4.72	351.50	
+30.3	4.71	351.51	
6	4.78	351.44	
+5.1	4.85	351.37	
+15.2	5.05	351.17	
+25.3	5.29	350.83	
S. Gut.	5.75	350.47	
+8.1	5.65	350.57	
S.L.	5.60	350.62	
+5	5.36	350.86	
+25	4.78	351.44	

E Menlo			
-25	4.78	351.44	
-5	5.35	350.87	
S.L.	5.56	350.66	
+8.1	5.63	350.59	
+13	5.78	350.44	
S. Gut.	5.81	350.41	
+5	5.68	350.54	
+10.1	5.44	350.78	
+20.2	5.14	351.08	
+30.3	4.96	351.26	
+33 on Rim MH	4.90	351.32	1' West of this Sec.
6	4.88	351.34	
+5.1	4.83	351.39	
+15.2	4.87	351.40	
+25.3	4.98	351.24	
N. Gutter	5.08	351.14	
+7.1	4.83	351.39	
N.L.	4.58	351.64	
E 1/4 Menlo Ave.			
N.L.	5.02	351.20	
+7.1	5.10	351.12	
N. Gut.	5.20	351.02	
+10.1	5.10	351.12	
+20.2	4.97	351.25	
+30.3	4.97	351.25	
6	5.00	351.22	

356.22

+5.1'	5.03	351.19
+15.2	5.21	351.01
+25.3	5.48	350.74
S. Gut.	5.90	350.32
+8.1	5.85	350.37
S.L.	5.81	350.41
+5	5.59	350.63
+25'	4.91	351.31
E cb. Menlo		
-25' on cb	4.77	351.45
-25" Gut.	5.26	350.96
-5" "	5.84	350.38
S.L. on cb.	5.46	350.76
" " Gut.	5.99	350.23
+8.1"	5.96	350.26
S. Gut.	5.96	350.26
+10.1'	5.58	350.64
+20.2'	5.29	350.93
+30.3	5.13	351.09
⌘	5.07	351.15
+5.1	5.05	351.17
+15.2	5.06	351.16
+25.3	5.14	351.08
N. Gut.	5.36	350.86
+7.1	5.34	350.88
N.L. on cb.	4.83	351.39
" " Gut.	5.39	350.83

356.22

53

East line Menlo

N top cb	4.92	351.30
N. Gut. H.	5.54	350.68
+10.1'	5.26	350.96
+20.2	5.18	351.04
+30.3	5.19	351.03
⌘	5.25	350.97
+5.1'	5.33	350.89
+15.2	5.40	350.82
+25.3	5.69	350.53
S. Gut.	6.10	350.12
S. top cb	5.47	350.75
o + 17.29 = Pt. 2 to S Line		
S top cb.	5.62	350.60
S. Gut.	6.25	349.97
+10	5.84	350.38
+20'	5.53	350.69
+29	5.47	350.75
+30	5.36	350.86
⌘	5.27	350.95
+5'	5.21	351.01
+15.1'	5.23	350.99
+25'	5.34	350.88
N. Gut.	5.58	350.64
N top cb	4.91	351.31

o + 50

356.22

N. top cb.	5.23	350.99
N. Gut.	5.97	350.25
+10'	5.71	350.51
+20'	5.60	350.62
+30'	5.52	350.70
9	5.56	350.66
+5	5.64	350.58
+15'	5.92	350.30
+25'	6.18	350.04
S. Gutter	6.62	349.60
Stop cb.	6.08	350.14
1+00		
S. top cb.	7.03	349.19
S. Gutter	7.36	348.86
+10	6.84	349.38
+20	6.53	349.69
+30	6.32	349.90
Σ	6.20	350.02
+5	6.10	350.12
+15'	6.11	350.11
+25	6.17	350.05
N. Gut.	6.46	349.76
N. top cb.	5.76	350.46
1+26.5 - W. cb. Alley Pt A to S.L. = B.C. Alley Ret.		
S. top cb. at B.C.	7.26	348.96
S. Gutter " "	7.63	348.59

356.22

54

1+26.5 = W. cb. Alley on diag.		
S. Gut.	7.66	348.56
+9' on cb.	7.09	349.13
" " Gut.	7.35	348.87
S.L. on cb.	6.92	349.30
" " Gut.	7.11	349.11
1+36.45 = Σ Alley between cbs. (section on diag.)		
S.L.	7.58	348.64
+7.1'	7.68	348.54
+12	7.85	348.37
S. Gut.	7.84	348.38
1+46.4 = E. cb. Alley. diag section		
S. Gut.	7.98	348.24
+9' on cb.	7.37	348.85
" " Gut.	7.68	348.54
S.L. on cb.	7.20	349.02
" " Gut.	7.29	348.93
1+51.3 Pt. A to S.L. = F.C. Alley Ret.		
S. top cb. at F.C. Alley Ret.	7.54	348.68
" Gut. " " " "	8.00	348.22
+10	7.50	348.72
+20	7.17	349.05
+30	6.86	349.36
+33.5 = Σ MH	6.77	349.45
Σ	6.73	349.49
+5	6.68	349.54
6.5' West of this sec.		

356.22

L ₀ +11	6.71	349.51
+15'	6.63	349.59
+25	6.65	349.57
N. Gutter	6.96	349.26
N. top cb.	6.20	350.02
Z ₀ +00		
N. top cb.	6.65	349.57
N. Gutter	7.36	348.86
+10'	7.19	349.03
+20'	7.18	349.04
+30'	7.12	349.10
L ₀	7.22	349.00
+5'	7.40	348.82
+11'	7.66	348.56
+15'	7.73	348.49
+25	8.12	348.10
S. Gutter	8.64	347.58
S. top	8.11	348.11
T.P.	4.69	351.93
Z ₀ +50		
S. top cb.	4.29	347.64
S. Gutter	4.98	346.95
+10'	4.39	347.54
+20'	4.03	347.90
+30'	3.70	348.23
L ₀	3.55	348.38

S.W. Cor.
47th Cajon.

351.93

55

+5	3.45	348.48
+15	3.38	348.55
+25	3.46	348.47
N. Gutter	3.65	348.28
N. top cb.	2.88	349.05
2. + 73.95 = N.W. to S.W. of S.W. Cor. 47th		
N. top cb.	3.14	348.79
N. Gutter	3.80	348.13
+10'	3.64	348.29
+20'	3.64	348.29
+30'	3.72	348.21
L ₀	3.83	348.10
+5'	3.92	348.01
+15'	4.25	347.68
+25	4.68	347.25
S. Gutter	5.24	346.69
S. top cb.	4.58	347.35
2. + 73.95 = N.W. 47th diag. section		
S. top cb.	4.66	347.27
S. Gutter	5.25	346.68
+10.1	4.73	347.20
+20.2	4.31	347.62
+30.3	3.99	347.94
L ₀	3.92	348.01
+5.1	3.80	348.13
+15.2	3.77	348.16

35193

125.3	3.79	348.14
N. Gut.	3.97	347.96
N top cb.	3.27	348.66
W cb. 47th		
H. top cb.	3.40	348.53
H. Gut.	4.10	347.83
+10.1	3.87	348.06
+20.2	3.85	348.08
+30.3	3.92	348.01
2	4.00	347.93
+5.1'	4.10	347.83
+15.2	4.93	347.50
+25.3	4.85	347.08
+31.3	5.26	346.67
S. Gut.	5.29	346.64
+8.1' on Gut.	5.22	346.71
S. L. on cb.	4.74	347.19
" " Gut. c.	5.22	346.71
+25' on cb.	4.44	347.49
" " Gut.	4.89	347.04
W/W		
25'	4.57	347.36
S. L.	4.88	347.05
+8.1	5.13	346.80
S. Gut.	5.33	346.60

E 47th

35193

56

-25'	4.49	347.44
S. L.	4.82	347.11
+8.1'	5.12	346.81
S. Gut. c.	5.33	346.60
+4'	5.29	346.64
+10.1'	4.93	347.00
+20.2'	4.51	347.42
+30.3'	4.17	347.76
2	4.07	347.86
+5.1	4.01	347.92
+15.2	4.01	347.92
+25.3	4.01	347.92
N. Gut.	4.20	347.73
N top cb.	3.58	348.35
E/W 47th		
S. Gut.	5.40	346.53
+8.1'	5.22	346.71
S. L.	4.92	347.01
+25'	4.65	347.28
E cb.		
-25' on cb.	4.66	347.27
" " Gut.	5.03	346.90
S. L. on cb.	4.86	347.07
" " Gut.	5.25	346.68
+8.1'	5.34	346.59
+12.2'	5.41	346.52

35193

S. Gut.	5.44	346.49
+10.1	4.96	346.97
+20.2	4.55	347.38
+30.3	4.24	347.69
20	4.19	347.74
+5.1	4.16	347.77
+15.2	4.12	347.81
+25.3	4.13	347.80
N. Gut.	4.37	347.56
N. top cb.	3.70	348.23
E.L. 47th		
N. top cb.	3.86	348.07
N. Gut.	4.46	347.47
+10.1	4.29	347.64
+20.2	4.27	347.66
+30.3	4.25	347.68
20	4.29	347.64
+5.1	4.38	347.55
+15.2	4.65	347.28
+25.3	5.02	346.91
S. Gut.	5.44	346.49
S. top cb.	4.80	347.13
O + 17.17 - Rt. Δ to S.L.		
S. top cb.	4.90	347.03
S. Gut.	5.45	346.48
+10	5.06	346.87

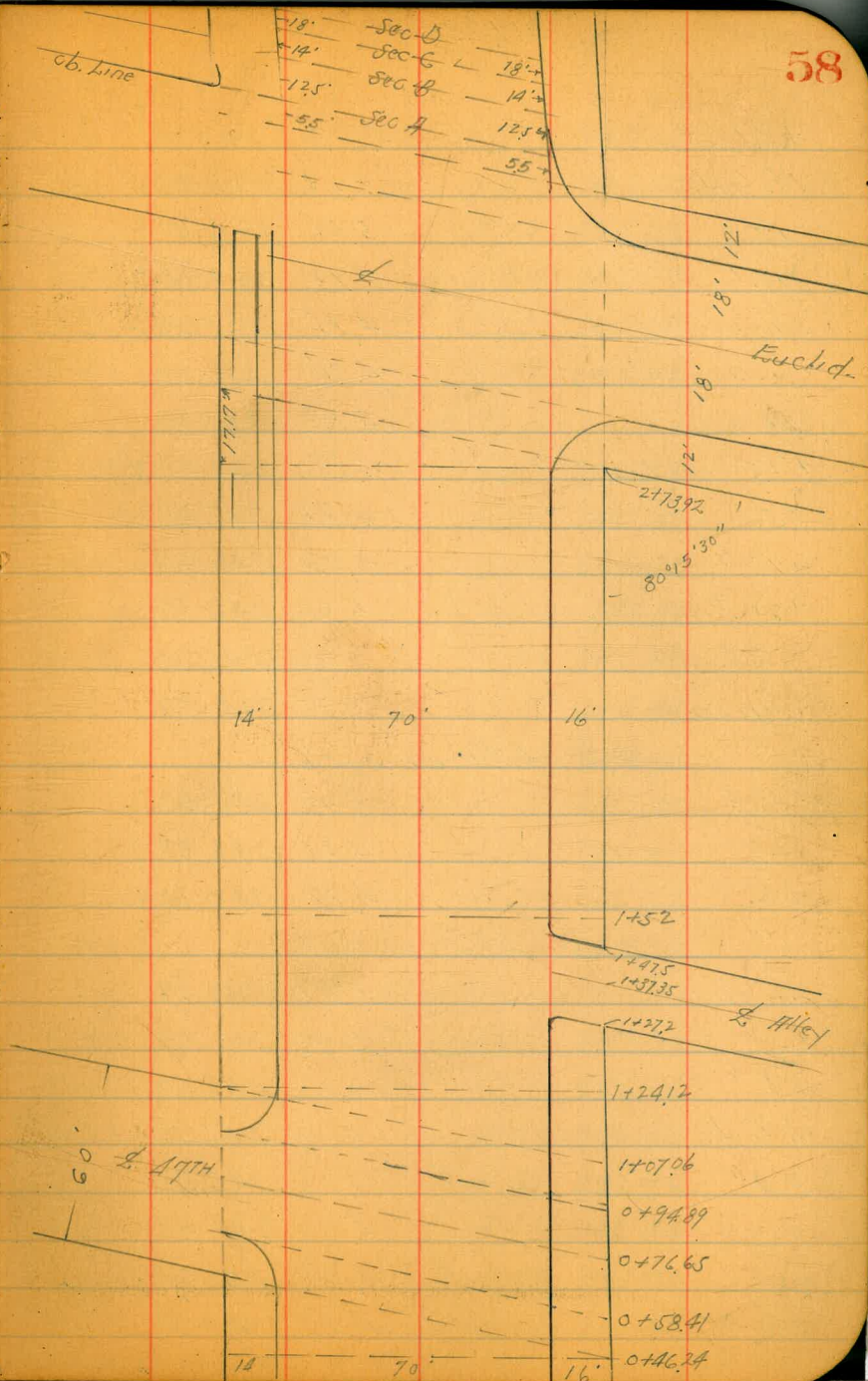
35193

57

+20	4.70	347.23
+30.1	4.43	347.50
20	4.34	347.59
+5	4.27	347.66
+15	4.30	347.63
+25	4.32	347.61
N. Gut.	4.47	347.46
N. top cb.	3.88	348.05
O + 46.2A = Rt. Δ to S.L. at intersection W.L. + S.L.		
N. top cb.	4.16	347.77
N. Gut.	4.81	347.12
+10.1	4.59	347.34
+20	4.49	347.44
+30.1	4.50	347.43
20	4.55	347.38
+5	4.62	347.31
+15	4.90	347.03
+25	5.26	346.67
S. Gut.	5.65	346.28
S. top cb.	5.16	346.77
W.L. 47th on North = diag. section		
S. top cb.	5.20	346.73
S. Gut.	5.68	346.35
+10.1	5.30	346.63
+20.2	4.94	346.99
+30.3	4.69	347.24

35193

2	4.65	347.28
+5.1	4.57	347.36
+15.2	4.58	347.35
+25.3	4.72	347.21
N. Gut.	4.86	347.07
N. top cb.	4.25	347.68
N. cb. 47 th on North. diag. section		
N. h. on top cb.	4.32	347.61
" " Gut.	4.91	347.02
+7.1' on Gut.	4.89	347.04
N. Gut.	4.95	346.98
+10.1	4.78	347.15
+20.2	4.63	347.30
+30.3	4.63	347.30
6	4.70	347.23
+5.1	4.78	347.15
+15.2	5.00	346.93
+25.3	5.35	346.58
S. Gut.	5.70	346.19
S. top cb.	5.25	346.68
N. 1/2 47 th diag. Section		
N. Gutters	5.00	346.93
+7.1'	4.87	347.06
N. h.	4.73	347.20
S. 47 th - diag. Section		
N. h.	4.61	347.32



35193

+7.1	4.83	347.10
N. Gut.	5.06	346.87
+5	5.06	346.87
+10.1	4.93	347.00
+20.2	4.76	347.17
+30.3	4.74	347.19
Σ	4.83	347.10
+15' on Rim MH	4.88	347.05
+5.1	4.88	347.05
+15.2	5.03	346.90
+25.3	5.37	346.56
S. Gut.	5.80	346.13
S. top cb	5.36	346.57
E 1/4 17th on North		
N. Gut.	5.10	346.83
+7.1	4.96	346.97
N. h.	4.79	347.14
E cb. 47th on North		
N. h. on cb.	4.66	347.27
" " Gut.	5.13	346.80
+7 " "	5.10	346.83
N. Gut.	5.17	346.76
+4'	5.15	346.78
+10.1	4.98	346.95
+20.2	4.88	347.05
+30.3	4.86	347.07

1.5' East
of this sec.

35193

59

Σ	4.91	347.02
+5.1	5.00	346.93
+15.2	5.18	346.75
+25.3	5.55	346.38
S. Gutter.	5.95	345.98
S. top cb.	5.51	346.42
1+07.06 = St. Sta. = E. h. 47th on North = diag. sections		
S. top cb.	5.59	346.34
S. Gutter.	6.01	345.92
+10.1	5.55	346.38
+20.2	5.22	346.71
+30.3	5.08	346.85
Σ	5.09	346.84
+5.1	5.03	346.90
+15.2	4.93	347.00
+25.3	5.06	346.87
N. Gutter.	5.27	346.66
N. top cb.	4.63	347.30
1+24.12 = Pt. to St. opp. N.E. Cor		
N. top cb.	4.63	347.30
N. Gutter.	5.27	346.66
+10'	5.07	346.86
+20'	4.97	346.96
+30'	4.99	346.94
Σ	5.03	346.90
+5'	5.08	346.85

35193

+15	5.34	346.59
+25	5.63	346.30
S. Gutter	6.02	345.91
S. top cb.	5.57	346.36
1+28.2 Pt. A to Cb. = 80. Alley Return on South		
S. top cb.	5.61	346.32
S. Gutter	6.03	345.90
1+27.2 = W cb. Alley. Sec. Diag.		
S. Gutter	6.06	345.87
+8.1 on cb.	5.56	346.37
+8.1 " Gutter	5.90	346.03
S. on cb.	5.97	346.46
" " Gutter	5.75	346.18
1+37.35		
S. on	6.23	345.70
+8.1'	6.18	345.75
S. Gutter	6.16	345.77
1+47.5 = E cb. Alley. Sec. Diag.		
S. Gutter	6.20	345.73
+8.1' on cb.	5.82	346.11
" " Gutter	6.10	345.83
+13' on top cb. = End cb.	5.80	346.13
" " Gutter	6.08	345.85
S. on gutter	6.06	345.87
1+52		
S. top cb.	5.88	346.05

35193

60

S. Gutter	6.18	345.75	
+10	5.87	346.06	
+20	5.49	346.44	
+30	5.30	346.63	
2	5.20	346.73	
+2 on Rim M.H.	5.15	346.78	6' West
+5	5.15	346.78	
+9' on Rim Gage M.H.	5.11	346.82	8.5' West
+15	5.09	346.84	
+25	5.18	346.75	
N. Gutter	5.43	346.50	
N. top cb.	4.86	347.07	
2+00			
N. top cb.	4.99	346.94	
N. Gutter	5.57	346.36	
+4'	5.60	346.33	
+10'	5.40	346.53	
+20'	5.93	346.50	
+30	5.46	346.47	
2	5.52	346.41	
+5'	5.63	346.30	
+15'	5.82	346.11	
+25	6.14	345.79	
S. Gutter	6.37	345.56	
S. top cb.	5.99	345.94	
2+37			

35193

2+37

S. top cb.	6.09	345.84
S. Gut.	6.57	345.36
+10	6.33	345.60
+20'	6.08	345.85
+30'	5.86	346.07
7	5.74	346.19
+5	5.67	346.26
+15	5.63	346.30
+25'	5.58	346.35
N. Gut.	5.78	346.15
N. top cb.	5.07	346.86

2+60

N. top cb.	5.14	346.79
N. Gutter	5.82	346.11
+10	5.75	346.18
+20'	5.80	346.13
+30'	5.92	346.01
6	6.05	345.88
+5	6.17	345.76
+15'	6.32	345.61
+25'	6.47	345.46
S. Gut.	6.68	345.25
S. top cb.	6.17	345.76

2+73.92 = 11.6 to sl. of S.E. Cor. Euclid

S. top cb.	6.21	345.72
S. Gutter	6.70	345.23

35193

61

+10	6.51	345.42
+20	6.44	345.49
+30	6.37	345.56
6	6.22	345.71
+5	6.11	345.82
+15	6.02	345.91
+25	5.92	346.01
N. Gut.	5.88	346.05
N. top cb.	5.21	346.72

M.L. Euclid. all sections in this int. = diag.

N. top cb.	5.23	346.70
N. Gut.	5.87	346.06
+10'	5.91	346.02
+20.2	6.08	345.85
+30.3	6.25	345.68
6	6.29	345.64
+5.1	6.43	345.50
+15.2	6.45	345.48
+25.3	6.50	345.43
S. Gut.	6.70	345.23
S. top cb.	6.21	345.72

M. cb.

-45' on top cb.	6.47	345.46
" " Gut.	7.10	344.83
-10' " Gut.	6.87	345.06
S.L. on cb.	6.17	345.76
" " Gut.	6.85	345.08

35193

+8.1' on gut.	6.72	345.21
S. Gut.	6.60	345.33
+10.1	6.42	345.51
+20.2	6.40	345.53
+30.3	6.24	345.69
ℓ	6.15	345.78
+15'	6.10	345.83
+15'	6.00	345.93
+25'	5.84	346.09
N. Gutter.	5.84	346.09
N top cb.	5.29	346.64
N top cb		
N top cb	5.35	346.58
S. Gut.	5.80	346.13
+10.1	5.80	346.13
+20.2	5.86	346.07
+30.3	5.96	345.97
ℓ	5.96	345.97
+15.1	6.05	345.88
+15.2	6.18	345.75
+25.3	6.16	345.77
S. Gut.	6.20	345.73
+8.1	6.27	345.66
S. G.	6.27	345.66
+10	6.09	345.84
+45	6.35	345.58

N 1/4

35193

62

E. Euclid Ave

-45'	6.26	345.67
-10'	5.89	346.04
S. G.	5.84	346.09
+8.1	5.87	346.06
S. Gut.	5.91	346.02
+10.1	5.92	346.01
+20.2	5.88	346.05
+30.3	5.80	346.13
ℓ	5.70	346.23
+15.1	5.67	346.26
+15.2	5.68	346.25
+25.3	5.66	346.27
N. Gut.	5.79	346.14
N top cb	5.35	346.58
N top cb.	5.40	346.53
N. Gutter.	5.75	346.18
N. L. on Pav.	5.29	346.64
E 1/4		
N. L.	5.33	346.60
N. cb. on gut.	5.65	346.28
+4'	5.72	346.21
+10.1	5.57	346.36
+20.2	5.52	346.41
+30.3	5.54	346.39

6' E of End cb and West edge Paving on North

35193

$\frac{L}{L}$	5.57	346.36
75.1	5.59	346.34
+15.2	5.58	346.35
+25.3	5.55	346.38
S. Gut.	5.58	346.35
+8.1	5.76	346.17
S.L.	5.99	345.94
+10	6.15	345.78
+45	6.48	345.45

E. cb. Euclid

-45' on cb	6.30	345.63
" " Gut.	6.93	345.00
-10' "	6.68	345.25
9.5' East = at cb. on Gut.	6.70	345.23
S.L. on Gut.	6.40	345.53
3.5' East. on Gut. at cb.	6.59	345.34
S.L. +8.1	6.03	345.90
S. Gut. H.V.	5.77	346.16
+10.1	5.41	346.52
+20.2	5.25	346.58
+30.3	5.42	346.51
$\frac{L}{L}$	5.42	346.51
+5.1	5.40	346.53
+15.2	5.38	346.55
+25.3	5.43	346.50
+30.3	5.52	346.41

35193

63

N. Gut.	5.48	346.45
N.H. on Pairing	5.24	346.69
East line		
N.H. on Pair.	4.99	346.94
N. Gut.	5.27	346.66
+5'	5.26	346.67
+10.1	5.22	346.71
+20.2'	5.18	346.75
+30.3	5.18	346.75
+35.5 = $\frac{L}{L}$	5.19	346.74
+5.1'	5.20	346.73
+15.2	5.25	346.68
+25.3	5.57	346.36
S. Gut.	6.05	345.88
+6.5 on Gut. at cb.	6.38	345.55
" " cb.	5.80	346.13
(section A)		
5.5' East E.L. on South = E.cb. on North.		
S. Gut. - 3.3' on cb.	5.65	346.28
" " Gut.	6.30	345.63
S. Gut. H.V.	6.15	345.78
+10.1'	5.65	346.28
+20.2	5.29	346.64
+30.3	5.11	346.82
+35.5 = $\frac{L}{L}$	5.09	346.84
+5.1	5.08	346.85
+15.1	5.07	346.86

35193

+25.3	5.09	346.84
N. Gut.	5.11	346.82
N.L. on Gut.	4.91	347.02
" "Cb.	4.21	347.72

Section B

N Gut on Walk	4.46	347.47
+2' = Gut	4.77	347.21
+10.1	4.83	347.10
+20.2	4.83	347.10
+30.3	4.89	347.04
2	4.86	347.07
+5.1	4.95	346.98
+15.2	5.38	346.55
+25.3	5.73	346.20
S. Gut.	6.20	345.73
S cb.	5.65	346.28

Sec C

S cb.	5.42	346.51
S. Gut.	6.02	345.91
+10.1	5.57	346.36
+20.2	5.20	346.73
+30.3	4.91	347.02
+35.5-4	4.66	347.27
2 +5.1	4.62	347.31
+15.2	4.60	347.33
+25.3	4.56	347.37

35193

64

+33.3 = N Gut of cb.	4.57	347.36
N top cb.	4.37	347.56

Sec D

N Gut. on Drive	4.10	347.83
+2' on Gut at N cb line	4.42	347.51
+10.1	4.38	347.55
+20.2	4.41	347.52
+30.3	4.47	347.46
+35.5-4	4.57	347.36
2 +5.1	4.72	347.21
+15.2	5.03	346.90
+25.3	5.33	346.60
S. Gut. in Drive.	5.77	346.16
Check S.W.B.P. Studid and Elevation	6.18	345.72 = B.M. 345.75 0.01 = Error.

R-4-33

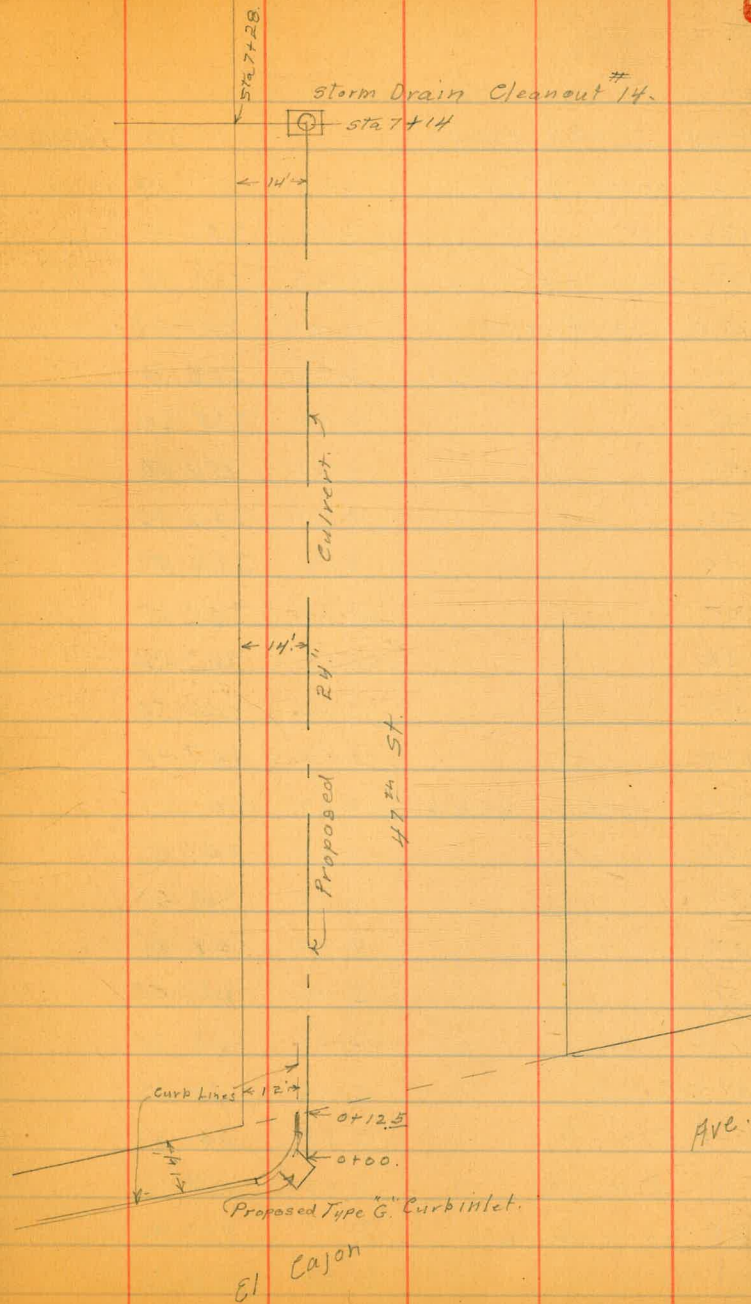
Miller
Walker
Bliss.

Profile for 24" Culvert.

14' E. of W. Line 47th St. from El Cajon North.

BM. BP.	6.01	353.25	347.24	SW 47 th & El Cajon Ave
0+00	on pav.	6.21	347.04	
0+12.5	N. line El Cajon on pav.	6.17	347.08	
0+50		5.6	347.7	
1+00		5.4	347.9	
+50		4.9	348.4	
2+00		4.7	348.6	
+50		4.6	348.7	
3+00		4.7	348.6	
+50		5.0	348.3	
4+00		5.6	347.7	
+50		6.8	346.5	
5+00		8.5	344.8	
+50		9.3	344.0	
6+00		10.0	343.3	
+50		11.2	342.1	
+75		11.5	341.8	
7+00		12.2	341.1	
+14	{ Cleanout #14. A 90° 00' Lt.	12.2	341.1	
+28	W. line 47 th St.	14.5	338.8	
7+40	Wash.	15.7	337.6	
7+59		14.7	338.6	

65



12-4-33
Miller
Walker
Bliss

Profile for 36" Culvert
5' E. of W. Line 43rd St. from
El Cajon to Meade Ave

B.M. B.P.	2.29	360.07		357.78	S.W. 43 rd + El Cajon.
0+00 Cleanout No 12.	2.88	357.19			pay
0+06 ^{3/4} gut	2.90	357.17			"
0+06 ^{3/4} ch.	2.49	357.58			ch
0+30 N. Line El Cajon	2.45	357.62			2 cmt walk
0+70	3.36	356.71			" " "
1+00	4.43	355.64			" " "
+50	6.03	354.04			" " "
2+00	7.75	352.32			" " "
+50	9.65	350.42			" " "
3+00	11.40	348.67			" " "
+23	12.13	347.94			" " "
+50	12.53	347.54			" " "
4+00	13.03	347.04			" " "
T.P.	3.59	350.66	13.00	347.07	
+50			4.00	346.66	" " "
5+00			4.03	346.63	" " "
+50			4.20	346.46	" " "
6+00			3.64	347.02	" " "
+37 ³ S. Line Meade					
+42 ³ - Brk. -			2.32	348.34	" " "
+51 S. cmt. ch.	2.40	348.26			
+51 S. gut.	2.89	347.77			
+77 ³ & Meade	2.48	348.18			
+92.8 Top ex cleanout.	2.75	357.91			3.5 W. of W. Line 34 th St.
+92.8 F.L. Ex Cleanout	21.05	358.61			

350.66

66

T.P. 12.51 359.58 3.59 347.07
chK. orig. B.M. 1.81 357.77 = 357.78

5-18-35 X Sec. Existing Pavment.
 Miller
 Walker
 Bliss
 El Cajon Ave. from Hamilton
 To Arizona
 110' Roadway.

Indexed
 C.S.K.

B.M. B.P. 0.30 368.65 368.35

N.E. El Cajon
 7. Hamilton

368.65

67

0+00 = W. Line Hamilton

0+10 W

Book 1474

N. el. 2.82 365.83 365.83

Gutter 3.74 364.91 365.05
 Gutter out New Pav.

+5 3.51 365.14

+15 3.38 365.27

+25 3.33 365.32 365.32

+35 3.16 365.49

+45 3.06 365.59

+55 = ϕ 3.06 365.59 365.59

+10 3.31 365.34

+20 3.63 365.02

+30 3.74 364.91 364.91

+40 4.03 364.62

+50 4.37 364.28

Gutter +55 pav out. 364.16

S. el. 3.83 364.82 364.82

0+25 W.

S. el. 5.26 363.39

Gutter 5.93 362.72

+5 5.77 362.88

+15 5.46 363.19

+25 5.17 363.48

+35

5.07 363.58

+45

4.79 363.86

✓ +55 = ϕ

4.69 363.96

+10

4.63 364.02

+20

4.64 364.01

+30

4.66 363.99

+40

4.72 363.93

+50

4.91 363.74

+55 = Gutter

5.12 363.53

N. el.

✓ 4.22 364.43

0+50 W.

N. el.

6.52 362.13

Gutter

7.27 361.38

+5

7.15 361.50

+15

6.96 361.69

+25

6.94 361.71

+35

6.96 361.69

+45

7.10 361.55

✓ +55 = ϕ

7.11 361.54

+10

7.21 361.44

+20

7.34 361.31

+30

7.48 361.17

+40

7.72 360.93

+50

8.13 360.52

Gutter

8.28 360.37

S. el.

7.60 361.05

368.65 ✓
0 + 75

s. d.	9.92	358.73
Gutter	10.60	358.05
+5	10.47	358.18
+15	10.07	358.58
+25	9.78	358.87
+35	9.69	358.96
+45	9.58	359.07
+55 = ϕ	9.45	359.20
+10	9.41	359.24
+20	9.28	359.37
+30	9.27	359.38
+40	9.27	359.38
+50	9.43	359.22
+55 = Gutter	9.53	359.12
N. el	8.76	359.89
	1 + 00	
N. el	11.08	357.57
Gutter	11.85	356.80
+5	11.77	356.88
+15	11.63	357.02
+25	11.61	357.04
+35	11.57	357.08
+45	11.6.9	356.96
+55 ϕ	11.75	356.90
+10	11.89	356.76
+20	11.97	356.68

368.65

El. Cajon Ave

68

+30	12.17	356.48
+40	12.46	356.19
+50	12.86	355.79
+55 = gutter	12.95	355.70
s. el	12.28	356.37
T.P.	11.4	356.89
	1 + 25	
s. el	2.85	354.04
Gutter	3.49	353.40
+5	3.43	353.46
+15	3.04	353.85
+25	2.71	354.18
+35	2.55	354.34
+45	2.38	354.51
+55 = ϕ	2.33	354.56
+10	2.24	354.65
+20	2.17	354.72
+30	2.19	354.70
+40	2.21	354.68
+50	2.30	354.59
+55 = gutter	2.38	354.51
N. el	1.59	355.30

356.89 ✓
1+50

N. el.	3.89	353.00
Gutter.	4.69	352.20
+5	4.62	352.27
+15	4.53	352.36
+25	4.49	352.40
+35	4.45	352.41
+45	4.60	352.29
✓ +55 = ϕ	4.64	352.25
+10	4.74	352.15
+20	4.85	352.04
+30	5.01	351.88
+40	5.29	351.60
+50	5.75	351.14
+55 = Gutter	5.89	351.00
S. el.	5.20	351.69
	1+75	
S. el.	7.54	349.35
Gutter	8.21	348.68
+5	8.05	348.84
+15	7.69	349.20
+25	7.34	349.55
+35	7.15	349.74
+45	7.04	349.85
✓ +55 = ϕ	6.92	349.97
+10	6.88	350.01
+20	6.87	350.02

356.89

El Cajon Ave 69

+30	6.81	350.08
+40	6.82	350.07
+50	6.92	349.97
+55 = gutter	7.00	349.89
Nemt el	6.19	350.70
	2+00	
N. el.	8.51	348.38
Gutter	9.27	347.62
+5	9.18	347.71
+15	9.08	347.81
+25	9.11	347.78
+35	9.15	347.74
+45	9.14	347.75
✓ +55 = ϕ	9.17	347.72
+10	9.31	347.58
+20	9.44	347.41
+30	9.64	347.25
+40	10.00	346.89
+50	10.47	346.42
+55 = Gutter	10.61	346.28
S. el.	9.86	347.03

356.89 ✓
2+25

S. el	12.22	344.67	
Gutter	12.92	343.97	
+5	12.74	344.15	
+15	12.29	344.60	
+25	11.98	344.91	
+35	11.77	345.12	
+45	11.60	345.29	
✓ +55 = ϕ	11.57	345.32	
+10	11.48	345.41	
+20	11.40	345.49	
+30	11.30	345.59	
+40	11.34	345.55	
+50	11.52	345.37	
+55 = Gutter	11.58	345.31	
N. el	10.86	346.03	
J. P.	0.69	344.71	
	2+50	12.87	344.02
N. el	0.98	343.73	
Gutter	1.64	343.07	
+5	1.56	343.15	
+15	1.40	343.31	
+25	1.43	343.28	
+35	1.52	343.19	
+45	1.60	343.11	

344.71 El Cajon Ave 70

✓ +55 = ϕ	1.72	342.99
+10	1.81	342.90
+20	1.89	342.82
+30	2.08	342.63
+40	2.42	342.29
+50	2.88	341.83
+55 = Gutter	3.03	341.68
S. el	2.45	342.26
	2+75	
S. el	4.77	339.94
Gutter	5.37	339.34
+5	5.22	339.49
+15	4.74	339.97
+25	4.46	340.25
+35	4.20	340.51
+45	4.13	340.58
✓ +55 = ϕ	3.93	340.78
+10	3.87	340.84
+20	3.82	340.89
+30	3.70	341.01
+40	3.71	341.00
+50	3.84	340.87
+55 = gutter	3.89	340.82
N. el	3.21	341.50

344.71
2+892

N. cl	4.59	340.12
Gutter	5.27	339.44
+5	5.12	339.59
+15	5.03	339.68
+25	4.96	339.75
+35	5.14	339.57
+45	5.15	339.56
✓ +55 = ϕ	5.23	339.48
+10	5.42	339.29
+20	5.51	339.20
+30	5.77	338.94
+40	6.10	338.61
+50	6.64	338.07
+55 = Gutter	6.78	337.93
S. curb, ✓	6.10	338.61
2+992 = E. Line Arizona St.		
S. cl	6.99	337.72
Gutter	7.67	337.04
+5	7.40	337.31
+15	6.88	337.83
+25	6.51	338.20
+35	6.27	338.44
+45	6.07	338.64
✓ +55 = ϕ	5.93	338.78
+10	5.78	338.93
+20	5.75	338.96

El Cajon Ave.

71

344.71

+30	5.70	339.01		
+40	5.73	338.98		
+50	5.91	338.80		
+55 = Gutter	6.03	338.68		
N. cl ✓	5.40	339.31		
14' W = E. cl. Line				
N. cl. Line = Gutter	6.47	338.24		
+5	6.21	338.50		
+15	6.25	338.46		
+25	6.17	338.54		
+35	6.22	338.49		
+45	6.22	338.49		
✓ +55 = ϕ	6.37	338.34		
+10	6.54	338.13		
+20	6.76	337.75		
+30	7.02	337.69		
+40	7.43	337.28		
+50	7.81	336.90		
+55 = S. gutter	7.92	336.79		
T.P.	12.79	357.11	0.39	344.32
T.P.	13.00	369.50	0.61	356.50
B.M. B.P.			1.14	368.36

N.E. El Cajon
+ Hamilton

Sta	+	HI	-	EI.	BM	Road above Culvert = Elev 100.00
TP	5.94	105.94	11.38	94.56		
TP	3.19	97.75	12.00	85.75		
TP	2.65	88.40				

285
505
1300

1415
505
1920

0+00			8.43			on Ground
			5.05			Top of corr Pipe
			13.00			Top conc Pipe
			19.20	69.20		Flow line conc Pipe
0+50			12.1			Bottom
1+00			11.4			
1+40			5.8			
+55			7.4			
2+00			6.2			
+50			3.5			
T.P.	9.77	95.58	2.59	85.81		
3+00			8.9			
+50			7.2			
4+00			4.8			
4+50			1.9			
TP	11.07	104.14	2.51	93.07		
5+00			8.80			
+50			3.9			
+80			0.2			
T.P.	10.37	113.58	0.93	103.21		
6+65			4.7	109.2		

M Road Div +

9-16-57
Miller
Walker
Bliss
Sisson

Plum St. X. Sec
Browning to Dumas.
Combination Walk + Curb 1/4 18' dia 8.5' 1/4

Indexed
C.S.K.

138.42

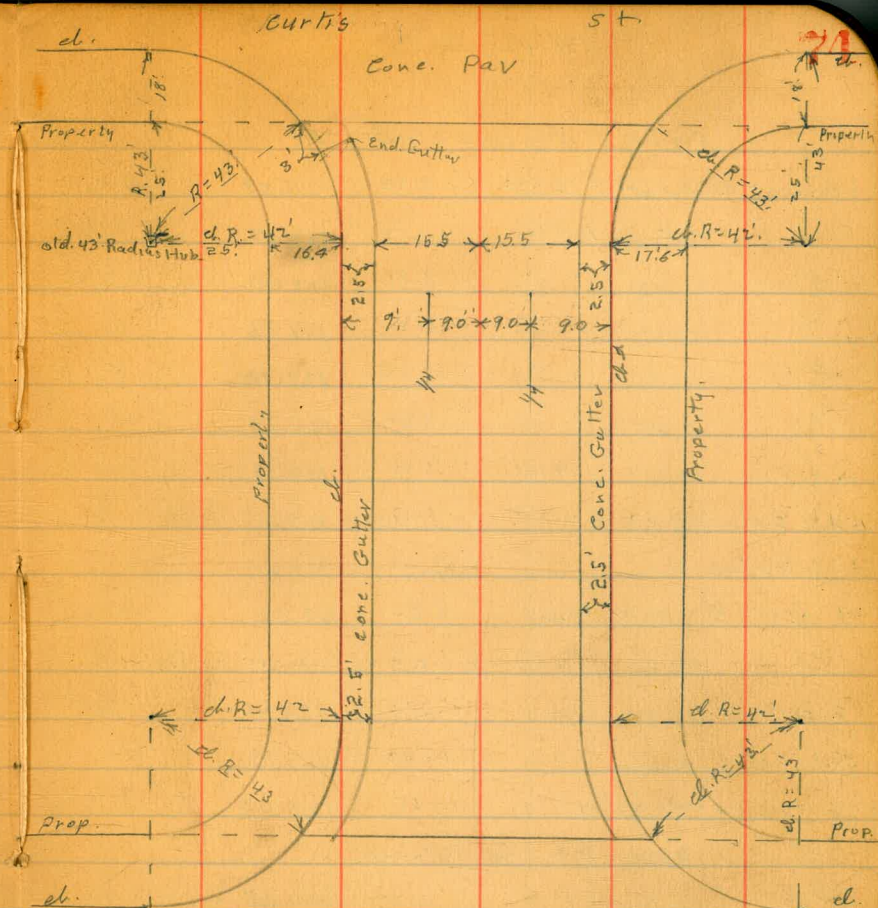
73

BM. B.P.	7.08	138.42	131.34	S.W. Plum + Curtis
0+00 = N Ly. Line Browning St. Paved.				
W. el. + 7.7 = cm + el. on Return	1.07	137.35		
Gutter Pav. N End.	1.57	136.85		
W. el. line " " "	1.62	136.70		
1/4 " " "	1.72	136.70		
ϕ " " "	1.82	136.60		
1/4 " " "	2.16	136.28		
E. el. line " " "	2.51	135.91		
+77 Gutter " " "	2.85	135.57		
+77 E. el on on Return	2.36	136.06		
0+25 N. End. 43' Radius Returns:				
E. el	2.86	135.56		
G.	3.0	135.4		
1/4	2.8	135.6		
ϕ	2.6	135.8		
1/4	2.6	135.8		
G.	2.5	135.9		
W. el.	1.90	136.52		
0+50				
W. el	2.61	135.81		
G	3.2	135.2		
1/4	3.1	135.3		
ϕ	3.2	135.2		
1/4	3.6	134.8		

G	3.8	134.6
E. el	3.62	134.80
0+70 = ϕ Drive on W.		
W. el. in drive	3.83	134.57
0+90 = ϕ Drive on E		
E. el. in drive	5.35	133.07
1+00		
E. el.	4.97	133.45
G	4.9	133.5
1/4	4.2	134.2
ϕ	4.2	134.2
1/4	4.1	134.3
G	4.2	134.2
W. el	4.01	134.41
1+09 ϕ Drive on E.		
E. el. in drive	5.65	132.77
1+11 ϕ Drive on W.		
W. el. in drive	4.83	133.59
1+50		
W. el	5.47	132.93
G	5.3	133.1
1/4	5.2	133.2
ϕ	5.2	133.2
1/4	5.4	133.0
+5	5.9	132.5
G!	6.7	131.7
E. el.	6.33	132.09

138.42
1+75 P.C. 43' Radius Return

E.d	6.97	131.45
G	7.3	131.1
+ 3.14	6.4	132.0
	6.0	132.4
⊕	5.9	132.5
14	5.9	132.5
G	6.2	132.2
W.d	6.26	132.16
2+00 ⁶ = Sly Line Curtis St. Pavd.		
W.d - 7.7 = ent. d. on Return	7.04	131.38
G. pav S. End	7.57	130.85
d " " "	7.53	130.89
14 " " "	7.57	130.85
⊕ " " "	7.70	130.72
14 " " "	7.87	130.55
d " " "	8.12	130.30
+ 5.5 G. "	8.24	130.14
+ 5.5 = E.d. on Return	7.75	130.67



138.42

0+00 = Nly Lin - Curtis St

E. d. Line - 7.0 = S. ent d. on Ret.	9.55	128.87
" " " = G Nly End. Pav	10.08	128.34
E. cl. line:	9.81	128.61
1/4 " " "	9.56	128.86
1/4 " " "	9.32	129.10
1/4 " " "	9.29	129.13
W. d. Line =	9.29	129.13
+ 11.0 E. edge + Gutter to E. " " "	9.37	129.05
+ 7. = Gutter " " "	9.42	129.00
+ 7. = W. ent. cl. on Return	8.86	129.56

0+03. on E. = End. ent. Gutter

E. ent. cl.	9.72	128.40
ent. gutter	10.43	127.99
+ 2.5 outside ent gutter	10.35	128.07

0+25 = B.C. cl. Returns

W. cl.	10.54	127.88
cone G	11.26	127.16
E. " "	11.10	127.32
1/4	11.5	126.9
1/4	11.5	126.9
1/4	11.8	126.6
+ 6.5 = W. edge cone G	12.00	126.42
+ 9. E. " " "	12.05	126.37
+ E. cl.	11.56	126.86

T.P. 0.42 125.85 12.99 125.43

125.85

0+50

E. cl.	1.19	124.66
cone G	1.76	124.09
+ 2.5 cone G	1.66	124.19
1/4	1.6	124.3
1/4	1.3	124.6
1/4	1.1	124.5
+ 6.5 = cone G	0.79	125.06
+ 9 = W. edge " in drive.	0.94	124.91

1+00

W. cl.	4.67	121.18
cone G	5.41	120.44
+ 2.5 = " "	5.30	120.55
1/4	5.7	120.2
1/4	6.0	119.9
1/4	6.2	119.7
+ 6.5 cone G	6.13	119.72
+ 9 " "	6.24	119.57
E. cl.	5.68	120.17

1+10.7 cl. Drive on W.

Drive	6.23	119.62
W. edge cone G	6.34	119.51
E. " " "	6.30	119.55

75

125.85

1+41³ = ϕ drive on E

drive	9.83	116.02
E. edge cone G	9.94	115.91
" " " "	9.83	116.02

1+50

E. cl	10.15	115.70
cone G	10.69	115.16
+2.5 " "	10.54	115.27
1/4	10.6	115.3
ϕ	10.0	115.9
1/4	10.1	115.8
+6.5 = cone G.	9.80	116.05
+9 = " "	9.85	116.00
+9 = w. cl	9.17	116.68

1+75 B.e cl. Return

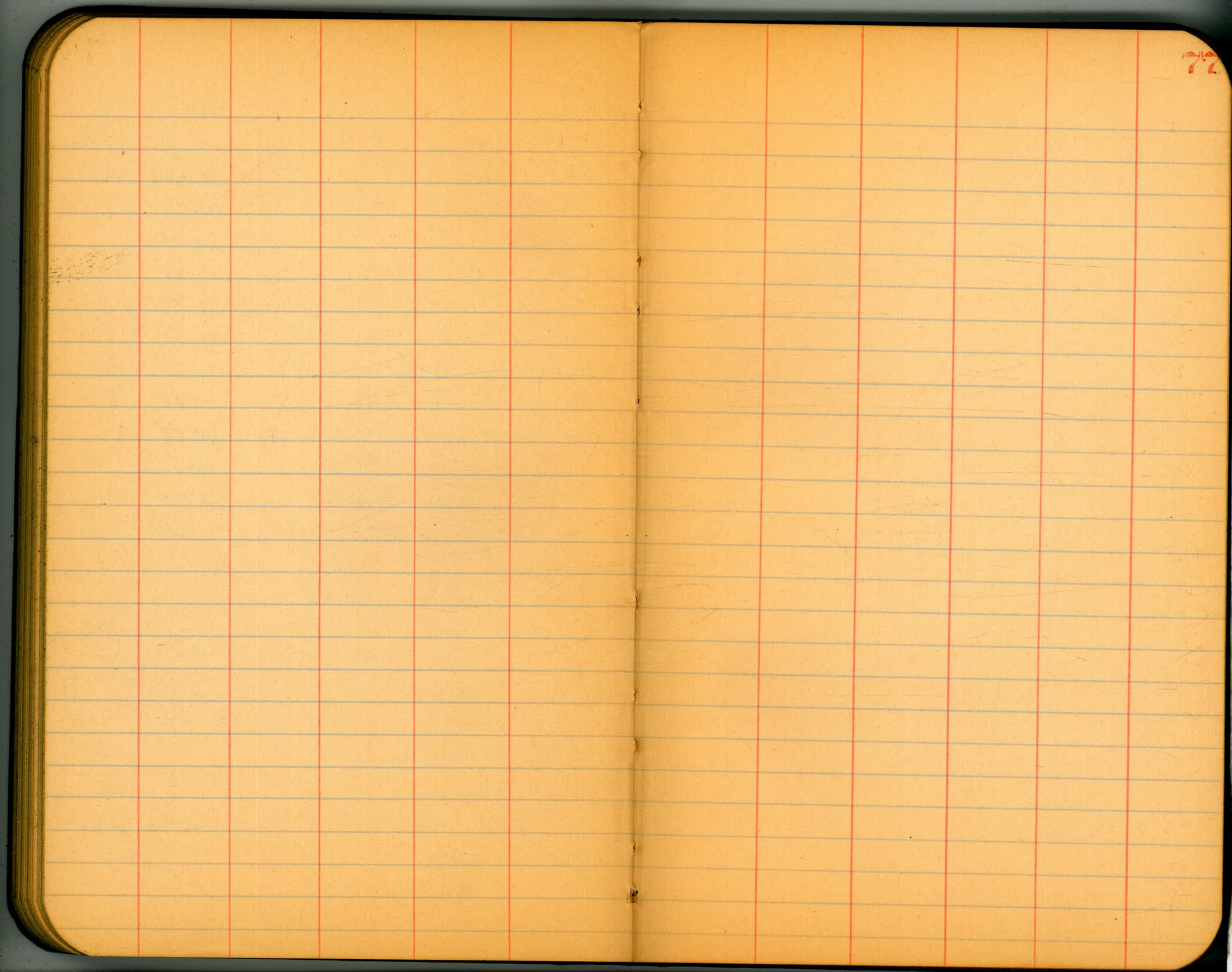
w. cl	11.40	114.45
cone G	12.10	113.75
+2.5 " "	11.99	113.86
1/4	12.0	113.9
ϕ	12.0	113.9
1/4	12.4	113.5
+6.5 = cone G.	12.87	112.98
+9 = " "	12.93	112.92
+9 = E. cl	12.45	113.40
T.P. 6.46	119.56	12.75 113.10

119.56

2+00 = Sly Line Dumas. St.

76

E. cl line - 7.7 = E. cl on Return	7.65	111.91	
Butter	9.09	111.47	S. End Pav.
+3 = w. edge cone G. to S.	7.93	111.63	" " "
E. cl. Line	7.80	111.76	" " "
1/4	7.50	112.06	" " "
ϕ	7.22	112.34	" " "
1/4	7.08	112.48	" " "
w. cl. line	7.01	112.55	" " "
+4.7 = E. Edge cone G. to S.	6.96	112.60	" " "
+7.7. G	6.90	112.66	" " "
+7.7. w. cl. on Return	6.53	113.03	
T.P.	13.12	132.13	0.55 119.01
orig. B.M.			0.77 131.36 = 131.34



72

78

79

Walker
Bliss
McCarty
11-23-33

"BENCH MARKS"
E of Cajon Ave.
Between 42nd Street ^{And} Euclid Ave.
Copied from Book 1476-79

S.W.P.P. 42nd And E/Cajon Ave	364.47
" " " Copeland " " "	363.025
" " " Van Dyke " " "	363.64
" " " 43rd " " "	357.78
" " " Tournament " " "	352.295
" " " 44th " " "	354.80
" " " Highland Ave " " "	356.20
" " " 45th " " "	357.32
" " " Chamourne " " "	356.625
" " " 46th " " "	353.04
" " " Menlo " " "	351.22
" " " 47th " " "	347.245
" " " Euclid " " "	345.74

DIRECTIONS FOR USE OF TABLES

TABLE No. 1.

Distance of slope stake from side or shoulder
stake for any width roadway, slope 1 1/2 to 1.
If ground is nearly level, the cut or fill or side
stake is located by the double entry method in
left column and top row. The number in body

363.64
363.64
363.64

IMPROVED TABLES AND INFORMATION

To find Tangent and External for curve of
any other degree, divide by degree of curve and
add correction found in column of corrections.
Degree of curve with a given L may be found
by dividing tangent (or external) opposite L by
given tangent (or external).

The distance from a point on the tangent to
the curve is very nearly the square of the tangent
length divided by twice the radius.

7335-370

$\frac{4134}{8.5}$

$\frac{18}{26}$
 $\frac{24}{24}$

$\frac{32.13}{31.34}$
 $\frac{.79}{.79}$

$\frac{18}{2.5}$ 36
 $\frac{1.5}{1.5}$

192.27
17.35
174.59

35304
719
360.23
356.62
3.61

588