

1482

PAS

LEVEL 200K

No. 383 F

ENGINEERING DEPARTMENT,
CITY OF SAN DIEGO,
CALIFORNIA.

MICROFILMED

04

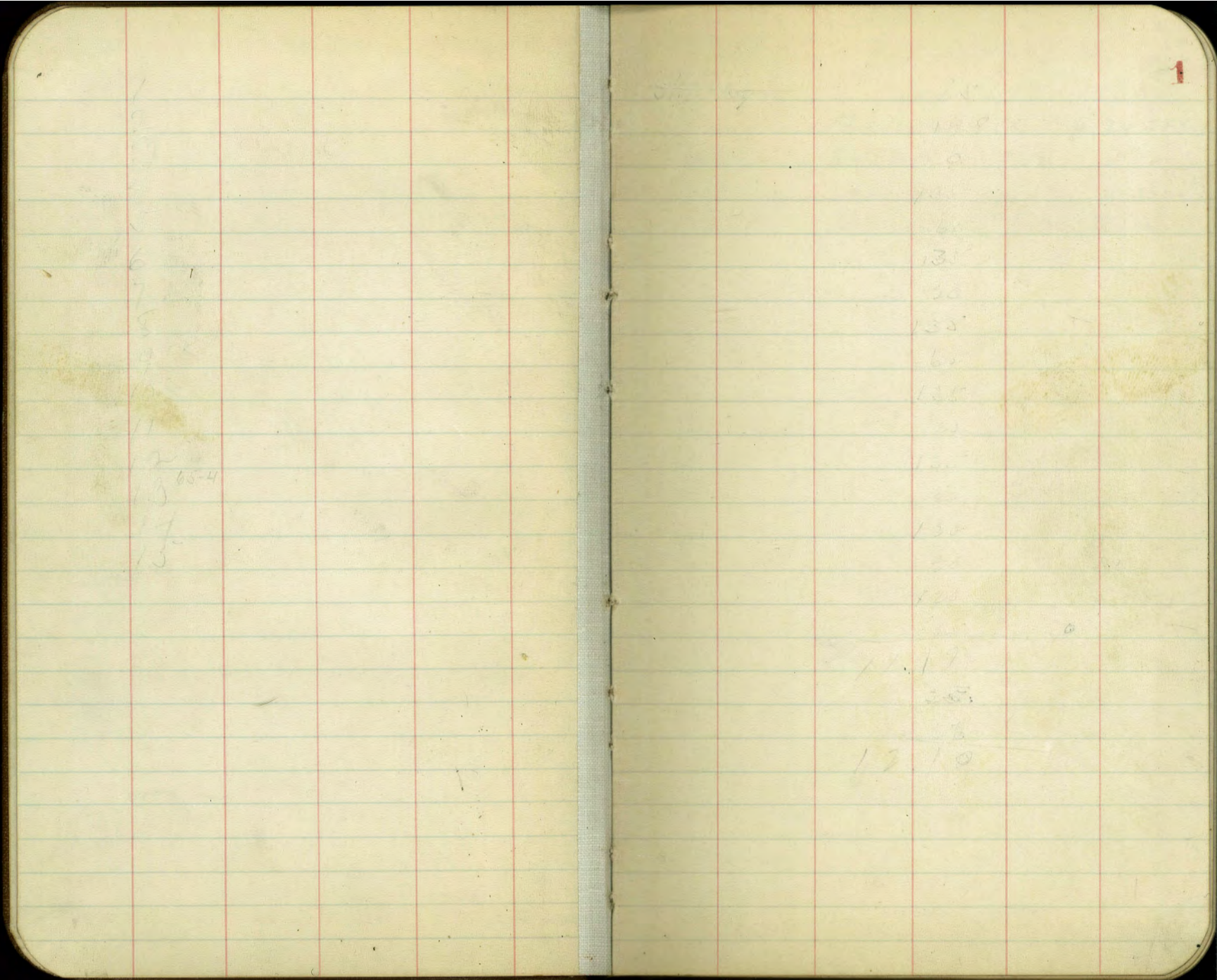
Our Leather Bound Engineers Note Books are carried in the following rulings:

- No. 380 LEVEL BOOK. Left and Right Hand Page the same as Left Hand Page of this Book.
- No. 382 FIELD BOOK. Left Hand Page as in this Book, Right Hand Page 4 x 4 to the inch, Center Line Red.
- No. 384 MINING TRANSIT BOOK. Left Hand Page as in this Book, Right Hand Page 8x8 to the inch, Center Line Red.
- No. 385 FIELD BOOK. Left Hand Page as in this Book, Right Hand Page 8 vertical and 4 horizontal lines to the inch, Center Line Red.

We also carry the Note Books listed above, bound in extra strong Fabri-Hide (otherwise the same quality of book), which can be furnished at a somewhat lower price.

In ordering Fabri-Hide covered books, add the letter "F" to catalog number.

THE FREDERICK POST CO.
ENGINEERING and DRAFTING SUPPLIES
IRVING PARK STATION
CHICAGO, ILL.



1
2
3
4
5
6
7
8
9
10
11
12
13 65-4
14
15

1
2
3
4
5
6
7
8
9
10
11
12
13
14
15
16
17
18
19 10

1

Job #185.

Jan. 29th 1934.

2

Agnew - Inst. X. 84359

Engert. - Rod. D-3203

Colvin } D-3202

Higgins } Chain. D-1833.

Sta.	+	H.I.	Rod.	Elev.
BM#15	2.47	22.21		19.78 ✓
T.P.	0.83	15.38	7.66	13.96
T.P.	1.79	8.55	98.62	6.77
BM#1-F.			6.58	1.20

179	19.78
59	243
120	22.21
	7.66
	14.55

3

Mon. N.E. Cor. Balboa Ave. & Rose Canyon Hwy

BM#14	3.53	10.01		6.48
T.P.	5.81	10.87	4.95	5.06
T.P.	5.02	12.56	3.33	7.54
T.P.	2.71	10.92	8.14	7.42
Mon.			4.90	5.22
T.P.	2.89	5.05	7.96	2.16
BM#1-F			3.54	1.51

conc. Mon. 60' RA Sta 207+30 Atlantic St

conc. Mon. Sta 217+00 L-Side

conc. Mon. Sta 227+00 L-Side

	+	HI	-	Elev.
				CITY DATUM
B.M. #14.	5.0	11.48		6.48
T.P.	4.83	8.59	7.72	3.76
T.P.	5.43	6.40	7.62	0.97
T.P.	6.35	5.55	7.20	-0.80
T.P.	5.34	3.38	7.51	-1.96
on Trav. Pt. X			5.02	-1.64
T.P.	5.29	4.24	4.43	-1.05
#1-P. B.M.			3.89	0.35

32.24

38.37

Notes. - From B.M. #14. 60' Rt. Sta 207+30 Atlantic St.

+4.12

Jan 30th 1934.

Agnew - Inst.

Engert. - Rod.

Colvin

Higgins } chain

B.M. #1-P Corrected Elev 4.35

60' Rt Sta 207+30 Atlantic St.

38.37
~~32.24~~
 6.13
 6.48
 3.76
 2.72

Hub at Angular Pt on Trav. in Pacific St.

75.0' - W - Bond St. 200' N. of Pacific St.

Referred To Hoop's Datum

	+	H.I.	-	Elev
^{#1-P} BM	4.95	5.30		0.35 ✓
T.P.	5.55	6.79 ✓	4.06	1.24 ✓
T.P.	2.62	8.67 ✓	0.74	6.05 ✓
T.P.	10.28	15.89 ✓	3.06	5.61 ✓
T.P.	9.91	22.64 ✓	3.16	12.73 ✓
^{#15} BM			2.87	19.77 ✓
				<u>19.78</u>

N.E. cor. Balboa + Rose Canyon

Notes -

From B.M. #1-P to B.M. #15
N.E. cor. Balboa + Rose Canyon.

DI -

			10' Aided.		
	+	H.I.	El-ev.	Cor. Elev.	Cor. Elev.
		3.46	10.00	city Datum	Hoops
			-1.64		Datum.
Pt. X	5.10	13.46	8.36	-1.64	2.36
					X- Pt. on Traverse Assumed. 0+0 Sta. N.E.S.W.

W-0+0.

S-0+0		5.1	8.36	-1.64	2.36
+25		5.4	8.06	-1.94	2.06
+50		4.85	8.61	-1.39	2.61
+75		5.00	8.46	-1.54	2.46
1+00		5.10	8.36	-1.64	2.36

W-0+25

S-0.0		4.7	8.76	-1.24	2.76
+25		4.9	8.56	-1.44	2.56
+50		5.1	8.36	-1.64	2.36
+75		4.7	8.76	-1.24	2.76
1+00		5.1	8.36	-1.64	2.36

W-0+50

S-0.0		4.6	8.86	-1.14	2.86
+25		4.7	8.76	-1.24	2.76
+50		4.8	8.66	-1.34	2.66
+75		4.9	8.56	-1.44	2.56
1+00		5.0	8.46	-1.54	2.46

W-0+75

S.0+0		4.9	8.56	-1.44	2.56
+25		4.8	8.66	-1.34	2.66
+50		5.0	8.46	-1.54	2.46
+75		4.9	8.56	-1.44	2.56
1+00		5.2	8.26	-1.74	2.26

sta + MI - Elev. City Datum Hoop's Datum
 1346 Cor. Elev. cor. Elev.
 W-1+00.

Sta	MI	Elev.	City Datum	Hoop's Datum
S-0.0	4.8	8.66	-1.34	2.66
+25	4.9	8.56	-1.44	2.56
+50	5.0	8.46	-1.54	2.46
+75	5.1	8.36	-1.64	2.36
1+00	5.1	8.36	-1.64	2.36

W-1+25

S-0.0	4.8	8.66	-1.34	2.66
+25	5.0	8.46	-1.54	2.46
+50	5.0	8.46	-1.54	2.46
+75	5.0	8.46	-1.54	2.46
1+00	4.8	8.66	-1.34	2.66

W-1+50

S-0.0	4.8	8.66	-1.34	2.66
+25	5.0	8.46	-1.54	2.46
+50	4.6	8.86	-1.14	2.86
+75	4.8	8.66	-1.34	2.66
1+00	4.6	8.86	-1.14	2.86

W-1+75

S-0.0	4.8	8.66	-1.34	2.66
+25	5.1	8.36	-1.64	2.36
+50	4.7	8.76	-1.24	2.76
+75	4.9	8.56	-1.44	2.56
1+00	5.1	8.36	-1.64	2.36

S	Sta	+	HI	-	Elev	city Datum	eov Elev. Hoops Datum
			13.46			Cox. Elev.	
			W-2+00				
S	S-0+0		4.9		8.56	-1.44	2.56
	+25		4.7		8.76	-1.24	2.76
	+50		5.2		8.26	-1.74	2.26
	+75		5.3		8.16	-1.84	2.16
I	1+00		5.1		8.36	-1.64	2.36
			W-2+25				
S	S-1+00		5.1		8.36	-1.64	2.36
	0+75		5.1		8.36	-1.64	2.36
	+50		5.1		8.36	-1.64	2.36
	+25		4.8		8.66	-1.34	2.66
I	0+00		4.8		8.66	-1.34	2.66
			W-2+50				
S	S 0+00		4.8		8.66	-1.34	2.66
	+25		4.9		8.56	-1.44	2.56
	+50		5.0		8.46	-1.54	2.46
	+75		5.0		8.46	-1.54	2.46
I	1+00		4.8		8.66	-1.34	2.66
			W-2+75				
S	S-1+00		4.8		8.66	-1.34	2.66
	0+75		4.9		8.56	-1.44	2.56
	+50		4.9		8.56	-1.44	2.56
	+25		4.7		8.76	-1.24	2.76
	0+00		4.9		8.56	-1.44	2.56

Sta	+	H.I.	-	Elev.	City Datum	Cor. Elev.	Cor. Elev. Hoops Datum
		W-3+00					
S. 0+0		13.46	4.5	8.96	-1.04		2.96
+25			4.7	8.76	-1.24		2.76
+50			4.8	8.66	-1.34		2.66
+75			4.7	8.76	-1.24		2.76
1+00			4.6	8.86	-1.14		2.86
		W-3+25					
S 1+00			5.0	8.46	-1.54		2.46
0+75			5.1	8.36	-1.64		2.36
+50			4.8	8.66	-1.34		2.66
+25			4.6	8.86	-1.14		2.86
0+00			4.6	8.86	-1.14		2.86
		W-3+50					
S-0+0			4.8	8.66	-1.34		2.66
+25			4.9	8.56	-1.44		2.56
+50			4.9	8.56	-1.44		2.56
+75			5.1	8.36	-1.64		2.36
1+00			5.1	8.36	-1.64		2.36
		W-3+75					
S-1+00			4.8	8.66	-1.34		2.66
0+75			4.8	8.66	-1.34		2.66
+50			5.1	8.36	-1.64		2.36
+25			5.1	8.36	-1.64		2.36
+00			5.0	8.46	-1.54		2.46

Sta	+	H.I.	-	Elev.	City Datum Cor Elev	Cor. Elev Hoops Datum.
		13.46				
		W-4+00				
S-0+0			5.0	8.46	-1.54	2.46
+25			4.9	8.56	-1.44	2.56
+50			4.7	8.76	-1.24	2.76
+75			4.8	8.66	-1.34	2.66
1+00			4.5	8.96	-1.04	2.96
		W-0+0				
S 1+25			5.2	8.26	-1.74	2.26
+50			5.2	8.26	-1.74	2.26
+75			5.1	8.36	-1.64	2.36
2+00			5.4	8.06	-1.94	2.06
		W-0+25				
S-2+00			5.5	7.96	-2.04	1.96
1+75			5.4	8.06	-1.94	2.06
+50			5.0	8.46	-1.54	2.46
+25			5.1	8.36	-1.64	2.36
		W-0+50				
S-1+25			5.1	8.36	-1.64	2.36
+50			5.2	8.26	-1.74	2.26
+75			5.4	8.06	-1.94	2.06
2+00			5.5	7.96	-2.04	1.96
		W-0+75				
S-2+00			5.3	8.16	-1.84	2.16
1+75			5.4	8.06	-1.94	2.06
+50			5.2	8.26	-1.74	2.26
+25			5.1	8.36	-1.64	2.36

Sta	+	HI	-	Elev.	City Datum	Cor. Elev	Hoops Datum
		W-1+00		Cor Elev.			
S-1+25		13.46	5.1	8.36	-1.64	2.36	
+50			5.2	8.26	-1.74	2.26	
+75			5.2	8.26	-1.74	2.26	
2+00			5.1	8.36	-1.64	2.36	
		W-1+25					
S-2+00			5.0	8.46	-1.54	2.46	
1+75			5.1	8.36	-1.64	2.36	
+50			5.0	8.46	-1.54	2.46	
+25			4.8	8.66	-1.34	2.66	
		W-1+50					
S-1+25			4.9	8.56	-1.44	2.56	
+50			4.8	8.66	-1.34	2.66	
+75			5.2	8.26	-1.74	2.26	
2+00			5.2	8.26	-1.74	2.26	
		W 1+75					
S-2+00			5.2	8.26	-1.74	2.26	
1+75			5.2	8.26	-1.74	2.26	
+50			5.2	8.26	-1.74	2.26	
+25			5.1	8.36	-1.64	2.36	
		W-2+00					
S-1+25			5.2	8.26	-1.74	2.26	
+50			5.1	8.36	-1.64	2.36	
+75			5.2	8.26	-1.74	2.26	
2+00			5.1	8.36	-1.64	2.36	

Sta	+	H.I.	-	Elev.	City Datum	Cor Elev Hoops Datum
		W-2+25			Cor Elev.	
S-2+00		13.46	5.3	8.16	-1.84	2.16
1+75			5.0	8.46	-1.54	2.46
+50			4.7	8.76	-1.24	2.76
+25			4.7	8.76	-1.24	2.76
		W-2+50				
S 1+25			5.1	8.36	-1.64	2.36
+50			5.0	8.46	-1.54	2.46
+75			4.8	8.66	-1.34	2.66
2+00			4.9	8.56	-1.44	2.56
		W-2+75				
S 2+00			4.7	8.76	-1.24	2.76
1+75			4.7	8.76	-1.24	2.76
+50			4.8	8.66	-1.34	2.66
+25			4.6	8.86	-1.14	2.86
		W-3+00				
S-1+25			4.5	8.96	-1.04	2.96
+50			4.6	8.86	-1.14	2.86
+75			4.7	8.76	-1.24	2.76
2+00			4.9	8.56	-1.44	2.56
		W-3+25				
S-2+00			5.1	8.36	-1.64	2.36
1+75			5.1	8.36	-1.64	2.36
+50			4.9	8.56	-1.44	2.56
+25			5.0	8.46	-1.54	2.46

Sta	+	H.I.	-	Elev.	City Datum	Cor Elev Hoop's Datum
		W-3+50			Cor Elev	
S 1+25		13.46	5.0	8.46	-1.54	2.46
+50			5.3	8.16	-1.84	2.16
+75			5.2	8.26	-1.74	2.26
2+00			5.2	8.26	-1.74	2.26
		W-3+75				
S-2+00			4.9	8.56	-1.44	2.56
1+75			5.0	8.46	-1.54	2.46
+50			5.0	8.46	-1.54	2.46
+25			4.9	8.56	-1.44	2.56
		W-4+00				
S 1+25			4.7	8.76	-1.24	2.76
+50			4.8	8.66	-1.34	2.66
+75			4.9	8.56	-1.44	2.56
2+00			5.0	8.46	-1.54	2.46
		W-0+0				
S-2+25			5.7	7.76	-2.24	1.76
+50			5.9	7.56	-2.44	1.56
+75			5.9	7.56	-2.44	1.56
3+00			5.9	7.56	-2.44	1.56
		W-0+25				
S-3+00			6.1	7.36	-2.64	1.36
2+75			6.0	7.46	-2.54	1.46
+50			5.8	7.66	-2.34	1.66
+25			5.7	7.76	-2.24	1.76

Sta	+	H.I.	-	Elev	City Datum	Hoops Datum
					Cor. Elev.	Cor. Elev.
W-0+50						
S-2+25		13.46	5.6	7.86	-2.14	1.86
+50			5.7	7.76	-2.24	1.76
+75			6.3	7.16	-2.84	1.16
3+00			6.4	7.06	-2.94	1.06
W-0+75						
S-3+00			5.9	7.56	-2.44	1.56
2+75			6.0	7.46	-2.54	1.46
+50			5.8	7.66	-2.34	1.66
+25			5.3	8.16	-1.84	2.16
W-1+00						
S-2+25			5.3	8.16	-1.84	2.16
+50			5.4	8.06	-1.94	2.06
+75			5.5	7.96	-2.04	1.96
3+00			6.0	7.46	-2.54	1.46
W-1+25						
S-3+00			5.5	7.96	-2.04	1.96
2+75			5.5	7.96	-2.04	1.96
+50			5.2	8.26	-1.74	2.26
+25			5.2	8.26	-1.74	2.26
W-1+50						
S-2+25			5.3	8.16	-1.84	2.16
+50			5.3	8.16	-1.84	2.16
+75			5.3	8.16	-1.84	2.16
3+00			5.3	8.16	-1.84	2.16

Sta	+	H.I.	-	Elev	City Datum	Cor. Elev	Cor. Elev Hoop's Datum
		W-1+75		Cor. Elev			
S-3+00		13.46	5.3	8.16	-1.84		2.16
	+75		5.2	8.26	-1.74		2.26
	+50		5.3	8.16	-1.84		2.16
	+25		5.4	8.06	-1.94		2.06
		W-2+00					
S-2+25			5.3	8.16	-1.84		2.16
	+50		5.4	8.06	-1.94		2.06
	+75		5.2	8.26	-1.74		2.26
	3+00		5.1	8.36	-1.64		2.36
		W-2+25					
S-3+00			5.2	8.26	-1.74		2.26
	+75		5.0	8.46	-1.54		2.46
	+50		5.0	8.46	-1.54		2.46
	+25		5.0	8.46	-1.54		2.46
		W-2+50					
S-3+25			4.9	8.56	-1.44		2.56
	+50		4.9	8.56	-1.44		2.56
	+75		5.0	8.46	-1.54		2.46
	3+00		5.3	8.16	-1.84		2.16
		W-2+75					
S-3+00			5.2	8.26	-1.74		2.26
	+75		5.1	8.36	-1.64		2.36
	+50		5.0	8.46	-1.54		2.46
	+25		5.2	8.26	-1.74		2.26

Sta	+	H.I.	-	Elev	Cor Elev City Datum	Cor. Elev. Hoop's Datum	
		W-3+00					Jan. 31 st 1934
S-2+25		13.46	4.8	8.66	-1.34	7.66	Agnew - Inst.
+50			4.9	8.56	-1.44	7.56	Engert - Rod.
+75			4.9	8.56	-1.44	7.56	Colvin.
3+00			5.0	8.46	-1.54	7.46	Higgins } chain.
		W-3+25					
S-3+00			5.2	8.26	-1.74	7.26	
2+75			4.9	8.56	-1.44	7.56	
+50			5.1	8.36	-1.64	7.36	
+25			5.2	8.26	-1.74	7.26	
		W-3+50					
S-2+25			5.1	8.36	-1.64	7.36	
+50			5.1	8.36	-1.64	7.36	
+75			5.2	8.26	-1.74	7.26	
3+00			5.4	8.06	-1.94	7.06	
		W-3+75					
S-3+00			5.5	7.96	-2.04	6.96	
2+75			5.5	7.96	-2.04	6.96	
+50			5.4	8.06	-1.94	7.06	
+25			5.2	8.26	-1.74	7.26	
		W-4+00					
S-2+25			5.2	8.26	-1.74	7.26	
+50			5.2	8.26	-1.74	7.26	
+75			5.4	8.06	-1.94	7.06	
3+00			5.4	8.06	-1.94	7.06	

Sta	+	H.I.	-	Elev.
B.M.#1-P	4.0	8.35		4.35
B.M.#2-R	5.36	4.35	5.35	0.35
		8.36		3.00
		4.36		-1.00

Elev. corrected to Hoops Survey.

17

10.0' W- 5-1+00 W-8+00

W-4+25

S-0+0	5.7	2.66	-1.34
+25	5.7	2.66	-1.34
+50	5.9	2.46	-1.54
+75	5.5	2.86	-1.14
1+00	5.7	2.66	-1.34

W-4+50

S-1+00	6.0	2.36	-1.64
0+75	6.0	2.36	-1.64
+50	5.8	2.56	-1.44
+25	5.6	2.76	-1.24
0+0	5.5	2.86	-1.14

W-4+75

S-0+0	5.8	2.56	-1.44
+25	5.6	2.76	-1.24
+50	5.4	2.96	-1.04
+75	5.6	2.76	-1.24
1+00	5.6	2.76	-1.24

W-5+00

S-1+00	6.2	2.16	-1.84
0+75	6.1	2.26	-1.74
+50	6.0	2.36	-1.64
+25	5.9	2.46	-1.54
0+0	5.7	2.66	-1.34

Sta	+	HI	-	Elev.
		8.36		
		(4.36)		
S-0+0		VI 5+25	6.6	1.76 -2.24
+25			6.6	1.76 -2.24
+50			6.3	2.06 -1.94
+75			6.5	1.86 -2.14
1+00			6.0	2.36 -1.64
		W 5+50		
S-1+00			6.7	1.66 -2.34
0+75			6.2	2.16 -1.84
+50			5.9	2.46 -1.54
+25			6.2	2.16 -1.84
0+0			6.3	2.06 -1.94
		W-5+75		
S-0+0			6.4	2.96 -1.04
+25			6.4	1.96 -2.04
+50			6.3	2.06 -1.96
+75			6.4	1.96 -2.04
1+00			6.2	2.16 -1.84
		W-6+00		
S-1+00			5.7	2.66 -1.34
0+75			5.5	2.86 -1.14
+50			5.4	2.96 -1.04
+25			5.4	2.96 -1.04
0+0			5.3	3.06 0.94

E-Line Bond St.

Sta.	+	H.I.	-	Elev.	CITY
		W-6+25			
		8.36			
		(4.36)			
S-0+0			5.4	2.96	-1.04
+25			5.3	3.06	-0.94
+50			5.7	2.66	-1.34
+75			5.5	2.86	-1.14
1+00			5.4	2.96	-1.04

W-6+50

S-0+0			5.6	2.76	-1.24
+25			5.1	3.26	-0.74
+50			5.7	2.66	-1.34
+75			5.4	2.96	-1.04
1+00			5.6	2.76	-1.24

W-6+75

S-0+0			5.1	3.26	-0.74
+25			5.4	2.96	-1.04
+50			5.5	2.86	-1.14
+75			5.6	2.76	-1.24
1+00			5.6	2.76	-1.24

W-7+00

S-0+0			5.6	2.76	-1.24
+25			5.6	2.76	-1.24
+50			5.9	2.46	-1.54
+75			5.8	2.56	-1.44
1+00			5.9	2.46	-1.54

} on Fill Bond St.

Sta	+	H.I.	-	Elev.
		8.36		
		<u>4.36</u>		
S 5-0+0	W-7+25		5.7	2.66 -1.34
	+25		5.6	2.76 -1.24
	+50		5.8	2.56 -1.44
	+75		6.1	2.26 -1.74
	+100		6.3	2.06 -1.94
	W-7+50			
S 5-0+0			5.6	2.76 -1.24
	+25		5.5	2.86 -1.14
	+50		5.7	2.66 -1.34
	+75		5.4	2.96 -1.04
	+100		5.9	2.46 -1.54
	W-7+75			
S 5-0+0			5.5	2.86 -1.14
	+25		5.6	2.76 -1.24
	+50		5.8	2.56 -1.44
	+75		5.8	2.56 -1.44
	+100		5.9	2.46 -1.54
	W-8+00			
S 5-0+0			5.3	3.06 -0.94
	+25		5.7	2.66 -1.34
	+50		5.7	2.66 -1.34
	+75		5.8	2.56 -1.44
	+100		5.7	2.66 -1.34

Sta	+	H.I. 8.36 <u>4.36</u>	-	Elev.
S-1+25	W-8+00		5.9	2.46 7.54
+50			5.9	2.46 7.54
+75			6.4	1.96 2.04
2+00			6.2	2.16 7.84
	W-7+75			
S-1+25			6.2	2.16 7.84
+50			6.1	2.26 7.74
+75			6.5	1.86 2.14
2+00			7.0	1.36 2.64
	W-7+50			
S-1+25			6.0	2.36 7.64
+50			6.2	2.16 7.84
+75			6.8	1.56 2.44
2+00			6.8	1.56 2.44
	W-7+25			
S-1+25			6.1	2.26 7.74
+50			6.5	1.86 2.14
+75			6.4	1.96 2.04
2+00			6.9	1.46 2.54
	W-7+00			
S-1+25			6.1	2.26 7.74
+50			6.4	1.96 2.04
+75			6.1	2.26 7.74
2+00			6.0	2.36 7.64

Sta.	+	HI	-	Elev.	CITY
		8.36			
		4.36			
S-2+00		W-6+75	5.8	2.56	-1.44
1+75			6.0	2.36	-1.64
+50			5.9	2.46	-1.54
+25			6.0	2.36	-1.64
		W-6+50			
S-1+25			5.8	2.56	-1.44
+50			5.8	2.56	-1.44
+75			5.8	2.56	-1.44
2+00			5.9	2.46	-1.54
		W-6+25			
S-2+00			5.8	2.56	-1.44
1+75			5.6	2.76	-1.24
+50			5.7	2.66	-1.34
+25			5.3	3.06	-0.94
		W-6+00			
S-1+25			5.7	2.66	-1.34
+50			5.9	2.46	-1.54
+75			5.8	2.56	-1.44
2+00			5.9	2.46	-1.54
		W-5+75			
S-2+00			6.2	2.16	-1.94
1+75			6.5	1.86	-2.14
+50			6.7	1.66	-2.34
+25			6.5	1.86	-2.14

} West Line Bond St.

} East Side Bond St.

Sta	+	H.I.	-	Elev.
		836		
		<u>4.36</u>		
S-1+25			W-5+50	6.2 2.16 7.84
+50				6.3 2.06 7.94
+75				6.6 1.76 7.24
2+00				6.5 1.86 7.14
			W-5+25	
S-2+00				6.7 1.66 7.34
+75				6.2 2.16 7.84
+50				7.2 1.16 7.84
+25				7.1 1.26 7.74
			W-5+00	
S-1+25				6.2 2.16 7.84
+50				6.2 2.16 7.84
+75				6.7 1.66 7.34
2+00				6.8 1.56 7.94
			W-4+75	
S-2+00				6.1 2.26 7.74
+75				6.0 2.36 7.64
+50				5.8 2.56 7.44
+25				6.1 2.26 7.74
			W-4+50	
S-1+25				5.9 2.46 7.54
+50				6.1 2.26 7.74
+75				6.0 2.36 7.64
2+00				5.9 2.46 7.54

Sta	+	HI	-	Elev.
		8.36		
		<u>4.36</u>		
S-2+00		W-4+25	6.0	2.36 -1.64
1+75			5.9	2.46 -1.54
+50			5.7	2.66 -1.34
+25			6.0	2.36 -1.63
		W-4+25		
S-2+25			6.0	2.36 -1.63
+50			6.2	2.16 -1.84
+75			6.2	2.16 -1.84
3+00			6.4	1.96 -2.04
		W-4+50		
S-3+00			6.3	2.06 -1.94
2+75			6.0	2.36 -1.64
+50			6.2	2.16 -1.84
+25			6.2	2.16 -1.84
		W-4+75		
S-2+25			6.0	2.36 -1.64
+50			6.4	1.96 -2.04
+75			6.3	2.06 -1.94
3+00			6.2	2.16 -1.84
		W-5+00		
S-3+00			6.5	1.86 -2.14
2+75			6.5	1.86 -2.14
+50			6.7	1.66 -2.34
+25			6.9	1.46 -2.54

Sta	+	HI	-	Elev.
		8.36		
		7.36		
S-2+25-	W-5+25-		6.4	1.96 -2.04
+50			6.4	1.96 -2.04
+75			6.5	1.86 -2.14
3+00			6.3	2.06 -1.94
	W-5+50			
S-3+00			6.4	1.96 -2.04
2+75			6.2	2.16 -1.84
+50			6.4	1.96 -2.04
+25			6.1	2.26 -1.74
	W-5+75-			
S-2+25-			5.9	2.46 -1.54
+50			6.0	2.36 -1.64
+75			6.0	2.36 -1.64
3+00			5.8	2.56 -1.44
	W-6+00			
S-3+00			6.3	2.06 -1.94
2+75			6.2	2.16 -1.84
+50			6.3	2.06 -1.94
+25			6.0	2.36 -1.64
	W-6+25-			
S-2+25-			5.5	2.86 -1.14
+50			5.7	2.66 -1.34
+75			5.6	2.76 -1.24
3+00			5.9	2.46 -1.54

E. side Bond St.

on Fill on Bond St

Sta.	+	HI	-	Elev.
		8.36		
		9.36		
S-3+00	W-6+50	6.2	2.16	-1.84
2+75		6.1	2.26	-1.74
+50		6.1	2.26	-1.74
+25		6.2	2.16	-1.84
	W-6+75			
S-2+25		5.9	2.46	-1.54
+50		6.0	2.36	-1.64
+75		6.5	1.86	-2.14
3+00		6.2	2.16	-1.84
	W-7+00			
S-3+00		6.6	1.76	-2.24
2+75		6.2	2.16	-1.84
+50		6.2	2.16	-1.84
+25		6.1	2.26	-1.74
	W-7+25			
S-2+25		6.4	1.96	-2.04
+50		6.3	2.06	-1.94
+75		6.4	1.96	-2.04
3+00		6.6	1.76	-2.24
	W-7+50			
S-3+00		7.3	1.06	-2.94
2+75		7.2	1.16	-2.84
+50		6.7	1.66	-2.34
+25		7.2	1.16	-2.84

slough.

Sta	+	HI	-	Elev
		8.36		
		<u>4.36</u>		
S-2+25	W-7+75	7.3	1.06	-2.94
+50		6.7	1.66	-2.34
+75		6.5	1.86	-2.14
3+00		6.6	1.76	-2.24
	W-8+00			
S-3+00		6.8	1.56	-2.44
2+75		6.9	1.46	-2.54
+50		6.8	1.56	-2.44
+25		6.5	1.86	-2.14
	W-8+00			
S-3+25		6.9	1.46	-2.54
+50		6.9	1.46	-2.54
+75		7.0	1.36	-2.64
4+00		7.1	1.26	-2.74
	W-7+75			
S-4+00		7.4	0.96	-3.04
3+75		7.3	1.06	-2.94
+50		7.4	0.96	-3.04
+25		7.0	1.36	-2.64
	W-7+50			
S-3+25		7.0	1.36	-2.64
+50		6.8	1.56	-2.44
+75		6.8	1.56	-2.44
4+00		6.9	1.46	-2.54

Slough

Bottom of Slough

Sta	+	H.I.	-	Elev.	
		8.36			
		9.36			
S-4+00	W-7+25	7.3	1.06	-2.94	Tide Line
3+75		6.7	1.66	-2.34	
+50		6.9	1.46	-2.54	
+25		6.8	1.56	-2.44	
	W-7+00				
S-3+25		6.5	1.86	-2.14	
+50		6.6	1.76	-2.24	
+75		6.9	1.46	-2.54	
4+00		7.0	1.36	-2.64	
	W-6+75				
S-4+00		7.0	1.36	-2.64	
3+75		6.7	1.66	-2.34	
+50		6.6	1.76	-2.24	
+25		6.5	1.86	-2.14	
	W-6+50				
S-3+25		6.5	1.86	-2.14	
+50		6.5	1.86	-2.14	
+75		6.7	1.66	-2.34	
4+00		6.8	1.56	-2.44	
	W-6+25				
S-4+00		5.5	2.86	-1.14	} 15' To Tide Line Fill on Bond St.
3+75		5.7	2.66	-1.34	
+50		5.9	2.46	-1.54	
+25		5.9	2.46	-1.54	

Sta.	+	HI	-	Elev
		8.36		
		(4.36)		
S-3+25		W-6+00	6.3	2.06 -1.94
+50			6.1	2.26 -1.74
+75			6.5	1.86 -2.14
4+00			6.2	2.16 -1.84
		W-5+75		
S-4+00			6.4	1.96 -2.04
3+75			6.2	2.16 -1.84
+50			6.2	2.16 -1.84
+25			6.1	2.26 -1.74
		W-5+50		
S-3+25			6.6	1.76 -2.24
+50			6.1	2.26 -1.74
+75			6.7	1.66 -2.34
4+00			6.5	1.86 -2.14
		W-5+25		
S-4+00			7.2	1.16 -2.84
3+75			6.8	1.56 -2.44
+50			6.0	2.36 -1.64
+25			6.2	2.16 -1.84
		W-5+00		
S-3+25			6.5	1.86 -2.14
+50			6.2	2.16 -1.84
+75			6.4	1.96 -2.04
4+00			6.7	1.66 -2.94

E-Line Bond St.

Sta.	+	H.I.	-	Elev.
		8.36		
		<u>4.36</u>		
S-4+00	W-4+75	7.0	1.36	-2.64
3+75		6.7	1.66	-2.34
+50		6.3	2.06	-1.94
+25		6.3	2.06	-1.94
	W-4+50			
S-3+25		6.3	2.06	-1.94
+50		6.2	2.16	-1.84
+75		6.9	1.46	-2.54
4+00		6.6	1.76	-2.24
	W-4+25			
S-4+00		7.4	0.96	-3.04
3+75		6.9	1.46	-2.54
+50		6.6	1.76	-2.24
+25		6.4	1.96	-2.04
	W-4+00			
S-3+25		6.2	2.16	-1.84
+50		6.5	1.86	-2.14
+75		6.7	1.66	-2.34
4+00		7.5	0.86	-3.14
T.P.	4.14	7.25 <u>3.25</u>	5.25	3.11 <u>-89</u> 0.89

Tide Line

Tide Line

Top of Stake w-4+00 S-3+00

Sta	+	H.I.	-	Elev	
		7.25			
		(3.25) ✓			
S-3+25	W-3+75	5.2	2.25	-1.75	
+50		5.6	1.65	-2.35	
+75		6.0	1.25	-2.75	
4+00		6.6	0.65	-3.35	Tide Line
	W-3+50				
S-4+00		6.6	0.65	-3.35	Tide Line
3+75		6.7	0.55	-3.45	
+50		5.8	1.45	-2.55	
+25		5.3	1.95	-2.05	
	W-3+25				
S-3+25		5.1	2.15	-1.85	
+50		5.7	1.55	-2.45	
+75		6.5	0.75	-3.25	
4+00		7.1	0.15	-3.85	Tide Line
	W-3+00				
S-4+00		7.0	0.25	-3.75	Tide Line
3+75		6.7	0.55	-3.45	
+50		5.9	1.35	-2.65	
+25		5.3	1.95	-2.05	
	W-2+75				
S-3+25		5.4	1.85	-2.15	
+50		7.5	-0.25	-4.25	
+75		7.1	0.15	-3.85	
4+00		7.3	-0.05	-4.05	Tide Line

Sta	+	HI 7.25 <u>3.25</u>	-	Elev		
S	S-4+00	W-2+50	7.4	-0.15	-4.15	Tide Line
	3+75		7.1	0.15	-3.85	
	+50		6.3	0.95	-3.05	
	+25		5.3	1.95	-2.05	
		W-2+25				
S	S-3+25		5.0	2.25	-1.75	
	+50		5.8	1.45	-2.55	
	+75		7.0	0.25	-3.75	Tide Line
	4+00		7.6	-0.35	-4.35	
		W-2+00				
S	S-4+00		7.5	-0.25	-4.25	Tide Line
	3+75		6.8	0.45	-3.55	
	+50		5.8	1.45	-2.55	
	+25		5.0	2.25	-1.75	
		W-1+75				
S	S-3+25		5.1	2.15	-1.85	
	+50		5.3	1.95	-2.05	
	+75		6.5	0.75	-3.25	
	4+00		7.5	-0.25	-4.25	Tide Line
		W-1+50				
S	S-4+00		7.2	-0.0	-4.00 ^{3.95}	" "
	3+75		5.7	1.55	-2.45	
	+50		5.5	1.75	-2.25	
	+25		5.2	2.05	-1.95	

Sta.	+	^{HL} 7.25 <u>3.25</u>	-	Elev
5-3+25	W-1+25		5.4	1.85 - 2.15
+50			5.6	1.65 - 2.35
+75			5.8	1.45 - 2.55
4+00			6.4	0.85 - 3.15
4+25			7.7	-0.50 - 4.50
	W-1+00			
5-4+25			7.5	-0.25 - 4.25
4+00			6.6	0.65 - 3.35
3+75			6.1	1.15 - 2.85
+50			5.8	1.45 - 2.55
+25			5.6	1.65 - 2.35
	W-0+75			
5-3+25			6.0	1.75 - 2.75
+50			6.1	1.15 - 2.85
+75			6.3	0.95 - 3.05
4+00			6.4	0.85 - 3.15
+25			7.0	0.75 - 3.75
	W-0+50			
5-4+25			7.3	-0.05 - 4.05
4+00			6.8	0.45 - 3.55
3+75			6.4	0.85 - 3.15
+50			6.3	0.95 - 3.05
+25			6.2	1.05 - 2.95

Tide Line

11 "

Tide Line

" "

Sta.	+	H.I. 7.25 <u>3.25</u>	-	Elev
S-3+25	W-0+25		6.3	0.95 - 3.05
+50			6.6	0.65 - 3.35
+75			6.8	0.45 - 3.55
4+00			6.8	0.45 - 3.55
+25			7.0	0.75 - 3.75
	W-0+0			
S-4+50			7.4	-0.15 - 4.15
4+25			7.2	0.0 - 4.00
4+00			6.8	0.45 - 3.55
3+75			6.4	0.85 - 3.15
+50			6.0	1.25 - 2.75
+25			6.1	1.15 - 2.85

Tide Line

Feb 5th 1934.

Agnew - Inst.

Engert - Rod.

Colvin } ch.

Higgins }

	+	H.I.	-	Elev
B.M. #2-P.	4.29	3.29		-1.00

W-8+25

S-0+0			4.4	-1.1
+25			4.5	-1.2
+50			4.3	-1.0
+75			4.2	-0.9
1+00			4.4	-1.1

W-8+50

S-1+00			4.6	-1.3
0+75			4.5	-1.2
+50			4.4	-1.1
+25			4.3	-1.0
0+0			4.2	-0.9

W-8+75

S-0+0			4.3	-1.0
+25			4.4	-1.1
+50			4.3	-1.0
+75			4.3	-1.0
1+00			4.6	-1.3

W-9+00

S-1+00			4.6	-1.3
0+75			4.3	-1.0
+50			4.3	-1.0
+25			4.2	-0.9
0+0			4.2	-0.9

Sta	+	H.I.	-	Elev
		3.29		
S-0+0	W-9+25		4.4	-1.1
+25			4.6	-1.3
+50			4.6	-1.3
+75			4.7	-1.4
1+00			4.9	-1.6
	W-9+50			
S-1+00			5.2	-1.9
0+75			5.5	-2.2
+50			4.7	-1.4
+25			4.6	-1.3
0+00			4.5	-1.2
	W-9+75			
S-0+0			4.6	-1.3
+25			4.7	-1.4
+50			5.0	-1.7
+75			5.0	-1.7
1+00			5.3	-2.0
	W-10+00			
S-1+00			5.2	-1.9
0+75			5.4	-2.1
+50			5.1	-1.8
+25			5.1	-1.8
0+00			4.7	-1.4

sta	+	H.I.	-	Elev.
		3.29		
S-0+0	W-10+25		4.4	-1.1
+25			4.6	-1.3
+50			4.7	-1.4
+75			5.0	-1.7
+100			5.1	-1.8
S-1+00	W-10+50		5.0	-1.7
0+75			4.8	-1.5
+50			4.7	-1.4
+25			4.6	-1.3
0+0			4.4	-1.1
	W-10+75			
S-0+0			4.4	-1.1
+25			4.5	-1.2
+50			4.7	-1.4
+75			4.5	-1.2
+100			4.8	-1.5
	W-11+00			
S-1+00			4.6	-1.3
0+75			4.6	-1.3
+50			4.4	-1.1
+25			4.4	-1.1
0+0			4.5	-1.2

Sta.	+	H.I.	-	Elev
		3.29		
S-0+0	W-11+25		4.4	-1.1
+25			4.3	-1.0
+50			4.3	-1.0
+75			4.3	-1.0
+100			4.6	-1.3
	W-11+50			
S-1+00			4.7	-1.4
0+75			4.2	-0.9
+50			4.1	+0.8
+25			4.1	-0.8
0+0			4.3	-1.1
	W-11+75			
S-0+0			4.1	-0.8
+25			3.9	-0.6
+50			4.1	-0.8
+75			3.8	-0.5
+100			4.3	-1.0
	W-12+00			
S-1+00			4.3	-1.0
0+75			4.3	-1.0
+50			4.0	-0.7
+25			4.0	-0.7
0+0			4.0	-0.7

Sta	+	H.I.	-	Elev.
		3.29		
S-1+25	W-12+00		4.5	-1.2
+50			4.5	-1.2
+75			4.1	-0.8
2+00			4.4	-1.1
	W-11+75			
S-2+00			4.3	-1.0
+75			4.4	-1.1
+50			4.4	-1.1
+25			4.2	-0.9
	W-11+50			
S-1+25			4.3	-1.0
+50			4.0	-0.7
+75			4.8	-1.5
2+00			4.3	-1.0
	W-11+25			
S-2+00			4.6	-1.3
+75			4.6	-1.3
+50			4.7	-1.4
+25			4.5	-1.2
	W-11+00			
S-1+25			4.5	-1.2
+50			4.7	-1.4
+75			4.7	-1.4
2+00			4.8	-1.5

Sta.	+	H.I.	-	Elev
		3.79		
S-2+00		VV-10+75	4.6	-1.3
1+75			5.0	-1.7
+50			4.6	-1.3
+25			4.8	-1.5
		W-10+50		
S-1+25			5.1	-1.8
+50			5.0	-1.7
+75			5.7	-2.4
2+00			5.0	-1.7
		W-10+25		
S-2+0			5.1	-1.8
1+75			5.3	-2.0
+50			5.5	-2.2
+25			5.4	-2.1
		W-10+00		
S-1+25			5.1	-1.8
+50			5.0	-1.7
+75			5.4	-2.1
2+00			5.6	-2.3
		W-9+75		
S-2+00			5.4	-2.1
1+75			5.3	-2.0
+50			5.2	-1.9
+25			5.7	-2.4

Sta	+	H.I.	-	Elev.
		3.29		
		W-9+50		
S-1+25			5.6	-2.3
	+50		5.9	-2.6
	+75		5.7	-2.4
	2+00		5.5	-2.2
		W-9+25		
S-2+00			5.5	-2.2
	+75		5.3	-2.0
	+50		4.8	-1.5
	+25		4.8	-1.5
		W-9+00		
S-1+25			4.5	-1.2
	+50		4.7	-1.4
	+75		4.8	-1.5
	2+00		5.1	-1.8
		W-8+75		
S-2+00			4.8	-1.5
	+75		4.8	-1.5
	+50		4.8	-1.5
	+25		4.5	-1.2
		W-8+50		
S-1+25			4.5	-1.2
	+50		4.6	-1.3
	+75		4.5	-1.2
	2+00		4.7	-1.4

Sta	+	HI	-	Elev
		3.29		
S-2+00		W-8+25	5.0	-1.7
1+75			4.7	-1.4
750			4.5	-1.2
725			4.6	-1.3
		W-8+25		
S-2+25			5.4	-2.1
750			5.6	-2.3
775			5.8	-2.5
3+00			5.8	-2.5
		W-8+50		
S-3+00			5.7	-2.4
2+75			5.6	-2.3
750			5.4	-2.1
725			5.3	-2.0
		W-8+75		
S-2+25			5.0	-1.7
750			5.1	-1.8
775			5.2	-1.9
3+00			5.5	-2.2
		W-9+00		
S-3+00			6.5	-3.2
2+75			5.2	-1.9
750			5.5	-2.2
725			5.3	-2.0

Sta	+	H I	-	Elev
		3.29		
S-2+25	W-9+25	5.4	-2.1	
+50		6.4	-3.1	} slough
+75		6.5	-3.2	
3+00		6.6	-3.3	
	W-9+50			
S-3+00		5.9	-2.6	
2+75		6.0	-2.7	
+50		5.9	-2.6	
+25		5.8	-2.5	
	W-9+75			
S-2+25		5.6	-2.3	
+50		5.5	-2.2	
+75		5.5	-2.2	
3+00		5.5	-2.2	
	W-10+00			
S-3+00		5.3	-2.0	
2+75		5.4	-2.1	
+50		5.4	-2.1	
+25		5.8	-2.5	
	W-10+25			
S-2+25		4.9	-1.6	
+50		5.3	-2.0	
+75		5.2	-1.9	
3+00		5.2	-1.9	

Sta	+	H.I.	-	Elev
		3.29		
S-3+00	W+10+50		5.2	-1.9
2+75			4.9	-1.6
+50			5.2	-1.9
+25			5.0	-1.7
	W+10+75			
S-2+25			5.1	-1.8
+50			4.9	-1.6
+75			5.2	-1.9
3+00			5.2	-1.9
	W-11+00			
S-3+00			5.1	-1.8
2+75			5.2	-1.9
+50			4.8	-1.5
+25			4.7	-1.4
	W-11+25			
S-2+25			4.4	-1.1
+50			4.8	-1.5
+75			4.7	-1.4
3+00			5.5	-2.2
	W-11+50			
S-3+00			5.0	-1.7
2+75			4.8	-1.5
+50			4.7	-1.4
+25			4.4	-1.1

Sta.	+	H1	-	Elev
		329		
S-2+20	W-11+75		4.5	-1.2
+50			4.8	-1.5
+75			4.9	-1.6
3+00			5.2	-1.9
	W-12+00			
S-3+00			4.9	-1.6
2+75			4.8	-1.5
+50			4.7	-1.1
+25			4.6	-1.3
	W-12+00			
S-3+25			5.6	-2.3
+50			6.5	-3.2
+75			6.4	-3.1
4+00			7.0	-3.7
	W-11+75			
S-4+00			7.1	-3.8
3+75			6.1	-2.8
+50			5.8	-2.5
+25			5.6	-2.3
	W-11+50			
S-3+25			5.4	-2.1
+50			5.2	-1.9
+75			5.4	-2.1
4+00			6.2	-2.9

Edge of Break

Edge of Break

Edge of Break

Sta.	+	HI	-	Elev.
		3.29		
S-4+00	W-11+25		6.1	-2.8
3+75			5.1	-1.8
+50			5.1	-1.8
+25			5.5	-2.2
	W-11+00			
S-3+25			5.3	-2.0
+50			5.4	-2.1
+75			5.4	-2.1
4+00			6.1	-2.8
	W-10+75			
S-4+00			6.1	-2.8
3+75			5.2	-1.9
+50			5.3	-2.0
+25			5.3	-2.0
	W-10+50			
S-3+25			5.4	-2.1
+50			5.4	-2.1
+75			5.5	-2.2
4+00			6.0	-2.7
	W-10+25			
S-4+00			5.7	-2.4
3+75			5.4	-2.1
+50			5.4	-2.1
+25			5.3	-2.0

Edge of Break.

Edge of Break.

" " "

" " "

Sta.	+	H.I.	-	Elev
		3.29		
S-3+28	W-10+00		5.4	-2.1
+50			5.4	-2.1
+75			5.8	-2.5
4+00			5.7	-2.4
	W-9+75			
S-4+00			5.6	-2.3
3+75			5.5	-2.2
+50			5.7	-2.4
+25			5.1	-1.8
	W-9+50			
S-3+25			5.6	-2.3
+50			5.9	-2.6
+75			5.7	-2.4
4+00			5.6	-2.3
	W-9+25			
S-4+00			5.7	-2.4
3+75			5.8	-2.5
+50			6.0	-2.7
+25			6.6	-3.3
	N-9+00			
S-3+25			6.9	-3.6
+50			7.0	-3.7
+75			7.0	-3.7
4+00			6.0	-2.7

shallow slough.

Sta. + H.I. - Elev

3.29

S-4+00	W-8+75	6.2	-2.9
3+75		7.8	-4.5
+50		6.9	-3.6
+25		6.4	-3.1

in slough

W-8+50

S-3+25		5.9	-2.6
+50		5.9	-2.6
+75		8.4	-5.1
4+00		6.7	-3.4

in slough

W-8+25

S+4+00		8.2	-4.9
3+75		8.2	-4.9
+50		5.8	-2.5
+25		5.6	-2.3

|| ||

BM#2-P	4.29	3.29	-1.00
BM#3-P	1.49	3.85	3.93 -0.64

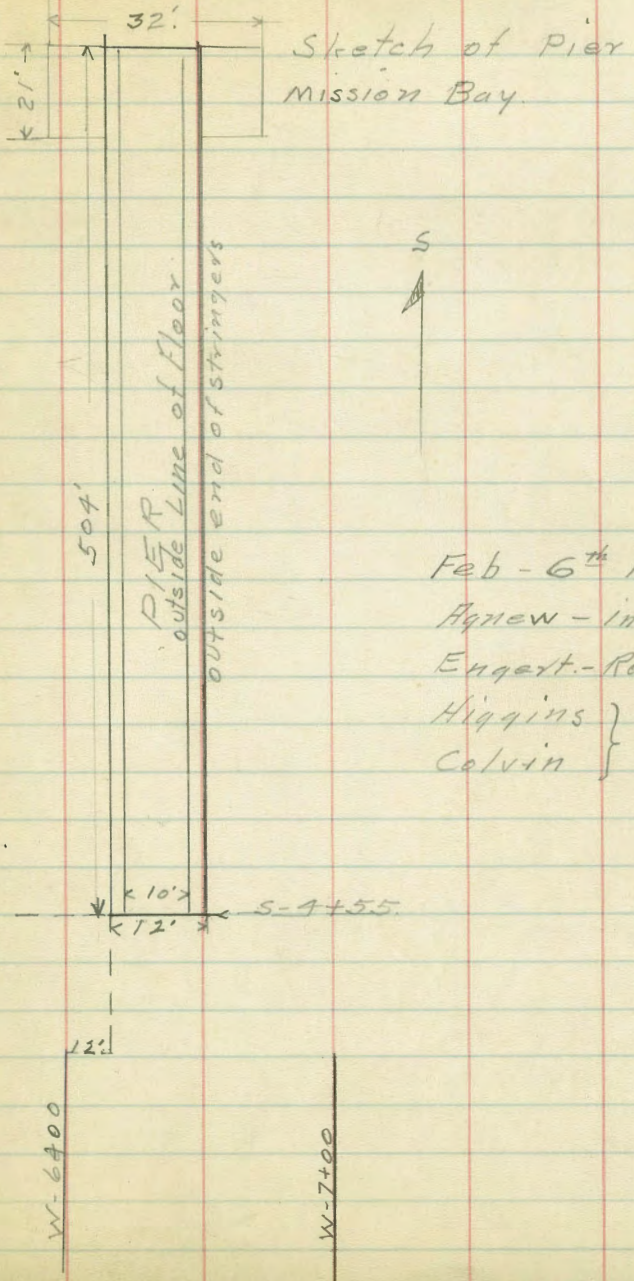
20' W- Sta. 12+00 on 0+0 line.

W-12+00

N-0+25		4.4	-0.5
+50		4.1	-0.2
+75		3.9	0.0
1+00		4.1	-0.2

Sta	+	H.I.	-	Elev.
		3.85		
N-1+00	W-11+75		4.2	-0.3
0+75			4.1	-0.2
+50			4.3	-0.4
+25			4.2	-0.3
	W-11+50			
N-0+25			4.4	-0.5
+50			4.3	-0.4
+75			4.3	-0.4
1+00			4.1	-0.2
	W-11+25			
N-1+00			4.3	-0.4
0+75			4.4	-0.5
+50			4.4	-0.5
+25			4.5	-0.6
	W-11+00			
N-0+25			4.7	-0.8
+50			4.7	-0.8
+75			4.8	-0.9
1+00			4.5	-0.6
	W-10+75			
N-1+00			4.9	-1.0
0+75			4.8	-0.9
+50			4.8	-0.9
+25			4.9	-1.0

Sta	+	H-I	-	Elev
		3.85		
N-0+25	W-10+50		5.2	-1.3
	+50		4.9	-1.0
	+75		4.6	-0.7
	1+00		4.5	-0.6
	W-10+25			
N-1+00			4.6	-0.7
	0+75		4.5	-0.6
	+50		4.7	-0.8
	+25		4.7	-0.8
	W-10+00			
N-0+25			5.0	-1.1
	+50		4.7	-0.8
	+75		4.9	-1.0
	1+00		4.9	-1.0



Feb - 6th 1934
 Agnew - inst.
 Engert - Rod.
 Higgins } ch.
 Calvin }

	+	H.I.	-	Elev.
BM#2-P	5.05	4.05		-1.00
	W-9+75			
N-0+25			5.5	-1.5
+50			5.2	-1.2
+75			5.1	-1.1
1+00			5.0	-1.0
	W-9+50			
N-1+00			4.7	-0.7
0+75			4.8	-0.8
+50			5.0	-1.0
+25			5.2	-1.2
	W-9+25			
N-0+25			5.2	-1.2
+50			4.9	-0.9
75			4.9	-0.9
1+00			4.9	-0.9
	W-9+00			
N-1+00			4.8	-0.8
0+75			4.7	-0.7
+50			4.9	-0.9
+25			5.1	-1.1
	W-8+75			
N-0+25			5.0	-1.0
+50			5.2	-1.2
+75			5.0	-1.0
1+00			5.1	-1.1

Sta.	+	H.I.	-	Elev.
		4.05		
N-1+00	W-8+50		5.1	-1.1
0+75			4.7	-0.7
+50			4.8	-0.8
+25			5.1	-1.1
	W-8+25			
N-0+25			5.1	-1.1
+50			5.1	-1.1
+75			5.2	-1.2
1+00			5.0	-1.0
	W-8+00			
N-1+00			5.1	-1.1
0+75			5.0	-1.0
+50			5.1	-1.1
+25			5.2	-1.2
	W-7+75			
N-0+25			5.1	-1.1
+50			5.0	-1.0
+75			5.0	-1.0
1+00			4.9	-0.9
	W-7+50			
N-1+00			4.7	-0.7
0+75			5.0	-1.0
+50			5.2	-1.2
+25			5.5	-1.5

Sta.	+	H.I	-	Elev.
		4.05		
N-0+25	W-7+25		5.2	-1.2
+50			5.0	-1.0
+75			5.0	-1.0
1+00			4.9	-0.9
	W-7+00			
N-1+00			4.6	-0.6
0+75			4.8	-0.8
+50			5.0	-1.0
+25			5.0	-1.0
	W-6+75			
N-0+25			4.7	-0.7
+50			4.8	-0.8
+75			4.9	-0.9
1+00			5.0	-1.0
	W-6+50			
N-1+00			5.5	-1.5
0+75			5.3	-1.3
+50			5.2	-1.2
+25			5.2	-1.2
	W-6+25			
N-0+25			5.2	-1.2
+50			5.1	-1.1
+75			4.9	-0.9
1+00			4.9	-0.9

Sta.	+	HI	-	Elev.
		4.05		
N-1+00	W-6+00		4.9	-0.9
0+75			5.6	-1.6
+50			5.5	-1.5
+25			5.4	-1.4
	W-5+75			
N-0+25			6.3	-2.3
+50			6.5	-2.5
+75			6.6	-2.6
1+00			6.2	-2.2
	W-5+50			
N-1+00			6.3	-2.3
0+75			6.1	-2.1
+50			6.0	-2.0
+25			6.3	-2.3
	W-5+25			
N-0+25			6.1	-2.1
+50			6.0	-2.0
+75			5.6	-1.6
1+00			5.5	-1.5
	W-5+00			
N-1+00			5.0	-1.0
0+75			5.3	-1.3
+50			5.4	-1.4
+25			5.4	-1.4

East Line Bond St.

Sta + H.I. - Elev

4.05

N-0+25	W-4+75	5.2	-1.2
+50		5.1	-1.1
+75		4.8	-0.8
1+00		5.2	-1.2

W-4+50

N-1+00		5.0	-1.0
0+75		5.1	-1.1
+50		5.2	-1.2
+25		5.1	-1.1

W-4+25

N-0+25		5.5	-1.5
+50		5.3	-1.3
+75		5.3	-1.3
1+00		5.5	-1.5

W+4+00

N-1+00		5.3	-1.3
0+75		5.8	-1.8
+50		5.7	-1.7
+25		5.7	1.7

T.P. 5.07 3.44 ✓ 5.68 -1.63 ✓

N-0+25	W-3+75	5.0	-1.6
+50		4.8	-1.4
+75		4.7	-1.3
1+00		4.6	-1.2

5.07
1.63
3.44

5.28
4.05
1.23

57

on Hub Staw. 4+00 S-0+00

Sta.	+	H.I.	-	Elev
		3.44		
N-1400	W-3+50		4.7	-1.3
0+75			4.9	-1.5
+50			4.7	-1.3
+25			4.7	-1.3
	N-3+25			
N-0+25			4.6	-1.2
+50			4.7	-1.3
+75			4.7	-1.3
1+00			4.6	-1.2
	W-3+00			
N-1400			4.9	-1.5
0+75			4.5	-1.1
+50			4.5	-1.1
+25			4.8	-1.4
	W-2+75			
N-0+25			4.8	-1.4
+50			4.8	-1.4
+75			4.7	-1.3
1+00			4.9	-1.5
	W-2+50			
N-1400			4.7	-1.3
0+75			4.8	-1.4
+50			4.6	-1.2
+25			4.7	-1.3

Sta	+	H.I.	-	Elev.
		3.44		
N-0+25	W-2+25		4.6	-1.2
	50		4.8	-1.4
	75		4.9	-1.5
	1+00		5.1	-1.7
	W-2+00			
N-1+00			5.0	-1.6
	0+75		5.0	-1.6
	+50		5.0	-1.6
	+25		4.8	-1.4
	W-1+75			
N-0+25			4.8	-1.4
	+50		4.9	-1.5
	+75		5.1	-1.7
	1+00		5.0	-1.6
	W-1+50			
N-1+00			5.1	-1.7
	0+75		5.2	-1.8
	+50		4.9	-1.5
	+25		4.9	-1.5
	W-1+25			
N-0+25			5.0	-1.6
	+50		5.2	-1.8
	+75		5.4	-2.0
	1+00		4.9	-1.5

512
25
25

Sta	+	HI	-	Elev.
		3.44		
N-1400	W-1400		4.8	-1.4
	0+75		5.1	-1.7
	+50		5.2	-1.8
	+25		5.2	-1.8
	W-0+75			
N+0+25			5.1	-1.7
	+50		5.1	-1.7
	+75		5.1	-1.7
	1+00		5.0	-1.6
	W-0+50			
N-1400			5.2	-1.8
	0+75		5.0	-1.6
	+50		5.0	-1.6
	+25		5.0	-1.6
	W-0+25			
N-0+25			4.9	-1.5
	+50		5.2	-1.8
	+75		5.0	-1.6
	1+00		5.1	-1.7
	W-0+00			
N-1+00			5.2	-1.8
	0+75		5.1	-1.7
	+50		5.3	-1.9
	+25		5.1	-1.7
	0+00		5.12	-1.68

ck on Hub. 0+0 P.X.

	+	H.I.	-	Elev
BM#4-P		3.44	4.25	-0.81 ✓
		W-0+00		
N. 1+25			5.3	-1.9
+50			5.2	-1.8
+75			5.4	-2.0
2+00			5.4	-2.0
+25			5.5	-2.1
+50			5.2	-1.8
+75			5.3	-1.9
3+00			5.3	-1.9
		W 0+25		
N. 3+00			5.2	-1.8
2+75			5.2	-1.8
+50			5.2	-1.8
+25			5.5	-2.1
2+00			5.4	-2.0
1+75			5.2	-1.8
+50			5.2	-1.8
+25			5.2	-1.8
		W-0+50		
N 1+25			5.0	-1.6
+50			5.3	-1.9
+75			5.2	-1.8
2+00			5.4	-2.0
+25			5.5	-2.1
+50			5.1	-1.7
+75			5.2	-1.8

Hub. Sta. W-1+00-N-3+50

	+	Ht.	-	Elev.
N 3+00		3.44	5.2	-1.8
		W-0+75		
N 3+00			5.1	-1.7
2+75			5.2	-1.8
+50			5.2	-1.8
+25			5.5	-2.1
2+00			5.5	-2.1
1+75			5.3	-1.9
+50			5.4	-2.0
+25			5.0	-1.6
		W-1+00		
N 1+25			5.0	-1.6
+50			5.3	-1.9
+75			5.2	-1.8
2+00			5.4	-2.0
+25			5.7	-2.3
+50			5.2	-1.8
+75			5.2	-1.8
3+00			5.1	-1.7
		W 1+25		
N 3+00			4.8	-1.4
2+75			5.1	-1.7
50			5.4	-2.0
25			5.5	-2.1
2+00			5.3	-1.9
1+75			5.2	-1.8

Sta	+	H1	-	Elev
N1+50		3.44	5.2	-1.8
+25			5.0	-1.6
		W1+50		
N1+25			4.9	-1.5
+50			5.0	-1.6
+75			5.3	-1.9
2+00			5.2	-1.8
+25			5.2	-1.8
+50			5.7	-2.3
+75			5.2	-1.8
3+00			4.9	-1.5
		W1+75		
N3+00			5.2	-1.8
2+75			5.4	-2.0
+50			5.5	-2.1
+25			5.4	-2.0
2+00			5.2	-1.8
1+75			5.0	-1.6
+50			4.9	-1.5
+25			4.9	-1.5
		W-2+00		
N1+25			5.2	-1.8
+50			4.9	-1.5
+75			4.8	-1.4
2+00			5.1	-1.7
+25			5.2	-1.8

Sta	+	HI	-	Elev
N-2+50		3.44	5.3	-1.9
	+75		5.3	-1.9
	+100		5.3	-1.9

W 2+25

N-3+00			5.3	-1.9
	+75		5.1	-1.7
	+50		5.1	-1.7
	+25		5.3	-1.9
	2+00		5.0	-1.6
	+75		4.9	-1.5
	+50		5.0	-1.6
	+25		5.1	-1.7

W- 2+50

N1+25			5.2	-1.8
	+50		5.2	-1.8
	+75		4.6	-1.2
	2+00		4.8	-1.4
	+25		4.8	-1.4
	50		4.8	-1.4
	75		4.9	-1.5
	3+00		4.7	1.3

Sta	+	HI	-	Elev
		3.44		
N-3+00	W-2+75		4.6	-1.2
			4.7	-1.3
			4.8	-1.4
			4.7	-1.3
			4.5	-1.1
			4.4	-1.0
			5.5	-2.1
			4.9	-1.5
	W 3+00			
N 1+25			4.7	-1.3
			4.8	-1.4
			5.5	-2.1
			5.2	-1.8
			4.7	-1.3
			4.6	-1.2
			4.6	-1.2
			4.6	-1.2
	W-3+25			
N-3+00			4.5	-1.1
			4.6	-1.2
			4.6	-1.2
			4.9	-1.5
			5.2	-1.8
			4.7	-1.3
			4.8	-1.4
			4.8	-1.4

Sta	+	H1	-	Elev
		3.44		
N 1+25	W-3+50		4.6	-1.2
50			4.7	-1.3
75			4.6	-1.2
2+00			4.7	-1.3
+25			5.0	-1.6
50			4.9	-1.5
75			4.6	-1.2
3+00			4.6	-1.2
	W 3+75			
N 3+00			4.6	-1.2
2+75			4.9	-1.5
+50			4.9	-1.5
25			4.9	-1.5
2+00			4.6	-1.2
1+75			4.4	-1.0
+50			4.4	-1.0
+25			4.6	-1.2
	W 4+00			
N 1+25			4.5	-1.1
+50			4.8	-1.4
+75			4.5	-1.1
2+00			4.4	-1.0
+25			4.8	-1.4
+50			4.9	-1.5
+75			4.9	-1.5
3+00			4.6	-1.2

Sta.	+	H.I.	-	Elev
		3.44		
N-3+00	W-4+25		4.9	-1.5
2+75			4.9	-1.5
+50			4.6	-1.2
+25			4.6	-1.2
2+00			4.5	-1.1
1+75			4.4	-1.0
+50			4.9	-1.5
+25			4.6	-1.2
	W-4+50			
N 1+25			4.7	-1.3
+50			4.5	-1.1
+75			4.4	-1.0
2+00			4.7	-1.3
+25			4.4	-1.0
+50			4.4	-1.0
+75			4.5	-1.1
3+00			4.8	-1.4

BM [#] 1-P 3.77 4.12 0.35 ✓

Sta	+	H.I.	-	Elev
		4.12		
1 N 3+00	VV-4+75		5.5	-1.4
	2+75		5.1	-1.0
	+50		5.2	-1.1
	+25		5.2	-1.1
	2+00		5.5	-1.4
	1+75		5.1	-1.0
	+50		5.0	-0.9
	+25		5.0	-0.9
	W-5+00			
1 N 1+25			5.4	-1.3
	+50		5.4	-1.3
	75		5.0	-0.9
	2+00		5.4	-1.3
	+25		5.2	-1.1
	50		5.1	-1.0
	75		4.9	-0.8
	3+00		5.4	-1.3
	W-5+25			
N-3+00			5.8	-1.7
	2+75		4.8	-0.7
E	+50		5.3	-1.2
	+25		6.3	-2.2
	2+00		5.5	-1.4
	1+75		5.5	-1.4
	50		5.7	-1.6
	+25		5.7	-1.6

Sta	+	H.I.	-	Elev
N 1+25	W-5+50	4.12	6.2	-2.1
+50			5.9	-1.8
+75			5.6	-1.5
2+00			5.5	-1.4
+25			5.5	-1.4
50			6.7	-2.6
75			4.8	-0.7
3+00			6.5	-2.4
	W-5+75			
N 3+00			7.0	-2.9
2+75			6.0	-1.9
+50			5.2	-1.1
25			5.0	-0.9
2+00			5.0	-0.9
1+75			5.8	-1.7
+50			6.5	-2.4
+25			6.2	-2.1
	W-6+00			
N-1+25			6.5	-2.4
50			6.2	-2.1
75			6.2	-2.1
2+00			5.9	-1.8
+25			4.7	-0.6
+50			5.0	-0.9
75			5.3	-1.2
3+00			6.1	-2.0

E side Bond. St.

Sta.	H.I.	-	Elev.
	4.12		
N. 3+00	W-6+25	5.4	-1.3
3+75		5.3	-1.2
+50		5.2	-1.1
+25		5.5	-1.4
2+00		5.2	-1.1
1+75		5.0	-0.9
+50		5.0	-0.9
+25		5.1	-1.0
	W 6+50		
N 1+75		5.4	-1.3
50		5.3	-1.2
75		5.6	-1.5
2+00		5.3	-1.2
25		5.3	-1.2
50		5.0	-0.9
75		5.4	-1.3
3+00		4.8	-0.7
	W 6+75		
N 3+00		5.7	-1.6
2+75		5.6	-1.5
+50		6.1	-2.0
+25		6.3	-2.2
2+00		5.4	-1.3
1+75		4.8	-0.7
+50		4.9	-0.8
+25		5.3	-1.2

Sta	+	HI	-	Elev
N 1+25	W-7+00	4.12	4.4	-0.3
+50			4.6	-0.5
+75			5.5	-1.4
2+00			5.4	-1.3
+25			5.4	-1.3
+50			5.2	-1.1
+75			5.8	-1.7
3+00			5.5	-1.4
W-7+25				
N 3+00			5.6	-1.5
2+75			4.8	-0.7
+50			4.7	-0.6
+25			4.9	-0.8
2+00			4.9	-0.8
1+75			4.9	-0.8
+50			4.8	-0.7
+25			4.7	-0.6
W 7+50				
N-1+25			4.9	-0.8
+50			4.7	-0.6
+75			4.7	-0.6
2+00			4.5	-0.4
+25			4.7	-0.6
+50			4.5	-0.4
+75			4.2	-0.1
3+00			5.0	-0.9

Sta.	H.I. 4.12	Elev
N 3+00 W-7+75	4.2	-0.1
2+75	4.2	-0.1
+50	4.2	-0.1
+25	4.5	-0.4
2+00	4.3	-0.2
1+75	4.6	-0.5
+50	4.7	-0.6
+25	4.9	-0.8
W-8+00		
N 1+25	4.8	-0.7
+50	5.0	-0.9
+75	4.7	-0.6
2+00	4.7	-0.6
+25	4.4	-0.3
+50	4.3	-0.2
+75	4.1	0.0
3+00	4.1	0.0
W-8+25		
N 3+00	4.4	-0.3
2+75	4.3	-0.2
+50	4.4	-0.3
25	4.5	-0.4
2+00	4.7	-0.6
1+75	4.7	-0.6
+50	4.5	-0.4
25	4.9	-0.8

Sta + HI - Elev

4.12

N 1+25	W-8+50	5.2	-1.1
+50		4.8	-0.7
+75		4.5	-0.4
2+00		4.3	-0.2
+25		4.6	-0.5
+50		4.7	-0.6
+75		4.6	-0.5
3+00		4.5	-0.4

BM #3-P 5.19 4.55^v -0.64^v

BM #5-P 3.92 0.53 = 0.63

Sta W-11+50 N. 4+00

W 8+75

N-3+00		4.9	-0.4
2+75		4.9	-0.4
+50		4.9	-0.4
+25		4.8	-0.3
2+00		5.2	-0.7
1+75		5.1	-0.6
+50		5.6	-1.1
+25		5.7	-1.2

Sta.	+	H1	-	Elev
		4.55		
N-1+25	W-9+00		5.6	-1.1
	+50		5.6	-1.1
	+75		5.5	-1.0
2+00			5.0	-0.5
	+25		5.0	-0.5
	+50		5.2	-0.7
	+75		4.9	-0.4
3+00			5.0	-0.5
	W-9+25			
N 3+00			5.0	-0.5
	2+75		5.2	-0.7
	+50		5.1	-0.6
	+25		5.3	-0.8
2+25			5.5	-1.0
	1+75		5.6	-1.1
	+50		5.3	-0.8
	+25		5.6	-1.1
	W 9+50			
N 1+25			5.1	-0.6
	+50		5.4	-0.9
	+75		5.4	-0.9
2+00			5.5	-1.0
	+25		5.1	-0.6
	+50		5.5	-1.0
	+75		5.5	-1.0
3+00			5.4	-0.9

Sta.	+	H.V.	-	Elev
		4:55		
N-3+00	W-9+75		5.5	-1.0
			5.0	-0.5
			5.1	-0.6
			5.5	-1.0
			5.6	-1.1
			4.8	-0.3
			4.9	-0.4
			5.1	-0.6
	W-10+00			
N1+25			5.4	-0.9
			5.4	-0.9
			5.3	-0.8
			5.0	-0.5
			4.7	-0.2
			4.7	-0.2
			5.1	-0.6
			5.1	-0.6
	W-10+25			
N3+00			4.8	-0.3
			5.1	-0.6
			4.8	-0.3
			4.9	-0.4
			5.0	-0.5
			5.1	-0.6
			5.1	-0.6
			5.4	-0.9

Sta.	+	H1	-	Elev
		4.55		
N-1+25	W-10+50		5.3	-0.8
	+50		5.2	-0.7
	+75		5.3	-0.8
2+00			4.8	-0.3
	+25		4.8	-0.3
	+50		4.8	-0.3
	+75		4.6	-0.1
3+00			5.1	-0.6
	W-10+75			
N3+00			4.9	-0.4
	2+75		4.6	-0.1
	+50		4.8	-0.3
	+25		4.9	-0.4
2+00			5.2	-0.7
	1+75		5.1	-0.6
	+50		5.2	-0.7
	+25		5.2	-0.7
	W-11+00			
N-1+25			5.4	-0.9
	+50		5.2	-0.7
	+75		5.0	-0.5
2+00			4.9	-0.4
	+25		5.0	-0.5
	+50		4.7	-0.2
	+75		4.4	0.1
3+00			4.7	-0.2

Sta.	+	H ₁	-	Elev
		4.55		
N 3+00	W-11+75		4.6	-0.1
			4.4	0.1
	+50		4.5	0.0
	+25		4.8	-0.3
2+00			4.8	-0.3
	+75		4.7	-0.2
	-50		5.1	-0.6
	+25		5.1	-0.6
	W-11+50			
N 1+25			5.0	-0.5
	+50		5.0	-0.5
	+75		4.8	-0.3
2+00			4.8	-0.3
	+25		4.9	-0.4
	+50		4.7	-0.2
	+75		4.6	-0.1
3+00			4.5	0.0
	W-11+75			
N 3+00			4.4	0.1
	+75		4.9	-0.4
	+50		4.6	-0.1
	+25		4.6	-0.1
2+00			4.6	-0.1
	+75		4.7	-0.2
	+50		4.9	-0.4
	+25		4.8	-0.3

Sta.	+	HI	-	Elev
		4.55		
W-12+00				
N1+25			4.7	-0.2
+50			4.6	-0.1
+75			4.4	0.1
2+00			4.4	0.1
+25			4.3	0.2
+50			4.5	0.0
+75			4.6	-0.1
3+00			4.5	0.0

B.M.#5-P 4.91 5.44 .60 See pg 73
0.53

W-12+00				
N3+25			5.0	0.4
+50			5.4	0.0
+75			4.9	0.5
4+00			4.8	0.6
+25			4.5	0.9
+50			4.5	0.9
+75			4.4	1.0
5+00			4.5	0.9

Sta	+	HI	-	Elev
		5.44		
N 5+00	W-11+75		5.1	0.3
	4+75		4.9	0.5
	+50		4.6	0.8
	+25		4.7	0.7
	4+00		4.6	0.8
	3+75		4.8	0.6
	+50		4.9	0.5
	+25		5.4	0.0

W-11+50

N 3+25			5.8	-0.4
	+50		4.6	0.8
	+75		4.7	0.7
	4+00		5.0	0.4
	+25		5.3	0.1
	+50		5.1	0.3
	+75		4.9	0.5
	5+00		5.0	0.4

W 11+25

N 5+00			5.3	0.1
	4+75		5.1	0.3
	+50		4.9	0.5
	+25		5.4	0.0
	4+00		5.6	-0.2
	3+75		4.9	0.5
	+50		5.1	0.3
	+25		4.9	0.5

Continued in Book 1483

720
640
80

635
80
555