

CIVIC CENTER
SURVEY

2

1508

MINING
TRANSFER

384

X - SECTIONS

MICROFILMED
DEC 24 1964

ENGINEERING DEPARTMENT,
CITY OF
CALIFORNIA,
DIEGO.

B.M. - East Pole

" West " 8.62

" Station 5.09

" S.E. Cor. Ash-Atlantic 4.94

" 07 "S" Line 6.50

Aug. 9. 1934

'Q' Line

B.M.	4.02		Elev
0+00	1264	5.50	7.1
13R		5.50	7.1
0+13		5.40	7.2
13R		5.30	7.3
0+25		5.50	7.1
13R		5.50	7.1
0+37		5.50	7.1
13R		5.50	7.1
0+50		5.60	7.0
13R		5.50	7.1
0+63		5.70	6.9
13R		5.60	7.0
0+75		5.60	7.0
13R		5.70	6.9
0+87		5.70	6.9
13R		5.70	6.9
1+00		5.80	6.8
13R		5.70	6.9
1+13		5.90	6.7
13R		5.60	7.0
1+25		5.70	6.9
13R		5.50	7.1
1+37		5.50	7.1
13R		5.50	7.1

			Elev
1+50	12.64	5.40	7.2
13R		5.40	7.2
1+63		5.30	7.3
13R		5.30	7.3
1+75		5.10	7.5
13R		5.20	7.4
1+87		4.90	7.8
13R		5.00	7.6
2+00		5.00	7.6
13R		5.00	7.6
2+13		4.90	7.7
13R		4.80	7.8
2+25		4.90	7.7
13R		4.80	7.8
2+37		4.90	7.7
13R		4.80	7.8
2+50		5.00	7.6
13R		4.80	7.8
2+63		5.10	7.5
13R		4.80	7.8
2+75		5.10	7.5
13R		4.90	7.7
2+87		5.30	7.3
13R		5.20	7.4
3+00		5.40	7.2
13R		5.10	7.5

B.M	3.18		8.62
3+13	11.80	4.40	7.4
13R		4.10	7.7
3+25		4.60	7.2
13R		4.40	7.4
3+37		4.50	7.3
13R		4.60	7.2
3+50		4.60	7.2
13R		4.60	7.2
3+63		4.70	7.1
13R		4.60	7.2
3+75		4.80	7.0
13R		4.80	7.0
3+87		4.70	7.1
13R		4.80	7.0
4+00		4.90	6.9
13R		4.90	6.9
4+13		4.80	7.0
13R		4.80	7.0
4+25		4.90	6.9
13R		5.10	6.7
4+37		4.80	7.0
13R		5.20	6.6
4+50		4.90	6.9
13R		5.30	6.5

4

			Elev
4+63	11.80	5.10	6.7
13R		5.20	6.6
4+75		5.50	6.3
13R		5.50	6.3
4+87		5.50	6.3
13R		5.50	6.3
5+00		5.50	6.3
13R		5.50	6.3
5+13		5.40	6.4
13R		5.50	6.3
5+25		5.70	6.1
13R		5.70	6.1
5+37		5.70	6.1
13R		5.60	6.2
5+50		5.60	6.2
13R		5.60	6.2
5+63		5.30	6.5
13R		5.50	6.3
5+75		5.40	6.4
13R		5.30	6.5
5+87		5.40	6.4
13R		5.20	6.6
6+00		5.40	6.4
13R		5.30	6.5
6+13		5.30	6.5
13R		5.20	6.6

6+24.23	11.80	5.20	6.6
13R		5.30	6.5
	"R" Line		
B.M. 3.94	0		8.62
0+00	12.56	5.90	6.8
13R		5.80	6.8
0+13		5.60	7.0
13R		5.40	7.2
0+25		5.50	7.1
13R		5.50	7.1
0+37		5.60	7.0
13R		5.50	7.1
0+50		5.60	7.0
13R		5.50	7.1
0+63		5.60	7.0
13R		5.60	7.0
0+75		5.50	7.1
13R		5.40	7.2
0+87		5.60	7.0
13R		5.50	7.1
1+00		5.70	6.9
13R		5.80	6.8
H13		5.60	7.0
13R		5.80	6.8
1+25		5.60	7.0
13R		5.70	6.9

6

			Elev
1+37	12.56	5.50	7.1
13R		5.40	7.2
1+50		5.30	7.3
13R		5.30	7.3
1+63		5.30	7.3
13R		5.20	7.4
1+75		5.10	7.5
13R		5.00	7.6
1+87		5.10	7.5
13R		4.80	7.8
2+00		5.20	7.4
13R		5.00	7.6
2+13		5.30	7.3
13R		4.90	7.7
2+25		5.10	7.5
13R		4.90	7.7
2+37		4.90	7.7
13R		5.00	7.6
2+50		5.10	7.5
13R		5.00	7.6
2+63		5.10	7.5
13R		5.20	7.4
2+75		5.10	7.5
13R		5.20	7.4
2+87		5.10	7.5
13R		5.20	7.4

3+00	12.56	5.10	7.5
13R		5.20	7.4
B.M	2.97	11.54	8.62
3+13	11.59	3.90	7.7
13R		4.10	7.5
3+25		4.20	7.4
13R		4.20	7.4
3+37		4.30	7.3
13R		4.20	7.4
3+50		4.20	7.4
13R		4.30	7.3
3+63		4.40	7.2
13R		4.40	7.2
3+75		4.40	7.2
13R		4.40	7.2
3+87		4.60	7.0
13R		4.60	7.0
4+00		4.80	6.8
13R		4.70	6.9
4+13		4.70	6.9
13R		4.60	7.0
4+25		4.70	6.9
13R		4.50	7.1
4+37		4.60	7.0
13R		4.60	7.0

4+50	11.59	4.70	6.9
13R		4.70	6.9
4+63		4.80	6.8
13R		4.90	6.9
4+75		5.00	6.6
13R		5.00	6.6
4+87		5.30	6.3
13R		5.20	6.4
5+00		5.10	6.5
13R		5.10	6.5
5+13		5.00	6.6
13R		5.10	6.5
5+25		5.10	6.5
13R		5.20	6.4
5+37		5.00	6.6
13R		5.10	6.5
5+50		4.90	6.7
13R		4.80	6.8
5+63		4.80	6.8
13R		4.90	6.7
5+75		5.00	6.6
13R		5.00	6.6
5+87		5.10	6.5
13R		5.10	6.5
6+00		5.10	6.5
13R		5.20	6.4

6+13	11.59	5.20	6.4
13R		5.10	6.5
6+24.13		5.10	6.5
13R		5.00	6.6

'5" Line

B.M.	4.05		8.62
0+00	12.67	6.00	6.7
13R		6.00	6.7
0+13		5.80	6.9
13R		5.80	6.9
0+25		5.70	7.0
13R		5.60	7.1
0+37		5.80	6.9
13R		5.80	6.9
0+50		5.90	6.8
13R		5.70	7.0
0+63		5.90	6.8
13R		5.70	7.0
0+75		5.80	6.9
13R		5.80	6.9
0+87		5.80	6.9
13R		5.90	6.8
1+00		5.80	6.9
13R		5.90	6.8
1+13		5.90	6.8
13R		5.70	7.0

1+25	12.67	5.80	6.9
13R		5.80	6.9
1+37		5.80	6.9
13R		5.70	7.0
1+50		5.70	7.0
13R		5.60	7.1
1+63		5.60	7.1
13R		5.40	7.3
1+75		5.60	7.1
13R		5.40	7.3
1+87		5.50	7.2
13R		5.40	7.3
2+00		5.60	7.1
13R		5.40	7.3
2+13		5.50	7.2
13R		5.20	7.5
2+25		5.40	7.3
13R		5.20	7.5
2+37		5.30	7.4
13R		5.10	7.6
2+50		5.50	7.2
13R		5.20	7.5
2+63		5.60	7.1
13R		5.20	7.5
2+75		5.60	7.1
13R		5.20	7.5

3+87	12.67	5.30	7.4
13R		5.20	7.5
3+00		5.40	7.3
13R		5.20	7.5
B.M	2.96		8.62
3+13	11.58	4.20	7.4
13R		4.10	7.5
3+25		4.20	7.4
13R		4.10	7.5
3+37		4.30	7.3
13R		4.30	7.3
3+50		4.50	7.1
13R		4.30	7.3
3+63		4.80	6.8
13R		4.60	7.0
3+75		4.90	6.7
13R		4.80	6.8
3+87		4.90	6.7
13R		4.90	6.7
4+00		4.90	6.7
13R		4.80	6.8
4+13		5.00	6.6
13R		4.90	6.7
4+25		5.00	6.6
13R		4.90	6.7

4+37	11.58	4.90	6.7
13R	.	4.80	6.8
4+50		5.10	6.5
13R		4.90	6.7
4+63		5.10	6.5
13R		5.00	6.6
4+75		5.10	6.5
13R		5.10	6.5
4+87		5.10	6.5
13R		5.20	6.4
5+00		5.20	6.2
13R		5.20	6.2
5+13		5.20	6.2
13R		5.20	6.2
5+25		5.10	6.5
13R		5.10	6.5
5+37		4.90	6.7
13R		4.90	6.7
5+50		4.90	6.7
13R		4.90	6.7
5+63		5.00	6.6
13R		4.80	6.8
5+75		5.00	6.6
13R		5.00	6.6
5+87		5.10	6.5
13R		5.10	6.5

12

			Elev
6+00	11.58	5.20	6.4
13R		5.10	6.5
6+13		5.20	6.4
13R		5.10	6.5
6+24.23		5.20	6.4
13R		5.10	6.5

"T" Line

B.M.	3.95		8.620
0+00	12.57	5.80	6.8
13R		5.90	6.7
0+13		5.70	6.9
13R		5.80	6.8
0+25		5.80	6.8
13R		5.90	6.7
0+37		5.80	6.8
13R		5.60	7.0
0+50		5.70	6.9
13R		5.60	7.0
0+63		5.60	7.0
13R		5.70	6.9
0+75		5.60	7.0
13R		5.60	7.0
0+87		5.60	7.0
13R		5.60	7.0
1+00		5.80	6.8
13R		5.70	6.9

1413	12.57	5.90	6.9
13R		5.70	6.9
1425		5.80	6.8
13R		5.70	6.9
1437		5.70	6.9
13R		5.70	6.9
1450		5.60	7.0
13R		5.60	7.0
1463		5.70	6.9
13R		5.50	7.1
1475		5.70	6.9
13R		5.60	7.0
1487		5.80	6.8
13R		5.60	7.0
2+00		5.60	7.0
13R		5.60	7.0
2+13		5.70	6.9
13R		5.60	7.0
2+25		5.60	7.0
13R		5.60	7.0
2+37		5.60	7.0
13R		5.50	7.1
2+50		5.80	6.8
13R		5.60	7.0
2+63		5.70	6.9
13R		5.60	7.0

2475	12.57	5.80	6.8
13R		5.50	7.1
2487		5.60	7.0
13R		5.40	7.2
3400		5.70	6.9
13R		5.50	7.1
B.M.	2.85		8.62
3413	11.47	4.50	7.0
13R		4.30	7.2
3425		4.60	6.9
13R		4.40	7.2
3437		4.50	7.0
13R		4.40	7.1
3450		4.60	6.9
13R		4.40	7.1
3463		5.00	6.5
13R		4.80	6.7
3475		5.00	6.5
13R		4.80	6.7
3487		5.00	6.5
13R		5.00	6.5
4400		5.00	6.5
13R		5.00	6.5
4413		5.00	6.5
13R		5.00	6.5

4+25	11.47	5.00	6.5
13R		4.90	6.6
4+37		4.90	6.6
13R		4.90	6.6
4+50		5.10	6.4
13R		5.00	6.5
4+63		5.30	6.2
13R		5.00	6.5
4+75		5.20	6.3
13R		4.90	6.6
4+87		5.20	6.3
13R		5.00	6.5
5+00		5.30	6.2
13R		5.20	6.3
5+13		5.20	6.3
13R		5.20	6.3
5+25		5.10	6.4
13R		5.00	6.5
5+37		4.90	6.6
13R		4.90	6.6
5+50		4.90	6.6
13R		5.00	6.5
5+63		5.00	6.5
13R		4.90	6.6
5+75		5.00	6.5
13R		4.90	6.6

5+87	11.47	5.00	6.5
13R		5.00	6.5
6+00		5.10	6.4
13R		5.00	6.5
6+13		5.10	6.4
13R		5.10	6.4
6+24.23		5.20	6.3
13R		5.10	6.4

B.M.	3.83		8.62
------	------	--	------

12.45

T.P.		7.15	5.30
------	--	------	------

4.08 9.38

B.M.		4.29	5.09
------	--	------	------

7.06

5.30

12.36

B.M.		3.76	8.60
------	--	------	------

3.51 12.11

B.M.		4.92	7.19
------	--	------	------

3.44 10.63

B.M.		5.68	4.95
------	--	------	------

Sta. 0+00 "U" Line

On North Iron Stanchion - Bulkhead
Line - Letter "O" of "Contractor" - S.W.
of Star Machine Works - 110'

Sta 0+00 - "U" Line

B.M. on Pole 1009

B.M. on Pole P-941

S.E. Cor. Atlantic & Becht - (0.01 Error)

18

"U" Line

B.M.	6.86		5.30
		1246	
0+00		6.86	5.30
7R		5.60	6.6
13R		5.40	6.8
25L		7.10	5.1
50L		7.20	5.0
75L		7.40	4.8
100L		7.60	4.6
125L		7.70	4.5
150L		7.80	4.4
175L		7.90	4.3
200L		8.20	4.0
0+13		6.90	5.3
2R		6.90	5.3
9R		5.10	6.1
13R		5.30	5.9
0+25		7.20	5.0
2R		6.90	5.3
9R		5.20	6.0
13R		5.40	5.8
25L		7.40	4.8
50L		7.50	4.7
75L		7.70	4.5
100L		7.90	4.3
125L		7.80	4.4

Sta. 0+00 "U" Line

East edge Walk

Bulk head line

150L	12.16	7.90	4.3
175L		7.90	4.3
200L		8.70	4.0
0+37		7.40	4.8
3R		7.20	5.0
8R		4.90	7.3
13R		5.30	6.9
0+50		7.40	4.8
2R		7.30	4.9
5R		6.40	5.6
7R		5.30	6.9
13R		5.30	6.9
25L		7.50	4.7
50L		7.60	4.6
75L		7.70	4.5
100L		8.00	4.2
125L		8.00	4.2
150L		8.00	4.2
175L		8.00	4.2
200L		8.30	3.9
0+63		7.50	4.7
2R		7.10	5.1
5R		6.30	5.9
7R		5.20	6.0
15R		5.20	6.0

Sidewalk
Bulkhead

Edge Paring
Bulkhead

0+75	12.16	7.50	4.7
2R		7.20	5.0
5R		6.50	5.7
7R		5.30	6.9
13R		5.30	6.9
25L		7.50	4.7
50L		7.70	4.5
75L		7.90	4.3
100L		8.10	4.1
125L		8.00	4.2
150L		8.10	4.1
175L		8.00	4.2
200L		8.40	3.8
0+87		7.50	4.7
2R		7.10	5.1
7R		5.30	6.9
13R		5.30	6.9
1400		7.40	4.8
2R		7.10	5.1
7R		5.20	7.0
13R		5.40	6.8
25L		7.50	4.7
50L		7.70	4.5
75L		7.90	4.3
100L		8.00	4.2
125L		8.00	4.2

Edge Paring
Bulkhead

150L	12.16	8.00	4.2
175L		7.90	4.3
200L		8.20	4.0
1+13		7.40	4.8
2R		7.10	5.1
6R		5.90	6.3
10R		5.40	6.8
13R		5.40	6.8
1+25		7.40	4.8
2R		7.00	5.2
6R		5.60	6.6
13R		5.20	7.0
25L		7.50	4.7
50L		7.60	4.6
75L		7.90	4.3
100L		7.80	4.4
125L		7.80	4.4
150L		7.80	4.4
175L		8.00	4.0
200L		8.30	3.9
1+37		7.40	4.8
2R		7.00	5.2
7R		5.30	6.9
13R		5.30	6.9
1+50		7.40	4.8
2R		6.90	5.3

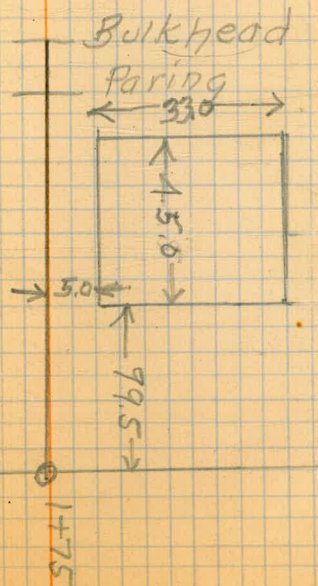
Edge Paring
Bulkhead

Edge Paring
Bulkhead

22

7R	12.16	5.50	6.7
13R		5.20	7.2
25L		7.50	4.7
50L		7.70	4.5
75L		7.90	4.3
100L		7.80	4.4
125L		7.80	4.4
150L		7.90	4.3
175L		7.90	4.3
200L		8.30	3.9
1+63		7.40	4.8
2R		7.20	5.0
7R		5.40	6.8
13R		5.30	6.9
1+75		7.40	4.8
2R		7.10	5.1
7R		5.40	4.8
13R		5.40	4.8
25L		7.60	4.6
50L		7.70	4.5
75L		8.0	4.2
94L		7.9	4.3
97L		6.6	5.6
97L(95)		7.6	4.6
97L(115)		7.8	4.4
99.5		6.7	5.5

Paving
Bulkhead



99.5L	17.16	6.90	5.3
125L		6.90	5.3
125L		7.10	5.1
125L(115)		7.10	5.1
125L(155)		7.80	4.4
144L		7.50	4.7
144L		7.70	4.5
144(75)		7.50	4.7
144(155)		7.70	4.5
150L		7.70	4.5
175L		7.90	4.3
200L		8.30	3.9
1+87		7.30	4.9
2R		7.20	5.0
7R		5.40	6.8
13R		5.40	6.8
2+00		7.30	4.9
2R		7.00	5.2
7R		5.70	7.0
13R		5.30	6.9
25L		7.90	4.3
50L		7.70	4.5
75L		8.00	4.2
193L		7.70	4.5
96L		7.00	5.2
99L		7.00	5.2

S. E. Cor. Machine Shop

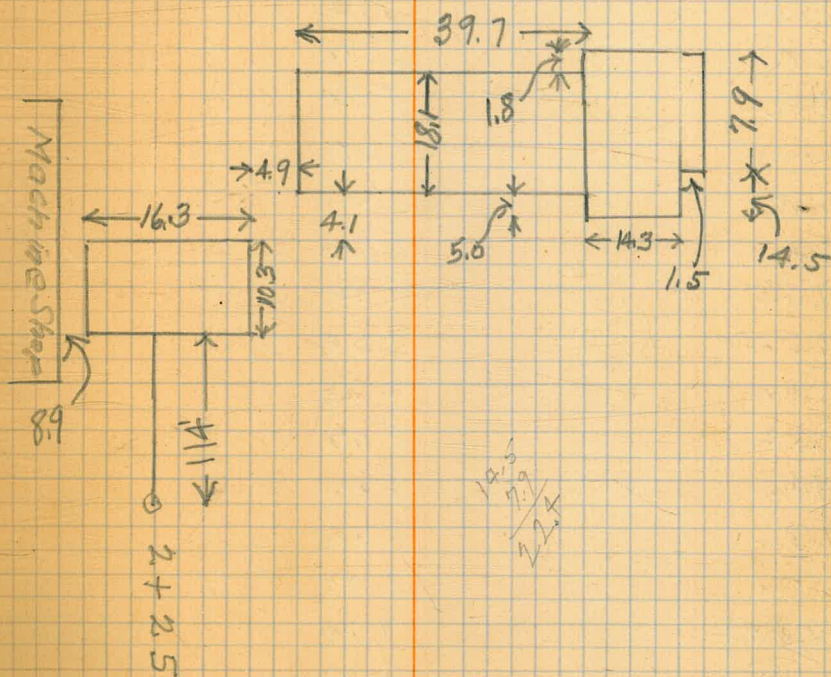
Bldg.

S. W. Cor. Machine Shop

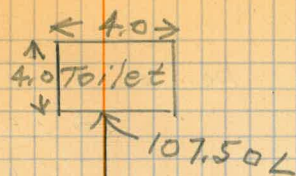
Paring
Bulkhead

Machine Shop

2+13	12.16	7.20	5.0
2R		7.00	5.2
7R		5.40	4.8
13R		5.30	4.9
2+25		7.20	5.0
2R		7.00	5.2
5R		5.60	6.6
13R		5.30	6.9
25L		7.50	4.7
50L		7.80	4.4
75L		7.90	4.3
192L		7.90	4.3
97L		7.10	5.1
100L		7.00	5.2
114L		7.40	4.8
2+37		7.20	5.0
2R		6.70	5.5
7R		5.50	6.7
13R		5.30	6.9
2+50		7.20	5.0
2R		6.90	5.3
7R		5.80	6.4
13R		5.50	6.7
25L		7.50	4.7
50L		7.80	4.4
75L		8.00	4.2



92L	12.16	7.80	4.4
96L		7.20	5.0
100L		6.30	5.9
107.5L		6.40	5.8
128.5L		7.40	4.8
2+63		7.20	5.0
2R		7.00	5.2
6R		5.70	6.5
10R		5.50	6.7
2+75		7.20	5.0
2R		6.90	5.3
6R		5.90	6.3
12R		5.40	6.8
25L		7.50	4.7
50L		7.70	4.5
75L		8.00	4.2
94L		8.00	4.2
97L		7.00	5.2
100L		7.00	5.2
128.5L		7.50	4.7
2+87		7.20	5.0
2R		7.00	5.0
9R		5.50	6.7
13R		5.40	6.8
3+00		7.10	5.1
2R		6.80	5.4



Toilet
Bldg.

0 2+50

Bldg.

5R	12.16	5.60	6.6
13R		5.30	6.9
25L		7.50	4.7
50L		7.70	4.5
75L		7.90	4.3
94L		8.00	4.2
98L		6.90	5.3
100L		6.80	5.4
125L		7.40	4.8
B.M.	3.10		8.62
150L	11.72	7.60	4.1
175L		7.50	4.2
200L		7.80	3.9
3+13		6.60	5.1
2R		6.20	5.5
6R		5.30	6.4
10R		4.80	6.9
13R		4.90	6.8
3+25		6.60	5.1
2R		6.20	5.5
6R		5.40	6.3
10R		4.80	6.9
13R		4.80	6.9
25L		7.00	4.7
50L		7.20	4.5
75L		7.40	4.3

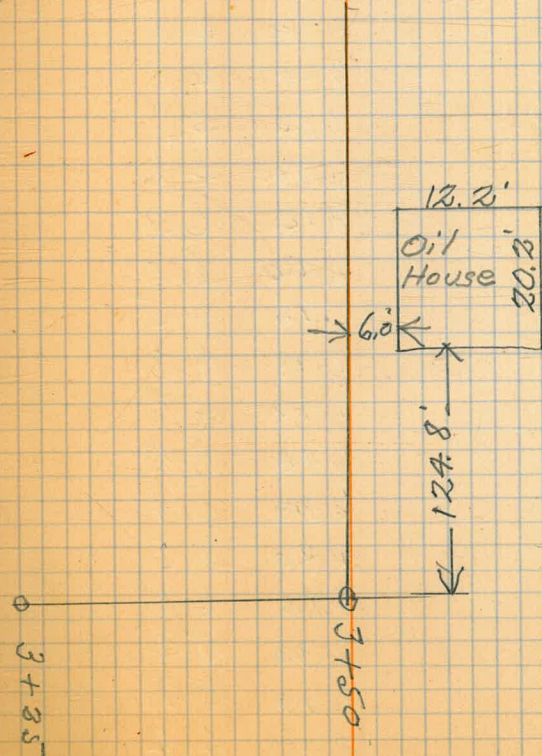
paring
Bulk head

27

92L	11.72	7.70	4.0
95L		7.30	4.4
98L		7.20	4.5
100L		7.10	4.6
102L		6.70	5.0
125L		6.80	4.9
150L		7.10	4.6
175L		7.40	4.3
200L		7.70	4.0

Aug. 13, 1934

B.M.	2.76		8.22
3+37	11.38	6.30	5.1
2R		5.90	5.5
10R		4.60	6.8
13R		4.60	6.8
3+50		6.40	5.0
2R		6.10	5.3
9R		4.80	6.6
13R		4.70	6.7
25L		6.60	4.8
50L		6.80	4.6
75L		7.00	4.4
93L		7.30	4.1
96L		6.90	4.5
100L		6.70	4.7
125L		6.60	4.8

Paving
Bulkhead

3463	11.38	6.40	5.0
2R		6.70	5.2
9R		4.90	6.5
13R		5.00	6.4
3475		6.40	5.0
2R		6.30	5.1
10R		5.00	6.4
13R		5.00	6.4
25L		6.80	4.6
50L		6.90	4.5
75L		7.10	4.3
94L		7.30	4.1
97L		6.80	4.6
100L		6.10	5.3
125L		6.40	5.0
150L		6.90	4.5
175L		7.10	4.3
200L		7.40	4.0
3487		6.40	5.0
2R		6.30	5.1
10R		4.90	6.5
13R		4.90	6.5
4400		6.30	5.1
2R		6.70	5.2
7R		5.00	6.4
13R		4.80	6.6

Faxing
Bulkhead

29

			Elev
25L	11.38	6.80	4.6
50L		7.00	4.4
75L		7.10	4.3
100L		7.10	4.3
125L		7.20	4.2
150L		7.10	4.3
175L		7.10	4.3
200L		7.50	3.9
4+13		6.50	4.9
2R		6.30	5.1
9R		5.00	6.4
13R		5.10	6.3
4+25		6.40	5.0
2R		6.20	5.2
8R		5.40	6.0
15R		5.40	6.0
25L		6.80	4.6
50L		6.90	4.5
75L		7.00	4.4
100L		7.20	4.2
125L		7.10	4.3
150L		7.20	4.2
175L		7.10	4.3
200L		7.50	3.9

Paving
Bulkhead

Paving
Bulkhead

4+37	11.38	6.40	5.0
3R		5.90	3.5
10R		5.40	6.0
13R		5.00	6.4
4+50		6.30	5.1
4R		6.00	5.4
10R		5.60	5.8
15R		5.00	6.4
25L		6.80	4.6
50L		6.80	4.6
75L		7.00	4.4
94L		7.20	4.2
97L		6.80	4.6
100L		6.30	5.1
103L		6.00	5.4
125L		6.50	4.9
150L		6.80	4.6
175L		7.10	4.3
200L		7.50	3.9
4+63		6.40	5.0
2R		6.20	5.2
9R		5.20	6.2
13R		5.30	6.1
4+75		6.40	5.0
1R		6.40	5.0
4R		5.90	5.5

0 Pole J.P. 1517



0 4+25

0 4+50

10R	11.38	5.20	6.2
13R		5.10	6.3
25L		6.80	4.6
50L		6.90	4.5
75L		7.10	4.3
96L		7.10	4.3
100L		6.50	4.9
125L		6.70	4.7
150L		6.60	4.8
175L		7.10	4.3
200L		7.50	3.9
4+87		6.60	4.8
1R		6.50	4.9
4R		5.60	3.8
5R		5.10	6.3
13R		5.20	6.2
5+00		6.40	5.0
1R		6.40	5.0
6R		5.60	5.8
8R		5.10	6.3
13R		5.20	6.2
25L		6.80	4.6
50L		7.00	4.4
75L		7.10	4.3
96L		7.00	4.4
100L		6.40	5.0

Paving
Bulkhead

32

			Elev
125L	11.38	6.70	4.7
150L		6.80	4.6
175L		7.10	4.3
200L		7.50	3.9
5+13		6.40	5.0
1R		6.30	5.1
5R		5.50	5.9
7R		5.10	6.3
13R		5.10	6.3
5+25		6.30	5.1
1R		6.30	5.1
5R		5.40	6.0
8R		5.00	6.4
13R		4.90	6.5
25L		6.80	4.6
50L		7.00	4.4
75L		7.10	4.3
100L		7.20	4.2
104L		6.60	4.8
108L		6.40	5.0
125L		6.80	4.6
150L		6.90	4.5
175L		7.10	4.3
200L		7.50	3.9
5+37		6.30	5.1
1R		6.20	5.2

Parina
Bulkhead

Parina
Bulkhead

5R	11.38	4.90	6.5
13R		4.80	6.6
5+50		6.30	4.1
1R		6.30	4.1
5R		5.40	6.0
8R		4.80	6.6
13R		4.80	6.6
25L		6.70	4.7
50L		6.90	4.5
75L		7.20	4.2
100L		7.20	4.2
104L		7.00	4.4
108L		6.80	4.6
125L		7.00	4.4
150L		7.00	4.4
175L		7.00	4.4
200L		7.50	3.9
5+63		6.40	5.0
1R		6.30	5.1
6R		5.10	6.3
10R		4.60	6.8
13R		4.90	6.5
5+75		6.50	4.9
1R		6.40	5.0
5R		5.20	6.2
10R		4.80	6.6

Paving
Bulkhead

13R	11.38	5.00	6.4
25L		6.70	4.7
50L		6.90	4.5
75L		7.00	4.4
100L		7.00	4.4
125L		7.10	4.3
150L		7.00	4.4
175L		7.00	4.4
200L		7.50	3.9
5+87		6.60	4.8
1R		6.40	5.0
5R		5.40	6.0
9R		5.10	6.3
13R		5.00	6.4
6+00		6.50	4.9
1R		6.20	5.2
5R		5.40	6.0
13R		5.00	6.4
25L		6.60	4.8
50L		6.80	4.6
75L		7.00	4.4
100L		7.00	4.4
125L		7.10	4.3
150L		7.10	4.3
175L		7.10	4.3
200L		7.50	3.9

Paving
BUKHEAD

6+13	11.38	6.60	4.8
1R		6.50	4.9
5R		5.40	6.0
13R		5.10	6.3
6+24.52		6.60	4.8
3R		6.10	5.3
5R		5.40	6.0
13R		5.10	6.3
25L		6.70	4.7
50L		6.80	4.6
75L		7.00	4.4
100L		7.10	4.3
125L		7.00	4.4
150L		7.00	4.4
175L		7.00	4.4
200L		7.50	3.9

BM 4.29			5.09
2+00(144.5L)	9.38	4.90	4.5
150L		5.00	4.4
175L		5.10	4.3
200L		5.40	4.0
2+25(124.3L)		5.00	4.4
150L		5.00	4.4
175L		5.20	4.1

Stanchion on Bulkhead
Wedge Mach. Shop

wedge Bldg.

Paving

2100L	9.38	5.40	4.0
2+50(146.5L)		5.10	4.3
150L		5.10	4.3
175L		5.10	4.3
200L		5.50	3.9
2+75(146.5L)		5.00	4.4
150L		5.20	4.1
175L		5.20	4.2
200L		5.40	4.0
3+50(150L)		4.60	4.8
175L		5.10	4.3
200L		5.50	3.9

B.M. 2.53 8.62

11.15 4.65 6.50
3.95

10.45
"A" Line

10.45

0+00		5.50
7R		5.60
12R		6.40
34R		5.30
0+13		5.60
9R		5.80
16R		6.50

Bulkhead
Wedge Bldg.

Paving
Bulkhead
Wedge Bldg.

Paving
Bulkhead

Paving
Bulkhead.

Pole - 1009.

125" North of "J" Line from Base
line 6+24.22 - Hub.

Base Line on Sta. 6+24.22.

Pavement

37

35R	10.45	5.40
0+25		5.70
8R		5.90
13R		6.60
35R		5.40
0+37		5.70
11R		6.00
18R		6.60
36R		5.40
0+50		5.60
10R		5.90
19R		6.60
36R		5.50
0+63		5.60
12R		6.40
19R		6.50
37R		5.50
0+75		5.70
12R		5.80
20R		6.40
37R		5.50
0+87		5.70
14R		5.90
20R		6.40
37R		5.60

15

Pavement

Pavement

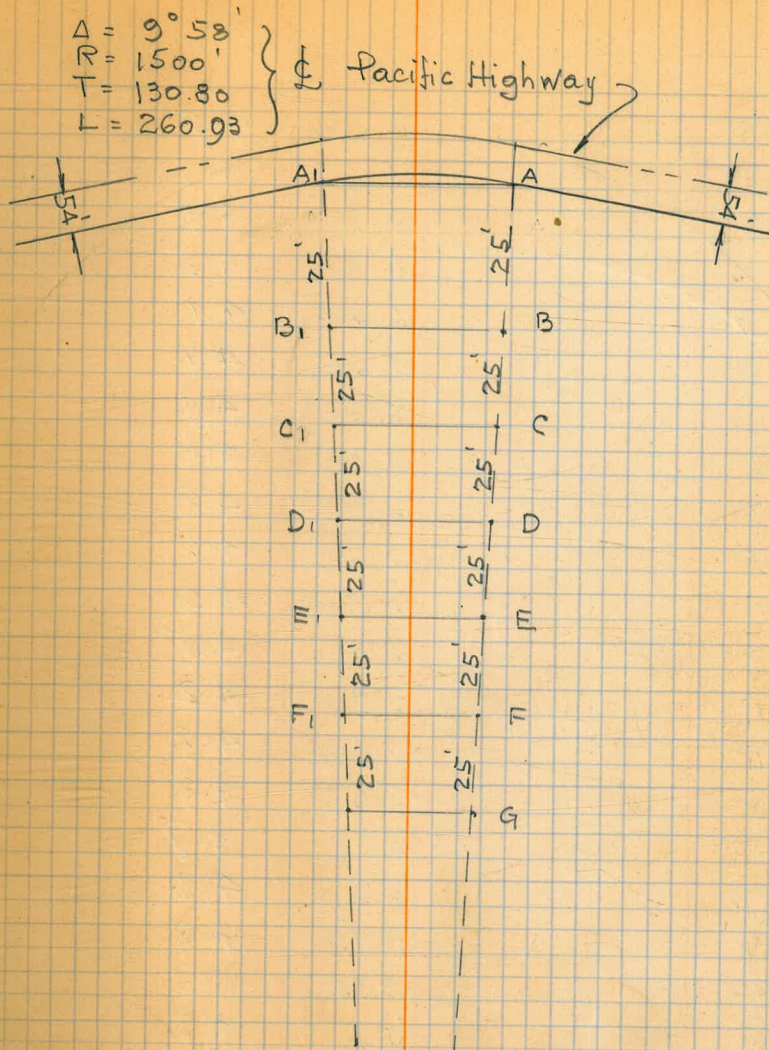
Pavement,
 J. T. Henderson Recorder to this point,
 12 M - Aug. 13, 1934.

1+00	5.70
16 R	6.00
20 R	6.30
37 R	5.60
1+13	5.70
13 R	5.90
21 R	6.00
36 R	5.7
1+25	5.80
16 R	5.90
20 R	6.30
36 R	5.70
1+37	5.90
16 R	5.80
20 R	6.30
36 R	5.80
1+50	6.00
16 R	5.80
20 R	6.20
35 R	5.80
1+63	5.80
14 R	5.90
19 R	6.40
35 R	5.90
1+75	

39

A-A Line
10.45

		Elev.
0+00	5.50	5.0
7 R	5.6	4.9
12 R	6.4	4.1
34 R	5.3	5.2
0+13	5.6	4.9
9 R	5.8	4.7
17 R	6.5	4.0
37 R	5.4	5.1
0+25	5.7	4.8
9 R	5.9	4.6
17 R	6.5	4.0
36 R	5.4	5.1
0+37	5.7	4.8
11 R	5.8	4.7
19 R	6.6	3.9
37 R	5.5	5.0
0+50	5.6	4.9
10 R	5.9	4.6
20 R	6.6	4.9
38 R	5.5	5.0
0+63	5.6	4.9
12 R	5.8	4.7
21 R	6.5	4.0
38 R	5.5	5.0
0+75	5.7	4.8
14 R	5.8	4.7



22 R	6.50	4.0
39 R	5.60	4.9
0+87	5.60	4.9
20 R	6.00	4.5
22 R	6.40	4.1
39 R	5.60	4.9
1+00	5.60	4.9
20 R	5.90	4.6
24 R	6.20	4.3
40 R	5.60	4.9
1+13	5.50	5.0
20 R	6.00	4.5
24 R	6.30	4.2
40 R	5.70	4.8
1+25	5.60	4.9
24 R	5.80	4.7
28 R	6.20	4.3
43 R	5.70	4.8
1+37	5.20	5.3
20 R	5.8	4.7
24 R	6.2	4.3
40 R	5.8	4.7
1+50	5.2	5.3
5 R	5.9	4.6
8 R	5.6	4.9
20 R	5.8	4.7

41

Elev

24 R	6.30	4.2
40 R	5.80	4.7
1+63	5.00	5.5
3 R	5.30	5.2
6 R	6.00	4.5
20 R	5.90	4.6
24 R	6.30	4.2
39 R	5.90	4.6
1+75	5.00	5.5
9 R	5.70	4.8
20 R	5.80	4.7
22 R	6.40	4.1
39 R	5.90	4.6

BM 3.37

9.87

1+87	4.70	5.2
8 R	5.20	4.7
18 R	5.40	4.5
22 R	5.90	4.0
39 R	5.40	4.5
2+00	5.00	4.9
12 R	5.00	4.9
19 R	5.40	4.5
21 R	5.90	4.0
38 R	5.20	4.5

42

Elev

2+14	4.90	5.0
9R	4.90	5.0
14R	5.50	4.4
16R	5.50	4.4
19R	6.10	3.8
37R	5.40	4.5
2+25	5.00	4.9
6R	5.00	4.9
13R	5.60	4.3
18R	6.10	3.8
36R	5.40	4.5
2+37	5.00	4.9
6R	5.40	4.5
11R	5.90	4.0
15R	5.80	4.1
18R	6.20	3.7
36R	5.50	4.4
2+51	5.40	4.5
6R	5.90	4.0
13R	5.80	4.1
17R	6.10	3.8
34R	5.50	4.4

B-B₁ Line

B.M. 3.98

10.48

5.30 5.2

0+00

13 P	5.10	5.4
0+13	5.60	4.9
TR 13	5.40	5.1
0+25	5.30	5.2
TR 13	5.60	4.9
0+37	5.30	5.2
TR 13	5.60	4.9
0+50	5.30	5.2
TR 13	5.40	5.1
0+63	5.00	5.5
TR 13	5.20	5.3
0+75	4.70	5.8
TR 13	4.90	5.6
0+87	4.60	5.9
TR 13	4.80	5.7
1+00	4.50	6.0
TR 13	4.80	5.7
1+13	5.60	4.9
TR 13	5.00	5.5
1+25	4.90	5.6
TR 13	5.10	5.4
1+37	5.00	5.5
TR 13	5.10	5.4
1+50	5.00	5.5
TR 13	4.90	5.6
1+63	5.00	5.5

44

Elev

R13	4.80	5.7
1+75	5.10	5.4
R13	5.00	5.5
1+87	5.30	5.2
R13	5.30	5.2
2+00	5.60	4.9
R13	5.90	4.6
2+13	5.70	4.8
R13	5.80	4.7
2+25	5.50	5.0
R13	5.40	5.1
2+37	5.60	4.9
R13	5.50	5.0
2+47.6	6.10	4.4
R13	5.90	4.6

C-C Line

0+00	5.10	5.4
R13	5.30	5.2
0+13	4.90	5.6
R13	5.20	5.3
0+25	4.70	5.8
R13	5.10	5.4
0+37	4.60	5.9
R13	5.10	5.4
0+50	4.60	5.9
R13	5.00	5.5

45

Elev

0+63	4.90	5.6
TR13	4.90	5.6
0+75	4.70	5.8
TR13	4.60	5.9
0+87	4.50	6.0
TR13	4.60	5.9
1+00	4.60	5.9
TR13	4.50	6.0
1+13	4.50	6.0
TR13	4.60	5.9
1+25	4.90	5.6
TR13	4.90	5.6
1+37	5.10	5.4
TR13	4.90	5.6
1+50	5.10	5.4
TR13	4.90	5.6
1+63	4.90	5.6
TR13	4.90	5.6
1+75	5.00	5.5
TR13	5.20	5.3
1+87	5.50	5.0
TR13	5.60	4.9
2+00	5.80	4.7
TR13	5.70	4.8
2+13	5.90	4.6
TR13	5.90	4.6

46

Elev.

2+25	5.50	5.0
TR13	5.60	4.9
2+37	5.50	5.0
TR13	5.60	4.9
2+42.8	5.60	5.9
TR13	5.60	5.9

D-D Line

B.M. 4.23

10.73

0+00	4.90	5.8
TR13	5.10	5.6
0+13	4.70	6.0
TR13	4.90	5.8
0+25	4.50	6.2
TR13	4.60	6.5
0+37	4.60	5.1
TR13	4.80	5.9
0+50	4.80	5.9
TR13	4.90	5.8
0+63	5.10	5.6
TR13	5.20	5.5
0+75	5.20	5.5
TR13	5.00	5.7
0+87	5.00	5.2
TR13	5.00	5.7
1+00	5.00	5.7

47

Elev

TR13	5.10	5.6
1+13	4.90	5.8
TR13	5.00	5.7
1+25	5.10	5.6
TR13	5.20	5.5
1+37	5.40	5.3
TR13	5.40	5.3
1+50	5.30	5.4
TR13	5.40	5.3
1+63	5.30	5.4
TR13	5.30	5.4
1+75	5.60	5.1
TR13	5.40	5.3
1+87	5.70	5.0
TR13	5.80	4.9
1+87 ✓	5.80	4.9
TR13 ✓	6.00	4.7
2+00	5.80	4.9
TR13	5.90	4.8
2+13	5.90	4.8
TR13	6.00	4.7
2+25	5.90	4.8
TR13	5.80	4.9
2+37.9	5.80	4.9
TR13	5.80	4.9

48

Elev.

E to E₁ Line

0+00	4.40	6.3
TR13	4.60	6.1
0+13	4.60	6.1
TR13	4.70	6.0
0+25	4.70	6.0
TR13	4.60	6.1
0+37	4.70	6.0
TR13	4.70	6.0
0+50	4.80	5.9
TR13	4.80	5.9
0+63	5.00	5.7
TR13	5.10	5.6
0+75	5.10	5.6
TR13	5.20	5.5
0+87	5.10	5.6
TR13	5.10	5.6
1+00	4.90	5.8
TR13	4.80	5.9
1+13	5.00	5.7
TR13	5.00	5.7
1+25	5.20	5.5
TR13	5.20	5.5
1+37	5.30	5.4
TR13	5.40	5.3
1+50	5.30	5.4
TR13	5.40	5.3

1+63	5.00	5.7
TR13	5.20	5.5
1+75	5.20	5.5
TR13	5.40	5.3
1+87	5.30	5.4
TR13	5.50	5.2
2+00	5.30	5.4
TR13	5.60	5.1
2+13	5.40	5.3
TR13	5.70	5.0
2+25	5.60	5.1
TR13	5.80	4.9
2+34.6	5.70	5.0
TR13	5.80	4.9

F to F1 Line

0+00	4.20	6.5
TR13	4.30	6.4
0+13	4.30	6.4
TR13	4.40	6.3
0+25	4.40	6.3
TR13	4.50	6.2
0+37	4.70	6.0
TR13	4.70	6.0
0+50	4.90	5.8
TR13	4.90	5.8

50

Elev.

0+63	4.80	5.9
TR13	4.90	5.8
0+75	4.80	5.9
TR13	5.00	5.7
0+87	5.00	5.7
TR13	5.10	5.6
1+00	4.90	5.8
TR13	4.90	5.8
1+13	5.00	5.7
TR13	5.00	5.7
1+25	4.90	5.8
TR13	5.10	5.6
1+37	5.00	5.7
TR13	5.20	5.5
1+50	5.10	5.6
TR13	5.30	5.4
1+63	4.80	5.9
TR13	4.90	5.8
1+75	4.80	5.9
TR13	4.70	6.0
1+87	5.00	5.7
TR13	5.10	5.6
2+00	5.20	5.5
TR13	5.20	5.5
2+13	5.10	5.6
TR13	5.30	5.4

51

Elev.

2+25	5.60	5.1
R13	5.40	5.3
2+27.2	5.70	5.0
R13	5.50	5.2

G to G1 Line

0+00	3.90	6.8
R13	3.90	6.8
0+13	4.10	6.6
R13	4.20	6.5
0+25	4.30	6.4
R13	4.50	6.2
0+37	4.50	6.2
R13	4.60	6.1
0+50	4.50	6.2
R13	4.60	6.1
0+63	4.50	6.2
R13	4.60	6.1
0+75	4.50	6.1
R13	4.60	6.1
0+87	4.50	6.2
R13	4.70	6.0
1+00	4.50	6.2
R13	4.90	5.8
1+13	4.60	6.1
R13	4.90	5.8

52

Elev.

1+25	4.60	6.1
TR13	4.80	5.9
1+37	4.60	6.1
TR13	4.60	6.1
1+50	4.60	6.1
TR13	4.90	5.8
1+63	4.60	6.1
TR13	4.80	5.9
1+75	4.30	6.4
TR13	4.70	6.0
1+87	4.50	6.2
TR13	4.70	6.0
2+00	4.70	6.0
TR13	4.90	5.8
2+13	5.10	5.6
TR13	5.40	5.3
2+22.8	5.00	5.7
TR13	5.50	5.2

H to Hi Line

0+00	4.10	6.6
TR13	4.10	6.6
0+13	4.20	6.5
TR13	4.10	6.6
0+25	4.40	6.3
TR13	4.40	6.3

52

0+37	4.40	6.3
TR13	4.50	6.2
0+50	4.30	6.4
TR13	4.60	6.1
0+63	4.40	6.3
TR13	4.50	6.2
0+75	4.30	6.4
TR13	4.50	6.2
0+87	4.50	6.2
TR13	4.50	6.2
1+00	4.40	6.3
TR13	4.40	6.3
1+13	4.50	6.2
TR13	4.40	6.4
1+25	4.50	6.2
TR13	4.50	6.2
1+37	4.50	6.2
TR13	4.70	6.0
1+50	4.70	6.0
TR13	4.80	5.9
1+63	4.70	6.0
TR13	4.70	6.0
1+75	4.50	6.2
TR13	4.40	6.3
1+87	4.50	6.2
TR13	4.30	6.4

54

Elev

2+00	4.80	5.9
TR13	4.60	6.1
2+13	4.90	5.8
TR13	4.70	6.0
2+18.6	4.60	6.1
TR13	4.80	5.9

I to I, Line

0+00	4.10	6.6
TR13	4.10	6.6
0+13	4.30	6.4
TR13	4.30	6.4
0+25	4.30	6.4
TR13	4.40	6.3
0+37	4.20	6.5
TR13	4.30	6.4
0+50	4.20	6.5
TR13	4.30	6.4
0+63	4.20	6.5
TR13	4.30	6.4
0+75	4.20	6.5
TR13	4.30	6.4
0+87	4.20	6.5
TR13	4.40	6.4
1+00	4.10	6.6
TR13	4.40	6.3

D. P. O'Kennedy Recorded to this point
10 A.M. Aug 14th 1934.

55

Elev.

1+13	4.20	6.5
R 13	4.40	6.3
1+25	4.50	6.2
R 13	4.40	6.3
1+37	4.70	6.0
R 13	4.60	5.9
1+50	4.70	6.0
R 13	4.70	6.0
1+63	5.00	5.7
R 13	4.90	5.8
1+75	5.00	5.7
R 13	4.80	5.9
1+87	5.10	5.6
R 13	4.70	6.0
2+00	5.20	5.5
R 13	4.80	5.9
2+13	5.20	5.5
R 13	5.10	5.6
2+14.5	5.20	5.5
R 13	4.90	5.8

J to J Line

0+00	4.20	6.5
R 13	4.20	6.5
0+13	4.20	6.5
R 13	4.30	6.4

56

Elev.

0+25	4.20	6.5
R13	4.20	6.5
0+37	4.20	6.5
R13	4.30	6.4
0+50	4.30	6.4
R13	4.20	6.5
0+63	4.20	6.5
R13	4.20	6.5
0+75	4.00	6.7
R13	4.00	6.7
0+87	4.10	6.6
R13	4.00	6.7
1+00	4.00	6.7
R13	4.10	6.6
1+13	4.00	6.7
R13	4.10	6.6
1+25	4.20	6.5
R13	4.30	6.4
1+37	4.30	6.4
R13	4.30	6.4
1+50	4.50	6.2
R13	4.60	6.1
1+63	4.70	6.0
R13	4.80	5.9
1+75	4.80	5.9
R13	4.90	5.8

57

Elev.

1+87		4.90	5.8
R13		5.00	5.7
2+00		5.00	5.7
R13		5.00	5.7
2+09.8		5.10	5.6
R13		5.10	5.6
0 T.P.		5.28	
	6.50		
		11.78	
	N-to K. Line		
0+00		5.20	6.6
R13		5.20	6.6
0+13		5.20	6.6
R13		5.30	6.5
0+25		5.20	6.6
R13		5.30	6.5
0+37		5.10	6.7
R13		5.20	6.6
0+50		5.20	6.6
R13		5.20	6.6
0+63		5.20	6.6
R13		5.30	6.5
0+75		5.10	6.7
R13		5.10	6.7

76

58

Elev.

0+57	5.10	6.7
R13	5.10	6.7
1+00	5.20	6.6
R13	5.00	6.8
1+13	5.40	6.4
R13	5.20	6.6
1+25	5.50	6.3
R13	5.40	6.4
1+37	5.60	6.2
R13	5.50	6.3
1+50	5.60	6.2
R13	5.50	6.3
1+63	5.80	6.0
R13	5.80	6.0
1+75	6.10	5.7
R13	6.00	5.8
1+87	6.20	5.6
R13	5.90	5.9
2+00	6.10	5.7
R13	6.10	5.7
2+05.7	6.00	5.8
R13	6.10	5.7

L to L line

0+00	5.10	6.7
R13	5.20	6.6

52

59

Elev.

0713	5.00	6.8
R13	5.20	6.6
0725	5.20	6.6
R13	5.20	6.6
0737	4.90	6.9
R13	5.00	6.8
0750	4.90	6.9
R13	5.00	6.8
0763	5.00	6.8
R13	5.10	6.7
0775	5.00	6.8
R13	5.20	6.6
0787	5.00	6.8
R13	5.20	6.6
1700	5.10	6.7
R13	5.20	6.6
1713	5.30	6.5
R13	5.40	6.4
1725	5.40	6.4
R13	5.60	6.2
1737	5.60	6.2
R13	5.70	6.1
1750	5.60	6.2
R13	5.70	6.1
1763	5.70	6.1
R13	5.80	6.0

60

Elev.

1+75	6.10	5.7
R13	6.10	5.7
1+81	6.10	5.7
R13	6.40	5.4
2+00	6.10	5.7
R13	6.00	5.8
2+01.0	6.20	5.6
R13	6.10	5.7

M-to M Line

0+00	4.90	6.9
R13	4.90	6.9
0+13	4.80	6.0
R13	5.00	6.8
0+25	4.80	7.0
R13	4.90	6.9
0+37	4.90	6.9
R13	4.90	6.9
0+50	5.10	6.7
R13	5.20	6.6
0+63	5.00	6.8
R13	5.10	6.7
0+75	5.00	6.8
R13	5.10	6.7
1+87	5.00	6.8
R13	5.20	6.6

61

Elev.

1+00	5.10	6.7
R13	5.30	6.5
1+13	5.10	6.7
R13	5.30	6.5
1+25	5.30	6.5
R13	5.30	6.5
1+37	5.40	6.4
R13	5.50	6.3
1+50	5.50	6.3
R13	5.60	6.2
1+63	5.60	6.2
R13	5.70	6.1
1+75	5.60	6.2
R13	5.90	4.9
1+87	5.80	6.0
R13	6.00	5.8
1+96.8	5.80	6.0
R13	6.00	5.8

N to N line

0+00	4.80	7.0
R13	4.80	7.0
0+13	4.90	6.9
R13	4.90	6.9
0+25	4.80	7.0
R13	5.05	6.8

62

Elev.

0+37	4.90	6.9
R13	4.90	6.9
0+50	4.90	6.9
R13	5.00	6.8
0+63	5.00	6.8
R13	5.00	6.8
0+75	5.10	6.7
R13	5.00	6.8
0+87	5.00	6.8
R13	5.20	6.6
1+00	5.20	6.6
R13	5.20	6.6
1+13	5.30	6.5
R13	5.50	6.3
1+25	5.30	6.5
R13	5.50	6.3
1+37	5.40	6.4
R13	5.40	6.4
1+50	5.30	6.5
R13	5.30	6.5
1+63	5.30	6.5
R13	5.50	6.3
1+75	5.40	6.4
R13	5.50	6.3
1+87	5.60	6.2
R13	5.60	6.2

63

ELEV.

1+92.1		5.60	6.2
R13		5.70	6.1
	0+00 Line		
0+00		5.00	6.8
R13		5.00	6.8
0+13		4.90	6.9
R13		4.90	6.9
0+25		5.00	6.8
R13		4.90	6.9
0+37		4.90	6.9
R13		4.90	6.9
0+50		4.90	6.9
R13		4.90	6.9
0+63		4.90	6.9
R13		5.00	6.8
0+75		4.90	6.9
R13		4.90	6.9
0+87		5.00	6.8
R13		4.90	6.9
1+00		5.10	6.7
R13		5.20	6.6
1+13		5.20	6.6
R13		5.30	6.5
1+25		5.30	6.5
R13		5.30	6.5
1+37		5.40	6.4

64

Elev.

R13	5.30	6.5
1+50	5.30	6.5
R13	5.30	6.5
1+63	5.50	6.3
R13	5.40	6.4
1+75	5.50	6.3
R13	5.40	6.4
1+87	5.70	6.1
R13	5.60	6.2
1+88.0	5.70	6.1
R13	5.60	6.2

Pto P Line

0+00	5.20	6.6
R13	5.06	6.8
0+13.	5.00	6.8
R13	4.90	6.9
0+25-	5.10	6.7
R13	5.10	6.7
0+37	5.00	6.8
R13	4.90	6.9
0+50	4.90	6.9
R13	5.00	6.8
0+63	5.00	6.8
R13	5.00	6.8

65

Elev.

0+75	4.90	6.9
R13	4.90	6.9
0+87	4.90	6.9
R13	5.00	6.8
1+00	5.00	6.8
R13	5.10	6.7
1+13	5.00	6.8
R13	5.20	6.6
1+25	5.10	6.7
R13	5.20	6.6
1+37	5.20	6.6
R13	5.20	6.6
1+50	5.30	6.5
R13	5.30	6.5
1+63	5.30	6.5
R13	5.40	6.4
1+75	5.50	6.3
R13	5.40	6.4
1+85.9	5.70	6.1
R13	5.70	6.1

Q to Q Line

0+00	5.30	6.5
R13	5.30	6.5
0+13	5.10	6.7
R13	5.10	6.7

66

Elev.

0+25	5.00	6.8
R13	5.10	6.7
0+37	4.90	6.9
R13	5.00	6.8
0+50	4.80	7.0
R13	4.90	6.9
0+63	4.80	7.0
R13	4.90	6.9
0+75	4.80	7.0
R13	5.00	6.8
0+87	4.90	6.9
R13	5.00	6.8
1+00	5.00	6.8
R13	5.00	6.8
1+13	5.10	6.7
R13	5.10	6.7
1+25	5.10	6.7
R13	5.10	6.7
1+37	5.10	6.7
R13	5.20	6.6
1+50	5.30	6.5
R13	5.30	6.5
1+63	5.30	6.5
R13	5.40	6.4
1+75	5.40	6.4
R13	5.50	6.3

50

67

Elev.

1+81.6	5.50	6.3
R13	5.50	6.3

R to R Line

0+00	5.30	6.5
R13	5.20	6.6
0+13	5.20	6.6
R13	5.20	6.6
0+25	5.20	6.6
R13	5.10	6.7
0+37	5.10	6.7
R13	5.00	6.8
0+50	5.10	6.7
R13	4.90	6.9
0+63	5.20	6.6
R13	4.90	6.9
0+75	5.20	6.6
R13	5.00	6.8
0+87	5.10	6.7
R13	5.00	6.8
1+00	5.10	6.7
R13	5.10	6.7
1+13	5.10	6.7
R13	5.00	6.8
1+25	5.20	6.6
R13	5.10	6.7

68

Elev.

1+37	5.20	6.6
R13	5.20	6.6
1+50	5.20	6.6
R13	5.20	6.6
1+63	5.30	6.5
R13	5.40	6.4
1+75	5.40	6.4
R13	5.30	6.5
1+77.2	5.40	6.4
R13	5.60	6.2

565 line

0+00	5.40	6.4
R13	5.40	6.4
0+13	5.40	6.4
R13	5.30	6.5
0+25	5.40	6.4
R13	5.20	6.6
0+37	5.40	6.4
R13	5.20	6.6
0+50	5.30	6.5
R13	5.30	6.5
0+63	5.30	6.5
R13	5.30	6.5
0+75	5.30	6.5
R13	5.20	6.6

69

Elev.

0+87	5.20	6.6
R13	5.20	6.6
1+06	5.10	6.7
R13	5.00	6.8
1+13	5.10	6.7
R13	5.10	6.7
1+25	5.20	6.6
R13	5.20	6.6
1+37	5.20	6.6
R13	5.20	6.6
1+50	5.40	6.3
R13	5.30	6.4
1+63	5.40	6.4
R13	5.40	6.4
1+73	5.50	6.3
R13	5.50	6.3

T to T Line

0+00	5.50	6.3
R13	5.40	6.4
0+13	5.50	6.3
R13	5.50	6.3
0+25	5.50	6.3
R13	5.50	6.3
0+37	5.50	6.3
R13	5.50	6.3

70

58.6

Elev.

0+50	5.30	6.15
R13	5.30	6.15
0+63	5.40	6.4
R13	5.40	6.4
0+75	5.40	6.4
R13	5.40	6.4
0+89	5.40	6.4
R13	5.30	6.15
1+00	5.40	6.4
R13	5.30	6.15
1+13	5.50	6.3
R13	5.20	6.6
1+25	5.50	6.3
R13	5.40	6.4
1+37	5.60	6.2
R13	5.40	6.4
1+50	6.40	5.4
R01	5.60	6.2
R13	5.50	6.3
1+63	6.50	5.3
R02	5.70	6.1
R13	5.60	6.2
1+68.6	6.70	5.1
R02	6.10	5.7
R04	5.60	6.2
R13	5.60	6.2

71

Elev.

U to U line

0+00	7.00	4.8
R02	6.60	5.2
R05	5.70	6.1
R13	5.50	6.3
0+13	6.70	5.1
R02	6.40	5.4
R06	5.50	6.3
R13	5.50	6.3
0+25	6.80	5.0
R02	6.10	5.7
R06	5.50	6.3
R13	5.50	6.3
0+37	6.90	4.9
R08	5.80	6.0
R13	5.50	6.3
0+50	6.90	4.9
R05	5.40	6.4
R10	5.30	6.5
0+67	6.90	4.9
R05	5.70	6.1
R10	5.40	6.3
0+75	6.90	4.9
R05	5.70	6.1
R09	5.40	6.4

72

Elev.

0+87	7.00	4.8
R 05	5.80	6.0
R 08	5.50	6.3
1+00	7.10	4.7
R 05	5.70	6.1
R 08	5.40	6.4
1+13	7.20	4.6
R 03	6.80	5.0
R 07	5.60	6.2
1+25	7.20	4.6
R 03	6.60	5.2
R 07	5.40	6.4
1+37	7.20	4.6
R 02	7.00	4.8
R 06	5.60	6.2
1+50	7.20	4.6
R 02	7.00	4.8
R 06	5.60	6.2
1+63	7.20	4.6
R 02	7.00	4.8
R 05	5.80	6.0
1+686	7.20	4.6
R 03	6.70	5.1
R 06	5.70	6.1

DIRECTIONS FOR USE OF TABLES

TABLE No. 1.

Distance of slope stake from side or shoulder stake for any width roadway, slope 1% to 1. If ground is nearly level, the cut or fill at side stake is located by the double entry method in

left column and top row. The number in body of table in same row and column gives distance

to cut or fill and find distance in table. Set up rod at stake and find distance in table. Set up

rod at stake and slope stake, lower target by this amount if cut, elevate if fill. Add this amount

to cut or fill and find distance in table. Set up rod at stake and find distance in table. Set up

rod at stake and slope stake, lower target by this amount if cut, elevate if fill. Add this amount

to cut or fill and find distance in table. Set up rod at stake and find distance in table. Set up

rod at stake and slope stake, lower target by this amount if cut, elevate if fill. Add this amount

to cut or fill and find distance in table. Set up rod at stake and find distance in table. Set up

rod at stake and slope stake, lower target by this amount if cut, elevate if fill. Add this amount

to cut or fill and find distance in table. Set up rod at stake and find distance in table. Set up

rod at stake and slope stake, lower target by this amount if cut, elevate if fill. Add this amount

to cut or fill and find distance in table. Set up rod at stake and find distance in table. Set up

rod at stake and slope stake, lower target by this amount if cut, elevate if fill. Add this amount

to cut or fill and find distance in table. Set up rod at stake and find distance in table. Set up

rod at stake and slope stake, lower target by this amount if cut, elevate if fill. Add this amount

TABLE No. 2.

To find Tangent and External for curve of any other degree, divide by degree of curve and

add correction found in column of corrections. Degree of curve with a given L may be found

by dividing tangent, (or external), opposite L by given tangent, (or external).

The distance from a point on the tangent to the curve is very nearly the square of the tangent

length divided by twice the radius.

