

1524

POST

7

1524

7

MICROFILMED
DEC 24 1964

ENGINEERING DEPARTMENT
CITY OF
SAN DIEGO,
CALIFORNIA.

MADE IN U. S. A.

Our Leather Bound Engineers Note Books
are carried in the following rulings:

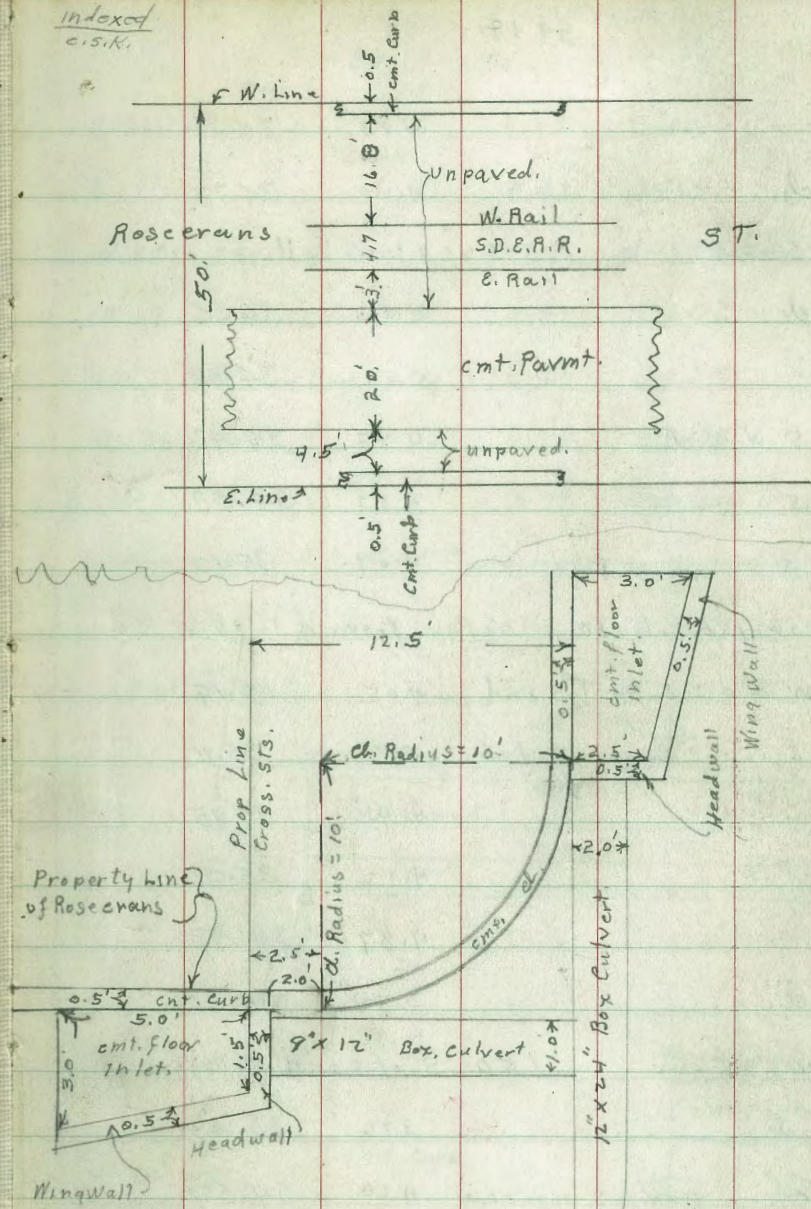
- No. 380 LEVEL BOOK. Left and Right Hand Page
the same as Left Hand Page
of this Book.
- No. 382 FIELD BOOK. Left Hand Page as in this
Book, Right Hand Page 4x4
to the inch, Center Line Red.
- No. 384 MINING TRANSIT BOOK. Left Hand Page as in this
Book, Right Hand Page 8x8
to the inch, Center Line Red.
- No. 385 FIELD BOOK. Left Hand Page as in this
Book, Right Hand Page 8
vertical and 4 horizontal lines to
the inch, Center Line Red.

We also carry the Note Books listed above,
bound in extra strong Fabri-Hide (otherwise
the same quality of book,) which can be fur-
nished at a somewhat lower price.

In ordering Fabri-Hide covered books, add
the letter "F" to catalog number.

THE FREDERICK POST CO.
ENGINEERING and DRAFTING SUPPLIES
IRVING PARK STATION
CHICAGO, ILL.

Rosecrans. St				
5-24-35	Miller			
Walker	X. Sec. from Reservation Line North			
B.M.B.P.	2.48	40.62	38.14	x.W.M. call
				+Rosecrans
				N. E. Kellogg
B.M.B.P.	5.66	39.79	7.09	+Rosecrans
259.1	S. of S. line Kellogg on W. } U.S. Reservation Line			
247.4	S. of S. " " " E }			
(0+00 = 253.25	S of Sid. Kellogg meas. on E Rosecrans) c.s.K.			
E. ch.		4.20	34.99	
G	PAV	4.67	34.52	
4.5' W. of E ch	"	4.20	34.99	
14.5' " " "	"	3.74	35.35	
24.5' W " " " = d	"	3.64	35.55	
+7.7' W of d	"	3.71	35.48	
16.1' " " " "	"	3.77	35.42	
24.5' " " " = G	"	4.07	35.12	
24.5' " " " = W. ch.	"	3.18	36.01	
0+43.25	210' S. of S. Line Kellogg			
W. ch		3.43	35.76	
G	PAV	4.24	34.95	
8.4' E of d	"	4.02	35.17	
16.8' E " "	"	3.88	35.31	
24.5' " " " = d	"	3.89	35.30	
10' " " d	"	4.14	35.05	
20' " " "	"	4.57	34.62	



39.19

G	4.83	34.36
E. cl.	4.40	34.79
0768.25	185' S. of S. Line Kellogg	
E. cl.	4.53	34.66
G	5.01	34.18
4.5 W. of cl	4.77	34.42
14.5 " " "	4.37	34.82
24.5 " " " = cl	4.09	35.10

From 185' S. to 150' S. No Pav. from cl to 10' W. of cl

3' W. of cl = E. Rail S. End	4.05	35.14
7.7 " " " = W. " S. End	4.08	35.11
10' " " "	4.04	35.15
16.6 " " "	4.12	35.07
G	4.37	34.82
W. cl.	3.58	35.61

1703.25 150' S. of S. Line Kellogg

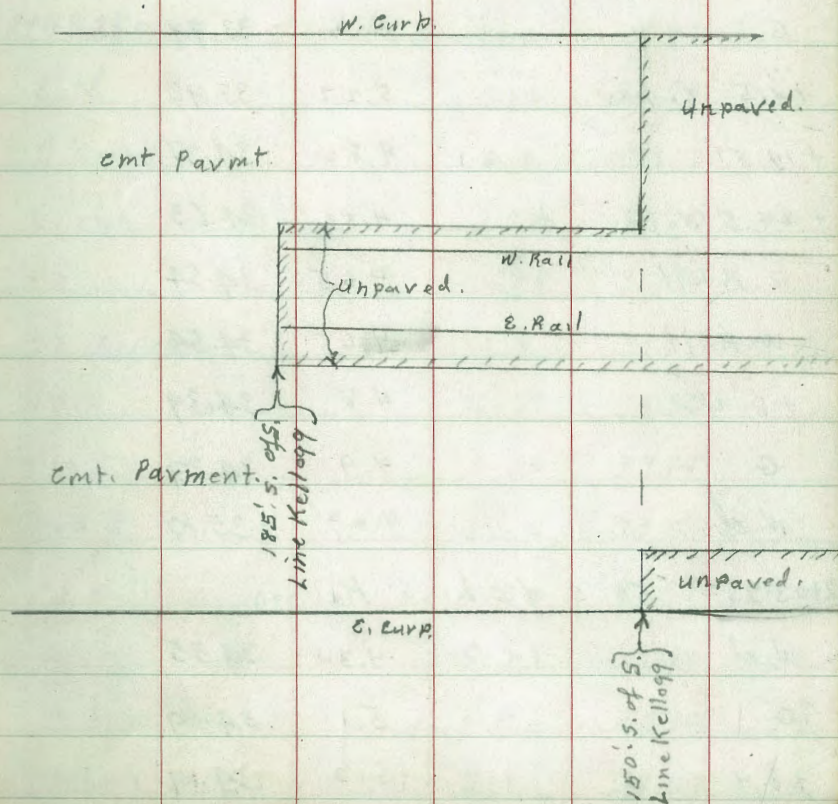
W. cl	3.76	35.43
G. pav. to S. unpav. to N	4.60	34.59
8.4 E	4.41	34.78
14.5 E	4.33	34.86

Roseerans

2

39.19

W. Rail	4.29	34.90
E. "	4.32	34.87
W. edge pav. = cl	4.27	34.92
10' S = cl Strip Pav. to N.	4.47	34.72
20' S = S. edge Pav. to N	4.91	34.28
G. Pav. to S.	5.24	33.95
E. cl -	4.70	34.49



39.19				Rosecrans		3
8.2 E of W. ch =	W. cor cmt + Box D.C.G. + Electro.	34.6' S. of S. line Kellogg 4.58	34.61	W. Rail	4.92	34.27
12.2 " " " "	S.E. Cor Box	4.59	34.60	E. "	4.94	34.25
+23.65 =		129.6' S. of S. line Kellogg		♀ = W. Pav	4.87	34.32
12.2 E of W. ch =	N.E. Cor Box	4.59	34.60	+10	5.06	34.13
8.2 E of W. ch =	N.W. Cor Box	4.59	34.60	+20 = E. Pav	5.51	33.68
+53.25 =	100' S. of S			G	5.6	33.59
E. ch		5.06	34.13	E. ch	5.31	33.88
G		5.2	33.99	+48.25 =	5' S. of S. line Kellogg	
+4.5 E. Pav		5.27	33.92	E. ch	5.66	33.53
+14.5		4.82	34.37	G. Ground to S	6.0	33.19
+24.5 W. Pav = ♀		4.56	34.63	G. cmt floor of intake	6.59	32.60
E. Rail		4.65	34.54	+3 " " " "	6.39	32.80
W. Rail		4.65	34.54	+3 Ground	5.6	33.59
+8.4		4.8	34.39	+4.5 Pav	5.69	33.50
G		4.9	34.29	+14.5 "	5.35	33.74
W. ch		4.09	35.10	+24.5 " ♀	5.12	34.07
+203.25 =	50' S. of S. line Kellogg			E. Rail	5.32	33.87
W. ch		4.34	34.85	W. "	5.28	33.91
G		5.1	34.09	+8.4 ground	5.0	34.19
+8.4		5.0	34.19	+13.4 "	5.1	34.09

39.19

+13.4 cmt. floor inlet.	5.32	33.87
+16.8 G. emt floor of inlet	5.44	33.75
G. ground.	5.2	33.99
W. d.	4.63	34.56
T.P 5.71 39.24 5.66 33.53		
Kellogg St. Intersection Paved, except Bct. Tracks + 2' on either side		
+53.25 = S. Line Kellogg St		
W. d. + Headwall + Pav. to N	4.71	34.53
G. = emt floor of inlet.	5.84	33.40
+11.5 " " " "	5.44	33.40
+1.5 Headwall + Wingwall	4.75	34.49
d. + 8.4	4.93	34.31
d. + 14.8	5.15	34.09
W Rail	5.33	33.91
E. "	5.36	33.88
d.	5.23	34.01
+10	5.42	33.82
+20	5.65	33.59
+3. Headwall + Pav. to E	5.71	33.53
+3. floor of inlet.	6.77	32.47
G " " "	6.77	32.47

39.24

Rosecrans

4

E. d. + pav	5.77	33.47
12.5 N. of S. = S. d. line		
10' E. of E. d. Line = Top d.	6.55	32.69
" " " " E.	7.31	31.93
E. d. Line	6.28	32.96
+4.5	5.95	33.29
+14.5	5.71	33.53
2' E. of E. Rail	5.34	33.88
E. Rail	5.32	33.92
W. Rail	5.30	33.94
2' W. of W. Rail	5.19	34.05
8.4 " " " "	4.89	34.35
W. d. Line	4.69	34.55
10' W. of W. d. line { Pavmt + Headwall + curb	3.98	35.26
" " " " " floor inlet.	5.36	33.88
15' " " " " " " = G	4.30	34.94
15' " " " " " emt. d.	3.54	35.66
2.5 N. of S. d.		
10' W. of W. d. line Floor, inlet.	5.36	33.88
" " " " " " { Headwall + Pavmt.	3.99	35.25

39.24

3. N. of S. cl. Line

15' W. of W. cl. line Par at W. End. of Wingwall 4.17 35.07

6.25 N. of S. cl. = S. '4

15' W. of W. cl. line 3.97 35.27

10' W. " " " 4.01 35.23

W. " " 4.66 34.58

+ 8.4 4.92 34.32

+ 13.8 5.14 34.10

+ 16.8 = W. Rail 5.29 33.95

+ 21.5 E. " 5.32 33.92

+ 23.5 5.37 33.87

+ 24.5 = ϕ 5.37 33.87 ϕ + 10 5.65 33.59

" + 20 5.83 33.41

" + 24.5 = E. cl. Line 6.05 33.19

10' E. of E. cl. 6.71 32.53

 ϕ . Kellogg

10' E. of E. cl. 6.52 32.72

E. cl. 5.88 33.36

+ 4.5 5.78 33.46

39.24

Roscerans

5

+ 14.5 5.61 33.63

2' E. of E. Rail 5.27 33.97

E. Rail 5.36 33.88

W. Rail 5.30 33.94

2' W. of W. Rail 5.12 34.12

8.4 " " " 4.83 34.41

W. cl. 4.67 34.57

10' W. of W. cl. 3.94 35.30

15' W. " " " 3.74 35.50

6.25 N. of ϕ = N. '14

15' W. of W. cl. line 3.85 35.39

10' " " " " 3.87 35.37

W. " " 4.65 34.59

+ 8.4 4.88 34.36

2' W. of W. Rail 5.04 34.16

" " 5.30 33.94

E. " 5.38 33.86

2' E. of " " 5.20 34.04

10' E. of ϕ 5.54 33.70

20' E. " 5.29 33.45

39.24

24.5 E. of E. ch. Lin.	5.99	33.25
10' E. of " " "	6.65	32.59
3' S. of N. ch. Lin.		
15' W. of W. ch. Lin. { Pavmt. w. End. Wing wall	4.14	35.10
2.5 S. of N. ch. Lin.		
10' W. of W. ch. { Pavmt. Head wall Wing wall	3.88	35.36
" " " " floor inlet.	5.41	33.83
10' E. of E. ch. N. ch. Lin. Top. ch.	6.58	32.66
10' E. of E. ch. G	7.40	31.84
E. ch.	6.20	33.04
+4.5	5.83	33.41
+14.5	5.49	33.75
2' E. of E. Rail	5.20	34.04
" "	5.36	33.88
W "	5.29	33.95
2' W. of " "	5.09	34.15
8.4 " " " "	4.84	34.40
W ch. line	4.66	34.58
10' W. of W. ch. { Curb Head wall Pavmt.	3.95	35.29
10' " " " " floor inlet.	5.41	33.83

39.24

Rosecrans

6

15' W. of W. ch. on ch.	3.58	35.66
15' " " " " G.	4.35	34.89
0+00 = N. line Kellogg.		
W ch. + Head wall	4.73	34.51
G. floor intake	5.91	33.33
+1.5 " " "	5.91	33.33
+1.5 { Pavmt. Wing wall Head wall	4.75	34.49
+8.4	4.88	34.36
2' W. of W. Rail	5.11	34.13
" "	5.27	33.97
E. " "	5.24	34.00
3' E. of " " = E	5.17	34.07
10' E. of d	5.41	33.83
20' " " " "	5.62	33.62
23' " " " " { Pav. Head wall Wing wall	5.75	33.49
23' " " " " floor inlet.	6.74	32.50
G " "	6.74	32.50
E. ch. + Head wall + Pav	5.74	33.50

39.24

0+05

E. cl.	5.69	33.55
G. ext floor of inlet.	4.51	32.73
G. dirt. to N	6.2	33.04
+3 " " "	5.8	33.44
+3. floor inlet + Wing wall	6.35	32.89
+4.5 pav	5.68	33.56
+14.5 "	5.33	33.91
+24.5 " = ϕ	5.17	34.07
E. Rail	5.19	34.05
W "	5.25	33.99
+8.4	5.0	34.24
+13.8 ground.	4.9	34.34
+13.8 Wing wall + floor inlet.	5.40	33.84
G. " "	5.52	33.72
G ground.	5.2	34.04
W. cl.	4.70	34.54
	0+50	
W. cl.	4.40	34.84
G	5.1	34.14
+8.4	5.0	34.24

39.24

Rosecrans

7

W. Rail	4.99	34.25
E "	5.00	34.24
ϕ pav	4.92	34.32
+10 "	5.14	34.10
+20 "	5.62	33.62
G	5.8	33.44
E. cl.	5.48	33.76
	1+00	
E. cl.	5.29	33.95
G	5.6	33.64
+4.5 pav	5.39	33.85
+14.5 "	4.98	34.26
+24.5 " ϕ	4.71	34.53
E. Rail	4.80	34.44
W. "	4.82	34.42
+8.4	4.8	34.44
G	4.7	34.54
W. cl.	4.18	35.06

		39.24		
		1+50		
E.	W. cl		3.95	35.29
G.	G		4.8	34.44
G.	+8.4		4.6	34.64
+3	W. Rail		4.59	34.65
+3.	E. " Pav		4.59	34.65
+4.	Φ Pav		4.45	34.79
+14.	+10 "		4.63	34.61
+24	+20 "		5.07	34.15
E.	G		5.3	33.94
W.	E. cl		5.0	34.24
+8.		2+00		
+13.	E. cl		4.72	34.52
+13.	G		5.1	34.14
G.	+4.5 Pav		4.91	34.33
G.	+14.5 "		4.47	34.77
W. d	+24.5 = Φ "		4.14	35.06
	E. Rail		4.40	34.84
W. d	W "		4.37	34.87
G.	+8.4		4.4	34.84
+8.	G		4.5	34.74

		39.24		Rosecrans	8
	W. cl		3.70	35.54	
			2+50		
	W. cl		3.43	35.81	
	G		4.3	34.94	
	+8.4		4.3	34.94	
	W. Rail		4.10	35.14	
	E. "		4.10	35.14	
	Φ Pav		3.96	35.28	
	+10 "		4.16	35.08	
	+20 "		4.65	34.59	
	G		4.9	34.34	
	E. cl		4.44	34.76	
	T.P.	4.97	40.76	3.45	35.79
			2+90		
	E. cl		5.77	34.99	
	G		6.1	34.66	
	+4.5 pav		5.93	34.83	
	+14.5 "		5.54	35.20	
	+24.5 Φ "		5.31	35.45	

40.76

E. Rail	5.38	35.38
w Rail	5.38	35.38
+ 8.4	5.5	35.26
G	5.5	35.26
W. ch.	4.79	35.97
Intersection of Lawrence Paved. Prop. line to Prop Line		
except 2' either side of Rails		
3+00 = S. Line Lawrence st		
W. ch.	4.72	36.04
G. Pav	5.56	35.20
+ 8.4 "	5.21	35.55
2' W. of Rail	5.23	35.53
W. Rail	5.27	35.49
E. "	5.28	35.48
2' E. of E Rail	5.37	35.39
± + 10	5.71	35.05
± + 20	6.16	34.60
G.	6.52	34.24
E. ch.	5.74	35.02

40.76

Rosecrans

9

12'.5 N. of S. Line = S. ch. line

10' E. of E. ch.	Top ch.	6.54	34.22
" " " " "	G	7.33	33.43
" " " " "	" "	6.45	34.31
+ 4.5		6.07	34.69
+ 4.5		5.69	35.07
2' E. of E. Rail		5.30	35.46
" "		5.23	35.53
W. "		5.23	35.53
2' W. of " "		5.24	35.52
8.4 " " " "		5.00	35.76
W. ch. line		4.80	35.96
10' W. of ch.	{ Top. ch. Headwall Pavmt.	4.05	36.71
10' " " " "	floor inlet	5.41	35.35
15' " " " "	G	4.36	36.40
15' " " " "	Top. ch.	3.60	37.16
	2.5' N. of S. ch.		
10' W. of W. ch.	{ Pavmt. Headwall Wingwall	4.00	36.76
10' " " " "	floor inlet	5.41	35.35
	3' N. of S. ch		
15' W. of W. ch. =	Pavmt. Wingwall	4.19	36.57

40.76

6.25 N. of S. ch. = S. '14

15' W. of W. ch	3.86	36.90
10' " " "	3.98	36.78
W. ch.	4.77	35.99
+ 8.4	5.01	35.75
2' W. of W. Rail	5.18	35.58
" "	5.19	35.57
E. "	5.19	35.57
2' E. of " "	5.23	35.53
4 + 10	5.50	35.26
" + 20	5.80	34.96
E. ch	6.11	34.65
10' E. of E. ch	6.80	33.96
E. Lawrence.		
10' E. of E. ch	6.53	34.23
E. ch	5.74	34.98
+ 4.5	5.62	35.14
+ 14.5	5.45	35.31
2' E. of E. Rail	5.26	35.50
" "	5.21	35.55
W. "	5.20	35.56

40.76

Rosocrans. 10

2' W. of W. Rail	5.14	35.62
8.4 " " "	4.97	35.79
W. ch line	4.79	35.97
10' W. of ch	3.97	36.79
15' W. " "	3.57	37.19
6.25' N. of 4 = N. '14		
15' W. of W. ch line	3.82	36.94
10' " " " "	4.01	36.75
" " " "	4.77	35.99
8.4 E. of " "	4.99	35.77
2' W. of W. Rail	5.12	35.64
" "	5.25	35.51
E. "	5.24	35.52
2' E. of " "	5.23	35.53
10' E. of ch	5.40	35.36
20' " " "	5.65	35.11
E. ch	5.98	34.78
10' E. of E. ch	6.80	33.96

		40.76	
3' S. of N. ch.			
15' W. of W. ch. Line	{ Pav Wing wall	4.20	36.56
2.5' S. of N. ch.			
10' N. of W. ch.	{ Pav. Wing wall Head wall	4.03	36.73
10' " " " " floor inlet		5.36	35.40
N. ch. of Lawrence			
10' E. of E. ch.	Top. ch.	6.63	34.13
" " " " "	G. pav.	7.39	33.37
" " " " "		6.41	34.35
+4.5		5.89	34.87
+14.5		5.47	35.29
2' E. of E. Rail		5.24	35.52
" " " " "		5.26	35.50
W. " " " " "		5.23	35.53
2' W. of W. " " " " "		5.09	35.67
8.4 " " " " "		4.91	35.75
W. ch. Line		4.78	35.98
10' W. of W. ch.	{ Pav. Top. ch. Head wall	4.06	36.70
10' " " " " " floor inlet		5.36	35.40
15' " " " " " G		4.33	36.43
15' " " " " " Top. ch.		3.56	37.20

		40.76		Rosecrans
				11
		0 + 0 = N. Line Lawrence St.		
W. ch	{ Top. ch. Head wall Pavmt.	4.73	36.03	
G = floor inlet		5.70	35.06	
+1.5	" " "	5.70	35.06	
+1.5	{ Pavmt. Head wall Wing wall	4.75	36.01	
+8.4		4.85	35.91	
2' W. of W. Rail		5.04	35.72	
" " " " "		5.23	35.53	
E. " " " " "		5.25	35.51	
2' E. of " " "		5.18	35.58	
10' E. of " " "		5.33	35.43	
20' " " " " "		5.55	35.21	
23' " " " " "	{ Pavmt. Wing wall Head wall	5.81	34.95	
23' " " " " " floor inlet		6.81	33.95	
G. " " " " "		6.81	33.95	
E. ch	{ Top. ch. Pavmt. Head wall	5.78	34.98	
		0 + 0.5		
E. ch		5.73	35.03	
G. ground.		6.3	34.46	
G. Floor inlet.		6.53	34.23	
+3.	" " "	6.47	34.29	

40.76
0+05. (204)

+3.	ground	6.0	34.76
+4.5	pav	5.71	35.05
+14.5		5.32	35.44
+24.5 =	⊘	5.17	35.59
	E. Rail	5.23	35.53
	W. "	5.22	35.54
+8.4'		4.9	35.86
+13.8	ground	5.0	35.76
+13.8	{ wingwall floor inlet	5.35	35.41
+16.8 =	G floor inlet.	5.52	35.24
	W. eb.	4.70	36.06
		0+50	
	W. eb.	4.46	36.30
	G	5.1	35.66
+8.4		4.9	35.86
	W. Rail	5.09	35.67
	E. "	5.08	35.68
	⊘ pav	4.95	35.81
+10	"	5.17	35.59
+20	"	5.71	35.05

40.76

Rosecrans.

12

	G	5.8	34.96
	E. eb.	5.59	35.17
		1+00	
	E. eb.	5.33	35.43
	G	5.5	35.26
	+4.5 pav	5.39	35.37
	+14.5 "	4.90	35.86
	⊘ "	4.65	36.11
	E. Rail	4.84	35.92
	W. "	4.87	35.89
	+8.4	4.70	36.06
	G	5.0	35.76
	W. eb.	4.25	36.51
		1+50	
	W. eb.	3.98	36.78
	G	4.4	36.36
	+8.4	4.5	36.26
	W. Rail	4.54	36.22
	E. "	4.53	36.23
	⊘ pav	4.43	36.33

40.76
1450 (con)

40.76

Rose crans.

13

+10		4.63	36.13	E. Rail		4.03	36.73
+20		5.12	35.64	♀	Par	3.88	36.88
G		5.3	35.46	+10.	"	4.13	36.63
E. cl.		5.03	35.73	+20.	"	4.62	36.14
	2+00			G		4.8	35.96
E. cl.		4.81	35.95	E. Rail cl.		4.53	36.23
G		4.9	35.86	T.P. B.M.B.F.	4.68	42.82	2.62
+4.5	Par	4.89	35.87				38.14
+14.5	"	4.41	36.35				38.14
♀	"	4.15	36.61				
E. Rail		4.26	36.50	E. cl.		6.35	36.49
W. "		4.24	36.48	G		6.6	36.22
+8.4		4.1	36.66	+4.5'		6.34	36.48
G		4.3	36.46	+14.5		5.96	36.86
W. cl.		3.74	37.02	♀		5.71	37.11
	2+50			E. Rail		5.91	36.91
W. cl.		3.43	37.33	W. "		5.89	36.93
G		4.0	36.76	+8.4		5.6	37.22
+8.4		4.0	36.76	G.		5.8	37.02
W. Rai		4.05	36.71	W. cl.		5.33	37.49

N.W. McCall

+ Rose crans
38.14

2+90

42.82

Intersection of M^e Call - Paved except Track & 2' either side3+00 = S. Line M^e Call

N. cl. 5.25 37.57

G. ground to S. 5.7- 37.12

G. Pav 6.12 36.70

+8.4 " 5.65 37.17

2' W of W. Rail 5.63 37.19

" " 5.86 36.96

" E. " 5.87 36.95

2' E of " " 5.80 37.02

10' E. of cl. 6.14 36.68

20' " " " 6.69 36.13

G. Pav 7.18 35.64

E. cl. 6.31 36.51

12.5' W. of S. Line = S. cl. Line
10' E of E. cl. Line G 7.96 34.86

10' E. of E. cl. Line cl 7.26 35.56

" " " G 7.25 35.57

+4.5 6.85 35.97

+14.5 6.07 36.75

42.82

Rose crans.

14

2' E of E. Rail 5.68 37.14

" " 5.69 37.13

W " 5.65 37.17

2' W. of " " 5.53 37.29

8.4 " " " 5.33 37.49

W. cl. Line 5.14 37.68

10' W. of W. cl. { Top. cl.
Pav
Headwall 4.55 38.27

" " " " floor inlet. 5.91 36.91

15' W. of W. cl. Top. cl. 4.16 38.66

" " " " " G. 4.95 37.87

2.5' N. of S. cl.

10' N. of N. cl. { Pavmt.
Headwall
Wingwall 4.54 38.28

" " " " " floor inlet. 5.91 36.91

3' N. of S. cl.

15' W. of W. cl. { Pavmt.
Wingwall 4.76 38.06

6.25' N. of S. cl. = S. "4

15' W. of W. cl. 4.32 38.50

10' " " " 4.34 38.46

" " " 4.95 37.87

+8.4 5.21 37.61

42.82
S. 1/4 (cont)

2' W. of W. Rail	5.46	37.36
" "	5.55	37.27
E. "	5.60	37.22
2' E of " "	5.65	37.17
10' E of ϕ	5.85	36.97
20' E " "	6.39	36.43
24.5' " " = E. ch. line	6.70	36.12
10' E. of G ch. line	7.31	35.51
ϕ MS Coll St		
10' E. of E. ch.	6.99	35.83
" "	6.27	36.55
+4.5	6.05	36.77
+14.5	5.74	37.08
2' E. of E. Rail	5.51	37.31
" "	5.53	37.29
W. "	5.48	37.34
2' W. of " "	5.42	37.40
8.4' " " " "	5.15	37.67
W. ch. line	4.85	37.97
10' W of W. ch.	4.27	38.55

42.82 Rose crans. 15

15' W. of W. ch.	3.97	38.85
6.25' N. of ϕ = N. 1/4		
15' W. of W. ch.	3.99	38.83
10' W. " " "	4.13	38.69
" "	4.85	37.97
+8.4	5.12	37.70
2' W. of W. Rail	5.35	37.47
" "	5.40	37.42
E. "	5.45	37.37
2' E. of " "	5.49	37.33
10' E of ϕ	5.63	37.19
20' " " "	6.12	36.70
E. ch.	6.38	36.44
10' E. of E. ch.	7.10	35.72
" (3' S. of N. ch.		
15' W. of W. ch. { Pavmt. Wing wall	4.25	38.57
2.5 S. of N. ch		
10' W. of W. ch. { Pavmt. Wing wall Head wall	4.06	38.76
10' " " " floor inlet.	5.53	37.29

42.82

N. cl.

10' E. of E. cl.	Top. cl.	7.00	35.82
" " " " "	G	7.64	35.14
" " " " "		6.72	36.10
+ 4.5		6.41	36.41
+ 14.5		6.65	36.17
2' E. of E. Rail		5.40	37.42
" " "		5.37	37.45
W. " "		5.35	37.47
2' W. of W. " "		5.27	37.55
8.4 " " " "		5.03	37.79
W. cl.		4.91	37.91
10' W. of W. cl.	{ cl. Pav Headwall	4.09	38.73
10' " " " "	floor inlet	5.53	37.29
15' " " " "	Top. cl.	3.79	39.03
15' " " " "	G.	4.36	38.46
T.P.	5.97	44.11	4.68
			38.14
	0+00 = N. Line	M ^s Call	
W. cl. + Headwall		6.00	38.11
G = floor inlet.		7.07	37.04

44.11

Rose crans.

16

+1.5 = Floor of inlet.		7.07	37.04
+1.5 = Pav. Headwall & Wingwall		6.02	38.09
cl + 8.4 "		6.24	37.87
2' W. of W. Rail - pav		6.43	37.68
W. Rail		6.54	37.57
E. " "		6.51	37.60
3' E. of E. Rail = cl Pav		6.58	37.53
+ 1.0	" "	6.74	37.37
+ 2.0	" "	7.00	37.11
+ 2.3 { Pav. Headwall Wingwall		7.18	36.93
+ 2.3 floor of intake		8.37	35.74
+ 24.5 " " " " = G		8.37	35.74
+ 24.5 = E. cl. + Headwall		7.26	36.85
	0+05		
E. cl.		7.19	36.92
G floor of inlet.		8.02	36.09
G dirt.		7.5	36.61
+ 3 "		7.3	36.81
+ 3. Wingwall & floor of inlet		7.94	36.17
+ 4.5 = Pav		7.17	36.94

44.11				44.11				Rosecrans.
0705 (con)								17
+14.5	Par	6.73	37.38	E. cl		6.34	37.73	
+24.5	"	6.54	37.57		1+00			
E. Rail		6.47	37.64	E. cl		5.64	38.49	
W. "		6.46	37.65	G		5.7	38.41	
+8.4		6.3	37.81	+4.5	par	6.00	38.11	
+13.8	dirt	6.3	37.81	+14.5	"	5.49	38.62	
+13.8	floor inlet + W. squall	6.72	37.39	+24.5 = cl	"	5.23	38.88	
+16.8	G. = floor inlet.	6.81	37.30	E. Rail		5.27	38.84	
+16.8	G dirt.	6.4	37.71	W. "		5.27	38.84	
W. cl.		5.97	38.14	+8.4		5.5	38.61	
	0750			G		5.5	38.61	
W. cl.		5.34	38.77	W. cl.		4.67	39.44	
G		5.9	38.21		1+50			
+8.4		5.9	38.21	W. cl.		4.01	40.10	
W. Rail		5.96	38.15	G		4.3	39.81	
E. "		6.02	38.09	+8.4		4.8	39.31	
cl	par.	5.91	38.20	W. Rail		4.59	39.52	
+10	"	6.15	37.96	E. "		4.57	39.54	
+20	"	6.68	37.43	cl	par	4.56	39.55	
G		6.5	37.61	+10	"	4.81	39.30	

44.11

+20	Pav	1+50 cont'd, 5.23	38.88
G		5.3	38.81
E. cl		5.03	39.08
		2+00	
E. cl		4.33	39.78
G		4.7	39.41
+4.5	Pav	4.60	39.51
+14.5	"	4.20	39.91
+24.5	" = ♀	3.86	40.25
E. Rail		3.91	40.20
W "		3.91	40.20
+8.4		4.0	40.11
G		4.1	40.01
W. cl		3.39	40.72
		2+50	
W. cl		2.69	41.42
G		3.0	41.11
+8.4		3.2	40.91
W. Rail		3.24	40.85
E. "		3.28	40.83

44.11

♀	Pav.	3.21	40.90
+10	Pav.	3.47	40.64
+20	Pav.	3.97	40.14
T.P.M.B.P.	6.23	47.86	2.48
G		7.8	40.06
E. cl.		7.45	40.41
	3+00 = S. Line	Nichols St	
E. cl		6.78	41.08
G dirt		7.0	40.86
G	Pav	7.24	40.58
+4.5	"	7.00	40.86
+14.5	"	6.53	41.33
+24.5		6.24	41.58
E. Rail		6.31	41.55
W. "		6.24	41.58
+8.4		5.9	41.96
G dirt		5.7	42.16
W. cl. N. End.		5.80	42.06
+6. W		2.6	45.24
+8. W		0.7	47.16
	Nichols St. Intersection	Paved E. of ♀	

Rosecrans

13

N. E. Nichols

+Rosecrans.
4.63

		47.86		
	12.5' W. of S. line = S. ch. line			
6' W. of W. ch		0.8	47.06	
4' " " " "		3.8	44.06	
W. ch. line		5.5	42.36	
+ 8.4		5.6	42.26	
W. Rail		6.10	41.76	
E. "		6.12	41.74	
☒ pav		6.17	41.69	
+10 "		6.40	41.46	
+20 "		6.87	40.99	
E. ch. line "		7.25	40.61	
10' E. of E. ch. B.C.	G. pav	8.18	39.68	
10' " " " " "	Top. ch	7.70	40.16	
	S. 1/4			
10' E. of E. ch.	pav.	8.27	39.59	
" " "	"	7.19	40.67	
+ 4.5	"	6.83	41.03	
+ 14.5	"	6.37	41.49	
+24.5 = ☒	"	6.08	41.78	
E. Rail		6.02	41.84	
W. "		6.02	41.84	

		47.86		
+ 8.4		5.7	42.16	
W. ch. line		4.9	42.96	
+ 4' W		3.7	44.16	
+ 10' W		3.0	44.86	
	☒ Nichols			
10' W. of W. ch. line		3.3	44.56	
" " "		4.6	43.26	
+ 8.4		5.5	42.36	
W. Rail		5.93	41.93	
E. "		5.95	41.91	
☒ pav.		6.00	41.86	
+10 "		6.28	41.58	
+20 "		6.75	41.11	
+24.5 " = E. ch. line		7.08	40.78	
10' E. of " " " pav.		8.25	39.61	
	W. 1/4			
10' E. of E. ch. line	pav	8.03	39.83	
" " "	"	7.03	40.83	
+ 4.5	"	6.69	41.17	
+ 14.5	"	6.25	41.61	

47.86

+24.5 Pav	5.92	41.94
E. Rail	5.86	42.00
W. "	5.84	42.02
+8.4	5.3	42.56
W. el. kin	4.4	43.46
+10	3.0	44.86
E. el. kin		
W. el. -10	3.1	44.76
" "	4.3	43.56
+8.4	5.2	42.66
W. Rail	5.75	42.11
E. "	5.79	42.07
⊕ Pav.	5.82	42.04
+10 "	6.08	41.78
+20 "	6.62	41.24
E. el. "	6.91	40.95
10' E. " G	7.81	40.05
10' E. Top. el. at. B. l.	7.31	40.55

47.86

Rosecrans, 20

0+00 = N. Line Nichols

E. el	6.24	41.60
G pav.	6.76	41.10
+4.5 "	6.43	41.43
+14.5 "	5.99	41.87
+24.5 " = ⊕	5.66	42.20
E. Rail	5.62	42.24
W. Rail	5.62	42.24
+8.4	5.2	42.66
G dirt	4.8	43.06
W. el. S. End.	5.20	42.66
5' W	0.3	47.56
10' W	0.0	47.86
	0+50	
W. el	4.18	43.68
G	4.8	43.06
+8.4	4.6	43.26
W. Rail	4.79	43.07
E. "	4.83	43.03
⊕ Pav.	4.61	43.25
+10 "	4.87	42.99

47.86

+20	pay	5.33	42.53
+25.5 ^A	G	5.7	42.16
E. el		5.21	42.65
		1+00	
E. el		4.13	43.73
G		4.7	43.16
+4.5	pay.	4.27	43.59
+14.5	"	3.83	44.03
+24.5	" = ϕ	3.58	44.28
E. Rail		3.68	44.18
W. "		3.67	44.19
+8.4		3.7	44.16
G		4.0	43.86
W. el.		3.12	44.74
		1+50	
W. el		2.03	45.83
G		2.9	44.96
+8.4		2.6	45.26
W. Rail		2.60	45.26
E. "		2.63	45.23

47.86

Rosecrans

21

ϕ	pay.	2.52	45.34	
+10	"	2.72	45.14	
+20	"	3.18	44.68	
+24.5 = G.		3.6	44.26	
E. el.		3.04	44.82	
		2+00		
E. el		1.93	45.93	
G		2.3	45.56	
+4.5 = pay.		2.13	45.73	
+14.5	"	1.67	46.19	
+24.5	" = ϕ	1.39	46.47	
E. Rail		1.51	46.35	
W. "		1.48	46.38	
+8.4		1.4	46.46	
G		1.9	45.96	
T.P.	7.46	54.11	1.21	46.65
W. el.		7.14	46.95	

54.11

2+50

W. cl		6.04	48.03
G		6.9	47.21
+8.4		6.7	47.41
W. Rail		6.61	47.50
E. "		6.65	47.46
⊕	Pay.	6.56	47.55
+10	"	6.80	47.31
+20	"	7.28	46.83
+24.5 = G		7.4	46.71
E. cl.		7.09	47.02
		2+90	
E. cl		6.26	47.85
G		6.4	47.71
+4.5	pay.	6.43	47.68
+14.5	"	6.05	48.06
+24.5	" ⊕	5.73	48.38
E. Rail		5.86	48.25
W. "		5.88	48.23
+8.4		5.8	48.31
G.		6.2	47.91
N. cl		5.23	48.88

54.11

Rosecrans.

22

Owens St. Intersection paved. except 2' on either side of Trunk

3+00 = S. Line Owens St.

W. cl		5.03	49.08
G. Pav.		5.97	48.14
+8.4 "	pay	5.72	48.39
2' W. of W. Rail	pay.	5.71	48.40
W. Rail "		5.64	48.47
E. "		5.69	48.42
⊕	pay	5.79	48.32
+10	"	5.98	48.13
+20	"	6.55	47.56
+24.5	" = G.	6.97	47.14
E. cl.		6.05	48.06
		12.5 N. = S. cl. Line	
10' E. of E. cl. = Top. cl. at B.C.		7.42	46.69
10' " " " " G.		8.17	45.94
E. cl. Line	pay.	7.13	46.98
+4.5	"	6.64	47.47
+14.5	"	5.93	48.18
+24.5	" = ⊕	5.51	48.60

54.11
S. el. Line (con)

E. Rail		5.43	48.68
W. "		5.42	48.69
+ 2'	Pav	5.26	48.85
+ 8.4'	"	5.10	49.01
+ 10.8'	W. el. line pav.	4.93	49.18
10.3' W.	{ Pav. curb Headwall	3.83	50.28
10.3' W.	G. = floor inlet	5.31	48.80
15' W.	G. = " "	3.90	50.21
15' W.	Top. el	3.30	50.81
2.5' N. of S. el. Line			
10.2' W. of W. el. Line	{ Pav. Headwall Wingwall	3.84	50.27
10.2' "	" " " floor inlet	5.31	48.80
3' N. of S. el. Line			
15' W. of W. el. Line	{ Pav. Wingwall	3.79	50.32
6.25' N. of S. el. = S. "			
15' W. of W. el. line	= pav.	3.47	50.64
10.2' "	" " " "	3.74	50.37
" " "	"	4.66	49.45
+ 8.4'	"	5.05	49.06
2' W. of W. Rail	"	5.11	49.00

54.11

Rosecrans.

23

W. Rail		5.22	48.89
E. Rail		5.25	48.86
2' E. of E. Rail	Pav	5.34	48.77
± + 10	"	5.69	48.42
+ 20	"	6.11	48.00
+ 24.5'	E. el. line "	6.35	47.76
+ 10'	"	7.06	47.05
±			
10.9' of S. el. Line		6.71	47.40
" " "		5.86	48.25
+ 4.5		5.62	48.49
+ 14.5		5.37	48.74
2' E. of E. Rail		5.12	48.99
" "		5.03	49.08
" "		5.01	49.10
2' W of " "		4.91	49.20
8.4' " " " "		4.75	49.36
W. el. line		4.45	49.66
10.2' W		3.30	50.81
15' "		2.74	51.37

60.21

+8.4	pav	10.23	49.98
2' W. of W. Rail.	"	10.33	49.88
" "	"	10.39	49.82
E. "	"	10.38	49.83
♀	"	10.56	49.65
+10.	"	10.79	49.42
+20.	"	11.03	49.18
+23.	{ Pav. Headwall Wing wall	11.18	49.03
+23	floor inlet	12.20	48.01
+24.5	" " = G.	12.20	48.01
+24.5	{ Pav. Curb Head wall	11.14	49.07
	0+05		
E. el.		10.88	49.33
G. floor inlet		11.83	48.38
G. dirt.		11.4	48.81
+3 "		11.4	48.81
+3	{ floor inlet. Wing wall.	11.81	48.40
+4.5	pav.	10.98	49.23
+14.5	"	10.58	49.63
+24.5	" ♀	10.30	49.91

60.21

Roscerans

25

E. Rail	10.15	50.06
W. "	10.16	50.05
+8.4	9.9	50.31
+13.8 dirt	9.7	50.51
+13.8 Wing wall floor inlet.	10.63	49.58
+16.8 G. = floor inlet,	10.64	49.57
G. dirt. for yardage,	9.7	50.51
W. el.	9.82	50.39
	0+50	
W. el.	7.53	52.68
G.	8.1	52.11
+8.4	7.9	52.31
W. Rail	8.23	51.98
E. "	8.27	51.94
♀	8.09	52.12
+10	8.32	51.89
+20	8.85	51.36
G	9.5	50.71
E. el.	8.65	51.56

60.21
1+00

E. el	6.22	53.99
G	6.7	53.51
+4.5	6.34	53.87
+14.5	5.83	54.38
+24.5 = 6	5.53	54.68
E. Rail	5.66	54.55
W. Rail	5.64	54.57
+8.4	5.5	54.71
G	5.6	54.61
W. el.	5.06	55.15
	1+50	
W. el	2.54	57.67
G	3.0	57.21
+8.4	2.7	57.51
W. Rail	3.13	57.08
E. "	3.13	57.08
6	3.04	57.17
+10	3.26	56.95
+20	3.82	56.39
G	4.4	55.81

60.21

Rose crans.

25

E. el	3.71	56.50
	2+00	
E. el	1.18	59.03
G.	1.7	58.51
+4.5	1.53	58.68
+14.5	0.90	59.31
+24.5	0.57	59.64
E. Rail	0.63	59.58
W. "	0.57	59.64
+8.4	0.2	60.01
G	0.5	59.71
W. el	0.05	60.16
T.P.	9.68	69.64
	2+46	BC, 20' strip Pavmt.
W. el	7.20	62.44
G	7.4	62.24
+8.4	7.4	62.24
W. Rail	7.67	61.97
E. "	7.82	61.82
6	7.69	61.95
+10	7.92	61.72

69.64

+20'	8.47	61.47
G.	9.0	60.64
E. cl.	8.29	61.35

2+73 ¹⁵

E. cl.	6.97	62.67
G	7.3	62.34
+3.8 E. edge pav	7.15	62.49
+13.8 E " "	6.66	62.98
+23.8 W " "	6.38	63.26
+27 E. Rail	6.49	63.15
+32 W. Rail	6.25	63.39
+40.5	6.1	63.54
+49 = G	6.1	63.54
+49 = W. cl.	5.86	63.78

3+00 = S. Line Perry St.

W. cl. - 5' ground	+1.0	70.64
W. cl. "	4.03	65.64
W. emt. cl.	4.53	65.11
+3. ground	5.0	64.64
+9.5 "	5.1	64.54
+19 W. Rail	5.14	64.50

69.64

+24. E. Rail	5.38	64.26
+27. W. edge Pav.	5.23	64.41
+37. E. " "	5.56	64.08
+47 E. " "	6.12	63.52
+49 = E. G	6.3	63.34
+49 = E. cl.	5.59	64.05

T.P. B.M. B.P. 4.86 68.93 5.57 64.07

In Perry St. Intersection E. Line = line from S.E. Cor. to N.E. Cor.

" " " " " " W. " = " " S.W. Cor. to N.W. Cor.

S. cl. line (51.8')

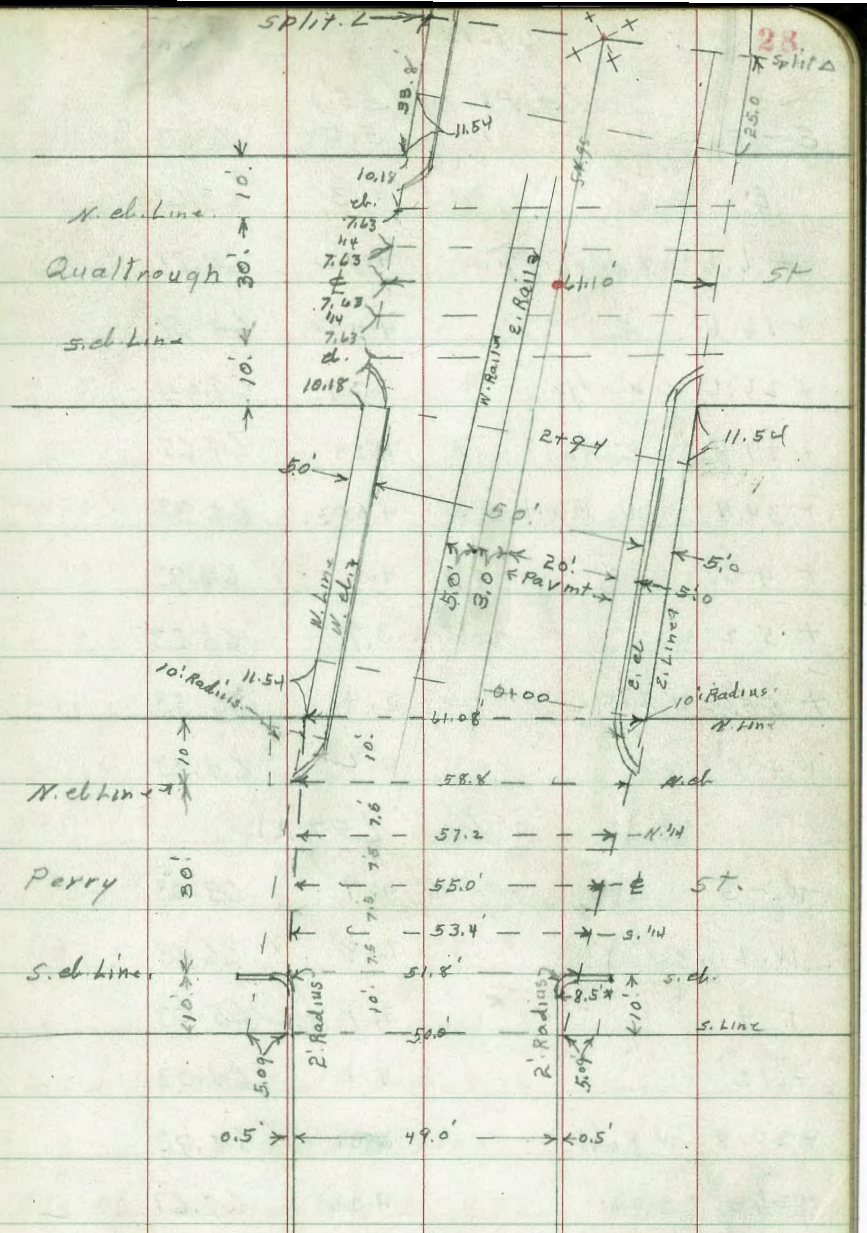
5.0 E = E. End emt. cl. Rel. to ground	4.83	64.10
E. line " " " " " "	4.83	64.10
+3.5 = E. emt. cl.	4.86	64.07
+3.5 ground	5.2	63.73
+4' = E. edge pav	5.04	63.89
+14. = E. " "	4.60	64.33
+24 = W. edge pav	4.34	64.59
+27.1 = E. Rail	4.43	64.50
+32.4 = W. " "	4.18	64.75
+40.	4.23	64.70

Rosecrans.

27

M.E. Perry
+ Rosecrans.
64.15

	68.93	Rosecrans
+48	4.1	64.83
+51.8 = W. line	2.8	66.13
W + 0.30 = W. edge line to S.	2.8	66.13 ground
" " " " " "	3.78	65.15 Top. ext. el
W + 5' = W. end. cmt. of Ret.	3.77	65.16 " " "
" " " " " "	1.8	67.13 ground.
	S. 1/4	(53.4)
W - 5	0.0	68.93
W.	2.4	66.53
+3	3.8	65.13
+10	4.1	64.83
+20 = W. Rail	4.05	64.88
+25 = E. Rail	4.32	64.61
+28 = W. edge pav	4.30	64.63
+38 = " "	4.46	64.47
+48 = E. edge "	4.85	64.08
+53.4 = E. line	5.2	63.73
+5'	5.5	63.43



68.93

Perry (55')

E - 5'	5.6	63.33
E	5.3	63.63
+ 6.6 = E. edge Pav.	4.72	64.21
+ 16.6 = " "	4.42	64.51
+ 26.6 = W. edge "	4.29	64.64
+ 29.8 = E. Rail	4.28	64.65
+ 34.9 = W. Rail	4.00	64.93
+ 42.	4.0	64.93
+ 5.2	3.7	65.23
+ 55' = W. Line	2.4	66.53
W + 5'	0.2	68.73
N. 1/4 (57.2)		
W. - 5'	0.9	68.03
W. Line	2.8	66.13
+ 4	3.9	65.03
+ 12	4.1	64.83
+ 20.8 = W. Rail	4.01	64.92
+ 26 = E. "	4.26	64.67
+ 29' = Wedge pav	4.30	64.63
+ 39.1 = " "	4.40	64.53

68.93

Rosecrans. 29

+ 49.2 = E. edge Pav.	4.74	64.19
+ 57.2 = E.	5.3	63.63
E + 5	5.7	63.23
N. ch. Line (58.8')		
E - 5'	5.3	63.63
E	5.0	63.93
+ 9' = E. edge Pav	4.77	64.16
+ 19.1 = " "	4.43	64.50
+ 29.2 = W. edge "	4.29	64.64
+ 32.2 = E. Rail	4.27	64.66
+ 37.4 = W. "	4.02	64.91
+ 45.	4.1	64.83
+ 55.	4.2	64.73
+ 58.8 = W.	2.4	66.53

1' N. of N. ch. Line

0.6' W. of W. Line = W. End. Ex. cnt. ch 3.76. 65.17

10' Rad. Return
Incomplete

3' N. of N. ch. Line

0.8' E. of W. Line = E. End. Ex. cnt. ch 4.88

64.05
10' Rad. Ret.
Incomplete

68.93

N. Line Perry (61.08')

W. = N. W. cor	2.9	66.03
+5.1 = W. emt. d.	3.79	65.14
+5.1 = G	4.2	64.73
+13.8	4.1	64.83
+22.4 = W. Rail	4.13	64.80
+27.6 = E "	4.33	64.60
+30.5 = W. edge Pav.	4.24	64.69
+40.7 ϕ "	4.38	64.55
+50.9 E. edge Pav	4.80	64.13
+55 = E. G	5.3	63.63
+55 = E. emt. d.	4.83	64.10
+60.08 = E. = N. E. Cor	4.7	64.23
0+0 = N. E. Cor. to 11.54 N. of N. W. cor		
E = N. E. cor	4.7	64.23
+5 = E. d.	4.83	64.10
G	5.3	63.63
+5 = E. edge pav	4.83	64.10
+15	4.44	64.49
+25 = W. edge pav = ϕ	4.28	64.65
+31 = E. Rail	4.40	64.53

68.93

Rosecrans

30

+ 8. = W. Rail	4.25	64.68
+ 26.5	4.2	64.73
+ 25 = G	4.3	64.63
W. d.	3.85	65.08
W.	3.1	65.83
	0+50	
W.	3.2	65.73
W. d.	4.20	64.73
G	5.2	63.73
+8.5	4.7	64.23
+17 = W. Rail	4.74	64.19
+22 = E. "	4.76	64.17
+25 = W. edge Pav = ϕ	4.68	64.25
+10 ϕ "	4.83	64.10
+20 = E. edge "	5.25	63.68
+25 = G	5.7	63.23
E. d.	5.14	63.89
E.	5.1	63.83

68.93
1700

E.		5.4	63.53
E. eb		5.49	63.44
G		6.0	62.93
+5 = E. edge Pav		5.57	63.36
+15.		5.19	63.74
+25 = W " "	" = ϕ	5.00	63.93
+3 = E. Rail		5.11	63.82
+8 = W " "		5.10	63.83
+16.5		5.0	63.93
+25 = G		5.2	63.73
W. eb		4.56	64.37
W.		3.5	65.43
	1453		
W.		4.3	64.63
eb		4.86	64.07
G		5.2	63.73
+8.5		5.2	63.73
+17 = W. Rail		5.42	63.51
+22 = E. "		5.41	63.52
+25 = W. edge pav. = ϕ		5.28	63.65

68.93

Rosecrans

31

+10 = ϕ Pav		5.53	63.40
+20 E. edge Pav		5.98	62.95
+25 = G		6.1	62.83
E. emt. cl. + S. End. emt. walk		5.84	63.09
cl. + 4.5 = E. Edge S. End emt. Walk		5.85	63.08
4.5' E. of E. cl. } +56 ⁵			
0.5 W. of E. line } = S. End. emt. wall			
4.5' E. of E. cl. } +86			
0.5 W. of E. line } = N. End. emt. wall.			
		2+03	
E. on N. End. emt. walk		5.75	63.18
E. cl. " " " "		6.21	62.72
G		6.5	62.43
+5 = E. edge pav		6.31	62.62
+15 ϕ "		5.92	63.01
+25 = W. " " = ϕ		5.80	63.13
+3' = E. Rail		5.93	63.00
+8' = W. "		5.84	63.09
+16.5		5.8	63.13
+25 = G		5.9	63.03

		68.93	
		2+03 (cont)	
W. cl		5.25	63.68
W.		4.0	64.93
		2+50	
W.		5.6	63.33
W. cl		5.52	63.41
G		6.2	62.73
+8.5		6.4	62.53
+17 =	W. Rail	6.15	62.78
+22 =	E. "	6.16	62.77
+25 =	W. edge pav = ϕ	5.99	62.94
+10	ϕ "	6.19	62.74
+20	E. " "	6.60	62.33
+25 =	G	6.9	62.03
E. cl		6.50	62.43
E.		6.6	62.33
2+84 = S. End. Pav. bet. E. cl. + strip pav.			
E.		6.6	62.33
E. cl.		6.76	62.17
G pav		7.09	61.84
10, "			

		68.93		Rosecrans
		2+87		32
E. Line on emt. drive		6.88	62.05	
E. cl. line G. indrive		7.10	61.83	S. E. Rosecrans
T.P.B.M.	2.16	63.96	7.13	61.80
		2+94. at 90° 00'		+ Qualtrough 62.07
E. indrive		1.75	62.01	
cl. = G indrive		2.28	61.68	
+5 = E. strip pav		1.90	62.06	
+15		1.50	62.46	
+25 = W. edge pav = ϕ		1.31	62.65	
+3 E. Rail		1.47	62.49	
+4 W. Rail		1.53	62.43	
+16.5		1.7	62.26	
+25 = G		2.0	61.96	
W. cl		0.82	63.14	
W. = S. line Qualtrough.		0.6	63.36	
		3+02		
E. line = N. side Emt. Drive		1.77	62.19	
E. G	" "	2.32	61.64	
+5	" "	2.02	61.94	

63.96
S. Line Quad/Trough

W.	0.6	63.36
el	0.82	63.14
G	2.0	61.96
+8.5	1.7	62.26
+17 = W. Rail	1.56	62.40
+22 = E "	1.51	62.45
+25 = W. edge pay. = ϕ	1.41	62.55
+10	1.64	62.32
+20	2.07	61.89
+25 G	2.5	61.46
el	1.97	61.99
E	1.9	62.06
0.3' s. of S. el. Line		
E. = E. End. cnt. el. Ref.	2.17	61.79
2.3 s. of S. el. Line		
W. = W. End. cnt. el. Ref.	0.84	63.12
S. el.		
E.	3.3	60.66
+5 el	2.8	61.16
+15.5 = E. pav	2.25	61.71

63.96

Rosecrans 33

+20.7	1.82	62.14
+30.9 = W. pav	1.62	62.34
+34. = E. Rail	1.64	62.32
+39 = W. "	1.64	62.28
+47.5	1.9	62.06
+56. el	2.1	61.86
+61.6 = W	1.4	62.56
S. 14		
W.	1.7	62.26
+5.1 = el	2.1	61.86
+12.6	2.1	61.86
+22.1 = W. Rail	1.80	62.16
+27.1 = E. "	1.75	62.21
+30.1 = ϕ = W. pav	1.74	62.22
+40.2	1.97	61.99
+50.4 E. pav	2.42	61.54
+56.0 = el	3.2	60.76
+61.1 = E	3.8	60.16

63.96

E. Qual Trough

E	4.4	59.56
+5.1 = el	3.6	60.36
+10.8 = E. Pav	2.58	61.38
+20.9	2.16	61.80
+31. = W. Pav	1.90	62.06
+34 = E. Rail	1.87	62.09
+34 = W. Rail	1.95	62.01
+47.5	2.3	61.66
+56 = el	2.2	61.76
+61.1 = W.	2.0	61.96
W	1.9	62.06
W. +5.1 = el	2.2	61.76
+12.6	2.5	61.46
+22 = W. Rail	2.12	61.84
+27 = E. "	2.00	61.96
+30.4 = W. Pav	2.06	61.90
+40.4	2.30	61.66
+50.5 = E. Pav	2.75	61.21
+56 = el	3.8	60.16
+61.1 = E	4.4	59.56

N. 1/4

63.96

N. el. Line

E	4.0	59.96
+5.1 = el	3.8	60.16
+10.7 = E. Pav	2.90	61.06
+20.8	2.48	61.48
+30.4 = W. Pav	2.24	61.72
+34 = E. Rail	2.16	61.80
+39 = W. Rail	2.30	61.66
+47.5	2.6	61.36
+56 el	2.3	61.66
+61.1 = W	2.3	61.66

0.3' N. of N. el. Line

W. = W. End. cnt. el. Ret 1.74 62.22 ✓

Cnt. curb Ret. at N.E. Cor. gone + cnt. el

on E. side gone from N. Line Qualtrough

To Station 0+67 Page 36.

N. Line Qualtrough.

W.	1.6	62.36
+5.1 = cnt. el	1.86	62.10
G	2.6	61.36
+13.4	2.9	61.06

Roscerans. 34

	63.96		
+21.7 = w. Rail	2.58	61.38	
+26.7 = E. "	2.45	61.51	
+29.9 = w. Pav	2.40	61.56	
+40.	2.67	61.29	
+50 [±] E. pav	3.14	60.82	
+56 = E. Line	3.2	60.76	
+61.1 = E. Line	3.3	60.66	
4' N of N. Line on E. = S. End			
Stucco Wall 3.5' High 1.5' in ST.			
33.8' N. of N. Line ^{Quadrangle on W}			} split of L
25.0' " " " " " "			
E. in yard.	3.6	60.36	
+5 = E. Line	4.2	59.76	
+12.8 = E. pav	4.45	59.51	
+21.8	3.96	60.00	
+31.8 = w. pav	3.72	60.24	
+35.7 = E. Rail	3.83	60.13	
+40" w. "	3.99	59.97	
+47.5	4.2	59.76	
+55 = G	4.4	59.56	

	63.96		Rosecrans. 33
+55 = cl.	3.51	60.45	
W.	3.4	60.56	
0+00 = { ^{Δ on W} E. & N. of A one } = 90° 00' To Rosecrans.			
0+03			
E. edge Pav			
11.8' W. of E. Line { S. side Cmt. Drive	4.76	59.20	
0+0.5.± = N. End. Stucco Wall 1.5' in ST. ✓			
E. Line = S. side Cmt. Drive	4.41	59.55	
0+19			
W. Line = W. End. Cmt. Walk	4.37	59.59	
W. cl = " " " "	4.43	59.53	
0+20.			
E. edge Pav			
11.1' W. of E. Line { N. side Cmt. Drive	5.42	58.54	
0+21			
W.	4.49	59.47	
+5 = Cmt. cl	4.54	59.42	
G	5.2	58.76	
+13	5.3	58.66	
+21 = w. Rail	5.09	58.87	
+26 = E. "	4.97	58.99	
+29 = w. Pav	4.87	59.09	

	63.96		63.96	Rosecrans	
	0+21 (con)		0+82.3 = E.C. Strip Pavmt + Tracks		35
+39	5.08	58.88	W.	7.3	56.66
+49 = E. pay	5.48	58.48	el	7.59	56.37
+55 = el line	5.1	58.86	el + 8.5	8.3	55.66
+60 = E. line = N. side emt. Pr	4.83	59.13	+17 = W. Rail	8.10	55.86
	0+65.2 = E. End. emt. walk on W.		+22 = E. "	8.03	55.93
W. Line emt. walk	6.40	56.56	+25 = ϕ = W. pav	7.91	56.05
Emt. el + " "	6.68	57.28	ϕ + 10	8.20	55.76
	0+67 = S. end. emt. el on el.		+20 = E. pav	8.69	55.27
E	7.8	56.16	+25 = G	9.3	54.66
+5 = E. emt. el	7.72	56.24	+25 = emt. el	8.54	55.42
+5 G	8.3	55.66	+30 = E. line	8.4	55.56
+10.2 = E. Pav	7.95	56.01			
+20.2	7.41	56.55			
+30.2 W. Pav.	7.18	56.78	E. line	9.9	54.06
+33.2 = E. Rail	7.27	56.69	el	9.41	54.55
+38.2 = W. "	7.39	56.57	G	10.0	53.96
+46.6	7.6	56.36	+5 = E. pav.	9.57	54.39
+55 = G	7.3	56.66	+15	9.08	54.88
+55 = emt. el	6.82	57.14	+25 W. pav = ϕ	8.80	55.16
+60 = W.	6.6	57.06	+3 = E. Rail	8.92	55.04
			+8 = W. "	8.93	55.03

63.96
1700 cov.

52.75
1788
Rosecrans.

37

+16.5	9.1	54.86
+25 = G	9.2	54.76
emt. cl.	8.50	55.46
W.	7.7	56.26
1750		
W	9.6	54.36
cl.	10.93	53.03
G	11.6	52.36
+8.5	11.7	52.26
+17 = W. Rail	11.37	52.59
+22 = E. "	11.37	52.59
+25 = ϕ = W. Pav	11.33	52.63
ϕ +10	11.58	52.38
+20 = E. Pav	12.01	51.95
+25-G	11.9	52.06
e. emt. cl. at sta. 1748 = N. End. good. curb	11.88	52.08
E.	11.8	52.16
J.P. 1.39	52.75	12.60
51.36		
✓ Curb sunk - N.E. from 1748 to 1788		

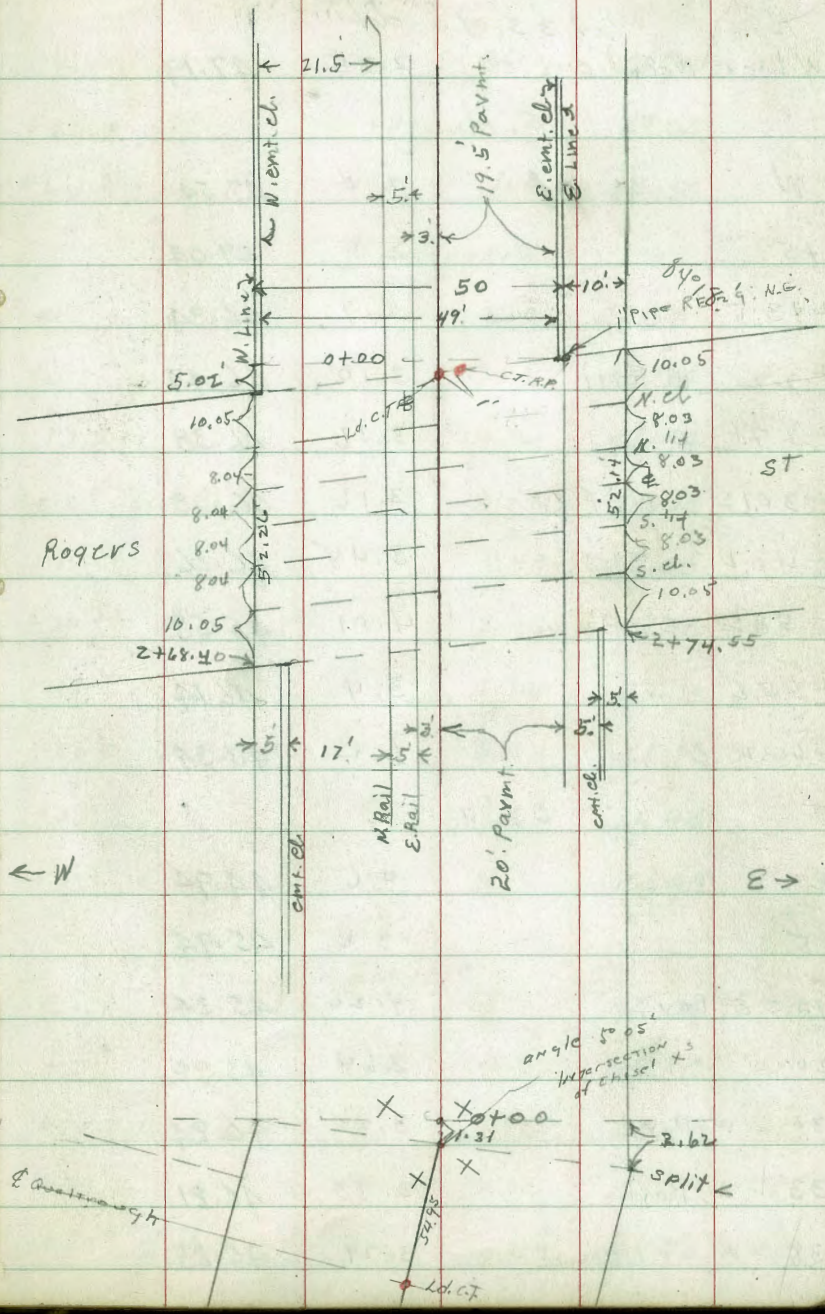
E. cl. on S. End. Good. Curb.	2.55	50.20
2700		
E	3.2	49.55
cl	3.15	49.60
G	3.6	49.15
+5 = E. Pav	3.31	49.44
+15	2.86	49.89
+25 = W. Pav = ϕ	2.61	50.14
+3' = E. Rail	2.72	50.03
+8 = W. "	2.70	50.05
+16.5	3.3	49.45
G	3.1	49.65
cl	2.22	50.53
W	1.8	50.95
2745 = S. End. cl. inlet on W.		
W. emt. cl.	5.40	47.35
G. on S. End. cl. inlet	6.32	46.43
+25 " " " " "	6.27	46.48

52.75
2+69.5 = S. End. inlet on E.

E. ent. cl.	6.69	46.06
G on S. End. inlet.	7.48	45.27
+2.5 " " "	7.37	45.38

2+68.40 on W. Line }
2+74.55 " E. " } = 5. line Rogers. on Diagonal

W.	4.4	48.35		
ent. cl.	5.55	47.20		
G. on N.W. Cor. inlet	5.61	47.14		
+2.5 N.E. " "	5.51	47.24		
ct	5.6	47.15		
+17 = W. Rail	6.05	46.70		
+22 = E. " "	6.11	46.64		
+25 = U.Pav	6.14	46.61		
+10	6.45	46.30		
+20 = E. pav	6.99	45.76		
+22.5 = N.W. Cor inlet	6.84	45.91		
+25 = G. N.E. " "	6.93	45.82		
E. ent. cl. N. End.	6.84	45.91		
E	7.0	45.75		
T.P.	2.30	49.54	5.51	47.24



49.54

1.3 S. of S. cl. line

W. line = W. End. cont. cl. 2.35 47.19

S. cl. line

W 2.0 47.54

+5 2.5 47.04

+13.5 2.7 46.84

+22 = W. Rail 3.10 46.44

+27.1 = E. " 3.16 46.38

+30.1 = W. Pav 3.16 46.38

+40.2 3.48 46.02

+50.2 = E. Pav 4.01 45.53

+55.2 3.4 46.14

+60.2 = 6.2 43.34

S. 1.4

E 4.6 44.94

+5 3.6 45.94

+10 = E. Pav 4.20 45.34

+20 3.64 45.90

+30 = W. Pav 3.30 46.24

+33 = E. Rail 3.33 46.21

+38 = W " 3.29 46.25

49.54

Rosecrans

39

2.8 46.74

2.5 47.04

1.0 48.54

E Rogers

2.0 47.54

2.6 46.94

3.2 46.34

3.46 46.08

3.49 46.05

3.46 46.08

3.84 45.70

4.44 45.10

3.6 45.94

4.6 44.94

N. 1.4

5.5 44.04

4.3 45.24

4.62 44.92

4.02 45.52

3.62 45.92

+46.2

+55.3

+60.2 = W.

W

+5

+13.5

+22.1 = W. Rail

+27.1 E. "

+30.1 = W. Pav

+40.2

+50.2 = E. Pav

+55

+60 = E.

E.

+5

+10 = E. Pav

+20

+30 = W. Pav

49.54

+33 ¹ = E. Rail	3.65	45.89
+38 ² = W "	3.63	45.91
+46 ¹	3.5	46.04
+55 ²	3.3	46.24
+60 ³ = W.	1.5	48.04

N ch. Line

N	2.1	47.94
+5	4.0	45.54
+13 ⁵	3.8	45.74
+22 ¹ W. Rail	3.77	45.77
+27 ¹ E. "	3.80	45.74
+30 ¹ W. Pav	3.77	45.77
+40 ²	4.18	45.36
+50 ² E. Pav	4.78	44.76
+55	4.5	45.04
+60 = E	5.8	43.74

N line Rogers St

E	9.5	40.04
+5	4.8	44.74
+10 = { E. line Back of Curb	4.48	45.06

49.54

Rose crans.

40

+10.5 Face Curb S. End	4.48	45.06	
G. pav	5.01	44.53	
+20	4.36	45.18	
+30 ¹ W. pav	3.97	45.57	
+33 ¹ E. Rail	4.05	45.49	
+38 ² = W. Rail	4.01	45.53	
+46 ¹	4.3	45.24	
+55 ²	4.4	45.14	
+59 ⁸ Face Curb.	3.33	46.21	
+60.3 ³ Back of ent. ch. = N. line	2.9	46.64 ground.	
5.02 N. of N. line Rogers on W		} = 0100 at 90°00	
N " " " E			
W. ch. sunk.	0+50	6.1	43.44
G.		6.9	42.64
+10 ²⁵		6.5	43.04
+21.5 = W. Rail		6.03	43.51
+26.5 = E. "		6.04	43.50
+29.5 = W. Pav		6.04	43.50
+39.25		6.40	43.14
+49 = G. pav.		6.94	42.60
E. ch.		6.47	43.07

49.54

✓ From 0+33⁷ to 1+09 Curb sunk on W.

→ This Reading should be before 0+50

→ 0+33²

W. ch. at N. End. good Curb. 5.00 44.54

1+00

E. ch - 8.46 41.08

G pav. 8.94 40.60

+ 9.25 8.37 41.27

+ 19⁵⁰ W. pav 8.00 41.54

+ 22⁵ E. Rail 8.03 41.51

+ 27⁵ W. " 8.05 41.49

+ 38²⁵ 8.6 40.94

+ 45 8.6 40.94

+ 49 = W. ch line - ch. sunk 8.0 41.54

1+09

W. ch. S. End. good Curb 7.85 41.69

from 1+09 to 1+53² ch. on W. OK

✓ from 1+53⁷ to 2+68 ch on W. N.G. sunk

49.54

Rosecrans

41

1+50

W. ch. OK 9.44 40.10

G 10.3 39.24

+ 10.75 10.4 39.14

+ 21.5 W. Rail 10.07 39.47

+ 26.5 E. " 10.11 39.43

+ 29⁵ W. pav 10.00 39.54

+ 39²⁵ 10.32 39.22

+ 49 = G. pav 10.95 38.59

E. ch. 10.42 39.12

1+53²

W. ch. on N. End. Good ch. 9.57 39.97

2+00

E. ch. 12.46 37.08

G pav 12.91 36.63

+ 9.25 12.33 37.21

+ 19.50 W. Pav. 11.96 37.58

+ 22⁵ E. Rail 12.01 37.53

+ 27⁵ W. " 11.98 37.56

+ 38²⁵ 12.5 37.04

+ 47 12.04 37.14

+ 49 = W. ch line ch. sunk 11.61 37.93

		49.54			Rosecrans		
T.P.	1.40	38.08	12.86	36.68	38.08		
	from 2+17 to 2+28 ch on E. (out) for driveway				+27 ⁵ W. Rail	4.21	33.87
		2+50			+38 ²⁵	4.6	33.48
W. cl sunk		2.2		35.88	+49 G	4.9	33.18
G		3.0		35.08	W. cl	3.85	34.23
+10 ²⁵		2.8		35.28			
+21 ⁵ = W. Rail		2.36		35.72	W. cl	4.69	33.39
+26 ⁵ E. "		2.37		35.71	G	5.4	32.68
+29 ⁵ W. Pav		2.40		35.68	+4	5.4	32.68
+39 ²⁵		2.79		35.29	+8 on sand. Pile	3.2	34.88
+49 = G pav.		3.42		34.66	+10 ⁷⁵ " "	4.7	33.38
E. ent. cl		2.92		35.16	+13	5.3	32.78
		2+68			+21 ⁵ W. R.	6.07	33.01
W. cl. on S. End. Good. cl.					+26 ⁵ E. "	5.09	32.99
					+29 ⁵ W. Pav.	5.14	32.94
		3+00			+39 ²⁵	5.55	32.53
E. cl		4.92		33.16	+49 = G. pav	6.20	31.88
G. pav		5.35		32.75	E. cl	5.80	32.28
+9 ⁷⁵		4.73		33.35			
+19 ⁵ W. Pav.		4.27		33.81			
+22 ⁵ E. Rail		4.23		33.85			

38.08
3+50

e. el		6.45	31.63
G pav		6.94	31.14
+9 ⁷⁵		6.29	31.79
+19.5	W. Pav	5.95	32.13
+22 ⁵	E. Rail	5.79	32.29
+27 ⁵	W. Rail	5.83	32.25
+35		5.7	32.38
+38 ⁷⁵	on sand Pile	4.0	34.08
+41	" " "	4.0	34.08
+44		6.2	31.88
+49 G		6.2	31.88
W. el		5.38	32.70
		3+75	
W. el		5.80	32.28
G		6.6	31.48
+4		6.5	31.58
+7	sand pile	4.7	33.38
+10 ⁷⁵	on sand. Pile	5.4	32.68
+14		6.2	31.88
+21 ⁵	W. R	6.31	31.77
+26 ⁵	E R	6.22	31.86

38.08

Postcrans.

43

+29.5	W. Pav	6.30	31.78
+39 ²⁵		6.68	31.40
+49	G Pav	7.33	30.75
E. el		6.85	31.23
		3+92.8	
e. el		6.80	31.28
G pav		7.58	30.50
		3+94 = S. End. Curb Inlet. see Page 44.	
1/2 E. of ch. line = Face of Curb.		6.87	31.21
" " " G. pav		7.65	30.43
E. el Line		7.60	30.48
+9.75		6.97	31.11
+19.7	W. pav	6.46	31.62
+22.7	E. R	6.40	31.68
+27.7	W. R	6.38	31.70
+38 ⁷⁵		6.2	31.88
+45		6.2	31.88
+49 G		6.8	31.28
W. el		5.90	32.18

Curb at Curb
Inlet is set
1/2 E. of curb
Line

38.08

4 + 04² = \neq Culvert

N. el		5.96	32.12	
G. on Top of	2'-6" x 2'-6" Grating	6.90	31.18	Box Catch Basin
+2.5"	"	6.80	31.28	
F.L.	Culvert	8.94	29.14	
2.5' W. of E. el line	W. side 2'-6" x 2'-6" Catch Basin Grating	7.38	30.70	
" " " " "	FL Culvert	13.51	24.57	
E. el line \neq	2'-6" x 2'-6" Catch Basin	7.54	30.54	E. Edge Grating
1' E. of E. el line =	G	7.74	30.34	
Ent. el.		6.83	31.25	
F.L. 30'	outlet Culvert	14.34	23.74	Cor. Iron
22' E. of E. el line	Outlet	19.0	19.08	30" Culvert
	4 + 15 N. End. d. Inlet			
1.0' E. of E. el line	Top el.	6.78	31.30	
G. pav		7.49	30.59	
E. el. line		7.46	30.62	
+10.15		6.84	31.24	
+20 ³	W. pav	6.43	31.65	
+23 ³	E. Rail	6.41	31.67	
+28 ³	W. "	6.47	31.61	

38.08

Rosecrans

44

+38²⁵

6.0 32.08

+45

6.3 31.78

+49 G

6.7 31.38

W. ent. el.

5.88 32.20

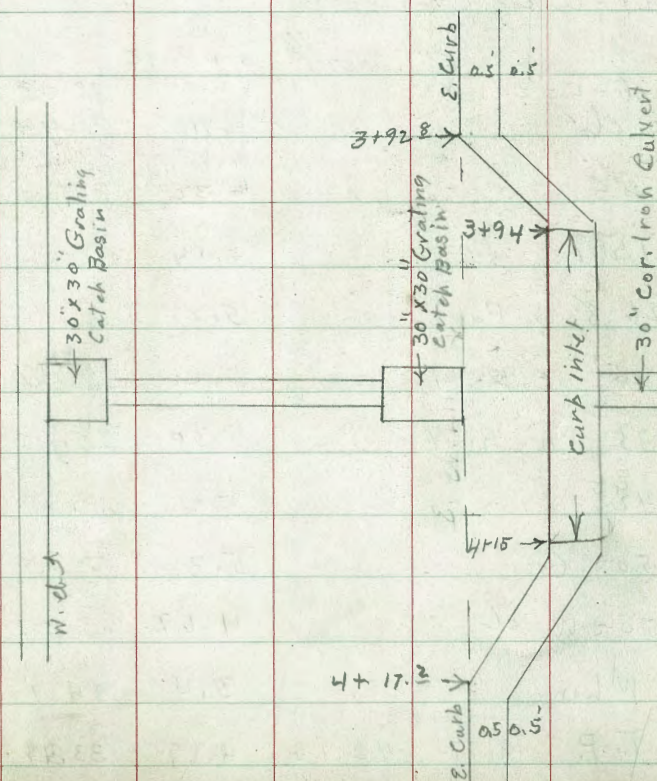
4 + 17.2

8. Ent. el.

6.77 31.31

G. pav

7.46 30.62



0+00 Page 45.

W	7.5	34.7
ch	8.77	33.39
G	9.5	32.66
+ 7.6	9.3	32.86
+ 15.2 = W. Rail	9.35	32.81
+ 20.2 = E. "	9.24	32.92
+ 23.2 = W. Pav	9.30	32.86
+ 34.1 "	9.61	32.55
+ 45 "	10.35	31.81
+ 50 = G "	10.68	31.48
ch	10.06	32.10
+ 5 = E. Limb	9.7	32.46
	0+57	
E. ch.	10.00	32.16
E. G. = 5. end. 5' unpaved strip	10.50	31.66 next to E. end
+ 5' = " " " "	10.19	31.97 " " " "
	0+25	
E	9.3	32.86
ch	9.19	32.97
G	9.7	32.46

+ 5 = E. Pav	9.39	32.77
+ 15.2	8.80	33.36
+ 25.2 = W. Pav	8.50	33.66
+ 28.2 E. Rail	8.40	33.76
+ 33.2 W. Rail	8.50	33.66
+ 41.2	8.7	33.46
+ 50 = G	8.8	33.36
ch.	8.05	34.11
W.	6.6	35.56
	0+80	
W	4.5	37.66
ch	5.85	36.31
G	6.6	35.56
+ 8.5	7.0	35.16
+ 17 W. R.	6.43	35.73
+ 22 E. "	6.35	35.81
+ 25 W. Pav = d	6.33	35.83
+ 10	6.58	35.58
+ 20 E. Pav	7.04	35.12
+ 25 = G	7.3	34.86

42.16
0 + 180 con.

el.	6.94	35.22
E	7.4	34.76
	1 + 40	
E	4.8	37.36
el	4.60	37.56
G	5.2	36.96
+5 E pav	4.63	37.53
+15	4.22	37.94
+25 = W. Pav = ϕ	3.99	38.17
+3 = E. R	4.07	38.09
+8 = W R	4.08	38.08
+16 ^E	4.6	37.56
G	4.5	37.66
el	3.44	38.72
W.	3.0	39.16
	1 + 61.5	
w. el.	2.61	39.55
From 1 + 61.5 to 1 + 70.7 curb lowered for drive.		
	1 + 70.7	
w. el = S. side emt. Drive	2.16	40.00

Rosecrans 47

	42.16		
	1 + 71.5		
W. line = S. side emt. Drive	1.90	40.26	
	1 + 81.8		
W. line = N. side emt. Drive	1.53	40.63	
	1 + 82.5		
W. el. = N. side emt. Drive	1.72	40.44	
	2 + 00		
W	0.8	41.36	
el	1.03	41.13	
G	2.0	40.16	
+ 8.5	2.1	40.06	
+ 17 = W. Rail	1.70	40.46	
+ 22 = E. "	1.72	40.44	
+ 25 = W. pav = ϕ	1.58	40.58	
+ 10	1.82	40.34	
+ 20 = E. pav	2.29	39.87	
+ 25 = G	2.6	39.56	
el.	2.12	40.04	
E	2.7	39.46	
T.P.	12.40	54.05	0.51
			41.65

54.05

2+50

E	12.2	41.85
el	11.99	42.06
G	12.8	41.25
+5 = E. Pav	12.16	41.89
+15	11.42	42.43
+25 = W. Pav = ϕ	11.47	42.58
+3 = E. Rail	11.56	42.49
+8 = W "	11.53	42.52
+16 ⁵	12.1	41.95
+25 = G	11.6	42.45
el.	10.94	43.11
W.	10.8	43.25
	3+00	
W.	8.9	45.15
el	8.92	45.13
G	10.0	44.05
+8.5'	10.0	44.05
+17 = W. Rail	9.48	44.57
+22 = E. "	9.48	44.57
+25 = W. Pav = ϕ	9.47	44.58

54.05

Rosecrans. St
48

+10	9.67	44.38
+20 = E. Pav	10.12	43.93
G	10.7	43.35
el	10.05	44.00
E	10.2	43.85
	3+50	
E	8.0	46.05
el	8.00	46.05
G	8.7	45.35
+5 = E. Pav	8.14	45.91
+15	7.72	46.33
+25 = W. Pav = ϕ	7.47	46.58
+3 = E. Rail	7.49	46.56
+8 = W "	7.49	46.56
+16 ⁵	8.1	45.95
G	7.9	46.15
el	6.98	47.07
W.	6.6	47.45

54.05
4+00

W		4.7	49.35
cl		4.98	49.07
G		5.7	48.35
+8.5		5.9	48.15
+17 =	W. Rail	5.48	48.57
+22	E "	5.48	48.57
+25	W. Pav = ϕ	5.50	48.55
+10		5.77	48.28
+20	E. Pav	6.18	47.87
G		6.5	47.55
cl		6.00	48.05
E		6.0	48.05
		4+50	
E		4.2	49.85
cl		4.00	50.05
G		4.5	49.55
+5	E. Pav.	4.19	49.86
+15		3.79	50.26
+25	W. Pav = ϕ	3.52	50.53
+3	W. Rail	3.44	50.61

54.05

Rosecrans

49

+8	W. Rail	3.45	50.60
+16.5		3.8	50.25
+25 = G		3.8	50.25
cl. in drive		3.66	50.39
curb grade.		2.96	51.09
W.		2.6	51.45
		4+75	
W		1.8	52.25
cl		1.98	52.07
G		2.9	51.15
+8.5		3.0	51.05
+17 =	W. Rail	2.45	51.60
+22 =	E. "	2.47	51.58
+25 =	W. Pav = ϕ	2.51	51.54
+10		2.73	51.32
+20	E. Pav	3.13	50.92
G		3.5	50.55
cl		3.09	50.96
E		3.1	50.95

54.05
5+00

E		2.4	51.65
el		2.22	51.83
G		2.7	51.35
+5 =	E. pav	2.36	51.69
+15		1.88	52.17
+25 =	W. Pav = ϕ	1.64	52.41
+3 =	E. Rail	1.79	52.26
+8 =	W. "	1.74	52.31
+16 ^E		2.2	51.85
+25 =	G	2.2	51.85
el		1.18	52.87
W.		1.0	53.05
		5+20	
W.		0.6	53.45
el.		0.78	53.27
G		1.7	52.35
+8 ^E		1.6	52.45
+17 =	W. Rail	1.42	52.63
+22 =	E. "	1.52	52.53
+25 =	W. Pav = ϕ	1.31	52.74

54.05

Rosecrans

50

+10		1.60	52.45
+20 =	E. pav.	2.07	51.98
G		2.3	51.75
el		1.93	52.12
E.		1.9	52.15
		5+40.	
E.		2.0	52.05
el		1.92	52.13
G		2.3	51.75
+5 =	E. Pav.	2.09	51.96
+15		1.57	52.48
+25 =	W. Pav = ϕ	1.29	52.76
+3.	E. Rail.	1.53	52.52
+8.	W. "	1.34	52.71
+16 ^E		1.3	52.75
+25 =	G	1.3	52.75
el.		0.63	53.42
W.		0.4	53.65

54.05

5+61 ⁴ = B.C. Track + 20' strip Pavmt.

W	0.4	53.65
cl	0.71	53.34
G	1.6	52.45
+8.5	1.7	52.35
+17 = W. Rail	1.42	52.63
+22 = E. "	1.69	52.36
+25 = W. Pav = $\frac{1}{2}$	1.43	52.62
+10	1.76	52.29
+20 = E. Pav	2.29	51.76
+25 = E. G.	2.51	51.55
cl	2.19	51.86
E.	2.1	51.95
5+72 ² = B.C. E. cmt. Curb		
E.	2.4	51.65
cl	2.43	51.62
G	2.8	51.25
cl + 4.6 = E. Pav.	2.61	51.44
" + 14.6	2.12	51.93
" + 24.6 = W. Pav.	1.73	52.32

54.05

Rosecrans

51

+ 27.7 = E. Rail	1.91	52.14
+ 32.8 = W. "	1.62	52.43
+ 41.4	2.1	51.95
+ 50 = G	1.9	52.15
cl.	0.91	53.14
W.	0.5	53.55
T.P. 3.70	35.02	2.73
	5+95 ⁴	
W.	2.12	52.82
cl.	2.44	52.58
G	3.3	51.72
cl + 10	3.5	51.52
" + 20 = W. Rail	3.05	51.97
" + 25 = E. "	3.36	51.66
" + 28 = W. Pav	3.47	51.55
+ 38	3.78	51.24
" + 48 = E. Pav	4.28	50.74
+ 50 = E. cl. line Produced	4.4	50.62
E. cl. line + 1.9 = G	4.4	50.62
" " + 1.9 = ent. cl	4.07	50.95
" " + 5 = E. Line	4.1	50.92

see B 6+17² see Plat Page 45

E. ch. line - at P.I. of E. curb	4.80	50.22
" " " + 6 ² = ϕ Pavmt.	4.41	50.61
" " " + 16 ² = W. edge pav	4.02	51.00
" " " + 19 ² = E. Rail	3.95	51.07
" " " + 25 = E. "	3.66	51.36
" " " + 37 ⁵	3.9	51.12
" " " + 50 = G	3.2	51.82
W. emb. ch.	3.03	51.99
W. Line	2.5	52.52

see C. = Split of L

W. Line	1.9	53.12
W. emb. ch Buried.	3.46	51.56
Gutter	2.8	52.22
" " " + 14.4	3.9	51.12
" " " + 28.8 = W. Rail	3.85	51.17
" " " + 33.9 = E. "	4.11	50.91
" " " + 36.7 = W. Pav.	4.16	50.86
" " " + 46.7 = ϕ "	4.50	50.52
" " " + 52.72 = P.I. E. chs	4.80	50.22
" " " + 56.70 = E. Pav	5.00	50.02
" " " + 60 = G	5.1	49.92

W. emb. ch. + 60 = E. emb. ch.	4.68	50.34
" " " + 65	4.4	50.62
0+00 = Sec. D. at 90° 00'		
P.I. of E. chs.	4.80	50.22
" " " " + 6.4 = ϕ Pav.	4.56	50.46
" " " " + 16.8 = W. "	4.33	50.69
" " " " + 19.2 = E. Rail	4.24	50.78
" " " " + 25.4 = W. "	4.05	50.97
" " " " + 37.5	4.4	50.62
" " " " + 50 = W. G	3.7	51.32
ch.	3.82	51.20
+10 = W.	0.7	54.32
0+18 = N. End. emb. ch. on West.		
Top. curb	4.27	50.75
0+22.5		
W	0.5	54.52
ch Line No curb.	4.1	50.92
" + 4	5.4	49.62
ch + 9.8	5.3	49.72
ch + 19.2 = W. Rail	4.76	50.26
" 25 = E. Rail	4.97	50.05

55.02

0+22.5 (con)

W. cl + 28 =	W. Pav	5.01	50.01
" " + 38.2 =	cl "	5.14	49.88
" " + 48.4 =	E. "	5.54	49.48
" " + 50 =	Produced E. cl line	5.7	49.32
" " + 51.2 =	E. G	5.6	49.42
" " + " =	E. cl	5.25	49.77
" " + 60		5.1	49.92

0+45 = E. C. E. Curb.

E. Line		6.0	49.02
E. cl		5.97	49.05
G		6.4	48.62
+ 4.6 =	E. Pav	6.14	48.88
+ 14.6		5.79	49.23
+ 24.6 =	W Pav	5.62	49.40
+ 27.4 =	E. Rail	5.79	49.23
+ 32.4 =	W "	5.55	49.47
+ 41.2		6.1	48.92
+ 47		6.2	48.82
+ 50 =	cl. Line no curb	5.0	50.02
W.		0.5	54.52

55.02

0+56.5 = E.C. Track + 20' Strip Pav.

Rosecrans

53

W		0.8	54.22
W. cl line	No curb	5.3	49.72
+ 3.		6.5	48.52
+ 8.5		6.4	48.62
+ 17 =	W. Rail	6.05	48.97
+ 22 =	E. "	6.27	48.75
+ 25 =	W. Pav = cl	6.01	49.01
+ 10		6.15	48.87
+ 20 =	E. Pav	6.52	48.50
+ 25 =	G	6.9	48.12
cl		6.49	48.53
E.		6.4	48.62

0+70 = S End. Cmt. Walk on West.

W. cl Line	No curb	6.6	
2.5 W. of W. cl	= E. edge walk S. end.	6.03	48.99
7.5 W. " W "	= W " " S. "	5.91	49.11
10. " " " "	= W. line	5.9	49.12

From 0+18 to 0+77.5 Curb gone on West.

BM. BP. W. cl. { 12' S. of N. line
P.L. 178. 3.49 51.53 = 51.51

55.02

0+77.5 = 5 End. cmt. el. on W

E.		6.8	48.22
el		7.43	47.59
G		7.8	47.22
+5 =	E. Pav	7.48	47.54
+15		7.11	47.91
+25 =	W. Pav, = ϕ	6.93	48.09
+3 =	E. Rail.	7.10	47.92
+8 =	W "	6.94	48.08
+16 E		7.4	47.62
+25 =	W, G	7.2	47.82
el	on S. End.	6.41	48.61
	1*00.		
W.		7.0	48.02
+2.5	W. walk	7.23	47.79
+7.5	E. "	7.35	47.67
+10	el.	7.40	47.62
G		8.0	47.02
+8.5		8.1	46.92
+17	= W. Rail	7.95	47.07
+22	= " "	8.05	46.97

55.02

Rosecrans.

54

+25 =	W. Pav = ϕ	2.91	47.11
+10		8.12	46.90
+20 =	E. Pav	8.53	46.49
+25 =	G	8.7	46.32
	el	8.41	46.61
	E.	8.2	46.82
		1+40	
	E.	9.9	45.12
	el	10.16	44.86
	G	10.4	44.62
+5 =	E. Pav	10.36	44.66
+15		9.94	45.08
+25 =	W. Pav = ϕ	9.69	45.33
+3 =	E. Rail	9.79	45.23
+8 =	W "	9.72	45.30
+14.5		9.7	45.32
+25 =	G	9.8	45.22
+25 =	el.	9.18	45.84
el + 2.5 =	E. Walk	9.10	45.92
+7.5 =	W. "	9.00	46.02
+10 =	W.	9.0	46.02

55.02
1+77

W			10.4	44.62
+2.5 W. edge N. End. cmt. Walk			10.66	44.36
+7.5 E " N " " "			10.77	44.25
cl			10.81	44.21
G			11.7	43.32
+8.5			11.5	43.52
+17 = W. Rail			11.24	43.78
+22 = E "			11.30	43.72
+25 = W. Pav = ϕ			11.38	43.64
+10			11.58	43.44
+20 E. Pav			11.97	43.05
G			12.1	42.92
cl			11.84	43.18
E.			12.8	43.22
T.P.	0.60	43.19	12.43	42.59
		2+20		
E			2.0	41.19
cl			1.96	41.23
G			2.12	40.99
+5 = E. Pav			2.05	41.14

43.19

Rose crans. 55

+15			1.65	41.54
+25 = W. Pav = ϕ			1.42	41.77
+3 E. Rail			1.31	41.88
+8 W "			1.35	41.84
+16.5			1.7	41.49
G			1.5	41.69
cl.			0.86	42.33
+2.5 = E. Edge S. End. cmt. Walk.			0.80	42.39
+7.5 = W " S " " "			0.65	42.54
W.			0.5	42.69
		2+60		
W.			2.5	40.69
+2.5 cmt. walk			2.48	40.71
+7.5 " "			2.60	40.59
cl			2.67	40.52
G			3.6	39.59
+8.5			3.4	39.79
+17 = W. Rail			3.11	40.08
+22 = E. "			3.12	40.07
+25 = W. Pav = ϕ			3.14	40.03

43.19

2+60 con.

4+10		3.42	39.77
+20 = E. Pav.		3.82	39.37
G		4.1	39.09
cl		3.75	39.44
E.		3.8	39.39
	3700		
E		5.5	37.69
cl		5.52	37.67
G		6.1	37.09
+5 = E. Pav		5.59	37.60
+15		5.20	37.99
+25 = W. Pav = 4		4.95	38.24
+3 E. Rail		4.87	38.32
+8 W. "		4.87	38.32
+16 ⁵		5.0	38.19
G		5.1	38.09
cl		4.44	38.75
+2.5 cmt. walk		4.40	38.79
+7.5 " "		4.30	38.89
W.		4.3	38.89

43.19

3450

Rosecrans.

56

W.		6.6	36.59	
+2.5 = cmt. walk		6.52	36.67	
+7.5 = " "		6.66	36.53	
cl. 1 st driveway		6.96	36.23	dipped
G		7.2	35.99	
+8 ⁵		7.2	35.99	
+17 = W. Rail		7.12	36.07	
+22 = E. "		7.12	36.07	
+25 = W. Pav = 4		7.16	36.03	
+10		7.39	35.80	
+20 E. Pav		7.79	35.40	
G		8.2	34.99	
cl		7.73	35.46	
E.		7.7	35.49	
T.P.	0.75	35.31	8.63	34.56
	4+00			
E		2.0	33.31	
cl		2.20	33.11	
G		2.4	32.91	
+5 = E. Pav.		2.11	33.20	

35.31

4+00 (con)

+15		1.71	33.60
+25 = W. Pav = ϕ		1.53	33.78
+3 = E. Rail		1.55	33.76
+8 = W "		1.53	33.78
+16 ⁵		2.0	33.31
G		1.7	33.61
cl		1.12	34.19
+25 Walk		1.07	34.24
+7.5 "		0.91	34.40
W		0.6	34.71
4+45 = N. End. emt. walk on W.			
W.		3.3	32.01
+2.5 = W. edge W. End. emt walk		2.81	32.50
+7.5 = E " N. " " "		2.92	32.39
cl		3.06	32.25
G		3.7	31.61
+8 ⁵		3.8	31.51
+17 = N. Rail		3.49	31.82
+22 = E "		3.46	31.85
+25 = W. Pav = ϕ		3.53	31.78

35.31

Rosecrans

57

+10.		3.78	31.53
+20 = E. Pav		4.24	31.07
G		4.3	31.01
cl.		4.20	31.11
E.		4.0	31.31

5+00

E.		6.8	28.51
cl.		6.43	28.88
G.		6.9	28.41
+5 = E. Pav.		6.61	28.70
+15.		6.21	29.10
+25 = W. Pav. = ϕ		5.99	29.32
+3 = E. Rail		5.84	29.47
+8 = W. "		5.84	29.47
+16 ⁵		5.8	29.51
G		5.6	29.71
cl		5.45	29.86
W.		4.9	30.41

	35.31		
W.	5+20 = S. Line	Bessemer St	$\left\{ \begin{array}{l} 60' \text{ wide} \\ 10' \text{ obs} \\ 10' \text{ } \\ 14' \end{array} \right.$ 5.8 29.51
ch	Barried		6.42 28.89
G			6.1 29.21
+8 E			6.3 29.01
+17 = W. Rail			6.72 28.59
+22 = E "			6.67 28.64
+25 = W. Pav. = ♀			6.80 28.51
+10			7.03 28.28
+20 = E. Pav			7.46 27.85
G			7.6 27.71
ch			7.43 27.88
E.			7.2 28.11
	9' N. of S. Line		
E. ch. = N. End. ext. ch.			7.74 27.57
	S. ch.		
E			7.9 27.41
ch			8.1 27.21
+5 = E. Pav.			7.75 27.56
+15			7.28 28.03
+25 = W. Pav. = ♀			7.02 28.29

	35.31	Rosecrans	58
+3 = E. Rail		2.89	28.42
+8 = W. "		6.92	28.39
+16 E		6.6	28.71
ch.		6.4	28.91
W. Ground		6.3	29.01
W. = N. End. ext. ch. Ret.		6.42	28.89
	S. 1/4		
W		6.6	28.71
ch. Line		6.8	28.51
+8 E		6.7	28.61
+17 = W. Rail		7.09	28.22
+22 = E. "		7.09	28.22
+25 = W. Pav. = ♀		7.23	28.08
+10		7.43	27.88
+20 = E. Pav		7.85	27.46
ch. Line		8.1	27.21
E.		8.2	27.11

35.31

E Bessemer St.

E.	8.2	27.11
ch. Line	7.9	27.41
+5 = E. Pav.	8.01	27.30
+15	7.62	27.69
+25 = W. Pav = E	7.37	27.94
+3 = E. Rail	7.23	28.08
+8 = W. "	7.26	28.05
+16 ^E	7.0	28.31
ch. Line	7.1	28.21
W.	7.0	28.31
	N. 1/4	
W.	7.3	28.01
ch. Line	7.3	28.01
+8 ^E	7.2	28.11
+17 = W. Rail	7.41	27.90
+22 = E. "	7.39	27.92
+25 = W. Pav = E	7.52	27.79
+10	7.73	27.58
+20 = E. Pav.	8.17	27.14
ch. Line	8.1	27.21

35.31

Rosecrans

59

E.	7.9	27.41
	Z' N. of N. 1/4	
E. ch. = S. End. ent. ch.	8.24	27.07
	N. ch.	
E.	8.4	26.91
ent. ch.	8.25	27.06
G	8.4	26.91
+5 = E. Pav.	8.31	27.00
+15	7.88	27.43
+25 = W. Pav = E	7.68	27.63
+3 = E. Rail	7.57	27.74
+8 = W. "	7.56	27.75
+16 ^E	7.4	27.91
ch. Line	7.6	27.71
W. Grounds	7.3	28.01
W. = W. end. ent. ch.	7.30	28.01
	{ Rosecrans. + Bessemer.	
BM. B. P. N.W.	7.45	27.86 = 28.05 27.80
	Ent. Walk. in. on W. side of Rosecrans, from Bessemer North.	

35.31

0+00 = N. Line Bessemer

W. cl	7.39	27.92
G	7.8	27.51
+8 ^E	7.6	27.71
+17 = W. Rail	7.69	27.62
+22 = E. "	7.48	27.63
+25 = W. Pav = ϕ	7.82	27.49
+10	8.04	27.27
+20 = E. Pav.	8.47	26.84
+25 = G	8.5	26.81
cl.	8.37	26.94
E.	8.4	26.91
	0+50	
E.	8.8	26.51
cl	8.74	26.53
G	9.0	26.31
+5 = E. Pav	8.92	26.39
+15	8.50	26.81
+25 = W. Pav = ϕ	8.29	27.02
+3 E. Rail	8.17	27.14
+8 W. "	8.17	27.14

35.31

Rosccrans

60

+16 ⁵	8.2	27.11
G	8.4	26.91
W. cl.	7.75	27.56
	1+00	
W. cl	8.17	27.14
G	8.8	26.51
+8 ^E	8.8	26.51
+17 = W. Rail	8.66	26.65
+22 = E. "	8.58	26.73
+25 = W. Pav = ϕ	8.69	26.62
+10	8.84	26.43
+20 = E. Pav	9.27	26.04
G	9.3	26.01
cl.	9.15	26.16
E.	9.1	26.21
	1+50	
E.	9.8	25.51
cl	9.56	25.75
G	9.9	25.41
+5 = E. Pav	9.69	25.62

345.31
1+50 (con)

+15		9.31	26.00
+25 =	W. Pav = ϕ	9.13	26.18
+3 =	E. Rail	9.00	26.31
+8	W. "	9.02	26.29
+16 ⁵		9.3	26.01
G		9.3	26.01
W. cl		8.65	26.66
	2+00		
W. cl		9.12	26.19
G		9.7	25.61
+8 ⁵		9.8	25.51
+17	W. Rail	9.51	25.80
+22	E. "	9.49	25.82
+25 =	W. Pav = ϕ	9.54	25.77
+10		9.73	25.58
+20 =	E. Pav.	10.12	25.19
G		10.4	24.91
cl		9.95	25.36
E.		10.1	25.21
T.P.	2.21	28.01	9.51
			25.80

28.01
2+50

Rosecrans,

61

E.		3.1	24.91
cl		3.10	24.91
G		3.5	24.51
+5 =	E. Pav	3.25	24.76
+15		2.8 ⁵	25.19
+25	W. Pav = ϕ	2.67	25.34
+3	E. Rail	2.55	25.46
+8	W. "	2.54	25.47
+16 ⁵		2.9	25.11
G		3.2	24.81
W. cl		2.34	25.67
	3+00		
W. cl		2.72	25.29
G		3.3	24.71
+8 ⁵		3.2	24.81
+17 =	W. Rail	2.99	25.02
+22 =	E. Rail	3.03	24.98
+25 =	W. Pav = ϕ	3.11	24.90
+10		3.25	24.76
+20 =	E. Pav.	3.67	24.34

28.01

3+00

G		3.9	24.11
E. cl		3.53	24.48
E		3.4	24.61
		3+50	
E		3.8	24.21
cl		3.93	24.08
G		4.3	23.71
+5	E. Pav	4.09	23.92
+15		3.65	24.36
+25 =	W. Pav = $\frac{1}{2}$	3.52	24.49
+3	E. Rail	3.44	24.57
+8	W. "	3.42	24.59
+16 ⁵		3.6	24.41
G		3.7	24.31
W. cl		3.19	24.82
		4+00	
W. cl		3.65	24.36
G		4.1	23.91
+8 ⁵		4.0	24.01
+17	W. Rail	3.88	24.13

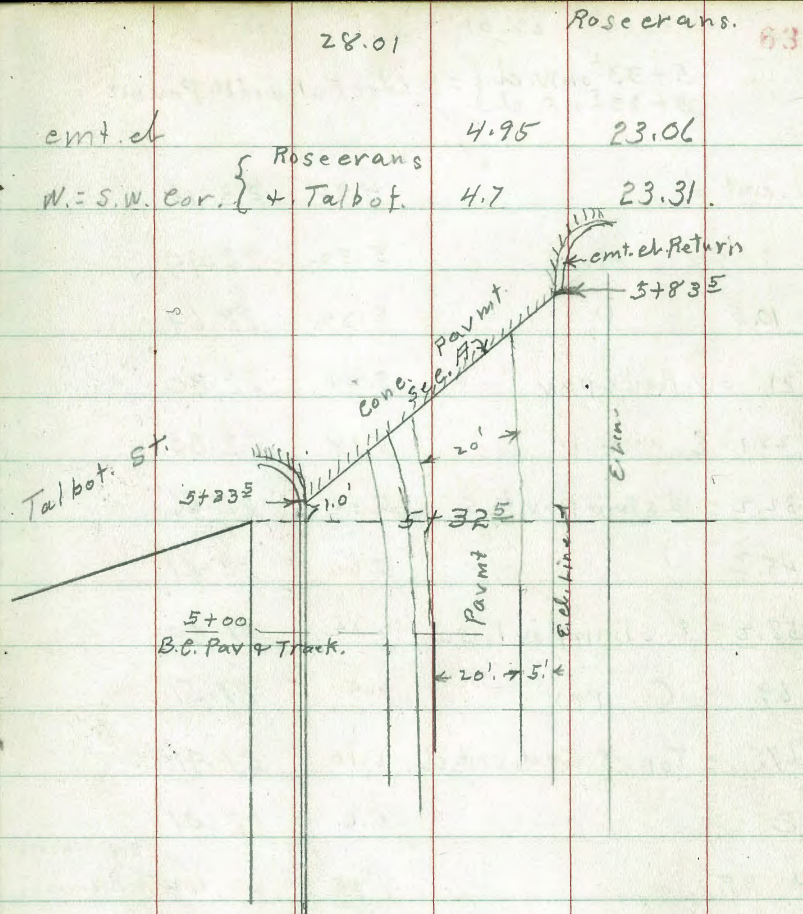
28.01

Rose crans.

62

+22	E. Rail	3.87	24.12
+25	W. Pav = $\frac{1}{2}$	3.97	24.04
+10		4.12	23.89
+20	E. Pav	4.49	23.52
G		4.7	23.31
E. cl		4.38	23.63
E		4.1	23.91
		4+50	
E.		4.5	23.51
cl		4.76	23.25
G		5.1	22.91
+5 =	E. Pav	4.97	23.04
+15		4.59	23.42
+25 =	W. Pav = $\frac{1}{2}$	4.40	23.61
+3	E. Rail	4.34	23.67
+8	W. "	4.34	23.69
+16 ⁵		4.4	23.61
G		4.5	23.51
W. cl		4.13	23.88
		4+77	
S. cl =	N. End. Ent. curb.	4.99	23.02

		28.01	
5+00 Approximate B.C. Track + 20' strip Pavmt.			
W. cl		4.56	23.45
G		4.8	23.21
+ 8.5		4.7	23.31
+ 17	W. Rail	4.81	23.20
+ 22	E. "	4.79	23.22
+ 25 =	W. Pav = $\frac{1}{2}$	4.85	23.16
+ 10		5.00	23.01
+ 20 =	E. Pav	5.39	22.62
+ 25 =	cl. Line No. Curb.	5.2	22.81
E.		5.0	23.01
		5+32.5	
E.		5.0	23.01
cl. line No. cl.		5.5	22.51
+ 6.2 =	E. Pav	5.70	22.31
+ 16.1		5.28	22.73
+ 26. =	W. Pav	5.12	22.89
+ 29.2 =	E. Rail	5.05	22.96
+ 34.2 =	W. "	5.10	22.91
+ 42.1		5.1	22.91
+ 50 =	G	5.0	23.01



28.01.

$$\left. \begin{array}{l} 5+33.5 \\ 5+83.5 \end{array} \right\} \begin{array}{l} \text{on W. cl.} \\ \text{on E. cl.} \end{array} = \text{S. Edge Fullwidth Pavmt.}$$

W. emt. cl. 4.95 23.15

G. Pav. 5.52 22.49

+ 10.5 4 5.32 22.69

+ 21. = W. Rail + pav 5.21 22.80

+ 28.2 = E. " + " 5.18 22.83

+ 32.2 = W. strip pav to S. 5.35 22.66

+ 45.2 5.60 22.41

+ 58.2 = E. strip pav to S. 6.12 21.89

+ 69. = G. pav 6.5 21.51

+ 48. = Top. S. End, emt. cl. 6.10 21.91

E 5.6 22.41

B.M. B.P. 7.35 20.66

= 20.65 old B.M. Book

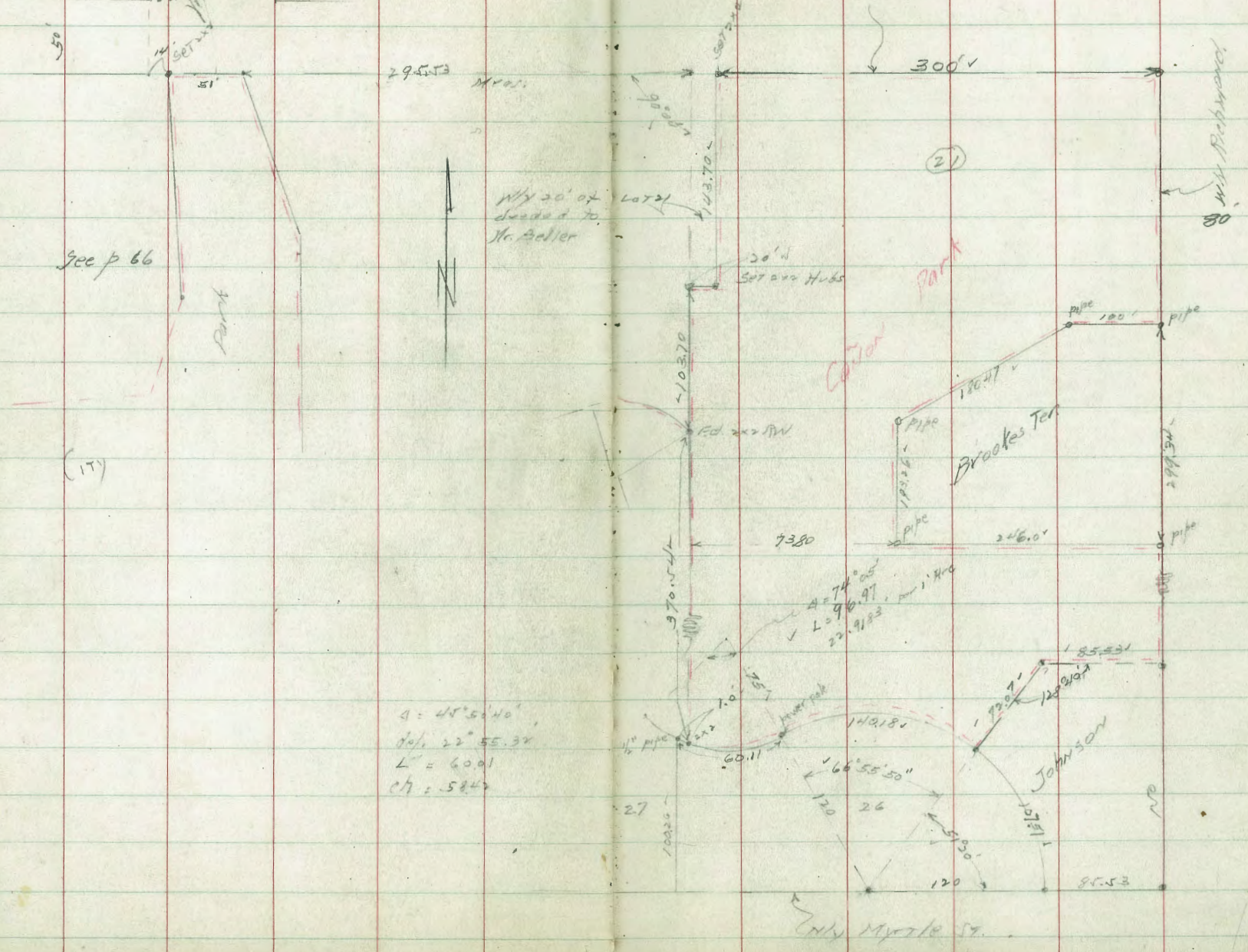
$$= 20.64 \left\{ \begin{array}{l} \text{Book 1317} \\ \text{Page 1, Pt.} \\ \text{(Lama Level)} \\ \text{Circuit.} \end{array} \right.$$

Rosecrans 64

Check Survey of
CITY CANTON PARK
LOT 21 MARSTON HILLS

Flora
Sisson
Northford
12-2-35

Indexed
C.S.K.
Sly Express



$\Delta = 45^{\circ} 52' 40''$
 $\Delta \phi = 22^{\circ} 55' 32''$
 $L = 60.01$
 $CH = .5842$

$\Delta = 74^{\circ} 05'$
 $L = 96.97$
 $CH = 1.810$
 22.9183

JOHNSON

Brookes Ten

CANTON
PARK

(21)

See p 66

(17)

only Myrtle St.

only Richmond

Why 20' of
L 29.553
deducted to
Mr. Bellier

20' H
Set over Hubs

Ed. 200 SW

85.53

27

100.26

73.80

246.0'

103.70

103.70

300'

29.553

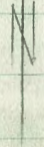
51'

50'

7/8 CT.

14' SET

Park



105.53

105.53

NE

85.53

180.47

100'

pipe

pipe

pipe

pipe

1/2" pipe

100.26

103.70

103.70

103.70

103.70

103.70

103.70

103.70

103.70

103.70

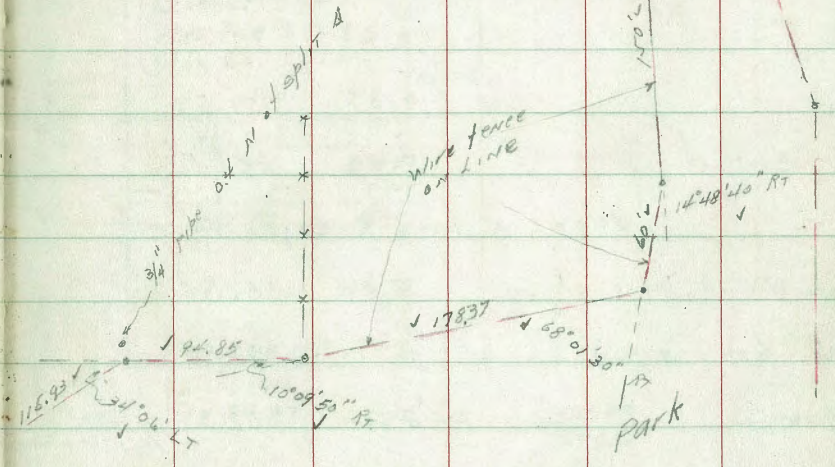
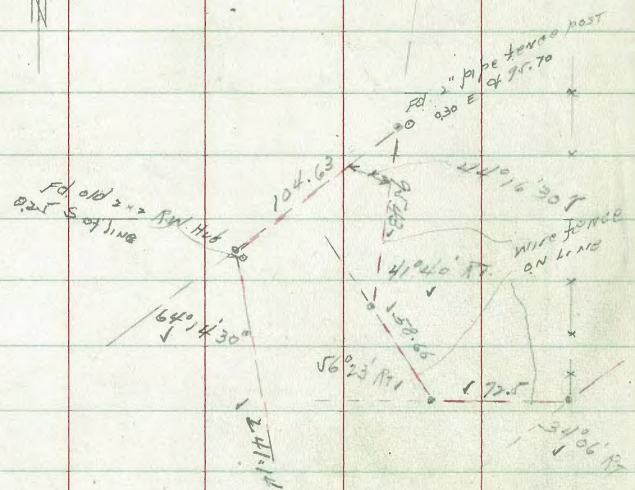
103.70

Check Survey of
 Nly Line of City Park.
 Lot 2 Marston Hills

Moore
 12-35

Indexed
 C.S.K.

66



CITY

PARK

2125

357.94

1+00

E-20	8.5	349.4
E	7.7	350.2
±	7.5	350.4
W	7.5	350.4

1+50

W	8.3	349.6
±	8.8	349.1
E	8.7	349.2

+20 9.0 348.9

T.P. 5.80 354.05 9.69 348.25

1+90 double garage on W. cnt. floor 32' Back

E-20 5.7 348.4

E-10 6.6 347.5

E 5.8 348.3

± 5.7 348.4

W 5.8 348.3

+30 ground 6.2 347.9

+32 floor 5.48 348.57

354.05

2+20

W-60	6.2	347.9
W-40	6.5	347.6
W	6.0	348.1
±	5.8	348.3

E 6.3 347.8

+7 7.0 347.1

+13 6.1 348.0

2+50

E-15 6.1 348.0

E-5 6.5 347.6

E 5.7 348.4

± 5.7 348.4

W 5.6 348.5

+30 6.5 347.6

+70 6.3 347.8

2+91 garage on W. cnt. floor 2.7 Back

W-2.7 = floor 5.6 348.5

2+97

1. W. of ± Sewer M.H. 9.05 345.00 F.L.

" " " " " " 4.60 349.45 Rim

63

354.05
3+00

W-70	6.8	347.3
W-35	6.3	347.8
W	5.5	348.6
⊥	4.6	349.5
E	4.8	349.3

3+07

3' E. of ⊥ = Sewer M.H. 8.98 345.07 F.L.

" " " " " " 4.36 349.69
3+22 = S. End. House 0.3 W. of W. Line

3+30

0.3' W. of W. Line = E. side House 4.95 349.10 floor.

3+45

E	3.9	350.2
⊥	4.0	350.1
W	5.1	349.0

3+50 = N. End. House 0.3 W. of W. Line

3+58 garage on W. dirt-floor 2.2 Back

W-2.2 floor	4.1	350.0
W	4.1	350.0
⊥	3.6	350.5
E	3.5	350.6

354.05

3+69 garage on W. dirt. floor 2.2 Back

W-2.2 = floor 3.9 350.2

4+00

E	2.5	351.6
⊥	2.7	351.4
W	2.7	351.4

T.P. 5.26 357.01 2.30 351.75

4+40

W 5.3 351.7

⊥ 5.0 352.0

E 4.4 352.6

5+00

E 4.6 352.4

⊥ 5.0 352.0

W 5.1 351.9

5+16 garage on E. cont. floor 8.7 Back

E-8.7 floor 5.0 352.0

5+49 garage on E. dirt floor 8.9 Back

W 4.8 352.2

⊥ 4.9 352.1

E 4.9 352.1

+8.9 floor 4.8 352.2

357.01

5770

E	4.4	352.6
±	5.0	352.0
W	4.8	352.2
	5+90	
W	5.4	351.6
±	5.6	351.4
+4	4.8	352.2
+5	3.7	353.3
E	3.8	353.2

6400

E	3.0	354.0
+4	6.7	350.3
±	6.9	350.1
+5	7.1	349.9
W	5.6	351.4

6407²⁰ = S. Line Meade Ave

W. S. End. cmt. cl.	7.79	349.22
W. S. " Pav.	7.98	349.03
± " " "	8.13	348.88
+7.4 " " "	7.98	349.03

357.01

6407²⁰ (con)

70

E. = S. End. cmt. cl.	7.67	349.34
6+21 ²⁰ = S. cl. Line		
100' E. of E. line cl.	7.38	349.63
" " " " " Pav	8.03	348.98
E. " "	8.51	348.50
E. cmt. cl.	7.77	349.24
± Pav.	8.56	348.45
W. " "	8.58	348.43
W. cmt. cl.	7.87	349.14
50' W. of W. line " "	8.11	348.90
" " " " " Pav.	8.78	348.23
B.M. B.P. N.W. 44 th + Meade	4.60	352.41 = 352.40

2-19-36
Miller
Walker
Bliss.

Culvert. levels for drainage
Bk. 1. Wilshire Place, Plat Page 67

Culvert could be constructed on
the S. 2' of Lot 16 - The N. 3' of Lot
15. The S. 3' of Lot 14. or the
N. 3' of Lot 13. without disturbing
any improvements.

Levels on S. Line Lot 16

B.M.B.P	0.75	358.48		357.73	S.W. 43 rd & El Cajon
T.P.	5.65	355.93	8.20	350.28	
0+00 = $\frac{1}{2}$ Alley = 2+00			7.6	348.3	{Alley} Profile
0+50 west			7.9		
1+00 "			7.1		
1+35 ³³ "			5.72		= E. edge cnt. walk
1+40 ³³ "			5.82		= W " " "
1+43 "			5.80	350.13	= E. ch. 43 rd st.
1+43 = gutter Pav			6.29	349.64	
T.P.	3.69	353.97	5.65	350.28	

Levels on line bet. Lots 14 & 15. 71

0+00 = $\frac{1}{2}$ Alley = 2+50		353.97	5.6	348.4	{Alley} Profile
0+50 West.			6.3	347.7	
1+00 "			5.9	348.1	
1+35 ³³ "			5.03	348.94	= E. edge cnt. walk
1+40 ³³ "			5.15	348.82	= W " " "
1+43 "			5.20	348.77	= E. ch. 43 rd st.
1+43 "			5.82	348.15	= gutter pav

Levels on N. Line Lot 13

0+00 = $\frac{1}{2}$ Alley = 3+00			4.5	349.5	{Alley} Profile
0+8 ⁵⁰ = E. End. cnt. walk 2' wide.			5.02		
0+36 = W " " " " "			5.60		
0+50			6.3		
1+00			6.7		
1+35 ³³ = E. edge cnt. walk			6.51		
1+40 ³³ = W " " " "			6.60		
1+43 grade E. ch. of 43 rd st.			6.80		
1+43 = gutter pav.			7.27		

dipped for
drive

Levels on E. ch. line 43rd St.

353.97

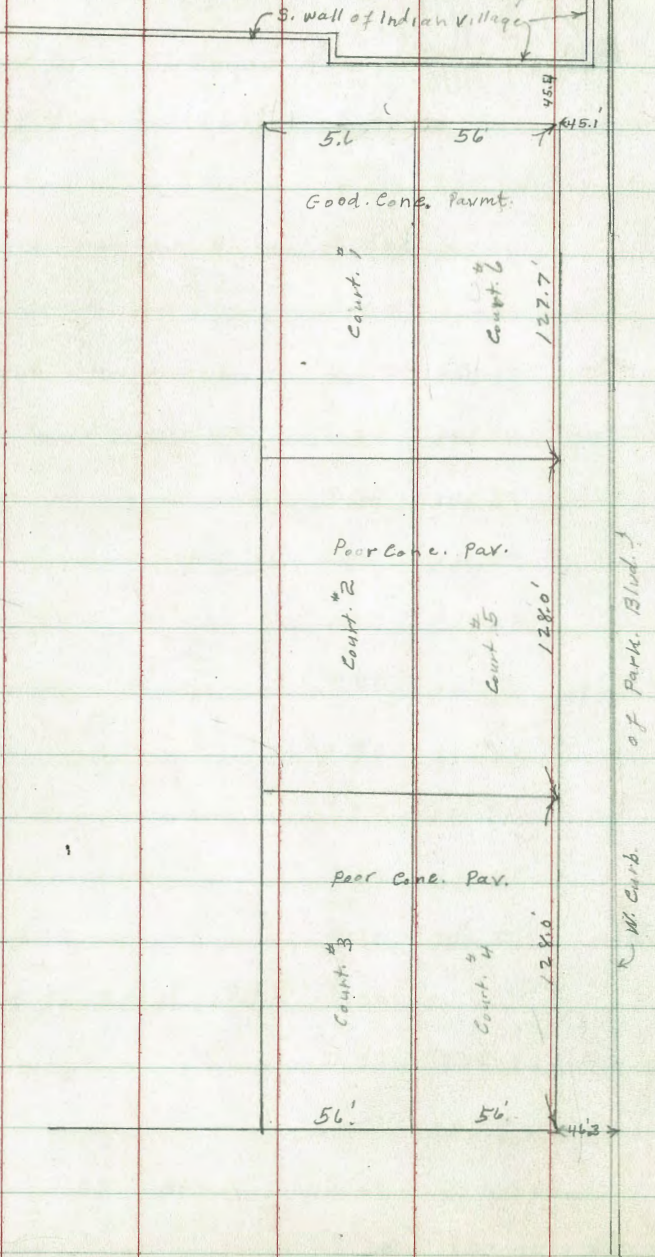
INDEXED
J. E. R.
AUG 17 1955

72

0+00	N. Line El Cajon Ave				
2+00	S. Line Lot 16	3.84	350.13	ch	
2+00	" " " "	4.33	349.64	gutter	
2+50	S " " 14	5.82	348.15	"	
2+50	" " " "	5.20	348.77	ch	
3+00	S " " 12	6.80	347.17	ch	
3+00	" " " "	7.27	346.70	gutter	
3+55		7.65	346.32	"	
3+55		7.05	346.92	ch	
4+00		7.23	346.74	"	
4+00		7.85	346.12	gutter	
4+50		7.93	346.04	"	
4+50		7.00	346.97	ch	
5+00		7.09	346.88	"	
5+00		8.11	346.86	gutter	
5+39	4 Ex. 20 ch. inlet.	8.30	346.67	"	
5+39		7.30	346.67	ch.	
5+39		14.1	337.9	F.L.	
J.P.	9.53 359.81	3.49	350.28		
Original BM		2.08	357.73 = 357.73		

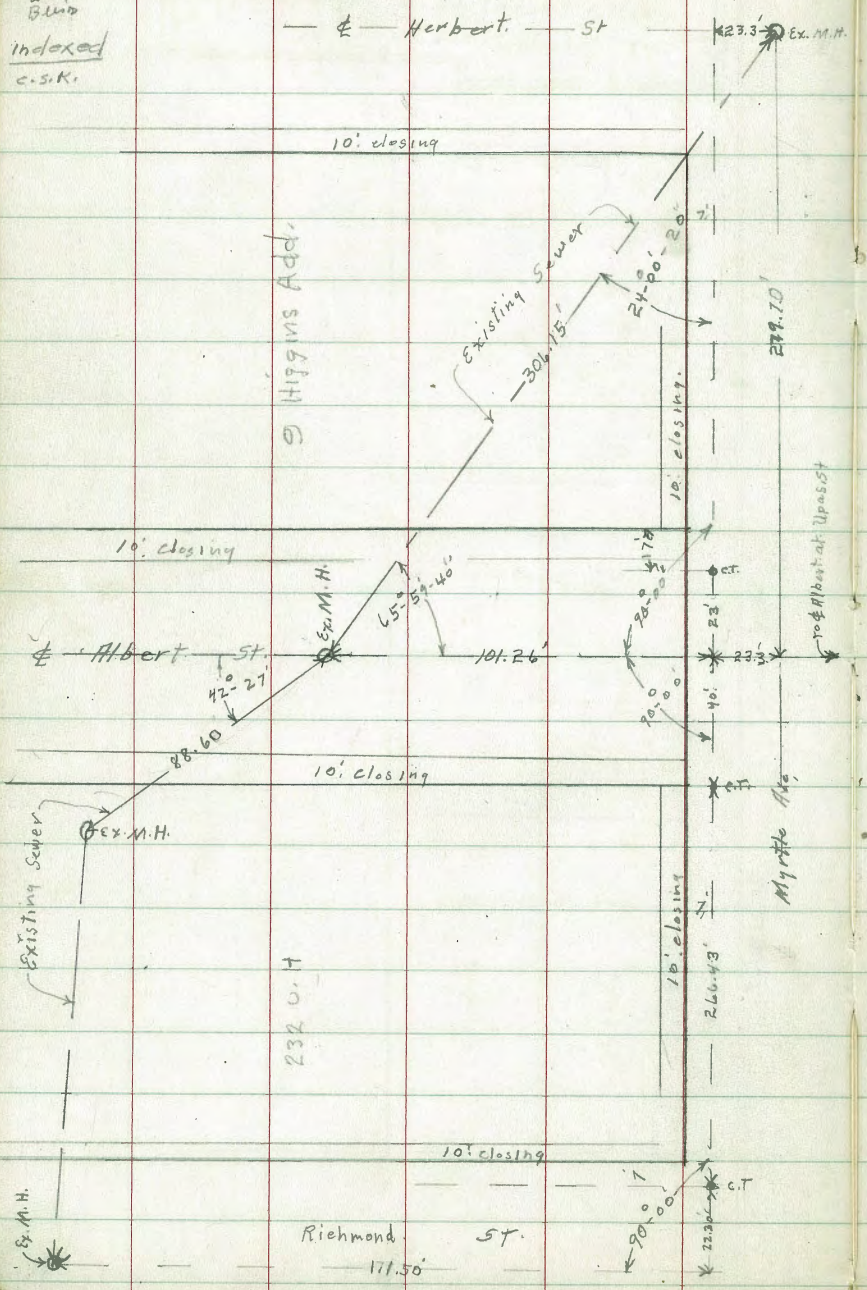
Indexed
C.S.K.

Survey of Tennis Courts Balboa Park
W. of Park Blvd. S. of Indian Village



2-18-37 Survey of Existing Sewer from Herbert
to Richmond St. N. of Myrtle

Indexed
c.s.K.



6-9-38
Miller
Walker
Bliss

X Sec. Alley Blk.

E Teratta Hts

Indexed

No 2

C.S.K.

Madison

Ave

75

B.M.B.P. 4.32 395.83 391.51 S.E. Monroe & Wilson

12' S. of N. line = N. ch. line of Monroe St

W-25	quarter pav	5.57	390.26
W	" "	5.86	389.97
W	ent. ch	5.26	390.57
☒	pav	6.03	389.80
E	ent. ch	6.10	389.73
E	quarter Pav	5.64	390.19
+ 25	" "	6.31	389.52

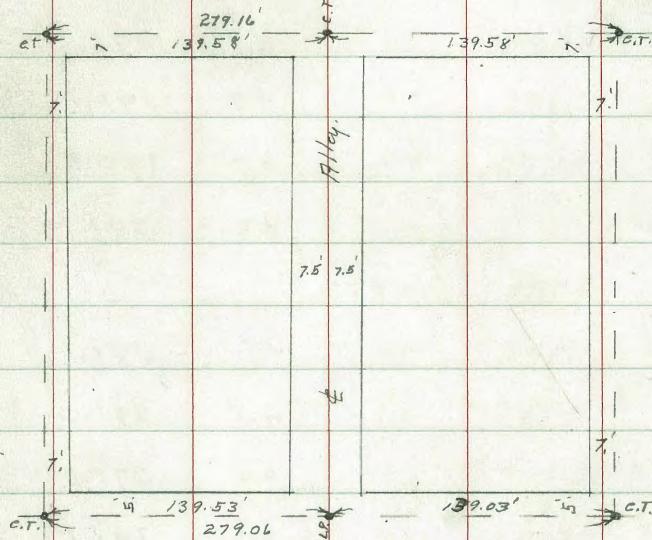
0+00 = N. Line Monroe

7.3	E. of ☒ = ent. ch N. End.	5.37	390.46
"	" " " " pav " "	5.64	390.14
☒	" " " "	5.74	390.09
+ 7.3	" " " "	5.41	390.42
"	ent. ch. " "	5.22	390.61

0+05

W		4.7	391.1
☒		5.2	390.6
E		5.3	390.5

Plotted AEB



Monroe

Ave

			395.83
			0+30
E		4.2	391.6
☒		4.5	391.3
W		4.2	391.6
			0+50
W		4.5	391.3
☒		4.5	391.3
E		4.4	391.4
+ 2		5.0	390.8
+ 10		5.3	390.5

397.52

from 4+09 to 4+40, hedge on E. 1.0 in Alley.
 4+10 Fence on E. 0.4 in Alley

4+41 " " " 0.5 " "

4+92 " " " 0.5 " "

4+41 N. End. Fence on W. 1.2 in Alley.

4+50

E-10 5.1 392.4

E 5.0 392.5

± 4.9 392.6

W 5.1 392.4

+10 5.2 392.3

4+93

E. Line Pipe Lot. Cor. 4.69 392.83 | Alley Grade? | cut?

5+00

W-10 5.0 392.5

W 5.0 392.5

± 5.1 392.4

E 4.5 393.0

+10 4.9 392.6

397.52

5+25

78

E-10 5.3 392.2

E 5.0 392.5

± 5.3 392.2

W 5.7 391.8

+10 5.3 392.2

5+43

E. Line Pipe Lot. Cor. 5.13 392.39 | Alley Grade? | cut?

5+50

W-10 5.2 392.3

W 5.2 392.3

± 5.4 392.1

E 5.3 392.2

5+77 Garage on E. North Entrance ^{line} cut. floor 0

E-5, floor 4.98 392.54

E 5.2 392.3

± 4.8 392.7

W 5.3 392.2

+10 5.3 392.2

397.52

5 + 81

E-5 in yard. 5.5 392.0

6 + 00

W 4.9 392.6

E 5.3 392.2

E 5.3 392.2

r 5 5.6 391.9

6 + 37

-5 5.6 391.9

E 5.3 392.2

E 5.2 392.3

W 5.0 392.5

6 + 42⁵ = S. Line Madison

W. cnt. cl 5.64 391.88

W pav s. End. 5.65 391.87

E " " 5.81 391.71

+ 7.2 " " 5.71 391.81

+ 7.2 cnt. cl. " " 5.70 391.82

12 in. of S. Line - S. cl. Line Madison

E-25 pav 4.57 390.95

E " 4.35 391.17

397.52

79

E. cnt. cl. 5.89 391.63

E. pav. 6.34 391.18

W " 6.31 391.21

W cnt. cl. 5.78 391.74

W + 25 pav. 6.13 391.39

T.P. B.M. B.P. 4.65 397.35 4.82 392.70

T.P. 4.44 395.84 5.95 391.40

orig B.M. 4.33 391.51 ✓

S. E. Madison
+ Wilson

2.56
124

53.20
26.85

54.10
48.07

774
660
1434
6.13
7.38
1351

765
25
19.0
71
9.5
61.5

S
N
T
W
T

6.03
95
15
80
2.87
278
9
296
55.11
51.51
3.60
28.10
20.65
7.45

5.
15.3
25.6
28.6
33.8
41.9
50.0

15

11.5
45
50.6

2.41
2.48

72.9
225
95.4
7.9

58
32
45

434
471
9.05

363.94
357.73
6.21

24
143
267
135.33

7.8
8.3
16.1

4.64
434
8.98
70.00
20.18
49.82

107
539
68