

1532



FEB 1988

1535

1532

1532

MICROFILMED  
DEC 24 1964

ENGINEERING DEPARTMENT  
CITY OF SAN DIEGO  
CALIFORNIA.

22.75  
51.3  
86.4  
146.45

Our Leather Bound Engineers Note Books are carried in the following rulings:

- No. 380 LEVEL BOOK. Left and Right Hand Page the same as Left Hand Page of this Book.
- No. 382 FIELD BOOK. Left Hand Page as in this Book, Right Hand Page 4 x 4 to the inch, Center Line Red.
- No. 384 MINING TRANSIT BOOK. Left Hand Page as in this Book, Right Hand Page 8x8 to the inch, Center Line Red.
- No. 385 FIELD BOOK. Left Hand Page as in this Book, Right Hand Page 8 vertical and 4 horizontal lines to the inch, Center Line Red.

We also carry the Note Books listed above, bound in extra strong Fabri-Hide (otherwise the same quality of book), which can be furnished at a somewhat lower price.

In ordering Fabri-Hide covered books, add the letter "F" to catalog number.

**THE FREDERICK POST CO.**  
*ENGINEERING and DRAFTING SUPPLIES*  
IRVING PARK STATION  
CHICAGO, ILL.



C	3.9	1.57
1/4	3.8	1.67
cb on conc.	3.30	2.17
+6 "	2.94	2.53
N " "	2.78	2.69
/ +02		
N	2.7	2.77
cb	3.3	2.17
+1.5	6.47	-1.00
+3	6.4	-0.93
+4	3.7	1.77
/ +33		
N on Cem floor d of 10'	3.07	2.40
cb	3.9	1.57
+2	5.2	0.27
+4	4.0	1.47
/ +50		
N	3.5	1.97
cb	4.0	1.47
+2	5.0	.77
+4	4.3	1.17
1/4	4.2	1.27
C	4.4	1.07
1/4	4.2	.87
gut	4.7	.77
S cb cert.	4.6	1.05

FL. over  
04 18" (1.7) 1.00

2 + 00" = Ely Col.		
S	4.7	0.77
cb	5.2	.27
gut	5.1	.37
1/4	4.6	.87
C	4.5	.97
1/4	4.3	1.17
+10	4.6	.87
+11	5.0	.47
cb	4.4	1.07
N	3.9	1.57
/ +85		
N @ 2.5' door to office	3.87	1.60
" " " floor #1	3.23	2.27
2 + 09		
N	4.4	1.07
cb	4.9	.57
+3	4.4	1.07
1/4	4.2	1.27
C	4.3	1.17
1/4	4.4	1.07
cb	5.1	0.37
+3	3.5	1.97
S	2.7	2.77
2 + 13.5		
FL. of 12" drain inlet at NL of Stark St	7.65	-2.18

2+13.5		
S		5.5
cb	FL. RW. Box Culv.	5.57
"	Top " " "	4.47
1/4		4.3
C		4.1
1/4		4.0
cb	Top RW Box Culv.	4.0
"	FL " " "	5.09
N		4.5

2+24.7

cb	on Ely Conc. Crossing	3.84
C	" " "	3.87
Scb		4.01

2+29.2 = E RR Spur

S	E rail	4.01
S	W "	4.08
E	E "	3.97
E	W "	3.91
N	E "	3.83
N	W "	3.83

2+33.5

N	on Conc. Par edge	3.70
C	" " "	3.85
S	" " "	3.98

2+54.1 ♀ Conc. Strip Pav.			Ext. tracks
S		4.07	1.40
C		3.99	1.48
N		3.80	1.67

2+74.7

N	on Conc. Pav.	3.69
C	" " "	3.84
S	" " "	3.95

2+79 = E RR Spur

S	E rail	4.01
S	W "	3.99
C	E "	3.85
C	W "	3.87
N	E "	3.78
N	W "	3.79

2+92.00 = E RR Spur

N	E rail	3.73
N	W "	3.71
C	E "	3.85
C	W "	3.83
S	E "	4.01
S	W "	4.01

3+15

S		4.0
cb		4.2
1/4		4.1

C	4.4	1.07	
1/4	4.1	1.37	
cb	4.1	1.37	
N	4.4	1.07	
+50 = Pond	4.8	.67	
3+40			
N	3.8	1.67	
cb	3.8	1.67	
1/4	3.8	1.67	
C	3.9	1.57	
1/4	4.0	1.47	
cb	3.9	1.57	
S	3.8	1.67	
3+90			
S	2.6	2.87	
cb	3.4	2.07	
1/4	3.5	1.97	
C	3.5	1.97	
1/4	3.5	1.97	
cb	3.6	1.87	
N	3.5	1.97	
4+30.5			
S	2.51	2.96	floor El.
4+40			
S	2.0	3.47	
cb	2.9	2.57	

1/4	2.8	4.67
C	2.8	2.67
1/4	2.7	2.77
cb	3.0	2.47
N	3.2	2.27
T.P. 472 7.80 2.39 3.08		
4+75.7 = Miller Hub		
N	4.7	3.10
cb	4.7	3.10
1/4	4.4	3.4
C	4.5	3.3
1/4	4.5	3.3
cb	4.7	3.1
S	5.2	2.6
4+84.25 = E Spur		
S E rail	4.51	3.29
S W "	4.48	3.32
C E "	4.39	3.41
C W "	4.39	3.41
N E "	4.42	3.38
N W "	4.40	3.40
4+97.25 = E Spur		
N E rail	4.43	3.37
N W "	4.43	3.37

C	E rail	4.53	3.27
C	W "	4.47	3.33
S	E "	4.68	3.17
S	W "	4.65	3.15

$\sum + 27.7 =$  Fly edge bar. on Pac.

S		4.50	3.3
C		4.44	3.36
N		4.36	3.44

TP		3.07	4.71
----	--	------	------

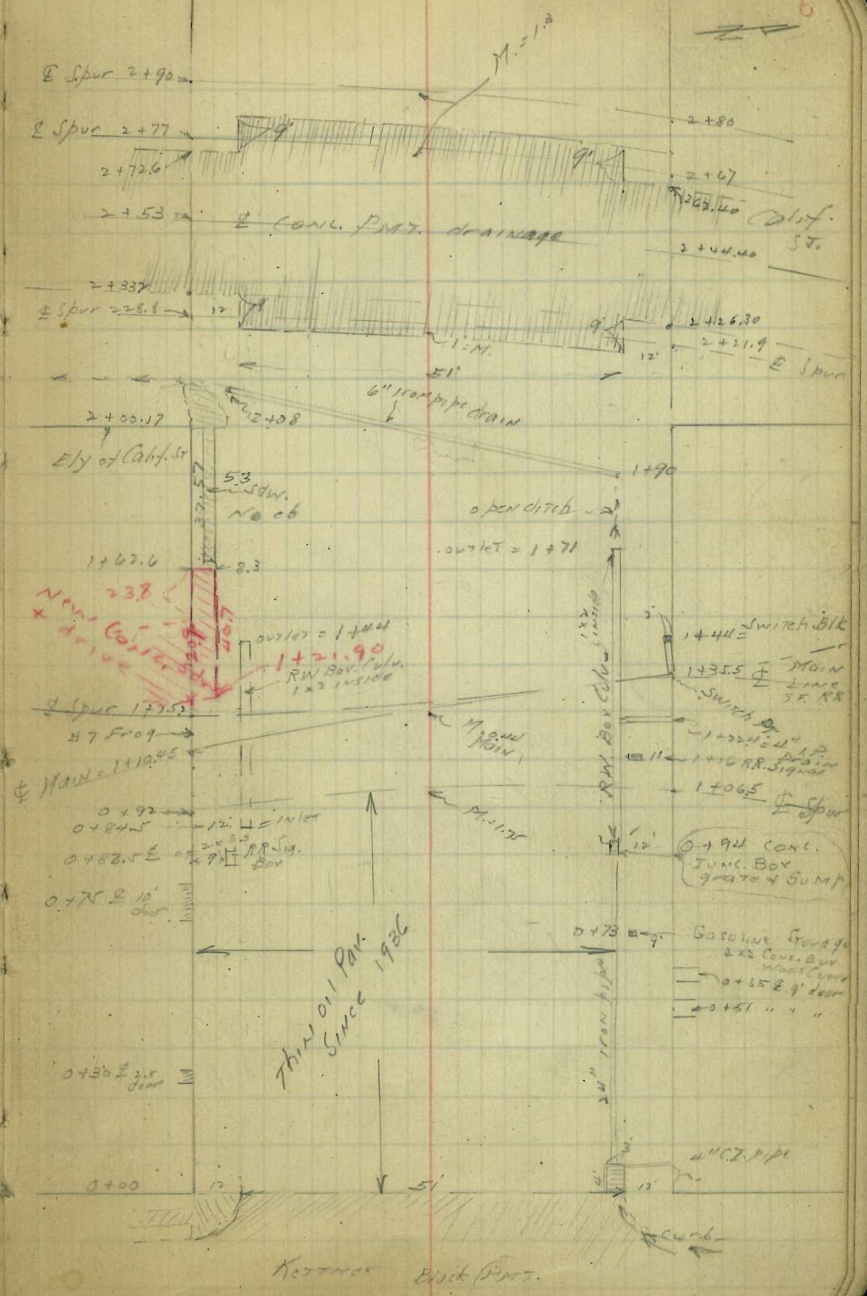
Level on F 57  
Kottner to Pacific

75' wide  
12' cbs  
12.5' 1/4"

indexed  
c.s.k.

SEBP	.44v	9.87	5.45	F + Kottner
	0+00 = W.L. Kottner			
S		6.25	5.62	
cb cmt.		4.38	5.49	
gut Pav		5.22	4.65	
1/4		4.85	5.02	
C		4.73	5.37	
1/4		4.77	5.10	
gut grate		5.38	4.49	
cb cmt.		4.61	5.26	
N No sidewalk		4.48	5.39	
	0+04			
N cb top of Conc Heat Fibor		4.40	5.47	of 7.150 9070
	0+30			
St		4.52	5.35	on lot 511
	0+50			
N apt approx 9' door		4.5	5.37	
cb		4.7	5.17	
1/4		4.7	5.11	
C		4.5	5.37	
1/4		4.6	5.27	
cb		4.9	4.97	
S		4.4	5.47	

E F ST.

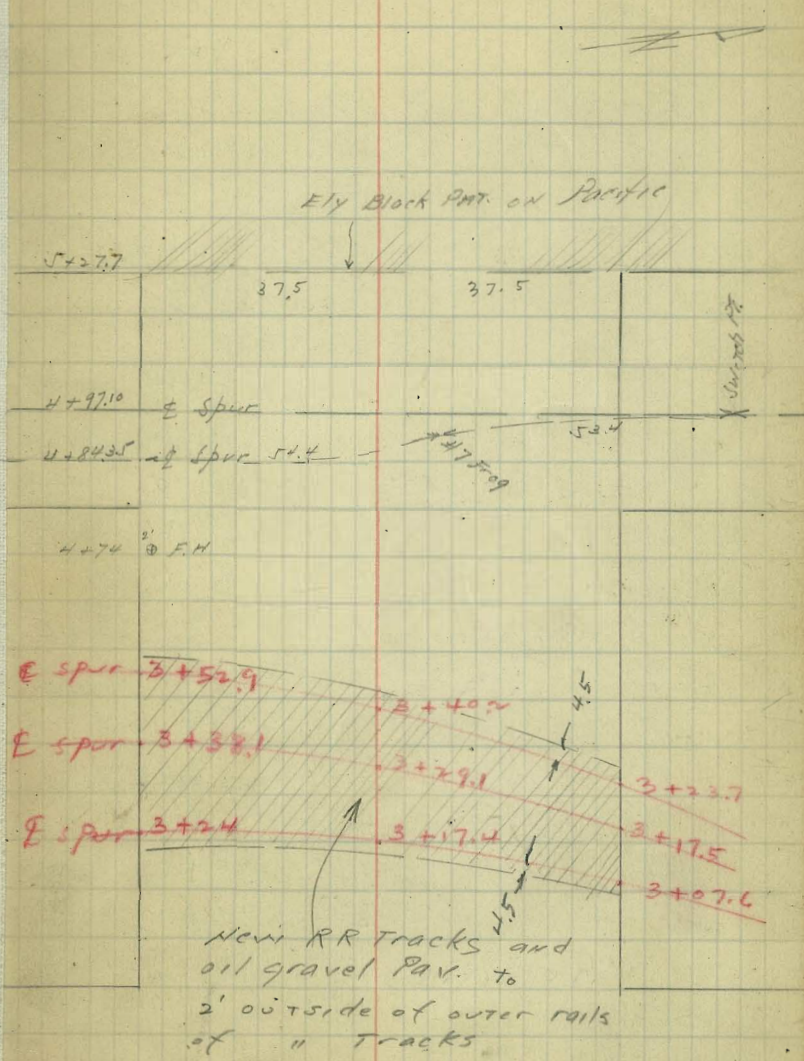


6



9.87

0+65			
NL	E of 9' door	4.8	5.07
0+70			
SL	E of 10' door	4.41	5.46
+8		4.5	5.37
cb		5.3	4.57
+2		5.3	4.57
1/4		4.6	5.27
C		4.5	5.37
0+73			
N 26	Top Cont. Box <sup>gas</sup> storage	4.57	5.30
0+84.5			
S		5.1	4.77
+10		4.9	4.97
cb	Top RW Box Culu	+90	4.97
+1	" " " FL	638	3.49
+5		4.9	4.97
1/4		4.7	5.17
C		4.5	5.37
1/4		4.7	5.17
cb		5.3	4.57
N		4.9	4.97
0+94			
N		4.9	4.97
cb	on 3x3 grate	5.2	4.45
FL	of 18" iron pipe	7.25	2.45
FL	" 1x2 RW Box Culu	7.04	2.83
N 1/4		4.7	



0+97 = 1st Spur on St. Note! Take out Super El

S	E rail	4.87	5.00
S	W "	4.81	5.06
C	E "	4.67	5.20
C	W "	4.55	5.32
N cb	E " = 1+045 = NL	4.59	5.28
N cb	W "	4.46	5.41

N = Box Car

1+16

N cb	Top of Conc. Base <sup>Signal</sup>	4.53	5.34
------	-------------------------------------	------	------

1+22.4

NL = FL of 4" iron pipe drain	6.10	3.77
"	5.0	4.87
N cb	5.0	4.87

1+10.XV = 5th Sta

S	E rail	5.03	4.84
S	W "	5.00	4.87
C	E "	4.89	4.98
C	W "	4.87	5.00
N	E "	4.78	5.09
N	W "	4.74	5.13

2. +15.X = 5th Sta

S	WE rail	4.96	4.91
C	W "	4.52	5.05

1+44

S		5.8	4.07
---	--	-----	------

S + 9		5.7	4.17
cb	Top 1st RW Box Car	5.60	4.27
"	FL " " " "	7.08	2.79
cb + 4		5.7	4.17
"		5.4	4.47
"		5.4	4.47
1/4		5.3	4.57
cb		5.3	4.57
N	Base of Smith Stand	5.1	4.77

1+71

N		5.8	4.07
+10		6.0	3.87

cb	TOP 1st RW Box Car	6.60	3.27	outlet
----	--------------------	------	------	--------

"	FL " " " "	7.90	1.97
+4		6.1	3.77

1/4		6.1	3.77
"		6.1	3.77

1/4		6.3	3.57
+10		6.4	3.47

cb	in open ditch	6.8	3.07
+10		6.0	3.87

+307 = N edge Cent Sdn.		6.00	3.87
S		6.0	3.87

1+90

S		6.2	3.67
N	8.3 North track	6.21	3.66

+10		6.3	3.57	
cb	in direct	6.9	2.97	
+7		6.6	3.27	
1/4		6.5	3.37	
c		6.4	3.47	
1/2		6.3	3.57	
+8		6.4	3.47	
+11	FL. of 6" iron pipe	7.58	2.29	in lot
cb		6.9	2.97	
+1		6.4	3.47	
N		6.2	3.67	
	2+08			
S	cb line FL. 6" iron pipe	8.05	1.82	outlet
	2+12			
S	top walk	6.39	3.48	
S	gut on gr.	6.9	2.97	
S cb		6.9	2.97	
1/4		6.7	3.17	
c		6.5	3.37	
1/2		6.5	3.37	
cb		6.5	3.37	
N		6.3	3.57	
	2+28.5 SL STA			
S	E rail	6.88	2.99	
S	W "	6.88	2.99	
C	E "	6.72	3.15	
C	W "	6.67	3.20	

N	E rail	6.43	3.44
N	W "	6.41	3.46
	2+32.2 = SL STA.		
N	E edge par. STA. B	6.31	3.56
C	" "	6.09	3.28
S	" "	6.78	3.09
	2+53 SL STA.		
S	on cone of drainage	6.90	2.97
C	" "	6.70	3.17
N	" "	6.25	3.42
	2+72.6 = WLY edge par.		
N	on cone	6.32	3.55
C	" "	6.59	3.28
S	" "	6.77	3.08
	2+77 = SL STA.		
S	E rail	6.88	2.99
S	W "	6.79	3.08
C	E "	6.58	3.29
C	W "	6.50	3.37
N	E "	6.32	3.52
N	W "	6.15	3.72
	2+90 = SL STA		
N	E rail	6.23	3.64
N	W "	6.18	3.69
C	E "	6.59	3.48
C	W "	6.58	3.49

2+90			
S	E rail	6.73	3.14
S	W "	6.68	3.19
3+00			
S		9.5	2.37
cb		7.0	2.87
1/4		6.8	3.07
c		6.8	3.07
1/4		6.8	3.07
cb		7.0	2.87
N		6.9	2.97
3+25			
N		6.9	2.97
cb		7.1	2.77
1/4		7.4	2.47
c		7.6	2.27
1/4		7.9	1.97
cb		7.8	2.07
S		7.8	2.07
3+60			
N		7.3	2.57
cb		7.7	2.17
1/4		7.8	2.07
c		7.7	2.17
1/4		7.5	2.37
cb		7.0	2.87
N		6.8	3.07

4+00			
N		7.2	2.67
cb		7.4	2.47
1/4		7.9	1.97
c		7.9	1.97
1/4		7.7	2.17
cb		7.5	2.37
S		7.0	2.87
T.P. 574 278 6.83 3.04			
4+50			
S		5.9	2.88
cb		6.1	2.68
1/4		6.2	2.58
c		6.4	2.38
1/4		6.7	2.08
cb		6.4	2.38
N		6.1	2.68
4+80			
N		5.8	2.98
cb		5.8	2.98
1/4		5.4	3.38
c		5.2	3.58
1/4		4.9	3.88
cb		5.4	3.38
S		5.4	3.38

4 + 84.35 = 1st Sta

S	E rail	4.98	3.80
S	W "	5.04	3.74
C	E "	4.82	3.95
C	W "	4.90	3.88
N	E "	4.86	3.92
N	W "	4.83	3.95

4 + 97.10 = 2nd Sta

N	E rail	4.83	3.95
N	W "	4.80	3.98
C	E rail	4.86	3.92
C	W "	4.86	3.92
S	E "	4.94	3.84
C	W "	4.92	3.86

5 + 27.7 = Ely edge part on P.C.

S		4.73	4.05
C		4.66	4.12
N		4.59	4.19

check to T.P. page 5

4.09	4.69	$\frac{4.71}{0.02}$
------	------	---------------------



N E rail	3.99	6.01
N W "	3.98	6.02
SL STA. 2+04.20 = Main $\frac{1}{2}$		
N E rail	4.09	5.91
N W "	4.06	5.94
C E "	4.21	5.79
C W "	4.18	5.82
S E "	4.32	5.68
S W "	4.34	5.66
2+20.40 $\frac{1}{2}$ Spur		
S E rail	4.24	5.76
S W "	4.27	5.73
C E "	4.11	5.89
C W "	4.09	5.91
N E "	4.06	5.94
N W "	4.01	5.99
2+45		
N	4.6	5.4
cb	4.8	5.2
$\frac{1}{4}$ NW edge M.H. corner	4.17	5.3
+2.1 = $\frac{1}{2}$ " "	4.17	5.3
7.7 W = $\frac{1}{2}$ " "	4.23	5.77
15.4 W = $\frac{1}{2}$ " "	4.28	5.72
C	4.3	5.7
S $\frac{1}{4}$	4.3	5.7
cb	4.3	5.7
S	4.6	5.4

2+50.5		
S cb + 1.6 $\frac{1}{2}$ M.H. corner	4.42	5.58
S $\frac{1}{4}$ + 0.6 $\frac{1}{2}$ M.H. "	4.34	5.66
3+00		
S	4.6	5.4
cb	4.9	5.1
$\frac{1}{4}$	4.9	5.1
C	5.1	4.9
$\frac{1}{4}$	5.0	5.0
cb	5.3	4.7
N	5.0	5.0
3+03		
N	4.9	5.1
cb	5.4	4.6
+ 8 edge par.	5.20	4.8
3+15		
N par	4.98	5.02
cb "	5.12	4.88
+ 8 " edge	5.26	4.74
3+40		
N par.	4.72	5.28
cb "	5.15	4.85
+ 8 " edge	5.26	4.74
$\frac{1}{4}$	5.3	4.7
C	5.2	4.8
$\frac{1}{4}$	5.3	4.7

cb		5.3	4.7
S		5.1	4.9
	3+69		
N	on pav	5.23	4.77
cb	" "	5.21	4.79
+8	" " edge	5.30	4.7
	3+77		
N		5.3	4.7
cb		5.4	4.6
+8	pav edge 4+00	5.25	4.75
S		5.4	4.6
cb		5.6	4.4
1/2		5.5	4.5
C		5.4	4.6
1/2		5.4	4.6
cb		5.6	4.4
N		5.3	4.7
	4+40		
N		5.7	4.3
cb		5.7	4.3
1/4		5.7	4.3
C		5.5	4.5
1/2		5.6	4.4
cb		5.4	4.4
S		5.6	4.4

	4+74		
S	Top xx Valve Box	5.28	4.7
S	ground	5.5	4.5
	+2 FL of 4" IP drain	5.96	4.04
cb		5.5	4.5
1/2		5.5	4.5
C		5.4	4.6
1/2		5.4	4.6
cb		5.5	4.5
N		5.5	4.5
	4+80		
	SL +1 = outside 1" drain	6.16	3.84
	4+83.5 E Spur		
N	E rail	5.27	4.68
N	W "	5.30	4.7
C	E "	5.33	4.67
C	W "	5.35	4.65
S	E "	5.45	4.55
S	W "	5.48	4.52
	4+97 E Spur		
S	E rail	5.22	4.78
S	W "	5.18	4.82
C	E "	5.13	4.87
C	W "	5.10	4.90
N	E "	5.2	4.88
N	W "	5.0	4.90



$\sqrt{+07.4}$ 0.5 N of  $\Phi$  EST = MH. 5.06 4.94 $\sqrt{+16.3}$ 

336 N of St EST = M.H. 5.06 4.94

 $\sqrt{+27.7}$  = Fly cage Par on Pacific

N 5.47 4.53

C 5.44 4.58

S 5.36 4.64

T.P. 5.28 10.22 5.06 4.94

Ch to T.P. p 5 5.52 4.70 4.71

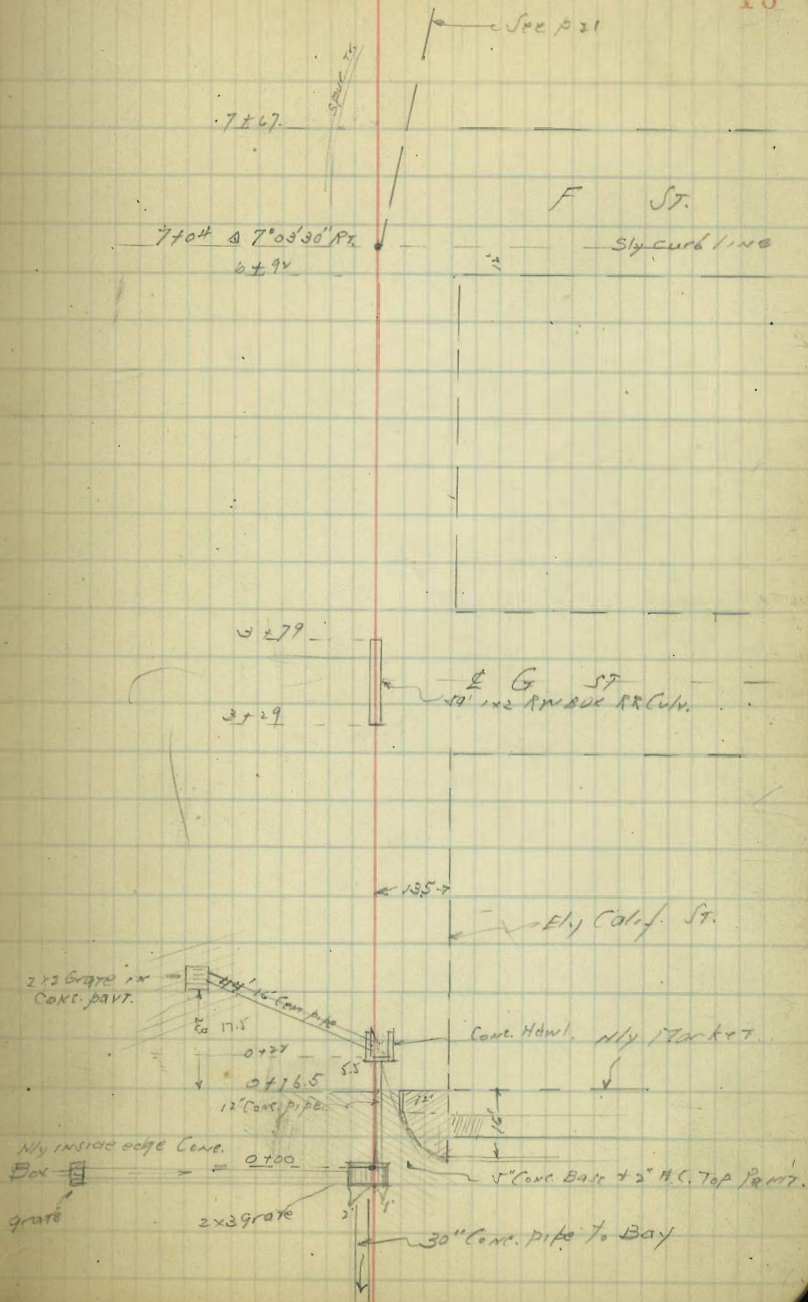
0.01

Proposed Drain on Calif. St.  
Market to F St.

Levels p 17

Proposed Drain

16



Levels of Prop. Drain  
on Calif. Market 7/4 F. S.

L.T.

Prop. Drain RT

17

0+33

-1.41

-1.71

5.8

$\frac{7.1}{4} = \text{Eq. dist.}$

0+28

7.4  $\rightarrow$  2.01

0+25

2.24  
7.63 Cont. Horiz. of inlet

0+23 = 2x2 Box inlet

FL 16" concrete  
pipe inlet  
-1.86  
 $\frac{7.25}{4.4}$

+1.62

4.57

$\frac{4.57}{4.4} = \text{grade}$

-2.23

7.62 FL 16" pipe outlet

0+22

2.23  
7.62 = FL 12" pipe inlet

0+20

+1.44  
5.81 = Top Hd. wall

0+16.5 = N/Y Market

+1.38

5.01 = Top pav.

+1.31

5.02

$\frac{5.02}{1.5} = \text{curb top}$

+1.28

4.61 Top cb.

0+00 = N. inside edge Conc. Box

-4.23  
9.62

FL. Box

+1.11

5.28 = Top iron grate

S.W. BP

2.43

5.39

2.96

G +  
Mortar

5.39  
 $\frac{5.39}{3}$

6

$$\begin{array}{r} \text{EX. ditch} \\ \frac{5.4}{2} \end{array} \begin{array}{l} -.01 \\ +1.19 \\ 4.7 \end{array}$$

+50

$$\begin{array}{r} \text{EX. ditch} \\ \frac{5.6}{2} \end{array} \begin{array}{l} -.21 \\ +.69 \\ 4.7 \end{array}$$

+25

$$\begin{array}{r} \text{EX. ditch} \\ \frac{5.7}{2} \end{array} \begin{array}{l} -.31 \\ +.59 \\ 4.8 \end{array}$$

+08

$$\begin{array}{r} -.51 \\ 5.9 \end{array} = \text{EX. ditch}$$

7

$$\begin{array}{r} -.31 \\ 5.7 \end{array} \begin{array}{l} -.11 \\ \frac{6.1}{2} \end{array} \text{EX. ditch}$$

+50

$$\begin{array}{r} +.59 \\ 4.8 \end{array} \begin{array}{l} -.61 \\ \frac{6.2}{2} \end{array} \text{EX. ditch}$$

1

$$\begin{array}{r} +.19 \\ 5.2 \end{array} \begin{array}{l} -.91 \\ \frac{6.5}{2} \end{array} \text{EX. ditch}$$

0+50

$$\begin{array}{r} -.31 \\ 5.7 \end{array} \begin{array}{l} -.41 \\ \frac{7.0}{2} \end{array} \text{EX. ditch}$$

539

539

+50

5

+92.5

+50

4

+79

3 + 29

3 + 14

539

+2.49  
2.9

+1.99  
3.4

+0.09  
3.3

+1.79  
3.6

+1.09  
4.3

4.39

5.00 = FL 1st Box = 12/147  
3.91 = Top  
+1.45

-0.4  
5.43

= FL outlet of 1st RW Box (C.N.)  
4.25 = Top  
+1.04

-0.21  
5.6

5.39

+1.79

3.6

FL of Box outlet

3.6

3.6

3.6

3.6

3.6

3.6

3.6

3.6

3.6

3.6

3.6

3.6

3.6

3.6

3.6

3.6

3.6

3.6

3.6

3.6

3.6

3.6

3.6

3.6

3.6

3.6

3.6

3.6

3.6

3.6

3.6

3.6

3.6

3.6

3.6

3.6

3.6

3.6

3.6

3.6

3.6

3.6

3.6

3.6

3.6

3.6

3.6

3.6

3.6

7+67 NLY F ST Put in grate inlet for drainage from N.

+10

7

+92 = SL F ST

6 +50

6 +00

539

TOP  
EVAL of Spur Tr.  $\frac{1.91}{6}$  +1.68

+3.59  
1.8

+2.29  
2.1

+2.79  
2.6

+2.49  
2.4

+3.51  
 $\frac{1.88}{2}$  = Top of Ret. No curb

+2.79  
2.6

+2.39  
3.0

+2.29  
2

Levels for proposed Drain  
 S.C.B. F St. S. of E St.

T.P. on Hub		2.89	5.46
+ ON Hub		2.89	
+50		2.7	
+04.5	F rail of Spur Tr.	3.02	
10	ON T.I.D.	3.5	
+87.9	W rail of Spur Tr.	3.03	
+58.1	E rail Main Tr.	3.27	
+43.6	W rail Main Track	3.37	
9		4.0	
+50		4.1	
8		4.8	
+50		5.1	
7+04 = S.C.B. F St = A	PT. $7^{\circ}03'30''$	5.51	
SEBP	3.10	8.55	5.15

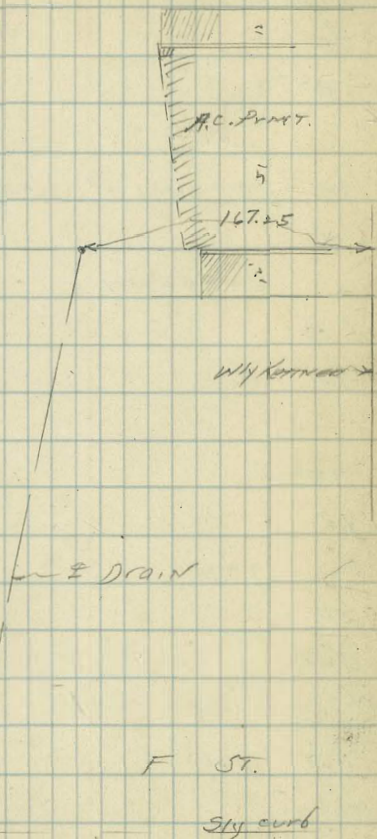
Hub  
 E +  
 Kottner

F St.

Sly curbline

7+04 A =  $7^{\circ}03'30''$  Pt.

See p 16



Level on Guide + PAVING  
 ON E ST  
 KETTNER WAY TO 1+65  
 1+54

on Hub p21 7.33 12.99 5.06

HL Kettner road

Sob 6.05 6.94

gut 6.54 6.45

C 6.01 6.98

gut grate over Cond. box chain 6.65 6.34

Hcb 5.96 7.03

0+50 = W/Y

Hcb 6.36 6.63

gut 7.03 5.93

C 6.39 6.60

gut 6.91 6.08

Sob 6.43 6.56

1+00

Sob 6.71 6.28

gut 7.31 5.68

C 6.84 6.17

gut 7.38 5.61

Hcb 6.66 6.33

1+54

Hcb 7.15 5.84

gut 7.73 5.26

C 7.17 5.80

gut 7.70 5.29

12.99

22

1+59.75 = SL STA

1+65 = HL = Take on Diagonal

7.05 5.94

S gut 7.73 5.26

C 7.38 5.61

gut grate cond. box 7.81 5.18

Hcb 7.23 5.76  $\frac{5.75}{.01}$  P.Y



indexed  
c.s.K.

Cross Section of Alley 15' wide  
B/C C Riviera Villas

Moore 7-24-26

NWBP	1274	273.22		260.68	Catalina Santa Barbara
T.P.	1271	285.57	0.56	272.86	
T.P.	625	291.08	0.74	284.83	
T.P.	413	284.54	10.67	280.41	

00 = NELY Santa Barbara

E Top cb		7.75		276.79	
E Pav.		8.13		276.41	
C "		8.49		275.85	
W "		8.64		275.90	
W Top cb		8.29		276.25	

0+10

W		7.9		276.6	
C		7.9		276.6	
E		8.0		276.5	

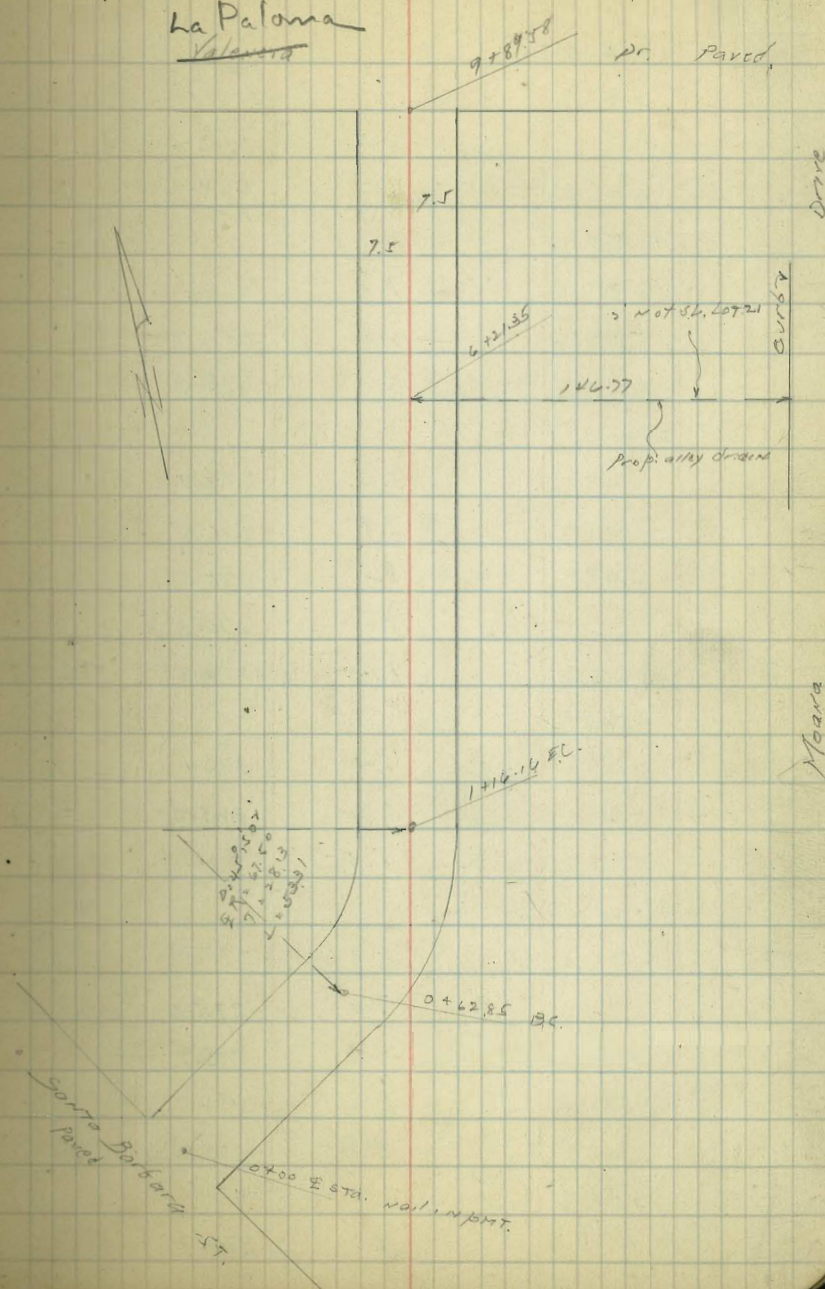
0+62.85 BC.

E		5.7		278.8	
C		5.8		278.7	
W		5.9		278.6	

0+89.56

W		5.7		278.8	
C		5.0		279.5	
E		4.4		280.1	

La Paloma  
~~Alameda~~



	1+10.16 EC.		
-25		3.3	281.2
E		5.0	279.5
C		5.5	279.0
W		5.9	278.6
+50		7.9	276.6
	1+50		
W		7.4	277.1
C		6.6	277.9
E		6.0	278.5
	2+00		
-25		5.3	279.2
E		7.9	276.6
C		8.0	276.5
W		8.0	276.5
+50		10.4	274.3
	2+50		
W		8.4	276.1
C		8.4	275.9
E		8.5	276.0
	3+00		
-25		8.8	275.7
E		9.0	275.5
C		8.8	275.7
W		8.8	275.7
+50		9.3	275.2
	3+50		
W		9.4	274.9

C		9.7	274.8	
E		9.9	274.6	
	4+00			
-25		10.1	274.4	
E		10.0	274.5	
C		9.9	274.6	
W		9.8	274.7	
+50		9.2	275.3	
	4+50			
W		9.9	274.6	
C		9.8	274.7	
E		10.4	274.1	
	5+00			
-25		11.1	273.4	
E		10.5	274.0	
C		10.5	274.0	
W		10.3	274.2	
+50		8.8	275.7	
J.P.	447	279.35	9.60	274.88
	5+50			
W		4.7	274.7	
C		5.4	274.2	
E		5.4	274.0	

279.35

6+00

-25		6.4	273.0
E		5.5	273.9
C		5.4	274.0
W		5.1	274.3
+25		4.8	274.6

6+21.35

W		5.1	274.3
C		5.4	274.0
E		5.7	273.7
+50		7.0	272.4
+100		7.7	271.7
+127.27	Wly Moano Dr.	8.3	271.1
+139.27	top cb.	8.45	270.9
"	907 pak.	9.1	270.23
	6+50		

E		5.3	274.1
C		5.0	274.4
W		4.5	274.9

7+00

-25		3.8	275.6
W		4.5	274.9
C		5.0	274.4
E		5.1	274.3
+25		6.4	273.0

279.35

25

7+50

E		4.7	274.7
C		4.5	274.9
W		4.1	275.3

8+00

-25		2.8	276.6
W		3.9	275.5
C		4.4	275.0
E		4.6	274.8
+25		6.0	273.4

8+50

E		4.4	274.8
C		4.4	275.0
W		3.7	275.7

9+00

-25		2.7	276.7
W		3.7	275.7
C		4.2	275.2
E		4.6	274.8
+25		5.3	274.1

9+50

E		4.4	275.0
C		4.1	275.3
W		3.8	275.6

279.35

26

9+75

W		2.7	275.2
C		3.8	275.6
E		4.6	274.8

9+89.58 = Sly Veronica Dr.

E	Top cb.	5.11	274.24
E	pay.	5.41	273.94
C	"	5.34	274.01
W	"	4.82	274.52
W	Top cb.	4.23	275.12

T.P.	1.81	271.96	9.18	270.17
------	------	--------	------	--------

T.P.	4.59	263.33	13.24	258.74
------	------	--------	-------	--------

check to BIA	<sup>Catalina</sup> Veronica	13.16	250.17	250.17
--------------	------------------------------	-------	--------	--------

Moore  
8-27-36

X sec of 7th St. EXT.  
UNIV. NLY TO INT. of 6th St. EXT.

"A" Line

6+91.83 = E.C.

9+8 S of Lk.

5+75 N of Washington = Pl. A line

4+57.08 = B.C.  
4+55 Ex. S.M.H.

9+75 = N end of paving F.C. Type

3+72.8 = P.O.T. nail in paving

3+00 Ex. Sewer M.H.

0+00 = Nly Univ. Ave.

Indexed  
C.S.K.

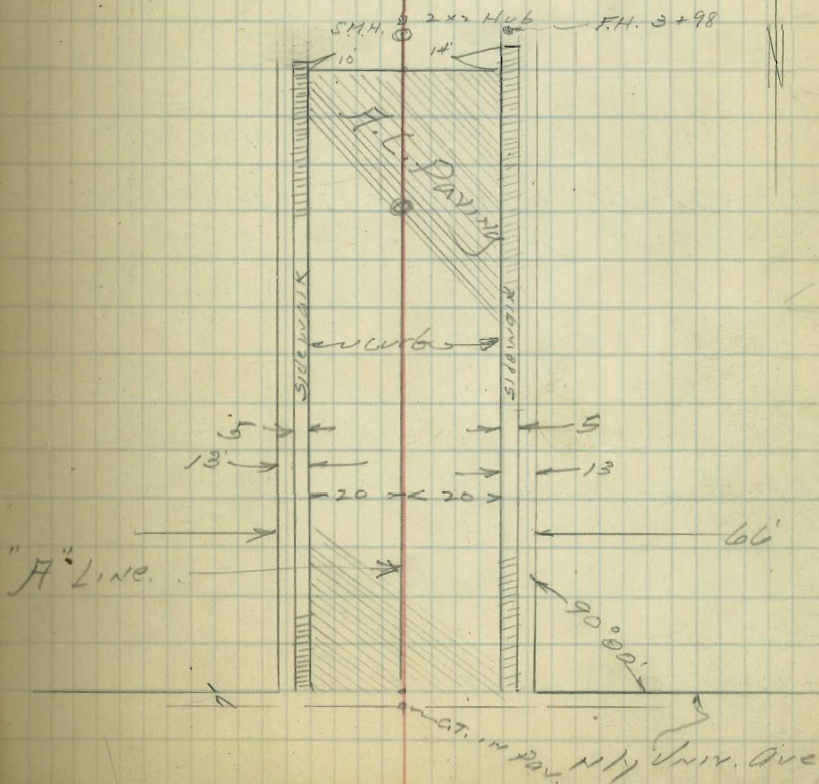
E of 7th St.

27

"A" Line

"B" Line

$\Delta = 13^\circ 27' \text{ LT.}$   
 $R = 1000$   
 $T = 117.92$   
 $L = 234.75$   
 $1.7189 = 1'$

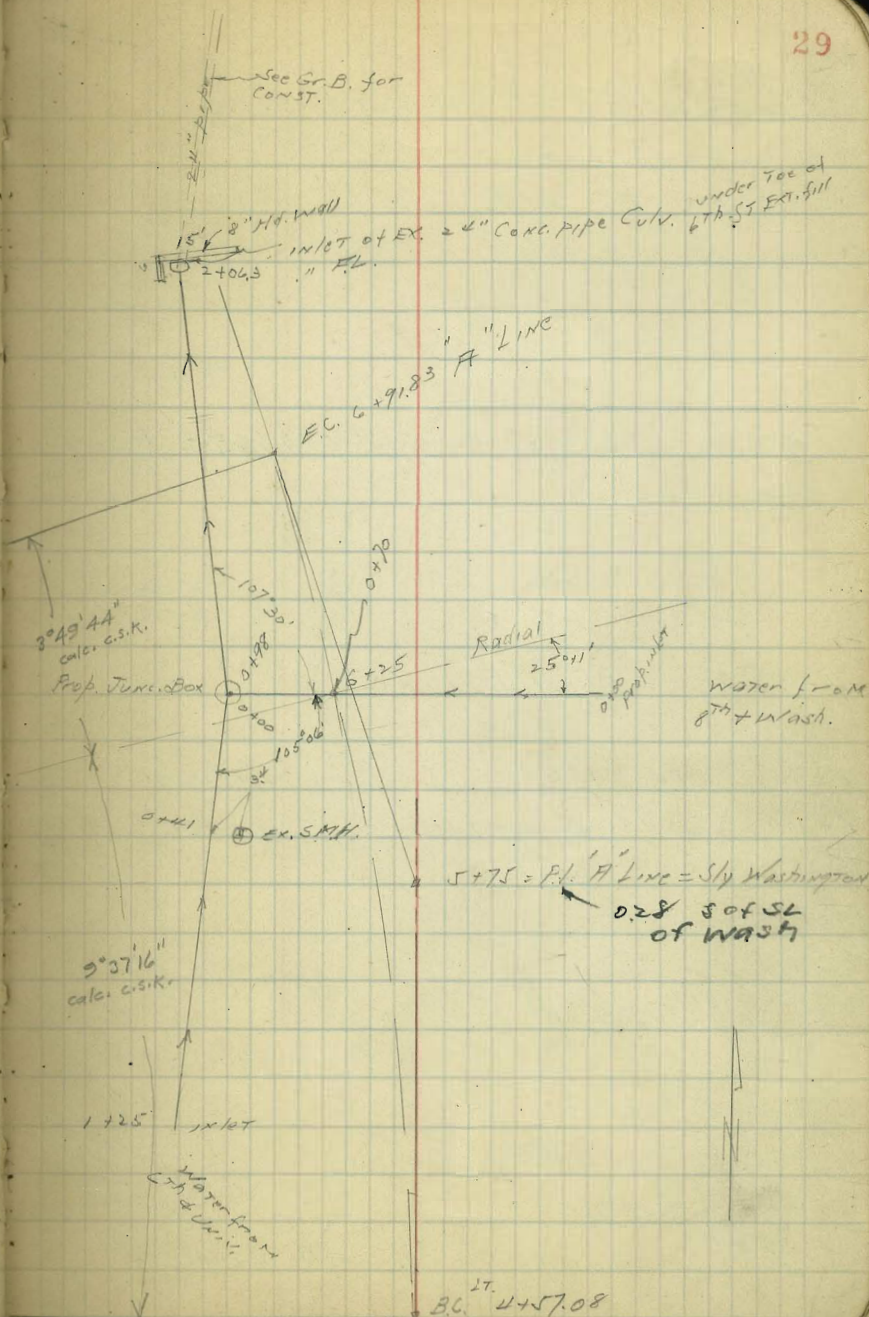




Levels for Prop. Culv.  
at 6+25 "A" LINE

23325 = H.I. p 24

0+00 = inlet water from 6th & Wash.	+5.4	238.7
+15	4.0	229.3
+30	5.9	227.4
+50	11.8	221.5
+70 = E. of "A"	14.7	218.6
+90	21.0	212.3
+98 = JUNCTION	21.9	211.4
1+25	24.6	208.7
+50	26.9	206.4
+75	28.2	205.1
2+06.3 Top Hd wall	30.4	202.9
" " F.L. 24" Conc. Pipe	33.4	199.9
00 = Junc.		
0+41	18.1	215.2
0+70	14.4	218.9
1+00	14.4	219.1
1+25 = INLET water from 6th & Univ.	14.0	219.3







Levels on 77 EXT.  
"H" LINE

Y + 80

Z + 60

T.P.

092

282.14

672

281.21

Z + 40

Z + 20

2

1

0+00 = N/S) UNIV. STG.

4.06

287.93

283.87

Z + 7

1.89	280.26
281.27	279.60
0.88	279.55
280.57	279.12
1.78	279.73
280.60	
1.55	
280.119	
1.92	
280.82	
1.43	
280.82	

6.10	281.83
282.27	281.14
5.66	282.18
282.35	281.5
5.79	281.68
281.53	281.36
6.70	281.80
281.70	282.45
5.96	282.35
282.35	282.22
5.96	282.91
281.97	283.40
5.96	282.87
283.25	
282.72	
283.06	
282.22	
282.91	
283.40	

287.93

T.P. 0.03 256.84 13.04 256.81

4+22  
13.4 13.3  
25 35  
260.4

4+13  
9.5  
30

T.P. 0.86 269.85 13.10 268.99

4+05  
13.8  
35

3+91  
14.6  
30

3+80  
11.7  
30

3+75 end of El. pav.

3+00 = SYM

282.15

256.7  
256.7  
254.1  
254.1  
256.3  
254.1

259.8  
255.9  
256.1  
259.3  
259.5  
258.6  
261.9  
264.5  
266.4  
267.9

268.4  
13.8  
266.6  
20.1  
263.1  
265.5  
269.1  
271.5  
271.6  
272.1

274.0  
273.55  
273.57  
274.65  
274.55  
274.5  
272.44  
272.55  
274.8

273.86  
273.22  
272.92  
272.11  
272.11  
272.72  
272.72

279.08  
278.40  
278.47  
277.80  
278.45  
278.72

279.07  
278.40  
278.47  
277.80  
278.45  
278.72

17

18

19

269.85

SYM

282.15

T.P. 0.23 243.92 12.87 243.69

+75

+70

+50

5+25

T.P. 11.89 256.50 12.17 244.67

5+00

4+75

4+57.08 BC. LT.

4+55 = SMH.

256.84

	LT	R	PT
	217.1	216.0	215.8
	39.5	40.0	39.8
	25	56	24
	230.6	231.1	230.6
	232.5	232.1	232.5
	237.3	233.5	237.3
	240.3	238.5	240.3
	241.9	247.5	241.9
	243.9	252.5	243.9
	245.3	252.6	245.3
	249.5	261.0	249.5
	250.8	256.1	250.8
	252.4	259.8	252.4
	254.2	259.8	254.2
	256.8	259.8	256.8
	258.7	259.8	258.7
	259.8	259.8	259.8
	261.0	259.8	261.0
	262.4	259.8	262.4
	264.1	259.8	264.1
	265.8	259.8	265.8
	267.5	259.8	267.5
	269.2	259.8	269.2
	270.9	259.8	270.9
	272.6	259.8	272.6
	274.3	259.8	274.3
	276.0	259.8	276.0
	277.7	259.8	277.7
	279.4	259.8	279.4
	281.1	259.8	281.1
	282.8	259.8	282.8
	284.5	259.8	284.5
	286.2	259.8	286.2
	287.9	259.8	287.9
	289.6	259.8	289.6
	291.3	259.8	291.3
	293.0	259.8	293.0
	294.7	259.8	294.7
	296.4	259.8	296.4
	298.1	259.8	298.1
	299.8	259.8	299.8
	301.5	259.8	301.5
	303.2	259.8	303.2
	304.9	259.8	304.9
	306.6	259.8	306.6
	308.3	259.8	308.3
	310.0	259.8	310.0
	311.7	259.8	311.7
	313.4	259.8	313.4
	315.1	259.8	315.1
	316.8	259.8	316.8
	318.5	259.8	318.5
	320.2	259.8	320.2
	321.9	259.8	321.9
	323.6	259.8	323.6
	325.3	259.8	325.3
	327.0	259.8	327.0
	328.7	259.8	328.7
	330.4	259.8	330.4
	332.1	259.8	332.1
	333.8	259.8	333.8
	335.5	259.8	335.5
	337.2	259.8	337.2
	338.9	259.8	338.9
	340.6	259.8	340.6
	342.3	259.8	342.3
	344.0	259.8	344.0
	345.7	259.8	345.7
	347.4	259.8	347.4
	349.1	259.8	349.1
	350.8	259.8	350.8
	352.5	259.8	352.5
	354.2	259.8	354.2
	355.9	259.8	355.9
	357.6	259.8	357.6
	359.3	259.8	359.3
	361.0	259.8	361.0
	362.7	259.8	362.7
	364.4	259.8	364.4
	366.1	259.8	366.1
	367.8	259.8	367.8
	369.5	259.8	369.5
	371.2	259.8	371.2
	372.9	259.8	372.9
	374.6	259.8	374.6
	376.3	259.8	376.3
	378.0	259.8	378.0
	379.7	259.8	379.7
	381.4	259.8	381.4
	383.1	259.8	383.1
	384.8	259.8	384.8
	386.5	259.8	386.5
	388.2	259.8	388.2
	389.9	259.8	389.9
	391.6	259.8	391.6
	393.3	259.8	393.3
	395.0	259.8	395.0
	396.7	259.8	396.7
	398.4	259.8	398.4
	400.1	259.8	400.1
	401.8	259.8	401.8
	403.5	259.8	403.5
	405.2	259.8	405.2
	406.9	259.8	406.9
	408.6	259.8	408.6
	410.3	259.8	410.3
	412.0	259.8	412.0
	413.7	259.8	413.7
	415.4	259.8	415.4
	417.1	259.8	417.1
	418.8	259.8	418.8
	420.5	259.8	420.5
	422.2	259.8	422.2
	423.9	259.8	423.9
	425.6	259.8	425.6
	427.3	259.8	427.3
	429.0	259.8	429.0
	430.7	259.8	430.7
	432.4	259.8	432.4
	434.1	259.8	434.1
	435.8	259.8	435.8
	437.5	259.8	437.5
	439.2	259.8	439.2
	440.9	259.8	440.9
	442.6	259.8	442.6
	444.3	259.8	444.3
	446.0	259.8	446.0
	447.7	259.8	447.7
	449.4	259.8	449.4
	451.1	259.8	451.1
	452.8	259.8	452.8
	454.5	259.8	454.5
	456.2	259.8	456.2
	457.9	259.8	457.9
	459.6	259.8	459.6
	461.3	259.8	461.3
	463.0	259.8	463.0
	464.7	259.8	464.7
	466.4	259.8	466.4
	468.1	259.8	468.1
	469.8	259.8	469.8
	471.5	259.8	471.5
	473.2	259.8	473.2
	474.9	259.8	474.9
	476.6	259.8	476.6
	478.3	259.8	478.3
	480.0	259.8	480.0
	481.7	259.8	481.7
	483.4	259.8	483.4
	485.1	259.8	485.1
	486.8	259.8	486.8
	488.5	259.8	488.5
	490.2	259.8	490.2
	491.9	259.8	491.9
	493.6	259.8	493.6
	495.3	259.8	495.3
	497.0	259.8	497.0
	498.7	259.8	498.7
	500.4	259.8	500.4

7 + 50

7 + 31.50 BC PT.

6 + 91.83 F.C.

+ 75

+ 50

6 + 25 = int. of prop. Calc.

T.P. for "B" 236 233.25 1303 230.89 ✓

6 + 00

243.92

212.6	211.9	212.2	221.4	227.7	229.4	232.0	232.0	232.7	234.2
21.5	21.0	21.7	21.5	16.2	14.5	11.9	11.0	11.5	9.7
2	2	2	2	10	10	10	10	10	10

243.92

70	12	17.5	21.4	16.2	14.7	17.1	16.9	11.5	6.0
10	00	50	30	14	10	7	13	20	00
231.1	226.1	215.8	211.9	217.1	218.6	214.2	218.4	221.8	233.3

233.3	211.4	209.7	218.3	225.7	232.2	236.3	233.3	233.3
0.0	0.0	0.0	0.0	0.0	0.0	0.0	0.0	0.0
235.3	211.4	209.7	218.3	225.7	232.2	236.3	233.3	233.3

21.0	21.0	21.0	21.0	21.0	21.0	21.0	21.0	21.0
0.0	0.0	0.0	0.0	0.0	0.0	0.0	0.0	0.0
235.3	211.4	209.7	218.3	225.7	232.2	236.3	233.3	233.3

234.3	210.5	204.7	205.4	207.7	217.4	228.3	228.3	233.3
1.0	1.0	1.0	1.0	1.0	1.0	1.0	1.0	1.0
235.3	211.5	205.7	206.4	208.7	218.4	229.3	229.3	234.3

231.5	221.2	202.2	202.3	202.8	201.5	203.0	223.5	230.6
0.0	0.0	0.0	0.0	0.0	0.0	0.0	0.0	0.0
231.5	221.2	202.2	202.3	202.8	201.5	203.0	223.5	230.6

27. 28. 29.

9+00

8+75

8+50

8+25

8+00

P.I. CT. 8+70.98 3.63 229.33 225.70

E.C. CT. 7+86.37 = 6TH ST EXT. Gr. BK. 54 2.89 234.33 234.40

T.P. P.I. CT. 8+70.98 11.02 236.72 7.55 225.70

7+75

233.25

L.T.

Edge pav. 5.93  
0.9 223.40

Edge pav. 4.51  
6 224.82  
224.82  
225.6

Edge pav. 2.97  
14 226.38  
226.38  
228.8

Edge pav. 1.31  
33 228.8  
228.8  
228.8

Edge pav. 0.0  
28 228.8  
228.8  
228.8

Edge shoulder  
6TH ST EXT.

231.4

218.9

207.6

199.1

204.9

218.6

226.3

1.9  
40

14.4  
20

25.7

34.2  
16

28.2  
10

17.7  
12

21.0  
10

Edge shoulder  
6TH ST EXT.

233.25

R.T.

Edge pav. 5.93  
0.9 223.40

Edge pav. 4.51  
6 224.82  
224.82  
225.6

Edge pav. 2.97  
14 226.38  
226.38  
228.8

Edge pav. 1.31  
33 228.8  
228.8  
228.8

Edge pav. 0.0  
28 228.8  
228.8  
228.8

Edge shoulder  
6TH ST EXT.

199.1

204.9

218.6

226.3

34.2  
16

28.2  
10

17.7  
12

21.0  
10

Edge pav. 5.93  
0.9 223.40

Edge pav. 4.51  
6 224.82  
224.82  
225.6

Edge pav. 2.97  
14 226.38  
226.38  
228.8

Edge pav. 1.31  
33 228.8  
228.8  
228.8

Edge pav. 0.0  
28 228.8  
228.8  
228.8

Edge shoulder  
6TH ST EXT.

199.1

204.9

218.6

226.3

10 + 03.55 EC. of H Line

9 + 75

9 + 50

9 + 25

229.33

	217.07	217.12	217.02	217.03
w/ edge par. 70	12.26	12.21	12.31	12.26
	218.92	218.91	218.81	219.33
	10.41	10.27	10.0	18
	220.46	220.43	220.8	220.8
	887	890	89	14 = should
	222.01	221.96	222.3	211.1
	732	737	70	182
	229.33	229.33	229.33	229.33
	189.8	189.8	189.8	189.8
	188.3	188.3	188.3	188.3
	187.2	187.2	187.2	187.2

Levels on "B" Line

8+25

T.P. 1.44 232.88 1230 231.44

8+00

7+50

7+00

6+50

6+28

6+00 "B" Line

5+95.5 Ex. S.M.H.

T.P. p34 12.83 243.77 230.89

209.8

231

213.2

224.6

37

232.88

244.2

29.5

220.7

26.6

221.0

24.7

225.0

18.7

218.0

25.7

232.6

11.1

227.9

15.80 = F.L.

243.77

224.6

21.1

228.0

25.7

223.7

15.0

235.2

10.5

224.5

19.2

237.5

10.0

227.5

230 = R.M.

229.2

21.5

235.7

28.0

243.7

10.0

241.4

14.6

233.7

10.8

241.8

10.8

232.7

45

60

+8.4

+12.1

75

+10.5

75

46.3

75

44.3

75

117.4

100

100

100

100

100

100

100

100

100

100

100

100









1+56

W'	3.6	100.9
C	3.5	101.0
E	2.7	101.8
+7 Sin. gar. dirt fl.	2.5	102.0

1+62

W-4.5 Sin. gar. dirt fl.	3.6	100.9
--------------------------	-----	-------

2+05

W-15 Sin. gar. dirt fl.	2.9	101.6
-------------------------	-----	-------

W	2.5	102.0
---	-----	-------

C	2.4	102.1
---	-----	-------

E	2.0	102.5
---	-----	-------

2+50

E	0.9	103.6
---	-----	-------

+5 Salt Hedge in alley

C	1.0	103.5
---	-----	-------

W	1.1	103.4
---	-----	-------

T.P.	7.29	110.82	0.95	103.53
------	------	--------	------	--------

2+86

W'	6.6	104.2
----	-----	-------

C	6.3	104.5
---	-----	-------

E	5.6	105.2
---	-----	-------

+2.4 dble gar Cem flprox	5.33	105.49	level
--------------------------	------	--------	-------

+6.5 " " floor	4.73	106.09	"
----------------	------	--------	---

3+00

E	5.3	105.5
---	-----	-------

+2.5 fence in alley	6.0	104.8
---------------------	-----	-------

C	6.0	104.8
---	-----	-------

W	6.1	104.7
---	-----	-------

3+15

W-3 dble gar dirt fl.	5.5	105.3	level
-----------------------	-----	-------	-------

3+22

W-3 Sin. gar " "	5.2	105.6
------------------	-----	-------

3+21

E 0.6 in alley Sin. gar fl. <sup>Cem</sup>	4.34	106.48
--	------	--------

3+07

W	4.6	106.2
---	-----	-------

C	4.6	106.2
---	-----	-------

E	4.1	106.7
---	-----	-------

+5 sin. gar dirt fl.	4.0	106.8
----------------------	-----	-------

3+83

E-5 sin. gar dirt	3.5	107.3
-------------------	-----	-------

4+00 = A - Sky La Jolla Park

E	3.1	107.7
---	-----	-------

C STUB A PT	3.77	107.05
-------------	------	--------

+7.25 Lineto S.	3.9	106.9
-----------------	-----	-------

W	3.9	106.9
---	-----	-------

4+12

E-5 sin. gar. dirt	2.4	108.2
--------------------	-----	-------

2 this gar to be taken  
away & new one built

110.82

4+34

C S.M. R.M. 2.78 108.04

4+50

W 2.7 108.1

C 2.5 108.3

E 2.3 108.5

4+99

E 0.2 110.6

C 1.0 109.8

W 1.1 109.7

T.P. 11.15 121.00 0.97 109.85

5+00

W 11.2 109.8

C 11.2 109.8

+5 10.9 110.1

E 9.1 111.9

5+26

E 8.5 112.5

+5 10.0 111.0

C 10.4 110.6

W 10.6 110.4

5+28

W 10.6 110.4

C 10.4 110.6

E 9.5 111.5

121.00

5+40

E -6.5 dba gpr <sup>corr. fl.</sup> level 9.32 111.67

E 9.7 111.3

C 10.1 110.9

W 10.2 110.8

6+00

W 9.0 112.0

C 8.8 112.2

E 8.7 112.3

6+50

E 7.2 113.8

C 7.6 113.4

W 7.8 113.2

7+00

W 6.4 114.6

C 6.5 114.5

E 5.8 115.2

7+50

E 4.2 116.8

C 5.2 115.8

W 5.3 115.7

8+00

W 4.4 116.6

C S.M. R.M. 3.78 117.22

E 3.5 117.5

42

121.00

8+35

E-14	dbble gar. cem floor	1.57	119.43
E-0.6	cem apron level	2.75	118.25
C		3.6	117.4
W		3.8	117.2

8+50

W		3.8	117.2
C		3.5	117.5
E		2.9	118.1

8+81

E-5	sin. gar dirt 1/	2.6	118.4
-----	------------------	-----	-------

9+00

F		2.1	118.9
C		2.9	118.1
W		3.2	117.8

9+50

W		2.5	118.5
C		2.3	118.7
E		1.8	119.2

T.P. 6.09 123.83 3.26 117.74

9+64

E-12	dbble gar cem fl. Level	3.63	120.20
E-10	cem apron "	3.71	120.12

123.83

43

9+81

E-12	sin. gar cem fl.	3.14	120.69
E-9.5	cem apron	3.22	120.61

10+00

E		3.5	120.3
C		4.2	119.6
W		4.6	119.2

10+50

W		3.5	120.3
C		3.2	120.6
E		2.6	121.2

10+74.8 Wly ConTA St.

E cb		1.96	121.87
E pav.		2.34	121.49
C "		2.92	120.91
W "		3.03	120.80
W cb		3.08	120.75

T.P. 134 116.05 912 11471

cb to starting BM. 972 106.33  $\frac{106.33}{0.01}$

Indexed  
c.s.k.

Levels for Drainage North  
of Imperial Ave at 33<sup>rd</sup> St.

44

B.M. Top Hydt 1.18 30.03 28.85 N.E. 33<sup>rd</sup>  
+ Imperial  
☒ 33<sup>rd</sup> St.

0+00 = N. Line Imperial 2.76 27.27 N. End pav.

0+ 5.1 24.9

1+35 = ☒ E. + W. Alley 5.21 24.82 Top. M.H.

2+70 = S. Line L St. 4.3 25.7

T.P. 5.06 29.88 5.21 24.82

☒ E. + W. Alley North of Imperial

☒ 32<sup>nd</sup> St. = 0+00 5.1 24.8

1+00 West 5.1 24.8

2+00 West. 4.6 25.3

☒ 33<sup>rd</sup> St. = 0+00 5.1 24.8

0+30 East. = E. Line 33<sup>rd</sup> 4.8 25.1

7' N. of 0+30 = ditch 2' wide 5.6 24.3

1+00 East 4.9 25.0

7' N. of 1+00 East = Ditch 2' wide 6.0 23.9

2+00 East. 4.1 25.8

7' North of 2+00 = ditch 2' wide 5.6 24.3

3+00 East. 4.8 25.1

7' North of 3+00 = ditch 7.0 22.9

3+18 East. 4.8 25.1

7' N. of 3+18 = ditch 3' wide 8.4 21.5

3+31 East. = Chollas creek. 10.7 19.2

Levels at Lake Hodges  
for 395.0 Contour

Moore  
Sistat  
Northern  
11-6-30

45

	6.91	333.52		326.61	
0 T.P.	12.58	340.17	5.93	327.59	y 302 1935
1 T.P.	12.51	352.15	0.53	339.64	
1 T.P.	13.08	364.69	0.52	351.61	
2 T.P.	12.41	376.97	0.43	364.26	
T.P.	13.06	389.36	0.97	376.30	
T.P.	9.18	398.09	0.45	388.91	

3.09 395.0 Contour

T.P.	7.74	399.44	6.39	391.70	
T.P.	3.05	398.66	3.83	395.61	

3.66 395.0 Contour

STATE B.M. Nly & Wly wing rail of Bernard Bridge  
U.S. C & G. B.M. Sly end & Ely Guard rail " "





63+77	56°10' RT	395.0
61+03	46°03' LT	395.0
58+63	27°35' LT	395.0
55+15	22°14' LT	395.0
50+55	11°26' RT	ON 395.0 Contour
47+86	28°26' LT	
44+13	119°22' RT	
38+75	19°13' RT	
34+80	58°18' RT	
33+20	E. of 30' Rd.	
28+00	23°28' RT	
21+20	37°27' LT	EX. 60'
17+52	47°41' RT	

90+30 = 0+00

89+84 70°14' LT. To 0+00

87+33 78°27' RT.

86+59 99°39' RT

83+97 34°03' LT. 365.0

78+81 23°19' RT 385.0

74+15 9°02' RT. 395.0

71+06 12°23' LT 395.0

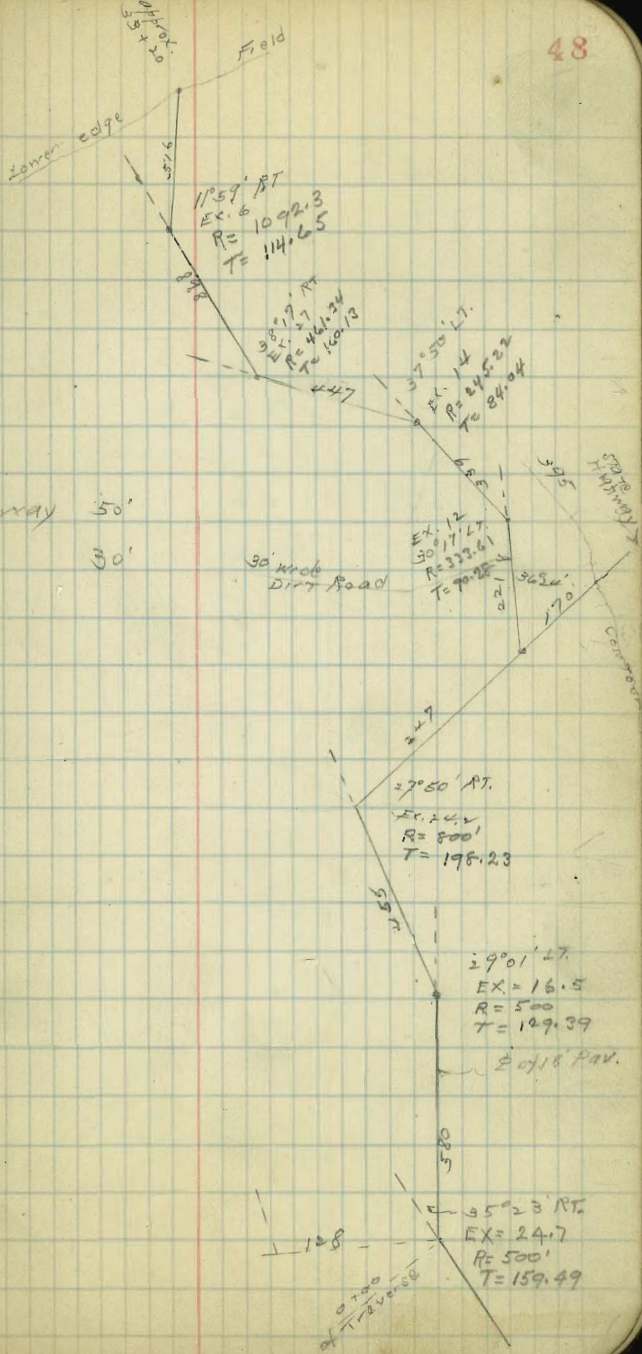
69+79 1/2 pav. State Highway 395.0

68+74 11°27' RT 395.0

66+68 38°03' RT 395.0 Contour

State Highway 50'

Dirt Road 30'



Levels for 395 Contour  
Ely of Lake  
Vicinity of Green Valley Bridge

W.S.C+G.B. 17	10.00	338.25		327.59	Y 302
on deck Skyend					
			11.32	326.93	
T.P.	11.83	345.41	4.67	333.58	
T.P.	13.15	358.17	0.39	345.02	
T.P.	13.00	370.79	0.38	357.79	
T.P.	13.15	383.50	0.44	370.35	
T.P.	12.51	395.69	0.34	383.18	
T.P.	12.42	407.30	0.81	394.88	
T.P.	8.00	414.43	0.93	406.37	
T.P.	8.02	402.15	12.30	402.13	$\frac{395.0}{7.15}$
T.P.	3.99	400.74	4.80	397.35	$\frac{295.0}{5.90}$
T.P.			5.08	395.66	

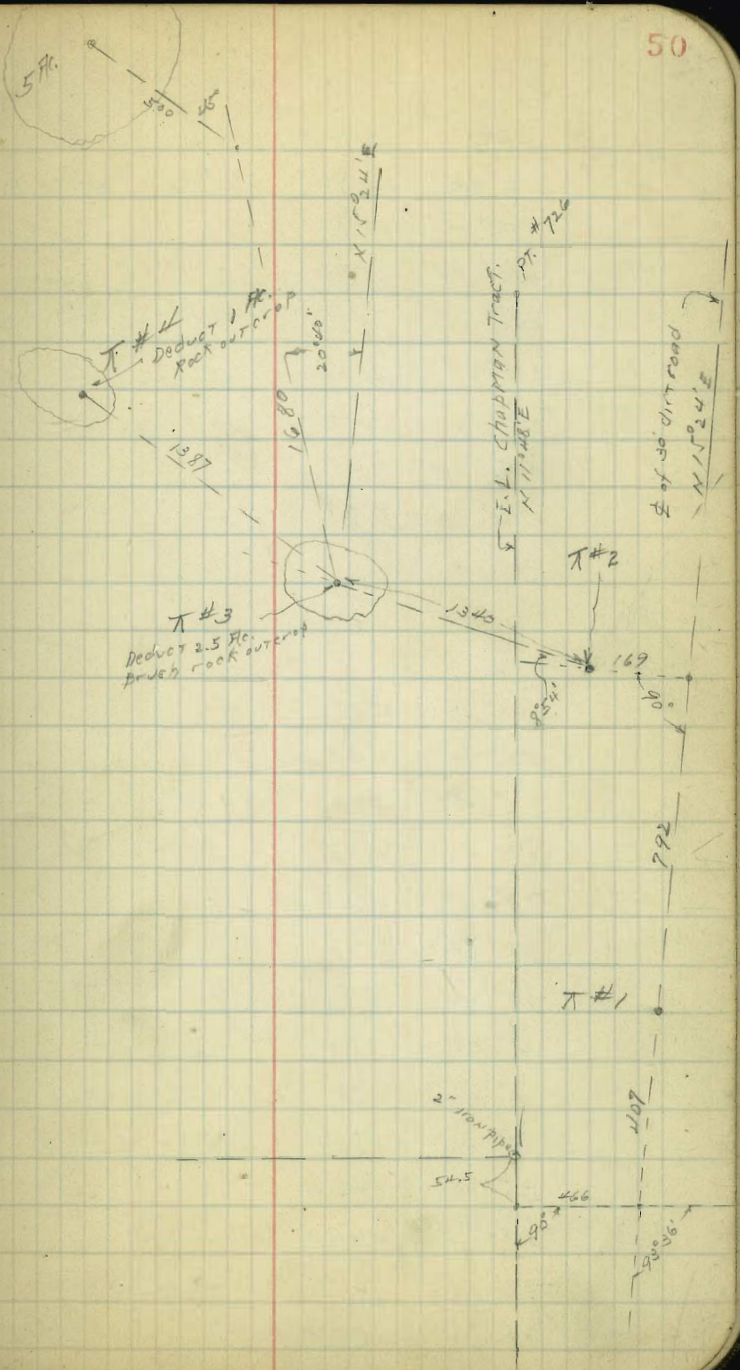
T #1  
 FS. 0° 0' =  
 Ⓢ DIRT ROAD N 15° 24' E  
 Δ read  
 Clockwise

Daley Lease  
 Ely from Lake in vicinity  
 of Green Valley Bridge

	AZ.	DIS.		
1	201° 40'	62		
2	255° 35'	267		
3	288° 27'	870		
4	157° 33'	83		
5	104° 18'	257		
6	100° 44'	745		
7	97° 44'	1380		
8	92° 20'	1470		
9	92° 51'	1450		
10	93° 42'	1180		
11	92° 10'	1005		
12	79° 42'	710		
13	68° 25'	765		
14	54° 27'	850	-395.0	CONTOUR
15	41° 27'	905	"	"

T #2  
 0° 0' = N 15° 24' E

1	86° 52'	735	395.0	"
2	71° 18'	765	"	"
3	59° 55'	850	"	"
4	48° 38'	915	"	"
5	31° 12'	1130	"	"
6	24° 34'	1245	"	"
	20° 00'	600		
7	17° 45'	1350	"	Deduct 1 1/2 A. Rock out crop



$\pi$ #2	Hz.	Dis.	CONTOUR	
8	6° 42'	1490	395.0	approx. $\pi$ Road
9	356° 24'	1545	"	
10	346° 54'	1570	"	
11	340° 16'	1620	"	
12	332° 28'	1600	"	
13	327° 17'	1710	—	
14	307° 13'	1145	—	
15	296° 40'	1155	—	

 $\pi$  #3

0° 00' on N 15° 24' E

1	31° 52'	505	—	
2	22° 34'	665	—	
3	22° 34'	950	395.0	
4	17° 42'	1135	"	
5	16° 39'	1300	"	
6	17° 04'	1510	"	
7	10° 26'	1680	"	
8	6° 05'	1590	"	
9	0° 00'	650		Deduct 2 Hc. Rock overcrop
10	0° 00'	1505	395.0	
11	355° 50'	1420	"	
12	351° 45'	1440	"	
13	344° 50'	1610	"	
14	339° 20'	1680	"	= $\Delta$ PT. = $\pi$ #5

$\pi$ #3	Ht	Dis.	Contour
15	334° 22'	1530	395.0
16	331° 35'	1305	"
17	326° 14'	1000	"
18	319° 52'	555	-
19	294° 24'	510	- #19 to #29 flow line
20	288° 10'	810	-
21	293° 05'	1010	-
22	292° 07'	1387	- = $\pi$ #4
23	271° 30'	775	-
24	258° 51'	735	-
25	253° 20'	600	-
26	254° 50'	650	-
27	222° 52'	500	-
28	192° 15'	445	-
29	158° 52'	325	- #29 to #1 flow line

not plowed to date

$\pi$ #4	Dis.
18	315° 15' 635

$\pi$ #4	0° on $\pi$ #3	Counter	Clockwise
1	33° 52'	95	-
2	123° 06'	240	-
3	152° 02'	560	-
4	165° 38'	610	-
5	175° 52'	525	-
6	177° 10'	355	-
7	208° 16'	380	-
8	253° 21'	355	-
9	298° 42'	575	-

S.W. Q.P.	36L	39.12	35.50	FRONT 4 B
NW 7 C.T.	5.96	37.51	7.59	31.55 FRONT 4 C
± of C ST.				
-50		6.71	30.80	
-25		6.39	31.12	
W.L. FRONT		6.08	31.43	
cb		5.94	31.57	
1/4		5.81	31.70	
C S.M.H.		5.71	31.80	
1/4		5.47	32.04	
cb		5.25	32.26	
E.L. FRONT		5.09	32.42	
+10		4.97	32.54	
+25		4.79	32.72	
+50		4.47	33.04	
N 1/4 C				
-50		4.54	32.97	
-25		4.87	32.64	
-10		5.07	32.44	
E.L.		5.15	32.36	
cb		5.31	32.20	
+7 & 25 1/2 STEAM 17H.		5.24	32.27	
1/4		5.48	32.03	
C		5.72	31.77	
1/4		5.89	31.62	

cb	5.94	31.55		
W.L.	6.14	31.37		
+25	6.46	31.05		
+50	6.82	30.69		
N 1/4 C ST				
-50	9.25	7.23	30.28	
-50	cb	6.71	30.80	
-25	9.05	7.10	30.41	
-25	cb	6.48	31.03	
W.L.	9.05	7.04	30.47	
W.L.	cb	6.23	31.18	
cb		6.18	31.33	
1/4		5.94	31.57	
C		5.80	31.71	
1/4		5.23	32.18	
cb		5.25	32.26	
E.L.	cb	5.42	32.09	
"	9.05	6.00	31.51	
+10	9.05 + cb	5.89	31.62	drive
+25	" "	5.51	32.00	"
+50	" "	5.43	32.18	"
cb + 10				
-50		4.24	33.27	
-25		4.46	33.05	
-10		4.75	32.76	
E.L.		4.87	32.64	

cb + pav	5.10	32.41
1/4	5.91	32.20
c	5.54	31.97
1/4	5.87	31.64
cb	6.15	31.36
W.L.	5.73	31.78
N.L.C		
W/cb	6.15	31.36
" gut	6.88	30.63
1/4	5.72	31.78
c	5.45	32.06
1/4	5.28	32.23
E cb	5.05	32.46
E " gut	6.05	31.46
N.L. + 9		
E cb	4.96	32.55
" gut	5.53	31.98
+ 8	5.17	32.34
1/4	5.21	32.30
c	5.35	32.16
1/4	5.64	31.87
W gut	6.53	30.98
" cb	5.98	31.53
N.L. + 15		
W cb	5.88	31.63
W gut	6.47	31.04

1/4	5.60	31.91
c	5.30	32.21
1/4	5.19	32.32
+ 5	5.14	32.35
E cb + gut	5.48	32.03
+ 10 east edge walk	4.74	32.77
N.L. + 20		
- 10 east edge walk	4.53	32.98
E cb + gut	5.27	32.14
1/4	5.14	32.39
c	5.28	32.23
1/4	5.49	32.02
W gut	6.31	31.20
W cb	5.71	31.80
N.L. + 45		
W cb	5.49	32.02
W gut	6.11	31.40
1/4	5.32	32.19
c	5.01	32.50
1/4	4.98	32.53
E gut + cb	5.22	32.29
+ 10 east edge walk	4.41	33.10
N.L. + 60		
- 10 east edge walk	4.34	33.17
E cb + gut	5.09	32.41
1/4	4.85	32.66

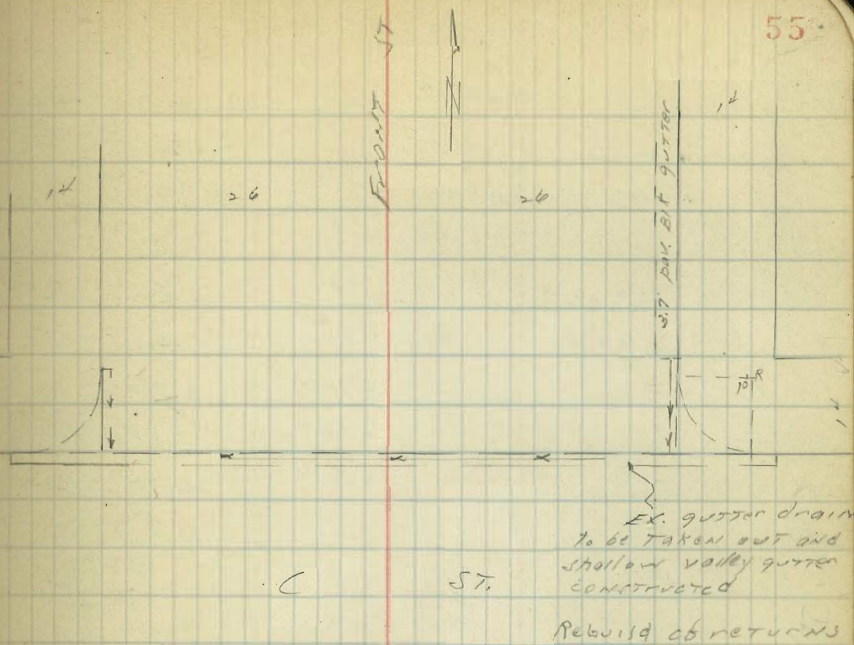
Drive

Drive

Drive



C	4.86	32.65
1/4	5.17	32.34
w/ gut	5.92	31.59
w cb	5.25	32.26



x sec of Juan St		50' wide		Indexed		J. C. H.	
Taylor to Gaines		10' curbs		C.S.R.			
		1896					
		1-2-37					
BP, mound					cb	4.6	3.8
	382	J. C. H.	4.62	Taylor	Sly	5.2	3.2
				San Diego			
	0+00 = wly Taylor					2+00	
Sly		3.8	4.6	Sly		4.5	3.9
cb	Top Cem.	4.75	4.69	cb		4.3	4.1
gut	par	4.40	4.04	c		4.3	4.1
c		4.07	4.37	cb		4.0	4.4
gut		4.31	4.13	nly		3.7	4.7
cb	Top Cem.	4.72	4.72			2+50	
nly		3.6	4.8	nly		3.5	4.9
	+50			cb		3.7	4.7
nly		3.2	5.0	c		4.0	4.4
cb		4.2	4.2	cb		4.2	4.2
c		4.6	3.8	Sly		4.5	3.9
cb		4.6	3.8			3+00 = Ely Rosecrans = 50' wide	
Sly		5.5	2.9	Sly		4.1	4.3
	1+00			cb		4.2	4.2
Sly		5.5	2.9	c		3.9	4.5
cb		4.8	3.6	cb		4.0	4.4
c		4.7	3.7	nly		3.9	4.5
cb		4.6	3.8			Center Rosecrans St.	
nly		4.4	4.0	nly		3.6	4.8
	1+50			cb		3.6	4.8
nly		4.0	4.4	c	5. P.M. RIM	3.49	4.95
cb		4.4	4.0	cb		3.5	4.9
c		4.4	4.0	Sly		3.4	5.0

8.24

0700 Wly Rosecrans St.

Sly	3.3	5.1
cb	3.2	5.1
c	3.2	5.0
cb	3.7	4.7
Nly	3.6	4.8

0750

Nly	3.3	5.1
cb	3.6	4.8
c	3.7	4.7
cb	3.7	4.7
Sly	3.4	5.0

1700

Sly	4.0	4.4
cb	4.1	4.3
c	4.2	4.2
cb	3.8	4.6
Nly	3.7	4.7

1750

Nly	3.4	5.0
cb	3.8	4.6
c	3.8	4.6
cb	3.4	5.0
Sly	3.2	5.2

8.44

57

2700

Sly	3.0	5.4
cb	3.2	5.2
c	3.4	5.0
cb	3.2	5.2
Nly	2.9	5.5

2750

Nly	2.8	5.6
cb	2.9	5.5
c	3.1	5.3
cb	3.2	5.2
Sly	3.1	5.3

3700 Ely Gaines = 50' wide

Sly	3.7	4.7
cb	4.2	4.2
c	3.0	5.4
cb	3.4	5.0
Nly	3.4	5.0

CENTER GAINES

Nly	2.8	5.6
cb	3.3	5.1
c	3.7	4.7
cb	3.6	4.8
Sly	2.8	5.6

Wly Gaines

Sly	3.5	4.9
-----	-----	-----

cb		3.4	5.0
c		4.4	4.0
cb		3.6	4.8
wly		3.6	4.8

x sec Pascragan 50' wide 10' cbs  
 Juan to Colhoun St.

T.P. 5.16 10.14 3.48 4.96

50' Sly of Juan St

wly		4.9	5.2
cb		5.5	4.6
c		5.3	4.8
cb		5.3	4.8
fly		4.8	5.3

100' Sly

fly		6.5	3.6
cb		6.8	3.3
c		6.6	3.5
cb		6.8	3.3
wly		6.4	3.7

150' Sly

wly		7.0	3.1
cb		7.4	2.7
c		7.4	2.7

cb		7.2	2.9
fly		6.5	3.6

200' Sly

fly		6.4	3.5
cb		7.2	2.9
c		7.3	2.8
cb		7.3	2.8
wly		6.7	3.4

225' Sly of Colhoun = 70' wide

wly		6.0	4.1
cb		6.0	4.1
c		6.3	3.8
cb		7.2	2.9
fly		7.2	2.9

Center Colhoun

fly		6.1	4.0
cb		6.2	3.9
c Mon.		8.21	1.91
cb		8.4	1.7
wly		8.3	1.8

Sly Colhoun

wly		4.2	5.9 700 P.P. Embankment
cb		4.3	6.8
c		5.7	4.4
cb		7.0	+ 3.1
fly		11.5	- 1.4 P.P. Pits

FAVORABLE ST. 50' wide  
10' curbs

10.12

50' Nly of Juan

wly	5.6	4.5
cb	5.4	4.7
C	5.3	4.8
cb	5.4	4.7
Ely	4.7	5.4

100 Nly

Ely	4.4	5.7
cb	5.0	5.1
C	5.1	5.0
cb	5.3	4.8
wly	5.2	4.9

150 Nly

wly	5.2	4.9
cb	5.4	4.7
C	5.1	5.0
cb	5.4	4.7
Ely	5.1	5.0

200 Nly

Ely	4.5	5.6
cb	4.8	5.3
C	4.9	5.2
cb	4.9	5.2
wly	4.9	5.2

Indexed  
c.s.k.

10.17

59

250 Nly

wly	4.5	5.6
cb	4.5	5.6
C	4.4	5.5
cb	4.6	5.5
Ely	4.6	5.5

300 Nly = Sly Sunset 50' wide

Ely	5.0	5.1
cb	5.1	5.0
C	4.8	5.3
cb	4.9	5.2
wly	4.7	5.4

Center

wly	4.9	5.2
cb	4.8	5.3
C	4.58	5.54
cb	4.7	5.4
Ely	4.7	5.4

300 Nly Sunset 50'

Ely	4.8	5.3
cb	5.1	5.0
C	4.7	5.4
cb	4.9	5.2
wly	5.0	5.1

J.P. 5.7

10.88V

4.41 5.71

0+50

W/y	5.6	5.3
cb	5.7	5.2
C	5.2	5.7
cb	5.5	5.4
E/y	5.5	5.4

1+00

E/y	5.2	5.7
cb	5.3	5.6
C	4.9	6.0
cb	5.4	5.5
W/y	5.4	5.5

1+50

W/y	4.9	6.0
cb	4.9	6.0
C	4.6	6.3
cb	4.9	6.0
E/y	5.0	5.9

2+00

E/y	4.5	6.4
cb	4.4	6.5
C	4.3	6.6
cb	4.8	6.1
W/y	4.8	6.1

2+50

W/y	4.4	6.5
-----	-----	-----

cb	4.4	6.5
C	4.0	6.9
cb	4.3	6.6
E/y	4.3	6.6

3+00 - 5/y WILKINSON ST.

E/y	4.3	6.6
cb	4.0	6.9
C	4.1	6.8
cb	4.3	6.6
W/y	4.7	6.2

T.P. 3.47 8.46 5.89 4.99

check to G.M.

3.83	4.63	4.62
		0.01

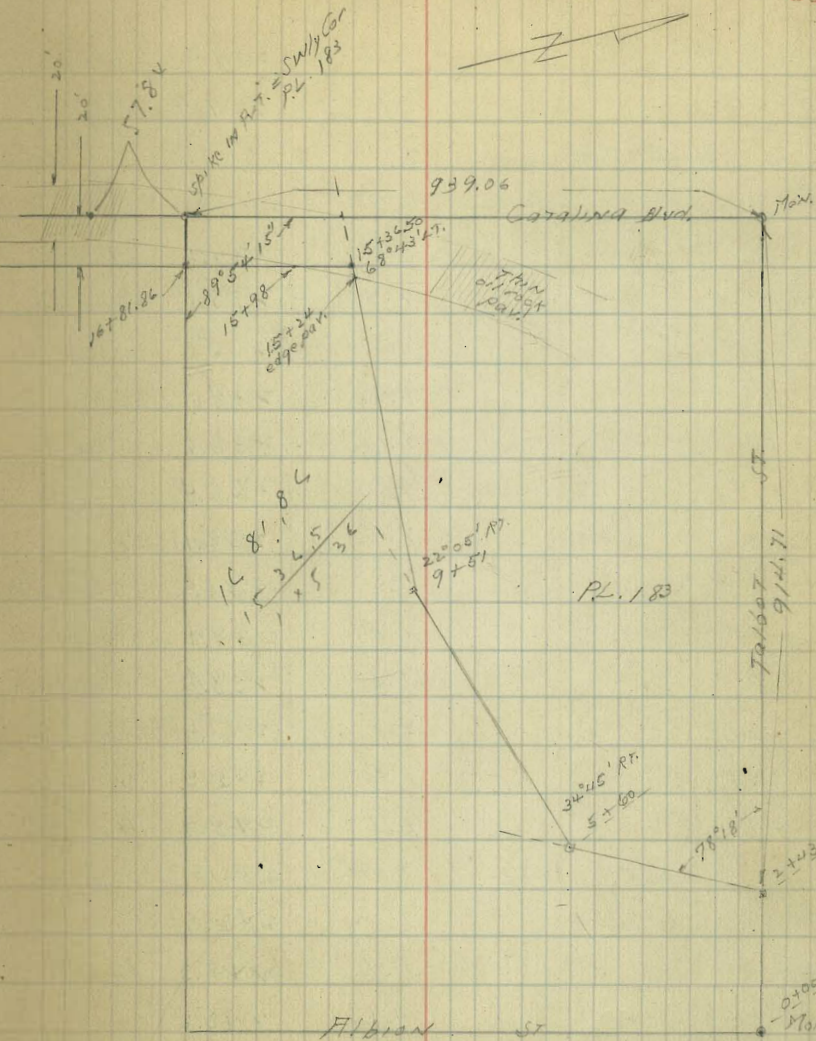
Sewer Prelim.  
 Talbot St. Thru. P.L. 183  
 to Catalina Blvd. to Pio Pico St.

Moore  
 1-8-27

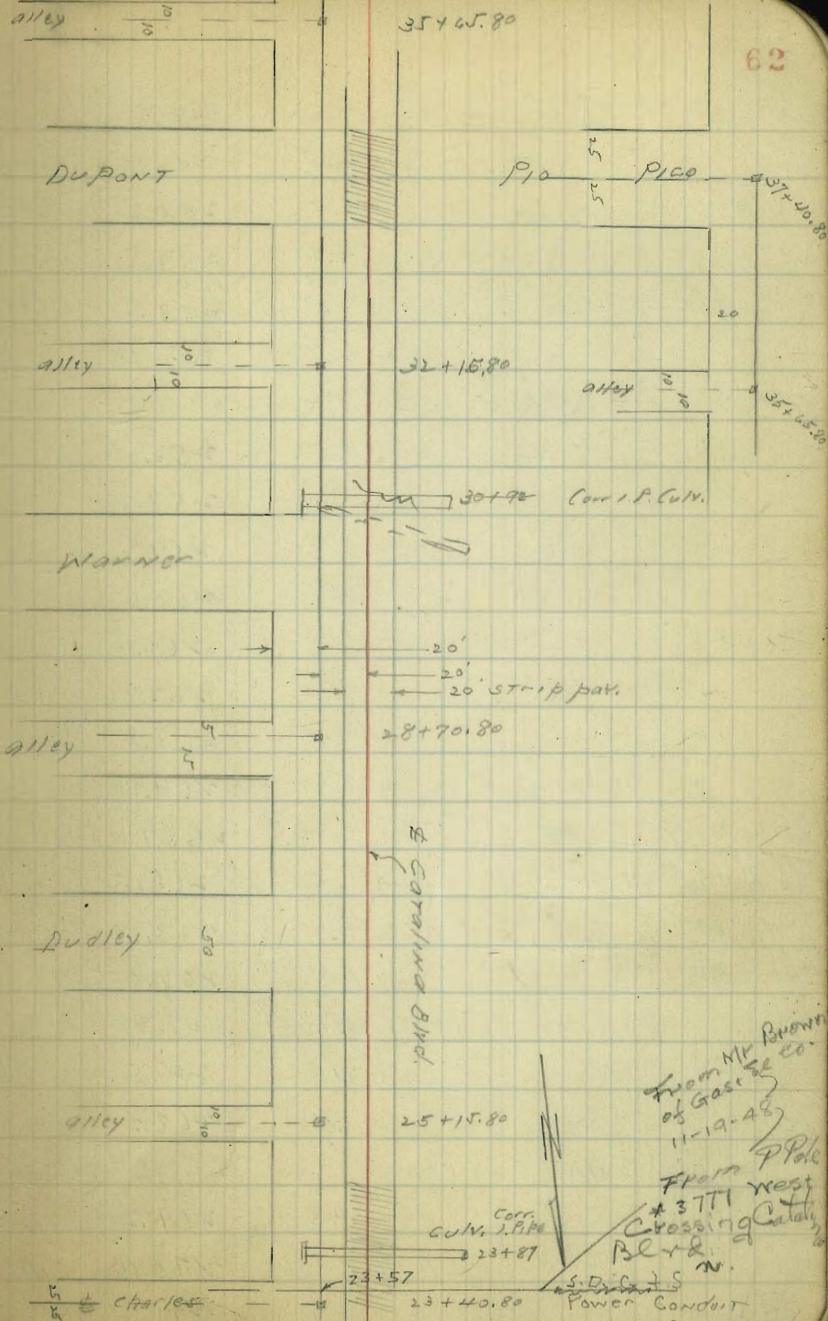
Indexed  
 C.S.K.

61

Talbot Albion B.M.	517	222.20	217.03	Conc. Max. Pueblo Cor.
0+00	on ground	4.5	217.7	14+07.3
+50		6.7	215.5	15+07.3
1		8.7	213.5	15+57.3
+50		10.0	212.2	16+07.3
2		10.6	211.6	16+57.3
+34	ground	10.5	211.7	16+91.3
	" F.L. 24" Con. pipe Culv.	15.8	206.4	17+00.3
2+43	Δ 78°18' RT	10.29	211.91	17+00.3
+50		10.3	211.9	17+07.3
3		11.2	211.0	17+57.3
+50		9.1	213.1	18+07.3
4		6.5	215.7	18+57.3
+50		5.4	216.6	19+07.3
5		3.0	219.2	19+57.3
+50		0.5	221.7	20+07.3
T.P.	11.30	232.93	0.63	221.57
5+60	Δ 34°45' RT	11.3	221.63	20+17.3
6		11.2	221.7	20+57.3
+50		10.9	222.0	21+07.3
7		10.0	222.9	21+57.3
+50		8.6	224.3	22+07.3
8		6.6	226.3	22+57.3
+50		4.0	228.9	23+07.3



9			3.5	229.4	23+57.3
+25			3.0	229.4	23+82.3
9+51 = Δ	22°05' Rt		1.03	231.90	24+08.3 5766
T.P	12.30	24420	1.03	231.90	"
10			9.8	234.4	24+57.3
+25			8.4	235.8	24+82.3
+50			8.7	235.5	25+07.3
11			9.3	234.9	25+57.3
+50			8.1	236.1	26+07.3
12			7.8	236.4	26+57.3
+50			8.1	236.1	27+07.3
13			7.3	236.9	27+57.3*
+50			6.8	237.4	
+75			5.8	238.4	
14			2.8	241.4	
+25			0.8	243.4	
+50			0.5	243.7	
T.P	12.50	255.69	1.07	243.13	
15			13.2	242.5	
+05			11.4	244.3	
+13			9.1	246.6	
+24	edge pav		8.82	246.87	
15+36.50 = Δ	68°43' L on pav		8.22	247.47	
+98	edge "		8.26	247.43	
16			8.3	247.4	
+50			7.8	247.9	





16	+8186	Public line	7.0	248.65	14+50.86 STUB
17			6.9	248.8	+69
	+50		5.5	250.2	15+19
18			4.2	257.5	+69
	+50		2.5	253.2	16+19
19			0.7	255.0	+69
T.P.	12.96	268.09	0.56	255.14	
	+50		11.5	256.6	17+19
20			10.1	258.0	+69
	+50		8.8	259.3	18+19
21			7.5	260.6	+69
	+50		6.3	261.8	19+19
22			5.3	262.8	+69
	+50		4.3	263.8	20+19
23			3.2	264.9	+69
	+40.8	Charles	2.30	265.79	STUB
	+87	18" I.P. Cuk ground	1.5	266.6	
	+87	F.L. "	4.10	263.99	
24			1.3	266.8	
T.P.	11.08	278.51	0.66	267.43	
	+50		11.0	267.5	
25			10.3	268.2	
	+15.8	Earley S of char.	10.20	268.31	
	+50		9.3	269.2	
24			8.5	270.0	
	+50		7.2	271.3	

27			6.5	272.0	
			4.8	273.7	
			3.2	275.3	
			1.8	277.2	
			0.38	278.13	STUB
			0.38	278.13	"
			11.2	279.5	
			8.9	281.8	
			6.7	284.0	
			4.4	286.3	
			2.8	287.9	
			4.9	285.8	
			2.3	288.4	
			0.5	290.2	
			0.76	289.94	
			10.0	291.9	
			9.59	292.53	STUB
			8.6	293.3	
			7.5	294.4	
			6.3	295.6	
			4.07	295.55	295.90 0.25
			5.4	296.5	
			4.9	297.0	
			4.4	297.5	
			4.2	297.7	
			4.13	297.79	STUB

18" or Carolina are 18" or 19" higher than Roseville

26		4.1	297.8
+50		3.7	298.2
WT		3.2	298.5
+40.8	E Pro Rico	2.8	299.1
+50		2.8	299.1
38		2.6	299.3
+50		2.1	299.8
38	+47.97 = 10' S of Pictol line	2.1	299.8

Sewer levels 10' S of Sly Line of Warner Villas

38+47.97 = 0400		2.1	299.8	
0+10 Ely		3.1	298.8	
0+20 E.L. of Carolina Blvd.		2.6	299.3	
T.P	1054	310.67	1.79	300.19
0+50		10.1	300.6	
1		8.2	302.5	
+50		6.0	304.7	
2		3.7	307.0	
+50		1.1	309.6	
T.P	11.17	320.56	1.28	309.39
3		8.8	311.8	
+50		6.4	314.2	
4		4.3	316.3	
+50		2.5	318.1	

5		1.2	319.2	
T.P	519	325.03	0.72	319.84
+50		4.9	320.1	
6		4.2	320.8	
+50		4.3	320.7	
7		4.6	320.4	
+50		4.5	320.5	
8		7.1	317.9	
+50		9.2	315.8	
+80.7 = Wly Silver Gate	10.5		314.5	

Sewer levels E alley S. of Du Pont

00=35+65.8	10.74	308.53		297.79 ✓	STUB
0+08		10.9		297.6	
+11		9.2		299.3	
+20 Ely Carolina		8.8		299.7	
+50		8.3		300.2	
1		6.3		302.2	
+50		3.9		304.6	
2		1.5		307.0	
T.P	11.98	320.01	0.50	308.03	
+50		10.2		309.8	
3		8.8		311.2	
+50		7.0		313.0	

H			5.6	314.4	
+50			4.6	315.4	
V			4.5	315.5	
+50			5.2	314.8	
U			6.6	313.4	
T.P.	0.29	313.88	6.42	313.59	
+50			2.2	311.5	
7			4.7	309.2	
+50			7.5	306.4	
8			10.6	303.3	
T.P.	2.20	304.42	11.66	302.22	
+50			3.6	300.8	
+81.9	WL. Silver Gate		5.4	299.0	
T.P.	12.35	309.62	7.15	297.27	
T.P.	9.87	318.22	1.27	308.35	
check ground	8+00	alley S of Pico Pico	0.3	317.9	317.9

±  
Sewer levels alley S of Warner

	1.01	303.28			302.22
T.P.	13.25	305.73		10.75	292.48
00 = WL Silver Gate				14.6	291.1
+50				12.4	293.3
1				9.5	296.2
+50				6.9	298.8
2				4.2	301.5
+50				1.8	304.4
T.P.	8.91	313.72		0.92	305.41
3				4.7	307.0
+50				5.0	308.7
4				4.0	309.7
+50				2.9	310.8
5				5.3	308.4
+50				7.3	306.4
6				10.0	303.7
T.P.	0.66	301.64		12.74	300.98
+50				0.3	301.3
7				2.4	299.2
+50				4.4	297.2
8				5.9	295.7
+50				7.4	294.2
8 + 63.4	EL. Catalina			8.4	293.2
8 + 83.4	Main Line			9.10	292.54

706  
 53  
 715.8

Sewer Levels

5' S of E of Alley S of Dudley St

0100 = 28 + 70.80	Carolina	12.00	290.73	278.13	5706
0 + 10			12.0	277.7	
0 + 12			10.7	280.0	
0 + 20 = EL. Carolina			9.9	280.8	
+ 50			7.8	282.9	
1			4.4	286.3	
+ 50			0.8	289.9	
T.P.	11.02	301.58	0.17	290.56	
2			7.5	294.1	
+ 50			4.1	297.5	
3			0.5	301.1	
T.P.	10.48	311.97	0.09	301.49	
+ 50			8.5	303.5	
4			6.5	305.5	
+ 50			4.9	307.1	
5			2.0	308.0	
+ 50			2.4	308.6	
6			3.9	308.1	
+ 50			5.3	306.7	
7			7.3	304.7	
T.P.	0.50	305.24	7.23	304.74	
+ 50			3.5	301.7	
8			6.0	299.2	
+ 50			8.7	296.5	
+ 84.9 W.L. Silver Gate			10.3	294.9	

Sewer Levels  
Alley S of Charles St.

		305.24		
T.P.	9.59	302.38	12.45	292.79
00 = W.L. Silver Gate			4.5	297.9
+ 50			0.5	301.9
T.P.	7.02	309.08	0.32	302.06
1			4.1	305.0
+ 50			2.8	306.8
2			1.4	307.7
+ 50			2.0	307.1
3			0.3	305.8
+ 50			5.4	303.7
4			8.2	300.9
+ 50			11.5	297.6
T.P.	11.6	298.07	12.17	296.91
5			3.8	294.3
+ 50			7.1	291.0
6			10.4	287.7
T.P.	10.5	280.49	12.63	285.44
+ 50			2.3	284.2
7			5.5	281.0
+ 50			9.2	277.3
8			10.7	274.8
T.P.	0.60	274.70	12.39	274.10
+ 50			5.7	269.0
1	+ 66.5 EL. Carolina		6.4	268.3
+ 70			7.2	267.5
8 + 86.5 = 25 + 15.8 STAIN LINE			6.33	268.37
				268.31



0+65 (con)

N.	6.2	326.3
±	6.1	326.4
S.	6.1	326.4

0+79 (W. Entrance) garage on S. dirt floor

6.S. of S. Line ± garage door = floor	6.6	325.9
S.	6.8	326.0
±	6.2	326.3
N.	6.2	326.3

1+00

N.	6.4	326.1
±	6.4	326.1
S.	6.6	325.9
+10	7.2	325.3

1+40 = { N. End. double garage on S. Line dirt floors.  
W. Line N+S. Alley

S. = 10	7.5	325.0
S. = floor	7.2	325.3
±	6.8	325.7
N.	6.7	325.8

1+50 = ± N+S. Alley.

N.	7.0	325.5
±	7.0	325.5
S.	6.9	325.6

1+60 = { E. End. above garage on S.  
E. Line N+S. Alley

S. = floor	7.1	325.4
±	7.1	325.4
N.	7.4	325.1

T.P. — 5.14 — 330.52 — 7.15 — 325.38 — Hub. E. L. W. S. Alley  
± E. W. Alley

1+79 E. End. garage on S. dirt floor East Entrance.

N.	5.0	325.5
+1	5.6	324.9
±	5.4	325.1
+4	5.4	325.1
S.	5.7	325.4
+ 6.± door = floor	5.2	325.3

2+00

S.	5.4	325.1
±	5.5	325.0
N.	5.4	325.1

2+50

N.	5.5	325.0
±	5.6	324.9
S.	5.6	324.9

2+96

S.	5.2	325.3
+1	5.5	325.0
±	5.6	324.9
+4	5.6	324.9
N.	5.3	325.2

2+99 ± { W. End curb + Pavmt.  
W. Line Tex 95. St

N. d.	4.94	325.58
N. pav	5.27	325.25
± "	5.63	324.89

## W. Line Texas (cont)

S. Pav.	5.42	325.10
S. ch.	5.09	325.43
14' E of W. Line = W. ch. Line Texas.		
S-25. ch.	5.65	324.87
S-25. pav.	6.31	324.21
S. Pav.	6.04	324.48
S. ch.	5.30	325.22
Φ Pav.	5.96	324.56
N. pav.	5.89	324.63
N. ch.	5.33	325.19
N+25. ch.	4.98	325.54
N+25. pav.	5.61	324.91

## N+S. Alley BIK 103 Univ. Hts

T.P. 582 — 331.20 — 5.14 — 325.38 — page 68

0+00 = N. Line E+W. Alley.

E.	6.1	325.1
Φ	5.7	325.5
W.	5.4	325.8
0+07. { garage on W. cmt floor 4.0 Back " " E dirt " 7.8 "		
W-4 = floor	5.25	325.95
W.	5.5	325.7
Φ	5.5	325.7
E.	5.9	325.3
E+7.8 = floor	5.6	325.6

0+50 E = S. End. garage under construction 1.7' Back		
E	5.5	325.7
Φ	5.5	325.7
W	5.5	325.7
N+1.7 Top. Form Boards for floor	4.32	326.88
0+71 = N. End. above Form Boards for garage floor		
N-1.7 Top. Form Boards.	4.30	326.9
W	5.4	325.8
0+93 { garage on W. cmt. floor 1.9' Back " " E dirt floor 7.5' "		
W-1.9 = floor	4.63	326.57
E-7.5 = floor	5.0	326.2
1+00		
W	5.1	326.1
Φ	5.3	325.9
E	5.3	325.9
1+05. garage on E. plastered floor 3.3' Back		
E-3.3 = floor	5.20	326.00
E	5.24	325.96
1+11 garage on W. cmt. floor 3.3' Back		
W E-1.5 = E. End. cmt. apron	5.00	326.20
W E-3.3 = floor	4.82	326.38
1+39 garage on W. cmt. floor 3.2' Back		
W-3.2 = floor	4.74	326.46
1+45 garage on E dirt floor 4.0' Back		
E-4 = floor	4.9	326.3

331.20

1+50

E.	5.0	326.2
±	5.0	326.2
W.	4.8	326.4

2+00

W.	3.9	327.3
±	4.2	327.0
E.	4.5	326.7

2+50

E.	4.3	326.9
±	3.9	327.3
W.	3.5	327.7

2+84 cmt. step out side of floor <sup>stoop.</sup> 5.5' Back

E - 5.5'	3.9	327.3
----------	-----	-------

2+90 garage on E. dirt floor 17.5' Back

E - 17.5' = floor	4.2	327.0
-------------------	-----	-------

3+00

W.	3.6	327.6
±	3.6	327.6
E.	4.0	327.2

3+05 garage on E dirt floor 8.2' Back

E - 8.2'	4.0	327.2
----------	-----	-------

3+48 garage on E. dirt floor 1.4' Back

E - 1.4 = floor	3.2	328.0
-----------------	-----	-------

3+50

E.	3.2	328.0
±	2.9	328.3
W.	2.9	328.3

331.20

70

T.P. — 7.27 — 335.66 — 2.81 — 328.39 —

3+86 double garage on W. cmt. floors 6.8' Back

W - 6.8 = floor.	6.45	329.21
------------------	------	--------

3+97

W.	6.6	329.1
±	6.9	328.8
E.	7.3	328.4

4+05 = garage on W. dirt floor 1.1' Back

W - 1.1 = floor.	6.0	329.7
------------------	-----	-------

4+20

E - 5	6.0	329.7
E	7.3	328.4
±	6.1	329.6
W.	6.2	329.5

4+32

W	5.3	330.4
±	5.3	330.4
±6	5.4	330.3
E	7.2	328.5
±5	6.4	329.3

4+44 = S. End (Outlet) 24" cmt. pipe culvert

E - 5	6.0	329.7
-------	-----	-------

E	6.4	329.3
---	-----	-------

E+1.2 = End of culvert F.L. 8.20 327.50 <sup>0.5 of Top of</sup> pipe 15.0 open.

±5	5.6	330.1
----	-----	-------

±	5.4	330.3
---	-----	-------

W	5.4	330.3
---	-----	-------



4+49.46 = { S. End. Curbs & Pav  
S. Line Meade Ave

W. ch	3.73	331.93
W. pav	3.94	331.72
± "	4.13	331.53
E "	4.06	331.60
E. ch.	3.98	331.68

14' N. of S. Line = S. ch. Line Meade Ave

E-25' pav	5.04	330.62
E-25' ch	4.51	331.15
E "	4.23	331.43
E pav	4.76	330.90
± "	4.66	331.00
W "	4.57	331.09
W ch	4.04	331.62
W+25' "	3.82	331.84
W+25' pav	4.42	331.24

14' S. of N. Line = N. ch. Line Meade Ave.

W-25' pav	3.85	331.81
W-25' ch.	3.22	332.44
W ch.	3.45	332.21
W pav	3.93	331.73
± "	4.03	331.63
E "	3.98	331.68
E ch	3.51	332.15
E+08' pav	4.15	331.51
E+13' "	4.29	331.37
E+17' "	4.20	331.46

E+25' pav	4.26	331.40
E+25' ch	3.74	331.92
E ch.	3.40	332.26
E. pav.	3.55	332.11
± "	3.75	331.91
W "	3.61	332.05
W. ch.	3.25	332.41

0+100 = { N. End. chs + Pav  
N. Line Meade Ave.

CHK. BM. B.P.

4.27

S. E. Texas  
331.395 + Meade.  
331.41

X Sec. BIK 72 U.H.

0+04.5' = N. End (in lot) 24' emb Pipe Culvert

W.	4.2	331.5
+5	3.9	331.8
±	3.8	331.9
+7'	3.8	331.9
+8.5' ± Pipe F.L.	6.	329.7
E.	5.6	330.1
+5'	5.6	330.1
0+19 S. End. Garage <sup>on E.</sup> East Entrance 0.7' Back		
E-5'	5.1	330.6
E	5.1	330.6
+2'	5.5	330.2
+4'	4.5	331.2
±	4.4	331.3
W	4.7	331.0
+4' = E. side House	4.7	331.0

0+43 garage on W. dirt floor 4' Back

W = H. = floor	4.9	330.8
W	4.8	330.9
Φ	4.8	330.7
E	5.0	330.7
+0.7 W. side garage	5.0	330.7

0+50 = N. End. above Garage on E.

0+56 garage on W. dirt floor 1.5 Back

N-1.5 = floor	5.0	330.7
---------------	-----	-------

0+92 garage on E. dirt floor 1.5 Back

E-1.5 floor.	4.2	331.5
--------------	-----	-------

1+00

E	4.2	331.5
---	-----	-------

Φ	4.4	331.3
---	-----	-------

W	4.4	331.3
---	-----	-------

T.P. - 6.03 - 338.18 - 3.51 - 332.15		
--------------------------------------	--	--

1+50

W	6.3	331.9
---	-----	-------

Φ	6.1	332.1
---	-----	-------

E	5.7	332.5
---	-----	-------

1+70 garage on W. cmt. floor 3' Back.

W-3. = floor	5.82	332.36
--------------	------	--------

W = E. End cmt. Apron.	5.76	332.42
------------------------	------	--------

1+76 garage on E. cmt. floor 3.8 Back

E-3.8 = floor	4.67	333.51
---------------	------	--------

E:	5.1	333.1
----	-----	-------

+3	5.6	332.6
----	-----	-------

Φ	5.9	332.3
---	-----	-------

1+76 (con)

W.	5.8	332.4
----	-----	-------

1+88 garage on E. cmt. floor 3.8' Back

E-3.8 = floor	4.72	333.46
---------------	------	--------

2+00 garage on E. cmt. floor 2.8' Back

W.	5.7	332.5
----	-----	-------

Φ	5.5	332.7
---	-----	-------

E.	5.0	333.2
----	-----	-------

E+3.8	4.88	333.30
-------	------	--------

2+35

E	4.8	333.4
---	-----	-------

Φ	4.9	333.3
---	-----	-------

W	4.9	333.3
---	-----	-------

2+75

W	4.7	333.5
---	-----	-------

Φ	4.7	333.5
---	-----	-------

E	4.5	333.7
---	-----	-------

3+00

E	4.0	334.2
---	-----	-------

Φ	4.0	334.2
---	-----	-------

W	4.0	334.2
---	-----	-------

3+15 garage on W. dirt floor 1.4 Back

W-1.4	3.9	334.3
-------	-----	-------

3+48 garage on E. 5.5 Back

E-5.5 = floor	3.2	335.0
---------------	-----	-------

338.18

	3+50		
E.	3.1	335.1	
±	3.3	334.9	
+7	3.3	334.9	
W:	2.6	335.6	

4+00

W.	2.1	336.1	
+3	2.8	335.4	
±	2.7	335.5	
E.	2.8	335.4	

---

T.P.	7.35	342.95	2.58	335.60
------	------	--------	------	--------

4+20 garage on W. Rough cnt. Block floor 5.5 Back

W - 5.5 = floor	6.5	336.5	
-----------------	-----	-------	--

4+40

E	6.8	336.2	
±	7.0	336.0	
W	6.9	336.1	

4+62 garage on E. dirt floor 7.8 Back

W	6.2	336.8	
±	6.7	336.3	
E	6.5	336.5	
E + 7.8 = floor	6.4	336.6	

5+00

E	5.7	337.3	
±	5.9	337.1	
W	5.3	337.7	

342.95

5+35

W	5.0	338.0	
±	4.9	338.1	
E	4.8	338.2	

5+70

E	4.0	339.0	
±	4.2	338.8	
+6	4.1	338.9	
W	3.5	339.5	

6+00.16 = S. Line Monroe (unpaved.)

W	4.1	338.9	
+5	4.9	338.1	
±	4.8	338.2	
+8	4.8	338.2	
E	4.2	338.8	

4.5' N. of S. Line = S. End. ch. Returns.

E cnt. ch. & ground	4.82	338.13	
±	5.0	338.0	
W cnt. ch. + "	4.90	338.05	

14. N. of S. Line = S. ch. Line Monroe.

W - 25. ch	5.0	338.0	
W - 25 gutter	5.5	337.5	
W ch	5.06	337.89	
W gutter	5.2	337.8	
± "	5.1	337.9	
E "	5.2	337.8	
E ch	4.90	338.05	
E + 75 ch	4.74	338.21	

342.95

338.97

338.97-73

338.96 BM. B.P.

S. E. Texas &amp; Monroe

BM. ch. k.

5-10.-37  
miller  
Walker  
Bliss

Grape St. Curb Levels  
Granada to 28<sup>th</sup>

75' wide  
12' cbs.  
51' Roadway

indexed  
C.S.K.

23490

74

B.M. B.P.

1.95

234.90

232.95

S.E. Grape  
& Granada

1+27

Curb on North not much good.

N. ch.

6.04

228.86

" " South O.K.

1+50

W. End Pavmt  
0+00 = W. line Granada

N. ch.

6.53

228.33

S. ch.

6.49

228.41

S. ent. ch

2.96

231.94

gutter pav

3.51

231.39

+12.75 = S. 1/4

3.18

231.72

+25.50 =  $\frac{1}{2}$

2.90

232.00

+38.25 = N. 1/4

3.08

231.82

+51.00 = gutter pav

3.59

231.31

+51.00 = N. ch.

3.00

231.90

From 1+50 W. N. ch. covered with dirt.

2+00

N. ch.

7.67

227.23

S. ch.

7.66

227.24

2+11 W = W. End. ent. ch. + walk. on N.

N. ch. W. End.

7.97

226.93

2+11.5 W = W. End. ent. ch. on S.

S. ch. W. End.

7.92

226.98

2+13 = W. End. ent. walk. on S.

From 0+00 to 0+19 Curb badly broken on N.

0+19 W.

N. ch.

3.48

231.42

0+50

N. ch.

4.15

230.75

S. ch.

4.12

230.78

S. ch.

E. edge drive

0+98.5

5.26

229.64

N. ch.

" "

5.33

229.57

From 0+98.5 to 1+07.5 N curb broken out for drive

1+07.5

N. ch.

5.55

229.35

1+18

N. ch.

5.82

229.08

From 1+18 To 1+27 Curb badly broken

Survey of S.E. Cor. of  
Rosecrans & Lytton

Moore  
4-1-38

S.W. B.P. v. 67 44.44 ✓ 41.75

Rosecrans  
Lytton

25' S of S.L. Lytton & E. of Rosecrans

Top cb	4.92	39.50
90T	5.36	39.06
+4 Pav	5.18	39.24
+8 "	4.90	39.52

S.L. Lytton

cb	5.38	39.04
90T	5.74	38.68
+4 Pav	5.57	38.85
+8 "	5.25	39.17

E. of Return

cb	5.36	39.06
90T	5.84	38.58
+4 Pav	5.62	38.80
+8 "	5.34	39.08

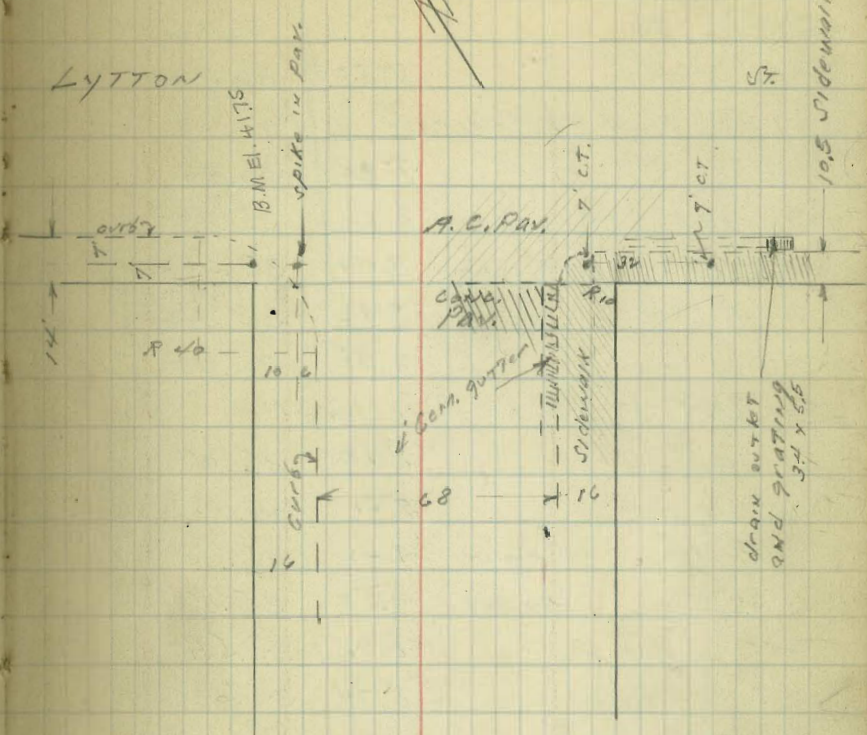
E.L. Rosecrans & S. of Lytton

cb	5.44	38.98
90T	6.16	38.26
+4 Pav	6.17	38.25
+8 "	6.08	38.34

25' E of E.L. Rosecrans

cb	6.90	37.52
90T	7.43	36.99

LYTTON



Rosecrans

907 + 1 pav.	7.55	36.87	
+ 8	7.50	36.92	
40' E of EL. Rosecrans			
cb	7.98	36.44	
Top grate 4 HD wall	8.00	36.42	
cb + 2 1/2 16" conc. drain	9.42	35.00	FL. of drain
+ 5 pav	8.52	35.90	
+ 8 "	8.40	36.02	
45.5' E of EL. Rosecrans			
cb	8.35	36.07	
907	9.22	35.20	
+ 1.7 apron of drain	9.44	35.00	
+ 3.4 " N. edge	9.25	35.17	
+ 5 pav	8.88	35.54	
+ 8 "	8.74	35.68	
S 16 LYTTON			
6.5' E of EL. Rosecrans = Power Pole Deadman			
25' " " " = 18" " "			

Handwritten scribble or signature.

ELLIOTT

SLY LYTTON

12

R20

Mine  
Trench

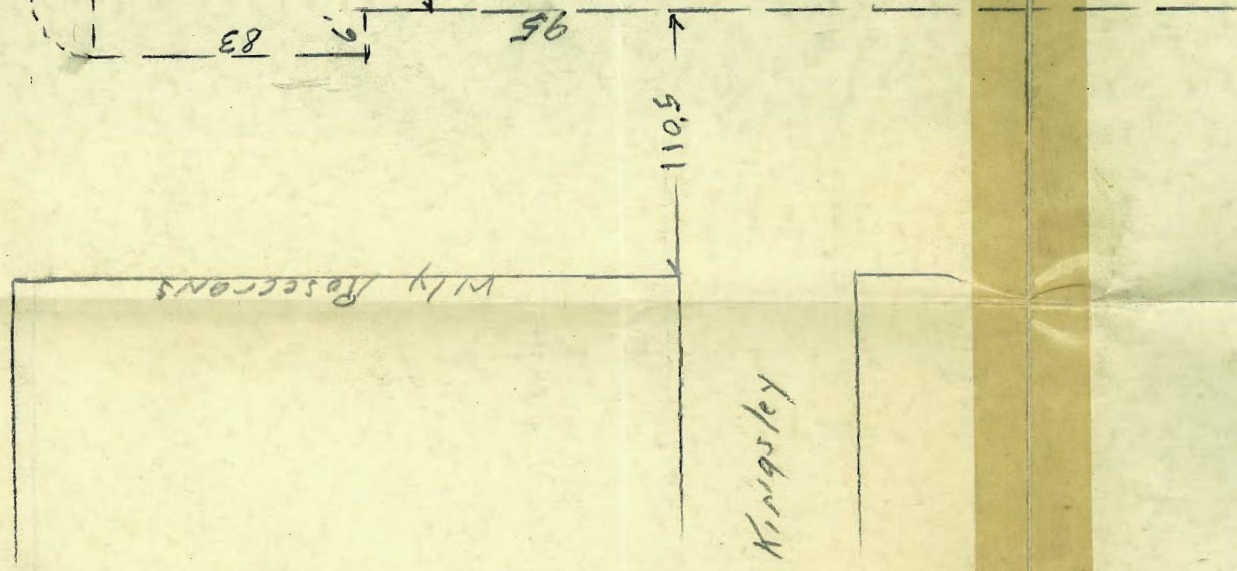
83

95

5'011

Wily Reservoirs

Kingsley



105en



1105

110

Officers  
Quarters

NOT FENCED

10

1105

ELLIOTT

Wire  
fence

Mr. Rosecrans

1105

Xenophon

10



5-10-38

2 Sec. Alley BIK 38 Normal Hts

Indexed  
c.s.k.

Adams.

Ave.

77

Miller  
Walker  
Bliss

B.M. 3.79 389.59 385.80

s.e. Adams  
& 32nd Sts

East & West Alley

12. W of E Line = E. ch. line of Bancroft St.

N - 50' 6.26 383.33

N - 25' G. pav 6.23 383.26

N. " " 6.30 383.29

N emt. ch. 5.55 384.04

φ. G. pav 6.37 383.22

S. " " 6.32 383.27

S. emt. ch. 5.61 383.98

S + 35' G. pav 6.50 383.09

0400 = E. Line Bancroft

N. emt. ch. E. end. 5.14 384.41

N. pav. " " 5.27 384.32

φ. " " " 5.45 384.14

S. " " " 5.42 384.17

S. emt. ch. " " 5.27 384.32

0410 East

S 4.5 385.1

φ 4.5 385.1

N 4.4 385.2

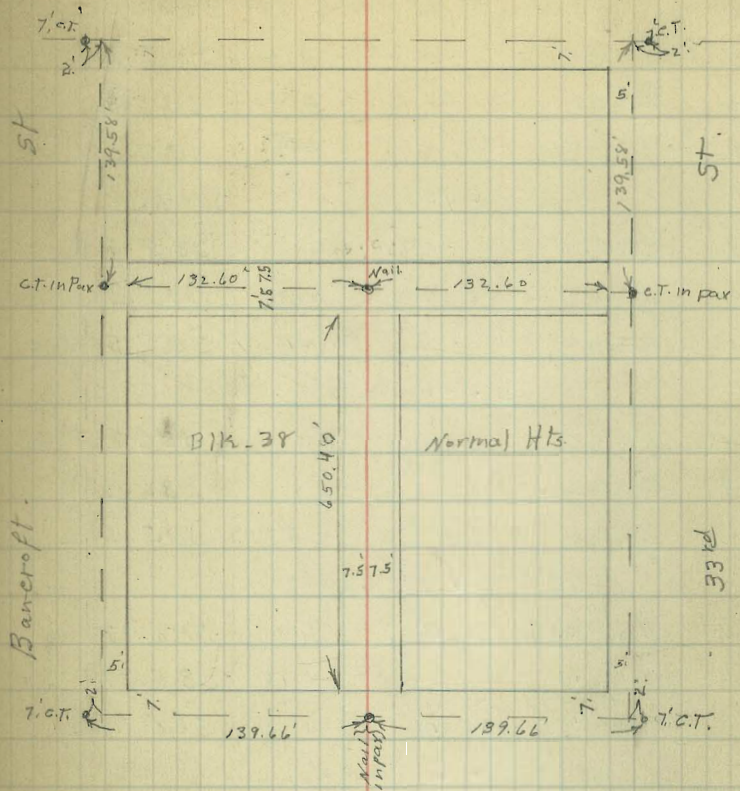
T.P. 5.30 390.22 4.67 384.92

0450

N 4.0 386.2

φ 4.4 385.8

S 4.3 385.9



Madison Ave.

390.22

0487 garage chs: emt floor. 610 Back

S-6 = floor 4.84 385.34

1400 East

S 4.7 385.5

φ 5.0 385.2

N 4.9 385.3

390.22

1+32<sup>60</sup> East. =  $\phi$  N+S. Alley.

N	4.9	385.3
$\phi$	4.9	385.3
S	4.9	385.3

1+70

S	4.8	385.4
$\phi$	5.0	385.2
N	4.7	385.5

2+00

N	4.0	386.2
$\phi$	4.2	386.0
S	4.8	385.4

2+65.20 = W. Line 33<sup>rd</sup> St.

S	part W. End. No. d	4.00	386.22
$\phi$	" " "	4.45	385.77
N	" " " No. d	4.12	386.10

12' E. of W. Line = W. d. Line

N	cmt d	4.36	385.86
N	G. par	4.79	385.43
$\phi$	" "	4.85	385.37
S	" "	4.83	385.39
S	cmt. d	4.55	385.67

North + South Alley

0+00 = S. Line E+W Alley. Where is other side ~~of~~

0.2 W. of E. Line = N. side garage	4.71	385.51	floor
$\phi$	4.9	385.3	
N	5.0	385.2	

390.22

0+50

78

N	5.0	385.2
$\phi$	5.2	385.0
E	5.4	384.8

1+00

E	5.9	384.3
$\phi$	5.8	384.4
W.	5.7	384.8

1+50

N	5.6	384.6
$\phi$	5.5	384.7
E	5.4	384.8

1+65

E	5.5	384.7
$\phi$	5.8	384.4
W.	5.7	384.5

1+90

W	5.7	384.5
$\phi$	5.8	384.4
E	5.7	384.4

2+00

E	5.7	384.5
$\phi$	5.5	384.7
W.	5.2	385.0

2+50

W	5.5	384.7
$\phi$	5.4	384.8
E	5.5	384.7
+1	5.8	384.4

3+00 = N. End. shed. on E. o. 3' in alley

E	6.0	384.2
☿	5.9	384.3
W	5.9	384.3

T.P. 4.69 389.08 5.83 384.39

3+21 { S. End. above shed. on E. o. 3' in Alley  
N. Fence 0.3 in Alley

3+42 Fence is on E. Line

3+50

W	4.9	384.2
☿	4.9	384.2
E	4.9	384.2

4+00

E-5 5.3 383.8

E 5.0 384.1

☿ 4.7 384.4

W 5.2 383.9

4+48

W 5.0 384.1

☿ 5.0 384.1

E 5.2 383.9

E+5 5.5 383.6

4+50

E-5 5.0 384.1

E 5.0 384.1

☿ 5.0 384.1

W 5.0 384.1

4+80

W	4.9	384.2
☿	5.0	384.1
E	5.0	384.1

5+00

W-2 5.0 384.1

W 4.3 384.8

+2 4.3 384.8

+3 5.2 383.9

☿ 5.0 384.1

E 5.0 384.1

5+50

E 5.3 383.8

☿ 5.4 383.7

+5 5.6 383.5

+6 5.0 384.1

W 5.0 384.1

6+00

W 5.0 384.1

+2 5.9 383.2

☿ 6.1 383.0

+5 5.9 383.2

E 5.3 383.8

6+40

E 5.6 383.5

+2 6.8 382.3

☿ 6.4 382.3

+6 6.7 382.4

W 5.9 383.2

389.08

6 + 50 4 = N. Line Madison

0.40' E. of W. Line =	amt. of N. end	6.95	382.13
" " " " " " " "	pay " "	7.04	382.04
" " " " " " " "	" " " "	7.10	381.98
-0.10' W. of E. line =	" " " "	6.94	382.14
" " " " " " " "	cb. " "	6.84	382.24

6 + 62 4 = N. d. Line

E.	amt. of	7.02	382.06
E.	pay	7.61	382.07
E.	"	7.65	381.43
W.	"	7.64	381.40
W.	amt. of	7.23	381.85

T.P.	5.77	390.16	4.69	384.39
------	------	--------	------	--------

T.P.	4.17	389.68	4.65	385.51
------	------	--------	------	--------

orig. B.M.			3.88	385.90	✓
------------	--	--	------	--------	---

## DIRECTIONS FOR USE OF TABLES

TABLE No. 1.

Distance of slope stake from side or shoulder  
 take for any width roadway, slope 1% to 1%  
 If ground is nearly level, the cut or fill of the  
 stake is located by the double entry method in  
 the column and row. The number in the  
 column is the distance from the side or shoulder  
 to the stake and the number in the row is the  
 amount of cut or fill. Add the amount  
 to cut or fill and find distance in table. Set up  
 and at the stake.

## IMPROVED TABLES

AND

## INFORMATION

TABLE No. 2.

To find Tangent and External for curve of  
 any other degree, divide by degree of curve and  
 add correction found in column of correction.  
 Degree of curve with a given  $L$  may be found  
 by dividing tangent (or external) opposite  $L$  by  
 given tangent (or external).  
 The distance from a point on the tangent to  
 the curve is very nearly the square of the tangent  
 length divided by twice the radius.

Calhoun

JUNE

SUNSET

WHITMAN

ROSE

GAINES

22.5

7.0

4.32

4.85

2.

2+99.93

4+49.80

378

342.75

338.76

3.99

335.66

331.41

4.25

472

488

7

125

7.59

139.59