

1534

WASHTON

FIELD BOOK

No. 355F

1534

MICROFILMED
DEC 24 1964

ENGINEERING DEPARTMENT
CITY OF SAN DIEGO.
CALIFORNIA.

Our Leather Bound Engineers Note Books are carried in the following rulings:

- No. 380 LEVEL BOOK. Left and Right Hand Page the same as Left Hand Page of this Book.
- No. 382 FIELD BOOK. Left Hand Page as in this Book, Right Hand Page 4 x 4 to the inch, Center Line Red.
- No. 384 MINING TRANSIT BOOK. Left Hand Page as in this Book, Right Hand Page 8x8 to the inch, Center Line Red.
- No. 385 FIELD BOOK. Left Hand Page as in this Book, Right Hand Page 8 vertical and 4 horizontal lines to the inch, Center Line Red.

We also carry the Note Books listed above, bound in extra strong Fabri-Hide (otherwise the same quality of book), which can be furnished at a somewhat lower price.

In ordering Fabri-Hide covered books, add the letter "F" to catalog number.

THE FREDERICK POST CO.
ENGINEERING and DRAFTING SUPPLIES
IRVING PARK STATION
CHICAGO, ILL.

29 + 17.70 = E.C.

28 + 13.85 = P.I.

$\Delta = 24^{\circ} 10' \text{ LT.}$

$R = 500$

$T = 107.04$

$L = 210.89$

27 + 06.31 = B.C.

23 + 96.68 = E.C.

$\Delta = 13^{\circ} 14' \text{ LT.}$

22 + 16.20 P.I.

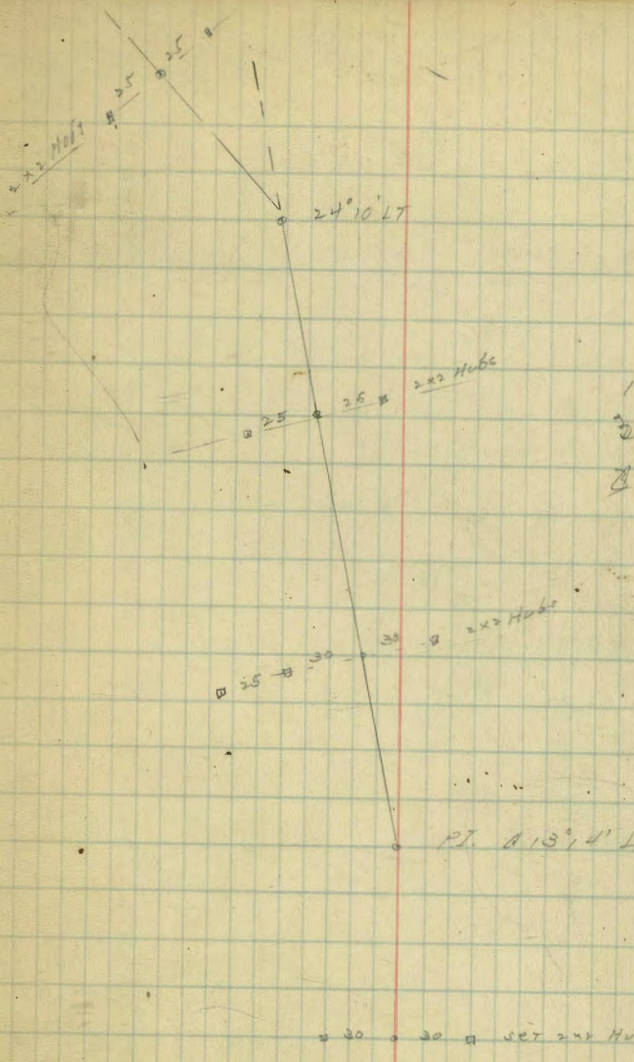
$R = 700$

$T = 81.20$

$L = 161.68$

27 + 35.00 = B.C.

16 + 07.36 = E.C.



25.60
 34.10
 155.50
 211.60
 866.30

P.I. $\Delta 13^{\circ} 14' \text{ LT.}$

2 x 2 Hubs

EC. 62+16.13

PI. 61+20.36

BC. 60+22.11

$$\Delta = 22^{\circ}14' \text{ PT}$$

$$R = 500$$

$$T = 98.25$$

$$L = 194.02$$

EC. 57+25.93

PI. 56+95.37

BC. 56+64.84

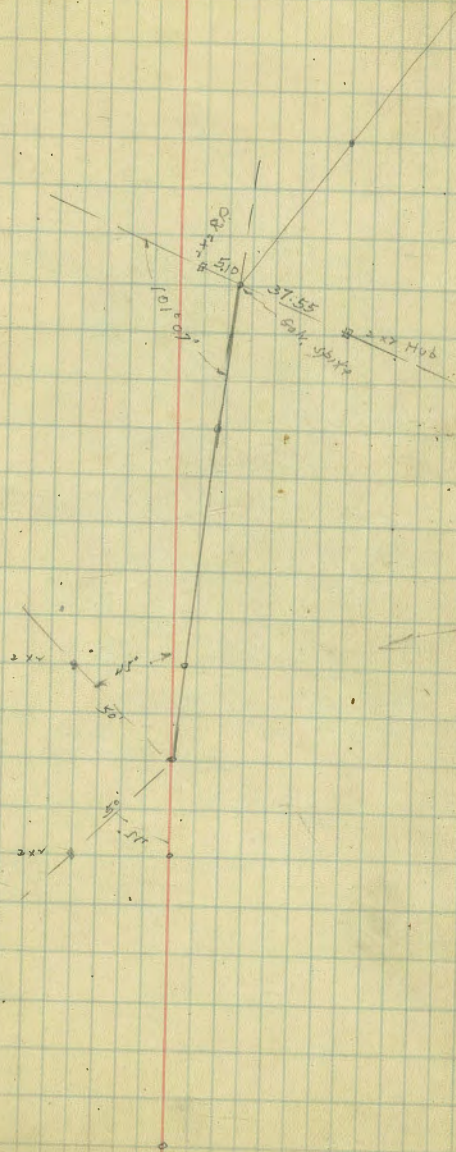
$$\Delta = 3^{\circ}30' \text{ PT}$$

$$R = 1000$$

$$T = 30.55$$

$$L = 61.09$$

EC. 45+23.99



84+15.34 = EC.

$\alpha = 33^{\circ} 04'$ LT
R = 600
T = 178.11
L = 346.27

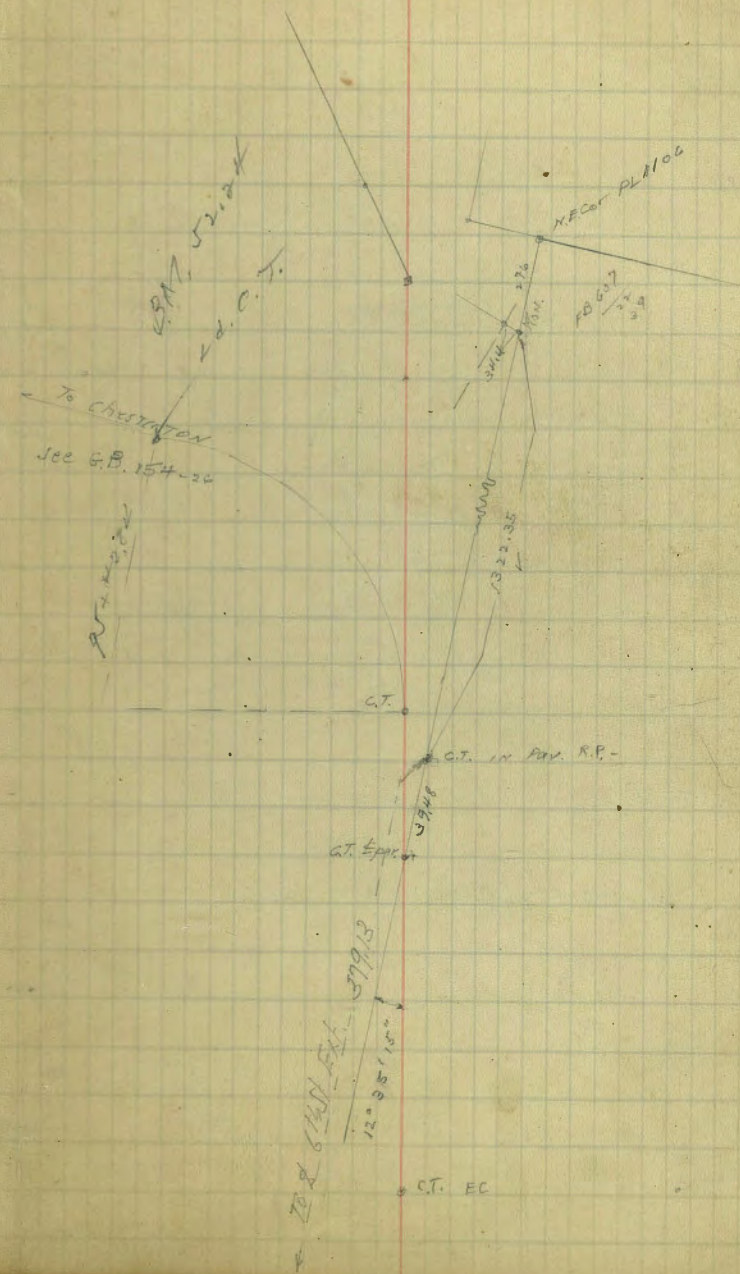
82+47.18 = P.I.

80+69.07 = BC.

80+22.21 = BC. of 6th St. Ext. = STA. 92+75.97

79+79.18 INTER. of N.Y. PL 1106

77+59.63 = EC



86 + 15.22 E.C.

85 + 43.90 = P.I.

$\Delta = 60^\circ 59'$ RT.

$R = 150$

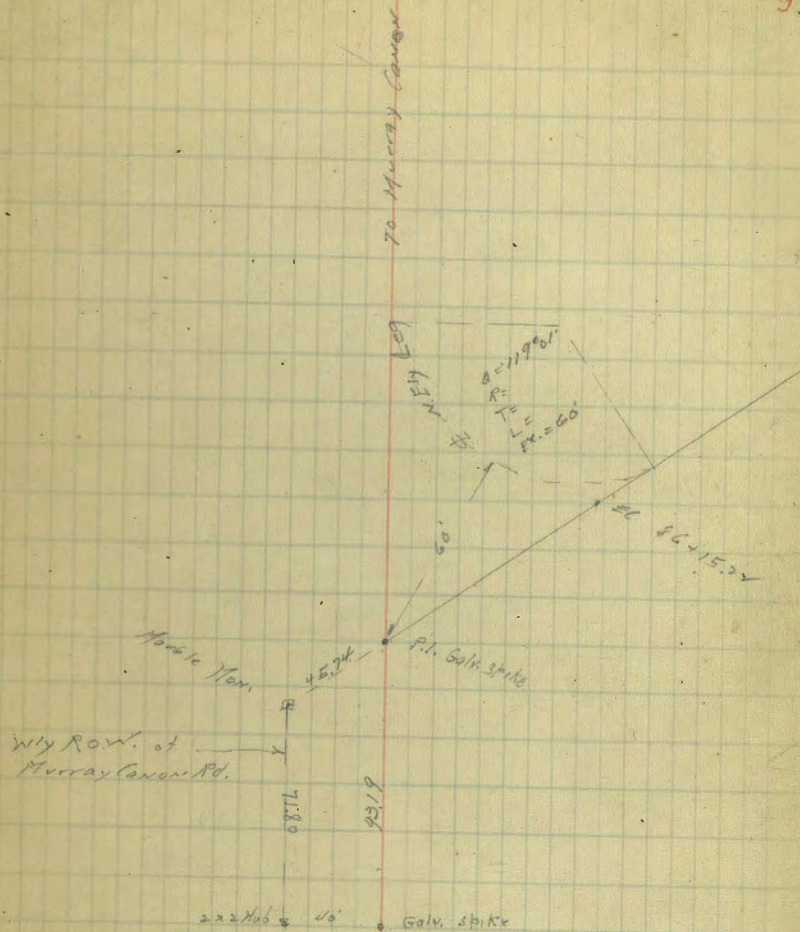
$T = 88.33$

$L = 159.65$

84 + 55.57 = B.C.

84 + 50.71 = old E.C. Murray Canon Rd

84 + 15.34 E.C.



112+30.46 I.C.

$\Delta = 57^{\circ}48'$ RT.

111+16.27 P.I.

R = 250
T = 138.01
L = 252.20

109+78.26 B.C.

106+67.57 E.C.

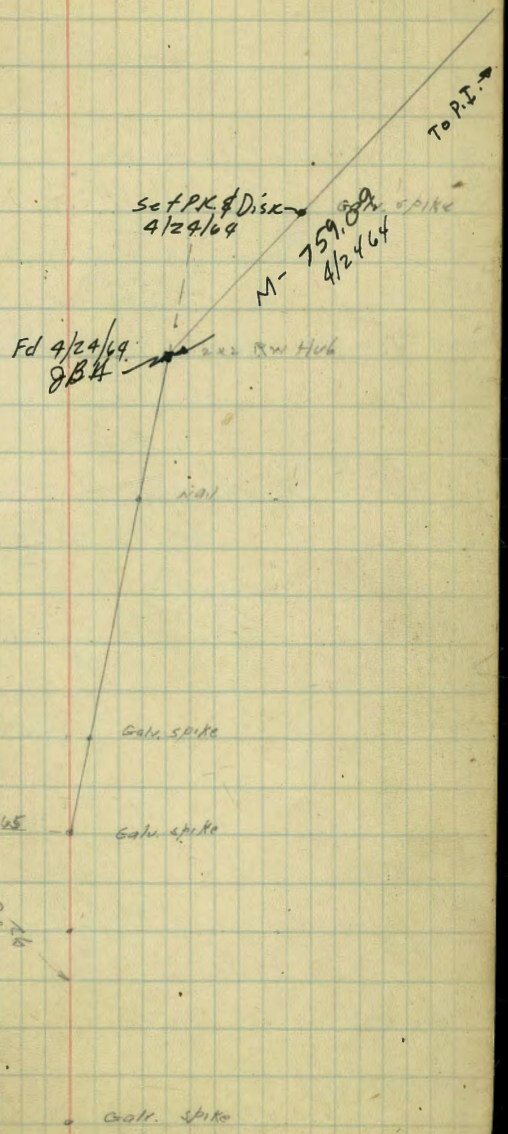
$\Delta = 5^{\circ}10'$ RT.

105+77.46 P.I.

R = 2000
T = 90.24
L = 180.30

104+87.22 B.C.

98+250.8 - E.C.



125 + 81.84 = E.C.

A = 37° 24' LT.
 P = 450.
 T = 15378 153.78
 L = 290.36

124 + 89.26 = P1

122 + 85.48 = BC.

121 + 14.46 = 1st sec. of 24 lot 4 produced w/4

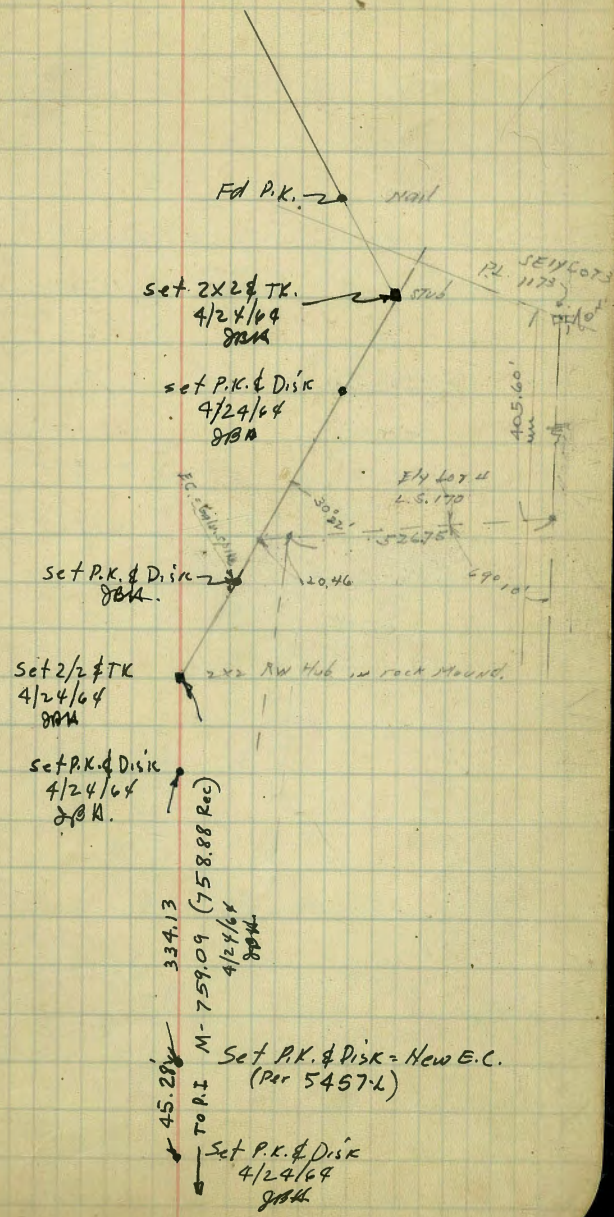
120 + 86.93 = EC calc. spine

A = 21° 52' Pt.
 P = 1250
 T = 241.46
 L = 477.06

118 + 51.33 = P1.200

116 + 09.87 = BC

112 + 30.46 = EC.



146 + 24.93 intersection of Nly 1173

144 + 76.86 = E.C

= intersection of \pm PL 1108 Prod. Nly

142 + 07.40 = P.I. $\Delta = 27^\circ 23' LT$

R=1150
T=220.16
L=549.64

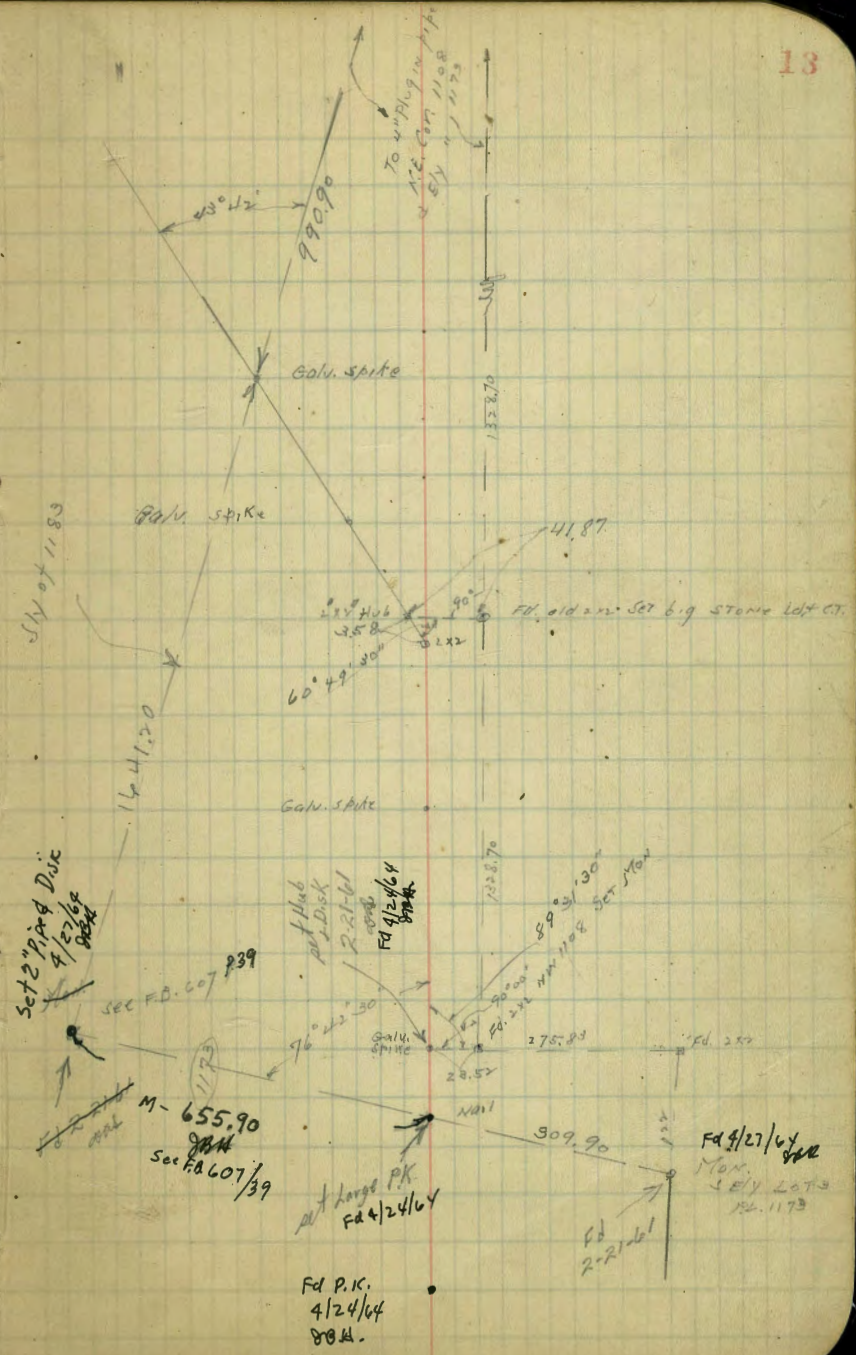
139 + 27.2 = BC. $L=549.64$

135 + 100 = P.I. $\Delta = 2^\circ 47' LT$

128 + 81.47 intersection of Wly of PL 1108 produced Nly

128 + 36.04 = intersec. of \pm of Lot 3 PL 1173 = N111

125 + 81.84 E.C.



154 + 78.54 EC

 $\Delta = 10^{\circ} 50'$ - RT.

151 + 65.41 PI.

P = 1200

T = 11378

L = 226.89

150 + 51.63 BC.

23.50

149 + 58.13 EC.

 $\Delta = 10^{\circ} 28'$ RT.

148 + 26.58 PI.

P = 1400

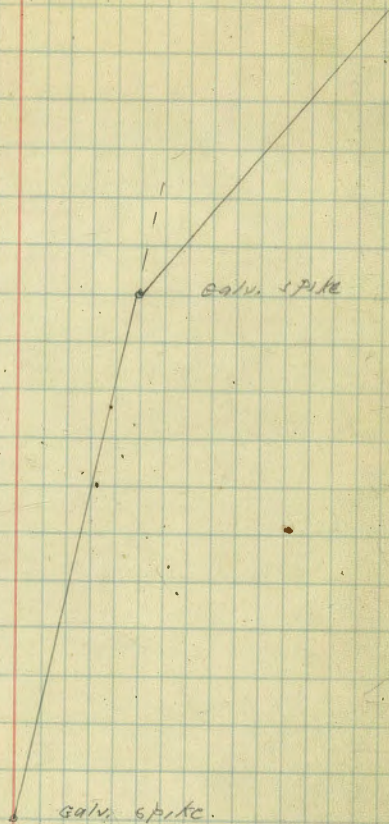
T = 132.34

L = 263.89

146 + 94.24 BC.

217.28

144 + 76.86 - EC.



158+75.14 = P.I. Δ 4° 30' RT.

157+58.30 INT. PL.

156+25.07 INTERSECT PL.

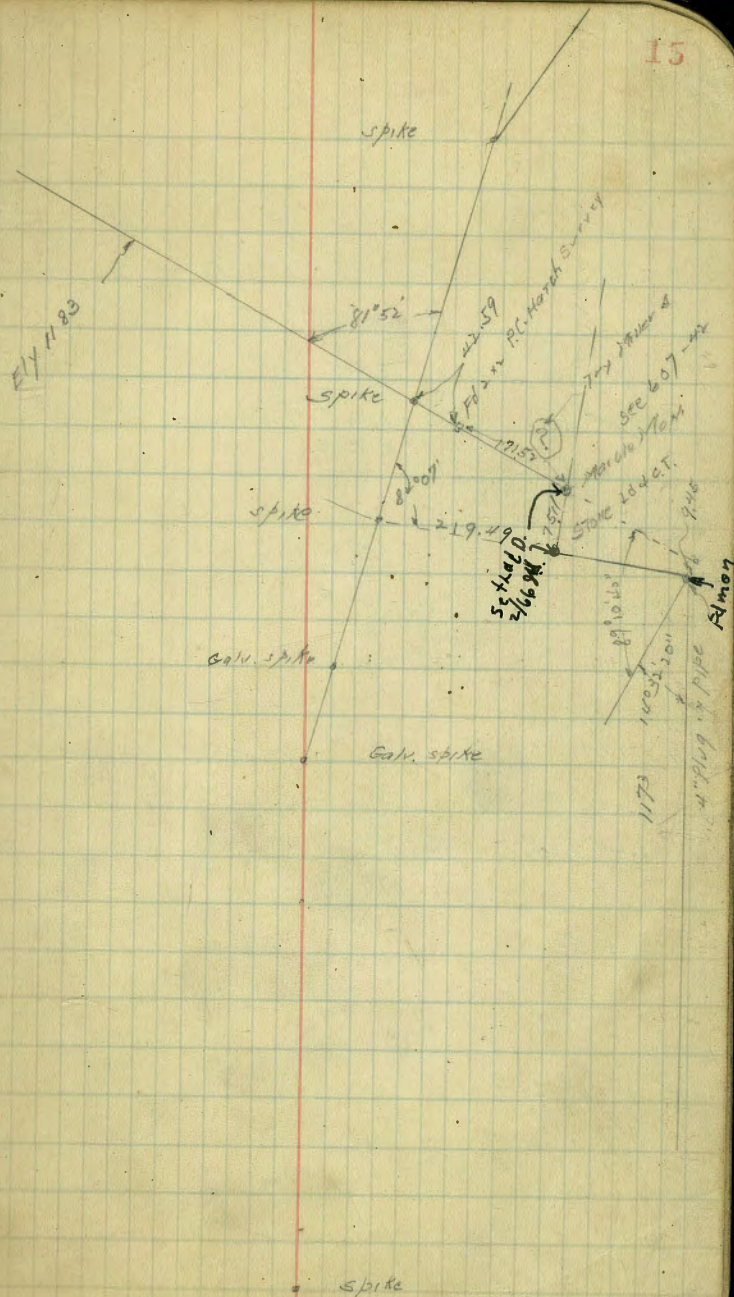
155+83.17 EC

154+92.00 P.I.
 $\Delta = 13^{\circ} 07'$ RT
 $R = 800$
 $T = 91.97$
 $L = 183.14$

154+00.03 BL

152+78.52 EC

15



169+74.22 EC

Δ 8° 34' LT.
R 1000
T 74.90
L 149.52

169+00 = P.I.

168+25.10 BC

166+32.12 = INT. of. Sly P.I.

167+78.91 EC

Δ 9° 56' RT
R 1000
T 86.90
L 173.37

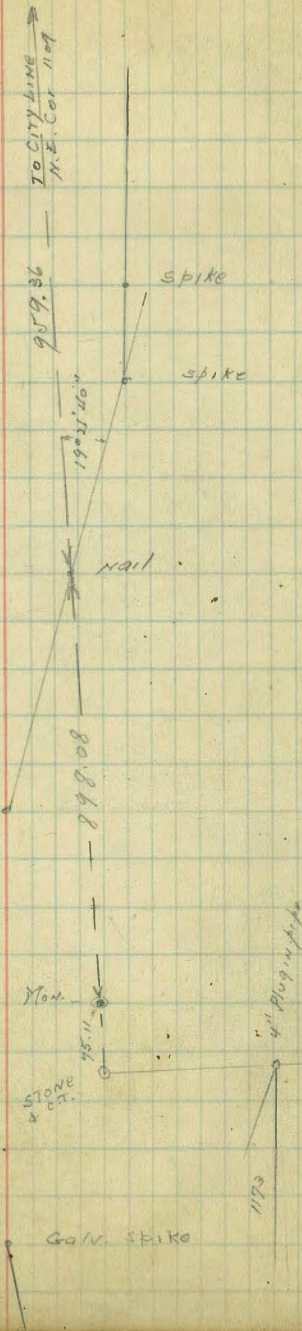
161+92.44 = P.I.

161+05.54 BC

158+75.14 = Δ 4° 30' RT

546.19

730.40



177+38.13 = old spike Fd. in oil pav. = Osborn E.C.

177+38.06 E.C. Galv. Spike

175+28.23 P.I.

$I = 35^{\circ}32' \text{ LT}$

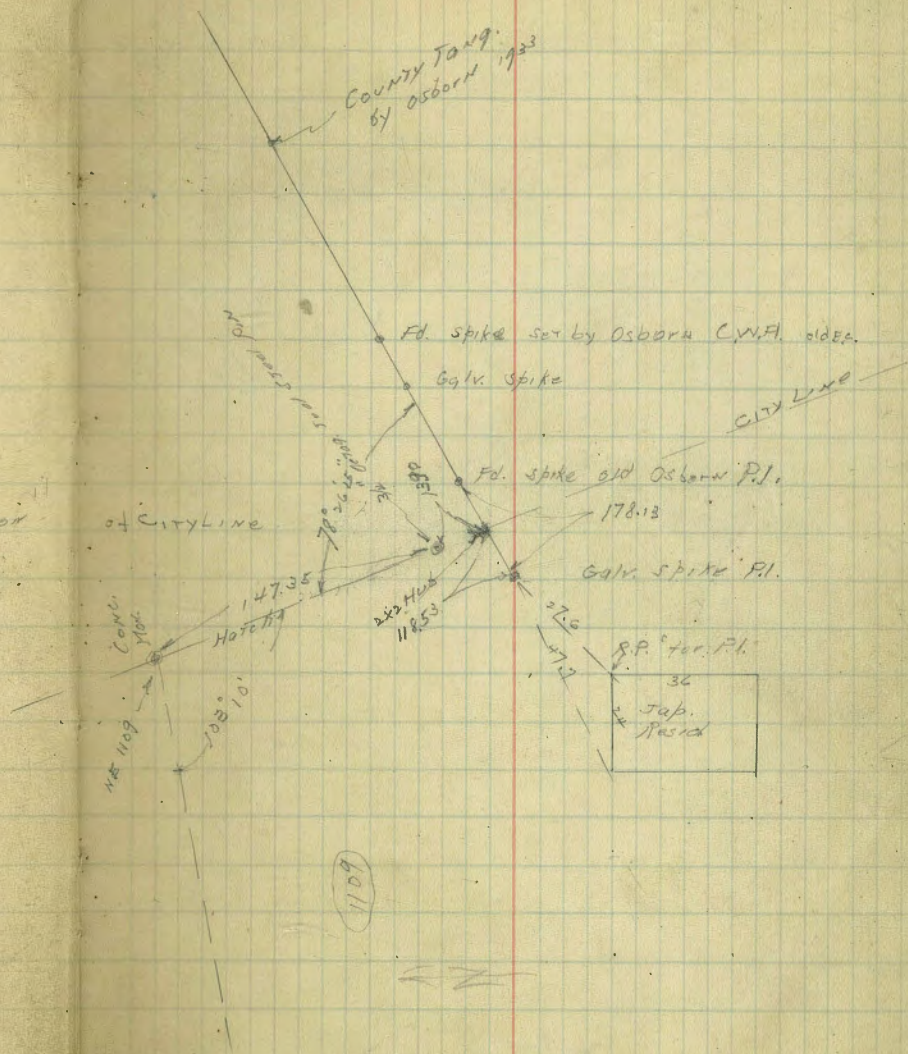
$R = 700$

$T = 224.29$

$L = 434.12$

173+03.94 B.C.

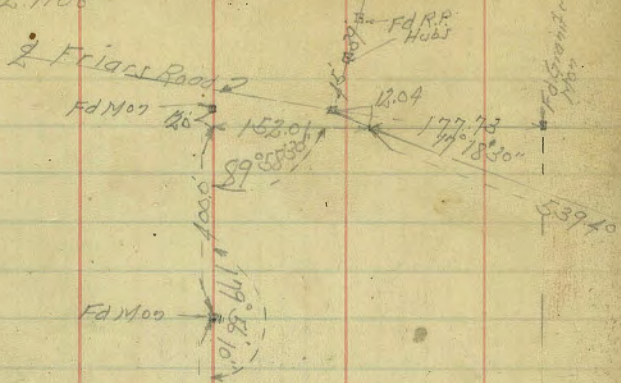
169+74.02 E.C.



379.22

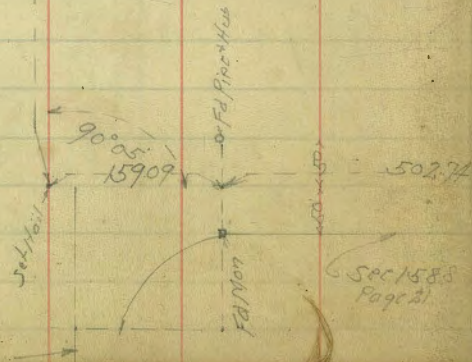
E.C. spike

Friars Road - 61451 Ext.
Portion PL 1106



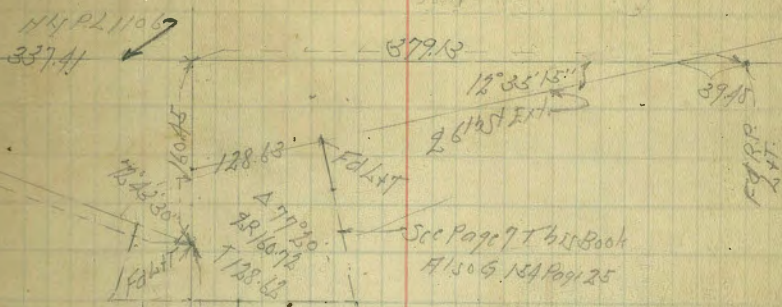
PL 1106.
FB 607 P 22

Taken From 607 P 22
2238.60

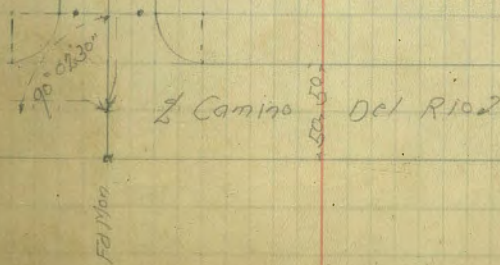


261451 Ext.

Nov 4-42 BWS
S 1107 Sommer 18
Hazard 8991

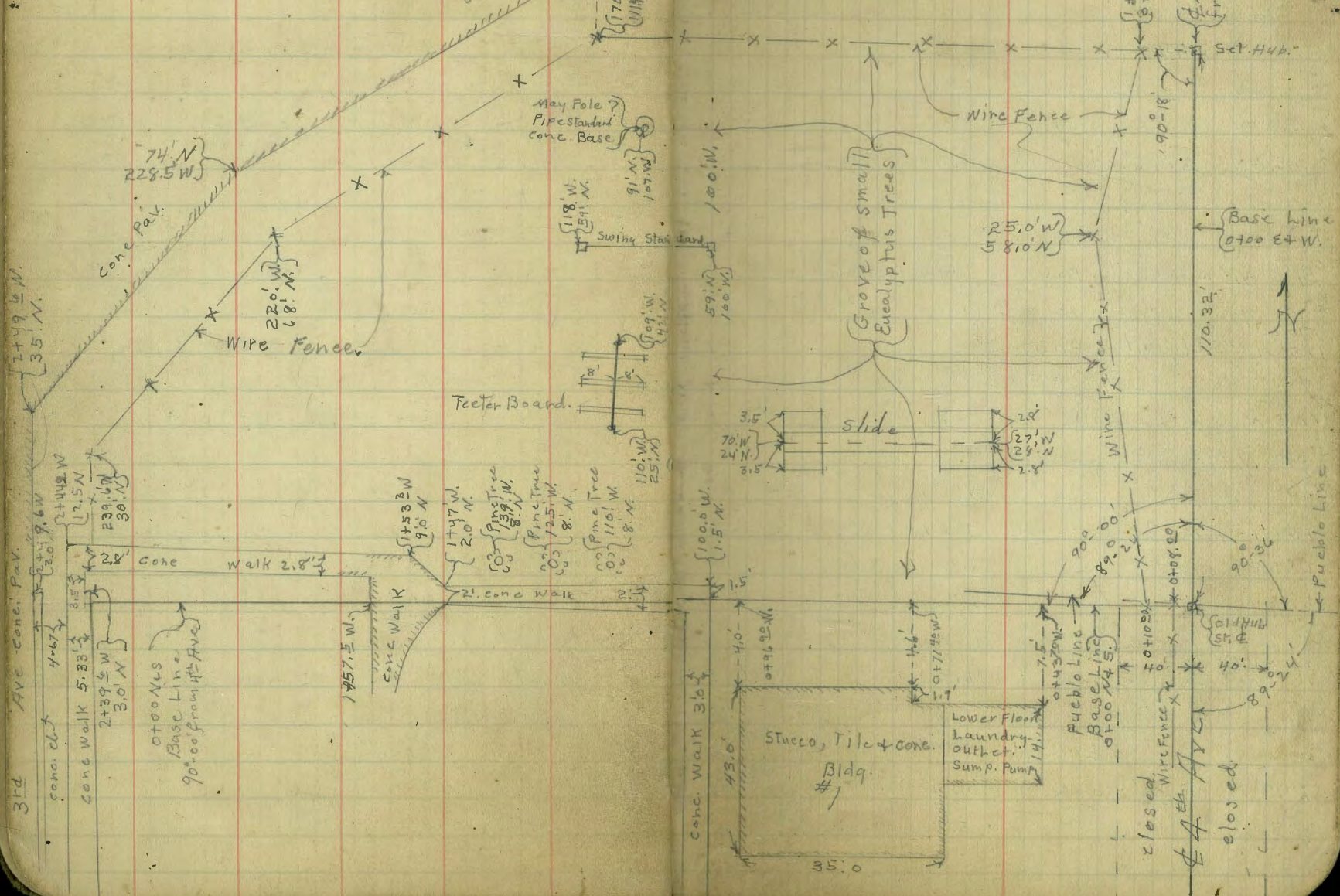


61451 Ext.
2478.70



10966

9-12-36
 Miller
 Walker
 Bloss
 Survey & Topog. in Area in P.L. 1118
 for Addition to Boys & Girls
 Aid Society
 F.B.s 832-22
 F.B 1060-79



Indexed
 c.s.Ki

Levels for Topog.
See Page 19.

B.M. B.P.	3.25	289.22		285.97	S.E. 3 rd A
B.M. Top Hydr.	5.37	292.75	1.84	287.38	+ Arbor. E. ed. 3 rd A S. L. Pl. 1118

249.6 W = E. curb. line 3rd Ave

3'.0 N Top. N. End ent. el.	7.77	284.98		
3.0 N gutter pav.	8.61	284.14		
35.0 N on E. Edge Pav.	8.47	284.28		

228.5 W } 74.0 N } on E. Edge Pav.	6.92	285.83		
---------------------------------------	------	--------	--	--

170' W.
125' N. S. Ely. edge Pav.

239.6 W = E. Line 3rd Ave

12.5' N = N. edge walk.	7.49	285.26		
30' N Δ in Fence	7.6	285.2		

225' W.

12' N = N. edge cont. walk	5.82	286.93		
25' N	6.3	286.5		
50' N	6.9	285.9		

220' W } 68' N } Δ in Fence	6.7	286.1		
--------------------------------	-----	-------	--	--

200' W.

10.5' N = N. edge walk	4.71	288.04		
25' N	5.4	287.4		
50'	5.9	286.9		

292.75

20

75' N	6.3	286.5		
85' N	6.4	286.4		

170' W

111.4 N = Δ in Fence.	5.9	286.9		
100' N	5.8	287.0		
75' N	5.5	287.3		
50' N	5.1	287.7		
25' N	4.5	288.3		
9.4 N N. edge walk	4.01	288.74		

9.0' N } 153.3' W } = N. edge walk	3.81	288.94		
---------------------------------------	------	--------	--	--

150' W.

25' N	4.3	288.5		
50' N	4.8	288.0		
75' N	5.3	287.5		
100' N	5.6	287.2		
110' N	5.5	287.3		

125' W.

110' N	5.5	287.3		
100' N	5.4	287.4		
75' N	5.3	287.5		
50' N	5.0	287.8		
25' N	4.5	288.3		
1.7' N = N. edge walk.	3.90	288.85		

292.75

100' W

1.5' N. = N. edge 2. 2nd Walk	4.44	285.31
25' N	4.9	287.9
50' N	5.3	287.5
75' N	5.6	287.2
100' N	5.7	287.1
110' N	5.7	287.1

Building #1. on floor	3.70	289.05
T.P.	0.73	288.75
	4.73	288.02

75' W

0+00 N + S = Base Line	3.0	285.8
25' N	4.3	284.5
50' N	4.2	284.6
70' N	5.4	283.4
75' N	4.0	284.8
84' N	2.8	286.0
100' N	1.9	286.9
110' N	1.8	287.0
85' N } 70' N }	2.4	286.4

288.75

62' W

110' N	2.6	286.2
100' N	2.6	286.2
84' N	6.6	282.2

50' W

110' N	7.0	281.8
100' N	7.1	281.7
75' N	9.2	279.6
50' N	8.7	280.1
25' N	8.8	280.0
9' N	8.3	280.5
0+00 N = Base Line	7.3	281.5

25' W

0+00 N + S Base Line	12.2	276.4
25' N	12.9	275.9
50' N	12.4	276.4
75' N	12.9	275.9
100' N	10.7	278.1
110' N	10.3	278.5

T.P. 6.01 283.11 11.65 277.10

Floor of Laundry Lower Floor } 2.34 280.77
 of L. Bldg #1. outlet is
 a sump pump. automatic

21

28311

00-N+S } 10' W }	9.3	273.8
14' W } 25' N }	9.3	273.8
15' W } 50' N }	9.2	273.9
20' W } 75' N }	8.1	275.0
12' W } 85' N }	8.4	274.7
13' W } 100' N }	6.6	276.5
12' W } 110' N }	6.5	276.6

0400 E+W. = ϕ 4¹⁶ Ave

110' N	11.3	271.8
100' N	13.9	269.2
75' N	16.7	266.4
50' N	19.5	263.6
25' N	16.7	266.4
0400 N+S	14.3	268.8

T.P. 12.79 289.89 6.01 277.10

T.P. 4.33 289.31 4.91 284.98

289.31

22

chk. B.M. Top. Hydt.	1.93	287.38 ✓
chk. original BM	3.34	285.97 ✓

7-14-36
Miller
Walker
Bliss

Prelim Sewer in P.L. 1118
To serve Boys + Girls Aid
Society To connect with
Mission Valley Sewer.

See Page 27 for Final Check of Location + Grades

292.75 Page 21

0+00			4.7	288.1
T.P.	0.73	288.75	4.73	288.02
+25			3.0	285.8
+50			7.3	281.5
+75			12.2	276.6
T.P.	6.01	283.11	11.65	277.10
+90			9.3	273.8
1+00	4 th Ave		14.3	268.8
T.P.	1.10	272.49	11.72	271.39
1+25			14.3	258.2
T.P.	0.01	259.58	12.92	259.57
T.P.	0.75	247.30	13.03	246.55
1+50			3.4	243.9
T.P.	0.00	234.76	12.54	234.76
1+78			6.5	228.3
1+79			9.0	225.8
1+86			14.0	220.8
T.P.	0.66	222.67	12.75	222.01
1+94			6.7	216.0
2+02	Wash		11.0	211.7
2+10	"		12.4	210.3

Ex M.H. #88
Mission Valley
Sewer

$$\Delta = 27^{\circ} 36'$$

$$R = 1000'$$

$$T = 245.62'$$

$$L = 481.71'$$

See Page 26 for Change

PL 1118

Pueblo Line
T+0+00
Proposed Sewer

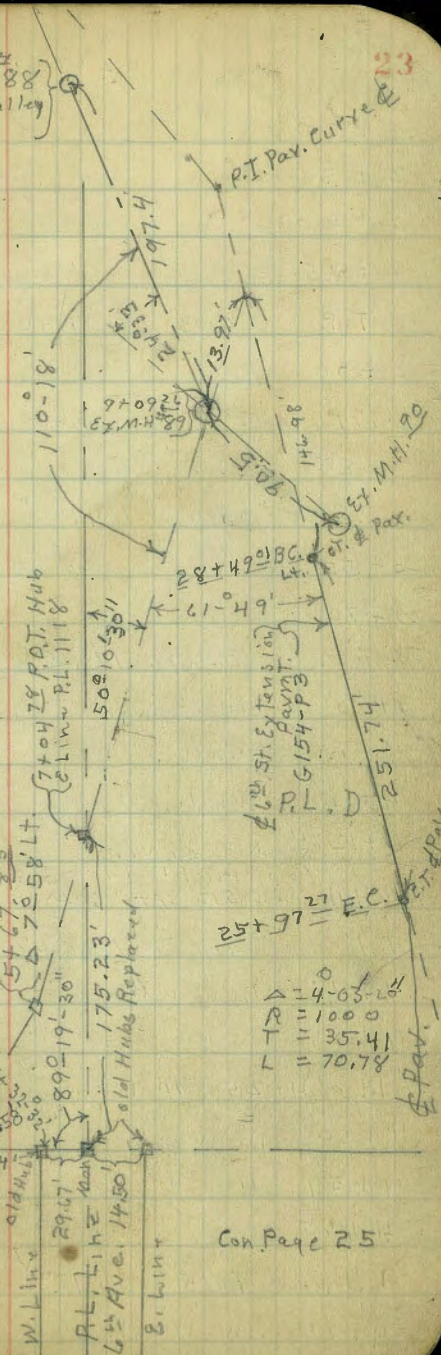
Hub #1+00
5th Ave. Addition

W. Line
8th Ave. 1450'

RL Line
6th Ave. 1450'

E. Line

Con. Page 25



$$\Delta = 4^{\circ} 05' 16''$$

$$R = 1000'$$

$$T = 35.41'$$

$$L = 70.78'$$

23

222.67

2+20			9.9	212.8
2+30			8.5	214.2
2+50			9.3	213.4
2+75			16.4	206.3
T.P.	0.03	209.44	13.26	209.41
3+00			12.5	196.9
T.P.	0.15	196.63	12.96	196.48
3+25			9.8	186.8
T.P.	0.16	184.20	12.59	184.04
3+50			5.0	179.2
3+70			11.5	172.7
T.P.	1.67	173.05	12.82	171.38
3+80	¢ 5th st. on s.		3.5	169.5
4+02	Wash		10.7	162.3
4+10	Wash		11.2	161.8
4+12.74	Δ on sewer.		10.0	163.0
T.P. Hub.	{ on Pueblo Line 8's of Sta 4+0803.		9.32	163.73
T.P.	4.95	168.68		163.73
4+17	In Wash		7.8	160.9
4+25			9.2	159.5
3. Lt of 4+25	In Wash		11.0	157.7
4+50	In Wash		12.7	156.0
4+59	" "		13.8	154.9
4+65			12.6	156.1
T.P.	1.75	157.93	12.50	156.18
4+85	In Wash		5.7	152.2

157.93

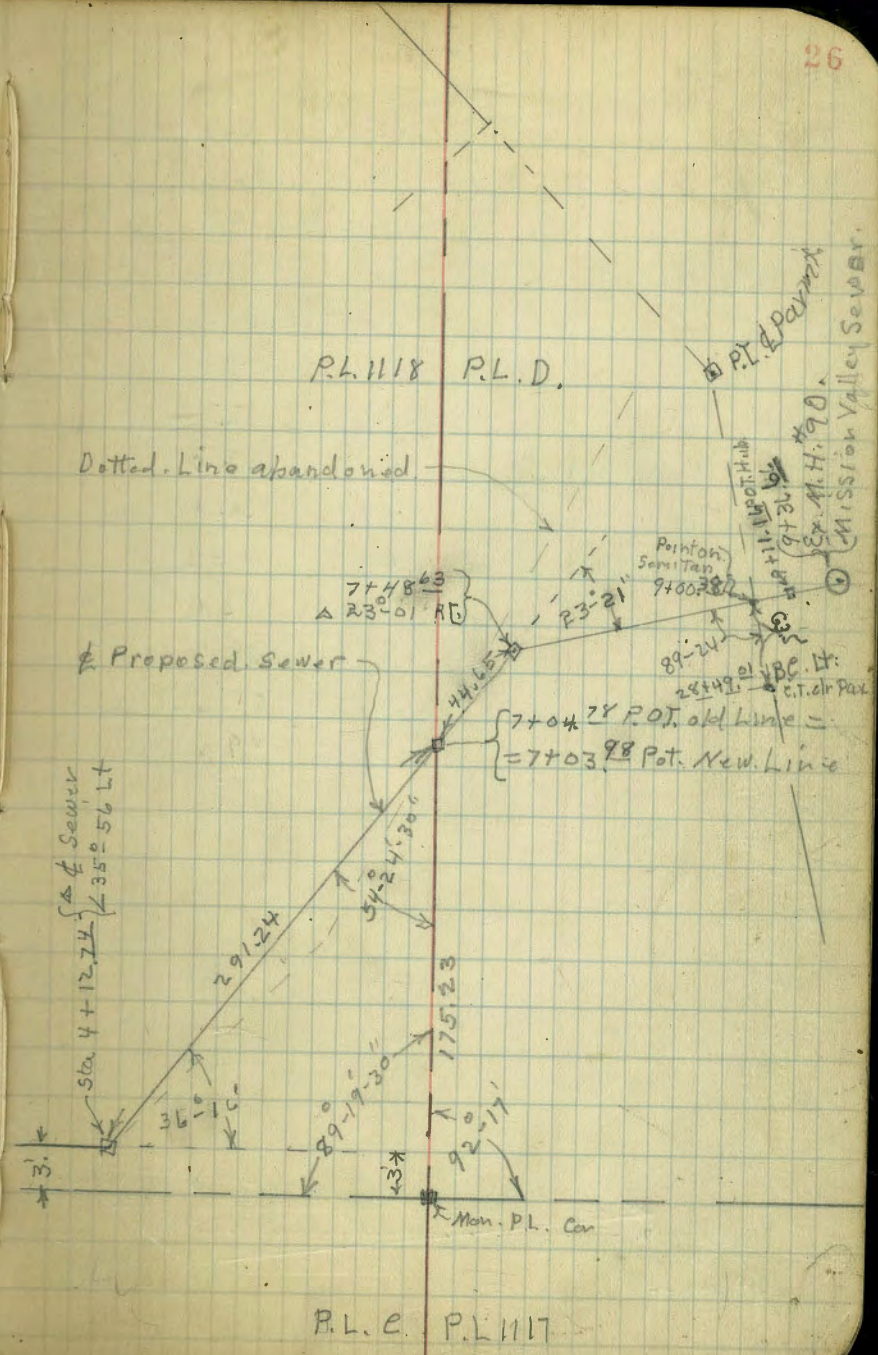
24

5+05	In Wash		7.7	150.2	
5+25	" "		9.8	148.1	
T.P.	2.35	148.86	11.42	146.51	
5+38	Wash		3.0	145.9	
5+60	"		5.3	143.6	
5+67 ⁸³ Δ 7 ⁵⁸ Lt.	Wash		7.36	141.50	¢ Hub.
6+00	In "		11.3	137.6	
6+25			14.3	134.6	
T.P.	1.35	137.35	12.86	136.00	
6+37	In Wash		6.2	131.2	
6+50	¢		6.8	130.6	
4 N of 6+50	In Wash		10.0	127.4	
6+75	¢		9.7	127.7	
5' N. of 6+75	In Wash		13.0	124.4	
7+05	In Wash		13.5	123.9	
T.P.	1.47	125.92	12.90	124.45	
7+30			4.1	121.8	
7+50			6.5	119.4	
T.P.	1.59	114.54	12.97	112.95	
7+85			1.5	113.0	
8+00			5.1	109.4	
8+50			7.3	107.2	
8+60			12.2	102.3	
8+80			12.0	102.5	
8+94			5.5	109.0	
			5		

10-8-30
miles
Walker
Bliss

Change in Prelim "B." Line
Sewer Location see Page 23

BM. Hub	3.61	167.34		163.73	3' s. of Sta. 4+00.03
4+12 ⁷⁴ Δ	35°-56' Lt		4.3	163.0	
4+17	1h wash		6.4	160.9	
4+25			7.8	159.5	
3' Lt. of 3+25 1h Wash			9.4	157.7	
4+50	1h wash		11.3	156.0	
4+56	" "		11.7	155.6	
4+58			10.4	156.9	
4+75			12.5	154.8	
T.P.	0.40	154.74	13.00	154.34	
4+87	Wash.		1.8	152.9	
5+00			3.4	151.3	
5+12			2.4	152.3	
5+25			5.1	149.6	
5+60			9.0	145.7	
5+70			10.6	144.1	
T.P.	1.25	143.09	12.90	141.84	
6+00			4.8	138.3	
6+25			8.0	135.1	
6+30			9.2	133.9	
6+50	Wash.		13.0	130.1	
T.P.	3.43	134.43	12.09	131.00	
7+00			10.1	124.3	
T.P.	2.32	124.77	11.98	122.45	
7+48 ⁴³ Δ	23°-21' Rt.		5.4	119.4	



P.L. 1117

Survey For Proposed City Rubbish
Dump in P.L. 1183

Dec 6-39
Sisson
Osborn
Chapman

28

PL 1183

PL 1183

Fd. 25422 x 244

990.00
1000.00
1000.00
1000.00

Fd. Granite
Mon.

See Page 137

PL 1173

Reynolds Road
(Main Rd)

432.24
175.00

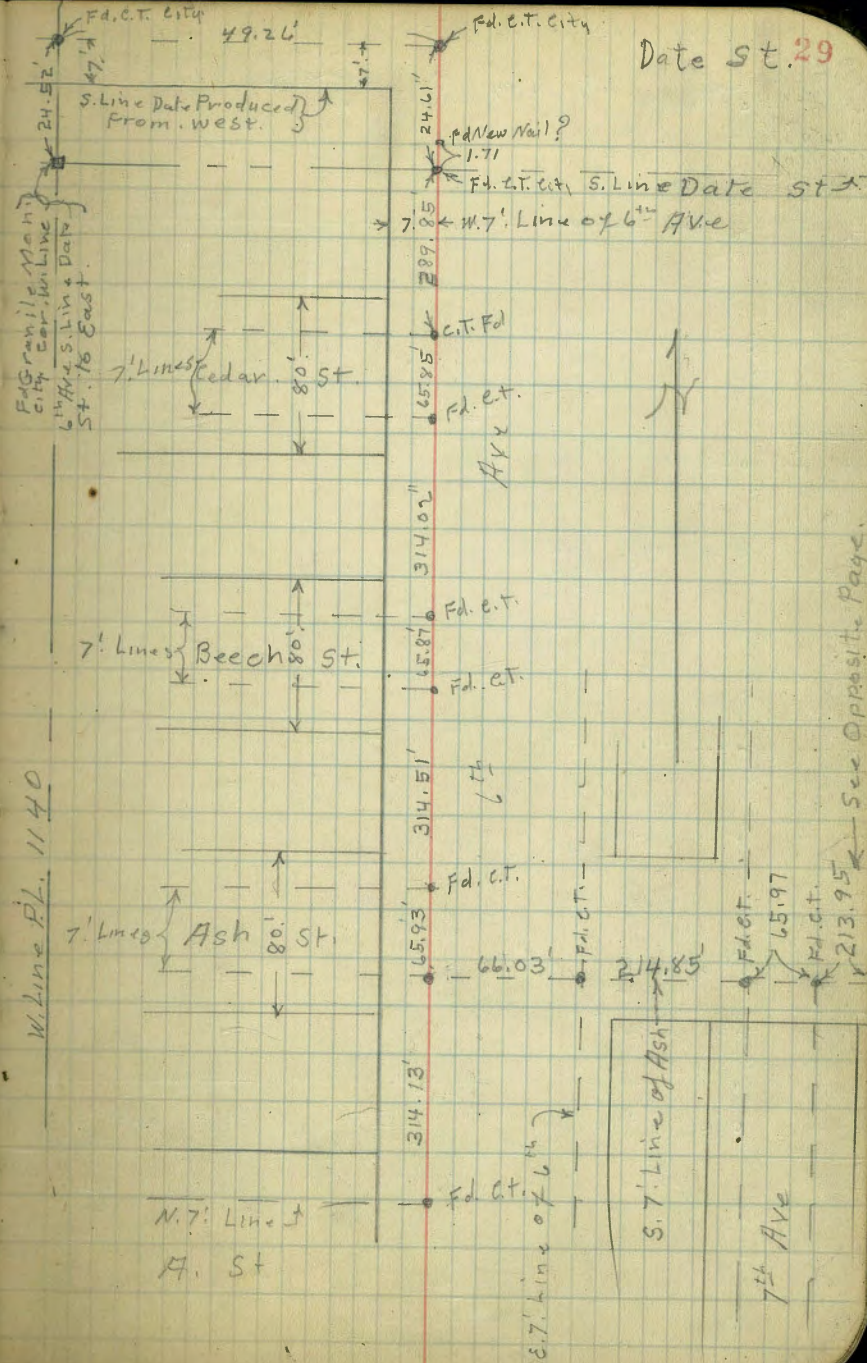
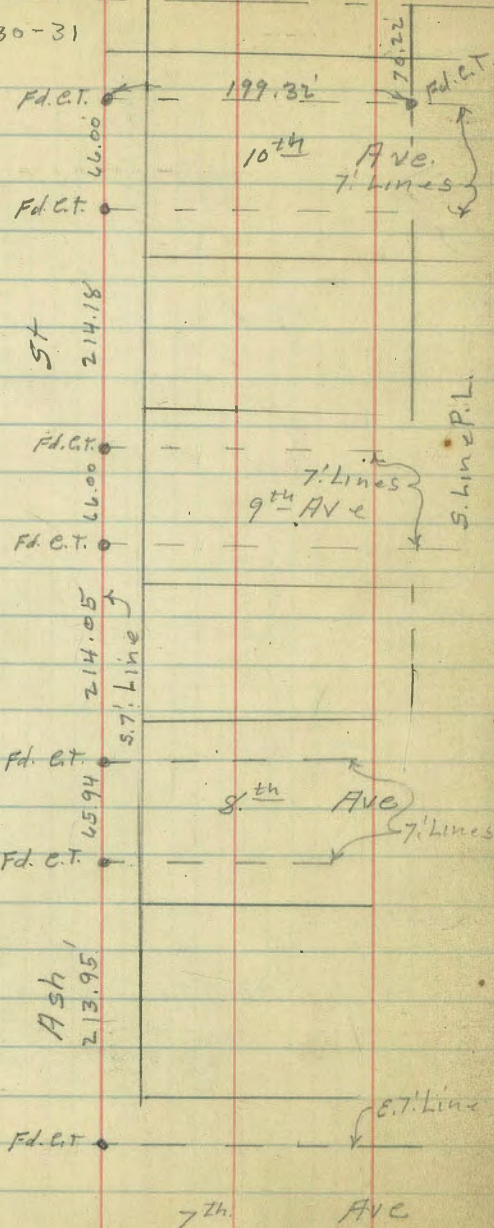
25430

Fd. Granite
Mon.

10-22-36
 Miller
 Walker
 Bliss
 Indexed
 C.S.K.

Measurements on W. 7th Line of 6th Ave

See Page 30-31
 Plotted
 T.P.S. 59
 60

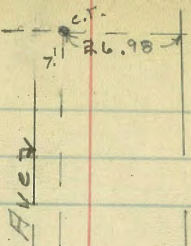


Date St. 29

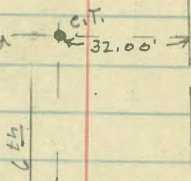
F.d. Granville, Manly City Cor. W. Line
 6th Ave. S. Line + Date
 St. 76 East

See Opposite Page.

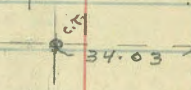
S. 7¹/₂ Line Juniper St



S. 7¹/₂ Line Hawthorn St



N. 7¹/₂ Line Grape St



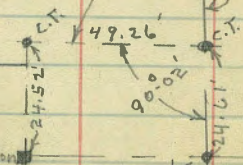
N. Line P.L. 1140.

W. 7¹/₂ Line 6th Ave produced from South

S. Line Date

Granite Mon

W. 7¹/₂ Line



S. Line Datest

W. Line 6th Ave

FACT. S.W. 6th + Ash.

Page 307

11-13-36
Miller
Walker
Bliss

X See Mendell Terrace 50' wide 10' obs.
Kenmore terrace West.

B.M.	3.69	392.76		389.07	N.E. Mt View Dr + Adams W. End.
T.P.	6.86	394.54	5.08	387.68	
N. End. Collier					N.E. Collier
T.P. B.M. B.P.	5.86	396.72	3.68	390.86	+ Mt. View Dr W. End. S.E.
T.P. B.M. B.P.			2.84	393.88	Copley + Mt. View Dr.
				393.91	
T.P. above	5.03	392.71		387.68	
T.P. B.M. B.P.	4.03	393.35	3.39	389.32	S.W. Woodell + Kenmore Ter.

12' E. of W. line = W. ch. Kenmore Ter.

S. curb line = gutter 4.50 388.85

N. curb " = " "

0+00 = W. line = Kenmore Ter.

43' S. of S. ch = N. edge cmt. walls 3.80 389.55

S. ch. 4.04 389.31

gutter pav W. End. 4.46 388.89

1/4 " " " 4.40 388.95

1/2 " " " 4.35 389.00

3/4 " " " 4.40 388.95

gutter " " " 4.57 388.78

N. ch. " " " 3.90 389.45

N. " " " 3.7 389.7

0+25 W.

N 3.5 389.9

+7 3.7 389.7

ch 4.6 388.8

Indexed
C.S.K.

393.35

33

1/4	4.4	389.0
1/2	4.1	389.3
3/4	4.4	389.0
gutter	4.7	388.7
Top cmt. ch.	4.24	389.11

0+50 W.

S. cmt. ch.	4.39	388.96
gutter	4.8	388.6
1/4	4.6	388.8
1/2	4.5	388.9
3/4	4.5	388.9
gutter	4.8	388.6
+3	4.0	389.4
N	2.9	390.5

0+75 W.

N	4.2	389.2
+7	4.5	388.9
ch	5.2	388.2
1/4	4.9	388.5
1/2	4.6	388.8
3/4	4.9	388.5
gutter	5.2	388.2
S. cmt. ch.	4.58	388.77

393.35

0+92 W.

S
4.3 S. of S. cl = N. Edge. W. end outwalk. 4.3 389.1
4.52 388.83
s. cl. 4.77 388.58

1+00 W.

S. 4.4 389.0
cmt. cl. 4.95 388.40
gutter 5.4 388.0
1/4 5.0 388.4
ϕ 4.7 388.7
1/4 5.2 388.2
cl 5.4 388.0
+2 4.9 388.5
+8 4.6 388.8
N 4.1 389.3

1+20 W = E. line

N 4.5 388.9
cl 5.3 388.1
1/4 5.2 388.2
ϕ 5.1 388.3
1/4 5.1 388.3
gutter 5.3 388.1
s. cmt. cl. 5.08 388.27
S 4.8 388.60

1+20 Z = W. End. S. cmt. cl.

S. cmt. cl. W. End 5.09 388.26

393.35

1+35

34

S 4.7 388.7
cl 5.0 388.4
+4 4.5 386.9
1/4 5.3 388.1
ϕ 5.0 388.4
1/4 5.2 388.2
cl 5.2 388.2
N 5.1 388.3

1+40

N 5.5 387.9
cl 5.2 388.2
1/4 5.6 387.8
ϕ 5.8 387.6
1/4 7.0 386.4
cl 6.8 386.6
S 6.0 387.4

1+50

S-10 11.4 381.6
S. 12.0 381.4
cl 13.0 380.4
1/4 13.4 380.0
ϕ 11.5 381.9
1/4 11.2 382.2
cl 10.7 382.7
+5 10.2 383.2
N 8.5 384.9
+10. 7.1 386.3

277.63
+100 E

S	5.1	272.5
Φ	4.9	272.7
0.8 S of N. Line W. End. Board Fence	5.0	272.6
N	5.0	272.6

+11 garage on S. ent. floor 0.6 Back.

1.6 N. of S. Line = N. End. ent. apron	5.37	272.26
0.8 S. of S. " garage floor	5.35	272.28

+16 = W. End 3. garages. on S. ent. floors 9.6 Back

1.6 N. of S. Line = N. End. ent. apron	5.40	272.23
S. on ent. apron	5.40	272.23
9.6 S. of S. Line = garage floor	5.26	272.37

+46 = E. End. above 3. garages. on S.

9.0 S. of S. Line = garage floor	5.40	272.23
S. on ent. apron	5.40	272.23
1.6 N. of S. Line = N. End. ent. apron	5.50	272.13

+50

N.	5.4	272.2
Φ	5.3	272.3
S	5.5	272.1

+52 = W. End. Cottage on S. Line Alley

S. ground at N. W. Cor House	5.3	272.3
T.P.	4.41	275.91 ✓
	6.13	271.50

+93 garage on N. ent. floor 10. Back.

N. on S. End. ent. strips.	4.27	271.64
10. N. of N. Line = garage floor	4.34	271.57

Alley Bldg 1. Watkins + Biddles
36

275.91

+94 Garage on S. ent. floor 0.7 Back		
0.7 S. of S. Line = garage floor	4.6	271.3
	2+00	

S.	4.8	271.1
Φ	4.6	271.3
N.	4.5	271.4

+07 garage on S. ent. floor 6.1 Back

6.1 S. of S. Line = floor	4.83	271.08
	2+15	

N.	5.5	270.4
Φ	5.2	270.7
S	5.5	270.4

+23

S	5.5	270.4
Φ	6.3	269.6
N	9.4	266.5
+10	6.0	269.9

+25

-15	17.0	258.9
N	15.5	260.4
Φ	11.0	264.9
+3	6.2	269.7
S	5.8	270.1

+40

S	8.9	267.0
+7.	9.4	266.5
T.P.	1.62	264.76 ✓
	12.77	263.14

264.76

φ		2+40 (con)	7.0	257.8
N			13.5	251.3
N+25			14.0	250.8
		2+70		
N-25			14.0	250.8
N			14.1	250.7
+			14.0	250.8
φ			11.5	253.3
+3			2.8	262.0
S			3.3	261.5
		2+90		
S-5 = N side House			12.1	252.7
S			12.3	252.5
φ			13.8	251.0
N			14.3	250.5
+25			14.0	250.8
	3.44	255.66	12.54	252.22
		2+95		
-25			4.6	251.1
N			5.0	250.7
+2			10.6	245.1
φ			11.5	244.2
+6			6.7	249.0
S			7.2	248.5
+10			8.6	247.1
+25			8.2	247.5

255.66

3+10

Ailey BIK 1 W+8 37

S-25			12.3	243.4
S			13.8	241.9
φ			12.4	243.3
N			11.3	244.4
+20			5.0	250.7
		3+22		
-25			11.0	244.7
N			12.8	242.9
φ			13.3	242.4
S			14.6	241.1
+25			15.0	240.7
		3+25		
-25			16.0	239.7
S			16.0	239.7
+5			15.0	240.7
φ			9.0	246.7
+5			5.9	249.8
N			5.6	250.1
+25			4.5	251.2
		3+40		
-25			4.6	251.1
N			4.4	250.9
φ			8.0	247.7
S			13.3	242.4
+25			17.0	238.7

255.66

- 25		
S	14.6	241.1
Φ	7.9	247.8
N	4.6	251.1
+ 25	4.6	251.1
	4.4	251.3

3+91

- 25		
N	4.7	251.0
Φ	4.2	251.5
S	4.1	251.6
+ 15	3.7	252.0
	6.4	249.3

4+00

S	+ 0.5	256.2
Φ	+ 2.4	258.1
+ 3	1.2	254.5
N	4.5	251.2
+ 25	4.5	251.2
T.P.	16.58	271.98 ✓ 0.26
		255.40

4+02

- 10	12.0	260.0
N	12.2	259.8
Φ	13.7	258.3
S	13.0	259.0
+ 10	12.9	259.1

271.98

Alley B/K1 W4B

38

4+10

- 10	12.8	259.2
S	7.6	264.4
Φ	7.0	265.0
N	5.4	266.6
+ 10	5.4	266.6

4+20

- 5	4.6	267.4
N	4.6	267.4
Φ	2.5	269.5
S	2.3	269.7

4+26 = W. End double garage on S. Line cmt. floor

S = cmt. floor	1.57	270.41
Φ	2.4	269.6
+ 6	2.7	269.3
N	3.9	268.1

4+41 E. End. above garage

N	1.6	270.4
Φ	1.7	270.3
S = cmt. floor	1.67	270.31

4+45 Φ cmt. walk 4.4 wide

S. line = N. End of walk

4+48 = W. End double garage on S. cmt. floor 0.215 alley		
0.3 N. of line cmt. floor	0.63	271.35

T.P.	7.29	278.17 ✓ 1.10
		270.88

4+54 = W. End. double garage on N. Line cmt. floor

N = cmt. floor	6.13	272.04
N = ground.	7.0	271.2

278.17.

4+64 = E. End double garage on S. 0.5 in Alley

0.5' N. of S. Line = garage floor	6.85	271.32
⊕	6.8	271.4
N ground	6.2	272.0
N. floor	6.22	271.95

4+66 ⊕ 2' Cmt. Wall

1.5' N. of S. Line = N. End walk 6.60 271.57

4+70 = E. End double garage on N. Line

N. = cmt. floor 6.22 271.95

4+97 = W. End E. Entrance garage on S. cmt. floor 1/2 in Alley

5+00

N	4.8	273.4
⊕	5.1	272.8
+8.8 = N. side of garage	5.4	272.8

5+09 ⊕ cmt. drive on N. Line

N. on S. End. cmt. Drive 4.64 273.53

5+15 = E. End of garage on S. 1.2' in Alley E. Entrance

S. Line = cmt. floor. 4.93 273.24

5+29 = W. End. cmt. walk on S. 0.2 S. of Line

S-0.2 = Walk 4.49 273.68

5+50

S-0.2 = walk	4.16	274.01
S	4.2	274.0
⊕	4.1	274.1
N	4.0	274.2

278.17

Alley BIKI W4 B

39

5+85 = E. End above cmt. walk on S. Line

N	3.5	274.7
+4	3.6	274.6
+5	4.1	274.1
⊕	4.3	273.9
+6	4.4	273.8
S. Line on cmt. Walk	3.68	274.49

5+92

S	3.9	274.3
+4	5.5	272.7
⊕	5.6	272.6
+5	5.3	272.9
+6	3.9	274.3
N	3.4	274.8

5+96² = W. Line 31st St.

N. cmt. dr. w. End.	5.15	273.02
N. pav	5.45	272.72
⊕ " " "	5.94	272.23
S. " " "	5.83	272.34
S. cmt. dr. " "	5.75	272.42

W. Curb. of 31st St

S. cmt. dr.	6.07	272.10
S. pav	6.46	271.71
⊕ " "	6.13	272.04
N " "	5.81	272.36
N. cmt. dr.	5.40	272.77

278.17

4.09

274.08

7.62

281.70

4.64

277.06

277.04

orig. B.M.

chk.

Levels for Drainage
Dwight + Fairmont

Indexed
C.S.K.

BM. BP 4.46 345.35 340.89

N.W. Dwight
+ Fairmont

W. Curb Line of Fairmont Ave

100' N. of N. Line Dwight cl. 3.20

" " " " gutter 3.84

75' " " " " " 4.15

50' " " " " " 4.47

25' " " " " " 4.80

5.5' " " " " " 5.18

N. Line F.L. Inlet culvert. 5.37

" " Top. cl. + pav + Headwall 4.46

N. cl 4.50

N "4 4.50

± 4.55

S. "4 4.71

S. cl. 4.90

S. Line Curb + pav + Headwall 4.83

" " F.L. out. let. 5.82

5' S. gully s. End Wing wall 5.80

25' S. " 5.90

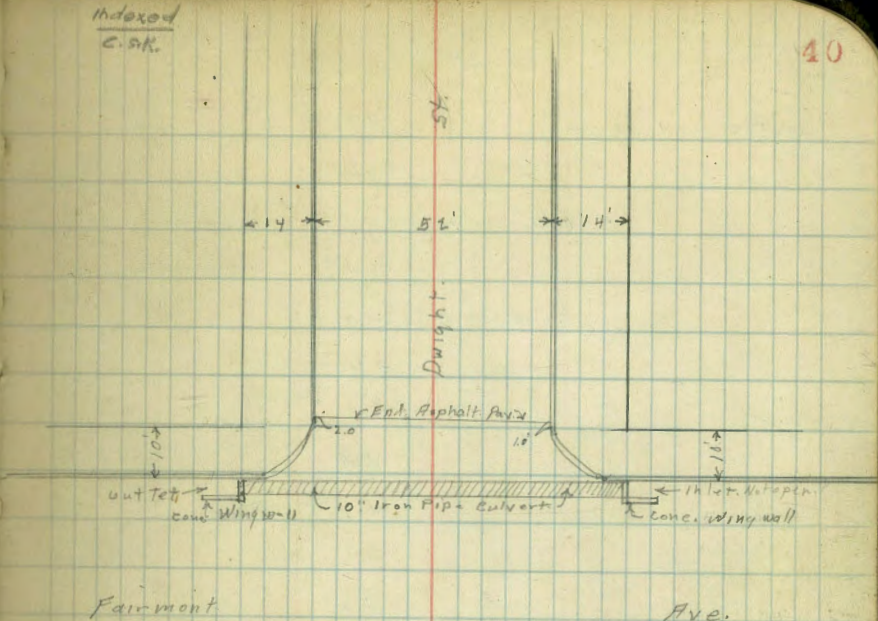
50' S. " 6.16

75' S. " 6.44

100' S. " 6.75

100' S. Top. cl. 6.15

N. End. Wing wall



345.35
4' E. of W. Line Fairmont

S. cl. 4.82

Gutter pav 4.92

"4 4.78

± 4.68

"4 4.65

N. cl + pav. 4.65

1' W. of W. Line N. cl }
2' " " " " S. } = W. End. Pav

N. cl 4.65

gutter pav. W. End 4.89

"4 4.80

± 4.75

"4 5.10

gutter pav w. end.	5.13
s. cl	4.81

3' W of W. Line

S. curb	4.40
---------	------

25' W. of W. Line

s. cl	4.60
-------	------

gutter	5.1
--------	-----

"4	4.7
----	-----

Φ	4.6
---	-----

"4	4.6
----	-----

gutter	5.2
--------	-----

N. cl	4.84
-------	------

50' W.

N. cl	5.20
-------	------

gutter	5.4
--------	-----

"4	4.7
----	-----

Φ	4.7
---	-----

"4	4.9
----	-----

gutter	5.3
--------	-----

s. cl	4.75
-------	------

75' W

s. cl	4.92
-------	------

N "	5.47
-----	------

172' W

N. cl	5.40
-------	------

s. cl	5.15
-------	------

7-7-37
Miller
Walker
Bliss

X. Seb. Street S. of Upas.
+ N. of Recreational area Balboa Park.
Arizona to Alabama.
45 ft. connecting to Upas.

FB1125-44

Arizona St

Indexed
C.S.K.

42

B.M.B.P

7.23

277.18

269.95

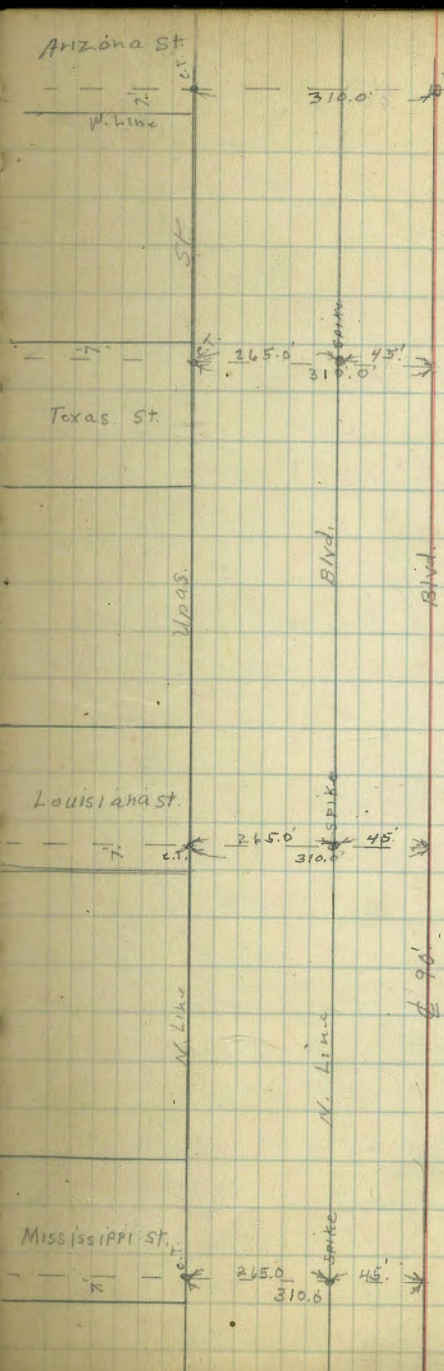
N.W. Upas
+ Arizona

Arizona St.

60' wide
10' c/s
10' Upas

0+00 = N. Line 90' Blvd.

W.	7.7	269.5
cl	8.6	268.6
1/4	9.0	268.2
1/2	9.4	267.8
3/4	9.8	267.4
cl	10.6	266.6
E	10.8	266.4
0+05 N		
E	10.0	267.2
cl	10.3	266.9
1/4	9.6	267.6
1/2	9.2	268.0
3/4	8.8	268.4
cl	8.5	268.7
W.	7.0	270.2
0+35 N		
W	5.8	271.4
1/4	6.1	271.1
cl	6.4	270.4
1/4	7.5	269.7
1/2	8.0	269.2
3/4	8.2	269.0
cl	8.4	268.4



277.14

0+35 N. (con)

+2	8.2	269.0
E. Line	8.1	269.1
0+50 N		
E	7.7	269.5
r7	7.6	269.6
cl	8.1	269.1
1/4	7.4	269.8
⊕	7.3	269.9
1/4	7.0	270.2
cl	6.9	270.3
+3	6.0	271.2
W	5.7	271.5

1+00 N

W	5.3	271.9
+7	5.4	271.8
cl	6.0	271.2
1/4	6.1	271.1
⊕	6.3	270.9
1/4	6.7	270.5
cl	7.1	270.1
E.	6.8	270.4

1+16

E = w. edge pav. from Pershing	6.97	270.21
cl	6.6	270.6
1/4	6.5	270.7
⊕	6.1	271.1

277.14

Arizona St

43.

1/4	5.8	271.4
cl	5.6	271.6
+3	5.5	271.7
W.	5.0	272.2
1+34		
W	4.7	272.5
+7	4.8	272.4
cl	5.7	271.5
1/4	5.9	271.3
⊕	6.0	271.2
1/4 = w. edge pav.	6.13	271.05
cl	6.59	270.59
E.	7.01	270.17

1+58

E	6.1	271.1
+4.	6.2	271.0
+7 = E. edge pav	6.73	270.45
cl on "	6.58	270.60
1/4 " "	6.22	270.96
⊕ w. edge pav	6.00	271.18
1/4	5.8	271.4
cl	5.7	271.5
+3	4.9	272.3
W	4.8	272.4

277.18

1+72

w			4.9	272.3
+8			5.0	272.2
ch			5.5	271.7
1/4 = w. edge pav.			6.00	271.18
1/2 on "			6.06	271.12
1/4 " "			6.37	270.81
+7 = edge "			6.60	270.58
ch			6.2	270.98
E			6.0	271.18

1+84

E			6.0	271.18
ch			6.2	270.98
+5 E. edge pav			6.60	270.58
1/4 on "			6.49	270.69
1/2 " "			6.18	271.00
1/4 " "			6.14	271.04
ch = w. edge "			6.25	270.93
+8			5.3	271.88
w.			5.0	272.18

1+98

w. = w. edge pav			6.40	270.78
ch. on "			6.36	270.82
1/4 " "			6.43	270.75
1/2 " "			6.60	270.58
1/4 " "			6.89	270.29
+7 = E. edge "			6.92	270.26

277.18

Arizona St.

44

ch.			7.0	270.18
E			7.7	269.98
			2+25 = S. Edge	Upas. St. Pav
E			8.24	268.94
ch			7.94	269.20
1/4			7.85	269.33
1/2			7.67	269.51
1/4			7.51	269.67
ch			7.36	269.82
w			7.12	270.06

+P 8.81 284.39 1.60 275.58

Indexed
o.s.K.
Texas st. S. of Upas

284.39 Page 44

0+00 = N. Line Upas.

0+20 = N. ch. Line Upas.

East pav 4.00 280.39

+10 = ch to s. pav 4.05 280.34

+30 = ctr curb line 4.30 280.09

+42.5 = ϕ 4.50 279.89

+55 = ctr curb. line 4.80 279.59

+75 = w. d. to s. of pav 5.25 279.14

+85 = W. 5.30 279.09

0+40 = S. edge Upas. ST Pav

W 4.81 279.58

+10 = ch 4.66 279.73

+30 4.35 280.04

+42.5 = ϕ 4.20 280.19

+55 4.03 280.36

+75 3.87 280.52

+85 = E 3.82 280.57

0+60 S

E 4.3 280.1

+10 4.3 280.1

+30 4.4 280.0

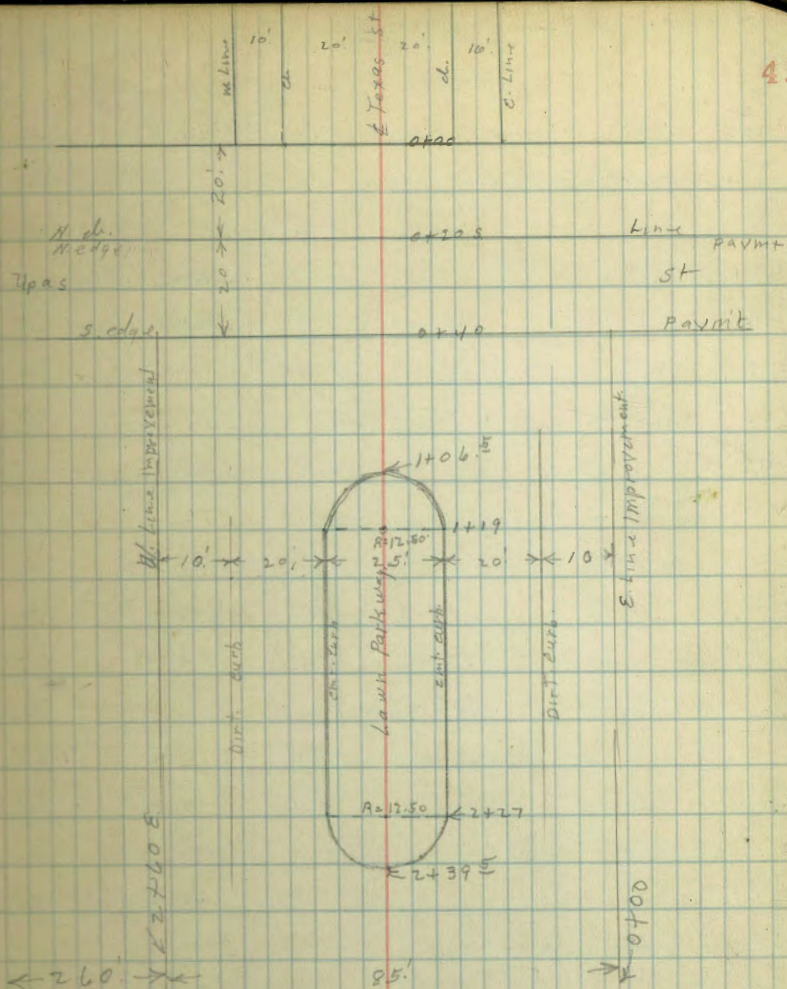
+33. Conc meter box Iron lid 4.34 280.03 3.70x3.70

+42.5 = ϕ 4.6 279.8

+55 4.9 279.5

+75 4.8 279.6

45



284.39

0+60's. con

+85=W.	4.6	279.8
1+06 ^E = N end. Park way.		
W	4.6	279.8
+8	4.8	279.6
+10	5.3	279.1
+30	5.3	279.1
+42.5 Roadway	5.1	279.3
+42.5 Top. curb	4.24	280.15
+55	5.0	279.4
+75	4.9	279.5
+76	4.4	280.0
+85	4.4	280.0
1+19 S-P.E. Park way curbs		
E	4.8	279.6
+8	4.6	279.8
+10	5.2	279.2
+30 Roadway	5.2	279.2
+30 cont. ch at P.E.	4.25	280.14
+42.5 - ch	4.5	279.9
+55 Top. ch at P.E.	4.62	279.77
+55 Roadway	5.5	278.9
+75	5.6	278.8
+77	4.9	279.5
+85=W	4.6	279.8

284.39

Texas. St.

46

	1+50	
W	5.2	279.2
+8	5.4	279.0
+10	6.1	278.3
+30 = Roadway	5.9	278.5
+30 = Top. ch.	5.14	279.25
+42.5 - ch	5.0	279.4
+55 = Top. ch	4.86	279.53
+55 = Roadway	5.7	278.7
+75	5.6	278.8
+77	5.1	279.3
+85 = E	5.2	279.2
	2+00	
E	5.7	278.7
+8	5.9	278.5
+10	6.3	278.1
+30 = Roadway	6.2	278.2
+30 = Top. ch.	5.40	278.99
+42.5 - ch	5.7	278.7
+55 = Top. ch	5.83	278.56
+55 = Roadway	6.7	277.7
+75	6.8	277.6
+77	6.4	278.0
+85=W	6.3	278.1

284.39

2+27 = B.C. Parkway curbs

N	6.5	277.9
+8	6.6	277.8
+10	7.0	277.4
+30 = Roadway	6.7	277.7
+30 = Top. of at. B.C.	6.15	278.24
+42 ⁵ = ϕ	5.9	278.5
+55 = Top. elev at. B.C.	5.67	278.72
+55 = Roadway	6.4	278.0
+75	6.4	278.0
+77	6.0	278.4
+85 = ϕ	5.9	278.5
2+29 ⁵ = S. End. Parkway.		
E	6.4	278.0
+10	6.5	277.9
+30	6.4	278.0
+42 ⁵ = ϕ = Roadway	6.5	277.9
+42 ⁵ = ϕ = Top. elev.	5.96	278.43
+55	6.7	277.7
+75	7.0	277.4
+85 = W	6.8	277.6
2+65 S = N. Line 90. Blvd.		
W	7.2	277.2
+10	6.9	277.5
+30	6.7	277.7
+42.5 = ϕ	6.6	277.8
+55.	6.5	277.9

284.39

Texas St.

47

+75	6.9	277.5
+85 = ϕ	7.0	277.4
T.P. & Tex. St. Top. of S. End. Parkway		
	5.94	278.45

Louisiana St. S. of Upas.

60' wide = 10' ds - 10' 1/4s.

indexed
C.S.M.

—280.86—

48

T.P. Page 48 — 2.41 — 280.86 — — 278.45 —

Set B.M. B.P.

274

278.12

N.E. Upas
Louisiana

1/4

3.6

277.3

d

3.7

277.2

N

3.7

277.2

0+00 = N. line Upas.

1+00

0+20 S. = N. d. line Upas. st.

E Top. d

2.75

278.11

W

4.0

276.9

E pav

3.48

277.38

d

4.1

276.8

d

3.60

277.26

1/4

"

3.72

277.14

1/4

3.7

277.2

♀

"

3.72

277.14

♀

3.9

277.0

1/4

"

3.84

277.02

1/4

4.2

276.7

d

"

3.93

276.93

d

3.3

277.6

W

"

4.02

276.84

E

3.4

277.1

W. Top. d

3.33

277.53

1+03

E

3.4

277.1

E+8

3.4

277.1

W

pav

3.84

277.02

d

4.3

276.6

d

"

3.73

277.13

1/4

4.2

276.7

1/4

"

3.66

277.20

♀

3.9

277.0

♀

"

3.62

277.24

1/4

3.7

277.2

1/4

"

3.52

277.34

+8

4.3

276.6

d

"

3.45

277.41

d

3.6

277.3

E

"

3.33

277.53

W

3.6

277.3

0+70 S.

E

3.4

277.5

d

3.8

277.1

1/4

3.6

277.3

♀

3.5

277.4

280.86

1+50

W	4.0	276.9
cl	4.1	276.8
+1	4.5	276.4
1/4	4.4	276.5
±	4.3	276.6
1/4	4.4	276.5
+9	4.8	276.1
cl	4.4	276.5
E	4.5	276.4

2+00

E	5.0	275.9
+8	4.8	276.1
cl	5.2	275.7
1/4	5.0	275.9
±	4.8	276.1
1/4	4.9	276.0
+9	4.8	276.1
cl	4.3	276.6
W	4.3	276.6

2+37

W	4.0	276.5
cl	4.5	276.4
+1	5.3	275.6
1/4	5.4	275.5
±	5.4	275.5
1/4	5.4	275.5

Louisiana St

280.86

49

cl	5.5	275.4
E	5.1	275.8

2+39

E	5.1	275.8
cl	5.5	275.4
1/4	5.4	275.5
±	5.4	275.5
1/4	5.4	275.5
+9	5.4	275.5
cl	5.0	275.9
W	4.9	276.0

2+63

W	5.4	275.5
cl	5.5	275.3
1/4	5.6	275.3
±	5.5	275.4
1/4	5.4	275.5
cl	5.4	275.5
E	5.4	275.5

2+65 S=W. Lin - 90.0 0 Nvd

E	5.4	275.5
cl	5.4	275.5
1/4	5.4	275.5
±	5.5	275.4
1/4	5.7	275.2
cl	6.1	274.8
W	6.1	274.8

Mississippi St. South of Upas.
60' wide 10' ch. 10' 1/4 s.
280.86

indexed
c.s.k.

277.31

Mississippi

50

T.P. 1.08 277.31 4.63 276.23

0+00 = N. Line 21 pas

0+20 = N. ch. Line Upas.

E. ch 3.97 273.34

E pav 4.66 272.65

ch " 4.74 272.57

" " 4.85 272.46

± " 4.87 272.44

" " 5.12 272.19

ch " 5.24 272.07

W " 5.43 271.88

W. ch " 4.42 272.49

0+40 = S. edge Upas. Pav

W Pav 4.79 272.52

ch " 4.63 272.68

" " 4.51 272.8

± " 4.43 272.88

" " 4.26 273.05

ch " 4.15 273.16

E " 3.98 273.33

0+65

E 2.5 274.8

ch 3.0 274.3

+2 3.5 273.8

" 3.6 273.7

± 3.6 273.7

1/4

ch

W

W

ch

"

±

"

+9

ch

E

E

ch

+2

W

±

"

+9

ch

W

3.7 273.6

4.4 272.9

4.1 273.2

0+80

4.6 272.7

4.6 272.7

4.0 273.3

3.4 273.9

3.4 273.9

3.3 274.0

2.8 274.5

2.7 274.6

1+00

2.4 274.9

2.4 274.9

3.5 273.8

3.4 273.9

3.6 273.7

4.0 273.3

4.4 272.9

4.0 273.3

4.2 273.1

1+505

W	4.6	272.7
cb	4.3	273.0
+1	4.9	272.4
1/4	4.3	273.0
ϕ	4.0	273.3
1/4	3.8	273.5
+9	3.9	273.4
cb	3.1	274.2
E.	3.1	274.2
	2+00	
E	3.4	273.9
cb	3.4	273.9
+1	4.3	273.0
1/4	4.1	273.2
ϕ	4.3	273.0
1/4	4.6	272.7
+9	4.9	272.4
cb	4.6	272.7
W	4.9	272.4
	2+35	
W	5.0	272.3
cb	4.8	272.5
+1	5.4	271.9
1/4	4.8	272.5
ϕ	4.5	272.8
1/4	4.1	273.2

+8	4.4	272.9
cb	3.7	273.6
E.	3.6	273.7
	2+55	
e	3.7	273.6
cb	3.9	273.4
+2	4.7	272.6
1/4	4.4	272.9
ϕ	4.7	272.6
1/4	5.2	272.1
+9	5.7	271.6
cb	4.9	272.4
W	5.1	272.2
	2+63	
W	5.7	271.6
cb	5.5	271.8
+1 = N. Edge cobble gutter	6.1	271.2
1/4 " " "	5.8	271.5
ϕ " " "	5.4	271.9
1/4 " " "	5.3	272.0
+9 " " "	5.1	272.2
cb	4.3	273.0
E	4.1	273.2

N. edge gutter
logs 2' SouthN. edge gutter
logs 2' South

— 277.31 —

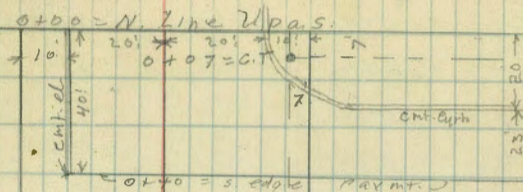
Mississippi St

Indexed
os.K.

Alabama St South of Upas.
60' wide 10' cbs. 10' 1/4s.

52

	2+655 = N. Line	90' Blvd.		
E-8	E. end. } Wedge } cobble gutter	4.8	272.5	
E	Wedge " "	4.9	272.4	
cb	N. " " "	5.2	272.1	
+ 1/4	Jog on N. edge " "	5.2	272.1	
		5.4	271.9	
±	" " "	5.6	271.7	
1/4	" " "	5.9	271.4	
+ 1/4	Jog on N. edge " "	6.1	271.2	
cb	N. edge " "	6.1	271.2	
W.	" " "	6.3	271.0	



— T.P. — 2.82 — 267.07 — 13.06 — 264.25 —

2+65 N. Line 90' Blvd.

± 90' Blvd.

— T — 267.07 — opp. page

0+20'S = N. of Line Upas

W	7.0	260.07
cb. = Top cent. d.	7.15	259.92
G. Pav	7.69	259.38
1/4 "	7.45	259.62
± "	7.27	259.80
1/4 "	7.15	259.92
cb "	7.01	260.06
E "	6.76	260.31

267.07

0+40.5 = s. edge Pav

E	Pav	5.92	261.15
el	"	6.32	260.75
1/4	"	6.68	260.39
1/4	"	6.95	260.12
1/4	"	7.30	259.77
G	"	7.61	259.46
w emf. el. S. End.		7.11	259.96
W		7.3	259.8
0+44.5			
W		7.5	259.6
el		7.7	259.4
1/4		7.1	260.0
1/4		6.8	260.3
1/4		6.6	260.5
el		6.2	260.9
E		5.2	261.9
0+80.9			
E		3.9	263.2
el		5.9	261.2
1/4		6.2	260.9
1/4		6.3	260.8
1/4		6.5	260.6
el		7.1	260.0
W		7.8	259.3
+5		8.1	259.0

267.07

1+00.5

Alabama St

53

-5		8.0	259.1
W		7.5	259.6
el		7.0	260.1
1/4		6.6	260.5
1/4		6.1	261.0
1/4		6.0	261.1
+9		5.7	261.4
el		4.8	262.3
E		3.6	263.5
1+50.5			
E		3.6	263.5
el		4.7	262.4
+1		5.7	261.4
1/4		5.9	261.2
1/4		6.0	261.1
1/4		6.3	260.8
el		7.1	260.0
W		8.0	259.1
+5		8.4	258.7
2+00			
-5		8.6	258.5
W		8.3	258.8
el		7.6	259.5
1/4		6.4	260.7
1/4		6.0	261.1
1/4		6.0	261.1

267.07

+9	6.0	261.1
cl	5	261.9
+5	4.5	262.6
E	4.1	263.0
2+35 S.		
E	4.3	262.8
+9	5.5	261.6
cl	6.2	260.9
1/4	6.3	260.8
±	6.4	260.7
1/4	6.9	260.2
cl	7.8	259.3
W	8.5	258.6
+5	8.8	258.3
2+55		
-5	9.2	257.9
W	8.8	258.3
cl	7.8	259.3
1/4	7.0	260.1
±	6.7	260.4
1/4	6.5	260.6
cl	6.4	260.7
E	5.0	262.1

267.07

Alabama St

54

2+65'S = N. Line - 90.0 Blvd

E	6.7	260.4
cl	6.7	260.4
1/4	6.7	260.4
±	6.9	260.2
1/4	7.2	259.9
cl	7.8	259.3
W	8.3	258.8
+5	9.7	257.4
chk. B.M. B.P.	7.58	259.49
N.W. 2/4 S.W. Louisiana 259.50		
T.P. SPK	6.66	260.41
E. 7/8 Line Alabama N. Line - 90.0 Blvd.		

EP Page 54 — 12.77 — 273.18 — — 260.41

W. curb Lin. Alabama St. 60' wide

45' N	13.9	259.3
30' N	13.2	260.0
15' N	13.0	260.2
ϕ	12.6	260.6
8' S	13.0	260.2
45' S	13.0	260.2
30' S	13.4	259.8
15' S	13.2	260.0
ϕ	13.2	260.0
15' N	13.2	260.0
30' N	13.1	260.1
45' N	13.0	260.2

0+00 = E. Lin. Alabama St

45' N	12.8	260.4
30' N	12.6	260.6
15' N	12.8	260.4
ϕ	12.9	260.3
15' S	13.0	260.2
30' S	13.1	260.1
45' S	13.6	259.6

0+20 E

45' S	13.8	259.4
30' S	13.0	260.2
15' S	12.6	260.6

ϕ	12.4	260.8	
35' N	12.2	261.0	
30' N	11.9	261.3	
42' N	s. edge cobble gutter w. end	11.75	261.43
45' N	" " " " "	11.75	261.43

0+32

45' N	11.43	261.75	
42' N	11.43	261.75	
30' N	11.3	261.9	
15' N	11.7	261.5	
ϕ	12.0	261.2	
15' S	12.3	260.9	
30' S	12.8	260.4	
+42' S	N. edge cobble gutter w. end	13.42	258.76
+45' S	" " " " "	14.31	258.87

0+50 E

45' S = G	12.53	260.65
42' S = G	12.54	260.6
30' S	11.8	261.4
15' S	11.3	261.9
ϕ	11.2	262.0
15' N	10.8	262.4
30' N	10.7	262.5
42' N = G	10.73	262.45
45' N = G	10.74	262.40

45' N = G.	8.70	264.48
42' N = G.	8.81	264.37
30' N	8.5	264.7
15' N	8.2	265.0
Φ	8.4	264.8
15' S	8.5	264.7
30' S	9.0	264.2
42' S = G.	9.61	263.57
45' S = G.	9.60	263.58

1+50 E

45' S = G.	7.13	266.05
42' S = G.	7.16	266.02
30' S	6.3	266.9
15' S	6.0	267.2
Φ	6.0	267.2
15' N	6.0	267.2
30' N	6.0	267.2
42' N = G.	6.52	266.66
45' N = G.	6.54	266.6

2+00

45' N = G.	4.65	268.53
42' N = G.	4.75	268.43
30' N	4.1	269.1
15' N	4.1	269.1
Φ	4.1	269.1
15' S.	4.1	269.1

30' S.	4.3	268.9
42' S = G.	5.05	268.13
45' S = G.	5.10	268.08

2+50 E

45' S = G.	3.61	269.57
42' S = G.	3.61	269.57
30' S	3.0	270.2
15' S	2.8	270.4
Φ	2.7	270.5
15' N	2.6	270.6
30' N	2.6	270.6
42' N = G.	3.06	270.12
45' N = G.	2.98	270.20

2+82 E. = W. Line MISSISSIPPI 40' wide

45' N = G.	2.20	270.98
42' N = G.	2.20	270.98
30' N	1.8	271.4
15' N	1.8	271.4
Φ	1.9	271.3
15' S	2.0	271.2
30' S	2.1	271.1
42' S = G.	2.62	270.56
45' S = G.	2.55	270.63

273.18
Mississippi St.

45' S = G	1.95	271.23
42' S = G	2.05	271.13
30' S	1.15	271.7
15' S	1.4	271.8
ϕ	1.2	272.0
15' N	1.0	272.2
30' N	0.9	272.3
42' N = G	1.30	271.88
45' N = G	1.48	271.70
47' N = N edge G	1.28	271.90

0+00 = E. Line Mississippi St.

45' N = G	0.80	272.38
42' N = G	0.90	272.28
30' N	0.4	272.8
15' N	0.4	272.8
ϕ	0.5	272.7
15' S	0.7	272.5
30' S	0.9	272.3
42' S = G	1.40	271.78
45' S = G	1.37	271.81

0+08 E = E. end. cobble gutter on N

45' N = G	0.70	272.48
42' N = G	0.75	272.43

0+29' E = E. end. cobble gutter on S

45' S = G	0.90	272.28
42' S = G	0.80	272.38

273.18
0+50 E 57

T.P. 6.92 279.88 0.22 272.96

45' S	7.1	272.8
30' S	6.8	273.1
15' S	6.5	273.4
ϕ	6.5	273.4
15' N	6.4	273.5
30' N	6.4	273.5
45' N	6.9	273.0

1+00

45' N	6.0	273.9
30' N	5.7	274.2
15' N	5.7	274.2
ϕ	5.8	274.1
15' S	5.9	274.0
30' S	6.0	273.9
45' S	6.6	273.3

1+50

45' S	6.3	273.6
30' S	5.8	274.1
15' S	5.7	274.2
ϕ	5.5	274.4
15' N	5.4	274.5
30' N	5.4	274.5
45' N	5.7	274.2

279.88

2+00 E

45' N	5.4	274.5
30' N	5.3	274.6
15' N	5.3	274.6
☐	5.3	274.6
15' S	5.5	274.4
30' S	5.6	274.3
45' S	6.0	273.9

2+50

45' S	5.7	274.2
30' S	5.4	274.5
15' S	5.1	274.8
☐	4.9	275.0
15' N	5.0	274.9
30' N	5.2	274.7
45' N	5.2	274.7

2+80 E = N. Line Louisiana 8+60' wid.

45' N.	5.2	274.7
30' N.	5.0	274.9
15' N.	4.9	275.0
☐	4.8	275.1
15' S.	5.1	274.8
30' S.	5.2	274.7
45' S.	5.5	274.4

279.88

☐

58

45' S	5.5	274.4
30' S	4.8	275.1
15' S	4.8	275.1
☐	4.6	275.3
15' N	4.6	275.3
30' N	4.6	275.3
45' N	4.7	275.2

0+00 = E. Line Louisiana

45' N	4.4	275.5
30' N	4.3	275.6
15' N	4.3	275.6
☐	4.3	275.6
15' S.	4.5	275.4
30' S	4.7	275.2
45' S.	5.1	274.8

0+50 E

45' S	4.9	275.0
30' S	4.4	275.5
15' S	4.1	275.8
☐	4.0	275.9
15' N	4.0	275.9
30' N	3.9	276.0
45' N	4.3	275.6

1+00 E

45' N	4.1	275.8
30' N	4.0	275.9
15' N	3.9	276.0
☐	3.8	276.1
15' S	4.1	275.8
30' S	4.3	275.6
45' S	4.7	275.2

1+50 E

45' S	4.1	275.8
30' S	3.9	276.0
15' S	3.7	276.2
☐	3.6	276.3
15' N	3.8	276.1
30' N	3.9	276.0
45' N	4.0	275.9

1+61

7' N of ☐ Eucalyptus Tree 12" Diam

1+70

5' N of ☐ Eucalyptus Tree 16" Diam

1+81

10' N of ☐ Eucalyptus Tree 10" Diam

1+83

3' S of ☐ Eucalyptus Tree 10" Diam

1+88

15' S of ☐ Eucalyptus Tree 14" Diam

1+91

7' S of ☐ Eucalyptus Tree 18" Diam

2+00 E

45' N	3.6	276.3
30' N	3.6	276.3
15' N	3.5	276.4
☐	3.5	276.4
15' S	3.6	276.3
30' S	3.6	276.3
45' S	3.8	276.1

2+60' E = W. Line Texas. See Page 45 (45' wide)

T.P. — 1.67 — 278.84 — 2.71 — 277.17

45' S	2.10	276.8
30' S	1.7	277.1
15' S	1.4	277.4
☐	1.3	277.5
15' N	1.3	277.5
30' N	1.4	277.4
45' N	1.6	277.2

☐ Texas St

45' N	1.0	277.8
30' N	1.0	277.8
15' N	0.8	278.0
☐	0.8	278.0
15' S	1.0	277.8
30' S	1.3	277.5
45' S	1.7	277.1

278.84

0+00 = E Line Texas.

45' S	1.9	276.9
30' S	1.5	277.3
25' S	1.2	277.6
⊕	0.9	277.9
15' N	1.0	277.8
30' N	1.2	277.6
45' N	1.4	277.4

0+50 E.

45' N	2.4	276.4
30' N	1.6	277.2
15' N	1.6	277.2
⊕	1.6	277.2
15' S	1.8	277.0
30' S	2.1	276.7
45' S	2.6	276.2

1+00 E.

45' S	2.9	275.9
30' S	3.0	275.8
15' S	2.9	275.9
⊕	2.9	275.9
15' N	3.3	275.5
30' N	3.5	275.3
45' N	4.2	274.6

278.84

60

1+50 E.

45' N	5.4	273.4
30' N	5.3	273.5
15' N	5.3	273.5
⊕	5.3	273.5
15' S	5.2	273.6
30' S	5.2	273.6
45' S	5.2	273.6

2+00 E.

45' S	7.9	270.9
30' S	7.6	271.2
15' S	7.5	271.3
⊕	7.8	271.0
15' N	7.8	271.0
30' N	7.7	271.1
45' N	7.5	271.3

2+62.7 E = W. Line Arizona 60' wide.

45' N	9.3	269.5
42' N	10.1	268.7
30' N	9.7	269.1
15' N	10.0	268.8
⊕	10.3	268.5
15' S	10.7	268.1
30' S	10.3	268.5
45' S	10.3	268.5

10' W = w. cl.

45' N	10.2	268.6
-------	------	-------

278.84

± Arizona st.

45' S	11.1	267.7
30' S	11.7	267.1
15' S	12.5	266.3
±	11.7	267.1
15' N	11.4	267.4
30' N	11.4	267.4
45' N	11.0	267.8
chk B.M. B.P. N.W. 1/4 plus ± Arizona	8.89	269.95 = 269.95
T.P. — 1.20 — 267.48 — 12.56 — 266.28 —		

0+00 = E. Lin Arizona st.

45' N	1.1	266.4
30' N	1.3	266.2
15' N	1.4	266.1
±	1.7	265.8
10' S = S. edge road.	2.5	265.0
12' S.	2.0	265.5
15' S.	2.0	265.5
30' S	1.7	265.8
45' S.	1.1	266.4

0+50 E

45' S	2.2	265.3
30' S	2.6	264.9
15' S	3.5	264.0
9' S	3.9	263.6
6' S	5.2	262.3
4' S = S. edge graded road.	4.6	262.9

267.48

61

±	4.0	263.5
15' N	3.3	264.2
30' N	3.1	264.4
43' N	3.2	264.3
45' N	1.5	266.0

1+00 N.

45' N	5.6	261.9
30' N	5.6	261.9
15' N	6.0	261.5
2' N = S. edge graded road	6.2	261.3
±	6.9	260.6
3' S	7.0	260.5
5' S	5.7	261.8
15' S	5.3	262.2
30' S	4.7	262.8
45' S	4.6	263.5

1+29

45' S	6.5	261.0
30' S	7.0	260.5
15' S	7.4	260.1
2' S	6.4	260.7
±	8.0	259.5
3' N	8.0	259.5
4' N = S. edge graded rd.	7.3	260.2
15' N	4.9	260.6
30' N	6.3	261.2

267.48

1+29 (com)

45' N - S.W. edge oiled Pav	5.90	261.58
60' N on pav	5.55	261.93

1+61 E.

45' N = N.E. edge pav	7.85	259.63
30' N on "	7.82	259.68
22' N = S.W. edge "	7.57	259.91
15' N	7.8	259.7
7' N = S. edge graded Rd.	8.5	259.0
5' N	9.2	258.3
2' N	9.2	258.3
Φ	8.1	259.4
15' S	8.0	259.5
30' S	8.0	259.5
45' S	7.8	259.7

2+00 E

45' S	9.3	258.2
30' S	9.8	257.7
15' S	10.2	257.3
7' S	10.1	257.4
6' S	11.7	255.8
2' S	11.6	255.9
Φ = S. edge graded Rd.	10.4	257.1
6' N = S. edge oiled Pav	10.10	257.38
15' N = " "	10.17	257.31
30' N = N. edge " "	10.50	256.98
33' N	11.2	256.30

267.48

62

36' N	10.1	257.4
45' N	10.1	257.4

7-19-37

Mullen
Walker
Bliss

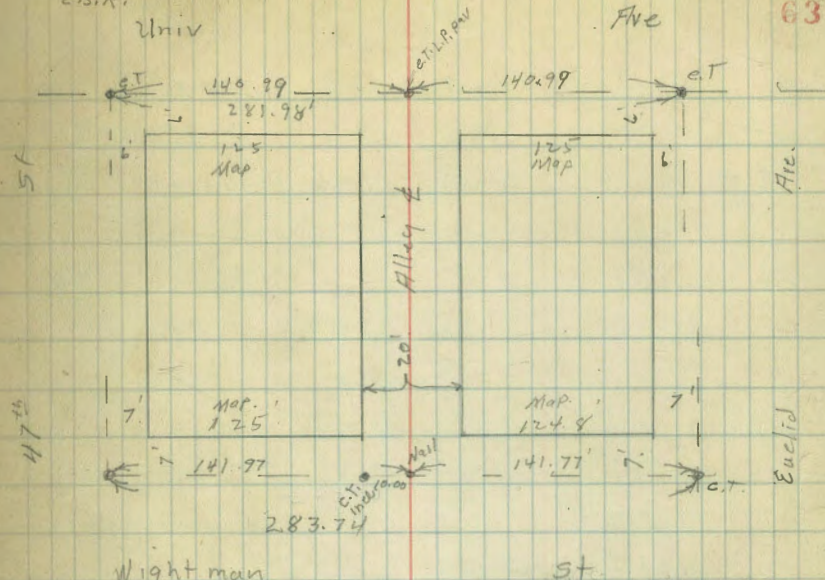
X. Sec. Alley Bks. 13 Fairmont & 4. Mt View.
Wightman to Univ. bet 47th & Euclid.

Indexed
c.s.K.

Univ

Fve

63



B.M. 4.62 345.30 340.68 N.W. Univ. + Euclid

15' N. of S. line = S. d. line Univ.

E -25 pav 5.41 339.89

E -25 curb 5.02 340.28

E. curb 4.86 340.44

E. pav 5.35 339.95

± pav 5.32 339.98

W. pav 5.33 339.97

W cl 4.92 340.38

W+25 cl 4.84 340.42

W+25 pav 5.25 340.05

0+00 S. line Univ Ave

W. walk 4.60 340.70

W. d S. End. 4.70 340.60

W. pav " " 4.75 340.55

± " " " 4.93 340.37

E " " " 4.79 340.51

E. cl " " 4.61 340.69

0+43

E 5.5 339.8

± 5.6 339.7

W. 5.2 340.1

W+0.1 emt. floor in ^{Baldina} under con structure 4.72 340.58

0+80

W 5.7 339.6

± 5.6 339.7

E 5.6 339.7

Wightman

St

— 345.30 —

0+90

E on fill 6.0 339.3

± " " 6.0 339.3

+T " " 6.6 338.7

W. " " 9.5 335.8

+17 Natural ground. 17.2 328.1

0+99.

± conc. Pier for 6" C.T. Sewer.

1700

N-17 17.5 327.8

W 17.0 328.3

± Fill 12.9 332.4

± Top. 6" C.T. sewer pipe 9.87 335.43

345.30

		1x00		
E	Fill		10.7	334.6
+10	"		10.6	334.7
T.P.	1.36	336.80	9.86	335.44
		1+10		
E-18			8.1	328.7
E			7.9	328.9
⊕			8.5	328.3
H3			10.1	326.7
N			9.9	326.9
+18			8.1	328.7

1+12

⊕ = conc. Pier for 6" C.I. Sewer.

1+22.4

⊕ = conc. Pier for sewer

1+25

W-18			7.9	328.9
W			8.3	328.5
⊕			9.7	327.1
E			7.9	328.9
+20			12.3	324.5

1+34.4

⊕ = conc. Pier for sewer.

1+35

E-25			15.5	321.3
E			11.7	325.1
⊕			9.6	327.2

336.80

64

W.			9.0	327.8
+15			7.8	329.0
		Eu/vert.		
0+98 S. 30' W. of ⊕			9.0	327.8
1+15 S ⊕			10.2	326.6
1+35 S. 35' E of ⊕			15.5	321.3
		1+46.4		
⊕		ent. Pier for Sewer		
→		out of order	1+40	
W-15			8.0	328.8
W			8.2	328.6
⊕			8.9	327.9
E			11.0	325.8
E+20			12.7	324.1
		1+50		
E-20			12.6	324.2
E			10.4	326.4
⊕			8.9	327.9
W			5.6	331.2
+10			2.5	334.3

1+58.4

⊕ = conc. pier for sewer

170.4

⊕ = conc. pier for sewer

336.80

1 + 75

W-7	0.0	336.8
W-	1.3	335.5
⊕	7.4	329.4
E	8.7	328.1
+14	8.7	328.1

1 + 82⁴

⊕ = conc. Pier

1 + 85

E-12	6.7	330.1
E	7.4	329.4
⊕	6.0	330.8
+4	5.3	331.5
W	0.9	335.9
+5	+0.5	337.3

2 + 00

W-5	+2.0	338.8
W	0.0	336.8
+6	3.1	333.7
⊕	3.4	333.4
⊕ Top 6" Sewer Pipe	1.78	335.02
+7	3.8	333.0
E	2.6	334.2
+10	1.0	335.8

T.P.	13.86	349.00	1.66	335.14
------	-------	--------	------	--------

349.00

65

→ out. of Place 1 + 94.4
 ⊕ Conc. Pier for 6" C.I. Sewer

2 + 10

E-5	9.3	339.7
E	9.6	339.4
+7	12.8	336.2
⊕	13.2	335.8
+7	11.0	338.0
W	8.7	340.3
+5	8.8	340.2

2 + 20

W-5	8.0	341.0
W	8.0	341.0
+6	10.0	339.0
⊕	10.0	339.0
+7	10.0	339.0
E	8.4	340.6
+5	8.4	340.6

2 + 33

-5	8.0	341.0
E	8.0	341.0
+6	5.0	344.0
⊕	7.0	342.0
W	6.8	342.2
+5	7.0	342.0

349.00

2+50

-5	6.3	342.7
W	6.2	342.8
¢	6.9	342.1
E	7.4	341.6
+5	7.5	341.5

3+00

-5	5.5	343.5
E	5.4	343.6
¢	4.8	344.2
W	4.6	344.4

3+05 garage on W cmt. floor 8.5 Back

W-4.5 E. edge cmt. apron 4.63 344.37

W-8.5 floor 4.57 344.43

3+15 garage on W. dirt floor 3.2 Back

W-3.2 floor 4.6 344.4

3+50

W	4.8	344.2
¢	5.0	344.0
E	4.9	344.1

3+57 garage on W. cmt. floor 11.5 Back

W-6.0 = E. edge cmt. apron. 5.00 344.00

W-8.5 = floor 4.89 344.11

3+83 garage on W. cmt. floor 8.5 Back.

W-6.0 = E. edge cmt. apron 5.20 343.80

W-8.5 floor 5.12 343.88

349.00

4+00

E	5.3	343.7
¢	5.7	343.3
W	5.6	343.4

4+50

W	6.1	342.9
¢ Top sewer M.H.	6.54	342.46
E	6.2	342.8

5+00

E	7.4	341.6
¢	7.5	341.5
W	7.2	341.8

5+08 garage on W. Dirt floor 1.5 Back

W-1.5 = floor 7.0 341.4

5+42 garage on E. cmt. floor 5.5 Back

E-5.5 = floor 7.60 341.40

5+50

W	7.6	341.4
¢	7.8	341.2
E	7.6	341.4

6+00 = N. Line Nighlman Unpaved.

E No Cut on E. of Alley 8.0 341.0

¢ 8.0 341.0

W = cmt. el N. End. 7.76 341.24

W. cmt. el 1515. = S. el. Line 7.87 341.13

W ground 8.5 340.5

¢ " 8.6 340.4

E " 8.6 340.4

Bal. Chk
66

349.00

10.65

338.35

4.90

343.25

2.59

340.66

340.64

orig. B.M.

142.87

0+00 = Nly xerobhan

W		5.4	137.5
+9.7	=cb top	4.21	136.66
+9.8	gut	4.67	136.20
cb	par	6.67	136.20
1/2	"	6.75	136.12
c	"	6.87	136.00
1/2	"	7.11	135.76
cb	"	7.41	135.46
+8.3	gut	7.81	135.06
+8.4	cb top	7.32	135.55
E		8.1	134.8

0+00

E		9.2	133.7
+13.4	top ob.	7.49	135.38
gut		8.0	134.9
cb		8.0	134.9
1/2		8.0	134.9
c		7.5	135.4
1/2		7.4	135.3
+4		7.1	135.8
cb		8.1	134.8
+6		7.3	135.6
W		5.3	137.6

142.87

68

0+25

W		5.8	137.1
+2		8.5	134.4
+14		9.1	133.8
cb		10.1	132.8
1/2		10.3	132.6
c		10.5	132.4
1/2		10.4	132.5
cb	gut	10.4	132.3
cb	top	10.11	132.76
E	Lawn	11.9	131.0

0+48 P.C.

E		12.8	129.1
cb	top	12.93	129.94
	gut	13.3	129.6
	1/2	13.0	129.9
	c	13.2	129.7
	1/2	13.1	129.8
cb		12.5	130.4
+16		11.0	131.9
W		7.1	135.8

T.P. 147 131.90 12.44 130.43

0+53

E cb on bog. par. gut. 2.94 128.96
to Drive in

131.90

0+68

W		+ 1.3	133.2
+ 2		0.5	131.4
+ 11		2.9	129.0
cb		3.7	128.2
1/4		4.4	127.5
C		4.5	127.4
1/4		4.7	127.2
cb	on edge paved Drive	2.40	127.50
E	" " "	5.31	126.59
	0+72		
W	+ 11.4 S edge walk	3.54	128.36
	0+79		
W	+ 11.4 N. edge "	3.87	128.03
	0+84		
- 10	S edge 3 Car Gar	5.50	126.40
E		5.70	126.20
cb	edge par.	6.14	125.76
1/4		5.9	126.0
C		6.0	125.9
1/4		5.8	126.1
cb		5.0	126.9
+ 6.6		4.5	127.4
+ 6.6	^{Rock} Top wall	2.9	129.0
W		0.3	131.6

131.90

69

0+96 - P.C. 6'R of wall

W		2.0	129.9
+ 11.4	^{Rock} Top wall	3.17	128.73
+ 11.4	Bot "	5.0	126.9
1+02	= ^{Rock} Top wall		
W	Top wall	1.85	130.05
+ 5.4	" " P.C.	3.0	128.9
1+02'	= Bot. wall		
W	- 19.4 S edge ^{2 car} 90°	3.35	128.55 corr. floor
W		4.3	127.6
cb		5.6	126.3
1/4		6.2	125.7
C		6.5	125.4
1/4		6.5	125.4
cb	edge drive par.	6.47	125.43
E	corr. pav	5.86	126.04
	1+14.5		
E	- 10 N edge ^{3 car} 90°	5.49	126.41
E		5.94	125.96
cb	end of Apron	6.72	125.18
	1+19		
E		7.8	124.1
cb		6.8	125.1
1/4		6.7	125.2
C		6.8	125.1

1/2		6.6	125.3
cb		6.7	125.7
W		5.0	126.9
+19.4	Wedge	5.55	128.55
	car gar.		
	1430		
W		5.9	126.0
cb		6.7	125.2
1/4		6.7	125.2
c		7.2	124.7
1/2		7.6	124.3
cb		7.7	124.2
E		8.6	123.3
	1445		
W-10		6.0	125.9
W		7.0	124.9
cb		8.3	123.6
	1450		
W-10		7.8	124.1
W		9.6	122.3
cb		12.6	119.3
1/2		16.1	115.8
T.P.	1.55	120.84	12.61
			119.29
C		8.6	112.2

1/2		9.6	111.2
cb		9.4	111.4
E		9.8	111.0
+10		11.5	109.3
T.P.	0.74	108.94	12.60
			108.18
	Taken on E cb line to Bot. Cañon for Prop. drain		
1+70		7.0	101.9
1+77		10.1	98.8
1+80		17.6	91.3
1+95		20.2	88.7
2+08	} Bot. Cañon	28.1	80.8
2+13		28.1	80.8
T.P.	12.45	120.63	0.74
			108.18
T.P.	12.11	132.31	0.43
			120.20
T.P.	11.96	144.09	0.24
			132.07
	12.16	155.17	1.02
			143.01
		0.95	154.22
			154.20
			0.02

Moore
7-3-37

X sec of alley
BIK 109 UNIV. HTS

indexed
c.s.K.

SEBP	5.54	372.32		366.78
T.P.	5.48	373.58	4.22	368.10

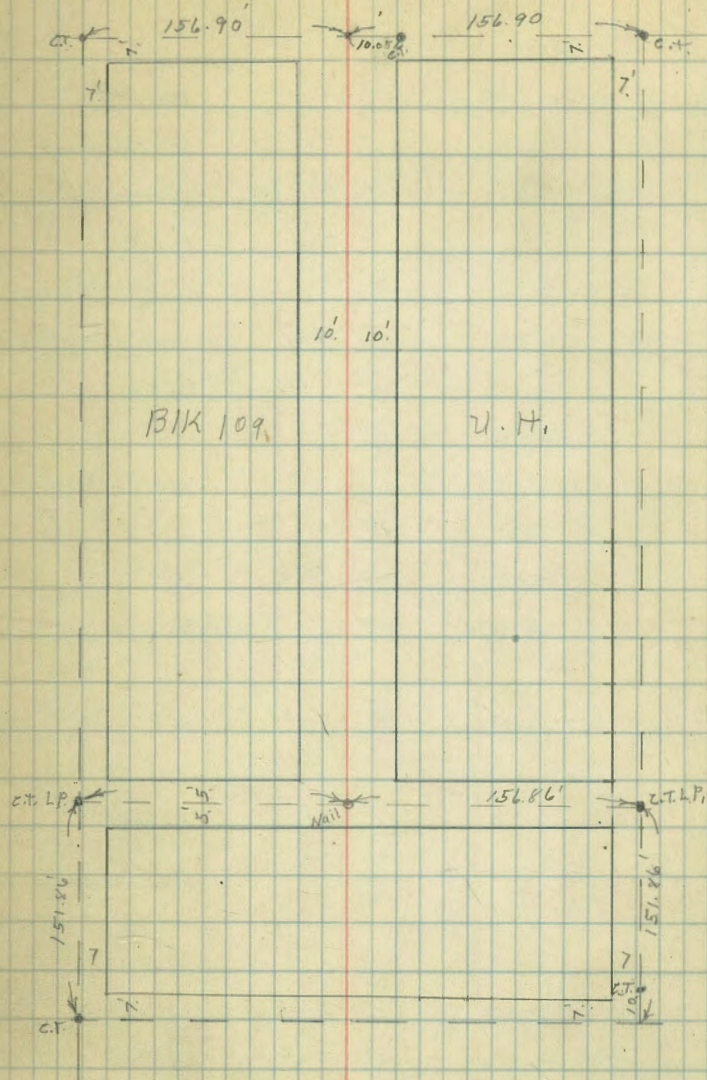
E + W alley 10' wide
Wly Kansas = 00

S curb		5.24		367.34
S pav.		5.53		368.05
" "		5.64		367.94
" "		5.59		367.99
N curb		5.20		368.38
0 + 20				
N		5.1		368.5
C		5.2		368.4
S Top cb + ground		4.99		367.59
0 + 38				
S Top cb + ground		5.07		368.51
" "		4.8		368.8
N		5.0		368.6
0 + 57				
N		5.0		368.6
C		4.8		368.8
S		4.7		368.9
cert				
+7.5 e. edge Apron		4.78		368.80
+21 dola gar floor		4.56		369.02

Moore
Kansas

9-7-38
Miller

71



0+73

-21	Wedge above gar	4.44	368.14
-7.5	" apron	4.68	368.90
C		4.7	368.9
N		4.8	368.8

0+79

-11	dbl gar dir floor	4.7	368.9
N		4.8	368.8

0+82

N		4.8	368.8
C		4.5	369.1
S		4.6	369.0
+21	e. edge dbl gar ^{cent.} floor	4.38	369.20

1+00

S-21	Wedge " "	4.38	369.20
S		4.5	369.1
C		4.5	369.1
N		5.0	368.6

1+20

N		5.0	368.6
C		4.8	368.8
S		4.4	369.0
+8.5	E edge Apron	4.39	369.19
+24.5	" " gar ^{cent.} floor	5.90	369.68

1+25

-8.5	Wedge above apron	4.25	369.33
------	-------------------	------	--------

1+50

S		4.5	369.1
C		4.7	368.9
N		4.7	368.9

2+00

N		4.5	369.1
C		4.4	369.2
S		4.4	369.2

2+50

S		4.1	369.5
C		4.1	369.5
N		4.1	369.5

2+67

S	TOP of	3.35	370.23
S		4.0	369.6
C		4.1	369.5
N		4.0	369.6

3+00 ELY UTAH

N	cb	3.07	370.51
N	par	3.21	370.37
C	"	3.34	370.24
S	"	3.17	370.41
S	cb	3.03	370.55

N + S alley 20 wide
109 V.H.

373.58

73

373.58

Nly of E + W alley = 0 + 0

W	4.9	368.2
"	4.7	368.9
E	4.8	368.8

0 + 27

E	5.8	368.8
"	5.3	368.3
W	5.2	368.4
+ 8.5 E dbk gar. dirt floor	5.3	368.3

0 + 50

W	5.5	368.1
"	5.4	368.2
E	5.6	368.0

1 + 00

E	5.3	368.3
"	5.4	368.2
W	5.7	367.9

1 + 11

E E drive 13 wide cent. gar. back 50'	5.35	367.23
--	------	--------

1 + 50

W	6.0	367.6
"	5.9	367.7
E	6.0	367.6

2 + 02

E - 20 Sedge dbk gar	5.55	368.03	cent floor
E - 25 " " apron	5.92	367.66	
E	6.1	367.5	
C	6.4	367.4	
W	6.3	367.3	

2 + 17

W	6.4	367.2
C	6.0	367.6
E	6.1	367.5

+ 7.5 Wedge apron	5.97	367.61	" "
+ 20 " " gar	5.55	368.03	

2 + 50

E	6.2	367.4
C	6.1	367.5
W	6.2	367.4

T.P.	4.86	372.45	5.99	367.59
------	------	--------	------	--------

3 + 00

W	5.1	367.4
"	5.0	367.5
E	5.0	367.5

3 + 50

E	5.2	367.3
C	4.9	367.6

372.45

W		5.0	362.5	
	4+00			
W		4.7	362.8	
C		4.7	362.8	
E		5.0	362.5	
	4+50			Sly Meade
E ob		4.50	362.89	
E pay		4.74	362.73	
C "		4.97	362.48	
W "		4.83	362.62	
W ob		4.42	362.83	
	4+04			S. gutter Meade
W pay		5.54	366.91	Hole in Pav.
C "		5.40	367.05	
E "		5.50	366.95	
check to B.M.		5.67	366.78	366.78

10-25-34 Pav. Estimate Alley BIK. 109 211
miller

74

0+00	= N. Line E+W Alley		
0+49.6	on W	2' x 2.7'	out for Elec Pole
2+16	on W	1.9' x 2.5'	out for Elec Pole
2+73	on E	1.6' x 2.4'	out for Tel Pole
2+75	±	Sewer M.H	2.2' Diam
3+48.5	on W	2.0' x 2.2'	out for Elec Pole
3+98	on E	1.5' x 2.6'	out for Tel Pole
4+49.4	= S. Line Meade St.		

chk. Grade

W	±	E
4+30	367.71	367.74
	0.14	4.76
	367.52	
	4.98	
	372.50	
	4.79	ok 502

3+90	4.91
3+60	4.83
3+30	4.72

10-23-37
Miller
Walker
Bliss

Dwight St. X Sec.

indexed
C.S.K

36th to Cherokee
80' wide 14' chs 13' 14'
Conc. Walks + Curbs in.

B.M. B.P. — 5.44 — 332.99 — — 327.55 — N.W. 36th + Dwight

14' E. of W. Line = W. el Line Cherokee

S. line el	4.57	327.42
S. pav	5.25	327.74
el	5.16	327.83
14	5.00	327.99
4	4.91	328.08
14	4.87	328.12
el	4.75	328.24
N. line	4.70	328.29
N. el	4.16	328.83
0 + 00 =	W. edge par. Cherokee	
N. el	4.09	328.90
G pav	4.64	328.35
14	4.56	328.43
4	4.60	328.39
14	4.76	328.23
G	5.09	327.90
S. el	4.50	328.49
	0 + 50	
S. el	4.65	328.34
G	5.1	328.9
14	4.7	328.3
4	4.5	328.5

332.99

75

14	4.5	328.15
G	4.8	328.2
N. el	4.27	328.72
	1 + 00	
N. el	4.39	328.60
G	5.0	328.00
14	4.5	328.5
4	4.5	328.5
14	4.9	328.1
G	5.1	327.9
S. el	4.78	328.21
	1 + 39 th on N } = E. line Alley	
	1 + 40 th on S }	
S. line int.	4.6	328.4
S + 1.67 = S. side ent. walk	4.70	328.25
4	4.91	328.05
G	5.2	328.8
14	4.8	328.2
4	4.6	328.4
14	4.5	328.5
G	5.0	328.0
4	4.56	328.43
H 12.33 = N. End walk + el	4.28	328.71
N. Line	3.6	329.4

332.99
 1+60 N }
 1+60 S } = W. Line Alley

N. Line	4.3	328.7
+ 1.67 = N. End. cl & walk	4.43	328.55
N. cl.	4.59	328.40
G.	4.9	328.1
1/4	4.5	328.5
⊕	4.5	328.5
1/4	4.7	328.9
G.	5.2	327.8
cl.	4.90	328.09
+ 12.33 = S. End. walk & cl.	4.76	328.23
S. Line.	4.6	328.7
2+00		
S. cl.	5.02	327.97
G.	5.6	327.4
1/4	5.0	328.0
⊕	4.6	328.4
1/4	4.8	328.2
G.	5.3	327.7
N. cl.	4.76	328.23
2+50		
N. cl.	4.87	328.12
G.	5.3	327.7
1/4	4.9	328.1
⊕	4.7	328.3
1/4	5.2	327.8
d.	5.7	327.3

332.99

Dwight 76

S. cl.	5.14	327.85
3+00 = E. Line 36 th St. intersection unpaved		
S. cl.	5.24	327.78
G.	6.0	327.0
1/4	5.7	327.3
⊕	5.5	327.5
1/4	5.7	327.3
G.	5.8	327.2
N. cl.	5.05	327.94
14 th W. = E. cl. Line		
N. line cl.	5.03	327.99
N. " G. Pav. S. End.	5.59	327.40
cl.	5.8	327.2
1/4	5.9	327.1
⊕	6.0	327.0
1/4	6.0	327.0
cl.	6.1	326.9
S.	6.1	326.9
S. Top. cl.	5.31	327.68
27 th W. = E. 1/4		
S. Line.	6.0	327.0
cl.	6.0	327.0
1/4	6.0	327.0
⊕	5.8	327.2
1/4	5.7	327.3
cl.	5.6	327.4

N. Line = S. End. Pav	5.45	322.57
40' W = ϕ 36 th		
N. Line = S. End. Pav	5.57	322.42
cl	5.4	322.6
1/4	5.4	322.6
ϕ	5.4	322.6
1/4	5.6	322.4
cl	5.6	322.4
S. Line.	5.7	322.3
53' W = W. 1/4		
S. Line	6.1	326.9
cl	5.6	322.4
1/4	5.6	322.4
ϕ	5.5	322.5
1/4	5.6	322.4
cl	5.6	322.4
N. Line = S. End. Pav	5.74	322.25
66' W = W. cl. Line		
N. Line cl.	5.50	322.49
" " G. Pav. S. End.	6.04	326.95
cl	6.1	326.9
1/4	5.6	322.4
ϕ	5.3	322.7
1/4	5.6	322.4
cl	5.6	322.4
S. Line.	6.0	322.0

S. Line Top cl.	5.89	322.10
80' W = W. Line 36 th		= 0 + 0 0
S. cl.	5.90	322.09
G.	6.3	326.7
1/4	5.8	322.2
ϕ	5.3	322.7
1/4	5.9	322.1
G.	6.4	326.6
N. cl.	5.47	322.52
Additional X Sec. 11-19-37		
B.M. B.P. - 2.56 - 330.11 - 5.44 - 327.55		N.W. 36 th Dwight
0 + 50 W. of 36 th		
N. cont. cl.	3.37	326.74
G.	4.0	326.1
1/4	3.3	326.8
ϕ	3.2	326.9
1/4	3.6	326.5
G.	4.4	325.7
S. cont. cl.	3.71	326.40
0 + 90		
S. cont. cl.	4.25	325.86
G.	4.9	325.2
1/4	4.2	325.9
ϕ	3.6	326.5
1/4	3.8	326.3
G.	4.6	325.5
N. cont. cl.	3.84	326.27

330.11

1+40 W = E. Line Alley. W. End. cmt Curbs

N. Line	3.7	326.4
+1.7 = N. Edge cmt. Walls	4.16	325.95
+7.0 = ^S N. End. cmt. el. Alley Ret.	4.30	325.81
N. el. line Top. cmt. el.	4.35	325.76
G	4.9	325.2
1/4	4.5	325.6
1/4	4.6	325.5
1/4	5.1	325.0
G	5.1	325.0
S. cmt. el.	4.89	325.22
S. End. cmt. el. Ret.		
+7 = N. edge " walk	4.81	325.30
+12 = S " " "	4.75	325.36
S.	4.8	325.3
1+48 ⁴ on S. = W. End. cmt. walk		
S+1.7 = S. side walk. W. End.	5.01	325.10
S+7. = N " " " "	5.08	325.03
1+49 ³ on N = W. End. cmt. walk		
N. el. +7 = S. side walk. W. End.	4.73	325.38
" " +12.3 = N " " " "	4.61	325.50
1+70		
N	4.0	326.1
el.	4.1	326.0
+2	5.0	325.1
1/4	4.8	325.3
1/4	5.0	325.1
1/4	5.3	324.8

330.11

Dwight

78

el	5.5	324.6
S	6.0	324.1
	2+00	
S.	6.1	324.0
el	5.8	324.3
1/4	5.7	324.4
1/4	5.3	324.8
1/4	4.9	325.2
+12	4.8	325.3
el	4.4	325.7
N	4.3	325.8
	2+50	
N	5.1	325.0
el	5.1	325.0
+2	5.7	324.4
1/4	5.7	324.4
1/4	5.8	324.3
1/4	6.2	323.9
el	6.5	323.6
S	6.7	323.4

W of Alley, Roadway Graded. side walks. Not.

330.11

3+00 = E. Line Wilson st.

s	7.1	323.0
cb	7.0	323.1
ty	6.7	323.4
q	6.4	323.7
ly	6.3	323.8
il	6.0	324.1
N	5.6	324.5

Dwight

79

Colosa

GAINES

PK
20.29
on CB

DIRECTIONS FOR USE OF TABLES

TABLE No. 1.

Distance of slope from side of station
take for any width roadway, slope 1 to 1.
If ground is nearly level, the cut or fill as
made is located by the double entry method in
the column and top row. The number of
of table in same row and column gives distance

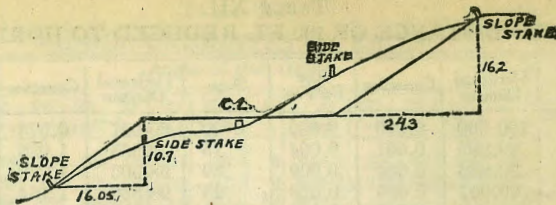
IMPROVED TABLES

AND

INFORMATION

TABLE No. 2.

To find Tangent and External for given
any other degree, divide by degree of curve and
add distance found in column of constant.
Degree of curve with a given E may be found
by dividing tangent (or external) opposite E by
given tangent (or external).
The distance from a point on the tangent to
the curve is very nearly the square of the tangent
length divided by twice the radius.



DISTANCES FROM SIDE STAKES FOR CROSS-SECTIONING.

SLOPE 1 1/2 TO 1. ROADWAY OF ANY WIDTH.

	0	.1	.2	.3	.4	.5	.6	.7	.8	.9	
0	0 00	0 15	0 30	0 45	0 60	0 75	0 90	1 05	1 20	1 35	0
1	1 50	1 05	1 30	1 45	2 10	2 25	2 40	2 55	2 70	2 85	1
2	3 00	3 15	3 30	3 45	3 60	3 75	3 90	4 05	4 20	4 35	2
3	4 50	4 65	4 80	4 95	5 10	5 25	5 40	5 55	5 70	5 85	3
4	6 00	6 15	6 30	6 45	6 60	6 75	6 90	7 05	7 20	7 35	4
5	7 50	7 65	7 80	7 95	8 10	8 25	8 40	8 55	8 70	8 85	5
6	9 00	9 15	9 30	9 45	9 60	9 75	9 90	10 05	10 20	10 35	6
7	10 50	10 65	10 80	10 95	11 10	11 25	11 40	11 55	11 70	11 85	7
8	12 00	12 15	12 30	12 45	12 60	12 75	12 90	13 05	13 20	13 35	8
9	13 50	13 65	13 80	13 95	14 10	14 25	14 40	14 55	14 70	14 85	9
10	15 00	15 15	15 30	15 45	15 60	15 75	15 90	16 05	16 20	16 35	10
11	16 50	16 65	16 80	16 95	17 10	17 25	17 40	17 55	17 70	17 85	11
12	18 00	18 15	18 30	18 45	18 60	18 75	18 90	19 05	19 20	19 35	12
13	19 50	19 65	19 80	19 95	20 10	20 25	20 40	20 55	20 70	20 85	13
14	21 00	21 15	21 30	21 45	21 60	21 75	21 90	22 05	22 20	22 35	14
15	22 50	22 65	22 80	22 95	23 10	23 25	23 40	23 55	23 70	23 85	15
16	24 00	24 15	24 30	24 45	24 60	24 75	24 90	25 05	25 20	25 35	16
17	25 50	25 65	25 80	25 95	26 10	26 25	26 40	26 55	26 70	26 85	17
18	27 00	27 15	27 30	27 45	27 60	27 75	27 90	28 05	28 20	28 35	18
19	28 50	28 65	28 80	28 95	29 10	29 25	29 40	29 55	29 70	29 85	19
20	30 00	30 15	30 30	30 45	30 60	30 75	30 90	31 05	31 20	31 35	20
21	31 50	31 65	31 80	31 95	32 10	32 25	32 40	32 55	32 70	32 85	21
22	33 00	33 15	33 30	33 45	33 60	33 75	33 90	34 05	34 20	34 35	22
23	34 50	34 65	34 80	34 95	35 10	35 25	35 40	35 55	35 70	35 85	23
24	36 00	36 15	36 30	36 45	36 60	36 75	36 90	37 05	37 20	37 35	24
25	37 50	37 65	37 80	37 95	38 10	38 25	38 40	38 55	38 70	38 85	25
26	39 00	39 15	39 30	39 45	39 60	39 75	39 90	40 05	40 20	40 35	26
27	40 50	40 65	40 80	40 95	41 10	41 25	41 40	41 55	41 70	41 85	27
28	42 00	42 15	42 30	42 45	42 60	42 75	42 90	43 05	43 20	43 35	28
29	43 50	43 65	43 80	43 95	44 10	44 25	44 40	44 55	44 70	44 85	29
30	45 00	45 15	45 30	45 45	45 60	45 75	45 90	46 05	46 20	46 35	30
31	46 50	46 65	46 80	46 95	47 10	47 25	47 40	47 55	47 70	47 85	31
32	48 00	48 15	48 30	48 45	48 60	48 75	48 90	49 05	49 20	49 35	32
33	49 50	49 65	49 80	49 95	50 10	50 25	50 40	50 55	50 70	50 85	33
34	51 00	51 15	51 30	51 45	51 60	51 75	51 90	52 05	52 20	52 35	34
35	52 50	52 65	52 80	52 95	53 10	53 25	53 40	53 55	53 70	53 85	35
36	54 00	54 15	54 30	54 45	54 60	54 75	54 90	55 05	55 20	55 35	36
37	55 50	55 65	55 80	55 95	56 10	56 25	56 40	56 55	56 70	56 85	37
38	57 00	57 15	57 30	57 45	57 60	57 75	57 90	58 05	58 20	58 35	38
39	58 50	58 65	58 80	58 95	59 10	59 25	59 40	59 55	59 70	59 85	39
40	60 00	60 15	60 30	60 45	60 60	60 75	60 90	61 05	61 20	61 35	40
41	61 50	61 65	61 80	61 95	62 10	62 25	62 40	62 55	62 70	62 85	41
42	63 00	63 15	63 30	63 45	63 60	63 75	63 90	64 05	64 20	64 35	42
43	64 50	64 65	64 80	64 95	65 10	65 25	65 40	65 55	65 70	65 85	43
44	66 00	66 15	66 30	66 45	66 60	66 75	66 90	67 05	67 20	67 35	44
45	67 50	67 65	67 80	67 95	68 10	68 25	68 40	68 55	68 70	68 85	45
46	69 00	69 15	69 30	69 45	69 60	69 75	69 90	70 05	70 20	70 35	46
47	70 50	70 65	70 80	70 95	71 10	71 25	71 40	71 55	71 70	71 85	47
48	72 00	72 15	72 30	72 45	72 60	72 75	72 90	73 05	73 20	73 35	48
49	73 50	73 65	73 80	73 95	74 10	74 25	74 40	74 55	74 70	74 85	49
50	75 00	75 15	75 30	75 45	75 60	75 75	75 90	76 05	76 20	76 35	50

Computed by L. Leland Locke.

C. J. Sewey
 Piers:
 0 + 99
 1 + 10.4
 1 + 22.1
 1 + 34.4
 1 + 46.4
 1 + 58.4
 1 + 70.4
 1 + 82.4
 1 + 94.4

[Handwritten signature]

483 + 66.09
462 + 15.49

21 + 50.58

965.80
309.90

655.90

118-03

118-03
dec

608 S.E. 293.91 391.37

22.90
1.71

24.61
42.5
20
10

4325
440.68

2.57

Upos. Alabama N.W. B.P. 259.50

25 2275
20 85

85
2375

262.05
7.59

255.46
57
30

1710

119
125

706.5

14
66-55

133505

7
52

122
114
66-55
61-49

5-06

110-18
5-06

105-12

54564