

1543

1543

MICROFILMED

DEC 24 1964

MADE IN U. S. A.

Our Leather Bound Engineers Note Books are carried in the following rulings:

- No. 380 LEVEL BOOK. Left and Right Hand Page the same as Left Hand Page of this Book.
- No. 382 FIELD BOOK. Left Hand Page as in this Book, Right Hand Page 4x4 to the inch, Center Line Red.
- No. 384 MINING TRANSIT BOOK. Left Hand Page as in this Book, Right Hand Page 8x8 to the inch, Center Line Red.
- No. 385 FIELD BOOK. Left Hand Page as in this Book, Right Hand Page 8 vertical and 4 horizontal lines to the inch, Center Line Red.

We also carry the Note Books listed above, bound in extra strong Fabri-Hide (otherwise the same quality of book,) which can be furnished at a somewhat lower price.

In ordering Fabri-Hide covered books, add the letter 'F' to catalog number.

**THE FREDERICK POST CO.**  
*ENGINEERING and DRAFTING SUPPLIES*  
IRVING PARK STATION  
CHICAGO, ILL.

Moore  
9-8-37

Par. Ely on E & W alley N wide

Bk 1 Hartley's North Park

SW BP 6.29 357.93

357.64

W. 357.77  
Ray

Ely Ray = 0+00

S ob & pav.

3.97

353.96

C "

4.08

353.85

N "

3.89

354.04

N c6

3.81

354.12

0+20

N

3.58

354.35

C

3.64

354.29

S

3.55

354.38

0+50

S

3.16

354.77

C

3.34

354.59

N

3.12

354.81

1+00 = Wly N & S alley

N

2.39

355.54

C

2.69

355.24

357.93

Indexed  
Cust.

1

S

2.31

355.62

1+15 = Ely N & S alley

S

2.50

355.43

C

2.72

355.21

N

2.95

355.58

1+50

N

2.57

355.36

C

2.88

355.05

S

2.64

355.29

1+87

S

2.88

355.05

C

3.02

354.91

N

2.64

355.29

2+00

N

2.81

355.12

C

3.14

354.79

S

3.05

354.88

2+20

S

3.13

354.80

C

3.26

354.67

Plotted

357.93

N 3.03 354.90

2 + H1 = wly GRIM ST.

N ob 2.70 355.23

N par. 3.15 354.78

O " 3.42 354.51

J " 3.37 354.57

J ob 3.31 354.62

Moore  
9-8-37

71.78

3

XSEC of Alley 20' wide

0+93

Blk 43 Chas. Henisley's Sub.

- 6.5 S.W. 9th. cerna. 5.19 66.59

BET. 26<sup>th</sup> + 27<sup>th</sup>, Imperial + L STS.

- 3.5 " cerna. apron 5.48 66.30

N 5.0 66.2

NWBP

7.86

71.78

63.92

26<sup>th</sup>

Imperial

C

5.8

66.0

S

5.6

66.2

Ely 26<sup>th</sup> = 0+00

1+20

S cb

4.74

62.02

S

5.8

66.0

S par.

4.83

66.95

C

5.0

66.2

C "

5.15

66.63

+9 S.W. 9th dirt

5.7

66.1

N "

4.79

66.99

1+50

N cb

4.42

62.36

N

6.3

65.5

0+20

S

5.7

66.1

N

4.2

62.6

S

6.0

65.8

C

4.6

62.2

2+00

S

4.8

62.0

S entrance to Warehouse

6.2

65.6

dirt floor

0+50

+5

5.6

66.2

S

5.3

66.8

C

5.0

66.2

C

4.7

62.1

N

6.0

65.8

N

4.7

62.1

71.78

2+50

N			5.3	66.5
C			5.5	66.3
J			5.3	66.5

T.P.	5.91	72.11	5.58	66.20
------	------	-------	------	-------

2+82

S-U	Gar. dirt floor		6.1	66.0
J			6.0	66.1

2+95

S-U	Gar. dirt floor		6.1	66.0
J			6.3	65.8
C			5.9	66.2
N			5.4	66.7

3+44

N	Gar. dirt floor		5.0	67.1
C			5.4	66.7
S			5.7	66.4

72.11

3+50

in alley	vent apron		4.34	67.77
N-1.5	gar. vent floor		3.90	68.21

3+75

J			5.1	67.0
C			4.8	67.3
N			4.5	67.6

4+05

N	online Gar	dirt floor	4.5	67.6
C			4.6	67.5
S			5.4	66.7

4+13

N	online gar	dirt floor	4.4	67.5
---	------------	------------	-----	------

4+62

J			4.8	67.3
---	--	--	-----	------

C			4.8	67.3
---	--	--	-----	------

N	online gar.	dirt floor	4.3	67.8
---	-------------	------------	-----	------

5+00

N			4.6	67.5
---	--	--	-----	------

C			4.5	67.6
---	--	--	-----	------

		72.11						
S			4.9	62.2			4.4	69.0
	5+19						6.6	68.8
N			4.4	62.7		5+94		
+3	<sup>back</sup> gar. dirt floor		4.4	62.7		N-2	Sim. gar. floor	5.38 69.99
	5+28					6+00	w/ly	27.19
S			4.7	62.4		N	cb	4.52 70.85
C			4.4	62.4		N	par	4.82 70.55
N.L.	Wedge	cem approx on line	4.00	68.11		C	"	5.33 70.04
+4	" "	double gar.	3.55	68.56	cem fl.	S	"	5.20 70.17
	5+48					S	cb	5.11 70.26
N-4	E " " "		3.57	68.54				
N	" "	cem. approx	3.91	68.20		TP	6.94 80.47	1.84 73.53
C			4.0	68.1		check to B14 BP NE Cor	3.00	77.47
S			4.2	62.9		2779 + L 51		<u>77.46</u> D. 0.1
F.P.	L 81	75.37	3.55	68.56				
	5+80							
S			6.2	69.2				

Mario  
7-8-37

208.25

Xsec. of Guy St.  
nly of Pringle

50 wide  
10 curbs  
7.5 1/4"

0+00

					E		7.8	200.5	
					cb	TOP COM.	8.14	200.11	200.0
M.W.B.P. W curb	1.15	266.22		265.07	Pringle Wash	gut pav	8.95	199.30	Public side
T.P.	0.57	254.09	12.70	253.52		"	9.76	198.49	
T.P.	0.13	241.70	12.52	241.57		gut "	11.40	196.85	
T.P.	0.26	229.13	12.83	228.87		cb TOP COM.	10.99	197.26	
SET B.M. 13' C.T. Pringle & Peterborough		3.84		225.29		W	10.9	197.4	
T.P.	0.06	216.12	13.07	216.06					0+25
T.P.	4.63	208.25	12.50	203.62		W TOP SET WALL	11.05	197.20	
SET B.M. 13' C.T. Pringle & Guy				11.79		cb	10.7	197.6	
						+5	9.6	198.7	
						cb	9.3	199.0	
						cb	8.3	200.0	
						E	5.2	203.1	
									0+45
						E	6.0	202.3	
						cb	8.5	199.8	
						cb	9.5	198.8	
						+10	9.5	198.8	

00+10 = Curb on Pringle

W pav. gut. 11.94 196.31

W cb TOP 11.11 197.14

cb pav 11.31 196.94

c " 10.23 198.02

E cb " 9.35 198.90

E Pav. gut 8.69 199.56

E cb TOP 8.11 200.14



208.25

cb		10.5	197.8	
W	Top ret. wall	11.15	197.10	
+7.5	Fin gar. <sup>wood</sup> floor	10.90	197.29	8' wide
	D + 84 2 1/4" walk d			
W	end of Ret. wall	11.48	196.77	
cb		11.7	197.1	
+5		10.1	197.2	
C		9.7	198.6	
cb		9.4	198.9	
E		6.6	201.7	
	1+00			
E		6.8	201.5	
cb		8.4	199.9	
C		9.4	198.9	
cb		11.1	197.2	
W	<sup>cem.</sup> double Dr. 20' wide	12.14	196.11	
	1+25			
W		12.7	195.6	
cb		11.1	197.2	
C		10.0	197.3	

208.25

Guy

7

cb		9.0	199.3	
E		6.1	202.2	
	1+50			
E		6.7	201.6	
+7		9.2	199.1	
cb		9.5	198.8	
C		10.0	198.3	
+5		10.4	197.9	
cb		11.8	196.5	
+7	5/4 edge <sup>cem Dr.</sup>	12.71	195.54	
W		12.9	195.4	
	1+05			
W		13.2	195.1	
+3	1/4 edge <sup>cem Dr.</sup>	12.88	195.37	
cb		12.2	196.1	
C		10.6	197.7	
cb		9.7	198.6	
+3		9.6	198.5	
E		6.7	201.6	

208.25

198.31

Guy

8

			208.25			198.31		
cl		1+84				2+00		
W	E		7.5	200.7		E	2.0	196.3
+	+7		10.4	192.9		cb	2.8	195.5
	cb		11.0	197.3		c	3.9	194.4
W	c		12.0	196.3		+12	5.2	193.1
cl	cb		13.1	195.2		cb	6.1	192.2
+	W		14.2	194.1		W	corr. walk	7.74
c							2+14	
cl	T.P.	2.17	198.01	12.11	196.14	12' W of E = outlet 12" pipe	9.02	189.29
E							2+20	
		1+92				W	10.5	182.8
E	W		6.0	192.3		cb	9.5	188.2
cl	cb		4.0	194.3		+5	9.7	187.6
c	+5	Top grate inlet	4.66	193.65		+7	8.5	189.8
cl	+5	FL. 12" pipe	5.96	192.35		c	6.3	192.0
W	c		2.9	195.4		cb	5.2	193.1
	cb		1.9	196.4		E	4.8	193.5
W	E		1.0	197.3			2+30	
c						E	6.0	192.3
c						cb	6.5	191.8

END BRIDGE APPROX. 2+15

198.31

Levels on Drive ways  
Wly side of Guy St

Guy

9

7.46 203.92 196.46

0+95

C 8.4 189.9

+11 10.1 188.2

+13 11.7 186.6

cb 10.8 182.5

W 12.1 186.2

2+50

-10 natural ground 16.5 181.8

-10 = 20' fill to Jo. 14.4 183.7

W 16.5 181.8

cb 15.1 183.2

C 15.5 182.8

cb 13.6 184.7

E 12.2 186.1

+10 10.8 182.5

3+00 = S/W Mission Hills Blvd

See

"

"

"

X sec

W.L. &amp; double ribbon drive 7.73 196.19 8' wide &amp; level

20' W of W.L. " " " 11.13 192.79

1+05

W.L. &amp; Conc. Drive 7.77 196.15 8' wide level

3.5' E of W.L. end of drive 7.24 196.68

20' W of W.L. E drive 10.97 192.95

1+53.5 = S edge double ribbon drive

3' E of W.L. 8.37 193.55

W.L. 8.73 195.19

10' W of W.L. 10.05 193.87

1+60.5 = N edge double ribbon Dr

3' E of W.L. 8.35 195.57

W.L. 8.73 195.19

10' W of W.L. 10.18 193.74

See page 31 for culvert levels

9-27-37 X See Alley Bk. 303 Pacific Beach

Miller  
Walker  
Bliss  
Sisson  
R.M.B.P. 12.40 33.59 21.19 N.W. Gresham  
+ Pacific Drive

T.P. 12.51 45.96 0.14 33.45

T.P. 12.51 57.64 0.83 45.13

0+00 = E. Line Haines St.

S. 9.0 48.8

φ 9.5 48.1

N 9.7 47.9

0+50 East

N 8.7 48.9

φ 6.8 50.8

S 6.3 51.3

1+00

S 5.1 52.5

φ 5.9 51.7

N 6.6 51.0

1+50

N 5.5 52.1

φ 5.1 52.5

S 4.7 52.9

Indexed  
as K.

Haines

St

10

Moh.

321.50

132.00

Moh.

10' 10'

Alley

Pac. Beach.

St.

Drive

Beach

Pacific

BK. 303

Oliver

115'

115'

10' 10'

7'

Nail

132.00'

Nail

330'

φ Ingraham

295.50'

st.

Moh.



57.64  
 2+00  
 S 4.1 53.8  
 E 4.1 53.5  
 N 4.6 53.0

2+50  
 N 3.6 54.0  
 + 3.6 = S.W. Cor } Combination House + garage  
 E on N.H. Rd 3.6 54.0  
 S 3.9 53.7

2+57 E garage on N dirt floor 3.6 in Alley

N + 3.6 floor 3.5 54.1

2+97 = E End. House = W End. Fence 3.6 in Alley

N. + 3.6 3.4 54.2

3+00

S 3.3 54.3

E 3.4 54.2

+ 6.4 = Fence 3.4 54.2

N. 3.4 54.2

3+48 = E. End. of fence.

N + 3.6 Fence 3.8 53.8

57.64  
 3+50  
 N 3.8 53.8

E 3.9 53.7

S 4.3 53.0

4+00

S 5.4 52.2

E 5.0 52.6

N 4.8 52.8

4+50

N 6.2 51.4

E 6.3 51.3

S 6.6 51.0

4+80

S 7.8 49.8

E 7.8 49.8

N 6.7 50.9

499 = W Line Ingham.

N 9.0 47.6

E 9.6 48.0

S 9.5 48.1

57.64

5+19 = w. Edge Pav.

S. 10.87 46.77

E 10.81 46.83

N. 10.79 46.85

Top. Fire Hydt. S. E. (Pacific Ingraham) 9.48 48.16

9-27-37

See Haines Pacific to Reed.

Miller  
Walker  
Bliss  
Sisson

80' wide 20' elev - 10' 1/4

56.80

13

0+50

57.64 T Page 12

E

4.3

52.5

T.P. 11.67

56.80

12.51

45.13

cl

5.4

51.4

B.M. Mon

1.64

55.16

N. Line Pacific

1/4

6.7

50.1

N. Line Pacific Drive =

E. 7' Line Reed

64.5 S. of S. Line Bk. 303. Pac. Beach

E

6.5

50.3

E

1.1

55.7

1/4

7.4

49.4

cl

1.3

55.5

cl

8.6

48.2

1/4

2.5

54.3

W.

10.2

46.6

E

2.7

54.1

1715 S. Line Alley

1/4

3.2

53.6

W.

12.0

44.8

cl

4.8

52.0

cl

10.2

46.6

W.

5.8

51.0

1/4

9.7

47.1

0+00 = S. Line Bk. 303. Pac. Beach

E

9.4

47.4

N

8.0

48.8

1/4

9.4

47.4

cl

6.0

50.8

cl

8.7

48.1

1/4

5.0

51.8

E

7.8

49.0

E

4.2

52.6

7+50

1/4

4.3

52.5

E

9.2

48.6

cl

3.5

53.3

cl

10.4

46.4

E

2.5

54.3

1/4

11.2

45.6

E

11.0

45.8

56.80

1/4 11.1 45.7

cl 11.9 44.9

W 12.5 44.3

2+00

W 13.7 43.1

cl 12.9 43.9

1/4 12.3 44.5

♀ 12.1 44.7

1/4 12.5 44.3

cl 11.6 45.2

E 11.1 45.7

2+50 = S. Line Oliver 80' wide

E 12.2 44.6

cl 12.7 44.1

1/4 13.1 43.7

♀ 12.8 44.0

1/4 13.0 43.8

cl 13.2 43.6

W 13.3 43.5

S.E. Hanes

T.P. 7' Mon 7.87 51.68 12.99 43.81 + Oliver

51.68

♀ Oliver

Hanes. St

14

W 8.2 43.5

cl 8.1 43.6

1/4 7.9 43.8

♀ 8.3 43.4

1/4 7.9 43.8

cl 8.0 43.7

E 7.2 44.7

0+00 = N. Line Oliver

E 7.5 44.2

cl 6.9 44.8

1/4 7.1 44.6

♀ 7.7 44.0

1/4 7.4 44.7

cl 7.5 44.2

W 7.8 43.9

0+50. N.

W 7.2 44.5

cl 7.2 44.5

1/4 7.0 44.7

♀ 7.2 44.5



51.68

1/4	7.1	44.6
cl	6.7	45.0
E	7.4	44.3
	1+00.	
E	6.9	44.8
cl	6.2	45.7
1/4	6.4	45.3
♀	6.6	45.1
1/4	6.2	45.7
cl	6.5	45.2
W	6.7	45.6
	1+50.	
W	5.9	45.8
cl	6.0	45.7
1/4	5.9	45.8
♀	5.8	45.9
1/4	5.5	46.2
cl	5.6	46.1
E	6.4	45.3

51.68

Hanes ST 15

2+00.

E	5.6	46.1
cl	5.1	46.6
1/4	4.8	47.3
♀	5.1	46.6
1/4	5.0	46.7
cl	5.0	46.7
W	5.1	46.6
	2+50.	
W	4.3	47.4
cl	4.5	47.3
1/4	4.1	47.6
♀	4.3	47.4
1/4	4.3	47.4
cl	4.4	47.3
E	4.9	46.8

51.68

Haines St

16

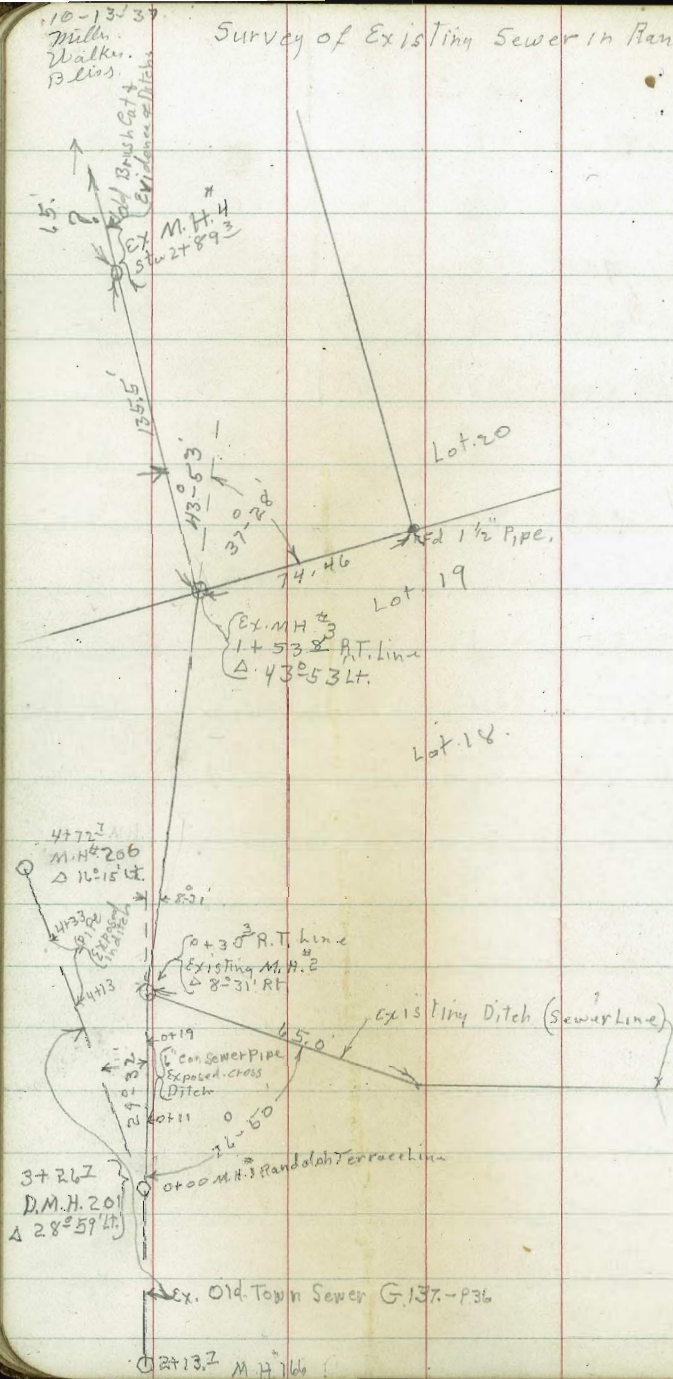
2+70 = 5. Line Reed

E			3.8	429	
cb			3.6	481	
1/4			3.5	482	
cb			3.9	428	
1/4			3.6	481	
cb			3.7	480	
W			3.5	482	
T.P.	2.71	46.52	7.87	43.81	
T.P.	0.12	33.89	12.75	33.77	
Orig BM			12.69	21.90 = 21.19	

Survey of Existing Sewer in Randolph Terrace

Indexed  
C.S.R.

Ex. M.H. of Property Line 43.0 E. of Lot Line  
bet. Lots 12 & 13 No evidence of Ditch in lots 25 or 26.  
However M.H. referred to on lot 26 is an electric  
Power M.H. Covered with a square cone cover.



10-23-37

Miller  
Walker  
Bris.

## Landis St. &amp; Sec.

E. line Arnold to W. line Pershing  
10' wide & 10' elev. 10' 1/4 curb & wall 1/4 inindexed  
c.s.n.

304.25

18

B.M. B.P.	12.40	304.25	291.85	s.e. Landis & Arnold.	s. cb.	7.96	296.29
	10' W. of E. Line = E. Curb of Arnold.				G.	8.6	295.7
S. Line cb.	12.33	291.92			1/4	8.2	296.1
S. " G. Pav.	13.09	291.16			±	8.0	296.3
cb " "	12.94	291.31			1/4	8.0	296.3
1/4 " "	12.84	291.41			G.	8.1	296.2
± " "	12.73	291.52			N. cb.	7.43	296.82
1/4 " "	12.65	291.60				14.00	
cb " "	12.53	291.72			N. cb.	2.97	301.28
N. Line " "	12.39	291.86			G.	3.6	300.7
N. Line cb	11.82	292.43			1/4	3.4	300.9
	0+00 = { E. End. Black Pav. E. Line Arnold. St.				±	3.4	300.9
N. cb.	11.85	292.40			1/4	3.6	300.7
G. Pav	12.44	291.81			G.	4.4	299.9
1/4	12.26	291.99			s. cb.	3.64	300.61
±	12.26	291.99					
1/4	12.41	291.84				1+25 = W. Line Alley	
G.	12.80	291.45			S. Line. N. end. Alley Pav.	1.19	303.06
s. cb.	12.32	291.73			" " curb	1.23	303.02
					cb "	1.56	302.69
					G.	1.7	302.6

304.25

317.15

Landis 19

1/4		1.3	303.0
¢		1.1	303.2
1/4		1.0	303.3
G.		1.1	303.2
cb.		0.83	303.42
N. line cb. + S. End. Alley Pav.		0.44	303.81
	1 + 32 <sup>5</sup> = ¢ Alley		
N. line S. End. Alley Pav.		0.46	303.79
S " N " " "		1.24	303.01
T.P.	13.06	317.15	0.16
	1 + 40 = E. Line Alley		
S. line N. End. Alley Pav.		13.46	303.69
" " cb.		12.85	304.70
cb. cb.		12.90	304.25
cb. G.		13.6	303.6
1/4		12.9	304.3
¢		12.6	304.6
1/4		12.6	304.6
G.		12.8	304.4
cb. cb.		12.19	304.96

N. line cb.	12.10	305.05
N. line = S. End. Alley Pav.	12.75	304.40
	1 + 96	
N. cb.	7.39	309.76
G.	8.1	309.1
1/4	7.8	309.4
¢	7.9	309.3
1/4	8.1	309.1
G.	8.8	308.4
S. cb.	8.38	308.77

2 + 55

S. cb.	3.05	314.10
G.	3.5	313.7
1/4	3.0	314.2
¢	2.7	314.5
1/4	2.6	314.6
G.	2.7	314.5
N. cb.	2.05	315.10

317.15  
 z + 65 = { W End. Black Pav  
 W Line Villa Terrace

N. cl.		1.22	315.93
G. Pav.		1.99	315.16
1/4 "		1.94	315.21
1/4 "		1.99	315.16
1/4 "		2.28	314.87
G "		2.80	314.35
S. cl.		2.21	314.94
	W + 12 = W. cl. line		
S. Line cl		2.19	314.96
S. line G. Pav		2.71	314.44
cl "	"	2.32	314.83
1/4 "	"	1.95	315.20
1/4 "	"	1.69	315.46
1/4 "	"	1.51	315.64
cl "	"	1.53	315.62
N. line "	"	1.61	315.64
N. " cl.		1.13	316.02

317.15

Landis

20

12' W of E. line = E. cl. line

N. line cl.		0.18	316.97
N " G. Pav.		1.94	306.8
cl. "	"	1.12	316.03
1/4 "	"	1.25	315.90
1/4 "	"	1.36	315.79
1/4 "	"	1.55	315.60
cl "	"	1.84	315.31
S. Line "	"	1.98	315.17
S. " cl.		1.15	316.00
	{ E. Line Villa Terrace 0+00 = E. Edge Black Pav		
S. cl.		1.09	316.06
S. G. Pav.		1.68	315.49
1/4 "	"	1.27	315.88
1/4 "	"	0.77	316.38
1/4 "	"	0.85	316.30
G "	"	1.00	316.15
N. cl.		0.23	316.92

T.P. 12.19 328.95 0.39 316.76

328.95

0 + 50

N. cl.	8.11	320.84
G.	8.9	320.1
1/4	8.7	320.3
E.	8.8	320.2
1/4	9.1	319.9
G.	9.4	319.6
S. cl.	8.89	320.06

1 + 00

S. cl.	4.85	324.10
G.	5.3	323.7
1/4	4.8	324.2
E.	4.4	324.6
1/4	4.4	324.6
G.	4.8	324.2
N. cl.	4.10	324.85

1 + 25 <sup>3</sup> = W. Line Alley

N. Line S. End. Alley Pay.	1.95	327.00
N. " cl.	1.87	327.08
dr. cl.	2.08	326.98
G.	2.6	326.4

328.95

Landis St

21

1/4	2.3	326.7
E.	2.8	326.2
1/4	3.5	325.5
dr. cl.	2.81	326.14
S. Line "	2.57	326.38
S. " ground	2.3	326.7

1 + 32 <sup>8</sup> = E. Alley

N. Line = S. End Alley Pay	2.00	326.98
S. " ground	1.8	327.2

1 + 40 <sup>3</sup> = E. Line Alley

S. Line ground.	1.5	327.5
S. " cl.	1.18	327.77
dr. cl.	1.51	327.44
G.	2.3	326.7
1/4	1.6	327.4
E.	1.1	327.9
1/4	1.2	327.8
G.	1.4	327.6
dr. cl.	0.79	328.08
N. Line "	0.57	328.38
N. " S. End. Alley Pay.	1.30	327.68

328.95

T.P. 11.76 346.62 0.69 328.26

24.00

N. cl 7.28 332.74

G 7.7 332.3

1/4 7.8 332.2

E 7.5 332.4

1/4 7.9 332.1

G cnt. drive 8.53 331.49

27.55

S. cl. 3.40 336.62

G 4.0 336.0

1/4 3.5 336.5

E 3.2 336.8

1/4 3.3 336.7

G 3.5 336.5

N. cl. 2.90 337.12

27.65  $\Sigma$  = W. End. Pav  
= W. Line Pershing

N. cl. 2.00 338.02

G. pav. 2.58 337.44

1/4 " 2.43 337.59

340.02

Landis

22

E pav 2.44 337.58

1/4 " 2.70 337.32

G. " 3.03 336.99

S. cl. 2.48 337.57

1/4 E. of Whina = W. cl. Line

S. Line cl 2.41 337.61

S " pav 2.98 337.04

cl " 2.77 337.25

1/4 " 2.32 337.70

E " 2.01 338.01

1/4 " 2.04 337.98

cl " 2.31 337.71

N. Line " 2.34 337.68

N. cl 1.93 338.09

FM B.P. S. E. Landis + Pershing 1.65 138.37 = 238.40



Senior Prelim. To serve  
100 x 150 Lot in Pt. Loma Highlands #2

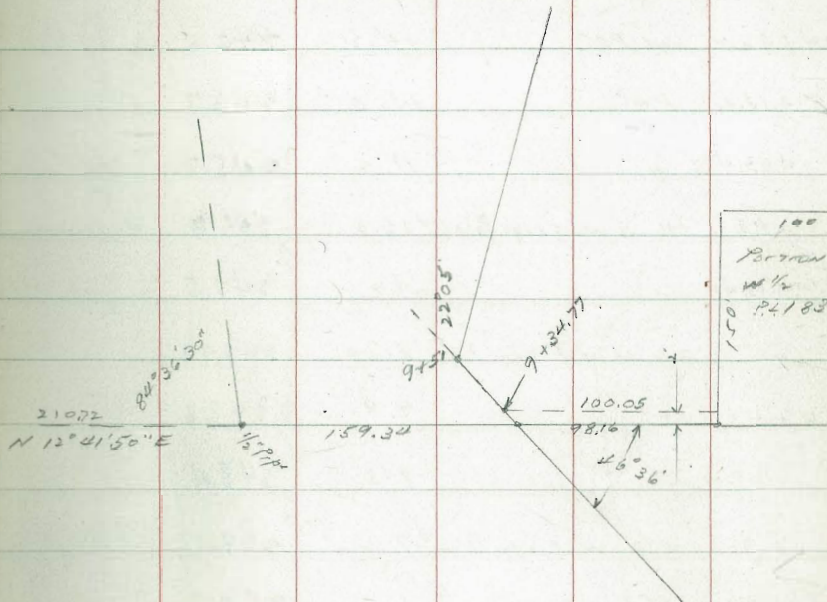
1901  
11-3-37

Indexed  
CISK.

23

see E.B. 1532 p. 67

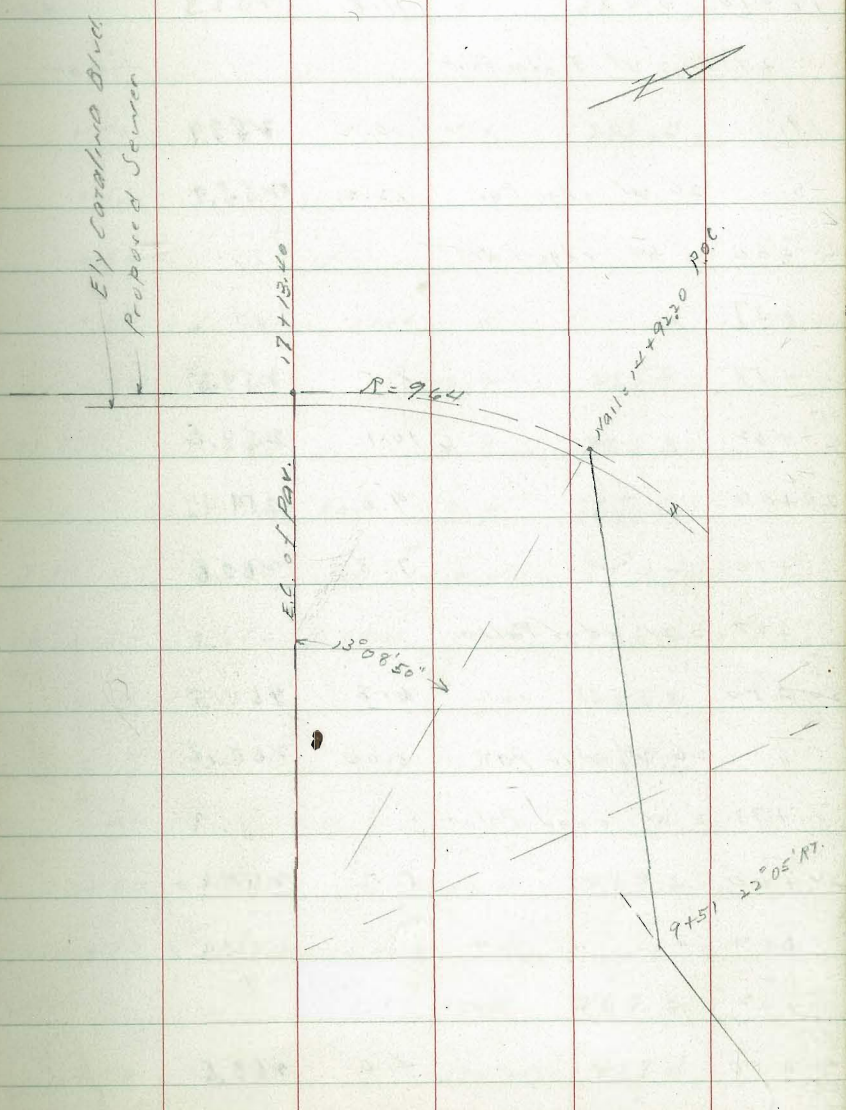
9+51.8	7.11	239.01	231.90	on stub
9+34.77	= 0+00	8.29	230.72	on stub
0+50		5.5	233.5	15+07.3
0+75		5.0	234.0	15+32.3
1+00.05		2.7	236.3	15+57.35



Sewer Prelim.  
 4' W. of E.L. Carolina Blvd.  
 Jennings St. to U.S.M. Res.

Indexed  
 2516

1532 P&E				
15+36.50	9.22	256.69	247.47	nail in par.
14+92.2	nail P.O.C.	14.2	242.5	
15+13.4	P.O.C.	13.0	243.7	
+63.4	"	11.0	245.7	
+98	" 2' W = Edge Palm	10.0	246.7	2' diam.
16+13.4	"	9.2	247.5	
"	26' W = E edge Pav.	8.70	247.99	
16+40	P.O.C.	7.9	248.8	
+63.4	"	8.3	248.4	
+90	" 2' W E edge Palm	7.6	249.1	"
17+13.4 = P.C.		6.0	250.7	
"	26' W edge Pav.	6.65	250.04	
+50		4.4	252.3	
+80	2' W edge Palm	3.1	253.6	"
18		2.2	254.8	
+14	" " "			"
+19	allow 1/2 pipe 4' E	1.5	255.2	
+45	2' W edge Palm			



256.69					268.14				
T.P.	12.80	268.14	1.35	25534	21 + 93	2' W edge Palm			
18 + 50			11.8	256.3	22		2.7	264.4	
+ 75	2' W E edge Palm				4' diam.				
19			10.2	257.9	+ 28	" " "			
"	26' W edge Pav.		12.2	255.9	+ 50	" " "	3.1	265.0	
+ 06	2' W edge Palm				+ 53	" " "			
+ 37	" " "				+ 83	" " "			
+ 58			8.5	259.6	+ 86	2' E Pepper tree			4' diam.
+ 62			10.1	258.0	+ 90		2.2	265.9	
20 + 06			9.0	259.1	23		2.8	265.3	
+ 10			7.3	260.8	"	26' W edge Pav.	2.0	265.5	
+ 27	2' W edge Palm				T.P.	11.87	279.61	0.40	267.74
20 + 50			6.8	261.3	23 + 13.4	= 1' N of E Chas.	13.4	266.2	Public Line
"	26' W edge Pav		8.00	260.14	+ 34		13.4	266.2	
+ 73	2' W edge Palm				+ 37		12.5	267.1	
21 + 00			5.5	262.6	+ 44	5.5 W = F.H.			
+ 02	" " "				+ 50		12.4	267.2	
+ 32	" " "				+ 70	2' W = Oenaria tree			
+ 50			4.6	263.5	24		12.4	267.2	
+ 02	" " "				+ 50		12.2	267.4	
					"	26' W = edge Pav	11.55	268.06	

		279.61		
24	+89.4	Galley S. of Chas	11.7	267.9
25			11.4	268.2
	+20	3' W x W. meter		
	+50		10.3	269.3
	+62	10' W Eucalyptus 2' diam.		
	+81	4' W = W meter		
20			9.0	270.6
	+21	" " " "		
	+27		7.4	272.2
	+50		7.9	271.7
	+80		7.0	272.6
	+89	" " " "	6.0	273.6
	+92		4.9	274.7
27			4.5	275.1
	+30.5	end 3' wide Cem. walk	2.13	276.48
	+50		2.3	277.3
	"	26' W edge Pav.	4.96	274.65
	+53	4' W = W meter		
T.P.	12.41	291.74	0.28	279.33
28	+00		12.8	278.9

			291.74	
				26
				Windy
				To dodge four of trees on E
				?
				1
28	+04.4	S of Galley Dudley	11.4	280.3
	+50		11.4	280.4
29			10.2	281.0
	+30	2' W x 6" Eucal. tree		
	+40	2' E " " "		
	+50		9.0	282.7
30			6.5	285.2
	+50		4.7	287.0
	+63	1' E 21" Eucal		
	+65	2' " " " "		
	"	4' W = end Culv. wing wall		
	+94	18" Eucal tree		on line
31			2.0	289.7
	T.P.	12.22	303.81	0.15
	+50		11.7	292.1
	+55	3' E 18" Eucal. tree		
	+58	7' " " "		
31	+89.4	Galley S of Warden	10.5	293.3
	"	26' W edge Pav.	11.12	292.69
	+97		10.3	293.5
32		2' W x W meter	9.5	294.3

32	+29.6 E 3' wide Cem. walk	8.22	295.59
	+34 8' W = W. Meter		
	+50	7.4	296.4
33		6.3	297.5
	" 20' W = edge Pav.	8.3	295.5
	+45	5.1	298.7
	+50	4.8	297.0
	+87	6.6	297.2
	+89	4.9	298.9
34		4.7	299.1
	" 26' W edge Pav.	6.78	297.03
	+50	4.5	299.3
	+85 4' W E edge Cypress 18" diam		
35		4.4	299.4
	+22 1' W " Eucal. Tree "		
	+39.4 Easley S of Dupont	4.4	299.4
	" 16' W on STUB	6.03	297.78
	+50	4.3	299.5
36		4.4	299.6
	+41 3' W = E edge Cypress	3.6	300.2
	+50	3.6	300.2

36	+97 5' W = W Meter	4.0	299.8
37		5.4	298.6
	" 26' W edge Pav.	4.60	299.21
	+30 5' W (2) W Meters	5.0	298.81
	+33	4.2	299.6
	+50	4.1	299.7
	+60 6' W F.H.		
	+75 3' W E edge Cypress 24" diam		
	+97 3' W " " Eucal. Tree		
38		3.8	300.0
	" 26' W edge Pav.	3.90	299.9
	+11 5' W = W Meter		
	+14 2' W edge Cypress 18" diam		
	+35	4.0	299.8
38	+41.57 = 10' S of S.L.	4.9	298.9
	+50	4.0	299.8
39		3.4	300.4
	T.P. 8.84 309.43	3.22	300.59
	39+05 inlet Culv.		11' W
	+50	9.1	300.3

40 + 00		9.2	300.2	
"	20' W edge Pav.	8.20	301.2	
+50		9.7	299.7	
41		9.6	299.8	
+50		8.5	300.9	
42		7.6	301.8	
+50		6.2	303.2	
43		5.2	304.2	
+29	2' W edge Cypress		22" diam.	
+37		3.3	306.1	
+41	W edge of rock pav.	4.3	305.1	dime in
43 + 46.2	= Pueblo Line	4.06	305.37	
+58.2	S edge Pav	3.8	305.6	" "
"	20' W = edge pav	3.08	306.35	
+62	Tel. dead MAN	2.9	306.5	on Line
43 + 87	beg. of Cypress Hedge 5' W.			
+91	3' W Tel. Pole			
44		2.2	307.2	
+50		0.4	309.0	
T.P.	1259	321.89	0.13	30930

45				11.1	310.8
	+24	3' W Tel. Pole			
	+50			9.1	312.8
	46			6.6	315.3
	"	20' W edge Pav		6.2	315.7
	+50			4.5	317.4
	+71	4' W Tel. Pole			
	47			2.3	319.6
	T.P.	12.42	333.98	0.33	321.56
	+50			11.6	322.4
	48			9.4	324.6
	"	20' W edge pav.		7.0	327.0
	+44	4' W Tel. Pole			
	+50			5.7	328.3
	49			2.7	331.3
	T.P.	12.87	344.71	0.14	333.84
	+50			11.5	335.2
	50 + 00			7.5	339.2
	"	20' W edge		7.92	338.79
	+16	4' W Tel. Pole			

340.71

&lt;

370.54

29

50+50			3.7	343.0	54+50		6.7	363.8	
51			0.5	346.2	+58 5' W Tel. Pole				
T.P.	12.50	358.95	0.26	346.45	55		4.6	365.9	
+50			9.5	349.5	" 26' W. edge Pav.		6.03	364.51	
+58 4' W. Tel. Pole					+50		3.1	367.4	
52			7.1	351.9	56		2.1	368.4	
" 26' W edge Pav.			8.31	350.64	" 26' W. edge Pav.		2.81	367.73	
+50			4.7	354.3	+08 5' W = Tel. Pole				
53			2.2	356.8	T.P.	10.79	380.28	10.5	369.49
+12 5' W. Tel. Pole					+50		11.2	369.1	
53+28.4 = Pueblo Line			0.7	358.3	57		10.0	369.7	
" " 26' W edge Pav.			1.56	357.39	" 26' W = edge Pav.		9.95	370.33	
" " end of Cypress Hedge 6' W					+50		10.5	369.8	
T.P.	12.95	370.54	1.36	357.59	+63 5' W = Tel. Pole				
53+44			11.3	359.2	58		9.8	370.5	
+47			12.4	358.1	" 26' W = edge Pav.		7.62	372.66	
+63			11.9	358.6	+50		9.1	371.2	
+65			10.8	359.7	59		8.1	372.2	
54			9.0	361.5	" 26' W = edge Pav.		5.27	375.01	
" 26' W edge Pav.			9.9	360.6	+13 5' W = Tel. Pole				

on 5' W  
Pueblo Cor  
& Catalina

38028

59+50 6.8 374.0

60 5.4 374.9

" 24' wedge Pav. 2.88 377.40

+48.4 4.0 376.3

T.P. 027 368.77 11.83 368.45

T.P. 402 362.58 10.76 357.96

check to 3/4" pipe BM #3 4.29 358.29 358.53 45' Pt. of 5+9. 9+86.45 Carolina Blvd. Pav. Job.  
0.24Same old  
erratum  
Bench Levels



Levels for Prop. Culv.  
on Guy St. at M. H. Blvd. Moore  
4-22-38

						128.75	
	10 Ely of W. L. Guy						
	0.91	190.20		189.29	FL. outlet 12" pipe	4+96	14.8
2+45			4.7	185.5	P. &	4+100	17.7
2+55			9.1	181.1			
2+65			11.5	178.7			
T.P.	0.29	177.84	12.65	177.55			
2+80			6.1	171.7			
2+00	Sly M. H. Blvd.		13.7	164.1			
T.P.	0.54	165.54	12.80	165.02			
3+10			0.9				
3+25			13.0				
T.P.	0.60	153.44	12.70	152.84			
3+50	Nly M. H. Blvd.		12.0				
T.P.	0.06	140.69	12.81	140.63			
3+75			10.8				
3+85			14.9				
T.P.	0.60	128.75	12.54	128.15			
4+00			11.2				
4+15			14.8				
4+30			15.0				

52

2

2

✓

✓

7

✓

✓

✓

✓

3

7

✓

7

✓

✓

7

✓

✓

✓

✓



12-1-37  
M. D. Cass  
Bless

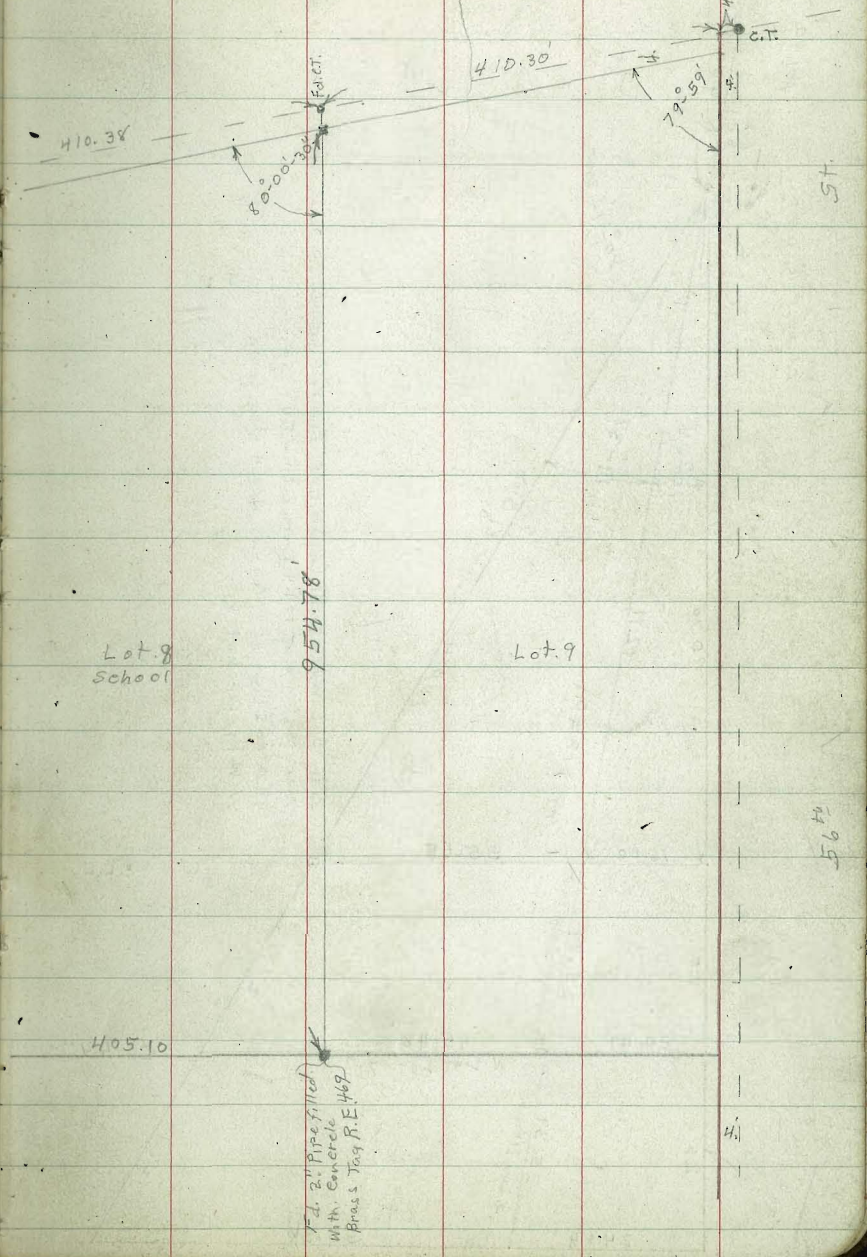
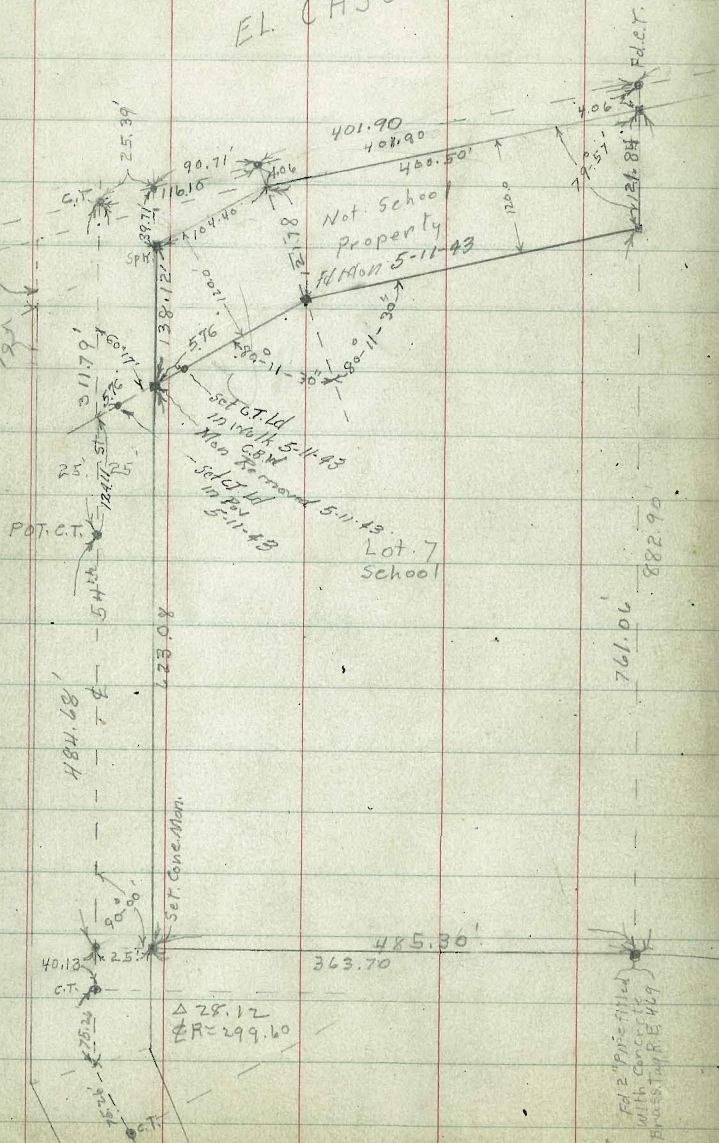
Survey Lot 8 & that portion  
of Lot 7 as shown on Plat. Lemmonville  
for Andrew Jackson School

EL CAJON

M. D. Cass  
C. 116

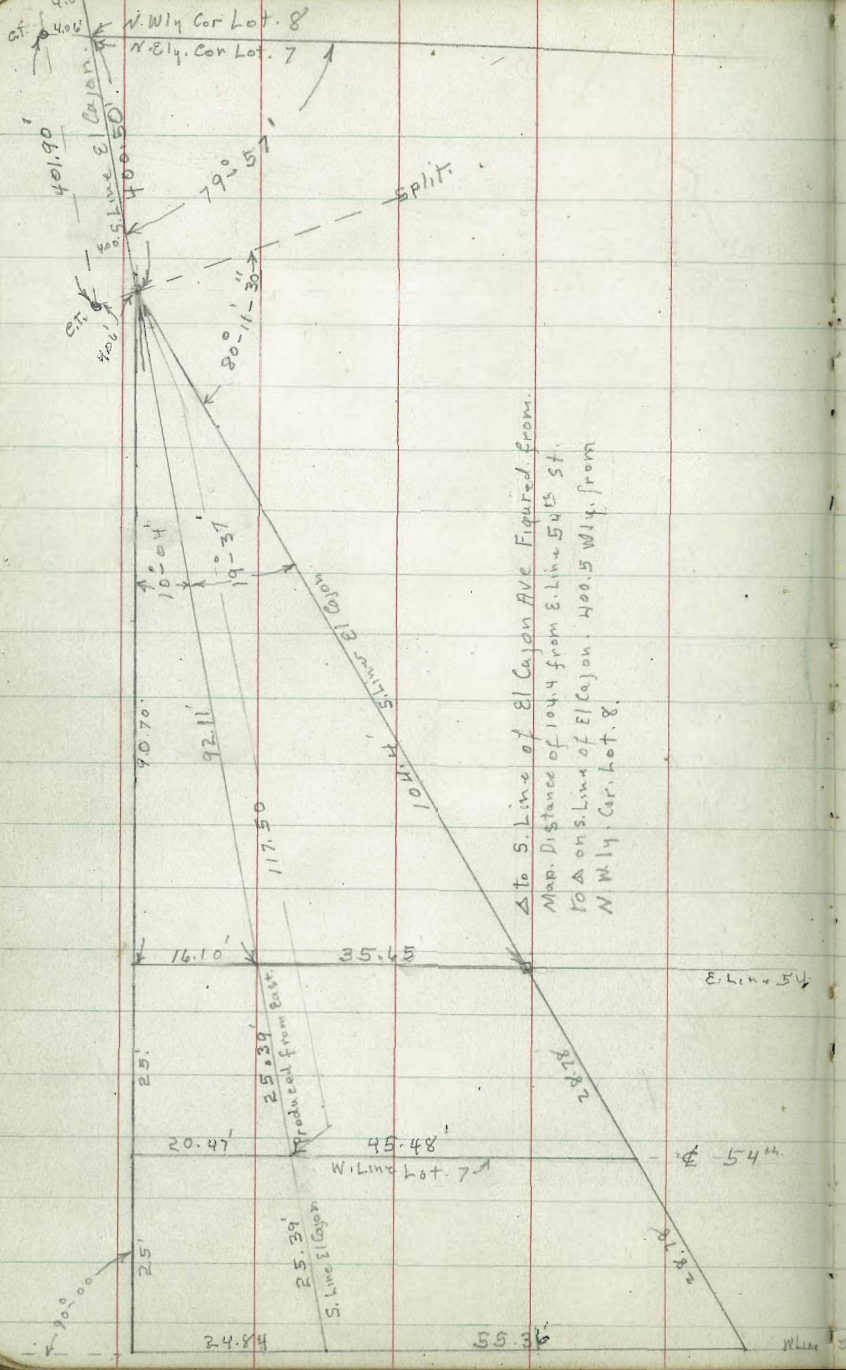
BLYD.

Plotted on T. & P. Sheet 34  
3670-3671-3672  
1/2 of 1/4 Sec. 16, T. 4 N., R. 6 E., S. 4



57

56



Levels on 54<sup>th</sup> St.  
El Cajon Blvd. South for  
Contour Map of School Grounds.  
Lots 7 & 8 Lemon Villa

B.P.M. 2.08 405.85 403.77 S.E. 54<sup>th</sup> & El Cajon

0+00 = S. line Lot 7			
7+94 N = S. line El Cajon			(10' E. of 54 <sup>th</sup> St & Edge 20' strip conc. pav)
E. Edge Pav.	3.60	402.25	
7+50 N			
E. Edge Pav	3.57	402.28	
7+00 N			
E. Edge Pav.	3.10	402.75	
4' E	3.4	402.5	
6' E	2.7	403.2	
15' E = E. Line 54 <sup>th</sup> St.	2.5	403.4	
6+50 N			
E. E. Pav	2.71	403.14	
5' E	2.8	403.1	
6' E	1.4	404.1	
15' E = E. Line	1.5	404.3	
6+00 N			
E. E. Pav	2.73	403.1	
5' E	2.8	403.1	
6' E	1.6	404.2	

405.85

A. Jackson School 36

15' E = E. Line	1.3	404.6	
5+50 N			
E. E. Pav	4.06	401.79	
5' E	4.1	401.8	
6' E	1.3	404.6	
15' E = E. Line	1.3	404.6	
5+00			
E. E. Pav	6.18	399.67	
5' E	6.4	399.5	
7' E	2.4	403.5	
15' E = E. Line	2.5	403.4	
4+50 N			
E. E. Pav	9.28	396.57	
5' E	9.5	396.4	
8' E	4.3	401.6	
15' E = E. Line	4.6	401.3	
4+00 N			
E. E. Pav	13.11	392.74	
5' E	13.1	392.8	
8' E	7.9	398.0	
15' E = E. Line	8.3	397.6	

405.85

T.P.	0.24	392.83	13.26	392.59
		3450 N		
E. E. Pav.		4.23		388.6
6' E		4.4		388.4
7' E		1.4		391.4
15' E = E. Line		2.4		390.4
20' E		5.0		387.8
		3100		
E. E. Pav		8.42		384.41
6' E		8.4		384.4
7' E		5.8		387.0
15' E = E. Line		6.5		386.3
20' E		9.5		383.3
		2450		
E. E. Pav		12.75		380.08
5' E		13.06		379.8
6' E		12.4		380.4
15' E = E. Line		13.0		379.8
20' E		15.2		377.6
T.P.	0.13	379.74	13.02	379.81

379.94

2000 N

E. Edge Pav.		4.16		375.78
5' E		3.7		376.2
10' E		7.0		372.9
15' E = E. Line 54 <sup>th</sup> St.		8.1		371.8
		1450 N		
E. E. Pav		8.41		371.53
4' E		8.4		371.5
12' E		73.5		366.4
15' E = E. Line		13.6		366.3
		1400 N		
E. E. Pav		12.54		367.36
4' E		12.4		367.5
12' E		17.0		362.9
15' E = E. Line		17.0		362.9
T.P.	0.56	367.73	12.77	367.17
		0450 N		
E. Edge Pav		4.52		363.21
4' E		4.3		363.4
12' E		8.5		359.2
15' E = E. Line		8.5		359.2

367.73

0 + 00 = S. End Lot 7 Lemon Villa

E. edge pay 8.56 359.17

10.2 8.2 359.5

15.2 = { S.W. Cor lot 8  
E. line 54<sup>th</sup> St 11.2 356.5 s.w. cor.  
School Property

B.M.S.W. cor Lot 8 on Cone Mon 10.80 356.93

~~T.P. 5.65 365.35 7.03 360.70~~B.M.B.P. S.W. 54<sup>th</sup> + Orange 1.58 363.77 Top of Headway  
C=36375

X 367.73

T.P. 12.98 373.78 6.93 360.80

B.M. Top of Pipe { S.W. cor lot 8  
S.E. Cor Lot 7 } 6.61 367.17

T.P. 5.77 378.26 1.29 372.49

B.M. Top of Pipe = { S.E. cor Lot 8  
S.E. Cor School Prop } 3.15 375.11B.M.B.P. 11.83 415.60 403.77 S.E. 54<sup>th</sup> +  
El Cajon

T.P. 7.06 421.17 1.49 414.11

Stub { 485.30 east 761.06 North  
N. line school Property } 4.63 416.54 on E. line Lot 7.P.O.T. on E. line Lot 7 { 485.3 East  
458 North } 7.4 413.8T.P. B.M. 1.86 419.31 N.E. Dayton  
+ El Cajon.



Topography Lots 7 & 8 Lemon Villa  
for Andrew Jackson School Grounds.

A. Jackson School 39

S. Line of Lots 7-8-9 East & West.

East line 54<sup>th</sup> St. - E. Line Lot 8 + E. line Lot 9

Assumed. North Azimuth Ls Clockwise from North.

E. Line 54<sup>th</sup> St. 0+00 E+W. - S. line Lots 7 & 8 = 00 N+S.

Instrument at 0+00 N+S. + 0+00 E+W. =

E. Line 54<sup>th</sup> + S. Line Lot 7 Ground. Elev 356.5

Station	Azimuth	stadia	vert. L.	Dist	Dif. in Elev.	Elev
✓ 1	S. Line 90°-00'	50'		50'	-0.5	356.0
✓ 2	S. Line 90°-00'	100'		100'	-0.3	356.2
✓ 3	" " 90°-00'	150'		150'	-0.3	356.2
✓ 4	" " 90°-00'	200'		200'	+1.0	357.5
✓ 5	" " 90°-00'	250'		250'	+2.5	359.0
✓ 6	79°-00'	257'		257'	+3.2	359.7
✓ 7	75°-30'	210'		210'	+2.0	358.5
✓ 8	71°-10'	163'		163'	+1.7	358.2
✓ 9	63°-30'	112'		112'	+1.7	358.2
✓ 10	43°-50'	68'		68'	+1.4	357.9
✓ 11	27°-00'	110'		110'	+4.1	360.6
✓ 12	45°-25'	141'		141'	+2.8	359.3

Station	Instrument. at 0 + 100 E + W + N + S. Ground El.	356.5				
Station	Azimuth	Stadia	Vert L	Dist.	Dif. in Elev	Elev.
✓ 13	58°-00'	180'		180'	+3.6	360.1
✓ 14	66°-10'	224'		224'	+3.8	360.3
✓ 15	70°-20'	273'	+1°-15'	272.9	+5.96	362.46
✓ 16	61°-40'	293'	+1°-38'	292.8	+8.35	364.85
✓ 17	55°-50'	247'	+1°-29'	246.9	+6.39	362.89
✓ 18	48°-50'	207'	+1°-34'	206.9	+5.66	362.16
✓ 19	38°-00'	167'	+1°-55'	166.8	+5.58	362.08
✓ 20	20°-00'	137'	+2°-40'	136.7	+6.37	362.87
✓ 21	10°-00'	207'	+3°-46'	206.2	+13.57	370.07
✓ 22	25°-25'	225'	+2°-55'	224.5	+11.5	368.0
✓ 23	35°-20'	254'	+2°-28'	253.6	+10.92	367.42
✓ 24	44°-30'	287'	+2°-20'	286.5	+11.67	368.17
✓ 25	51°-40'	326'	+2°-15'	325.5	+12.79	369.29
✓ 26	43°-35'	374'	+3°-00'	373.0	+19.55	376.05
✓ 27	36°-10'	341'	+3°-11'	340.0	+18.91	375.41
✓ 28	29°-05'	307'	+3°-11'	306.1	+17.02	373.52
✓ 29	21°-00'	294'	+3°-29'	290.0	+17.63	374.13
✓ 30	12°-05'	281'	+3°-50'	279.7	+18.75	374.25
✓ 31	9°-35'	277'	+4°-11'	275.5	+20.15	376.65
✓ 32	7°-25'	315'	+4°-23'	313.2	+24.00	380.5

Station	Instrument at 0+00 E+W + N+S	Ground Elev	356.5			
Station	Azimuth	stadia	Vert. L.	Dist.	Diff in Elev	Elev.
✓ 33	15-20	337.	+4-07	335.4	+24.13	380.63
✓ 34	8-45	354.	+5-05	351.3	+31.24	387.74
✓ 35	11-40	361.	+5-00	358.3	+31.35	387.85
✓ 36	11-40	349.	+4-41	346.7	+28.40	384.90
✓ 37	14-20	361.	+4-37	358.8	+28.96	385.46
✓ 38	17-18	367.	+4-18	365.1	+27.41	383.91
✓ 39	22-28	380.	+4-06	378.2	+27.10	383.60
✓ 40	29-11	401.	+3-52	399.2	+26.98	383.48
✓ 41	36-05	435.	+3-33	433.4	+26.88	383.38
✓ 42	32-00	490.	+4-04	487.6	+34.66	391.16
✓ 43	29-40	514.	+4-20	511.1	+38.72	395.22
✓ 44	26-33	495.	+4-26	492.2	+38.15	394.65
✓ 45	27-50	472.	+4-15	469.5	+34.89	391.39
✓ 46	23-10	450.	+4-27	447.4	+34.81	391.31
✓ 47	16-15	427.	+5-01	423.8	+37.20	393.70
✓ 48	12-37	417.	+5-24	413.4	+39.09	395.57
✓ 49	7-50	411.	+5-50	406.8	+41.55	398.05
✓ 50	7-17	374.	+5-32	370.6	+35.89	392.39
✓ 51	11-20	381.	+5-18	377.9	+35.04	391.54
✓ 52	17-13	388.	+4-38	385.6	+31.24	387.74

Azimuth Angles Clockwise from North

Instrument at 0+00 N &amp; S. 485.30 East

= S. E. Cor. Lot. 7 Ground Elev. 366.7

Station	Azimuth	Stadia	Vert. L	Dist	Diff. in Elev.	Elev.
✓ 1	335° 00'	493.	+3° 24'	491.3	+29.18	395.88
✓ 2	334° 00'	467.	+3° 09'	465.7	+25.62	392.32
✓ 3	337° 50'	444.	+3° 29'	442.5	+26.92	393.62
✓ 4	339° 35'	469.	+3° 55'	466.9	+31.96	398.66
✓ 5	340° 35'	491.	+4° 20'	488.2	+36.99	403.69
✓ 6	346° 00'	429.	+4° 17'	426.7	+31.95	398.65
✓ 7	346° 40'	449.	+4° 40'	446.0	+36.41	403.11
✓ 8	347° 07'	465.	+4° 56'	461.7	+39.84	406.54
✓ 9	352° 06'	441.	+5° 09'	437.7	+39.43	406.13
✓ 10	357° 30'	427.	+5° 02'	423.8	+37.32	404.02
✓ 11	357° 30'	410.	+5° 35'	406.2	+39.70	406.40
✓ 12	0° 00'	392.	+5° 00'	389.0	+34.04	400.74
✓ 13	0° 00'	419.	+5° 30'	415.1	+39.98	406.68
✓ 14	0° 00'	380.	+4° 35'	377.7	+30.27	396.97
✓ 15	352° 45'	380.	+4° 16'	378.0	+28.19	394.89
✓ 16	345° 00'	390.	+3° 48'	388.4	+25.79	392.49
✓ 17	338° 25'	409.	+3° 19'	407.7	+23.62	390.32

Station	Instrument at 0100 North + 4 85.30 East. S.E. Cor. Lot. 7. Azimuth.	Stadia.	Vert. L.	Ground. Elev	Dist.	Diff. in Elev.	Elev.
✓ 18	332°-13'	427'	+2°-49'	366.7	426.1	+20.96	387.66
✓ 19	328°-40'	380'	+2°-12'		379.5	+14.58	381.28
✓ 20	334°-30'	361'	+2°-34'		360.3	+16.25	382.95
✓ 21	342°-00'	340'	+3°-00'		339.1	+17.77	384.47
✓ 22	351°-10'	328'	+3°-31'		326.8	+20.08	386.78
✓ 23	0°-00'	318'	+3°-37'		316.8	+20.02	386.72
✓ 24	0°-00'	250'	+2°-50'		249.4	+12.34	379.04
✓ 25	347°-50'	255'	+2°-38'		254.5	+11.70	378.40
✓ 26	337°-45'	272'	+2°-16'		271.6	+10.75	377.45
✓ 27	328°-45'	292'	+1°-45'		291.8	+9.00	375.70
✓ 28	322°-00'	321'	+1°-30'		320.8	+8.90	375.1
✓ 29	317°-00'	296'			290.	+4.5	371.2
✓ 30	324°-30'	240'	+1°-21'		259.9	+6.12	372.82
✓ 31	334°-00'	233'	+1°-46'		232.8	+7.14	373.84
✓ 32	343°-30'	218'	+2°-13'		217.7	+8.42	375.12
✓ 33	0°-00'	200'	+2°-27'		199.7	+8.54	375.24
✓ 34	0°-00'	150'	+2°-30'		149.7	+6.54	373.24
✓ 35	341°-30'	160'	+1°-48'		159.9	+5.02	371.72
✓ 36	326°-50'	180'			180.	+3.4	376.1

Instrument at 0+00 North 485.3' East

= S.E. Cor Lot. 7

Ground Elev.

366.7

Station	Azimuth	Stadia	Vert. L.	Dist.	Diff'n Elev	Elev.
✓ 37	316-30 <sup>0</sup>	210'		210'	+2.10	368.8
✓ 38	309-30 <sup>01</sup>	244'		244'	+0.4	367.1
✓ 39	? 259-00 <sup>01</sup>	213'		213'	-1.8	364.9
✓ 40	307-25 <sup>01</sup>	170'		170'	0.0	366.7
✓ 41	318-20 <sup>02</sup>	138'		138'	+1.4	368.1
✓ 42	333-30 <sup>01</sup>	117'		117'	+2.6	369.3
✓ 43	0-00 <sup>00</sup>	105'		105'	+3.7	370.4
✓ 44	0-00 <sup>00</sup>	50'		50'	+1.7	368.4
✓ 45	312-00 <sup>00</sup>	74'		74'	+0.5	367.2
✓ 46	295-00 <sup>00</sup>	114'		114'	-0.9	365.8
✓ 47	289-30 <sup>01</sup>	165'		165'	-2.1	364.6
✓ 48	284-35 <sup>01</sup>	187'		189'	-4.0	362.7
✓ 49	270-00 <sup>00</sup>	185'		185'	-4.2	362.5
✓ 50	270-00 <sup>00</sup>	135'		135'	-2.6	364.1
✓ 51	270-00 <sup>00</sup>	85'		85'	-0.9	365.8
✓ 52	270-00 <sup>00</sup>	43'		43'	-0.3	366.4
✓ 53	90-00 <sup>00</sup>	50'		50'	+0.2	366.9
✓ 54	90-00 <sup>00</sup>	82'		82'	+0.3	367.0
✓ 55	90-00 <sup>00</sup>	100'		100'	-0.5	366.2

Instrument at 0<sup>00</sup> North 485.3 East

= S.E. Cor. Lot. 7

Ground Elev.

366.7

Station	Azimuth	Stadia	Vert. L	Dist.	Diff in Elev	Elev
✓ 56	90°-00'			150'	-4.1	362.6
✓ 57	90°-00'			200'	-4.4	362.3
✓ 58	79°-40'			250'	-3.0	363.7
✓ 59	78°-00'			208'	-2.5	364.2
✓ 60	75°-30'			164'	-2.6	364.1
✓ 61	68°-30'			110'	+1.1	367.8
✓ 62	64°-30'			90'	+2.1	368.8
✓ 63	54°-30'			68'	+2.4	369.1
✓ 64	34°-20'			101'	+4.0	370.7
✓ 65	48°-25'			127'	+4.2	370.9
✓ 66	55°-30'			137'	+3.2	369.9
✓ 67	62°-40'			177'	+0.3	367.0
✓ 68	64°-15'			188'	-1.1	365.6
✓ 69	69°-00'			220'	+1.0	367.7
✓ 70	59°-10'			250'	+6.0	372.7
✓ 71	52°-45'			213'	+2.5	369.2
✓ 72	51°-45'			205'	+3.6	370.3
✓ 73	40°-00'	170'	+2°05'	169.8	+6.18	372.88
✓ 74	23°-40'	147'	+2°24'	146.8	+6.20	372.90

♀ wash

♀ wash

Instrument at 0+00 North 485.3 East.  
 = S.E. Cor Lot 7 Ground Elev = 346.7

A. Jackson School 46

Station	Azimuth	stadia	Vert. L	Dist.	Diff. in Elev	Elev
✓ 75	19°-20'	185'	+2°-32'	184.6	+8.17	374.87
✓ 76	34°-00'	206'	+2°-18'	205.7	+8.30	375.00
✓ 77	44°-03'	237'	+1°-44'	236.8	+7.16	373.86
✓ 78	47°-00'	250'	+1°-45'	249.8	+7.63	374.33
✓ 79	51°-20'	272'	+1°-54'	271.7	+9.01	375.71
✓ 80	44°-40'	310'	+2°-12'	309.6	+11.89	378.59
✓ 81	38°-05'	283'	+2°-16'	282.6	+11.20	377.90
✓ 82	29°-20'	253'	+2°-31'	252.5	+11.10	377.80
✓ 83	15°-13'	231'	+2°-45'	230.5	+11.07	377.77
✓ 84	12°-00'	274'	+3°-03'	273.2	+14.56	381.26
✓ 85	22°-50'	297'	+2°-53'	296.3	+14.92	381.62
✓ 86	30°-50'	317'	+2°-32'	316.4	+14.00	380.70
✓ 87	39°-20'	348'	+2°-26'	347.4	+14.76	381.46
✓ 88	34°-31'	385'	+2°-35'	384.3	+17.45	384.15
✓ 89	28°-24'	354'	+2°-46'	353.2	+17.07	383.77
✓ 90	19°-30'	328'	+3°-14'	327.0	+18.47	385.17
✓ 91	10°-10'	311'	+3°-26'	310.0	+18.59	385.29
✓ 92	10°-10'	294'	+3°-15'	293.1	+16.64	383.34
✓ 93	8°-08'	356'	+4°-04'	354.3	+25.18	391.58



Instrument at 0+00 N. + 485.3 East  
= S.E. Cor Lot 7 Ground Elev. 366.7

Station	Azimuth	Stadia	Vert. L	Dist.	Diff. in Elev.	Elev.
✓ 94	15° 54'	370'	+3° 46'	368.5	+24.25	390.95
✓ 95	24° 30'	386'	+3° 08'	384.9	+21.07	387.77
✓ 96	32° 00'	411'	+2° 41'	410.1	+19.24	385.94

Instrument at 0+00 N. 885.4 East =

5' West of S.E. Cor Lot 8. Ground Elev. 374.3

✓ 1	270° 00'	150'	-3° 20'	149.5	-8.71	365.59
✓ 2	270° 00'	91'	-3° 46'	90.63	-5.81	368.49
✓ 3	270° 00'			45'	-2.4	370.9
✓ 4	270° 00'			15'	-1.7	372.6
✓ 5	90° 00'			5'	+0.8	375.1
✓ 6	14° 00'			17'	-0.8	373.5
✓ 7	3° 30'			47'	-0.8	373.5
✓ 8	311° 40'			67'	-4.4	369.9
✓ 9	294° 10'			103'	-7.6	366.7
✓ 10	287° 00'	143'	-4° 02'	142.3	-10.03	364.27
✓ 11	285° 05'	159'	-3° 49'	158.3	-10.52	363.74
✓ 12	289° 00'	163'	-3° 34'	162.4	-10.12	364.15
✓ 13	297° 16'			178'	-6.4	367.9

Instrument at 0+00 North. 885.4' East.

= 5 West of S. E. Cor Lot 8. Ground Elev = 374.3

Station				Elev.
✓ station	303-50 <sup>0'</sup>	751.	-8.2	366.1
✓ 14	306-20 <sup>0'</sup>	166.	-7.4	366.9
✓ 15	309-10 <sup>0'</sup>	165.	-6.7	367.6
✓ 16	317-05 <sup>0'</sup>	147.	-7.5	366.8
✓ 17	315-30 <sup>0'</sup>	180.	-3.5	370.8
✓ 18	309-10 <sup>0'</sup>	174.	-4.0	370.3
✓ 19	303-55 <sup>0'</sup>	163.	-6.3	368.0
✓ 20	305-42 <sup>0'</sup>	144.	-8.7	365.6
✓ 21	311-17 <sup>0'</sup>	122.	-7.0	367.3
✓ 22	329-17 <sup>0'</sup>	100.	-4.8	369.5
✓ 23	357-00 <sup>0'</sup>	97.	-1.1	373.2
✓ 24	2-10 <sup>0'</sup>	97.	0.0	374.3
✓ 25	1-15 <sup>0'</sup>	150.	-0.2	374.1
✓ 26	356-10 <sup>0'</sup>	151.	-1.7	372.6
✓ 27	346-03 <sup>0'</sup>	157.	-4.1	370.2
✓ 28	340-06 <sup>0'</sup>	162.	-4.6	369.7
✓ 29	327-15 <sup>0'</sup>	178.	-4.1	370.2
✓ 30	321-46 <sup>0'</sup>	189.	-1.7	372.6
✓ 31	317-47 <sup>0'</sup>	199.	0.0	374.3
✓ 32	313-15 <sup>0'</sup>	215.	+1.4	375.7

Instrument at 0+00 North 885.4' East.  
 = 5' West of S. E. Cor. Lot. 8 Ground Elev = 374.3

Station	Azimuth	Stadia	Vert. $\angle$	Dist.	Diff in Elev.	Elev.
✓ 33	321 <sup>0</sup> -25'			260'	+ 4.6	378.9
✓ 34	335 <sup>0</sup> -00'			230'	+ 4.0	378.3
✓ 35	335 <sup>0</sup> -00'			220'	+ 3.2	377.5
✓ 36	344 <sup>0</sup> -08'			218'	+ 2.1	376.4
✓ 37	347 <sup>0</sup> -00'			217'	+ 0.6	374.9
✓ 38	352 <sup>0</sup> -14'			210'	- 2.1	372.2
✓ 39	355 <sup>0</sup> -30'			209'	- 2.0	372.3
✓ 40	1 <sup>0</sup> -04'			200'	+ 0.9	374.7
✓ 41	1 <sup>0</sup> -00'			233'	+ 0.5	374.8
✓ 42	359 <sup>0</sup> -08'			230'	+ 0.2	374.5
✓ 43	357 <sup>0</sup> -12'			236'	- 1.0	373.3
✓ 44	354 <sup>0</sup> -02'			236'	- 0.4	373.9
✓ 45	0 <sup>0</sup> -57'			242'	- 0.6	373.7
✓ 46	0 <sup>0</sup> -50'			250'	+ 0.5	374.8
✓ 47	353 <sup>0</sup> -00'			251'	+ 0.6	374.9
✓ 48	348 <sup>0</sup> -52'			255'	+ 4.2	378.5
✓ 49	344 <sup>0</sup> -15'			228'	+ 3.0	377.3
✓ 50	338 <sup>0</sup> -16'	263'	+ 1 <sup>0</sup> -23'	262.9	+ 6.32	380.62
✓ 51	328 <sup>0</sup> -10'	291'	+ 1 <sup>0</sup> -15'	290.9	+ 6.34	380.64

Instrument at 0+00 North 885.4 East.

= 5' West. of S.E. Cor. Lot 8. Ground Elev = 374.3

Station	Azimuth.	stadia	vert. L.	Dist.	Diff. in Elev.	Elev.
✓ 52.	332°-50'	346'	+1°-30'	345.8	+9.06	383.36
✓ 53.	341°-30'	321'	+1°-30'	320.8	+8.40	382.70
✓ 54	350°-17'	313'	+1°-22'	312.8	+7.46	381.76
✓ 55	353°-40'	307'	+1°-11'	306.9	+6.34	380.64
✓ 56	0°-46'			300'	+2.2	376.5
✓ 57	0°-43'			320'	+3.0	377.3
✓ 58	359°-40'			317	+4.2	378.5
✓ 59	0°-43'	350'	+0°-45'	350.0	+4.58	378.88
✓ 60	359°-45'	350'	+0°-58'	349.9	+5.90	380.2
✓ 61	355°-36'	350'	+1°-15'	349.9	+7.63	381.93
✓ 62	352°-19'	352'	+1°-23'	351.8	+8.50	382.80
✓ 63	343°-45'	357'	+1°-36'	356.8	+9.97	384.27
✓ 64	334°-25'	370'	+1°-38'	369.7	+10.54	384.84
✓ 65	337°-00'	420'	+1°-50'	419.6	+13.43	387.73
✓ 66	345°-00'	400'	+1°-47'	399.7	+12.44	386.74
✓ 67	352°-30'	400'	+1°-40'	399.7	+11.63	385.93
✓ 68	0°-37'	400'	+1°-11'	399.8	+8.26	382.56
✓ 69	0°-30'	450'	+1°-34'	449.7	+12.30	386.60
✓ 70	353°-30'	450'	+1°-48'	449.6	+14.13	388.43

Instrument at 0+00 North.  $\theta$  85.4 East  
 = 5. West of E. Line Lot. 8

Ground Elev = 374.3

Station	Azimuth	Stadia	Vert. $\angle$	Dist.	Diff. in Elev.	Elev
✓ 71	347°-22'	450'	+1°-58'	449.5	+15.43	389.73
✓ 72	240°-30'	461'	+2°-08'	460.4	+17.15	391.45
✓ 73	335°-30'	468'	+2°-22'	467.2	+19.31	393.61

Instrument at 0+00 E+W = E. Line 54<sup>th</sup> St.

623.08' North = N.W. Cor. School Property.

Ground Elev 404.50

Station	Azimuth	Stadia	Vert. $\angle$	Dist.	Diff in Elev	Elev
✓ 1	156°-56'			136'	-1.7	402.8
✓ 2	149°-02'			144'	-2.3	402.2
✓ 3	140°-32'			163'	-1.3	403.2
✓ 4	147°-54'			201'	-3.0	401.5
✓ 5	136°-00'			222'	-1.0	403.5
✓ 6	126°-38'			189'	+1.1	405.6
✓ 7	120°-37'			221'	+2.0	406.5
✓ 8	125°-23'			233'	+0.9	405.4
✓ 9	128°-27'			246'	-2.0	402.5
✓ 10	117°-53'			284'	0.0	404.5

Instrument at 0+00 E+W 6 23.04 April  
 = N.W. Cor School Property. Ground Elev 404.5

H. Jackson School 52

Station	Azimuth	stadia	Vert L	Dist.	Diff in Elev	Elev
✓ 11	115-40			279'	+2.0	406.5
✓ 12	112-08			270'	+3.5	408.0
✓ 13	108-40			314'	+4.8	409.3
✓ 14	112-30			327'	+3.3	407.8
✓ 15	115-39			333'	+1.1	405.6
✓ 16	114-21			383'	+1.6	406.1
✓ 17	112-27			376'	+4.2	408.7
✓ 18	108-41			367'	+5.8	410.3
✓ 19	105-12	362'	+1-10'	361.9	+7.37	411.87
✓ 20	103-24	381'	+1-20'	380.8	+8.86	413.36
✓ 21	99-42	367'	+1-28'	366.8	+9.39	413.89
✓ 22	100-47	325'	+1-15'	324.9	+7.09	411.59
✓ 23	103-20	273'	+1-11'	272.9	+5.64	410.14
✓ 24	106-35			223'	+3.7	408.2
✓ 25	112-43			175'	+2.0	406.5
✓ 26	122-07			139'	+0.7	405.2
✓ 27	132-10			117'	-0.3	404.2
✓ 28	145-08			100'	0.0	404.5
✓ 29	156-56			97'	+0.4	404.9

Instrument at top E. W. 6 2 5. 0 8 North  
N. W. Com. School Property

A. Jackson School

53

Ground El. 404.5

station	Azimuth	stadia	vert. L	Dist.	Diff in elev	Elev.
✓ 30	164°-25'			112'	-0.4	404.1
✓ 31	164°-25'			88'	+0.6	405.1
✓ 32	110°-15'			68'	+1.4	405.9
✓ 33	101°-30'			116'	+2.0	406.5
✓ 34	98°-50'			147'	+3.0	407.5
✓ 35	97°-08'	220'	+1°-20'	219.9	+5.12	409.62
✓ 36	95°-12'	271'	+1°-32'	270.8	+7.26	411.76
✓ 37	94°-23'	320'	+1°-31'	319.8	+8.47	412.97
✓ 38	93°-53'	365'	+1°-37'	364.7	+10.29	414.79
✓ 39	85°-40'	360'	+1°-41'	359.7	+10.57	415.07
✓ 40	85°-27'	314'	+1°-43'	313.7	+9.40	413.90
✓ 41	83°-55'	261'	+1°-46'	260.8	+8.04	412.54
✓ 42	82°-23'	211'	+1°-37'	210.9	+5.95	410.45
✓ 43	80°-00'	163'	+1°-33'	162.9	+4.42	408.92
✓ 44	75°-40'			111'	+3.2	407.7
✓ 45	65°-20'			64'	+1.5	406.0
✓ 46	31°-50'			94'	0.0	404.5
✓ 47	52°-30'			127'	+1.7	406.2
✓ 48	60°-19'			152'	+3.0	407.5

Δ on N. Line School Property.

Instrument at 0+00 E+W. 623.08 North  
N.W. Cor. School Property.

A. Jackson School

54

Ground. Elev 404.5

Station	Azimuth	Stadia	Vert. $\angle$	Dist.	Diff. in Elev	Elev.
✓ 49	65°-10'			171.	+ 3.7	408.2
✓ 50	70°-10'	214.	+1°-30'	213.9	+ 5.60	410.1
✓ 51	73°-40'	265'	+1°-39'	264.8	+7.63	412.13
✓ 52	76°-15'	316.	+1°-43'	315.7	+ 9.96	413.96
✓ 53	77°-43'	370.	+1°-44'	369.7	+11.19	415.69
✓ 54	70°-20'	387.	+1°-24'	386.8	+ 9.45	413.95
✓ 55	67°-04'	341'	+1°-17'	340.9	+ 7.73	412.23
✓ 56	62°-50'	292.	+1°-09'	291.9	+ 5.86	410.36
✓ 57	57°-10'	245.	+0°-58'	244.9	+ 4.13	408.63
✓ 58	49°-00'			206.	+ 3.0	407.5
✓ 59	36°-10'			167.	+ 1.6	406.1
✓ 60	19°-30'			140.	+ 0.6	405.1



Instrument at 485.3 East. 761.06 North

H. Jackson School

55

Ground Elev 416.5  
Dist. Diff. in Elev. Elev.

Station	Azimuth	stadia	vert. L	Dist.	Diff. in Elev.	Elev.
✓ 1	0° 00'			76'	+0.7	417.2
✓ 2	31° 46'			92'	+1.5	418.0
✓ 3	49° 30'			132'	+1.8	418.3
✓ 4	62° 50'			178'	+1.9	418.4
✓ 5	65° 36'			230'	+2.2	418.7
✓ 6	68° 30'			272'	+2.3	418.8
✓ 7	80° 32'			269'	+1.0	417.5
✓ 8	80° 27'			216'	+1.3	417.8
✓ 9	80° 27'			162'	+1.3	417.8
✓ 10	80° 27'			106'	+0.9	417.4
✓ 11	80° 52'			54'	+0.8	417.3
✓ 12	80° 52'			5'	-0.3	416.2
✓ 13	80° 52'			4'	0.0	416.5
✓ 14	259° 57'			40'	-1.3	415.2
✓ 15	259° 57'			80'	-1.6	414.9
✓ 16	234° 00'			94'	-0.2	416.3
✓ 17	213° 55'			60'	0.0	416.5
✓ 18	175° 43'			46'	+0.4	416.9
✓ 19	174° 30'			46'	-0.6	415.9

Ground Elev 416.5

Station	Azimuth	Stadia	Vert $\angle$	Dist.	Diff in Elev	Elev.	
✓ ✓ 20	126°-54'			54'	+0.5	417.0	
✓ ✓ 21	105°-45'			109'	+0.6	417.1	
✓ ✓ 22	98°-28'			156'	+1.0	417.5	NW Cor Main Bldg.
✓ ✓ 23	93°-17'			200'	+1.4	417.9	
✓ ✓ 24	91°-08'			271'	+0.2	416.7	N.E. Cor. Bldg
✓ ✓ 25	106°-38'			163'	+0.5	417.0	S W. " Main Bldg.
✓ ✓ 26	106°-58'			271'	-1.8	414.7	S W. Cor Bldg
✓ ✓ 29	107°-40'			219'	+0.2	416.7	
✓ ✓ 30	111°-36'			247'	-1.0	415.5	
✓ ✓ 31	115°-03'			178'	-0.4	416.1	
✓ ✓ 32	126°-43'			140'	0.0	416.5	
✓ ✓ 33	147°-17'			107'	+0.2	416.7	
✓ ✓ 34	176°-42'			92'	-0.5	416.0	
✓ ✓ 35	178°-00'			92'	+1.0	417.5	
✓ ✓ 36	202°-58'			109'	+0.6	417.1	
✓ ✓ 37	220°-00'			137'	-0.3	416.2	
✓ ✓ 38	209°-02'			186'	-0.7	415.8	
✓ ✓ 39	194°-58'			153'	+0.9	417.4	
✓ ✓ 40	178°-57'			148'	+0.9	417.4	

Instrument at - 485.3 East 761.06 North.

A. Jackson School 57

Ground Elev 416.5

Station	Azimuth	stadia	vert. L.	Dist	Diff. in Elev	Elev
✓ 41	177° 50'			148'	-0.9	415.6
✓ 42	159° 48'			153'	0.0	416.5
✓ 43	142° 00'			169'	-0.3	416.2
✓ 44	126° 18'			210'	-1.0	415.5
✓ 45	136° 13'			260'	-1.6	414.9
✓ 46	145° 55'			230'	-1.3	415.2
✓ 47	158° 49'			206'	-0.7	415.8
✓ 48	178° 44'			194'	-0.8	415.7
✓ 49	179° 20'			194'	+0.4	416.9
✓ 50	190° 25'			198'	-0.3	416.2
✓ 51	203° 30'			214'	-1.5	415.0

S.W. Cor Bldg.

Instrument at { 485.3 East } P.O.T. E. Line Lot 7.  
 { 458.0 North }

Ground Elev 413.8

Station	Azimuth	stadia	vert. L.	Dist	Diff. in Elev	Elev
✓ 1	291° 08'			126'	-2.0	411.8
✓ 2	272° 57'			110'	-4.5	409.3
✓ 3	266° 20'			110'	-7.1	406.7
✓ 4	269° 44'			88'	-4.4	409.4

Instrument at 485.3 East 458. North

A. Jackson School 58

Station	Azimuth	Stadia	vert. L	Ground Elev.	Dist	Diff in Elev	Elev
✓ ✓ 5	259°-35'			413.8	60'	-4.2	409.6
✓ ✓ 6	269°-35'				50'	-2.0	411.8
✓ ✓ 7	273°-20'				60'	-2.0	411.8
✓ ✓ 8	305°-50'				71'	+0.5	414.3
✓ ✓ 9	307°-25'				165'	+0.4	414.2
✓ 10	327°-00'				48'	+1.6	415.4
✓ 11	295°-54'				28'	0.0	413.8
✓ 12	259°-35'				22'	-0.7	413.1
✓ 13	240°-53'				28'	-2.3	411.5
✓ 14	220°-34'				34'	-4.7	409.1
✓ 15	212°-30'				40'	-7.4	406.4
✓ 16	195°-07'				44'	-7.7	406.1
✓ 17	180°-00'				41'	-6.7	407.1
✓ 18	180°-00'				22'	-3.6	410.2
✓ 19	180°-00'				10'	-1.3	412.5
✓ 20	3°-03'				41'	+1.8	415.6
✓ 21	5°-20'				41'	+0.3	414.1
✓ 22	55°-00'				72'	+1.2	415.0
✓ 23	70°-20'				126'	-0.6	413.2

Instrument at 485.3 East 458 North

A. Jackson School 59

Ground Elev 413.8

Station	Azimuth	Stadia	Vert $\angle$	Dist.	Diff in Elev	Elev
✓ 24	74°-33'			163.	-2.0	411.8
✓ 25	90°-00'			111.	-2.0	411.8
✓ 26	90°-00'			85.	-2.3	411.5
✓ 27	90°-00'			57.	-0.3	413.5
✓ 28	90°-00'			5.	-1.0	412.8
✓ 29	90°-00'			3.	0.0	413.8
✓ 30	152°-55'			12.	-1.4	412.4
✓ 31	170°-10'			26.	-2.7	411.1
✓ 32	172°-35'			42.	-5.3	408.5
✓ 33	151°-42'			45.	-3.7	410.1
✓ 34	140°-00'			54.	-3.8	410.0
✓ 35	114°-25'			35.	-1.0	412.8
✓ 36	108°-10'			77.	-2.5	411.3
✓ 37	180°-00'	65.	-11°-30'	62.2	-12.74	401.06
✓ 38	157°-54'	72.	-9°-43'	69.97	-11.98	401.82
✓ 39	147°-20'	66.	-8°-06'	64.72	-9.21	404.59
✓ 40	150°-49'	88.	-9°-52'	85.43	-14.86	398.94
✓ 41	165°-28'	84.	-10°-55'	81.2	-15.62	398.18
✓ 42	180°-00'	84.	-11°-48'	80.7	-16.81	396.99

Instrument at 458' North 597.3 East.

A. Jackson School 60

Ground Elev = 411.6

Station	Azimuth	Stadia	Vert. L	Dist.	Diff in Elev	Elev.
✓ 1	226°00'	50.	-6°17'	49.4	-5.44	406.16
✓ 2	218°07'	54.	-8°26'	52.9	-7.83	403.77
✓ 3	204°25'	76.	-10°20'	73.8	-13.41	398.19
✓ 4	162°03'	72.	-13°47'	68.1	-16.66	394.94
✓ 5	162°50'	42.	-17°28'	38.5	-12.02	399.58
✓ 6	157°06'	15.	-33°41'	10.4	-6.9	404.7
✓ 7	75°47'	33.	-17°00'	30.4	-9.23	402.37
✓ 8	62°02'	71.	-8°15'	69.6	-10.08	401.52
✓ 9	84°48'	71.	-11°00'	68.5	-13.30	398.3
✓ 10	117°00'	79.	-13°11'	74.8	-17.55	394.05
✓ 11	138°00'	101.	-12°15'	96.6	-20.93	390.67
✓ 12	54°00'	125.	-4°47'	124.2	-10.39	401.21
✓ 13	67°03'	159.	-5°24'	157.6	-14.90	396.70
✓ 14	74°30'	205.	-4°55'	203.5	-17.51	394.09
✓ 15	78°20'	252.	-4°21'	250.6	-19.06	392.54
✓ 16	80°22'	300.	-4°05'	298.5	-21.31	390.29
✓ 17	70°17'	313.	-3°10'	312.1	-17.26	394.34
✓ 18	66°46'	263.	-3°26'	262.1	-15.72	395.88
✓ 19	63°00'	214.	-3°11'	213.3	-11.81	399.79

Instrument at 458' North 597.3 East.

Ground Elev 411.6

Station	Azimuth	stadia	vert. L	Dist.	Diff. in Elev	Elev
✓ 20	60°-45'	189'	-3°-58'	188.2	-13.10	398.50
✓ 21	58°-33'	175'	-3°-11'	174.5	-9.70	401.90
✓ 22	51°-37'	143'	-3°-31'	142.5	-8.76	402.84

Instrument at 605.5 North 4732.4 East.

Ground Elev. 413.5

Station	Azimuth	stadia	vert. L	Dist.	Diff. in Elev	Elev
✓ 1	219°-02'			120'	-1.6	411.9
✓ 2	226°-30'			117'	-0.6	412.9
✓ 3	218°-35'			99'	-1.7	411.8
✓ 4	231°-00'			80'	-1.1	412.4
✓ 5	216°-20'			69'	-1.3	412.2
✓ 6	230°-05'			60'	-0.8	412.7
✓ 7	238°-39'			52'	-1.3	412.2
✓ 8	250°-31'			50'	+1.0	414.5
✓ 9	245°-00'			34'	+0.4	413.9
✓ 10	281°-00'			35'	+1.5	415.0
✓ 11	314°-19'			55'	+1.8	415.3

S.E. Cor Bldg

Instrument at 60E. 5North. 732.4 East

A. Jackson School 62

Ground. El. = 413.5

Station	Azimuth	stadia	vert. L	Dist.	Diff. in Elev	Elev
✓ 12	306°16'			37'	+1.7	415.2
✓ 13	336°01'			32'	+1.1	414.6
✓ 14	241°30'			12'	-0.1	413.4
✓ 15	150°30'			5'	00	413.5
✓ 16	5°35'			21'	00	413.5
✓ 17	2°54'			51'	+0.8	414.3
✓ 18	22°25'			43'	-0.7	412.8
✓ 19	37°50'			63'	-1.4	412.1
✓ 20	29°25'			71'	-0.2	413.3
✓ 21	22°41'			87'	+1.1	414.6
✓ 22	30°45'			97'	+0.8	414.3
✓ 23	40°10'			113'	-0.7	412.8
✓ 24	44°53'			94'	-2.4	411.1
✓ 25	356°50'			121'	+3.0	416.5
✓ 26	212°55'	57'	-9°38'	55.5	-9.4	404.1
✓ 27	221°40'	49'	-9°20'	47.7	-7.84	405.66
✓ 28	206°16'	45'	-13°06'	43.0	-9.94	403.56
✓ 29	214°24'	34'	-13°56'	32.3	-7.96	405.6
✓ 30	154°30'	22'	-23°17'	15.9	-8.00	405.5

S.E. Cor Bldg

S.E. Cor Main Bldg.



Ground Elev 413.5

Station	Azimuth	Stadia	V. Angle	Dist.	Diff. in Elev	Elev
✓ 31	93°-26'	33'	-16°-39'	30.3	-9.5	404.0
✓ 32	94°-20'	20'	-19°-52'	17.7	-6.39	407.11
✓ 33	53°-30'	22'	-12°-31'	21.0	-4.65	408.85
✓ 34	70°-00'	37'	-11°-20'	35.5	-7.13	406.37
✓ 35	97°-53'	61'	-12°-10'	58.3	-12.57	400.93
✓ 36	67°-07'	78'	-6°-38'	77.0	-8.95	404.55
✓ 37	74°-45'	117'	-6°-03'	115.7	-12.26	401.24
✓ 38	77°-10'	163'	-5°-10'	161.7	-14.62	398.88
✓ 39	62°-23'	179'	-3°-32'	178.3	-11.00	402.50
✓ 40	59°-12'	153'	-3°-40'	152.4	-9.76	403.74
✓ 41	53°-04'	139'	-3°-15'	138.6	-7.86	405.64
✓ 42	58°-20'	120'	-2°-22'	119.8	-4.95	408.55
✓ 43	50°-53'	95'	-3°-07'	94.7	-5.16	408.34
✓ 44	40°-50'	155'	-0°-30'	155.0	-1.35	412.15

Instrument at 954.8' North 889.4' East  
 N.E. Cor Lot. 8.

Ground Elev. = 420.6

A. Jackson School 64

Station	Azimuth	stadia	vert. $\angle$	Dist	Diff'n Elev	Elev
✓ 1	208°-46'			250'	-4.7	415.9
✓ 2	201°-25'			236'	-5.3	415.3
✓ 3	193°-44'			213'	-6.0	414.6
✓ 4	185°-49'	208'	-2°-44'	207.6	-10.15	410.45
✓ 5	180°-00'	187'	-3°-29'	186.4	-11.34	409.26
✓ 6	180°-00'	167'	-3°-08'	166.5	-7.08	411.52
✓ 7	186°-40'	179'	-2°-43'	178.6	-8.47	412.13
✓ 8	194°-52'			185'	-5.3	415.3
✓ 9	203°-53'			200'	-4.5	416.1
✓ 10	209°-43'			214'	-4.2	416.4
✓ 11	216°-12'			193'	-3.5	417.1
✓ 12	208°-51'			169'	-3.9	416.7
✓ 13	208°-51'			153'	-4.7	415.9
✓ 14	185°-53'			140'	-7.1	413.5
✓ 15	180°-00'			137'	-6.2	414.4
✓ 16	180°-00'			97'	-4.8	415.8
✓ 17	191°-30'			100'	-5.0	415.6
✓ 18	211°-43'			123'	-3.5	417.1
✓ 19	226°-40'			165'	-2.5	418.1

Instrument at 954.8' North 889.4' East  
N.E. Cor Lot 8.

Ground Elev. = 420.6

A. Jackson School 65

Station	Azimuth	Stadia	Vert. L	Dist.	Diff. in Elev.	Elev.
✓ 20	242 <sup>0</sup> 43'			142'	-1.6	419.0
✓ 21	233 <sup>0</sup> 30'			92'	-2.2	418.4
✓ 22	210 <sup>0</sup> 32'			53'	-3.2	417.4
✓ 23	180 <sup>0</sup> 00'			38'	-1.9	418.7

Levels S. Side El Cajon from W  
line lot 8 to E. line lot 8. Lemon Villas

H. Jackson School

66

					424.14		
BM. B.P.	4.85	424.16	419.31	N.E. El Cajon + Dayton.	2750	4.6	419.56
		0+00 = W. line lot 8		1. N = S. walk		4.68	419.95
S. line El Cajon		7.3	416.56	4. S. of S. line		4.8	419.36
1.0' N = S. edge cont. walk.		7.27	416.89		3700		
		0+05		S. line		4.4	419.76
S. line		6.3	417.56	1. N = S. edge walk		4.21	419.95
1. N = S. L. walk		7.16	417.00	5. S. of S. line		5.0	419.16
		0750			3750		
S. line		6.1	418.06	S. line		4.0	420.16
1. N = S. walk.		6.31	417.85	1. N = S. edge walk		3.80	420.36
		1700		4. S. of S. line		5.4	418.76
S. line		5.4	418.36		4700		
1. N = S. walk.		5.80	418.36	S. line		3.6	420.56
		1+50		1. N = S. edge walk		3.42	420.74
S. line		5.3	418.86	6. S. of S. line		5.6	418.56
1. N = S. walk		5.44	418.72				
		2+00			4710 38 = N.E. Cor Lot 8		
S. line				S. line		3.6	420.56
1. N = S. walk.		5.07	419.09	1. N = S. edge walk		3.41	420.75
		5.0	419.16	6. S. of S. line		5.4	418.76

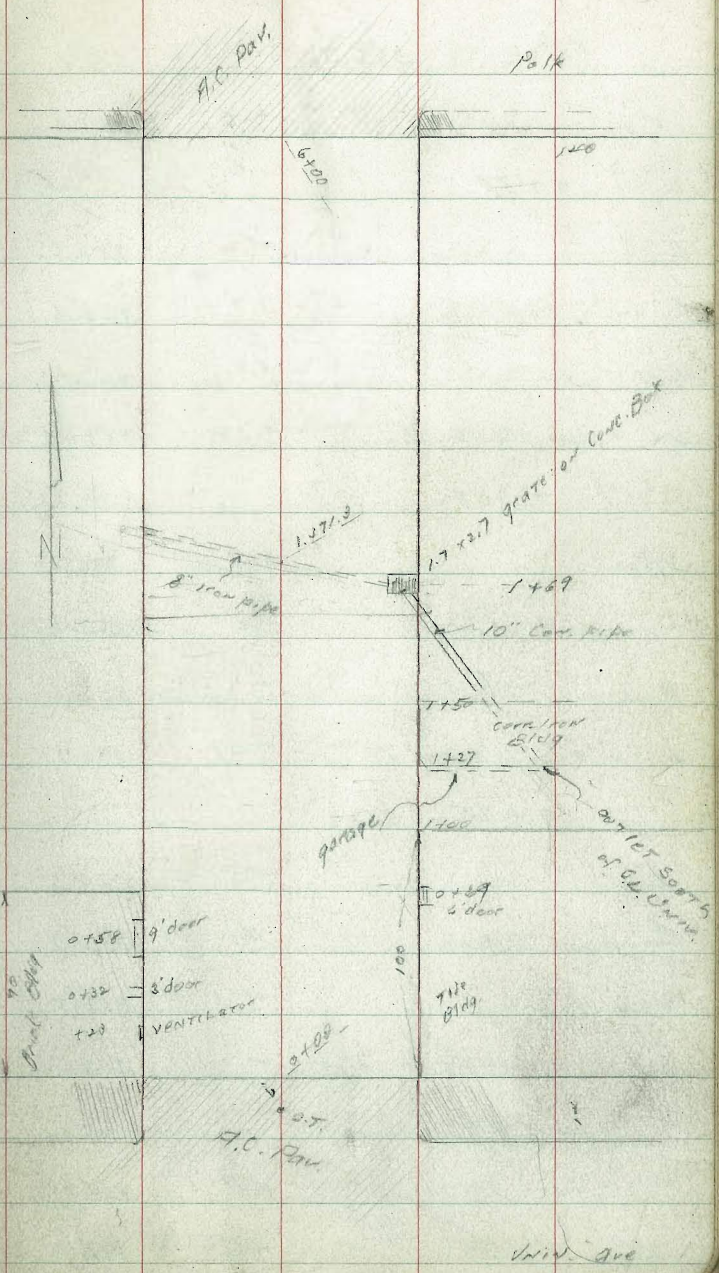
XSEC of Alley 20' wide  
 BIK #12 City Hrs.  
 for 2174 Marlborough  
 Univ. to Polk

INDEXED  
 CRK.

Moore  
 1-24-37

67

NW BP	6.12	358.05	357.98	UNIV. ON CENTRAL Hwy
"	"	4.18	353.87	UNIV. ON
T.P.	3.85	356.78	352.93	
0+00 - 112 Univ. Ave.				
W CB		3.40	353.38	
W Pav.		3.46	353.32	
C		3.62	353.14	
E		3.47	353.29	
E CB		3.89	353.39	
0+23				
E		3.41	353.4	
C		3.2	353.6	
W		3.1	353.3	
W sill of 1.8 VENT.		3.24	353.54	
0+32				
W sill of 3' door cell H.		3.26	353.52	
W		3.6	353.2	
C		3.4	353.4	



356.78

356.78

68

E	3.6	353.2	
0 + 58			
E	4.2	352.8	
C	3.7	353.1	
+ 8	3.7	353.1	
W 9' Gar. cent. fl.	4.32	353.46	100 Foot Strip
0 + 69			
W	3.9	352.9	
C	3.8	353.0	
E	4.3	352.5	
E 6' door cent fl.	4.01	352.77	
0 + 75			
E	4.3	352.5	
C	4.1	352.7	
W	4.3	352.5	
+ 1 Sedge triple gar. dirt	4.2	352.6	
0 + 97			
- 1 face triple gar	4.9	351.9	
W	4.9	351.9	

	4.9	351.9	
	4.9	351.9	
1 + 11			
E	5.1	351.7	
C	5.2	351.6	
W	5.3	351.5	
+ 1 cent. apron	5.44	351.34	
+ 6 S.W. gar.	5.10	351.68	?
1 + 21			
- 1 Sedge triple gar. dirt	5.5	351.3	
W	5.5	351.3	
C	5.4	351.4	
E	5.3	351.5	
1 + 27			
E - 6' gar S entrance	4.66	352.12	wood fl. in corner 100 ft strip
1 + 50			
E	4.1	350.7	
C	5.9	350.9	
W	5.9	350.9	
T.P.	5.41	355.05	6.54 350.24

	1+69		
- 30	LOT filled in	2.3	351.4
W		4.9	350.8
C		5.0	350.7
+6		5.4	350.3
E	FL BOX drain	6.79	348.86
L	grate	5.69	349.96
+50		4.1	351.6
	1+78.6		
W	inlet 8" iron pipe	5.67	349.88
	2+00		
- 50		3.8	351.9
E		5.2	350.5
C		4.9	350.8
W		5.4	350.3
	2+10		
- 10		6.0	349.7
W		5.3	350.4
+ 2		4.2	351.5
C		4.9	350.8

+6		4.6	351.1
F		5.8	350.4
	2+30		
E		4.8	350.9
C		4.8	350.9
W		5.2	350.5
+10		5.6	350.1
	2+59		
W		4.6	351.1
C		4.8	350.9
E		4.7	351.0
+8	cent apron	4.44	351.21
+11	S.N. 900 cent. 7/	4.17	351.48
	2+67		
W		4.2	351.5
+1	cent apron	3.96	351.69
+5	S.N. 900 cent.	3.50	352.15
	3+02		
-1	Sledge triple 900.	3.4	352.3
E		3.4	352.3

DINT

o			3.2	352.3
W			3.7	352.0
	3 + 36			
W			3.3	352.4
o			3.1	352.6
E			2.4	352.5
+1	sl. edge dirt	Tr. gar.	3.3	352.4
	3 + 36			
-1	Sim gar.	dirt	2.9	352.8
E			2.7	352.9
c			2.9	352.8
W			3.2	352.5
	3 + 56			
-7.5	Sim. gar.	dirt	2.0	353.2
W			2.6	353.1
o			2.6	353.1
#			2.3	353.4
	3 + 82			
-6	Sim gar	dirt	2.1	353.6
E			1.8	353.9

o			2.0	353.7
W			1.6	354.1
	3 + 92			
E			1.7	354.0
+6	Sim. gar.	dirt	1.9	353.8
T.P.	5.85	359.99	1.51	354.14
	3 + 03			
W			5.7	354.3
c			5.9	354.1
E			5.9	354.1
+15	sl. edge dov. gar	dirt	5.8	354.2
	4 + 08			
W			5.7	354.3
+7	cent apron		5.60	354.39
+15	Sim gar	cent	5.27	354.22
	4 + 22			
E-4	N edge dov. gar		5.4	354.6 dirt
E			5.3	354.7



359.99

359.99

71

		5.5	354.8
W		5.5	354.8
	H+31		
1.4	in alley cent. apron	5.33	354.66
W		5.36	354.63
+16	5 in gar cent.	5.35	354.64
	H+50		
W		5.2	354.8
C		5.0	355.0
E		4.8	355.2
	H+04		
E		4.9	356.1
C		4.0	356.0
W		3.6	356.4
+3.3	S edge cent apron	3.24	356.75
+3.3	S. " dou. gar cent.	3.24	356.75
	H+25		
-7.3	N edge dou. gar cent.	3.15	356.84
-3.3	N " cent. apron	3.16	356.83
W		3.3	356.7

		5+20		
W			2.8	357.2
C			3.1	356.9
E	5 in gar	dir T	2.9	357.1 on line
		H+00		
E			2.4	357.6
C			2.2	357.8
W			2.3	357.7
		H+80		
W			2.2	357.8
C			2.2	357.8
E			1.9	357.1
		H+00		
		JL Polk		
E	curb		2.80	357.19
E	par.		2.97	357.02
C			3.23	356.76
W			3.18	356.87
W	cb		3.06	356.93

359.99  
20.9  
357.90  
2.22  
355.12  
2.97  
352.15  
4.50  
356.67  
4.17  
362.52

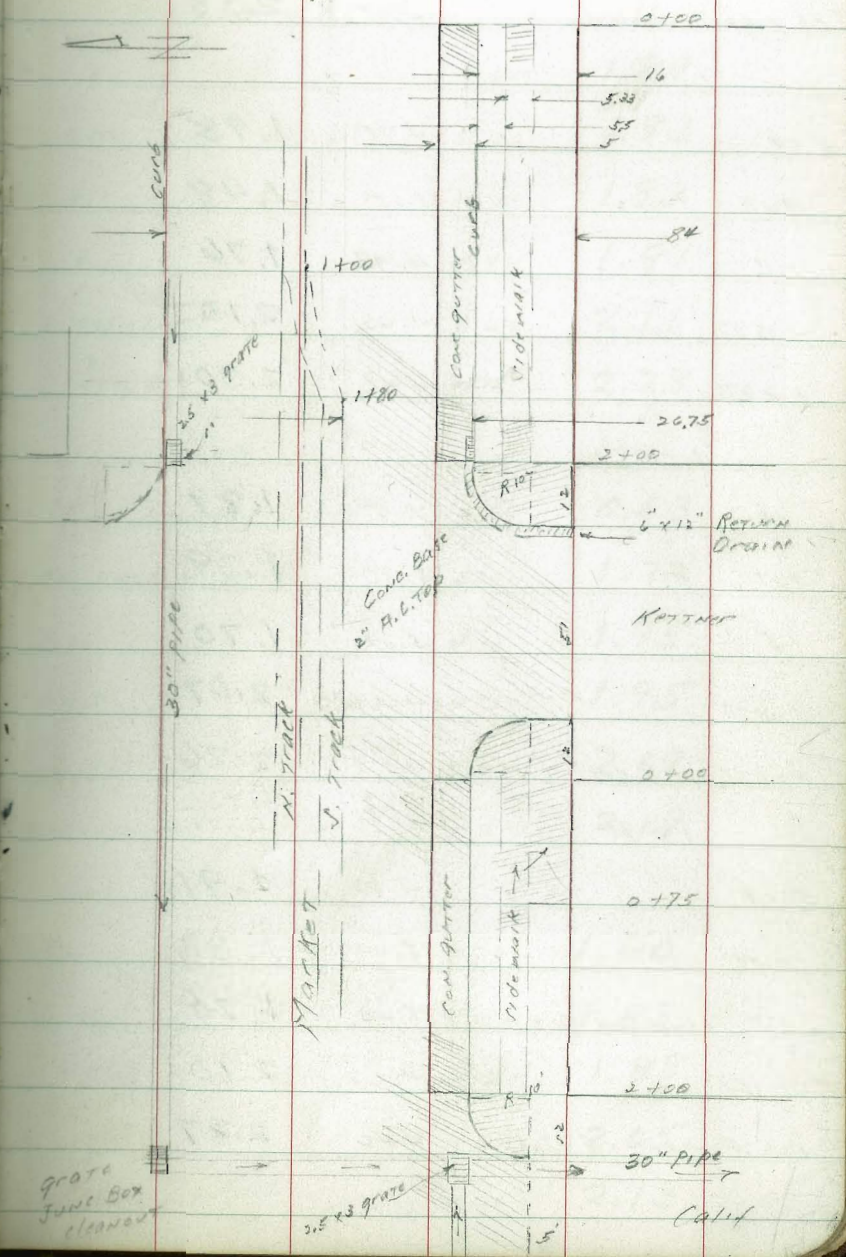
W 3.3  
357.19  
357.02  
356.76  
356.87  
356.93

Levels on Ev. Paving  
Market at Kottner

Indexed  
c.s.k.

70

		CITY DATUM	
		Market	India
JWB	4.31	6.73	2.42
W.L. India = 0+00			
S cb		4.32	2.41
S gut		4.88	1.85
+ S = edge of concrete gutter		4.64	2.09
+ 15.87 pav.		4.34	2.39
+ 26.75 pav.		4.07	2.67
0+50			
S cb		4.52	2.21
gut		4.99	1.74
+ S		4.75	1.98
+ 15.87 pav.		4.52	2.21
+ 26.75 "		4.32	2.41
1+00			
S cb		4.64	2.09
gut		5.09	1.64
+ S		4.83	1.88
+ 15.87 pav		4.58	2.15



5 cb + 26.75 pav	4.35	2.38
1 + 50		
5 cb	4.75	1.98
gut	5.25	1.48
+ 5	4.97	1.76
+ 15.87 pav	4.63	2.10
+ 26.75 "	4.43	2.30
1 + 80		
5 cb	4.84	1.89
gut	5.34	1.39
1.5	5.03	1.70
+ 15.87	4.66	2.07
+ 26.75 PC rail S track	4.47	2.26
1 + 95		
5 cb	4.82	1.91
gut	5.40	1.33
+ 5 edge com gut	5.03	1.70
+ 15.87	4.63	2.10
+ 26.75 rail S track	4.46	2.27

2400 = EL KOTTWERS			75' wide 12' cbs 12.75' 1/4"
5 cb	4.84	1.89	
gut. PL drain	5.20	0.93	
+ 1 Headwall	4.91	1.82	
+ 5	4.90	1.81	
+ 15.87	4.62	2.11	
+ 26.75	4.45	2.28	
E cb			
5L PL drain outlet	6.10	0.63	
5L curb + gutter	5.01	1.72	
5 cb	4.78	1.95	
+ 5	4.78	1.95	
+ 15.87	4.64	2.09	
+ 26.75 rail	4.54	2.19	
E 1/4			
5L	5.13	1.60	
5 cb	4.90	1.83	
+ 5	4.85	1.88	
+ 15.87	4.68	2.05	
+ 26.75 rail	4.60	2.13	

E Kettner

SL	par.	5.20	1.53
S cb		4.95	1.78
+5		4.90	1.83
+15.87		4.73	2.00
+20.75		4.61	2.12

w/ 1/2

SL		5.38	1.35
S cb		5.09	1.64
+5		4.99	1.74
+15.87		4.78	1.95
+20.75 rail		4.62	2.11

w/ curb

SL	curb	5.66	1.07
"	gut	4.11	0.62
S cb	par	5.59	1.14
+5		5.27	1.46
+15.87		4.87	1.86
+20.75		4.68	2.05

W2 Kettner = 0.100

S cb		5.92	1.41
gut		5.87	0.86
+5		5.55	1.18
+15.87		5.09	1.70
+20.75	-9.1	4.78	1.95

0.450

S cb		5.55	1.18
gut		6.03	0.70
+5		5.70	0.97
+15.87		5.27	1.46
+20.75 rail		4.94	1.79

1.400

S cb		5.72	1.01
gut		6.17	0.56
+5		5.91	0.82
+15.87		5.41	1.32
+20.75	-0.1	5.02	1.71

1.450

S cb		5.94	0.79
------	--	------	------

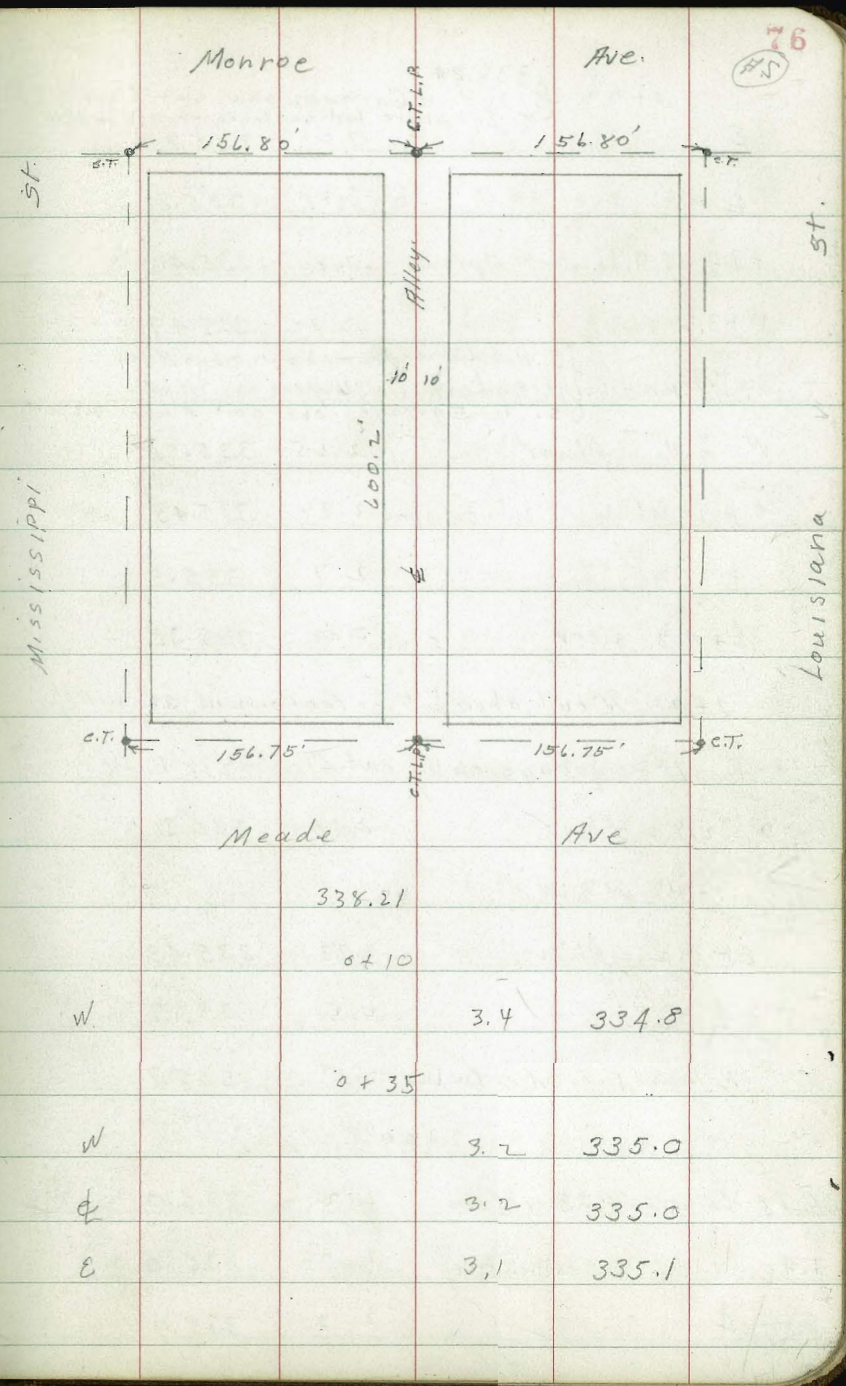
gus	6.95	0.38	
+5	5.98	0.75	
+15.87	5.53	1.18	
+26.75 rail	5.19	1.54	
2+00 E.L. Calif.			
S cb	5.90	0.83	
gus	6.45	0.28	
+5	6.18	0.55	
+15.87	5.67	1.06	
+26.75 rail	5.33	1.40	
E cb. of Calif. = 12' curb			
S2 +5 cb	6.00	0.73	
S2 +5 gus pav	6.08	0.65	
S cb Top grate	6.70	0.03	
" F.L. 24" pipe & Box	11.23	-4.50	
+5 pav.			
+15.87 "	5.68	1.05	
+26.75 rail	5.35	1.38	
SWBP MARKET Kettner	5.92	1.41	1.40

WL India + 1 + 99 =			Levels for prop. Curb 1' east of E.L. Kettner
S cb	4.84	1.89	
gus F.L. inlet 6"x6" drain	5.80	0.93	
+1	4.91	1.82	
+5	4.94	1.81	
+15.87	4.67	2.11	
+26.75	4.45	2.28	
+26.75 N rail of H track	4.40	2.33	
+68 Top grate	5.54	1.21	
" F.L. of Clean out box	9.82	-3.09	30" pipe
" Top curb	4.88	1.85	

5-14-38  
Miller  
Walker  
Bliss

X See Alley Blk. 73 Univ. Hts

R.M. B.P.				
	5.51	338.21	332.70	S. E. Meade + Louisiana
	14' S of N. Line = N. ch. Line Meade			
E-25	G. Pav.	5.25	332.96	
E	" "	5.24	332.95	
E.	ch	4.65	333.56	
Φ	G. Pav.	5.33	332.88	
W	" "	5.33	332.88	
W	ch	4.72	333.49	
E + 25	G. P.	5.51	332.70	
	S. End. Lattice Fence on W. 0.3' in Alley 0+00 = W. Line Meade.			
W.	ch	N. End	4.47	333.94
W	pav	" "	4.60	333.61
Φ	" "	" "	4.85	333.36
E	" "	" "	4.64	333.57
E.	ch	" "	4.55	333.66
	0+10 N			
E			3.3	334.9
+5			3.8	334.4
Φ			3.9	334.3
+5			3.8	334.4



W	3.4	334.8
W	3.2	335.0
Φ	3.2	335.0
E	3.1	335.1

			338.21	
E	0+6.5	{ S. End. 4 Garages N. End. above Lattice 3.0	shw cnt. floor 3.6 Back fence on W. 0.6' in Alley	335.2
E		3.0		335.2
	+9.4	E Side cnt. Apron	2.40	335.41
	W+3.6	floor	2.72	335.49
	7+0.0	{ S. End. Lattice Fence on W. 0.3' in Alley N. End. above 4 garages on W S. " 5 garages on E cnt. floors 0.3 Back		
	W-3.6	= floor	2.65	335.56
	0.4' in alley	= E. side cnt apron	2.74	335.45
	±		2.7	335.5
	E+0.3	= floor	2.89	335.32
	1+2.2	N. End. above Lattice Fence on W. 0.2' in Alley		
	1+3.0	garage on W. cnt. floor	2.8	Back
	W-2.8	= floor	2.00	336.21
	1+4.8	N. End.		
	E-0.2	= floor	2.73	335.48
	±		2.5	335.7
	W Board. Fence 0.1' E. of W. Line		2.5	335.7
			2+0.0	
	0.8' E. of W. Line N. End. Board. Fence		2.2	336.0
	1/2' E. of W. Line S. End. Lattice Fence		2.2	336.0
	±		2.3	335.9

			338.21	
E			2.3	335.9
T.P.	7.22	343.40	2.03	336.18
	2+39	± double garage on E. cnt. floor	3.8	Back
E-3.8	= floor		6.86	336.54
	2+50	{ N. End. above Lattice Fence on W. 1.0' in Alley S. End 2. Story Frame House cnt. foundation 0.2' in Alley.		
E			7.1	336.3
±			7.1	336.3
W			7.0	336.4
	2+58	garage on E cnt floor	3.6	Back
E-3.6	= floor		6.80	336.60
	2+64	S. End. 3 garages on E. cnt. floors.	3.6	Back
E-1.8	W edge cnt apron.		6.75	336.65
E-3.6	= floor		6.50	336.90
	2+68 <sup>5</sup>	N. End. above House 0.2' E. of W. Line		
	2+71	± cnt walk on W. 0.3' in Alley		
	0.3' E. of W. Line = E. End. walk.		6.44	336.96
	2+75	= S. End 3. garages on W cnt. floor 0.7' in Alley		
	0.7' E. of W. Line floor		6.40	337.00
	3.4' E. of W. " E. edge cnt apron		6.57	336.83

343.40

343.40

78

2+92 = N. End above 3. garages on E. 4.2' Back

4+00

E-2.2 = W. edge cnt. apron 6.40 337.00

W

5.3 338.1

E-4.2 = floor 6.18 337.22

E

5.4 338.0

S. End Picket fence on W. 0.8' in Alley.  
 2+98 = N. End above 3. garages on W. 0.8' in Alley

E

5.4 338.0

E. of W. line = E. cnt. apron 6.4 337.0

4+17 E double garage on W. dirt. floor 0.7 Back

E. " " " floor 6.37 337.03

W-0.7 = floor 5.0 338.4

3+00

4+50

W 6.3 337.1

E 5.0 338.4

E 6.4 337.0

E 5.0 338.4

E 6.3 337.1

W 4.9 338.5

S. End. Garage 0.2 in Alley W. Entrance  
 3+27 N. End above fence on W. 0.8' in Alley

4+64 E double garage on W. cnt. floor 0.8 Back

Garage door on W. dirt floor 0.2 in Alley  
 3+40 Garage on E. cnt. floor 30' Back (elev)

W-0.8 = floor 4.44 338.96

E-9.3 = N. End. cnt. drive 6.1 337.3

W. = E. End. cnt. apron. 4.57 338.83

E 6.1 337.3

4+74 cnt. walk on W.

E 6.2 337.2

0.2 E. of W. line = E. End. walk 4.30 339.10

W floor 6.0 337.4

4+84 E double garage on E dirt. floor 0.6 in alley

N. End. above Garage on W. 0.1 in Alley elev  
 3+47 S. End. wooden fence 0.2 in Alley

0.6 W. of E. line = floor. elev

3+75 Fence on W 0.4 in Alley

5+00

W 4.4 339.0

E 4.2 339.2

E = fence 4.3 339.1

E+3 in yard. 5.0 338.4



343.40

 $\frac{5}{3+25}$  S. End. Picket Fence on 0.5 in Alley

 $\frac{5}{2+50}$ 

E - 3

4.3 339.1

E = fence.

4.2 339.2

E

4.1 339.3

W

4.0 339.4

 $\frac{5}{2+75}$ 

W

3.8 339.6

E

4.6 338.8

E

4.6 338.8

6400' = S. line Monroe

E. cl. S. End 5.46 337.94

E. pav " " 5.58 337.82

E " " " 5.83 337.57

W " " " 5.76 337.64

W " " " 5.61 337.79

T.P. 5.52 343.29 5.71 337.69

343.21

14' N. of S. Line = S. d. Line Monroe

W-25 pav. 6.32 336.89

W " 6.15 337.06

W dr 5.67 337.54

E pav 6.14 337.07

E " 6.05 337.16

E dr 5.57 337.64

E+25 pav. 6.09 337.12

 BM. (B.P.) Plug Gone.  
 S. E. Louisiana + Monroe 5.85 337.36 = 337.35

*Handwritten signature*

79

DIRECTIONS FOR USE OF TABLES

TABLE No. 1.

Directions of slope take from side or elevation  
under the sun within compass, above 15 to 1  
If ground is nearly level, the run or fall of side  
take is marked by the double entry method in  
the column and top row. The number in each

row also takes its slope rate. It is found in the

---

---

# IMPROVED TABLES

AND

# INFORMATION

---

---

To find Tangent and Elevation for curves  
any other degree divide by tangent of given  
with correction found in column of correction.  
Degree of curve with a given  $L$  and  $R$  be found  
by dividing tangent by distance of degree  $L$   
given tangent for constant  $R$ .  
The distance from a point on the curve to  
the curve is  $2R \sin \frac{1}{2} \theta$  where  $\theta$  is the tangent  
half divided by twice the radius.

13.  
64155  

---

10'

311.29  
10.00  
321.29  
160.65

115

311.29  
115.10  
196.20

321.29

321.30  
135.15  
186.15

321.30  
125.10  
196.20

54 7.50 270 321.5 115  
30 44 257 10  
5 13 10.5 132  
17 794 519 (313.5) 125  
40 4.4 856 257  
16 1.24 1.9 2.00  
24 2.56 2544 40.02  
84 50 42 234.40  
18 3.7 1.36 32 1.62  
30 1 272  
54  
1.6  
34

9.3  
13.

2575  
9  
2675

321.50  
257  
64.50