

1545

PAST
PAST

LEVEL BOOK

No. 381T

1545

MICROFILMED
DEC 24 1964

ENGINEERING DEPARTMENT
CITY OF SAN DIEGO
CALIFORNIA

MADE IN U. S. A.

**Our Leather Bound Engineers Note Books
are carried in the following rulings:**

- No. 380 LEVEL BOOK.** Left and Right Hand Page
the same as Left Hand Page
of this Book.
- No. 382 FIELD BOOK.** Left Hand Page as in this
Book, Right Hand Page 4x4
to the inch, Center Line Red.
- No. 384 MINING TRANSIT
BOOK.** Left Hand Page as in this
Book, Right Hand Page 8x8
to the inch, Center Line Red.
- No. 385 FIELD BOOK.** Left Hand Page as in this
Book, Right Hand Page 8 ver-
tical and 4 horizontal lines to
the inch, Center Line Red.

We also carry the Note Books listed above,
bound in extra strong Fabri-Hide (otherwise
the same quality of book,) which can be fur-
nished at a somewhat lower price.

In ordering Fabri-Hide covered books, add
the letter "F" to catalog number.

THE FREDERICK POST CO.

ENGINEERING and DRAFTING SUPPLIES

P. O. Box 803

CHICAGO

11-8-37
Miller
Walker
Bliss

Canyada Way. from
Richmond St. Extension to Robinson
F.B. 1542-P.1. - F.B. 1515-P.62 - F.B. 1446-P.16 + F.B. 1174-41
110' R.O.W.

+50

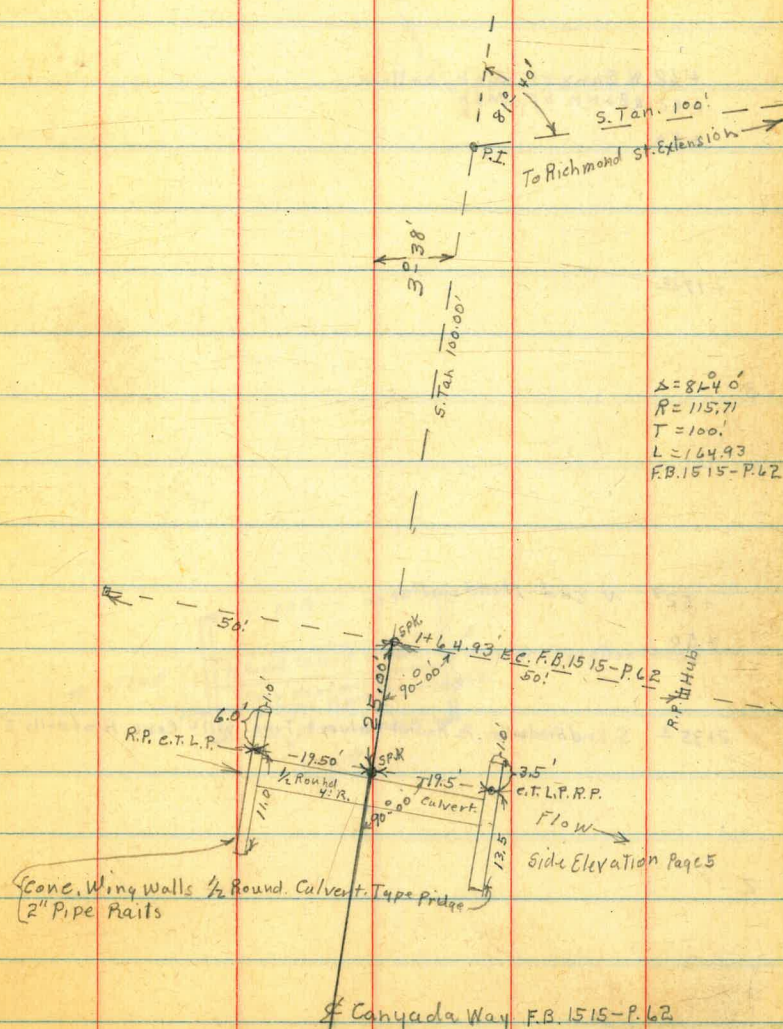
+50

0+00 P.I. & Richmond St. Extension

indexed
S.S.R.

£

1



$\Delta = 82.40'$
 $R = 115.71$
 $T = 100'$
 $L = 164.93$
F.B. 1515-P.62

Conc. Wing Walls 1/2 Round Culvert. Type Bridge
2" Pipe Rafts

£ Canyada Way F.B. 1515-P.62

44'00 E Bank of Wash. Top.
+90 E Bank of Wash. bottom

+73²⁸ P.O.T. Hub. E wash.

+68 W Bank of Wash. bottom
+62 W Bank of Wash.
+50

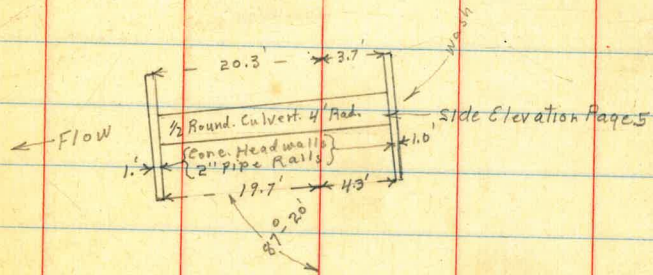
+17¹⁰

3

+52⁸ N. End Headwalls.

+50

2735⁶ S. End Headwalls. 1/2 Round. Culvert Type. With Conc. Headwalls 2" Pipe & Rails



2

+50

+10 N. Bank. of Wash. Top.

6-- 700 W " " " , bottom

+86 E " " " "

+81 E Bank " " Top.

+50

5

+50

£

Wash.

£

Canyada Way

4

9

+50

8

+50

+10 E. Edge Existing Road. 24' Wide

7 P.O.T. Hub.

E. Edge Road.

□

£

11

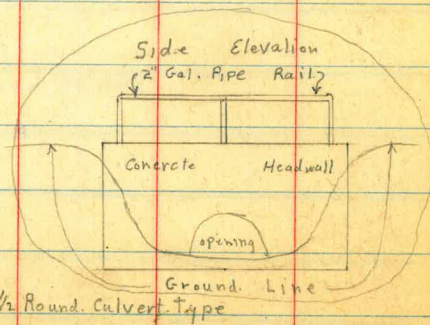
+50

10

+50

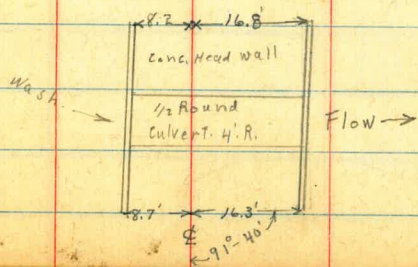
+25+

N. End. Ex. Bridge



9+00

S. End. Ex. Bridge 1/2 Round Culvert Type



+50 E. Edge Ex. Road. 25' wide

13

+50

12

+50

Canyada Way

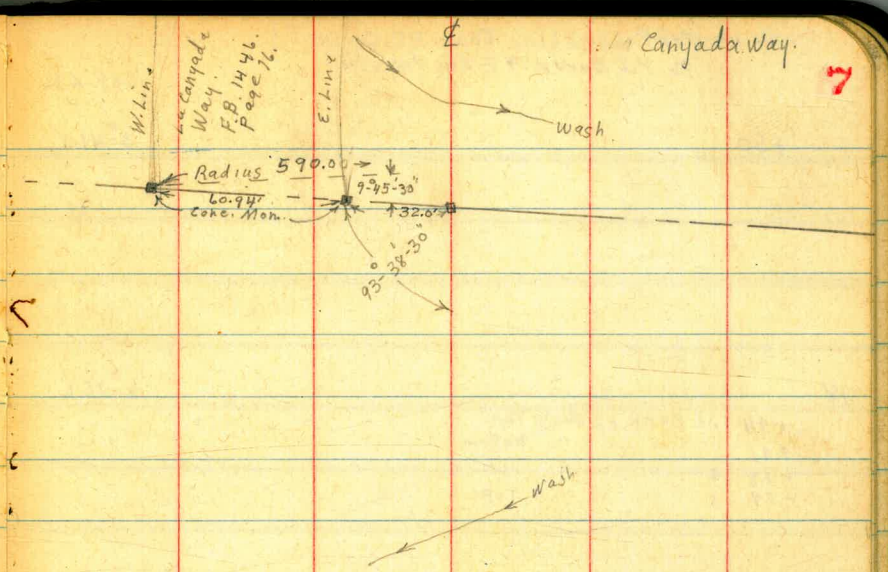
6

E. Edge Road.

+09 N. Bank of Wash Top.
 +06 " " " " bottom
 +01 S " " " " "
 16 S " " " " Top.

Def \angle s.
 1°-38.4'

+80² P.I. N. Line Balboa Park. Hub. on S. Tan.



Canyada Way.

7

+50

1°-13.8'

+37 N. Bank. Wash Top.
 +30 " " " " bottom
 +25 S " " " " "
 +24 " " " " Top.

15

0°-49.3'

+50

0°-24.7'

14

13+99⁴⁴ Hub. B.C. RT. Δ 9°-28'-30" 9' E. of E. edge Road.

For Random Line from P.I. Curve #1.
to P.I. Curve #2 see Page 16.

⊥

Canyada Way.

8

+50

Def. Ls.

3°-41.1'

18

3°-16.6'

+94 N. Bank of Wash Top.
+91 " " " " bottom
+83 S " " " "
+79 S " " " " Top.



+50

2°-52.1'

17+00

2°-27.5'

(16+897) P.I. Hub

⊥ P.I. Hub.

curve #1
Δ Pt. 9°-28'-30"
R = 3500'
T = 290.06'
L = 578.86'

+50

2°-02.9'

⊥

21

+50

+33

+29

+22

+20³⁸

P.O.T.

Hub.

N. Bank of wash Top.

" " " " bottom

S " " " "

S " " " Top.

20

+78⁴⁴

E.C.

Hub.

Def. Ls.
4-44.25

+53

+51

+50

+41

+38

N. Bank of Wash Top.

" " " " bottom

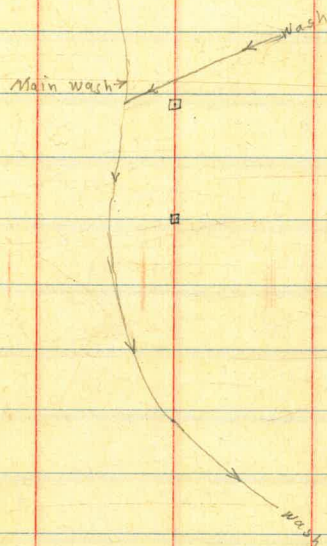
S " " " "

S " " " Top.

4-30.2'

19

4-05.7'



10

+50

Def. 2s
0-25V

Canyada Way

10

+06²⁹ Hub B.C. Lt. $\angle 14^{\circ} - 17^{\circ} 30''$

23

⊠

+50

22

+50

⊠

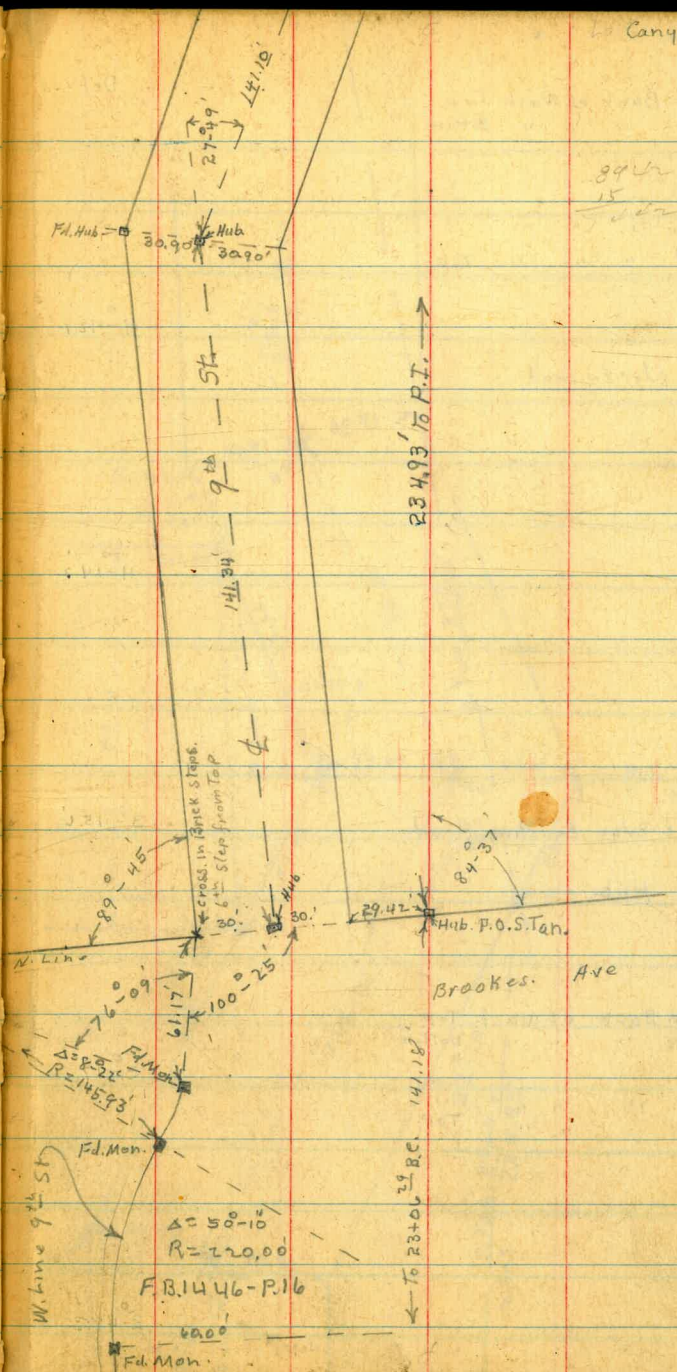
Def. 2s

2-19.6

1-51'

1-22.4 v

0-53.7 v



Canyada Way.

11



39 1/2
15
54 1/2

23493 1/2 FT.

Brookes Ave

141.18'
To 23401 24 BC

FB. 1446-P. 16

6000
Fd. Mon.

+50

25

+50

24

+72 E. Bank of Wash. Top.
+71 E " " " Bottom

Def Ls

+31 W " " " "
+30 W " " " " Top

28

4°-42.9

+90 = E. Edge Ex. Road

+50

4°-14.2

25

27 E. Edge Existing Road.

(+82 ⁴⁰ P.I.) Hub.

3°-45.6

+62 W. Bank of Wash Top
+56 W " " " " Bottom

+50

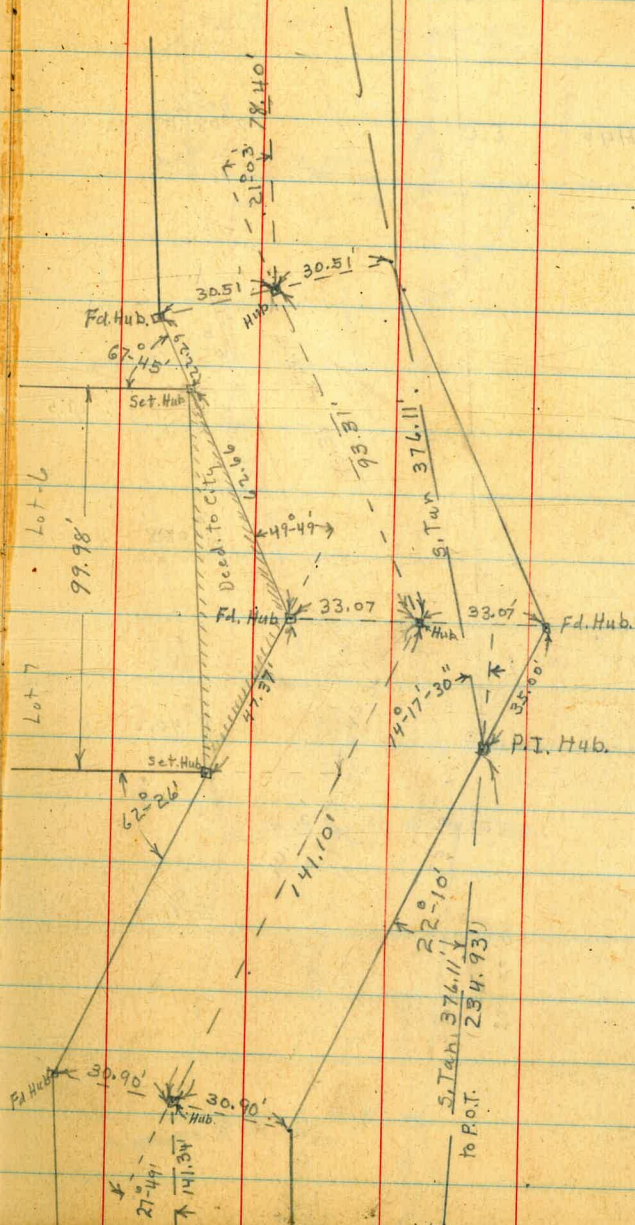
3°-17

+45 E " " " "
+44 E " " " " Top

24

26

2°-48.3



curve 2
 $\Delta 14^{\circ}-17'-30''$
 $R = 3000'$
 $T = 376.11'$
 $EX = 23.49'$
 $L = 748.31'$

+54.60 Hyb. E.C.
+50

Def. Ls
7°08.75'

30

6°-37.5

25

+50

6°-08.8

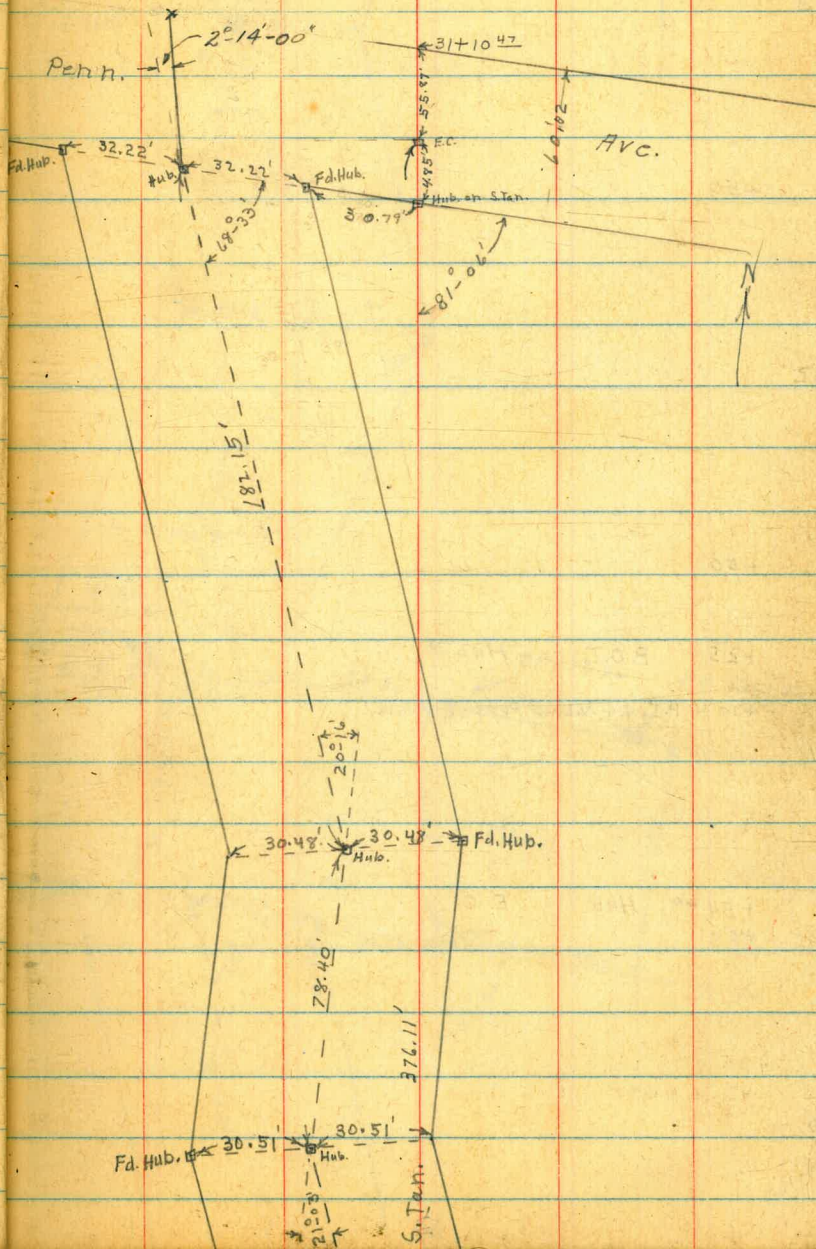
29

5°-40.2

+50

5°-11.5

24



33

+50

32

+50

+25 P.O.T. H4b.

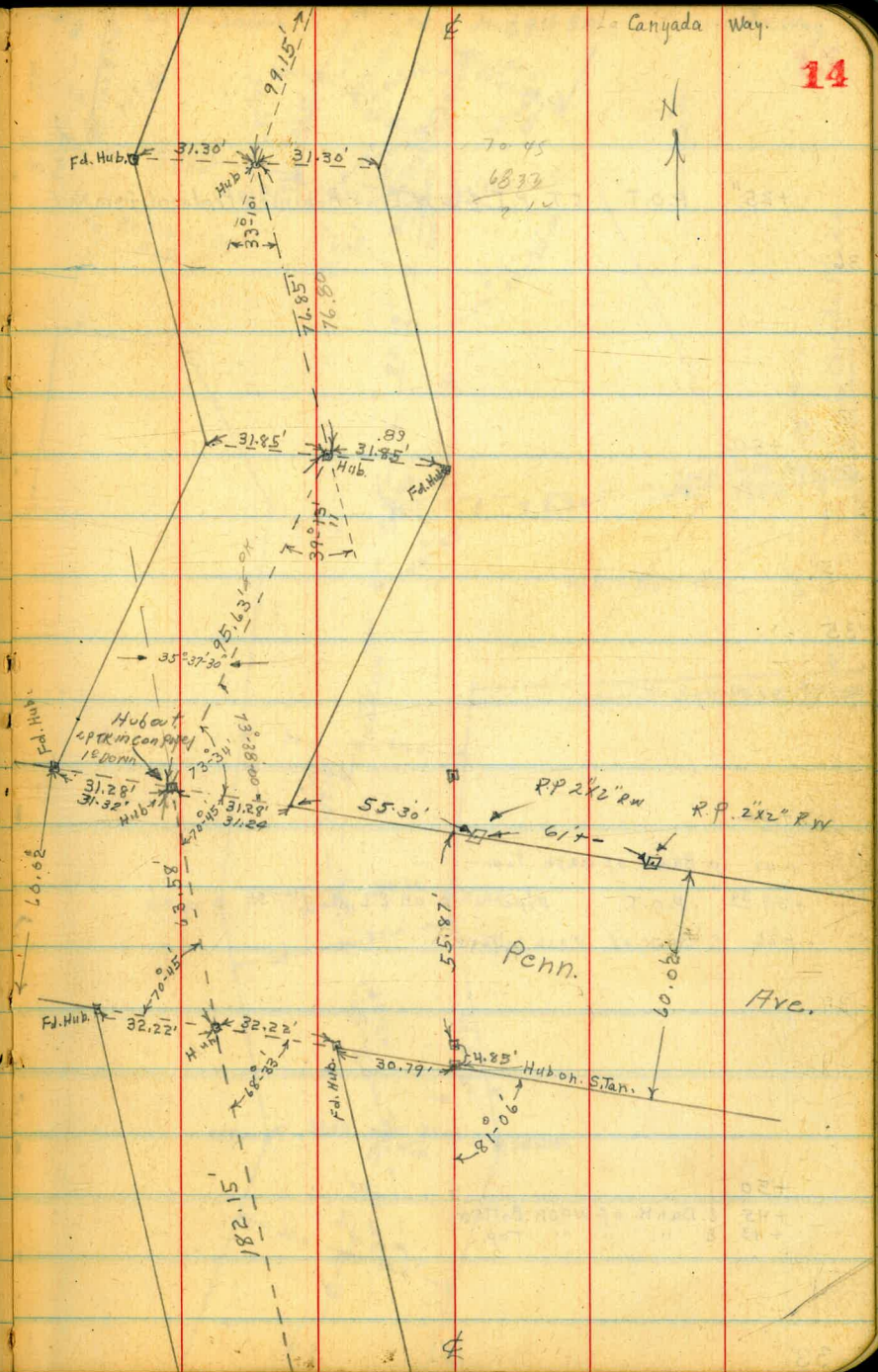
+104 P.I. & M.L. no Pennsylvania.

31

+54 60 H4b. E.C.

+50

30



+25" P.O.T. C.T. P.I. of N. Line Robinson Produced from West

36

+50

35

+50

+41 W Bank of Wash Top.

+39 3/4 P.O.T. Pipe on E Line 9th St

+36 E Bank of Wash bottom.

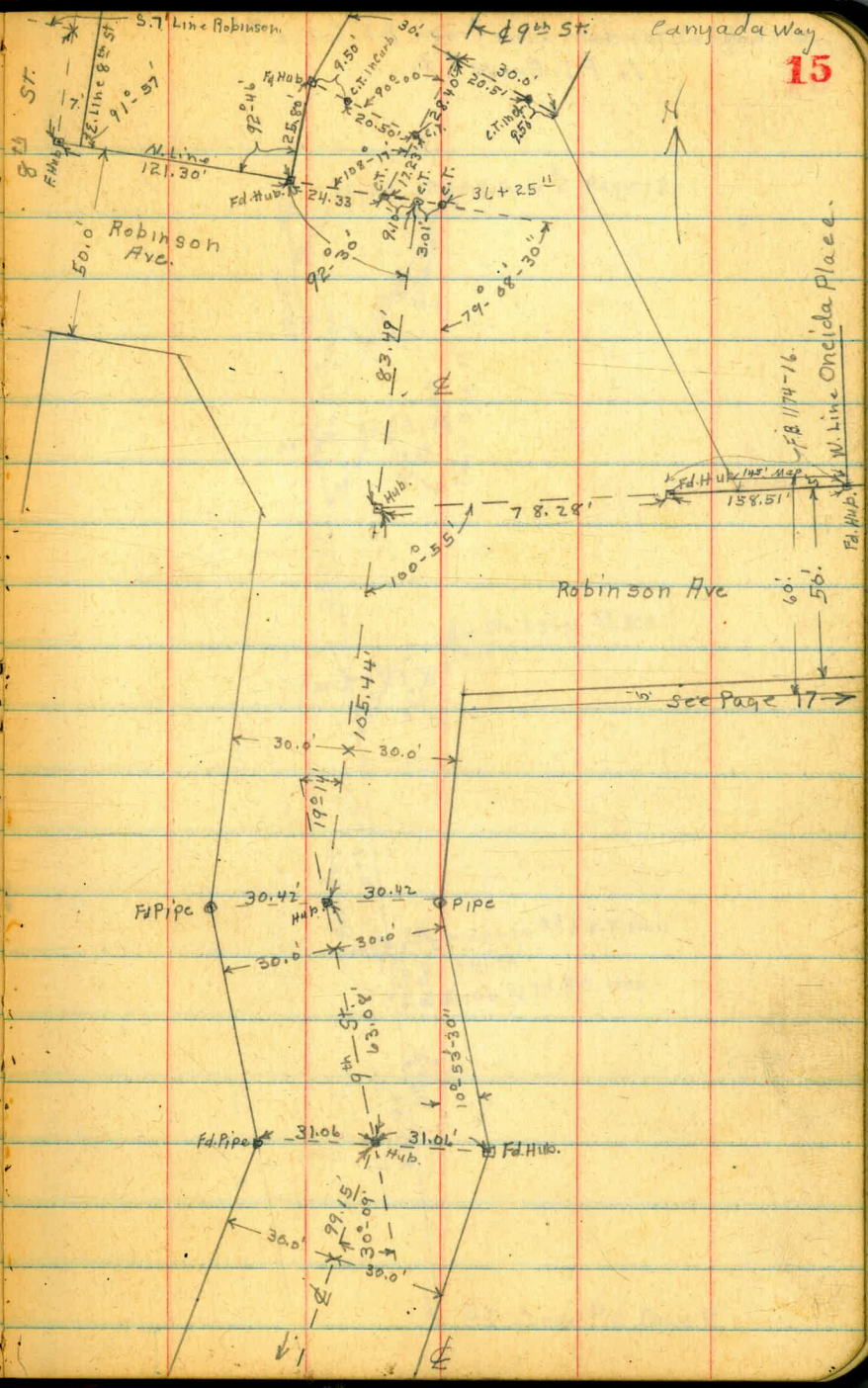
34

+50

+45 E. Bank of Wash Bottom

+43 E " " " Top,

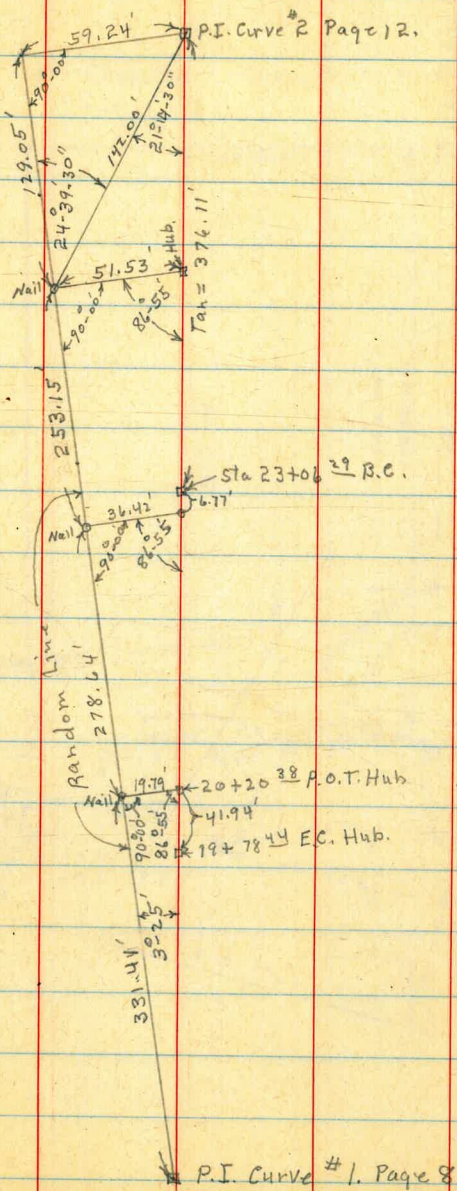
33



See Page 17

Random Line from P.I. Curve #1.
to P.I. Curve #2.

Caryada Way.
16



5-25-38
Milan
Walker
Bliss

Ties at 10th + Robinson
in La Canyada Villa Tract

Indexed
C.S.K.

17

Revised on
Ties at 10th
11/14/38
20' mch'd as not complete
as to op. C.S.K.

BIK 3

BIK 4

20' 20'

Plaza

Cherokee Lane

100.00 Map.

F.D.C.T.

1497

F.D.C.T.

1497

F.D.C.T.

57

Ortidge

149.4 Map
148.88 meas.
155.91'

20' 20'

141.17

147.00 Map
146.92

21.50 Map

87.58 opening
81.47 Map

F.D.C.T.

10th

Robinson Ave
F.B. 1453-R21

F.D.C.T.

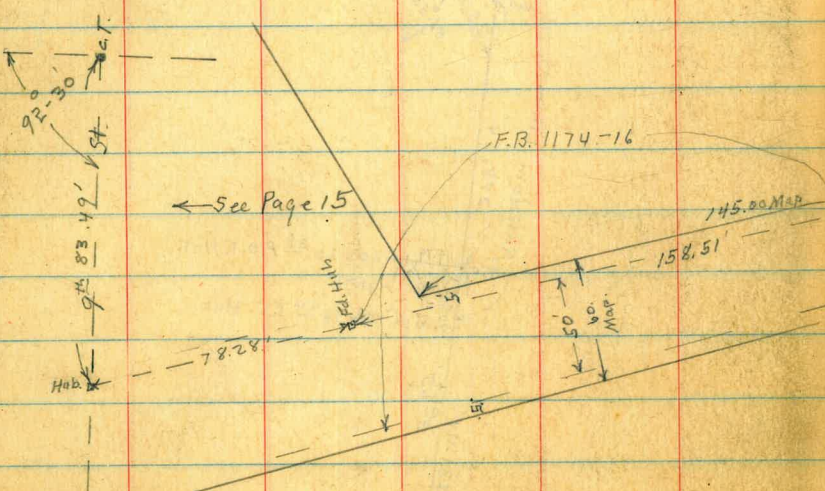
23.00

F.D.C.T.

22.97

F.D.C.T.

7



See Page 15

F.B. 1174-16

$\Delta = 37.29$ Map

60' Map

F.D.P.L. Hub

Mail Post

23.00

22.97

23.00

76.40

107.00

50

GREENE J4 X-Section

Cont. from P 59

7352

18

N+25	77.69						
0+47 = 2' date Palm	5.3	72.4		N+15	2.3	71.2	
N+28							
0+65 = 1/2 Fruit Tree 3"	5.5	72.2		2+25			
T.P.	6.46	73.52	10.63	67.06	N-15'	3.5	70.0
	2+05 = ELY end Rel. Well on South			N	4.2	69.3	
S-10		6.3	67.2	cb.	4.5	69.0	
S-4 on Ground		6.2	67.3	"	5.0	68.5	
= SLY end Well				L	5.7	67.8	
S-4 on top Well		3.36	70.16	"	6.3	67.2	
S - " " "		3.43	70.09	cb.	6.8	66.7	
S on Ground at Well		5.9	67.6	S	7.3	66.2	
cb.		5.7	67.8	+15	7.3	66.2	
+3		5.7	67.8				
+4		6.4	67.1				
1/4		6.2	67.3	-25	8.0	65.5	
L		5.6	67.9	S	7.3	66.2	
1/4		5.0	68.5	cb.	7.3	66.2	
+7		4.5	69.0	1/4	7.2	66.3	
+8		3.8	69.7	L	7.2	66.3	
cb.		3.8	69.7	1/4	7.0	66.5	
+4		2.8	70.7	+6	7.0	66.5	
N		2.8	70.7	+8	5.9	62.6	

cb.		59	62.6
N		52	68.3
+25		4.1	69.4
	2+85		
-40		9.1	64.4
N		8.9	64.6
cb.		8.9	64.6
+6		9.0	64.5
+8		10.1	63.4
'14		10.1	63.4
'15		10.0	63.5
'16		10.1	63.4
cb.		10.1	63.4
S		10.3	63.2
+20		9.6	63.9
+40		12.0	61.5
TP	0.14	67.76	59.0 67.62
TP	7.22	56.07	12.91 54.85
TP	2.22	43.54	12.75 43.32
chk B.M. BP P49		5.81	39.73

39.71 - B.M.
002 Error



Cross Section Polk Ave
Louisiana to Arizona

80' wide
14' curb
13' 1/4

S.E. RP
Polk +
MIDWAY

B.M.	0.53	310.50	309.97
FCB Louisiana			
H on Paving		8.86	01.69
1/2 Return of Grating to		9.40	01.10
Cb on Paving		9.04	01.96
1/4 " "		8.82	01.68
1/2 " "		8.83	01.67
1/4 " "		9.08	01.92
Cb " "		9.37	01.13
S " "		9.56	00.94

FCB Louisiana 0+0

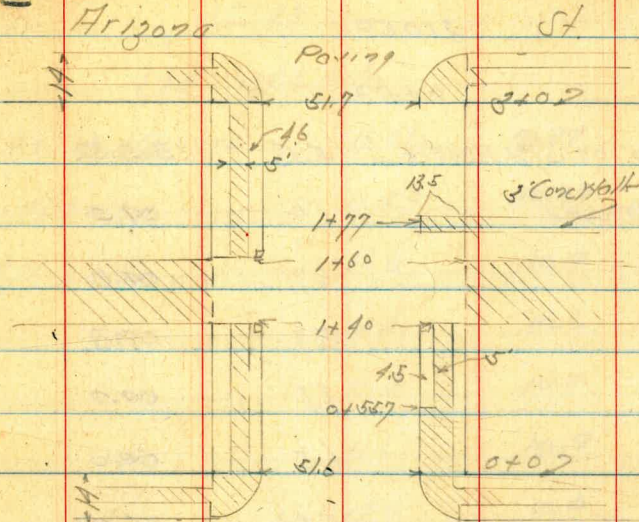
S + 10 = 1/4 Conc. Walk		8.77	01.72
Cb Top		8.80	01.70
Gutter on Paving		9.52	00.98
1/4 " "		9.08	01.92
1/2 " "		8.78	01.72
1/4 " "		8.74	01.76
Gutter " "		8.96	01.59
H Cb Top		8.82	02.18

Notes Reduced - 7-1-90
Baker

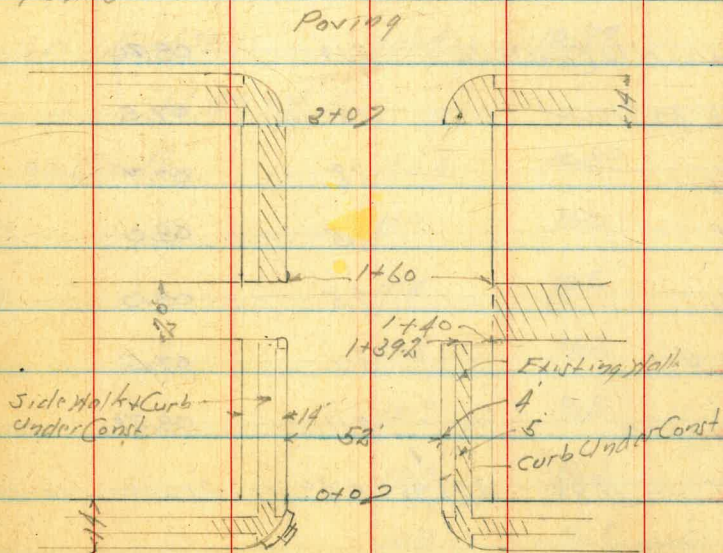
INDEVED
EFB

June 25-40
Sisson
Northway
W Moore
St

22



Texas



Louisiana

Paving

St.

✓
310.50

0+50

N 410 07 S/W Header	5.18	305.32
Cb Ground	6.0	09.5
1/4	5.7	09.8
1/2	5.7	09.8
1/4	6.1	09.9
Cb	6.5	09.0
+4 = Nly Conc Walk	5.43	05.07

1+0

S 410 = Nly Conc Walk	2.10	08.90
Cb 07 Ground	3.0	07.5
1/4	2.8	07.7
1/2	2.5	08.0
1/4	2.5	08.0
Gutter	3.0	07.5
H Cb Top	2.11	08.39

TP 11.88 321.98 0.90 310.10

✓
321.98

1+40 = H.L. Alley

N Cb Top + Ground	11.01	10.97
Cb In Drive	11.59	10.39
Gutter	11.6	10.9
1/4	11.4	10.6
1/2	11.3	10.7
1/4	11.6	10.9
Cb	12.0	10.0

+4 = Nly Conc Walk	10.90	11.08
S = Nly Conc Pav.	11.04	10.99

1+50 = 1/2 Alley

S 07 Conc Pav	11.18	10.80
+11	11.0	11.0
Cb	11.4	10.6
1/4	10.8	11.2
1/2	10.7	11.3
1/4	10.7	11.3
Cb	10.9	11.1
+2	10.6	11.4
N	10.7	11.3

Polk AJO

321.98 ✓

1760 = FL H/W

Fl Cb Top & Ground	9.84	312.14
Cb in Conc Drive	10.17	11.81
Gutter	10.2	11.8
1/4	10.0	12.0
1/2	10.0	12.0
1/4	10.2	11.8
Cb	10.8	11.2
1/2	10.6	11.4
S = Fly Conc Pav	10.73	11.25

1765

S	8.8	12.2
1/2	9.5	12.5
1/9	9.5	12.5
Cb	10.4	11.6
1/4	9.8	12.2
1/2	9.6	12.4
1/4	9.7	12.3
Gutter	10.1	11.9

321.98 ✓

Cb in Conc Drive

9.96	312.02	
270		
Hcb	6.80	15.18
Gutter	7.7	14.3
1/4	7.3	14.7
1/2	7.1	14.9
1/4	7.3	14.7
Cb	7.8	14.2
1/2	6.9	15.1
S	6.5	15.5
2750		
S	2.7	19.3
1/10	2.5	19.5
Cb	3.8	18.2
1/4	3.0	19.0
1/2	2.8	19.2
1/4	3.0	19.0
Gutter	2.4	18.6
Hcb Top	2.84	19.14

321.98 ✓

2175

N/Cb Top	0.84	321.14
Gutter	1.3	20.7
1/4	0.8	21.2
1/2	0.7	21.3
1/4	0.7	21.3
Cb	1.3	20.7
1/2	0.4	21.6
S	0.0	22.0

JP 859 330.33 0.24 321.74

330.33 ✓
YCb Texas

S on W/C Conc Walk	7.18	23.15
Cb Top	7.33	23.00
Gutter on Paving	7.82	22.51
1/4 " "	7.22	23.11
1/2 " "	7.07	23.26
1/4 " "	7.18	23.15
Gutter	7.65	22.68
YCb Top	7.27	23.06

330.33 ✓

YCb Texas

N on Paving	7.77	322.56
Cb " "	7.42	22.90
1/4 " "	6.93	23.40
1/2 " "	6.77	23.56
1/4 " "	6.87	23.46
Cb " "	7.47	22.86
S " "	7.73	22.60

YCb Texas

S on Paving	5.88	24.95
Cb " "	5.59	24.74
1/4 " "	5.38	24.95
1/2 " "	5.35	24.98
1/4 " "	5.49	24.89
Cb " "	5.77	24.56
N " "	5.93	24.90

330.33

F L Texas = 0 + 0

N Cb Top	5.40	324.93
Gutter on Paving	5.74	24.59
1/4 " " "	5.32	25.01
1/2 " " "	5.13	25.20
1/4 " " "	5.26	25.07
Gutter " " "	5.90	24.63
Scb Top	5.18	25.15
BIM 6.33	331.41	5.25
0 + 50		325.08
Scb Top	5.81	25.60
Gutter	6.3	25.1
1/4	5.9	25.5
1/2	5.7	25.7
1/4	5.8	25.6
Gutter	6.3	25.1
H Cb Top	5.70	25.71
1 + 0		
N Cb Top	5.28	26.13

SEBP
Polk +
Texas
24.95
324.95

.13 High

331.41

Gutter	5.8	25.6
1/4	5.4	26.0
1/2	5.4	26.0
1/4	5.5	25.9
Gutter	5.7	25.7
Scb Top	5.30	26.11
1 + 40 = 1/4 H Alley		
S = 1/4 Conc Paving + Cb	4.71	26.70
Cb Top	4.95	26.96
Gutter	5.5	25.9
1/4	5.2	26.2
1/2	5.0	26.9
1/4	5.1	26.3
Gutter	5.4	26.0
Cb Top	4.96	26.95
H = 1/4 Conc Paving	4.71	26.70
H Top Cb	4.65	26.76
1 + 50 = 1/2 H Alley		
H on Paving + Ground	4.95	26.96
Cb	5.3	26.1

331.91 ✓

1/4	4.9	26.5
1/2	5.0	26.9
1/4	5.0	26.9
Cb	5.3	26.1
S on Conc Paving + Ground	5.02	26.39
1+60 = E L Alley		
S on Paving + Ground	4.62	26.79
Cb	5.3	26.1
1/4	5.0	26.8
1/2	4.8	26.6
1/4	4.9	26.5
Gutter	5.0	26.9
Cb Top	4.75	26.66
N Cb	4.55	26.86
N = E L Conc Paving	4.71	26.70
1+64		
N Cb	4.72	26.69
Gutter	5.1	26.3
1/4	4.9	26.5

331.91

1/2	4.8	326.6
1/4	5.0	26.9
+11	5.2	26.2
Cb	4.8	26.6
+1	3.9	27.5
S	3.9	27.5
1+77		
S on 3' Conc Walk	3.56	27.85
+ 12.5 = N L 3' Conc Walk	5.59	27.82
2+0		
S	5.3	28.1
+12	3.4	28.0
Cb	4.3	27.1
+2	4.8	26.6
1/4	4.8	26.6
1/2	4.6	26.8
1/4	4.6	26.8
Gutter	4.8	26.6
N Cb Top	4.92	26.99

27

Polk A.C.

331.41 ✓

2+50

Hcb	3.85	7 328.5C
Gutter	4.4	27.0
1/4	4.1	27.3
1/2	4.0	27.4
1/4	4.3	27.1
+1/8	4.5	26.9
Cb	3.8	27.6
+2	3.1	28.3
S	3.0	28.9
2+75		
S	3.0	28.9
+1/8	3.9	28.5
Cb	3.5	27.9
+1	4.3	27.1
1/4	4.0	27.4
1/2	3.8	27.6
1/4	3.9	27.5
Gutter	4.1	27.3
Hcb Top	3.56	27.85

28

331.41

370 = H L H 13070

Hcb Top	3.27	328.14
Gutter on Pav 129	4.10	27.31
1/4	3.62	27.79
1/2	3.43	27.98
1/4	3.59	27.82
Gutter " "	3.87	27.54
S Cb Top	3.37	28.04
S on Conc Walk	3.24	28.17
H Cb Arizona		
S on Pav 129	3.91	27.50
Cb " "	3.53	27.88
1/4 " "	3.25	28.16
1/2 " "	3.20	28.21
1/4 " "	3.34	28.07
Cb " "	3.73	27.68
H " "	3.87	27.54
B.M.	1.50	329.91

J.F.B.P.
Polk +
Arizona
329.95

Cross Section Alley Block 70 Univ. Hts
Between Arizona - Hamilton From Meade to
Monroe

INDEXED
E.F.B.

June 27/60
Sisson
Northey
W Moore 23

BM 1.24 372.31 371.07 SE Load Meade & Hamilton

0+14 - N/Cb Meade Ave

F on Paving 10.90 361.91

" " 12.10 360.21

" " 13.23 359.08

0+10 - N/Cb Meade

" Cb Top 12.46 359.85

" Paving 12.49 359.87

" " 11.73 360.58

F " 10.42 361.89

F Cb Top 10.02 362.29

TP 5.64 365.86 12.09 360.22

0+25

-2 Top Dry Cobble Wall 1.8 364.1

F 4.3 361.6

+1 4.8 361.1

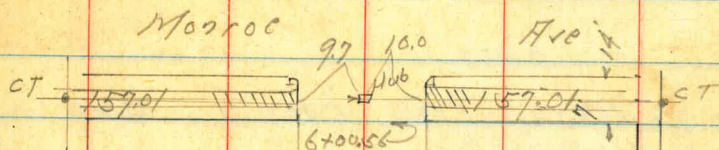
" 5.4 360.5

" 5.8 360.1

40.85 - F/4.23 Conc Walk 5.65 360.21

40.85 Top 1st Step 5.05 360.91

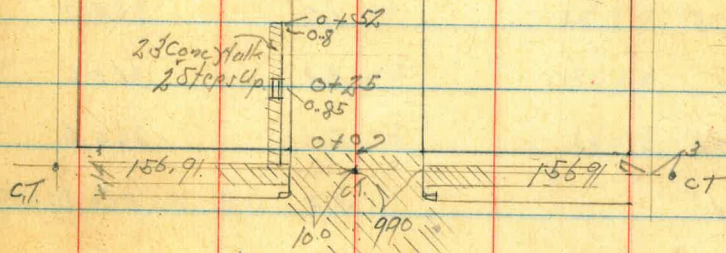
Reduced & Plotted by H.M. Cole
6/29/40 Profile 2835



Block 70
Univ. Hts.

Arizona

Hamilton



Meade

Ave

365.86

0+52

-0.8 - 1/4 23' Conc Walk	5.40	360.46
-0.8 - 1/4 Power Pole	5.5	360.4
W	5.3	360.6
+	4.8	361.1
F	4.4	361.5
+5	1.6	364.3
⁰⁺⁵⁰ on Spike Fence Post	1.32	364.54

0+60

W-4' = 1/2 Garage Dirt Floor 5.6 360.3

0+88

on Spike Fence Post	0.89	364.97
-5	1.7	364.2
F	4.3	361.6
+6	5.3	360.6
+	5.3	360.6
+9	5.4	360.5
W	5.6	360.3
+10	7.0	358.9

365.86

1+18

-40' - 1/2 Garage Dirt Floor	9.9	356.0
-10'	7.3	358.6
W	5.4	360.5
+3	4.9	361.0
+	5.0	360.9
+7	4.7	361.2
F	3.8	362.1
+10	2.8	363.1

1+50

-8'	3.5	362.4
-2'	5.5	362.4
F	2.8	363.1
+5	4.9	361.0
+	5.0	360.9
+9.2 - 1/4 Power Pole		
W	5.2	360.7
+10	6.5	359.4

365.86

2+0

-10		6.0	359.9
H		4.9	361.0
Z		5.0	360.9
+4		5.1	360.8
+7		3.4	362.5
F		3.1	362.8
+10		2.8	363.1

TP 599 367.25 4.50 361.36

2+50

-10		3.9	363.5
F		4.2	363.2
+5		5.7	361.7
Z		5.8	361.6
H		5.8	361.6
+2.5 Approx Floor S bed		8.4	359.0

2+76

H+1.6 - Wly Power Pole

367.35

2+0

-10		7.2	360.1
H		5.6	361.8
+4		5.0	362.4
Z	- Z M.H. on Rim	4.77	362.58
+5		4.6	362.8
F		3.4	364.0
+10		3.0	364.4

2+25

-10		3.1	364.3
F		3.8	363.6
+4		4.8	362.6
Z		4.9	362.5
+7		4.9	362.5
H		5.6	361.8
+10		6.8	360.6

2+50

-10		5.9	361.5
H		4.6	362.8

36725

+3	4.4	3630
2	4.4	3630
+5.	4.2	3632
+8	2.8	3646
F	2.2	3651
+10	1.9	3655

3+80

-10.6 = Fly Do Garage Conc Floor	1.06	36629
-6.3 = Fly Conc Apron	2.19	36516
F	2.5	3649
+5	3.1	3643
2	2.3	3641
+7	3.4	3640
H	3.8	3636
+10	5.5	3619

3+97

-10	4.7	3627
H	3.1	3643
+2	2.8	3646

36725

2	2.9	3645
+6	2.8	3646
F	2.2	3652
+6.1 = Fly Conc Apron	1.80	36555
+10.1 = Fly Do Garage C.F.	1.10	36625
TP	8.04	372.51
	2.88	364.47

4+22

H-2.3 = 2 1/2 Conc Wall	8.47	36404
-------------------------	------	-------

4+23

H+1.6 = Fly Conc Apron	8.47	36404
H-1.4 = Fly Do Garage Conc Floor	8.35	36416

4+41

-10	5.2	3673
F	6.3	3662
+4	7.2	3653
2	7.4	3651
+6	8.3	3642
+9.4 = Fly Conc Apron	8.46	36405
H	8.4	3641
+2.2 = Fly Do Garage Conc Floor	8.40	36411

372.51

4+55

-10	7.8	364.7
H	6.0	366.5
L	6.2	366.3
+7	6.0	366.5
F	5.9	367.1
+10	5.0	367.5

4+70

-10	4.8	367.7
F	4.9	367.6
+3	5.1	367.4
L	5.1	367.4
+9	5.3	367.2
H	6.0	366.5
+10	7.2	365.3

4+95

H-32 = Garage Dirt Flow 5.9 366.6

5+0

-10	5.6	366.9
-----	-----	-------

372.51

H	5.0	367.5
+10 = H Power Pak		
L	5.1	367.4
+6	4.8	367.7
F	3.9	368.6
+10	3.8	368.7

5+25

-10	2.7	369.8
F	3.5	369.0
+4	4.5	368.0
L	4.5	368.0
H	4.5	368.0
+10	4.6	367.9

5+57

-28 = L Conc Walk	4.41	368.10
H	4.2	368.3
+3	3.5	369.0
L	3.4	369.1
+6	3.2	369.3

372.51

F		24	370.1
+5		18	370.7
	5+75		
F		17	370.8
+4		22	370.3
L		26	369.9
+6		27	369.8
+9		38	368.7
W		38	368.7

6+00.56=5

W TopCb		3.56	368.95
W Ground		3.9	368.6
L		3.4	369.1
+5		3.2	369.3
F Ground		2.7	369.8
F TopCb		2.4	370.11
TP	8.29	377.13	367
			368.81
	SC6 Monroct		
F TopCb		7.34	369.79

377.13

F Ground		8.2	368.9
L		8.5	368.6
W		9.1	368.0
W TopCb		8.59	368.54
BM		1.87	375.26

J.F.B.P.
Monroct
Hamilton
875.50

Re Cross Section N + S Alley Block 27
 H. M. Higgins Add From Broadway to C St.
 Between 25th + 26th St.

Original # 1522-967 Sec Sketch

BM 466 19364 18898

TP 2.97 19119 5.42 18822

0+0 = HL Broadway

E - Cb Top 2.56 18863

+0.2 = Gutter on Paving 2.63 18856

2 " " 2.98 18821

H " " 2.68 18851

+0.2 = Cb Top 2.62 18857

0+33

F -0.5 = 1/4 Conc Walk 3.14 18805

0+35

-10 4.3 1869

H 4.0 1872

2 3.9 1873

F 3.7 1875

+6.9 = 1/4 Conc Walk 3.12 18802

0+80

-6.9 = 1/4 Conc Walk 4.62 18657

F 5.5 1857

STRA
 Broadway by
 + 26th St.

Reduced + Plotted
 by H.M. Cole
 7/1/40 Profile
 No. 2045

INDEXED
 EFB

19119

2 5.5 185.7

H 5.2 186.0

+13 11.4 179.8

+20 11.1 180.1

1+17

F -0.5 = 1/4 Conc Walk 5.57 185.68

1+20

-2.5 9.3 181.9

-10 = Fly Shed 8.9 182.3

-5 7.4 183.8

H 5.4 185.8

2 5.8 185.4

F 5.7 185.5

1+39

F -3.2 = 1/4 + 1/4 Conc Appro 4.84 18635

1+40.38 = 5.6 F + W Fly

F 5.4 185.8

2 5.6 185.6

H 6.3 184.9

June 27/40
 S. Noz
 Hartberg
 Moore

35

191.19

+25		90	183.2
	1+48		
W-0.2 = Wly Porter Pail			
	1+50.38 = F+W Filter		
-15		76	183.6
W		6.8	184.4
+3	Top 6" C.I. Saver	5.38	185.81
+5		5.0	186.2
2		4.9	186.3
F		5.0	186.2
	1+58		
W-7.7 = Fly 3 Garage Wood Floor	7.2		184.0
	1+60.38 = W 6 F+W Filter		
F		5.6	185.6
2		5.5	185.7
+6		5.8	185.4
W		6.5	184.7
-5		7.3	183.9
+7.7 = Fly 3 Garage		7.3	183.9

191.19

	1+74		
-7.7 = Fly 3 Garage		7.0	184.2
W		6.8	184.4
2		6.6	184.6
F		6.5	184.7
+16 = 2 Do. Garage Wood Floor	5.13		186.06
	2+0		
-10		4.7	186.5
F		5.2	186.0
+6		6.3	184.9
2		6.7	184.5
W		7.0	184.2
+7.7 = W 3 Garage Wood Floor	7.2		184.0
	2+21		
W		6.5	184.7
2		6.1	185.1
F		5.1	186.1
+3 S Wly Car B. Idg.		5.1	186.1

19119

2+25

W	= S.E. Cor. Bldg Under Construction	6.2	185.0
---	-------------------------------------	-----	-------

2+46

-4	= Wly Bldg	4.1	187.1
----	------------	-----	-------

E		4.2	187.0
---	--	-----	-------

2		4.6	186.6
---	--	-----	-------

W	= Base Foundation Under Const.	4.9	186.3
---	--------------------------------	-----	-------

2+47

W		4.8	186.4
---	--	-----	-------

2		4.5	186.7
---	--	-----	-------

+9		4.1	182.1
----	--	-----	-------

E	= on Board Walk	40.2	191.4
---	-----------------	------	-------

TP	9.41	198.18	2.42	188.77
----	------	--------	------	--------

2+68

-4	on Board Walk	6.81	191.37
----	---------------	------	--------

E		6.8	191.4
---	--	-----	-------

+1		6.8	191.4
----	--	-----	-------

+1.5		8.2	190.0
------	--	-----	-------

+7		9.3	188.9
----	--	-----	-------

19818

2		9.4	188.8
---	--	-----	-------

W	= Ely Bldg Under Const.	9.4	188.8
---	-------------------------	-----	-------

2+91

W	= N.E. Cor. Bldg Under Const.	9.0	189.2
---	-------------------------------	-----	-------

2+76

-15		10.6	187.6
-----	--	------	-------

-10		10.2	188.0
-----	--	------	-------

W		8.4	189.8
---	--	-----	-------

2		8.4	189.8
---	--	-----	-------

+5		8.0	190.2
----	--	-----	-------

+8.5	= Base Rock Wall	7.0	191.2
------	------------------	-----	-------

+9	Top " "	4.1	194.1
----	---------	-----	-------

E		4.1	194.1
---	--	-----	-------

2+00.76 = S.W. Cor.

E	Cor Top	4.12	194.06 ✓
---	---------	------	----------

	Gutter on Paving	4.47	193.71
--	------------------	------	--------

2	" "	4.79	193.39
---	-----	------	--------

	Gutter " "	4.87	193.31
--	------------	------	--------

W	Cor Top	4.68	193.50
---	---------	------	--------

Walker
Bliss
Lebell

8-28-40

CURB And Paving Levels
Southwest Corner
Rosecrans + Canyon Road.

SW. & P.
Rosecrans
& Canyon Rd.

4.23 24.88 20.65

0+00 going South on Rosecrans St.

W top cb - pc. 4.38 20.50

" Gut " 5.14 19.74

+12.5' on pav. 5.39 19.49

+25' " " E pav. Rosecrans 5.49 19.39

0+25

E pav. 5.09 19.79

+12.5 on pav. 5.09 19.79

W Gut " 5.17 19.71

W top cb. 4.46 20.42

0+50

W top cb 4.60 20.28

" Gut pav. 5.25 19.63

+12.5 " 5.05 19.83

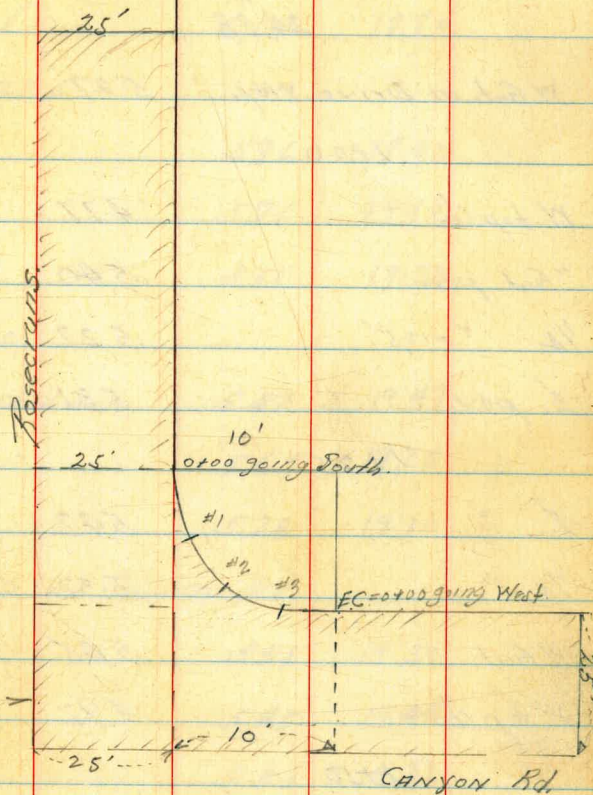
E " 5.05 19.83

0+75

E pav. 5.18 19.70

12.5' W on pav. 5.12 19.76

Reduced & Plotted
H.M.C.
8-29-40



24.88

W Gut. in Drive Way. 5.27 19.61

1400

W top cb 4.77 20.11

" Gut. pov. 5.40 19.48

1/4 " = 12.5' 5.22 19.66

E pov. 5.31 19.57

1425

E " 5.42 19.46

1/4 " 5.32 19.56

W Gut. 5.45 19.43

W top cb. 4.92 19.96

1450

W top cb 5.05 19.83

" Gut. pov. 5.52 19.36

" 1/4 " 5.45 19.43

E " 5.55 19.33

0 - 35 going West on Canyon Road.

E pov. on S cb Canyon produced. 5.67 19.21

12.5' E 5.93 18.95

24.88

39

25' E = E pov. = E Canyon 6.04 18.84

0 - 22.5

E Canyon 5.96 18.92

South 1/4 5.76 19.12

South Gut. 5.55 19.33

0 - 10

South Gut. - Int cb lines. 5.41 19.47

" 1/4 on pov. 5.63 19.25

E " 5.78 19.10

0 + 00 on Canyon Rd

E 5.58 19.30

1/4 5.43 19.45

Gut. 5.36 19.52

S top cb 4.22 20.66

Levels on Ret.

#3 on cb. 4.29 20.59

" " Pov. 5.36 19.52

#2 " cb. 4.35 20.53

#2 " Pov. 5.28 19.60

#1 " cb. 4.38 20.50

#1 " Pov. 5.20 19.68

24.88

0+25 on Canyon Rd.

South top cb.	3.68	21.20
" Gut. pav.	4.67	20.21
1/4 "	4.99	19.89
1/2 "	5.24	19.64

0+50

1/2 pav	4.74	20.14
1/4 "	4.42	20.46
South Gut.	4.01	20.87
" top cb.	3.00	21.88

0+75

South top cb.	2.35	22.53
Gut	3.37	21.51
1/4	3.74	21.14
1/2	4.09	20.79

1+00

1/2	3.40	21.48
1/4	3.07	21.81
1/2 Gut	2.72	22.16
1/2 top cb.	1.68	23.20

24.88

1+25

Stop cb.	1.04	23.84
Gut	2.00	22.88
1/4	2.34	22.54
T.P.	3.49	27.31
1/2	5.12	22.19

1+50 on Canyon Road.

1/2	4.51	22.80
1/4	4.18	23.13
South Gut.	3.79	23.52
" top cb.	2.77	24.54
chk. starting B.Y.	6.66	20.65

Walker
Bliss
Isbell
9-28-30

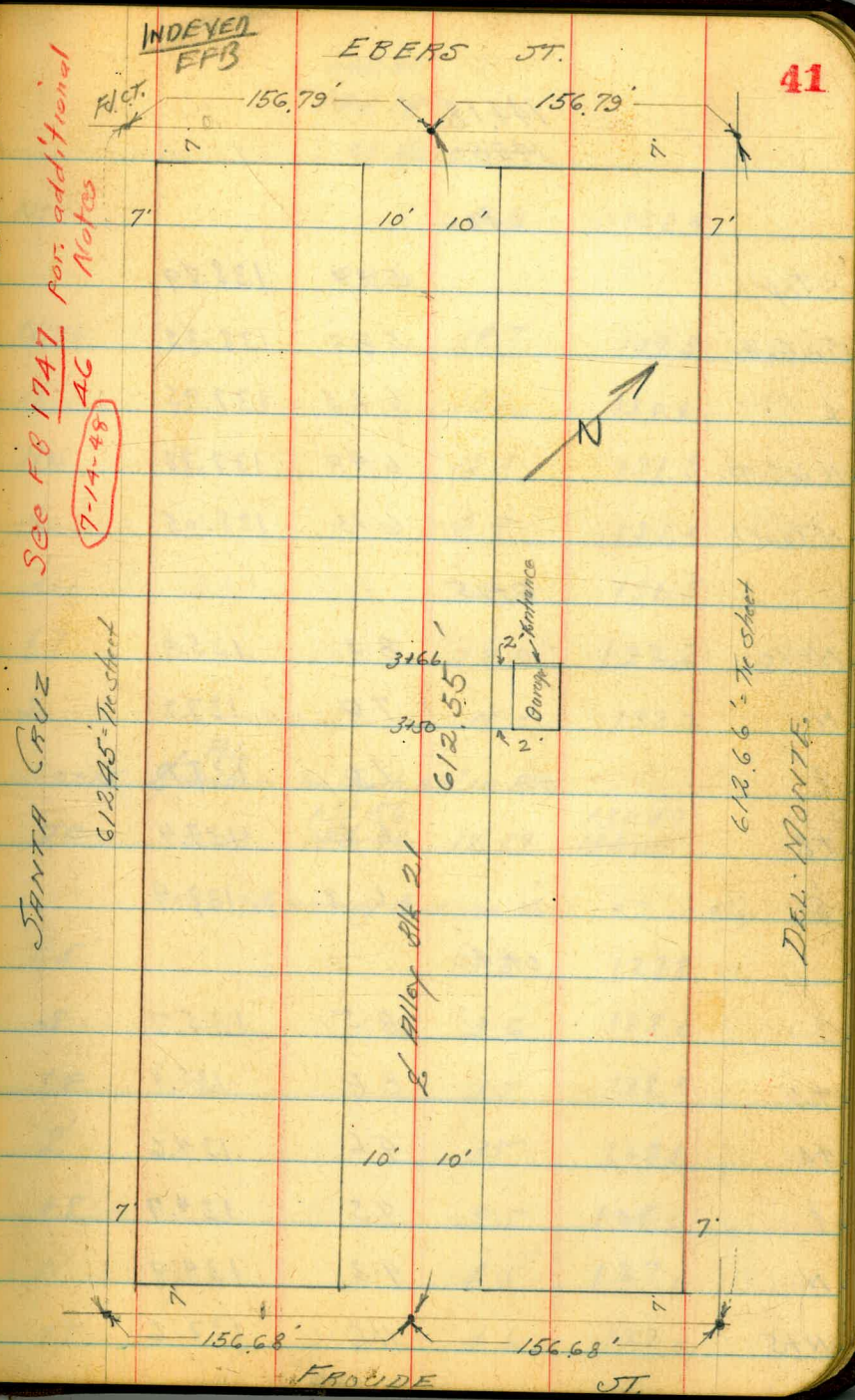
CROSS SECTION Alley Blk 21
Ocean Beach
Bet. SANTA CRUZ AND DEL MONTE.
From Froude to Ebers.

		257.05		254.18	SW. BR. SANTA Barbara
	2.87	258.37		255.58	✓ Santa Cruz
TP	0.18	244.18	13.05	244.00	See Note
		245.50		245.32	Page 47
TP	0.46	231.98		231.52	
		233.30	12.66	232.84	
		222.95		222.95	
Set B.M. B.P. NW. Santa Cruz	9.03	224.27		224.27	
TP	0.37	219.43		219.06	
		220.75	12.92	220.38	
TP	0.43	207.26		206.83	
		208.58	12.60	208.15	
TP	0.20	194.65		194.45	
		195.97	12.81	195.77	
TP	0.37	182.11		181.74	
		183.43	12.91	183.06	
TP	0.37	169.62		169.25	
		170.94	12.86	170.57	
TP	0.18	156.91		156.73	
		158.23	12.89	158.05	
Set B.M. B.P. NE. Santa Cruz + Froude	10.36	146.55		146.55	
TP	0.22	144.18		143.96	
		145.50	12.95	145.28	

0-12 Section in Gutter Wch Line of Froude.

N. Top ch	6.38	137.80
Gutter	6.96	137.22
ℓ	6.35	137.83
S. Gutter	5.90	138.28
S. Top ch	5.23	138.95

Reduced & Plotted by H.M.C. 6
8-30-40
Profile 2377



See FO 1747 for additional Notes
7-14-48 AC

144.18
145.50

0700

S-Topch 5.29 138.89

S in Gutter 5.83 138.35

E 6.23 137.95

N in Gutter 6.40 137.78

N Topch 6.13 138.05

0715

N-10 8.3 135.9

N 7.0 137.2

E 7.0 137.2

+8 6.8 137.4

S 6.3 137.9

0740

S 8.5 135.7

+3 8.8 135.4

+4 9.6 134.6

E 9.5 134.7

N 9.3 134.9

N+5 11.6 132.6

42

145.50
144.18
0740

N+10 11.8 132.4

0770

N-10 14.7 129.5

N 13.6 130.6

N+5 12.7 131.5

E 12.8 131.4

-6 12.7 131.5

+7 12.0 132.2

S 11.0 133.2

0775 - Pole
Anchor on South 0.7' in Alley

TP 0.07 131.56 131.49
132.88 12.69 132.81

1+00 = Beginning Fence on North - 0.2' in Alley.

-5' 3.8 127.8

S 3.6 128.0

+4 3.2 128.4

E 3.5 128.1

+8 3.5 128.1

N 4.5 127.1

+5 4.6 127.0

131.56
~~132.88~~

1+00 = Pole on South 1' in Alley = 1.3' dia.
1+01 = Beginning Fence on South 0.7 in Alley

1+30

-5	8.0	123.6
N	7.8	123.8
+2	7.2	124.4
L	7.4	124.2
+2	7.6	124.0
S	6.7	124.9
+5	6.8	124.8

1+50.7 = End Fence on N 0.4 in Alley

1+51 = Beginning Fence on N 0.2 in Alley

1+60

-5	10.6	121.0
S at Fence	10.6	121.0
+5	10.7	120.9
L	10.7	120.9
N at Fence	11.0	120.6
+10	10.9	120.7

= End Fence on South

2+00 = End Lath Fence on N 0.1 Back

119.28

118.73

T.P. 0.55 130.60 12.83 120.05

120.60
119.28

-10	2.6	116.7
N	2.0	117.3
L	1.7	117.6
+9.9 at Fence	1.1	118.2
+10	0.4	118.9

2+33 = End Fence on N 0.4 Back

2+42 = Gunge on N 4.2 Back Conc. Floor

N-4.2 on Conc. Floor 5.10 114.18

2+46 = Beginning Board Fence on N 0.45 Back

2+50

S-10'	3.4	115.9
S	4.2	115.1
+5	5.6	113.7
L	5.8	113.5
N	5.7	113.6
+10	5.7	113.6

2+72 = Pole 1' in Alley = 1' dia

= Beginning Lath Fence on N 0.2 Back

2+72 = End Board Fence on N 0.2 Back

2+98.5 = N.H. rim. 9.12 110.16
0.3' South 1.5

3+00 = End Lath Fence on N

120.60
119.28

-5'	8.0	111.3
S	8.5	110.8
+2	9.6	109.7
2	9.4	109.9
+7	9.8	109.5
N	9.6	109.7
+7	9.8	109.5
	9.47	109.81
3+01.5 = Conc Walk on N 2' wide 0.3' in Alley		
3+04.5 = East edge door way Dble garage on North		
N + 4.7 = toe Apron	9.80	109.48
+6.8 = Garage Floor	9.70	109.58
3+20 = 14 edge Doorway Dble garage Above		
N + 4.7 on toe Apron	9.85	109.43
+6.8 " Garage Floor	9.71	109.57
3+21 = Beginning Board Fence on N 0.1' in Alley		
3+49 = End " " " " " "		
3+50		
-5	13.8	105.5
N	13.3	106.0
2	13.5	105.8

44

120.60
119.28

+8	13.2	106.1
+9	12.4	106.9
S	12.4	106.9
+10	11.6	107.7
T.P	0.38	106.74
		108.06
		12.92
		106.36
		107.68
3+66 = West end Garage on N W entrance		
6 N W Line of Garage	19.7	104.77
3+99 = 3" Tile Drain From Down Spout to House on South	0.6' in Alley	
Flow 3" Tile Drain	4.52	102.22
4+00 = Pole on South 1.3' in Alley = 10" dia		
-5	3.5	103.2
S	3.9	102.8
+6	4.6	102.1
2	4.7	102.0
N	4.6	102.1
+10	4.6	102.1
	3.7	103.0 on ground
4+01 = Beginning House on South 1.5' Back		
4+33 = End " " " "	6.5	100.2 on ground
4+35 = Conc Walk 2' Back	6.94	99.80 3.5' wide

10806
106.74

No Bars, doors,
Now
House
7/13/45

4+42 = Garage on South 10.8' back = Apron. on Apron.	6.6	100.1	
S + 14.1' = Garage Floor	6.4	100.3	
4+48 = Beginning Board Fence on South 1.1' Back			
4+50			
N - 10	8.9	97.8	
N	8.9	97.8	
L	8.3	98.4	
S	7.7	99.0	
+5	7.6	99.1	
4+51.5 = L. H.H. Rim = 8.41 0.2' South	8.41	98.33	0.2' South
4+98 = End Board Fence on South 1.6' Back			
4+99 = L. Pole on South 1' in Alley = 1.1' dia.			
4+93 = Beginning Wire Fence on S 1.6' Back			
5+100			
-5	10.8	95.9	
S	11.1	95.6	
+5	12.0	94.7	
L	12.1	94.6	
N	12.0	94.7	

10806
106.74

45

N+10	13.0	93.7	
TP	1.82	96.13 97.45	94.31 95.63
5+04 = East edge Conc. Apron on N. to Dble Garage			
N+28 = Toe Conc Apron	2.65	93.48	
+59 = Garage Floor	2.40	93.73	
5+20 = West end Pbase Apron			
N+28' toe Apron	2.67	93.46	
+59 = Garage Floor	2.47	93.66	
5+23 = End Wire Fence on South 1.4' Back			
5+25			
-5'	3.0	93.1	
N	3.0	93.1	
L	3.3	92.8	
S	2.5	93.6	
+5'	1.9	94.2	
5+34 = L. Garage on South			
5+32 = toe Apron	3.00	93.13	
+4.6 = Garage Floor	2.79	93.34	
5+27 = Beginning Fence on N 9.3' in Alley			

97.45
96.13

5+40 = Beginning Cobble Wall on South 0.4' Back

5+0.4 = toe wall on ground	3.6	92.5
+0.7 = top "	2.4	93.7
5+46.5 = Beginning Conc. Ret. Wall on South 0.1' Back		
5+0.1 = toe wall	4.5	91.6
+0.1 top "	3.60	92.53
5+47 = Beginning House on South 2.2' Back		
5+47.5 = End Cobble Wall on " 0.6' Back		
toe cobble wall = top Conc. Wall	3.6	92.5
top " "	2.3	93.8

5+50

conc Ret. Wall

-0.1 = top Wall	3.81	92.32
	1.13	94.50
-0.1 = Footing Wall	5.64	90.49
S	4.8	91.3
+5	5.5	90.6
S	5.8	90.3
+5	5.7	90.4
+7	5.0	91.1
N	5.0	91.1
+5	4.8	91.3

97.45
96.13

5+75

-5	6.4	89.7
N	6.2	89.9
+3	8.1	88.0
+6	8.7	87.4
S	8.5	87.6
+6	8.1	88.0
S	7.5	88.6
+0.1 = top Footing	8.42	87.71
+0.1 = top Wall	5.35	90.78

5+87 = Break in Ret Wall on South

S = 0.1 top Wall	6.01	90.12
= top Footing	10.0	86.1
S	8.6	87.5
+2	9.7	86.4
S	10.1	86.0
+3	10.4	85.7
+7	9.7	86.4
+9	7.3	88.8
+9.9 at Fence	7.0	89.1
N+5	6.9	89.2

46

9745
96.13

Section
5+97 (5+95)
End Fence on N 0.1 in Alley

-10	8.1	88.0
N	7.8	88.3
+3	11.2	84.9
+6	11.8	84.3
S	11.5	84.6
+6	11.1	85.0
S	10.1	86.0
+0.1 = top Feeding	11.4	84.7
+0.1 = top Wall	7.50	88.63

5+98.55 = East line Ebers.

S - 0.1 top Wall	7.81	88.32 ✓
S top cb.	10.83	85.30 ✓
" Gut	11.62	84.51
S on pov	12.42	83.71
N Gut	12.65	83.48
N top cb.	12.62	83.51
6+10.55 = East cb Ebers.		
N top cb.	12.75	83.38
N Gut pov	13.39	82.74

9745
96.13

47

S pov		12.56	83.57
S Gut		11.67	84.46
S top cb.		11.02	85.11
T.P.	6.42	94.80 96.12	88.38 87.70
Set B.P. ^{N.E.} Santa Cruz + Ebers		1.07	93.73 95.05
chk. SW ^{B.M.} Conc. Men		+0.78	95.58 + Santa Cruz, + Ebers.
T.P.	0.19	82.09 83.41	81.90 83.22
chk. SW 7' back		10.56	71.53 Del Monte + Ebers. 92.7 = diff
T.P.	0.41	70.23	12.27 69.82
chk. SE B.P. Narragansett + Ebers		5.93	64.30 64.19 = B.M. 0.11 = diff.

T.P.	12.85	250.33	2.3748	SE B.P. Santa Barbara + Del Monte
T.P.	9.02	258.48	0.87	249.46
chk. SE B.P. Santa Barbara + ^{Santa Cruz}		4.30	254.18	at
			255.50	
			1.321	

Note: The original B.M. was marked SW. Cor SANTA BARBARA + SANTA CRUZ. This B.M. is gone and I found one on the S.E. which I took for the given Elev. which was wrong. Hence the corrections on p-41 see 48

Alley 21

Ocean Beach
Cont from P-47

Chas Moore says "The BMs on
Santa Barbara do not agree with
the BMs, West of Santa Barbara by
0.25 hence the 0.27 diff P-47

Walker
Bliss
Isbell
10-17-40

CROSS SECTION - GREENE ST.
from ETIWANDA to BOLINAS
60' wide
10' cbs
10' 11/2

SWLY B.P.
Greene
& Etiwanda

11.50 51.21 39.71 Soto

0 - 30' = S. Etiwanda on South.

N top cb	11.91	39.30
" Gut. paving.	12.59	38.62
N 1/4 "	12.11	39.10
L "	11.84	39.37
S 1/4 "	11.75	39.46
S cb "	11.70	39.51
S "	11.57	39.64
+10	11.44	39.77

SELY Return

-10 = cb BC. Gut. paving.	11.28	39.93
-10 on top cb.	10.63	40.58
L Ret. on Paving.	11.21	40.00
L " " cb.	10.64	40.57

0 + 00 = FLY LINE Etiwanda

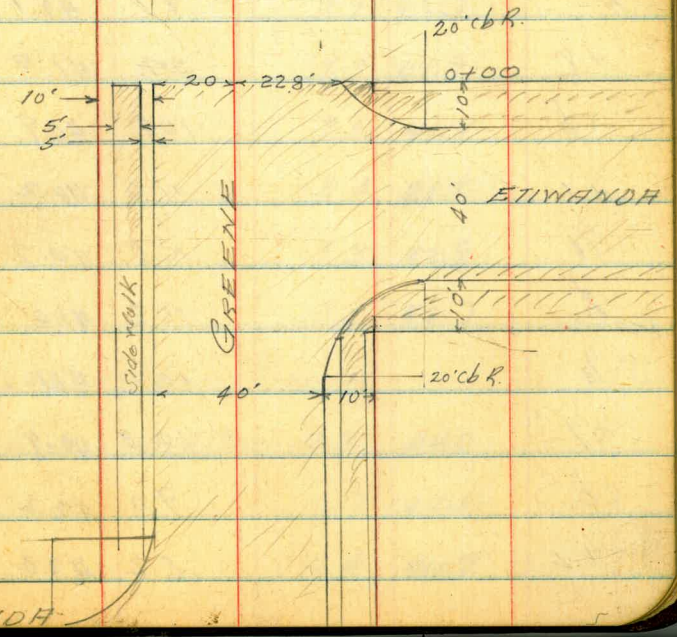
S on top Walk	10.42	40.79
+72" " cb.	10.45	40.76

INDEXED
EPB

Part Line

49

10' + 20' + 20' + 10'



51.21

GREENE ST.

S + 7.2' on Paving	11.00	40.21
S cb. " "	10.95	40.26
S 1/4 " "	10.90	40.31
E " "	11.00	40.21
NW 1/4 " "	11.33	39.88
" Gutter "	11.78	39.43
" top cb.	11.13	40.08
NLY cb + 5' = sky edge Walk	11.07	40.14
NLY line on Walk	11.00	40.21
0 + 15		
N	9.1	42.1
+ 8	9.4	41.8
cb	10.4	40.8
+ 1	11.0	40.2
1/4	10.5	40.7
E	10.2	41.0
S 1/4	10.1	41.1
+ 7'	10.3	40.9
cb.	9.0	42.2
+ E	8.2	43.0

51.21

South	7.6	43.6
0 + 35		
S - 7 at house	6.1	45.1
S	6.2	45.0
+ 4	6.8	44.4
+ 8	6.7	44.5
cb	7.3	43.9
+ 3	7.9	43.3
+ 4	9.0	42.2
1/4	8.7	42.5
E	8.9	42.3
1/4	9.3	41.9
NLY cb.	9.8	41.4
+ 3'	8.2	42.8
N	8.3	42.9
+ 5'	8.5	42.7
0 + 67 = 1/2 Garage on N		
- 8' at Garage dirt floor	7.2	44.0
N	6.7	44.5
+ 5	6.4	44.8

51.21

GREENE ST.

cb.	6.9	44.3
+5	7.0	44.2
N 1/4	6.8	44.4
1/2	6.3	44.9
S 1/4	6.1	45.1
+7	6.2	45.0
+8	5.5	45.2
cb	4.7	46.5
+3	4.8	46.9
+5	4.5	46.2
South	3.7	47.5
+6' at house	3.2	48.0
0+92-1/2 Garage on South. dirt floor		
S-6'-Garage floor	1.0	50.2
1+00		
S-6'	0.5	50.7
S	1.4	49.8
+4	1.9	49.3
+6	1.7	49.5
cb.	2.2	49.0

51.21

51

+2	2.4	48.8
+3	3.7	47.2
1/4	3.4	47.8
1/2	3.2	48.0 ?
1/4	4.0	47.2
+9	4.4	46.8
cb.	3.1	47.1
N	3.1	47.1
+10'	3.7	48.5
T.P.	12.26	61.97
	1.50	49.71
1+09-1/2 Garage on South		
Dirt		
S-6.5'-Garage Floor	10.5	51.5
1+50		
-10	11.6	50.4
N	11.0	51.0
+9	10.1	51.9
cb.	11.0	51.0
1/4	10.7	51.3
1/2	10.3	51.7

6197

GREENE ST.

6197

52

1/4	10.6	51.4
+5	10.9	51.1
cb	9.4	52.6
S	7.9	54.1
+10	6.7	55.3
2+00 = WLY Lutz Soto St.		
-10	3.2	58.9
S	3.8	58.2
cb	5.0	57.0
+2	6.0	56.0
1/4	6.0	56.0
1/2	6.2	55.8
1/4	6.2	55.8
cb	6.5	55.5
N	6.4	55.6
+10	6.6	55.4
+50	9.0	53.0
+100	11.7	50.3
WLY cb Soto		
-100	11.7	50.9

60' wide
10' cb
10' 1/4 S

-50'	8.0	54.0
N	5.7	56.3
cb	5.6	56.4
1/4	5.4	56.6
1/2	5.3	56.7
1/4	5.1	56.9
+8	5.4	56.6
cb	5.1	56.9
South on Paving	4.30	57.67
" " top cb, at end.	3.67	58.30
" +30' on "	2.50	59.47
+30 " top cb	1.87	60.10
WLY 1/4 Soto		
-30' on Paving.	2.08	59.79
South " "	3.86	58.11
" cb	4.5	57.5
" 1/4	4.4	57.6
1/2	4.3	57.7
1/4	4.7	57.3
cb	4.9	57.1

61.97

GREENE ST.

N	5.1	56.9
+50' on Graded roadway.	8.1	53.9
+100' " " "	11.0	51.0

ELY SOTO ST.

-100' on Graded Roadway	10.5	56.5
-------------------------	------	------

-50' " " "	7.7	54.3
------------	-----	------

N " " "	4.7	52.3
---------	-----	------

cb.	4.2	52.2
-----	-----	------

1/4	3.8	52.2
-----	-----	------

+9' = 1/4" on Paving	3.42	58.55
----------------------	------	-------

1/4	3.4	58.57
-----	-----	-------

1/4	3.7	58.3
-----	-----	------

cb.	3.8	38.2
-----	-----	------

South, on end of Paving.	3.58	58.39
--------------------------	------	-------

+30' on Paving.	1.80	60.17
-----------------	------	-------

ELY 1/4 SOTO ST.

-30' on Paving.	1.86	60.11
-----------------	------	-------

S " "	3.34	58.63
-------	------	-------

cb.	3.2	58.8
-----	-----	------

1/4	2.9	59.1
-----	-----	------

61.97

53

1/4	2.7	59.3
-----	-----	------

1/4	3.1	58.9
-----	-----	------

cb.	3.7	58.3
-----	-----	------

N	4.4	57.6
---	-----	------

+50' on Graded roadway	7.2	54.8
------------------------	-----	------

+100' " " "	9.9	52.1
-------------	-----	------

ELY cb SOTO ST.

-100' on Graded roadway	9.6	52.4
-------------------------	-----	------

-50' " " "	7.2	54.8
------------	-----	------

N	4.2	57.8
---	-----	------

cb.	3.9	58.6
-----	-----	------

1/4	2.5	59.5
-----	-----	------

1/4	2.2	59.8
-----	-----	------

1/4	2.2	59.8
-----	-----	------

cb.	2.8	59.2
-----	-----	------

South, on end Paving	3.36	58.61
----------------------	------	-------

" " top cb.	2.65	59.32
-------------	------	-------

" +30' " "	1.08	60.89
------------	------	-------

+30' on Paving.	1.83	60.14
-----------------	------	-------

61.97

GREENE ST.

0+00 = ELY LINE SOTO ST.

-10 2.0 60.0
 -10 on Ref Wall +1.4 62.4
 S " " " +0.9 62.9
 S 1.7 60.3
 +3 1.7 60.3
 +7 0.7 61.3
 cb. 1.5 60.5
 +2 2.0 60.0
 1/4 1.4 60.6
 2 1.6 60.4
 1/4 2.0 60.0
 cb. 2.6 59.4
 +2 1.7 60.3
 N 1.9 60.1
 +50 4.7 57.3
 +100 7.2 54.8
 0+10
 -15' 2.3 59.7
 N 1.7 60.3

61.97

+6 1.3 60.7
 cb. 1.6 60.4
 +2 1.9 60.1
 1/4 1.3 60.7
 2 0.9 61.1
 1/4 0.7 61.2
 +8 1.2 60.8
 T.P. 1232 73.99 0.30 61.67
 cb. 12.1 61.9
 +4 11.4 62.6
 +7 11.8 62.2
 S 10.0 64.0
 +8 8.7 65.3
 0+50
 S-7' at house 6.5 67.5
 S 6.8 67.2
 +3 8.6 65.4
 +6 8.4 65.6
 cb. 9.4 64.6
 +1 10.0 64.0

73.99

GREENE ST.

1/4	9.8	64.2
1/2	10.1	63.9
1/4	10.7	63.3
+8	11.3	62.7
+9	10.0	64.0
N	10.3	63.7
+25	12.2	61.8
+89 = WLY edge Garage		
-15	9.0	65.0
N	8.3	65.7
cb.	7.5	66.5
+1	7.5	66.5
+2	8.3	65.7
1/4	8.1	65.9
1/2	7.5	66.5
1/4	7.0	67.0
+9	7.4	66.6
cb.	6.2	67.8
+7	5.7	68.3
S	4.2	69.8

73.99

55

S+17 at WLY edge Garage	3.7	70.3
0+95 = 1/2 Above Garage	3.6	70.4
on South Elev. P-56		
1+05 = 1/2 Garage on South	(Conc. Ribbon)
-17' of Garage	3.1	70.9
S	3.9	70.1
cb.	5.6	68.4
+1	6.2	67.8
1/4	6.0	68.0
1/2	6.5	67.5
1/4	6.8	67.2
+7	7.2	66.8
+8	6.5	67.5
cb.	6.5	67.5
N	7.0	67.0
+15	8.3	65.7
1+50		
-15'	4.8	69.2
N	4.0	70.0
cb.	3.5	70.5
+2	3.5	70.5

+3		4.1	69.9	
N 1/4		3.9	70.1	
2		4.0	70.0	
S 1/4		3.8	70.2	
cb.		4.2	69.8	
+5		2.6	71.4	
S		2.4	71.6	
+3		1.5	72.5	
+10		1.3	72.7	
1+0.2 = 1/2 Conc. Ribbon to Garage on South				
South on Conc. Ribbon		4.02	69.92	
+5' " " "		3.40	69.59	
+16.5 " " "		3.04	70.95	at Garage
1+0.7.5 = 1/2 Conc. Ribbon Above Garage				
S = On Conc. Ribbon		3.84	70.15	
+5 " " "		3.90	70.69	
+16.5 " " "		3.84	70.15	at Garage
Location Pepper Trees NLY side st				
N+6.2				
0+0.1 = 1/2 Pepper Tree 5"	13.8	72.6		
N+5.8				
0+2.6 = " " " 9"	11.9	72.1		

Location Pepper Trees cont.

N+6.3				
0+5.2 = 1/2 7" Tree	9.8	64.2		
N+6.2				
0+7.5 " 4" "	8.7	65.3		
N+5.5				
1+0.1 " 6" "	6.8	67.2		
N+5.6				
1+2.6 " 5" "	5.4	68.6		
N+5.9				
1+5.2 " 10" "	4.1	69.9		
N+6				
1+7.6 " 10" "	2.7	71.3		
2+0.0 = W.L. Bolinas St				
T.P.	6.40	78.88	1.51	72.48
S-10			5.3	73.6
S			5.5	73.4
+7			5.8	73.1
+8			6.7	72.2
cb.			6.5	72.4
1/4			6.4	72.5
2/3			6.5	72.4
1/4			6.7	72.2
cb			6.6	72.3
N			7.3	71.6
+5.0			9.5	69.4
+10.0			10.7	68.2

60' wide
10' cbs
10' 1/4

78.88

GREENE ST.

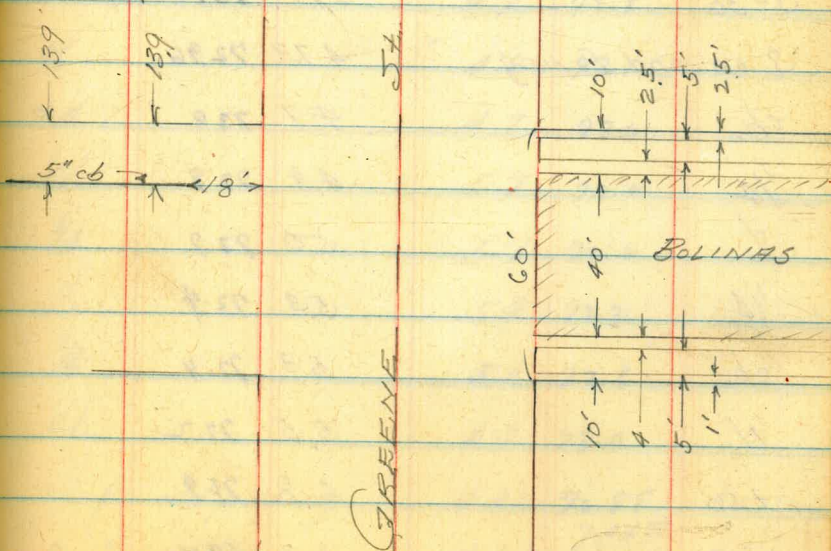
WLY cb. Bolinas

-100	10.6	68.3
-50	9.1	69.8
H	7.1	71.8
cb.	6.6	72.3
1/4	6.4	72.5
1/2	6.2	72.7
3/4	6.1	72.8
cb.	6.1	72.8
S on end Paving	6.30	72.6
" " " cb. top	5.62	73.26
S+30' on " "	4.83	74.05
" " Paving	5.53	73.35
WLY 1/4 Bolinas		
S-30' on Paving	5.17	73.71
S on end "	6.03	72.85
cb.	5.9	73.0
1/4	5.9	73.0
1/2	6.0	72.9
3/4	6.3	72.6

78.88

57

cb.	6.4	72.5
H	6.9	72.4
TR	4.57	77.69
+50	7.5	70.2
+100	9.0	69.7
1/2 Bolinas		
-100	8.7	69.0
-50	7.3	70.4
cont 58		



N	5.7	72.0
cb.	5.2	72.5
1/10	5.1	72.6
+9 S MH Rim	4.60	73.09
1/2	4.6	73.1
1/4	4.7	73.0
cb.	4.6	73.1
end. South on Paving	4.74	72.95
S+30' " Paving.	3.87	73.82
ELY 1/4 Bolinas.		
S-30	3.91	73.78
S on end Paving.	4.73	72.96
cb.	4.7	73.0
1/10	4.8	72.9
1/2	5.0	72.9
1/4	5.3	72.4
cb.	5.3	72.4
N	5.5	72.2
+50	6.8	71.9
+100	8.3	69.4

S 1/4 +6.9 = 5" curbing		
N-100 on cb ^{5"} (top cb)	6.99	70.70
N-100 " Gut on Ground.	7.4	70.3
N-50 " " " "	6.1	71.6
N-50 on cb.	5.71	71.98
N-18 " cb = end	4.90	72.79
N-18 " Ground at cb.	5.3	72.4
ELY/cb. Bolinas.		
N-100	7.0	70.7
N-50	5.7	72.0
N-18	4.9	72.8
N	4.6	73.1
+4	4.7	73.0
cb.	5.7	72.0
1/10	5.7	72.0
1/2	5.4	72.3
1/4	5.1	72.6
cb.	4.7	73.0
S on end paving	4.81	72.88
" " " cb.	4.24	73.45 - ?

7769

GREENE ST.

S+30' on Pav	4.10	73.59
S+30' " cb.	3.36	74.30
Ely Solinus = 0+00		
S-10	3.7	74.0
S on top Ret. Wall	3.60	74.09
S " Ground	4.2	73.5
cb.	4.4	73.3
+2	5.0	72.7
1/4	5.4	72.3
1/2	5.8	71.9
1/2	6.0	71.7
cb.	6.2	71.5
+6	4.7	73.0
N	4.6	73.1
+10	4.7	73.0
+100	6.3	71.4
0+50		
-10	5.2	72.5
N	5.2	72.5
+6	5.4	72.3

7769

59

N+9	7.9	69.8
cb.	7.9	69.8
1/4	8.0	69.7
1/2	8.0	69.7
1/4	8.0	69.7
+6	7.8	69.9
+7	6.9	70.8
cb.	6.9	70.8
S at Wall on Ground	6.6	71.1
S on top Ret. Wall	4.20	73.49
+10	4.0	73.7

Location Pepper Trees on South

S+8.2		
0+8.5 = 1/2 10" Tree	4.7	73.0
S+8.2		
0+28 = 1/2 8" "	5.5	72.2
S+8.2		
0+41 = 1/2 6" Accacia	6.2	71.5
S+8.2		
0+48 = Elac. Pole 12" dia.	6.8	70.9
S+8.0		
0+63 = 1/2 4" Tree	7.7	70.0
S+8.2		
0+79 = 1/2 5" "	8.4	69.3
S+8.0		
0+94 = 1/2 5" "	9.5	68.2
S+7.8		
2+05 = 1/2 3" "	10.0	67.7

Cont. Page 18

	EI	#1	-	cb	
000	6476	544		59.32	East
+10			5.26	59.50	
+20			4.55	60.21	
+30			3.92	60.84	
	w. 1/2				
00	6.10	64.40		58.20	
+10			5.41	58.99	
+20			4.84	59.56	
+30			4.36	60.04	

IMPROVED TABLES

AND

INFORMATION

1551-4740 454b

589

410

999

529

528

1137

1412

937

4756

7^o58

658

1356

1356