

1546

LEWIS BOOK

No. 380

1546

MICROFILMED

DEC 24 1964

ENGINEERING DEPARTMENT
CITY OF
CALIFORNIA
SAN DIEGO

Our Leather Bound Engineers Note Books are carried in the following rulings:

- No. 380 LEVEL BOOK. Left and Right Hand Page the same as Left Hand Page of this Book.
- No. 382 FIELD BOOK. Left Hand Page as in this Book, Right Hand Page 4 x 4 to the inch, Center Line Red.
- No. 384 MINING TRANSIT BOOK. Left Hand Page as in this Book, Right Hand Page 8x8 to the inch, Center Line Red.
- No. 385 FIELD BOOK. Left Hand Page as in this Book, Right Hand Page 8 vertical and 4 horizontal lines to the inch, Center Line Red.

We also carry the Note Books listed above, bound in extra strong Fabri-Hide (otherwise the same quality of book), which can be furnished at a somewhat lower price.

In ordering Fabri-Hide covered books, add the letter "F" to catalog number.

THE FREDERICK POST CO.
ENGINEERING and DRAFTING SUPPLIES
IRVING PARK STATION
CHICAGO, ILL.

Santa Rita Place p. 55

XSec of La Jolla Miramar Rd.
Sta. 100+00 to 109+59.34
For Re-grade

Moore 11-4-57
L.V. SON
Northern

+50

T.P. 12.56 $\frac{396.28}{397.46}$ 0.40 $\frac{383.72}{384.90}$

10v

+50

101

+50

100+00

LT. of
98+72.36 12.86 $\frac{384.12}{385.30}$
Correction for Bench
33.179-24 $\frac{371.44}{1.12}$
 $\frac{371.26}{371.26}$

COUNTY
Oregon

Spike 3M
transferred
pole

Indexed
c. 1915.

LT.

R

RT.

1

$\frac{381.6}{14.7}$ $\frac{382.4}{13.8}$ $\frac{383.5}{12.8}$ $\frac{384.2}{12.1}$ $\frac{383.6}{12.7}$ $\frac{383.0}{12.6}$ $\frac{384.1}{12.2}$
 $\frac{50}{23}$ $\frac{75}{75}$ $\frac{75}{75}$ $\frac{75}{75}$ $\frac{75}{75}$ $\frac{75}{75}$ $\frac{75}{75}$

$\frac{396.28}{397.46}$

$\frac{384.4}{2.7}$ $\frac{382.8}{1.9}$ $\frac{382.5}{2.3}$ $\frac{382.7}{1.9}$ $\frac{382.0}{1.4}$ $\frac{382.3}{1.8}$ $\frac{382.2}{1.9}$ $\frac{383.4}{0.7}$ $\frac{382.4}{1.7}$
 $\frac{50}{20}$ $\frac{25}{25}$ $\frac{25}{25}$ $\frac{75}{75}$ $\frac{75}{75}$ $\frac{75}{75}$ $\frac{75}{75}$ $\frac{75}{75}$ $\frac{75}{75}$

$\frac{380.9}{3.2}$ $\frac{381.1}{4.0}$ $\frac{380.6}{3.5}$ $\frac{381.0}{3.1}$ $\frac{381.4}{2.7}$ $\frac{381.1}{3.0}$ $\frac{381.2}{2.9}$ $\frac{381.9}{2.2}$ $\frac{381.9}{3.2}$
 $\frac{50}{50}$ $\frac{50}{50}$ $\frac{25}{25}$ $\frac{75}{75}$ 27 $\frac{75}{75}$ $\frac{75}{75}$ $\frac{75}{75}$ $\frac{75}{75}$

$\frac{379.4}{4.7}$ $\frac{379.7}{4.2}$ $\frac{378.9}{5.2}$ $\frac{379.4}{4.7}$ $\frac{378.9}{4.2}$ $\frac{379.5}{4.6}$ $\frac{379.6}{4.5}$ $\frac{380.9}{5.2}$ $\frac{381.1}{3.0}$
 $\frac{50}{50}$ $\frac{24}{24}$ $\frac{25}{25}$ $\frac{75}{75}$ 42 $\frac{75}{75}$ $\frac{75}{75}$ $\frac{75}{75}$ $\frac{75}{75}$

$\frac{377.4}{3.7}$ $\frac{377.8}{4.3}$ $\frac{377.3}{6.8}$ $\frac{377.6}{6.0}$ $\frac{378.2}{5.9}$ $\frac{378.1}{6.1}$ $\frac{377.6}{6.5}$ $\frac{380.6}{4.0}$ $\frac{380.1}{4.0}$
 $\frac{30}{30}$ $\frac{24}{24}$ $\frac{23}{23}$ $\frac{75}{75}$ 59 $\frac{75}{75}$ $\frac{75}{75}$ $\frac{75}{75}$ $\frac{75}{75}$

$\frac{375.9}{8.7}$ $\frac{376.1}{8.9}$ $\frac{375.5}{8.6}$ $\frac{376.2}{7.9}$ $\frac{376.7}{7.4}$ $\frac{376.5}{7.6}$ $\frac{376.3}{7.8}$ $\frac{375.4}{8.7}$ $\frac{378.5}{4.6}$ $\frac{378.5}{5.6}$
 $\frac{50}{50}$ $\frac{24}{24}$ $\frac{23}{23}$ $\frac{75}{75}$ 74 $\frac{76}{76}$ $\frac{76}{76}$ $\frac{76}{76}$ $\frac{76}{76}$ $\frac{76}{76}$

$\frac{384.12}{385.30}$
 $\frac{384.12}{385.30}$

106703.74 D.C. PT.

395.83	393.7	394.1	394.2	393.6	393.3	394.2	399.4	400.5	402.8
9.54	11.7	11.3	11.2	11.8	12.1	11.2	6.0	4.9	2.6
30	25	15	15	15	22	27	30	26	29

T.P. on S. 9.54

405.37
406.55 0.45

395.83
397.01 30' LT. 140M.

405.37
406.55

+50

394.0	392.0	392.4	392.5	391.1	391.5	393.3	391.1	396.5
2.3	4.3	3.9	3.8	4.2	4.5	3.0	1.2	4.0
30	24	15	15	15	23	28	30	32

105

392.6	392.2	390.5	390.3	391.0	390.8	390.5	392.4	394.5
4.1	4.1	5.8	5.4	5.4	5.5	5.8	4.3	1.8
30	28	24	15	15	15	22	26	30

+50

388.8	389.2	389.5	389.7	389.3	388.3	391.6
7.5	7.1	6.7	6.6	7.0	7.0	2.7
30	24	15	15	15	24	30

104

386.2	387.5	388.1	388.3	388.0	389.7	382.1	388.1	388.0
10.1	8.8	8.4	8.0	8.3	8.6	9.2	8.2	8.3
30	23	15	15	15	21	26	25	30

+50

385.3	386.2	386.6	387.0	386.6	386.6	385.9
11.0	10.1	9.7	9.3	9.7	9.7	10.4
30	23	15	15	15	27	30

103

384.3	384.6	385.1	385.4	385.0	384.8	384.9
12.1	11.7	11.2	10.7	11.3	11.5	11.4
30	33	15	15	32	30	30

396.28
397.46

394.28
397.46

+05

3928	3956	3965	3966	3969	3970	3965	3966	3965
7.6	7.4	8.9	8.8	8.5	8.4	8.6	8.8	8.9
30	26	20	15	8.5	15	15	30	40

109

3975	3981	3966	3968	3971	3971	3969	3981	4000	4002
7.6	7.3	8.8	8.4	8.3	8.3	8.5	7.3	8.4	8.1
30	24	20	15	8.3	15	25	30	31	27

+50

4007	4005	3978	3975	3980	3978	3973	3971	3980	4012
5.2	4.9	7.6	7.6	7.6	7.8	8.1	8.3	7.6	4.2
30	27	25	15	7.4	15	23	30	34	40

108

4007	3983	3982	3982	3986	3983	3974	3981	4031
4.5	7.1	7.2	7.2	7.8	8.1	8.0	7.3	1.8
30	23	15	7.2	15	22	30	44	48

+50

4014	3972	3972	3977	3970	3968	3971	3980	4046
4.0	7.7	7.7	7.7	8.4	8.6	8.3	7.4	1.3
30	23	15	7.7	15	21	30	40	51

107

4008	4008	3971	3967	3968	3960	3958	3959	3984	4039
4.6	4.6	8.3	8.5	8.6	9.4	9.5	9.5	7.0	1.5
30	26	23	15	8.6	15	21	30	47	51

+65

3994	3994	3960	3959	3960	3952	3948	3969	3973	3976	4038
6.0	6.0	9.4	9.5	9.4	10.2	10.5	9.2	8.1	5.8	1.6
30	28	28	15	9.4	15	21	30	40	47	50

106+50

3986	3954	3955	3956	3958	3945	3962	4003	4006	4035
6.8	10.0	9.9	9.8	10.6	10.9	9.1	5.2	4.8	1.9
30	24	15	9.8	15	21	28	32	48	51

405.37
~~406.55~~

405.37
~~406.55~~

see 68.179-27 also 1451-67

check to C.T.B.M.

9.65 ~~395.72~~
~~396.90~~ ~~396.87~~

396.90
= 395.725 Rose Canyon Benches
1.175

109 + 59.34 on E. edge of N. bound Conc. pav.

$\frac{395.02}{10.95}$ $\frac{395.50}{9.87}$ $\frac{394.95}{9.42}$
30 30 30

+40

$\frac{396.5}{8.9}$ $\frac{396.6}{8.8}$ $\frac{395.4}{10.0}$ $\frac{395.4}{10.0}$ $\frac{395.5}{9.6}$ $\frac{396.0}{9.4}$ $\frac{395.5}{9.6}$ $\frac{395.7}{9.7}$
30 30 18 15 15 15 30 40

109 + 16.94 E.C.

$\frac{397.16}{8.21}$ $\frac{396.1}{7.3}$ $\frac{396.5}{8.9}$ $\frac{396.2}{9.2}$ $\frac{396.5}{8.9}$ $\frac{396.7}{8.7}$ $\frac{396.7}{8.7}$
30 25 20 15 15 15 30 40

~~405.37~~
~~406.55~~

ON CONC. MAN.
SET BY MILLS
NAVY DEPT. OF
PUBLIC WORKS

405.32
~~406.55~~
2

indexed
c.s.k.

12.93

Check Ex. Man holes at
FANTOSA Blvd. S. of
W. Pt. LOMA Blvd

T.P. 5.58 7.64 10.87 20.4

Spike BM
SE. RP. 5.27 8.35

FANTOSA +
W. Pt. LOMA

1ST alley S of Temecula
RIM of M.H. 1.83 5.81

F.L. MAIN LINE 7.32 0.32

F.L. from West 6.88 0.76

Ground at M.H. 5.1 2.5

" 4' West 5.0 2.6

" 10' " + 5.3 12.9

" 24' " + 9.9 17.5

M.H. & Rialto at FANTOSA

RIM + ground 0.74 7.61

F.L. Main Line 10.31 - 1.96

F.L. from West 9.72 - 1.37

T.P. 5.04 12.93 0.46 7.89

connect to
channel 1.49
set up " = 1.00
get distance

T.P. 1.58 7.84 13.8 62.6

Black M First alley S of RIALTO

RIM + ground 1.02 11.91

F.L. Main Line 14.06 - 1.13

F.L. from West 13.72 - 0.19

& Temecula at FANTOSA

RIM 8.10 4.83

F.L. Main Line 13.54 - 0.61

" from West 13.26 - 0.33

Ground at M.H. 12.5 .4

" 15' W of " 13.4 - 0.5

" 52 " " 11.8 1.1

" 63 " " 5.6 1.3

" 74 " " 5.6 1.3

" 78 " " 4.8 8.1

" 110 " " 5.1 7.8

New
Toe FILL
Shoulder

M.H. & MENTONE at FANTOSA Blvd.

RIM 1.58 6.26

F.L. Main Line 7.01 0.83

F.L. from West 6.63 1.21

ground 5.0 2.8

4' West 5.0 2.8

8' West + 4.3 12.1

M.H. alley S of MENTONE

RIM 0.72 7.14

F.L. Main Line 6.28 1.56

F.L. from West 5.96 1.88

ground 4.3 3.5

5' West 4.0 3.8

T.P. 239 $\langle 7.84 \rangle$ 0.74 $\langle 7.10 \rangle$
 $\langle 9.42 \rangle$

M.H. & Mantalvo at Famosa

RINA	1.63	7.86	✓
F.L. Main Line	7.03	2.46	✓
F.L. from West	6.63	2.86	✓
ground	5.4	4.1	✓
4' West	5.2	4.3	✓
5' West	1.3	8.2	✓

M.H. 73' South of E Mantalvo St

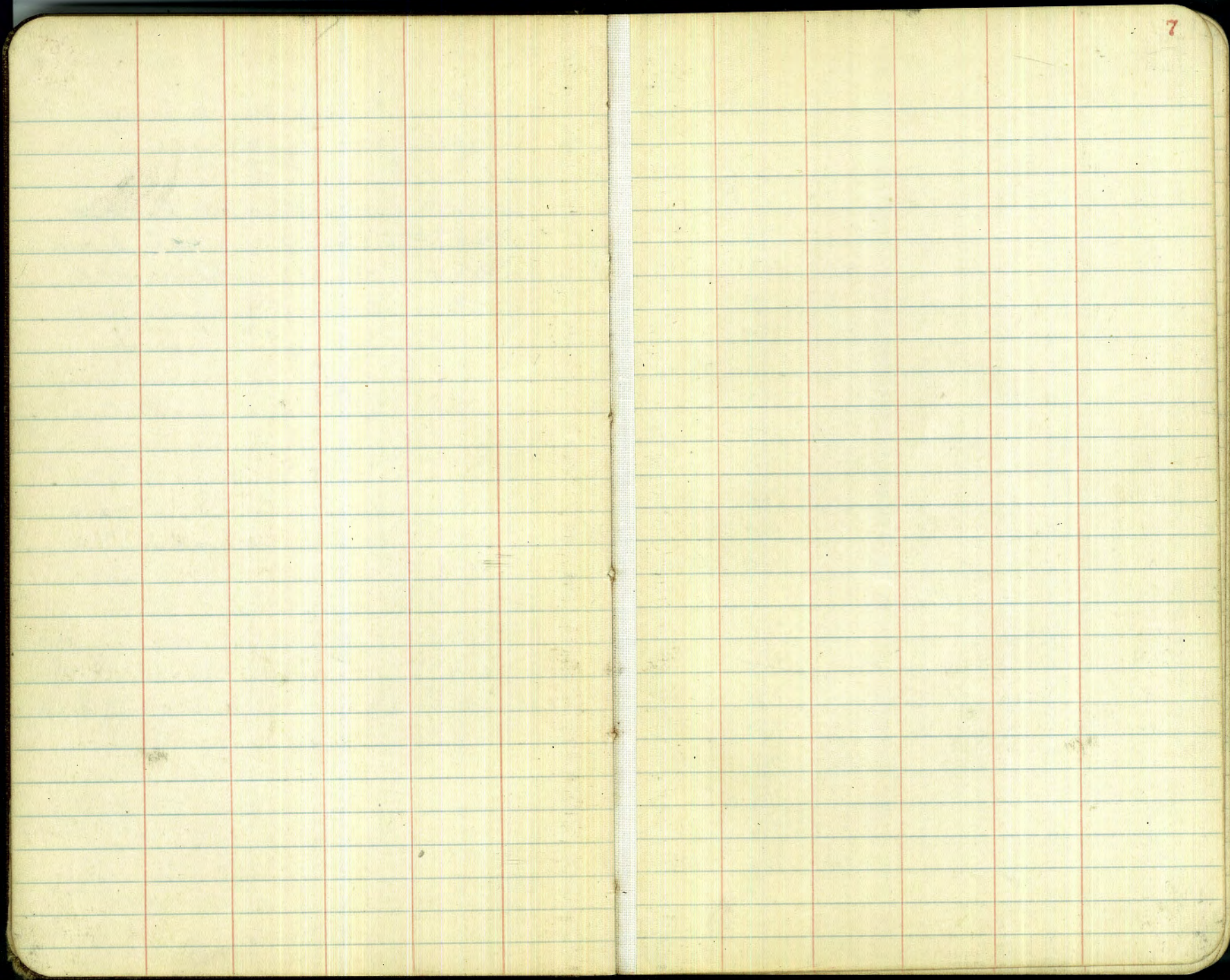
RINA	1.24	8.25	✓
F.L. Main Line	6.63	2.86	✓
ground	1.3	8.2	✓

T.P. 128 $\langle 7.54 \rangle$ 3.23 $\langle 6.24 \rangle$
 T.P. 1008 $\langle 12.90 \rangle$ 2.72 $\langle 11.82 \rangle$
 check to orig. B.M. 11.83 $\langle 8.07 \rangle$ 308

Harry, Please Note!

at M.H. on S 3' line of
 W. Pt. Lanta Blvd. at Famosa
 The F.L. of stub end from
 West is 0.15 above the
 Main Line F.L.

$\frac{2.95}{3}$
 $\frac{2.80}{4}$ Stub



81.31

0+50 E

S+0.5 = Wooden fence	7.9	73.4
+2.	8.4	72.9
⊕	8.6	72.7
+9. <small>{ Alley ground Top wooden wall</small>	9.0	72.3
+9.1	10.8	70.5
N	10.8	70.5
+3	11.1	70.2

0+50.5 = Wly End double garage on N. dirt floor 3.0 Bark

N - 3 floor	8.3	72.0
N	8.4	72.9
⊕	8.6	72.7
+8	8.4	72.9
S	7.8	72.5

0+70 = E = Ely. End. above garage

B+0.5 = wire fence	6.5	74.8
+4.	6.9	74.4
⊕	7.3	74.0
N	7.4	73.9
+3 = floor	8.1	73.2

0+80 S. of shed on N

N - 5.0	9.5	71.8
N = 0.5' <small>in yard</small>	9.0	72.3
N = Wooden Fence in Alley	7.1	74.2
⊕	6.6	74.7
+9.5 = Fence	6.0	75.3
S	6.0	75.3

81.31

9

1+0.0

S+0.5 = wire fence	4.1	72.2
+4	4.7	76.6
⊕	5.1	76.2
+6	5.3	76.0
N	6.5	74.8
+7	8.3	73.0

1+25

N - 7	7.5	72.8
N	6.0	75.6
+4	3.2	78.1
⊕	2.7	78.6
+6	2.5	78.8
+9.5 = fence	2.1	79.2
S	1.7	79.6

T.P. 11.00 - 90.56 - 1.75 - 79.56

1+42 garage on W. conc. floor 13.5 Bark

W - 13.5 = floor	8.9	81.7
------------------	-----	------

1+50

S	9.3	71.3
+3.	10.0	80.6
⊕	10.2	80.4
+6.	10.5	80.1
N	13.0	77.6
+3.2 = W side N. End. of garage		
+8 = ctr N. Entrance Garage floor	14.7	75.9

90.56

1+70

-10	12.8	77.8
-3	12.0	78.6
N	10.0	80.6
+4	9.5	81.1
⊕	9.6	81.6
S.	8.0	82.6

1+91 garage on S^{Line} ent. floor

S = floor 6.6 84.0

2+00

S	6.6	84.0
⊕	6.8	83.8
+8.5 wood fence E. End	7.0	83.6
N	8.1	82.1
+10	10.3	80.3

2+03

-10	9.4	81.2
N	7.4	83.2
+3	6.7	83.9
⊕	6.4	84.2
+6	6.0	84.6
S	5.2	85.4

2+25

S.	4.8	85.8
⊕	4.9	85.7
+8	5.0	85.6
N.	4.6	86.0

90.56

2+50

N.	4.5	86.1
⊕	4.0	86.6
S.	3.7	86.9

2+82 garage on S. dirt floor 0.9' Back

S- 0.9 = floor 4.1 86.5

3+00

S	3.9	86.7
⊕	4.4	86.2
N	4.4	86.2

3+21 garage on N dirt floor 4.0' Back

N-4.0 = floor 5.3 85.3

3+27 = W. End ^{New} garage floor on S. 6.6' Back

N-6.6 = floor 2.75 87.86

S. Line 3.9 86.7

3+45 garage on N ent. floor 2.3' Back

N-2.3 = floor 5.54 85.02

3+47 = E. End above New garage on S.

S. Line 4.7 86.4

+6.6 = floor 2.70 87.86

3+50

N.	5.8	84.8
⊕	5.5	85.1
+5	5.4	85.2
S.	4.4	86.2

10

90.56

3+82 garage on N. dirt floor 3.3' Back
 N-3.3' = floor 6.8 83.8
 3+90 double garage on S. cmt. floor 7.0' Back
 S-7.0' = floor 4.90 85.66
 S 6.1 84.8
 E 6.3 84.3
 +9.5 = wooden fence 6.8 83.8
 N = 6.8 83.8

3+91

N-5.1' 8.3 82.3
 N 8.0 82.6
 +0.5 6.8 83.8
 E 6.3 84.3
 S 6.1 84.5

T.P. 3.37 — 87.40 — 6.53 — 84.03

4+12 garage on S. cmt. floor 1.1' Back
 S-1.2' = floor 2.94 84.46

Not used 4+17 = W. side garage on N. dirt floor on hill

N-5.1' N. of garage 5.4 82.0
 N-0.5 " " " 5.3 82.1
 N. 1' = floor 4.3 83.1
 E 3.6 83.8
 S 3.3 84.1

4+34 W. end board. fence on N. 0.4 in Alley

87.40

11

4+50

S 3.3 84.1
 +1. 4.0 83.7
 E 4.4 83.0
 +9.5 Board Fence 4.8 82.6
 N 4.9 82.5
 4+53. E. End Board Fence on N. 1.0 in Alley
 W. Garage " " " " "

4+63 ctr double garage on N. dirt floor 1.0' in Alley

E+9. = floor. 5.1 82.3

4+91 to 4+97 wooden sloop. on N 0.7 in Alley

4+95 garage on S. dirt floor 1.5' Back

S-1.5 4.2 83.2

5+00

-5 5.6 81.8
 N. 5.1 82.3
 E 5.0 82.4
 S. 4.2 83.2

5+25

S. 3.9 83.5
 +3 4.5 82.9
 E 4.8 82.6
 N 5.5 81.9
 +5 6.2 81.2

5+50

-5 6.2 81.2
 N 6.0 81.4
 E 5.5 81.9
 +7 5.1 82.0
 S 4.2 83.2

87.40

5+53 N. End garage on N. 0.5 in Allen

5+60 above garage on N line

5+73 E. End, E. Entrance Garage on N 1.0 Back.

S	4.1	83.3
+2	5.1	82.3
⊕	5.6	81.8
N	5.6	81.8
+2	7.3	80.1
+5 door of garage.	7.4	80.0

6+00

N-5	6.2	81.2
N-1	6.0	81.4
N	5.0	82.4
⊕	4.8	82.6
+5	4.4	83.0
+8	3.4	84.0
S.	3.4	84.0

6+01¹ = W. line Evans. St.

S cmt. cl. W. End.	3.40	84.0
S. ground	3.4	84.0
+7	4.4	83.0
⊕	4.8	82.6
N	5.0	82.4
N. cmt. cl. W. End.	4.90	82.44

87.40

12

6+11¹ = W. cl. Evans. St. Unpaved.

N.	cmt. cl.	5.26	82.14
N	ground	5.8	81.6
⊕	"	5.1	82.3
S.	"	4.1	83.3
S.	cmt. cl.	3.62	83.78

T.P. 11.09' 97.79 0.70 86.70²

B.M.B.P. 2.78 95.01 = N. E. Evans

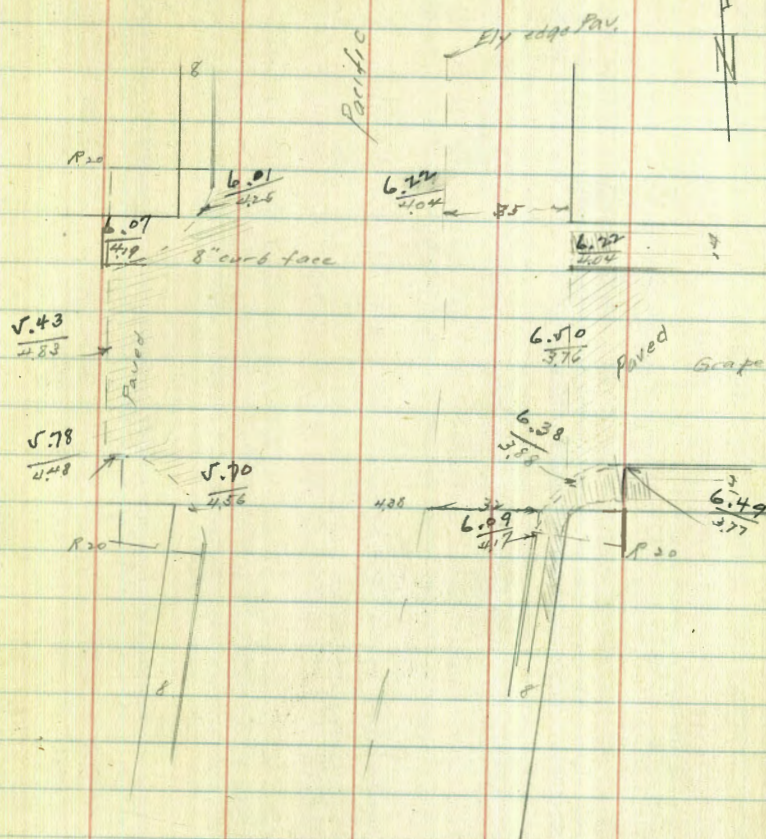
+ Ocean View

= 94.99

Curb Grades
Pacific + Grape

10-31-37

S.E.P. 3.73 10.26 6.53 Grape Pacific



Pacific & Hawthorn

JEBP

4.93

11.46

6.53

Grape

Pacific

8.18
328

9.00
246

9.89
1.57 at 9.16
2.00 = gutter

9.55
1.71 Hawthorn
paved

8.77
2.69 = gutter
Driveway

7.93
353

8.59
287



Pacific + Ivy

		11.46			
T.P.	427	1416	157	989	
			080	1336	1338

$$\frac{9.24}{4.92}$$

Paved

$$\frac{9.74}{5.04}$$

8" cb. base

Ivy

NOT graded

$$\frac{8.98}{5.18}$$

Pacific

$$\frac{9.52}{4.64}$$

7 sec Arroyo Pl, 30 wide
Rosacrans to " Ter.

1 floor
2-10-28

Indexed
CSK.

16

N.W.C.P.	12.79	40.63	27.84
T.P.	11.89	52.38	40.49
T.P. CT. BM.	12.11	61.39	49.28

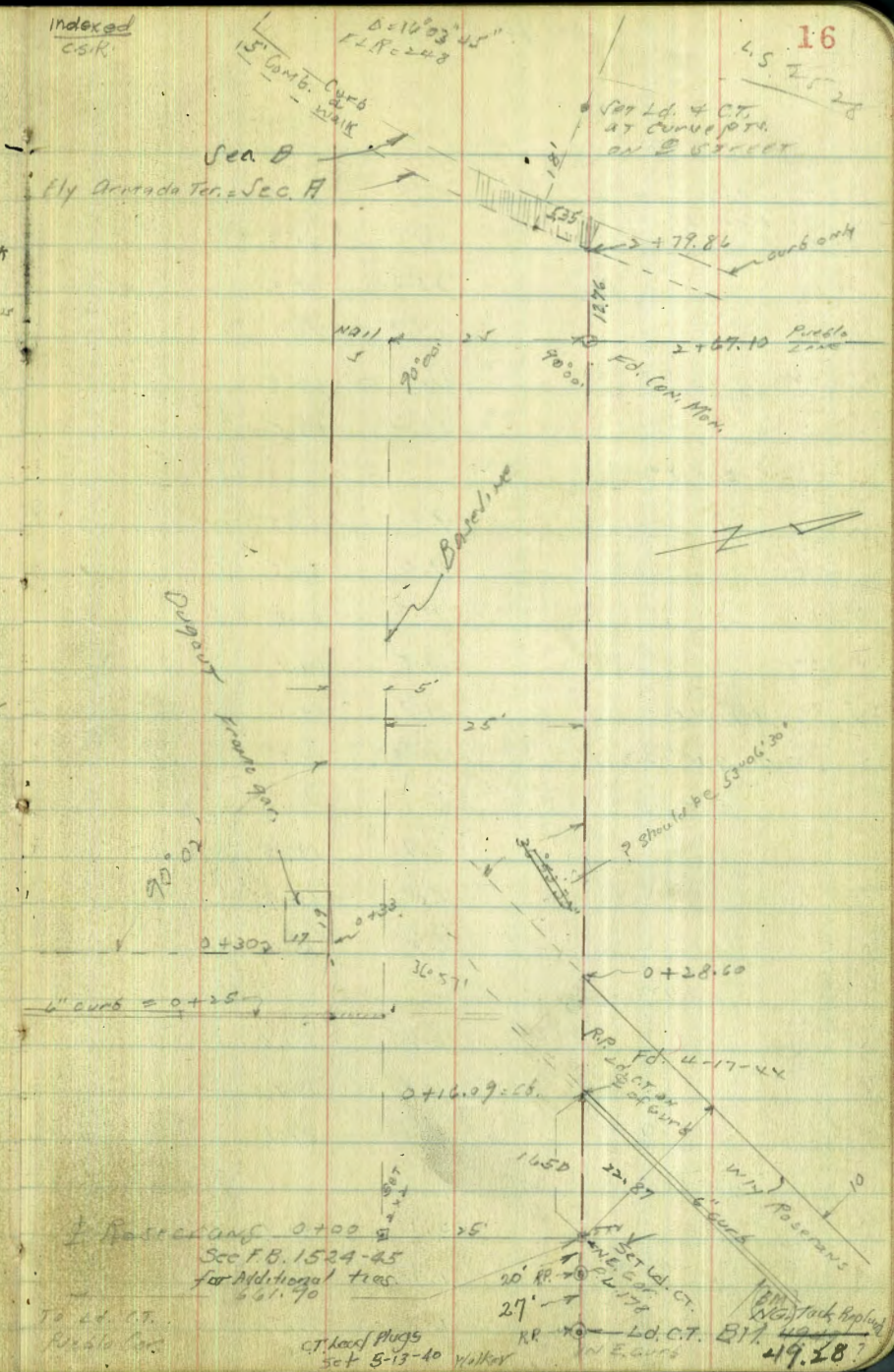
Rosacrans
Basement
Shown in BM Book
28.05 turning
E of Rosacrans
& Pueblo line

0+00 = E.L. Pueblo Lot #178 = E Rosacrans

0+16.09 = W curb Rosacrans to N.E.

N top curb	10.15	51.24
10' N " "	10.40	50.99
0+25 W curb to So		
S top curb	9.43	51.96
20' S " "	8.90	52.49
0+33 W.L. to So.		
9' S gar. door floor	8.5	52.9
+6' S gas meter only temporary	6.5	55.9
C	5.4	56.2
N	4.05	61.89
+8	0.2	61.20
+10	4.0	57.4
C	5.5	55.9
+28	2.6	58.8
S	8.8	52.6
29' Garage in St. 0.40 dirt floor	0.2	52.2
T.P.	12.84	74.15
	0.06	61.33

sec. diag.
0+30 to 0+28.60 on N



E Rosacrans 0+00
Sec F.B. 1524-45
for additional ties
6.1.90

To Ld. C.T.
Pueblo line

CT. load plugs
set 5-13-40 Walker

18' 1/2' track applied
4-19-28'

	0+38		
S	Top gar. roof	11.9	62.3
S	= floor el. of Garage	12.1	62.1
	+10	15.2	58.9
	+20	14.5	59.7
	+25	11.4	62.8
N		10.4	63.8

0+52

N		9.0	65.2
	+10	9.6	64.6
	+18	11.4	62.8
	+25	9.5	64.7
S	ground	9.7	64.5
S	TOP gar. roof	11.4	62.8

0+60

J		8.7	65.5
C		8.8	65.4
N		8.2	66.0

0+75

N		6.6	67.6
C		6.3	67.9
S		6.1	68.1

1+00

S		2.1	72.1
C		1.2	73.0
+9		1.9	72.3

N			2.2	72.0
T.P.	12.04	86.71	0.08	74.07
	1+30			
N			9.4	77.3
C			8.7	77.8
S			9.5	77.2
	1+60			
S			1.5	85.2
C			1.8	85.4
N			0.6	86.1
T.P.	12.84	99.17	0.38	86.33
	1+80			
N			7.7	91.5
C			8.2	90.8
S			9.0	90.2
	2+00			
S			4.9	94.3
C			4.5	94.7
N			2.7	96.5
T.P.	13.04	111.94	0.27	98.90

X See Alley BJK 57 Park Villas

3/17/34
Miller
Walke
Bliss-

N.E. Myrtle
+ Felton

BM. BP. 7.40 322.48 315.08

10' s. of N. Line = X ch Line Myrtle

E. Top. ch 4.75 317.73
E. Butter pav. 5.27 317.21
4 " " 5.15 317.33
W " " 4.84 312.64
W. Top. ch. 7.34 318.14

0+00 = N. Line Myrtle

W. Top. ch N. End. 4.04 318.40
W Pav " " 4.50 317.98
4 " " " 5.07 317.41
E " " " 5.09 317.39
E Top ch " " Return 4.68 317.80
E " " S. " 4.55 317.93

0+07.81

2.5' E. of 4 = [ctr 36" x 24" cleanout
grating for 12" culvert, 4.72 317.76 Top
" " " " 12.00 310.48 FL.

0+25

E. -0.3 Top N.S. ch. 4.46 318.02
E 4.8 317.7
4 4.6 317.9
W. 4.1 312.4

0+50

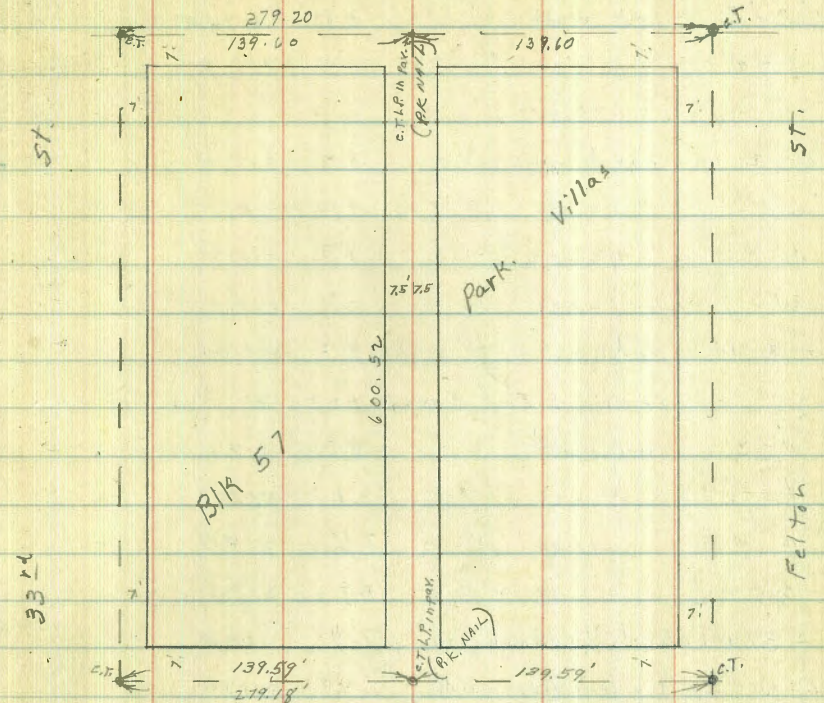
W-5 in yard. 4.6 317.9
W 4.0 317.5
4 4.3 318.2
E 4.3 318.2

Indexed
C.S.K.

Dwight.

326.75 S.E. Felton + Park

19



Myrtle

ST.

T 322.48

0+50

E + 0.5' N. End. cnt. ch. 4.17 318.31
0+54 = garage ^{one} conc floor 2.9' Back
E - 2.9' = floor 4.04 318.44

T.P. 7.78 326.28 3.98 318.50

326.28

0+65 ϕ walk on E.

1' E of E. = cmt. walk. 8.48 317.40

6' E of E 8.4 317.9

0+75

E-3 in yard. 8.3 318.0

C 8.0 318.3

 ϕ 8.1 318.2

W 7.9 318.4

+3 in yard. 8.3 318.0

1+00 = S. End Garage on E. cmt floor 7.5 Buck

W-3 in yard 8.3 318.0

N 7.6 318.7

 ϕ 7.6 318.7

E 7.7 318.6

+30 in yard. to South. 7.9 318.4

E+0.6 = S.W. cor Conc Apron 7.48 318.80

E+7.5 garage floor 7.35 318.93

1+10.5 = N. End. above garage

E+0.6 N.W. cor cmt. apron 7.50 318.78

1+50

E-2 in yard. to South 7.0 319.3

E-2 " " " North 6.6 319.7

E, 6.5 319.8

 ϕ 6.4 319.9

W 6.3 320.0

+1, 7.0 319.3

+15, 7.4 318.9

326.28

2+00

W-15 in yard. to South 6.4 319.9

W-15 " " " North. 6.1 320.2

W-1 " " " " 6.1 320.2

W-1 " " " South 6.4 319.9

W 5.6 320.7

 ϕ 5.5 320.8

E 5.5 320.8

+1 5.6 320.7

2+50

E-30 in yard. to North. 5.4 320.9

E-30 " " " to South 5.0 321.3

E-3 " " " North 5.3 321.0

E-3 " " " South 5.0 321.3

E 4.7 321.6

 ϕ 5.0 321.3

W 4.9 321.4

+5 yards to N & S. 5.4 320.9

2+75

-5 4.7 321.6

W 4.4 321.9

 ϕ 4.5 321.8

E 4.5 321.8

+1 4.9 321.4

+5 4.7 321.6

20

3+00

-5.	4.1	322.2
-1.	4.0	322.3
E	3.3	323.0
±	3.3	323.0
W	3.2	323.1
W+5 in yard to South	4.2	322.1
+5 " " to North	3.1	323.2

3+20

W-5	3.1	323.2
W	3.1	323.2
+1	2.7	323.6
±	2.7	323.6
+6.5	2.8	323.5
E	3.3	323.0
+5	3.3	323.0

3+62 garage on W. ent floor 5' Back (N+ in use)

-5	2.2	324.1
E	2.4	323.9
±	2.4	323.9
W	2.5	323.8
+5 floor	2.8	323.5

4+00

W-5	1.8	324.5
W	1.8	324.5
±	1.8	324.5
E	1.9	324.4
-5	1.6	324.9

T.P. 7.72 332.96 1.08 325.20 ✓

± Double
4+38 garage on E. dirt floor 3.5 Back

W-5	7.0	325.9
W	7.0	325.9
±	7.0	325.9
E	6.6	326.3
+3.5 = floor	6.2	326.7
4+61 garage on E. floor		
E-21.3 floor	5.5	322.4

Not in use
21.3 Back

4+75

E	5.7	322.2
±	6.2	326.7
W	6.0	326.9
+5	6.0	326.9

5+00

-5	5.3	322.6
W	5.3	322.6
±	5.4	322.5
E	5.1	322.8

0+38 ± Double garage on E dirt floor 10.5 Back
E-10.5 4.24 328.66

5+50

E	4.3	328.6
±	4.2	328.7
W	4.1	328.8

332.92

5+55 garage on E. cmt. floor. 5.0 Back

E - 5.0 floor 3.97 328.95

E - 0.6 W. edge cmt. apron 4.25 328.67

5+85

W 3.9 328.0

E 3.8 329.1

E 3.8 329.1

T.P. 5.43 333.54 4.81 328.11

6+00^S = S. Line Dwight.

E. Top cl. S. End. 5.10 322.44

E. Pav. " " 5.33 328.21

E " " " 5.56 322.96

W " " " 5.51 328.03

W Top cl. " " 5.37 328.17

10' N of S. Line = S. cl. Line

W - 25 cl. 5.81 322.73

" " G 6.27 322.27

W - 4.2 G 5.93 322.61

W - 4.0 G 6.05 322.49

W. G 6.07 322.47

W cl. 5.62 322.92

E G 6.07 322.47

E G 6.00 322.54

E Top cl. 5.47 328.07

E+25 Top cl. 5.60 322.94

333.54

S. cl. Line (Con)

22

E+25 G. 6.04 322.50

B.M. B.P. 6.59 326.95 ✓ + Dwight. ^{S.E. Felton}

18th St. X Sec

Σ 29.79

00-50 = 50' N. of N. Line Commercial		
E. db	0.33	29.46
G	1.03	28.76
" ₁₄	1.27	28.52
±	1.62	28.17
" ₁₄	2.24	27.55
G	3.08	26.71
W. db	2.47	27.32

00 - 24'

W. db	4.22	25.57
G	4.69	25.10
" ₁₄	3.82	25.97
±	3.26	26.53
" ₁₄	2.89	26.98
G	2.61	27.18
E. db	1.93	27.86

0+00 = N. Line Commercial

E. db	4.18	25.61
G	4.82	24.97
" ₁₄	4.65	25.14
±	4.88	24.91
" ₁₄	5.35	24.44
G	6.10	23.69
W. db	5.65	24.14

29.79

24

0+14 = N. db

W-100 dirt gutter	9.4	20.4
W-50 " "	7.6	22.2
W. pav W. End	6.42	23.37
W. cut d. " "	5.72	23.07
db	6.18	23.61
" ₁₄	5.73	24.06
±	5.36	24.43
" ₁₄	5.19	24.60
db	5.20	24.59
E. G	4.98	24.81
E. db	4.20	25.59
76. pav. E. End	4.80	24.99
+50 dirt @	3.9	25.9
+100 " "	2.2	26.6
+100 Top. db	2.6	27.2

0+29⁴ E. Rail

E-100	3.10	26.69
E-50	4.03	25.66
E-11 = E. pav	4.72	25.07
E	4.92	24.87
db	5.20	24.59
" ₁₄	5.43	24.36
±	5.68	24.11
" ₁₄	5.90	23.89
db	6.15	23.64
W = W. pav	6.42	23.37

29.79

0+29.4 con

W+50	7.51	22.28
W+100	8.70	21.09
0+34 ^E = S. Rail.		
W-100	8.74	21.05
W-50	7.52	22.27
W	6.44	23.25
d	6.16	23.63
1/4	5.93	23.86
¢	5.67	24.12
1/2	5.42	24.37
d	5.17	24.62
E	4.93	24.86
+ 12 ^z = E. Pay	4.71	25.08
+ 50 ⁱ	3.99	25.80
+ 100 ⁱ	3.10	26.69

0+40 = ¢

E-100	3.3	26.5
E-50	4.3	25.5
E-14 = E. Pay	4.72	25.07
E	5.01	24.78
d	5.27	24.52
1/4	5.46	24.33
¢ Top M. H.	5.65	24.14
1/4	5.97	23.82
d	6.23	23.56
W	6.54	23.25

29.79

10.6

9.4

25

W+50	7.9	21.9
+100	9.3	20.5
0+53 = S. 44		
W-100	9.9	19.9
W-50	8.7	21.1
W. pay.	7.07	22.72
d	6.67	23.12
1/4	6.35	23.44
¢	6.03	23.76
1/2	5.75	24.04
d	5.53	24.26
E	5.30	24.49
+ 18 = E. Pay	4.96	24.83
+ 50	4.7	25.1
+ 100	4.0	25.8

0+66 = S. d. Line

E-100	4.4	25.4
E-50	5.0	24.8
E-22.5 E. Pay	5.74	24.01
E-22.5 E. Top d.	5.21	24.58
E	5.61	24.18
d	5.79	24.00
1/4	6.01	23.78
¢	6.33	23.46
1/2	6.81	22.98
d	7.44	22.35

W. Line pav	7.91	21.88
W. " Top. d	7.24	22.55
+ 50' dirt. G	9.4	20.4
+ 100' " "	16.6	19.2

0 + 80 = S. Line Commercial

W. d	7.26	22.53
G	7.88	21.91
1/4	7.13	22.66
⊕	6.62	23.17
1/4	6.25	23.54
d	6.02	23.77
E	5.93	23.86
+ 13 = G	6.18	23.61
+ 13 = Top. d. on Return	5.57	24.22

1 + 07

E. Line 18 th St. Produced.	6.40	23.39
d	6.55	23.24
1/4	6.77	23.02
⊕	7.04	22.75
1/4	7.50	22.29
G. pav. S. End.	8.22	21.57
d. " "	7.55	22.24
W. Line	7.7	22.1

1 + 18.5

W.	8.7	21.1
d	7.7	22.1

1/4 = S. End. Pav.	7.66	22.13
⊕	7.25	22.54
1/4	6.93	22.86
d.	6.79	23.00
E	6.83	22.96

1 + 29.9

E	6.95	22.84
d	7.02	22.77
1/4	7.11	22.68
⊕ S. End. Pav	7.34	22.45
1/4	7.5	22.3
+ 11.1	8.0	21.8
d	9.0	20.8
W	9.2	20.6

1 + 41.3

W	9.5	20.3
d.	9.4	20.4
+ 2	8.2	21.6
1/4	7.7	22.1
⊕	7.5	22.3
1/4 = S. End. Pav	7.31	22.48
d.	7.30	22.49
E.	7.32	22.45

29.79

1+47.5 = P.I.

E. Line = 18th St + curb. Return

E. Line Gutter 7.72 22.07

" " ch. Ret. 7.10 22.69

1+55

2.5' E of E. ch = End. ch. Ret. 7.17 22.62 Top. ch

2.5' E of E " = " " " 7.89 21.90 S. End. Pav.

E. ch. 7.5 22.3

" 4 7.7 22.1

4 7.6 22.8

" 4 7.9 21.8

ch 8.7 21.1

+2 9.8 20.0

W. 10.6 19.2

+5 10.7 19.1

1+61.5

W-5 10.8 19.0

W 10.7 19.1

+2 10.2 19.6

ch 8.7 21.1

" 4 7.9 21.9

4 7.7 22.1

" 4 7.8 22.0

ch 7.4 22.4

E Cor Kearney + 18th St. 8.3 21.5

29.79

1+77

27

E 10.5 19.3

+5 10.6 19.2

+8 9.1 20.7

ch 9.1 20.7

" 4 9.3 20.5

4 9.4 20.4

" 4 9.7 20.1

ch 10.5 19.3

W 12.0 17.8

+10 12.4 17.4

1+97

-20 13.6 16.2

W 13.2 16.6

ch 12.8 17.0

+7 12.4 17.4

+10 11.2 18.6

" 4 11.0 18.8

4 10.6 19.2

" 4 10.1 19.7

ch 10.6 19.2

+5 10.7 19.1

+7 11.3 18.5

E 11.4 18.4

29.79
2+09 = N. End Warehouse

28

E	12.4	17.4
+6	12.4	17.4
+9	10.9	18.9
ch	11.0	18.8
1 st Floor of Warehouse	11.2	18.8
6	11.1	18.7
1 st Floor of Warehouse	11.3	18.5
+5	11.6	18.2
+8	12.8	17.0
ch	13.2	16.6
W floor of Warehouse	13.4	16.4
+20	13.5	16.3

Xsec alley 30' wide
 BIK B Standing north

Moore
 4-2-38

Indexed
 C.S.K.

29

SW 8E 6.10 385.04 378.92

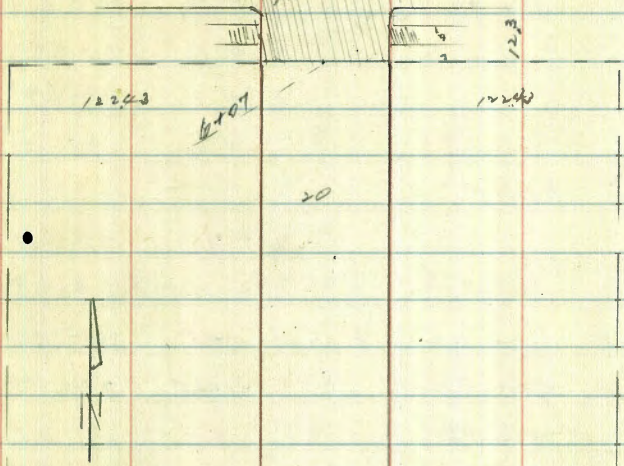
El CAYON
 34th

Meade

A.C. Pav.

0+25 = N. 66 El CAYON

E pav	4.68	378.34
C "	4.72	378.30
W "	4.80	378.22



0+00 N. El CAYON

W 66	5.42	379.60
N. Pav	5.50	379.52
C "	5.64	379.38
E "	5.39	379.73
E 66	5.15	379.87

57

0+15

E	4.7	380.3
C	5.0	380.0
W	5.3	379.7

if you can't
 don't cover
 the

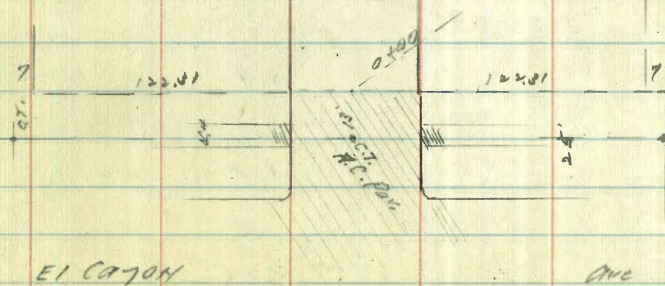
FULTON

34 76

0+43

W bot. Vent. Street Bldg	5.3	379.7
C	4.7	380.3
E	4.5	380.5

0.4 back



7

0+75

E	4.8	380.8
C	4.5	380.5
W	4.7	380.3

El CAYON

ONE

385.02

0+90

-3	Sin. gar. dirt	4.4	380.6
W		4.4	380.6
C		4.3	380.7
E		4.0	381.0

1+05

E		4.1	380.9
C		4.2	380.8

+08 Cem. apron 8' wide 4.45 380.57

W/ gar. Cem. " 4.45 380.57

1+18

W		4.4	380.4
C		4.3	380.7
E		4.3	380.7

+7 Sin. gar. Cem. 11' 4.24 380.78

1+50

E		4.1	380.9
C		4.0	381.0
W		4.5	380.5

2+00

W		3.9	381.1
C		3.4	381.6
E		3.4	381.6

T.P. 548. 387.29 4.21 381.81

387.29

30

1+58

E bot. drainage ditch 6.40 380.89 from yd

2+20

E 5.3 382.0

C 5.6 381.7

W 5.9 381.4

+6 E 900. 18' wide 5.60 381.66 cem. 11' level

2+50

-4 Sin. gar. cem. 5.35 381.94

W 5.6 381.7

C 5.5 381.8

E 5.3 382.0

2+60

E -15 Sin. gar. cem. 4.44 382.85

E 5.1 382.2

2+90

E 5.0 382.3

C 4.9 382.4

W 5.2 382.1

3+09

-4 S edge dble gar. cem. 4.29 383.00

W " " cem. apron 4.52 382.77

C 4.6 382.7

E 4.6 382.7

3+26

E	4.4	382.9
C	4.5	382.8
W	N edge cent. approx	4.42 382.87
W	" " gar	4.25 383.04
3+50		
W	4.2	383.1
C	4.3	383.0
E	4.1	383.2

3+78

-7	S edge cent. gar	3.65 383.64
E	cent. approx	3.23 383.46
C	4.0	383.3
W	4.2	383.1

3+94

W	3.8	383.5
C	3.9	383.4
E	N edge cent. approx	3.69 383.60
+7	gar " fl	3.65 383.64

4+00

E	3.7	383.6
C	3.6	383.7
W	3.5	383.8
W	+16 S.W. gar. cent fl.	3.70 383.59

T.P. 6.00 389.72 3.57 383.72

4+47

-16	E 16 gar. cent fl.	5.98 383.74	fl. Level
-14	" " cent. approx	6.18 383.54	
W		6.0 383.7	
C		6.1 383.6	
E		6.0 383.7	
+8	S.W. gar. dirt	6.1 383.6	

4+75

E	5.8	383.9
C	6.1	383.6
W	5.9	383.8

5+00

W	5.7	384.0
L	5.5	384.2
E	5.4	384.3

5+07

E - 2	2' cent. WK	4.77 384.95
-------	-------------	-------------

5+25

E	5.2	384.5
C	5.1	384.6
W	5.3	384.4

5+50

W	5.0	384.7
---	-----	-------

C	5.0	384.7	
---	-----	-------	--

K	4.8	384.9	
---	-----	-------	--

5+80

F	4.8	384.9	
---	-----	-------	--

C	4.8	384.9	
---	-----	-------	--

W	5.0	384.7	
---	-----	-------	--

5+97

W	5.4	384.3	
---	-----	-------	--

C	5.4	384.1	
---	-----	-------	--

E	5.2	384.5	
---	-----	-------	--

6+07 52 Meade Ave

E ab	6.21	383.51	
------	------	--------	--

E pav	6.42	383.30	
-------	------	--------	--

C "	6.72	383.00	
-----	------	--------	--

W "	6.85	382.87	
-----	------	--------	--

W cb	6.70	383.02	
------	------	--------	--

506 Meade

W pav.	7.47	382.25	
--------	------	--------	--

C "	7.41	382.31	
-----	------	--------	--

E "	7.20	382.52	
-----	------	--------	--

T.P.	5.73	388.41	7.04	382.68	
------	------	--------	------	--------	--

NW DP Meade + 347h.			4.15	384.26	384.12
---------------------	--	--	------	--------	--------

T.P.	3.34	387.58	4.15	384.26	0.14
------	------	--------	------	--------	------

check to starting 811.			8.65	378.93	378.92
------------------------	--	--	------	--------	--------

0.01

error
of something 9.7.

5-3-'38
Miller
Walker
Bliss.

X Sec. Alley BIK-3 Carmel Hts

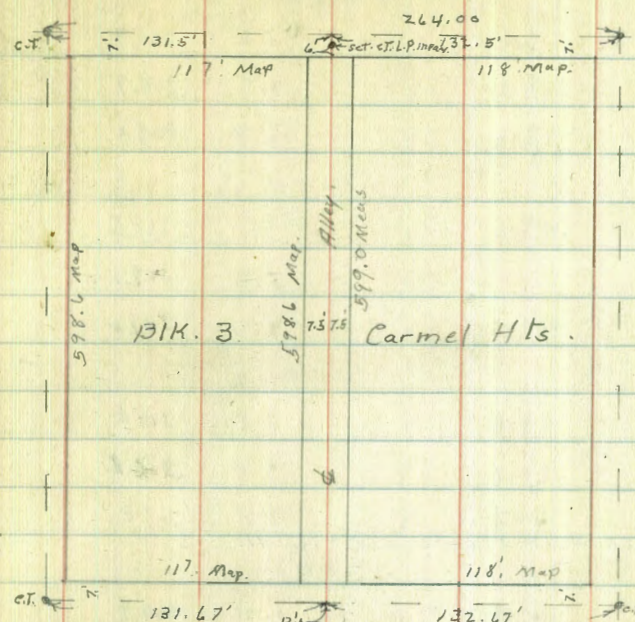
311.61
B.M. N.W. 33rd
& Redwood

Indexed
251K
Redwood

ST.

33

B.M. B.P.	3.48	316.49	313.01	N.W. Felton & Redwood
T.P.	4.18	312.23	8.44	304.05



10' S. of N. Line = N. Park Line of Palm St.

E - 25'	Gutter pav	5.68	306.55
E	" "	5.40	306.83
E	cmt. cl	4.85	307.38
W	Gutter pav	5.36	306.87
W	" "	5.42	306.81
W	cmt. cl	4.83	307.40
W + 25'	Gutter Pav.	5.62	306.61

0+00 = N. Line Palm St

W. cmt. cl.	N. End.	4.66	307.57
W. pav.	" "	4.84	307.35
W	" "	5.01	307.22
E	" "	4.75	307.48
E cmt. cl	" "	4.62	307.61

0+18

E		4.0	308.2
W		3.8	308.4
W		3.8	308.4

0+44 Garage on E. cmt. floor 130' Back

1' E. of E. line	cmt. apron W. End.	3.77	308.46
3' E. of E. Line	floor.	3.09	308.54

264.34

131.60 132.60

312.23

0+50

W	3.5	308.7
♀	3.5	308.7
E	3.9	308.3

1+00

E	3.4	308.8
♀	3.1	309.1
W	3.2	309.0

1+50

W	3.8	308.4
♀	3.8	308.4
E	3.8	308.4

Outs from 2+00 to 4+00 see Page 41.

X

2+00

E	4.7	307.8
♀	4.2	308.0
W	4.0	308.2

2+50

W	4.3	307.9
♀	4.3	307.9
E	4.4	307.8

2+81

E	5.0	307.2
♀ Top. Ex. M.H.	5.11	307.12
♀ ground	4.3	307.9
W	4.4	307.8
T.P.	7.82	316.19
	3.86	308.37

316.19

3+50

W	7.4	308.8
♀	7.4	308.8
E	7.4	308.8

3+55 Garage on E. ent. floor 3' Back

E-3' = floor 7.20 308.99

3+65

E-3 = W. End. ent. walk. 7.40 308.79

X

4+00

E	6.5	309.7
♀	6.7	309.5
W	6.8	309.4

4+65

W	4.8	311.4
♀	4.9	311.3
E	4.9	311.3

4+85 garage on W dirt floor 2' Back

W-2 = floor 5.1 311.1

5+00

W

♀

E

5+11 ♀ Double garage on W. ent. floor 10.6' Back

W-6.8 = E End. ent. apron 4.77 311.42

W-10.6 = floor 4.77 311.42

Alley Blk 3 Carmel Hts

34

316.19

Alley BIK 3 Carmel Hts 35

5+50

W		4.1	312.1
E		4.0	312.2
E		4.1	312.1

5+75

W		3.8	312.4
♀		4.0	312.2
E		4.0	312.2

T.P. orig. BM	3.62	316.63	3.18	313.01 ✓
---------------	------	--------	------	----------

5+99 = S. Line Redwood St

E. cnt. el.	S. End	4.92	311.71
E.	par " "	4.98	311.65
♀	" " "	5.28	311.35
W	" " "	5.08	311.55
w.	cnt. el. " "	4.91	311.72

6+09 = S. el. Redwood St

W-25	G. par	5.72	310.90
W	" "	5.60	311.03
W	cnt. el	5.08	311.55
♀	G. par	5.56	311.07
E	G "	5.55	311.08
E	cnt. el	4.99	311.64
E+25	G. par	5.49	311.14

XSEC of PINE ST 50' wide
Conde to Arista

Moore
5-13-38

NW&P	1.06	264.98	263.92	Pine ampudie
T.P.	3.91	252.24	248.33	

W.L. Conde St - 48 = w/ly Conde Pl. to South

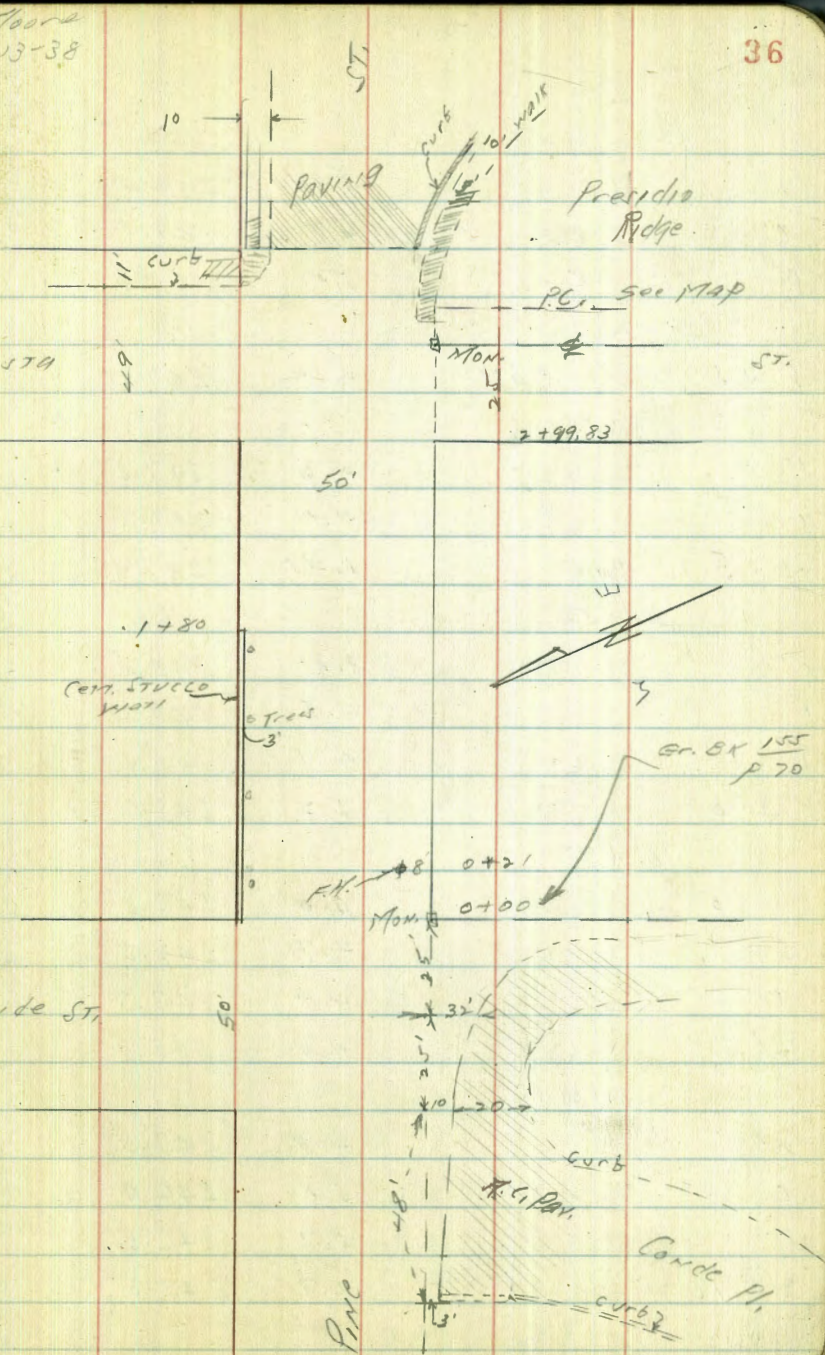
S - 10 cb		12.94	239.30
- 10 Pav		10.39	238.85
- 3 "		13.09	239.15
- 3 cb		12.58	239.66
SL		12.5	239.7
C		12.5	239.7
N		14.4	239.8

W.L. Conde St

N		6.4	245.8
+1		7.4	254.8
C		8.6	253.6
S		10.0	242.2
✓ +10 Pav		11.03	241.21
+30 Pav gut		12.10	240.14
+20 cb		11.54	240.70
♀			
- 32 Pav		10.24	242.00
- 15		8.3	243.9
S		7.4	244.8
C		6.1	246.1
N		4.3	247.9

Arista

Conde St



Ek. Condo Sr

N		3.8	248.4
E		4.7	247.5
S	Con Mon.	5.41	246.83
	0 + 21		
S	+ 8 F.H. Base	4.5	247.7
	0 + 25		
S		4.6	247.6
C		4.4	247.8
N	E 16' pav.	5.45	248.79
	0 + 50		
N		3.8	248.4
C		4.5	247.7
S		4.1	248.1
	+ 10	5.2	247.0
	0 + 75		
- 10		6.0	246.2
S		4.7	247.5
C		4.9	247.3
N		4.0	248.2
	1 + 00		
N		4.7	247.5
C		5.8	246.4
S		5.7	246.5
+ 10		6.7	245.5

1 + 25

- 10		11.3	240.9
S		7.0	245.2
C		7.0	245.2
N		6.2	245.8
	1 + 44		
N	E 16' pav. drive	7.05	245.19
C		7.8	244.4
S		8.0	254.2
	+ 10	12.4	239.8
	1 + 80		
- 10		14.0	238.2
S		10.1	242.1
C		8.6	243.6
N	East end Cem. Wall	8.4	243.8
	2 + 00		
N		8.5	243.7
C		8.8	243.4
	+ 22	8.6	243.6
S		10.5	241.7
	+ 10	12.7	239.5
	2 + 25		
- 10		11.8	240.4
S		9.3	242.9
C		8.8	243.4
N		8.4	243.8

	+50		
N		8.8	243.9
C		8.7	243.5
S		9.1	243.1
+10		11.1	241.1
	+75		
-10		9.8	242.4
S		8.6	243.6
C		8.4	243.8
N		8.0	244.2
	+99.83	w/y	Arizta 50' wide.
N		7.4	244.8
C		7.9	244.3
S		8.3	243.9
+10		8.7	243.5
	±		
-10		7.5	245.0
S	Mon.	7.39	244.85
C	S.M.H. Rim	6.9	245.3
N		6.6	245.6
	± + 4		
S	Sedge 5' walk	7.97	244.27
	± + 14		
N	cb	6.7	246.07
N		6.7	245.5
+10		6.7	245.5

	c	66	245.6
S	Sedge walk	7.21	245.03
	E.L. Arizta St		
S	Sedge walk	6.04	246.20
cb		6.22	246.01
gut	pay	6.72	245.52
C	"	6.04	246.20
N	gut " C+15	6.71	245.53
N	cb "	6.15	246.09
N	Cor corum	5.94	246.30
	E.L. +10		
N	cb	5.19	247.05
N	gut pay.	5.72	246.51
C	"	5.25	246.99
S	" " = C + 21	5.76	246.48
S	cb "	5.29	246.95

Levels on Headers
in Alley Bk & Point Hts 15' wide

Moore
5-14-38

268.78

Point	Dist	Level	Height	Point	Dist	Level	Height
NWSP	x71	270.71	268.00	Douglas Brant	0+64		
				N		2.15	266.63
	00-10			C		2.4	266.2
N	par.	4.90	265.81	S		2.19	266.59
C		4.97	265.74	+13	Gar. dirt	1.9	266.9
S		4.99	265.72		0+80		
	0+00 = W/4 Brant			V		2.53	266.25
S	ob	4.38	266.33	C		2.9	265.9
S	par	4.63	266.08	N		2.49	266.29
C	"	4.78	265.93		1+00		
N	"	4.55	266.16	N		2.91	265.87
N	ob	4.27	266.44	C		4.3	265.5
				S		2.86	265.92
T.P.	2.00	268.78	3.93		1+18		
				-4	Gar. dirt	2.1	265.7
	0+25			V		3.34	265.44
N	header	2.08	266.70	C		3.7	264.9
C	ground = Sub-grade	2.6	266.2	N		3.36	265.42
S	header	2.07	266.71	+5	"	2.90	265.88
	0+40				1+30		
S		1.95	266.83	N		3.58	265.20
C		2.4	266.4	C		3.9	264.9
N		1.94	266.86	S		3.54	265.24
				+0.4	Gar. dirt	3.4	265.6

1452			
S	4.04	264.74	
C	4.5	264.3	
N	4.13	264.65	
+1.5 Sedge dble gar.	4.34	264.44	20' wide cent FAST Entrance
1475 = w. end grading			
N	2.54	264.24	
C	5.0	263.8	
S	4.64	264.14	

Levels BIK-3 Carmel Hts.
Continued from Page 34

B.M.	4.29	317.30		313.01
T.P.	4.46	313.86	7.20	309.40
		4+00		
W-25.			4.6	309.3
W-5			4.7	309.2
W			4.5	309.4
			4.2	309.7
E				
E+2				
E+20	N. of cont. wall			
E+20	S. of " "			
		3+50		
E-20.			5.5	308.4
E			5.1	308.4
W			5.1	308.8
W-25.			5.0	308.8
		2+81		
W-25			5.5	308.4
W-1.			6.1	307.8
W			6.1	307.8
E-10.			6.2	307.7
E-25			6.3	307.6

313.46

2+50

41

E-25			6.4	307.5
E-2			6.2	307.7
E			6.1	307.4
W			6.0	307.9
+5			5.7	308.2
+25			5.7	308.2
		2+00		
W-15			5.7	308.2
W-5			5.7	308.2
W			5.7	308.2
E			6.1	307.4
E+20			6.6	307.3
		1+50		
E-25			6.2	307.7
E			5.5	308.4
W			5.5	308.4
W+10			5.5	308.4

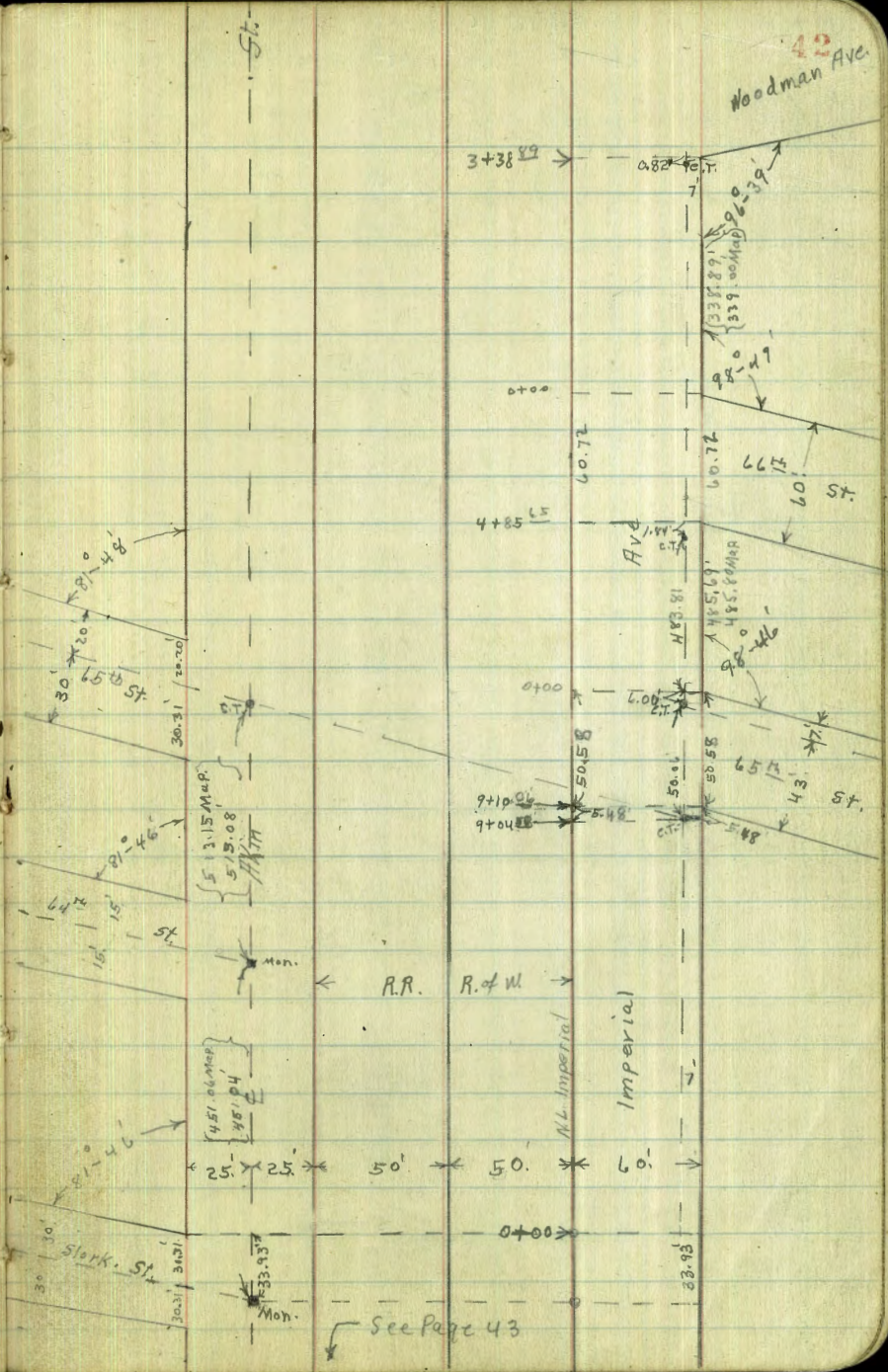
6-9-38.
Mellen.
Walker
Bliss

Imperial Ave X Sec.
Stork To 66th St.

B.M. Top. F. Hgd. T.

s.d. Imperial
bet 64th & Stork

see F.B. 1269 P. 2.



See Page 43

Indexed
C.S.R.

Imperial & Soc.

62nd to Stork ST 60' wide 1.8' strip pav
S. Line = Base Line all Readings are N.

B.M. Nails in pole 11.40 2 07.23 195.83. 62nd & Imperial

0+00 = W. Line 62nd

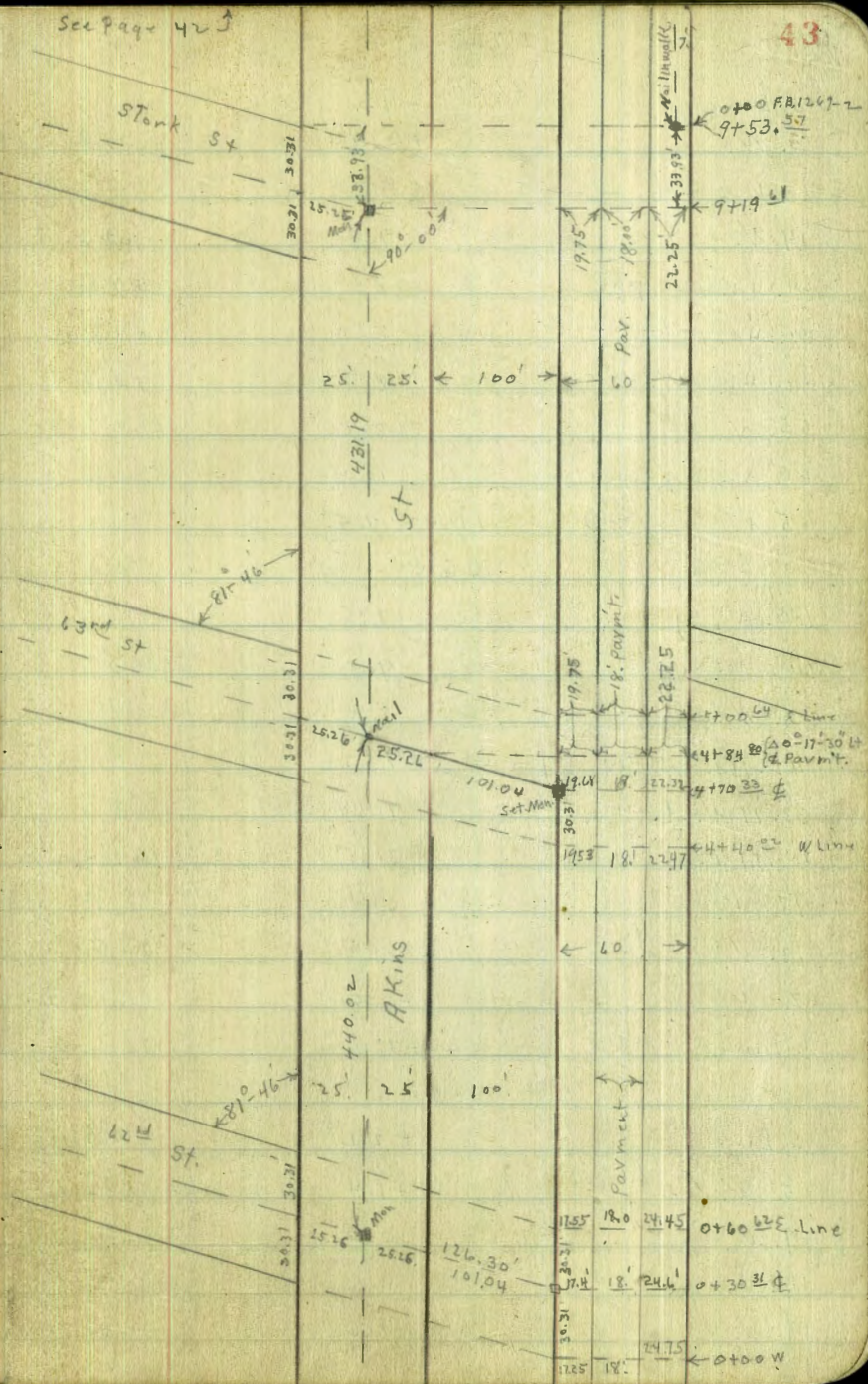
60' N. of S Line	12.7	194.5
53' N.	13.6	193.6
+42.75' N. = N. Pav	13.65	193.58
33.75' N. = ϕ "	12.85	194.38
24.75' N. = S. "	12.97	194.26
19' N.	13.0	194.2
13' N. = ϕ Line	2.1	200.1
S. Line	+3.7	210.9
0+30.31 = ϕ 62nd ST		
S. Line	+3.8	211.0
+13' N. = ϕ "	5.0	202.2
+19' N.	11.4	195.8
+24.5' N. = S. Pav	11.60	195.63
+33.5' N. ϕ "	11.57	195.66
+42.5' N. N. "	11.67	195.56
60' N. = N. Line	12.2	195.0

0+60.62 = E Line 62nd ST

60' N.	11.3	195.9
42.45' N. = N. Pav	10.32	196.91
33.45' N. = ϕ "	10.16	197.07
24.45' N. = S. "	10.24	196.99
19' N.	10.6	196.6
13' N. = ϕ "	3.3	203.4
S.	+5.3	212.5

See Page 42 J

43



207.23			207.23			44
S. Line	+4.3	211.5				
5' N.	+34.2	310.4	23.98 N. = S. pay	6.44		200.79
13' N. = dr	4.7	202.5	32.96 N. = dr "	6.42		200.81
19' N.	9.4	197.8	41.98 N. = N. "	6.49		200.74
24.24 N. = S. pay	8.62	198.61	54' ✓	7.0		200.2
33.24 N. dr "	8.50	198.73	60' N. = N. Line	8.4		198.8
42.24 N. N. "	8.7	198.5	63' ✓	5.7		201.5
55' N.	8.4	198.4			11.75	
60' N. = N. Line	10.4	196.8	63' N.	5.3		201.9
65' N.	7.5	199.7	60' ✓	7.3		199.9
	11.25		54' ✓	6.3		200.9
65' N.	7.5	199.7	41.85 N. = N. pay	5.70		201.53
60' N.	9.4	197.8	32.85 N. = dr "	5.61		201.62
83' N.	7.4	199.4	23.85 N. = S. "	5.69		201.54
42.11' N. N. pay	7.52	199.71	17' ✓	6.4		200.8
33.11' N. dr "	7.48	199.75	13' N. = dr	3.2		204.0
24.11' N. S. "	7.57	199.66	7' N.	0.0		207.2
17' N.	8.4	198.8	S. Line	11.5		208.7
13' N. = dr	6.0	201.2			21.00	
7' N.	+0.5	207.7	S. Line	+0.4		207.6
S. Line	+3.0	210.2	12' N.	0.4		206.8
	11.50		13' N.	2.1		205.1
S. Line	+2.2	209.4	16' N.	5.5		201.7
5' N.	+1.4	208.6	23.72' ✓ = S. pay	4.92		202.31
7' N.	0.0	207.2	32.72' ✓ = dr "	4.84		202.39
13' N. = dr	4.8	202.4	41.72' ✓ = N. "	4.95		202.28
17' N.	7.2	200.0	N.	5.8		201.4

207.23

60' N. = N. line	6.9	200.3
61' N.	4.7	202.5
2+25		
61' N.	4.0	203.2
60' N. = N.	6.2	201.0
53' N.	5.0	202.2
41.59' N. = N. Pav	4.33	202.90
32.59' N. = d. "	4.20	203.03
23.59' N. = S. "	4.31	202.92
16' N.	4.9	202.3
14' N.	1.0	206.2
13' N. = d	1.0	206.2
S. Line	0.0	207.2
2+50		
S. Line	7.02	207.4
13' N.	0.6	206.6
14' N.	0.6	206.6
16' N.	4.1	203.1
23.46' N. S. Pav	3.65	203.58
32.46' N. d. "	3.50	203.73
41.46' N. N. "	3.72	203.51
54' N.	4.1	203.1
60' N.	5.3	201.9
61' N.	4.1	203.1

207.23

45

2+75

61' N.	2.8	204.4
60' N.	4.7	202.5
56' N.	3.6	203.6
41.33' N. = N. Pav	3.00	204.23
32.33' N. d. "	2.85	204.38
23.33' N. S. "	3.00	204.23
16' N.	3.5	203.7
15' N.	1.4	205.8
13' N. = d	1.3	205.9
S.	0.6	206.6
3+00		
S.	7.02	207.4
13' N.	7.02	207.4
14' N.	7.02	207.4
16' N.	3.0	204.2
23.20' N.	2.30	204.93
32.30' N.	2.28	204.95
41.30' N.	2.40	204.83
53' N.	2.8	204.4
59' N.	4.0	203.2
60' N.	2.2	205.0

207.23

3+50

60' N.		1.1	206.1	
59' N.		2.7	204.5	
54' N.		1.8	205.4	
40.94' N.	N "	1.47	205.76	
31.94' N.	4 "	1.36	205.87	
22.94' N.	S. "	1.39	205.84	
16' N.		1.8	205.4	
T.P.	8.16	214.21	1.18	206.05
13' N. = d.		5.7	208.5	
S.		5.1	209.1	
		4+00		
S		5.0	209.2	
13' N. = d		5.9	208.3	
14' N		6.0	208.2	
16' N		8.3	205.9	
22.68' N = S. Pav		7.64	206.57	
31.68' N = 4 "		7.64	206.57	
40.68' N = N "		7.71	206.50	
52' N		7.9	206.3	
56' N		8.7	205.5	
57' N		6.6	207.6	
60' N = N. Line		6.6	207.6	
		4+40 ⁰² = W. Line	63 rd St.	
60' N = N. Line		6.1	208.1	
59' N		6.0	208.2	
57' N		8.0	205.9	

214.21

46

52' N.		6.8	207.4
40.47' N. N. Pav		6.97	207.24
31.47' N. 4 "		6.90	207.31
22.47' N. S. "		6.86	207.35
16' N		7.2	207.0
13' N = d		3.5	210.7
S. Line		3.0	211.2
		4+70 ³³ = 4.63 rd St.	
S. Line		2.6	211.6
13' N.		2.1	212.1
14' N.		2.1	212.1
16' N.		6.2	207.5
22.32' N = S. Pav		6.34	207.83
31.32' N = 4 "		6.40	207.81
40.32' N = N. Pav		6.43	207.78
52' N		6.6	207.6
60' N		7.2	207.0
		4+44 ⁸⁰ Δ 0°-17'-30" Lt. 4. Pav.	
		S. Edge of Pav = 22.25' N. of S. Line	
		5+0064 = E. Line	63 rd St.
60' N = N. Line		6.5	207.7
40.25' N. = N. Pav.		6.1	208.1
31.25' N = 4 Pav		5.96	208.25
22.25' N = S Pav		5.98	208.23
13' N = d		5.7	208.5
S.		5.4	208.8

21421

5+00⁶⁴ (con)

3' N.		2.3	211.9
S. Line		2.3	211.9
T.P.R.M. Fire hydr.	0.56	213.18	1.59
		212.62	✓ 5.2. 63 rd Imperial
		5+27 ⁹²	= W.L. 63 rd St. S.
S.		2.7	210.5
+13 = cl		3.6	209.6
+22.25 = S. Pav		4.45	208.73
+31.25 " "		4.43	208.75
+40.25 N "		4.53	208.65
+60 = N		4.5	208.1
	5+58 ²³		{ = W. End. cmt. cl + walk. = E. Line 63 rd St. to S. = W. End. Pav. bet. cl + 88' strip.
+40 = N		4.4	208.8
+40.25 = N. Pav.		4.25	208.93
+31.25 " "		4.09	209.09
+22.25 S. "		4.20	208.98
+13.5 gutter pav W. End.		3.78	209.40
+13.5 { W. edge walk } { cmt. cl. }		2.48	210.70
+3.2 S. edge cmt. walk " "		1.92	211.26
S		1.6	211.6
	6+84		
S.		2.2	211.0
+3. S. side walk		2.47	211.01
+13.4 cmt cl. E. End.		2.64	210.54
	G pav.	3.53	209.65
+22.25		3.98	209.20
+31.25		3.98	209.20

213-18

47

+40.25 = N. Pav.		4.10	209.08
+50		4.2	209.0
+57		4.7	208.5
+60 = N		4.4	208.8
	6+08 = E. End full width walk on S.		
S		2.2	211.0
+3 = E. End. S. edge cmt. walk		2.18	211.0
+10 = S. side pav to E.		2.68	210.50
+13.5 = " "		2.83	210.35
+22.25		3.98	209.20
	6+29 = W. Edge gas. station pumps.		
+40 = N		4.3	208.9
+57		4.7	208.5
+50		4.2	209.0
+40.25 = N. Pav.		4.23	208.95
+31.25		4.15	209.03
+22.25		4.12	209.06
+13.4 pav		3.49	209.69
+13.4 Top (W. End) Cone, Pump Island.		2.63	210.55
+10 = S. Pav		2.88	210.30
+0.8 = ground		2.6	210.6
+0.8 = E. End. N. side		1.95	211.23
S.		2.6	210.6

2/3.18

6 + 45 E. End. Gas station

S	ground	2.4	210.4
+0.8 = E. End N. side	{conc. Gas Pump Island.	2.01	211.17
+0.8	ground	2.8	210.4
+10 = S. Pav		3.1	210.1
+13 ³ = E. End. N. side	{conc. Gas Pump Island.	2.50	210.68
+13.2	Pav	3.61	209.57
+22.25		4.34	208.84
+31.25	18' s. Trip pav	4.35	208.83
+40.25	N. Pav	4.37	208.81
+50		4.5	208.7
+55		4.9	208.3
+60 = N		4.2	209.0
	7+00		
+60 = N		4.8	208.4
+55 =		5.2	208.0
+50		5.0	208.2
+40.25 = N. Pav		4.85	208.33
+31.25		4.76	208.42
+22.25		4.76	208.42
+13. = S. ch. Line		4.64	209.04
+10 = s. edge pav.		3.92	209.26
S		3.5	209.7
	7+50		
S		4.2	209.0
+10 = S. Pav		4.70	208.48
+13 = ch. line		4.82	208.36
+22.25		5.29	207.89

2/3.18

48

+31.25		5.30	207.88
+40.25 = N. edge Pav.		5.37	207.81
+55		5.4	207.8
+60 = N		5.3	207.9
	7+61 = 310 jog. in s. Edge Pav.		
S.		4.4	208.8
+10 = s edge pav to N.		4.77	208.41
+13 = s " " to E.		4.98	208.20
	8+11		
+60 = N.		5.3	207.9
+55		5.8	207.4
+40.25 = N. edge		5.57	207.61
+31.25		5.48	207.70
+22.25		5.48	207.70
+13 = Gutter Pav		5.34	207.84
+13 = W. End. conc. ch.		4.71	208.47
+9.5 = N. side conc. walk to E.		4.88	208.30
+55 = s. " " " " " " " "		4.87	208.31
S. line		4.6	208.6
	8+42		
S. Line		4.6	208.6
+5.5 = s. edge conc. walk		4.71	208.47
+9.5 = N. " " " " " " " "		4.76	208.42
+13 = E. End. conc. ch.		4.36	208.72
+13 = G. Pav		5.02	208.16
+22.25		5.10	208.08

+31.25	5.02	208.16
+40.25 = N. edge pav	5.12	208.26
+60 = N	5.2	208.0
8+70		
+60 = N	5.2	208.0
+40.25 = N Pav	4.73	208.45
+31.25 "	4.61	208.57
+22.25 "	4.72	208.46
+13. G. pav	4.67	208.51
+13' = W. End. conc. cl.	4.23	208.95
+9.5 = N edge walks	4.55	208.63
+5.5 = S. " "	4.43	208.75
+2.7 = Building Line to E.	4.2	209.0
8+95. = Public Garage on S.		
S+2.7 = Front of Garage	3.67	209.01
+5.5 = S edge walk.	3.93	209.25
+9.5 = N " "	4.09	209.09
+13 = ch line = gutter pav	4.21	208.97
+22.25	4.38	208.80
+31.25	4.33	208.85
+40.25 = N. edge pav	4.43	208.75
+50	4.5	208.7
+60 = N	5.0	208.2
+65	4.7	208.5

9+12

+60 = N. Line	4.8	208.4
+50	4.2	209.0
+40.25 = N edge pav	4.15	209.03
+31.25 "	4.06	209.12
+22.25 "	4.18	209.00
+13 = G. pav	4.14	209.00
+13 = E. End. conc. cl.	3.81	209.37
+9.5 = N edge walks	3.74	209.44
+5.5 = S " "	3.53	209.65
S+60 = Building Line	3.2	210.0
9+63.7 =		
S+2 = Building line	2.5	210.7
S+5.5 = S. edge walk	2.43	210.75
+9.5 = N " "	2.53	210.65
+13 = W. End. conc. cl.	2.60	210.58
+13 = G. pav	3.27	209.91
+22.25	3.32	209.86
+21.25	3.20	209.98
+40.25 = N. Pav.	3.33	209.85
+50	3.7	209.5
+60	4.2	209.0
+65	4.1	209.1

see Page 50 for sec. 9+53.57

over

0+100 F.B. 1269 - P. 2.
 = 9+53⁵⁷ = Pt. Ls from N.E. cor. Stork + Atkins.

This sec. out of place should be on former page

5+2 = Bldg line	2.4	210.8		
+5.5 = s. edge walk	2.87	210.31		
+9.5 N " "	2.95	210.23		
+13 = cb line north	2.9	210.3		
+13 G pav	3.53	209.65		
+22.25 "	3.53	209.65 =	209.76	F.B. 1269 - P. 2
+31.25 "	3.47	209.71 =	209.76	" " " "
+40.25 = N edge pav	3.62	209.56 =	209.76	" " " "
+50	3.7	209.5		
+60 = N	4.4	208.8		
+65	4.3	208.9		

check sec. 0+64 F.B. 1269 - P. 2

S. ~~213.18~~

S. ent. d. 1.34 211.84 = 211.99 F.B. 1269 - P. 2

7-20-38
Miller
Walker
Bliss

X Sec. Alley B1K.43. H. P. Whitney's

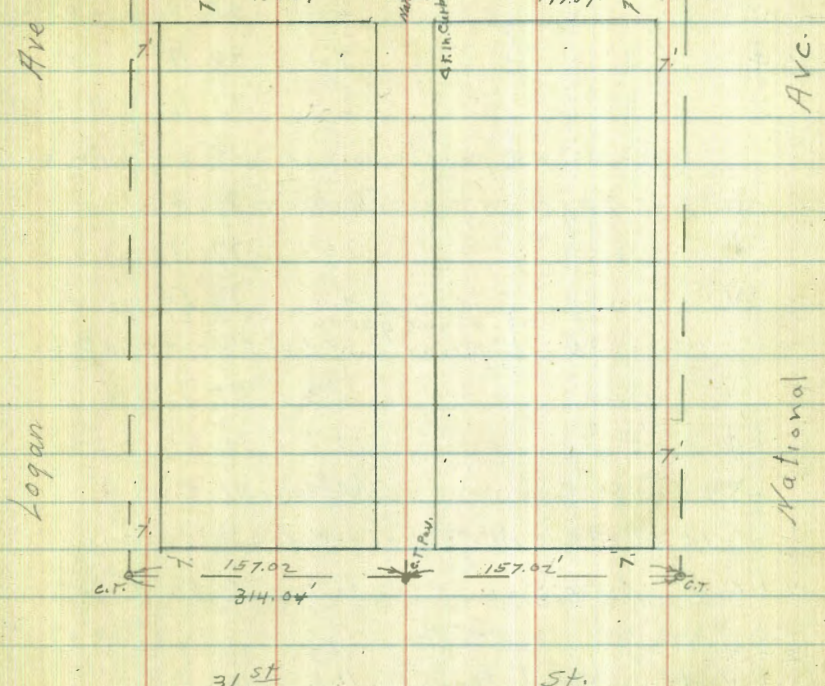
indexed
C.S.K.

32nd

St.

51

BM. B.P.	7.86	81.83	73.97	N. W. cor 31 st Logan.
10' W. of E. Line = E. ch. Line 31 st St.				
N-15	gutter	pav.	6.41	75.42
N	"	"	6.27	75.56
N	emt. ch.		5.68	76.13
±	"	"	6.34	75.49
S.	gutter	"	6.39	75.44
S.	emt. ch.		5.86	75.97
+ 15	gutter	"	6.69	75.14
0+00 = E. Line 32 nd St.				
S	emt. ch.	E. End.	5.63	76.20
S.	pav.	" "	5.73	76.10
E	"	" "	6.04	75.79
N.	"	" "	5.66	76.17
N.	emt. ch.	" "	5.56	76.27
N. Top	W. End. Cone. Wall.		4.31	77.52



0+02

N.			5.1	76.7
±			5.7	76.1
S			5.0	76.8
0+15				
S			5.0	76.8
±			5.2	76.6
N			5.3	76.5

81.83
0+45

N-0.2	Top. E. End. Conc. Wall	4.92	76.91
N.		6.0	75.8
±		7.1	74.7
S.		6.2	75.6
or 81. W. End double garage on s. dirt floor on line			
S.	floor	10.0	71.8
±		9.8	72.0
N.		9.3	72.5
1+00 = { E. End. above garage on s. line W. End. garage on N. dirt floor 0.2' in Alley			
N = floor		10.3	71.5
±		10.5	71.3
S. = floor		10.4	71.4
1+32 ctr. double garage on N. cnt. floor 0.2' in Alley			
N+0.2	floor	10.90	70.93
1+50			
S-5'		11.3	70.5
0.2 N. of S. = W. End. Fence		11.6	70.2
±		11.6	70.2
0.3' S. of N. = Fence		11.5	70.3
N+5		11.7	70.1
ctr. double garage on s. conc. floor 0.4' in Alley			
1+91 garage on N. cnt. floor			
N. floor		12.60	69.23
N+1 = S. Edge cnt. apron		12.75	69.08
±		12.6	69.2
0.4' N. of S. line = floor		12.30	69.53
1+83 Fence on N. 0.2' in Alley			
T.P.	3.74	72.90	12.67
			69.16 ^v

72.90

52

2+24	{ Garage on s. dirt floor	0.9' in Alley
	" " N " "	0.2' in Alley
0.9' N. of S. line	floor	3.9
±		4.1
+ 9.5		4.1
+ 9.8	floor	4.4
2+50 W. End. double Garage on S. 0.6' in Alley		
N-30'		5.3
N-10'		4.9
N.		4.3
±		4.1
0.6 N. of S. = floor		4.0
S+5		3.5
2+70 = E. End. above garage on s. 0.6' in Alley		
0.6 N. of S. = floor		3.6
3+00 { W. End. garage on s. dirt floor 0.7' in Alley		
	" " " " N " " "	2.5' Back
0.7 N. of S. = floor		3.9
±		4.0
N		4.2
+ 2.5	floor	4.2
+ 1.0		4.5
3+30		
N		4.5
±		4.4
+ 8.5 = Fence		4.5

72.90

{ E. End fence on S. 1.0 in Alley
 3+50 N. double garage on S. dirt floor 0.7 in Alley
 0.7 N of S = floor ✓ 5.7 67.2
 ⊕ 5.6 67.3
 N 5.8 67.1

E. End above garage on S. 0.9 in Alley
 3+68 E. 4 Garage on N. dirt floor 0.5 Back
 N-0.5 floor 6.1 66.8
 N. 6.1 66.8
 ⊕ 6.0 66.9
 S. 6.0 66.9

ct. double
 3+89 garage on N. dirt floor 0.8 Back
 N-0.5 = floor 7.1 65.8
 N. 6.9 66.0

4+00
 1.1 N of S = fence 6.8 66.1
 ⊕ 7.1 65.8
 N 7.1 65.8

4+23 Shed garage on S. dirt floor 1.0 in Alley
 1.0 N of S. 7.3 65.6
 4+35 garage on N. dirt floor 3.5 Back.
 N-3.5 floor 8.0 64.9

4+38
 ⊕ Top. M.H. 7.60 65.3

72.90

53

4+50 E. End garage on S. conc. floor 1.0 in Alley
 S 7.8 65.1
 +1.0 N ent. floor 7.45 65.45
 +1.3 N. End. conc. apron. 7.45 65.45
 ⊕ 8.2 64.7
 N. 8.2 64.7

4+55 garage on S. dirt floor 0.8 in Alley
 0.8 N of S = floor. 8.0 64.9
 4+49 garage on N. dirt floor 0.8 Back
 N-0.8 = floor 9.2 63.7
 N. 8.8 64.1

4+88 garage on N dirt floor 0.5 Back
 N-0.5 = floor 9.2 63.7

5+00
 N 9.4 63.5
 ⊕ 9.3 63.6
 S. 9.1 63.8

5+08 garage on N. dirt floor 2.5 Back.
 N-2.5 = floor 9.4 63.5
 5+23 garage on S. dirt floor 0.2 in Alley
 0.2 N of S = floor 9.5 63.4
 ⊕ 10.0 62.9
 N. 10.1 62.8

T.P. 1.08 63.32 10.66 62.24

63.32

5+32

N.	1.4	61.9
⊕	1.7	61.6
46	1.6	61.7
S	0.5	62.8

5+48

S	1.4	61.9
+2	3.1	60.2
⊕	4.1	59.2
N	3.7	59.6

5+49⁵ = W. line 32nd St.

N. amt. cl. + dirt.	4.48	58.84
⊕ " "	4.4	58.9
S. amt. cl. + Dirt	3.63	59.69

10' E. of W. Line = W. cl. 32nd St. (Unpaved)

S. amt. cl.	3.82	59.50
S. dirt gutter	4.7	58.6
⊕ " "	5.0	58.3
N " "	5.8	57.5
N. amt. cl.	4.76	58.66

BM. BP N.W. 32 nd National	2.26	61.06 = 61.02
---------------------------------------	------	---------------

54

4 sec of Santa Rita Pl. 30' wide
Seawall to Mission Blvd.

Indexed
c.s.k.

8.91

Moore
Northend
8-8-38 55

SWBP 1.83 8.91 7.08

York of
Seawall

0-12

S edge sch. 4.27 4.64

C " " 4.30 4.64

N " " 4.27 4.64

0+0

N 3.7 5.2

C 4.1 4.8

S 3.9 5.0

0+0v

- 0.8 w/ dbl gar. cent 3.88 5.03

S+0.6 cent. apron 3.93 4.98

0+20

S on apron 3.87 5.04

+ 1.4 EL. gar. 3.8v 5.09

C 4.1 4.8

N 4.0 4.9

0+38

N Top stake w/ Prop. garage 3.84 5.07

C 4.0 4.9

S 4.2 4.7

0+50

S 4.3 4.6

+ 1.6 Sid. gar. dirt 4.4 4.5

0+62

S 4.2 4.7

C 4.3 4.6

N on stake EL. Prop. gar. 4.07 4.84

0+80.43 w/ strandway

N 4.5 4.4

C 4.8 4.1

S 4.9 4.0

0+00 EL strandway

S 5.4 3.5

C 5.4 3.5

N 5.2 3.7

0+10

N E 4' cent walk 5.30 3.61

C 5.7 3.2

S 6.1 2.8

0+39.23 w/ 20' pav. alley to N

S 6.7 2.2

C 7.2 1.7

N pav. 7.45 1.46

0+49.23

N E alley N pav. 8.00 0.91

C 7.7 1.2

S 7.0 1.9

0+59.23 = 0+00

S w/ gar. cent 7.8v 1.09

S cent apron 8.03 0.86

8.91

c			8.1	0.8	
N	EL 91/4 N. par.		7.93	0.98	
	0+20				
N			7.9	1.6	
+8			8.8	0.1	
c			8.7	0.2	
S			8.4	0.5	
+1.4	CEM apron		8.1	0.8	
+3.4	EL gar. cemt.		7.78	1.13	
T.P.	3.25	356	8.60	0.31	
	0+24				
-3.4	WL gar. cemt.		2.79	0.77	
S	on apron		3.06	0.50	
S	+5 CEM. apron		3.25	0.31	5' IN ST.
c			3.5	0.1	
+7			3.5	0.1	
N			2.0	1.6	
	0+49				
N			3.1	0.5	
+8			2.0	-0.4	
c			2.0	-0.4	
+10	CEM. apron		2.67	-0.11	
S	" "		2.24	0.32	
+4.6	EL gar. cemt.		2.96	0.60	

3.56

56

					0+57
-4.8	WL gar. cemt.		3.23	0.33	
-0.8	CEM apron		3.51	0.05	
S			3.5	0.06	
c			4.1	-0.5	
+7			4.1	-0.5	
N			3.5	0.1	
					0+73
N			4.0	-0.4	
c			4.3	-0.7	
S			3.7	-0.1	
+0.8	apron		3.56	0.00	
+4.8	EL. gar. cemt		3.28	0.28	
					0+80
S	-0.8	9 1.5 CEM. MARK	3.87	-0.31	
					1+00
S			4.5	-0.9	
c			4.0	-1.0	
N			4.2	-0.6	
					1+31
N			4.5	-0.9	
c			4.8	-1.2	
S	CEM. apron		4.67	-1.11	
+6	WL gar. CEM		4.49	-0.93	

1 + 19		
- 6	EL 9th CEM.	4.55 -0.99
S	CEM apron	4.75 -1.19
C		4.9 -1.3
N		4.8 -1.2

2 + 00

N		5.1 -1.5
C		5.1 -1.5
S		5.0 -1.4

2 + 29.7 WL Mission Blvd to N.

S		5.0 -1.4
C		5.2 -1.6
N		5.0 -1.4
N	Top cb return	4.71 -1.15

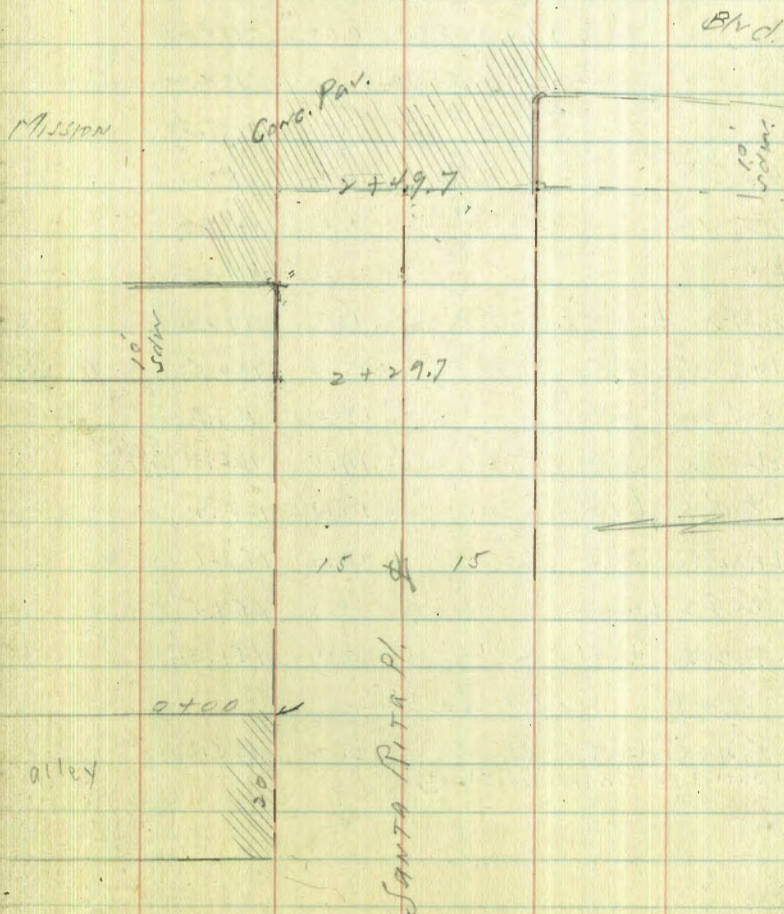
2 + 39.7 W cb Line to N.

N	cb	4.81 -1.25
N	gnt pav.	5.30 -1.74
C		4.9 -1.3
S		4.7 -1.1

2 + 49.7 = WL Mission Blvd to S.

S	cb and pav	4.51 -0.95
C	pav	4.70 -1.14 ✓
N	"	4.84 -1.30 ✓

2 + 59.7 = cb to S		
N	pav	5.23 -1.67
C	"	4.99 -1.43
S	"	4.88 -1.32
S	Top cb	4.50 -0.94



8-27-38 Nutmeg St. X Sec. Brant to Curlew.
 Miller Walker Bliss
 80' Wide. - 14' chs. - 13' 1/4"

B.M. Out. 185.99 C.T. N.E. Brant 4 Nutmeg

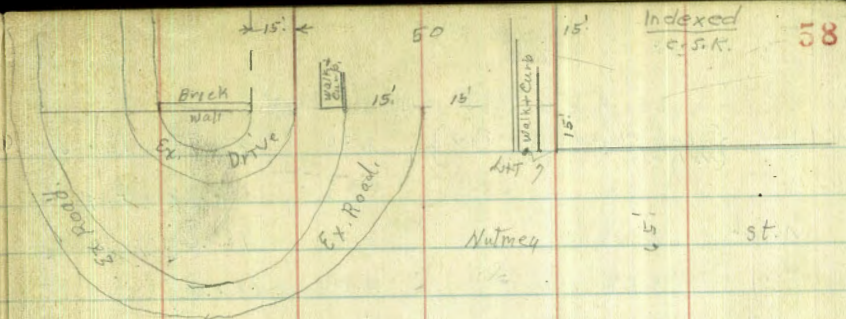
B.M. E. ch. N. line Nutmeg 0.44 186.30 ✓ 185.96 F.P. 1174, Page 8

55' E of W. Line of Brant St = E. ch. Brant St To N.

N. Line Nutmeg to W. Top. ch.	0.43	185.87	N. End. 15'
" " " " " Gutter	1.44	184.86	Curb. Inlet
+15 " " " " " TO E Top. ch. S. End	0.65	185.65	S. End. 15'
+15 " " " " " Gutter S. End Pav	1.60	184.70	Carb. Inlet
+20	1.0	185.30	
10' E. of +20 above	5.8	180.5	
N. 1/4	6.0	180.3	
10' E. of N 1/4	9.0	177.3	
⊕	12.0	174.3	
10' E. of ⊕	13.7	172.6	
S 1/4	15.8	170.5	
10' E. of S. 1/4	18.0	168.3	
S. ch	19.5	166.8	
10' E. of S. ch.	22.1	164.2	
S. Line	28.2	158.1	
10' E. of S. Line	28.9	157.5	
10' S. of S. " "	35.0	151.3	

54' E. of W. Line

2' S. of S. ch. of Nutmeg } 21.3 165.0
 S. End Outlet 18" Cor. Iron Pipe Culvert



Indexed
 C.S.K. 58

40' E of W. Line = ⊕ Brant

10' S. of S. 1/4	34.5	153.8
S. 1/4	27.0	159.3
S. ch	19.3	167.0
1/4	14.7	171.6
⊕ Top. M.H.	9.95	176.37
+7	8.6	177.7
1/4	3.8	182.5
ch.	2.0	184.3
+5 S. End. Pavmt. = S. E. ch. Ex. Rd.	1.43	184.87
N. Line on "	1.29	185.01

186.30 ✓

25' E. of W. Line = W. d. to N				
N. line = S. End. of Walk + Pav. (NW edge Ex. Road)	1.34	184.94	Top. cl	
" "	2.33	183.97	G. pav	
N. cl	3.7	184.6		
"4	4.0	187.3		
+7	5.6	180.7		
cl	7.2	179.1		
"4	12.4	173.7		
cl	16.3	170.0		
5' S. of S. cl S. End. Outlet + 18" Pipe Culvert Cor Iron	19.0	167.3	FL.	
S	25.7	160.6		
+ 10	31.3	155.0		

15' E. of W. = W. Line Brant. to N.				
+10	21.3	158.0		
S	22.1	164.4		
cl	15.0	171.3		
"4	11.2	175.1		
cl S. edge Ex. Rd.	5.2	181.1		
"4	5.2	181.1		
+9 NW edge Ex. Rd.	4.1	187.7		
cl	2.5	183.8		
N = N. Edge Drive	1.2	185.1		

T.P. 0.09 184.77 ✓ 1.62 184.68

184.77 ✓

59

0+00 = W. Line Brant. to South.				
N. Top Brick wall	0.09	184.68 ✓		
N. = NW edge Drive	0.7	184.11 ✓		
+14 = cl	1.7	183.1		
+27 = "4	2.5	182.3		
"4 + 5 N. edge Ex. Road.	4.5	180.3		
+40 = cl	4.6	180.2 ✓		
cl + 7 S. edge Ex. Road.	4.8	180.0		
+53 = "4	7.6	177.2		
"4 + 5	8.0	176.8		
+66 = cl	10.7	174.1		
+80 = S	16.0	168.8 ✓		
+10	21.4	163.4		

0+25				
S - 20	19.8	165.0		
S	11.7	173.1 ✓		
cl = S. edge Ex. Road.	6.5	178.3		
"4	6.7	178.1		
+3 N. edge Ex. Rd.	6.7	178.1		
cl	3.5	181.3 ✓		
+7 S. edge Drive	3.0	181.8		
"4	3.0	181.8		
cl NW edge Drive	2.2	184.6		
N	1.8	183.0 ✓		
N Top Brick wall	0.5	184.3 ✓		

	0+55	
N. Top Brick wall	0.15	184.64 ✓
N	2.1	184.7 ✓
d	2.7	184.1
+4 N. Edge Drive	3.2	181.6
44	4.3	180.5
± SWly edge drive	4.0	180.8 ✓
+7	5.0	179.8
1/4	6.4	178.4
+4	7.4	177.4
+5 N. edge Ex. Rd.	9.4	175.4
d	9.3	175.5
+5 = S. edge Ex Rd	8.5	176.3
S	10.6	174.2 ✓
+25	19.0	165.8
	0+63	
-25	18.0	166.8
-10	13.0	171.8
S	10.7	174.1 ✓
+7 = S. Edge ex. Road.	8.6	176.2
d	9.4	175.4
+8. N edge ex. Rd	10.0	174.8
+10.	8.0	176.8
1/4	7.0	177.2
+10	6.4	178.4
±	5.4	179.4 ✓
+6 S. edge ex. Drive	4.3	184.5

	0+63	
1/4	4.5	180.3
d	5.3	179.5
N. = W. End. Brick wall E. Edge Ex. Drive	5.6	179.2 ✓
N. W. End. Top wall	6.20	184.57 ✓
	0+75	
N. - 20 W. edge drive	6.0	178.8
N. " " "	5.5	179.3 ✓
d " " "	5.0	179.8
1/4	7.3	177.5
4 E of above 1/4 = W. edge drive	4.6	180.2
±	7.4	177.4 ✓
+8	8.8	176.0
1/4 = N. Edge Ex. Road.	11.9	172.9
d	9.6	175.2
+3 SWly edge Ex Rd	9.6	175.2
S	13.7	171.1 ✓
S-25	18.6	166.2
T.P.	2.10	174.22 ✓
	12.65	172.12
	0+85	
-25	9.9	164.3
S	5.3	168.9 ✓
d	2.6	171.6
+8 S.W. edge Ex. Rd	0.4	173.8
1/4	1.5	172.7

This is a drive
running North.
into Husband's
yard.

174.22 ✓

174.22 ✓

61

0+85 (cont)

±		3.0	171.2 ✓
1/4		4.3	169.9
+ 5	N edge Ex. Rd.	5.1	169.1
+ 7		0.5	173.7
dr		1.0	173.2
N		2.8	171.4 ✓

0+90

N	" " " "	8.2	166.0 ✓
cl		6.0	168.2
<u>2. E. of above cl = E edge Ex. Rd.</u>			
W		4.7	169.5
±		2.9	171.3 ✓
1/4	wly edge ex. Rd.	1.0	173.2
dr		4.4	169.8
S		6.6	167.6 ✓
+ 25		11.3	162.9

1+07

- 25		14.0	160.2
S		11.0	163.2 ✓
cl		9.7	164.5
1/4		9.1	165.1
±		9.0	165.2 ✓
N. 1/4		8.5	165.7
<u>T. E. of above N. 1/4 = wly edge Ex. Rd.</u>			
N. cl		6.8	167.4

H. E. of above N. cl = wly edge Rd.	6.1	168.1
N = wly edge Ex. Road.	7.5	166.7 ✓
N + 35 in Ex. Road.	11.8	162.4

1+23

N		14.3	159.9 ✓
dr		13.5	160.7
1/4		13.5	160.7
±		13.6	160.6 ✓
1/4		13.6	160.6
cl		13.6	160.6
S		14.0	160.2 ✓
+ 25		16.5	157.7

T.P.	0.52	161.64 ✓	13.10	161.12
------	------	----------	-------	--------

1+43

S-25		6.4	155.2	
S		6.0	155.6 ✓	
cl		7.4	154.2	
1/4		8.5	153.1	
±		9.8	151.8 ✓	
1/4		9.4	152.2	
dr		9.2	152.4	
N		10.1	151.5 ✓	
+ 15		10.0	151.6	
T.P.	0.16	148.87 ✓	12.93	148.71

148.87 ✓

1+71

-20	8.0	140.7	
N	7.0	141.2 ✓	
ch	7.5	140.7	
44	6.8	141.4	
¢	6.8	141.4 ✓	
44	6.5	141.7	
ch	5.8	142.4	
5	4.6	143.6	
+25	2.1	146.1 ✓	

1+85

S-25	7.0	141.7	
S	10.7	137.5 ✓	
ch	12.0	136.7	
'4	11.6	136.6	
¢	12.6	135.6 ✓	
114	13.5	134.7	
ch	14.7	133.5	
N	15.0	133.2 ✓	
+25	15.0	133.4	

T.P. 13.05 161.76 ✓ 0.16 148.71

T.P. 13.32 174.44 ✓ 0.64 161.12

T.P. 12.97 186.68 ✓ 0.73 173.71

chk. Top, ch. N. Line Mtng. v. d. Brant 1.74 184.94 ✓

Indexed
215-R

X sec UPAS ST
STATE TO UNION

50' wide
10' db
7 1/2' 1/4 10-38

SWBP	11.50	147.94		136.44
T.P.	12.20	140.13	0.01	147.93
T.P.	12.92	172.74	0.31	159.82

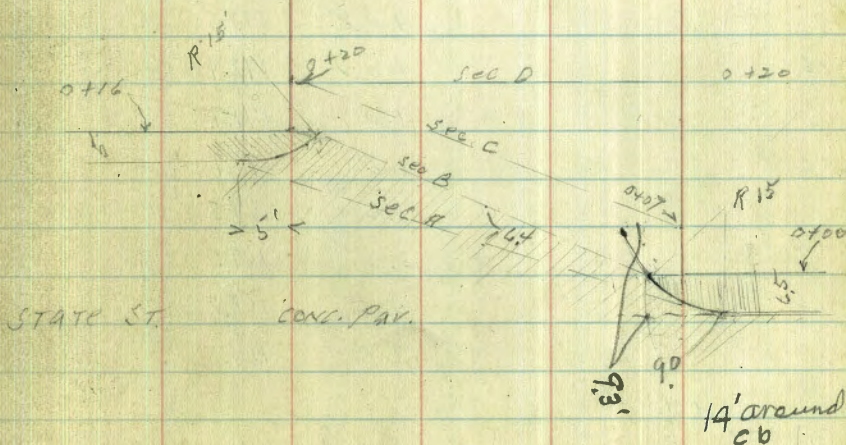
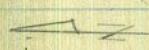
WALNUT
UNION

UNION ST



Sec. A		cb. PC	%	cb. PC.
N-5	cb. PC.	10.10		162.64
"	gvt	10.71		162.03
N	PAV.	10.53		162.21
cb	"	10.37		162.37
1/4	"	10.25		162.49
6	"	10.20		162.54
10' W of C	"	10.52		162.22
20' W " "	"	10.60		162.14
5 1/4	PAV	10.32		162.42
cb	"	10.44		162.30
cb + 5	" gvt	10.49		162.25
" "	cb TOP	9.95		162.79
S	" "	9.77		162.97
S	gvt	10.22		162.50
S + 5	gvt	9.40		163.30
S	" cb PC	8.89		163.85
Sec. B				
S	Top sdw	9.62		163.12
+ 95	" cb end	9.84		162.90
"	gvt	10.32		162.42

Plotted 8-21-40 AMC



S 1/4	par	9.98	162.76
c	"	9.81	162.93
N 1/4	"	9.92	162.82
cb	Top end cb	9.85	162.89
"	gut	10.48	162.26
N	sdw	9.90	162.84
	Sec C		
N		6.0	166.1
cb		4.0	168.1
1/2		6.0	166.7
c + 4		5.1	167.6
c		2.7	170.0
1/2		2.8	169.9
cb		2.3	170.4
S		1.2	171.5
	0 + 20 90° Sec. D		
S		+0.8	173.5
cb		+0.2	172.9
1/2		1.0	171.7
c		1.8	170.9
1/4		5.2	167.5
+ 2		3.2	169.5
cb		4.5	168.2
N		6.6	166.1
	0 + 40		
N		2.7	170.0
cb		0.9	171.8

		172.74			
T.P.	12.76	185.26	0.24	172.50	
N 1/4			12.3	173.0	
c			10.6	174.7	
1/4			9.7	175.6	
cb			8.8	176.5	
S			7.8	177.5	
	0 + 60				
S			4.2	181.1	
cb			5.2	180.1	
1/4			6.4	178.9	
c			7.2	178.1	
1/4			8.2	177.1	
cb			8.9	176.4	
N			10.2	174.9	
	0 + 80				
N			5.0	180.3	
cb			3.9	181.4	
1/4			3.4	181.9	
c			2.7	182.6	
1/2			2.1	183.2	
cb			1.7	183.6	
S			1.3	184.0	
T.P.	12.77	197.74	0.29	184.97	

197.74

1+00		
S	11.0	186.7
cb	11.2	186.5
1/2	10.9	186.8
c	11.4	186.3
1/4	12.2	185.5
cb	12.7	185.0
N	13.9	183.8

1+17

N	10.0	187.7
cb	8.8	188.9
1/2	8.6	189.1
c	9.0	188.7
1/4	8.8	188.9
cb	8.3	189.4
S	7.1	190.6

1+29

S	gar.	6.5	191.2
cb		7.0	190.7
1/4		7.8	189.9
c		8.2	189.5
1/2		8.4	189.3
cb		8.2	189.5
N		8.0	189.1

197.74

65

1+34

N	8.3	189.4	
cb	7.9	189.8	
1/2	8.0	189.7	
c	5.1	192.6	
1/4	4.2	193.5	
cb	4.5	193.2	
1/2	6.0	191.7	
S	E.L. 2 car gar.	6.4	191.3

1+59

S	♀ 3' cems walk	1.4	196.60
cb	16" Euc. tree	1.5	196.2
1/2		1.6	196.1
c		1.6	196.1
1/2		2.3	195.4
1/2		3.5	194.2
cb		3.7	194.0
N		3.6	194.1

T.P.	1232	209.91	0.15	197.59
------	------	--------	------	--------

1+80

N	12.4	197.5
cb	11.3	198.6
1/2	11.3	198.6
c	10.7	199.2

209.91

1/2	10.4	199.5
cb	10.2	199.7
+3	9.6	200.3
S	9.5	200.4
2+100		
S	5.0	204.9
cb	5.5	204.4
1/2	5.6	204.3
c	6.0	203.9
1/2	6.5	203.4
cb	7.3	202.6
N	8.4	201.5
2+15.7 = W of Union		
N	3.4	206.3
+ 9.3 top end cb	4.02	205.89
gut	4.59	205.32
C pav	4.52	205.39
10' E of C	3.81	206.10
20' " " "	3.15	206.76
S gut	4.49	205.42
S cb	3.95	205.96
S	3.9	206.0
2+21.7		
S cb = S+9.2	3.68	206.23
S gut	4.15	205.76

209.91

66

S 1/2	4.03	205.88		
c	4.10	205.81		
N 1/2	4.10	205.81		
cb	4.02	205.89		
N gut	4.11	205.80		
N top of P.C.	3.57	206.34		
SW Cor E.C. of cb return 22.5 R				
Top of	2.38	207.53		
T.P.	0.55	197.94	12.52	197.39
T.P.	1.20	187.85	11.29	186.65
	6.04	181.81		181.88
				0.07
BM top corr. wall S side VINE ST				
W. of STEPS W of UNION by Miller				

10-17-38

X Sec. Alley BIK. 222 S.D.L. + T. Co. Add

Indexed
C.S.K.

Standard

St

67

BM	9.13	75.15	66.02	N.W. 28 th & Logan
(10' E. of W. Line of 28 th St = = W. ch. Line 28 th St. Parallel to 28 th St)				
6.25'	S. of & Alley Produced	5.15	70.00	E. ch. 28 th St = S. d. Return of Alley
"	"	5.62	69.53	pav
"	"	5.58	69.57	"
13'	N " " "	5.33	69.82	" = [W. ch. Alley] = Produced
8.5'	N " " "	5.20	69.95	"
8.5'	N " " "	4.61	70.54	" [N. ch. Ret. of Alley] " of 28 th

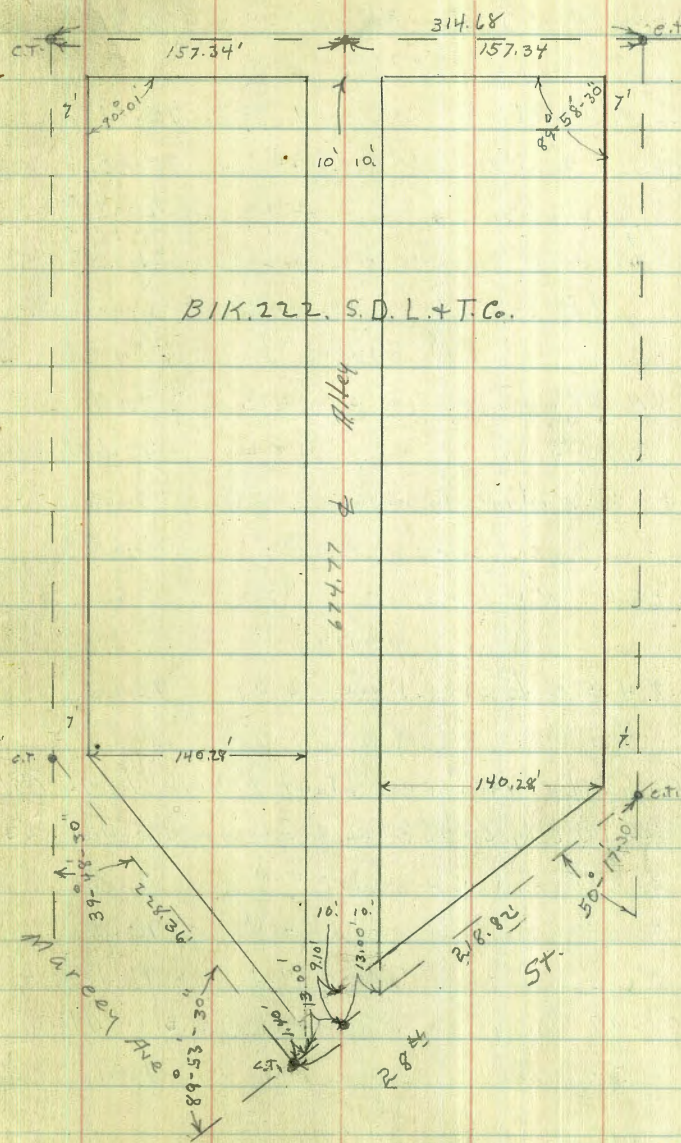
(188' of W. ch. of 28th St. parallel to 28th St
= W. Line conc. walk. N of Alley = W. edge 28th St Pav)

14.2'	N of & Alley Produced	4.45	70.70	S. W. Car conc. walk
14.2'	" " " "	4.73	70.42	Pav. W. Side N. Line
13'	" " " "	4.84	70.31	" = Alley Produced
9'	" " " "	5.09	70.06	Pav. W. Side
"	" " " "	5.16	69.99	Pav. W. Side
7.95'	" " " "	5.19	69.96	" " "
7.95'	" " " "	4.87	70.28	{ Top. cont. ch. Alley Return
0+00 = W. Line 28 th St. Sec. Parallel to 28 th				
7.95'	of & Alley	4.74	70.37	Top. cont. ch. Alley Ret.
"	" " " " Pav. NG	5.2	70.0	
"	" " " "	5.1	70.1	
13'	N " " "	4.8	70.35	= N. Line

0+11 at Rt. Ls to Alley.

N	4.3	70.9
+3	4.8	70.4
&	4.9	70.3
&+	4.6	70.6
&+7.6	4.24	70.91
{ = W. End. cont. d. Alley Ret. E " " Walk		

W. ch. of 28th St.



75.15

0+11 continued.

±9.9' conc. walk at N.E. Cor store Bldg.	4.24	70.91
--	------	-------

0+17

S=N. side store	4.54	70.61
-----------------	------	-------

S+2=N. " walls	4.67	70.48
----------------	------	-------

±	4.9	70.3
---	-----	------

+4	4.7	70.5
----	-----	------

N	4.2	71.0
---	-----	------

Bet 0+27. + 0+30. conc. walk gone on s.

0+44

N	4.3	70.9
---	-----	------

±	4.6	70.6
---	-----	------

+8.4 = N. edge conc. walk	4.51	70.64
---------------------------	------	-------

S. on " "	4.50	70.65
-----------	------	-------

+0.4 = N.W. Cor store	4.50	70.65
-----------------------	------	-------

0+47

8.4 S. of ± = (N. side W. End) walk	4.49	70.66
-------------------------------------	------	-------

0+58 Large Pepper Stump 7' High 1.1 in Alley

0+69 E. 1/4. End. E. Entrance Garage ^{on s.} dirt floor 0.3 in Alley

S. = floor at N. side door	4.4	70.8
----------------------------	-----	------

±	4.4	70.8
---	-----	------

N.	4.7	71.1
----	-----	------

0+95 Garage on s. dirt floor 0.3 in Alley

S+0.3 = floor	4.5	70.7
---------------	-----	------

75.15

68

1+00 garage on N dirt floor	3.0	Back
-----------------------------	-----	------

N-3 = floor	3.5	71.7
-------------	-----	------

N	3.8	71.4
---	-----	------

+3	4.2	71.0
----	-----	------

±	4.2	71.0
---	-----	------

+9.7 = E. End. Board Fence	4.2	71.0
----------------------------	-----	------

1+15 garage on N. dirt floor 3.0 Back

N+3' = floor	3.7	71.5
--------------	-----	------

W. End. of above Fence on S. Line O.K. Here
1+19.4 Shed on N. 0.3 in Alley.

1+31 garage on S. dirt floor. 0.2 in Alley

S+0.2 = floor	3.9	71.3
---------------	-----	------

W. End. Shed on N. Line O.K. Here
±+49 W. " garage on S. 0.25 in Alley

1+50

S.	3.7	71.5
----	-----	------

±	3.9	71.3
---	-----	------

N	3.7	71.5
---	-----	------

1+56 garage on S. dirt floor 3.1 Back

S-3.1 = floor	3.6	71.6
---------------	-----	------

1+68 garage on s. dirt floor 3.8' Back

S-3.8 = floor	3.4	71.8
---------------	-----	------

1+84 garage on S. conc. floor 4.9' Back

S-4.9 = floor	3.13	71.52
---------------	------	-------

2+00

N	3.0	72.2
---	-----	------

±	3.4	71.8
---	-----	------

S.	3.2	72.0
----	-----	------

75.15

2+17 Garage on S. conc floor on S. Line
" " " " " " 2.5' Back

S = floor	2.85	72.30
E	2.9	72.4
N	2.7	72.5
N+2.5 = floor	2.7	72.5

T.P. 5.33 77.61 ✓ 2.87 72.28

2+31 garage on N. dirt floor 0.1' Back

N-0.1 Not in use 4.2 73.4

2+42 garage on N dirt floor 0.1' Back

N-0.1 = floor 4.3 73.3

2+50

N 4.9 72.7

E 5.0 72.6

S 5.0 72.6

From 2+22 to 2+60 Fence on S. 0.15 in Alley Average

2+67 garage on S. conc floor 3.8 Back

S+3.8 = floor 4.72 72.89

2+70 garage on N. Line dirt floor

N = floor 4.3 73.3

2+85 garage on N dirt floor 2.1 Back

N-2.1 = floor 4.9 72.7

2+90 garage on S. Line dirt floor

S = floor 5.0 72.6

77.61

69

3+00 garage on S. Line dirt floor

S = floor 5.0 72.6

E 5.0 72.6

N 4.9 72.7

3+10 garage on S. Line dirt floor

S = floor 5.1 72.5

3+14 garage on N. conc floor 2.9' Back

0.2 in alley - S End conc approx 4.84 72.73

N+0.9 = floor 4.60 73.01

3+20 8. end shed. 0.3 in Alley

3+26 W " " 0.4 " "

E " Picket Fence out in Alley

3+26 5.1

N-5 5.1 72.5

N 5.1 72.5

E 5.2 72.4

S 5.0 72.6

+15 5.8 71.8

3+60

S-11 original ground 6.2 71.4

S-10 New fill 5.0 72.6

S 5.0 72.6

E 5.2 72.4

N 5.1 72.5

+5 5.4 72.2

3+66 - W. End above Picket Fence on N 0.8 in Alley

77.61

3+70 garage on N. dirt floor 1.4 Back

N-1.4 = floor	4.8	72.8
N.	5.0	72.6
♀	5.3	72.3
S	5.0	72.6
+10 New. full	5.5	72.1

3+80

S-10	6.5	71.1
S-3	6.2	71.4
S	5.5	72.1
♀	5.5	72.1
N.	5.4	72.2
+10	5.7	71.9

4+06 E. side shed 0.9 in Alley

N-10.	5.7	71.9
N.	5.6	72.0
+1.	5.1	72.5
♀	5.1	72.5
S	5.1	72.5
+1.	6.5	71.1
+10.	7.0	70.6

4+14

S-7.7	6.6	71.0
S-1.	6.5	71.1
S	5.4	72.2
♀	5.1	72.5
+9 = shed	5.4	72.2

77.61

4+15

N+1.0 = shed	5.4	72.2
♀	5.1	72.5
S	5.4	72.2
+7.7	5.6	72.0

4+27 W End above shed on N.O.R. in Alley
4+34 garage on S. dirt floor 8.0 Back

S-8.1 = floor	5.6	72.0
---------------	-----	------

4+40 double garage on N dirt floor 2.8 Back

N-2.8 = floor	4.6	73.0
---------------	-----	------

T.P.	5.58	78.35	4.84	72.77
------	------	-------	------	-------

4+53 E. end Fence on N. 1.0 in Alley

4+60

S-10	6.0	72.4
S	5.5	72.9
♀	5.4	73.0
N	5.4	73.0
+10	5.0	73.4

4+73

N-10	4.5	73.9
N.	5.0	73.4
+3	5.4	73.0
♀	5.2	73.2
S	5.2	73.2
+5	5.0	73.4

70

78.35

4+76

S-5	5.3	73.1
SW	5.2	73.2
E	5.2	73.2
+Z	5.3	73.1
79.4 Fence	3.3	75.1
N	3.3	75.1
4+94 garage on S. dirt floor	0.7	Back
S-0.7 = floor	5.0	73.4
5+06 garage on S. Linx conc. floor		
S = floor	4.75	73.60
5+06 E. End double garage on N. conc floor	5.1	Back
N-5.1 = floor	3.55	74.80
1.1 in alley = S. side conc apron	4.52	73.83
E	4.8	73.6
S.	4.7	73.7
5+22 = W End above double garage		
N-5.1 floor	3.58	74.77
1.1 in Alley = S. side conc apron	4.46	73.89
5+27 E. End double garage on N dirt floor	0.2	Back
N-0.2 = floor	4.4	74.0
5+49 garage on S. side conc. floor		
S,	4.77	73.58
5+44 = W End above double garage on N.		
S-5	5.4	73.0
S-1	5.4	73.0
SW	5.0	73.4

78.35

E	4.6	73.8
N = floor	4.5	73.9
N+0.2 dirt W of garage	3.9	74.5
5+74		
N-0.1	3.4	75.0
N	4.8	73.6
E	4.8	73.6
S	5.0	73.4
+5	5.5	72.9
5+75		
S-5	5.5	72.9
S	5.0	73.4
E	5.0	73.4
N	4.8	73.6
+5	4.8	73.6
6+00 garage on N. dirt floor	5.2	Back
N-5.2 = floor	5.0	73.4
N	5.0	73.4
E	5.0	73.4
S	5.0	73.4
+5	5.2	73.2
Garage on S. dirt floor	5.5	Back
6+14 " " N conc "	5.5	Back
S-5.5	5.1	73.3
S	5.0	73.4
E	5.0	73.4
N+1.1 = S. Edge conc apron	5.07	73.28
+5.5 = floor	4.37	73.98

78.35

6+25 { E End double garage on s. dirt floor 0.4 pack
E " Cone curb on N. 0.2 Back

N-0.2 Top. E. End cone ch. 4.0 74.4

N 4.8 73.6

☿ 4.8 73.6

S 5.0 73.4

+0.4 = floor of garage 5.0 73.4

+5 dirt E of garage 5.3 73.1

6+41 = W End above double garage on s.

S-0.4 = floor 4.8 73.6

S-0.4 dirt W of garage 3.8 74.6

☿ 4.6 73.8

N 4.7 73.7

N. 1/2 Top. cone ch. 4.04 74.31

6+23

N Top. cone ch. 4.04 74.31

N 4.6 73.8

☿ 4.3 74.1

S 4.2 74.2

+1 3.5 74.9

6+74 22 = E. Line Sicard st

0.2 s. of stone cone ch. E. End 3.19 75.16

" " " " pav " " 3.38 74.97 + dirt to E

☿ " " " 3.69 74.66 " " "

N " " " 3.52 74.83 " " "

N cone ch. Ret " " 3.09 75.26

N. = N. End above cone ch. to E 4.09 74.26

78.35

10' W of E. Line = E. ch Line Sicard

N ch 3.24 75.06

N pav 3.78 74.57

☿ " 3.87 74.48

S " 3.96 74.39

S ch. 3.49 74.86

T.P. 4.87 79.46 3.76 74.59

B.M. T.P. 1.15 74.27 6.34 73.12

T.P. 5.07 74.17 5.17 69.10

Orig B.M.

8.14 66.03 = 66.02

s.w. sicard
+ Julian
73.01

72

1-31-29
Miller
Walker
Bliss

35th St X Sec. at Market. Indexed
50' wide 10' ds. 30' Rdw c.s.M.

B.M. B.P. 10.16W 95.81 N.E. 35th
85.65 + Market St.

N. { 0+05 E. Line 35th on N } ex. Line Market St
{ 0+00 E. Line 35th on N }

W		11.4	84.0
+ 11.0 W. ch	N. End	11.50	84.31
Hk gutter pav	" "	12.14	83.62
+ 25' $\frac{1}{2}$	" "	11.60	84.21
+ 40' gutter	" "	11.50	84.31
+ 40' E. ch	" "	10.83	84.98
+ 50.2 E		10.6	85.2

S. { 0+00 W. Line 35th on S } = S. Line Market St
{ 0+24 E " " " N }

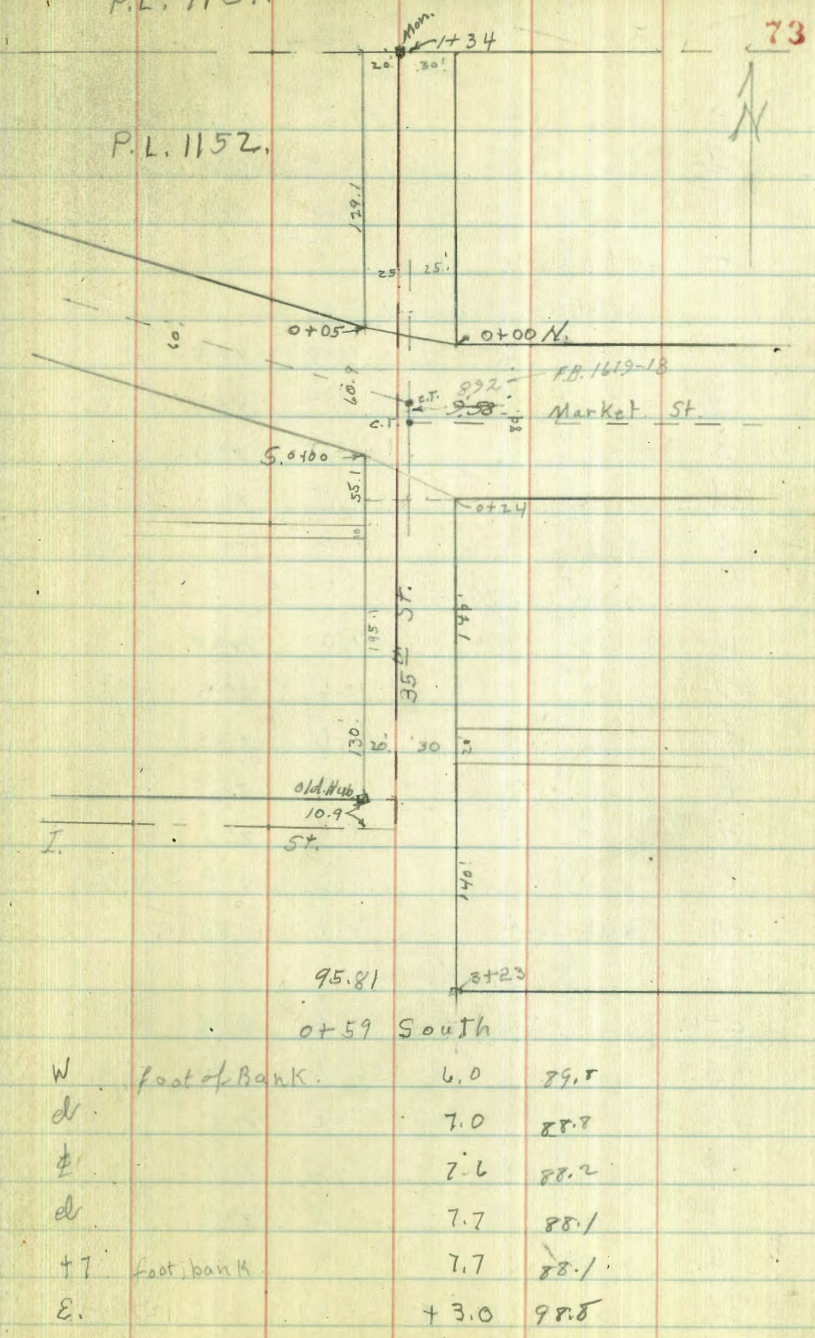
W		12.5	83.3
+ 10.8 = W. ch	S. End.	12.38	83.43
+ 10.8 = W. gutter Pav	" "	12.97	82.84
+ 27.6 = $\frac{1}{2}$	" " "	12.46	82.35
+ 44 = E. gutter	" " "	12.40	83.41
+ 44 = E. ch	" " "	11.78	84.01
+ 55.2 E		10.8	85.0

0 + 50' S. of S. Line Market.

E		4.0	91.7
+ 1 foot Bank.		9.0	86.8
ch		9.2	86.6
$\frac{1}{2}$		9.0	86.8
ch		8.1	87.7
W		7.5	88.3
+ 5 foot Bank		7.5	88.3

P.L. 1151.

P.L. 1152.



I.

W	foot of Bank.	6.0	89.5
d		7.0	88.8
$\frac{1}{2}$		7.6	88.2
ch		7.7	88.1
+ 7 foot bank		7.7	88.1
E.		+ 3.0	98.8

95.81

0772. South

E	+7.0	102.8	
cl	4.8	91.0	
ϕ	4.8	91.0	
+1/2 foot of bank	0.2	95.6	
0+11 N of N. Line - Market			
E	10.3	85.5	
d	10.4	85.4	
ϕ	10.8	85.0	
d	11.5	84.3	
W	11.0	84.8	
0+22 North			
W	+7.0	102.8	
+4	10.6	85.2	
d	10.6	85.2	
ϕ	10.3	85.5	
d	10.1	85.2	
E	10.0	85.5	
+7 = Bank foot	8.0	82.8	
0+60 North.			
E-10 = Bank foot.	6.6	89.2	
E.	6.6	89.2	
d	7.2	88.6	
ϕ	7.2	88.8	
cl	6.5	89.3	
+2 foot of Bank.	6.5	89.3	
T.P.	12.85	107.97	0.69 95.12

107.97

35.87

0+65 N.

W. d	1.0	107.0	
2' E of cl = foot bank	15.5	92.5	
ϕ	15.8	92.2	
cl	15.0	93.0	
E	12.2	95.8	
+13. = foot of bank	9.1	98.9	
0+81 North.			
- 7. foot. Bank.	2.5	105.5	
E	2.5	105.5	
d	1.3	106.2	
ϕ	2.5	105.5	
T.P.	12.90	120.30	0.57 107.40
+5	5.0	115.3	
cl	5.5	114.8	
W	5.8	114.5	
0+65 North			
2' W of W. d Top Bank	6.2	114.1	
W. Line	6.4	113.9	
0+60 North			
3' W of W. d Top Bank	6.3	114.0	
W. Line	6.7	113.6	
0+84 North.			
W	5.8	114.5	
d	5.2	115.1	
ϕ	4.5	115.8	
d	4.0	116.3	
E	3.8	116.5	

120.30
1+34 North = N Line PL. 1152

E	5.0	115.3
cl	5.0	115.3
♀	5.2	115.1
Set. B.M. Mon 5. W. of ♀ on Pueblo Cor	5.51	114.99
cl	5.3	115.0
W	5.3	115.0

0+72 S. of S. Line Market.

E+13, = 2' E. of W-cl	8.0	112.3
cl	8.0	112.3
W	7.5	112.8

0+75 South.

W	7.2	112.1
cl	8.2	112.1
♀	7.7	112.6
cl	7.2	113.1
E	7.3	113.0

1+00' South

E	4.5	115.8
cl	4.5	115.8
♀	4.5	115.8
cl	5.0	115.3
W	5.4	114.9

1+25 South

W	4.5	115.8
cl	2.3	118.0
♀	2.1	118.2

120.30

35th St

75

cl	2.8	117.5
E	2.6	112.7

1+50' South

E	0.5	119.8
cl	0.8	119.5
♀	1.3	119.0
cl	3.2	112.1
W.	6.0	114.3

1+75 South

W.	7.3	112.6
cl	4.8	115.5
♀	2.3	118.0
cl	1.6	118.2
E	1.1	119.2

1+95' South = N Line Island Ave on W.

E	2.0	118.3
cl	2.2	118.1
♀	2.5	112.8
cl	6.0	114.3
W	8.6	111.7

2+25 South

W	11.2	109.1
cl	8.4	111.9
♀	5.5	114.8
cl	4.4	115.9
E	4.0	116.3

120.30

2450 South

E	6.3	114.0
cl	7.2	113.1
⊕	10.3	110.0
cl	12.8	107.5
W	15.2	104.1

2475 South

W	20.0	100.3
cl	17.4	102.9
⊕	15.2	105.1
cl	11.8	108.5
E	9.4	110.9

T.P.	0.06	107.60	12.70	107.54
------	------	--------	-------	--------

3100 South

E	2.8	104.8
cl	4.4	103.2
⊕	6.7	100.9
cl	9.8	97.8
W	11.9	95.7

3124 South = N. Line Island on E.

W	18.4	89.2
cl	15.1	92.5
⊕	11.3	96.3
cl	9.0	98.6
E	8.1	99.5

107.60

35th St.

76

T.P.	8.38	111.88	4.10	103.50
------	------	--------	------	--------

T.P.	6.11	99.38	12.61	99.27
------	------	-------	-------	-------

Orig. B.M.			13.73	85.65
------------	--	--	-------	-------

7-20-39
Miller
Walker.

X Sec. for Shuffleboard Courts
6th + Redwood. indexed
c.s.k.

S.W. Cor Ex Courts
BM Top Post 3.41 103.41 100.0 Assumed.

S. End. Court 1 5.14
0+00 E 0+00 E+W

S.W. Cor. Ex. Court. 0+00 S. 5.46

" " " Bottom drainage ditch 5.50

0+08 S 5.1

0+30 S S.W. Cor New Courts 5.1

0+60 E

0+30 S S.E. Cor New Courts 5.2

0+08 S 5.2

0+00 S N.E. Cor New Courts 5.48

" " " " 6.00

Grades:
BM 2.48 102.48 100.0

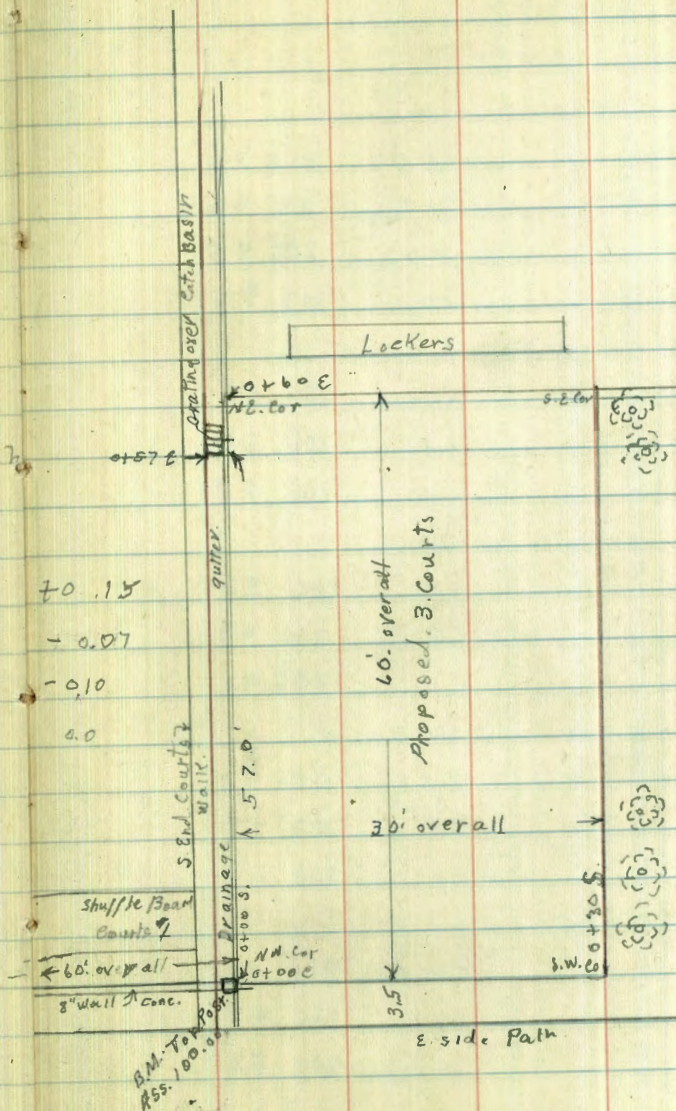
stab SW Cor 4.33 4.48 +0.15

stab SE " 4.55 4.48 -0.07

conc. NE Cor 4.58 4.48 -0.10

" NW " 4.48 Road 4.48 0.0

Conc. Edge
Drainage ditch
" "
Bottom



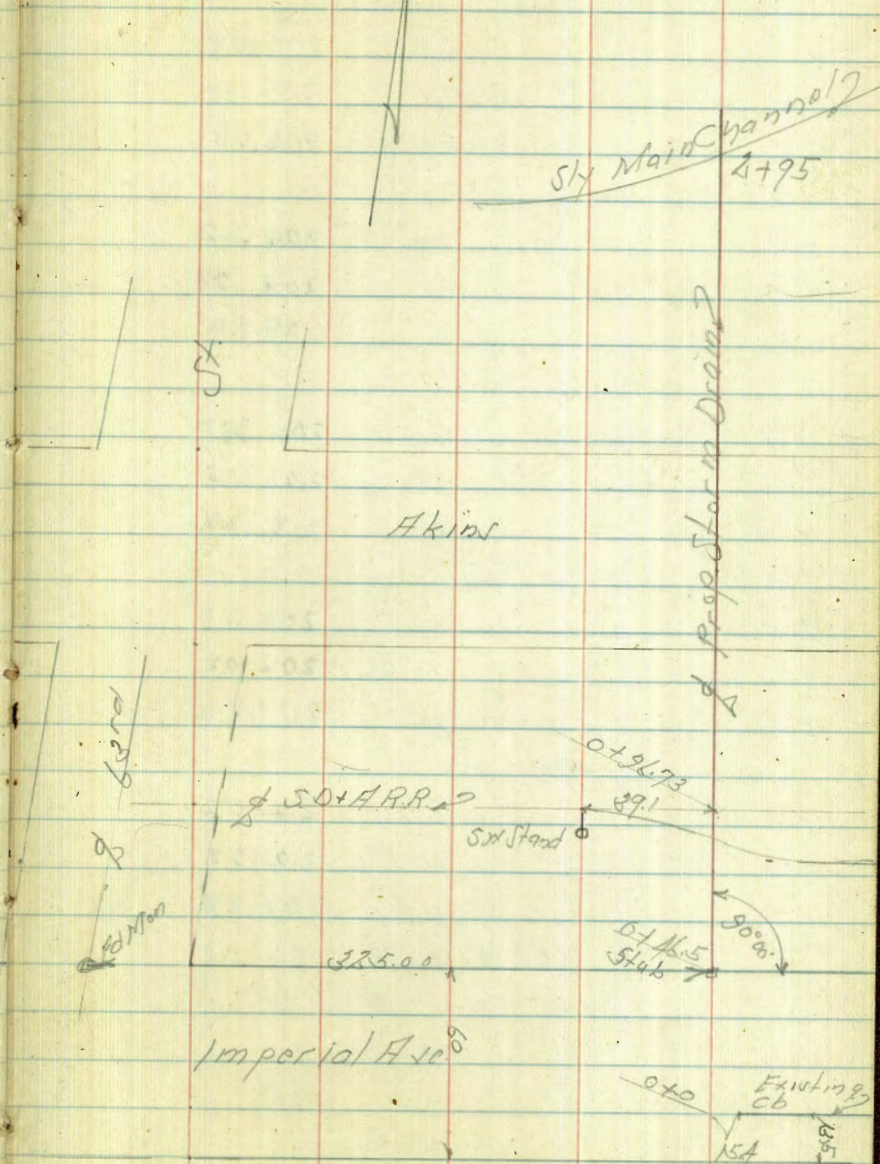
Proposed Storm Drain
Imperial Ave East of 63rd St

INDEXED
E.P.S.

March 22-90
Sutton
Northrup
H. Moore

78

B.M.	100	213.62	212.62	SE Top Hyd Imperial X 63rd St
		0+0 - S.C. Imperial		
10'H on Paving		5.87	206.75	
♀		5.96	206.66	
15' E " "		5.77	206.85	
15' E Top Cb - N End		5.13	207.50	
		0+26.8 - N.E. Edge Paving		
10' E on Paving		6.10	206.52	
♀		6.27	206.35	
10' H " "		6.14	206.48	
		0+40		
10' H		6.1	206.52	
♀		6.2	206.42	
10' E		6.2	206.42	
		0+46.5 - N.E. Imperial		
10' E		4.4	208.22	
♀		5.4	207.22	
10' H		4.4	208.22	
		0+65		
10' H		6.5	206.12	
♀		6.3	206.42	
10' E		6.1	206.52	
		0+96.73 - 2' Track Mainline		
10' E		6.6	206.02	
10' E Top Rail		6.20	206.42	



	213.62		
♂		6.8	205.82
10' H		6.9	205.72
10' H Top Rail		6.54	206.08
	1+07		
10' H		8.3	204.32
♂		8.1	204.52
10' F		8.0	204.62
	1+46.5 =		
10' F		9.4	203.22
♂		9.5	203.12
10' H		9.4	203.22
	1+70		
10' H		10.5	202.12
♂		10.6	202.02
10' F		10.8	201.82
	1+96		
10' F		10.6	202.02
♂		11.1	201.52
10' H		11.4	201.22
TP	1.65	204.68	10.59
	2+07		203.03
10' H		9.5	
♂		9.2	
10' F		9.1	

	204.68	
	2+21	
10' F		9.2
♂		9.8
10' H		11.1
	2+27	
10' H		12.7
♂		12.2
10' F		13.5
	2+40 = Bottom Small Channel	
10' F		12.2
♂		11.8
10' H		11.9
♂		11.9
	2+55	
10' H		10.9
♂		10.7
10' F		10.6
	2+63	
10' F		11.0
♂		9.5
♂		9.5
10' H		9.3
	2+80	
15' H		7.9
♂		8.8

	204.68	
10' F		9.0
	2+87	
10' W		8.5
5' F		7.0
1/2		6.9
4' W		7.0
10' W		9.0
20' W		12.0

2+95 - Sky Edge Main Channel

20' W		12.1
9' W		12.0
1/2		11.6
10' F		10.7

3+0

10' F		11.7
1/2		12.2
10' W		13.2

DIRECTIONS FOR USE OF TABLES

TABLE No. 1.

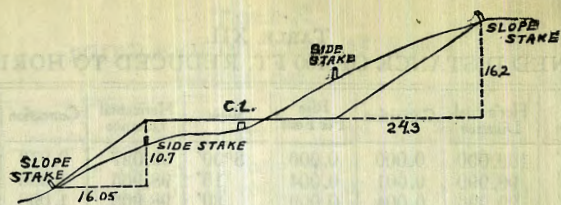
Distance of slope stake from side or shoulder stake for any width roadway, slope 1 1/2 to 1. If ground is nearly level, the cut or fill at this stake is located by the double entry method in left column and top row. The number in both columns is the same. If ground is not

IMPROVED TABLES

AND

INFORMATION

To find Tangent and External for curve of any other degree divide by degree of curve and add correction found in column of correction. Degree of curve with a given L may be found by dividing tangent (or external) opposite L by given tangent (or external). The distance from a point on the tangent to the curve is very nearly the square of the tangent length divided by twice the radius.



DISTANCES FROM SIDE STAKES FOR CROSS-SECTIONING.

SLOPE $1\frac{1}{2}$ TO 1. ROADWAY OF ANY WIDTH.

	0	.1	.2	.3	.4	.5	.6	.7	.8	.9	
0	0 00	0 15	0 30	0 45	0 60	0 75	0 90	1 05	1 20	1 35	0
1	1 50	1 65	1 80	1 95	2 10	2 25	2 40	2 55	2 70	2 85	1
2	3 00	3 15	3 30	3 45	3 60	3 75	3 90	4 05	4 20	4 35	2
3	4 50	4 65	4 80	4 95	5 10	5 25	5 40	5 55	5 70	5 85	3
4	6 00	6 15	6 30	6 45	6 60	6 75	6 90	7 05	7 20	7 35	4
5	7 50	7 65	7 80	7 95	8 10	8 25	8 40	8 55	8 70	8 85	5
6	9 00	9 15	9 30	9 45	9 60	9 75	9 90	10 05	10 20	10 35	6
7	10 50	10 65	10 80	10 95	11 10	11 25	11 40	11 55	11 70	11 85	7
8	12 00	12 15	12 30	12 45	12 60	12 75	12 90	13 05	13 20	13 35	8
9	13 50	13 65	13 80	13 95	14 10	14 25	14 40	14 55	14 70	14 85	9
10	15 00	15 15	15 30	15 45	15 60	15 75	15 90	16 05	16 20	16 35	10
11	16 50	16 65	16 80	16 95	17 10	17 25	17 40	17 55	17 70	17 85	11
12	18 00	18 15	18 30	18 45	18 60	18 75	18 90	19 05	19 20	19 35	12
13	19 50	19 65	19 80	19 95	20 10	20 25	20 40	20 55	20 70	20 85	13
14	21 00	21 15	21 30	21 45	21 60	21 75	21 90	22 05	22 20	22 35	14
15	22 50	22 65	22 80	22 95	23 10	23 25	23 40	23 55	23 70	23 85	15
16	24 00	24 15	24 30	24 45	24 60	24 75	24 90	25 05	25 20	25 35	16
17	25 50	25 65	25 80	25 95	26 10	26 25	26 40	26 55	26 70	26 85	17
18	27 00	27 15	27 30	27 45	27 60	27 75	27 90	28 05	28 20	28 35	18
19	28 50	28 65	28 80	28 95	29 10	29 25	29 40	29 55	29 70	29 85	19
20	30 00	30 15	30 30	30 45	30 60	30 75	30 90	31 05	31 20	31 35	20
21	31 50	31 65	31 80	31 95	32 10	32 25	32 40	32 55	32 70	32 85	21
22	33 00	33 15	33 30	33 45	33 60	33 75	33 90	34 05	34 20	34 35	22
23	34 50	34 65	34 80	34 95	35 10	35 25	35 40	35 55	35 70	35 85	23
24	36 00	36 15	36 30	36 45	36 60	36 75	36 90	37 05	37 20	37 35	24
25	37 50	37 65	37 80	37 95	38 10	38 25	38 40	38 55	38 70	38 85	25
26	39 00	39 15	39 30	39 45	39 60	39 75	39 90	40 05	40 20	40 35	26
27	40 50	40 65	40 80	40 95	41 10	41 25	41 40	41 55	41 70	41 85	27
28	42 00	42 15	42 30	42 45	42 60	42 75	42 90	43 05	43 20	43 35	28
29	43 50	43 65	43 80	43 95	44 10	44 25	44 40	44 55	44 70	44 85	29
30	45 00	45 15	45 30	45 45	45 60	45 75	45 90	46 05	46 20	46 35	30
31	46 50	46 65	46 80	46 95	47 10	47 25	47 40	47 55	47 70	47 85	31
32	48 00	48 15	48 30	48 45	48 60	48 75	48 90	49 05	49 20	49 35	32
33	49 50	49 65	49 80	49 95	50 10	50 25	50 40	50 55	50 70	50 85	33
34	51 00	51 15	51 30	51 45	51 60	51 75	51 90	52 05	52 20	52 35	34
35	52 50	52 65	52 80	52 95	53 10	53 25	53 40	53 55	53 70	53 85	35
36	54 00	54 15	54 30	54 45	54 60	54 75	54 90	55 05	55 20	55 35	36
37	55 50	55 65	55 80	55 95	56 10	56 25	56 40	56 55	56 70	56 85	37
38	57 00	57 15	57 30	57 45	57 60	57 75	57 90	58 05	58 20	58 35	38
39	58 50	58 65	58 80	58 95	59 10	59 25	59 40	59 55	59 70	59 85	39
40	60 00	60 15	60 30	60 45	60 60	60 75	60 90	61 05	61 20	61 35	40
41	61 50	61 65	61 80	61 95	62 10	62 25	62 40	62 55	62 70	62 85	41
42	63 00	63 15	63 30	63 45	63 60	63 75	63 90	64 05	64 20	64 35	42
43	64 50	64 65	64 80	64 95	65 10	65 25	65 40	65 55	65 70	65 85	43
44	66 00	66 15	66 30	66 45	66 60	66 75	66 90	67 05	67 20	67 35	44
45	67 50	67 65	67 80	67 95	68 10	68 25	68 40	68 55	68 70	68 85	45
46	69 00	69 15	69 30	69 45	69 60	69 75	69 90	70 05	70 20	70 35	46
47	70 50	70 65	70 80	70 95	71 10	71 25	71 40	71 55	71 70	71 85	47
48	72 00	72 15	72 30	72 45	72 60	72 75	72 90	73 05	73 20	73 35	48
49	73 50	73 65	73 80	73 95	74 10	74 25	74 40	74 55	74 70	74 85	49
50	75 00	75 15	75 30	75 45	75 60	75 75	75 90	76 05	76 20	76 35	50

Computed by L. Leland Locke.

174.00
958
164.42

47.563	67.5	41684	6.05	2272.68
14	197	17.4	5.95	139.59
<u>61.5</u>		3135	12.00	335.54
15.5	204	7		26.95
<u>77.0</u>		<u>43</u>	1041	8.59
22		27		6.60
<u>09</u>				
107				
377				
<u>3.63</u>				
14				

64.32			
<u>2.24</u>			
62.08			



78635	
<u>7946</u>	29.46
1.798	<u>6.34</u>
77.67	73.12
77.50	

157.63 10740 R.P.