

1547

POSTS

---

*[Faint, illegible text]*

---

1547

MICROFILMED

DEC 24 1964

ENGINEERING DEPARTMENT  
CITY OF SAN DIEGO,  
CALIFORNIA.

MADE IN U. S. A.

Our Leather Bound Engineers Note Books  
are carried in the following rulings:

- No. 380 LEVEL BOOK. Left and Right Hand Page  
the same as Left Hand Page  
of this Book.
- No. 382 FIELD BOOK. Left Hand Page as in this  
Book, Right Hand Page 4x4  
to the inch, Center Line Red.
- No. 384 MINING TRANSIT  
BOOK. Left Hand Page as in this  
Book, Right Hand Page 8x8  
to the inch, Center Line Red.
- No. 385 FIELD BOOK. Left Hand Page as in this  
Book, Right Hand Page 8 ver-  
tical and 4 horizontal lines to  
the inch, Center Line Red.

We also carry the Note Books listed above,  
bound in extra strong Fabri-Hide (otherwise  
the same quality of book,) which can be fur-  
nished at a somewhat lower price.

In ordering Fabri-Hide covered books, add  
the letter "F" to catalog number.

**THE FREDERICK POST CO.**

*ENGINEERING and DRAFTING SUPPLIES*

P. O. Box 803

**CHICAGO**

Levels on Wells 50 wide  
Voitairé to Browning

Indexed  
C.S.R.

76.55

Moore  
11-29-37.

1

					c		6.5	70.0	
S.F.P.	0+6	96.81		96.35	Voitairé Villa Dr.	E		5.3	71.2
S.E. TOP T.P. F.H.	6.03	93.09	9.75	87.06	Voitairé Warrington	+2		4.3	72.2
S.W. 7 CT.			5.90	87.19	Voitairé Warden		1+50		
T.P.	0.58	80.63	13.04	80.05		E		2.4	74.1
T.P. S.W. 7 CT.	5.97	76.55	10.05	70.58	Voitairé Wells	+8		5.3	71.2
						C		6.0	70.5
	Nly Voitairé = 00					W		7.6	68.9
W 66			5.96	70.59					
W 90 T. PAV			4.49	70.06		W	Sly Whittier = 2+00	6.6	69.9
C	"		6.05	70.50		C		5.1	71.4
E	"		5.88	70.67		E		2.3	73.2
E 66			5.46	71.09		E			
	0+50					E		3.8	72.7
E			4.8	71.7		C		4.5	72.0
+3			5.8	70.7		W		6.0	70.5
C			6.5	70.0					
W			7.0	69.5		W	Nly Whittier = 0+00	5.28	71.27
	1+00					C		4.1	72.4
W			6.7	69.8		E		3.4	72.9

ON Hut

76.55

0 + 50

E	3.4	73.1
C	4.0	72.5
W	4.7	71.8

1 + 00

W	4.9	71.6
C	4.5	71.0
E	3.7	72.8

1 + 50

E	4.1	72.4
+2	5.0	71.5
C	5.0	71.5
W	5.4	70.9

2 + 00 sly Xenophon

W	4.9	71.6
+2	5.8	70.7
C	5.8	70.7
+20	5.9	70.6
E	5.0	71.5

76.55

2

E	5.4	71.1
+3	6.5	70.2
C	6.4	70.1
W	7.0	69.5

wait in hole

T.P. S.W.	2.09	73.55	509	71.46
-----------	------	-------	-----	-------

wells  
Xenophon

wly Xenophon = 0 + 0

W	4.5	69.0
C	4.0	69.5
+22	3.4	70.1
E	2.4	71.1

0 + 50

E	3.2	70.3
C	4.0	69.5
W	4.3	69.2

1 + 00

W	4.9	69.6
C	4.2	69.3

73.55

E 3.5 70.0

1+50

E 4.5 69.0

C 4.8 68.7

W 5.0 68.5

Sly yange F2+0

W 4.8 68.7

C 5.4 69.1

E 5.7 67.8

I

E 6.6 66.9

C 6.0 67.5

W 5.2 68.3

Nly yange =00

W 7.22 66.33 ON HUB

C 7.8 65.7

E 7.6 65.9

0+50

E 8.2 65.3

C 8.4 65.1

73.55

3

W 8.8 64.7

1+00

W 9.2 64.3

C 9.0 64.5

E 8.3 65.2

+2 6.5 67.0

1+50

E 5.0 68.5

+1 7.1 66.4

C 9.1 64.4

W 9.3 64.2

2+0 = Sly Zola

W 8.6 64.9

C 8.4 65.1

+1 7.5 66.0

E 4.7 68.8

+2 2.1 71.4

Nail Pole

T.P. SW 4.98 70.84 7.69 65.86 Wells Zola

70.84

E

E 3.7 67.1

+7 5.0 65.8

C 5.7 65.1

W 5.2 65.6

Nly Zola

W 5.7 65.1

C 6.0 64.8

+15 5.3 65.5

E +1.2 72.0

0 + 50

E +1.5 72.3

+2 2.4 67.4

+15 5.7 64.9

C 6.3 64.5

W 6.2 64.6

170

W 6.2 64.6

C 6.0 64.8

+20

70.84

4

E +2.5 77.3

1 + 50

E +5.0 75.8

+5 2.8 68.0

C 4.8 66.0

W 5.9 65.5

+ +0 sly alcott

W 4.7 66.1

C 5.5 65.3

+15 4.3 66.5

+20 2.7 68.1

E +2.5 73.3

E

E +1.2 72.0

+4 2.8 68.0

+8 4.5 66.3

C 6.1 64.7

W 7.5 63.3

Nly alcott

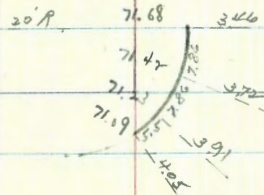
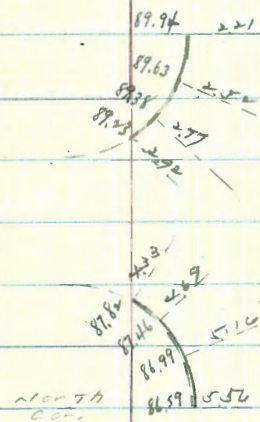
W 7.2 63.6

C		7.0	63.8
+20		5.5	65.3
E		1.0	69.5
	0+50		
E		2.5	67.3
+5		5.0	65.8
C		0.1	64.7
W		8.5	62.3
	1+0		
W		10.0	60.8
C		7.3	63.5
E		4.2	66.6
	1+50		
E		5.6	65.2
C		8.9	61.9
W		11.6	59.2
	2+00 S/ly Browning		
W		11.0	59.8
C		9.2	61.6
E		6.7	64.1

CURB rods

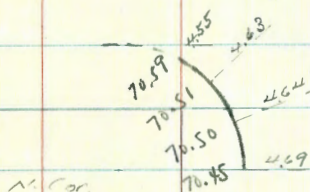
$$\begin{array}{r} 87.19 \\ 4.96 \\ \hline 92.15 \end{array}$$

HARDEN



$$\begin{array}{r} 70.58 \\ 4.56 \\ \hline 75.14 \end{array}$$

WELLS



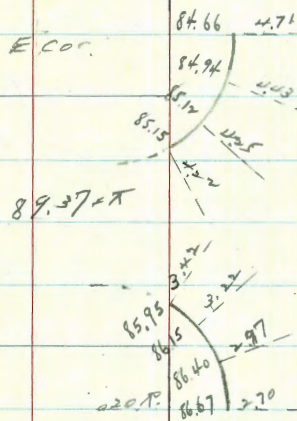
LEVELS ON WARDEN ST  
VOITAIRO TO XENOPHON

INDEXED  
C.S.R.

VOITAIRO  
WARDEN

CURB RODS

SWITCH	419	92.15		87.19
		N/4 VOITAIRO=00		
W CB			4.08	87.84
W 90° PAR.			4.80	87.35
C			3.91	88.24
E "			3.37	88.78
E CB			2.94	89.23
		0+50		
E			3.0	88.5
C			4.0	88.1
W			4.5	88.6
		1+0		
W			4.4	87.7
C			4.5	87.6
E			4.2	87.9
		1+50		
E			3.7	88.4
C			5.1	87.0
W			5.0	87.1





92.15

+20 Sly Whistler

W 7.4 84.7

C 8.2 83.9

+5 6.7 85.4

+20 5.6 86.5

E 3.6 88.5

E

E 7.0 85.1

C 11.0 81.1

W 9.3 82.8

Nly Whistler = 00

W 9.5 82.6

C 10.1 82.0

+15 9.2 82.8

E 5.7 86.4

0 +25

E +1.0 93.1

+15 5.0 87.1

C 6.0 86.1

92.15

+20

4.8 87.3

W

0.0 92.1

T.P. 4.30 96.09 0.42 91.73

0 +50

W 2.1 94.0

C 2.9 93.2

E 6.0 90.1

1 +00

E 10.7 85.4

C 6.9 89.2

W 4.2 91.9

1 +50

W 9.3 86.8

C 11.5 84.6

E 14.4 81.7

+20 Sly Xenophob

E 17.2 78.9

C 12.6 83.5

W 11.5 84.6

96.09

T.P. 0.47 85.99 10.57 85.52

E

W 2.3 83.7

+V 3.9 82.1

C 4.6 81.4

E 9.8 76.2

w/ly exemption

E 11.6 74.4

C 6.7 79.3

W 4.9 81.1

Levels on Warrington indexed  
 Voltaire to Warrington

89.37

9

Top	Voltaire	Warrington	Voltaire	Warrington	Voltaire	Warrington
B19 F.H.	2.31	89.37	87.00			
E cb	4.22	85.15		T.P.	0.94	77.81
E gut part	4.78	84.59				12.50
C "	4.03	85.34				76.87
W "	3.97	85.40				
W cb	3.42	85.95				
	0 + 50					
W	3.4	86.0				
C	4.8	84.6				
+24	4.7	84.7				
E	+ 1.0	90.4				
	1 + 0					
E	4.7	84.7				
C	5.3	84.1				
+23	5.7	83.7				
W	0.7	88.7				
	1 + 50					
W	7.2	82.2				

10.1 79.3  
 12.9 75.5  
 22.1 55.7  
 12.8 64.0  
 5.2 72.4

T.P. 0.94 77.81  
 2 + 0 Sly Warrington

Indexed  
C.S.K.

Whittier 70' wide  
planning to go to Wells

10

77.81

88.70

S

0.5

88.2

Wly Warrington

S

5.4

72.4

T.P

6.34

94.63

0.41

88.29

C

14.7

63.1

N

20.8

57.0

1+50

S

4.2

90.4

T.P

12.30

88.70

1.41

76.40

C

6.5

88.1

N

7.8

86.8

0+25

2+0

N

13.5

75.2

N

7.2

87.4

C

12.7

76.0

C

5.4

89.2

S

10.0

78.1

S

5.9

90.7

0+50

2+30

S

6.7

82.0

S

1.7

92.9

C

7.4

81.3

C

4.3

90.3

N

11.3

77.4

N

5.5

89.1

1+0

2+50

N

4.7

84.0

N

4.4

90.2

C

1.6

87.1

C

2.0

92.0

94.63

C +25	1.3	93.3
S	5.0	89.6
2 +65		
S	5.3	89.3
C	5.6	89.0
+10	1.8	92.8
N	2.2	92.4
W.L. Warden = 0+00		
0+20		
S	5.5	89.1
+7	4.8	89.8
+17	11.0	83.6
C	11.5	83.1
+30	9.9	84.7
N	3.0	91.0
0 +27		
N	2.6	91.0
+5	9.6	85.0
C	11.8	82.8

94.63

11

+20	10.1	84.5
+25	6.6	88.0
+27	0.0	94.6
+32	+2.0	96.6
S	0.4	94.2
0 +40		
S	0.4	94.2
+8	0.5	94.1
+12	11.5	83.1
C	12.6	82.0
+22	11.1	83.5
N	4.6	90.0
0 +55		
N	5.6	89.0
+12	11.4	83.2
C	13.0	81.6
+20	12.2	82.4
S	9.3	85.3
T.P.	0.0	81.77
	12.96	81.67

	1+0			
S		+1.4	83.2	
C		1.4	80.4	
N		0.9	80.9	
	1+50			
N		1.7	80.1	
C		2.6	79.2	
S		0.3	81.5	
	2+0			
S		0.6	81.2	
+12		1.4	80.4	
+16		2.8	78.0	
C		4.5	77.3	
N		3.3	78.5	
	2+50			
N		6.3	75.5	
+5		7.5	74.3	
C		7.6	74.2	
+20		7.4	74.4	

+25

S

3+00 = 6/4 wells see p 1

new hub wells &amp; waterline

5.2

4.6

10.49

76.6

77.2

71.28

71.27

Proposed Drainage Ditch  
on Calif. St.  
Redwood to Sassafras

Moore 12-7-57

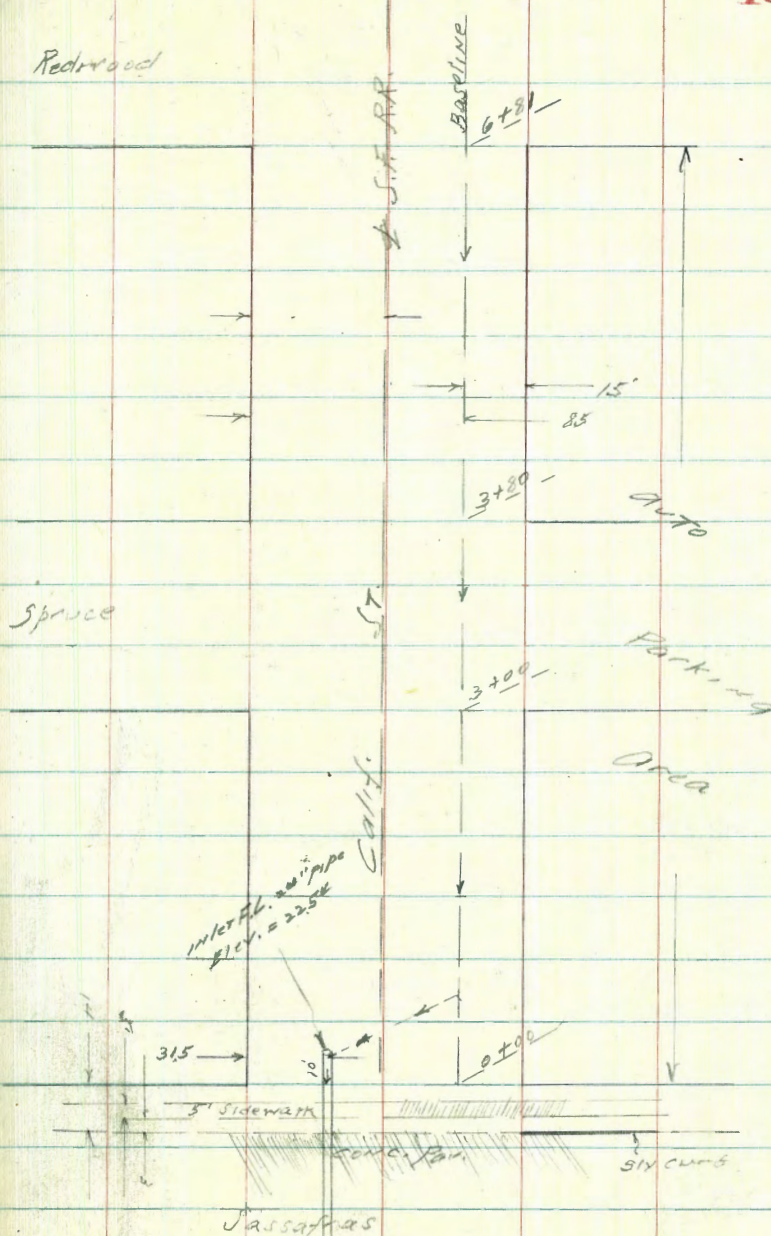
Near Auto Park approx. 17' lower  
than natural ground elev.  
on wly line of Calif. and  
cut of approx. 1:1 from west line

Indexed  
C.S.R.

Redwood

Spruce

interf. w/ pipe  
Elev. = 22.52



Levels for ditch on <sup>Indexed</sup> Calif. St. <sub>c.s.K.</sub>  
 Redwood to Sassafras

EAST

→  
 Baseline

WEST

14

S.E.P.P.	0.14	49.15		49.01
T.P.	0.59	41.02	8.72	40.43
T.P.	0.07	32.35	8.74	32.28

32.35 = H.I.

00-14 = Sly ch Sassafras on edge par.

" -11 = nly edge sidewalk

" -6 = Sly "

0+00 = Sly Sassafras

0+50

1+00

1+50

$\frac{25.41}{6.94}$	$\frac{24.68}{7.07}$	$\frac{24.18}{8.17}$	$\frac{23.05}{7.30}$	$\frac{22.35}{7.00}$
		15.00	27.4	27.4

$\frac{25.73}{6.62}$

$\frac{25.82}{6.53}$

$\frac{24.85}{7.5}$

$\frac{24.3}{8.1}$

$\frac{22.4}{10.0}$

$\frac{21.3}{11.1}$

23 Top Cut

$\frac{25.4}{7.0}$

$\frac{25.0}{7.4}$

$\frac{23.2}{10.2}$

21 Top Cut

$\frac{26.0}{6.4}$

$\frac{26.1}{5.3}$

$\frac{22.8}{9.6}$

20 Top Cut

$\frac{26.3}{6.2}$

$\frac{27.0}{5.0}$

$\frac{26.9}{7.5}$

20 Top Cut



32.35

2+00

2+50

T.P. 5.77 32.98 514 27.21

3+00 Nly Spruce St.

3+40 E " "

3+80 S/y " "

4+00

EAST

32.35 H.I.

Baseline

 $\frac{26.6}{5.8}$  $\frac{26.0}{6.4}$ 

TOP CUT

 $\frac{26.8}{5.6}$  $\frac{23.6}{4.8}$ 

TOP CUT

32.98 H.P.

 $\frac{26.9}{6.1}$  $\frac{26.8}{6.2}$ 

TOP CUT

 $\frac{26.9}{6.1}$  $\frac{23.0}{6.0}$ 

TOP CUT

 $\frac{28.25}{4.23}$ 

S.F. RR rail 3.5

 $\frac{27.2}{5.8}$  $\frac{27.3}{5.7}$ 

TOP CUT

 $\frac{27.8}{5.2}$  $\frac{28.3}{4.7}$ 

TOP CUT

15

32.98

4 + 50

5 + 0

5 + 50

6 + 0

6 + 50

6 + 81 Nly Redwood St.

7 + 21  $\frac{1}{2}$ 

EAST

Baseline

WEST

16

32.98 - H.I.

 $\frac{28.1}{4.9}$  $\frac{28.6}{5.0}$ 

TOP CUT

 $\frac{28.1}{4.9}$  $\frac{28.1}{4.9}$  $\frac{28.5}{4.5}$  $\frac{28.3}{4.7}$  $\frac{28.6}{4.4}$  $\frac{28.3}{4.7}$  $\frac{28.7}{4.3}$  $\frac{28.4}{4.6}$  $\frac{28.8}{4.2}$  $\frac{28.5}{4.5}$  $\frac{28.3}{3.7}$  $\frac{28.9}{4.1}$

32.98

32.98 H.L.

17

↗  
Baseline

EAST

WEST

7+61 Sly Redwood 57

$$\begin{array}{r} 30.81 \\ 2.17 \\ \hline \text{cut } 32.98 \end{array}$$

$$\begin{array}{r} 29.8 \\ \hline 3.2 \end{array}$$

$$\begin{array}{r} 29.5 \\ 3.5 \\ \hline 15 \end{array}$$
TOP Sly end  
CUT

8+0

$$\begin{array}{r} 29.8 \\ \hline 3.2 \end{array}$$

9+0

$$\begin{array}{r} 29.6 \\ \hline 3.4 \end{array}$$

10+0

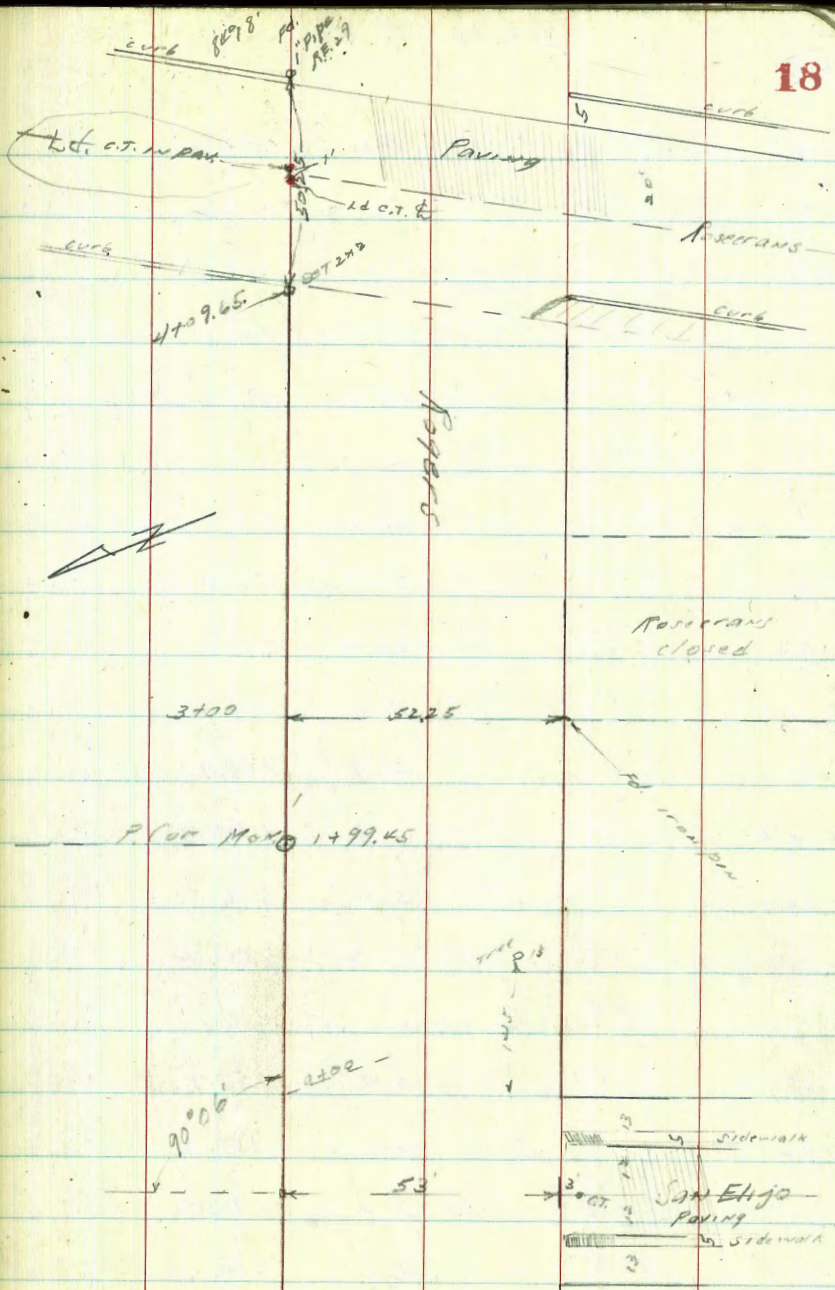
$$\begin{array}{r} 29.3 \\ \hline 3.7 \end{array}$$

Fl. 24" Conc. pipe Culv. 10.44 22.54  
 inlet at Calif.  
 and Salsafra St

Xsec of Rogers St = 10' curbs  
 San Eliso to Rosecrans 17000  
 12-12-37

indexed  
 curb

SE TOP FH	2.91	142.93	160.00	Quatrough San Eliso
T.P. 3' C.T.	1.53	156.56	7.90	155.03 Rogers
Wly San Eliso = 50' wide 13' curbs 24' Roadway				
J		1.0	155.6	
cb		3.0	153.60	
C	40 9.65 199.45	3.7	152.90	
cb	10 2.30	4.5	152.1	
N		4.5	152.1	
W of				
-5		11.3	145.3	
N		8.4	148.2	
+5		5.3	151.3	
cb		4.7	151.9	
C		2.2	154.4	
cb		1.3	155.3	
S TOP cb		0.50	156.00	
E				
S pav.		1.55	155.01	
cb		0.5	156.1	



+5	0.8	155.8
C	5.3	151.3
cb	11.2	145.4
N	15.2	141.4
+25	24.0	132.6
E cb		
N-30	33.6	123.0
N	23.7	132.9
cb	20.4	136.2
+5	10.1	146.5
-C	4.9	151.7
+6	1.8	154.8
cb	2.0	154.6
S top cb.	1.62	154.94
Ely San Elipo = 0+00		
S	3.4	153.2
cb	3.8	152.8
+11	3.6	153.0
C	6.6	150.00
cb	17.6	139.00

N	23.4	133.2
+30	36.4	120.2
0+25		
-45	45.7	110.9
-20	34.8	121.8
N	21.3	135.3
cb	10.7	139.9
C	12.1	144.5
+4	8.2	148.4
cb	8.3	148.3
S	6.5	150.1
0+50		
S	10.2	146.4
+8	10.4	146.2
cb	12.9	143.7
+13	12.6	144.0
C	13.6	143.0
cb	17.5	139.1
N	21.4	135.2
+33	37.2	119.4
+50	52.6	104.0

156.56

144.12

0+85

T.P.	0.22	144.12	12.00	143.90	S	2.0	141.5
	0+57				cb	4.2	139.9
S			+ 1.0	145.1	+5	0.5	137.6
+5			+ 1.0	145.1	1+00		
cb			1.50	142.6	S	8.6	135.5
	0+65				cb	8.2	135.9
S			2.5	141.6	+3	8.2	135.9
cb			2.6	141.5	15	10.1	134.0
	0+75				C	9.8	134.3
-55			43.1	101.0	+3	7.8	136.3
-10			12.3	131.8	+7	8.0	136.1
N			9.7	134.4	cb	11.6	132.5
cb			7.2	136.9	N	15.2	128.9
C			4.6	139.5	+18	23.8	120.3
+1			5.8	138.3	+30	31.0	113.1
+12			4.8	139.3	1+25		
cb			3.9	140.2	-30	41.8	102.3
S			2.8	141.3	-13	28.8	115.3
+2	± 16' wide Cem apron		2.75	141.37	N	21.3	122.8
+7	± 16' Garage " floor		2.69	141.43			

Apron floor Level

144.12

cb	17.2	126.9
+ 8	13.8	130.3
+ 10	14.6	129.5
c	15.5	128.6
+ 8	14.8	129.3
+ 9	13.5	130.6
cb	14.6	129.5
s	15.5	128.6

T.P.	009	131.65	12.56	131.56
------	-----	--------	-------	--------

1+50

s	9.5	122.2
cb	9.7	122.0
c	9.1	122.6
cb	10.1	121.6
N	12.0	119.7
+20	26.7	105.0
-15	25.6	106.1

1+75

131.65

N	16.8	114.9		
cb	14.2	117.5		
c	14.4	117.3		
cb	14.6	117.1		
s	14.6	117.1	on lawn	
T.P.	0.46	119.17	12.94	118.71

1+99.45

S E Drive	6.2	112.8	
cb	6.0	113.2	
s	5.7	113.5	
cb	5.5	113.7	
+ 5	8.6	110.6	
N	9.73	109.44	on Mon.
+15	13.9	105.3	
2+20			
- 15	18.8	100.4	
N	15.2	104.0	
cb	11.9	107.3	

119.17

cb +9		7.9	111.3
c		6.2	112.4
cb		7.6	111.6
s		9.4	109.5
	2 + 30		
s		11.2	108.0
cb		11.7	107.5
c		13.8	105.4
cb		16.0	103.2
N		17.7	101.5
+10		19.6	99.6
T.P.	0.18	106.90	12.45
			106.72
	2 + 50		
N		10.9	96.0
cb		9.3	97.6
c		7.8	99.1
cb		5.9	101.0
s		4.2	102.7

106.90

22

T.P.	0.61	94.78	12.73	94.17
			2 + 75	
s			0.9	93.9
cb			2.2	92.6
c			4.1	90.7
cb			5.3	89.5
N			6.9	87.9
			3 + 00	
N			15.1	79.7
cb			12.8	82.0
c			11.3	83.5
cb			9.8	85.0
s			9.3	85.5
T.P.	0.46	82.43	12.81	81.97
s			5.0	77.4
cb			6.8	75.6
			8.8	73.6



C		7.0	75.4
cb		9.1	73.3
N		9.9	72.5
T.P.	0.32	70.02	12.73
			69.70
	3+50		
N		4.7	65.3
cb		3.7	66.3
C		2.5	67.5
cb		0.0	70.0
S		0.2	69.8
	3+75		
S		8.6	61.4
cb		9.4	60.6
C		10.0	60.0
+10		9.4	60.6
+12		11.8	58.2
cb		11.8	58.2
+7		12.3	57.7
N		11.1	58.9

			70.02	
T.P.	1.86	58.90	12.98	57.04
			4+00	
N			8.7	50.2
+8			8.8	50.1
cb			5.3	53.6
C			5.0	53.9
cb			5.9	53.0
S			5.8	53.1
			4+09.65 = why	Resistance on diag.
S			11.65	47.25
cb			10.5	48.4
C			10.6	48.3
cb			11.4	47.5
N			12.62	46.28
T.P.	7.34	65.49	0.75	58.15
SE.P.P.			3.66	61.83
				62.07
				0.24
			17.1105	41.80

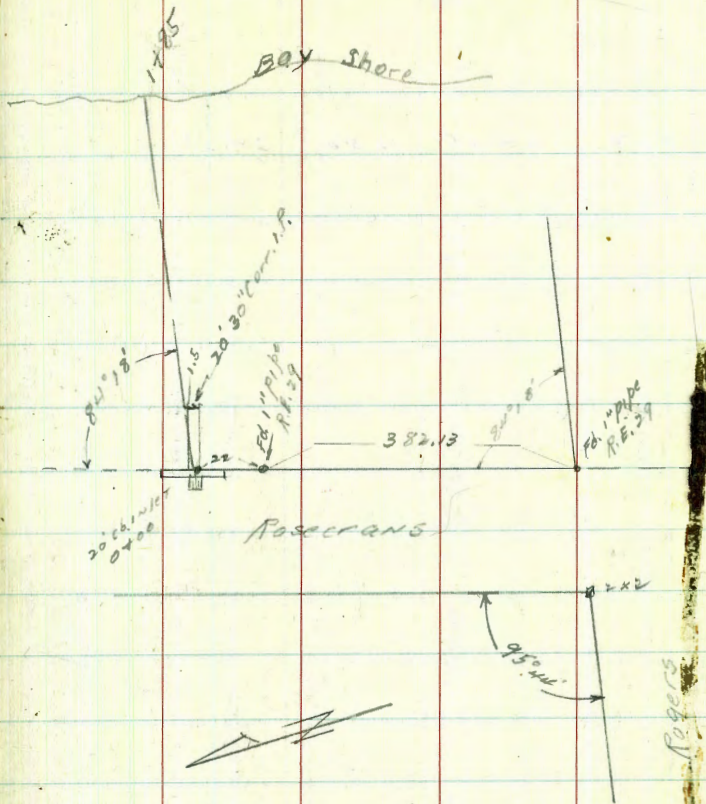
indexed  
C.S.K.

Moore  
12-14-37

24 5

Prop. storm ditch  
Rosecrans to Bay Shore  
Nly from Rogers

(see Book 1539, page 41 for  
line up hill to west.)



Levels for Prop. Ditch

← T.

PT.

T.P. 0.64 24.85 12.52 24.23

0+13

10.26.25  
L

0+7

6.30.35  
L

0+00

24.08  
12.67 FL. BOT. Box

0+00

6.30.38  
6.37 gutter

0+00

31.29  
54.6 Top curb

T.P. 0.72 36.75 12.00 36.03

36.75  
w

Mr. Rogers

1.75 48.03 40.28

Top curb  
P23

0 + 70

0 + 50

0 + 33

0 + 30

0 + 21

0 + 20 end 30" pipe

24.85

6 1/2 | 21.75  
4 1/2 | 20.85  
7 1/2 | 17.15

6 1/2 | 22.55  
7 1/2 | 17.45

6 1/2 | 21.75  
5 1/2 | 21.65

6 1/2 | 22.55  
7 1/2 | 17.45

6 1/2 | 21.75  
4 1/2 | 20.85  
7 1/2 | 17.15

6 1/2 | 18.35  
9 1/2 | 15.75

6 1/2 | 18.35  
9 1/2 | 15.75

6 1/2 | 21.75  
5 1/2 | 21.65

6 1/2 | 22.55  
7 1/2 | 17.45

6 1/2 | 21.75  
4 1/2 | 20.85  
7 1/2 | 17.15

6 1/2 | 18.35  
9 1/2 | 15.75

6 1/2 | 18.35  
9 1/2 | 15.75

6 1/2 | 21.75  
5 1/2 | 21.65

6 1/2 | 22.55  
7 1/2 | 17.45

6 1/2 | 21.75  
4 1/2 | 20.85  
7 1/2 | 17.15

6 1/2 | 13.95  
10 1/2 | 11.15

6 1/2 | 13.95  
10 1/2 | 11.15

6 1/2 | 21.75  
5 1/2 | 21.65

6 1/2 | 22.55  
7 1/2 | 17.45

6 1/2 | 21.75  
4 1/2 | 20.85  
7 1/2 | 17.15

592  
11.5  
FL. 30" pipe

24.85

6 1/2 | 12.35  
10 1/2 | 11.25

6 1/2 | 12.35  
10 1/2 | 11.25

6 1/2 | 13.75  
5 1/2 | 13.75

6 1/2 | 14.55  
10 1/2 | 12.7

6 1/2 | 23.35  
10 1/2 | 12.7

6 1/2 | 13.7  
10 1/2 | 11.15

6 1/2 | 13.95  
10 1/2 | 11.25

6 1/2 | 21.75  
5 1/2 | 21.65

6 1/2 | 22.55  
7 1/2 | 17.45

6 1/2 | 21.75  
4 1/2 | 20.85  
7 1/2 | 17.15

6 1/2 | 18.05  
10 1/2 | 16.05

6 1/2 | 18.05  
10 1/2 | 16.05

6 1/2 | 21.65  
5 1/2 | 21.65

6 1/2 | 22.55  
7 1/2 | 17.45

6 1/2 | 21.65  
4 1/2 | 20.85  
7 1/2 | 17.15

6 1/2 | 18.05  
10 1/2 | 16.05

1+48

1+23

1+21

1+10

T.P.

049

1290

1264

1221

0+80

24.85

LT.

$\frac{5.0}{14}$

$\frac{9.20}{19}$

$\frac{14.0}{8}$

$\frac{10.7}{14}$

$\frac{14.0}{5}$

$\frac{10.7}{12}$

$\frac{15.0}{11}$

$\frac{9.20}{11}$

$\frac{15.0}{5}$

$\frac{9.30}{8.5}$

$\frac{10.2}{10.2}$

$\frac{10.2}{10.2}$

$\frac{1.6}{7.6}$

$\frac{9.4}{6.4}$

$\frac{9.7}{6.7}$

$\frac{1.5}{11.40}$

$\frac{1.4}{11.50}$

$\frac{1.8}{12}$

$\frac{6.7}{9}$

$\frac{8.1}{8.1}$

$\frac{7.0}{6.7}$

$\frac{2.0}{4}$

$\frac{10.0}{10.0}$

$\frac{10.0}{17.85}$

$\frac{10.1}{17.75}$

$\frac{18.0}{12.90}$

$\frac{18.0}{6.85}$

$\frac{9.9}{14.95}$

$\frac{10.0}{14.85}$

24.85

RT.

27

197

2

.25

1785

$$\begin{array}{r} 16.0 \\ - 3.10 \\ \hline \end{array}$$
 SAND BEACH

1772

$$\begin{array}{r} 25.1 \\ - 1.50 \\ \hline 14.4 \end{array}$$
 ON SAND BEACH

1760

$$\begin{array}{r} 6.0 \\ 1.5 \\ \hline 6.90 \end{array}$$

$$\begin{array}{r} 14.1 \\ 9 \\ \hline 1.20 \end{array}$$

$$\begin{array}{r} 14.0 \\ 5 \\ \hline 1.10 \end{array}$$

$$\begin{array}{r} 6.5 \\ 6.70 \\ \hline \end{array}$$

$$\begin{array}{r} 6.2 \\ 6.70 \\ \hline \end{array}$$

$$\begin{array}{r} 15.1 \\ 1.70 \\ \hline 6.80 \end{array}$$

12.90

$$\begin{array}{r} 12.90 \\ 0 \\ \hline \end{array}$$

Xsec of Webster  
34th to 36th

60' wide  
10' deep  
Moore  
12-15-37

Indexed  
C.S.K.

29

34th

B.M. B.P. 3.00 32.57 29.57

T.P. 6.00 26.35 12.22 20.35

Ely 34th to 0+00 = in creek

N 11.8 14.6

C 12.3 14.1

S 13.1 13.3

0+20

S 8.2 18.2

C 11.7 14.7

N 12.4 13.8

0+40

N 7.1 19.3

C 8.3 18.1

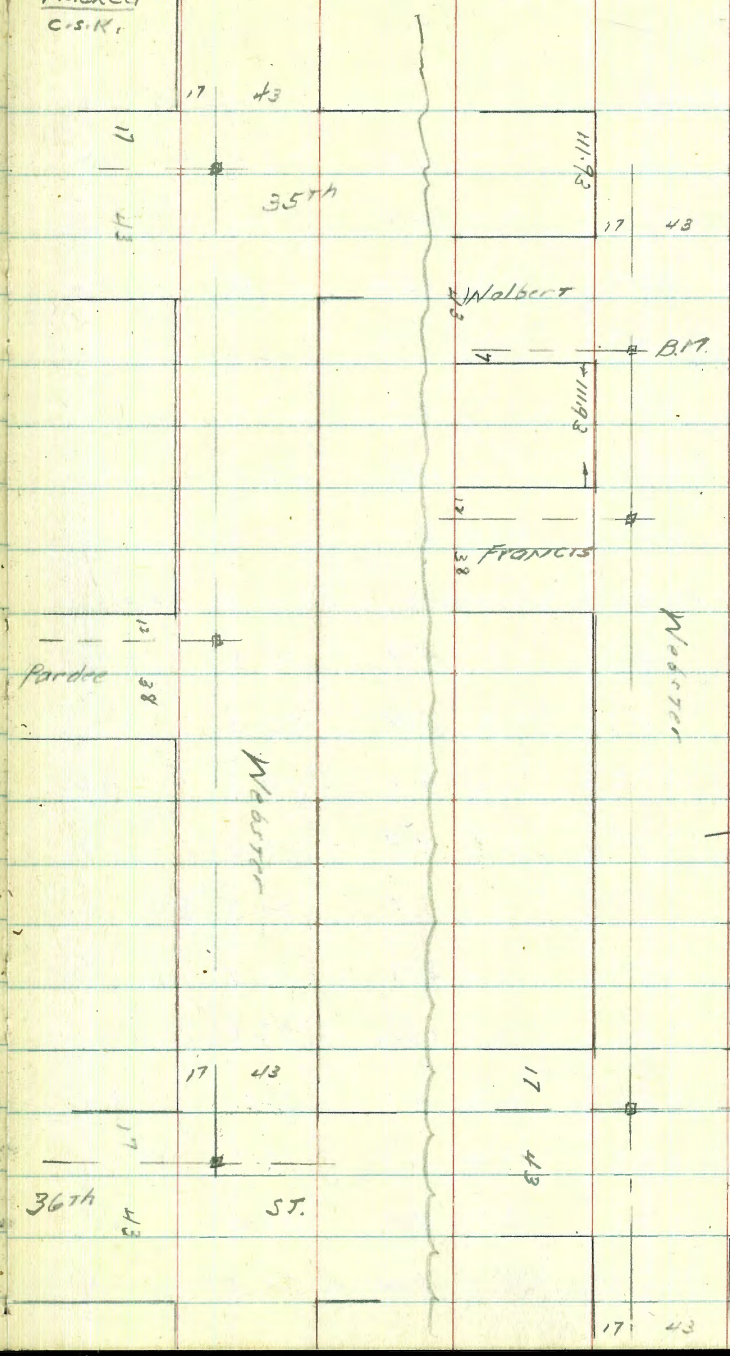
S 1.6 24.8

T.P. 12.18 37.76 0.77 25.58

N. Hill bridge  
34th + 11th

Pardee  
12 38

36th  
17 43

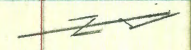


Webster

FRANCIS

Webster

Webster



11.63

8.6114

12

38

17

43

12

38

17

43

17 43

35th

17 43

B.M. 35.80

17 43

17

43

35th

17 43

37.76

37.76

Webster

30

0+70

w ob

V		11.7	26.1	N	4.5	33.3
C		10.2	21.6	+7	4.3	33.5
N		16.0	21.8	cb	8.8	29.0
	1+00			+3	9.1	28.7
N		12.7	25.1	1/4	5.5	32.3
C		11.1	26.7	+5	7.0	30.8
S		9.4	28.4	C	5.4	32.4
	1+11.93 = wly Webster = 50' wide 10' cbc			1/4	4.8	33.0
S		4.9	32.9	+1	8.2	29.6
cb		5.4	32.4	+8	8.2	29.6
+4		9.8	28.0	cb	5.1	32.7
+7		9.9	27.9	S	3.0	34.8
1/4		7.5	30.3			
C		8.3	29.5	S	2.2	35.6
+4		10.0	27.8	+7	3.3	34.5
1/4		6.6	31.2	cb	5.0	32.8
+7		11.1	26.7	+7	4.9	32.9
cb		7.8	30.0	1/4	3.3	34.5
N		8.4	29.4	C SM H. T. M	2.55	35.21



37.76

Webster

Indexed  
C.S.K.

44.23

webster to Sly Term.

31

1/4		2.6	35.2		X sec of Webster + pl. 50' wide 10' cbs		
cb.		3.2	34.6		S.L. Webster = 0+00		
N		2.5	35.3		0+50		
	E cb			E		4.8	39.4
N		1.8	36.0	7.0		6.0	38.2
c		1.8	36.0	cb		6.1	38.1
1/4		1.8	36.0	90T		6.8	37.4
c		1.8	36.0	c		6.1	38.1
1/4		1.8	36.0	90T		6.9	37.3
cb		1.7	36.1	cb		6.6	37.6
S		1.4	36.4	W		6.5	37.7
	Ely Webster				1+00		
S		1.4	36.4	W		5.4	38.8
cb		1.5	36.3	cb		5.4	38.6
1/4		1.3	36.5	c		5.0	39.2
c		1.0	36.8	90T		5.6	38.6
1/4		1.0	36.8	cb		5.1	39.1
cb		0.9	36.9	17		4.9	39.3
N		1.0	36.8	E		3.5	40.7
T.P. BM.	843	44.23	1.96	35.80	on E. 7' 4 13' Hub Webster + Webster		

44.23

1+50

E 3.0 41.2

+4 4.8 39.4

cb 5.3 38.9

C 4.9 39.3

cb 5.1 39.1

W 5.3 38.9

2+00

W 5.4 38.8

cb 5.3 38.9

C 4.7 39.5

cb 5.3 38.9

+p 4.9 39.3

E 3.8 40.4

2+07

W + 5 3' wide cent. right 5.4 38.77

2+50

E 4.9 39.3

cb 5.5 38.7

C 5.1 39.1

44.23

Wolbert

32

cb 5.3 38.4

W 6.4 37.8

3+00

W 7.7 36.5

cb 7.1 37.1

C 6.8 37.4

cb 7.0 37.2

E 7.0 37.2

BM	13.10	48.90	35.80	Hub Webster Webster	1 + 11.93	FWY FRANCIS	50' wide
						3.4	45.5
Ely Webster = 0+00					cb	3.7	45.2
0 + 12					+2	3.8	45.1
5		13.4	35.5		+3	4.7	44.2
+8		12.0	36.9		1/4	4.1	44.8
cb		13.6	35.3		c	4.0	44.9
+2		15.3	33.6		1/4	4.3	44.6
1/4		12.0	36.9		+3	4.6	44.3
0 + 50					cb	0.6	42.3
5		9.4	39.5		+3	0.6	42.3
+5		9.3	39.6		+5	4.2	44.6
cb		12.0	36.9		5	3.5	45.4
+5		9.4	39.5				
1/4		8.8	40.1		5	1.1	47.8
c.		8.4	40.5		cb	2.1	46.8
1/4		8.5	40.4		1/4	2.0	46.9
907		8.8	40.1		c	1.7	47.2
cb		8.3	40.6		1/4	2.4	46.7
1/4		8.1	40.8		+5	2.9	46.0

48.90

61.32

Webster

34

46			1.0	47.3	1/4		8.0	53.3
cb			1.7	47.2	cb		8.6	52.7
N			1.0	47.9	45		8.0	53.3
					N		4.5	54.8
T.P.	12.24	61.32	0.32	48.58		1400		
					N		2.4	58.7
	Ely Francis #0100				44		4.3	57.0
N			11.2	50.1	cb		4.4	56.9
cb			12.2	49.1	1/2		4.4	56.9
1/2			12.4	48.9	c		4.1	57.2
c			12.1	49.2	1/4		4.4	56.9
1/4			12.5	48.8	cb		5.2	56.1
cb			12.4	48.9	5		4.4	56.9
5			12.4	48.9		1450		
	0450				5		2.2	59.1
J			8.2	53.1	42		1.0	60.3
48			8.0	53.3	cb		1.2	60.0
cb			8.7	52.6	1/4		0.8	60.5
1/4			8.3	53.0	c		0.5	60.8
c			7.9	53.4	1/2		0.5	60.8

61.32

cb			1.0	60.3
N			0.3	61.3
T.P.	1251	7362	0.21	61.11
	2+00			
N			9.2	64.4
cb			9.4	64.2
+2			10.0	63.6
1/4			9.0	64.2
c			9.3	64.3
1/4			9.2	64.0
cb			9.9	63.7
S			10.0	63.6
	2+50			
S			6.9	66.7
+5			6.2	67.4
cb			6.6	67.0
1/4			6.4	67.2
c			6.0	67.6

73.62

35

1/4			6.3	67.3
+8			6.5	67.1
cb			5.8	67.8
N			5.7	67.9
			2+74.95 = WL 357h = 60' wide	
N			4.8	69.3
cb			4.3	69.3
+2			5.0	68.6
1/4			5.0	68.6
c			4.7	68.9
1/4			5.0	68.6
+5			5.3	68.3
cb			4.4	69.2
S			4.4	69.2
				♀
S			3.4	70.2
cb			3.4	70.2
1/4			3.5	70.1
c			3.5	70.1
1/4			3.5	70.1
cb			3.3	70.3
N			3.2	70.4

73.62

86.42

36

E.L. 355A-0100

cb

11.6

74.8

N

2.1

71.5

N

11.1

75.3

cb

2.0

71.6

1+00

+2

2.4

71.2

N

6.6

79.8

1/4

2.1

71.5

cb

7.0

79.4

c

2.0

71.6

+2

7.9

78.5

1/4

2.3

71.3

1/4

7.7

78.7

cb

2.3

71.3

c

7.7

78.7

S

2.3

71.3

1/4

7.9

78.5

cb

6.8

79.6

T.P.

12.89

86.42

0.09

73.53

+6

6.8

79.6

S

5.5

80.9

0+50

1+43

S

11.3

75.1

N on E 7' wide <sup>corr.</sup> Drive

3.78

82.64

cb

11.5

74.9

+7

11.2

75.2

1+50

1/4

12.0

74.4

S

2.0

84.4

c

11.7

74.7

+2

3.2

83.2

1/4

11.9

74.5

cb

3.6

82.8

+8

12.2

74.2

1/4

4.1

82.3

86.47

c	3.8	82.6
1/2	3.7	82.7
+8	4.3	82.1
cb	3.4	83.0
N	2.9	83.5

2+00

N	0.0	86.4
cb	0.1	86.3
+2	1.0	85.4
1/2	0.2	86.0
c	0.4	86.0
1/2	0.5	85.9
cb	0.0	86.4
S	+0.2	86.6

J.P.	12.81	99.08	0.15	86.27
------	-------	-------	------	-------

2+45 = WL Pardee = 50' wide

S	9.9	89.2
cb	10.1	89.0

99.08

37

1/2	10.5	88.6
c	10.4	88.7
1/2	10.5	88.6
+8	11.1	88.0
cb	10.0	89.1
N	10.0	89.1

E

N	8.8	90.3
cb	9.2	89.9
+2	9.7	89.4
1/2	9.3	89.8
c	9.0	90.1
1/2	9.0	90.1
cb	9.2	89.9
S	9.2	89.9

EL Pardee = 0+00

S	7.9	91.2
cb	8.3	90.8
1/2	8.0	91.1
c	7.4	91.5

99.08

1/4		8.0	91.1
+8		8.4	90.7
cb		7.6	91.5
N		7.3	91.8
	0+50		
N		4.2	94.9
+2		4.8	94.3
cb		5.1	94.0
1/4		5.2	93.9
c		5.2	93.9
1/4		5.5	93.6
cb		5.3	93.8
S		5.0	94.1
	1+00		
S		2.7	96.4
cb		3.2	95.9
1/4		3.2	95.9
c		3.0	96.1
1/4		3.1	96.0
+7		3.4	95.7

99.08

38

cb		2.7	96.4	
N		1.8	97.3	
	1+16			
cb	Wedge less walk	1.82	97.26	
	1+24			
cb	E " " "	1.42	97.66	
	1+50			
N		0.3	98.8	
cb		1.1	98.0	
+3		1.6	97.5	
1/4		1.4	97.7	
c		1.3	97.8	
1/4		1.5	97.6	
cb		1.3	97.8	
S		1.2	97.9	
T.P.	2.86	101.05	0.89	98.19
	2+00			
S		2.9	98.2	



cb	2.9	98.2
+	—	
1/2	3.0	98.1
c	2.0	98.1
1/2	2.9	98.2
+7	3.0	98.1
cb	2.5	98.6
+8	2.4	98.7
N	1.5	99.6

2 + 44 = 46 36 + 4

N	3.6	97.5
cb	3.3	97.8
+2	3.9	97.2
1/2	4.1	97.0
c	3.8	97.3
1/2	3.6	97.5
cb	3.3	97.8
5	3.9	97.2

T.P. B.M. 5.66 101.81 4.90

96.15

TOPATH  
SE COR  
Imp. + 36<sup>th</sup>

S.E. B.P. Imp. + South block

3.91

97.90

97.91

0.01

X sec of Pardee St 50' wide  
Webster to Franklin 10' curb

92.95

TOP cb.					
1+24	0.62	98.28		97.66	
T.P.	0.99	92.95	6.32	91.96	
	Sly Webster = 0+00				
	0+20				
W	TOP 4' cent. walk	2.94		90.01	
	0+50				
W		3.4		89.6	
cb		4.4		89.6	
c		3.2		89.8	
ob		3.2		89.8	
E 90.		2.7		90.3	
E	TOP re-wall	1.08		94.87	
	0+74				
E	TOP BOT. 4' STEP	3.42		89.53	
	1+00				
E	TOP wall	1.91		90.04	
E	90.	3.8		89.2	
cb		4.1		88.9	
c		3.9		89.1	

p38  
SE Webster  
Pardee  
TOP Lower  
cent. step

cb		3.8		89.2	
W		4.1		88.9	
	1+05				
E	E 9' cent. dr.	3.44		89.49	
	1+23				
E	TOP BOT. STEP 4' wide	3.91		89.04	
	1+50				
W		5.4		87.6	
ob		5.0		88.0	
c		4.8		88.2	
ob		4.7		88.3	
E		4.6		88.4	
E	TOP. wall	2.72		90.23	
	2+00				
E	TOP WALL	4.2		88.8	
E		5.7		87.3	
cb		6.1		86.9	
c		5.8		87.2	
cb		5.9		87.1	
+7		6.0		82.0	
W		6.8		86.2	

92.95

	2+33		
E	TOP BOT. STEP U' WIDE 6.20	86.75	
	2+50		
W	7.6	85.4	
+3	6.6	86.4	
cb	6.7	86.3	
c	6.8	86.2	
cb	6.9	86.1	
E	6.6	86.4	
	3+00		
E	7.3	85.2	
cb	7.8	85.2	
c	7.8	85.2	
cb	7.9	85.1	
W	7.8	85.2	
	3+14		
E	TOP BOT. STEP U' WIDE 7.2	85.8	
	3+50		
W	9.7	83.3	
cb	9.7	83.3	

92.95

41

				C	9.7	83.3
				cb	9.0	84.0
				E	8.2	84.8
					2+00	
				E	10.0	83.0
				cb	11.1	81.9
				c	11.4	81.6
				cb	11.5	81.5
				W	11.6	81.4
					2+12	
				W	TOP CORN WALK	11.65 81.30
				T.P.	2.16 83.09	12.02 80.93
					4+58	
				W	TOP WALK	2.71 80.38
				W	90	3.2 79.9
				cb	3.5	79.6
				c	3.5	79.6
				cb	2.9	80.2
				E	2.4	80.7



83.09  
 10  
 Set Bit Max. 2.9 74.79 10.49 72.60

Pardee  
 Franklin

cb

5.6

69.2

W

5.4

69.4

0+50

2+00

E 2.9 76.9

W

6.5

68.3

cb 3.3 76.5

cb

6.5

68.3

c 3.2 76.4

c

6.4

68.4

+10 3.7 76.1

cb

6.5

68.3

cb 3.2 76.6

E

6.6

68.2

W 3.0 76.8

+24 APRON  
 +35 S.W. GARAGE CORR.  
 +30 N + 10' ALLEY

6.39

68.40

5.70

69.09

1+00

E

7.1

67.2

W 4.3 76.5

cb

7.1

67.7

cb 4.3 76.5

c

7.0

67.8

+4 5.1 69.7

cb

6.8

68.0

c 4.9 69.9

W

6.7

68.1

cb 4.6 76.2

E 4.1 76.7

1+50

E 5.2 69.6

cb 5.8 69.0

c 5.7 69.1

XVCC Franklin 50' wide  
Pardee To earth 10.00

84.71

44

13' Mon.	12.11	84.71	72.60	Pardee Franklin	J		4.3	80.4	
	EL Pardee 20+00				cb		4.5	80.2	
	0+27				C		4.0	80.7	
S	W edge cca 570A	9.57	78.14		cb		4.2	80.5	
S	E .. .. "	9.58	78.13		N		5.9	80.8	
	0+54								
S	TOP 570P	8.68	76.03		T.P.	12.05	95.22	1.54	83.17
S		9.9	78.4						
cb		9.5	78.2			2+00			
C		8.8	78.9		N		10.5	74.7	
cb		8.8	78.9		cb		11.0	74.2	
N		8.7	76.5		O		10.9	74.3	
	1+00				cb		11.3	83.9	
N		6.7	78.0		S		10.8	84.4	
cb		6.9	77.8			2+30			
C		6.7	78.0		S		7.1	88.1	
cb		7.4	78.3		cb		8.1	87.1	
S		7.2	78.5		C		8.1	87.1	
					cb		7.8	82.4	

95.22

6.9 88.3

2 + 45 W.L. 3677

5.7 90.0

6.2 88.0

6.3 88.9

5.9 88.3

4.8 90.4

T.P. 0.31 82.95 12.58 82.64

Levels

E 36th St

150' N of Ocean View Blvd 1.50 81.45

125' " " " 3.0 80.0

100' " " " 5.2 78.6

75' " " " 8.8 74.2

50' " " " 12.6 70.4

T.P. 0.75 70.98 12.72 70.23

N.L. Ocean View W curb Rts. 8.15 62.83 63.0

" " E " 9.14 61.84 62.0

Xsec of Franklin Cont.  
Pardee to Francis

45

5.06 77.66 72.60

W.L. Pardee = 00

0 + 50

5 4.0 73.1

cb 4.8 72.9

0 4.6 73.1

cb 4.5 73.2

N 4.0 73.2

1 + 00

N 3.7 74.0

cb 4.1 73.6

c 4.0 73.7

cb 4.8 72.9

s 4.5 73.2

1 + 36

5 3.9 73.8

cb 4.2 73.5

c 3.6 74.1

cb 3.7 74.5





77.66

1+00

N 8.8 68.9

cb 9.1 68.6

+4 10.1 67.6

c 9.7 68.0

cb 9.9 67.8

v 9.8 62.9

1+50

s 11.7 66.0

cb 11.7 66.0

+4 13.4 64.1

c 11.6 66.1

cb 11.6 66.1

N 10.8 66.9

T.P. 149 67.22 11.93 65.73

2+00

N 3.3 63.9

cb 3.4 63.5

67.22

47

+4 4.4 62.8

c 4.7 63.5

cb 4.1 63.1

s 3.9 63.3

2+50

s 5.8 61.4

cb 4.1 61.1

c 6.1 61.1

+13 6.3 60.9

cb 5.7 61.5

N 4.8 62.4

2+75 ELY FRANCIS ST.

N 6.4 60.8

cb 6.9 60.3

c 6.9 60.3

cb 4.7 60.5

s 6.4 60.8

Prop. Culvert.  
W. side Albatross box.

Indexed  
c.s.k.

Moore  
1-7-38

48

Robinson + Penn Ave

Robinson

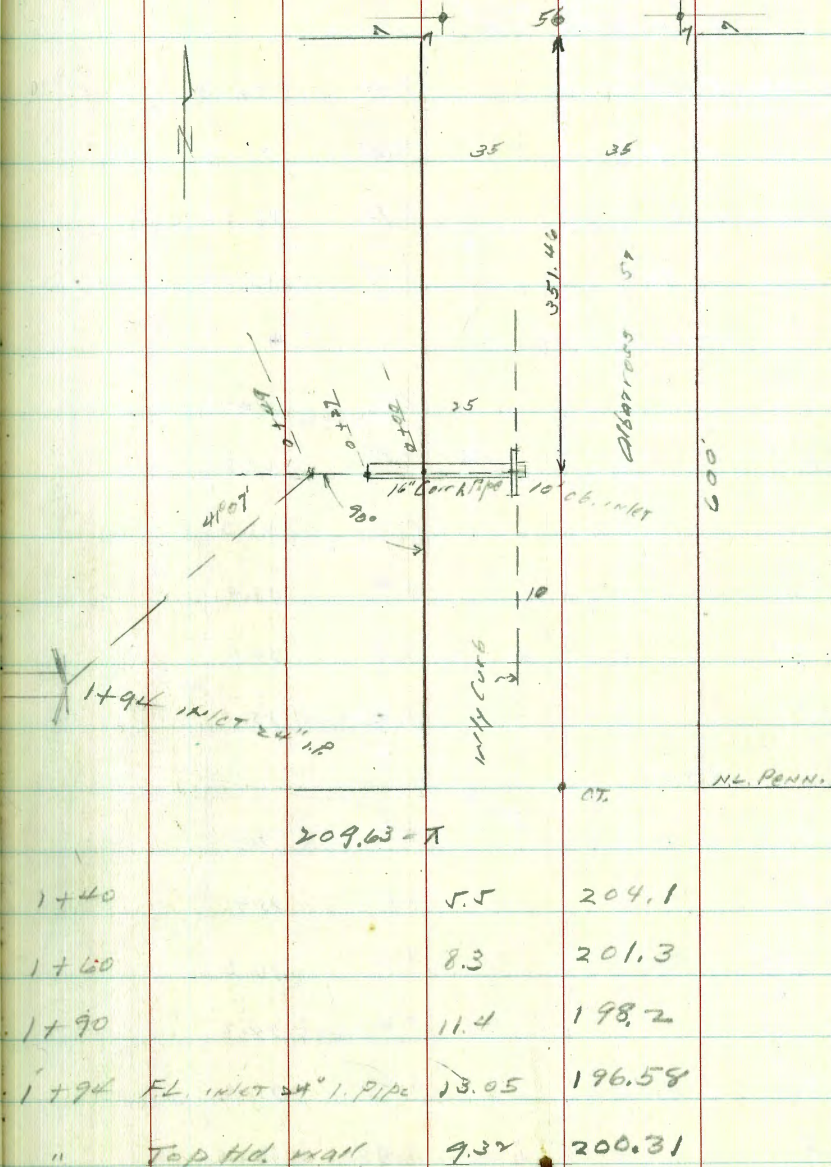
Robinson  
Front

N.E.B.P.	0.71	270.68		269.97
T.P.	0.35	258.96	12.07	258.61
00+25	Box box	10.94		248.02
"	grate	7.45		251.51
"	Top curb	6.51		252.45
T.P.	0.05	246.22	12.79	246.17
T.P.	0.17	238.72	12.69	238.53
T.P.	0.55	221.32	12.95	220.77

0+00 = W. side Albatross

0+27	FL. end of New 1" pipe	16" Cor. 3.08		218.24
0+27	ground	3.7		217.6
0+35		3.8		217.5
0+37		2.5		218.8
0+49 = A	41° 07' LT. on stub	4.08		217.24

0+60		6.7		214.6
0+75		11.1		210.2
T.P.	1.25	209.63	12.94	208.38
1+00		2.6		207.0
1+25		4.0		205.6



209.63 = T

OT.

N.E. PENN.

1+40		5.5		204.1
1+60		8.3		201.3
1+90		11.4		198.2
1+94	FL. INLET 24\" 1\" P.I.P.E	13.05		196.58
"	Top Hd. wall	9.32		200.31

X-sec of 3674 St.  
Imperial to Ocean View

60' wide  
10' curbs

1 floor  
1-8-38.  
10 boxes  
C.S.K.

49

5.22 101.37

96.15

0-10 = S. of Imp.

E -10 = P.L. cb return 7.30 94.02 TOP

" " " gut 7.83 93.54 Pav.

E end curb 7.72 93.65 TOP

" " " gut 8.35 93.02 Pav.

0+00 S.L. Imperial

E 7.0 94.4

cb 7.5 93.9

C 8.1 93.3

cb 8.4 93.0

+5 6.8 94.6

W 6.3 95.1

0+25

W 5.0 96.4

cb 6.0 95.4

+5 7.2 94.2

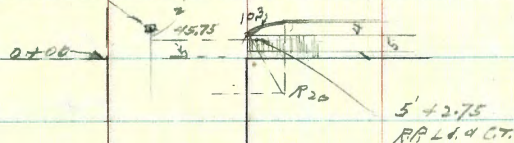
C 7.2 94.2

cb 6.2 95.2

E 6.0 95.4

7 413 Com. Man.

Imperial Ave.



0+76.73

Webster

43

17

0+00

1+42.36

Gettmore

0+00

17 48

1+59.33

Franklin

0+00

38

12

3+29.37

Ocean View Blvd.

	0 + 50		
E	5.0	96.4	
ob	4.8	96.6	
+H	5.7	95.2	
C	6.4	95.0	
+13	6.1	95.3	
+N	5.4	96.0	
cb	5.2	96.2	
W	4.8	96.9	
0 + 74.73	N.L. Webster	60' wide	
W	3.4	98.0	
cb	4.3	92.1	
+7	5.4	96.0	
a	5.5	95.9	
ob	5.3	96.1	
E	4.9	96.7	
E	Webster		
F	5.3	96.1	
ob	5.3	96.1	
C	5.0	96.4	

cb	4.0	92.4	
W	4.2	92.2	
0 + 100	S.L. Webster		
W	4.2	92.2	
cb	4.3	92.1	
C	4.9	96.5	
cb	4.7	96.2	
E	5.5	95.9	
0 + 50			
E	6.0	95.4	
cb	4.7	96.2	
C	4.7	96.2	
+13	4.9	96.5	
cb	4.3	92.1	
W	4.6	96.8	
1 + 00			
W	3.4	98.0	
cb	2.6	92.8	
C	4.3	92.1	
cb	4.6	96.8	
E	5.3	96.1	

1+50

E	5.5	95.9
cb	4.0	96.5
C	4.1	92.3
cb	3.2	98.2
W	3.4	98.0

1+88

E	E 3' wide corr. walk	5.58	95.79
---	----------------------	------	-------

2+00

W	4.3	92.1
cb	4.0	92.4
a	4.4	92.0
cb	5.3	96.1
E	5.7	95.7

2+50

E	6.2	95.2
cb	5.7	95.7
c	4.8	96.6
cb	4.3	92.1
W	5.8	92.6

2+60

W	E 9' Cent. dr. level	3.53	92.84
---	----------------------	------	-------

3+00

W	2.5	98.9
cb	2.4	99.0
a	3.8	92.6
cb	4.3	92.1
E	5.4	96.0

T.P	2.41	100.52	3.46	97.91	nail in Power Pole
-----	------	--------	------	-------	-----------------------

3+30

E	E 3' walk	4.49	96.03
---	-----------	------	-------

3+50

E	4.4	96.1
cb	3.3	92.2
C	2.8	92.7
cb	2.1	98.4
W	2.4	98.1

100.58

	4+00			
w		4.8	95.7	
cb		4.6	95.9	
c		4.6	95.9	
cb		4.8	95.7	
E		5.3	95.2	
	4+42.36	NL	58' NW/66	
E		5.9	94.6	
cb		6.0	94.5	
c		5.7	94.8	
cb		6.4	94.1	
w		7.0	93.5	
	F			
w		7.8	92.2	
cb		7.3	93.2	
c		6.4	94.1	
cb		6.6	93.9	
E		6.8	93.2	
	0+00	St Gilmore		
F		6.7	93.8	

100.52

		cb	5.9	94.6
		c	6.3	94.2
		cb	7.6	92.9
		w	8.6	91.9
	0+05			
		w	8.6	91.9
		cb	7.8	92.2
		c	6.4	94.1
		+18	5.7	94.8
		cb	4.9	96.6
		E	5.2	92.3
	0+50			
		E	2.9	97.6
		cb	4.6	96.9
		+2	4.6	95.9
		c	5.3	95.2
		+8	5.9	94.6
		+12	7.2	93.3
		cb	8.0	92.5
		w	8.8	91.2

52

100.52

1+00

W	8.3	92.2
cb	6.9	93.8
C	4.9	95.6
+17	4.5	96.0
cb	3.4	92.1
E	2.7	92.8

1+25

E	3.7	96.8
cb	4.4	96.1
C	5.1	95.4
cb	7.0	93.5
W	8.5	92.0

1+59.33 N L Franklin 50' wide

W	9.4	90.9
cb	8.3	92.2
+10	7.1	93.4
C	6.5	94.0
cb	4.6	95.9
E	4.2	96.3

100.52

Z

E	4.6	95.9
cb	5.4	95.1
C	7.4	93.1
cb	10.1	90.4
W	11.6	88.9

0+00 S L Franklin

W	10.4	90.1
cb	9.4	91.1
+8	8.2	92.3
C	7.5	93.0
cb	5.8	94.2
E	5.1	95.4

0+50

E	7.0	93.5
cb	8.3	92.3
+9	8.3	92.2
+11	9.1	94.4
C	9.7	94.8
+13	10.2	90.3

53

+17			12.2	82.2
cb			12.9	82.6
W			13.0	82.8
	1+00			
W			15.1	85.4
cb			14.5	86.0
+5			12.8	82.2
c			12.3	88.2
+9			12.1	88.4
+11			11.4	89.1
cb			11.4	89.1
F			10.0	90.8
T.P	098	89.83	11.67	88.85
	1+50			
E			1.0	88.6
cb			1.9	82.9
+9			2.0	87.8
+11			3.1	86.7

				C	3.5	86.3	
				+13	4.2	85.6	
				cb	5.0	84.2	
				W	6.8	83.0	
					1+73		
				E	E 5' walk	1.72	88.11
					2+00		
				W	9.8	80.0	
				cb	8.0	81.8	
				+7	7.1	82.7	
				c	6.4	83.4	
				+9	5.5	84.3	
				+11	4.7	85.1	
				cb	4.0	85.8	
				+8	3.4	86.4	
				E	2.1	82.2	
					2+08		
				E	5' in 5' 5' walk	2.32	82.51
					2+50		
				E	4.0	85.8	



89.83

+0	6.6	822
cb	7.6	822
+4	8.6	812
c	8.9	809
+15	9.6	802
cb	10.6	792
w	11.5	783
2+75		
w	12.8	770
cb	11.9	779
c	10.8	790
cb	9.6	802
+7	8.7	811
E	5.1	847
3+00		
E	5.8	840
+3	6.1	839
+5	9.5	803
cb	11.7	781
+5	13.1	757

89.83

55

c	13.5	763
+15	14.2	756
cb	13.7	761
w	14.5	753
T.P. 1.20 7812 12.97 76.86		
3+50		
w	5.7	724
+3	8.8	693
cb	9.6	685
+2	11.4	667
c	9.5	686
+17	10.0	681
cb	9.0	691
+6	7.4	707
+8	+0.4	78.7
E	+0.6	78.7

(1)

78.12

2475

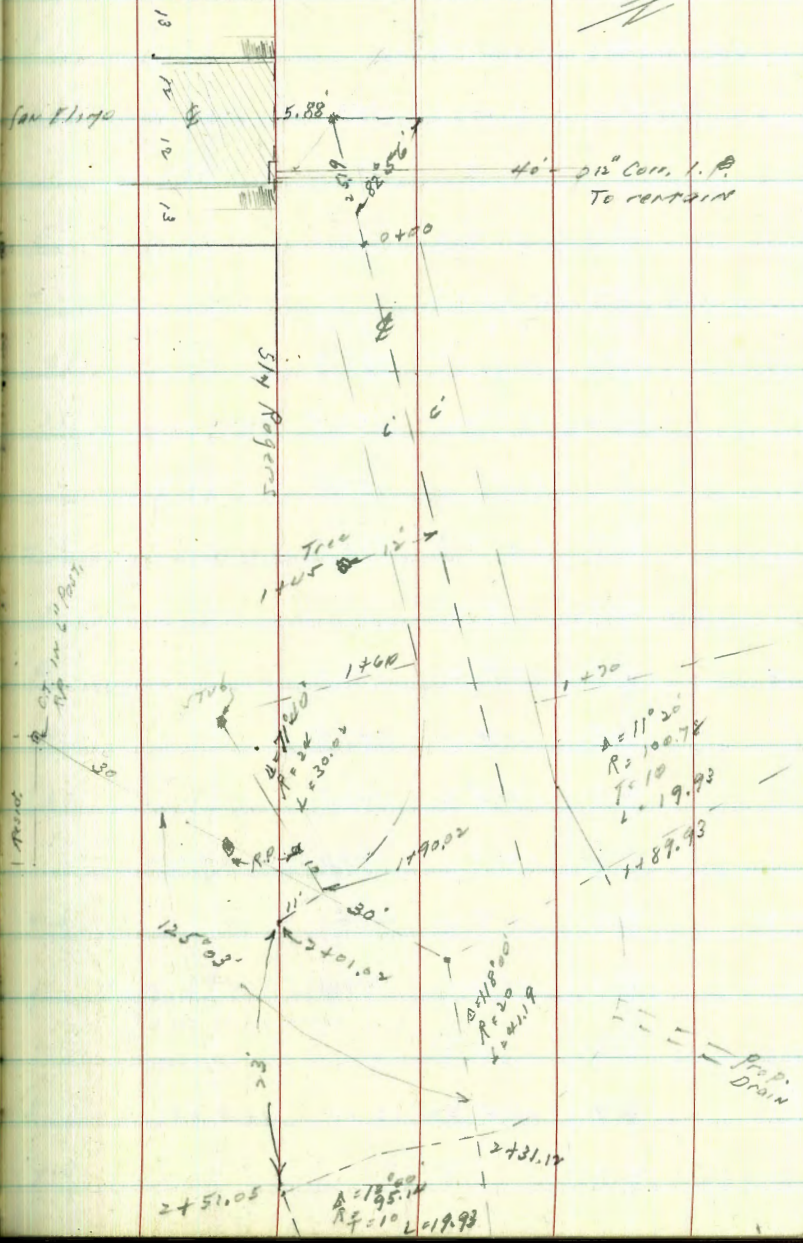
Indexed  
c.s.k.

Proposed 12' Private Dr.  
on Rogers E of San Eliz

56  
Mud  
12-4-58

E			2.0	76.1	
+2			2.0	76.1	
+4			10.2	67.7	
cb			12.4	65.7	
+2			13.1	65.1	
c			12.6	65.5	
cb			12.9	65.2	
+8			11.7	66.4	
W			6.8	71.3	
T.P.	0.49	67.10	11.71	66.41	
W cb top	3489.37	not Ocean View	4.29	62.81	
" " gut. pav			4.98	63.12	
C			4.88	62.22	
E cb			5.87	61.23	
" cb			5.29	61.81	61.84

Alley





		144.72					120.05		
T.P.	0.25	132.06	12.91	131.81	N			4.2	115.9
	1+50				+2	OUT		4.5	115.9
S			9.1	123.0	+7	"		6.8	113.3
C			9.4	122.7			✓ +09.93	line drain	
N			9.0	123.1	N			7.3	112.8
	1+60 P.C. S.L.				+3	OUT		7.8	112.3
-0			10.8	121.3	+7	"		10.3	109.8
N			11.0	121.1	+15	"		14.1	106.0
C			11.3	120.8			✓ +41.14	PRC	
S	STUB		11.33	120.73	N			7.3	112.8
+3			11.4	121.5	+6	OUT		7.5	112.6
					+15	"		12.5	107.6
T.P.	0.43	120.05	12.44	119.62			✓ +51.05	approx SL Rogers	
	1+70 P.C. S.L.				+5	OUT		9.0	111.1
C			1.5	118.6	N			7.3	112.8
N			0.8	119.3	+1	"		8.0	112.1
+5			1.4	118.7			1+90.00	EC on S.L.	
	1+89.93 PRC				5-5			3.7	116.4
					5			4.6	115.5
Center bango			6.0	114.1					

120.05

2 + 01.02 approx. SL Rogers

- 5	4.9	115.2
5	6.1	114.0
0	7.4	112.7

22' 2 + 01.02 to 2 + 51.05

20' S of SL Rogers

10' W	8.0	112.1
0	9.3	110.8
10' E	9.4	110.7

B.M. Con. Mon. Pueblo Cor. 1061 109.44

