

1550

1870

1870

1870



1550

MICROFILMED

DEC 24 1964

ENGINEERING DEPARTMENT  
CITY OF SAN DIEGO,  
CALIFORNIA.

Our Leather Bound Engineers Note Books are carried in the following rulings:

- No. 380 LEVEL BOOK. Left and Right Hand Page the same as Left Hand Page of this Book.
- No. 382 FIELD BOOK. Left Hand Page as in this Book, Right Hand Page 4 x 4 to the inch, Center Line Red.
- No. 384 MINING TRANSIT BOOK. Left Hand Page as in this Book, Right Hand Page 8x8 to the inch, Center Line Red.
- No. 385 FIELD BOOK. Left Hand Page as in this Book, Right Hand Page 8 vertical and 4 horizontal lines to the inch, Center Line Red.

We also carry the Note Books listed above, bound in extra strong Fabri-Hide (otherwise the same quality of book), which can be furnished at a somewhat lower price.

In ordering Fabri-Hide covered books, add the letter "F" to catalog number.

**THE FREDERICK POST CO.**  
*ENGINEERING and DRAFTING SUPPLIES*  
IRVING PARK STATION  
CHICAGO, ILL.



47 <sup>th</sup> St.	Imperial to <sup>225 N.</sup> Pera	4-8
Pera st.	47 <sup>th</sup> to Plantano	9-13
Almendra	Plantano to 49 <sup>th</sup>	14-18
Naranja	✓ r -	19-21
Fresa	47 <sup>th</sup> - 49 <sup>th</sup>	22-26
Plantano	SDA R/4 Castana	27-33
Castana	47 <sup>th</sup> - 49 <sup>th</sup>	34-41
49 <sup>th</sup> St.	Almendra - Nogal	42-49
Nogal	47 <sup>th</sup> to 49 <sup>th</sup>	50-56
Escuela	Castana Imperial	57-61
Haya	Nogal - Cereza	62-64
Cereza	Haya - 47 <sup>th</sup>	65-68
Alleys A-B-C	Nogal Castana	69-74
Imperial	47 to east 48	75-78



12-28-37

Miller  
Walker  
Bliss.X Sec. Sts & Alleys in  
Sunshine Gardens S. of S. D & A.R.R.  
For Plat see T.P. Book # 19.

BM.BP.	5.64	164.49		159.85	N.W. 45 <sup>th</sup> + Market
T.P.	0.49	152.11	12.87	151.62	
T.P.	0.10	140.51	11.65	140.46	
T.P.	0.29	128.05	12.80	127.76	
Set. BM.BP			7.51	120.54	W. curb. 47 <sup>th</sup> S. of S. Line Market
T.P.	0.99	115.99	13.05	115.00	
T.P.	0.16	103.21	12.94	103.05	
T.P.	1.22	91.68	12.75	90.46	
Set. BM.BP			7.50	84.18	N.E. 47 <sup>th</sup> Pora.
T.P.	1.42	80.59	12.51	79.17	
Set. BM.BP	10.14	84.97	5.76	74.83	S.E. 47 <sup>th</sup> + Castany
T.P.	13.05	97.86	0.16	84.81	
T.P.	11.75	109.01	0.60	97.26	
T.P.	9.16	117.50	0.67	108.34	
T.P.	3.48	113.79	7.19	110.31	
T.P.	8.08	118.25	3.62	110.17	
chk. BM. et. & Ocean View. within 47 <sup>th</sup>			2.60	115.65 = 115.76	K.B. 12 17 P 18
		117.50 H.I. above			
Set. BM.BP		5.50	112.00		S.E. 47 <sup>th</sup> + Imperial











X See. 47<sup>th</sup> St - Imperial to 225' N of Pera  
 Roadway Pavd. conc. walks & curb on E & W sides

Indexed  
 c.s.k.

B.M. RP — 5.30 — 89.40 — — 84.18 — N.E. 47<sup>th</sup> St + Pera St.

00 - 225.0' = Brk. Gravel in curb

E. cl	2.13	87.35
E. G Pav	2.63	86.85
cl "	2.40	87.08
W. G "	2.77	86.71
W. cl	2.21	87.27

00 - 100'

W. cl	3.82	85.66
W. G Pav	4.35	85.13
cl "	4.17	85.31
E. G "	4.38	85.10
E. cl	3.86	85.52

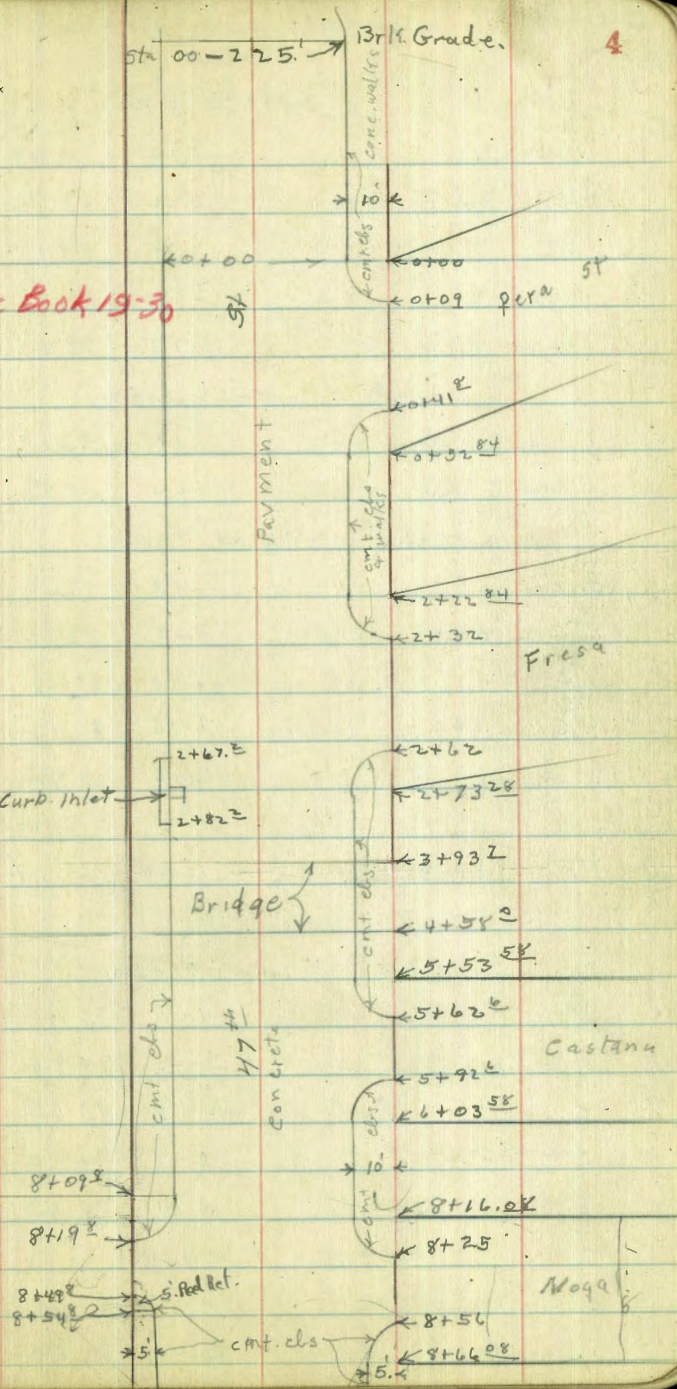
0+00 = N. Line Pera

E. cl	5.33	84.15
E. G Pav.	5.89	83.59
cl "	5.67	83.81
W. G "	5.90	83.58
W. cl	5.33	84.15

0+09 E. End. cl. Return on N.E.

E. line Top. cl.	5.28	84.20
E. " E. Pav	5.88	83.60

See tie Book 19-30





89.48

0+26.42 ♀ Para. on E. Line

W. d	5.70	83.78
W. G pav	6.22	83.26
♀ "	6.00	83.48
E. G. "	6.30	83.18
E. Line "	6.13	83.35

0+41 ♀ E. End. of S. E. Ret.

E. Line Top. d.	6.19	83.29
E. Line G. Pav.	6.62	82.86

0+52 <sup>84</sup> = S. Line Para.

E. d	6.19	82.29	?
E. G. pav.	6.65	82.83	
♀ "	6.40	83.08	
W. G. "	6.76	82.72	
W. d	6.16	83.32	

T.P. — 3.53 — 80.12 — 12.89 — 76.59

2+22 <sup>84</sup> N. Line Fresca

W. d	4.48	75.44
W. G. pav	5.23	74.89
♀ "	4.93	75.19
E. G. "	5.18	74.94
E. d	4.74	75.38

2+32 E. End. N. E. Ret

E. Line Top. d.	4.67	75.45
E. Line G. Pav.	5.23	74.89

80.12

47<sup>th</sup> St  
52+48 <sup>06</sup> ♀ Fresca. on E. Line

E. Line pav.	5.27	74.82
E. G. "	5.45	74.67
♀ "	5.53	74.59
W. G. "	5.83	74.29
W. d	4.98	75.14

2+62 = E. End. S. E. Ret.

E. Line Top. d.	5.14	74.98
E. Line G. Pav.	5.59	74.53

2+67.2 = N. End. 15' d. inlet on W. d.

W. d.	5.16	74.96
W. G.	6.09	74.03

2+73 <sup>08</sup> S. Line Fresca

W. d	5.19	74.93
W. G. curb. inlet. grating	6.18	73.94
♀ pav	5.91	74.11
E. G. "	5.80	74.32
E. d	5.18	74.94

2+82 = S. End. d. inlet

W. d	5.20	74.92
W. G.	6.09	74.03

3+93.2 N. End. Bridge

W. d	4.70	75.42
W. G. pav	5.31	74.81
♀ "	5.20	74.92
E. G. "	5.38	74.74
E. d	4.78	75.34



4+58 = S. End. Bridge

Nogal St

E. cl	4.75	75.37
E. G pav	5.37	74.75
± "	5.05	75.07
W. G "	5.23	74.89
W. d	4.66	75.46

5+53<sup>58</sup> = N. Line Castana

W. d	5.27	74.85
W. G pav	5.53	74.59
± "	5.40	74.72
E. G "	5.61	74.51
E. d	5.15	74.97

5+62<sup>6</sup> = E. End. N. E. Return

E. Line Top. cl	5.14	74.98
E. G Pav	5.87	74.25

5+78<sup>58</sup> = ± Castana

E. Line Pav	5.71	74.41
E. G "	5.68	74.44
± "	5.57	74.55
W. G "	5.64	74.48

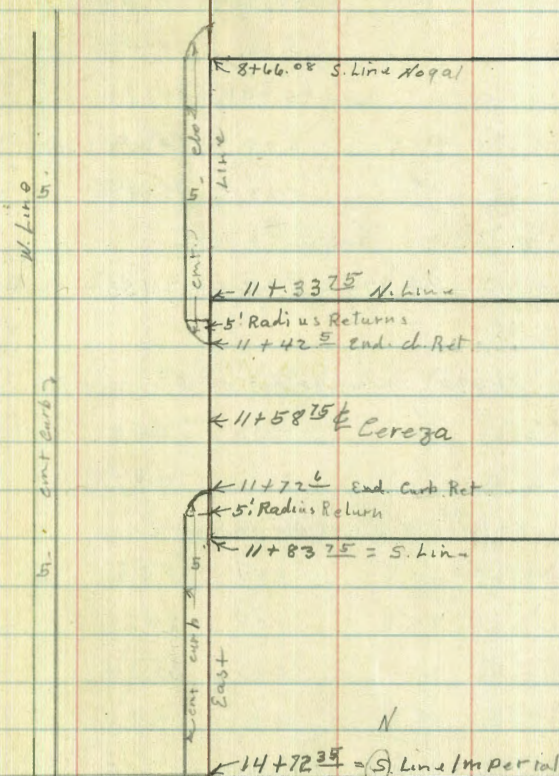
W. d Drive way.

5+92<sup>6</sup> E. End. S. E. Ret.

E. Line Top. cl	5.42	74.70
E. " G.	6.16	73.96

E. cl. S. End. Lowered. on Drive way.

G	4.48	111.62
±	4.58	111.52
G	4.97	111.13
W. d. S. End.	4.27	111.83



Continued from bottom of Page 8

N 116.10

14+71.3 on West	} S. End. Cmt. Curbs.
14+72 on E	



80.12

6+03<sup>58</sup> = S. Line Castana

N. ch	5.32	74.80
W. G. pav	5.68	74.44
± "	5.74	74.38
E. G. "	6.00	74.12
E. ch.	5.33	74.79

S. E. 47<sup>m</sup>

T.P. B.M. B.P. — 10.14 — 84.97 — 5.29 — 74.83 — + Castana —

8+09<sup>8</sup> = N. End 10' Ret. on W. N.W. Ret

W. ch	9.58	75.39
W. G. pav	10.16	74.81

8+10<sup>08</sup> N. Line Nogal on E.

E. ch	9.64	75.33
E. G. pav	10.08	74.89
± "	9.83	75.14
W. G. "	10.11	74.86

8+19<sup>8</sup> W End 10' Return W. N.W. Return

W. Line Top. ch	9.60	75.37
W. Line G. pav.	10.17	74.80

8+25<sup>8</sup> E. End of N. E. Return

E. Line Top. ch	9.50	75.47
E. " G. Pav.	9.94	75.03

8+41<sup>08</sup> ± Nogal on E.

W. Line pav	9.93	75.04
W. G. " 7.5 p. of W. Line	9.88	75.09
± "	9.69	75.28

84.97

47<sup>m</sup> St. 7

E. G. pav 7.5' E. of W. Line	9.79	75.18
E. Line "	9.60	75.37

8+49<sup>8</sup> W. End. S.W. Return 5' Rad.

W. Line Top. ch.	9.49	75.48
W. " G. pav	9.94	75.03

8+54<sup>8</sup> S. End S.W. Ret. 5' Rad.

W. ch	9.41	75.56
W. G.	9.86	75.11

8+56 E. End S. E. Ret. 10' R.

E. Line Top. ch.	9.40	75.57
E. " G. pav.	9.70	75.27

8+66<sup>08</sup> S. Line Nogal on E.

E. ch.	9.21	75.76
E. G. pav	9.57	75.40
± "	9.10	75.87
W. G. "	9.56	75.41
W. ch.	9.15	75.82

8+86<sup>08</sup> Brk. Gutter Lines

W. ch.	7.64	77.33
W. G. pav.	8.19	76.78
± "	7.64	77.33
E. G. "	8.30	76.67
E. ch.	7.66	77.31

T.P. — 13.05 — 97.86 — 0.16 — 84.81 —

T.P. — 11.75 — 109.01 — 0.60 — 97.26 —



11 + 27 E = Brk. E + w. gutters

E. dr		12.10	96.91
E. G	par	12.68	96.33
♀	"	12.42	96.59
W. G.	"	12.78	96.23
W. dr		12.22	96.79

11 + 32 E Brk. E + W. drs.

W. dr		11.84	97.17
W. G.	par.	12.46	96.55
♀	"	12.15	96.86
E. G	"	12.38	96.63
E. dr.		11.75	97.26

11 + 33<sup>25</sup> = N. Line Cereza St

E. dr		11.72	97.29
E. G	par	12.31	96.70
♀	"	12.09	96.92
W. G	"	12.42	96.59
W. dr		11.82	97.99

11 + 42<sup>6</sup> E. End. N. E. Ret.

W. dr		11.64	97.37
W. G	par	12.12	96.89
♀	"	11.83	97.18
E. G	"	12.21	96.80
E. Line G.	"	12.24	96.77
E. Line Top dr		11.69	97.32

11 + 58<sup>75</sup> = ♀ Cereza

E. Line Par		11.70	97.31
E. G.	"	11.76	97.25
♀	"	11.39	97.63
W. G	"	11.80	97.21
W. dr		11.29	97.72

11 + 72<sup>6</sup> E. End. S. E. Ret.

W. dr		10.99	98.02
W. G	par	11.42	97.59
♀	"	10.95	98.06
E. G	"	11.38	97.63
E. Line "		11.21	97.70
E. Line Top dr		10.71	98.30

11 + 83<sup>75</sup> = S. Line Cereza St.

E. dr		10.50	98.51
E. G	par	11.06	97.95
♀	"	10.57	98.44
W. G	"	11.10	97.91
W. dr.		10.68	98.33

— T.P. — 9.16 — 117.50 — 0.67 — 108.54 —

B.M.	4.10	116.10 <sup>6</sup>	5.50 <sup>6</sup>	112.00 <sup>6</sup>
		520 144.59		
W. dr			4.86	111.24
G			5.38	110.72
♀			4.96	111.14
G			4.99	111.11

E. dr. N. End. Driveway. 4.21 111.89

Continued Bottom Page 6.

S.E. 47<sup>th</sup> St  
Imperial.



Walker  
Bliss  
1-17-38

Cross Section Pera St. 10' cbs  
From East line 47th To West line  
Plantano street

Indexed  
c.s.K.

47th St.

9

10.81 94.99 84.18 N.E. & P.P.  
Peru + 47th  
Section = E.L. 47th

N	10.1	84.9
+9" on cb.	10.79	84.20
" " Gut. paving	11.40	83.59
1/4" "	11.54	83.45
1/2" "	11.65	83.34
S 1/4" "	11.92	83.07
S Gut. on Paving 1/4" slope	12.15	82.84
" cb.	11.72	83.27
S.L.	11.3	83.9

0+00 = RT Δ to N.E. Cor. 47th

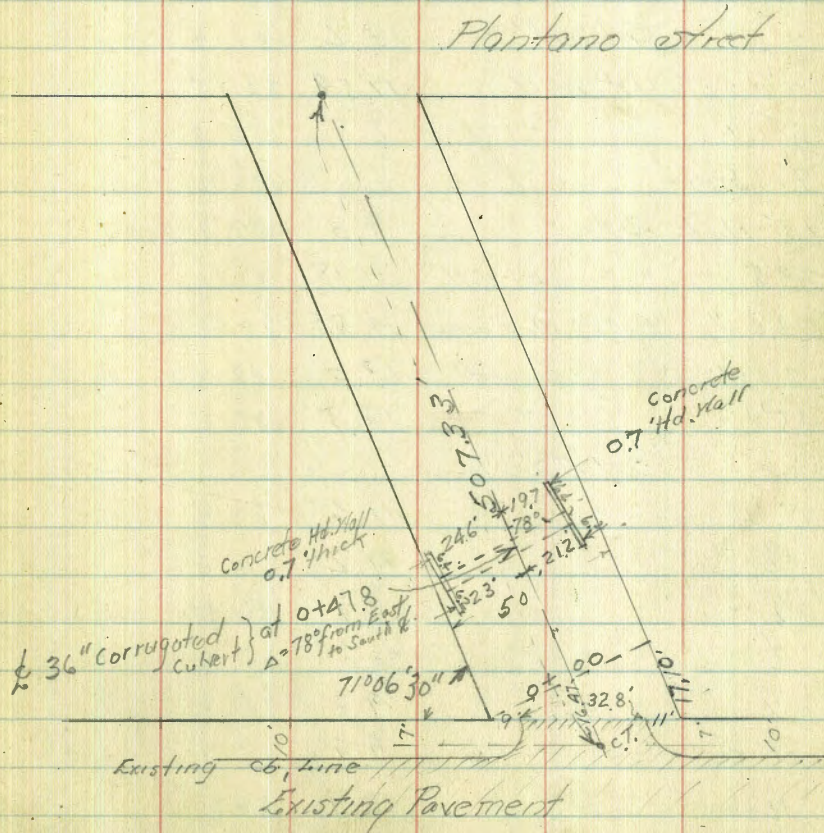
S	9.6	85.4
cb.	9.6	85.4
1/4	9.9	85.1
1/2	10.7	84.3
1/4	11.1	83.9
cb.	10.4	84.6
N	10.1	84.9

0+25

N	9.7	85.3
cb.	9.9	85.1
1/4	10.1	84.9
1/2	10.0	85.0
1/4	10.1	84.9

Alameda

see tie Book 19-30





94.99

Para st.

8763

94.99

10

cb.	10.3	84.7	-10'	1+00	10.7	84.3
S.	10.6	84.4	N		10.9	84.1
0+47.8 - E Existing culvert		36" corrugated	+8		10.3	84.7
Note: Look this over before making any extension			cb.		9.3	85.7
I think this culvert can be eliminated - <sup>chase</sup> Walker			1/4		8.6	86.4
40' South of E Road	13.5	81.5	E		8.3	86.7
20' " " on Flow line	15.27	79.72	1/4		9.2	85.8
" " " Ground	13.6	81.4	cb		10.0	85.0
" " " Hd Wall	11.52	83.45	S		10.1	84.9
8' " "	8.8	86.2	+5		10.1	84.9
E Street	8.5	86.2		1+35		
13' North of E	9.3	85.7	-5'		11.3	83.7
23.8 " " " on Hd Wall	11.18	83.81	S		11.0	84.0
23.8 " " " Flow line	14.83	80.16	cb.		10.0	85.0
" " " " Ground	13.0	82.0	1/4		8.4	86.6
45' " " " " "	12.7	82.3	E		7.7	87.3
0+50			1/4		7.7	87.3
S	11.6	83.4	cb.		8.6	86.4
cb.	11.2	83.8	N		8.5	86.5
1/2	8.7	86.3		1+60		
E	8.6	86.4	N		5.3	89.7
1/4	9.3	85.7	+6		5.7	89.3
N cb.	9.9	85.1	cb.		6.4	88.6
N. L.	10.9	84.1	1/4		6.8	88.2
+10	10.7	84.3	E		6.9	88.1
1+00			1/4		6.9	88.1



94.99

Pera st.

cb.		7.9	87.1
S		9.1	85.9
	2+00		
S-10'		8.2	86.8
S		7.5	87.5
cb.		6.6	88.4
1/4		6.3	88.7
L		6.1	88.9
1/4		6.1	88.9
cb.		6.0	89.0
N		4.6	90.4
	2+25		
N		3.7	91.3
+6		4.4	90.6
cb.		6.1	88.9
1/4		6.4	88.6
L		6.3	88.7
1/4		6.5	88.5
cb.		6.6	88.4
S		8.1	86.9
+10		8.5	86.5
	2+50		
-10		12.7	82.3
S		9.9	85.1
cb.		7.5	87.5
1/4		6.6	88.4

94.99

11

L		6.6	88.4
1/10		6.5	88.5
cb		6.2	88.8
+3'		3.8	91.2
N		3.1	91.9
	2+75		
N		2.8	92.2
+7		3.8	91.2
cb.		5.7	89.3
1/4		6.5	88.5
L		6.9	88.1
1/4		7.0	88.0
cb.		11.0	84.0
S		13.6	81.4
+10		15.0	80.0
+20		16.1	78.9
	3+00		
-20'		17.2	77.8
S		15.3	79.7
cb.		11.6	83.4
1/4		7.4	87.6
L		7.2	87.8
1/4		7.1	87.9
+4'		6.9	88.1
cb.		4.9	90.1
+5'		3.4	91.6



94.99

Pera St.

N		3.3	92.7
	3+50		
N		1.4	93.6
+7		2.8	92.2
cb.		4.3	90.7
+4		7.1	87.9
1/4		7.4	87.6
L.		7.6	87.4
1/4		7.6	87.4
+3		7.6	87.4
cb.		10.2	84.8
S		14.5	80.5
+20		18.0	77.0
	4+100		
-20		17.6	77.4
-10		16.5	78.5
S		14.1	80.9
cb.		11.2	83.8
+5		8.5	86.5
1/2		8.3	86.7
L.		8.1	86.9
1/4		8.0	87.0
+4'		7.5	87.5
cb.		5.1	89.9
+3		3.2	91.8
N		1.5	93.5

94.99

12

	4+40		
N		2.1	92.9
+8		3.6	91.4
cb.		5.9	89.1
+4'		7.8	87.2
1/4		8.3	86.7
L.		8.5	86.5
1/4		8.5	86.5
+3		8.7	86.3
cb.		11.1	83.9
S		14.2	80.8
+10		16.4	78.6
+20		17.5	77.5
	4+70		
-20		17.0	78.0
S		15.0	80.0
cb.		12.6	82.4
+4		10.7	84.3
1/4		9.9	85.1
L.		9.7	85.3
1/4		9.6	85.4
+3		9.4	85.6
cb.		6.5	88.5
+3		5.3	89.7
N		3.8	91.2

4+90.86 = West line Plantano St.



94.99' Pera St.

to +90.86 - West line Plantino St.

13

			N.W. Cor. Plantino + Pera St.
N. line on top Iron pipe	5.79	89.20	
+4	6.7	88.3	
cb.	9.3	85.7	
1/4	10.2	84.8	
6	10.6	84.4	
1/4	10.8	84.2	
+3	11.1	83.9	
cb.	12.3	82.7	
S	14.9	80.1	
+20	16.6	78.4	
TP	5.79	89.20	N.W. Cor. Plantino + Pera Iron pipe



Cross Section Almendra St. <sup>10' c.s.</sup> 7.5' <sup>1/4</sup>s  
 From East line Plantano Street  
 To " " Frambuesa "

Indexed  
 C.S.K.

See tie Book 19-30 <sup>14</sup>

49 SB

3.51 92.71 89.20 <sup>N.W. Iron Pipe</sup>  
<sup>Plantano Page 13</sup>  
<sup>& Peru</sup>

0+00 = East line Plantano St.

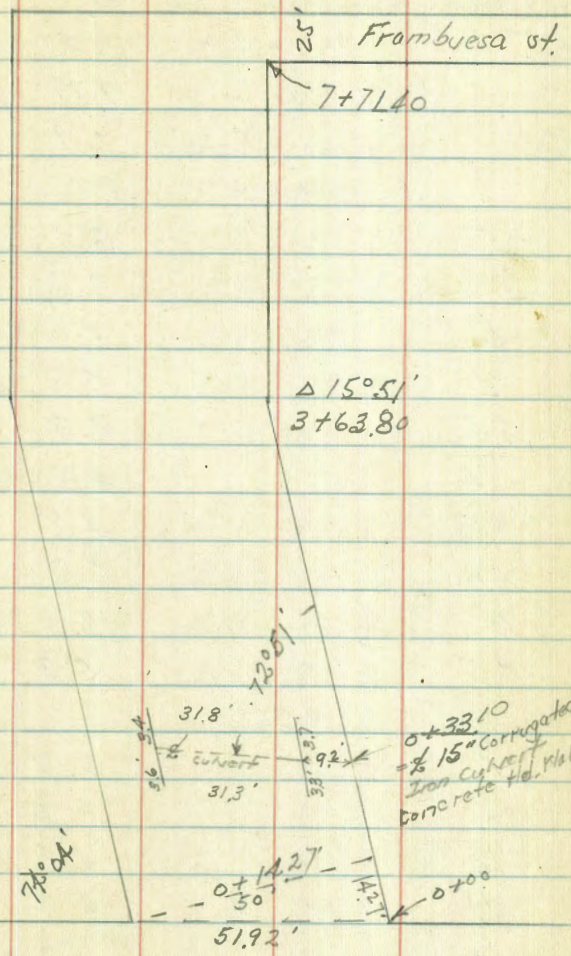
S	5.7	87.0
cb.	4.4	88.3
1/4	3.8	88.9
2	3.7	89.0
N 1/4	3.4	89.3
+5	2.3	90.4
cb.	2.1	90.6
N	1.7	91.0

0+14.27 = Pt. Δ to N.E. Cor.

N	1.7	91.0
cb.	2.5	90.2
1/4	3.5	89.2
2	3.9	88.8
1/4	4.2	88.5
cb.	6.0	86.7
S	7.3	85.4
+5	7.9	84.8

0+33.10 Section over 2' culvert

30' South of South line	10.4	82.3
South Prop. line	9.3	83.4
9.2' North of South line	9.33	83.38 on Flow line
" " " " "	7.51	85.20 " Hd. Wall
15' " " " "	5.5	87.2



0+33.10  
 2' 15" Corrugated  
 Iron Culvert  
 Concrete Hd. Walls

Plantano

street



92.71

37' North of South Prop line	4.5	88.2	
40.7 " " " " "	5.81	86.9	
" " on Flow	7.79	84.92	Next Pipe
63' " of South prop. line	6.1	86.6	
	0+50		
-5	8.8	83.9	
S	8.1	84.6	
cb.	7.0	85.7	
1/4	4.8	87.9	
2/8	4.3	88.4	
1/4	4.5	88.2	
+3	4.5	88.2	
cb.	6.7	86.0	
N	5.7	87.0	
+5	5.3	87.4	
	1+00		
N	1.7	91.0	
cb.	2.3	90.4	
1/4	4.6	88.1	
2/8	4.7	88.0	
1/4	5.0	87.7	
cb.	4.8	87.9	
S	6.3	86.4	
+10	9.0	83.7	
	1+50		
-10	9.2	83.5	

92.71

15

S	5.5	87.2	
+4'	4.6	88.1	
cb.	4.4	88.3	
+4	4.3	88.4	
1/4	5.6	87.1	
2/8	5.6	87.1	
1/4	5.3	87.4	
+5	3.4	89.3	
cb.	3.4	89.3	
N	2.6	90.1	
	2+00		
N	4.1	88.6	
cb.	4.5	88.2	
+4	4.9	87.8	
1/4	6.5	86.2	
2/8	6.6	86.1	
1/4	7.2	85.5	
cb.	10.6	82.1	
S	12.0	80.7	
+15'	12.9	79.8	
	2+50		
-15	12.5	80.2	
S	11.8	80.9	
cb.	10.8	81.9	
1/4	8.3	84.4	
2/8	7.2	85.5	



92.71

92.00

16

1/4		7.6	85.1	+3		5.5	86.5
N cb.		7.7	85.0	1/4		5.8	86.2
N		4.8	87.9	1/2		6.0	86.0
	3+00			1/4		6.5	85.5
N		5.5	87.2	cb.		6.9	85.1
cb.		6.8	85.9	S		7.5	84.5
1/4		7.0	85.7	+10		8.4	83.6
1/2		7.3	85.4		4+50		
1/4		7.7	85.0	-10		9.1	82.9
cb.		9.4	83.3	S		8.7	83.3
S		10.2	82.5	cb.		8.2	83.8
+15'		10.9	81.8	1/4		7.2	84.8
T.P.	7.23 92.00	7.94	84.77	1/2		6.7	85.3
	3+63.80 Δ Rt. 15°56'	5048' - diag. dist. Section on Δ Bisector.		1/4		6.6	85.4
-10		8.0	84.0	+5		6.5	85.5
S		7.3	84.7	N cb.		5.5	86.5
cb.		6.1	85.9	N		4.9	87.1
1/4		6.2	85.8		5+00		
1/2		5.9	86.1	N		6.1	85.9
1/4		5.5	86.5	cb.		6.8	85.2
+5		3.7	88.3	+3'		7.7	84.3
cb.		3.7	88.3	1/4		7.3	84.7
N		2.4	89.6	1/2		7.4	84.6
	4+00			1/4		7.7	84.3
N		3.3	88.7	cb.		8.3	83.7
cb.		4.2	87.8	S		8.8	83.2
				+10'		9.4	82.6



	5+50		
-10'		9.9	82.1
S		9.3	82.7
cb.		8.6	83.4
1/4		7.9	84.1
2		7.8	84.2
1/4		7.7	84.3
cb.		7.3	84.7
N		6.6	85.4

6+00

N		7.6	84.4
cb.		8.2	83.8
1/4		8.1	83.9
2		8.2	83.8
1/4		8.6	83.4
cb.		9.1	82.9
S		9.5	82.5
+10		9.8	82.2

6+50

-10		9.8	82.2
S		9.4	82.6
cb.		9.1	82.9
1/4		8.6	83.4
2		8.3	83.7
1/4		8.4	83.6
cb.		8.5	83.5

N		8.5	83.5
	7+00		
N		7.6	84.4
cb.		7.8	84.2
1/4		8.2	83.8
2		8.2	83.8
1/4		8.5	83.5
cb.		8.7	83.3
S		8.9	83.1
+10		8.9	83.1

7+50

-10		8.8	83.2
S		8.5	83.5
cb.		8.4	83.6
1/4		7.9	84.1
2		7.9	84.1
1/4		8.1	83.9
+3		8.1	83.9
+5		7.3	84.7
cb.		7.3	84.7
N		7.0	85.0

7+71.40 = West line Frambuesa St.

N		7.1	84.9
cb.		7.5	84.5
1/4		7.7	84.3
2		7.7	84.3



92.00

Frambuesa

18

5 1/4

7.8 84.2

cb.

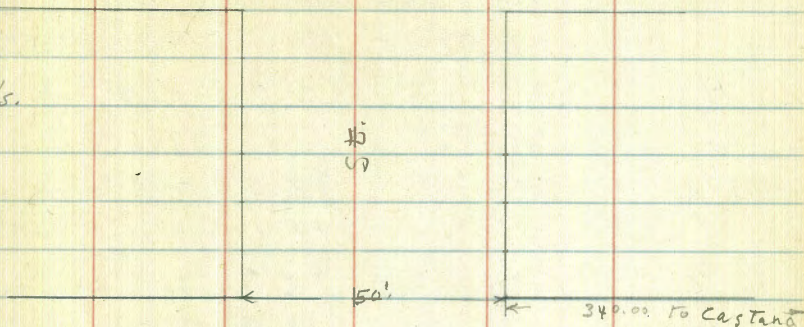
8.0 84.0

S.W. Cor. Iron pipe

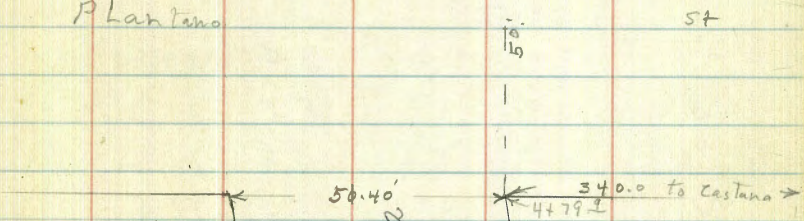
8.24 83.76

Iron Pipe  
S.W. Cor.  
Frambuesa & Alameda sts.

For check Above TP see Cross Sections P. 42

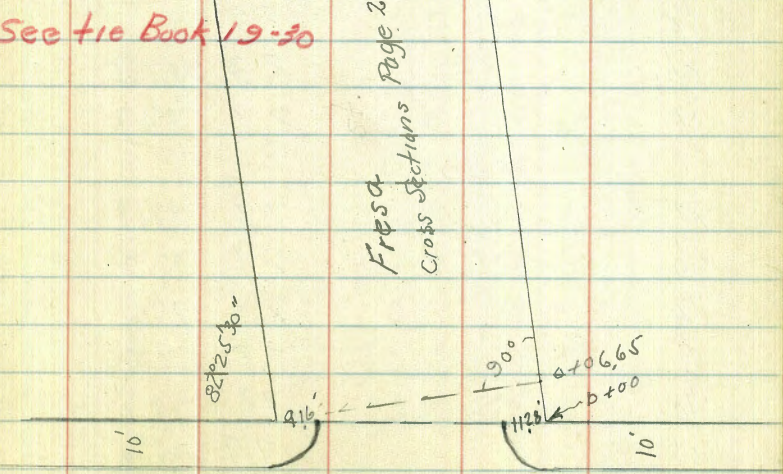


P Lantana



See tie Book 19-30

FRESA  
Cross Sections  
Page 22



47th



Walker  
Bliss  
1-18-38

Cross Section Naranja St. 50' W  
From East Line Plantano St. 10' C.S.  
To West " Frutibusa St. 7.5' W

Indexed  
C.S.Ki

8584

19

0+00 = East Line Plantano street.  
0.26 89.46 89.20

street.  
New Iron Pipe  
Plantano  
& Para

1+50

N	11.5	78.0	S	7.5	78.3
cb.	11.9	77.6	cb.	7.5	78.3
1/4	12.0	77.5	1/4	7.5	78.3
1/2	12.1	77.4	1/2	7.3	78.5
1/4	12.2	77.3	1/4	7.4	78.4
cb.	12.3	77.2	cb.	7.4	78.4

Stk. on Iron pipe 85.84 12.52 76.94

0+50

2+00

S	8.4	77.4	N	6.8	79.0
cb.	8.5	77.3	cb.	6.9	78.9
1/4	8.6	77.2	1/4	6.9	78.9
1/2	8.3	77.5	1/2	6.8	79.0
1/4	8.3	77.5	1/4	6.8	79.0
cb.	8.3	77.5	cb.	7.0	78.8
N	8.1	77.7	S	6.8	79.0

2+50

1+00

N	7.9	77.9	S	6.2	79.6
cb.	8.1	77.7	cb.	6.4	79.4
1/4	8.2	77.6	1/4	6.4	79.4
1/2	7.8	78.0	1/2	6.3	79.5
1/4	7.8	78.0	1/4	6.4	79.4
cb.	7.9	77.9	cb.	6.4	79.4
S	7.9	77.9	N	6.4	79.4

3+00

1+50

N	5.9	79.9	cb.	5.9	79.9
cb.	5.9	79.9			



8584 Naranja st.

8584

20

1/4	6.0	79.8
1/2	5.8	80.0
1/4	5.9	79.9
cb.	5.8	80.0
S	5.9	79.9

3+50

S	5.3	80.5
cb.	5.5	80.3
1/4	5.2	80.6
1/2	5.2	80.6
1/4	5.5	80.3
cb.	5.4	80.4
N	5.5	80.3

4+00

N	5.0	80.8
cb.	4.9	80.9
1/4	4.9	80.9
1/2	4.8	81.0
1/4	4.9	80.9
cb.	4.9	80.9
S	5.0	80.8

4+50

S	4.3	81.5
cb.	4.5	81.3
1/4	4.5	81.3
1/2	4.3	81.5

1/4	4.2	81.4
cb.	4.4	81.4
N	4.3	81.5

5+00

N	3.9	81.9
cb.	3.9	81.9
1/4	3.9	81.9
1/2	3.8	82.0
1/4	3.8	82.0
cb.	3.7	82.1
S	3.8	82.0

5+50

S	3.4	82.4
cb.	3.4	82.4
1/4	3.4	82.4
1/2	3.2	82.6
1/4	3.4	82.4
cb.	3.5	82.3
N	3.3	82.5

6+00

N	3.0	82.8
cb.	2.9	82.9
1/4	3.0	82.8
1/2	2.8	83.0
1/4	3.1	82.7
cb.	2.9	82.9



S 2.9 82.9

6+50

S 2.4 83.4

cb. 2.3 83.5

1/4 2.4 83.4

1/2 2.4 83.4

1/4 2.5 83.3

cb. 2.4 83.4

N 2.5 83.3

7+00

N 1.9 83.9

cb. 2.0 83.8

1/4 2.0 83.8

1/2 1.8 84.0

1/4 1.9 83.9

cb. 1.9 83.9

S 1.8 84.0

7+55.7 = Top S.L. Station.

S 0.8 85.0

cb. 1.2 84.6

1/4 1.3 84.5

1/2 1.3 84.5

1/4 1.7 84.1

cb. 1.7 84.1

N.W. Cor. Iron pipe 1.74 84.10 ✓

For chks. above pipe see P. 43



Walker  
Bliss  
1-20-38

Cross Section FRESA-JT. 50' wide  
From East line 47th St. 10' cbs. 1/4s.  
To West line Fremont St. 7.5' 1/4s.  
Sketch Page 18

Indexed  
c.s.K.

80.23

22

5.25 80.23

74.98

Top of S.E. Fresa  
2+62 Page 5

H 1/4

4.7 75.5

2

4.8 75.4

1/4

4.8 75.4

+6

4.9 75.3

cb.

4.1 76.1

S

4.1 76.1

N 4.4 75.8

+9.16 = cb 4.78 75.45

" = Gut. on Pav. 5.35 74.88

N 1/4 on Paving 5.32 74.91

2 " " 5.41 74.82

S 1/4 " " 5.52 74.71

S Gut. " " 5.70 74.53

S top cb. 5.25 74.98

S 7/11.28 5.0 75.2

0+50

S 5.0 75.2

+8 4.4 75.8

cb. 5.2 75.0

1/2 4.9 75.3

2 4.8 75.4

1/4 4.7 75.5

cb. 4.6 75.6

+3 3.9 76.3

N 3.5 76.7

1+00

N 2.5 77.7

cb. 3.3 76.9

+2 4.7 75.5

1+50

S

4.4 75.8

cb.

4.6 75.6

1/4

4.9 75.3

2

4.7 75.5

1/4

4.5 75.7

+3

4.5 75.7

cb.

3.5 76.7

N

3.0 77.2

2+00

N

4.2 76.0

cb.

4.4 75.8

1/4

4.6 75.6

2

4.9 75.3

1/4

5.0 75.2

cb.

5.2 75.0

S

5.3 74.9

2+50

S

5.4 74.8

cb.

5.3 74.9



S 1/4	5.4	74.8
2	5.1	75.1
N 1/4	5.0	75.2
cb.	4.7	75.5
N	4.4	75.8
3+00		
N	5.2	75.0
cb.	5.5	74.7
1/4	5.5	74.7
2	5.7	74.5
1/4	5.7	74.5
cb.	5.9	74.3
S	5.9	74.3
3+50		
S	4.9	75.3
cb.	4.9	75.3
1/4	4.8	75.4
2	5.1	75.1
1/4	4.9	75.3
cb.	5.1	75.1
N	5.2	75.0
4+00		
N	4.3	75.9
cb.	4.1	76.1
1/4	4.3	75.9
2	4.1	76.1

1/4	4.4	75.8
cb.	4.2	76.0
S	4.3	75.9
4+40		
S	3.8	76.4
2	3.7	76.5
1/4	3.8	76.4
2	3.7	76.5
1/4	3.7	76.5
cb.	3.6	76.6
N	3.6	76.6
4+79.9 = Sta. SW Cor Plantano St. section on line		
N	3.2	77.0
cb.	3.1	77.1
1/4	3.2	77.0
2	3.4	76.8
1/4	3.3	76.9
cb.	3.3	76.9
S	7.92	84.76
S on SW Cor. Iron pipe Plantano		
chk. SE. Iron pipe Nuanja	7.82	76.94
0+00 = East line Plantano St.		
S	7.3	77.5
cb.	7.4	77.4
1/4	7.5	77.3
2	7.6	77.2
1/4	7.5	77.3



84,76

cb.		7.3	77.5
N		7.2	77.6
	0+35		
N		7.2	77.6
cb.		7.2	77.6
$\frac{1}{4}$		7.1	77.7
$\frac{1}{2}$		7.2	77.6
$\frac{1}{4}$		6.7	78.1
cb.		5.4	79.4
S		5.2	79.6
	0+60		
S		6.7	78.1
cb.		6.6	78.2
$\frac{1}{4}$		6.7	78.1
$\frac{1}{2}$		6.6	78.2
$\frac{1}{4}$		6.9	77.9
cb.		6.9	77.9
N		6.9	77.9
	1+00		
N		6.3	78.5
cb.		6.4	78.4
$\frac{1}{4}$		6.5	78.3
$\frac{1}{2}$		6.4	78.4
$\frac{1}{4}$		6.3	78.5
cb.		6.2	78.6
S		6.4	78.4

84,76

24

	1+50		
S		6.2	78.6
cb.		6.0	78.8
$\frac{1}{4}$		6.0	78.8
$\frac{1}{2}$		6.0	78.8
$\frac{1}{4}$		6.1	78.7
cb.		6.0	78.8
N		5.9	78.9
	2+00		
N		5.5	79.3
cb.		5.4	79.4
$\frac{1}{4}$		5.5	79.3
$\frac{1}{2}$		5.6	79.2
$\frac{1}{4}$		5.7	79.1
cb.		5.8	79.0
S		5.9	78.9
	2+50		
S		5.7	79.1
cb.		5.7	79.1
$\frac{1}{4}$		5.6	79.2
$\frac{1}{2}$		5.4	79.4
$\frac{1}{2}$		5.4	79.4
cb.		5.3	79.5
N		5.2	79.6
	3+00		
N		5.0	79.8



cb.	5.2	79.6
1/4	5.3	79.5
1/2	5.4	79.4
1/4	5.2	79.6
cb.	5.2	79.6
S	5.4	79.4

3+50

S	5.0	79.8
cb.	4.9	79.9
1/4	4.8	80.0
1/2	4.8	80.0
1/4	5.0	79.8
cb.	4.8	80.0
N	5.1	79.7

4+17

N	4.2	80.6
cb.	4.2	80.6
1/4	4.3	80.5
1/2	4.2	80.6
1/4	4.5	80.3
cb.	4.4	80.4
S N	4.4	80.4

4+20 This and other sections East are in Creek Bed.

S N	7.5	77.3
cb.	7.4	
1/4	7.3	

1/2	7.4	77.4
1/4	7.4	77.4
cb.	7.3	77.5
N	7.3	77.5

4+50 in Creek Bed.

-10	5.9	78.9
N	5.9	78.9
cb.	6.1	78.7
1/4	6.2	78.6
1/2	6.3	78.5
1/4	6.7	78.1
cb.	6.7	78.1
S	6.8	78.0
+10	6.8	78.0

5+00 in Creek Bed.

-10'	6.2	78.6
S	6.2	78.6
cb.	6.2	78.6
1/4	6.2	78.6
1/2	6.0	78.8
1/4	6.0	78.8
cb.	5.9	78.9

N

+10

-10'	6.1	78.7
------	-----	------

5+50 in Creek Bed.



84.76

N	6.1	78.7
cb.	6.1	78.7
1/4	5.7	79.1
1/2	5.4	79.4
3/4	5.5	79.3
cb.	5.5	79.3
S	5.3	79.5
+10	5.3	79.5

6+00 IN Creek Bed

-10'	5.0	79.8
S	5.0	79.8
cb.	5.0	79.8
1/4	5.3	79.5
1/2	5.3	79.5
3/4	5.3	79.5
cb.	5.3	79.5
N	4.9	79.9
+10	4.8	80.0

6+50 IN Creek Bed

N	3.8	81.0
cb.	3.8	81.0
1/4	4.3	80.5
1/2	4.4	80.4
3/4	4.6	80.2
cb.	4.8	80.0
S	5.2	79.6

84.76

26

7+00 IN Creek Bed

S	4.2	80.6
cb.	4.0	80.8
1/4	4.1	80.7
1/2	3.5	81.3
3/4	3.5	81.3
cb.	3.5	81.3
N	3.5	81.3

7+52.22 = West Line Frambuesa Street

N	3.9	80.9
cb.	3.5	81.3
1/4	3.0	81.8
1/2	2.8	82.0
3/4	2.9	81.9
cb.	3.2	81.6
S	3.0	81.8



Cross Section Plantano st. 50' wide  
 From S.D. & A. R.R. of way  
 To N. line Costano street.

Indexed  
 C.S.K.

11.99 101.17  
 Top Rail on West line plantano st. + 2.9 104.1  
 Floor line 1'x2' wooden Box culvert 7.19 93.98

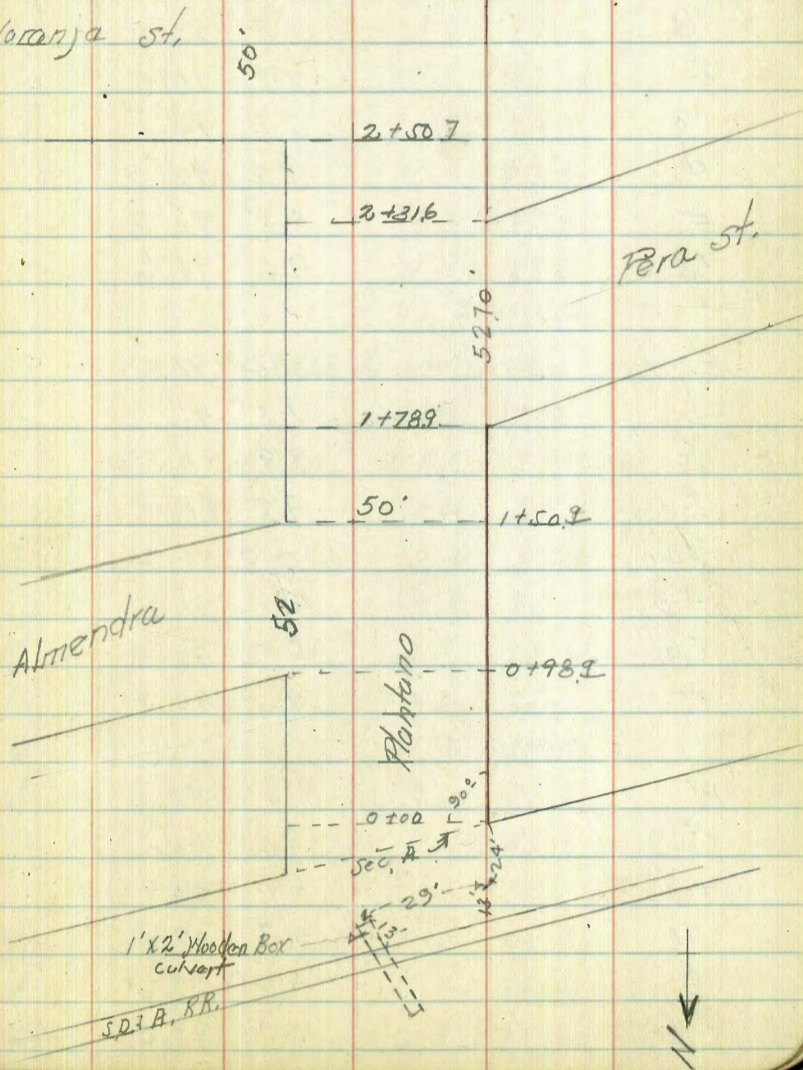
Ch. B  
 N.W. 87M  
 Plantano + Pera  
 Page 19

Sec. A

W	2.6	98.6
cb.	2.9	98.3
1/4	3.0	98.2
1/2	3.0	98.2
+6	3.2	98.0
1/4	4.0	97.7
cb.	8.1	93.1
+3	8.1	93.1
E	6.9	94.3
+10	5.0	96.2
0+00		
-5'	6.6	94.6
E	7.9	93.3
+4	9.2	92.0
+7	9.3	91.9
cb.	7.5	93.7
1/4	3.6	97.6
1/2	3.4	97.8
1/4	3.3	97.9
cb.	2.9	98.3
W	2.6	98.6

Naranja st.

Almendra



See tie Book 19-30



	0+50		
W		5.4	95.8
cb.		5.6	95.6
+3		7.4	93.8
1/4		7.4	93.8
2		7.2	94.0
1/4		7.2	94.0
cb.		7.2	94.0
E		8.5	92.7
+5		9.6	91.6

0+98.9

E		10.2	91.0
cb.		9.5	91.7
1/4		9.9	91.3
2		9.8	91.4
1/4		10.0	91.2
+3		10.0	91.2
cb.		8.2	93.0
W		7.5	93.7

1+24.9

W		9.2	92.2
cb.		9.6	91.6
+3		11.1	90.1
1/4		11.7	89.5
2		11.6	89.6
1/4		12.2	89.0

cb.		11.8	89.4
E		12.0	89.2
	1+50.9		
E		14.3	86.9
cb.		13.6	87.6
1/4		13.8	87.4
2		13.5	87.7
1/4		13.6	87.6
+4		13.3	87.9
cb.		11.4	89.8
W		10.7	90.5

1+78.9 = At Δ to NW Cor. Pera Street

W		12.0	89.2	
T.P.	0.15	89.35	11.97	89.20
+7		1.0	88.4	
cb.		2.4	87.0	
1/4		3.9	85.5	
2		4.2	85.2	
1/4		4.4	85.0	
cb.		4.8	84.6	
2		5.6	83.8	
+15		7.1	82.3	
	1+89.4			
-15		8.5	80.9	
2		7.0	82.4	
cb.		6.1	83.3	

NW Iron Pipe  
Platano + Pera



1/4	5.4	84.0
2/4	5.2	84.2
1/4	5.0	84.4
cb.	4.6	84.8
W	3.7	85.7

$2+05.25 = 2$  Para on West

W	5.0	84.4
cb.	5.7	83.7
1/4	6.6	82.8
2/4	6.8	82.6
1/4	7.1	82.3
cb.	8.0	81.4
E	8.4	81.0
+10	9.0	80.4

$2+13.15 = 5$  1/4 Para St. on West

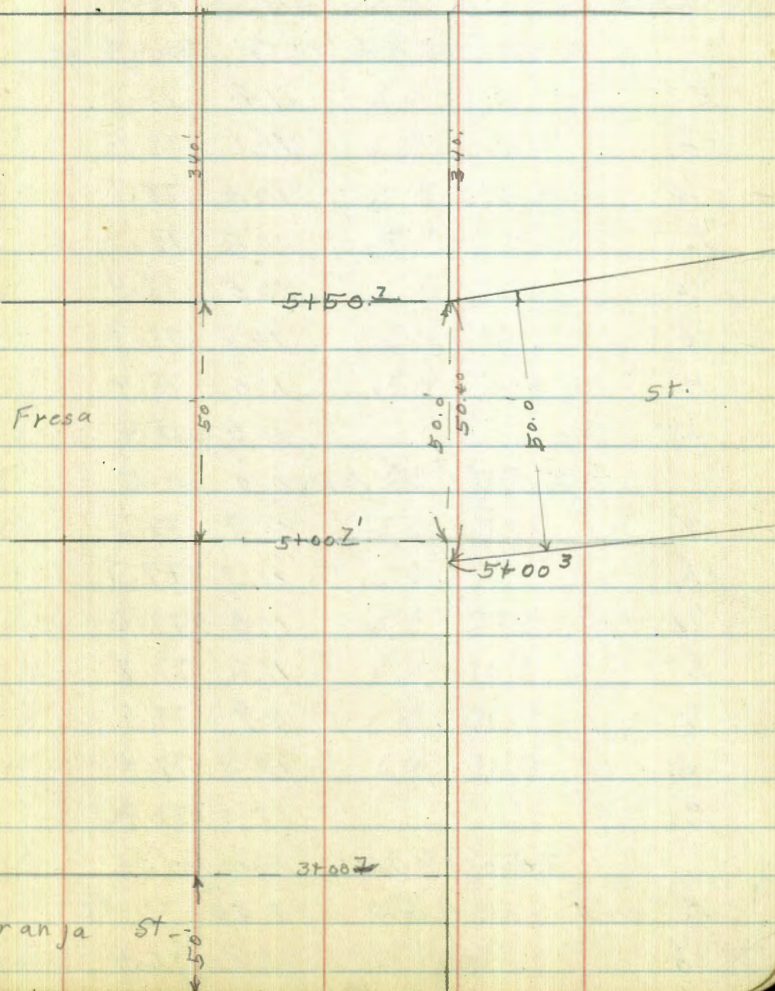
-10	9.8	79.6
E	9.5	79.9
cb.	8.9	80.5
1/4	7.8	81.6
cb.	7.7	81.7
1/4	7.5	81.9
cb.	6.8	82.6
W	5.2	84.2

$2+31.6 = 5$  1/2 Para on West

W	9.3	80.1
cb.	9.5	79.9

Castana

St.





89.35

Plantano

1/4	9.2	80.2
1/2	9.2	80.2
1/4	9.4	80.0
cb.	10.4	79.0
E	10.7	78.7
+10	10.7	78.7

2+50.7 = P.L. A to N.E. Cor. Naranja st.

E	11.4	78.0
cb.	11.1	78.3
1/4	10.6	78.8
1/2	10.5	78.9
1/4	10.5	78.9
cb.	10.7	78.7
W	11.0	78.4
+5	11.0	78.4

2+75.7 = Naranja on E.

W	11.7	77.7
cb.	11.7	77.7
1/4	11.8	77.6
1/2	11.6	77.8
1/4	11.9	77.5
cb.	12.0	77.4
E.	12.0	77.4

3+00.7 = S.E. Cor. Naranja st.

E. on iron pipe Page 19	12.40	76.95
cb.	12.5	76.9

89.35

Plantano

30

1/4	12.4	77.0
1/2	12.2	77.2
1/4	12.4	77.0
cb.	12.5	76.9
W	12.5	76.9
T.P.	5.71	82.66
	12.40	76.95

N.E. Cor. Naranja  
+ Plantano P-19

3+50

W	6.4	76.3
cb.	6.3	76.4
1/4	6.3	76.4
1/2	5.7	77.0
1/4	6.1	76.6
cb.	6.0	76.7
E	5.8	76.9

4+00

E	5.6	77.1
cb.	5.6	77.1
1/4	5.9	76.8
1/2	5.6	77.1
1/4	6.1	76.6
cb.	6.4	76.7
W	6.4	76.7

4+50

W	5.7	77.0
cb.	5.6	77.1
1/4	5.7	77.0



8266

L	5.4	77.3
'14	5.4	77.3
cb.	5.3	77.4
E.	5.2	77.5

5+00.3 section diag. to 5+00.7 on N.E. cor. Fresa

E.	5.0	77.7
cb.	5.1	77.6
'14	5.5	77.2
L	5.4	77.3
'14	5.8	76.9
cb.	5.6	77.1
W	5.6	77.1

5+25.7 =  $\frac{1}{2}$  Fresa

W	5.8	76.9
cb.	5.8	76.9
'14	5.7	77.0
L	5.6	77.1
'14	5.6	77.1
cb.	5.5	77.2
E.	5.5	77.2

5+50.7 = Stone Fresa

E.	5.2	77.5
cb.	5.3	77.4
'14	5.5	77.2
L	5.2	77.5
'14	5.7	77.0

8266

Plantano

31

cb.	5.6	77.1
W	5.8	76.9

6+00

W	6.0	76.7
cb.	6.0	76.7

'14	6.0	76.7
-----	-----	------

L	5.4	77.3
---	-----	------

'14	5.7	77.0
-----	-----	------

cb.	5.6	77.1
-----	-----	------

E.	5.4	77.3
----	-----	------

6+50

E.	5.0	77.7
----	-----	------

cb.	5.1	77.6
-----	-----	------

'14	5.5	77.2
-----	-----	------

L	5.3	77.5
---	-----	------

'14	5.7	77.0
-----	-----	------

cb.	5.5	77.2
-----	-----	------

W	6.0	76.7
---	-----	------

7+00

W	6.0	76.7
---	-----	------

cb.	6.0	76.7
-----	-----	------

'14	5.9	76.6
-----	-----	------

L	5.6	77.1
---	-----	------

'14	5.7	77.0
-----	-----	------

cb.	5.5	77.2
-----	-----	------

E.	5.1	77.6
----	-----	------



7+50

F	6.4	76.3
cb.	6.7	76.0
'14	6.9	75.9
g	6.7	76.0
'14	7.2	75.5
cb.	7.1	75.6
W	7.4	75.3

7+80

-15	11.3	71.4
W-1	9.6	73.1
W	8.4	74.3
cb.	7.9	74.8
'14	7.7	75.0
g	7.4	75.3
'14	7.4	75.3
cb.	7.1	75.6
F	7.1	75.6

7+90

-10	8.8	73.9
F	9.0	73.7
+6	6.7	76.0
cb.	7.0	75.7
'14	7.5	75.2
g	8.1	74.6
'14	8.4	74.3

cb.	9.5	73.2
W	11.2	71.5
+5	12.2	70.5
+15	12.2	70.5

7+95

-15	12.2	70.5
W	12.2	70.5
cb.	12.1	70.6
'14	11.5	71.2
g	10.9	71.8
'14	10.5	72.2
cb.	10.4	72.3
F	10.3	72.4
+10	10.0	72.7

8+50

-15	11.6	71.1
F	11.5	71.2
cb.	11.3	71.4
'14	11.6	71.1
g	11.6	71.1
'14	11.8	70.9
cb.	11.8	70.9
W	11.5	71.2
+15	11.5	71.2

8+80

-15	10.0	72.7
-----	------	------



82.66 ✓

W	9.8	72.9
cb.	10.4	72.3
1/4	10.5	72.2
1/2	10.9	71.8
1/4	10.7	72.0
cb.	11.0	71.7
E	11.5	71.2
+15	11.8	70.9

8+85

-15	10.0	72.7
E	9.8	72.9
cb.	10.2	72.5
1/4	10.0	72.7
1/2	10.3	72.4
1/4	9.7	73.0
cb.	8.1	73.6
W	7.6	74.1
+15	7.5	74.2

8+90.7 = North line Costano St.

W on Iron pipe

W on Iron pipe	6.84	75.82
cb.	7.2	75.5
1/4	7.5	75.2
1/2	7.8	74.9
1/4	9.4	73.3
cb.	10.0	72.7
E	10.2	72.5

N.W. Cor. Costano  
+Plantano St

82.66

33

T.P.

6.84 75.82  
 75.84 = Page 35  
 - NW Iron Pipe  
 Costano  
 + Plantano



Miller  
Walker  
Bliss  
2-24-38

Cross Section Castanet. 50' wide  
From East line 47th  
To West line from 49th street

-Indexed  
c.s.K.

77.53

34

EPB

2.70 77.53 74.83  
East line 47th = 0+00

S.F. B.P.  
Castano  
+ 47th  
Pipe

S	2.4	75.1	cb.	4.8	72.7
+11"			1/4	4.8	72.7
= South top cb	2.83	74.70	cb.	4.9	72.6
" Gut on Paving	3.57	73.96	N	4.9	72.6
"			+5	4.9	72.6
S Gut + 6.5 = S 1/4 on Paving	3.32	74.21			1+00
S on " "	3.12	74.41	-5	4.8	72.7
N 1/4 " "	3.17	74.36	N	4.9	72.6
N 1/4 + 8.5 = at N Gut on "	3.28	74.25	cb.	4.9	72.6
" " on top cb.	2.55	74.98	1/4	4.9	72.6
N cb + 9 = N 1/4	2.3	75.2	S	5.0	72.5
			1/4	4.9	72.6
0+12			cb.	4.7	72.8
-5	4.9	72.6	S	5.1	72.4
N	4.8	72.7	+5	5.0	72.5
cb.	3.5	74.0			1+50
1/4	3.7	73.8	-5	4.7	72.8
S	3.9	73.6	S	4.9	72.7
1/4	3.6	73.9	cb.	4.6	72.9
cb.	4.5	73.0	1/4	4.8	72.7
S	5.0	72.5	S	4.7	72.8
+5	5.0	72.5	1/4	4.7	72.8
			cb.	4.7	72.8
0+50			N	4.7	72.8
-5'	5.1	72.4	+5	4.7	72.8
S	5.2	72.3			
cb.	4.8	72.7			
1/4	5.0	72.5			

2+13.34 = West line Nanzanillo st. 50' wide







82.72

1/2	6.8	75.9
2/6	7.1	75.6
1/4	7.5	75.2
cb.	7.6	75.1
N	8.1	74.6
+5	8.2	74.5
4+50		
-5	7.4	75.3
N	7.1	75.6
cb.	6.8	75.9
1/2	6.3	76.4
2/6	6.0	76.7
1/4	5.2	77.5
cb.	4.1	78.6
S	3.6	79.1
4+78.28 = West Line Plantano		
S	3.1	79.6
cb.	3.3	79.4
1/4	5.4	77.3
2/6	5.6	77.1
1/4	6.0	76.7
N	6.2	76.5
5+03.28 = 2/6 Plantano		
N	7.8	74.9
cb.	4.9	77.8
1/4	5.2	77.5

82.72

Castana

36

2/6	5.3	77.4
1/4	4.8	77.9
cb.	3.5	80.2
S	2.3	80.4
5+28.28 = E Line Plantano		
S	0.7	82.0
cb.	1.2	81.5
+2	1.2	81.5
+5	4.0	78.7
1/4	4.8	77.9
2/6	5.5	77.2
1/4	3.7	77.0
cb.	8.7	74.0
N	10.2	72.5
5+50		
-25	12.0	70.7
-5	10.0	72.7
N	10.0	72.7
cb.	9.7	73.0
1/4	7.2	75.5
2/6	6.0	76.7
1/4	5.8	76.9
+3	5.8	76.9
cb.	1.1	81.6
S	+0.5	83.2
6+00		



82.72

Castana

6+00

S	1.8	80.9
cb.	4.3	78.4
+5	7.3	75.4
1/4	7.3	75.4
+3	7.3	75.4
2	9.3	73.4
1/4	8.8	73.9
cb.	9.4	73.3
N	11.8	70.9
+25	12.0	70.7

6+50

-25'	11.2	71.5
N	11.7	71.0
cb.	11.7	71.0
1/4	10.6	72.1
+2	8.7	74.0
2	8.5	74.2
1/4	6.3	76.4
cb.	4.7	78.0
+6	0.6	82.1
S	+7.0	89.7

T.P. 7.67 85.83<sup>+</sup> 4.56 78.16<sup>+</sup>

7+00

S	+13.0	98.0
cb.	+2.0	87.8
1/4	7.3	78.5

85.83

Castana St

37

2	8.9	76.9
+3	14.2	71.6
1/4	14.2	71.6
cb.	14.2	71.6
N	14.9	70.9
+10	14.9	70.9
+25	13.0	72.8

7+20

-25'	13.5	72.3
N	14.8	71.0
cb.	14.8	71.0
1/4	14.1	71.7
+4	14.1	71.7
2	10.5	75.3
1/4	4.8	81.0
cb.	+2.0	87.8
+5	+12.0	97.8
S	+13.3	99.1

7+50

S	+5.5	91.3
+4	+4.7	90.5
cb.	0.7	85.1
1/4	10.0	75.8
2	14.1	71.7
1/4	14.0	71.8
cb.	14.4	71.4



85.83

N	14.7	71.1
+10	14.7	74.1
+16	13.3	72.5
+25	11.0	74.8
8+00		
-25'	12.4	73.4
-15'	12.8	73.0
N	15.4	70.4
cb.	13.7	72.1
1/4	13.5	72.3
2	13.1	72.7
1/4	10.8	75.0
cb.	7.6	78.2
S	1.3	84.5
8+50		
S	4.8	81.0
cb.	7.3	78.5
1/4	11.4	74.4
+4	13.2	72.6
2	13.8	72.0
1/4	14.0	71.8
cb.	14.0	71.0
N	13.5	72.3
+25	10.8	75.0
8+65		
-25	10.5	75.3

85.83

Castana

38

N	11.4	74.4
+5	12.0	73.8
cb.	13.6	72.2
1/4	12.8	72.0
2	13.8	72.0
1/4	13.3	72.5
cb.	8.5	77.3
S	2.4	83.4
8+90		
S-10	+1.0	86.8
S	12.8	73.0
cb.	14.0	71.8
1/4	11.6	74.2
2	11.3	74.5
1/4	13.0	72.8
cb.	10.5	75.3
N	9.5	76.3
+25	9.0	76.8
9+50		
-25	10.0	75.8
N	10.8	75.0
cb.	11.3	74.5
1/4	12.0	73.8
2	12.1	73.7
1/4	13.3	72.5
cb.	12.4	73.4



8583 ✓ Castaño

S	13.0	72.8
+10	10.1	75.7
9+83		
S-10	+49	90.7
-8	+0.3	86.1
S	6.1	79.7
+5	11.0	74.8
cb.	13.5	72.3
1/4	13.1	72.7
1/2	13.1	72.7
1/4	12.8	73.0
cb.	12.8	73.0
N	12.8	73.0
+25	11.3	74.5
9+95		
-25	12.3	73.5
N-5	13.0	72.8
N	12.3	73.5
cb.	10.3	75.5
1/4	8.1	77.7
1/2	2.7	83.1
1/4	2.6	83.2
cb.	2.7	83.1
S	+2.5	87.3
+2	+4.5	90.3
+10	+4.5	90.3

8583

Castaño

39

10+80		
S	+4.3	90.1
cb.	+2.7	88.5
1/4	0.0	85.8
1/2	0.3	85.5
1/4	0.1	85.7
cb.	4.8	81.0
N	4.8	81.0
+15	8.6	77.2
+25	9.0	76.8
T.P.	12.96	96.60
T.P.	11.03	94.67
10+40		
-15	7.5	87.2
-9	12.0	82.7
N	12.0	82.7
+8	12.0	82.7
cb.	5.8	88.9
1/4	7.1	87.6
1/2	7.3	87.4
1/4	7.2	87.5
+3	7.2	87.5
cb.	4.1	90.6
S	2.5	92.2
10+60		
S	1.7	93.0
cb.	2.4	92.3

for lot stake  
10+49 on N



94.67 Costuño

S 1/4	5.8	88.9
L	6.5	88.2
N 1/4	6.7	88.0
cb.	7.2	87.5
N	6.2	88.5
+15	5.5	89.2

11+00

-15	3.5	91.2
N	3.0	91.7
cb.	2.8	91.9
1/4	3.1	91.6
L	2.5	92.2
1/4	2.6	92.1
cb.	1.1	93.6
T.P.	12.66	106.68
S	12.7	94.0

11+50

S	8.5	98.2
cb.	9.5	97.2
1/4	9.6	97.1
L	9.3	97.4
1/4	10.5	96.2
cb.	11.1	95.6
N	12.1	94.6
+15	13.0	93.7

12+00

106.68 Costuño 40

-15'	8.0	98.7
N	6.5	100.2
cb.	5.4	101.3
1/4	3.6	103.1
L	3.3	103.4
1/4	4.0	102.7
cb.	3.6	103.1
S	3.2	103.5

T.P.	12.47	118.89
	12+40	

S	6.2	112.7
cb.	6.5	112.4
+5	6.7	112.2
1/4	8.8	110.1
L	9.5	109.4
1/4	9.6	109.3
+3	9.6	109.3
cb.	7.5	111.4
N	8.5	110.4

12+63

T.P.	8.66	126.06
N	2.8	118.3
cb.	7.7	118.4
+2	7.7	118.4
+4	12.8	113.3
1/4	12.8	113.3



126.06

Castaña

41

1/4	11.8	114.3
+2	6.8	119.3
cb.	6.4	119.7
5	6.2	119.9

126 + 80.36 = West line Frambuesa

5	5.1	121.0
cb.	5.1	121.0
+4	5.1	121.0
1/4	9.1	117.0
2	10.0	116.1
1/4	10.4	115.7
+2	10.4	115.7
+5	6.5	119.6
cb.	6.5	119.6

N.W. 6" Iron pipe

6.67 119.39

N.W. Iron Pipe  
Castaña  
Frambuesa

For chg above pipe see Page 47



Miller  
Walker  
Bess 2-25-38

Cross Section Frambuesa St.  
From N. Line Almendra St.  
To Nogal Street

50' Wide  
10' cbs.  
7.5' 1/4s.

Indexed  
C.S.R.

89.75

42

5.99 89.75

83.76

Iron Pipe  
S.W. Cor. Almendra  
Frambuesa P. 13

E.

5.9 83.9

North line Almendra

cb.

6.0 83.8

W

4.8 85.0

1/4

6.0 83.8

cb.

4.9 84.9

1/2

6.1 83.7

1/4

4.4 85.4

1/4

6.1 83.7

1/2

4.2 85.6

cb.

6.5 83.3

1/4

4.3 85.5

W

6.4 83.4

cb.

4.3 85.5

1+00

E.

4.3 85.5

W

6.1 83.7

N. Almendra St.

cb.

6.0 83.8

E.

5.0 84.8

1/4

5.7 84.1

cb.

5.2 84.6

1/2

5.6 84.2

1/4

5.2 84.6

1/2

5.9 83.9

1/2

5.1 84.7

cb.

5.8 84.0

1/4

5.2 84.6

E.

5.7 84.1

cb.

5.2 84.6

1+50

W

5.5 84.3

E.

5.5 84.3

0+00 = S. line Almendra

cb.

5.6 84.2

W

6.0 83.8

1/4

5.8 84.0

cb.

5.9 83.9

1/2

5.8 84.0

1/4

5.8 84.0

1/2

5.6 84.2

1/2

5.5 84.3

cb.

5.8 84.0

1/4

5.4 84.4

W

5.8 84.0

cb.

5.4 84.4

1+99.90 = N. line Naranja St.

E.

5.3 84.5

W

5.7 84.1

0+50

cb.

5.4 84.4



1/4	4.8	85.0
1/2	4.7	85.1
1/4	4.9	84.9
cb.	5.2	84.6
E	5.1	84.7

2+24.9 = 8 Naranja

E	4.5	85.3
cb.	4.4	85.4
1/4	4.4	85.4
1/2	4.3	85.5
1/4	4.6	85.2
cb.	5.0	84.8
W	5.3	84.5

Ch. NW Iron pipe

5.68 84.07

NW Naranja  
& Frambuesa  
Page 21

2+49.9 = 5hine Naranja St.

W	4.8	85.0
cb.	5.2	84.6
1/4	4.6	85.2
1/2	4.7	85.1
1/4	4.1	85.7
cb.	4.3	85.5
E	4.2	85.6

2+70

E	4.0	85.8
cb.	4.2	85.6
1/4	4.0	85.8

1/2	5.0	84.8
1/4	5.0	84.8
cb.	5.2	84.6
W	5.1	84.7

-10	3+00	7.4	82.4
W	in Creek bottom.	7.1	82.7

cb.	7.4	82.4
1/4	7.4	82.4
1/2	7.3	82.5
1/4	7.5	82.3
cb.	6.5	83.3
E	6.0	83.8
+10	6.0	83.8

TR	6.04	90.87	4.92	84.83
----	------	-------	------	-------

3+50 in Creek Bottom

-10	8.1	82.8
E	8.1	82.8
cb.	8.3	82.6
1/4	8.2	82.7
1/2	8.6	82.3
1/4	8.8	82.1
cb.	9.2	81.7
W	9.0	81.9

+15 9.0 81.9

4+00 in Creek Bottom

-15	11.2	89.7
-----	------	------



90.87

Frambuesa

90.87

44

W	10.8	80.1
cb.	10.4	80.5
1/4	10.3	80.6
1/4	10.2	80.7
1/4	9.6	81.3
cb.	9.5	81.4
E	9.2	81.7
+10	9.2	81.7

A + 50 in Creek bottom = 1/4 mile Fresa st

-10	9.1	81.8
E	9.1	81.8
cb.	9.2	81.7
1/4	9.4	81.5
E	9.4	81.5
1/4	9.7	81.2
cb.	9.7	81.2
W	9.9	81.0
+10	10.0	80.9

A + 75 = 1/2 Fresa st.

W	9.1	81.8
cb.	9.0	81.9
1/4	9.0	81.9
E	8.5	82.4
1/4	8.4	82.5
cb.	8.0	82.9
E	8.0	82.9

+10

-10

E

cb.

1/4

E

1/4

cb.

W

-15

W

cb.

1/4

E

+2

1/4

cb.

E

+15

T.P.

-15

E

cb.

8.0 82.9

5+00 = South line Fresa street

8.6 82.3

8.7 82.2

8.8 82.1

8.5 82.4

8.0 82.9

8.3 82.6

8.5 82.4

9.2 81.7

5+50

7.1 83.8

6.3 84.6

3.0 87.9

2.8 88.1

3.5 87.4

4.6 86.3

4.7 86.2

4.6 86.3

4.0 86.9

3.5 87.4

0.11 90.76

12.52 103.28

5+90

5.0 98.3

5.5 97.8

7.5 95.8



103.28

Frambuesa

1/4			8.9	94.4
1/2			9.3	94.0
1/4			9.9	93.4
cb.			10.3	93.0
+3			15.1	88.2
W			16.0	87.3
+20			18.5	84.8
	6+14			
-20			12.6	90.7
W			7.0	96.3
+5			4.2	99.1
cb.			4.2	99.1
+3			6.6	96.7
1/4			5.7	97.6
+3			5.0	98.3
L			1.0	102.3
T.P.	10.34	113.12	0.50	102.78
1/4			9.8	103.3
cb.			8.5	104.6
E			7.4	105.7
	6+35			
E			1.0	112.1
cb.			1.5	111.6
1/4			1.5	111.6
L			2.4	110.7
+1			8.6	104.5

113.12

Frambuesa<sup>45</sup>

1/4			12.0	101.1
+5			13.3	99.8
cb.			12.0	101.1
+3			6.6	106.5
W			6.5	106.6
	6+75			
W			7.2	105.9
+8			6.6	106.5
cb.			8.3	104.8
+3			10.2	102.9
1/4			10.4	102.7
+5			9.3	103.8
L			7.0	106.1
+2			3.0	110.1
1/4			3.2	109.9
cb.			1.5	111.6
E			0.9	112.2
	7+00			
E			2.6	110.5
cb.			4.6	108.5
1/4			6.0	107.1
L			7.3	105.8
1/4			8.5	104.6
cb.			8.0	105.1
W			7.8	105.3
+10			8.1	105.0



113.12

Frombuesa

7+12

-15	12.2	100.9
W	10.2	102.9
cb.	7.7	105.4
1/4	7.6	105.5
1/2	7.2	105.9
1/4	6.0	107.1
cb.	5.0	108.1
E	4.2	108.9

7+37 on E 7+34 on W = 2' Exist. Corrugated Culvert

-15	7.4	105.7
E	10.0	103.1
cb.	10.6	102.5
+5	11.3	101.8

+5 on Floor Line

+5 on top Hd. Wall

1/4	10.0	103.1
1/2	6.3	106.8
1/4	6.2	106.9
cb.	7.2	105.9
W	13.3	99.8

+6 on Hd. Wall

+6 " Floor Line

+2.0	17.3	95.8
------	------	------

T.P.	3.30	112.54	3.88	109.24
------	------	--------	------	--------

7+46

112.54

Frombuesa 46

7+46

-30	16.0	106.5
-5	13.0	109.5
W	10.2	102.3
cb.	5.0	107.5
1/4	4.2	108.3
+3	5.1	107.4
1/2	6.7	105.8
1/4	10.0	102.5

cb.	10.7	101.8
-----	------	-------

E	10.7	101.8
---	------	-------

+15	8.2	104.3
-----	-----	-------

7+75

-2.5 = Bottom Mark	9.6	102.9
--------------------	-----	-------

-E	6.1	106.4
----	-----	-------

cb.	4.0	108.5
-----	-----	-------

1/4	3.0	109.5
-----	-----	-------

1/2	1.8	110.7
-----	-----	-------

1/4	1.6	110.9
-----	-----	-------

cb.	1.7	110.8
-----	-----	-------

W	3.3	109.2
---	-----	-------

+2.0	6.6	105.9
------	-----	-------

T.P.	11.26	123.23	0.57	111.97
------	-------	--------	------	--------

8+05

W	5.0	118.2
---	-----	-------

+7	4.7	118.5
----	-----	-------



123.23

+8	9.2	114.0
cb.	9.2	114.0
1/4	9.3	113.9
L	9.0	114.2
+1	4.3	118.9
1/4	4.1	119.1
cb.	5.4	117.8
E	7.8	115.4
8+402 = North Line Castaña St.		
E	3.8	119.4
cb.	3.7	119.5
1/4	3.4	119.8
+5	3.0	120.2
L	6.7	116.5
1/4	7.3	115.9
cb.	7.0	116.2
+2	7.0	116.2
+4	3.8	119.4
W on Iron pipe	3.84	119.39
8+53		
W	3.8	119.4
+6	3.6	119.6
+8	6.8	116.4
cb.	6.8	116.4
1/4	6.3	116.9
L	6.0	117.2

1 1/2" I.P. pipe  
N. of Castaña  
Fambuesa P. 41

123.23 Fambuesa

47

+1	2.6	120.6
1/4	2.5	119.7
cb.	2.7	120.5
E	3.0	120.2
8+56		
E	2.7	120.5
cb.	2.3	120.9
1/4	2.2	121.0
+6	2.5	120.7
L	5.4	117.8
1/4	6.0	117.2
cb.	6.6	116.6
W	7.1	116.1
8+652 = E Castaña on West		
W	7.1	116.1
cb.	5.8	117.4
1/4	5.7	117.5
L	4.6	118.6
+1	2.5	120.7
1/4	1.4	121.8
cb.	2.0	121.2
E	2.2	121.0
8+73		
E	1.7	121.5
cb.	1.6	121.6
1/4	1.3	121.9



123.23

+6	1.2	122.0
2	4.4	118.8
1/4	5.1	118.1
cb.	5.5	117.7
W	6.1	117.1
8+76		
W.	1.9	121.3
+6	2.5	120.7
+8	5.0	118.2
cb.	5.0	118.2
1/4	4.8	118.4
2	4.0	119.2
+1	1.2	122.0
1/4	1.1	122.1
cb.	1.7	121.5
E	2.0	121.2
8+90.2 = Shore Castaña on West		
E	1.8	121.4
cb.	1.5	121.7
1/4	1.4	121.8
+6	1.1	122.1
2	3.2	120.0
1/4	4.2	119.0
cb.	4.1	119.1
+2	4.1	119.1
+4	1.8	121.4

123.23

Frambuesa 48

W	1.9	121.3
T.P.	8.49	130.03
9+50		
W-5	9.8	120.2
W	9.8	120.2
cb.	8.7	121.3
1/4	8.0	122.0
2	8.2	121.8
+1	7.0	123.0
1/4	7.0	123.0
cb.	6.6	123.4
E	6.6	123.4
10+00		
E	5.0	125.0
cb.	5.3	124.7
1/4	5.5	124.5
2	6.1	123.9
1/4	6.2	123.8
cb.	6.6	123.4
W	6.7	123.3
+5	6.7	123.3
10+50		
W	4.5	125.5
cb.	4.7	125.3
1/4	4.5	125.5
2	4.2	125.8



130.03

1/4 4.1 125.9

cb. 3.7 126.3

E 3.1 126.9

11+04.8 = North line Nogal St

E 0.7 129.3

cb. 1.6 128.4

1/4 2.1 127.9

E 2.7 127.3

1/4 3.0 127.0

cb. 3.3 126.7

W on Iron pipe 3.21 126.82

11+29.8 = E. Nogal street

W 3.9 126.1

cb. 3.2 126.8

1/4 2.6 127.4

E 2.0 128.0

1/4 1.4 128.6

cb. 0.5 129.5

E +0.9 130.9

11+44.8 = South cb. Nogal St

E +0.9 130.9

cb. 0.5 129.5

1/4 0.8 129.2

E 0.5 129.5

1/4 0.5 129.5

cb. 1.8 128.2

130.03

Frambuesa 49

W 3.7 126.3

11+54.8 = South line Nogal St.

W 3.2 126.8

cb. 2.1 127.9

1/4 0.0 130.0

E +0.4 130.4

1/4 +0.2 130.2

cb. +1.0 131.0

E +4.3 134.3

For check Above H.I. see Cross Section Nogal St. Page 50



Miller  
Walker  
Bliss  
3-5-38

Cross Section Nogal St. 50' wide  
From West line From 49<sup>th</sup> St. 10' cbs  
To East line 47<sup>th</sup> Street 75' 14"

Indexed  
C.S.K.

Nogal Street 50

130.03 - H.I. from Page 49

			S	1+00	8.2	121.8
N	3.2	126.8	cb.		9.0	121.0
cb.	3.7	126.3	1/4		9.6	120.4
1/4	3.7	126.3	S		9.8	120.2
S	3.8	126.2	1/4		9.9	120.1
1/4	4.1	125.9	cb.		10.5	119.5
cb.	3.6	126.4	N		11.9	118.1
S	3.1	126.9	+10		12.6	117.4

0+30

				1+35		
S	2.4	127.6	-10		12.0	118.0
cb.	3.1	126.9	N		11.0	119.0
1/4	3.7	126.3	cb.		10.6	119.4
S	5.8	124.2	1/4		10.2	119.8
1/4	6.2	123.8	S		10.5	119.5
cb.	6.6	123.4	+4		8.1	121.9
N	7.2	122.8	1/4		7.8	122.2

0+60

			cb.		7.6	122.4
-10	10.2	119.8	S		7.3	122.7
N	10.0	120.0		1+70.23 = West line Alley on North.		
cb.	8.8	121.2	S		8.8	121.2
1/4	8.7	121.3	cb.		9.6	120.4
S	8.5	121.5	1/4		10.0	120.0
1/4	7.3	122.7	+4		10.3	119.7
cb.	7.3	122.7	S		11.0	119.0
S	6.5	123.5	1/4		11.0	119.0



130.03

cb.	11.0	119.0
N on Iron pipe	10.66	119.37
2+00		
-10	12.5	117.5
N	12.0	118.0
cb.	11.7	118.3
1/4	11.5	118.5
1/2	11.4	118.6
1/4	11.3	118.7
cb.	11.1	118.9
S	10.4	119.6
2+50		
S	12.0	118.0
cb.	12.1	117.9
1/4	12.1	117.9
1/2	12.3	117.7
1/4	12.2	117.8
cb.	12.9	117.1
N	13.6	116.4
+10	13.3	116.7
2+85		
-10	14.4	115.6
N	13.4	116.6
cb.	13.0	117.0
1/4	12.6	117.4
1/2	12.6	117.4

130.03

Nogal St. 51

+4	11.2	118.8
1/4	10.7	119.3
cb.	9.8	120.2
S	10.2	119.8
3+20		
S	12.4	117.6
cb.	12.5	117.5
1/4	12.8	117.2
1/2	14.1	115.9
1/4	14.0	116.0
cb.	13.8	116.2
N	13.5	116.5
+10	14.5	115.5
+33 = uncompleted Proposed floor garage on Porch	14.9	115.1
3+39 = 1/2 Porch on North	14.1	115.9
TP	0.15	117.31
12.87	117.16	
3+50		
-10	2.7	114.6
N	2.2	115.1
cb.	2.0	115.3
1/4	1.5	115.8
1/2	1.7	115.6
1/4	1.3	116.0
cb.	+0.3	117.6
S	+1.7	119.0

New Garage on North 33' Back Ground of Porch 1' low 19.5 Back



117.31

	4 + 00		
S-10		4.2	113.1
S		4.3	113.0
cb.		4.2	113.1
1/4		4.0	113.3
2		3.6	113.7
1/4		3.6	113.7
Ncb.		4.3	113.0
N		5.0	112.3
+10		5.4	111.9

4 + 50

N		7.2	110.1
cb.		7.3	110.0
1/4		6.4	110.9
2		6.8	110.5
1/4		8.1	109.2
cb.		7.8	109.5
S		7.8	109.5
+10		7.8	109.5

5 + 00

-10		13.8	103.5
S		12.4	104.9
cb.		11.3	106.0
1/4		10.6	106.7
2		9.3	108.0
1/4		8.8	108.5

117.31

Negot St 52

cb.		8.7	108.6
+4		7.0	110.3
N		6.1	111.2

5 + 50

N		5.4	111.9
+4		6.0	111.3
cb.		11.0	106.3
+3		12.0	105.3
1/4		12.2	105.1
2		12.2	105.1
1/4		11.8	105.5
cb.		12.9	104.4
S		14.4	102.9
+10		15.5	101.8

(6 8/63)

-10		17.0	100.3
S		16.2	101.1
cb.		15.2	102.1
1/4		15.5	101.8
2		15.8	101.5
1/4		16.7	100.6
+5		16.7	100.6
cb.		13.5	103.8
+4		9.0	108.3
N		7.4	109.9
T.P.	0.44	105.12	12.63 104.68



105.12

Nogal st.

95.07

Nogal street 53

6+12.67=

N	1.4	103.7	5
+6	2.7	102.4	-10
cb.	5.5	99.6	5
1/4	6.0	99.1	cb.
2	6.1	99.0	1/4
1/4	6.4	98.7	2
cb.	6.6	98.5	1/4
5	7.5	97.6	cb.

6+37.67 = East line Alley on North.  
East line Hoya St. on South.

5	9.0	96.1	+10
cb.	8.8	96.3	7+50
1/4	8.7	96.4	-10
2	9.0	96.1	N
1/4	8.7	96.4	cb.
cb.	8.8	96.3	1/4

N on Iron Pipe 1.32  
T.P. on Iron Pipe 95.07 11.37 93.75  
N.W. Cor Alley Hoya + Nogal

6+62.67 = West line Hoya St. on West

N-10	2.0	93.1	(?)	5
N	1.8	93.3		+10
cb.	1.4	93.7		8+00
1/4	1.0	94.1		-10'
2	1.2	93.9		5
1/4	1.0	94.1		cb.
cb.	1.7	93.4		1/4

7+00

1.8 93.3

3.7 91.4

3.1 92.0

3.3 91.8

3.3 91.8

3.3 91.8

3.4 91.7

4.2 90.9

4.4 90.7

4.5 90.6

7+50

6.7 88.4

6.5 88.6

6.4 88.7

6.2 88.9

5.8 89.3

5.8 89.3

5.6 89.5

5.2 89.9

5.5 89.6

8+00

7.7 87.4

7.5 87.6

7.8 87.3

8.0 87.1



95.07

L		8.2	86.9
1/4		8.4	86.7
cb		8.3	86.8
N		8.3	86.8
+10'		8.3	86.8
8±50 = East edge Walk on N			
-10 on Walk		11.2	83.3
N " "		11.2	83.3
cb		11.2	83.9
1/4		11.1	84.0
L		10.8	84.3
1/4		10.9	84.2
cb		10.4	84.7
S		10.5	84.6
+10		10.7	84.4
9±00			
-10		12.7	82.4
S		12.7	82.4
cb		12.2	82.9
1/4		12.8	82.3
L		12.0	82.1
1/4		13.3	81.8
cb		13.5	81.6
N		13.5	81.6
+10		13.5	81.6
T.P.	0.15	82.46	12.76 82.31

82.46

Nogal Street

54

9±50			
-10		1.3	81.2
S		1.5	81.0
cb		1.4	81.1
+2		2.4	80.1
1/4		2.1	80.4
L		2.3	80.2
1/4		2.4	80.1
Ncb		2.6	79.9
N		2.4	80.1
+10		2.7	79.8
10±00			
-10		5.0	77.5
N		4.5	78.0
cb		4.3	78.2
1/4		4.3	78.2
L		4.0	78.5
1/4		4.0	78.5
+8		5.0	77.5
cb		5.0	77.5
+4		3.8	78.7
S		3.4	79.1
+10		3.4	79.1
10±15.67 = East line Marzucella St.			
S		4.5	78.0
+5		4.7	77.8



+7	5.4	77.1
cb.	5.4	77.1
+3	5.2	77.3
+5	4.2	78.3
1/4	4.2	78.3
2	4.4	78.5
+5	4.6	77.9
1/4	5.5	77.0
cb.	5.7	76.8
N	5.6	76.9

10+40.67 = *La Manzanillo St.*

N	6.6	75.9
cb.	6.1	76.4
1/4	6.1	76.4
2	5.5	77.0
1/4	5.0	77.5
cb.	5.5	77.0
S	4.6	77.9

10+65.67 = *West Side Manzanillo*

S on Iron pipe	5.69	76.77
cb.	6.0	76.5
1/4	6.3	76.2
2	6.5	76.0
1/4	6.8	75.7
cb.	6.9	75.6
N	7.1	75.4

11+00		
-10	8.0	74.5
N	7.8	74.7
cb.	7.5	75.0
1/4	7.5	75.0
2	7.3	75.2
1/4	7.1	75.4
cb.	6.8	75.7
S	6.4	76.1

11+50

S	7.5	75.0
cb.	7.7	74.8
1/4	8.0	74.5
2	8.1	74.4
1/4	8.2	74.3
cb.	8.5	74.0
N	8.7	73.8
+10	9.0	73.5

12+00

-10	9.5	73.0
N	9.1	73.4
cb.	9.0	73.5
1/4	8.6	73.9
2	8.6	73.9
1/4	8.6	73.9
cb.	8.5	74.0



S	8.1	74.4
12+50		
-10	8.7	73.8
S	8.7	73.8
cb.	8.7	73.8
1/4	8.4	74.1
1/2	8.3	74.2
1/4	8.4	74.1
cb	8.5	74.0
N	9.6	72.9
+10	10.2	72.3

12+74

-10	10.0	72.5
N	9.7	72.8
+7	7.7	74.8
cb.	7.2	75.3
1/4	7.7	74.8
1/2	7.5	75.0
1/4	7.8	74.7
cb.	8.2	74.3
S	8.4	74.1
+10	8.4	74.1

12+80, BB = East Line 47th St.

S on Walk	6.75	75.71
+10.08 = South Top cb.	6.89	75.57
S, Gutter at cb.	7.19	75.27

S 1/4 on Paving	7.13	75.33
1/2 " "	7.11	75.35
N 1/4 " "	7.25	75.21
+8.5 = N. Gutter on Paving at cb.	7.43	75.03
" = N. Top cb.	2.00	75.46
cb + 19 = N. on Walk	6.68	75.78
chk. S.E. B.M. 47th Carona	7.64	74.82

Page 1  
 74.83 = B.M.  
 0.01 = Error.



Miller  
Walker  
Bliss  
3-8-38

Cross Section <sup>Escuela St.</sup> ~~Marzillo St.~~ 50' W.D.  
From South Line Costana St. 75' W.D.  
To Imperial Ave

Indexed  
C-S.K.I.

82.46

Marzillo St. 57  
Escuela

82.46 = X from Page 56

South Line Costana St. = 0+00

E <sub>0</sub>	9.1	73.4	cb.		9.2	73.3
cb.	9.1	73.4	W		9.3	73.2
1/4	9.1	73.4	+10		9.3	73.2
1/4	9.3	73.2		1+50		
1/4	9.6	72.9	-10		9.2	73.3
cb.	9.4	73.1	W		9.0	73.5
W	9.7	72.8	cb.		8.6	73.9
0+50			1/4		8.6	73.9
-10	9.8	72.7	1/4		8.4	74.1
W	9.6	72.9	cb.		8.0	74.5
cb.	9.4	73.1	+8		7.8	74.7
1/4	9.4	73.1	E.		8.0	74.5
1/4	9.1	73.4		2+12.9 = North Line	7.0	75.5
1/4	9.0	73.5	E			
cb.	9.0	73.5	cb.		5.6	76.9
E <sub>0</sub>	9.0	73.5	1/4		6.3	76.2
+10	9.0	73.5	1/4		6.4	76.1
1+00			E		6.6	75.9
-10	8.0	74.5	1/4		6.7	75.8
E	8.0	74.5	cb.		6.9	75.6
cb.	8.8	73.7	W		7.1	75.4
1/4	8.7	73.8	TR	12.66 89.43	5.69	76.77
1/4	8.9	73.6				
1/4	9.2	73.3		0+00 = South Line		
			W		12.7	76.7
			cb.		12.3	77.1
			1/4		12.0	77.4

S.W. Iron Pipe  
Near Marzillo



89.43

L		11.4	78.0
1/4		11.1	78.3
cb.		11.1	78.3
E		11.4	78.0
	0+50		
-5		8.7	80.7
E		8.7	80.7
cb.		8.5	80.9
1/4		8.5	80.9
L		8.5	80.9
1/4		9.0	80.4
cb.		9.5	79.9
W		9.8	79.6
10'		10.4	79.0
	1+00		
-10		5.2	84.2
W		4.3	85.1
cb.		3.8	85.6
1/4		3.8	85.6
L		3.8	85.6
1/4		4.0	85.4
cb.		4.0	85.4
E		3.8	85.6
+5		4.0	85.4
T.P.	12.58 101.88	0.13	82.30
	1+50		

101.88

Marzillo street 58

	1+50		
-5'		10.5	91.4
E		10.5	91.4
cb.		10.5	91.4
1/4		10.5	91.4
L		10.3	91.6
1/4		10.3	91.6
cb.		9.8	92.1
W		10.4	91.5
+10		11.0	90.9
	2+00		
-10'		4.3	97.6
W		4.0	97.9
cb.		3.6	98.3
1/4		4.7	97.2
L		4.5	97.4
1/4		4.5	97.4
cb.		4.8	97.1
E		4.3	97.6
+5'		4.3	97.6
	2+25		
-5'		1.4	100.5
E		1.4	100.5
cb.		2.0	99.9
1/4		1.5	100.4
L		1.4	100.5
1/4		2.1	99.8



cb.		0.8	101.1
W		1.2	100.7
T.P.	13.2.9	115.16	0.01 101.87 ✓
	2.+6.767 = North line Cerezo st.		
W		7.1	108.1
cb.		7.8	107.4
1/4		10.1	105.1
L		10.2	105.0
1/4		10.2	105.0
cb.		10.2	105.0
E		9.7	105.5
	2.+7.767 = N.cb. Cerezo		
E		8.3	106.9
cb.		8.8	106.4
1/4		9.0	106.2
L		9.0	106.2
1/4		8.8	106.4
cb.		5.8	109.4
W		5.0	110.2
	2.+8.1		
W		6.3	108.9
cb.		7.6	107.6
1/4		8.1	107.1
L		8.4	106.8
1/4		8.5	106.7
cb.		8.5	106.7

E		8.1	107.1
	2.+9.267 = S. Cerezo		
E		7.3	107.9
cb.		7.5	107.7
1/4		7.5	107.7
L		7.2	108.0
1/4		6.8	108.4
cb.		6.4	108.8
W		5.5	109.7
	3.+0.5		
W		5.2	110.0
cb.		5.9	109.3
1/4		6.1	109.1
L		6.1	109.1
1/4		6.1	109.1
cb.		6.5	108.7
E		6.1	109.1
	3.+1.3		
E		4.3	110.9
cb.		5.7	109.5
1/4		5.4	109.8
L		5.4	109.8
1/4		5.3	109.9
cb.		2.5	102.7
W		+0.4	115.6



115.16

3+17.67 = South Line Cercosa

W		+0.4	115.6
+6		+0.4	115.6
cb.		2.0	113.2
1/4		4.8	110.4
1/2		4.9	110.3
1/4		5.0	110.2
cb.		5.5	109.7
E		4.1	111.1
	3+50		
E		1.3	113.9
cb.		2.0	113.2
1/4		1.8	113.4
1/2		1.8	113.4
1/4		2.1	113.1
cb.		0.4	114.8
TP	12.25	127.54	0.37 114.79
+5		11.2	116.3
W		10.4	117.1
	4+00		
W		6.3	121.2
cb.		7.2	120.3
+4		9.4	118.1
1/4		9.3	118.2
1/2		9.4	118.1
1/4		9.4	118.1

127.54 Morzillo street 60

cb.		9.6	117.9
E		9.1	118.4
	4+50		
E		4.5	123.0
cb.		5.5	122.0
+3		8.0	119.5
1/4		2.1	120.4
1/2		6.1	121.4
1/4		6.0	121.5
+4		6.0	121.5
cb.		4.8	122.7
W		4.5	123.0
	5+00		
W		4.8	122.7
cb.		4.5	123.0
1/4		4.8	122.7
1/2		5.1	122.4
1/4		6.7	120.8
+2		6.7	120.8
cb.		3.5	124.0
+2		1.6	125.9
E		0.1	127.4
	5+46 = Garage on West side Floor 9' Back		
E		1.2	126.3
cb.		3.0	124.5
+5		6.5	121.0



1/4	6.5	121.0
L	5.6	121.9
1/4	5.3	122.2
cb.	5.7	121.8
W	6.1	121.4
+ 9' at Garage on dirt floor	6.3	121.2

5+79 = L Conc Walk on West 5' wide

- 4' on Ken. Porch to house	6.06	121.48
W " Conc Walk * "	6.90	120.64
+ 3' * E. end Conc. Walk	6.90	120.64
cb.	6.5	121.0
1/4	6.0	121.5
L	6.0	121.5
1/4	6.0	121.5
+ 4	6.2	121.3
cb.	5.1	122.4
E	3.7	123.8

6+06.5 = North line Imperial Ave

E	3.7	123.8
+ 6'	4.6	122.9
cb.	6.0	121.5
1/4	5.8	121.7
L	6.4	121.1
1/4	6.7	120.8
cb.	7.1	120.4
W	7.7	119.8

127.54

0.22 120.95

T.P. cop. tack @ Marzillo + Imperial	6.81	120.73	ct. in Conc. Paving
chk. S.E. BP 4th Imperial	8.95	112.00	Page 1
		<u>112.00</u>	= 8M
		0.00	







106.13

Hoya

W	10.6	95.5
+4	10.0	96.1
cb.	8.5	97.6
1/4	8.5	97.6
+7' on top. Hd. wall	10.45	95.68
" " Flow keel	12.45	93.68
2.	12.5	93.6
1/4	10.5	95.6
cb.	10.8	95.3
E	9.7	96.4
+10	8.7	97.4
0+50		
-11' in channel	11.1	95.0
E	10.6	95.5
cb.	9.5	96.6
1/4	8.8	97.3
2.	8.2	97.9
1/4	6.5	99.6
cb.	6.2	99.9
+5	6.8	99.3
W	8.5	97.6
+10	9.2	96.9
0+75		
-10	5.5	100.6
W	4.8	101.3
+6	2.3	103.8

106.13

Hoya

63

cb.	2.7	107.4	
1/4	3.0	103.1	
2.	4.0	102.1	
1/4	4.8	101.3	
cb.	5.4	100.7	
E	5.8	100.3	
+10	5.8	100.3	
T.P.	12.78	118.77	
-10	1+00	12.5	106.3
E	11.8	107.0	
cb.	11.1	107.7	
1/4	11.0	107.8	
2.	10.8	108.0	
1/4	11.4	107.4	
cb.	11.8	107.0	
W	12.3	106.5	
+10	13.3	105.5	
1+35			
-10	6.1	112.7	
W	4.8	114.0	
+4	6.5	112.3	
cb.	6.2	112.6	
1/4	6.4	112.4	
+4	3.7	115.1	
2.	3.5	115.3	
1/4	3.2	115.6	



118.77

Haya St.

cb.	3.8	115.0	L	
E	5.7	113.1	1/4	
1+77.10 = Station N.W. Cor. Cereza Section on shine produced				
E - 10'	4.1	114.7	W	
E	3.1	115.7		
cb.	2.2	116.6	W	
1/4	2.0	116.8	cb.	
L	1.1	117.7	1/4	
1/4	1.3	117.5	L	
cb.	1.0	117.8	1/4	
W	0.7	118.1	cb.	
TP	2.41	126.04	0.14	118.63

2+23.18 = E. Cereza Produced

W	5.7	120.3
cb.	6.0	120.0
1/4	6.1	119.9
L	6.4	119.6
1/4	6.7	119.3
cb.	7.2	118.8
E	8.0	118.0
+10	8.6	117.4

2+13 = Station on West Section Parallel to Cereza

-10'	6.8	119.2
E	6.0	120.0
cb.	5.5	120.5
1/4	5.5	120.5

126.04

64

	5.8	120.2
	5.8	120.2
cb.	5.6	120.4
W	5.5	120.5
1+18 = Station on West Section Parallel to Cereza		
	3.0	123.0
cb.	3.3	122.7
1/4	3.4	122.6
L	3.5	122.5
1/4	3.9	122.1
cb.	4.2	121.8
E	4.3	121.7
+10	5.7	120.4

2+29.26 = S.W. Cor Cereza, Section on shine produced

E	2.4	123.6
cb.	2.2	123.8
1/4	2.0	124.0
L	2.4	123.6
1/4	2.1	123.9
cb.	2.1	123.9
W	1.8	124.2

For check out Above H.F. see Continuation  
Cross Sections on Page 65



Miller  
Walker  
Bliss  
3-9-38

Cross Section Cerezo St.  
From West Line Haya St.  
To East Line 47th St.

50' wide  
10' cbs.  
7.5' 1/4s.

Indexed  
c.s.K.

126.04

Cerezo St.

65

			cb.		7.0	119.0
			N		8.7	117.3
	126.04 + 7 from Page 64					
	6+00 - NW Cor. Haya	This section on West Line Haya	+10		10.3	115.7
S	1.8	124.2		1+50		
cb.	2.9	123.1	-10		12.2	113.8
+4	5.3	120.7	N		10.5	115.5
1/4	5.8	120.2	cb.		9.1	115.9
L	5.7	120.3	1/4		7.4	118.6
1/4	6.0	120.0	L		6.5	119.5
cb.	6.5	119.5	1/4		6.3	119.7
N	2.7	118.3	cb.		4.3	121.7
	0+50		S		2.4	123.6
N-10	9.7	116.3		2+00		
N	8.1	117.9	S.		6.6	119.4
cb.	6.6	119.4	cb.		7.8	118.2
1/4	6.0	120.0	1/4		9.3	117.7
L	5.7	120.3	L		9.5	117.5
1/4	5.2	120.8	1/4		10.1	115.9
cb.	3.3	122.7	cb.		11.6	114.4
S	1.0	125.0	N		12.6	113.4
	1+00		+10		14.3	111.7
S	1.0	125.0		2+50		
cb.	3.3	122.7	-10		15.3	110.7
1/4	5.0	121.0	N		14.5	111.5
L	5.1	120.9	cb.		14.0	112.0
1/4	5.7	120.3	1/4		13.3	112.7



126.04 Cereza st.

ℓ		12.8	113.2	
1/4		12.9	113.1	
cb		12.6	113.4	
S		11.6	114.4	
T.P.	324	116.50	12.78	113.26
	2+90			

S		5.6	110.9
cb.		5.8	110.7
1/4		5.9	110.6
ℓ		6.1	110.4
1/4		6.8	109.7
cb.		2.5	109.0
N		8.4	108.1
+10		9.2	107.3

N. line station = 3718.88 = Δ Section on split Δ

-10		10.5	106.0
N		9.0	107.5
cb.		8.5	108.0
1/4		8.1	108.4
ℓ		8.0	108.5
1/4		8.0	108.5
cb.		7.5	109.0
S		6.4	110.1
	3+60		
S		6.6	109.9
cb.		7.7	108.8

116.50

Cereza street 66

1/4		8.4	108.1
ℓ		8.7	107.8
1/4		9.4	107.1
cb.		10.1	106.4
N		12.0	104.5
+10		13.0	103.5

3+66.14 = East line Manzillo

N		11.0	105.5
cb.		9.6	106.9
1/4		8.9	107.6
ℓ		8.8	107.7
1/4		8.2	108.3
+4		8.0	108.5
cb.		7.0	109.5
S		5.4	111.1

0+00 = West line Manzillo St.

S		1.0	115.5
+4		1.6	114.9
cb.		4.3	112.2
+4		6.7	109.8
1/4		7.0	109.5
ℓ		6.8	109.7
1/4		7.5	109.0
+4		7.7	108.8
cb.		6.4	110.1
N		8.3	108.2



0+25

N	6.0	110.5
cb.	4.1	112.4
+3	5.3	111.2
1/4	5.3	111.2
2	4.8	111.7
1/4	4.9	111.6
+3	4.5	112.0
cb.	2.0	114.5
+3	0.2	116.3
S	+0.3	116.8

0+50

S	+1.3	117.8
+7	+1.0	117.5
cb.	0.2	116.3
+5	3.3	113.2
1/4	3.5	113.0
2	4.0	112.5
1/4	4.3	112.2
+3	4.2	112.3
cb.	3.0	113.5
N	4.8	111.7

0+75

N	6.5	110.0
cb.	4.8	111.7
+4	5.0	111.5

1/4	5.0	111.5
2	4.7	111.8
1/4	4.8	111.7
+1	4.8	111.7
+3	3.1	113.4
cb.	1.8	114.7
S	0.8	115.7

1+00

S	3.1	113.4
cb.	3.6	112.9
+6	6.1	110.4
1/4	6.3	110.2
2	6.1	110.4
1/4	6.3	110.2
cb.	6.8	109.7
N	8.0	108.5

1+30

N	10.2	106.3
cb.	9.1	107.4
1/4	8.5	108.0
2	8.0	108.5
1/4	7.8	108.7
cb.	6.6	109.9
S	6.0	110.5

1+65

S	7.8	108.7
---	-----	-------



116.50 Cereza

cb.	8.3	108.2
1/4	10.0	106.5
2	9.8	106.7
1/4	10.0	106.5
cb.	10.0	106.5
N	10.2	106.3
2+02		
N	9.8	106.7
+7'	10.5	106.0
cb.	11.5	105.0
1/4	12.2	104.3
2	11.6	104.9
1/4	11.7	104.8
+2	11.7	104.8
cb.	8.8	107.7
S	8.3	108.2
2+08		
S	8.2	108.3
cb.	9.0	107.5
+3	10.0	106.5
+5	17.5	99.0
1/4	17.7	98.8
2	17.7	98.8
1/4	16.3	100.2
+3	13.3	103.2
cb.	12.0	104.5

116.50 Cereza St. 68

+4	9.8	106.7
N	9.8	106.7
2+12		
N	9.8	106.7
+6	10.3	106.2
cb.	11.8	104.7
+3	16.6	99.9
1/4	17.6	98.9
2	18.4	98.1
1/4	18.3	98.2
+3	18.3	98.2
+5	9.5	107.0
cb.	8.9	107.6
S	8.1	108.4
T.P.	0.69	104.69
2+17.4 = East Lane 47th St.		
S	6.0	98.7
cb. +1.15 = Top exist. cb.	6.39	98.20
" " - 5' cut on Paving	6.99	99.70
S 1/4 on Paving	7.16	97.53
2 " "	7.38	97.31
N 1/2 " "	7.68	97.01
" cb. +1.15 = exist. gutter at cb.	7.92	96.77
" " +1.15 on " cb.	7.38	97.31
N	7.3	97.4



Miller  
Walker  
Bliss  
3-9-38

Cross Section 20' Alley "A" - see sketch  
From North line Nogal st  
To South line Castana st.

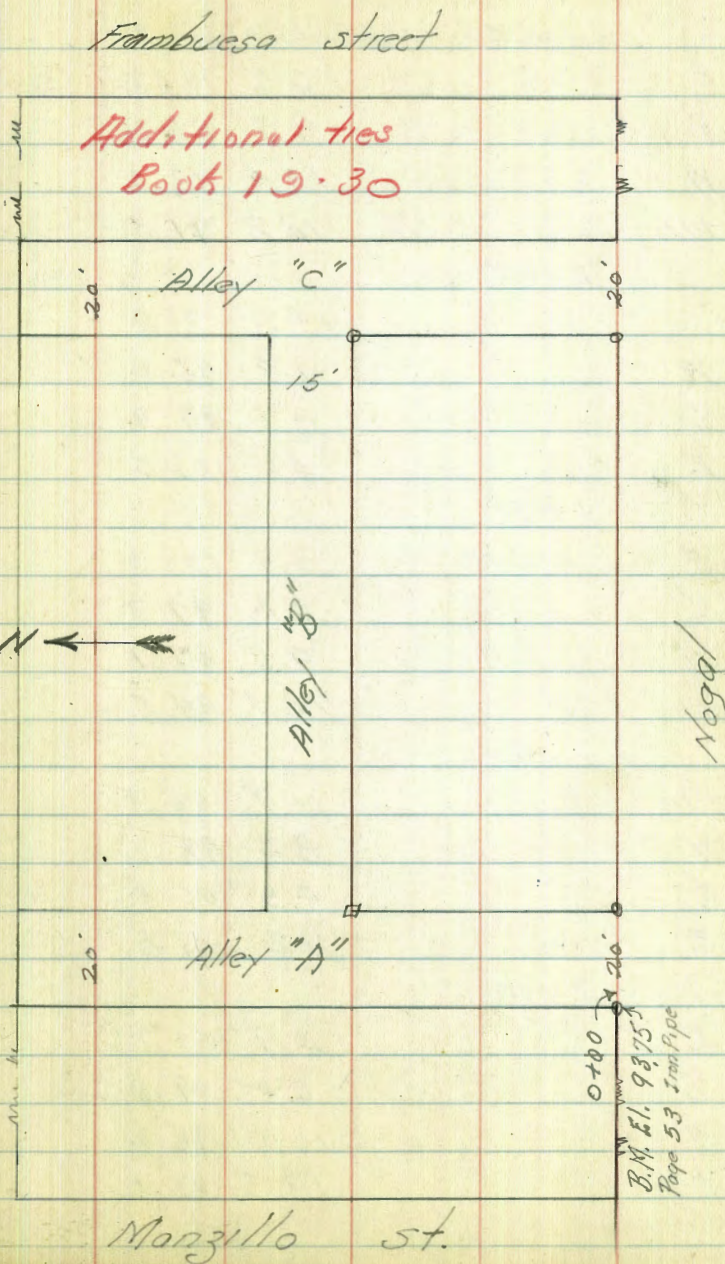
Indexed  
c.s.K1

69

	12.82	106.57	93.75
	0 + 00 = North line Nogal st.		
W	12.8	93.8	
L	11.7	94.9	
E	9.6	97.0	
	0 + 25		
E	9.2	97.4	
L	10.2	96.4	
W	12.8	93.8	
+10	14.3	92.3	
	0 + 50		
-10	13.9	92.7	
W	12.6	94.0	
L	10.1	96.5	
E	7.9	98.7	
	0 + 75		
E	7.4	99.2	
L	10.6	96.0	
W	12.4	94.2	
+10	14.3	92.3	
	0 + 99.4 = South line Alley "B"		
-10	14.8	91.8	
W	12.4	94.2	
L	9.6	97.0	
E	6.8	99.8	

B.M. Iron Pipe  
100' Alley  
Hogup Nogal

Castana.





106.57 Alley "A"

1+144 = North line Alley

E	6.6	100.0
S	9.7	96.9
W	13.4	93.2
+10	14.8	91.8

1+50

-10	13.8	92.8
W	11.3	95.3
S	8.7	97.9
E	4.6	102.0

1+70

E	3.3	103.3
S	6.8	99.8
W	9.5	97.1
+10	12.1	94.5

1+90

-10	12.7	94.9
W	8.4	98.2
S	4.8	101.8
E	1.2	105.6

2+00

E	4.9	101.7
S	6.8	99.8
W	10.0	96.6
+10	13.5	93.1

70

2+13.4 = South line Castana st.

-10	23.0	83.6
W	21.0	85.6
S	19.0	87.6
E	20.8	85.8
+10	17.1	89.5







116.87

Alley 8

N	16.5	100.4
S	14.6	102.3
S	12.3	104.6
+10	10.2	106.7

2+80

=+10	7.5	
S	7.5	109.4
S	10.2	106.7
N	12.5	104.4
+15	15.8	101.1

3+0.5

-15	14.0	102.9
N	9.4	107.5
S	7.3	109.6
S	5.3	111.6

3+30

S	3.7	113.2
S	5.0	111.9
N	6.8	110.1
+15	11.4	105.5

3+55

-15	11.0	105.9
N	6.2	110.7
S	4.4	112.5
S	2.7	114.2

TP	7.20	121.62	2.45	114.42
----	------	--------	------	--------

on Hub on South  
lot # 150

121.62

72

3+90

S	6.2	115.4
S	7.4	114.2
N	8.7	112.9
+10	12.0	109.6

4+05

-10	11.8	109.8
N	8.0	113.6
S	6.6	115.0
S	5.0	116.6

4+30

S	4.8	116.8
S	6.6	115.0
N	8.3	113.3
+15	13.4	108.2

4+55

-15	14.0	107.6
N	10.2	111.4
S	8.6	113.0
S	6.7	114.9

4+68.1 = West line Alley "C"

S	7.1	114.5
S	9.6	112.0
N	11.9	109.7



Miller  
Walker  
Bliss  
3-9-38

Cross Section 20' Alley "C" <sup>see sketch</sup>  
From North line Negal st. Page 69  
To South " Costana

121.62

73

121.62 -  $\pi$  from Page 72

0+00 = North line OR3

W on Iron Pipe 2.25 119.37

E 2.0 119.6

E 2.3 119.3

0+25

E 3.7 117.9

E 2.8 118.8

W 2.2 119.4

0+50

W 5.1 116.5

E 5.4 116.2

E 6.1 115.5

+5 6.6 115.0

0+85

-5 7.0 114.6

E 6.6 115.0

E 6.0 115.6

W 5.7 115.9

1+00.9 = South line Alley "B"

W 7.1 114.5

E 7.1 114.5

E 8.4 113.2

+10 9.6 112.0

1+15.9 = North line Alley "B"

132

E

13.1 108.5

E

12.6 109.0

W

12.0 109.6

+10

11.0 110.6

TP

0.81 109.69

12.74 108.88

1+30

-10

2.7 107.0

W

3.0 106.7

E

3.8 105.9

E

4.8 104.9

+10

5.2 104.5

1+55

-10'

6.1 103.6

E

7.5 102.2

E

7.5 102.2

W

6.8 102.9

+10

6.4 103.3

1+85

-10

12.5 97.2

W

13.0 96.7

E

11.4 98.3

E

11.0 98.7

+10

10.2 99.5

2+12

-10

12.8 96.9

E

13.4 96.3



109.69

Alley "C"

13+45.55

Imperial

49th St

74

L  
W

13.7 96.0

14.3 95.4

13+25.55

60'

Ave.

6+69.13

Additional ties  
Book 19.

6+39.13

49th St

6+04.44

60'

Imperial 0.71  
of Pax

8+29.12

60'

3+09.13

Escuela St.

Levels For Survey  
in Sierra Vista Tract  
see FB 1581-1

2+79.12

2+59.92

Imp. 0.70  
of Pax

Manzanillo

2+34.92

2+09.22

50'

0+00

47'

50'

Imperial

Imp. 0.92 south  
of Pax

60'

St



3-19-34

X Sec Imperial Ave FB. 1295 - P. 2  
 47<sup>th</sup> St. East. to 4<sup>th</sup> Ct  
 See plat. Page 74  
 18' strip Pav. not on  $\phi$ .

See

E 83

BM. B.P.	8.35	120.35	112.00
		W Line 47 <sup>th</sup> St.	
S	Ground	8.1	112.3
d	"	9.2	111.2
+11.9 = S.P.		9.51	110.84
$\phi$		9.41	110.94
+9.2 = N.P.		9.49	110.86
d	Ground.	9.2	111.2
N	Gr.	8.6	113.8
		0+05' E = w. ch. to N	
N.	Top ch.	8.52	111.83
N	G. Pav.	9.22	111.13
		0+10 = w. ch. to S.	
N.	Pav.	9.03	111.32
d	"	9.00	111.35
+10.1 = N.P.	"	9.23	111.12
$\phi$	"	9.13	111.22
+8.1 = S.P.	"	9.13	111.22
d	"	9.24	111.07
S. Gutter	"	9.04	111.31
S. Top ch.		8.04	112.29
+25' gutter Pav		8.75	111.60
		0+30 = $\phi$ to S	
-25	Pav	8.42	111.93
S.	"	8.87	111.48
44	"	9.05	111.30
d		8.95	

Indexed  
 C.S.M.

120.35

+11.9 = Pav

 $\phi$ 

+9.9

d

N

N.

N. Ground

d

+10.1 = N.P.

S ( $\phi$ )?

+8.1 = S.P.

d pav

+5 Pav

S

S d

+25' S gutter

0+00 = E. Line 47<sup>th</sup> St.

S. Ground.

d

+11.9

 $\phi$ 

+9.9

d Gr

N.

0+50 East.

N

d.

Locals For Senior  
 Sierra Vista Tract  
 FB. 1581-1

85.5 111.80

8.46 111.89

8.50 111.85

8.54 111.77

8.80 111.55

0+45 = 2. ch. to N.

8.73 111.22

0+50 = 2. ch. to South

8.3 112.1

8.0 112.4

7.64 112.67

7.42 112.53

7.97 112.38

8.70 111.68

8.90 111.45

8.85 111.50

8.38 111.97

8.71 111.64

6.6 113.8

7.7 112.7

7.68 112.67

7.58 112.77

7.62 112.73

7.4 113.0

7.6 112.8

6.1 114.3

6.2 114.2

Book 1295-P. 4  
 = 112.44



120.35

N d + 10.1	N.P.	6.20	114.15
±		6.12	114.23
+ 8.1	S.P.	6.24	114.11
cl		6.3	114.1
S		6.2	114.2
	1 + 00		
S.		5.5	114.9
cl		5.0	115.4
+ 11.8	S.P.	4.67	115.68
±		4.58	115.77
+ 9.8 =	N.P.	4.69	115.66
cl		4.8	115.6
N		4.7	115.7
	1750		
N		2.6	117.8
cl		3.0	117.4
+ 10.2	N.P.	3.11	117.24
±		3.02	117.33
+ 8.2	S.P.	3.11	117.24
d		3.5	116.9
S.		3.9	116.5
	2 + 09 <sup>2</sup> = W. Line Manzanillo st.		
- 5		2.7	118.2
S		2.0	118.4
cl		1.6	118.8
+ 11.7	S.P.	0.80	119.55
±		0.70	119.65

120.35

+ 9.7	N.P.	0.89	119.55	
cl		0.7	119.7	
N		0.4	120.0	
T.P	12.29	132.25	0.39	119.76
	2 + 34 <sup>2</sup> = ±			
N		11.2	121.1	
cl		11.4	120.9	
+ 10 <sup>2</sup>	N.P.	11.67	120.58	
± one T. BM		11.52	120.73	
+ 8.3	S.P.	11.58	120.67	
cl		11.9	120.4	
S		12.7	119.6	
+ 5		13.0	119.3	
	2 + 59 <sup>2</sup> =	E. Line Manzanillo		
- 5		12.0	120.3	
S.		11.6	120.7	
cl		10.6	121.7	
+ 11.7	S.P.	10.48	121.77	
± one C.T.		10.39	121.86	
+ 9.7	N.P.	10.48	121.77	
± 17		10.5	121.8	
± 18		9.5	122.8	
cl		8.9	123.4	
N		8.0	124.3	

120.73

76



132.25

2+79  $\overline{L}$  = w. Line Escuela St.

N.		6.7	125.6
d		8.1	124.2
+2		8.4	123.9
+3		10.0	122.3
+10.2	N.P.	9.54	122.71
$\overline{L}$		9.45	122.80
+8.2	S.P.	9.58	122.67
d		9.6	122.7
S		10.7	121.6
+50		12.8	119.5

 $\overline{L}$  + 0.9  $\overline{L}$  =  $\overline{L}$ 

-50		12.2	120.1
S		9.2	123.1
d		8.5	123.8
+11.2	S.P.	8.05	124.20
$\overline{L}$		8.01	124.24
+9.7	N.P.	8.13	124.12
$\overline{L}$ + 17		7.7	124.16
$\overline{L}$ + 18		6.8	125.5
d		6.1	126.2
N		4.9	127.4

3139  $\overline{L}$  e. Line Escuela St.

N		4.2	128.1
d		5.4	126.9
+5		6.6	125.7
+10.2	N.P.	6.10	125.55

132.25

77

$\overline{L}$		6.66	125.59	
+ 8.2	S.P.	6.70	125.55	
d		7.0	125.3	
S.		7.0	125.3	
+50		9.9	122.4	
	3+60			
S		6.0	126.3	
d		6.0	126.3	
+11.2	S.P.	5.71	126.54	
$\overline{L}$		5.56	126.69	
+9.7	N.P.	5.54	126.67	
+14		6.0	126.3	
+15		4.8	127.5	
d		4.4	127.9	
N		3.6	128.7	
T.P.	9.75	140.85	1.15	131.10
	4+2.9			
N		6.2	134.7	
d		6.2	134.7	
+3		6.3	134.6	
+5		11.0	129.9	
+10.4	N.P.	11.57	129.28	
$\overline{L}$		11.54	129.31	
+8.4	S.P.	11.67	129.18	
d		11.7	129.2	
S.		11.4	129.3	



140.85

5+00

S		8.3	132.6
d		8.3	132.6
+11.6	S.P.	8.40	132.45
±		8.31	132.54
+9.6	N.P.	8.38	132.47
+17		8.2	132.7
d		5.0	135.9
+5		2.1	138.8
N		1.9	139.0

5+41

N		0.4	140.5
d		3.8	137.1
+4		5.2	135.7
+10.4	N.P.	5.83	135.02
±		5.76	135.09
+8.4	S.P.	5.91	134.94
d		6.1	134.8
S		6.6	134.3

6+04<sup>12</sup>W. Line 48<sup>th</sup> St

S-50		7.4	133.5
S		5.2	135.7
d		4.5	136.4
+11 <sup>5</sup>	S.P.	4.32	136.53
±		4.17	136.68
+9 <sup>5</sup>	N.P.	4.23	136.62
+17		4.2	136.7

140.85

78

d 2.8 138.1

N 1.3 139.6

6+34<sup>12</sup> = ± 48<sup>th</sup> = E. Line Sunshine Garden

N 2.8 138.1

d 3.5 137.4

+10.5 N.P. 3.14 137.67

± ph. CT. L.P. 3.10 137.25 = 137.82

+8.5 S.P. 3.22 137.63

d 3.9 137.0

S 4.6 136.3

+5.0 6.6 134.3

6+64<sup>12</sup> E. Line 48<sup>th</sup>

-5.0 6.2 134.7

S 3.4 137.5

d 2.4 137.5

+11.5 S.P. 2.16 138.69

± 2.05 138.80

+9.5 N.P. 2.13 138.72

+15 2.5 138.4

d 1.8 139.1

N 1.8 139.1







$$\begin{array}{r} 1471.35 \\ 1235 \\ \hline 1489.0 \end{array}$$

43

$$\begin{array}{r} 231.6 \\ 268.7 \\ \hline 500.3 \end{array}$$