

1551  
SEYERS

1880

1880

1880

1551

MICROFILMED  
DEC 24 1964

ENGINEERING DEPARTMENT,  
CITY OF SAN DIEGO,  
CALIFORNIA.

MADE IN U. S. A.

Our Leather Bound Engineers Note Books  
are carried in the following rulings:

- No. 380 LEVEL BOOK. Left and Right Hand Page  
the same as Left Hand Page  
of this Book.
- No. 382 FIELD BOOK. Left Hand Page as in this  
Book, Right Hand Page 4x4  
to the inch, Center Line Red.
- No. 384 MINING TRANSIT  
BOOK. Left Hand Page as in this  
Book, Right Hand Page 8x8  
to the inch, Center Line Red.
- No. 385 FIELD BOOK. Left Hand Page as in this  
Book, Right Hand Page 8  
vertical and 4 horizontal lines to  
the inch, Center Line Red.

We also carry the Note Books listed above,  
bound in extra strong Fabri-Hide (otherwise  
the same quality of book,) which can be fur-  
nished at a somewhat lower price.

In ordering Fabri-Hide covered books, add  
the letter "F" to catalog number.

**THE FREDERICK POST CO.**

*ENGINEERING and DRAFTING SUPPLIES*

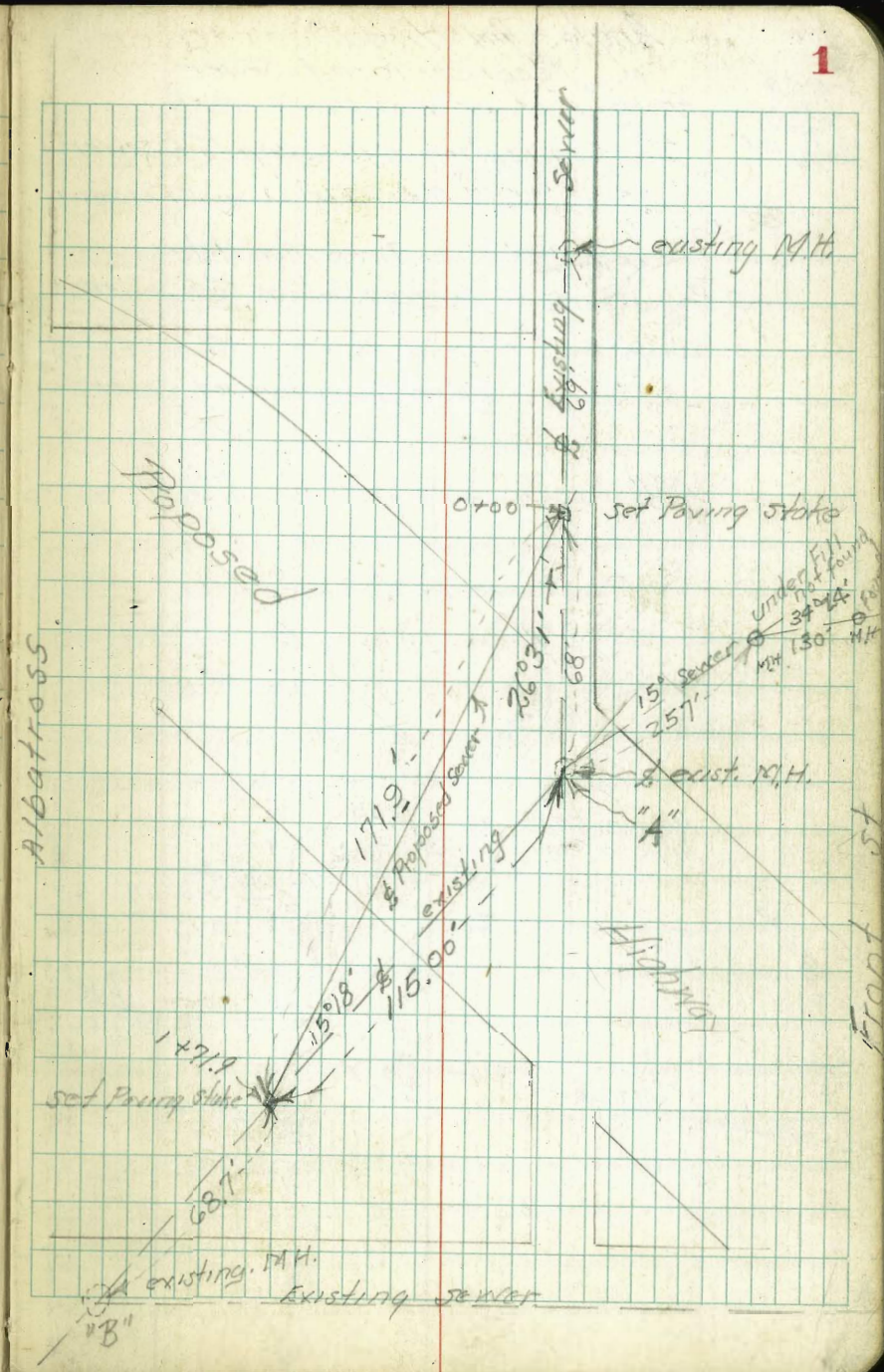
P. O. Box 803

CHICAGO

Proposed Sewer Location and levels  
 Walker Bliss  
 1-27-38  
 Bet. Albatross And Front  
 at and north of University Ave  
 54.89  
 Douglas  
 Albatross

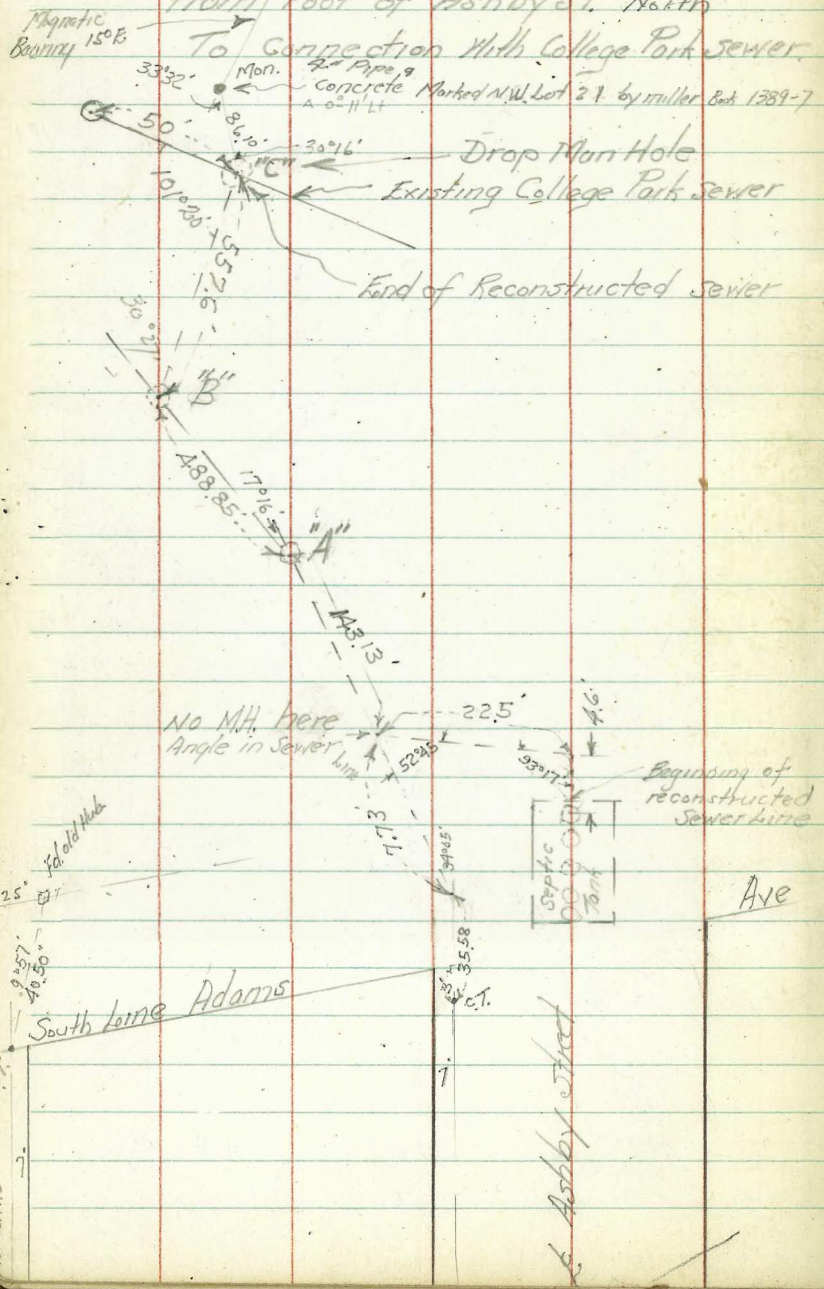
	2.25	272.78		270.53	
T.P.	0.37	260.40	12.75	260.03	
T.P.	0.47	248.15	12.72	247.68	
0+00 on stub.			1.35	246.80	
+15 on Fill			2.1	246.1	
+21 on old fill			6.6	241.6	
+44 " " "			12.3	235.9	
T.P.	2.71	238.30	12.56	235.59	
+67			9.1	229.2	
+70 - Flow of ditch			9.9	228.4	
on Run M.H. at "A"			4.10	234.20	
" Flow M.H.			9.22	219.08	
0+94 - Bottom ditch			10.2	228.1	
+98			9.2	229.1	
1+15			9.7	228.6	
+35			11.4	226.9	
1+71.9 $\Delta$ intersection on stub at "B"			11.18	227.12	
68.7' South on Exist. Run M.H.			13.14	225.16	Prop. M.H.
" " " Flow line to North			17.40	220.90	at "B"
" " " " " South			18.16	220.14	

Alignment changed  
 see Construction notes  
 in grade Book 188 - Page 1



Muller  
Bliss  
2-A-38

Angles and distances over  
Reconstructed Sewer  
From Foot of Ashby St. North  
To connection with College Park sewer.



B.M. BP 2  
Sw. Hibby & Adams  
Book 1389-9

	1.20	400.93	399.73
Top Rim M.H. North end Septic Tank	2.22		398.71
" M.H. "A"	9.33		391.60
Flow line M.H. "A"	19.93		381.00
T.P.	0.33	388.40	12.86 388.07
T.P.	0.51	376.51	12.40 376.00
T.P.	1.20	364.96	12.75 363.76
Rim M.H. "B"	2.42		362.54
Flow "B"	9.12		355.84
T.P.	1.00	352.93	13.03 351.93
T.P.	2.30	342.49	12.74 340.19
Rim M.H. "C"	5.11		337.38
Flow line M.H. "C"	11.11		331.38 } Drop. M.H.
Chk. or Mon. Book 1389-18	6.65		335.84
Flow line College Park sewer	11.46		331.03 }

El Centro

A table with 6 columns and 20 rows. The columns are defined by vertical red lines, and the rows are defined by horizontal blue lines. The table is currently empty.

A table with 10 columns and 20 rows. The columns are defined by vertical green lines, and the rows are defined by horizontal blue lines. The table is currently empty.

A table with 4 columns and 20 rows. The columns are defined by vertical red lines, and the rows are defined by horizontal blue lines. The table is currently empty.

A table with 1 column and 20 rows. The rows are defined by horizontal blue lines. The table is currently empty.

360.42

7+00

E+66 8.4 357.0

E+76 = W. Line proposed. 8.9 351.5

E+86 9.3 351.1

7+17.5 & 9' cone. Drive

E+39 6.4 354.0

E+40 = E. End of Cone Drive 7.17 353.2

E+76 = W. Line 8.70  
7+27 = S. side shack 351.7

E+49<sup>E</sup> = S.E. Cor 8.4 352.0

E+69 = S.W. " 9.0 351.4

7+35 N side shack

E+49<sup>E</sup> = N.E. Cor 8.5 351.9

E+69 = N.W. " 9.0 351.4

7+52

E+66 8.7 351.7

E+76 = W. Line 9.0 351.4

E+86 9.3 351.1

7+55 S. side chicken shed removed

E+67 S.E. Cor shed 8.7 351.7

E+76 = W. Line = S.W. Cor shed 9.0 351.4

E+86 9.3 351.1

7+70

E+67 = N.E. Cor above shed 8.8 351.6

E+76 = N.W. " " " 9.2 351.2

E+86

8+01.8

E+66 8.7 351.7

E+76 = W. Line 9.1 351.3

E+86 9.7 350.7

8+50

E+66 9.0 351.4

E+76 = W. Line 9.6 350.8

E+86 10.0 350.4

C.S.K. B.M. F.B. 1535-P 21, 6.56 353.86 ✓

(76' wide, 10' deep) Additional Notes Euclid N. of El Cajon Blvd 8-12-39  
50' Row

✓ 3+52<sup>E</sup> N. End Walk, curb & Pav. on W. side = N. End Full width St.

✓ 3+53 = S " Fence 40' W of E. Line

✓ 3+53 Fence from 40' W of E. Line W. to 76' W of E.

✓ 4+95 6x6 clothes Pole 60' W of E. Line

✓ 5+05 4x4 " " 75.5' " " " "

✓ 5+22 4x4 " " 60' " " " "

✓ 5+37 S. End double garage 51.5' W of E. Line " " 78' W of E = S.W. Cor

✓ 5+60 N " " " " " " " " 78' W of E = N.W. "

✓ 5+64 E+W. Fence from 40' W of E. West.

✓ 5+72 E+W. " " 40' " " " " W. = hot. Division fence

✓ Bet 5+72 + 6+00 from 40' W of E. line West. 15:

Divided into small chicken pens. Not in use back repair

✓ 6+00 = S. End Corrugated Iron Garage 47' W of E. = S.E. Cor.

✓ 6+00 " " " " 93.5' " " = S.W. "

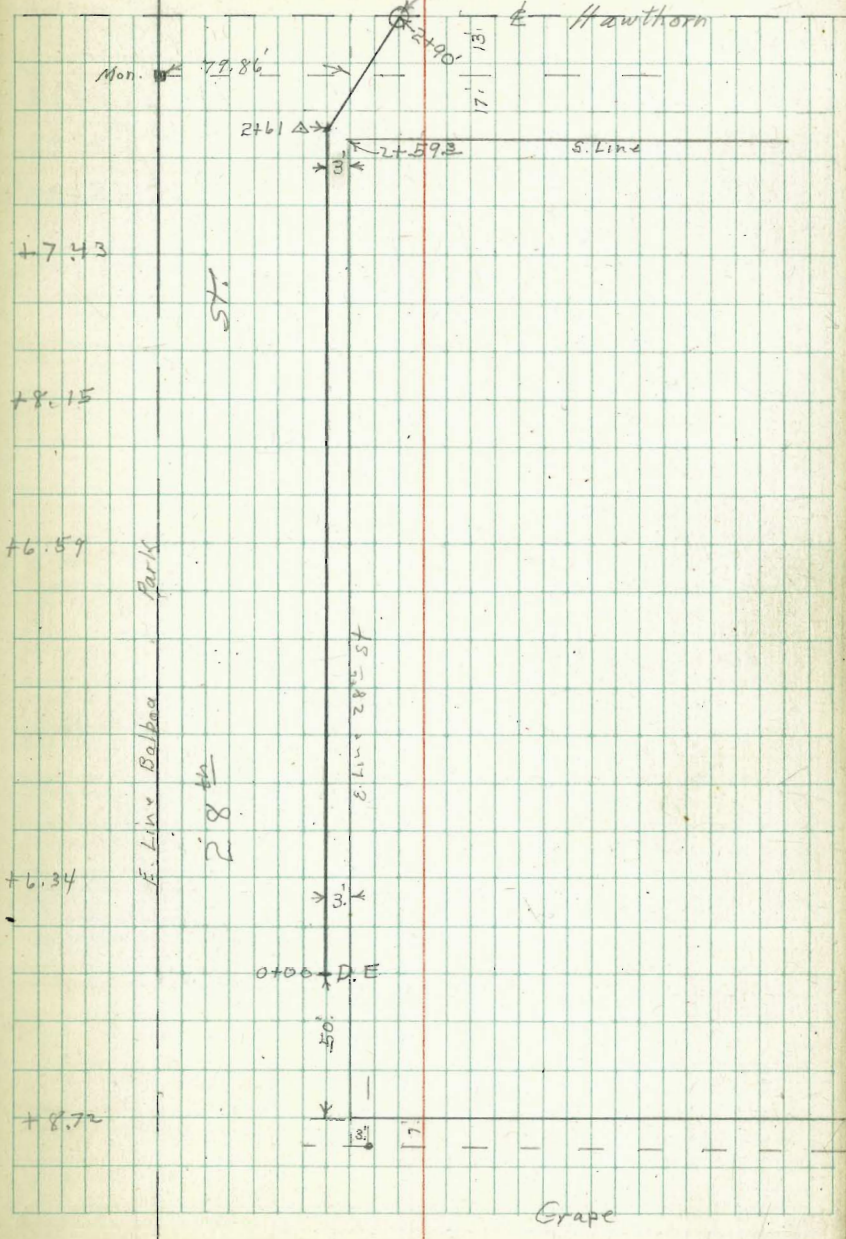
Continued on Page 15.

1-29-39  
Miller  
Walker  
13185

Sewer 14 28<sup>th</sup> St. Grape to Hawthorn

Indexed  
C.S.K

BM.RP	0.46	233.41		232.95	s. e. Grape + Granada.
(00-60	N. Culvert	Grape	7.45	225.96	
(00-60	N d.	"	6.45	226.96	
00-50.	F.L. Out Let. Culvert.		10.30	223.11	
(0+00	φ Nat Gr.		6.0	226.4	F.L. Grade 220.50
(0+00	6' W.R.P.		5.48	227.93	
(0+00	φ Ditch		10.8	222.6	
(0+50	φ Nat. Gr		7.9	225.5	218.50
(0+50	6' W. R.P.	Brk.	6.76	226.65	
(0+50	Ditch		11.6	221.8	
(1+00	φ Nat. Gr		12.4	221.0	215.00
(1+00	6' W. R.P.	Brk.	11.82	221.59	
T.P.	0.36	220.72	13.05	220.36	
(1+31	Fill		2.0	218.7	
(1+31	Nat. Gr.		5.0	215.7	
(1+50	φ "		8.7	212.0	206.0
(1+50	6' W. R.P.		8.38	212.34	
T.P.	0.52	208.33	12.91	207.81	
(2+00	φ Nat Gr		6.0	202.3	197.00
(2+00	6' W. R.P.		2.61	205.72	
T.P.	3.31	198.87	12.77	195.56	





19887

Grade

2+61		9.5	189.4	} 186.0
2+61	G.W.R.P.	9.46	189.41	
2+90	E.M.H. Rim.	5.93	192.94	185.0
2+90	" " F.L.	16.93	181.94 = 182.60 Plan	

+3.41

+7.94

7

3-7-39  
Miller  
Walker  
Bliss

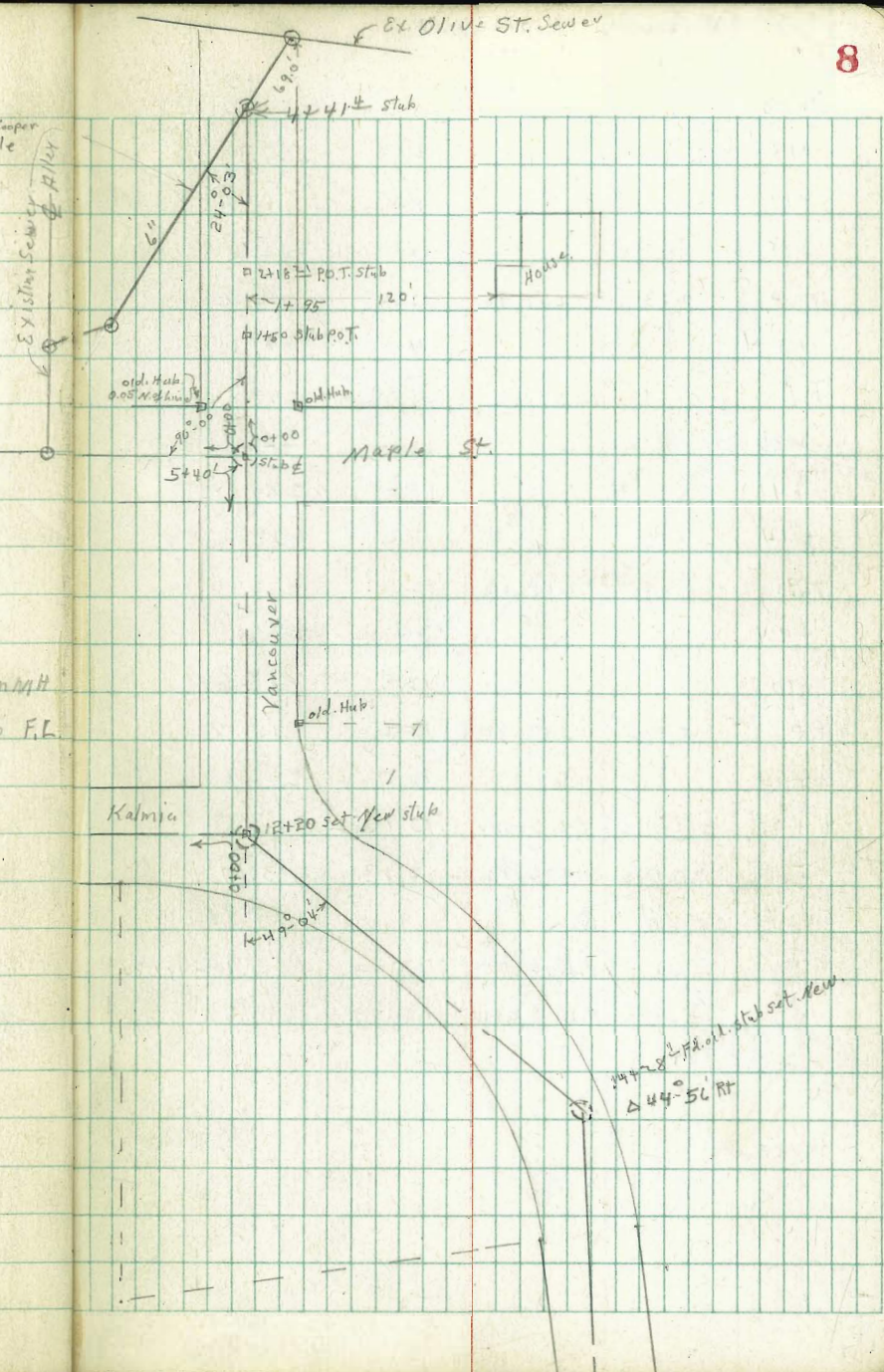
Montclair Sewers:

Maple St. +  
Vancouver Ave F.B. 1191-20

B.M.B.P	0.43	286.88		286.45
T.P.	3.01	276.96	12.93	273.95
± Maple St.				
Stub { ± Maple } { ± Vancouver }	0+00	ground	5.0	272.0
	0+30		4.7	272.3
	0+60		5.8	271.2
	1+00		7.5	269.5
	+20		8.3	268.7
	+22	wash	10.0	267.0
	+24		9.0	268.0
	+50		7.3	269.7
+90 <sup>3</sup>	W	± Maple ± Vancouver	3.50	273.46
" "	" "	" "	10.30	266.66 = 267.0 F.L.

± Vancouver St. Maple North.

0+00	{ ± Maple } { ± Vancouver }	ground	5.0	272.0
" "	New ± Stub		5.16	271.80
0+50			5.1	271.9
1+00			6.2	270.8
1+25			7.3	269.7
1+50			9.3	267.7
1+63			11.2	265.8
1+95	120. Rt = House	floor	4.7	272.3
"	" " "	ground	6.6	270.6
T.P.	0.25	264.46	12.75	264.21

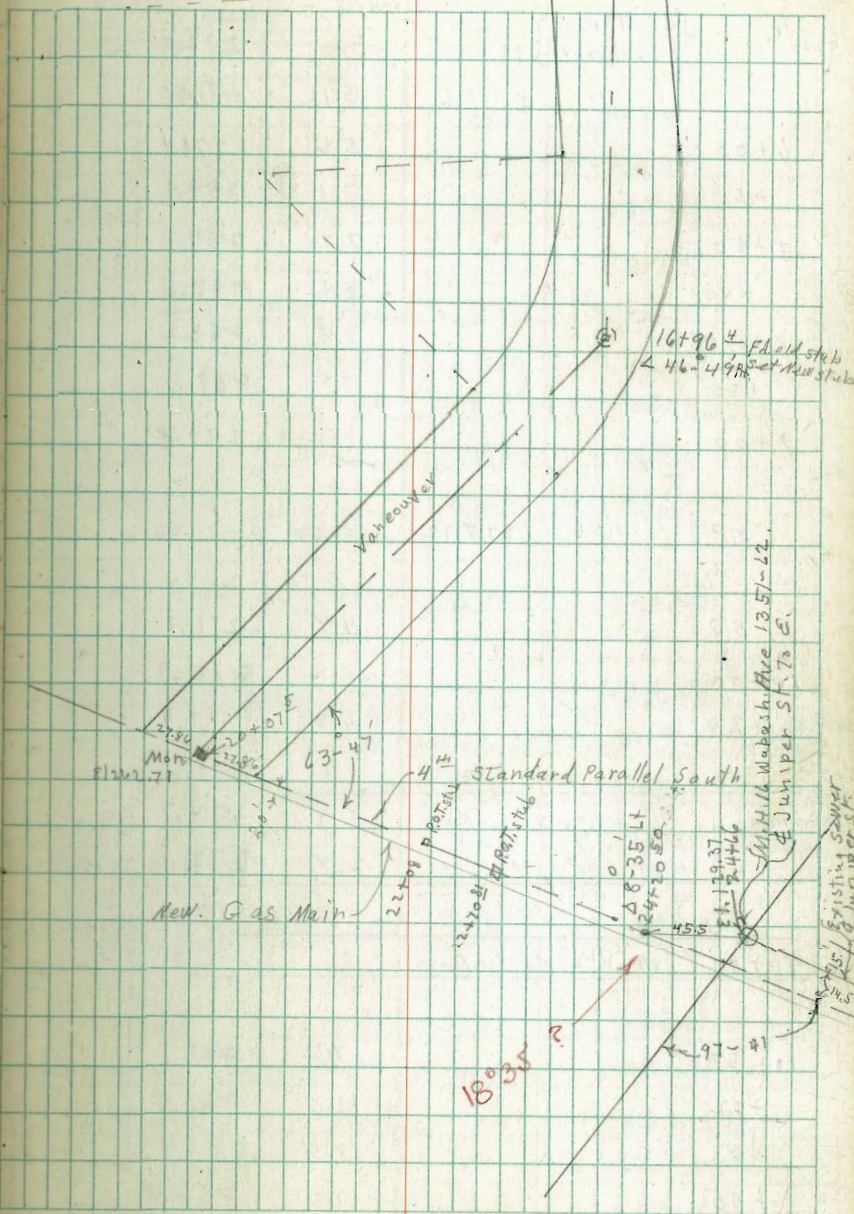


1/27/38 JUN 1938 ST

YanCouver Maple North  
264.46

2+00			5.3	259.2
+18 <sup>21</sup>	P.O.T. slab		6.57	257.89
+27			8.0	256.5
+35			12.0	252.5
T.P.	0.13	251.96	12.63	251.83
+54			4.9	247.1
T.P.	0.61	239.83	12.74	239.22
+86	wash		13.0	226.8
+91	"		15.0	224.8
3+14			11.6	228.2
T.P.	1.48	228.60	12.71	227.12
+44			6.1	222.5
+70			13.0	215.6
T.P.	0.82	216.80	12.62	215.98
+94			10.0	206.8
4+41 <sup>14</sup>	Ex Stub P.T. Ex. Sewer		13.13	203.67
T.P.	3.26	206.93	13.13	203.67
5+10 <sup>4</sup>	Ex M.H. Rim		9.02	197.91
"	" " Fil. 6" to S		17.03	189.90 - 189.80
"	" " Fil. 8" E+W		17.33	189.60

2050  
075  
455 **9**



5+40	Maple Vancouver	276.96 $\pi$ Page 8. ground.	5.0	272.0	
"	"	st. stub	5.11	271.80	
6+00			5.6	271.4	
+50			7.1	269.9	
7+00			7.7	269.3	
+50			8.4	268.6	
8+00			8.8	268.2	
+50			7.5	269.5	
9+00			6.1	270.9	
T.P.	4.56	275.92	5.60	271.36	
+50			4.8	271.1	
10+00			5.2	270.7	
+50			6.5	269.4	
10+54	47. RT = S.E. Cor. House		1.2	274.7	Floor
"	47 " " " "		3.8	272.1	9 ft. wall
10+57	89. RT = N.E. Cor. House				
10+57 $\phi$			7.6	268.3	
+72			12.5	263.4	
+83			18.5	257.4	
+95			19.0	256.9	

10+95	15. RT. of $\phi$		8.1	267.8	
11+12			13.5	262.4	
11+32			8.0	267.9	
11+50			6.5	269.4	
12+00			7.2	268.7	
+20	$\Delta$ 49° 04' Lt. ground		7.4	268.5	
+20	New. Hub. old. Scraped out.		7.55	268.37	
+50			9.8	266.1	
13+00			11.7	264.2	
+50			12.0	263.9	
T.P.	6.40	270.42	11.90	264.02	
13+60	27 RT. $\phi$ House Floor.		4.8	265.6	
13+60	47. RT. Laundry trays in basement.	13.3		257.1	Laundry Room Floor
13+60	54 RT. Main plumbing	7.3		263.1	X. In pipe basement
13+60	54. RT	73.5		256.9	Floor
13+85	63. RT = S.E. Cor. House	2.3		268.1	Floor
14+00			5.3	265.1	
+28	44° 56' RT. ground	4.0		266.4	
+28	" " New stub	4.25		266.17	
+60		4.7		265.7	
15+00		5.0		265.4	

15+50		5.0	265.4	
16+00		4.4	266.0	
+50		4.1	266.3	
+96 <sup>ft</sup>	Δ 46'-49' Rt. ground	3.8	266.6	
+96 <sup>ft</sup>	" " New. Stub	4.16	266.26	
T. P. & Man	3.05	269.31	4.16	266.26
<hr/>				
15+55	W. Lt Front of House floor	4.3	265.0	
	59' Lt = Y in plumbing above ground.	6.6	262.7	
	59' Lt. = ground.	8.8	260.5	
15+50	42 Rt = Front of House floor	2.5	266.8	
	56 Rt = Plumbing outlet	6.7	262.6	Y above ground
	56 Rt = " "	7.6	261.7	ground
<hr/>				
17+50		4.0	265.3	
<hr/>				
17+94	42 Lt = S.W. Cor. House floor	2.0	267.3	
"	" " ground.	4.7	264.6	
<hr/>				
18+00		5.9	263.4	
+50		6.7	262.6	
19+00		7.3	262.0	
<hr/>				
19+04	45 Lt = SW. Cor. House	6.7	262.6	Floor
"	" " " "	7.3	262.0	ground

19+10	47 Rt = N.E. Cor. House	4.6	264.7	floor
19+10	63 Rt = N.W. " "	8.0	261.3	Ground Near plumbing
<hr/>				
19+50		6.9	262.4	
20+07	<sup>5</sup> S. Line Montclair N. Line Hortons purchase Lt.	6.60	262.71 = 262.83	
<hr/>				
T.P. & Man	0.69	263.40	6.60	262.71
<hr/>				
20+50		3.1	260.3	
+73		4.8	258.6	
+73	6' S. of 2nd	6.0	257.4	
+94		15.6	247.4	
+94	6' South	17.0	246.4	
+94	6' N	13.6	249.8	
<hr/>				
21+18				
6' Lt		9.7	253.7	
6'		12.0	251.4	
6' Rt		13.6	249.8	
<hr/>				
21+33				
6' Rt		5.9	257.5	
6'		4.6	258.8	
<hr/>				
21+50				
6'		4.4	259.0	
6' Rt		5.6	257.8	

22+00 9.0 254.4

22+08  $\frac{1}{2}$  stub P.O.T.

T.P. 0.38 251.08 12.70 250.70

22+13<sup>8</sup>  $\frac{1}{2}$  Alley, to N 0.2 250.9

22+50 8.1 243.0

T.P. 0.10 238.28 12.90 238.18

22+70<sup>81</sup>  $\frac{1}{2}$  stub P.O.T. 1.97 236.31

22+80 6.0 232.3

T.P. 4.80 241.11 1.97 236.31

T.P. 2.38 140.34 103.15 137.96

24+00 149.0

24+18 0.0 120.3

24+20<sup>54</sup>  $\Delta$  8°-35' Lt.

24+22 4.2 136.1

24+66

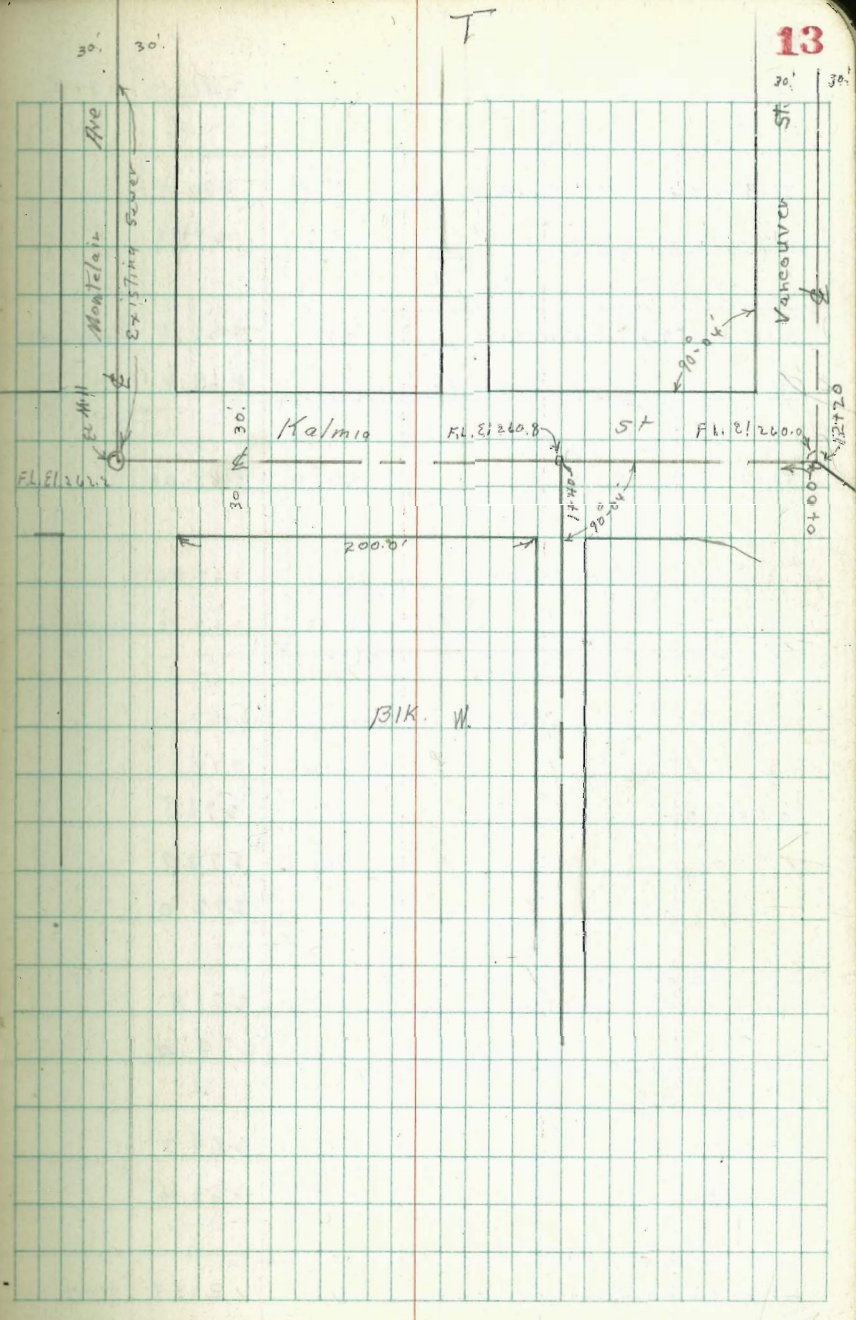
M.H. 16 Wabash. } M.H. Rivn 5.80 134.54  
14.5 N. of  $\frac{1}{2}$ 

24+66 F.L. 11.00 129.34 = 129.37 ✓

Cr

Montclair Sewers:  
 & Kalmia St.

B.M. & Stub 12+20 Page 10			
B.M.	10.19	278.56	268.37
0+00 to W =	Stub 12+20 Vancouver St.		268.5 ground
0+60 W	7.9	270.7	
0+60	SE-N =	Car S. Edge House ground	6.0 272.6
0+1	" " " "	" " floor	4.4 274.2
1+00			6.5 272.1
1+40	{0+00 line to S & All-gy BIK. W}		5.0 273.6
1+80			4.5 274.1
1+80-58'	N = S.W	Car House ground	3.4 275.2
" - 58.4'	" " "	" " floor	1.4 277.2
1+80 - 274'	N = S.W	Car House ground	1.7 276.9
" " " "	" " "	" " floor	1.2 277.4
1+80 - 323'	N = S.W	Car House ground	1.5 277.1
" " " "	" " "	" " floor	0.3 278.3
2+00			4.5 274.1
+50			5.0 273.6
65+	N = S	N.W. Car House ground	7.5 271.1
" " " "	" " "	" " floor	6.4 272.2







6/17/39  
Mills  
Walker  
Bloss

Additional Improvements  
Euclid Ave Opening Not El Cajon.  
Continued from Page 5.

76' width  
10' dia  
56' Rdw.

15

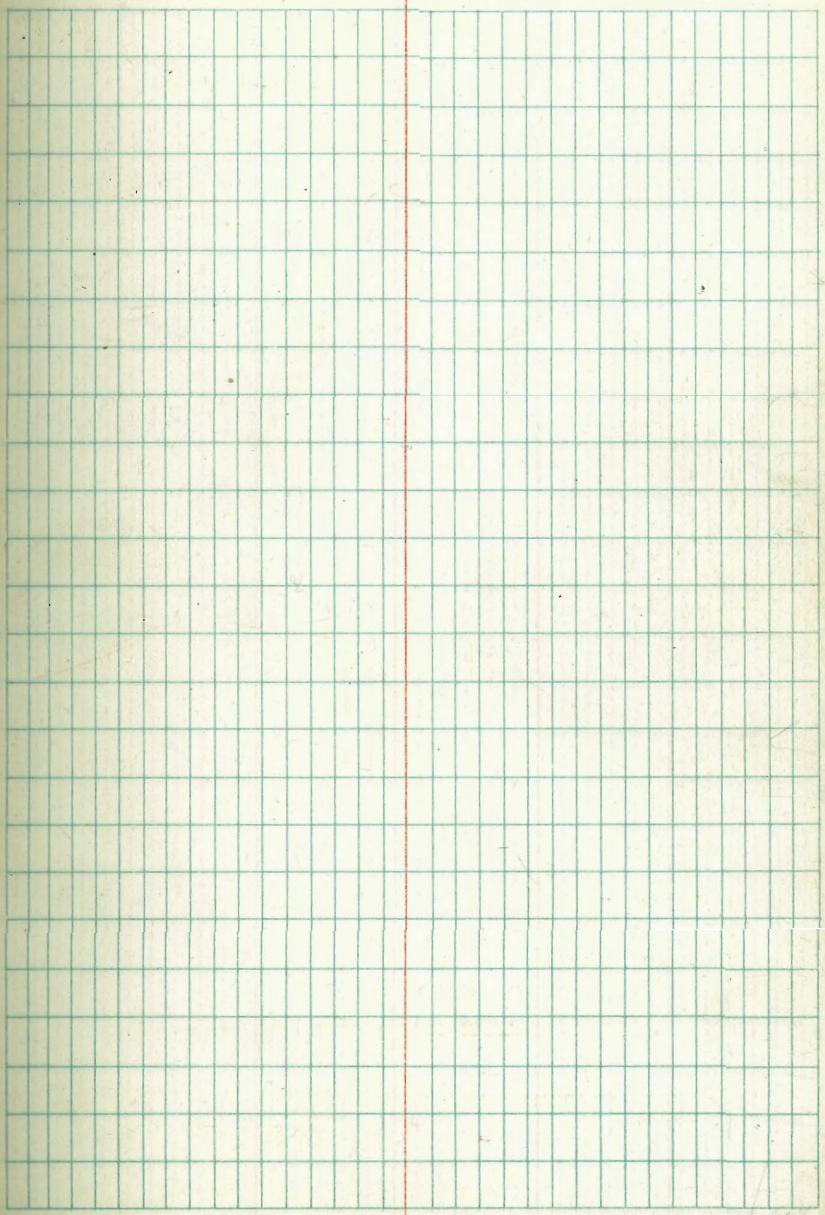
- ✓ 6+14<sup>5</sup> N. side above Cor. Iron Garage  
S. " 3. Wooden garages. 47' W. of E. = S. E. Cov
- ✓ 6+14<sup>5</sup> N. " " " " 67' W. of E. = SW "
- ✓ 6+45 N. " above " " 47' " " = S. E. "
- ✓ Bet. 6+45 + 6+81<sup>5</sup> from 40' W. of E. line west: <sup>Prot in use</sup> chicken pens.
- ✓ 6+81<sup>5</sup> = E + W. Prop. Division Fence <sup>from</sup> 40' W. of E. line West
- ✓ 6+55 Eucalyptus Tree cut off at ground
- ✓ 6+64 " " " " " "
- ✓ 6+76 " " " " " "
- ✓ 7+10 flowering " " " " Now Bush
- ✓ Bet. 7+27 + 7+35 shack. Removed.
- ✓ 7+17, 5 & 9. cone. drive on W.
- ✓ 7+24 & 7+31 pine cloth posts 77' W. of E. line
- ✓ 7+55 to 7+70 chicken House Removed.
- ✓ 7+84 58' W. of E. Pepper Tree cut down
- ✓ 7+80 to 7+86 from 40' W. to - 70' W. <sup>condition terrible</sup> chicken wire Pen
- ✓ 8+92 51' W. of E. - orange Tree Butt = 10" Diam.
- ✓ 9+01<sup>2</sup> S. End. Full width st. cl. walk. + pav.

10-2-39  
Miller  
Walker  
Bliss

Sewer Levels of Webster: 33<sup>rd</sup> to Payne  
of Payne N + S. of Webster

Indexed  
C.S.K.  
S.E. 33<sup>rd</sup>  
+ Webster

BM. Top. Hgt.	2.01	23.61	21.60	
0+00 Ex. M.H. } of Webster St		4.05	19.56	Rim
		Below 7.20		
0+00		11.25	12.36	F.L.
+25		5.4	18.2	
0+50 W		5.4	18.2	
1+00 W		5.3	18.3	
1+41 M.H. 1 of Payne St.		4.7	18.9	0+00
	S. on of Payne St.			
1+55		4.0	19.6	+14
1+72		5.0	18.6	+31
2+00		5.4	18.2	+59
+50		5.8	17.8	1+09
3		6.3	17.3	+59
+50		6.6	17.0	2+09
4		6.6	17.0	+59
+70	S. line Home Garden	7.3	16.3	3+29
	N. on of Payne			
0+00 of Webster		4.7	18.9	
0+60 N		4.9	18.7	
1+00 N		4.7	18.9	
	W. on of Webster			
0+00 of Payne of Webster		4.7	18.9	
0+20		4.0	19.6	
0+35		1.7	21.9	
0+83		+17.6	41.2	
0+97 <sup>2</sup>	W. line Home Garden	+20.7	44.3	

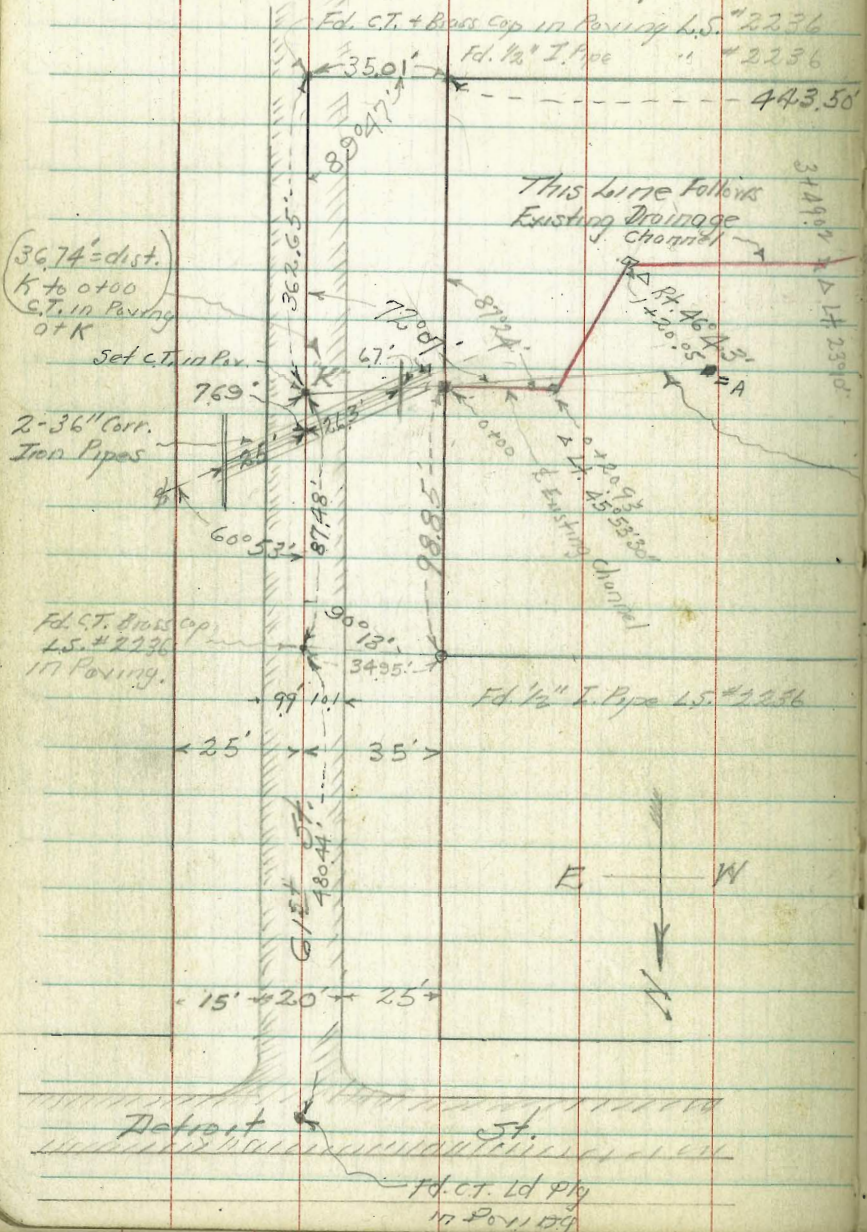


A table with 6 columns and 20 rows. The columns are defined by vertical red lines, and the rows are defined by horizontal green lines. The table is currently empty.

A table with 10 columns and 20 rows. The columns are defined by vertical green lines, and the rows are defined by horizontal green lines. The table is currently empty.

Walker  
Bliss  
Isbell  
11-15-39

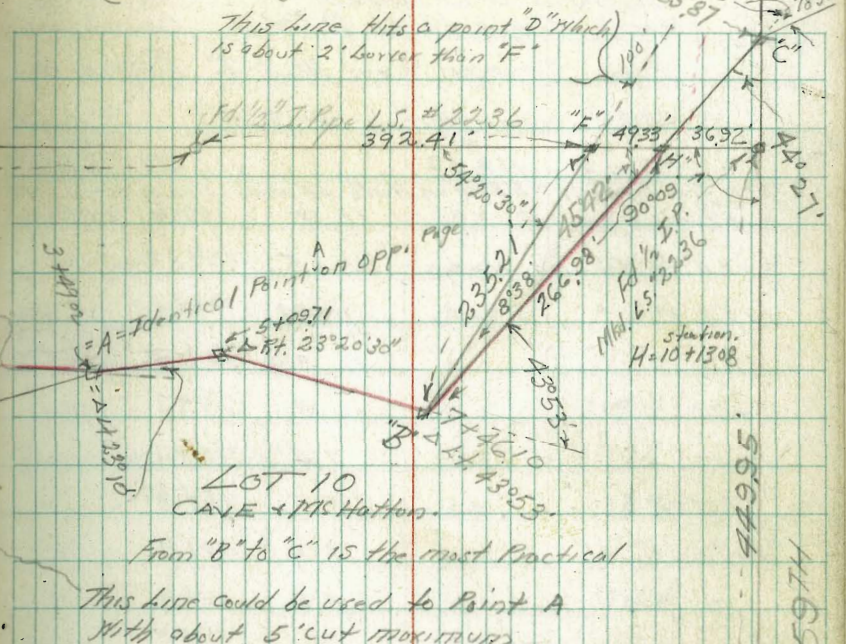
Survey thru Lot 10  
CAVE & McHatten Sub.  
For Drainage Pt. of Hwy.



indexed  
C.S.K.

(See B-sheet 2292  
For opening on 61st st)

"D"  
18  
10465.87  
18°30'



LOT 10  
CAVE & McHatten  
From "B" to "C" is the most practical  
This line could be used to Point A  
with about 5' cut maximum.  
**Natural Drainage channel in Red.**

Point A	0.3	lower	than	F
" C	0.7	"	"	"
" D	2.0	"	"	" = 10 ditch

449.95  
5974

15' → 20' → 25'  
Detroit St.  
Fd. C.T. 1d ply  
17 20 11 09

Walker Preliminary Levels for Sewers. INDEXED  
 Bliss Altavista Suburb #1 EFB  
 Isbell 1X Alleys Blocks D and E

124.08

From Ocean View Blvd. To Logan Ave.

See sketch P-22

3.03	119.52	116.49	SW. R.P. Ocean View
1+35.06 Book 1041-67 = E Alley on North 44' North of S. Line		107.6	Ocean View
= 0+00 on ground	11.9	107.6	98.77 = Floor
0+04 on Paring. Nudge	11.05	108.47	
0+24 " " S. edge	10.88	108.64	
+50	11.3	108.7	All property on Lt. Above & Block this block
0+75	10.4	109.1	
1+00	7.4	112.1	
75' R.L.	14.7	104.8	
1+15	7.6	111.9	
+50	5.2	114.3	
2+00	5.0	114.5	
75' R.L.	12.0	107.5	
2+50	9.5	110.0	
3+00 = Δ 0°31' R.L.	10.0	109.5	
75' R.L.	13.3	106.2	
3+40	8.8	110.7	
3+75	5.5	114.0	
4+00	4.3	115.2	
25' R.L.	3.4	116.1	
75' R.L.	8.2	111.3	
T.P. 510 124.08	0.54	118.98	
4+50	4.0	120.1	
5+00	3.3	120.8	

(5+00) 15' R.L.	3.2	120.9
" 75' R.L.	9.5	114.6
5+30	3.9	120.2
+70	7.2	116.9
6+00	7.8	116.3
75' R.L.	11.2	112.9
6+40	7.7	116.4
6+44 = N.L. - 7'-5"	7.1	117.0
+50	6.7	117.4
7+04 = S.L. - 7'-5"	6.6	117.5
+50	5.4	118.7
40' R.L.	8.8	115.3
75' R.L.	7.7	116.4
7+80	5.9	118.2
8+00	7.6	116.5
+20	8.2	115.9
85' R.L. at House on ground	9.9	114.2
" " " " " Floor	8.9	115.2
8+50	8.1	115.0
9+00	7.6	116.5
T.P. 399 121.39	6.68	117.40
75' R.L. of 9+00	11.9	109.5
9+50	1.9	119.5
10+00	3.8	117.6
50' R.L.	7.2	114.2
75' R.L.	11.8	109.6

10+50		6.5	114.9
11+00		8.0	113.4
75' Pt		9.7	111.7
11+30		7.2	114.2
+60		9.2	112.2
12+00		8.6	112.8
75' Pt		11.9	109.5
12+50		7.4	114.0
75' Pt		11.8	109.6
13+04 = N.W. Logan Ave on paving	7.10		114.29
N.E. Return Logan + Pynchon	10.65		110.74

For check see P. 24

Additional Hand level shots

Left of E of Alley Blocks A + D

12+84 = House on Lt	121.4	0.5	120.9	70' Lt Floor
" " " Ground		4.0	117.4	
11+80 " " " "		4.0	117.4	
" " " Floor		0.5	120.9	65' Back
(11+00) 70' Lt		4.5	116.9	
(9+00) 70' Lt	124.1	+0.5	124.6	
(8+00) 70' Lt	124.1	2.4	121.7	
(5+00) 75' Lt	124.1	1.8	122.3	on Floor
" " "	124.1	5.0	119.1	" Ground
4+00 75' Lt	119.5	6.0	113.5	Basement of House
" " " on ground		3.0	116.5	

Hand level 119.5

(3+00) 75' Lt	8.0	111.5
(2+00) 75' Lt	5.0	114.5
(1+00) 75' Lt	4.4	115.1

D+E (?)

Abandoned

See side shots by level P 62

? See page 19

Walker. Preliminary Levels for Sewer  
Bliss  
Isbell. IN Blocks C, <sup>Mid F.</sup> Altavista Suburb #1  
3-14-40 From Ocean View Blvd. to Logan Ave.

Location - sketch P-22

Station	9.19	103.90	94.71	8/11.27, in box 5489.81 Book 1047.72 Flow line
4+6497 sketch P-22 = 0+00			96.4	90.52
0+04 on N. edge paving		6.72	97.18	
0+24 " S. edge paving		6.68	97.22	
0+30		7.1	96.8	
+50		4.8	99.1	
1+00		5.6	98.3	
75' ft at House on ground		6.4	97.5	
75' " " " Floor		4.80	99.10	
1+50		5.0	98.9	
2+00		4.7	99.2	
75' ft		4.7	99.2	
2+50		5.8	98.1	
3+00		6.3	97.6	
75' ft		7.7	96.2	
3+50		5.2	98.7	
4+00		4.6	99.3	
75' ft		5.3	98.6	
+50		4.5	99.4	
5+00		2.6	101.3	
75' ft		6.8	99.1	
T.P.	12.61	114.11	2.40	101.50
5+50			8.9	105.2
5+75			6.8	107.3

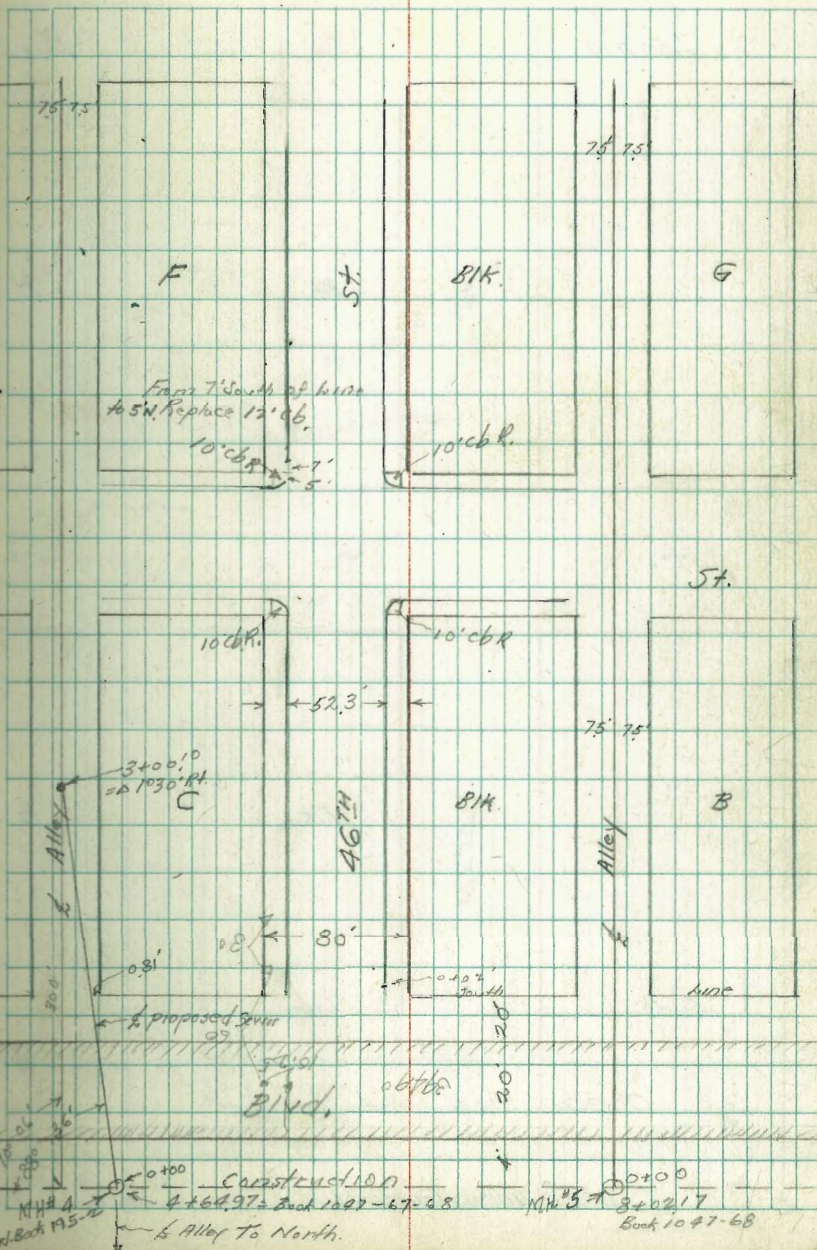
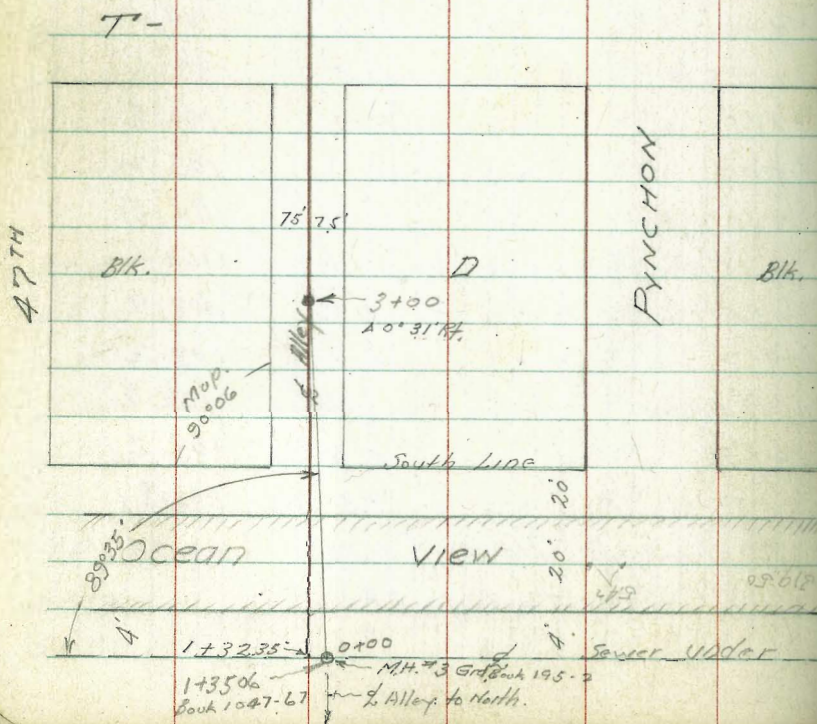
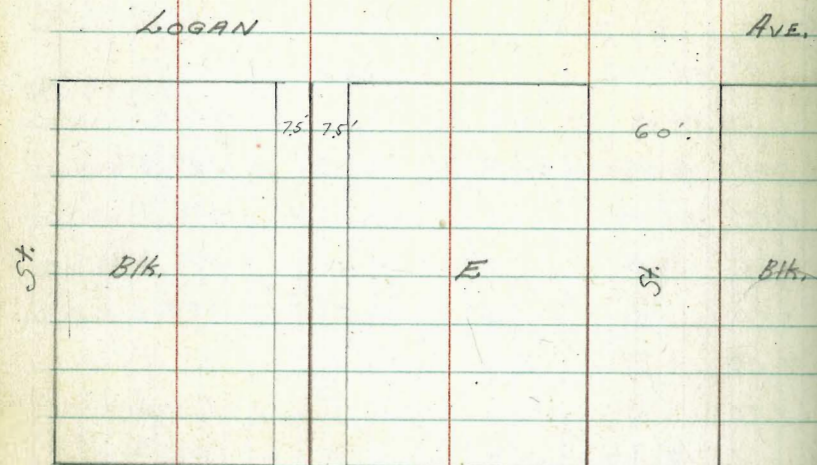
on top luths  
5+00  
Given height  
77.11

(NOEYED) 114.11  
EFB

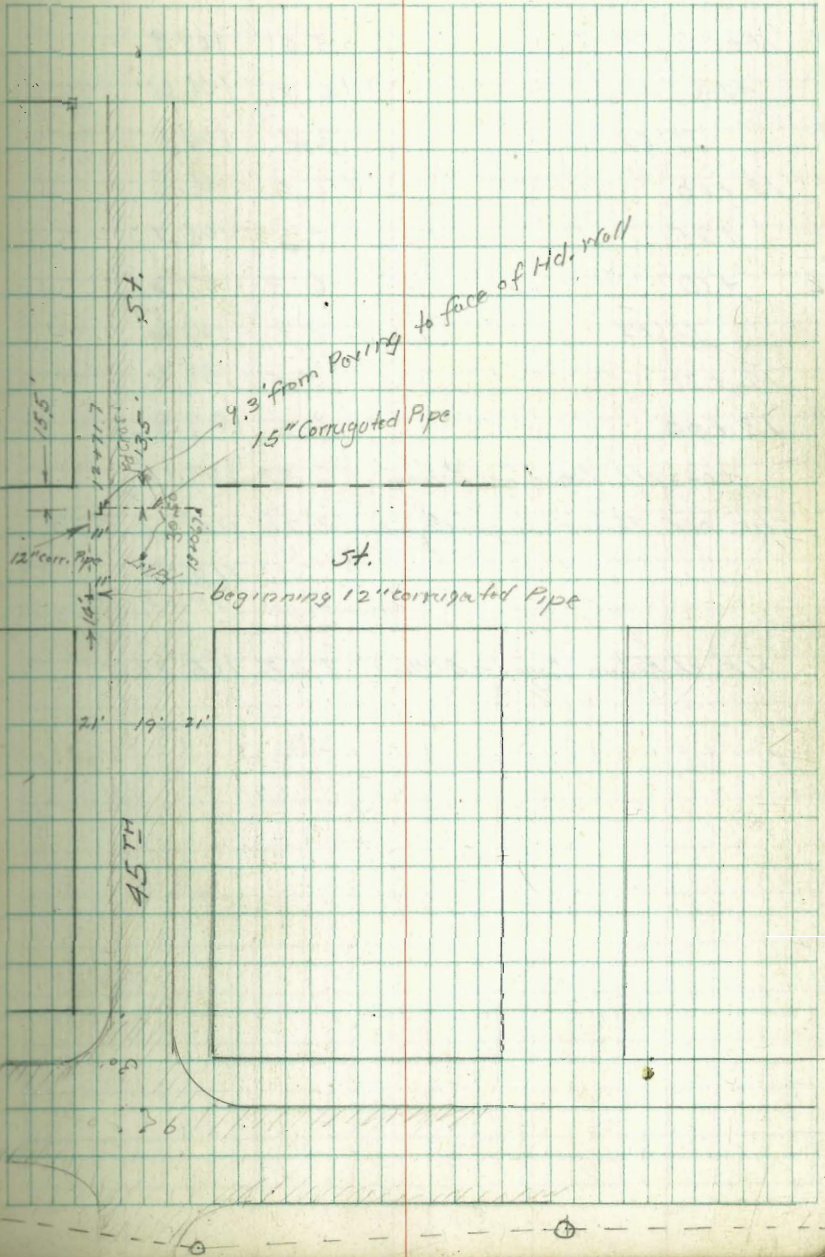
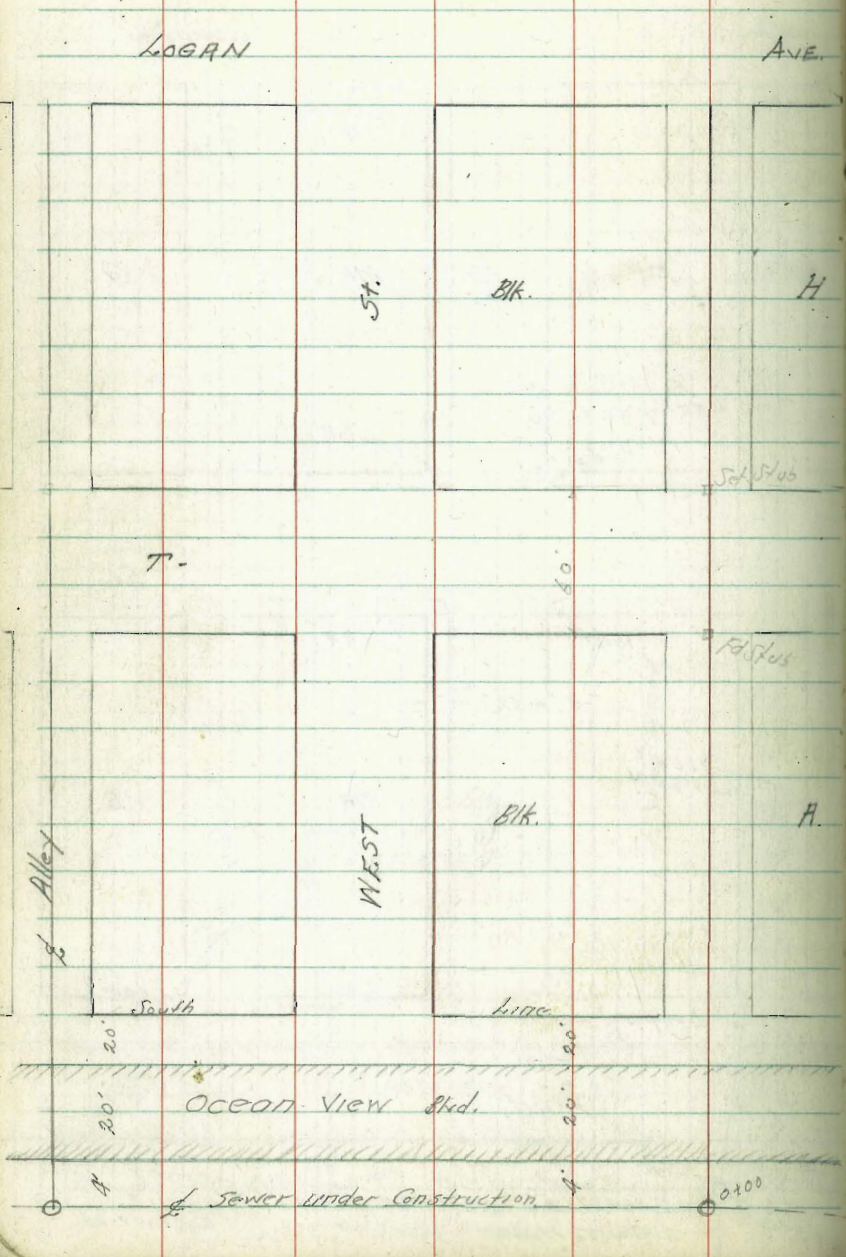
6+00	6.1	108.0
30' ft	7.4	106.7
75' ft	11.6	102.5
6+44+ on stub - N.W. - T-st.	4.95	109.16
+50	6.0	108.1
+75	5.5	108.6
7+00	4.5	109.6
+10	2.7	111.4
7+50	2.3	111.8
75' ft	7.9	106.2
8+00	6.9	107.2
+50	9.7	104.4
75' ft	14.5	99.6
8+75	11.3	102.8
9+00	10.9	103.2
+50	8.6	105.5
75' ft	10.7	103.4
9+85	5.2	108.9
10+00	4.9	109.2
65' ft	5.1	109.0
10+50	4.6	109.5
75' ft	7.3	106.8
T.P.	3.69	112.47
	4.33	109.78

Cont Page 24

Location & Preliminary Levels for Sewers  
Altovista Suburb #1







## Alleys Blocks C and F

11+00	5.6	107.9	
+50	6.9	106.6	
75' Rk	9.4	104.1	
12+00	7.0	106.5	
+25	7.8	105.7	
+50	6.3	107.2	
75' Rk	9.9	103.6	
12+75	5.5	108.0	
13+00	5.6	107.9	
+04 = N.E. Logan on Pavag	6.32	107.15	✓
chk. N.E. Return Logan + Ryden	2.70	110.77	P. 20
		110.74	
		0.03 Error	
N.E. cb. Return Logan + 46th	7.65	105.82	✓

Walker  
Bkiss.  
Isbell  
3-15-40

Preliminary levels for Sewer  
IN E Alleys Blocks B, and G  
IN Alhambra Suburb #1

From Ocean View Blvd To Logan Blvd

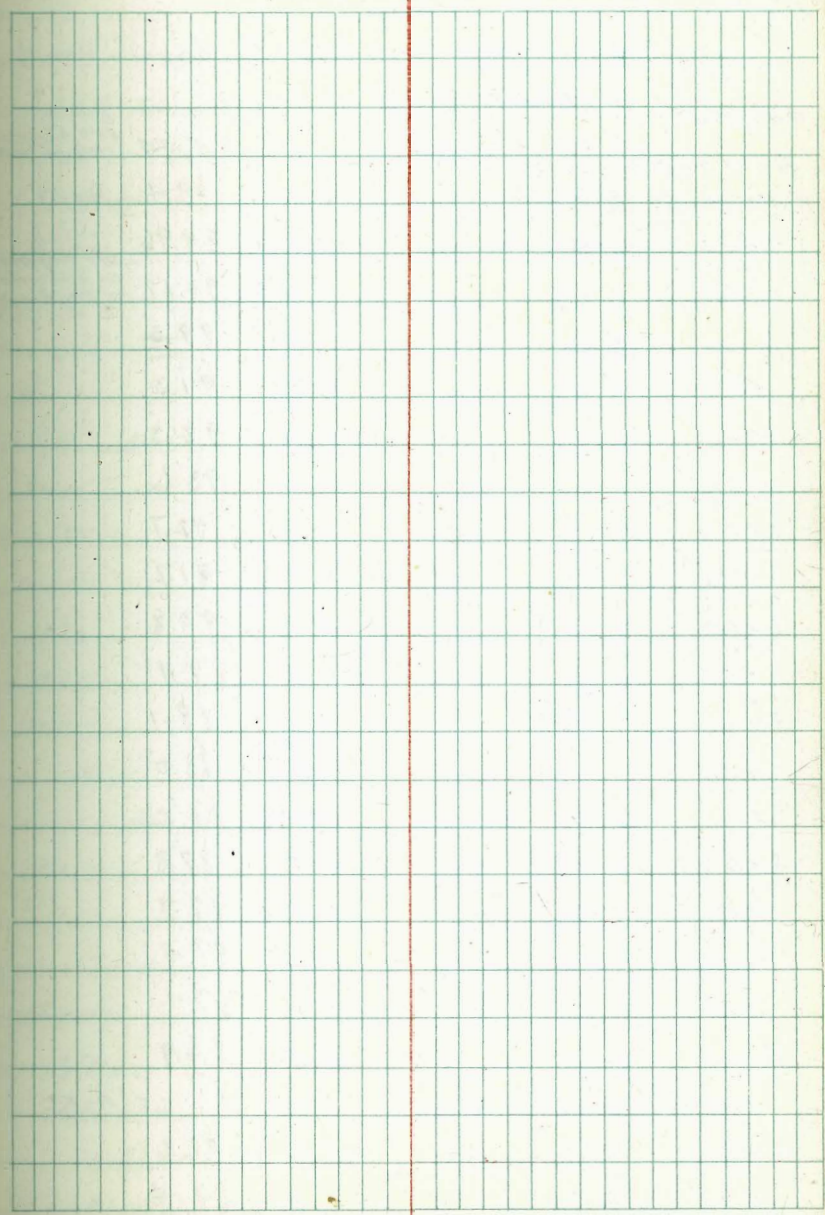
	4.01	98.72	94.71	S.M. CT. P. 21 Flow pipe 85.46
8+02/17 Back 1047-68 = 0+00		5.8	92.9	
+04 = N edge Paving.		5.58	93.14	
+24 = S. " "		5.53	93.19	
+30		6.0	92.7	
+50		3.3	95.4	
+65		4.2	94.5	
1+00		3.9	94.8	
75' RT.		4.9	93.8	Lt. Above & Elev
+50		3.9	94.8	
80' RT at house on ground	4.8		93.9	
" " " " " floor	3.4		95.3	
2+00		4.5	94.2	
+50		4.9	93.8	
75' RT		5.7	93.0	Lt. Above & Elev
3+00		5.0	93.7	
+50		6.1	92.6	
65' Lt.		5.7	93.0	Rt. Above & Elev
4+00		6.5	92.2	
+50		6.6	92.1	
50' RT - lowest point in lot.	7.6		91.1	Lt. Above & Elev
5+00		5.9	92.8	
+25		6.6	92.1	
+50		6.0	92.7	
75' RT.		7.4	91.3	Lt. Above & Elev

INVOYED  
E/FB 98.72

6+00	6.7	92.0	Lt. Above
75' RT.	8.6	90.1	& Elev
6+35	8.1	90.6	
+44 = N. edge - T-st on stub	6.25	92.47	
+60	6.2	92.5	
+90	6.6	92.1	
7+04 = S. edge - T-st	6.1	92.6	
7+30	6.0	92.7	
+50	5.2	93.5	
75' RT.	6.4	92.3	
8+00	5.0	93.7	
T.P. 8.04 101.74	5.02		93.70
+50	7.8	93.9	
75' RT.	9.9	91.8	All property on lot this block above & elev.
9+00	8.4	93.3	
+15	8.0	93.7	
+40	9.6	92.1	
+55	8.8	92.9	
75' RT.	10.7	91.0	
9+70	9.2	92.5	
10+00	6.9	94.8	
+10	7.4	94.3	
+30	5.1	96.6	
+50	5.6	96.1	
75' RT.	8.0	92.7	

Alleys Blocks G & B.  
Cont from P-25

11+00		8.3	93.4
(11+08)	75' ft. at House on ground	9.3	92.4
"	" " " " " Floor	8.20	93.5
11+50		8.0	93.7
+75		6.2	95.5
12+00		6.2	95.5
	60' ft.	9.5	92.2
	100' ft.	12.5	89.2
12+25		3.7	98.0
+50		3.0	98.7
	65' ft.	9.8	91.9
12+85		0.5	101.2
	T.P. 4.67	105.67	0.74
	N. line Logan		
= 13+04	on ground. (Paving buried)	6.5	99.2
13+14	= N. cb. Logan on paving.	7.76	97.91
chk. N.E. cb Return Logan	296' 5"	+0.15	105.82
	4.51	105.51	4.67
			101.00
N.E. cb Return Logan		12.82	92.69
chk. P-27			



Walker  
Bliss  
Tibell  
3-15-40

Preliminary levels for Sewer  
in E. Alleys Blocks A, and H  
Alhambra Suburb #1

From Ocean View Blvd. To Logan Ave

Grid 195-3

Sketch P-23

10.18 95.62  
11+27.32 Book 1047-89  
= 0+00 on ground

85.44

81.01 C.T.  
45' to Ocean  
View to West

6.2 89.4 80.59

0+04 " N. edge Paving. 5.66 89.96

+24 = 5 " " 5.45 90.17

+30 6.3 89.3

+43 4.3 91.3

+46 2.3 93.3

+65 2.0 93.6

+100 2.9 92.7

+50 3.9 91.7

2+00 4.8 90.8

+50 6.5 89.1

3+00 7.5 88.1

+50 7.6 88.0

T.P. 3.99 92.22 7.39 88.23

4+00 4.4 87.8

+50 4.3 87.9

5+00 5.2 87.0

+50 5.1 87.1

6+00 5.3 86.9

+44 = N. line Test on slab 5.57 86.65

6+60 5.6 86.6

+75 4.8 87.4

All property on both sides of Alley Above & in this block

checked P-57

INDEXED  
E.F.B. 92.22

27

6+90	5.3	86.9
7+04 = Stone Test	4.3	87.9
7+50	4.3	87.9
75' RT.	6.5	85.7
8+00	5.9	86.3
+50	5.2	87.0
75' RT.	5.9	86.3
9+00	2.5	88.7
T.P. 5.15 93.76	3.61	88.61
9+50	4.5	89.3
50' RT.	5.9	87.9
10+00	5.7	88.1
+20	5.0	88.8
+35	5.8	88.0
+55	4.7	89.1
40' RT.	6.4	87.4
40' RT.	5.6	88.2
11+00	4.8	89.0
+50	5.9	87.9
75' RT.	6.1	87.7
12+00	6.9	86.9
+30	7.5	86.3
+50	6.8	87.0
75' RT.	7.9	85.9
13+04 = N.L. - Logan Ave on Pav.	6.00	87.8
chk. N.E. C.B. Part - Logan & West Sts	1.12	92.64
		92.69 = P-26
		0.05 Error

Walker  
Miss  
Isbell  
3-14-80

CROSS SECTIONS PINCHON ST.  
From Ocean View Blvd 60' wide  
To Logan Ave 10' cbs.  
10' 1/2 as.

Sketch A-22

on cr.

12.55 107.26 94.71

0-20' = S edge Paving Ocean View Blvd.

W-20' on Paving. 7.59 99.67

W " " 7.15 100.11

cb. " " 6.95 100.31

1/4 " " 6.67 100.59

E " " 6.37 100.89

1/4 " " 6.15 101.11

E.cb. " " 5.91 101.35

E " " 5.62 101.64

+20 " " 4.60 102.66

0+100 = Skine Ocean View Blvd

E 5.1 102.2

cb. 5.5 101.8

1/4 6.1 101.2

E 6.1 101.2

1/4 6.5 100.8

cb. 6.6 100.7

W 6.8 100.5

+20 7.2 100.1

0+50

-20 6.1 101.2

W 5.4 101.9

cb. 5.0 102.3

Red. - Plot. new profile 3/25/40. C.D.H.

INDEXED 107 26  
EFB

28

1/4	5.2	102.1
E	4.9	102.4
1/4	4.9	102.4
cb.	4.8	102.5
E	4.3	103.0
1400		
E	4.5	102.8
cb.	5.1	102.2
1/4	4.9	102.4
E	5.0	102.3
1/4	5.2	102.1
cb.	5.2	102.1
W	5.2	102.1
+20	5.6	101.7
1450		
-20	6.2	101.1
W	5.2	102.1
cb.	5.1	102.2
1/4	5.1	102.2
E	4.9	102.4
1/4	4.8	102.5
E.cb.	4.8	102.5
E	4.2	103.0
2100		
E	4.2	103.1
cb.	4.7	102.6

1/4	4.7	102.6
2	4.8	102.5
1/4	4.9	102.4
cb	5.0	102.3
W	5.3	102.0
+20	7.1	100.2
2+50		
-20	6.9	100.4
W	4.8	102.5
cb	4.6	102.7
1/4	4.7	102.6
2	4.7	102.6
1/4	4.6	102.7
cb	4.4	102.9
E	4.3	103.0
3+00		
E	3.4	103.9
cb	3.9	103.4
1/4	4.0	103.3
2	4.0	103.3
1/4	4.3	103.0
cb	4.1	103.2
W	4.4	102.9
+20	5.5	101.8
3+50		
-50	6.2	101.1

-20	5.6	101.7
W	3.7	103.6
cb	3.3	104.0
1/4	3.3	104.0
2	3.0	104.3
1/4	2.9	104.4
cb	3.0	104.3
E	2.6	104.7
4+00		
E	0.5	106.8
cb	1.5	105.8
1/4	1.4	105.9
2	1.5	105.8
1/4	2.0	105.3
cb	2.0	105.3
W	2.3	105.0
+20	4.1	103.2
+50	5.5	101.8
4+50		
-20	3.1	104.2
W	1.0	106.3
cb	0.7	106.6
1/4	0.6	106.7
2	0.3	107.0
T.P.	12.64	119.77
	0.13	107.13
Cont. P-30		

E 1/4	12.7	107.1
" cb.	12.9	106.9
E	12.6	107.2
5+00		
E	11.1	108.7
cb.	11.5	108.3
1/4	11.0	108.8
1/2	11.3	108.5
1/4	11.4	108.4
cb.	11.5	108.3
W	11.4	108.4
+20	13.1	106.7
5+50		
-20	9.5	110.3
-5	9.4	110.4
W	8.2	111.6
cb.	8.6	111.2
1/4	8.9	110.9
1/2	8.6	111.8
1/4	8.4	111.4
cb.	8.5	111.3
E	8.5	111.3
6+00 = N.h. - T-st.		
E	4.8	115.0
cb.	5.2	114.6
1/4	5.3	114.5

1/2	5.7	114.1
1/4	6.1	113.7
WCB	5.7	114.1
W	4.7	115.1
W on Hub.	4.55	115.22
6+10 = N cb. - T-st		
W	5.2	114.6
cb.	5.5	114.3
1/4	5.5	114.3
1/2	5.3	114.5
1/4	5.2	114.6
cb.	4.9	114.9
E	5.0	114.8
6+20 = N 1/4 - T-st.		
E	4.8	115.0
cb.	4.9	114.9
1/4	4.9	114.9
1/2	5.0	114.8
1/4	5.1	114.7
cb.	5.2	114.6
W	5.2	114.6
6+30		
W	5.0	114.8
cb.	5.1	114.7
1/4	5.0	114.8
1/2	5.0	114.8

N. Ry. Hub.  
T-st  
Rynchon



11977

RYNCHON

1/4	4.9	114.9
cb.	4.8	115.0
E	4.7	115.1
6+40 = 5 1/4 - T-st.		
E	4.5	115.3
cb.	4.6	115.2
1/4	4.7	115.1
E	4.8	115.0
1/4	4.9	114.9
cb.	4.9	114.9
W	5.1	114.7
6+50 = 5 cb. - T-st.		
W	5.0	114.8
cb.	4.9	114.9
1/4	4.8	115.0
E	4.8	115.0
1/4	4.6	115.2
cb.	4.4	115.4
E	4.5	115.3
0+00 = Shire T-st		
E	4.6	115.2
cb.	4.5	115.3
1/4	4.4	115.4
E	4.8	115.0
1/4	4.9	114.9
cb.	4.7	115.1

11977

RYNCHON

31

18	1.4	115.4
W	3.8	116.0
0+50		
W	3.7	116.1
12	4.3	115.5
cb.	4.6	115.2
1/4	4.6	115.2
E	4.5	115.3
1/4	4.2	115.6
cb.	4.4	115.4
E	3.8	116.0
1+00		
E	5.4	114.4
cb.	5.6	114.2
1/4	5.5	114.3
E	5.7	114.1
1/4	5.9	113.9
cb.	5.9	113.9
16	5.5	114.3
W	4.7	115.1
Conc.		
1+05 = N. Ribbon Drive Wagon E	5.44	114.33
+10 = S " " " "	5.40	114.37
1+27 = S Conc. Walk on E	5.81	113.96
1+50		
-20	8.2	111.6
W	6.7	113.1

cb.		7.5	112.3
1/4		7.6	112.2
6		7.5	112.3
1/4		7.4	112.4
Ecb.		7.4	112.4
E		6.9	112.9
+20		8.1	111.7
	2+00		
-20		11.3	108.5
E		10.1	109.7
cb.		9.6	110.2
1/4		9.7	110.1
E		10.0	109.8
1/4		10.0	109.8
cb.		9.8	110.0
1/4		9.8	110.0
+20		10.7	109.1
+35		12.9	106.9
T.P.	6.27 114.96	11.08	108.69
	2+50		
-30		8.5	106.5
W		7.4	107.6
cb.		7.1	107.9
1/4		7.1	107.9
6		7.1	107.9
1/4		7.0	108.0

cb.		7.4	107.6
E		7.1	107.9
+25		6.8	108.2
	3+00		
-25		7.2	107.8
E		7.7	107.3
cb		7.9	107.1
1/4		7.6	107.4
6		7.7	107.3
1/4		7.9	107.1
cb		8.1	106.9
W		8.2	106.8
+20		8.5	106.5
+30		8.1	106.9
	3+50		
-20		8.2	106.8
W		7.6	107.4
cb		8.0	107.0
1/4		7.9	107.1
6		7.8	107.2
1/4		7.7	107.3
cb.		7.9	107.1
E		7.0	108.0
+20		7.3	107.7

11496

PYNCHON

	4+100		
-10'		6.6	108.4
E		6.6	108.4
cb.		6.7	108.3
1/4		6.3	108.7
E		6.5	108.5
1/4		6.3	108.7
cb.		6.5	108.5
W		6.0	109.0
+20		7.6	107.4

4+35

-10		4.9	110.1
W		4.4	110.6
cb.		4.9	110.1
1/4		4.9	110.1
E		4.9	110.1
1/4		4.7	110.3
cb.		5.0	110.0
E		4.9	110.1
+10		5.5	109.5

4+30

-10		4.5	110.5
E		4.2	110.8
cb.		4.6	110.4
1/4		4.3	110.7
E		4.1	110.9

11496

PYNCHON

33

1/4	4.0	111.0
cb.	3.7	111.3
+8'	3.2	111.8
W	2.5	112.5
+15	2.3	112.7

5+100

W	1.5	113.5
+3	2.5	112.5
cb.	2.8	112.2
1/4	2.7	112.3
E	2.6	112.4
1/4	2.6	112.4
cb.	2.7	112.3
E	3.2	111.8
+10	3.9	111.1

5+50

E	2.6	112.4
cb.	2.8	112.2
1/4	3.1	111.9
E	3.2	111.8
1/4	3.3	111.7
cb.	3.5	111.5
W	3.4	111.6

5+85

W	3.8	111.2
cb.	3.3	111.7

1/4	3.0	112.0
L	3.5	111.5
1/4	3.1	111.9
cb.	3.0	112.0
E	3.1	111.9

6+00 = N.L. Hogan

E on Con. Walk	4.11	110.85
" cb. on Ret.	4.27	110.69
" Gut " paving	4.86	110.10
" 1/4 " "	4.91	110.05
L " "	5.07	109.89
W 1/4 " "	5.23	109.76
W Gut.	5.68	109.28
W cb. on Ret.	5.10	109.86
W on Conc. Walks	5.04	109.92
Chk. N.E. Top cb P. 20	4.22	110.74 ✓

Walker  
Blair  
Isbell  
3-15-40

CROSS SECTIONS 46TH ST. 80' Wide  
From Ocean View Blvd. 14' cbs.  
13' '45.  
To Logan Ave  
Sketch P-22

	6.25	100.96	94.71	R.M. CT. P-25
	0-20 = S. edge Paving			
-20' on Paving	5.91		95.05	
E " "	6.26		94.80	
cb " "	6.43		94.53	
1/4 " "	6.65		94.31	
E " "	6.75		94.21	
1/4 " "	6.91		94.05	
cb " "	7.05		93.91	
W " "	7.22		93.74	
+20' " "	7.33		93.63	
	0+00			
W-5	7.0		94.0	
W	7.0		94.0	
cb	6.6		94.4	
1/4	6.3		94.7	
E	6.3		94.7	
1/4	6.4		94.6	
Gut.	6.4		94.6	
E top cb.	5.50		95.46	
E	6.2		94.8	
	0+02			
E	5.8		95.2	
cb.	5.41		95.55	

Red. Plot. on new profile  
3/23-40 GBN

INDEXED  
E.F.B. 100.96

46TH 35

Gut.	6.1	94.9
1/4	6.1	94.9
E	6.2	94.8
1/4	6.2	94.8
W Gut.	6.7	94.3
W Top cb	5.86	95.10
W	6.2	94.8
	0+50	
W	4.7	96.3
+11	4.7	96.3
W top cb	4.90	96.06
W Gut	5.9	95.1
1/4	5.2	95.8
E	4.8	96.2
1/4	4.9	96.1
Gut.	5.1	95.9
E Top cb	4.57	96.39
E	4.3	96.7
	1+00	
E	4.1	96.9
" top cb	3.92	97.04
Gut.	4.7	96.3
1/4	4.8	96.2
E	4.8	96.2
1/4	5.2	95.8
Gut.	5.7	95.3

W Top cb.	4.79	96.17
W	4.6	96.4
1+50		
W	4.3	96.7
+2	4.8	96.2
W cb.	4.94	96.02
Gut.	5.6	95.4
1/2	5.1	95.9
2	4.7	96.3
1/2	4.7	96.3
Gut.	4.9	96.1
E top cb.	4.22	96.74
E	3.9	97.1

2+00

E	4.3	96.7
E Top cb.	4.31	96.65
Gut.	4.9	96.1
1/4	4.7	96.3
2	4.8	96.2
1/4	5.3	95.7
Gut.	5.5	95.5
W top cb.	4.92	96.04
+1	4.6	96.4
+7	4.8	96.2
W	5.1	95.9

2+50

W	5.8	95.2
+2	5.8	95.2
+8	4.2	96.8
+12	4.5	96.5
W top cb.	5.10	95.86
" Gut.	5.9	95.1
1/2	5.5	95.5
2	5.1	95.9
1/4	4.9	96.1
Gut.	4.7	96.3
Top cb.	4.45	96.51
E	4.6	96.4
3+00		
E	5.0	96.0
+13	5.0	96.0
Top cb.	4.49	96.47
E Gut.	4.9	96.1
1/4	5.1	95.9
2	5.2	95.8
1/4	5.7	95.3
Gut.	5.7	95.3
top cb.	5.33	95.63
+3	4.7	96.3
+7	4.5	96.5
W	6.4	94.6

3+50

W-	5.8	95.2
W	5.8	95.2
+7	5.0	96.0
+11	5.1	95.9
Top cb.	5.34	95.62
Gut.	5.6	95.4
1/4	5.4	95.6
2	5.0	96.0
1/4	4.8	96.2
Gut.	4.8	96.2
E top cb.	4.20	96.76
+1	4.6	96.4
+12	4.4	96.6
E	4.0	97.0
4+00		
E	2.9	98.1
+1	3.6	97.4
E top cb.	3.96	97.00
Gut.	4.6	96.4
1/4	4.6	96.4
2	4.8	96.2
1/4	5.1	95.9
Gut.	5.4	95.6
top	5.15	95.81
+4	4.6	96.4
+8	5.3	95.7

W	5.3	95.7
4+50		
W	4.5	96.5
+2	4.7	96.3
cb.	4.77	96.19
Gut.	5.1	95.9
1/4	4.8	96.2
2	4.4	96.6
1/4	4.3	96.7
Gut.	4.2	96.8
E top cb.	3.78	97.18
E	3.7	97.3
5+00		
E	4.4	96.6
cb.	3.72	97.24
Gut.	4.5	96.5
1/4	4.3	96.7
2	4.3	96.7
1/4	4.5	96.5
Gut.	5.0	96.0
cb.	4.62	96.34
W	4.7	96.3
5+50		
W	5.3	95.7
+13	4.8	96.2
W cb	4.51	96.45
Gut.	4.5	96.5

1/4	4.3	967
1/2	4.2	968
1/4	4.2	968
Gut.	4.3	967
top cb.	3.45	9751
+1	3.9	971
E	3.8	972

G+00 = N 1/4 - T-st.

E	2.6	984
cb.	3.00	97.96
Gut.	3.0	98.
1/4	3.3	977
1/2	3.7	97.3
1/4	3.9	971
Gut.	4.3	967
top cb.	4.27	9669
H	4.4	966

G+10

W Gut. at line	4.6	964
W.L. top cb.	4.48	9648
cb.	4.1	969
1/4	4.0	970
1/2	3.6	974
1/4	3.2	978
cb.	2.7	983
E line Top cb.	2.20	9876
E " Gut.	2.4	98.6

G+20 = N 1/4 - T-st.

E	2.0	99.0
cb.	2.6	98.4
1/4	3.4	97.6
1/2	3.6	97.4
1/4	3.9	97.1
cb.	4.4	96.6
W	5.7	95.3

G+30 = 1/2 - T-st

W	4.6	96.4
cb.	4.4	96.6
1/4	4.1	96.9
1/2	3.6	97.4
1/4	3.1	97.9
cb.	2.7	98.3
E	2.0	99.0

G+40

E	2.1	98.9
cb.	2.8	98.2
1/4	3.1	97.9
1/2	3.7	97.3
1/4	4.1	96.9
cb.	4.3	96.7
W	4.7	96.3



6+50 = 5 cb. -T-st

W.L. Top cb.	4.47	96.49
" Gut	4.3	96.7
cb.	4.1	96.6
1/4	4.0	97.0
L	3.5	97.5
1/4	3.3	97.7
cb.	2.6	98.4
E.L. Gut.	2.2	98.8
E Line top cb.	1.93	99.03

S Line T-st. = 0+00

E	1.5	99.5
cb.	2.2	98.8
Gut.	3.1	97.9
1/4	3.1	97.9
L	3.3	97.7
1/4	3.7	97.3
Gut	4.0	97.0
top cb.	3.97	96.99
W	4.5	96.5
+5	4.5	96.5
0+07 on cb. on E	2.17	98.89
T.P. 11.04 109.30	2.50	98.46
0+50		
W	11.2	98.3
+13	11.2	98.3
W cb.	11.42	98.08

W Gut.	12.0	97.5
1/4	11.4	98.1
L	11.0	98.5
1/4	11.2	98.3
Gut.	11.0	98.5
E. cb.	10.61	98.89
+7	10.4	99.1
E	9.4	100.1
	1+00	
E	10.4	99.1
cb.	10.55	98.95
Gut	11.1	98.4
1/4	10.8	98.7
L	10.7	98.8
1/4	11.1	98.4
Gut	11.3	98.2
W top cb.	10.85	98.65
+13	11.4	98.1
W	11.8	97.7
+20	13.2	96.3
	1+50	
-20	14.2	95.3
W	11.9	97.6
+7	10.6	98.9
cb.	10.31	99.19
Gut	10.8	98.7

1/4	10.6	98.9
2	10.2	99.3
1/4	10.3	99.2
Gut	10.5	99.0
top cb	10.20	99.30
E	10.6	98.9
2+00		
E	9.1	100.4
cb.	9.20	100.30
Gut.	9.6	99.9
1/4	9.4	100.1
2	9.3	100.2
1/4	9.8	99.7
Gut.	10.2	99.3
cb.	9.61	99.89
W	9.8	99.7
+20	12.3	97.2
2+50		
-25	10.5	99.0
W	8.5	101.0
cb.	8.53	100.97
Gut.	9.2	100.3
1/4	8.9	100.6
2	8.4	101.1
1/4	8.4	101.1
Gut.	8.7	100.8

E cb.	8.24	101.26
E	7.7	101.8
Replace cb. on Vert 2+91 to 2+98		
3+00		
E	6.5	103.0
+5	7.5	102.0
cb.	7.60	101.90
Gut.	8.00	101.50
1/4	7.6	101.9
2	7.5	102.0
1/4	7.9	101.6
Gut.	8.3	101.2
W cb.	7.66	101.84
W cb+1	7.8	101.7
W	8.7	100.8
+25	10.4	99.1
Replace cb on E 3+24 to 3+27 and 3+40 to 3+46		
3+50		
-25	10.2	99.3
-5	9.7	99.8
W	7.8	101.7
+13	7.6	101.9
top cb.	6.96	102.54
Gut.	7.8	101.7
1/4	7.3	102.2
2	6.9	102.6

'10	7.0	102.5
Gut.	7.4	102.1
Lo cb.	7.00	102.50
E	6.5	103.0
Cb. on West 3+79 to 4+55 in Bad shape <small>Should be replaced.</small>		
4+00		
E	6.7	102.8
+13	6.9	102.6
cb.	6.40	103.10
Gut.	6.9	102.6
'14	6.6	102.9
Lo	6.4	103.1
'14	6.5	103.0
Gut.	6.9	102.6
cb.	6.25	103.25
+1	6.9	102.6
+13	6.8	102.7
W	7.3	102.2
+5	8.9	100.6
+25'	9.8	99.7
4+50		
-25'	8.7	100.8
-5'	8.1	101.4
W	6.0	103.5
+13	5.6	103.9
cb.	5.06	104.44
Gut.	5.8	103.7

'14	5.3	104.2
Lo	5.1	104.4
'14	5.4	104.1
Gut.	5.8	103.7
top cb	5.29	104.21
+1	5.6	103.9
E	5.4	104.1
5+00		
E	2.9	106.6
+10	3.2	106.3
cb	3.56	105.94
Gut.	3.8	105.7
'14	3.5	106.0
Lo	3.5	106.0
'14	3.7	105.8
Gut.	3.9	105.6
W cb.	3.54	105.96
W	3.4	106.1
+25	5.2	104.3
5+25		
W	2.4	107.1
cb.	2.75	106.75
Gut.	3.5	106.0
'14	3.1	106.4
Lo	3.0	106.5
'14	2.8	106.7

Gut.	3.2	106.3
E top cb.	2.73	106.77
E <sub>0</sub>	2.7	106.8
Replace cb on East 5+30 to 5+38		
" " " W	5+39 to 5+49.5	
5+50		
E	3.5	106.0
cb.	3.12	106.38
Gut.	3.3	106.2
1/4	2.9	106.6
1/2	3.0	106.5
3/4	3.1	106.4
Gut.	3.4	106.1
cb.	2.90	106.60
+1	3.3	106.2
W	3.0	106.5
5+87 = End cb on E		
W	2.7	106.8
+8	3.0	106.5
+9	3.3	106.2
top cb	3.14	106.36
Gut.	4.0	105.5
1/4	3.8	105.7
1/2	3.8	105.7
3/4	3.9	105.6
Gut.	4.1	105.4

E top cb.	4.00	105.50
E	4.5	105.0
+10	5.9	103.6
6+00 = N line Logan		
E top walk	3.65	105.85
E top cb.	3.75	105.75
" Gut. on paving	4.38	105.12
1/4 " "	4.66	104.84
1/2 " "	4.72	104.78
3/4 " "	5.02	104.48
Gut. " "	5.33	104.17
W cb.	4.73	104.77
W.L. on Walk	4.73	104.77
5+95 = End cb. on West. <small>order</small> what not taken in		
on W cb.	3.15	106.35
cbk. N.E. Ret. Logan + 46th	3.70	105.76
		105.82
		0.06 = Error.

Walker  
Blas  
Isbell  
3-15-40

CROSS SECTIONS WEST Street  
From Ocean View Blvd.  
To Logan Ave

60' wide  
10' cbs.  
10' 1/4s

Sketch P-23

3.51 98.22 94.71 P-35

0-20 = S. edge Paving.

-20 on Paving 5.46 92.76

E " " 5.57 92.65

cb. " " 5.64 92.58

1/4 " " 5.64 92.58

1/4 " " 5.69 92.53

1/4 " " 5.82 92.40

cb. " " 5.89 92.33

W " " 5.99 92.23

+20 " " 6.28 91.94

0+00 = S.L. Ocean View

W 5.1 93.1

cb. 5.1 93.1

1/4 5.4 92.8

1/4 5.3 92.9

+6 5.3 92.9

1/6 4.8 93.4

cb. 4.8 93.4

E 4.8 93.4

0+04

E 4.2 94.0

cb. 4.0 94.0

1/4 4.3 93.9

11/20 - Plot on new profile  
 3/22-1940 G.D.H.

INDEXED 98.22  
E.F.B.

43

+4	52	93.0
1/4	52	93.0
1/4	53	92.9
+6	53	92.9
cb.	4.0	94.2
W	3.8	94.4
	0+45	
W	4.4	93.8
+8	4.7	93.5
cb.	5.2	93.0
1/4	5.2	93.0
1/4	4.9	93.3
1/4	4.5	93.7
cb.	4.4	93.8
+5	4.0	94.2
E	2.9	95.3
	0+65	
E	4.6	93.6
cb.	4.8	93.4
1/4	4.9	93.3
E	5.3	92.9
1/4	5.3	92.9
cb.	5.5	92.7
+2	5.0	93.2
W	4.8	93.4

	1+00		
W		5.7	92.5
+8		5.7	92.5
cb.		6.1	92.1
+3		5.7	92.5
1/4		5.7	92.5
1/2		5.5	92.7
1/2		5.1	93.1
cb.		5.1	93.1
E		4.6	93.6
	1+39 = 1/2 Ribbon drive	5.00	93.2
	1+50		on E.
E		5.2	93.0
cb.		5.6	92.6
1/4		5.6	92.6
1/2		6.0	92.2
1/4		6.2	92.0
cb.		6.3	91.9
W		5.9	92.3
	1+70 = 1/2 Conc. Walk on W	6.10	92.12
	1+90 1/2 " Ribbon drive	6.20	92.02
	2+00		on W
W		6.2	92.0
cb.		6.4	91.8
1/4		6.6	91.6
1/2		6.5	91.7

1/4		6.1 92.1
cb.		6.2 92.0
1/2		5.7 92.5
	2+44 1/2 Conc. Walk on W	6.30 91.92 2.5" wide
	2+50	
E		6.2 92.0
cb.		6.4 91.8
1/4		6.7 91.5
1/2		7.1 91.1
1/4		7.2 91.0
cb.		6.9 91.3
W		6.7 91.5
	3+00	
W		7.7 90.5
cb.		7.6 90.6
1/4		7.5 90.7
1/2		7.4 90.8
+5		7.1 91.1
+6		6.8 91.4
1/4		6.8 91.4
cb.		7.1 91.1
E		6.4 91.8
	3+50	
E		6.4 91.8
cb.		6.5 91.7
1/4		7.0 91.2

1/4+5	7.2	91.0
2	7.4	90.8
1/4	7.6	90.6
cb.	7.7	90.5
W	7.1	91.1

4+00

W	7.2	91.0
cb.	7.7	90.5
1/4	7.6	90.6
2	7.3	90.9
1/4	7.1	91.1
cb.	7.1	91.1
E	6.5	91.7

4+50

-5	8.3	89.9
E	7.3	90.9
cb	7.5	90.7
1/4	7.6	90.6
2	8.0	90.2
1/4	8.2	90.0
cb.	8.3	89.9
W	8.5	89.7

5+00

W	7.9	90.3
cb.	8.2	90.0
1/4	8.2	90.0

2	8.0	90.2
1/4	7.6	90.6
cb.	7.0	91.2
E	7.0	91.2

5+50

E-5	8.6	89.6
E	7.6	90.6
cb	7.4	90.8
1/4	7.4	90.8
2	7.8	90.4
1/4	8.2	90.0
cb	8.2	90.0
W	8.0	90.2

6+00 = N.L. - T-ST.

W	8.1	90.1
cb	8.3	89.9
1/4	8.4	89.8
2	8.0	90.2
1/4	7.4	90.8
cb.	7.2	91.0
E	6.8	91.4
TR	4.94	96.17
	6.99	91.23

6+10 = N cb. T-ST.

E	5.6	90.6
cb.	5.8	90.4
1/4	5.7	90.5

N.E. Prop. 1/4,  
ch. P. 55

96.17

WEST ST.

2	6.3	89.9
1/4	6.5	89.7
Wcb.	6.9	89.3
W	6.7	89.5
6+20=N 1/4		
W	6.9	89.3
cb.	6.5	89.7
1/4	6.9	89.8
2	6.2	90.0
1/4	5.9	90.3
cb.	5.6	90.6
E.	5.5	90.7
6+30		
E.	5.4	90.8
cb.	5.6	90.6
1/4	5.8	90.4
2	6.1	90.1
1/4	6.3	89.9
cb.	6.4	89.8
W	6.7	89.5
6+40		
W	6.9	89.3
cb.	6.5	89.7
1/4	6.3	89.9
2	6.1	90.1
1/4	6.0	90.2

46

cb.	5.8	90.4
E.	5.6	90.6
6+50		
E.	5.8	90.4
cb.	5.9	90.3
1/4	6.0	90.2
2	6.3	89.9
1/4	6.4	89.8
cb.	6.4	89.8
W.	6.5	89.7
0+00=SL-T-ST		
W	6.0	90.2
cb.	6.1	90.1
1/4	6.3	89.9
2	6.0	90.2
1/4	5.6	90.6
cb.	5.6	90.6
E.	5.2	91.0
0+50		
E.	4.5	91.7
cb.	4.8	91.4
1/4	5.0	91.2
2	5.7	90.5
1/4	6.0	90.2
cb.	6.1	90.1
W.	6.0	90.2



1+00			
W		6.1	90.1
cb.		5.7	90.5
1/4		6.2	90.0
1/2		5.9	90.3
1/4		5.9	90.8
+9		5.5	90.7
cb.		4.8	91.4
E		4.9	91.8

1+50

E		5.3	90.8
+8		5.4	90.8
cb.		6.2	90.0
1/4		6.0	90.2
1/2		6.4	89.8
1/4		6.6	89.6
cb.		6.5	89.7
W		6.7	89.5

2+00

W		7.0	89.2
cb.		6.9	89.3
1/4		6.8	89.4
1/2		6.5	89.7
1/4		6.0	90.2
cb.		6.4	90.0
+2		5.1	90.5

2+50		5.5	90.7
E		5.6	90.6
cb.		6.1	90.1
1/4		5.9	90.3
1/2		6.4	89.8
1/4		6.7	89.5
cb.		6.7	89.5
W		6.7	89.5

3+00

W		6.2	90.0
cb.		6.7	89.5
1/4		6.8	89.4
1/2		6.7	89.5
1/4		6.1	90.1
cb.		6.8	89.4
+2		6.2	90.0
E		6.2	90.0

3+50

E		6.2	90.0
+8		6.3	89.9
cb.		6.7	89.5
1/4		6.7	89.5
1/2		7.0	89.2
1/4		7.0	89.0
cb.		7.4	88.8
W		6.8	89.4

4+00		
W	7.1	89.1
cb	7.2	89.0
1/4	7.0	89.2
1/2	6.9	89.3
1/4	6.4	89.8
cb	6.4	89.8
+2	6.0	90.2
E	5.8	90.4
4+25.5 = Conc. Walk	5.87	90.30 <sup>00</sup> E
4+45 = <sup>Conc.</sup> Ribbon Drive	5.93	90.24" "
4+50		
E	5.9	90.3
cb	6.3	89.9
+2	6.9	89.3
1/4	6.9	89.3
1/2	7.4	88.8
1/4	7.6	88.6
cb	7.7	88.5
W	7.4	88.8
5+00		
W	7.6	88.6
cb	7.6	88.6
1/4	7.4	88.8
1/2	7.3	88.9
1/4	6.9	89.3

cb	7.1	89.1
E	7.1	89.1
5+50		
E	6.7	89.5
cb	6.9	89.3
1/4	6.5	89.7
1/2	6.7	89.5
1/4	6.7	89.5
cb	6.5	89.7
W	6.6	89.6
5+77		
W	5.4	90.8
cb	5.3	90.9
1/4	5.6	90.6
E	5.4	90.8
+5	4.5	91.7
1/4	4.5	91.7
+7	4.7	91.5
cb	5.4	90.8
E		
6+00 = N.H. Logan Ave		
E top walk	3.33	92.84
" " cb	3.59	92.58
" out on Paving.	4.20	91.97
1/4 " "	4.32	91.85
1/2 " "	4.49	91.68

96.17

West St.

W 1/4 on Paving

4.80

91.37

" Gut " "

5.32

90.85

W Top lb.

4.80

91.37

W on conc. Walk

4.67

91.50

chk N.E. cb Ret P-22

3.51

92.66

92.69 P-22

0.03 Error.

49

Walker  
Bliss  
Isbell  
3-16-40

CROSS SECTIONS 7<sup>th</sup> St.  
From 47<sup>th</sup> St.  
To 45<sup>th</sup> St.

60' wide  
10' cbs.  
10' 1/4s.

E.M. on Hub  
N.W. T.  
Fyncheon P. 30

12.70 127.92 115.22

0+00 = West line 47<sup>th</sup>

N on Walk.	1.95	125.97
N top cb.	2.31	125.61
Gut. on Pav.	2.89	125.03
1/4 " "	2.63	125.29
1/2 " "	2.51	125.41
1/4 " "	2.60	125.32
S. Gut. " "	2.96	124.96
S top cb.	2.10	125.82
S. on	1.88	126.04
0+05		
-10'	2.9	125.0
S	3.2	124.7
cb.	3.6	124.3
+5	3.0	124.9
1/4	3.0	124.9
1/2	2.9	125.0
1/4	3.1	124.8
+6	3.2	124.7
cb.	1.7	126.2
N	1.1	126.5
0+15		
-5	3.2	124.7

INDEXED

EFB

50

N	3.2	124.7
cb.	3.8	124.1
1/4	3.7	124.2
1/2	3.6	124.1
1/4	3.5	124.2
+5	3.3	124.6
cb.	3.7	124.2
+5	4.0	123.9
S	3.8	124.1
+10	3.6	124.3
0+50		
-10	5.2	122.7
S	5.7	122.2
cb.	6.3	121.6
+6	6.1	121.8
1/4	6.4	121.5
1/2	6.4	121.5
1/4	6.5	121.4
cb.	6.4	121.5
N	6.7	121.2
+10	5.9	122.0
1+00		
-10	10.1	117.8
N	9.1	118.8
cb.	9.0	118.7
+5	8.9	118.9

12792

T-st.

1/4	9.1	118.5	
2/4	9.2	118.7	
1/4	9.1	118.8	
+4	8.5	119.4	
cb.	9.0	118.9	
S	8.6	119.3	
+10	7.9	120.0	
	1+50		
-10	11.1	116.8	
S	11.0	116.9	
cb.	11.3	116.6	
1/4	11.2	116.7	
2/4	11.2	116.7	
1/4	11.2	116.7	
cb.	11.3	116.6	
N	11.5	116.4	
+2	12.3	115.6	
+10	11.6	116.3	-
	2+00		
-10	12.9	115.0	
-3	12.9	115.0	
N	12.3	115.6	
+2	12.0	115.9	
cb.	12.4	115.5	
1/4	12.3	115.6	
2/4	12.2	115.7	

12792

T-st.

51

1/4	12.1	115.8	
cb.	12.3	115.6	
S	12.0	115.9	
+10	12.1	115.8	
	2+50		
-10	11.0	116.9	
S	11.9	116.0	
cb.	12.6	115.3	
1/4	12.5	115.7	
2/4	12.7	115.2	
1/4	12.8	115.1	
cb.	12.9	115.0	
N	12.9	115.0	
+10	15.8	112.1	
	2+65 = East line Ryncher st		
N	12.8	115.1	
cb.	13.0	114.9	
1/4	13.0	114.9	
2/4	12.8	115.1	
1/4	11.6	116.3	
cb.	12.7	115.2	
S	12.7	115.2	
	3+25 = West line Ryncher st		
S	12.4	115.5	
cb.	13.0	114.9	
1/4	13.2	114.7	

	12792	T-st.
6		13.3 114.6
1/4		13.2 114.2
cb		13.5 114.4
N		12.8 115.1
TP	0.73 115.95	12.70 115.22
	3+50	
-10		3.7 112.3
N		1.3 114.7
cb		1.2 114.8
1/4		1.5 114.5
d		1.4 114.6
1/4		1.4 114.6
cb		1.3 114.7
S		0.5 115.5
	4+00	
S		1.4 114.5
cb		2.4 113.5
1/4		2.6 113.4
d		2.7 113.3
1/4		2.5 113.5
+7		2.9 113.1
cb		2.3 113.7
+5		1.9 114.1
N		2.2 113.8
+10		2.5 113.5

	11595	T-st.
	4+30	
-10		4.8 111.2
N		3.8 112.2
+5		4.0 112.0
cb		5.0 111.0
1/4		4.8 111.2
6		4.7 111.3
1/4		4.6 111.4
cb		4.4 111.6
S		3.6 112.4
	4+65 = Beginning	cb
S		6.6 109.4
+5		7.2 108.8
cb		7.02 108.93
cut.		7.3 108.7
1/4		7.7 108.3
d		8.0 108.0
1/4		8.1 107.9
cut.		8.5 107.5
N top cb.		7.58 108.32
+6		7.5 108.5
N		7.0 109.0
+5		7.4 108.1
	4+81	
-5		9.7 106.3
N		9.4 106.6

11595

T-st.

cb.		8.78	102.12	
Gut		9.6	106.4	
1/4		9.2	106.8	
2		9.2	106.8	
1/4		8.9	102.1	
Gut		8.4	102.6	
cb		8.26	102.69	
S		8.4	102.6	
	5+00			
S		8.6	102.4	
+2		9.5	108.5	
cb.		9.76	106.19	
Gut.		10.0	106.0	
1/4		10.2	105.7	
2		10.7	105.3	
1/4		10.6	105.3	
Gut.		11.0	105.0	
N top cb.		10.26	105.69	
N		10.6	105.4	
15		11.0	105.0	
T.P.	1.53	104.53	12.95	103.00
-5		3.0	101.5	
N		2.3	102.2	
N top cb.		2.69	101.84	
Gut.		3.2	101.3	
1/4		3.0	101.5	

2

10453

T-st.

53

2		2.8	101.7		
1/4		3.0	101.5		
Gut		3.0	101.5		
cb		2.45	102.08		
+7		2.6	101.9		
S		1.1	103.4		
	5+90	= East line	4675 st.		
S		4.9	99.1		
cb.		5.49	99.04		
Gut		5.5	99.1		
1/4		5.6	98.9		
2		5.6	98.9		
1/4		5.6	98.9		
Gut.		5.8	98.9		
N top cb		5.75	98.78		
N		6.1	98.4		
T.P.	6.79	99.25	12.07	92.46	6+44 P. 25 on stub.
	6+70	= West line	4674 st.		
N		2.8	96.6		
N top cb.		2.76	96.49		
Gut.		2.9	96.4		
1/4		3.0	96.3		
2		2.9	96.4		
1/4		3.0	96.3		
15		3.1	96.2		
Gut		2.6	96.7		
				Above cb.	

99.25

T-st.

S cb. 2.77 96.48

S 2.8 96.5

Levels on cb Returns 46<sup>th</sup> St. 10' cb. Radius

S.W. Cb. Return

S Return 2.28 96.97

P.C. on T-st. Roadway 2.57 96.68

S.E. Cb. Return

P.C. on T-st. Roadway 0.32 98.93

S Ret. 0.40 98.85

N.E. Cb. Return

P.C. on T-st. Roadway 0.72 98.53

S Ret. 1.01 98.24

N.W. Return

P.C. on T-st. Roadway 2.70 96.55

S Ret. 2.52 96.23

7+00

S 3.5 95.8

cb. 3.67 95.58

Gut 4.1 95.2

+4 4.3 95.0

1/2 4.1 95.2

1/4 4.0 95.3

1/4 4.1 95.2

Gut 4.0 95.3

cb. 3.53 96.72

N 4.0 95.3

T-st.

54

7+50

N 5.5 92.8

+9 5.4 93.9

N cb. 4.95 94.30

N Gut. 5.6 93.7

1/2 5.4 93.9

S 5.5 93.8

1/4 5.7 93.7

+6 5.8 93.5

Gut. 5.6 93.7

cb. 5.13 94.12

+1 5.5 93.8

S 5.3 94.0

7+94.6 = End Existing cb.

S 6.4 92.9

cb. 6.29 92.9.6

Gut 6.7 92.6

1/2 6.6 92.7

S 6.2 93.1

1/4 6.3 93.0

Gut 6.5 92.8

N top cb. 6.14 93.11

+4 6.1 93.2

N 6.5 92.8

+5 8.4 90.9

+10 8.4 90.9



9925

T-St.

8+50

- 5	8.7	90.6
N	7.4	91.9
+6	7.1	92.2
cb.	7.2	92.1
1/4	7.3	92.0
L	7.2	92.1
1/4	7.5	91.8
cb.	7.6	91.7
S	7.5	91.8

9+00

S	7.8	91.5
+5	7.8	91.5
cb.	8.5	90.8
1/4	8.1	91.2
L	7.9	91.4
1/4	8.0	91.3
+8	8.3	91.0
cb	7.9	91.4
+4	7.5	91.8
N	7.4	91.9

9+35.4 = East line of West St

N	7.8	91.5
+6	7.8	91.5
cb.	8.5	90.8
+4	9.0	90.3

9925

T-St.

55

1/4	8.6	90.7	
L	8.5	90.8	
1/4	8.8	90.5	
cb.	8.9	90.4	
+9	8.2	91.1	
S	8.1	91.2	
Chh. NE Prop. Hub T+West St	8.01	91.24	P. 45
T.P. 133	91.64	8.94	90.31
9+35.4 = W.L. West St			

S	1.5	90.1
+9	1.7	89.9
cb.	2.1	89.5
1/4	2.3	89.3
L	2.1	89.5
1/4	2.3	89.3
+5	2.5	89.1
cb.	2.0	89.6
N cb +8	1.7	89.9
N	1.4	90.2

10+10

N	1.1	90.5
+4	1.7	89.9
cb	2.3	89.3
+3	2.8	88.8
1/4	2.6	89.0
L	2.5	89.1

1/4	2.5	89.1
cb.	2.4	89.2
5	2.1	89.5
10+35		
5	2.8	88.5
cb.	3.1	88.5
1/4	3.0	88.6
+5	2.7	88.9
6	2.9	88.7
1/4	3.2	88.4
+4	3.2	88.4
cb.	2.7	88.9
N	2.7	88.9
11+00		
N	4.1	87.6
cb.	3.8	87.8
+6	4.6	87.0
1/4	4.2	87.4
6	3.7	87.9
+4	3.7	87.9
1/4	4.1	87.5
cb.	4.2	87.4
+4	3.5	88.1
5	3.3	88.3
11+50		
5	4.3	87.3

+6	4.2	87.4
cb.	5.1	86.5
1/4	4.9	86.7
6	4.9	86.7
1/4	5.2	86.4
+6	5.5	86.1
cb.	4.9	86.7
N	4.6	87.0
12+00		
N	5.5	86.1
cb.	5.8	85.8
+4	6.2	85.4
1/4	5.8	85.8
6	5.7	85.9
1/4	5.7	85.9
cb.	5.7	85.9
5	5.8	85.8
12+50		
5-5	6.9	84.7
5	6.7	84.9
cb.	6.0	85.6
+3	6.7	84.9
1/4	6.2	85.4
6	6.2	85.4
1/4	6.1	85.5
+5	6.3	85.3

+6	7.0	84.6
cb.	6.4	85.2
N	6.3	85.3
12+60 = East limit 45th St.		
N	6.2	85.4
cb	6.4	85.2
+3	7.0	84.6
+5	6.3	85.3
1/4	6.1	85.5
8	6.1	85.5
+8	6.2	85.4
1/4	5.9	85.7
+6	6.9	84.7
cb	6.4	85.2
S	6.7	84.9
+5	7.0	84.6

12+70 = Existing 12" Corrugated pipe

N+14' = N end on Floor	7.73	83.91
N+44.5 = S " " "	8.02	83.62

12+71.7 = East end of East Yard 15" pipe		
N+46.5 on Hd. Wall	6.22	85.42
N+46.5 on Floor east end	8.14	83.50

13+06.2 = West end 24"

N+46.5 on Floor West end	8.80	82.84
" Hd. Wall	7.12	84.52

12+81 = East edge 19' strip Paving

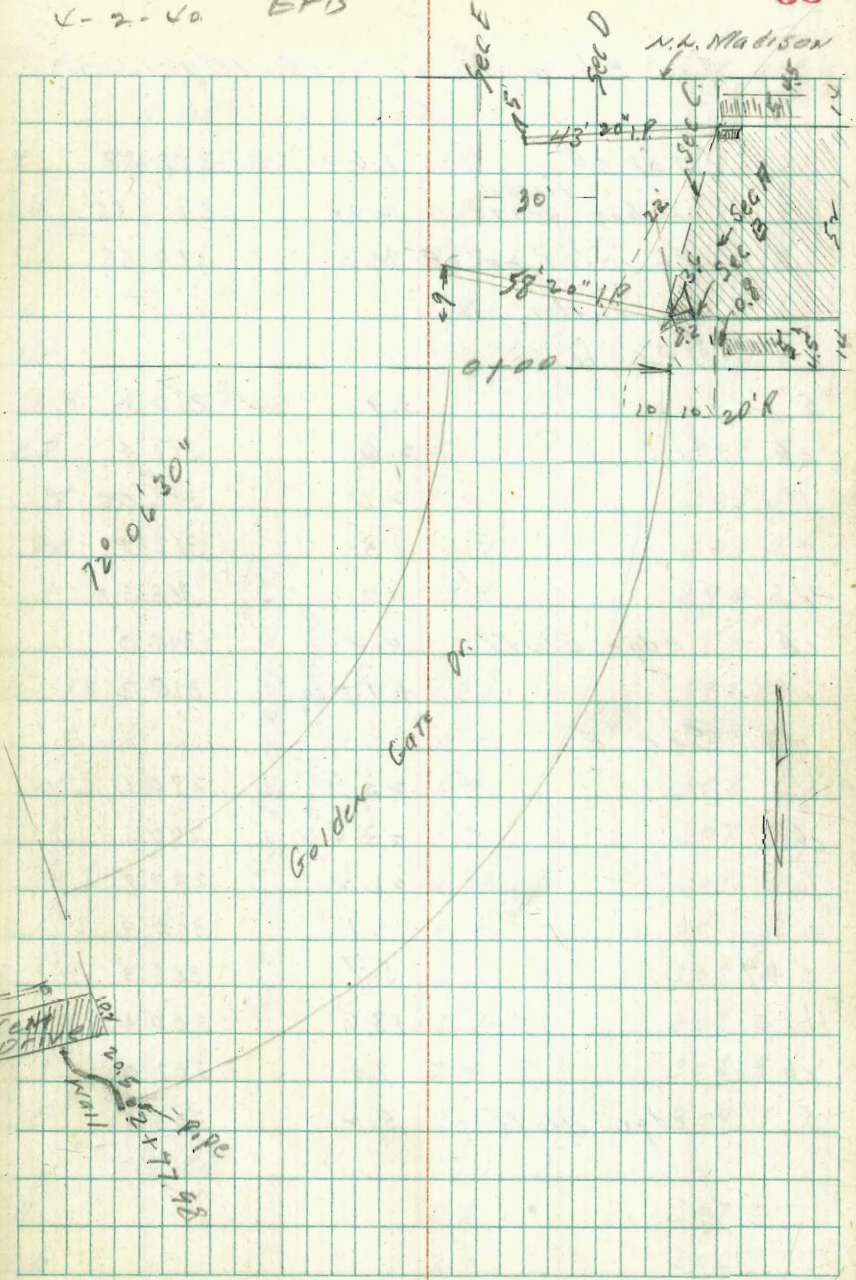
-50 on Paving	5.90	85.74
---------------	------	-------

N.H. on Paving		6.10	85.54	
cb.	" "	6.04	85.60	
1/4	" "	6.05	85.59	
1/4	" "	6.11	85.53	
1/4	" "	6.07	85.57	
cb.	" "	6.00	85.64	
S	" "	5.98	85.66	} Flat
+50	" "	5.98	85.66	
+100	" "	5.68	85.96	
Chk. stub 6+44 P-27		4.96	86.68	
			86.65	
			0.03 = Error	

X sec Golden Gate Dr. 60' wide  
 S of Madison 10' eas  
 10' 1/4

T.P. 84-61	1.58	313.98	312.40
Sec A			
S	1.4		312.6
S cb	1.48		312.50
gUT	2.15		312.83
1/2 Pav	1.53		312.45
0 "	1.19		312.79
1/4 "	1.02		312.96
gUT F4 6"x36" cb inlet	1.15		312.83
N cb	0.46		313.52
Sec C end Pav.			
N cb	0.46		313.52
gUT	0.75		313.23
+ 5 Pav	1.13		312.85
1/2 "	1.11		312.87
0 "	1.32		312.66
1/2 "	1.70		312.28
+ 8.5" 5 cb Madison	2.06		311.92
cb TOP grate	2.02		311.96
+ 2 gUT "	2.04		311.96
TOP cb end	1.71		311.27

Moore INDEXED  
 4-2-40 EFB



## Sec. B grate on S of Madison

3.6

S. Top cb	1.60	312.38
411TED on bot. grate	2.43	311.55
PK inlet 20" L.P.	4.30	309.68
" outlet "		

## Sec D

S	3.9	310.1
cb	2.6	311.4
1/4	2.0	312.0
c	1.3	312.7
1/4	0.7	313.3
cb edge bluff	0.0	314.0
N	+1.2	315.2

## Sec E

N	23.9	290.1
cb	23.4	290.6
1/4	21.4	292.8
c	11.1	302.9
+7	5.7	308.3
1/4	13.6	300.4
cb	7.0	307.0
S edge bluff	5.2	308.8

## X Sec Golden Gate Dr.

Note! Sta. on  
E. line

0 + 00 = S of MADISON

E Top 1/2" pipe	1.77	312.21
cb	2.7	311.3
1/4	3.8	310.2
c	3.9	310.1
1/4	4.0	310.0
+9 RR ST. HT.		
cb	5.1	308.9
+2	5.4	308.8
N	12.7	301.3
+10	19.7	294.3
0 + 40		
-18	10.7	297.3
-5	4.4	307.6
N	5.9	308.1
cb	6.2	307.8
1/4	4.2	307.8
c	4.2	307.8
1/4	5.6	308.4
cb	5.4	308.6
+	5.2	308.8
E	4.5	309.5
0 + 80		
E	4.8	307.2
cb	7.1	306.9

Red. & curb line p/bt on profile 1897  
4-3-40 CB Hough

1/4	7.0	307.0
c	7.5	306.5
1/4	7.6	306.4
cb	7.3	306.7
w	7.7	306.3

1+15 W +7 14" PP

1+20

w	10.1	303.9
cb	9.0	305.0
1/4	9.1	304.9
c	9.4	304.8
1/4	9.5	304.5
cb	9.5	304.5
E	9.6	304.4

1+40

E	10.7	303.3
cb	10.4	303.6
1/4	10.0	304.0
c	9.9	304.1
1/4	9.7	304.3
cb	9.6	304.4
w	11.8	302.2
+10	16.2	297.8

1+80		
-10	18.5	295.5
w	14.0	300.0
cb	10.9	303.1
1/4	10.5	303.5
c	10.6	303.4
1/4	10.8	303.2
cb	10.8	303.2
E	10.8	303.2
1+84		
E -5 E do. gar.	10.56	303.42 Top Cent. Ad. No. 11000 YES
2+20		
E	11.4	302.6
cb	10.7	303.3
1/4	11.3	302.7
c	11.0	303.0
1/4	11.1	302.9
cb	11.2	302.8
w	12.1	301.9
+10	15.7	298.3
2+40		
-20	16.5	297.5
-10	13.4	300.6
w	12.0	301.0
cb	11.5	302.5

1/4	11.6	302.4
c	11.5	302.5
1/2	11.9	302.1
cb	12.1	301.9
E	13.0	301.0
+10	18.5	295.5
+77.98 E.C.		
-10	20.9	293.1
E	15.7	298.3
+3	12.7	301.3
cb	12.0	302.0
cb Top Wall	8.0	306.0
1/4 + 0.5 end of SH Drive <sup>CON.</sup>	11.43	302.55
Q + 0.7 " NW "	11.43	302.55
1/2	11.9	302.1
cb	11.7	302.3
N	11.8	302.2

Walker  
31.5  
1st bill  
5-22-40

Additional Levels East of E. Alley.  
Blocks D, H and E  
(E Levels and levels West of E, see Page 19)

Side shots are from West edge side Walk <sup>of</sup> 47th St. = 2.5' East Plane = Base Line

9.88	126.37	116.49	
0+00 = A' N. N. edge Por.			
0+44 = Spine Ocean View	9.8	116.6	
1+00 = Wedge Walk.	8.9	117.5	
56' Rt.	11.0	115.4	
2+00 = on W edge side Walk.	7.43	118.94	
13' Rt.	11.0	115.4	
60' Rt.	11.8	114.6	
3+00 = " " " "	5.85	120.52	
17' Rt.	11.5	114.9	
60' Rt.	15.3	111.1	
4+00 " " " "	4.17	122.20	
58' Rt. = Back of House	2.33	124.04	Main floor.
58' Rt. " " "	10.4	116.0	Basement.
58' Rt. " " "	7.1	119.3	Ground
5+00 = W edge of Walk.	2.69	123.68	
53' Rt. = Back of House	0.4	126.0	floor.
55' " = " " "	3.9	122.5	Ground
6+00			
5+00 on W. edge Walk.	1.03	125.34	
TP	4.67	130.00	1.04 125.33
60'			8.1 121.9
6+44 = N.W. T-st.	4.09	125.91	W. edge Walk.
7+04 = S.W. T-st.	4.07	125.93	"
8+00 = W. edge Walk.	5.25	124.75	
60' Rt.	7.4	122.6	

138.00

9+00 = W edge Walk.	6.36	123.64	outs Above the Pt.
10+00 " " "	7.44	122.56	
60' Rt.	9.7	120.3	
11+00 = on W edge Side Walk.	5.68	121.32	
60' Rt.	12.9	117.1	
11+65	9.45	120.55	
55' Rt. = Back of House	8.9	121.1	floor
55' Rt.	12.2	117.8	Ground
12+00 = on W. edge Walk.	9.91	120.09	
60' Rt.	12.9	117.1	
12+55 " " "	10.50	119.5	
63' Rt. = Back of House	8.96	121.04	floor.
63' Rt. " " "	10.4	119.6	Ground.
13+04 = N.W. corner	10.90	119.10	
chk. N.W. top of Return Page 50	4.41	125.59	
		125.61 = P. 50	
		0.02 = 4.1101	



Elevation Pressure Recording Gauge

Pacific Harbor

20' East of East Line Pacific on South Side Harbor

BM 4.67 6.07 1.40 Six BP Market + Harbor

TP 6.29 10.18 2.18 3.89

Elev. Center of 1.08 x 1.48 Metal Box on Pedestal +0.23 10.41

TP 2.17 6.06 6.29 3.89

BM 4.65 1.41 Six BP Market + Harbor 1.40

Elevation Pressure Recording Gauge

East San Diego Water Dept Shop

El Cajon Between Van Dyke & 43rd

BM 4.53 368.09 368.56 Six BP El Cajon Van Dyke

TP 5.10 368.47 472 368.37

Elev. Center of Metal Box on Pedestal 0.27 368.20

indexed  
c.s.k.

Feb-7-14  
Sisson  
Bliss T  
Osborne

63

Elevation Pressure Recording Gauge

Main + Vista 20' West of West Line of Main

South side of Vista

BM 4.96 19.85 14.89 Six BP Main + Vista

Elev. Center of Metal Box on Pedestal 0.26 19.59

Pressure Recording Gauge  
Metal Box 1.08

Center Box  
Center of Gauge 0.21



Elevation of OverFlow Pipe  
University Heights Water Tank

Indexed  
c.s.k.

BM 7.38 380.39 378.01 JFBP  
Howard +  
Idaho

TP 4.77 380.71 4.45 375.94

Top of Stake 4.41 376.30  
+ 125.13

Elevation Floor Line Over Flow Pipe 501.43

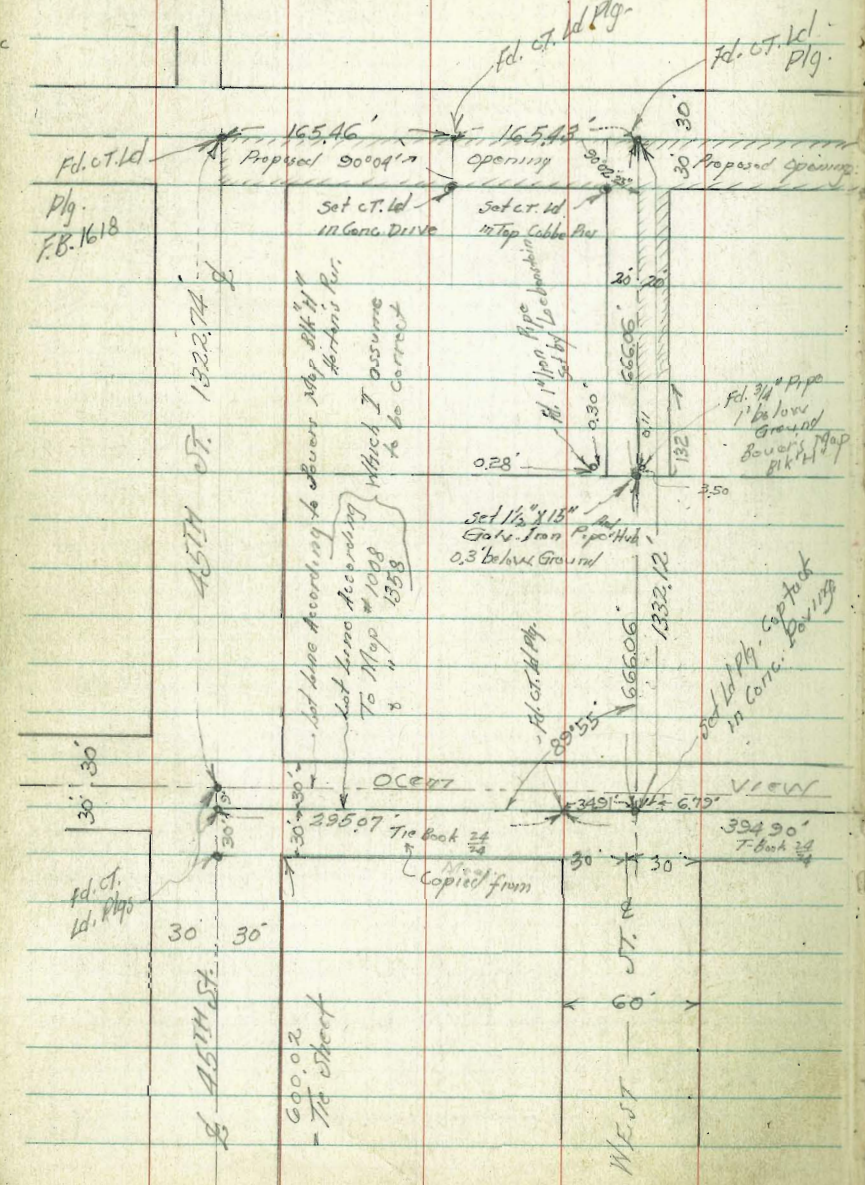
Feb. 10 - 1944  
Sisson  
Bliss  
Osborn





Walker  
Harold  
Hardin  
Says 10-20-44

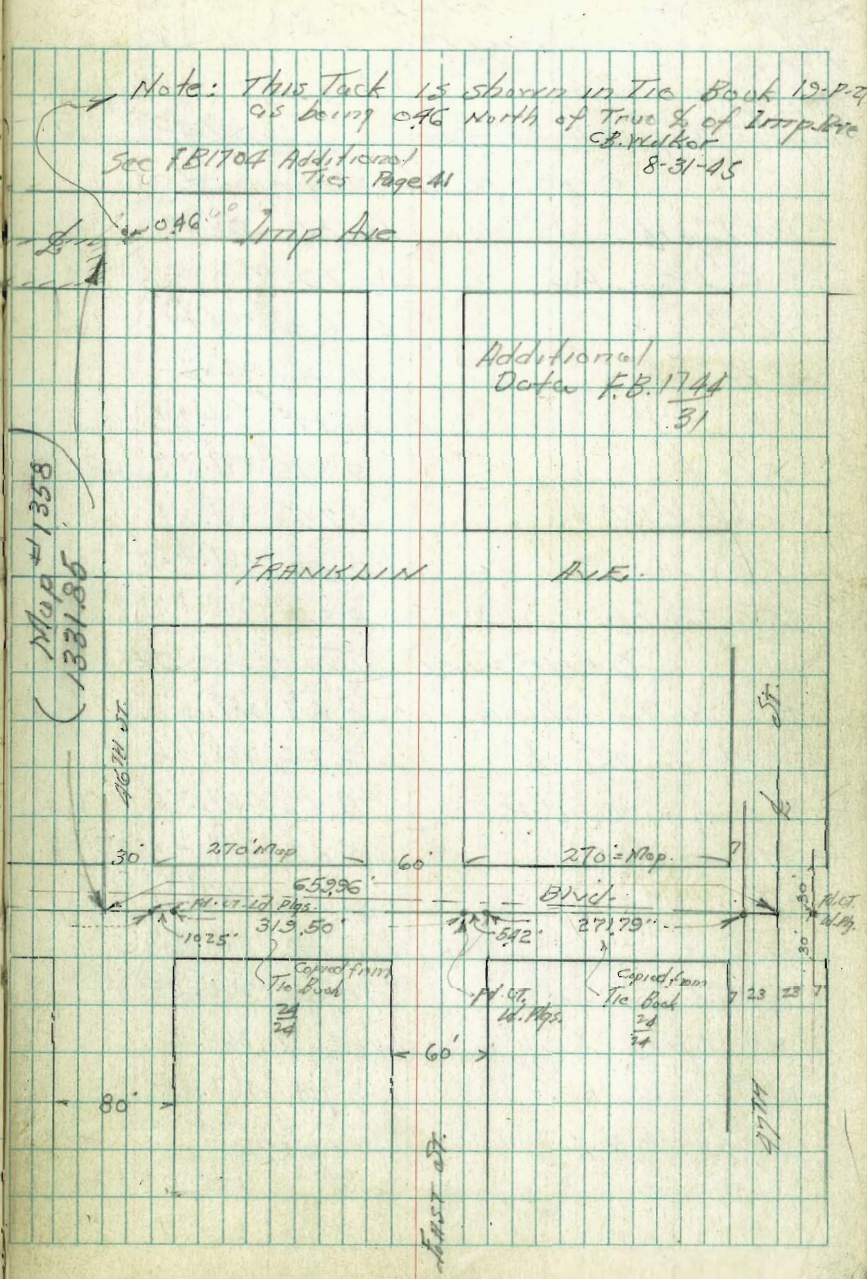
Survey - Proposed Opening  
Imperial Ave (South Side)  
between 45th and West St.



Indexed  
C.S.K.

Plotted on Tie Point Sheets  
C.S.K. 11-3-44

67



Note: This Tack is shown in Tie Book 12-P.2.  
as being 046 North of True S. of Imperial  
C.S.K. Walker  
8-31-45

Sec FB1704 Additional  
Ties Page 41

Additional  
Data F.B. 1744  
31

Map #1358  
1331.85

270' Map  
65.996'  
1025'  
313.50'  
271.29'  
542'

Blvd.  
60'

11' c.t. l.d. Pgs.  
14' Top Cable Box

11' Conc. Drive  
14' Top Cable Box

11' Conc. Drive  
14' Top Cable Box



cb.	8.3	268.7
+1	9.3	267.7
1/4	9.0	268.0
2	8.5	268.5
1/4	8.7	268.3
+3	9.0	268.0
cb.	7.1	269.9
E	6.1	270.9
+5	5.0	272.0

0+25 = E Pole on E 11.7' in st.

0+50

-5	4.6	272.4
E	5.3	271.7
cb.	6.1	270.9
+7	7.3	269.7
1/4	6.9	270.1
2	6.5	270.5
1/4	6.9	270.1
+7	7.4	269.6
+8	6.7	270.3
cb.	6.9	270.1
W	7.1	269.9
+5	7.3	269.7

0+70 = S. edge 8' Conc. Drive on E 0.7' in st.

+78 N " " 3.20 273.84 "

0+46 to 1+17 = Pickett Fence 1' Back on West

+95.6 E Pole on W 10.1' in st.

1+00

-10'	8.0	269.0
W	7.0	270.0
+1	5.4	271.6
cb.	4.5	272.5
+4	4.8	272.2
1/4	4.5	272.5
2	4.2	272.8
1/4	4.4	272.6
+4	4.7	272.3
+6	3.8	273.2
cb.	3.7	273.3
E	2.4	274.6
+5	1.3	275.7

1+50

-5	10.5	277.5
E	0.6	276.4
cb.	1.8	275.2
+4	1.8	275.2
+5	2.6	274.4
1/4	2.5	274.5
2	2.3	274.7
1/4	2.6	274.4
+6.1	3.0	274.9
+6.1 on Conc Walk	2.65	274.39
cb. on " "	2.61	274.43
W " " "	2.45	274.59

1+50.6  
= 2 5.7 Conc  
walk  
on W  
13.9' in st.

277.04

1+18		
Wcb. on slab Walk	3.65	273.39
W +1 on Ground	4.0	273.0 at Wall
" " Wall	1.35	275.69
+2 W side Wall	6.7	270.3
+10	7.0	270.0

1+61

W on Wall	0.96	276.08
TP 8.46 284.74	0.76	276.28

1+83 = S edge Drive on W

-0.8 on Garage Floor	8.40	276.39
W.L. +5' Brk. in Drive	9.20	275.54
cb. on Drive	9.32	275.42
+2 Brk "	9.35	275.39
+3 Toe Lip To Drive	9.60	275.14

1+97

W-0.8 = Gar. Floor	8.35	276.39
W +5' = Brk Drive	8.93	275.81
cb. on "	8.95	275.79
+2 Brk in "	8.96	275.78
+3 = Toe Lip to Drive	9.15	275.59

2+00

-10	15.3	269.4
W	10.6	274.1
W +5	8.9	275.7
cb.	8.8	275.7
14	8.9	276.0

284.74

Commonwealth Area 70  
X-Sections.

2	8.3	276.9
14	8.4	276.3
+8.2 = Pole	8.3	276.4
cb	8.3	276.4
E	7.3	277.9
+5	6.6	278.1
2+15		
-5	6.2	278.5
E	6.8	277.9
cb.	7.6	277.1
14	8.0	276.7
2	7.7	277.0
14	8.3	276.4
cb.	8.5	276.2
+5	8.8	275.9
W	9.9	274.8
110	10.6	274.1
	6.9	278.3
2+09 = Beginning of 8" Core Wall on E on Line		
2+48 End Above Wall	5.26	279.48
2+29 = S edge Walk on W	0.3' in 5th	3.5' wide
2+33 on Above Walk	7.44	277.30
2+48 W N and "	7.02	277.72
2+50		
-10	7.3	277.4
W	7.0	277.7
cb.	6.9	277.8



2150

284.74

W 1/4	6.8	277.9	
2	6.5	278.2	
1/4	6.7	278.0	
cb.	6.5	278.2	
E	5.5	279.2	
+5 in dirt drive	5.2	279.5	
2+52 = Pole on W 10.4' in st.		274.3	
2+69 = 18" Pepper on W 2' in st.			
3+00			
-5'	3.5	281.2	✓
E	3.8	280.9	✓
+3	4.3	280.4	✓
cb.	4.5	280.2	✓
+6	4.9	279.8	✓
1/4	4.6	280.1	✓
2	4.1	280.3	✓
1/4	4.6	280.1	✓
+3	4.2	279.8	✓
cb.	4.8	279.9	✓
W	4.8	279.9	✓
+5	4.8	279.9	✓
3+16 = 2' South Ribbon on E			
E on Toe Ribbon	3.07	281.67	✓
+2 on "	2.79	281.95	✓
+8 "	2.64	282.10	✓

284.74

Commonwealth Page 71  
X-Sections

3+20.5 = 2' Conc. Ribbon on E on Line			
E on Toe Ribbon	3.03	281.71	
+2 "	2.83	281.91	
+8 "	2.59	282.15	
T.P. 7.38	2.82.52	2.60	282.14
3+50 = beginning wire fence on W			1.3' in st
-5	7.6	281.9	
W	7.6	281.9	
cb.	7.4	282.1	
+3	7.2	282.3	
+5	7.9	281.6	
1/4	7.5	282.0	
2	7.3	282.2	
1/4	7.6	281.9	
+5	7.3	282.2	
cb.	7.2	282.3	
E	6.6	282.9	
+5	6.5	283.0	
3+65 = 8' Conc. Drive on E 30.7' Back			
3+83 = Pole on E 12.4' in st.			1.3' in st
3+70 to 4+10.3 = 2.5' High Pickett Fence on E			
4+00			
-5	5.4	284.1	✓
E	5.3	284.2	✓
cb.	5.9	283.6	✓
+8	6.2	283.3	✓

4+00

E 1/4	5.9	283.6
2	5.8	283.7
W 1/4	6.1	283.4
+5	6.4	283.1
Wcb.	6.3	283.2
W	6.5	283.0
	6.5	283.0
3+24.5 = Garage on W. 0.8' Back DIRT Floor		
2+02 E Pole on W 10.4' in st.		
	4.76	284.76
4+10.3 = beg. 4" conc. wall on E	1.3'	st.
	3.55	285.57
4+46 = End " " "	3.93	285.59
4+47 = 1.8' conc. Ribbon Drive on East		1.3' in st.
4+52.2 = 1.9' " " "	3.90	285.62
4+50		
-5	5.4	284.1
W	5.3	284.2
cb.	5.0	284.5
+4	5.4	284.1
1/4	5.0	284.5
2	4.6	284.9
1/4	4.7	284.8
+7	4.9	284.6
cb.	4.6	284.9
E	4.0	285.5
+5	3.8	285.7
5+00		
-5	3.1	286.4

E	3.2	286.3
cb.	3.5	286.0
+7	4.0	285.5
1/4	4.0	285.5
2	3.9	285.6
1/4	4.3	285.2
+6	4.6	284.9
cb.	4.3	285.2
W	5.1	284.4
+5	5.0	284.5
5+40		
-5	5.3	284.2
W	4.6	284.9
cb.	4.0	285.5
+4	4.3	285.2
1/4	4.1	285.4
2	3.7	285.8
1/4	3.7	285.8
+4	3.6	285.9
cb.	2.8	286.7
E	2.0	287.5
+5	1.9	287.6
5+57		
-5	1.7	287.8
E	2.2	287.3
cb.	3.5	286.0

5+57

28952

Commissioner's Rec.  
X-Sections.

cb+4	4.2	285.3	
'14	4.3	285.2	
ℓ	4.6	284.9	
'14	4.5	284.6	
+5'	5.0	284.5	
cb.	3.8	285.7	
W	4.6	284.9	
+5	5.0	284.5	
5+60.7± South Line Laurel St			
-19.6 = W end Paving.	5.56	283.96	
W.L. on "	5.30	284.22	
cb.	5.22	284.30	
'14	5.07	284.45	
ℓ	4.84	284.68	
'14	4.63	284.89	
cb.	4.42	285.10	
E	4.28	285.24	
+20	3.95	285.57	
+40	3.65	285.87	
15" N			
-40 on Paving	3.31	286.21	
-20	3.66	285.86	
E	3.97	285.55	
cb.	4.14	285.38	
'14	4.28	285.24	
ℓ	4.44	285.08	

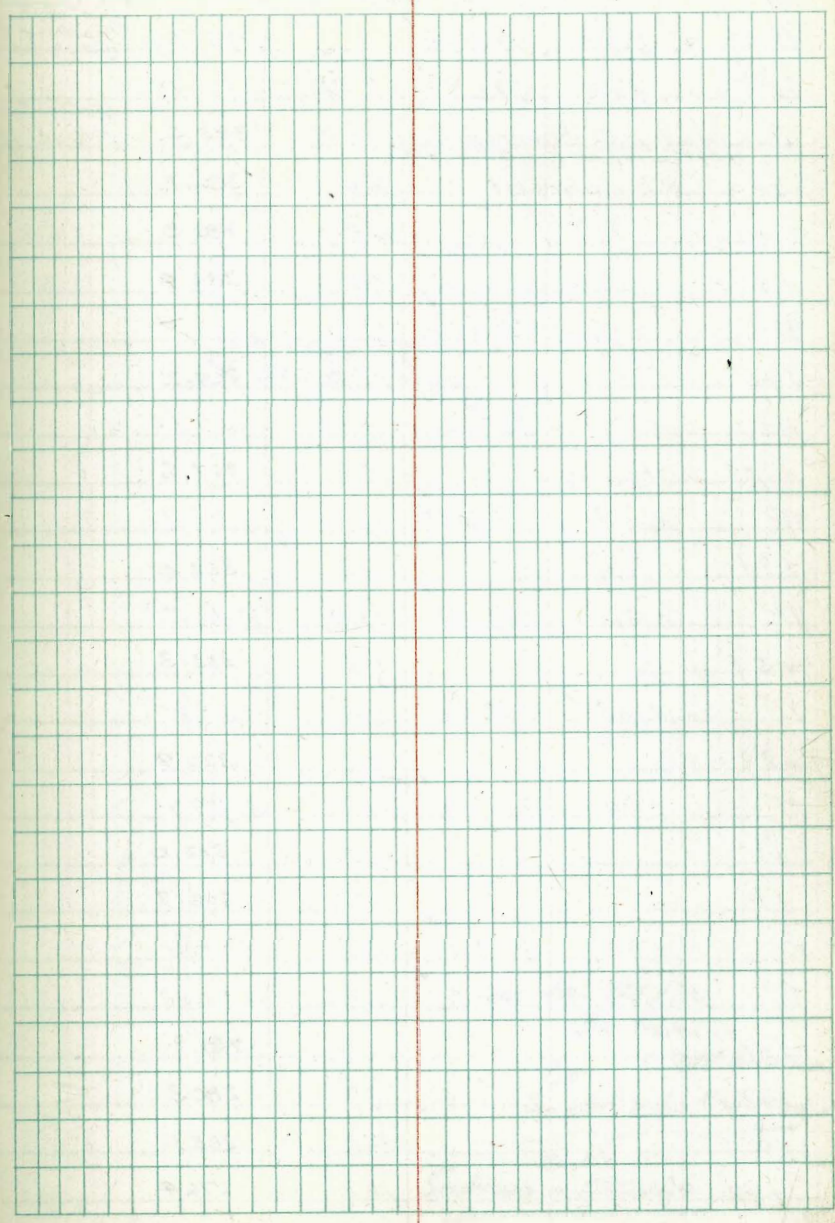
28952

73

W.L. on Pav.	4.64	284.88	
cb	4.89	284.63	
W	5.08	284.44	
+20 = W end Paving	5.38	284.14	
-20' 30' N of St Laurel = N.L. on W			
on cb.	5.14	284.38	
-20' on Pav.	5.47	284.05	
W.L. " "	5.13	284.39	
cb	4.77	284.75	
'14	4.30	285.22	
ℓ	4.15	285.37	
'14	4.02	285.50	
cb.	3.92	285.60	
E	3.81	285.71	
+20	3.54	285.98	
+40	3.23	286.29	
40' N of S.L. = E cb Laurel on East			
-40 on Pav.	3.27	286.25	
1' N on cb.	2.92	286.60	
-20' on Paving	3.60	285.92	
E	3.75	285.77	
cb.	3.83	285.69	
'14	3.98	285.54	
ℓ	4.20	285.32	
'14	4.53	284.99	
cb.	4.28	284.54	

28252 Commonwealth Ave  
X Sections

cb. 75 = Int cb Ret. on Gut	5.15	284.37	✓
76 on Top Rolled cb	4.80	284.72	✓
W.L. on Conc Drive	4.86	284.66	✓
+ 20 " " "	5.14	284.38	✓
TP 0.65 280.52	9.65	279.87	
Chk. Starting BM	14.10	266.42	
		<u>266.41</u>	266.43
		0.01	0.01



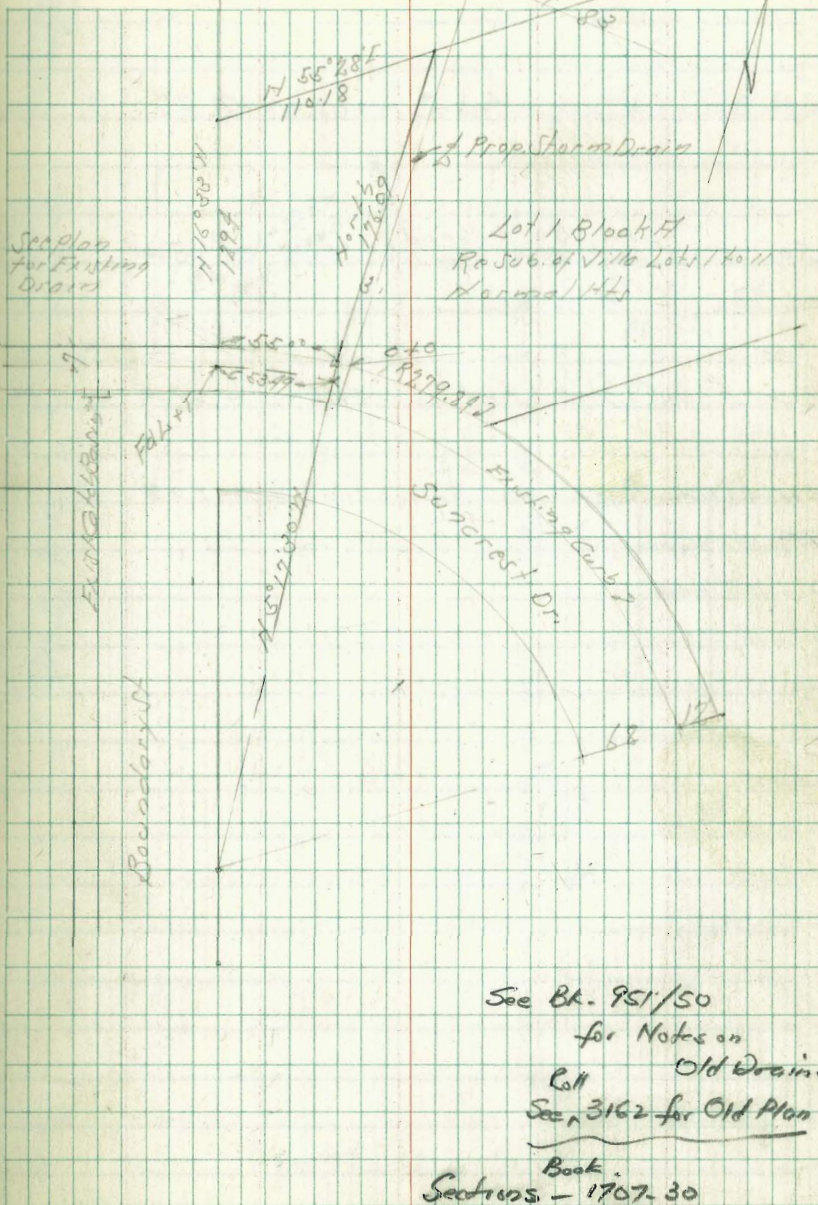
Proposed Storm Drain  
 Lot 1 Block 4 ReSub of Villa Lake 1 to 11  
 Normal Hts  
 For Mr. Baines

BM	2.87	393.83		390.96	S.F. 8 P Planning & Boundary
TP	4.80	391.21	7.42	386.41	
Curb Inlet N. Co. Suncrest		7.70		383.51	12" Coo Pipe Floor Line
West Curb Line Boundary to S		5.0		386.2	
+10 = N. Suncrest			5.9	385.3	
+50			5.9	385.3	
+74			7.8	383.4	
TP	0.88	379.59	12.70	378.51	
+70			15.2	369.2	
TP	0.37	367.45	12.51	367.08	
+11	54		9.8	357.6	
TP	0.35	355.48	12.32	353.13	
+24			3.5	352.0	
TP	0.36	342.93	12.91	342.57	
+54			9.6	333.3	
TP	0.83	331.64	12.12	330.81	
+80			9.2	322.9	
TP	0.99	319.96	12.57	318.97	
+20			8.0	312.0	
+10			13.3	306.7	
TP	0.35	307.66	12.65	307.31	
TP	0.39	295.22	12.82	294.83	
+40			5.3	289.9	
+53			8.9	286.3	
+65			12.1	283.1	
+83 = Bottom Mark			18.8	276.9	

Indexed  
 213.41

April 18-46  
 S. S. S. S. S.  
 11/19/46  
 Model

75



See Bk. 951/50  
 for Notes on  
 Old Drain -  
 Call  
 Sec. 3162 for Old Plan.  
 Book  
 Sections - 1707-30

Levels Top 16" Gas Line  
at Tecolote A.R. Bridge

B.M. B.P. 1.40 9.25 7.85

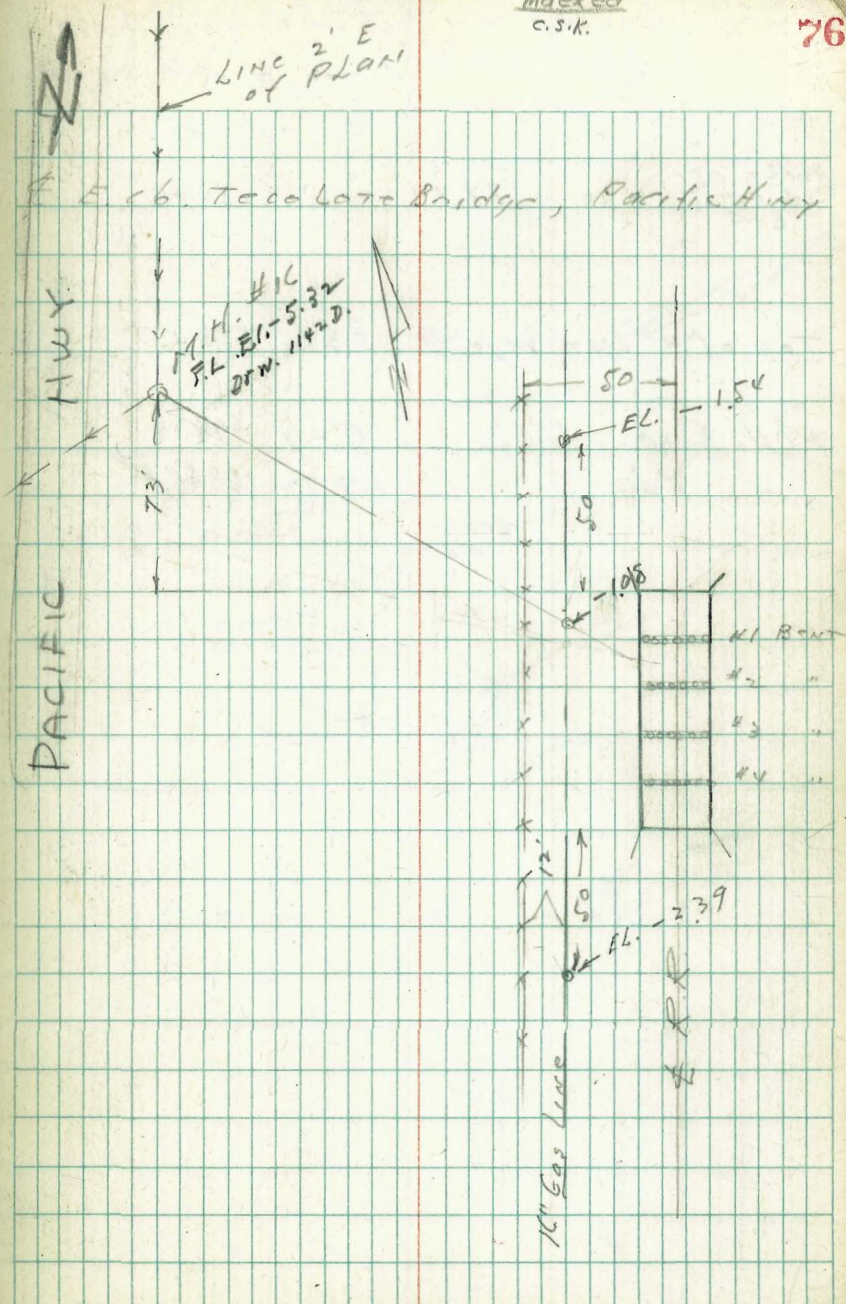
50' N of N. Bulkhead of R.R. Bridge 10.79 - 1.54

50' S of S. Bulkhead 11.64 - 2.39

ON LINE BETWEEN #1 and #2 BENTS 10.33 - 1.08

Indexed  
C.S.K.

76



Location of Sewer Lat.  
Swly Con. Clove & Whittier

HWLY 151  
2d. C.T.  
B.M. 4.40 188.47 184.07

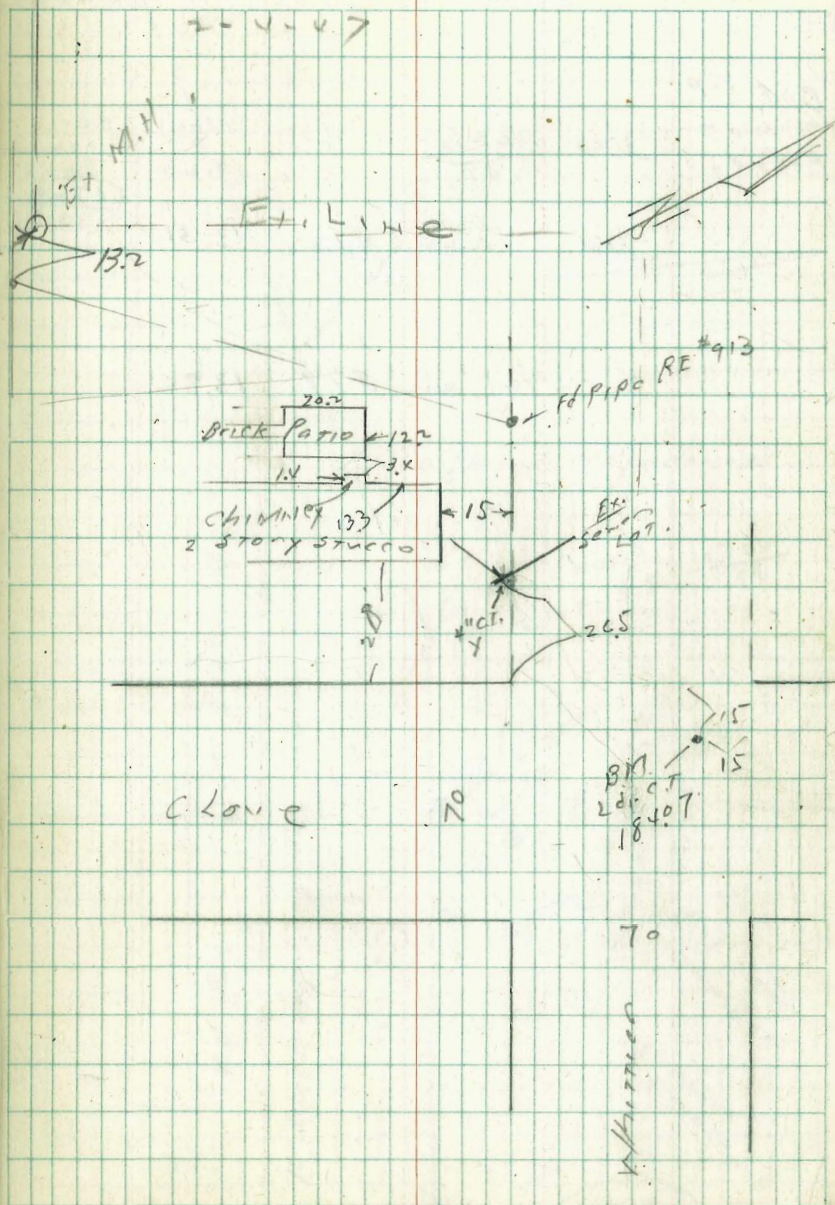
Top of 4" Lat. Wye 5.36 183.11

M.H. Rim 9.29 179.18  
" F.H. 19.92 168.55

ground  
0.250

Moore indexed  
Beqq c.s.k.  
H. Johnson W.O. #258

77

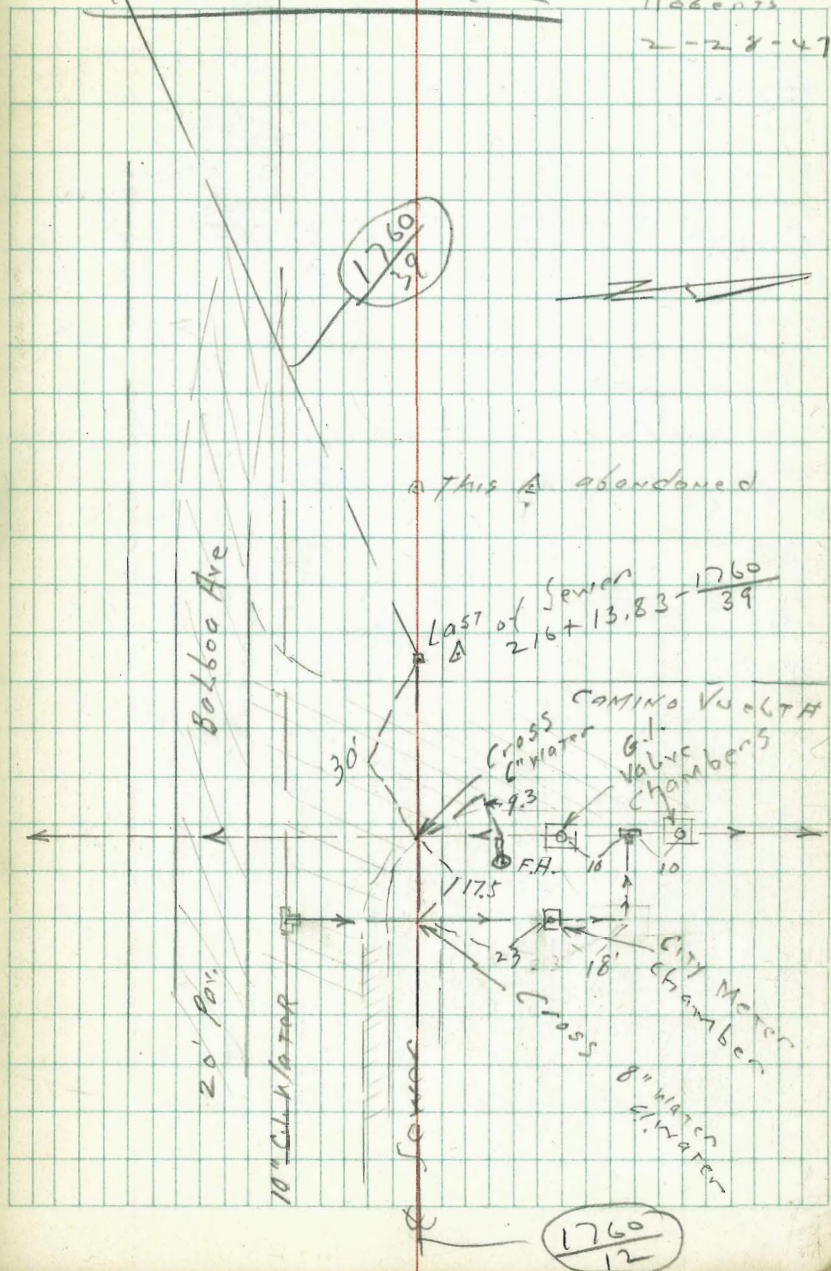


TOP  
Elev. of Water Lines  
at Balboa + Camino Vuelta

B.M. TOP CTR. HWT F.H.T.	3.40	22.63 H.I.	Elev 7 19.23	See Other Book 1760 30
Top		CITY C.I. Water 9.12	13.51	
Top 4" Gl. Water		C.I. 8.79	13.84	

TRUNK SEWER #2

Moore  
Begg  
Green  
Roberts  
2-28-47





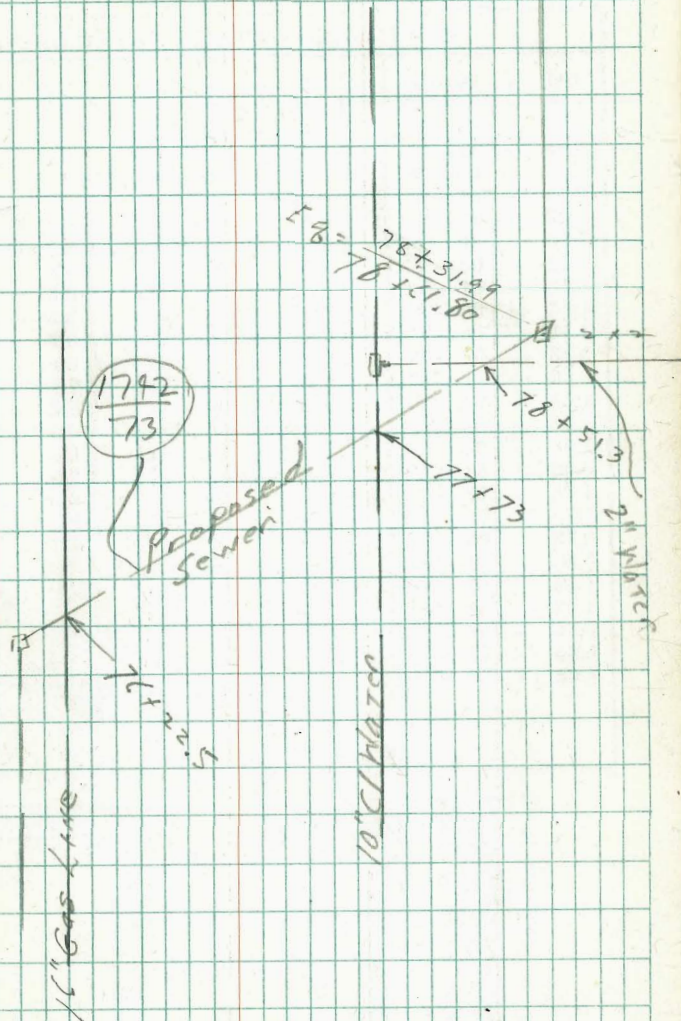
Elev. Top of 16" Gas Lines  
on W.O. 155

76+22.5 Cross 16" gas line to Top of 16" Line  
3.22 stub EL=2.11  
gas  
1792  
76  
See other Books for Elev.  
113+67.5 Cross 16" gas line to Top of 16" gas line  
3.37 stub EL=7.09  
1686  
82

Elev. of Top of 10" C.I. Water  
and 2" Water

T.P. 2x2 3.41

TRUNK SEWER #2



# IMPROVED TABLES AND INFORMATION

## HORIZONTAL STADIA CORRECTIONS

2°-00' — 0.1	21°-00' — 12.8	33°-00' — 29.7
3°-00' — 0.3	21°-30' — 13.4	33°-15' — 30.1
4°-00' — 0.5	22°-00' — 14.0	33°-30' — 30.5
5°-00' — 0.8	22°-30' — 14.7	33°-45' — 30.9
6°-00' — 1.1	23°-00' — 15.3	34°-00' — 31.3
7°-00' — 1.5	23°-30' — 15.9	34°-15' — 31.7
8°-00' — 1.9	24°-00' — 16.5	34°-30' — 32.1
9°-00' — 2.5	24°-30' — 17.2	34°-45' — 32.5
10°-00' — 3.0	25°-00' — 17.9	35°-00' — 32.9
10°-30' — 3.3	25°-30' — 18.6	35°-15' — 33.3
11°-00' — 3.6	26°-00' — 19.2	35°-30' — 33.7
11°-30' — 4.0	26°-30' — 19.9	35°-45' — 34.1
12°-00' — 4.3	27°-00' — 20.6	36°-00' — 34.6
12°-30' — 4.7	27°-30' — 21.3	36°-15' — 35.0
13°-00' — 5.1	28°-00' — 22.0	36°-30' — 35.4
13°-30' — 5.5	28°-30' — 22.8	36°-45' — 35.8
14°-00' — 5.9	29°-00' — 23.5	37°-00' — 36.2
14°-30' — 6.3	29°-30' — 24.3	37°-15' — 36.6
15°-00' — 6.7	30°-00' — 25.0	37°-30' — 37.1
15°-30' — 7.2	30°-15' — 25.4	37°-45' — 37.5
16°-00' — 7.6	30°-30' — 25.8	38°-00' — 37.9
16°-30' — 8.1	30°-45' — 26.2	38°-15' — 38.3
17°-00' — 8.5	31°-00' — 26.5	38°-30' — 38.7
17°-30' — 9.0	31°-15' — 26.9	38°-45' — 39.1
18°-00' — 9.5	31°-30' — 27.3	39°-00' — 39.6
18°-30' — 10.1	31°-45' — 27.7	39°-15' — 40.0
19°-00' — 10.6	32°-00' — 28.1	39°-30' — 40.5
19°-30' — 11.2	32°-15' — 28.5	
20°-00' — 11.7	32°-30' — 28.9	
20°-30' — 12.3	32°-45' — 29.3	

### Chains to Feet

1 .....	66
2 .....	132
3 .....	198
4 .....	264
5 .....	330
6 .....	396
7 .....	462
8 .....	528
9 .....	594
10 .....	660

### Feet to Chains

100 ....	1.515
200 ....	3.030
300 ....	4.545
400 ....	6.060
500 ....	7.575
600 ....	9.090
700 ....	10.606
800 ....	12.121
900 ....	13.636
1,000 ....	15.151

TABLE II—Continued  
TRIGONOMETRIC FORMULAE (continued)

In any triangle:

Given a, b, C; to find c, B, A.

Use Law of Lines.

Given A, B, c; to find a, b, C.

Use Law of Lines.

Given a, b, c; to find A, B, C.

$$\text{Let } \frac{a+b+c}{2} = s, \sqrt{\frac{(s-a)(s-b)(s-c)}{s}} = r$$

$$\cos \frac{1}{2} A = \sqrt{\frac{s(s-a)}{bc}}$$

$$\tan \frac{1}{2} A = \frac{r}{s-a}$$

$$\tan \frac{1}{2} B = \frac{r}{s-b}$$

$$\tan \frac{1}{2} C = \frac{r}{s-c}$$

Area of a triangle:

$$\text{Area} = \frac{1}{2} ab \sin C$$

$$\text{Area} = \sqrt{s(s-a)(s-b)(s-c)}$$

PRISMOIDAL FORMULA.

$$\text{Vol.} = \frac{h}{6} (B+b+4M)$$

h = altitude; b, B = bases; M = midsection

TABLE III  
INCHES AND FRACTIONS OF AN INCH IN DECIMALS OF A FOOT

	0	1	2	3	4	5	6	7	8	9	10	11	
$\frac{1}{16}$	.0052	.0885	.1719	.2552	.3385	.4219	.5052	.5885	.6719	.7552	.8385	.9219	$\frac{1}{16}$
$\frac{1}{8}$	.0104	.0938	.1771	.2604	.3438	.4271	.5104	.5938	.6771	.7604	.8438	.9271	$\frac{1}{8}$
$\frac{3}{16}$	.0156	.0990	.1823	.2656	.3490	.4323	.5156	.5990	.6823	.7656	.8490	.9323	$\frac{3}{16}$
$\frac{1}{4}$	.0208	.1042	.1875	.2708	.3542	.4375	.5208	.6042	.6875	.7708	.8542	.9375	$\frac{1}{4}$
$\frac{5}{16}$	.0260	.1094	.1927	.2760	.3594	.4427	.5260	.6094	.6927	.7760	.8594	.9427	$\frac{5}{16}$
$\frac{3}{8}$	.0313	.1146	.1979	.2813	.3646	.4479	.5313	.6146	.6979	.7813	.8646	.9479	$\frac{3}{8}$
$\frac{7}{16}$	.0365	.1198	.2031	.2865	.3698	.4531	.5365	.6198	.7031	.7865	.8698	.9531	$\frac{7}{16}$
$\frac{1}{2}$	.0417	.1250	.2083	.2917	.3750	.4583	.5417	.6250	.7083	.7917	.8750	.9583	$\frac{1}{2}$
$\frac{9}{16}$	.0469	.1302	.2135	.2969	.3803	.4635	.5469	.6302	.7135	.7969	.8802	.9635	$\frac{9}{16}$
$\frac{5}{8}$	.0521	.1354	.2188	.3021	.3854	.4688	.5521	.6354	.7188	.8021	.8854	.9688	$\frac{5}{8}$
$\frac{11}{16}$	.0573	.1406	.2240	.3073	.3906	.4740	.5573	.6406	.7240	.8073	.8906	.9740	$\frac{11}{16}$
$\frac{3}{4}$	.0625	.1458	.2292	.3125	.3958	.4792	.5625	.6458	.7292	.8125	.8958	.9792	$\frac{3}{4}$
$\frac{13}{16}$	.0677	.1510	.2344	.3177	.4010	.4844	.5677	.6510	.7344	.8177	.9010	.9844	$\frac{13}{16}$
$\frac{7}{8}$	.0729	.1563	.2396	.3229	.4063	.4896	.5729	.6563	.7396	.8229	.9063	.9896	$\frac{7}{8}$
$\frac{15}{16}$	.0781	.1615	.2448	.3281	.4115	.4948	.5781	.6615	.7448	.8281	.9115	.9948	$\frac{15}{16}$
1	.0833	.1667	.2500	.3333	.4167	.5000	.5833	.6667	.7500	.8333	.9167	1.000	1
	0	1	2	3	4	5	6	7	8	9	10	11	

TABLE IV  
USEFUL RELATIONS.

Lineal feet	×.00019	= miles
Lineal yards	×.0006	= miles
Square inches	×.007	= square feet
Square feet	×.111	= square yards
Square yards	×.0002067	= acres
Acres	×4840	= square yards
Cubic inches	×.00058	= cubic feet
Cubic feet	×.03704	= cubic yards
Links	×.22	= yards
Links	×.66	= feet
Feet	×1.5	= links

$$360^\circ = 21600' = 1296000''$$

$$\text{Radius} = \text{arc of } 57.2957790^\circ$$

$$\text{Arc of } 1^\circ (\text{radius} = 1) = .017453292$$

$$\text{Arc of } 1' (\text{radius} = 1) = .000290888$$

$$\text{Arc of } 1'' (\text{radius} = 1) = .000004848$$

$$\pi = 3.141592654 \quad \sqrt{\frac{1}{\pi}} = 0.564190$$

$$\frac{\pi}{4} = 0.785398163 \quad \sqrt[3]{\frac{6}{\pi}} = 1.240700982$$

$$\frac{\pi}{6} = 0.523598776 \quad \pi^2 = 9.869604401$$

$$\sqrt{\frac{4}{\pi}} = 1.128379167 \quad \frac{1}{\pi^2} = 0.101321184$$

$$\frac{\pi}{6} = 0.523598776 \quad \sqrt{\pi} = 1.772453851$$

$$\frac{4\pi}{3} = 4.188790205 \quad \frac{1}{\pi} = 0.3183099$$

Curvature of Earth's surface = about 0.7 feet in 1 mile

Curvature in feet = 0.667 (Dist. in miles)<sup>2</sup>

Difference between arc and chord length, 0.05 feet in 11½ miles

$$\text{Probable error of a single observation} = 0.6754 \sqrt{\frac{Mv^2}{n-1}}$$

Error in chaining of 0.01 feet in 100 feet:

Due to—

1. Length of tape error of 0.01 feet
2. Alignment. One end 1.4 feet out of line
3. Sag of tape at centre of 0.61 feet.
4. Temperature difference of 15°
5. Difference of pull of 15 lbs.

STADIA REDUCTION FORMULAE.

$$\text{Horizontal Distance} = R - R \sin^2 a + C \cos a$$

$$\text{Vertical Distance} = R \frac{1}{2} \sin 2a + C \sin a$$

$$R = \text{Reading} \times \frac{\text{distance from Object glass to cross hairs}}{\text{distance between cross hairs}}$$

C = distance from Object glass to cross hairs + distance from Object glass to center of instrument.

a = angle of elevation for mid Reading

✓  
18  
28

67  
30  
102  
132

TABLE X.  
MIDDLE ORDINATES OF RAILS  
Length of Rail (feet)

C o	R Feet	30 Inch	28 Inch	26 Inch	24 Inch	22 Inch	20 Inch	C o	R Feet	30 Inch	28 Inch	26 Inch	24 Inch	22 Inch	20 Inch
0-20	17189	.08	.07	.06	.05	.04	.03	8	716.8	1.88	1.64	1.42	1.20	1.01	.84
0-40	8594	.16	.14	.12	.10	.08	.07	9	637.3	2.12	1.84	1.60	1.35	1.14	.94
1-0	5730	.24	.20	.18	.15	.13	.10	10	573.7	2.36	2.05	1.78	1.50	1.27	1.04
1-20	4297	.31	.27	.23	.20	.17	.13	11	521.7	2.59	2.26	1.95	1.65	1.39	1.15
1-40	3438	.39	.34	.29	.25	.21	.17	12	478.3	3.83	2.47	2.15	1.81	1.54	1.26
2-0	2865	.47	.41	.35	.30	.25	.20	13	441.7	3.05	2.66	2.30	1.96	1.66	1.36
2-20	2456	.55	.48	.41	.35	.29	.23	14	410.3	3.30	2.87	2.48	2.10	1.78	1.46
2-40	2149	.63	.55	.47	.40	.33	.27	15	383.1	3.54	3.08	2.68	2.26	1.91	1.57
3-0	1910	.71	.62	.53	.45	.38	.31	16	359.3	3.76	3.28	2.83	2.40	2.04	1.67
3-20	1719	.78	.68	.59	.50	.42	.35	17	338.3	4.00	3.48	3.02	2.57	2.16	1.78
3-40	1563	.86	.75	.65	.55	.46	.38	18	319.6	4.21	3.67	3.18	2.70	2.28	1.87
4-0	1433	.94	.82	.71	.60	.50	.42	19	302.9	4.45	3.89	3.36	2.86	2.41	1.98
4-20	1323	1.02	.89	.77	.65	.55	.45	20	287.9	4.70	4.09	3.55	3.00	2.54	2.09
4-40	1228	1.10	.96	.83	.70	.59	.48	22	262.0	5.16	4.44	3.84	3.30	2.80	2.29
5	1146	1.18	1.03	.89	.75	.63	.52	24	240.5	5.64	4.92	4.20	3.59	3.04	2.50
6	955.3	1.41	1.23	1.06	.90	.76	.62	26	222.3	6.07	5.29	4.58	3.88	3.29	2.70
7	819.0	1.65	1.44	1.24	1.05	.89	.73								

TABLE XI.  
SHORT RADIUS CURVES

Radius Feet	Chord Feet	Central Angle	Deflection Angle	Deflection for 1 Foot
35	10	16-26	8-13	49.3
45	10	12-46	6-23	38.3
50	15	17-16	8-38	34.5
60	15	14-22	7-11	28.8
75	15	11-30	5-45	23.0
100	20	11-30	5-45	17.3
120	20	9-34	4-47	14.3
150	20	7-39	3-49	11.5
190	25	7-32	3-46	9.15
200	25	7-10	3-35	8.6
225	25	6-25	3-12	7.7
240	25	5-58	2-59	7.2
250	25	5-44	2-52	6.9
275	25	5-12	2-36	6.2
288	50	9-58	4-59	6.0
300	50	9-32	4-46	5.7
350	50	8-12	4-06	4.9
376	50	7-40	3-50	4.6
400	50	7-10	3-35	4.3
410	50	7-00	3-30	4.2

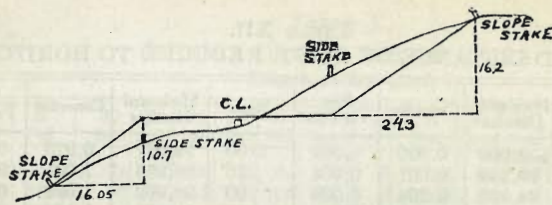
To find length of curve divide angle from P. C. to P. T. by central angle of chord, and multiply by length of chord.

TABLE XII.  
INCLINED DISTANCE OF 100 FT. REDUCED TO HORIZONTAL

Slope	Horizontal Distance	Correction	Rise Per Foot	Slope	Horizontal Distance	Correction	Rise Per Foot
0°00'	100.000	0.000	0.000	8°00'	99.027	0.973	0.139
15'	99.999	0.001	0.004	15'	98.965	1.035	0.143
30'	99.996	0.004	0.009	30'	98.902	1.098	0.148
45'	99.991	0.009	0.013	45'	98.836	1.164	0.152
1 00	99.985	0.015	0.017	9 00	98.769	1.231	0.156
15	99.976	0.024	0.022	15	98.700	1.300	0.161
30	99.966	0.034	0.026	30	98.629	1.371	0.165
45	99.953	0.047	0.031	45	98.556	1.444	0.169
2 00	99.939	0.061	0.035	10 00	98.481	1.519	0.174
15	99.923	0.077	0.039	15	98.404	1.596	0.178
30	99.905	0.095	0.044	30	98.325	1.675	0.182
45	99.885	0.115	0.048	45	98.245	1.755	0.187
3 00	99.863	0.137	0.052	11 00	98.163	1.837	0.191
15	99.839	0.161	0.057	15	98.079	1.921	0.195
30	99.813	0.187	0.061	30	97.992	2.008	0.199
45	99.786	0.214	0.065	45	97.905	2.095	0.204
4 00	99.756	0.244	0.070	12 00	97.815	2.185	0.208
15	99.725	0.275	0.074	15	97.723	2.277	0.212
30	99.692	0.308	0.078	30	97.630	2.370	0.216
45	99.657	0.343	0.083	45	97.534	2.466	0.221
5 00	99.619	0.381	0.087	13 00	97.437	2.563	0.225
15	99.580	0.420	0.092	15	97.338	2.662	0.229
30	99.540	0.460	0.096	30	97.237	2.763	0.233
45	99.497	0.503	0.100	45	97.134	2.866	0.238
6 00	99.452	0.548	0.105	14 00	97.030	2.970	0.242
15	99.406	0.594	0.109	15	96.923	3.077	0.246
30	99.357	0.643	0.113	30	96.815	3.185	0.250
45	99.307	0.693	0.118	45	96.705	3.295	0.255
7 00	99.255	0.745	0.122	15 00	96.593	3.407	0.259
15	99.200	0.800	0.126	15	96.479	3.521	0.263
30	99.144	0.856	0.131	30	96.363	3.637	0.267
45	99.087	0.913	0.135	45	96.246	3.754	0.271

TABLE XIII.  
MINUTES IN DECIMALS OF A DEGREE.

0 30'	.00833	10' 30"	.17500	20' 30"	.34167	30' 10"	.50833	40' 30"	.67500	50' 10"	.84167
1 00	.01667	11 00	.18333	21 00	.35000	31 00	.51667	41 00	.68333	51 00	.85000
30	.02500	30	.19167	30	.35833	30	.52500	30	.69167	30	.85833
2 00	.03333	12 00	.20000	22 00	.36667	32 00	.53333	42 00	.70000	52 00	.86667
30	.04167	30	.20833	30	.37500	30	.54167	30	.70833	30	.87500
3 00	.05000	13 00	.21667	23 00	.38333	33 00	.55000	43 00	.71667	53 00	.88333
30	.05833	30	.22500	30	.39167	30	.55833	30	.72500	30	.89167
4 00	.06667	14 00	.23333	24 00	.40000	34 00	.56667	44 00	.73333	54 00	.90000
30	.07500	30	.24167	30	.40833	30	.57500	30	.74167	30	.90833
5 00	.08333	15 00	.25000	25 00	.41667	35 00	.58333	45 00	.75000	55 00	.91667
30	.09167	30	.25833	30	.42500	30	.59167	30	.75833	30	.92500
6 00	.10000	16 00	.26667	26 00	.43333	36 00	.60000	46 00	.76667	56 00	.93333
30	.10833	30	.27500	30	.44167	30	.60833	30	.77500	30	.94167
7 00	.11667	17 00	.28333	27 00	.45000	37 00	.61667	47 00	.78333	57 00	.95000
30	.12500	30	.29167	30	.45833	30	.62500	30	.79167	30	.95833
8 00	.13333	18 00	.30000	28 00	.46667	38 00	.63333	48 00	.80000	58 00	.96667
30	.14167	30	.30833	30	.47500	30	.64167	30	.80833	30	.97500
9 00	.15000	19 00	.31667	29 00	.48333	39 00	.65000	49 00	.81667	59 00	.98333
30	.15833	30	.32500	30	.49167	30	.65833	30	.82500	30	.99167
10 00	.16667	20 00	.33333	30 00	.50000	40 00	.66667	50 00	.83333	60 00	1.00000



DISTANCES FROM SIDE STAKES FOR CROSS-SECTIONING.

SLOPE 1 1/2 TO 1. ROADWAY OF ANY WIDTH.

	0	.1	.2	.3	.4	.5	.6	.7	.8	.9	
0	0 00	0 15	0 30	0 45	0 60	0 75	0 90	1 05	1 20	1 35	0
1	1 50	1 65	1 80	1 95	2 10	2 25	2 40	2 55	2 70	2 85	1
2	3 00	3 15	3 30	3 45	3 60	3 75	3 90	4 05	4 20	4 35	2
3	4 50	4 65	4 80	4 95	5 10	5 25	5 40	5 55	5 70	5 85	3
4	6 00	6 15	6 30	6 45	6 60	6 75	6 90	7 05	7 20	7 35	4
5	7 50	7 65	7 80	7 95	8 10	8 25	8 40	8 55	8 70	8 85	5
6	9 00	9 15	9 30	9 45	9 60	9 75	9 90	10 05	10 20	10 35	6
7	10 50	10 65	10 80	10 95	11 10	11 25	11 40	11 55	11 70	11 85	7
8	12 00	12 15	12 30	12 45	12 60	12 75	12 90	13 05	13 20	13 35	8
9	13 50	13 65	13 80	13 95	14 10	14 25	14 40	14 55	14 70	14 85	9
10	15 00	15 15	15 30	15 45	15 60	15 75	15 90	16 05	16 20	16 35	10
11	16 50	16 65	16 80	16 95	17 10	17 25	17 40	17 55	17 70	17 85	11
12	18 00	18 15	18 30	18 45	18 60	18 75	18 90	19 05	19 20	19 35	12
13	19 50	19 65	19 80	19 95	20 10	20 25	20 40	20 55	20 70	20 85	13
14	21 00	21 15	21 30	21 45	21 60	21 75	21 90	22 05	22 20	22 35	14
15	22 50	22 65	22 80	22 95	23 10	23 25	23 40	23 55	23 70	23 85	15
16	24 00	24 15	24 30	24 45	24 60	24 75	24 90	25 05	25 20	25 35	16
17	25 50	25 65	25 80	25 95	26 10	26 25	26 40	26 55	26 70	26 85	17
18	27 00	27 15	27 30	27 45	27 60	27 75	27 90	28 05	28 20	28 35	18
19	28 50	28 65	28 80	28 95	29 10	29 25	29 40	29 55	29 70	29 85	19
20	30 00	30 15	30 30	30 45	30 60	30 75	30 90	31 05	31 20	31 35	20
21	31 50	31 65	31 80	31 95	32 10	32 25	32 40	32 55	32 70	32 85	21
22	33 00	33 15	33 30	33 45	33 60	33 75	33 90	34 05	34 20	34 35	22
23	34 50	34 65	34 80	34 95	35 10	35 25	35 40	35 55	35 70	35 85	23
24	36 00	36 15	36 30	36 45	36 60	36 75	36 90	37 05	37 20	37 35	24
25	37 50	37 65	37 80	37 95	38 10	38 25	38 40	38 55	38 70	38 85	25
26	39 00	39 15	39 30	39 45	39 60	39 75	39 90	40 05	40 20	40 35	26
27	40 50	40 65	40 80	40 95	41 10	41 25	41 40	41 55	41 70	41 85	27
28	42 00	42 15	42 30	42 45	42 60	42 75	42 90	43 05	43 20	43 35	28
29	43 50	43 65	43 80	43 95	44 10	44 25	44 40	44 55	44 70	44 85	29
30	45 00	45 15	45 30	45 45	45 60	45 75	45 90	46 05	46 20	46 35	30
31	46 50	46 65	46 80	46 95	47 10	47 25	47 40	47 55	47 70	47 85	31
32	48 00	48 15	48 30	48 45	48 60	48 75	48 90	49 05	49 20	49 35	32
33	49 50	49 65	49 80	49 95	50 10	50 25	50 40	50 55	50 70	50 85	33
34	51 00	51 15	51 30	51 45	51 60	51 75	51 90	52 05	52 20	52 35	34
35	52 50	52 65	52 80	52 95	53 10	53 25	53 40	53 55	53 70	53 85	35
36	54 00	54 15	54 30	54 45	54 60	54 75	54 90	55 05	55 20	55 35	36
37	55 50	55 65	55 80	55 95	56 10	56 25	56 40	56 55	56 70	56 85	37
38	57 00	57 15	57 30	57 45	57 60	57 75	57 90	58 05	58 20	58 35	38
39	58 50	58 65	58 80	58 95	59 10	59 25	59 40	59 55	59 70	59 85	39
40	60 00	60 15	60 30	60 45	60 60	60 75	60 90	61 05	61 20	61 35	40
41	61 50	61 65	61 80	61 95	62 10	62 25	62 40	62 55	62 70	62 85	41
42	63 00	63 15	63 30	63 45	63 60	63 75	63 90	64 05	64 20	64 35	42
43	64 50	64 65	64 80	64 95	65 10	65 25	65 40	65 55	65 70	65 85	43
44	66 00	66 15	66 30	66 45	66 60	66 75	66 90	67 05	67 20	67 35	44
45	67 50	67 65	67 80	67 95	68 10	68 25	68 40	68 55	68 70	68 85	45
46	69 00	69 15	69 30	69 45	69 60	69 75	69 90	70 05	70 20	70 35	46
47	70 50	70 65	70 80	70 95	71 10	71 25	71 40	71 55	71 70	71 85	47
48	72 00	72 15	72 30	72 45	72 60	72 75	72 90	73 05	73 20	73 35	48
49	73 50	73 65	73 80	73 95	74 10	74 25	74 40	74 55	74 70	74 85	49
50	75 00	75 15	75 30	75 45	75 60	75 75	75 90	76 05	76 20	76 35	50

Computed by L. Leland Locke.

269.5

450 13' bet Brass  
Plugs

262' N to CT.

90° 13'

14.88

450 13

362.65  
87.98

357.67

348.03

9.66

1293

117

1410

26.22

V.L. 10.42 - 83.00

V.L. 2-46 84.30

73-53  
16-07  
90-00

85  
4.4  
133

2278

790  
240  
1030

12.  
6.6  
18.8

10.4  
2

1291

233.41

1291

220.50

10-5 544

17 10. 540

1727 - 581

119.5

10

109.5

13

122.5

7

115.5

119.5

60

73° 34