

1555

1555

1555

1555

1555

MICROFILMED
DEC 24 1964

ENGINEERING DEPARTMENT
CITY OF SAN DIEGO
CALIFORNIA

MADE IN U. S. A.

Our Leather Bound Engineers Note Books
are carried in the following rulings:

- No. 380 LEVEL BOOK. Left and Right Hand Page
the same as Left Hand Page
of this Book.
- No. 382 FIELD BOOK. Left Hand Page as in this
Book, Right Hand Page 4x4
to the inch, Center Line Red.
- No. 384 MINING TRANSIT
BOOK. Left Hand Page as in this
Book, Right Hand Page 8x8
to the inch, Center Line Red.
- No. 385 FIELD BOOK. Left Hand Page as in this
Book, Right Hand Page 8 ver-
tical and 4 horizontal lines to
the inch, Center Line Red.

We also carry the Note Books listed above,
bound in extra strong Fabri-Hide (otherwise
the same quality of book,) which can be fur-
nished at a somewhat lower price.

In ordering Fabri-Hide covered books, add
the letter "F" to catalog number.

THE FREDERICK POST CO.

ENGINEERING and DRAFTING SUPPLIES

P. O. Box 803

CHICAGO

Indexed
C.S.K.

Xsec of Mission Bay State Park Lands
South " " " Park Tract Map #1120

Moore
Purson
Northen

3-22-38

City Field party

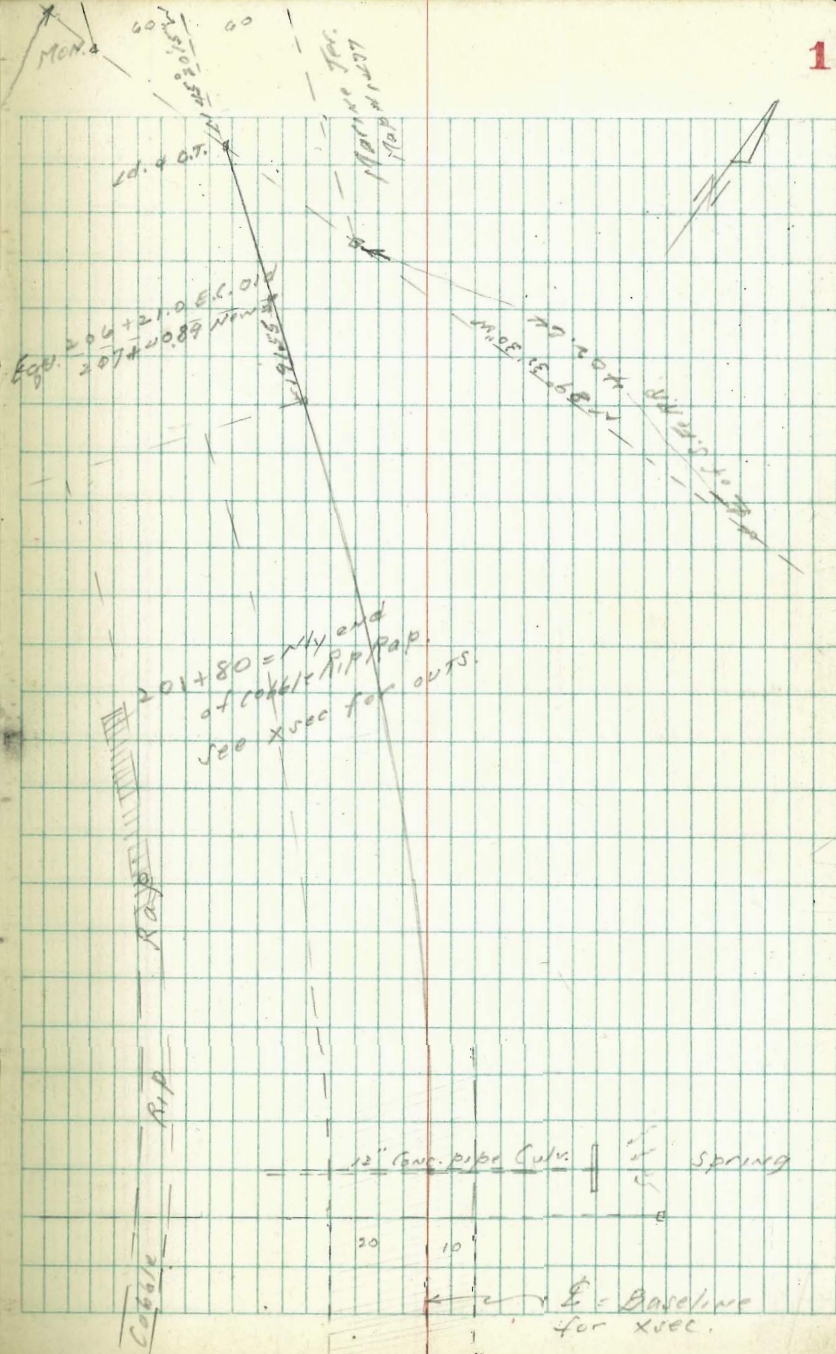
205+58.34

$\Delta = 24^{\circ}53'45''$ LT.
 $R = 3500$
 $T = 772.59$
 $L = 1520.80$

See level notes for Culv.

190+37.54 B.C. LT.

1



A page with horizontal blue lines and four vertical red margin lines, creating a structured layout for writing.

A page with a grid of blue lines and one vertical red margin line, suitable for technical drawing or data recording.

+ H.I. - EL.

192

Sec. taken at 90° and Radial

+250

191

+54 12" cov. pipe Culv.

190 + 3754 = B.C. LT.

T.P. 3.22 4.30 5.52 3.08

T.P. 0.66 8.60 10.13 7.94

B.M. #11 1.26 18.07 16.81

Rt. of Sta. 178+00

W/ R.R. ROW. FENCE 3/4" iron pipe. CITY DATUM

LT.

Shoulder Rip Rap

33

Pacific Highway. Road on Pavng

-7.0

-6.1

-3.9

1.3

2.25

12.3

12.4

10.4

5.0

2.55

-7.0

-6.1

-3.3

1.3

2.25

12.3

12.4

10.4

5.0

2.55

-6.8

-6.1

-2.9

1.4

1.6

2.97

12.1

12.4

9.4

4.7

2.36

-6.9

-5.7

-4.25

-2.6

1.4

1.6

3.15

12.4

12.0

10.55

9.9

5.9

4.7

3.15

EL. OUTLET CULV

-2.1

-6.0

-3.4

1.4

3.14

12.4

12.3

9.7

4.9

3.12

6.30 ✓

+50

197

+50

196

+75

89' - 24" Cor. pipe Culv.

195+50

T.P. 4.91 5.80^v 5.41 0.89^v
6.30

LT

5

$\frac{12.9}{120}$	$\frac{11.9}{110}$	$\frac{9.8}{58}$	$\frac{5.1}{51}$	$\frac{5.0}{50}$
-7.1	-6.1	-4.0	0.7	2.60
$\frac{12.9}{120}$	$\frac{11.0}{110}$	$\frac{9.8}{58}$	$\frac{5.1}{51}$	$\frac{5.0}{50}$
-7.1	-6.2	-4.0	0.7	2.47
$\frac{12.8}{120}$	$\frac{11.8}{110}$	$\frac{10.0}{58}$	$\frac{5.1}{51}$	$\frac{5.0}{50}$
-7.0	-6.0	-4.2	0.7	2.30
$\frac{12.8}{120}$	$\frac{11.7}{110}$	$\frac{9.5}{57}$	$\frac{5.1}{51}$	$\frac{5.0}{50}$
-7.0	-5.9	-3.7	0.6	2.27
$\frac{12.9}{120}$	$\frac{11.8}{110}$	$\frac{9.1}{58}$	$\frac{5.1}{51}$	$\frac{5.0}{50}$
-7.1	-6.0	-3.3	1.6	2.16
$\frac{12.0}{120}$	$\frac{12.0}{110}$	$\frac{9.5}{58}$	$\frac{5.1}{51}$	$\frac{5.0}{50}$
-7.2	-6.2	-3.7	0.6	2.22
$\frac{12.0}{120}$	$\frac{12.0}{110}$	$\frac{9.5}{58}$	$\frac{5.1}{51}$	$\frac{5.0}{50}$
-7.2	-6.2	-3.7	0.6	2.22

TOP
FL. 2.16
FL. 2.16

FL. 2.16

5.80^v

750

202

T.P. 5.07 7.59[✓] 3.28 2.52

750 Proposed 104-36" R. CONC. PIPE
CUM.

201

200+50

5.80

17.

7

23.2
11.7

17.2
11.0

10.1
6.4

6.6
5.7

5.2
2.4

5.3
3.6

14.1
14.0

13.1
11.0

10.0
8.8

5.7
4.9

5.3
3.5

7.59[✓]

11.6
14.0

11.6
11.0

9.3
8.3

7.8
6.8

5.8
5.4

3.6
2.8

1.4 outlet

0.72

STOP CUM.

11.6
11.0

11.4
11.0

9.5
8.3

4.6
3.5

3.4
2.2

11.6
12.0

11.6
11.0

9.3
8.2

4.6
3.6

3.4
2.4

5.80[✓]

750

$\frac{13.4}{175}$	$\frac{13.1}{150}$	$\frac{13.1}{125}$	$\frac{9.9}{106}$	$\frac{6.2}{102}$	$\frac{2.1}{100}$	$\frac{5.0}{120}$	$\frac{2.2}{120}$	$\frac{6.4}{100}$
-5.6	-5.1	-4.6	-2.3	1.2	3.3	4.3	3.4	4.58

205

$\frac{13.4}{175}$	$\frac{13.1}{150}$	$\frac{12.0}{120}$	$\frac{9.9}{100}$	$\frac{6.2}{97}$	$\frac{4.2}{11}$	$\frac{5.0}{12}$	$\frac{2.1}{10}$	$\frac{2.46}{100}$
-5.6	-5.5	-4.4	-2.3	1.4	3.2	4.6	3.5	2.46

750

$\frac{13.4}{175}$	$\frac{13.1}{150}$	$\frac{9.9}{100}$	$\frac{6.2}{97}$	$\frac{3.0}{11}$	$\frac{4.3}{11}$	$\frac{3.0}{100}$	$\frac{4.33}{100}$
-5.6	-4.7	-2.3	0.9	3.0	4.3	3.0	4.33

204 Req. of embankment 41' LT

$\frac{13.4}{175}$	$\frac{12.6}{150}$	$\frac{10.0}{95}$	$\frac{7.2}{94}$	$\frac{4.5}{50}$	$\frac{4.3}{11}$	$\frac{3.1}{11}$	$\frac{3.1}{100}$	$\frac{4.19}{100}$
-5.9	-5.0	-2.4	0.4	3.1	3.3	4.5	3.1	4.19

750

$\frac{13.6}{175}$	$\frac{12.1}{125}$	$\frac{9.8}{81}$	$\frac{5.8}{75}$	$\frac{1.8}{50}$	$\frac{4.11}{100}$
-6.0	-4.5	-2.2	1.8	2.8	4.11

203 Req. New fill on West or Left by State Com.

7.59

$\frac{12.0}{150}$	$\frac{12.0}{115}$	$\frac{10.0}{72}$	$\frac{1.9}{24}$	$\frac{2.6}{50}$	$\frac{3.99}{100}$
-5.4	-4.4	-2.4	1.9	2.6	3.99

7.59

100-120 11.100

check to B.M. #14 Mon. 60' R
207+30 173 6.50 ✓ 6.48

207+ Sec. Taken on Pueblo Line

207+ Ld. # C.T. Sky Mission Bay
Sec. 07 90° 00' Park Tract

207

206+50

8.23

10.4	5.8	6.1	7.0	6.4	5.4	4.9	4.74	5.44	✓
530	214	200	250	200	140	100	87	20	
-2.2	-2.4	2.1	1.2	1.8	2.8	3.3	3.45	4.4	
13.9	13.1	11.7	10.5	7.1	6.6	4.1	4.1	4.6	
530	200	150	183	127	100	47	22	29	
-5.7	-4.9	-3.5	-2.3	1.0	1.6	4.1	5.6	5.33	
13.6	12.7	11.7	10.8	6.8	6.2	4.5	4.5	4.1	
580	180	131	127	120	100	46	43	39	
-5.4	-4.5	3.5	-2.6	1.8	3.2	3.7	5.0	5.27	
12.4	12.8	10.8	9.4	7.1	6.1	4.9	4.2	3.6	
505	175	128	120	114	100	46	43	39	
-6.0	-4.1	-2.6	-1.4	1.1	1.8	3.3	4.2	5.16	
12.4	12.8	10.8	9.4	7.1	6.1	4.9	4.2	3.6	
505	175	128	120	114	100	46	43	39	
-6.0	-4.1	-2.6	-1.4	1.1	1.8	3.3	4.2	5.16	

on R.O.M. Comp. 100'

11.10 11.10 11.10

8.23 ✓

202

450 Proposed 36" C.U.N.A.

201

450

200

199450

200400
on pav.
p. 6

10.53 13.73

220

L

RT

	5.1	8.9	9.7	10.9					
	$\frac{1.8}{2.4}$	$\frac{1.8}{5.0}$	$\frac{2.0}{100.0}$	$\frac{1.8}{121}$					
	4.9	6.6	8.4	8.8					
	$\frac{1.8}{1.5}$	$\frac{7.1}{5.9}$	$\frac{5.3}{6.3}$	$\frac{4.9}{100}$	$\frac{5.6}{128}$	$\frac{4.6}{129}$	$\frac{1.1}{135}$	$\frac{8.9}{13.5}$	
	5.2	7.5	9.8	7.6					
	$\frac{1.8}{2.2}$	$\frac{1.6}{6.2}$	$\frac{1.1}{10.3}$	$\frac{1.1}{10.2}$	$\frac{7.0}{11}$	$\frac{1.4}{11}$	$\frac{1.4}{12.0}$		
	4.5	5.5	7.2	5.2					
	$\frac{1.9}{3.3}$	$\frac{1.0}{1.7}$	$\frac{1.6}{5.1}$	$\frac{1.8}{9.0}$	$\frac{1.1}{9.5}$	$\frac{1.1}{9.0}$	$\frac{1.4}{10.2}$	$\frac{1.7}{10.7}$	
	3.5	4.6	5.6	3.2					
	$\frac{1.0}{3.4}$	$\frac{1.1}{6.1}$	$\frac{1.1}{6.8}$	$\frac{1.0}{7.2}$	$\frac{1.0}{7.1}$	$\frac{1.1}{7.1}$	$\frac{1.1}{8.6}$	$\frac{1.1}{9.2}$	
	3.1	3.2	2.2	2.5					
	$\frac{1.0}{2.6}$	$\frac{1.0}{7.0}$	$\frac{1.1}{5.8}$	$\frac{1.1}{4.0}$	$\frac{1.0}{4.1}$	$\frac{1.0}{8.0}$			
	3.5	4.7	6.0	4.7					
	3.1	3.2	3.2	3.5					
	6.4	7.6	6.4	6.4					
	$\frac{1.1}{3.8}$	$\frac{1.1}{7.1}$	$\frac{1.1}{8.6}$	$\frac{1.1}{9.2}$					

13.73

204

203+50

208

207

203

202+50

13.73

$\frac{9.3}{50}$	$\frac{8.4}{100}$	$\frac{7.8}{128}$	$\frac{4.1}{1271}$	$\frac{5.18}{176}$		✓
4.4	5.3	5.9	9.6	2.9		
$\frac{9.2}{50}$	$\frac{8.1}{100}$	$\frac{7.4}{127}$	$\frac{5.7}{138}$	$\frac{3.4}{150}$	$\frac{4.4}{168}$	
4.5	5.6	6.3	10.0	10.3	10.5	✓
$\frac{10.7}{45}$	$\frac{9.3}{50}$	$\frac{7}{80}$	$\frac{5.5}{90}$	$\frac{5.0}{100}$	$\frac{7.1}{120}$	$\frac{5.6}{133}$
3.0	4.4	6.2	6.2	5.7	6.6	10.1
						11.0
$\frac{7.4}{45}$	$\frac{5.5}{50}$	$\frac{4.9}{80}$	$\frac{2.3}{100}$	$\frac{3.4}{120}$	$\frac{10.0}{150}$	$\frac{11.0}{188}$
6.3	2.9	6.5	2.4	10.0	11.0	✓
$\frac{7.2}{42}$	$\frac{6.0}{50}$	$\frac{4.3}{100}$	$\frac{2.9}{150}$	$\frac{2.7}{178}$		✓
6.3	2.7	9.4	10.8	11.0		
$\frac{8.7}{45}$	$\frac{2.8}{50}$	$\frac{3.7}{100}$	$\frac{2.1}{129}$			✓
5.0	4.9	10.0	11.6			

13.73 ✓

206

T.P. 7.50 18.63 ✓ 2.60 11.13 ✓

+60

+40

205

204+50

13.73

φ

PT

5.4	7.2	10.7	11.3	12.2	12.6
$\frac{13.7}{50}$	$\frac{11.4}{87}$	$\frac{7.8}{88}$	$\frac{7.6}{100}$	$\frac{6.4}{147}$	$\frac{6.0}{157}$

18.63 ✓

5.5	6.5	9.7	9.9	10.9	11.7
$\frac{8.2}{50}$	$\frac{7.1}{84}$	$\frac{4.0}{85}$	$\frac{3.8}{100}$	$\frac{2.8}{150}$	$\frac{2.0}{170}$

5.1	5.6	6.9	7.8	10.6	11.6
$\frac{8.6}{50}$	$\frac{8.1}{100}$	$\frac{6.8}{150}$	$\frac{5.9}{167}$	$\frac{4.1}{168}$	$\frac{2.1}{193}$

5.3	5.5	7.0	10.0	11.2
$\frac{8.7}{50}$	$\frac{8.2}{100}$	$\frac{6.7}{141}$	$\frac{5.7}{163}$	$\frac{3.5}{196}$

4.8	6.3	6.5	9.5	10.2
$\frac{8.9}{50}$	$\frac{7.4}{100}$	$\frac{7.2}{153}$	$\frac{4.2}{154}$	$\frac{3.8}{188}$

13.73 ✓

check to SAT #14 12.14 6.49 ✓ 2.48

207+20

3.2
14.8
50

5.6
11.0

207+10

4.0
14.4
50

5.8
12.8
51

6.6
11.8
58

207

3.9
14.7
50

4.4
13.8
59

7.1
11.5
60

4.3
10.3
67

206+56

4.4
14.2
50

7.4
11.2
100

13.2
5.4
101

13.7
4.9
114

18.63

61

Σ

PT.

15

5-4-38 X Sec. Alley } Blk 19 Boyers Sub
 Miller Walker } " 7 Sub. Lots 20 to 50 Teralta
 Bless From Orange to Polk Bet. Wilson & 35th N.W. 35th +
 B.M. B.P. 4.00 382.12 378.12 Orange

for Out Sta 1400 to Sta 100 see Page 19

T.P. 1.57 374.27 2.42 374.70

6.55 of N. Line = N. ch. Line Polk. Ave

E-25 G. pav 6.25 370.02

E. " " 6.14 370.13

E. ch 5.76 370.51

ch G. pav 6.12 370.15

W. " " 6.06 370.21

W. ch 5.70 370.57

W+25 6.02 370.25

at 100 = N. Line Polk. Ave

10.20 W. of ch = cmt. ch N. End 5.65 370.62

10.20 " " = Pav " " 5.76 370.51

ch " " " 5.87 370.40

9.65 E. of ch " " " 5.74 370.53

9.65 " " " cmt. ch " " 5.56 370.71

at 20

E 4.0 372.3

ch 4.3 372.0

W. 4.9 371.4

ch Double
 at 11, Garage on E. cmt. floor 10' Back

W 4.0 372.3

ch 3.8 372.5

E 3.6 372.7

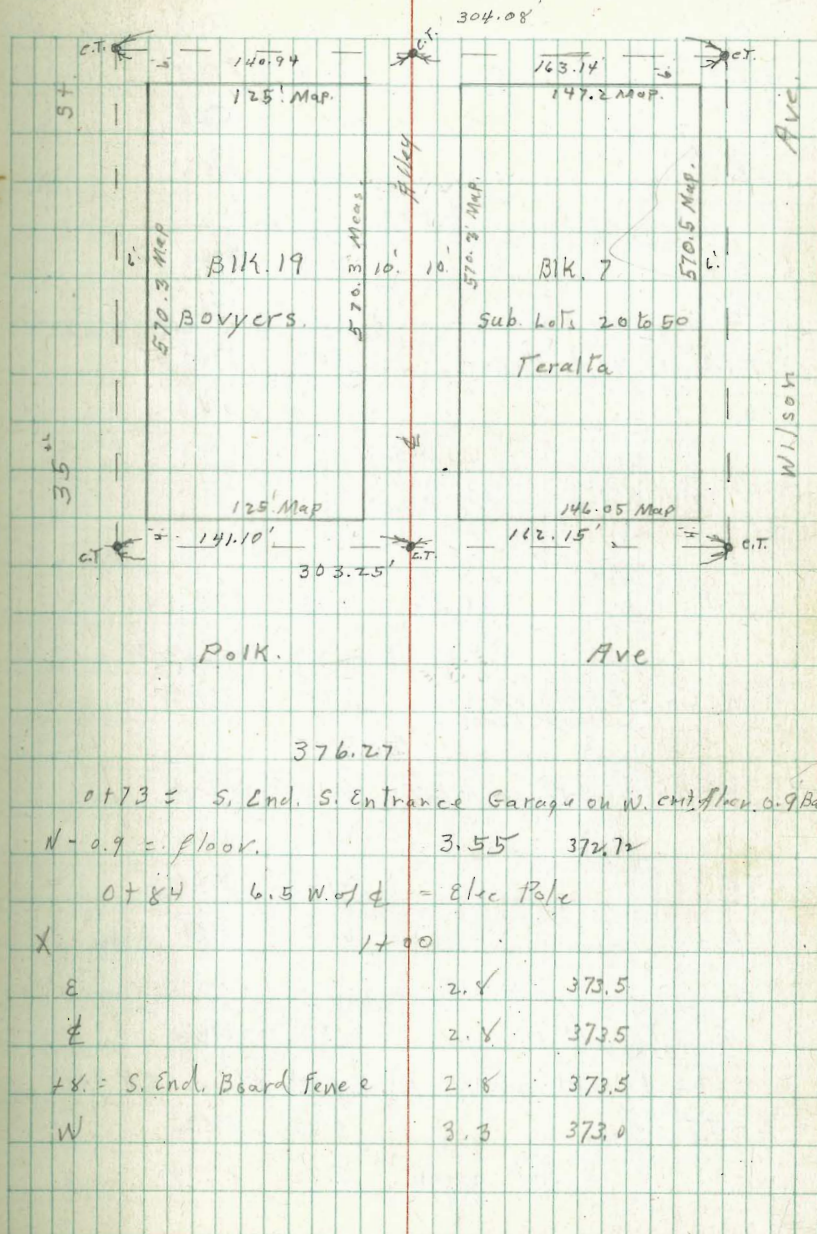
E+5.7 W. End. cmt. approx 3.39 372.88

E+10.0 floor 3.40 372.87

378.12 - 3
 377.05 - 3
 Indexed
 C.S.N.

Orange Ave

16



at 73 = S. End. S. Entrance Garage on W. cmt. floor 0.9 Back
 N-0.9 = floor. 3.55 372.72
 at 84 6.5 W. of ch = Elec Pole
 X
 E 2.4 373.5
 ch 2.4 373.5
 +8. = S. End. Board Fence 2.8 373.5
 W 3.3 373.0

		376.27		
		1+50		
W		3.5	372.8	
+1.8 = Board Fence		3.2	373.1	
±		2.7	373.6	
E		2.7	373.6	
		2+00		
E		2.3	374.0	
±		2.3	374.0	
+9.2 Board Fence		2.2	374.1	
W		2.3	374.0	
		2+02		
7.8 W. of ± = Elec Pole				
T.P.	6.82	380.96	2.13	374.14
		2+31	± 2' cmt. walk on W	
W. Line = { E. End. walk. } { Board Fence. }		6.60	374.36	
		2+50		
W-0.5 Board Fence N. End		6.6	374.4	
W		6.6	374.4	
±		6.6	374.4	
E		6.6	374.4	
		2+75		
± Top. M. H.		6.23	374.73	
2+89 = ± double garage on W. emt. floor		5.5	Back	
W-5.5 floor		5.73	375.23	
W-3.5 E. End. cmt. apron		5.82	375.14	

380.96 17

stucco = garage on E. emt. floor 0.2 in Alley

0.2 W. of E. line floor	5.34	375.58
1.8 W. of E. " W. end. cmt. apron	5.70	375.26
±	6.1	374.9
W	6.1	374.9
3+07 S. End. Fence on E. 0.5' in Alley		
	3+08	
0.2 W. of E. Line = W. End. 2' cmt. walk	5.43	375.53
3+43 Garage on W. dirt. floor N. Back		
W-4' = floor	5.9	375.1
3+33 N. End. above Fence 0.5' in Alley.		
3+50 garage on E. cmt. floor	4'	Back
W	5.8	375.2
±	5.9	375.1
E	5.6	375.4
E+4 = floor	5.37	375.59
	4+00	
E	5.5	375.5
±	5.0	376.0
W	5.4	375.6
4+09 garage on W. dirt. floor	5'	Back
W-5' = floor	5.4	375.6
4+26 Garage on E. under construction	4'	Back
E. Line stub for { Alley } { Grade }	4.91	376.05
	4+50	
W	4.8	376.2
±	4.8	376.2
E	4.8	376.2

380.96

X

5+00

E		3.9	377.1
E		4.1	376.9
W		4.2	376.8
5+00	Garage on w. e. end. floor	3.0	377.1
	" " " " " " " "	4.8	" "
W-3.1	= floor	4.00	376.96
W-0.5	E. End. e. apron	4.11	376.85
E		4.0	377.0
E-W.	End e. apron	3.78	377.18
E+4.8	= floor	3.83	377.13
5+14	= S. End. Picket Fence on East. 0.3 in Alley		
	5+34		
1.4	E. of W. Line = {E. side} S. End. Cont. walk	3.95	377.01
	5+53		
1.2	E. of W. Line = {E. side} N. End. Cont. walk	3.77	377.19
1.2	E. " " " = {E. side} S. End. Fine Cypress Hedge		
	5+55		
E.		3.4	377.6
E+0.3	N. End. Picket Fence	3.4	377.6
E+1.8	= {S. End} W. Side Fine Cypress Hedge	3.4	377.6
E		3.6	377.4
W.		3.8	377.2
T.P.	4.71	381.94	3.73 377.23

381.94

18

5+70.3 = S. Line Orange Ave

9.7	W. of E. cont. ch. S. End.	4.89	377.05
"	" " " Pav. " "	4.90	377.04
9.1	" " " N. End above Cypress Hedge		
E	Pav. S. End	5.26	376.68
8.50	E. of E. = N. End. Cypress Hedge		
9.15	E. of E. = Pav. S. End.	5.06	376.88
"	" " " = cont. ch. " "	4.97	376.97
	N. of S. Line = S. ch. Line of Orange Ave		
E-25	G. Pav	5.66	376.28
E	" "	5.57	376.37
E.	cont. ch.	5.05	376.89
E	G. Pav	5.53	376.41
W	" "	5.45	376.49
W.	cont. ch.	5.22	376.72
W+25		5.37	376.57
chk. Orig B.M.		3.81 -	378.13 = 378.12

outs in Alley Orange to Polk.
bet. 35th & Wilson
See Page 16.

B.M.	4.23	382.35	378.12	N.W. 35 th & Orange
		5+00		
W-25			5.6	376.8
N-2			5.9	376.5
W			5.6	376.8
E			6.3	377.1
E+25			5.6	376.8
		4+50		
E-25			6.3	376.1
E			6.2	376.2
W			6.2	376.2
N-25			6.4	376.0
		4+00		
W-25			7.0	375.4
W			6.8	375.6
E			6.9	375.5
E+25			6.7	375.7
		3+65		
E			7.3	375.1
E+25			7.3	375.1
		3+50		
W			7.1	375.2
+5			7.5	374.7
+25			7.5	374.9

382.35
3+32

19

E			7.0	375.4
E+2			7.4	375.0
+20			7.6	374.8
T.P. B. 40	378.48		7.27	375.08
		3+30		
E			3.1	375.4
+20 Lawn.			3.1	375.4
		3+00		
W			3.6	374.9
W+25			3.8	374.7
		2+90		
E			3.6	374.9
E+2			3.8	374.7
E-25			3.8	374.7
		2+50		
E-25			4.0	378.5
E-2			4.3	378.2
		2+50		
E-25			4.5	374.6
E-5			4.6	373.9
E			4.1	374.4
W			4.1	374.4
+25 Lawn.			4.4	374.1

378.48

2+20

E	4.2	374.3
E-5	4.7	373.8
E-25	4.9	373.6

2+00

E-20	4.5	374.0
E	4.5	374.0
W	4.5	374.0
+2	4.7	373.8
+25	5.0	373.5

1+50

W-25	5.5	373.0
W-2	5.5	373.0
W	5.7	372.8
E	5.0	373.5
+25	5.5	373.0

1+00

E-25	5.5	373.0
E-15	5.7	372.8
E	5.0	373.5
W	5.5	373.0
W+2	5.7	372.8
W+25	5.8	372.7

378.5

20

0+75

E-25	5.7	372.8
E	5.5	373.0

150

+ 12.8
70.5

+ 11.3
65.7

+ 11.2
55.2

+ 11.9
55.5

+ 11.5
55.4

+ 11.9
48.9

+ 11.5
38.9

100

+ 11.0
67.8

+ 11.4
60.4

+ 11.0
55.1

+ 11.0
55.5

+ 11.5
55.4

+ 11.5
47.0

+ 11.1
39.3

150

+ 11.2
81.2

+ 11.0
60.4

+ 11.0
55.1

+ 11.9
55.5

+ 11.0
55.4

+ 11.8
47.0

+ 11.0
44.4

+ 11.4
37.0

144

18" Corr. I.P. Culv. 90°

+ 11.2
75.6

+ 11.2
66.6

+ 11.2
55.2

+ 11.9
55.4

+ 11.0
55.4

+ 11.8
40.8

+ 11.1
37.6

159

+ 11.1
78.1

+ 11.2
67.2

+ 11.2
55.0

+ 11.0
55.3

+ 11.0
55.0

+ 11.6
37.3

+ 11.8
36.4

175.4

Δ 4° 30' Rt.

+ 11.7
78.9

+ 11.8
68.6

+ 11.2
55.0

+ 11.1
55.1

+ 11.6
55.0

+ 11.8
37.8

+ 11.9
36.4

150

+ 11.2
80.5

+ 11.9
70.9

+ 11.2
55.0

+ 11.9
54.9

+ 11.2
54.8

+ 11.6
46.0

+ 11.5
36.4

+ 11.5
35.3

158

59.38

150	+ 12.8	70.5	+ 11.3	65.7	+ 11.2	55.2	+ 11.9	55.5	+ 11.5	55.4	+ 11.9	48.9	+ 11.5	38.9
100	+ 11.0	67.8	+ 11.4	60.4	+ 11.0	55.1	+ 11.0	55.5	+ 11.5	55.4	+ 11.5	47.0	+ 11.1	39.3
150	+ 11.2	81.2	+ 11.0	60.4	+ 11.0	55.1	+ 11.9	55.5	+ 11.0	55.4	+ 11.8	47.0	+ 11.0	44.4
144	+ 11.2	75.6	+ 11.2	66.6	+ 11.2	55.2	+ 11.9	55.4	+ 11.0	55.4	+ 11.8	40.8	+ 11.1	37.6
159	+ 11.1	78.1	+ 11.2	67.2	+ 11.2	55.0	+ 11.0	55.3	+ 11.0	55.0	+ 11.6	37.3	+ 11.8	36.4
175.4	+ 11.7	78.9	+ 11.8	68.6	+ 11.2	55.0	+ 11.1	55.1	+ 11.6	55.0	+ 11.8	37.8	+ 11.9	36.4
150	+ 11.2	80.5	+ 11.9	70.9	+ 11.2	55.0	+ 11.9	54.9	+ 11.2	54.8	+ 11.6	46.0	+ 11.5	36.4
158	+ 11.1	78.1	+ 11.2	67.2	+ 11.2	55.0	+ 11.0	55.3	+ 11.0	55.0	+ 11.6	37.3	+ 11.8	36.4

59.38

ch. to B.M. p 29 98d 78.62 78.91
-0.29

178

+80

+60

+38.06 F.C.

177

+50

176+20 CUM INTER

88.46

8

28

CANTINO del PRO

0.30 dif. betw. Miller + Walter at 67th St. EXT.

873

1.7

87.8

0.7

87.7

0.6

87.5

0

85.5

W 0

810
7.5
4.5

75.81
2.2
7.0

FLANIER

80.86
7.00
2.1

83.1
5.2
2.5

80.86
7.00
2.1

83.5
5.0

83.8
2.7
1.2

80.1
2.7
2.7

76.3
1.2
5.0

H.W. WAY

88.46

Mission Valley B.M. levels

B.M. #17	1.70	66.08		64.38
T.P.	0.03	53.01	13.10	52.98
T.P.	2.50	42.36	11.15	41.86
T.P.	4.66	45.79	3.23	41.13
T.P.	4.07	45.74	4.12	41.67
T.P.	8.75	45.59	8.90	36.84
T.P.	11.77	54.04	9.32	42.27
T.P.	12.45	66.19	0.00	53.74
T.P.	12.88	79.03	0.04	66.15
T.P.	10.46	89.47	0.02	79.01
Set B.M.			10.56	78.91

chisel cut bridge M.H. RIA 536 17. of 206 + 37

CANTINA del RIO

by Miller

S.E. Top Conc. Hd. w/ck. CITY LINE + REYNOLDS' AVE.

A table with 5 columns and 20 rows. The columns are defined by vertical red lines, and the rows are defined by horizontal blue lines. The table is currently empty.

A table with 1 column and 20 rows. The rows are defined by horizontal blue lines. The table is currently empty.

6-24-38
Miller
Walker
Bliss

X See Alley Bk. 113 Univ Hts.

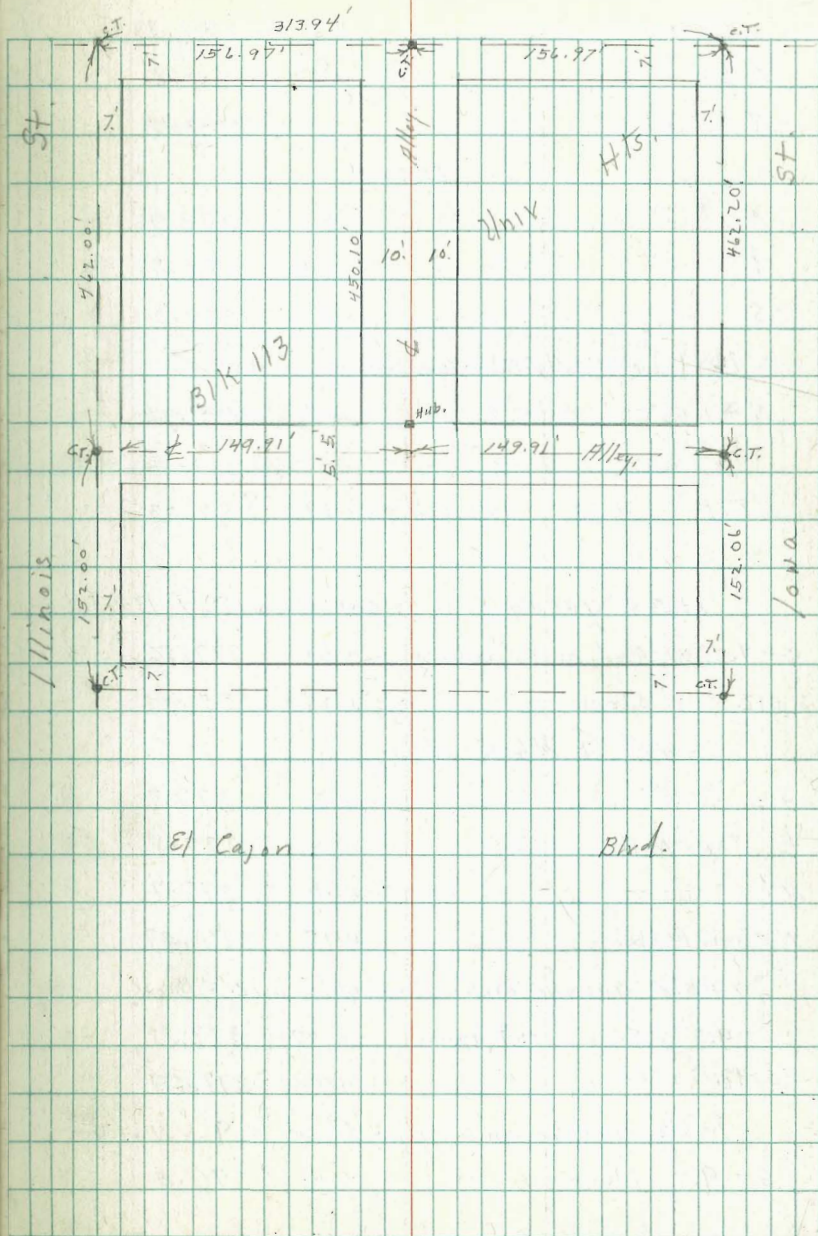
B.M.	11.29	384.22	372.93	S.E. Iowa & El Cajon
E & W. Alley 10' wide				
14' E of W. Line = W. lb. Iowa				
S.	cmt. cl.		6.09	378.13
S.	pay		6.66	377.56
E	"		5.53	378.69
N.	"		6.34	377.88
N.	cmt. cl.		5.64	378.58
0+00 = W. Line Iowa St.				
N.	cmt. cl.	N. End.	5.51	378.71
N.	pay.	" "	5.77	378.45
E	"	" "	5.98	378.24
S.	"	" "	5.84	378.34
S.	cmt. cl.	" "	5.58	378.64
0+15				
S			4.4	379.8
E			4.6	379.6
N			4.4	379.8
H. Lawn			4.1	380.1
0+18 E. End. conc. wall 4' High 1' N. of N. Line				
0+68				
N			4.8	379.4
E			5.0	379.2
S			5.1	379.1

Indexed
C.S.K.

Meade

Ave

31



384.22 ✓
070

S	4.9	379.3
E	4.7	379.5
N	4.7	379.5

1700

N	5.3	378.9
E	5.4	378.8
S	5.2	379.0

1419 } Sw. End. above wall 1.4' N. of N. line
W. " off Entrance Garage 1.4' N. of N. line

N. + 1.5' cmt. walk. S. end.	5.31	378.91
------------------------------	------	--------

T.P. 4.19 382.22 ✓ 6.19 378.03 ✓

1438 garage on S. cmt. floor 12.7' Back

S-9.7' N. End. cmt. apron	4.66	377.56
S-12.7' = floor	4.24	377.94

1449 1/2' E N+S Alley

S	4.5	377.7
E Top. M.H.	4.7	377.5
N	4.5	377.7
N. Top. Hub.	4.75	377.47

1458 garage on S. cmt. floor 12.5' Back

S-9.5' = N. End. cmt. apron	5.00	377.22
S-12.5' = floor	4.73	377.49

1482 garage on S. cmt. floor 9.8' Back

S-9.8' = floor	5.4	376.8
----------------	-----	-------

382.22

Alley BIK. 113 2-H.

32

1495 garage on S. cmt. floor 12.0' Back

S-9' = N. End. cmt. Apron	5.76	376.46
S-12.0' = floor	5.48	376.74

2700

N	5.5	376.7
E	5.7	376.5
S	5.7	376.5

2722 double garage on N. cmt. floor 16.0' Back

N-10.2' = S. end. cmt. Apron	5.70	376.52
N-16.0' = floor	5.45	376.77

2750

S	6.8	375.4
E	6.8	375.4
N	6.6	375.6

2770

N	7.3	374.9
E	7.3	374.9
S	7.3	374.9

2785

S	8.5	373.7
E	8.9	373.3
N	8.3	373.9

2+99. $\frac{1}{2}$ = E. Line // Illinois St.

N.	cont. d.	E. End.	12.19	370.03
N.	pay.	" "	12.45	369.77
d	"	" "	12.68	369.54
S	"	" "	12.73	369.49
S	cont. d.	" "	12.48	369.74

14' W. of E. Line = E. d. // Illinois St

S.	cont. d.		12.70	369.52
S.	pay		13.22	369.00
φ	"		13.16	369.06
N.	"		12.94	369.28
N.	cont. d.		12.29	369.93

N. + S. Alley

0+00 = N. Line E + W. Alley 20' wide

W			4.5	377.7
φ			4.5	377.7
E			4.2	378.0

0+02 = S. End 4 garages on E. cont. floor 0.8' Back

0.4' W. of E = W. edge cont. apron.	3.86	378.36
0.8' E. of E = floor.	3.38	378.84

0+38 = N. End. also 4 garages on E. 0.8' Back

0.7' W. of E. Line = W. End. cont. apron	3.70	378.52
0.8' E. of E = floor	3.45	378.77

0+41 = φ 2.2' walk. on E.

1.0' W. of E. Line = W. End. cont. walk	3.92	378.30
---	------	--------

T.P. 8.53 386.82 3.93 378.29

			0+40	
E			8.6	378.2
φ			8.7	378.1
W			9.0	377.8
			0+70	
W			8.4	378.0
φ			8.6	378.2
E			8.4	378.4
			1+00	
E			7.8	379.0
φ			8.3	378.5
W			8.3	378.5
			1+40	
W			7.9	378.9
φ			7.6	379.2
E			7.1	379.7
			1+57 garage on E. cont. floor	
0.3' W. of E. Line = floor		5.87		380.95
+1.1		6.4		380.7
φ		6.4		380.4
W		6.6		380.2
			1+77 S. End 4 garages on W. cont. floor 5.8' Back	
W-5.8' = floor		6.37		380.45

386.82

2+00

E			
±	6.3	380.5	
W	6.4	380.4	

2+07 = 1/2 End. above garages on W 5.8 Back

W-5.4 = floor 7.00 379.82

From 1+64 to 2+00 Board Fence on E. 0.5 in Alley.

2+12 ± double garage on E. dirt floor 4.0 Back

E-4.0' = floor 5.6 381.2

2+20

W	6.3	380.5	
±	6.2	380.6	
E	6.1	380.7	

2+33

E	5.9	380.9	
±	5.6	381.2	
W	4.8	382.0	

2+50

W	4.7	382.1	
±	5.7	381.1	
E	5.7	381.1	

2+60

E	5.8	381.0	
±	6.0	380.8	
W	6.0	380.8	

386.82

2+87

34

W	5.9	380.9	
±	6.0	380.8	
E	5.8	381.0	

3+00

E	5.6	381.2	
±	5.4	381.4	
W	4.1	382.7	

3+08 garage on E. dirt. floor 1.4 Back

E-1.4 4.7 382.1

3+25

W	4.9	381.9	
±	5.0	381.8	
E	4.9	381.9	

3+50

E	4.3	382.5	
±	4.2	382.6	
W	4.1	382.7	

3+88 ± double garage on E. ent floor 5.2' Back

0.2' w of E = w. end. apron 3.70 383.12

E-5.2 = floor 3.63 383.19

386.82

	4+00		
W-		4.5	382.3
+1		4.1	382.7
±		4.0	382.8
E		4.0	382.8

4+07

E		3.4	383.0
±		4.0	382.8
W		4.1	382.7

4+35

W		4.0	382.8
±		4.1	382.7
+7		3.9	382.9
E		3.3	383.5

4+50⁰ = S. Line Meade st.

9.8' E of ± = cont. of S. End.		4.53	382.29
9.8' " " " = pay " "		4.72	382.10
± " " "		5.12	381.70
W " " "		4.94	381.88
W cont. of " "		4.75	382.07

14' N of S Line = S. of Line Meade st.

W-20 pay		5.65	381.17
W "		5.50	381.32
W cont. of		4.90	381.92
± pay		5.44	381.38
E "		5.35	381.47
E		4.73	382.09
+10		5.30	381.52

386.82

35

T.P.	6.19	383.94	9.07	377.75
orig BM			11.02	372.92 = 372.93

Moore
7/27/38.

indexed
C.S.K.

X sec Hilley BIK 76 Ocean Beach
20' wide

NEAR 695 12.81 6.76 Cape May Bacon

00-12 W cb Bacon
S cb 7.61 5.20
S pav 7.86 4.95
C " 7.84 4.95
N " 7.84 4.97
N cb 7.08 5.73

0+00 W L Bacon

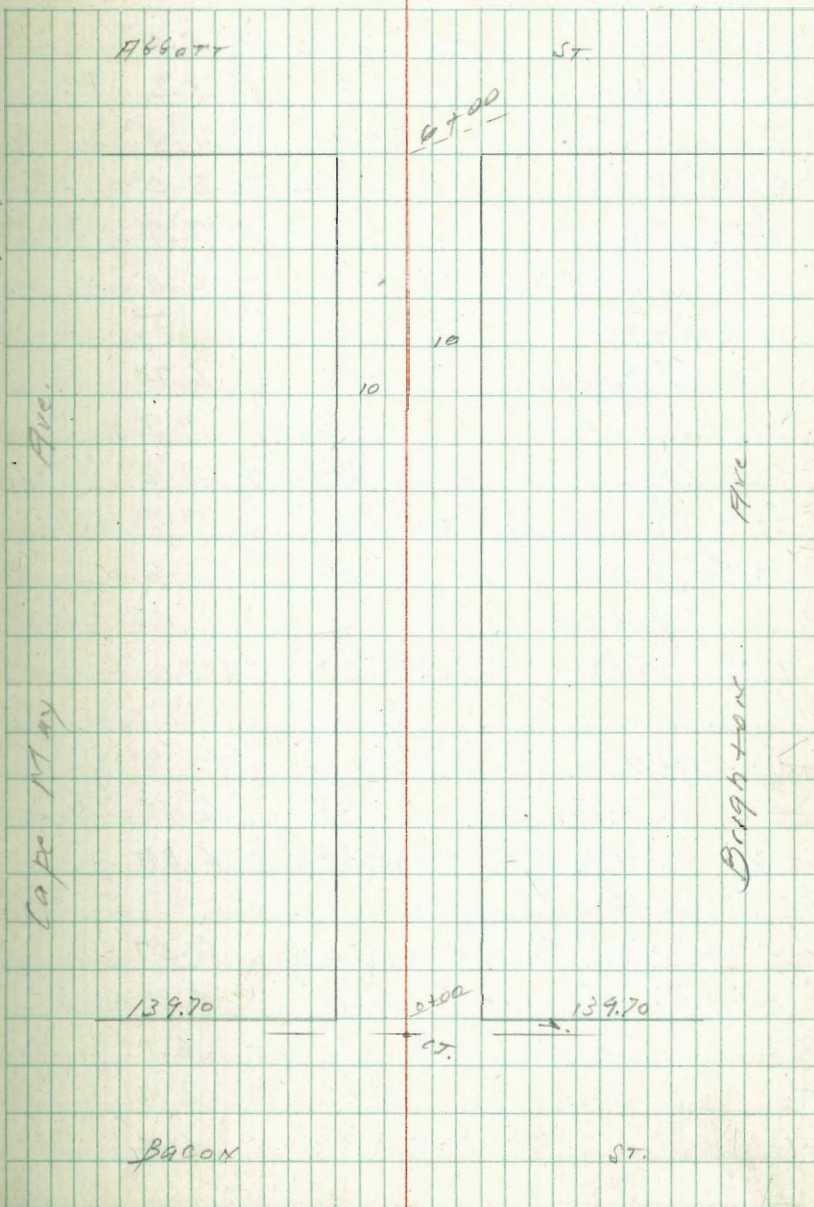
N cb 6.69 6.12
N pav 7.27 5.54
C " 7.71 5.09
S " 7.33 5.48
S cb 7.21 5.60

0+25

-5 6.9 5.9
S 5.8 7.0
C 5.5 7.3
N 5.9 6.9

0+50

N 5.8 7.0
C 5.0 7.8
S 5.2 7.6
+7 7.1 5.7



0+80			
-15		7.2	5.6
-10		7.2	5.6
S		4.9	7.9
C		4.8	8.0
+7		5.1	7.7
N		6.0	6.8
0+94			
-10	2 Sim. gar. Cor. fl.	6.07	6.74
N		5.7	7.1
C		5.2	7.6
S		5.3	7.5
+15		7.2	5.6

T.P. 2.96 10.15 ✓ 5.62 7.19

1+11			
S-8	EL. 4 Car gar.	3.69	6.46 ^{Cor. floor}
-6.5	Cem. apron	3.84	6.29

1+46			
S-7.8	WL 4 Car gar.	3.58	6.57 "
S-6.4	apron	3.77	6.38
S		4.1	6.1
C		3.8	6.4
N		3.8	6.4

1+53			
S-8	EL. 4 car gar.	3.30	6.85 Cem fl.
S-6.5	apron	3.65	6.50
1+88			
S-8	WL 4 car gar	3.30	6.85 " "
S-6.5	apron	3.58	6.57
S		4.8	5.9
C		4.9	5.3
N		4.9	5.3

2+13
 5' Toilet in alley 1.5 on N.

2+20			
N		5.6	4.6
C		5.6	4.6
S		5.7	4.5

2+39			
S-3	double gar.	5.4	4.6 dirt fl.
S		5.4	4.6
C		5.6	4.6
+5		5.8	4.4
N		6.4	3.8

2+70			
-5		4.0	4.2
N		6.0	4.2
+5		4.7	5.5
C		4.8	5.4
S		4.7	5.5

10.15

3400			
S		3.9	6.3
C		3.8	6.4
N		3.7	6.5
3419			
-S		1.1	9.1
N		3.7	6.5
C		3.4	6.6
S		3.1	7.1
+4	a.pron	2.82	7.33
+7.5	EL 3 car gas	2.68	7.47
3445			
S	-7.5 WLS "	2.45	7.50
S	-6 a.pron	2.83	7.32
S		2.9	7.3
C		2.9	7.3
+7		2.7	7.5
N		1.4	8.6
T.P.	8.97 16.35	2.77	7.38
3451			
-1.7	EL. Corr. 1 gas. fl.	7.50	8.85
N		8.0	8.4
C		7.5	8.9
S		7.8	8.6

16.35

38

4402			
S		6.2	9.8
C		4.7	9.7
N		7.5	8.9
+1.7	WLS Corr. gas. fl.	7.50	8.85
4435			
N		6.4	10.0
C		4.6	9.8
S		7.0	9.4
4450			
S		7.0	9.4
C		6.2	10.2
N		4.6	11.8
+5	Sand hill	3.0	13.4
4475			
-5	Sand hill	3.2	13.2
N		4.6	11.8
C		5.8	11.1
S		5.5	10.9
5400			
S		5.0	11.4
C		5.8	11.1
N		3.8	12.6
+5	Sand hill	2.6	13.8

5+24

N		0.0	16.4
+2	Top Wood Wall	0.0	16.4
+2	Bot " "	2.8	13.6
C		5.0	11.4
S		5.3	11.1
+1.5	NW Cor. of 30x40	5.35	11.00

gar. cert. fr. W. entrance

5+50

S		5.2	11.2
C		5.0	11.4
+9.2	Bot. Wood Wall	1.1	15.3
N	Top " "	0.0	16.4

5+80

-3	E Frame house	0.0	16.4
N		1.3	15.1
C		5.2	11.2
S		5.7	10.7

5+90

N	Top Conc. wall	1.77	14.58
N	Bot ground	5.84	10.51

5+96 SAME

5+98.5

N	E 3' Conc. Step 36' wide	5.83	10.52
---	-----------------------------	------	-------

6+00

N	cb	6.48	9.87
N	Par.	6.77	9.58
C	"	7.14	9.21
S	"	6.75	9.60
S	cb	6.66	9.69
6+10 = E. cb. Abbott			
S	Par.	7.44	8.91
C	"	7.35	9.00
N	"	7.32	9.03

ch. to NW Abbott	7.44	8.91	8.89
			0.0 ✓

5+84

N - 1.5 E house 0.0 16' wide

00 to 2+75 alley surfaced with red dirt

2+75 to 6+00 Blow beach sand

8-24-38
miller
Walker
Belian

43rd St. Paymt. Grades. Mark of St. South.
80' wid. - 20' cbs. 40' Rdw.

	E. d	E. G	W. G	W. d
+ 20	5.86	6.54	1.54	5.95
	128.74	128.76	128.76	128.35
2 + 00	5.60	6.29	6.29	5.60
	128.70	128.01	128.01	128.70
+ 80	5.33	6.04	6.04	5.40
	128.77	128.26	128.26	128.90
+ 60	5.11	5.80	5.80	5.20
	128.19	128.50	128.50	129.10
+ 40	5.01	5.60	5.60	5.10
	128.29	128.70	128.70	129.20
+ 20	5.00	5.50	5.50	5.03
	128.30	128.50	128.50	129.27
1 + 00	5.05	5.63	5.70	5.20
	128.25	128.67	128.60	129.10
+ 80	5.23	5.83	6.00	5.45
	128.07	128.77	128.20	128.55
0 + 60	5.54	6.13	6.50	5.82
	128.76	128.17	128.50	128.48
0 + 40	5.96	6.63	7.10	6.44
	128.34	128.67	128.20	128.56
0 + 20	6.45	7.13	7.80	7.20
	127.85	128.17	127.10	128.10
Pay 0 + 00	6.74	7.63	8.55	7.94
S. Line Market	127.36	128.57	125.75	126.36

B.M. 6.76 π 134.30 127.54 S.E. 43rd \downarrow Market St

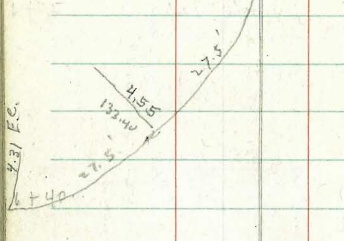
Index of
C.S.K. E. d E. C 1/4 \oplus 1/4 W. G U. d

	E. d	E. C	W. G	U. d
4 + 60	10.10	10.80	10.80	10.15
	127.85	127.15	127.15	127.80
4 + 40	10.55	11.20	11.20	10.55
	127.40	126.95	126.95	126.40
4 + 20	10.80	11.50	11.50	10.85
	127.15	126.45	126.45	127.10
S. End. inlet	11.00	12.04	12.10	11.07
3 + 90	126.95	125.91	125.85	126.88
N. End. inlet	11.00	12.04	12.11	11.10
3 + 86	126.95	125.91	125.84	126.85
+ 60	11.04	11.75	11.75	10.95
	126.91	126.20	126.20	127.00
+ 40	10.92	11.50	11.60	10.59
	127.03	126.35	126.35	127.06
+ 20	7.09	7.80	7.80	7.13
	127.21	126.50	126.50	127.17
3 + 00	6.83	7.54	7.54	6.87
	127.47	126.76	126.76	127.43
+ 80	6.60	7.29	7.29	6.67
	127.70	127.01	127.01	127.63
+ 60	6.44	7.04	7.04	6.50
	127.86	127.26	127.26	127.80
2 + 40	6.12	6.79	6.79	6.18
	128.17	127.51	127.51	128.12

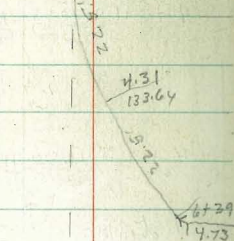
π 137.95 π 134.30

Wd

6+75
P.C. 35d Rad
3.76
134.19
4.44



4.44
134.19
3.76
6+75 P.C.



6+20
D.C.
6.12
131.83



P.C. 35 Rad
5+65
7.11
130.84
7.80

5+40
7.86
130.09
8.56

5+20
8.50
129.45
9.16

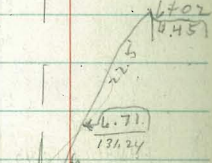
5+00
9.10
128.81
9.76

4+80
9.65
128.30
10.28

4+60
10.10
122.85
10.80

∑ 137.95

131.70
6.17
5.78
0.40



6+07
6.45
4.67
131.24
7.90
131.9

7.23
130.72
8.00

8.66
129.91
8.58

9.24
129.37
9.10

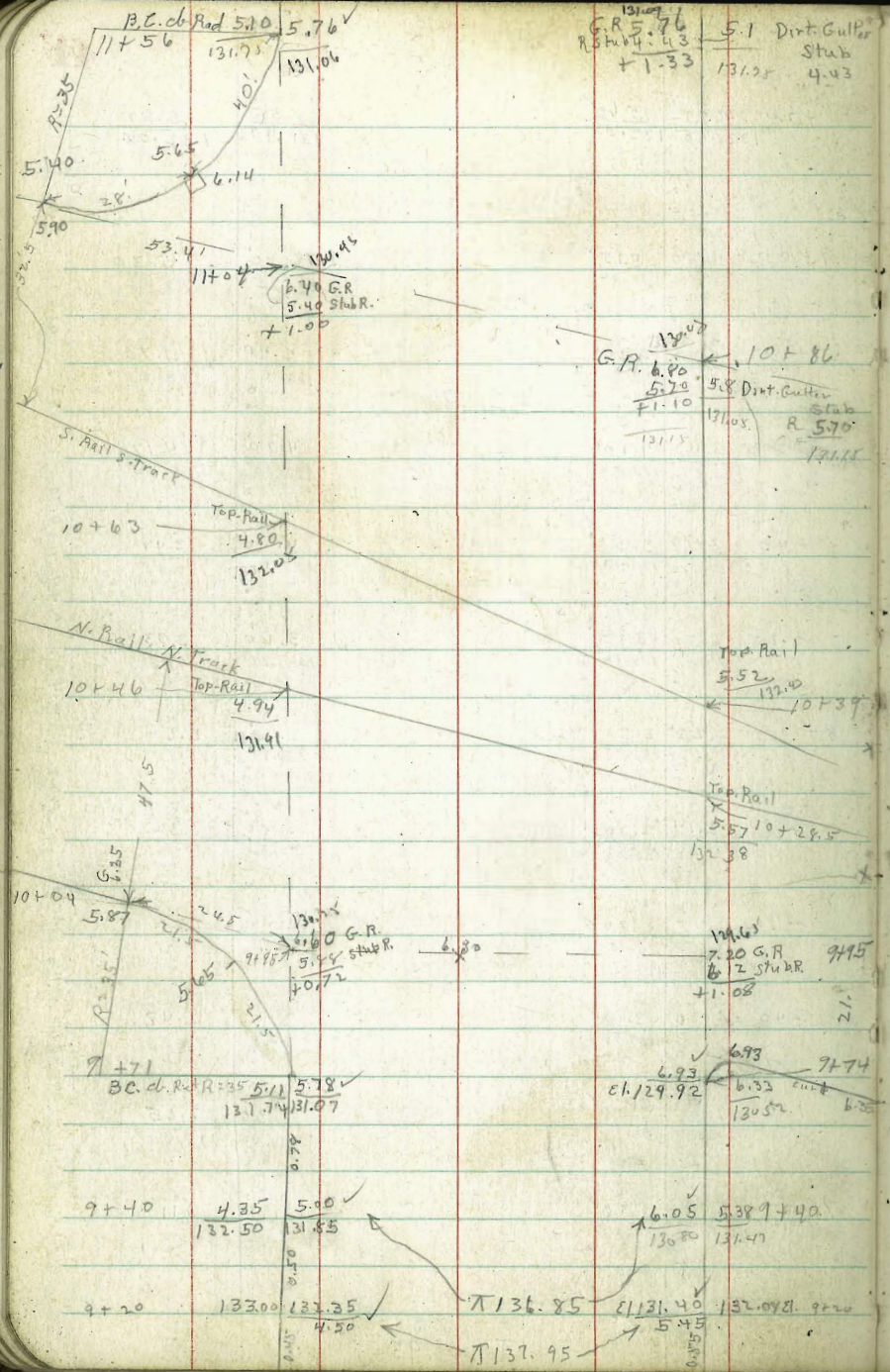
9.76
128.83
9.68

10.28
128.27
10.15

10.80
127.80

+20	4.95	5.60	6.55	5.87	
	133.06	132.35	131.40	132.08	0.57
					0.55
9+00	4.50	5.15	6.00	5.30	
	133.45	132.50	131.95	132.65	0.68
					0.60
+80	4.00	4.15	5.40	4.70	
	133.50	133.30	132.55	133.25	0.53
					0.55
+60	3.43	4.10	4.80	4.17	
	134.57	133.85	133.15	133.75	0.70
					0.70
+40	2.90	3.55	4.20	3.47	
	135.05	134.40	133.75	134.45	0.44
					0.44
+20	2.50	3.15	3.10	3.03	
	135.45	134.80	134.35	134.92	0.43
					0.43
8+00	2.28	2.90	3.10	2.60	
	135.67	135.05	134.85	135.35	0.28
					0.28
+80	2.14	2.70	2.40	2.32	
	135.81	135.25	135.15	135.63	0.44
					0.44
+60	2.15	2.80	2.10	2.28	
	135.86	135.15	135.05	135.62	0.14
					0.14
+40	2.30	3.00	3.10	2.42	
	135.85	134.95	134.85	135.53	0.23
					0.23
+20	2.60	3.30	3.30	2.45	
	135.35	134.65	134.60	135.30	0.44
					0.44
7+00	3.00	3.70	3.70	3.11	
	134.85	134.25	134.25	134.84	0.51
					0.51
	3.76	4.44	4.44	3.76	
	134.19	132.57	133.51	134.19	

∑ 137.95



Side	Gutter	Wod.	R.P. Stab
$\begin{array}{r} 2.00 \\ 12+87 \end{array}$	$\begin{array}{r} 2.00 \\ 134.75 \\ 134.19 \end{array}$	$\begin{array}{r} 134.19 \\ 2.19 \\ 133.98 \end{array}$	$\begin{array}{r} \text{Dirt Gutter} \\ \text{Stab} \\ 2.06 \\ 134.79 \end{array}$
$\begin{array}{r} 12+43.7 \\ 3.00 \\ 133.85 \end{array}$	$\begin{array}{r} 3.70 \\ 133.15 \end{array}$	$\begin{array}{r} 133.15 \\ 2.7 \\ 133.15 \end{array}$	$\begin{array}{r} \text{Dirt Gutter} \\ \text{Stab} \\ 3.35 \\ 133.50 \end{array}$
$\begin{array}{r} 12+00 \\ 4.06 \\ 132.79 \end{array}$	$\begin{array}{r} 4.73 \\ 132.12 \end{array}$	$\begin{array}{r} 132.12 \\ 4.73 \\ 132.45 \end{array}$	$\begin{array}{r} \text{Dirt Gutter} \\ \text{Stab} \\ 3.56 \\ 132.56 \end{array}$
$\begin{array}{r} 11+56 \\ 5.10 \\ 131.35 \end{array}$	$\begin{array}{r} 5.76 \\ 131.05 \end{array}$	$\begin{array}{r} 131.05 \\ 5.76 \\ 131.05 \end{array}$	$\begin{array}{r} \text{Dirt Gutter} \\ \text{Stab} \\ 4.43 \end{array}$

9-8-38
miller
Walker
Bliss

Re. X. Sec. Alley Bk. 143 Univ Hts.
See F. B. 1469 - 31 for Orig. X. Sec.

B.M. B.P.	0.99	335.96	334.97	S.E. - Polk & Georgia
T.P.	0.20	324.00	12.16	323.80
T.P.	0.56	312.05	12.51	311.49
+00 = N. Line Polk. Ave				
E-1		6.8		
E = cnt. d. & Pav. N. End & S. End. cnt. wall Top		6.39		305.66
+8 " " "		5.39		306.16
± " " "		5.06		306.99
W " " " & dirt to N.		3.11		308.94
W dt " "		2.51		309.54
+34				
W		3.2		308.9
+1		4.6		307.5
±		5.4		306.7
E		6.3		305.8
+0.1 Top. Δ conc wall		6.09		305.96
+1.		7.3		304.8
+37				
E-2.1	N. End. wall. S. Edge - W. End. cnt. wall	6.10		305.95 Top. wall
		7.29		304.76 cnt. walls
+40 S. Side garage on E. cnt. floor 5.1 Back.				
E-5.1 floor		7.18		304.87
E		7.1		305.0
+5		6.1		306.0
±		5.4		306.7
+0.7 N. edge M. H.		5.35		306.70

indexed
C.S.R.

312.05

43

+9		4.6		307.5
W		3.0		309.1
S. End. Double garage on W. dirt floor 4.7 Back				
+5.6	S. End. Trippl		"	7.5 "
+5.6 S. End. Trippl " " E. cnt. " "				
W-4.7 = floor		3.4		308.7
W		4.0		308.1
±		5.3		306.8
+6		5.8		306.3
E = S. End. W. Edge cnt. apron				
+4.5		7.16		304.89
+7.5 = floor		6.85		305.17
+72 N. End above garage on W.				
W-4.7 = floor		3.4		308.7
+84 = N. End. above Trippl garage on E.				
E-7.5 = floor		6.91		305.14
E-4.5 N. End. cnt. apron		7.13		304.92
E = " " N. edge " "		6.50		305.55
+5		6.0		306.1
±		5.7		306.4
+5		5.1		307.0
W		3.2		308.9
+90 ctn. double garage on W. dirt floor 7.8 Back				
W-7.8 = floor		2.0		300.1

1+01 Garage on E. end floor 4.3 Back.

W	3.8	308.3
+3	5.2	306.9
⊕	6.1	306.0
E	6.8	305.3
+2.7 W. end. ent. apron.	7.07	304.98
+4.3 = floor	6.93	305.13

1+26

E-5	7.8	304.3
E. ground to s	7.3	304.7
+1.0 = Top. S. End. ent. wall	6.62	305.43
+1.0 ground.	7.3	304.8
⊕	6.5	305.6
W	5.6	306.5

1+31 S. side. House on E. 0.5 in Alley

9.5 E. of ⊕ = floor 5.95 306.20 306.26

1+32 = N. End. ent. wall on E. 1.3 in Alley

9.7 E. of ⊕ dist.	7.0	305.1
9.5 " " " " front. of House	7.0	305.1
8.7 E. of ⊕ Top. wall	4.23	305.42

1+47

W	4.4	302.7
+3	5.8	306.3
⊕	6.5	305.6
+9.5 Face of House	6.9	305.2

1+49. E = N. End. House

E-5	10.0	302.1
E.	9.0	303.1
+0.5 = N.W. Cor House	9.0	303.1
+3	8.7	303.4
+4	7.1	305.0
⊕	6.6	305.5
+7	6.1	306.0
W	4.8	302.3

1+70

W	6.0	306.1
+6	7.0	305.1
⊕	7.3	304.8
+5	7.4	304.7
E.	9.6	302.5
+10	10.2	301.9

1+71

-1.0	11.6	300.5
-4.2 = S.W. Cor Garage	10.9	301.2
E	7.4	304.7
+5	7.4	304.7
⊕	7.4	304.7
+4	7.1	305.0
W	6.1	306.0

1790 - N. End. N. Entrance Garage on E. dirt floor 4 1/2 Back

W	6.9	305.2
+6	8.2	303.9
⊕	8.3	303.8
+6	8.5	303.6
E	11.7	300.4
+4.2 = N.W. Cor. garage	11.7	300.4
+10 = Dr Door = floor	12.0	300.0
2+12.		
-5	11.4	300.7
E	10.8	301.3
+5	9.9	302.3
⊕	9.7	302.4
+4	9.6	302.5
W	8.3	303.8
2+31 garage on E dirt floor 2.5 Back		
W	8.7	303.4
+7	10.3	301.8
⊕	10.7	301.4
E	10.7	301.4
E+2.5 = floor	10.7	301.4

2+37 S. End. Board Fence on E. 0.6 in Alley

2+50 " " " " 0.4 "

2+51 " " on E. line

2+6 S. End. Garage on E. 0.5 in Alley
N " above fence on 0.5 " "

2+80 = N. End. above Garage on E. 0.5 in Alley, North side

E-5. N. Side Garage	13.8	298.3
E	12.4	299.7
+0.5 = N.W. Cor	12.4	299.7
⊕	11.5	300.7
+0.7 = N.H.	11.12	300.3
+5	11.0	301.1
W	10.0	302.1
3+04		
W	10.9	301.2
+4	11.8	301.3
⊕	12.3	299.8
+8	12.6	299.5
E = S.W. Cor Garage	13.5	298.6
+5	14.2	299.9

T.P. 6.44 306.38 12.11 299.94

N. End. above garage on E dirt floor

3+25 S " Garage on E. N. Entrance		
5 " W. edge ext. wall		
E. Top wall	6.86	299.52
E	7.5	298.9
⊕	7.3	299.1
+6	6.7	299.7
W	7.0	304.4 299.4

306.38

3+41 = N. End. above North Entrance Garage on E. dirt floor

W	5.3	301.1
+4	7.0	299.4
⊕	7.4	299.0
E. N.W. cor. garage	7.5	298.9
E. Top wall	6.93	299.45
E +8.5 Base of wall	8.2	298.2
E +5.0 floor	8.2	298.2

3+44.5

E. N. End. above wall	6.93	299.45
E. ground.	7.8	298.6

From 3+44 to 3+62 = 3 garages on E. 30' Back

3+50 = S. End. 4 garages on W. int. floors. 5.2 Back

W-5.2 floor	6.21	300.17
-------------	------	--------

3+62 S. End. double Garage on E. dirt floors on line

E-5	9.1	292.3
E. ground + floor	7.9	298.5
⊕	7.5	298.9
W.	6.6	299.7

3+82 = N. End. above 4 garages on E

W	6.7	299.4
⊕	7.3	299.1
+9 = S. End. conc. wall	8.15	298.23
E = floor	8.1	298.3
+7.	10.5	295.9
+5	10.7	295.7

306.38

46

3+89 = N. End. above 4 garages on W. 6.5 Back

W-6.5 = floor 6.43 299.95

3+94 { N. End. above ent. wall on E 8.6 E. of ⊕
 on Eucalyptus Tree 30' diam. W. edge 8.9' E of ⊕

8.6 E. of ⊕ = N. End. wall	7.8	298.6
E. Back of wall	8.0	298.4
4+02 { S. End. double garage on W. dirt floor 8.5 Back S. " " " " E. ent " 2.5 "		

E-2.5 = floor	8.6	297.8
E	8.6	297.8
⊕	8.1	298.3
W	7.9	298.5
+8.5 = floor	7.2	299.2

4+21 = N. End. above garages on E + W

W-8.5 = floor	7.2	299.2
W	7.8	298.6
⊕	8.4	298.0
E	8.7	292.7
+2.5 floor	8.6	297.8

4+40 garage on W. dirt. floor 3.5 Back.

W-3.5	7.1	299.3
4+70 double garage on E. ent. floor 3.0 Back		
E-3. = floor	7.4	299.0
E	7.5	298.9
⊕	7.4	299.0
W	6.6	299.8

	306.34	
5		
4 + 05 garage on W dirt floor 5.0 Back		
W - 5.0 = floor	3.2	303.2
W	4.1	302.3
♀	5.5	300.9
♂	5.5	300.9
+1	6.0	300.4
+5	6.2	300.2
5		
4 + 15 garage on W dirt floor 5.0 Back		
W - 5.0 = floor	2.2	304.2
5 + 19 garage on E. cut floor 3.2 Back		
E - 3.2 = floor	5.42	306.96
5 + 24 S. End. double garage on W cut floor 2.5 Back		
E	5.1	301.3
♀	4.8	301.6
+3	4.6	301.8
W	3.2	303.2
+2.5 = floor	2.23	304.15
5 + 31 garage on E. cut floor 7.4 Back		
E - 7.4 = floor	5.12	301.26
E - 3 = W. End. cut apron	5.22	301.46
5 + 49 = N. End. double garage on W.		
W - 2.5	2.3	304.1
W	2.9	303.5
+8	4.1	302.3
♀	4.2	302.2
♂	4.3	302.1

	306.38	
5 + 65		
E	3.7	302.7
♀	3.7	302.7
W	2.4	304.0
5 + 98 ⁸⁵ = 5. Lin - Howard Ave		
10.25 W of ♀ = ♂ S. End	1.80	303.58
10.2 " " " Pav. E. End	2.31	304.09
E " " "	3.53	302.85
+4 " " "	3.80	302.58
+9.7 = Pav. E. End	3.83	302.55
+9.7	3.75	302.63

10-20-34
 2nd
 Water
 Bless

X Sec. Alley Bldg. III. U.H.
 S + W. Alley. 10' wide

Indexed
 C.S.K.

S. 2 Ohio
 El Cajon

BM 8.96 372.06 363.10

20' E. of W. = W. d. Ohio St.

S.	conc. ch	6.45	365.61
S.	par	7.00	365.06
±	"	6.92	365.14
N	"	6.84	365.24
N	concep.	6.15	365.91

0+00 = W. Line Ohio St.

N.	conc. ch. W. End.	5.94	366.12
N	par " "	5.75	366.31
±	" " "	6.33	365.73
S	" " "	6.13	365.93
S	ch. " "	5.89	366.17

0+00 = E. End. 8" conc. ch. on N. 0.8' in Alley

0.8' S. of N = Top. ch. E. End 5.19 366.87

0+16 1/2 = W. End. above ch. on N. 0.8' in Alley

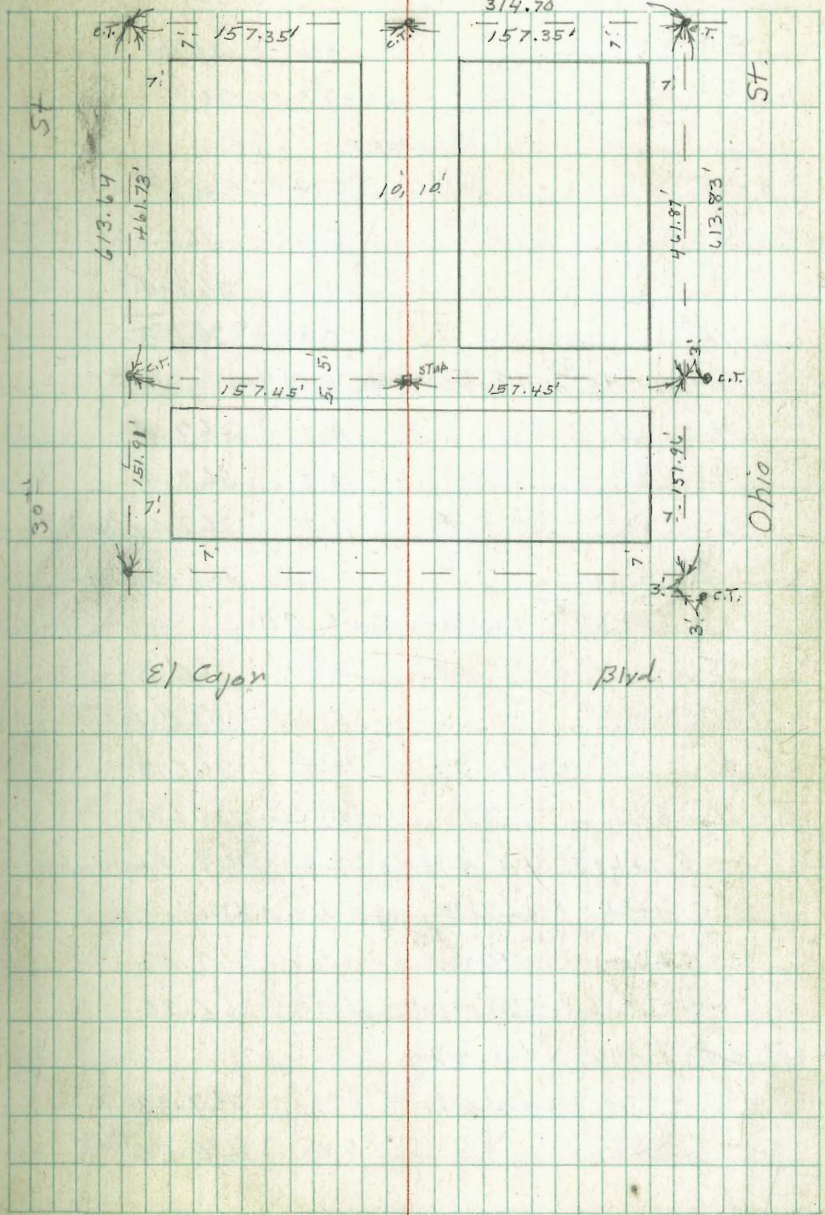
N.	ground	5.1	367.0
+0.8	Top. ch. W. End	4.52	367.54
±		5.2	366.9
S.		5.2	366.9

0+30

S		5.1	367.0
±		4.9	367.2
N		4.7	367.4

Meade Ave

BM. S. W. Meade Ohio 373.52



N	4.9	367.2
☉	5.0	367.1
S	5.0	367.1

1+00

S-5	5.4	366.7
S	5.0	367.1
☉	4.7	367.4
N	4.9	367.3

1+40⁴⁵ = E. Line N+S. Alley

N	4.7	367.4
☉	4.7	367.4
S	4.7	367.4
+5	5.3	366.8

1+60⁴⁵ = W. Line N+S. Alley

-5	5.8	366.3
S	5.4	366.7
☉	5.3	366.8
N	5.2	366.9

1+60⁶⁰ 0.7 N. of N = S.E. Cor Stucco Apartment

1+66 - Reduced Box around Ventilator

(S. side Box - Top)

0.1 S. of N. Line } Box = Top Vent	4.63	367.43
" " " " } Bottom Box + Vent.	5.70	366.36
0.1 S. of N. 1+76 Vent. + Box		
" " " " Top Box + Vent	4.73	367.33
" " " " "	5.80	366.26

N	5.7	366.4
☉	5.7	366.4
S	6.0	366.1
+5	6.0	366.1

Top Box + Vent. 0.1 S. of N.	4.67	367.37
Bottom " " " " "	5.72	366.34

1+96

0.7 N. of N. Screen Vent. 10" High 5.58 366.48 Bottom

2+00

S-5	6.2	365.9
S	6.2	365.9
☉	5.9	366.2
N	5.6	366.5

2+0.6 = Ventilator screen

Bottom of screen 5.6 366.5

2+16 Ventilator screen

Bottom screen 0.8 Back 5.8 366.3

2+16

N	5.8	366.3
☉	6.0	366.1
S	6.1	366.0
+5	5.1	367.0

2+26 Ventilator screen

Bottom 0.8 Back 5.8 366.3

0.8' N of N	Bottom	Vent screen 5.8	366.3
		2+42	
0.8' N of N	Bottom	Vent screen 5.8	366.3
		2+50	
-5		5.5	366.6
S.		5.7	366.4
⊕		6.1	366.0
N		6.2	365.9
		2+56	
0.8' N of N	Vent screen Bottom	5.75	366.31
		2+66	
0.8' N of N	Bottom Vent.	5.75	366.31
		2+76	
0.8' N of N	Bottom	5.70	366.36
		2+80	
0.8' N of N	Bottom	18" x 18" wood Door	6.24 365.82
N		6.3	365.8
⊕		6.5	365.6
S		6.5	365.6
+5		6.3	365.8
		2+86	
-5		6.5	365.6
S.		6.5	365.6
⊕		6.5	365.6
N		6.5	365.6
+0.2	E. End. Top. 6" cone. ch.	5.8	366.3

+0.8 = S. W. Cor above Stucco Apartment

0.2' N of N. cone. ch.	6.73	365.33
" " " Pav. E. End	7.03	365.03
⊕ " " "	7.11	364.95
S " " "	7.15	364.91
cone ch " "	7.06	365.00
14' W. of E. = E. ch.		
S. ch	7.45	364.61
S. Pav	7.98	364.08
⊕ " "	7.99	364.07
N " "	8.00	364.06
N ch	7.43	364.63

N + S Alley

0+00 = N. Line E. + W. Alley

W - 0.1 =	5.2	366.9
⊕	5.0	367.1
E	4.7	367.4
0+0.5		
E	4.7	367.4
⊕	4.9	367.3
W	4.9	367.2

+15 Redwood Box around ventilator	0.4 in Alley	
0.8' E. of W. Top. Box	4.3	367.8
0.1' W. of W. Bottom of Vent screen	5.5	366.6

	372.06			
0+26 R.W. Box around Vent. screen	0.8' in Alley			
0.1 W of W. Bottom of screen	5.5	366.6		
0.4 E of W. Box Top	4.3	367.8		
0+30 = E. End. Board Fence on W.	0.15' in Alley			
0.2 E of W	4.4	367.7		
E	4.7	367.4		
E	4.7	367.4		
T.P.	3.89	371.39	4.56	367.50
0+50 S. End S. Entrance garage on E.	1.7' Back			
E - 1.7 W. Side floor	4.1	367.3		
0+60 W. Entrance above garage - S. Entrance				
-1.7 floor	4.1	367.3		
E	4.3	367.1		
E	4.5	366.9		
W.	4.5	366.9		
0+72 N. End above Fence on W.	0.15' in Alley			
0+83 garage on E. dirt floor	1.7' Back			
E - 1.7 = floor	4.7	366.7		
	1+00			
W	4.9	366.5		
E	4.9	366.5		
E	4.7	366.7		
1+07 garage on E. dirt floor	1.2' Back			
E - 1.2 = floor	4.6	366.8		
1+20 S. End double Garage on W. cont floor	4.8' Back			
W - 4.8 floor	4.10	367.29		

	371.39			
1+34 N. End above double Garage on W				
E	4.7	366.7		
E	5.0	366.4		
W	5.2	366.2		
+4.8 = floor	4.13	367.26		
1+48 S. End 4 garages on W. (No floor + porch yet) (Under construction) 4.8' Back				
W - 4.8 Bottom of Door Jamb.	4.32	367.07		
1+68 S. End 8 garages on E. conc. floors. 2.5' Back.				
E - 2.5 = floor	4.12	367.27		
1+84 = N. End above 4 garages on W.				
W - 4.8 Bottom of Door jam	4.32	367.07		
W	4.8	366.6		
E	4.5	366.9		
E	4.2	367.2		
E + 2.5 floor	4.14	367.21		
T.P.	4.96	372.29	4.06	367.33
1+99 S. End 8 garages on W. conc. floors 4.1' Back				
W - 4.6 = floor	4.84	367.41		
2+40 N. End above 8 garages on E. 2.5' Back				
E - 2.5 floor	5.03	367.26		
E	5.4	367.2		
E	5.2	367.1		
W	5.2	367.1		
W + 4.6 = floor.	4.86	367.43		

2+70 N. End above 8. garages on w. 4.6 Back

W-4.6 floor 4.85 367.44

2+75 S. End. 5. garages on w. ent. floors 4.2 Back

W-4.2 floor 4.37 367.92

W-0.2 = E. side cone apron 4.56 367.73

W 4.7 367.6

E 5.1 367.2

E 5.1 367.2

3+00

-5 4.48 367.5

E 4.4 367.9

E 4.3 368.0

W 4.5 367.8

+0.2 = cone apron 4.46 367.83

+4.2 = floor 4.37 367.92

4+25 = N. End above 5. garages on w

W-4.2 4.31 367.98

W-0.2 floor 4.46 367.83

W 4.3 368.0

E 4.3 368.0

E 4.1 368.2

+5 4.4 367.9

3+45

E-5 4.1 368.2

E 3.8 368.5

E 4.0 368.3

+6 3.8 368.5

W 4.4 367.9

+10 4.8 367.5

3+55

-10 4.8 367.5

W 4.3 368.0

+4 3.9 368.4

E 4.1 368.2

E 3.9 368.4

+5 3.6 368.7

3+70 S. End 3 garages on E. cone floors 4.8 Back

E-4.8 3.23 369.06

0.2 W of E = w. edge cone apron 3.70 368.59

E 3.8 368.5

W 3.7 368.6

+15 4.7 367.6

3+96 N. End. above 3. garages on E.

-5 3.5 368.8

W 3.4 368.9

+4 3.1 369.2

E 3.3 369.0

+9.8 = W. edge cone apron 3.31 368.98

+4.8 = floor 3.21 369.08

4+25

E		2.5	369.8
±		2.6	369.7
+8		2.1	370.2
W		2.4	369.5
+5		2.9	369.4
4+46			
W		2.4	369.5
+5		3.2	369.1
±		3.2	369.1
+5		3.0	369.3
E		2.5	369.8

4+49.8 = S. Line Meadu Ave

0.1 W of E.	conc. ch.	S. end.	2.74	369.55
4 " " "	par	" "	2.95	369.34
±	"	" "	3.35	368.94

T.P. 6.83 375.77 3.35 368.94

+9.9 Pav. S. end 6.69 369.08

+9.9 conc. ch. " " 6.51 369.26

14' N of S. Line = S. ch. Meadu

W	ch		6.85	368.92
W	Pav		7.43	368.34
±	"		7.20	368.59
E	"		6.98	368.79
E	ch		6.26	369.51

chk. B.M. Top. ch. B.P. out.

2.38 373.39

S. E. cor
Meadu + Ohio
373.52

T.P. 1.32 374.71 2.38 373.39

chk. Orig B.M. 11.61 363.10

6-30-38 Property Line Levels Chamaine
 Miller, Walker, Bliss.
 from Thorn South to old R.R. Cut

B.M. BP	2.40	338.28	335.88	N.W. Mqth & Chamaine
T.P. B.M. BP	0.15	333.16	333.01	N.W. Thorn & Chamaine
See F.B. 1185-44 for X. See.				
0+00 = S. Line Thorn St.				
W.		0.8	332.4	
W. ch		0.76	332.40 = 332.36	
E. ch		1.27	331.89 = 332.36	
E.		1.2	332.0	
0+50				
E.		2.0	331.2	
W.		1.6	331.6	
1+00				
W.		2.4	330.8	
E.		2.6	330.6	
1+42				
W. conc Drive		3.1	330.1	
1+50				
E.		3.7	329.5	
W.		3.4	329.8	
1+58				
W. conc Drive		3.46	329.70	
1+79				
W. conc Drive		3.73	329.43	

333.16

54

2+00		
W.	4.1	329.1
E.	4.5	328.7
0+24		
W. conc Drive	4.33	288.3
2+50		
E.	5.0	328.2
W.	4.9	328.4
2+56.5		
E. conc walk	4.97	328.19
3+00		
W.	5.5	327.7
E.	6.0	327.2
3+50		
E.	6.4	326.8
W.	6.8	326.4
4+00		
W.	7.6	325.6
E.	7.3	325.9
4+25		
W. Brick walk	7.70	325.46
4+43		
W. conc Drive	8.02	325.14
4+41		
E. conc walk	7.81	325.35

4+50

W. 8.4 324.8

E. 8.4 324.8

4+68

E. conc. Walls 8.44 324.72

4+92

E. conc. Drive 9.00 324.46

5+00

E. 9.3 323.9

W. 9.6 323.6

5+50

W. 10.9 322.3

E. 10.8 322.4

6+00 = N. Line Redwood, 60 wide

E. 12.4 320.8

W. 12.4 320.8

T.P. 440 2.48 323.19 12.45 320.71

N.E. R.R. Cor.
Redwood
Chamounie

0+00 = S. Line Redwood, to W

W. 4.1 319.1

E. 4.0 319.2

0+20 = S. Line Redwood on E.

0+33

E. conc. walk 4.60 318.50

0+50

E. 5.3 317.9

W. 5.7 317.5

1+00

W. 7.5 315.7

E. 6.6 316.6

1+50

E. 7.9 315.3

W. 9.4 313.8

2+00

W. 10.9 312.3

E. 9.4 313.8

2+50

E. 10.5 312.7

W. 12.8 310.4

2+92, W. Line } Top. R.R. Cut.
3+17, E. Line }

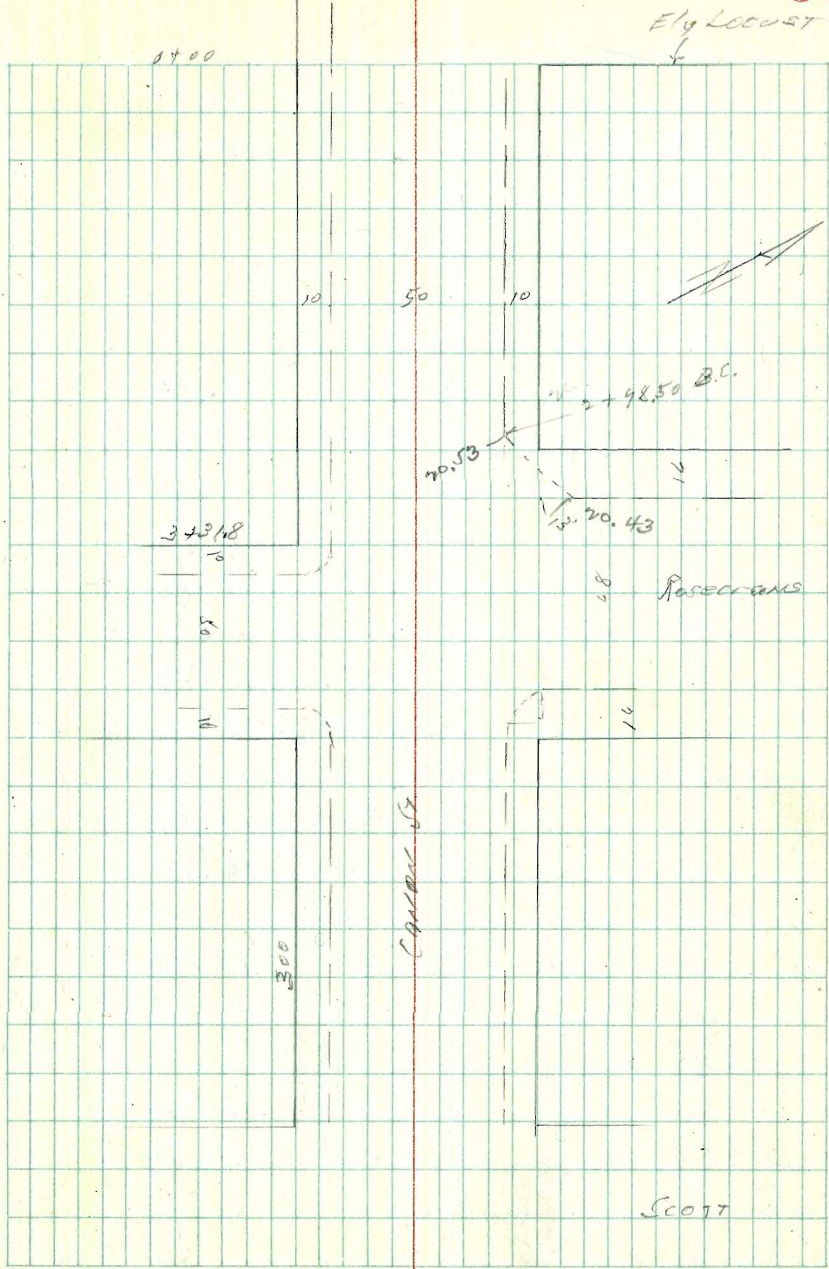
W. 14.2 309.0 = 309.0

E. 12.6 310.6 = 310.6

Curb level on Cañon St

Locust to Scott

INBP			CITY	Restrooms Cañon
1002	30.64	✓	20.04	20.43 = slope.
0400	Ely Locust			
S	1.41		29.75	
N	1.58		29.08	
0+50				
N	3.06		27.60	
S	2.49		27.97	
1+00				
S	2.00		26.66	
N	4.52		26.14	
1+50				
N	5.92		24.74	
S	5.34		25.32	
2+00				
S	6.03		24.03	
N	7.34		23.32	
2+50				
N	8.70		21.96	
S	7.97		22.69	
3+00				
S	9.30		21.36	
2+98.5 B.C.				
N	10.13		20.53	
N E.C.	10.53		20.43	



30.66

343180 + WIL ROSECRANS 10.50

S 100 ✓ 20.64

F.C. SL 10.12 20.54

T.P. 100 21.70 ✓ 100 20.64

E 06 LINE ROSECRANS

S+ 06.1000 ✓ 2.16 18.54

N+ " " 2.65 19.05

0400 1.1 ROSECRANS

S 2.19 19.51

N 2.59 19.11

0450

N 2.93 17.77

S 3.01 18.09

1400

S 5.04 16.66

N 5.29 16.41

1450

N 6.74 14.96

S 6.51 15.19

2100

S 7.88 13.82

N 8.03 13.67

31.70

2450

N 9.37 12.33

S 9.20 12.50

3400 WIL SCOTT

S 10.45 11.25

N 10.60 11.04

Indexed
C.S.K.

Moore
12-17-38

XSEC of alleys in
BLK 6 Roseville Hts.

NEBP	5.00	235.88		230.48	Record Tumbull
T.P.	0.19	223.27	12.80	223.08	
T.P.	0.54	211.59	12.22	211.05	

0-13 = Ely cb Bangor

S Pav.		4.36		207.23
N "		5.31		206.28

0-7 edge Pav.

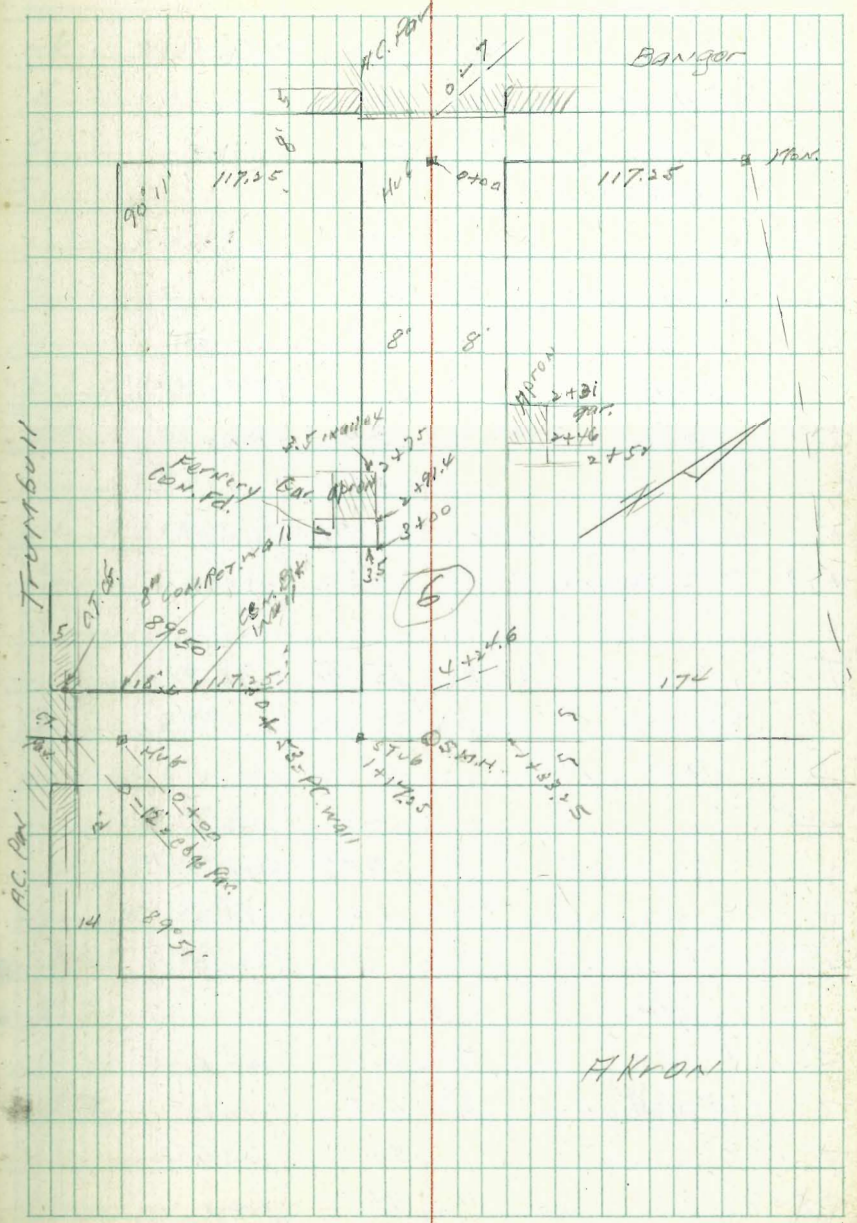
N cb		4.84		206.75
N Pav		5.23		206.36
C "		4.74		206.83
S "		4.31		207.26
S cb 7		3.91		207.68

10+00 Ely Bangor

S		4.2		207.4
C		4.6		207.0
N		4.9		206.7

0+25

N		5.9		205.7
C		5.7		205.9
S		5.5		206.1



0+50

S	7.5	204.1
C	7.5	204.1
N	7.8	203.8

0+75

N	9.9	206.7
C	9.7	206.9
S	9.7	206.9

1+17

S	13.6	198.0
C	13.5	198.1
N	13.5	198.1
+19	2 Sin. gar. dr. cem	14.30 197.29

T.P. 0.14 198.83 12.88 198.71

1+50

S	1.0	194.8
N	3.8	195.6
C	3.6	195.2
S	3.5	195.3

2+00

S	8.2	190.6
C	S.M.H. PINT	8.27 190.56
N	9.1	189.7
+10	9.4	189.4

2+31

-6	wedge do. gar cem	11.60	187.23
N	" apron "	11.80	187.03
O		11.7	187.6
S		10.8	188.0

2+46

S		12.4	186.64
C		12.7	186.1
N	E edge apron	12.51	186.32
+6	" " gar	11.84	187.01

2+54

N	E edge 2 cem wk	13.03	185.80
C		13.1	185.7
S		13.0	185.8

T.P. 0.27 196.44 13.03 185.80

2+75

-6	W edge do. gar	1.72	184.88
S	on apron	2.42	184.20
+3.5	edge apron	2.77	183.85 walled 3.5
C		3.0	183.6
N		3.2	183.4
+10		3.6	183.0

+ 9/4 w/ edge Fernery			
-10		5.1	181.8
N		4.5	182.1
C		4.3	182.3
+ 4.5	apron in alley 3.5'	3.80	182.82
S	on "	3.15	183.49
+ 6		1.80	184.82
3 + 00 = W edge Fernery on S side			
3.5	in alley 90'	4.5	182.1
	TOP CORN fd. Fernery	2.77	183.85
3	+ 50		
S		8.4	178.2
C		8.6	178.0
N		8.9	177.7
+ 10		9.3	177.3
3	+ 75		
-10		11.5	175.1
N		11.2	175.4
C		10.8	175.8
S		10.4	176.0
4	+ 00		
S		12.9	173.2
C		13.3	173.3
N		13.4	173.0
+ 10		14.0	172.6
T.P.	0.34	173.94	180.0

+ + 4.6 wly N 4 S alley			
N		3.6	170.3
C		3.4	170.5
S		3.3	170.6
N 4 S alley XSec 1 to 20			
0-18	= N 4 S Truip Bull		
W Pav	5.94	168.00	
E "	7.04	166.90	
0-12	= edge Pav		
E cb	4.02	167.32	
E Pav	4.96	166.98	
C "	4.52	167.42	
W "	5.88	168.06	
W cb + Top wall	5.52	168.42	
0+00	N 1/4		
W gr	4.8	169.1	
C	5.4	168.5	
E	4.7	169.2	
0+02	4VA in grade TOP wall		
E	5.4	168.3	
C	5.3	168.6	
W	4.8	169.1	
W TOP wall	3.13	170.81	

173.94

0+18		
W Top Cem. Ret. Wall	2.92	171.00
W	4.0	169.9
C	4.4	169.5
E	4.4	169.5
+5	4.3	169.6

0+53

-5	4.8	169.1
E	4.2	169.7
0	3.8	170.1
W = P.C. of wall ground	3.2	170.7
W Top Wall	2.07	171.87

0+94

-4.5 E edge of gar. ceil.	0.93	173.01
W	3.0	170.9
C	3.4	170.3
E	4.0	169.9
+5	4.5	169.4

1+17.25 SLE + W alley

-10	4.7	169.2
E	4.2	169.7
C STUB	3.91	170.03
W	3.3	170.6

1+25.35

E S.M.H. R.M.	4.06	169.88
---------------	------	--------

173.94

61

1+33.25 SLE + W alley

W	3.6	170.3
C	4.1	169.8
E	4.5	169.4
+10	5.7	168.2

1+50

-10	5.7	168.2
E	5.2	168.7
C	4.8	169.1
W	4.2	169.7

1+75

W	5.2	168.7
C	5.8	168.1
E	6.2	167.7
+10	7.5	166.4

2+00

-10	8.4	165.3
E	7.7	166.2
C	7.3	166.6
W	7.0	166.9

2+15

W	8.7	165.2
C	9.0	164.9
E	9.2	164.5
+10	10.2	163.7

173.94

2+25				
-10		11.5	162.4	
E		11.1	162.8	
C		11.0	162.9	
W		10.7	163.2	
T.P.	19'	164.53	12.42	161.54
2+44 N. end of possible grade + Pav.				
W		3.3	159.2	
C		3.9	158.6	
E		4.4	158.1	
+10		5.4	157.1	
2+54 E		10.5	152.0	
T.P.	0.39	150.40	12.52	150.01
2+75 E		8.0	142.4	
T.P.	0.72	138.33	12.79	137.61
2+88 E		2.5	135.8	
3 E		9.2	129.1	
+07 E		14.0	124.3	
T.P.	0.86	126.22	12.95	125.38
3+23 E		10.2	116.0	
T.P.	0.15	113.58	12.79	113.43

113.58

62

2+31 E		3.7	109.9	
2+38 E				
3+44 E TOP of		10.70	102.9	52401 narrow strip Pav
" E Pav		11.36	102.22	
3+65.1 E TOP of		12.39	101.19	NH "
" E Pav		11.81	101.70	
T.P.	0.53	101.16	12.95	100.43
T.P.	0.84	89.24	12.74	88.42
BMBP SE 1/4 of CANON IN 16.		8.11	81.15	
T.P.	0.27	76.87	12.66	76.60
T.P.	2.01	60.09	12.19	64.08
NWBP CANON Willow		5.00	61.69	61.20
				0.49
visual diff. bet. BMS on top of Roseville and BIT in Roseville				

Cross Section E + W Alley
Block 72 Ocean Beach

20' wide

Feb. 1940
for New
Elec.

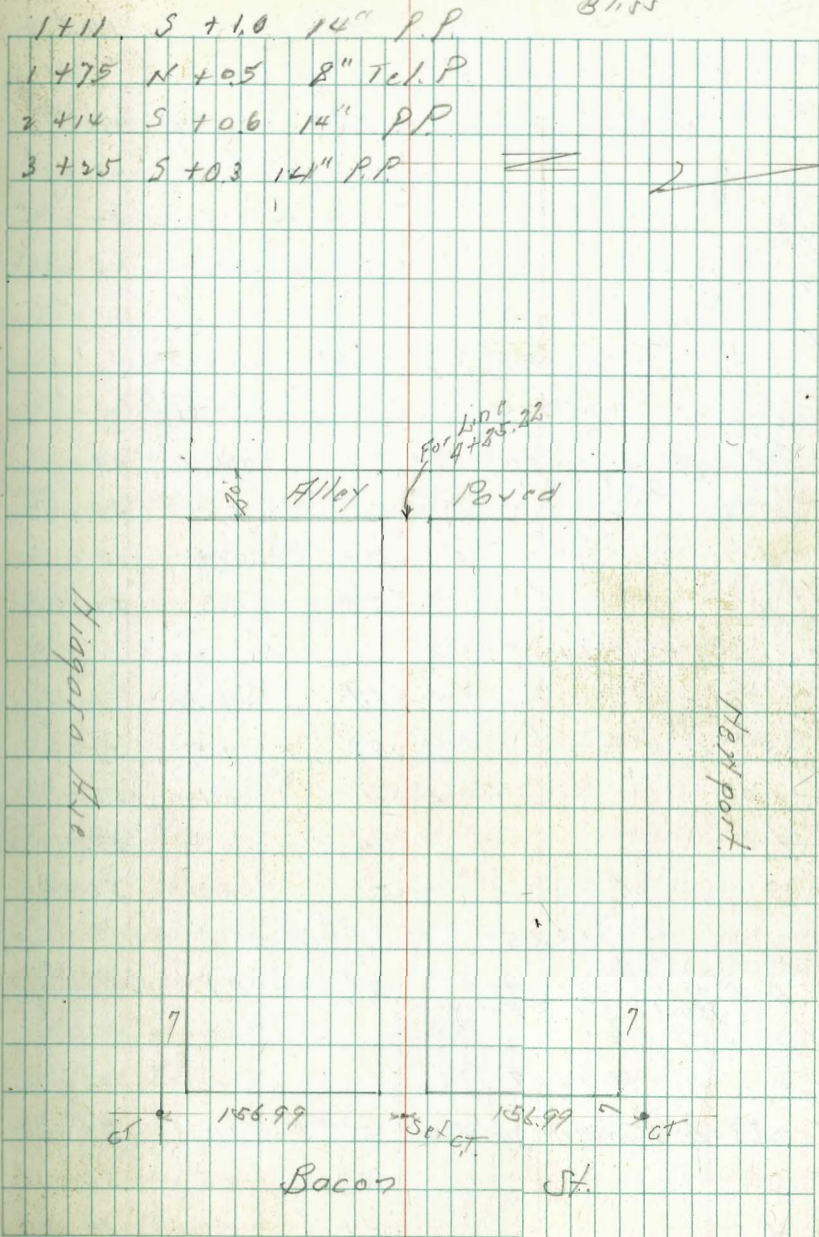
B.M.	5.67	16.72	11.05	N.E. CP Newport Bacon
	0-12 = H.C.B. Bacon			
H	on Paving	5.04	11.68	11.05 5.50 16.59
L	"	4.99	11.73	
S	"	4.95	11.77	
	0+0 = H.L. Bacon			
S	Top CB	4.04	12.68	
	Paving	4.19	12.53	
L	on "	4.68	12.04	
H	"	4.39	12.33	
	Top CB	4.26	12.46	
	0+10			
H		4.4	12.3	5.3 = 12.3
L		4.8	11.9	5.8 = 11.8
S		4.2	12.5	5.2 = 12.4
	0+51			
S		4.4	12.3	5.3 = 12.3
+2		4.9	11.8	4.8 = 11.8
L		5.0	11.7	5.0 = 11.6
H	= Fly Conc Apron Spacco Floor	4.78	11.94	4.68 = 11.91
	0+66			
S.S. of SL = Fly Conc Apron Dirt Floor	4.9	11.8		

New Top Readings in New

Indexed
2-5-16

Dec. 23-38
S. 15507
Newport
Bliss

63



for L.P.S.
for 4+25.22

Alley Paved

Highway Ave

Newport

156.99

156.99

Bacon

St.

16.72
 0+77
 16.59

M = 1/4 Conc Apron	4.88	11.84	4.72 = 11.81
+1	5.3	11.4	4.9 = 11.1
S	5.3	11.4	5.2 = 11.4
S	5.1	11.6	4.8 = 11.8

0+78
 H.L. = 2 Conc Walk

1+0	5.13	11.59	
-2 = 1/4 Garage	5.1	11.6	4.9 = 11.7
S	5.1	11.6	5.0 = 11.6
S	5.3	11.4	5.3 = 11.3
H	5.4	11.3	5.2 = 11.4

1+12

-20	6.1	10.6	SAME
H	5.2	11.5	5.1 = 11.5
+4	5.6	11.1	5.5 = 11.1
S	5.4	11.3	5.3 = 11.3
S	5.1	11.6	5.1 = 11.5

1+25

6 ft of H.L. = 2 Garage	5.6	11.1	
Wood Floor of Entrance			

1+27

-2.3 = E 3 Garage 1st Floor	5.1	11.6	5.0 = 11.6
S	5.2	11.5	5.0 = 11.6
S	5.5	11.2	5.4 = 11.2

x 64
 16.59

+8	5.5	11.2	5.5 = 11.1
H	5.0	11.7	4.8 = 11.8

1+50

H	5.2	11.5	4.8 = 11.8
+2	5.7	11.0	5.5 = 11.1
S	5.9	10.8	5.5 = 11.1
S	5.4	11.3	5.3 = 11.3

+26 = 1/4 Garage
 1st Floor

TP 3.91	15.56	5.07	11.65
	1+62		

S	4.1	11.5	3.8 = 11.4
S	4.5	11.1	4.2 = 11.0
H + 0.4	5.0	10.6	4.3 = 10.9
1.10			3.8 = 11.4
+50	5.5	10.1	4.5 = 10.7

1+78 - Prop Drains

Stop Co of Newport	5.55	10.01	
Gutter of Paving	6.25	9.31	
S.L. Newport of Conc Walk	5.35	10.21	
S.L. Newport of Ground	5.6	10.0	
40'S of S.L. Newport	6.0	9.6	
90'S of " " "	5.6	10.0	
140'S of " " " = N.L.	4.8	10.8	

T.P.
 4.89
 11.79
 3.49
 15.175

15.56

T
15.19

1+94

-5 = 1/2 Garage Dirt Floor	5.2	10.4	4.4 = 10.8
H	4.8	10.6	4.4 = 10.8
1/2	4.7	10.9	4.4 = 10.8
S	4.1	11.5	4.0 = 11.2

2+06

-7 = 1/2 Garage Conc Floor	3.9	11.7	
S	4.3	11.3	3.9 = 11.3
1/2	4.8	10.8	4.5 = 10.7
H	5.1	10.5	4.4 = 10.8

-15	2+30	5.4	10.2	5.3 = 9.9
H		5.2	10.4	4.7 = 10.5
1/2		5.1	10.5	4.8 = 10.4
S		4.8	10.8	4.4 = 10.8
+0.5 = 1/2 3' Conc Walk		4.33	11.23	3.95 = 11.24

2+68

S		4.6	11.0	4.1 = 11.1
1/2		4.9	10.7	4.6 = 10.6
H		5.0	10.6	4.6 = 10.6

+4 = 1/2 Garage Conc Floor	4.78	10.78	SAME -
----------------------------	------	-------	--------

2+84

2' Hof H Line = 1/2 Walk Entrance to Shack	4.77	10.79	
--	------	-------	--

15.56

T
15.19
65

3+0

H		4.2	11.4	4.0 = 11.2
1/2		4.3	11.3	4.0 = 11.2
S		4.0	11.6	3.6 = 11.6

3+50

S		2.5	13.1	1.9 = 13.3
+2		2.8	13.8	2.5 = 12.7
1/2		2.9	12.7	2.4 = 12.8
H		2.8	12.8	2.5 = 12.7
TP	5.75	1920	2.11	13.45

3+80

-2 = 1/2 Garage Conc Floor	5.49	13.71	
H	5.4	13.8	
1/2	5.2	14.0	
S	5.0	14.2	

4+01

S		3.4	15.8
1/2		3.8	15.4
H = 1/2 1.5 Conc Walk Dirt Same		3.85	15.35

4+15

H		3.7	15.5
+5		3.1	16.1
1/2		3.1	16.1
S		2.5	16.7

1920

4+25.22 = E1/1 Pav

S on paving		2.95	16.25
E " "		3.42	15.78
H " "		3.63	15.57
TP	6.67	15.40	10.47
BM		4.35	11.05

 NEBP
 Newport
 8000
 11.05

See page 80 for culvert at Sta. 2+47
 for BLK 72 Ocean Beach

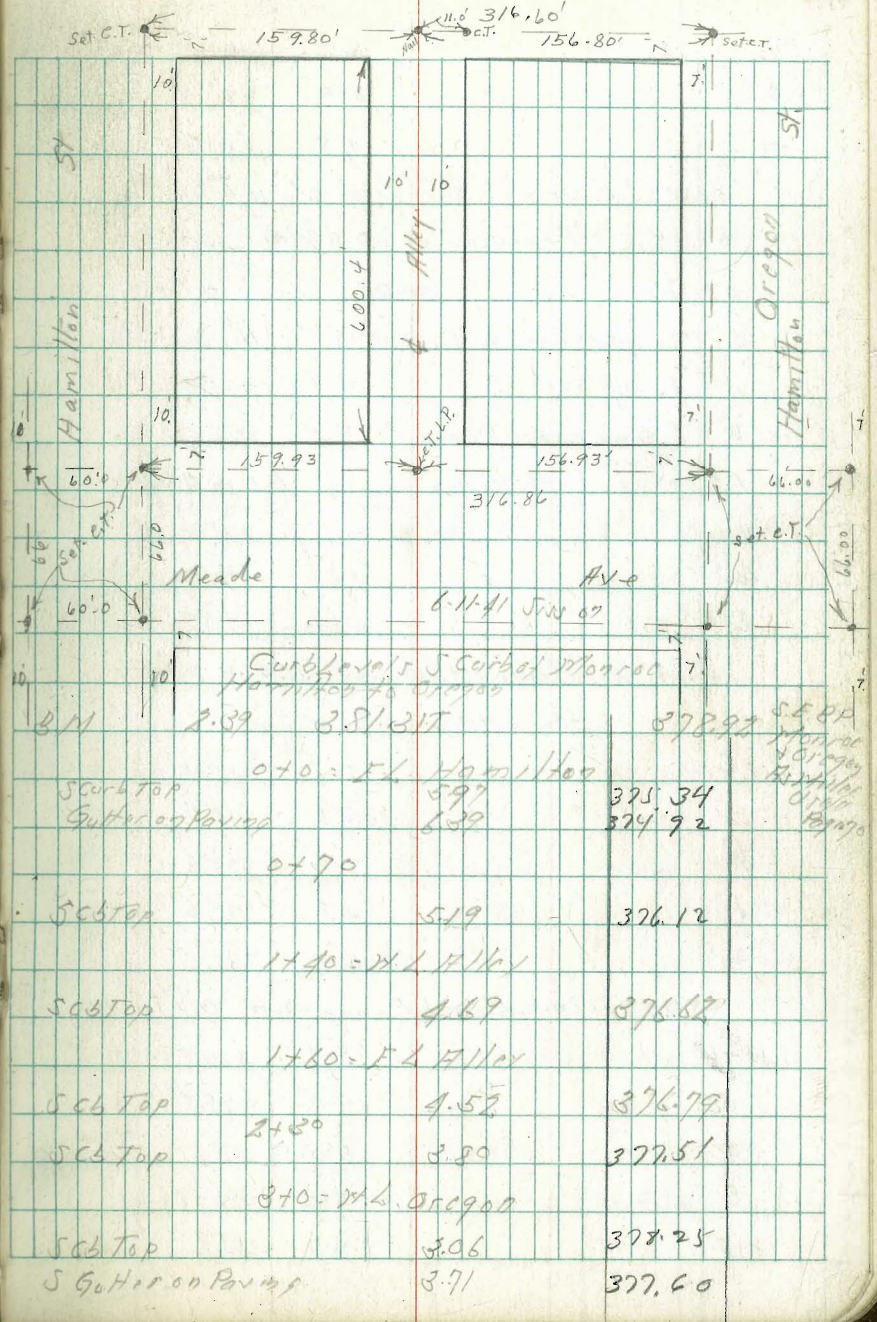
1-18-39
Miller
Wal Ken
Bliss
B.P. gone Rod
on curb.
B.N.B.P.

X Sec. Alley Blk. 69 Univ. Hts.

3.27	380.50	377.23	S. E. Meade + Oregon.
14' s. of N. = N. d. Meade			
E. cut d.	5.55	374.95	
E. pav	6.14	374.36	
φ	6.20	374.30	
W "	6.30	374.20	
W. cut. d.	5.80	374.70	
0+00 = N. Line Meade			
W. = W. cut. d. N. End	5.70	374.80	
W pav	" "	5.75	374.75
φ	" "	6.03	374.47
+10.1	" "	5.70	374.80
+10.1 cut. d.	" "	5.43	375.07
0+15			
E	4.8	375.7	
φ	4.9	375.6	
W	4.8	375.7	
0+34 S. End. S. Ent. Garage on E. dirt floor			
W	4.7	375.8	
φ	4.9	375.6	
+ 7.	4.6	375.9	
E	4.2	376.3	
+05 = floor	4.2	376.3	

375.30 S. E. Meade + Hamilton
Monroe

Indexed
C.S.R.
Ave 67



0+50

E	5.0	325.5
E	5.0	325.5
W	4.8	325.2
0+51. to 0+58. shed on W. 0.4 in Alley		
W 0+58	Fence on W. 0.5 in Alley	S. End
0+75	" " " 0.7 " "	N. End
0+91.	garage on W. ent floor	4' Back
W-4.	= floor	4.70 325.80
W=	E. End. ent. Apron.	4.78 326.72
1+00	S. End. House on W.	0.1 in Alley
W	4.6	325.9
E	4.6	325.9
E	4.6	325.9

1+49 = N. End above House on W. 0.6 in Alley

1+50

E-10	5.1	325.4
E	5.1	325.4
E	4.9	325.6
W	4.9	325.6
+10	5.0	325.5

2+00 S. End. Board Fence on W. 0.7 in Alley

W-10	5.7	324.8
W	5.0	325.5
E	5.0	325.5
E	5.0	325.5
+10	4.7	325.8

2+50 Above Board Fence on W. 0.4 in Alley

E-10	4.8	325.7
E	4.5	326.0
E	4.8	325.7
W	4.8	325.7
+10	5.3	325.2

3+00

-10	5.2	325.3
W	5.0	325.5
E	5.0	325.5
E	4.8	325.7
E+10	4.6	325.9

3+0 N. End Fence on W. 0.1 in Alley
3+08 garage on W. ent floor 2.4' Back

W-2.4	4.8	325.7
W-0.4	E. End. ent apron.	4.9 325.6

3+15 S. End. Fence on W. 0.3 in Alley

3+50 above Fence 0.3 in Alley

E. at shed	4.9	325.6
E	5.0	325.5
W	5.1	325.4
+10	5.5	325.0

3+75

W-10	4.9	325.6
W	5.1	325.4
E	5.3	325.2
E	4.9	325.6

3+81 N. End. above Fence on W. 0.3 in Alley

380.50

4+00

E-10		5.1	375.4
E		5.1	375.4
⊕		5.0	375.8
W		5.1	375.4
+10		5.2	375.3
T.P.	5.54	381.05	4.99

4+03	Double garage on E. conc. floor.	1.3' Back	
E-1.3	= floor	4.74	376.31
0.8	in Alley = W. End conc. apron.	5.10	375.95
4+08	S. End double garage on W. dirt floors	3.6 Back	
W-3.6	= floor	5.3	375.8
4+23	= N. End above garage on E.		
E-1.3	= floor	4.74	376.31
0.8	in Alley = W. end conc apron	5.10	375.95
4+25	N. End above garages. on W. S. 113 garages on W. conc floor	3.6 Back	
0.3	in Alley = E. side conc. apron.	5.31	375.74
W-3.6	= floor	5.25	375.80
4+50	N. = N. End. above 3. garages on W.		
W-10		5.4	375.7
W-3.6	= floor	5.11	375.94
0.1	E. of W. = E. Edge conc. apron	5.22	375.83
⊕		5.1	376.0

381.05

69

E.		5.1	376.0
+10		5.0	376.1
4+59	S. End 4 garages on E. conc. floors.	on Lin.	
E. floor		4.57	376.48
E. dirt		4.7	376.4
⊕		5.1	376.0
W		5.1	376.0
+10		4.7	376.4
4+80	E. End. conc. walk on W. 1.2' Back		
W-1.2	= walk	4.65	376.40
5+00	= N. End above 4 garages on E.		
W.	5+00	5.0	376.1
⊕		5.0	376.1
E		4.8	376.3
E = floor		4.56	376.49
+10		4.8	376.3
5+31	S. End Double garage on E. conc. floor	1.9 Back	
E-1.9	floor	4.12	376.93
5+48	N. End above garages on E.		
E-1.9	= floor	4.12	376.93

381.05
5750

-10	4.4	376.7
E	4.4	376.7
Φ	4.5	376.6
W	4.4	376.7
+2	4.9	376.2
+10	5.0	376.1

67004 = S. Line Monroe Ave

0.2' E of W. = conc. dr. s. end	4.08	376.97
" " " " ground	4.5	376.6
Φ " "	4.3	376.8
E " "	4.3	376.8
E conc. dr.	3.70	377.35

14' N of s. = s. ch. Monroe.

E. conc. dr.	4.27	376.78
C. ground.	4.7	376.4
Φ " "	4.8	376.3
W. " "	5.0	376.1
W. conc. dr.	4.44	376.61

T.P.C.T. 11.0 } 4.74 381.79 4.60 377.05
E. of Alley S.
7' Line of Monroe

chk. BM. S.E. Monroe + Oregon 2.87 378.92 = 379.00
B.P. gone Rod on curb.

Sept 4/70
SINOT

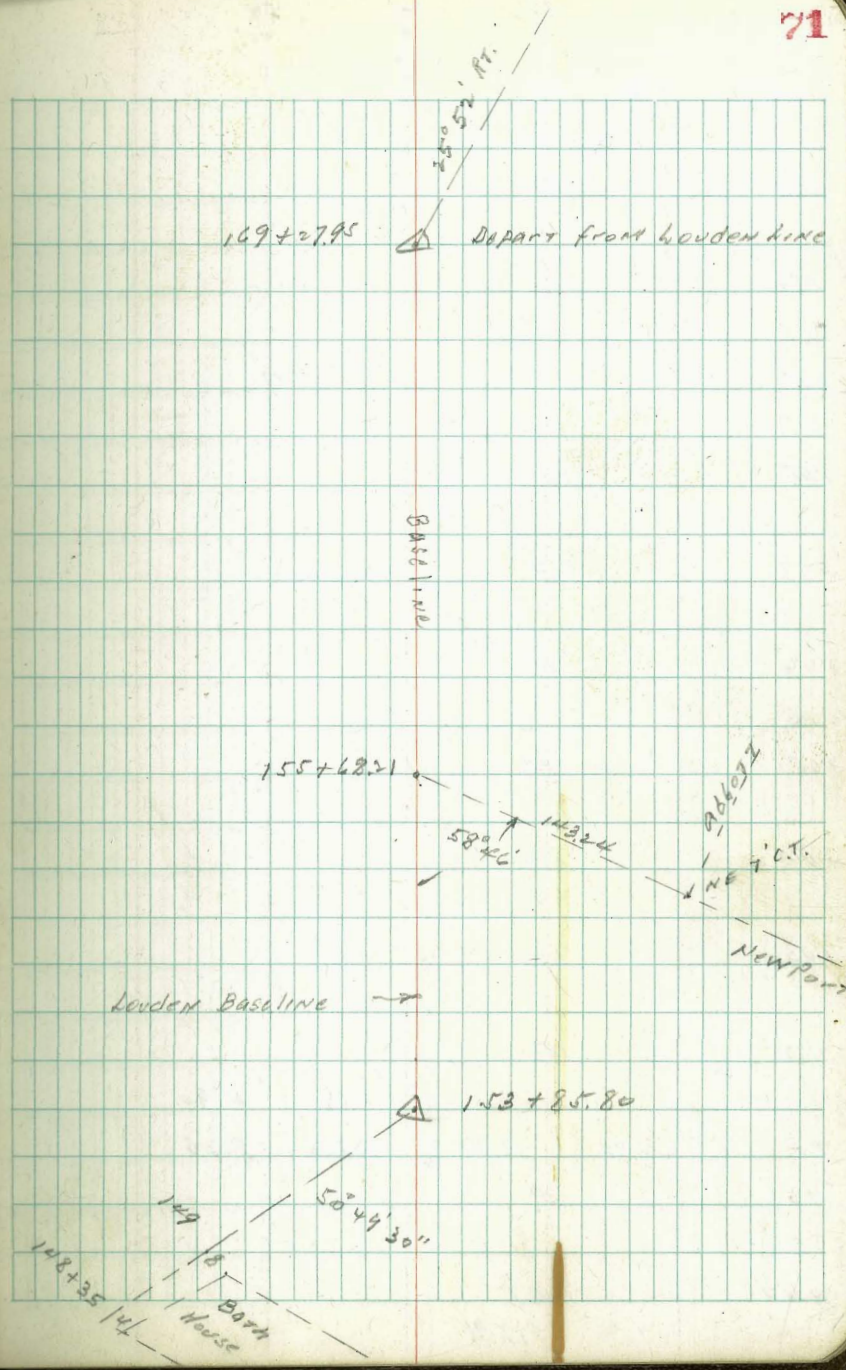
BM. 3.37 382.29 378.92
chk. Orig. BM. 377.24 = 377.23

0750		
F-0.4 = Fly Picket Fence	✓	
N+0.9 = Fly Power Pole	✓	
170		
F = Fly Picket Fence	✓	
1749		
N+0.9 = Fly Power Pole	✓	
2750		
N+0.6 = Fly Power Pole	✓	
3450		
N+0.3 = Fly Power Pole	✓	
BM 4.53 380.84		376.31
3792		
N+0.3 = Fly Core Apron	514 ✓	375.70
N-3.7 = Garage Core Floor	498 ✓	375.91
3454		
N+0.3 = Fly Power Pole	✓	
5754		
N = Fly Power Pole	✓	

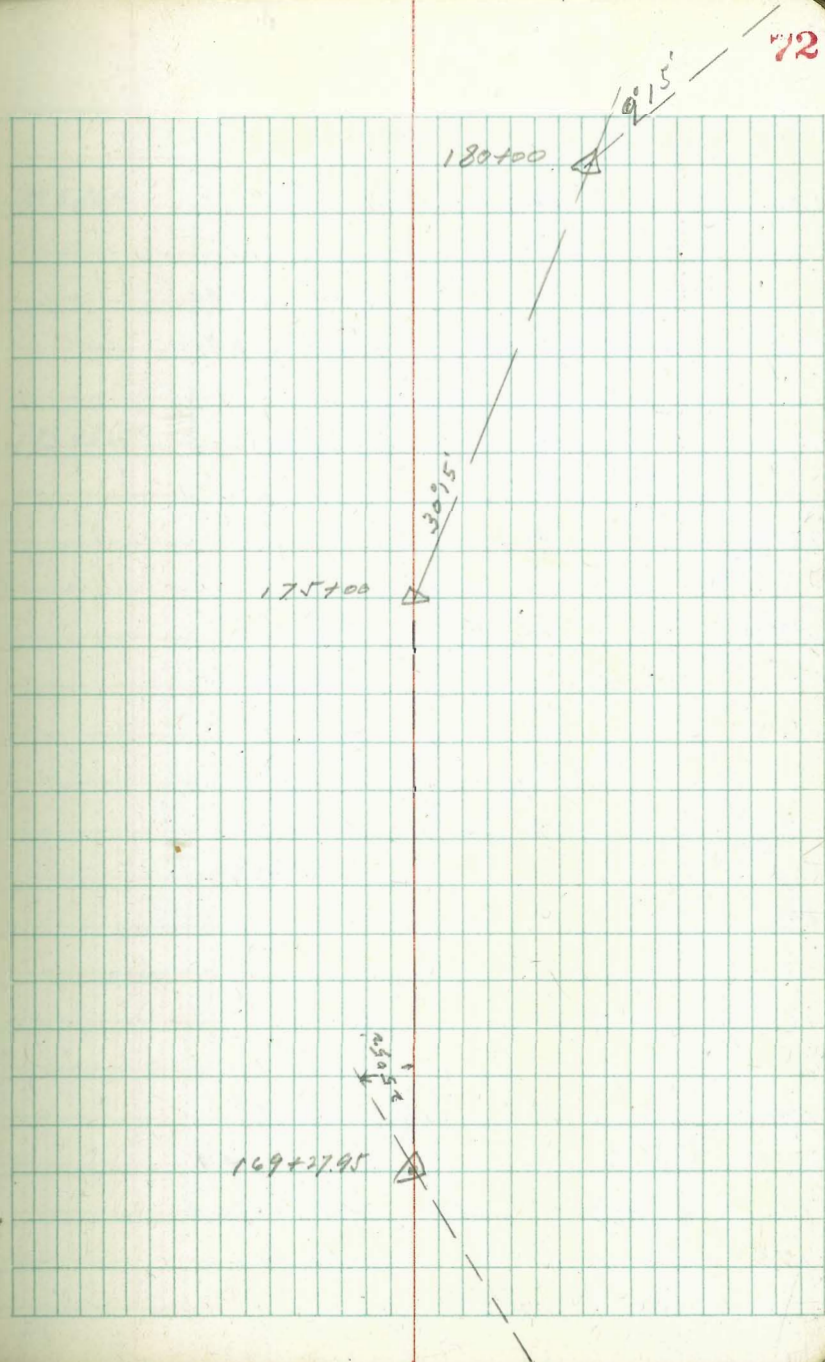
02 Floor
01 02
07 08

LT	RT	Indexed c.s.k.
159	144	
158	154	Survey of M.H. Tide Ocean Beach Barb House to Mission Beach Bridge
157	151	Moore Sisson Northern 3-28-39
156	150	
155	146	
154	145	
153	118	
152	115	
151	0	
150	26	
149		8' = 7.0 El.
148+35		4' = 7.5 "
	11.01	4.90
	15.51	U.S.G.A. Newport Abbott
	6.50	
	9.01	
NEBP	0.40	15.91

Baseline



	ST	Baseline	A7
172	29		
171	33		
170	6		
169			7
168	23		
167	64		
166	75		
165	100		
164	110		
163	114		
162	123		
		6.16	2.90
T.P.	2.70	11.06	7.55
161	139		
160	146		
	15.91		



183

27

182

12

T.P.

2.99

9.90

4.27

6.91

181

12

180

17

179

28

178

64

177

86

176

84

175 A SPLIT 53

174

65

T.P.

3.68

11.18

3.57

7.50

173

50

11.06

LT

RT

Beg. wooden Bulkhead

Baseline

73

184+86.4

93

11

183+82.7

92

12

181+75.3

180+86.0

180+00

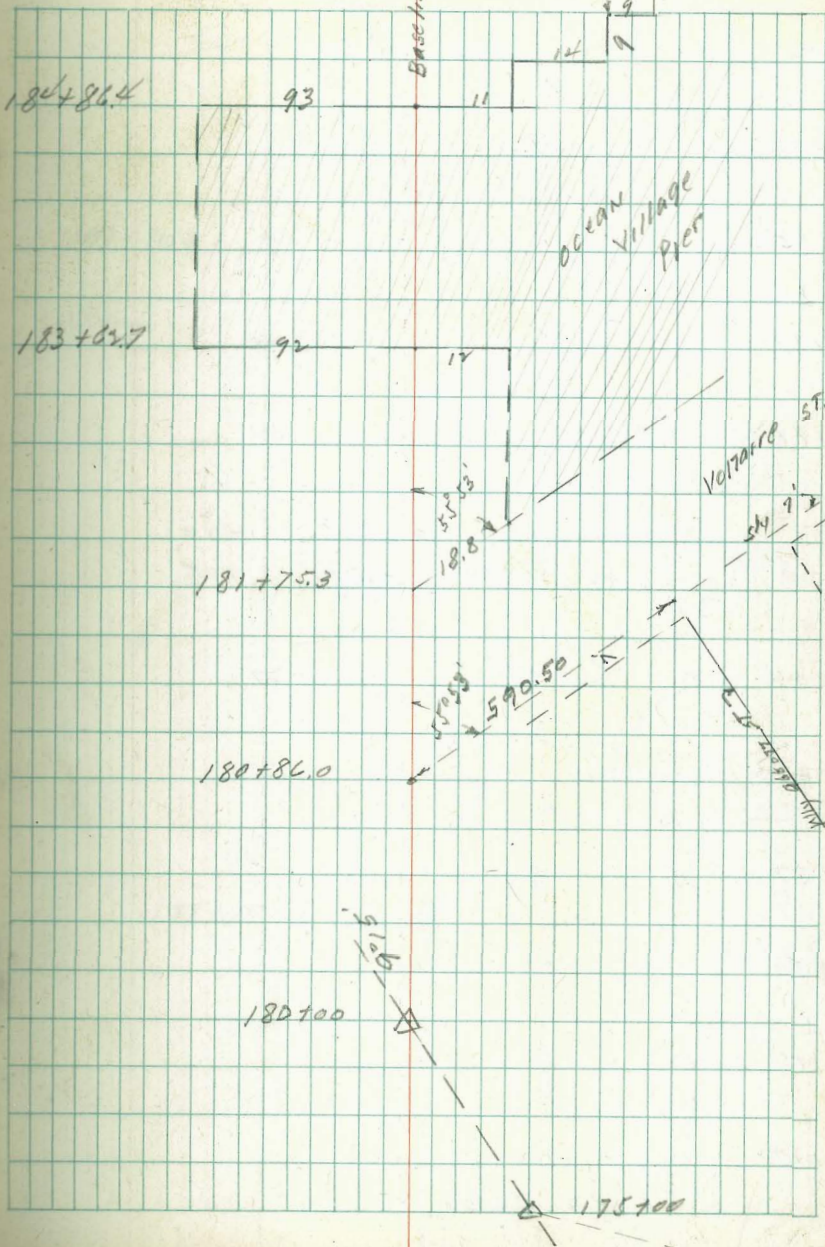
OCEAN VILLAGE PLOT

VOLTAGE ST.

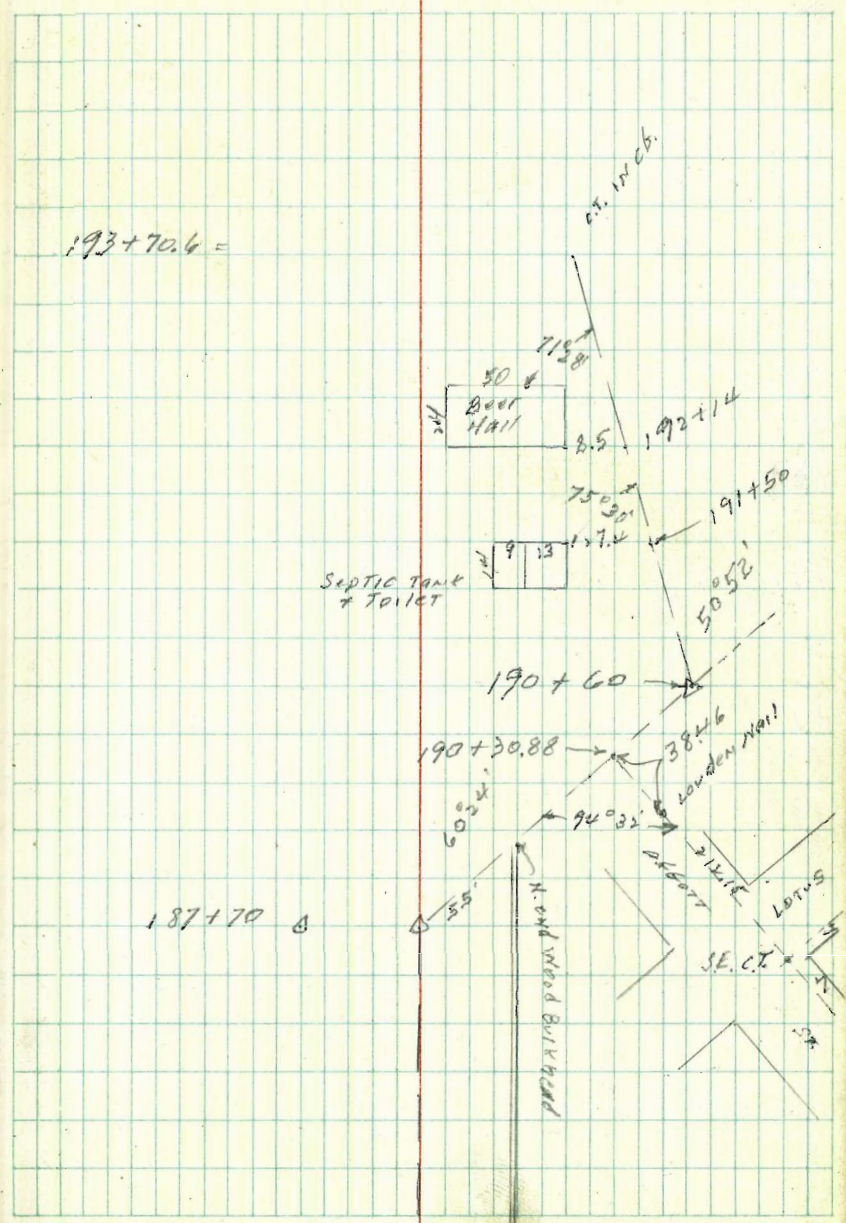
410.5

590.50

175+00



	LT	RT
		10.47 490
T.P.	992 15.37	3.90 545
190+200	49	
189+40		7
189		24
188+50		34
		4.85 490
T.P.	0.30 9.35	0.85 9.05
188		20
187+70 ON SPLIT		13
187	110	
186	100	
185	83	
184	71	
	9.90	



12.03
 9.01
 3.02

4' S of M.B. Bridge
 check to C.T. in curb

4.80 12.03 3.22
 0.20

425 38

193 34

192 + 50 26

11.93 490

T.P. 6.52 16.83 5.06 10.31

192 25

+ 50 32

191 58

190 + 60 ^{ON} SPIT 88

15.37

This tack has settled same

4-18-39
Miles
Walker

x Sec. Alley BIK 12 1/2
City Hts Annex

Indexed
C.S.R.

N.W. Landis
4 Chamoune

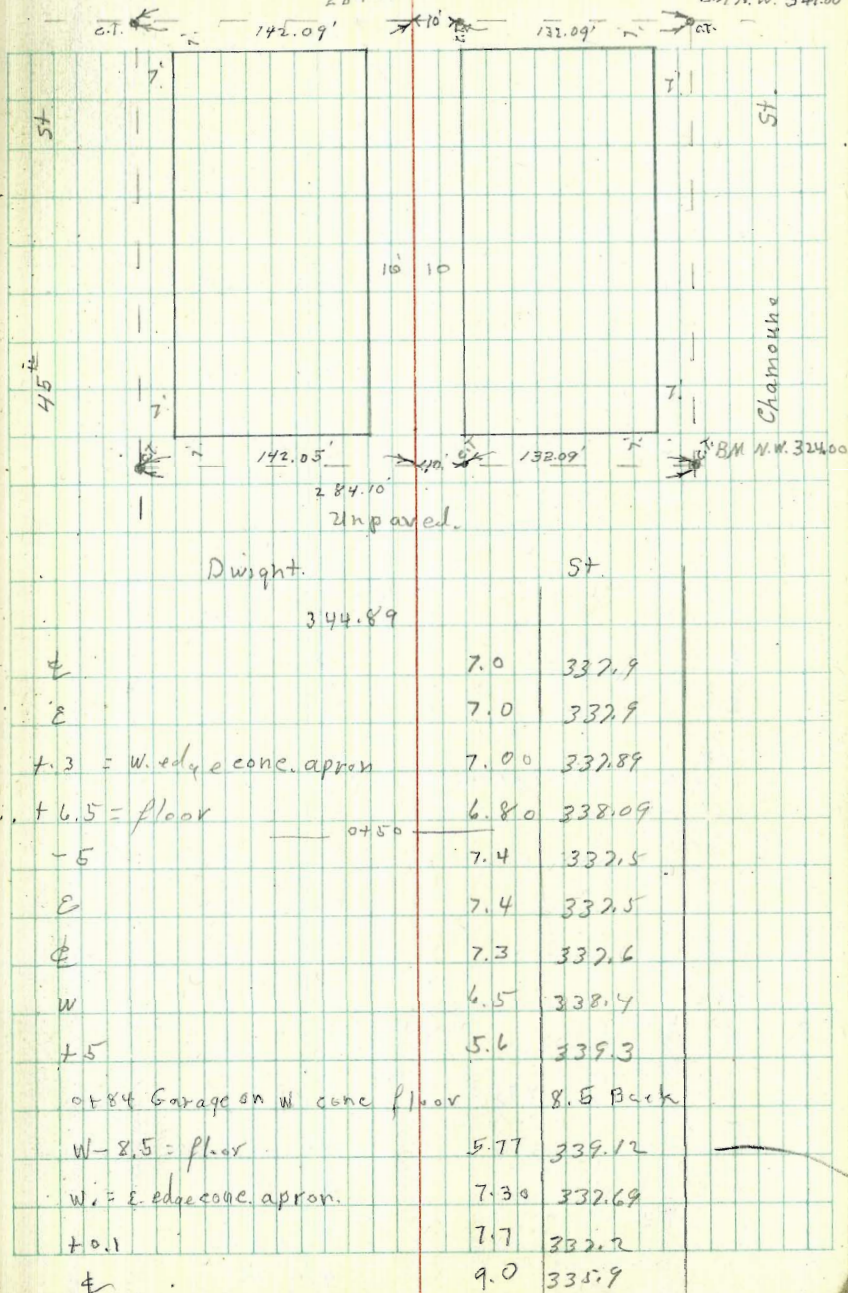
BM	3.89	344.89	341.00
14' N. of S. = s. cb. Landis			
E			
E cb.		3.58	341.31
E gutter		4.1	340.8
4		3.9	341.0
W gutter		4.5	340.8
W. cb.		3.52	341.37
+5.0		3.04	341.85
0+00 = S. line Landis			
W. conc. cb. S. End.		3.23	341.56
W ground.		3.5	341.4
4		4.1	340.8
+9.75 "		3.5	341.4
+9.75 conc. cb. S. End		3.31	341.58
0+20			
E-5 = w. side House		6.0	338.9
E		5.7	339.2
4		5.6	339.3
+6		5.0	339.9
W		4.4	340.5
+2		4.2	340.7
0+44 garage on E. conc. floor Back			
-2		5.1	339.8
W		5.1	339.8
+4		6.2	338.7

Landis Unpaved ST

284.18

76

BM N.W. 341.00



344.89

E	8.6	336.3
+5	8.6	336.3
1+07 garage on E. conc. floor 6.6 Back		
-6.6 = floor	9.14	335.25
-5.3 = w. edge conc. apron	9.27	335.62
E	9.4	335.5
⊕	9.6	335.3
+6	9.4	335.5
W	8.4	336.5
+5	7.4	332.5
1+30		
-5	8.7	336.2
W	9.3	335.6
⊕	9.8	335.1
E	10.0	334.9
+10	10.1	334.8
1+51 to 1+79 Shingled House on W. Line 1+65		
-10	10.1	334.8
E	10.0	334.9
⊕	9.4	335.1
+7	9.4	335.5
W = E. Side House	8.8	336.1
2+00		
W	8.5	336.4
+3	9.0	335.9
⊕	9.1	335.9
E	9.6	335.3
+10	10.7	334.2

344.89

777

2+37 garage on W. dirt floor 0.3 Back.

-10	10.7	334.2
E	9.2	335.7
⊕	8.8	336.1
W+0.3 = floor	8.3	336.5
2+70		
W	8.3	336.5
+5	8.7	336.2
⊕	8.7	336.2
C	8.7	336.2
+3	10.0	334.9
+10	10.4	334.1
3+05 garage on W. dirt floor 4.0 Back		
-10	10.8	334.1
E	9.2	335.7
⊕	8.8	336.1
W	8.1	336.8
+4 = floor	7.2	332.2
T.P.	6.95	343.98
3+50		
W	7.1	336.9
⊕	7.6	336.4
E	8.2	335.8
+10	9.8	334.2
3+77		
-10	9.4	334.6
E	7.3	336.7
⊕	7.0	332.0

W		6.3	339.7
	3+78		
W		6.3	332.0
⊕		7.0	332.0
E		7.2	336.8
+10		7.2	336.8
	4+00		
-10		7.3	336.2
E		7.1	336.9
⊕		6.9	332.1
W		6.5	332.5
	4+02		
W		6.5	332.5
⊕		6.9	332.1
E		7.6	336.4
+2		8.0	336.0
+10		8.8	335.2
	4+25		
-10		8.1	335.9
E		7.0	332.0
⊕		6.5	332.5
W		6.2	332.5

From 4+00 to 4+30 conc. wall on W. line 3' High

" 4+30 to 4+50 garage on W. dirt floor 0.4 in Alley

	4+44		
0.4 E. of W. line = garage floor		4.6	339.4
+5		5.6	338.4
⊕		5.8	338.2
E		6.3	339.2
+10		7.3	336.2
	4+75		
-10		6.8	332.2
E		5.5	338.5
⊕		5.2	338.8
+4		4.9	339.1
W		3.9	340.1
4+92 garage on W. dirt floor		2.8	Back.
W-2.8 = floor		3.4	340.6
W			
5+07 garage on W. conc. floor		2.6	Back
W-2.6 = floor		2.52	341.46
W. on apron		2.78	341.21
+1.3 E. edge conc. apron		3.06	340.92
⊕		4.3	339.2
E		5.0	339.0
+5		5.7	338.3
	5+40		
E		3.4	340.6
⊕		3.4	340.6
+5		3.0	341.0
W		2.5	341.5

W	2.2	341.8
+4	3.9	340.1
±	4.2	339.8
+U	3.8	340.2
±	3.6	340.4

5485 N. End. cobble Wall

W. Line ground at Foot of wall	4.0	340.0
+1.0 W = Top. Cobble wall	1.5	342.5

5495

E	5.0	339.0
+6	6.6	337.4
±	6.6	337.4
+7	6.2	337.8

+9.5 foot of Cobble Wall 5.1 338.9

W. Top " " 2.5 341.5

6400 = N. Line Dwight St.

W-0.1 Top. wall	3.60	340.38
W ground.	6.8	337.2
W. conc. cl. N. End.	6.92	337.06
±	7.2	336.8
+6	7.2	336.8
E conc. cl. N. End	8.64	335.34
E. ground.	8.4	335.6
+0.1 Top. Conc. Wall to E.	5.88	338.10

14 S. of N. = N. cl. Line Dwight.

E. conc. cl.	8.81	335.17
E. gutter	9.5	334.5
±	8.5	335.5
W gutter	7.9	336.1
W. conc. cl.	6.94	337.04
T.P.	9.97	343.78
Orig. B.M.	4.78	341.00 = 341.00

Sta 2447 culvert
 Culvert Alley BIK 72 Ocean Beach
 1519

S		4.3	10.9
S + J		4.7	10.5
c		4.8	10.4
N 20 + 00		4.5	10.7
0 + 10		5.1	10.1
0 + 25		5.3	9.9
0 + 50		5.4	9.8
0 + 75		5.7	9.5
1 + 0		5.6	9.6
1 + 40		6.0	9.2
1 + 42.7	Top Cent Wk	5.55	9.64
1 + 54	" 66	5.86	9.43
Newport "	gut	6.59	8.60
2 + 57	New Garage		
S - 1.8	Sim. gar Cent A	4.17	11.02 9' door

Note: -

Profile Ele. on this block Page 63 Fr W Alley

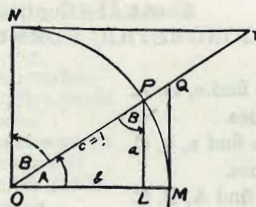


TABLE II

TRIGONOMETRIC FORMULÆ.

$$\angle A = \angle MOP \quad \angle B = \angle PON = \angle OPL$$

$$R = OB = c = 1$$

$$\sin A = \frac{a}{c} = \frac{a}{1} = a = \cos B = LP$$

$$\cos A = \frac{b}{c} = \frac{b}{1} = b = \sin B = OL$$

$$\tan A = \frac{a}{b} = \frac{MQ}{OM} = \frac{MQ}{1} = MQ = \cot B = MQ$$

$$\cot A = \frac{NT}{ON} = \frac{NT}{1} = NT = \tan B = NT$$

$$\sec A = \frac{OQ}{OM} = \frac{OQ}{1} = OQ = \csc B = OQ$$

$$\csc A = \frac{OT}{ON} = \frac{OT}{1} = OT = \sec B = OT$$

$$\text{vers } A = \frac{LM}{OP} = LM = \text{covers } B \#$$

$$\text{covers } A = \frac{OP - LP}{OP} = OP - LP = \text{vers } B$$

$$\text{exsec } A = PQ = \text{coexsec } B$$

$$\text{coexsec } A = PT = \text{exsec } B$$

$$\sin \frac{1}{2} A = \sqrt{\frac{1 - \cos A}{2}} \quad \cos \frac{1}{2} A = \sqrt{\frac{1 + \cos A}{2}}$$

$$\sin 2A = 2 \sin A \cos A \quad \cos 2A = \cos^2 A - \sin^2 A$$

$$\text{Law of Lines} \quad \frac{\sin A}{a} = \frac{\sin B}{B} = \frac{\sin C}{C}$$

$$\text{Law of Cosines} \quad c^2 = a^2 + b^2 - 2ab \cos C$$

$$\text{Law of Tangents} \quad \frac{a+b}{a-b} = \frac{\tan \frac{1}{2}(A+B)}{\tan \frac{1}{2}(A-B)}$$

78.91 SE Top Hd w L

017 x 1100

Revised Pa

$$\begin{array}{r} 2297.82 \\ 149.91 \\ \hline \end{array}$$

457.2 152

38
32134

37723
3.27
38050

$$\begin{array}{r} 60036.72 \\ 000600 \\ \hline \end{array}$$

$$\begin{array}{r} 450 \\ 46 \\ \hline 46 \\ \hline 461.82 \\ 157.92 \\ \hline 613.64 \end{array}$$

36320

$$\begin{array}{r} 140 \\ 60 \\ \hline 084.0 \end{array}$$

461.87
151.86
613.83

$$\begin{array}{r} 60017 \\ 0003 \\ \hline \end{array}$$

$$\begin{array}{r} 140227 \\ 420 \\ \hline \end{array}$$

300.90

$$\begin{array}{r} 2133.60 \\ 156.8 \\ \hline \end{array}$$

331.8