

1596

LEVEL BOOK.

No. 410

MICROFILMED
DEC 28 1964

Peg Book
Steiner Cust &
Paving Work

Ford-

June 11-1915

To

Card Indexed Mar 21, 1918

ENGINEERING DEPARTMENT
CITY OF EAST SAN DIEGO,
CALIFORNIA.

ENGINEERING DEPARTMENT
CITY OF SAN DIEGO,
CALIFORNIA.

Note: - Card index brought
up to page 30.

Sta	+ -	HI	-	Elev
				361.48

Brass Plug NW Pac. + Steiner

Steiner SE Pac	3.97	365.95	✓ 4.55	360.90
-------------------	------	--------	--------	--------

SW "			4.65	360.80
------	--	--	------	--------

B.M.				360.45
------	--	--	--	--------

Brass Plug NW Wilson + Steiner

Steiner SE Wilson	4.02	364.47	4.87	359.60
----------------------	------	--------	------	--------

SW "			4.67	359.80
------	--	--	------	--------

Curb 5 stakes Steiner

June 11/1912
Fossil Impact Site

B.M.				360.45
------	--	--	--	--------

Brass Plug NW Wilson + Steiner

Steiner SW Wilson	4.10	364.55	✓ 4.75	359.80
----------------------	------	--------	--------	--------

SE "			4.95	359.60
------	--	--	------	--------

B.M.				359.37
------	--	--	--	--------

Brass Plug N.W. Storey + Steiner

Steiner SW Storey	4.10	363.47	4.77	358.70
----------------------	------	--------	------	--------

SE.			4.97	358.50
-----	--	--	------	--------

B.M.				348.16
------	--	--	--	--------

Pipe NE Thomas + Steiner

	2.75	350.91	5.0	345.3
--	------	--------	-----	-------

B.M.				348.33
------	--	--	--	--------

Pipe NW Daley + Steiner

Daley SW Steiner	3.89	352.22	✓ 5.42	346.80
---------------------	------	--------	--------	--------

SE "			5.02	347.20
------	--	--	------	--------

Food
Hunt
Gmt
June 12-15

Sta	Ht.	Elev
BM		359.82
SE Swift	4.12	363.94 ✓ 5.24 358.70

Pipe N.W. Steiner + Swift

BM		361.48
SW Pac.	4.9	365.92 ✓ 5.12 360.80

Brass plug NW Pacific + Steiner

BM		348.33
Daley bet	4.89	353.22
Thomas Daley		set 5.02 348.2 Marked 42.0
S.E. Cor.		(7.02 346.2)
Thomas Steiner		set 5.62 347.62 Marked 42.0
		(7.62 345.6)

Pipe N.W. Daley + Steiner

June 14-1915
Food
Hunt
Gmt

BM		348.16
SE Steiner		
0475 Reel	2.02	350.18 12.54 337.64
	3.29	340.93

Pipe NE Thomas + Steiner

Curve ends
34
from to 46- Pipe 33' to old 14" steel Pipe
11.1
329.8 346.65 468 232.24

45
6-14-15

Sta	+	H.1	-	Elev
B.M.				351.97
SW Reed- <i>Steiner</i>	2.92	354.89	3.49	351.40
SE			4.19	350.70

B.M.				357.48
SW Brant <i>Steiner</i>	3.63	361.11	4.21	356.90
SE			4.91	356.20

B.M.				359.37
SW Steiner <i>Steiner</i>	4.06	363.43	4.73	358.70
SE "			4.93	358.50

B.M.				348.16
SE Thomas <i>Steiner</i>	2.57	350.73	5.13	345.60
SW "			5.43	345.30

B.M.				351.97
SE Reed- <i>Steiner</i>	2.82	354.79	4.09	350.70

3
June 14-1915
Ford
Gyat
Hyatt

Brass Plug NW Reed & Steiner

Brass Plug NW Brant & Steiner

Brass Plug NW Steiner & Steiner

Pipe NE Thomas & Steiner

Brass Plug NW Reed & Steiner

June 17-1915
Ford-Hyatt
Gyat

Sta	+	HI	-	Elev
B.M.				348.33
^{Steiner} SE Daley	2.66	350.99	✓ 3.79	347.20
SW "			✓ 4.19	346.80

B.M.				349.17
^{Steiner} SE Sisson	5.11	354.28	✓ 4.78	349.50
SW ^{Steiner} Sisson			✓ 5.18	349.10

B.M.				352.00
^{Steiner} SW Hugo				351.40
Oil Walk + Back	4.35	356.35	4.79	351.56
West of Hugo				351.40
East End Walk	- 0.10			
Walk West of Hwy	- 0.27			

B.M.				352.00
	4.91	366.91	5.71	

B.M.				354.04
^{Steiner} SW Conklin	4.67	358.71	5.11	353.60

B.M.				354.04
^{Steiner} SE Conklin	4.44	358.48	5.08	353.40

44

June 18-15
Ford
Hyat Graf

Pipe NW Daley & Steiner

Pipe NW Sisson & Steiner

6x10 1.424' W + E PL

Brass Plug NW Hugo & Steiner

Brass Plug NW Conklin & Steiner

June 28 15

Ford
Hight
Cmf

Sta 7 H1 - Elev

B.M. 352.91

Steiner
SW stickten 5.13 358.07 5.54 352.50

352.91

Steiner
SE stickten 5.27 358.18 5.18 353.00

B.M. 356.77

Copeland
NW Steiner 4.96 361.73 5.07 356.66

B.M. 352.91

Steiner
NE stickten 5.25 352.16 4.86 353.30

B.M. 348.16

Thomas
NW Steiner 1.62 349.78 3.98 345.80

Brass Plug NW stickten + Steiner

Brass Plug N.W. Copeland + Steiner

Brass Plug NW stickten + Steiner

Pipe NE Thomas + Steiner

June 24. 15⁶
 Ford
 Hyatt
 Graf

Sta F HI - Elev

B.M. 354.04
 Brass Plug NW Cranklin & Steiner
 NE Cranklin 4.49 358.53 4.83 353.70

B.M. 352.91
 Brass Plug NW Stackton Steiner
 NW Steiner Stackton 5.68 358.59 5.79 352.80

B.M. 354.04
 Brass Plug NW Cranklin & Steiner
 NW Steiner Cranklin 4.79 358.83 4.93 353.90

B.M. 352.00
 Brass Plug NW Hugo Steiner
 NE Steiner Hugo 5.32 357.32 5.22 352.10

B.M. 349.17
 Pipe NW Sisson & Steiner
 NE Steiner Sisson 5.17 354.34 4.44 349.90

B.M. 348.33
 Pipe NW Steiner & Daley
 NE Steiner Daley 2.78 351.11 3.51 348.60

June 25 1915
 Ford Hyatt Graf

June 25-15
Ford Hyatt Graf

Sta.	f	H.I.	-	Elev
B.M.				349.17
^{Steiner} NW Sisson	539	354.56	5.06	349.50

Pipe NW Sisson & Steiner

B.M.				352.00
^{Steiner} NE Hugo	523	357.23	5.13	352.10

Brass Plug NW Hugo & Steiner

June 28-15
Hyatt Graf

B.M.				351.97
^{Steiner} NE Reed	388	355.85	4.65	351.20

Brass Plug NW Reed & Steiner

July 28-1915
Ford Hyatt Graf

B.M.				348.16
^{Steiner} NE Thomas	181	349.97	3.97	346.00

Iron Pipe NE Thomas & Steiner

B.M.				348.16
^{Steiner} NW Thomas	256	350.72	4.92	345.80

Iron pipe NE Thomas & Steiner

B.M.				349.17
^{Return Sisson Steiner} NW Steiner	490	354.07	4.57	349.50

Iron pipe NW Sisson & Steiner

June 30-15⁹
Ford Graf
Hyatt

Sta F #1 - Elev

B.M. 359.37

Brass Plug NW Storey & Steiner

^{Steiner}
NW Storey 4.34 363.71 4.51 359.20

B.M. 361.48

Brass Plug NW Pacific & Steiner

^{Steiner}
NE Pacific 4.52 366.00 4.80 361.20

B.M. 360.45

Brass Plug NW Wilson & Steiner

^{Steiner}
NW Wilson 4.71 365.16 4.86 360.30

B.M. 359.82

IRON PIPE NW Swift & Steiner

^{Swift}
NE Steiner 4.61 364.43 5.23 359.20

B.M. 361.48

Brass Plug NW Pac & Steiner

^{Steiner}
NW Pacific 4.84 366.32 5.02 361.30

Sta. + H.I. - Elev.

B.M. 352.89

Steiner
N.E. Scott 3.86 356.75 6.75 350.0

B.M. 359.82

Steiner
N.W. Swift 4.63 364.45 5.85 358.6

B.M. 359.82

Steiner
S.W. Swift 3.80 363.62 5.52 358.10

B.M. 352.89

Steiner
S.E. Scott 3.03 355.92 5.09 350.83 +2.83

B.M. 352.89

SL Steiner
bet Scott & Swift
2.16 W. W. Allen 3.00 355.89 3.89 352.00

B.M. 359.82

swift
N.E. Steiner 4.15 363.97 4.77 359.20

3/4" iron pipe N.W. Steiner 43' E of E.L. Scott.

1" iron pipe N.W. Swift + Steiner

iron pipe N.W. Steiner 43' E of E.L. Scott.

1" iron pipe N.E. Steiner E of E.L. Scott

Iron Pipe N.W. Swift + Steiner

← July 8-15 →

July 8-15
Fork 14 1/2 ft
G.M.F.

July 8-1915
Ford-~~Map~~
Graf

Sta	F	HI	-	Elev
B.M.				359.82
NW ^{Swift} Stenu	2.97	362.79	4.19	358.60

100 Pipe NW Swift + Stenu

B.M.				352.89
Bet Swift + Stenu D ₁₅ 25' W-50.51' End Cement Surt Ch-10-22'	4.68	357.57	7.27	350.30
D = 3° 05'			✓ 5.91	351.66
6°-10'			✓ 6.25	351.32
9° 15'			✓ 6.59	350.98
12° 20'			✓ 6.93	350.64
15° 25'			✓ 7.27	350.30

Stubs set A' Back

B.M.				340.29
E. Wabash PT-Curb W.L. Scott 47.98' S of SL Stenu PC. W.L. Scott.	4.82	345.11	4.96	340.15
			1.13	343.98

3/4" Iron Pipe W of W.L. Wabash 'S of SW Stenu & Wabash

B.M.				340.29
^{Stenu} SW Scott	8.90	349.19	2.19	347.06

WL Scott S of Steiner.

Sta	+	H1	-	Elev
B.M.				340.15
pc 10.49				5.11 349.98
3° 20' ✓	9.00	349.15 ✓	5.86	343.29
6° 41' ✓			6.55	342.60
10° 01' ✓			7.24	341.91
13° 22' ✓			7.93	341.22
16° 42' ✓			8.56	340.59
20° 03' P.T.			9.00	340.15

B.M.				359.82
Swift SW Steiner	3.62	363.44	5.34	358.10

Top Cu v6 SW Scott Stake Steiner				347.0
Steiner SW Scott	4.99	351.99	4.99	347.0
Steiner NW Scott			2.79	349.20

From SW BK Cu
Sec = 10.67

Sec = 64.01

July 9 15
Ford
Hunt
Gmt

12

July 9 - 1915

Steiner

July 20, 1915

13

+ H.I. - F.I.

B.M. 33916 34816

1.72 349.88

S.W. Thomas 4.58 345.3

SE 11 4.26 345.68

B.M. 351.97

2.80 354.77

SE Flood 4.17 350.70

Pipe N.E. Cor. Thomas

B.M. 348.16

N. E. Cor.

2.10 350.76

W.L. Thomas

N Gutter 5.73 345.3

N 1/4 4.97 345.19

N.H. 4.81 345.95

S.H. 5.01 45.75

S 1/4 5.19 45.57

S.G. 5.86 44.9

E.L. Thom.

N Gutt. 5.86 45.5

N 1/4 4.78 45.98

N.H. 4.61 46.15

S.H. 4.81 45.95

S 1/4 4.99 45.77

S Gutt. 5.54 45.8

Nalley G. 2.76 48.00

alley bet Thomas & Reed

N 1/4 2.27 48.97

N.H. 2.11 48.65

Walter Thomas
+ Reed

S.H. 48.45

S 1/4 2.31 48.25

S. G. H. 316 47.60

Reed Ave

East Line 515 351.97

N. Curb 357.18 5.92 51.2

N. G. 4.42 50.7

N 1/4 5.73 51.19

N. H. 5.79 51.35

S. H. 5.97 51.15

S 1/4 6.18 52.94

S. G. 6.32 50.3

S. Curb 6.43 50.7

E
N. C

N. G

N 1/4 5.15 51.97

N. H. 4.97 52.15

S. H. 5.17 51.95

S 1/4 5.40 51.73

5.72 351.40

B.M. N.W. Reed

Bradt

BM 35748

405 36153

N.G. 7.13 53.8

N 1/4 7.00 54.33

N.H. 7.03 54.5

S.H. 7.23 54.3

S 1/4 7.95 54.08

S.G. 8.13 53.4

E.L. Bradt

N.C. 36153 4.83 56.7

N.G. 5.33 56.2

N 1/4 4.84 56.69

N.H. 4.68 56.85

S.H. 4.88 56.65

S 1/4 5.09 56.44

S.G. 5.73 55.80

S.C. 5.33 56.2

N.W. Cor. Cherokee in Bradt

Alley between Reed + Bradt

Bradt

NG	6153	413	57.4
NG		4.63	569
N ¹ / ₄		4.10	5743
N.H		3.93	576
S.H		4.13	574
S ¹ / ₄		4.35	5718
SG		5.03	565
SC		4.63	569

Alley bet Bradt & Storey

NG	6153	3.83	577
N ¹ / ₄		3.26	5827
N.H		3.06	5847
S.H		3.26	5827
S ¹ / ₄		3.51	5808
SG		4.23	573

July 27 17

Lockey
Kennedy
Graf

Storey

Aug 18

359.37

448 363.85

East Line

N.C. 485 359.0

N.G. 5.35 58.5

N 1/4 4.80 59.05

N.H. 4.7 59.15
4.60 59.25

S.H. 4.9 58.95
4.80 59.05

S 1/4 5.02 58.93

S.G. 5.75 58.10

S.C. 5.33 58.5

West

N.C. 4.65 59.2

N.G. 5.15 58.7

N 1/4 4.55 59.3

N.H. 4.45 59.4
4.35 59.5

S.H. 4.65 59.2
4.55 59.3

S 1/4 4.80 59.05

S.G. 58.35

S.C. 5.15 58.7

Alley bet Storey & Wilson

NG	63.85	4.68	59.17
N 1/4		4.10	59.75
		4.00	59.85
NH		3.90	59.95
		4.2	59.6
SH		4.10	59.75
S 1/4		4.35	59.50
SG		5.10	58.75

Wilson Ave

East Line	555	36600	36045
NC			5.9 601
NG			59.65
N 1/4		5.77	60.23
		5.65	60.35
NH		5.55	60.45
		5.85	60.15
SH		5.75	60.25
S 1/4		6.00	60.00
SG			59.2
SC		6.4	59.6

B.M. N.W. Cor. Wilson & Steiner

	H.I	Rd	EI
NC	366.00	5.7	360.3
NG			59.8
N ¹ / ₄		5.55	60.45
NH		5.45 5.35	60.55 60.65
SH		5.65 5.55	60.35 60.45
S ¹ / ₄		5.83	60.17
SG		6.6	59.4
SC		6.8	59.8

Alley

NG	6600	5.75	60.25
N ¹ / ₄		5.18	60.82
N.H.		5.00	61.00
S.H.		5.20	60.8
S ¹ / ₄		5.37	60.63
SG		6.25	59.95

Alley bat Wilson & Pacific

Pacific

	5.42	66.90	36.48
East Line			
N.C		5.70	61.8
N.G		6.20	60.7
N 1/4		5.63	61.27
N.H		5.45	61.45
S.H		5.65	61.25
S 1/4		5.83	61.07
S.G		6.40	60.55
S.C		6.00	60.91
West Line	66.90		
A.C		5.60	61.3
N.G		6.1	60.8
N 1/4		5.61	61.29
N.H		5.45	61.45
S.H		5.65	61.25
S 1/4		5.86	61.04
S.G		6.5	60.4
S.C		6.10	60.8

Pacific

Aug 27

22

Laeko
Kennedy
Graf

NG	7.15	5975	
N ¹ / ₄	6.63	6027	
N.H.	6.45	6045	
S.H	6.65	6025	} to high
S ¹ / ₄	6.27	6003	
SG	7.45	5935	

Op Hay bet Pacific & Swift

Swift Int

Aug 27 23
Kuehn Lecky
Kempsey
Giff

35286

N.W. Cor of Swift

424 6406

East Line
N.C

5.86 59.3

N.G

5.36 58.7

N 1/4

4.78 59.28

N.H

4.61 59.45

S.H

4.81 59.25

S 1/2

5.02 59.02

S.G

5.76 58.3

S.C

5.36 58.7

West Line

N.C

5.46 58.6

N.G

5.96 58.1

N 1/4

5.97 58.59

N.H

5.31 58.75

S.H

5.51 58.55

S 1/2

5.72 58.34

S.G

57.7

S.C

5.96 58.1

Alley bet Swift & Scott

N.G.	10.66	53.4
N. 1/4	10.22	53.84
N.H.	10.06	54.00
S.H.	10.26	53.8
S. 1/4	10.51	53.55
S.G.	11.26	52.8

Ford
Hunt 25
Graf
July 22-15

Sta + HI - Elev

B.M. Filmore 325.37

Pipe NW Filmore & Mission

SW Mission 2.21 327.58 5.58 322.00
NW " " 5.08 322.50

B.M. Filmore 333.44

Brass Plug NW Filmore & Pueblo

SE Pueblo 3.34 336.78 5.78 331.00

B.M. Filmore 333.44

NE Pueblo 3.42 336.86 4.86 332.00

July 26-15
Ford Hunt Graf

B.M. Thomas 348.16

Pipe NE Thomas & Steiner

SW Steiner 2.87 351.03 5.73 345.3

Curb's Thomas 51.8 S.P.L. Steiner
Return PUT IN HO 31.00 by white

B.M. Reed 351.97

Brass Plug NW Reed Steiner

SE Steiner 3.88 355.85 5.15 350.7

B.M. Wabash 330.76

110M Pipe NW Filmore Wabash

SW Filmore 2.77 333.53 3.03 330.50

" " 4.07 334.83 4.33 330.50

B.M. Mission 325.37

Pipe NW Mission Filmore

SE Filmore 1.95 329.32 5.32 322.00

NE " 5.13 328.63 4.63 322.50

Ford
Hwy
Stat
July 26-15

Curve Grades Filmore

Curve Grades At Filmore at Wabash

BM				330.76	pipe NW Filmore Wabash
PC	4.86	335.62	5.65	329.97	
100' W of W.L. Mission	4.08	334.84	6.67	328.17	
PT 16° 41'			2.84	332.00	
3° 20.2'			4.56	330.28	
6° 40.4'			4.20	330.64	
10° 0.6'			3.79	331.05	
13° 20.8'			3.34	331.50	
BM				330.76	
PT	4.13	334.89	2.89	332.00	
				330.76	
	6.77	337.53	5.24	332.29	
			4.93	332.60	

EL Mission				322.50	
100' W of W.L. Wabash				328.17	
3596 W " " " "				PC = 29.97	
ARC 10.366 D = 3° 20.2'				30.26	+ 0.2 = 30.28
2 - 10.366 D = 6° 40.4'				30.55	+ 0.9 = 30.64
2 1/2 - 10.366 D = 10° 0.6'				30.70	MIT Stake
1/2 10.366 D = 15° 0.6'				30.96	+ 0.9 = 31.05
40 10.366 D = 13° 20.8'				31.48	+ 0.2 = 31.50
5 10.366 D = 16° 41' PT				32.00	
+ 7.2' Tan = PC 10'R Δ 56° 38'				32.25	← By Map -
PT arc = 9.88				32.60	
+ 9' = PC 10'R Δ 56° 47'				32.29	ON Ground by Int.
PT 10'R				32.60	

Thomas Avenue

Aug 27, 15
Leskey 27
Kennedy
Graf

B.M.

34814

Iron Pipe N.E. Cor

3.35 35151

N. Gutter M.L.

6.21 45.3

N 1/4 "

5.76 45.75

N.H. "

5.56 45.95

S.H. "

5.76 45.75

S 1/4 "

6.01 45.50

S.G. "

6.61 44.9

Reed Ave

Aug 27, '28
Loutrey
Grat
Kennedy

B.M.

35197

Brass Plug N.W. Cor

3.28 5525

East line

NG

4.55 507

N 1/4

4.10 5115
off old stake 500

NH

3.90 5735

S.H

4.10 5115

S 1/4

4.35 509

SG

4.95 503

Pacific

Aug 27, 15
Leekey
Kennedy
Graf 29

B.M

36148

N.W. Cor

5.33

6681

6681

west line

N.G

601

608

N. 1/2

556

6125

N.H.

536

6145

S.H.

556

6125

S. 1/4

581

610

S.G.

640

6041

Swift Int

Aug 27/30
Lecky
Kennedy
Graf

B.M.

59.82

B.M. Iron Pipe N.W. Cor

3.89

63.71

E. Line

NG

5.01 58.7

N 1/4

4.48 59.23

NH

4.26 59.45

SH

4.46 59.25

S 1/4

4.74 58.97

SG

5.41 58.3

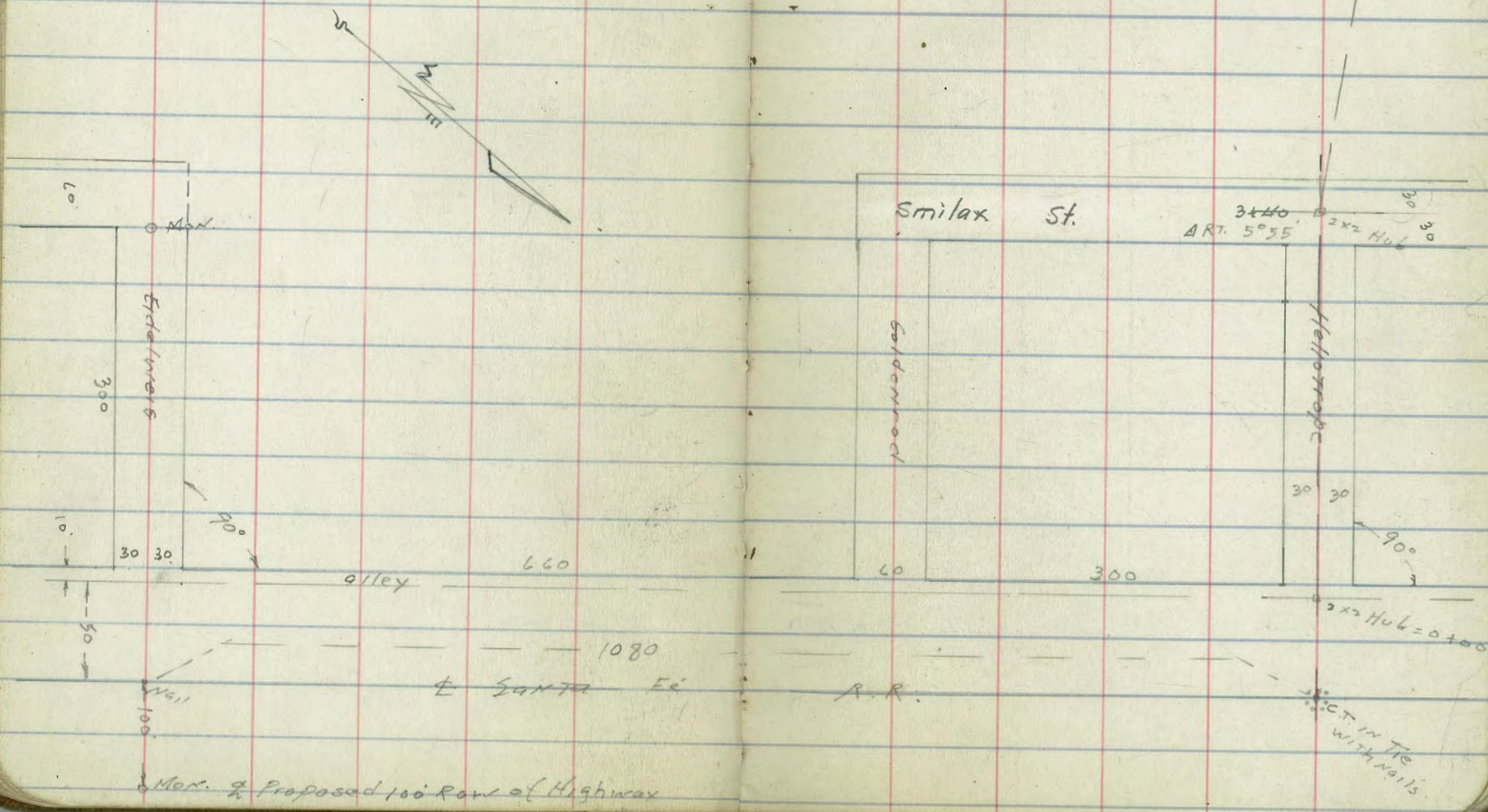
Moore
Osborn
Hale
12-20-40

INDEXED
EFB

31

Proposed Sewer & Heliotrape St.
Wly Thru P.L. 1329.

See E.P. 1440 p 46



Sewer Levels
 on Heliotrope St.
 Santa Fe RR Wly Thru Pk. 1329

750	11.1	20.6	5	11.4	20.9	
1+00	10.9	20.8	450	12.1	20.4	
0+50	10.7	21.0	4	11.9	20.6	
0+00 on Hub	10.77	20.88	3+50	12.2	20.3	
0-11 Tee emb.	11.2	20.5	on Hub T.P. 3+40	12.5	32.50 11.69 19.96	
0-22 Shoulder emb.	11.7	21.0	3+40 A RT. 5° 55'	11.3	20.4	
0-50 Top W. rail RR	243	28.22	3	11.5	20.2	
T.P.	297	31.65	462	28.68	450	
T.P.	234	33.30	569	30.94	11.2	20.5
2.33	36.63	34.30	(City Datum)	2+00	11.1	20.6

BM U.S.G.S DATUM
 Mon. 75 Metres SW.
 Santa Fe Sta.
 E. end gas pumps
 at Soller's Store

31.65

8+50 10.0 32.6 ✓

T.P 10.26 42.61 0.15 32.35

8 1.8 30.7

+50 4.6 27.9

7 in small wash 7.7 24.8

+80 7.7 24.8

+50 8.9 23.6

6 11.0 21.5

5+50 12.1 20.4

32.50

11 on 2x2 Hub 3.3 39.48

+70 Barbed wire fence 3.8 38.8

+50 4.9 37.7

+25 9 12' dirt Road 5.9 36.7

10 6.3 36.3

+50 approx. crossing of 4" water pipe 7.9 34.7 ✓ 2' below

9 9.6 33.0 ✓

8+80 small wash 10.8 31.8

42.61

Moore
Osbeyne
Hale
1-15-41

Indexed
L.M.

34

X sec Kellogg St = 50' wide
12.5' curbs
6.25' 1/4"

at Rosecrans St.

NEPP 6.44 40.04 3360 Rosecrans
Kellogg

00-5

F.H. cb 6.45 33.59 ✓

gvt end 7.26 32.78 ^{3.5 x 2.7}

+ 5 = edge pav 6.47 33.57 ✓

+ 15 = 9' sidewalk 6.12 33.92

E = W edge " 5.89 34.15 ✓

1/4 5.8 34.2

W gvt apron 6.17 33.87 ✓

W h cb 5.39 34.65 ✓

S h Kellogg

W cb 5.41 34.53

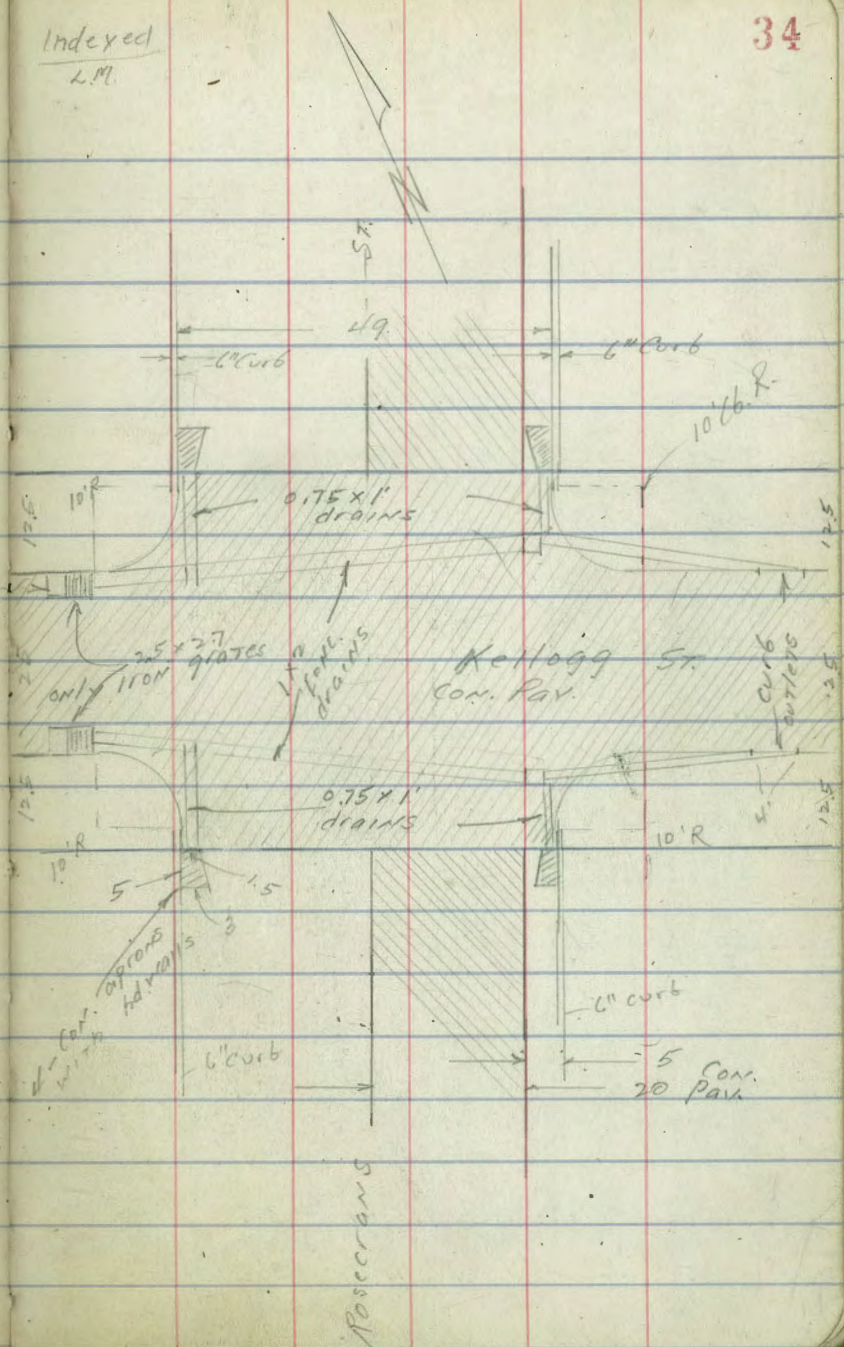
+ 1.5 Hdl. wall 5.45 34.59

" F.L. 6.55 33.49

W 1/4 pav 5.84 34.20

E " 5.90 34.10

Reduced 2/1/44 - All



♀ +10	6.17	33.87
♀ +20	6.40	33.64
♀ +23.5 hd wall	6.45	33.59
" FL inlet	7.51	32.53
EL c6	6.47	33.57
S c6 Kellogg		
EL-47 c6	9.79	30.25
" gut	10.5	29.52
EL-31.1 ♀ opening c6	8.7	31.32
" " " FL	9.89	30.15
EL-9.5 c6 P.C.	7.24	32.80
" " gut	8.00	32.04
EL	7.07	32.97
+5	6.72	33.32
+15	6.32	33.72
+25	6.07	33.97
1/4	5.99	34.15
WL on cleanout cover	5.41	34.63
+9.5 P.C. c6 hd wall	4.68	35.36
" FL inlet	6.07	33.97

WL +14.5 c6	4.30	35.74
" " FL approx	5.02	35.02
WL +5.0 c6	1.48	38.56
" " gut	2.26	37.78
S 1/4 Kellogg		
WL -5.0	1.73	38.31
" -14.5	4.65	35.39
" -9.5	4.85	35.19
WL	5.50	34.54
1/4	5.85	34.19
♀	6.08	33.96
+10	6.34	33.70
+20	6.50	33.46
E.L.	6.83	33.21
" +9.5	7.35	32.69
" +4.7	10.00	30.04
♀ Kellogg		
EL -47	9.84	30.20
" -9.5	7.14	32.90
E.L.	6.60	33.44

40.04

EL + 5	6.50	33.54
" + 15	6.31	33.73
E	6.04	34.00
1/4	5.76	34.27
WL	5.38	34.66
WL + 9.5	4.73	35.31
" + 14.5	4.42	35.62
" + 50	1.47	38.57
N 1/4 Kellogg		
WL - 50	1.67	38.37
" - 14.5	4.64	35.40
" - 9.5	4.61	35.43
WL	5.35	34.69
W 1/4	5.73	34.31
E	5.98	34.06
" + 10	6.24	33.80
" + 20	6.69	33.36
EL	6.69	33.35
" + 9.5	7.35	32.69
" + 47	10.03	30.01

40.0X

35

N 1/6 Kellogg			
EL - 47	cb	9.84	30.18
"	"	gnt	10.62 29.42
"	-30.5	cb	8.62 31.42
"	"	E outlet	9.75 30.29 FL.
"	-9.5	cb PC	7.15 32.89
"	"	gnt	7.90 32.14
EL		6.95	33.09
+ 5		6.55	33.49
+ 15		6.26	33.78
E		5.95	34.09
1/4		5.76	34.28
WL	on	cleanout cover	5.38 34.66
+ 9.5	cb	PC	4.70 35.34
"		hd wall	4.70 35.34
"	FL	inlet	6.14 33.90
+ 14.5	cb		4.33 35.71
"		gnt	5.10 34.94
+ 50	cb		1.50 38.54
"		gnt	2.24 37.80

N L Kellogg

W.L. cb d. Hd wall 5.44 34.60

+1.5 FL inlet 6.64 33.40

1/4 5.78 34.26

9 5.91 34.13

+10 6.13 33.97

+20 6.33 33.71

+23.5 inlet FL 7.47 32.57

FL cb 4 Hd wall 6.45 33.59

N L +5

EL cb. 6.41 33.63

" FL approx 7.24 32.80

+5 6.41 33.63

+1.5 6.07 33.97

+2.5 = 9 = w edge Pa 5.97 34.07

1/4 5.8 34.2

W L FL approx = 9.07 6.24 33.80

W L cb 5.42 34.62

X sec Lawrence
 AT Rosecrans
 50' wide
 12.5 cbs
 6.25 1/4

Indexed
 L.M.

N.E. BP 8.00 41.60

Rosecrans
 Kollag

S. Lawrence

EN TOP CB 6.48 35.12

" GUT 7.26 34.34

" + 5 6.89 34.71

" + 15 6.41 35.19

" + 25 = 8 = Wedge 6.11 35.48

1/4 5.95 35.65

WL GUT 6.28 35.32

" CB 5.45 36.18

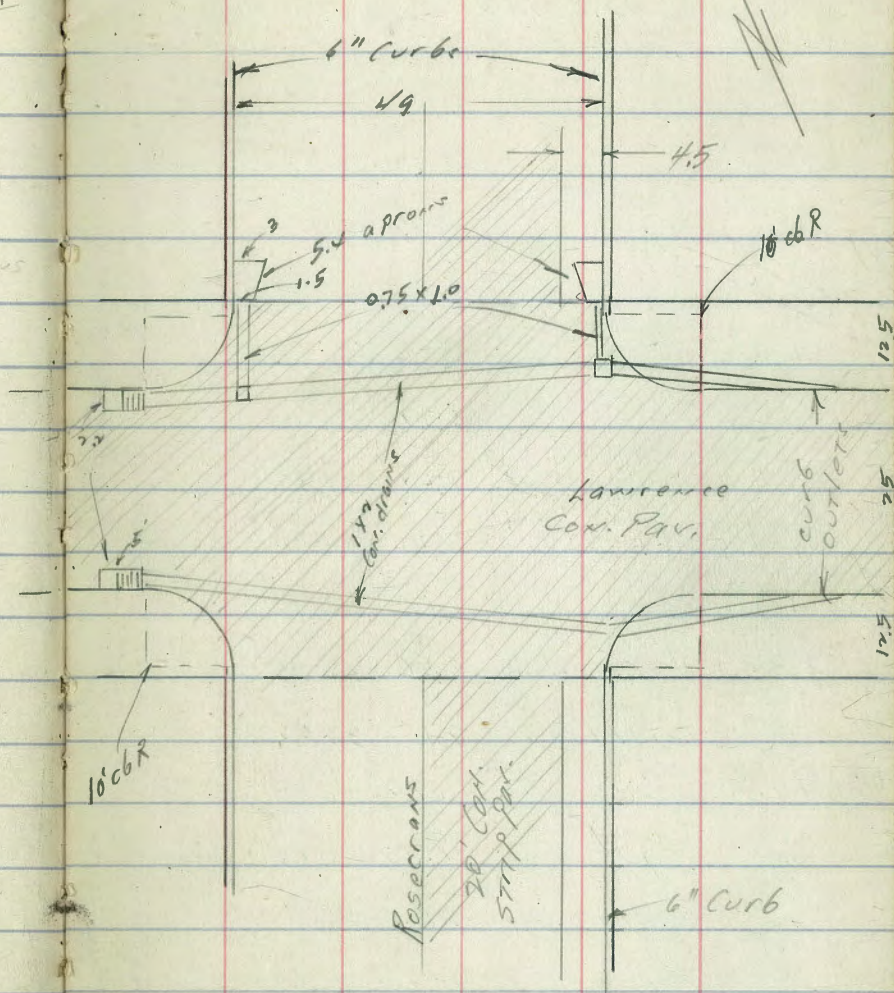
S. Lawrence

WL - 50 1.40 40.20

" " 2.20 39.40

" - 14.5 4.34 37.24

" " 5.09 36.51



41.60

Hdwall WL - 9.5 c6 PC	4.75	36.85
" " FL Inlay	6.14	35.44
W.L.	5.50	36.10
1/4	5.88	35.72
c	6.02	35.34
C + 10	6.32	35.26
" + 20	6.79	34.81
EL	7.24	34.36
+ 9.5 c6 PC	7.30	34.30
"	8.14	33.46
+ 25.3 ^{TOP} c6 outlet	8.66	32.94
" 9UT FL "	9.75	31.85
+ 50 c6	10.68	30.92
" 9UT	11.47	30.13
S 1/4 Lawrence		
- 50	10.91	30.69
- 9.5	7.54	34.06
EL	6.81	34.79
+ 5	6.60	35.00

41.60

39

EL + 15	6.32	35.25
c	6.12	35.48
1/4	5.90	35.70
WL	5.52	36.08
WL + 9.5	4.49	36.91
" + 14.5	4.50	37.10
" + 50	1.57	40.03

Lawrence

- 50	1.40	40.20
- 14.5	4.21	39.39
- 9.5	4.70	36.90
WL	5.49	36.11
1/4	5.88	35.22
c	5.99	35.61
+ 10	6.21	35.39
+ 20	6.36	35.24
EL	6.56	35.04
+ 9.5	7.28	34.32
+ 50	10.73	30.87

N 1/4 Lawrence

- 50	10.92	30.68
- 9.5	7.50	34.10
EL	6.65	34.95
+ 5	6.40	35.20
+ 15	6.18	35.42
C	5.94	35.64
1/4	5.82	35.74
WL	5.50	36.10
+ 9.5	4.74	36.86
+ 14.5	4.52	37.04
+ 50	1.59	40.01

N c6. Lawrence

- 50 c6	1.37	40.23
" gut	2.13	39.47
- 14.5 c6	4.34	37.26
" gut	5.09	36.51
- 9.5 c6 Hd wall	4.79	36.81
" FL inlet	5.11	35.49
WL Top clearout	5.51	36.09

1/4	5.77	35.83
C	5.95	35.65
+ 10	6.22	35.38
+ 20	6.57	35.03
EL	7.13	34.47
+ 9.5 c6 P.C.	7.32	34.24
" gut	8.15	33.45
+ 24.9 c6	8.72	32.78
" " 2' outlet	9.80	31.80
+ 50 c6	10.84	30.74
" gut	11.50	30.10

N K Lawrence

EL c6 & Hd wall	6.50	35.10
+ 1.5 FL inlet	7.53	34.02
+ 5	6.22	35.38
+ 15	6.08	35.52
C	5.90	35.70
1/4	5.69	35.91
WL c6 & Hd wall	5.44	36.16
" inlet	6.42	35.18

4160

W.L. Lawrence + 5

W.L. cb 5.42 36.15

" ^{FL} 90T apron 6.23 35.37

1/4 5.70 35.90

C 5.92 35.68

+10 6.08 35.52

+20 6.48 35.12

E.L. ^{90T} FL apron 7.26 34.34

" curb 6.45 35.15

41

X sec of McCall 50' wide
 1 1/2 cbs indexed
 2.25 1/4 L.M.

at Rosecrans

EL	771	3581
+5	734	3588
+15	6.60	36.62
C	6.10	37.12

XWBEP 509 4300

3813 Rosecrans
 McCall

P 43

S L McCall

WL cb 5.65 32.57

" gUT 6.50 36.70

1/2 = 12.25 pav 6.04 37.15

C 6.23 36.99

+10 6.58 36.64

+20 7.16 36.06

EL gUT 7.63 35.59

" cb 6.72 36.50

S cb McCall

- 50 cb 11.69 31.53

" gUT 12.48 30.74

- 21.5 cb 8.84 34.38

" 2 4' outlet 9.91 33.31

- 9.5 cb P 7.68 35.54

" gUT 8.45 34.77

McCall Intersection

same as Lawrence

C + 12.25 = 1/4	590	32.32
WL	5.55	32.67
+ 9.5 c6 Hal wall	4.97	38.25
" FL inlet	6.35	36.87
+ 14.5 c6	4.58	38.64
" approx	5.37	37.85
+ 50 c6	1.59	41.63
" gut	2.31	40.81

S 1/4 McCall

- 50	1.62	41.60
- 14.5	4.75	38.47
- 9.5	4.93	38.29
WL	5.36	32.86
1/4	5.78	32.44
C	6.13	32.09
+ 10	6.35	36.87
+ 20	6.83	36.39
EL	7.10	36.12
+ 9.5	7.76	35.46
+ 50	11.77	31.45

E McCall

- 50	11.43	32.7.9
- 9.5	7.44	35.7.6
EL	6.70	36.52
+ 5	6.51	36.21
+ 15	6.18	32.04
C	5.99	32.23
1/4	5.73	32.4.9
WL	5.28	32.94

+ 9.5	4.69	38.53
+ 14.5	4.34	38.88
+ 50	1.22	41.99

N 1/4 McCall

- 50	1.24	41.98
- 14.5	4.35	38.87
- 9.5	4.55	38.62
WL	5.24	37.96
1/4	5.71	32.51
C	5.94	32.28
+ 10	6.08	32.14

C + 20	6.52	3668
FL	6.85	3632
+ 9.5	7.55	3562
+ 50	11.60	31.62

N cb McColl

- 50 cb	11.52	31.20
" gUT	12.18	31.04
- 20.35 G	8.45	34.77

" " F 4' 0" 5' 10"	9.56	33.66
--------------------	------	-------

- 9.5 cb P.C.	7.46	35.26
---------------	------	-------

" gUT	8.15	35.07
-------	------	-------

FL	7.20	36.02
----	------	-------

+ 5	6.80	36.42
-----	------	-------

+ 15	6.13	37.09
------	------	-------

C	5.83	37.39
---	------	-------

1/4	5.67	37.55
-----	------	-------

WL	5.33	37.89
----	------	-------

+ 9.5 cb & Hd. wall	4.50	38.92
---------------------	------	-------

" FL inlet	5.99	39.23
------------	------	-------

+ 14.5 cb	4.22	39.20
-----------	------	-------

+ 14.5 gUT	4.79	38.43
------------	------	-------

+ 50 cb	0.96	42.26
---------	------	-------

" gUT	1.67	41.55
-------	------	-------

N L McColl

W L Top cb & Hd. wall	5.12	38.10
-----------------------	------	-------

" FL inlet	6.18	37.04
------------	------	-------

1/4	5.55	37.62
-----	------	-------

C	5.72	37.50
---	------	-------

+ 10	5.88	37.34
------	------	-------

+ 20	6.13	37.09
------	------	-------

FL FL inlet	7.51	35.91
-------------	------	-------

" cb	6.40	36.82
------	------	-------

N L + 5

FL cb	6.33	36.89
-------	------	-------

" gUT apron	7.16	36.04
-------------	------	-------

+ 5	6.30	36.92
-----	------	-------

+ 15	5.87	37.35
------	------	-------

C	5.48	37.54
---	------	-------

1/4	5.4	37.8
-----	-----	------

W L gUT apron	5.95	37.27
---------------	------	-------

" curb	5.10	38.12
--------	------	-------

Sketch P48

Indexed
L.M.

55.54

45

1/2 sec of Owens
at Rosecrans

50' wide
12.5 cb
6.25 1/2

- 9.5 FL 1/2 6.75 48.79
W/L 6.26 49.28
1/4 6.58 48.96
C 6.91 48.67

SEBP 747 55.54

Rosecrans
4807 Owens

+ 10 7.23 48.31
+ 20 7.87 47.72

SL OWENS

EL cb PC 7.42 48.12

E.L. 8.34 47.20

" gut 8.35 47.19

+ 9.5 cb PC 8.78 46.76

+ 5 7.95 47.5.9

" gut 9.53 46.01

+ 15 7.40 48.14

+ 18.5 cb 9.69 45.85

C 7.16 48.38

" 9' 1/2^{cb} outlet 10.84 44.70

1/4 7.10 48.44

+ 50 cb 13.12 42.92

W/L gut 7.34 48.20

" gut 13.84 41.20

" cb 6.39 49.15

S 1/4 of Owens

S cb OWENS

- 50 13.14 42.40

- 50 cb 0.15 55.39

- 2.5 8.58 46.96

" gut 0.77 54.77

EL 7.67 47.87

- 14.5 cb 4.67 50.8.7

+ 5 7.42 48.12

" gut approx 5.78 50.26

+ 15 7.20 48.34

- 9.5 cb + Hd wall
PC 5.32 50.22

C 6.75 48.79

1/4	6.45	49.09
WL	6.02	49.52
+9.5	5.03	50.51
+14.5	4.71	50.83
+50	0.0	55.54

E OWENS

-50	+0.36	58.80
-14.5	4.02	51.52
-9.5	4.64	50.90
WL	5.75	49.79
1/4	6.20	49.34
C	6.52	49.02
+10	6.07	48.82
+20	6.96	48.5.8
FL	7.29	48.25
+9.5	8.07	47.42
+50	12.68	42.86

N 1/4 OWENS

-50	12.71	42.82
-9.5	8.05	47.49

FL	7.20	48.34
+5	6.79	48.73
+15	6.52	49.00
+25 = 8	6.35	49.19
1/4 = 12.25	6.05	49.49

WL	5.68	49.86
+9.5	4.31	51.21
+14.5	4.06	51.48
+50	+0.42	55.96

N 06 OWENS

-50 cb	+0.70	56.24
" gut	+0.15	55.69
-14.5 cb PC	3.67	51.82
" gut apron	4.47	51.02
-9.5 cb + 1/4 wall	4.23	51.31
" FL	5.62	49.92
" FL Drop	7.01	48.48
WL	5.47	50.07
1/4	5.88	49.66
C	6.23	49.31

+10	6.44	48.10
+20	6.96	48.58
E.L.	7.36	48.18
+9.5 cb PC	7.59	47.98
" gut	8.38	47.16
+18.8 cb	8.67	46.87
" E.C. opening OUTLET	9.77	45.77
+50 cb	12.34	43.20
" gut	13.10	42.44

M.L. OWENS

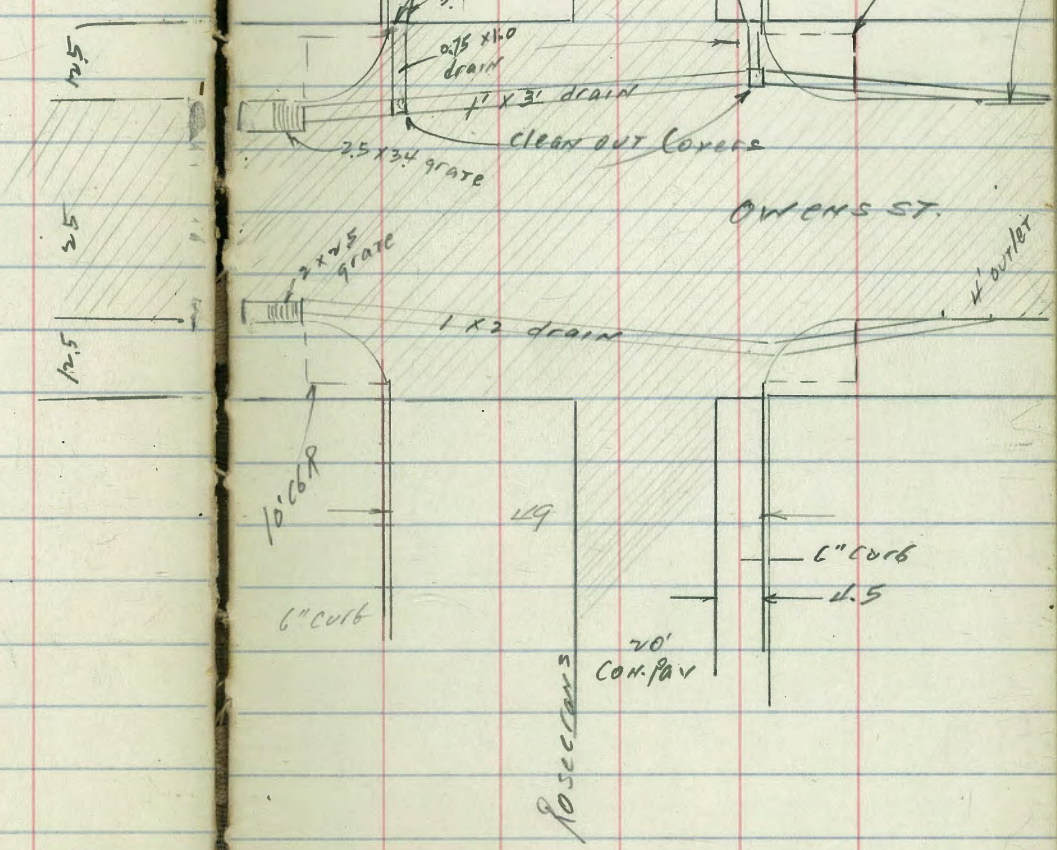
E.L. cb Hd wall	6.40	48.14
" INLET FL.	7.43	48.11
+5	6.29	48.25
+15	6.05	49.49
C	5.88	49.66
1/4	5.57	49.97
W.L. cb Hd wall	5.31	50.25
" INLET FL	6.31	49.23

N1 +5		
W.L. cb	5.08	50.46
" gut approx	5.94	49.60
1/4	5.14	50.1
C	5.56	49.98
+10	5.76	49.88
+20	6.15	49.39
E.L. gut approx	6.99	48.58
E.L. cb	6.13	49.41

P 48 for

Sketch of OWENS ST.

Sketch of
OWENS & Rosecrans



Cross Section Alley Block 187 City Heights
 Landis to Nightman
 Boundary + Hile

Indexed
 LM

April 21-41
 Survey
 Fort 25-2
 N Moore

49

BM 2-48 331.52 329.04 NE SP Landis + Boundary

0-14 - H.Cb of Landis

W Top Ch 4.53 326.99

W Gutter Ground 5.3 326.2

Z 5.1 326.1

E Gutter 5.6 325.9

E Top Ch 4.87 326.65

0+0 - H.Cb - Landis

E Top Ch 4.69 326.83

E Gutter Ground 5.0 326.5

Z 49.5 - Sly Wire Fence 5.2 326.3

W Gutter 4.8 326.7

W Top Ch 4.41 327.11

0+05

F-1.0 - W/4 22 Conc Walk 4.55 326.97

0+150

-0.8 - W/4 22 Conc Walk 4.78 326.74

F 5.0 326.5

+2 - W/4 Hedge

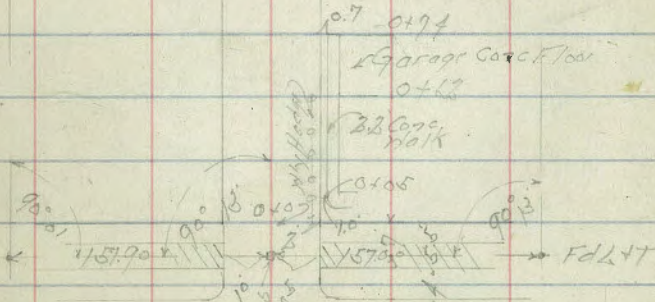
Nightman
 FdLHT 6402 FdLHT

Block 187
 City Heights

440 Pot Stubs

10x10

Boundary



Landis

Hile

33/52

Z		50	326.5
+8.7	= Wly Porch Pole		
+9.2	= Wly Wire Fence		
W		46	326.9
+10		44	322.1
TP	4.74	331.33	4.93
	0+56		326.59
W-0.2	= Wly Do Garage Conc Floor	4.23	327.10
	0+62		
F-0.7	= Wly 22 Conc Walk	4.62	326.71
F-3.0	= Wly Garage Conc	4.56	326.77
	0+74		
-0.2	= Wly Do Garage Conc Floor	4.25	327.08
W		46	326.7
Z		49	326.4
F		50	326.3
+0.7	= Wly Conc Floor	4.80	326.53
+3.0	= Wly Garage C.F.	4.72	326.61

33/22

		0+80	
W+1.0	= Wly Lath Fence		
		1+0	
-10		5.6	325.7
F		5.4	325.9
Z		5.0	326.3
W		4.9	326.4
+1.0		4.9	326.4
		1+14	
W+1.6	= Wly Lath Fence		
		1+19	
W+0.2	= Wly Lath House		
		1+33	
F-9.6	= Wly Garage Conc Floor	5.27	326.05
		1+50	
-10		4.5	326.8
W		4.5	326.8
+1.1	= Wly Lath Fence Join 20' by 40' on South		
+2.2	= Wly Porch Pole		

33/33

Z	4.8	326.5
F	5.2	326.1
710	5.5	325.8

1452

W + 0.4 = 1/4 Shed

1458

F - 9.1 = 1/2 Garage Dirt Floor 5.6 325.7

1461

W + 0.6 = 1/4 Shed

1468

W = 1/4 Shed

1475

W + 1.0 = 1/2 2nd floor Footing

1477

W + 0.5 = 1/4 Shed

1485

W + 2.6 = 1/4 2nd Garage
Dirt Floor 4.7 325.6

33/33

210

-10 5.8 325.5

-0.6 = 1/4 Wire Floor

F 5.0 326.3

Z 5.2 326.1

+7.2 = 1/4 2nd Garage
Dirt Floor 4.8 326.5

W 4.8 326.8

2+08'

W - 0.7 = 1/2 Garage Dirt Floor 4.9 326.4

2+36

F - 0.6 = 1/4 Wire Floor

2+15

W - 0.8 = 1/2 Garage Concrete Floor 4.39 326.94

F - 3.45 = 1/2 Garage Dirt Floor 6.3 325.0

2+50

W 4.6 326.7

Z 5.1 326.2

F 5.6 325.7

710 6.1 325.2

	331.33		
	2+51		
M-10 = Sly Board Fence			
JP	3.87	330.00	5.20 326.13
	2+62		
F-150 = 2 Garage Coat Floor 468			325.32
	2+78		
W+01 = Wly Post Pole			
	2+80		
W+0.5 = 2 14" Pepper Tree			
	2+83		
M-10 = Wly Board Fence			
W-0.5 = Sly Garage Coat Floor 3.28			326.72
	3+0		
-10		5.0	325.0
F		4.4	325.6
L		4.0	326.0
W		3.8	326.2
+0.5 = Wly Shed Sly Part Used as Garage			
+10		3.8	326.2

	330.00		
	3+02		
F = Sly Frame House			
	3+15		
F+0.2 = Wly Frame House			
	3+25		
F-06 = Wly Enc Tree			
	3+50		
W		5.5	324.5
L		5.9	324.1
F		5.7	324.3
+10		6.3	323.7
	3+54		
F-0.4 = Sly Lot 5 Fence			
W-1.3 = 120 Frame Bldg			
	3+68		
W-0.8 = Sly Lot 4 House 4.98			325.02
			6" Code Foundation To

330.00

3475

-5	76	322.4
F	7.0	3230
+0.3 = 1/4 Lot 4 Fence		
L	6.7	323.3
W	5.9	324.1
+0.9 = 5/4 Lot 4 House Top Conc Foundation	5.0	324.96
+0		
-0.9 = 1/4 Lot 4 House Top Conc Found	5.3	324.69
W	6.8	323.2
+0.8 = 1/4 Post Pole		
L	7.6	322.4
F	7.7	322.3
+1.0	8.7	321.3

4101

W + 0.7 = 5/4 Board Fence

4139

W + 1.3 = 1/4 Board Fence

330.00

4150

-10	12.1	317.1
F	11.3	318.7
+2	9.7	320.3
L	9.5	320.5
W	9.8	320.8
+10	8.6	321.4

4184

-10	10.1	319.9
-0.7 = 5/4 Driveway		

W	11.0	319.0
L	12.0	318.0
+7	14.2	315.8
F	14.4	315.6
+10	14.5	315.5

TP 0.93 318.78 12.14 317.86

540

-10	2.1	315.7
F	4.0	314.8

31878		
F+5	34	315.4
$\frac{1}{2}$	35	315.3
+6	27	316.1
+8.0 = Wly Parrot Pale		
W - Wly 2nd Parrot Tr 10.7		
+0.7 = Wly Dwelling		
5+25		
-10	26	316.2
W	5.8	313.0
+2	6.0	312.8
$\frac{1}{2}$	6.4	312.4
F	5.5	313.3
+0.2 = Wly Shad Conc Found 1.87		316.91
5+27		
F = Wly Shad Conc Found 1.84		316.94
5+50		
-10	6.4	312.4
F	6.6	312.2

31878		
$\frac{1}{2}$	7.9	310.9
W	9.0	309.8
+5	8.4	310.4
+10	6.4	312.4
5+75		
W	9.0	309.8
+5	13.2	305.6
$\frac{1}{2}$	13.8	305.0
F	14.1	304.7
+10	14.5	304.3
6+0 - Approx Sd. Weight man		
-15	17.8	301.0
F	17.2	301.6
$\frac{1}{2}$	16.6	302.2
W	13.5	305.3
TP	11.58	330.22
	0.13	318.65
TP	4.81	321.45
	0.62	326.61
BN	2.39	329.06

N.E.P.
Landing
Boundary
329.06

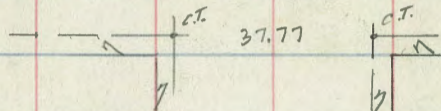
Moore
Osborne
Covert
7-17-41.

Indexed
LM

Thorn

ST. 55

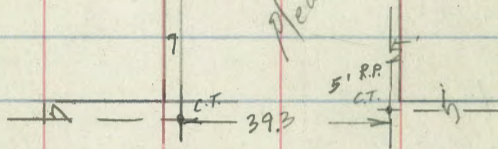
sec alley 15' wide
Blk 5 Frary Hts.



Thorn ST

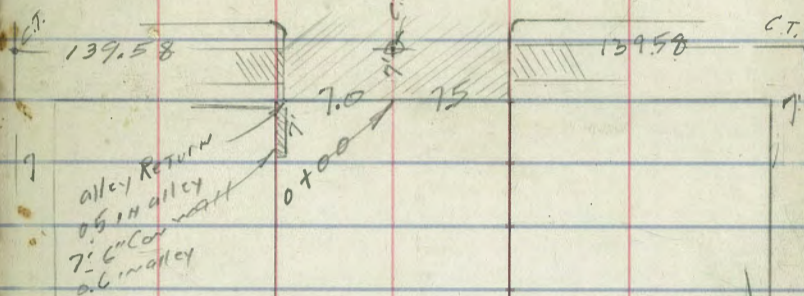
32nd St.

Please look at 1st Street
for 32nd at Redwood



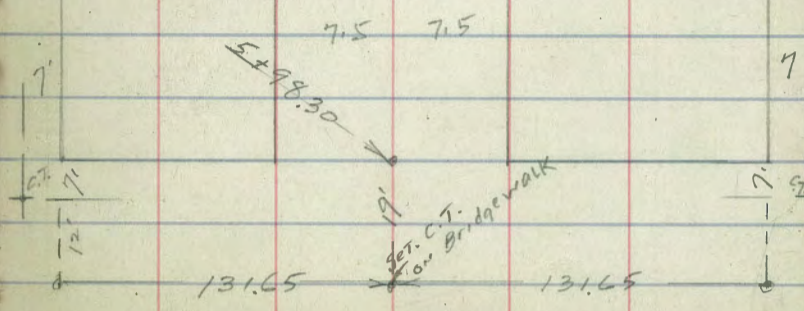
39.3
1.3 = 7' line on
S. side of Redwood
at 32nd St

Redwood ST



Herbert St

32nd St.



Redwood ST

Moore
E. Farrow
7-22-41

X sec alley
Blk 5 Frary Hts.

56

314.15

					T.P.	1.82	314.88	1.09	313.06	
SW B.P.	0.72	315.54	314.80	Thorn 33 ^d STS			0 ± 16			
T.P.	10.22	314.15	11.59	303.93	F			2.0	312.9	10.22 75
		TOP. FH. SE.								
check to BM	Thorn + 30 th	6.93	307.22	307.26	C			1.8	313.1	
					W			1.5	313.4	
	0 ± 10	S gutter of Thorn			+ 2.8	W edge 3 rd car gar.		1.3	312.6	dirt ✓
W Pav		2.63	311.52	✓			0 ± 19			
E "		3.27	310.88	✓	E + 0.6	Back edge		0.8	Tel. pole ✓	
	0 ± 00	SL THORN ST					0 ± 43			
E top cb		2.48	311.67	✓	W - 2.7	S edge door gar ^{3 car}		1.57	313.31	Top Can pier future Elev. Elev. ✓
E Pav.	Profile 2625 7-24-41 C.B.H.	2.57	311.58	✓	W			2.3	312.6	
C "		2.65	311.50	✓	C			2.9	312.0	
W "		2.33	311.82	✓	E			2.8	312.1	
W Top cb		1.91	312.24	✓			0 ± 55			
	0 ± 07				E	curb walk		3.64	311.84	✓
W Top end wall	+ 0.06		314.21		+ 0.6	leg. lattice fence		0.6	alley ✓	
W + 0.6 Bot "	"	0.5	313.7	Top ground ✓			0 ± 64			
W + 0.4 "	Footing of wall	1.0	313.21							
C		1.7	313.0		E			3.6	311.3	
E		1.3	312.9		+ 0.6	fence		4.1	310.8	

314.86

W		3.7	311.2	
+8.8 E 8' ^{cem.} apron		3.40	311.48 ✓	
+10.6 E Sim. gar. Cem		3.18	311.70 ✓	
1+01				
- 0.4 Hedge shed				
W 1' p.p/c		5.0	309.3 ✓	
C		6.0	308.9	
+6.4 lattice fence				
F		5.7	309.2	
1+10				
E + 1.1 end hat. fence	1.1 in alley		✓	
1+19.3				
E - 5.8 E ^{cem. 9.4} apron wide	6.40		308.48 ✓	
E - 8.2 E Sim. gar.	5.90		308.98 ✓	cem floor
E		6.7	308.2	
C		6.7	308.2	
W		6.3	308.6	
+0.8 against shed			✓	
T.P.	4.41	314.79	7.00	307.88

312.79

57

1+36				
E - 3.25 Sim. gar		4.42	307.87 ✓	cem fl.
1+38				
W - 1 E Sim. gar		4.02	308.27 ✓	
W + 0.5 E Cem. apron		4.27	308.02 ✓	9.4 wide
1+43				
E - 1.88 E Sim. gar.		4.7	307.6 ✓	dirt
1+50				
W - 1.2 N.L. ^{do.} gar				✓
W		4.8	307.5	
C		4.8	307.5	
E		5.0	307.3	
1+53				
E - 1.88 N.L. ^{do. gar} Cem		4.86	307.43 ✓	
E - 1.58 ^{do. gar} Cem apron		5.04	307.25 ✓	
1+68				
W - 1.3 S.L. ^{do. gar}		5.10	307.19 ✓	cem x 1. high
1+68.5				
W - 0.9 Hedge & Cem. walk		5.05	307.24 ✓	

31229

1+71

E-18.8 St do. gar
cem fl. 4.88 307.41 ✓E-15.8 St ^{cem} apron 5.51 306.78 ✓

W-0.9 beg. Picket fence ✓

1+84

E 5.9 306.4

+1.7 8" Tel Pole

C 6.3 306.0

W 6.1 306.2

1+99

W-0.9 end Picket fence ✓

W-4.7 beg. lath " ✓

W 6.4 305.7

+0.4 p. pole ✓

C 7.3 305.0

E 7.1 305.2

+1.0 7.1 305.2

T.P. 0.30 304.84 7.75 304.54

30484

58

2+26

E TOP 4" Cor. Ret. Wall 2.31 302.53

+LL TOP END " 2.15 302.69 ✓

+W 2.5 302.3

C 2.5 302.3 ^{7.5}_{4.2}

W 1.8 302.0

+7.5 east edge ^{18"} Pepper Tree ✓

2+29.5

E +2.2 XL ^{cem} apron ~ 90 301.94 ✓

2+36

E +2.2 E ^{cem} apron 3.60 301.24 ✓
2.2 walleyE-3.4 E Sugar 8.70 296.14 ✓
cem fl.

2+42.5

E +2.2 4.15 300.69 ✓

2+49

W-4.1 beg. ^{Cor.} Wall 4.1 300.7 ✓
W END fence

C 4.1 300.2

E 5.0 299.8

+5 5.5 299.3

304.84

	2+57		
E	N.L. SW. gar	5.25	299.59 ✓
	2+67		
E	+0.4 S.L. SW. gar	5.25	299.59 ^{N.W. Cor} shed ✓
	2+74		
E	-5	9.3	295.5
F		6.0	298.8
E	+0.8 Sw. Cor. shed	6.6	298.2 ✓
W		5.4	299.4
	+4.2 Bot. STEP Thru Ret. wall	4.68	300.16 ✓
	2+80		
W		6.0	298.8
C		6.8	298.0
E		9.3	295.5
	+8	10.9	293.9
	2+99		
W	-4.7 end Ret. wall		
W	-4.5 P. Pole		

304.84

59

	3+00		
	-10	10.9	293.9
E		9.0	295.8
	+2 Tel. Pole		✓
C	S.M. H. Rim	7.5	297.69 ✓
W		6.6	298.2
	3+15		
	-5	6.0	298.8
W		5.5	299.3
	+4	8.5	296.3
C		7.6	297.2
E		8.6	296.2
	+10	11.0	288.8
	3+23		
	-10	16.2	288.6
E		13.8	291.0
C		13.0	291.8
W		8.3	296.5
	+5	5.7	299.1

30484

3+31
 E W-21.4 E edge gar. door N entrance 4.56 300.28 Cent. ✓

E T.P. 0.81 292.98 11.67 293.17

E 3+60

E -7 0.0 294.0

E W 4.7 289.3

E C 5.7 288.3

E E 7.7 286.3

E +6 11.4 282.6

E +15 17.0 277.0

4+05

W-25 6.5 287.5

-15 7.8 286.2

W 13.3 280.7

T.P. 0.78 292.08 12.18 281.90

C 4+05 5.0 277.1

282.08

60

E 8.7 273.1

+8 12.5 269.6

+18 12.7 269.4

4+65

-10 14.2 267.9

E 13.7 268.4

C 9.5 272.6

W 6.3 275.8

+7 0.0 282.1

+12 +2.0 284.1

5+00

-8 0.0 282.1

W 3.4 278.7

8C 8.2 273.9

E 9.5 272.6

+10 15.0 267.1

+20 15.5 266.6

T.P. 230 275.91 8.49 273.59

27591

5730

-10	7.4	268.5
E	4.4	271.5
C	M.H. Rum	4.0
		271.9
W	1.0	274.9
+10	+7.0	282.9

5765

-10	+3.0	278.9
W	3.5	272.4
C	7.0	268.9
E	9.2	266.7
+15	10.9	265.0

5198.3 NW Redwood

-10	10.3	265.6
E	8.9	267.0
C	7.3	268.6
W	4.8	271.1
+10	+1.8	277.7

61

27591

T.P.	12.75	288.50	0.16	275.75
T.P.	9.55	297.82	0.23	288.77
T.P.	11.94	307.96	1.80	296.07
check back to		0.74	307.22	307.22
BY Top FH.				
SECOR 32 nd + Thorn				

Cross Section 6th Ave.
Evans Place to Robinson Ave
Cross Sectioned as 80' Wide From West Line

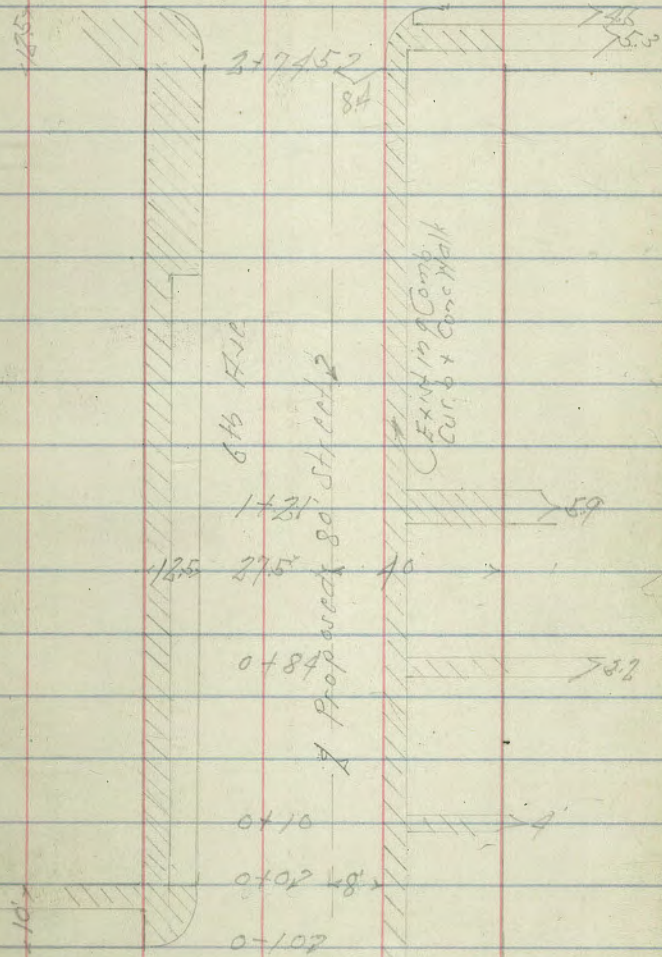
Levels Next Page

Indexed
LM

Aug. 29-41
Sisson
Hortberg
H. Moor
62

Robinson

Ave



Evans Place

616/7-10

8-30-41
C.B.H.

Red & Plat. Profile 1473.

0+84 = 1/2 22 Conc Walk on Pt

0+50

0+32 275 19 1/2 = 1/2 30" Tall Palm Tree

0+10 = 1/2 4' Conc Walk on Pt

0+0 = N Line

0-10 = NC 6 Line Evans Place

BM 4.45 290.72

286.27

H.W.B.P.
E. J. J. J.
616/7

290.72

616/7

7

Rt: E

286.15	285.49	285.90	285.28	285.07	285.66	285.67	285.60
4.57 27.5	5.22 27.5	4.82 27.5	5.49	5.15 8-50	5.06 8-06	5.05 27.5	5.12 16-00
286.25	285.62	286.08	285.46	285.31	285.87	285.95	285.86
4.47 27.5	5.10 27.5	4.64 27.5	5.26	5.41 8-50	4.83 8-06	4.77 27.5	4.86 10-00
286.19	285.61	285.88	285.12	285.54	285.92	285.96	285.6
4.83 27.5	5.11 27.5	4.84 27.5	4.60 27.5	5.18	5.30 8-50	4.76 8-06	4.9 27.5

21.50

TP

3.14 (28984) 102 286.70

27.0

17.50

17.36 27 RA of 1/2 = 1/2 46" Palm Tree

17.91 = 1/2 59" Co. 20" Walk 402 RA

14.09 26.15 RA of 1/2 = 1/2 48" Palm Tree

14.0

29072

~~285.82~~ 285.82
~~285.92~~ 285.92
~~285.99~~ 285.99
~~285.13~~ 285.13
~~284.96~~ 284.96
~~284.22~~ 284.22
~~284.22~~ 284.22
~~284.22~~ 284.22
~~284.22~~ 284.22

439 494 477 559 576 516 54
 275-66 275-64 275 275 275 275 275
 285.62 281.07 287.29 284.50 284.32 285.01 284.0
 65.10 565 543 677 640 571 67
 275-66 275-64 275 275 275-64 275-64 275 275

183.81 8.18 285.44 284.78 284.57 285.33 284.5
 491 554 538 594 614 537 67
 275-66 275-64 275 275 275 275 275
 285.50 285.77 285.78
 558 495 491
 82-64 Walk 870-64 Walk

286.02 285.52 285.74 285.07 284.94 285.60 285.5
 470 536 498 565 578 517 52
 275-66 275-64 275 275 275 275 275
 29072

2734.5 - H.L. Robinson

420	501	491	556	581	571
275.50	275.50	13.75		84.50	84.50
285.57	284.71	284.90	284.18	284.03	284.62

3722 - H.C. Linn

435	487	496	514	521	627	658	603
40.00	40.00	27.5	13.75	84	27.5	40.00	40.00
285.49	284.97	284.88	284.70	284.32	283.98	283.57	283.26

3704.5 = L. Robinson

421	455	476	505	520	567	607
40	27.5	13.75		84	27.5	40
285.82	285.29	285.08	284.79	284.64	284.17	283.82

2787 = S.C. Linn

439	479	503	521	562	585	621	577	666	600
40.00	40.00	27.5	13.75	5.62	84	27.5	27.5	40.00	40.00
285.55	285.05	284.81	284.63	284.22	283.99	283.53	284.07	283.18	283.78

2774.5 - S.L. Robinson

449	500	500	571	590	570	58	58
27.5	27.5	13.75		84	84	27.5	40
285.35	284.84	284.84	284.13	283.94	284.64	284.0	284.0

289.84

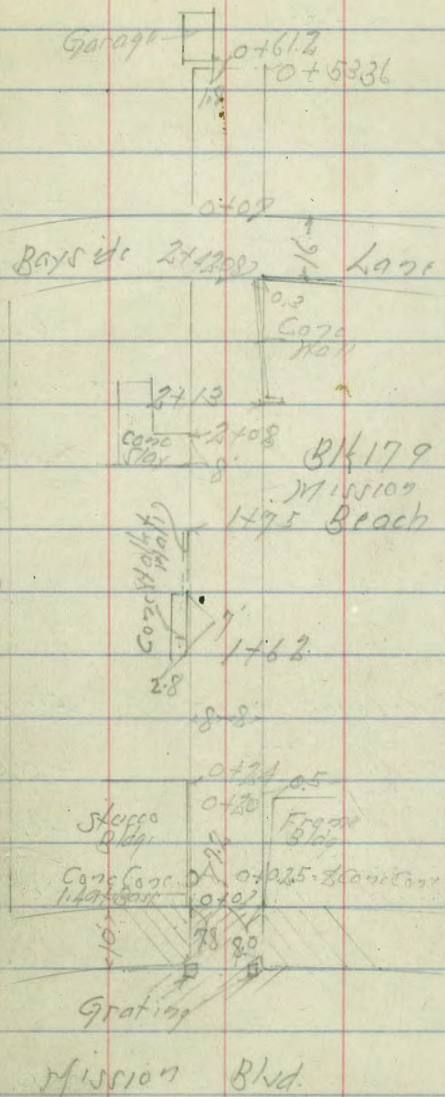
289.84

Cross Section H / Bay Block 179
 Mission Beach
 From Mission Blvd. to Bayside Lane

Indexed
 LM →

Aug 29 41
 Sisson 66
 Northrup
 Moore

B.M.	5.94	5.58	-0.36	SE BP Mission Blvd & 5th St
TP	5.27	4.54	6.31	-0.73
				0-10 = FCB Line Mission Blvd
N		5.26	-0.72	
Z		5.32	-0.78	C.B.M.
S		5.27	-0.73	C.B.M.
				0+0 = F Line Mission
S	NWC or Bldg	4.84	-0.30	
S	Gutter	5.48	-0.94	
Z		5.38	-0.84	
H	Gutter	5.40	-0.86	
N	CB Top	4.76	-0.22	9-2-41 Profile 2953
				0+24
H	S Fly Stucco Bldg	5.1	-0.6	
Z		5.0	-0.5	
S		5.1	-0.6	
				0+32
S	Garage 1st floor	5.07	-0.48	



4.54
 0+158
 -0.6 = $\frac{1}{2}$ Garage Conc Floor 4.67 - 0.13 ✓
 S 4.70 - 0.16
 +0.3 = Nly Conc Apron 4.75 - 0.21 ✓
 $\frac{1}{2}$ 5.0 - 0.5
 H 5.1 - 0.6
 +5 5.0 - 0.5

0+165
 S+0.4 = Sky Port in Park

0+172
 -1.2 = $\frac{1}{2}$ Garage Conc Floor 5.01 - 0.47 ✓
 H 5.1 - 0.6
 $\frac{1}{2}$ 5.0 - 0.5
 S = Nly Conc Apron 4.78 - 0.24 ✓
 +1.0 = $\frac{1}{10}$ Conc 5.66 4.63 - 0.09 ✓

0+195
 H-0.2 = $\frac{1}{2}$ Garage Dirt 5.0 - 0.5 ✓
 N Floor

4.54
 1+0
 S 5.0 - 0.5
 $\frac{1}{2}$ 5.0 - 0.5
 H 5.0 - 0.5
 1+05
 S-3.5 = $\frac{1}{2}$ Garage Dirt 4.8 - 0.3 ✓
 1+19

S-0.5 = $\frac{1}{2}$ Conc Walk 4.28 x 0.26'
 1+22

S+0.2 = Nly Conc P. 1.0 for 1x1 ✓
 1+25
 H 4.9 - 0.4
 $\frac{1}{2}$ 4.9 - 0.4
 S 4.8 - 0.3

+0.7 Nly Cor Garage East ✓
 1+41
 -0.7 = N E Cor 4.5 0.0 ✓
 Garage Dirt Floor
 East Entrance

4.54
1+57

-5	4.8	-0.3	
S	5.0	-0.5	
Z	5.0	-0.5	
H	5.0	-0.5	
+30' $\frac{1}{2}$ Garage Wood Floor	4.95	-0.41	✓
	1+62		
H = $\frac{1}{4}$ 28 Conc Walk	4.86	-0.32	✓
	1+65		
S = Sky Power Pole			✓
	1+75		
H = $\frac{1}{4}$ 0.5 Conc Wall Top	4.42	0.12	✓
	1+87		
H-0.2 = $\frac{1}{2}$ 35 Stone Walk	4.70	-0.16	✓
	1+91		
S-2.8 = $\frac{1}{2}$ Garage Board Floor	4.97	-0.43	✓

4.54
2+10

H	5.1	-0.6	
Z	5.2	-0.8	
S	5.2	-0.7	
+0.8 = $\frac{1}{4}$ 1/8" x 8" French Part			✓
TP = 4.55 392	5.17	-0.63	
	2+06		
S-0.2 = $\frac{1}{2}$ Brick Drive	4.55	-0.63	✓
S-200' $\frac{1}{2}$ Garage Conc Floor	4.43	-0.51	✓
	2+08		
H = $\frac{1}{4}$ 5 Conc Wall	4.45	-0.53	✓
	2+12		
S-0.6 = $\frac{1}{2}$ 8" x 8" Part			✓
	2+13		
S = 0.5 Conc Wall Top	4.08	-0.16	✓
	2+22		
1+45 = 5 W Cor House			✓
H+0.5 = $\frac{1}{4}$ Rough Brick Wall			✓

391

2+40

N-12 = S.F. Car House ✓

2+1308 = W. Boysside Lane

S 46 -0.7

+10.3 = Tap on 15 Cans Wall 4.57 -0.65 ✓

1/2 4.7 -0.8

+7.6 = Fly Power Pack Wall ✓

N 46 -0.7

0+0 = E. Boysside Lane

N 4.8 -0.9

1/2 4.6 -0.7

+7.5 = Fly Power Pack ✓

S 4.9 -1.0

0+02

S-0.3 = W. Wood Porch ✓

0+04

N-0.2 = S.W. Car House ✓

0+17

S = Fly Wood Porch ✓

392

0+20

N-0.5 = 1/2 Garage Wood 4.28 -0.4 ✓
Floor

0+34

S 4.8 -0.9

1/2 4.7 -0.8

N 4.6 -0.7

+6.0 = 1/2 Garage Wood 4.5 -0.6 ✓
Floor

0+39

N-0.5 = W. Lot 4 Fence ✓

0+53.36 = Fly Alley

N 4.5 -0.6

1/2 4.7 -0.8

S 4.6 -0.7

0+57

1.8 N of 1/2 = Fly Car House 4.76 -0.84

0+62

1.8 N of 1/2 = Fly Garage 3.94 -0.02
Floor

N-1.6 = Fly Lot 4 Fence ✓

392

TP 6.33 5.61 4.64 -0.72

BM 5.95 -0.34

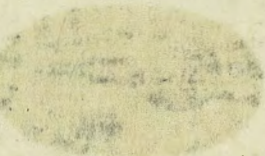
SEBP
MISSING
+ 0.86
-0.86

B.M. *Stemmer*
Copied from 72-8-2-15
40-Graf.

Panby	359.10	BPNW
Van Dyke	358.15	BPNW
Copeland	356.77	BPNW
Stocketon	352.91	BPNW
Conklin	354.04	BPNW
Hugo	352.00	BPNW
Sisson	349.17	Pipe NW
Daley	348.33	Pipe NW
Thomas	348.16	Pipe NE
Reed-	351.97	
Bradt	357.48	
Stover	359.37	
Wilson	360.45	
Pacific	361.48	
Swift	359.82	Pipe 2+57-2' N
Scott Filmore	352.89	Pipe NW
Wabash	330.76	Pipe
Mission	325.37	"
Boundary	333.44	NW B.P. S.D.

J. W. Thomas 345.3
S E Reed 350.7

43.5
3.0



1801

418.90
418.85
- 418.75 Dunnick

80
25
55
225
137.5

581
21
600

749.5
222
527.5

555
131

263
75
8.8



ENGINEER G. D. PARTMENT,
CITY OF EAST SAN DIEGO,
CALIFORNIA.