

1598



---

ENGINEERS

FIELD BOOK

No. 40F

---

# EUGENE DIETZGEN CO.

DRAWING MATERIALS, MATHEMATICAL and  
SURVEYING INSTRUMENTS

Chicago New York San Francisco New Orleans Pittsburg Toronto

Distances from Center of Roadway for Cross-Sectioning  
Roadway 16 feet wide. Side Slopes 1 on 1.  
For Single Track Embankment.

| H  | 0    | .1   | .2   | .3   | .4   | .5   | .6   | .7   | .8   | .9   | H  |
|----|------|------|------|------|------|------|------|------|------|------|----|
| 0  | 8.0  | 8.1  | 8.2  | 8.3  | 8.4  | 8.5  | 8.6  | 8.7  | 8.8  | 8.9  | 0  |
| 1  | 9.0  | 9.1  | 9.2  | 9.3  | 9.4  | 9.5  | 9.6  | 9.7  | 9.8  | 9.9  | 1  |
| 2  | 10.0 | 10.1 | 10.2 | 10.3 | 10.4 | 10.5 | 10.6 | 10.7 | 10.8 | 10.9 | 2  |
| 3  | 11.0 | 11.1 | 11.2 | 11.3 | 11.4 | 11.5 | 11.6 | 11.7 | 11.8 | 11.9 | 3  |
| 4  | 12.0 | 12.1 | 12.2 | 12.3 | 12.4 | 12.5 | 12.6 | 12.7 | 12.8 | 12.9 | 4  |
| 5  | 13.0 | 13.1 | 13.2 | 13.3 | 13.4 | 13.5 | 13.6 | 13.7 | 13.8 | 13.9 | 5  |
| 6  | 14.0 | 14.1 | 14.2 | 14.3 | 14.4 | 14.5 | 14.6 | 14.7 | 14.8 | 14.9 | 6  |
| 7  | 15.0 | 15.1 | 15.2 | 15.3 | 15.4 | 15.5 | 15.6 | 15.7 | 15.8 | 15.9 | 7  |
| 8  | 16.0 | 16.1 | 16.2 | 16.3 | 16.4 | 16.5 | 16.6 | 16.7 | 16.8 | 16.9 | 8  |
| 9  | 17.0 | 17.1 | 17.2 | 17.3 | 17.4 | 17.5 | 17.6 | 17.7 | 17.8 | 17.9 | 9  |
| 10 | 18.0 | 18.1 | 18.2 | 18.3 | 18.4 | 18.5 | 18.6 | 18.7 | 18.8 | 18.9 | 10 |
| 11 | 19.0 | 19.1 | 19.2 | 19.3 | 19.4 | 19.5 | 19.6 | 19.7 | 19.8 | 19.9 | 11 |
| 12 | 20.0 | 20.1 | 20.2 | 20.3 | 20.4 | 20.5 | 20.6 | 20.7 | 20.8 | 20.9 | 12 |
| 13 | 21.0 | 21.1 | 21.2 | 21.3 | 21.4 | 21.5 | 21.6 | 21.7 | 21.8 | 21.9 | 13 |
| 14 | 22.0 | 22.1 | 22.2 | 22.3 | 22.4 | 22.5 | 22.6 | 22.7 | 22.8 | 22.9 | 14 |
| 15 | 23.0 | 23.1 | 23.2 | 23.3 | 23.4 | 23.5 | 23.6 | 23.7 | 23.8 | 23.9 | 15 |
| 16 | 24.0 | 24.1 | 24.2 | 24.3 | 24.4 | 24.5 | 24.6 | 24.7 | 24.8 | 24.9 | 16 |
| 17 | 25.0 | 25.1 | 25.2 | 25.3 | 25.4 | 25.5 | 25.6 | 25.7 | 25.8 | 25.9 | 17 |
| 18 | 26.0 | 26.1 | 26.2 | 26.3 | 26.4 | 26.5 | 26.6 | 26.7 | 26.8 | 26.9 | 18 |
| 19 | 27.0 | 27.1 | 27.2 | 27.3 | 27.4 | 27.5 | 27.6 | 27.7 | 27.8 | 27.9 | 19 |
| 20 | 28.0 | 28.1 | 28.2 | 28.3 | 28.4 | 28.5 | 28.6 | 28.7 | 28.8 | 28.9 | 20 |
| 21 | 29.0 | 29.1 | 29.2 | 29.3 | 29.4 | 29.5 | 29.6 | 29.7 | 29.8 | 29.9 | 21 |
| 22 | 30.0 | 30.1 | 30.2 | 30.3 | 30.4 | 30.5 | 30.6 | 30.7 | 30.8 | 30.9 | 22 |
| 23 | 31.0 | 31.1 | 31.2 | 31.3 | 31.4 | 31.5 | 31.6 | 31.7 | 31.8 | 31.9 | 23 |
| 24 | 32.0 | 32.1 | 32.2 | 32.3 | 32.4 | 32.5 | 32.6 | 32.7 | 32.8 | 32.9 | 24 |
| 25 | 33.0 | 33.1 | 33.2 | 33.3 | 33.4 | 33.5 | 33.6 | 33.7 | 33.8 | 33.9 | 25 |
| 26 | 34.0 | 34.1 | 34.2 | 34.3 | 34.4 | 34.5 | 34.6 | 34.7 | 34.8 | 34.9 | 26 |
| 27 | 35.0 | 35.1 | 35.2 | 35.3 | 35.4 | 35.5 | 35.6 | 35.7 | 35.8 | 35.9 | 27 |
| 28 | 36.0 | 36.1 | 36.2 | 36.3 | 36.4 | 36.5 | 36.6 | 36.7 | 36.8 | 36.9 | 28 |
| 29 | 37.0 | 37.1 | 37.2 | 37.3 | 37.4 | 37.5 | 37.6 | 37.7 | 37.8 | 37.9 | 29 |
| 30 | 38.0 | 38.1 | 38.2 | 38.3 | 38.4 | 38.5 | 38.6 | 38.7 | 38.8 | 38.9 | 30 |
| 31 | 39.0 | 39.1 | 39.2 | 39.3 | 39.4 | 39.5 | 39.6 | 39.7 | 39.8 | 39.9 | 31 |
| 32 | 40.0 | 40.1 | 40.2 | 40.3 | 40.4 | 40.5 | 40.6 | 40.7 | 40.8 | 40.9 | 32 |
| 33 | 41.0 | 41.1 | 41.2 | 41.3 | 41.4 | 41.5 | 41.6 | 41.7 | 41.8 | 41.9 | 33 |
| 34 | 42.0 | 42.1 | 42.2 | 42.3 | 42.4 | 42.5 | 42.6 | 42.7 | 42.8 | 42.9 | 34 |
| 35 | 43.0 | 43.1 | 43.2 | 43.3 | 43.4 | 43.5 | 43.6 | 43.7 | 43.8 | 43.9 | 35 |
| 36 | 44.0 | 44.1 | 44.2 | 44.3 | 44.4 | 44.5 | 44.6 | 44.7 | 44.8 | 44.9 | 36 |
| 37 | 45.0 | 45.1 | 45.2 | 45.3 | 45.4 | 45.5 | 45.6 | 45.7 | 45.8 | 45.9 | 37 |
| 38 | 46.0 | 46.1 | 46.2 | 46.3 | 46.4 | 46.5 | 46.6 | 46.7 | 46.8 | 46.9 | 38 |
| 39 | 47.0 | 47.1 | 47.2 | 47.3 | 47.4 | 47.5 | 47.6 | 47.7 | 47.8 | 47.9 | 39 |
| 40 | 48.0 | 48.1 | 48.2 | 48.3 | 48.4 | 48.5 | 48.6 | 48.7 | 48.8 | 48.9 | 40 |

**Example**—If point is 22.6 ft. above grade, how far should it be from center line to be a slope stake point? Ans. from Table 30.6. For same slopes but other widths of roadbed, correct above figures by one-half difference in width of roadbed; thus in example above, for 20 ft. roadbed distance will be  $30.6 + (20 - 16) \div 2$  or 2 ft. added to  $30.6 = 32.6$ . For slopes of 1 on  $1\frac{1}{2}$  see inside of back cover.

Copyright, 1914, by Eugene Dietzgen Co.

# 1598

ENGINEERING DEPARTMENT  
CITY OF SAN DIEGO,  
CALIFORNIA.

The paper stock of this book is made of a high grade 50% rag paper having a water resisting surface and is sewed with Bing Special Enamel Waterproof Thread.

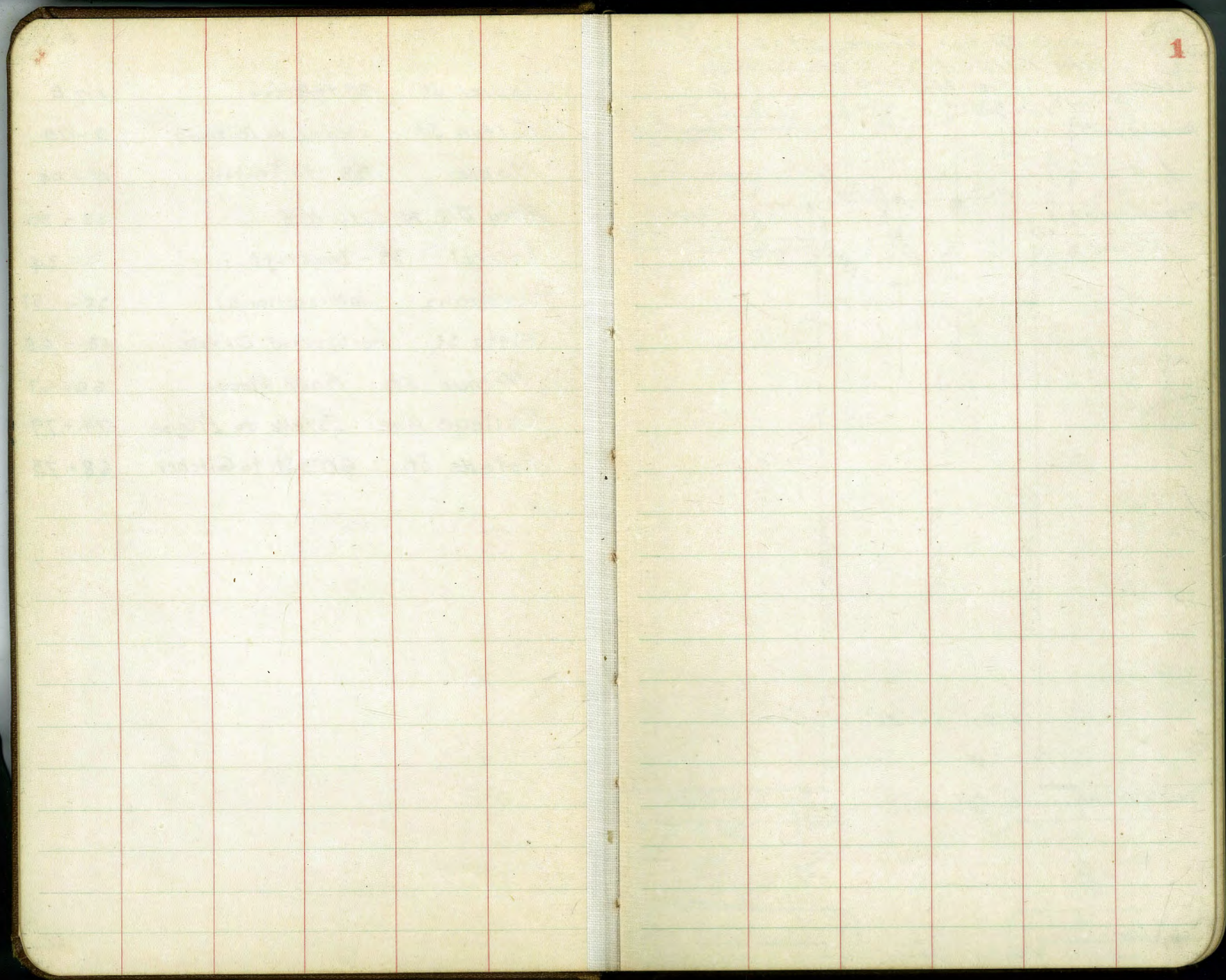
Made in U. S. A.

500 Lovers  
17356

295  
200

3007  
250

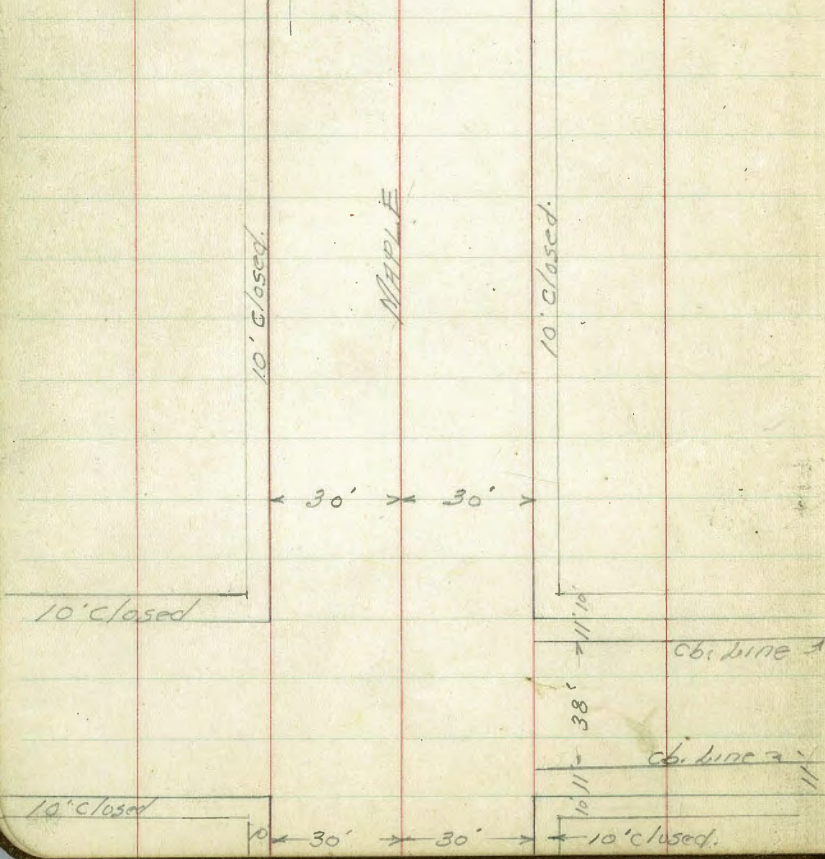
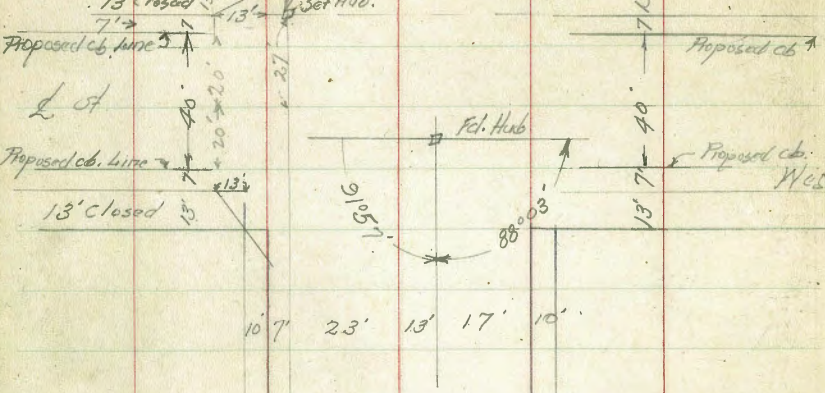
|               |                                 |       |
|---------------|---------------------------------|-------|
| Laurel St     | 33 to Felton                    | 1-8   |
| Felton St     | Laurel to Nutmeg                | 9-18  |
| Maple         | 33 to Felton                    | 19-24 |
| Alley Blk. 74 | City Hts                        | 25-30 |
| Laurel        | 33 - Bancroft.                  | 31-34 |
| (Rosecrans -  | intersections)                  | 35-57 |
| Pitta St.     | Hollywood Dr. etc               | 58-65 |
| Arthur St.    | Final Meas.                     | 66-67 |
| College Ave.  | Estelle to El Cajon             | 74-79 |
| Estelle St.   | 60 <sup>th</sup> St. to Gilcher | 68-73 |



Walker  
 87.55  
 10ball  
 1-25-41

CROSS SECTION LAUREL ST. 60' Wide  
 Betw. Felton & 33rd St.  
 E1-25216-P-13

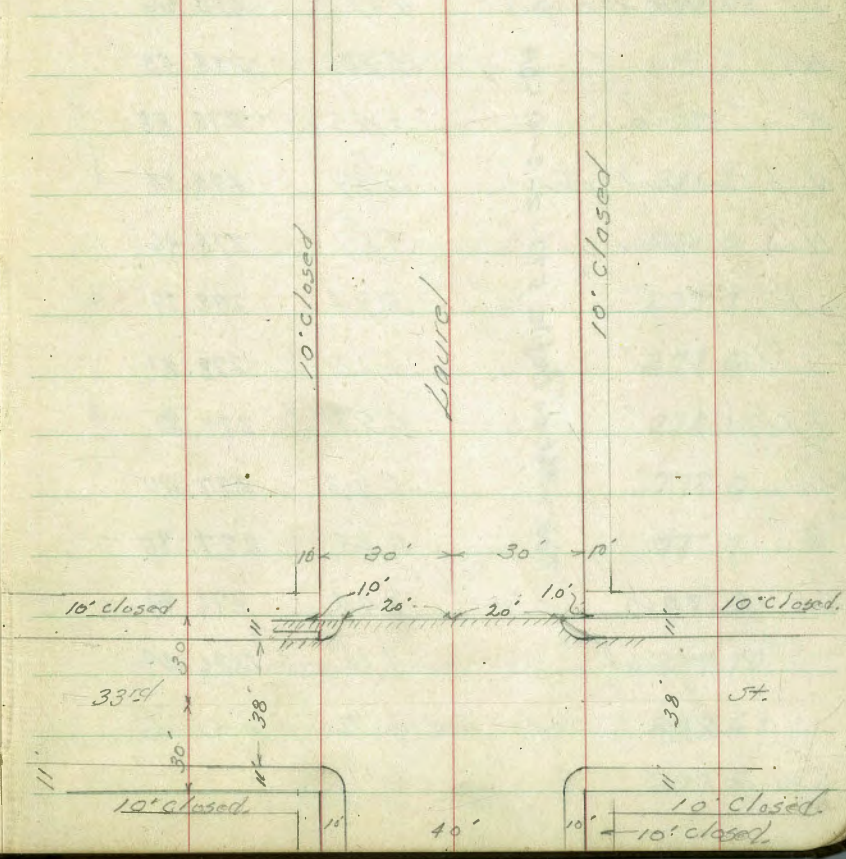
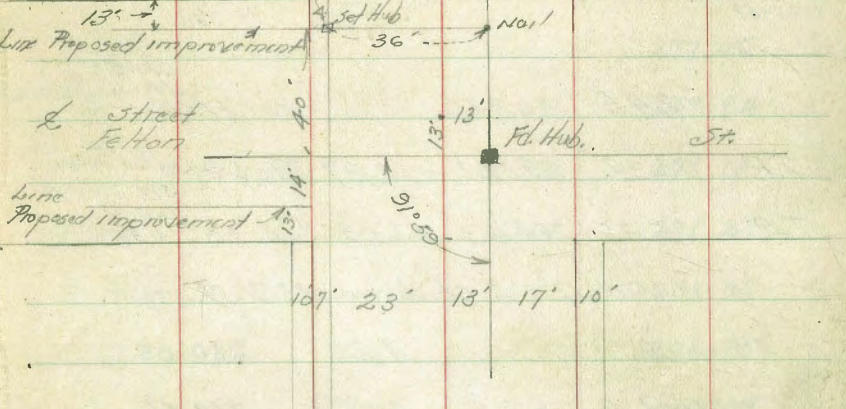
10' cbs.  
 10' gas



Indexed  
 C-S.K.

P-8  
 E1. 252.14

2



Walker  
Bliss  
Labell  
1-25-41

LAUREL ST. Cross Sections  
From 33rd to Felton 60' Wide  
Sketch p-2

10' cb.  
10' 1/4s

S.W.P.P.  
Maple & 32nd St

on Rub in Pav.  
S.W. 7' feet  
Laurel  
& 33rd

2.45 303.56 301.11

T.P. 0.32 291.01 12.87 290.69

T.P. 5.35 284.33 12.03 278.98

0-11' = E. cb. line 33rd St

N-20 on cb. 4.28 280.05

" "Gut Paving. 4.67 279.66

N " " " 5.80 278.53

N " top cb. 5.45 278.88

N cb. on Gut Pav 5.99 278.34

N 1/4 " Paving. 5.87 278.46

L " " 5.94 278.39

S 1/4 " " 6.12 278.21

S cb. " " 6.53 277.80

S.L. " " 6.93 277.40

" " cb. 6.43 277.90

S.L. + 20 on cb 7.44 276.89

" " " Gut. 7.84 276.49

Note: 0-1' = East edge Paving. cb & Walk

S.L. on Walk. 6.19

284.33

3

S cb on cb. 6.43 277.90

" "Gut Paving. 6.87 277.46

S 1/4 on " 6.49 277.84

L " " 6.20 278.13

N 1/4 " " 6.06 278.27

N Gut. " " 6.12 278.21

N cb. on cb. 5.50 278.83

N.L. " Walk. 5.25 278.08

0+00 = E.L. 33rd

0+07

-10 2.5 281.8

N 3.3 281.0

cb 4.6 279.7

+4 5.9 278.4

1/4 6.2 278.1

L 6.3 278.0

1/4 6.6 287.7

cb. 6.6 277.7

+7.5 = Wedge Private Walk. 6.63 277.70

S.L. = 5 " " 6.64 277.69

+10 6.8 277.5

284.33

Laurel St.

|            |  |      |        |
|------------|--|------|--------|
|            | 0+23 = E end Private Walk on South.        |      |        |
| S.L. + 0.3 | = Sedge Walk                               | 7.20 | 277.13 |
| " + 2.0    | = N " "                                    | 7.20 | 277.13 |
|            | Base Wall =                                | 7.2  | 277.1  |
|            | 0+20 = Beginning Long Black Wall on South. |      |        |
|            | 0+45                                       |      |        |
| S-2        | on Wall                                    | 5.0  | 279.3  |
| S-2        | at Wall on ground                          | 8.2  | 276.1  |
| S          |  | 8.5  | 275.8  |
| cb.        |  | 7.7  | 276.6  |
| 1/4        |  | 7.6  | 276.7  |
| L          |  | 6.1  | 278.2  |
| 1/4        |  | 5.6  | 278.7  |
| cb.        |  | 5.1  | 279.2  |
| N.         |  | 4.3  | 280.0  |
| +10        |  | 3.0  | 281.3  |
|            | 0+58.7 = Stop Over on Wall                 |      |        |
|            | on Wall                                    | 5.0  | 279.3  |
| 0+58.8     | on "                                       | 8.3  | 376.0  |
|            | 0+67 = End Ref Wall on South.              |      |        |
| N-10       |  | 3.6  | 280.7  |
| N          |  | 4.5  | 279.8  |
| cb.        |  | 5.3  | 279.0  |

284.33

Laurel St

4

|      |  |      |       |
|------|--|------|-------|
| 1/4  |  | 6.3  | 278.0 |
| L    |  | 7.2  | 277.1 |
| 1/4  |  | 8.0  | 276.3 |
| cb.  |  | 11.8 | 272.5 |
| S.L. |  | 13.2 | 271.1 |
| +2   | at Wall on Ground                                  | 13.6 | 270.7 |
| +2   | on Wall  | 8.6  | 275.7 |
| +3   | on ground at Wall                                  | 13.8 | 270.5 |
| +10  |  | 17.2 | 267.1 |
|      | 1+00   |      |       |
| -30  |  | 20.3 | 264.0 |
| -22  |  | 23.4 | 260.9 |
| -10  |  | 23.7 | 260.6 |
| S    |  | 17.3 | 267.0 |
| cb.  |  | 13.9 | 270.4 |
| 1/4  |  | 9.1  | 275.2 |
| L    |  | 6.5  | 277.8 |
| 1/4  |  | 6.7  | 277.6 |
| cb.  |  | 6.5  | 277.8 |
| N    |  | 5.8  | 278.5 |
| +10  |  | 4.7  | 279.6 |
|      | 1+09 = to Tel & Falso Pole on N = 8' South of N.L. |      |       |

284.33

Laurel St.

1+10 = Beginning Board Fence on N on line

1+25

-10 6.9 277.4

N 7.3 277.0

cb. 7.1 277.2

'/4 7.1 277.2

+5 7.7 276.6

L 10.0 274.3

'/4 13.3 271.0

T.P. 4.30 277.00 11.63 272.70

cb. 8.3 268.7

S 11.3 265.7

+10 17.1 259.9

+20 22.0 255.0

+26 23.0 254.0

+35 17.0 260.0

1+35

-35 21.0 256.0

-26 23.0 254.0

-20 22.0 255.0

-10 17.2 259.8

277.00

Laurel St.

5

S 13.2 263.8

cb. 9.4 267.6

'/4 6.8 270.2

L 6.5 270.5

4/2 3.4 273.6

cb. 1.8 275.2

N 0.5 276.5

+10 0.0 277.0

(1+27 = Guy Deadman 8' South of N.L.) on line

1+33 = End Board Fence on N = Beginning Wire fence

1+70 = <sup>on</sup>N = End above wire fence

1+75

-10 4.3 272.7

N 4.8 272.2

cb. 5.5 271.5

'/4 7.2 269.8

+6 8.3 268.7

L 10.5 266.5

+7 10.6 266.4

'/4 11.9 265.1

cb. 15.1 261.9



|  | 277.00 | Laurel St |
|--|--------|-----------|
| SL   | 18.0   | 259.0     |
| +10  | 21.6   | 255.4     |
| +35 = Bottom of Canyon                       | 32.0   | 245.0     |
| +47  | 24.0   | 253.0     |
|  | 2+00   |           |
| -50  | 25.9   | 251.1     |
| -37 = Bottom of Canyon                       | 35.5   | 241.5     |
| -10  | 23.2   | 253.8     |
| 5  | 20.1   | 256.9     |
| cb.  | 17.4   | 259.6     |
| 1/4  | 14.0   | 263.0     |
| 2  | 13.2   | 263.8     |
| +3   | 11.5   | 265.5     |
| 1/4  | 10.3   | 266.7     |
| cb.  | 9.8    | 267.2     |
| N  | 9.5    | 267.5     |
| +10  | 9.1    | 267.9     |
| 2+2.3 = N.E. Proposed Improvement Felton St. |        |           |
| TD   | 0.2.8  | 264.34    |
|  | 12.94  | 264.06    |
| N  | 1.9    | 262.4     |
| cb.  | 2.7    | 261.6     |

|                                     | 264.34 | Laurel St | 6 |
|-------------------------------------|--------|-----------|---|
| 1/4                                 | 3.4    | 266.9     |   |
| 2                                   | 4.7    | 259.6     |   |
| +5                                  | 4.6    | 259.7     |   |
| 1/4                                 | 5.6    | 258.7     |   |
| cb.                                 | 7.6    | 256.7     |   |
| 5                                   | 11.1   | 253.2     |   |
| +10                                 | 15.3   | 249.0     |   |
| +40 = Bottom of Canyon              | 25.6   | 238.7     |   |
| +50                                 | 21.3   | 243.0     |   |
| 2+30 = N.E. proposed cb. Felton St. |        |           |   |
| -50                                 | 22.1   | 242.2     |   |
| -10 = Bottom of Canyon              | 26.9   | 237.4     |   |
| -10                                 | 16.0   | 248.3     |   |
| 5                                   | 11.7   | 252.6     |   |
| cb.                                 | 8.9    | 255.4     |   |
| 1/4                                 | 7.0    | 257.3     |   |
| +7                                  | 5.7    | 258.6     |   |
| 2                                   | 6.1    | 258.2     |   |
| +5                                  | 6.2    | 258.1     |   |
| 1/4                                 | 5.1    | 259.2     |   |
| cb.                                 | 4.1    | 260.2     |   |
| N                                   | 3.5    | 260.8     |   |

264.34

Laurel St

2+50 = L. Feltton

|      |      |       |
|------|------|-------|
| N    | 7.2  | 257.1 |
| cb.  | 8.2  | 256.1 |
| 1/4  | 8.6  | 255.7 |
| L    | 10.6 | 253.7 |
| 1/4  | 12.0 | 252.3 |
| cb.  | 13.8 | 250.5 |
| S    | 16.7 | 247.6 |
| 710' | 20.5 | 243.8 |
| +28' | 28.3 | 236.0 |
| +10  | 28.3 | 236.0 |
| +50  | 25.2 | 239.1 |

2470 = East Line proposed cb Feltton

|     |      |       |
|-----|------|-------|
| -50 | 29.0 | 235.3 |
| -43 | 31.2 | 233.1 |
| -33 | 30.3 | 234.0 |
| -10 | 23.0 | 241.3 |
| S   | 19.4 | 244.9 |
| cb. | 16.5 | 247.8 |
| 1/4 | 15.0 | 249.3 |
| L   | 13.6 | 250.7 |

264.34

Laurel St.

7

|      |       |        |
|------|-------|--------|
| 1/4  | 12.2  | 252.1  |
| cb.  | 11.3  | 253.0  |
| N    | 10.1  | 254.2  |
| 710' | 2.44  | 253.86 |
|      | 12.92 | 251.42 |

2+80 = E.L. proposed improvement

|     |      |       |
|-----|------|-------|
| N   | 1.0  | 252.9 |
| cb. | 1.8  | 252.1 |
| 1/4 | 2.6  | 251.3 |
| L   | 3.6  | 250.3 |
| 1/4 | 5.0  | 248.9 |
| cb. | 7.0  | 246.9 |
| S   | 9.7  | 244.2 |
| +10 | 13.7 | 240.2 |
| +30 | 20.8 | 233.1 |
| +43 | 21.8 | 232.1 |
| +50 | 19.0 | 234.9 |

2+93 = E.L. Feltton

|     |      |       |
|-----|------|-------|
| -50 | 21.8 | 232.1 |
| -42 | 23.2 | 230.7 |
| -36 | 23.2 | 230.7 |
| -10 | 15.5 | 238.4 |

253.86

8

|     |  |      |      |
|-----|--|------|------|
| S   |  | 11.6 | 2423 |
| cb. |  | 9.3  | 2446 |
| 1/4 |  | 8.0  | 2459 |
| L   |  | 6.8  | 2471 |
| 1/2 |  | 5.2  | 2487 |
| cb. |  | 4.2  | 2497 |
| N   |  | 3.6  | 2503 |

TP 12.49 264.63 1.72 252.14

13' W E Line Feltory

017 Hub 7' South N.L. Level 12.49 252.14

↑  
264.63 see continuation levels  
p-9

Walker  
 1864  
 1-25-41  
 Cross Section Falton St. 54' wide  
 from N.W. Laurel  
 to St. Nutmeg 7' cbs.  
 10' cbs.

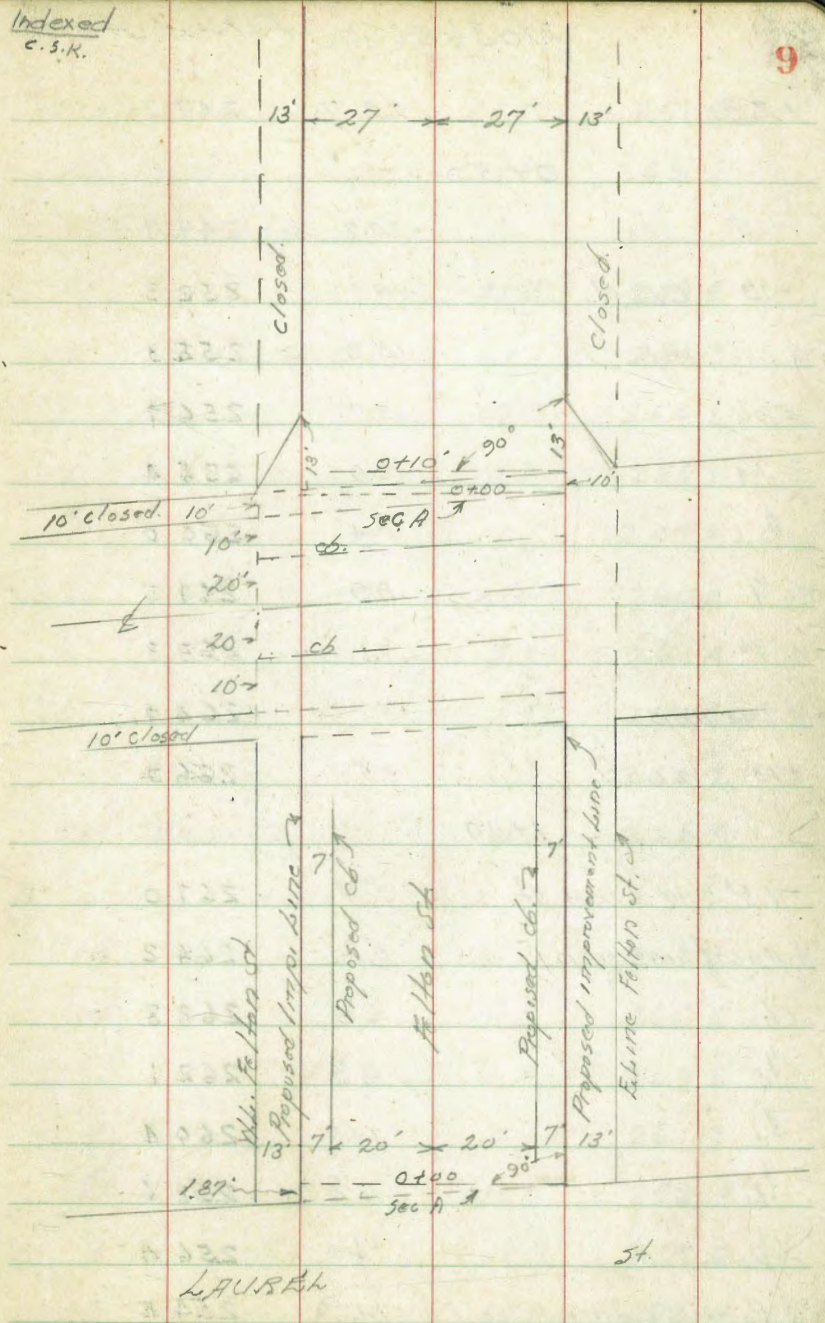
264.63 = A P-B

N.W. Laurel - Section A

|                        |        |        |
|------------------------|--------|--------|
| -13' = FL              | 14.4   | 250.2  |
| E = Line Improvement   | 11.7   | 252.9  |
| +7' cb                 | 10.3   | 254.3  |
| +10' = 14              | 8.7    | 255.9  |
| +10' = 2               | 7.5    | 257.1  |
| +10' = 1A              | 5.5    | 259.1  |
| +10' = cb              | 4.7    | 259.9  |
| +7' = W = Line Imp.    | 2.2    | 262.4  |
| W + 13 = W Line Falton | +0.4   | 265.0  |
| TP                     | 6.29   | 270.36 |
|                        | 0 + 23 | 0.56   |
| 264.07                 |        |        |
| -13' = WL              | 4.1    | 266.3  |
| W = Line Imp.          | 6.2    | 264.2  |
| +7' cb                 | 8.1    | 262.3  |
| +10' = 14              | 9.8    | 260.6  |
| +10' = 2               | 11.0   | 259.4  |
| +10' = 16              | 12.9   | 257.5  |
| +10' = cb              | 16.4   | 254.0  |
| +10' = E = Line Imp.   | 17.3   | 253.1  |
| +13' = E Line          | 20.5   | 249.9  |

Redr Plot on Profile 325 - CBH.

Indexed  
C.S.K.



27036

Felton St

+23 22.7 247.7

0+50

-25 20.7 249.7

-13' - E.L. St. 18.1 252.3

E. line imp. 15.0 255.4

E cb. 13.7 256.7

E 1/4 12.0 258.4

E 1/2 10.4 260.0

W. 1/4 8.9 261.5

W. cb. 7.1 263.3

W. line imp. 5.7 264.7

+13' - W.L. St. 3.5 266.9

1+00

-13' - W. line St. 3.4 267.0

W. line of line imp. 5.2 264.2

cb. 6.6 263.8

1/4 8.3 262.1

1/2 10.0 260.4

1/2 11.8 258.6

cb. 14.0 256.4

E = line Imp. 16.0 254.4

27036

10

+13' - E. line St. 18.5 251.9

+25 20.8 249.6

2+50

-25 21.2 249.2

-13' - East line St. 19.1 251.3

E = line imp. 16.3 254.1

cb. 14.3 256.1

1/4 12.6 257.8

1/2 10.4 260.0

1/4 9.0 261.4

cb. 7.8 262.6

W = line imp. 6.2 264.2

+13' - W. line St. 4.0 266.4

2+00

-13 3.1 267.3

W 4.8 265.6

cb. 6.8 263.6

1/4 8.7 261.7

1/2 10.9 259.5

1/4 12.9 257.5

cb. 15.0 255.4

|                             | 27036  | Felton St    |
|-----------------------------|--------|--------------|
| Proposed.<br>E = Line Prop. | 16.0   | 254.4        |
| +13'                        | 18.8   | 251.6        |
| +25'                        | 21.8   | 248.6        |
| 2+25'                       |        |              |
| -25'                        | 21.6   | 248.8        |
| -13'                        | 19.6   | 250.8        |
| E                           | 16.1   | 254.3        |
| cb.                         | 14.9   | 255.5        |
| 1/4                         | 12.6   | 257.8        |
| 2                           | 11.1   | 259.3        |
| 1/4                         | 8.8    | 261.6        |
| cb.                         | 7.2    | 263.2        |
| W                           | 5.9    | 264.5        |
| +13'                        | 3.4    | 267.0        |
| 2+50'                       |        |              |
| -13'                        | 5.5    | 264.9        |
| W                           | 7.8    | 262.5        |
| cb.                         | 9.4    | 261.0        |
| 1/4                         | 10.8   | 259.6        |
| 2                           | 12.5   | 257.9        |
| T.P. 190                    | 259.58 | 12.68 257.68 |

|        | 25958 |       |
|--------|-------|-------|
| 1/4    | 4.6   | 255.0 |
| cb.    | 6.6   | 253.6 |
| E      | 7.8   | 251.8 |
| +13'   | 9.8   | 249.8 |
| +25'   | 11.9  | 247.7 |
| 2+75'  |       |       |
| -35'   | 20.3  | 239.3 |
| -25'   | 17.7  | 241.9 |
| -13'   | 15.8  | 243.8 |
| E      | 12.0  | 247.6 |
| cb.    | 10.3  | 249.3 |
| 1/4    | 8.7   | 250.9 |
| 2      | 6.7   | 252.9 |
| 1/4    | 4.8   | 254.8 |
| cb.    | 2.8   | 256.8 |
| W      | 1.0   | 258.6 |
| +13'   | 10.9  | 260.5 |
| +20'   | 11.9  | 261.5 |
| 3+100' |       |       |
| -20'   | 2.5   | 257.1 |
| -13'   | 4.0   | 255.6 |
| W      | 7.4   | 252.2 |

259.58

Fellon St.

|     |                      |                                 |
|-----|----------------------|---------------------------------|
| cb. | 8.8                  | 251.8                           |
| 1/4 | 11.3                 | 248.3                           |
| L   | 13.5                 | 246.1                           |
| 1/4 | 16.3                 | 243.3                           |
| cb  | 18.1                 | 241.5                           |
| F   | 19.5                 | 240.1                           |
| +13 | 21.7                 | 237.9                           |
| +25 | 21.9                 | 237.7                           |
| +40 | 24.0                 | 235.6                           |
| +50 | 25.3                 | 234.3                           |
|     | 3+20 24 = Same Maple | 10" db.<br>10" 1/4"<br>60" wide |
| -50 | 25.3                 | 234.3                           |
| -40 | 23.1                 | 236.5                           |
| -25 | 21.3                 | 238.3                           |
| -13 | 19.3                 | 240.3                           |
| F   | 17.9                 | 241.7                           |
| cb. | 17.6                 | 242.0                           |
| 1/4 | 17.4                 | 242.2                           |
| L   | 16.7                 | 242.9                           |
| 1/4 | 16.1                 | 243.5                           |
| cb. | 13.5                 | 246.1                           |

259.58

12

|                         |      |       |
|-------------------------|------|-------|
| Y1 = line proposed Imp. | 12.8 | 246.8 |
| 5 cb Maple              |      |       |
| 1/4                     | 15.1 | 244.5 |
| cb.                     | 15.7 | 243.9 |
| 1/4                     | 15.7 | 243.9 |
| +9                      | 16.6 | 243.0 |
| L                       | 14.2 | 245.4 |
| 1/4                     | 14.0 | 245.6 |
| cb.                     | 14.3 | 245.3 |
| F                       | 14.5 | 245.1 |
| +13'                    | 15.7 | 243.9 |
| +25                     | 18.0 | 241.6 |
| +45                     | 21.1 | 238.5 |
| +55                     | 24.0 | 235.6 |
| L Maple                 |      |       |
| -50                     | 21.2 | 238.4 |
| -25                     | 13.3 | 246.3 |
| -13                     | 11.4 | 248.2 |
| F.                      | 8.8  | 250.8 |
| cb.                     | 8.3  | 251.3 |
| 1/4                     | 6.9  | 252.7 |

259.58

Felton St

L on Riv. Sewer MH 6.07 253.51

L " Grd. 7.0 252.6

1/4 8.3 251.3

Cb. 8.7 250.9

W 8.4 251.2

N Cb. Maple

W 1.0 258.6

Cb. 1.9 257.7

1/4 2.8 256.8

L 3.5 256.1

1/4 4.5 255.1

Cb. 6.4 253.2

E 7.6 252.0

+13 9.2 250.4

+17 10.0 249.6

+25 12.6 247.0

+50 23.1 236.5

+60 - Bottom of ditch 25.0 234.6

N.L. Maple = Sec A

-50 21.6 238.0

-25 13.5 246.1

259.58

13

-13' 9.0 250.6

E 6.3 253.3

Cb. 5.5 254.1

1/4 4.1 255.5

L 2.9 256.7

1/4 1.3 258.3

TP 9.64 266.08 3.14 256.44

Cb. 6.1 260.0

W 5.8 260.3

0+25  
N 7 1/2 line Maple  
on Hub 27' E of E Felton  
Felton St. Maple to Nutmeg.  
= 54' wide  
7' C&S, 10' 1/2 AS

13.92 252.16

-13 +0.2 266.3

W 2.2 263.9

Cb. 3.4 262.7

1/4 5.0 261.1

L 6.8 259.3

1/4 8.8 257.3

Cb. 10.8 255.3

E 12.1 254.0

+13 14.8 251.3

+25 18.8 247.3

+50 27.6 238.5



266.08

Felton St

276.63

14

0±50

cb

15.8

260.8

-50

26.0

240.1

E

17.7

258.9

-26

12.4

248.7

+13

21.0

255.6

-20

13.3

252.8

+25

26.5

250.1

-13

12.7

253.4

+45

29.2

247.4

E

10.0

256.1

+50 = Bottom of ditch

36.2

240.4

cb

8.0

258.1

+750

1/4

6.1

260.0

-50 = Bottom of ditch

34.2

242.4

E

4.3

261.8

-36

25.4

251.2

1/4

2.4

263.7

-13

19.0

257.6

cb

0.0

266.1

E

15.0

261.6

W

+1.4

267.5

cb

13.5

263.1

+13

3.5

262.6

1/4

10.8

265.8

+P

11.67

276.63

1.12

264.96

E

8.0

268.6

+100

1/4

5.8

270.8

-13

1.6

275.0

cb

4.4

272.2

W

4.6

272.0

W

3.0

273.6

cb

6.0

270.6

+13

0.7

275.9

1/4

8.2

268.4

+200

E

11.0

265.6

-13

1.3

275.3

1/4

13.3

263.3

W

3.5

273.1

276.63

Felton St.

|                       |      |       |
|-----------------------|------|-------|
| cb.                   | 5.0  | 271.6 |
| 1/4                   | 7.2  | 269.4 |
| L                     | 8.9  | 267.7 |
| 1/4                   | 11.2 | 265.4 |
| cb.                   | 13.3 | 263.3 |
| E                     | 15.3 | 261.3 |
| +13                   | 18.4 | 258.2 |
| +25                   | 21.6 | 255.0 |
| +40                   | 25.8 | 250.8 |
| +47                   | 29.4 | 247.2 |
| +52 - Bottom ditch    | 32.4 | 244.2 |
|                       | 2+25 |       |
| -50                   | 28.3 | 248.3 |
| -45 - Bottom of ditch | 30.5 | 246.1 |
| -35                   | 23.6 | 253.0 |
| -25                   | 21.2 | 255.4 |
| -13                   | 18.1 | 258.5 |
| E                     | 16.3 | 260.3 |
| cb.                   | 15.9 | 260.7 |
| +4                    | 12.3 | 264.3 |
| 1/4                   | 11.9 | 265.3 |

276.63

Felton St.

15

|     |      |       |
|-----|------|-------|
| L   | 9.8  | 266.8 |
| 1/4 | 8.2  | 268.4 |
| cb. | 5.6  | 271.0 |
| W   | 4.4  | 272.2 |
| +13 | 1.6  | 275.0 |
|     | 7.25 | 2+50  |
| -13 | 2.6  | 274.0 |
| W   | 5.6  | 271.0 |
| cb. | 7.1  | 269.5 |
| 1/4 | 8.6  | 268.0 |
| L   | 10.2 | 266.4 |
| 1/4 | 12.2 | 264.4 |
| +6  | 13.3 | 263.3 |
| cb. | 15.8 | 260.8 |
| E   | 17.5 | 259.1 |
| +13 | 18.6 | 258.0 |
| +25 | 24.6 | 252.0 |
| +32 | 28.8 | 247.8 |
| +40 | 31.9 | 244.7 |
| +50 | 29.4 | 247.2 |

27663

Fellon St.

2+77 = end 30" Conc. Culvert 175' EE W170

|                          |                    |        |
|--------------------------|--------------------|--------|
| -40                      | 18.6               | 258.0  |
| -25                      | 24.8               | 251.8  |
| -17.5                    | 26.0               | 250.6  |
| -17.5 = Flow 30" Culvert | 25.05 - Hand Level | 251.58 |
| -13.0                    | 22.1               | 254.5  |
| E                        | 16.4               | 260.2  |
| cb.                      | 14.0               | 262.6  |
| 1/4                      | 12.3               | 264.3  |
| 1/2                      | 10.9               | 265.7  |
| 1/2                      | 8.9                | 267.7  |
| cb.                      | 7.6                | 269.0  |
| W                        | 6.4                | 270.2  |
| +13'                     | 4.0                | 272.6  |
|                          | 2+89               |        |
| -13                      | 4.1                | 272.5  |
| W                        | 6.6                | 270.0  |
| cb.                      | 6.8                | 269.8  |
| 1/4                      | 6.3                | 270.3  |
| 1/2                      | 6.7                | 269.9  |
| 1/4                      | 6.1                | 270.5  |

27663

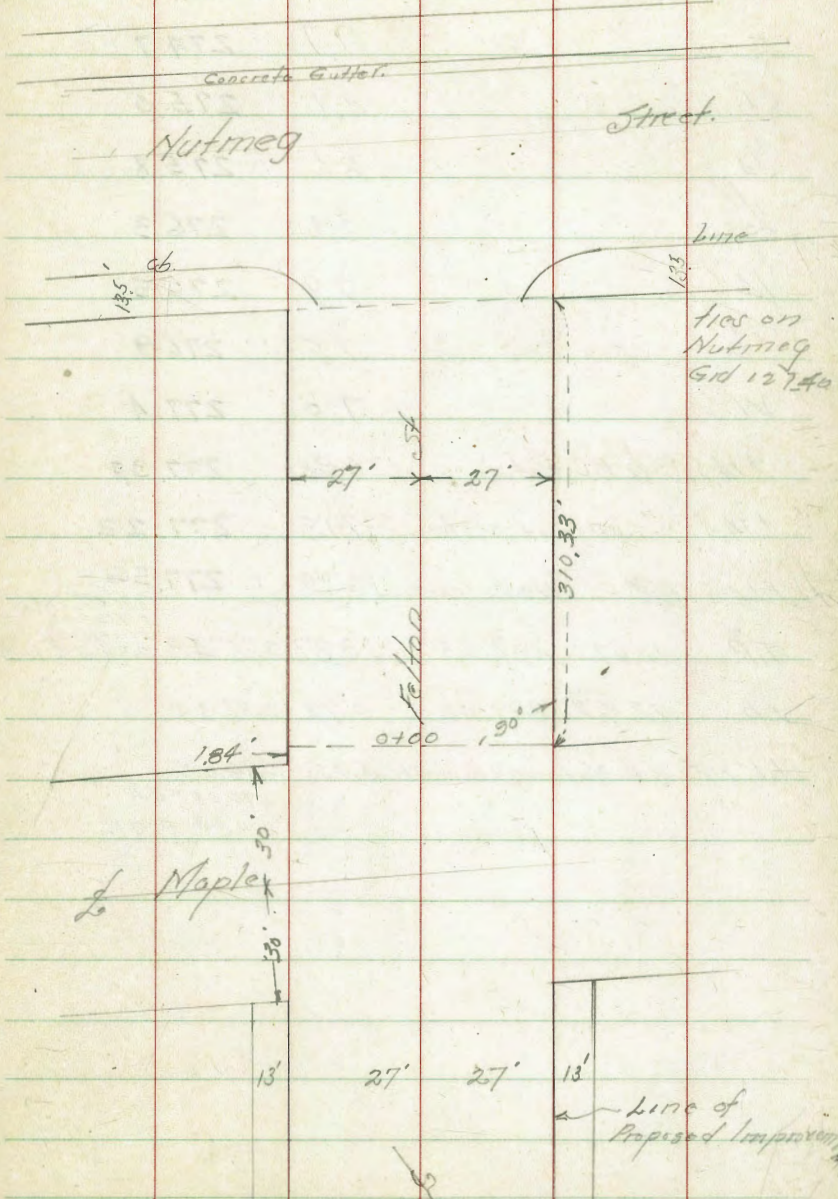
16

|     |                                 |        |
|-----|---------------------------------|--------|
| cb  | 7.5                             | 269.1  |
| E   | 9.6                             | 267.0  |
| +13 | 16.4                            | 260.2  |
| +25 | 15.7                            | 260.9  |
| +40 | 16.6                            | 260.0  |
|     | 3+00                            |        |
| -40 | 7.1                             | 269.5  |
| -25 | 8.6                             | 268.0  |
| -13 | 8.2                             | 268.4  |
| -4  | 6.6                             | 270.0  |
| E   | 4.5                             | 272.1  |
| cb. | 0.8                             | 275.8  |
| TP  | 9.13                            | 284.35 |
| 1/4 | 14.1                            | 275.22 |
| 1/2 | 6.4                             | 278.0  |
| 1/2 | 6.3                             | 278.1  |
| 1/4 | 6.4                             | 278.0  |
| cb. | 7.4                             | 277.0  |
| W   | 6.9                             | 277.5  |
| +13 | 6.7                             | 278.7  |
|     | 3+10.33 on diag. = S.L. Nutmeg. |        |
| -13 | 3.5                             | 278.9  |

|                      |       |        |
|----------------------|-------|--------|
| W                    | 5.9   | 278.5  |
| +7 on Wcb.           | 7.31  | 277.04 |
| +7" Gravel.          | 5.8   | 278.6  |
| +7 on Conc. Gut.     | 7.86  | 276.49 |
| 1/4                  | 6.8   | 277.6  |
| 1/2                  | 6.8   | 277.6  |
| 1/2                  | 7.4   | 277.0  |
| cb                   | 9.0   | 275.4  |
| +1 on cb.            | 8.91  | 275.44 |
| +1 " Floor cb inlet. | 10.16 | 274.19 |
| F                    | 9.9   | 274.5  |
| +13                  | 10.1  | 274.3  |
| +25                  | 9.6   | 274.8  |

## S cb. Nutmeg

|                             |      |        |
|-----------------------------|------|--------|
| -50 on cb.                  | 8.50 | 275.85 |
| -50' " Gut. Conc.           | 9.12 | 275.23 |
| -35' " cb.                  | 8.85 | 275.50 |
| -35' " Conc. Gut.           | 9.57 | 274.78 |
| -14.5' PC. Ret. on Conc Gut | 9.85 | 274.50 |
| -14.5' " " " cb.            | 9.00 | 275.35 |
| -14.5' 25' RT-edge Gut.     | 9.93 | 274.42 |

OK Grid Book  
127-37

|         |                        |        |             |  |
|---------|------------------------|--------|-------------|--|
| E       | C' Lh. on Flow Inlet   | 10.17  | 274.18      |  |
| E       |                        | 9.7    | 274.7       |  |
| cb.     |                        | 8.9    | 275.5       |  |
| 1/4     |                        | 8.6    | 275.8       |  |
| 2       |                        | 8.1    | 276.3       |  |
| 1/4     |                        | 7.9    | 276.5       |  |
| cb      |                        | 7.5    | 276.9       |  |
| W       |                        | 7.0    | 277.4       |  |
| +14.5 = | cb B.C. Ret            | 6.38   | 277.97      |  |
| +14.5 = | " on Gout at cb.       | 7.13   | 277.22      |  |
| (+14.5) | 8.1 Wedge (on Gout)    | 6.79   | 277.56      |  |
| TP      | 11.67                  | 287.15 | 8.87        | 275.48                                 |
|         |                        |        |             | on Gout. 57.4112 Nutmeg 25.5' Ed. Felt |
| TP      | 12.62                  | 299.00 | 0.77        | 286.38                                 |
| Chh. NE | B.P. Nutmeg + Bancroft | 4.75   | 294.05      |  |
|         |                        |        | 294.08 - 8P |  |
|         |                        |        | 0.03 Error. |  |

Walker, Bliss  
Isbell  
1-30-41

Cross Section MAPLE ST.  
from 33rd  
to Felton St

60' wide  
10' C&G  
10' '45.

Indexed  
C.S.K.

19

817. 4.95 299.03 294.08 NE BP  
Nutmeg  
& Bananft.

TP 0.51 287.30 12.24 286.79

0-11' = toe rolled cb on North

-25 on cb. 1'E. 6.75 280.55

-25 " Pav. = toe rolled cb. 7.09 280.31

-10 " cb 1'E. 7.99 279.31

-10 " Pav = toe rolled cb. 8.30 279.05

14 on " 8.78 278.52

cb " " 9.01 278.29

1/4 " " 9.08 278.22

1/2 " " 9.13 278.17

1/2 " " 9.02 278.28

cb " " 8.87 278.43

5 " " 8.72 278.58

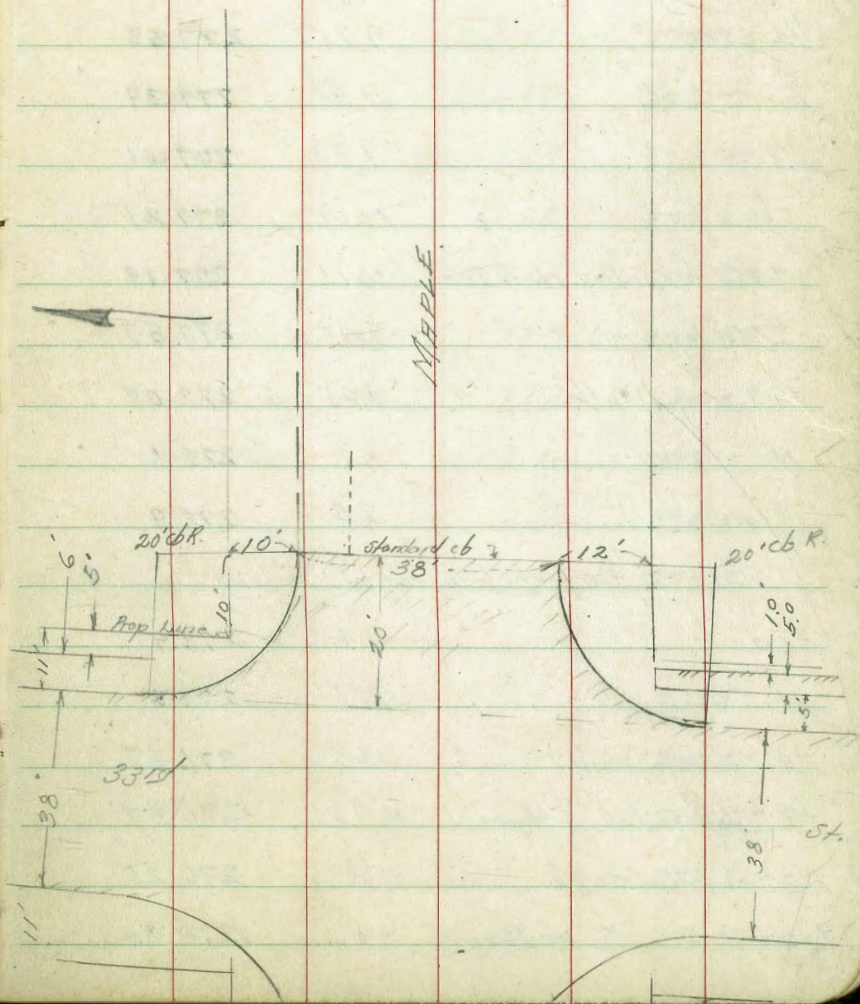
76 " " 8.47 278.83

76 " cb. 7.99 ~~278.31~~ 278.31

Note  
Above cb 86.9 should be 8' 5.5".  
to fit a 20' cb R but is only 6' on account of  
drive way. (Standard cb from 35 South to Laurel)

5 + 25 on cb. 6.80 280.50

" 4 Pav. 7.29 280.01



287.30

Maple St.

|      |                               |       |        |
|------|-------------------------------|-------|--------|
| 0+00 | = E. L. 331st St              |       |        |
| S    |                               | 7.9   | 279.4  |
| +3   |                               | 8.6   | 278.7  |
| +9   | top rolled on cb              | 9.19  | 278.11 |
| +10  | cb " Gut par.                 | 9.50  | 277.80 |
| 1/4  | on "                          | 9.75  | 277.55 |
| 1/2  | " "                           | 9.91  | 277.39 |
| 1/4  | " "                           | 9.89  | 277.41 |
| cb   | " "                           | 10.09 | 277.21 |
| +2.5 | = toe rolled pb on Pav.       | 10.11 | 277.19 |
| +3.5 | = top " "                     | 9.75  | 277.55 |
| +9.7 | = edge Walk                   | 9.25  | 278.05 |
| N    |                               | 9.2   | 278.1  |
| +10  |                               | 8.4   | 278.9  |
| 0+09 | cb face end of Paring         |       |        |
| -10  |                               | 8.4   | 278.9  |
| N    |                               | 8.7   | 278.6  |
| +4'  | = N edge Walk                 | 10.63 | 276.67 |
| +9   | = top rolled cb = top reg. cb | 10.73 | 276.57 |
| +10  | = toe rolled curb             | 11.05 | 276.25 |
| +10  | = " " " on Paring             | 11.46 | 275.84 |

287.30

20

|         |                            |       |        |
|---------|----------------------------|-------|--------|
| cb +3.5 | = inlet on Gutting.        | 11.59 | 275.71 |
| cb +3.5 | on Flow Pipe               | 12.93 | 274.37 |
| "       | " top cb.                  | 10.61 | 276.69 |
| 1/4     | on cb.                     | 10.24 | 277.06 |
| "       | " Pav.                     | 11.00 | 276.30 |
| 1/2     | " cb.                      | 9.97  | 277.33 |
| 1/2     | " Pav.                     | 10.58 | 276.72 |
| 1/4     | " cb.                      | 9.83  | 277.47 |
| 1/4     | " Pav.                     | 10.28 | 277.02 |
| +8      | on cb.                     | 9.67  | 277.63 |
| +8"     | toe rolled cb - Pav.       | 9.95  | 277.35 |
| +9      | on top old cb - rolled cb. | 9.62  | 277.68 |
| cb      | on Ground                  | 9.1   | 278.2  |
| +8      |                            | 8.5   | 278.8  |
| S       |                            | 7.8   | 279.5  |
| 0+22    |                            |       |        |
| -7      | at house                   | 7.8   | 279.5  |
| S       |                            | 7.8   | 279.5  |
| cb      |                            | 8.9   | 278.6  |
| 1/4     |                            | 9.5   | 277.8  |
| 1/2     |                            | 10.6  | 276.7  |

28730

Maple St

|              |      |       |
|--------------|------|-------|
| 1/4          | 114  | 275.9 |
| cb.          | 10.8 | 276.5 |
| N            | 9.5  | 277.8 |
| +10          | 8.3  | 279.0 |
|              | 0+35 |       |
| -30          | 7.0  | 280.3 |
| -20          | 7.4  | 279.9 |
| -10          | 8.7  | 278.6 |
| N            | 10.7 | 276.6 |
| cb.          | 14.7 | 272.6 |
| 1/4          | 18.1 | 269.2 |
| L            | 14.9 | 272.4 |
| 1/4          | 12.0 | 275.3 |
| +5           | 11.5 | 275.8 |
| cb.          | 9.8  | 277.5 |
| +5           | 8.7  | 278.6 |
| S            | 8.5  | 278.8 |
| +7 at house  | 8.4  | 278.9 |
|              | 0+50 |       |
| -8' at house | 8.8  | 278.5 |
| S            | 9.1  | 278.2 |
| +4           | 9.5  | 277.8 |

28730

21

|     |      |        |
|-----|------|--------|
| cb. | 12.0 | 275.3  |
| +5  | 13.3 | 274.0  |
| 1/4 | 13.7 | 273.6  |
| +7  | 14.1 | 273.2  |
| L   | 15.1 | 272.2  |
| 1/4 | 20.6 | 266.7  |
| cb. | 24.0 | 263.3  |
| N   | 16.3 | 271.0  |
| +10 | 14.0 | 273.3  |
| +18 | 12.1 | 274.6  |
| +26 | 7.5  | 279.8  |
| +40 | 7.0  | 280.3  |
|     | 0+70 |        |
| -40 | 7.9  | 279.4  |
| -25 | 8.2  | 279.1  |
| TP  | 0.46 | 274.66 |
| -10 | 7.2  | 267.5  |
| N   | 13.3 | 261.4  |
| cb. | 14.6 | 260.1  |
| +5  | 14.0 | 260.7  |
| 1/4 | 11.0 | 263.7  |



274.66

Maple St

|  |                                  |        |
|--|----------------------------------|--------|
| L  | 5.8                              | 268.9  |
| +4   | 2.8                              | 271.9  |
| 1/4  | 2.5                              | 272.2  |
| cb.  | 2.0                              | 272.7  |
| S  | +1.5                             | 276.2  |
| +10  | +3.2                             | 277.9  |
|  | $\frac{10 \times 11}{10} = 7.95$ | 266.71 |
| (0 + 40 = End 18" corrugated Culvert 12.5' South 11) |                                  |        |
|  | 1+00                             |        |
| -10  | 1.3                              | 273.4  |
| S  | 3.5                              | 271.2  |
| cb.  | 4.6                              | 270.1  |
| 1/4  | 5.3                              | 269.4  |
| L  | 12.8                             | 261.9  |
| 1/4  | 15.4                             | 259.3  |
| +7   | 19.4                             | 255.3  |
| cb.  | 18.8                             | 255.9  |
| +5   | 18.5                             | 256.2  |
| N  | 15.4                             | 259.3  |
| +10  | 9.2                              | 265.5  |
| +20  | +3.0                             | 277.7  |
| +40  | +3.7                             | 278.4  |

274.66

22

|     |                    |        |        |        |
|-----|--------------------|--------|--------|--------|
| -40 | 1+30               | +2.5   | 277.2  |        |
| -34 |                    | +2.0   | 276.7  |        |
| -10 |                    | 6.4    | 268.3  |        |
| N   |                    | 11.5   | 263.2  |        |
| cb. |                    | 13.5   | 266.2  |        |
| +5  |                    | 21.9   | 252.8  |        |
| 1/4 |                    | 21.9   | 252.8  |        |
| L   |                    | 17.3   | 257.4  |        |
| 1/4 |                    | 13.3   | 261.4  |        |
| cb. |                    | 9.5    | 265.2  |        |
| S   |                    | 7.8    | 266.9  |        |
| +10 |                    | 6.0    | 268.7  |        |
|     | 1+55               |        |        |        |
| -10 |                    | 10.0   | 264.7  |        |
| S   |                    | 11.6   | 263.1  |        |
| cb. |                    | 14.0   | 260.7  |        |
| TP  | 3.80               | 266.09 | 12.37  | 262.29 |
| 1/4 |                    | 9.5    | 256.6  |        |
| L   | 40' 6"             | 13.85  | 252.24 |        |
|     | 10' C. Iron Jumper |        |        |        |
| +6  |                    | 17.7   | 248.4  |        |
| 1/4 |                    | 15.6   | 250.5  |        |

266.09

Maple St.

|           |      |       |
|-----------|------|-------|
| cb.       | 9.7  | 256.4 |
| N         | 3.5  | 262.6 |
| +10       | 0.3  | 265.8 |
| +20       | +1.7 | 267.8 |
|           | 1+75 |       |
| -20       | +1.4 | 267.5 |
| -10       | 1.3  | 264.8 |
| N         | 4.0  | 262.1 |
| cb.       | 7.0  | 259.1 |
| 1/4       | 14.7 | 251.4 |
| +6        | 17.9 | 248.2 |
| L         | 18.6 | 247.5 |
| L on Pipe | 15.3 | 250.8 |
| +3        | 18.3 | 247.8 |
| 1/4       | 14.4 | 251.7 |
| cb.       | 11.0 | 255.1 |
| S         | 8.1  | 258.0 |
| +10       | 4.7  | 261.4 |
| +15       | 3.5  | 262.6 |
|           | 2+00 |       |
| -20       | 7.8  | 258.3 |

266.09

23

|                    |  |       |
|--------------------|--|-------|
| -10                | 10.7                                     | 255.4 |
| S                  | 14.8                                     | 251.3 |
| cb.                | 18.0                                     | 248.1 |
| +5                 | 20.0                                     | 246.1 |
| 1/4                | 20.0                                     | 246.1 |
| +5                 | 18.8                                     | 247.3 |
| L                  | 16.1                                     | 250.0 |
| (4' W. on 6" Pipe) | 16.6                                     | 249.5 |
| 1/4                | 9.3                                      | 256.8 |
| cb.                | 6.6                                      | 259.5 |
| N                  | 4.0                                      | 262.1 |
| +10                | 1.8                                      | 264.3 |
| +20                | 10.2                                     | 266.3 |
|                    | on diagonal                              |       |
|                    | 2+2.3 = W. on H. Proposed strip on south |       |
| N                  | 5.6                                      | 260.5 |
| cb.                | 7.5                                      | 258.6 |
| 1/4                | 9.7                                      | 256.4 |
| L                  | 15.0                                     | 251.1 |
| 1/16               | 17.5                                     | 248.6 |
| +7                 | 21.8                                     | 244.3 |
| cb.                | 21.8                                     |       |

266.09

Maple St

6615

22.1

244.0

5

19.4

246.1

27' E of L

chk. Hub N 7' W of Maple

13.87

252.22

P-13

252.16

Hub P-13

0.06 Error

Walter  
Bliss  
10611  
130-41

CROSS SECTION ALLEY B/W. 74 CITY HTS.  
Between Fairmount & 43rd. Sts.  
from LANDIS to WIGHTMAN

5.66 353.31

B/A NW-ER  
Landis  
+ 43rd

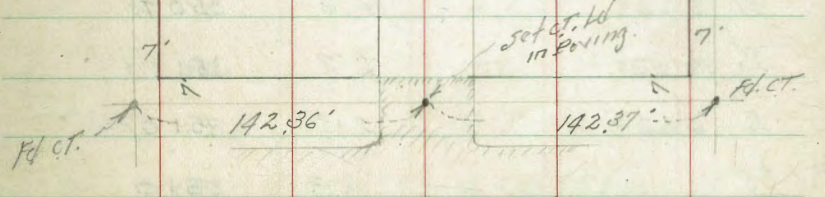
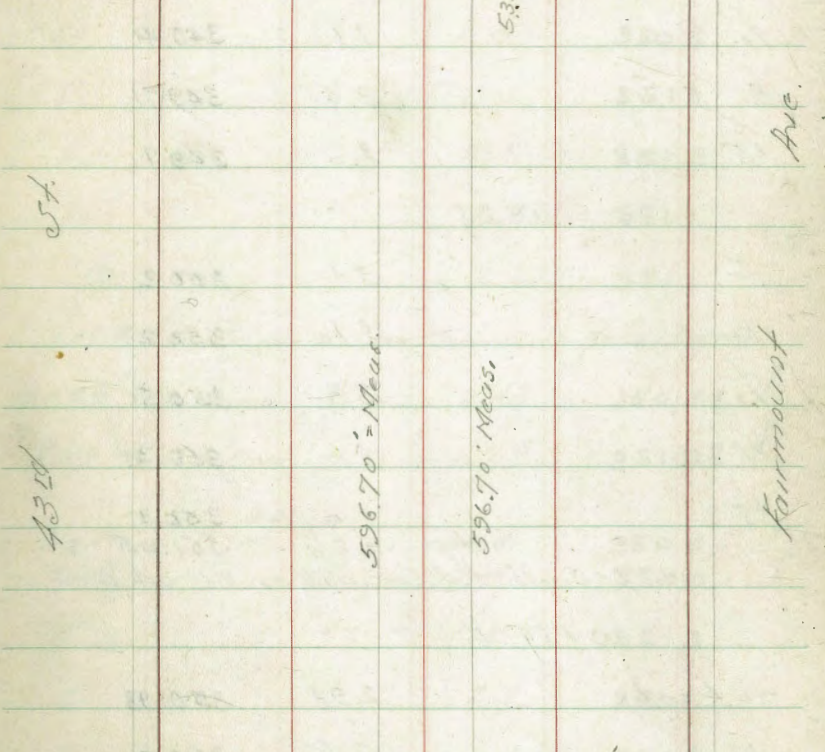
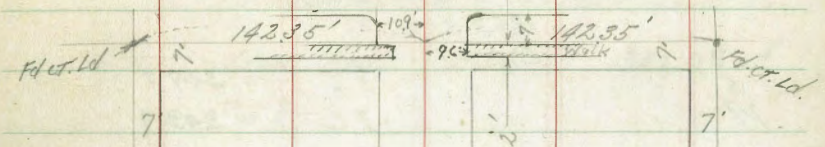
0-14 = Ncb.

|                              |      |          |
|------------------------------|------|----------|
| -15 on Conc. Pav.            | 5.38 | 347.93   |
| " " top cb.                  | 4.88 | 348.43   |
| W on Conc. Pav.              | 5.30 | 348.01   |
| " " top cb.                  | 4.74 | 348.57   |
| E " Conc. Pav.               | 5.25 | 348.06   |
| E " " "                      | 5.17 | 348.14   |
| " " top cb.                  | 4.61 | 348.70   |
| +13' " "                     | 4.74 | 348.57   |
| " on Conc. Pav.              | 5.19 | 348.12   |
| +135' " " "                  | 5.11 | 348.20   |
| Red. & Plat. 1-31-41 C.A.H.  |      |          |
| E + 0.25' 0+00 = Nk. Landis. |      |          |
| = E top cb.                  | 4.55 | 348.76   |
| " Gut.                       | 4.66 | 348.65   |
| E on Conc. Pav.              | 4.97 | 348.34 ✓ |
| +10.25 on " "                | 4.69 | 348.62 ✓ |
| " " top cb.                  | 4.60 | 348.71 ✓ |

Indexed  
c.s.k.

WIGHTMAN

St.



LANDIS

St.

Walker  
Bliss  
Webb  
1-30-41

Cross Section Alley 81 1/2 74 - City Hts.  
Between Fairmount + 43rd.  
from LANDIS to Wightman

Cont. from P-25

353.31  
0+07

|  |      |        |
|--|------|--------|
| -5'                                      | 3.6  | 349.7  |
| W  | 3.6  | 349.7  |
| L  | 3.9  | 349.4  |
| E  | 3.6  | 349.7  |
| +5                                       | 3.6  | 349.7  |
| 0+25                                     |      |        |
| -5'                                      | 3.1  | 350.2  |
| E  | 3.1  | 350.2  |
| L  | 2.8  | 350.5  |
| W  | 3.0  | 350.3  |
| +5                                       | 3.0  | 350.3  |
| top 2.26 351.05 ✓                        |      |        |
| 0+37 = South end Conc. Wall on W 4' Back |      |        |
| 0+50 = N " " " "                         |      |        |
| -0.4 on top                              | 2.38 | 350.93 |
| W  | 2.6  | 350.7  |
| L  | 2.2  | 351.1  |
| E  | 2.3  | 351.0  |
| +5                                       | 2.3  | 351.0  |

0+58 = Beginning Fence on E 0.4 in Alley ✓  
0+76 = Fence on same line this Sta on E ✓

353.31

26

|  |        |          |
|--|--------|----------|
| 0+71 = L Pole on W Back edge 0.1 in Alley ✓      |        |          |
| 0+78 = L Garage on W 4' Back Conc. Floor         |        |          |
| Floor Above = 2.26                               | 351.05 | ✓        |
| 0+85   |        |          |
| -10  | 2.5    | 350.8    |
| E  | 2.0    | 351.3    |
| L  | 2.1    | 351.2    |
| W  | 2.2    | 351.1    |
| +10  | 2.2    | 351.1    |
| 0+94 = Garage on W. Conc. Floor with Conc. Apron |        |          |
| W + 0.6 = Top Apron                              | 2.43   | 350.88 ✓ |
| +55 = Garage Floor                               | 2.23   | 351.08 ✓ |
| 1+00   |        |          |
| -20  | 2.4    | 350.9    |
| -10  | 2.4    | 350.9    |
| W  | 2.0    | 351.3    |
| L  | 2.2    | 351.1    |
| E  | 2.1    | 351.2    |
| +10  | 2.6    | 350.7    |
| +20  | 2.7    | 350.6    |
| TP   | 6.20   | 357.25   |
|  | 3.26   | 351.05   |

Cont. P-27

Alley 81k 74 - City Hts.  
Cont. from p-26

357.25

|      |   |     |       |
|------|---|-----|-------|
|      | 1+80                                      |     |       |
| -25' |   | 6.7 | 350.6 |
| -10  |   | 6.3 | 351.0 |
| E    |   | 6.2 | 351.1 |
| L    |   | 6.2 | 351.1 |
| W    |   | 6.1 | 351.2 |
| +10  |   | 6.1 | 351.2 |
|      | 1+55                                      |     |       |
| -10  |   | 6.2 | 351.1 |
| W    |   | 6.1 | 351.2 |
| L    |   | 6.2 | 351.1 |
| E    |   | 6.1 | 351.2 |
| +10  |   | 6.2 | 351.1 |
| 2    | 0+74 = E Alc on W Back edge 0.6' in Alley |     | ✓     |
|      | 1+82                                      |     |       |
| L    |   | 5.7 | 351.6 |
| +4   |   | 5.3 | 352.0 |
| L    |   | 5.5 | 351.8 |
| +4   |   | 5.8 | 351.5 |
| W    |   | 5.8 | 351.5 |
| +10  |   | 5.9 | 351.4 |

357.25

27

1+89

|      |                                    |     |       |
|------|------------------------------------|-----|-------|
| -10  |                                    | 5.7 | 351.6 |
| W    |                                    | 5.5 | 351.8 |
| +6   |                                    | 5.6 | 351.7 |
| L    |                                    | 4.9 | 352.4 |
| +5   |                                    | 4.8 | 352.5 |
| E    |                                    | 5.4 | 351.9 |
| +10  |                                    | 5.6 | 351.7 |
| 2+00 | Beginning Shed on E 1.1' in Alley  |     | }     |
| 2+15 | end " " 1.0' " "                   |     | }     |
| 2+15 | Beginning fence on E 1.0' in "     |     | }     |
| 2+37 | end " " " 1.0' " "                 |     | }     |
| 2+37 | Beginning Shed on E 1.0' " "       |     | }     |
| 2+49 | end " " " 1.0' " "                 |     | }     |
| 2+49 | Beginning fence on E 1.0' in Alley |     | }     |
| 2+89 | end " " " 1.0' " "                 |     | }     |
| 2+89 | Beginning Shed " " 1.0' " "        |     | }     |
| 2+99 | W end " " " 1.0' " "               |     | }     |
|      | 2+20                               |     |       |
| -10  |                                    | 5.9 | 351.4 |
| E    |                                    | 5.7 | 351.6 |

Alley 81/2 74-City Hts.  
Cont. from P-27

357.25

|      |     |       |
|------|-----|-------|
| E+1  | 5.1 | 352.2 |
| L    | 5.0 | 352.3 |
| +7   | 5.1 | 352.2 |
| W    | 4.5 | 352.8 |
| +10  | 5.8 | 351.5 |
| 2150 |     |       |
| -10  | 5.1 | 352.2 |
| W    | 4.7 | 352.6 |
| L    | 4.7 | 352.6 |
| +9   | 4.9 | 352.4 |
| E    | 5.9 | 351.4 |
| +10  | 6.2 | 351.1 |
| 2175 |     |       |
| -10  | 6.1 | 351.2 |
| E    | 6.1 | 351.2 |
| +1   | 5.6 | 351.7 |
| L    | 5.2 | 352.1 |
| W    | 4.8 | 352.5 |
| +10  | 5.2 | 352.1 |

2173 - Pole on W. Back edge = 0.2 in Alley ↓

357.25

28

|   |      |        |      |        |
|---|------|--------|------|--------|
| T.P.                                      | 5.74 | 358.18 | 4.81 | 352.44 |
| 3400                                      |      |        |      |        |
| -10                                       |      |        | 6.2  | 352.0  |
| W   |      |        | 6.1  | 352.1  |
| L   |      |        | 6.2  | 352.0  |
| E   |      |        | 6.2  | 352.0  |
| +15                                       |      |        | 6.8  | 351.4  |
| +30                                       |      |        | 6.8  | 351.4  |
| 3450                                      |      |        |      |        |
| -30                                       |      |        | 6.2  | 352.0  |
| E-10                                      |      |        | 5.8  | 352.4  |
| E   |      |        | 5.8  | 352.4  |
| L   |      |        | 5.8  | 352.4  |
| W   |      |        | 5.8  | 352.4  |
| +10                                       |      |        | 6.1  | 352.1  |
|   |      |        | 5.31 | 352.87 |
| 3454 - Garage on W 0.4' Back same floor ✓ |      |        |      |        |
| 3472 - Pole on W Back edge of W.S.W.L. ✓  |      |        |      |        |
| 4100                                      |      |        |      |        |
| -10                                       |      |        | 5.4  | 352.8  |
| W   |      |        | 5.4  | 352.8  |
| L   |      |        | 5.3  | 252.9  |

35818

Alley Bk. 74 City Hts.

35818

29

|  |      |                            |
|--|------|----------------------------|
| E  | 5.0  | 3532                       |
| +30  | 5.4  | 3528                       |
| A+25   |      |                            |
| -30  | 5.0  | 3532                       |
| E  | 4.8  | 3534                       |
| L  | 5.0  | 3532                       |
| W  | 4.9  | 3533                       |
| +3   | 5.4  | 3528                       |
| +25  | 5.6  | 3526                       |
| +35  | 5.4  | 3528                       |
|  | 5.2  | 3530 <sup>st. garage</sup> |
| A104 = Garage on W. 1' back dirt floor       |      |                            |
| A+50   |      |                            |
| -10  | 5.3  | 3529                       |
| W  | 4.9  | 3533                       |
| L  | 4.8  | 3534                       |
| E  | 4.7  | 3535                       |
| +30  | 5.0  | 3532                       |
| A+67 = South end 3 Garages on E. Conc. Floor |      |                            |
| South end on Floor 3.67 35451                |      |                            |
| N " " "                                      | 3.66 | 35452                      |

|   |      |        |
|---|------|--------|
| E - 3.5 on Floor Garage                           | 3.66 | 354.52 |
| E-3   | 4.7  | 353.5  |
| E   | 4.7  | 353.5  |
| L   | 4.5  | 353.7  |
| +8  | 4.7  | 353.5  |
| W   | 5.1  | 353.1  |
| +5  | 4.9  | 353.3  |
| +10   | 4.7  | 353.5  |
| A+71 = 1/2 Deadman on W. 0.8' E. of W.L. ✓        |      |        |
| A+96 = 1/2 Pole on W. Back edge = 0.6' in Alley ✓ |      |        |
| 5100  |      |        |
| -10   | 4.0  | 354.2  |
| W   | 4.2  | 354.0  |
| +5  | 4.5  | 353.7  |
| L   | 4.4  | 353.8  |
| E   | 4.3  | 353.9  |
| +10   | 4.1  | 354.1  |
| T.P.  | 4.92 | 358.90 |
|   | 4.20 | 353.98 |
| 5120  |      |        |
| -5  | 4.3  | 354.6  |
| E   | 4.4  | 354.5  |



358.90 Alley BK 74 City Hts.

|   |        |          |
|---|--------|----------|
| L   | 4.8    | 354.1    |
| W   | 4.7    | 354.2    |
| +10   | 4.6    | 354.3    |
| St. Ent.  |        |          |
| 5+18 = South end Repair Garage on E Conc. Floor |        |          |
| 5+48 = N " " " " " "                            |        |          |
| South end floor = 3.95                          | 354.95 | 3.8 Back |
| N " " = 3.81                                    | 355.09 | ↓        |
| 5+50 = Garage on W Conc. Floor                  |        | 3.3 Back |
| -3.3 on Floor                                   | 4.71   | 354.19   |
| W   | 4.7    | 354.2    |
| L   | 4.4    | 354.5    |
| E   | 4.2    | 354.7    |
| +10   | 4.1    | 354.8    |
| 5+90  |        |          |
| -5  | 4.2    | 354.7    |
| E   | 4.3    | 354.6    |
| L   | 4.4    | 354.5    |
| W   | 4.4    | 354.5    |
| +5  | 4.7    | 354.2    |
| 5+96.7 = St. Wightman                           |        |          |
| W   | 4.9    | 354.0    |

358.90

30

|   |        |        |
|---|--------|--------|
| L                                       | 4.9    | 354.0  |
| E                                       | 4.6    | 354.3  |
| 5+98.7 = South edge Finding Side Walk.  |        |        |
| E+04 on South end cb.                   | 4.70   | 354.20 |
| L                                       | 5.0    | 353.9  |
| +5.3 on end Walk                        | 5.37   | 353.53 |
| 4.8 " "                                 | 4.98   | 353.92 |
| W " "                                   | 4.87   | 354.03 |
| 6+03.5 = N edge Walk                    |        |        |
| 6+10.7 = South cb Wightman              |        |        |
| -125 on Pav. Fl. 431/2                  | 5.98   | 352.92 |
| -125 " cb " "                           | 5.58   | 353.32 |
| W                                       | 5.4    | 353.5  |
| " on cb. Ret. Alley                     | 5.16   | 353.74 |
| L                                       | 5.3    | 353.6  |
| E                                       | 5.3    | 353.6  |
| " on cb. Ret. Alley                     | 4.81   | 354.09 |
| T.P.                                    | 3.84   | 359.10 |
| E+125 <sup>35</sup> on Pav. W. E. Front | 4.84   | 354.06 |
| -125 <sup>35</sup> on cb. " "           | 4.47   | 354.43 |
|   | 5.54   | 353.56 |
|   | 353.57 | = 8P   |
|   | 0.07   | error. |

error  
 355.33  
 355.26  
 N.Y. 8P  
 Wightman  
 + Fairmount  
 N.Y. Wightman  
 + 431/2

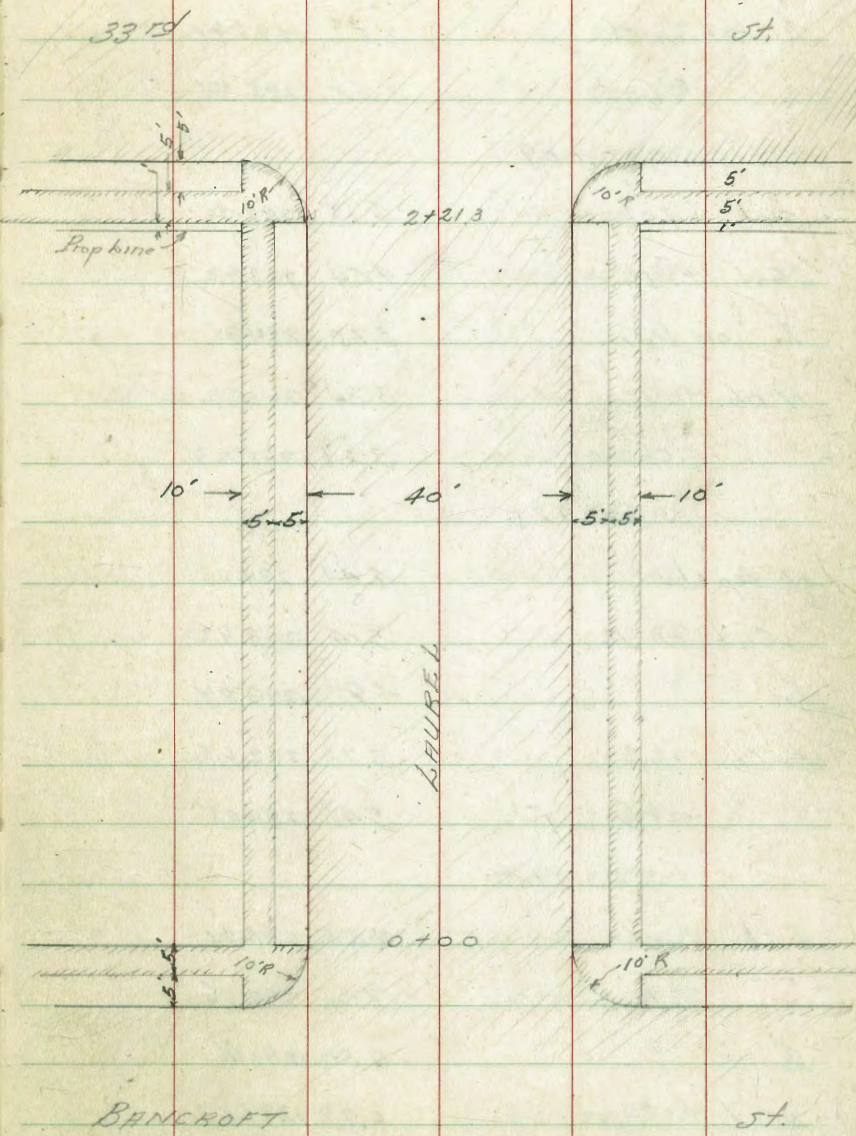
Walker  
Bliss  
Ludell  
2-14-41

CROSS SECTION LAUREL ST.  
CURB GUT, AND L<sub>1</sub> LEVELS  
FROM BANCROFT TO 33<sup>RD</sup> ST.

Elev. 7.2 on Rock  
p. 3

|                                |        |          |
|--------------------------------|--------|----------|
| 7.77                           | 298.46 | 290.69   |
| 0 - 10' = E. cb. line Bancroft |        |          |
| 4" E. top cb. - PC. Rt.        | 3.59   | 294.87 ✓ |
| 4" Gut. " " on Pav.            | 3.95   | 294.51   |
| cb. on " "                     | 3.59   | 294.87   |
| L <sub>1</sub> " Pav.          | 2.89   | 295.57   |
| N. cb. " "                     | 2.85   | 295.61   |
| N.L. BC cb. Ret. on Pav.       | 2.95   | 295.51   |
| " " " on cb.                   | 2.57   | 295.89 ✓ |
| 0 + 00 = E. L. Bancroft.       |        |          |
| N. cb. on cb.                  | 2.59   | 295.87   |
| " " " Paring.                  | 3.24   | 295.22   |
| L <sub>1</sub> " "             | 3.26   | 295.20   |
| 5" Gut. " "                    | 3.99   | 294.4)   |
| 5" cb. on cb.                  | 3.60   | 294.86   |
| S. E. Ret.                     |        |          |
| L <sub>1</sub> Ret. on cb.     | 3.52   | 294.99   |
| L <sub>1</sub> " " Pav.        | 3.91   | 294.55   |
| N.E. Ret.                      |        |          |

Indexed  
c. s. k.



## N.E. Refurto

|                |      |        |
|----------------|------|--------|
| L Ref. on cb.  | 2.52 | 295.94 |
| " " " Gut.     | 3.05 | 295.41 |
| 0+09           |      |        |
| S cb. on cb.   | 4.18 | 294.28 |
| " Gut. " Pav.  | 4.54 | 293.92 |
| L on Pav.      | 3.75 | 294.71 |
| N cb. " "      | 3.84 | 294.62 |
| " " " cb.      | 3.21 | 295.25 |
| 0+25           |      |        |
| N top cb.      | 4.41 | 294.05 |
| " Gut. on Pav. | 5.04 | 293.42 |
| L " "          | 4.92 | 293.54 |
| S cb. " "      | 5.78 | 292.68 |
| " " " cb.      | 5.41 | 293.05 |
| 0+50           |      |        |
| S cb. on cb.   | 7.25 | 291.21 |
| " " " Pav.     | 7.60 | 290.86 |
| L " "          | 6.80 | 291.66 |
| N cb. " "      | 6.77 | 291.67 |
| " " " cb.      | 6.22 | 292.29 |

## 0+75

|                        |        |              |
|------------------------|--------|--------------|
| N cb. on cb.           | 8.08   | 290.38       |
| " " " Pav.             | 8.68   | 289.78       |
| L " "                  | 8.58   | 289.88       |
| S cb. " "              | 9.44   | 289.02       |
| " " " cb.              | 9.08   | 289.38       |
| 1+00                   |        |              |
| S cb. on cb.           | 10.90  | 287.55       |
| " " " Pav.             | 11.27  | 287.19       |
| L " "                  | 10.46  | 288.04       |
| N cb. " "              | 10.43  | 288.03       |
| " " " cb.              | 9.90   | 288.55       |
| 1+25                   |        |              |
| N cb. on cb.           | 11.65  | 286.81       |
| " " " Pav.             | 12.26  | 286.20       |
| L " "                  | 12.12  | 286.34       |
| S cb. on Pav. in Drive | 13.03  | 285.43       |
| TR 117                 | 286.73 | 12.90 285.56 |
| 1+50                   |        |              |
| S cb. on cb.           | 2.80   | 283.93       |
| " Gut. " Pav.          | 3.11   | 283.62       |

286.73

|               |      |        |
|---------------|------|--------|
| L on Pav      | 2.23 | 284.50 |
| N cb. "       | 2.37 | 284.36 |
| " " " cb.     | 1.82 | 284.91 |
| 1+75          |      |        |
| N cb. on cb.  | 3.63 | 283.10 |
| " " Pav.      | 4.12 | 282.61 |
| L " "         | 4.08 | 282.65 |
| S cb. on "    | 4.98 | 281.75 |
| " " " cb.     | 4.58 | 282.18 |
| 2+00          |      |        |
| S cb. on cb.  | 6.45 | 280.28 |
| " " " Pav.    | 6.75 | 279.93 |
| L " "         | 5.88 | 280.85 |
| N cb. " "     | 5.98 | 280.25 |
| N " " cb.     | 5.49 | 281.30 |
| 2+178         |      |        |
| N cb. on      | 6.68 | 280.05 |
| " " " Pav.    | 7.22 | 279.31 |
| L Pav         | 7.10 | 279.63 |
| S cb. on Pav. | 8.07 | 278.66 |
| " " " cb.     | 7.73 | 279.00 |

286.73

33

|  |      |        |
|--|------|--------|
| 2+213 - BC 10' cb. Radius Ret. = 1' E of West Line<br>33rd St. |      |        |
| S top cb.  | 7.74 | 278.89 |
| " Gut. on Pav.   | 8.19 | 278.54 |
| L " "  | 7.29 | 279.44 |
| N cb. " "  | 7.38 | 279.35 |
| N top cb.  | 6.85 | 279.88 |
| N.W. Return 33rd   |      |        |
| L Ret. on cb.  | 6.83 | 279.90 |
| L " " Pav.   | 7.51 | 279.22 |
| S.W. Return 33rd   |      |        |
| L Ret. on cb.  | 7.76 | 278.97 |
| " " " Paving.  | 8.34 | 278.39 |
| 2+313 = N cb. line 33rd  |      |        |
| N. on E.C. cb. Ret.  | 6.85 | 279.88 |
| " at " " on Pav.   | 7.44 | 279.29 |
| N cb. on Pav.  | 7.63 | 279.10 |
| N 1/4 " "  | 7.46 | 279.27 |
| L " "  | 7.60 | 279.13 |
| S 1/4 " "  | 7.83 | 278.90 |
| " Gut. " "   | 8.16 | 278.57 |
| S 1/4 on Pav. at   | 8.53 | 278.10 |
|  | 7.85 | 278.88 |

chk. Srv. 7' back tunnel x 33rd 7.75 278.98 P-3

2450.3 = 2.33rd

N.L. on Pav 7.48 279.25

N.Cb. " " 8.05 278.68

N 1/4 " " 7.87 278.86

E " " - Rim M.H. 7.85 278.88

S 1/4 " " 8.04 278.69

S.Cb. " " 8.20 278.53

S.L. " " 8.49 278.24

Additional LEVELS on Curb and Paving.

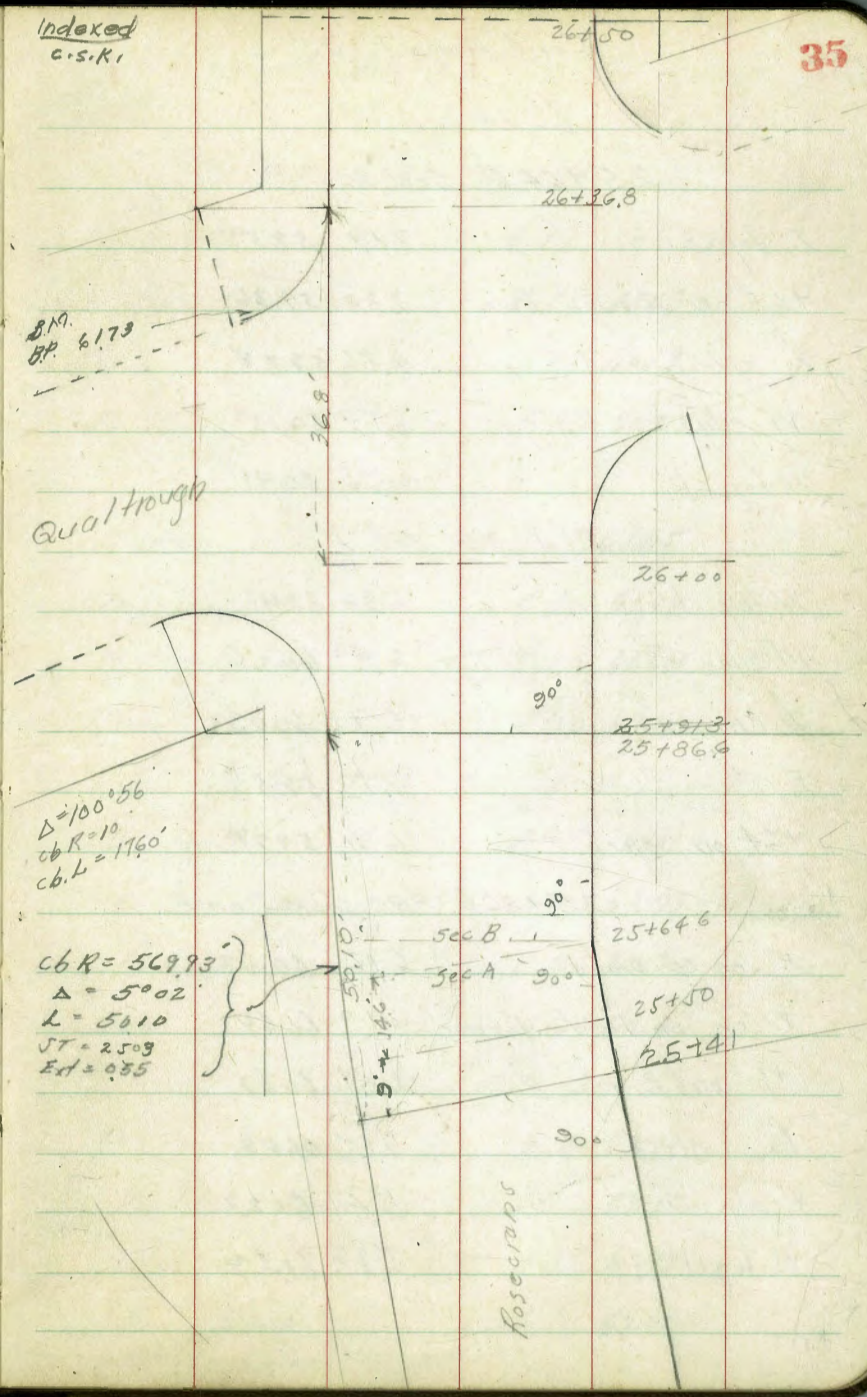
Walker Rosecrans And Quail trough  
 Bliss Levels from Talkot to Rav. See Grid P-197  
 Sommermeier 55.8P  
 2-19-41 5.01 66.74 61.73 Rosecrans  
 & Quail

cb on East.  
 25+41 = BC (Station on West cb.)

|                              |      |       |
|------------------------------|------|-------|
| E top cb.                    | 8.33 | 58.41 |
| .65' on E. edge Pav.         | 8.47 | 58.27 |
| cb + 16.5' Strip "           | 8.05 | 58.69 |
| + 26.5' Wedge " "            | 7.83 | 58.91 |
| W top cb.                    | 7.48 | 59.26 |
| 3' South of cb BC on E.      |      |       |
| E. cb - 6.5' on Drive.       | 7.55 | 59.19 |
| E cb on Drive.               | 8.61 | 58.13 |
| + 24 " "                     | 8.05 | 58.69 |
| + 6.5' on E edge Pav.        | 8.22 | 58.52 |
| 25+150                       |      |       |
| W top cb.                    | 7.01 | 59.73 |
| W edge Pav.                  | 7.35 | 59.39 |
| L. Strip "                   | 7.57 | 59.17 |
| E. edge Strip Pav.           | 8.02 | 58.72 |
| E edge Pav + 4.8' on Drive   | 7.84 | 58.90 |
| E edge Pav. + 6.5' on Drive. | 8.38 | 58.36 |
| E cb + 6' on Drive.          | 7.44 | 59.30 |

Cont P-36

Indexed  
 C.S.K.



6674

25+64.6 Sec A

E top cb. 719 59.55

+6.5 on E edge Par. 738 59.36

L Strip Par. 686 59.88

W edge " 659 60.15

W top cb. 633 60.41

25+64.6 Sec B

W top cb. 633 60.41

W edge Par. 649 60.25

L Strip " 671 60.03

E " " 719 59.55

+6.4 on top cb. 696 59.78

25+86.6 \* P.R.C. cb Red. on E.

E on cb stake 612 60.62

E cb. on Header Form 610 60.64

+6 on E edge Par. 607 60.62

L Strip " 565 61.09

W edge " 547 61.27

W top cb. 522 61.52

6674

36

25+97.3 - 25+92

W cb. 497 61.77

W edge strip Par. 5.25 61.49

L " " 5.45 61.19

E " " " 5.85 60.89

26+100

E Par. 569 61.05

L " 530 61.49

W edge Par. 510 61.64

W top cb. 460 62.14

26+36.8 = E.C. cb Red. on E.

E top cb. 483 61.91

+5 on E edge Par. 495 61.79

L Strip " 459 62.21

W " " 437 62.37

26+50 = E.C. SW. Red. Quail.

W top cb. 364 63.10

W edge Par. 412 62.62

L " " 431 62.43

E " Strip " 472 62.02

Cont. P-37

Cont from P-36  
6674

37

E. Gut. 5.09 61.65

26+42.5 = N edge DRY. 5.16 61.58

Pre-filled  
from cb to strip  
on conc.

26+58.5 = S " " 4.94 61.80

26+58.5 on cb E 4.60 62.14

26+75

E top cb. 4.51 62.23

E strip Pav 4.62 62.12

S " " 4.22 62.52

W " " 4.00 62.74

W top cb. 3.46 63.28



Walter  
Gios  
Sommermeier  
2-20-41

OWEN ST. & ROSECRANS  
Levels on Intersections  
All cuts are from cb. times.

SFBP  
OWEN & ROSECRANS  
Gr. B-197-37

Indexed  
c.s.Ki

5652

38  
Finish of  
cb. bridge

|                              |       |       |
|------------------------------|-------|-------|
| 8.53                         | 56.52 | 47.99 |
| North cb Owen - 33+09.5      |       |       |
| Wcb - 50' on cb.             | 0.26  | 56.29 |
| " " " Gut.                   | 0.94  | 55.58 |
| Wcb - 25' on cb.             | 3.44  | 53.05 |
| " " " Gut.                   | 4.15  | 52.37 |
| W <sup>cb</sup> - 15' on cb. | 4.74  | 51.28 |
| " " " Gutter.                | 5.52  | 51.00 |
| Wcb - 10' on cb - Paring     | 5.32  | 51.20 |
| Wcb on Pav.                  | 6.54  | 49.95 |
| " 1/4 " "                    | 6.97  | 49.53 |
| W edge strip                 | 7.31  | 49.21 |
| L " "                        | 7.51  | 49.01 |
| E " "                        | 8.05  | 48.47 |
| E cb on Pav.                 | 8.38  | 48.14 |
| +10 " PG. cb Ret             | 8.65  | 47.77 |
| " " " " Gut.                 | 9.43  | 47.09 |
| +16.5 " cb.                  | 9.43  | 47.09 |
| " " " on Gut Flow            | 10.54 | 45.98 |
| +22.5 " "                    | 10.11 | 46.41 |
| " " on Flow outlet           | 11.16 | 45.36 |

|                        |       |       |
|------------------------|-------|-------|
| E cb + 25' on cb.      | 10.99 | 46.03 |
| " " " Gut.             | 11.42 | 45.10 |
| E cb + 50' on cb.      | 13.38 | 43.14 |
| " " " Gut.             | 14.08 | 42.44 |
| N 1/4 OWENS - 33+15.75 |       |       |
| E cb - 50' on Pav.     | 13.71 | 42.81 |
| " - 25' " "            | 10.90 | 45.62 |
| " - 10' " "            | 9.08  | 47.44 |
| E cb " "               | 8.24  | 48.28 |
| +5' on E strip Pav     | 7.92  | 48.60 |
| L Strip Pav            | 7.61  | 48.91 |
| W " "                  | 7.44  | 49.08 |
| +12.25' on Pav.        | 7.11  | 49.41 |
| W cb on Pav.           | 6.71  | 49.81 |
| +10' " "               | 5.42  | 51.10 |
| +15' " "               | 5.12  | 51.40 |
| +25' " "               | 3.89  | 52.53 |
| +50' " "               | 0.59  | 55.93 |
| L Owen st. - 33+22     |       |       |
| -50' on Pav.           | 0.65  | 55.87 |
| -25' " "               | 3.91  | 52.61 |

56.52

|                             |       |       |
|-----------------------------|-------|-------|
| -15 on Pav                  | 521   | 51.31 |
| -10 " "                     | 574   | 50.78 |
| W/cb " "                    | 6.88  | 49.64 |
| +12.25 " "                  | 7.90  | 49.22 |
| W edge strip Pav.           | 7.52  | 48.96 |
| L " "                       | 7.83  | 48.69 |
| L " " "                     | 8.02  | 48.50 |
| E cb on " "                 | 8.28  | 48.24 |
| " " +10 " "                 | 9.13  | 47.39 |
| " " +16.5 " "               | 9.86  | 46.66 |
| " " +25 " "                 | 10.89 | 45.63 |
| " " +50 " "                 | 13.70 | 42.82 |
| South 1/4 on Pav = 33+38.25 |       |       |
| Ecb-50 on Pav.              | 14.15 | 42.37 |
| " " -25 " "                 | 11.37 | 45.15 |
| " " -16.5 " "               | 10.43 | 46.09 |
| " " -10 " "                 | 9.62  | 46.90 |
| E cb " "                    | 8.75  | 47.27 |
| E edge strip "              | 8.54  | 47.97 |
| L " "                       | 8.20  | 48.32 |
| W " "                       | 7.80  | 48.72 |

56.52

39

|                            |       |       |
|----------------------------|-------|-------|
| W 1/4 on Pav               | 7.50  | 49.02 |
| W cb " "                   | 7.07  | 49.45 |
| " " +10 on Pav.            | 6.11  | 50.41 |
| " " +15 " "                | 5.82  | 50.70 |
| " " +25 " "                | 4.46  | 52.06 |
| " " +50 " "                | 1.10  | 55.42 |
| South 1/4 on Pav = 33+34.5 |       |       |
| Wcb-50 on cb.              | 1.27  | 55.25 |
| " " " Gut                  | 1.90  | 54.62 |
| " -25 " top cb             | 4.50  | 52.02 |
| " " " Gut                  | 5.17  | 51.35 |
| " -15 " cb.                | 5.73  | 50.79 |
| " " " Gut                  | 6.33  | 50.19 |
| " -10 " cb. = Pav.         | 6.30  | 50.22 |
| Wcb on Pav                 | 7.34  | 49.18 |
| +12.25 on Pav              | 7.67  | 48.85 |
| W edge Pav strip.          | 7.97  | 48.55 |
| L " "                      | 8.32  | 48.20 |
| E edge " "                 | 8.93  | 47.59 |
| E cb on Pav                | 9.48  | 47.04 |
| +10 on cb B.C. Ref.        | 9.82  | 46.70 |
| " " Pav " "                | 10.58 | 45.99 |

5652

|                      |       |       |                   |
|----------------------|-------|-------|-------------------|
| E. cb + 125' on cb.  | 10.48 | 46.04 | N edge<br>outlet. |
| " " " " Flow outlet. | 11.55 | 44.92 |                   |
| " " 210' " " "       | 12.09 | 44.43 |                   |
| " " 21' " cb "       | 10.96 | 45.56 |                   |
| " + 25' " cb.        | 11.42 | 45.10 |                   |
| " + 25' " Gut.       | 12.43 | 44.09 |                   |
| " + 50' " cb.        | 14.14 | 42.38 |                   |
| " " on Gut.          | 14.85 | 41.67 |                   |

40

Walker  
Shss  
Sammernest  
7-19-41

M<sup>S</sup> CALL AND PASSECKAHS

Intersections. Levels.

Grid 197 All cuts are from cb lines Passecans.  
P-40 5.23 4341 3818 <sup>NW & P</sup> M<sup>S</sup> Call  
& Passecans

N cb. M<sup>S</sup> Call = 40 + 09.8

|                   |      |       |
|-------------------|------|-------|
| -50' on cb.       | 1.06 | 42.35 |
| -50' "Gut.        | 1.74 | 41.62 |
| -25 " cb.         | 3.48 | 34.93 |
| " "Gut.           | 4.05 | 39.26 |
| -15' on cb.       | 4.40 | 39.01 |
| " "Gut.           | 5.00 | 39.41 |
| -10' " " = cb.    | 4.64 | 38.77 |
| W cb. on Pav.     | 5.47 | 37.94 |
| " " + 12.5        | 5.81 | 37.60 |
| W edge Strip Pav. | 5.96 | 37.45 |
| " " "             | 6.24 | 37.17 |
| E " " "           | 6.95 | 36.46 |
| E cb. on Pav.     | 7.30 | 36.11 |
| +10' " cb.        | 7.59 | 35.82 |
| " "Gut.           | 8.28 | 35.13 |
| +19 on cb.        | 8.43 | 34.98 |
| " " Flory         | 9.50 | 33.91 |

Indexed  
C.S.K.

4341

41

|  |       |       |
|--|-------|-------|
| +20 on cb.                             | 8.51  | 34.90 |
| " " Gut.                               | 9.66  | 33.75 |
| +23.2 " cb.                            | 8.77  | 34.67 |
| " "Gut. Flory                          | 9.84  | 33.52 |
| +25 " cb.                              | 9.00  | 34.41 |
| " "Gut.                                | 10.00 | 33.41 |
| +50 " cb.                              | 11.66 | 31.75 |
| " "Gut.                                | 12.33 | 31.08 |
| N 1/2 M <sup>S</sup> Call = 40 + 16.05 |       |       |
| -50' on Pav.                           | 11.65 | 31.76 |
| -25 " "                                | 9.19  | 34.22 |
| -20 " "                                | 8.63  | 34.28 |
| -10 " "                                | 9.867 | 34.74 |
| E cb " "                               | 6.95  | 36.46 |
| E edge Strip Pav.                      | 6.63  | 36.78 |
| " " "                                  | 6.22  | 37.19 |
| W " " "                                | 6.05  | 37.34 |
| +12.5 on "                             | 5.88  | 37.53 |
| W cb. on Pav.                          | 5.40  | 38.01 |
| +10' " "                               | 4.69  | 38.72 |
| +15' " "                               | 4.53  | 38.88 |

| 4341                      |      | MFC Coll<br>& Rosecrans. |  |
|---------------------------|------|--------------------------|--|
| +25' on Pav               | 362  | 39.79                    |  |
| +50 " "                   | 136  | 42.05                    |  |
| L MFC Coll = 40 + 22.30   |      |                          |  |
| -50' on Paving            | 136  | 42.08                    |  |
| -25' " "                  | 355  | 39.86                    |  |
| -15 " "                   | 451  | 38.90                    |  |
| -10 " "                   | 483  | 38.58                    |  |
| W cb. " "                 | 544  | 37.87                    |  |
| +12.25 " "                | 590  | 37.41                    |  |
| W edge Strip Pav          | 611  | 37.30                    |  |
| L " "                     | 630  | 32.11                    |  |
| E " " "                   | 667  | 36.74                    |  |
| E cb on " "               | 684  | 36.57                    |  |
| +10 " Pav                 | 756  | 35.81                    |  |
| +20 " "                   | 850  | 34.91                    |  |
| +25 " "                   | 905  | 34.36                    |  |
| +50 " "                   | 1151 | 31.90                    |  |
| S 1/4 MFC Coll 40 + 28.55 |      |                          |  |
| -50' on Pav               | 1182 | 31.59                    |  |
| -25 " "                   | 933  | 34.08                    |  |
| -20 " "                   | 886  | 34.55                    |  |

| 4341                           |     | 42    |  |
|--------------------------------|-----|-------|--|
| -10 on Pav                     | 784 | 35.57 |  |
| E cb " "                       | 720 | 36.21 |  |
| E edge Strip Pav               | 702 | 36.39 |  |
| L " "                          | 650 | 36.91 |  |
| W " " "                        | 618 | 37.23 |  |
| +12.25 on Pav                  | 593 | 37.48 |  |
| W cb. " "                      | 553 | 37.88 |  |
| " " +10 " "                    | 507 | 38.34 |  |
| " " +15 " "                    | 491 | 38.50 |  |
| " " +25 " "                    | 403 | 39.38 |  |
| " " +50 " "                    | 178 | 41.63 |  |
| South cb MFC Coll = 40 + 34.80 |     |       |  |
| -50' on cb                     | 173 | 41.68 |  |
| -50 " Gut                      | 247 | 40.94 |  |
| -25 " cb                       | 387 | 39.54 |  |
| -25 " Gut                      | 460 | 39.81 |  |
| -15 " top cb                   | 472 | 38.69 |  |
| " " Gut                        | 548 | 37.93 |  |
| -10' on cb                     | 511 | 38.70 |  |
| -10 " Pav                      | 511 | 38.30 |  |
| W cb                           | 570 | 37.70 |  |

4341

McCull  
& Rose crans.

|                 |       |       |        |
|-----------------|-------|-------|--------|
| +12.25 on Pav   | 6.04  | 37.37 |        |
| Wedge Strip     | 6.20  | 37.21 |        |
| L " "           | 6.70  | 36.71 |        |
| E " "           | 7.48  | 35.93 |        |
| E cb on Pav     | 7.82  | 35.59 |        |
| " " +10 on cb.  | 7.80  | 35.61 |        |
| " " " Guts.     | 8.57  | 34.89 |        |
| +20 on cb.      | 8.81  | 34.60 |        |
| " " " Guts Flow | 9.92  | 33.49 | outlet |
| +24.2 on cb.    | 9.22  | 34.19 |        |
| " " " Flow Guts | 10.18 | 33.23 | outlet |
| +25 on cb.      | 9.32  | 34.09 |        |
| " " " Guts.     | 10.24 | 33.17 |        |
| +50 " top cb.   | 11.77 | 31.67 |        |
| " " " Guts.     | 12.55 | 30.86 |        |

43

Walker  
Phos  
Small  
Sammarmout  
2-20-41

LAWRENCE  
+ ROSECRANS

Locals Intersections

All cuts are from oblique Rosecrans  
Grid 197-87

746 40.99 33.53

N.C.B. Lawrence = 43+60.1

-50' on cb. 0.86 40.13

" " Gut 1.62 39.32

-25' " cb. 2.94 38.05

" " Gut 3.68 37.31

-15' " cb. 3.78 37.21

" " Gut 4.54 36.44

-10' " " =cb. 4.23 36.76

W cb on Pav 4.95 36.04

W edge Strip Pav 5.22 35.77

E on " 5.40 35.59

E " " " 5.92 35.07

E cb on Pav 6.55 34.44

+ " 110' on cb 6.80 34.19

+10' " Pav 7.55 33.44

+23.5' " cb. 7.95 33.04

+23.5' " Gut Floor 9.12 31.87

+25' " cb. 8.10 32.89

+25' " Gut 9.21 31.28

Indexed  
C.S.K.

40.99

44

+27.6 8.36 32.63

" " on Gut Floor 9.40 31.59 outlet

+50' " cb. 10.30 30.69

" " Gut 10.91 30.08

N 1/4 Lawrence = 43+66.35

-50' on Pav 7.034 30.65

-25' " " 8.36 32.63

-10' " " 6.97 34.02

cb. " " 6.12 34.87

E edge Strip Pav 5.84 35.15

E " " 5.64 35.35

W " " " 5.40 35.59

+123.5' on " 5.32 35.67

W cb " " 4.96 36.03

+10' " " 4.20 36.79

+15' " " 4.01 36.98

+25' " " 3.19 37.80

+50' " " 1.14 39.88

E Lawrence = 43+72.60

-50' on Pav 0.93 40.06

-25' " " 2.96 38.03

4099

|                   |       |       |
|-------------------|-------|-------|
| -15 on Pav.       | 3.78  | 32.24 |
| -10 on Pav.       | 4.16  | 36.83 |
| Wcb " "           | 4.97  | 36.02 |
| +12.5 " "         | 5.33  | 35.64 |
| W edge Strip Pav. | 5.44  | 35.55 |
| L " "             | 5.65  | 35.34 |
| E " "             | 5.82  | 35.19 |
| E cb on Pav.      | 5.96  | 35.03 |
| +10 " "           | 6.70  | 34.29 |
| +25 " "           | 8.04  | 32.95 |
| +50 " "           | 10.13 | 30.86 |

South 1/4 Lawrence 43+78.85

|                   |       |       |
|-------------------|-------|-------|
| -50 on Parking.   | 10.33 | 30.66 |
| -25 " "           | 8.31  | 32.68 |
| -10 " "           | 6.98  | 34.01 |
| E cb " "          | 6.27  | 34.72 |
| E edge Strip Pav. | 5.99  | 35.00 |
| L " "             | 5.78  | 35.21 |
| W " " "           | 5.62  | 35.37 |
| +12.5 on " "      | 5.36  | 35.63 |
| W cb " "          | 4.97  | 36.02 |

4099

45

|                 |      |       |
|-----------------|------|-------|
| Wcb +10 on Pav. | 4.16 | 36.83 |
| " +15 " "       | 4.05 | 36.94 |
| " +25 " "       | 3.17 | 37.82 |
| " +50 " "       | 1.11 | 39.88 |

South cb Lawrence - 43+85.10

|                    |      |       |
|--------------------|------|-------|
| -50' on cb.        | 0.86 | 40.13 |
| -50 " Gut.         | 1.67 | 39.32 |
| -25 " cb.          | 3.02 | 37.97 |
| " " Gut.           | 3.79 | 37.20 |
| -15 " top cb       | 3.84 | 37.15 |
| " " Gut.           | 4.57 | 36.42 |
| -10 " "            | 4.24 | 36.75 |
| -10 on cb.         | 4.22 | 36.77 |
| W cb on Pav.       | 5.00 | 35.99 |
| " " +12.5 on Pav.  | 5.35 | 35.64 |
| W edge Pav. Strip. | 5.50 | 35.49 |
| L Strip Pav.       | 5.80 | 35.19 |
| E edge " "         | 6.26 | 34.73 |
| E cb               | 6.64 | 34.35 |
| " " +10 on cb.     | 6.76 | 34.23 |
| " " Gut.           | 7.56 | 33.43 |



\*599

+24 oncb. 794 33.05

" " Gut Flow 908 31.91

+25 803 32.94

" 915 31.84

+27 oncb. 829 32.26

+27 " Flow outlet 935 31.64

+50 oncb. 1009 30.90

+50 " Gut 1088 30.11

Mulker  
Bliss  
Sommermeier

Kellogg And Rosecrans  
Intersection Levels

all cuts are from cb base Rosecrans  
Rosecrans  
+ Kellogg.

N cb Kellogg = 47+09.5

|                     |      |       |
|---------------------|------|-------|
| -50' on cb.         | 0.90 | 38.46 |
| -50' " Gut          | 1.64 | 37.72 |
| -25' " cb.          | 2.92 | 36.44 |
| -25' " Gut.         | 3.68 | 35.68 |
| -15' " cb.          | 3.72 | 35.64 |
| -15' " Gut          | 4.48 | 34.86 |
| -10' on cb. = Pav.  | 4.08 | 35.28 |
| W cb. on Paving.    | 4.78 | 34.58 |
| " " +12.25' on Pav. | 5.17 | 34.19 |
| W edge strip        | 5.31 | 34.05 |
| L " "               | 5.66 | 33.70 |
| E " "               | 5.93 | 33.43 |
| E cb on "           | 6.32 | 33.04 |
| " " +10' on cb.     | 6.54 | 32.82 |
| " " Gut             | 7.29 | 32.07 |
| +25' on cb.         | 7.65 | 31.71 |
| " " Gut             | 8.63 | 30.73 |

Indexed  
C.S.K.

39.36

47

|                          |       |       |               |
|--------------------------|-------|-------|---------------|
| +29' on cb.              | 7.88  | 31.48 | Wedge         |
| " " Gut. Flow outlet     | 9.05  | 30.31 | outlet        |
| +33' " " "               | 9.28  | 30.07 | E edge outlet |
| " " cb.                  | 8.17  | 31.19 |               |
| +50' " Gut in Drive      | 10.15 | 29.21 |               |
| N 1/4 Kellogg = 47+15.75 |       |       |               |
| -50' on Pav.             | 9.60  | 29.76 |               |
| -25' " "                 | 7.87  | 31.49 |               |
| -10' " "                 | 6.76  | 32.60 |               |
| E cb. " "                | 6.05  | 33.31 |               |
| E edge strip Pav         | 5.85  | 33.51 |               |
| L " " "                  | 5.66  | 33.70 |               |
| W " " "                  | 5.38  | 33.98 |               |
| +12.25' on "             | 5.13  | 34.23 |               |
| W cb " "                 | 4.78  | 34.58 |               |
| +10' " "                 | 4.00  | 35.35 |               |
| +15' " "                 | 4.01  | 35.35 |               |
| +25' " "                 | 3.16  | 36.20 |               |
| +50' " "                 | 1.08  | 38.28 |               |
| S Kellogg = 47+22        |       |       |               |
| -50' on Pav              | 0.92  | 38.44 |               |

3936

Kellogg

|                  |     |      |
|------------------|-----|------|
| -25 on Pav       | 292 | 3644 |
| -15 " "          | 382 | 3554 |
| -10 " "          | 411 | 3525 |
| Wcb. " "         | 478 | 3458 |
| " " +1225 on Pav | 518 | 3418 |
| W edge Strip Pav | 548 | 3388 |
| S " "            | 572 | 3364 |
| E " "            | 589 | 3347 |
| Ecb on "         | 602 | 3334 |
| " " +10 on Pav   | 658 | 3278 |
| +25 " "          | 758 | 3198 |
| +50 " "          | 936 | 3000 |
| South 1/4 =      | 474 | 2825 |
| -50' on Pav      | 954 | 2982 |
| -25 " "          | 794 | 3142 |
| -10 " "          | 678 | 3258 |
| Ecb.             | 616 | 3320 |
| E edge Strip Pav | 595 | 3341 |
| S " "            | 574 | 3362 |
| W " "            | 561 | 3375 |
| +1225 on "       | 528 | 3408 |

3936

48

|                    |     |      |
|--------------------|-----|------|
| Wcb. on Pav        | 490 | 3446 |
| " " +10 " "        | 424 | 3512 |
| +15 " "            | 407 | 3529 |
| +25 " "            | 329 | 3607 |
| +50 " "            | 114 | 3827 |
| South cb. Kellogg  |     |      |
| -50 on cb.         | 090 | 3846 |
| " " Gut            | 168 | 3768 |
| -25 on cb.         | 294 | 3647 |
| " " Gut            | 373 | 3563 |
| -15 on cb.         | 369 | 3567 |
| " " Gut            | 440 | 3496 |
| -10 " " cb. = Pav. | 410 | 3526 |
| Wcb. on Pav        | 480 | 3456 |
| +1225 " "          | 529 | 3407 |
| W edge Strip       | 545 | 3391 |
| S " "              | 571 | 3365 |
| E " "              | 612 | 3324 |
| Ecb. on Pav        | 642 | 3294 |
| +10 " cb.          | 666 | 3290 |
| " " Pav            | 743 | 3193 |

39.36

K-11099

|                 |       |       |        |
|-----------------|-------|-------|--------|
| 5.06 +25 on cb  | 7.67  | 34.69 |        |
| " " " Gut       | 8.75  | 30.61 | W edge |
| +28 " cb        | 7.97  | 31.39 | outlet |
| " " Flow outlet | 9.20  | 30.14 | E edge |
| +33.7 on cb "   | 8.25  | 31.11 |        |
| " " "           | 9.36  | 30.00 |        |
| +50 on cb       | 9.35  | 30.01 |        |
| +50 " Gut       | 10.09 | 29.27 |        |

49

Walker  
Isbell  
2-21-91

CURB LEVELS on Returns  
Intersecting Streets on Rosecrans  
Owen to Kellogg

540 53.39 47.99

SW Return Owen

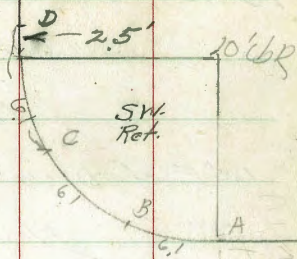
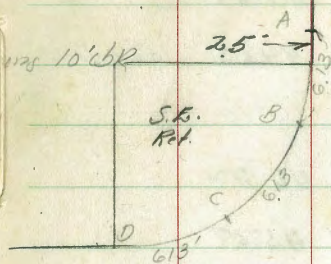
|                       |      |       |
|-----------------------|------|-------|
| A-10' on cb.          | 1.94 | 51.45 |
| " " " Pav.            | 2.61 | 50.78 |
| A on cb.              | 3.24 | 50.15 |
| " " Flwy              | 4.60 | 48.79 |
| B on cb.              | 3.62 | 49.77 |
| B on Pav.             | 3.99 | 49.40 |
| C " cb.               | 4.03 | 49.36 |
| C " Pav.              | 4.73 | 48.66 |
| D on cb.              | 4.38 | 49.01 |
| D on Pav.             | 5.27 | 48.12 |
| 10' South of D on cb. | 4.53 | 48.76 |

SE Return Owen

|              |      |       |
|--------------|------|-------|
| A-10' on cb. | 5.54 | 47.85 |
| A on cb.     | 5.37 | 48.02 |
| A " Pav.     | 6.28 | 47.11 |
| B " cb.      | 5.67 | 47.72 |
| B " Pav.     | 6.40 | 46.99 |
| C " cb.      | 6.16 | 47.23 |
| C " Pav.     | 6.78 | 46.61 |
| D " cb.      | 6.71 | 46.68 |
| D " Pav.     | 7.45 | 45.94 |

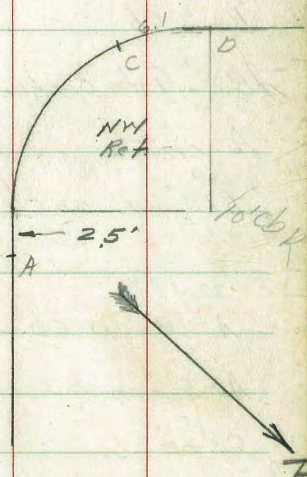
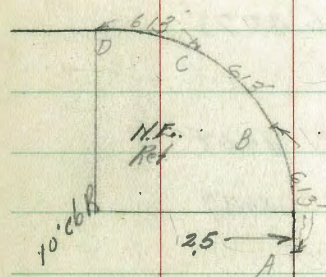
Indexed  
G.S.K.

50



Owens

St.



Rosecrans

|                     |     |       |         |
|---------------------|-----|-------|---------|
| 10' E of D on cb.   | 774 | 45.65 |         |
| 10' " " " Gut Floor | 876 | 44.63 | out let |

NE Return 0/100

|                   |     |       |  |
|-------------------|-----|-------|--|
| 10' E of D, on cb | 667 | 46.92 |  |
|-------------------|-----|-------|--|

|                      |     |       |  |
|----------------------|-----|-------|--|
| " " " " Floor outlet | 771 | 45.68 |  |
|----------------------|-----|-------|--|

|           |     |       |  |
|-----------|-----|-------|--|
| D, on cb. | 551 | 47.88 |  |
|-----------|-----|-------|--|

|          |     |       |  |
|----------|-----|-------|--|
| " " Pav. | 630 | 47.09 |  |
|----------|-----|-------|--|

|           |     |       |  |
|-----------|-----|-------|--|
| C, on cb. | 507 | 48.32 |  |
|-----------|-----|-------|--|

|          |     |       |  |
|----------|-----|-------|--|
| " " Gut. | 558 | 47.71 |  |
|----------|-----|-------|--|

|         |     |       |  |
|---------|-----|-------|--|
| B " cb. | 466 | 48.73 |  |
|---------|-----|-------|--|

|                    |  |  |  |
|--------------------|--|--|--|
| B " Gut Broken out |  |  |  |
|--------------------|--|--|--|

|         |     |       |  |
|---------|-----|-------|--|
| A on cb | 431 | 49.05 |  |
|---------|-----|-------|--|

|              |     |       |  |
|--------------|-----|-------|--|
| +10' N on cb | 380 | 49.59 |  |
|--------------|-----|-------|--|

NW Return 0

|                         |     |       |  |
|-------------------------|-----|-------|--|
| 32-87<br>= A-10' on cb. | 277 | 50.62 |  |
|-------------------------|-----|-------|--|

|           |     |       |                                    |
|-----------|-----|-------|------------------------------------|
| A-5 on cb | 300 | 50.39 | Beginning<br>flow with<br>on Inlet |
|-----------|-----|-------|------------------------------------|

|          |     |       |  |
|----------|-----|-------|--|
| C on cb. | 262 | 50.77 |  |
|----------|-----|-------|--|

|         |     |       |  |
|---------|-----|-------|--|
| C " Pav | 265 | 50.74 |  |
|---------|-----|-------|--|

|                |     |       |  |
|----------------|-----|-------|--|
| B on cb. = Pav | 217 | 51.22 |  |
|----------------|-----|-------|--|

|                    |     |       |                   |
|--------------------|-----|-------|-------------------|
| D " on Floor Inlet | 351 | 49.88 | Flow from<br>West |
|--------------------|-----|-------|-------------------|

|         |     |       |                 |
|---------|-----|-------|-----------------|
| B " " " | 518 | 48.21 | Flow to<br>East |
|---------|-----|-------|-----------------|

|             |     |       |  |
|-------------|-----|-------|--|
| B+10' on cb | 097 | 52.42 |  |
|-------------|-----|-------|--|

|           |     |       |  |
|-----------|-----|-------|--|
| " " " Gut | 167 | 51.72 |  |
|-----------|-----|-------|--|

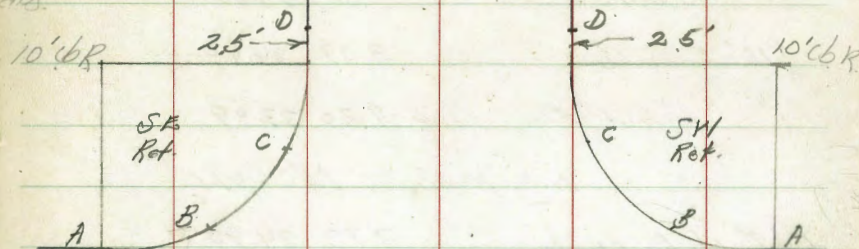
→ A

Walker  
106.11  
2-21-41

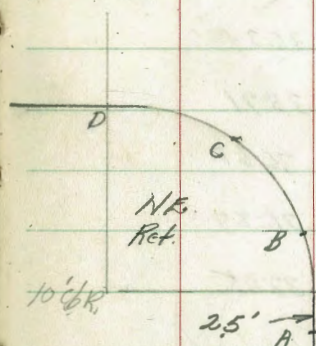
Levels on Returns  
M<sup>c</sup> CALL and Rosecrans.

|                       | SW Ret  | M <sup>c</sup> Call st. | SW Cop Dish<br>10'cb<br>M <sup>c</sup> Call & Rosecrans |
|-----------------------|---------|-------------------------|---|
|                       | 370     | 42.69                   | 38.99   |
| 10' W of A on cb      | 3.58    | 39.11                   |   |
| " " " " Gut.          | 4.38    | 38.31                   |   |
| A on cb = Pav         | 4.40    | 38.29                   |   |
| " " Flow inlet        | 5.75    | 36.94                   |   |
| B on cb               | 4.80    | 38.89                   |   |
| " " Gut.              | 4.92    | 37.77                   |   |
| C " cb                | 4.98    | 37.71                   |   |
| " " Gut               | 5.48    | 32.29                   |   |
| D on cb               | 5.09    | 37.60                   |   |
| D " Gut.              | 5.94    | 36.75                   |   |
| +10' South on cb      | 5.17    | 32.52                   |   |
|                       | SE Ret. | M <sup>c</sup> Call     |   |
| 10' South of D, on cb | 6.20    | 36.99                   |   |
| D on cb               | 6.15    | 36.54                   |   |
| D " Paving            | 7.05    | 35.64                   |   |
| C " cb                | 6.39    | 36.30                   |   |
| C " Pav.              | 7.15    | 35.54                   |   |
| B " cb                | 6.65    | 36.04                   |   |
| " " Pav.              | 7.46    | 35.23                   |   |

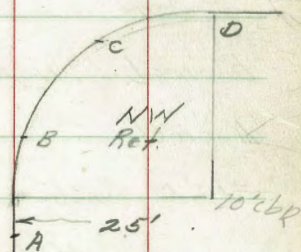
Indexed  
C.S.K.



M<sup>c</sup> CALL



Jr.



Rosecrans

|                         |      |       |
|-------------------------|------|-------|
| A on cb.                | 7.08 | 35.61 |
| " " Pavil               | 7.84 | 34.85 |
| +10' E on cb.           | 8.09 | 34.60 |
| " " " Gut = Flow outlet | 9.20 | 33.49 |

## NE Return MC CALL

|                     |      |       |
|---------------------|------|-------|
| 10' E of D on cb    | 7.79 | 34.90 |
| " " " " " Gut       | 8.95 | 33.74 |
| D on cb.            | 6.87 | 35.82 |
| " " " Gut           | 7.59 | 35.10 |
| C " cb              | 6.35 | 36.34 |
| " " " Gut           | 6.98 | 35.71 |
| B on cb. No Gut Pav | 6.01 | 36.68 |
| A on cb             | 5.82 | 36.87 |
| +10' N on cb        | 5.64 | 37.05 |

## NW Return 195 (D.H. US)

|                       |      |       |                                   |
|-----------------------|------|-------|-----------------------------------|
| A-10' on cb = 37487.3 | 4.47 | 38.22 | Beginning<br>New Work<br>on Inlet |
| A-5' " "              | 4.55 | 38.14 |                                   |
| C on cb = Paving      | 4.39 | 38.30 |                                   |
| D on cb               | 3.97 | 38.72 |                                   |
| " " " Flow Inlet      | 5.37 | 37.22 |                                   |
| +10' N on cb          | 3.21 | 39.48 |                                   |
| " " " Gut             | 3.81 | 38.88 |                                   |



Walker  
Isbell  
2-21-41

Levels on Curb Returns  
LAWRENCE  
& KELLOGG.

430 40.52 36.22

W top cb  
434.25  
874 197.51

NW Return

A-10' on cb = 4.38 36.14

A-5' on cb 4.42 36.10

C on cb = Pav 4.02 36.50

D " cb 3.75 36.77

D " Flow inlet 5.07 35.45

+10' cb 2.90 37.62

" Gut 3.65 36.87

SW Ret

A-10' on cb 2.54 37.98

" " Gut 3.31 32.21

A on cb = Pav 3.74 36.77

" Flow Line Inlet 5.08 35.44

B on cb 4.04 36.48

" " Pav 4.26 36.26

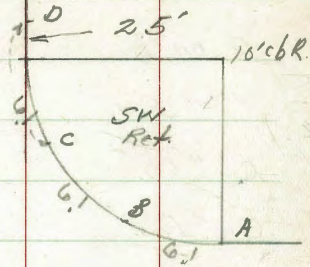
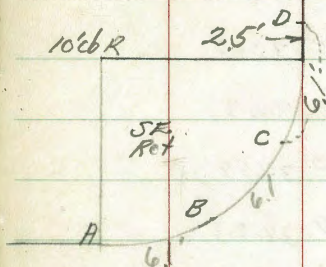
C " cb 4.26 36.26

C " Pav 4.79 35.73

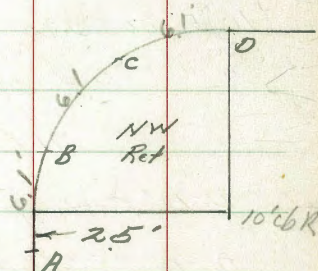
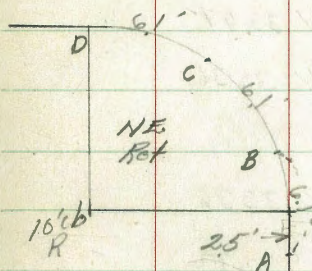
D " cb 4.43 36.09

" on Pav 5.26 35.26

54



Lawrence



Rosecrans

4052  
D + 10' South on cb. 448 36.04

SE Return Lawrence

D - 10' South on cb. 545 35.07

D on cb. 545 35.07

" " Par. 625 34.27

C " cb. 553 34.99

C " Par. 629 34.23

B on cb. 578 34.74

" " Par. 652 34.00

A on cb. 637 34.15

" " Par. 706 33.46

+ 10' E. on cb. 711 33.41

" " " Gut. ~~outlet~~ 816 32.36

NE Ret.

D - 10' E. on cb. 716 33.36

D. - 10' " " Gut. 820 32.32

D on cb. 638 34.20

" " Gut. 709 33.43

C " cb. 591 34.61

C " Gut. 653 33.99

B " cb. 565 34.87

no Par. on Gut.

4052

A on cb. 5.47 35.05

+ 10' N on cb. 5.38 35.14

55

Walker  
186011  
2-21-41

Curb Levels, Intersections  
Kellogg + Rosecrans

N.E. BP  
Kellogg  
+ Rosecrans

Indexed  
c.s.k.

39.36

56

5.83 39.36 33.53

N.W. Ret. Kellogg St.

A-10' on cb 4.78 34.58

A-5 " " 4.82 34.54

C on cb = Pav. 4.47 34.89

D on cb = " 4.07 35.29

" " Floor inlet 5.58 33.78

D+10' W on cb 3.32 36.04

" " " " Pav. 4.08 35.28

S.W. Ret.

A-10' on cb 3.32 36.04

" " " Gut 4.09 35.27

A on cb 4.09 35.27

" " Floor inlet 5.49 33.87

B on cb = Pav. 4.34 35.02

D + 5' West on cb 4.78 34.58

+10 " " " 4.74 34.62

S.E. Ret.

D-10' on cb 5.16 33.60

D on cb 5.84 33.52

C on cb 6.11 33.25

B " cb 6.51 33.05

B " Pav. 6.90 32.41

A on cb 6.63 32.73

A " Pav. 7.41 31.95

+10' E on cb 7.28 32.08

+10 " " Gut 8.72 31.14

N.E. Ret.

D-10 E on cb 7.22 32.14

" " " " Gut 8.12 31.24

D on cb 6.53 32.83

" " Gut 7.30 32.06

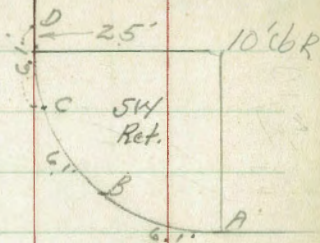
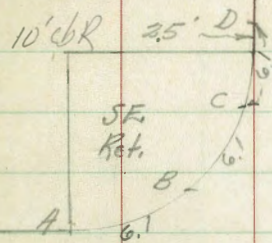
C on cb 6.17 33.19

" " Gut 6.77 32.59

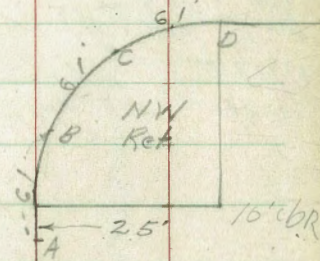
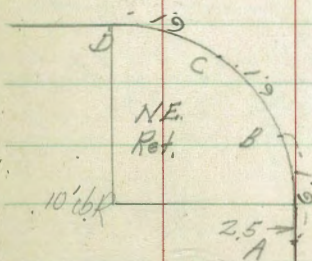
B on cb 5.95 33.43

A " " 5.85 33.51

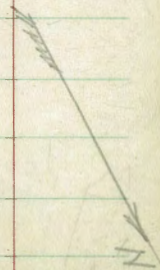
+10' N on cb 5.75 33.61



2.5'  
KELLOGG



Boscians



Cross Section P, Ho St.

Indexed  
6/19

April 23-41  
Sisson  
North  
H. Moore

58

6+2826  
Fd Mon

Hy Line West Hollywood

20'  
2+2816  
Pit Ho St

60  
Rod 10 On

2+289

Comb. Walk + Cb

Existing  
18" Conc  
Drain  
2+0916  
Fd. 10'

2+943

Fd. 10'

1+937

1+784

Comb. Walk + Cb

2+788.11

20' 50"

2 1/2" Conc  
Culverts

1952

Hollywood Dr.

0x02  
Set Ho

2+0916  
2+0916  
2+0916

2 SW 1/4 R 2

1+9580

1+003

Market St. Extension

4 Grains on MH Pin

Merlio

Cross Section Hollywood Drive  
Pitts St to Radio Dr.

Indexed  
C.S.K.

40 ft. dc

1+21 23' Rho/2 = Tel/Pole

1+0

0+80

0+68

0+50

0+20

0+0 = 1/2 Pitts St

B.M. 537 16708

CH

Reds-Plot Profile # 423 5-16-41

(Filed under - Market St.)

161.71

NE Nat'l +  
Imperial +  
Mortlo

Lt-N

Z

Rt-S

59

58.2 58.1 57.9 157.9 58.1 57.8 57.3  
8.9 9.0 9.2 9.2 9.0 9.3 9.8  
30 20 10 10 20 30

59.1 58.4 58.9 159.2 59.7 59.0 59.1 57.5  
8.0 8.7 8.2 7.9 7.4 8.1 8.0 9.6  
30 20 10 10 20 27 32

65.8 65.2 60.5 160.0 60.6 59.7 60.3 57.5  
13 19 6.6 7.1 6.5 7.4 6.8 9.6  
20 11 3 10 20 27 33

67.0 66.6 63.5 161.7 60.2 60.3 62.7 58.0  
0.1 0.5 3.6 5.4 6.9 6.8 4.4 9.1  
20 10 5 20 23 30 36

65.0 63.8 163.1 62.6 61.7 64.5  
2.1 3.3 4.0 4.5 5.4 2.6  
20 10 20 25 32

165.3 164.2 162.89 164.6 157.1 157.73  
1.8 2.9 4.19 2.5 10.0 9.25  
20 20 Pan Hub 31 41 27-28  
Tel/Pole

16708

LH

L

RH

1+9580 = Fly Rodia Dr. 92 South

|          |          |          |      |          |           |           |                        |
|----------|----------|----------|------|----------|-----------|-----------|------------------------|
| 573      | 573      | 574      | 1576 | 574      | 570       | 566       | 58.01                  |
| 98<br>30 | 98<br>20 | 97<br>10 | 95   | 97<br>10 | 101<br>20 | 105<br>30 | 9.07<br>47.5 PR<br>Top |

1+75

|          |          |          |       |          |          |           |
|----------|----------|----------|-------|----------|----------|-----------|
| 57.7     | 57.9     | 58.0     | 157.9 | 57.5     | 57.4     | 57.0      |
| 91<br>30 | 92<br>20 | 91<br>10 | 92    | 96<br>10 | 97<br>20 | 101<br>35 |

1+50

|          |          |          |       |          |          |           |
|----------|----------|----------|-------|----------|----------|-----------|
| 58.4     | 58.0     | 57.9     | 158.0 | 57.8     | 57.6     | 57.1      |
| 87<br>30 | 91<br>20 | 92<br>10 | 91    | 92<br>10 | 95<br>20 | 100<br>35 |

1+75

|          |          |          |       |          |          |          |
|----------|----------|----------|-------|----------|----------|----------|
| 583      | 58.0     | 57.7     | 157.6 | 57.6     | 57.4     | 57.4     |
| 88<br>30 | 91<br>20 | 94<br>10 | 95    | 95<br>10 | 97<br>20 | 97<br>30 |

16708 Ford.

16708

Cross Section P. Has J  
Hollywood Drive to Holly Lin West Hollywood Sub

index  
c.s.k.

L.H

B

R.I

61

New Profile. Plotted 5-16-41 BH

1750

|      |      |      |      |      |      |      |
|------|------|------|------|------|------|------|
| 76.9 | 76.0 | 76.7 | 76.9 | 76.9 | 76.6 | 76.2 |
| 11   | 20   | 13   | 11   | 11   | 14   | 18   |
| 25   | 20   | 10   |      | 10   | 20   | 30   |

1725

|      |      |      |      |      |      |
|------|------|------|------|------|------|
| 73.7 | 73.3 | 72.6 | 73.2 | 72.9 | 72.9 |
| 43   | 47   | 54   | 48   | 51   | 51   |
| 20   | 6    |      | 10   | 20   | 30   |

170

|      |      |      |      |      |      |      |
|------|------|------|------|------|------|------|
| 71.0 | 70.2 | 70.6 | 69.7 | 70.2 | 70.4 | 71.0 |
| 70   | 78   | 74   | 83   | 72   | 76   | 70   |
| 20   | 10   | 2    |      | 10   | 20   | 30   |

0+70

|       |       |       |       |       |       |       |       |
|-------|-------|-------|-------|-------|-------|-------|-------|
| 167.7 | 168.2 | 168.3 | 167.5 | 168.2 | 167.6 | 168.6 | 168.5 |
| 103   | 98    | 97    | 105   | 98    | 104   | 94    | 95    |
| 20    | 10    | 4     |       | 10    | 20    | 25    | 30    |

TP 1137 178.00 0.45 166.63

17800

0+40 = N.L. Hollywood Dr

|       |      |       |       |       |       |       |
|-------|------|-------|-------|-------|-------|-------|
| 166.0 | 1664 | 166.3 | 165.3 | 165.3 | 165.0 | 166.8 |
| 11    | 07   | 08    | 18    | 18    | 21    | 22    |
| 20    | 15   | 3     |       | 10    | 20    | 25    |

0+0 = S.L. Hollywood Drive

|       |       |       |       |       |
|-------|-------|-------|-------|-------|
| 164.3 | 164.1 | 162.9 | 163.0 | 162.6 |
| 28    | 30    | 42    | 41    | 45    |
| 20    | 10    |       | 10    | 20    |

16708 S. Ford

16708



2+23/6 = Ncb Market St. Ext

2+08/16 = Market

Q/M scABP

7.72

181.83

SEBP  
Market + Pth

1+934

1+88/16 = Sh Market St. Ext

1+84 = Opp outlet 18' Conc Drain

1+75

TP

1191

189.55

0.36

177.64

178.00

Lt

R

Rt

P2

|       |       |        |       |       |         |
|-------|-------|--------|-------|-------|---------|
| 82.62 | 82.48 | 182.17 | 81.77 | 81.20 | 81.82   |
| 6.93  | 7.07  | 7.38   | 7.78  | 8.35  | 7.73    |
| 20    | 10    |        | 10    | 28.5  | 22.5 cl |

|       |       |        |       |       |
|-------|-------|--------|-------|-------|
| 82.82 | 82.70 | 182.46 | 82.08 | 81.60 |
| 6.73  | 6.85  | 7.09   | 7.47  | 7.95  |
| 20    | 10    |        | 10    | 20    |

|       |       |        |       |       |       |         |
|-------|-------|--------|-------|-------|-------|---------|
| 82.61 | 82.43 | 182.23 | 81.92 | 81.53 | 81.14 | 81.78   |
| 6.94  | 7.12  | 7.32   | 7.65  | 8.02  | 8.41  | 7.77    |
| 20    | 10    |        | 10    | 16    | 22.5  | 22.5 cl |

|       |       |       |          |        |         |       |
|-------|-------|-------|----------|--------|---------|-------|
| 182.5 | 182.4 | 182.4 | 182.17   | 181.50 | 182.07  | 182.0 |
| 7.1   | 7.2   | 7.2   | 7.38     | 8.05   | 7.48    | 7.6   |
| 20    | 10    |       | 1.80, 10 | 16.3   | 16.3 cl | 20    |

176.82  
12.73  
17.5 FL 18' Drain

|      |      |      |      |      |      |       |      |      |      |
|------|------|------|------|------|------|-------|------|------|------|
| 80.2 | 80.8 | 79.7 | 76.1 | 79.7 | 81.7 | 181.0 | 80.6 | 80.1 | 78.7 |
| 9.1  | 8.2  | 7.9  | 12.5 | 9.9  | 7.9  | 8.1   | 9.0  | 9.5  | 10.9 |
| 20   | 20   | 20   | 18   | 15   | 10   |       | 10   | 20   | 20   |

189.55

3750

|                  |                 |                 |       |                  |                  |                  |
|------------------|-----------------|-----------------|-------|------------------|------------------|------------------|
| 198.9            | 197.9           | 196.6           | 196.9 | 196.8            | 196.3            | 195.6            |
| $\frac{2.3}{20}$ | $\frac{3.2}{7}$ | $\frac{4.6}{4}$ | 4.3   | $\frac{4.1}{10}$ | $\frac{4.9}{20}$ | $\frac{5.6}{30}$ |

370

|                  |                 |                 |       |                 |                  |                   |
|------------------|-----------------|-----------------|-------|-----------------|------------------|-------------------|
| 194.0            | 193.5           | 191.8           | 192.1 | 191.6           | 191.4            | 190.6             |
| $\frac{7.2}{20}$ | $\frac{7.7}{7}$ | $\frac{9.4}{3}$ | 9.1   | $\frac{9.6}{8}$ | $\frac{9.8}{20}$ | $\frac{10.6}{30}$ |

2770

|                   |                  |                  |       |                   |                   |                   |
|-------------------|------------------|------------------|-------|-------------------|-------------------|-------------------|
| 190.8             | 190.0            | 188.5            | 188.8 | 189.1             | 188.2             | 187.7             |
| $\frac{19.4}{20}$ | $\frac{16.3}{7}$ | $\frac{12.7}{4}$ | 12.4  | $\frac{12.1}{10}$ | $\frac{13.0}{20}$ | $\frac{13.5}{30}$ |

TP 11.78 201.16 0.17 189.38

201.16

2735

|                  |                  |                  |                  |                 |       |                  |                  |                  |
|------------------|------------------|------------------|------------------|-----------------|-------|------------------|------------------|------------------|
| 187.3            | 187.2            | 179.9            | 186.9            | 187.1           | 184.1 | 183.9            | 185.1            | 184.9            |
| $\frac{2.3}{30}$ | $\frac{2.1}{20}$ | $\frac{9.7}{15}$ | $\frac{2.7}{12}$ | $\frac{2.5}{8}$ | 5.5   | $\frac{5.7}{13}$ | $\frac{4.5}{20}$ | $\frac{4.7}{30}$ |

2729 = Intake 18" Corc Drain

183.08 177.52

$\frac{6.7}{10}$   $\frac{12.03}{10}$   
 16.3 - Add Corc Drain  
 10.7

2728.16 = H.L. Market St Ext

|                  |                  |       |                       |                     |                      |                  |
|------------------|------------------|-------|-----------------------|---------------------|----------------------|------------------|
| 182.8            | 183.3            | 182.8 | 182.24                | 181.43              | 182.03               | 182.0            |
| $\frac{6.8}{20}$ | $\frac{6.3}{10}$ | 6.8   | $\frac{7.31}{17.191}$ | $\frac{8.11}{16.3}$ | $\frac{7.52}{12.06}$ | $\frac{7.6}{20}$ |

189.53

189.55

6+28.26 - NY Line West Hollywood Sub

| Lt        | A         | Rt         |
|-----------|-----------|------------|
| 218.1     | 217.6     | 215.3      |
| 3.3<br>20 | 3.8<br>17 | 6.1<br>10  |
| 215.2     | 213.5     | 211.9      |
| 6.2       | 7.9<br>10 | 9.5<br>20  |
| 210.1     |           | 11.3<br>30 |

6+0

|           |           |          |       |          |            |            |
|-----------|-----------|----------|-------|----------|------------|------------|
| 216.7     | 215.3     | 213.1    | 213.4 | 213.2    | 210.8      | 208.7      |
| 4.7<br>20 | 6.1<br>10 | 8.3<br>5 | 8.0   | 8.2<br>9 | 10.6<br>20 | 12.7<br>30 |

5+50

|           |           |           |       |            |            |            |
|-----------|-----------|-----------|-------|------------|------------|------------|
| 214.4     | 213.0     | 210.8     | 210.8 | 210.5      | 209.6      | 207.1      |
| 7.0<br>20 | 8.4<br>10 | 10.6<br>5 | 10.6  | 10.9<br>10 | 11.8<br>20 | 14.3<br>30 |

TP 9.83 221.37 1.93 211.54

221.37

5+0

|           |          |          |       |           |           |           |
|-----------|----------|----------|-------|-----------|-----------|-----------|
| 211.5     | 210.3    | 208.6    | 208.5 | 208.4     | 207.0     | 205.6     |
| 1.5<br>20 | 2.7<br>9 | 4.1<br>5 | 4.5   | 4.6<br>12 | 6.0<br>20 | 7.9<br>30 |

4+50

|           |          |          |       |           |           |            |
|-----------|----------|----------|-------|-----------|-----------|------------|
| 208.0     | 206.9    | 205.2    | 205.1 | 205.2     | 204.2     | 203.0      |
| 5.0<br>20 | 6.1<br>9 | 7.8<br>5 | 7.9   | 7.8<br>12 | 8.8<br>20 | 10.0<br>30 |

4+0

|           |          |           |       |            |            |            |
|-----------|----------|-----------|-------|------------|------------|------------|
| 204.1     | 203.1    | 200.8     | 200.5 | 201.0      | 200.1      | 199.3      |
| 8.9<br>20 | 9.9<br>8 | 12.2<br>5 | 12.5  | 12.0<br>12 | 12.9<br>20 | 13.7<br>30 |

TP 11.92 212.97 0.11 201.05

212.97

201.16

|    |  |  |      |        |  |
|----|--|--|------|--------|--|
| BM |  |  | 9.57 | 161.69 | NE Hoist + Wood<br>Imperial +<br>McClint<br>161.71 |
|----|--|--|------|--------|--|

|    |      |        |      |        |  |
|----|------|--------|------|--------|--|
| TP | 2.46 | 171.26 | 9.18 | 168.80 |  |
|----|------|--------|------|--------|--|

|    |      |        |       |        |  |
|----|------|--------|-------|--------|--|
| TP | 0.15 | 177.98 | 11.52 | 177.83 |  |
|----|------|--------|-------|--------|--|

|    |  |  |      |        |   |
|----|--|--|------|--------|---|
| BM |  |  | 7.53 | 181.82 | SE B.P.<br>Markholter<br>+ P.H.<br>181.83 |
|----|--|--|------|--------|---|

|    |      |        |       |        |  |
|----|------|--------|-------|--------|--|
| TP | 0.29 | 189.35 | 11.21 | 189.06 |  |
|----|------|--------|-------|--------|--|

|    |      |        |       |        |  |
|----|------|--------|-------|--------|--|
| TP | 0.55 | 200.27 | 12.05 | 199.72 |  |
|----|------|--------|-------|--------|--|

|    |      |        |       |        |  |
|----|------|--------|-------|--------|--|
| TP | 1.21 | 211.77 | 10.81 | 210.56 |  |
|----|------|--------|-------|--------|--|

|    |  |  |      |        |                               |
|----|--|--|------|--------|-------------------------------|
| BM |  |  | 6.97 | 214.40 | Mon. N.W.C.<br>East Hollywood |
|----|--|--|------|--------|-------------------------------|

|  |  |        |  |  |  |
|--|--|--------|--|--|--|
|  |  | 221.37 |  |  |  |
|--|--|--------|--|--|--|

6-12-41  
Moore  
Osborne  
Farrow

Final Meas. on  
ARTHUR ST.

INDEXED  
LM

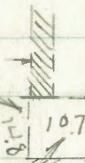
Mansfield

ST.

35.7

64.57

1/2 Exception  
on side of  
alley



10.7

10.7

10.7

14.8

35.7

all alleys paved  
to back edge  
of sidewalk

35.7

35th

ST.

Hawley

35.7

64.57

8.11

10.6

10.6

14.9

all Ret. 7' R

35.7

7

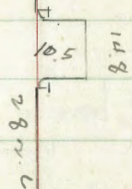
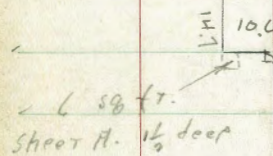
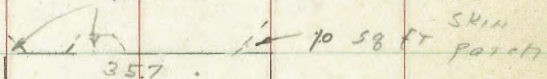
63

Mansfield

70 58 ft. strip  
patch

34th

40 58 ft SKIN



35.7

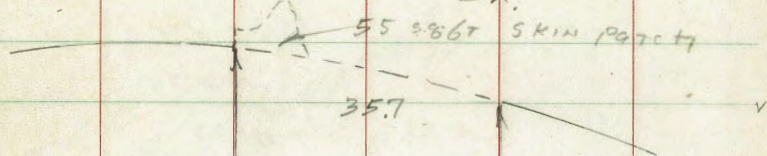
Hawley

Plan 5883-L

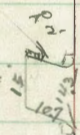
June 13-41

G.O.H.

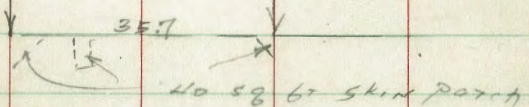
N. Mt. View Dr.



66. 4 edw.  
per plan



Kick from Resident  
Dirt & asphalt Rubbish in alley



34th

Cross Section College Ave  
 Estelle St to El Cajon Blvd  
 Estelle St 80th to East Line Gilcher Tract

Indexed

LM

July 2, 41

Sisson  
 Hartmann  
 Hammond  
 Albion

68

El Cajon Blvd  
 Traffic Light

52  
 52  
 173

38°

213

35

56

59

13

275

209

9+74.5

9+57.0

9+38.177

Oil Station

35.04

Passing

5402

Existing Full Type Curb

4+91

Carol St

Back of Curb

4+59

4+502

Ave

80

30

2+502

Bradford St

College

2+07

0+07

Estelle

82

8+11.0

8+71.0

St

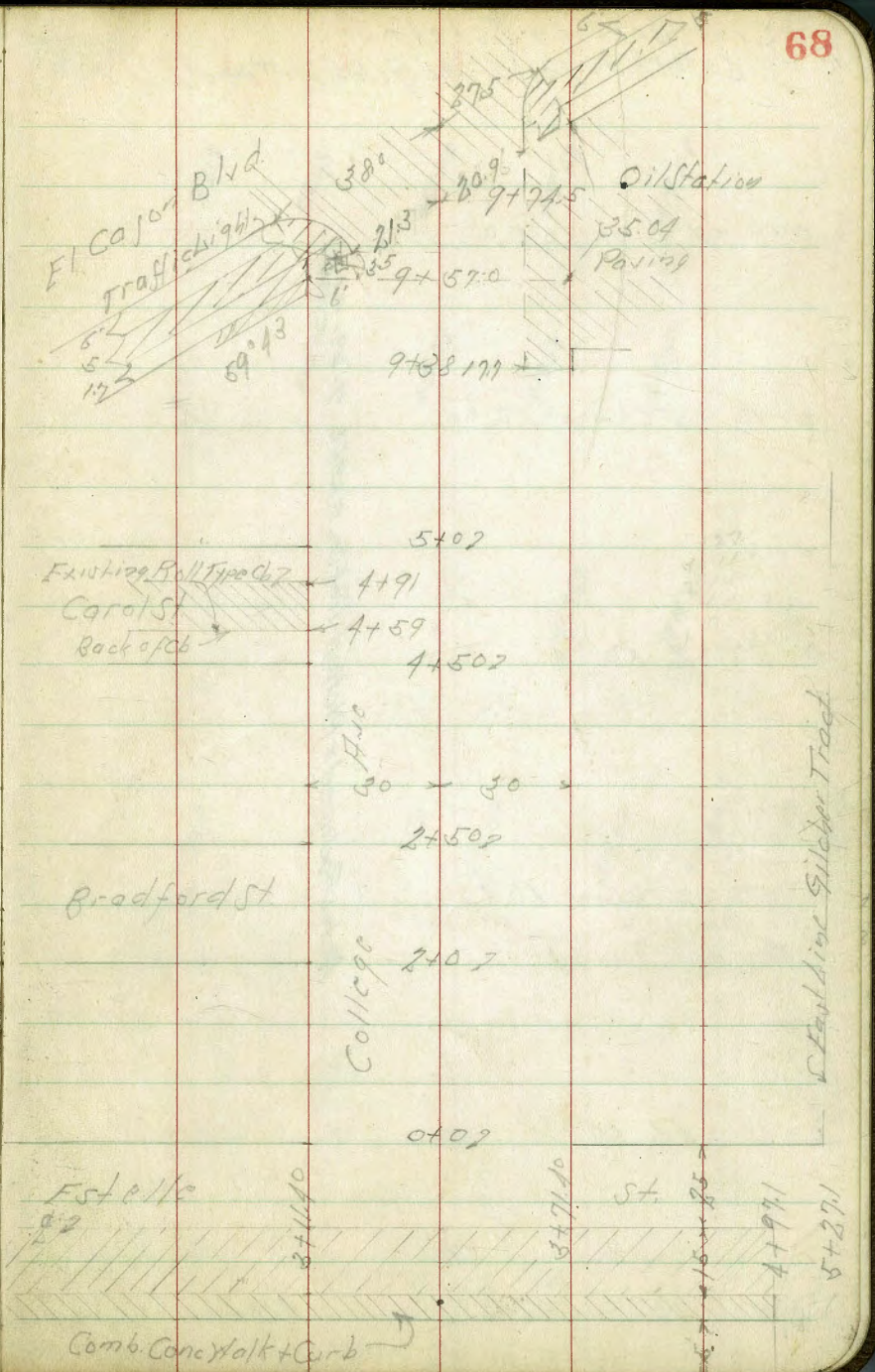
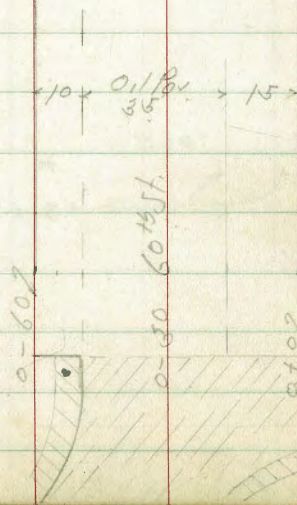
5+15.0

4+97.1

5+27.1

Comb. Conc. Walk + Curb

East Line Gilcher Tract







1750

1716 = 2 7' 2' Ribbon Conc Dr. on 4' 2' Ribbon

170

0797 = 2 7' 2' Ribbon Conc Dr. on 4' 2' Ribbon

0750

0724

425.83

Lt.

Z

Rt.

423.3

3.15  
15

423.05

3.18  
15

422.7

3.15  
15

422.97

3.18  
15

422.4

3.15  
15

422.09

3.14  
15

422.2

3.15  
15

422.07

3.19  
15

421.7

3.15  
15

422.39

3.51  
15

420.5

3.15  
15

421.49

3.24  
15

422.97

3.16  
15

421.57

3.19  
15

420.71

3.12  
15

425.83 ✓

422.20

3.15  
15

421.24

3.15  
15

420.49

3.15  
15

422.69

3.14  
15

421.74

3.09  
15

420.92

3.15  
15

420.82

3.01  
15

Estelle St.

2+0

2+65 = 2 7' 2' Ribbon Conc on Lt 2' Ribbon

2+46 = 2 7' 2' Ribbon Conc Dr on Lt 2' Ribbon

TP 11.32 435.89 1.26 424.57

2+25

2+0

1+96 = 2 7' 2' Ribbon Conc Dr on Lt 2' Ribbon

425.83

71

4+

4273

86  
25

42639

9.50  
25 on Dr.

42561

10.28  
25 on Dr.

4253

2.05  
25

4243

1.5  
25

42449

1.84  
25 on Dr.

4273

86  
25

42580

10.09  
19-54 Conc

42532

10.57  
19-54 Conc

4253

2.05  
25

4243

1.5  
25

42449

1.84  
25 on Dr.

4263

96  
15

4248

11.1  
15

42532

10.57  
19-54 Conc

4287

2.1  
15

4232

2.6  
15

42405

1.78  
19-54 Dr.

42715

874

42519

10.70

42580

435.89 ✓

42380

2.03

42323

2.60

42405

1.25.83 ✓

PT

42705

8.84  
15

42517

10.72  
15

42374

2.09  
15

42374

2.09  
15

42311

2.72  
15-54 Dr.

42357

2.24  
15-54 Carb

42760

8.89  
15

42566

10.25  
15

42424

1.59  
15

42424

1.59  
15

42357

2.24  
15-54 Carb

42357

2.24  
15-54 Carb

4+50

TP 8.33 443.33 0.89 435.00

4+0

3+92 = 2 7' 2 Ribbons Conc Dr. or 1 2 Ribbons

3+71.4 = EL College Ave

3+41.4 = 2

3+11.40 = W.L. College Ave

435.89

4

435.6

7.7  
25

435.9

7.1  
15

435.78

7.55

443.33 ✓

RT

435.67

7.64  
15-Div

433.5

2.4  
25

433.7

2.1  
15

433.7

2.2  
10

432.92

2.97

432.81

3.08  
15

432.22

2.67  
15

433.06

2.82  
25-Div

432.20

2.19  
15-Div

432.4

3.5  
25

432.2

3.7  
15

431.22

4.67

431.20

4.69  
15

431.60

4.28  
15

429.9

6.0  
25

430.0

5.9  
15

429.52

6.37

429.46

6.43  
15-Div

427.5

8.4  
25

427.1

8.2  
15

427.78

8.11

427.72

8.17  
15-Guthrie

428.14

7.75  
15-Curb

435.89 ✓

Estelle St.

TP 1.19 433.51 11.01 432.32

5+271 = Fly Gilbert Tract

5+12

4+971 = Fly Rowing Conc Walk on Pt

4+87 = 1/2 7' 2' Ribbon Conc Dr on Lt 2' Ribbon

4+68 = 1/2 7' 2' Ribbon Conc Dr on Lt 2' Ribbon

443

Lt L Pt

440.8

441.4

440.9

439.9

440.1

440.6

442.6

25  
25

19  
15

24

37  
37

32  
30

37  
25

37  
25

439.4

439.6

440.5

440.7

439.5

439.3

440.2

441.5

29  
25

37  
20

38  
25

36  
38

3.8

10  
15

37  
20

18  
25

438.7

438.7

439.4

439.3

438.46

438.38

438.85

440.4

16  
25

16  
20

39  
15

40  
17

4.87

195  
15-40

118  
1506

29  
25

437.96

448.28

6.27

1507 Dr

5.05

1505-1401

436.71

437.03

6.56

1507 Dr

6.20

1505-1401

443.33 ✓

Cross Section College Hill  
Estelle St. to FICajon Blvd

2+25 = Z

2+0 = S.L. Bradford

1+50

1+0

242 Rt of Z = Fly Harbor Pole  
206 Lt of Z = Fly Power Pole ✓

0+50

0+0 = N.L. Estelle

433.51 St. Ford

Notes Reduced & Aligned on Profile # 2947  
J-29-41 C.B.H.

|           |           |           |           |          |           |           |           |
|-----------|-----------|-----------|-----------|----------|-----------|-----------|-----------|
| 430.8     | 430.1     | 429.6     | 429.1     | 429.8    | 429.3     | 429.2     | 429.3     |
| 27<br>10  | 25<br>30  | 29<br>20  | 14<br>15  | 26<br>15 | 14<br>15  | 20<br>20  | 20<br>30  |
| 430.4     | 429.8     | 429.4     | 429.3     | 429.5    | 428.8     | 429.1     | 429.1     |
| 31<br>10  | 27<br>30  | 14<br>20  | 5.2<br>15 | 5.0      | 1.7<br>15 | 1.0<br>20 | 5.0<br>30 |
| 428.6     | 428.7     | 428.6     | 427.6     | 427.8    | 427.7     | 429.0     | 429.2     |
| 1.9<br>10 | 1.0<br>30 | 1.9<br>20 | 5.9<br>15 | 5.7      | 5.0<br>15 | 1.5<br>20 | 5.0<br>30 |
| 427.6     | 428.3     | 428.8     | 427.9     | 427.7    | 427.8     | 427.2     | 429.1     |
| 5.9<br>10 | 5.0<br>30 | 1.7<br>20 | 6.2<br>15 | 5.8      | 5.7<br>15 | 5.0<br>20 | 5.0<br>30 |
| 427.9     | 428.0     | 428.3     | 427.7     | 428.5    | 427.7     | 429.3     | 430.1     |
| 5.6<br>10 | 5.5<br>30 | 5.0<br>20 | 5.0<br>18 | 5.0      | 4.8<br>15 | 1.0<br>20 | 5.0<br>30 |
| 427.3     | 427.3     | 427.9     | 427.9     | 427.9    | 427.7     | 427.3     | 429.1     |
| 5.0<br>30 | 5.0<br>30 | 5.0<br>20 | 5.0<br>15 | 5.0      | 5.0<br>15 | 1.0<br>20 | 5.0<br>30 |

3782 - Hly Do Garage on Lt

3766 - Sly Do Garage on Lt

3750

3725

TP 12.15 445.12 0.54 422.97

370

3750 - H.L. Bradford

433.51

Lt.

St

PT

|     |        |        |  |  |  |  |  |  |  |  |  |
|-----|--------|--------|--|--|--|--|--|--|--|--|--|
|     |        | 441.00 |  |  |  |  |  |  |  |  |  |
|     | 441.00 |        |  |  |  |  |  |  |  |  |  |
| 421 | 441.00 |        |  |  |  |  |  |  |  |  |  |
| 424 | 441.00 |        |  |  |  |  |  |  |  |  |  |
| 426 | 441.00 |        |  |  |  |  |  |  |  |  |  |
| 428 | 441.00 |        |  |  |  |  |  |  |  |  |  |
| 430 | 441.00 |        |  |  |  |  |  |  |  |  |  |
| 432 | 441.00 |        |  |  |  |  |  |  |  |  |  |
| 434 | 441.00 |        |  |  |  |  |  |  |  |  |  |
| 436 | 441.00 |        |  |  |  |  |  |  |  |  |  |
| 438 | 441.00 |        |  |  |  |  |  |  |  |  |  |
| 440 | 441.00 |        |  |  |  |  |  |  |  |  |  |
| 442 | 441.00 |        |  |  |  |  |  |  |  |  |  |
| 444 | 441.00 |        |  |  |  |  |  |  |  |  |  |
| 446 | 441.00 |        |  |  |  |  |  |  |  |  |  |
| 448 | 441.00 |        |  |  |  |  |  |  |  |  |  |
| 450 | 441.00 |        |  |  |  |  |  |  |  |  |  |
| 452 | 441.00 |        |  |  |  |  |  |  |  |  |  |
| 454 | 441.00 |        |  |  |  |  |  |  |  |  |  |
| 456 | 441.00 |        |  |  |  |  |  |  |  |  |  |
| 458 | 441.00 |        |  |  |  |  |  |  |  |  |  |
| 460 | 441.00 |        |  |  |  |  |  |  |  |  |  |
| 462 | 441.00 |        |  |  |  |  |  |  |  |  |  |
| 464 | 441.00 |        |  |  |  |  |  |  |  |  |  |
| 466 | 441.00 |        |  |  |  |  |  |  |  |  |  |
| 468 | 441.00 |        |  |  |  |  |  |  |  |  |  |
| 470 | 441.00 |        |  |  |  |  |  |  |  |  |  |
| 472 | 441.00 |        |  |  |  |  |  |  |  |  |  |
| 474 | 441.00 |        |  |  |  |  |  |  |  |  |  |
| 476 | 441.00 |        |  |  |  |  |  |  |  |  |  |
| 478 | 441.00 |        |  |  |  |  |  |  |  |  |  |
| 480 | 441.00 |        |  |  |  |  |  |  |  |  |  |
| 482 | 441.00 |        |  |  |  |  |  |  |  |  |  |
| 484 | 441.00 |        |  |  |  |  |  |  |  |  |  |
| 486 | 441.00 |        |  |  |  |  |  |  |  |  |  |
| 488 | 441.00 |        |  |  |  |  |  |  |  |  |  |
| 490 | 441.00 |        |  |  |  |  |  |  |  |  |  |
| 492 | 441.00 |        |  |  |  |  |  |  |  |  |  |
| 494 | 441.00 |        |  |  |  |  |  |  |  |  |  |
| 496 | 441.00 |        |  |  |  |  |  |  |  |  |  |
| 498 | 441.00 |        |  |  |  |  |  |  |  |  |  |
| 500 | 441.00 |        |  |  |  |  |  |  |  |  |  |

421 H.L. Bradford  
Garage  
Contractor

424 H.L. Bradford  
Garage  
Contractor

426 H.L. Bradford  
Garage  
Contractor

428 H.L. Bradford  
Garage  
Contractor

430 H.L. Bradford  
Garage  
Contractor

432 H.L. Bradford  
Garage  
Contractor

434 H.L. Bradford  
Garage  
Contractor

445.12

433.51 ✓

4+91 = 1/4 Roll Carb on Lt

4+75 = 2 Carol

4+59 = 5/4 Roll Carb on Carol

4+50 = 5/4 Carol

4+49 22.6 Lt of L = 1/4 Power Pole

4+30

4+0

445.12

|       |               |       |               |       |           |       |          |       |           |       |           |       |            |       |           |
|-------|---------------|-------|---------------|-------|-----------|-------|----------|-------|-----------|-------|-----------|-------|------------|-------|-----------|
| 44406 | 1.06<br>30-64 | 44438 | 0.74<br>30-70 | 44433 | 1.8<br>20 | 44430 | 2.1<br>8 | 44437 | 2.1<br>8  | 44428 | 2.3<br>20 | 44413 | 0.5<br>0.8 | 44410 | 1.1<br>4  |
| 44357 | 1.55<br>30-64 | 44420 | 1.1<br>30     | 44333 | 1.8<br>20 | 44233 | 2.8      | 4417  | 0.5<br>20 | 4412  | 0.5<br>20 | 4405  | 1.6<br>40  | 4401  | 1.5<br>40 |
| 44387 | 1.35<br>30-70 | 4431  | 2.0<br>20     | 4421  | 2.0<br>15 | 4419  | 3.2      | 4415  | 3.6<br>7  | 4416  | 3.5<br>10 | 4411  | 1.0<br>20  | 4405  | 1.6<br>30 |
| 4439  | 1.8<br>30     | 4432  | 1.9<br>20     | 4417  | 3.1<br>15 | 4415  | 3.5      | 4411  | 4.0<br>8  | 4416  | 3.5<br>10 | 4411  | 1.0<br>20  | 4405  | 1.6<br>30 |
| 4433  | 0.8<br>0.8    | 4421  | 1.5<br>20     | 4398  | 1.5<br>15 | 4399  | 1.5<br>8 | 4395  | 1.5<br>15 | 4403  | 1.8<br>10 | 4398  | 1.5<br>20  | 4391  | 1.5<br>20 |
| 440.8 | 1.5<br>30     | 4394  | 1.5<br>20     | 4377  | 1.5<br>15 | 4376  | 1.5      | 4375  | 1.5<br>15 | 4380  | 1.5<br>15 | 4348  | 1.5<br>15  | 4344  | 1.5<br>20 |
|       |               |       |               |       |           |       |          |       |           |       |           |       |            | 4333  | 1.5<br>30 |
|       |               |       |               |       |           |       |          |       |           |       |           |       |            | 4330  | 1.5<br>45 |

445.12

6750

JP 11.41 463.61 0.18 452.20

670 224 Lt of 2 = N.Y. Paper Pole 15' Dia

5770 = N.Y. Dr. Garage 2 Lt

5754 = S.Y. Dr. Garage 07 Lt

5725

JP 7.45 452.38 0.19 444.93

570 = N.C. Carol

445.12

452.8

10.8  
30

452.7

10.9  
30

451.8

11.8  
30

452.2

11.4  
30

451.9

11.7  
30

452.6

11.0  
30

453.2

10.4  
30

453.0

10.6  
30

463.61 ✓

450.4

2.0  
30

449.5

2.9  
30

448.8

3.6  
30

448.6

3.8  
30

448.4

4.0  
30

448.5

3.9  
30

449.3

3.1  
30

449.7

2.7  
30

449.4

2.8  
30

449.0

3.3  
30

449.48

2.9  
30

448.60

3.7  
30

446.6

5.8  
30

445.9

6.5  
30

445.9

6.5  
30

445.7

6.7  
30

444.0

8.4  
30

443.6

8.8  
30

443.9

8.5  
30

442.6

7.8  
30

447.0

5.4  
30

446.2

6.2  
30

444.5

7.9  
30

444.6

7.8  
30

444.5

7.9  
30

444.5

7.9  
30

441.7

10.7  
30

440.8

11.6  
30

440.9

11.5  
30

Nail Pole  
S.Y. Carol 4 Gallons  
No.

445.3

10.2  
30

444.5

0.6  
30

443.4

1.7  
30

443.5

1.6  
30

443.2

1.9  
30

442.3

2.8  
30

441.8

3.6  
30

441.0

4.1  
30

445.12

77



8+40 29.8 Lt of Z = N E Cor Stucco Wall  
 22.6 Lt of Z = W by Power Pole

8+0

7+69 = Z 4' Conc Walk on Lt

7+56 = Z 7' Conc Drive on Lt

7+50 29.7 Lt of Z = S E by Stucco Wall

7+25

7+0

6+75

463.61

| Lt                                    | Z                   | Rt                 |
|---------------------------------------|---------------------|--------------------|
| 461.0<br>2.6<br>297.51<br>Hall Stucco | 460.6<br>3.0<br>20  | 460.4<br>3.3<br>10 |
| 460.7<br>2.9<br>10                    | 460.5<br>2.1<br>20  | 460.4<br>3.3<br>30 |
| 460.0<br>2.6<br>10                    |                     |                    |
| 459.82<br>2.9<br>29.72<br>Hall Conc   | 459.65<br>2.9<br>20 | 459.2<br>4.4<br>20 |
| 458.9<br>4.7<br>10                    | 458.9<br>4.7<br>20  | 458.9<br>4.7<br>30 |
| 458.7<br>4.9<br>10                    | 458.7<br>4.9<br>20  | 458.7<br>4.9<br>30 |
| 458.6<br>5.0<br>30                    | 458.4<br>5.2<br>20  | 458.1<br>5.5<br>16 |
| 457.1<br>6.5<br>14                    | 457.1<br>6.5<br>14  | 457.9<br>5.7<br>10 |
| 457.6<br>6.0<br>10                    | 457.9<br>5.7<br>20  | 457.8<br>6.0<br>30 |
| 457.6<br>5.7<br>10                    | 457.9<br>5.7<br>20  | 457.6<br>5.9<br>30 |
| 457.0<br>6.6<br>20                    | 457.0<br>6.6<br>16  | 456.5<br>7.6<br>14 |
| 456.5<br>7.1<br>10                    | 456.5<br>7.1<br>10  | 456.2<br>7.6<br>10 |
| 456.7<br>6.9<br>20                    | 456.7<br>6.9<br>30  | 456.7<br>6.9<br>30 |
| 455.8<br>8.2<br>20                    | 455.3<br>8.6<br>20  | 454.2<br>9.4<br>14 |
| 454.7<br>8.9<br>10                    | 454.4<br>9.2<br>10  | 455.0<br>8.6<br>20 |
| 455.2<br>8.4<br>30                    | 455.1<br>8.5<br>10  |                    |
| 463.61                                |                     |                    |

BT

416

465.24

H.P. BP  
El Cajon  
Collection  
465.27

Schlier El Cajon Blvd on Diagonal

9+74.5 = Sch. El Cajon on Diagonal

9+57 = S.L. El Cajon on Lt

9+38

TP 6.06 469.40 0.27 463.34

9+0

8+50

463.61

Lt

S

Rt

464.89

4.56  
38 = 26.50  
Top

464.90

4.50  
21.5 = 0.5

464.9

4.5  
30

463.8

4.56  
38 = El Cajon  
Blvd

462.9

4.0  
30

461.5

2.1  
30

464.30

5.10  
28 = 5.11  
H.P.

464.26

5.14  
21.3 = 0.11

464.4

5.0  
20

463.7

5.7  
26

463.3

0.5  
20

461.5

2.1  
30

464.24

5.16  
20.8

464.31

5.09  
11.6

464.1

5.0  
10

463.8

5.6  
10

462.8

0.8  
10

461.6

2.0  
10

464.15

5.25

464.35

5.05

464.2

5.2

463.8

5.6

463.0

0.6  
10

461.9

1.7  
10

464.03

5.27  
20.8

464.21

5.14  
11.6

464.0

5.4  
10

463.5

5.9  
10

462.8

0.8  
10

461.8

1.8  
10

464.01

5.29  
27.5 = 9.1

464.14

5.26  
20.9 = 9.1

464.07

5.33  
17.7 = 11.9

463.71

5.69  
17.7 = 5.11  
H.P.

463.0

0.6  
20

461.8

1.8  
20

464.65

4.75  
27.5 = 6.5  
7.5

464.68

4.77  
20.9 = 0.5  
3.7

464.18

4.82  
30 = 10.1

463.87

5.53  
20

463.1

0.5  
30

461.9

1.7  
30

464.9

4.5  
34.7

464.29

5.01  
30 = 10.1

463.99

5.01  
30 = 10.1

469.40 ✓

463.61 |

TABLE VIII.—NATURAL TRIGONOMETRICAL FUNCTIONS.

| Angle | Sine.  | Tan.  | Cotg. | Cosin. | Angle  | Sine.  | Tan.  | Cotg.  | Cosin. |        |
|-------|--------|-------|-------|--------|--------|--------|-------|--------|--------|--------|
| 0°    | 0      | 0     | ∞     | 1      | 90°    | 1      | ∞     | 0      | 0      |        |
| 10    | .0029  | .0029 | 343.8 | .99998 | 80     | .1736  | .1736 | 5.769  | .98531 |        |
| 20    | .0058  | .0058 | 171.9 | .99996 | 70     | .1650  | .1650 | 6.082  | .98902 |        |
| 30    | .0087  | .0087 | 114.6 | .99993 | 60     | .1564  | .1564 | 6.435  | .99272 |        |
| 40    | .0116  | .0116 | 85.94 | .99989 | 50     | .1478  | .1478 | 6.827  | .99644 |        |
| 50    | .0145  | .0145 | 68.75 | .99989 | 40     | .1392  | .1392 | 7.115  | .99986 |        |
| 1     | .0175  | .0175 | 57.29 | .99985 | 30     | .1307  | .1307 | 7.405  | .99986 |        |
| 10    | .0204  | .0204 | 49.10 | .99979 | 20     | .1221  | .1221 | 7.694  | .99982 |        |
| 20    | .0233  | .0233 | 42.96 | .99973 | 10     | .1136  | .1136 | 7.982  | .99980 |        |
| 30    | .0262  | .0262 | 38.19 | .99966 | 0      | .1050  | .1050 | 8.270  | .99980 |        |
| 40    | .0291  | .0291 | 34.37 | .99958 | 10     | .0965  | .0965 | 8.558  | .99980 |        |
| 50    | .0320  | .0320 | 31.24 | .99949 | 20     | .0880  | .0880 | 8.846  | .99980 |        |
| 2     | .0349  | .0349 | 28.64 | .99939 | 30     | .0795  | .0795 | 9.134  | .99980 |        |
| 10    | .0378  | .0378 | 26.43 | .99929 | 40     | .0710  | .0710 | 9.422  | .99980 |        |
| 20    | .0407  | .0407 | 24.54 | .99917 | 50     | .0625  | .0625 | 9.710  | .99980 |        |
| 30    | .0436  | .0437 | 22.90 | .99905 | 60     | .0540  | .0540 | 10.000 | .99980 |        |
| 40    | .0465  | .0466 | 21.47 | .99892 | 70     | .0455  | .0455 | 10.290 | .99980 |        |
| 50    | .0494  | .0495 | 20.21 | .99878 | 80     | .0370  | .0370 | 10.580 | .99980 |        |
| 3     | .0523  | .0524 | 19.08 | .99863 | 90     | .0285  | .0285 | 10.870 | .99980 |        |
| 10    | .0552  | .0553 | 18.07 | .99847 | 80     | .0200  | .0200 | 11.160 | .99980 |        |
| 20    | .0581  | .0582 | 17.17 | .99831 | 70     | .0115  | .0115 | 11.450 | .99980 |        |
| 30    | .0610  | .0612 | 16.35 | .99813 | 60     | .0030  | .0030 | 11.740 | .99980 |        |
| 40    | .0640  | .0641 | 15.60 | .99795 | 50     | .0045  | .0045 | 12.030 | .99980 |        |
| 50    | .0669  | .0670 | 14.92 | .99776 | 40     | .0060  | .0060 | 12.320 | .99980 |        |
| 4     | .0698  | .0699 | 14.30 | .99756 | 30     | .0075  | .0075 | 12.610 | .99980 |        |
| 10    | .0727  | .0729 | 13.73 | .99736 | 20     | .0090  | .0090 | 12.900 | .99980 |        |
| 20    | .0756  | .0758 | 13.20 | .99714 | 10     | .0105  | .0105 | 13.190 | .99980 |        |
| 30    | .0785  | .0787 | 12.71 | .99692 | 0      | .0120  | .0120 | 13.480 | .99980 |        |
| 40    | .0814  | .0816 | 12.25 | .99668 | 10     | .0135  | .0135 | 13.770 | .99980 |        |
| 50    | .0843  | .0846 | 11.83 | .99644 | 20     | .0150  | .0150 | 14.060 | .99980 |        |
| 5     | .0872  | .0875 | 11.43 | .99619 | 30     | .0165  | .0165 | 14.350 | .99980 |        |
| 10    | .0901  | .0904 | 11.06 | .99594 | 40     | .0180  | .0180 | 14.640 | .99980 |        |
| 20    | .0929  | .0934 | 10.71 | .99567 | 50     | .0195  | .0195 | 14.930 | .99980 |        |
| 30    | .0958  | .0963 | 10.39 | .99540 | 60     | .0210  | .0210 | 15.220 | .99980 |        |
| 40    | .0987  | .0992 | 10.08 | .99511 | 70     | .0225  | .0225 | 15.510 | .99980 |        |
| 50    | .1016  | .1022 | 9.788 | .99482 | 80     | .0240  | .0240 | 15.800 | .99980 |        |
| 6     | .1045  | .1051 | 9.514 | .99452 | 90     | .0255  | .0255 | 16.090 | .99980 |        |
| 10    | .1074  | .1080 | 9.255 | .99421 | 80     | .0270  | .0270 | 16.380 | .99980 |        |
| 20    | .1103  | .1110 | 9.010 | .99390 | 70     | .0285  | .0285 | 16.670 | .99980 |        |
| 30    | .1132  | .1139 | 8.777 | .99357 | 60     | .0300  | .0300 | 16.960 | .99980 |        |
| 40    | .1161  | .1169 | 8.556 | .99324 | 50     | .0315  | .0315 | 17.250 | .99980 |        |
| 50    | .1190  | .1198 | 8.345 | .99290 | 40     | .0330  | .0330 | 17.540 | .99980 |        |
| 7     | .1219  | .1228 | 8.144 | .99255 | 30     | .0345  | .0345 | 17.830 | .99980 |        |
| 10    | .1248  | .1257 | 7.953 | .99219 | 20     | .0360  | .0360 | 18.120 | .99980 |        |
| 20    | .1276  | .1287 | 7.770 | .99182 | 10     | .0375  | .0375 | 18.410 | .99980 |        |
| 30    | .1305  | .1317 | 7.596 | .99144 | 0      | .0390  | .0390 | 18.700 | .99980 |        |
| 40    | .1334  | .1346 | 7.429 | .99106 | 10     | .0405  | .0405 | 19.000 | .99980 |        |
| 50    | .1363  | .1376 | 7.269 | .99067 | 20     | .0420  | .0420 | 19.300 | .99980 |        |
|       | Cosin. | Cotg. | Tan.  | Sine.  | Angle. | Cosin. | Cotg. | Tan.   | Sine.  | Angle. |

20/  
35  
756

TABLE VIII.—NATURAL TRIGONOMETRICAL FUNCTIONS.

| Angle | Sine.  | Tan.  | Cotg. | Cosin. | Angle  | Sine.  | Tan.  | Cotg. | Cosin. |        |
|-------|--------|-------|-------|--------|--------|--------|-------|-------|--------|--------|
| 16    | .2756  | .2867 | 3.487 | .96126 | 74     | .4067  | .4452 | 2.246 | .91355 |        |
| 10    | .2784  | .2899 | 3.450 | .96046 | 60     | .4094  | .4487 | 2.220 | .91236 |        |
| 20    | .2812  | .2931 | 3.412 | .95964 | 50     | .4120  | .4522 | 2.211 | .91116 |        |
| 30    | .2840  | .2962 | 3.376 | .95882 | 40     | .4147  | .4557 | 2.194 | .90996 |        |
| 40    | .2868  | .2994 | 3.340 | .95799 | 30     | .4173  | .4592 | 2.177 | .90875 |        |
| 50    | .2896  | .3026 | 3.305 | .95715 | 20     | .4200  | .4628 | 2.161 | .90753 |        |
| 17    | .2924  | .3057 | 3.271 | .95615 | 73     | .4226  | .4663 | 2.145 | .90631 |        |
| 10    | .2952  | .3089 | 3.237 | .95545 | 60     | .4253  | .4699 | 2.128 | .90507 |        |
| 20    | .2979  | .3121 | 3.204 | .95459 | 50     | .4279  | .4734 | 2.112 | .90383 |        |
| 30    | .3007  | .3153 | 3.172 | .95372 | 40     | .4305  | .4770 | 2.097 | .90259 |        |
| 40    | .3035  | .3185 | 3.140 | .95284 | 30     | .4331  | .4806 | 2.081 | .90133 |        |
| 50    | .3062  | .3217 | 3.108 | .95195 | 20     | .4358  | .4841 | 2.066 | .90007 |        |
| 18    | .3090  | .3249 | 3.078 | .95106 | 72     | .4384  | .4877 | 2.050 | .89879 |        |
| 10    | .3118  | .3281 | 3.048 | .95015 | 60     | .4410  | .4913 | 2.035 | .89752 |        |
| 20    | .3145  | .3314 | 3.018 | .94924 | 50     | .4436  | .4950 | 2.020 | .89623 |        |
| 30    | .3173  | .3346 | 2.989 | .94832 | 40     | .4462  | .4986 | 2.006 | .89493 |        |
| 40    | .3201  | .3378 | 2.960 | .94740 | 30     | .4488  | .5022 | 1.991 | .89363 |        |
| 50    | .3228  | .3411 | 2.932 | .94646 | 20     | .4514  | .5059 | 1.977 | .89232 |        |
| 19    | .3256  | .3443 | 2.904 | .94552 | 71     | .4540  | .5095 | 1.963 | .89101 |        |
| 10    | .3283  | .3476 | 2.877 | .94457 | 60     | .4566  | .5132 | 1.949 | .88968 |        |
| 20    | .3311  | .3508 | 2.850 | .94361 | 50     | .4592  | .5169 | 1.935 | .88835 |        |
| 30    | .3338  | .3541 | 2.824 | .94264 | 40     | .4617  | .5206 | 1.921 | .88701 |        |
| 40    | .3365  | .3574 | 2.798 | .94167 | 30     | .4643  | .5243 | 1.907 | .88566 |        |
| 50    | .3393  | .3607 | 2.773 | .94068 | 20     | .4669  | .5280 | 1.894 | .88431 |        |
| 20    | .3420  | .3640 | 2.747 | .93969 | 70     | .4695  | .5317 | 1.881 | .88295 |        |
| 10    | .3448  | .3673 | 2.723 | .93869 | 60     | .4720  | .5354 | 1.868 | .88158 |        |
| 20    | .3475  | .3706 | 2.699 | .93769 | 50     | .4746  | .5392 | 1.855 | .88020 |        |
| 30    | .3502  | .3739 | 2.675 | .93667 | 40     | .4772  | .5430 | 1.842 | .87882 |        |
| 40    | .3529  | .3772 | 2.651 | .93565 | 30     | .4797  | .5467 | 1.829 | .87743 |        |
| 50    | .3557  | .3805 | 2.628 | .93462 | 20     | .4823  | .5505 | 1.816 | .87603 |        |
| 21    | .3584  | .3839 | 2.605 | .93358 | 69     | .4848  | .5543 | 1.804 | .87462 |        |
| 10    | .3611  | .3872 | 2.583 | .93253 | 60     | .4874  | .5581 | 1.792 | .87321 |        |
| 20    | .3638  | .3906 | 2.560 | .93148 | 50     | .4899  | .5619 | 1.780 | .87178 |        |
| 30    | .3665  | .3939 | 2.539 | .93042 | 40     | .4924  | .5658 | 1.767 | .87036 |        |
| 40    | .3692  | .3973 | 2.517 | .92935 | 30     | .4950  | .5696 | 1.756 | .86892 |        |
| 50    | .3719  | .4006 | 2.496 | .92827 | 20     | .4975  | .5735 | 1.744 | .86748 |        |
| 22    | .3746  | .4040 | 2.475 | .92718 | 68     | .4975  | .5774 | 1.732 | .86603 |        |
| 10    | .3773  | .4074 | 2.455 | .92609 | 60     | .5025  | .5812 | 1.720 | .86457 |        |
| 20    | .3800  | .4108 | 2.434 | .92499 | 50     | .5050  | .5851 | 1.709 | .86310 |        |
| 30    | .3827  | .4142 | 2.414 | .92388 | 40     | .5075  | .5890 | 1.698 | .86163 |        |
| 40    | .3854  | .4176 | 2.394 | .92276 | 30     | .5100  | .5930 | 1.686 | .86015 |        |
| 50    | .3881  | .4210 | 2.375 | .92164 | 20     | .5125  | .5969 | 1.675 | .85866 |        |
| 23    | .3907  | .4245 | 2.356 | .92050 | 67     | .5150  | .6009 | 1.664 | .85717 |        |
| 10    | .3934  | .4279 | 2.337 | .91936 | 60     | .5175  | .6048 | 1.653 | .85567 |        |
| 20    | .3961  | .4314 | 2.318 | .91822 | 50     | .5200  | .6088 | 1.643 | .85416 |        |
| 30    | .3987  | .4348 | 2.300 | .91706 | 40     | .5225  | .6128 | 1.632 | .85264 |        |
| 40    | .4014  | .4383 | 2.282 | .91590 | 30     | .5250  | .6168 | 1.621 | .85112 |        |
| 50    | .4041  | .4417 | 2.264 | .91472 | 20     | .5275  | .6208 | 1.611 | .84959 |        |
|       | Cosin. | Cotg. | Tan.  | Sine.  | Angle. | Cosin. | Cotg. | Tan.  | Sine.  | Angle. |

TABLE VIII.—NATURAL TRIGONOMETRICAL FUNCTIONS.

Table with columns for Angle, Sine, Tan., Cotg., and Cosin. for angles 32 to 40. Includes a second set of columns for angles 39 to 45. Bottom row shows Cosin., Cotg., Tan., Sine., and Angle.

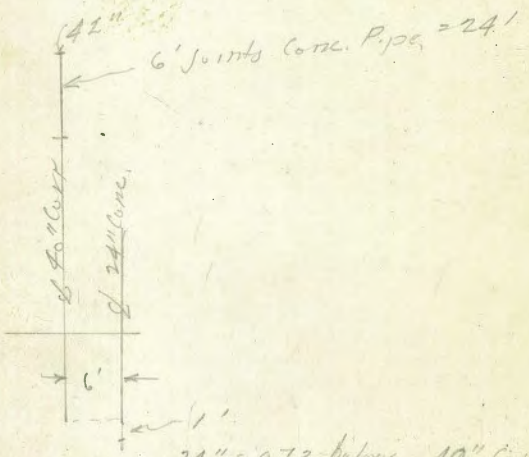
TABLE IX.—CALCULATION OF EARTHWORK.

Table with columns for Width and HEIGHT (1-15). Contains numerical data for earthwork calculations.

Table gives cu. yds. in 1 ft. of a triangle of given width and height. Corrections for tenths of width are one tenth the values found under each height considering the widths from 1 to 9 as tenths and similarly the corrections for tenths of height are one tenth the figures opposite width considering the heights from 1 to 9 as tenths. Thus if w=16.2 and h=5.3, cu. yds. = 1.48 + .028 + .089 = 1.597 cu. yds. or practically 160 cu. yds. per 100 ft. If w exceeds 40 ft., use one half and multiply result by 4. Any cross-section may be divided into one half of each and multiply result by 4. To the triangle of the sum of the outside cuts (or fills) =h, and 1/2 the roadbed =w, add the triangles formed by taking the distance out to each break in turn (=w's) by the difference between the cuts (or fills) on each side of it (=h's) always subtracting the outer from the inner.

R.S. 489 469

91059' - 91057'  
 183.58' - 183.54'  
 3127837' - 3127831'  
 91059' - 91057'  
 596.7  
 7  
 603.7  
 603.5 = N edge Walk  
 - 5.3  
 598.2 = S edge Walk



43 VI  
 442  
 3897

H 99-18-30 Y  
 N 00 38.20 S  
 29.57 00

155.7  
 62.28  
 120.8  
 79.28  
 155.70  
 30  
 185.7

4.12

0741 = End cut H. 18' Corrugated  
25 South N/C

DISTANCES FROM CENTER OF ROADWAY FOR CROSS-SECTIONING.

Roadway 16 feet wide. Side Slopes 1 on 1 1/2  
For Single Track Embankment.

188  
203 = Elev

| H  | 0    | .1   | .2   | .3   | .4   | .5   | .6   | .7   | .8   | .9   | H  |
|----|------|------|------|------|------|------|------|------|------|------|----|
| 0  | 8.0  | 8.2  | *8.3 | 8.5  | 8.6  | 8.8  | 8.9  | 9.1  | 9.2  | 9.4  | 0  |
| 1  | 9.5  | 9.7  | 9.8  | 10.0 | 10.1 | 10.3 | 10.4 | 10.6 | 10.7 | 10.9 | 1  |
| 2  | 11.0 | 11.2 | 11.3 | 11.5 | 11.6 | 11.8 | 11.9 | 12.1 | 12.2 | 12.4 | 2  |
| 3  | 12.5 | 12.7 | 12.8 | 13.0 | 13.1 | 13.3 | 13.4 | 13.6 | 13.7 | 13.9 | 3  |
| 4  | 14.0 | 14.2 | 14.3 | 14.5 | 14.6 | 14.8 | 14.9 | 15.1 | 15.2 | 15.4 | 4  |
| 5  | 15.5 | 15.7 | 15.8 | 16.0 | 16.1 | 16.3 | 16.4 | 16.6 | 16.7 | 16.9 | 5  |
| 6  | 17.0 | 17.2 | 17.3 | 17.5 | 17.6 | 17.8 | 17.9 | 18.1 | 18.2 | 18.4 | 6  |
| 7  | 18.5 | 18.7 | 18.8 | 19.0 | 19.1 | 19.3 | 19.4 | 19.6 | 19.7 | 19.9 | 7  |
| 8  | 20.0 | 20.2 | 20.3 | 20.5 | 20.6 | 20.8 | 20.9 | 21.1 | 21.2 | 21.4 | 8  |
| 9  | 21.5 | 21.7 | 21.8 | 22.0 | 22.1 | 22.3 | 22.4 | 22.6 | 22.7 | 22.9 | 9  |
| 10 | 23.0 | 23.2 | 23.3 | 23.5 | 23.6 | 23.8 | 23.9 | 24.1 | 24.2 | 24.4 | 10 |
| 11 | 24.5 | 24.7 | 24.8 | 25.0 | 25.1 | 25.3 | 25.4 | 25.6 | 25.7 | 25.9 | 11 |
| 12 | 26.0 | 26.2 | 26.3 | 26.5 | 26.6 | 26.8 | 26.9 | 27.1 | 27.2 | 27.4 | 12 |
| 13 | 27.5 | 27.7 | 27.8 | 28.0 | 28.1 | 28.3 | 28.4 | 28.6 | 28.7 | 28.9 | 13 |
| 14 | 29.0 | 29.2 | 29.3 | 29.5 | 29.6 | 29.8 | 29.9 | 30.1 | 30.2 | 30.4 | 14 |
| 15 | 30.5 | 30.7 | 30.8 | 31.0 | 31.1 | 31.3 | 31.4 | 31.6 | 31.7 | 31.9 | 15 |
| 16 | 32.0 | 32.2 | 32.3 | 32.5 | 32.6 | 32.8 | 32.9 | 33.1 | 33.2 | 33.4 | 16 |
| 17 | 33.5 | 33.7 | 33.8 | 34.0 | 34.1 | 34.3 | 34.4 | 34.6 | 34.7 | 34.9 | 17 |
| 18 | 35.0 | 35.2 | 35.3 | 35.5 | 35.6 | 35.8 | 35.9 | 36.1 | 36.2 | 36.4 | 18 |
| 19 | 36.5 | 36.7 | 36.8 | 37.0 | 37.1 | 37.3 | 37.4 | 37.6 | 37.7 | 37.9 | 19 |
| 20 | 38.0 | 38.2 | 38.3 | 38.5 | 38.6 | 38.8 | 38.9 | 39.1 | 39.2 | 39.4 | 20 |
| 21 | 39.5 | 39.7 | 39.8 | 40.0 | 40.1 | 40.3 | 40.4 | 40.6 | 40.7 | 40.9 | 21 |
| 22 | 41.0 | 41.2 | 41.3 | 41.5 | 41.6 | 41.8 | 41.9 | 42.1 | 42.2 | 42.4 | 22 |
| 23 | 42.5 | 42.7 | 42.8 | 43.0 | 43.1 | 43.3 | 43.4 | 43.6 | 43.7 | 43.9 | 23 |
| 24 | 44.0 | 44.2 | 44.3 | 44.5 | 44.6 | 44.8 | 44.9 | 45.1 | 45.2 | 45.4 | 24 |
| 25 | 45.5 | 45.7 | 45.8 | 46.0 | 46.1 | 46.3 | 46.4 | 46.6 | 46.7 | 46.9 | 25 |
| 26 | 47.0 | 47.2 | 47.3 | 47.5 | 47.6 | 47.8 | 47.9 | 48.1 | 48.2 | 48.4 | 26 |
| 27 | 48.5 | 48.7 | 48.8 | 49.0 | 49.1 | 49.3 | 49.4 | 49.6 | 49.7 | 49.9 | 27 |
| 28 | 50.0 | 50.2 | 50.3 | 50.5 | 50.6 | 50.8 | 50.9 | 51.1 | 51.2 | 51.4 | 28 |
| 29 | 51.5 | 51.7 | 51.8 | 52.0 | 52.1 | 52.3 | 52.4 | 52.6 | 52.7 | 52.9 | 29 |
| 30 | 53.0 | 53.2 | 53.3 | 53.5 | 53.6 | 53.8 | 53.9 | 54.1 | 54.2 | 54.4 | 30 |
| 31 | 54.5 | 54.7 | 54.8 | 55.0 | 55.1 | 55.3 | 55.4 | 55.6 | 55.7 | 55.9 | 31 |
| 32 | 56.0 | 56.2 | 56.3 | 56.5 | 56.6 | 56.8 | 56.9 | 57.1 | 57.2 | 57.4 | 32 |
| 33 | 57.5 | 57.7 | 57.8 | 58.0 | 58.1 | 58.3 | 58.4 | 58.6 | 58.7 | 58.9 | 33 |
| 34 | 59.0 | 59.2 | 59.3 | 59.5 | 59.6 | 59.8 | 59.9 | 60.1 | 60.2 | 60.4 | 34 |
| 35 | 60.5 | 60.7 | 60.8 | 61.0 | 61.1 | 61.3 | 61.4 | 61.6 | 61.7 | 61.9 | 35 |
| 36 | 62.0 | 62.2 | 62.3 | 62.5 | 62.6 | 62.8 | 62.9 | 63.1 | 63.2 | 63.4 | 36 |
| 37 | 63.5 | 63.7 | 63.8 | 64.0 | 64.1 | 64.3 | 64.4 | 64.6 | 64.7 | 64.9 | 37 |
| 38 | 65.0 | 65.2 | 65.3 | 65.5 | 65.6 | 65.8 | 65.9 | 66.1 | 66.2 | 66.4 | 38 |
| 39 | 66.5 | 66.7 | 66.8 | 67.0 | 67.1 | 67.3 | 67.4 | 67.6 | 67.7 | 67.9 | 39 |
| 40 | 68.0 | 68.2 | 68.3 | 68.5 | 68.6 | 68.8 | 68.9 | 69.1 | 69.2 | 69.4 | 40 |

Example—If point is 22.6 ft. above grade, how far should it be from center line to be a slope stake point? Ans. from Table 41.9. For same slopes but other widths of roadbed correct above figures by one-half difference in width of roadbed; thus in example above for 20 ft. roadbed distance will be 41.9 + (20 - 16) ÷ 2 or 2 ft. added to 41.9 = 43.9. For slopes of 1 on 1 see inside of front cover.

MADE IN U.S.A.