

1644

HETZ

FIELD BOOK

No. 769

TRAVERSE TABLE FOR TRANSIT BOOK.

From 1° to 90° for a distance of 100.

Degrees.	DEGREES.		1/2 DEGREE.		1/4 DEGREE.		1/4 DEGREE.		Degrees.
	Lat.	Dep.	Lat.	Dep.	Lat.	Dep.	Lat.	Dep.	
0	99.98	1.75	100.00	0.44	100.00	0.87	99.99	1.31	89
1	99.94	3.49	99.98	0.18	99.97	2.62	99.95	3.05	88
2	99.86	5.23	99.92	3.93	99.91	4.36	99.88	4.80	87
3	99.76	6.98	99.84	5.67	99.81	6.10	99.79	6.54	86
4	99.62	8.72	99.73	7.41	99.69	7.85	99.66	8.28	85
5	99.45	10.45	99.58	9.15	99.54	9.58	99.50	10.02	84
6	99.25	12.19	99.41	10.89	99.36	11.32	99.31	11.75	83
7	99.03	13.92	99.20	12.62	99.14	13.05	99.09	13.49	82
8	98.77	15.64	98.97	14.35	98.90	14.78	98.84	15.21	81
9	98.48	17.36	98.70	16.07	98.63	16.50	98.56	16.93	80
10			98.40	17.79	98.33	18.22	98.25	18.65	79
11	98.16	19.08	98.08	19.51	97.99	19.04	97.90	20.36	78
12	97.81	20.79	97.72	21.22	97.63	21.64	97.53	22.07	77
13	97.44	22.50	97.34	22.92	97.24	23.34	97.13	23.77	76
14	97.03	24.19	96.92	24.62	96.81	25.04	96.70	25.46	75
15	96.59	25.88	96.48	26.30	96.36	26.72	96.25	27.14	74
16	96.13	27.56	96.00	27.98	95.88	28.40	95.76	28.32	73
17	95.63	29.24	95.50	29.65	95.37	30.07	95.24	30.49	72
18	95.11	30.90	94.97	31.32	94.83	31.73	94.69	32.14	71
19	94.55	32.56	94.41	32.97	94.26	33.38	94.12	33.79	70
20	93.97	34.20	93.82	34.61	93.67	35.02	93.51	35.43	69
21	93.36	35.84	93.20	36.24	93.04	36.65	92.88	37.06	68
22	92.72	37.46	92.55	37.86	92.39	38.27	92.22	38.67	67
23	92.05	39.07	91.88	39.47	91.71	39.87	91.53	40.27	66
24	91.35	40.67	91.18	41.07	91.00	41.47	90.81	41.87	65
25	90.63	42.26	90.45	42.66	90.28	43.05	90.07	43.44	64
26	89.88	43.84	89.69	44.23	89.49	44.62	89.30	45.01	63
27	89.10	45.40	88.90	45.79	88.70	46.17	88.50	46.56	62
28	88.29	46.95	88.09	47.33	87.88	47.72	87.67	48.10	61
29	87.46	48.48	87.25	48.86	87.04	49.24	86.82	49.62	60
30	86.60	50.00	86.38	50.38	86.16	50.75	85.94	51.13	59
31	85.72	51.50	85.49	51.88	85.26	52.25	85.04	52.62	58
32	84.80	52.99	84.57	53.36	84.34	53.73	84.10	54.10	57
33	83.87	54.46	83.63	54.83	83.39	55.19	83.15	55.56	56
34	82.90	55.92	82.66	56.28	82.41	56.64	82.16	57.00	55
35	81.92	57.36	81.66	57.71	81.41	58.07	81.16	58.42	54
36	80.90	58.78	80.64	59.13	80.39	59.48	80.13	59.83	53
37	79.86	60.18	79.60	60.53	79.34	60.88	79.07	61.22	52
38	78.80	61.57	78.53	61.91	78.26	62.25	77.99	62.59	51
39	77.71	62.93	77.44	63.27	77.16	63.61	76.88	63.94	50
40	76.60	64.28	76.32	64.61	76.04	64.94	75.76	65.28	49
41	75.47	65.61	75.18	65.93	74.90	66.26	74.61	66.59	48
42	74.31	66.91	74.02	67.24	73.73	67.56	73.43	67.88	47
43	73.14	68.20	72.84	68.52	72.54	68.84	72.24	69.15	46
44	71.93	69.47	71.63	69.78	71.33	70.09	71.02	70.40	45
45	70.71	70.71							
Degrees.	Dep.	Lat.	Dep.	Lat.	Dep.	Lat.	Dep.	Lat.	Degrees.
	DEGREES.		1/2 DEGREE.		1/4 DEGREE.		1/4 DEGREE.		

Published by the A. LIETZ Co., San Francisco, Cal.

MADE IN
U. S. A.



Quality
Evidenced
Since
1882.

Standard
Tripod
Connection

LIETZ STANDARD ENGINEERS' TRANSIT
With U Shaped Standards

No. 5E with 6 1/4" limb.

No. 11E with 5" limb.

Furnished with either Internal or External
Focusing Telescope.

TABLE OF STADIA REDUCTIONS.—Continued.

Min.	24°		25°		26°		27°		28°		29°		30°	
	Hor. Dist.	Diff. Elev.	Hor. Dist.	Diff. Elev.	Hor. Dist.	Diff. Elev.	Hor. Dist.	Diff. Elev.	Hor. Dist.	Diff. Elev.	Hor. Dist.	Diff. Elev.	Hor. Dist.	Diff. Elev.
0	83.46	37.16	82.14	38.30	80.78	39.40	79.39	40.45	77.96	41.45	76.50	42.40	75.00	43.30
2	83.41	37.20	82.09	38.34	80.74	39.44	79.34	40.49	77.91	41.49	76.45	42.43	74.95	43.33
4	83.37	37.23	82.05	38.38	80.69	39.47	79.30	40.52	77.86	41.52	76.40	42.46	74.90	43.36
6	83.33	37.27	82.01	38.41	80.65	39.51	79.26	40.55	77.81	41.55	76.35	42.49	74.85	43.39
8	83.29	37.31	81.96	38.45	80.61	39.54	79.22	40.58	77.77	41.58	76.31	42.52	74.81	43.42
10	83.24	37.35	81.92	38.49	80.55	39.58	79.15	40.62	77.72	41.61	76.25	42.55	74.75	43.45
12	83.20	37.39	81.87	38.53	80.51	39.61	79.11	40.66	77.67	41.65	76.20	42.59	74.70	43.47
14	83.15	37.42	81.82	38.56	80.46	39.65	79.06	40.70	77.62	41.69	76.15	42.62	74.65	43.50
16	83.11	37.46	81.78	38.60	80.42	39.68	79.02	40.73	77.58	41.72	76.11	42.65	74.61	43.53
18	83.07	37.51	81.74	38.64	80.37	39.72	78.98	40.76	77.54	41.75	76.06	42.68	74.56	43.55
20	83.02	37.54	81.69	38.67	80.32	39.75	78.93	40.79	77.49	41.77	76.00	42.71	74.49	43.58
22	82.98	37.58	81.65	38.71	80.28	39.79	78.87	40.82	77.44	41.81	75.95	42.74	74.44	43.62
24	82.93	37.62	81.60	38.75	80.23	39.82	78.82	40.85	77.39	41.84	75.90	42.77	74.39	43.65
26	82.89	37.66	81.56	38.78	80.18	39.85	78.77	40.88	77.34	41.87	75.85	42.80	74.34	43.68
28	82.85	37.70	81.51	38.82	80.14	39.89	78.73	40.92	77.29	41.90	75.80	42.83	74.29	43.70
30	82.80	37.74	81.47	38.85	80.09	39.93	78.68	40.95	77.23	41.93	75.75	42.86	74.24	43.73
32	82.76	37.77	81.42	38.89	80.04	39.97	78.63	40.99	77.18	41.97	75.70	42.89	74.19	43.76
34	82.72	37.81	81.38	38.92	80.00	39.99	78.58	41.02	77.13	42.00	75.65	42.92	74.14	43.79
36	82.67	37.85	81.33	38.97	79.95	40.04	78.54	41.05	77.08	42.03	75.60	42.95	74.09	43.82
38	82.63	37.89	81.29	39.00	79.90	40.07	78.49	41.09	77.04	42.06	75.55	42.98	74.04	43.84
40	82.58	37.93	81.24	39.04	79.86	40.11	78.44	41.12	76.99	42.09	75.50	43.01	73.99	43.87
42	82.54	37.96	81.19	39.08	79.81	40.14	78.39	41.15	76.94	42.12	75.45	43.04	73.93	43.90
44	82.49	37.99	81.15	39.11	79.77	40.18	78.34	41.18	76.89	42.15	75.40	43.07	73.88	43.93
46	82.45	38.04	81.10	39.15	79.72	40.21	78.30	41.22	76.84	42.19	75.35	43.10	73.83	43.95
48	82.41	38.08	81.05	39.18	79.67	40.24	78.25	41.25	76.79	42.22	75.30	43.13	73.78	43.98
50	82.36	38.11	81.01	39.22	79.62	40.28	78.20	41.29	76.74	42.25	75.25	43.16	73.73	44.01
52	82.32	38.15	80.97	39.25	79.58	40.31	78.15	41.32	76.69	42.28	75.20	43.19	73.68	44.04
54	82.27	38.19	80.92	39.29	79.53	40.35	78.10	41.35	76.64	42.31	75.15	43.21	73.63	44.07
56	82.23	38.23	80.87	39.33	79.48	40.38	78.05	41.39	76.59	42.34	75.10	43.24	73.58	44.10
58	82.18	38.26	80.83	39.36	79.44	40.42	78.01	41.42	76.55	42.37	75.05	43.27	73.53	44.12
60	82.14	38.30	80.78	39.40	79.39	40.45	77.96	41.45	76.50	42.40	75.00	43.30	73.47	44.15
c= 75...	68	31	.68	32	.67	.33	.66	.35	.66	.36	.65	.37	.65	.38
c=1.15...	1.05	48	1.04	50	1.03	51	1.02	.58	1.01	55	1.00	.57	0.99	.58
c=1.90...	1.73	79	1.72	82	1.70	85	1.69	.86	1.67	91	1.65	.84	1.64	.85

Published by the A. Lutz Co., San Francisco, Cal.

Myrtle St. 37 to Wilson
Madison - 30th - Kansas

1-16
17-24

Lynn St. Lamont to Grasham 25-40
Jewett St Chalcedony to Beryl 41-44
Kendall Alley N. 45-47
Missouri Jewett to 1/2 way to Lamont 48-50
Where Kendall would connect

Bliss
Sommer Myer
Begg

60' 5"
10' 6"
10' 4"

Indexed
C.S.K.

9/16/92 X-Section Myrtle St from 187' East of

37th to W. line of Wilson

BM. 2.69 313.93 310.74 NW 89
37th Myrtle

Elm 37th - 187

N 13.1 300.3

cb 13.3 300.1

1/3 13.3 300.1

1/4 15.2 298.2

1/2 16.0 297.4

1/4 16.0 297.4

cb 17.5 295.9

S 18.0 295.4

S+10 22.0 291.4

Elm 37th - 180

S-10 20.0 293.4

S 17.0 296.4

cb 15.0 298.4

1/4 12.5 300.9

1/2 11.8 301.6

1/4 11.2 302.2

cb 10.9 302.5

N 12.1 301.3

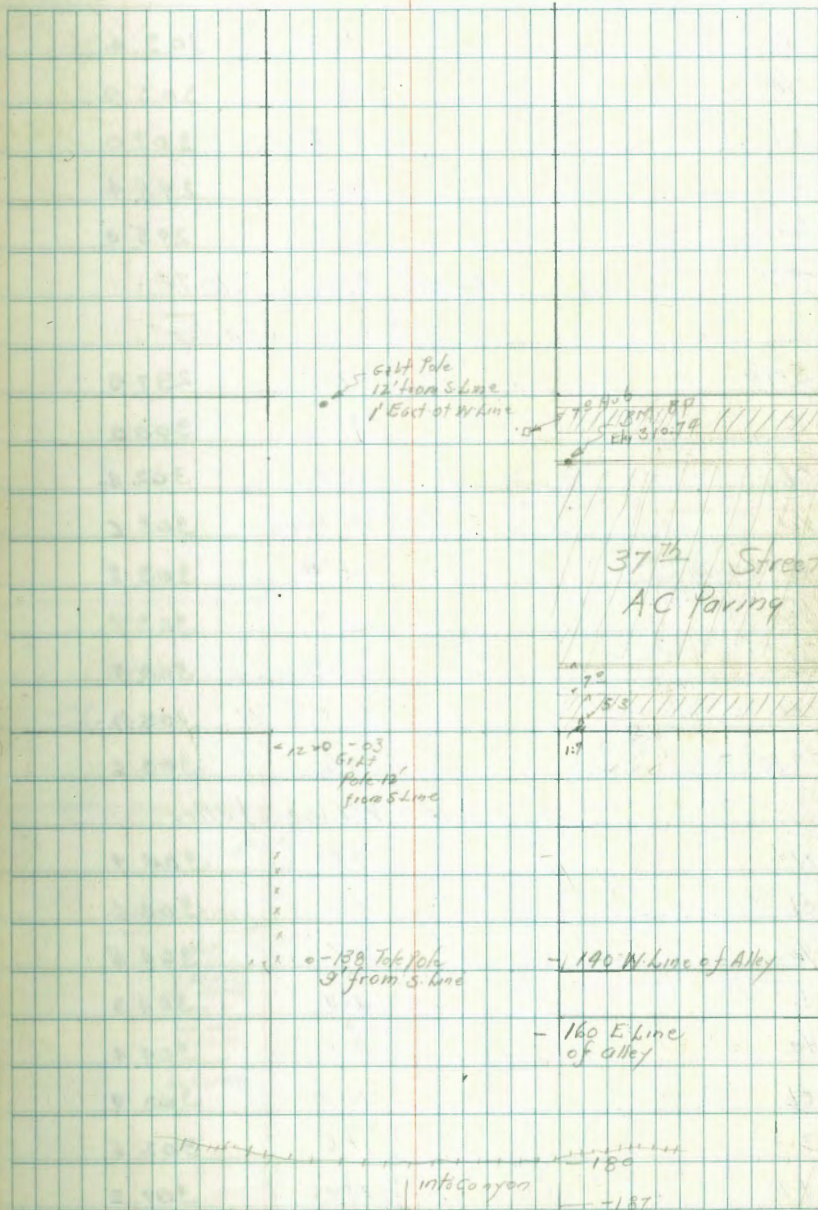
- 165

N 9.8 303.6

cb 9.8 303.6

1/4 9.8 303.6

Notes Reduced & Plotted on Profile # 652
9-21-1942 C.B. Hough



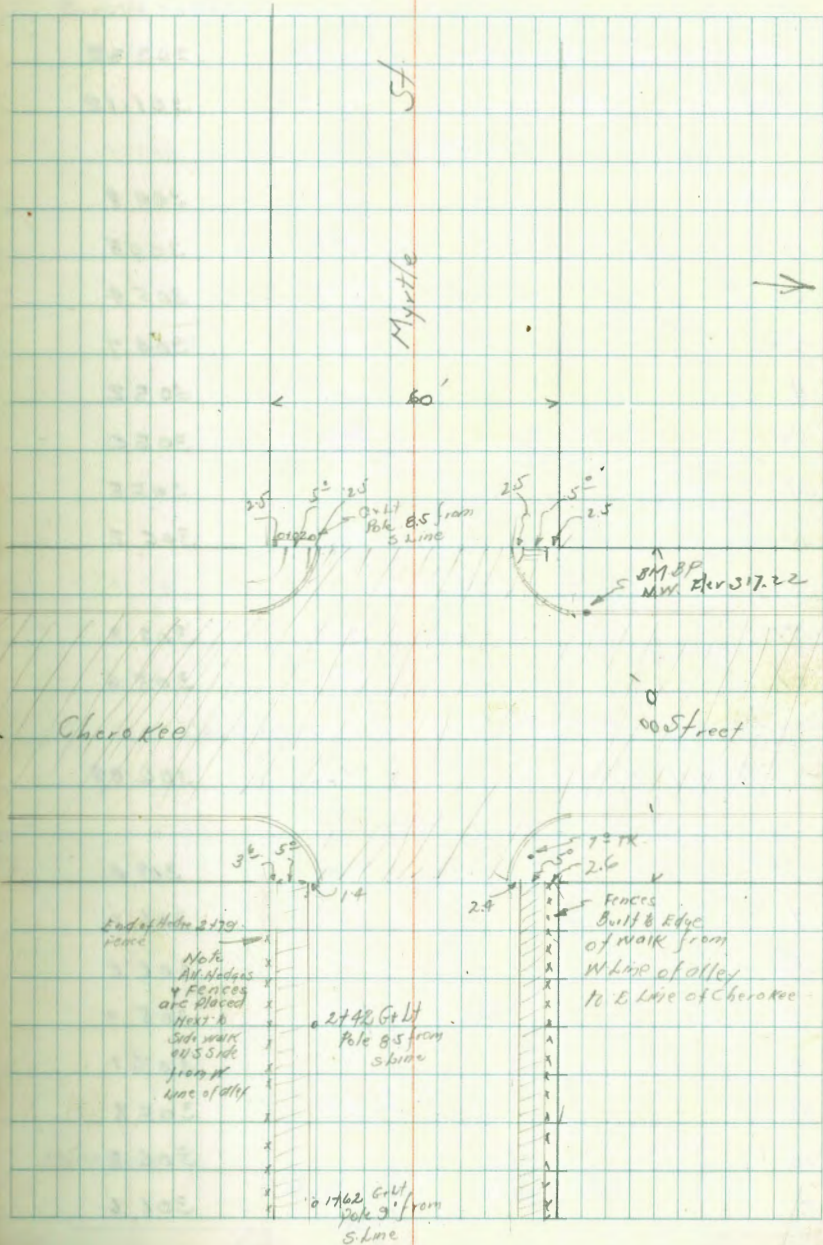
E.		10.0	303.4
1/4		10.4	303.0
cb		11.4	302.0
S		15.0	298.4
S+10		17.5	295.9
T.P.	350	314.24	269 310.74

-160 E line of alley

S-10		17.2	297.0
S		14.2	300.0
cb		11.8	302.4
1/4		10.6	303.6
E		10.4	303.8
1/4		10.4	303.8
cb		10.5	303.7
N		10.5	303.7
7/10		10.6	303.6

-140 W line of alley

N		9.5	304.7
cb		9.6	304.6
1/4		9.7	304.5
E		9.9	304.3
1/4		9.8	304.4
cb		10.3	303.9
S		11.6	302.6
S+10		13.0	301.2



T
3142A

- 133 ct. Simple Garage on South

ct. of Drive way on South 1' Back	10.92	303.32
Floor Garage 225 Back floor	13.12	301.12

- 122

S-10	9.4	304.8
S	9.4	304.8
cb	8.8	305.4
1/4	9.5	304.7
1/4	9.0	305.2
1/4	9.2	305.0
cb	8.7	305.5
N	8.0	306.2

- 121

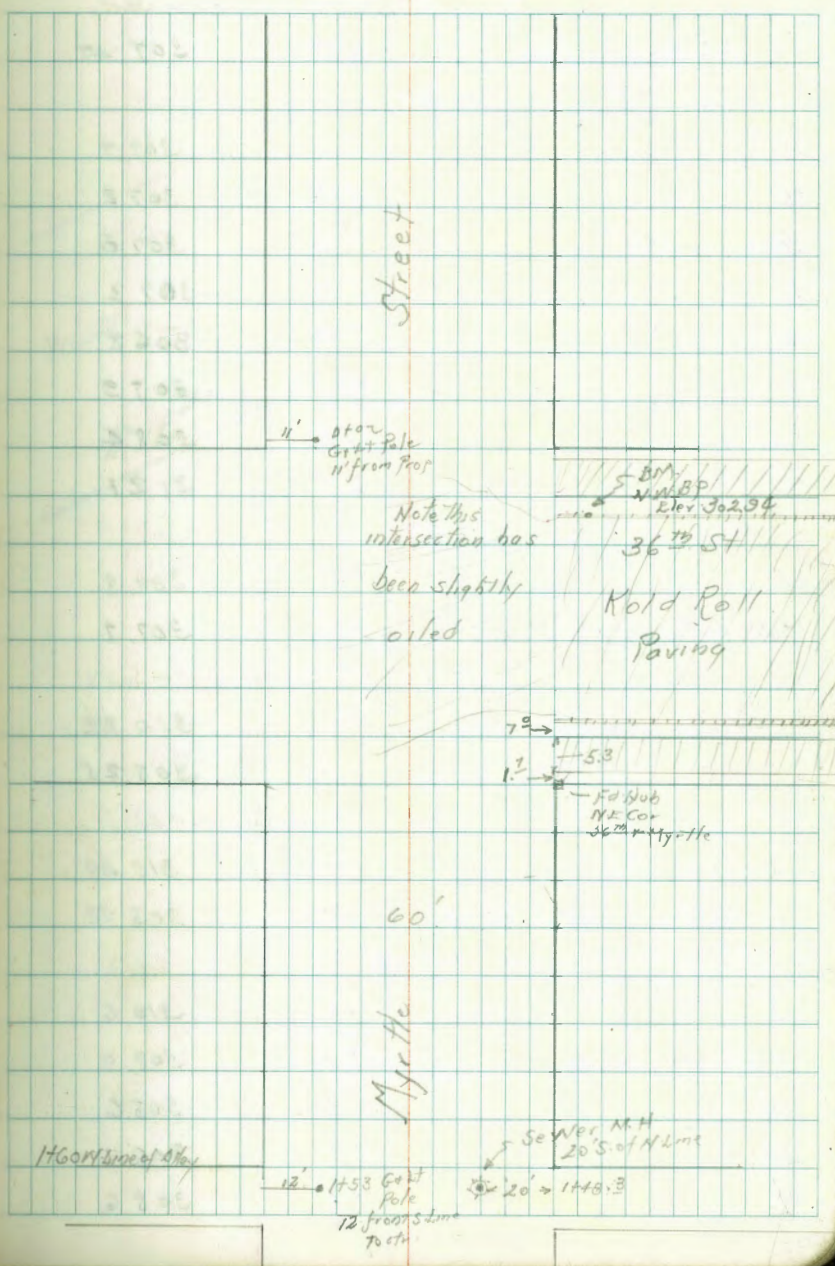
N	5.9	308.3
cb	8.7	305.6

- 101 2' Walk on South

ct. walk 2' Back	7.25	306.99
------------------	------	--------

- 100

N	9.8	309.4
77	7.4	306.8
cb	7.6	306.6
1/4	8.5	305.7
1/4	8.1	306.1
1/4	8.4	305.8
cb	7.9	306.3
S	7.6	306.6



Street

Note this intersection has been slightly oiled

Roll Roll Paving

60'

Myrtle

1760 ft. level of 4th

Sewer M.H. 20' S. of N. Line

12' at 12' from Pole 12' from 5' line to ct.

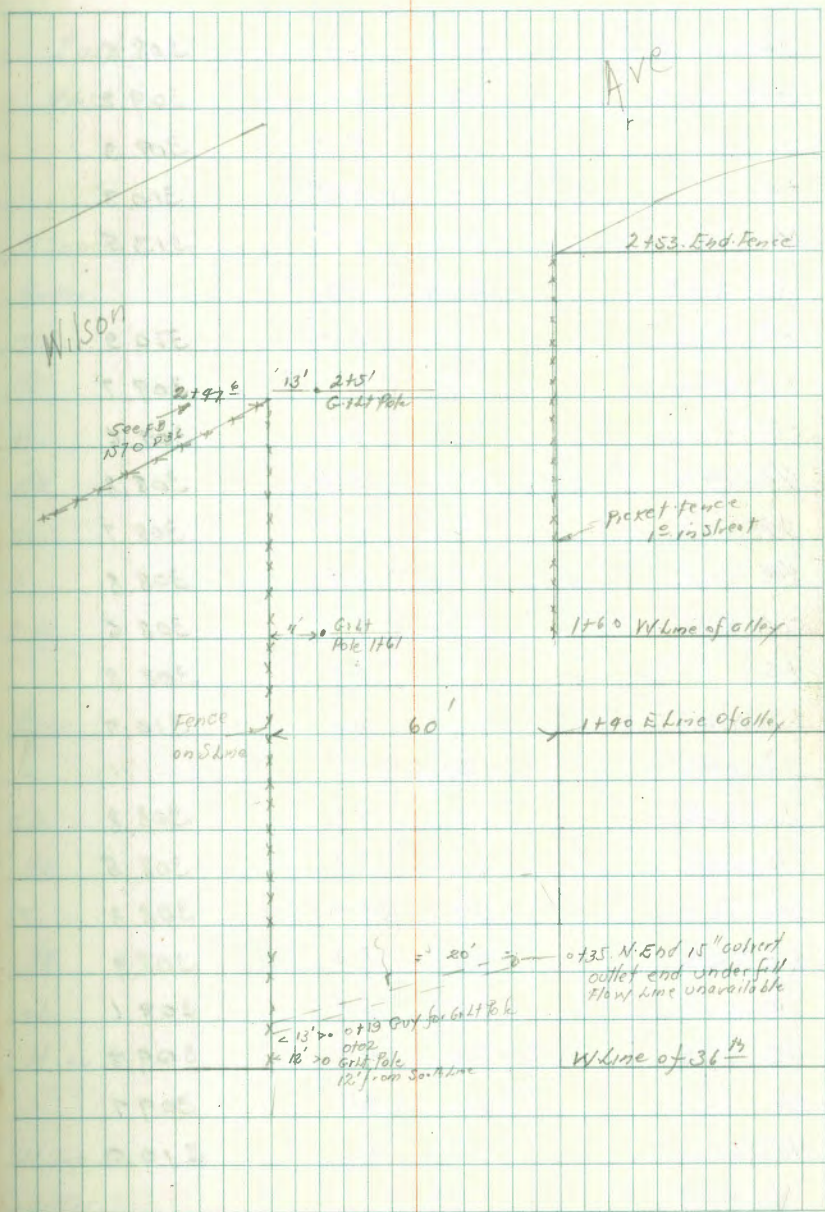
20' at 20' from 4th

Fid. Job N.E. Cor. 36th & Myrtle

T
314.24

55 Single Garage on South

1.5 Back Can floor	6.77	307.47
	- 50	
S	6.5	307.7
ob	7.0	307.2
1/4	7.2	307.0
2	7.0	307.2
1/4	7.4	306.8
ob	6.3	307.9
+3	5.8	308.4
N	2.1	312.1
	- 47	
S	4.4	309.8
+3	6.5	307.7
	- 39	ct 3 stairway on South
cta Can steps Top step	4.02	310.22
3.5 in street Bottom "	5.99	308.25
	- 24	ct 4 stairway 4 steps
Top step	3.75	310.49
Bottom " 3.5 in street	5.52	308.72
	- 08	
S	3.6	310.6
+3	5.3	308.9
ob	5.6	308.6
1/4	5.5	308.7
2	5.6	308.6



1/4	5.6	308.6
+5	5.0	309.2
cb	4.9	309.3
+4	3.9	310.3
N	0.7	313.5
E line of 37 th		
N	3.3	310.9
+7	4.5	309.7
cb	4.6	309.6
1/4	5.4	308.8
2	5.5	308.7
1/4	5.4	308.8
cb	5.6	308.6
+5	5.4	308.8
S	3.5	310.7
E line + 7		
S	5.4	308.8
cb	5.7	308.5
1/4	5.4	308.8
2	5.3	308.9
1/4	5.1	309.1
+5	4.5	309.7
cb	4.5	309.7
N	4.2	310.0

East Edge of Walk	3.77	310.47
West " " "	3.92	310.32
Ecb Line of 37 th		
N Top cb	4.05	310.19
Gutter	4.65	309.59
cb	4.7	309.5
1/4	5.4	308.8
2	5.4	308.8
1/4	5.7	308.5
cb	5.8	308.4
S	5.9	308.3
+10	5.8	308.4
2		
S-10	5.2	309.0
S	5.2	309.0
cb	5.3	308.9
1/4	5.2	309.0
2	4.8	309.4
1/4	4.4	309.8
cb	4.1	310.1
N on Porch	3.71	310.53
Wcb of 37 th		
N Top cb	3.70	310.54
Gutter	4.36	309.88

π
314.24

N+3	4.6	309.6
cb	5.1	309.1
1/4	5.4	308.8
2	5.3	308.9
1/4	5.3	308.9
cb	5.4	308.8
S	5.9	308.3
+10	6.7	307.5

Ncb? 7 inside Edge of walk on N

inside edge	3.53	310.71
outside " 53 walk	3.37	310.87

W. Line of 37th - 00

S-10	5.7	308.5
S	5.1	309.1
cb	4.9	309.3
1/4	5.1	309.1
2	4.7	309.5
1/4	4.4	309.8
cb	4.3	309.9
+3	3.4	310.8
N	3.0	311.2
	0+04	313.8
N	1.8	312.4
+3	2.7	311.5
+8	3.2	311.0

π
314.24

6

0135

N	2.2	312.0
+7	2.8	311.4
cb	3.6	310.6
1/4	3.5	310.7
2	3.9	310.3
1/4	4.5	309.7
+3	4.5	309.7
+5	4.1	310.1
cb	4.2	310.0
S	4.9	309.3
+10	6.0	308.2

0170

S-10	4.8	309.4
S	4.0	310.2
cb	3.6	310.6
1/4	4.0	310.2
2	3.5	310.7
1/4	3.3	310.9
cb	3.2	311.0
+2	2.5	311.7
N	1.9	312.3
	1+00	
N	1.3	312.9
+7	1.7	312.5
cb	2.7	311.5

1/4	26	311.6
1/2	29	311.3
1/4	31	311.1
1/2	33	310.9
cb	28	311.4
S	33	310.9
110	38	310.9

1715 2' Walk on South

chk on S Line	3.00	311.24
---------------	------	--------

1740 E Line of alley

S-10	20	312.2
S	20	312.2
cb	18	312.4
1/4	1.8	312.4
1/2	2.3	311.9
1/4	2.1	312.1
1/2	1.8	312.4
1/4	1.7	312.5
cb	1.6	312.6
N	0.8	313.4

T.P.	8.52	321.69	1.07	313.17
------	------	--------	------	--------

1760 W Line of alley

N	7.6	314.1
+2.6 N Side s' Walk	7.84	313.85
+2.6 S " " "	7.95	313.74

cb	8.4	313.3
1/2	8.5	312.8
1/4	8.7	313.0
1/2	8.7	313.0
1/4	9.1	312.6
1/2	9.3	312.4
1/5	9.0	312.7
cb	8.9	312.8
+1.4 inside edge s' Walk	8.83	312.86
+6.9 outside " " "	8.81	312.88
S	8.8	312.9
	2.00	
S	7.6	314.1
+3.6	8.07	313.62
+8.6	8.10	313.59
cb	8.3	313.4
1/8	8.6	313.1
1/4	8.3	313.4
1/2	7.9	313.8
1/4	7.8	313.9
1/2	7.8	313.9
+2.4 Edge of Walk	7.06	314.63
+7.4 " " "	6.98	314.71
N	6.6	315.1

2+50

N		5.2	316.5
+2.6	Edge of walk	5.94	315.75
+7.6	" " "	6.05	315.64
cb		6.4	315.3
1/4		6.6	315.1
1/2		6.7	315.0
1/4		7.1	314.6
cb		7.2	314.5
+ 1.4	Edge walk	7.14	314.55
+ 6.4	" "	7.12	314.57
S. c.		6.6	315.1

2+58² E. line of Cherokee

S		6.2	315.5
+3.6	Edge of walk	6.2	315.48
+8.6	" " "	6.16	315.53
cb		6.14	315.55
Gutter		6.72	314.97
1/4		5.96	315.73
1/2		5.58	316.11
1/4		5.47	316.22
Gutter		5.72	315.97
Top cb		5.08	316.61
+ 2.4	Edge walk	4.91	316.78
+ 7.4	" "	4.60	317.09
N		4.3	317.4

check BM NW. B.P. Cherokee 4.97 317.22
 W. line of Cherokee = 0.0

N		4.5	317.2
+2.5 N	Edge of walk	4.67	317.02
+7.5 S	" " "	5.05	316.64
N	Top cb	5.28	316.41
Gutter		5.82	315.83
1/4		5.65	316.04
1/2		5.65	316.04
1/4		5.92	315.77
Gutter		6.40	315.29
S. Top cb		5.86	315.83
+ 2.5	Edge walk	5.83	315.86
+7.5	" "	5.80	315.85
S		6.2	315.5

0+50

S-S		8.3	313.4
S		8.5	313.2
cb		8.1	313.6
+3		8.3	313.4
1/4		8.0	313.7
1/2		7.6	314.1
1/4		7.3	314.4
cb		7.3	314.4
+2		6.5	315.2

π
321.69

N	5.6	316.1
	1700	
N	7.6	314.1
cb	8.3	313.4
+1	8.8	312.9
+5	8.5	313.2
1/4	8.7	313.0
£	9.0	312.7
1/4	9.6	312.1
+6	10.1	311.6
+8	9.6	312.1
cb	9.6	312.1
S	10.0	311.7
+10	10.1	311.6
	1740 - E Line of alley	
-10	12.0	309.7
S	11.4	310.3
cb	11.1	310.6
+3	11.0	310.7
+6	11.4	310.3
1/4	11.2	310.5
£	10.4	311.1
1/4	10.9	311.3
cb	10.3	311.4
N	9.3	312.4

π
321.69

9

T.P.	2.13	313.36	10.46	311.23
			1743 - Sewer MH - 20' S of N line	
	Pm		2.30	311.06
	1.9		1760 W line of alley	Note fences on south side of alley that check this
N	2.31		1.8	311.6
cb	1.9		2.6	310.8
1/4	1.9		3.2	310.2
£	2.2		3.4	310.0
1/4	2.7		4.0	309.4
+3	2.3		4.3	309.1
+5	2.3		3.1	310.3
cb	1.9		3.3	310.1
S	2.2		3.9	309.5
+10	2.2		4.4	309.0
			2100	
-10	5.1		6.7	306.7
S	5.2		6.3	307.1
cb	4.1		5.9	307.5
+3	4.1		5.7	307.7
+5	3.8		6.6	306.8
1/4	3.9		6.2	307.2
£	3.8		5.7	307.7
1/4	3.9		5.7	307.7
cb	3.9		5.9	307.5
+3	3.9		5.6	307.8

2100

cb15. 3.5 309.9

N 3.5 309.9

2125

N 4.3 309.1

t4 7.1 306.3

cb 7.3 306.1

1/4 7.3 306.1

2 7.1 306.3

1/4 7.6 305.8

t5 8.1 305.3

t7 7.4 306.0

cb 7.6 305.8

S 8.1 305.3

t10 8.6 304.8

2150

-10 10.2 303.2

S 9.6 303.8

cb 9.0 304.4

t2 8.8 304.6

t5 9.8 303.6

1/4 9.3 304.1

2 8.6 304.8

1/4 8.8 304.6

cb 8.7 304.7

t3 8.7 304.7

t6 6.6 307.8

N 6.5 307.9

2175

N 7.2 306.2

t7 8.4 305.0

cb 9.6 303.8

t2 10.2 303.2

1/4 10.2 303.2

2 10.0 303.4

1/4 10.6 302.8

t5 11.1 302.3

cb 10.3 303.1

S 10.7 302.7

t10 11.3 302.1

2190

-10 12.4 301.0

S 12.2 301.2

cb 11.3 302.1

1/4 11.4 302.0

2 11.2 302.2

1/4 11.1 302.3

t5 10.7 302.7

cb 9.8 303.6

N 8.8 304.6

7
31336249.38 E Line of 36th

N	9.8	303.6
cb	10.5	302.9
1/4	11.1	302.3
£	11.5	301.9
1/4	11.6	301.8
cb	11.6	301.8
S.	12.2	301.2
+10	12.4	301.0

E Line +17 Edge mark

outside edge mark	9.81	303.55
53mm. 105 side Edge mark	9.96	303.40

E cb of 36th

S-10	12.5	300.9
S.	11.9	301.5
cb	12.0	301.4
1/4	12.0	301.4
£	12.0	301.4
1/4	11.6	301.8
cb	11.4	302.0
N. Gutter	10.74	302.62
N. Top cb	10.14	303.22

E 1/4

N on Roll Roll	10.08	303.31
cb	11.0	302.4
1/4	11.6	301.8

7
31336

11

£	12.2	301.2
1/4	12.6	300.8
cb	12.4	301.0
S.	12.9	300.5
+10	12.7	300.7
£ of 36 th		
-15	21.9	291.5
-5	19.0	294.4
S.	16.9	296.5
+5	14.3	299.1
cb	13.6	299.8
13	13.0	300.4
1/4	13.2	300.2
+3 Roll Roll	13.1	300.3
£	12.5	300.9
1/4	11.6	301.8
cb	10.8	302.6
N	10.06	303.30
W 1/4		
N	10.54	302.82
cb	11.3	302.1
1/4	12.1	301.3
£	13.0	300.4
1/4	13.8	299.6
cb	14.0	299.4

+5	15.4	298.0
S.	16.8	296.6
+10	20.4	293.0
+20	25.2	288.2
W. cb		
-15	20.3	293.1
S	17.0	296.4
15	14.5	298.9
cb.	14.5	298.9
+5	13.8	299.6
1/4	13.9	299.5
+2 - Kold Roll	14.0	299.4
8	13.5	299.9
1/4	13.1	300.3
+5	12.2	301.2
cb	12.0	301.4
N. Gutter	11.31	302.05
N. Top cb.	10.65	302.71
E. Edge of Walk		
+7	10.90	302.96
+12.3	10.30	303.06
W. line of 36 th = 00		
N	10.8	302.6
cb	11.8	301.8
+9 ch Kold Roll Gutter	13.0	300.4
1/4	12.5	300.9

+2			12.6	300.8	
+9			13.5	299.9	
8			14.0	299.4	
1/4			14.1	299.3	
cb			14.6	298.8	
+5			16.5	296.9	
S			17.8	295.6	
+5			20.0	293.4	
+15			20.8	292.6	
TP	1.28	304.22	10.42	302.94	
0/20					
-20			11.6	292.6	
S			11.2	293.0	
+3			10.1	294.1	
cb			6.0	298.2	
+2			5.2	299.0	
1/4			5.3	298.9	
8			5.1	299.1	
+5			5.0	299.2	
1/4			7.8	296.4	
cb			7.3	296.9	
N			3.2	301.0	
+5			1.4	302.8	
+35 - North End 15" gutter					
Flow line .20' from N line				11.35	292.27

0+40

N-10	7.0	297.2
N	10.5	293.7
cb	10.1	294.1
1/4	10.6	293.6
+8	5.2	299.0
5	5.2	299.0
1/4	5.9	298.8
cb	5.2	299.0
+5	7.1	297.1
+9	8.3	295.9
S	11.3	292.9
+20	12.0	292.2

0+45

S-20	8.1	296.1
S	7.7	296.5
+1	6.9	297.8
+6	6.0	298.2
cb	4.8	299.4
1/4	5.1	299.1
5	5.0	299.2

0+60

S-20	5.0	299.2
S	5.5	298.7
cb	4.8	299.4
1/4	4.7	299.5

5		4.2	300.0
+3		4.2	300.0
1/4		8.0	296.2
cb		3.0	295.2
N		10.4	293.8
+20		10.0	294.2

0+75

N-20		10.2	294.0	
N		7.7	296.5	
TP	870	310.11	2.81	301.41
+7		11.7	298.4	
cb		11.0	299.1	
1/4		10.2	299.9	
+7		9.2	300.9	
5		9.9	300.2	
1/4		9.8	300.3	
cb		5.7	300.4	
S		10.0	300.1	
+10		9.4	300.7	
+20		9.2	300.9	

1+00

-20		6.7	303.4
-10		7.0	303.1
S		6.8	303.3
+5		7.5	302.6

cb	7.7	302.4
1/4	8.0	302.1
2	8.0	302.1
1/4	8.1	302.0
cb	8.1	302.0
N	8.3	301.8
+08	8.5	301.6
+15	9.5	300.6

1120

N-10	6.5	303.6
N	6.0	304.1
cb	5.8	304.3
1/4	5.6	304.5
2	5.8	304.3
1/4	6.0	304.1
cb	5.5	304.6
S	5.1	305.0
+10	5.0	305.1

1140 Elm of Alley

S-10	3.6	306.5
S	3.6	306.5
cb	3.8	306.3
1/4	3.9	306.2
2	3.9	306.2
1/4	3.9	306.2

cb	4.1	306.0
N	3.9	306.2
+10	3.8	306.3

1160 Elm of Alley

N-10	2.5	307.6
N	2.2	307.9
cb	2.3	307.8
1/4	2.2	307.9
2	2.3	307.8
1/4	2.4	307.7
cb	2.4	307.7
S	2.6	307.5
+5	2.6	307.5

TP 5.27 313.29 2.09 308.02

1180

S-10	6.0	306.3
S	5.3	308.0
cb	5.1	308.2
1/4	4.8	308.5
2	4.3	309.0
1/4	4.2	309.1
cb	4.1	309.2
N	3.9	309.4
+10	3.5	309.4

2100

N+5	2.8	310.5
N	3.1	310.2
cb	3.4	309.9
1/4	3.5	309.8
£	4.0	309.3
1/4	4.5	308.8
cb	4.9	308.4
S	5.4	307.8
+10	6.2	307.1

2125

S-10	7.8	305.5
S	6.0	306.7
+5	6.3	307.0
cb	5.8	307.5
1/4	5.0	308.3
£	4.6	308.7
1/4	3.8	309.5
cb	3.4	309.9
N	2.8	310.5
+5	2.6	310.7

opp. 2147.6 SE. Co. Wilson & Myrtle

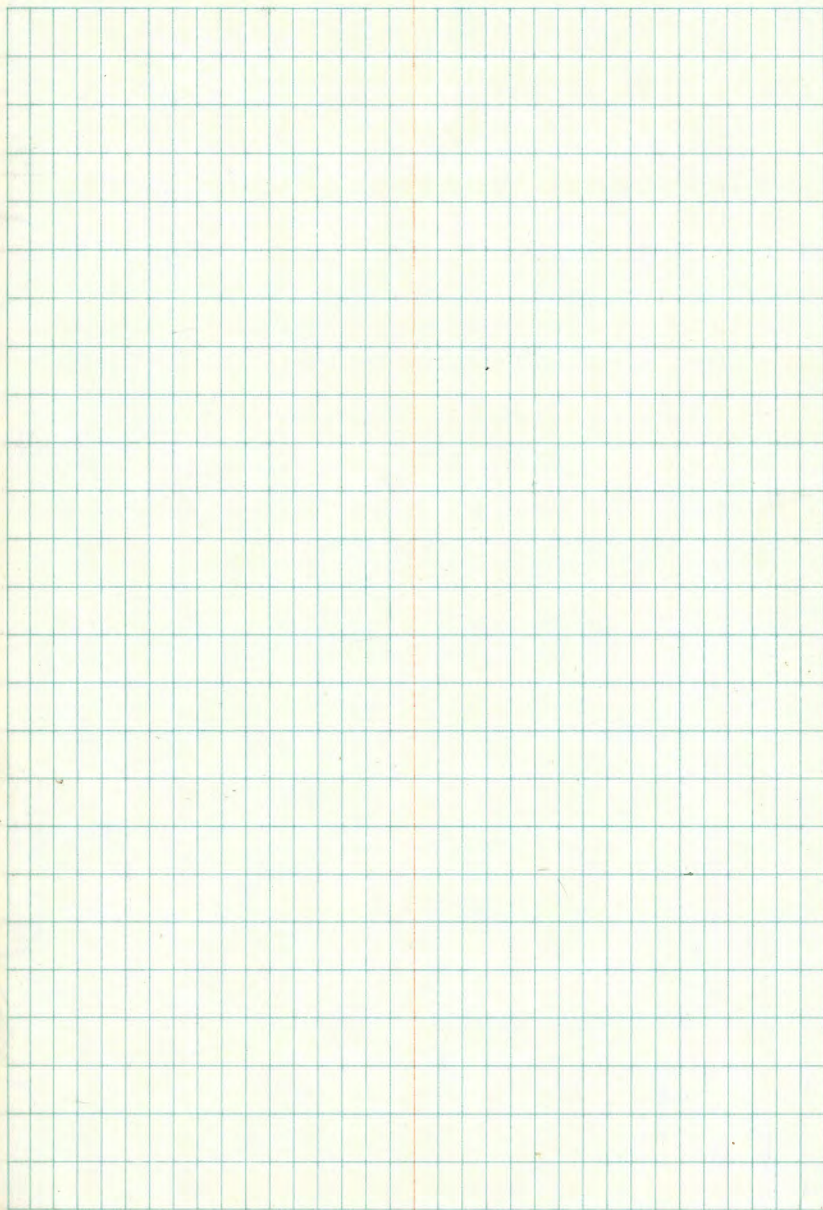
-5	3.3	310.0
N	3.6	309.7
cb	4.3	309.0
1/4	5.0	308.3

£	5.6	307.7
1/4	6.7	306.6
cb	7.2	306.1
S	8.7	304.0
+10	9.8	303.5
	2162	
S-10	10.3	303.0
S	9.8	303.9
cb	8.5	304.8
1/4	7.6	305.7
£	6.8	306.9
1/4	5.7	307.6
cb	5.1	308.2
N	4.3	309.0
+5	3.7	309.6
	2180	
-5	4.9	308.4
N	5.2	308.1
cb	5.6	307.7
+5	5.9	307.4
1/4	7.2	306.1
£	8.1	305.2
+5	9.3	304.0
+5	10.2	303.1
1/4	9.8	303.5

T
313.29

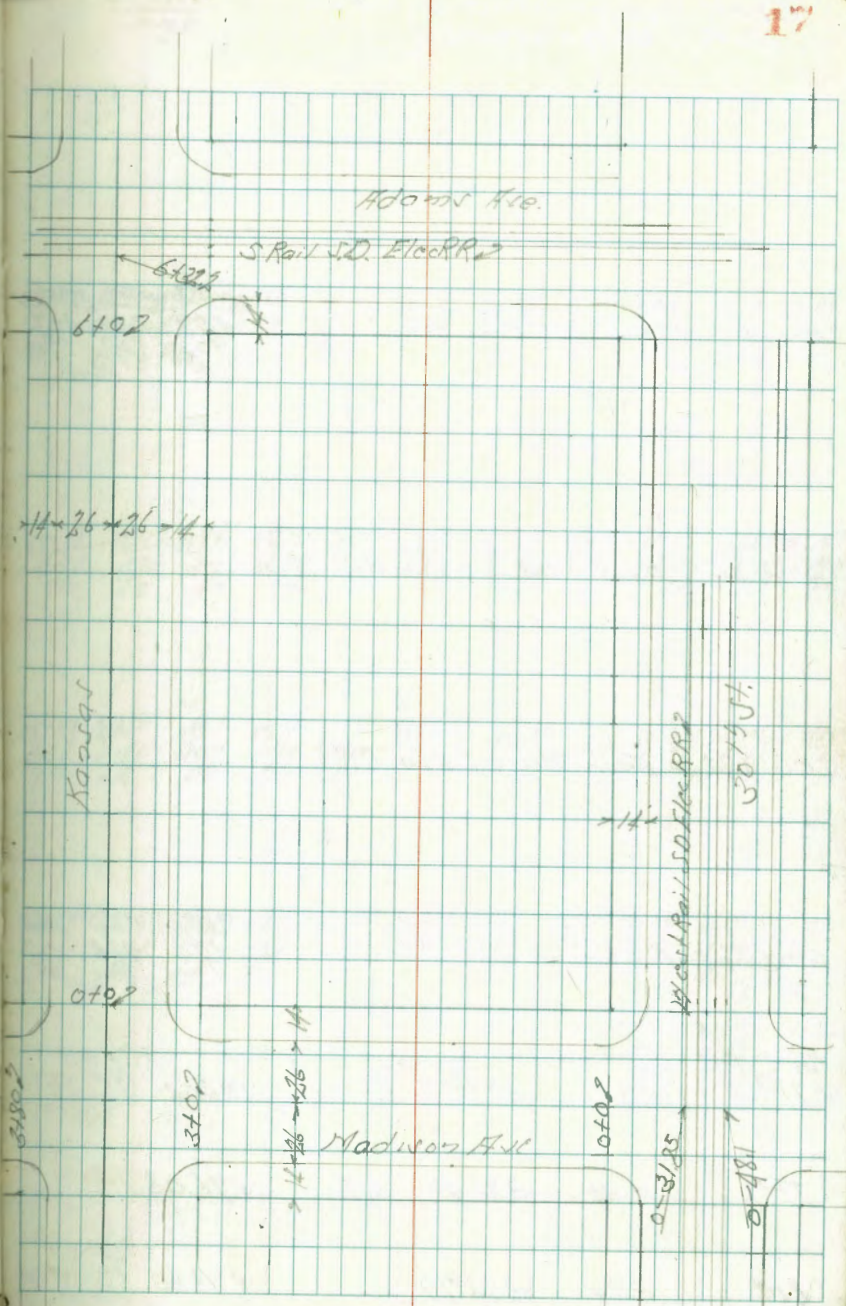
75	9.8	303.5	
06	11.2	302.1	
5	12.8	300.5	
+10	14.5	298.8	
check PM	10.35	302.94	NW BP 36 th M th

16



Cross Section Madison Ave 30th to Kansas
" " Kansas St. Madison to Adams

Oct 22-42
Sisson
Hazard



Cross Section Madison Ave.
30th St to Kaoser St.

Indexed
c.s.k.

0-14 = HCB Line 30th St.

38458	38398	38401
479	529	454
90-cb	90-90	65-cl

0-3185 = West Rail S.D. Elec RR.

0-481 = East Rail S.D. Elec RR.

0-66 = FCB Line 30th St.

38543	38472	38520
394	465	367
90-cb	90-90	65-cl

TP 3.93 38937 0.38 38604 SE-PP
Madison
30th St
385.00.

TP 10.34 38642 6.71 376.08

BM 3.94 382.79 378.85 SE-PP
Madison
30th St

41-5

2

Rt. 11

18

38422	38514	38450	38485	38524	38525	38528	38529	38464	38518	38475
511	453	487	455	413	408	409	443	473	419	462
65-90	90-cb	40-90	26	13		13	26	15-90	40-cb	65-cl

411
65-cb

412
90-90

401
90-cb

38473	38512	38544	38549	38546	38545	38583	38534	38555	38564	38580
454	425	597	688	488	588	584	584	582	573	567
90	85	40	26	13		13	26	40	65	90

38479	38526	38520	38538	38444	38552	38554	38567	38553	38560	38581
458	431	407	598	691	585	583	585	583	570	568
90	85	40	26	13		13	26	40	85	90

38504	38494	38527	38531	38526	38525	38550	38525	38545	38415	38524
483	2.25	410	408	401	392	387	371	372	3.27	363
65-90	40-cb	40-90	26	13		13	26	40	90-90	65-cl

38521 38486 38620
374 6.47 5.07
625 90-90 90-cb

2+0

1+60 = N Line Alley

+50

1+40 = E Line Alley

P 1.02 38241 7.98 38139

1+0

0+50

0+0 = N Line Alley

38937

329 61	329 09	329 64	329 89	329 84	329 63	329 31
2.00	2.22	2.95	2.52	2.57	2.78	2.19
26	26	13		13	26	26
26	26				26	26

329 53	329 18	329 64	329 96	329 28	329 64	329 18
1.88	2.23	1.77	1.45	1.63	1.77	1.23
26	26	13		13	26	26
	80.22	80.92	81.20	41.69	80.92	

381 38	381 85	381 20	381 42	381 39	381 20	381 78
1.02	1.21	1.21	0.94	1.02	1.21	0.63
26	26	13		13	26	26

38241

382 36	381 81	382 21	382 42	382 22	382 09	382 25
7.07	7.56	7.16	6.95	7.05	7.28	6.62
26	26	13		13	26	26

383 73	383 01	383 54	383 68	383 56	383 15	383 21
5.24	4.77	5.81	5.69	5.81	4.22	5.26
26	26	13		13	26	26

384 05	384 50	385 02	385 17	384 93	384 34	385 03
4.52	7.87	4.25	4.19	4.44	5.02	4.34
26	26	13		13	26	26

38937

3+53

376.04
6.37
90

376.09 376.19 376.28 376.32 376.86 376.95 377.20
6.37 6.28 6.13 5.89 5.55 5.46 5.21
85 40 26 13 13 26

3+40 = 2 Kansas

376.34
6.05
90

376.52 376.63 376.76 376.84 377.20 377.26 377.54
5.81 5.79 5.65 5.47 5.21 5.15 4.97
85 40 26 13 13 26

3+27

376.27
6.14
90

376.48 376.57 376.74 376.88 377.21 377.33 377.47
5.98 5.84 5.67 5.53 5.20 5.08 4.94
85 40 26 13 13 26

3+14 = F.C.B. Kansas

376.72 376.01 376.77 376.19
5.72 6.40 5.53 6.27
90-cb 90-60f 85-cb 65-90

377.04 376.24 376.50 377.00 377.12 377.34 377.35
5.37 6.17 5.91 5.71 5.21 5.07 5.06
40-cb 40-60f 26 13 13 26

3+0 = F.L. Kansas

377.08 376.54 377.10 377.59 377.52 377.42 377.15
5.37 5.87 5.51 4.82 4.84 4.09 4.26
26-cb 26-60f 13 13 26-60f 26-cb

2+50

377.77 378.24 378.62 378.64 378.46
4.14 4.05 3.71 3.77 3.95
26-60f 13 13 26-60f

382.41

382.41

3780 = H Line Kennel

3766 = HCB Line Kennel St

38241

<u>37607</u>	<u>37573</u>	<u>37638</u>	<u>37625</u>	<u>37621</u>	<u>37669</u>	<u>37701</u>
683	668	600	566	570	581	540
26-CB	26-Gul	13		13	26-Gul	26-CB

<u>37529</u>	<u>37600</u>	<u>37537</u>	<u>37565</u>	<u>37614</u>	<u>37643</u>	<u>37657</u>	<u>37665</u>
741	634	704	676	631	596	584	576
65-40-CB	40-Gul	40-90A	28	13		13	26

38241

Cross Section Kansas St
Madison to Adams Ave

Indexed
o.s.k.

LT-W

2

RT-E

22

2+50

<u>38020</u>	<u>38069</u>	<u>38080</u>	<u>38068</u>	<u>38063</u>	<u>38008</u>	<u>38078</u>
4.53	5.09	4.95	4.05	4.10	4.65	3.95
26-66	26-64	13		13	26-50	26-64

2+0

<u>38041</u>	<u>37991</u>	<u>38064</u>	<u>38106</u>	<u>38082</u>	<u>38046</u>	<u>38113</u>
5.32	5.82	5.09	4.67	4.86	5.27	4.60
26	26	13		13	26	26

1+50

<u>37954</u>	<u>37902</u>	<u>37981</u>	<u>38016</u>	<u>38005</u>	<u>37961</u>	<u>38033</u>
6.17	6.71	5.92	5.57	5.68	6.12	5.40
26	26	13		13	26	26

1+0

<u>37864</u>	<u>37812</u>	<u>37868</u>	<u>37834</u>	<u>37825</u>	<u>37883</u>	<u>37851</u>
7.09	7.56	6.74	6.39	6.48	6.90	6.17
26	26	13		13	26	26

TP

7.65

385.73

1.33

378.08

385.73

0+50

<u>37885</u>	<u>37825</u>	<u>37824</u>	<u>37856</u>	<u>37858</u>	<u>37891</u>	<u>37878</u>
4.56	5.16	4.21	3.85	3.83	4.60	3.63
26	26	13		13	26	26

0+0 = N. Kansas St

Madison Ave

<u>37803</u>	<u>37625</u>	<u>37242</u>	<u>37285</u>	<u>37272</u>	<u>37230</u>	<u>37802</u>
5.48	5.66	4.97	4.59	4.90	5.11	4.34
26-66	26-64	13		13	26-64	26-Carb

382.41

382.41

5750

570

4150

TP 7.88 392.35 1.26 384.47

410

3450

310

38873

386.51	385.70	386.52	386.83	386.52	385.82	385.45
5.84	6.45	5.98	5.52	5.78	6.52	5.90
26	26	13		13	26	26
	Butter				Butter	

385.48	385.04	385.81	385.92	385.65	385.00	385.62
8.87	7.35	6.50	6.32	8.70	7.05	6.73
26	26	13		13	26	26

389.42	384.07	384.24	385.07	384.88	384.28	384.94
7.88	8.28	7.61	7.26	7.47	8.10	7.41
26	26	13		13	26	26

392.35

383.71	383.26	384.01	384.27	384.07	383.51	384.16
2.08	2.47	1.72	1.46	1.66	2.27	1.57
26	26	13		13	26	26

382.88	382.45	383.18	383.43	382.31	382.22	382.42
2.05	2.28	2.55	2.30	2.22	2.01	2.01
26	26	13		13	26	26

382.60	381.88	382.30	382.67	382.48	381.90	382.51
5.70	4.04	5.23	3.01	3.76	5.82	3.29
26	26	13		13	26	26
	Butter				Butter	

38873

BM 5.10 386.03

SFBP
Madison
Vinton
386.03
Thursing

TP 3.94 391.13 5.41 387.19

TP 3.22 392.60 2.97 389.88

SFBP
Madison
Vinton
389.88

6+322 = South Rail SDFIc RR.

6+231

6+14 = S.C. Line Adams

6+0 = S.L. Adams

392.25

382.70	382.74	382.73	382.73	382.66	382.80	382.85	382.79	382.72
465	461	462	462	469	455	450	444	488
40	26	13		13	26	40	85	90

382.70	382.69	382.69	382.72	382.73	382.68	382.68	382.57	382.23
465	466	466	458	462	467	467	478	488
40	26	13		13	26	40	85	90

382.21	386.87	382.09	382.32	382.53	382.50	382.09	386.88	382.37
514	553	526	498	482	485	531	546	499
40	26	26	13		13	26	40	85

382.04	382.45	382.14	382.54
531	492	531	492
65-60	65-60	70-60	90-60

382.14	386.60	382.22	382.52	382.52	386.66	382.15
521	525	506	471	498	569	520
26-60	26-60	13		13	26-60	26-60

392.25

Cross Sec. of Low St. 80' wide
 LAMONT to Gresham
 for grade estab.
 20' curbs
 10' 1/4"

Lead
 B.M. CT 7.17 150.16 ✓ 142.49
 150.03 142.36 SW 10 RR

02-40 P LAMONT

S pav	8.13	141.53
S cb u	8.31	141.85
C "	7.89	142.27
N cb u	7.54	142.64
N "	7.19	142.97

00-20 wch LAMONT

N Top cb	6.97	143.19
N gut	7.59	142.57
cb pav	7.78	142.38
1/4 "	7.90	142.26
C "	7.93	142.23
1/4 "	8.06	142.10
cb "	8.19	141.97
S gut	8.44	141.72
S Top cb	7.69	142.47

Reduced 2-5-1943
 C.B. Hough

0400 = wch LAMONT

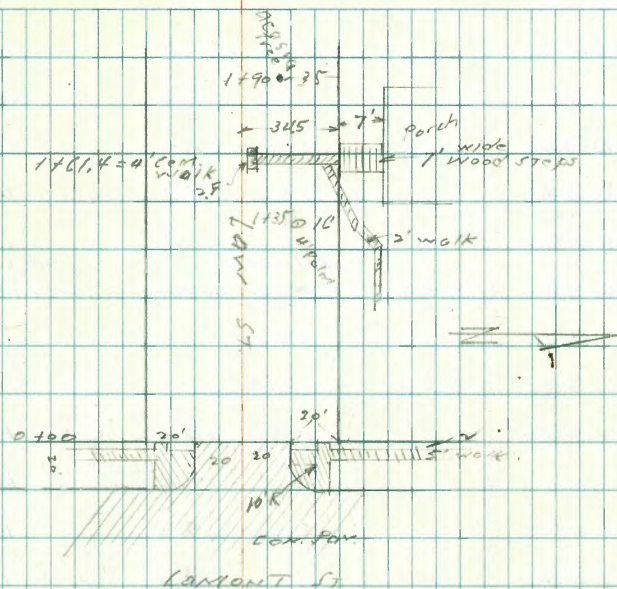
S dirt	7.4	142.8
cb Top cb	7.53	142.63
gut pav	8.06	142.10
1/4 "	7.74	142.42
C "	7.55	142.61

C. Moore
 Surveyor 19-35
 W. Moore
 2-1-43.

Indexed
 C.S.K.

25

LAMONT
 4 Lane



150.16 ✓
 150.03

N L pav	7.56	142.60
N gut "	7.63	142.53
cb Top cb	7.04	143.14
N dirt	6.7	143.5
N "	7.7	147.5
cb "	3.6	146.6
1/4 "	4.4	146.0
+7	4.8	145.4

150.10
+50.22

c		6.2	143.8
1/2		6.8	143.4
+v		6.0	144.2
cb		6.0	144.2
S		6.6	143.6

T.P. 4.99 154.27 ✓ 0.28 149.28
154.14 149.15

0 + 25

S		10.2	144.1
cb		9.3	145.0
+5		9.0	145.3
1/2		9.5	144.8
c		8.9	145.4
+3		7.9	146.4
1/2		7.9	146.4
cb		7.4	146.9
N		6.2	147.5

0 + 50

N		6.2	148.1
cb		7.1	147.2
1/2		7.4	146.9
1/2		7.5	146.8
c		8.1	146.2
1/2		8.2	145.9
+3		8.0	146.3

154.14
154.27

Low St. 26

cb		8.7	145.6
S		9.7	144.6
	1 + 00		
S		8.1	146.2
cb		7.0	147.3
1/2		6.8	147.5
c		6.3	148.0
1/2		5.6	148.7
cb		5.2	149.1
N		4.3	150.0

1 + 15

N		3.1	151.2
cb		4.3	150.0
1/2		4.6	149.7
c		5.6	148.7
1/2		6.1	148.1
cb		6.5	147.8
S		7.7	146.6

1 + 20

S-5		6.9	147.4 ✓
S		5.7	148.6
cb		5.6	148.7
1/2		6.0	148.3
c		5.5	148.8
	1 + 50		
S-5		6.0	148.3 ✓

154.14
154.27

S	5.7	148.0
cb	5.3	149.0
1/4	5.5	148.8
c	5.0	149.3
1/4	3.3	151.0
cb	2.6	151.7
N on S walk	1.5	152.8 ✓
1 + 61 E of Cor. walk		
N + 5.5 Hand u' walk	2.0x	152.23 ^{Bottom} _{of steps} ✓
N 1/4 + 7.5 S "	3.88	150.39 ✓
2 + 00		
N	2.0	152.3
cb	3.2	151.1
1/4	3.6	150.7
c	4.9	149.4
1/4	5.1	149.2
cb	5.6	148.7
S	5.8	148.5
+ 5	6.0	148.3 ✓
2 + 05		
S	7.2	147.1
cb	5.8	148.5
1/4	5.1	149.2
c	4.8	149.5
T.P. 154.28 ✓ 149.61		
2.17	154.15	149.48

152.15
152.28

Low 27

2 + 50		
S	5.2	147.1
cb	3.9	148.4
1/4	3.2	149.1
c	2.9	149.4
1/4	1.7	150.6
cb	1.5	150.8
N	0.7	151.6
2 + 85		
N	3.3	149.0
cb	3.7	148.6
1/4	4.0	148.3
c	4.6	147.7
1/4	4.6	147.7
cb	4.4	147.9
S	5.3	147.0
3 + 00		
S	5.9	146.4
cb	5.3	147.0
1/4	5.8	146.5
c	5.8	146.5
1/4	5.3	147.0
cb	5.1	147.2
N	4.9	147.4
3 + 50		
N	7.4	144.9

152.15
152.28

N	cb	8.1	144.2
	1/2	8.4	143.9
	+3	8.7	143.6
	+5	9.9	142.4
	C	9.7	142.6
	1/2	9.6	142.7
	cb	9.6	142.7
	S	10.1	142.2
		4+20	
	S	13.2	139.1
	cb	12.6	139.7
	1/2	12.4	139.9
	C	12.7	139.9
	+5	12.5	139.8
	+7	10.8	141.5
	1/2	10.8	141.5
	cb	10.7	142.1
	N	8.7	143.6
T.P.	2.58	142.06	139.48
		141.92	139.35
		12.80	
		4+35	
	S	4.3	137.8
	+10	4.7	137.4
	cb	3.8	138.3
	1/2	3.9	138.2
	C	3.4	138.7

141.93
142.06

Law

28

4+50

N		0.8	141.3
cb		1.9	140.2
1/2		2.1	140.1
+3		2.4	139.7
+5		4.1	138.0
C		4.0	138.1
1/2		4.4	137.7
cb		3.9	138.2
+10		4.3	137.8
S		6.0	136.1
+7		6.4	135.7 ✓
		4+60	
+10		7.2	134.9 ✓
S		5.8	136.3
+10		4.4	137.7
cb		4.3	137.8
1/2		4.7	137.4
C		4.3	137.8
		4+75	
S		5.0	137.1
cb		4.5	137.6
1/2		5.0	137.1
C		4.8	137.3
+6		4.9	137.2
+7		4.1	139.0

141.93

142.06

N 2	2.9	139.2
cb	2.5	139.6
N	1.4	140.7
4199.53 = E. h. Kendall = 80' wide 20' curbs		
N	1.5	140.5
cb	2.9	139.2
1/4	3.8	138.3
+3	5.4	136.9
c	5.3	136.8
1/4	5.6	136.5
cb	5.4	136.9
S	5.5	136.6
E.L. + 10		
S	6.9	135.2
cb	6.4	135.7
1/4	6.1	136.0
c	5.6	136.5
1/4	5.4	136.9
cb	4.3	137.8
N	2.7	139.4
E cb Kendall		
N	3.3	138.8
cb	4.5	137.6
1/4	4.9	137.2
c	5.3	136.8
1/4	5.8	136.3

141.93

142.06

Low 29

S cb	6.4	135.9
S	6.8	135.3
E Kendall		
S	7.1	135.0
cb	6.3	135.8
1/4	5.9	136.2
c	5.5	136.6
1/4	5.4	136.7
cb	4.9	137.2
N	3.8	138.3
W cb Kendall		
N	4.0	138.1
cb	6.0	136.1
1/4	6.1	136.0
c	6.1	136.0
1/4	6.5	135.6
cb	7.1	135.0
S	7.8	134.3
W cb + 6		
S	8.4	133.7
+15	8.4	133.9
S cb	6.8	135.3
1/4	6.9	135.2
c	6.5	135.6
0 + 00 = W L Kendall		
S Top 3/4" pipe Con.	8.95	133.11 132.90 B.M.

141.93
142.06

S +15	8.3	133.8
S cb	7.0	135.1
1/4	6.9	135.2
c	6.5	135.6
1/4	6.5	135.6
cb	6.3	135.8
N Beg Stucco wall of Back	4.8	137.3 ✓
0+15		
S -0.4 E 3' CEM walk	9.20	132.86 ✓
0+24		
N +0.9 E 3' CEM walk	4.90	137.16 ✓
N E 3' gate on "	4.87	137.19 ✓
0+50		
N	6.1	136.0
cb	7.2	134.9
1/4	7.0	135.1
c	6.9	135.2
1/4	7.4	134.7
+7	7.7	134.4
cb	9.1	133.0
S	9.9	132.2
0+68		
S -0.4 3' CEM walk	9.94	132.12 ✓
0+94		
S E 8' CEM drive	10.05	132.01 ✓

141.93
142.06

Low 30

	1+00	
S	10.1	132.0
+18	9.4	132.7
cb	8.4	133.7
+2	7.8	134.3
1/4	7.6	134.5
c	7.1	135.0
1/4	7.4	134.9
cb	7.4	134.9
N	6.3	135.8
N +0.7 end of Stucco wall	6.2	135.8 ✓
1+20		
S -0.3 E 3' CEM walk	9.60	132.46 ✓
1+40		
S -0.3 E 8' CEM drive	9.30	132.70 ✓
1+50		
N	5.5	136.6
cb	6.3	135.8
1/4	7.4	134.9
c	7.1	135.0
1/4	7.5	134.6
+7	7.8	134.3
cb	8.5	133.6
S	9.4	132.7
1+69		
S -0.1 E 3' CEM walk	9.08	132.98 ✓

141.93
142.9L

	1+94		
S	8' cent drive	9.24	132.82 ✓
	2+00		
S		9.0	132.5
cb		8.0	133.5
+3		7.8	134.3
1/4		7.1	135.0
c		6.8	135.3
1/2		6.9	135.2
cb		6.3	135.8
N		5.0	137.1
T.P.	5.74	140.94 ✓ 140.81	135.22 135.09
	2+44		
S	8' cent drive	8.26	132.68 ^{also used} as walk
	2+50		
N		3.0	137.3
cb		5.4	135.5
1/4		5.5	135.4
c		5.4	135.5
1/2		5.8	135.1
cb		6.3	134.6
+2		7.4	133.5
S		8.3	132.6

140.81
140.94

Low 31

	2+91		
S-04	8' cent drive	8.17	132.77 ^{also used} as walk
	3+00		
S		8.24	132.7
1/8		7.0	133.9
cb		6.8	134.8
+2		5.6	135.3
1/4		5.1	135.8
c		4.6	136.3
1/2		4.6	136.3
cb		3.3	137.6
N		1.9	139.0
	3+19		
S-04	3' cent walk	6.84	134.10 ✓
	3+41		
S-05	8' cent drive	6.23	134.71 ✓
	3+50		
N		2.5	138.4
cb		3.3	137.6
1/4		4.2	136.7
c		4.1	136.8
1/2		4.5	136.4
cb		5.1	135.8
S		6.1	134.8
	3+68		
S-03	3' cent walk	5.87	135.07 ✓

140.84

140.94

	3+94		
S-cx	\$ 8.5 ccm drive	6.41	134.53 ✓
	4+00		
S		5.0	134.3
+18		5.9	135.0
cb		5.2	135.7
1/2		5.0	135.9
c		4.4	136.5
1/4		4.6	136.3
cb		4.0	136.9
N		3.2	137.7

4+19

S-cx \$ 3' ccm walk 6.84 134.10 ✓

4+40

S-cx \$ 9' ccm drive 7.14 133.80 ✓

4+50

N 2.7 132.2

cb 4.0 136.9

+8 4.5 136.4

1/2 5.2 135.5

c 5.1 135.8

1/4 5.0 135.5

cb 6.1 134.8

S 7.2 133.7

4+75

S 7.4 133.5

140.81

140.94

Law 32

S	cb	6.7	134.2
	+3	7.1	133.8
	1/4	6.3	134.6
	c	5.9	135.0
	1/4	6.1	134.8
	+3	4.8	136.1
	cb	4.4	136.5
	N	3.5	137.4
	4+84		
S	\$ 3' ccm walk	7.7	133.47 ✓
	5+00.13 = E.L. Jewell =	80' wide	20' curbs
	N	5.2	135.7
	cb	5.9	135.0
	+7	6.8	134.1
	1/4	7.5	133.4
	c	7.9	133.0
	1/4	8.1	132.8
	+8	8.7	132.2
	cb	7.7	133.2
	S	8.3	132.6
	E.Cb. Jewell		
S		11.2	129.7
cb		10.5	130.4
1/2		10.2	130.7
c		9.9	131.0
1/4		9.6	131.3

140.81
140.94

N cb	9.4	131.5
N	8.5	132.4
E Jewell		
N	8.5	132.4
cb	9.3	131.6
1/2	9.7	131.2
C	10.2	130.7
1/4	10.4	130.5
cb	10.9	130.0
S	11.6	129.3
W cb. Jewell		
S	12.8	128.1
cb	12.4	128.5
1/2	12.4	128.7
C	11.8	129.1
1/4	11.1	129.8
cb	10.6	130.3
N	9.8	131.1
W.L. Jewell = 0.00		
N	10.3	130.6
cb	11.6	129.3
1/2	12.8	128.1
C	12.8	128.1
1/4	13.0	127.9
cb	13.3	127.6
S	13.9	127.0

140.81
140.94

LAW 33

128.98 SW Cor.

Tip at the pole	5.0	134.00 ✓ 133.87	11.96	128.85	Law and Jewell
0 + 50					
S			9.8		124.2
cb			8.0		126.0
1/2			7.1		126.9
C			6.9		127.1
1/4			6.9		127.1
cb			6.1		127.9
cb			5.1		128.9
N			2.7		131.3
1 + 00					
N			1.7		132.3
cb			4.1		129.9
1/2			5.3		128.7
1/4			6.3		127.7
C			6.7		127.3
1/2			7.2		126.8
cb			8.0		125.4
S			9.9		124.1
1 + 50					
S			10.5		123.5
cb			9.2		125.0
1/2			7.5		126.5
C			6.9		127.1
1/4			6.5		127.5

133.87

134.00

1/4	5.5	128.5
cb	4.4	129.6
N	2.5	131.5
2 + 100		
N	4.4	129.6
cb	6.1	127.9
1/4	7.4	126.6
+1	8.5	125.5
C	8.7	125.3
1/4	8.7	125.3
cb	10.0	124.0
S	12.0	122.0
2 + 44		
C	9.1	124.9
+8	8.8	125.2
N 1/4	8.1	125.9
+8.5 old	7.6	126.4
cb	6.4	127.6
N	5.2	128.8
2 + 45		
N	4.0	130.0
cb	4.2	129.8
+1.5	SE cor. con. Gen. Top old well	4.3 129.7 ✓
+2	7.3	126.7
1/4	8.1	125.9
+2	8.8	125.2

133.87

134.00

Low 34

C	9.7	124.8
1/4	9.3	124.7
cb	11.1	122.9
S	12.9	121.1
2 + 44		
S	13.5	120.5
cb	12.1	121.9
1/4	10.0	124.0
C	9.8	124.2
+8	9.4	124.6
1/4	8.0	126.0
+8	7.6	126.4
+8.5 Top ^{5 in S} old well	4.8	129.2 ✓
cb	5.0	129.0
N	4.4	129.6
2 + 45		
N	4.6	129.4
cb	6.3	127.7
1/4	7.9	126.1
+2	9.4	124.6
C	9.8	124.2
T.P.	3.03	126.86 ✓ 126.73
		10.77 123.23 123.10
3 + 50		
N	0.3	126.6
cb	2.4	124.5
1/4	3.9	123.0
+2	4.9	122.0

126.73
126.86

c	5.4	121.5
1/2	5.6	121.3
26	7.7	119.2
S	9.0	117.9
H+00		
S	10.3	116.6
c6	8.7	118.2
1/2	7.1	119.8
c	6.8	120.1
+9	6.3	120.6
1/2	5.7	121.2
c6	4.7	122.2
N	3.0	123.9
H+50		
N	6.8	120.1
c6	7.8	119.1
1/2	8.3	118.6
+1	8.8	118.1
c	9.0	117.9
1/2	9.3	117.6
c6	10.1	116.9
S	11.2	115.7
S+00		
S	13.1	113.8
c6	12.6	114.3
1/2	11.9	115.0
f3	12.0	114.9

126.73
126.86

Law 35

1/2 + 5	13.4	113.5
c	13.3	113.6
1/2	13.0	113.9
+3	11.4	115.5
c6	10.7	116.2
N	9.8	117.1
T.P.	0.97	115.13 115.00
5+19.3 - E.L. Inglehart = 80' wide 20' cbs		
N	0.1	115.0
c6	1.1	114.0
AC	1.4	113.7
1/2	2.3	111.8
c	4.1	111.0
1/2	2.4	112.7
c6	2.8	112.3
S	3.2	111.9
E.L. + 18		
S	4.0	110.5
c6	4.0	111.1
1/2	4.2	110.9
+4	4.5	110.6
+7	6.0	109.1
c	5.9	109.2
1/2	5.4	109.7
+3	5.3	109.8
+7	2.5	112.6

45.00
115.13

cb	2.1	113.0
N	2.0	113.1
E cb Ingraband		
N edge oil pav	4.8	110.3
cb " " "	5.5	109.6
C " " "	6.0	109.1
cb " " "	6.8	108.3
S " " "	7.2	107.7
S Ingraband		
S oil pav	7.6	107.5
cb " " "	7.0	108.1
C " S.M.H. REM	6.3	108.8 ✓
cb " " "	5.7	109.4
N " " "	5.0	110.1
W cb Ingraband		
N edge oil pav	5.6	109.5
cb " " "	6.4	108.7
C " " "	7.1	108.0
cb " " "	7.6	107.5
S " " "	8.2	106.9
W cb + x		
S	7.2	107.9
cb	7.1	108.0
C	6.7	108.4
cb	6.0	109.1
N	4.8	110.3

45.00
115.13

Law 36

0 + 50 = W cb Ingraband

N	6.1	109.0
cb	6.4	108.7
S	6.7	108.4
cb	7.5	107.6
S	7.7	107.4
0 + 50		
S	9.0	106.1
cb	8.9	106.2
C	8.4	106.9
cb	7.8	107.3
N	8.0	107.1
1 + 50		
N	8.0	106.5
cb	9.1	106.0
C	9.5	105.6
cb	9.9	105.2
S	10.1	105.0
1 + 50		
S	11.1	104.0
cb	10.3	104.8
C	10.1	105.0
cb	9.8	105.3
N	9.0	106.1
7.0		
3.87	109.27 ✓	105.35
109.09	9.78	105.27

109.09
109.22

	2 + 50		
N		3.9	105.3
cb		4.5	104.7
c		4.9	104.3
cb		5.2	103.6
S		6.6	102.6
	2 + 50		
S		6.7	102.5
cb		5.9	103.3
c		5.1	104.1
cb		4.6	104.6
N		3.5	105.7
	3 + 00		
N		3.5	105.7
cb		4.8	104.4
c		5.2	104.0
cb		4.2	103.0
S		6.7	102.5
	3 + 50		
S		6.6	102.6
cb		6.4	102.8
c		5.2	104.0
cb		4.8	104.4
N		3.6	105.6
	3 + 84		
S	E 3' Cond. walk	6.86	102.36 ✓

109.09
109.22

Law 37

N		3.6	105.6
cb		4.8	104.4
c		5.0	104.2
cb		6.3	102.9
S		6.5	102.7
	4 + 50		
S		6.5	102.7
cb		6.0	103.2
c		4.8	104.4
cb		4.6	104.6
N		3.5	105.7
	4 + 98.4 = E.L. HAINES = 80' wide 20' curbs		
N		3.7	105.5
cb		4.5	104.7
c		4.8	104.4
cb		5.4	103.8
S		6.1	103.1
	E. cb. HAINES		
S		6.1	103.1
cb		5.6	103.6
c		4.9	104.3
cb		4.7	104.5
N		3.8	105.3
	G. HAINES		
N		3.9	105.3
cb		4.7	104.5
c		5.0	104.2

109.09
109.22

S cb	5.2	104.0
S	5.8	103.4
W cb Haines		
S	6.6	102.6
cb	5.9	103.3
C	5.3	103.9
cb	5.1	104.1
N	4.0	105.2

2400 W L Haines

N	4.1	105.1
cb	5.0	104.2
C	5.1	104.1
cb	5.9	103.3
S	6.7	102.5

2450

S	7.2	102.0
cb	6.4	102.8
C	5.7	103.5
cb	5.7	104.0
N	4.0	105.2

T.P. 1.86 106.95 ✓ 4.3 105.09
106.87 104.96

2461

N-0.5 E 8' cement drive 1.48 105.41 ✓

2482

N-0.5 E 4' cement walk ✓

106.80
106.95

Low 38

1400		
N	1.7	105.3
+ 4' 6" 4" cement walk	1.89	105.06 Top ✓
cb	2.3	103.7
C	3.7	103.3
cb	4.5	102.5
S	5.4	101.6
1450		
S	5.5	101.5
cb	4.8	102.2
C	4.1	102.9
cb	3.7	103.3
+ 11.5' 4" cement walk	2.54	104.41 Top ✓
N	2.6	104.4
2400		
N	3.0	104.0
cb	3.9	103.1
C	4.4	102.6
cb	4.6	102.4
S	5.5	101.5
2450		
S	5.8	101.2
cb	5.4	101.8
C	4.7	102.3
cb	4.3	102.7
N	3.4	103.6

106.82
106.95

3100

N		4.0	103.0
cb		4.8	102.2
c		5.0	101.8
cb		5.5	101.5
S		6.1	100.9
3 + 10.5 E do. 1.5 cent. ribbon drive			
N-5		3.71	103.24 ✓
N+1.6		4.35	102.60 ✓
3 + 10 beg. cent. blk. wall on N. 3' in ST. ✓			
3 + 30			
N+3	3' cent. loose slab walk	4.04	102.91 ✓
T.P.	3.27	105.51 ✓ 105.38	4.71 104.24 102.11
3 + 50			
S		5.0	100.3
cb		4.5	101.0
c		4.1	101.4
cb		3.7	101.8
+17	end cent. blk. wall beg. wire fence ✓	2.8	102.7 ✓
N		2.6	102.9
4 + 100			
N		2.8	102.7
cb		3.2	101.3
c		4.0	101.1
cb		4.5	101.0
S		5.5	100.0

105.38
105.51

4450

Law 39

S		5.0	100.3
cb		4.8	100.7
c		4.9	100.6
cb		4.6	100.9
+12		4.0	101.5
+ 16.4 end wire fence ✓			
N		3.3	102.2
4 + 90.09 P.C. Curb			
N		3.9	101.6
+15		4.4	101.1
cb		5.0	99.9
c		5.9	99.6
+5		6.1	99.4
cb		5.5	100.0
S		5.0	99.9
5 + 00.09 E. h. Gresham ST			
S		6.6	98.9 100.7
+18.3	Tepend curb	6.44	99.07
"	gut Pav	7.08	98.43
cb	Pav	7.03	98.48
1/4	"	6.50	99.01
c	"	6.19	99.32
1/4	"	6.05	99.46
cb	"	6.07	99.44
+1.7	" gut	6.07	99.44
"	Tepend curb	5.47	100.04
N	diot	4.6	100.9

105.38
105.51

Eh. Gresham +10

N Top curb Ret.	5.30	100.21
gwt Pav	6.00	99.51
4 Lane "	6.44	99.07
S gwt "	7.25	98.26
S Top curb	6.67	98.84

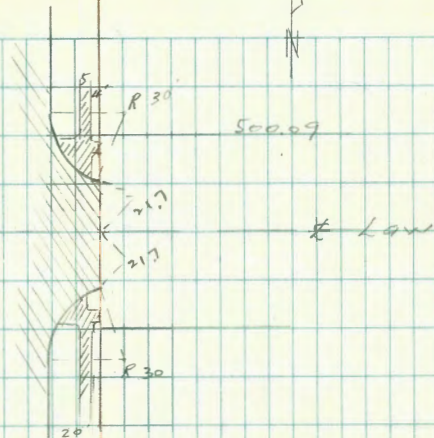
E cb Line Gresham

-10 Top cb PC	7.48	98.03
" gwt	8.17	97.39
S Pav. gwt. valley	7.72	97.74
S cb " " "	7.20	98.31
C " " "	6.63	98.88
N cb " " "	6.11	99.39
nl " " "	5.47	100.04
+10 " gwt	5.09	100.42
" Top curb PC	4.44	101.07

Z.P.	12.74	118.16 118.03	0.09	105.44 105.47
Z.P.	12.92	130.94 130.79	0.16	118.00 117.87
Z.P.	12.39	143.17 143.04	0.14	130.78 130.65
Z.P.	11.27	154.24 154.11	0.20	142.97 142.84
Z.P.	5.75	159.24 159.11	0.75	153.49 153.36

check to 2d. + C.T.			0.69	158.55 158.44	158.55
Sv. Con. Fannet + Tourmaline					0.00
7' on Tourmaline					
15.5 " Fannet					

Gresham St.
Conv. Pav.



See late levels on Fannet, Loring & 1/2
old City DATUM

Levels on Jewell St. 80' wide
20' cbs

Chalcedony to Beryl

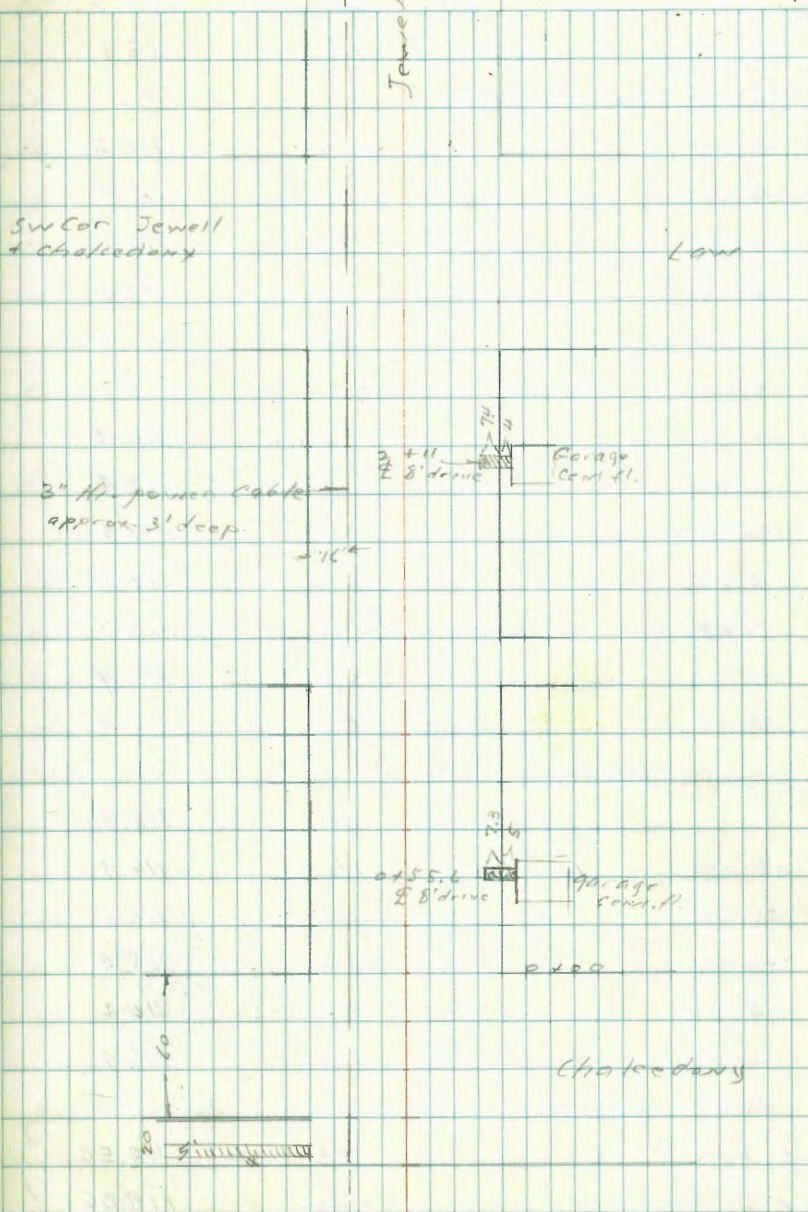
3 nails Pole	129.49	128.98	Law
SW Cor.	129.36	128.85	Jewell
T.P.	120.09	117.45	P.33
	119.96	117.34	
Set T.P. Sw Jewell + Chalcedony	9.04	111.05	Top Curb

80' wide
S.L. Chalcedony: 20' cbs

w	8.7	111.4
cb	8.2	111.9
+5	8.6	111.5
C	8.0	112.1
cb	8.2	111.9
+5	6.9	113.2
E	6.2	113.9
S cb		
E	6.5	113.6
cb	7.8	112.3
C	8.2	111.9
cb.	8.9	111.2
w Top cb	9.04	111.05
+75 " "	9.26	110.53
E Chalcedony		
w	9.0	111.1
cb	8.6	111.5
C	8.2	111.9

Reduced Plotted 2-8-1943 G.B.H.

Jewell



119.96
120.09

E cb	7.2	112.5	
E	7.0	113.1	
N. cb Chalcedony			
E	6.9	113.2	
cb	7.4	112.7	
C	7.5	112.6	
cb	7.7	112.4	
w	8.4	111.9	
N. L Chalcedony = 0.400			
w	7.8	112.3	
+ 10	6.7	113.4	
cb	6.7	113.4	
C	6.6	113.5	
+ 19	6.6	113.5	
cb	6.4	113.9	
E	5.4	114.9	
0.150			
E	1.4	118.7	
cb	3.4	116.9	
C	3.3	116.8	
+ 16	4.4	115.9	
cb	3.7	116.4	
w	3.7	116.4	
0.556			
E + 7.3 & 8' wide cent. da.	1.53	118.56	J
E " " " " "	1.03	119.06	I
E - 5 & Garage door	0.63	119.46	J

Jewell 42

119.96
120.09

FP	12.85	132.85 ✓	0.09	120.00
	+ 100	132.74		119.87
w			12.1	120.8
cb			11.3	121.6
+ 5			12.4	120.7
C			11.9	121.0
cb			12.5	120.4
+ 5			11.7	120.2
E			11.4	121.5
1.750				
E			6.6	126.3
+ 15			7.4	125.5
cb			8.7	124.2
C			8.5	124.4
+ 15			9.4	123.7
cb			9.0	123.9
w			10.0	122.9
2.400				
w			8.6	124.3
cb			6.8	126.1
C			5.9	127.0
cb			6.0	126.9
+ 10			4.0	128.9
E			3.1	129.8

132.74

132.85

2+11

E +7.4 9 8' cond drive 2.90 129.95 ✓

E 1.91 130.94 ✓

E -4.0 7 9 cond drive 1.44 131.41 ✓

2+50

E 0.8 132.1

cb 4.0 128.9

c 4.0 128.9

cb 5.1 127.8

w 6.5 126.4

2+70 S.L. Law Sec P. 33

2+100 N.L. Law " " "

T.P. 12.94 145.31 ✓ 0.46 132.39
145.18 ✓ 132.26

0+50

sw 9.9 135.4

cb 11.2 134.1

c 10.6 134.7

cb 10.7 134.6

+10 10.1 135.2

E 8.0 137.3

1+00

E 5.1 140.2

+10 7.3 138.0

cb 7.8 137.5

c 7.4 137.9

-7/5 7.6 137.7

145.18

145.31

Jewell 43

cb 6.9 138.4

w 5.7 139.6

1+50

w 2.4 142.9

cb 2.8 142.5

+3 2.8 142.5

+5 4.1 141.2

c 3.5 141.8

cb 3.8 141.5

E 2.0 143.1

157.72 ✓

T.P. 12.56 157.59 0.15 145.10
145.07

2+00

c 10.9 146.8

cb 10.3 145.4

c 10.3 145.4

+15 10.9 144.8

cb 10.1 145.6

w 11.9 145.8

2+35

w 8.8 148.9

cb 9.7 148.5

c 9.1 148.6

cb 8.7 149.0

+15 8.7 149.0

E 7.4 150.3

157.59
157.72

2 + 69

W	5.5	152.2
+ 17	5.3	152.4
cb	4.4	153.3
C	4.1	153.6
2 + 7a S.L. Beryl		
E	2.5	155.2
cb	2.8	154.9
C	3.9	153.8
cb	4.0	153.7
+ 8 ground	4.9	152.8
+ 8 E end old Cobble wall	2.1	155.6
W Top wall	2.2	155.5
W ground	3.2	154.3

T.P.	0.17	144.94 ✓ 144.81	12.95	144.77 144.64
T.P.	2.30	135.78 135.65	11.26	133.48 133.35
check to T.P. 2nd infale	6.80	128.98 ✓ 128.85		128.98

Sw Jewell + Lane p.33

Check Levels to
Diamond & Ingraham and
To Garnet

T.P. P.M.I	1.74	112.77 112.64	11.05	110.97	Top cb Sw Jewell + Chalcedony
T.P.	1.96	103.35 103.22	11.38	101.39 101.26	
T.P.	1.61	94.24 94.11	10.52	92.81 92.68	
T.P.	1.72	85.34 85.21	10.80	83.62 83.49	Id. E Diamond and E. Ingraham 83.59 0.03
check to B.P. School Porch NW End old Ingraham 7.13				78.21 78.08	78.11 ? 0.10
T.P.	0.15	73.86 73.73	11.63	73.71 73.58	
T.P.	3.75	69.64 69.51	7.97	65.89 65.76	
check to DIV CITY B.M. B.P. SE curb				70.2 62.60 62.47	62.60 0.00

Ingraham & Garnet
(Book 1627-page 39 check levels)

NOTE! starting B.M. on p. 25 is N.G.
should be 0.13 higher or 144.49
I think this was derived from USC+G

Levels on Kendall St. = 80' wide
 20' off.
 Chalcedony to alley N. of Law St.

3/4" pipe
 5 ft. Cor. 269 135.80 132.11 Law + Kendall P. 29

0 + 00 = N.L. Chalcedony

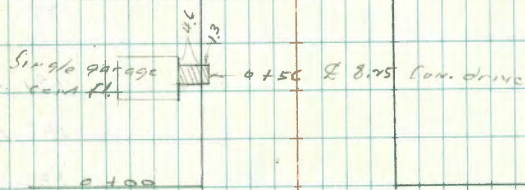
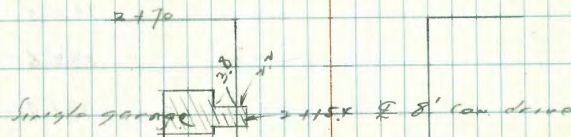
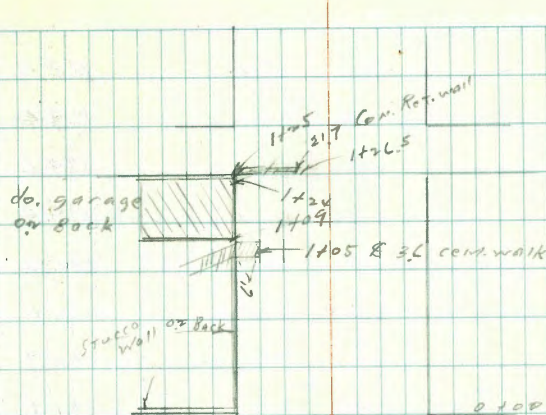
W	10.1	125.7
cb	9.6	126.2
+7	9.3	126.5
1/4	9.6	126.2
c	9.0	126.8
1/4	9.2	126.6
+2	8.3	127.5
cb	8.1	127.7
F	8.3	127.5
0 + 50		
F	6.5	129.3
cb	6.5	129.3
1/4	6.6	129.2
+2	7.3	128.5
c	7.2	128.6
1/4	8.0	127.8
+2	7.8	128.0
cb	8.3	127.5
W	8.6	127.2

Reduced Profile #522
 2-6-1943 CBM

0 + 50		
W + 1.3	8' 8" Form drive	127.18 ✓
W - 4.6	" "	127.50

Indexed
 C.S.K.

45



Kendall

Chalcedony

1100		
w	6.9	128.9
cb	6.4	129.4
+5	6.2	129.6
+7	6.4	129.4
c	5.6	130.2
1/4	5.8	130.0
+w	5.1	130.7
cb	4.2	131.1
E	4.6	131.2
1150		
E	2.6	133.2
+10	3.5	132.3
cb	3.2	132.6
+8	3.9	131.9
1/4	4.5	131.3
c	4.3	131.5
+15	5.0	130.8
cb	4.8	131.0
w	5.5	130.3
2+00		
w	4.4	131.4
+18	3.8	132.0
cb	3.1	132.7
+4	3.4	132.4
c	2.7	133.1

1/4	2.9	132.9
cb	1.9	133.9
+15	2.0	133.8
E	1.2	134.6
2+15.4		
w + 2x E 8' Com. drive	3.88	131.92 ✓
w - 3.8 " " "	3.82	131.98
2+35		
E	0.1	135.7
+7	1.3	134.5
cb	1.2	134.6
1/4	2.1	133.7
c	1.8	134.0
+17	2.5	133.3
cb	2.3	133.5
+3	2.9	132.9
w	3.4	132.4
T.P. 12.44 145.55 2.69 - 133.11 3/4 pipe		
FOR		
2+70 S.L. Lane and a 100 M.L. Lane See P. 49		
0+40		
w	4.6	141.0
cb	4.5	141.1
c	3.6	142.0

145.55

C + 13			3.0	142.4
c6			3.5	142.1
+ 8			3.6	142.0
+ 9			2.5	143.1
E			1.6	144.0
T.P.	11.71	155.94	1.34	144.23
	0.185			
E			7.8	148.1
+ 15			8.6	147.3
+ 17			10.4	145.5
c6			10.1	145.8
C			10.2	145.7
c6			9.8	146.1
W			10.7	145.2
	1405			
W	E 3/8 cent walk		9.12	146.82 ✓
+ C	" " " "		9.07	146.87
c6			8.9	147.0
C			8.7	147.2
c6			8.6	147.3
+ C			6.6	149.3
E			5.9	150.0
	1409			
W	S edge do garage		8.49	147.45 ✓ Cent floor
	1404			
W	N edge " "		8.45	147.49

155.94

Kendall

47

E			3.3	152.6
+ 15			4.3	151.6
c6			5.7	150.2
C			6.1	149.6
c6			7.2	148.5
W	ground		8.3	147.6
	1406.5			
W	Top wall		5.14	150.80
c6	" "		4.40	151.54
+ 17	" " end wall		4.35	151.59
+ 15			5.10	150.9
C			5.8	150.1
	1405 N. Alley			
W			4.7	151.2
c6			4.0	151.9
C			2.4	152.5
c6			2.8	153.1
A3			2.3	153.6
E			1.5	154.4
T.P.	0.27	144.28	11.93	144.01
	check to 3/4" pipe		11.17	133.11

Levels on Missouri St. = 80' wide
20' C&GS
Kendall to Jewell

B.M. P. 29
3/4" Pipe SW 1.37 134.48 133.11 Law
Z.P. 0.99 126.00 9.47 125.01 Kendall
T.P. SW 1/4 3.24 111.55 12.49 113.31 Missouri
Kendall

0+00 wh Kendall

S	3.9	112.7
cb	3.2	113.4
+15	2.8	113.8
c	3.2	113.4
cb	2.5	114.0
+10	1.1	115.5
N	0.7	115.9
0+50		
N	2.1	114.5
cb	3.6	114.0
+10	4.4	112.2
c	4.7	111.9
+5	4.1	112.5
cb	4.6	112.0
S	5.4	111.2
1+00		
S	6.5	110.1
cb	6.3	110.3

Reduced Feb 17-1941 Platted on
Profile # 1553

111.55

C. Moore
Landmark No. 48
Vol. 1000

2-15-42

c	6.2	110.4
+18	5.4	111.2
cb	4.9	111.7
+10	4.8	111.8
N	3.6	113.0
1+25		
N	4.8	111.8
cb	5.8	110.8
+4	6.3	110.3
c	7.2	109.4
+10	6.9	109.7
cb	7.2	109.6
S	6.8	109.8
1+50		
S	7.7	108.9
cb	8.0	108.6
c	8.5	108.1
+18	8.1	108.5
cb	7.6	109.0
N	6.8	109.8
2+00		
N	8.2	108.4
cb	9.0	107.6
+2	10.0	106.6
c	10.0	106.6

c + 5	9.7	106.9
cb	10.0	106.4
S	9.6	107.0
2 + 50		
S	11.7	104.9
cb	11.7	104.9
+ 10	11.0	105.6
C	11.0	105.6
cb	11.0	105.6
+ 7	10.6	106.0
N	9.2	107.4

T.P. 5.27 110.11 11.71 104.84

3 + 00		
S	6.5	103.6
cb	6.0	104.1
+ 10	5.3	104.8
C	5.5	104.6
+ 18	5.4	104.7
cb	4.5	105.6
+ 5	3.9	106.2
N	3.3	106.8

3 + 48

N-10 E. do. 2' Cor. Rib. Drive 3.39 106.72 ✓
 N + 17 " " " " 3.79 106.32 ✓

7' wide over all

N 10	4.6	105.5
cb	5.4	104.7
C	6.2	103.9
+ 10	5.9	104.2
cb	6.4	103.7
S	8.9	103.2
4 + 00		
S	7.4	102.7
cb	6.9	103.2
+ 10	6.4	103.7
+ 14	7.0	103.1
C	6.7	103.4
+ 18	6.6	103.5
cb	5.9	104.2
+ 5	5.4	104.7
N	5.1	105.0
4 + 50		
N	6.2	103.9
cb	6.7	103.4
+ 7	7.4	102.7
C	7.6	102.5
+ 9	7.9	102.2
+ 13	7.4	102.7
cb	7.7	102.4
S	8.4	101.9

4799.89 - E.H. Jewell

S	9.0	101.1
cb	8.0	101.5
+10	9.0	100.9
C	8.0	101.5
+17	8.0	102.1
cb	7.4	102.7
+5	6.8	103.3
N	6.6	103.5

TP	13.07	116.69	6.44	103.67
----	-------	--------	------	--------

check to TP p. 41

5m. Top Curb	Jewell & Chalcedony	5.63	111.06	111.05
				.01

5+85 = 21.50 of S. h. Polk to E.
 " " " " Campus to W.

5+72 = R

5+29.5

7.18 348.72 0.91 341.54

4+87

4+37

3+87

3+37

2+87

342.45

W. Lane

E. Lane

52

393.61	393.86	394.02	394.19	394.07	393.87	393.56
5.11	4.86	4.68	4.53	4.65	4.85	5.16
55	42.5	30	30	30	42.5	55
394.70	393.30	393.96	393.27	393.70	393.67	393.20
5.54	5.44	5.26	5.25	5.02	5.03	5.19
55	42.5	30	35	25	30	42.5
391.05	391.82	391.98		392.50	392.54	392.30
7.47	7.38	7.24		6.24	6.20	6.42
55	42.5	30		30	42.5	55
			348.72			
388.93	389.42	389.57		391.35	391.28	391.78
2.52	3.03	2.91		1.10	1.17	1.27
55	42.5	30		30	42.5	55
336.63	337.13	337.28		339.18	339.33	339.20
5.82	5.32	5.17		3.27	3.12	3.25
55	42.5	30		30	42.5	55
339.21	334.77	335.00		337.09	337.35	337.36
8.24	7.68	7.45		5.36	5.20	5.09
55	42.5	30		30	42.5	55
337.77	337.33	332.53		339.96	335.22	335.29
10.68	10.24	9.90		7.49	7.21	7.16
55	42.5	30		30	42.5	55
329.29	329.09	330.17		332.81	333.07	333.22
13.16	12.56	12.28		9.64	9.38	9.23
55	42.5	30		30	42.5	55
			342.45			

Normal St. Pav. Levels

Indexed
c.s.k.

Campus to Park Blvd.

2+50

T.P. 5.51 349.73 5.91 344.22

450

0+50

0+00 = R

0-13 N.L. Park

SWI
T.P. F.H. 3.64 350.13 2.23 346.49
348.22

CAMPUS
NORMAL

W. LANE

E. LANE

53

349.06	349.37	349.22	349.91	349.73	349.39
5.67	5.34	5.31	5.84	6.00	6.39
55	42.5	30	30	42.5	55
			349.73		
349.21	349.50	349.49	349.07	349.05	349.49
5.92	5.63	5.64	6.11	6.28	6.64
55	42.5	30	30	42.5	55
349.28	349.57	349.60	349.14	349.16	349.54
5.85	5.56	5.53	6.01	6.17	6.54
55	42.5	30	30	42.5	55
349.23	349.71	349.76	349.21	349.16	349.68
5.70	5.22	5.38	5.82	5.97	6.25
55	42.5	30	30	42.5	55
349.56	349.82	349.82	349.39	349.18	349.74
5.58	5.31	5.31	5.74	5.95	6.39
55	42.5	30	30	42.5	55
349.62	349.92	349.09	349.13	349.82	349.68
5.49	5.21	5.02	5.20	5.31	5.45
55	42.5	30	25	25	30
349.71	349.06	349.12	349.12	349.72	349.26
5.42	5.07	4.99	5.01	5.39	5.67
55	42.5	30	5.01 Pav.	30	42.5
			350.13		

FH. S.W. CON
 CAMPUS
 HORRICAL

check to B.M. 343 346.50 346.49

6 + 19.3

6 + 0.3 = R

1.50

5

1.50

4

1.50

3

349.73

12.

W. LANE

£

E. LANE

54

392.11	392.54	392.76	392.92	392.91	392.03	392.58
6.67 55	6.21 42.5	5.97 30	5.80 90.	6.34 30	6.70 42.5	7.15 55
392.10	392.54	392.71	392.79	392.48	392.90	392.03
6.63 55	6.19 42.5	6.01 30	5.94 25	6.25 25	6.33 30	6.70 42.5
392.26	392.66	392.71		392.16	392.09	392.69
6.47 55	6.07 42.5	6.04 30		6.57 30	6.64 42.5	7.04 55
392.44	392.73	392.84		392.34	392.24	392.83
6.49 55	6.00 42.5	5.89 30		6.39 30	6.51 42.5	6.90 55
392.58	392.83	392.00		392.37	392.28	392.89
6.15 55	5.90 42.5	5.73 30		6.36 30	6.25 42.5	6.84 55
392.68	392.98	392.13		392.53	392.21	392.10
6.05 55	5.75 42.5	5.60 30		6.20 30	6.34 42.5	6.63 55
392.82	392.06	392.22		392.69	392.56	392.26
5.91 55	5.67 42.5	5.51 30		6.04 30	6.17 42.5	6.28 55
392.93	392.23	392.32		392.85	392.66	392.79
5.80 55	5.50 42.5	5.41 30		5.88 30	6.07 42.5	6.54 55

349.73

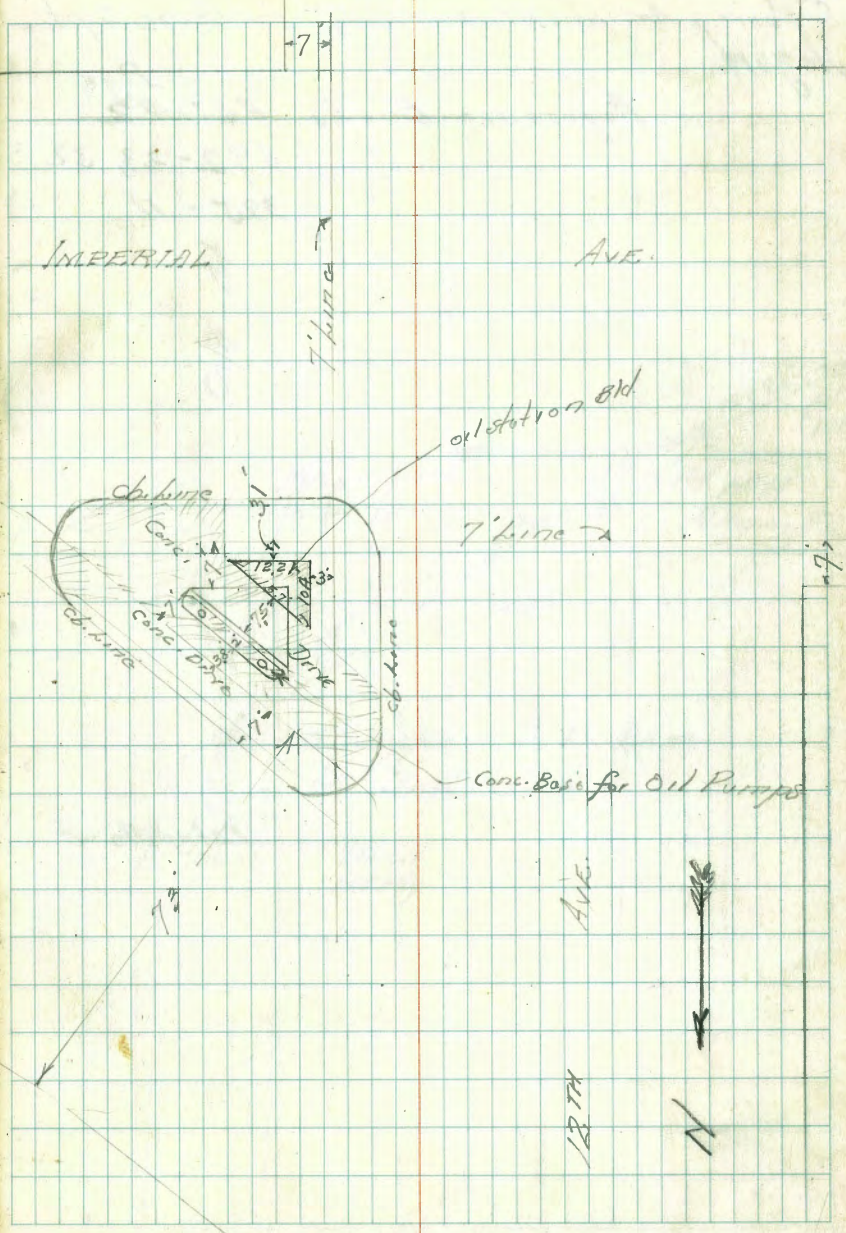
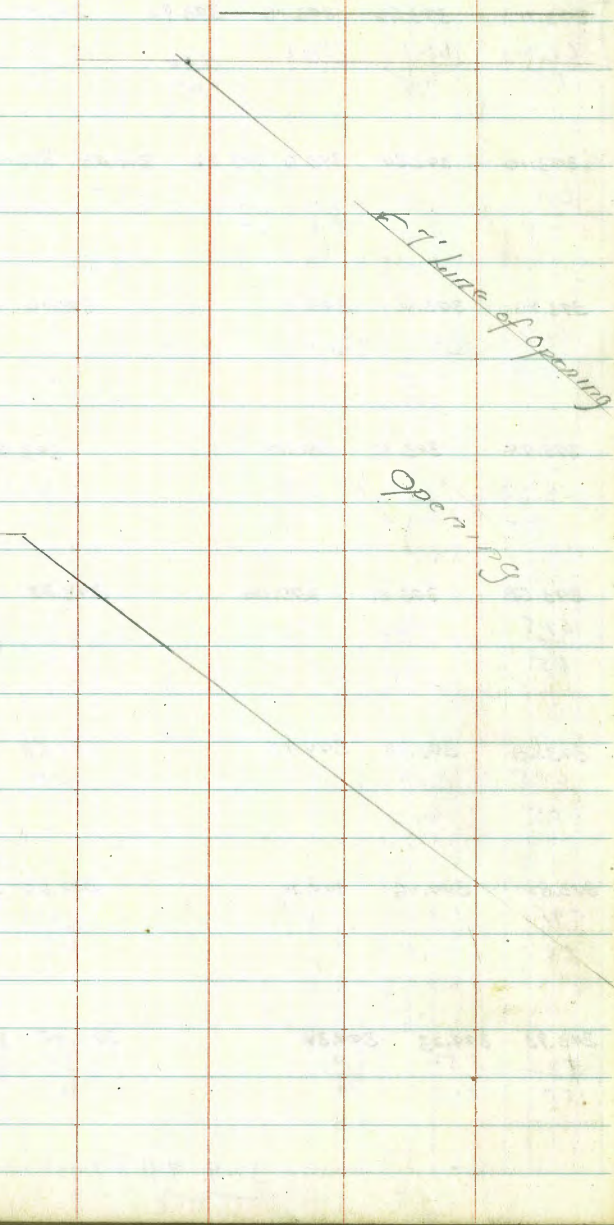
Mulher
Osborne
Hagard
8-26-43

LOCATION of OIL STATION Bld.
at NE. COR. 12th & IMPERIAL AVE.

Indexed
e.s.kr

Plotted on 2713-B

55

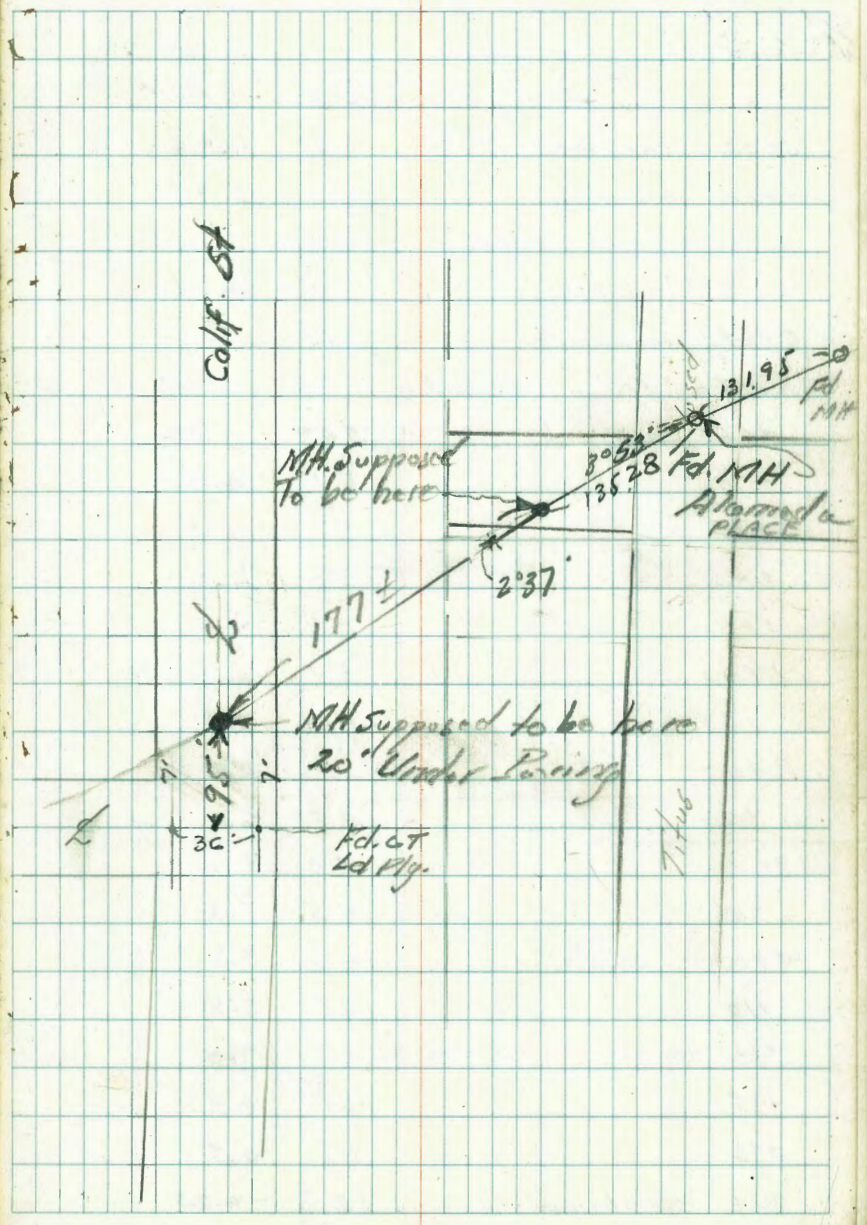


3-26-43 Location of Existing Sewer M.H.s.
 Walker IN CALIFORNIA ST
 Osborne And in Alameda St. for Sewer Dept.
 Hazard PL.

Reference Books ^{Page} 481-92
 " 892-23, 32
 " 395-11

Indexed
 C.S.K.

Estudillo St

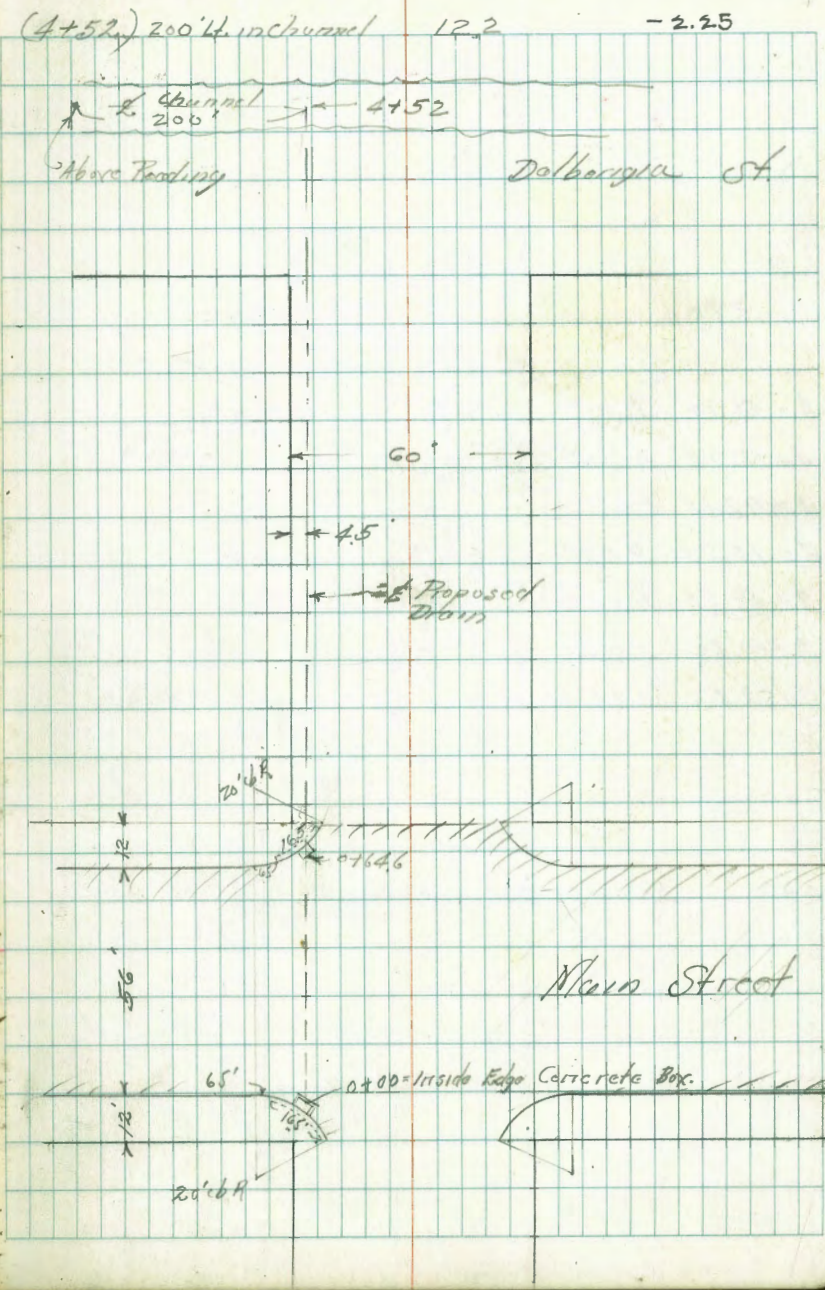


Walker
Osborne
Hazard
4-2-43
D.M. from M.H.
F.B. 1697-58
Alto. Cond. Book 203-75

LEVELS FOR PROPOSED DRAIN
ON 5TH ST.
FROM MAIN TO Dalbergia ST.

	6.30	11.22	5.03	Peak Dalbergia
T.P.	4.64	9.95?	5.31	6.02
0+02.4 on cb Ret.	10.66		5.47	4.48
0+00 on Grating.			6.50	3.45
0+00 " Floor 2' x 3.5' Box			12.24	-2.29 -1.58
0+32.32 = 2' Manhole			5.63	4.32
0+64.6 on Grating			6.48	3.47
0+64.6 " Floor 2' x 3.5' Conc. Box			11.38	-1.43 -0.70
+66.6 on Top cb			5.43	4.52
+71			5.1	4.9
+74			3.9	6.1
+80			3.9	6.1
+83			5.2	4.8
1+00			5.1	4.9
+50			4.3	5.7
2+00			3.8	6.2
+50			4.0	6.0
3+00			4.0	6.0
+50			4.5	5.5
4+00			4.7	5.3
+10			4.5	5.5
+18			2.7	7.3
+25			6.1	3.9
+34			6.5	3.5
+47 = edge channel			12.2	-2.25
+52 = " "			12.2	-7.25

Indexed
c.s.k.



Proposed Sewer in Blocks 457-462
C.C. Seaman's

5+46.60

4+56.10 P.O.T.

4+15.75 A 15°12' Lt

3+72.36 P.O.T.

3+10.85 P.O.T.

2+49.25 P.O.T.

2+10.40 P.O.T.

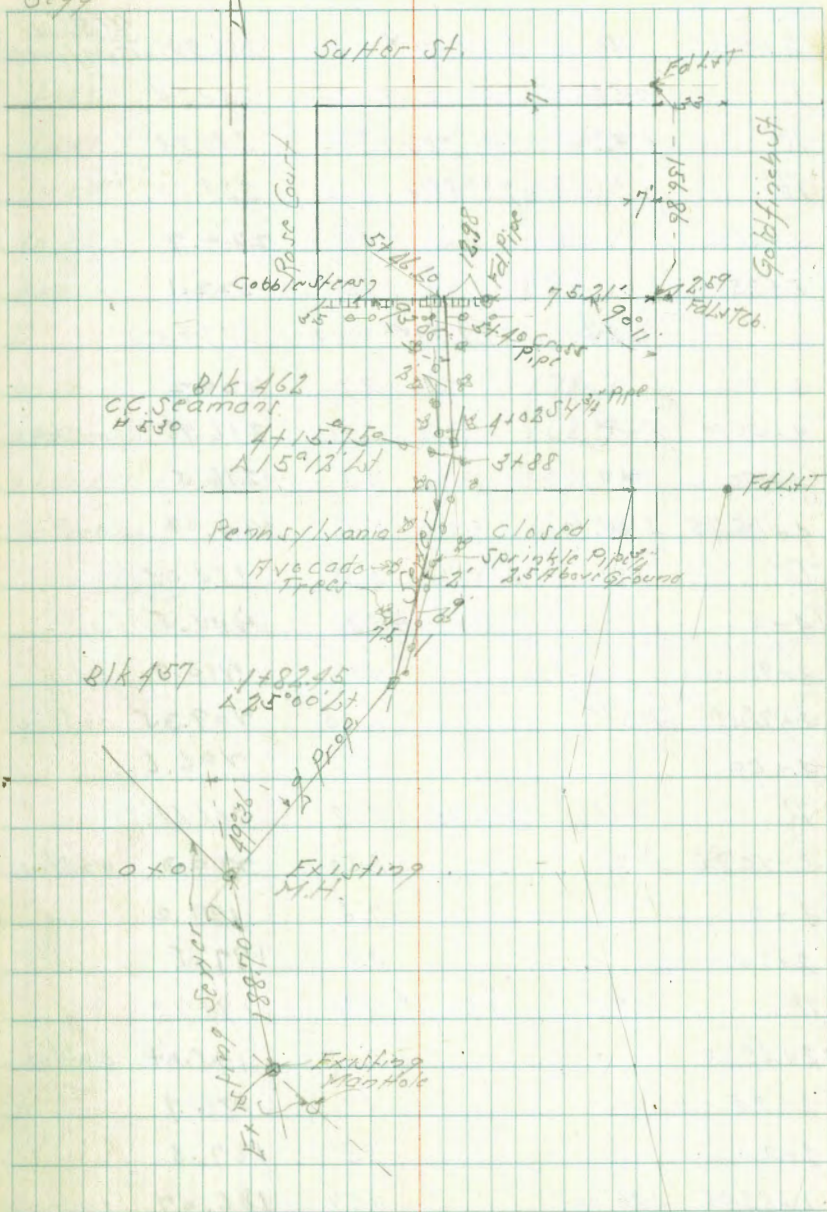
1+82.45 A 25°00' Lt

0+0 - Existing Manhole

July 8-1-143
Sisson
Bliss
Begg

Indexed
C.S.K.

58



BM	2.60	259.59 ✓	256.99	NFBP Section 4 Goldfinch
TP	0.52	253.76 ✓	6.35	253.24
TP	0.42	241.25 ✓	12.93	240.83
TP	0.78	229.58 ✓	12.45	228.80
5+46.6			4.9	224.7
5+25			7.5	222.1
	0.84	222.89 ✓	7.53	222.05
5+0			2.7	220.2
4+56.10	P.O.T.		5.91	216.98 on Stub
4+50			6.4	216.5
4+15.75	A 15° 12'		8.86	214.03 on Stub
TP	1.70	215.73 ✓	8.86	214.03
4+0			3.2	210.5
3+91			5.0	210.7
3+72.36	P.O.T.		6.38	209.35 on Stub
3+50			9.1	206.6
TP	0.14	206.75	9.12	206.61
3+10.85	P.O.T.		6.50	200.3 on Stub
3+0			7.6	199.2
3+75			9.3	197.5
TP	1.72	195.64 ✓	12.83	193.92
2+49.25			0.60	195.04 on Stub
2+25			3.7	191.9
2+0			7.8	187.8
1+82.95	A 25° 00'		9.57	186.07 on Stub

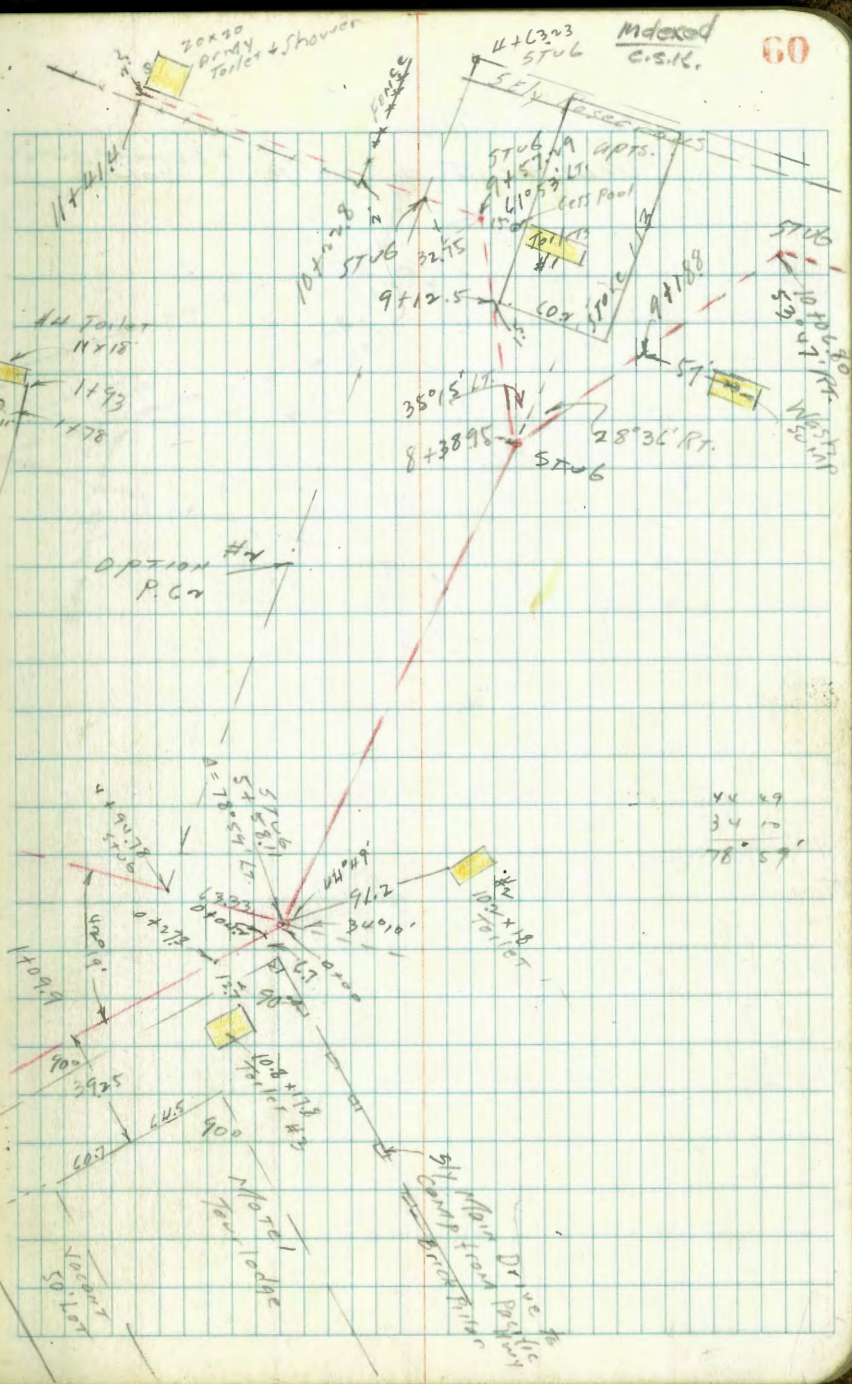
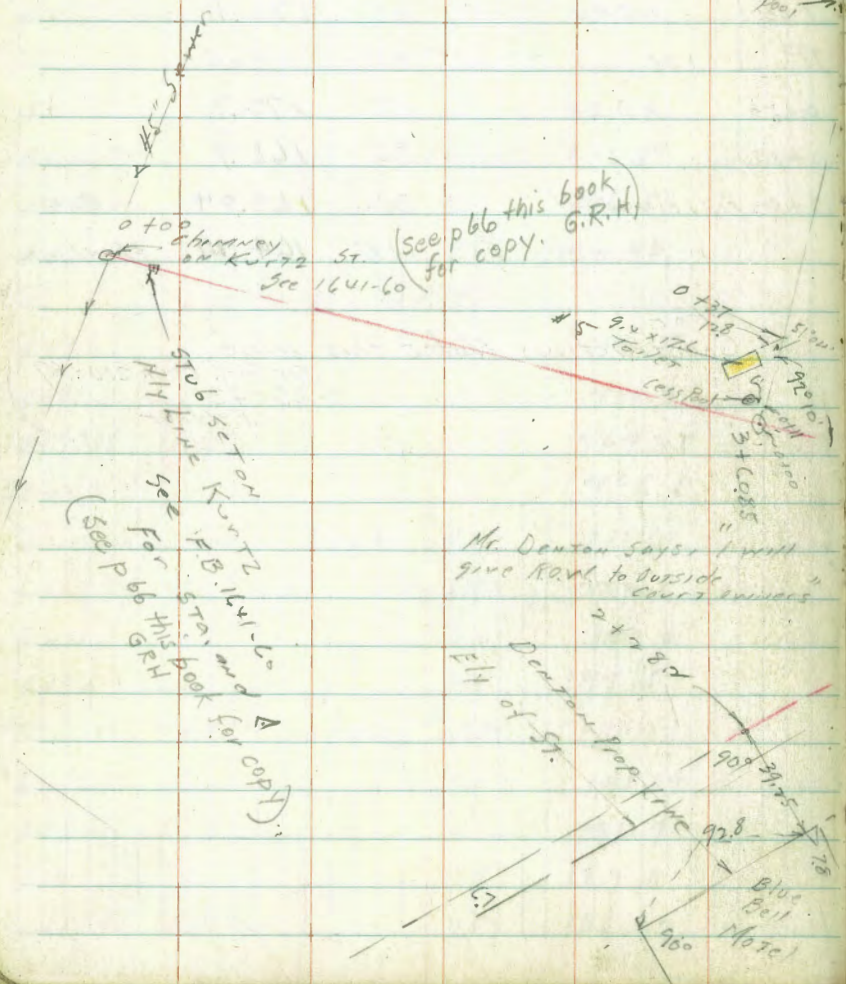
		195.64		
TP	2.53	188.60 ✓	9.57	186.07 on Stub 1+82.95
	1+68		2.1	186.50
	1+59		4.3	184.3
	1+50		4.9	183.7
	1+25		7.6	181.0
	1+0		10.5	178.1
TP	1.25	177.28 ✓	12.57	176.03
	0+50		4.7	172.7
	0+18		8.5	168.9
	0+0 Existing MH		8.34	169.04 on Rim
	" "		12.11	164.27 Flag Line

For
Construction notes this line
See Grd. Book 210-69
7-23-43
C.C. Walker

C. Moore
8-5-43.

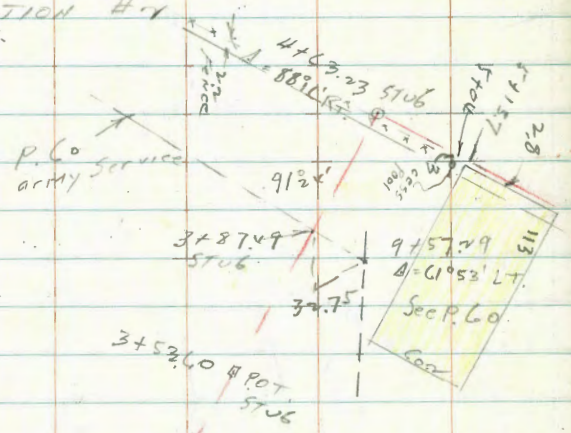
Sewer Prelim. DENTON Auto Camp, Old Town.

Contd. from F.B. 1641-60
See Page 66 this book

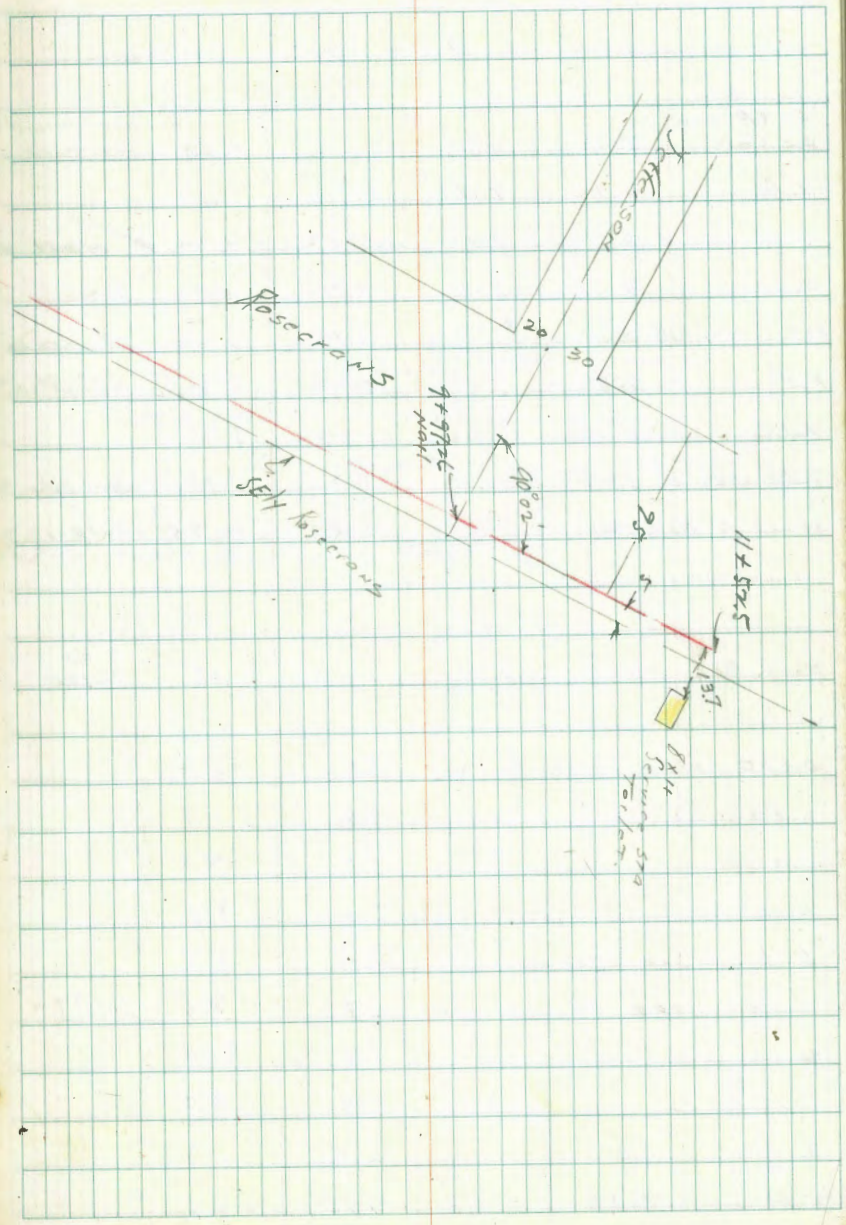
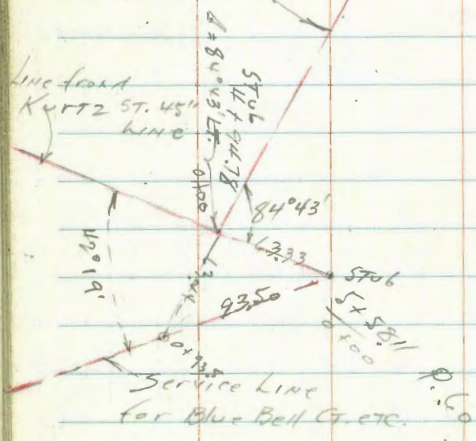


Senior Pedro's. Denton Auto Camp

OPTION #1



OPTION #2



C. Moore
8-6-43.

Sewer Levels

DENTON AUTO CAMP, Old Town.

Bill Bliss Top RR Iron SE Cor	5.22	9.72	4.50	Greenwood Hancock
T.P.	2.86	2.81	4.77	4.95
T.P.	2.52	7.44	2.89	4.92
T.P.	5.50	2.40	4.54	2.90
Set Temp. BM. FRONT of Trailer		#12x 5.32	3.08	Rock Pav. State
T.P.	5.54	9.85	4.09	4.31
T.P.	5.25	10.68	4.42	5.43
T.P.	4.97	10.35	5.30	5.38
check to B14 B.P.		5.80	4.55	4.64

Temp. BM	4.23	7.31	3.08	#12x Trailer
----------	------	------	------	-----------------

0+00 chimney on Kurro		5.1	2.2	✓
+25		5.6	1.7	✓
+50		5.3	2.0	✓
1		5.2	2.1	✓
L +	See 16x1-60	5.1	2.2	✓
"	100+ LT. ground	4.8	2.5	Toilet WASH
2		5.3	2.0	✓
+50		4.9	2.4	✓
3		5.0	2.3	✓
T.P.	5.55	7.90	4.96	2.35

10 Fence Post 2' Eaf 5+00 P. 62

SP. W. of Pacific on Nly Line of Main Entrance
To Denton Auto Camp (Sunset Auto Court)
approx 800' SW of Pacific and Rosecrans

SE. Cor. Pacific & Rosecrans, E. of Pacific
& inside Curb Rd. S. of Pacific
E. of Rosecrans
E. of Rosecrans, N. Ely Cor. Taylor & San Diego
E. of Pacific Hwy. Const.

3 + 60.85			4.9	3.0	✓
"	11' LT. Toilet #4		4.9	3.0	✓ ground
"	178 LT. " #4		5.8	2.1	✓ "
4			5.0	2.9	✓
+ 50			4.9	3.0	✓
T.P.	4.93	8.18	4.65	3.25	✓
4 + 94.78 =	Beq. OPTION A ✓		4.67	3.51	✓ STUB
5 + 58.11	A = 78° 59' LT		5.0 ✓	3.6	✓ "
"	91.2 N Toilet #4		4.4	3.8	✓
6			4.9	3.3	✓
+ 50			5.0	3.2	✓
T.P.	4.91	7.97	5.17	3.06	✓
7			5.1	2.9	✓
+ 50			5.1	2.9	✓
8			5.1	2.9	✓
8 + 38.95	A = 35° 15' LT		5.0	3.0	✓
9			5.1	2.9	✓
9 + 57.29	A = 61° 52' LT		5.3	2.7	✓
8 + 38.95	A = 78° 36' RT		5.0	3.0	✓
8 + 50			5.0	3.0	✓
9			4.7	3.3	✓
+ 50			4.9	3.1	✓
10 + 26.80	A = 53° 47' RT		4.8	3.2	✓
T.P.	6.28	9.53	4.72	3.25	✓
+ 50			4.3	3.2	✓
"			4.3	3.2	✓

11 + 50			6.7	3.3	✓
12			5.9	3.6	✓
150			5.6	3.9	✓
13			5.6	3.9	✓
+ 50			5.4	4.1	✓
14 + 100 A	40° 20' LT		5.0	4.5	✓
"	134' RT Gess pool		4.2	5.3	✓ grounded
15 + 12.3	Service STA Toilet		4.3	5.2	✓

Levels on OPTION #2

3.68 7.19 3.51 4 + 94.78 STUB

4 + 19 + 78 = 0 + 100					
0 + 50			4.5	2.7	✓
1			4.5	2.7	✓
150			4.5	2.7	✓
2			4.6	2.6	✓
150			4.5	2.7	✓
3			4.6	2.6	✓
150			4.8	2.4	✓
3 + 27.49	Int. sec. ARMY Service		5.00	2.19	✓
"	151' LT ARMY		4.00	3.19	✓ Toilet, ground
4			5.0	2.2	✓
150			4.8	2.4	✓
4 + 12.23	A = 88° 16' RT		4.4	2.8	✓
T.P.	3.55	8.47	2.27	4.92	✓ T.P. 4.94

5+00	(5+47.74)	5.2	2.9	✓
+50	(5+97.74)	5.2	3.3	✓
6	(6+47.74)	5.5	3.0	✓
+50	(6+97.74)	5.5	3.0	✓
7	(7+47.74)	5.3	3.2	✓
+50	(7+97.74)	5.7	2.8	✓
8	(8+47.74)	5.3	3.2	✓
+50	(8+97.74)	4.7	3.8	✓
9	(9+47.74)	4.9	3.6	✓
+50	(9+97.74)	4.7	3.8	✓
10	(10+47.74)	4.7	3.8	✓
+50	(10+97.74)	4.4	4.1	✓
11	(11+47.74)	4.0	4.5	✓
+52.5	(12+00.29)	3.7	4.8	✓

Stations continuing from page 60

Levels to serve Blue Bell Motel, etc

5+58.11	= 0+100				
2+27.3		4.4	3.6	✓	
" 12.7 E = Toilet #3		4.1	3.7	✓	
0+50		4.4	3.4	✓	
0+92.5	P.C.V	4.2	3.2	✓	
X		4.7	3.1	✓	
1+09.9		4.7	3.1	✓	
" 39.5 E		4.4	3.4	✓	P.C.
1+50		4.8	3.0	✓	
X		4.9	2.9	✓	
X + 48.4		5.0	2.8	✓	
" 39.5 E		4.8	3.0	✓	P.C.
Temp. B.M. Stake P. 63		4.7	3.3	✓	3.3

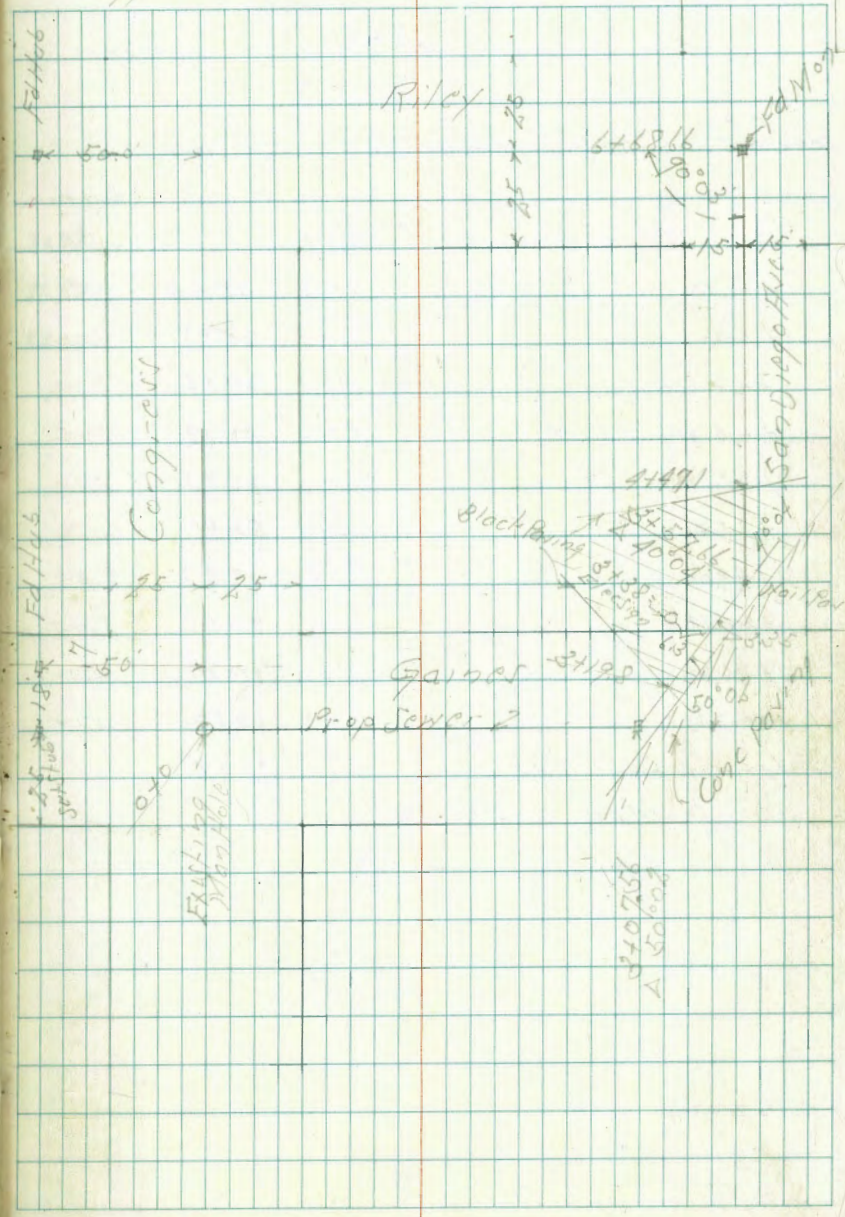
3/4 = 5+58.11

Proposed Sewer Gainers St + San Diego Ave.
From Congress to Riley

BM	5.77	10.39	4.62	SE 8 P 2 Cur San Diego Ave & Riley
TP	3.10	7.91	5.58	4.81
BM	2.67	6.91	3.67	4.24
0+0 = 1/2 Gainers & Congress	4.07		2.84	07 Run M
Exst. M.H. Flow Line	10.24		-3.33	
+50		3.9	3.0	
+10		4.9	2.0	
+50		5.0	1.9	
+20		6.1	0.8	
+50		5.5	1.4	
+20		5.0	1.9	
+07.56 Δ 50° 02' N	4.94	1.97	1.97	07 St 46
TP	5.55	7.52	4.94	1.97
+19.8 = Edge Black Pav.	5.33	2.19	2.19	
+57.66 Δ 40° 04' N	5.18	2.36	2.36	07 Pav
+40	5.13	2.39	2.39	" "
+47.1 = Wly Black Paving	4.91	2.61	2.61	
+50	5.6	1.9	1.9	
+10	5.44	4.08	4.08	24 1/2 ft of 2 of floor 8.129
+50	5.4	2.1	2.1	
+60	5.2	2.3	2.3	
+50	5.1	2.4	2.4	
+68.66 = 1/2 Riley	5.48	2.04	2.04	07 Run Riley San Diego Ave

Sept 22 13
J. J. 07
8155
8899

indexed
c. s. K.



Noore

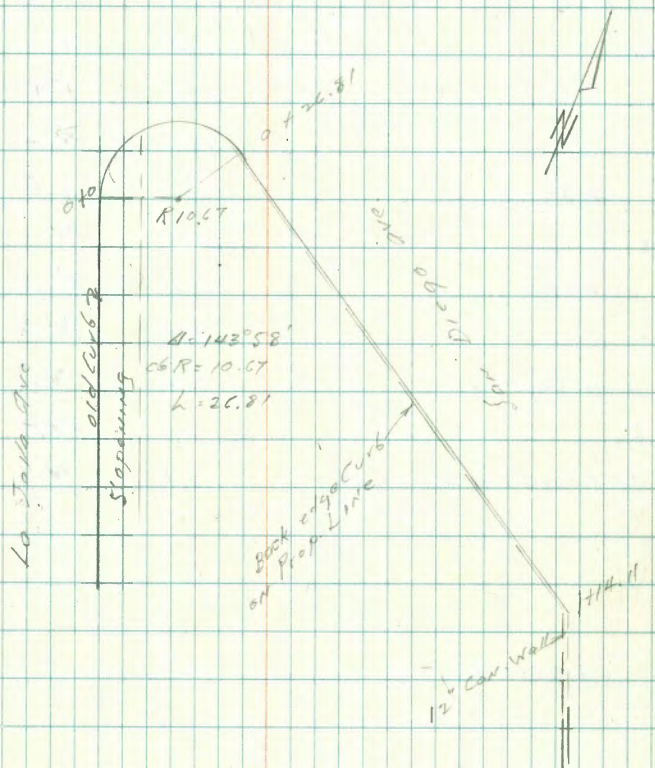
9-29-43 Curb Levels Sky Car
1st Tolb Ave. & San Diego Ave

El. old	Ob. BC	9.64	42.91	33.29	
		Curb		Center	
2+0	BC old curb	9.64		10.04	32.89
+0.67		9.48	33.43	9.98	32.83
+1.24		9.06	33.85	9.67	33.29
+2.01		8.35	34.56	8.93	
+2.68	EC	7.74	35.19	8.26	
+3.68		7.04	35.87	7.60	
+5.58		5.90	37.01	6.56	
+6.90		5.28	37.63	5.81	
+8.78		4.66	38.25	5.27	
+9.65		4.00	38.91	4.74	
+10.21		3.39	39.52	4.14	
+11.41 = end curb drops		3.53	39.38	3.79	

to meet grade of wall

Note!

Curb grades have been raised



9-29-03

Proposed Sewer on
Rosecrans Blvd. Kurtz Hwy.
For Mr. Denton

Indexed
O.S.K.

T.P. Nail in
Post, 3' E. of
5+00

2.97 7.89 ✓ 11.92 P.63

0+00	Rim M.H.	5.77	2.12
+50		5.4	2.5
1		5.8	2.1
+50		5.8	2.1
2		5.3	2.6
+50		6.0	1.9
3		5.8	2.1
+50		5.8	2.1
4		5.7	2.2
+50		5.2	2.7
5		5.0	2.9
5+10.97 = 4+63.23		5.1	2.8

P.64

2+96 Reg. Bd. Fence 1' in st.

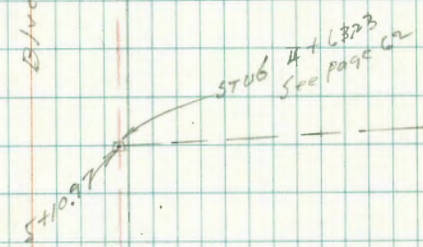
5+10.97 Fence 2' in st.

Moore



Hancock

95
Blvd.



3+50

95
5

Rosecrans

Kurtz

Interceptor

0+00

EX. M.H.

Sewer

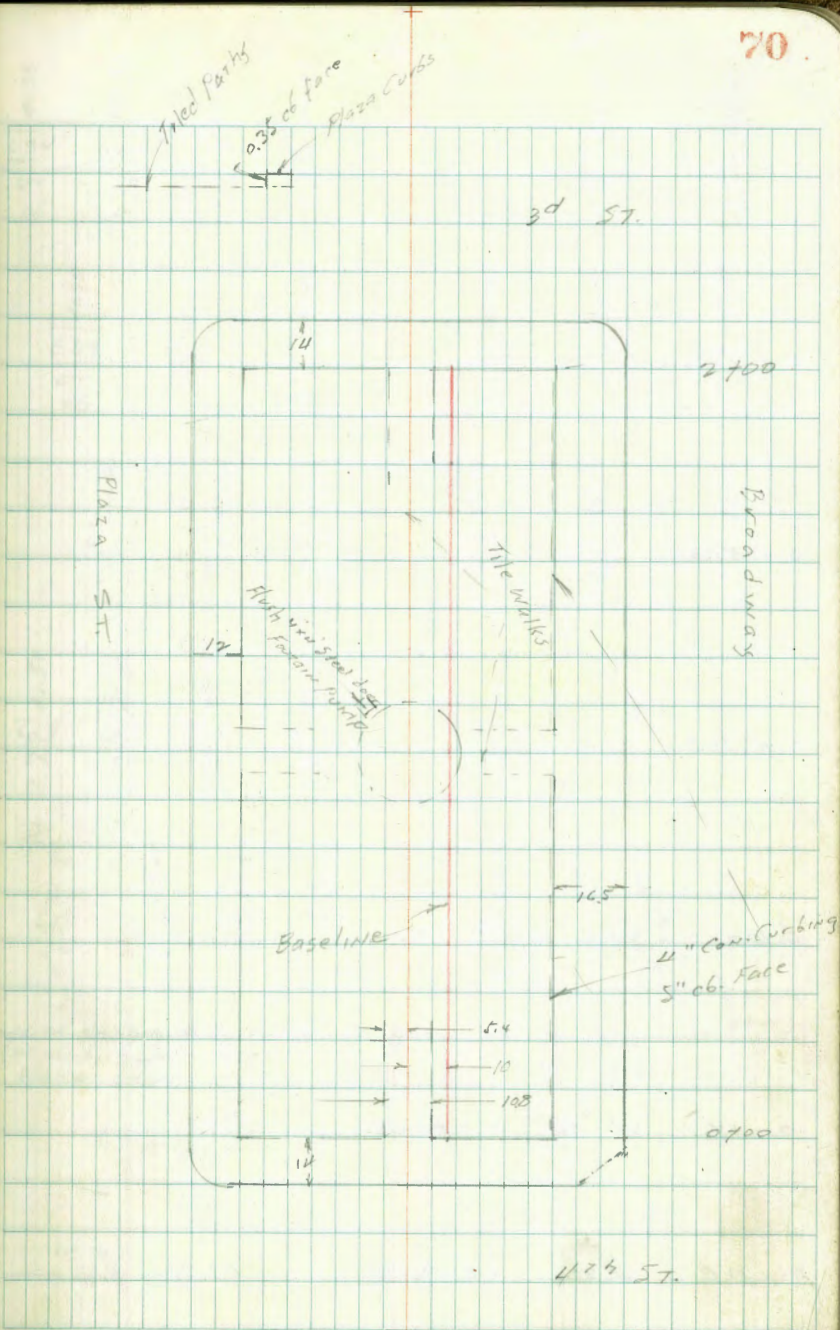
Indexed
C.S.K.

Levels on Plaza

4th + Broadway

C. Moore
S. M. Meyer
H. Moore
12-1-43

F.B. 1517-16



0 + 54.3

0 + 51.3

0 + 37.3

0 + 34.3

0 400 = w.l. 4 7th St.

0-14 W c6. 4 7th St.

SWBP 11.56 48.27

113.71 4th Broadway

W = Con. walks & Tile walks

W c6
(Wickerby St
Plaza St)

S. Cur 6
Edwy.

41.35	41.65	42.87	42.93	43.23	42.97
6.94	6.64	5.20	5.30	5.04	5.39
6.2	5.0	15.4	17.0	27.2	45.1
6.6	W	W	W	W	6
41.38	41.67	42.93	43.05	43.29	43.01
6.89	6.60	5.30	5.20	4.98	5.26
6.2	5.0	15.4	17.0	27.2	45.1
6.6	W	W	W	W	6
41.56	41.80	43.13	43.19	43.51	43.20
6.71	6.47	5.14	5.08	4.76	5.07
6.2	5.0	15.4	17.0	27.2	45.1
6.6	W	W	W	W	6
41.58	41.82	43.15	43.54	43.24	
6.69	6.45	5.14	5.17	5.03	
6.2	5.0	15.4	17.0	27.2	
6.6	W	W	W	W	
41.90	42.08	42.99	43.22	43.70	
6.97	6.19	5.28	5.15	4.57	
6.2	5.0	15.4	17.0	27.2	
6.6	W	W	W	W	
42.98	43.33	43.61			
5.29	4.94	4.47			
6	W	W			
44.86	43.61				
5.41	4.47				
6	W				

1748.7

1745.7

T.P. 2.50 45.08 5.29 42.98

2714 = E 26 3d ST

2700 F.W. 3d ST

1765.7

1767.7

48.7

40.42
7.00
67
66

40.63
4.85
50
4

40.93
7.05
67
66

40.66
4.87
50
4

45.48

44.58
7.69
6

40.79
7.30
37.6
6

40.77
7.55
15.4
4

40.81
7.06
4.6
4

40.88
7.39
4

41.23
7.04
2.76
4

41.01
7.26
44.1
26

41.24
7.01
15.4
4

41.42
6.85
4.6
4

41.69
6.58
2.76
4

41.42
6.85
44.1
26

41.31
6.76
20.8
4

41.53
6.74
4

41.55
6.74
20.8
4

41.74
6.53
2.76
4

41.42
6.85
44.1
26

48.7

check to Orig BM	4.50	43.72	43.71
I.P.	4.67	48.22	43.55

2114 FL 3d 57

2100 FL 3d 57

1765.7

1762.7

45.48

51	39.77
51	39.77
51	39.77

51	40.20
51	40.20
51	40.20

51	40.22
51	40.22
51	40.22

51	40.54
51	40.54
51	40.54

51	40.54
51	40.54
51	40.54

51	39.84
51	39.84
51	39.84

51	40.04
51	40.04
51	40.04

51	40.50
51	40.50
51	40.50

51	40.54
51	40.54
51	40.54

51	40.54
51	40.54
51	40.54

51	40.54
51	40.54
51	40.54

45.48

RC Cross Section Alley Block 13
 Sub. Lots 20 to 50 Block N Teralta
 From Orange to Polk Between 39th & 40th St.

BM	4.75	370.52	365.77	Orange St 39th St
0-14 = So Curb line of Orange				
N	0.7 Paving	6.06 ✓	364.46	
S	" "	6.12 ✓	364.39	
E	" "	6.12 ✓	364.39	
0+0 = S.L. Orange				
E	Top Curb Paving	5.72 ✓	364.80	
S	0.7 "	5.65 ✓	364.87	
N	" "	5.57 ✓	364.95	
N	Top Curb	5.42 ✓	365.10	
0+15				
N		5.0 ✓	365.5	
S		5.1 ✓	365.4	
E		4.9 ✓	365.6	
0+62				
-4.6	= N.W. Do Garage Conc Floor	5.17 ✓	365.35	
-1.0	= N.W. Conc. Eppan	5.22 ✓	365.29	
E		5.0 ✓	365.5	
S		5.1 ✓	365.4	
N		5.4 ✓	365.1	
0+77				
E-1.0	= N.W. Conc. Eppan	5.31 ✓	365.21	
E-4.8	= S.W. Do Garage Conc Floor	5.20 ✓	365.32	

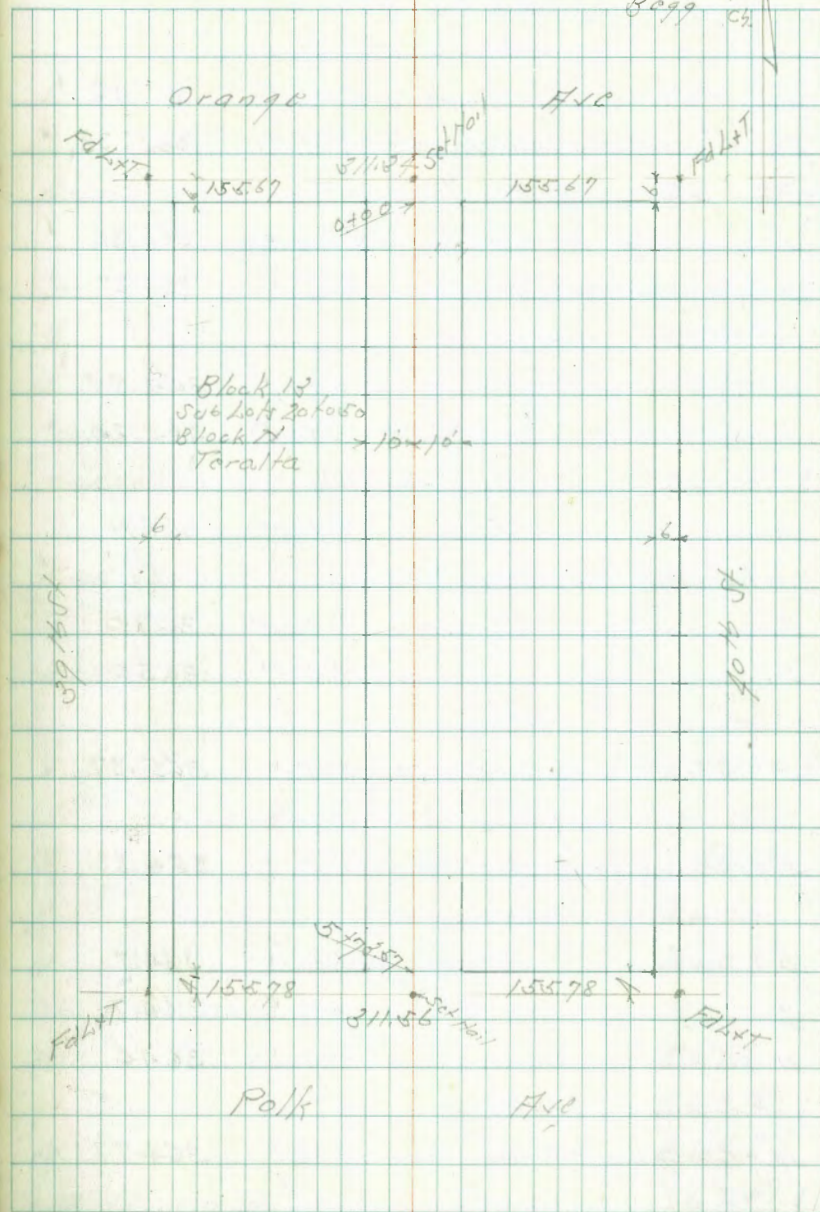
Reduced & Plotted
 Do Scale
 Oct 16 - 1943
 Profile 2675

Original Section
 Field Book #1521-66

Indexed
 PDK.

Dec. 15-43
 Sisson
 Bliss
 Osborne
 Bagg

75



39th St

40th St

37052 ✓		
0+81		
E-0.8	= Nly Conc Apron	5.36 ✓ 365.16 ✓
E-4.8	= Nly Do Garage Conc Floor	5.14 ✓ 365.38 ✓
0+90		
H-1.1	= Fly Conc Apron	5.22 ✓ 365.30 ✓
H-3.1	= Garage Conc Floor	5.15 ✓ 365.37 ✓
0+99		
E-0.7	= Nly Conc Apron	5.53 ✓ 364.99 ✓
E-4.7	= S. Nly Do Garage Conc Floor	5.32 ✓ 365.20 ✓
1+0		
H		5.5 ✓ 365.0
+1.3	= Fly Power Pole	
Z		5.5 ✓ 365.0
F		5.5 ✓ 365.0
1+09		
E-12.5	= Garage Conc Floor	5.15 ✓ 365.37 ✓
1+11		
E-12.5	= Garage Conc Floor	5.69 ✓ 364.83 ✓
1+50		
F		5.8 ✓ 364.7
Z		5.8 ✓ 364.7
H		5.9 ✓ 364.6
1+65		
H-1.1	= Garage Conc Floor	5.75 ✓ 364.77 ✓

37052 ✓		
1+70		
E-4.5	= Do Garage Dirt Floor	5.2 ✓ 364.7 ✓
1+82		
H-7.6	= Conc Slab No Garage ✓	6.14 ✓ 364.38 ✓
2+0		
H		6.0 ✓ 364.5
Z		6.0 ✓ 364.5
F		6.2 ✓ 364.3
2+05		
H-15.1	= Nly Conc Slab No Garage ✓	6.25 ✓ 364.27 ✓
2+25		
H-11.5	= Sly Conc Slab No Garage ✓	8.20 ✓ 364.22 ✓
2+26		
H+2.9	= Fly Power Pole	
2+33		
E-0.3	= Garage Conc Floor	6.58 ✓ 363.94 ✓
2+50		
F		6.8 ✓ 363.7
Z		6.5 ✓ 364.0
H		6.7 ✓ 363.8
2+81		
H		7.0 ✓ 363.5
Z		6.9 ✓ 363.8
F		7.0 ✓ 363.5
+2.0	= Garage Conc Floor	7.01 ✓ 363.51 ✓

370.52

TP 4.05 367.83 6.74 362.78

3+97

H-5 = Garage Conc Floor 4.15 ✓ 363.68 ✓

3+30

F 4.3 ✓ 363.5

Z 4.3 ✓ 363.5

H 4.6 ✓ 363.2

3+54

-3.3 = Garage Conc Floor 4.81 ✓ 363.02 ✓

H 4.9 ✓ 362.9

Z 4.7 ✓ 363.1

F

+2.0 = Fly De Garage Conc Floor 4.81 ✓ 363.02 ✓

3+62

H+1.5 = Fly Porter Pole

3+70

H-3.2 = Garage Conc Floor 5.05 ✓ 362.78 ✓

F-2.7 Fly De Garage Conc Floor 4.82 ✓ 363.01 ✓

4+0

F 5.0 ✓ 362.8

Z 5.1 ✓ 362.7

H 5.1 ✓ 362.7

+2.5 5.8 ✓ 362.0

4+32

H-1.6 = Garage Dirt Floor 5.7 ✓ 362.1 ✓

367.83

4+50

-2.0 6.0 ✓ 361.8

H 5.8 ✓ 362.0

Z 5.5 ✓ 362.3

F 5.6 ✓ 362.2

4+73

F 5.6 ✓ 362.2

Z 5.7 ✓ 362.1

H 5.9 ✓ 361.9

+2.0 6.2 ✓ 361.5

4+75

H+2.0 = Fly Porter Pole

5+0

H 6.2 ✓ 361.5

Z 5.9 ✓ 361.9

F 5.8 ✓ 362.0

5+15

H-0.8 = Fly Conc Floor 6.21 ✓ 361.62 ✓

H-1.8 = Garage Conc Floor 6.04 ✓ 361.79 ✓

5+20

F 6.5 ✓ 361.3

Z 6.2 ✓ 361.6

H 6.6 ✓ 361.2

+1.0 6.1 ✓ 361.2

367.83

5+60

H	7.4 ✓	360.4
L	7.4 ✓	360.4
E	7.3 ✓	360.5

5+70

E	8.1 ✓	359.7
+5	8.4 ✓	359.4
L	8.2 ✓	359.6
+5	8.3 ✓	359.5
H	7.8 ✓	360.0

5+78.57 = NL Polk

H Top Curb	8.36 ✓	359.47 ✓
H on Pav 129	8.58 ✓	359.25 ✓
L " "	8.74 ✓	359.09 ✓
E " "	8.53 ✓	359.30 ✓
E Top Curb	8.36 ✓	359.47 ✓

5+80.07 = N Cb Line Polk

E on Pav 129	8.92 ✓	358.90 ✓
L " "	9.03 ✓	358.80 ✓
H " "	8.98 ✓	358.85 ✓
TP 6.25 270.27	3.81	264.02
B.M.	4.49	265.78

HW 8P
 010099439
 265.77

C. Moore
Southern Mass.

Moore Levels for Bristol's Recorder

30995
~~2-8-47~~ WATER MAIN PRESSURE

ON PT. LANTER

6.27 = H.I. from G.B. 206 - p 47

EL. CTR. IRON DOOR OF Recorder
BOX 0.15 6.12

B.M.B.P. 7.28 15.47 8.39 B.M.

FL. CTR. IRON DOOR Recorder
BOX 0.90 14.77

INDEXED
C.S.K.

79

5' Ely of Ely Rosecrans, on Nly side of Midway

B.P. in NWly c6 Newell + Rosecrans

30' W of NW Rosecrans on NE Lowell St.

IMPROVED TABLES AND INFORMATION

HORIZONTAL STADIA CORRECTIONS

2°-00' — 0.1	21°-00' — 12.8	33°-00' — 29.7
3°-00' — 0.3	21°-30' — 13.4	33°-15' — 30.1
4°-00' — 0.5	22°-00' — 14.0	33°-30' — 30.5
5°-00' — 0.8	22°-30' — 14.7	33°-45' — 30.9
6°-00' — 1.1	23°-00' — 15.3	34°-00' — 31.3
7°-00' — 1.5	23°-30' — 15.9	34°-15' — 31.7
8°-00' — 1.9	24°-00' — 16.5	34°-30' — 32.1
9°-00' — 2.5	24°-30' — 17.2	34°-45' — 32.5
10°-00' — 3.0	25°-00' — 17.9	35°-00' — 32.9
10°-30' — 3.3	25°-30' — 18.6	35°-15' — 33.3
11°-00' — 3.6	26°-00' — 19.2	35°-30' — 33.7
11°-30' — 4.0	26°-30' — 19.9	35°-45' — 34.1
12°-00' — 4.3	27°-00' — 20.6	36°-00' — 34.6
12°-30' — 4.7	27°-30' — 21.3	36°-15' — 35.0
13°-00' — 5.1	28°-00' — 22.0	36°-30' — 35.4
13°-30' — 5.5	28°-30' — 22.8	36°-45' — 35.8
14°-00' — 5.9	29°-00' — 23.5	37°-00' — 36.2
14°-30' — 6.3	29°-30' — 24.3	37°-15' — 36.6
15°-00' — 6.7	30°-00' — 25.0	37°-30' — 37.1
15°-30' — 7.2	30°-15' — 25.4	37°-45' — 37.5
16°-00' — 7.6	30°-30' — 25.8	38°-00' — 37.9
16°-30' — 8.1	30°-45' — 26.2	38°-15' — 38.3
17°-00' — 8.5	31°-00' — 26.5	38°-30' — 38.7
17°-30' — 9.0	31°-15' — 26.9	38°-45' — 39.1
18°-00' — 9.5	31°-30' — 27.3	39°-00' — 39.6
18°-30' — 10.1	31°-45' — 27.7	39°-15' — 40.0
19°-00' — 10.6	32°-00' — 28.1	39°-30' — 40.5
19°-30' — 11.2	32°-15' — 28.5	
20°-00' — 11.7	32°-30' — 28.9	
20°-30' — 12.3	32°-45' — 29.3	

Chains to Feet

1	66
2	132
3	198
4	264
5	330
6	396
7	462
8	528
9	594
10	660

Feet to Chains

100	1.515
200	3.030
300	4.545
400	6.060
500	7.575
600	9.090
700	10.606
800	12.121
900	13.636
1,000	15.151

TABLE X.
MIDDLE ORDINATES OF RAILS
Length of Rail (feet)

C o /	R Feet	30 Inch	28 Inch	26 Inch	24 Inch	22 Inch	20 Inch	C o	R Feet	30 Inch	28 Inch	26 Inch	24 Inch	22 Inch	20 Inch
0-20	17189	.08	.07	.06	.05	.04	.03	8	716.8	1.88	1.64	1.42	1.20	1.01	.84
0-40	8594	.16	.14	.12	.10	.08	.07	9	637.3	2.12	1.84	1.60	1.35	1.14	.94
1-0	5730	.24	.20	.18	.15	.13	.10	10	573.7	2.36	2.05	1.78	1.50	1.27	1.04
1-20	4297	.31	.27	.23	.20	.17	.13	11	521.7	2.59	2.26	1.95	1.65	1.39	1.15
1-40	3438	.39	.34	.29	.25	.21	.17	12	478.3	3.83	2.47	2.15	1.81	1.54	1.26
2-0	2865	.47	.41	.35	.30	.25	.20	13	441.7	3.05	2.66	2.30	1.96	1.66	1.36
2-20	2456	.55	.48	.41	.35	.29	.23	14	410.3	3.30	2.87	2.48	2.10	1.78	1.46
2-40	2149	.63	.55	.47	.40	.33	.27	15	383.1	3.54	3.08	2.68	2.26	1.91	1.57
3-0	1910	.71	.62	.53	.45	.38	.31	16	359.3	3.76	3.28	2.83	2.40	2.04	1.67
3-20	1719	.78	.68	.59	.50	.42	.35	17	338.3	4.00	3.48	3.02	2.57	2.16	1.78
3-40	1563	.86	.75	.65	.55	.46	.38	18	319.6	4.21	3.67	3.18	2.70	2.28	1.87
4-0	1433	.94	.82	.71	.60	.50	.42	19	302.9	4.45	3.89	3.36	2.86	2.41	1.98
4-20	1323	1.02	.89	.77	.65	.55	.45	20	287.9	4.70	4.09	3.55	3.00	2.54	2.09
4-40	1228	1.10	.96	.83	.70	.59	.48	22	262.0	5.16	4.44	3.84	3.30	2.80	2.29
5	1146	1.18	1.03	.89	.75	.63	.52	24	240.5	5.64	4.92	4.20	3.59	3.04	2.50
6	955.3	1.41	1.23	1.06	.90	.76	.62	26	222.3	6.07	5.29	4.58	3.88	3.29	2.70
7	819.0	1.65	1.44	1.24	1.05	.89	.73								

TABLE XI.
SHORT RADIUS CURVES

Radius Feet	Chord Feet	Central Angle	Deflection Angle	Deflection for 1 Foot
35	10	16-26	8-13	49.3
45	10	12-46	6-23	38.3
50	15	17-16	8-38	34.5
60	15	14-22	7-11	28.8
75	15	11-30	5-45	23.0
100	20	11-30	5-45	17.3
120	20	9-34	4-47	14.3
150	20	7-39	3-49	11.5
190	25	7-32	3-46	9.15
200	25	7-10	3-35	8.6
225	25	6-25	3-12	7.7
240	25	5-58	2-59	7.2
250	25	5-44	2-52	6.9
275	25	5-12	2-36	6.2
288	50	9-58	4-59	6.0
300	50	9-32	4-46	5.7
350	50	8-12	4-06	4.9
376	50	7-40	3-50	4.6
400	50	7-10	3-35	4.3
410	50	7-00	3-30	4.2

To find length of curve divide angle from P. C. to P. T. by central angle of chord, and multiply by length of chord.

TABLE XII.
INCLINED DISTANCE OF 100 FT. REDUCED TO HORIZONTAL

Slope	Horizontal Distance	Correction	Rise Per Foot	Slope	Horizontal Distance	Correction	Rise Per Foot
0°00'	100.000	0.000	0.000	8°00'	99.027	0.973	0.139
15'	99.999	0.001	0.004	15'	98.965	1.035	0.143
30'	99.996	0.004	0.009	30'	98.902	1.098	0.148
45'	99.991	0.009	0.013	45'	98.836	1.164	0.152
1 00	99.985	0.015	0.017	9 00	98.769	1.231	0.156
15	99.976	0.024	0.022	15	98.700	1.300	0.161
30	99.966	0.034	0.026	30	98.629	1.371	0.165
45	99.953	0.047	0.031	45	98.556	1.444	0.169
2 00	99.939	0.061	0.035	10 00	98.481	1.519	0.174
15	99.923	0.077	0.039	15	98.404	1.596	0.178
30	99.905	0.095	0.044	30	98.325	1.675	0.182
45	99.885	0.115	0.048	45	98.245	1.755	0.187
3 00	99.863	0.137	0.052	11 00	98.163	1.837	0.191
15	99.839	0.161	0.057	15	98.079	1.921	0.195
30	99.813	0.187	0.061	30	97.992	2.008	0.199
45	99.786	0.214	0.065	45	97.905	2.095	0.204
4 00	99.756	0.244	0.070	12 00	97.815	2.185	0.208
15	99.725	0.275	0.074	15	97.723	2.277	0.212
30	99.692	0.308	0.078	30	97.630	2.370	0.216
45	99.657	0.343	0.083	45	97.534	2.466	0.221
5 00	99.619	0.381	0.087	13 00	97.437	2.563	0.225
15	99.580	0.420	0.092	15	97.338	2.662	0.229
30	99.540	0.460	0.096	30	97.237	2.763	0.233
45	99.497	0.503	0.100	45	97.134	2.866	0.238
6 00	99.452	0.548	0.105	14 00	97.030	2.970	0.242
15	99.406	0.594	0.109	15	96.923	3.077	0.246
30	99.357	0.643	0.113	30	96.815	3.185	0.250
45	99.307	0.693	0.118	45	96.705	3.295	0.255
7 00	99.255	0.745	0.122	15 00	96.593	3.407	0.259
15	99.200	0.800	0.126	15	96.479	3.521	0.263
30	99.144	0.856	0.131	30	96.363	3.637	0.267
45	99.087	0.913	0.135	45	96.246	3.754	0.271

TABLE XIII.
MINUTES IN DECIMALS OF A DEGREE.

0 30"	.00833	10' 30"	.17500	20' 30"	.34167	30' 30"	.50833	40' 30"	.67500	50' 30"	.84167
1 00	.01667	11 00	.18333	21 00	.35000	31 00	.51667	41 00	.68333	51 00	.85000
30	.02500	30	.19167	30	.35833	30	.52500	30	.69167	30	.85833
2 00	.03333	12 00	.20000	22 00	.36667	32 00	.53333	42 00	.70000	52 00	.86667
30	.04167	30	.20833	30	.37500	30	.54167	30	.70833	30	.87500
3 00	.05000	18 00	.21667	23 00	.38333	33 00	.55000	43 00	.71667	53 00	.88333
30	.05833	30	.22500	30	.39167	30	.55833	30	.72500	30	.89167
4 00	.06667	14 00	.23333	24 00	.40000	34 00	.56667	44 00	.73333	54 00	.90000
30	.07500	30	.24167	30	.40833	30	.57500	30	.74167	30	.90833
5 00	.08333	15 00	.25000	25 00	.41667	35 00	.58333	45 00	.75000	55 00	.91667
30	.09167	30	.25833	30	.42500	30	.59167	30	.75833	30	.92500
6 00	.10000	16 00	.26667	26 00	.43333	36 00	.60000	46 00	.76667	56 00	.93333
30	.10833	30	.27500	30	.44167	30	.60833	30	.77500	30	.94167
7 00	.11667	17 00	.28333	27 00	.45000	37 00	.61667	47 00	.78333	57 00	.95000
30	.12500	30	.29167	30	.45833	30	.62500	30	.79167	30	.95833
8 00	.13333	18 00	.30000	28 00	.46667	38 00	.63333	48 00	.80000	58 00	.96667
30	.14167	30	.30833	30	.47500	30	.64167	30	.80833	30	.97500
9 00	.15000	19 00	.31667	29 00	.48333	39 00	.65000	49 00	.81667	59 00	.98333
30	.15833	30	.32500	30	.49167	30	.65833	30	.82500	30	.99167
10 00	.16667	20 00	.33333	30 00	.50000	40 00	.66667	50 00	.83333	60 00	1.00000



44.1
27.0
16.5