

1645

LEITZ

LEVEL BOOK

No. 772

TRAVERSE TABLE FOR TRANSIT BOOK.

From 1° to 90° for a distance of 100.

Degrees.	DEGREES.		½ DEGREE.		¼ DEGREE.		¼ DEGREE.		Degrees.
	Lat.	Dep.	Lat.	Dep.	Lat.	Dep.	Lat.	Dep.	
0									
1	99.98	1.75	99.98	2.18	99.97	2.62	99.95	3.05	89
2	99.94	3.49	99.92	3.93	99.91	4.36	99.88	4.80	88
3	99.86	5.23	99.84	5.67	99.81	6.10	99.79	6.54	87
4	99.76	6.98	99.73	7.41	99.69	7.85	99.66	8.28	86
5	99.62	8.72	99.58	9.15	99.54	9.58	99.50	10.02	85
6	99.45	10.45	99.41	10.89	99.36	11.32	99.31	11.75	84
7	99.25	12.19	99.20	12.62	99.14	13.05	99.09	13.49	83
8	99.03	13.92	98.97	14.35	98.90	14.78	98.84	15.21	82
9	98.77	15.64	98.70	16.07	98.63	16.50	98.56	16.93	81
10	98.48	17.36	98.40	17.79	98.33	18.22	98.25	18.65	80
11	98.16	19.08	98.08	19.51	97.99	19.94	97.90	20.36	79
12	97.81	20.79	97.72	21.22	97.63	21.64	97.53	22.07	78
13	97.44	22.50	97.34	22.92	97.24	23.34	97.13	23.77	77
14	97.03	24.19	96.92	24.62	96.81	25.04	96.70	25.46	76
15	96.59	25.88	96.48	26.30	96.36	26.72	96.25	27.14	75
16	96.13	27.56	96.00	27.98	95.88	28.40	95.76	28.82	74
17	95.63	29.24	95.50	29.65	95.37	30.07	95.24	30.49	73
18	95.11	30.90	94.97	31.32	94.83	31.73	94.69	32.14	72
19	94.55	32.56	94.41	32.97	94.26	33.38	94.12	32.79	71
20	93.97	34.20	93.82	34.61	93.67	35.02	93.51	35.43	70
21	93.36	35.84	93.20	36.24	93.04	36.65	92.88	37.06	69
22	92.72	37.46	92.55	37.86	92.39	38.27	92.22	38.67	68
23	92.05	39.07	91.88	39.47	91.71	39.87	91.53	40.27	67
24	91.35	40.67	91.18	41.07	91.00	41.47	90.81	41.87	66
25	90.63	42.26	90.45	42.66	90.26	43.05	90.07	43.44	65
26	89.88	43.84	89.69	44.23	89.49	44.62	89.30	45.01	64
27	89.10	45.40	88.90	45.79	88.70	46.17	88.50	46.56	63
28	88.29	46.95	88.09	47.33	87.88	47.72	87.67	48.10	62
29	87.46	48.48	87.25	48.86	87.04	49.24	86.82	49.62	61
30	86.60	50.00	86.38	50.38	86.16	50.75	85.94	51.13	60
31	85.72	51.50	85.49	51.88	85.26	52.25	85.04	52.62	59
32	84.80	52.99	84.57	53.36	84.34	53.73	84.10	54.10	58
33	83.87	54.46	83.63	54.83	83.39	55.19	83.15	55.56	57
34	82.90	55.92	82.66	56.28	82.41	56.64	82.16	57.00	56
35	81.92	57.36	81.66	57.71	81.41	58.07	81.16	58.42	55
36	80.90	58.78	80.64	59.13	80.39	59.48	80.13	59.83	54
37	79.86	60.18	79.60	60.53	79.34	60.88	79.07	61.22	53
38	78.80	61.57	78.53	61.91	78.26	62.25	77.99	62.59	52
39	77.71	62.93	77.44	63.27	77.16	63.61	76.88	63.94	51
40	76.60	64.28	76.32	64.61	76.04	64.94	75.76	65.28	50
41	75.47	65.61	75.18	65.93	74.90	66.26	74.61	66.59	49
42	74.31	66.91	74.02	67.24	73.73	67.56	73.43	67.88	48
43	73.14	68.20	72.84	68.52	72.54	68.84	72.24	69.15	47
44	71.93	69.47	71.63	69.78	71.33	70.09	71.02	70.40	46
45	70.71	70.71							45
	Dep.	Lat.	Dep.	Lat.	Dep.	Lat.	Dep.	Lat.	
	DEGREES.	½ DEGREE.	¼ DEGREE.	¼ DEGREE.	DEGREES.	½ DEGREE.	¼ DEGREE.	¼ DEGREE.	

Published by the A. LIETZ Co., San Francisco, Cal.

MADE IN
U. S. A.



Quality
Evidenced
Since
1882.

Standard
Tripod
Connection

LIETZ STANDARD ENGINEERS' TRANSIT
With U Shaped Standards

No. 5E with 6¼" limb.

No. 11E with 5" limb.

Furnished with either Internal or External
Focusing Telescope.

1645

CITY ENGINEER

TABLE OF STADIA REDUCTIONS
For a Constant of 100.

ROD VERTICAL.

Min.	0°		1°		2°		3°		4°		5°		6°		7°		Min.
	Hor. Dist.	Diff. Elev.	Hor. Dist.	Diff. Elev.	Hor. Dist.	Diff. Elev.	Hor. Dist.	Diff. Elev.	Hor. Dist.	Diff. Elev.	Hor. Dist.	Diff. Elev.	Hor. Dist.	Diff. Elev.	Hor. Dist.	Diff. Elev.	
0	100.00	00	99.97	1.74	99.89	3.40	99.73	5.03	99.51	6.64	99.24	8.26	98.91	9.89	98.51	11.54	0
1	100.00	.06	99.97	1.80	99.89	3.45	99.73	5.08	99.51	6.69	99.24	8.31	98.91	9.95	98.51	11.60	1
2	100.00	.12	99.97	1.86	99.87	3.50	99.71	5.14	99.50	6.74	99.22	8.34	98.89	10.01	98.48	11.66	2
3	100.00	.17	99.96	1.92	99.86	3.56	99.70	5.20	99.49	6.79	99.21	8.39	98.88	10.07	98.47	11.72	3
4	100.00	.23	99.96	1.98	99.86	3.62	99.70	5.26	99.49	6.85	99.21	8.44	98.88	10.13	98.47	11.78	4
5	100.00	.29	99.95	2.04	99.85	3.67	99.69	5.32	99.48	6.90	99.20	8.49	98.87	10.19	98.46	11.84	5
6	100.00	.35	99.95	2.10	99.85	3.73	99.69	5.38	99.48	6.96	99.20	8.54	98.87	10.25	98.46	11.90	6
7	100.00	.41	99.94	2.16	99.84	3.79	99.68	5.44	99.47	7.02	99.19	8.59	98.86	10.31	98.45	11.96	7
8	100.00	.47	99.94	2.22	99.84	3.84	99.68	5.50	99.47	7.08	99.19	8.64	98.86	10.37	98.45	12.02	8
9	100.00	.53	99.93	2.28	99.83	3.90	99.67	5.56	99.46	7.14	99.18	8.69	98.85	10.43	98.45	12.08	9
10	100.00	.59	99.93	2.34	99.83	3.96	99.67	5.62	99.46	7.20	99.18	8.74	98.85	10.49	98.44	12.14	10
11	100.00	.65	99.92	2.40	99.82	4.02	99.66	5.68	99.45	7.26	99.17	8.79	98.84	10.55	98.44	12.20	11
12	100.00	.71	99.92	2.46	99.82	4.08	99.66	5.74	99.45	7.32	99.17	8.84	98.84	10.61	98.43	12.26	12
13	100.00	.77	99.91	2.52	99.81	4.14	99.65	5.80	99.44	7.38	99.16	8.89	98.83	10.67	98.43	12.32	13
14	100.00	.83	99.91	2.58	99.81	4.20	99.65	5.86	99.44	7.44	99.16	8.94	98.83	10.73	98.43	12.38	14
15	100.00	.89	99.90	2.64	99.80	4.26	99.64	5.92	99.43	7.50	99.15	8.99	98.82	10.79	98.42	12.44	15
16	100.00	.95	99.90	2.70	99.80	4.32	99.64	5.98	99.43	7.56	99.15	9.04	98.82	10.85	98.42	12.50	16
17	100.00	1.01	99.89	2.76	99.80	4.38	99.63	6.04	99.42	7.62	99.14	9.09	98.81	10.91	98.41	12.56	17
18	100.00	1.07	99.89	2.82	99.79	4.44	99.63	6.10	99.42	7.68	99.14	9.14	98.81	10.97	98.41	12.62	18
19	100.00	1.13	99.88	2.88	99.79	4.50	99.62	6.16	99.41	7.74	99.13	9.19	98.80	11.03	98.40	12.68	19
20	100.00	1.19	99.88	2.94	99.78	4.56	99.62	6.22	99.41	7.80	99.13	9.24	98.80	11.09	98.40	12.74	20
21	100.00	1.25	99.87	3.00	99.78	4.62	99.61	6.28	99.40	7.86	99.12	9.29	98.79	11.15	98.39	12.80	21
22	100.00	1.31	99.87	3.06	99.77	4.68	99.61	6.34	99.40	7.92	99.12	9.34	98.79	11.21	98.39	12.86	22
23	100.00	1.37	99.86	3.12	99.77	4.74	99.60	6.40	99.39	7.98	99.11	9.39	98.78	11.27	98.38	12.92	23
24	100.00	1.43	99.86	3.18	99.76	4.80	99.60	6.46	99.39	8.04	99.11	9.44	98.78	11.33	98.38	12.98	24
25	100.00	1.49	99.85	3.24	99.76	4.86	99.59	6.52	99.38	8.10	99.10	9.49	98.77	11.39	98.37	13.04	25
26	100.00	1.55	99.85	3.30	99.75	4.92	99.59	6.58	99.38	8.16	99.10	9.54	98.77	11.45	98.37	13.10	26
27	100.00	1.61	99.84	3.36	99.75	4.98	99.58	6.64	99.37	8.22	99.09	9.59	98.76	11.51	98.36	13.16	27
28	100.00	1.67	99.84	3.42	99.74	5.04	99.58	6.70	99.37	8.28	99.09	9.64	98.76	11.57	98.36	13.22	28
29	100.00	1.73	99.83	3.48	99.74	5.10	99.57	6.76	99.36	8.34	99.08	9.69	98.75	11.63	98.35	13.28	29
30	100.00	1.79	99.83	3.54	99.73	5.16	99.57	6.82	99.36	8.40	99.08	9.74	98.75	11.69	98.35	13.34	30
31	100.00	1.85	99.82	3.60	99.73	5.22	99.56	6.88	99.35	8.46	99.07	9.79	98.74	11.75	98.34	13.40	31
32	100.00	1.91	99.82	3.66	99.72	5.28	99.56	6.94	99.35	8.52	99.07	9.84	98.74	11.81	98.34	13.46	32
33	100.00	1.97	99.81	3.72	99.72	5.34	99.55	7.00	99.34	8.58	99.06	9.89	98.73	11.87	98.33	13.52	33
34	100.00	2.03	99.81	3.78	99.71	5.40	99.55	7.06	99.34	8.64	99.06	9.94	98.73	11.93	98.33	13.58	34
35	100.00	2.09	99.80	3.84	99.71	5.46	99.54	7.12	99.33	8.70	99.05	9.99	98.72	11.99	98.32	13.64	35
36	100.00	2.15	99.80	3.90	99.70	5.52	99.54	7.18	99.33	8.76	99.05	10.04	98.72	12.05	98.32	13.70	36
37	100.00	2.21	99.79	3.96	99.70	5.58	99.53	7.24	99.32	8.82	99.04	10.09	98.71	12.11	98.31	13.76	37
38	100.00	2.27	99.79	4.02	99.69	5.64	99.53	7.30	99.32	8.88	99.04	10.14	98.71	12.17	98.31	13.82	38
39	100.00	2.33	99.78	4.08	99.68	5.70	99.52	7.36	99.31	8.94	99.03	10.19	98.70	12.23	98.30	13.88	39
40	100.00	2.39	99.78	4.14	99.68	5.76	99.52	7.42	99.31	9.00	99.03	10.24	98.70	12.29	98.30	13.94	40
41	100.00	2.45	99.77	4.20	99.67	5.82	99.51	7.48	99.30	9.06	99.02	10.29	98.69	12.35	98.29	14.00	41
42	100.00	2.51	99.77	4.26	99.67	5.88	99.51	7.54	99.30	9.12	99.02	10.34	98.69	12.41	98.29	14.06	42
43	100.00	2.57	99.76	4.32	99.66	5.94	99.50	7.60	99.29	9.18	99.01	10.39	98.68	12.47	98.28	14.12	43
44	100.00	2.63	99.76	4.38	99.66	6.00	99.50	7.66	99.29	9.24	99.01	10.44	98.68	12.53	98.28	14.18	44
45	100.00	2.69	99.75	4.44	99.65	6.06	99.50	7.72	99.28	9.30	99.00	10.49	98.67	12.59	98.27	14.24	45
46	100.00	2.75	99.75	4.50	99.65	6.12	99.49	7.78	99.28	9.36	99.00	10.54	98.67	12.65	98.27	14.30	46
47	100.00	2.81	99.74	4.56	99.64	6.18	99.49	7.84	99.27	9.42	98.99	10.59	98.66	12.71	98.26	14.36	47
48	100.00	2.87	99.74	4.62	99.64	6.24	99.48	7.90	99.27	9.48	98.99	10.64	98.66	12.77	98.26	14.42	48
49	100.00	2.93	99.73	4.68	99.63	6.30	99.48	7.96	99.26	9.54	98.98	10.69	98.65	12.83	98.25	14.48	49
50	100.00	2.99	99.73	4.74	99.63	6.36	99.47	8.02	99.26	9.60	98.98	10.74	98.65	12.89	98.25	14.54	50
51	100.00	3.05	99.72	4.80	99.62	6.42	99.47	8.08	99.25	9.66	98.97	10.79	98.64	12.95	98.24	14.60	51
52	100.00	3.11	99.72	4.86	99.62	6.48	99.46	8.14	99.25	9.72	98.97	10.84	98.64	13.01	98.24	14.66	52
53	100.00	3.17	99.71	4.92	99.61	6.54	99.46	8.20	99.24	9.78	98.96	10.89	98.63	13.07	98.23	14.72	53
54	100.00	3.23	99.71	4.98	99.61	6.60	99.45	8.26	99.24	9.84	98.96	10.94	98.63	13.13	98.23	14.78	54
55	100.00	3.29	99.70	5.04	99.60	6.66	99.45	8.32	99.23	9.90	98.95	10.99	98.62	13.19	98.22	14.84	55
56	100.00	3.35	99.70	5.10	99.60	6.72	99.44	8.38	99.23	9.96	98.95	11.04	98.62	13.25	98.22	14.90	56
57	100.00	3.41	99.69	5.16	99.59	6.78	99.44	8.44	99.22	10.02	98.94	11.09	98.61	13.31	98.21	14.96	57
58	100.00	3.47	99.69	5.22	99.59	6.84	99.43	8.50	99.22	10.08	98.94	11.14	98.61	13.37	98.21	15.02	58
59	100.00	3.53	99.68	5.28	99.58	6.90	99.43	8.56	99.21	10.14	98.93	11.19	98.60	13.43	98.20	15.08	59
60	100.00	3.59	99.68	5.34	99.58	6.96	99.42	8.62	99.21	10.20	98.93	11.24	98.60	13.49	98.20	15.14	60
c= .75		.75		.02	.75	.03	.75	.05									

TABLE OF STADIA REDUCTIONS.—Continued.

Min.	24°		25°		26°		27°		28°	
	Hor. Dist.	Diff. Elev.	Hor. Dist.	Diff. Elev.	Hor. Dist.	Diff. Elev.	Hor. Dist.	Diff. Elev.	Hor. Dist.	Diff. Elev.
0	83.46	37.16	82.14	38.30	80.78	39.40	79.39	40.45	77.96	41.44
2	83.41	37.20	82.09	38.34	80.74	39.44	79.34	40.49	77.91	41.48
4	83.37	37.23	82.05	38.38	80.69	39.47	79.30	40.52	77.86	41.52
6	83.33	37.26	82.01	38.41	80.65	39.51	79.26	40.55	77.81	41.56
8	83.29	37.29	81.97	38.45	80.61	39.54	79.22	40.58	77.77	41.60
10	83.24	37.35	81.92	38.49	80.55	39.58	79.15	40.62	77.72	41.64
12	83.20	37.39	81.87	38.53	80.51	39.61	79.11	40.66	77.67	41.68
14	83.15	37.43	81.83	38.56	80.46	39.65	79.06	40.70	77.62	41.72
16	83.11	37.46	81.79	38.60	80.42	39.69	79.02	40.74	77.58	41.76
18	83.07	37.51	81.74	38.64	80.37	39.73	78.96	40.78	77.52	41.80
20	83.02	37.54	81.69	38.67	80.32	39.76	78.92	40.82	77.48	41.84
22	82.98	37.58	81.65	38.71	80.28	39.79	78.87	40.86	77.42	41.88
24	82.93	37.62	81.60	38.75	80.23	39.83	78.83	40.90	77.38	41.92
26	82.89	37.66	81.56	38.78	80.18	39.86	78.77	40.94	77.33	41.96
28	82.85	37.70	81.51	38.82	80.14	39.90	78.73	40.98	77.29	42.00
30	82.80	37.74	81.47	38.85	80.09	39.93	78.68	41.02	77.23	42.04
32	82.76	37.77	81.42	38.89	80.04	39.97	78.63	41.06	77.18	42.08
34	82.71	37.81	81.38	38.92	80.00	40.00	78.59	41.10	77.14	42.12
36	82.67	37.85	81.33	38.95	79.95	40.04	78.54	41.14	77.09	42.16
38	82.63	37.89	81.29	38.99	79.90	40.07	78.49	41.18	77.04	42.20
40	82.58	37.93	81.24	39.04	79.86	40.11	78.44	41.22	76.99	42.24
42	82.54	37.96	81.19	39.08	79.81	40.14	78.39	41.26	76.94	42.28
44	82.49	38.00	81.15	39.11	79.76	40.18	78.34	41.30	76.89	42.32
46	82.45	38.04	81.10	39.15	79.72	40.21	78.30	41.34	76.84	42.36
48	82.41	38.08	81.06	39.18	79.67	40.24	78.25	41.38	76.79	42.40
50	82.36	38.11	81.01	39.22	79.62	40.28	78.20	41.42	76.74	42.44
52	82.32	38.15	80.97	39.25	79.58	40.31	78.15	41.46	76.69	42.48
54	82.27	38.19	80.92	39.29	79.53	40.35	78.10	41.50	76.64	42.52
56	82.23	38.23	80.87	39.33	79.48	40.38	78.06	41.54	76.59	42.56
58	82.18	38.26	80.83	39.36	79.44	40.42	78.01	41.58	76.55	42.60
60	82.14	38.30	80.78	39.40	79.39	40.45	77.96	41.62	76.50	42.64
c=75...	68	31	66	32	67	33	66	35	66	36
c=1.15...	1.05	48	1.04	50	1.03	51	1.02	53	1.01	55
c=1.90...	1.73	79	1.72	82	1.70	85	1.69	88	1.67	91

Published by the A. Lutz Co., San Francisco, Ca

index of
C.S.K.

50' wide
12' curbs

Curb levels on Camino de La Costa

Beg at La Jolla Blvd gks 12 and 2-a

Note! W.L. - Baseline Sta. Levels on Curbs
opp. P.L. P.T.S

1 + C8

(\$140.9)

1 + VV 03

(\$120.8)

0 + 96.04

(\$80.5)

T.P.

0.14 64.66 12.45 64.57

0 + 48.01

(\$40.3)

0 + 00 = B.C.

(\$0.00)

00 - 36.95 F.C. S.H.

00 - 15.30 - N.H. = CC

00 - 63.16 B.C. S.H.

00 - 51.48 - N.H. B.C.

B.P. mark 1.13 76.97

75.84

125' S of -
de La Costa
on La Jolla

LT

(\$161.06)

57.80 ✓

57.45 ✓

£

57.95 ✓

57.51 ✓

RT

57.81 ✓

Moore
W. Moore
M. Fox
7-24-41

1492.04 CC

6.86
26

7.21
97

6.71

7.15
97

6.85
66

58.70 ✓

5.96
66

58.24 ✓

6.22
97

58.58 ✓

6.05

58.11 ✓

6.55
97

58.46 ✓

6.20
66

58.89 ✓

6.77
66

58.49 ✓

5.17
97

58.79 ✓

6.87

58.40 ✓

5.26
97

58.80 ✓

6.86
66

62.94 ✓

1.72
66

62.51 ✓

2.15
97

62.78 ✓

1.88

62.37 ✓

2.29
97

62.79 ✓

1.87
66

65.86 ✓

11.11
66

65.39 ✓

11.58
97

64.66

65.52 ✓

11.15

65.42 ✓

11.55
66

65.83 ✓

11.12
97

68.61 ✓

8.36
66

68.19 ✓

8.78
97

68.55 ✓

8.42

68.13 ✓

8.06
97

68.52 ✓

8.45
66

71.03 ✓

8.22
66

70.48 ✓

6.49
97

68.95 ✓

8.27
97

69.35 ✓

7.57
66

72.90 ✓

4.07
66

72.65 ✓

4.37
97

70.63 ✓

6.36
97

70.93 ✓

6.07
66

76.97

4 + 44 curb & side access (asra) $\$$ 413.02

4 + 33 $\$$ 4102.02

TOP
I.P. E.H. 326 62.00 6.52 58.12

3 + 87.94 BC Left (Map 1810 Sheet 3) $\$$ 3756.90

+ 50 $\$$ 3119.02

3 $\$$ 2169.02

+ 50 $\$$ 2419.02

+ 70 curb, side and pav. (water det. fill) $\$$ 1189.02

+ 100 $\$$ 1469.02

64.66

L1 = w/ly of $\$$ RT = 84 curb 2
55.43 ✓ 55.01 ✓ 55.67 ✓ 55.93 ✓ 55.82 ✓
6.57 6.99 6.33 6.57 6.18
06 07 07 07 06

55.56 ✓ 55.21 ✓ 55.55 ✓ 55.77 ✓ 56.20 ✓
6.42 6.79 6.15 6.23 5.80
06 07 07 07 06

55.86 ✓ 55.49 ✓ 62.00 ✓ 56.04 ✓ 61.10 ✓
8.80 9.17 8.51 8.52 8.22
06 07 07 07 06

56.13 ✓ 55.74 ✓ 56.12 ✓ 56.32 ✓ 56.51 ✓
8.53 8.92 8.22 8.32 7.99
06 07 07 07 06

56.53 ✓ 56.11 ✓ 56.94 ✓ 56.72 ✓ 57.06 ✓
8.13 8.55 7.82 7.92 7.50
06 07 07 07 06

56.79 ✓ 56.23 ✓ 57.21 ✓ 57.16 ✓ 57.47 ✓
8.07 8.43 7.45 7.50 7.19
06 07 07 07 06

56.74 ✓ 56.51 ✓ 57.50 ✓ 57.29 ✓ 57.94 ✓
7.72 8.15 7.16 7.37 7.12
06 07 07 07 06

57.53 ✓ 57.16 ✓ 57.69 ✓ 57.30 ✓ 57.54 ✓
7.13 7.50 6.97 7.30 7.12
06 07 07 07 06

64.66

W.L. 519.

7

61745

150

61232

6

52728

150

52119

5

4171

172

4144.05

4160

412902

4153 9 curb inlets (0.70 x 3)

412202

67.00

LT

±

Continuo de COSTA

PT

3

56.53 ✓	56.21 ✓	56.97 ✓	56.98 ✓	57.39 ✓
5.47	5.79	5.03	5.02	4.61
06	97		97	06

56.24 ✓	55.99 ✓	56.76 ✓	56.78 ✓	57.17 ✓
5.70	6.01	5.24	5.22	4.83
06	97		97	06

56.17 ✓	55.80 ✓	56.45 ✓	56.34 ✓	56.79 ✓
5.83	6.20	5.55	5.22	5.21
06	97		97	06

55.85 ✓	56.40 ✓	56.10 ✓	56.10 ✓	
6.15	6.60	5.80	5.90	5.50
06	97		97	06

55.67 ✓	55.21 ✓	55.84 ✓	56.40 ✓	56.15 ✓
6.33	6.79	6.10	6.32	5.85
06	97		97	06

55.64 ✓	55.09 ✓	55.75 ✓	55.70 ✓	56.06 ✓
6.46	6.91	6.25	6.22	5.94
06	97		97	06

54.69 ✓	54.32 ✓	55.63 ✓	55.59 ✓	55.94 ✓
7.31	7.68	6.37	6.41	6.00
06	97		97	06

54.90 ✓	54.02 ✓	55.59 ✓	54.52 ✓	55.77 ✓
7.10	7.98	6.41	7.28	6.22
06	97		97	06

W11

67.00

W11

+45

9+21.35

+30

9+106.35

+15

8+91.35

9

8+76.35

+50

8+26.35

8+12.76 = E.C.

7+89.11

8

7+76.3

T.P

7.85 66.57 3.28 58.72

+50

7+25.5

62.00

59.51 ✓

59.05 ✓

59.79 ✓

59.61 ✓

59.95 ✓

700
c6

7.52
97

6.83
97

6.70
97

6.62
c6

58.42 ✓

59.22 ✓

59.11 ✓

59.44 ✓

in drive
c6

8.15
97

7.35
97

7.22
97

7.13
c6

57.85 ✓

58.72 ✓

58.68 ✓

59.03 ✓

c6
in drive

8.72
97

7.85
97

7.89
97

7.52
c6

51.90 ✓

57.39 ✓

56.43 ✓

58.59 ✓

58.76 ✓

8.27
c6

7.18
97

8.12
97

8.18
97

7.81
c6

57.34 ✓

56.91 ✓

57.85 ✓

57.91 ✓

58.34 ✓

7.23
c6

7.00
97

8.72
97

8.00
97

8.23
c6

57.21 ✓

56.83 ✓

57.65 ✓

57.91 ✓

58.13 ✓

7.30
c6

7.72
97

8.92
97

8.80
97

8.44
c6

57.09 ✓

56.70 ✓

57.51 ✓

57.62 ✓

58.06 ✓

7.48
c6

7.87
97

7.00
97

8.95
97

8.51
c6

56.82 ✓

56.40 ✓

66.57
57.25 ✓

57.26 ✓

57.71 ✓

5.18
c6

5.00
97

4.75
97

4.72
97

4.29
c6

62.00
3

Part #1

4 CB. PARTS

CONTINUA de la COSTA

60' wide

Part #1

15' curbs

11 + 20.59 = PCC on P.L. = Part #4

PART #3

Part #1

4 CB. PARTS

PART #1

10 + 24.76 BC LT on west

9 + 87.18 PL BC on RT on East

66.57

12 + 06.32

11 + 62.76

11 + 19.15

10 + 89.62

10 + 60.13

10 + 30.52

10 + 01.11

9 + 63.13

58.02 ✓	57.65 ✓	58.53 ✓	58.50 ✓	58.97 ✓
8.49	8.94	8.44	8.07	7.60
22	97		97	06

60.24 ✓	59.83 ✓	60.52 ✓	60.57 ✓	60.95 ✓
6.33	6.74	6.25	6.00	5.62
06	97		97	06

62.39 ✓	61.95 ✓	62.53 ✓	62.48 ✓	62.91 ✓
4.18	4.62	4.04	4.09	3.86
06	97		97	06

63.35 ✓	62.79 ✓	63.17 ✓
3.22	3.78	3.40
06	97	

63.76 ✓	63.33 ✓	63.60 ✓
2.81	3.24	2.97
06	97	

63.71 ✓	63.15 ✓	63.36 ✓
2.86	3.42	3.11
06	97	

drive	62.77 ✓	62.67 ✓
06	4.10	3.90
	97	

61.33 ✓	60.93 ✓	61.38 ✓	61.11 ✓	61.53 ✓
5.24	5.00	5.19	5.40	5.04
06	97		97	06

66.57

14 + 3x 56

14 + 5369

T.P. 0.55 45.91 12.18 45.36

13 + 99.39

14 + 1324

13 + 64.27 POC

13 + 7280

13 + 47

13 + 5299

13 + 9.78

13 + 3319

13 + 11.56

13 + 1339

12 + 95.34 = Part #4 = PCC on 84 line

12 + 9339

T.P. 2d. C.T. lot

5/7 S. 6.6c 0.17 57.54 915 57.87

Bot. La Mesa + Cressida

Part #3

12 + 4998

66.57

CAMINO de La P. 579

6

LT
41.39 ✓ 41.02 ✓ 41.91 ✓ 42.15 ✓
4.5v 4.89 4.00 3.7c
c6 97 97 malley

45.82 ✓ 45.46 ✓ 46.50 ✓ 46.54 ✓ 47.05 ✓
11.72 12.08 11.04 11.00 10.49
c6 97 c6 97 c6

49.81 ✓ 49.36 ✓ 50.93 ✓ 50.54 ✓ 51.01 ✓
7.73 8.18 7.71 7.00 6.53 P.C. N.L.
c6 97 c6 97 c6

51.24 ✓ 50.85 ✓ 51.68 ✓
6.30 6.69 5.8c
c6 97

52.28 ✓ 51.90 ✓ 52.94 ✓
5.2c 5.64 4.6c
c6 97

53.12 ✓ 52.72 ✓ 53.67 ✓
4.4v 4.8v 3.87
c6 97

53.97 ✓ 53.63 ✓ 54.54 ✓ 54.71 ✓ 55.10 ✓
3.57 3.91 3.00 2.83 2.8v APC
c6 97 c6

56.02 ✓ 56.51 ✓ 57.5x 56.44 ✓ 56.55 ✓ 57.01 ✓
10.55 10.98 10.13 10.0v 9.56
c6 97 c6

66.57

Cantina de la Costa

L = 5/4
Side

PT

7

16 + 36 end and cross cut and

16 + 84.56

24.31^v

23.66^v

23.92^v

22.90^v

w. end
23.76
4 x 2.57
ch. 1/2

9.77
cc

10.44
97

10.16
Cross 56

11.18
97

10.32
cc

16 + 30.84 E.C.

16 + 79.41

24.49^v

23.88^v

23.66^v

23.10^v

23.82^v

9.59
cc

10.20
97

10.44
97

10.98
97

10.36
cc

P.C. W.L.

15 + 99.35

16 + 43.19

25.53^v

24.97^v

25.21^v

THE RETURN ON
THE NE CORNER
THIS INTERSECTION
IS ON A GRADE
P.R.C. TO P.R.C.

8.55
cc

9.11
97

8.87

15 + 67.36

16 + 06.98

27.26^v

26.75^v

27.47^v

6.84
cc

7.33
97

6.61

15 + 36.38

15 + 70.77

29.67^v

29.22^v

29.85^v

4.41
cc

4.86
97

4.23

P.R.C. TO
P.R.C. IN
STEP 8

T.P. 0.57 34.08 12.35 33.56

15 + 04.90 POC

15 + 34.52

32.98^v

32.52^v

32.92^v

32.50^v

32.90^v

12.73
cc

13.38
97

12.99

13.41
97

13.01
cc

P.L.P.R.C.

14 + 69.73

14 + 98.35

37.29^v

36.89^v

37.48^v

37.97^v

37.82^v

8.44
cc

9.07
97

8.43

8.54
97

8.08
cc

45.91

45.91

CANTINA de La COSTA 50' wide
12' curbside
Running N by along Ocean Front

LT = West Side # 1PT
32.59 32.12^v 32.78^v 22.53^v 33.17^v
3750 6.75/26 7.22/97 1.52 6.71/97 6.17/26

3

3+11.5

31.74^v 31.29^v 31.96^v 31.82^v 32.27^v
7.60/26 8.05/97 7.38 7.52/97 7.07/26

T.P. 2.76 39.2x 2.50 31.58

39.3x

+50

2+59.6

30.51^v 30.09^v 30.76^v 30.60^v 31.10^v
3.57/26 3.99/97 3.32 3.48/97 2.98/26

x

2+07.7

29.03^v 28.63^v 29.35^v 29.31^v 29.79^v
5.05/26 5.25/97 4.73 4.27/97 4.29/26

1+50.15

1+55.9

27.64^v 27.17^v 27.98^v 28.18^v 28.10^v
6.44/26 6.91/97 6.10 5.90/97 5.38/26 PRC EX

1+00

403.8

26.18^v 25.90^v
2.92/26 6.18/97

0+50

751.9

24.40^v
9.68/97 IN DRIVE

B.C. = 0+00 Note! STA. ON WLY LINE

23.82^v 23.10^v
10.26/26 10.98/97

34.08

34.08

+ 50

77686

7

77186

+ 50

Return + 67683

L + 29.12 EC

67482

L + 00

Mica Mains Pl. Curbed and Sidewalked across

6722,98

5 + 47.06

576801

5

57192

+ 50

47673

4

47152

39.34

31.85 ^v ←	31.20 ^v	32.09 ^v	31.90 ^v RT	32.39 ^v	9
7.49 CB	7.94 RT	7.5	7.44 RT	6.95 CB	
	31.62 ^v	32.27 ^v	32.07 ^v	32.55 ^v	
7.49 CB in drive	7.77 RT	7.07	7.7 RT	6.79 CB	
32.27 ^v	31.82 ^v	32.47 ^v	32.26 ^v	32.77 ^v	
7.07 CB	7.57 RT	6.87	7.08 RT	6.57 CB	
32.32 ^v	31.86 ^v	32.52 ^v	32.34 ^v	32.83 ^v	
7.07 CB	7.48 RT	6.87	7.00 RT	6.51 CB	
32.40 ^v	31.95 ^v	32.63 ^v	32.43 ^v	32.93 ^v	
6.92 CB	7.39 RT	6.71	6.71 RT	6.41 CB	
32.59 ^v	32.13 ^v	32.80 ^v	32.75 ^v		
6.75 CB	7.21 RT	6.52	6.59 RT in drive		
32.76 ^v	32.35 ^v	33.00 ^v	32.92 ^v	33.40 ^v	
6.58 CB	6.99 RT	6.24	6.42 RT	5.92 CB	
33.03 ^v	32.56 ^v	33.22 ^v	33.06 ^v	33.54 ^v	
6.31 CB	6.78 RT	6.17	6.28 RT	5.80 CB	
33.00 ^v	32.51 ^v	33.14 ^v	32.94 ^v	33.44 ^v	
6.34 CB	6.83 RT	6.20	6.40 CB	5.90 RT	
			39.34		

Camino de La Costa
at Ave. Cortez

L+

E

R+

10

10+50

10+66³

30.69 [✓]	30.31 [✓]	31.47 [✓]	31.62 [✓]	32.06 [✓]
$\frac{7.4x}{26}$	$\frac{8.0x}{27}$	6.86	$\frac{6.71}{27}$	$\frac{6.27}{26}$

10+48 (+2910 Ret Pt)

10+44⁴⁶

30.82 [✓]	29.99 [✓]	31.50 [✓]	31.86 [✓]	32.37 [✓]
$\frac{7.51}{26}$	$\frac{8.3x}{27}$	6.83	$\frac{6.47}{27}$	$\frac{5.96}{26}$ - PRC to Cortez

cb in let

Set B.M.
Top F.H.

3.7[✓] 34.61

La Costa +
Ave Cortez

30.90 [✓]	30.40 [✓]	31.48 [✓]
$\frac{7.43}{26}$	$\frac{7.93}{27}$	6.85

10

10+44⁴

31.09 [✓]	30.69 [✓]	31.53 [✓]
$\frac{7.2x}{26}$	$\frac{7.0x}{27}$	6.80

150

9+618

30.83 [✓]	31.18 [✓]
$\frac{7.50}{26}$	7.5

95 in drive

9+00

9+095

31.31 [✓]	30.88 [✓]	31.61 [✓]	31.36 [✓]	31.84 [✓]
$\frac{7.0x}{26}$	$\frac{7.45}{27}$	6.7x	$\frac{6.97}{27}$	$\frac{6.49}{26}$ P.O.C. to Ave. Cortez

8+7910 PRC on hill

8+8765

31.42 [✓]	31.07 [✓]	31.74 [✓]	31.52 [✓]	31.98 [✓]
$\frac{6.91}{26}$	$\frac{7.26}{27}$	6.59	$\frac{6.81}{27}$	$\frac{6.35}{26}$

8+35.76

8+4832

31.64 [✓]	31.21 [✓]	31.87 [✓]	31.69 [✓]	32.16 [✓]
$\frac{6.69}{26}$	$\frac{7.1x}{27}$	6.46	$\frac{6.6x}{27}$	$\frac{6.17}{26}$

7+92.44 BC R

8+1100

T.P.

6.41 38.33 7.4x 31.9x
39.3x

38.33

Camino de la Costa
W.L. STA.

#5

4
14+433

#4

4
13+983

#3

4
13+543

#2

4
13+10

THIS CURVE IN 15 EQUAL PARTS
TOTAL 710.93 = W.L.L.

#1

4
12+653

T.P.

10.22 4131 7.24 31.09

11+756.6
Cac
LINE 90%
4

#196? P.R.C.

Curbed and sidewalked
across Cortez Pl.

4
12+207

#50

4
11+701

11+00

4
11+486

38.33

11

35.13	34.70	35.10	34.80	35.00
6.18	6.51	6.21	6.51	6.31
06	97		97	06

33.05	32.68	33.14	33.00	33.09
8.20	8.63	8.17	8.31	8.24
06	97		97	06

31.45	31.14	31.59	31.34	31.53
9.80	10.17	9.72	9.97	9.78
06	97		97	06

30.32	29.97	30.61	30.44	30.89
10.99	11.32	10.70	10.87	10.82
06	97		97	06

29.63	30.29	30.06	30.54	
11.58	11.02	11.25	10.77	
06	97		97	06

29.95	29.56	30.37	30.29	30.76
8.88	8.77	7.96	8.04	7.57
06	97		97	06

30.25	29.87	30.69	30.69	31.15
8.08	8.26	7.62	7.62	7.18
06	97		97	06

30.39	29.99	30.97	31.13	31.61
7.94	8.32	7.36	7.20	6.72
06	97		97	06

38.33

12 17+55

54.47	54.10	54.41	54.02	54.45
11.18	11.55	11.24	11.63	11.20
CG	97		97	CG

11 17+10

53.41	53.00	53.35	52.96	53.41
12.24	12.65	12.30	12.69	12.24
CG	97		97	CG

T.P. 12.70 65.65 1.14 52.95

10 16+88
Break in road

52.56	52.20	52.56	52.13	52.56
1.53	1.89	1.53	1.50	1.53
CG	97		97	CG

10 16+69

51.34	50.89	51.27	50.78	
2.75	3.20	2.87	3.31	in drive
CG	97		97	CG

9 16+214

47.98	47.57	47.97	47.56	47.97
6.11	6.50	6.10	6.53	6.10
CG	97		97	CG

8 15+769

43.92	43.49	43.94	43.47	43.95
10.17	10.60	10.15	10.60	10.14
CG	97		97	CG

T.P. 12.80 54.09 2.07 41.29

7 15+324

40.16	40.39	39.83	40.22	
drive	1.15	0.97	1.48	1.09
CG	97		97	CG

6 14+87.9

37.44	37.01	37.30	36.85	37.26
3.87	4.30	4.01	4.44	4.05
CG	97		97	CG

41.31

41.31

5 = 70 + 56.68 = F.C. Station ^{or} N side
 19+96.65

4 19+75.02

T.P. 11.54 76.65 0.54 65.11

3 19+53.39

2 19+31.76
 21.63

W.L. P.C.C. = 149.75

in 5 equal parts = 2995

1 19+10.13

15 = 19+06.93 = P.C.C. west. Lane 18+88.50

14 18+44

13 17+99.5

65.15

LT R = E. side
 67.06' 66.68' 67.05' 66.59' 67.11'
 9.59 9.97 9.60 10.00 9.52
 26 97 97 97 26

65.71' 65.29' 65.73' 65.26' 65.72'
 10.94 11.30 10.92 11.39 10.93
 26 97 97 97 26

76.65
 64.34' 63.95' 64.31' 63.91' 64.37'
 1.31 1.70 1.34 1.74 1.28
 26 97 97 97 26

62.99' 62.60' 63.00' 62.59' 63.03'
 2.66 3.05 2.65 3.06 2.62
 26 97 97 97 26

61.62' 61.24' 61.64' 61.20' 61.63'
 4.03 4.41 4.21 4.45 4.02
 26 97 97 97 26

60.22' 59.86' 60.26' 59.84' 60.28'
 5.43 5.79 5.39 5.81 5.37
 26 97 97 97 26

57.98' 57.58' 57.99' 57.62' 58.06'
 7.67 8.07 7.66 8.03 7.59
 26 97 97 97 26

56.12' 55.70' 56.12' 55.69' 56.17'
 9.53 9.95 9.53 9.96 9.48
 26 97 97 97 26

65.15

			3000	79.48	79.87 = El. according to Walker levels on USC&G
T.P.	7.21	82.68	379	75.47	0.39
T.P.	6.33	79.26	11.24	72.93	11' in S.W. Front of House #302 Via del Norte
T.P.	4.03	84.17	4.76	82.14	B.C. N side Via del Norte E. of Ave Cortez
T.P.	12.20	86.90	1.95	74.70	Intersection of Camino de La Costa + Via del Norte 10' out from N.H. POC 21 + 6318

21 + 6318 = POC = W. of N.H. STA. $\frac{74.67'}{1.98/26}$ $\frac{74.28'}{2.37/27}$ $\frac{74.84'}{1.81}$ $\frac{74.65'}{2.00/27}$ $\frac{75.11'}{1.54/26}$ = POC S. Line

21 + 0968 B.C.L.T. $\frac{70.44'}{6.21/26}$ $\frac{70.05'}{6.60/27}$ $\frac{70.47'}{4.18}$ $\frac{70.03'}{6.67/27}$ $\frac{70.47'}{6.18/26}$

76.15

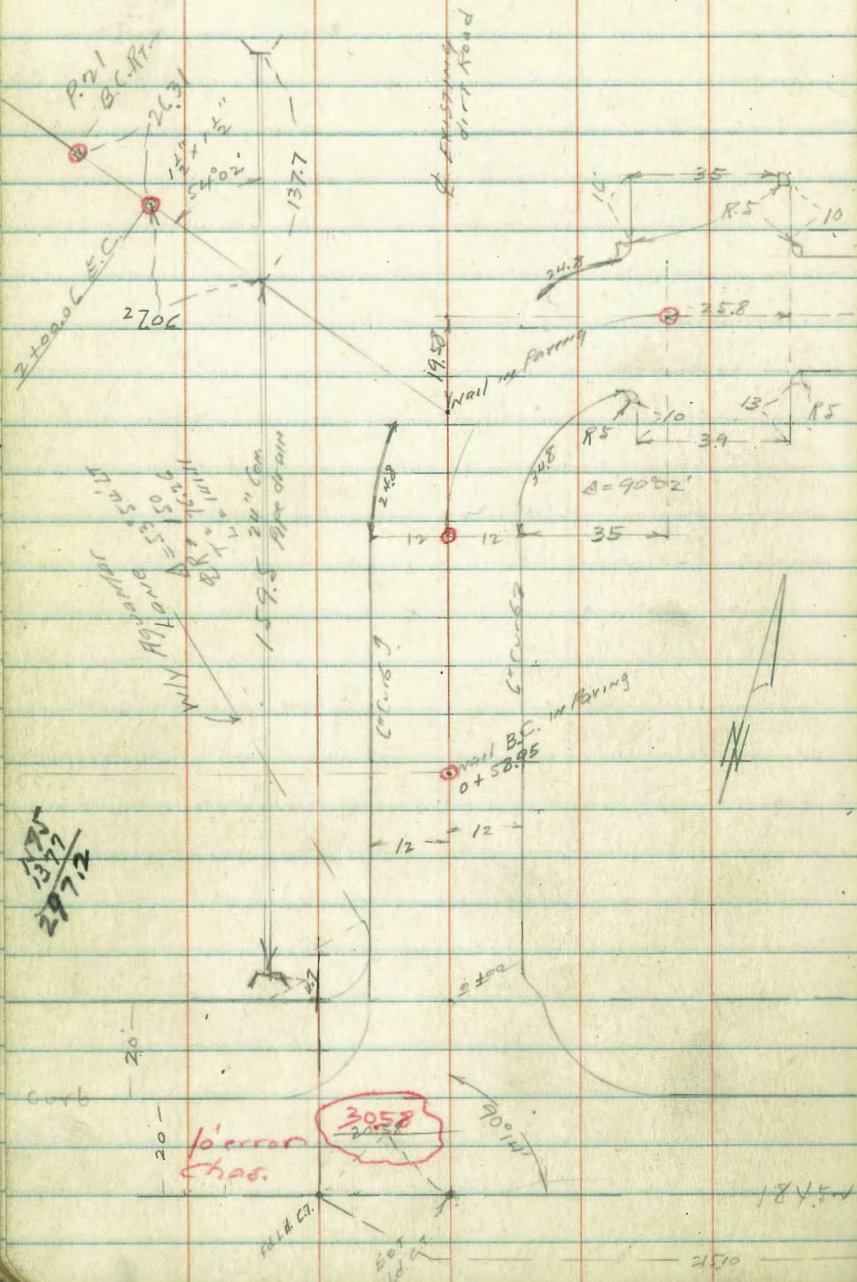
76.25

Proposed Road to
New Pacific Beach Res. Site.

C. Moore
Sommer Meyer
W. Moore

Indexed
c.s.R.

12-24-43



3900
3958
Plot 1" = 40'
Profile 80' to 1" Horiz
6' to 1" Vert.

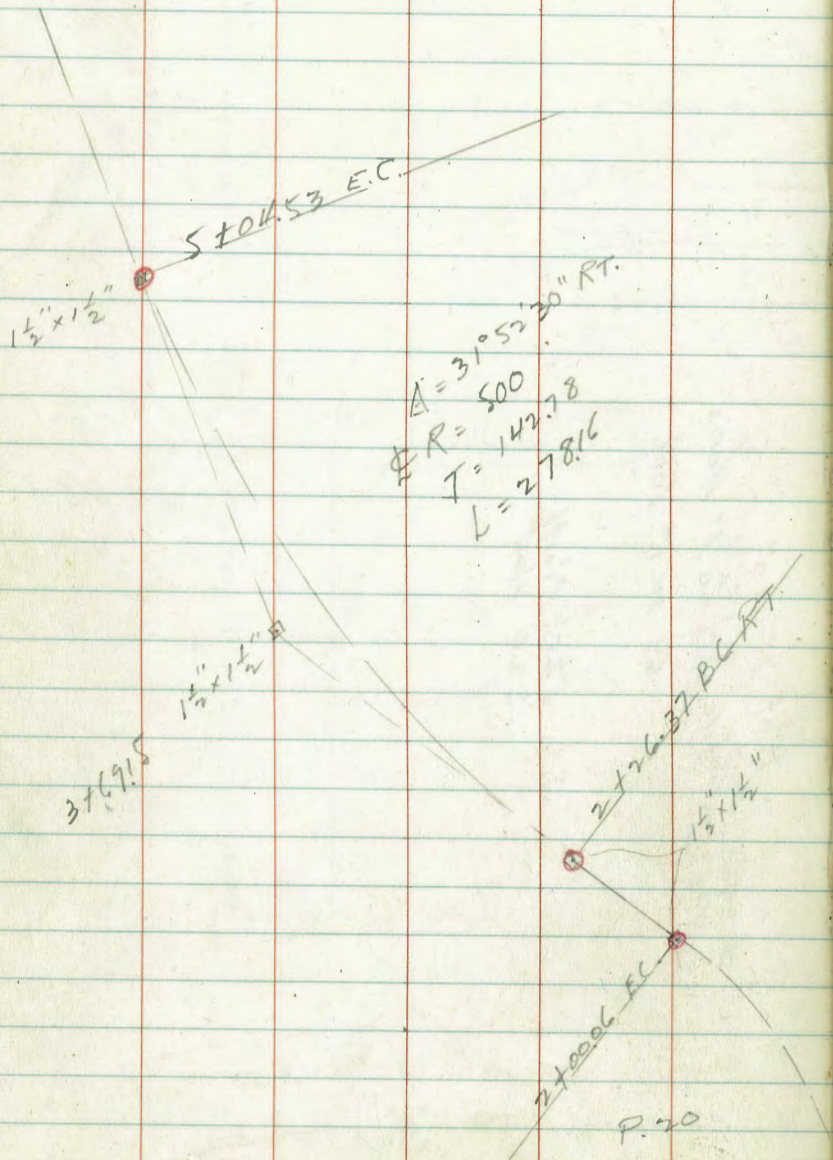
Site 520' North
320' West

1377
2706
2706

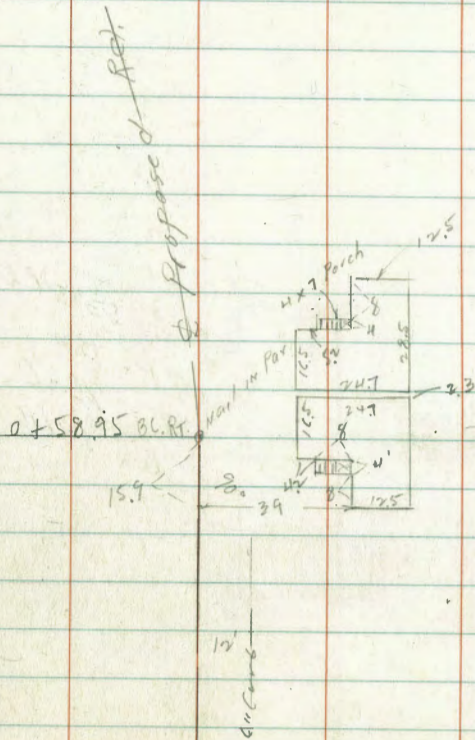
3058
3058
Pieron
Chas.

Curb
Tie Pt. Book #20 p. 80
Foot Hill
Blvd.

Proposed Road

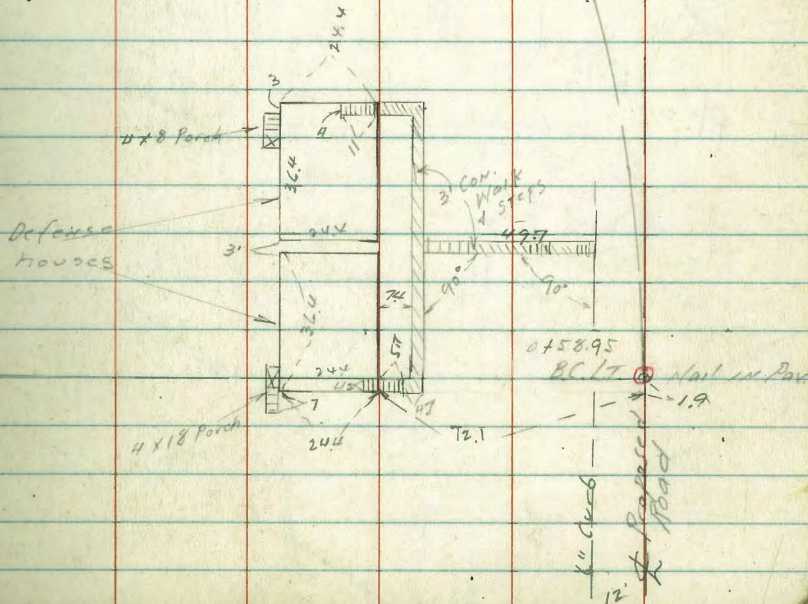
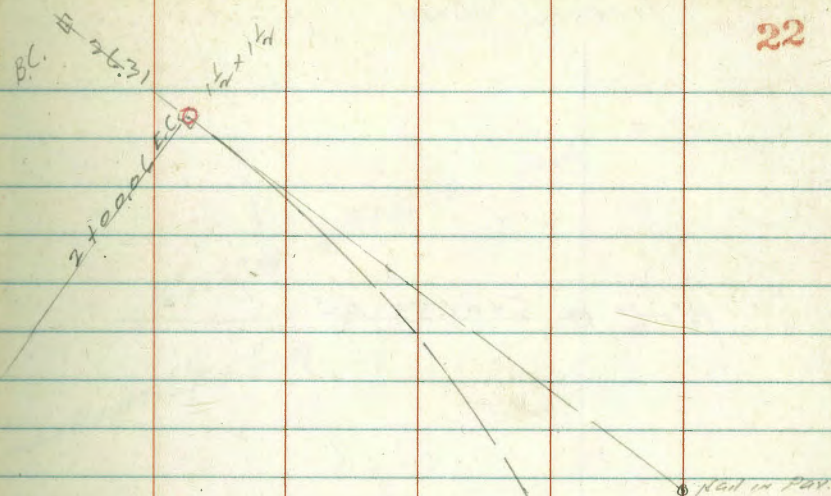


Location of defense houses on Rt.



Location of Defense House
 Left of E Prop Road
 to Reservoir Site

$A = 53^{\circ} 54' LT$
 $PK = 150$
 $T = 76.26$
 $L = 111.11$

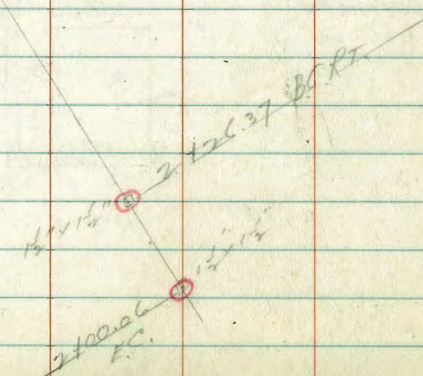


Proposed Road

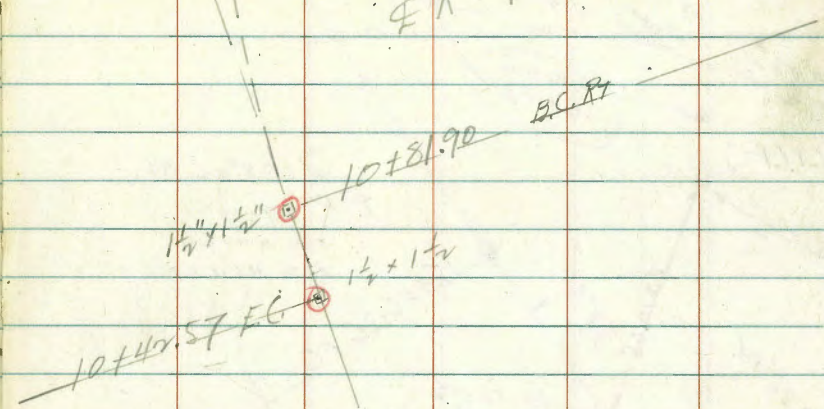
$1\frac{1}{2}'' \times 1\frac{1}{2}''$ \odot 5+04.53 EC.

$A = 31^{\circ}52'30''$ RT.
E.R. = 500
T = 142.78
L = 278.16

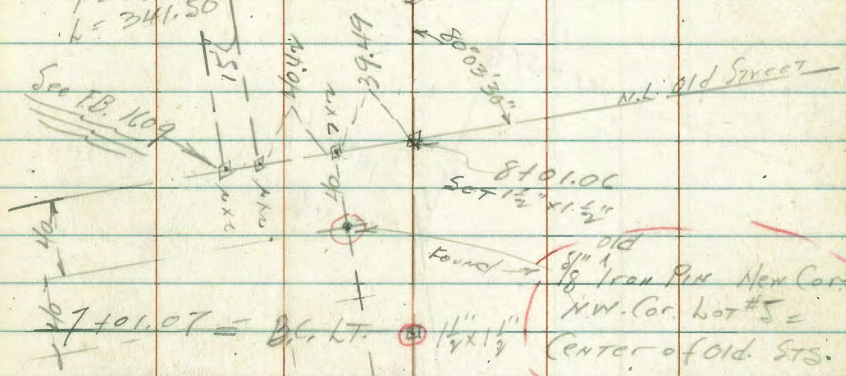
P.I. = $1\frac{1}{2}'' \times 1\frac{1}{2}''$



$A = 38^{\circ}02''$ RT
E.R. = 700

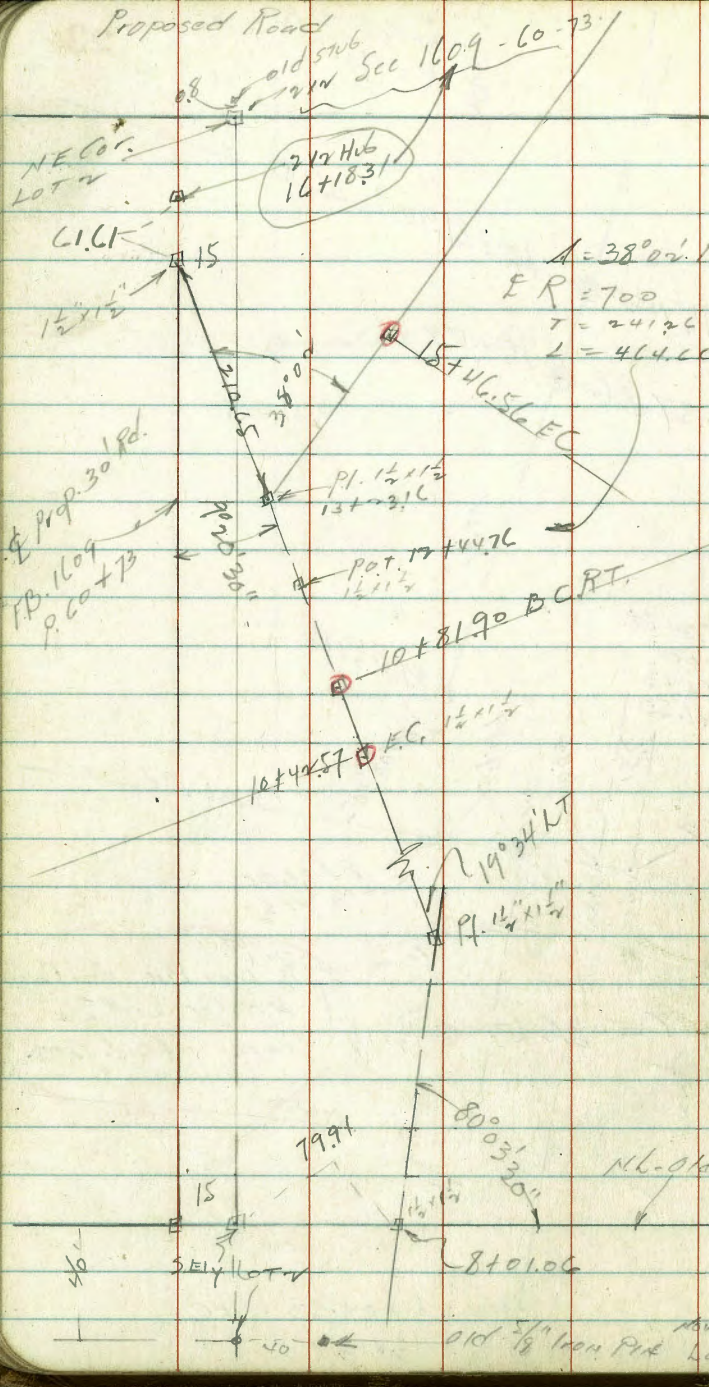


$A = 19^{\circ}34'$ LT.
E.R. = 1000
T = 172.43
L = 341.50



5+04.53 = EC.
 $1\frac{1}{2}'' \times 1\frac{1}{2}''$

old
NW. Cor. Lot #5 =
Center of old Sts.



$A = 38^{\circ} 02' RT$
 $ER = 700$
 $T = 241.26$
 $L = 464.66$

Con Mon.
 NLY PL 1984

See Map # 2001
 for Lot C + C

This image shows a blank ledger page with a grid of 10 columns and 20 rows. The page is cream-colored with a dark border. The number '25' is printed in red in the top right corner. The grid is formed by thin blue horizontal lines and thin red vertical lines. The columns are of varying widths, with the first column being the widest and the last column being the narrowest. The page is otherwise empty of any text or markings.

Levels on Prop. Road
to Res. Site

1+18.3 Intersection with 6" curb on West

1+00

0+77.5

0+58.95 B.C.L.T.

0+00

0+00 N.L. Footwall Blvd = Edge Con Pav. and
Beg. of Black Pav.

M.N.B.P

127.5

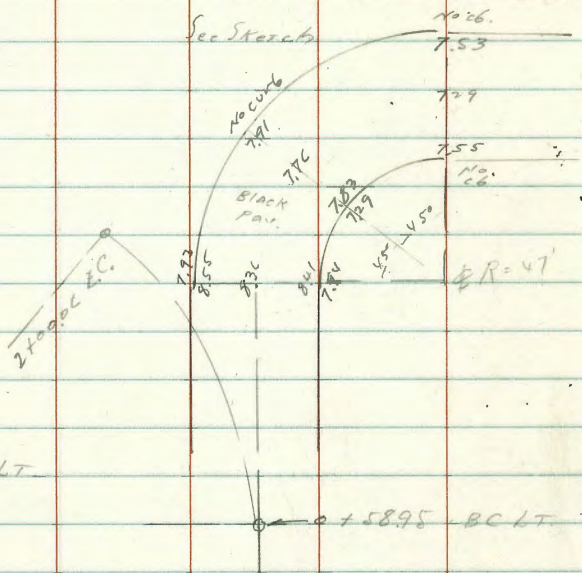
197.86

185.11

F

Plan of defense Paving E.L.

See Sketch



F.L. outlet
24" Con
Pipe drain

198.1	195.9	192.2	190.5	189.4	189.9	190.5	190.5	190.7	190.1
+0.8	2.0	4.7	8.0	8.1	7.9	7.3	7.1	7.7	
40	21	7	15.3	30.6	30.6	30.6	48.7	48.7	9.7

196.7	193.9	189.6	189.0	189.2	189.9	189.9	190.0	190.0
1.7	4.6	8.2	8.8	8.6	8.4	8.0	7.9	
40	17	7	7	8.6	18	18	40	

194.7	192.2	188.5	188.3	188.4	188.6	189.0	189.1	
3.2	5.7	9.0	9.4	7.2	9.3	2.8	8.8	
35	20	11.3	11.3	9.7	15.1	13.1	2.5	LAWN

194.3	192.2	188.4	187.8	188.2	187.9	188.2	188.3	
3.6	5.7	9.4	9.9	9.6	9.9	9.4	9.6	
35	21	12	12	9.7	12	12	2.5	LAWN

185.3	189.4	188.2	187.8	186.7	186.7	186.3	186.8	186.5
12.4	9.5	9.7	10.5	11.1	11.0	11.5	11.0	11.4
	30	18	12	12	12	9.7	12	3.5

187.2	187.4	187.2	186.6	186.5	186.0	185.7	186.1	186.1
12.7	10.5	10.6	11.2	11.2	11.8	12.1	11.7	11.8
30	30	12	12	12	12	18	18	3.5

E edge
spillage

197.86

4+00

234.6	231.2	225.5	218.1	209.4	202.8	201.5
+15.2	+11.8	+1.1	43	10.0	16.6	17.9
40	30	15		17	37	60

3+75

231.2	227.0	220.5	213.5	205.6	202.2	201.1
+11.8	+7.6	+1.1	59	13.8	17.2	18.3
40	30	75		20	38	60

T.P.

13.02 219.43 1.67 206.41

224.9	216.6	211.7	208.1	205.4	201.1	199.5
+16.6	+8.5	+3.6	0.0	2.7	7.0	8.6
40	21	10		9	31	60

3+50

3+25

222.6	199.1	205.5	204.3	207.0	199.8	199.6	200.4	199.2
+14.5	+9.0	+2.6	3.8	6.1	8.3	8.5	7.7	8.9
41	29	15		13	31	43	50	60

3+00

221.9	215.5	207.9	202.9	198.9	198.3
+13.8	+7.4	0.2	5.2	9.2	9.8
44	30	13		30	60

2+75

218.1	206.0	206.9	203.7	198.3	197.6
+10.0	+2.1	1.2	4.4	9.8	10.5
43	24	13		31	60

208.08

208.08

C + 00

L7	E	PT
2458	2460	2397
231.8	225.2	223.1
+17.2	+15.1	+8.8
40	30	15
209	7.8	15.7
	20	45
		19.6
		60

S + 50

243.7	240.0	231.0
225.6	217.7	207.7
+12.8	+9.1	+0.9
40	30	15
53	13.2	23.2
	20	46
		26.7
		60

T.P. 12.88 230.91 1.40 218.03

240.1	236.5	230.2
228.2	213.9	204.5
+20.7	+17.1	+10.8
40	30	15
38	5.5	14.9
	21	44
		15.8
		60

S + 0 v. 53 EC.

4 + 75

242.6	238.2	231.5
225.3	213.5	204.7
+22.2	+18.8	+12.1
40	30	15
41	5.9	14.7
	22	44
		16.3
		60

4 + 50

240.1	237.1	230.6
222.2	213.7	204.6
+20.7	+17.7	+11.2
40	30	15
28	5.7	14.8
	20	46
		16.2
		60

4 + 25

237.5	233.6	228.5
221.1	214.5	210.0
+18.1	+14.4	+9.1
40	30	15
17	4.9	9.4
	13	26
		15.4
		16.8
		60

219.43

219.43

9+00

$$\begin{array}{r}
 281.1 \\
 + 13.0 \\
 \hline
 40 \\
 294.1
 \end{array}
 \quad
 \begin{array}{r}
 271.7 \\
 + 3.6 \\
 \hline
 20 \\
 275.3
 \end{array}
 \quad
 \begin{array}{r}
 269.5 \\
 + 3.6 \\
 \hline
 20 \\
 273.1
 \end{array}
 \quad
 \begin{array}{r}
 258.5 \\
 + 9.6 \\
 \hline
 20 \\
 268.1
 \end{array}
 \quad
 \begin{array}{r}
 249.9 \\
 + 18.2 \\
 \hline
 45 \\
 268.1
 \end{array}
 \quad
 \begin{array}{r}
 241.1 \\
 + 27.0 \\
 \hline
 60 \\
 268.1
 \end{array}$$

8+50

$$\begin{array}{r}
 275.8 \\
 + 7.3 \\
 \hline
 40 \\
 283.1
 \end{array}
 \quad
 \begin{array}{r}
 271.7 \\
 + 3.6 \\
 \hline
 30 \\
 275.3
 \end{array}
 \quad
 \begin{array}{r}
 261.0 \\
 + 7.1 \\
 \hline
 10 \\
 268.1
 \end{array}
 \quad
 \begin{array}{r}
 258.3 \\
 + 9.8 \\
 \hline
 20 \\
 268.1
 \end{array}
 \quad
 \begin{array}{r}
 244.2 \\
 + 15.0 \\
 \hline
 20 \\
 259.2
 \end{array}
 \quad
 \begin{array}{r}
 235.0 \\
 + 23.9 \\
 \hline
 45 \\
 258.9
 \end{array}
 \quad
 \begin{array}{r}
 33.1 \\
 + 19 \\
 \hline
 52.1
 \end{array}$$

T.P. 13.07 268.14 0.19 255.17

T.P. 12.79 255.31 0.69 242.57

8+00

$$\begin{array}{r}
 269.7 \\
 + 26.5 \\
 \hline
 40 \\
 296.2
 \end{array}
 \quad
 \begin{array}{r}
 265.9 \\
 + 22.7 \\
 \hline
 30 \\
 288.6
 \end{array}
 \quad
 \begin{array}{r}
 258.0 \\
 + 14.8 \\
 \hline
 15 \\
 272.8
 \end{array}
 \quad
 \begin{array}{r}
 257.1 \\
 + 8.9 \\
 \hline
 20 \\
 266.0
 \end{array}
 \quad
 \begin{array}{r}
 245.3 \\
 + 2.1 \\
 \hline
 20 \\
 247.4
 \end{array}
 \quad
 \begin{array}{r}
 235.5 \\
 + 7.7 \\
 \hline
 45 \\
 243.2
 \end{array}
 \quad
 \begin{array}{r}
 230.0 \\
 + 13.4 \\
 \hline
 63 \\
 243.4
 \end{array}$$

7+50

$$\begin{array}{r}
 266.3 \\
 + 23.1 \\
 \hline
 40 \\
 289.4
 \end{array}
 \quad
 \begin{array}{r}
 261.9 \\
 + 18.7 \\
 \hline
 30 \\
 280.6
 \end{array}
 \quad
 \begin{array}{r}
 255.4 \\
 + 12.0 \\
 \hline
 15 \\
 267.4
 \end{array}
 \quad
 \begin{array}{r}
 249.7 \\
 + 6.5 \\
 \hline
 20 \\
 256.2
 \end{array}
 \quad
 \begin{array}{r}
 241.4 \\
 + 1.8 \\
 \hline
 20 \\
 243.2
 \end{array}
 \quad
 \begin{array}{r}
 234.5 \\
 + 8.7 \\
 \hline
 45 \\
 243.2
 \end{array}
 \quad
 \begin{array}{r}
 228.5 \\
 + 14.7 \\
 \hline
 60 \\
 243.2
 \end{array}$$

7+01.07 BC.LT

$$\begin{array}{r}
 259.7 \\
 + 16.5 \\
 \hline
 40 \\
 276.2
 \end{array}
 \quad
 \begin{array}{r}
 255.7 \\
 + 12.5 \\
 \hline
 30 \\
 268.2
 \end{array}
 \quad
 \begin{array}{r}
 249.6 \\
 + 6.4 \\
 \hline
 15 \\
 256.0
 \end{array}
 \quad
 \begin{array}{r}
 244.5 \\
 + 1.3 \\
 \hline
 20 \\
 245.8
 \end{array}
 \quad
 \begin{array}{r}
 238.0 \\
 + 5.2 \\
 \hline
 20 \\
 243.2
 \end{array}
 \quad
 \begin{array}{r}
 229.4 \\
 + 13.8 \\
 \hline
 45 \\
 243.2
 \end{array}
 \quad
 \begin{array}{r}
 223.6 \\
 + 19.6 \\
 \hline
 60 \\
 243.2
 \end{array}$$

6+50

$$\begin{array}{r}
 255.1 \\
 + 11.9 \\
 \hline
 40 \\
 267.0
 \end{array}
 \quad
 \begin{array}{r}
 251.1 \\
 + 7.9 \\
 \hline
 30 \\
 259.0
 \end{array}
 \quad
 \begin{array}{r}
 246.1 \\
 + 2.9 \\
 \hline
 15 \\
 249.0
 \end{array}
 \quad
 \begin{array}{r}
 238.4 \\
 + 4.8 \\
 \hline
 20 \\
 243.2
 \end{array}
 \quad
 \begin{array}{r}
 231.8 \\
 + 11.4 \\
 \hline
 20 \\
 243.2
 \end{array}
 \quad
 \begin{array}{r}
 226.0 \\
 + 18.2 \\
 \hline
 45 \\
 244.2
 \end{array}
 \quad
 \begin{array}{r}
 219.8 \\
 + 23.4 \\
 \hline
 60 \\
 243.2
 \end{array}$$

T.P. 13.07 243.21 0.77 230.19

230.91

243.21

11 + 50

297.4	294.4	291.0	289.9	287.5	289.0
+ 4.7	+ 1.7	1.7	2.8	5.2	3.7
40	25	9		27	40

11 + 00

290.9	287.5	284.6	282.7	279.9	277.6	281.1
1.8	5.2	3.1	10.0	12.8	15.1	11.6
40	25	12		28	41	50

Head of Ravine

T.P. on Sub 12.46 292.71 0.27 280.25 10 + 91.90

10 + 81.90 B.C. AT.

287.3	283.8	280.2	279.0	274.5	279.2
+ 6.6	+ 3.1	2.47	1.7	6.2	1.5
40	20	STUB	22	41	50

Bot. Rav.

10 + 44.57 E.C.

282.6	278.5	275.4	272.3	269.0	275.3
+ 1.9	2.2	5.28	8.4	11.7	5.4
40	20	STUB	22	33	50

Bot. Rav.

10 + 00

281.0	278.2	274.1	270.5	265.9	259.3	266.3
+ 0.3	2.5	6.6	10.2	14.8	21.4	14.4
40	30	15		20	35	50

Bot. Rav.

T.P. 13.06 280.72 0.28 267.66

9 + 50

283.7	278.6	273.2	280.72	267.5	260.2	251.6	246.6	255.5
+ 15.6	+ 10.7	+ 5.1	0.0	7.9	7.9	16.5	19.5	12.0
40	30	15		28		47	53	66

Bot. Rav.

268.14

268.14

14 + 50

14 + 00

T.P

12.63 325.93 0.74 312.30

13 + 50

13 + 00

P.O.T. 57.6
T.P. 12 + 47.6

11.52 314.04 2.63 307.57

12 + 50

12 + 00

T.P

12.54 305.15 0.10 292.61
192.71

LT

3109 3131 317.7 321.0 324.0
15.0 12.8 8.2 4.9 1.9
40 23 15 40

3084 3109 3138 314.7 316.8 318.2
17.5 15.0 12.1 11.2 9.1 7.7
40 25 12 20 40

307.7 309.1 310.6 311.7 312.8
6.3 4.9 3.4 2.3 1.2
40 20 20 40

304.9 306.1 306.4 306.8 306.6
9.1 7.9 7.6 7.2 7.4
40 20 20 40

303.5 303.4 303.7 302.8 302.7
1.7 1.8 1.8 2.4 2.5
40 20 20 40

301.3 299.2 297.2 296.9 295.5
3.9 4.0 8.0 9.2 9.7
40 25 20 40

305.15
2

311.90

9.38

307.52

PPT. STUB

P. 32

348.23

12.89

335.34

7.12

336.46

12.00

323.82

0.60

324.42

75.88

311.54

0.30

311.90

12.55

299.35

0.06

299.41

7.17

290.24

322 F.P. HUB
FB. 1609-67
0.01

17+50

17+00

T.P.

10.80

348.23

0.69

337.43

16+50

16+00

T.P.

10.33

338.12

0.12

325.79

15+46.50 EC

15+00

325.93

L+

E

R

340.0

8.2
40

342.4

5.8
20

344.6

3.5

347.5

+0.2
20

348.4

+4.6
40

352.8

335.4

12.8
40

336.5

11.7
20

339.1

9.1

341.4

6.0
20

342.2

1.7
40

346.5

328.1

10.0
40

331.0

7.1
20

333.7

4.4

335.2

2.9
10

339.2

+1.2
25

342.7

+4.1
40

321.5

16.6
40

324.9

13.2
15

328.0

10.1

333.1

5.0
20

338.1

8.0
40

316.9

9.0
40

320.2

5.7
20

322.2

3.8
STUB

323.4

2.5
8

333.6

+7.7
40

313.9

12.0
40

316.4

2.5
15

319.5

6.4

321.1

4.8
10

325.5

0.4
25

328.6

+2.7
40

325.93

Proposed Water Main
Pueblo Lot 191

16+15.79 = Catalina Blvd

12+40.06 $\Delta 16^{\circ}39' H$

1+75.68 POT

1+42.98 $\Delta 45^{\circ}00' H$

0+21.00 $\Delta 45^{\circ}00' H$

0+00

Reduced & Plotted
Feb-4-1944
G.O.H.

La Palma

Varona

Point Loma

Indexed
c.s.k.

Feb 17 1944
65+20
65+79

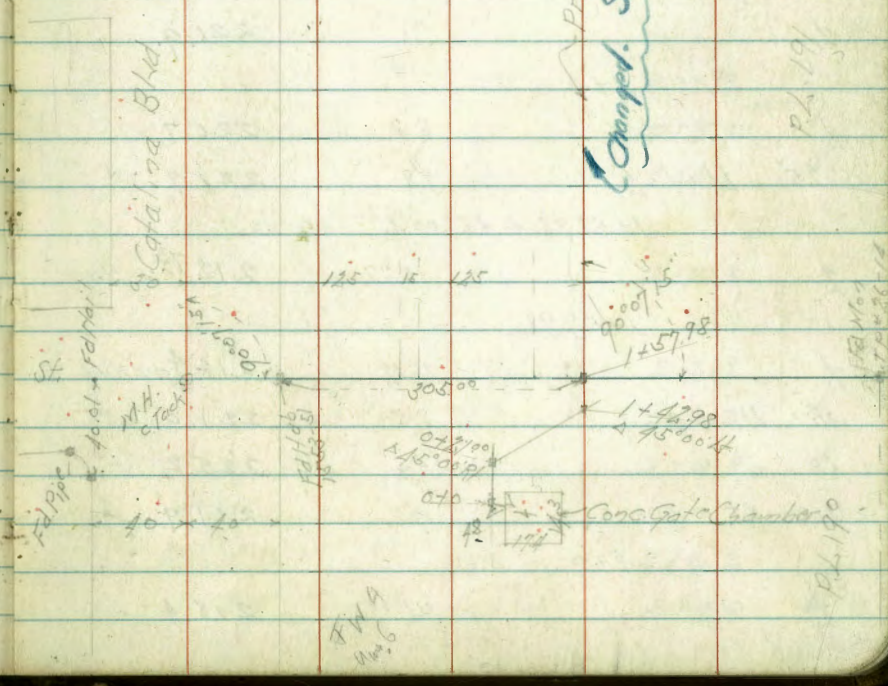
Contd. P. 37
12+34.51
POINT NOT SET

Proposed Water Main
Changed. See P. 35

Feb. 2-1944
S15500
B1100
055000
34

12+40.06
 $\Delta 66^{\circ}39'$

tie back
12+50.58



P.L. 191

Proposed Water Main

P.L. 190

FW 9
11/16

BM	2.14	252.96	250.82	5 1/2 x 8 1/2 var. 0.99 x Catalina	50' Lt of 1/2	6.3	223.2	✓
TP	0.27	240.64	240.37		40' Rt " "	15.2	214.3	✓
	0+0					21.50		
1/2		8.7	231.9		1/2	12.3	217.2	
1.8	Rt. 1/4 Top Conc. Gate Chamber 0+21	8.25	232.29		1/2	3.0		
1/2		8.87	231.77	Hub	50' Lt of 1/2	7.1	222.4	✓
	0+60				30' Rt " "	16.3	213.2	✓
1/2		14.0	226.6		TP	5.38	222.10	12.78
25' Lt of 1/2		11.8	228.8	↓		3+50		
TP	0.98	229.50	228.52		1/2	7.3	214.8	
	0+75				50' Lt of 1/2	1.0	221.1	✓
1/2		7.6	221.9			4+0		
	1+0				1/2	10.2	211.9	224.1 ✓
1/2		8.8	220.7		50' Lt of 1/2 = Rock Outcrop	7.0	213.7	↓
25' Lt of 1/2		7.8	221.7	✓	40' Rt " "	13.0	209.1	↓
	1+42.98 Δ 45° 00' Lt					4+50		
1/2		10.77	218.7	Hub	1/2	9.8	212.3	
	1+57.98					5+0		
1/2		11.12	218.4	Hub	1/2	9.3	212.8	
30' Lt of 1/2		8.5	221.0	↓	50' Lt of 1/2 = Rock	0.8	221.3	✓
60' Lt " "		4.3	225.2	↓	40' Rt of 1/2	11.7	210.4	↓
30' Rt " "		17.6	211.9	↓		5+50		
	2+0				1/2	9.9	212.2	
1/2		11.1	218.4		50' Lt of 1/2	2.5	219.6	↓

	222.10				216.37		
6+0							
2		9.5	212.6		50 Lt of 2	5.7	210.7 ✓
50 Lt of 2		7.1	215.0	1	50 Rt	13.7	202.7 ✓
40 Rt		12.6	209.5	1		8+50	
TP	3.61	216.37	9.34	212.76	2	9.9	206.5
	6+25.63				50 Lt of 2	7.3	209.1 ✓
2		3.58	212.8	0.2546	50 Rt	13.0	203.4 ✓
	6+66					9+0	
2		5.8	210.6		2	10.6	205.8
50 Lt of 2		2.9	213.5	1	50 Lt of 2	8.1	208.3 ✓
40 Rt		9.0	207.4	1	50 Rt	13.1	203.3 ✓
	7+0				TP	216.37	212.20
2		10.6	205.8			10.54	205.83
50 Lt of 2		6.2	210.2	✓		9+10	0.2546
50 Rt		13.7	202.7	✓	2 = 8 + 2 Ditch 6 Hike	9.4	202.8
	7+25					9+50	
2		11.6	204.8		2	7.8	204.4
50 Lt of 2		7.7	208.7	✓		10+0	
50 Rt		15.3	201.1	✓	2	8.9	203.3
	7+50				50 Lt of 2	7.1	205.1 ✓
2		9.9	206.5		50 Rt	11.2	201.0 ✓
50 Lt of 2		1.6	211.8	✓		10+50	
50 Rt		15.5	200.9	1	2	10.5	201.7
	8+0				2	11.1	201.1
2		8.8	207.6		50 Lt of 2	9.8	202.4 ✓
					50 Rt	15.0	197.2 ✓

		212.20			
TP	283	204.05 ✓	10.98	201.22	
		11+50			
♀			3.9	200.2	
		12+0			
♀			5.2	198.8	
50' Lt of ♀			4.2	199.9 ✓	
50' Rt "			6.8	197.3 ✓	
		12+40.06 A	4.4		
♀			6.60	197.5 on Hub	
		13+0			
♀			5.7	198.4	
50' Lt of ♀			4.0	200.1 ↓	
50' Rt "			9.8	196.3 ↓	
		13+33			
♀			4.8	199.3	
TP	12.70	215.40 ✓	1.35	202.70	
		13+70			
♀			12.3	203.1	
		14+0			
♀			9.0	206.4	
50' Lt of ♀			6.5	208.9 ✓	
50' Rt "			13.4	202.0 ✓	
		14+50			
♀			4.5	210.9	
50' Lt of ♀			1.5	213.9 ✓	

		215.40			
50' Rt of ♀			10.1	205.3 ✓	
TP	11.69		0.52	214.82	
		15+0			
♀			9.8	216.7	
50' Lt of ♀			7.0	219.5 ✓	
50' Rt "			15.2	211.3 ✓	
		15+25			
♀			5.4	221.1	
50' Lt of ♀			2.8	223.7 ✓	
40' Rt "			11.2	215.3 ✓	
		15+86			
♀			6.1	220.4	
		15+90			
♀			7.7	218.8	
25' Lt of ♀			6.4	220.1 ✓	
30' Rt "			7.6	218.9 ✓	
		15+96			
♀ = Fly Parakee			7.26	219.25	
		16+15.79 = ♀ Catalina			
♀ on Pav			6.54	219.97	
B.M.			1.32	225.19	
					30' Top of Hub Point of contact Catalina 225.17

Levels & Location of Res. 10' Outlet

CSM

drain & 8" overflow

3-544

2.03

234.32

232.29

W/4
Tap Conc.

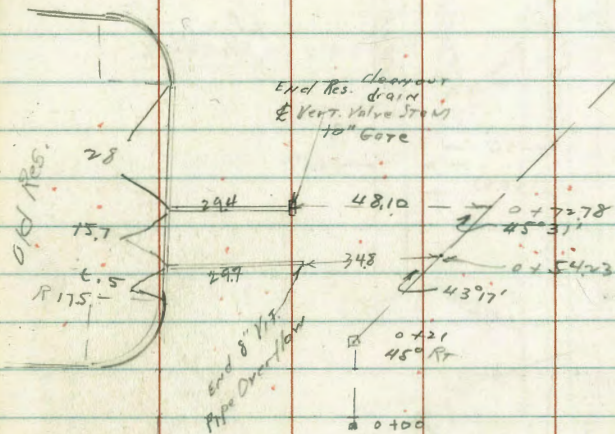
Gate chamber 4.8 ft of 0.100 P. 25

0+54.23

♀		6.7	227.6
15 LT		4.9	229.4
33 "		2.7	231.6
34.8 "	FL 8" overflow	1.71	232.61

0+72.78

♀		12.0	222.3
8 LT		9.1	225.2
16 "		7.0	227.3
24 "	overflow directly	7.3	227.0
34 "		5.2	229.1
46 "		4.6	229.7
48.10 "	FL gate W.	3.35	230.97
"	10" pipe	3.25	231.07



P. 34

1+42.98
245.27

0+72.78

45°31'

0+54.23

43°11'

0+21
45°R

0+00

C. Moore
S. W. R. M. P.
E. B.

3-5-44

Proposed water line

Three Lot v. Pt. Loma Hts

20' PAVING
DRAINAGE LINE

Chas. Street

19+13 INT. 12"
Water Line
approx 30"
Coverage
over line
Came Base
Par. 1 1/2" W.S.

18+487 Int. 8" Curb
Req. Pav

approx. cb. & B.C.
and end walk

18+13.60

18+8.7

8" Curb
5' WALK

20'
28.33

6.67

16+15.50

d.c.t. IMP.

15+81.5
7331.30 R.

Potable
Line

12+4090
5' Curb
P. 34

12+3461
CLOS. LT
NOT SET

N.H.
See p. 40

25+60.50

Continued Pg. 74
INTSEC.
Sewer
25+49.5
39

25+36.80

Par.
W. Alley

23+88.5 approx
cb. & B.C.

23+85

23+79.7

PAVING

Corralero
ave

23+14.4

21+99.88

23+08.5
4.0° 01' LT.

23+04.5
cb. & B.C.

Elk Catalina
Rd.

approx 21+39
cb. & B.C.

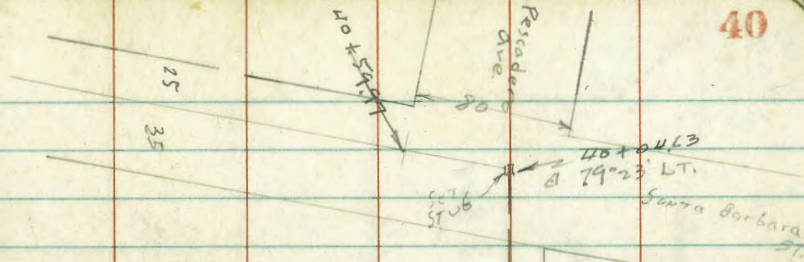
INTSEC. CURB
21+26.60

Diff - 10862

19+81.79 = 16+73.17

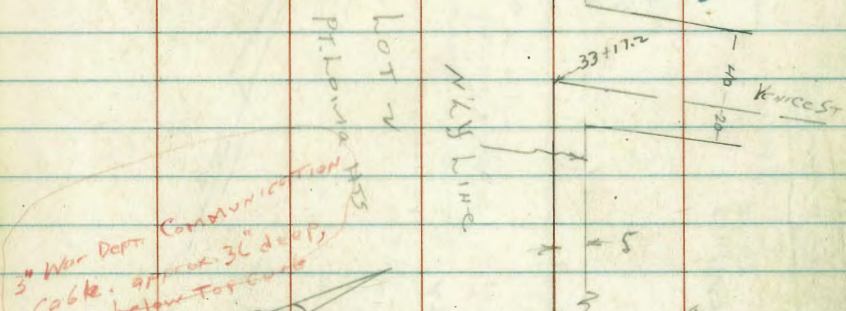
From Page 75

20' Pav.
CHAS. STREET

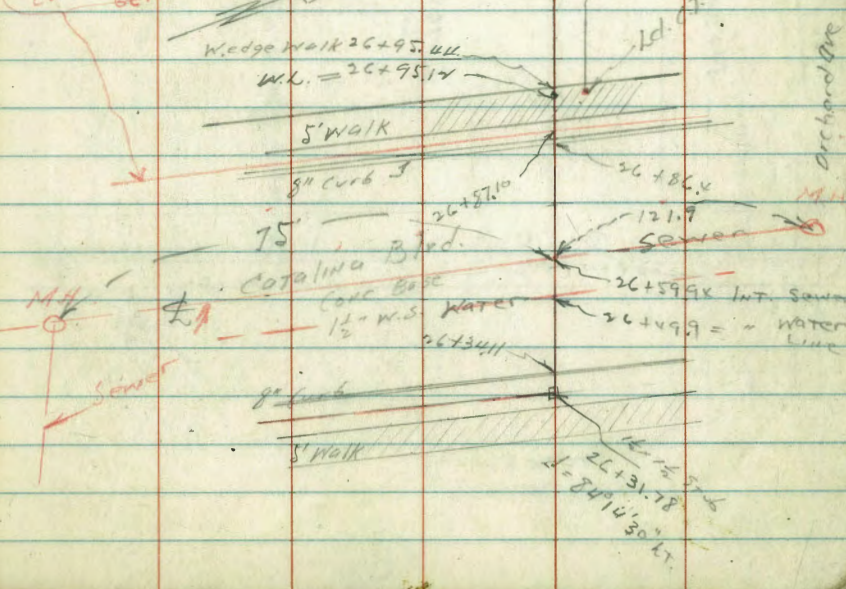


For Levels see
F.B. 1637-75
also T. 1637-75
F. 35-37-38

Imped.
See pg 72



3" War Dept. Communication
Cable. approx. 36" deep,
below top curb



Note! Please check Sewers, Stub
Water Service, Mains etc.
Gas Mains & Services

Levels on proposed water line
from lot to Pt. Loma Hts.

Bkt. SW. Top FH	0.21	225.48	225.17	225.17
15 + 21.5		4.85	220.63	STUB
16		5.7	219.8	
+ 15.5		6.5	219.8	
"	WLT TOP	6.55	218.93	end
+ 5.0		8.8	216.7	
17		12.4	213.1	
"	WLT TOP	12.37	213.11	cb
TP	0.44	213.24	212.80	
+ 5.0		3.4	209.8	
"	WLT TOP	3.40	209.84	cb
18		5.8	207.4	
+ 12.6		6.4	206.8	
"	Top cb	6.4	206.83	end/walk
+ 4.87		7.40	205.84	cb
"	gut	7.95	205.28	
19		9.05	204.18	
+ 13	approx over 12" water	9.35	203.89	
+ 5.0		9.85	203.38	
20		10.48	202.76	

TP	3.44	205.85	10.23	202.11
		213.24		
+ 5.0			3.74	202.11
31			4.65	201.20
+ 26.6	gut		4.90	200.93
"	cb		4.33	201.52
+ 3.9			4.1	201.7
"	WLT TOP		4.25	201.60
+ 5.0			4.3	201.5
22			4.7	201.1
+ 5.0			5.2	200.6
23			5.6	200.2
+ 0.85	d = 0' 1" LT		5.74	200.11
"	WLT TOP		5.79	200.06
+ 14.4	Top cb		6.04	199.81
"	gut		6.61	199.24
+ 5.0			6.72	199.12
+ 7.97	gut		7.12	198.72
"	Top cb		6.55	199.30
+ 8.5	edge	ROT	6.50	199.35
+ 8.5			6.6	199.2
"	WLT	cb	6.56	199.29
24			6.6	199.2
+ 5.0			7.0	198.8
TP	2.84	202.35	6.36	199.49

202.35

15.00		4.10	198.3	
+36.8	Tap ch	4.29	198.06	
"	gut	4.76	197.59	
+49.6	Sewer P	4.93	197.42	
+60.5	gut ^{STUB} here	4.94	197.41	
"	Tap ch	4.58	197.77	
"		4.9	197.4	
+31.78	A 84° 14' 30" LT	5.22	197.13	STUB
+34.11	Tap ch	5.25	197.10	
"	gut	5.89	196.46	
+59.94	9 Carolina	6.15	196.20	
"	75 LT M# RIM	5.50	196.85	
"	" " " E.L.	11.21	191.14	
"	121.9 RT " RIM	7.09	195.26	at Orchard ST
"	" " " E.L.	16.79	186.06	Geo.
+86.4	gut	5.66	196.69	Please check
"	Tap curb	5.05	197.30	
+87.10	3" Comp. Lutz, War Dept cable about 30' deep	5.10	197.3	
+95.14	Wedge sewer	4.90	197.45	
check to SWBP	GET + Orchard	5.85	196.50	196.50

For levels from here to Santa Barbara St
 See 1437-75 These levels were taken on
 my line lot 2 but 5' South will
 be approx. the same as

Water Levels on Santa Barbara St

Pasadena Sty to Pt Loma ave

Nly Cor. BM
outside PIUG
OUT

0.3x	252.58	252.2x		
T.P.	0.11	239.82	14.86	239.74
T.P.	0.5x	227.31	12.06	226.77

Orchard

Santa Barbara

See 1637-76

44+32.81	S 71 Line Bermuda	3.5	201.1
+50		4.3	200.3
45		6.6	198.0
+50		8.9	195.7
46		11.2	193.0

40+24.63	A 79° 23' LT	2.03	225.28	STUB
40+59.97		4.3	223.0	

T.P.	0.39	192.14	12.88	191.73
------	------	--------	-------	--------

Fd. RR Spike in P.P. SWy Cor
Set BM. Santa Barbara
Pasadena

24.5	224.86	224.89
------	--------	--------

+50	1.6	190.5
-----	-----	-------

41+00	6.8	220.5
+50	10.7	216.6

47+01		3.7	188.4	
"	15' RT on to West	4.58	187.54	Top end curb
47+51.3	A 89° 58' RT	4.22	187.90	STUB

+77	5.8	186.3
-----	-----	-------

T.P.	0.1	214.3x	12.98	214.33
------	-----	--------	-------	--------

48	8.1	184.0
----	-----	-------

48+11	9.4	182.7
-------	-----	-------

42	1.7	213.1
----	-----	-------

"	7' RT on to North	8.87	183.25	Top curb
---	-------------------	------	--------	----------

+50	4.6	209.7
-----	-----	-------

H.W. J. says you got the rest of Profile
to the wly.

43	8.0	206.3
----	-----	-------

+50	11.0	203.3
-----	------	-------

check to BMT BP SWy Cor	Santa Barb. Pasadena Ave	9.90	182.22	182.22
-------------------------	--------------------------	------	--------	--------

44	12.2	202.1
----	------	-------

"	" BMBP SE Cor	"	3.56	188.56	188.56
- Same Intersection					

T.P.	0.96	204.61	12.69	201.65
------	------	--------	-------	--------

check to SWy Cor	Santa Barbara Bermuda	3.74	200.87	200.83
------------------	-----------------------	------	--------	--------

Cross Section South 1/2 Half of
Elephant St. Locust to Willow
Levels Next Page

Indexed
C.S.K.

April 5-44
J. S. S. O. Y.
Osborne

45

Plot 14 1/2 line 2

Willow St

Existing
Cross Curb

7.2

35
38+70.5

Set Hub

38+70.52

Fd Man

Excavation

34+00.52

Elephant St

45

35

0+00

Fd Man

Locust

70

Plot 14 1/2

17.70

TP

12.39

37.81

0.29

25.92

17.50

17.0

3 1/2 1/2 of 1/2 Sky Power Pole

07.50

07.0 = 1/2 Locust

TP

11.71

25.91

6.00

14.00

H.M. Moo
Locust +
Oliphaat

TP

5.87

20.00

1.23

14.63

BM

7.57

15.96

8.29

H.M. BP
Rosocrans
+ Heron

17.5

2

27.8

100
35

29.2

8.6
17

29.7

8.1

23.5

11
35

24.4

1.3
17

24.8

3.2

19.1

6.6
35

18.8

6.9
17

19.5

6.2

16.7

9.0
35

16.1

9.6
17

16.2

9.5

15.6

10.1
35

12.9

10.8
17

12.8

10.9

25.91 ✓

Notes Reduced. ~~BL~~

TP 12.28 86.37 ✓ 0.42 74.09

715

70.0 72.9 72.9
45 16 16
35 17

705.3 on 1/2 = M.H. 4.37 70.19 on R.107

3+00.52 = E.L. Evergreen

67.0 68.9 68.6
75 56 59
35 17

2+85

60.9 62.8 63.0
13.6 11.7 11.5
35 17

TP 12.46 74.51 ✓ 0.46 62.05

74.51

2+50

50.8 52.1 53.1
11.7 10.4 9.4
35 17

TP 12.46 62.51 ✓ 0.40 50.05

62.51

2+20

43.2 44.2 44.9
7.2 6.1 5.6
35 17

TP 12.01 50.45 ✓ 0.37 37.44

50.45

1+94

35.7 37.2 38.5
2.1 0.4 1.3
35 17

37.81

37.8

TP 1242 122.54 0.42 110.12

4730

102.3 103.6 104.9 106.0
6.2 6.9 5.6 4.5
35 23 17

TP 1205 110.54 0.27 98.49

110.54

3796

93.5 99.7 98.57
5.3 4.1 5.19
35 17 22.14

3780

88.2 96.2 91.0 90.7
10.6 8.4 7.8 8.1
40 35 17

37052 - W.L. Evergreen

86.7 89.5 89.9
12.1 9.3 9.8
35 17

874

8.29 90.47

W.L. Evergreen
Oliphant

3755

85.8 87.8 87.6 85.1
13.0 11.0 11.2 13.7
35 17 12

TP 1201 98.76 0.62 85.75

98.76

373552 - 2

76.5 80.0 79.7
9.9 6.4 6.7
35 17

86.87

86.87

5170

187.67 138.12 138.7 138.7

9.08 8.6 8.0 8.0

28.7
Black DM

5158

28 R1 of 2: S1/2 Port Co Polk

136.99 137.88 137.5 138.1

9.73 8.81 9.2 8.6

35.0
28.7
Black DM

5135

132.6 134.1 137.8

14.1 12.6 8.9

3.5 17

TP

12.23 146.72 0.29 134.49

148.72

5122

128.6 128.3 129.5 132.0

6.3 6.6 5.4 2.9

3.5 2.5 1.7

4195

122.6 121.9 123.1 123.9

12.3 12.0 11.8 11.0

3.3 3.2 1.7

TP

12.68 134.88 0.34 122.20

134.88

4170

115.9 115.1 116.2 116.7

7.1 7.4 6.3 5.8

3.5 2.1 1.7

122.54

122.54

BM

4.93

177.73

✓
5.278 P
17.71 low t
Poc
177.79

TP

11.24

182.66

0.27

170.82

TP

12.45

171.09

0.31

158.64

7 + 0.55 = 7.55

150.80

150.19

150.92

8.15

8.76

8.49

7.2 = Top Cross
Cuts from

7.2 = Gutter

6 + 70.5 = 76.5 = E.L. W. Now = E.L. Pav. 170

147.9

109.8

150.9

151.21

150.91

151.01

151.77

152.35

153.15

116
35

96
17

86
11

7.74
7.2

8.54
7.2

7.93

7.18

6.60

5.80

Top Cross
Cuts from

7.2 = Gutter

2.5 = Gutter

2.5 = End of Top

6 + 48

144.2

146.4

148.0

14.7
35

12.5
17

11.0

158.95

TP

12.72

158.95

0.49

146.23

6 + 30

143.7

144.9

145.3

3.0
35

1.8
17

1.4

5 + 90

140.5

140.8

140.7

6.2
35

6.2
17

6.0

146.72

146.72

Levels for Presidio Park
Recn. Bldg

1470	N. C. Bldg	9.4 110	7.68 57.25	8.3 24 HUB	7.05 24 HUB	11.42 HUB	88.21 25	14.88 110.9	14.90 52.9 Pav	15.19 1.89 15.1
1444		9.4 110	7.68 57.25	8.62 57.25 HUB	7.24 24 HUB	11.84 58.4 HUB	86.41 25	14.78 114	14.82 52 Pav	14.95 2.13 14.1
1410	Center Line of Bldg	9.5 110	7.58 57.25	8.88 57.25 HUB	7.6 28	11.08 60	14.58 25	14.78 114	14.79 52.9 45.6 Pav	14.79 1.29 14.3
0476		9.4 110	7.68 57.25	9.04 57.25 HUB	7.66 28 HUB	10.51 65.7 HUB	11.48 25	14.58 122	14.53 42.2 Pav	14.54 2.54 14.9
0450		9.1 110	7.98 57.25	8.78 57.25 HUB	9.08 38 HUB	10.07 70.1 HUB	10.78 25	14.28 43.2	14.28 27.6 Pav	14.21 2.87 14.83
0400	50' S. of S. Cor. of Bldg.					19.55 75				

T.P. Spike 5.33 17.08 1.49 11.75 2^d Spike in PA. Gypsum 130' N. of N. Cor. of Bldg. 17.08 Hl.
 T.P. 1.84 13.44 10.85 11.60
 BMBP 2.38 22.45 20.07 ex. Cor. Guard Rail S.W. Cor. of Bridge on Taylor and Camino del Rio

Levels Presidio Park Rec. Bldg

Lt

E.G. Bldg

Rt.

53

check to Orig. Bldg		2.70	20.07	20.07
T.P.	11.41	22.77	20.8	11.36
TP Spike	1.69	13.44	5.33	11.75

2.120

17.08

5/11.68

17.08

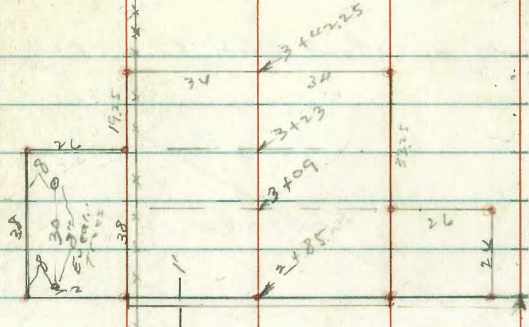
Memorial Park Rec. Bldg

⊙ E 2 x 2 Hubs

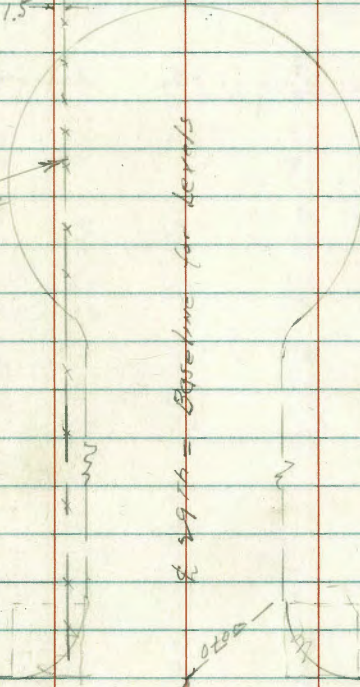
Moore
SOMMERHOFER
MEMO
4-24-44

Restake + Levels
P. 57

Indexed
0-5-R



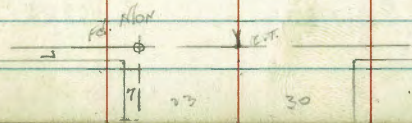
10' High
Wide fence



to 19th = Entrance for permits

Narcy

Ave



Leads on Mont. Park Rec. Bldg.

2 + 53.6v

~~Restake P 57~~

2 + 29.6v

~~Line of Wings~~

2 + 28.6v

Center Face of Bldg.

1.50

0.750

0.100 N.L. Murray Ave

T.P. 639 77.56 3.59 76.17

N.W. & P. 631 74.76 8.45

Logan + 29th

73.38	73.41	73.46	72.86	73.46	72.96	73.41	73.53	73.69
4.0	4.1	4.0	4.7	4.1	4.6	4.1	4.03	3.87
19	19	19	19	19	19	20	20	20
72.64	73.16	72.36	72.96	72.66	73.01	73.07	73.50	73.50
4.9v	4.4	5.2v	4.4	4.9	4.5	4.49	4.06	4.06
32	20	19	19	19	20	34	20	20
Hub	Hub	Hub	Hub	Hub	Hub	Hub	Hub	Hub
72.66	72.66	71.96	72.36	71.96	72.36	72.36	72.46	72.46
5.9	5.9	5.6	5.2	5.6	5.7	5.7	5.1	5.1
30	20	19	19	19	20	20	20	20
72.16	72.06	71.16	71.66	71.46	71.86	71.96	71.96	71.96
5.4	5.4	5.4	5.5	5.5	5.7	5.7	5.1	5.1
30	20	19	19	19	20	20	20	20
71.96	71.26	70.86	71.06	70.86	71.36	71.36	71.36	71.36
5.1	5.3	5.3	5.5	5.7	5.6	5.6	5.5	5.5
30	20	19	19	19	20	20	20	20
70.86	70.56	70.06	70.56	70.16	70.96	70.96	70.96	70.96
6.7	7.0	7.5	7.0	7.6	6.6	6.6	6.6	6.6
30	20	19	19	19	20	20	20	20
70.46	70.06	69.76	69.76	69.66	69.66	69.66	70.16	70.16
7.1	7.5	7.8	7.8	7.9	7.9	7.9	7.6	7.6
30	20	19	19	20	21	21	20	20

77.56

RESTAKE P 57

check to orig. B.M.

910

CRVC

CRVS
0.01

~~3+26.87~~

~~3+36.87~~

~~3+46.87~~

~~3+47.67~~

LT

29974

RT

56

74.26	74.37	74.44	73.56	74.16	73.56	74.06	74.30	75.26
3.3	3.19	3.1	5.0	3.6	5.0	3.5	3.36	2.3
60	60	20	9	19	19	20	36	60
73.87	73.76	73.74	73.26	73.96	73.26	73.76	73.96	74.96
3.59	3.80	3.8	4.3	3.6	5.3	3.8	3.6	2.6
60	36	20	19	19	19	20	36	60
4.6	4.6							
75.44	75.44	74.66	75.26	74.56	74.56	75.36	75.46	75.46
2.1	2.1	2.9	2.3	3.0	3.0	2.2	2.1	2.1
30	30	19	19	19	19	20	30	30
1.0	1.2	1.8	1.2	2.1	2.1	1.3	1.2	1.2
20	20	19	19	19	19	20	30	30
76.56	76.86	75.76	76.86	75.46	76.86	76.86	76.36	76.36

Regrade + Levels on new Hubs
Memorial Park Rec. Bldg 5-4-44
Sketch P. 54

check to old HW 6
+ 86.87 34' Lt. 4.71 74.37 74.37

3142.25 NL Bldg.

3123

3109

2185 SL Wings

T.P. 7.70 79.08 3.44 71.38
NWSP 6.37 74.82 68.25 1976
10952

Lt

Rt.

	75.36	76.42
	<u>3.72</u>	<u>2.06</u>
	34	34
75.17	75.07	
<u>3.91</u>	<u>3.99</u>	
60	34	
74.44	74.4	
<u>4.90</u>	<u>4.72</u>	
60	34	
74.47	75.33	
<u>4.21</u>	<u>3.75</u>	
30	30	
78.01	75.82	
<u>4.07</u>	<u>3.26</u>	
34	30	

79.08

Proposed Water Main Lot 2
Loma Heights "H"

Levels Next Page

36+35.85 - 11' 25" Lx Santa Barbara
May 10-44
Sisson
R.I.S.
056077

37+81.38 POT

39+33 POT

38+95 Olive Tree 12' d + 12' 10'

33+69.60 POT

2 Rows @ 55 Trees
110

31+50.89 176° 41' 45" 05-112

Fdht
Nail
Bermuda Ave

206.66
36+35.85

35+93 28
9 1/2
Olive Tree

29+10.03

Proposed Water Main
Lot 2 Loma Heights

22+16.74
176° 41' 45" 05-112

Old 11/22/15
P.M.

89° 29' 30"

89° 22' 30"

335.89

458.73

Catalina Blvd

Recorder
E.C.

Fdhtus

Set Hub

San Diego County
School District

Indexed
C.S.K.

Santa Barbara

Verice

Set Hub

TR 456

93° 45' 00"

200.76
116° 31' 18"
100.91

Fdht

Orchard Ave

Levels Proposed Water Main L012
Loma Heights "H"

May 18-44
J. Sisson
8115 T
Osborne

						223.56		
B.M.	1160	211.71		200.11	2370855 ⁰²⁵²⁶	26+50	3.8	219.8
	21+50.87	$\Delta 74^{\circ} 07' 4''$	10.20	201.51	Page 93 02526	TP	11.85	231.66
	+53.4	F. Gb Catalina	10.21	201.50		27+0	10.6	221.1
	"	Gutter	10.23	200.88		"	28.94012	11.3
	+	8	11.03	200.68		+50	9.5	222.2
	22+07.5	Gutter	10.70	201.01		28+0	7.9	223.8
	"	Top Curb	10.08	201.63		"	30.84	8.7
	+16.71		9.98	201.73		+50	6.2	225.5
	+20		6.5	205.2		29+0	4.8	226.9
	"	20' H on line Catalina	6.5	205.2		"	30.84	5.8
	+45	Fly Olive Tree 14' South of 11' H				+33.03	POT	3.93
	+70		2.2	209.5				3.1
TP	12.94		1.09	210.62		30+0		1.2
	23+0		10.9	212.7		"	30.84	2.3
	"	20' H 1/2	12.5	211.1		TP	12.18	212.25
	+40		7.3	216.3		+50		10.7
	+69.60	POT	5.87	217.69	02526	31+0		8.1
	24+0		4.9	218.7		"	30.84	9.2
	"	20' H	5.3	218.3		+50		5.2
	+50		4.4	219.2		32+0		3.1
	25+0		5.5	218.1		"	30.84	3.7
	"	20' H	5.8	217.8		TP	3.92	216.89
	+50		5.2	218.0		+50		2.8
	26+0		4.5	219.1		+81.38	POT	1.84
	"	20' H	5.1	218.5		33+0		2.0

246.89

32+0	20/11 0 1/2		3.5	243.4
33+50			7.2	239.6
34+0			11.5	225.9
"	20/11 0 1/2		12.2	239.7
TP	0.38	234.36	12.91	233.98
+50			3.5	230.9
35+0			9.2	225.2
"	20/11 0 1/2		9.2	225.2
TP	0.70	222.26	12.80	221.56
+50			2.0	220.3
+93	= 1/4 Olive Tract 9	South 16	North	
+94			5.6	216.7
36+0			7.6	214.7
"	20/11 0 1/2		6.3	216.0
+09			9.0	213.3
+12			11.0	211.3
+15			10.0	212.3
+3585			11.09	211.17 on Hub
TP	0.23	211.40	11.09	211.17
BM			10.58	200.82

Notes Reduced.

S.M.B.P.
Bermuda
Santa Barbara
200.83
Page 44

Location of Olive Trees Lot 2 Loma Heights
Water Main

July 29-44
Simpson
Bliss
Osborne
61

Distances to Center of Tree	Diameter of Ground	No. Heights			
25+45	12.6 ft off	18" Olive Tree	12.7 ft off	18" Olive Tree	12.8 ft off 20" Olive Tree
25+20	12.6 ft	18" " "	12.8 ft	15" " "	12.8 ft = 24" " "
24+95	12.6 ft	18" " "	12.4 ft	18" " "	12.8 ft = 24" " "
24+70	12.6 ft	18" " "	12.4 ft	18" " "	12.7 ft = 18" " "
24+45	12.6 ft	14" " "	12.4 ft	18" " "	12.7 ft = 18" " "
24+20	12.6 ft	15" " "	12.4 ft	14" " "	12.7 ft = 14" " "
23+95	12.6 ft	16" " "	12.4 ft	12" " "	12.6 ft = 14" " "
23+70	12.6 ft	18" " "	12.4 ft	14" " "	12.6 ft = 18" " "
23+45	12.8 ft	15" " "	12.8 ft	14" " "	12.5 ft = 18" " "
23+20	12.1 ft	10" " "	11.9 ft	6" " "	12.5 ft = 24" " "
22+95	12.4 ft	16" " "	11.6 ft	15" " "	12.5 ft = 15" " "
22+70	12.7 ft off	10" " "	11.5 ft	12" " "	12.6 ft = 18" Olive Tree
22+45	14' off	20 Olive Tree	11' ft off	20" Olive Tree	12.4 ft = 15" Olive Tree

31+94	11.6 ft = 12" olive tree	14.8 ft = 9" olive tree	35+12	9.5 ft = 10" olive tree	10.5 ft = 12" olive tree
31+70	11.1 ft = 12" " "	13.9 ft = 10" " "	34+93	9.7 ft = 12" " "	15.3 ft = 14" " "
31+45	11.2 ft = 10" " "	13.5 ft = 10" " "	34+68	9.8 ft = 10" " "	15.2 ft = 16" " "
31+20	11.3 ft = 12" " "	13.7 ft = 12" " "	34+43	10.4 ft = 12" " "	15.1 ft = 18" " "
30+95	11.4 ft = 12" " "	13.6 ft = 14" " "	34+19	10.3 ft = 12" " "	14.8 ft = 1" Bush
30+70	11.5 ft = 10" " "	13.5 ft = 14" " "	33+94	10.4 ft = 15" " "	14.6 ft = 12" olive tree
30+45	11.6 ft = 12" " "	13.4 ft = 12" " "	33+69	10.7 ft = 8" " "	14.4 ft = 14" " "
30+20	11.7 ft = 10" " "	13.3 ft = 14" " "	33+44	11.6 ft = 16" " "	14.2 ft = 14" " "
29+95	out	13.2 ft = 4" " "	33+19	11 ft = 8" " "	14.1 ft = 5" olive tree
29+70	out	13.1 ft = 10" " "	32+94	11 ft = 5" " "	14.1 ft = 4" Bush
29+45	12 ft = 18" olive tree	13 ft = 16" " "	32+69	11 ft = 10" " "	14 ft = 1" Stump + Bush
29+20	12.1 ft = 18" " "	13.9 ft = 14" " "	32+44	11 ft = 10" " "	14 ft = 12" olive tree
28+95	12.1 ft = 20" olive tree	13.9 ft = 14" olive tree	32+19	11 ft of 1/2 = 10" olive tree	14 ft of 1/2 = 10" olive tree

35793 9.0 ft of 18" Oliv. Tr. 16 ft of 18" Oliv. Tr.

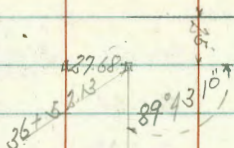
35768 9.2 ft - 18" " " 15.8 ft - 10" " "

35743 9.4 ft - 10" " " 15.6 ft - 18" " "

P Line Proposed Water Main
Lot 2 Loma Heights

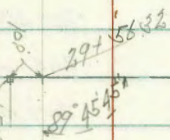
June 13-44
S. J. P. O. S.
81.00
086000
64

36+52.13 = N 25 Line Santa Barbara



Santa Barbara

33+07.02 POT



Venice

St

29+49.32 POT

P Line
S. J. P. O. S.
81.00
086000

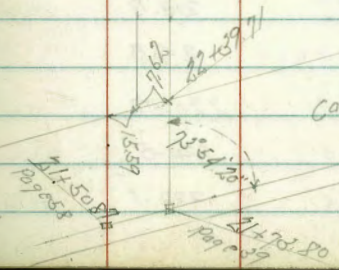
San Diego Unified
School District

Orchard Ave

23+84.87 POT

Catalina Blvd

21+73.80 A 72°54'20" H



P Line Levets Proposed Water Main
 Lot 2 Loma Heights

June 14-14
 J. S. S. Co
 Bliss
 Osborn & T

					220.73				
BM	10.65	212.16	201.51	on stub 21450.87 Page 158	287.50		7.2	223.5	
21473.80	A 73° 51' 30" W	10.85	201.31		294.0		5.8	224.9	
+76.30 = Cb		10.93	201.23		449.32 P.O.T.		4.50	226.23	on stub
"	Gutter on Pav	11.45	200.71		304.0		2.7	228.0	
224.0	on Pav	11.76	200.90		+50		0.6	230.1	
+30.5 = Gutter		11.34	200.82		TP	12.97	243.13	0.57	230.16
" = Cb		10.73	201.93		314.0		1.07	232.9	
+34.5 = Fly		10.63	201.53		+50		8.2	234.9	
+39.71 = by Catalina		10.58	201.58		+75		6.5	236.6	
+44		7.0	205.2		324.0		5.1	238.0	
+80		5.2	207.0		+50		2.2	240.9	
234.0		3.1	209.1		+75		0.8	242.3	
TP	12.38	222.49	1.05	211.11	TP	5.03	246.96	1.20	241.93
+50		9.8	213.7		334.0		2.7	243.3	
+84.87 P.O.T.		6.64	216.85	on stub	+107.02 P.O.T.		3.84	243.12	on stub
244.0		5.9	217.6		+50		6.5	240.5	
+50		5.0	218.5		344.0		11.3	235.7	
254.0		5.8	217.7		TP	1.32	235.63	12.65	234.31
+50		5.9	217.6		+50		4.5	231.1	
264.0		5.3	218.2		354.0		9.2	226.9	
+50		4.7	218.8		+50		12.5	222.1	
274.0		3.7	219.8		TP	1.48	224.71	12.40	223.23
TP	10.15	230.73	2.91	220.58	364.0		7.0	217.7	
+50		9.9	220.8		+25		9.6	215.1	
284.0		8.6	222.1		+29		11.7	213.0	

P-Line Olive Trees Location

	224.71			St.		Rt.
36+33	10.9	213.8		25+35	11" = olive tree	14' Rt = 15" olive tree
+5213 A	11.58	213.13	025046			
BM	13.51	211.20	025706 36+35.85 06 211.17 Page 60.	25+10	"	18" " "
				21+85	"	18" " "
				21+60	"	16" " "
				21+35	"	14" " "
				21+10	"	14" " "
				23+85	"	14" " "
				23+60	"	15" " "
				23+36	"	12" " "
				23+11	"	18" " "
				22+86	"	10" " "
				22+61 = 110 ft = olive tree = Ely olive grove		140' Rt = 22" olive tree
				22+33.5		22' Rt = 5 1/2" Power Pole

Same as Box on Rt. of 10' line

	Lt	Z	Rt		Lt	Z	Rt
28+60	117		133 = 12" Stump & Bent	31+85	12 Lt = Olive Tree	13 Rt = 11" Olive Tree	
28+35	115		135 = 21" Olive Tree	31+60	"	" " 10" " "	
28+10	113		137 = 20" " "	31+35	"	" " 10" " "	
27+85	11 Lt =		14 Rt = 18" " "	31+10	"	" " 15" " "	
27+60	" "		" " 22" " "	30+85	"	" " 9" " "	
27+35	" "		" " 20" " "	30+60	"	" " 12" " "	
27+10	" "		" " 24" " "	30+35	"	" " 10" " "	
26+85	" "		" " 22" " "	30+10	"	" " 9" " "	
26+60	" "		" " 23" " "	29+85	"	" " 7" " "	
26+35	" "		" " 20" " "	29+60	"	" " 24" " "	
26+10	" "		" " 18" " "	29+35	"	" " 20" " "	
25+85	" "		" " 18" " "	29+10	"	" " 16" " "	
25+60	11 Lt = Olive Tree		14 Rt = 12" Olive Tree	28+85	12 Lt = Olive Tree	13 Rt = 18" Olive Tree	

Same as Post on Right of 10th Line

	Lt.	Z.	Rt.		Lt.	Z.	Rt.
235+10	12' Lt = Olive Tree		12' Rt = 10" Olive Tree				
234+85	"		8" " "				
234+60	"		14" " "				
234+35	"		16" " "				
234+10	"		18" " "				
233+85	"		14" " "				
233+60	"		12" " "				
233+35	"		5" " "				
233+10	"	Same as Post on Right of Mt. Airy	8' Stump + Burd	36+24			1.5' Rt - 5/16" Palm Tree
232+85	"		12" Olive Tree	36+10 Mt Olive Grove	12' Lt = Olive Tree		18' Rt = 16" Olive Tree
232+60	"		12" " "	35+85	"	" "	18"
232+35	"		10" " "	35+60	"	" "	12"
232+10	12' Lt = Olive Tree		13' Rt = 7" Olive Tree	35+35	12' Lt =		12"

Sommermay or
Osborne
W. Moors
899 indexed
c.s.K.

State Street

3+40.6 = M.H.
 @ Walnut &
 @ State.

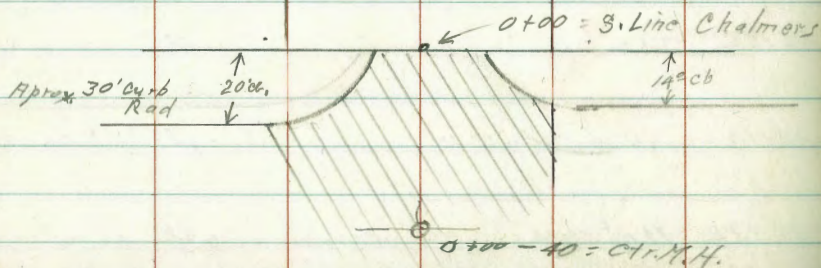
⊕

30' Roadway
 25' curb on East ← 75' → 20' curb on west

E. Line State

W. Line State

Borrow Pit



Sewer Line Profile Levels
 Chalmers - to South

69
 8/5/49

0+00 = @ State &

South line Chalmers

S.E.B.P. Columbia & Chalmers	13.05	110.16	—	97.11	✓
	11.90	120.66	1.40	108.76	

0-40 = M.H. @ Chalmers

F. Line	15.48	105.18		
Rim M.H.	9.11	111.55		

0+00 - S Line Chalmers

W + 19'	Top Curb	8.13	112.53
✓	Outlet	8.58	112.08
⊕		8.70	112.46
⊕ + 12.6	Outlet	7.84	112.82
✓	Curb	7.38	113.28
	0 + 25		
W		4.0	116.7
⊕	}	4.9	115.8
E		3.5	117.2
E + 5		4.16.0	136.7
	0 + 30		
⊕		0.2	120.5
		120.66	
T.P.	11.86	131.95	
	7.86	127.95	0.57 120.09

0+00 - 40 = Ch. M.H.

Profile Levels
Sewer

131.95

0+75

Φ 6.2 125.8

1+00

W-50 7.0 125.0

W 4.8 127.2

Φ 0.4 131.6

Φ+17 + 1.0 133.0

Φ+18 + 6.0 138.0

E + 7.2 139.2

T.P. 131.95

12.97 144.92 0+00 131.95

1+25

E 1.6 143.3

Φ 8.2 136.7

W 11.4 133.5

W+10 5.8 139.1

1+50

W 1.3 143.6

Φ 2.5 142.4

E + 2.0 146.9

144.92

T.P. 12.73 156.96 0.69 144.23

1+75

Φ 9.5 147.5

State St Chalmers to
Walnut

8/5/44 70

2+00

W 156.96 4.5 152.5

Φ 5.2 157.8

E 3.0 154.0

2+25

Φ 2.0 155.0

156.96

T.P. 8.46 163.68 1.74 155.22

2+50

E-A5 Sewer outlet
From house 10.0 153.7

E 7.1 156.6

Φ 5.2 158.5

W 3.9 159.8

2+65

Φ 4.5 159.2

2+85

6.9 156.8

3+00

W 6.4 157.3

Φ 8.7 155.0

E 13.8 149.9

3+20

Φ 13.6 150.1

State St Sewer Levels

Chalmers to Walnut

X
163.68

T.P. 0.75 152.04 12.39 151.29

3 + 40¢ on Mon. @ Walnut + State

⊕ 6.65 145.39

152.04

2.12 142.03 12.13 139.91

N.W.B.R

Union + Walnut

6.08 135.95

P2 Line Proposed Water Main
 Catalina Blvd - Orchard Ave - Venice St + Alley Blk 75
 Point Loma Heights

Levels Next Page

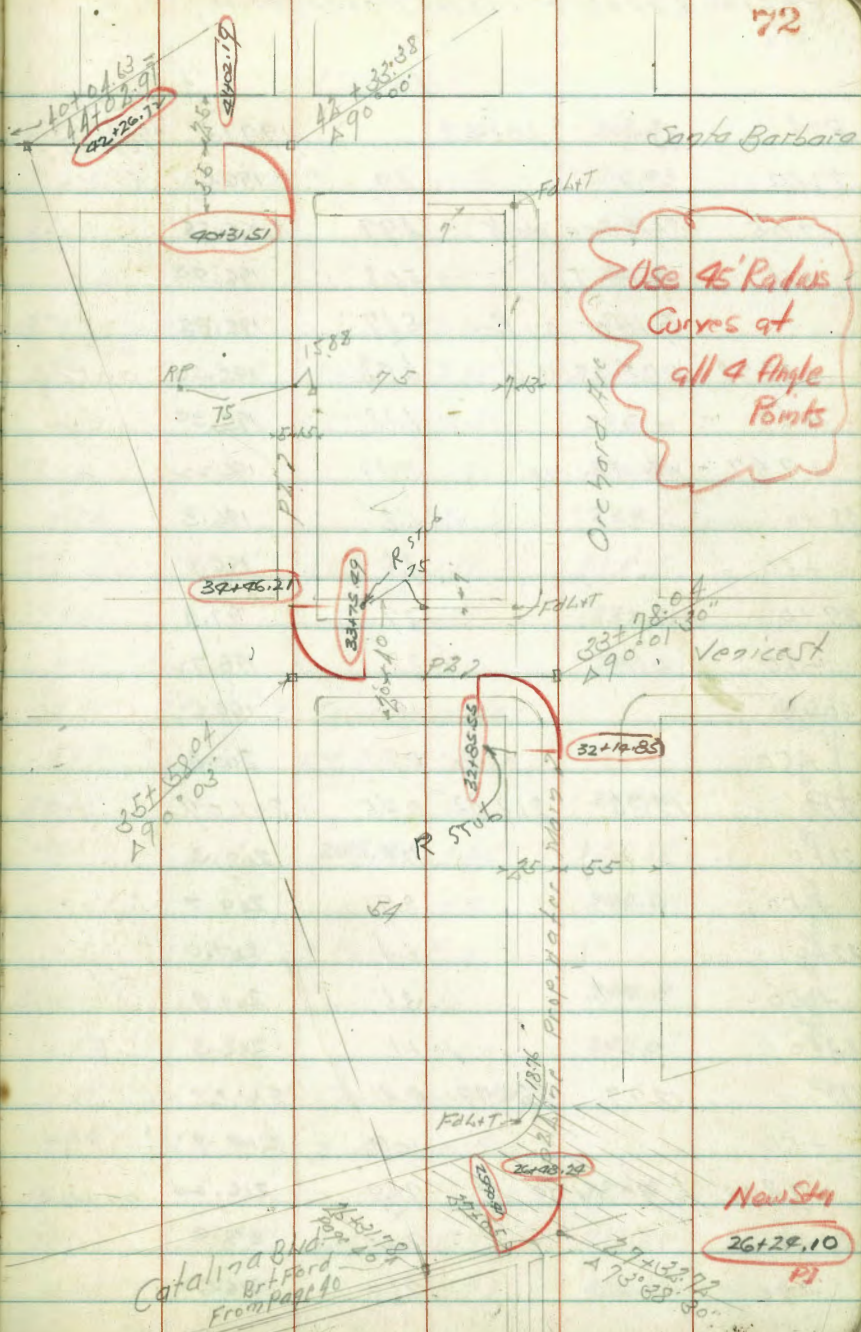
A-Line Page 58

P-Line Page 64

Page 40?

Aug 8-11
 Sisson
 Blist
 Hazard
 Hardin

Plotted
 See Drawing - 1119-D



P2 Line Levels Proposed Water Main

BM	4.39	201.52	197.13	on Hub 25+31.78 109+40	35+0	225.79	9.5	216.3
27+0		49	196.6		+58.04	A 90° 03' 18"	9.36	216.93 on Hub
+0.5	Sly Conc Walk	4.97	196.55		36+0		7.6	218.2
+11	Curb Top	5.08	196.99		+50		4.6	221.2
"	Gutter on Pav	5.67	195.85		37+0		3.1	223.7
+32.72	A 73° 38' 30" H	6.02	195.50	on Pav	TP	13.08	236.72	2.15
+62		6.18	195.32	" "	+50		10.5	226.2
+94.7	W/S Paving	5.30	196.22		38+0		6.4	230.3
28+0		5.2	196.3		+50		2.6	239.1
+50		4.6	196.9		TP	12.46	247.57	1.61
29+0		3.7	197.8		39+0		10.1	237.5
+50		2.8	198.72		+50		6.6	241.0
30+0		1.9	199.6		+71	38 1/2 ft of 2" Cable Dead Man		
+50		0.7	200.8		+99	4 1/2 " " " = 2" Paper Pole		
TP	1236	213.43	0.45	201.07	40+0		3.1	249.5
31+0		1.1	202.3		TP	4.19	249.21	2.35
+50		8.7	204.7		+50		3.8	245.6
32+0		6.4	207.0		+98	40 1/2 ft of 2" Paper Pole		
+50		3.6	209.8		41+0		4.6	249.8
33+0		1.1	212.3		+50		7.4	242.0
TP	1277	225.79	0.41	212.02	+89	4.5 ft of 2" Cable Dead Man		
+50		10.9	219.9		+97	36 1/2 " " " = 2" Anchor Pole		
+78.04	A 90° 01' 30" H	9.59	216.20	on Hub	42+0		12.1	237.3
34+0		9.4	216.2		TP	0.57	237.10	12.88
+50		9.2	216.6		+333.38	A 90° 00' H	0.98	236.12 on Hub

Notes Reduced. 8-9-05

237.10

42+50

22

239.9

48+0

63

230.8

+50

96

227.5

44+0

117

225.9

+0.291 = 40+04.63
Myoerol Page

11.86

225.24

✓
0.2 Stub
225.28

Levels A' Line
Proposed Water Main P.L. 190-191-197

Dec. 20-44
S. S. 5007
Bliss X
Osborne 76

BM.									
		222.83	218.73	on Hub 1442.98 Pg 135	9+0.5		135	203.1	
0+98.63	BC Lt.	2.01	220.82	on Hub	+0.8		141	205.5	
1+35		3.5	219.3		+5.0		121	207.5	
+69.32	FC	3.88	218.95	on Hub	TP	1.32	205.98	11.98	204.66
2+0		4.3	218.5		10+0		2.5		203.5
+50		5.0	217.5		+50		3.9		202.1
3+0		5.9	216.9		11+0		4.8		201.2
+50		8.0	214.8		+50		5.6		200.2
+80		9.9	212.9		+91.41	BC Lt.	7.18		198.8 on Hub
4+0		10.7	212.1		12+0		7.2		198.7
+50		9.9	212.9		+50		8.8		197.2
5+0		9.3	213.5		13+0		10.4		195.6
TP	298	216.64	213.66		"	55 Lt of 2	8.8		197.2
+50		4.2	212.2		"	50 ft	13.2		193.8
6+0		5.8	212.8		+50		12.2		192.7
+19.75	P.O.T.	3.36	213.28	on Hub	TP	0.93	194.26	12.65	193.33
+50		4.9	211.7		14+0		6.2		188.1
+70		7.1	209.5		"	25 Lt	6.0		188.3
+87		10.0	206.6		"	50 Lt	0.0		199.3
7+0		11.7	204.9		"	50 ft	6.5		187.8
+50		8.4	208.2		+50		10.6		183.7
8+0		9.0	207.6		15+0		14.4		179.9
+50		10.1	206.5		"	50 Lt	9.2		185.1
9+0		11.0	205.6		"	50 ft	18.2		176.0
+0.2		13.5	203.1		+19.25	FC	13.3		181.0

216.64 ✓

19426

205.61

15419.25	50' Rt 1/2	16.4	177.9	TP	11.82	215.75	168	203.93	✓
"	50' Lt	9.0	185.3	TP	11.98	225.88	1.25	214.50	✓
1640		10.4	183.9						
"	25' Lt	9.9	189.9	B.M.			0.71	225.17	✓
"	25' Rt	9.7	189.6						
150		2.9	191.9						
"	25' Rt	2.8	191.5						
"	25' Lt	3.7	190.6						
TP	1228	205.61	0.93	193.33					
+66.62	BC Lt	12.70	192.91	07 Hub					
+78.09	FC	11.15	192.96	07 Hub					
"	25' Rt	10.6	195.0						
"	25' Lt	12.5	193.1						
1710		10.1	195.5						
"	25' Rt	9.5	196.1						
"	25' Lt	10.2	195.9						
150		7.3	198.3						
"	25' Rt	6.6	199.0						
"	25' Lt	6.0	199.6						
1810		2.7	202.9						
"	25' Rt	3.1	202.5						
"	25' Lt	2.7	202.9						
+16.77	BC Rt	2.40	203.21	07 Hub					
+46	= Edge Parings	2.78	202.83						
+72.17	= FC	2.60	203.01						

3rd Top Fire Hyd
Point Lanna Hut
+ Catalina
22517

Notes Reduced.

12-21-09
[Signature]

MEMORIAL TABLES
AND
INFORMATION

The right page of the notebook shows faint, ghosted text and a table structure. At the top, the words "MEMORIAL TABLES AND INFORMATION" are visible. Below this, there is a rectangular box containing a table with several rows and columns. The text within the table is extremely faint and illegible, but the layout suggests a structured data table with a header row and multiple data rows.

64' W of Pipe

0 + 72.78

33.23

21

54.23

90

22.30

112.30

348 - 8" V.T. PIPE

294

65

75.7