

1656



ENGINEER'S
FIELD BOOK
No. 403F

EUGENE DIETZGEN CO.

DRAWING MATERIALS, MATHEMATICAL and
SURVEYING INSTRUMENTS

Chicago New York San Francisco New Orleans Pittsburg Toronto

Distances from Center of Roadway for Cross-Sectioning
Roadway 16 feet wide. Side Slopes 1 on 1.
For Single Track Embankment.

H	0	.1	.2	.3	.4	.5	.6	.7	.8	.9	H
0	8.0	8.1	8.2	8.3	8.4	8.5	8.6	8.7	8.8	8.9	0
1	9.0	9.1	9.2	9.3	9.4	9.5	9.6	9.7	9.8	9.9	1
2	10.0	10.1	10.2	10.3	10.4	10.5	10.6	10.7	10.8	10.9	2
3	11.0	11.1	11.2	11.3	11.4	11.5	11.6	11.7	11.8	11.9	3
4	12.0	12.1	12.2	12.3	12.4	12.5	12.6	12.7	12.8	12.9	4
5	13.0	13.1	13.2	13.3	13.4	13.5	13.6	13.7	13.8	13.9	5
6	14.0	14.1	14.2	14.3	14.4	14.5	14.6	14.7	14.8	14.9	6
7	15.0	15.1	15.2	15.3	15.4	15.5	15.6	15.7	15.8	15.9	7
8	16.0	16.1	16.2	16.3	16.4	16.5	16.6	16.7	16.8	16.9	8
9	17.0	17.1	17.2	17.3	17.4	17.5	17.6	17.7	17.8	17.9	9
10	18.0	18.1	18.2	18.3	18.4	18.5	18.6	18.7	18.8	18.9	10
11	19.0	19.1	19.2	19.3	19.4	19.5	19.6	19.7	19.8	19.9	11
12	20.0	20.1	20.2	20.3	20.4	20.5	20.6	20.7	20.8	20.9	12
13	21.0	21.1	21.2	21.3	21.4	21.5	21.6	21.7	21.8	21.9	13
14	22.0	22.1	22.2	22.3	22.4	22.5	22.6	22.7	22.8	22.9	14
15	23.0	23.1	23.2	23.3	23.4	23.5	23.6	23.7	23.8	23.9	15
16	24.0	24.1	24.2	24.3	24.4	24.5	24.6	24.7	24.8	24.9	16
17	25.0	25.1	25.2	25.3	25.4	25.5	25.6	25.7	25.8	25.9	17
18	26.0	26.1	26.2	26.3	26.4	26.5	26.6	26.7	26.8	26.9	18
19	27.0	27.1	27.2	27.3	27.4	27.5	27.6	27.7	27.8	27.9	19
20	28.0	28.1	28.2	28.3	28.4	28.5	28.6	28.7	28.8	28.9	20
21	29.0	29.1	29.2	29.3	29.4	29.5	29.6	29.7	29.8	29.9	21
22	30.0	30.1	30.2	30.3	30.4	30.5	30.6	30.7	30.8	30.9	22
23	31.0	31.1	31.2	31.3	31.4	31.5	31.6	31.7	31.8	31.9	23
24	32.0	32.1	32.2	32.3	32.4	32.5	32.6	32.7	32.8	32.9	24
25	33.0	33.1	33.2	33.3	33.4	33.5	33.6	33.7	33.8	33.9	25
26	34.0	34.1	34.2	34.3	34.4	34.5	34.6	34.7	34.8	34.9	26
27	35.0	35.1	35.2	35.3	35.4	35.5	35.6	35.7	35.8	35.9	27
28	36.0	36.1	36.2	36.3	36.4	36.5	36.6	36.7	36.8	36.9	28
29	37.0	37.1	37.2	37.3	37.4	37.5	37.6	37.7	37.8	37.9	29
30	38.0	38.1	38.2	38.3	38.4	38.5	38.6	38.7	38.8	38.9	30
31	39.0	39.1	39.2	39.3	39.4	39.5	39.6	39.7	39.8	39.9	31
32	40.0	40.1	40.2	40.3	40.4	40.5	40.6	40.7	40.8	40.9	32
33	41.0	41.1	41.2	41.3	41.4	41.5	41.6	41.7	41.8	41.9	33
34	42.0	42.1	42.2	42.3	42.4	42.5	42.6	42.7	42.8	42.9	34
35	43.0	43.1	43.2	43.3	43.4	43.5	43.6	43.7	43.8	43.9	35
36	44.0	44.1	44.2	44.3	44.4	44.5	44.6	44.7	44.8	44.9	36
37	45.0	45.1	45.2	45.3	45.4	45.5	45.6	45.7	45.8	45.9	37
38	46.0	46.1	46.2	46.3	46.4	46.5	46.6	46.7	46.8	46.9	38
39	47.0	47.1	47.2	47.3	47.4	47.5	47.6	47.7	47.8	47.9	39
40	48.0	48.1	48.2	48.3	48.4	48.5	48.6	48.7	48.8	48.9	40

Example—If point is 22.6 ft. above grade, how far should it be from center line to be a slope stake point? Ans. from Table 30.6. For same slopes but other widths of roadbed, correct above figures by one-half difference in width of roadbed; thus in example above, for 20 ft. roadbed distance will be $30.6 + (20 - 16) \div 2$ or 2 ft. added to 30.6 = 32.6. For slopes of 1 on 1½ see inside of back cover.

Copyright, 1914, by Eugene Dietzgen Co.

270
540
293
576
271
550
130
27
33
66
207

1656

CITY ENGINEER'S OFFICE

ENGINEERING DEPARTMENT, CITY OF SAN DIEGO, CALIFORNIA.

This Field Book is manufactured of a High Grade 50% Rag Paper having a WATER RESISTING SURFACE, and is sewed with Bing Special Enamel Waterproof thread.

Made in U. S. A.

Alignment Sta.		
		2-21
St 1	- 12+75 ²¹	22-24
2	17+32 ⁶	24-27
3	21+39 ⁵⁷	27-29
4	21+92 ⁵⁷	29-31
5	24+75 ⁸	31-34
6	28+13 ⁵³	35-37
7	31+22 ¹²	37-39
8	34+50	39-40
9		41-43
10	40+30 ⁸⁶	43-46
11	43+24 ²²	46-48
12	47+00	48-51
13	52+98 ⁵²	51-58
16		58-61
17		61-64
18	67+40	64-
19		65-66
18		67-72
20		72-74
21		74-78
22		78-79

Walker
Osborne
Hazard
6-4-43

~ "ALIGNMENT" ~

Proposed Highway

WABASH CANYON

From Market Street to 40th

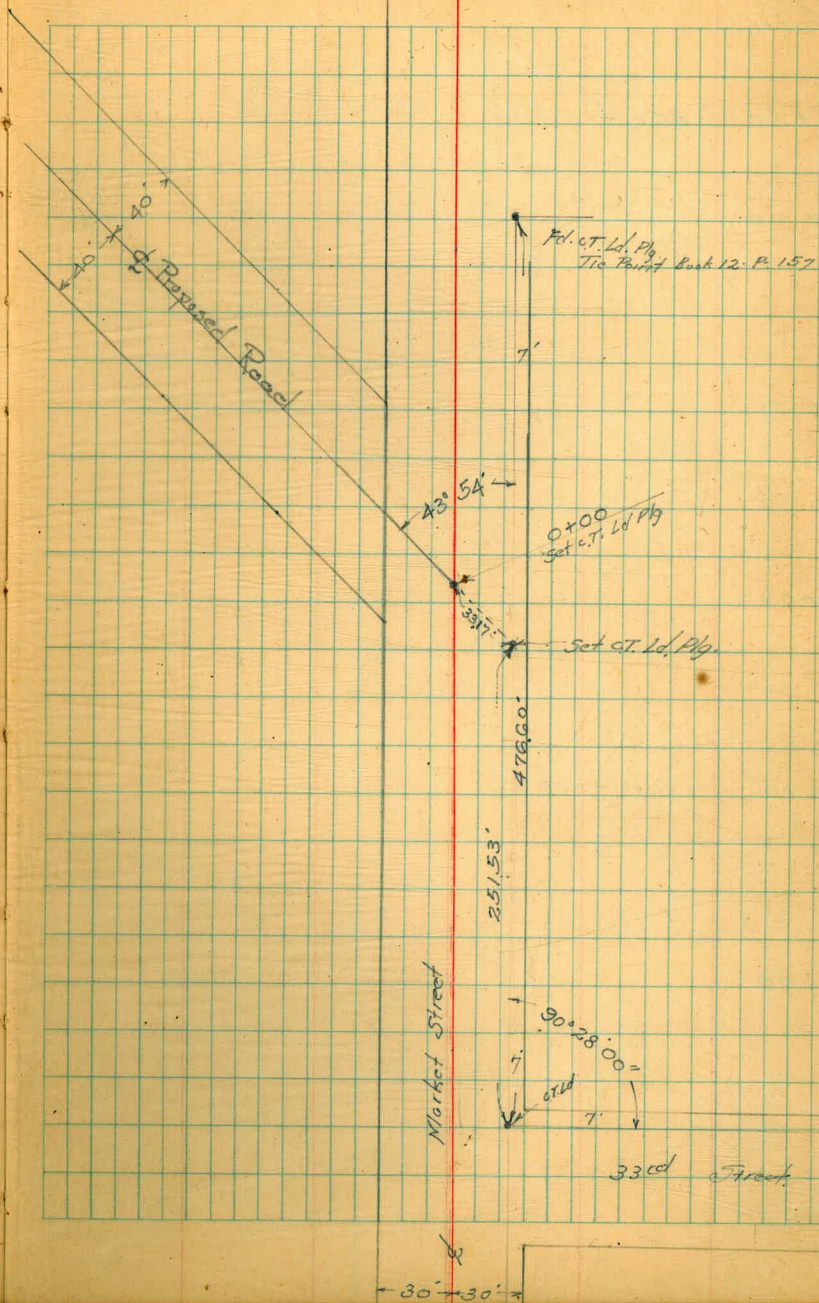
Station

1+00

0+00 = Set & T. Id in Concrete Paving.

indexed
e.s.k.

2



Wabash Canyon Road

Stations

7+60.07 = B.C. Lt.

7+00

6+00

5+00

4+00

3+00

2+00

$S R = 640'$
 $\Delta = 46^{\circ}09'45''$
 $T = 272.72$
 $L = 515.64$

B.C. Lt.
7+60.07 40' 40'

Wabash Canyon Road

Station Note. It was decided To Topog. this Canyon From Federal Bld. To 40th

So Will use the 2 Stations as Base Line for Station Survey

For Elevations of Control Points See FB 1657

12+75.71 E.C. Set Redwood Hub. = \square 1 Elev. 51.64

+50 21°55.6'

12+00 19°41.28'

+50 17°27'

11+00 15°12.72'

+50 12°58.44'

10+00 10°44.36'

+50 8°30.08'

9+00 6°15.80'

+50 4°01.52'

8+00 1°47.24'

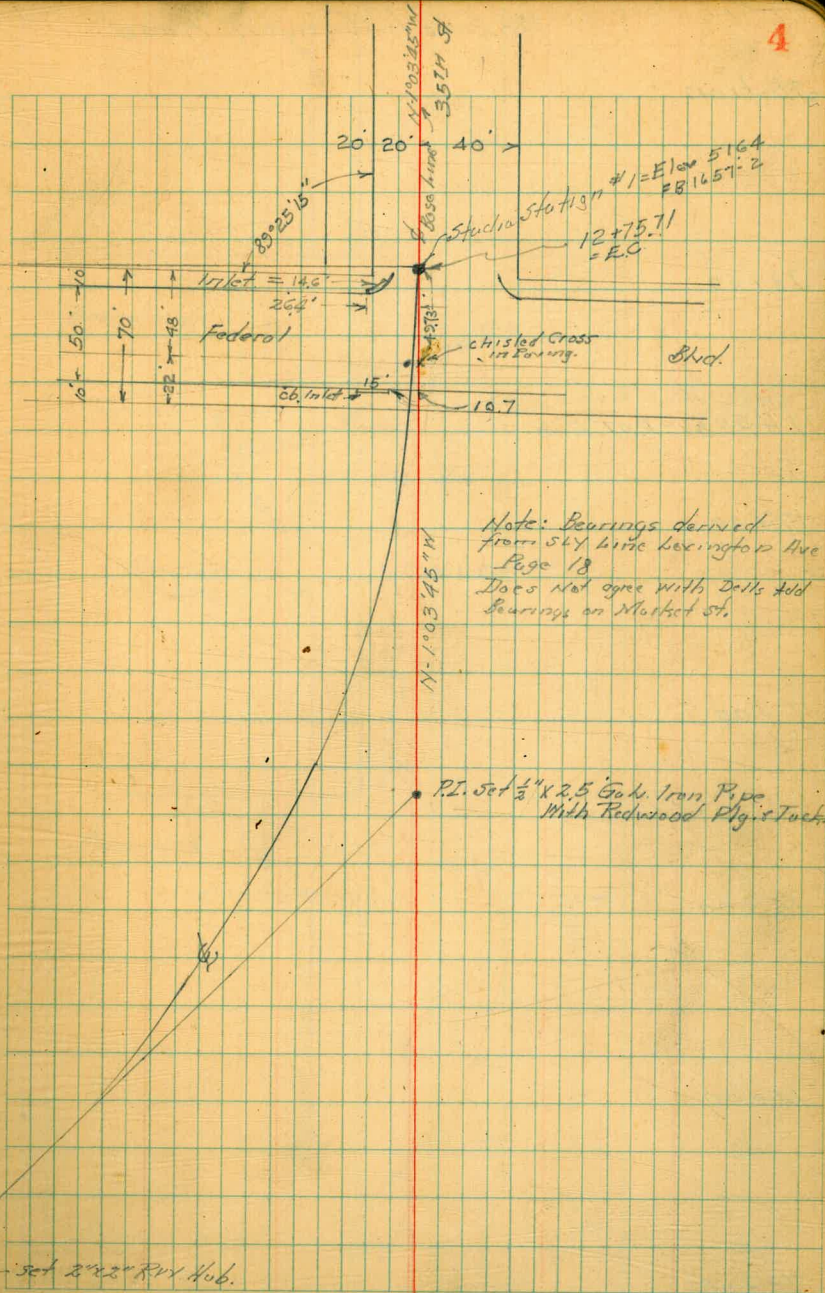
7+60.07 BC Lt.

$$\Delta = 46^{\circ}09'45''$$

$$LR = 640'$$

$$LST = 272.72$$

$$L = 515.64$$



Mabosh Canyon Road

Station

18+00

17+32.60 = P.O.T. Hub.

17+00

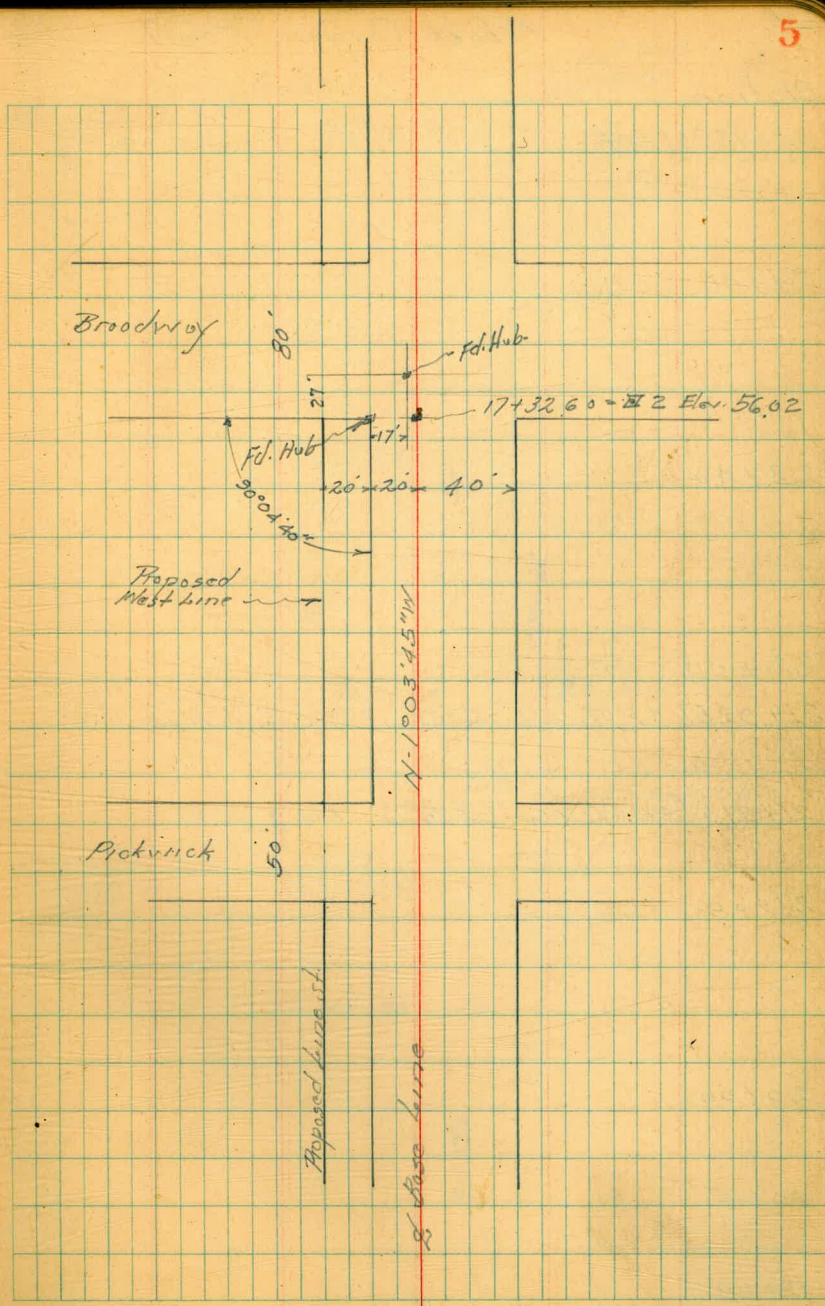
N-1°03'45"W

16+00

15+00

14+00

13+00



Wabash Canyon Road

Station

24+75.80 = P.O.T.

24+00

23+00

22+00

21+92.57 = P.O.T. N.L.-C-ST 2" x 2" R.W. Hub = 174 Elev = 61.66

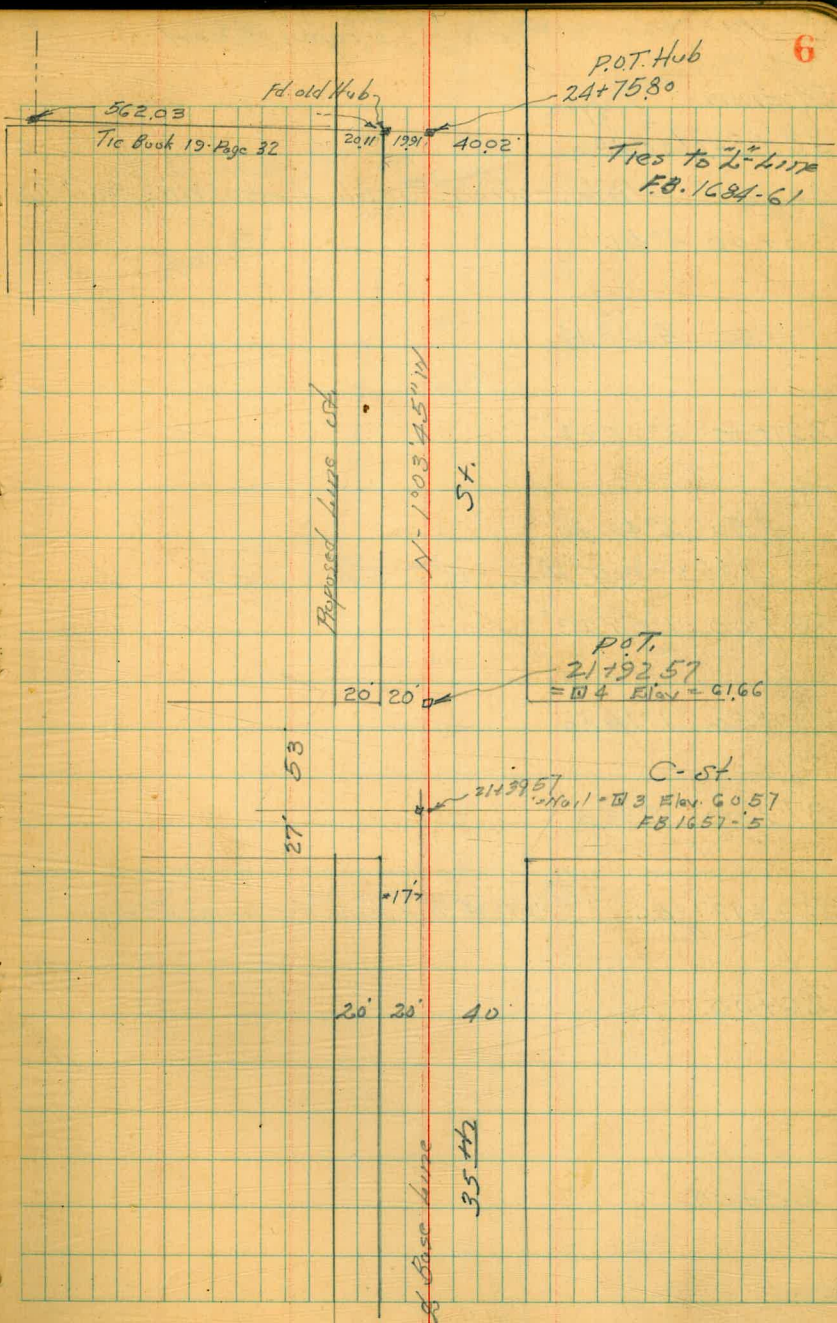
21+39.57 = P.O.T. Nail = 173 Elev = 60.57

21+00

20+00

19+00

1385.56



Wabash Canyon Road

Station $5^{\circ}21'$
 $30+3477 = P.O.C.$
 $30+1371 = \text{Intersection Pueblo Line With Semi-Tangent}$
 $30+00 \quad 4^{\circ}51.1'$

+50 $4^{\circ}08.14'$

$29+00 \quad 3^{\circ}25.17'$

+50 $2^{\circ}42.2'$

$28+1353 = \text{Post. Hub.} = \square G \quad \text{Elev} = 79.53$

$28+00 \quad 1^{\circ}59.23'$

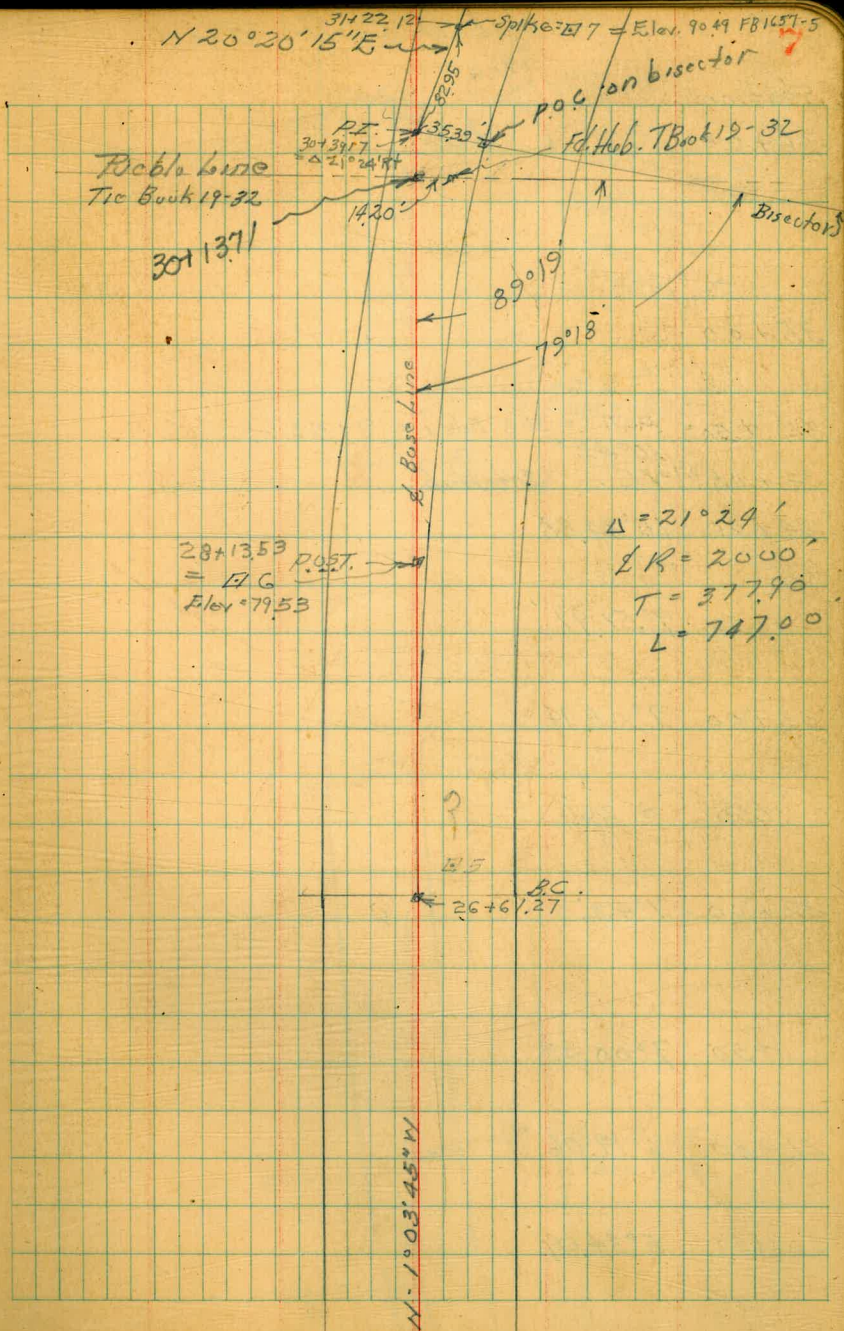
+50 $1^{\circ}16.26'$

$27+00 \quad 0^{\circ}33.3'$

$26+61.27 = B.C. = \text{P.O.T. of Base Line for Topog. Survey}$

$26+00$

$25+00$



Wabash Canyon Road

Station

36+00

35+00

34+50 = P.O.T. = $\square 8$ Elev = 97.53

34+08.27 = F.C. Set Hub

34+00 10°34.88

+50 9°51.91'

33+00 9°08.94

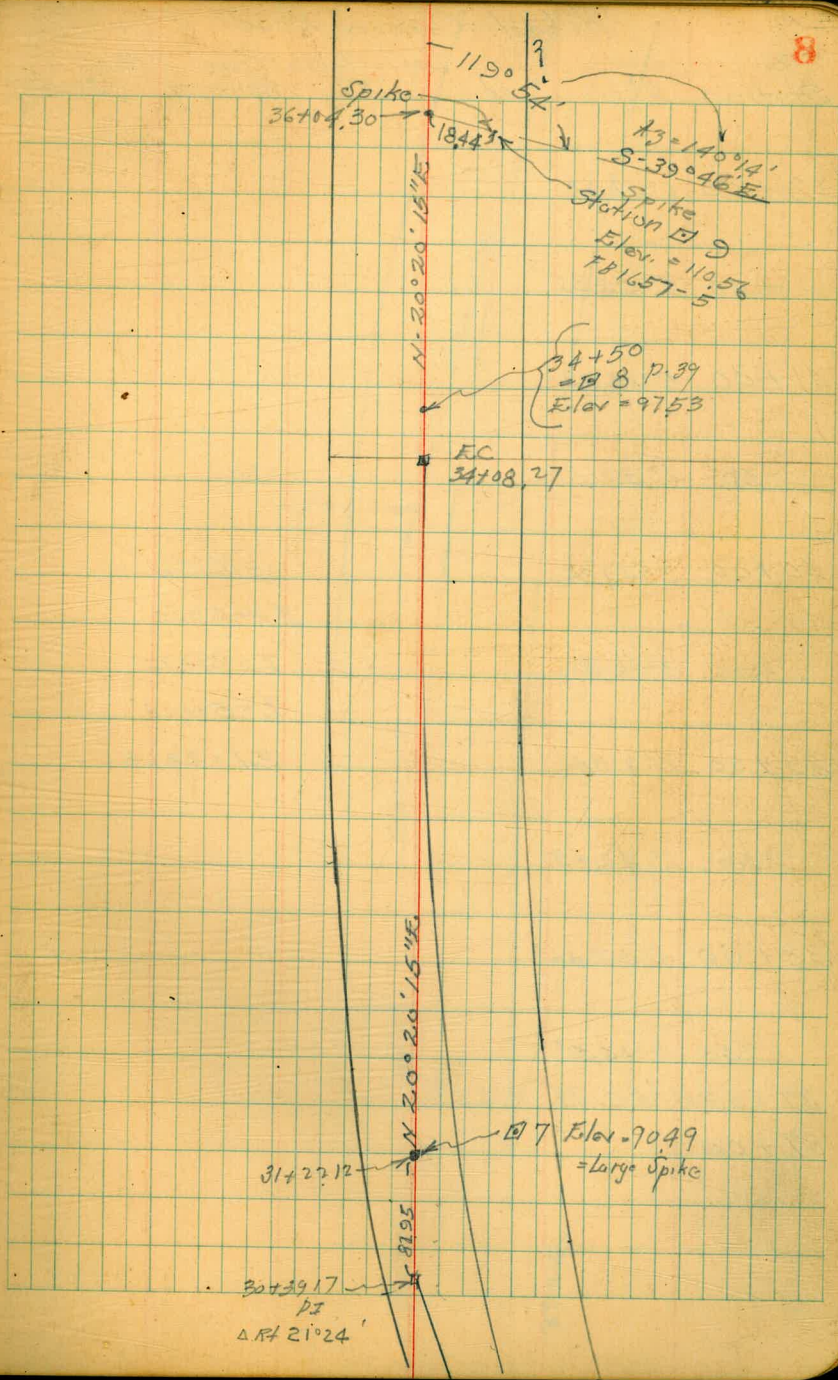
+50 8°26'

32+00 7°43.0

+50 7°06.03

31+00 6°17.06

30+50 5°34.09



Wobash Canyon Road

Station Align Lt. Deflection Rt True Mag. Bearing Bearing

42+00 6°41.32'

+50 5°58.35'

41+00 5°15.38'

+50 4°32.31'

40+00 3°49.34'

+50 3°06.37'

39+00 2°23.4'

+50 1°40.43'

38+00 0°57.46'

+50 0°14.5'

37+33.14 = B.C. TA

37+00

324.87

$\Delta = 16^\circ 56'$

$R = 2000'$

$T = 297.72'$

$L = 591.08'$

$E_t = 22.04'$

PI
= 40+30.86
= Sta. Base of Curve

N 27°16'15" E

297.72

P.C.
37+33.14

N 20°20'15" E

Wobash Canyon Road

Station

48+00

47+00 = P.O.T. = $\square 12$ Elev. 100.06

46+00

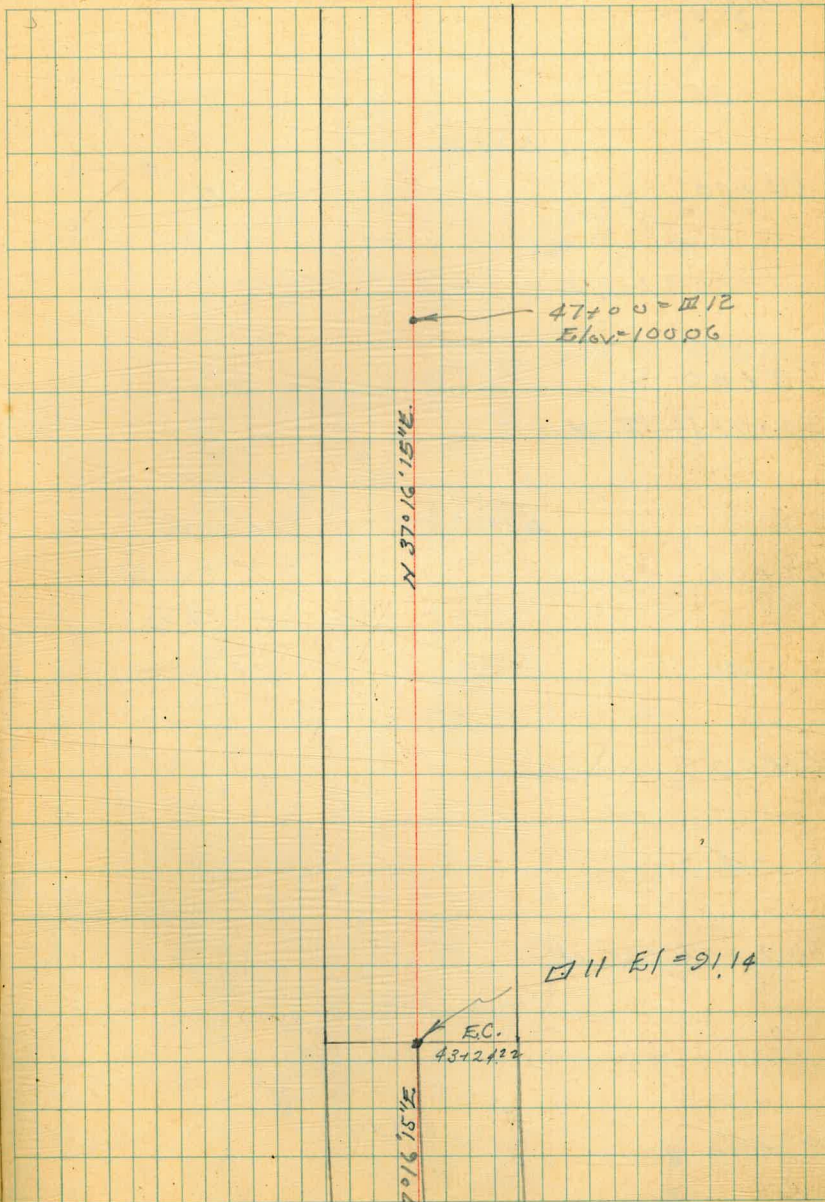
45+00

44+00

$8^{\circ}28'$ = $\square 11$ Elev = 91.14
 43+24.22 = E.C. = P.O.T. of Base line for Topog. Survey

43+00 $8^{\circ}07.26'$

42+50 $7^{\circ}24.3'$



47+00 = $\square 12$
 Elev. = 100.06

N 37°16'15\"/>

$\square 11$ El = 91.14

E.C.
 43+24.22

N 37°16'15\"/>

Wabash Canyon Road

Station

755

N 20° 20' 15" E

54+00

750 = P.O.T. Spike = 14 14

53+00

52+98.52 = P.I. H 16.56'

750

N 37° 16' 15" E

$\Delta = 16° 56'$

$\Delta R = 2000'$

52+00

$T = 297.72'$

$L = 591.08'$

750

$E_d = 22.09'$

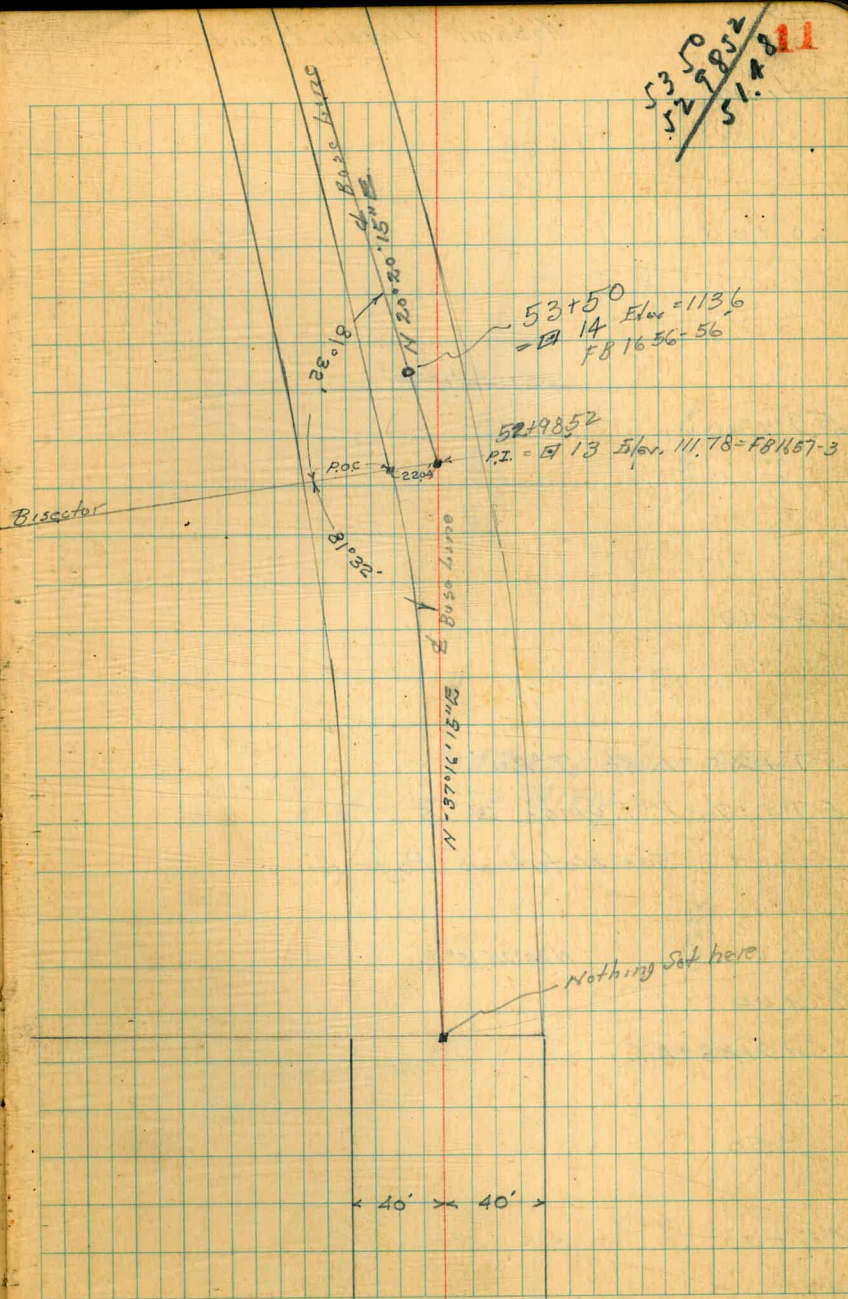
51+00

750

50+00.80 = B.C. L.

49+00

676.58



Wabash Canyon Road

Station

60+00

N 27° 40' N⁹⁰ E

59+00

1015.25

58+00

57+25 = Δ Rt. 7° 20'

57+17 = POT. Spike □ 15

see Notation Page 4

153.2

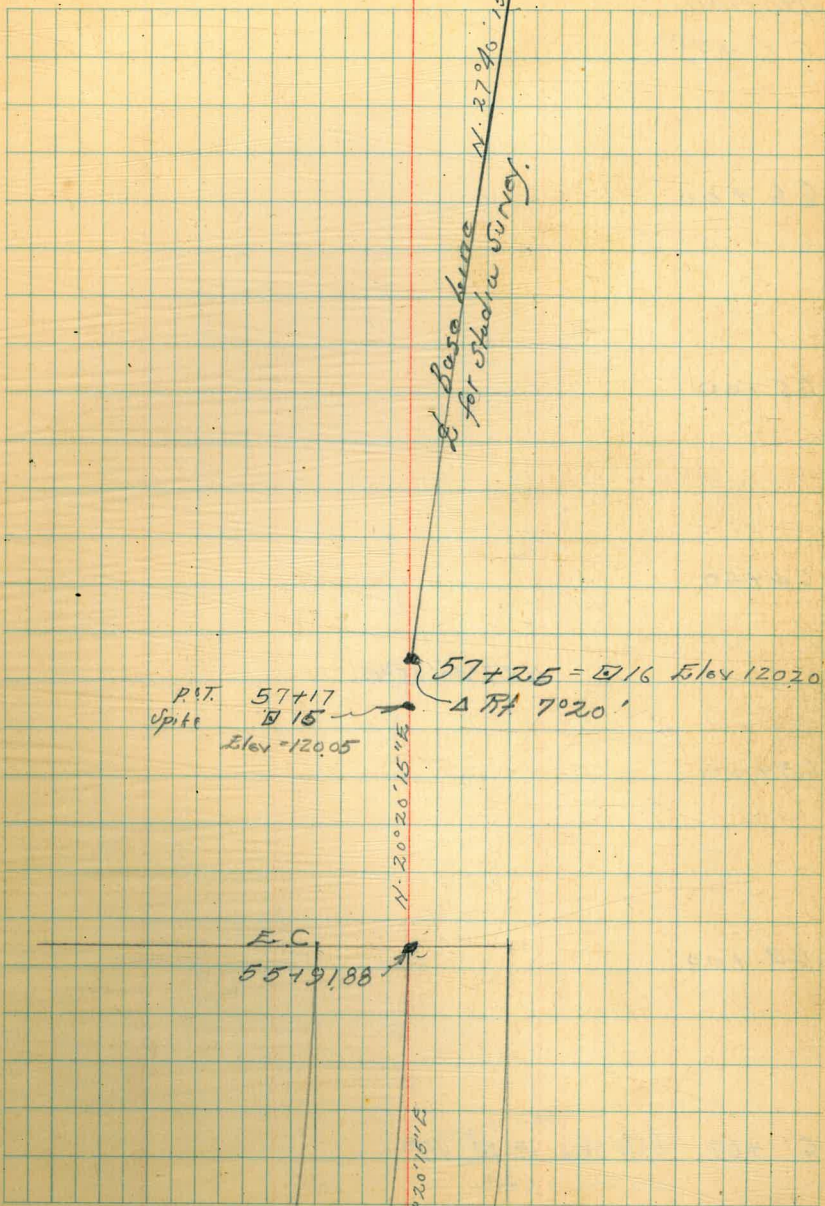
N 20° 20' 15" E

56+00

55+91.88 = E.C.

+50

55+00



Wabash Canyon Road

Station

66+75

66+00

65+00

64+00

N 27° 40' 15" E.

63+00

62+00

61+00 = POT. stub = □ 17

N 27° 40' 15" E

8 Base line

61+00 = POT.
Stadia Sta. # 17
Elev. = 117.02

Wabash Canyon Road

Stations

72+00

N 19° 32' E

71+70 = Δ Rt. 17° 09' 45"

71+00

N 12° 22' 15" E

70+00

4302

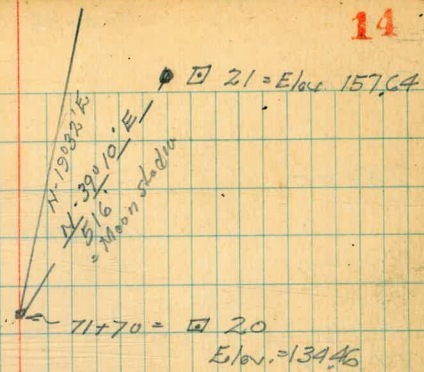
69+00

68+00

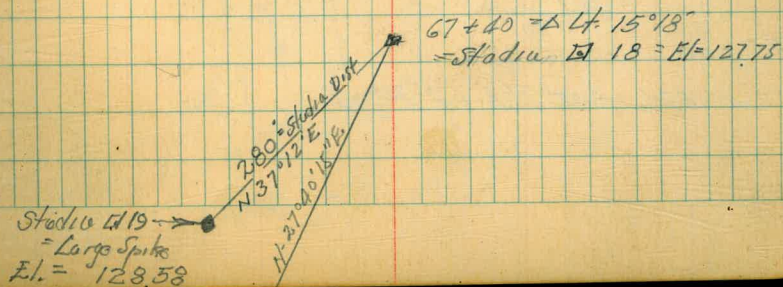
67+40 = Δ Lt 15° 18' Set Hub.

67+00

N 27° 40' 15" E



N 12° 22' 15" E



Wobash Canyon Road

Station

84+70.39=P.O.T.

N34°25'E

83+00

82+60.08 = Δ Rt. 27°59'30" Fd. stake FB. 1512-50

82+00

N6°25'30"E

81+00

80+49.77 = P.O.T. Stake Fd.

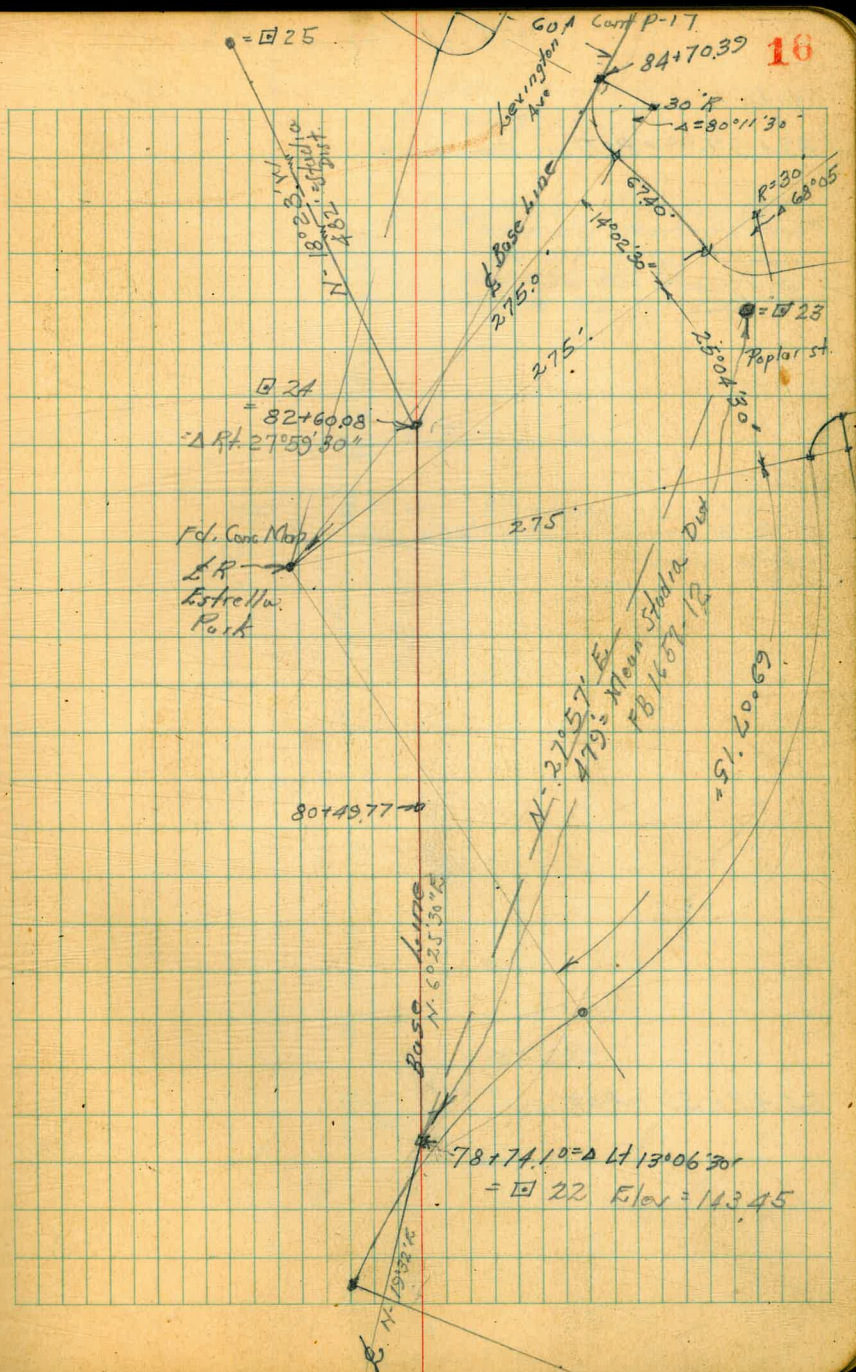
80+00

386
983

78+74.10 = Δ Lt. 13°06'30"

N19°32'E

7433



Wabash Canyon Road
Base Line
for Topog. Survey.

Station
26+00

25+00

$N 0^{\circ} 05' 30'' W$

24+84.95 = P.O.T.

24+13.95 = ΔL $49^{\circ} 38' 30''$

22+98.86 = P.O.T.

$N 49^{\circ} 38' E$

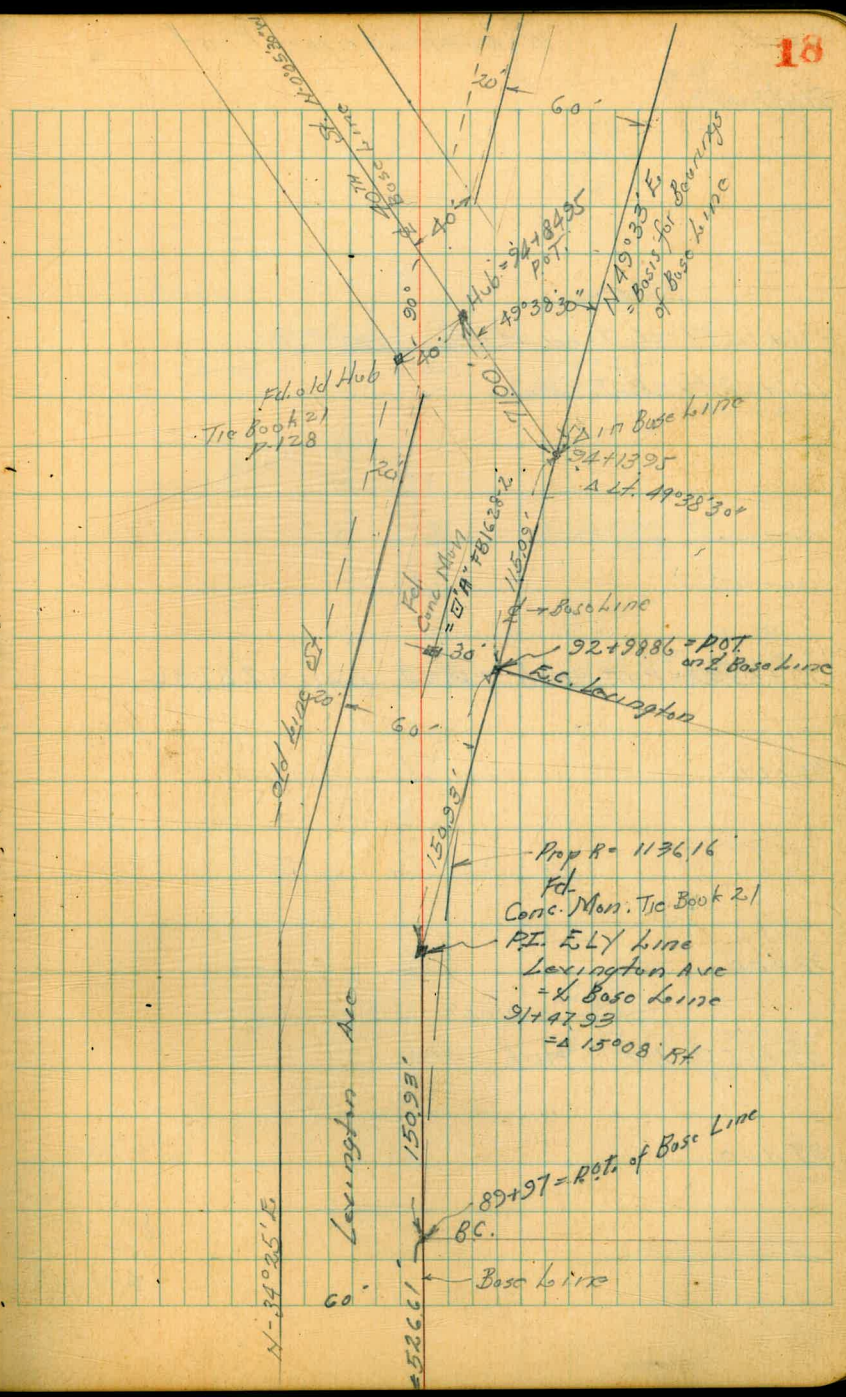
26602

21+47.93 = Δ $15^{\circ} 08' 54''$

$N 34^{\circ} 25' E$

88785

89+97.00 = P.O.T.



Wabash Canyon Road

Station

101+14.49 - N 7' Line Quince St.

101+02.69 - P.O.T. Hub.

100+00

99+59.39 - P.O.T. Hub. = $\square 29$ Elev. = 287.36

99+00

98+00

N-0°05'30"W

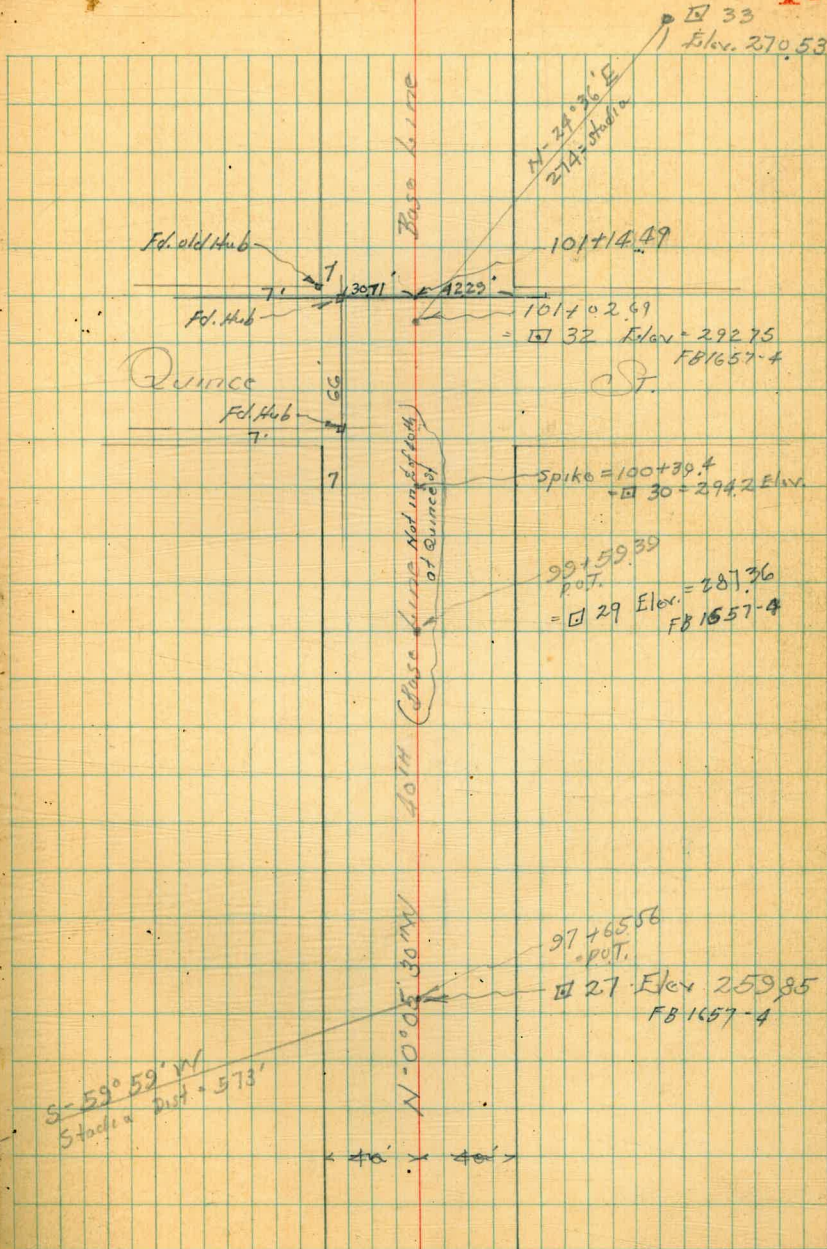
97+65.56 - P.O.T. Hub

97+00

Spike in old RR Bank
 $\square 28$
 Elev 261.7

Cont P-21

19



Wabash Canyon Road.

Station

Wabash Canyon Road.

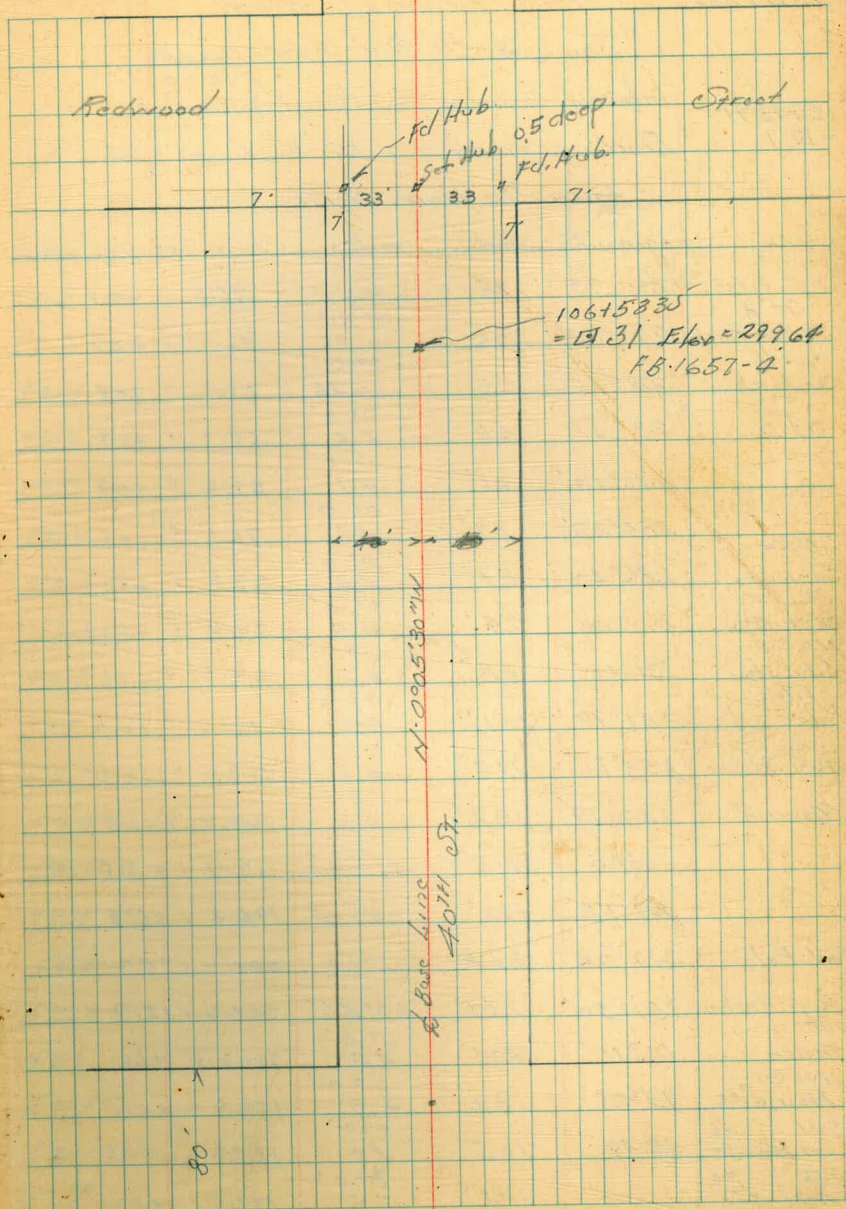
Station

107+27.35 = Int. South 7' line Redwood st.

106+53.35 = P.O.T.

$N 0^{\circ} 05' 30'' W$

101+02.69 = P.O.T.

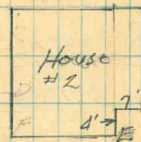
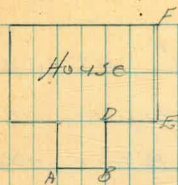


Wobash Canyon Road
 Station *Stadia Topog.*
 From Federal Blvd.
 To 40th And. Redwood.

Internal Focusing Bessel Transit Inst. Constant = 100'
 12+75.71
 = 101 Readings from 101 Elev. 51.64 HI = 5.2

~ Azimuths from North ~

	Azimuth	Stadia	Vert. A	Horiz. Dist.	Diff. Elev.	Elev. ✓
N. Gut Fall	262°33'	98	0°0'	98.0	-0.1	51.5
at A			0°0'			
SW Cor. Porch	278°52'	86	0°46'	86.6	+0.7	52.3
at B			0°0'			
Car Porch	282°15'	65	0°46'	65.0	+0.8	52.4
at D	287°52'	68	4.6	68.0	+0.8	52.4
	290°10'	61	0°0'	61.0	+0.7	52.3
	305°23'	71	4.6	71.0	+0.8	52.4
SW Cor			0°0'			
Serv. Sta.	286°40'	37	4.4	37.0	+1.0	52.6
S.E. Cor			0°0'			
Serv. Sta.	295°40'	24	4.5	24.0	+0.9	52.8
N.E. Cor			0°0'			
Serv. Sta.	331°18'	48	4.8	48.0	+0.6	52.2
Elev. Pole	351°17'	101	5.2	101.0	+0.2	51.8
			0°0'			
Guy. Anchor	353°16'	117	4.8	117.0	+0.6	52.2
			0°0'			
Ground	343°19'	108	4.6	108.0	+0.8	52.4 ✓
"	333°0'	118	+3°09'	117.7	+6.5	58.1 ✓
"	341°55'	198	+2°01'	196.8	+6.9	58.5 ✓
Tel. Pole	347°24'	204	+1°10'	204.0	+4.2	55.8 ✓
Guy. Anchor	351°30'	201	+0°46'	201.0	+2.7	54.3 ✓
NW Cor			0°0'			
Fence	10°11'	200	4.4	200.0	+1.0	52.6 ✓
NW Cor			0°0'			
House #2	13°25'	189	4.9	189.0	+0.5	52.1 ✓
SW Cor #2			0°0'			
Car House	15°49'	165	4.9	165.0	+0.5	52.1
SE Cor #2			0°0'			
Cor	181	5.2	181.0	+0.7	51.8	



Wobash Canyon Road.
Topog.

Station

	Readings from #1		Elev. 51.64	HI. = 5.1	
	Azimuth	Stadia	Vert. A.	Horiz. Dist.	Diff. Elev.
✓ Apricot Tree 3"	33°12'	163'	0° 0'	163.0	-0.2
✓ Apricot 3"	33°56'	181'	0° 0'	181.0	-0.5
Srv. Cor	331°53'	98'	3.8	98.0	+1.6
✓ Fence	21°24'	105'	0° 0'	105.0	+0.4
S.E. Cor	42°34'	134'	5.7	134.0	-0.3
✓ Fence	54°30'	171'	0° 0'	171.0	-1.4
	70°58'	147'	9.1	147.0	-3.2
	62°50'	107'	0° 0'	107.0	-1.9
	39°34'	63'	5.8	63.0	-0.4
	93°15'	37'	0° 0'	37.0	+0.6
N. Gut. Fed	105°30'	43'	5.6	43.0	-0.2
" " "	96°17'	102'	0° 0'	102.0	+0.5
	85°20'	102'	3.9	102.0	+1.5
	78°30'	104'	0° 0'	104.0	-2.2
	93°55'	164'	3.6	164.0	+1.8
	91°15'	164'	0° 0'	164.0	+2.1
N.W. Cor	87°55'	155'	10.0	155.0	-4.6
Bridge	94°28'	185'	0° 0'	185.0	+2.2
in channel	94°25'	186'	13.2	186.0	-7.8
Srv. Cor	106°46'	194'	0° 0'	194.0	+2.2
Bridge	106°46'	194'	3.2	194.0	+2.2
in channel	106°46'	195'	0° 0'	195.0	-9.2
S.E. Cor	101°02'	291'	2.5	291.0	+2.9
Bridge	101°02'	291'	0° 0'	291.0	+2.9
in channel	101°02'	290'	15.0	290.0	-9.6

Elev.
51.4 ✓
51.1 ✓
52.3 ✓
52.0 ✓
51.3 ✓
50.2 ✓
49.9 ✓
49.9 ✓
51.2 ✓
52.2 ✓
51.7 ✓
52.1 ✓
53.1 ✓
49.4 ✓
53.4 ✓
53.2 ✓
47.0 ✓
53.8 ✓
43.8 ✓
53.8 ✓
42.4 ✓
54.5 ✓
42.0 ✓

Wabash Canyon Road.

Station

Readings from $\square 1$ Elev. 51.64 HI = 5.4

Station	Azimuth	Stadia	Vert. A	Horiz.	
NE. Cor			0°		
Bridge	92° 45'	285'	2.9	285.0	+2.5
W Channel	92° 50'	284'	15.0	284.0	-9.6
	77° 0'	218'	10.4	218.0	-5.0
W Bank ch.	76° 36'	278'	9.4	278.0	-4.0
" edge "	77° 0'	288'	13.7	288.0	-8.0
E " "	76° 39'	360'	13.0	360.0	-8.6
E Bank "	57° 26'	403'	7.3	403.0	-3.7
E edge "	57° 06'	390'	10.7	390.0	-5.3
W " "	54° 13'	335'	11.3	335.0	-5.9
" Bank "	54° 11'	333'	8.8	333.0	-3.4
	51° 02'	291'	8.0	291.0	-2.6
	42° 24'	225'	7.1	225.0	-1.5
	12° 25'	228'	4.5	228.0	+0.9
	29° 15'	280'	5.4	280.0	0.0

Readings From $\square 2$ = 11432.6 HI = 5.5

$\square 2$ = Elev. = 56.02

Station	Azimuth	Stadia	Vert. A	Horiz. Dist.	Diff Elev.
	200° 22'	2.55'	1.0	255.0	+4.4
	191° 50'	238'	6.4	238.0	-1.0
	181° 05'	233'	8.2	233.0	-2.8
W Bank ch.	136° 54'	265'	on 11.5	265.0	-0.5 - 6.1
" edge "	133° 10'	270	-1° 25'	269.9	-6.7
E " "	124° 20'	310	-1° 24'	309.8	-7.6
" Bank "	122° 45'	308	10.6	308.0	-5.2

54.1 ✓
42.0 ✓
46.6 ✓
42.6 ✓
43.3 ✓
43.6 ✓
42.9 ✓
46.3 ✓
45.7 ✓
48.2 ✓
49.0 ✓
50.1 ✓
52.8 ✓
51.6 ✓

Elev.
60.4 ✓
55.0 ✓
53.2 ✓
50.4 ✓
49.3 ✓
48.4 ✓
50.8 ✓

Wabash Canyon Road

25

Station	Readings from 12 2	Elev	56.02	HT = 55
	031muth	Stadia	Vert A	Horiz. Dist. Diff. Elev
E. Bank ch.	124°15'	240'	11.0	240.0' -5.5
" Edge "	125°10'	234'	12.5	234.0' -7.0
W " "	142°40'	185'	11.0	185.0' -5.5
" Bank "	143°40'	183'	8.5	183.0' -3.0
	159°32'	161'	8.9	161.0' -3.4
	178°07'	151'	7.7	151.0' -2.2
	205°0'	173'	5.6	173.0' -0.1
	220°47'	116'	5.7	116.0' -0.2
	208°15'	94'	6.4	94.0' -0.9
	180°20'	78'	7.1	78.0' -1.6
	153°20'	81'	7.5	81.0' -2.0
W Bank sta.	127°15'	117'	7.1	117.0' -1.6
W edge "	124°55'	119'	11.7	119.0' -6.2
E " "	102°0'	184'	10.2	184.0' -4.7
E. Bank "	99°13'	193'	9.0	193.0' -3.5
" " "	86°57'	170'	8.6	170.0' -3.1
" Edge "	85°24'	163'	10.0	163.0' -4.5
W " "	86°27'	126'	10.0	126.0' -4.5
" Bk "	84°47'	119'	9.3	119.0' -3.8
✓ Tel Pole	82°03'	109'	8.0	109.0' -2.5
	80°09'	70'	6.6	70.0' -1.1
	56°05'	24'	5.2	24.0' +0.3
	313°50'	16'	5.9	16.0' -0.4
✓ Tel Pole	296°40'	29'	4.7	29.0' +0.8

Elev
50.5 ✓
49.0 ✓
50.5 ✓
53.0 ✓
52.6 ✓
53.8 ✓
56.9 ✓
55.8 ✓
55.1 ✓
54.4 ✓
54.0 ✓
54.4 ✓
49.8 ✓
51.3 ✓
52.5 ✓
52.8 ✓
51.5 ✓
51.5 ✓
52.2 ✓
53.5 ✓
54.9 ✓
56.3 ✓
55.6 ✓
56.8 ✓

Wobash Canyon Road

Station

Station	Readings	Frnt	2 Elev	56.92	HI-55
	Azimuth	Stadia	Vert. A	Horiz. Dist	Diff. Elev
	278°35'	78'	3.7	78.0	+1.8
	214°13'	50'	4.8	50.0	+0.2
	242°30'	88'	3.2	88.0	+2.3
✓ SW cor House	310°35'	119'	3.9	119.0	+1.6
A	321°55'	124'	3.9	124.0	+1.6
✓ SE cor House	331°37'	111'	4.1	111.0	+1.4
B	344°45'	82'	4.8	82.0	+0.7
✓ SE cor Fence	351°30'	143'	4.3	143.0	+1.2
✓ NE " "	350°22'	154'	4.0	154.0	+1.5
✓ SE cor Garage	343°57'	159'	4.0	159.0	+1.5
✓ SW " "	351°23'	170'	3.9	170.0	+1.6
✓ NE " "	352°20'	194'	3.8	194.0	+1.7
✓ SE cor House 13x22'	352°56'	207'	3.1	207.0	+2.4
✓ NE " "	356°17'	79'	4.9	79.0	+0.6
	26°06'	87'	5.2	87.0	+0.3
W Bank ch.	40°27'	102'	4.9	102.0	+0.6
" edge "	13°09'	108'	7.1	108.0	-1.4
" "	54°	146'	7.5	146.0	-2.0
R. edge "	67°08'	235'	9.2	235.0	-3.7
" Bank "	66°47'	245'	3.4	245.0	+2.1
" " "	50°06'	258'	2.1	258.0	+3.4
" Edge "	49°30'	248'	8.7	248.0	-3.3
" "	37°09'	203'	6.8	203.0	-1.3

Elev.
57.8 ✓
56.7 ✓
58.3 ✓
57.6 ✓
57.6 ✓
57.4 ✓
56.7 ✓
57.2 ✓
57.5 ✓
57.5 ✓
57.6 ✓
57.7 ✓
58.4 ✓
56.6 ✓
56.3 ✓
56.6 ✓
54.4 ✓
54.0 ✓
52.3 ✓
58.1 ✓
59.4 ✓
52.7 ✓
54.7 ✓



Wobash Canyon Road.

Station	Azimuth	Stadia	Topog. etc. Verta	Horiz. Dist.	Diff. Elev.	Elev.
Readings from #1 Elev = 52.02 HI = 5.5						
W Bank ch.	33°50'	194'	5.5	194.0	0.0	56.0 ✓
2 chunnels in ch.	25°47'	173'	6.1	173.0	-0.6	55.4 ✓
W Bank "	24°03'	168'	4.0	168.0	+1.5	57.5 ✓
	12°07'	157'	4.1	157.0	+1.4	57.4 ✓
	358°37'	154	4.5	154.0	+1.0	57.0 ✓
	358°42'	215'	3.5	215.0	+2.0	58.0 ✓
	12°07'	224'	3.7	224.0	+1.8	57.8 ✓
W Bank ch.	17°30'	233	3.2	233.0	+2.3	58.3 ✓
" edge "	18°07'	241'	5.4	241.0	+0.1	56.1 ✓
2 chunnels W Bank "	25°21'	243'	4.9	243.0	+0.6	56.6 ✓
in "	26°14'	247'	7.5	247.0	-2.0	54.6 ✓
E. edge "	41°0	304'	5.7	304.0	-0.3	55.7
" Bank "	41°45'	310'	+1°39'	309.8	+8.9	64.9 ✓
	45°20'	348'	+2°09'	347.6	+12.0	68.0 ✓
	52°45'	324'	+1°58'	323.7	+11.1	67.1 ✓
	60°50'	302'	+1°55'	301.7	+10.1	66.1 ✓
	74°20'	284'	+1°29'	283.8	+7.4	63.4 ✓
Tel Pole	86°0'	254'	6.8	254.0	-0.6	55.4 ✓
21+39.57 = #3 Readings from #3 Elev 60.57 HI 5.3						
	109°40'	327'	+4°02'	325.4	+22.9	83.5 ✓
	116°35'	283'	+2°12'	282.6	+10.9	71.5 ✓
E. bank	118°20'	235'	+1°39'	234.8	+6.8	67.4 ✓
" edge	120°05'	220'	10.7	220.0	-5.4	55.2 ✓
W. "	143°20'	141'	11.2	141.0	-5.9	54.7 ✓

Elev. this station from FB 1657-5

Topog. Wabash Canyon Road.				
Station	Readings from El 3	Elev = 60.57	HT 53	
Station	Azimuth	Stadia	Vert. Δ	Horiz Dist Diff. Elev
w. bank ch.	144° 20'	138'	8.6	138.0' -3.5
	156°	122'	8.1	122.0' -2.8
	178° 25'	110'	6.9	110.0' -1.6
N.W. Cor Fence	184° 50'	168'	6.9	168.0' -1.6
✓ Elec. Pole	205° 20'	208'	6.0	208.0' -0.7
	206° 30'	130'	6.0	130.0' -0.7
S.E. Cor House	206° 47'	71'	6.0	71.0' -0.7
NE. " "	206° 28'	52'	5.3	53.0' 0.0
NW. " "	237° 54'	82'	5.2	82.0' +0.1
16" Elec. Tree	251° 25'	27'	4.7	27.0' +0.6
Double " "	267° 0'	32'	4.2	32.0' +1.1
18" Stump	290° 0'	49'	4.0	49.0' +1.3
10" " "	296° 35'	53'	4.2	53.0' +1.1
10" " "	284° 10'	64'	4.6	64.0' +0.7
12" " "	315° 05'	56'	3.7	56.0' +1.6
10" " "	310° 30'	61'	4.0	61.0' +1.3
10" " "	314° 10'	69'	3.7	69.0' +1.6
8" " "	310° 55'	84'	4.2	84.0' +1.1
16" Tree	291° 00'	87'	4.0	87.0' +1.3
16" " "	310° 40'	100'	3.8	100.0' +2.5
16" " "	304° 56'	127'	2.8	127.0' +2.5
12" " "	307° 00'	159'	1.7	159.0' +4.1
5" " "	276° 50'	124'	2.4	124.0' +2.9
4" " "	276° 50'	131'	1.4	131.0' +3.7
6" " "	274°	120'	2.8	120.0' +2.5

Elev

57.1 ✓

57.8 ✓

59.0 ✓

59.0 ✓

59.9 ✓

59.9 ✓

59.9 ✓

60.6 ✓

60.7 ✓

61.2 ✓

61.2 ✓

61.9 ✓

61.7 ✓

61.3 ✓

62.2 ✓

61.9 ✓

62.2 ✓

61.7 ✓

61.9 ✓

63.1 ✓

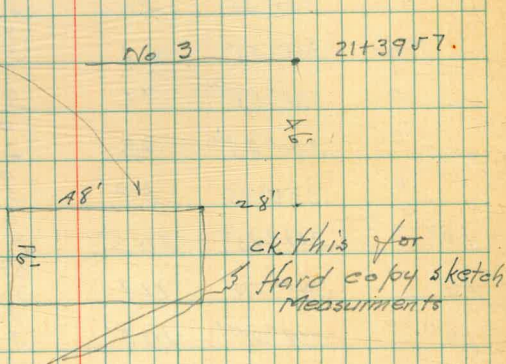
63.1 ✓

64.7 ✓

63.5 ✓

64.3 ✓

63.1 ✓



Wabash Canyon Road
Topog.

Station

Station	Azimuth	Stadia	Vert. A	Horiz. Dist.	Diff. Elev.	Elev.
Readings from #3 Elev. 60.57 HI = 5.3						
18" Tree Stump	320°10'	20'	4.2	20.0 ✓	+1.1	61.2 ✓
16" " "	322°20'	30'	4.3	30.0 ✓	+1.0	61.4 ✓
16" " "	338°0'	34'	4.0	34.0 ✓	+1.3	61.9 ✓
18" " "	349°20'	59'	4.0	59.0 ✓	+1.3	61.9 ✓
" " " "	335°55'	51'	3.9	51.0 ✓	+1.4	62.0 ✓
Tree	335°55'	61'	3.7	61.0 ✓	+1.6	62.2 ✓
"	335°55'	71'	3.7	71.0 ✓	+1.6	62.2 ✓
"	330°25'	66'	3.2	66.0 ✓	+2.1	62.7 ✓
"	330°25'	83'	3.2	83.0 ✓	+2.1	62.7 ✓
18" "	319°45'	103'	3.3	103.0	+2.0	62.4 ✓
16" "	345°20'	117'	3.1	117.0 ✓	+2.2	62.8 ✓
16" "	314°05'	103'	3.3	103.0 ✓	+2.0	62.8 ✓
"	317°40'	131'	3.3	131.0 ✓	+2.0	62.8 ✓
21+9257 Readings from #4 Elev. 61.66 HI = 5.6						
10" Tree Stump	306°35'	46'	4.6	46.0 ✓	+1.0	62.7 ✓
2-16" Fuel Trees	318°55'	67'	4.0	67.0 ✓	+1.06	62.3 ✓
6" Tree Stump	326°05'	79'	4.2	79.0 ✓	+0.4	62.1 ✓
20" Tree	330°05'	75'	4.1	75.0 ✓	+1.5	63.2 ✓
"	330°05'	85'	3.8	85.0 ✓	+1.8	63.5 ✓
"	330°05'	115'	4.0	115.0 ✓	+1.6	63.3 ✓
30" Fuel Tree	334°30'	138'	3.6	138.0 ✓	+2.0	63.7 ✓
"	338°20'	142'	3.3	142.0 ✓	+2.3	64.0 ✓
"	351°40'	174'	2.6	174.0 ✓	+3.0	64.7 ✓

Wabash Canyon Road

Station	Azimuth	Stadia	vert. A	Horiz. Dist	Diff. Elev	Elev.
---------	---------	--------	---------	-------------	------------	-------

Readings from T 4 Elev. 61.66 HI=5.6

	350°20'	193'	2.7 0°	193.0	✓ +2.9	64.61
30" Tree	321°15'	116'	3.7 0°	116.0	✓ +1.9	63.5 ✓
	147°40'	55'	6.1 0°	55.0	✓ -0.5	61.2 ✓
W Bank ch	143°20'	77'	8.4 0°	77.0	✓ -2.8	58.9 ✓
" edge "	141°10'	80'	10.0 0°	80.0	✓ -4.4	57.3 ✓
" "	124°05'	118'	11.1 0°	118.0	✓ -5.5	56.2 ✓
" "	113°0'	180'	8.8 0°	180.0	✓ -3.2	58.5 ✓
Toe Bluff	108°50'	214'	9.7 0°	214.0	✓ -4.1	57.6 ✓
Top "	105°0'	222'	+2°39'	221.6	✓ 110.2	61.9 ✓
Top Ridge	102°45'	274'	+4°45'	272.2	✓ +22.9	84.6 ✓
	88°40'	290'	+4°55'	287.9	✓ +24.8	86.5 ✓
	88°20'	242'	+2°53'	241.4	✓ +12.2	83.9 ✓
Top slope	87°15'	203'	+1°34'	202.9	✓ +5.5	67.2 ✓
Toe slope	85°30'	187'	5.3 0°	187.0	✓ +0.3	62.0 ✓
E Bank	79°05'	122'	5.3 0°	122.0	✓ +0.3	62.0 ✓
E edge ch.	78°	114'	7.6 0°	114.0	✓ -2.0	59.7 ✓
No. 10 Flow L	75°25'	84'	9.6 0°	84.0	✓ -4.0	57.7 ✓
W edge "	352°20'	14'	8.0 0°	14.0	✓ -2.4	59.3 ✓
" Bank "	337°20'	18'	5.7 0°	18.0	✓ -0.1	61.6 ✓
W "	328°20'	58'	5.3 0°	58.0	✓ +0.3	62.0 ✓
" edge "	334°25'	57'	8.1 0°	57.6	✓ -2.5	59.2 ✓
W Bank "	338°25'	108'	4.3 0°	108.0	✓ +1.3	63.0
" edge "						

Topog. - Wobash Canyon Road

Station	Azimuth	Stadia	Vert A	Horiz Dist	Diff. Elev	Elev.
Readings from Sta 4 Elev 61.66 HI = 5.6						
W edge ch.	345° 20'	104'	6.9	104.0	-1.3	60.4 ✓
" " "	347° 40'	141'	3.8	141.0	+1.8	63.5 ✓
W edge "	350° 55'	139'	7.3	139.0	-1.7	60.0 ✓
W Bank "	350° 55'	186'	3.0	186.0	+2.6	64.3 ✓
" edge "	353° 10'	186'	7.0	186.0	-3.4	58.3 ✓
" Bank "	355° 25'	222'	2.6	222.0	+3.0	64.7 ✓
" edge "	358° 40'	223'	8.1	223.0	-2.5	59.2 ✓
in ch.	19° 40'	245'	5.7	245.0	-0.1	61.6 ✓
Edge in ch.	10° 50'	159'	5.9	159.0	-0.3	61.4 ✓
" " "	13° 25'	107'	7.6	107.0	-2.0	59.7 ✓
" " "	37° 30'	120'	8.9	120.0	-3.3	58.4 ✓
E. Flow "	24° 05'	175'	7.1	175.0	-1.5	60.2 ✓
E. edge "	25° 50'	259'	6.8	259.0	-1.2	60.5 ✓
	39° 55'	226'	3.8	226.0	+1.8	63.5 ✓
	15° 10'	183'	4.2	183.0	+1.4	63.1 ✓
Top slope	58° 45'	225'	3.9	225.0	+1.7	63.4 ✓
24+15.80 ⁸⁵ Readings from Sta. 5 Elev. 65.96 HI = 5.5						
" " "	104° 50'	246'	9.5	246.0	-4.0	62.0 ✓ ✓
" " "	97° 25'	285'	8.8	285.0	-3.3	62.7 ✓ ✓
" " "	87° 10'	317'	7.5	317.0	-2.0	64.0 ✓ ✓
" " "	72° 55'	318'	7.7	318.0	-2.2	63.8 ✓ ✓
Top of bank	69° 45'	330'	+1.06	329.9	+6.3	72.3 ✓
" " "	81° 30'	332'	+3.24	330.9	+19.6	85.6 ✓
" " "	88° 10'	332'	+5.11	329.3	+29.9	95.9 ✓

Elev.
60.4 ✓
63.5 ✓
60.0 ✓
64.3 ✓
58.3 ✓
64.7 ✓
59.2 ✓
61.6 ✓
61.4 ✓
59.7 ✓
58.4 ✓
60.2 ✓
60.5 ✓
63.5 ✓
63.1 ✓
63.4 ✓
62.0 ✓ ✓
62.7 ✓ ✓
64.0 ✓ ✓
63.8 ✓ ✓
72.3 ✓
85.6 ✓
95.9 ✓

Topog. Wabash Canyon Road

Station	Azimuth	Stadia	Vert Δ	Horiz Dist	Diff. Elev
Readings From 17 5 Elev 659.6 Ht 5.5					
Top of bank	95° 05'	316'	+5° 13'	313.4	+28.6
" " "	100° 35'	282'	+2° 23'	286.5	+11.7
" " "	105° 45'	255'	+0° 26'	255.0	+1.9
" " "	126° 0'	253'	+0° 20'	253.0	+1.5
on ridge	124° 25'	290'	+3° 0'	289.2	+15.2
" "	115°	284'	+3° 12'	283.1	+15.9
" "	109° 40'	346'	+4° 28'	344.0	+26.9
Top of ridge	93° 35'	383'	+6° 38'	378.0	+44.0
on slope	78° 40'	383'	+5° 47'	379.3	+38.4
" "	67° 40'	408'	+5° 34'	404.2	+39.4
in ch.	73° 50'	302'	6.3	302.0	-0.8
" "	87° 45'	284'	7.2	284.0	-1.7
" "	96° 05'	251'	8.3	251.0	-2.8
on bar	89° 0'	210'	7.9	210.0	-2.4
" "	74° 55'	247'	6.6	247.0	-1.1
✓ E.M.H.	67° 44'	267'	+0° 46'	267.0	3.6
W. edge ch	69° 50'	237'	8.5	237.0	-3.0
" Bk "	69° 0'	238'	6.1	238.0	-0.6
" edge "	76° 40'	179'	9.5	179.0	-4.0
" Bk "	76° 45'	177'	7.7	177.0	-2.2
" edge "	95° 20'	103'	9.8	103.0	-4.3
" Bk "	94° 15'	103'	8.7	103.0	-2.7
" edge "	142° 20'	52'	11.7	52.0	-6.2
" Bk "	142° 20'	48'	9.7	48.0	-4.2

Elev.

94.6	✓
77.7	✓
67.9	✓
67.5	✓
81.2	✓
81.9	✓
92.9	✓
110.0	✓
104.4	✓
105.4	✓
65.2	✓ ✓
64.3	✓ ✓
63.2	✓
63.6	✓
64.9	✓
62.4	✓ error 69.6
63.0	✓
65.4	✓
62.0	✓
63.8	✓ ✓
61.2	✓
63.3	✓
59.8	✓
61.8	✓

Topog - Wobash Canyon Road.

Station	Azimuth	Stadia	Vert. a	Horiz. Dist.	Diff. Elev.
Readings from #5 Elev = 65.6 HI 5.5					
	142° 0'	23'	5.8	23.0	-0.3
✓ 2" KH	172° 50'	137'	10.0	132.0	-4.8
18" Luc Tree	209° 40'	80'	6.4	80.0	-0.9
24" " "	216° 0'	67'	5.3	67.0	-0.8
" " "	206° 20'	51'	5.9	51.0	-0.9
" " "	230° 20'	12'	5.9	12.0	-0.4
30" " "	270° 20'	8'	0° 0'	8.0	+5.5
20" " "	270° 20'	16'	0° 0'	16.0	+5.5
18" " "	255° 0'	26'	5.1	26.0	+0.4
12" Stump	293° 20'	21'	4.2	21.0	+1.3
30" Luc Tree	270° 05'	46'	5.1	46.0	+0.4
12" " "	270° 0'	63'	4.7	63.0	+0.8
14" " "	257° 20'	66'	4.3	66.0	+1.2
" " "	259° 40'	80'	3.1	80.0	+2.4
18" " "	242°	65'	5.3	65.0	+0.2
26" " "	221°	70'	5.6	70.0	-0.1
18" " "	218° 30'	88'	6.0	88.0	-0.5
18" " "	210°	98'	6.4	98.0	-0.9
24" Stump	159° 40'	15'	5.3	15.0	+0.2
" " "	139°	20'	5.2	20.0	+0.3
12" Luc Tree	126°	24'	5.5	24.0	0.0
Bk. old cb.	78° 10'	46'	5.8	46.0	-0.3
edge " "	85° 20'	57'	8.4	57.0	-2.9
Bk " "	67° 20'	124'	0°	124.0	+5.5

Elev.	
65.7	✓
66.5	✓
65.1	✓
65.2	✓
65.6	✓
65.6	✓
71.5	✓
71.5	✓
66.4	✓
67.3	✓
66.4	✓
66.8	✓
67.2	✓
68.4	✓
66.2	✓
65.9	✓
65.5	✓
65.1	✓
66.2	✓
66.3	✓
66.0	✓
65.7	✓
63.1	✓
71.5	✓ ?

ck for elev. from #5 elev.

Topog. Mubush Canyon Road

Station	Azimuth	Stadia	Vert Δ	Horiz Dist	Diff. Elev.
	Readings from T.S. Elev. 6596 HI 5.5				
W edge old ch.	72°30'	135'	8.5	135.0	-3.0
W Bk. "	60°10'	210'	+ 0°43'	210.0	-2.6 -1.0
" edge "	59°0'	223'	+ 0°23'	223.0	+1.5 -2.0
" Bk "	53°20'	281'	+ 0°39'	281.0	3.2 -2.0
	46°40'	270'	+ 0°54'	270.0	+4.2
	35°40'	223'	+ 1°04'	223.0	+4.1
	35°50'	98'	0°	98.0	+1.8
	349°20'	56'	0°	56.0	+1.6
	315°40'	71'	0°	71.0	+1.7
	296°30'	116'	+ 2°04'	116.0	+4.2
	317°30'	136'	+ 2°20'	135.8	+5.5
	331°40'	108'	0°	108.0	+3.6
	190°	102'	+ 2°05'	101.9	+3.7
	24°10'	230'	+ 1°39'	229.8	+6.6
	8°10'	209'	+ 2°27'	208.7	+8.9
	353°30'	185'	+ 2°50'	184.5	+9.1
	347°40'	191'	+ 3°04'	190.5	+10.2
	331°	213'	+ 3°09'	212.4	+16.2
	338°40'	257'	+ 3°23'	256.1	+15.2
	354°	240'	+ 2°55'	239.4	+12.2
	10°	253'	+ 2°10'	252.6	+9.5
SW Cor chicken shed	344°39'	265'	+ 3°21'	264.1	+15.5
SE cor chicken shed	348°05'	258'	+ 3°49'	257.0	+17.2

Elev.

63.0 ✓
62.4 ✓ error 676
65.8 ✓
67.2 ✓
70.2 ✓
70.1 ✓
62.8 ✓
62.6 ✓
62.7 ✓
70.2 ✓
71.5 ✓
69.6 ✓
69.7 ✓
72.6 ✓
74.9 ✓
75.1 ✓
76.2 ✓
77.2 ✓
81.2 ✓
78.2 ✓
75.5 ✓
81.5 ✓
83.2 ✓

shed 18' long on 35th st. side

Topog. Wabash Canyon

Station	Azimuth	Stadia	Vert. A	Horiz. Dist.	Diff. Elev.
28+13.53 ⁰⁶	Readings from 27.6 Elev. 79.53 H.Z. = 5.4				
S.F. Cor. House	251°51'	71'	+3°18'	70.5	+4.1
N.E. " "	276°05'	68'	+4°35'	67.6	+5.4
	277°10'	130'	+3°09'	129.6	+7.1
	309°40'	113'	+3°24'	112.6	+6.7
	332°25'	126'	+1°41'	125.9	+3.7
	349°20'	191'	+2°	190.5	+6.7
	352°	283'	+5°29'	279.5	+26.9
	340°30'	247'	+7°12'	243.1	+30.7
	325°40'	203'	+8°30'	198.5	+29.7
	312°20'	170'	+10°39'	164.4	+30.9
	294°30'	168'	+11°03'	163.0	+28.9
	323°20'	78'	+3°20'	77.7	+4.6
	337°40'	63'	4.7	63.0	-0.9
	24°50'	43'	6.4	43.0	-1.0
	36°20'	90'	8.8	90.0	-3.4
	75°45'	75'	9.5	75.0	-4.1
	124°20'	84'	11.0	84.0	-5.6
W. Bank ^{old.} ch.	112°40'	181'	-2°41'	180.6	-8.5
E. edge old ch.	112°	189'	-3°28'	188.4	-11.4
W. Bank " "	91°50'	135'	12.1	135.0	-6.7
Wedge " "	91°	143'	-4°25'	142.1	-11.1
W. Bk. " "	65°20'	142'	10.3	142.0	-4.9
Wedge " "	67°20'	151'	-3°46'	150.4	-9.9
W. Bk. " "	59°10'	193'	-1°28'	192.9	-4.9
W. edge " "	61°40'	198'	-2°42'	197.6	-9.3

Elev.

83.6 ✓

34' Long Pt. to Base line

84.9 ✓

86.6 ✓

86.2 ✓

83.2 ✓

86.2 ✓

106.4 ✓

110.2 ✓

109.2 ✓

110.4 ✓

108.7 ✓

84.0 ✓

78.6 ✓

78.5 ✓

76.1 ✓

75.4 ✓

73.9 ✓

71.0 ✓

68.1 ✓

72.8 ✓

68.4 ✓

74.6 ✓

69.6 ✓

74.6 ✓

70.2 ✓

Topog. Wabush Canyon

Station	Azimuth	Stadia	Vert. Δ	Horiz. Dist.	Diff. Elev.
	Readings	From	Elev.	79.53	HT 5.4
W. Bank old ch.	57°30'	270'	-1°15'	269.9	-5.9
W. edge " "	58°40'	271'	-1°52'	270.7	-8.8
Int. old + New					
West Bank ch.	52°	311'	-1°05'	310.9	-5.9
W. edge ch.	53°	314'	-0°47'	314.0	-4.3 -3.5
	49°40'	243'	-1°10'	242.9	-4.9
	42°45'	174'	-1°20'	173.9	-4.1
	46°50'	139'	-2°03'	138.5	-5.0
	23°50'	146'	8.4	146.0	+3.0
	358°45'	148'	5.8	148.0	-0.4
	2°40'	198'	5.2	198.0	+0.2
	11°10'	237'	6.1	232.0	-0.7
	17°55'	297'	6.0	292.0	-0.6
	29°20'	309'	6.9	309.0	-1.5
W. Bank ch.	35°50'	321'	11.8	321.0	-5.9
W. edge ch.	49°20'	347'	13.6	342.0	-6.2
W. Bank ch.	79°40'	246'	-2°16'	245.6	-9.7
" edge "	78°40'	274'	-2°15'	273.5	-10.8
" Bk "	92°30'	278'	-2°08'	275.7	-10.4
" edge "	92°45'	283'	-2°26'	282.5	-12.0
W. Bank "	109°10'	270'	-2°31'	269.5	-11.8
" edge "	109°05'	274'	-2°20'	273.5	-11.2 -3.0
✓ L. M.H.	108°30'	277'	-1°58'	276.7	-9.5
W. Bk ch.	124°25'	303'	-1°57'	302.7	-10.3 -2.1
" edge "	124°25'	308'	-1°53'	302.7	-10.1 -5.1

73.6 ✓
 70.7 ✓
 73.6 ✓
 71.7 ✓
 74.6 ✓
 75.4 ✓
 74.5 ✓
 76.5 ✓
 79.1 ✓
 79.2 ✓
 78.8 ✓
 78.9 ✓
 78.0 ✓
 73.6 ✓
 72.8 ✓
 69.8 ✓
 68.2 ✓
 69.1 ✓
 67.5 ✓
 67.7 ✓
 65.3 ✓
 70.0 ✓
 67.1 ✓
 64.3 ✓

Topog. Wabash Canyon.

Station	Azimuth	Stadia	Vert. Ang.	Dist.	Diff. Elev.
Readings from W 6 Elev. 79.53 HI-54					
107°24'	330	-2°11'	329.5	-12.6	
107°24'	298	-2°37'	297.4	-13.5	
81°20'	315	-2°10'	314.5	-11.9	
63°25'	337	-1°40'	326.7	-9.8	
✓ L.M.H.	58°42'	385	-0°37'	385.0	-4.1
E. edge ch.	64°16'	455	-1°15'	454.5	-9.9
" " "	73°13'	393	-1°29'	392.5	-10.2
" " "	88°05'	325	-1°45' 8.5	324.7	-9.9 -3.1
" " "	106°56'	320	-2°10'	319.5	-12.1
" " "	119°23'	360	-2°07'	359.6	-13.3
	108°30'	375	+3°31'	373.5	+24.2
	97°41'	325	-0°51'	324.9	+4.8
	97°07'	375	+3°16'	373.9	+21.3
	81°41'	360	-0°38'	360.0	-4.0
	88°03'	389	+4°10'	386.9	+28.2
	74°14'	395	-0°37'	389.0	-4.2
	78°40'	432	+3°42'	430.2	+22.7
	65°58'	463	-0°15'	463.0	-2.0
31+22.12 = 53.12 82.95 from 15' ^{W 7} Readings from W 7 Elev. = 90.49 HI. 5.0					
Toe slope	92°47'	417	-1°55'	416.6	-13.9
	108°40'	475	+3°14'	473.6	+26.8
	92°36'	413	-2°32'	412.2	18.2
	97°31'	499	+3°20'	497.3	+29.0
	70°46'	587	-0°19'	587.0	-3.2

Elev.
66.9 ✓
66.0 ✓
67.6 ✓
69.7 ✓
75.7 ✓
69.6 ✓
69.3 ✓
66.5 ✓
67.4 ✓
66.2 ✓
103.2 ✓
84.3 ✗ error 74.7
100.8 ✓
75.5 ✓
107.7 ✓
75.3 ✓
107.2 ✓
77.8 ✓
76.6 ✓
117.3 ✓
72.3 ✓
119.5 ✓
87.3 ✓

Topog. Mubash Canyon Road

Station	Azimuth	Stadia	Vert. A	Horiz. Dist	Diff. Elev	Elev
	Readings from 7 Elev 90.49 HI = 5.0					
	64°	678'	-0°10'	678.0	-2.0	88.5 ✓
	86°47'	544'	+3°05'	542.3	+30.1	120.6 ✓
	57°52'	785'	+0°25'	785.0	+5.7	96.2 ✓
	50°55'	750'	-0°37'	749.9	-5.1	82.4 ✓
	54°33'	650'	-0°55'	649.9	-10.4	80.1 ✓
	59°22'	569'	-1°10'	568.8	-11.6	78.9 ✓
	78°36'	600'	+3°19'	598.2	+34.2	125.2 ✓
	63°16'	475'	-1°32'	474.7	-12.7	77.8 ✓
	74°45'	417'	-2°05'	416.5	-15.1	75.4 ✓
	83°08'	350'	-2°43'	349.2	16.6	73.9 ✓
	83°57'	305'	-3°12'	304.1	-12.00	73.5 ✓
	83°57'	302'	-3°37'	300.9	-19.0	71.5 ✓
	67°55'	730'	+3°17'	722.8	+41.2	132.2 ✓
E. Bk. ch.	58°28'	340'	-2°20'	339.4	-13.8	76.7 ✓
E. edge "	58°15'	332'	-2°10'	331.5	-12.5-5.5	72.5 ✓
✓ E.M.H.	52°58'	384'	-1°23'	383.8	-9.3	81.2 ✓
	43°50'	475'	-1°30'	474.7	-12.4	78.1 ✓
L ch.	34°29'	340'	-1°50'	339.7	-10.9 -3.5	76.1 ✓
L "	61°02'	318'	-2°26'	317.5	-13.4 -3.5	73.6 ✓
" "	86°55'	289'	-3°47'	282.8	-19.0	71.5 ✓
	42°08'	597'	-0°51'	596.9	-8.7	81.8 ✓
NW E Side ch	94°33'	260'	-4°10'	258.6	-18.8	74.7 ✓
E. N. Fork ch	55°	191'	-4°58'	189.7	-16.4	74.1 ✓
W Bunks. "	52°27'	183'	-4°03'	182.0	-12.8	77.7 ✓

Topog. Wabash Canyon Road.

Station	Azimuth	Stadia	Vert. A.	Horiz. Dist.	Diff. Elev.	Elev.
N Fork	Readings	From	7 Elev	90.49	HI 5.0	
10 ch.	37°25'	285'	-1°38'	11.0	284.5	-81 -6.0
	36°02'	282'	-1°14'	11.0	281.9	-57 -6.0
	33°26'	218'	-2°23'		217.6	-9.1
E NW Ch.	22°33'	205'	-2°55'		204.5	-10.4 -3.0
on Bank	23°51'	190'	-3°37'		189.3	-11.6
E NW Ch.	59°09'	138'	-6°55'		136.1	-16.5
on Bank	55°08'	134'	-5°57'		132.6	-13.9
E NW Ch.	84°32'	175'	-5°52'		173.2	-17.8
	85°28'	161'	-4°35'		160.0	-12.8
	106°38'	35'	-14°31'		32.8	-8.5
	286°02'	62'	+19°28'	7.0	55.2	+19.5 -2.0
	288°52'	31'	+21°32'		26.9	+10.6
	348°11'	92'	+11°19'		88.5	+17.7
	23°28'	116'	-3°39'		115.6	-7.4
34+50 = 178	Readings	From	18 Elev	97.53	HI 5.1	
	228°19'	123'	-4°20'	10.1	122.3	-9.1 -5.0
	239°49'	213'	+0°53'		213.0	+2.3
	220°55'	169'	-8°42'		167.3	-16.7
Δ in E Creek	209°24'	170'	-6°14'		168.0	-18.4
N Bank "	210°20'	160'	-6°07'		158.3	-17.0
E "	266°28'	102'	-8°44'		99.7	-15.4
N Bank	265°05'	93'	-8°56'		90.8	-14.3
E Creek	284°15'	187'	-4°21'		185.9	-14.3
N Bank	285°	178'	-3°46'		177.3	-11.7

Elev.
76.4 ✓
78.8 ✓
81.4 ✓
77.1 ✓
78.9 ✓
74.0 ✓
76.6 ✓
72.7 ✓
77.7 ✓
82.0 ✓
108.0 ✓
101.1 ✓
108.2 ✓
83.1 ✓
83.4 ✓
100.8 ✓
80.8 ✓
79.4 ✓
80.5 ✓
82.1 ✓
83.2 ✓
83.2 ✓
85.8 ✓

10' wide ✓

15' wide ✓

✓ 15' wide

✓ 10' wide

Topog. Mubush Canyon Road

Station	Azimuth	Stadia	Vert. A	Horiz. Dist	Diff. Elev	Elev.
	Readings From	□ 8	Elev. = 975.3	HI = 5.1		
L. creek	318°15'	236'	-1°05'	235.9	-4.5 - 7.0	86.0 ✓
E. Bank	318°43'	220'	-0°56'	220.0	-36 - 6.0	82.9 ✓
	303°55'	240'	-2°02'	239.7	-8.5	89.0 ✓
	300°25'	275'	+1°10'	274.9	+5.6	103.1 ✓
	280°47'	196'	-1°34'	195.9	-5.4	92.1 ✓
	275°56'	245'	+2°45'	244.5	+11.7	109.2 ✓
	263°28'	151'	-3°10'	150.5	-8.3	89.2 ✓
	8°40'	210'	+9°26'	204.5	+34.0	131.8 ✓
	352°50'	195'	+7°54'	191.4	+26.6	124.1 ✓
	335°02'	181'	+4°35'	179.9	+14.4	111.9 ✓
	316°54'	112'	-2°31'	111.8	-4.9	92.6 ✓
	338°08'	66'	+7°21'	64.9	+8.4	105.9 ✓
	274°51'	47'	-1°10'	45.2	-9.0 - 2.0	86.5 ✓
	182°51'	66'	-7°51'	64.8	-8.9 - 1.0	87.6 ✓
	101°10'	22'	-2°36'	22.0	-1.0	96.5 ✓
	164°45'	68'	-2°14'	62.9	-2.7	94.8 ✓
	305°00'	16'	+1°50'	16.0	+5.1	102.6 ✓
	30°45'	68'	+3°05'	62.8	+3.7	101.2 ✓
	9°06'	136'	+7°03'	134.0	+16.5	114.0 ✓
	27°11'	128'	+4°26'	122.3	+8.9	107.4 ✓
	20°24'	56'	+3°20'	55.8	+3.3	100.7 ✓
	335°48'	61'	+7°14'	60.1	+7.6	103.1 ✓

Elev.
86.0 ✓
82.9 ✓
89.0 ✓
103.1 ✓
92.1 ✓
109.2 ✓
89.2 ✓
131.8 ✓
124.1 ✓
111.9 ✓
92.6 ✓
105.9 ✓
86.5 ✓
87.6 ✓
96.5 ✓
94.8 ✓
102.6 ✓
101.2 ✓
114.0 ✓
107.4 ✓
100.7 ✓
103.1 ✓

215

Topog. Hoback Canyon Road

Station	Azimuth	Stadia	Vert Δ	Horiz. Dist	Diff Elev
Readings from E19 - Elev 110.56 H.I. = 4.9					
	189° 20'	150'	-10° 35'	145.0	-27.1
W. bank	182° 10'	147'	-12° 35'	130.1	-31.3
+ Stream	173° 20'	153'	-13° 12'	145.0	-34.0
	193° 15'	76'	-12° 21'	72.5	-15.9
W. bank	167° 30'	78'	-23° 19'	57.0	-28.9
	169° 53'	84'	-25° 07'	69.0	-32.3
E. Stream	154° 35'	89'	-24° 42'	73.5	-33.8
	0° 40'	185'	+8° 41'	180.8	+22.6
	9° 12'	208'	+6° 11'	205.5	+22.3
Top Bluff	89° 35'	49'	-43° 23'	25.9	-24.5
	8° 12'	270'	+6° 10'	266.9	+28.8 -20
	16° 12'	270'	+20° 15'	269.6	+10.6 -60
	92° 50'	65'	-38° 18'	40.0	-31.6
E. ch.	97° 04'	74'	-31° 48'	53.5	-33.1
	34° 21'	73'	-14° 54'	68.2	-18.1
	20° 08'	222'	+0° 53'	222.0	+3.4 -6.0
	51° 06'	85'	-21° 34'	73.6	-29.1
E. ch.	61° 16'	98'	-27° 20'	85.0	-33.2
	23° 20'	168'	-1° 02'	162.9	-3.0 -4.0
	35°	114'	-3° 45'	111.4	-17.2 -1.0
	39° 45'	124'	-10° 25'	120.1	-21.05 -4.0
	15° 0'	136'	+2° 40'	135.7	+6.3
E. ch.	47° 40'	135'	-14° 40'	126.4	-33.1

Elev
83.5 ✓
79.3 ✓
76.6 ✓
94.7 ✓
82.2 ✓
78.3 ✓
76.8 ✓
138.2 ✓
132.9 ✓
86.1 ✓
132.4 ✓
115.2 ✓
79.0 ✓
77.5 ✓
92.5 ✓
108.0 ✓
81.5 ✓
77.4 ✓
103.6 ✓
92.4 ✓
85.5 ✓
116.9 ✓
77.5 ✓

60' Wide

25' Wide

" "

30' Wide

1657-2 BC 37+33 14 VA. 3°40' Elev. 119.21

Topog. Moberg Canyon Road

Station	Azimuth	Stadia	Vert. \angle	Horiz. Dist	Diff. Elev.
	Readings	From	to	Elev. 110.56	HI = 49
	3°30'	73'	+2°40'	92.8	+34
E bk. ch.	56°25'	151'	-11°20'	145.1	-29.1
	1°44'	35'	-4°16'	34.8	-2.6
	27°	9'	-7°06'	8.9	-1.1
E bk. ch.	69°	108'	-17°17'	97.5	-32.2
" " "	92°04'	85'	-21°55'	73.2	-29.4
" " "	147°20'	98'	-20°31'	85.9	-32.1
	141°16'	158'	-12°03'	152.1	-32.3
	108°40'	141'	-12°43'	134.2	-30.3
	75°06'	169'	-10°18'	163.7	-29.7
	61°12'	494'	-2°27'	493.2	-21.1
	58°36'	22.3	-7°31'	219.2	-28.9
	69°45'	455'	-2°40'	454.0	-21.2
	53°35'	315'	-5°10'	312.4	-28.3
	76°40'	424'	-3°22'	422.6	-24.9
	75°22'	510	-2°09'	509.4	-19.1
	45°08'	415'	-3°28'	413.6	-25.1
	57°57'	380'	-4°01'	378.2	-26.7
	71°54'	294'	-5°32'	291.3	-28.2
	67°09'	509'	-1°39'	508.7	-14.6
	65°20'	578'	-0°15'	578.0	-2.4
	68°31'	638'	+0°14'	638.0	-2.6
	93°06'	221'	-7°35'	217.3	-28.8
	121°	188'	-9°54'	182.5	-31.8

Elev.

114.0	✓
81.5	✓
108.0	✓
109.5	✓
78.4	✓
81.2	✓
78.5	✓
78.3	✓
80.3	✓
80.9	✓
89.5	✓
81.7	✓
89.4	✓
82.3	✓
85.7	✓
91.5	✓
85.5	✓
83.9	✓
82.4	✓
96.0	✓
108.2	✓
108.0	✓
81.8	✓
98.8	✓

Station	Azimuth	Stadia	Vert. A	Horiz Dist	Diff Elev
Readings from #9 Elev. 11056 HI=4.9					
80°48'	640'	+1°47'	639.5	+19.9	
76°06'	627'	+0°55'	626.9	+10.0	
70°56'	580'	-0°09'	580.0	+1.5	
90°22'	268'	-6°32'	264.5	-30.3	
85°55'	373'	-4°39'	370.7	-30.1	
79°47'	567'	-0°15'	567.0	-2.5	
68°42'	410'	-3°30'	408.8	-25.0	
83°17'	615'	+2°05'	614.3	+22.3	
90°21'	565'	+2°36'	563.9	+25.6	
90°55'	525'	+0°06'	525.0	+0.9	
85°21'	557'	+0°14'	557.0	+2.3	
98°24'	547'	+2°44'	545.8	+26.1	
79°57'	565'	-0°19'	565.0	-3.1	
97°15'	497'	-0°32'	497.0	-4.6	
on L 6" Gas M,	101°44'	409'	-4°21'	408.7	-30.9
" " " "	116°16'	443'	-3°42'	441.2	-28.6
" " " "	121°01'	428'	-4°26'	422.6	-32.8
40+30.86° P.I. - 10	Readings from #10 - Elev = 115.15 HI = 4.9				
222°22'	181'	+10°41'	174.9	+33.0	-71
203°19'	155'	+3°38'	154.4	+9.8	-21
234°58'	116'	+15°24'	107.9	+29.7	
200°09'	98'	+1°02'	98.0	+17.7	
195°18'	155'	-2°09'	154.8	-5.8	-71
216°14'	31'	0°	31.0	-4.4	

Elev		
130.5	✓	
120.6	✓	
112.1	✓	error 109.1
80.3	✓	
80.5	✓	
108.1	✓	
85.6	✓	
132.9	✓	
136.2	✓	
111.5	✓	
112.9	✓	
136.7	✓	
102.5		
106.0	✓	
79.7	✓	North & South line ✓
82.0	✓	" " " ✓
77.8	✓	East & West " ✓
146.1	✓	
112.9	✓	
144.9	✓	
132.9	✓	
102.3	✓	
110.8	✓	W.C.

alt very close

Topog. Wabash Canyon Road

Stations	Azimuth	Stadia	Vert Δ	Horiz Dist.	Diff Elev
			10 Elev = 115.15	HI = 4.9	
			-10°20'		
W Bank ch.	188°25'	158'	12.0	150.7	-33.0 -2.1
			-10°31'		
Wedge "	182°20'	164'	11.0	156.2	-34.7 -6.1
			+17°42'	103.5	+32.0
E. edge ch.	159°09'	195'	-10°28'	188.7	-34.8
			-6°28'	220.7	-30.7
			-5°0'	314.6	-22.5
			-6°21'	245.0	-22.3
			-11°45'	153.5	-31.9
E. edge ch.	119°20'	90'	-22°01'	77.4	-31.2
			-1°12'	463.8	-9.7
			-0°28'	521.0	-4.2
			-18°01'		
Wedge ch.	166°18'	99'	7.0	89.5	-29.1 -2.1
			-19°57'		
Wedge "	150°59'	82'	12.0	72.6	-26.3 -2.1
			+24°51'		
			12.0	98.8	+47.8 -2.1
			+12°05'		
			7.0	24.8	+5.3 -2.1
			-16°51'		
			7.0	40.4	-12.2 -2.1
			-33°36'		
Wedge ch.	112°42'	61'	10.0	42.3	-28.1 -5.1
			+10°20'	632.0	+14.8
			+1°19'	587.8	+13.6
			-7°44'	239.6	-32.5
			-6°33'	239.9	-27.5
			+0°21'	433.0	+2.6
			-3°52'	318.6	-21.5
			+1°35'	586.6	+16.2

Elev		
75.1	✓	
74.4	✓	
147.2	✓	
80.4	✓	4'E = Top Bank 3' Higher.
84.5	✓	
82.7	✓	
82.9	✓	
83.3	✓	
84.0	✓	3'E = Top Bank 2' Higher.
105.5	✓	
116.0	✓	
84.1	✓	1'W = " " 2' "
81.8	✓	100' Small Wash from West
155.9	✓	
118.4	✓	
100.9	✓	
82.0	✓	2'W = Top Bank 4.5' Higher.
130.0	✓	
128.8	✓	
82.7	✓	✓ S.M.H.
82.7	✓	
112.8	✓	
93.7	✓	
131.4	✓	

Topog. Wobash Canyon

Station	Azimuth	Stadia	Vert. A	Horiz. Dist.	Diff. Elev.
Readings from 410 Elev. 115.15 HI = 4.9					
	83°04'	350'	-3°00'	349.0	-18.3
E edge ch	76°30'	95'	-19°05'	85.0	-29.4
	94°44'	627'	+1°35'	626.6	+17.3
	75°21'	283'	-5°03'	280.9	-24.8
W edge ch	64°01'	86'	-2°03'	70.6	-25.8 -21
	90°01'	525'	+0°09'	525.0	+1.4
Top E edge ch	65°40'	245'	-6°05'	242.0	-27.2
BOT. " "	64°05'	248'	-7°03'	244.4	-30.2
W edge ch	42°21'	115'	-12°25'	109.7	-24.2 -60
	64°28'	31W	-4°09'	310.5	-22.5
	103°10'	495'	-0°11'	495.0	-1.6
E ^{Top} Bank	61°40'	338'	+1°41'	337.7	+9.9
W ^{Bot} Bank	61°10'	341'	-5°01'	338.4	-29.7
	110°56'	408'	-0°56'	407.9	-6.7
Too slope	31°01'	185'	-4°20'	183.9	-13.9 -20
	93°52'	400'	-0°50'	399.9	-5.8
	72°26'	397'	-2°00'	396.5	-14.6
	37°56'	195'	-7°41'	191.5	-25.8
	66°24'	431'	-1°30'	430.7	-12.0
W edge ch	40°26'	189'	-8°53'	184.5	-28.9
	84°03'	425'	-0°31'	425.0	-3.8
	193°20'	13'	-10°10'	12.6	-1.9
	308°30'	42'	+25°35'	34.8	+15.9
	326°36'	64'	+22°38'	54.6	+22.7

Elev		
96.9	✓	
85.8	✓	Top Bank SW 3.4 H
132.5	✓	
90.4	✓	
82.3	✓	W " " SW 7.0 H
116.6	✓	
88.0	✓	
85.0	✓	
85.0	✓	Top Bank SW 5.5 H
92.7	✓	W SW H Bank
113.6	✓	
125.1	✓	
85.5	✓	
108.5	✓	
99.3	✓	
109.4	✓	
100.6	✓	
89.4	✓	
103.2	✓	
86.3	✓	3' W 2.0 H
111.4	✓	
113.3	✓	
131.1	✓	
132.9	✓	

Topog. Wabash Canyon Road.

Station	Azimuth	Stadia	Vert. Δ	Horizontal Dist.	Diff. Elev.
Readings from $\square 10$ Elev. = 115.15 HI = 4.5					
Guy pole	317° 55'	122	+25° 01' 8.9	100.1	+471 - 44
Elec. pole	338° 40'	138	+21° 23' 7.9	119.5	+421 - 3.4
Land mark	359° 01'	134	+13° 11' 5.9	122.0	+298 - 1.4
	64° 31'	405	-2° 22'	404.2	-17.9
W Bot ch	54° 25'	306	-5° 22'	303.4	-28.5
	11° 30'	90	+6° 16' 8.9	89.0	+9.8 - 4.4
	48° 20'	311	-4° 50'	308.8	-26.1
	14° 22'	49	+6° 00' 8.9	48.5	+5.1 - 4.4
Wedge ch	50° 10'	380	-4° 22'	377.8	-28.9
	352° 42'	70	+17° 08' 7.9	64.0	+19.7 - 3.5
	67° 02'	458	-0° 33'	458.0	-4.4
	14° 00'	134	+6° 30' 12.9	132.3	+15.4 - 8.4
	35° 50'	434	-0° 54'	228.6	-27.6
	30° 51'	230	-5° 11'	228.7	-20.7
	3° 40'	155	+11° 09' 8.9	149.4	+29.4 - 4.4
	86° 40'	680	+2° 03'	679.2	+24.3
Power Line Xing	348° 02'	180	+20° 00' 15.0	158.9	+57.9 - 10.5
	25° 54'	227	-3° 35'	226.2	-14.2
	80° 12'	658	+1° 12'	657.7	+13.8
	80° 35'	551	+0° 33'	551.0	+5.3
$\square 11$	37° 20'	263	-5° 20'	260.8	-24.3
= 43 + 24.22	Readings from $\square 11$ Elev. = 91.14 HI = 5.1				
	271° 06'	229	+22° 0'	196.8	+79.5

Elev	
159.9	✓
158.9	✓
143.6	✓
97.3	✓
86.7	✓
120.6	✓
89.1	✓
115.9	✓
86.3	✓
131.4	✓
110.8	✓
122.2	✓
82.6	✓
94.5	✓
140.2	✓
139.5	✓
162.6	✓
101.0	✓
129.0	✓
120.5	✓
90.9	✓
170.6	✓

2. W 3' H. Top Bank

Topog. Wobush Canyon Road.

Station	Azimuth	adia	Vert. Δ	Horiz Dist	Diff Elev
5" Seman map	Readings from	11	Elev	21.14	HI = 5.1
	265° 17'	169'	+20° 26'	148.6	+55.3
	257° 27'	124'	+25° 13'	101.6	+47.8
	304° 41'	68'	+13° 15'	64.5	+15.2
	331° 26'	26'	+8° 09'	25.5	+3.6
	298° 07'	146'	+23° 30'	122.8	+53.4
	63°	47'	-0° 20'	42.0	-2.7
on 2" Gus Map	313° 10'	157'	+21° 35'	136.0	+53.7
West Bk. ch.	86° 19'	131'	-0° 39'	131.0	-1.5
E "	90° 20'	189'	-0° 44'	189.0	-2.2
E edge "	92° 28'	281'	-0° 12'	281.0	-1.0
	76° 14'	371'	+4° 0'	369.0	+26.9
	87° 08'	264'	-0° 10'	264.0	-0.8
E edge "	86° 30'	277'	-0° 25'	277.0	-2.0
W Top Bk ch	75° 10'	277'	+0° 40'	277.0	+3.2 - 3.0
SE edge ch.	86° 25'	352'	+0° 30'	352.0	+3.1 - 5.0
" Bk "	87° 33'	360'	+1° 16'	359.9	+2.9
	90° 0'	400'	+4° 0'	392.9	+29.0
	301° 15'	184'	+24° 45'	152.0	+70.0
	301° 46'	229'	+24° 18'	190.7	+85.9
Point	90° 40'	496'	+4° 26'	493.3	+38.2
E. NH	43°	137'	+3° 43'	136.4	+8.8 - 5.0
on 2" Gus	10° 10'	91'	+3° 40'	90.6	+5.8
	350° 07'	123'	+7° 50'	120.7	+16.6
	338° 52'	175'	+15° 0'	163.3	+43.8

Elev.

146.4 ✓
138.9 ✓
106.3 ✓
94.7 ✓
144.5 ✓
88.4 ✓
144.8 ✓
89.6 ✓
88.9 ✓
90.1 ✓
118.0 ✓
90.3 ✓
89.1 ✓
91.3 ✓
89.2 ✓
99.0 ✓
120.1 ✓
161.1 ✓
122.0 ✓
129.3 ✓
94.4 ✓ = 94.9
96.9 ✓
102.2 ✓
134.9 ✓

✓
1" = Wedge ch. - 3' Lower

✓ Edge ch.
2" S = 3' Lower

✓
6" Gus Line in West-Tree
Ground 1' Lower
" Same place

Topog. Wabush Canyon Road.

Station	Azimuth	Stadia	Vert. a	Horiz. Dist.	Diff. Elev.	Elev.
47700	Readings from Et 11 Elev 9114 HI=51					
Et 12	37°16'15"	375'	+1°22'	374.5	+892	100.06 ✓
	95°09'	620	+5°40'	614.0	+60.9	152.0 ✓
	9°35'	264'	+5°0'	262.0	+22.9	114.0 ✓
	325°23'	235'	+21°42'	202.9	+80.7	171.8 ✓
	22°36'	174'	+2°42'	173.6	+82	99.3 ✓
	3°12'	281'	+7°43'	276.0	+32.3	128.9 ✓
	22°28'	277'	+2°48'	276.7	+13.5	104.6 ✓
Ground	84°59'	571'	+4°28'	567.6	+44.7	135.5 ✓
at Guy Pole	346°52'	308'	+15°10'	282.0	+72.8	168.9 ✓
47700 = Et 12	Readings from Et 12 Elev. 100.06 HI=5.0					
6" Gun. M.	267°40'	85'	+3°06'	84.8	+4.6	104.7 ✓
	296°10'	292'	+17°30'	265.6	+83.7	183.8 ✓
	297°48'	110'	+72°0'	108.4	+13.3	113.4 ✓
	293°38'	189'	+12°45'	180.0	+40.7	140.8 ✓
E Elec Pole	118°11'	396'	+4°45'	393.4	+32.7	132.8 ✓
on Ground	105°56'	410'	+1°50'	402.1	+34.4	134.5 ✓
	135°	31'	-5°46'	30.7	-3.1	97.0 ✓
	327°05'	142'	+8°50'	138.6	+21.5	121.6 ✓
	178°03'	128'	-2°37'	127.8	-5.7	94.9 ✓
	321°30'	198'	+12°32'	182.9	+41.9	142.0 ✓
	326°20'	50'	+7°26'	49.2	+6.4	106.5 ✓
	221°32'	65'	-1°26'	68.0	-6.6	93.5 ✓
	195°05'	78'	-3°08'	72.7	-4.3	95.8 ✓
W Bank ch.	142°37'	277'	-1°24'	276.9	-6.8	93.3 ✓
W edge "	142°48'	284'	-1°08'	283.9	-5.6	91.5 ✓
		3.0			-3.0	

This checks T.P. on Rock by Nail at 47700 FB 1657-3 on ground over main

Topog. Wabash Canyon Road.

Station	Azimuth	Stadia	Vert. Δ	Horizontal Dist.	Diff. Elev.
π. sum.	Reading from #12 Elev. 100.06 HI = 5.0				
E. edge ch.	140°05'	337'	-1°22'	336.8	-8.0 -10.0
E. Bank "	140°30'	347'	-0°05'	347.0	-0.5
	131°57'	374'	+2°03'	373.5	+13.4
	124°35'	357'	+1°33'	356.8	+9.6
E. Bank ch.	123°33'	342'	+0°28'	342.0	+2.8
E. edge "	122°00'	332'	-0°47'	332.0	-4.8 -2.0
W " "	120°35'	286'	-0°39'	286.0	-3.3 -5.0
W. Bank "	120°35'	283'	-1°01'	282.9	-5.0
	120°46'	181'	-1°29'	180.9	-4.7
	108°15'	102'	-2°34'	101.8	-4.6
	80°	50'	-2°10'	48.9	-1.9
	99°45'	241'	-0°45'	241.0	-3.2
W. Bk ch.	94°41'	314'	-0°18'	314.0	-1.6
Wedge "	94°41'	330'	-0°30'	330.0	-2.9 -2.0
E. " "	93°16'	378'	-0°20'	378.0	-2.2 -4.0
47+50	37°16'	50'	+2°41'	49.8	+2.3
	354°48'	77'	+7°35'	75.7	+10.0
	321°35'	252'	+15°00'	235.2	+63.0
	331°21'	253'	+13°40'	240.9	+54.1
	331°52'	198'	+10°30'	188.5	+35.0
	352°32'	161'	+7°52'	158.0	+26.8
	344°38'	216'	+11°12'	207.9	+41.2
	341°32'	283'	+14°25'	265.6	+68.2
within 2' of Main	15°40'	124'	+5°48'	122.8	+12.6

Elev.

91.1 ✓
99.4 ✓
113.5 ✓
109.7 ✓
102.9 ✓
93.6 ✓
91.8 ✓
95.1 ✓
95.4 ✓
95.5 ✓
98.2 ✓
96.9 ✓
98.5 ✓
95.2 ✓
93.9 ✓
102.4 ✓
110.1 ✓
163.1 ✓
154.2 ✓
135.1 ✓
121.9 ✓
141.3 ✓
168.3 ✓
112.7 ✓

on ground

Sommermayr						Topog. Wabush Canyon Road.	
Reading		From El 12	Elev. = 100.06	H ₂ = 5.0			
Station	Azimuth	Stadia	Vert. Δ	Horiz Dist	Diff. Elev.	Elev.	
	37° 16'	111'	+ 3° 17'	110.7	+ 6.3	106.4	✓
	348° 12'	292'	+ 13° 04'	277.3	+ 64.3	164.4	✓
	55° 16'	110'	+ 2° 58'			97.8	✓
			13.0	109.7	+ 5.7	- 8.0	
E. Run NH	78° 35'	145'	- 0° 22'			97.2	✓
			7.0	145.0	- 0.9	- 2.0	
	89° 32'	179'	- 1° 0'	178.9	- 3.1	97.0	✓
E. Bank ch.	92° 40'	390'	+ 0° 24'	390.0	+ 2.7	102.8	✓
Brook Hill	91° 51'	493'	+ 4° 28'	490.1	+ 38.3	138.4	✓
	93° 06'	542'	+ 4° 47'	538.4	+ 45.1	145.2	✓
	106° 20'	490'	+ 5° 0'	486.3	+ 42.5	142.6	✓
	127° 15'	474'	+ 5° 10'	470.1	+ 42.5	142.6	✓
	76° 31'	225'	- 0° 37'	225.0	- 2.4	97.7	✓
	75° 24'	487'	- 0° 0'	487.0	00	100.1	
E. Bank ch.	74° 45'	463'	0° 0'	463.0	00	100.1	✓
E. edge "	74° 29'	462'	- 0° 17'	462.0	- 2.3	97.8	✓
W "	72° 48'	347'	- 0° 15'	347.0	- 1.5	98.6	✓
W BK "	72° 42'	332'	- 0° 16'	332.0	- 1.5	98.6	✓
	64° 10'	278'	- 0° 02'	278.0	- 0.1	100.0	✓
	352° 11'	341'	+ 12° 02'			152.8	✓
			9.0	256.1	+ 56.7	- 4.0	
	357° 36'	287'	+ 8° 52'	280.7	+ 43.7	143.8	✓
	352° 51'	245'	+ 10° 41'	236.5	+ 44.6	144.7	✓
	22° 27'	143'	+ 4° 56'	142.0	+ 12.2	112.3	✓
	6° 25'	210'	+ 7° 0'	206.9	+ 25.7	125.5	✓
	4° 11'	350'	+ 11° 16'	336.8	+ 62.1	162.2	✓
	23° 56'	227'	+ 4° 41'			113.6	✓
			6.0	225.5	+ 18.5	- 5.0	
	10° 27'	433'	+ 9° 38'	421.2	+ 71.4	171.5	✓

Ground Same Elev

Topog. Mabush Canyon

Station Azimuth Stadia Vert Δ Horiz Dist Diff Elev

Readings from 13 Elev 111.78 H.I. = 5.0

Station	Azimuth	Stadia	Vert Δ	Horiz Dist	Diff Elev
Tac slope	161°42'	368	-1°36'	367.7	-10.2
Bk	158°34'	378'	-0°19'	378.0	-2.1
	147°19'	353'	+1°23'	352.8	+8.5
	142°23'	360'	+1°40'	359.7	+10.5
	140°45'	325'	+1°52'	324.7	+10.6
	145°46'	320'	-0°19'	320.0	-1.8
E Bank ch.	150°08'	274'	-2°04'	273.7	-9.9
E Rim Mt.	153°06'	197'	-2°05'	196.8	-7.1
Bk 2.5' Lancer ch.	162°41'	121'	-4°26'	120.3	-9.3
	185°52'	75'	-5°26'	74.3	-7.1
Top 6" Gas Main	241°53'	51'	-2°58'	50.9	-2.6
	270°08'	80'	+5°59'	79.2	+8.3 -1.0
	289°53'	226'	+16°57'	207.0	+63.0 -3.0
	296°01'	153'	+15°20'	142.3	+39.0 -5.0
	297°55'	112'	+15°23'	104.2	+28.7 -8.0
	137°50'	462'	+4°55'	458.7	+39.3
	139°24'	382'	+4°05'	380.2	+27.1
	144°38'	340'	+4°47'	337.7	+28.3
E Edge ch	129°41'	282	-1°26'	281.8	-7.0 -5.0
" Bk "	129°41'	285	-1°03'	284.9	-5.2
	128°45'	318'	+2°37'	317.4	+14.2
	123°23'	332'	+2°0'	331.6	+11.6
	120°50'	392'	+4°38'	389.5	+31.6
E edge ch.	119°12'	318'	-1°37'	317.8	+9.0

Elev

181.6	?
109.7	✓
120.3	✓
122.3	✓
122.4	✓
110.0	✓
101.9	✓
104.7	✓
102.5	✓
104.7	✓
109.2	✓
119.1	✓
121.8	✓
145.8	✓
140.5	✓ error 132.5
151.3	✓
138.9	✓
140.1	? can't use it
99.8	✓
106.6	✓
126.5	✓
123.4	✓
143.4	✓
120.8	✓ error = 102.8

+ 2' W = 3' Lower.
= E Edge ch.
+ 3' E = W edge ch. 3.5 below R 222 Mt.

Topog. Wabush Canyon Road.

Station	Azimuth	Stadia	Vert. Δ	Horiz. Dist.	Diff. Elev.
Readings from Δ 13 Elev. 11178 H.I. = 5.0					
	217°	10'	0°	00	1
Soil Pit.	217°	12'	8.0	-3.9	-
	231°50'	87'	6.5	-1.5	-
	246°20'	48'	6.2	-1.2	-
	326°42'	28'	2.3	+2.7	+
Soil Pit.	254°10'	20'	8.0	-3.0	-
	268°12'	20'	4.5	+0.5	+
Dead iron Pole Anchor.	345°20'	52'	+5°47'	51.5	+5.2
Elec. Pole on Pipe	34°27'	52'	+2°30'	51.9	+2.3
	28°03'	77'	5.8	-0.8	-
	10°22'	86'	+2°55'	85.5	+4.4
	345°35'	119'	+4°17'	118.4	+8.9
	358°20'	208'	+2°59'	202.5	+10.8
	12°55'	210'	+0°40'	21.0	+2.4
	32°12'	223'	-1°0'	222.9	-3.9
	48°37'	265'	-0°19'	265.0	-1.5
	63°42'	164'	-1°40'	163.9	-4.8
	110°05'	97'	-4°0'	96.8	-6.8
	164°23'	125'	-4°22'	124.3	-9.5
	119°12'	148'	-2°47'	147.7	-7.2
	86°09'	190'	-1°32'	189.9	-5.1
w/ on bk ch.	65°18'	266'	-0°42'	266.0	-3.3
"Wedge"	65°18'	272'	-1°10'	271.9	-5.5
ok.	67°52'	66'	-1°34'	66.0	1.8

Cont. P. 56

Elev.
111.5 ✓
108.8 ✓
110.3 ✓
110.6 ✓
109.1 ✓
108.8 ✓
112.3 ✓
117.0 ✓
114.1 ✓
111.0 ✓
116.2 ✓
120.7 ✓
122.6 ✓
114.2 ✓
107.9 ✓
110.3 ✓
107.0 ✓
105.0 ✓
102.3 ✓
104.5 ✓
106.7 ✓
108.5 ✓
106.3 ✓
110.0 ✓

Angle Point
✓ 10 6" Gas Meter H.P.

Cont from Page 53

Station	Azimuth	Stadia	Vert Δ	Horiz Dist	Diff Elev	Elev
Readings from # 13 Elev 111.78 HI = 5.0						
	120°19'	479'	+5°21'	474.9	+44.5	156.3 ✓
	113°09'	423'	+5°04'	419.5	+37.2	149.0 ✓
	108°23'	470	+5°39' 7.0	465.7	+46.1 -2.0	155.9 ✓
	103°0'	478'	+5°55'	473.0	+49.0	160.8 ✓
	98°02'	545'	+6°40'	532.7	+62.8	174.6 ✓
	94°13'	535'	+6°33'	528.1	+60.6	172.4 ✓
E edge ch.	108°0'	350	-1°35' -0°26'	349.8	-9.2	102.1 ✓
" Bank "	106°18'	353'	6.0 +1°08'	353.0	-2.7 -1.0	108.1 ✓
	109°15'	369'	6.0	368.9	+7.3 -1.0	115.1 ✓
	110°19'	164'	-2°25'	163.7	-6.9	104.9 ✓
	107°18'	518'	+6°12'	512.0	+52.6	164.4 ✓
W Bank ch.	108°09'	267'	-1°29' -1°46'	266.9	-6.9	104.9 ✓
W edge "	107°38'	278'	6.0 0°0'	277.8	-8.6 -1.0	102.2 ✓
El 14 53+50	20°20'18"	515'	3.2 +11°09'	515.0	+1.8	113.6 ✓
1657-7	312°25'	200	17.0 +8°49'	192.7	+38.0 -12.0	137.8 ✓
	317°23'	163	9.0	159.4	+24.6 -4.0	132.4 ✓
	320°05'	87	+7°0'	85.7	+10.5	122.3 ✓
	333°16'	135'	+9°10'	129.1	+21.2	133.0 ✓
	70°10'	172'	-1°26'	171.9	-4.3	107.5 ✓
	56°10'	144'	-0°21'	144.0	-0.9	110.9 ✓
	96°20'	595'	+7°11'	589.7	+73.8	185.6 ✓
	31°40'	343'	-0°19'	343.0	-1.9	109.9 ✓
	92°16'	570'	+6°52'	561.9	+62.7	179.5 ✓
W Bk ch	58°53'	275'	-0°33'	275	-2.6	109.2 ✓
W edge "	59°07'	278	-0°33' 8.0	278	-2.7 -3.0	106.1 ✓

Elev

156.3 ✓

149.0 ✓

155.9 ✓

160.8 ✓

174.6 ✓

172.4 ✓

102.1 ✓

108.1 ✓

115.1 ✓

104.9 ✓

164.4 ✓

104.9 ✓

102.2 ✓

113.6 ✓

137.8 ✓

132.4 ✓

122.3 ✓

133.0 ✓

107.5 ✓

110.9 ✓

185.6 ✓

109.9 ✓

179.5 ✓

109.2 ✓

106.1 ✓

Station	Azimuth	Stadia	VA	Horiz Dist	Diff Elev	Elev
Walker T o Rec.	Readings	From 13	Elev 1178	HI = 5.0		
	76°57'	225'	-1°00'	224.9	-3.9	107.9 ✓
W BK ch.	78°40'	327'	-0°53'	326.9	-5.0	106.8 ✓
W edge "	78°40'	332'	-0°56'	331.9	-5.4	104.4 ✓
	87°13'	545'	+6°24'	538.7	+60.4	172.2 ✓
	90°03'	380	-0°07'	380.0	-0.8	105.0 ✓
	84°56'	518'	+5°51'	512.7	+52.5	164.3 ✓
	91°56'	390'	+0°25'	390.0	+2.8	114.6 ✓
	87°35'	477'	+5°14'	473.0	+43.3	155.1 ✓
	92°45'	450'	+3°06'	448.8	+24.3	136.1 ✓
	91°23'	467'	+3°25'	465.3	+27.8	139.4 ✓
	79°35'	543'	+5°29'	538.2	+51.6	163.4 ✓
	95°51'	443'	+2°32'	442.2	+19.6	131.4 ✓
	85°09'	600'	+6°29'	592.2	+67.3	179.1 ✓
	99°09'	430'	+2°55'	428.9	+21.9	133.7 ✓
	74°56'	547'	+5°15'	542.5	+49.9	161.7 ✓
	78°25'	405'	-0°51'	404.9	-5.9	105.9 ✓
	69°25'	600'	+4°47'	596.0	+49.9	161.0 ✓
	77°30'	421'	+0°40'	420.9	+4.9	116.7 ✓
	78°35'	452'	+2°44'	451	+21.5	133.3 ✓
	74°36'	450'	+1°46'	449.6	+13.9	125.7 ✓
	78°55'	666	+6°20'	657.9	+73.0	181.8 ✓
	69°20'	480'	+2°21'	479.2	+19.2	131.5 ✓
	69°10'	460'	+1°35'	459.7	+12.7	124.5 ✓
?	68°50'	440'	0°05'	440.0	+0.6	112.4 ✓

Elev

107.9 ✓
106.8 ✓
104.4 ✓
172.2 ✓
105.0 ✓
164.3 ✓
114.6 ✓
155.1 ✓
136.1 ✓
139.4 ✓
163.4 ✓
131.4 ✓
179.1 ✓
133.7 ✓
161.7 ✓
105.9 ✓
161.0 ✓
116.7 ✓
133.3 ✓
125.7 ✓
181.8 ✓
131.5 ✓
124.5 ✓
112.4 ✓

Station	Az	Stadia	VA	Readings From 13 Elev 11178 HI=5.0		
E Bk ch.	69°05'	419'	-0°24'	419.0	-29	
" Edge "	68°44'	410'	-0°39'	410.0	-47	
	69°20'	610'	+5°10'	605.1	+54.7	
E edge "	57°45'	385'	-0°39'	385.0	-44	
" Bk "	57°44'	403'	-0°18'	403.0	-2.1	
	57°16'	455'	-0°15'	455.0	-2.4	
	63°0'	517'	+2°01'	516.4	+18.2	
	60°30'	556'	+1°58'	555.4	+19.1	
	59°20'	570'	+1°35'	569.6	+15.7	
	54°33'	577'	+1°37'	576.6	+16.3	
	49°31'	553'	+1°0'	552.8	+9.7	

Station	Az	Stadia	VA	Readings From 16 Elev 120.20 HI=5.1		
E. Riv. MH.	105°58'	139'	-2°56'	138.7	-7.1	
	105°10'	500'	+5°10'	495.9	+44.8	
W Bk ch.	156°12'	216'	-2°33'	215.6	-9.6	
" edge "	152°25'	219'	-3°29'	218.3	-13.3	
	146°40'	183'	-3°46'	182.3	-12.0	
W Bk "	114°30'	148'	-4°54'	142.3	-10.5	
W Edge "	113°53'	151'	-4°10'	150.2	-10.9	+2.0
W Bk "	72°04'	183'	-2°37'	182.7	-8.4	
" edge ch.	72°56'	188'	-3°09'	182.5	-10.3	
W Bk "	61°49'	288'	-1°29'	282.8	-7.4	
" edge "	63°0'	293'	-1°45'	292.8	-8.9	
" Bk "	51°30'	373'	-0°50'	371.9	-5.4	
W edge "	52°05'	380'	-1°0'	379.9	-6.6	

108.9	✓
107.1	✓
166.5	✓
107.4	✓
109.7	✓
109.4	✓
130.0	✓
130.9	✓
127.5	✓
128.1	✓
121.5	✓
1	
113.1	✓
165.0	✓
110.6	✓
106.9	✓
108.2	✓
108.7	✓
109.3	✓
111.8	✓
109.9	✓
112.8	✓
111.3	✓
114.8	✓
113.6	

108.7 Ground 4.4' Lower
 ✓ Int. & Chan. to N.W.

Readings from #16 Elev. = 120.20 H.I. = 5.1

Station	Azimuth	Stadia	Vert. Δ	Horiz. D.	Diff. Elev
			+3°55'		
	108°42'	474	13.0	471.9	+32.3 -79
			+4°50'		
	106°44'	607	14.1	602.6	+56.0 -70
	48°16'	325	-0°50'	324.7	-10.4
	52°51'	249	-1°31'	248.5	-10.9
	60°09'	184	-2°24'	183.7	-7.7
	81°45'	117	-4°09'	116.4	-8.4
	111°31'	93	-5°49'	92.1	-9.4
	101°36'	575	+6°03'	568.7	+60.3
E edge ch.	101°53'	187	-3°22'	186.4	-11.0
" Bk "	104°0'	191	-2°41'	190.6	-9.0
	102°0'	253	-1°43'	252.8	-9.5
	91°30'	570	+5°44'	564.4	+56.7
E Edge ch.	78°0'	248	-2°09'	247.7	-9.3
" Bk "	78°37'	253	-1°31'	252.8	-6.7
" edge "	80°43'	283	-1°21'	282.8	-6.7
" " "	71°16'	338	-1°30'	337.8	-8.8
" Bk "	71°33'	341	-1°06'	340.9	-6.5
	71°33'	363	-0°53'	362.9	-5.3
	88°48'	530	+5°17'	525.7	+48.6
E Edge ch.	61°13'	419	-0°42'	418.9	-5.1
	65°21'	483	-0°23'	483.0	-3.3
	80°25'	583	+4°35'	579.3	+46.4
	60°33'	527	-0°31'	527.0	-4.8
	83°06'	653	+5°41'	646.5	+64.3
E Bk ch.	54°42'	470	-0°23'	470.0	-3.1
" edge "	54°48'	463	-0°54'	463.0	-7.3

Elev	
144.6	✓
162.2	✓
109.8	✓
109.3	✓
112.5	✓
111.8	✓
110.8	✓
180.5	✓
109.2	✓
111.2	✓
112.7	✓
176.9	✓
110.9	
113.5	
113.5	✓
111.4	✓
113.7	✓
114.9	✓
168.8	✓
115.1	✓
116.9	✓
166.6	✓
115.4	✓
184.5	✓
117.1	✓
112.9	✓

Δ in chan.

Station Azimuths Studia VA Horiz. Dist. Diff Elev

Readings From \square 16 Elev 120.20 HI 5.1

	76°07'	715'	+5°02'	709.6	+62.5
	73°35'	667'	+4°20'	663.2	+50.3
	85°06'	310'	+1°02'	309.9	+5.6
	66°06'	723'	+3°33'	719.2	+44.7
	74°45'	388'	+1°37' 6.1	387.7	+11.0 -1.0
	71°40'	488'	+2°10' 8.1	487.3	+18.4 -2.0
	72°01'	730'	+4°24'	725.8	+55.8
	66°47'	527'	+1°40'	526.6	+15.3
	67°15'	577'	+2°00'	576.3	+20.1
	71°57'	535'	+2°12'	534.2	+20.5
	78°40'	480'	+2°15'	479.3	+18.8
	86°03'	442'	+2°24'	441.3	+18.5
	95°44'	395'	+2°07'	394.5	+14.6
	101°26'	385'	+2°22'	384.4	+15.9
	92°35'	505'	+5°07'	501.2	+44.9
6-22-43	80°24'	693'	+4°48'	588.0	+49.4

Elev

182.7	✓
170.8	✓
125.8	✓
164.9	✓
136.2	✓
136.6	✓ error 135.6 ✓
176.0	✓
135.5	✓
140.3	✓
140.7	✓
139.0	✓
138.2	✓
134.8	✓
136.1	✓
165.1	✓
169.6	✓

Readings From \square 16 Elev 120.20 HI 5.0

6-23-43	330°53'	256'	+2°26'	255.4	+10.9
	330°54'	213'	+2°23'	212.7	+8.9
	334°47'	182'	+2°20'	181.7	+7.4
	4°36'	409'	+19°51'	397.0	+68.9
	341°05'	132'	+3°30'	131.5	+8.0
	357°28'	154'	+3°38'	153.4	+9.2
	357°50'	301'	+10°58' 6.0	290.4	+55.8 -0.9

131.1	✓
129.1	✓
127.6	✓
189.1	✓
128.2	✓
129.9	✓
175.1	✓

6-23-93

Station Azimuth, Stadia Δ Horiz. Dist Diff Elev
 Readings from $\square 16$ Elev. = 1202.0 HI = 5.0

	351°03'	233'	71°0'	224.5	+43.6	
	347°57'	310'	+10°25'	300.0	+58.1	-60
✓	346°11'	189'	+8°02'	125.3	+26.2	
✓ E. River Mt. Branch line	325°07'	198'	+2°58'	197.5	+10.2	
	13°03'	193'	+0°51'	193.0	+2.9	
	63°55'	61'	-1°45'	60.9	-18.6	
	71°51'	66'	-1°41'	65.9	-19.4	-60
	15°0'	265'	+1°18'	264.9	+6.0	
✓	40°0'	126'	+1°55'	125.9	+4.2	-60
✓ Power Pole	22°43'	263'	+0°24'	263.0	+18	
	21°33'	335'	+0°40'	335.0	+3.9	
✓	29°50'	207'	-0°16'	207.0	-1.0	-70
✓ on Top Pipe 6" H.P. Gas	24°10'	177'	-1°15'	176.9	-3.9	
	29°52'	154'	-0°15'	154.0	-0.7	-70
514.00 □ 17	27°40'	375'	-0°30'	375.0	-3.3	
□ 13	200°20'	432'	-1°08'	431.9	-8.5	

Readings from $\square 17$ Elev. 1170.2 HI = 5.0

	216°25'	106'	+1°02'	106.0	+1.9	
	247°43'	135'	+10°45'	130.3 220.4	+24.8	
	203°30'	97'	-0°51'	97.0	-14.4	
	173°0'	101'	-0°56'	101.0	-1.6	
	306°0'	113'	+19°51'	100.1	+36.1	
	151°25'	129'	-0°46'	129.0	-1.7	
	117°0'	97'	-0°39'	97.0	-1.1	

61

Elev

1		
1638	✓	
1693	✓	
1464	✓	
130.4	✓	Ground = 1' lower
123.1	✓	
104.6	✓	
94.8	✓	✓ on conc. slab over Branch Sewer
126.2	✓	
118.4	✓	error 117.4 ✓
122.0	✓	
124.1	✓	
112.2	✓	
116.3	✓	
112.5	✓	
116.9	✓	check □ 17 Elev. 1170.2 ^{20M}
111.2		check □ 13 Elev. 1117.8 ^{10M}
118.9	✓	
141.4	✓	
112.6	✓	9. -1.4 = 115.6 ✓
115.4	✓	
153.1	✓	
115.3	✓	
115.9	✓	

6-23-43

Station	Azimuth	Stadia	Vert. Δ	Horiz. Dist	Diff. Elev
	Readings	From 17	17 Elev	117.02	H.I. = 50
	122°30'	42'	5.3 0°	42.0	-03 -0.3
	276°50'	25'	1.7	25.0	+3.3
	271°30'	35'	+12°18'	33.5	+7.3
	313°54'	202'	+21°40'	174.4	+69.3
	280°11'	45'	+11°0'	43.3	+8.4
	318°50'	257'	+19°55'	227.4	+82.31
	344°40'	97'	+9°30' 8.0	94.4	+15.8 -3.0
	1°53'	84'	+6°50' 0°0'	82.8	+9.9
	8°10'	82'	3.0	82.0	+2.0
chkd. 9-23-43	331°20'	170'	+18°55'	152.3	+52.1
W Bk ch.	31°	83'	0°	83.0	00
"edge "	33°10'	86'	6.7	86.0	-1.7
	341°	293'	+18°20'	264.0	+87.5
W Bk "	69°	63'	4.3 0°	63.0	+0.7
"edge "	69°	65'	7.0 0°	65.0	-2.0
" "	28°	143'	6.5 0°	143.0	-1.5
" Bk "	26°23'	144'	3.7	144.0	+1.3
	18°40'	198'	+10°26'	198.0	+1.5
	15°25'	151'	+3°17'	150.5	+8.6
	344°53'	235'	+15°08'	219.3	+59.2
	5°08'	201'	+5°18'	199.4	+18.5
chkd. 9-23-43	331°54'	186'	+17°37' 11.0	169.3	+50.7 -6.0
Pinner Pole	9°51'	197'	+3°44'	196.2	+12.8
	18°40'	227'	+2°23'	226.6	+9.4

62

Elev.

116.7 ✓
120.3 ✓
124.3 ✓
186.3 ✓
125.4 ✓
199.3 ✓
129.8 ✓
126.9 ✓
119.0 ✓
169.1 ✓
117.0 ✓
115.3 ✓
204.5 ✓
116.3 ✓
115.0 ✓
115.5 ✓
118.3 ✓
118.5 ✓
125.6 ✓
196.2 ✓
135.5 ✓
161.7 ✓
129.8 ✓
126.4 ✓

129.2
62.7
241.9

61.30
21.47
82.81
112.82
199.5

double ck
Revised for New Station 270°

double ck OK CBW.

6-23-49

Station	Azimuth	Stadia	Vert Δ	Horiz Dist	Diff. Elev.
Readings	From	19	17 Elev.	11702	HI-5.0
	21°40'	230'	+1°03'	229.9	+4.2
	316°	133'	+18°55'	119.2	+40.8
	30°51'	232'	+0°55'	232.0	+3.2
W Bk. ch.	44°35'	255'	+0°34'	255.0	+2.5
" edge "	45°53'	252'	0°	252.0	-1.2
↳ From M.H.	47°11'	188'	0.2 1.8	188.0	+3.2
E edge ch.	99°20'	203'	-1°01'	202.9	-3.6
" Bk "	98°32'	207'	-0°07'	207.0	-0.5
" Edge "	78°10'	200'	-0°26'	200.0	-1.5
" Bk "	78°10'	208'	-0°10'	208.0	-0.6
" " "	56°0'	267'	+0°31'	267.0	+2.4
E edge "	55°0'	269'	+0°19'	269.0	+1.5
	50°23'	423'	+0°42'	422.9	+5.2
E Bk "	68°23'	357'	+0°39'	357.0	+4.1
	38°50'	390'	+0°42'	389.9	+4.8
	32°05'	375'	+0°47'	374.9	+5.1
	23°0'	358'	+1°22' 9.0	358.0	+2.3-4.0
	17°55'	356'	+3°17' 12.0	358.9 119.6	+2.4 +1.7-2.0
	69°55'	455'	+1°18'	454.8	+10.3
	69°50'	417'	+0°53'	416.9	+6.4
	8°52'	360'	+7°15'	354.4	+45.1
	78°06'	420'	+1°18' 9.0	419.8	+9.5-4.0
	92°13'	370'	+1°02' 8.0	368.9	+7.3-5.0
	98°25'	340'	+0°34'	340.0	+3.4

63

Elev.
121.2 ✓
157.8 ✓
120.7 ✓
119.5 ✓
115.8 ✓
120.2 ✓
113.7 ✓
116.5 ✓
115.5 ✓
116.4 ✓
119.4 ✓
118.5 ✓
122.2 ✓
121.1 ✓
121.8 ✓
122.1 ✓
115.3 = 121.5 ✓
116.9 = 130.4 ✓
129.3 ✓
123.4 ✓
162.1 ✓
122.5 ✓
119.3 error = 121.3 ✓
120.4 ✓

Ground 2' lower

Station	Azimuth	Stadia	Vert Δ	Horiz Dist.	Diff. Elev.	Elev.
Readings from $\square 17$ Elev 1170.2 HI = 5.0						
	99° 0'	314'	+0° 03'	314.0	+0.3	117.3 ✓
	99° 0'	264'	+0° 02'	264.0	+0.2	117.2 ✓
	87° 0'	287'	+0° 05'	287.0	+0.4	117.4 ✓
	78° 20'	325'	+0° 56' 8.0	324.9	+5.3 -3.0	119.3 ✓
	73° 40'	255'	+0° 34'	255.0	+2.5	119.5 ✓
	74° 08'	586'	+3° 48' 17.0	583.6	+38.2 -12.0	143.2 ✓
	110° 40'	332'	+3° 11'	331.0	+18.4	135.4
	107° 10'	375'	+3° 35'	373.6	+23.7	140.4
	97° 09'	397'	+3° 19'	395.8	+22.9	139.9 ✓
	80° 08'	537'	+4° 40'	533.7	+43.6	160.6 ✓
	99° 27'	435'	+4° 44'	432.1	+35.8	152.8 ✓
	83° 31'	593'	+5° 38' 10.0	587.5	+57.1 -5.0	169.1 ✓
	90° 20'	453'	+3° 57'	451.0	+31.1	148.1 ✓
	92° 05'	504'	+5° 37'	499.4	+49.1	166.1 ✓
	85° 44'	538'	+5° 14'	528.7	+48.8	165.5 ✓
	83° 51'	507'	+4° 17'	504.2	+32.8	154.8 ✓
	78° 05'	509'	+4° 02'	506.8	+36.2	153.7 ✓
	75° 41'	497'	+3° 03'	495.5	+26.4	143.4 ✓
	71° 54'	480'	+1° 47'	479.6	+15.0	132.0 ✓
67+40 $\square 18$	27° 40'	640'	+0° 57'	639.9	+10.6	127.75 = F.B. 1657-3
Readings from $\square 18$ Elev 127.75 HI = 5.0						
$\square 19$	217° 12'	280'	+0° 10'	280	+0.8	128.58 on #60 Spike
Readings from $\square 19$ Elev 128.58 HI = 5.1						
$\square 18$	37° 12'	280'	0° 5.93	280	-0.83	127.75

duplicate

duplicate

6-23-43

796

65

Station	Azimuth	Stadia	Vert. Δ	Horiz Dist.	Diff. Elev.	Elev.
	Readings From	Sta. 19	Elev. = 128.58	H.I. = 5.1		
E edge ch.	62°15'	473'	-0°32'	473.0	-4.4	124.2 ✓
" Bk "	61°53'	477'	-0°11'	477.0	-1.5	127.1 ✓
	114°10'	575'	+3°29'	573.1	+34.9	163.5 ✓
	116°05'	580'	+3°33' 15.0	587.8	+36.5 -9.9	155.2 ✓
E Top Bk ch.	69°18'	365'	-0°22'	365.0	-2.3	126.3 ✓
E edge "	69°20'	362'	-0°49'	362.0	-5.2	123.4 ✓
" Bk "	79°25'	385'	-0°09'	385.0	-1.0	127.6 ✓
" Edge "	79°25'	380'	-0°05' 10.0	380.0	-0.6 -4.9	123.1 ✓
	113°42'	540'	+2°47' 13.0	538.8	+26.2 -6.9	147.9 error $\frac{+26.2}{-7.9} = 146.9$ ✓
E Bk ch.	92°51'	319'	-0°51'	318.8	-4.7	123.9 ✓
E edge "	92°55'	310'	-1°09' +3°27'	309.9	-6.2	122.4 ✓
	111°55'	580'	12.0	578.0	+34.8 -6.9	156.5 ✓
	111°0'	312'	-1°08'	311.9	-6.2	122.4 ✓
	111°0'	309'	-1°46'	308.7	-9.50	119.1 ✓
	109°15'	515'	+4°18'	512.3	+38.5	167.1 ✓
	104°42'	513'	+5°0' 6.1	508.1	+44.5	173.1 error $\frac{+44.5}{-7.0} = 172.1$ ✓
E Bk ch.	125°10'	311'	-0°55'	310.9	-5.0	123.6 ✓
E edge "	124°37'	315'	-1°24'	314.8	-7.7	120.9 ✓ = Int. Branch Ch. To East
	108°52'	415'	+3°55'	413.1	+28.3	156.9 ✓
	102°42'	435'	+4°27'	432.5	+33.2	162.3 ✓
	122°32'	318'	-0°41'	318.0	-3.8	124.8 ✓
	118°0'	348'	0°0'	348.0	0.0	128.6 ✓
	99°05'	473'	+4°44'	468.9	+38.9	167.5 ✓
	110°45'	373'	+1°29'	372.8	+9.7	138.3 ✓

Int. Top Slope Dble. Canyon

6-23-43

Station	Azimuth	Stadia	Vert. Δ	Horiz. Dist.	Diff. Elev.
Readings From $\square 19$ Elev = 128.58 HI = 5.1					
111°46'	396'	+2°26'	395.3	+168	
95°50'	578	+5°22'	573.0	+53.8	
108°20'	353'	+0°32'	353.0	+3.3	
85°0'	625'	+5°39'	619.3	+61.2	
79°10'	360'	+1°27'	359.8	+9.1	-5.9
100°40'	360'	+0°40'	360.0	+4.2	-0.9
84°0'	528	+5°16'	523.7	+48.2	
92°30'	407'	+2°03'	406.5	+4.6	
78°33'	547'	+4°35'	543.6	+43.6	
86°03'	423'	+1°41'	422.6	+12.4	
84°25'	400'	+1°25'	399.8	+9.9	
78°11'	597'	+4°55'	592.8	+51.0	-0.9
75°25'	688'	+5°14'	682.4	+62.5	
70°57'	607'	+4°29'	603.5	+47.3	
72°37'	570'	+3°39'	562.9	+36.2	-4.9
67°55'	582'	+3°46'	579.6	+38.1	
62°45'	572'	+3°01'	570.4	+30.1	
57°34'	640'	+2°53'	638.4	+32.2	
97°06'	429'	+3°15'	422.2	+24.3	
68°30'	717'	+5°24'	710.8	+67.2	
63°40'	767'	+5°03'	761.2	+62.3	
91°27'	450'	+4°03'	447.8	+31.7	
86°03'	501'	+4°42'	492.7	+40.9	
79°20'	515'	+3°57'	512.7	+35.4	

66

Elev

145.4 ✓

182.4 ✓

131.9 ✓

189.8 ✓

131.8 ✓

131.9 ✓

176.8 ✓

133.2 ✓

172.2 ✓

141.0 ✓

138.5 ✓

178.7 ✓

191.1 ✓

175.5 ✓

159.9 ✓

166.7 ✓

158.7 ✓

160.8 ✓

152.9 ✓

195.8 ✓

195.9 ✓

160.3 ✓

169.5 ✓

164.0 ✓

$$\begin{array}{r} +48.2 \\ -3.9 \\ \hline 172.9 \end{array}$$

✓ checked Ag.

✓ checked Ag.
in Draw4.20 PM 6-23-43
checked Ag.

6-24-43

Station	Azimuth	Stadia	Vert. A.	Horiz. Dist.	Diff. Elev.
	Readings	From 18	Elev. = 127.75	HZ = 51	
	225°50'	211'	+10°34'	211.0	+2.1
	232°16'	246'	+5°09'	244.1	+22.0
	219°46'	2.08'	-1°13'	208.0	-4.4
	231°40'	156'	-1°03'	156.0	-2.9
	234°14'	177'	+0°34'	177.0	+1.8
Elev. Pole	240°18'	184'	+4°16'	183.0	+13.8
	239°37'	2.80'	+10°16'	271.3	+49.1
	245°44'	125'	-1°20'	124.9	+2.9
	247°23'	311'	+14°39'	291.5	+76.1
	251°43'	127'	2.2	127.0	+2.9
	260°35'	301'	+18°01'	272.3	+88.5
	254°13'	143'	+3°0'	142.6	+7.5
	269°35'	297'	+18°16'	268.2	+88.4
	279°52'	304'	+19°39'	270.2	+96.3
	289°53'	117'	+4°41'	116.7	+9.5
	292°55'	92'	1.5	92.0	+3.6
	293°52'	90'	7.0	90.0	-1.9
	295°36'	258'	+18°57'	231.2	+79.3
	325°48'	102'	6.9	102.0	-1.8
	324°24'	117'	+3°26'	116.6	+7.0
	308°40'	302'	+16°11'	278.5	+80.8 -39
	322°40'	144'	+4°52'	143.0	+12.2
	317°06'	311'	+12°58'	295.7	+68.0 -2.9
	336°30'	174'	+4°17'	173.1	+13.0

67

Elev.

	129.9				
	149.8	✓			
	123.4	✓			
	124.9	✓			
	129.6	✓			
	141.6	✓			
	176.9	✓			
	130.7	✓			
	203.9				
	130.7	✓			
	216.3	✓			
	135.3	✓			
	216.2	✓			
	224.1	✓			
	137.3	✓			
	131.4	✓			
	125.9	✓			
	207.1	✓			
	126.0	✓			
	134.8	✓			
	204.7	✓			
	140.0	✓			
	192.9	✓			
	140.8	✓			

9 am
6-24-43

Az. ch. 9:30 am

Az. ch. 9:35 am 6-24-43

6-24-43

Station	Azimuth	Stadia	Vert. Δ	Horiz. Dist.	Diff. Elev.
Readings	From	51	18	Elev. = 127.75	HT = 5.1
339°20'	178'	+3°41'	177.3	+11.4	
330°20'	201'	+5°25'	199.3	+18.9	
321°08'	175'	+7°42'	171.9	+23.2	
328°23'	420'	+10°55' 12.0	405.2	+78.1	-6.9
306°45'	174'	+12°22'	166.0	+36.4	
288°00'	172'	+11°47'	164.9	+34.4	
337°0'	327'	+12°56'	311.0	+71.0	
268°54'	181'	+11°08'	174.5	+34.3	
264°48'	167'	+7°53'	163.9	+22.7	
344°0'	415'	+12°42'	395.1	+89.0	
264°0'	153'	+6°20'	151.2	+16.2	
348°54'	477'	+10°36'	432.2	+80.8	
255°54'	187'	+10°0'	181.4	+32.0	
353°38'	447'	+7°28'	439.7	+57.6	
348°30'	374'	+9°10' +1°06'	364.5	+58.9	
358°48'	130'	6.1	130.0	+2.5	-1.0
358°11'	133'	+2°0'	132.8	+4.6	
341°05'	303'	+10°29'	293.2	+54.2	
334°05'	284'	+11°03'	273.7	+53.4	
317°16'	233'	+11°0'	224.5	+43.6	
328°02'	301'	+8°54' 7.1	293.9	+46.0	-2.0
320°27'	271'	+11°0' 7.1	261.2	+50.8	-2.0
332°42'	243'	+8°25'	238.0	+35.2	
327°07'	231'	11.0			

68

Elev

139.2	✓	✓	Mouth of Draw to NW.
146.7	✓	✓	in & " " " "
151.0	✓		
199.0	✓	✓	in & of Draw to NW.
164.2	✓		
162.2	✓		
199.1	✓		
162.1	✓		
150.5	✓		
216.8	✓		
144.5	✓		
208.6	✓		
159.5	✓		
185.4	✓		Az. chk 10 am
186.7	✓		
129.3	✓		
132.4	✓		
182.0	✓		
181.2	✓		
171.4	✓		
171.8	✓	?	
176.8	✓		
163.0	✓		Az. chk 10.10 am 6-24-43

6-24-43

Station Azimuth Azimuth Vert. Δ Horiz. Dist. Diff. Elev. Elev.
 Readings from 18 Elev. 127.75 HI = 5.1

Station	Azimuth	Stadia	Vert. Δ	Horiz. Dist.	Diff. Elev.	Elev.
Elec. Pole	343°26'	200'	+3°29'	199.3	+12.1	139.9 ✓
	352°15'	182'	+1°54'	186.8	+6.0	133.8 ✓
	354°20'	243'	+2°0'	242.2	+8.5 -6.0	130.3 ✓
	353°40'	244'	+1°58'	248.7	+8.4	136.2 ✓
	356°40'	278'	+1°35'	272.8	+7.2	135.5 ✓
	359°0'	316'	+1°29'	315.8	+8.2	136.0 ✓
	6°25'	320'	+0°48'	320.0	+4.6	132.4 ✓
	20°50'	316'	+0°43'	316.0	+4.0	131.8 ✓
	20°20'	204'	+0°34'	204.0	+2.0	129.8 ✓
	358°20'	204'	+1°39'	203.9	+5.9 -2.0	131.7 ✓
	356°40'	194'	+1°20'	193.9	+4.5	132.3 ✓
	356°40'	143'	+1°54'	142.9	+4.8	132.6 ✓
W Bk ch.	358°0'	128'	+1°07'	128.0	+2.5 -1.0	129.3 Duplicate
	26°05'	93'	0°	93.0	0	127.5 ✓
N edge "	27°25'	92'	0°	92.0	-1.9	125.9 ✓
" Bk "	53°55'	38'	0°	38.0	-2.8	125.0 ✓
" edge "	53°	37'	0°	37.0	-0.8	127.0 ✓
N Bk "	120°20'	80'	0°	80.0	-1.1	126.7 ✓
" edge "	120°0'	82'	0°	82.0	-3.5	124.3 ✓
" Bk "	129°0'	185'	0°	185.0	-1.6	126.2 ✓
" edge "	126°25'	189'	0°	189.0	-4.7	123.1 ✓
" Bk "	141°20'	221'	0°	221.0	-2.7	125.1 ✓
" edge "	141°30'	226'	0°	226.0	-3.2	124.6 error 123.6 ✓
E Bk ch.	141°10'	287'	0°	287.0	-0.9	126.9 ✓
" edge "	141°10'	283'	12.8	288.0	-7.7	120.1 ✓

10.15 am 6-24-43

69

Elev.	10.15 am 6-24-43
139.9 ✓	
133.8 ✓	
130.3 ✓	
136.2 ✓	
135.5 ✓	E Gas Co. NH. Ground = 3' Lower
136.0 ✓	
132.4 ✓	
131.8 ✓	
129.8 ✓	
131.7 ✓	
132.3 ✓	
132.6 ✓	
129.3	chk 93. 1040 am
127.5 ✓	
125.9 ✓	
125.0 ✓	
127.0 ✓	
126.7 ✓	
124.3 ✓	
126.2 ✓	
123.1 ✓	
125.1 ✓	
124.6	error 123.6 ✓
126.9 ✓	
120.1 ✓	

6-24-43

70

Station Azimuth Rodia Vert. \pm Horiz. Dist. Diff. Elev. Elev.

Readings from Sta 18 Elev. 127.75 HI = 5.1

W. Bk ch.	161°40'	263'	9.2	263.0	-41	123.7 ✓
" edge "	161°40'	265'	12.7	265.0	-76	120.2 ✓
" Bk "	180°25'	345'	12.1	345.0	-70	120.8 ✓
r edge "	180°10'	350'	13.5	350.0	-84	119.4 ✓
	189°20'	320'	11.1	320.0	-6.6	121.8 ✓
	202°20'	294'	10.6	294.0	-55	122.3 ✓
	205°20'	197'	9.1	197.0	-4.0	123.8 ✓
	138°40'	158'	8.5	158.0	-3.4	124.4 ✓
	161°50'	65'	6.4	65.0	-1.3	126.5 ✓
	270°	10'	7.1	10.0	-2.0	125.8 ✓
E. Bk ch.	100°50'	228'	5.8	228.0	-0.7	127.1 ✓
Toe slope	102°20'	250'	1.9	250.0	+3.2	131.0 ✓
	93°20'	318'	+3°44' 6.1	316.7	+26.5 -10	147.3 ✓
	87°20'	292'	+2°40' 8.1	291.4	+13.6 -3.0	139.4 ✓
	77°10'	304'	+3°12' 7.1	303.1	+17.0 -2.0	142.8 ✓
	64°10'	340'	+2°50' 7.1	339.2	+16.8 -2.0	142.6 ✓
	55°30'	340'	+2°25' 9.1	338.4	+14.3 -4.0	138.1 ✓
	49°30'	353'	+1°45'	352.7	+10.8	138.6 ✓
E. Bk ch.	48°05'	320'	+1°34' 9.1	320.0	+3.2	131.0 ✓
" " "	53°25'	284'	3.9	284.0	+1.2	129.0 ✓
E. edge "	53°10'	283'	4.9	283.0	+0.2	128.0 ✓
E. Bk "	70°40'	233'	4.6	233.0	+0.5	128.3 ✓
	69°35'	263'	+1°59' 9.1	263.9	+45 -4.0	128.3 ✓
E. edge ch.	41°0'	345'	3.4	345.0	+1.7	129.5 ✓

chk Az. 11 am 6-24-43

Stations Azimuth Stadia Vert. A Horiz. Dist. Diff. Elev.

Readings from #18 Elev. 127.75 HI = 5.1

Station	Azimuth	Stadia	Vert. A	Horiz. Dist.	Diff.	Elev.
	41°10'	353'	7.1	352.9	+6.3	-2.0
	44°05'	357'	7.1	356.7	+10.4	-2.0
↓ R.M. 1/11/43	17°51'	65'	+1°46'	65.0	+2.0	
	41°25'	480'	+2°45'	479.0	+23.0	
	58°20'	548'	+3°13'	546.3	+30.7	
	39°26'	395'	+1°51'	394.6	+12.8	
	48°27'	351'	+1°46'	350.7	+10.8	-1.0
	67°23'	578'	+6°12'	571.3	+61.9	
	65°53'	362'	+3°36'	360.7	+22.8	-3.0
	63°20'	326'	+2°57'	325.2	+16.9	-4.0
	59°46'	665'	+6°16'	657.3	+72.2	
	75°55'	343'	+4°48'	340.7	+28.6	-1.0
	54°52'	760'	+5°52'	752.1	+77.3	
	49°38'	730'	+4°08'	726.4	+52.5	
	74°38'	518'	+6°50'	510.6	+61.2	
	67°0'	540'	+5°45'	534.7	+53.8	
	66°36'	548'	+5°37'	542.9	+53.4	
↓ L.M.H.	43°52'	747'	+3°14'	744.7	+42.1	
	64°20'	558'	+5°30'	552.9	+53.2	
	45°13'	687'	+3°02'	685.1	+36.3	
	49°0'	585'	+3°03'	583.4	+31.1	
	62°36'	525'	+4°42'	521.5	+42.9	-1.0
	60°07'	485'	+3°44'	483.0	+31.5	-2.0
	53°0'	517'	+3°19'	515.4	+29.8	

Elev

132.1 ✓	✓	
736.2 ✓	✓	chk. Hg. 11.50 Am. 6-24-43
129.8 ✓	✓	Ground 14' lower
150.8 ✓	✓	
158.5 ✓	✓	
140.6 ✓	✓	
132.6 ✓	✓	
189.7 ✓	✓	
147.6 ✓	✓	
140.7 ✓	✓	
200.0 ✓	✓	
155.4 ✓	✓	
205.0		
180.3		
189.0 ✓	✓	
186.6 ✓	✓	
181.2 ✓	✓	E. Hd. of Draw - E. end.
169.9		
181.0 ✓	✓	
164.1		
158.9		
169.7 ✓	✓	
157.3 ✓	✓	
152.6 ✓	✓	

Station	Azimuth	Stadia	Vert. Δ	Horiz. Dist.	Diff. Elev.
Readings from $\square 18$ Elev = 127.75 HT = 5.1					
	57°08'	587'	+4°29'	583.7	+45.8
	51°38'	653'	+4°08'	649.8	+46.9
71+70					
$\square 20$	Readings from $\square 20$ Elev. 134.46 HT = 5.0				
$\square 18$	192°22'	430'	-0°48'	429.6	-6.0 -10
W Bk ch	163°34'	210'	-1°01'	209.9	-3.7
" edge "	162°44'	217'	0°	217.0	-5.3
" Bk "	158°15'	149'	0°	149.0	-2.6
" edge "	156°31'	150'	0°	150.0	-4.6
" Bk "	173°0'	56'	0°	56.0	-0.6
" edge "	171°20'	56'	0°	56.0	-4.6
" Bk "	3°28'	30'	0°	30.0	
" edge "	6°20'	30'	0°	30.0	-2.9
S NH	354°07'	111'	0°	111.0	+1.8
W Bk ch	351°58'	166'	0°	166.0	+2.9
" edge "	353°23'	169'	0°	169.0	
	337°0'	113'	0°	113.0	+1.7
	333°13'	117'	+3°40'	116.5	+7.5
E Elec Pole	331°28'	80'	+1°06'	80.0	+1.5
	239°16'	81'	0°	81.0	-0.5
	243°36'	89'	0°	89.0	+3.8
	188°53'	95'	0°	95.0	-2.3
	294°20'	223'	+24°20'	185.1	+83.7
	302°0'	145'	+18°06'	131.2	+42.8
	305°37'	249'	+22°34'	217.5	+87.3

Elev

No! Hard Copy.

123.6	✓	✓	
174.7	✓		
127.8	✓		
130.8	✓	✓	
129.7	✓	✓	
131.9	✓	✓	
129.9	✓	✓	
133.9	✓	✓	
129.9	✓	✓	
134.5	✓	✓	
131.6	✓	✓	
136.3			W edge ch. Ch = 3' Lower ✓ ✓
137.4	✓		
134.5	✓		
136.2	✓		
142.0	✓		
136.0	✓		Too Slope = 7' West Local chk az. 2:15 Pm
134.0	✓		
138.3	✓		
132.2	✓		
218.2	✓		
177.3	✓		
221.8	✓		

Station	Azimuth	Stadia	Vert. Δ	High. Dist.	Diff. Elev.
Readings from $\square 20$ Elev. = 134.46 HI = 5.0					
	310°49'	165	+17°09' 6.0	150.9	+46.5
	312°30'	270	+21°37'	233.7	+92.5
	317°32'	133	+11°31'	127.7	+26.2
	317°35'	282	+20°48'	246.9	+83.6
	327°10'	171	+13°15'	162.1	+43.2
	320°03'	240	+19°35'	213.2	+75.8
	339°40'	219	+9°06'	213.6	+34.3
	325°50'	284	+17°30' 9.0	258.3	+81.5 -4.0
OK ✓	341°40'	268	+8°40' 7.0	261.9	+40.1 -2.0
Re checked ✓	333°21'	302	+14°56' 9.0	282.2	+76.3 -4.0
OK ✓	342°18'	306	+9°10' 12.0	298.3	+48.1 -7.0
OK ✓	343°18'	321	+8°0'	314.8	+44.2
	345°40'	325	error +13°20' 14.0	307.6	+72.9 -9.0
OK ✓	347°0'	380	+6°48' 7.0	374.9	+44.7 -2.0
OK ✓	336°15'	360	+13°09'	341.8	+77.8
W edge Ch.	356°33'	378	+0°25' +2°22'	378.0	+2.8
✓ Bk " Rm.	355°35'	370	13.0	369.4	+15.3 -8.0
✓ L.M.H.	3°32'	385	+0°43'	384.9	+4.8
	354°11'	280	+0°56' 10.0	279.9	+4.6
	353°14'	283	+1°33' 7.0	282.8	+7.7 -2.0
E Bk ch.	4°37'	318	+0°35' 0.0	313.0	+3.2
" Edge "	4°02'	312	3.2	312.0	+1.8
" Bk "	9°41'	225	+0°23'	225.0	+1.5
" Edge "	8°54'	225	+0°10' 5.0	225.0	-0.0

Elev.

181.0	error	+46.5 -11.0 180.0 ✓
227.0	✓	
160.7	✓	
228.1	✓	
177.7	✓	
210.3	✓	
168.8	✓	
212.0	✓	
172.6	✓	
206.8	✓	
175.6	✓	
178.7	✓	
198.4	✓	
177.2	✓	
214.3	✓	
137.3	✓	134.5 +1.3 147.8 = 141.8 ✓
142.8	✓	
139.3	✓	
139.1	error	+4.6 -5.0 134.1 ✓
140.2	✓	
137.7	✓	
136.3	✓	
136.0	✓	
134.5	✓	

(Shots Marked by Red checked see FB 1658-14)

chk Az. 245 Pm

This VA one wrong. C.B.H.
12 - See FB 1658-14 = EIG 172.

chk Az. 305 Pm.

VGR 1' lower

Station	Azimuth	Stadia	Vert. Δ	Horiz. Dist.	Diff. Elev.
Readings from Sta 20 Elev. 134.46 HI = 5.1					
E. bk ch.	28°40'	146'	4.3	146.0	+0.8
" Edge "	26°35'	143	5.4	143.0	-0.3
" Bk "	49° 0'	56'	6.0	56.0	-0.9
" edge "	44° 0'	56'	7.7	56.0	-2.6
" " "	110°50	171'	7.7	171.6	-2.6
	109°21'	183'	7.1	182.7	+5.6
	98°26'	173'	6.6	173.0	-1.5
	87°51'	195'	12.0	194.5	+9.6 -6.9
Sta 21	39°10'	517'	12°34'	516.0	+23.13
Mean D = 516' Mean Elev = 157.64 HI = 5.2 Mean Dist Elev = 23.18					
Sta 20	219°10'	515	-2°36'	514.0	-23.34
	199°55'	273'	-4°25'	265.5	-21.0
	185°36'	249	7.9	249.0	-2.8
	197°36'	162'	10.2	161.2	11.7 -5.1
Gas M.H.	170°22'	280'	+1°01'	279.9	+5.0
	146°57'	328'	+5°34'	325.0	+3.17
Brew Hill	239°40	12'	7.0	12.0	-1.9
	135°16'	271'	+7°44'	266.2	+36.1
Brew Hill	353°30'	12	6.0	12.0	-0.9
" "	45°45'	64'	3.8	64.0	+1.3
Some cor Lat 23	118°27'	234'	+10°26'	225.5	+41.7
Side Hill	44°24'	113'	+1°37'	112.9	+3.2
	123°22'	137'	7.2	135.1	+16.2 -2.1
	43°30'	163	+1°41'	162.8	+4.8

74

135.3	✓	
134.2	✓	
133.6	✓	
131.9	✓	Δ in ch.
131.9	✓	Δ " "
140.1	✓	chk Ag 32° Run.
133.0	✓	
137.2	✓	
157.59		
157.54		
134.30		
-178.6	=	136.6 ✓
154.8	✓	
164.2	✓	
162.6	✓	Ground 3' Lower.
189.3	✓	
155.7	✓	
193.7	✓	
156.7	✓	
158.9	✓	
199.3	✓	
160.8	✓	
171.7	✓	
162.4	✓	

Station	Azimuth	Stadia	Vert. Δ	Horiz. Dist.	Diff. Elev.
Readings from $\square 21$ Elev = 157.64 HI = 5.7					
	143°13'	188'	+5°38' 9.2	186.3	+18.4 -4.0
	158°05'	161'	+1°0'	161.0	+2.8
on 2" Water	170°20'	60	6.1	60.0	-0.9
	38°12'	221	+2°56'	220.5	+11.1
	35°13'	242	+2°07'	241.7	+9.0
	30°47'	265	+2°01'	264.7	+9.3
	28°05'	292	+1°50'	291.7	+9.3
	27°16'	340	+2°38'	339.4	+15.6
	25°14'	382	+2°40'	381.2	+17.7
	25°23'	430	+2°49' 9.0	429.1	+20.9 -3.8
	24°0'	470	11.0		
	25°16'	470	+2°55' 11.0	468.9	+23.9 -5.8
			-5°41'		
chkd.	207°0'	106'	12.2	105.0	-10.4 -7.0
			-11°22'		
	242°0'	66'	9.2	63.5	-12.7 -4.0
chkd. 9-23-43	301°0'	56'	-10°27'	12.2	54.2 -10.0 -7.0
	14°44'	408'	-1°25'	407.8	-10.0
	13°37'	337'	-2°01'	336.6	-11.8
	17°54'	345'	-1°07'	344.9	-6.7
	20°20'	247'	-2°59'	246.4	-12.8
	233°25'	213'	-5°26'	211.2	-20.1
Readings from $\square 21$ Elev = 157.64 HI = 5.1					
	11°30'	81	-7°54' 11.1	79.5	-11.0 -6.0
			-5°43'		
	20°30'	80	11.1	79.2	-7.9 -6.0
Setting line as above on 2" Water	246°02'	154'	-7°21'	151.5	-19.6

Elev.		
172.0	✓	
160.4	✓	
156.7	✓	
168.2	✓	
166.6	✓	Small Drove
166.9	✓	
166.9	✓	
173.2	✓	
175.3	✓	
174.7	✓	
175.7	✓	chkd. 3:30 Pm
161.0	✓	
166.3	✓	
160.6	✓	
149.6	✓	
145.8	✓	
158.9	✓	
144.8	✓	
137.5	✓	chkd. 4:35 Pm 6-24-43
		6-25-43 - 9 am
140.6	✓	
143.7	✓	
138.0	✓	

Station Azimuth Stadia. Vert. & Horiz Dist. Diff. Elev

on P.O.T. Hub Readings from \square 21 = Elev. 157.64 HI = 5.1

75+40	256°11'	208	-5°04'	206.4	-18.3	
E Bk ch.	270°08'	253	-4°21'	251.5	-19.1	
E Elev. Pole	273°16'	238	-4°24'	236.7	-18.2	
E Bk ch.	280°44'	229	-4°31'	229.6	-18.0	
	21°08'	156	-3°21'	155.5	-9.1	-4.0
	31°35'	148	-1°00'	148.0	-2.6	-6.0
	21°16'	204	-3°27'	203.3	-12.1	
	26°53'	200	-0°49'	200.0	-2.9	-6.0
	12°28'	197	-4°33'	195.8	-15.6	
	9°24'	305	-2°19'	304.6	-12.3	
	355°44'	337	-2°06'	336.6	-12.4	
E Elev. Pole	343°07'	375	-1°42'	374.7	-11.1	-2.0
E Bk ch.	311°05'	234	-4°05'	232.9	-16.6	
78+41.10 - \square 22	341°26'	281	-2°53'	280.3	-14.1	
W Bk ch.	313°00'	279	-3°23'	278.1	-16.4	
" " "	304°20'	267	-3°29'	266.1	-16.2	
" " "	280°47'	264	-4°04'	262.7	-18.7	
Toe slope	275°10'	363	-3°03'	362.0	-19.3	
W Bk ch.	270°07'	290	-3°16'	288.8	-19.0	
Toe slope	284°16'	331	-3°01'	330.1	-17.4	
	293°42'	313	-2°56'	311.2	-16.0	
	301°40'	320	-2°14'	319.5	-12.5	
	271°31'	372	-0°47'	371.9	-5.1	
	277°14'	371	-1°00'	370.9	-6.5	

Elev.

139.9	✓		
138.5	✓	E edge	2.5' Lower.
139.4	✓		
139.6	✓	" "	" "
144.5	✓		
149.0	✓		
145.5	✓		
148.7	✓		
142.0	✓		
145.3	✓		
145.2	✓		
144.5	✓	Also = E Bank ch.	Edge ch = 3' Lower
141.0	✓		Edge ch = 2' Lower ✓
143.5	✓		ch & Az. 925 ann
141.2	✓	✓ edge =	1' Lower.
141.4	✓	✓ " "	" 2' "
138.9	✓	✓ " "	" 1' "
138.3	✓		
138.6	✓	✓ " "	" 1' "
140.2	✓		
141.6	✓		
145.1	✓		
152.5	✓		
151.1	✓	CHK Az. 10 ann	6-25-43

Station	Azimuth	Stadia	Vert. Δ	Horiz. Dist.	Diff. Elev.	Elev.
	Readings	From \square	2.1 Elev.	157.64	47-5.1	
	282°24'	347'	-2°01'	346.6	-12.2	145.4 ✓
	308°50'	361'	-1°08'	360.9	-7.1	150.5 ✓
	289°40'	339'	-1°58'	338.7	-11.6	146.0 ✓
	288°55'	363'	-1°15'	362.9	-7.9	149.7 ✓
	299°28'	388'	-0°30'	380.0	-3.4	154.2 ✓
	308°08'	370'	-0°57'	369.9	-6.1	151.5 ✓
	305°27'	420	+0°20' 13.1	420.0	-2.4 -80	147.2 ✓ = Int. \angle Mouth of Draw (West end N.West)
Side Hill	273°10'	521'	+8°27'	510.1	+75.7	233.3 ✓ ✓ 172 "
	314°0'	421'	-0°39'	421.0	-4.8	152.8 ✓
	278°24'	490'	+7°41'	481.3	+64.9	222.5 ✓
	284°46'	503	+7°59'	493.7	+69.2	226.8 ✓
	285°54'	550	+8°05' 9.1	539.3	+76.6 -4.0	230.2 ✓
	315°36'	465'	+1°27'	464.7	+11.8	169.4 ✓
	309°35'	475'	+2°30'	474.1	+20.7	178.3 ✓
	306°15'	495'	+2°25'	494.2	+20.9	178.5 ✓
	288°44'	594'	+7°06' 9.1	585.2	+72.9 -49	226.5 ✓
	304°57'	540'	+2°41'	538.8	+25.3	182.9 ✓
	305°25'	586'	+2°48' 10.1	584.7	+28.6 -5.0	181.2 ✓
	293°45'	670'	+6°09'	662.7	+71.4	229.0 ✓
	298°41'	670	+4°25' 11.1	665.6	+55.3 -60	206.9 ✓
	286°04'	410'	+2°13'	409.9	+15.9	173.5 ✓
	280°57'	417'	+2°45'	416.1	+20.0	172.1 ✓
	304°0'	660	+2°50' 20.7	658.4	+32.6 -15.6	174.6 ✓ \angle Draw N.W.
	270°	430'	+3°16'	428.2	+24.5	182.0 ✓

chk Ag 10:35 am.

Station Azimuth Stadia Vert. Δ Horiz Dist Diff. Elev Elev.

Readings From \square 21 Elev. 157.64 HI = 5.1

265°42'	430'	+3°47'	428.2	+28.3
300°10'	540'	+2°16' 15.0	539.2	+21.3 -9.9
256°57'	442'	+3°48'	440.2	+29.2
254°38'	443'	+2°59'	441.9	+28.0
294°25'	460'	+4°10'	457.6	+33.3
293°40'	540'	+5°14' 18.0	535.6	+49.0 -12.9
87°45'	106'			
110°20'	-185'	+9°46'	179.8	+30.9
84°48'	190'	+10°29'	183.9	+34.0
59°53'	222'	+7°42'	218.1	+29.5
38°05'	417'	+5°59'	412.7	+43.2
49°17'	258'	+6°24'	254.8	+28.6
38°30'	327'	+5°08'	324.5	+29.3
44°35'	352'	+7°15'	346.6	+44.1
31°09'	388'	+3°56'	385.3	+26.6
62°28'	290'	+10°18'	281.0	+51.0

Readings From \square 22 = Elev. 143.45 HI =

on Rim MH	250°41'	56'	0° 4.34	56.0	+0.8
E bk ch.	243°0'	28'	0° 5.4	28.0	-0.3
E " "	351°53'	181'	+0°49'	186.0	+2.6
" " "	348°54'	251'	+1°06'	250.9	+4.8
" " "	341°14'	308'	+0°39'	308.0	+3.5
W " "	289°40'	85'	0° 4.5	85.0	+0.6
" " "	321°55'	123'	0° 4.9	123.0	+0.2

185.9	✓
169.0	✓
186.8	✓
180.6	✓
190.9	✓
193.7	✓
188.5	✓
191.6	✓
187.1	✓
200.8	✓
186.2	✓
186.9	✓
201.7	✓
184.2	✓
208.6	✓

chk Az. Ham 6-25-48

chk Az. 1145 Rem 6-25-48

144.3	✓	Ground = 3' lower
143.2	✓	edge ch = Same Elev
146.1	✓	" " = 1' lower
148.3	✓	" " = 3' "
147.0	✓	" " = 1' "
144.1	✓	" " = 2' "
143.9	✓	" " = 1.5' "

Station	Azimuth	Stadia	Vert. Δ	Horiz Dist	Diff. Elev	Elev	
E Mon.	Readings From	22	Elev = 14345	HI = 50			
E Estrella Pk	355°24'	322'	+2°16'	11.0	321.5	+12.7 -60	150.2 ✓
W Bk. ch.	328°15'	192'	+0°37'	192.0	+2.1		145.6 ✓
" "	327°23'	248'	+0°41'	248.0	+3.0		146.5 ✓
	357°45'	278'	+1°41'	277.8	+8.2		151.0 ✓
W Bk "	329°28'	281'	+2°20'	11.0	280.5	+11.4 -60	148.9 ✓
E Wash N.W.	336°33'	331'	+0°36'	331.0	+3.5		147.0 ✓
" "	332°35'	410'	+1°27'	12.0	409.8	+10.4 -70	146.9 ✓
E Bk ch.	342°55'	356'	+1°40'	11.0	354.7	+10.3 -60	147.8 ✓
Toe slope	330°10'	314'	+2°09'	13.0	313.6	+11.2 -8.0	147.2 ✓
" "	323°31'	243'	+0°57'	242.9	+4.0		147.5 ✓
	312°18'	223'	+2°05'	222.7	+8.1		151.6 ✓
Toe Slope	313°54'	207'	+0°26'	202.0	+16		145.1 ✓
" "	284°17'	192'	+1°22'	7.0	191.9	+46 -2.0	146.1 ✓
	284°35'	201'	+2°02'	200.8	+7.1		150.6 ✓
	283°12'	216'	+2°55'	215.5	+11.0		154.5 ✓
	285°25'	363'	+11°15'	349.4	+69.5		213.0
	287°56'	343'	+12°07'	328.2	+70.4		213.9 ✓
	273°0'	230'	+2°51'	229.4	+11.4		164.9 ✓
	272°07'	184'	+1°45'	183.8	+5.6		149.1 ✓
	273°35'	171'	+0°17'	170.9	+3.8		147.3 ✓
	300°07'	358'	+12°38'	341.2	+76.4		219.9 ✓
	308°58'	371'	+11°52'	355.5	+74.7		218.2 ✓
	288°41'	263'	+7°50'	258.2	+35.5		179.0

Elev. this station from F.B. 1657-3

Edge ch = 3' Lower

Edge ch 1' Lower

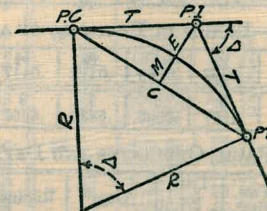
chk Az 150

chk. Az 205 Pm G-25-43

Topog. Cont. in FB 1657 Page 10

DIETZGEN'S RAILROAD CURVE AND REDUCTION TABLES

Copyright, 1914, by Eugene Dietzgen Co., New York City



30+15.71
28+15.53
20018

CURVE FORMULAS

- Radius $= R = \frac{50}{\sin \frac{D}{2}} (1)$ Degree of Curve $= D$ and $\sin \frac{D}{2} = \frac{50}{R} (2)$
- Tangent $= T = R \tan \frac{\Delta}{2} (3)$ Length of Curve $= L = 100 \frac{\Delta}{D} (4)$
- Middle ordinate $= M = R (1 - \cos \frac{\Delta}{2}) (5) = R \text{vers} \frac{\Delta}{2} (6)$
- External $= E = T \tan \frac{\Delta}{4} (7) = R \div \cos \frac{\Delta}{2} - R (8) = R \text{exsec} \frac{\Delta}{2} (9)$
- Long Chord $= C = 2 R \sin \frac{\Delta}{2} (10)$ $\Delta =$ Central Angle

EXPLANATION AND USE OF TABLES

Stations.—Given P. I. = Sta. 161 + 60.35 to find Sta. of P. C. and P. T. $\Delta = 62^\circ 10'$ $D = 8^\circ 20'$. From Table IV for 1° curve $T = 3454.1$ and $\div 8\frac{1}{2} = 414.49$ ft. From Table V correction = .36 or $T = 414.85$ ft. P. C. = Sta. P. I. $- T = 157 + 45.50$. Also from (4) $L = 746.00$ and P. T. = Sta. P. C. $+ L = 164 + 91.50$.

Offsets.—Tangent offsets vary (approximately) directly with D and with square of the distance. Thus tangent offset for Sta. 158 on above curve is 2.16 ft. found as follows. From Table III tangent offset for 100 ft. = 7.27 ft. Distance = 158 - Sta. P. C. = 54.50, hence offset = 7.27 $(54.50 \div 100)^2 = 2.16$ ft. Also square of any distance divided by twice the radius equals (approximately) the distance from tangent to curve. Thus $(54.50)^2 \div (2 \times 688.26) = 2.16$ ft.

Deflections.—Deflection angle = $\frac{1}{2} D$ for 100 ft., $\frac{1}{4} D$ for 50 ft., etc. For c ft. = (in minutes) $.3 \times C \times D^\circ$ or = defl. for 1 ft. from Table III $\times C$. For Sta. 158 of above curve = $.3 \times 54.5 \times 8\frac{1}{2} = 136.2'$ or $2^\circ 16.2'$, or = $2.50 \times 54.5 = 136.2'$ from Table III. For Sta. 159 deflection angle = $2^\circ 16.2' + 8^\circ 20' \div 2 = 6^\circ 26.2'$, etc.

Externals.—May be found in similar manner to tangents. Thus E for curve above is 115.37. For from Table IV for 1° curve $E = 960.6$ for $8^\circ 20' = 960.6 \div 8\frac{1}{2} = 115.27$ and from Table V correction = .10 or $E = 115.37$ ft. Or suppose $\Delta = 32^\circ$ and E is measured and found to be 42 ft. What is D ? From Table IV $E = 230.9$ and $\div 42 = 5.5$ or $D = 5^\circ 30'$.

TABLE VI.—CORRECTIONS FOR SUB-CHORDS AND LONG CHORDS.

FOR SUB-CHORDS ADD										Excess of arc per 100 ft.	LONG CHORDS				
D	10	20	30	40	50	60	70	80	90		D	200	300	400	500
4°	.00	.00	.01	.01	.01	.01	.01	.01	.00	.02	1	199.99	299.97	399.92	499.85
6	.00	.01	.01	.02	.02	.02	.02	.01	.01	.05	2	199.97	299.88	399.70	499.39
8	.01	.02	.02	.03	.03	.03	.03	.02	.01	.08	3	199.93	299.73	399.32	498.63
10	.01	.02	.03	.04	.05	.05	.05	.04	.02	.13	4	199.88	299.51	398.78	497.57
12	.02	.04	.05	.06	.07	.07	.07	.05	.03	.18	5	199.81	299.24	398.10	496.20
14	.02	.05	.07	.08	.09	.10	.10	.09	.07	.25	6	199.73	298.90	397.26	494.53
16	.03	.06	.09	.11	.12	.12	.12	.09	.05	.33	7	199.63	298.51	396.28	492.57
18	.04	.08	.11	.14	.15	.16	.15	.12	.07	.41	8	199.51	298.05	395.14	490.31
20	.05	.10	.14	.17	.19	.20	.18	.15	.09	.51	9	199.38	297.54	393.86	487.75
22	.06	.12	.17	.21	.23	.24	.22	.18	.10	.62	10	199.24	296.96	392.42	484.90
24	.07	.14	.20	.25	.28	.28	.26	.21	.12	.74	12	198.90	295.63	389.02	478.34
26	.09	.17	.24	.29	.32	.33	.31	.25	.15	.86	14	198.51	294.06	385.22	470.65
28	.10	.19	.27	.34	.37	.38	.36	.29	.17	1.00	16	198.05	292.25	380.76	461.86
30	.11	.22	.31	.39	.43	.44	.41	.33	.19	1.15	18	197.64	290.21	375.74	452.02
32	.13	.25	.36	.44	.49	.50	.47	.38	.22	1.31	20	196.90	287.94	370.17	441.15
34	.15	.28	.40	.50	.55	.57	.53	.43	.25	1.48	22	196.32	285.44	364.06	429.30
36	.17	.32	.45	.56	.62	.64	.60	.48	.28	1.66	24	195.63	282.71	357.43	416.53
38	.18	.36	.51	.62	.70	.71	.66	.53	.31	1.86	26	194.87	279.76	350.30	402.89
40	.21	.40	.56	.69	.77	.79	.73	.59	.35	2.06	28	194.06	276.59	342.69	388.42
42	.23	.44	.62	.76	.85	.87	.81	.65	.38	2.28	30	193.18	273.20	334.61	373.20
44	.25	.48	.68	.84	.94	.96	.89	.72	.42	2.50	32	192.25	269.61	326.08	357.23
46	.27	.52	.75	.92	1.02	1.05	.98	.78	.46	2.74	34	191.26	265.81	317.12	340.73
48	.30	.57	.81	1.00	1.12	1.14	1.06	.86	.50	2.99	36	190.21	261.89	307.77	323.61
50	.32	.62	.89	1.09	1.21	1.24	1.15	.93	.55	3.24	38	189.10	257.60	298.03	305.99
52	.35	.67	.96	1.18	1.31	1.35	1.25	1.01	.59	3.52	40	187.94	253.21	287.94	287.94
54	.38	.73	1.04	1.28	1.42	1.46	1.35	1.09	.64	3.80	42	186.72	248.63	277.51	269.54
56	.41	.78	1.12	1.38	1.53	1.57	1.46	1.17	.69	4.09	44	185.44	243.87	266.78	250.85
58	.44	.84	1.20	1.48	1.65	1.69	1.57	1.20	.74	4.40	46	184.10	239.93	255.78	231.95
60	.47	.91	1.29	1.59	1.76	1.81	1.68	1.35	.80	4.72	48	182.71	233.83	244.51	212.92

NOTE.—When a chord of less than 100 ft. is used the corrections given in the above table should be added to the nominal length of chord to get the length which should be used in order that the 100 ft. points will check with those obtained by using the standard 100 ft. chord. Thus in locating a 14° curve by 25 ft. chords measure 25'.06 for each chord. Long chords are useful in passing obstacles.

TABLE VII.—MIDDLE ORDINATES FOR RAILS IN FEET.

Deg. of Curve	LENGTH OF RAILS							Deg. of Curve	LENGTH OF RAILS						
	32	30	28	26	24	22	20		32	30	28	26	24	22	20
1°	.022	.020	.016	.013	.011	.009	.008	16°	.366	.313	.273	.236	.200	.170	.139
2	.045	.038	.034	.029	.025	.021	.017	17	.378	.333	.290	.252	.213	.180	.148
3	.067	.058	.051	.044	.037	.031	.026	18	.400	.351	.306	.265	.225	.190	.156
4	.089	.079	.069	.060	.050	.042	.035	19	.423	.371	.324	.280	.238	.201	.165
5	.112	.099	.086	.074	.063	.053	.044	20	.445	.392	.341	.296	.250	.212	.174
6	.134	.117	.102	.088	.076	.064	.052	21	.466	.410	.357	.309	.262	.222	.182
7	.156	.137	.120	.104	.088	.074	.061	22	.487	.430	.375	.325	.275	.233	.191
8	.179	.158	.137	.119	.100	.085	.070	23	.509	.450	.390	.338	.287	.243	.199
9	.201	.175	.153	.133	.112	.095	.078	24	.531	.469	.408	.354	.299	.253	.208
10	.223	.196	.171	.148	.125	.106	.087	25	.552	.488	.424	.367	.311	.263	.216
11	.245	.216	.188	.163	.139	.117	.096	26	.573	.506	.441	.382	.323	.274	.225
12	.268	.236	.206	.179	.151	.128	.105	27	.594	.524	.457	.396	.335	.284	.233
13	.290	.254	.222	.192	.163	.138	.113	28	.618	.545	.475	.411	.348	.294	.242
14	.312	.275	.239	.207	.175	.148	.122	29	.638	.564	.491	.424	.359	.303	.250
15	.334	.295	.257	.223	.188	.159	.131	30	.660	.583	.508	.438	.374	.313	.259

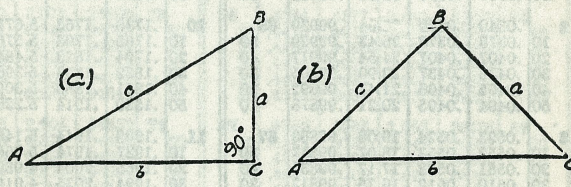
SLOPE REDUCTIONS.

When distances are measured on a slope they may be reduced to the equivalent horizontal distance by the following approximate rule:— subtract from the slope distance the square of the rise divided by twice the slope distance. Thus for a slope distance of 250.3 ft. and a rise of 15 ft. correction=15²÷2×250.3=.45 (by slide rule) or horizontal distance=250.3—.45=249.85. When vertical angle=V. A. is measured horizontal distance=slope distance—slope distance (1—Cos. V. A.). Thus for slope distance of 248.7 ft. and V. A. of 4° 20' from Table VIII Cos=.99714 and correction=1—.99714=.00286 per foot or total of .286×2½ (near enough)=.57 and horizontal distance=248.7—.57=248.13 ft.

TRIGONOMETRICAL FORMULAS.

See fig. (a).

sin. $A = \frac{a}{c}$
 cos. $A = \frac{b}{c}$
 tan. $A = \frac{a}{b}$
 cot. $A = \frac{b}{a}$
 sec. $A = \frac{c}{b}$
 cosec. $A = \frac{c}{a}$



FORMULA FOR SOLVING TRIANGLES.

Given	Sought.	Right triangles. See fig. (a).
a, c	A, B	$\sin. A = \frac{a}{c}, \cos. B = \frac{a}{c}, b = \sqrt{(c+a)(c-a)}$
a, b	A, B, c	$\tan. A = \frac{a}{b}, \cot. B = \frac{a}{b}, c = \sqrt{a^2+b^2}$
A, a	B, b, c	$B = 90^\circ - A, b = a \cot. A, c = \frac{a}{\sin. A}$
A, b	B, a, c	$B = 90^\circ - A, a = b \tan. A, c = \frac{b}{\cos. A}$
A, c	B, a, b	$B = 90^\circ - A, a = c \sin. A, b = c \cos. A$
Given	Sought.	Oblique triangles. See fig. (b).
A, B, a	b	$b = \frac{a \sin. B}{\sin. A}$
A, a, b	B	$\sin. B = \frac{b \sin. A}{a}$
a, b, C	A - B	$\tan. \frac{1}{2}(A-B) = \frac{(a-b) \tan. \frac{1}{2}(A+B)}{a+b}$
c, b, c	A	$\left\{ \begin{aligned} \text{If } s = \frac{1}{2}(a+b+c), \sin. \frac{1}{2}A &= \sqrt{\frac{(s-b)(s-c)}{bc}} \\ \cos. \frac{1}{2}A &= \sqrt{\frac{s(s-a)}{bc}}, \tan. \frac{1}{2}A = \sqrt{\frac{(s-b)(s-c)}{s(s-a)}} \\ \sin. A &= \frac{2\sqrt{s(s-a)(s-b)(s-c)}}{bc} \end{aligned} \right.$
A, B, C, a	area	$\text{area} = \frac{a^2 \sin. B \sin. C}{2 \sin. A}$
A, b, c	area	$\text{area} = \frac{1}{2}bc \sin. A$
a, b, c	area	$s = \frac{1}{2}(a+b+c), \text{area} = \sqrt{s(s-a)(s-b)(s-c)}$

27040
120

298
590

2139.28
5289
2184.17

521985
515
537500

43

N +
133 2030

37+3314
297.72
4030.86

29+50

26' R = 4' below
44' R 11' below
85' 11.9 below

120.20
5.1
125.3
5.25
120.05

177
25.5

293
586 17'

130
1.18
5.82
21.1
100.9

290
590

535' 11°13' 76°33'
545' 98°02' +6°40'
478' 103° 75°55'
470' 108°23' 75°39'
423' 113°09' 75°04'
479' 120°19' +5°21'

140
360

26161.27
377.90
9039.17
3013.71
254.6

1300
1063
237
474

73
55
18
360

178
356

DISTANCES FROM CENTER OF ROADWAY FOR CROSS-SECTIONING.

Roadway 16 feet wide. Side Slopes 1 on 1½
For Single Track Embankment.

H	0	.1	.2	.3	.4	.5	.6	.7	.8	.9	H
0	8.0	8.2	8.3	8.5	8.6	8.8	8.9	9.1	9.2	9.4	0
1	9.5	9.7	9.8	10.0	10.1	10.3	10.4	10.6	10.7	10.9	1
2	11.0	11.2	11.3	11.5	11.6	11.8	11.9	12.1	12.2	12.4	2
3	12.5	12.7	12.8	13.0	13.1	13.3	13.4	13.6	13.7	13.9	3
4	14.0	14.2	14.3	14.5	14.6	14.8	14.9	15.1	15.2	15.4	4
5	15.5	15.7	15.8	16.0	16.1	16.3	16.4	16.6	16.7	16.9	5
6	17.0	17.2	17.3	17.5	17.6	17.8	17.9	18.1	18.2	18.4	6
7	18.5	18.7	18.8	19.0	19.1	19.3	19.4	19.6	19.7	19.9	7
8	20.0	20.2	20.3	20.5	20.6	20.8	20.9	21.1	21.2	21.4	8
9	21.5	21.7	21.8	22.0	22.1	22.3	22.4	22.6	22.7	22.9	9
10	23.0	23.2	23.3	23.5	23.6	23.8	23.9	24.1	24.2	24.4	10
11	24.5	24.7	24.8	25.0	25.1	25.3	25.4	25.6	25.7	25.9	11
12	26.0	26.2	26.3	26.5	26.6	26.8	26.9	27.1	27.2	27.4	12
13	27.5	27.7	27.8	28.0	28.1	28.3	28.4	28.6	28.7	28.9	13
14	29.0	29.2	29.3	29.5	29.6	29.8	29.9	30.1	30.2	30.4	14
15	30.5	30.7	30.8	31.0	31.1	31.3	31.4	31.6	31.7	31.9	15
16	32.0	32.2	32.3	32.5	32.6	32.8	32.9	33.1	33.2	33.4	16
17	33.5	33.7	33.8	34.0	34.1	34.3	34.4	34.6	34.7	34.9	17
18	35.0	35.2	35.3	35.5	35.6	35.8	35.9	36.1	36.2	36.4	18
19	36.5	36.7	36.8	37.0	37.1	37.3	37.4	37.6	37.7	37.9	19
20	38.0	38.2	38.3	38.5	38.6	38.8	38.9	39.1	39.2	39.4	20
21	39.5	39.7	39.8	40.0	40.1	40.3	40.4	40.6	40.7	40.9	21
22	41.0	41.2	41.3	41.5	41.6	41.8	41.9	42.1	42.2	42.4	22
23	42.5	42.7	42.8	43.0	43.1	43.3	43.4	43.6	43.7	43.9	23
24	44.0	44.2	44.3	44.5	44.6	44.8	44.9	45.1	45.2	45.4	24
25	45.5	45.7	45.8	46.0	46.1	46.3	46.4	46.6	46.7	46.9	25
26	47.0	47.2	47.3	47.5	47.6	47.8	47.9	48.1	48.2	48.4	26
27	48.5	48.7	48.8	49.0	49.1	49.3	49.4	49.6	49.7	49.9	27
28	50.0	50.2	50.3	50.5	50.6	50.8	50.9	51.1	51.2	51.4	28
29	51.5	51.7	51.8	52.0	52.1	52.3	52.4	52.6	52.7	52.9	29
30	53.0	53.2	53.3	53.5	53.6	53.8	53.9	54.1	54.2	54.4	30
31	54.5	54.7	54.8	55.0	55.1	55.3	55.4	55.6	55.7	55.9	31
32	56.0	56.2	56.3	56.5	56.6	56.8	56.9	57.1	57.2	57.4	32
33	57.5	57.7	57.8	58.0	58.1	58.3	58.4	58.6	58.7	58.9	33
34	59.0	59.2	59.3	59.5	59.6	59.8	59.9	60.1	60.2	60.4	34
35	60.5	60.7	60.8	61.0	61.1	61.3	61.4	61.6	61.7	61.9	35
36	62.0	62.2	62.3	62.5	62.6	62.8	62.9	63.1	63.2	63.4	36
37	63.5	63.7	63.8	64.0	64.1	64.3	64.4	64.6	64.7	64.9	37
38	65.0	65.2	65.3	65.5	65.6	65.8	65.9	66.1	66.2	66.4	38
39	66.5	66.7	66.8	67.0	67.1	67.3	67.4	67.6	67.7	67.9	39
40	68.0	68.2	68.3	68.5	68.6	68.8	68.9	69.1	69.2	69.4	40

Example—If point is 22.6 ft. above grade, how far should it be from center line to be a slope stake point? Ans. from Table 41.9. For same slopes but other widths of roadbed correct above figures by one-half difference in width of roadbed; thus in example above for 20 ft. roadbed distance will be 41.9+(20-16)+2 or 2 ft. added to 41.9=43.9. For slopes of 1 on 1 see inside of front cover.