

1665



ENGINEERS'
FIELD BOOK

No. 403F

EUGENE DIETZGEN CO.

DRAWING MATERIALS, MATHEMATICAL and
SURVEYING INSTRUMENTS

Chicago New York San Francisco New Orleans Pittsburg Toronto

Distances from Center of Roadway for Cross-Sectioning
Roadway 16 feet wide. Side Slopes 1 on 1.
For Single Track Embankment.

H	0	.1	.2	.3	.4	.5	.6	.7	.8	.9	H
0	8.0	8.1	8.2	8.3	8.4	8.5	8.6	8.7	8.8	8.9	0
1	9.0	9.1	9.2	9.3	9.4	9.5	9.6	9.7	9.8	9.9	1
2	10.0	10.1	10.2	10.3	10.4	10.5	10.6	10.7	10.8	10.9	2
3	11.0	11.1	11.2	11.3	11.4	11.5	11.6	11.7	11.8	11.9	3
4	12.0	12.1	12.2	12.3	12.4	12.5	12.6	12.7	12.8	12.9	4
5	13.0	13.1	13.2	13.3	13.4	13.5	13.6	13.7	13.8	13.9	5
6	14.0	14.1	14.2	14.3	14.4	14.5	14.6	14.7	14.8	14.9	6
7	15.0	15.1	15.2	15.3	15.4	15.5	15.6	15.7	15.8	15.9	7
8	16.0	16.1	16.2	16.3	16.4	16.5	16.6	16.7	16.8	16.9	8
9	17.0	17.1	17.2	17.3	17.4	17.5	17.6	17.7	17.8	17.9	9
10	18.0	18.1	18.2	18.3	18.4	18.5	18.6	18.7	18.8	18.9	10
11	19.0	19.1	19.2	19.3	19.4	19.5	19.6	19.7	19.8	19.9	11
12	20.0	20.1	20.2	20.3	20.4	20.5	20.6	20.7	20.8	20.9	12
13	21.0	21.1	21.2	21.3	21.4	21.5	21.6	21.7	21.8	21.9	13
14	22.0	22.1	22.2	22.3	22.4	22.5	22.6	22.7	22.8	22.9	14
15	23.0	23.1	23.2	23.3	23.4	23.5	23.6	23.7	23.8	23.9	15
16	24.0	24.1	24.2	24.3	24.4	24.5	24.6	24.7	24.8	24.9	16
17	25.0	25.1	25.2	25.3	25.4	25.5	25.6	25.7	25.8	25.9	17
18	26.0	26.1	26.2	26.3	26.4	26.5	26.6	26.7	26.8	26.9	18
19	27.0	27.1	27.2	27.3	27.4	27.5	27.6	27.7	27.8	27.9	19
20	28.0	28.1	28.2	28.3	28.4	28.5	28.6	28.7	28.8	28.9	20
21	29.0	29.1	29.2	29.3	29.4	29.5	29.6	29.7	29.8	29.9	21
22	30.0	30.1	30.2	30.3	30.4	30.5	30.6	30.7	30.8	30.9	22
23	31.0	31.1	31.2	31.3	31.4	31.5	31.6	31.7	31.8	31.9	23
24	32.0	32.1	32.2	32.3	32.4	32.5	32.6	32.7	32.8	32.9	24
25	33.0	33.1	33.2	33.3	33.4	33.5	33.6	33.7	33.8	33.9	25
26	34.0	34.1	34.2	34.3	34.4	34.5	34.6	34.7	34.8	34.9	26
27	35.0	35.1	35.2	35.3	35.4	35.5	35.6	35.7	35.8	35.9	27
28	36.0	36.1	36.2	36.3	36.4	36.5	36.6	36.7	36.8	36.9	28
29	37.0	37.1	37.2	37.3	37.4	37.5	37.6	37.7	37.8	37.9	29
30	38.0	38.1	38.2	38.3	38.4	38.5	38.6	38.7	38.8	38.9	30
31	39.0	39.1	39.2	39.3	39.4	39.5	39.6	39.7	39.8	39.9	31
32	40.0	40.1	40.2	40.3	40.4	40.5	40.6	40.7	40.8	40.9	32
33	41.0	41.1	41.2	41.3	41.4	41.5	41.6	41.7	41.8	41.9	33
34	42.0	42.1	42.2	42.3	42.4	42.5	42.6	42.7	42.8	42.9	34
35	43.0	43.1	43.2	43.3	43.4	43.5	43.6	43.7	43.8	43.9	35
36	44.0	44.1	44.2	44.3	44.4	44.5	44.6	44.7	44.8	44.9	36
37	45.0	45.1	45.2	45.3	45.4	45.5	45.6	45.7	45.8	45.9	37
38	46.0	46.1	46.2	46.3	46.4	46.5	46.6	46.7	46.8	46.9	38
39	47.0	47.1	47.2	47.3	47.4	47.5	47.6	47.7	47.8	47.9	39
40	48.0	48.1	48.2	48.3	48.4	48.5	48.6	48.7	48.8	48.9	40

Example—If point is 22.6 ft. above grade, how far should it be from center line to be a slope stake point? Ans. from Table 30.6. For same slopes but other widths of roadbed, correct above figures by one-half difference in width of roadbed; thus in example above, for 20 ft. roadbed distance will be $30.6 + (20 - 16) \div 2$ or 2 ft. added to $30.6 = 32.6$. For slopes of 1 on 1½ see inside of back cover.

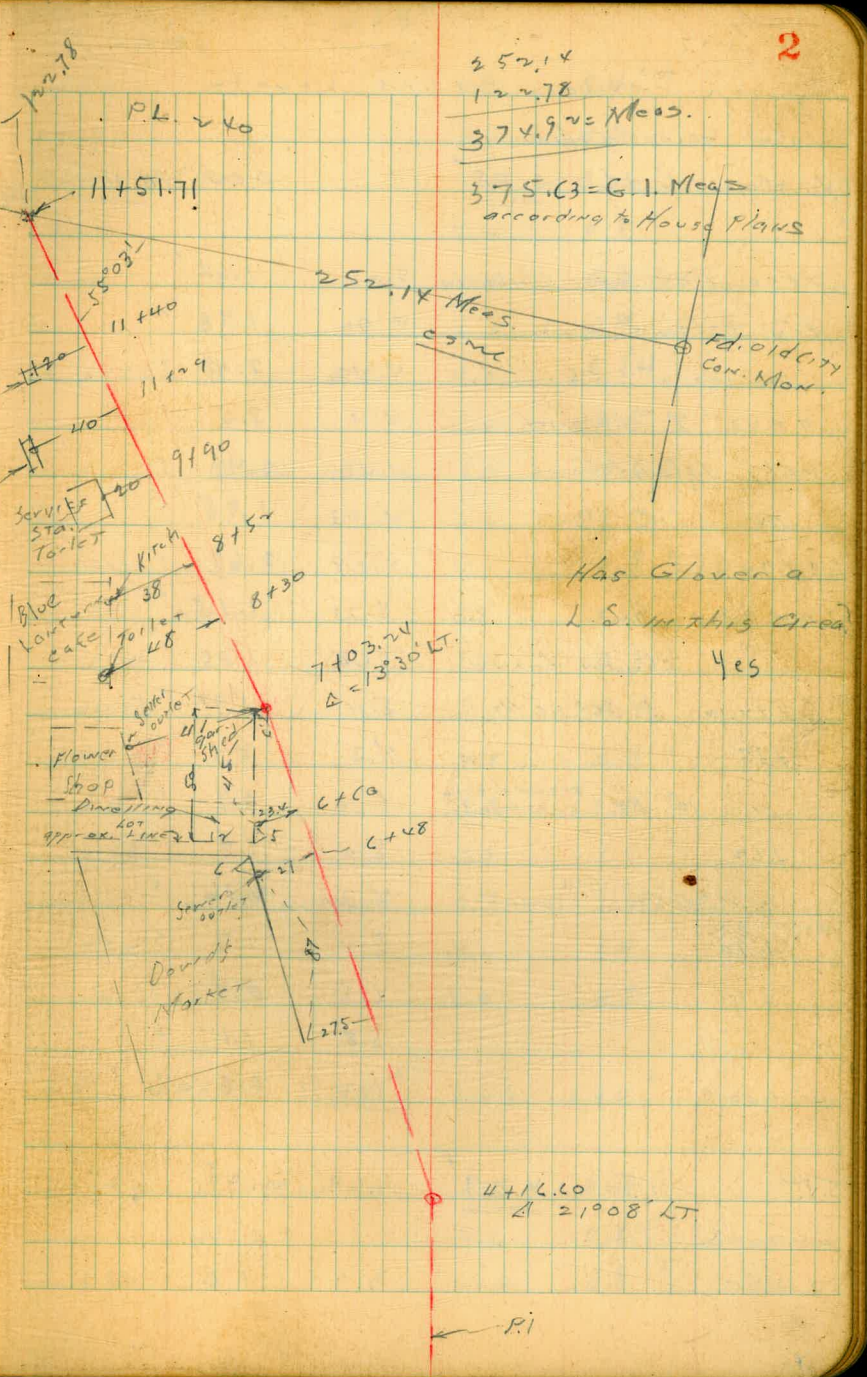
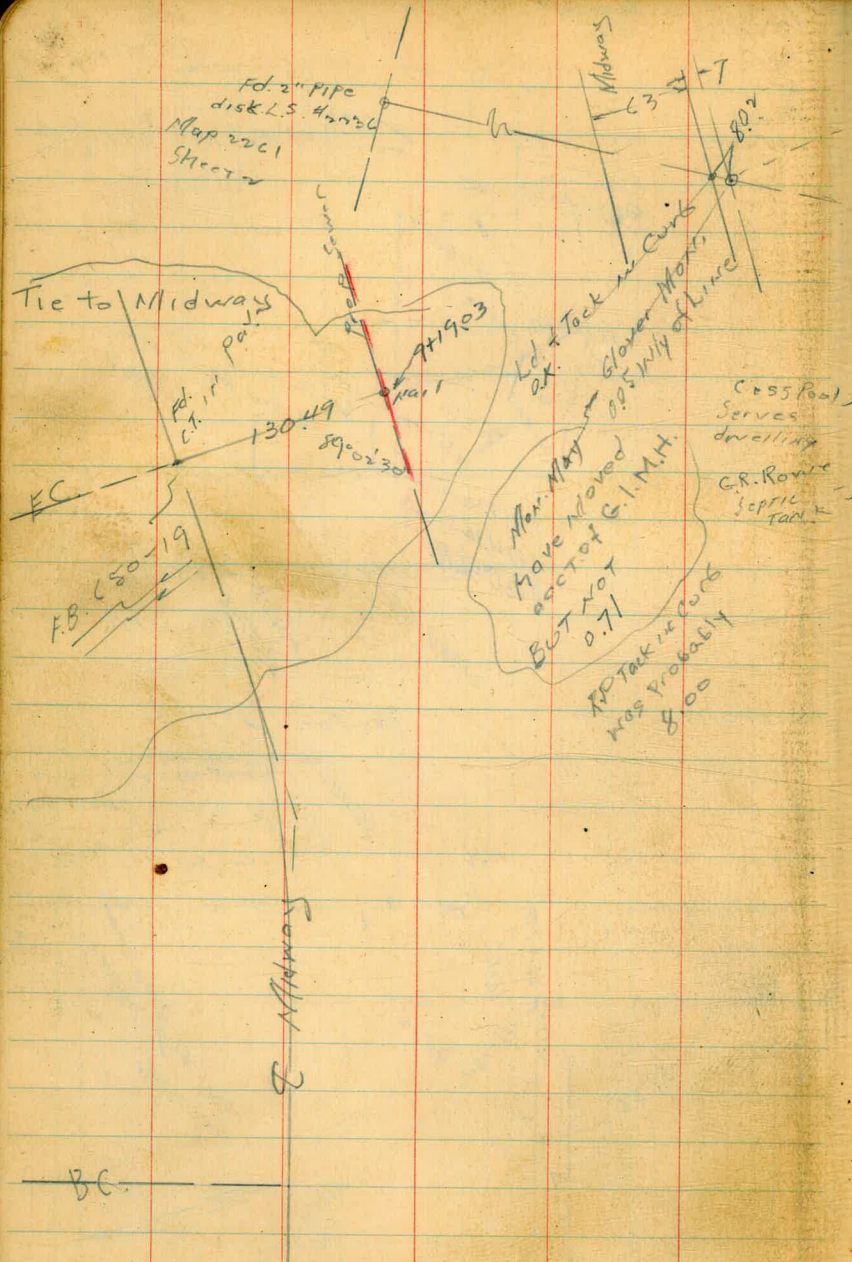
Copyright, 1914, by Eugene Dietzgen Co.

1665

CITY ENGINEER'S OFFICE

This Field Book is manufactured of a High Grade 50% Rag Paper having a WATER RESISTING SURFACE, and is sewed with Bing Special Enamel Waterproof thread.

Made in U. S. A.



Sketch P₁

Sewer Prelim. Levels.

Swly Car Gaines + Midway

B.M. Mon. 4.26 6.88

0.67 F.B. 1652-7-19

0+00 Pav. over chimney	5.22	1.64	✓
Ely Island gut.	4.90	1.98	✓
" " cb.	4.40	2.48	✓
0+43 I Island	4.4	2.5	✓
Wily Island Curb	4.40	2.48	✓
" " gut	4.93	1.95	✓
0+74 C	4.19	2.69	✓
0+98.4 gut	5.73	1.15	✓
" " cb. in drive	5.68	1.20	✓
1+14.10 Δ 30° 56' RT	5.11	1.77	STUG
+35	4.8	2.1	✓
" 12 RT ground over cesspool	6.0	0.9	✓
+62	5.0	1.9	✓
" 50 LT 0.15 STG Floor	4.72	2.16	✓
+80	5.4	1.7	✓
+90	6.5	0.4	✓
"	5.8	1.1	✓
+30	6.3	0.6	✓
T.P. 470 4.89	6.69	0.19	✓
+250	3.9	1.0	

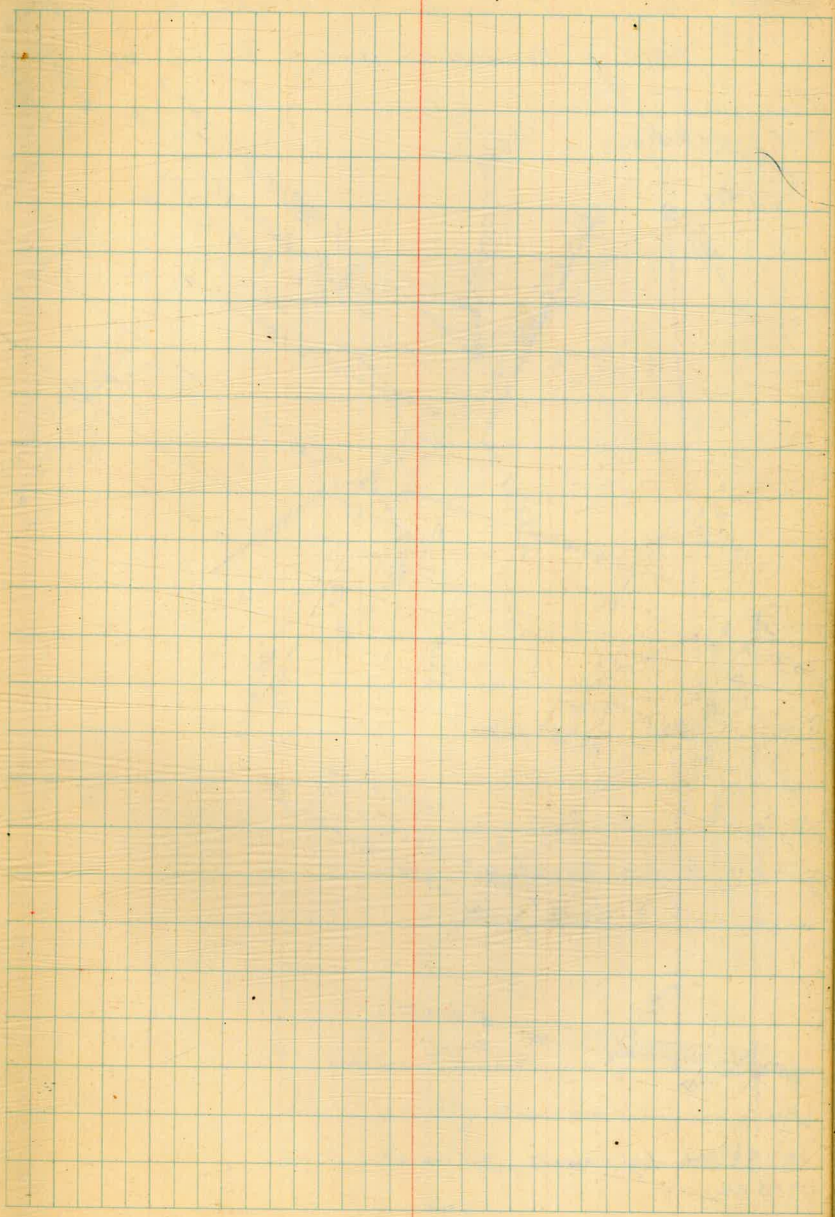
H.89

3

2+100	4.5	0.4	
2+91	4.7	0.2	
" 95 RT	4.95	-0.06	Top 4" Cl. Sewer
3+35	4.2	0.7	
+50	4.6	0.3	
4	4.5	0.4	
4 116.60 Δ 21° 08' LT	4.35	0.54	STUG
+50	5.4	-0.5	
+75 Lake Midway	5.5	-0.6	
5	3.6	1.3	
+30	4.1	0.8	
+60	3.7	1.2	
+70	5.2	-0.3	
6	5.3	-0.4	
+20	4.9	0.0	
+35	3.8	1.1	
+48	3.9	1.0	
" 27 LT ground	3.7	1.2	4" Sewer 24" deep
+60	4.0	0.9	
" 23.4 "	4.2	0.7	
T.P. 404 5.44	3.49	1.40	
7+03.2x Δ 13° 30' LT	4.7	0.7	
" 41 LT	4.6	0.8	ground
+50	4.6	0.8	

5.00

8		4.8	0.6	✓	
+30		4.6	0.8	✓	
"	48 LT	4.5	0.9	✓ ground	
+52		4.6	0.8	✓	
"	38 LT	4.8	0.6	✓ "	
+60		5.0	0.4	✓	
9		5.4	0.0	✓	
+20		5.2	0.2	✓	
+30		4.9	0.5	✓	
+35		4.2	1.2	✓	
+50		3.9	1.5	✓	
+90		4.1	1.3	✓	
"	20' LT	4.1	1.3	✓ ground	
10 +25		4.4	1.0	✓	
+50		5.1	0.3	✓	
"		5.1	0.3	✓	
+29		5.1	0.3	✓	
"	40 LT	5.2	0.2	✓ "	
+40		4.5	0.9	✓	
"	20 LT	4.9	0.5	✓ "	
+45		4.5	0.9	✓	
" +51.71		3.3	2.1	✓	
T.P	4.67	5.27	4.89	0.55	✓
check to orig. BM		4.59	0.63	0.62	✓

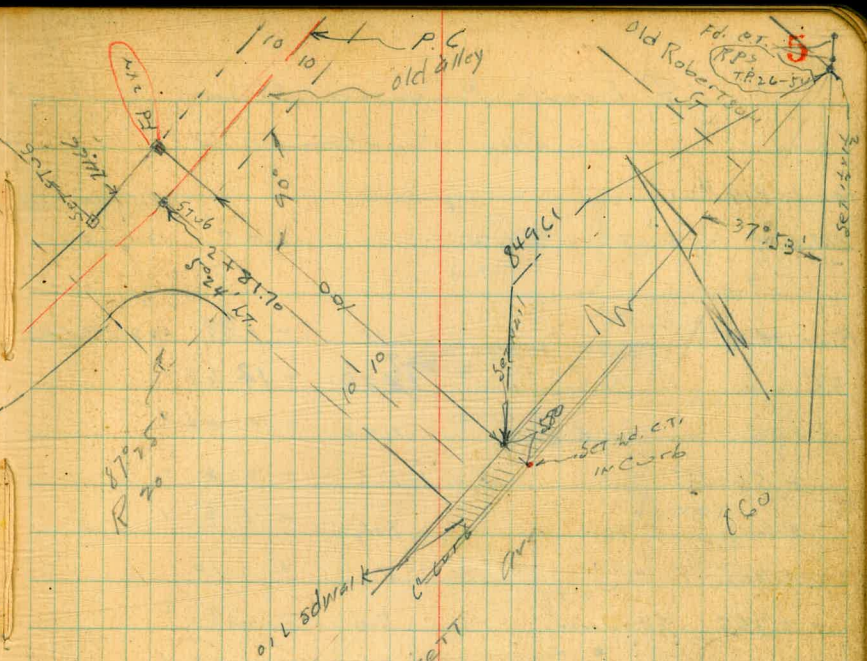
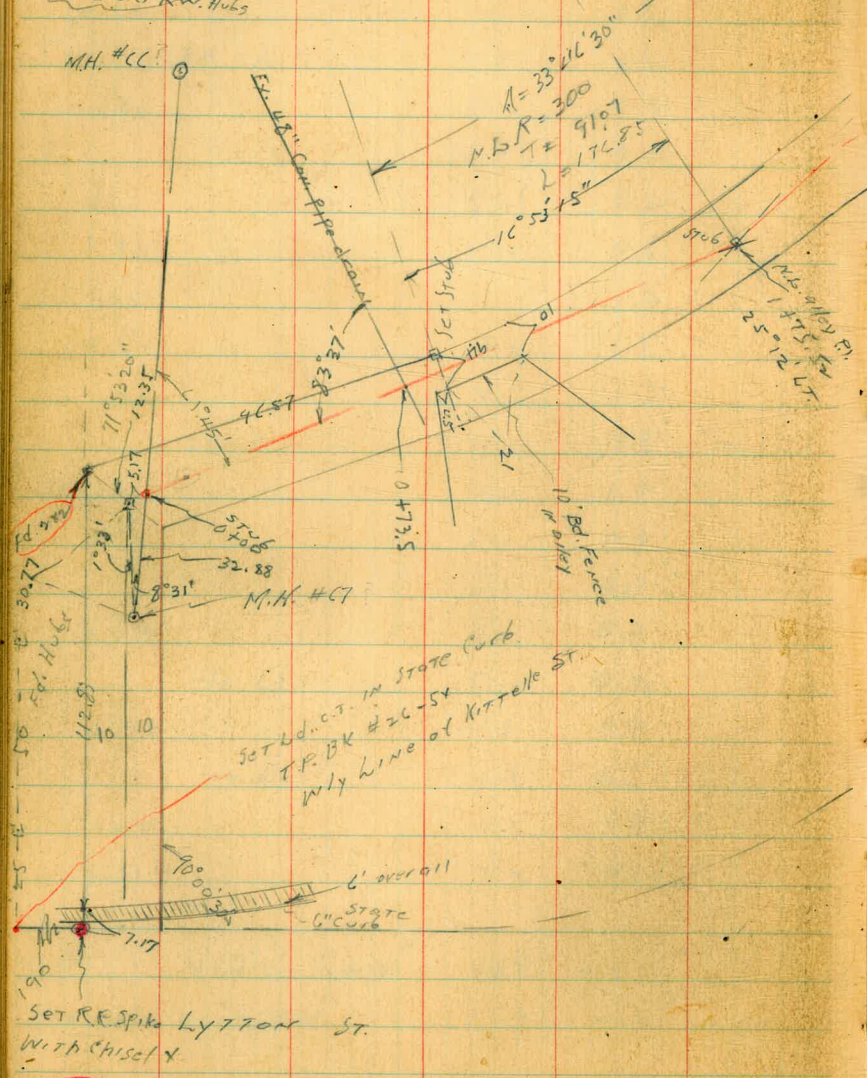


C Moore
 Designer, Mayor
 W. Moore
 Ed 30995

Indexed
 C.S.K.

Proposed Sewer in 20' Alley
 Blk 4 Pendleton Add

SEC 1424-21
 Ed. 2 old RW. Hubs



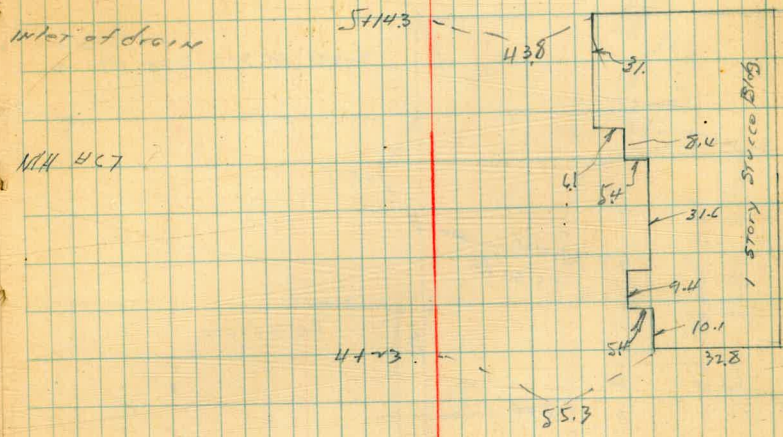
Alley Layout
 6'00' Wly Lytton St.
 1'413.24 @ 71°53'20" RT
 x 103.06 EC
 x 1'97.07 @ 1.8 33'46'30" LT
 3' 91.28 EC
 11' 05.94 @ Alley South

at Ely Cor. of Robertson &
 Barnett = L.T. cor. to Curb

6.7
 5.5
 0.7 = Parking

Levels Proposed Sewer
in alley, Pondlatah add

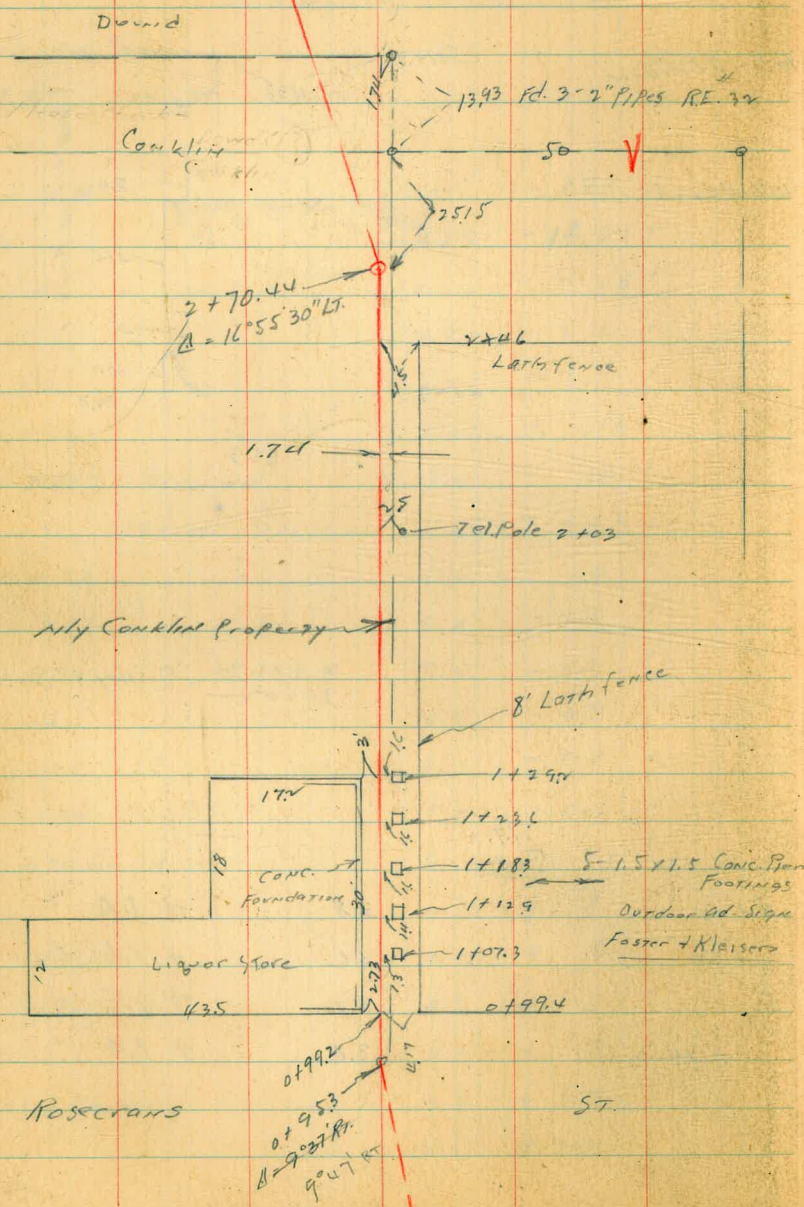
Mkt. BM. #21				Hd. water	
BM. B.P.	4.17	5.22	1.05	1317-59	
Run M.H.		7.11	-1.89	168+5.6	M.H. 427
El. "		7.11 7.89	-12.67		
0+00	on stub Ex	7.26	-2.04		
+50		7.6	-2.4		
+60		7.1	-1.9		
+70		5.1	+ .10		
0+73.5	ground	5.0	+ .2		
"	Top 48" Pipe down	5.65	-0.43		
0+77		5.2	.0		
0+88		6.4	-1.2		
0+93		5.5	-0.3		
1+00		5.5	-0.3		
+10		6.1	-0.9		
+50		5.7	-0.7		
1+75.5	Δ	5.53	-0.31	5706	
~		4.6	+ .6		
+50		4.7	+ .5		
+81.70	Δ	4.5	+ .7		
3		4.3	+ .9		
+50		3.8	+ 1.4		
4		4.0	+ 1.2		



4+23	3.8	+ 1.4	✓
+50	3.6	+ 1.6	✓
5	3.7	+ 1.5	✓
+14.3	3.8	+ 1.4	✓

H.I.
Sewer

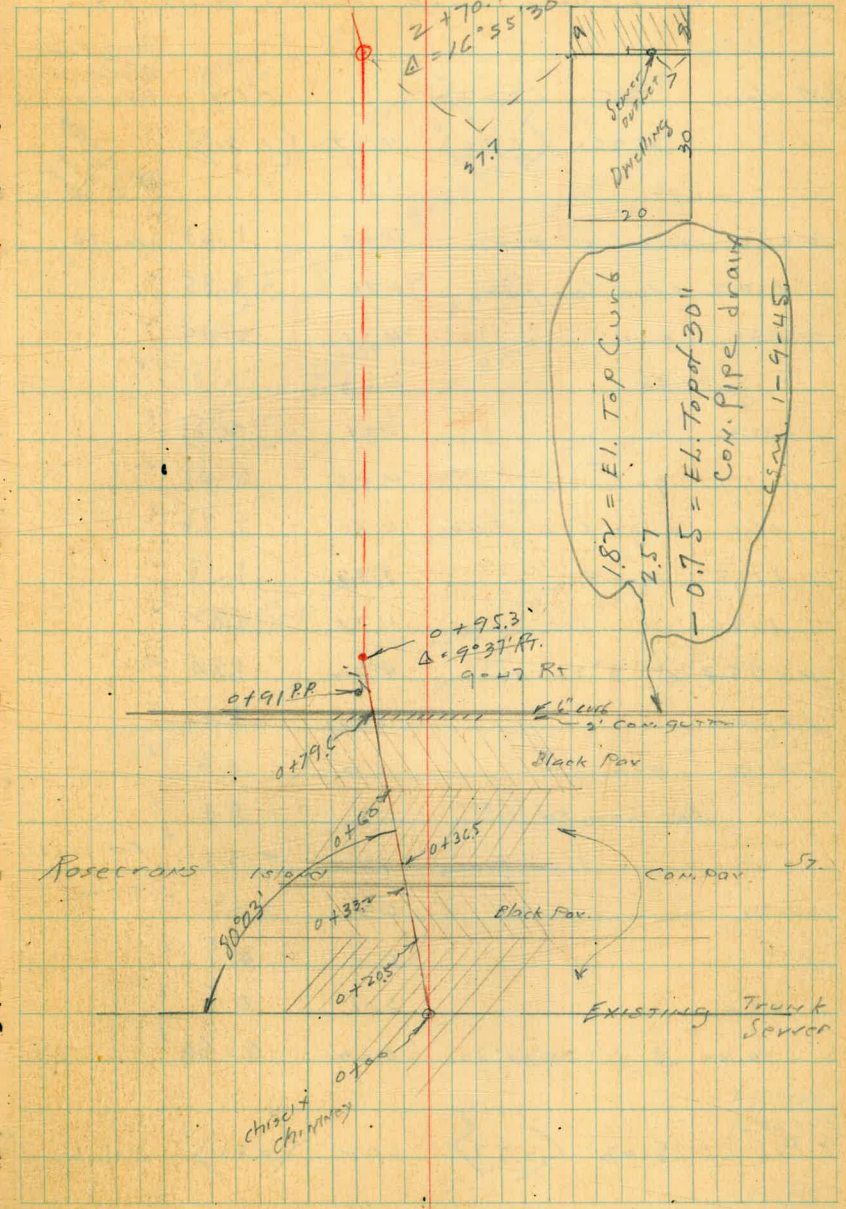
Proposed 8" Sewer to Serve Area
NW 1/4 of Rosecrans & Midway



C.S. 11-44

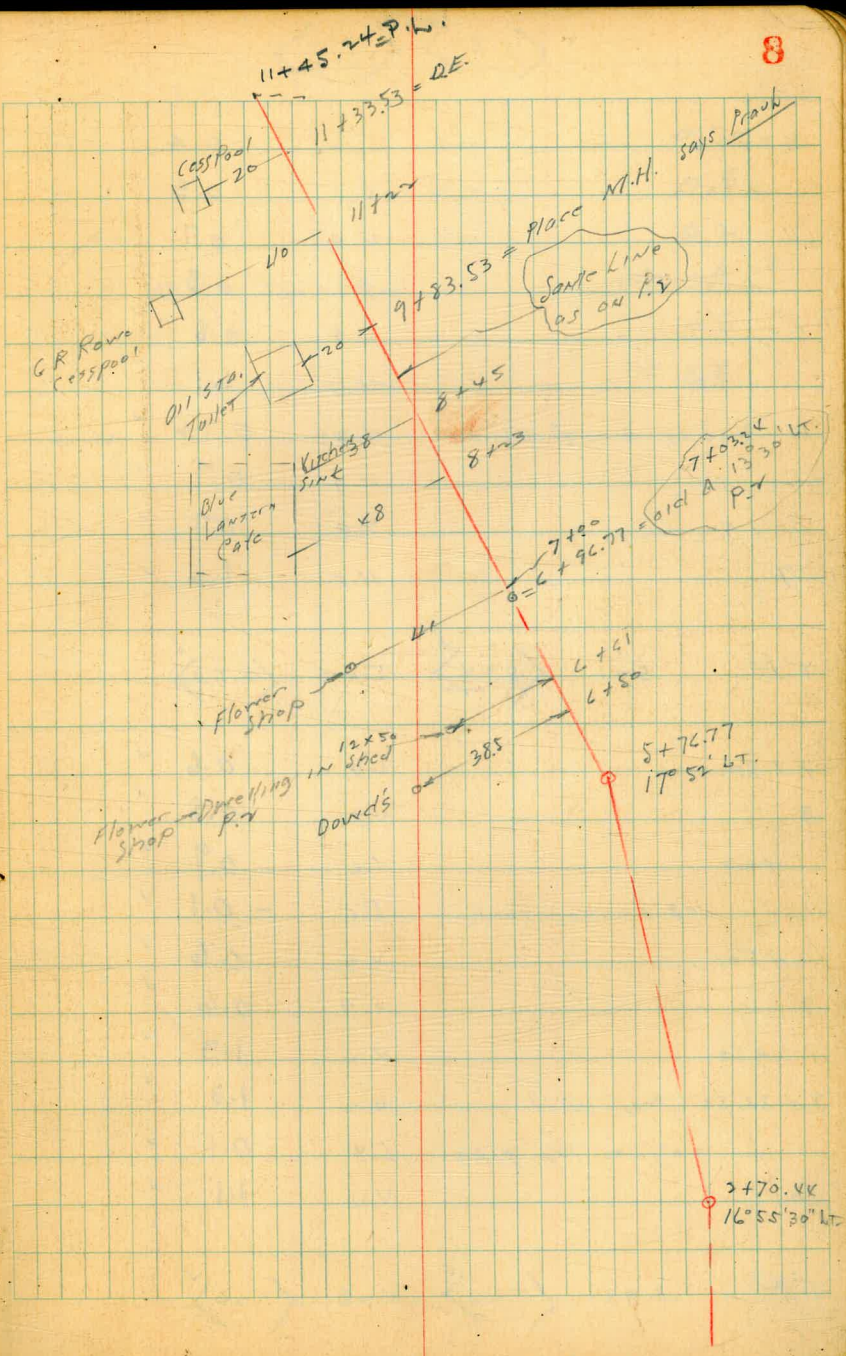
P. 8

7



Levels Prop. Sewer Sketch P.7

B.M. Men	5.45	<4.97>	0.67	Swly Cor. Midway Gornes
T.P.	4.70	<6.50>	4.27	<1.80> Redy, rat Hinged down
0+00	chisel x pav.	4.93	1.63	even chimney
+20.5	edge Cor pav.	4.71	1.85	✓
+33	gvt	4.51	2.05	✓
+33.2	cb	4.03	2.53	✓
+36.5	"	4.01	2.55	✓
+36.7	gvt	4.55	2.01	✓
+60	edge Cor Pav.	4.80	1.76	✓
+79.5	gvt	5.39	1.17	✓
+79.6	cb	4.74	1.82	✓
0+95.3	Δ 9°37' RT	4.72	1.84	✓
1+00		5.2	1.4	✓
1+10	ground	6.0	0.6	✓
"	Bar. Con. Ed. Stone L. over	6.7	-0.1	✓
"	" " sign Piers	9.7	-3.1	Fd. water at this level
1+50		6.3	+0.3	✓
✓		6.1	0.5	✓
+50		6.1	0.5	✓
2+70.44	Δ 16°55'30" LT	6.02	0.5A	✓
T.P.	5.03	<5.57>	6.02	<0.50> Δ H.L.



5.57

3 + 00	5.2	0.4	✓
+ 50	5.1	0.5	✓
4	4.9	0.7	✓
+ 50	5.1	0.5	✓
5	4.8	0.8	✓
+ 50	4.5	1.1	✓
5 + 76.77 Δ 17° SW LT	4.85	0.72	✓ Hub
6	4.9	0.7	✓
+ 50	4.9	0.7	✓
7	4.6	1.0	✓

T.P. 5.01 $\langle 5.54 \rangle$ 5.04 $\langle 0.53 \rangle$

7 + 50	4.9	0.6	✓
8	4.7	0.8	✓
+ 23	4.6	0.9	✓
" 48' LT Top Tank	5.6	- 0.1	✓
+ 50	4.9	0.6	✓
9	4.9	0.6	✓
+ 50	4.2	1.3	✓
9 + 83.53 Prop. N.H.	4.2	1.3	✓
" 20' LT. Top pipe	5.4	0.1	✓
10	4.4	1.1	✓

T.P. 3.98 $\langle 5.24 \rangle$ 4.28 $\langle 1.24 \rangle$

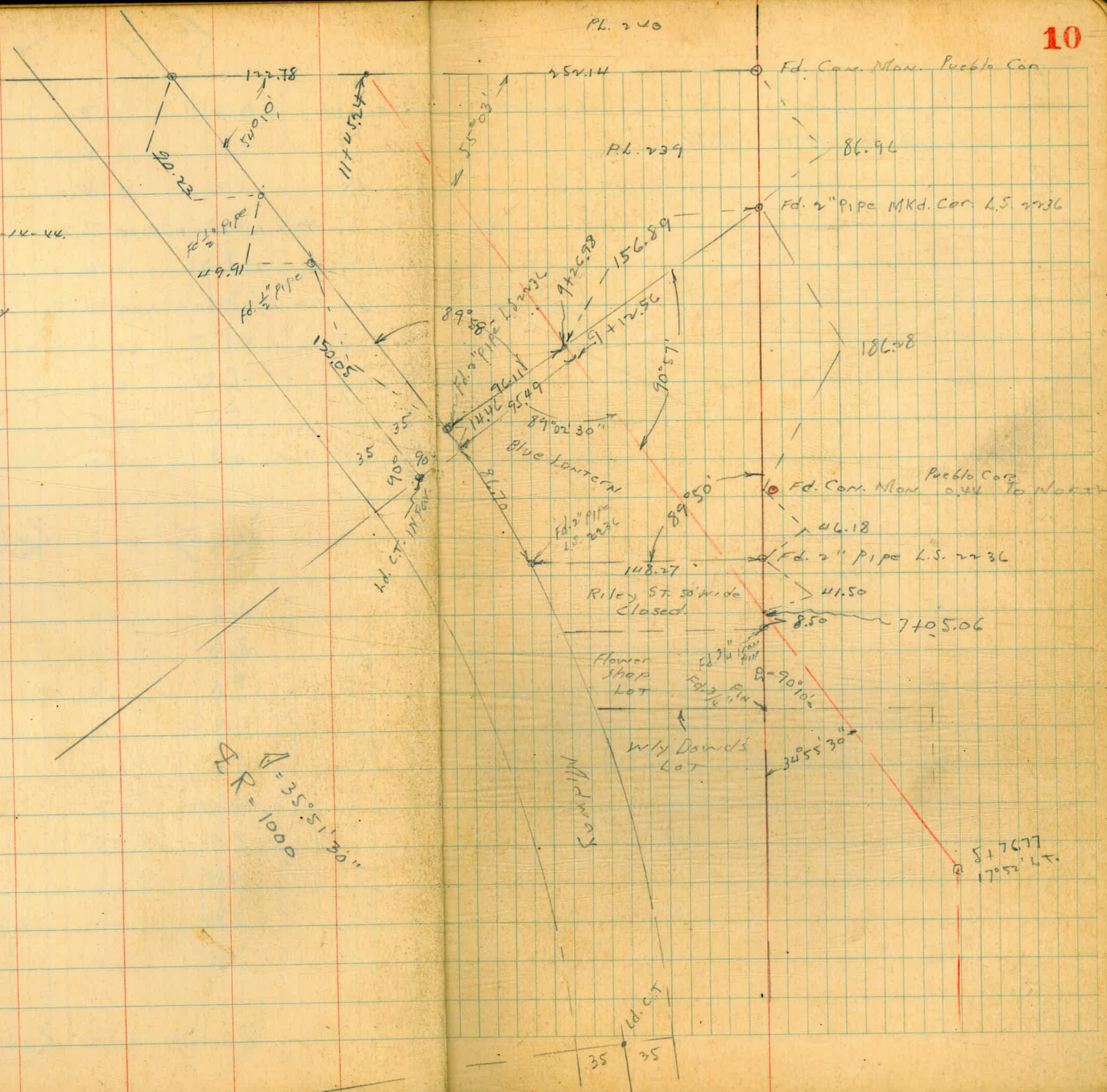
5.24

10 + 50	5.0	0.2	✓
"	4.7	0.5	✓
+ 22	5.0	0.2	✓
" 40' LT Top 4" pipe	6.1	- 0.9	✓
11 + 33.53 D.E.	4.7	0.5	✓
" 20' LT Top 4" pipe	5.5	- 0.3	✓

PL. 240

P.L. TIES for
proposed sewer 4.12.44.

nearby front Midway
and Rosecrans



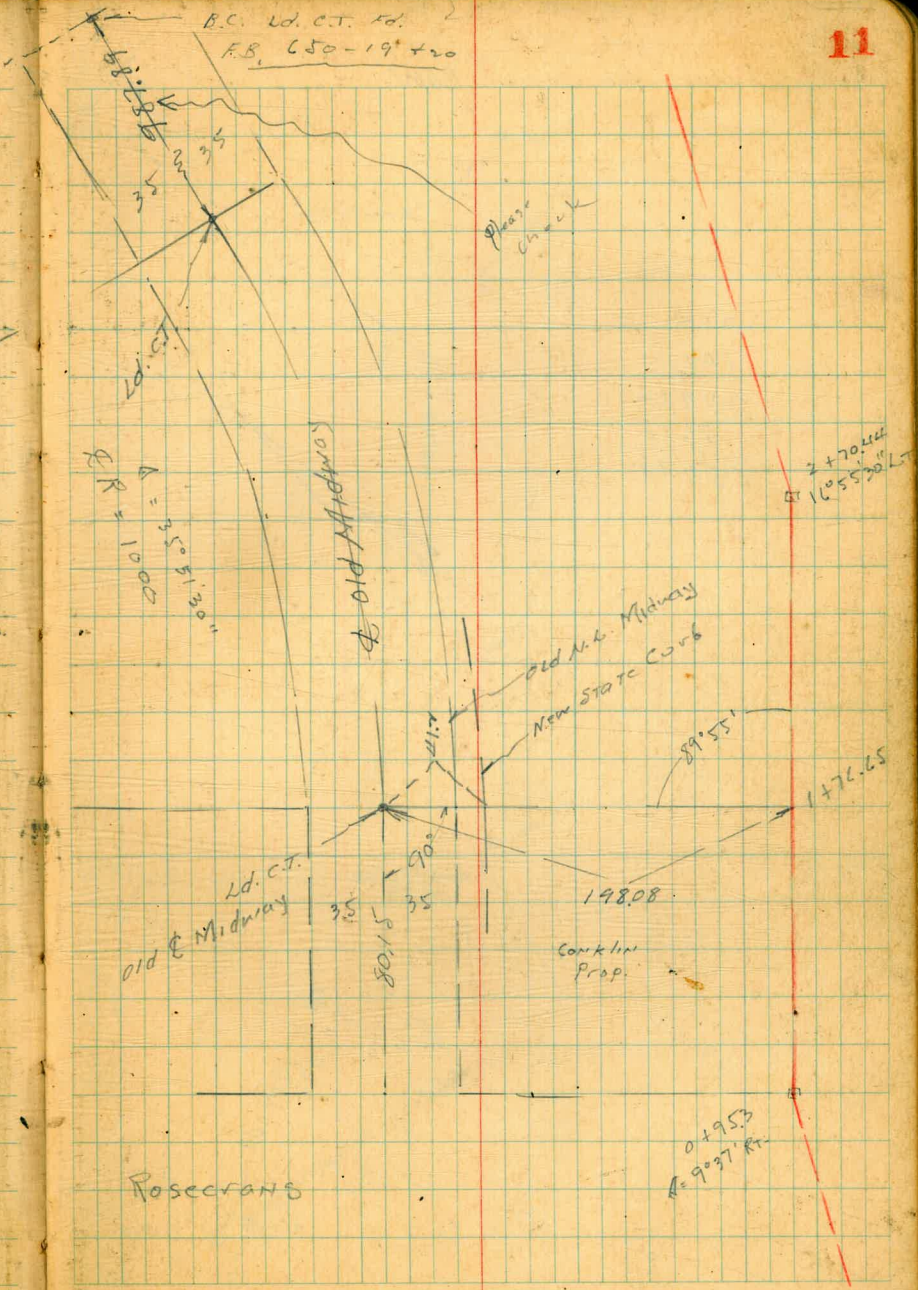
BR = 1000
Δ = 35° 51' 30"

5176.77
17° 52' 45"

35 35
ld. ct.

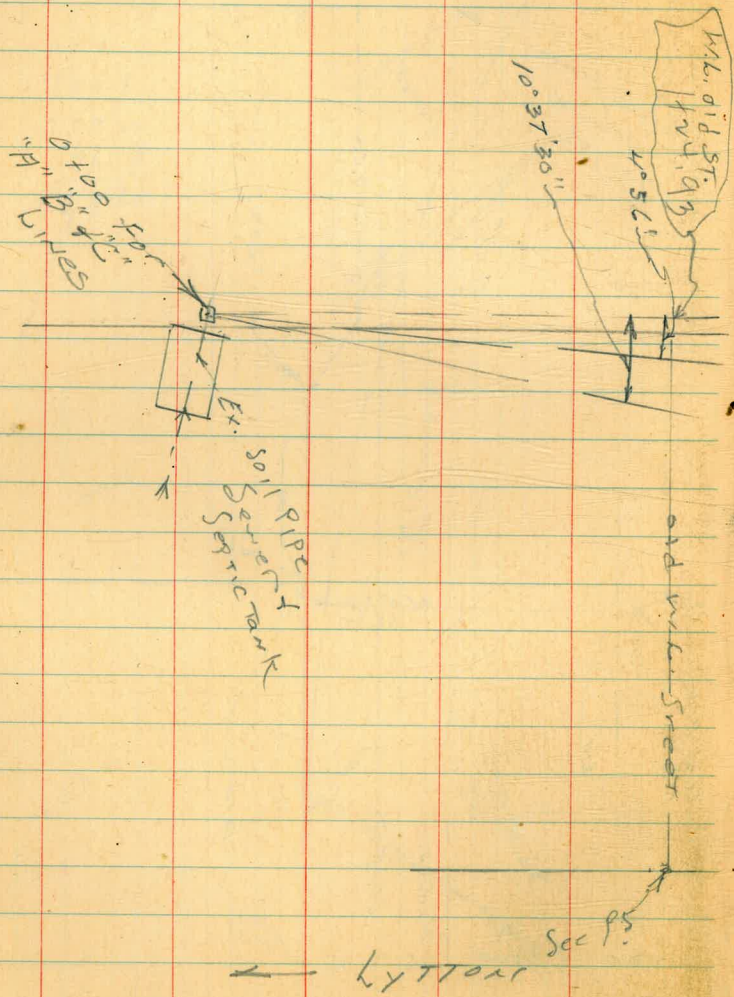
Tie to Sewer thru Conklin lot
from E old Midway.

R.P.S. Rd.
See FB (50-19-20)

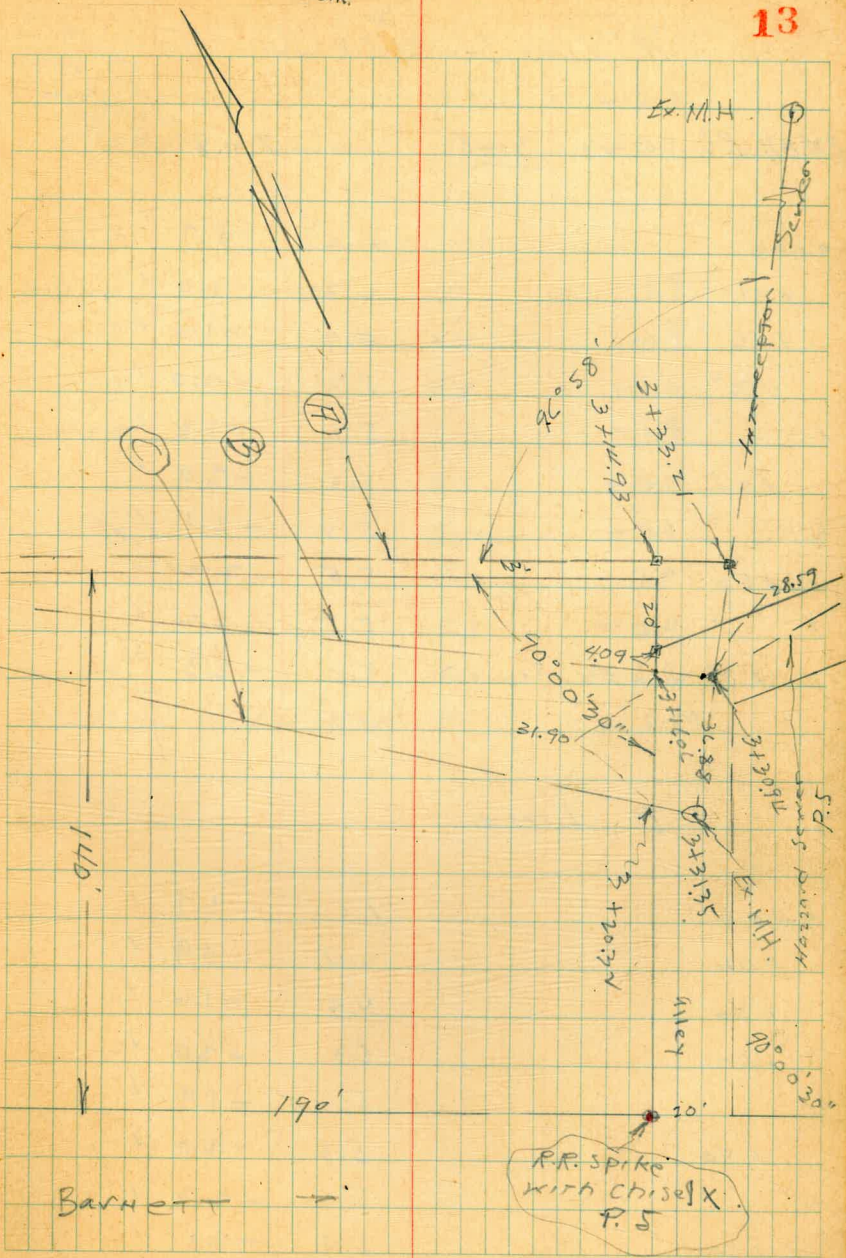


Bayside Country Club EST.
 Prop. Sewer "A" "B" "C" Lines

Moore
 Sprung & W.M.
 10-2-44



Indexed
 C.S.R.



BARNETT

RR. spike
 with chisel
 P. 5

"A" Line Sewer Levels

B.M.B.P. P.6	v.23	<u>3.28</u>	1.05	137-59 Also pg this book
0+00			1.0	1.7 ✓ STUB
+41			2.3	1.0 ✓
+46			4.9	-1.6 ✓
+54			5.3	-2.0 ✓
1			5.1	-1.8 ✓
+50			5.3	-2.0 ✓
2			5.4	-2.1 ✓
+50			5.5	-2.2 ✓
3			5.5	-2.2 ✓
3 + 33.21 EX. Sewer			5.0	-2.3 ✓ ground

"B" Line

0+00			1.0	1.7 ✓
+44			2.4	0.9 ✓
+50			4.9	-1.6 ✓
+60			5.3	-2.0 ✓
1			5.2	-1.9 ✓
+50			5.3	-2.0 ✓
2			5.5	-2.2 ✓
+50			5.4	-2.1 ✓

HI
3.28

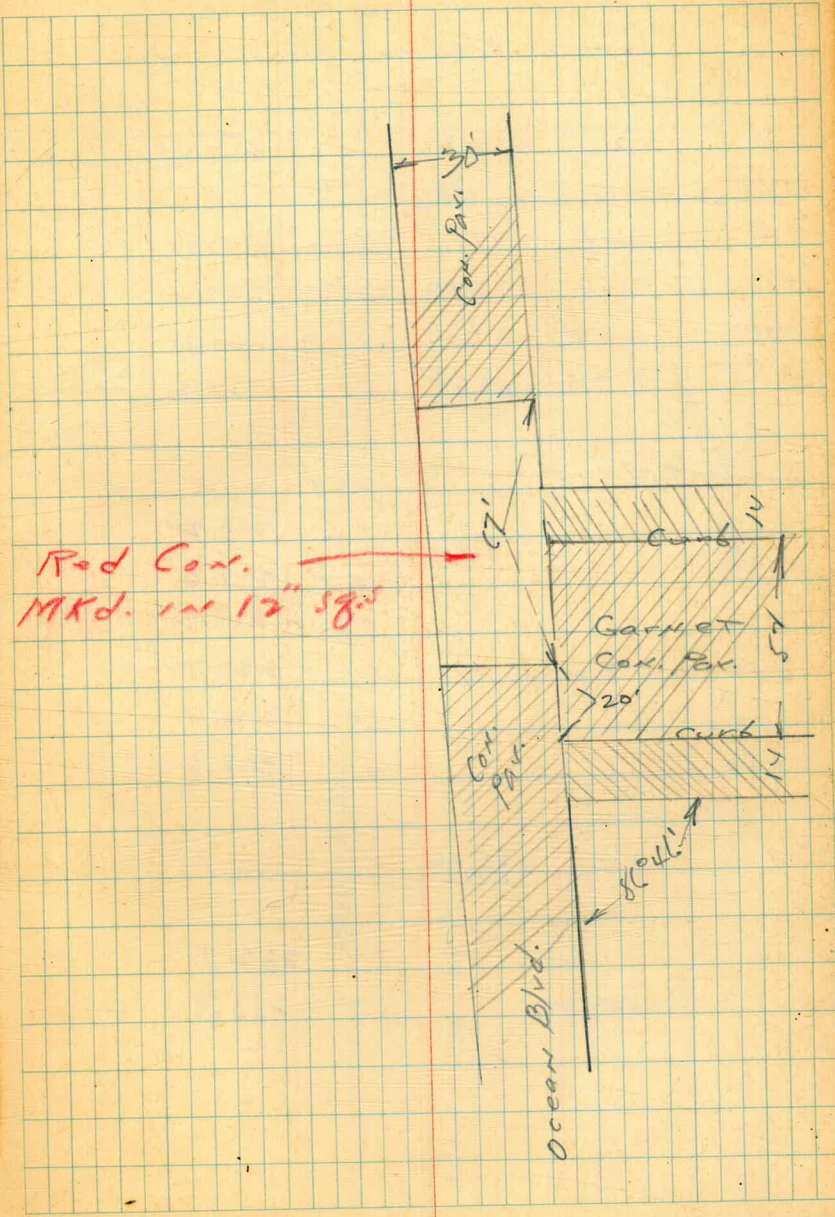
14

3+00			5.5	-2.2 ✓
3 + 30.94 EX. Sewer			5.4	-2.1 ✓ ground
"C" Line				
0+00			1.6	1.7 ✓
+48			2.4	0.9 ✓
+55			4.9	-1.6 ✓
+65			5.2	-1.9 ✓
1			5.3	-2.0 ✓
+50			5.4	-2.1 ✓
2			5.3	-2.0 ✓
+50			5.3	-2.0 ✓
3			5.1	-1.8 ✓
3 + 31.35 EX. M.H. RIM			5.7	-1.89 ✓

Area of Red Con. Pavt.
at West end Garnet St
and Ocean Blvd

c.s.m.

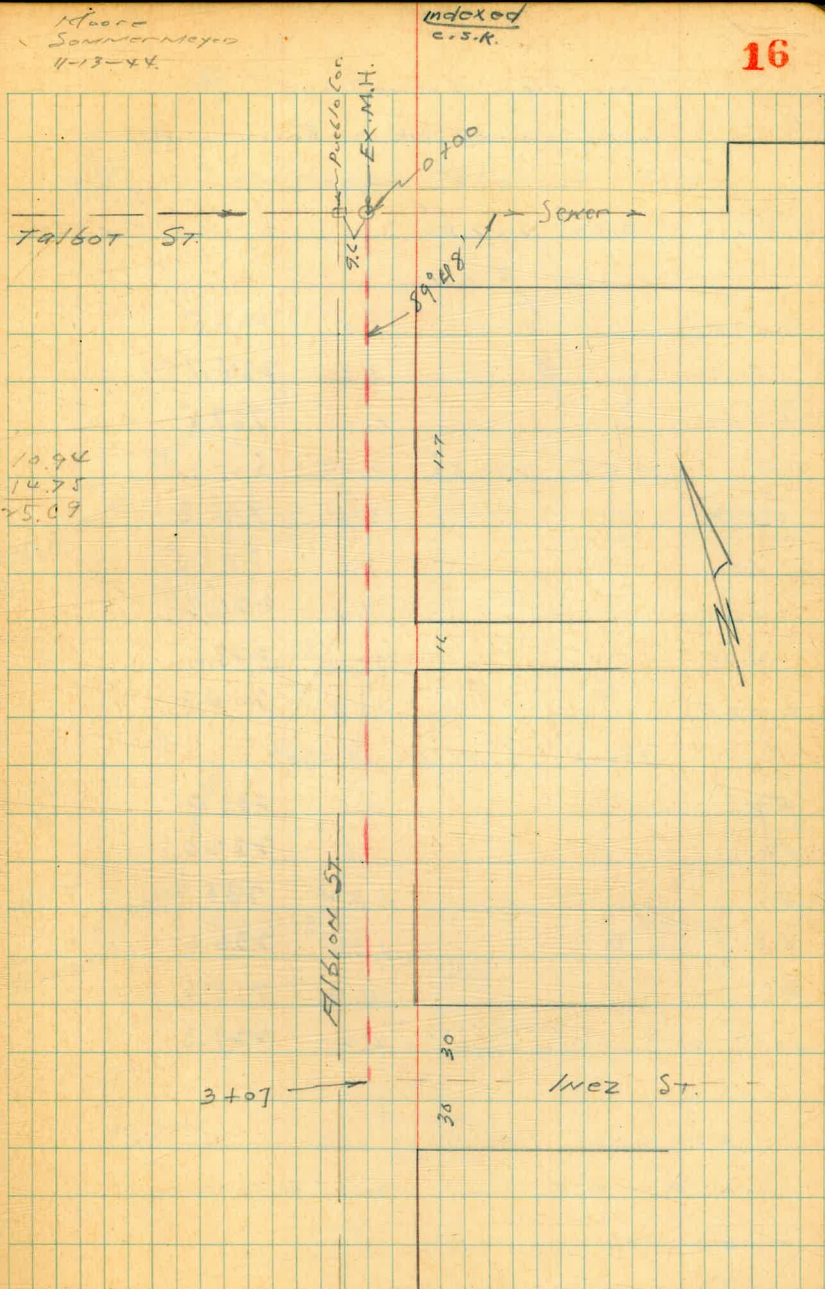
10-2-44



Proposed Sewer to serve
lots 29-33 Blk 104 Roseville HTS.

	2.21	262.89		260.68
T.P.	0.17	260.81	2.25	260.64
T.P.	0.18	247.95	12.04	247.77
T.P.	0.66	235.86	12.75	235.20
T.P.	0.49	223.36	14.99	222.87
T.P. chisel CROSS	10.94	228.24	5.46	217.90
				S. R. 177 M.H.
0+00 M.H. FL.		25.69		223.5
+25		10.6		218.2
+50		10.2		218.6
+100		8.6		220.2
+150 with 8 gully		6.1		222.7
+100		3.4		225.4
+50		0.7		228.6
T.P.	7.76	235.94	0.6	228.8
3+00			3.7	232.7
3+07 & Inez St.			2.6	233.3

Raining



Floor Elev. of dwellings

lots 29-33 Blk 12 Roseville Hts

BM	Chisel cross	10.62	228.52	217.90	S. side M.H. RM 2100
	Levels	P. alley			
	0+00		6.0	222.5	
	+25		3.8	224.7	
	+50		1.0	227.5	
TP	5.55	233.53	0.54	227.95	
	0+73		5.2	228.3	
	1+00		5.0	228.5	
	+47		7.2	226.3	
	+75		10.0	223.5	
	2+05		12.7	210.8	

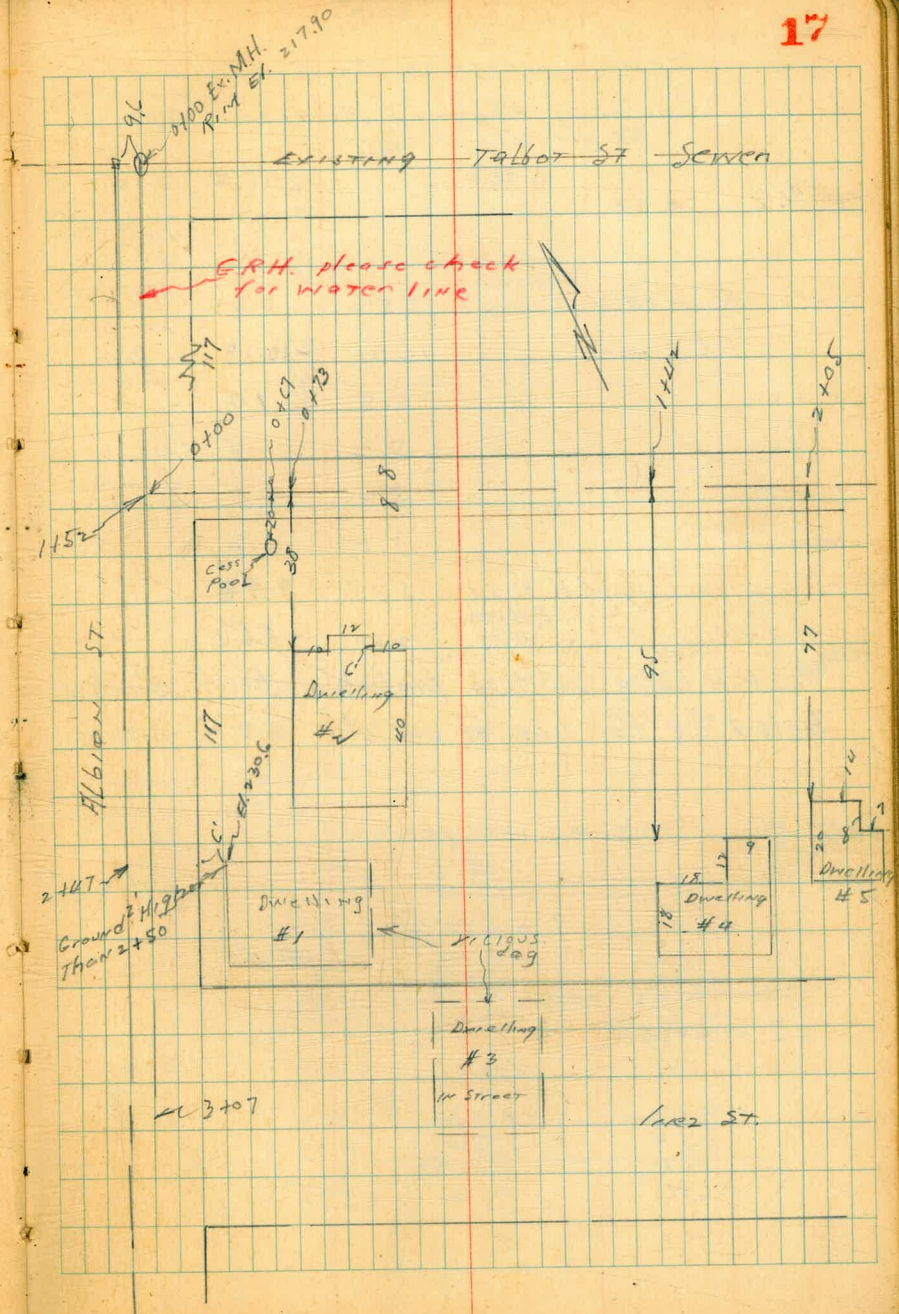
Floor El. of Dwellings

#2	0.5	233.0	
#4	1.5	232.0	
#1	+3.2	236.7	
#3	+3.1	236.6	
#5	14.9	218.6	
0+67 20' S. =	ground over cess pool	4.2	229.3

#1 - 2 - 3 Dwellings under one ownership
and #4 + 5 " would like to come in.

#1 + #2 now go into Cess pool

#3 now has cess pool



83 m

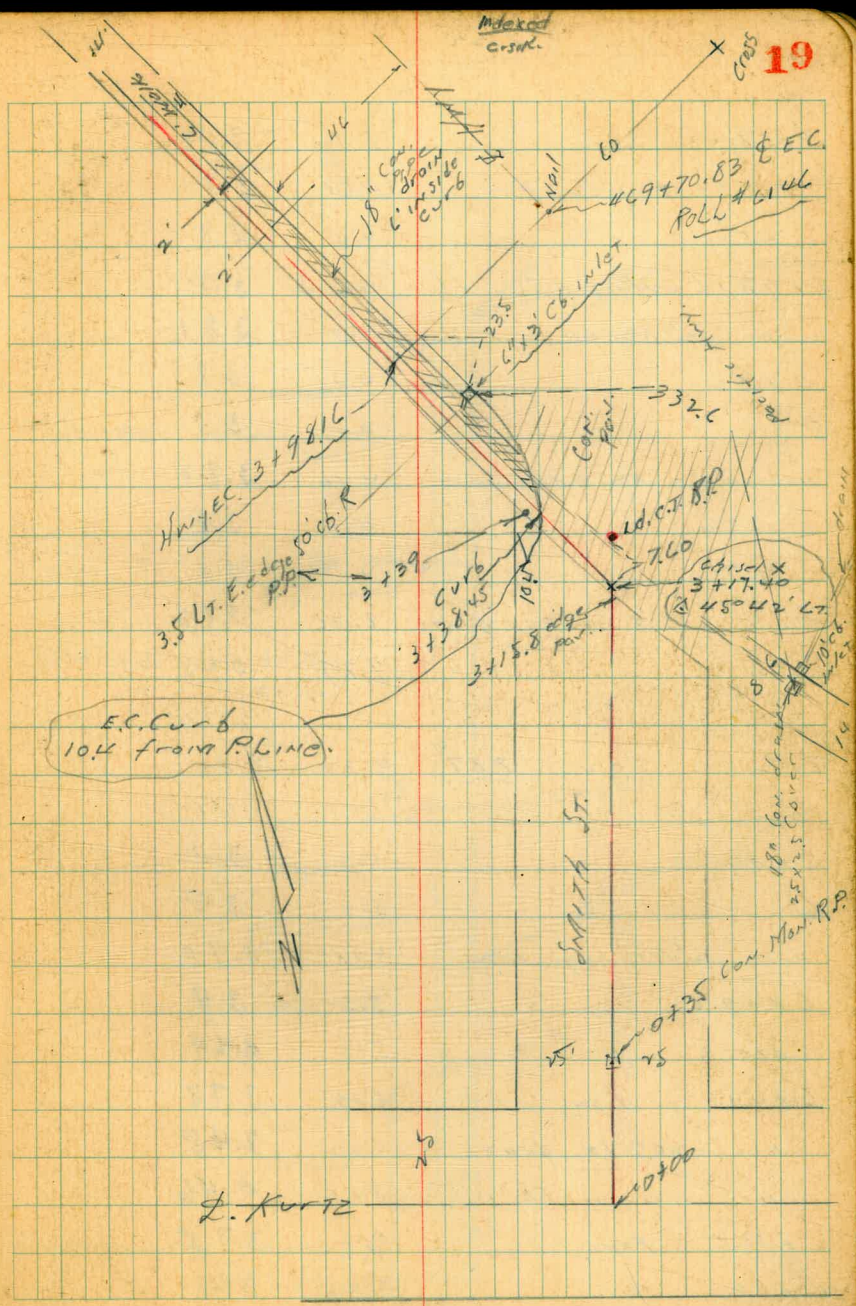
11-29-44 Sewer Levels on SMITH ST
 Kurtz N.Y. to serve Blue Bell + North CTS
 Motel

West B.M. B.P. Curb Pacific	#67	8.98		4.31	800' So. of Reservoirs
T.P.	440	8.22	5.16	3.82	

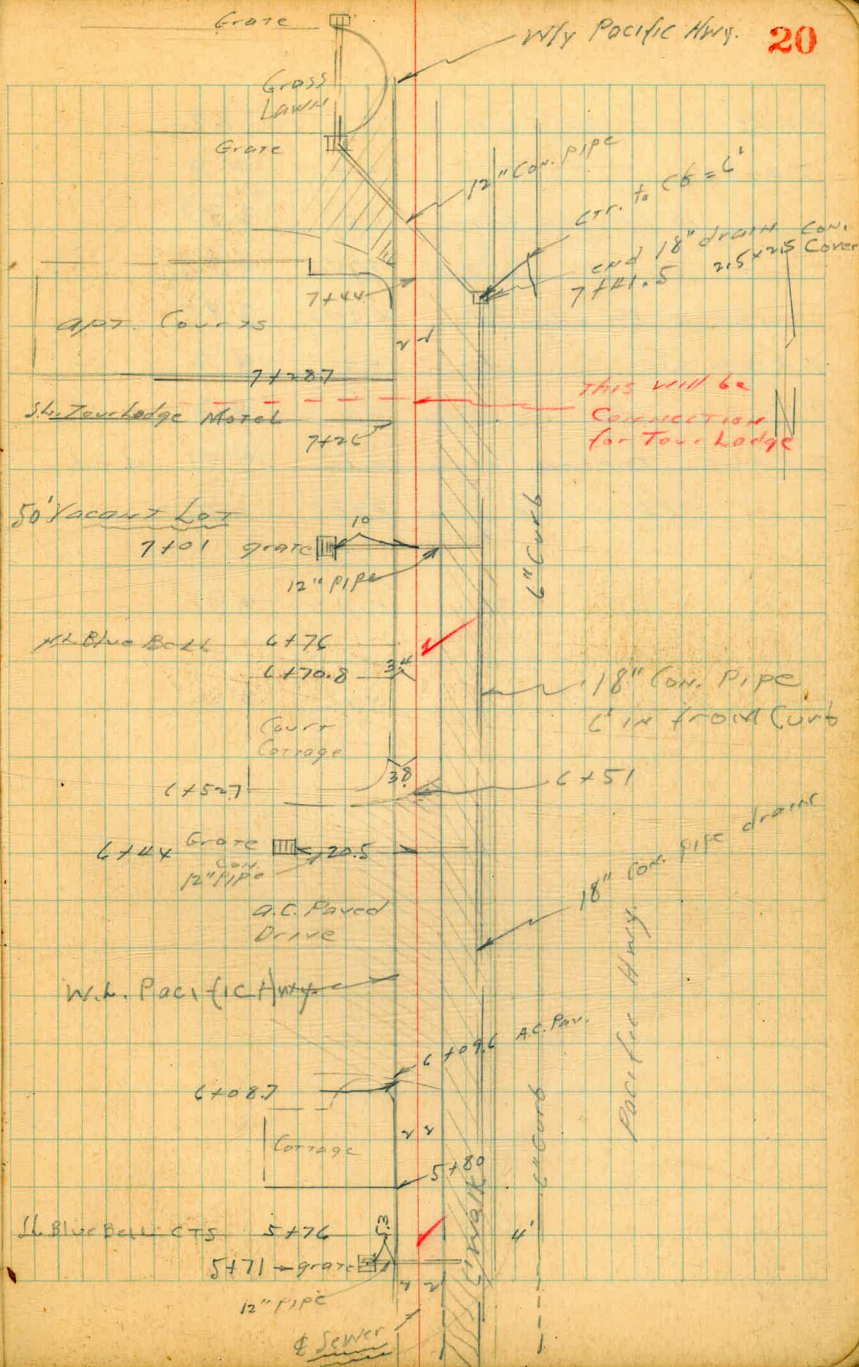
0 +00 E. Kurtz		6.6	1.6	
+05		7.2	1.0	
+17		6.3	1.9	
+20		6.3	1.9	
+23 Cross streets		7.9	0.3	
+26		6.2	2.0	
+50		6.2	1.8	
1		6.0	2.2	
+50		5.6	2.6	
2		5.1	3.1	
+50		5.1	3.1	
3		5.1	3.1	
+15.8 Pav. edge		5.01	3.21	
3 +17.40 @ 45° 42' LT		5.00	3.22	chisel cross

Junc. Box South end 18" pipe drain	Top sdw. + Box cover	4.87	3.40	
F.L. Box		11.07	2.80	

332.6 So. of 6" x 3' cb. inlet
 N of N.Y. Line, SMITH ST.



	8.22		
3+38.45 gut.	5.14	3.08	
" Top Curb	4.51	3.71	
+50	4.4	3.8	
3+98.16 = Hwy E.C.	4.5	3.7	
" 1/2 RT. on edge Sdnc	4.41	3.81	
+50	4.4	3.8	
5	4.5	3.7	
" 1/2 RT. = edge Sdnc	4.40	3.82	
+50	4.4	3.8	
+71	4.4	3.8	
" 5.3 LT. Top grate	6.36	1.86	
" " " Fl. 12"	7.79	0.43	
T.P.	5.02	8.87	4.37 3.85
5+80	5.5	3.4	
6	5.4	3.5	
" 1/2 RT edge Sdnc	4.97	3.90	
6+09.6 Pav.	5.5	3.4	
+10.6 "	5.18	3.69	
6+44 Pav.	5.09	3.78	
" 20.5 LT grate	6.42	2.45	
" " " Fl. 12" pipe	8.41	0.46	
6+50.5 Pav.	5.14	3.75	
6+51 Pav.	5.39	3.48	



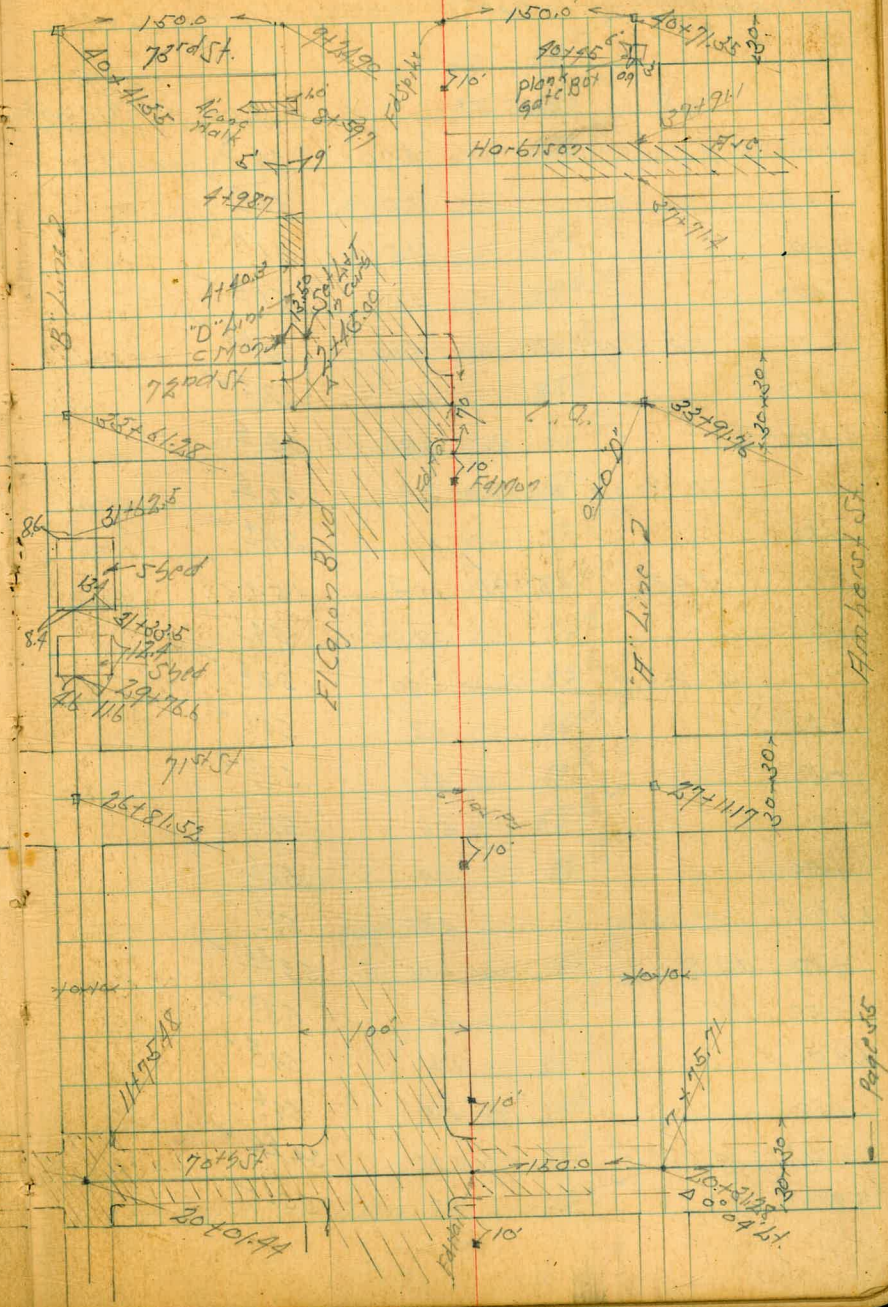
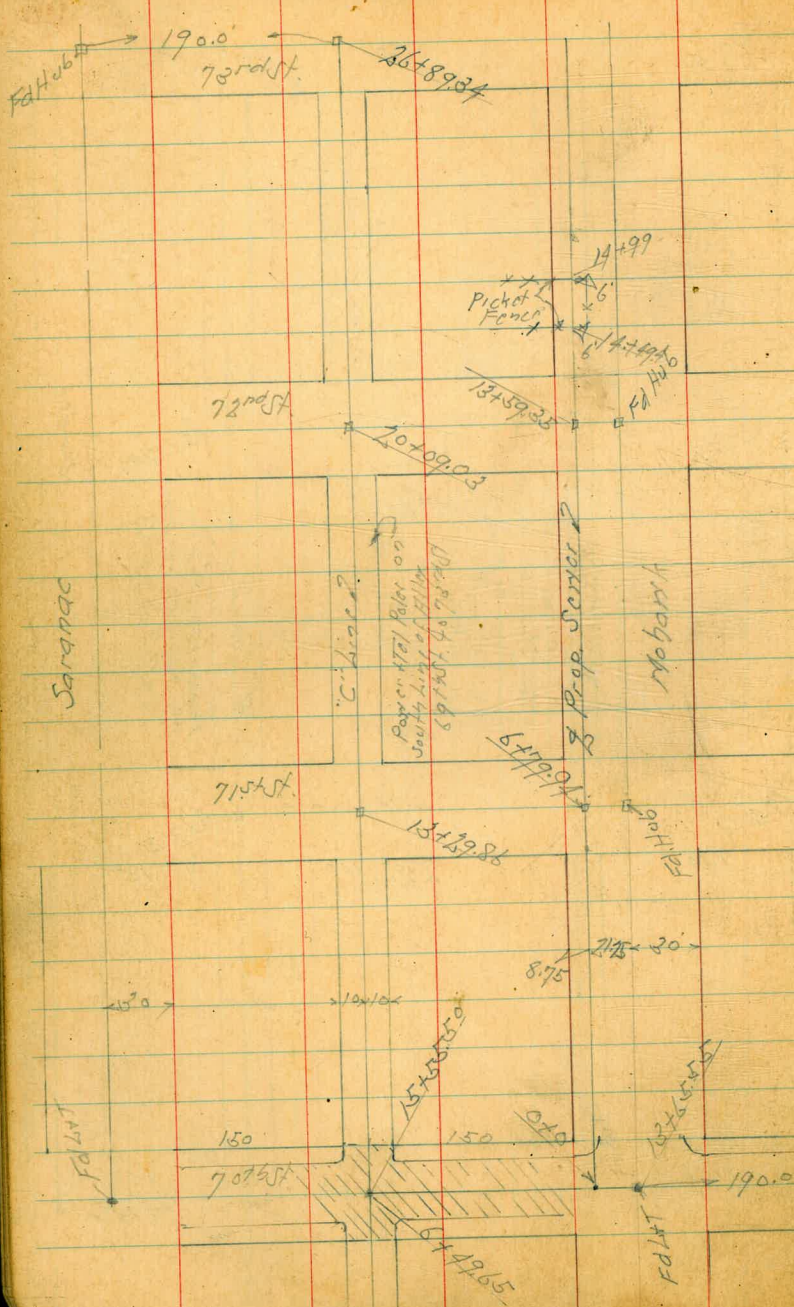
6776	N.L. Blue Bell Cr.	5.0	3.9	
7+01		4.9	4.0	
"	10' Lt Top grate	6.50	2.37	
"	F.L. 12" Pipe	7.94	0.93	
"	2' Rt edge sdw	4.94	3.95	
7+26	Sh. Touchedge	4.7	4.2	
7+28.7	S. edge " Sldg.	4.7	4.2	
7+41.5	Top Con. Cover	4.86	4.01	4 sdw.
"	F.L. end 18" ^{Con.} pipe drain	8.08	0.79	✓
T.P.	S. 11	906	4.92	3.95 ✓
check to orig. B.M.		476	4.30	4.31 ✓

$$\begin{array}{r}
 7 + 41.5 \\
 3 - 98.6 \\
 \hline
 3 - 43.34
 \end{array}$$

$$\begin{array}{r}
 343.34 \\
 26.50 \\
 \hline
 332.6 \\
 702.44 = L. 18" \text{ drain} \text{ Con.} \\
 \\
 \text{S. end} - 2.80 \\
 \text{N. " } - 0.79
 \end{array}$$

66.04

570			8.5	57.5	
+50			10.1	55.9	
6400.81	- FL 32 nd St.		12.1	53.9	
TP	8.06	12.45	10.65	55.39	
B.M.			2.93	60.52	559.70 p. F.H.V. Ocean View + 5300 ft 80.90



Levels Proposed Survey "H" Line
 Alley Between El Cajon & Amberst.
 From 67th St to 73rd St. Sketch Page 25 & 26

BM	1.81	453.51	453.70	S.W. RP El Cajon St 67th St
0+0	FL 67th St	4.70	50.8	on stub
+50		5.0	50.5	
+10		4.5	51.0	
+10		4.0	51.3	
"	112 Rt of 1/2 - N/4 House	4.65	50.86	on floor
+50		3.4	52.1	
+20		1.9	53.6	
"	110 Rt of 1/2 - N/4 House	2.7	52.8	on floor
+50		1.1	54.4	
TP	3.43	457.91	1.03	454.48
+20			3.8	54.1
"	116 Rt of 1/2 - N/4 House	5.20	52.6	on floor
+25		3.8	54.1	
+30		4.6	53.3	
+20		5.6	52.3	
+50		5.3	52.6	
5+0		4.8	53.1	
+10	114 Rt of 1/2 - N/4 House	4.55	53.36	on floor
+50		4.6	53.3	
6+0		3.4	54.5	
+30		3.5	54.4	
+7120	68th St	3.25	54.66	on stub
7+0		2.8	55.1	

Aug 10-45
 S. S. S. S. S.
 S. S. S. S. S.
 S. S. S. S. S.
 Osborne 27

457.91

7+50		3.2	54.7	
8+0		2.4	55.5	
"	100 ft of 1/2	5.9	52.0	on ground
TP	6.68	462.01	2.58	455.33
+50		6.4	55.6	
9+0		6.2	55.8	
+50		5.5	56.5	
10+0		4.9	57.3	
+43	79 Rt of 1/2 - N/4 House	5.40	56.61	on floor
+50		4.9	57.1	
11+0		4.6	57.4	
+50		4.4	57.6	
"	111 Rt of 1/2 - N/4 House	5.6	56.4	on floor
12+0		4.4	57.6	
+50		5.5	56.3	
12+0		7.1	54.2	
"	100 ft of 1/2	8.7	53.3	on ground
+510	69th St	7.31	54.70	on stub
TP	10.00	464.70	7.31	454.70
14+0		9.8	54.9	on stub
+50		9.5	55.2	13+51
15+0		9.0	55.1	
+50		7.2	57.5	
16+0		5.0	59.7	
+25	107 Rt of 1/2 - N/4 House	4.10	60.6	on floor

464.70

16+50		3.9	60 ⁸	✓	
17+0		4.4	60 ³	✓	
+50		4.5	60 ²	✓	
18+0		4.2	60 ⁵	✓	
"	102 Rt of 1/2 - NY House	4.2	60 ⁵	✓	07 Floor
+50		3.6	61 ¹	✓	
19+0		3.2	61 ³	✓	
TP	6.73	468.16	3.27	✓	461.43
+50		5.9	62 ³	✓	
20+0		6.0	62 ²	✓	
+20	16 Lt = 5 1/2 x 4 ASD Gas Co. Man Hole	5.66	62 ⁵⁰	✓	462.50 07 R 100 ✓
+31.28	70th St	5.35	62 ⁸¹	✓	462.81 07 Mail gone
+50		5.7	62 ⁵	✓	
21+0		5.1	63 ¹	✓	
+50		4.9	63 ³	✓	
22+0		4.0	64 ²	✓	
+50		3.3	64 ⁹	✓	
23+0		2.9	65 ³	✓	
"	103 Rt of 1/2 - NY House	4.5	63 ⁷	✓	07 Floor
+50		2.7	65 ³	✓	
24+0		2.9	65 ³	✓	
+30		3.3	64 ⁹	✓	
"	118 Rt of 1/2 - NY House	3.7	64 ⁵	✓	07 Floor
TP	12.43	477.01	3.58	✓	464.58
25+0		11.0	66 ⁰¹	✓	

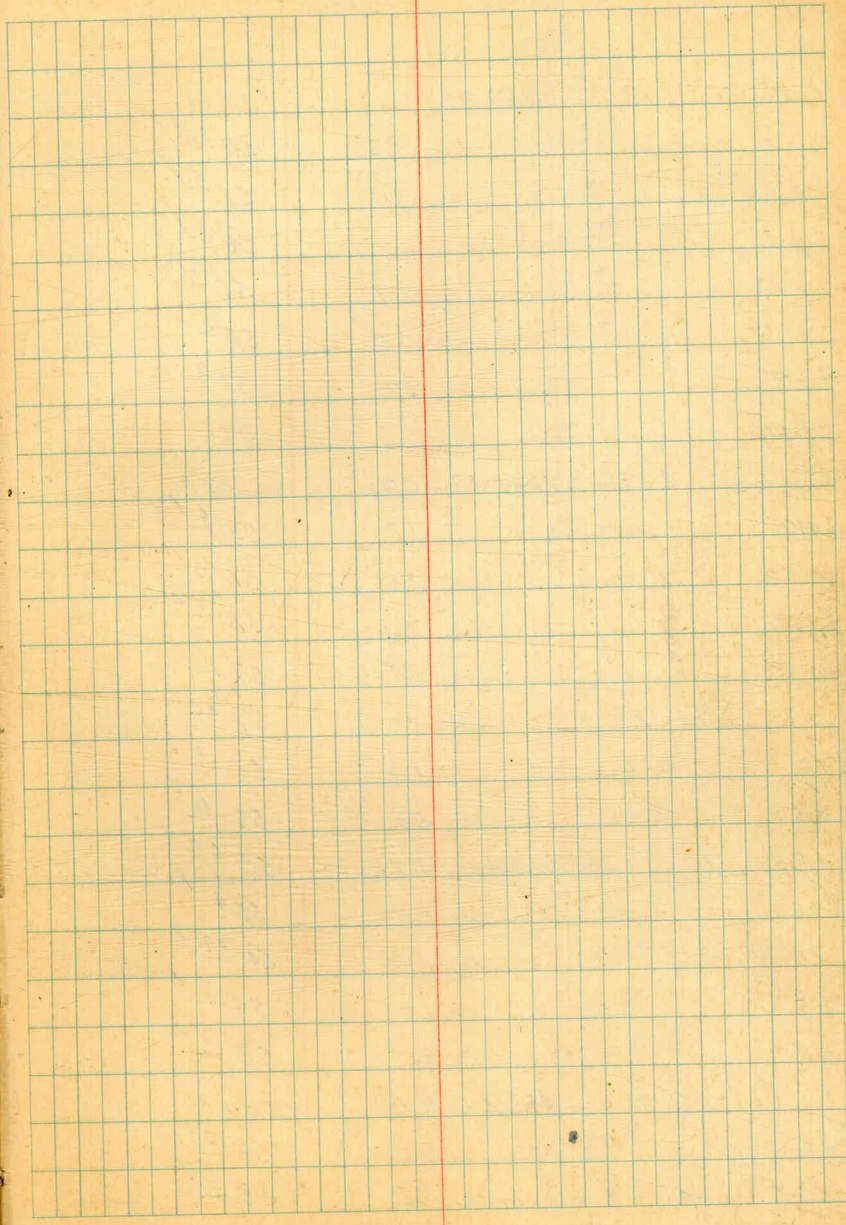
477.01

25+50		9.7	67 ³	✓	
26+0		9.2	67 ⁹	✓	
"	110 Rt of 1/2 - NY House	8.05	68 ⁹⁶	✓	07 Floor
+50		7.9	69 ¹	✓	
27+0		6.6	70 ⁴	✓	
+11.17	71st St	6.46	70 ⁵⁵	✓	07 St 6
+50		4.9	72 ¹	✓	
+7.5	102 Rt of 1/2 - NY House	4.20	72 ⁸	✓	07 Floor
28+0		2.8	74 ²	✓	
+50		2.0	75 ⁰	✓	
29+0		2.7	74 ³	✓	
+50		2.6	74 ⁴	✓	
30+0		2.7	74 ³	✓	
+20	111 Rt of 1/2 - NY House	3.8	73 ²	✓	07 Floor
+1.50		2.5	74 ⁵	✓	
TP	8.40	483.03	2.58	✓	474.63
31+0		7.8	75 ²	✓	
+7.5	103 Rt of 1/2 - NY House	6.6	76 ⁴	✓	07 Floor
+50		6.7	76 ³	✓	
32+0		5.4	77 ⁶	✓	
+50		4.1	78 ²	✓	
33+0		4.3	78 ⁷	✓	
+50		4.7	78 ³	✓	
+9.76	72nd St	5.71	77 ³²	✓	07 St 6
34+0		5.9	77 ¹	✓	

"H" Line

483.03

34+50			6.8	76 ² ✓
35+0			6.6	76 ⁴ ✓
+50			6.1	76 ⁹ ✓
36+0			8.2	74 ⁸ ✓
+50			12.9	70 ¹ ✓
TP	5.77	473.91	12.89	470.14
+85			10.0	65 ⁹ ✓
37+0			10.1	65 ⁸ ✓
+50			8.4	67 ⁵ ✓
+71.4	= 1/4 Pav Harbor	7.50	68	41 ✓
+91.1	= Fly Pav	7.50	68	41 ✓
38+0			7.8	68 ¹ ✓
+25			9.5	66 ⁴ ✓
"	125 ft of 1/2	15.3	60	6 ✓ on Ground
+50			7.6	68 ³ ✓
39+0			4.4	71 ⁵ ✓
+50			4.2	71 ² ✓
40+0			4.9	71 ⁰ ✓
"	14 ft of 1/2 = 1/4 Pav House	7.9	68	0 ✓ on Floor Basement Ho.
+25			4.6	71 ³ ✓
+45			2.88	73 ⁰³ ✓ Top Plank Gate Box
+71.35	= 1/2 73 ⁰³ St	0.98	74 ⁹³	on Start
TP	8.08	483.04	0.95	474.95
BM			2.77	480.27 ✓ SM 8P 5/10/07 4700 480.35



Levels Proposed Sewer B Line
 Alley Between E 1 Capon Blvd. + Mohawk
 From 67th St. to 73rd St. Sketch Page 25 + 26

B.M.	610	459.80	458.90	S.W.B.P. E 1 Capon Blvd + 67th St.
0+0	= E 67th St	9.55	50 ²⁵ ✓	on Stub
+50		8.3	51 ⁵ ✓	
1+0		7.9	54 ⁹ ✓	
+50		2.9	56 ⁹ ✓	
+7.5	94 Rt of 1/2 Alley House	3.5	56 ³ ✓	on Floor
2+0		1.9	57 ² ✓	
+50		0.8	59 ⁰ ✓	
TP	2.50	461.38	092	458.88 ✓
3+0			1.8	59 ⁶ ✓
+50			2.5	58 ² ✓
4+0			3.3	58 ¹ ✓
+50			4.3	57 ¹ ✓
+90	108 Lt of 1/2 Sly House	3.75	57 ⁶³ ✓	on Floor
5+0			5.3	56 ¹ ✓
+50			5.4	56 ⁰ ✓
+75	119 Lt of 1/2 Sly House	5.75	55 ⁶³ ✓	on Floor
6+0			6.0	55 ⁴ ✓
+41.3	= E 68th St	6.44	54 ⁹⁴ ✓	on Stub
7+0			6.9	54 ⁷ ✓
+50			7.5	53 ⁹ ✓
TP	7.19	461.12	7.45	455.93 ✓
8+0			7.5	53 ⁶ ✓
"	84 Lt of 1/2 Sly House	7.8	53 ³ ✓	on Floor

Aug. 18-15
 S. B. Coon
 Bliss
 Osborn

30

461.12

8+50		7.2	53 ⁹ ✓	
9+0		6.1	55 ⁰ ✓	
+50		5.5	55 ⁶ ✓	
10+0		4.8	56 ³ ✓	checked to here
"	101 Lt of 1/2 Sly House	2.78	58 ³⁴ ✓	on Floor
+50		4.1	57 ⁰ ✓	
11+0		2.7	58 ⁴ ✓	
+50		2.0	59 ¹ ✓	
12+0		2.2	58 ⁹ ✓	
+10	95 Rt of 1/2 Alley House	2.3	57 ⁸ ✓	on Floor
+50		1.8	59 ³ ✓	
TP	5.42	464.88	1.66	459.46 ✓
13+0			5.9	59 ⁰ ✓
+21.41	= E 69th St		5.75	459.13 ✓
+50			5.5	59 ⁴ ✓
14+0			5.1	59 ⁸ ✓
+50			5.0	59 ² ✓
+85	93 Rt of 1/2 Alley House	5.30	59 ⁵⁸ ✓	on Floor
15+0			5.0	59 ⁹ ✓
+50			4.9	60 ⁰ ✓
16+0			4.4	60 ⁵ ✓
+50			4.1	60 ⁸ ✓
17+0			3.4	61 ⁵ ✓
"	100 Rt of 1/2		5.1	59 ⁸ ✓
+50			1.8	63 ¹ ✓

		464.88			
TP	10.28	473.70	1.46	463.92	✓
18+0			9.6	64	✓
+50			8.6	65	✓
19+0			6.4	67	✓
"	100' Rt of L		10.3	63	✓
+50			4.5	69	✓
+71.4	Wly Paving		5.07	68	✓
+81.4			5.31	68	✓
20+0	1.44 - L 70th St		4.52	69	✓
+21.4			4.92	68	✓
+31.4	Ely Paving		4.60	69	✓
+50			5.0	68	✓
21+0			4.7	69	✓
+40	117' Rt of L - Nly Bldg	6.6		67	✓
+50		3.3		70	✓
22+0		0.9		72	✓
TP	11.08	483.70	1.08	472.62	
+50			7.7	76	✓
23+0			5.7	78	✓
+15	80' Rt of L - Nly House		6.7	77	✓
+50			4.8	78	✓
24+0			5.3	78	✓
+50			5.9	77	✓
+60	87' Rt of L - Nly House	9.35		74	✓
25+0		5.8		77	✓

		483.70			
25+50			4.6	79	✓
26+0			2.8	80	✓
+15	105' Rt of L - Nly		7.8	75	✓
+50			1.5	82	✓
+81.52 - L 71st St			1.46	82	✓
27+0			0.9	82	✓
TP	10.38	493.39	0.69	483.01	
+50			12.5	80	✓
"	75' Rt of L - Nly House		13.65	79	✓
28+0			13.9	80	✓
+50			11.8	81	✓
29+0			8.6	84	✓
+50			4.7	88	✓
30+0			2.3	91	✓
+50			1.6	91	✓
"	90' Rt of L - Nly House		5.2	88	✓
31+0			2.1	91	✓
TP	3.89	495.28	2.00	491.39	
+50			4.3	91	✓
32+0			4.7	90	✓
+50			5.3	90	✓
33+0			5.3	90	✓
"	100' Rt of L		11.8	83	✓
+50			5.3	90	✓
+61.28 - L 72nd St			5.19	90	✓

8" Line

Station	Offset	Station	Offset	Station	Offset	Notes
	49528			91	1	
3410		42		91	1	
+15	66 Rt of 1/2 Hwy House	8.57		86	9	07 Floor
+50		6.4		88	9	
3510		6.7		88	6	
TP	6.52	49523	6.57	488.71		
+50		6.2		89	0	
3610		5.6		89	6	
+16	37 Rt of 1/2 Fly Auto Court	9.98		85	25	07 Floor of Courts
+50		4.9		90	3	
3710		4.5		90	7	
+50		4.6		90	6	
3810		4.8		90	4	
+50		6.0		89	2	
"	100 Rt of 1/2	15.8		79	4	07 Ground
3910		7.1		88	1	
+50		8.3		86	9	
+85	101 Rt of 1/2 Hwy House	12.5		82	2	07 Floor
4010		8.6		86	6	
+11.35	73' d St	7.96		87	22	
TP	2.12	489.45	7.96	487.27		07 1/2 Stub 40+41.35
BM		9.18		480.27		1 SW 8P F/CO 1004 73' d St 480.35

Levels Proposed for "C" Line

Alley Between Mohawk & Saranac

From 69th St. to 73rd St Sketch Page 25 & 26

BM	9.95	469.08	459.13	1342.41 B	on Stub
0+0	- East Line 69 th St	7.3	61 ⁸		Page 25
+50		2.3	66 ⁸		
TP	10.10	478.75	468.65		
1+0		7.0	71 ⁷		
+2.5	97 ft of $\frac{1}{2}$ = 1/4 House	6.1	72 ⁶		on Floor
+50		5.0	73 ⁷		
2+0		5.5	73 ²		
+50		5.3	73 ⁴		
3+0		4.6	74 ¹		
+50		4.2	74 ⁵		
"	104 ft of $\frac{1}{2}$ = 1/4 House	4.4	74 ³		on Floor
+7.5	102 ft of $\frac{1}{2}$ = 1/4 "	0.7	78 ⁰		" "
4+0		3.3	75 ⁴		
+50		2.8	75 ⁹		
+80	105 ft of $\frac{1}{2}$ = 1/4 House	2.5	76 ²		on Floor
5+0		3.0	75 ⁷		
+50		3.2	75 ⁵		
TP	4.35	479.07	474.72		
+7.5	115 ft of $\frac{1}{2}$ = 1/4 House	4.4	74 ⁶³		on Floor
6+0		5.2	73 ⁹		
+19.65	= W.L. 70 th St	7.8	71 ³		on Ground
+29.65	"	9.46	69 ⁶¹		on Pav
+49.65	= $\frac{1}{2}$ 70 th St	9.00	470.07		on Nail Box
+69.65		9.45	69 ⁶²		

479.07

Aug 20-45

Sisson
Bliss
Osborn
B.P.P.

33

6+79.65	= E.L. 70 th St	9.27	69 ⁸⁰		on Pav
7+0		7.6	71 ⁵		
+50		4.0	75 ¹		
8+0		10.4	78 ²		
TP	12.56	490.82	478.26		
+50		8.1	82.7		
"	100 ft of $\frac{1}{2}$	11.0	79 ⁸		on Ground
9+0		3.4	87 ⁴		
+2.5	111 ft of $\frac{1}{2}$ = 1/4 House	70.8	91 ⁶		on Floor
TP	12.83	489.99	489.99		
+50		502.82	93 ⁷		
10+0		2.1	00 ²		
+2.0	117 ft of $\frac{1}{2}$ = 1/4 House	6.3	96 ⁵		on Floor
TP	12.67	514.36	501.69		
+50		9.3	05 ¹		
11+0		6.5	07 ⁹		
+1.5	104 ft of $\frac{1}{2}$ = 1/4 House	19.9	94 ⁵		on Floor
+50		5.7	08 ⁷		
12+0		3.6	10 ⁸		
+50		1.9	12 ⁵		
"	95 ft of $\frac{1}{2}$ = 1/4 House	12.7	01 ²		on Floor
13+0		1.2	13 ²		
+29.86	= $\frac{1}{2}$ 71 st	1.84	12 ⁵²		on Stub
TP	12.59	525.11	512.52		on Stub 13129.81

52511

13+50		12.3	12 ⁸ ✓	
14+0		11.7	13 ⁴ ✓	
"	15 Rt of 1/2 = 1 1/4 House	12.8	12 ³ ✓	
+50		12.4	12 ² ✓ on Floor	
15+0		10.3	14 ⁰ ✓	
"	100 Rt of 1/2	23.0	02 ¹ ✓ on Ground	
+50		4.9	20 ² ✓	
16+0		2.1	23 ⁰ ✓	
+50		1.3	23 ⁸ ✓	
17+0		2.3	22 ⁸ ✓	
"	101 Rt of 1/2 = 1 1/4 House	11.9	13 ² ✓ on Floor	
+50		2.7	22 ⁴ ✓	
18+0		3.2	21 ² ✓	
TP	5.91	527.48	3.54	521.57
+50			6.1	21 ⁴ ✓
+90	46 Rt of 1/2 = 1 1/4 House	16.3	11 ² ✓ on Floor	
19+0		6.6	20 ² ✓	
+50		6.5	21 ⁰ ✓	
20+0		5.0	22 ⁵ ✓	
+09.03 = 1/2 70rd St		50.4	22 ⁴⁴ ✓ on Stab	
+50		4.8	22 ⁷ ✓	
+75	112 Rt of 1/2 = 1 1/4 House	17.6	09 ² ✓ on Floor	
21+0		5.0	22 ⁵ ✓	
+50		4.7	22 ⁰ ✓	
+75	115 Rt of 1/2 = 1 1/4 House	16.2	11 ³ ✓ on Floor	

52748

22+0		3.4	24 ¹ ✓	
+50		1.4	26 ¹ ✓	
TP	5.08	529.82	0.74	526.74
23+0		2.4	27 ⁴ ✓	
"	100 Rt of 1/2	10.6	19 ² ✓ on Ground	
+50		2.0	27 ⁸ ✓	
+75		2.3	27 ⁵ ✓	
24+0		6.5	23 ⁵ ✓	
TP	0.51	517.52	12.81	517.01 ✓
+50			5.1	12 ⁴ ✓
TP	1.06	505.74	12.84	504.68 ✓
25+0		1.9	03 ⁸ ✓	
+50		12.8	92 ² ✓	
TP	0.69	493.51	12.92	492.82 ✓
26+0		7.9	85 ⁶ ✓	
TP	3.93	484.41	13.03	480.48 ✓
+50			5.2	79 ² ✓
+89.34 = 1/2 70rd St			9.94	74 ⁴² ✓ on Stab
TP	9.12	492.28	12.5	483.16 ✓ on Stab
TP			5.00	487.28 ✓ on Stab

on Stab
4074135B
48727
Page 22

466.38			
7+75.71 = 47°11' Rt	3.56	62	82 ✓
8+0	3.2	63	2 ✓
+50	2.4	64	0 ✓
9+0	2.2	64	2 ✓
+25.7 = S L El Cajon	2.04	64	34 ✓
TP 10.66 475.06	1.98	464.40	
+40	11.01	64	05 ✓
+50	10.59	64	47 ✓
+75.7 = 2 El Cajon	10.12	64	93 ✓
10+0	10.53	64	53 ✓
+11	11.04	64	02 ✓
+25.7 = N L El Cajon	10.52	64	54 ✓
+50	9.6	65	5 ✓
11+0	8.2	66	2 ✓
+50	6.7	68	4 ✓
+75.48 = 2 Hillcy = 20101.44 B"	5.89	69	17 ✓
12+0	5.2	69	2 ✓
+50	3.7	71	4 ✓
13+0	2.3	72	8 ✓
+50	1.0	74	06 ✓
+65.55 = 2 Mohawk	0.68	474.38	✓
14+0	0.0	75	06 ✓
+50	0.4	74	2 ✓
15+0	2.1	73	0 ✓
+55.50 = 2 Hillcy = 6+49850	5.04	470.02	09 Mail

Levels Proposed Survey Mohawk St
70th St to 73rd St
Sketch Page 26

B.M.	12.27	486.65		474.28	247 Mohawk 70th St Page 26
0+0	= 70th St		11.86	74 19	✓
+20	= Gutter		12.5	74 1	✓
+23.5	= Curb		11.91	74 14	✓
+32			9.5	77 1	✓
+50			9.4	77 2	✓
1+0			8.3	78 3	✓
+50			6.0	80 6	✓
2+0			3.5	83 1	✓
+50			0.9	85 1	✓
TP	10.95	497.07	0.53	484.2	✓
3+0			8.8	88 3	✓
+50			5.6	91 5	✓
4+0			5.3	91 8	✓
+50			8.6	88 5	✓
5+0			9.8	87 3	✓
+50			8.4	88 1	✓
6+0			5.9	91 2	✓
+50			3.6	93 5	✓
+79.94	= 71st St		2.54	94 53	109 Stub
7+0			2.0	95 01	✓
TP	12.49	507.52	2.04	495.03	✓
+50			13.9	93 6	✓
8+0			14.2	93 3	✓
+50			12.1	95 1	✓

Aug. 22 45
S. 1000
Bliss
Storant
8099

37

507.52

9+0			10.3	97 2	✓
+50			8.8	98 1	✓
10+0			7.0	00 5	✓
+50			4.6	02 9	✓
11+0			4.5	03 0	✓
+50			6.2	01 3	✓
12+0			6.7	00 8	✓
+50			7.3	00 2	✓
13+0			7.9	99 6	✓
+50			7.8	99 1	✓
14+0			6.4	01 1	✓
+59.35	= 72nd St		5.90	01 82	109 Stub
+7.5			3.7	03 8	✓
TP	12.28	516.62	3.28	504.34	✓
14+0			11.8	04 8	✓
+50			10.8	05 8	✓
15+0			10.3	06 3	✓
+50			9.6	07 2	✓
+99	= N.E. Fly 3' Cyp Hedge				
16+0			5.4	11 2	✓
+50			5.1	11 5	✓
17+0			4.6	12 2	✓
+50			4.9	11 2	✓
18+0			8.0	08 6	✓
+50			12.8	03 8	✓

Mohawk St.

516.62

TP 0.98 504.96 12.64 503.98

on basement floor

18+09 75 67 of 1/2 = 51/2 house + 2.6 507.6

19+0 54 99.6

+50 110 94.0

TP 2.08 494.12 12.92 492.04

For check

6.85 487.27

on stub 40 + 41.35 = 81.35
487.27
Page 32

Levels Proposed Sewer "D" Line
72nd St & E/Cajon Blvd. to 73rd St.

Sketch Page 26

BM	7.88	485.20	477.32	on stub 38+21.76'H"
0+0	-33+91.76'H"		77.3	on stub
+50		70	78.2	
1+0		6.6	78.6	
+50	= S.L. E/Cajon	5.44	79.16	
+64	= S.Cb.	5.60	79.60	
2+0	= Z	5.09	80.11	
+36	= N.Cb.	5.52	79.68	
+45	= Δ	5.11	80.09	
+65.1	= Gutter	5.88	79.32	
"	= Cb Top	5.26	79.94	
3+0		5.9	79.8	
+50		5.9	79.3	
4+0		6.5	78.7	
+10.3	= Wly Conc Walk	7.07	78.13	
+98.7	= Ely " "	7.05	78.15	
5+0		7.1	78.1	
+50		7.9	77.3	
TP	2.59	481.94	680	478.40
6+0		4.9	77.0	
+50		4.9	77.0	
7+0		4.7	77.2	
+50		4.2	77.2	
8+0		3.5	78.4	
+50		2.7	79.2	

481.94

8+59.7	= Wly F Co	2.31	79.63	
9+0		1.8	80.1	
+0.53	= N.Cb 73rd	1.58	80.36	
"	= Gutter	2.18	79.76	
+24.9	= Z 73rd St	1.36	80.58	
BM		1.68	180.26	S.W. 3P E/Cajon Blvd 73rd St 180.35

Levels Proposed Center Line
 89th St + Mohawk St to Serve John Fair School

Sketch Page 25

BM	8.64	467.77	459.13	07 Stub 13+21.418" Page 25
0+0	= 13+21.418"	8.64	59.13	
+50		7.1	60.2	✓
1+0		5.8	61.9	✓
+50		4.6	63.2	✓
+89.95	= A 90° 00' Lt of Mohawk	3.9	63.9	✓
2+0		4.1	63.7	✓
+50		5.0	62.8	✓
3+0		6.0	61.8	✓
+59.10	= A 90° 00' Rt	7.23	60.57	on Stub
4+0		6.9	60.9	✓
+30		6.0	61.8	✓
TP	3.30	464.46	6.61	461.16
+68	07 Conc. Curb Top	3.45	61.01	✓
"	07 H.C. Pav	4.00	60.76	✓
+73	07 Conc. Driv. Foundation	4.12	60.34	✓
+78	" "	4.12	60.34	✓
+94.4	07 H.C. Paving	4.64	59.82	✓
"	07 Lt. S.F. Toilet	4.94	60.02	on Floor
Building	" B" E Entrance	2.18	62.28	" "
"	" A" S.W. Entrance	2.04	62.42	" "
TP	8.71	462.70	10.47	453.99
Building	" H" End Storage + Fair place	8.98	53.72	on Floor
For Check		0.9	464.8	0+0 'C' Page 25

Aug. 25-45

Sisson

Glin

Osborne

8099

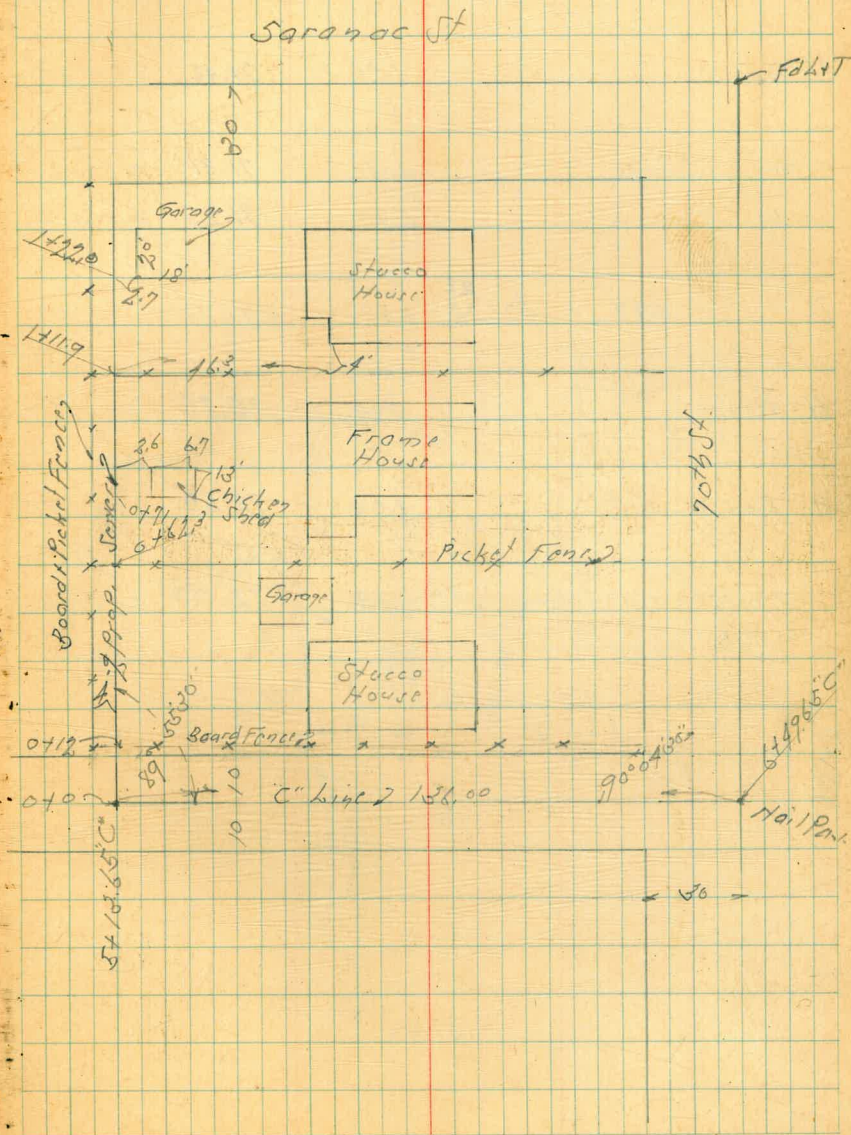
40

Proposed Saxon South of Saranac St. +
West of 70th St.

BM	6.33	481.05	474.72	0.77P 57750 Page 23
+10	-	5.12	75.93	0.25 per ft
+20	-	4.8	76.2	
"	19' Rt = Wly House	4.27	76.78	0.7 Floor
+50	-	6.0	75.0	
+90	56' Rt = Wly House	6.00	75.0	0.7 Floor
+10	-	6.6	74.4	
+22	-	7.0	74.0	
"	46.3 Rt = Wly House	6.40	74.65	0.7 Floor

Aug. 31-45
51000
81.55
Asbornc
8999

41



Levels on N.E. Cor. of
LTH + UPAS ST.

+ = set chisel cross

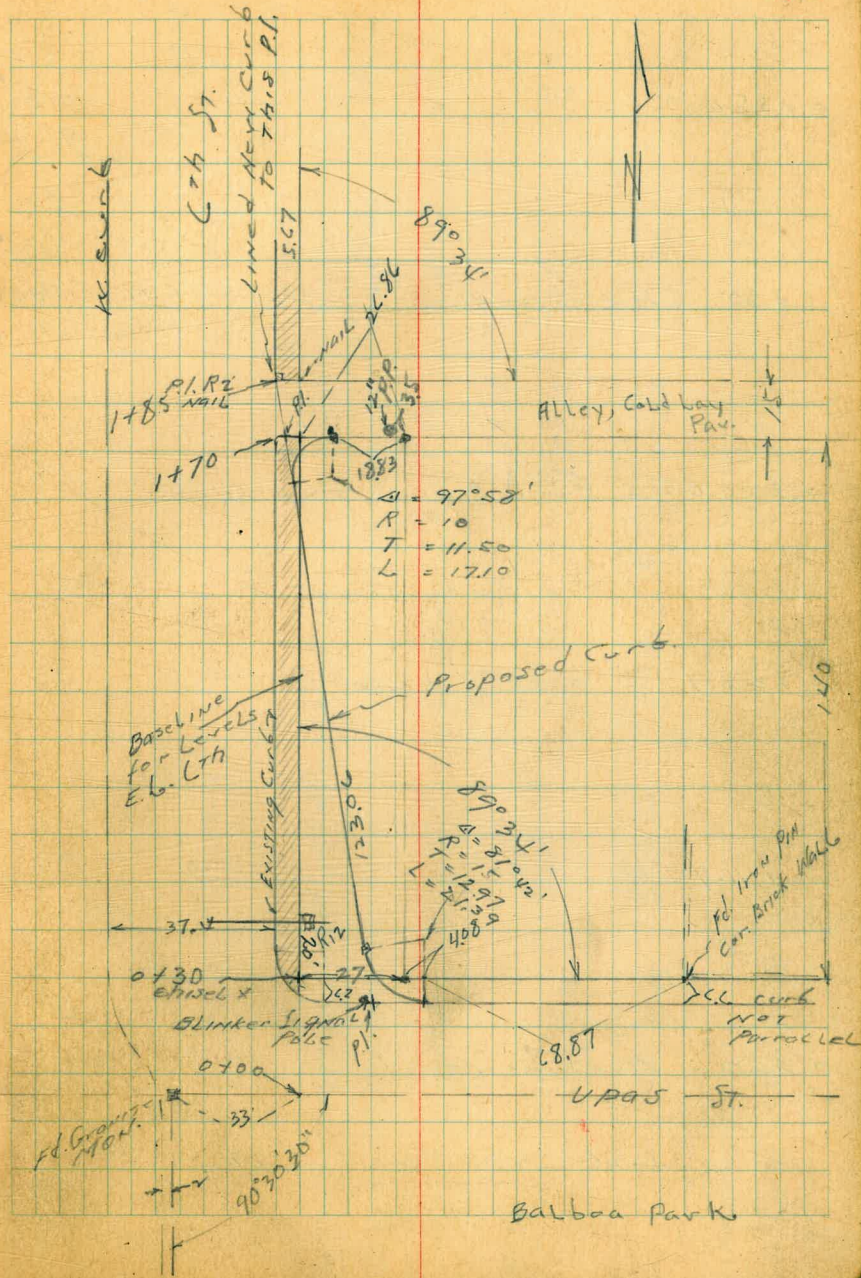
• = " STUBS

See F.D. 1382-IV

Place
Sander Geyer
M.E.M.
10-18-45

Indexed
C.S.K.

43



0+35.8

88.05
7.28
97
in drive

88.57
4.70
M₄

88.92
4.41
E

88.96
4.37
E₄

88.72
4.41
507
97

89.49
5.27
52
66

E.L.
6th
89.71
5.22

90.4
4.9
27

90.6
4.7
20

0+30 = N L UPAS

88.36
6.97
W₆

88.14
7.19
97

88.64
6.67
M₄

88.98
6.35
E

89.06
6.27
E₄

88.74
6.59
47
97

89.55
5.78
42
26

89.67
5.66
27

90.1
5.2
20

0+23.8 = North curb line Top curb

88.82
6.51
P₆

89.52
5.81
27

89.72
5.61
27

89.74
5.59
31.08
97
27 B.C.

89.99
5.34
20

0+23.7 = gutter line

89.11
6.22
20

89.06
6.27
10

88.82
6.51
P₆

88.85
6.48
27

89.06
6.27
27

89.11
6.22
31.08
97
27 B.C.

89.40
5.73
20

0+11.9

89.14
6.19
20

89.30
6.03
10

89.23
6.10

89.58
5.75
27

89.84
5.59
52

90.02
5.2
20

0+00 = Park line

89.19
6.26
20

89.43
5.96
10

89.40
5.92

89.76
5.77
27

90.06
5.77
52

90.10
5.33
20

6.26 295.33

289.07

295.33

check back to 9M

6-6 ~89.07

1+85 N.L. alley

87.50
7.83
Wcb
87.18
9T
87.75
7.58
W 1/4

1+77.5 Alley

87.54
7.79
Wcb
87.19
9T
87.79
7.52
W 1/4

1+70 - S.L. alley

87.57
7.76
Wcb
87.26
9T
80.7

1+35

in drive
Wcb
87.49
7.84
9T
88.05
7.28
W 1/4

1+00

87.95
7.38
Wcb
87.59
9T
88.22
7.11
W 1/4

0+50

88.21
7.12
Wcb
87.82
9T
88.50
6.83
W 1/4

295.33
2

6-7

E.L.
(74)

Rt.

88.10	88.11	87.93	88.72	88.92	89.14
7.23	7.22	7.10	4.41	4.41	4.19
8	5 1/2	5.27 9T	5.27 26 9T	27	20
88.15	88.15	87.95	88.50	88.61	88.86
7.18	7.18	7.38	6.83	6.72	6.47
8	5 1/4	5.27 9T	5.27 26 9T	27	20
87.83	88.21	88.19	88.83	89.08	90.5
7.50	7.12	7.14	6.58	6.31	5.8
W 1/4	8	5 1/4	5.27 26 9T	6.31 26 and 9T	27
88.43	88.40	88.19	89.00	89.15	90.5
6.90	6.93	7.14	6.33	6.18	4.8
8	5 1/4	5.27 9T	5.27 26	6.18	27
88.62	88.54	88.30	89.14	89.35	90.3
6.71	6.79	7.03	6.51	5.98	5.0
8	5 1/4	5.27 9T	5.27 26	5.98	27
88.81	88.65	88.45	89.64	90.6	90.3
6.57	6.58	5.88	5.59	4.7	5.0
8	5 1/4	5.27 9T	5.27 26	10	27
88.86	88.65	89.45	89.64	90.6	90.6
6.47	6.52	6.58	5.59	4.7	5.0
8	5 1/4	5.27 9T	5.27 26	10	27
88.86	88.86	89.05	90.5	90.5	90.5
6.47	6.47	6.47	6.47	6.47	6.47
8	8	8	8	8	8

295.33

Cross Section Along "A" Block 54 Normal Hts.
From Monroe Ave to Madison Ave
Sketch Page 46

BM 7.02 393.70 386.68

S&RP
Monroe
Cherokee

BM 4.66 396.88 1.48 392.22

S&RP
Monroe
Cherokee

0-12 = N. Cb. line of Monroe

F on Plant Mix 5.09 391.79

F " " " 5.11 391.77

H " " " 5.05 391.83

0+0 = N. L. Monroe Ave

H Top Cb 4.68 392.20

" Gutter on Pav 4.90 391.98

F " " 5.34 391.54

F Gutter 4.99 391.87

F Top Cb 4.73 392.15

0+01

H -0.3 = 1/4 Picket Fence

0+10

F 4.6 392.3

F 4.7 392.2

H 4.2 392.6

0+22

H -0.3 = 1/4 Picket & 1/4 Board Fence

0+50

H 4.1 392.8

F 4.2 392.7

F 3.9 392.0

+04 = 1/4 Picket Fence

396.88

0+81

F -0.2 = 1/4 Picket Fence & 1/4 Bldg

1+0

-0.2 = 1/4 Bldg

F = 1/4 Lot's Fence 3.9 393.0

F 3.9 393.0

H 3.9 393.0

+0.1 = 1/4 Power Pole

1+25

H +0.1 = 1/4 Board Fence

1+33

F +0.9 = 1/4 Lot's & 1/4 Picket Fence

1+50

-2.0 4.0 392.9

H 3.8 393.1

F 3.7 393.2

F 3.5 393.4

+1.5 3.8 393.1

2+0

-1.5 3.8 393.1

-1.9 = 1/4 Picket Fence

-1.0 = 1/4 Picket Fence

F 3.6 393.3

F 3.6 393.3

+0.9 = 1/4 Power Pole

396.88			
M		36	393.3
+20		39	393.0
2+33			
F -1.3	= N/4 Picket Fence		
2+50			
-15		34	393.5
M		34	393.5
$\frac{1}{2}$		35	393.4
F		32	393.7
+1.8	= N/4 + Top Conc Steps	1.26	395.62
TP	6.09	399.68	393.59
2+93			
F -6.6	= $\frac{1}{2}$ Garage Conc Floor	5.86	393.82
	<small>1761 to 351</small>		
3+0			
-15		6.3	393.4
F		6.1	393.6
$\frac{1}{2}$		6.0	393.7
+6.5	= N/4 Porch Pole		
M		6.0	93.7 390.7
+15		6.3	93.4
3+50			
-15		5.6	94.1
M		5.8	93.9
$\frac{1}{2}$		5.8	93.9
F		5.8	93.9
+15		5.9	93.8

399.68			
3+71			
F -0.7	= Wire Fence		
4+0			
-15		51	94.6
F = Wire Fence		54	94.3
$\frac{1}{2}$		53	94.4
M		51	94.6
+15		53	94.4
4+07			
M -1.0	= N/4 Porch Pole		
4+42			
F = N/4 Latht Wire Fence			
4+50			
-15		49	94.8
M		47	95.0
$\frac{1}{2}$		50	94.7
F		51	94.6
+15		50	94.7
5+0			
-15		46	95.1
F		46	95.1
$\frac{1}{2}$		47	95.0
M		4.8	94.9
+15		55	94.2

399.68

5409

H = Sty Wire Fence

5434

H+08 = Sty Plyer Pole

H+0.2 = Sty Wire Fence

5450

-1.5 4.3 = 95.4

H 3.9 = 95.8

Z 3.8 = 95.9

F 3.9 = 95.8

+5.2 = 2 Garage Conc Floor 3.92 = 95.76

5458

H+0.3 = Sty Lath Fence

5495

F -0.9 = Sty 4" Conc Curb

5497

H+0.7 = Sty Plyer Pole

640

-0.9 = Top Conc Curb 3.80 = 95.9

F 3.8 = 95.9

Z 3.9 = 95.8

+6.5 = Sty 2" Hedge

+7.2 = Sty Lath Fence

H 4.0 = 95.7

+7.5 4.3 = 95.4

399.68

6415

H 4.2 = 395.5

Z 4.2 = 395.5

F 4.2 = 395.5

+1.0 = Top Conc Curb 3.63 = 396.05

6430

-0.8 = Top Conc Curb 3.84 = 395.74

F 4.6 = 395.1

Z 4.8 = 394.9

H 4.8 = 394.9

TR 4.98 398.48 6.18 = 398.50

644269 = S.L. Madison

H on Pav. Top Curb Out 4.75 = 93.73

Z on Pav. Top Curb Out 4.85 = 93.63

F " " Curb out 4.49 = 93.99

+0.5 = Top Conc Curb 3.39 = 95.09

64442

F-0.5 = Sty + Top Conc Curb 3.60 = 94.88

645469 = S.C. of Madison

F on H.C. Pav 5.15 = 93.33

Z " " " 5.18 = 93.30

H " " " 5.22 = 93.26

8 M. 4.77 = 393.71

N.E. 7' 4 1/2"
Madison
H.L. 1000
393.52

Cross Section Alley 8" Block 54 Normal Hts

B24	5.41	397.63	392.22	SE 8P Concrete N. 1509 P47
		0-12 = H.C. 6" Top Concrete		
-20 = Top Curb		6.00	91.63	
-20 = Gutter		6.23	91.40	
F 07 Curb		5.83	91.80	
F 07 Plant Mix		6.08	91.55	
1/2	"	6.10	91.53	
1/2	"	" + Top Curb 6.21	91.42	
		010 = H.C. Concrete		
H 07 Cb		5.88	91.75	
H 07 Paving		6.05	91.58	
1/2	"	6.16	91.47	
F	"	6.14	91.49	
F Top Cb		5.99	91.69	
+20		5.5	92.13	
-20	0+15	4.4	93.23	
F		4.8	92.8	
1/2		5.0	92.6	
+173		4.0	93.6	Ground
		Top Concrete 15"	3.67	93.96
		0+22		
H +0.2 = 1/4" Conc Wall		3.65	93.98	
		0+30		
H = 1/4" Lot's Fence		3.9	93.78	
1/2		4.4	93.2	
F		4.3	93.3	
		0+50		
H = 1/4" Picket Fence x 1/4" Power Pole				
H -0.2 = 1/4" Lot's Fence				

		397.63	
		0+65	
-20		4.2	93.4
F		3.7	93.9
1/2		3.8	93.8
1/2		3.4	94.2
		1+0	
-1.2 = 1/4" Picket Fence			
H		3.7	93.9
1/2		3.6	94.0
F		3.7	93.9
+20		3.8	93.8
		1+01	
H-2.2 = 5/8" Conc Floor		3.65	93.98
H-2.9 5/8" 4 Garage		3.35	94.28 Conc Floor
		1+49	
-20		4.4	93.2
F		3.8	93.8
1/2		3.7	93.9
H		3.5	94.1
+2.5 = 1/4" Conc Floor		3.44	94.19
+3.4 = 1/4" 4 Garage		3.44	94.19 Conc Floor
		1+50	
H-1.3 = 1/4" Power Pole			

397.63

2+0

-15	4.1	93.5
X	4.3	93.3
Z	4.6	93.0
F	4.5	93.1
+20	4.5	93.1

2+39.2 = S-L Alley's

-20	4.4	93.2
F	4.4	93.2
Z	4.4	93.2
X	4.5	93.1

+27 = Wly Tel Pole

+10	4.0	93.6
-----	-----	------

2+40

F+32 = Ely Archer Pole

TP

3.51

394.12

1/20112
Tel. pole
10.3.12
2+39.12

Cross Section Alley D Block 59 Normal Hts

Sketch Page 46

B.M. 478 398.90 394.12

10.2' x 12' Pole
2 x 3 1/2" S

0-12 = E.C. line of 3 1/2" S

H on Paving 6.83 92.07

L " " 6.89 92.01

S " " 6.78 92.12

0+0 = E.L. 3 1/2" S

S on Paving Ret out 6.39 92.51

L " " 6.48 92.42

H " " Ret out 6.29 92.61

+0.5 = 2 x 1 1/4" Hedge

0+20

H 5.2 93.7

L 5.4 93.5

S 5.4 93.5

+0.8 = 1 1/4" 2' Conc Block Walk 5.23 93.67

0+40

-0.9 = 1 1/4" Conc Block Walk 4.74 94.16

S 4.7 94.2

L 4.8 94.1

H 5.0 93.9

0+45

S -0.3 = 1 1/4" Picket Fence

S -0.8 = Fly 2' Conc Block Walk

0+68

H -1.5 = Fly 2' Hedge

398.90

0+76

H -1.6 = Fly 2' Ribbed Conc Drive 4.79 94.11

H -6.6 = Fly Garage Conc Floor 4.37 94.53

0+81

H = 1 1/4" Picket Fence

0+85

H " " 4.7 94.2

L " " 4.6 94.3

S " " 4.5 94.4

1+06.68 = 1/2 of Circle

-0.7 = Fly Picket Fence

S " " 4.6 94.3

L " " 4.6 94.3

H = Fly Picket Fence 4.6 94.3

Cross Section Alley F Block 59 Normal Hts

Sketch Page 46

398.90 Bl. Ford

0 - 12 = 5 Cb Lin + Madison

F on Pav	5.98	92.92
L	5.92	92.98
H	6.07	92.83

0 + 0 = 5 L Madison

H = Cb + Pav	5.80	93.10
L	5.69	93.21
F = Cb + "	5.65	93.25

0 + 20

F	4.3	94.6
L	4.6	94.3
H	4.4	94.5

0 + 40

-2.5 = Fly 2 Core Walk	4.22	94.68
H	4.1	94.80
L	4.0	94.9
F	4.0	94.9

0 + 75

F	3.7	95.2
L	3.7	95.2
H	3.7	95.2
+10	4.3	94.6

1 + 04 = 8 10 Core Apron on Ford

-10	4.1	94.8
H	3.8	95.1

398.90

L	3.8	95.1
+6 = Fly Core Apron	3.75	95.15
F on	3.69	95.21
+7.5 = Fly Garage Core Floor	3.30	95.60
1 + 32.32 = All Circle		
F	4.0	94.90
L	3.9	95.0
H	4.2	94.7

Cross Section 30 Alley "C" Block 54 Normal Hts.

Sketch Page #6

398.90 87 Ford

BM		6.55	92.35	on Stub Radius & Grade
	0+0			
15' Lt = F		4.5	94.4	
Z		4.7	94.2	
+7		4.1	94.8	
15' Rt = H		4.3	94.6	
	0+50			
15' Rt		4.8	94.1	
7' Rt		4.8	94.1	
Z		5.2	93.7	
15' Lt		5.0	93.9	
	1+0			
15' Lt		5.4	93.5	
Z		5.4	93.5	
+5		5.4	93.5	
+8		4.8	94.1	
15' Rt	0	5.0	93.9	
	1+50			
15' Rt		5.0	93.9	
12' Rt		5.6	93.3	
Z		5.8	93.1	
15' Lt		5.7	93.2	
	2+0			
15' Lt		5.8	93.1	

Oct. 30-15
S. J. J. J.
Bliss
Osborn

54

398.90

Z		5.7	93.2
13' Rt		5.7	93.2
15' Rt		5.4	93.5
	2+50		
15' Rt		5.1	93.8
10' Rt		5.6	93.3
Z		5.8	93.1
15' Lt		5.7	93.2
	3+0		
15' Lt		5.1	93.8
Z		5.2	93.7
15' Rt		5.2	93.7
	3+50		
15' Rt		4.8	94.1
Z		5.0	93.9
15' Lt		5.0	93.9
	4+0		
15' Lt		4.4	94.5
7' Lt		5.0	93.9
Z		5.0	93.9
15' Rt		4.8	94.1
	4+50		
15' Rt		4.7	94.2
Z		4.7	94.2
15' Lt		4.9	94.0

398.90

5+0

15' Lt	4.4	94.5
$\frac{1}{2}$	4.6	94.3
15' Rt	4.8	94.1

5+50

15' Lt	4.7	94.2
$\frac{1}{2}$	4.3	94.6
15' Rt	4.5	94.4

6+0

15' Rt	4.0	94.9
$\frac{1}{2}$	3.9	95.0
15' Lt	3.8	95.1

6+50

15' Lt	3.7	95.2
$\frac{1}{2}$	3.7	95.2
15' Rt	4.0	94.9

7+0

20' Rt	4.4	94.5
15' Rt	3.9	95.0
$\frac{1}{2}$	3.9	95.0
15' Lt	3.6	95.3

7+50

15' Lt	4.0	94.9
$\frac{1}{2}$	4.2	94.7
15' Rt	4.0	94.9

398.90

8+0

15' Rt	3.8	95.1
5' Rt	4.5	94.4
$\frac{1}{2}$	4.5	94.4
15' Lt	3.7	95.2

8+50

15' Lt	4.5	94.4
$\frac{1}{2}$	4.3	94.6
15' Rt	4.2	94.7

9+0

15' Rt	4.1	94.8
$\frac{1}{2}$	4.0	94.9
15' Lt	4.2	94.7

Proposed Sycor Amber St. St.
70th St to 69th St.
Sketch Page 35

BM	1.51	461.51	460.00	
0+0	= 5+84.09 on 70th St	1.51	460.00	
+50	on Rock & Oil Pav.	2.7	58.8	
1+0	" " " "	3.2	58.3	
+50	" " " "	3.5	58.0	
2+0	" " " "	3.8	57.7	
+50	" " " "	4.1	57.4	
3+0	" " " "	4.5	57.0	
"	56' Lt of $\frac{1}{2}$ " Fly House	2.77	58.74	on Floor
+50	on Rock & Oil Pav.	4.6	56.9	
4+0	" " " "	4.7	56.8	
+50	" " " "	5.0	56.5	
5+0	" " " "	5.2	56.3	
"	67' Lt of $\frac{1}{2}$ " Fly House	5.73	55.78	on Floor
+50	on Rock & Oil Pav.	5.7	55.8	
6+0	" " " "	6.0	55.5	
JP	4.37	459.82	6.06	455.45
6+0	100' Lt of $\frac{1}{2}$ " Low Point	6.0	53.8	
"	165' Lt " " " " of Top of cut	7.3	52.5	
6+50	on Rock & Oil Pav.	4.8	55.0	
7+044	= $\frac{1}{2}$ 69th St	5.6	54.2	

5.12

454.70

on 5th
13th St
Page 27

Nov. 6. 45
S. 5507
Bliss
8099

56

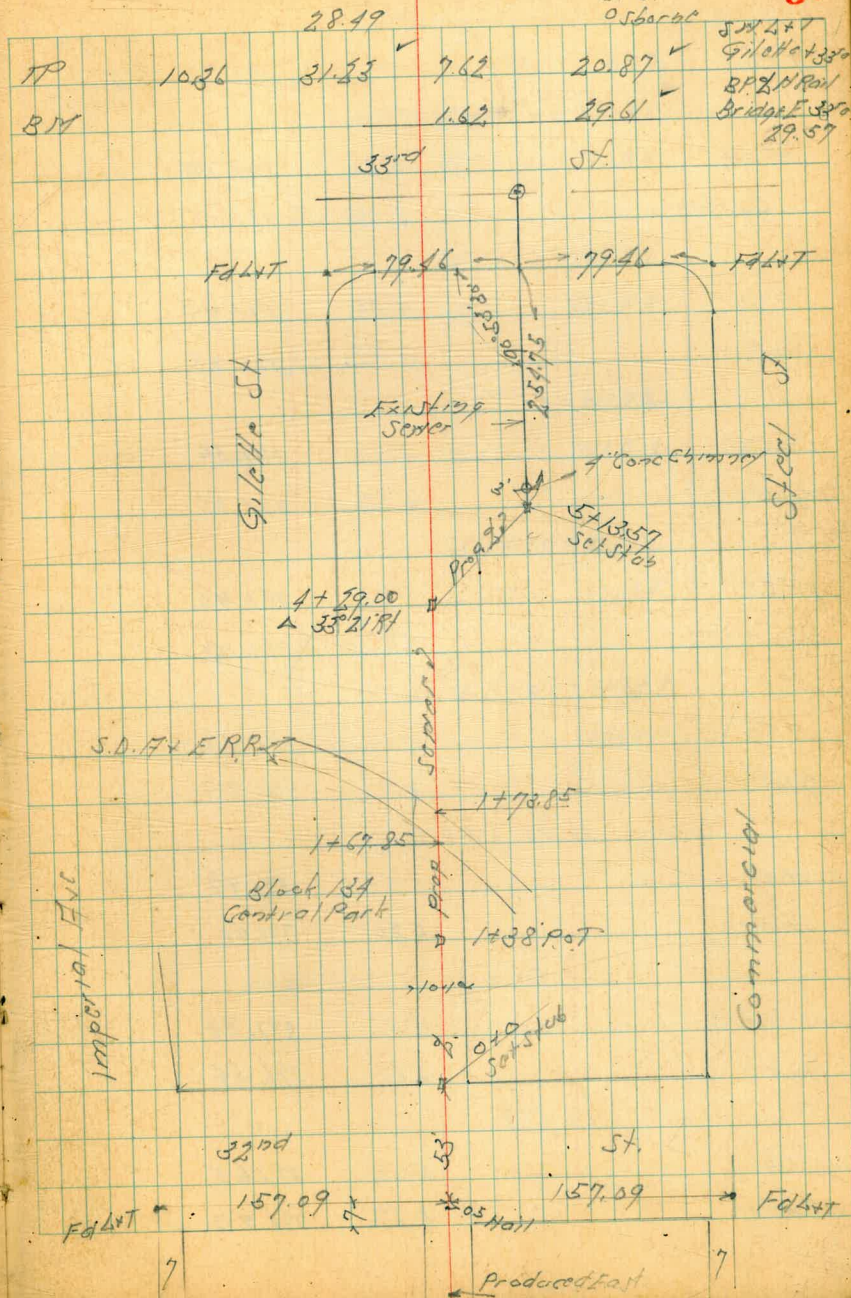
Proposed Sewer Block 134 Central Park
East of 32nd South of Imperial

BM	7.99	7.502	67.03	HYBR. Imperial + 32nd St
0+0 = F.L. 32nd St.	6.10	68.92	075/ub	
+50	3.6	71.4		
1+0	5.2	69.8		
+35	4.7	70.3		
+38 POT	3.94	71.08	075/ub	
+62	9.8	65.2		
+67.85 = N.Y. Rail Top	9.06	65.96		
+73.85 = E.H. " "	8.83	66.19		
+84	10.2	64.8		
+92	7.9	67.1		
2+0	9.2	65.8		
+25	10.8	64.2		
TP 0.52	62.66	12.88	62.14	
+50	2.4	60.3		
3+0	4.9	57.8		
+50	5.6	57.1		
4+0	6.6	56.1		
+29.0 = Δ 33° 21' Rt.	7.23	55.43	075/ub	
+38	7.4	54.3		
+50	14.0	48.7		
TP 1.76	51.77	12.65	50.01	
TP 1.64	40.40	13.01	38.76	
5+0	10.4	30.0		
TP 0.60	28.49	12.51	27.89	
+13.57	8.38	22.13	075/ub	

Indexed
C.S.K.

Nov. 9-45
S 155.00
811.55
0.5 barrel

57



Monroe Ave. North Curb Levels
East Line 35th to Alley West of W. 1000

Sketch Page 46

BM	4.98	397.20	392.22
	0+0 = E.L. 35th St		
H Cb		5.76	391.44
Gutter		6.07	391.13
	0+25		
H Cb		5.75	391.45
Gutter		5.92	391.28
	0+45		
H Cb		5.70	391.50
Gutter		5.85	391.35
	0+70		
H Cb		5.78	391.42
Gutter		5.91	391.29
	1+0		
H Cb		5.64	391.56
Gutter		5.81	391.39
	1+30 = B.C. Alley Return		
H Cb		5.73	391.47
Gutter		5.80	391.40
	1+50 = B.C. Alley Return		
H Cb		5.36	391.84
Gutter		5.64	391.56
	1+67.7		
H Cb		5.53	391.65
Gutter		5.77	391.43

S.F. B.P.
Monroe +
W. 1000
Page 47

Dec. 19. 45
Sisson
81.00
0.56
82.99

58

	397.20	
	2+0	
H Cb	5.59	391.61
Gutter	5.76	391.44
	2+25	
H Cb	5.48	391.72
Gutter	5.66	391.54
	2+50	
H Cb	5.48	391.72
Gutter	5.67	391.53
	2+75	
H Cb	5.34	391.86
Gutter	5.52	391.68
	2+96	
H Cb	5.21	391.99
Gutter = B.C. Alley Return	5.40	391.80

Walker
Hurdin
Harley

1-3-46

LEVELS Proposed Culvert Block
as per sketch on Pt. Page

B.M. N.V. B.P.
Ocean View
3/15/47

	7.28	56.59	48.61
0-54.19	ond Rim	Exist. M.H.	5.06
0-54.19	on Flow		15.31
0-42.4	= W Gut		5.15
0-16			4.5
0-05			8.7
0+00	End exist. 18" Conc. Pipe	on Flow	14.00
0+07	Δ Rt $21^{\circ}39'30''$		13.9
0+40			13.2
+80			12.4
+13			11.9
+33			11.8
+35.42	Δ Rt $17^{\circ}26'$		10.42
+40			11.7
+87.65	Δ Rt $22^{\circ}27'$		10.22
+91.15	= End exist. 24" Pipe		10.02 46.57
+95			5.8
2+10.9	= South cb Franklin Inlet		5.77
"	" Gut. Groting		6.77
"	on Flow inlet		9.15

Const. Grades Above Pipe

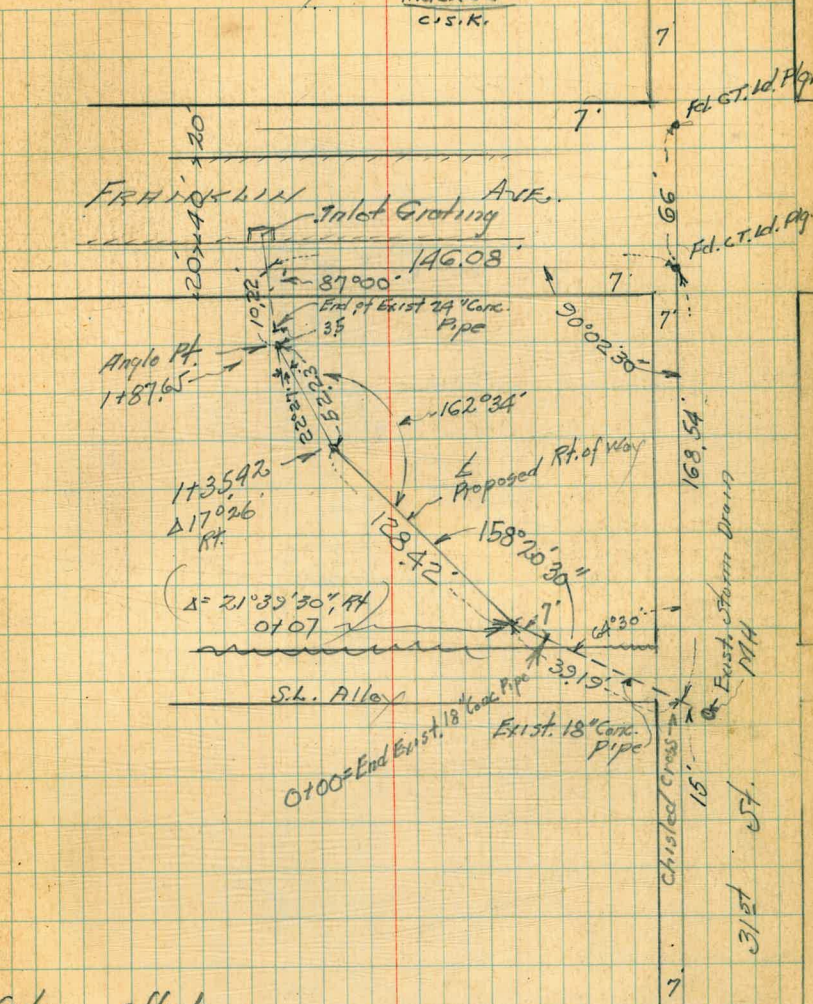
	Proposed	Flot. h. m
0+00	14.00 42.59	42.59
+07	13.05 43.54	42.74
+40	10.98 45.61	43.43
+80	8.92 47.67	44.26
+13	11.61 44.98	44.94

+13 = end of Work
on foot line
100' W.W.L. 3/15/47

328 Feed the Doleys Add.
choates Addition

indexed
C.S.K.

59



Cuts offsets

0.00	
+0.80	4' 4"
+2.18	" Ocean View Blvd.
+3.41	"
+4.04	"

End of Work
on foot line

3/15/47

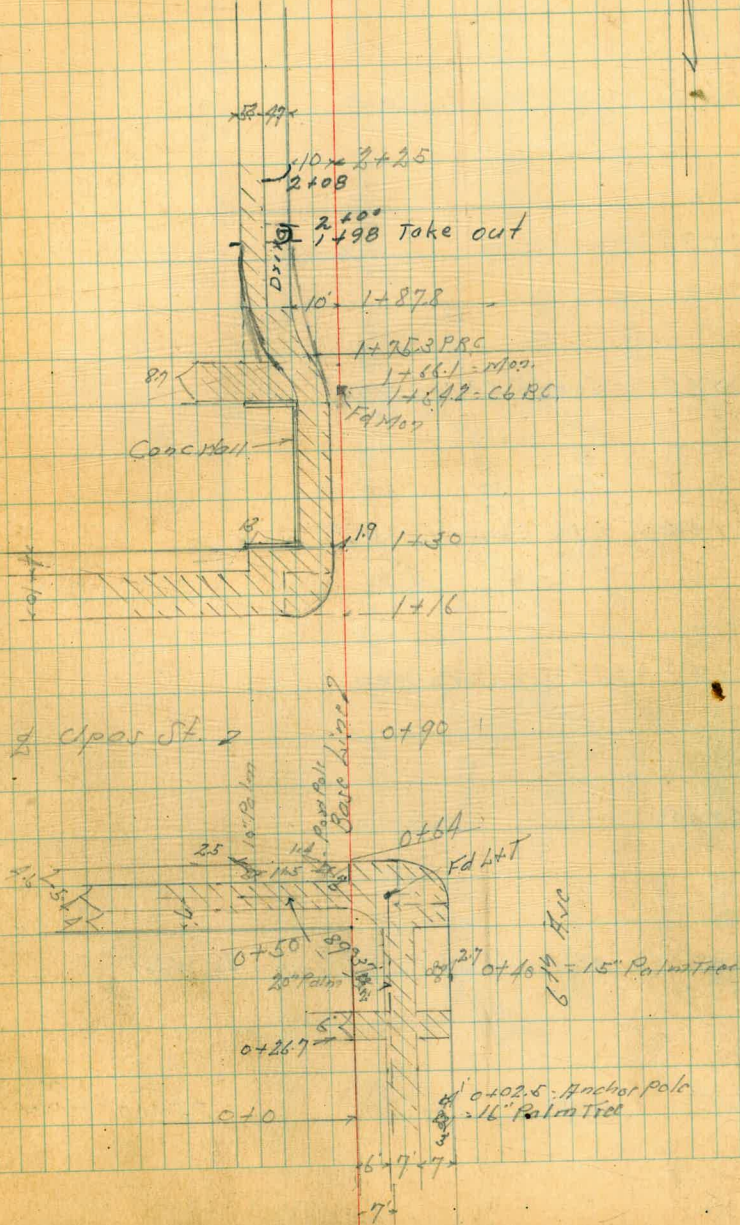
Levels + Topog 6^{1/2} Ave At Upos St.

Levels Next Page

Indexed
c.s.k.

Fed. 27-46
Sisson
Osborn
Haddel

60



Cross Section 6th Ave West Side
 North & South of Upas St.
 Sketch Page 60

0+90 = 1/2 Upas to West

0+78

0+64 = South cb to West

0+54 = Sly Conc Walk to West

0+50 = S.L. Upas to West

0+25

0+0 = 50' South of S.L. of Upas to West

BM

5.19

294.26

289.07

5.19
 294.26

L-11

5.00

Rt. 1

61

88.11	88.63	89.19	89.36	89.43	89.61
6.15 30'-6ul	5.66 30'-cb	5.16 30'-cb	5.10 30'-cb	4.82 30'	4.65 30'
88.72	88.60	89.05	89.06	88.74	88.97
5.16 30'-cb	5.16 30'-cb	5.16 30'-cb	5.10 30'-cb	5.10 30'-cb	5.19 30'
89.25	89.21	89.01	89.01	88.74	89.20
5.16 30'-cb	4.99 30'-cb	5.19 30'-cb	5.19 30'-cb	5.19 30'-cb	5.19 30'
89.4	89.31	89.25	89.09	88.63	89.14
4.95 30'-cb	4.98 30'-cb	5.19 30'-cb	5.19 30'-cb	5.19 30'-cb	5.19 30'
89.4	89.23	89.13	89.01	88.51	88.88
5.19 30'-cb	5.19 30'-cb	5.19 30'-cb	5.19 30'-cb	5.19 30'-cb	5.19 30'
89.2	89.15	89.03	88.88	88.42	88.90
5.19 30'-cb	5.19 30'-cb	5.19 30'-cb	5.19 30'-cb	5.19 30'-cb	5.19 30'

294.26

81507

Lt. 24

R

Rt-E

63

2+25

1+98

1+87.8

294.26

88.52	88.27	87.93	88.62	88.94
5.74 20=Walk	5.99 10=Cb	6.53 10=Cb	5.61	5.53 10=Cb
88.55	88.38	88.12	88.19	89.02
5.71 20=Walk	5.88 10=Cb	6.4 10=Cb	5.57	5.24 10=Cb
88.86	88.83	88.70	88.67	89.03
5.70 10=Walk	5.73 10=Walk	5.56 10=Walk	6.08 10=Cb	5.28 10=Cb

294.26

1+65 Cont.	294.07	
7.92 Lt. ^{floating} Bottom of wall		7.70
12' Lt. Top wall		3.83
ground		5.2
21.02 Lt. Top-end of wall		3.79
ground		5.1
1+66 = face of N. wall		
6.92 Lt. on walk		4.87
Top wall		3.83
12' Lt. " "		3.83
on walk		4.89
21.02 Lt. Top end of wall		3.79
on walk		4.93

Walker CURB And GUTTER ELEV.
 Handicks on Robinson between 4th
 Huntley. - South Side
 4-21-46 And 5th. And on 5th Ave.
 West side from Robinson
 100' South.

4.20 293.07 288.87
 SW Return
 S.W. NW-Br.
 Robinson
 4th
 o.k.

B.C. on cb
 " Gut.

T.P. 484 292.20 571 287.36
 SW Return = 22' = 4 Parts

BC on cb 5.58 287.12

" Gut 5.33 286.87

① on cb 5.07 287.13

" " Gut 5.31 286.89

② " cb 5.06 287.14

" " Gut 5.38 286.82

③ " cb 5.03 287.17

" " Gut 5.39 286.81

0700 F.C. = on cb 4.97 287.23

" " Gut 5.40 286.80

0725 South on cb 5.24 286.96

" " Gut 5.67 286.53

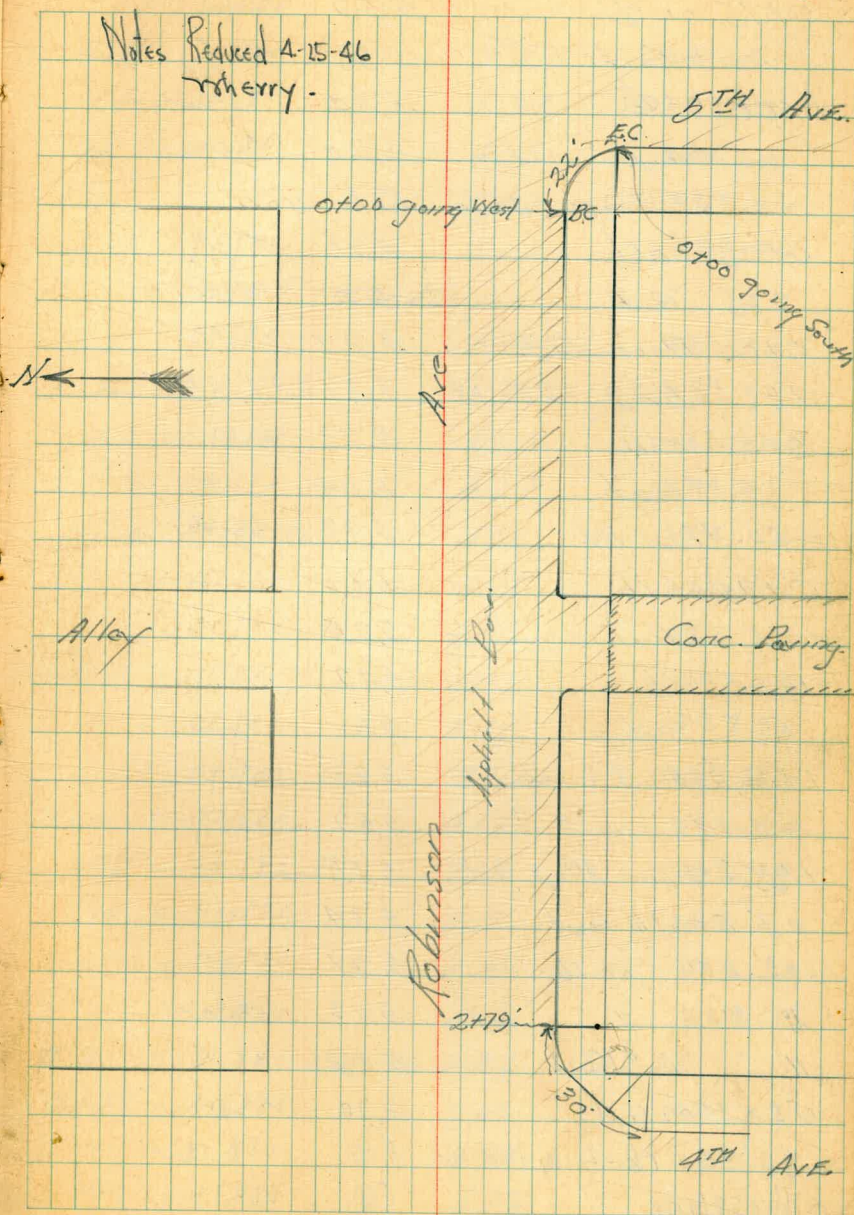
0750 " cb 5.41 286.77

" " Gut 5.76 286.94

Indexed
 O.S.K.I.

66

Notes Reduced 4-15-46
 rcherry.



292.20

0+75 on cb	5.59	286.61
" " Gut.	5.95	286.25
1+00 " cb	5.84	286.36
" " Gut.	6.20	286.00

West side Robinson

0+25 on cb	4.91	287.29
+25 " Gut.	5.2	287.0
0+00 Floor Bld.	4.21	287.99
T.P. 5.29 293.18	4.31	287.89
0+50 on cb	5.71	287.47
" " Gut.	6.04	287.14
Floor Bld.	4.83	288.35
0+75 on cb	5.60	287.58
" " Gut.	5.95	287.23
1+00 " cb	5.47	287.71
" " Gut.	5.80	287.38
1+32.5 BC. 3'R cb	5.28	287.90
" " Gut.	5.59	287.59
1+38.5 = E. Line Alley Gut.	5.55	287.63
3' South Gut.	5.34	287.84
3' " on cb.	5.21	287.97
11' " " "	5.02	288.16
11' " " Gut	5.07	288.15
5'L. on Gut	4.90	288.28
" " cb = lower than Gut	5.00	288.18
1' S.S. Line	5.00	288.18
5' " "	5.01	288.17

29318

67

1+43 = E. Alley		
Gut.	5.53	287.65
11' South	5.21	287.97
11.5 on Roll	4.98	288.20
5'L.	5.12	288.06
3' S	5.12	288.06
1+50.5 = W. L. Alley		
Gut	5.48	287.70
cb	5.26	287.92
11.5 on Gut	4.95	288.23
" " " cb	4.77	288.41
11.5 South on Roll	4.68	288.50
5'L. on cb	4.75	288.43
" Gut	4.85	288.33
1+75 on cb.	5.16	288.02
" " Gut.	5.45	287.73
Floor New Bld.	4.15	289.03
2+00 in Drive	5.18	288.00
+25 on cb sunk	4.99	288.19
1.25 " Gut	5.10	288.08
2+50 on cb	4.79	288.39
" " Gut.	5.02	288.16
T.P. 5.10 294.06 4.22		288.96
2+77 on cb	5.49	288.57
" " Gut	5.77	288.29
2+79 = BC. Ret. on cb	5.32	288.74
" " " " Gut.	5.75	288.31

29406

① on cb	5.28	288.78
" " East	5.79	288.27
② " cb	5.25	288.81
" " East	5.70	288.36
③ " cb	5.25	288.81
" " East	5.68	288.38
④ " E6. on cb	5.22	288.84
" " East	5.64	288.42
chk. BM ^{starting} NW 8P Robinson 4th	5.21	288.85 288.87 0.02

Walker
Hendricks
Huntley
Curel
6-18-46

Additional check on Above B.M.

And curb, as Above cb Elev. Does not

check established grade by about 0.25

	7.28	291.12	283.84	BM NW 8P Robinson + 312 Ave
CHK B.M. NW Robinson 3rd	2.08	289.04	288.87	
			0.17	
	7.22	291.74	284.52	NW 8P Utility Ave + 312
T.P.	5.78	293.35	4.17	287.57
T.P.	1.78	290.91	4.22	289.13
T.P. Chk B.M.	6.98	283.93		NW 8P Robinson 3rd

B.M. Chk. from 5th + Utility.

	3.81	293.75	289.94	BM NW 8P Utility Ave + 5th
T.P.	6.40	293.81	6.34	287.41
chk B.M. NW Robinson 4th	4.79	289.02		288.87
	4.79	293.66		288.87
chk cb 2+50			5.28	288.38
T.P.	4.89	292.15	6.40	287.26
chk 0+50 cb			5.31	286.84
				286.77 0.07
chk 0+75 cb			5.53	286.62
				286.61 0.01

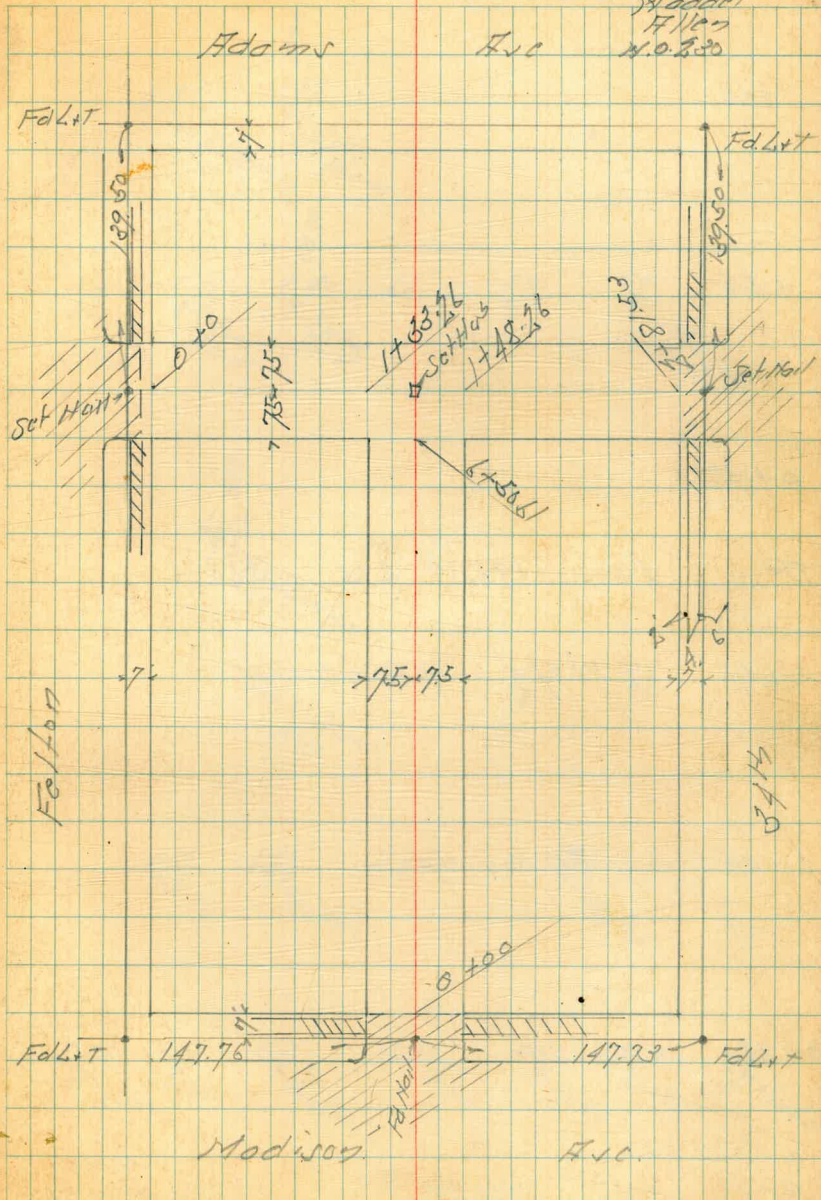
68
BM
NW 8P
Utility Ave
+ 5thBM NW
Robinson
+ 4th

Cross Section Alley's Block 62
 Resub Blocks 39 + 56 Normal Hts. #2077

Indexed
 C.S.K.

Oct. 11. 46
 Sisson
 McCoy
 3rd add'l
 Filler
 N.O. 8.20

69



Lt Lt Rt

+18 7.5 Rt of Lt = Wly Wire Fence
+08 7.4 Rt of Lt = Fly Board Fence

2+0

+80 7.0 Rt of Lt = Board Fence
+65 7.2 Lt of Lt = Fly Metal Fence
+56 7.3 Lt of Lt = Angle Metal Fence

1+48.26 = E.L. N+S Alley 7.5 Rt of Lt = Wly Shdr Board Fence
4.80 390.50 ^{on Hub} L N+S Alley

1+33.26 = W.L. N+S Alley 7.3 Rt of Lt = Fly Post Pole

+25 7.3 Lt of Lt = Angled Metal Fence
+12 7.4 Lt of Lt = Wly Metal Fence

1+10

0+83

395.00

4.0
2.0 4.7
7.5 4.1 4.0
8.7
2.0

4.7
7.5 4.7 4.5

4.9
7.5 4.8 4.9
7.5

4.7
2.5 4.6
7.5 4.8 4.9
7.5

49.5
4.5 on AC Pav. 4.7
3.5 on AC Pav. 5.1 5.1
5.1 4.7
7.5 2.5

49.9
4.5 on Pav. 5.0
5.9 5.3
5.5
7.5 395.30

2 + 81.53 = 11.234th St.

+ 73

+ 57.4

+ 50

+ 48 6.7 R/O of 2 = 51/2 Power Pole

+ 36

2 + 20

395.50

Lt

2

Rt

72

3.96
7.5 = 11/2 Conc
Wall

5.84
7.5 = 11/2 Power
No Conc

6.02

5.91
7.5 = 11/2 Power

3.67
7.5 = 11/2 Conc
Wall

3.96
7.5 = 11/2 Conc
Wall

4.3
7.5

5.1
5

4.9

5.1
4

4.5
Ground
Station

3.66
7.5 on top
Wall

91.2

3.64
7.5 = 11/2 Conc
Wall

3.3
7.5

3.5

3.8
4

4.4
7.5

91.8

3.42
7.5 = 11/2 Conc
Wall

3.3
7.5

3.5

3.6
4

4.4
7.5

91.20

4.10
7.5 = 11/2 Conc
Wall

395.50

BM

4.78

389.31

S.M.BP
Hdgm. 1+
341507
389.25

2193.53 = W.C.B. Line 341507

TP

4.75

394.09

5.96

389.34

395.30

Lt.

Rt.

Rt.

73

5.26

5.08

5.27

5.33

5.42

5.29

5.10

8=6 gutter

8=Cb

8=6 gutter

8=6 gutter

8=Cb

8=6 gutter

394.09

+27 6.6 Lt of $\frac{1}{2}$ - Wly Power Pole
 3+0 7.2 Lt of $\frac{1}{2}$ - Picket Fence
 8 Rt of $\frac{1}{2}$ - Picket Fence
 TP 5.66 395.07 1.15 389.41

+50 7.4 Lt of $\frac{1}{2}$ - Picket Fence
 7.7 Rt of $\frac{1}{2}$ - Sly Picket Fence

+02 7.1 Lt of $\frac{1}{2}$ - Wly Power Pole
 2+0 7.7 Lt of $\frac{1}{2}$ - Picket Fence

+50

+25 7.8 Lt of $\frac{1}{2}$ - Sly Board Fence

+13

+0

393.81

Lt.

$\frac{1}{2}$

Rt.

75

5.0
20

5.1
7.5

5.4

5.4
7.5

5.6
20

395.07

4.2
7.5

4.3

89.70
1.6
1.7
Wly Cold
Lay Pol

4.8
20

4.7
7.5

4.7

89.53
1.33
4.7
Wly Cold
Lay Pol

4.6
20

4.6
7.5

4.8

89.33
4.53
4.7
Wly Cold
Lay Pol

89.24
4.59
- 1/2 Co. for
Cont Floor

4.9
20

4.6
7.5

4.8

89.27
4.59
6.8
Wly Cold
Lay Pol

4.23
20

393.86

Lt

S

Rt

5+0 7.7 Rt of S = 1/4 Board + Sly Wire Fence
 +94 6.8 Lt of S = 1/4 Picket + Sly Wire + 1/4 Board Fence
 + 6.8 Lt of S = 1/4 Ply Panel Pole 7.9 Lt of S = Sly Picket Fence
 +51 7.8 Rt of S = 1/4 Wire + Sly Board Fence
 +50

+01 7.6 Lt of S = 1/4 Picket Fence
 +0 7.1 Rt of S = Sly Wire Fence

3+99

+91

+82

+73

+51

3+86 7.1 Lt of S = 1/4 Picket Fence to South by Board + Picket Fence North
 395.07

4.3
7.5 4.7
7.5 51 5.0
7.5 1.8
2.5

4.8
7.5 51 4.8
7.5

5.1
7.5 51 5.1
7.5

89.98
5.09
7.5 = Sly Conc.
Apr 07
5.15
7.5 = 1/4 Board
190
16.3 = 1/4 Board
4.85
4.01 = Sly Conc. Floor
Gorpp

7.27
4.99
7.5 = 1/4 Sly Conc
Walk

5.2
7.5 5.3

89.88
5.27
7.6 = 1/4 Sly Conc
Walk

395.07

6+5061 = S.L. F & W Alley 7.1 Rt of Z = N/4 Shed + Board Fence

B17
+25

4.59 390.48
^{0.78 Hub}
F & W Alley
390.50

6+0 7.2 Rt of Z = N/4 Shed + Sh. Board Fence

+83

+52 6.7 Lt of Z = W/4 Power Pole

+50 8.0 Rt of Z = Sheds

+33
5+25 8.0 Rt of Z = N/4 Wire Fence + Sh. Shed

395.07

Lt. Z Rt.

4.5
7.5 4.7 4.8
7.5

4.7
7.5 4.8 5.0
7.5

4.6
7.5 4.6 4.8
7.5

170
178 = 1/4 of 390.50
Kalt Top
90.3
4.8 = Bar Cone
Wall
90.3
1.45
1.74 = 1/4 of 390.50
Wall Top
4.6 = Bar Cone
Wall

4.7
7.5 4.8 4.5
7.5

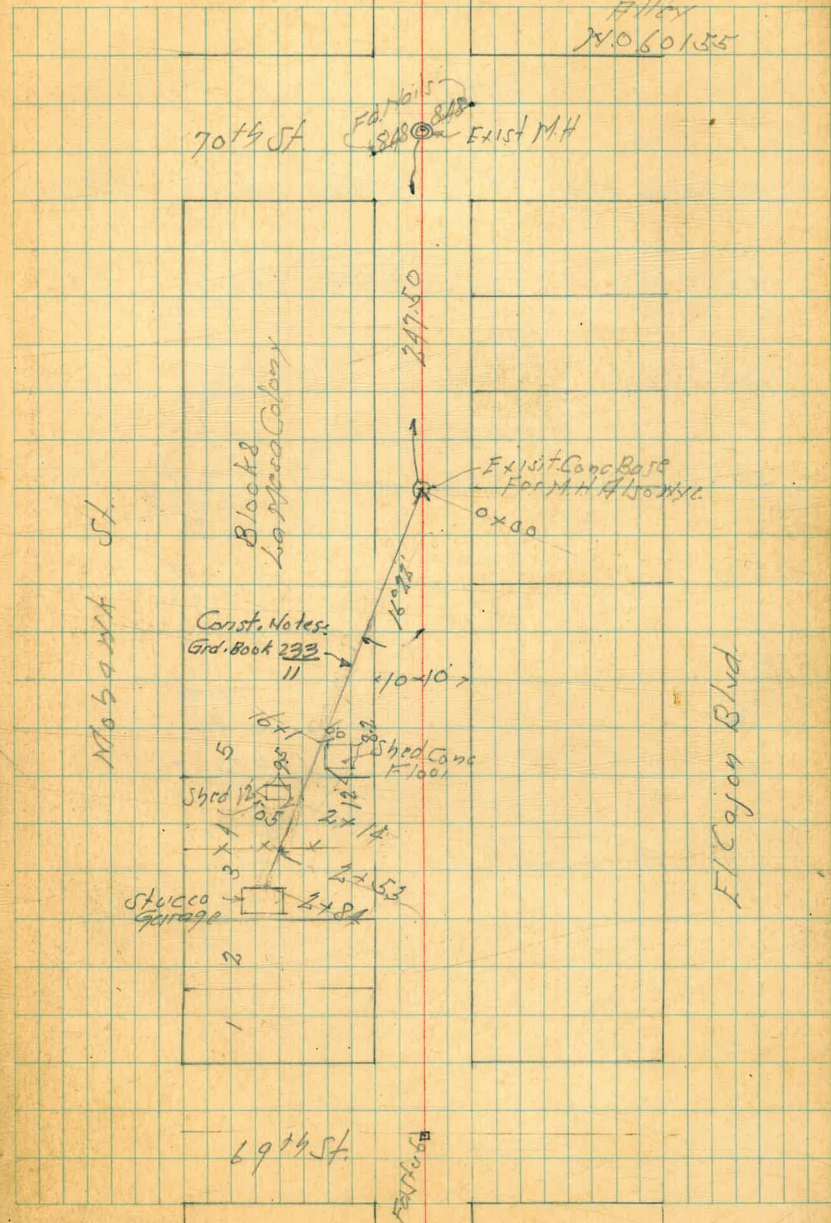
5.0
7.5 5.0 5.0
7.5

395.07

Proposed Survey Block 8 La Mesa Colony

BM	4.14	468.40	464.26	SW 87° E/Cajon + 70th St
0+0	= Top Exist 6" Pipe	9.98	458.42	1/4 Clay Pipe
"		5.2	463.2	Gr-ound
+36	= E+M Picket & Wire Fence			
+44	= H+S " " " "			
+50		6.2	462.2	
+83	9 1/4 H of 1/2 = 1/2 Stucco	+29	471.3	House on Floor
+97	= H+S Board Fence			
1+0		6.6	461.8	
+19	1/2 = 2x2 Conc. Fire Place	Sectional		
+44	7 1/2 H of 1/2 = 1/2	+18	470.2	Camp Single House on Floor
+49	= H+S Board Fence			
+50		6.6	461.8	
+58	= 5 1/4 3' Ext Conc	6.04	462.36	
+73	= 11 1/4 3' Ext Walk	6.05	462.35	
+87	11 1/4 of 1/2 = 1/2	4.1	464.3	Stucco House on Floor
2+0		5.9	462.5	
+01	= H+S Picket Fence			
+38	E+M Picket Fence			
TP	8.06	468.50	796	460.44
+40	40' R of 1/2 = 1/2	10.1	468.6	Stucco House on Floor
+50		5.7	462.8	
+84	1/2 = 1/2 + E+M	5.15	463.35	Stucco Garage Stationary Table on Floor

Aug. 29 47
Simon
McCoy
Filley
NO 60135 78



Sewer Const. on El Cajon Ave
70th St. Ely 150'

(469.80)

0+00	Const MH	M.H. #1	Inv 003
			455.50
			14.30
			5.20
			C 9.00
0+00	Inv. 6" Line	M.H. #1	456.50
			13.30
			5.20
			C 8.00
+25			457.12
			12.68
			4.92
			C 7.76
+50			457.75
			12.05
			4.53
			C 7.52
+75			458.37
			11.43
			4.15
			C 7.28
1			459.00
			10.80
			3.76
			C 7.04
+25			459.62
			10.18
			3.41
			C 6.77
+50	Plug end		460.25
			9.55
			3.04
			C 6.51

3483 B

W.O. 21001

Moore
8099
Sheridan
Bunch

C-29-48

79

				S.W. El Cajon 469.75
BM. 85	6x3	463.18		456.75
T.P.	803	(469.80)	1.41	461.77
Sw BP	El Cajon 70th	5.56		464.24 Ed.
P. 36	check to Pav. & El Cajon and 70th	4.86		464.94 464.93 0.01

- 4.16
 - 6.43 227

- 5.66 MH Bot.

- 10.18 FL 18"

13603
 1297
 23.26

289.09
 519
 294.26

444.69
 305.09
 139

DISTANCES FROM CENTER OF ROADWAY FOR
 CROSS-SECTIONING.

Roadway 16 feet wide. Side Slopes 1 on 1½
 For Single Track Embankment.

H	0	.1	.2	.3	.4	.5	.6	.7	.8	.9	H
0	8.0	8.2	8.3	8.5	8.6	8.8	8.9	9.1	9.2	9.4	0
1	9.5	9.7	9.8	10.0	10.1	10.3	10.4	10.6	10.7	10.9	1
2	11.0	11.2	11.3	11.5	11.6	11.8	11.9	12.1	12.2	12.4	2
3	12.5	12.7	12.8	13.0	13.1	13.3	13.4	13.6	13.7	13.9	3
4	14.0	14.2	14.3	14.5	14.6	14.8	14.9	15.1	15.2	15.4	4
5	15.5	15.7	15.8	16.0	16.1	16.3	16.4	16.6	16.7	16.9	5
6	17.0	17.2	17.3	17.5	17.6	17.8	17.9	18.1	18.2	18.4	6
7	18.5	18.7	18.8	19.0	19.1	19.3	19.4	19.6	19.7	19.9	7
8	20.0	20.2	20.3	20.5	20.6	20.8	20.9	21.1	21.2	21.4	8
9	21.5	21.7	21.8	22.0	22.1	22.3	22.4	22.6	22.7	22.9	9
10	23.0	23.2	23.3	23.5	23.6	23.8	23.9	24.1	24.2	24.4	10
11	24.5	24.7	24.8	25.0	25.1	25.3	25.4	25.6	25.7	25.9	11
12	26.0	26.2	26.3	26.5	26.6	26.8	26.9	27.1	27.2	27.4	12
13	27.5	27.7	27.8	28.0	28.1	28.3	28.4	28.6	28.7	28.9	13
14	29.0	29.2	29.3	29.5	29.6	29.8	29.9	30.1	30.2	30.4	14
15	30.5	30.7	30.8	31.0	31.1	31.3	31.4	31.6	31.7	31.9	15
16	32.0	32.2	32.3	32.5	32.6	32.8	32.9	33.1	33.2	33.4	16
17	33.5	33.7	33.8	34.0	34.1	34.3	34.4	34.6	34.7	34.9	17
18	35.0	35.2	35.3	35.5	35.6	35.8	35.9	36.1	36.2	36.4	18
19	36.5	36.7	36.8	37.0	37.1	37.3	37.4	37.6	37.7	37.9	19
20	38.0	38.2	38.3	38.5	38.6	38.8	38.9	39.1	39.2	39.4	20
21	39.5	39.7	39.8	40.0	40.1	40.3	40.4	40.6	40.7	40.9	21
22	41.0	41.2	41.3	41.5	41.6	41.8	41.9	42.1	42.2	42.4	22
23	42.5	42.7	42.8	43.0	43.1	43.3	43.4	43.6	43.7	43.9	23
24	44.0	44.2	44.3	44.5	44.6	44.8	44.9	45.1	45.2	45.4	24
25	45.5	45.7	45.8	46.0	46.1	46.3	46.4	46.6	46.7	46.9	25
26	47.0	47.2	47.3	47.5	47.6	47.8	47.9	48.1	48.2	48.4	26
27	48.5	48.7	48.8	49.0	49.1	49.3	49.4	49.6	49.7	49.9	27
28	50.0	50.2	50.3	50.5	50.6	50.8	50.9	51.1	51.2	51.4	28
29	51.5	51.7	51.8	52.0	52.1	52.3	52.4	52.6	52.7	52.9	29
30	53.0	53.2	53.3	53.5	53.6	53.8	53.9	54.1	54.2	54.4	30
31	54.5	54.7	54.8	55.0	55.1	55.3	55.4	55.6	55.7	55.9	31
32	56.0	56.2	56.3	56.5	56.6	56.8	56.9	57.1	57.2	57.4	32
33	57.5	57.7	57.8	58.0	58.1	58.3	58.4	58.6	58.7	58.9	33
34	59.0	59.2	59.3	59.5	59.6	59.8	59.9	60.1	60.2	60.4	34
35	60.5	60.7	60.8	61.0	61.1	61.3	61.4	61.6	61.7	61.9	35
36	62.0	62.2	62.3	62.5	62.6	62.8	62.9	63.1	63.2	63.4	36
37	63.5	63.7	63.8	64.0	64.1	64.3	64.4	64.6	64.7	64.9	37
38	65.0	65.2	65.3	65.5	65.6	65.8	65.9	66.1	66.2	66.4	38
39	66.5	66.7	66.8	67.0	67.1	67.3	67.4	67.6	67.7	67.9	39
40	68.0	68.2	68.3	68.5	68.6	68.8	68.9	69.1	69.2	69.4	40

Example—If point is 22.6 ft. above grade, how far should it be from center line to be a slope stake point? Ans. from Table 41.9. For same slopes but other widths of roadbed correct above figures by one-half difference in width of roadbed; thus in example above for 20 ft. roadbed distance will be 41.9 + (20 - 16) ÷ 2 or 2 ft. added to 41.9 = 43.9. For slopes of 1 on 1 see inside of front cover.

MADE IN U.S.A.