

1677



ENGINEER'S  
FIELD BOOK  
No. 403F

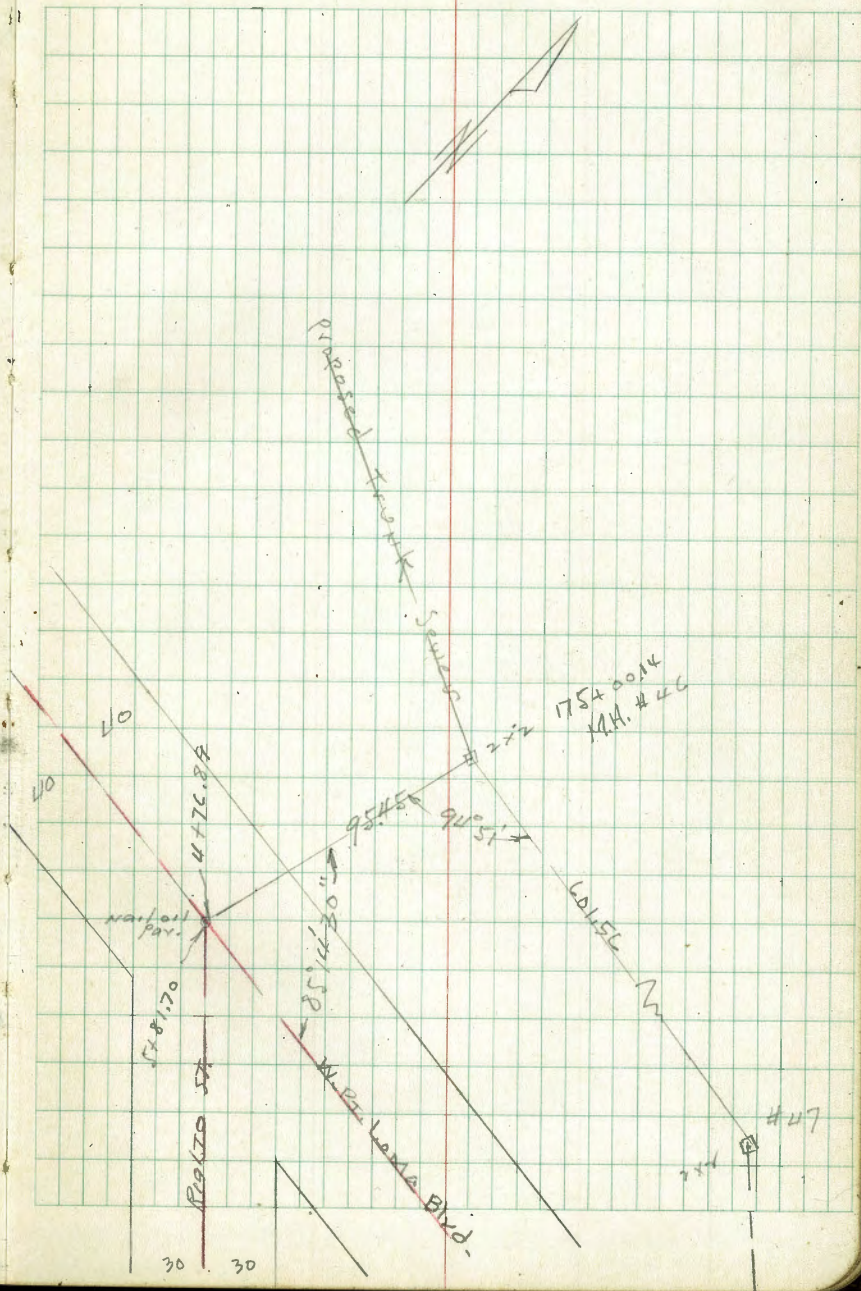


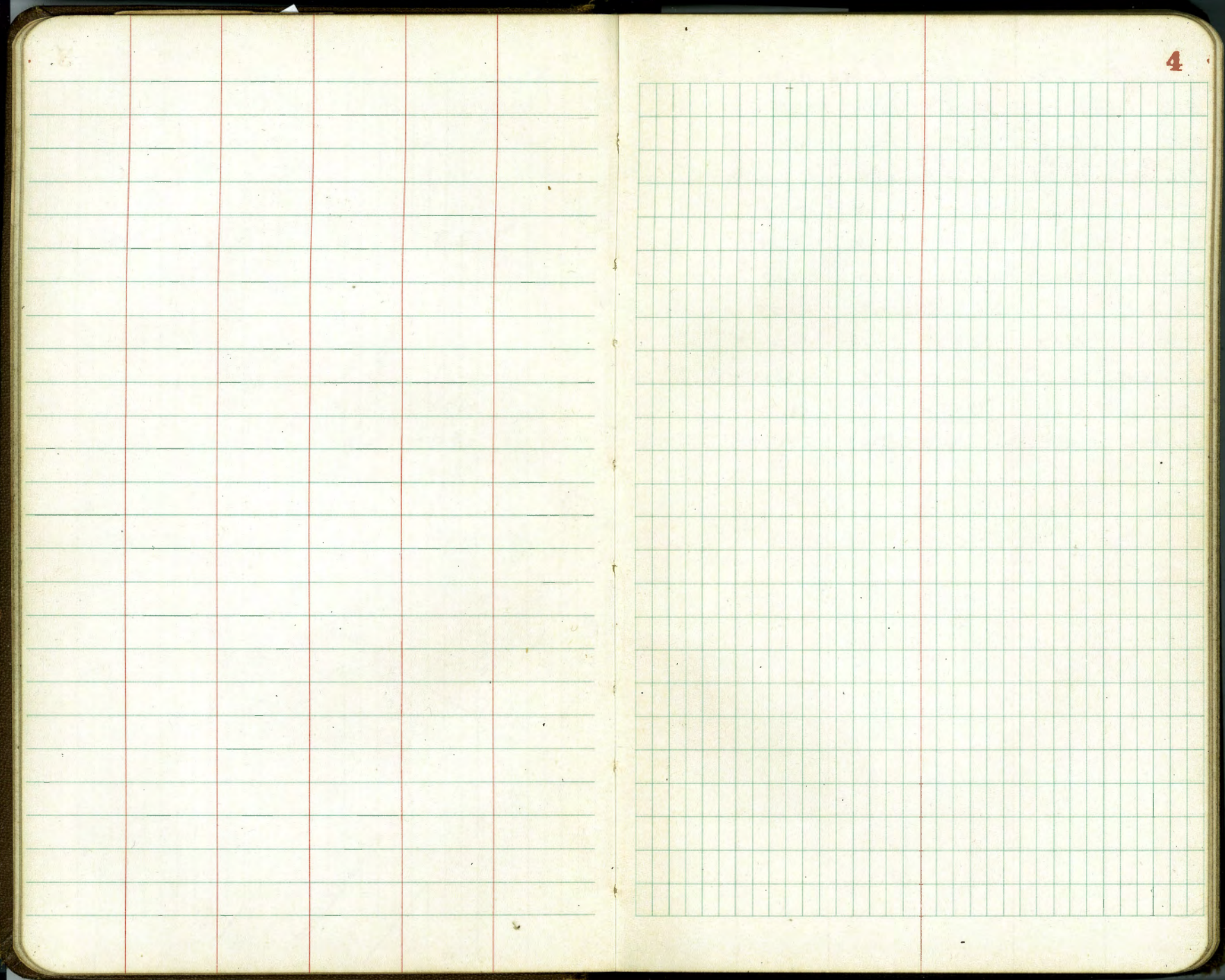


Sewer Levels, E. W. Pt. Loma Blvd.  
and E Rialto St. to M.H. #46  
on Main Trunk Line.

T.P. Nail 3.91 4.38 5.47 P.17

0+00 = E	W. Pt. Loma Blvd and Rialto	3.9	5.5	✓
+22		4.7	4.7	/
+25		3.9	5.5	✓
+41		4.1	5.3	✓
+46		8.2	1.2	✓
+65		9.2	0.2	✓
+75		10.2	-1.0	✓
+80		10.2	-0.8	✓
+89		5.2	4.2	✓
0+95.45	M.H. #46	5.2	4.2	/





B.M.<sup>s</sup> for Severs, Loma Alta #2

B.M.	4.02	6.07 ✓	1.65	
T.P.	5.26	7.68 ✓	3.65	2.42 ✓
T.P. <sup>Con.</sup> Narrow	12.59	17.53 ✓	2.74	4.94 ✓
T.P.	12.44	29.92 ✓	0.05	17.48 ✓
T.P.	12.66	42.51 ✓	0.07	29.85 ✓
T.P.	12.40	54.59 ✓	0.32	42.19 ✓
Set B.M.		10.80 ✓	43.79 ✓	
T.P.	11.19	66.09 ✓	0.19	54.40 ✓
Set B.M.		3.77	62.32 ✓	
T.P.	6.31	<u>69.28</u> ✓	3.17	62.92 ✓
Set B.M.		5.29	63.99 ✓	

222 Hub Old A Pt 182 + SB. 02 - EP. 1634 -

B.M. Con. Man. 5' W. of SW Cor. W. of Loma Blvd. and Rio Lito St.

40<sup>th</sup> Spike P.P. SE Cor. Mantone & Clovis Sts.40<sup>th</sup> Spike P.P. SE Cor. Mantone & Clovis Sts.40<sup>th</sup> Spike P.P. SE Cor. Mantone & Clovis Sts.

± Sewer Levels on Montalvo St.  
Clovis, Fly to Famosa Blvd  
6928 H.I. P.S

0+00	W 7' Line Clovis E Montalvo St	9.0	60.3	✓
+25		7.1	62.2	✓
+50		5.8	63.5	✓
1		3.0	66.3	✓
+50		0.3	69.0	✓
T.P.	2.11 71.65	0.73	69.5	✓
1+75		1.5	70.1	✓
2		0.9	70.8	✓
+25		0.6	71.1	✓
+50		0.2	71.0	✓
+75		1.3	70.4	✓
3		2.2	69.5	✓
+50		4.4	67.3	✓
"	125' N	6.7	65.0	✓
4	Side Rods on low side	6.2	65.5	✓
+50		7.2	64.5	✓
5		7.9	63.8	✓
"	125' N	12.2	59.5	✓
+50		8.5	63.2	✓
6		9.4	62.3	✓
+50		10.8	60.9	✓
6 + 6009	W 7' Line Carulos	11.0	60.7	✓
"	125' N	11.8	54.9	✓

T.P.	112	71.66	59.89	12.89	58.77	✓	mark 7+00
7+00				1.1	58.8	✓	
+50				4.5	55.4	✓	
8				7.0	52.9	✓	
"	125' N			12.4	47.5	✓	
+50				10.0	49.9	✓	
9				13.5	46.4	✓	
T.P.	0.36	47.50		12.75	47.14	✓	
9+50				5.9	41.6	✓	
10+00				10.9	36.6	✓	
"	100' N Fl. elev. House			17.2	30.3	✓	30.3
T.P.	0.08	35.01		12.57	32.93	✓	
+50				2.4	32.6	✓	
11+00				5.6	29.4	✓	
"	100' N			21.0	14.0	✓	
+50				10.4	24.6	✓	
+55				11.3	23.7	✓	
T.P.	0.14	22.21		12.94	22.07	✓	
+70				3.9	18.3	✓	
+85				9.7	12.5	✓	
11+92.5	STUB			12.94	9.7	✓	
12+00.70	STUB			16.42	5.79	✓	

See P. 50 for add'l Sewer Levels

7 Sewer Levels on MONTONE ST.

Clovis Ely to Famosa Blvd

BM. P5 4.34 66.66 ✓ 67.32

0 to W. 7' Line Clovis E MONTONE 6.2 60.5 ✓

+25 5.4 61.3 ✓

+50 5.3 61.4 ✓

1 4.8 61.9 ✓

+25 4.4 62.3 ✓

+50 4.4 62.3 ✓

2 5.5 61.2 ✓

" 125' N 8.2 58.5 ✓

+50 7.2 59.5 ✓

3 8.9 57.8 ✓

+25 9.9 56.8 ✓

+50 11.5 55.2 ✓

T.P. 0.40 54.08 12.98 53.68 ✓

4+00 2.8 51.3 ✓

" 125' N 11.9 42.2 ✓

+50 6.2 47.9 ✓

5 8.6 45.5 ✓

+50 10.4 43.7 ✓

6 12.8 41.3 ✓

" 125' N 23.0 31.1 ✓

54.08

T.P. 0.15 41.45 + 12.78 41.30 ✓

+50 3.0 38.5 ✓

+75 5.1 36.4 ✓

7 5.8 35.7 ✓

7+06.18 E. 7' Line CANTULOS ST 6.31 35.14 ✓ STUB

+50 8.8 32.7 ✓

8+00 14.4 27.1 ✓

" 125' N 17.7 24.3 ✓

T.P. 0.27 29.29 12.43 29.07 ✓

+50 7.6 21.7 ✓

+70 9.7 19.6 ✓

9 10.1 19.2 ✓

+30 11.0 18.3 ✓

+45 12.2 17.1 ✓

T.P. 1.06 17.57 12.78 16.51 ✓

9+70.34 = 11+32.67 8.95 8.67 ✓ STUB Famosa Blvd

8-8-46

BM P5 4.87 67.19 67.32

T.P. 0.33 54.44 13.08 54.11

3+06 8.5' N Garage Floor 6.82 47.67 ✓

4+02 10.8' N S.C. Sewer Ground 2' Lower 9.0 45.44 ✓ 42' Cor Hwy House

ground 0.4 41.7 41.3 = 4+00

4+15 107' N by Floor EL. 11.5 30.2

of house at Sewer Vent  
Sewer Con. 2nd Floor



E Sewer Levels on Temecula St.  
Clavis Ely to Famosa Blvd.

B.M. P5 0.28 44.07 43.79

0+0 W 7' line Clavis  
# Temecula 3.0 41.1 ✓

+50 2.7 41.4 ✓

1 3.8 40.3 ✓

+50 4.4 39.7 ✓

" 80' N Basement  
# Clavis 13.2 30.4 ✓

2 4.9 39.2 ✓

+50 6.3 37.8 ✓

3 8.5 35.6 ✓

" 100' N 14.1 30.0 ✓

+50 11.2 32.9 ✓

T.P. 0.35 31.64 12.78 31.29 ✓

4+00 1.8 29.8 ✓

+50 4.7 26.9 ✓

5 8.5 23.1 ✓

" 100' N 9.1 22.5 ✓

+25 11.4 20.7 ✓

T.P. 0.22 18.91 12.95 18.69 ✓

18.91

5+50 6.0 17.9 ✓

6 7.5 11.4 ✓

+20 10.5 8.4 ✓

6+50.1 W 7' line  
Clavis to Famosa St 12.0 6.9 ✓

+90 12.7 6.7 ✓

T.P. 4.38 11.93 11.34 7.57 ✓

6+77 9.7 2.2 ✓

7+50 POT 12.42 -0.47 ✓ STUB

7+68.54 = 7+49.17 Famosa 13.40 -1.53 ✓ STUB

~~8-8-26 -1.53~~

Spike  
B.M. 0.45 44.24 43.79 ✓

T.P. 3.30 36.24 11.30 37.94 ✓

1+76 87' Nly Basement  
Floor 5.27 30.97 ✓

NAIL in Pole 5L  
alley 7.02 28.62 ✓

Trial Line

Sewer Levels on FAMOSA Blvd  
W. PT. LOMA Blvd Sly to Montalvo

B.M. P.5 4.87 6.52 ✓  
SPIKE P.P. 3.81 6.89 ✓  
SECOO. TR 3.44 3.08 ✓  
2x2 Hub  
FAMOSA  
W. PT. LOMA

PT. LOMA  
0+00 - So. 20' Lane Blvd. 5.79 1.10 ✓  
112 5.2 1.7 ✓  
150 6.0 0.9 ✓  
1 6.5 0.4 ✓  
130 6.8 0.1 ✓  
150 6.1 0.8 ✓  
2 5.1 1.8 ✓  
150 4.1 2.8 ✓  
3 2.5 4.4 ✓  
150 0.6 6.3 ✓

T.P. 2.90 15.56 ✓  
0.23 6.66 ✓

3+65.54 RIALTO ST. 8.01 6.95 ✓  
4 7.0 8.6 ✓  
+50 5.0 10.2 ✓  
5 4.5 11.1 ✓  
+30 3.6 12.0 ✓  
5+67.49 A 7' 20" RT 3.57 11.99 ✓  
Stub

(15.56)

9

5+95	4.0	11.6	✓
6+15	4.4	11.2	✓
+45	8.3	7.3	✓
" 12 LT	12.0	3.6	✓
" 10 RT	7.1	8.5	✓
T.P. 6.81	9.97 ✓	12.45	3.11 ✓
6+75	8.0	1.3	✓
" 10 RT	7.5	2.4	✓
" 15 LT	10.7	-0.3	✓
7+10	12.0	-2.1	✓
" 10 RT	11.0	-1.1	✓
" 15 LT	13.0	-3.1	✓
7+49.7 = E Terrace	11.48	-1.56	✓ P.8 Stub
" 15 LT	12.2	-2.3	✓
7+92	12.8	-2.9	✓
" 10 RT	11.3	-1.4	✓
" 15 LT	13.2	-3.3	✓
8+25	7.0	2.5	✓
" 10 RT	5.1	4.8	✓
" 15 LT	12.2	-2.3	✓
8+42	4.0	5.5	✓
" 10 RT	2.7	7.2	✓
" 15 LT	8.5	1.4	✓

9.92

	8 + 75		4.9	5.0	
	" 10 RT		2.5	7.4	
	" 15 LT		7.7	2.2	
B.M.	8 + 95		4.9	5.0	
SPI SE	" 10 RT		6.1	8.8	
	" 15 LT		8.7	1.2	
0	9 + 33.5 Δ 7' 20" LT		1.02	8.90 ✓	STUB
	" 10 RT		+4.0	13.4	
	" 15 LT		7.3	2.6	
1	+47		+0.8	10.7	
	" 10 RT		+5.2	15.1	
	" 15 LT		7.0	2.9	
2					
	T.P. 635	<u>11.53</u> ✓	4.74	5.18 ✓	
3					
	9 + 71		6.6	4.9	
	" 10 RT		2.3	9.12	
7.1	" 15 LT		12.4	-0.9	
	10 + 03		12.8	-1.3	
34	" 10 RT		8.0	3.5	
41	" 15 LT		15.3	-3.8	
	+50		13.1	-0.6	
5	" 10 RT		11.7	-0.2	
	" 15 LT		14.5	-3.0	

11.53

	10 + 80		12.5	-1.0	
	" 10 RT		11.7	-0.2	
	" 15 LT		13.8	-2.3	
	10 + 94		12.9	-1.4	
	" 10 RT		6.4	5.1	
	" 15 LT		14.2	-2.7	
	11 + 15		6.8	4.7	
	" 10 RT		1.9	9.6	
	" 15 LT		13.9	-2.4	
	11 + 32.67 ⊕ <sup>9 + 70.34</sup> NORTON		2.94	8.59	P.T. STUB
	" 15 LT		9.9	1.6	
	+57		0.8	10.7	
	" 10 RT		+3.2	14.7	
	" 15 LT		8.1	3.4	
	12		5.3	6.2	
	" 10 RT		0.9	10.6	
	" 15 LT		12.2	-0.7	
	+30		9.8	2.7	
	" 10 RT		5.0	6.5	
	" 15 LT		14.0	-2.5	
	+52		12.3	-0.8	
	" 10 RT		7.6	3.9	
	" 15 LT		15.0	-3.5	
	+80		10.4	1.1	
	" 10 RT		5.9	5.6	
	" 15 LT		16.5	-5.0	

11.53

13+00		9.7	1.8
"	10 RT	4.8	6.7
"	15 LT	13.5	-2.1
+30		10.5	0.9
"	10 RT	4.7	6.8
"	10 LT	14.8	-3.3
+55		7.3	4.2
"	10 RT	1.8	9.7
"	12 LT	14.5	-3.0
+80		6.0	5.5
"	10 RT	1.9	9.6
"	13 LT	13.4	-1.9
14+05		4.1	7.4
"	10 RT	2.5	9.0
"	15 LT	10.1	1.4
+30		3.3	8.2
"	10 RT	1.4	10.1
"	11 LT	4.5	6.9
"	20 LT	7.6	3.9
+80		4.5	6.9
"	10 RT	1.5	10.0
"	15 LT	10.1	1.4
15		5.0	6.5
"	10 RT	0.5	11.1
"	15 LT	10.1	1.4

Famosa, Trial Line

11

11.53

15+31.11 = $\frac{12+00.70}{2}$ Montalvo	5.76	5.77	Stub
" 15 LT	17.0	-0.5	<u>P.C</u>

## E. Sewer Levels on Riabto St.

Famosa Blvd. to W. Pt. Loma Blvd.

BM.		1937	6.95	STUB page 9
3	+15.54	12.42	6.95	✓
	100' = 3 + 15.54	Famosa Blvd. 12.42	6.95	✓
	+30	11.2	8.2	✓
	+50	9.9	9.5	✓
	+85	7.3	12.1	✓
1		6.3	13.1	✓
	+50	3.9	15.5	✓
	" 100' N = 16 FT	7.8	11.6	✓
2		2.5	16.9	✓
	+50	2.1	17.3	✓
	" 100' N	6.5	12.8	✓
3		2.6	16.8	✓
	+50	3.7	15.7	✓
	" 100' N	9.5	9.9	✓
"		5.2	14.2	✓
	+50	8.4	11.0	✓
T.P.	0.91	11.91	8.37	11.00
5		5.0	6.9	✓
	+30	2.1	4.8	✓
	+46	edge oil pav	7.4	4.8

11.91

5+81.70 = 4+76.89  
 CUV 547 ✓  
 Nail  
 in pav.

Some levels on Temecula  
W. 7' Line Clovis to Pt. Loma Blvd

BM Spike				Temecula Clovis
P. 5	2.10	<u>45.89</u>	43.79	✓
0+0 = W. 7' Line Clovis		4.8	41.1	✓
"	100' N	15.1	30.8	✓
0+50		5.6	40.3	✓
"	100' N	16.3	29.6	✓
1+00		6.6	39.3	✓
1+25		7.5	38.4	✓
"	100' N	19.8	26.1	✓
1+50		9.2	36.7	✓
✓		14.1	31.8	✓
T.P.	0.23	<u>33.18</u>	12.94	32.95 ✓
100' N of 2+00		9.4	23.8	✓
2+50		6.2	27.0	✓
3		11.5	21.7	✓
T.P.	3.17	<u>24.83</u>	16.52	21.66 ✓
3+25		5.3	19.5	✓
3+50		6.1	18.7	✓
3+54	edge oil par	6.1	18.7	✓

24.83

W. Pt. Loma Blvd  
3+25.54 9+69.25 533 19.50 ✓ nail  
oil par

✓

± Same Levels on MONTANE ST.  
Clovis to W. P. Latta Blvd.

B.M. spike  
P.S. 111 63.43 ✓ 62.32 ✓ Montane  
Clovis

0+00 - W 2' Line Clovis 3.0 60.4 ✓

+50 5.2 58.2 ✓

1+00 7.0 56.4 ✓

" 100' S 9.3 54.1 ✓

" 100' N 8.4 55.0 ✓

1+50 8.6 54.8 ✓

2 9.9 53.5 ✓

" 100' S 13.5 49.8 ✓

+50 11.3 52.1 ✓

3+00 12.6 50.8 ✓

" 100' S 14.9 48.5 ✓

" 100' N 12.4 51.0 ✓

T.P. 0.71 51.55 ✓ 12.59 50.84 ✓

3+50 2.5 49.1 ✓

+75 3.5 48.1 ✓

4 5.0 46.6 ✓

" 100' N 7.4 44.2 ✓

+25 6.7 44.9 ✓

+50 8.3 43.3 ✓

51.55

4+75 10.1 41.5 ✓

5+00 12.0 39.6 ✓

" 115' N 20.5 37.1 ✓ House  
Floor El.

T.P. 1.33 40.86 ✓ 12.04 39.53 ✓

5+25 3.6 37.3 ✓

150 5.9 35.0 ✓

" 60' N 10.9 30.0 ✓ Floor El.

+75 8.0 32.9 ✓

6 10.2 30.7 ✓

+25 12.7 28.2 ✓

T.P. 1.98 30.32 ✓ 12.52 28.34 ✓

6+50 4.4 25.9 ✓

+75 6.2 24.1 ✓

7+00 oil pan edge 7.7 22.6 ✓

+25 7.1 23.2 ✓

7+56.15 = 14+62.05 on  
W. P. Latta Blvd. 7.40 22.92 ✓ Stub  
edge oil  
pan.

SE Sewer Levels on Montalvo St.  
Clovis to W. Pt. Loma Blvd

SE Spike BM	0.09	64.48	13.99	Clovis Montalvo P.S.
0 + 00 = W. 7' line Clovis	4.2	60.3	✓	
+50	9.2	55.3	✓	
1 + 00	13.8	50.7	✓	
" 125 S	14.5	49.9	✓	
" 125 N	13.0	51.5	✓	
T.P.	0.04	51.47	13.05	51.43
1 + 25		2.6	48.9	✓
+50		3.9	47.6	✓
+75		4.9	46.6	✓
2		5.6	45.9	✓
+50		6.4	45.1	✓
" 125 S		11.0	40.5	✓
" 125 N		4.6	46.9	✓
3		6.8	44.7	✓
+50		6.9	44.6	✓
" 125 S		10.4	41.1	✓
" 125 N		4.4	47.1	✓
4		7.2	44.3	✓
+50		7.5	44.0	✓

		51.47		
T.P.	128	45.27	7.48	43.99
5			1.5	43.8
+50			1.8	43.5
6			2.3	43.0
+50			3.2	42.1
+75			4.2	41.1
7			5.8	39.5
" 110' N Floor Pl.			8.5	36.8
+25			8.0	37.3
+50			10.6	34.7
+75			13.3	32.0
T.P.	151	33.73	13.05	32.22
8			4.4	29.3
+25			6.5	27.2
+50			8.9	24.8
+65 approx. 12" Waco			8.8	24.9
8 + 95.04 = 18 + 15.65	W. Pt. Loma	9.03	24.70	mail



Service Levels on Pueblo Line  
on Yaleta St.  
Clovis to N. Pt. Loma Blvd.

BM. P.S.	0.74	44.73	23.99	Clovis Montalvo
0100 W 7' line on Clovis	4.7	60.5		
+50	10.4	54.3		
T.P.	0.23	51.94	130.2	51.71
1100		3.0		47.9
+50		7.2		44.6
2 House 20' N EL. 445	10.4	41.5		
+50		11.9		40.0
3 125 House 20' N EL. 430	12.4	39.5		
+50		11.8		40.1
4	10.2	41.7		
T.P.	8.72	50.44	10.02	41.92
4 + 50		6.8		43.8
5		5.0		45.6
+50		4.0		46.6
6		4.0		46.6
+50		5.0		45.6

	50.44			
6 + 75		6.1		44.5
7		7.7		42.9
+25		9.4		41.2
+50		11.8		38.8
T.P.	0.37	38.08	12.93	27.71
7 + 75		2.4		35.7
8		6.7		31.9
+30		10.4		27.7
+50		12.7		25.4
T.P.	2.77	28.54	12.51	25.57
Service Level				
8 + 89.20		7.3		21.2
9		7.3		21.2
+25		7.1		21.4
+50		5.9		22.6
+67		5.3		23.2
10		4.6		23.9
10 + 49.13 = 18 + 15.95		3.82		24.72
W. Pt. Loma Blvd. + 8 Montalvo				
				24.70
				P. 15

± Section Levels on Oil Pav.

W. Pt. Longa Blvd.

Famosa Blvd. to Montalvo St.

P.9  
Spike SE.  
Coo. Pole 4.99 8.07 ✓  
Famosa +  
W. Pt. Longa 3.08 ✓

Nail & W. Pt. Longa +  
0 to 15' line of Famosa 6.4 1.7 ✓

+50 approx. cable U.S. COMM. 6.3 1.8 ✓  
3' deep

1 5.6 2.5 ✓

+50 5.3 2.8 ✓

2 5.1 3.0 ✓

+50 4.8 3.3 ✓

3 4.4 3.7 ✓

+50 4.1 4.0 ✓

4 3.7 4.4 ✓

+50 3.0 5.1 ✓

4 + 76.89 = 5 + 81.70 on  
± Rialto 2.60 5.47 ✓ Nail

T.P. Nail 9.66 15.13 ✓  
2.60 5.47 ✓ Nail  
4 + 76.89

5 9.2 5.9 ✓

+50 7.9 7.2 ✓

6 6.5 8.6 ✓

+50 4.7 10.4 ✓

7 3.0 12.1 ✓

+50 1.3 13.8 ✓

T.P. 9.28 22.81 ✓  
15.13  
160 13.53 ✓

8 7.2 15.6 ✓

+50 5.6 17.2 ✓

9 4.4 18.4 ✓

+50 3.0 19.2 ✓

9 + 69.25 = 3 + 85.50 on  
± Temecula 3.31 19.50 ✓ Nail

10 3.0 19.8 ✓

+50 2.6 20.2 ✓

11 2.2 20.6 ✓

T.P. 7.01 27.62 ✓  
220 20.61 ✓

+50 6.7 20.9 ✓

12 6.3 21.3 ✓

+50 5.9 21.7 ✓

+55.66 = B.C. on Longa 5.8 21.82 ✓

13 5.5 22.1 ✓

+50 5.1 ~~22.5~~ 22.5 ✓

14 4.7 22.9 ✓

+50 4.6 23.0 ✓

14 + 62.05 = 4 + 83.96 on  
± Mentone 4.70 23.22 ✓ Stub

T.P. 4.28 29.20 ✓  
470 22.92 ✓  
above  
A.P.  
Stub P.14

Sewer Levels, W. Pr. Loma Blvd.

29.20

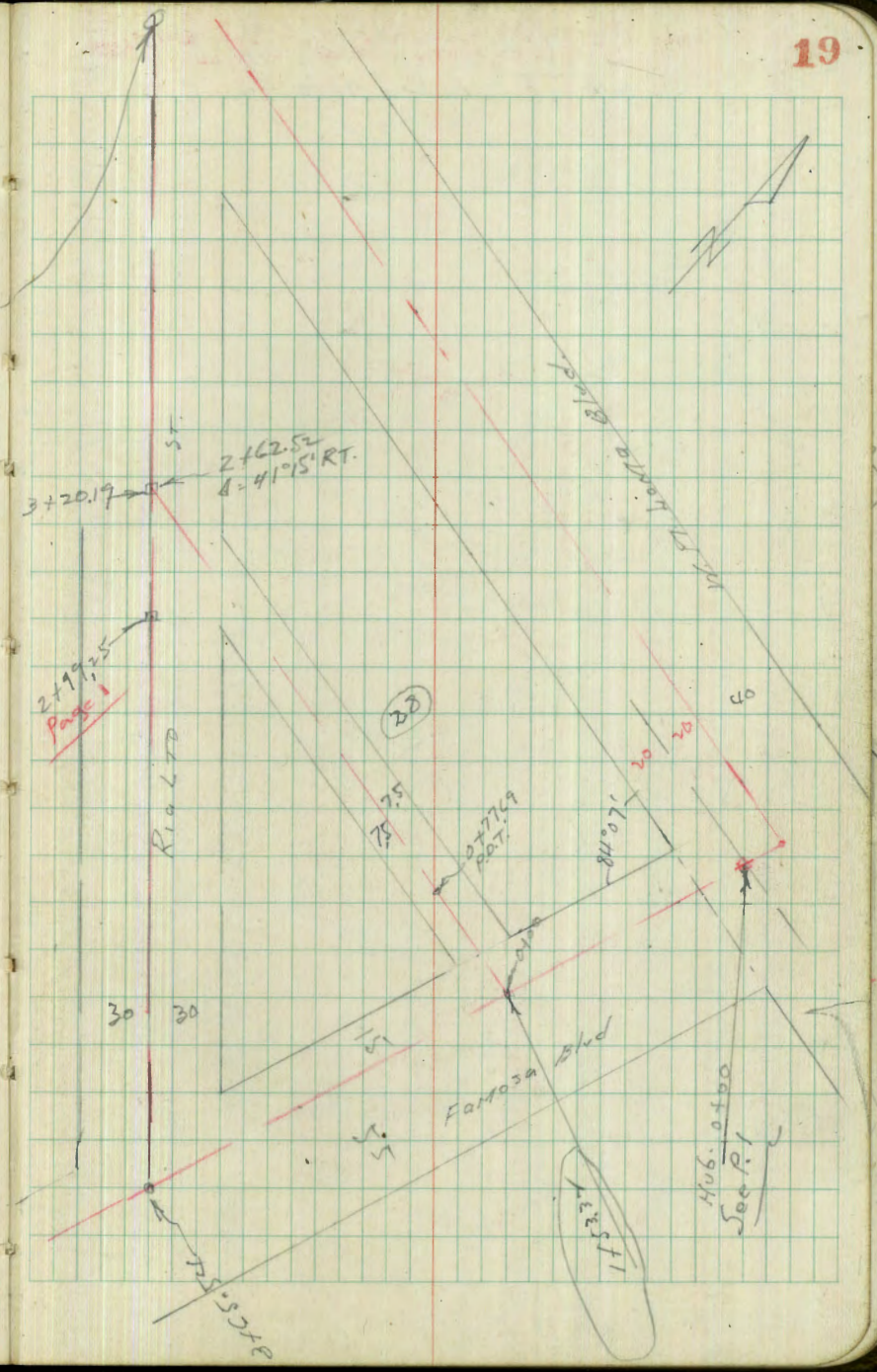
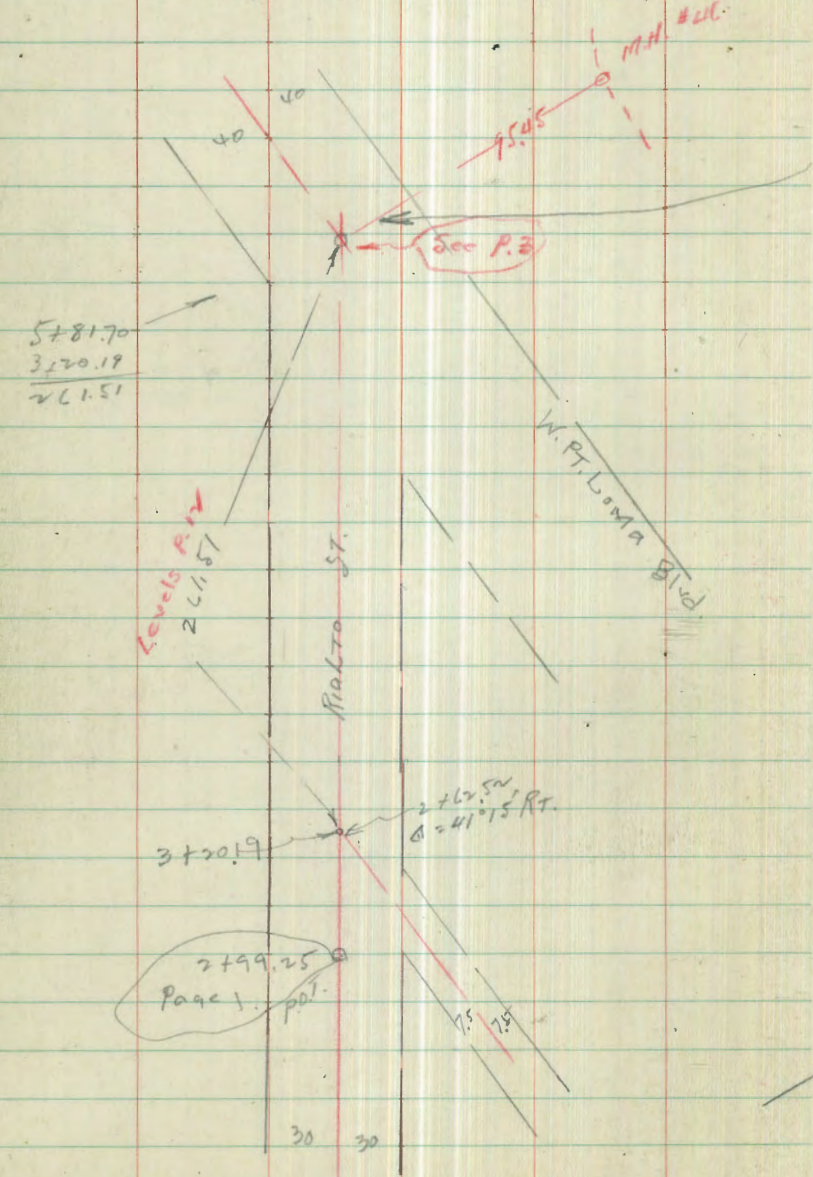
15		5.8	23.4	↓
+50		5.2	24.0	↓
16		4.8	24.4	↓
+50		4.5	24.7	↓
17		4.2	24.9	↓
+50		4.2	25.0	↓
18		4.3	24.9	↓
18+15.65 =	♀ Montalvo	4.50	24.70	24.70
	8+9.50V			P. 15

END of STREET Sewer Survey

2nd Survey for Sewers in Alley

Alley Sewer Levels

Loma Alta #2 BK 28

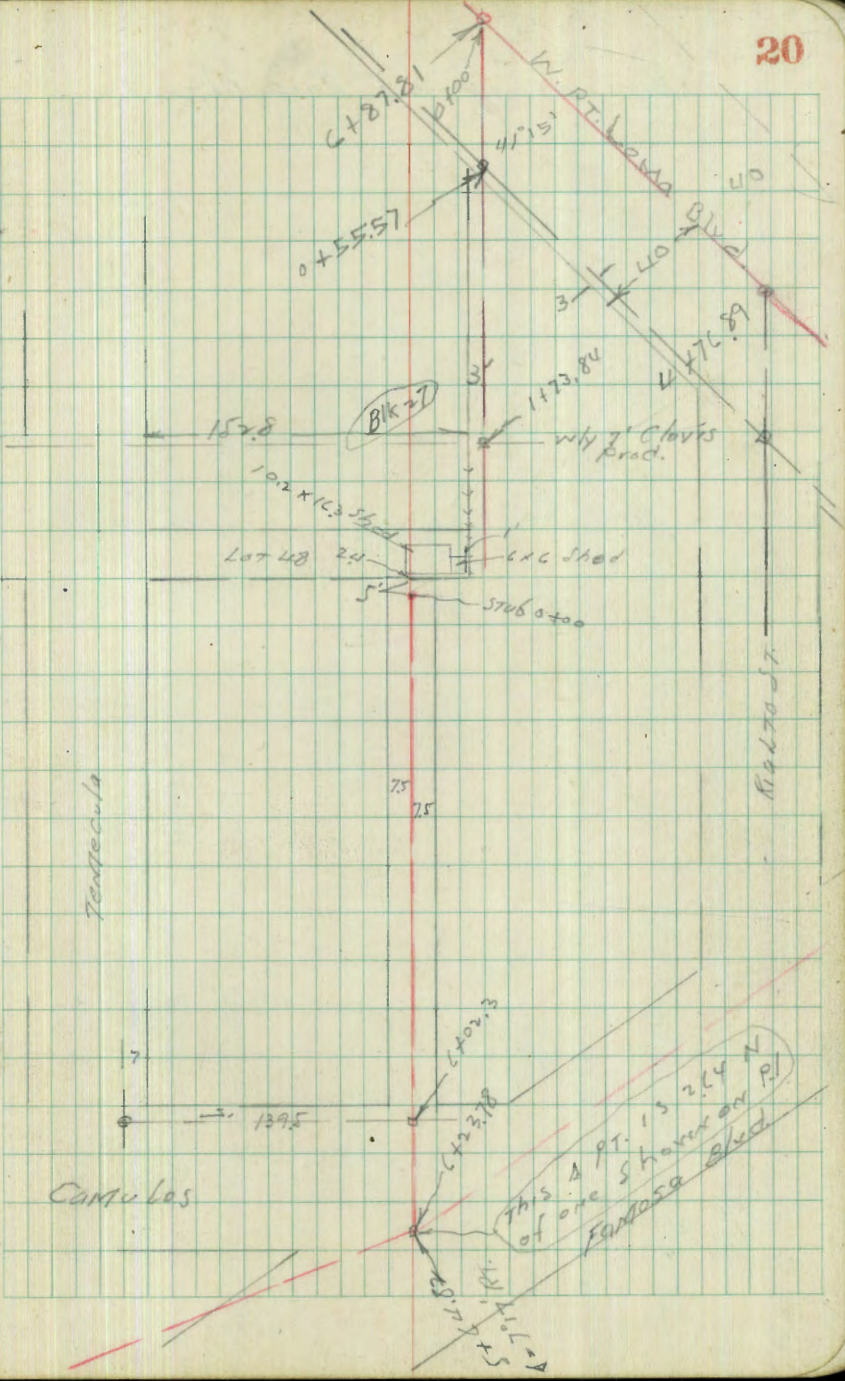


B/K 27 Lanta ALTA 47

Clavis

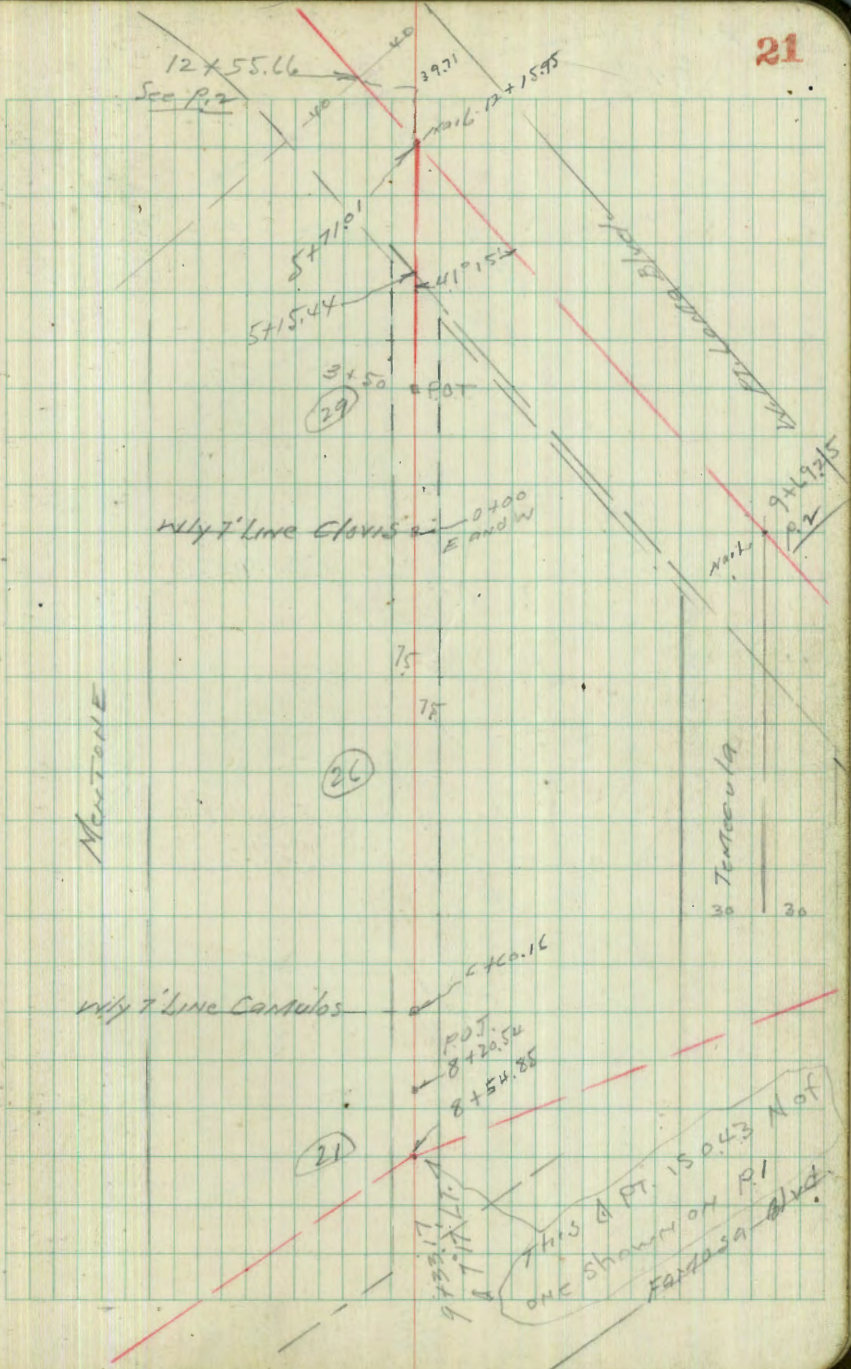
Pentecula

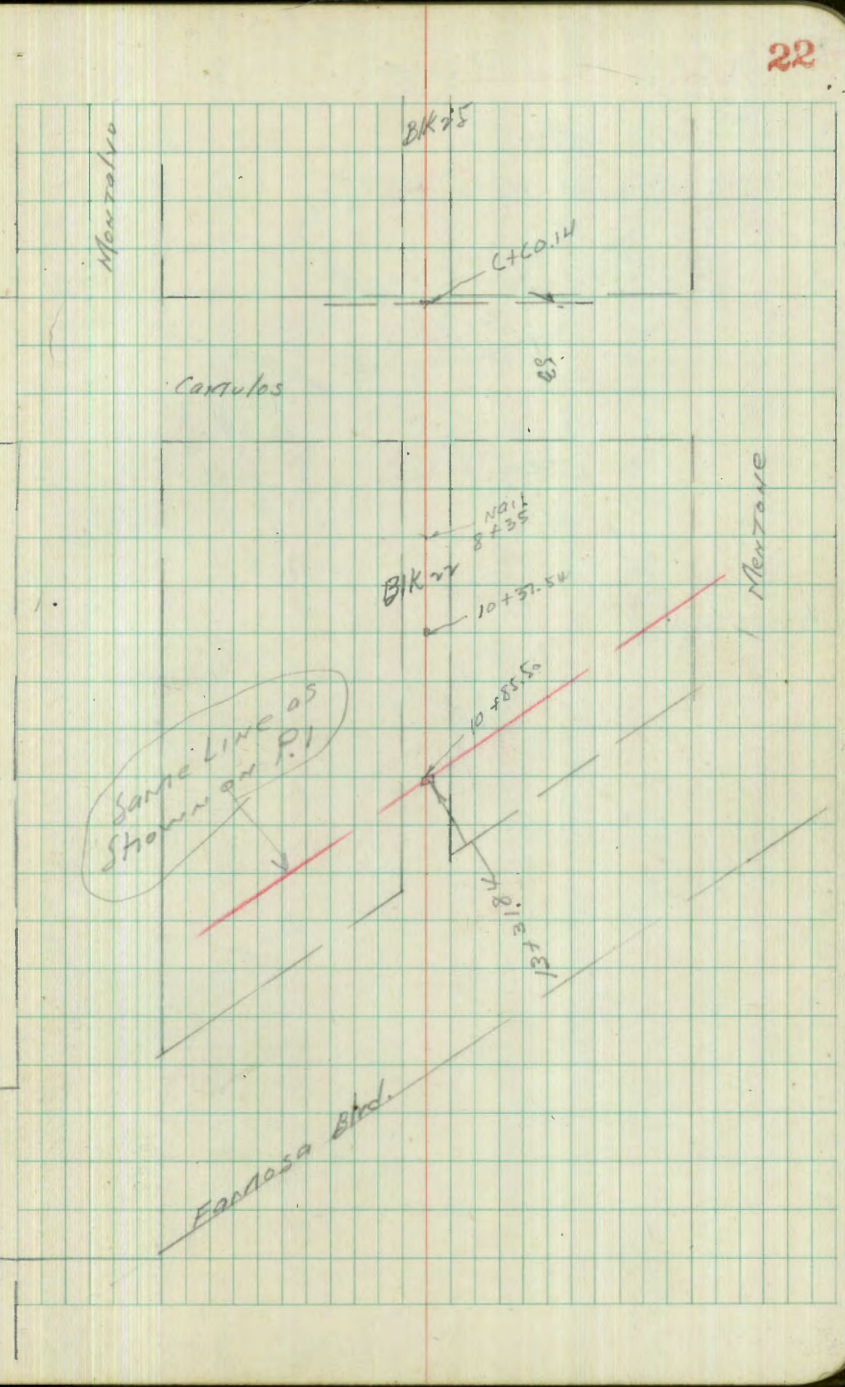
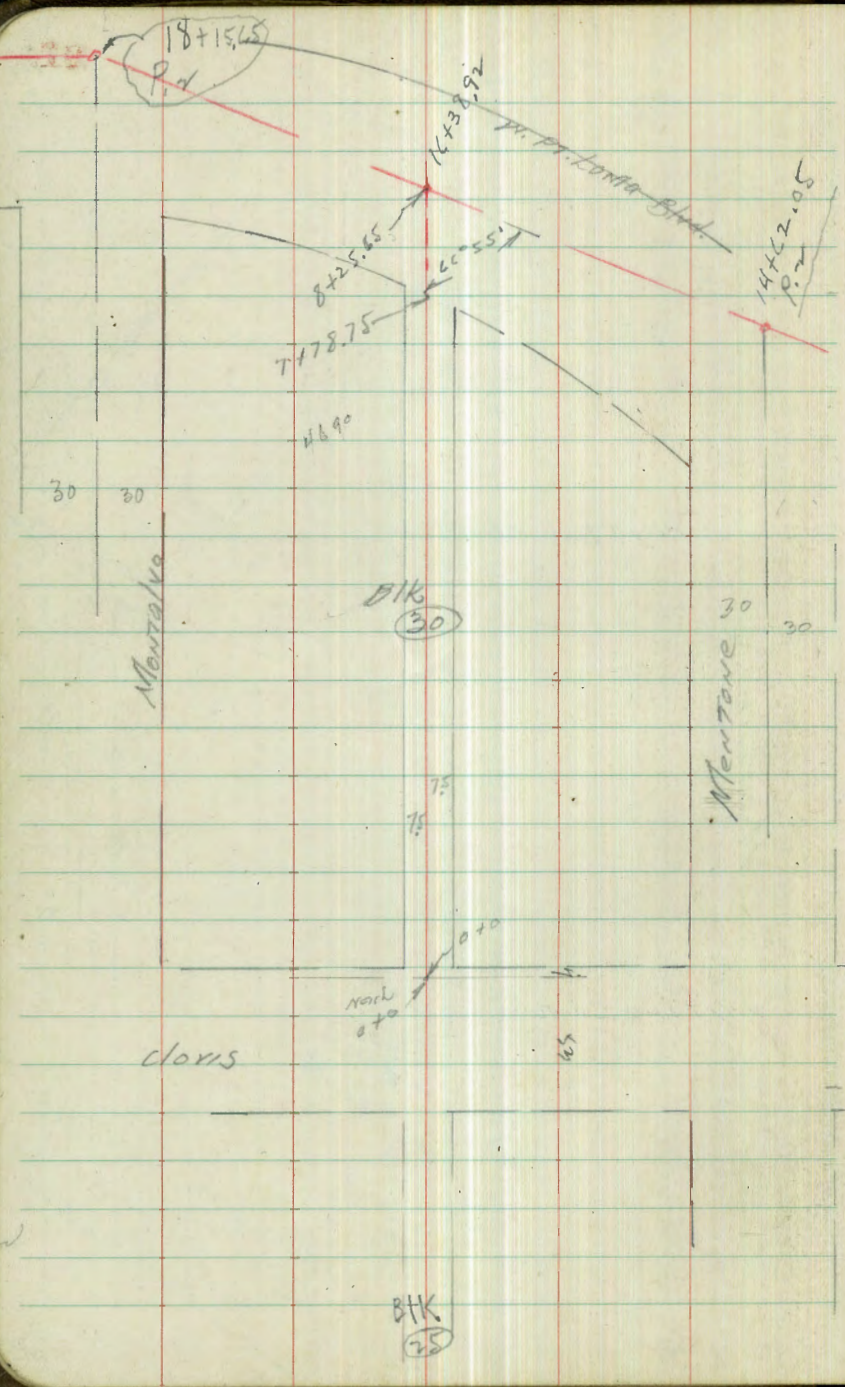
Camulos



Bks 21-26-29 LOMA ALTA #2

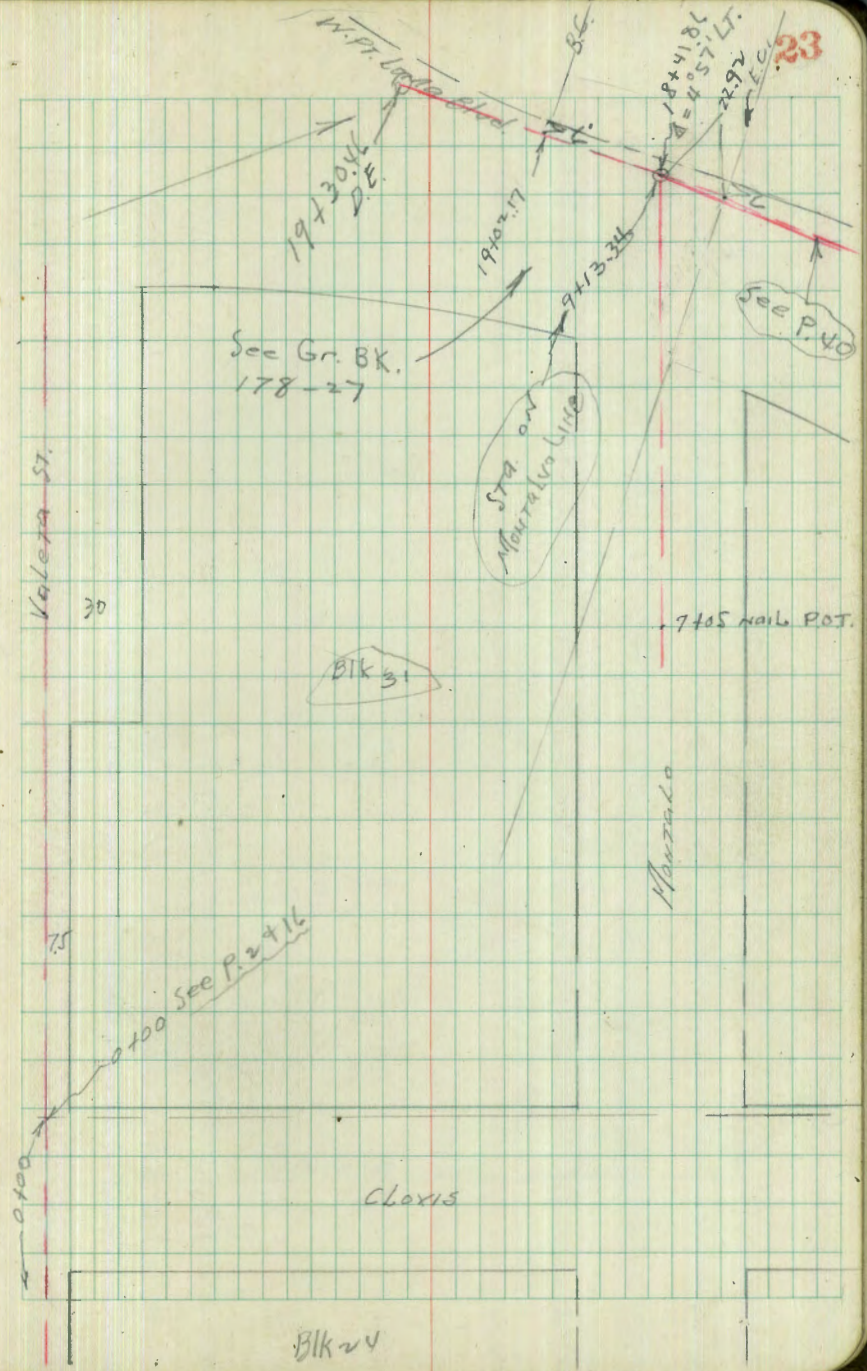
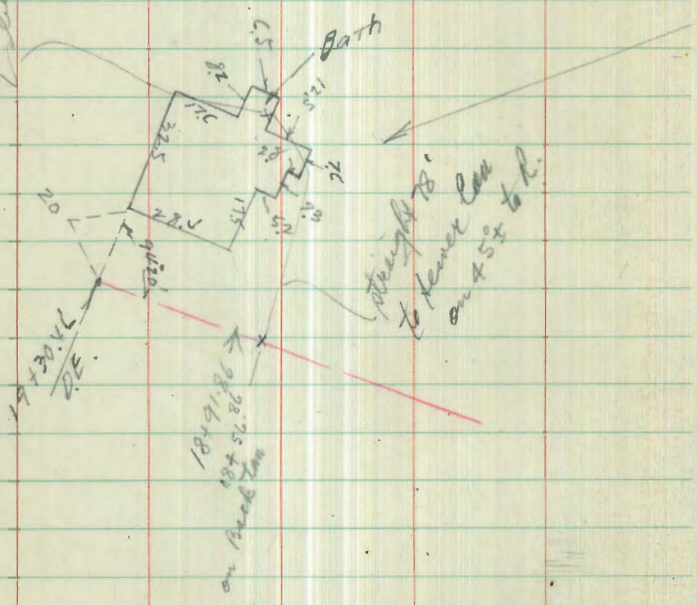
1255.66  
39.71  
1215.95





House  
below floor

Most Wly house in Blk 32  
Linda Alta 40







## Sewer Levels &amp; Alley

25

Blk 28 Loma Alta H.V.

Spike P.P. ✓  
 SE Cor. 9.86 12.94 ✓  
 P. 9 3.08 Famosa " ✓

Sketch p. 19

o f o o = 145335V on Famosa	11.8	1.1	✓
o f 10	11.8	1.1	✓
o f 15	7.2	5.7	✓
o f 25	5.4	7.5	✓
o f 50	3.7	9.2	✓
" 100' North	8.8	4.1	✓
o f 77.67 Sub P.D.T.	2.24	10.50	✓
1400	1.3	11.6	✓
T.P.	7.84	20.64 ✓	21.6 12.78 ✓

1418 4' LT. on So. to NE Cor. of 10x20 Street

1438 54' LT. " " To NW Cor. " " "

1450	6.8	13.8	✓
" 83' N Floor El. of Middle of 3 Houses	11.3	9.3	✓

1457 5.6 N to P. Pole

2400	4.9	15.7	✓
2425	4.3	16.3	✓

2445 11.7 N to Top Pole

2450 4.2 16.4 ✓

2452.5V @ PALITO ST. 4.2 16.4 ✓

↑ See p. 17

T.P. 249 13.76 ✓ 9.05 11.57 ✓

back to N.H. wall in out par 8.28 5.48 ✓ 5.47 ✓

2 PALITO + W. P. Loma Blvd P-10 ✓

Seaman Levels P. H. Lay

(Bik 27) LANTA ALTA #4

Sketch P. 20

BM. P. 5				
SE Spike	0.20	43.99	43.79	Tanecula + Clovis
T.P.	1.74	33.04	31.30	

0+00 = 5' E of Elev Lot 48 6.35 26.69 ✓ STUB

" 100' N 14.9 18.1 ✓

0+50 5.0 28.0 ✓

+90 6' S to PP

1+00 5.2 27.8 ✓

" 100' N 13.2 19.8 ✓

1+50 6.1 26.9 ✓

2+00 6.2 26.8 ✓

2+45 12' S to PP

2+50 7.0 26.0 ✓

" 100' N 11.5 21.5 ✓

3+00 8.0 25.0 ✓

T.P. 0.60 25.63 8.01 25.03 ✓

3+45 14' S to PP

3+50 1.9 23.7 ✓

4+00 Alley 3.8 21.8 ✓

4+00 100' N 6.7 18.9 ✓

4+45 5' S to PP

4+50 5.5 20.1 ✓

5+00 7.3 18.3 ✓

5+45 5.5 S to PP

5+50 9.4 16.2 ✓

T.P. 4.67 17.49 12.81 12.84 ✓

5+75 2.3 15.2 ✓

6+00 4.7 13.3 ✓

6+10 5.8 11.7 ✓

6+23.78 = 5+14.82 + 7.96  
New on Famosa Blvd. 5.5 12.0 ✓

old STUB 07 5+16.46 P. 9 5.49 12.00 11.99 ✓

thru Private Property

Sewer Levels ~~2~~ City

Blk 27 Loma 4679 Ave

Sketch P. 20

North E 2.64 22.14 19.50 <sup>topical</sup> W. Pt. Loma P. 13417

6+87.81 on W. Pt. Loma Blvd.

= 0+00 = 3' N. of

1/6 line Blk 27 = 10.4 11.7 <sup>E W. Pt. Loma Blvd.</sup>

0+22 11.3 10.8 ✓

0+32 12.2 9.9 ✓

0+41 12.4 9.7 ✓

+42 11.4 10.7 ✓

+60 12.2 9.9 ✓

+64 6.2 15.9 ✓

+75 5.4 16.7 ✓

+ 4.0 18.1 ✓

+25 2.1 20.0 ✓

f.p. 6.25 28.16 2.23 21.91 ✓

+50 2.6 21.6 ✓

+ 50' N 11.9 16.3 ✓

1+73.84 Pot <sup>w/ 7' line</sup> <sub>cross prop. nty.</sub> 5.5 22.7 ✓

1+90 4.6 23.6 ✓

28.16

9' So. of 1+90 = Cass Pool	4.5	23.7	ground
2+00	4.5	23.7	
" 50' N	9.5	18.7	
2+27	2.9	24.3	
check to steel stub p. 21	1.46	24.70	<u>26.69</u> 0.01



Sketch P. 21

Between  
Tentacula +  
Mentone

Screen Levels E alley

Blks 26 and 21 Lane 91a #2

Clovis to Fontosa Blvd

B.M. P. 5 11.51 55.30 43.79

T.P. Hub 1.87 61.13 1.94 54.26 at 100

2+00 Wly 7' Line on Clovis 6.87 54.26 Hub

+40 7.4 53.7

+45 8.4 S to P.P.

+80 5.2 55.9

1+00 4.8 56.3

" 100' N 13.1 48.0

1+50 4.8 56.3

" 100' N 15.1 46.0

1+53 5.6 S to P.P.

1+60 3.9 57.2

+75 4.7 56.4

2 5.9 55.2

+25 6.5 54.6

2+50 8.1 53.0

" 100' N 18.0 43.1

2+53 6.2 S to P.P.

2+75 9.3 51.8

3+00 11.6 49.5

T.P. 0.21 48.49 12.85 48.28

28

48.49

3+50 3.7 44.8

" 100' N 11.7 36.8

4 8.4 40.1

4+20 6.8 S to P.P.

+50 12.4 36.1

T.P. 0.13 35.65 12.97 35.52

5+00 2.6 33.1

" 100' N 8.2 27.5

+50 5.6 30.1

+78 6.1 S to P.P.

6+00 7.7 28.0

" 50' N 12.0 23.7

" 100' N 23.2 12.5

6+52 9.9 25.8

6+59 8.5 S to P.P.

6+60.10 Wly 7' Cornulos 13.07 22.58 stub

T.P. 2.75 25.33 13.07 22.58 CYCLOIC STUB

6+66 3.7 21.6

6+67 4.7 20.6

6+90 4.7 20.6

6 + 98		0.6	24.7	✓
7 + 50		1.7	23.6	✓
"	40' N	4.4	13.7	✓ 20.7
"	100' N	24.2	1.1	✓
8 + 00		3.4	21.9	✓
+ 20		6.1	19.2	✓
+ 40		10.1	15.2	✓

T.P. 8.02 20.45 12.90 12.43

8 + 54.85 = 9 + 33.17 47.17 ✓ 11.61 8.84 ✓ New  
New & Pt. on STUB  
Famosa Bnd.

check to old A 9 + 32.60 11.52 8.92 ✓ 8.90  
P.10. on Famosa  
0.02

## Sewer Levels E Alley

Blks. 25 + 22

Betw. Montano + Montalvo

and Clovis + Fantosa

## Sketch P22

SE Spike PP	5.42	<u>6941</u>	63.99	Montalvo Clovis P.5
0+00 = Wly 7' Line Clovis	7.4		62.0	↓
+10		6.4	63.0	↓
+40		6.0	63.4	↓
+44	98 S to PP			
+46	85 S to Tel. P.			
+50		5.2	64.2	↓
L		0.1	69.3	↓
T.P.	3.42	<u>7269</u>	69.27	↓
+25		1.3	71.4	↓
"	100' N	3.3	69.4	↓
+50		0.4	72.3	↓
+52	62 S to PP			
+75		0.7	72.0	↓
2		1.3	71.4	↓
+50		3.3	69.4	↓
+52	6 S to PP			

3+00		5.7	67.0	↓
"	100' N	9.6	63.1	↓
+50		8.8	63.9	↓
+53	6 S to PP			
4		11.8	60.9	↓
T.P.	1.42	<u>6065</u>	59.63	↓
+50		2.1	58.6	↓
5		3.7	57.0	↓
"	100' N	9.7	51.0	↓
+50		5.0	55.7	↓
+53	5.7 S to PP			
6		6.2	54.5	↓
"	(?)	11.8	48.9	↓
+40		7.3	53.4	↓
6+60.14	Wly 7' Cornulos	8.95	51.70	↓ STUB
+71		10.4	50.3	↓
+80		10.2	50.5	↓
+94		11.0	49.7	↓
7		10.5	50.2	↓
+50		13.1	47.6	↓
T.P.	0.60	<u>4818</u>	47.58	↓
7+43	5.75 to PP			

4818

8100		2.9	45.3	✓
"	100' N	11.0	37.2	✓
+35		5.2	43.0	✓
+50		6.9	41.3	✓
+75		11.9	36.3	✓

T.P. 0.18 25.36 13.00 35.18 ✓

9100		11.0	31.4	✓
"	100' N	9.8	28.6	✓
+25		6.2	29.2	✓
+50		9.0	26.4	✓
+63	145 to PP			
+75		10.5	24.9	✓
10100		13.8	21.6	✓
"	100' N	20.4	15.0	✓

T.P. 0.39 22.79 12.96 22.40 ✓

10109		2.0	20.8	✓
+15		3.9	18.9	✓
+40		5.3	17.5	✓
+43		7.1	15.7	✓
+54		8.7	14.2	✓
+60		11.5	11.3	✓

2279

T.P. 1.89 11.87 12.81 9.98 ✓

10172 5.3 6.6 ✓

10185.50 = 13131.84 on Famosa Blvd. 10.72 1.14 ✓ 57.6

ground check on 13130 Famosa Blvd. P.H. 11.0 0.87 ✓ 0.9



## Sewer Levels on Valeta St.

Clovis to Fantasa Blvd

Sketch P. 23 + 24

SE Spike	518	29.7	63.99	Mantel to Clovis
0 to 100 Wly 7' Line	on Clovis	8.8	60.4	↓
+20		6.4	62.8	↓
+45		5.1	64.1	↓
+70		1.7	67.5	↓
T.P.	1010	79.15	0.14	69.05
1 to 100			8.3	70.9
+28	6' N to P.P.			
+30		6.0		73.2
+50		5.4		73.8
+75		4.8		74.4
2		4.3		74.9
+50		4.7		74.5
+53	6' N to P.P.			
3		6.4		73.0
+50		8.5		70.7
4		9.5		69.7
+50		9.7		69.5
+53	6' N to P.P.			
5		9.2		70.0
+50		8.8		70.4

S153 L'N to P.P.

T.P.	1022	71.43	87.4	70.41
6 to 100			1.1	70.3
+50			2.0	69.4
+53	6' N to P.P.			
6 + 60 = Wly 7' Line	on Cumulos	2.7		68.7
+70		3.3		68.1
7		4.3		67.1
+50		7.5		63.9
8		10.7		60.7
11	100' N	15.2		56.2
+50		12.5		58.8
T.P.	098	59.46	12.95	58.48
8 + 63	6' N to P.P.			
9 + 0			2.9	56.6
+50			5.7	53.8
+63	6' N to P.P.			
10			8.3	51.2
11	100' N		14.2	45.3
10 + 50			12.0	47.5
T.P.	011	46.70	12.87	46.59

11+00		2.4	44.3	✓
"	100' N	10.7	36.0	✓
+48	C.N. to Tel. Pole			
+50		6.0	40.7	✓
+69		7.5	39.2	✓
+81		9.8	36.9	✓

T.P. 005 33.96 12.79 33.91<sup>4</sup>

11+90		1.6	32.4	✓
12+02		7.1	26.9	✓
+15		12.8	24.2	✓

T.P. 006 21.02 13.00 20.96

+30		5.8	15.2	✓
+55		12.0	9.0	✓

T.P. 1.20 11.48 11.34 9.62<sup>✓</sup>

12+79 4' N Tel. P.

+80		7.9	3.6	✓
13		12.4	-0.9	✓
13+11.21	A to B	14.0	-2.5	✓

13+50		4.3	2.7	✓
"	30' W	4.7	6.8	✓
14		2.5	9.0	✓
"	20' W	+1.3	12.8	✓
14+30		0.7	10.8	✓
"	15' W	+4.5	16.0	✓
14+55		1.8	9.7	✓
"	10' W	+1.5	13.0	✓
14+75		4.8	6.7	✓
"	10' W	0.7	10.8	✓
15+02	✓ = P. Mantalvo	5.71	5.77	5.77
	15+31.11'			P. 11
	P. 1			

Senior Levels & Alley Blk 26 <sup>29</sup> LOMA 9670  
 Between Tentacula & Neutonic  
 and Clavis & W. Pt. Loma Blvd.  
 Sketch P. 21

T.P. 0+00	3.57	57.83 ✓		54.26	Wly 7' Line on Clavis P. 28
0+50			4.3	53.5	
1			4.8	53.0 ✓	
107	65	to P.P.			
1+50			4.9	52.9 ✓	
"	100'	N	13.8	47.0 ✓	
2			5.0	52.4 ✓	
+50			6.4	51.4 ✓	
"	70'	N Floor St. House	11.3	46.5 ✓	
+82	6'	S to P.P.			
3+00			8.0	49.2 ✓	
3+50			12.01	45.82 ✓	
"	75'	N	19.7	38.1 ✓	
T.P.	037	46.19 ✓	12.01	45.82 ✓	3+50 Stub
4+00			6.4	39.8 ✓	
+25			9.9	36.3 ✓	
T.P.	004	33.19 ✓	13.04	33.15 ✓	

33.19 ✓

4+50	1.4	31.8 ✓	
+75	6.2	27.0 ✓	
5+00	10.5	22.7 ✓	
+25	12.2	21.0 ✓	
+35	12.9	20.3 ✓	
+38	8.7	S. to P.P.	
+50	12.2	21.0 ✓	
5+7101	8 W. Pt. Loma Blvd.	11.71	21.48 ✓
	= 12 + 5.95		mark
check to 12+55.66	on cliff face	11.40	21.79 ✓
			21.82 ✓
			P. 17

✓

Survey Levels & Gley Blk. 30 Loma Alta Dr  
Between Montalvo & Montone  
and Clovis & W. Pt. Loma Blvd.

Sketch P. 17

BM. P5 SE Spike PP 3.05 67.0<sup>✓</sup> Clovis & Montalvo 63.99

6700 = Wly 7' Line Clovis 5.0 62.0 ✓ NAIL  
+50 10.4 56.6 ✓

T.P. 0.16 54.02<sup>✓</sup> 12.98 54.00<sup>✓</sup>

1700 1.6 52.6 ✓

" 100' S 3.3 50.9 ✓

+07 6.4 S to P.P. 3.8 50.4 ✓

+50 5.7 48.5 ✓

2 +07 6.4 S to P.P. 6.3 47.9 ✓

+50 6.7 47.5 ✓

3 100' S 8.7 45.5 ✓

+32 8' S to P.P. 7.0 47.2 ✓

+50 7.9 46.3 ✓

" 132 7' S to P.P. 9.1 45.1 ✓

+50 9.1 45.1 ✓

54.02

5100 10.8 43.4<sup>✓</sup>

T.P. 6.09 43.83<sup>✓</sup> 11.48 42.74<sup>✓</sup>

5419 6' S to P.P. 7.5 41.3<sup>✓</sup>

+50 4.6 39.2<sup>✓</sup>

5464 55' N - SE Cor. House 5.7 38.1<sup>✓</sup>

1865 57' N - SW " " 7.1 36.7<sup>✓</sup>

6700 4.6 39.2<sup>✓</sup>

" 100' N 5.7 38.1<sup>✓</sup>

4322 5.1 S to P.P. 7.1 36.7<sup>✓</sup>

+50 8.4 35.4<sup>✓</sup>

175 10.5 33.3<sup>✓</sup>

7700 " 60' N Floor El. House 16.6 27.2<sup>✓</sup>

7725 12.8 31.0<sup>✓</sup>

T.P. 0.88 31.75<sup>✓</sup> 12.96 30.87<sup>✓</sup>

7732 6.2 S to P.P. 3.9 27.9<sup>✓</sup>

+50 6.7 25.1<sup>✓</sup>

7778.75 nail 7.7 24.1<sup>✓</sup>

+95 7.2 24.6<sup>✓</sup>

8713 approx <sup>king of</sup> ~~margin~~ <sup>LINE</sup> 7.0 24.8<sup>✓</sup>

8725.65 = 16 + 38.92 on W. Pt. Loma Blvd 7.0 24.8<sup>✓</sup>

check to 14+6205 & Montone 8.81 22.94<sup>✓</sup> 22.92  
on W. Pt. Loma Blvd. P. 17

Elev. of Floor Levels & Soil Pipes  
of Houses in Blk 32 Longfellow Ave  
Located from Sta. on W. Ft. Longfellow Blvd.

BM. P. 17	569	<u>28.6</u>	22.92	STUB 14x205	
50' RT of 15415 Fl.	"	4" Soil PIPE	15.1	13.5	of house
60' RT of 15450 "	"	"	12.0	16.6	} double house
75' " " 15480 "	"	"	13.5	15.1	
75 RT " 16100 Floor Elev	8.7			19.9	of house

T.P. 2.14 26.39 0.36 24.25

100' RT of 16440	EL. 4" Soil Pipe	12.7	13.7	of house
110 RT of 17115	Floor EL	7.7	18.7	" "
80' RT of 17435	" "	3.2	23.2	" "

T.P. 6.00 31.35 1.04 25.35

75' RT of 18415.5 Fl. El. 7.1 24.3 of house

check to 18415.65 6.67 24.68 24.70  
0.02

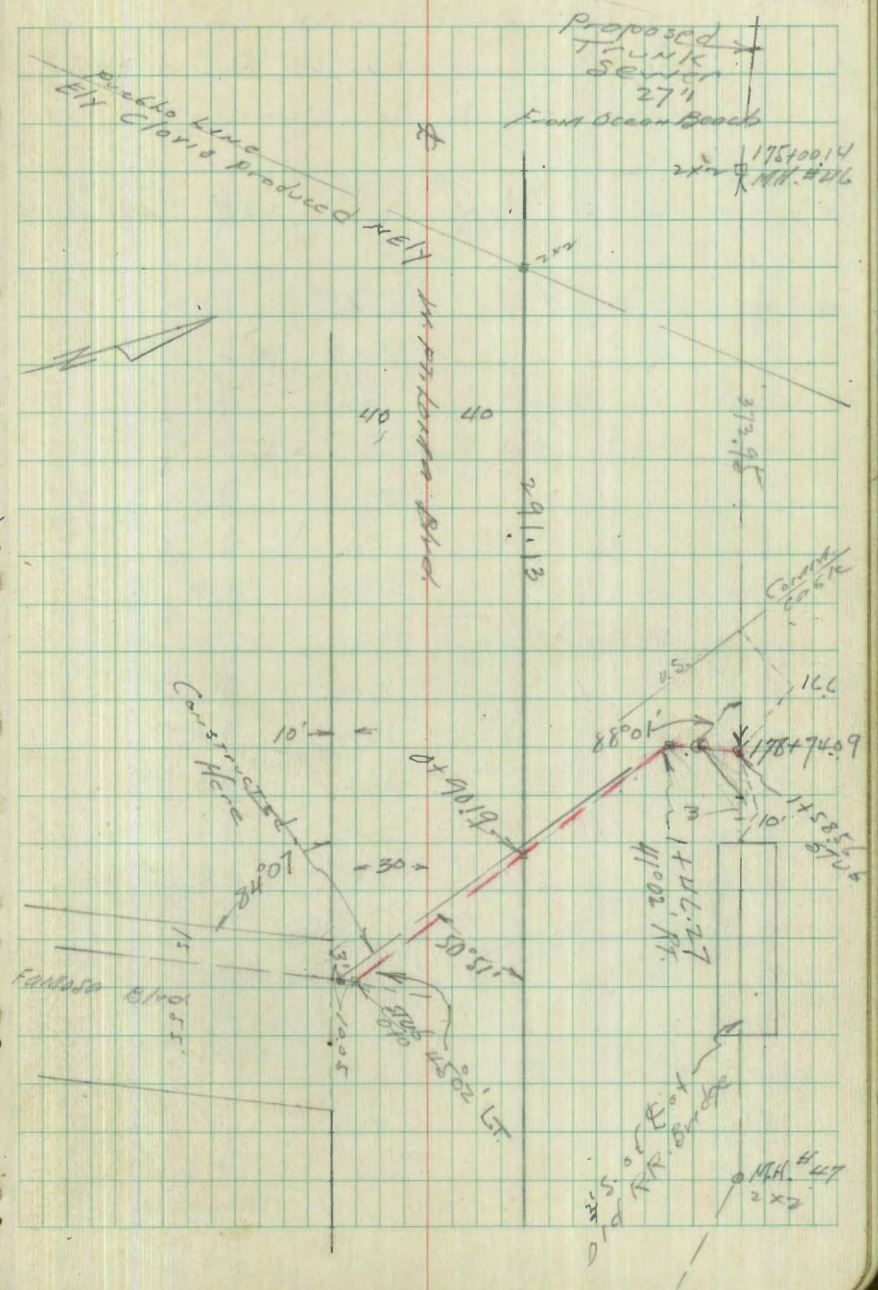
✓

Second Proposed Junction of  
Loma Alta Sewer with Main Trunk Line  
from Ocean Beach

BM Spike  
SE GR PA 216 6.24 208 Fantosa  
112.17.60  
R9

040	Stub = So. 10' line of H.P.T.	4.8	1.4	✓
110	Loma Blvd and W. 15' line of Fantosa	5.2	1.0	✓
123		4.8	1.4	✓
140		4.6	1.6	✓
165		5.3	.9	✓
170		4.9	1.3	✓
190		4.8	1.4	✓
197		6.5	- .3	✓
197		7.5	- 3.3	✓
132		7.9	- 3.7	✓
140		8.2	- 2.0	✓
1 + 46.27 A	41°02' RT	5.7	5	✓ Stub
150		7.5	3.7	✓
1 + 58.56	JUNCTION Main Line	1.4	4.8	✓ Stub
178 + 74.99				

C. Moore  
17540014  
E. B. 4995 3-3-45



Sewer Prelim. on  
 Sly 3' Line of W. Pt. Loma Blvd.  
 Famosa to Valbeta

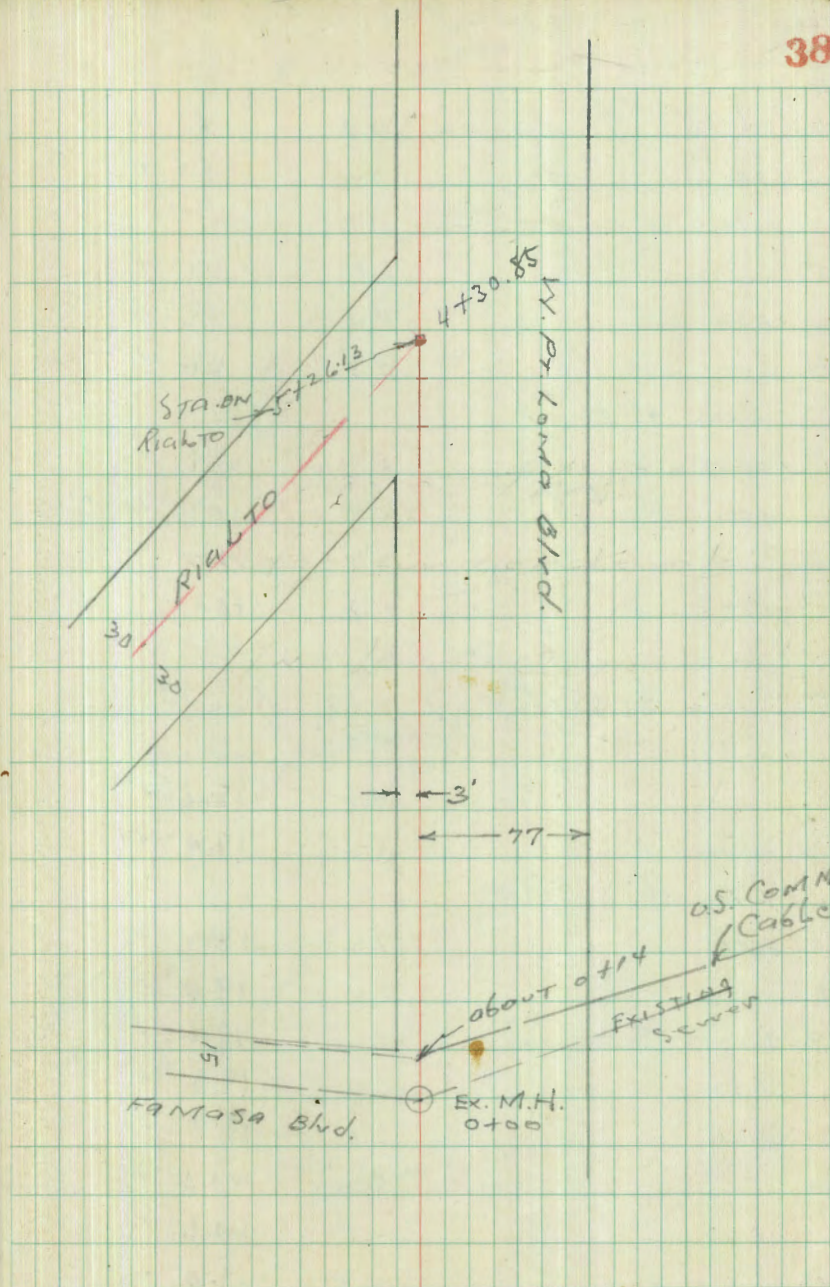
BM. SPIKE  
 Sely Cor. 5.06 8.14 ✓ 3.08 Famosa &  
 W. Pt. Loma

0+00	RIM M.H.	6.85	1.29	✓
"	F.L. "	11.09	-2.95	✓
0+14	ground	7.0	1.14	✓
0+17	6' RT. P.P. Guy			
+50		6.2	1.9	✓
1		5.2	2.7	✓
+50		4.9	3.2	✓
+55	9' RT PP.			
2		5.0	3.1	✓
+50		4.7	3.4	✓
3		4.3	3.8	✓
+50		3.8	4.3	✓
+80		2.3	4.8	✓

T.P. 9.25 14.98 ✓ 2.45 5.69 ✓

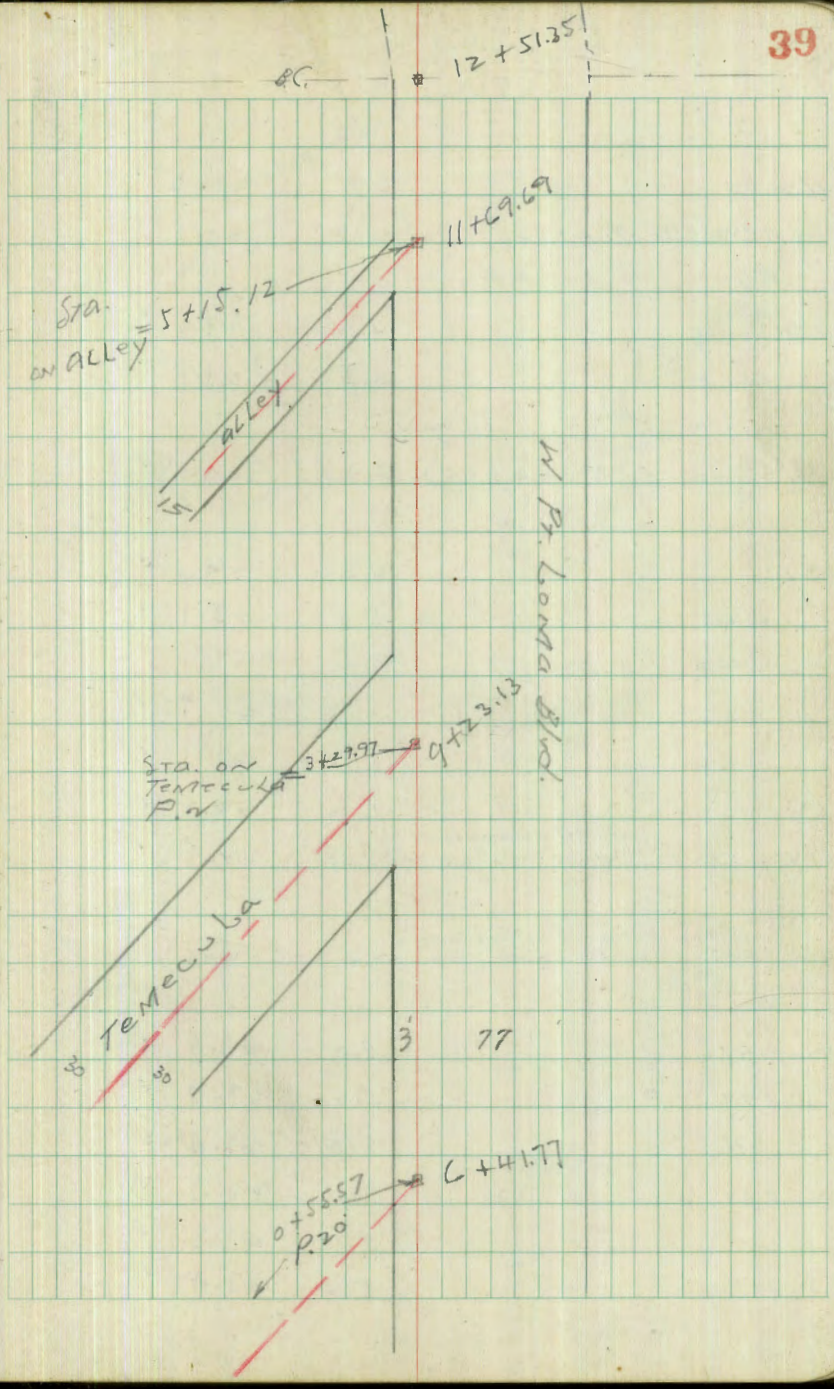
3+89 9' RT PP.

+94		9.2	5.1	✓
+97		10.1	4.8	✓
4		10.1	4.8	✓



14.94 ✓

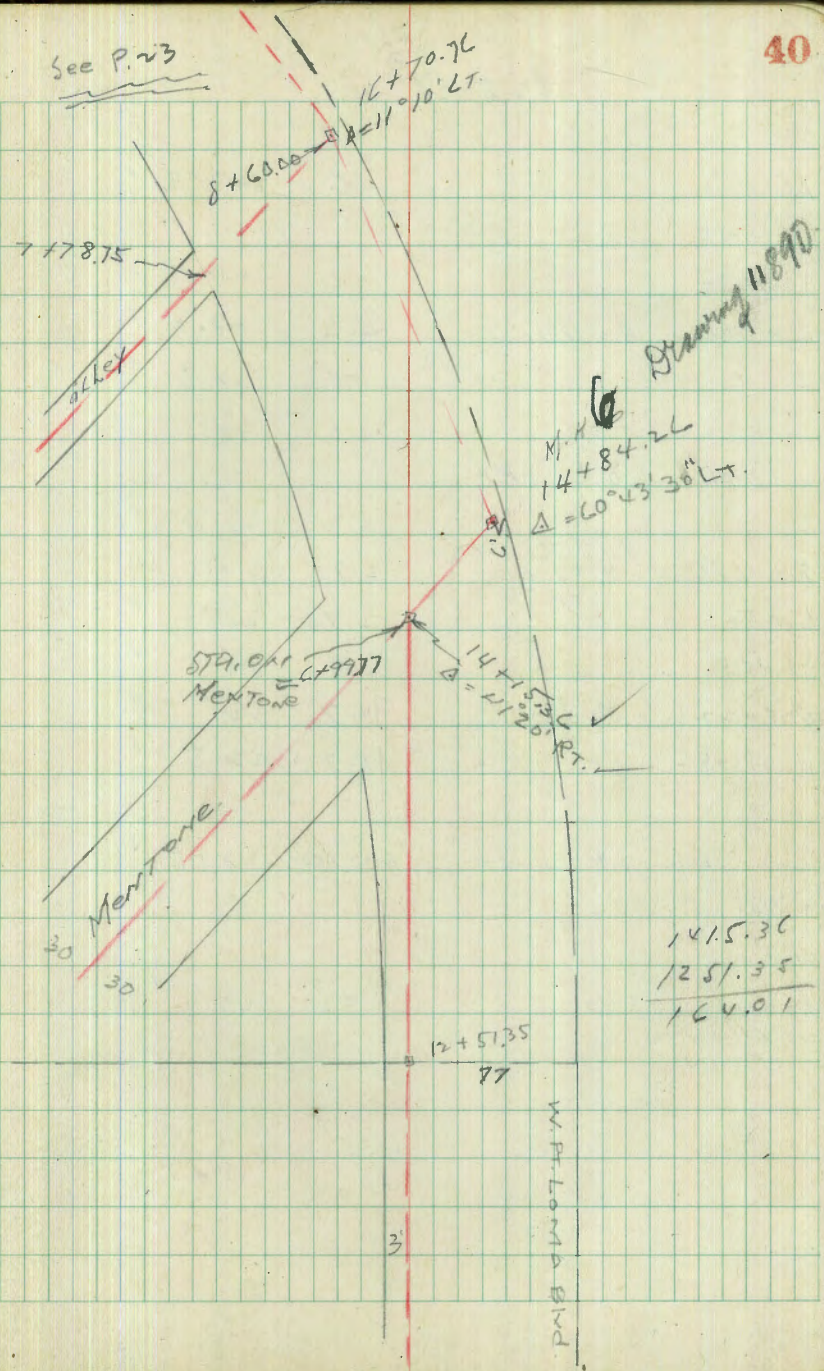
4	+30.85	E Rialto	9.8	5.1	✓
	+50		9.2	5.5	✓
	+70	9' R+ PP			
5			8.8	6.1	✓
	+50		7.4	7.3	✓
6			6.3	8.6	✓
	+40	9' R+ PP			
6	+41.77 = 0+55.57		5.1	9.8	✓
	+50	P. 20	4.8	10.1	✓
7			2.7	12.2	✓
	+50		0.8	14.1	✓
T.P.	10.97	← 25.40 ✓	0.47	← 14.47 ✓	
8			2.8	15.6	✓
	+50		8.0	17.4	✓
	+71	9' R+ PP			
	+80		7.2	18.2	✓
9			6.4	19.0	✓
9	+23.13	E Temecula	6.2	19.2	✓
	+53		6.1	19.3	✓
	+60		5.6	19.8	✓
10			5.0	20.4	✓
	+50		4.8	20.6	✓
11			4.4	21.0	✓





25.44

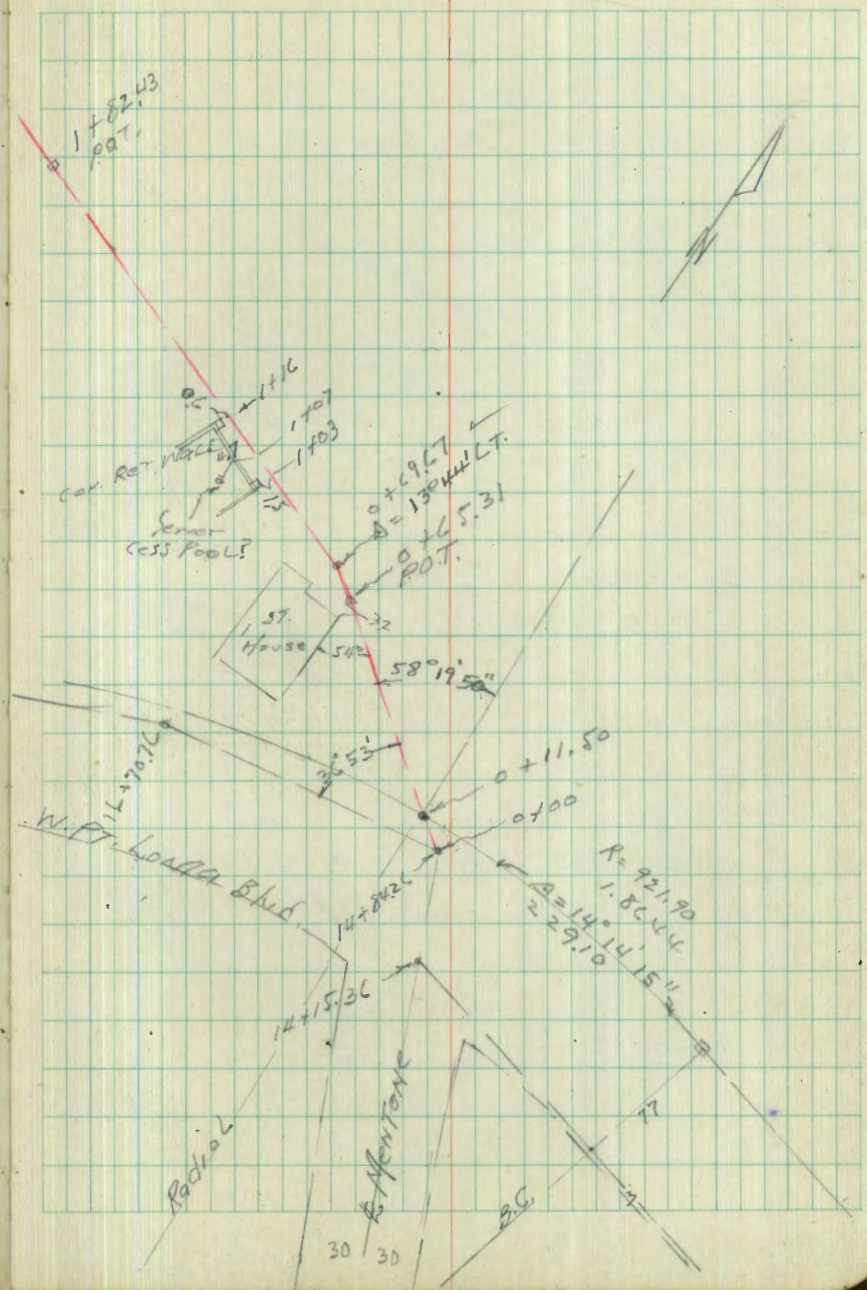
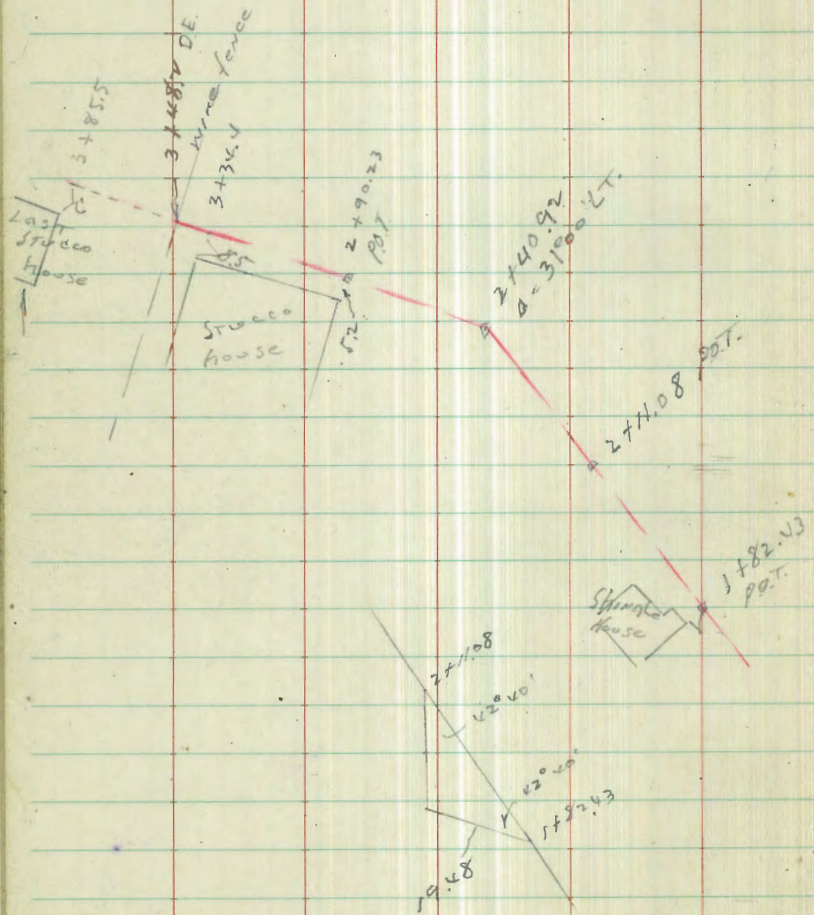
11+50		3.9	21.5	✓
+69.09	alley	4.3	21.1	✓
+94	9' RT P.P.			
12		4.2	21.2	✓
+51.35		3.9	21.5	✓
T.P.	195	2.94	21.50	✓
13		6.3	22.1	✓
+40		5.3	23.1	✓
+42	1' RT. P.P.			
+56		4.7	23.7	✓
+62		6.7	21.7	✓
14		6.2	22.2	✓
14+15.36	E MENTONE = Δ 41° 20' RT	5.9	22.5	✓
Set	spike SWly Cor MENTONE SET B.M. 4' W P.T. CORNER BLVD.	4.39	24.06	✓
14+41		5.0	23.4	✓
+74		5.4	23.0	✓
+76		5.0	23.4	✓
14+84.26	E MENTONE Δ = 60° 43' 30" LT	5.1	23.3	✓
15		5.1	23.3	✓
+50		5.0	23.4	✓



(28.45)

16		46	23.8	✓
+25	1.5 LT P.P.			
+50		46	23.8	✓
16 + 70.76	B 11° 10' LT	40	24.4	✓
17		36	24.8	✓
+50		33	25.1	✓
+91	0.8 LT P.P.			
18		30	25.4	✓
	g Montalvo			
18 + 41.86	A 4° 57' LT	23	26.1	✓
+50		27	25.7	✓
+65		38	24.6	✓
19 + 0.221	= Blvd BC.	47	23.7	✓
+30.40	D.E.?	59	22.5	✓
Floor E.L. of house		+0.10	28.55	✓
20' RT of D.E.				
check to 6 + 50		255	25.9	✓
on MENTONE				
P. 14				

Lava Line Sewer  
Thru Blk 32 Lava Fltra #2  
Levels p. 44



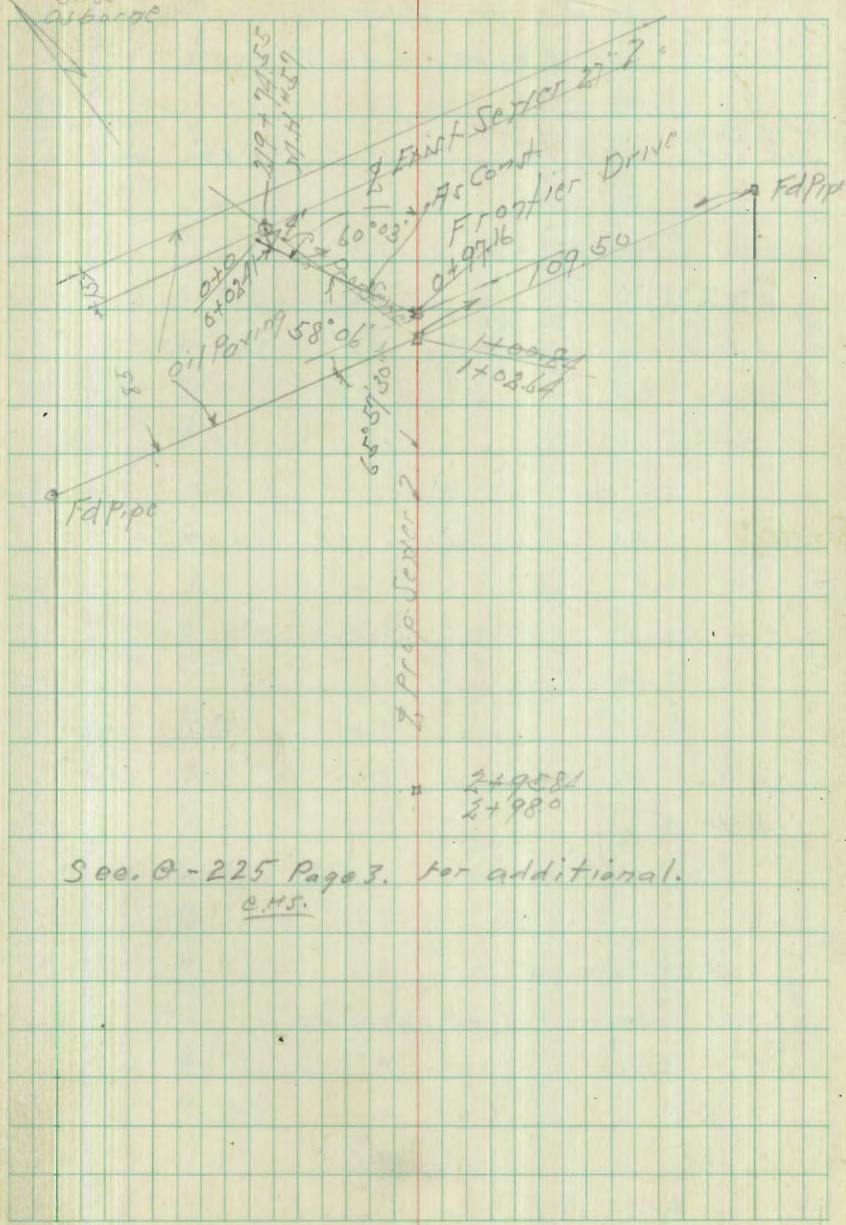
Proposed Sewer, Frontier Drive  
To Serve Margery Hutman Property

BM	8.23	11.13	290	RP 574 H 101 Culvert 14 Idyax Dr N. of 8 Point Lane
TP	4.25	7.34	8.14	2.99
0+0 = Exit MH		5.08	2.26	on Rim
"		16.65	-9.31	Florkige
+50		5.02	2.32	
1+00.84 A		5.16	2.18	on Stub
1+10		4.5	2.8	
+50		4.6	2.7	
2+0		4.8	2.5	
+50		5.1	2.2	
+95.84		5.88	1.96	on Stub
Sewer Grades				
BM	5.85	8.11	2.26	on Rim MH 0+0
0+0 = Exit MH			-7.90	$\frac{15.81}{5.85} = 2.70$ $\frac{5.85}{0.99} = 5.91$
47.38 +48.08			-6.05	$\frac{14.16}{5.85} = 2.42$ $\frac{5.85}{0.833} = 7.02$
+94.75 = 197.16 = MH			-4.40	$\frac{12.51}{5.78} = 2.16$ $\frac{5.78}{0.873} = 6.62$
1+50			-4.03	$\frac{12.14}{5.28} = 2.30$ $\frac{5.28}{0.856} = 6.17$
2+0			-3.68	$\frac{11.79}{5.65} = 2.09$ $\frac{5.65}{0.814} = 6.94$
+50			-3.35	$\frac{11.46}{5.28} = 2.17$ $\frac{5.28}{0.811} = 6.51$
+98.0 = DE			-3.00	$\frac{11.11}{6.19} = 1.79$ $\frac{6.19}{0.998} = 6.20$

Sept 26-45  
5:55 PM  
81/35  
Asberac

indexed  
c.s.R.

Grades  
Sept 28-45 **43**



Levels on Low Level Sewer

1st Blk 37, Longo Plaza #2

Swly Spike  
- BM. BP 2.58  $\left\langle \begin{matrix} 26.64 \\ 26.64 \end{matrix} \right\rangle$  Mentone  
W. Pt. Ledge 24.06

0+00 = 14+8426 = A 3.3 23.3

+07 3.2 23.4

+11.5 N.L. W. Pt. Longo Blvd. 4.5 22.1

+22 7.9 18.7

+38 10.3 16.3

T.P. 0.07  $\left\langle \begin{matrix} 14.53 \\ 14.53 \end{matrix} \right\rangle$  12.18  $\left\langle \begin{matrix} 14.46 \\ 14.46 \end{matrix} \right\rangle$

0+48 2.5 14.0

0+55

E 5.0 9.0

5' LT FL. 4" Sewer 1.2 13.3

8' RT 8.7 5.8

0+65.31

E 0.0 7.9

3.2 LT ground House con 5.3 9.2

0+69.67 = A 13' 4" LT.

E 7.1 7.4

7 RT 12.2 2.3

5 LT 4.4 10.1

$\left\langle \begin{matrix} 14.53 \\ 14.53 \end{matrix} \right\rangle$

0+73 7.6 6.9

E 0.7 LT = 4" x 4" Porch Support 7.6 6.9

0+75 7.6 6.9

E 0.9 LT 4" x 4" Porch Support 7.6 6.9

7.9 T.O.P. CON. BLK

0+83 8.8 5.1

E 5' LT 5.2 9.3

7 RT 13.1 1.4

1+03 8.1 6.4

E 1.5 LT Top of 1st Pilaster 4.1 10.4

2.5 LT " " WALL 3.2 11.3

8 RT 13.8 0.7

1+07

E 4.7 LT Sewer pipe maybe cast pool 3.2 11.3

For houses

1+16 7.7 6.8

E 0.6 LT Top of 1st Pilaster con 4.0 10.5

+ 6.5' sewer line

2 LT " Con. Wall 3.0 11.5

7 RT 11.2 3.3

1+27

E 10" Leaning Tree 7.1 7.4

(14.53)

lense 10k  
sewer k  
1+16cm

1+37

E 8.0 6.5

2' LT CTG 6" Tree

5 LT 4.8 9.7

7 RT 12.6 1.9

T.P. 5.50 (16.32) 3.71 (10.87) ✓

1+55

E 9.0 7.3

7' LT 3.9 12.4

5 RT 12.7 3.6

1+75

E 8.2 7.9

5 RT 11.2 5.1

10 LT Top Sewer  
cleanout cap 2.0 14.3 Maybe  
cess pool

1+82+3

E 8.0 8.3

5.5 LT 4x4  
Perch  
Support 4.3 12.0 ground

4 RT 11.6 4.7

1+88

E 8.9 7.4

5 RT 12.7 3.6

5 LT 4.2 12.1

(16.32)

45

T.P. 3.54 (19.42) 0.44 (15.88)

1+91

E 9.3 10.1

2+11.08

E 9.9 9.5

8 RT 15.8 3.6

5 LT RIM Bluff 5.7 13.7

2+40.92 1 330' LT

E 10.5 8.9

10 RT 20.5 -1.1

6 LT RIM Bluff 6.5 12.9

2+50

E 10.3 9.1

5' LT RIM Bluff 6.7 12.7

12 RT 20.2 -1.2

2+61

E RIM Bluff 7.2 12.2

5 LT 6.3 13.1

6 RT 12.2 7.2

2+80

E RIM 8.3 11.1

5 LT 6.4 13.0

10 RT 12.9 6.5

<19.42>

2+9093 pot

E Hub 6.89 12.53

52 LT ground 6. 13.4

52 LT Floor cl. 0.7 18.7

6 Rt 12.8 6.6

Studio house  
Dinner con  
= 16.7

T.P. Lark 8.22 <21.60> 6.04 <13.38> 2' N of road  
house con

3+13

E 8.0 13.6

3+34

E 5.0 16.0

3+48 ~ Fence

E 4.8 16.8

3+85.5

E 3.8 17.8

6' LT to Car house 3.0 18.0  
plumbing in this house falls toward Blvd.

Con.  
Renter don't  
ground  
plumbing  
20' R 18.0  
+ 4.92

T.P. 12.87 <21.25> 8.22 <13.38>

check to orig. BM. 2.8 <24.07> 24.06





$\langle 17.57 \rangle$ 

1789	4.1	13.4	✓
1792	2.6	14.9	✓
✓	3.0	14.5	✓
+31.5 P.O.T.	3.0	13.9	✓

T.P.	2.94	$\langle 19.29 \rangle$	11.6	$\langle 16.35 \rangle$	✓
------	------	-------------------------	------	-------------------------	---

 $2 + 60.38 \quad A = 27^\circ 41' LT$ 

E A	6.8	12.5	✓	P.M. on Bluff
-----	-----	------	---	---------------

5 LT	6.2	13.1	✓
------	-----	------	---

5 RT	10.4	8.9	✓
------	------	-----	---

2 + 72	4.0	12.7	✓
--------	-----	------	---

+78	8.1	11.2	✓
-----	-----	------	---

$\frac{2 + 87.48}{2 + 90.23} = EB$	6.77	$\langle 12.52 \rangle$	✓	2500 Hub 12.53
------------------------------------	------	-------------------------	---	----------------

P.O.T. P. 42

See Levels Contd.

11-30-45

Location of COMM. Cable  
Loma Alta #2

SE Spike P.P. 2.29 (5.37) 3.08 FANTOSA & W. PT. LOMA

W. PT. LOMA AT FANTOSA

0 + 19.2 TOP cable 8.73 - 3.36  
5' deep

Montalvo on CANULAS

3.40 (64.06) 20.66 460.09

+69.7 TOP COMM. cable 6.6 57.46 02 Higher 10:5  
3.1 deep

on CANULAS in alley bet.

Montalvo and MENTONE

4.17 (55.87) 51.70 stub 460.12

+72.6 TOP cable 8.7 47.60

" ground 5.6 50.3

on Cameros St.  
10' S of E of MENTONE

5.62 (45.76) 35.14 stub 70 to 618

+73.6 - 10' S of E 5.79 34.97 TOP cable

" 3.1 27.7 ground

.5 Lower on E MENTONE 24.5

E Rialto AT FANTOSA

8.34 (11.42) 3.08

0 + 17.4 cable 6.77 4.65

alley S of RIALTO AT FANTOSA

T.P. 4.33 (14.53) 1.22 10.20

6 + 07.1 cable 5.45 9.08

E Tenecula AT CANULAS

14.53

T.P. 10.73 (22.55) 17.1 (12.87)

stub  
T.P. 0.26 (22.84) 0.99 (22.56) 22.58

6 + 67.2 cable 19.74 3.08

" ground 14.6 8.2

E alley S of Tenecula AT CANULAS

22.82

6 + 67.1 cable 24.9 18.33

" ground 2.3 20.5

3 Addl. Sewer Levels on  
Maurale Ely from Camulos

From P.C.

BNT Spiko PP  
SW Maurale  
Camulos 0.00 62.55 62.55 P.B.  
1699.5

T.P. 0.08 50.03 12.60 49.95

T.P. 0.06 36.95 13.14 36.89

10+02 III' NLY Sewer Y 10.3 26.65

8-8-46

50

2-5-47

Cross section for drain on

INDEXED

MLK  
SEP 21 1949

	58.5	59.8	60.0	59.7	63.31
0+28.2	$\frac{5.5}{10}$	$\frac{4.2}{4}$	4.0	$\frac{4.8}{6.1}$	$\frac{0.70}{6.1}$
				7.0	Foundation

0+26		61.7		
		2.3		

0+15.2	62.0	62.6	62.7	62.79
	$\frac{2.0}{6}$	1.4	$\frac{1.3}{1.5}$	$\frac{0.72}{1.5}$
				TOP FOUNDATION

0+00	62.5			
	1.5			

1.27    64.01    —    62.74

B.M. = stub for sewer lateral # 37 G.B. 225 P.4

lot grade: 57.48

cut 5.26

62.74 = El. stub.

Sammormeyer 51

W. Moore  
T. Green

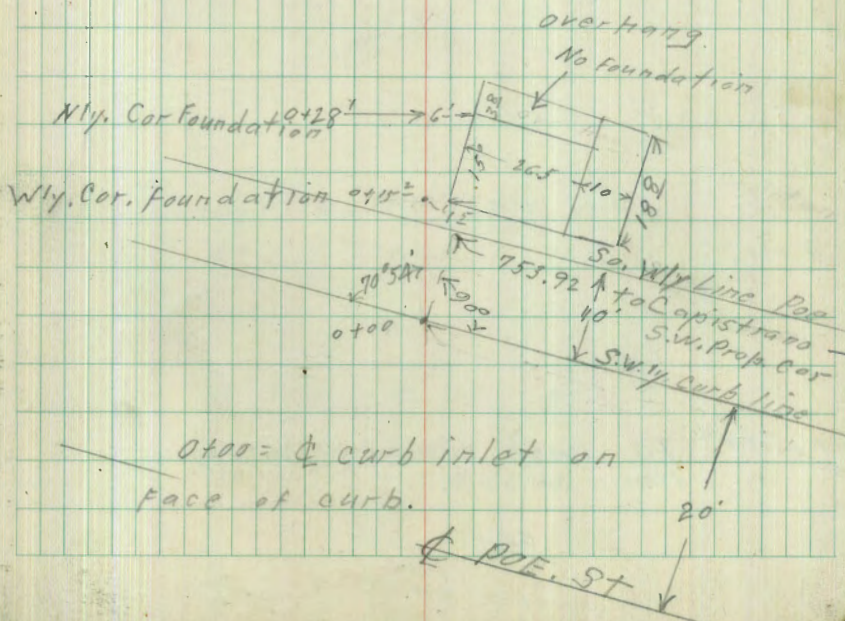
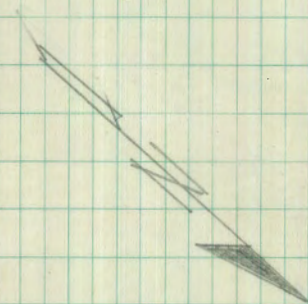
Poe. Street

Work Order 1019

proposed 18" Drain

• 0+96 = End profile

• 0+72 = Main wash



0+76

0+72 Int. Main Wash &  $\phi$ . drain

0+67

0+55

T.P. 1.44 54.86 10.59 53.42

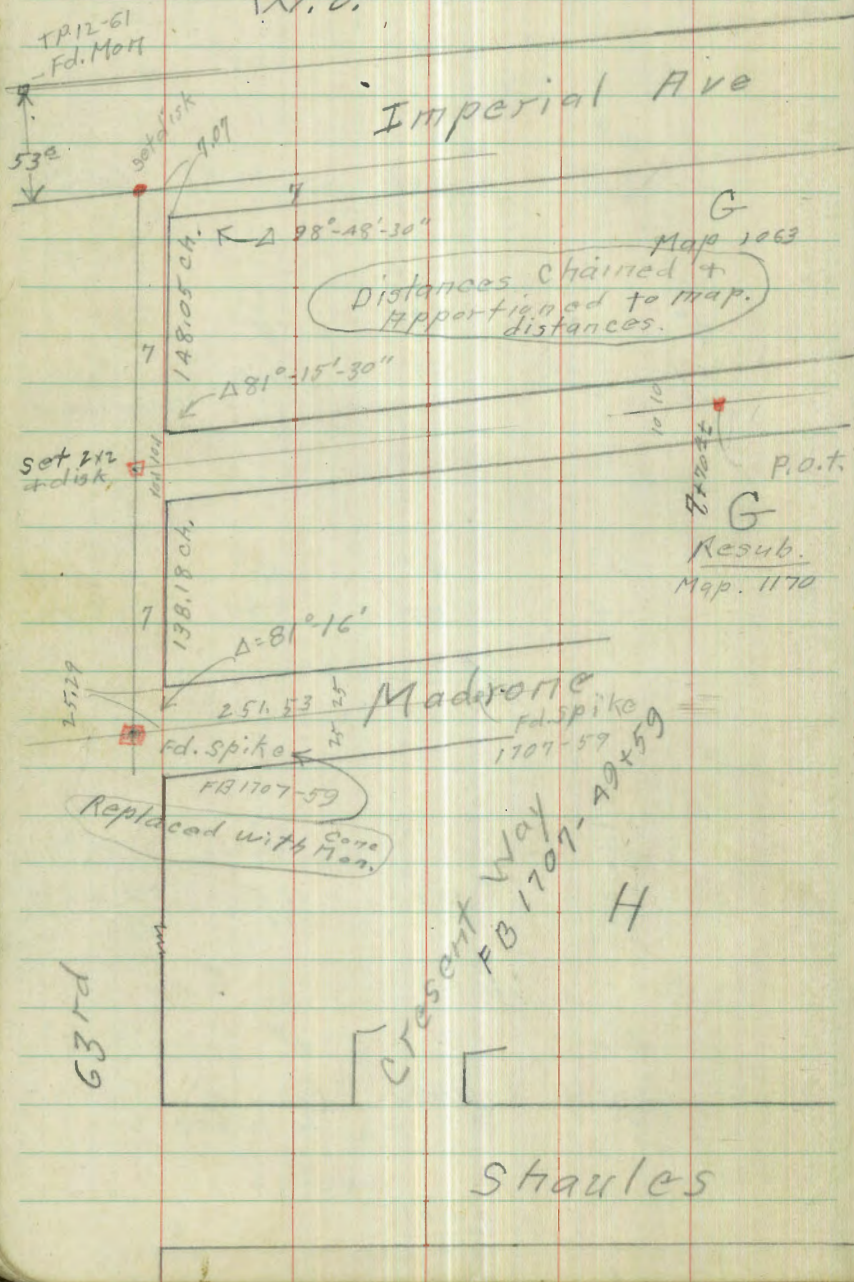
0+47

0+40 In wash running N.Wly to  
main wash.64.01

	43.5	$\phi$ .	
	11.4	45.2	
	<u>10</u>	9.7	
		17 main wash	
	46.4	43.3	
	8.5	11.6	
	<u>10</u>	12 main wash	
	42.0	46.0	44.1
	6.1	48.6	10.8
	<u>10</u>	5.3	<u>10</u> in Main Wash
	50.3	47.6	47.4
	4.6	5.3	7.5
	<u>10</u>	<u>54.86</u>	<u>10</u>
	55.3	54.0	51.5
	8.7	10.0	12.5
	<u>10</u>		<u>10</u>
	54.0	52.7	48.0
	10.0	11.8	16.0
	<u>10</u>		<u>10</u>
		<u>64.01</u>	

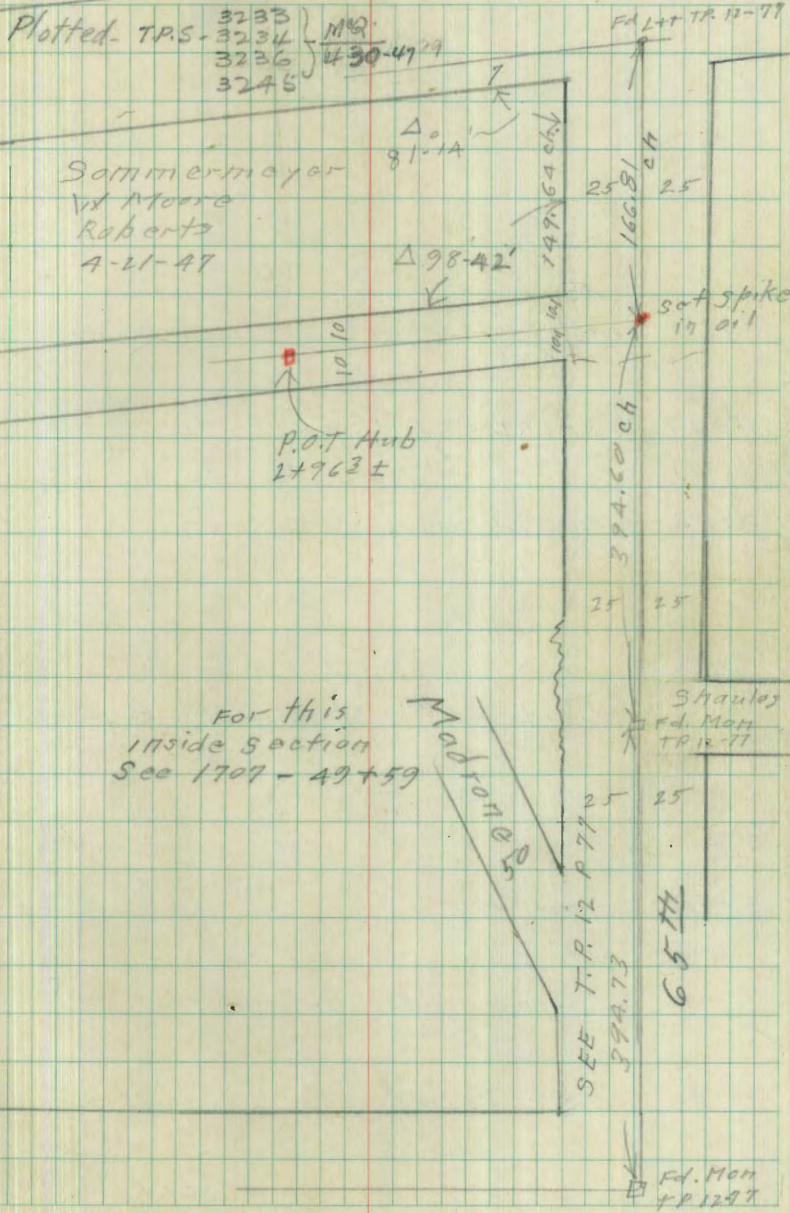
Alley-Bik.G. Encanto Hqts Map 1170

W.O.#



Cross Section

index of c.s.H





Alley Bk. G. Encanto Hqts.

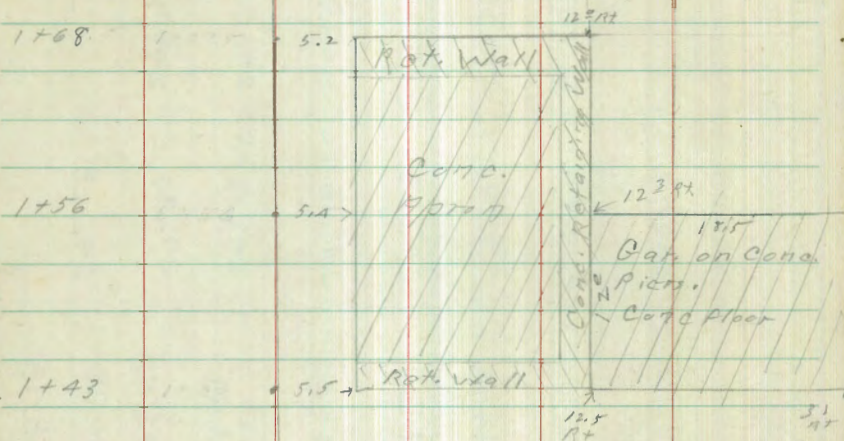
Lt = S

±

Rt. = N

1+92 9<sup>th</sup> Rt. = Back of pole # 839 75H

1+68<sup>L</sup> = 12<sup>th</sup> Rt. start plank Ret. wall. →



into Garage - See Above

1+43 = start conc. Retaining wall + Apron

1+42

1+32 11<sup>th</sup> Rt. = ctr. 10" pepper tree

T.P. 7.05 256.98 2.15 249.73  
252.08

	250.48		
	6.50	6.38	11.8
	5.2	12.0	17.5
	250.60	250.67	245.18
	6.38	6.31	11.8
	5.4	12.3	17.5
	250.57	250.69	245.18
	6.41	6.27	11.8
	5.5	12.5	17.5

+2.2	256.98	252.28	250.58	250.68	250.68	247.88	244.28
20	1.0	47	6.4	6.8	9.0	9.1	12.7
	15	10	8		10	10	16

256.98



3+20

T.P. 3.93 256.94 3.97 253.01

2+96 7<sup>2</sup>4+ = Back. P. Pole # 172059

2+90

2+45 12° Rt. = End plank Rot. Wall

2+41 10° Rt. = S.W. Cor. Frame Gar. (End Gar.)

2+36<sup>E</sup>  $\Phi$  Gar. dirt + plank floors

2+32 9° Rt. = S.E. Cor. Frame Gar. (Start Gar.)

2+00

256.98

257.84

+0.9  
70

253.04

+3.9  
6

252.94

+1.0  
7

252.64

+4.3  
7

250.94

+6.0  
70

256.94

+2.3  
15

254.48

255.98

+1.7  
10

253.28

252.38

+3.8  
6

252.98

252.18

+2.8  
7

252.68

251.38

+1.2  
7

251.78

+9.5  
10

251.78

+7.9  
20

25178

247.58

+2.0  
13

250.38

239.98

+10.7  
20

246.28

256.98

A+97	9 <sup>E</sup> Rt. = Back Telapda 99886H										248.94
T.P.	0.66 244.55 13.05 243.89										246.24
A+50											243.74
A+18	9 <sup>E</sup> Lt. = Ctr. 16" Gum tree										243.74
A+09	7 <sup>E</sup> Lt. = 20" Gum tree										243.34
3+99	10' Lt. = Ctr. 24" Gum tree										242.24
											236.94
3+97	10.2 Lt. = top of wall 10.1 Lt. = Base of wall } End of wall										256.74
											253.04
											251.64
											251.74
											249.04
											249.04
											248.94
											246.84
											244.04
											253.34
											250.24
											250.64
3-91	10.2 Lt. Top 8" Conc. Wall 10.0 Lt. Base Conc. Wall										254.84
											252.04
											251.54
3+62 <sup>5</sup>	9.7 Top 6" Conc. Wall 9.2 Lt. = Base Conc. Wall } Start of wall										252.74
											251.74
											251.34
3+61	9.1 Lt. CENTER OF 3 <sup>E</sup> WIDE Conc. STEP										249.14
											246.94
											255.94
											255.74
											257.84
											252.74
											262.94
											252.94
											252.64
											251.24
											247.44
											244.14
3+59	9.0 Lt. = Top 6" Conc. wall 8.7 Lt. = Base conc. wall } End of wall										256.84
											252.94
											253.74
											262.94
											252.94
											252.64
											251.24
											247.44
											244.14
3+44	9 <sup>E</sup> Rt. = Back of Tpale 99882H										256.84
											252.94
											253.74
											262.94
											252.94
											252.64
											251.24
											247.44
											244.14
3+23	10 Lt. = Start Wire Fence										256.84
											252.94
											253.74
											262.94
											252.94
											252.64
											251.24
											247.44
											244.14
3+21	9 <sup>E</sup> Lt. = Top of 6" wide wall 8 <sup>E</sup> Lt. = Base Conc. wall										256.84
											252.94
											253.74
											262.94
											252.94
											252.64
											251.24
											247.44
											244.14

256.74

256.74

T.P. 3.56 230.53 8.33 226.97

6+50

6+48 9.7 Rt. = start wire fence  
8.9 Rt. = t. pole # 97874H

6+00 9.9 Rt. End conc. wall

5+95 9.9 Rt. step down in wall

5+94 10.1 Rt. End shed

5+70 7.9 Rt. = start frame shed on conc. wall as back Foundation

2.46 235.30 11.71 232.84

5+50

5+00

4+99 9.2 Lt. = cut 18" Gum tree  
2.44, 55

	Lt. = S		Rt. = N.	
	2.5	4.4	5.7	7.9
	20	10	9	10
	232.80	230.90	228.10	227.40
	235.20	232.70	230.0	230.6
	2.0	2.5	5.3	4.7
	20	10	9.8	9.9
	235.20	230.70	231.40	230.50
	2.5	1.6	3.7	4.8
	10	5	9.9	9.9
	232.70	230.70	227.10	227.90
	2.5	1.6	3.2	3.0
	10	5	10.5	10.5
	232.70	230.70	227.10	226.70
	2.46	2.7	2.3	4.6
	20	5	5	9.9
	240.66	232.60	232.50	230.70
	2.8	10.3	11.6	11.4
	10	7	10	30
	241.35	234.25	232.95	230.15
	2.8	5.2	6.8	2.4
	10	6	10	12
	243.96	239.36	238.05	237.15
	2.44	5.2	6.8	10.3
	10	6	10	30
	244.55	234.25	234.05	234.25



10+66 9.6 Rt. = End Tail fence  
 +51 9.9 Lt = Ctr. 7" Cypress  
 10+50  
 10+36 9° Lt. = Ctr. 14" Cypress  
 10+31 10.1 Rt. = End Frame shed + start of Tail fence  
 10+22 10.5 Lt = End Gar. Conc. Floor  
 10+13E =  $\Phi$  Gar.  
 10+13 9.9 Rt. = End rail fence + start Frame shed  
 10+05 9.7 Lt. start Gar. Conc. Floor  
 10+03 9.4 Rt. = start rail fence  
 10+00

9+51 8.8 Rt. = Back edge pole # 9958AH

9+50

T.P 3.50 223.53 10.50 220.03

9+00

8+98 10.5 Rt. = End frame shed

8+83 10.4 Rt. Start Frame shed

8+82 9.5 Rt. = End wire fence

8+50

230.53

	221.73	220.43	218.93	218.63	218.53	218.03	217.23
	$\frac{1.9}{20}$	$\frac{3.1}{10}$	$\frac{4.6}{7}$	4.9	$\frac{5.0}{4}$	$\frac{5.5}{10}$	$\frac{6.8}{20}$
	222.13	220.03	219.51	218.83	218.33	217.43	216.43
	$\frac{1.4}{20}$	$\frac{3.5}{10}$	$\frac{4.5}{5}$	4.7	$\frac{5.2}{8}$	$\frac{6.1}{10}$	$\frac{7.1}{20}$
	221.73	220.03	219.13	219.13	218.73	216.73	216.03
	$\frac{1.9}{20}$	$\frac{3.5}{10}$	$\frac{4.4}{6}$	4.4	$\frac{4.8}{8}$	$\frac{6.8}{10}$	$\frac{7.5}{20}$
	222.33	221.13	220.13	219.83	219.73	218.33	217.03
	$\frac{8.2}{20}$	$\frac{9.4}{12}$	$\frac{10.4}{10}$	10.7	$\frac{10.8}{7}$	$\frac{12.4}{10}$	$\frac{13.5}{20}$
	222.73	221.33	221.13	221.03	218.33	217.83	
	$\frac{7.8}{20}$	$\frac{9.2}{10}$	9.4	$\frac{9.5}{7}$	$\frac{12.2}{10}$	$\frac{12.7}{20}$	

230.53

12+55 { 10.7 Rt = start Pipe + wire fence. A  
 12+52 { 10<sup>d</sup> Rt = Back edge T. pole # 79888H  
 12+51 { 8<sup>e</sup> Rt = Ctr. 24" gum tree stump  
 12+50 { 10<sup>e</sup> Rt = End frame shed  
 12+27 { 8<sup>o</sup> Rt = Ctr. 14" pepper tree  
 12+09 { 10<sup>o</sup> Rt = End picket fence & start frame  
 T.P. 6.79 227.11 3.21 220.32

12+00 10.3 Rt. start picket fence

11+59 10.1 Rt. = End rail fence

11+50

11+3 { 8.2 Lt = Ctr. 6" cypress  
 11+01 { 9.9 Rt = 4 in fence  
 11+01 { 8.8 Rt = T. Pole # 79896H + D.P. 175156  
 11+00 10<sup>o</sup> Lt = Ctr. Large cactus

10+85 10.2 Rt. = Start rail fence

10+71 10.4 Lt. = 2.8 cone walk

~~220.43~~  
223.53

	223.31	222.31	220.81	221.01	221.01	219.91	219.91	219.31
	$\frac{3.8}{20}$	$\frac{4.8}{14}$	$\frac{6.7}{12}$	$\frac{6.7}{10}$	6.1	$\frac{6.1}{3}$	$\frac{7.2}{6}$	$\frac{7.2}{10}$
shed				<u>227.11</u>				
	223.13	221.13	220.13	220.33	220.33	219.73	219.23	218.33
	$\frac{0.4}{20}$	$\frac{2.4}{12}$	$\frac{3.4}{10}$	3.2	$\frac{3.2}{7}$	$\frac{3.8}{6}$	$\frac{4.3}{10}$	$\frac{5.2}{20}$
	222.43	221.43	219.53	219.53	219.23	218.13	217.93	216.83
	$\frac{0.9}{20}$	$\frac{2.1}{10}$	$\frac{3.8}{8}$	4.0	$\frac{4.3}{7}$	$\frac{5.4}{6}$	$\frac{5.8}{10}$	$\frac{6.7}{20}$
	221.53	220.43	219.53	218.53	218.53	218.43	217.73	216.73
	$\frac{2.0}{20}$	$\frac{2.1}{10}$	$\frac{4.0}{7}$	$\frac{5.0}{10}$	5.0	$\frac{5.1}{6}$	$\frac{5.0}{10}$	$\frac{5.6}{10}$
	220.21	220.03	218.73	218.53	218.43	218.23	217.33	216.23
	$\frac{3.27}{10.4}$	$\frac{3.4}{10}$	$\frac{4.8}{8}$	5.0	$\frac{5.3}{5}$	$\frac{5.3}{5}$	$\frac{5.2}{10}$	$\frac{7.3}{20}$
	walk							
				<u>220.53</u>				
				223.53				

0-19 B.M.  
SECP. 65<sup>th</sup> + Imperial (221.14) 7.93 221.11 Error 0.07

T.P. 734 227.04 1.38 221.70

T.P. 2.26 223.08 0.16 213.12

Top Hydt. SE  
63<sup>rd</sup> Imperial 0.68 213.28 5.48 212.60 Strown 95  
213.62

T.P. 2.31 218.08 11.34 215.77

⊕ 63<sup>rd</sup> St.

13407 2 East Nire 63<sup>rd</sup>

13406 E 11<sup>th</sup> Rt. = End Pipe + wire fence

13400

227.11

$\begin{array}{r} 0.8 \\ 50 \\ \hline 223.81 \end{array}$	$\begin{array}{r} 1.7 \\ 10 \\ \hline 222.41 \end{array}$	$\begin{array}{r} 1.0 \\ \hline 221.71 \end{array}$	$\begin{array}{r} 5.6 \\ 10 \\ \hline 221.57 \end{array}$	$\begin{array}{r} 0.7 \\ 20 \\ \hline 220.41 \end{array}$
$\begin{array}{r} 1.0 \\ 10 \\ \hline 223.11 \end{array}$	$\begin{array}{r} 5.0 \\ 10 \\ \hline 222.11 \end{array}$	$\begin{array}{r} 5.3 \\ \hline 221.81 \end{array}$	$\begin{array}{r} 6.1 \\ 10 \\ \hline 221.01 \end{array}$	$\begin{array}{r} 0.3 \\ 20 \\ \hline 220.81 \end{array}$
$\begin{array}{r} 226.31 \\ \hline 222.31 \end{array}$			$\begin{array}{r} 218.51 \\ \hline 218.51 \end{array}$	

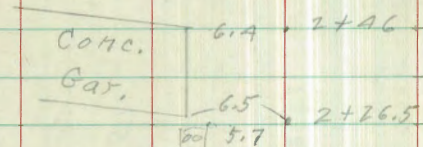
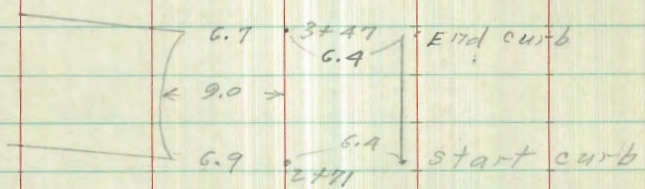
Location of Bldg. S. side Imperial  
65th to 63rd

0+00 = W. Line 65th (Going West)

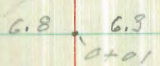
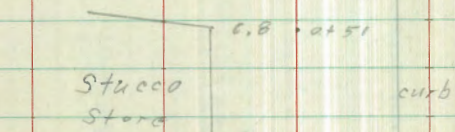
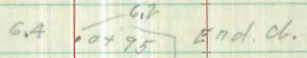
Base line = S. 7' line Imperial

B.L.

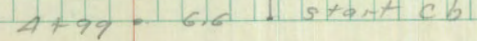
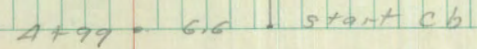
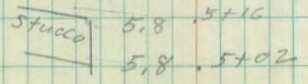
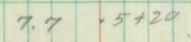
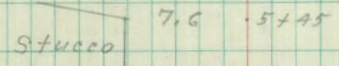
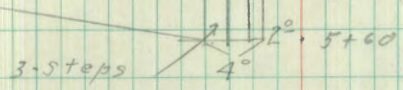
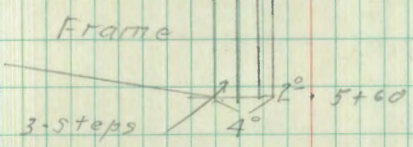
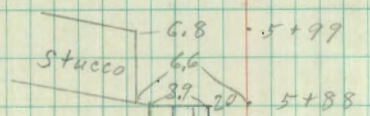
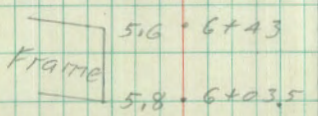
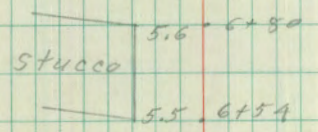
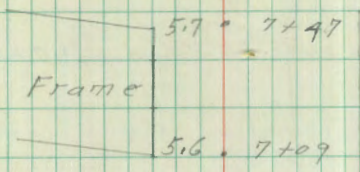
Sommermeier  
W Moore  
Roberts  
4-23-47



Cobble Wall



B.L.



Fd. Track  
1 1/2' N. of B.L.



BL  
B.L. = Sa 7' Line Imperial

13+13.1 - 5.9 - Approx. curb BC,  
10' D. Rad.  
12+03 - 6.0 - start cb.  
10+55 - 6.1 - End. cb.

Cor. Iron  
Bldg  
Conc. Block Front  
A.3 - 9+24  
A.9 - 9+54  
9+53 - 6.1 - start cb.

End of curb 9+01 - 6.1 - End Ch

Frame  
6.5 - 8+76  
6.6 - 8+53  
5.2  
Frame  
5.6 - 8+07

Brick  
Bldg  
5.4 - 8+02  
6.2  
5.8 - 7+57  
curb

Location of Pump House  
Herrick & 65th

Begg  
Greer  
Roberts

WO

?

from 6476 L sheet #2

indexed  
c.s.k.

63

met Roy Harker

fd tack

30 20

Herrick

Set Hub

51

32

Pump House

65 ST

00.00

198.00

creak channel

81.00

set Hub

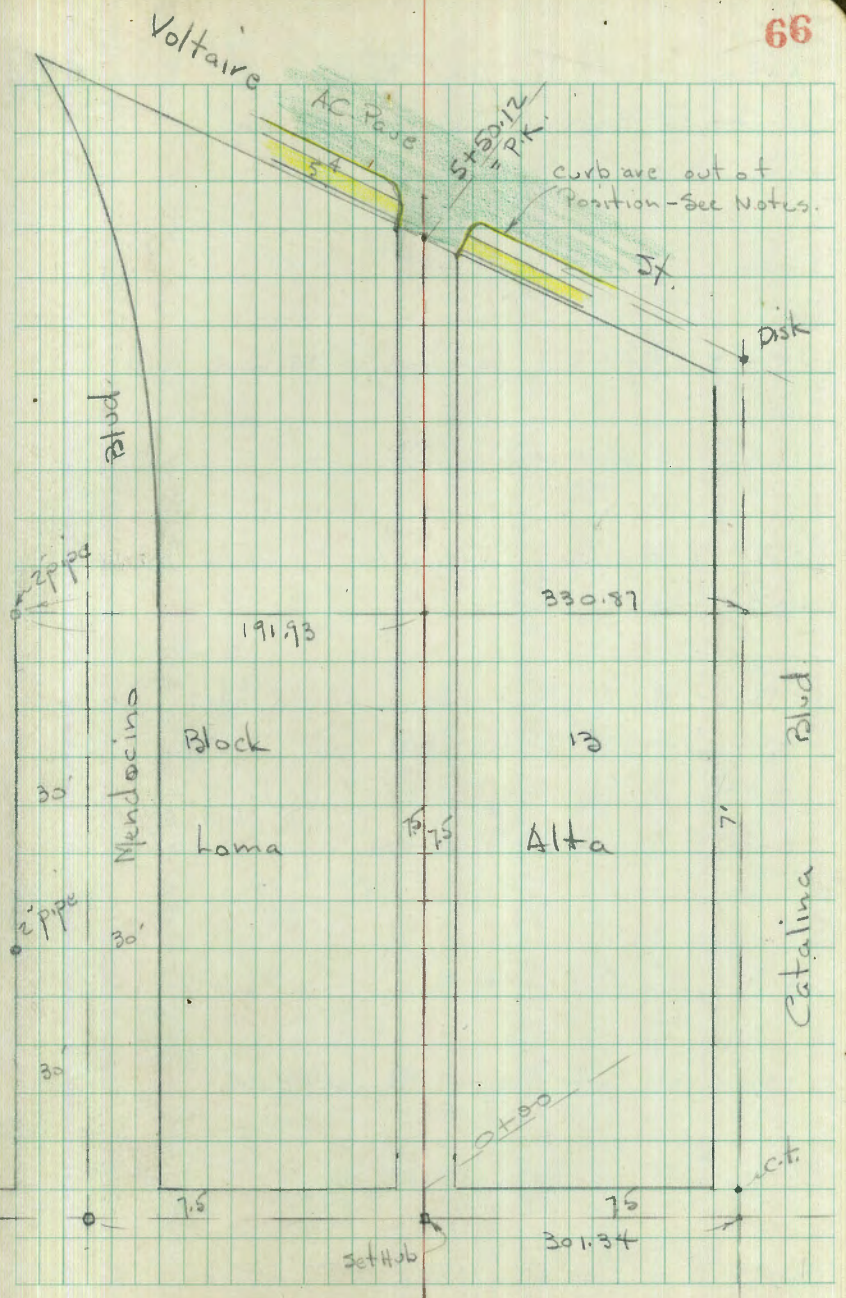
fd ct 20200

Akins

fdct

RR

INDEXED  
 OCT 19 1954



X-Sept. 15 Alley in Block 13 - Loma  
 for Grade Est. - Sketch - P. 66  
 W.O. 25020 - 10-18-54 7.0.

2+00

1+97 - 8.7' Rt. = Beg. Conc. apron to Doub. Gar.

1+69.5 - 8' Rt. = end apron

1+52 - 8' Rt. = Beg. Conc. apron to Doub. Gar.

1+50

1+42.2 - 8.3' Rt. = end Conc. apron at 2' Conc. wall

1+03 - 12' Rt. =  $\square$  in wall = B.M. 79.32

1+00

0+62.7 - 9' Rt. = Beg. Conc. apron <sup>Apts.</sup> to Gar. +

0+50

0+12 - 14.6' Lt. =  $\pm$  Sing. Gar. Dirt floor

0+00 = N.E. of Alley = S.H. of Sub.

0 - 07.5 = in Graded Alley

- Voltaire  
 B.M. =  $\square$  in S.W. Alley Ret. 64.36

67

Alta	Lt.	$\pm$	Rt.	
	72.0 7.5	72.0	72.3 7.5	
			72.37 8.7	72.49 16.7 floor
			74.05 8 = apron	
	74.9 8.5 Top of loose rock wall	74.9 7.5	74.7 7.5	74.68 8 apron 74.60 16.5 floor
			75.91 8.3 Conc. apron	
	80.1 7.5	78.9 7.5	78.2 7.5	78.0 7.5 78.26 9 Conc.
		80.3 7.5	80.3 7.5	79.44 9 = Conc.
	83.0 14.6 floor			
		83.1 7.5	83.0 7.5	82.6 7.5
	84.0 30	83.0 7.5	82.8 7.5	82.9 7.5 82.6 30

Actual Elev. Used.

5+00

4+50

4+11- 8.4' Lt. =  $\pm$  P. pole # A-2187

4+00

3+50

3+37- 8.5' Lt. = end apron

3+35.5- 17' Rt. =  $\pm$  Sing. Gar- Conc. floor

3+29.5- 7.5' Rt. = end wall

3+12- 8.5' Lt. = Beg. Conc. apron to Doub. Gar.

3+00

2+87- 7.4' Rt. = Beg. <sup>also wood fence</sup> 4" Conc. wall around Patio

2+74- 14.4' Rt. =  $\pm$  Doub. Gar- Conc. floor

2+57- 13.8' Rt. =  $\pm$  Sing. Gar. Conc. floor

2+50

2+21- 8.4' Rt. =  $\pm$  2' Conc. walk

2+16- 8.5' Rt. = end apron

Lt

$\pm$

Rt

68

64.3  
7.5

63.9

63.6  
7.5

66.4  
13  
Lumber  
yard

64.8  
7.5

64.5

64.3  
7.5

68.9  
15

65.8  
7.5

65.8

65.8  
7.5

72.6  
13  
Top  
bank

67.8  
8.5 apron

67.2

67.1  
7.5

67.58  
17 = floor

72.24  
23.5  
floor

68.58  
8.5 = apron

68.33  
7.5  
Top wall

68.5  
7.5

68.5

68.4  
7.5

68.76  
7.6 = top wall

68.92  
7.4 = top wall

68.00  
8 = patio

69.35  
14.4 = floor

69.16  
13.8 = floor

71.0  
8  
Top  
walk

69.8  
7.5

69.8

69.8  
7.5

71.30  
8.4  
walk

71.68  
15  
walk

72.06  
8.5 = apron

5+60.3 = S. cb. Line - Sect. along cb.

5+52.5 - 8.2 Lt. = end of Ret. =  $\square$  = B.M. 64.36

5+50.12 = S.L. of Voltaire - Sect. along S.L.

5+46.5 - 6.6 Rt. = end of Return

64.90	64.40	64.28	63.77	63.31	62.91	63.40	62.09	62.54
Top	35 gut.	R. Pp.	11.4 gut.		15 gut.	Top = R. 3' Rad.	50 gut.	Top

64.36  
= Top = B.M.

63.88  
8.2 = gut.

64.33	63.90	63.37	63.42	63.55
Top	9 = gut.		1.5 gut.	Top

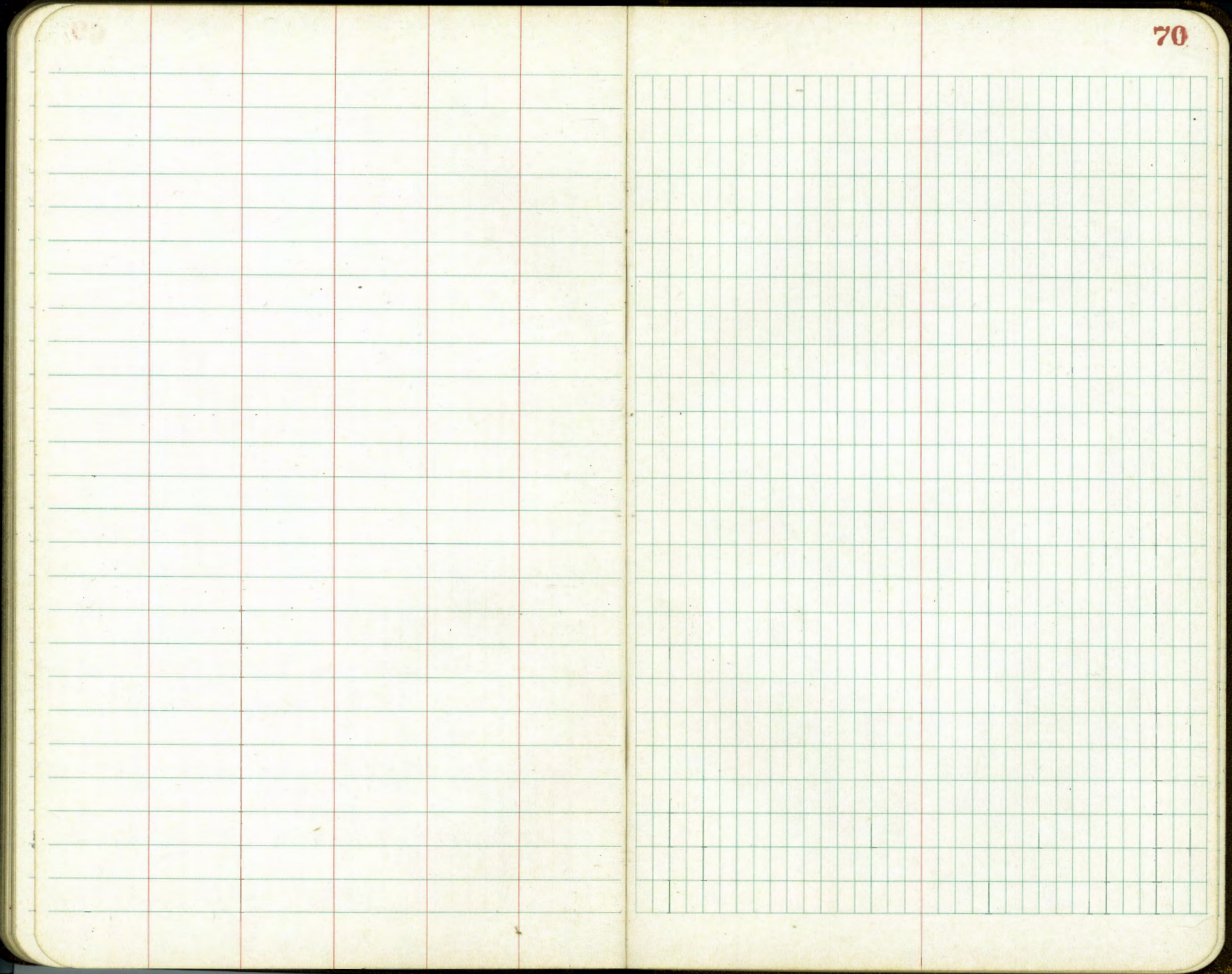
63.4

63.40

63.57

6.6  
gut.

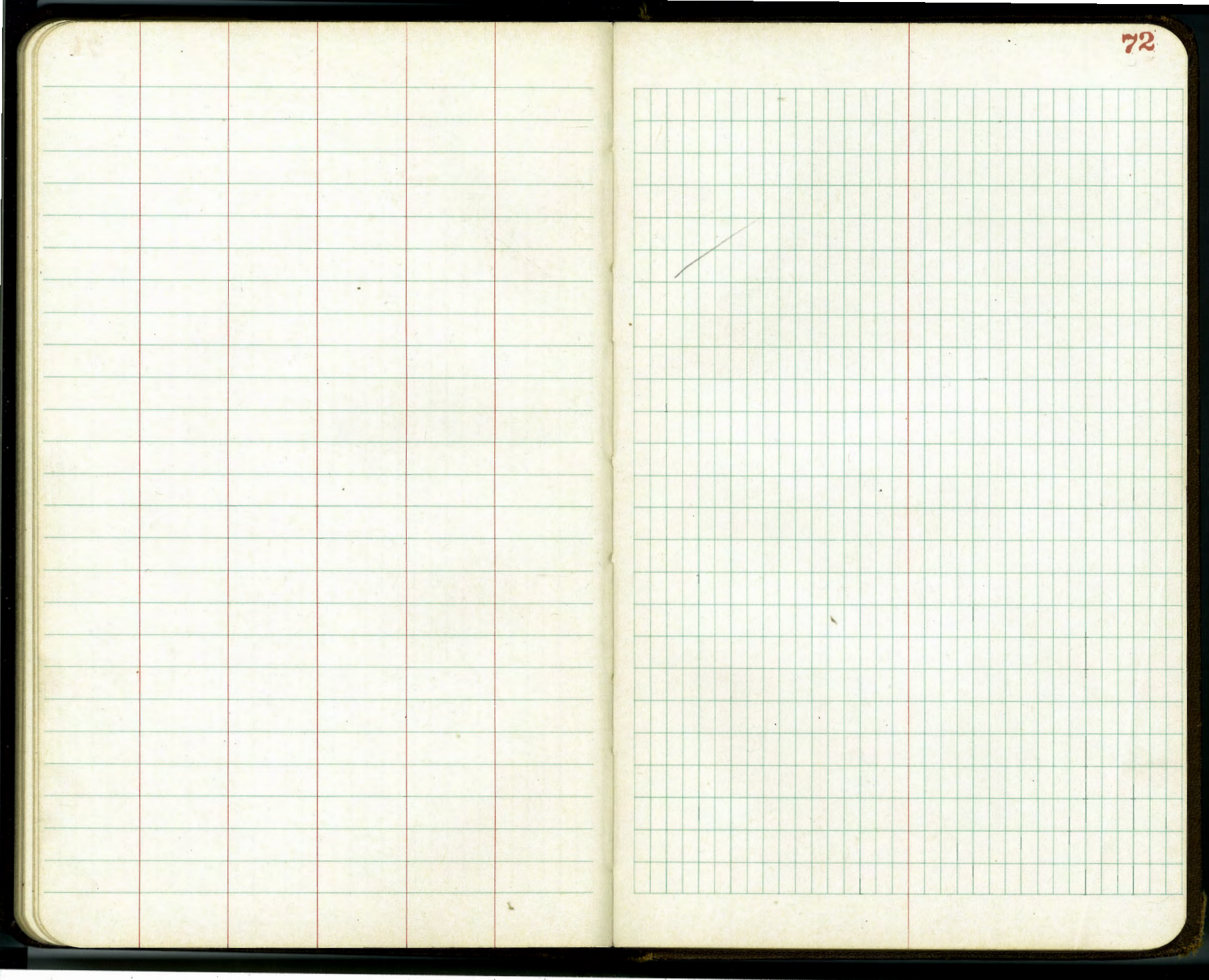
Top = end of cb.



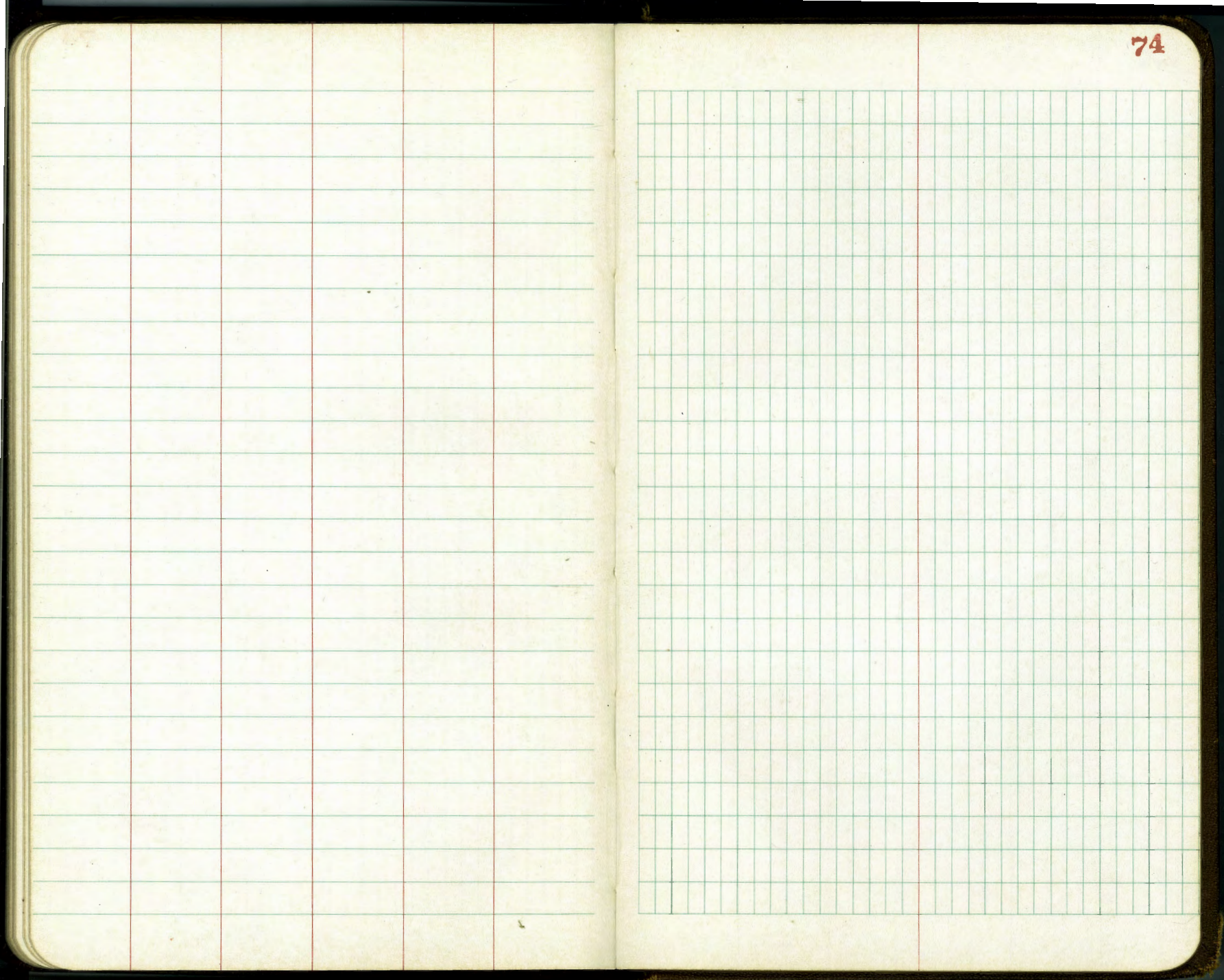
A table with 6 columns and 20 rows. The columns are defined by vertical red lines, and the rows are defined by horizontal green lines. The table is currently empty.

A table with 10 columns and 20 rows. The columns are defined by vertical green lines, and the rows are defined by horizontal green lines. The table is currently empty.









The image shows an open notebook with two pages. The left page is ruled with horizontal lines and has four vertical red margin lines. The right page is ruled with horizontal lines and has a single vertical red margin line. The pages are cream-colored and show signs of age. The notebook is bound in the center, and the pages are slightly curved. The number '75' is written in red ink in the top right corner of the right page.

A table with 6 columns and 20 rows. The columns are defined by vertical red lines, and the rows are defined by horizontal blue lines. The table is currently empty.

A table with 10 columns and 20 rows. The columns are defined by vertical green lines, and the rows are defined by horizontal blue lines. The table is currently empty.

A table with 5 columns and 20 rows. The columns are defined by vertical red lines, and the rows are defined by horizontal blue lines. The table is currently empty.

A table with 1 column and 20 rows. The column is defined by a vertical red line, and the rows are defined by horizontal blue lines. The table is currently empty.



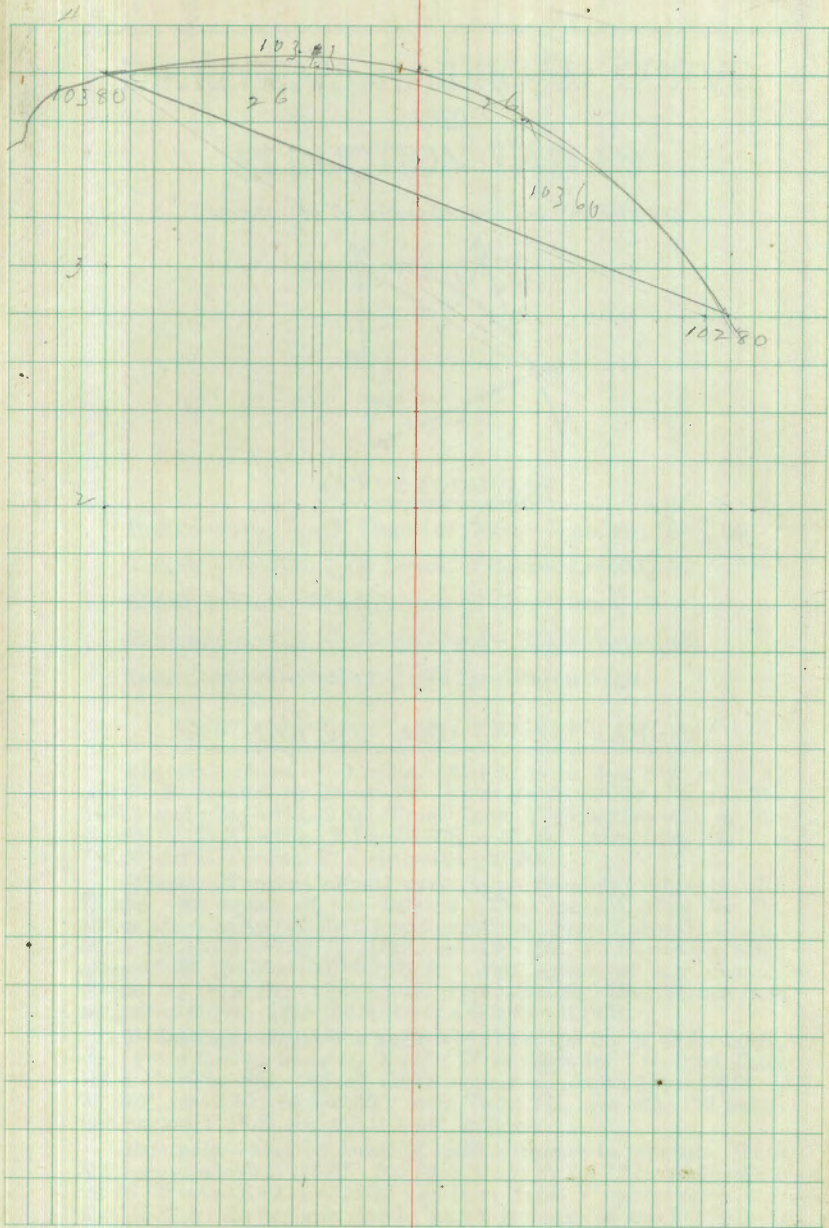




DIAGRAM  
HORIZONTAL  
I  
FROM S

Enter on the hor  
of the stadia re  
stadia constant  
run vertically up  
line representing  
location of this  
the dotted line  
gives the corre  
from the exteri  
"f+c" (usuall  
be added to of  
Distance The  
scale plus abou  
8" of vertical an  
is the Vertical

© 1917 BY J.H.

Col. 50 E 46 N.H. to #47

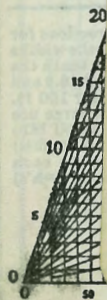
24.6 mi of Bridge

21262

13079  
7704  
5375

# 1159

13818  
2529  
1010  
17357



DISTANCES FROM CENTER LINE

CROSS-SLOPE

Roadway 16 feet wide.

For Single Track Embankment.

H	0	.1	.2	.3	.4	.5	.6	.7	.8	.9	
0	8.0	8.2	8.3	8.5	8.6	8.8	8.9	9.1	9.2	9.4	0
1	9.5	9.7	9.8	10.0	10.1	10.3	10.4	10.6	10.7	10.9	1
2	11.0	11.2	11.3	11.5	11.6	11.8	11.9	12.1	12.2	12.4	2
3	12.5	12.7	12.8	13.0	13.1	13.3	13.4	13.6	13.7	13.9	3
4	14.0	14.2	14.3	14.5	14.6	14.8	14.9	15.1	15.2	15.4	4
5	15.5	15.7	15.8	16.0	16.1	16.3	16.4	16.6	16.7	16.9	5
6	17.0	17.2	17.3	17.5	17.6	17.8	17.9	18.1	18.2	18.4	6
7	18.5	18.7	18.8	19.0	19.1	19.3	19.4	19.6	19.7	19.9	7
8	20.0	20.2	20.3	20.5	20.6	20.8	20.9	21.1	21.2	21.4	8
9	21.5	21.7	21.8	22.0	22.1	22.3	22.4	22.6	22.7	22.9	9
10	23.0	23.2	23.3	23.5	23.6	23.8	23.9	24.1	24.2	24.4	10
11	24.5	24.7	24.8	25.0	25.1	25.3	25.4	25.6	25.7	25.9	11
12	26.0	26.2	26.3	26.5	26.6	26.8	26.9	27.1	27.2	27.4	12
13	27.5	27.7	27.8	28.0	28.1	28.3	28.4	28.6	28.7	28.9	13
14	29.0	29.2	29.3	29.5	29.6	29.8	29.9	30.1	30.2	30.4	14
15	30.5	30.7	30.8	31.0	31.1	31.3	31.4	31.6	31.7	31.9	15
16	32.0	32.2	32.3	32.5	32.6	32.8	32.9	33.1	33.2	33.4	16
17	33.5	33.7	33.8	34.0	34.1	34.3	34.4	34.6	34.7	34.9	17
18	35.0	35.2	35.3	35.5	35.6	35.8	35.9	36.1	36.2	36.4	18
19	36.5	36.7	36.8	37.0	37.1	37.3	37.4	37.6	37.7	37.9	19
20	38.0	38.2	38.3	38.5	38.6	38.8	38.9	39.1	39.2	39.4	20
21	39.5	39.7	39.8	40.0	40.1	40.3	40.4	40.6	40.7	40.9	21
22	41.0	41.2	41.3	41.5	41.6	41.8	41.9	42.1	42.2	42.4	22
23	42.5	42.7	42.8	43.0	43.1	43.3	43.4	43.6	43.7	43.9	23
24	44.0	44.2	44.3	44.5	44.6	44.8	44.9	45.1	45.2	45.4	24
25	45.5	45.7	45.8	46.0	46.1	46.3	46.4	46.6	46.7	46.9	25
26	47.0	47.2	47.3	47.5	47.6	47.8	47.9	48.1	48.2	48.4	26
27	48.5	48.7	48.8	49.0	49.1	49.3	49.4	49.6	49.7	49.9	27
28	50.0	50.2	50.3	50.5	50.6	50.8	50.9	51.1	51.2	51.4	28
29	51.5	51.7	51.8	52.0	52.1	52.3	52.4	52.6	52.7	52.9	29
30	53.0	53.2	53.3	53.5	53.6	53.8	53.9	54.1	54.2	54.4	30
31	54.5	54.7	54.8	55.0	55.1	55.3	55.4	55.6	55.7	55.9	31
32	56.0	56.2	56.3	56.5	56.6	56.8	56.9	57.1	57.2	57.4	32
33	57.5	57.7	57.8	58.0	58.1	58.3	58.4	58.6	58.7	58.9	33
34	59.0	59.2	59.3	59.5	59.6	59.8	59.9	60.1	60.2	60.4	34
35	60.5	60.7	60.8	61.0	61.1	61.3	61.4	61.6	61.7	61.9	35
36	62.0	62.2	62.3	62.5	62.6	62.8	62.9	63.1	63.2	63.4	36
37	63.5	63.7	63.8	64.0	64.1	64.3	64.4	64.6	64.7	64.9	37
38	65.0	65.2	65.3	65.5	65.6	65.8	65.9	66.1	66.2	66.4	38
39	66.5	66.7	66.8	67.0	67.1	67.3	67.4	67.6	67.7	67.9	39
40	68.0	68.2	68.3	68.5	68.6	68.8	68.9	69.1	69.2	69.4	40

Example—If point is 22.6 ft. above grade, how far should it be from center line to be a slope stake point? Ans. from Table 41.9. For same slopes but other widths of roadbed correct above figures by one-half difference in width of roadbed; thus in example above for 20 ft. roadbed distance will be  $41.9 + (20 - 16) \div 2$  or 2 ft. added to 41.9 = 43.9. For slopes of 1 on 1 see inside of front cover.

MADE IN U.S.A.