

1706

ENGINEERS'
LEVEL BOOK
No. 410F

EUGENE DIETZGEN CO.

DRAWING MATERIALS, MATHEMATICAL and
SURVEYING INSTRUMENTS

Chicago New York San Francisco New Orleans Pittsburg Toronto

Distances from Center of Roadway for Cross-Sectioning
Roadway 16 feet wide. Side Slopes 1 on 1.
For Single Track Embankment.

H	0	.1	.2	.3	.4	.5	.6	.7	.8	.9	H
0	8.0	8.1	8.2	8.3	8.4	8.5	8.6	8.7	8.8	8.9	0
1	9.0	9.1	9.2	9.3	9.4	9.5	9.6	9.7	9.8	9.9	1
2	10.0	10.1	10.2	10.3	10.4	10.5	10.6	10.7	10.8	10.9	2
3	11.0	11.1	11.2	11.3	11.4	11.5	11.6	11.7	11.8	11.9	3
4	12.0	12.1	12.2	12.3	12.4	12.5	12.6	12.7	12.8	12.9	4
5	13.0	13.1	13.2	13.3	13.4	13.5	13.6	13.7	13.8	13.9	5
6	14.0	14.1	14.2	14.3	14.4	14.5	14.6	14.7	14.8	14.9	6
7	15.0	15.1	15.2	15.3	15.4	15.5	15.6	15.7	15.8	15.9	7
8	16.0	16.1	16.2	16.3	16.4	16.5	16.6	16.7	16.8	16.9	8
9	17.0	17.1	17.2	17.3	17.4	17.5	17.6	17.7	17.8	17.9	9
10	18.0	18.1	18.2	18.3	18.4	18.5	18.6	18.7	18.8	18.9	10
11	19.0	19.1	19.2	19.3	19.4	19.5	19.6	19.7	19.8	19.9	11
12	20.0	20.1	20.2	20.3	20.4	20.5	20.6	20.7	20.8	20.9	12
13	21.0	21.1	21.2	21.3	21.4	21.5	21.6	21.7	21.8	21.9	13
14	22.0	22.1	22.2	22.3	22.4	22.5	22.6	22.7	22.8	22.9	14
15	23.0	23.1	23.2	23.3	23.4	23.5	23.6	23.7	23.8	23.9	15
16	24.0	24.1	24.2	24.3	24.4	24.5	24.6	24.7	24.8	24.9	16
17	25.0	25.1	25.2	25.3	25.4	25.5	25.6	25.7	25.8	25.9	17
18	26.0	26.1	26.2	26.3	26.4	26.5	26.6	26.7	26.8	26.9	18
19	27.0	27.1	27.2	27.3	27.4	27.5	27.6	27.7	27.8	27.9	19
20	28.0	28.1	28.2	28.3	28.4	28.5	28.6	28.7	28.8	28.9	20
21	29.0	29.1	29.2	29.3	29.4	29.5	29.6	29.7	29.8	29.9	21
22	30.0	30.1	30.2	30.3	30.4	30.5	30.6	30.7	30.8	30.9	22
23	31.0	31.1	31.2	31.3	31.4	31.5	31.6	31.7	31.8	31.9	23
24	32.0	32.1	32.2	32.3	32.4	32.5	32.6	32.7	32.8	32.9	24
25	33.0	33.1	33.2	33.3	33.4	33.5	33.6	33.7	33.8	33.9	25
26	34.0	34.1	34.2	34.3	34.4	34.5	34.6	34.7	34.8	34.9	26
27	35.0	35.1	35.2	35.3	35.4	35.5	35.6	35.7	35.8	35.9	27
28	36.0	36.1	36.2	36.3	36.4	36.5	36.6	36.7	36.8	36.9	28
29	37.0	37.1	37.2	37.3	37.4	37.5	37.6	37.7	37.8	37.9	29
30	38.0	38.1	38.2	38.3	38.4	38.5	38.6	38.7	38.8	38.9	30
31	39.0	39.1	39.2	39.3	39.4	39.5	39.6	39.7	39.8	39.9	31
32	40.0	40.1	40.2	40.3	40.4	40.5	40.6	40.7	40.8	40.9	32
33	41.0	41.1	41.2	41.3	41.4	41.5	41.6	41.7	41.8	41.9	33
34	42.0	42.1	42.2	42.3	42.4	42.5	42.6	42.7	42.8	42.9	34
35	43.0	43.1	43.2	43.3	43.4	43.5	43.6	43.7	43.8	43.9	35
36	44.0	44.1	44.2	44.3	44.4	44.5	44.6	44.7	44.8	44.9	36
37	45.0	45.1	45.2	45.3	45.4	45.5	45.6	45.7	45.8	45.9	37
38	46.0	46.1	46.2	46.3	46.4	46.5	46.6	46.7	46.8	46.9	38
39	47.0	47.1	47.2	47.3	47.4	47.5	47.6	47.7	47.8	47.9	39
40	48.0	48.1	48.2	48.3	48.4	48.5	48.6	48.7	48.8	48.9	40

Example—If point is 22.6 ft. above grade, how far should it be from center line to be a slope stake point? Ans. from Table 30.6. For same slopes but other widths of roadbed, correct above figures by one-half difference in width of roadbed; thus in example above, for 20 ft. roadbed distance will be $30.6 + (20 - 16) \div 2$ or 2 ft. added to 30.6 = 32.6. For slopes of 1 on 1½ see inside of back cover.
Copyright, 1914, by Eugene Dietzgen Co.

1706

CITY ENGINEER'S OFFICE

INDEXED

to page 472

This Field Book is manufactured of a High Grade 50% Rag Paper having a WATER RESISTING SURFACE, and is sewed with Bing Special Enamel Waterproof thread.

Made in U. S. A.

Index	P
Mission Valley Trunk, Sewer	1-18
Winchester St, Cross Section	18-24
Calle Serena " "	25-32
Calle Pintoresca " "	33-37
x Sect Keats, Shafter Scott & Lowell (Block 96 Roseville)	42-62

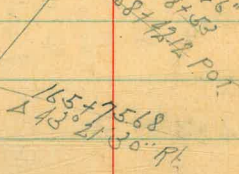
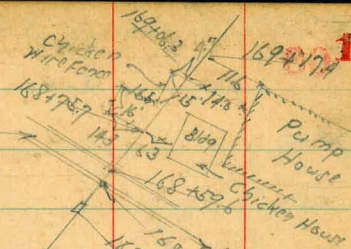
Proposed Sewer Mission Valley Trunk #3
 A Line Change East of West of City Line

BM	12.73	54.93	✓	42.20	on stub 256+10.30 1626-51
159+61.20		5.18		49.75	on stub
160+0		5.0		49.9	✓
+50		5.1		49.8	✓
+64	6' Rt of L. - 11/4" Power Pole	#99149			
161+0		6.2		48.7	✓
+38.5	13' Lt of L. - Conc Box	10.16		44.77	✓ Flowline
+50		6.5		48.4	✓
+90°	A. 42° 55' Lt	6.39		48.54	✓ on stub
"	13' Lt of L. - 11/4" Conc Pipe Culv.	9.25		45.66	✓ Flowline
162+0		7.1		47.8	✓
+09		7.9		47.0	✓
+18		6.3		48.6	✓
+23	5 1/4" AC Power	6.08		48.85	✓
+62	11/4" "	5.60		49.3	✓
+77		5.3		49.6	✓
+89		9.2		45.7	✓
163+0		8.4		46.5	✓
+20		10.6		44.3	✓
+50		11.3		43.6	✓

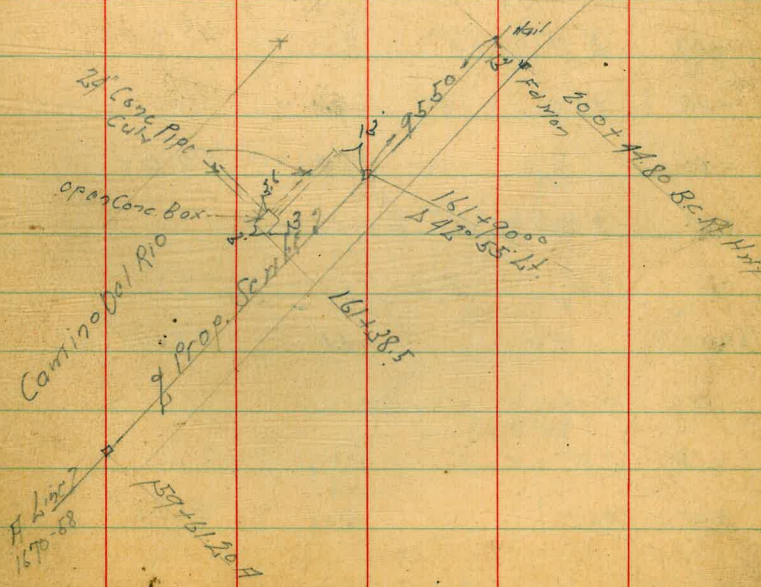
Feb 2. 46
 5:50 a.m.
 0560 at
 8777
 Haddal

Open Conc
 Still 110Y

INDEXED
 WK
 JAN 18 1949



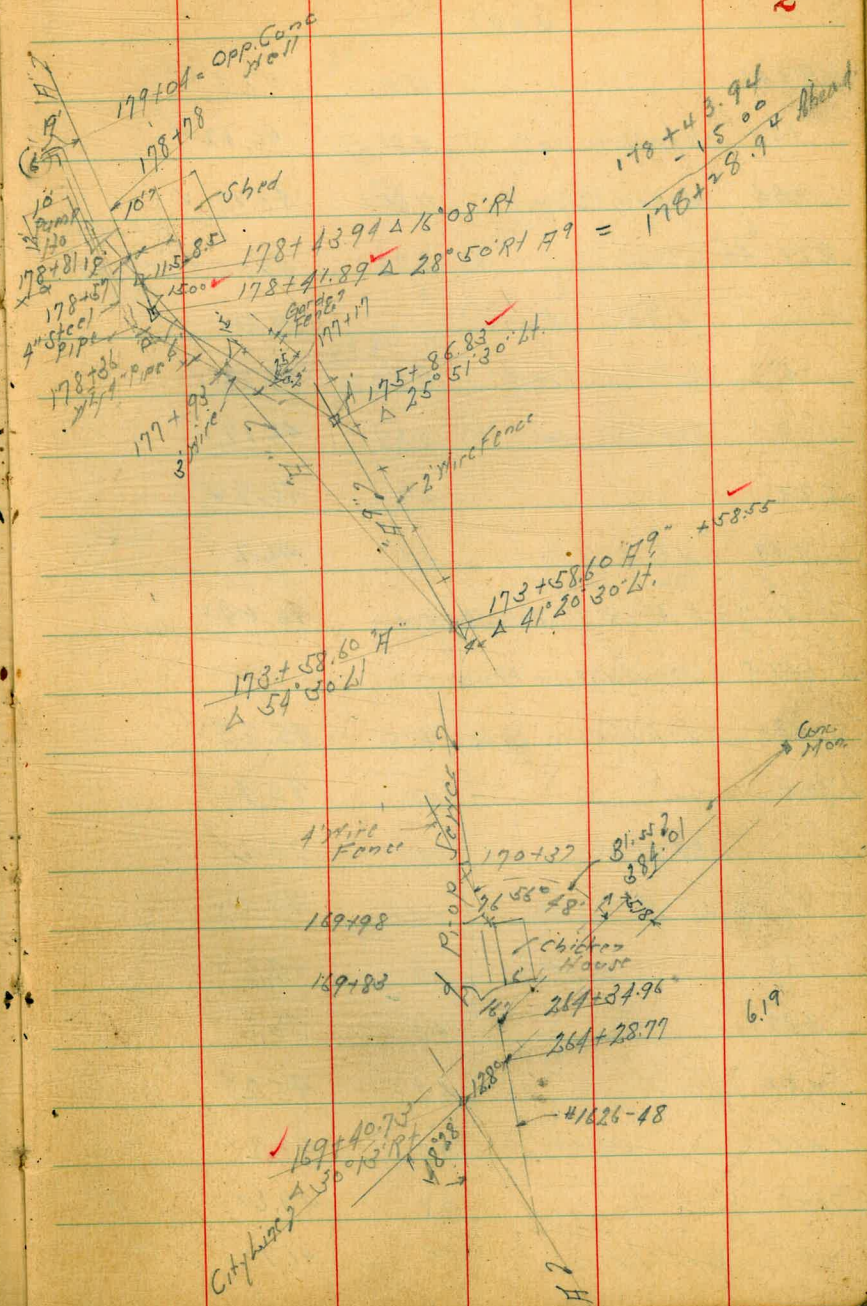
87
 Fed 2" Pipe



"H" Mission Valley Trunk

5493

164+0		11.4	43.5 ✓	
+50		11.0	43.9 ✓	
165+0		10.3	44.6 ✓	
+50		9.5	45.4 ✓	
+75.68	Δ 45° 21' 30"	9.51	45.42 ✓	as stub
166+0		8.5	46.4 ✓	
+50		7.3	47.6 ✓	
+67.5	Wire Cross Fence North & South			
+68		6.2	48.7 ✓	
167+0		6.2	48.7 ✓	
+04	14' R of L = 4" Fruit Tree			
+07	2' H " " = 4" " "			
+38	4.5 R " " = 8" " "			
+50		4.9	50.0 ✓	
+54	8' R of L = 6" Fruit Tree			
+58	9' L " " = 9" " "			
168+0		4.1	50.8 ✓	
+36	9' L of L = 7" Fruit Tree			
+38	LRT " " = 7" " "			
+12.12	POT	3.06	51.87 ✓	as stub

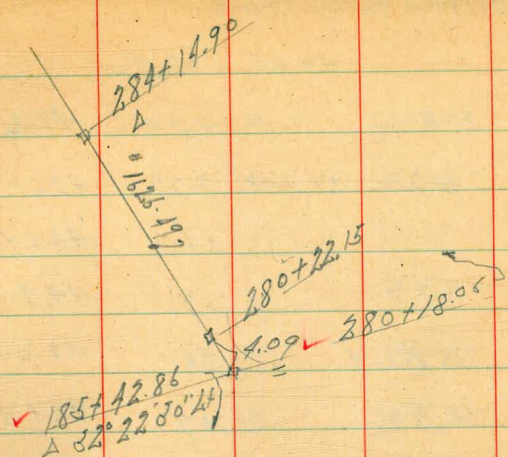


Hⁿ Mission Valley Trunk

5493

168+45	5.1	51.8 ✓
+53 = Top Conc Wall	8.81	46.12 ✓
+53 = Bottom Culvert	11.80	43.13 ✓
B.M. # 43	8.78	46.15 ✓
" " "	4.23	50.44
+59.6 = Bottom Culvert	7.21	43.23 ✓
" Top Conc Wall	4.27	46.17 ✓
169+0	4.7	45.7 ✓
+19 = 1/4 oil Pav.	4.2	46.2 ✓
+31 = Top 10' Steel Pipe		41.25
+40.73 = 30' 13" Flt = Fly Oil Pav. 4+0		46.04 ✓ on stub
+47.5 = Heavy Wire Fence 14+5		
+54.4 = Top 36" Conc Pipe	5.19	45.25 ✓
170+	5.0	45.4 ✓
" 27' Lt of 1/2	12.2	38.2 ✓
" 35' Rt "	+2.1	48.0 ✓
+35	5.8	44.6 ✓
+38	4.3	46.1 ✓
+50	5.2	45.2 ✓
+65	7.2	43.2 ✓
171+0	7.8	42.6 ✓
" 50' Lt of 1/2	9.3	41.1 ✓

B.P. Wall
Culvert
15' R. 168+53
26.21

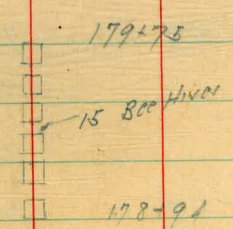


46.04 stub
169+10.73
47.65
8.25 Top Steel Pipe
41.25

181+90.00 ✓
P.O.T.

190+55.39 ✓
P.O.T.

Wire Fence 17 x 180+19



"H" Mission Valley Trunk

50.44

171+0	21' Rt of L	1.2	49.2 ✓	
TP	9.17	51.84 ✓	7.77	42.67 ✓
+50		8.7	43.1 ✓	
172+0		6.9	44.9 ✓	
"	35' Rt of L	2.6	49.2 ✓	
"	38' Lt of L	10.7	41.1 ✓	
+50		5.4	46.4 ✓	
173+0		5.9	45.9 ✓	
+40		6.5	45.3 ✓	
+58.60	Δ 54° 30' Lt	4.40	47.44 ✓	on Stub
"	12' Rt of L	0.0	51.8 ✓	on Hwy Slope
"	25' Lt " "	7.5	44.3 ✓	
174+0		7.5	44.3 ✓	
+50		9.1	42.7 ✓	
175+0		9.6	42.2 ✓	
"	30' Rt of L	7.9	43.9 ✓	
+50		10.0	41.8 ✓	
176+0		9.9	41.9 ✓	
"	40' Rt of L	7.3	44.5 ✓	
+50		9.8	42.0 ✓	

4

51.84

TP	7.14	49.93 ✓	9.05	42.79 ✓
177+0			7.7	42.2 ✓
"	11' Rt of L		7.0	42.9 ✓
"	22 " " " "		0.7	49.2 ✓
+50			7.6	42.3 ✓
178+0			5.1	44.8 ✓
"	17' Rt of L		+3.2	46.7 ✓
+12	3' Rt of L - 1/4 48" Live Euc Stump			
+42.94	Δ 16' 08"		3.96	45.97 ✓ on Stub
"	9' Rt of L		0.0	49.9 ✓
"	20'		+5.5	44.4 ✓
+62	4.5' Lt - 5 1/2" Peach Tree			
	7' Rt - 1 1/4 10" Fig Tree			
+73	4' Lt - 5 1/2" Peach Tree			
	4' Rt - 1 1/4 6" Fig Tree			
+86	3' Lt - 1 1/4 5" Peach Tree			
+90			1.8	48.1 ✓
179+0			3.0	46.9 ✓
+17	3' Lt - 5 1/2" Peach Tree			
+26	8' Lt - " " " "			
+33	3' Lt - " " " "			
+44	3' Lt - 5 1/2" " " "			

49.93

55.24

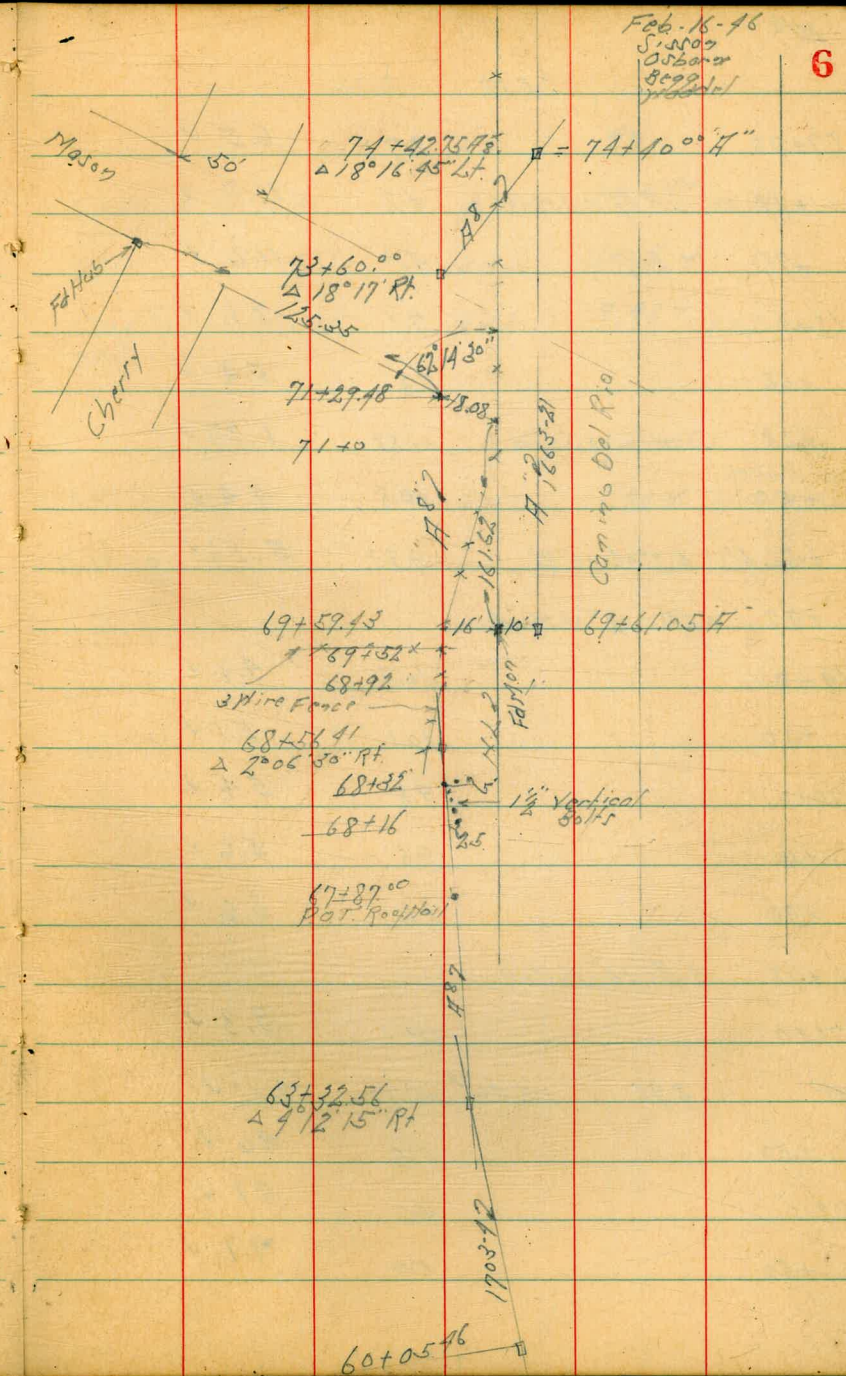
179+50		2.5	47.4 ✓
+53	3' Lt = Sly 6" Peach Tree		
+61	1' Rt = 1 1/4 5" Apricot Tree		
	3' Lt = Sly 3" Peach "		
+69	1' Rt = 1 1/4 5" Apricot "		
	3' Lt = Sly 5" Peach "		
+81	4' Lt of 1/2 = Sly 58" Live Euc. Stump		
180+0		1.5	48.4 ✓
+18		4.0	45.9 ✓
"	10' Rt	75.1	44.8 ✓ on Cut Bank
+52	= Bottom Wash to Sea	3.7	46.2 ✓
+59		2.7	47.2 ✓
TP	7.87	55.24 ✓	2.56
			47.37 ✓
+63		9.1	46.1 ✓
"	15' Lt	10.5	44.7 ✓
"	12' Rt = Top Cut Bank	0.1	55.1 ✓
181+0		8.4	46.8 ✓
"	7' Lt	11.5	43.7 ✓
"	10' Rt = Top Cut Bank	1.1	54.1 ✓
+50	= Top Cut Bank	5.1	50.1 ✓
"	13' Rt	4.6	50.6 ✓
"	13' Lt	12.1	43.1 ✓

182+0		8.6	46.6 ✓
"	14' Lt	11.4	43.8 ✓
"	14' Rt	7.2	48.0 ✓
+50		9.7	45.5 ✓
"	15' Lt	11.3	43.9 ✓
"	17' Rt	7.5	47.7 ✓
183+0		10.8	44.4 ✓
"	20' Lt	11.3	43.9 ✓
"	12' Rt = 3 Wire Fence		
	12' Rt = Top Slope	9.0	46.2 ✓
+50		16.1	44.1 ✓
184+0		18.4	44.8 ✓
"	15' Lt	10.6	44.6 ✓
"	1.4 Rt = 3 Wire Fence		
"	13' Rt on Fill	3.9	51.3 ✓
+50		9.5	45.7 ✓
185+0		8.6	46.6 ✓
"	15' Lt	8.7	46.5 ✓
"	4.5 Rt = 3 Wire Fence		
"	12' Rt	2.9	52.3 ✓
+42.8	A 32' 22' 30" Lt.	6.78	48.46 ✓ on Stub
"	5.5 Rt = 3 Wire Fence		
"	14' Rt on Fill	0.6	54.6 ✓
TP	6.43	54.89	6.78
			48.46 ✓
819+25		0.59	54.32 ✓

SP 90° Rl
322.150
54.32
7.62.50

Proposed Sexton-Mission Valley Trunk
 H³ Line Change 63+32.56 to
 No. 5 R.W.

B.M.	10.70	15.19	4.49	0=Status 63+32.56 1903-5
63+50		11.1	4.1	✓
64+0		11.2	4.0	✓
"	6' Rt of 1/2 = Toc Fill	11.7	3.5	✓
"	15' Lt " "	11.1	4.1	✓
+50		10.9	4.3	✓
65+0		11.1	4.1	✓
"	15' Rt of 1/2	7.3	7.9	✓
"	24' Lt " " = Sly S.D. River	12.6	2.6	✓ water level
+50		10.8	4.4	✓
66+0		10.6	4.6	✓
"	5' Rt of 1/2 Toc Fill	10.1	5.1	✓
"	35' Lt " " = Sly S.D. River	12.2	3.0	✓ water level
+34	1/2 = Sly 10" Willow			
+50		9.6	5.6	✓
67+0		8.7	6.5	✓
"	25' Rt = Toc Fill	5.8	9.4	✓
"	33' Lt = Sly D.D. River	12.0	3.2	✓
+13	3/4 Water Pipe			
+50		8.9	6.3	✓



"H"

1519

67+20		8.7	6.5 ✓
+79	= Wly of Ramp	4.2	11.0 ✓
+96	= Ely " "	4.0	11.2 ✓
68+0		7.1	8.1 ✓
+06		9.8	5.4 ✓
+23	Something Solid.	13.82	1.37 ✓
+50		10.8	4.4 ✓
+56.41	$\Delta 2^{\circ}06'30''R$	9.83	5.36 ✓ or Stub
+97	o.5 RT = 12" W. 1/2 W		
69+0		10.3	4.9 ✓
+50		10.1	5.1 ✓
70+0		9.8	5.4 ✓
+50		9.6	5.6 ✓
+70		6.6	8.6 ✓
+78	2 ft = 14" W. 1/2 W		
71+0		5.9	8.3 ✓
7P	598 1540 ✓	5.77	9.42 ✓
+50		5.8	9.6 ✓
72+0		5.7	9.7 ✓
+50		5.7	9.7 ✓

1540

7

73+0		5.5	9.9 ✓
+60	$\Delta 18^{\circ}17'R$	4.75	10.65 ✓ or Stub
74+0		4.9	10.5 ✓
+42.75	$\Delta 18^{\circ}16'R$	5.42	9.98 ✓ or Stub
74+40 ft			
75+15.5 ft		8.56	6.84 ✓ Flow Line of 30" Conc of 60' pipe 6.86

Mission Valley Trunk Line Change
 #9 Line at Records
 Sketch Page 2

Feb 18, 46
 Sisson
 Osborn
 G. B. B. B.
 Haddel

8

51.55

BM	4.11	51.55 ✓	47.44	0.25 Stub 173+53.60 ft Page 4
174+0		4.9	46.7 ✓	
"	5 ft 0 1/2	3.8	47.8 ✓	
"	7 ft " "	6.7	44.9 ✓	
+50		6.2	45.4 ✓	
175+0		6.1	45.5 ✓	
"	7 ft 0 1/2	4.6	47.0 ✓	
"	5 ft " "	7.5	44.1 ✓	
+50		5.3	46.3 ✓	
+86.83	Δ 25° 51' 30" Δt	5.15	46.40 ✓	on stub
"	7 ft 0 1/2	3.1	48.5 ✓	
"	15 ft " "	7.4	44.2 ✓	
176+0		6.4	45.2 ✓	
+50		5.2	46.2 ✓	
"	35 ft 0 1/2	6.3	45.3 ✓	
177+0		3.2	48.4 ✓	
"	7 ft 0 1/2	3.3	48.3 ✓	
"	16 " " "	8.7	42.9 ✓	
+25		1.5	50.1 ✓	
+50		4.7	46.9 ✓	

178+0

5.9

45.7 ✓

6 ft 0 1/2

8.5

43.1 ✓

10 ft " "

0.0

51.6 ✓

+23 5 ft 0 1/2 = 116.48' Live Euc Stamp

+41.89 Δ 28° 50' ft

7.92

43.63 ✓ on stub

Proposed Senior Mountain Valley Trunk
 Phase Continued East of 6th St. to East of Texas St

No Levels From 75+98.95 to 90+

85+84 F 0.4 Lt of 7 - Sky Transformer Pole # 79979
 15' Lt of 7 - Spike New Location

85+67 F 0.4 Lt of 7 - Sky Transformer Pole # 79080
 15.3 Lt of 7 - Spike New Location

82+71 8.5 Lt. & So. side Transformer Pole
 # 79079

81+54 11.5 Lt Power Pole # 79078

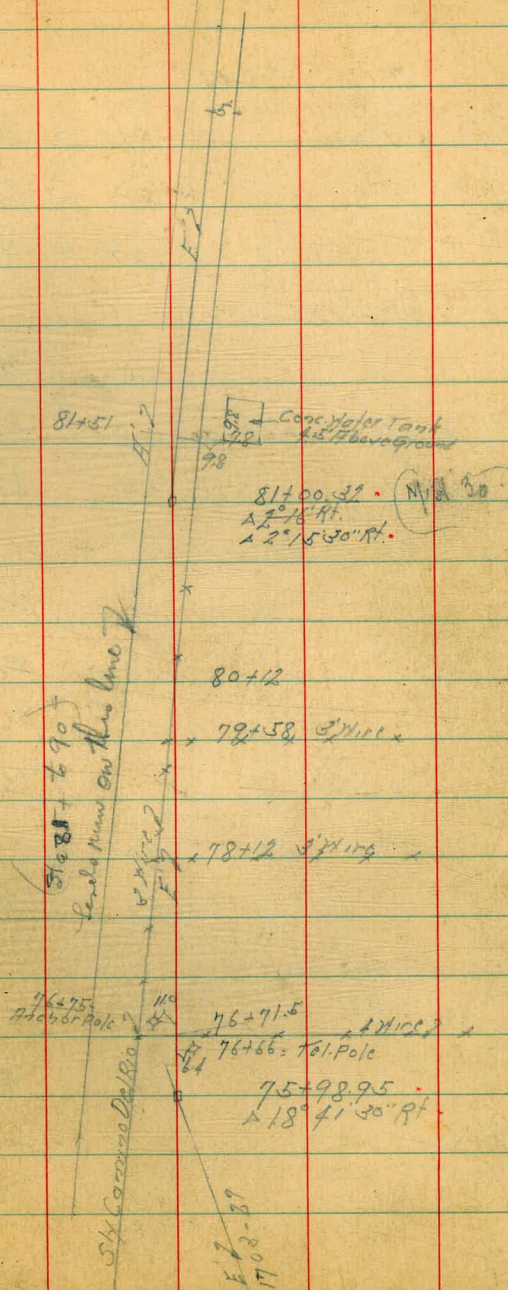
81+48 7.0 Lt. So. Side 36" Tree

80+11 0.8 Right dead man

79+99.2 Ahead (New Lt.) = 79+80.65 Back

March 18-46
 S. J. J. J.
 H. J. J.
 H. J. J.

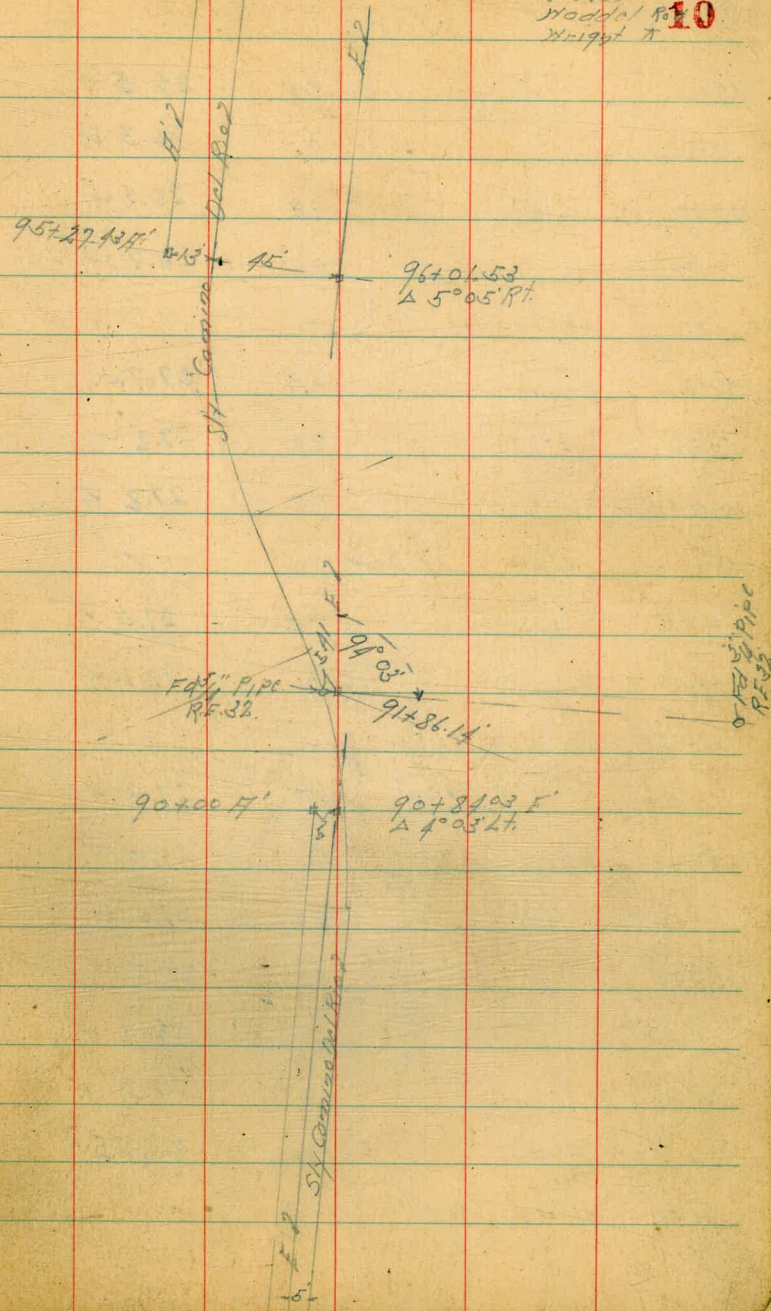
9



Levels Proposed Senior Mission Valley Trunk
 Highest Continued East of 8th St. to East of Texas

BM	733	35.13 ✓	27.80	5 ft in Pol 64 ft 89400 old pipe
90+84.03	2' Wire + Board Fence	8.19	26.99'	cut
91+0		8.3	26.8 ✓	
+50		8.3	26.8 ✓	
+85.5	2' Wire + Board Fence			
92+0		8.4	26.7 ✓	
+05	W/ Private Road	7.8	27.3 ✓	
+16	Fly "	7.7	27.4 ✓	
+19	4 Wire Fence			
+50		8.5	26.6 ✓	
93+0		8.8	26.3 ✓	
+50		8.7	26.4 ✓	
94+0		8.7	26.4 ✓	
TP	788	34.95 ✓	806	27.07 ✓
+50		8.4	26.6 ✓	
+67	3 Wire Fence			
95+0		8.6	26.4 ✓	
+50		8.3	26.7 ✓	
96+01.53	Δ 5°05' Rt	8.44	26.51 ✓	
+50		8.4	26.6 ✓	

March 21, '66
 S. Gray
 Model R10
 Wright T



E" Line

34.95

97+0		8.5	26.5 ✓
+50		8.5	26.3 ✓
98+0		8.9	26.1 ✓
+50		8.3	26.7 ✓
+90	4 Wire N+S		
99+0		7.3	27.7 ✓
+50		7.8	27.2 ✓
100+0		7.8	27.2 ✓
TP	8.78	36.20 ✓	7.53 27.42
+50		9.2	27.0 ✓
101+0		9.1	27.1 ✓
+48	3 Wire N+S		
+50		8.9	27.3 ✓
102+0		8.7	27.5 ✓
+50		8.8	27.4 ✓
103+0		8.7	27.5 ✓
+50		8.1	28.1 ✓
104+0		7.9	28.3 ✓
+16.78 POT		7.65	28.55 ✓
+35	2 Wire N+S		

PL 1108

Fd 100

Fd Mail
Rt 129

PL 1107

407.23
141.65

Fd 919
Rt 32

500.00
500.00

118+50.00
Δ 12° 23' Lt.

117+19.78 H
Fd RR Hubs
35 & 35
279.80

117+94.88 F

Grain Field

119.10

50

Del River

105+19.21
POT
Call House

P.L. 1111

1853B

76° 30' H

97.720

104+39.66

96+10.4

+16.78 POT

1853B

P.L. 1112

76° 30' H

101+43.54

Fd 919
Rt 32

15

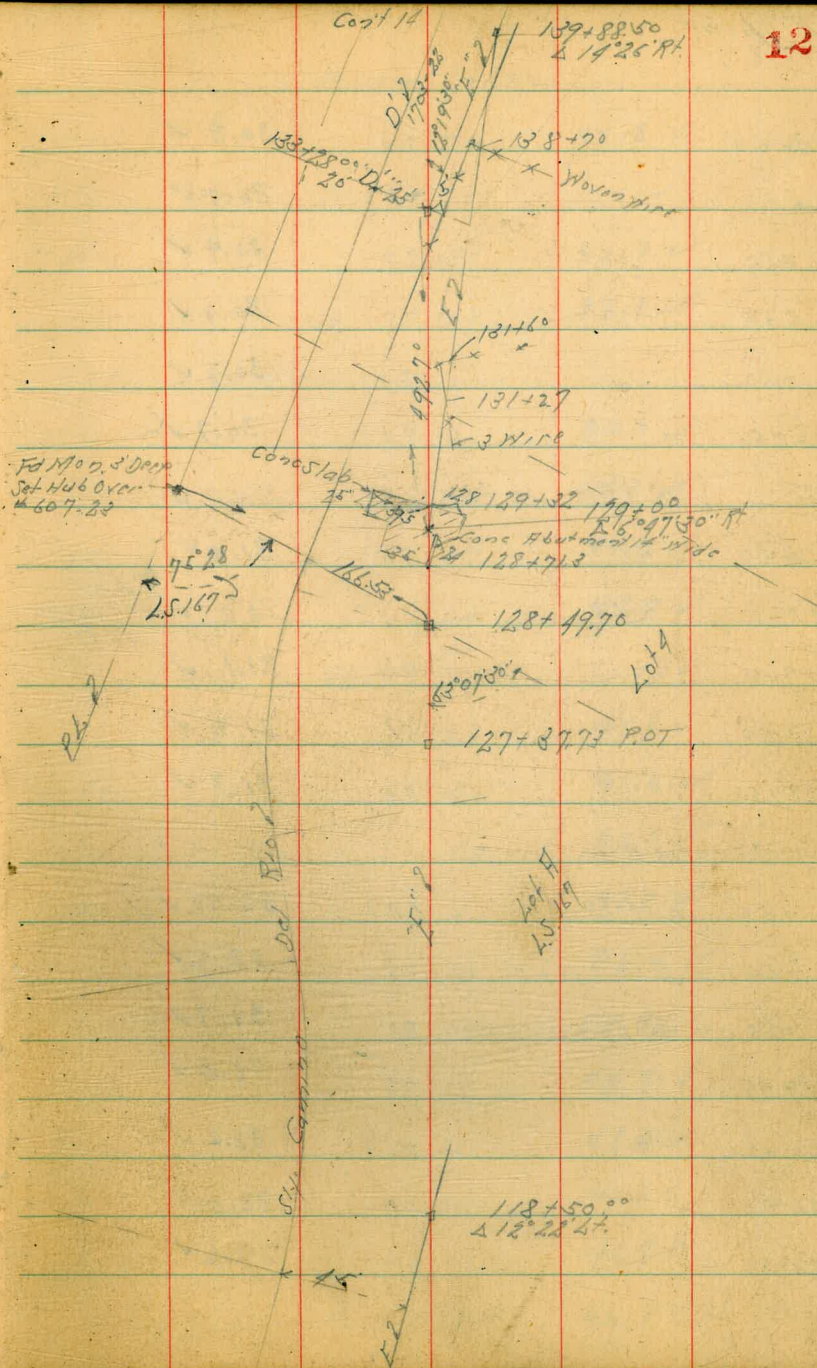
15

96+01.58
Δ 5° 05' Rt.

F" Line

36.20

TP	6.18	37.17	5.21	30.99	✓
104+57	= 1/2 Garage		8.15	29.02	Conc Floor
105+19.21	POT		7.68	29.49	conclus
+50			7.8	29.4	✓
106+0			7.7	29.5	✓
+50			7.2	29.9	✓
107+0			7.2	30.0	✓
+50			7.0	30.2	✓
108+0			7.2	30.0	✓
+50			6.9	30.3	✓
109+0			6.8	30.4	✓
+50			6.9	30.3	✓
110+0			6.8	30.4	✓
TP	7.44	38.07	6.54	30.62	✓
+50			7.6	30.5	✓
111+0			7.6	30.5	✓
+50			7.6	30.5	✓
112+0			7.6	30.5	✓
+50			7.4	30.7	✓
113+0			7.4	30.7	✓



F" Line

38.07

113+50			7.2	30.8 ✓
114+0			7.4	30.7 ✓
+50			7.2	30.9 ✓
115+0			7.2	30.8 ✓
+50			7.3	30.8 ✓
116+0			7.4	30.7 ✓
TP	8.72	39.79 ✓	7.00	31.07 ✓
+50			8.8	31.0 ✓
BM			6.42	33.37 ✓ <small>chisel D 14" x 115" x 85 810 33.37</small>
117+0			8.7	31.1 ✓
+50			8.6	31.2 ✓
118+0			8.5	31.3 ✓
+35	= 3 Wire N/S			
+50	= 12" x 22" Lt			
+55	= 3 Wire N/S			
+65	= 1/4 Spinach Patch			
119+0			7.8	32.0 ✓
120+0			7.6	32.2 ✓
121+0			7.5	32.3 ✓
122+0			7.2	32.6 ✓

13

39.79 ✓

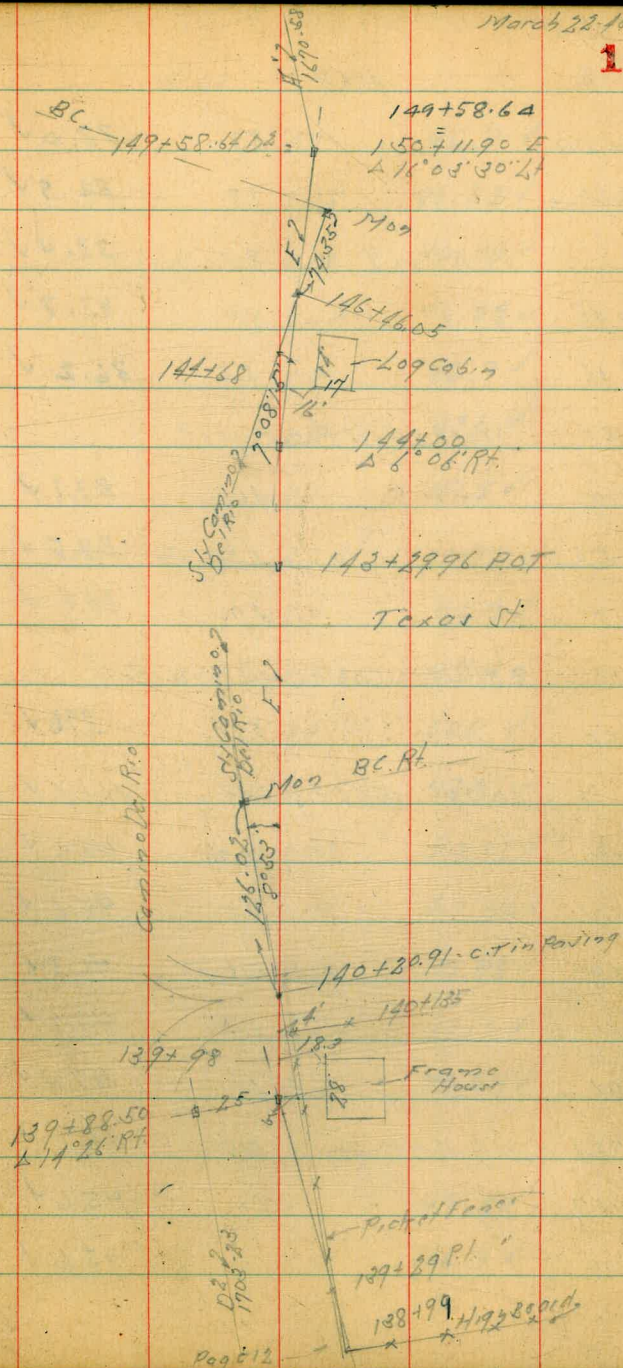
123+0			7.0	32.8 ✓	112+95
TP	12.72	45.51 ✓	7.00	32.79 ✓	
124+0			12.8	32.7 ✓	
+50	= 1/4 Spinach				
+52	= 3 Wire Fence N/S				
125+0			10.6	34.9 ✓	
+21	= Top Hill				
+42			0.9	44.6 ✓	
126+0			0.5	45.0 ✓	
TP	12.29	57.01 ✓	0.79	44.72 ✓	
+36			9.2	47.8 ✓	
+18			14.4	42.6 ✓	
+70			14.9	42.1 ✓	
127+04			12.5	43.5 ✓	
+23			1.6	55.4 ✓	
+37.73	Pot				
+58			1.5	55.5 ✓	
128+0			8.6	48.4 ✓	
"	= 90" Hole				
+50			10.2	46.8 ✓	on Conc
+71.3	= 1/4 14" Conc Foot med				
			10.9	46.1 ✓	on Conc

F Line

		57.01 ✓		
TP	0.99	47.49 ✓	10.51	26.50 ✓ ^{0.27 Pipe}
129+0	Δ 6° 17' 30" Rt.		2.76	44.73 ✓ _{on Conc. Grass}
"	50° Rt.		5.7	41.8 ✓
+32	= Fly Conc Slab		5.19	44.30 ✓
+50			3.9	43.6 ✓
130+0			4.9	42.6 ✓
+50			5.4	42.1 ✓
+82	= 4' Wire Fence			
"	3 1/2' Rt. = 11 1/2' Euc. Tree			
"	7' Lt. = Sly 28'			
131+0			7.6	39.9 ✓
+30	9' Lt 1/2 = Sly Power Pole			
+50			9.4	38.1 ✓
132+0			11.8	35.7 ✓
"	50' Lt of 1/2 = Sly Low 148 Spd			32.7 ✓
"	50' Rt		8.8	38.7 ✓
TP	7.08	41.68 ✓	12.89	34.60 ✓
+50	= Sly Low Spd		7.8	33.9 ✓
133+0			9.0	32.7 ✓
"	50' Rt 1/2		8.0	33.7 ✓

March 22, 16

14



41.68

133+50			8.7	33.0 ✓
134+0			8.8	32.9 ✓
..	75 ft of 1/2		8.3	33.4 ✓
+90			8.0	33.7 ✓
+46			5.5	36.2 ✓
+50	Woven Wire Fence 14 ft			
135+0			4.6	37.1 ✓
+50			1.2	37.5 ✓
136+0			3.7	38.0 ✓
+05	8 ft of 1/2 = Cable Road Man Pole to South			
+50			2.1	39.6 ✓
TP	10.29	51.63	0.34	41.34 ✓
137+0			10.0	41.6 ✓
+50			7.5	44.1 ✓
138+0			5.3	46.3 ✓
+50			4.4	47.2 ✓
+71			4.2	47.4 ✓
+753	W/ly HC Paving		5.5	46.1 ✓
+967	FLY " "		6.0	45.6 ✓
139+0			6.0	45.6 ✓

51.63

15

139+50			4.9	46.7 ✓
+8850	= 6 1/2 ft of 1/2		5.38	46.25 ✓ on stake
140+16.5	W/ly 0.1 x Rock Pav		5.19	46.44 ✓
+326	FLY " "		5.04	46.59 ✓
+50			4.9	46.7 ✓
141+0			4.5	47.1 ✓
+50			4.1	47.5 ✓
TP	5.62	52.17	4.08	47.55 ✓
142+0			6.3	46.9 ✓
+30			5.8	47.4 ✓
+36			2.4	50.8 ✓
+50			4.3	48.9 ✓
+96	W/ly HC Paving TERRACE		3.04	50.13 ✓
143+0	0.7		2.87	50.30 ✓
+06.5	FLY HC Pav Terrace		2.19	49.98 ✓
B.M.			5.50	49.67 ✓ Point II H.W. Can. 26' W 142+15.0 1973
+29.96			3.63	49.54 ✓ on stake
+33	33 ft of 1/2 W/ly 30' Cypress Tree			
+37			4.1	49.1 ✓
+11			6.9	46.3 ✓

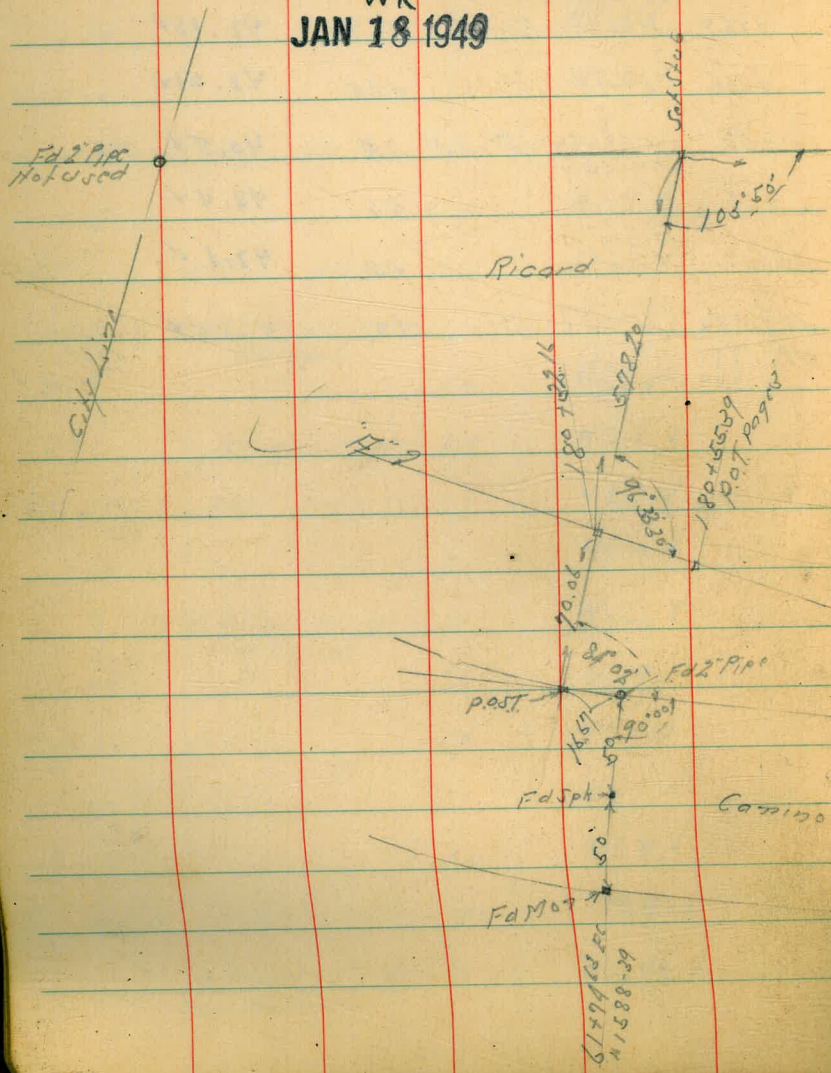
144+0	= A 6° 06' Rt	8.85	44.32 ✓	on Stake
+39	= Fly Dirt Drive	8.8	44.4 ✓	
"	8' Rt of 2 = Wly 12" Tree			
"	8' Rt of 2 = Wly 15" Conc Walk			
+50		10.4	42.8 ✓	
145+0		11.0	42.2 ✓	
+17	4' Rt of 2 = Wly Post Pole #79/41			
+50		11.3	41.9 ✓	
TP	5.8'	47.86	11.12	42.05 ✓
+92	3' Rt of 2 = Wly 12" Conc 6.12 Culvert			Flow Line
+93		6.0	41.9 ✓	
+95	= Wly Dirt Dr.	5.2	42.7 ✓	
146+06	= Fly " "	5.2	42.7 ✓	
+10		6.3	41.6 ✓	
"	4' Rt of 2 = Fly 12" Conc Culvert	6.3	41.23 ✓	Flow Line
+50		6.0	41.9 ✓	
147+0		5.9	42.0 ✓	
+50		6.0	41.9 ✓	
148+0		6.5	41.4 ✓	
+32		8.0	39.9 ✓	
"	9' Rt of 2 = Fly 21" Conc Pipe Culv.	9.42	38.44 ✓	Flow Line

148+50		7.2	40.7 ✓	
149+0		7.5	40.4 ✓	
+11	2' Rt of 2 = Wly 24" Egg Shaper Steel Culv	6.6	41.3 ✓	Top Culv
+16.7	= Wly Oil + Rock Pav	5.68	42.18 ✓	
+26.6	= Fly " " "	5.65	42.21 ✓	
+52	5' Rt of 2 = Fly 14" Conc Culv	7.4	40.5 ✓	Flow Line
+55		5.5	42.4 ✓	
150+0		5.2	42.1 ✓	
+119.0	A 16° 03' 35" Lt	6.01	41.85 ✓	on Stake
149+58.81			41.83	
+58.64			1703.81 ✓	

Rec 1703
24

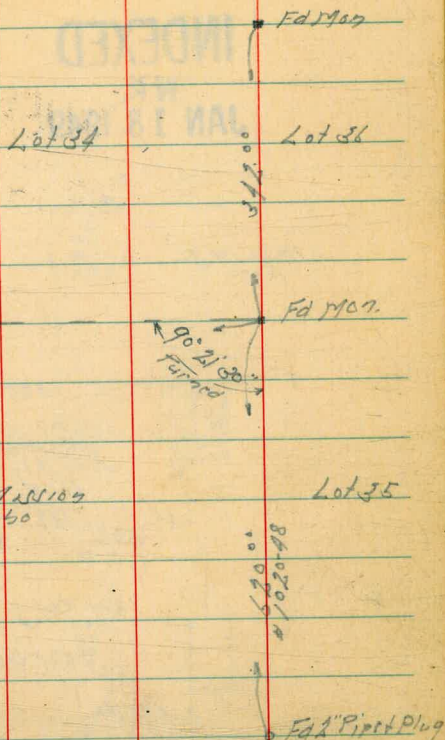
Tin Lot 32 Ex Mission Rancho + P.L. 1113
Had Ely Ricard

INDEXED
WK
JAN 18 1949



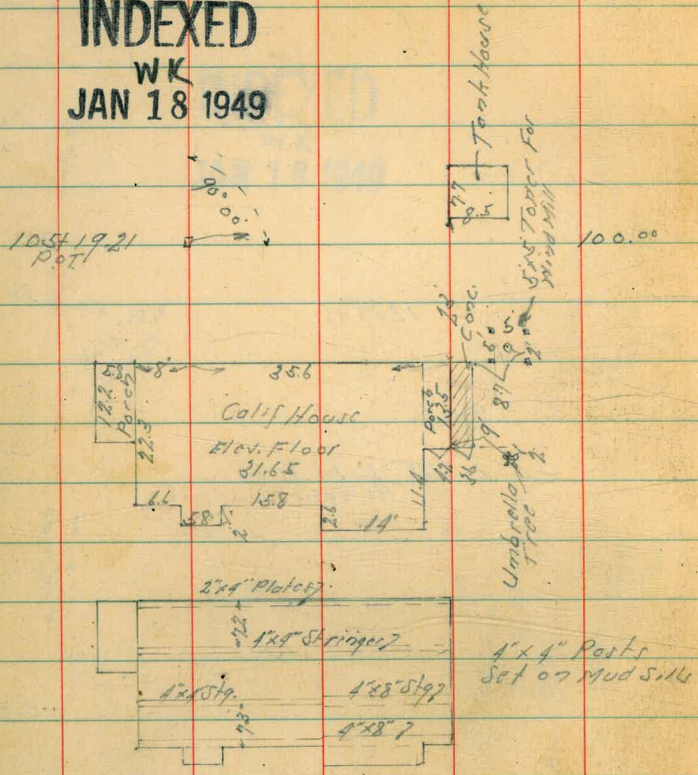
April 3-46
Sisson
Haddel
Wright

17



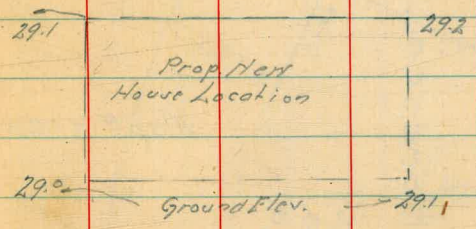
House Location Vasco Property
Mission Valley

INDEXED
WK
JAN 18 1949



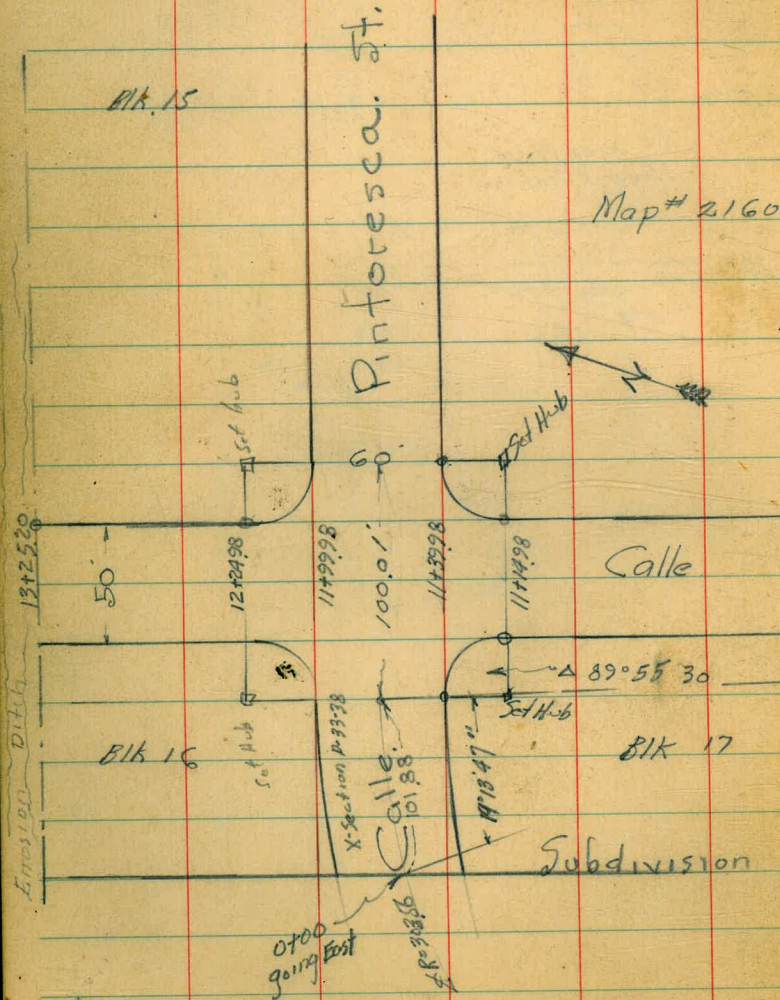
10-00-00-00-00-00
Mission Valley Street

April 20-46
Sisson
Strigg
Haddel
18



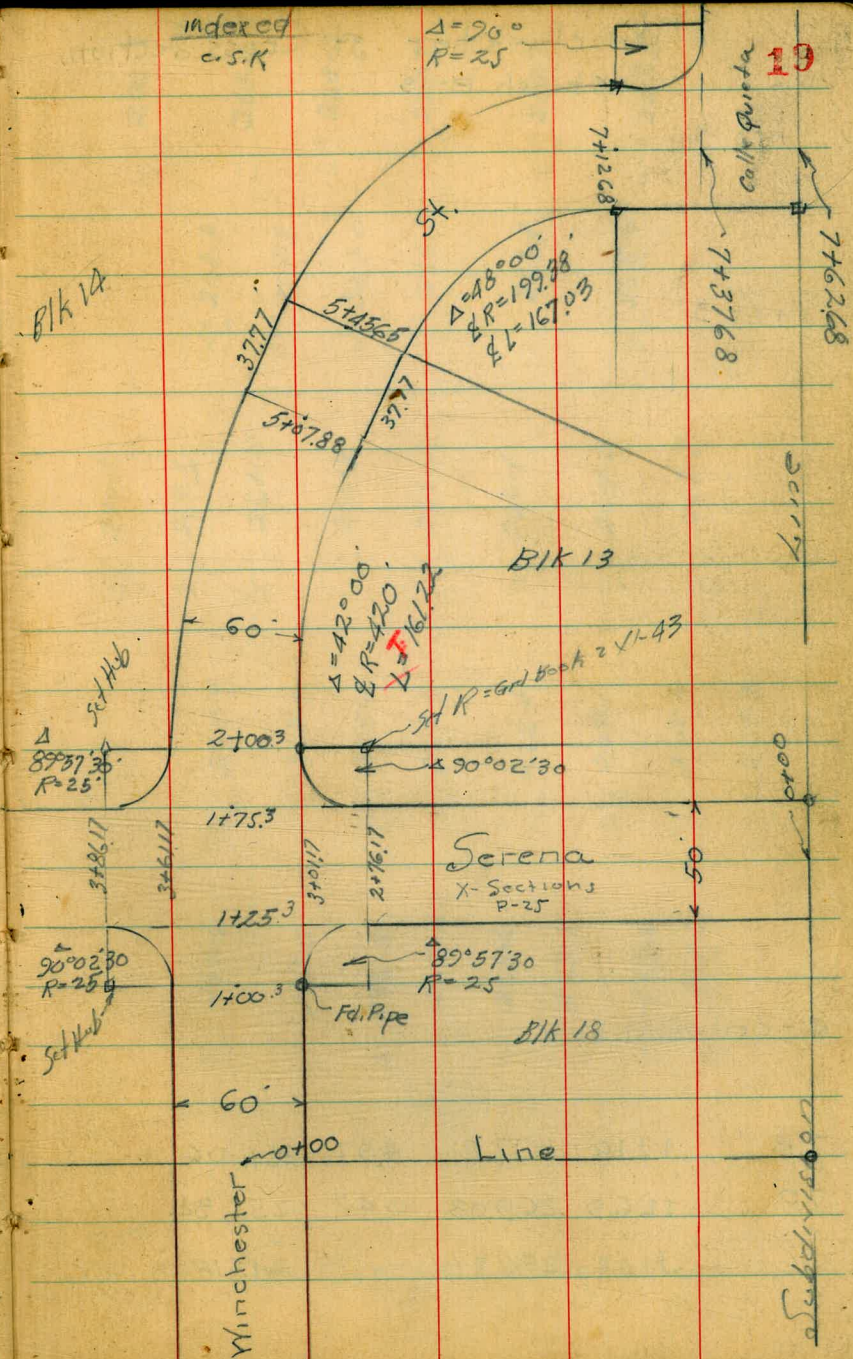
Walker
Hendricks
Johnson.
9-24-27

Cross Section - Winchester St.
Stations are as
per sketch



indexed
C.S.K

$\Delta = 90^\circ$
 $R = 25$



Winchester St. Cross Sections
Sketch P-19

1+50.3

1+25.3

1+00.3

0+50

0+00 sketch P-19

TP.	13.16	277.22	4.97	264.06
TP	12.69	269.03	0.42	256.34
	11.58	256.76		245.18

270.3 Lt.
6.9
30

269.6
7.6
17

268.2
9.0
13

267.7
9.5
14

267.5 Rt.
9.7
30

268.8
8.4
30

268.3
8.9
18

267.0
10.2
8

266.5
10.7

266.1
11.1

265.6
11.6
30

270.1
7.1
35

269.6
7.6
45

268.5
8.7
30

266.3
10.9
9

266.2
11.0

266.1
11.1
9

264.2
13.0
30

263.7
13.5
45

268.9
8.3
45

267.7
9.5
30

265.8
11.4
12

265.6
11.6

265.8
11.4
7

264.1
13.1
16

263.2
14.0
30

261.9
15.3
45

269.6
7.6
45

268.0
9.2
30

266.5
10.7
4

265.2
12.0

265.5
11.7
9

263.9
13.3
14

262.6
14.6
30

262.2
15
45

277.22

on Pipe on Rt 1+00.3

B.M.
SW. B.P. SEA Breeze + Edgewater

1342520
Emission Ditch

Winchester St. Cross Section

3+00

2+75

2+50

T.P.

13.21 290.32 0.11 277.11

2+25

2+00.3

1+75.3

277.22

4

283.8	282.7	280.1	279.5	279.5	279.0	279.2	279.4	278.9	280.5	281.3	282.5
6.5 45	7.6 30	10.2 7	10.8 5	10.8	11.3 9	12.1 11	10.9 13	11.4 17	9.8 21	9.0 30	7.8 45
281.2	280.3	278.3	276.8	277.2	277.0	276.9	275.5	277.3	278.7	280.2	
9.1 45	10.0 30	12.0 9	13.5 7	13.1 5	13.3	13.4 6	14.8 10	13.0 12	11.6 30	10.1 45	
279.2	278.1	276.1	274.2	275.0	274.7	274.5	273.3	275.1	274.9	276.1	276.6
11.1 45	12.2 30	14.2 6	16.1 8	15.3 4	15.6	15.8 7	17.0 6	15.2 12	15.4 16	14.2 26	13.7 30
											13.3 45
							290.32				
277.0	276.1	274.5	272.7	272.7	272.5	271.2	272.5	272.5	272.5	273.5	273.6
0.2 45	1.1 30	2.1 12	4.5 10	4.5	4.1 5	6.0 9	4.1 12	4.1 12	4.1 12	4.7 16	3.7 18
										3.1 18	2.6 30
											1.0 45
275.5	274.7	273.8	272.3	270.9	270.6	270.6	271.4	271.9	273.8	274.8	
1.7 55	2.5 45	3.4 30	4.0 14	5.3 12	5.6	6.0 13	5.8 10	5.3 30	4.4 45	2.4 55	
272.1	270.9	269.3	269.0	269.1	269.4	269.4	269.4	269.4			
5.1 30	6.3 14	7.0 13	8.2	8.1 13	7.8 30	7.8 30	7.8 30	7.8 30			

277.22

21

21

Winchester St. Cross Sections

4+50

4+25

4+00

T.P.

12.14

302.44

0.02 290.30

3+75

3+50

3+25

290.32

L4

19

R4

22

296.6
5.8
45

295.9
6.5
30

295.2
7.2
7

294.3
8.1
7

293.8
8.6
11

294.0
8.4
30

294.1
8.3
45

294.1
8.3
45

293.3
9.1
30

293.3
9.1
10

291.9
10.5
10

291.6
10.8
9

291.3
11.1
10

292.1
10.3
12

292.1
10.3
30

292.4
10.0
45

291.7
10.7
45

290.7
11.7
30

290.4
12.6
12

289.8
12.6
10

289.3
13.1
10

288.7
13.7
8

288.2
14.2
9

289.9
12.5
12

289.6
12.8
21

289.8
12.6
30

290.1
12.3
45

302.44

290.2
0.1
45

288.7
1.6
30

288.1
2.2
10

287.0
3.3
7

287.2
3.1
10

286.6
3.7
7

285.8
4.5
9

287.4
2.9
11

287.2
3.1
20

287.8
2.5
30

288.0
2.3
45

288.4
1.9
45

287.1
3.2
8

285.5
4.8
7

284.4
5.9
5

284.2
6.1
6

283.9
6.4
8

282.4
7.9
9

284.6
5.1
11

285.3
5.0
18

285.4
4.9
30

285.7
4.6
45

285.5
4.8
45

284.9
5.4
30

283.7
6.6
8

282.7
7.6
6

282.0
8.3
8

281.5
8.8
8

280.3
10.0
11

281.7
8.6
13

281.7
8.6
18

282.4
7.9
19

283.2
7.1
30

284.1
6.2
45

290.32

Winchester St. Cross Sections

6+5701

6+2917

6+0133

5+7349

5+4565

5+0788

4+75

30244
#

294.8 ^H	292.1	292.0	291.6	291.8	291.7	291.1	290.5	290.8 ^H	290.8 ^H
26 45	10.3 30	10.4 20	10.8 8	10.6	10.7 6	11.3 8	11.9 20	11.6 30	11.5 45
295.3	294.7	293.9	293.8	293.5	293.1	292.1	292.5	292.4	292.0
7.1 45	7.7 30	8.5 16	8.6	8.9 5	9.3 10	10.3 20	9.9 25	10.6 30	10.4 45
297.8	296.9	296.1	295.4	295.4	294.4	294.1	294.3	293.9	293.5
4.6 45	5.5 30	6.3 16	7.0	7.0 5	8.0 11	8.3 18	8.1 22	8.5 30	8.9 45
299.7	298.5	297.9	297.2	297.1	296.8	296.2	295.5	294.6	
3.7 45	3.9 30	4.5 15	5.2	5.3 3	5.6 4	6.2 20	6.9 30	7.8 45	
301.1	299.9	299.1	298.2	297.7	297.2	297.4	296.7	296.2	295.4
1.3	2.5 30	3.3 10	4.3 3	4.7	5.2 5	5.0 7	5.7 21	6.2 30	7.0 45
301.1	299.9	298.8	298.7	297.9	297.6	297.4	296.6	296.4	
1.3 45	2.4 30	2.5 17	3.6 12	3.7 4	4.5 2	4.8	5.3 11	5.0 17	5.8 30
299.0	297.9	297.1	296.2	295.5	296.1	295.8	295.4		
3.4 45	4.5 30	5.3 15	6.2	6.9 11	6.3 17	6.6 30	7.0 45		

30244
#

Winchester St. Cross Sections

For Final check on starting BM see P-32

Chk Pipe 1+00.3 P-20 1324 $\frac{0.02}{264.06}$
264.08

TP 2.85 277.32 12.64 274.47

TP

~~12.73~~ 277.56

7+62.68 TP

Hub on pt 4.03 287.11 7.21 283.08

"T.P.
A"

7+62.68

7+37.68

7+12.59 = E.C.

TP 0.28 290.29 12.43 290.01

6+84.85

302.44

4

E

	283.8	283.8	283.3	283.6	283.6	283.1	283.1
	6.5/45	6.5/30	6.5/21	6.7	6.5/5.1	7.2/30	7.2/45
285.6	285.5	285.4	284.7	285.2	285.2	285.4	285.7
4.7/45	4.8/30	4.9/24	5.6/18	5.1	5.1/16	4.9/30	4.6/45
287.5	287.3	287.2	287.2	287.1	286.7	287.2	287.8
2.8/45	3.0/30	3.1/17	3.1	3.2	3.6/15	3.1/30	2.5/45
			290.29				
	290.3	289.9	290.1	290.1	289.9	289.0	289.2
	12.1/45	12.5/30	12.3/15	12.3	12.5/4	13.4/8	13.2/16
							13.3/30
							13.2/45

302.44

CROSS SECTION - CALLE SERENA

Sketch P-19

2+50

2+25

2+00

1+50

1+00

0+50

0+00 = Subdivision Line

13.24 277.30

264.06

B.M. Pipe
H=0.3
P=20

indexed

C.F.K.

266.3

4.0
40

266.4

10.9
40

267.2

10.1
40

266.0

11.3
40

264.4

12.9
40

262.9

14.4
40

267.8

9.5
25

268.6

8.7
25

268.3

8.0
25

268.0

9.3
25

266.3

11.0
25

264.5

12.8
25

269.1

8.2
14

270.3

7.0
13

270.5

6.8
13

268.8

7.5
13

267.8

9.5
13

265.6

11.7
14

270.4

6.9
9

271.8

5.5

272.1

5.2

271.1

6.2

269.5

7.8

267.0

10.7

271.3

6.0

272.1

5.2

273.4

3.9
13

272.4

4.9
13

270.3

7.0
13

268.0

9.3
13

271.3

6.0
9

273.3

4.0
13

272.1

4.1
4

273.4

3.9
13

272.4

4.9
13

270.3

7.0
13

268.0

9.3
13

273.5

3.8
25

274.7

2.6
25

273.2

4.1
8

274.8

2.5
25

273.9

3.4
25

271.8

5.5
25

269.2

8.1
25

275.2

2.1
40

276.4

0.9
40

275.6

1.7
30

276.7

0.6
40

275.4

1.9
40

273.1

4.2
40

260.8

6.5
40

25

277.4

10.1
40

Calle Serena X-Sections

5+50

5+00

4+50

T.P. 12.22 289.01 0.51 276.79

4+18

3+8617

3+0117 X-Sections
This Intersection: See Sections on Winchester

2+76.17

277.30

H

I

H. 26

283.3

57
40

279.9

21
40

275.2

13.8
40

273.0

43
40

270.6

67
40

264.8

12.5
40

284.0

50
25

279.9

21
25

275.7

13.3
25

273.5

3.8
25

271.3

60
25

266.0

11.3
25

284.6

44
14

280.2

8.8
15

276.2

12.8
12

273.8

3.5
14

272.0

53
16

266.6

10.7
18

284.2

48
10

279.7

9.3
9

275.7

13.3
9

273.5

3.8
8

271.3

60
11

268.3

20

284.6

44

280.2

8.8

275.7

13.3

273.5

3.5

272.1

52

269.3

8.0
10

284.9

41
6

280.2

8.8
4

276.3

12.7
6

274.0

3.3
7

272.7

4.6
8

271.7

5.6
25

285.7

33
9

281.1

7.9
9

277.0

12.0
13

275.2

2.1
12

273.5

3.8
13

273.6

3.7
40

286.1

29
25

282.2

6.8
25

277.9

11.1
25

275.8

1.5
25

274.1

3.2
25

286.7

23
40

282.9

6.1
40

278.9

10.1
40

276.5

9.9
40

274.7

2.6
40

277.30

Colle Serena X-Sections

7+70

7+35

7+20

6+7.5

6+50

6+00

T.P.

5+75

241 298.32 0.10 288.91

289.01

H

288.9
24
40

290.1
82
25

291.3
70
11

292.0
63
7

292.2
61
7

292.7
56
12

293.5
48
16

294.0
43
25

295.1
32
40

288.9
24
40

288.9
24
40

290.5
78
25

293.9
44
5

293.9
44
5

294.2
41
10

295.4
29
14

295.7
26
25

296.1
22
40

288.9
24
40

290.6
77
25

291.9
64
19

293.4
49
8

293.8
45
8

294.4
32
10

295.3
30
15

295.6
27
25

295.9
24
40

287.7
106
40

289.1
92
25

290.6
77
9

290.9
74
8

291.7
66
8

292.4
59
12

293.1
52
25

294.0
43
40

287.3
110
40

288.5
98
25

289.6
87
11

290.1
82
8

290.7
76
7

291.4
69
12

292.1
62
25

293.1
52
40

285.9
124
40

287.0
113
25

287.6
127
11

287.9
104
10

288.3
100
7

288.1
92
11

289.7
86
25

290.3
80
40

285.1
33
40

285.8
32
25

286.3
27
12

285.8
32
9

286.4
28
10

286.9
21
7

286.5
21
10

288.3
21
25

288.7
20
40

289.01

H

27

Calle Serena X Sections

9+75

9+50

9+10

8+75

8+50

8+25

8+00

298.32

288.1	286.9	285.1	283.4	285.0
10.2 40	11.4 40	13.2 40	14.9 40	13.3 40
289.6	288.5	286.5	284.9	284.1
8.7 25	9.8 25	11.8 25	13.4 25	14.2 40
290.8	289.6	287.6	285.9	285.7
7.6 5	8.7 10	10.7 25	12.4 25	11.7 25
291.4	290.4	288.6	286.8	286.8
6.9 5	7.9 6	9.7 6	11.5 5	11.5 8
291.5	290.3	288.3	287.0	287.5
6.8 25	8.0 25	10.0 25	11.3 25	10.8 25
291.7	290.9	289.0	287.4	286.4
6.6 11	7.4 10	9.3 25	10.9 13	11.9 25
292.6	292.2	290.1	288.9	289.5
5.7 15	6.1 15	8.2 15	9.4 18	8.8 18
293.1	292.5	290.4	289.1	289.7
5.2 25	5.8 25	7.9 25	9.2 25	8.6 25
294.3	293.3	291.4	289.9	290.3
4.0 40	5.0 40	6.9 40	8.4 40	8.0 40
				292.0 ²⁸
				6.3 40

298.32

Calle Serana X Sections

11+60

11+56

11+39.98

TR

102

287.96

11.38

286.94

on Pipe
11+14.98
25' off of 9

11+14.98

10+85

10+35

10+00

298.32
3

279.5 8.5 40	280.4 7.6 25	280.4 7.6 21	281.0 7.0 17	281.7 6.3 7	282.3 5.7	282.4 5.6 13	282.1 5.9 25	281.9 6.1 50
280.3 7.7 40	280.8 7.2 25	281.3 6.7 21	282.2 5.8 8	282.7 5.3	282.4 5.6 10	282.2 5.8 22	282.8 5.2 25	283.7 4.3 50
	281.8 6.2 40	282.7 5.8 25	283.7 4.3 3	282.9 5.1	282.8 5.2 12	284.0 4.0 16	284.2 3.8 25	285.0 3.0 50
					287.96			285.03 2.93 50 on Pipe
284.7 13.6 40	285.7 12.6 5	285.9 12.4 5	284.8 13.5 5	285.6 12.7	286.1 12.2 8	286.1 12.2 13	287.1 11.2 16	286.9 11.4 25
	287.1 11.2 40	288.1 10.2 25	288.8 9.5 6	288.5 9.8	289.2 9.1 5	289.6 8.7 14	290.5 7.8 16	290.9 7.4 25
	287.4 10.2 40	288.8 9.5 25	290.2 8.1 5	290.6 7.7	291.2 7.1 7	291.7 6.6 14	292.5 5.8 18	292.7 5.6 25
2870 11.3 40	287.9 10.4 25	289.0 9.3 9	289.6 8.7	290.4 7.9 10	290.8 7.5 15	291.5 6.8 18	291.8 6.5 25	292.9 5.4 40
					298.32			

Calle Serena Cross Sections

13+25.20

13+00

12+63

T.P.

0.50

276.96

11.50

276.46

on pipe
28' offset
12+24.98

12+24.98

11+99.98

11+82

11+69.98

287.96

277.2	271.2	269.2	267.5
58 40	7.8 40	8.8 25	8.8 25
272.0	270.4	270.7	270.0
5.0 25	6.6 25	6.3 25	6.8 25
272.4	273.0	272.8	271.5
4.6 25	4.0 25	4.1 25	5.5 25
276.26	274.4	273.8	272.0
274.0	274.6	274.9	275.7
14.0 40	13.4 25	13.1 25	12.3 25
275.4	276.4	276.9	275.7
12.6 50	11.6 25	11.1 25	10.4 25
277.6	278.2	278.8	279.7
10.4 40	9.8 25	9.2 40	8.3 25
279.2	279.9	280.9	281.1
8.8 40	8.1 25	7.1 25	6.0 25
277.6	278.2	279.7	279.3
8.3 40	7.8 25	7.1 25	6.4 25
281.6	281.7	281.8	280.8
6.3 25	6.2 25	5.2 25	7.2 50

Calle Serena Cross Sections

13+66

13+59 = Wedge Drainage Channel (Bottom)

13+52 = Bottom Drainage Ditch

13+47 Cont.

13+47

13+35 Cont.

13+35

276.96

	ft.		ft.
260.7	16.3	260.5	18.0
265.2	11.8	259.0	18.0
265.5	11.5	260.5	16.5
263.7	13.3	262.1	14.9
264.9	12.1	260.5	15.5
266.2	10.8	262.1	14.9
267.2	9.8	262.5	14.5
		263.6	13.4
		264.2	12.8
		270.2	13.6
		270.5	13.8
		263.2	13.0
		264.0	13.0
		266.6	10.4
		270.0	7.6
		271.0	10.0
267.3	9.7	269.4	7.6
268.0	9.4	269.5	7.5
265.2	11.8	269.7	7.3
264.0	13.0	270.2	6.8
264.8	12.2	266.6	10.4
268.3	8.7	266.6	10.4
			34
	276.96		

Calle Serena Cross Sections

Completed 10-9-47

				0.01
Chk starting BM P-20			245.18	
	9.09		245.17	
T.P.	0.29	254.26	13.25	253.97
T.P.	2.39	267.22	12.13	264.83

14+30

13+80

13+66 Cont.

276.96
3

14.0	263.0	13.6	263.4	13.4	265.6
90		75		54	
13.0	264.0	12.1	264.9	10.5	266.5
73		58		50	
18.6	268.4	11.0	266.0	23	267.7
60		25		25	
27.7	268.3	10.0	267.0	82	268.8
24		25		25	
7.8	269.2	7.4	268.1	73	269.7
35		50		25	
6.9	270.1	5.9	269.6	59	271.1
50		75		50	
6.1	270.9	4.6	271.1	4.6	272.4
75		75		75	

276.96
3

Walker
Becker
Williams
4-14-48

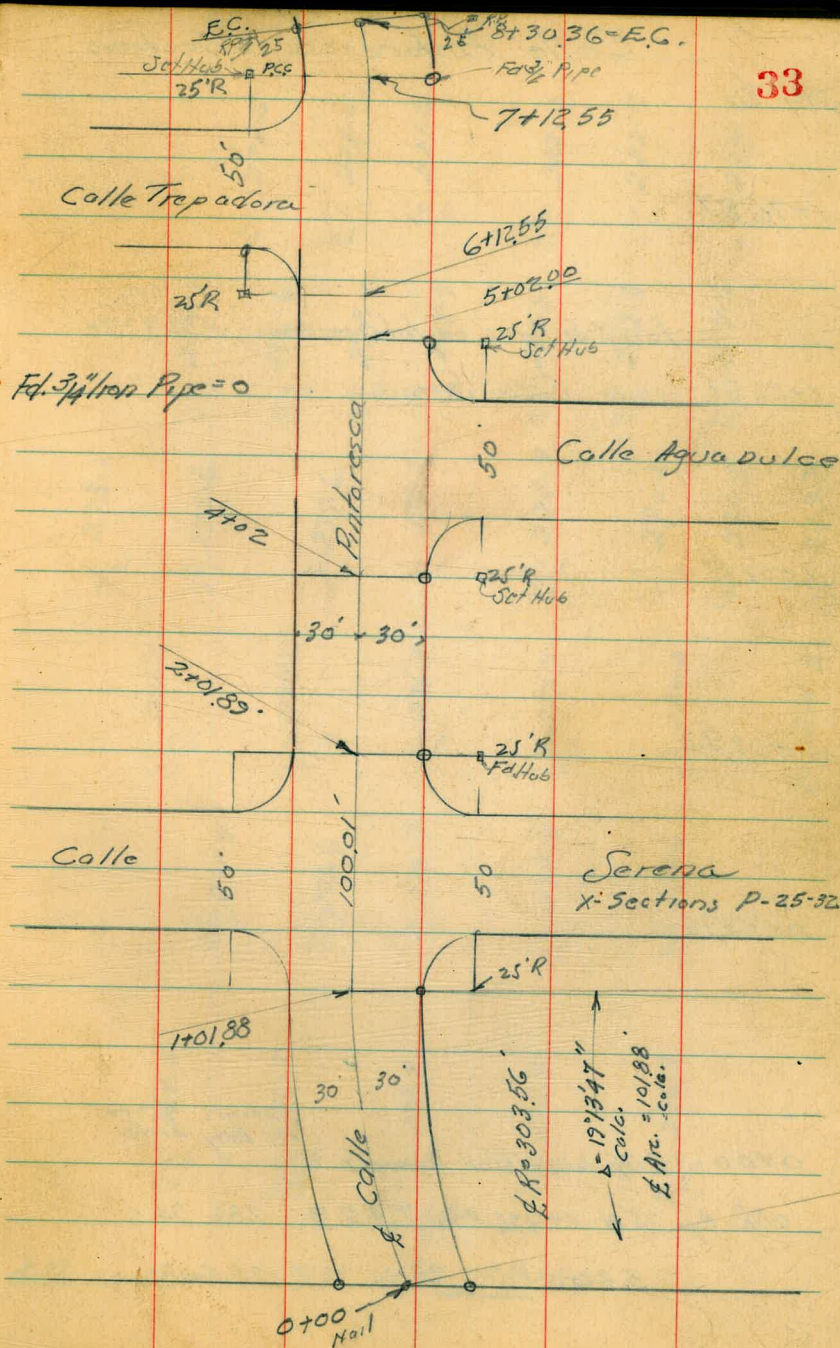
CROSS SECTIONS. - Paradise Hills

CALLE PINTORESCA

from West Boundary Tres Lomas
To E.C. East of Calle Trepadora

INDEXED

APR 15 1948



Calle Antaresca - X-Section

Sta L.

1+76.87

for X-Sections on Intersection P-29-30

1+26.87 = White Calle Serana

1+01.88

0+67.92

0+33.96

0+00 = Dry Calle Tres Hermanas

Section diag.
on dry hole

chk Pipe 25' RT 11+14.98 P-29 3.2.9 286.94

5.20 290.23 285.03

278.5
117
30

278.5
107
18

281.6
86

282.0
82
15

282.9
73
19

284.1
61
30

274.9
15.8
50

276.6
13.6
30

278.4
11.8
10

279.9
10.3

280.5
2.7
14

282.8
7.4
30

284.6
5.6
45

273.8
16.4
50

275.6
14.6
30

277.6
12.6
9

279.2
11.0

278.9
11.3
10

280.2
10.0
17

281.5
8.7
30

283.3
6.7
45

271.6
18.6
30

274.5
15.7
30

276.9
13.3

277.4
12.8
10

280.0
10.2
30

281.3
8.9
45

271.4
18.8
50

273.6
16.6
30

275.7
14.5

278.4
11.8
30

278.6
10.6
45

269.6
20.6
50

270.7
19.5
31.8

273.9
16.3

276.3
13.9
31

276.9
15.3
45

BM on Pipe 11+39.98 50 ft P-29

Calle Pintoresca - X-Section

4+27 - W. CALLE AGUA DULCE

4+00

TR 12.32 299.71 2.84 287.39

3+50

3+00

2+68

2+35

2+01.89

290.23

12.5 50	277.7	10.0 50	280.2	6.8 50	283.4	14.3 45	285.4	10.2 9	289.7
10.9 30	279.3	9.1 30	281.1	5.1 30	285.1	11.7 30	286.0	9.1 15	290.6
9.6 =	280.6	8.0 10	282.2	4.4 12	285.8	11.2	286.5	8.0 30	291.7
8.3 4	281.9	6.9 6	283.3	3.9 0	286.3	11.2	286.5	6.8 45	292.9
8.4	281.8	7.6 3	282.6	2.9	286.3	299.71	286.5	4.9 80	294.8
8.4	281.8	7.3	282.9	1.9	286.3	286.3	286.5	2.3 130	297.4
8.4 11	281.8	6.6 11	283.6	1.5	285.7	285.7	286.5	1.8 9	289.7
8.4 11	283.0	5.3 8	285.5	1.2	284.9	284.9	286.5	1.8 15	290.6
6.5 15	283.7	3.9 24	286.3	1.6	286.3	286.3	286.5	1.2 30	291.7
6.1 22	284.1	2.5 30	287.7	1.0 45	287.4	287.4	286.5	1.2 30	292.9
5.2 30	285.0	1.5 45	288.7	1.0 45	288.9	288.9	286.5	1.0 45	294.8
3.2 45	287.0		288.7		290.4	290.4	286.5		297.4

Calle Pintoresca - X-Section

6+37.55

6+12.55 BC. 25' Rad. on Lt.

5+65

5+2.5

5+02

4+77

4+52

299.71

293.3	64 20.5	293.0	57 30	294.7	50 5	294.9	48	294.7	50 7	295.7	40 12	296.3	39 16	296.8	37 30	298.6	21 15
293.3	64 155	292.5	72 105	291.95	776 55	291.7	57 30	293.4	50 5	293.6	48	294.7	39 16	296.8	37 30	298.6	21 15
			on Pipe														
		290.7	90 30	291.7	80 30	293.4	50 5	293.6	50 7	293.5	40 12	294.7	39 16	296.8	37 30	298.6	21 15
		288.4	113 50	290.3	94 30	290.8	89	290.9	88 10	291.3	84 13	293.1	66 30	294.8	42 45	296.9	28 45
		286.4	133 30	287.4	116 15	290.2	95	290.1	96 10	290.8	89	291.6	66 30	293.4	42 45	296.9	28 45
		285.5	142 50	287.5	122 30	290.1	96	290.1	97 7	291.76	795 30	293.2	65 45	296.9	28 45	298.6	21 15
		285.4	143 50	289.7	10.0 4	290.2	95	290.3	94 13	292.0	77 30	295.8	39 30	297.7	20 130	298.6	21 15
		285.5	142 50	289.4	10.9 10	290.1	97	290.7	90 11	292.2	75 30	294.7	50 30	297.31	240 130	298.6	21 15
		287.5	142 30	289.7	10.0 4	290.2	95	290.3	94 13	292.0	77 30	295.8	39 30	297.7	20 130	298.6	21 15
		285.5	142 50	289.4	10.9 10	290.1	97	290.7	90 11	292.2	75 30	294.7	50 30	297.31	240 130	298.6	21 15

299.71

Calle Pintoresca - X-Section

Chk. Forting Bld. 2.53 285.03^v
 TP 3.08 294.56 12.83 291.48
 8+30.36 = E.C.

7+91.09

7+51.83

7+12.55 = B.C. H.

TP 5.58 304.31 0.98 298.73
on Pipe 30" H
 7+12.55

6+87.55

299.71

4	6	H
298.7	299.4	299.50
5.6 50	4.9 30	4.6 4
297.8	298.7	299.6
6.5 50	5.6 30	4.7 4
297.1	298.6	300.0
7.2 50	6.7 30	4.9 4
296.4	297.7	300.5
7.9 55	7.6 30	4.9 6
297.2	297.7	298.7
7.1 10	6.6 10	6.0 12
295.1	297.0	299.9
4.6 155	4.7 30	4.4 15
294.8		298.8
4.9 105		4.9 45
294.9		
4.8 55		
295.5		
4.2 30		
297.6		
2.1 18		
297.9		
1.8 30		
298.8		
0.9 45		

37

299.71

8/6/48

McCoy
W. Moore
AllenSea Breeze X-Section
1200' South of Winchester
(Sketch Pg 91 Lt.)

0+49

19.5 Rt. & 2.5' walk

0+30

So. P.L. Winchester

0+00 Cont.

INDEXED
WIK
JAN 18 1949

0+00

& Winchester

0-20

Continued

0-20

Cb. Line to West

0-30

E.C. NW. Cor. + No. P.L. Winchester

T.P. 31

8.96 253.08

244.12

NW. Lead Plug
(Water Service)
Sea Breeze
& Winchester
Pg 26-169x

248.3

 $\frac{7.8}{38}$

249.7

 $\frac{3.4}{25}$

249.7

 $\frac{3.9}{15}$

248.3

4.8

248.2

 $\frac{4.9}{15}$

247.31

5.77

70.7

House Fl.

247.80

5.28

19.5

Edge

Walk

247.0

6.1

25

33

247.45

5.60

2.5

Walk

246.76

6.32

37

Walk

at Stop

247.7

 $\frac{5.4}{75}$

247.5

 $\frac{5.6}{50}$

247.5

 $\frac{5.6}{25}$

247.7

 $\frac{5.4}{15}$

247.5

5.6

247.8

 $\frac{5.3}{15}$

247.0

6.1

245.7

7.4

243.6

 $\frac{9.5}{75}$

12.94

90

245.4

 $\frac{7.7}{100}$

246.1

7.0

246.3

6.8

246.1

7.0

245.7

7.4

244.9

8.2

244.2

8.79

25

Edge

243.13

9.95

50

241.81

11.27

70

243.30

9.78

50

Cb.

241.62

11.46

70

242.20

10.88

70

239.9

13.70

90

240.5

12.60

90

245.1

 $\frac{8.0}{100}$

244.8

8.3

245.2

7.9

245.0

8.1

244.3

8.8

243.8

9.3

243.59

9.54

241.1

8.95

241.81

10.34

244.79

50

244.0

9

244.9

 $\frac{8.7}{25}$

244.3

 $\frac{8.8}{15}$

243.6

9.5

243.1

 $\frac{10}{15.5}$

243.49

9.59

244.0

 $\frac{2.1}{25}$

153

Cb

EC

7 253.08

TP #31
Pg 26-1697

Sea Breeze

8.96

244.12

+200 Southernly side of dirt drive
to East

+80 Northernly side of dirt drive
to East

+77

+60

+25

1+00

+85.5 @ 7' single Garage drive way

T 253.08

Sketch pg. 41 (L.)

250.2	250.2	249.1	248.1	248.2	247.5	246.9	39
2.9	2.9	2.9	2.9	2.9	5.6	6.2	2.9
50	25	25	15	15	15	25	50

250.2	249.2	249.9	248.8	248.6	247.8	247.7
2.9	2.9	2.2	2.3	2.5	5.3	5.4
50	25	19	15	15	15	25

250.3	251.0	250.6	248.8	248.5	247.8	247.7
2.8	2.1	2.5	2.3	2.6	5.3	5.4
50	25	19	15	15	15	25

250.9	251.0	250.2	249.7	248.6	247.6	246.2	246.0	247.0
2.2	2.1	2.7	3.4	2.5	2.6	2.9	5.1	6.1
50	25	15	12	7	15	15	25	50

250.8	249.9	249.0	249.2	248.7	248.1
2.3	3.2	2.1	3.9	2.4	5.0
25	15	7	15	15	25

249.9	250.3	249.60	248.7	249.0	248.38	247.7	246.8
3.2	2.8	3.5	4.4	4.1	2.7	5.4	6.3
25	25	15	7	15	15	25	50

248.16	247.00
4.92	6.08
19.4	41.0
Begin Drive	Garage Floor

T 253.08

8/6/48

McCoy
W Moore
Allen

X-Section Roanoke 200' East from E.P.L. Winchester

40

Be. Hub.
25' LT. 2+25

11.58 283.08

4.61 290.05

2+00

INDEXED

WK

JAN 18 1949

1+50

1+00

0+50

0+25

0+00

East line of Winchester & Roanoke

Hub at 7+62.68

P. 24
= 0-60

11.58 299.66

283.08

291.1	288.9	287.1	285.0	283.1	280.2
$\frac{3.6}{50}$	$\frac{5.8}{25}$	7.6	$\frac{9.7}{25}$	$\frac{11.6}{50}$	$\frac{14.5}{100}$

287.9	286.1	284.4
$\frac{6.8}{25}$	8.6	$\frac{10.3}{25}$

288.9	286.8	285.6	284.3	282.1	279.6
$\frac{5.8}{50}$	$\frac{7.9}{25}$	9.1	$\frac{10.4}{25}$	$\frac{12.6}{50}$	$\frac{15.1}{100}$

286.0	285.1	283.0
$\frac{8.7}{25}$	9.6	$\frac{11.7}{25}$

285.9	284.4	282.5
$\frac{8.8}{25}$	10.3	$\frac{12.2}{25}$

287.3	285.4	284.1	281.9	280.2	277.8
$\frac{7.9}{50}$	$\frac{9.3}{25}$	10.6	$\frac{12.8}{25}$	$\frac{14.5}{50}$	$\frac{16.9}{100}$

7299.66

Sketch P. 91 (P)

Roanoke
(Calle Quieta)

25'

cont.
Mon

25' P.L.
Radius

25'

Dirt Driveway

Levels Pg 38
compare sketch
Pg 80 - 1697

Prop. Line

SEA BREEZE

1780

33118'

0+85.5

N

25' P.L.
Radius

0+99

0+30

Winchester

60'

0+00

25'

0-20

0-30

25' P.L.
Radius

10' Cb. Radius

Calle Agudalce

41

Ed. Hub 25' 2+25'

Levels Pg 40
compare sketch
Pg 19 - 1706

N

Prop. Line

Roanoke

(Calle Quieta)

25' P.L.
Radius

Ed. Hub

0+25

0+00

Winchester
(Calle Aguacate)

Ed. Hub

50'

0-60

(= 7+0268 Pg. 24)

X Sects Block 96 Roseville

7+05.27

2+35.32

Keats

2+00.32

INDEXED
WK
MAR 18 1949

ST

← 35' X 35' →

Shaffer

0+00

3+35.30

Fd Hub & Disc

Lowell

← 35' X 35' →

0+00

Entrance to
Heavy Gas
Stn

R=15'

Fd. Nail

ST

C&L line

66 N 25 E 99

set 4 Chisel x's
17 Rim MIN.

2+35.15

ST

← 35' X 35' →

Scott

0+00

See also
Pg 73

R=43'

5'

42

Fd. & Disc

Conc Gutter

AC Paving

set nail

35'

35'

0+00

R=43'

← 16' →

100'

ST

C&L

Rosecrans

3-17-49 X Section Keats St
 Hendricks Rosecrans to Shafter
 Bramby
 Green
 Rorer

NO# 22002 Reg Oil & Rock Paving & Asphalt Cb
 on Lt.
 0127 End Cbs. Conc Gut & A.C. Paving

INDEXED

WK

MAR 18 1949

S.E. Cb Ret Keats & Rosecrans (B.C. on Rosecrans)
 5 parts

N.E. Cb Ret Keats & Rosecrans (B.C. on Rosecrans)
 5 parts

0+00 East Line Rosecrans

0-16 East Cb Line Rosecrans

SW 1/8 Disc
 Rosecrans
 & Keats

T.P. 7.39 12.21 3.84 4.82

B.M. 5.91 8.66 2.75

(ADD. Levels Pg 73)

43

74	71	64	62	61	64	61	582	567	630	69	60	52
4.8	5.0	5.40	5.49	6.1	6.10	6.04	6.39	6.54	5.91	5.4	6.2	6.3
50	35	23.4	17	17	14.		14	17	17	28	35	50
		SW	CB	G	G		Conc Gut	G	CB			

732	724	710	702	700	710	687	728	638	68	610	672
4.89	4.27	5.01	4.39	5.21	4.61	5.54	4.93	5.83	5.32	6.11	5.4
G	CB	G	CB	G	CB	G	CB	G	CB	G	CB
BC		①		②		③		④		EC	

		622	680	623
		5.49	5.41	5.78
		226	226	
		Conc Gut	Conc Gut	

831	769	704	722	722	721	715	711	680	668	657	642	711	614	672
3.90	4.52	4.27	4.82	4.99	5.00	5.02	5.10	5.21	5.23	5.64	5.72	5.10	6.07	5.48
110	110	60	60	43.5	35	17		17	35	43.5	60	60	110	110
CB	G	CB	G	Conc Gut						Conc Gut	G	CB	G	CB

S.W. 1/8 P. Garrison & Rosecrans

X Sect Keats St. Contd.

1100

INDEXED

0195 R 8 Conc. Drive 29.2 Rt

0167 NW Cor. House on Rt 50'

0155 R 4' Conc. Walk 28.7 Rt.

T.P. 4.07 $\frac{7.31}{\lambda}$ 6.97 5.24

0150 Power Pole # P2988 24' Rt

0128 Beg. Pickett fence 18' Lt.

$\frac{1221}{\lambda}$

44

6.9	16.1	5.1	A ₁	2	A ₂	3.8	3.8	A ₃	A ₃
24	2.9	4.0	5.1	5.1	5.5	5.5	5.5	5.5	5.5
50	35	18	16		14	24	29	50	
		Ch	G			Pay			

A ₁	4.6 ⁰
48.4	47.1
29.2	55

A
7.1
1.9
50
Fl.

5.46	5.1
385	384
287	40

				9.31 ^v				
6.2	6.1	6.3	5.4	6.2	5.4	5.4	5.4	5.2
5.5	5.5	5.9	6.8	6.7	7.0	6.6	6.6	6.9
50	35	18	16		14.5	21	35	50
		Ch	E		Pay			

$\frac{1221}{\lambda}$

X Sect. Keats St. Cont'd.

INDEXED

1+90 R 9.5' Conc Drive 35' Rt.

1+71 R 3.3' Conc Walk 34.6 Rt. (R House Rt.)

1+50

1+49 Power Pole #2949 23.7 Rt.

1+41.5 R 10' Garage 50' Rt.

1+26 R 3' Conc Walk 34.4 Rt. House on Rt.
R 4' Conc Walk 16.8 Rt.

9.31
A

R

45

1.66	1.13	2.06
7.65	7.53	7.25
35	48	73
		Fl. Gar.

2.35	2.34	2
6.96	6.95	5.1
24.6	47	53
		Floor

1.6	1.6	2	2.9	9	6	4	7	1	2
4.2	4.2	5.1	6.4	6.4	6.8	6.9	6.6	6.9	7.1
50	35	18	16		14	18	30	25	50
					Par.				

2.90
6.41
50
Floor

5.95	5.21	4.25	3.08	4.73	5.0
3.26	4.24	5.06	6.23	6.08	4.3
35	18.6	16.8	34.4	48	50
					Floor

9.31
A

INDEXED

2155

2.6	2.1	1.9	1.3	1.1	0.9	0.5	0.1	0.6	0.8
67	73	74	80	83	88	88	85	85	85
50	28	18	16	15		14	20	35	50
						Pav.			

2130

Beq Asphalt Parking Area 18' x 4'

3.1	3.1	2.1	1.1	1.1	0.9	1.1	1.3	1.3
59	63	63	82	72	88	83	80	80
50	35	18	16		15	21	35	50
						Pav.		

2129

3' Conc Walk 34.7 RT. (to House RT)

	1.27	1.44	3.21
	804	787	61
	34.7	47	54
			FLOOR

2110

7' Conc Drive 34.5 RT

	1.33	1.63
	798	768
	34.5	72
		Fl. Gar.

2100

3.1	3.1	3.1	1.1	1.1	1.1	1.1	1.1
54	55	61	75	74	79	79	78
50	35	18	16		15	35	50
						Pav	

9.31

9.31

INDEXED

2+99.99 W Line Scott St.

2+97 Power Pole # P2901 23.8 RL

2+80 & 3' Conc Walk 34.7' (House on RL)

2+55 L. Pickett Fence 18' Lt.

2+75

2+70

2+59 & 7' Conc Drive 35' RL

931
/

47

2'	8	0	0.5	0.5	0.0	0.0	0.1	0.1	0.6
7'	7 ⁵	8 ³	8 ⁸	9 ⁰	9 ²	9 ³	8 ⁶	8 ⁶	8 ⁷
35	25	23	16		12	18	25	35	50
					Par.				

0.82	1.01	1
8 ⁴⁹	8 ³⁰	6 ⁶
34.7	45	50
		Floor

2'	2.1	2.0	1.2	0.8	0.1	0.2	0.3	0.1	0.8	0.8
6 ⁶	7 ²	7 ³	8 ¹	8 ⁵	8 ⁶	9 ¹	9 ⁰	8 ⁶	8 ⁵	8 ⁵
42	29	18	16	14		14	19	22	35	50
						Par.				

3	0	3	1.0	1	3	2	1	1	0.8
7'	11	11	11	0.1	0.1	0.1	0.1	0.1	0.8
7 ⁰	7 ⁴	8 ⁰	8 ³	8 ⁶	9 ⁰	9 ¹	8 ⁶	8 ⁶	8 ⁵
50	35	18	15		14	19	22	35	50
					Par.				

0.81	0.86
8 ⁵⁰	8 ⁴⁵
35	63
	Fl. Gar

931
/

INDEXED

3+46

3+42.5 & Sewer MH

3+34.99 & Scott (& Sewer MH)

3+23

3+16

T.P. 3.62 $\frac{3.81}{11}$ 9.12 0.19

9.31

0.1 0.2 0.1 0.6 0.8 1.0
 39 40 39 45 46 48
 35 17 14 35 50
 Pav.

0.09
 372
 Rim

0.1 0.1 0.0 0.2 0.5 0.4 0.6
 37 37 38 40 43 43 43
 35 17 Rim MH 14 26 35 50
 Pav.

0.2 0.2 0.1 0.3 0.1 0.6 0.2
 36 36 37 41 43 44 40
 35 17 14 22 35 50
 Pav.

0.2 0.2 0.2 0.3 0.3 0.2 0.1 0.1
 35 36 36 41 41 36 39 39
 35 17 13 19 25 35 50
 3.81 Pav
 11

E. Rim MH & Keats & Scott.

INDEXED

4726 R. House 54' Lt

4700 West side Double Garage 54' Lt.

3787 R 25' Conc Walk 17' Lt. (House on Lt)

3799 East Line Scott St.

3763 End Oil & Rock Paving

3.81

0.8
30
54
Fl.

0.03 0.0 0.6 0.9 1.0 1.1 0.1 1.1 1.0 1.1
384 38 42 42 48 49 34 23 28 27
54 35 13 11 12 21 30 35 50
Floor

2.2
16
50
Floor
0.23
358
35
Floor
0.09
390
17

0.1 0.0 0.3 0.6 0.7 0.6 0.6 0.3 0.6 1.3
37 38 42 42 45 44 46 35 32 25
50 35 16 14 9 14 20 35 50

0.1 0.1 0.5 0.6 0.7 0.1 0.5 0.1 1.1
37 42 42 42 45 37 43 39 31
35 17 9 13 20 30 35 50
Pav Pav

3.81

X Sect. Keats St

5+50

	.16	.17	.10	.19	.10	.14	.09	.00	.01	.02
48	45	48	52	48	52	47	38	37		36
50	35	12	11		13	17	28	35		48

5+44 & House 49' Rt.

+2.0
1.8
49
Fl.

5+00 & House 54' Rt.

	.10	.12	.09	.12	.10	.14	.14	.03	.02	.03
48	50	46	50	48	52	52	41	40	42	25
50	35	13	12		13	19	29	35	54	5K 6. Fl

4+71 Power Pole # P2875 23' Rt.

4+57 & House 66' Lt.

4+50

	.17	.18								
			66							
			Fl.							
			.10							
				.10		.13	.10	.09	.01	.03
45	46	46	48	48	51	48	47	32	41	
50	35	13	12		11	12	22	35	50	

4+41 & Garage 75' Lt. Dirt Fl.

.17
45
75
Fl.

3.81

3.81
/

6+55

INDEXED

6+75 24" Euc. Tree 255'

6+20 18" Euc. Tree 255 ft.

6+00

5+73

5+67

5+70 Power Pole #P 2835 235 ft.

3.81

1.1	1.0	0.9	0.6	0.9	1.0	1.2	1.4	1.5	2.4	51	2.4
27	28	29	42	47	48	50	54	43	12	12	12
50	35	26	15	14		11	16	22	25	50	

3	1.1	1.0	0.0	0.9	1.0	1.4	1.0	0.2	1	0.5
25	27	28	28	47	48	52	48	36	39	32
50	35	27	22	12		15	18	30	35	50

0.4	0.5	0.2	1.1	1.0	1.5	0.9	1.4
32	32	35	49	48	53	34	24
50	35	26	11		15	35	50

1.0	0.9	0.7	0.8	1.3	1.0	1.3	0.9	0.2	0.6	0.1	1.2
28	29	31	45	51	48	51	47	35	32	31	26
50	35	23	15	12		16	18	23	29	35	50

0.0	0.6	1.0	1.3	1.0	1.4	0.9	0.6	0.1	0.1	0.6
38	44	48	51	48	53	47	44	39	37	32
50	35	14	12		14	17	22	29	35	50

3.81

INDEXED

B.M. 4.51 +0.69 0.69

T.P. 7.64 5.20 6.25 -2.44

7+35.27 East line shaffer

7+05.27 & Shaffer

15" Pine Tree 33' Lt

6+74 Power Pole # P2801 24' Rt.

6+70.27 West line shaffer

6.59 15" Pepper 29.5 Lt

3.81

& Hub Lowell & Shaffer F.B. 1777

& Mon Keats & Shaffer

1.3	1.3	1.1	1.4	2.1	1.3
25	25	4?	5?	5?	5!
35	32	10		12	25

1.3	1.4	1.3	1.8	1.2	1.4	2.1
4!	4?	5!	5!	5!	2.4	0?
35	25		8	16	35	50

1.3	1.3	1.9	1.0	1.1	1.6	1.9	1.1	1.4	1.6
25	42	42	48	49	54	42	45	24	22
35	21	20		10	15	18	22	26	35

3.81

X Sect. Lowell St.
 Scott to Shatter
 See sketch p. 42

0-55 & Scott St. & Sewer MH

0-61.4 W. Line Entrance to Navy Gas Sta

INDEXED

WK

MAR 18 1949

0-70 West Line Scott St.

0-74 & Drop Inlet 15" Pipe (15.641)

0-76.41 BC Cb Ret. to Navy Gas Sta. on Lt.

B17 5.72 $\frac{6.41}{\lambda}$

0.69

53

1.12

365 4.8 5.2 4.8 5.3 5.3 5.5
 35 32 16 Rim 13 20 35
 Ramp Ramp

2.2 3.2 3.2 3.6 4.4 5.0 4.8 4.8 5.0 5.3 4.8 4.2
 35 35 32 32 25 15 10 12 24.5 31 35
 Cb G Cb G Cb G Pay
 EC

2.7 4.8 4.8 5.0 4.9 4.8 5.0 5.3 4.8 4.1
 35 18 18 14 10 12 18 24 35
 Cb G Pay

6.75 5.7
 15.6 15.6
 FL Grate

2.7 4.4 5.0 4.9 4.2 5.0 5.2 4.3 3.1
 35 17 17 10 10 17 20 35
 Cb G Pay

& Hub Lowell
 & Shatter

$\frac{6.41}{\lambda}$

0194 Power Pole 450920H 19' Lt

0153

INDEXED

0150

0114 Dead Man to Pole 24' Rt.

0100 East line Scott St. End oil & Leak Paving

0-08 Anchor Pole 23.6 Rt. # 450921 H

0-09 East line Entrance to Maxx Gas Sts.

0-26.4 & Series MH.

6.41

INDEXED
1^E 4^O 5^E 5^O 6^O 6^E 6^O 5^E 6^O 5^E 5^O 5^E
50 35 23 16 8 10 16 29 35 40 50

1^E 4^O 5^E 5^O 6^O 6^E 6^O 5^E 6^O 6^E 6^O 6^E
50 35 23 16 8 10 16 20 29 35 50

2^E 4^E 4^E 5^E 5^O 5^E 5^O 5^E 5^O 5^E 6^O 6^E
50 35 29 14 12 8 11 21 35 50
Pax

2^E 3^O 3^O 3^O 4^E 5^O 5^E 5^O 5^E 5^O 5^E 5^O
50 50 35 35 32 13 7 11 24 35
Cb. 6 Cb 6 Ramp Pav

508
Rim

6.41

X Sect Lowell St Cont'd

INDEXED

2100 Power Pole # 7 244 Rt.

1186 3' Conc Walk 195 Rt. House on Rt.

1160 Garage 98 Rt Dirt Fl.

1150

1149 Power Pole # 2841 19' Rt.

1100

6.41
X

52	54	58	60	61	56	61	52	1.2
35	25	17		9	10	20	35	52
								50

524	504	0.1
19.5	35	50
		Fl.

6.3

1.1
52
98
Fl.

51	56	59	61	66	59	56	55	58	0.6
38	26	19		8	11	20	35	50	

14	45	49	56	59	61	63	59	59	65	62	52	52	52	1.1
50	35	33	19	17		7	12	18	27	32	35	39	50	

6.41
X

INDEXED

3+70.30 East Line Shatter

3+75.30 E Shatter

3+00.30 West Line Shatter

2+89 Power Pole # 469077H 19.5 ft.

2+50

2+08

6.41

2² 3⁰ 4² 4² 4⁸ 5⁰ 5⁵ 5⁵ 5² 5⁰ 4⁹
 35 25 16 12 4 7 19 25 29 35

3⁵ 4⁰ 5² 5² 6² 5² 6⁰ 6⁰
 35 25 11 14 20 27 35

3⁹ 5⁰ 5⁵ 6⁰ 6⁰ 6⁵ 6² 6¹ 5²
 35 20 8 7 10 15 16 35

0.5, 0.3, 0.0, 0.0
 4⁵ 5² 6² 6⁰ 6⁵ 5² 5² 6² 6⁵ 6⁵
 35 16 15 10 11 15 30 35 50

0.5, 0.1, 0.8
 5¹ 5⁴ 5⁸ 5⁹ 6¹ 5² 6⁰ 6² 5⁵ 5⁹ 7¹ 7²
 35 21 17 8 14 18 20 25 29 35 50

6.41
 1

X Sect Scott St.

Lowell to Leats

Sketch P. 42

0+92.5 € 7' Split Drive 12.4 Lt (Gar. Lt)

INDEXED

WK

MAR 18 1949

0+72 & 3' Conc Walk 12.4 Lt. & House Lt

0+51 Anchor Pole 18' Lt

0+50 Power Pole 19' Lt

0+21 Beg Frame Bldg 35' Rt

0+24 Power Pole # D34988T 18' Lt.

0+00 30 Line Lowell St

B+7 5.72 6.41

0.69

57

0.16	0.26	0.47
6.25	6.5	5.94
62	45	12.4
Fl.		

2.02	1.48	0.52
4.29	5.93	5.89
42	30	12.4
Fl.		

0.1	0.6	0.2	0.6	0.2	0.2	0.6	0.8	3.1
6.5	6.4	6.2	5.8	6.2	6.2	5.8	5.5	5.2
50	35	27	13	12	9		19	35
					Pay.		Pay	Pay

0.2	0.0	0.6	0.4	0.1	0.1	1.1	3.0	3.1
6.5	6.4	5.8	6.0	5.2	5.2	5.2	3.5	3.2
50	35	14	11		11	19	35	50
							Pay.	Pay

0.3	0.7	0.4	0.6	0.9	1.0	0.8	2.0	2.1
6.1	5.2	6.0	5.8	5.5	5.4	5.6	4.4	4.0
35	27	16	9	6.41	12	19	30	35
				Pay.		Pay.		

& Hub
Shatter @ Lowell

INDEXED

1155 R 2.5' Conc. Walk

(3 Linc House)
13.4 ft

1150

1137 6" Vit. Clay ^{pipe} Drain 21.5 ft

1114 R 2.5' Conc. Walk 12.4 ft. (Nine House)

1100

6.41
7

2.3
4.1 6.12 5.84
4.2 4.2 13.5
Fl.

0.2 0.1 0.0 0.5 0.5 0.5 2.9
6.2 6.0 6.3 6.4 5.9 5.9 5.9 3.5
3.5 14 13 11 7 18 25
Pay.

0.56
5.85
21.5
Fl.

2.5 0.62 0.55
3.2 5.22 5.85
4.3 4.2 12.4
Fl.

0.0 0.2 0.1 0.1 0.6 0.8 3.1
6.4 6.2 6.3 6.0 5.8 5.5 3.1
4.5 3.5 8 5 20 3.5
Pay.

6.41
7

INDEXED

B.M. 6.25 0.16 0.19

210015 No. Line Keats.

14895 End Frame Bldg 35' Rt.

1179

1472 Power Pole #1 P 1660 18.4 Rt.

6.41
/

Rim MH & Keats & Scott (P. 48 this Book)

0.0	0.1	0.1	0.1	0.1	0.2	0.3	0.4	1.3	2.0
6.4	6.3	6.5	6.5	6.3	6.3	6.1	5.5	5.1	4.4
35	28	14	9		13	21	27	33	35
			Par.						

0.3	0.1	0.3	0.1	0.1	0.3	0.3	0.4	2.6
6.7	6.3	6.1	6.5	6.5	6.1	6.1	6.0	3.5
43	35	23	13	10		12	20	35
				Par.				

6.41
/

X sect Shafter St.
 Lowell to Keats
 see p 42 for sketch

0+81 End SW. 35 RT

0.72
 4.5
 35
 40
 0.71

0+80 Tel. Pole # D 92337-7 14.2 Lt

0+55 @ House 42.5 Rt.

INDEXED

WK
 MAR 18 1949

0+50

1.0 2 5 0 2 0.2 0.1 0.1 0.9 0.75 0.71
 38 33 44 49 47.5 50 45 40 42 46
 50 35 13 10 6 4 18 29 35 40
 SW SW

2.1
 2.5
 42.5
 FL

0+24 @ House 42.5 Rt.

0+11 Anchor to Pole 23.8 Rt.

0+02 Power Pole # 1698 23.8 Rt.

beg 5' Conc. work on Rt. 35.1

0+00 So. Line Lowell St.

1.5 1.9 0.9 0.5 0.3 0.3 0.6 0.72 0.72
 34 35 40 44 46 52 43 45 45
 50 35 13 11 19 20 35.1 40.1
 SW SW

B17 4.18 4.87
 1

0.69

4.87
 @ Hub Lowell & Shafter

X sect. Shatter St. Cont'd.

1459 12" Pine 29.7 Rt.

1450

INDEXED

1445 8" Pine 29' Rt.

1433 & Conc. & Brick Walk H. Line House Rt. (23.3 Rt.)

1415 & House 43' Rt.

1400 1.2' wide Power Pole 24.3 Rt #1674
Beg Conc. Ret. Wall 23.4 Rt.

0490 & Double Garage (66' Rt. Dirt Fl.)

4.87

61

1.3	1.5	0.8	0.9	0.3	0.8	0.8	0.1	0.2	0.6	1.3	1.3
36	34	45	58	52	52	52	48	47	39	36	36
50	35	19	13	6	4	11	236	236	35	50	

0.20	1.21	1.19	1.5
467	366	368	34
232	263	50	66
			Fl.

0.9
2.1
2.7
4.3
Fl.

1.3	0.7	0.6	0.8	0.1	0.7	0.3	0.1	0.4	0.65	0.65	1.41
36	43	43	52	48	56	52	48	45	42	42	32
50	35	15	12	6	4	19	234	234	246	246	

Wall Wall Wall

1.07

38
66
Fl.

4.87
1

INDEXED

WK

MAR 18 1949

BM 731 -2.44 -2.44

2+00.32 No. Line Keats St.

1+90 6" Tree 31.6 Rt.

1+71 End 1.2' Conc. Ret. Wall 23.7 Rt.

4.87

⊕ Mon. Keats & Shafter (p. 52 this Book)

3.0	4.0	1.3	0.0	1.4	0.9	0.3	0.6	0.1	1.1	1.1
1.9	0.9	2.6	4.9	6.3	5.2	5.2	5.5	5.0	3.8	3.8
50	43	35	22	14	8		21	23	29	35

0.92

4.45

23.7

4.87
mm

3-23-49
 Hendricks Extension of X Sections on Scott
 So St. East to Shatter Bet. Kents
 Lowell & Kents

1403

1400 NW Cor House

T.P. 3.90 5.17 5.40 1.27

0170

0165

0150

(0100 So. Line Lowell)

817 525 6.67
 7

1.22

$$\begin{array}{r} 6 \\ 0.6 \\ \times 7 \\ \hline 235 \end{array}$$

$$\begin{array}{r} 11 \\ 1.1 \\ \times 2 \\ \hline 220 \end{array}$$

$$\begin{array}{r} 10 \\ 1.0 \\ \times 2 \\ \hline 200 \end{array}$$

$$\begin{array}{r} 12 \\ 1.2 \\ \times 15 \\ \hline 187 \end{array}$$

$$\begin{array}{r} 11 \\ 1.1 \\ \times 15 \\ \hline 150 \end{array}$$

$$\begin{array}{r} 11 \\ 1.1 \\ \times 10 \\ \hline 100 \end{array}$$

$$\begin{array}{r} 11 \\ 1.1 \\ \times 8 \\ \hline 88 \end{array}$$

$$\begin{array}{r} 0.4 \\ 4.8 \\ \times 8 \\ \hline 288 \end{array}$$

$$\begin{array}{r} 0.4 \\ 4.8 \\ \times 5 \\ \hline 250 \end{array}$$

$$\begin{array}{r} 1.1 \\ 1.1 \\ \times 205 \\ \hline 246 \end{array}$$

$$\begin{array}{r} 0.6 \\ 0.6 \\ \times 226 \\ \hline 226 \end{array}$$

$$\begin{array}{r} 0.4 \\ 0.4 \\ \times 200 \\ \hline 200 \end{array}$$

$$\begin{array}{r} 0.8 \\ 0.8 \\ \times 187 \\ \hline 187 \end{array}$$

$$\begin{array}{r} 0.8 \\ 0.8 \\ \times 150 \\ \hline 150 \end{array}$$

$$\begin{array}{r} 1.2 \\ 1.2 \\ \times 100 \\ \hline 100 \end{array}$$

$$\begin{array}{r} 1.6 \\ 1.6 \\ \times 88 \\ \hline 88 \end{array}$$

$$\begin{array}{r} 0.2 \\ 0.2 \\ \times 85 \\ \hline 85 \end{array}$$

$$\begin{array}{r} 0.0 \\ 0.0 \\ \times 45 \\ \hline 45 \end{array}$$

$$\begin{array}{r} 3 \\ 0.3 \\ \times 70 \\ \hline 210 \end{array}$$

$$\begin{array}{r} 3 \\ 0.3 \\ \times 51 \\ \hline 153 \end{array}$$

$$\begin{array}{r} 1.6 \\ 1.6 \\ \times 55 \\ \hline 243 \end{array}$$

$$\begin{array}{r} 2 \\ 0.2 \\ \times 74 \\ \hline 280 \end{array}$$

$$\begin{array}{r} 1 \\ 0.1 \\ \times 73 \\ \hline 270 \end{array}$$

$$\begin{array}{r} 1 \\ 0.1 \\ \times 249 \\ \hline 249 \end{array}$$

$$\begin{array}{r} 1 \\ 0.1 \\ \times 203 \\ \hline 203 \end{array}$$

$$\begin{array}{r} 6 \\ 0.6 \\ \times 281 \\ \hline 262 \end{array}$$

$$\begin{array}{r} 11 \\ 1.1 \\ \times 220 \\ \hline 250 \end{array}$$

$$\begin{array}{r} 10 \\ 1.0 \\ \times 245 \\ \hline 245 \end{array}$$

$$\begin{array}{r} 0.9 \\ 0.9 \\ \times 200 \\ \hline 200 \end{array}$$

$$\begin{array}{r} 1.0 \\ 1.0 \\ \times 150 \\ \hline 150 \end{array}$$

$$\begin{array}{r} 1.1 \\ 1.1 \\ \times 100 \\ \hline 100 \end{array}$$

$$\begin{array}{r} 1.2 \\ 1.2 \\ \times 88 \\ \hline 88 \end{array}$$

$$\begin{array}{r} 0.1 \\ 0.1 \\ \times 85 \\ \hline 85 \end{array}$$

$$\begin{array}{r} 0.1 \\ 0.1 \\ \times 50 \\ \hline 50 \end{array}$$

6.67
 Rim Sewer M.H. E Scott & Lowell

6.18 -1.0 -1.0

11.50

5.17

OK 5.10 P. 50

0.9	0.6	0.4	0.2	0.9	0.9	0.6	0.9	0.9	0.3
43	44	55	55	61	61	60	55	61	55
383	233	220	200	190	150	127	117	98	55

5.17

X-Sect 10th Ave.
(Hayes to Johnson)

11-9-49

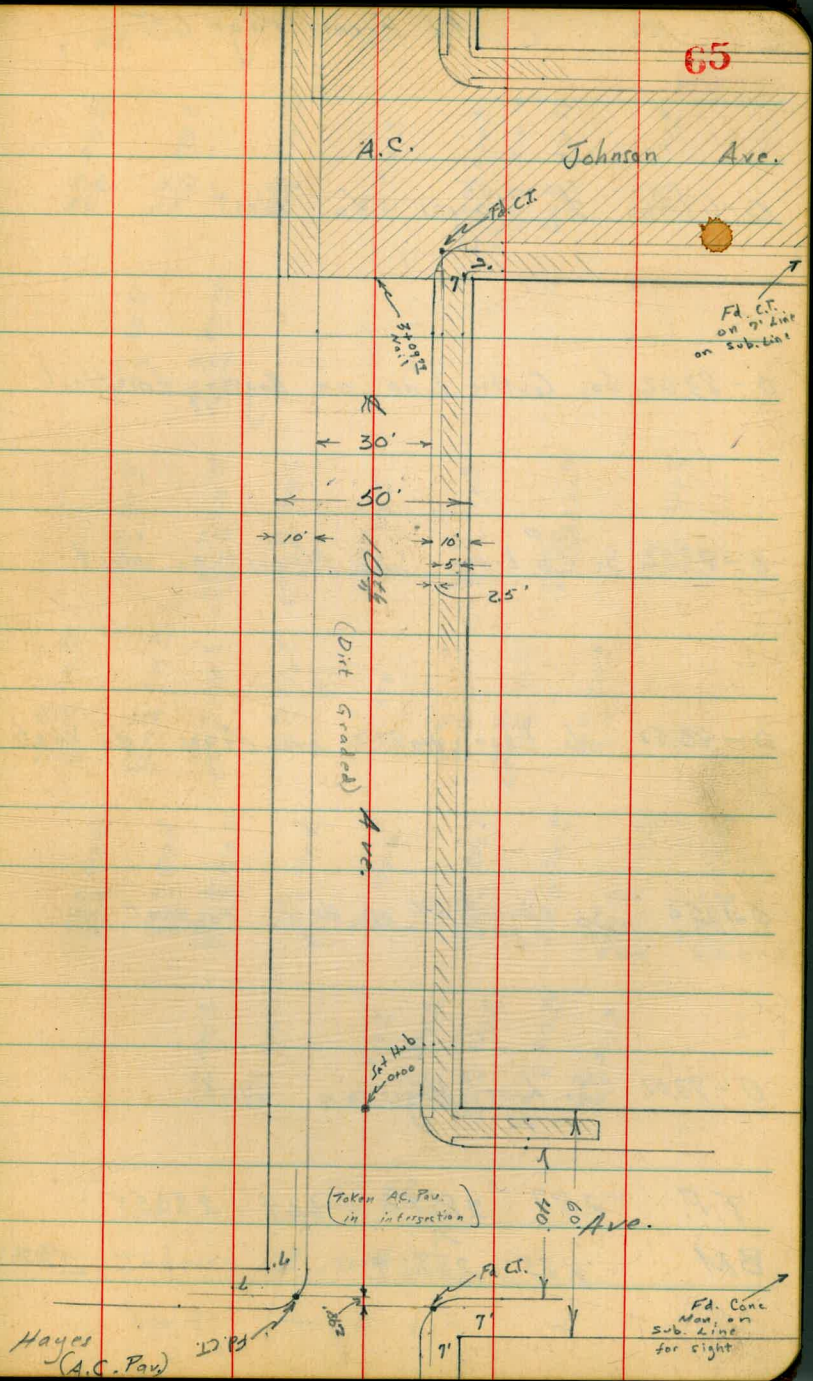
Roberts
Garber
Moore
Clark
W.D. # 31607

T.P. 271 # 261

F.B. 1124 # 1100

INDEXED
W.K.
MAR 17 1950

65



Cont'd From Page 65

0-68.02 £ Hayes to West

0-83.02 So. Gutter Line on Hayes to West

0-83.02 ^{TOP} So. Cb. Line on Hayes to West

0-85.52 No. Edge Walk on Hayes to West

0-90.52 So. Edge Walk on Hayes to West

0-93.02 So. Line Hayes on West

T.P. 2.87 283.42 6.64 280.55

BM + 4.75 287.19. 282.44

+ H.I - Elev

St.	£	Rt
277.26 6.06 50	278.0 5.42 25	278.0 5.5 25
276.27 6.45 50	277.26 5.64 28.7 End Cb	277.2 5.7 25
277.41 6.01 50	278.34 5.08 24.9 End Cb	278.2 5.3 15
277.54 5.88 50 Walk	278.44 4.98 25 End Walk	278.2 5.1 15
272.41 5.78 50 Walk	278.2 5.1 25 Dirt	278.2 4.9 15
	280.2 3.2 25	280.0 3.1 15
	279.4 5.4 4	278.0 5.3 15 Dirt
	277.6 5.77 15 End	277.43 6.0 25

283.42

NWBP Johnson # 10th Ave.

66

Cont'd From Page 66

0-41

0-43.02 No. Line Hayes on West

0-50 So. Cb. Line on Hayes on East

N.W. Curb Ret. Hayes \neq 10th

0-53.02 No. Cb. Line Hayes on West

S.E. Curb Ret. Hayes \neq 10th

0-60 So. Line Hayes to East

283.42

67

	278 1	278 2	278 3	278 4	278 5	278 6	278 7	278 8	278 9	278 10
	2.3	2.5	4.3	4.4	4.90	4.72	5.21			
	50	29	25	15	15	15	25			
				cb	Gutt					
	278 12	278 13	278 14	278 15	278 16	278 17	278 18	278 19	278 20	278 21
	5.3	4.5	4.4	4.4	4.94	4.94	5.23			
	50	29	25	15	15	15	25			
				cb	Gutt					
	278 22	278 23	278 24	278 25	278 26	278 27	278 28	278 29	278 30	278 31
	4.4	4.4	5.0	5.01	5.16	5.58	4.95	6.2	5.45	
	25	17.9	17.9	15	15	25	25	49	49	
		cb	Gutt			Gutt	cb	Gutt	cb	Ent cb.
	278 32	278 33	278 34	278 35	278 36	278 37	278 38	278 39	278 40	278 41
	4.5	5.21	4.51	5.11	4.51	4.94	4.4	4.94		
	cb	Gutt	cb	Gutt	cb	Gutt	cb	Gutt		
	B.C. Hayes		1/3		2/3		E.C. 10 th			
	278 42	278 43	278 44	278 45	278 46	278 47	278 48	278 49	278 50	278 51
	5.77	6.13	4.56	5.11	5.01	4.94	5.30	5.42	4.96	5.0
	50	50	25	25	15	15	15	17.6	17.6	25
	cb	Gutt	cb	Gutt				Gutt	cb	
	278 52	278 53	278 54	278 55	278 56	278 57	278 58	278 59	278 60	278 61
	5.31	4.74	5.38	4.96	5.46	4.96	5.58	4.95		
	Gutt	cb	Gutt	cb	Gutt	cb	Gutt	cb		
	B.C. on 10 th		1/3		2/3		E.C. on Hayes			
	278 62	278 63	278 64	278 65	278 66	278 67	278 68	278 69	278 70	278 71
	6.00	5.25	5.11		5.31	4.94	5.1	5.4		
	50	25	15	5.11	15	15	25	5.0		
					Gutt	cb				

283.42

Cont'd From Page 67

0+50

0+41 Rt Begin 19' Drive Opening

0+14 Lt. 85' Driveway opening in Curb

0+00 No. Line Hayes on East

N.E. Curb Ret Hayes & 10th

0-10 No. Cb. Line Hayes on East

0-30 £ Hayes on East

283.42
↑

68

N. 281 1/2	Lt	59	£		Rt
35	2,7	2,83	3,6	280 1/2	279 1/2
	25	cb	15	279 1/2	279 1/2
		Gutt	Gutt		3,47
					15
					cb

280 1/2	280 1/2	280 1/2	279 1/2	279 1/2
2,96	3,15	3,44	3,74	3,69
24	23,5	18	15	15

281 1/2	281 1/2	280 1/2	279 1/2	279 1/2	278 1/2	278 1/2
1,9	1,7	3,2	3,70	4,29	5,05	4,50
40	28	25	15	15	15	15
			cb	Gutt	Gutt	cb

278 1/2	278 1/2	278 1/2	278 1/2	278 1/2	278 1/2	278 1/2
5,29	4,51	5,17	4,50	5,06	4,50	5,05
5,44	cb	Gutt	1/3	Gutt	cb	Gutt
BC on	Hayes					EC on 10th

281 1/2	281 1/2	280 1/2	278 1/2	279 1/2	278 1/2	278 1/2
2,1	1,8	3,3	3,4	4,46	4,90	5,29
40	28	25	15	15	15	25
			cb	Gutt	Gutt	Gutt

281 1/2	281 1/2	279 1/2	278 1/2	278 1/2	278 1/2	278 1/2
2,2	1,9	4,0	4,21	4,69	4,75	4,78
40	28	25	15	15	15	25
			cb	Gutt		

281 1/2	281 1/2	279 1/2	278 1/2	278 1/2	278 1/2	278 1/2
2,2	1,9	4,0	4,21	4,69	4,75	4,78
40	28	25	15	15	15	25
			cb	Gutt		

283.42
↑

Cont'd From Page 68

1422 Lt. & 9' Drive Opening

1+02.5 Rt & 10' Drive opening in curb

1+00

0+89 Lt. & 2.5' Conc. Walk

T.P. 6.36 287.16 2.62 280.80

0+68 Lt. 9' Drive Opening

0+60 Rt End 19' Opening

283.42

Lt $\frac{R}{L}$ Rt

69

$\begin{array}{r} 281.16 \\ 5.50 \\ 25 \end{array}$ $\begin{array}{r} 281.16 \\ 5.58 \\ 20.5 \end{array}$ $\begin{array}{r} 281.16 \\ 6.16 \\ 15 \end{array}$

$\begin{array}{r} 281.2 \\ 5.5 \\ 35 \end{array}$ $\begin{array}{r} 281.2 \\ 5.5 \\ 25 \end{array}$ $\begin{array}{r} 281.22 \\ 5.94 \\ 15 \\ 66 \end{array}$ $\begin{array}{r} 280.2 \\ 6.5 \\ 15 \\ 66 \end{array}$ $\begin{array}{r} 281.1 \\ 6 \end{array}$

$\begin{array}{r} 280.84 \\ 6.3 \\ 15 \end{array}$

$\begin{array}{r} 280.97 \\ 6.19 \\ 15 \\ 66 \end{array}$ $\begin{array}{r} 281.32 \\ 5.84 \\ 15 \\ 66 \end{array}$

$\begin{array}{r} 281.20 \\ 5.56 \\ 25 \end{array}$ $\begin{array}{r} 281.49 \\ 5.67 \\ 22.5 \end{array}$ $\begin{array}{r} 281.07 \\ 6.09 \\ 15 \end{array}$

287.16

$\begin{array}{r} 281.02 \\ 2.40 \\ 25 \end{array}$ $\begin{array}{r} 280.97 \\ 2.45 \\ 19.5 \end{array}$ $\begin{array}{r} 280.32 \\ 3.10 \\ 15 \end{array}$

$\begin{array}{r} 280.15 \\ 3.16 \\ 15 \end{array}$

283.42

Cont'd From Page 69

2+35.5 Begin Walk on Rt.

2+32 Lt. & 2' Conc. Walk

2+14 Lt. & 2.5 Conc. Walk

1+96 Walk Ends on Rt.

1+67 Lt. & 11' Opening in Curb

1+54 Rt. & 10' Opening

1+50

86 281	282	82 282	281.2	282.2	282.2	87 282	87 282
5.3 35	48 25	5.0 15 Cb	5.5 15 Gutt	48 282.2	5.0 15 Gutt	4.29 15 Cb	4.18 17.5 Walk

282.25
4.91
25.3
Walk

282.28
4.88
25.3
Walk

282.21	282	76 281	281.6	282.0	282.06	282.08	282.65	282.67
5.1 35	49 25	5.20 15 Cb	5.6 15 Gutt	5.2	5.1 15 Gutt	4.58 15 Cb	4.51 17.5 Walk	4.49 23.5 Walk

281.80
5.18
25

281.86
5.30
20

281.42
5.74
15

281.71
5.45
15

281.74	281.86	281.67	281.1	281.2	281.9	282.01
5.2 35	5.3 25	5.47 15 Cb	61 15 Gutt	5.5	5.6 15 Gutt	5.15 15 Cb

287.16

287.16

Cont'd From Page 70

Check

4.76 282.40 = 287.16

4+59.79 No. Curb L. Johnson on East

3+39.79 E Johnson on East

3+19.79 So. Curb Line Johnson on E.

3+09.79 So. Line Johnson on East

3+09.2 Pav. Edge

3+06 Begin Walk on Lt.

2+67 Lt. & 8' Drive Opening in cb.

287.16

Lt

E

Rt

Starting B.M.

11

Lt	E	Rt
282.2	281.98	282.69
4.90	5.18	4.47
25	15	50
23	6.46	50
17.8	5.65	9.47
15	15	50
cb.	6.46	50
282.03	281.51	282.19
4.79	5.36	3.89
15	15	50
cb.	6.46	50
282.03	281.80	282.59
4.79	5.36	3.89
15	15	50
cb.	6.46	50
282.03	281.51	282.19
4.79	5.36	3.89
15	15	50
cb.	6.46	50
282.03	281.80	282.59
4.79	5.36	3.89
15	15	50
cb.	6.46	50
282.03	281.51	282.19
4.79	5.36	3.89
15	15	50
cb.	6.46	50
282.03	281.80	282.59
4.79	5.36	3.89
15	15	50
cb.	6.46	50
282.03	281.51	282.19
4.79	5.36	3.89
15	15	50
cb.	6.46	50
282.03	281.80	282.59
4.79	5.36	3.89
15	15	50
cb.	6.46	50
282.03	281.51	282.19
4.79	5.36	3.89
15	15	50
cb.	6.46	50
282.03	281.80	282.59
4.79	5.36	3.89
15	15	50
cb.	6.46	50

287.16

8-16-50 Stake N.E. Cor
 Hendricks Wm E. Derbonne Prop. in
 Cota Mission Valley P.L. 1112

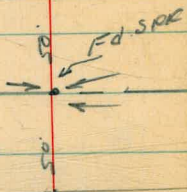
Greer
 Crawford
 H.O. 2006

Ref Books P. 23
 FB (670, 1530, 607) P.L. 1107

Dwg. 1064 D &
 State Hwy. Ref W Map R5955 FAS 732 (2)
 (Mission Valley Road)
 (901.50 Rec)

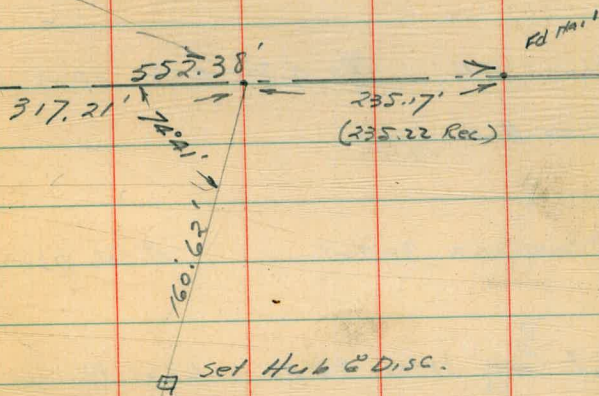
Ed Comp Mon
 SVI. Cor P.L. 1107

584.10



INDEXED
 YFK

AUG 18 1950



ADD LEVELS - KEATS - ROSECRANS to Shafter
See sketch Pg. 42 & Notes Pg. 43

4400 54 LT. W. END 2-car gar.

3487 17.3 LT & 2.5' conc. walk; 50' RT House.

3470 50' RT Bay Driveway (multiple-unit)

3443.5 Sewer M.H. chk. 5.55 0.08 = 0.09 Pg. 48

3434.99 Sewer M.H.

2480 E 3 Conc. Walk 34.7 RT, RT 50.6 driveway

2459 E 7' Conc. Drive 35' RT - 63 RT Floor gr.

T.P. 4.92 5.63[✓] 10.73 0.71[✓]

0+55 4' Conc. Walk 287 RT (check) 5.96 548[✓] = 546

(0+00) = E. Line ROSECRANS

B.M. 4.78 11.44[✓] 6.66 SW

L + Misc. Keats
& ROSECRANS
FB# 1706-43

LT

E

RT

73

INDEXED

DEC 3 1952

	5.70	
	54	
	Floor	
2.21	0.21	5.74
3.42	5.71	5.74
50	35	17.3
Floor	Walk	LIP

0.33	0.16
5.3	4.87
50	50
DIRT	Floor

0.15

5.45
Rim M.H.

0.53
4.80
34.7
LIP Walk

2.68
2.95
50.6
Floor

0.81
4.82
35
LIP

0.81
4.75
63
Flo. GAR

3.63[✓]

11.44
570
74

5.63
570
10.17

11.44[✓]

Keats (CONT.)

6+00 117' LT E House (48 wide)

(See next pg. For Scott etc)
ON this H-1.

4+36 112' LT E 2-car gar. CONC. Floor.

4+26 54' LT E House

4+22.5 50' RT END Multiple UNIT.

4+18 54' LT E. END 2-car gar.

LT

E

RT

74

108
4.59
117
Floor

5.70
112
Floor
CONC.

021
4.92
54
Floor

5.75
54

021
4.86
50
Floor

5.63

ADD. Levels Scott - Lowell to Jarvis

Sketch Pg 42 + Notes pg 57

3+69 Req New A.C. Part & C's

3+60 34' LT S. end multiple-unit.

3+38 33.7 LT N. END Multiple-unit

3+23 30' LT & 2.5 CONC WALK

3+09 34' LT S. LINE OF Bldg
(N. Side shown on Keats at STA. 3+70)

1+55 13.4 LT & 2.5 CONC WALK, 43' LT S. LINE House
(18' wide)

1+14 12.4 LT & 2.5 CONC WALK, 43' LT N. LINE House
(18' wide)

0+92.5 19.4 & 7' Ribbon Drive 62 LT gar.

0+72 19.4 LT & 2.5 CONC WALK, 41.3 LT House

0+00 = (S.L. Lowell)

75

116	LT	2	RT	
447	5.06	4.67	4.87	4.26
506	447	A.C.	17	17
17	17		G	TRC
CA	G			

1.09
4.54
34
Floor

110
4.53
33.7
Floor

0.88
5.15
40
WALK

5.16
30
LIP

0.24
4.87
34

2.28	0.87	0.60
3.34	5.20	5.03
43	50	33.4
Floor	WALK	LIP

2.27	0.58	0.52
3.16	5.05	5.07
43	35	12.4
Floor	WALK	

0.11	0.29	0.48
5.46	5.35	5.15
62	45	21P
Floor	ON CONC. Drive	E-Ribbon

2.01	0.51	
3.62	5.09	
41.3	19.4	
Floor	LIP	

5.63
(See Prod. Pg.)

INDEXED
DEC 3 1952

SCOTT (CONT.)

75

LT

R

RT

(Cont. Next Page)

T.P. 5.63 4.73[✓] 6.53 -0.90[✓]

T.P. 6.98 5.63[✓] 6.98 -1.35[✓]

4421 44.5 RT END 4-Car gar

3483 44.5 RT Beg 4-Car gar

114
4.44
22
Lip
BK MARK

0.93
4.70
44.5
Floor

121
4.36
22
Lip
BK MARK

0.95
4.68
44.5 Floor

5.63
✓

ADD Levels SHAFTEK
Lowell to Keats

See sketch Pg 42
& notes " 60

77

INDEXED
LOWELL
DEC 3 1952

check 7.17 - 2.44 = $\frac{1}{2}$ conc. Mon. KEATS & SHAFTEK

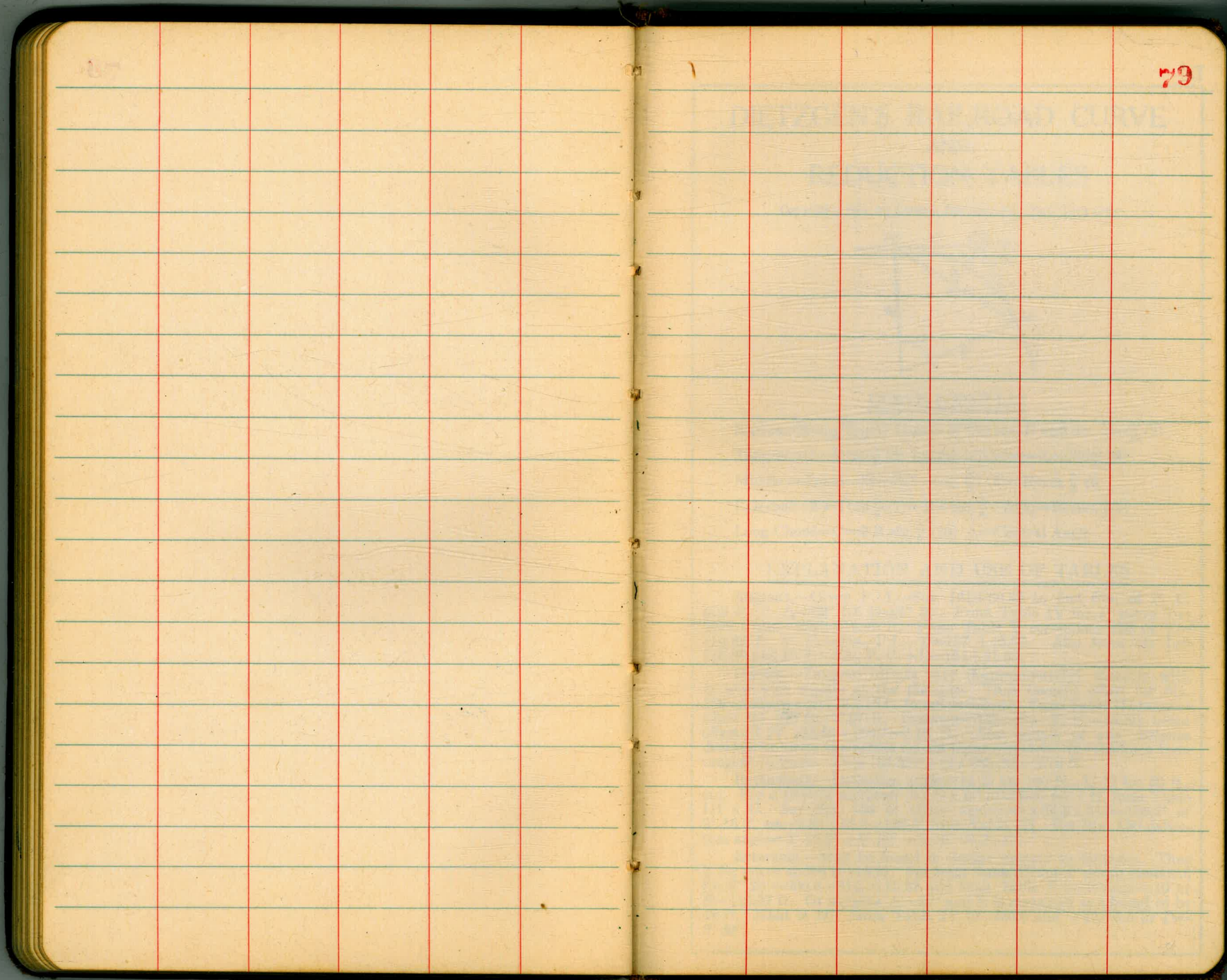
1+45 $\frac{1}{2}$ house 66' RT.

1+15 43' RT $\frac{1}{2}$ House

↳ 80
3.25'
66
Floor
203
2.70
43
Floor

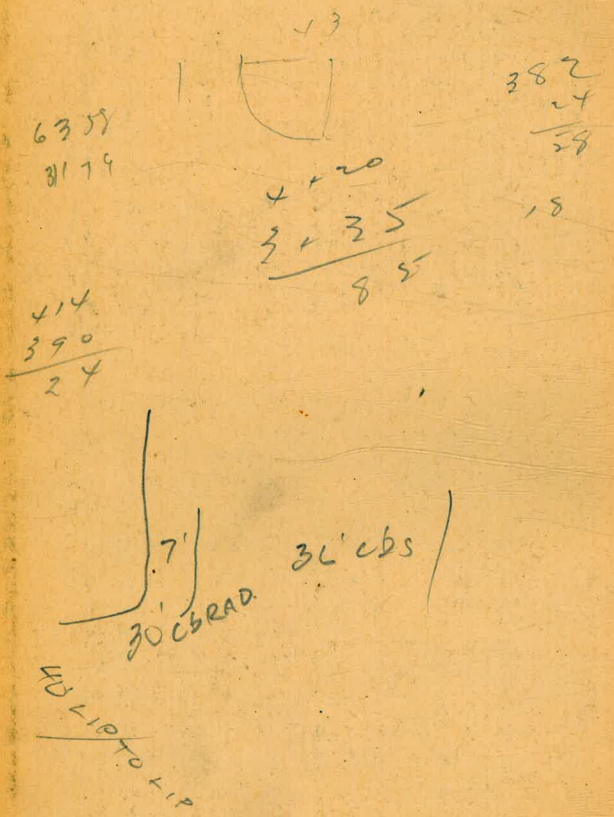
0+00 = S.L. Lowell

4.73 ✓
X



79

PROPERTY AT STA 134,
 JOHN ELLIS
 % C.B. PROVENCE
 435 BANK OF AMERICA.



DISTANCES FROM CENTER OF ROADWAY FOR
 CROSS-SECTIONING.

Roadway 16 feet wide. Side Slopes 1 on 1 1/2
 For Single Track Embankment.

H	0	.1	.2	.3	.4	.5	.6	.7	.8	.9	H
0	8.0	8.2	8.3	8.5	8.6	8.8	8.9	9.1	9.2	9.4	0
1	9.5	9.7	9.8	10.0	10.1	10.3	10.4	10.6	10.7	10.9	1
2	11.0	11.2	11.3	11.5	11.6	11.8	11.9	12.1	12.2	12.4	2
3	12.5	12.7	12.8	13.0	13.1	13.3	13.4	13.6	13.7	13.9	3
4	14.0	14.2	14.3	14.5	14.6	14.8	14.9	15.1	15.2	15.4	4
5	15.5	15.7	15.8	16.0	16.1	16.3	16.4	16.6	16.7	16.9	5
6	17.0	17.2	17.3	17.5	17.6	17.8	17.9	18.1	18.2	18.4	6
7	18.5	18.7	18.8	19.0	19.1	19.3	19.4	19.6	19.7	19.9	7
8	20.0	20.2	20.3	20.5	20.6	20.8	20.9	21.1	21.2	21.4	8
9	21.5	21.7	21.8	22.0	22.1	22.3	22.4	22.6	22.7	22.9	9
10	23.0	23.2	23.3	23.5	23.6	23.8	23.9	24.1	24.2	24.4	10
11	24.5	24.7	24.8	25.0	25.1	25.3	25.4	25.6	25.7	25.9	11
12	26.0	26.2	26.3	26.5	26.6	26.8	26.9	27.1	27.2	27.4	12
13	27.5	27.7	27.8	28.0	28.1	28.3	28.4	28.6	28.7	28.9	13
14	29.0	29.2	29.3	29.5	29.6	29.8	29.9	30.1	30.2	30.4	14
15	30.5	30.7	30.8	31.0	31.1	31.3	31.4	31.6	31.7	31.9	15
16	32.0	32.2	32.3	32.5	32.6	32.8	32.9	33.1	33.2	33.4	16
17	33.5	33.7	33.8	34.0	34.1	34.3	34.4	34.6	34.7	34.9	17
18	35.0	35.2	35.3	35.5	35.6	35.8	35.9	36.1	36.2	36.4	18
19	36.5	36.7	36.8	37.0	37.1	37.3	37.4	37.6	37.7	37.9	19
20	38.0	38.2	38.3	38.5	38.6	38.8	38.9	39.1	39.2	39.4	20
21	39.5	39.7	39.8	40.0	40.1	40.3	40.4	40.6	40.7	40.9	21
22	41.0	41.2	41.3	41.5	41.6	41.8	41.9	42.1	42.2	42.4	22
23	42.5	42.7	42.8	43.0	43.1	43.3	43.4	43.6	43.7	43.9	23
24	44.0	44.2	44.3	44.5	44.6	44.8	44.9	45.1	45.2	45.4	24
25	45.5	45.7	45.8	46.0	46.1	46.3	46.4	46.6	46.7	46.9	25
26	47.0	47.2	47.3	47.5	47.6	47.8	47.9	48.1	48.2	48.4	26
27	48.5	48.7	48.8	49.0	49.1	49.3	49.4	49.6	49.7	49.9	27
28	50.0	50.2	50.3	50.5	50.6	50.8	50.9	51.1	51.2	51.4	28
29	51.5	51.7	51.8	52.0	52.1	52.3	52.4	52.6	52.7	52.9	29
30	53.0	53.2	53.3	53.5	53.6	53.8	53.9	54.1	54.2	54.4	30
31	54.5	54.7	54.8	55.0	55.1	55.3	55.4	55.6	55.7	55.9	31
32	56.0	56.2	56.3	56.5	56.6	56.8	56.9	57.1	57.2	57.4	32
33	57.5	57.7	57.8	58.0	58.1	58.3	58.4	58.6	58.7	58.9	33
34	59.0	59.2	59.3	59.5	59.6	59.8	59.9	60.1	60.2	60.4	34
35	60.5	60.7	60.8	61.0	61.1	61.3	61.4	61.6	61.7	61.9	35
36	62.0	62.2	62.3	62.5	62.6	62.8	62.9	63.1	63.2	63.4	36
37	63.5	63.7	63.8	64.0	64.1	64.3	64.4	64.6	64.7	64.9	37
38	65.0	65.2	65.3	65.5	65.6	65.8	65.9	66.1	66.2	66.4	38
39	66.5	66.7	66.8	67.0	67.1	67.3	67.4	67.6	67.7	67.9	39
40	68.0	68.2	68.3	68.5	68.6	68.8	68.9	69.1	69.2	69.4	40

Example—If point is 22.6 ft. above grade, how far should it be from center line to be a slope stake point? Ans. from Table 41.9. For same slopes but other widths of roadbed correct above figures by one-half difference in width of roadbed; thus in example above for 20 ft. roadbed distance will be $41.9 + (20 - 16) \div 2$ or 2 ft. added to 41.9 = 43.9. For slopes of 1 on 1 see inside of front cover.