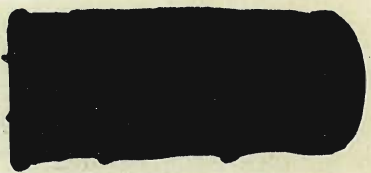


1739





1739

CITY ENGINEER'S OFFICE

MICROFILMED
DEC 29 1964

MADE IN U. S. A.

Our Leather Bound Engineers Note Books
are carried in the following rulings:

- No. 380 LEVEL BOOK. Left and Right Hand Page the same as Left Hand Page of this Book.
- No. 382 FIELD BOOK. Left Hand Page as in this Book, Right Hand Page 4x4 to the inch, Center Line Red.
- No. 384 MINING TRANSIT BOOK. Left Hand Page as in this Book, Right Hand Page 8x8 to the inch, Center Line Red.
- No. 385 FIELD BOOK. Left Hand Page as in this Book, Right Hand Page 8 vertical and 4 horizontal lines to the inch, Center Line Red.

We also carry the Note Books listed above, bound in extra strong Fabri-Hide (otherwise the same quality of book,) which can be furnished at a somewhat lower price.

In ordering Fabri-Hide covered books, add the letter "F" to catalog number.

THE FREDERICK POST CO.
ENGINEERING and DRAFTING SUPPLIES
P. O. Box 803 CHICAGO

Proposed Taxi Way Between
Ryan Field & Paik Airport

BM	3.67	6.67	3.00	
TP	4.29	5.38	5.58	1.09
TP	5.63	3.92	7.09	-1.71
TP	5.25	5.08	4.09	-0.17
TP	5.08	5.98	4.18	0.90
0+0			4.98	1.00
1+0			4.9	1.08
2+0			5.3	0.68
3+0			5.4	0.58
4+0			6.6	-0.62
5+0			7.5	-1.52
TP	3.33	3.12	6.19	-0.21
6+0			5.0	-1.88
7+0			4.6	-1.48
7+0	In Channel		7.8	-4.68
7+0	50 River		10.0	-6.88
8+35			5.5	-2.38
7+0			2.3	0.82
TP	5.00	6.86	1.76	1.36
9+0			5.8	0.56
10+0			5.5	0.86
11+0			5.2	1.10
12+0			4.5	1.86
13+0			5.6	0.76
14+0			4.6	1.76

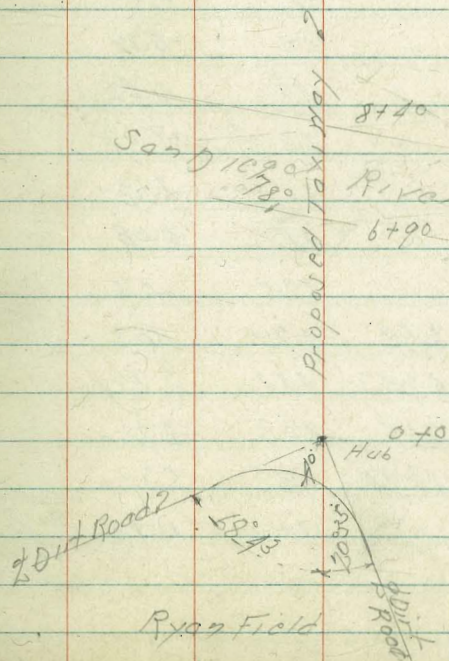
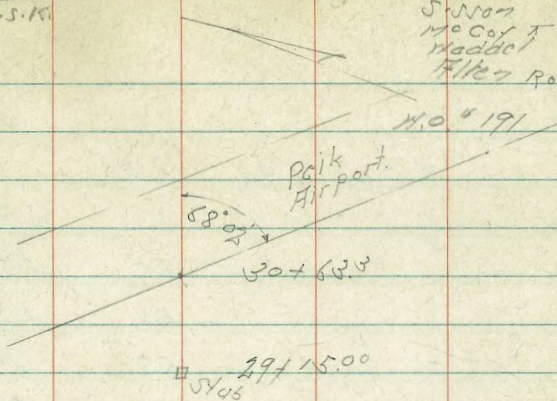
50% Calc
100% Calc
Paik Airport
Kausawa

Notes Taken by Cassin 10-21-46

Indexed
C.S.M.

Oct. 14. 46
Sullivan
McCoy
Haddell
Allen Rod

1



6.56

15+0 48 1.56

TP 4.60 6.43 4.53 1.83

16+0 46 1.83

17+0 45 1.93

18+0 51 1.33

19+0 50 1.43

20+0 56 0.83

21+0 58 0.63

22+0 62 0.23

TP 3.97 4.28 6.12 0.31

23+0 57 0.58

24+0 36 0.68

25+0 50 -0.72

26+0 48 0.52

27+0 43 -0.02

28+0 31 1.18

29+0 36 0.68

4 15 32.5 1.03

TP 5.60 6.63 32.5 1.03

TP 5.74 6.23 4.14 2.19

TP 5.44 7.65 4.02 2.21

TP 8.41 15.14 0.92 6.73

BM 320 11.84

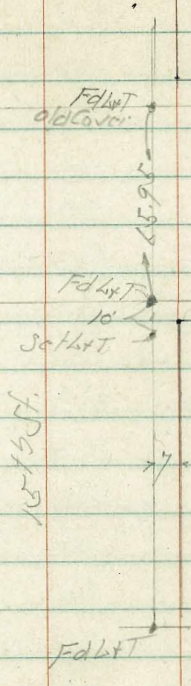
02.56
07.43
29+15

Lead 4 in Col 1
Specific Mass
Density 8.1 g/cm³
11.69

Tie Points 9 St + 15th St

indexed
C.S.R.

9 St.



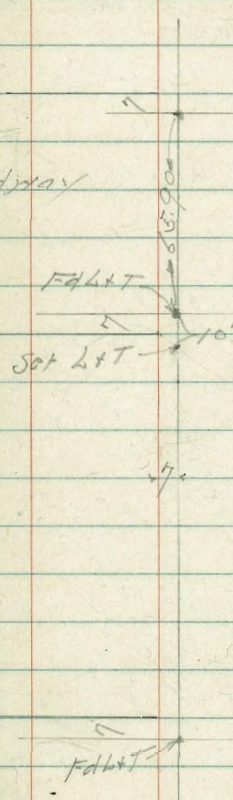
Market St.

Tie Points Broadway
+ 25th St

Oct 28. 46
Sisson
McCoy
Widdell
H. H. H.

3

Broadway



E St.

LT=11

2

RT=E

5

+ HI - Elev

+10

337.81
6.5
10

337.01
7.2
5

336.71
7.6

336.91
7.4

337.26
7.05

337.91
6.40

5-11/16 Conc Slab
10 on Conc Slab

+02'

336.85
7.46
10 = SW 1/16 Conc Slab

0+0 = H.L. Landis St. 10' off SE 1/2 Hedge

336.31
8.0
10

336.01
8.3

336.11
8.5
10

0-01.7 = Nly Conc Crosswalk

336.01
8.20
10

335.81
8.50

335.64
8.67
10

0-14 = N Carb Line Landis St.

335.85
8.46
10 = Carb

335.11
7.7
10 = Gutter

334.91
9.4

334.71
9.6
10 = Gutter

335.41
8.90
10 = C68C

TP 8.78 344.31 6.94 335.53

344.31

BM 7.22 342.47 335.25

HI

09/10/01
0-01.7
filled

HWP
Landis
+ 335.53

Lt.

L

Rt.

7

+43 104 Rt of 2 = 5/4 Wire Fence

+26

+19

+06

TP 469 34516 3.84 340 47

2+0 108 Rt of 2 = 1/4 Board Fence

+75 98 Lt of 2 = 1/4 Post and Rail

+70

+53

10.7 Rt of 2 = Board Fence
8.5 Rt of 2 = 1/4 "Sema" Tree

1+30

344.51

340.54

462
106.51 Do.
9.00
Conc Floor

340.30

486
112.50
Conc Floor

340.37

479
107.50
Conc Floor

340.26

49
29.50
Conc Floor

340.35

481
113.50
Conc Floor

345.16

340.21

46
10

340.61

37
10

340.31

40
10

340.01

45
20

340.21

46
10

340.71

36
10

340.71

36
10

340.01

43
10

?

339.71

46
20

339.71

46
10

340.11

43
15

340.21

41

340.22

409
8.50
Conc Floor

8.50
Conc Floor

340.26

4.05
10 on Conc Floor

344.51

TP 5.51 348.35 2.32 342.84

+14

570

+96 96 1/2 - wly Paper Polk

+77

+50

+14

+08'

345.16

Lt.

2d

Rt.

342.49

2.67
118 = 5 1/2 Conc
Apron

343.26 342.56 342.56 342.55 342.66

19
10

26
5

26

2.61
118 = 5 1/2 Conc
Apron

2.50

118 = 5 1/2 Conc
Garage Floor

342.50

2.66
118 = 5 1/2 Conc
Apron

342.36

342.06

341.46

341.26

341.16

340.86

2.8
20

3.1
10

3.7
10

3.9

4.0
10

4.3
20

340.41

340.58

4.75
9 = 2 Conc
Apron

4.58
118 = 5 1/2 Conc
Garage Floor

341.86

3.30
117 = 5 1/2 Conc
Garage Floor

345.16

6400.05 - S.L. Hightman

+94

+83

+60 10 R of $\frac{1}{2}$ - 1 1/4 Picket Fence

+56

+50 10.2 R of $\frac{1}{2}$ - 5/4 Picket Fence

5+24

348.35

L.T. - 1/4

2

P.T. 5

10

342.75

5/6
10

342.35

60

342.25

6/10

344.25

4/10

342.95

5/4

342.85

5/5

342.85

5/5

343.55

4/8
10

343.85

4/5

13 - Fly Floor Hour

343.85

4/5

343.55

4/8

343.65

4/7
10

343.65

4/7

10 - Fly Floor Hour

344.20

4/5

13 - Fly Floor Hour

343.75

4/6
10

343.35

5/0

343.05

5/3
10

342.53

5.88

18.1

2 - Garage
Con Floor

348.35

Lt=W

S

Rt=E

11

BM

9.58

338.77

7.48
338.82
338.82

6 + 14.05 = South Carb line

6 + 0.75 = Sly Cone Cross Walk

348.35

347.50

341.85

341.65

341.15

341.85

5.85

6.5

6.9

7.2

6.47

12.9 = ch

12.0 = gutter
5' to 5.5'

12.9 = gutter
5' to 5.5'

12.0 = ch

342.42

342.11

341.10

5.93

6.24

6.75

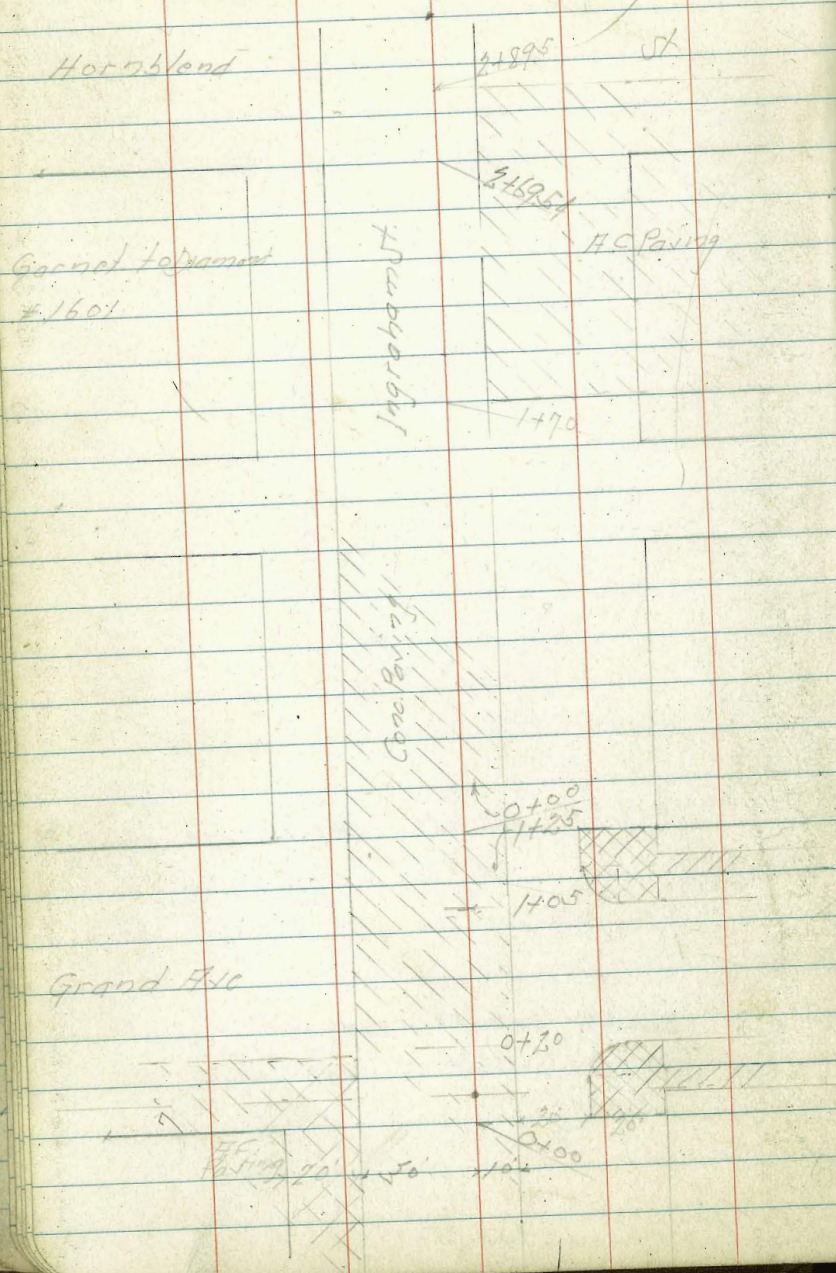
16' = 0.75
Walk

17.0 = 0.75
Cone
Walk

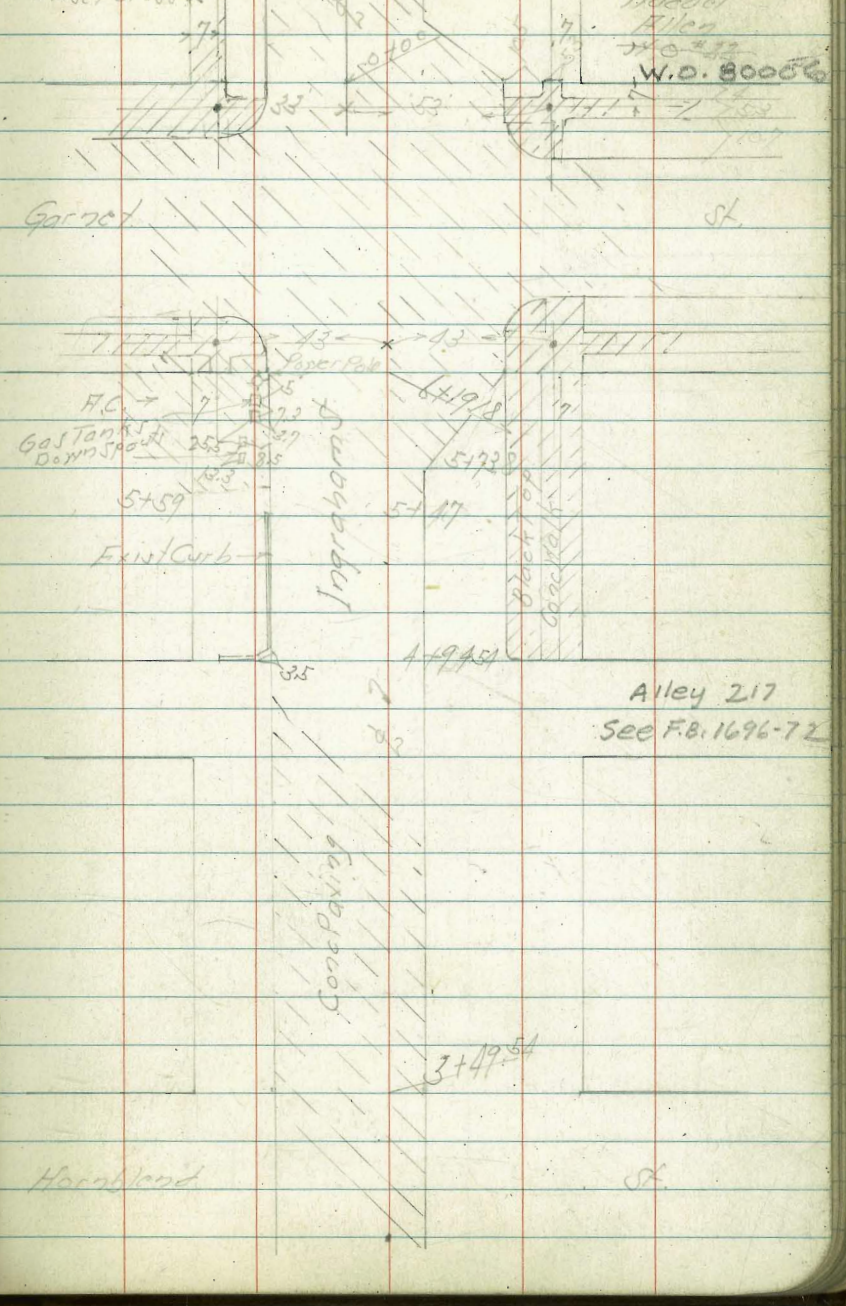
348.35

Cross Section Ingraham St.
Grand Ave. to Diamond St

INDEXED
CISTN.



Lead+Tack Found
x Chisel/Cross x



Dec. 24-46

SINCE
MAY
MADDELL
ALLEN

12

W.D. 80006

Alley 217

See F.B. 1696-72

Cross Section Ingraham St.
 Grand Ave. to Diamond St.
 Sketch Page 14

Dec. 26-46
 McCoy
 Hodder
 Allen Lt. W

2

Rt. E

14

0+0 J
 1+25 J = N.L. Grand Ave 321 Lt of L. W. Power Pak
 322 R 1/2 = Fly Tel Pak

56.8 57.1 55.94 56.35 56.54 56.54 56.20 55.2 55.6 55.83 56.27
 50 58 699 658 639 639 664 77 73 710 666
 50 35 30-11/10 20 10 10-ELY 20 30 30-20 50-100

1+05 = North Curb Line

56.1 56.2 55.63 56.02 56.21 56.23 55.97 55.0 54.8 54.83
 68 57 720 691 672 670 696 79 81 710
 50 33 30 20 10 10-ELY 24 50 50-25

1+25 = L

55.6 55.01 55.40 55.53 55.52 55.31 54.8 54.5
 72 792 752 740 741 742 81 84
 60 30-11/10 20 10 10-ELY 30 50

1+30 = South Curb Line

54.58 54.46 54.77 54.87 54.84 54.56 53.7 53.3 54.01
 835 847 816 806 809 827 92 96 892
 50-100 50-100 20 10 10-ELY 30 30 50-25

0+0 = South Line Grand Ave

55.25 54.13 54.38 54.58 54.56 54.28 53.7 53.8 53.94
 768 820 855 835 837 855 95 91 890
 150-100 30-11/10 20 10 10-ELY 20 30 30-25

BM 7.08 62.93

53.85 NE BP
 Grand Ave
 1/10-100

62.93

54.1
 680

Reduced and checked by R.E. Coburn
 1/2/47

2+45 31.5 Rt of 1/2 - 2 Fly Hyd.

61.7
1/50

59.7	60.0	58.76	59.17	59.42	59.48	59.37	59.29	59.53	59.70
32 47	29 34	117 30	376 20	351 10	345	351 10	364 20	340 30	333 50

2+35

+07 32 Rt of 1/2 - Fly Power + Tel Pole

59.5	59.4	58.40	58.81	59.02	59.02	58.89	58.67	59.05	59.41
34 60	35 34	153 30	113 20	391 10	391	104 10	126 22	388 30	353 50

2+0

1+70 3/4 HC Power on Rt

59.3	59.1	58.03	58.45	58.66	58.65	58.53	58.23	58.65	59.13
36 50	38 34	198 30	148 20	127 10	128	140 10	170 21	158 30	180 50

1+35 1/2 Hill

59.2	58.4	57.62	58.06	58.23	58.21	58.03	57.4	57.6	58.5
37 50	45 34	581 30	187 20	170 10	122	190 10	55 20	50 30	44 50

+24 32 Lt of 1/2 - Fly Power

+165 31.8 Rt of 1/2 - Fly Tel Pole

59.3
1/50

58.0	58.1	57.24	57.61	57.84	57.80	57.62	56.8	56.9	57.7
19 47	18 32	580 30	533 20	509 10	513	531 10	61 20	50 30	52 50

1+0

0+50

58.6
1/50

57.5	57.7	56.58	57.01	57.27	57.20	56.93	55.8	56.3	56.7
54 45	52 37	635 30	597 20	566 10	592	600 10	71 21	66 30	63 50

4+0

61.0	61.0	60.12	60.57	60.69	60.76	60.71	60.3	60.2	60.8	65.7
56 50	56 33	641 30 20	599 20	587 10	580	585 10	652 24	64 30	58 42	0.9 50

3+51

31' Lt. E 12" Pepper Tree.

60.3	60.6	59.93	60.15	60.36	60.42	60.49	59.9	60.1	60.7	63.0
63 50	60 34	663 30	641 20	620 10	614	616 10	67 22	65 30	59 43	56 50

3+49.54 = N. Hornblend

323 Rt of B - Ely Tel Pole
35' Lt of Z - N.Y. Power Pole?

2+29.54 = N. Carb Line

60.7	60.4	59.56	59.96	60.13	60.26	60.24	59.9	59.9	60.1
59 50	62 34	700 30	660 20	643 10	630	632 10	67 20	67 30	65 50

3+09.54 = Z Hornblend

60.3	59.8	59.46	59.81	59.96	60.10	60.08	59.9	60.0	59.9
63 50	68 40	710 30	675 20	660 10	646	648 10	67 20	66 30	67 50

TP

4.31

66.56 ✓

0.68

62.25 ✓

Hot fire Hyd
Hornblend
Ingram St

60.2	60.0	59.29	59.71	59.93	60.05	59.97	59.78	59.80	59.98
27 50	29 42	364 30	322 20	300 10	288	296 10	315 20	313 30	295 50

2+89.54 = N.Y. HC Paving on Rt.

2+69.54 = S.L. Hornblend

61.0	60.0	60.1	59.11	59.58	59.79	59.92	59.87	59.62	59.96	60.11
19 50	29 48	28 37	382 30	335 20	311 10	301	306 10	301 31	297 30	287 50

62.93 ✓

62.95 ✓

BM = N.W. 7 ct.

62.26

BM

567

(62.1)

Now out.

SFBP
Sprout
10970
62.10

5728

5759

S.L. HC. Pav. 27 ct.

5747

TP

5.83

68.28

4.11

62.45

5707

328 RI of 1/2 = Fly Tail Pole

1+9454

= H.L. Alley

1+7454

S.L. Alley 325 1/2 of 1/2 Fly Tail Pole

4+50

66.56

St

St

St

17

62.67 61.60 61.43 61.82 62.00 62.03 61.96 61.7 61.6 62.06

561 6.62 6.85 6.46 6.28 6.25 6.22 6.6 6.7 6.22
50 31-11/20 30 20 10 10 20 30 30-26
P.C. 9/10 5/10

62.28 61.58

6.00 6.70
50 37.5
SFBP

62.0 61.83 61.21 61.61 61.78 61.85 61.75 61.1 61.2 61.87

6.3 6.45 7.07 6.67 6.50 6.43 6.53 7.2 7.1 6.41
50 30-26 30-26 20 10 10 10 19 30 30-26

61.7 61.58 61.40 60.74 61.17 61.34 61.45 61.36 60.7 60.9 61.51 61.7 61.70

49 4.98 5.1 5.82 5.39 5.32 5.11 5.20 5.9 5.7 5.05 4.9 4.8
50 4.4 3.0 3.0 2.0 1.0 1.0 1.0 2.0 3.0 3.0 3.0 3.0 3.0

61.1 61.3 60.46 60.96 61.20 61.31 61.23 60.6 61.0 61.5 63.0

5.5 5.2 6.10 5.40 5.27 5.25 5.33 6.0 5.6 5.1 5.6
50 33 30 20 10 10 10 24 30 43 38

61.1 61.5 60.50 60.89 61.05 61.13 61.09 60.4 60.6 61.1 61.2

5.5 5.1 6.06 5.67 5.51 5.42 5.47 6.2 6.0 5.35 5.1
50 33 30 20 10 10 10 20 30 43 38

66.56

Ingraham St.

Lt.

S

Pt.

18

0-03 = 126 ft of S = Fl. Tol. Pak

0-14 = N Ch Line Garnet to West

0-20 = N Ch Line Garnet to East

6+5918 = 7 Garnet St

6+3918 = 5 Ch Line Garnet to East

6+3318 = 5 Ch Line Garnet to West

6+1918 = 5 L Garnet

63.19 62.81 62.64 62.73 62.78

5.09 5.47 5.64 5.55 5.50
40-Ch 40-Guller 20 10

62.63 62.63 62.66 62.60 62.59 62.73 62.00

↑
E of X-Secs 40' From West Line }
E of X-Secs 50' From West Line } See P. 12

62.61 62.52 62.45 62.42 62.37 62.43 62.46 62.54 62.78

5.67 5.76 5.83 5.86 5.91 5.85 5.82 5.74 5.50
50 30 20 10 20 20 30 50

62.17 62.17 62.20 61.36 62.06 62.59

6.11 6.11 6.08 6.22 6.22 5.80
10 20 30 30 50-Guller

62.59 62.03 61.73 61.99 62.08 62.12

5.69 6.25 6.55 6.29 6.90 6.16
50-Ch 50-Guller 30 20 10

62.85 62.15 61.45 61.82 62.01 62.11 62.00 61.88 61.55 62.35

5.73 6.12 6.83 6.46 6.27 6.17 6.28 6.40 6.78 5.93
50-Guller 50-Ch 30-Guller 20-Ch 10

68.28

68.28

+08 71A Rt of 1/2 = Fly Tail Pole

2+0

1+45 N.L. Hilley

7P 743 72.59 ✓ 212 65.16 ✓

1+25 = S.L. Hilley 41.5 Pt of 1/2 = Fly Tail Pole

+22 273 Lt of 1/2 = W/W Power Pole

1+0

0+49 418 Rt of 1/2 = Fly Tail Pole

0+45 = Angle in Paving 00 Rt

0+0 = N.L. Garrod St

68.28 ✓

Lt. Z Rt

66.59 65.34 65.73 65.92 65.96 65.88 65.4 66.0 66.6

600 725 686 667 662 671 729 66 68
397 = Fly Tail Pole
20 = W/W
600m

65.6 64.62 65.03 65.23 65.19 65.14 64.4 65.2 65.8

70 797 756 736 740 745 82 74 68
40 20 = W/W
20 = Fly Tail Pole

65.26 64.86 64.38 64.83 64.98 64.96 64.86 64.1 64.9 65.8

302 342 390 345 350 353 342 42 34 25
40 = Cob
20 = Cob
Ground

64.66 64.06 64.42 64.55 64.63 64.56 63.9 64.4 64.7

349 422 396 373 365 372 44 39 31
20 = 56
20 = Cob
20 = Fly Tail Pole

63.92 63.33 63.70 63.85 63.92 63.80 63.3 63.9 64.8

436 495 458 443 436 418 50 44 35
20 = Cob
20 = 54m
20 = Fly Tail Pole

63.24 62.64 62.95 63.07 63.14 63.07 62.75 63.19 63.4

494 514 522 521 514 521 553 509 49
20 = Cob
20 = 54m
20 = Fly Tail Pole

← 10' →
← E of R. of W. →
68.28 ✓

Ingraham St

Felspar + Ingrahan
Set. BM. on SW. 7' Disk

67.21

67.95
67.30
Top 54.5
PC. gut

3430 = 1/2 Cb Line Felspar

3410 = 1/2 Felspar - Beg. New Sect.

3490 = 1/2 Cb Line Felspar to West

67.64 66.99
Top 80
gut

3470 = 1/2 Felspar 2 1/2 ft to 1/2 1/2 ft. Part

New Sections - 4-22-55 - 7.0

3435

3418

72.59 ✓

45

2

PT

20

67.36 60.0	67.15 67.12	67.58 67.48	67.71 67.68	67.73	67.77 67.66	67.6	67.8	68.8
10 40	547 20	511 10	491	186	492	50	48	48
					20-ELTON	40	52	80

67.49 70 AC.	67.15 67.4	66.87 66.81	67.35 67.19	67.49 67.44	67.48	67.47 67.41	67.61	67.4	67.5	68.5
	528	528	540	515		518	50	57	51	41
	20	20	10			20-ELTON	40	52	80	
		beg. New AC. 1					edge AC.			

67.35	66.72	66.87 66.61	66.91 67.14	67.24 67.20	67.22	67.42 67.19	67.2	68.2
Top 5	50	50	512	539		527	51	41
PC.	gut					20-ELTON	40	80
			New AC.					

67.13	67.02	67.05	66.30	66.87 66.73	67.02 66.99	66.96	66.90	67.0	67.9
30.8	27.8	21.5	586	560	563	569	56	48	
Top	and cb	gut.				20-ELTON	40	80	
cb to 5.									

66.5	65.88	66.22	66.45	66.45	66.37	65.9	66.2	67.4
41	671	637	514	614	637	67	61	51
40	20	10			20-ELTON	38	40	80

66.84
595
20-ELTON
DARK

72.59 ✓

724
62
6.62

8+50.5 - 27' Rt. = t Tel. pole

8+45

8+35

2 Alloy 02 Rt.

8+25

5.6 Alloy 02 Rt.

8+0

7+51.5 - 40.8 Rt. = t Tel. pole - BM. 78.78

7+50

7P

865

85.81 ✓

858

7716 ✓

7+00

N.L. Emerald

See p. 28

7974 ✓

Lt.

S

Rt.

23

79.62 6.21 22.7-Cb	78.91 79.03 6.90 22.7-Gutter	79.35 6.66 10	79.40 79.51 6.41	79.47 79.57 6.34 10	79.25 79.43 6.56 17.6-Fly 15.7	79.9 ✓ 5.9 30	80.5 ✓ 5.2 40
--------------------------	---------------------------------------	---------------------	------------------------	------------------------------	--	---------------------	---------------------

79.29 6.52 22.7-Cb	78.61 78.80 7.20 22.7-Gutter	78.94 6.87 10	79.19 6.52	79.22 6.59 10	78.99 6.82 17.6-Fly 15.7	79.60 6.21 30	80.07 ✓ 5.74 40
--------------------------	---------------------------------------	---------------------	---------------	---------------------	-----------------------------------	---------------------	-----------------------

See P. 26 For Add'l Notes

79.05 6.76 22.7-Cb	78.35 7.46 22.7-Gutter	78.66 7.15 10	78.90 6.91	79.01 6.80 10	78.80 7.01 17.6-Fly 15.7	79.7 6.1 30	80.4 ✓ 5.4 40
--------------------------	------------------------------	---------------------	---------------	---------------------	-----------------------------------	-------------------	---------------------

78.43 78.44 7.38 22.7-Cb	77.71 77.90 8.04 22.7-Gutter	78.03 78.17 7.78 10	78.26 78.38 7.55	78.38 78.43 7.43 10	78.16 78.29 7.65 17.6-Fly 15.7	78.9 ✓ 6.9 30	79.4 ✓ 6.4 40
-----------------------------------	---------------------------------------	------------------------------	------------------------	------------------------------	--	---------------------	---------------------

77.20 77.24 8.61 22.7-Cb	76.46 76.62 9.35 22.7-Gutter	76.69 76.87 9.12 10	76.95 77.04 8.86	77.02 77.11 8.79 10	76.71 76.92 9.04 17.6-Fly 15.7	77.6 ✓ 8.9 30	78.3 ✓ 7.5 40
-----------------------------------	---------------------------------------	------------------------------	------------------------	------------------------------	--	---------------------	---------------------

75.95 2.79 22.5-Cb	75.27 1.47 22.5-Gutter	75.34 75.54 1.40 10	75.63 75.77 4.11	75.76 75.90 5.98 10	75.65 75.80 4.09 17.5-Fly 15.7	76.6 ✓ 5.71 30	77.5 ✓ 2.2 40
--------------------------	------------------------------	------------------------------	------------------------	------------------------------	--	----------------------	---------------------

7974 ✓

St

Z

Rt

BM

0.55

85.26

85.31

NE Mo
Diamond
4109 calms
85.22

10+10 = Z Diamond

85.81 ✓

82.42	82.71	82.86	83.00	83.16	83.34	83.61
239 40	210 20	295 16	281	265 10	247 20	220 10

85.81 ✓

Additional Notes along W. Side
of Ingraham - Emerald to Diamond

5-22-47

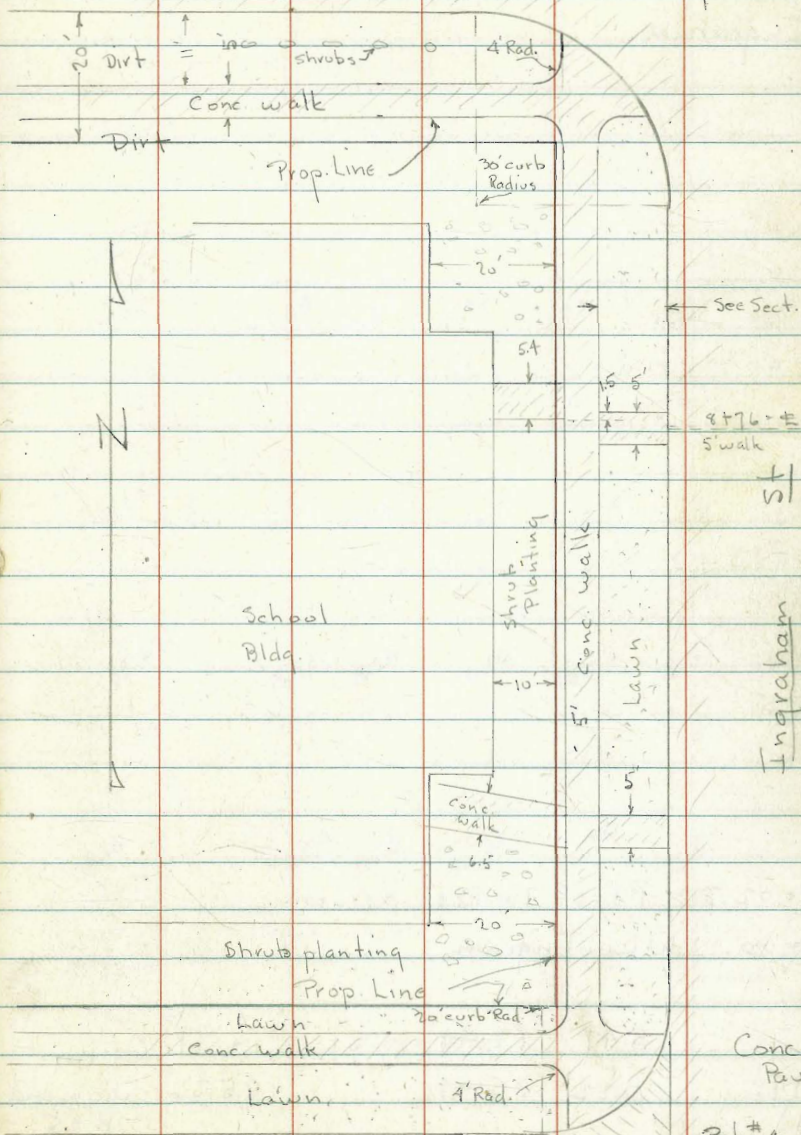
Osborne
Hardin
Smith
Worrell

1095
W.O. 80006

Diamond St

Ret. # 2

Conc. pave



Notes Red. 5-22-46
R. E. Coburn

INDEXED
Apr 25 1947

Emerald St

AC. Pave

Ret. # 1

Conc. Pave

Ingraham

Levels along N. cb. of Emerald
 Use cb. line as Base line - 0+00 = W.L.
 Ingraham

Lt. = S

BaseLine =
 ✓ cb. line

Rt. = N.

27

1+00 - end.

75.14	75.68	75.03	75.84	75.92	76.3	76.8
7.30	6.6	7.41	6.60	6.52	6.1	5.6
10	Top	gut.	11 walk	16 walk	20	30

0+50

75.22	75.89	75.18	76.09	76.14	76.5	76.8
7.22	6.55	7.26	6.35	6.30	5.9	5.6
10	Top	gut.	11 walk	16 walk	20	30

0+25

75.22	75.98	75.24	76.16	76.24	76.5	76.9
7.22	6.46	7.20	6.28	6.20	5.9	5.5
10	Top	gut.	11 walk	16 walk	20	30

0+02.3 = P.C. of 20' Rad. Return

0+00 = W.L. Ingram

75.14	76.04	75.25	76.21	76.30	76.5
7.30	6.40	7.09	6.23	6.14	5.9
10 on pave	Top cb	gut.	11 edgewalk	16 Back walk	20 N.L. Emerald

B.M.	5.47	82.44	8.51	76.97	NE. Mon.	82.44
	0.22	85.48		85.26	Diamond	
					P. 25	

Levels around Ret. # 1 - N.W. Cor Emerald

+ Ingraham

31' around - 5 parts - 6.2 each.

H.I. = 82.44 - P. 27

W. end = N. cb. Emerald + 2.3 W. of W. Ingraham

	6.40	76.04	Top
	7.19	75.25	gut.
6.2 E =	6.36	76.08	Top
	7.12	75.32	gut.
6.2	6.36	76.08	Top
	7.21	75.23	gut.
6.2	6.46	75.98	Top
	7.16	75.28	gut.
6.2	6.52	75.92	Top
	7.23	75.21	gut.
6.2 = E.C. = N.L. Emerald	6.50	75.94 [✓]	Top
+ W. cb. Ingraham	7.18	75.26 [✓]	gut.

Additional Rods along W. side of
Ingraham - from cb W. - Taken on same
sections + Sta. as shown on Pages 23 + 24

7+72-25' Lt. = \pm Alarm Pole # 537386-H
7+86.5-282 Lt. = \pm 10" Acacia
7+59-50' Lt. = Near Cor. of Jog in school Bldg.
7+69.8 = \pm of 4x6.5' water Vault - along back of walk
7+55-28.4 Lt. = \pm 10" Acacia
7+50 = N. edge of 5' Conc. walk to school

7+24-60.1 Lt. = S.E. Cor. school Bldg.
7+24.7-28.3 Lt. = \pm 4" Acacia

7+00 = N.W. Emerald.

6+96 = N. side of walk along Emerald.

6+87 = opp. P.C. of 4' Rad. for edge of walk on
Lt. - See sketch P. 26

Lt. = W \pm

Rt. = E.

	78.41	77.9	
	4.03	4.5	
	50	50	
	Floor elev.	ground	
	77.97	77.43	77.35
	4.47	5.01	5.09
	50	40	38.5
	on walk	on walk	walks
		To school	33.5 = Cor. of walks

	77.2		
	5.2		
	60.1		
	ground		
	along school		
	76.3	76.24	76.16
	6.1	6.20	6.28
	40	38.5	33.5 = edge walk at EC. 4' Rad.
	W.L.	Back of walk	

	76.03	
	6.41	
	29.6 = P.C. - 4' Rad. curve	in edge of walk

	76.1	76.14
	6.3	6.30
	40	38.6 = edge walk
		at P.C.

82.44 = P. 27

	Lt.	↔	Rt.
9+09.5 - 28.5 Lt. = Φ 8" Acacia	19.3		
9+06 - 50 Lt. = Cor. of school Bldg. - 60' Lt. = Bldg. ahead	3.1 50 ground along school	81.0	81.15 81.05
9+00	1.4 40	1.29 38.5	1.39 33.5
8+82.5 - 28.6 Lt. = Φ 9" Acacia		walk	walk
8+79.7 = Φ 5.4 Conc. walk from ^{Gone} walk to school	79.17 3.27 50 walk	80.65 1.79 38.5	Φ walk + edge of N. + S. walk
8+76 = Φ 5 Conc. walk on Lt.	80.7 1.7 40	80.56 1.88 38.5	80.48 1.96 33.5
8+55.5 - 28.7 Lt. = Φ 8" Acacia			22.7 = walk + Top cb
8+45	78.7 3.7 50	79.6 2.8 40	79.80 2.64 38.5
		walk	33.5 walk
8+35	79.3 3.1 40	79.50 2.94 38.5	79.48 2.96 33.5
		walk	walk
8+25	79.0 3.4 40	79.20 3.24 38.5	79.20 3.24 33.5
8+23 - 27.8 Lt. = Φ P. pole #4674		walk	walk
8+17 - 28.3 Lt. = Φ 8" Acacia			
8+00	78.3 4.1 50 along school	78.5 3.9 40 38.5	78.64 3.80 33.5
		walk	walk
			82.44 ✓

T.P. on BM. 290 88.16 ✓ 283 85.26 ✓

End

9+83 = P.C. 4' Rad. Curve in edge of walk

9+79 = N. side walk

9+74 = S. side of S. Conc. walk along Diamond

9+70 = P.C. 4' Rad. curves on edge of walks

9+67.5 = 27.3 Lt. = E. P. pole

9+66.7 = 32' Lt. = E. P. pole # 4678

9+60

9+54 = 60' Lt. = N.E. Cor. school Bldg.

9+39.5 = 28.4 Lt. = E. 5" Acacia

T.P. 695 88.09 ✓ 130 81.14 ✓

9+30

Lt.

E

Rt.

82.48

5.61

38.5 = P.C. walk

82.59

82.54

5.50

5.55

42.5
E.C. 4' Rad.

29.1 = Top + walk

82.66

82.65

82.61

5.43

5.44

5.48

42.5

29.5

25.6

E.C.
4' Rad.E.C.
4' Rad. curve

Top of + walk

82.6

82.77

82.69

5.5

5.36

5.40

40

38

33.5

walk

walk

82.1

82.4

82.56

82.52

6.0

5.7

5.53

5.57

50

40

38.5

33.5

walk

walk

81.67

80.4

6.42

7.7

60

60

floor
elev.

ground

88.09 ✓

81.7

81.82

81.76

0.7

0.62

0.68

40

38.5

33.5

walk

walk

82.44

Levels along S. curb of Diamond
 Used cb. as base line = 0+00 = W.L. Ingraham

Lt.

= Base line
 = cb. Line

Rt.

1+12.3 = end.

80.0	80.41	80.34	79.60	80.20	80.06
8.2	7.75	7.82	8.56	7.96	8.10
20	16	11	9ft.	Top	10
		walk			

0+62.3

80.1	80.8	81.43	81.36	80.61	81.22	81.11
8.1	7.4	6.73	6.80	7.55	6.94	7.05
30	20	16	14	9ft.	Top	10
		walk				

0+12.3 = P.C. 30 Rad. Ret. (Const. joint - not true by meas)

82.2	82.44	82.40	81.66	82.28	82.12
6.0	5.72	5.76	6.50	5.88	6.04
20	16	11	9ft.	Top	16 on Conc. pave
S.L. Diamond	edge walk				

0+00 = W.L. Ingraham

88.16 - P. 31

Levels around Return #2 - S.W. Cor,
Diamond + Ingraham -

46.5 around - 7 parts - 6.6 each.

H.I = 88.16 - P. 31

S. end = P.C. on W. cb. Ingraham

	5.67	82.49	Top
	6.29	81.87	gut.
6.6 N.	5.58	82.58	Top
	6.21	81.95	gut.
6.6	5.55	82.61	Top
	6.17	81.99	gut.
6.6	5.63	82.53	Top
	6.20	81.96	gut.
6.6	5.70	82.46	Top
	6.22	81.94	gut.
6.6	5.77	82.39	Top
	6.31	81.85	gut.
6.6	5.86	82.30	Top
	6.41	81.75	gut.
6.6 = E.C. - S. cb. Diamond.	5.88	82.28	Top
	6.50	81.66	gut.

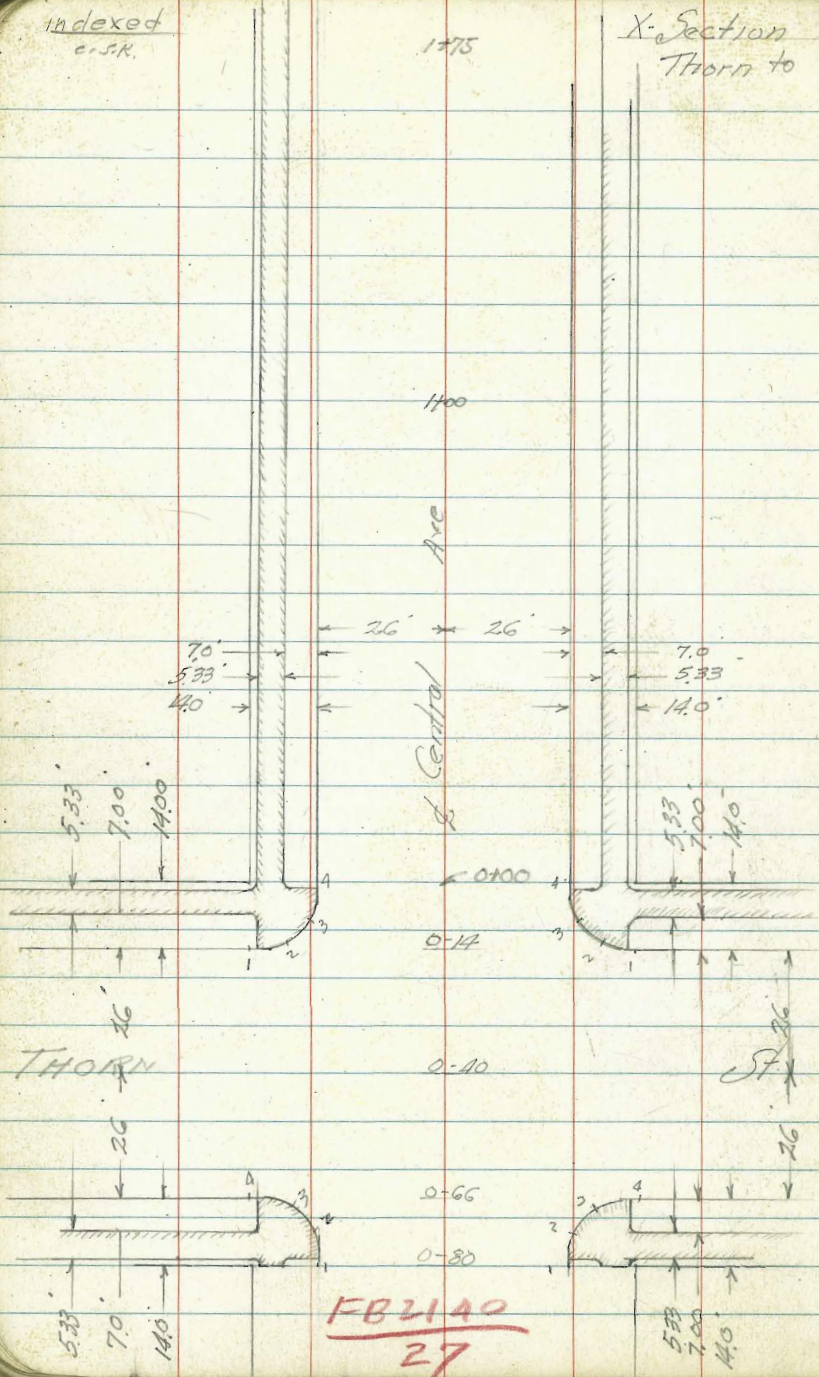
indexed
e.s.R.

1+75

X-Section
Thorn to
Central Ave

4+40

34

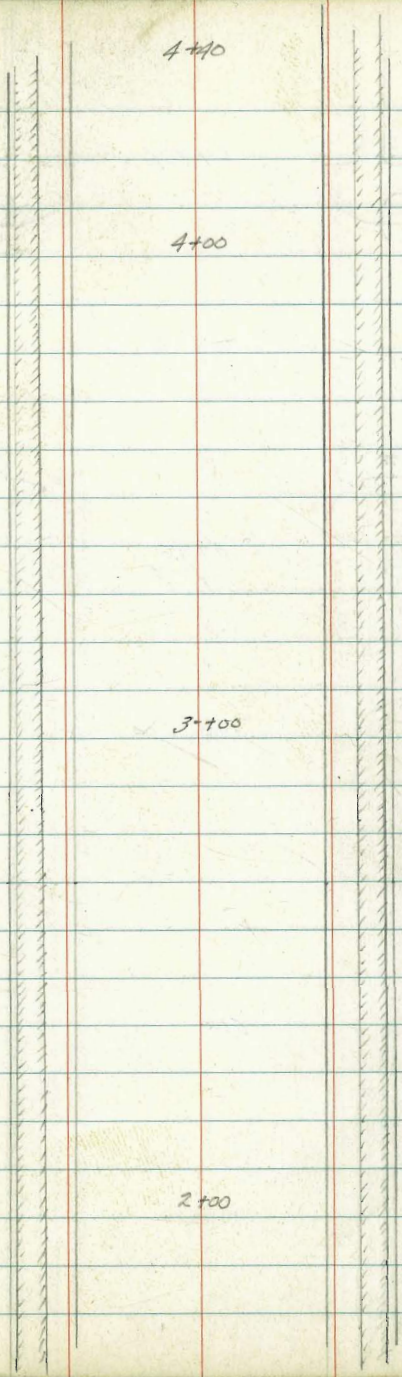


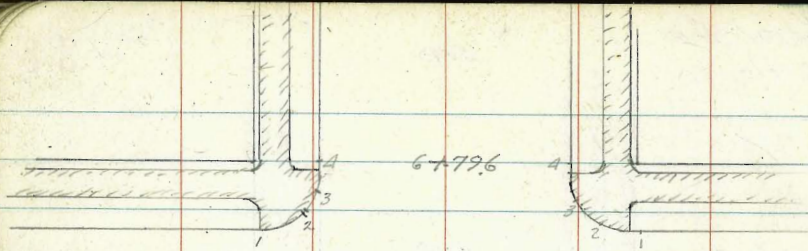
FB2140
27

4+00

3+100

2+00

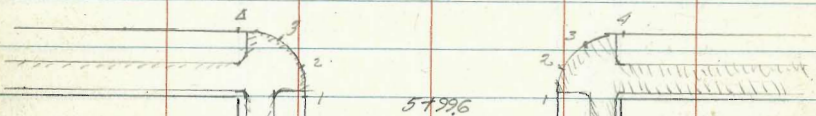




61796

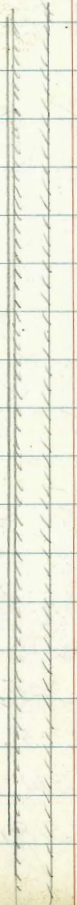
Myrtle

St.



51996

5100



Central Axis

8100



7100

2+50

2+31.5 = 9' Conc. Drive on Rt

2+05 = 3' Conc Walk on Rt

2+00

1+70 = 2' 4" Walk

1+50

1+26 = 2' 4" Walk

316.17

316.17

35 40	39 38	47 38	49 33	50 26	56 26	53 13	51 13	53 26	45 26	43 33	43 38	42 40
		Walk	Walk							Walk	Walk	on Walk
312.7	312.3	311.41	311.27	312.14	310.6	310.9	311.1	310.9	311.62	311.85	311.85	311.96
								310.40		311.35	311.04	311.75
								557 26		484 33	473 38	442 40
								Drive		Drive	Drive	Drive
								310.40		310.65	310.77	310.85
								568 26		552 33	540 38	532 40
								Walk		Walk	Walk	Walk
								311.0		310.12	310.04	309.92
								52 40		63 33	62 26	62 26
								309.7		309.92	309.92	309.92
								65 13		62 13	62 26	62 26
								309.7		310.0	310.0	310.0
								62 13		62 13	62 26	62 26
								309.7		310.0	310.0	310.0
								62 13		62 13	62 26	62 26
								309.7		310.0	310.0	310.0
								62 13		62 13	62 26	62 26
								309.7		310.0	310.0	310.0
								62 13		62 13	62 26	62 26
								309.7		310.0	310.0	310.0
								62 13		62 13	62 26	62 26
								309.7		310.0	310.0	310.0
								62 13		62 13	62 26	62 26
								309.7		310.0	310.0	310.0
								62 13		62 13	62 26	62 26
								309.7		310.0	310.0	310.0
								62 13		62 13	62 26	62 26
								309.7		310.0	310.0	310.0
								62 13		62 13	62 26	62 26
								309.7		310.0	310.0	310.0
								62 13		62 13	62 26	62 26
								309.7		310.0	310.0	310.0
								62 13		62 13	62 26	62 26
								309.7		310.0	310.0	310.0
								62 13		62 13	62 26	62 26
								309.7		310.0	310.0	310.0
								62 13		62 13	62 26	62 26
								309.7		310.0	310.0	310.0
								62 13		62 13	62 26	62 26
								309.7		310.0	310.0	310.0
								62 13		62 13	62 26	62 26
								309.7		310.0	310.0	310.0
								62 13		62 13	62 26	62 26
								309.7		310.0	310.0	310.0
								62 13		62 13	62 26	62 26
								309.7		310.0	310.0	310.0
								62 13		62 13	62 26	62 26
								309.7		310.0	310.0	310.0
								62 13		62 13	62 26	62 26
								309.7		310.0	310.0	310.0
								62 13		62 13	62 26	62 26
								309.7		310.0	310.0	310.0
								62 13		62 13	62 26	62 26
								309.7		310.0	310.0	310.0
								62 13		62 13	62 26	62 26
								309.7		310.0	310.0	310.0
								62 13		62 13	62 26	62 26
								309.7		310.0	310.0	310.0
								62 13		62 13	62 26	62 26
								309.7		310.0	310.0	310.0
								62 13		62 13	62 26	62 26
								309.7		310.0	310.0	310.0
								62 13		62 13	62 26	62 26
								309.7		310.0	310.0	310.0
								62 13		62 13	62 26	62 26
								309.7		310.0	310.0	310.0
								62 13		62 13	62 26	62 26
								309.7		310.0	310.0	310.0
								62 13		62 13	62 26	62 26
								309.7		310.0	310.0	310.0
								62 13		62 13	62 26	62 26
								309.7		310.0	310.0	310.0
								62 13		62 13	62 26	62 26
								309.7		310.0	310.0	310.0
								62 13		62 13	62 26	62 26
								309.7		310.0	310.0	310.0
								62 13		62 13	62 26	62 26
								309.7		310.0	310.0	310.0
								62 13		62 13	62 26	62 26
								309.7		310.0	310.0	310.0
								62 13		62 13	62 26	62 26
								309.7		310.0	310.0	310.0
								62 13		62 13	62 26	62 26
								309.7		310.0	310.0	310.0
								62 13		62 13	62 26	62 26
								309.7		310.0	310.0	310.0
								62 13		62 13	62 26	62 26
								309.7		310.0	310.0	310.0
								62 13		62 13	62 26	62 26
								309.7		310.0	310.0	310.0
								62 13		62 13	62 26	62 26
								309.7		310.0	310.0	310.0
								62 13		62 13	62 26	62 26
								309.7		310.0	310.0	310.0
								62 13		62 13	62 26	62 26
								309.7		310.0	310.0	310.0
								62 13		62 13	62 26	62 26
								309.7		310.0	310.0	310.0
								62 13		62 13	62 26	62 26
								309.7		310.0	310.0	310.0
								62 13		62 13	62 26	62 26
								309.7		310.0	310.0	310.0
								62 13		62 13	62 26	62 26
								309.7		310.0	310.0	310.0
								62 13		62 13	62 26	62 26
								309.7		310.0	310.0	310.0
								62 13		62 13	62 26	62 26
								309.7		310.0	310.0	310.0
								62 13		62 13	62 26	62 26
								309.7		310.0	310.0	310.0
								62 13		62 13	62 26	62 26
								309.7		310.0	310.0	310.0
								62 13		62 13	62 26	62 26
								309.7		310.0	310.0	310.0
								62 13		62 13	62 26	62 26
								309.7		310.0	310.0	310.0
								62 13		62 13	62 26	62 26
								309.7		310.0	310.0	310.0
								62 13		62 13	62 26	62 26

5+50

5+05 = 9' Conc. Drive on Rt.

5+00

4+93 = 2' Drive on Lt.

4+81.9 = 3' Conc. Walk

4+68.5 = 3' Conc. Walk

4+59 = 10' Conc. Dr. on Rt.

4+50

32486

57 40	578 383	584 33	615 26	615 26	68 26	65 13	62 13	63 13	63 26	568 26	548 33	543 38.3	55 40	319.2 4	319.08 4	318.92 4	318.71 4	318.11 4	318.4 4	318.7 4	318.6 4	318.6 4	319.18 R	319.38 R	318.43 1	319.4 1
70 40	746 383	712 33	738 26	738 26	80 26	77 13	74 13	75 13	74 26	705 26	681 33	664 38.3	65 40	317.9 4	317.80 4	317.74 4	317.48 4	316.9 4	317.2 4	317.5 4	317.4 4	317.3 4	317.81 4	318.05 4	318.22 4	318.4 4
77 40	783 383	791 33	804 26	804 26	808 26	804 26.5	804 26.5	737 26.5	729 33	714 38.3	708 40	708 40		317.2 4	317.2 4	317.03 4	316.95 4	316.82 4	316.82 4	317.49 4	317.4 4	317.3 4	317.81 4	318.05 4	318.22 4	318.4 4
79 40	824 383	825 33	850 26	850 26	862 26	827 26	827 26	862 26	780 33	761 38.3	758 40	758 40		317.0 4	316.62 4	316.61 4	316.36 4	316.3 4	316.2 4	316.24 4	316.3 4	316.3 4	317.06 4	317.25 4	317.4 4	317.2 4
82 40	824 383	825 33	850 26	850 26	862 26	827 26	827 26	862 26	780 33	761 38.3	758 40	758 40		317.0 4	316.62 4	316.61 4	316.36 4	316.3 4	316.2 4	316.24 4	316.3 4	316.3 4	317.06 4	317.25 4	317.4 4	317.2 4

Central Ave
Cross Sections

6+39.4 = S Myrtle

5.2	5.0	4.7	4.7	4.8	4.6	4.7	4.8	4.6
40	30	46	26	13	46	13	26	40
319.7	319.0	320.2	320.2	320.1	320.3	320.2	320.1	320.3

6+13.4

5.8	6.1	5.8	5.8	5.7	5.4	5.3	5.2	4.5
40	40	30	30	40	40	26	40	40
319.28	318.8	319.68	319.1	319.94	319.5	319.6	319.7	320.29

N.W. And N.E. Curb Return Myrtle x Central

4.35	4.50	4.51	4.41	4.11	4.13	4.17	4.17
#1	#2	#3	#4	#1	#1	#2	#1
320.31	320.36	320.35	320.45	320.75	320.73	320.69	320.69

S.W. And S.E. Curb Return Myrtle x Central

4.92	4.88	4.89	4.90	4.52	4.49	4.50	4.57
#1	#1	#2	#1	#1	#1	#1	#1
319.94	319.98	319.97	319.96	320.34	320.37	320.56	320.29

1' low - from -

5+99.4 = Spine Myrtle Ave

5.7	5.6	5.66	5.71	5.7	5.3	5.1	5.2	5.3	4.53	4.33	4.26	4.3
40	38.3	33	26	26	13	31	13	26	26	33	38.3	40
319.2	319.26	319.20	318.95	319.2	319.6	319.8	319.7	319.4	320.33	320.53	320.60	320.6

5+76 E 3' Conc. Walk on Lt
324.86

5.14	5.17	5.28	5.40
40	38.3	33	26.5
319.72	319.69	319.48	319.38

324.86

Central Ave Cross Sections

8+00

7+50

7+33 = 2

TP

7+00

6+79.4 = HL

6+65.4 Cont.

6+65.4 = N cb. line Myrtle

324.86

For
X Check out Sec Cont Levels P-44

7.60 322.04 3.42 321.44

321.10	320.65	320.56	320.45	320.08	320.47	320.48	320.71	320.75	320.36	320.95	321.01	321.10
37 46	421 383	430 33	441 26 6	478 26 64	439 13 Pov	418 Pov	415 13 Pov	411 26 64	391 33	385 383	376 40	
320.06	319.5	320.31	319.7	319.9	320.39	320.54	320.4	320.2	320.70			
48 80	54	45 40 6	52 40	50 26	447 13	432 324.86	45 13	47 40	416 40 6			
567 140 89' Conc. Drive	571 135	57 135	537 250' Conc. Drive	531 88 89' Conc. Drive								
320.10	320.65	320.56	320.45	320.08	320.47	320.48	320.71	320.75	320.36	320.95	321.01	321.10
416 6	469 26 Pov	421 13 Pov	398 Pov	405 13 Pov	428 26 Pov	380 26 Cb						
320.70	320.117	320.65	320.88	320.81	320.58	321.06						
805 26	737 33	724 383	688 40									
320.99	321.67	321.80	322.16									
760 26 Cb	814 26	777 13 Pov	758 Pov	760 13 Pov	786 26 Pov	731 26 Cb						
691 26 Pov	712 26 Pov	704 13 Pov	680 Pov	684 13	715 26	662 26 Cb						
322.13	321.62	322.00	322.84	322.20	322.89	323.02						

Myrtle Ave Cross Sections Cont'd

3479.8 E Line 41st St.

Detail Showing
How Sections Taken
Around Returns of
41st & Myrtle

Ave

3465.8 E Cb Line 41st St.

41st St.

3439.8 E 41st St.



3413.8 W Cb Line 41st St.

Myrtle

SW & SE Curb Returns 41st & E

NW & NE Curb Returns 41st & Myrtle

324.84

E

47

322.42	321.91	321.88	321.21	321.18	320.61	320.61	320.52	320.17	319.88	320.39	319.10	319.66	318.13	318.71
40	38.3	39	26	26	13	13	13	26	26	26	33	38.3	40	40
SW	SW	SW	Ch	Gut	Gut	Gut	Gut	Gut	Gut	Ch	SW	SW	SW	SW
322.54	321.76	320.90	320.70	320.64	320.55	320.57	319.76	318.93	318.72	318.72	318.72	318.72	318.72	318.72
140	140	90	90	40	40	26	26	40	40	90	90	140	140	140
Ch	Gut	Ch	Gut	Ch	Gut	Gut	Gut	Gut	Ch	Gut	Ch	Gut	Ch	Gut
322.96	322.54	322.18	321.62	321.48	321.05	320.84	321.10	321.07	320.92	320.65	320.45	320.09	319.70	320.22
140	140	90	90	40	40	26	13	13	26	26	40	40	90	90
Ch	Gut	Ch	Gut	Ch	Gut	Gut	Gut	Gut	Gut	Gut	Ch	Gut	Ch	Gut
321.10	321.10	321.11	321.09	320.89	320.89	320.89	320.89	320.89	320.89	320.89	320.89	320.89	320.89	320.89
44	43	42	41	41	41	41	41	41	41	41	41	41	41	41
SW	SW	SW	SW	SW	SW	SW	SW	SW	SW	SW	SW	SW	SW	SW
321.09	321.45	321.43	321.44	321.18	321.18	321.18	321.18	321.18	321.18	321.18	321.18	321.18	321.18	321.18
335	339	341	338	366	366	366	366	366	366	366	366	366	366	366
44	43	42	41	41	41	41	41	41	41	41	41	41	41	41
NW	SW	SW	SW	SW	SW	SW	SW	SW	SW	SW	SW	SW	SW	SW
NW	SW	SW	SW	SW	SW	SW	SW	SW	SW	SW	SW	SW	SW	SW

324.84

B.M.

3.32 321.52 321.52

5+00

H.V.B.P. 41st St Myrtle
 7.83 7.72 7.77 8.20 8.29 8.22 8.16 8.09 8.01 8.18 8.29 8.22 8.22
 40 38.3 33 26 26 13 13 26 26 33 38.3 40
 S.W. S.W. Cb Gut Gut Cb S.W. S.W.

4+50

318.9 318.79 318.71 318.52 318.46 318.28 318.23 317.85 317.46 317.84 318.09 318.13 318.4
 5.9 6.05 6.23 6.32 6.78 6.56 6.61 6.99 7.38 7.00 6.75 6.71 6.4
 40 38.3 33 26 26 13 13 26 26 33 38.3 40
 S.W. S.W. Cb Gut Gut Cb S.W. S.W.

4+45 & 9' Conc Drive on Rt.

317.60 318.26 318.28 318.6
 7.24 6.58 6.26 6.3
 26 33 38.3 40

4100

320.9 320.56 320.57 320.42 319.79 319.85 319.86 319.71 319.36 319.70 319.83 319.93 319.94
 3.9 4.28 4.27 4.22 5.05 4.99 4.98 5.23 5.48 5.4 5.41 4.91 4.9
 40 38.3 33 26 26 13 13 26 26 33 38.3 40
 S.W. S.W. Cb Gut Gut Cb S.W. S.W.

48.7.25

48.7.25

Osborne
Hardin
Smith
Worrell
00

Broadway To Est Ketner Blvd
Dec 15 1947 East Side
Curb Line Int. By To E E Side

+ 10 P.C. Return
+ 17.1 Fire Hdt 2' Back
+ 20 Prop Line
+ 20 Begin Drive
+ 52.5 End Drive Begin Red
+ 54.9 1.2 Rt sign Post
+ 56 End Red
+ 56.4 2' Back & Water Meter
+ 59 1.4 Back wly Power Pole
+ 67.2 1.6 Back Guy Wire
+ 85.6 1.4 Back wly Tel Pole
+ 89.5 Begin Drive
1+16.5 End Drive Begin Red
1+18.5 End Red
1+52.7 1' Back wly Power Pole
1+53 Begin Red
1+54.5 End Red Begin Drive
1+85 End Drive Begin Red
1+88 End Red
2+79.5 1' Back wly Power Pole
3+01.5 1.7 Back Guy Wire
3+08 0.7 Back wly 2' Meter Box
3+20 S. Prop Line
3+22 Curb P.C.
3+32 Curb Line Int N.E. Cor.
Ketner at "E" St.

Broadway To Est w side Ketner

51

00 Curb Line Int. Bdy w. side Ketner
+10 P.C. Return
+20 Prop Line Begin Red
+36 End Red
1+51.6 1' Back 6" Water Gate
3+05.5 Begin Red
3+20 S. Prop Line
3+21.5 End Red
3+22 P.C. Curb Ret
3+32 Curb Line Int
N.W. Ketner at "E" St

W. side Kettner Fst To G st.

00	Curb Line	Int	
+10	Curb P.C.	Ret	
+12	N Prop Line	Begin Red	
+13	1.2 Back Ely	Power Pole	
+23	1.2 Back Ely	16" Palm	
+30	End Red	Begin Drive	
+42	End Drive	Begin Red	
+45.5	End Red	Begin yellow	
+52.2	1.2 Back Ely	16" Palm	
+68	1.4 Back Ely	16" Palm	
+75	End yellow	Begin Red	
+79	End Red	Begin Drive	
+89	End Drive	Begin Red	
+92	End Red		
+99.5	1.4 Back Ely	12" Palm	
1+11.5	1.4 Back Ely	Power Pole	
1+16.5	1.3 Back Ely	16" Palm	
1+23.8	Begin Red		
1+27	End Red	Begin Dr	
1+37	End Dr	Begin Red	
1+41	End Red		
1+43.5	1.3 Back Ely	12" Palm	
2+05.5	0.9 Back Ely	Power Pole	
2+24.2	1.5 Back Ely	Tel Pole	
2+49	1. Back Ely	25'x25' signal	
2+49.7	Begin Red		

W side Kettner

52

2+56	1.9 Back	E Meter Box	
2+67	End curb	& Red	
2+69	E 8"	storm Drain steel	
2+76.3	N. Rail	Double R.R. Track	
3+15.3	S. Rail	Double R.R. Track	
3+12	S Prop Line		
3+24	S. Curb Line	Int.	

E. side Kettner Fst To G st

00	Curb Line	Int.	
+10	Curb P.C.	Ret	
+12	N Prop Line		
+14	1. Back Wly	Power Pole	
+25.7	1.5 Back	E Fire Hdt.	
1+05	1. Back	Guy Line	
1+14.7	1.1 Back Wly	Power Pole	
1+47	1. Back Wly	Power Pole	
2+72.3	1.3 Back	E W. Meter Box	
2+75	Begin Drive		
2+91.3	End Drive		
2+97.8	0.9 Back Wly.	Power Pole	
3+06	Begin Red		
3+11	1. Back Wly	Power Pole	
3+12	End Red	S. Prop Line	
3+14	curb P.C.	Return	
3+24	Curb Line Int.	N.E. cor. Kettner + G st.	

S. Side Est Pacific To Ketter

0+00	Curb Line Int.			
+10.4	W. Rail Double	R.R.	Track	
+28.3	E. Rail Double	R.R.	Track	
+34.4	Begin Curb			
+46.4	2.3 Back Nly.	Tel.	Pole	
+68	Begin Drive			
+83	End Drive			
+114.5	Begin Red			
+123.5	End Red Begin	Drive		
+146	End Drive Begin	Red		
+154.5	End Red			
+180	1.2 Back Nly.	Power Pole		
+209	2. Back &	Guy Wire		
+232.5	P.C. 2' Curb Ret.			
+234.5	W Curb Line Int	Calif at E		
+347	Begin Curb E. side	Calif at E		
+51.7	Begin Conc Walk			
+12.5	0.8 Back Wly	Gas Co. Access	^{Box}	
+18.5	0.8 Back Ely.	Gas Co. Access	^{Box}	
+193.5	Begin Red			
+207.3	1.8 Back Blvd.	Stop Sign		
+209.5	E Prop Line.	End Red		
+211.5	Curb Ret P.C.			
+221.5	Curb Line Int.			
	S.W. Cor Ketter E.			

N. Side Est. Pacific To Ketter

53

0+00	Curb Line Int			
+10.3	W Rail Double	R.R.	Track	
+28.3	E Rail Double	R.R.	Track	
+34.1	Begin Curb	Begin Red		✓
+36.5	1.5 Back &	Fire Hdt.		
+46.7	1.1 Sly	Power Pole		
+50.7	1.2 &	R.R. Crossing Sign		
+70	End Red			✓
+99.7	Begin Red			
+109	End Red Begin	Drive		
+133.5	End Drive	Begin Red		✓
+135.5	1.2 Back Sly	Power pole		
+143	End Red			✓
+180	1.2 Back Sly	Power Pole		
+204.5	Begin Red			✓
+205.5	2. Back &	guy wire		
+209	End Red	Begin Drive		✓
+226	End Drive	Begin Red		✓
+232.5	End Red	P.C. 2' Curb Ret		
+234.5	Curb Line Int	Calif at E		✓
+240.5	Sly on curb	8"x8" R.R. Cross Sign		
+243.7	1.4 Back Sly	Power Pole		
+244.7	Begin Curb Ely	Calif at E.		
+271	Begin Yellow	Metal		
+292	Begin Side Walk	opening Gas Co		
	cont on p 54			

				N Side E Union To Front Cont			
4+01	End yellow	Metal Cover	1+765	End	Red		54 ✓
4+22	End sidewalk opening	Gas L	2+10.5	P.C.	curb Ret.		
4+24.5	2' Back &	R.R. M.H.	2+12	E Prop	Line		
4+30	Begin Red		2+12	0.8	Back sly	Light Post	
4+45	End Red		2+26	curb Line	Int	N.W. cor. Front. E.	
4+94	Begin Red						
5+09.5	E Prop Lin	End Red		S. side "E"	Union To	Front	
5+11.5	P.C. Curb	Ret	0+00	curb Line	Int.		
5+21.5	Curb Line	Int	0+10	P.C. Curb	Ret.		
	N.W. Ketcher at E.		+12	W Prop	Line		✓
			+12	1.	Back Nly	Light Post	
			+13.7	2.2	Back Gas	Filler Box	
			+14.3		Begin	Drive	
			+20.5	2.2	&	Gas Filler Box	
			0+78	End	Drive		✓
			+82.5	0.9	Back Nly	Power Pole	
			+91.4	1.	Back Nly	Light Post	
			1+08.5	Begin	Red		✓
			1+12	End	Red	Begin	Drive ✓
			1+28	End	Drive	Begin	Red ✓
			1+31	End	Red		✓
			1+37.6	1.3	Back &	Gas Valve	
			1+71.6	1.	Back Nly	Light Post	
			1+79.5	0.9	Back Nly	Power Pole	
			2+05.5	2.	Back &	Guy wire	
			2+12	E Prop	Line		
			2+16.	curb	P.C.		
			2+26	curb Line	Int	S.W. cor Front. E.	
N. side Est Union To Front							
00	N.E. curb	Line Int.					
0+10	curb Line	P.C.					
+0+12	W Prop	Line					
0+51.8	1' Back	sly Light Post					
+78.5	Begin	Red					
+92	End	Red	Begin	Drive			
+1+04	End	Drive	Begin	Red			
1+05.5	1.8	Back &	6" Gas Gate				
1+10	1.7	Back &	W. Meter Bo				
+1+12	End	Red					
1+16.2	1.	Back	sly Light Post				
+1+47		Begin	Red				
+1+52	End	Red	Begin	Drive			
+1+71.5	End	Drive	Begin	Red			

W side India St Bdy To E.
 0+00 N Curb Line Int West side
 +10 PC curb Ret
 +20 N Prop Line Begin Red
 +20.8 1. Back Ely Power Pole
 +28 End Red
 +45.2 1.7 Back & 6" Gas Valve
 +48 1.6 Back Lly 12" Palm
 +51 2' Back & 2'x2' W. Meter
 +72 1.7 Back Ely 12" Palm
 +113 Begin Rod
 +123 1.2 Back Ely Power Pole, End Red
 +153.6 1.6 Back & W. Meter Box
 +155.4 1. Back & 6" W. Gate
 +156.3 1.6 Back & W. Meter Box
 +187 Begin Drive
 +218 End Drive
 +222.2 0.7 Back Ely Power Pole
 +284 Begin Drive N.G.
 +300 Begin Red
 +314 End Drive N.G.
 +318 0.8 Back Ely Power Pole
 +320 S. Prop Line End Red
 +322 P.C. Curb Ret.
 +332 Curb Line Int
 N.W. Cor India at E.

E. side India Broadway to E.
 0+00 S.E. Curb Line Int.
 +10 Curb Ret. P.C.
 +20 N Prop Line Begin Red
 +23.5 1.3 Back & Fire Hdt.
 +30 1.3 Back & Street Sign
 +35.5 End Red
 +46.5 1.7 Back & W. Meter Box
 +104.5 Begin Drive
 +122.5 End Drive
 +179.7 1.8 Back & W. Meter Box
 +187 Begin Drive
 +213.8 2. Back & Gasoline Filler
 +216.5 1. Back & 6" Gas Gate
 +218 End Drive
 +238.5 2. Back & W. Meter Box
 +239. Begin Drive
 +253.5 End Drive
 +295 2. Back & Guy Wire
 +304.8 Begin Red
 +312.8 1.6 Back & W. Meter Box
 +317 1.3 Back wly Guy Pole
 +320 S. Prop Line End Red
 +322 P.C. Curb Ret
 +332 Curb Line Int
 N.E. Cor India at E.

W side India F to G

0+00	Curb	Line	Int.	
0+10	Curb	Ret	P.C.	
+11.5	0.7	Back	Ely.	10"x20" Pipe Bas
+12	N.W.	Prop	Cor.	
+12.8	1.	Back	Ely.	Power Pole
+59.6	2.	Back	£	Parking Post
+66		Begin	Red	
+67		Begin	Drive	End Red
+81		End	Drive	Begin yellow
+06.5		End	yellow	
+14	1.1	Back	Ely.	Power Pole
+65.7	1.6	Back	£	Parking Post
+14	1.1	Back	Ely.	Power Pole
+77.3	1.6	Back	£	Parking Post
+99	1.	Back	Ely.	Power Pole
+12	S.W.	Prop	Cor.	
+14	Curb	Ret	P.C.	
+24	Curb	Line	Int.	
	N.W.	corner	India	at G.

E. side India F. to G.

0+00	Curb	Line	Int.	S.E. Cor
0+10	Curb	Ret.	P.C.	
+12	Prop	Line		
+18.6	1.2	Back	£	Fire Hdt.
+58	Begin	Broken	out	Curb
+62	0.5	Back	wly	36" Eucalyptus
+65	End	Broken	out	Curb
+00	Begin	Broken	out	Curb
+11.5	0.5	Back	wly	36" Eucalyptus
+15	End	Broken	out	Curb
+49.2	1.	Back	wly	Power Pole
+77.2	1.1	Back	£	Fuel Filla Pipe
+77.8	1.5	Back	£	W Meter Box
+07.5	0.6	Back	wly	30" Eucalyptus
+12	S.	Prop	Line	
+14	P.C.	Curb	Ret	
+24	Curb	Line	Int	
	N.E.	corner	India	at G

S. Side G St Pacific To Calif.

0+00	S.E. Curb Int.		
+103	W. Rail Double	R.R. Track	
+283	E. Rail Double	R.R. Track	
+349	Begin Curb		
+55	1.5 Back Nly	Power Pole	
+71	Begin Drive		
+88	End Drive		
+94	End Curb		
+99.7	1.5 Back Nly	Power Pole	
+108	R.R. R.O.W. being used as Drive		

N. Side G St Pacific To Calif.

0+00	Curb Line Int.		
+10.3	W. Rail Double	R.R. Track	
+28.3	E. Rail Double	R.R. Track	
0+41	55' N. of S. Curb	^{Nly} R.R. ^{Post} Crossing	
1+31.5	37' N. of N. Curb Wly.	Loading Platform	
1+49	12' Back	Begin Loading Ramp	
2+10	12' Back	End Loading Ramp	

S. side Fst G India To Columbia 57

0+00	S.E. Curb Line Int.		
0+10	P.C. Curb Ret		
+12	W. Prop Line		
0+32	1. Back Nly	Power Pole	
+34	Begin Drive		
1+82	End Drive		
2+12	E. Prop Line		
2+14	P.C. Curb Ret		
2+24	S.W. Curb Line Int.		

N side Fst G India To Columbia

0+00	N.E. Curb Line Int.		
0+10	P.C. Curb Ret		
0+12	W Prop Line		
+175	0.8 Back sly	36" Eucalyptus	
+63	0.8 Back sly	30" Eucalyptus	
1+133	1.1 Back sly	20" Eucalyptus	
1+23	Begin yellow		
1+62	0.8 Back sly	24" Eucalyptus	
1+63	End yellow		
2+07	0.8 Back sly	40" Eucalyptus	
2+12	E. Prop Line		
2+14	P.C. Curb Ret		
2+24	N.W. Curb Line Int.		

N. side G. St. Columbia To State				S. side G. St. Columbia To State			
0+00	N.E.	Curb Line	Int	0+00	S.E.	Curb Line	Int
+10	P.C.	Curb Ret		+10	P.C.	Curb Ret.	
+12	W	Prop Line		+12	W	Prop Line	✓
+34	Begin	Red		+13	l.	Back Nly. Power Pole	
+37	End	Red	Begin Drive	+12	l. l	Back Nly. Power Pole	✓
+54.5	End	Drive	Begin Red	+14.5		Begin yellow	✓
+57	End	Red		+34.5	End	yellow, Begin Drive	✓
+88	Begin	Red		+59.5	End	Drive Begin yellow	✓
+90	End	Red	Begin Drive	+81	End	yellow Begin Drive	✓
+108	End	Drive	Begin yellow	+91.5	End	Drive Begin yellow	✓
+128	Begin	Drive		+205	End	yellow Begin Red	✓
+146	End	Drive		+11.5	l.	Back Nly Power Pole	
+61.5	End	yellow		+12	End	Red E. Prop Line	✓
+12	E.	Prop Line		+14	P.C.	Curb Ret	
+14	P.C.	Curb Ret		+24	S.W	Curb Line Int.	
+24	N.W.	Curb Line	Int.				

S. Side F st India To Columbia

0+00	S. E	curb Line	Int.
0+10	P.C	curb Ret.	
0+12	W	Prop Line	
0+15	1.	Back Nly	Power Pole
0+25	1	Back Nly	24" Eucalyptus
0+68	1.2	Back Nly	24" Eucalyptus
1+06	1.	Back Nly	Power Pole
1+10.3	1	Back Nly	24" Eucalyptus
1+53	2.	Back &	W Meter Box
1+55	1.5	Back &	Gas Valve
1+96		Begin Red	
2+07	1.5	Back Nly	12" Eucalypt
2+10	1.2	Back Nly	Power Pole
2+12		End Red, E	Prop Line
2+14	PC	curb Ret	
2+24	S.W	curb Line	Int.
		Columbia at	F.

N. side F st India To Columbia

0+00	N.E.	curb Line	Int
0+10	P.C	curb Ret	
0+12	W	Prop Line	✓
0+13	1.1	Back sly	Power Pole
0+20.6	1.	Back &	Guy wire
0+22.3	0.9	Back &	Guy wire
0+43.5	1.1	Back sly	Tel Pole
0+45	G.	Begin Drive	✓
0+56.5	N.	End Drive	✓
1+14.5	1.1	Back sly	Tel Pole
2+04		Begin Red	✓
2+11.5	1.2	Back sly	Tel pole
2+12		End Red,	E. Prop Line
2+14	P.C.	curb Ret	
2+24	N.W.	curb Line	Int.

S. Side F. St, Columbia To State
Meters are already installed

N. Side	F. St,	Columbia	To	State
0+00	N.E.	Curb	Line	Int
+10	P.C.	Curb	Ret	
✓ +12	W	Prop	Line	Begin Red
+13	1.3	Back	sly	Power Pole
✓ +28		End	Red	
+37	0.7	Back	sly	Light Post
✓ +48		Begin	Red	
+51		End	Red	Begin Drive
+84		End	Drive	Begin Red
✓ +87.5		End	Red	
✓ 1+06		Begin	Red	
1+10.3	0.7	Back	sly	Power Pole
✓ 1+11.3		End	Red	Begin Drive
1+30		End	Drive	Begin Red
✓ 1+35		End	Red	
1+42	0.7	Back	sly	Light Post
2+02.5		Begin	Red	
2+11.3	1.	Back	sly	Power Pole
2+12	E	Prop	Line	End Red
2+14	P.C.	Curb	Ret	
2+24	N.W.	Curb	Line	Int.
				State at F. St

S. Side F. St, State To Union 60
Meters Already installed

N. Side	F. St	State	To	Union
0+00	N.E.	Curb	Line	Int
+10	P.C.	Curb	Ret	
+12	W	Prop	Line	Begin Red
+15.5	1.5	Back	sly	Power Pole
+23		End	Red	
+37.5	0.6	Back	sly	Light Post
1+11	0.9	Back	sly	Power Pole
1+15		Begin	Drive	
1+38		End	Drive	
1+86.7	0.6	Back	sly	Light Post
2+11	1.	Back	sly	Power Pole
2+12	E	Prop	Line	
2+14	P.C.	Curb	Ret	
2+24	N.W.	Curb	Line	Int
				Union at F. St.

S	Side	Fst	Union To	Front	N	side	Fst	Union To	Front
0+00	S.E.	Curb	Line	Int.	0+00	N.E.	Curb	Line	Int.
+10	P.C.	Curb	Ret		+10	P.C.	Curb	Ret	
+12	W	Prop	Line		+12	W	Prop	Line	
+13	1.3	Back	Nly	Power Pole	+128	1.1	Back	Sly	Power Pole
+35	0.7	Back	Nly	Light Post	+35.3	0.7	Back	Sly	Light Post
+46.8	1.	Back	⊕	W Meter Box	0+69.5		Begin	yellow	
+54.5		Begin		White	1+03.5		End	yellow	
+60.5	1.	Back	⊕	W Meter Box	1+10.5	1.1	Back	Sly	Power Pole
0+73.5	End	white		Begin yellow	1+20		Begin	yellow	
1+12.5	End	yellow			1+28		Begin	Drive	
1+13.3	0.9	Back	Nly	Power Pole	1+40		End	Drive	End yellow
1+50		Begin		yellow	1+59.5		Begin	Red	
1+78.5		End		yellow	1+64		Begin	Drive	End Red
1+86.2	0.7	Back	Nly	Light Post	1+83.5		End	Drive	Begin Red
2+09.6	3.5	Back	⊕	Gas Valve	1+86.3	0.7	Back	Sly	Light Post
2+11.4	0.9	Back	Nly	Power Pole	1+87		End	Red	
+12	E.	Prop	Line		2+04.5		Begin	Red	
+16	P.C.	Curb	Ret		2+11		End	Red	
+26	S.W	Curb	Line	Int.	2+11	1.	Back	Sly	Tel Pole
	Front st	at		F.	2+12	E	Prop	Line	
					2+16	P.C.	Curb	Ret	
					2+26	N.W.	Curb	Line	Int
							Front	at	Fst.

S. side	F st.	Front	To	1 st	N side	F st	Front	To	1 st
0+00	S.E.	Curb	Line	Int	0+00	N.E.	Curb	Line	Int.
0+10	P.C.	Curb	Ret.		0+10	P.C.	Curb	Ret	
0+14	W.	Prop	Line		0+14	W	Prop	Line	✓
+15	1.	Back	Nly.	Power Pole	+15	1.	Back	Sly	Power Pole
0+38.4	1.2	Back	Nly	Light Post	0+28.5	0.8	Back	Sly	Light Post
+61		Begin	Red		+62		Begin	Drive	✓
+66		End	Red	Begin Drive	+82		End	Drive	✓
+80.5		End	Drive	Begin Red	1+01	1.7	Back	W. Meter Box	
+85		End	Red		1+15.2	0.8	Back	Sly	Power Pole
1+13.3	1.	Back	Nly	Power Pole	1+36.5		Begin	Drive	✓
1+14		Begin	yellow	stores	1+71		End	Drive	✓
1+54.5		End	yellow	vacant	+88.8	0.7	Back	Sly	Light Post
1+74		Begin	white		2+06		Begin	Red	✓
1+89.5	0.7	Back	Nly	Light Post	2+11.5	1.1	Back	Sly	Power Pole
1+98.5		End	white	Begin Red	2+13	1.8	Back	W. sign	Post
2+13.5	1.1	Back	Nly	Power Pole	2+14	E	Prop	Line	
2+14	E	Prop	Line		2+18	P.C.	Curb	Ret	
2+18	P.C.	Curb	Ret		2+28	N.W.	Curb	Line	Int
2+28	S.W	Curb	Line	Int.		F. st.	at	1 st st.	
	F st	at	1 st						

Service
being
consec

N.	Side	Market	Ketner	To	India
0+00	Curb	Line	Int		
0+10	P.C.	Curb	Ret		
0+12	W.	Prop	Line		
0+12.5	1.	Back	Sly	Power	Pole
0+27	1.7	Back	£	Guy	Wire
0+44.5	2.	Back	£	W. Meter	Box
0+55	N.G.	Begin	Drive		
0+67	N.G.	End	Drive		
0+83.5	2.5	Back	£	Sign	Post
1+02	3'	Back	£	Tel	M.H.
1+12	1.2	Back	Sly	Power	Pole
1+14	N.G.	Begin	Yellow		
1+39.5	1.1	Back	Gas	Gate	
1+40	N.G.	End	Yellow		
1+58.8	2.3	Back	£	Sign	Post
1+88.5	1.6	Back	Sly	Power	Pole
2+02.5		Begin	Red		
2+12	E.	Prop	Line,	End	Red
2+14	P.C.	Curb	Ret		
2+24		Curb	Line	Int.	
		N.W. Cor.	Market	at	India

S	Side	Market	Ketner	To	India
0+00	Curb	Line	Int		
0+12	W.	Prop	Line		
0+13.2	1.8	Back	£	Sign	Post
0+14.9	0.7	Back	Nly	Power	Pole
0+15	P.C.	Curb	Ret.		
0+22.5	1.6	Back	£	Water	Meter Box
0+23.7	1.6	Back	£	W. Meter	Box
0+50.2	1.6	Back	£	W. Meter	Box
0+51.6	1.6	Back	£	W. Meter	Box
0+75	1.6	Back	£	W. Meter	Box
0+76.3	1.6	Back	£	W. Meter	Box
0+86.7	2	Back	£	Sign	Post
0+99.3	1.6	Back	£	W. Meter	Box
1+00.4	1.6	Back	£	W. Meter	Box
1+11.3	1.2	Back	Nly.	Power	Pole
1+28	1.6	Back	£	W. Meter	Box
1+51.2	2	Back	£	RR.	Sign
1+54	2.0	Back	Nly.	24"	Palmt
1+86.5	2.3	Back	£	Sign	Post
2+10	1.	Back	Nly	Power	Pole
2+12	E.	Prop	Line		
2+14	P.C.	Curb	Ret		
2+24		Curb	Line	Int	
		S.W. Cor.	India	at	Market

N	side	Market, India To Columbia		
0+00	curb	Line	Int.	
0+10	P.C	curb	Ret.	Begin Red
0+12	W.	Prop.	Line	
0+29.6	1.2	Back	S ly	Power Pole
0+33	1.3	Back	S ly	2'x2' Signal Base
0+34.5	End	Red	Begin	Drive
0+57	End	Drive	Begin	Red
0+61	End	Red		
1+13	1.1	Back	S ly	Power Pole
1+60.6	2.	Back	⊕ R.R.	Sign Post
1+83.5	1.4	Back	S ly	Power Pole
2+10	2.6	Back	⊕	Highway Sign
2+12	E.	Prop.	Line	
2+14	P.C	curb	Ret.	
2+24	curb	Line	Int.	
	N.W.	Cor Market at Columbia		

S	side	Market India To Columbia		
0+00	curb	Line	Int.	
0+10	P.C.	curb	Ret.	
0+12	W	Prop	Line	Begin Red ✓
0+15	1.1	Back	N ly 2'x2'	Signal R.R.
0+19	0.7	Back	N ly	Power Pole
0+25	End	curb	End	Red ✓
0+34.3	W Rail	Double		R.R. Track
0+52.4	E Rail	Double		R.R. Track
0+70	Begin	curb	Begin	Red ✓
0+81.7	2.5	Back	⊕	R.R. Access Box
0+86.5	End	Red.		✓
1+08.3	1.2	Back	N ly	Power Pole
1+29.2	1.	Back	N ly	Power Pole
1+69.5	2.4	Back	⊕	R.R. Xing sign
1+78	1.1	Back	⊕	Access Box
1+97.5	1.6	Back	⊕	W. Meter Box
2+11.5	1.	Back	N ly	Power Pole
2+12	E.	Prop	Line	
2+14	P.C.	curb	Ret	
2+24	curb	Line	Int	
	S.W	cor. Market at Columbia		

N. side Market Columbia to State				S side Market Columbia to Union			
0+00	Curb	Line	Int.	0+00	Curb	Line	Int.
0+10	P.C	Curb	Ret	0+10	P.C.	Curb	Ret
0+12	W.	Prop	Line	0+12	W	Prop	Line
0+13.6	1.3	Back	Sly Power Pole	0+15.6	2.5	Back	⊥ Highway Sign
1+12		Begin	Red	0+17.6	1.	Back	Nly Power Pole
1+13	1.	Back	Sly Power Pole	0+50.5	1.7	Back	⊥ Guy wire
1+22.5		Begin	Drive End Red	1+14.2	1.	Back	Nly Power Pole
1+52.5		End	Drive Begin Red	1+59.1	1	Back	⊥ Gas Valve
1+54.5		End	Red	1+95		Begin	Red
1+63.7	1	Back	⊥ Gas Valve	1+99	0.9	Back	Nly Power Pole
1+71.5		Begin	Red	2+05		Begin	Drive End Red
1+79.5		End	Red Begin Drive	2+19		End	Drive Begin Red
1+94		End	Drive Begin Red	2+28	1.2	Back	⊥ Fire Hd tr
1+96.7	1.6	Back	⊥ Guy wire	2+38		End	Red
2+00	3.5	Back	⊥ Tel. M.H	2+53		Begin	Drive
2+10.5	0.7	Back	Sly Power Pole	2+73		End	Drive
2+12	E.	Prop	Line	2+89.6	1.2	Back	Nly Power Pole
2+14	P.C	Curb	Ret.	2+92.3	1.1	Back	Nly Power Pole
2+24	Curb	Line	Int.	2+96.2	1.6	Back	⊥ W. Metal Box
	N.W. Cor.	Market	at State	2+96.5		Begin	Red
				3+02		End	Red Begin Drive
				3+20.5		End	Drive Begin Red
				3+25.5	0.8	Back	Nly Light Post.
				3+26.5		End	Red
				3+66		Begin	Drive

N. Side Market state To Union

0+00	curb	Line	Int.		3+83	End	Drive		
0+10	P.C	curb	Ret		3+85	1.	Back	Nly	Power Pole.
0+12	W	Prop	Line		4+63	0.7	Back	Nly	Light Post
0+15.3	0.8	Back	Sly	Power Pole	4+86	1.	Back	Nly	Power Pole
0+37.1	0.7	Back	Sly	Lamp Post	4+87	E.	Prop	Line	
0+77.5		Begin	Red		4+89		P.C.	curb	Ret
0+79.5	1.6	Back	E	W. Meter Box	4+99		curb	Line	Int.
0+82	Begin	Drive	End	Red					
0+94	End	Drive	Begin	Red					
0+98	End	Red							
1+10.2	0.7	Back	Sly	Power Pole					
1+80		Begin	Red						
1+82.5	1.	Back	Sly	Light Post					
1+83.5	0	Begin	Drive	End Red					
1+95.5	N	End	Drive	Begin Red					
2+07.5		End	Red						
2+09.5	1.3	Back	Sly	Power Pole					
2+12	E	Prop	Line						
2+14		P.C	curb	Ret					
2+24		curb	Line	Int					

Loggings
to be

S.W. cor Market at Union

N.W cor Market at Union

N side Market Union To Front				S side Market Union To Front			
0+00	curb	Line	Int	0+00	curb	Line	Int.
0+10	P.C.	curb	Ret	0+10	P.C.	curb	Ret
0+12	W	Prop	Line	0+12	W	Prop	Line
0+14.5	0.9	Back	Sly Power Pole	+13	1.6	Back	⊕ W Meter Box
0+36.6	0.7	Back	Sly Light Post	+143	1.	Back	Nly Power Pole
0+45.5	2.5	Back	⊕ W. Meter Box	0+37	0.6	Back	Nly Light Post
0+76.5	1.	Back	⊕ Gas Valve	0+41	1.6	Back	⊕ W Meter Box
0+85.5		Begin yellow		0+51		Begin Broken out curb	
0+89	N.G.	Begin Drive		+59		End Broken out curb	
1+12		End Drive End Loading		+65		Begin Drive	
1+13	1.	Back	Sly Power Pole	+89		End Drive	
1+24		Begin Red		1+14	1.	Back	Nly Power Pole
1+27		Begin Drive		1+87.7	0.7	Back	Nly Light Post
1+46		End Drive	Begin Red	2+11.2	2.2	Back	Nly Power Pole
1+48.5		End Red		2+12		E. Prop. Line	
1+86.6	0.7	Back	Sly Light Post	2+16		Re curb Ret	
2+10.8	1.1	Back	Sly Power Pole	2+26		Curb Line Int	
2+12	E	Prop Line				S.W. Cor. Market at Front.	
2+16	P.C.	Curb Ret.					
2+26		Curb Line Int					
		N.W. cor Market at Front					

N. Line Market Front To 1st

0+00 Curb Line Int.
 0+10 P.C. Curb Ret
 0+14 W Prop Line
 0+16.2 1. Back Sly Power Pole
 0+28.5 3.5 Back & Tel. M.H.
 0+38.6 0.7 Back Sly Lamp Post
 0+54 Begin Drive
 0+76 End Drive
 1+12.7 1. Back Sly Tel Pole
 1+15 Begin Drive
 1+37 End Drive
 1+88.8 0.7 Back Sly Light Post
 2+13 1.2 Back Sly Tel Pole
 2+14 E Prop Line
 2+18 P.C. Curb Ret.
 2+28 Curb Line Int

N.W. Cor. Market at 1st

S Side Market Front To 1st

68

0+00 Curb Line Int
 0+10 P.C. Curb Ret
 0+14 W Prop Line
 0+15.6 1. Back Nly Power Pole
 0+39 0.8 Back Nly Lamp Post
 0+42 2. Back & Guy Wire
 0+64.5 1. Back & Gas Gate
 0+83 N.G. Begin Drive
 0+96 End Drive
 1+10 1. Back Nly Power Pole
 1+15.2 0.9 Back & Water Gate
 1+60 Begin Drive
 1+86 End Drive
 1+89.5 0.7 Back Nly Light Post
 2+12 1. Back Nly Power Pole
 2+14 E Prop Line
 2+18 P.C. Curb Ret
 2+28 Curb Line Int.

S. W. Cor. Market at 1st

N	Side	Market	1st	To	2nd
0+00	Curb	Line	Int.		
0+10	P.C	Curb	Ret.		
0+14	W	Prop	Line		
0+15.7	1.0	Back	Sly	Fire	Hdt
0+18.5	1	Back	Sly	Tel	Pole
0+38.5	0.8	Back	Sly	Light	Post
1+11		Begin	Red		
1+13.5	1.	Back	Sly	Tel.	Pole
1+15		Begin	Drive	End	Red
1+49		End	Drive	Begin	Red
1+53		End	Red		
1+71.5		Begin	Red		
1+73	1.	Back	Sly	Lamp	Post
1+75		End	Red	Begin	Drive
2+09		End	Drive		
2+13	1.	Back	Sly	Tel	Pole
2+14	E	Prop	Line		
2+18	P.C	Curb	Ret		
2+28		Curb	Line	Int	

N.W. Cor 2nd Market.

S	Side	Market	1st	To	2nd
0+00	Curb	Line	Int		
0+10	P.C	Curb	Ret		
0+14	W	Prop	Line		
0+17	1.1	Back	Nly	Power	Pole
0+39.3	0.7	Back	Nly	Light	Post
0+49		Begin	Drive		
0+60		End	Drive		
0+76		Begin	Drive		
1+10		End	Drive		
1+133	1.6			W. Meter	
1+15	1.1			Nly. Power	Pole
1+32	1.6			W Meter	
1+43		Begin	Drive		
1+85		End	Drive		
1+89.8	0.7	Back	Nly	Light	Post
2+13.5	1.	Back	Nly	Power	Pole
2+14		E Prop.	Line		
2+18		P.C.	Curb	Ret	
2+28		Curb	Line	Int.	

S. W. Cor. Market. AT 2nd

N	side	Market	2 nd	To	3 rd
0+00		Curb	Line	Int.	
0+10		P.C.	Curb	Ret.	
0+14	W	Prop	Line	Begin	Red
0+14.5	1.	Back	Sly	Tel	Pole
0+19.9	1.	Back	⊕	Mail	Box
0+28		End	Red		
0+39	0.7	Back	sly	Lamp	Post
0+50		Begin	White		
0+76		End	White		
1+13.5	1.	Back	sly	Tel	Pole
1+33.6	1.	Back	⊕	Guy	Wire
1+41.7	1.2	Back	⊕	Gas	Valve
1+89.3	0.6	Back	sly	Lamp	Post
2+14	E	Prop.	Line		
2+18		P.C.	Curb	Ret.	
2+28		Curb	Line	Int.	
		N.W.	Cor.	Market	at 3 rd

S	side	Market	2 nd	To	3 rd
0+00		Curb	Line	Int.	
0+10		P.C.	Curb	Ret.	
0+14	W	Prop	Line	Begin	Red
0+16.2	1.	Back	Nly	Power	Pole
0+20.5	1.	Back	Nly	Light	Post
0+29		Begin	Drive	End	Red ✓
0+69.5		End	Drive	Begin	Red ✓
0+85		End	Red	Begin	Drive ✓
1+07		End	Drive	Begin	Red ✓
1+13	1.	Back	Nly	Power	Pole
1+17		End	Red	Begin	Drive ✓
1+47		End	Drive	Begin	Red ✓
1+52		End	Red		✓
1+72		Begin	Red		✓
1+77		End	Red	Begin	Drive ✓
2+07		End	Drive	Begin	Red ✓
2+09.8	0.7	Back	Nly	Lamp	Post
2+16.5	1.	Back	Nly	Power	Pole
2+14	E	Prop	Line	End	Red ✓
2+18		P.C.	Curb	Ret	
2+28		Curb	Line	Int	

S.W. Cor. Market at 3rd

W.	side	Colum	bia	E To	F
0+00	Curb	Line	Int		
0+10	P.C.	Curb	Ret		
0+12	N	Prop	Line	Begin	Red
0+30	End	Red	Begin	Drive	
0+44	End	Drive	Begin	yellow	
0+57.8	1.7	Back	⊕	W. Meter Box	
0+80	End	yellow	Begin	Drive	
0+94.5	End	Drive	Begin	Red	
0+97.5	End	Red			
1+14	1.	Back	Ely	Power	Pole
1+25.5	Begin	Red			
1+28.3	1.6	Back	⊕	W. Meter Box	
1+29	End	Red	Begin	Drive	
1+45	End	Drive	Begin	Red	
1+48	End	Red			
1+79	Begin	Drive			
1+95	End	Drive	Begin	Broken	Curb
1+96.5	1.7	Back	⊕	W. Meter Box	
2+12	End	Broken	Curb		
2+63.5	1.	Back	Ely	Power	Pole
2+66.8	1.6	Back	⊕	W. Meter Box	
2+96.5		Begin	Red		
3+12	S	Prop	Line	End	Red
3+14	P.C.	Curb	Ret		
3+24	Curb	Line	Int		
	N.W.	Columbia	at	F	

E.	side	Colum	bia	E To	F
0+00	Curb	Line	Int.		
0+10	P.C	Curb	Ret		
0+12	N	Prop	Line	Begin	Red ✓
0+17	1.1	Back	⊕	Fira	Hdt
0+24	1.4	Back	⊕	Guy	Wire
0+28.5		End	Red		✓
0+39.6	1.	Back	wly	Power	Pole
0+47.6	1.7	Back	⊕	W. Meter Box	
0+81		Begin	Red		✓
0+84.5	End	Red	Begin	Drive	✓
1+00	End	Drive	Begin	Red	✓
1+04	End	Red			✓
1+15.5	1.2	Back	⊕	Gas	Valve
1+29	Begin	Drive			✓
1+44	End	Drive			✓
1+62.3	1.1	Back	wly	Power	Pole
1+65		Begin	Red		✓
1+68	Begin	Drive	End	Red	
1+87.7	End	Drive	Begin	Red	✓
1+87	End	Red			
2+03	Begin	yellow			
2+22.4	1.7	Back	⊕	W. Meter Box	
2+28	1.2	Back	⊕	Gas	Valve
2+37	End	yellow	Begin	Red	✓
2+39	End	Red	Begin	Drive	
2+61.5	End	Drive	Begin	Red	
2+64.5	End	Red			

E. side Columbia E To F cont.				E. side State St E To F			
2+77.5		Begin Red		0+00	curb	Line Int.	
2+80	2.3	Back &	W. Meter Box	0+10	P.C.	curb Ret	
2+81	End	Red	Begin Drive	0+12	N.	Prop Line	Begin Red. ✓
3+10	End	Drive	Begin Red	0+12.8	1.	Back wly	Power Pole
3+11.5	1.2	Back wly	Power Pole	0+20.3	1.2	Back &	Fire Hdt.
3+12	S	Prop Line	End Red	0+27	2.3	Back &	W Meter Box
3+14	P.C.	curb Ret		+33	End Red		✓
3+24	curb	Line Int		0+72	Begin Red		✓
				0+76.5	End Red	Begin Drive	✓
				0+97.5	End Drive	Begin Red	✓
				+03	End Red		✓
0+00	curb	Line Int.		1+09.5	1.7	Back &	W Meter Box
0+10	P.C.	curb Ret		1+11	1.3	Back wly	Power Pole
0+12	N	Prop Line		1+14.8	2.2	Back &	Gas Valve
				1+23		Begin Red	✓
				1+28		End Red	Begin Drive ✓
				1+46.5		End Drive	Begin Red ✓
				1+50.5		End Red	✓
				1+90		Begin Red	✓
				1+94.5		End Red	Begin Drive ✓
				2+08		End Drive	✓
				2+28		Begin Drive	
				2+43.5		End Drive	
				2+49		End Red	✓
				2+61.4	2	Back &	W Meter Box
				2+63.6	1.7	Back &	W Meter Box
				2+65	2.	Back &	Gas Valve

E side Columbia F To G

0+00 Curb Line Int.

0+10 P.C. curb Ret

0+12 N Prop Line

Meters are installed both
sides of this block

W. side Columbia F To G

2+24 From N. curb Line

slab for meter is in BUT

Meter has not been installed

Meter stand No. CL 706

E side state E to F cont.

2+71 Begin yellow
 2+84.5 1.7 Back & Guy wire
 2+96 End yellow Begin Red
 3+07 1.2 Back & 8" W. Gate
 3+10.5 0.9 Back Wly Power Pole
 3+12 S. Prop Line
 3+14 P.C. Curb Ret
 3+24 Curb Line Int
 N.E. Cor State at F

2+35 End Drive Begin Red ✓
 2+38 End Red Begin yellow
 2+59.5 End yellow
 3+00 Begin Red
 3+09.5 1. Back Ely Power Pole
 3+12 S Prop Line End Red
 3+14 P.C. Curb Ret
 3+24 Curb Line Int.
 N.W. Cor State at F.

W side state E. To F.

0+00 Curb Line Int.
 0+10 P.C. Curb Ret.
 0+12 N Prop Line Begin Red
 0+22.5 End Red
 0+46.6 1.7 Back & W Meter Box
 1+11.5 2.2 Back & W Meter Box
 1+12.7 1.2 Back Ely Power Pole
 1+38.7 2. Back & W. Meter Box
 1+52 Begin Drive
 1+62 End Drive
 1+63 End Red
 1+78 Begin Drive Begin Red
 2+11.5 1. Back Ely Power Pole
 2+14.8 1.6 Back & Gas Valve
 2+15.8 1.6 Back & W Meter Box
 2+18 End Red Begin Drive

W side State F To G

0+00 Curb Line Int.
 0+10 P.C. Curb Ret.
 0+12 N Prop Line Begin Red ✓
 0+15.5 0.9 Back Ely Power Pole
 0+22 End Red ✓
 0+52.5 2.5 Back & W. Meter Box
 0+62 Begin yellow ✓
 0+88.8 1.7 Back & W. Meter Box
 0+92 End yellow ✓
 1+28 Begin Drive ✓
 1+58 End Drive ✓
 1+61 1.3 Back & Gas Valve
 1+66 1.1 Back Ely Power Pole
 1+68 Begin Drive ✓
 2+14 End Drive ✓
 2+17 0.3 Back Ely 36" Palm

2+29.4	1.7	Back	⊕	W Meter Box	1+89	Begin Drive
2+52	0.6	Back	Ely	30" Palm	2+07	End Drive ✓
2+54		Begin	Broken	Curb	2+12	1. Back Wly Guy Pole
2+63	1.2	Back	Ely	Power Pole	2+33	1.3 Back ⊕ Guy Wire
2+64		End	Broken	Curb	2+58	1.3 Back Wly 10" Palm
2+79	2.3	Back	⊕	W Meter Box	2+97	1.7 Back wly 8" Palm
2+79	N.G.	Begin		Drive	3+06.6	1.2 Back ⊕ 8" W. Gate
2+96		End		Drive	3+12	S. Prop Line
3+12	S.	Prop		Line	3+14	P.C. Curb Ret
3+14	P.C.	Curb		Ret	3+24	Curb Line Int
3+24	Curb	Line		Int		N.E. Cor State at G.
	N.W.	Cor.		State at G.		

						E. Side State G. To Market
		E. Side		State F. To G.	0+00	Curb Line Int.
		0+00	Curb	Line Int.	0+10	P.C. Curb Ret
		0+10	P.C.	Curb Ret	0+12	N Prop Line ✓
✓		0+12	N	Prop Line Begin Red	0+17	1.2 Back ⊕ Fire Hdt.
		0+17	1.2	Back ⊕ Fire Hdt	0+28	Begin Yellow ✓
		0+21.8		Back Wly Power Pole	0+32.3	1.7 Back ⊕ Gas Valve
✓		0+28	End Red	Begin Yellow	0+35.3	1.5 Back ⊕ W Meter Box
		0+67		End Yellow	0+48.3	1.3 Back ⊕ Gasoline Pump
✓		0+85.5		End Yellow	0+77	End Yellow Begin Drive ✓
		1+06.5	⊕	1' Metal Storm Drain	0+95	End Drive ✓
		1+14.6	1.3	Back Wly Power Pole	1+63	Begin Red ✓
		1+33.7	2.3	Back ⊕ W Meter Box	1+68	End Red Begin Drive ✓
✓		1+42		Begin Drive	1+83	End Drive Begin Red
✓		1+62		End Drive	1+87	End Red
		1+75	1.5	Back Wly 12" Palm		

E side State G to Market Cont

2+44.7 1.5 Back & W Meter Box
 2+55 Begin Red
 2+58 Begin Drive
 2+72 End Drive
 2+75 End Red
 2+95 Begin Red
 3+05.2 1.2 Back & Fire Hdt
 3+12 5 Prop Line End Red
 3+18 P.C. Curb Ret
 3+28 Curb Line Int.
 N.E. cor. Market at State

1+62 End Drive
 1+66 End Red
 1+79.5 Begin Red
 1+81 Begin Drive
 1+94.5 End Drive
 1+97 End Red
 2+08 0.7 Back Ely Power Pole
 2+12.5 Begin Red
 2+13.8 2. Back & W Meter Box
 2+16.5 Begin Drive
 2+32 End Drive
 2+36 End Red Begin yellow

W side State G to Market

0+00 Curb Line Int.
 0+10 P.C. Curb Ret.
 0+12 N Prop Line
 0+57 2. Back & W Meter Box
 0+62.8 1.7 Back & W Meter Box
 0+63.6 1. Back & Gas Gate
 0+79 Begin Red
 0+82 Begin Drive
 0+92 End Drive
 0+97 End Red
 1+09 1. Back Ely Power Pole
 1+35 2. Back & W Meter Box
 1+38.5 Begin Red
 1+46 Begin Drive

2+54 End yellow
 2+69.5 Begin Red
 2+75.5 2. Back & W Meter Box
 2+76 Begin Drive
 2+86.5 End Drive
 3+04.2 2. Back & Sign Post
 3+08 1. Back Ely Power Pole
 3+12 5 Prop. Line End Red
 3+18 P.C. Curb Ret
 3+28 Curb Line Int.
 N.W. cor Market at State

IMPROVED TABLES AND INFORMATION

HORIZONTAL STADIA CORRECTIONS

2°-00' — 0.1	21°-00' — 12.8	33°-00' — 29.7
3°-00' — 0.3	21°-30' — 13.4	33°-15' — 30.1
4°-00' — 0.5	22°-00' — 14.0	33°-30' — 30.5
5°-00' — 0.8	22°-30' — 14.7	33°-45' — 30.9
6°-00' — 1.1	23°-00' — 15.3	34°-00' — 31.3
7°-00' — 1.5	23°-30' — 15.9	34°-15' — 31.7
8°-00' — 1.9	24°-00' — 16.5	34°-30' — 32.1
9°-00' — 2.5	24°-30' — 17.2	34°-45' — 32.5
10°-00' — 3.0	25°-00' — 17.9	35°-00' — 32.9
10°-30' — 3.3	25°-30' — 18.6	35°-15' — 33.3
11°-00' — 3.6	26°-00' — 19.2	35°-30' — 33.7
11°-30' — 4.0	26°-30' — 19.9	35°-45' — 34.1
12°-00' — 4.3	27°-00' — 20.6	36°-00' — 34.6
12°-30' — 4.7	27°-30' — 21.3	36°-15' — 35.0
13°-00' — 5.1	28°-00' — 22.0	36°-30' — 35.4
13°-30' — 5.5	28°-30' — 22.8	36°-45' — 35.8
14°-00' — 5.9	29°-00' — 23.5	37°-00' — 36.2
14°-30' — 6.3	29°-30' — 24.3	37°-15' — 36.6
15°-00' — 6.7	30°-00' — 25.0	37°-30' — 37.1
15°-30' — 7.2	30°-15' — 25.4	37°-45' — 37.5
16°-00' — 7.6	30°-30' — 25.8	38°-00' — 37.9
16°-30' — 8.1	30°-45' — 26.2	38°-15' — 38.3
17°-00' — 8.5	31°-00' — 26.5	38°-30' — 38.7
17°-30' — 9.0	31°-15' — 26.9	38°-45' — 39.1
18°-00' — 9.5	31°-30' — 27.3	39°-00' — 39.6
18°-30' — 10.1	31°-45' — 27.7	39°-15' — 40.0
19°-00' — 10.6	32°-00' — 28.1	39°-30' — 40.5
19°-30' — 11.2	32°-15' — 28.5	
20°-00' — 11.7	32°-30' — 28.9	
20°-30' — 12.3	32°-45' — 29.3	

Chains to Feet

1	66
2	132
3	198
4	264
5	330
6	396
7	462
8	528
9	594
10	660

Feet to Chains

100	1.515
200	3.030
300	4.545
400	6.060
500	7.575
600	9.090
700	10.606
800	12.121
900	13.636
1,000	15.151

DIRECTIONS FOR USE OF TABLES

TABLE No. 1.

Distance of slope stake from side or shoulder stake for any width roadway, slope $1\frac{1}{2}$ to 1. If ground is nearly level, the cut or fill at side stake is located by the double entry method in left column and top row. The number in body of table in same row and column gives distance from side stake to slope stake. If ground is not level estimate the difference in elevation between the side stake and slope stake, lower target by this amount if cut, elevate if fill. Add this amount to cut or fill and find distance in table. Set up rod at this point, and line of sight should cut target. If it does not make the slight adjustment necessary.

TABLE No. 9.

To find Tangent and External for curve of any other degree, divide by degree of curve and add correction found in column of corrections.

Degree of curve with a given I may be found by dividing tangent, (or external), opposite I by given tangent, (or external).

The distance from a point on the tangent to the curve is very nearly the square of the tangent length divided by twice the radius.

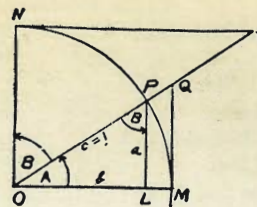


TABLE II
TRIGONOMETRIC FORMULÆ.

$$\angle A = \angle MOP \quad \angle B = \angle PON = \angle OPL$$

$$R = OB = c = 1$$

$$\sin A = \frac{a}{c} = \frac{a}{1} = a = \cos B = LP$$

$$\cos A = \frac{b}{c} = \frac{b}{1} = b = \sin B = OL$$

$$\tan A = \frac{a}{b} = \frac{MQ}{OM} = \frac{MQ}{1} = MQ = \cot B = MQ$$

$$\cot A = \frac{NT}{ON} = \frac{NT}{1} = NT = \tan B = NT$$

$$\sec A = \frac{OQ}{OM} = \frac{OQ}{1} = OQ = \csc B = OQ$$

$$\csc A = \frac{OT}{ON} = \frac{OT}{1} = OT = \sec B = OT$$

$$\text{vers } A = \frac{LM}{OP} = LM = \text{covers } B \#$$

$$\text{covers } A = \frac{OP - LP}{OP} = OP - LP = \text{vers } B$$

$$\text{exsec } A = PQ = \text{coexsec } B$$

$$\text{coexsec } A = PT = \text{exsec } B$$

$$\sin \frac{1}{2} A = \sqrt{\frac{1 - \cos A}{2}} \quad \cos \frac{1}{2} A = \sqrt{\frac{1 + \cos A}{2}}$$

$$\sin 2A = 2 \sin A \cos A \quad \cos 2A = \cos^2 A - \sin^2 A$$

$$\text{Law of Lines} \quad \frac{\sin A}{a} = \frac{\sin B}{B} = \frac{\sin C}{C}$$

$$\text{Law of Cosines} \quad c^2 = a^2 + b^2 - 2ab \cos C$$

$$\text{Law of Tangents} \quad \frac{a+b}{a-b} = \frac{\tan \frac{1}{2}(A+B)}{\tan \frac{1}{2}(A-B)}$$

St. Cor 2421 & G.

26
50
15000
40000