

1741

1741

CITY ENGINEER'S OFFICE

MICROFILMED
DEC 29 1964

MADE IN U. S. A.

1741

Our Leather Bound Engineers Note Books are carried in the following rulings:

- No. 380 LEVEL BOOK. Left and Right Hand Page the same as Left Hand Page of this Book.
- No. 382 FIELD BOOK. Left Hand Page as in this Book, Right Hand Page 4x4 to the inch, Center Line Red.
- No. 384 MINING TRANSIT BOOK. Left Hand Page as in this Book, Right Hand Page 8x8 to the inch, Center Line Red.
- No. 385 FIELD BOOK. Left Hand Page as in this Book, Right Hand Page 8 vertical and 4 horizontal lines to the inch, Center Line Red.

We also carry the Note Books listed above, bound in extra strong Fabri-Hide (otherwise the same quality of book,) which can be furnished at a somewhat lower price.

In ordering Fabri-Hide covered books, add the letter "F" to catalog number.

THE FREDERICK POST CO.

ENGINEERING and DRAFTING SUPPLIES

P. O. Box 803

CHICAGO

INDEX

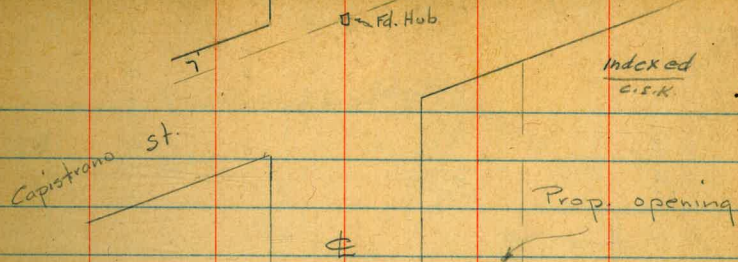
	Page
Mabusha Drive - Location	1-3
" " X-Sections	4-10
" " + Chalkyouth cbls	11, 12
" " Location Bldg	13-15
Lafolla Rancho Rd X-Sections	19-28
Lafolla Scenic Dr. X-Sections	29-34
Pueblo Lot 1202 - Location Easements	35
Cross Sec. Jennings ^{Banger to} _{300' west}	62-65
Location Valves & M.H.'s on 5 th from "B" to Washington	66-75

THE FREDERICK POST CO.
ENGINEERING AND DRAWING OFFICE
P. O. BOX 800
CHICAGO

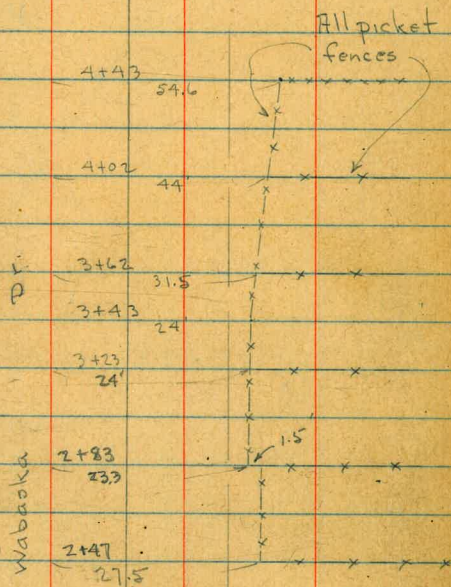
Location of Bldgs. on Wabaska Dr.

10-15-46

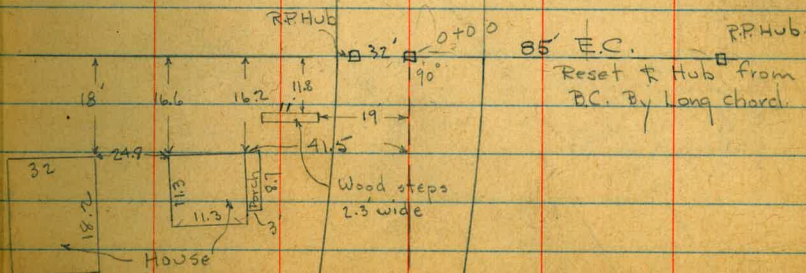
Osborne
Hardin
Warrell
Smith



Indexed
C.S.K. 1

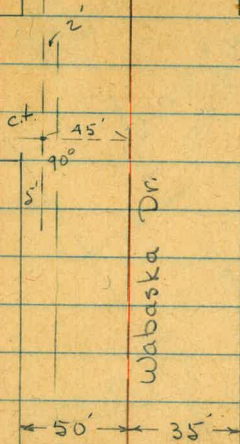


← 17.5 → 17.5 → 22.5 →



Centraloma

Dr.



5' 35'

Blud.

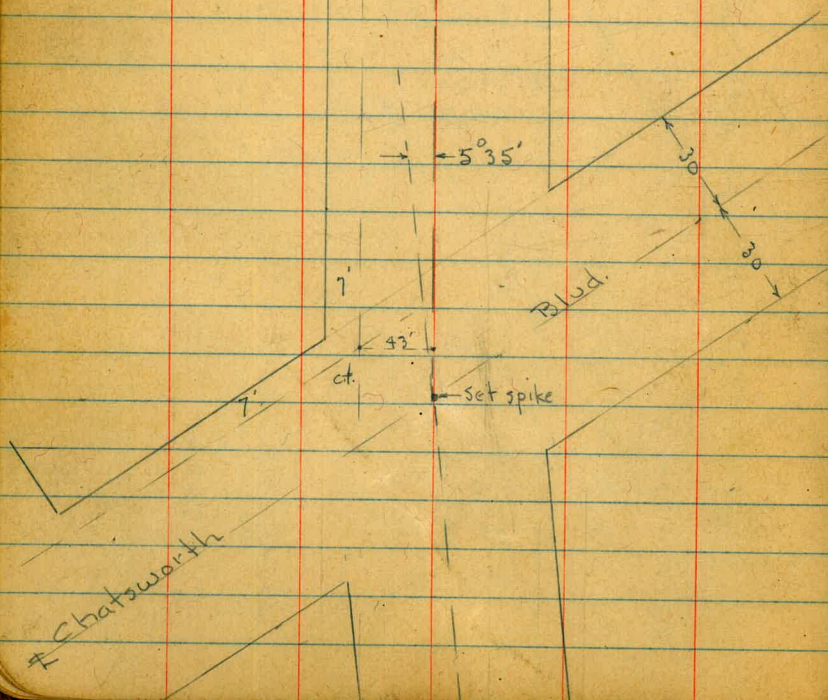
7'

42'

ct.

Set spike

Chatsworth



W.D. 194

X-Sect. of Wabaska Dr. - New Location
of Prop. 80' st. straight thru from Φ of
Capistrano to Φ of Chatsworth

Indexed
on site

7

1+40

73.4	72.6	71.9	69.2	69.8	68.8	69.6	70.0	71.4	72.0	72.7	72.8
2.9 50	3.7 40	4.4 36	7.1 27	6 50	7.5 6	6.7	6.3	4.9 11	4.3 20	3.6 40	3.5 50

1+00

74.1	72.7	69.1	68.6	68.7	68.8	71.4	72.4	72.5	72.5
2.2 50	3.6 40	7.2 28	7.1 20	7.6	7.5	4.9 20	3.9 40	3.8 50	

0+59.92 = E.L. + N.L. Capistrano

74.0	72.9	69.9	68.5	67.9	65.4	69.8	70.4	69.3	69.3
2.3 50	3.4 40	6.4 30	7.8 20	8.4 5	10.9	26.5 20	5.9 30	7.1 40 = N.L. Capistrano	

0+48.2 for cut to inlet of culvert \pm W.L. + Ncb.
Capistrano

73.9	72.8	72.4	70.2	68.7	68.0	64.5	66.2	69.3	68.9	68.31	67.46
2.4 50	3.5 40	3.9 36	6.1 29	7.6 20	8.3 5	11.8	10.1 7	7.0 20	7.4 38	8.00 40	8.85 40

Topch. gut conc.

0+35.25 - Φ and N.L. Capistrano

74.0	72.4	71.5	68.5	68.3	69.1	69.1	67.4	68.0
2.3 50	3.9 40	4.8 35	7.8 20	8.0 4	7.2	7.2	8.9 20	8.3 40

0+10.58 = W.L. Wabaska + N.L. Capistrano

76.3	70.6	68.8	68.3	66.2
0.0 50	5.1 40	7.5 20	8 20	2.5 20

0+00 = Φ Capistrano + Φ Wabaska

69.5	70.6	68.8	68.3	66.2
6.8 40	7.4 20	7.7 17	8.3 20	7.8 40

B.M. 6.50 76.31

69.81

5.7' P.O.C. +
old Wabaska
Hub

76.31

T.P. 8.81 85.18 5.35 76.37

Cross on E + S. 7' Line

5+66 - 40.1 Rt. = ± 6" Euc. tree

5+60

5+52 - 44.3 Rt. = ± 10" Euc. tree

5+20

4+84 - 7.4 Rt = ± P. pole

4+80

4+59 - 6' Rt = ± Guy Pole

4+50 - 5.5 Rt = ± Dead man

4+11.82 = W.L. + N.L. Poe

3+92.7 = W.L. + N. cb. Poe

3+47.08 = ± + N.L. Poe

It.

⊕

Rt.

76.8	77.1	77.3	77.1	77.5	76.8	77.7	79.7	86.0
4.9 50	4.6 40	4.4 30	4.6 15	4.2	4.9 15	4.0 30	2.0 40	+4.3 60
75.9	75.7	75.6	76.5	76.0	75.7	76.0	80.8	89.7
5.8 50	6.0 40	5.1 30	5.2 15	5.7	6.0 15	5.5 0	0.9 40	+8.0 61
74.8	74.7	74.5	74.3	74.0	73.8	74.1	76.9	80.3
5.9 50	7.0 40	7.2 30	7.4 15	7.7	7.9 50	7.6 25	4.8 30	1.4 40
73.7	73.1	72.9	73.4	74.5	74.0	77.8	80.8	+6.1 66
8.0 50	8.6 40	8.8 30	8.3 15	7.2	7.1 50	8.9 0	0.9 40	+5.2 62
	71.5	72.5	73.7	73.9	74.5	78.6	80.9	86.5
	10.2 40	9.2 30	8.0 15	7.8	7.2 15	3.1 30	0.8 40	+4.6 60
71.34	71.08	71.2	73.2	74.7	74.8	78.4	81.1	86.3
10.38	11.64	10.4	10.5	8.5	7.0	5.9 50	3.3 30	0.6 40
Topcb. 32.6W	40	40	30	15	10	15	30	40
along cb.	Conjunct	cb						
= P.C. Alley Ret.								
70.4	70.4	70.1	71.1	72.0	73.6	76.9	80.2	84.7
11.3 40	11.3 30	11.6 15	10.6 10	9.7	8.1 15	4.8 30	1.5 40	+3.0 52
				81.72				

Level out

Level out

Level out

Level out

Level out

Check B.M. S.E. Poe + Chatsworth 6.96 78.22 78.21
end.

6+70.88 = Angle point - E Wabaska + E Chatsworth

6+65.2 = E.L. + S.cb. Chatsworth

6+54.15 = E.L. + S.L. Chatsworth

6+41.6 = 244 Rt. = E P. pole

6+37 = 41 Rt. = E 4" Euc. tree

6+17.4 = W.L. + S.cb. Chatsworth

6+05.88 = W.L. + S.L. Chatsworth

	lt	☐	Rt.
76.94	8.24	8.29	8.28
76.89	40	30	15
76.90	8.57	8.53	8.53
76.61	8.24	8.24	8.24
76.65	30	30	30
76.94	7.70	7.70	7.70
77.20	7.98	7.98	7.98
76.95	8.23	8.29	8.32
76.89	40	30	15
76.86	8.63	8.73	8.48
76.55	8.16	8.16	8.16
76.45	40	40	40
76.70	9.02	9.02	9.02
77.69	7.49	7.49	7.49
79.41	5.77	5.77	5.77
80.02	5.16	5.16	5.16
77.01	8.17	8.22	8.47
76.96	40	30	15
76.71	8.93	8.93	8.93
76.25	9.14	9.14	9.14
76.04	8.93	8.31	7.5
76.25	40	21.1	40
76.81	9.02	9.02	9.02
77.7	7.5	7.5	7.5
80.15	5.1	5.1	5.1
77.02	8.16	8.34	8.98
76.84	40	30	15
76.20	8.80	8.80	8.80
76.38	9.56	9.56	9.56
75.62	8.3	8.3	8.3
76.9	6.5	6.5	6.5
78.1	4.7	4.7	4.7
78.8	5.1	5.1	5.1
79.8	3.9	3.9	3.9
81.3	2.3	2.3	2.3
76.01	9.17	8.69	9.45
76.49	40	40	24
75.73	8.85	8.85	8.85
76.33	7.3	7.3	7.3
76.4	7.1	7.1	7.1
77.9	7.2	7.2	7.2
78.1	6.6	6.6	6.6
78.0	4.2	4.2	4.2
78.6	2.3	2.3	2.3
81.0	6.0	6.0	6.0
82.9	7.5	7.5	7.5
76.5	8.7	7.8	7.4
77.4	40	30	15
77.8	6.9	7.5	7.5
78.3	6.8	6.8	6.8
77.7	4.8	4.8	4.8
78.4	1.6	1.6	1.6
80.4	0.7	0.7	0.7
83.6	0.1	0.1	0.1
84.5	0.0	0.0	0.0

50' W along S.cb. Chatsworth From here

50' E at Here along

S.L. Chatsworth

85.18

Location of Inlets along S. curb of Chatsworth
near Location of Wabaska Dr.

85.18 - P. 10

10-29-46

7.0.

Indexed
C.S.K.

Quimby St

11

0+00 = W.L. Quimby - Meas. along cb. line

0+85.2 = \pm 2' x 2.5' Grate over box inlet

Top cb. opp. \pm Grate 8.00

Top Grate in gutter 8.88

Flow line of box 10.38

76.30
74.80

0+88.2 = Brk. in cb.

Top cb. 8.15

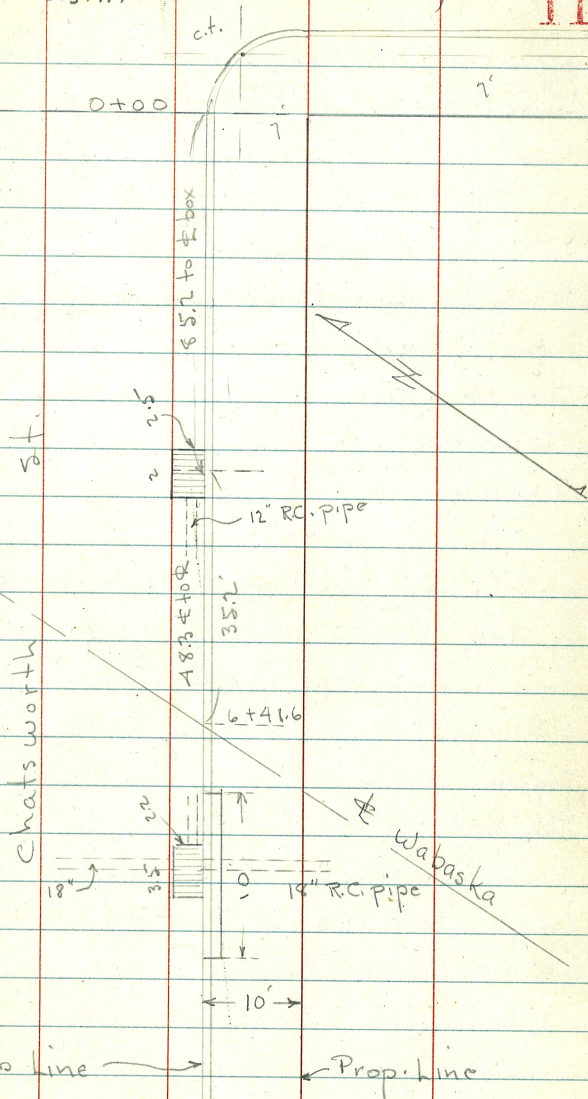
gut. 8.83

1+33.5 = \pm 3.5' x 2.2' Grate in \pm of 10' opening
curb inlet

Top cb. opp. \pm 8.99

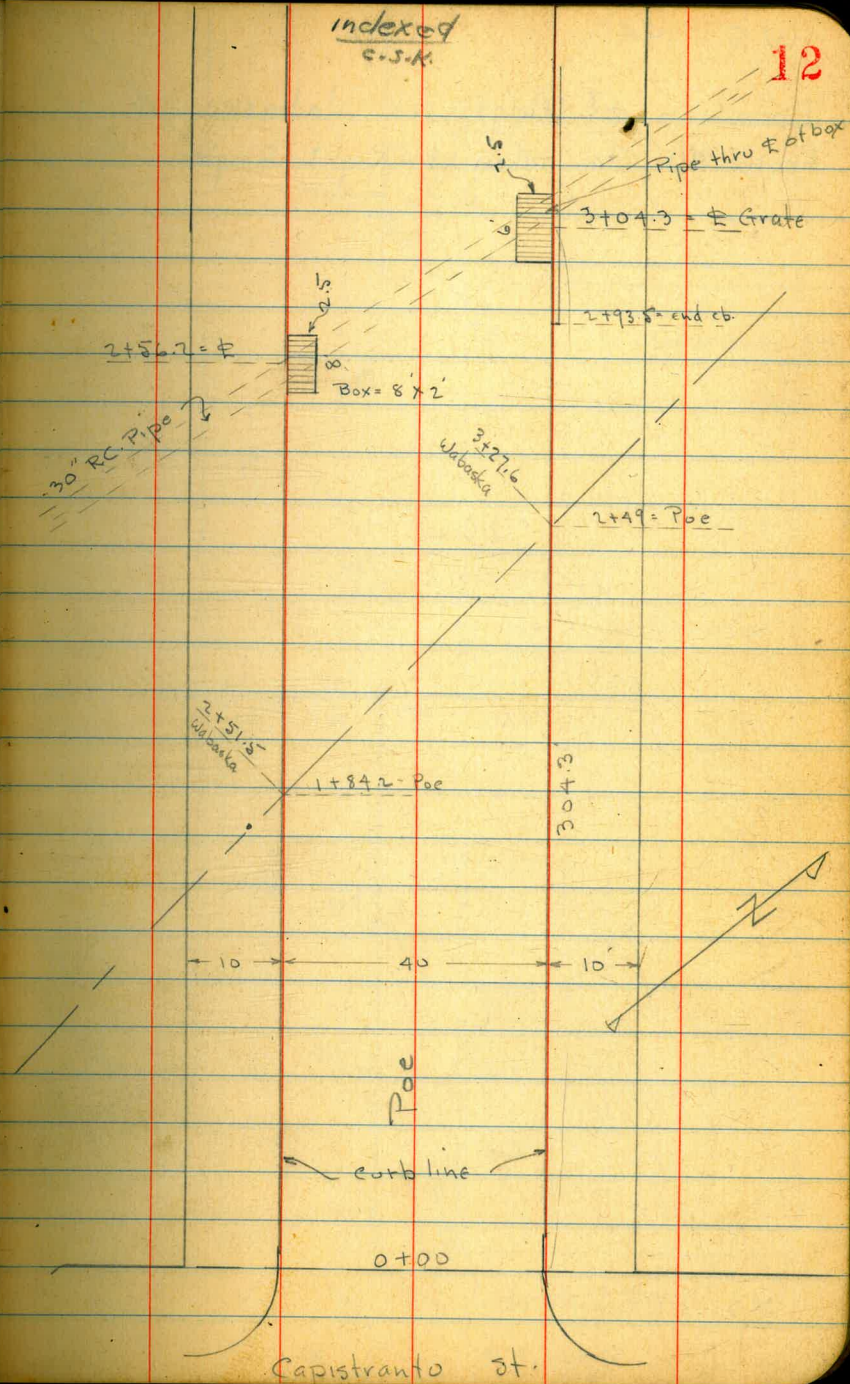
Top grate 9.92

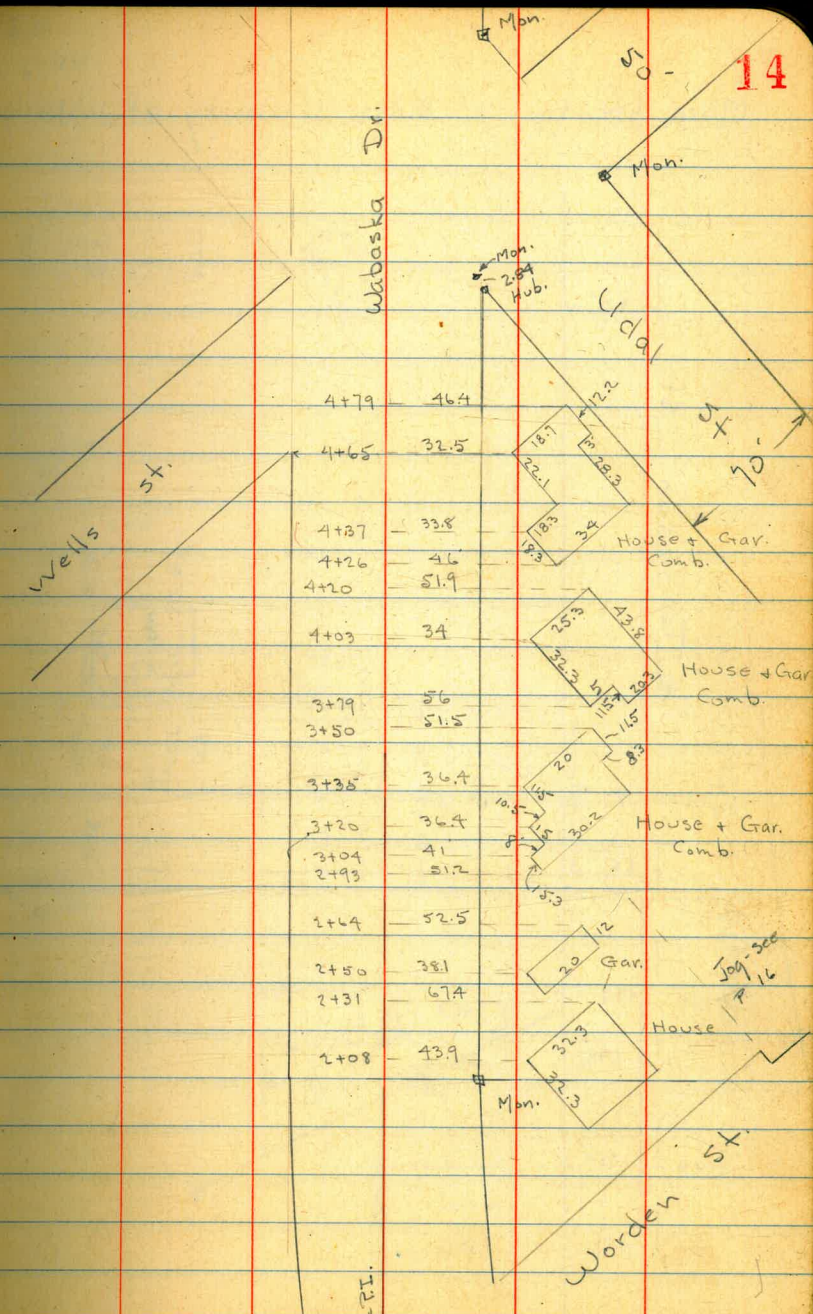
Flow line of Box 14.58 70.60



Location of inlets on Poe St. near
Location of Wabaska Dr.

6.61	76.42	69.81	5.7 Poe old E. Wabaska
0+00 = W L. Capistrano			
2+56.2 = Φ Box inlet on S. cb. line Poe			
Top cb opp. Φ	6.00	70.4	
Top Grate - Φ	6.92	69.50	
Flow line box	10.73	65.69	
2+93.5 = E. end cb. on N. cb. line of Poe			
Top cb.	5.61	70.81	
3+04.3 = Φ Box inlet on N. cb. line Poe.			
Top cb. opp. Φ	5.50	70.9	
Top grate - Φ	6.42	70.00	
Flow line box	10.20	66.22	
Add. curb elev. on cb. s' of Poe from int. of Wabaska			
0+70 on S. cb. Poe			
Top cb.	6.17	70.25	
Gutter - Conc.	7.01	69.41	
1+30 on N. cb. Poe			
Top cb.	4.96	71.46	
Gutter Conc.	5.79	70.63	



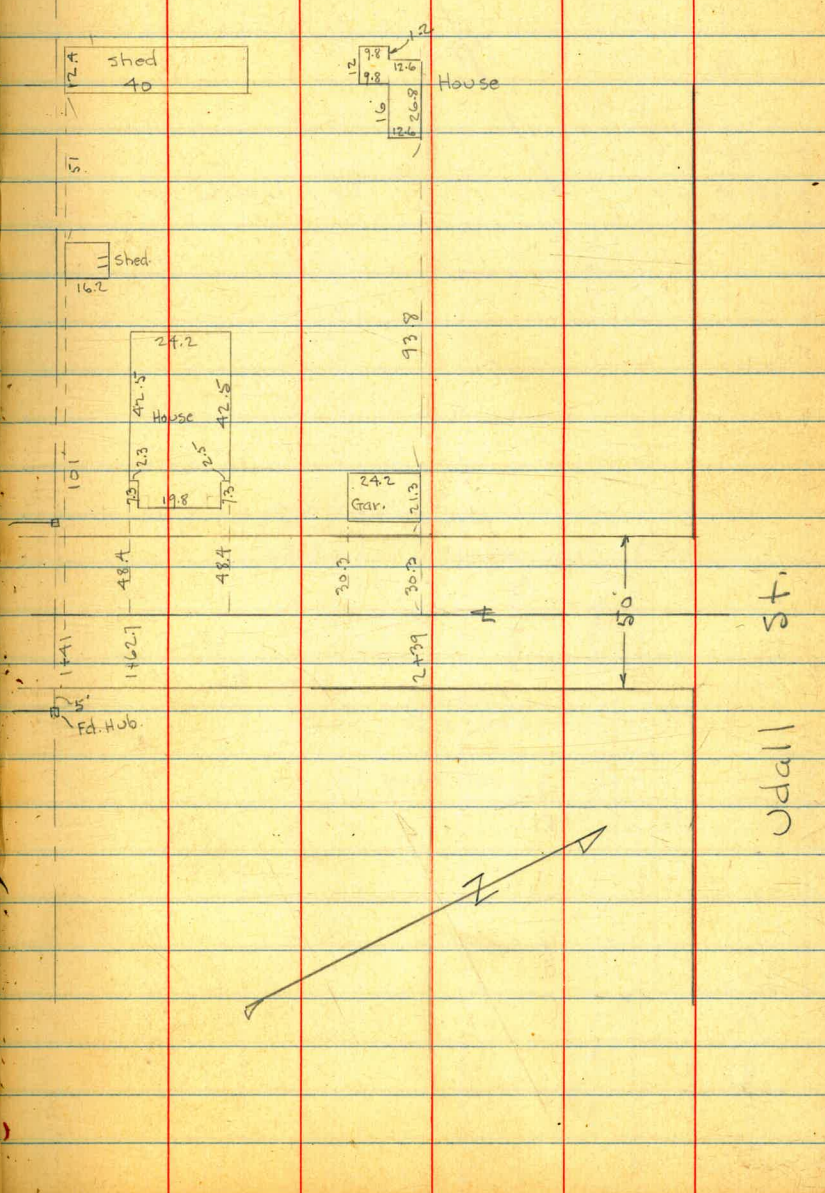
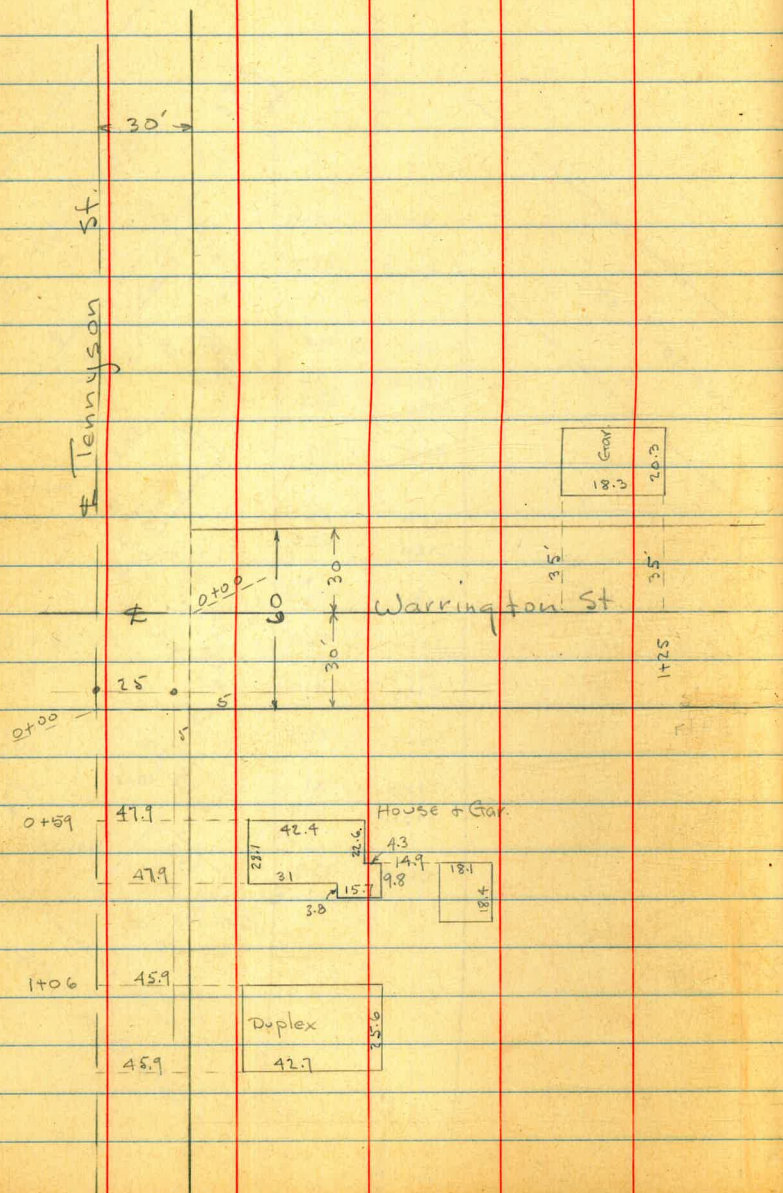


4+79	46.4
4+65	32.5
4+87	33.8
4+26	4.6
4+20	51.9
4+03	34
3+79	26
3+50	51.5
3+35	36.4
3+20	36.4
3+04	41
2+93	51.2
2+64	52.5
2+50	38.1
2+31	67.4
2+08	43.9

0+00-RT.

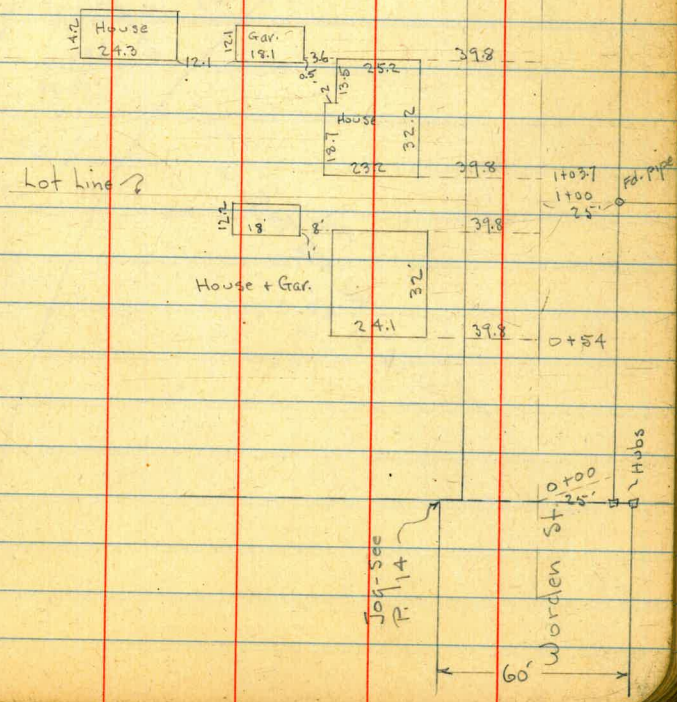
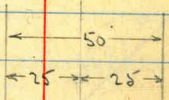
7.0
11-6-46

More location of Bldgs. - Vicinity of Wabaska.



70.
11-6-46

Udall St.



2+50 = end.

2+00

36 35	544.2	4.4 35	545.9
26 25	544.2	4.5 25	545.8
16 15	541.7	7.9 15	542.4
12 12	542.1	7.6 13	542.7
8 8	542.1	7.8	542.5
10 10	541.5	8.2 8	542.1
2 2	541.2	8.8 11	541.5
10 10	545.1	4.0 23	546.3
25 25	545.3	4.2 25	546.1
46 40	545.7	4.1 10	546.2

550.29

X-Sect. of La Jolla Rancho Rd. from
La Jolla Mesa Dr. E. 50' st. except for
first 24.47 which is only 45' - 5' off N. side
will use Φ for Base Line - as shown in sketch.

- 1+50
1+33 20.6 Lt. = Φ 24" Euc.
1+24 20.8 Lt. = Φ 10" Euc.
1+18 24.8 Rt. = Reg. Rail fence
1+17 24.8 Rt. = N. edge of 18" x 18" Brick Coloum
1+13 20.2 Lt. = Φ 14" Euc.
1+00 30' Rt. = edge Brick wall

T.P. 10.60 550.69 10.20 540.09

- 0+84 20' Lt. = Φ 20" Euc.
0+73 19.8 Lt. = Φ 8" Euc.
0+62 19.2 Lt. = Φ 18" Euc.

0+50

0+42 20' Lt. = Φ 20" Euc

0+00 = Int. of Φ La Jolla Rancho & E. L. of
La Jolla Mesa Dr. - Sect. at Rt angles

Lt = N.

Φ

Rt. = S

10.0 20	9.8 20	9.5 11	9.7	9.8 10	8.9 25	8.9 25
540.7	540.9	541.2	541.0	540.9	541.8	541.8
		edge CL		edge CL		

540.1	540.1	540.4	540.4	540.3	540.4	540.5
10.6 30	10.6 20	10.3 10	10.3	10.4 17	10.3 25	10.2 35
		edge CL		edge CL		

550.69

540.1	540.1	539.9	540.0	540.0	540.1
10.2 30	10.2 20	10.4 10	10.3	10.3 10	10.2 25

539.5	539.4	539.5	539.7	539.8	539.9
10.8 30	10.9 20	10.8 10	10.6	10.5 10	10.4 25
		edge CL			

550.29 - P. 20

3+39.47 = P.C. of 25' Rad Prop. Curve on Lt.
 T.P. 10.80 560.89 0.60 550.09

3+32 - 18' Rt. = Φ 1.7 x 2.7' Cone Gate Box
 3+32 - 4.5 Rt. = apparent location of Water
 main

3+00

2+50

2+31 20.2 Lt. = Beg. Rail fence
 2+26 - 21.8 Lt. = Φ 18" Euc.
 2+24.47 = opp. 5' Jog in N. Line
 2+19 - 20.6 Lt. = Φ 6" Euc.
 2+17 20.8 Lt. = Φ 4" Euc.
 2+02 - 21.2 Lt. = Φ 14" Euc.
 2+00
 1+75 20.3 Lt. = Φ 18" Euc.
 1+71 - 20.3 Lt. = Φ 6" Euc.
 1+64 - 20.6 Lt. = Φ 10" Euc.
 1+55 - 20.5 Lt. = Φ 6" Euc.

546.7	547.0	547.6	547.4	547.5	549.3	549.2	549.5
14.2 35	13.9 25	13.3 11	13.1 11	13.4 12	11.6 20	11.7 20	11.4 35
	P.C.	edge Cl.		edge Cl.			
545.2	545.2	545.6	545.8	545.6	546.6	546.8	547.2
5.5 35	5.5 25	10.1 10	4.9 4	5.1 17	4.1 17	3.9 25	3.5 35
		edge Cl.		edge Cl.			
544.1	543.7	543.6	543.6	543.5	544.4	544.8	544.1
6.6 35	7.0 25	10.1 10	7.1 11	7.2 17	6.3 25	6.5 25	6.6 35
		edge Cl.		edge Cl.			
542.5	542.5	542.1	542.8	542.8	542.6	542.8	544.1
8.2 35	8.2 25	7.6 20	7.9 11	7.9 11	8.1 10	6.9 25	6.6 35
		edge Cl.			edge Cl.	fence	
541.2	541.7	542.2	542.0	542.1	541.9	543.1	543.2
9.5 30	9.0 20	8.5 11	8.7 11	8.6 11	8.8 10	7.6 25	7.5 35
		edge Cl.			edge Cl.		
550.69							

5+00

4+93- 23.2 Lt. = \pm 6" Euc.

4+69- 23.1 Lt. = \pm 4" Euc.

4+49.47 = E.C. Prop. Curve

4+42- 23.2 Lt. = \pm 5" Euc.

4+24.47 = E.L.

4+10 23.1 Lt. = \pm 2" Pine

4+08 - 20.2 Lt. = Reg. Rail fence

3+94.47 = \pm Florence Dr.

3+93 - 18' Rt. = \pm 18 x 19 Conc. Meter box

3+91 - 25.2 Rt. = N. edge 18" x 18" Brick Post. 3-5 High

3+83 - 20.2 Lt. = end fence

3+77 - 22.2 Lt. = \pm 2" Pine

To House - way back

3+76 - 25' Rt. = End Rail fence at Dirt Drive
camp now vacant)

3+74 - 23.3 Lt. = \pm 17 x 2.7 Meter box (was for Army)

3+64.47 = W.L. Florence Dr.

3+61 - 23.3 Lt. = \pm 4" Euc.

548.7

12.2
100
all on

548.8

12.1
0
C.L. pave

548.9

11.0
25

550.6

10.3
10

550.8

10.1

550.2

10.7
14
edge CL

551.6

9.3
20

552.0

2.8
25

552.8

9.1
35

547.8

13.1
0

548.7

12.2
5

548.9

12.0
1
edge CL

549.2

11.7
1
560.89

548.8

12.1
2
edge CL

550.7

10.2
20

550.6

10.3
25

550.7

10.2
35

548.7

12.2
100
all on

548.8

12.1
0
C.L. pave

548.9

11.0
25

550.6

10.3
10

550.8

10.1

550.2

10.7
14
edge CL

551.6

9.3
20

552.0

2.8
25

552.8

9.1
35

550.6

12.3
25

551.7

11.2
25

552.1

10.8
10

552.3

8.6

551.5

9.4
15
edge CL

553.0

7.9
20

553.4

7.7
25

553.7

7.2
30

552.6

12.3
25

552.8

11.8
25

553.2

10.7
10
edge C.L.

553.4

10.5

552.7

9.2
15
edge CL

554.1

6.8
20

554.6

6.5
25

554.7

6.2
30

554.6

12.3
35

554.8

11.6
25

555.1

10.8
10
edge CL

555.2

10.7

554.7

6.2
15
edge CL

556.1

4.8
20

556.2

4.7
25

556.6

4.3
30

T.P. 4.64 557.63 8.53 552.99

11+00

10+50

10+00

9+50

9+00

8+50

7.0
35

8.1
35

7.1
35

8.0
35

8.7
35

7.2
35

554.5

7.0
25

6.4
25

7.2
25

8.0
25

8.2
25

7.1
25

554.2

8.6
16

8.9
6

8.8
10

8.4
10

7.4
10

552.7

8.6
10

8.8
10

8.8
10

8.4
10

7.4
10

552.9

8.6
6

8.6
10

8.8
8

9.0
0

8.5
5

7.6
6

552.9

8.7
11

8.7
11

8.9
11

9.0
11

8.7
11

7.9
11

552.8

8.9
5

8.6
5

9.4
25

10.7
5

9.0
5

7.9
25

552.6

8.9
5

8.6
5

9.4
25

10.7
5

9.0
5

7.9
25

550.5

8.7
35

8.6
35

9.0
35

10.6
35

9.4
35

8.4
35

549.8

Top Hyd
Sub. Cor.
LaTolla Scenic

T.P. 4.51 548.90 13.24 544.39

14+00

13+50

13+00

12+88 - 18.3 Rt. = # u.M.

12+55 - 4.8 Rt. = # 8" Gate Cover.

12+50

12+00

11+50

2 35	555.0	2 35	555.8	4 35	553.3	2 35	545.5
2 35	554.6	2 35	554.2	2 35	552.8	2 35	547.0
4 15	552.8	2 35	554.9	2 35	552.5	2 35	548.8
4 15	553.1	4 15	553.1	6 10	550.8	2 35	548.4
4 15	553.0	4 15	553.0	6 10	551.0	2 35	548.3
4 15	553.1	4 15	553.1	6 10	551.2	2 35	548.4
4 15	553.0	4 15	553.1	6 10	551.0	2 35	548.1
4 15	552.8	2 35	551.8	6 10	551.0	2 35	548.1
4 15	551.4	2 35	551.3	6 10	540.4	2 35	547.8
4 15	550.5	2 35	551.2	6 10	540.4	2 35	547.8

557.63

X-Section La Jolla Scenic Dr. from about
 250' S. of La Jolla Rancho Rd. - N. to N.L.
 of P.L. 1774 - The base line to the N. of
 Rancho Rd. is the E.L. of the W'h of N.E. 1/4 of N.E. 1/4
 P.L. 1774 - Map of La Jolla Manor shows some
 possible Road to the E. this same line produced
 S. becomes the E.L. of La Jolla Scenic Dr.
 will show all outs from the base line throughout.

1+30 = opp. Prop. P.C. on Lt.

0+80

T.P. 4.22 548.61 7.36 544.39

0+40

Baseline is the E.L. Sect. at Rt. angles
 0+100 = E.L. La Jolla Scenic Dr. about 250's.

B.M. 7.36 551.75 544.39

Top Hyd.

2-6-47
 7.0.

Intersect
 C.S.K.

Lt.

Baseline -
 E.L.

29
 Rt.

539.2
 9.4
 6.5
 10.5
 12.0
 11.6
 11.4
 12.1
 12.0
 P.C. on
 W.L.
 edge CL
 edge CL

541.2
 7.4
 6.5
 540.3
 8.3
 8.0
 538.1
 10.5
 30.
 10.538.5
 10.1
 25
 9.538.7
 18
 10.538.0
 10.6
 8.
 10.537.9
 10.7
 edge CL.
 edge CL.

541.9
 9.9
 6.5
 541.3
 10.5
 13.1
 31
 538.7
 12.6
 25
 539.2
 12.3
 18
 538.5
 12.8
 9
 539.0
 12.4
 15.4
 edge CL.
 edge CL.

541.6
 10.2
 6.5
 541.3
 10.5
 3.
 539.2
 12.6
 12.0
 11.8
 12.4
 12.8
 539.0
 12.4
 12.8
 8
 538.5
 13.3
 15
 edge CL.
 E.L.

551.75

2+75

2+72 - 18.6 Lt = \pm W.M. + Beg. 1" pipe

2+60

2+55 - 44 = \pm S.D. Gas Co. 25x25 MH. 10.25 on Rim

2+50 = \pm Rancho Rd. - Begin 25' on Rt.

2+25 = S.L. Rancho Rd.

2+00

1+65.26 = Ang. pt. - Sect. on split

5343

10.3
55

5370

11.6
50

5363

12.3
55

edge Cl.

5367

11.9
25

5360

12.6
8

edge Cl.

5354

13.2
2

54861

5349

69
55

5341

50
55

5367

11.9
27

edge Cl.

5367

11.9
15

5364

12
2

5360

12.6
55

edge Cl.

5355

13.1
55

5391

95
50

5342

10.4
39

edge Cl.

5376

11.0
25

5374

11.2
15

5371

11.5
55

5366

12.0
8

edge Cl.

5363

12.3
15

5396

9.0
40

5346

10.0
20

5341

10.5
55

5377

10.9
10

edge Cl.

5359

12.7
25

5402

9.4
40

5389

9.7
22

edge Cl.

5346

10.0
10

5345

10.1
10

5343

10.3
11

edge Cl.

5342

10.4
15

5366

12.0
25

Lt.

40

5407

7.9
20

5397

8.9
9

edge Cl.

5396

9.0
11

5395

9.1
11

edge Cl.

5342

10.4
25

Rt.

5342

10.4
25

5+00

Water pipe under ground.

4+50 - Cold Lay here in poor Cond.

4+00 - 18.2 Lt = 1" pipe - on ground.

3+50

3+25

T.P. 11.55 555.43 4.73 543.88

2+98.70 - opp. P.C. Prop. Curve on Lt.

5+00	551.8	551.4	550.5	549.7	549.7	549.7	549.7	549.7	549.7
4+50	552.1	551.7	550.2	549.2	549.2	549.2	549.2	549.2	549.2
4+00	550.8	550.3	549.1	548.5	548.5	548.5	548.5	548.5	548.5
3+50	547.5	547.4	547.0	546.3	546.4	546.4	546.4	546.4	546.4
3+25	546.1	545.9	545.3	544.4	544.4	544.4	544.4	544.4	544.4
T.P.	544.0	543.8	542.8	541.9	541.9	541.9	541.9	541.9	541.9
2+98.70	543.8	543.6	542.3	541.6	541.6	541.6	541.6	541.6	541.6

6+64.19 = St. Florence Dr. on Lt.

6+38.68 = opp. P.C. Prop Curve on Lt.
should be Here

6+50

Trees & shrubs E. of Dr.

6+41 - 15' Rt. = E. edge of Dr. Beg. Heavy growth of

6+41 - 19' Rt. = W. end of E. + W. Rail fence

6+39 - 1.8 Rt. = Beg. Rail fence

6+25

6+00

TP. 12.64 567.51 0.56 554.81

5+50 = end of Cold bay pave

555.5	555.5	563.7	563.0	565.3	565.3
+ 0.1	0.0	5.8	4.5	2.2	2.2
555.6	555.6	562.9	561.6	564.0	564.0
4.0	4.0	4.6	5.9	3.5	3.5
554.5	554.5	561.1	559.5	562.3	562.3
3.2	3.2	6.4	8.0	2.7	2.7
552.2	552.2	558.4	556.7	560.5	560.5
2.0	2.0	9.1	10.8	2.0	2.0
551.1	551.1	558.2	556.8	559.9	559.9
4.5	4.5	9.3	10.1	0.6	0.6
551.0	551.0	558.1	556.9	560.1	560.1
4.4	4.4	9.4	10.6	1.4	1.4
550.7	550.7	557.1	556.0	558.7	558.7
4.7	4.7	10.4	11.5	0.8	0.8
549.6	549.6	557.0	555.7	558.4	558.4
5.8	5.8	10.5	11.8	0.9	0.9
549.3	549.3	555.3	554.2	556.6	556.6
2.5	2.5	12.2	13.3	1.0	1.0
554.3	554.3	554.0	552.8	555.0	555.0
4.0	4.0	13.5	14.7	1.2	1.2
		15.9	17.1	1.5	1.5
		4.0	4.0	1.25	1.25
				4.0	4.0
				12.5	12.5
				2.5	2.5
				4.0	4.0
				14.7	14.7
				4.0	4.0
				12.5	12.5
				2.5	2.5
				4.0	4.0
				12.5	12.5
				2.5	2.5
				4.0	4.0
				14.7	14.7
				4.0	4.0
				12.5	12.5
				2.5	2.5
				4.0	4.0
				12.5	12.5
				2.5	2.5
				4.0	4.0
				14.7	14.7
				4.0	4.0
				12.5	12.5
				2.5	2.5
				4.0	4.0
				12.5	12.5
				2.5	2.5
				4.0	4.0
				14.7	14.7
				4.0	4.0
				12.5	12.5
				2.5	2.5
				4.0	4.0
				12.5	12.5
				2.5	2.5
				4.0	4.0
				14.7	14.7
				4.0	4.0
				12.5	12.5
				2.5	2.5
				4.0	4.0
				12.5	12.5
				2.5	2.5
				4.0	4.0
				14.7	14.7
				4.0	4.0
				12.5	12.5
				2.5	2.5
				4.0	4.0
				12.5	12.5
				2.5	2.5
				4.0	4.0
				14.7	14.7
				4.0	4.0
				12.5	12.5
				2.5	2.5
				4.0	4.0
				12.5	12.5
				2.5	2.5
				4.0	4.0
				14.7	14.7
				4.0	4.0
				12.5	12.5
				2.5	2.5
				4.0	4.0
				12.5	12.5
				2.5	2.5
				4.0	4.0
				14.7	14.7
				4.0	4.0
				12.5	12.5
				2.5	2.5
				4.0	4.0
				12.5	12.5
				2.5	2.5
				4.0	4.0
				14.7	14.7
				4.0	4.0
				12.5	12.5
				2.5	2.5
				4.0	4.0
				12.5	12.5
				2.5	2.5
				4.0	4.0
				14.7	14.7
				4.0	4.0
				12.5	12.5
				2.5	2.5
				4.0	4.0
				12.5	12.5
				2.5	2.5
				4.0	4.0
				14.7	14.7
				4.0	4.0
				12.5	12.5
				2.5	2.5
				4.0	4.0
				12.5	12.5
				2.5	2.5
				4.0	4.0
				14.7	14.7
				4.0	4.0
				12.5	12.5
				2.5	2.5
				4.0	4.0
				12.5	12.5
				2.5	2.5
				4.0	4.0
				14.7	14.7
				4.0	4.0
				12.5	12.5
				2.5	2.5
				4.0	4.0
				12.5	12.5
				2.5	2.5
				4.0	4.0
				14.7	14.7
				4.0	4.0
				12.5	12.5
				2.5	2.5
				4.0	4.0
				12.5	12.5
				2.5	2.5
				4.0	4.0
				14.7	14.7
				4.0	4.0
				12.5	12.5
				2.5	2.5
				4.0	4.0
				12.5	12.5
				2.5	2.5
				4.0	4.0
				14.7	14.7
				4.0	4.0
				12.5	12.5
				2.5	2.5
				4.0	4.0
				12.5	12.5
				2.5	2.5
				4.0	4.0
				14.7	14.7
				4.0	4.0
				12.5	12.5
				2.5	2.5
				4.0	4.0
				12.5	12.5
				2.5	2.5
				4.0	4.0
				14.7	14.7
				4.0	4.0
				12.5	12.5
				2.5	2.5
				4.0	4.0
				12.5	12.5
				2.5	2.5
				4.0	4.0
				14.7	14.7
				4.0	4.0
				12.5	12.5
				2.5	2.5
				4.0	4.0
				12.5	12.5
				2.5	2.5
				4.0	4.0
				14.7	14.7
				4.0	4.0
				12.5	12.5
				2.5	2.5
				4.0	4.0
				12.5	12.5
				2.5	2.5
				4.0	4.0
				14.7	14.7
				4.0	4.0
				12.5	12.5
				2.5	2.5
				4.0	4.0
				12.5	12.5
				2.5	2.5
				4.0	4.0
				14.7	14.7
				4.0	4.0
				12.5	12.5
				2.5	2.5
				4.0	4.0
				12.5	12.5
				2.5	2.5
				4.0	4.0
				14.7	14.7
				4.0	4.0
				12.5	12.5
				2.5	2.5
				4.0	4.0
				12.5	12.5
				2.5	2.5
				4.0	4.0
				14.7	14.7
				4.0	4.0
				12.5	12.5
				2.5	2.5
				4.0	4.0
				12.5	12.5
				2.5	2.5
				4.0	4.0
				14.7	14.7
				4.0	4.0
				12.5	12.5
				2.5	2.5
				4.0	4.0
				12.5	12.5
				2.5	2.5
				4.0	4.0
				14.7	14.7
				4.0	4.0
				12.5	12.5
				2.5	2.5
				4.0	4.0
				12.5	12.5
				2.5	2.5
				4.0	4.0
				14.7	14.7
				4.0	4.0
				12.5	12.5
				2.5	2.5
				4.0	4.0
				12.5	12.5

6+94.19 = Florence Dr.

7+24.19 = N.L. Florence Dr. - .9 Rt = fence

7+40 - 98 Rt. = House

8.31

floor elev.

Beq. Heavy shrubs on Rt. of fence

7+48.70 = opp P.C. on Lt.

559.20

7+75

8+00 - .6 Rt. = fence - Beq thick brush Rt. of fence

8+25

6-566.0
05

565.1
40

564.6
33

562.1
56
20
4

562.5
00

562.5
00

562.2
33

561.8
14
4

560.5
25

558.1
40

600
45

565.8
40

565.3
25

563.3
42

563.8
10

564.2
33

563.3
42

562.9
46

561.8
40

566.6
05

565.4
40

565.0
25

563.4
41

564.0
10

563.8
17

564.3
32

563.2
43

562.8
28

562.3
52

566.0
55

565.4
40

565.0
25

563.4
23

564.0
10

563.8
17

564.3
32

563.2
43

562.8
28

562.3
40

565.4
25

564.9
40

564.3
25

562.4
23

563.1
40

563.1
40

561.8
25

561.4
40

563.5
55

563.2
40

562.6
25

560.8
23

561.4
10

561.5
00

560.1
10

559.6
25

559.1
40

561.5
05

560.8
45

559.9
26

558.8
24

559.4
10

559.1
40

558.0
10

557.9
25

557.0
40

Lt.

B.L

Rt.

check Starting B.M.	6.93	541.74	✓ Top Hyd. St. Cor.	541.75
1.26	548.67	12.40		547.41
4.84	559.89	9.37		555.05
T.P.	6.30	564.42		558.12

10+04.33 - in Road = end.

9+54.33 - for profile in Φ of graded road.

9+04.33 = P.L. = end - Sect. along P.L.

8+75

8+50

557.1	556.3	555.4	554.7	554.9	554.4	553.5	552.6	552.3
10.4	11.2	12.1	12.8	12.6	13.1	14.0	14.9	15.2
5	40	26	25	12	5	5	25	40
558.7	558.1	556.9	555.9	556.1	555.7	555.2	554.1	553.6
8.8	9.4	10.6	11.6	11.4	11.8	12.3	13.4	13.9
5	40	27	25	12	5	5	25	40
559.5	558.7	557.9	557.1	557.5	557.3	556.8	556.2	555.5
10.8	8.8	9.6	10.4	10.0	10.2	10.7	11.3	12.0
5	40	26	24	10	10	10	5	40

557.51

Walker
Hendricks
Becker
Johnson
4-8-47

Survey - Proposed Easement in Pueblo Lot 1202

indexed
C.S.K.

35

Fd. Conc. Mon.
N.W. Cor Pl. 1202

NE Cor
Pl. 1202

Pl. 1202

"CITY
Boundary"
See Williams Map

Fd. 10" Pl. 8 Disk Marked RE 32"
117 Conc. Buried

Road
90°01'

Pl. 1202

Water Tank
Stand Pipe
See P. 36
Set Hub & Disk
89°59'
129.00'
55.720'

Pl. 1202

1201

245.45'

1679.22'

89°59'

66.326'
90°01'

1690.34'

730.25'

Fd. 2" x 2" x 4" Hub
(Mon had been graded
out)

This Granite Mon
Reset by Hendricks
Feb. 7-1550
FB 2069-1

Set Hub & Disk

220.26'
89°59'30"

Birmingham 50 St.

Fd. 3/4" Pipe

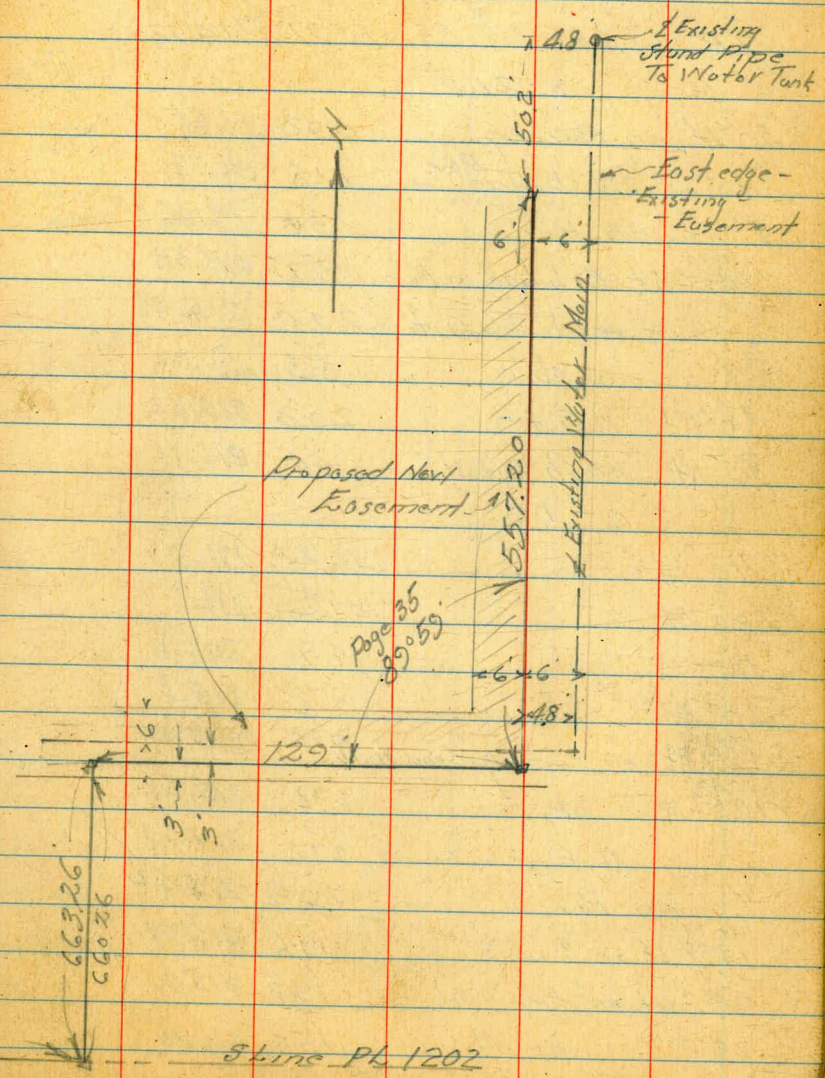
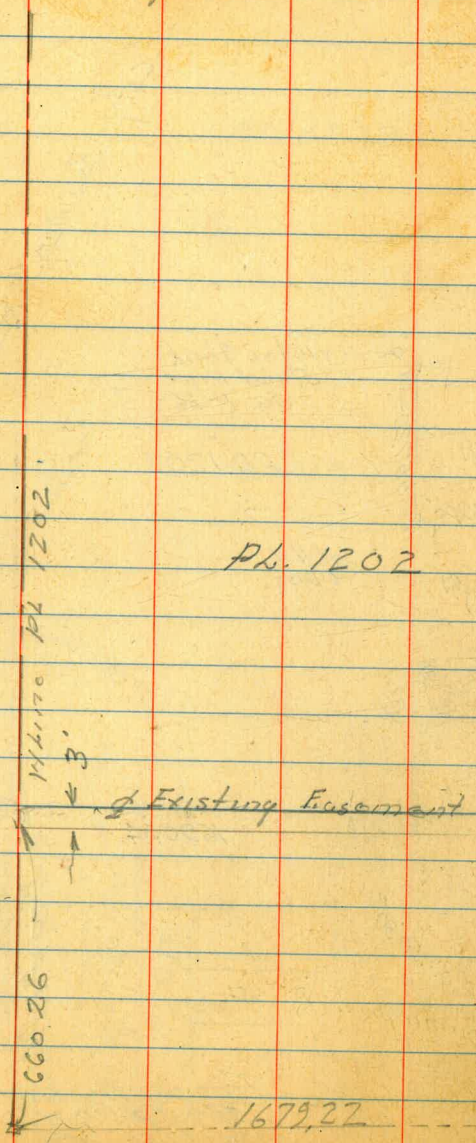
Set Hub & Disk

Tics on Birmingham
See FB 2022

53

Walker
Hendricks
Becker
Johnson
4-8-4)

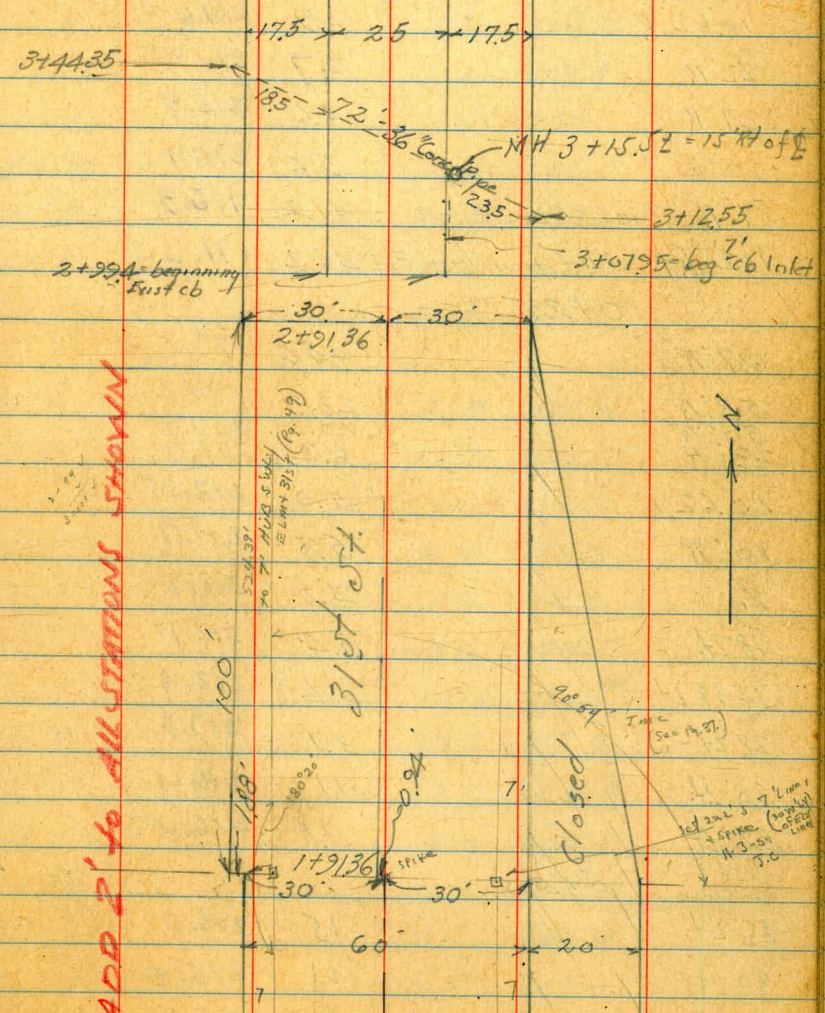
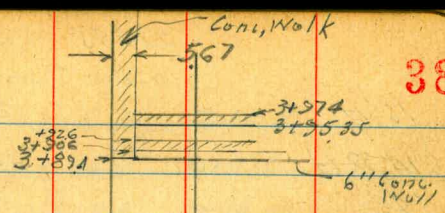
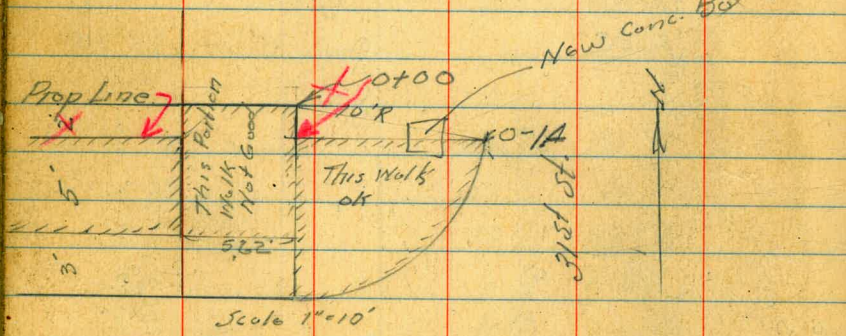
Pueblo Lot 1202
Location Existing Water Main
in relation to Survey
for Proposed Easement
as shown Page 35



21758
0-10 Cont'd.

30' Lt on Hd Walk = Top cb.	1.40	216.15
" on Flow Inlet	2.82	214.73
SECT. "A"		
24.17' Lt on Edge Walk	1.31	216.24
14.17' Lt on cb EC Ret	1.74	215.81 ✓
" " " Gut	2.30	215.25
4' Lt. on Pav.	2.29	215.26
2	2.68	214.87
10.80	3.48	214.07
10.62 Rt on Gut		
10.80	2.84	214.71 ✓
10.62 R " cb = N end		
10.5	2.55	215.00
10.3 Rt on Edge Walk		
0700 = Rt Δ to NW Cor Cedar + 315'		
30' Lt	1.1	216.4

Cont D-39



21755

31st St.

0+00 Cont'd.

15' Lt	2.0	215.5
14.38 Lt	2.7	214.8
ℓ	2.7	214.8
9' R	3.7	213.8
10.80		
10.62 R	2.9	214.6
22 R	2.7	214.8
27 R	4.6	212.9
30' R	5.6	211.9
89' R. Toe slope	41.2	176.3
112 Rft. Flat from here East	46.2	171.3
0+25		
27' R	44.4	173.1
53' R	23.3	194.2
30' R	10.2	207.3
23' R	6.2	211.3
10.62 R	5.0	212.55
10' R	5.8	211.7
ℓ	4.8	212.7
13 Lt.	5.4	212.1
14.38 Lt	4.6	212.9
28 Lt	3.7	213.8
30 Lt	1.1	216.4
32 Lt	1.1	216.4
0+50		
35 Lt.	15	216.0
30 Lt	2.1	215.4
27 Lt	5.6	211.9

21755

39

23 Lt	6.7	210.8
14.38 Lt	6.9	210.6
13 Lt	7.8	209.7
ℓ	7.4	210.1
2' R	8.3	209.2
10.62 R	7.6	209.9
20' R	8.4	209.1
30' R	15.0	202.5
45' R	24.3	193.2
61' R	30.4	187.1
25' R	46.5	171.0
1+00		
87' R	45.3	172.2
63' R	34.7	182.8
46' R	27.0	190.5
37' R	24.8	192.7
30' R	19.3	198.2
19' R	13.0	204.5
10.62 R	13.0	204.5
10' R	13.6	203.9
ℓ	12.6	204.9
13 Lt	13.0	204.5
14.38 Lt	12.1	205.4
27 Lt	11.5	206.0
30 Lt	10.5	207.0
34 Lt	6.5	211.0

1+13.6 20.1 Lt. = Elec. Pole # D-1632

7 R	0.80	20509	1326	20429
	1+09.76			
20.6' Lt on W. edge Side Walk	0.70		204.40	
15.62' on cb.	0.80		204.30	
" on Gut. Conc.	1.49		202.60	
12.62' Lt on " Gut.	1.38		202.71	
	1+41.66			
	1+39.7			
30' Lt. on Conc. Drive	2.27		202.12	
^{17.86} 20.6' Lt " Edge Side Walk	3.74		201.35	
^{12.86} 15.62' Lt on cb.	3.83		201.26	
" " " Gut.	4.48		200.61	
^{9.86} 12.62' Lt "	4.33		200.76	
2	4.4		200.7	
7 R	5.3		199.8	
10.62' R	4.0		201.1	
21 R	4.5		200.6	
30 R	10.4		194.7	
42 R	17.3		187.8	
51 R	19.3		185.8	
66 R	26.4		178.7	
81 R	31.0		174.1	
	1+59.9 1+76			
63 R	28.2		176.9	
47 R	22.7		182.4	
30 R	11.1		194.0	
25 R +	8.2		196.9	

10.62' R	7.6		197.5	
8 R	8.9		196.2	
2	8.1		197.	
13' Lt	8.2		196.9	
14.38' Lt.	7.3		197.8	
20 Lt	6.6		198.5	
25' Lt	6.0		199.1	
30' Lt	2.2		202.9	
35' Lt = Top Bank	+2.5		230.1	
	1+62.22 = Corrected Station			
	1+59.9 = N. end Exist Combustion Walk & cb.			
30' Lt. on Drive	3.49		201.60	
^{17.68} 20.62' Lt on edge Conc. Walk	5.77		199.32	
^{12.68} 15.62' Lt " cb	5.91		199.18	
" on Gut.	6.50		198.59	
^{9.68} 12.62' Lt on E edge Gut.	6.39		198.70	
	2+0.0			
35' Lt	2.0		203.1	
30' Lt	4.5		200.6	
27	8.0		197.1	
22' Lt	9.5		195.6	
14.38' Lt	10.7		194.1	
13' Lt.	11.1		194.0	
2	10.5		194.6	
9 R	7.1		197.0	(194.0?)
10.62 R	9.9		195.2	
24 R	10.2		194.9	

205.09

31st St.

30'R		144	190.7
44'R		23.1	182.0
55'R		27.8	177.3
68'R		30.0	175.1
TP	3.14	125.26	12.97
	2+30.07		182.29
30'Lt		0.3	194.9
24'Lt		2.4	192.8
1438 Lt		3.3	191.9
12' Lt		3.9	191.2
♀		3.4	191.8
9'R		4.0	191.2
10.62'R		3.3	191.9
24'R		3.2	192.0
30'R		6.4	188.8
40'R		12.8	182.4
52'		17.0	178.2
73'		19.0	176.2
	2+50.07		
70'R		18.6	176.6
51'R		18.1	177.1
30'R		9.8	185.4
22'R		5.3	189.9
10.62R		4.8	190.4
9'R		5.4	189.8
♀		4.9	190.2
12' Lt		11.6	182.6

195.26

41

1438 Lt		4.7	190.5
28 Lt		3.4	191.8
30' Lt.		1.5	192.7
37 Lt		4.0	199.26
	2+70.07		
35' Lt		3.6	191.6
30' Lt		5.6	189.6
1438 Lt		6.3	188.9
♀		6.2	189.0
9' Lt		6.4	188.8
10.62'R		5.9	189.2
20'R		6.7	188.5
30' Lt		12.9	182.2
38'R		16.6	178.6
55'R		17.0	178.2
	2+90.07		
50'R		16.0	179.2
30'R		14.2	181.0
19'R		7.6	187.6
10.62'R		7.2	188.0
♀		7.3	187.9
1438 Lt		7.5	187.7
30' Lt		6.9	188.2
35' Lt		6.4	188.8

195.26 31st St. X Sections

Existing 17.5' cbs
Cb + Gutter 25' Roadway

2+99.4 = beginning - from here North

12.5' Rt. on cb	7.56	187.70	✓
" " " Conc. Guts	8.22	187.04	"
9.5' Rt. on West edge Guts	7.96	187.30	
9.5' Lt. on " East " "	8.38	186.88	
12.5' Lt. " West " "	8.46	186.80	
" cb Broken for Drive			

3+026

12.5' Lt. = Beg. Good cb 7.71 187.55

3+07.22 = Beg. 6' cb Inlet on Lt.

12.5' Lt. on cb	7.64	187.62	
" " " Guts	8.57	186.69	
9.5' Lt. " "	8.33	186.93	

3+07.95 = Beg. 6' cb Inlet on Rt.

9.5' Rt. on Guts	8.34	186.92	
12.5' Rt. " "	8.54	186.72	
" " " cb.	7.62	187.64	

3+12.55

32.1' Rt. Flow 36" 17.89 177.37

" " Hd Well 13.69 181.57

T.R. 8.52 200.63 315 192.11

3+15 = Btk in Conc Guts on Rt.

12.5' Rt. on cb	12.96	187.67	
" " " Guts	13.58	187.05	
9.5' Rt. " Guts	13.32	187.31	

20063

42

3+14.22 = Btk in Conc Gutter on Lt.

9.5' Lt. on Guts	13.50	187.13	
12.5' " " "	13.62	186.94	
12.5' Lt. " cb	13.08	187.55	
3+30.07			

40' Lt. 16.0 184.63

30' Lt. 14.4 186.23

5' South of Above Stn 12.7 187.90

22' Lt. 12.6 188.0

12.5' Lt. on cb 12.90 187.73

" " " Guts 13.54 187.09

9.5' Lt. " " 13.28 187.35

L 12.8 187.8

9.5' R Guts 13.18 187.45

12.5' R " 12.23 188.40

" " on cb 12.76 187.87

26' 12.8 187.83

30' R 13.5 188.13

40' R 15.7 184.92

3+50.07

40' R 12.8 187.8

30' R 12.1 188.5

12.5' R cb 11.94 188.69

" Guts 12.62 188.01

9.5' R " 12.43 188.20

20063

ℓ		11.9	188.73
12.5' Lt. Gut		12.48	188.15
12.5' Lt "		12.74	187.89
" " cb		12.16	188.47
20' Lt		12.4	188.20
28' Lt		17.0	183.6
30' Lt		18.3	182.3
34' Lt		19.4	181.2
45' Lt		18.6	182.0
3+44.35			
27.8' Lt. on Flow 36"	co. test	20.94	199.69
" " Hd. Well		16.85	183.98
3+70.07			
45' Lt		18.2	182.40
34' Lt		17.8	182.80
30' Lt		16.5	184.10
20' Lt		10.6	190.0
12.5' Lt cb		10.72	189.91
" " Gut		11.32	189.31
2.5' Lt Gut		11.02	189.61
ℓ		10.6	190.0
2.5' Rt Gut		10.93	189.70
12.5' R "		11.07	189.56
" " cb		10.43	190.20
30' Rt		11.1	189.5
35' Rt		11.4	189.2

20063

Combinations			
3+89.4 = Reg. Conc. Walk on Rt.			
12.5' Rt on cb		8.52	192.11
18.17 Rt " Walk		8.41	192.22
3+90.07			
30' R on 6" Well		8.68	191.95
30' Rt. i. South-Ground		9.7	190.9
18.17 Rt on Walk		8.34	192.29
12.5' Rt on cb		8.49	192.14
" " " Gut		9.09	191.54
9.5' " " "		8.86	191.77
ℓ		8.6	192.0
9.5' Lt "		9.00	191.6
12.5' Lt "		9.18	191.45
12.5' Lt cb		8.60	192.03
20' Lt		8.9	191.7
30' Lt		15.1	185.5
35' Lt		16.9	183.7
45' Lt		16.9	183.7
3+90.6			
30' R on Conc Ribbon		8.69	191.94
3+97.4			
30' R on Conc "		8.37	192.26
18.17 R " " "		7.62	193.01

43

200.63 31st St.

	4+08.4 South edge Walk on R		
30' Rt	on Walk	6.85	193.78
18.17 R		6.46	194.17
	4+11.5 = N edge Conc. Walk on Rt.		
18.17 Rt.	on Walk	6.17	194.46
30' R		6.70	193.93
	4+25.7 = Cobble wall on R		
18.5' Rt	on Wall	4.13	196.50
30' R	" "	4.7	195.9
	4+29.5 = Cobble Wall on R		
18.5' R	on Wall	3.47	197.16
30' "	" "	3.30	197.33
	4+42.4 = South edge Conc. Walk on Rt.		
18.2 R	on Walk	2.02	198.61
30' R	" "	2.31	198.32
	4+51.6 = N edge Conc. Walk on Rt.		
30' Rt.	on Walk	2.17	198.46
" "	" 7" Conc. Wall	1.78	198.85
18.2 Rt	" Walk	1.82	198.81
18.2 Rt	on 7" Conc. Wall	1.38	199.25
	4+25		
30' R		5.2	195.43
18.18 Rt	on Walk	4.71	195.92
12.5' Rt	" cb	4.79	195.84
"	" Gut	5.43	195.20
2.5' Rt	on "	5.26	195.37

200.63

44

			5.0	195.6
	2.5' Lt. on Gut		5.38	195.25
	12.5' Lt. " "		5.59	195.04
	12.5' Lt. " cb		4.23	195.70
	19' Lt		5.4	195.2
	24' Lt		7.3	193.3
	30' Lt		11.6	189.0
	41' Lt		16.1	184.5
	50' Lt		15.8	184.8
	T.P. 11.89 212.22		0.30	200.33
	4+62.6 = Reg. 4' Conc. Walk on Rt.			
	18.17 R on Walk		11.45	200.77
	30' R " "		10.59	201.63
	4+73.6			
	18.17 Rt. on Walk		11.02	201.20
	30' Rt. " "		10.34	201.88
	4+92 = Reg. Conc. Ribbon Drive on Rt.			
	30' Rt. on Drive		6.89	205.33
	18.17 R " "		2.04	203.18
	4+98.6 = " edge Drive			
	18.17 Rt. on Drive		8.35	203.87
	30' R " "		6.55	205.67
	4+99.65 = Reg. 5.67' Combination Walk on Lt.			
	12.5' Lt. on cb		8.75	203.47
	18.17 Lt. " Walk		8.62	203.60

212.22

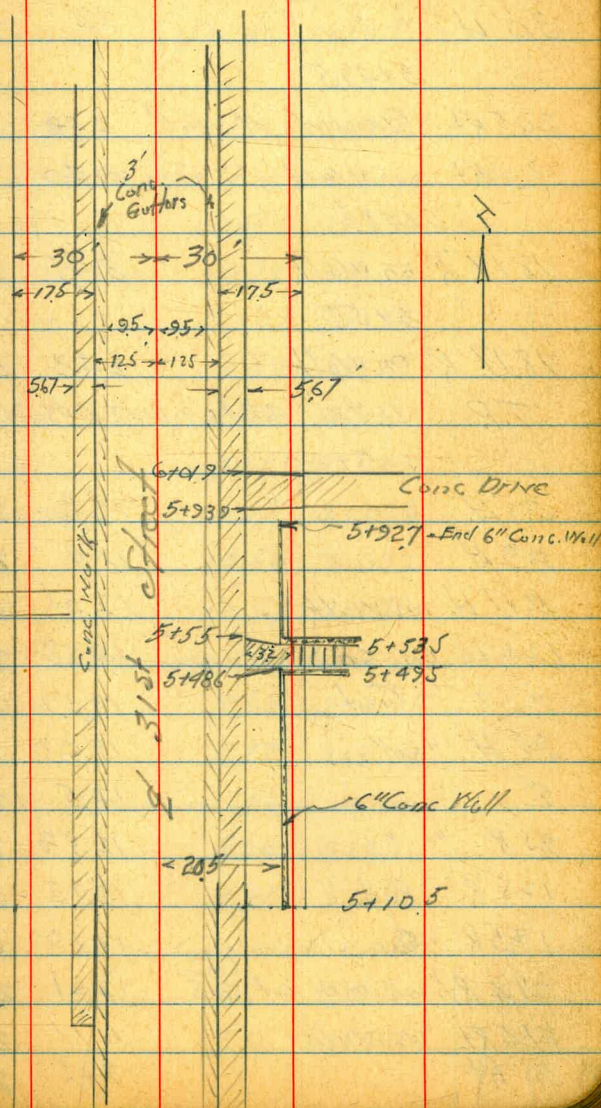
4+75

50' Lt	21.6	190.6
39' Lt	19.3	192.9
30' Lt	18.9	198.3
25' Lt	11.1	201.1
12.5' Lt Cb	11.32	200.90
" Cut	11.90	200.32 (56)
9.5' Lt "	11.70	200.52
ℓ	11.3	200.9
2.5' Rt Cut	11.47	200.75
12.5' R "	11.72	200.50 (62)
12.5' R on Cb	11.10	201.12
1817' Rt	10.94	201.28
30' R	10.1	202.1
5+10.5 = Beg 6" Conc Well on R		
30' R	3.9	208.3
20.5' R on Well	4.51	207.71
" " " Ground	6.9	205.3
1817' Rt on Well	7.14	205.08
12.5' Rt on Cb	7.22	205.00 (63)
12.5' Cut.	7.85	204.37
9.5' R "	7.64	204.58
ℓ	7.6	204.6
9.5' Lt Cut	8.04	204.18
12.5' Lt "	8.27	203.95 (66)
" Lt on Cb	7.61	204.61

212.22

45

1817' H. on Well	7.54	204.68
30' Lt	7.0	205.2



212.22

5+48.6 = cobble Wall

18.17 H. on Walk	3.50	208.72
19.4 " Wall	3.2	209.0
28.4 on "	1.4	210.8
30.4 " "	1.4	210.8

5+49.5

20.5 RT Ground at Wall	2.88	209.4
" RT on Wall	0.40	211.82

5+48.6

18.17 R on Walk	3.95	209.17
-----------------	------	--------

5+55

18.17 R on Walk	2.43	209.79
-----------------	------	--------

T.P.	11.72	221.31	2.63	209.59
------	-------	--------	------	--------

5+50

30.4	10.7	210.6
------	------	-------

23.4	11.0	210.3
------	------	-------

18.17 H. on Walk	12.31	209.00
------------------	-------	--------

12.5 H on cb	12.58	208.73
--------------	-------	--------

" " Cut	13.19	208.12
---------	-------	--------

2.5 H " "	13.00	208.31
-----------	-------	--------

2	12.5	208.8
---	------	-------

9.5 R " "	12.53	208.78
-----------	-------	--------

12.5 R Cut	12.73	208.58
------------	-------	--------

12.5 R cb	12.10	209.21
-----------	-------	--------

21.4 RT on walk at step	12.01	209.30
-------------------------	-------	--------

21.4 RT " Walk	11.71	209.60
----------------	-------	--------

30. RT	7.26	214.05
--------	------	--------

221.31

5+49

30 R on Wall	6.57	214.74
--------------	------	--------

5+53.5

30 RT on Wall	6.60	214.71
---------------	------	--------

20.5 R " "	8.99	212.32
------------	------	--------

" R on Ground	10.6	210.7
---------------	------	-------

5+55

18.17 RT on Walk	11.60	209.71
------------------	-------	--------

5+64.6 = South edge Conc. Walk on West

18.17 H. on Walk	10.97	210.34
------------------	-------	--------

19.5 H " " at step	10.74	210.57
--------------------	-------	--------

" " " " on "	10.27	211.04
--------------	-------	--------

30.4 " "	9.80	211.51
----------	------	--------

5+68.6 = N edge Above Walk

30.4 H. on Walk	9.76	211.55
-----------------	------	--------

19.4 " " = step	10.17	211.14
-----------------	-------	--------

" " "	10.54	210.77
-------	-------	--------

18.17 H on "	10.57	210.74
--------------	-------	--------

5+86.8 = South edge Conc Drive on West

18.17 H on Drive	8.60	212.71
------------------	------	--------

30.4 " "	8.52	212.79
----------	------	--------

5+94.7 = N edge Conc Drive on West

30.4 on Drive	8.20	213.11
---------------	------	--------

18.17 H " "	7.85	213.46
-------------	------	--------

5+92.7 = Head Conc Wall on RT

20.5 RT at Wall on Ground	6.9	214.4
---------------------------	-----	-------

" " on "	5.46	215.85
----------	------	--------

46

221.31

5+93.9 = South edge Conc. Drive on R

30' Rt on Dr	4.58	216.73
18.17 R " "	7.32	213.99
6+01.9 = N edge Conc Drive on R		
18.17 R on Drive	6.48	214.83
30' R " " "	4.30	217.01
6+00		
30' Rt on Drive	4.30	217.01
18.17 R " "	6.67	214.64
12.5' Rt on Gut. in Drive	7.40	213.91
9.5 R " "	7.18	214.13
8	7.3	214.0
9.5' Lt " "	7.83	213.48
12.5' Lt " "	8.05	213.26
" " on cb	7.44	213.87
18.17' Lt " Walk	7.30	214.01
30' Lt	7.4	213.9
6+01.9 = South edge 0.8' Conc. Wall on Lt.		
30' Lt on Ground	7.3	214.0
" " " Wall	4.55	216.76
18.2' Lt on "	6.47	214.84
18.2 " " Ground	7.1	214.2
6+02.7 = South edge Drive		
18.2' Lt on Drive	6.96	214.35
30' Lt " "	4.74	216.57

221.31

47

6+12.3 = N edge Conc Drive

30' Lt on Drive	4.36	216.95
18.17 Lt " "	5.99	215.32
6+14		
18.17 Lt on Cobble Wall	5.85	215.46
30' Lt " " "	4.24	217.07
6+13.9		
30' Lt on Cobble Wall	3.22	218.09
18.17' " Wall	5.66	215.65
6+27.5 = South edge Conc. Wall		
18.17' Lt. on Wall	4.43	216.88
30' Lt " " "	2.39	218.92
6+30.7 = N edge Conc Wall		
30' Lt on Wall	2.43	218.88
18.17 Lt " "	4.10	217.21
6+32.5 = South edge Conc Dr		
18.17 Rt on Drive	3.17	218.14
30' R " "	0.69	220.62
6+39.2		
30' R on Drive	0.29	221.02
18.17 R " "	2.45	218.86
6+48.10 " Conc. Ret Wall		
18.17 Lt on Wall	2.33	218.98
18.17 Lt " Wall	1.67	219.64
30' Lt " "	+0.50	221.81
" " " Ground	1.9	219.4

	221.31	31st Street
TR 9.30	229.61	1.00 220.31
6+50		
30' Lt.	8.1	221.5
18.17 Lt. on Walk	10.45	219.16
12.5 Lt. on cb	10.57	219.04
" " " Gut.	11.21	218.40
9.5' Lt. " "	11.03	218.58
♀	10.3	219.3
9.5' Rt on cut	10.17	219.44
12.5 R " "	10.27	219.34
" " " cb	9.75	219.86
18.17 R " Walk	9.59	220.02
30' R	6.4	223.2
6+51 = South edge Conc. Drive		
18.17 Lt.	10.34	219.27
30' Lt	8.08	221.53
6+61.7 = N edge Conc. Drive on W		
30' Lt. on Drive	7.45	222.16
" " " Wall	5.34	224.27
18.17 " "	9.16	220.45
" " " Drive	9.31	220.30
6+57.7 = South edge Wall + ^{Stop} on Rt		
18.17 Rt on Walk	8.82	220.79
30' Rt " Wall	4.80	224.81
6+58.2		
30' R on walk = Top Stop.	4.80	224.81

	229.61	
23' Rt = Bottom stop.	8.45	221.16
18.17 R on Walk	8.75	220.86
6+61.8 = N edge stops + Wall on R		
18.17 R on Walk	8.39	220.22
23' R " "	8.41	221.20
30' R " Top stop	4.67	224.94
6+90.07 = Skine Elm on Rt. to 31st St.		
30' Rt.	4.7	224.9
18.17 Rt. on Walk	5.32	224.29
12.5 R " cb	5.48	224.13
9.5 Rt " Gut.	6.3	223.3
♀	6.4	223.2
9.5' Lt on cut	6.88	222.73
12.5 Lt " "	7.07	222.54
" " " cb	6.44	223.17
18.17 Lt on Walk	6.35	223.26
26' Lt.	2.5	227.1
30' Lt.	2.4	227.2
Sec B diag.		
W cb	5.08	224.53
" Gut.	5.72	223.89
edge Conc Gut	5.62	223.99
♀ Conc Pav	5.47	224.14
	5.75	223.86
E Gut.	5.92	223.69
E cb.	5.34	224.27

229.61

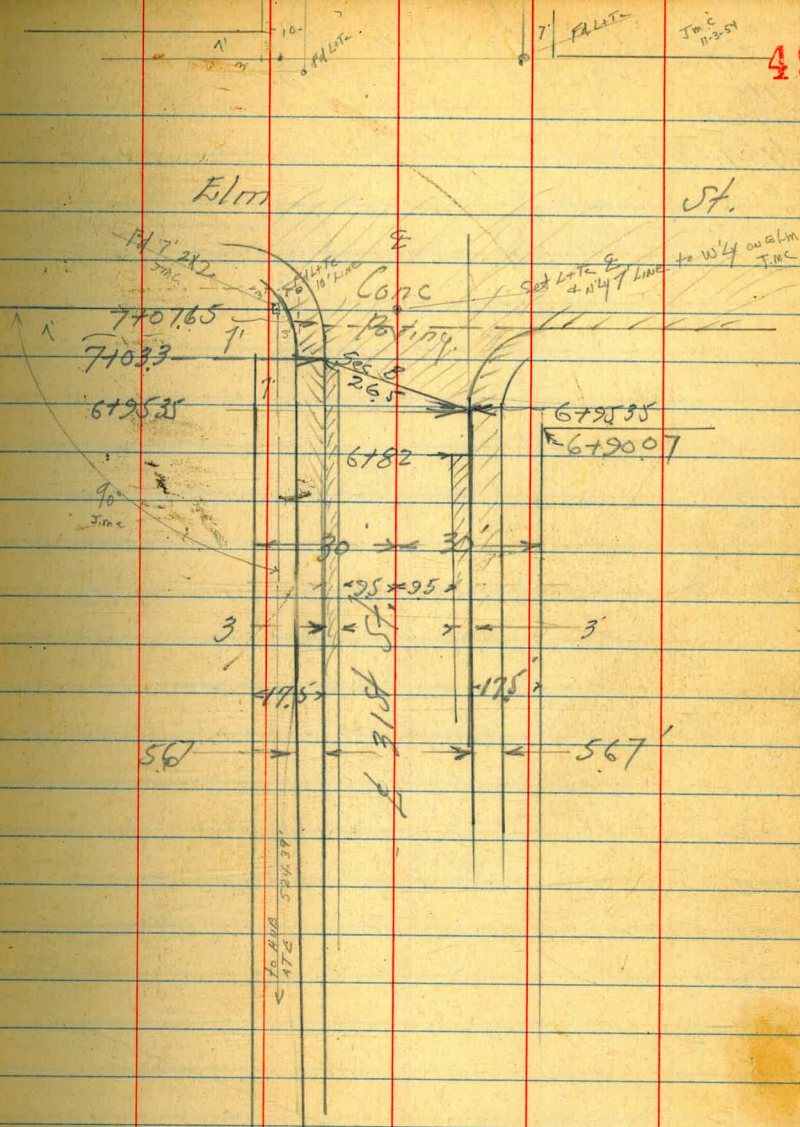
31st St X-Sections

7+07.65

30' R on cb	541	224.20
" " " Gut	575	223.86
12.5' R on Gut Produced	528	224.33
L on Pav.	503	224.58
12.5' Lt " "	525	224.36
" " on cb	463	224.98
18.17 H on Walk	445	225.16
25' Lt	1.8	227.8
30' Lt Elm + 31st	18	227.8
SWBP	342	226.79
TP 5.31	225.52	240
chk SE BP Elm + 32nd	528	220.24
		220.18 - Record
		006

Elev
1+11.5 = Pole 19.5' Lt.Elev
4+50 = Pole 19' Lt.Elev
5+988 = Pole 19.5' Lt.

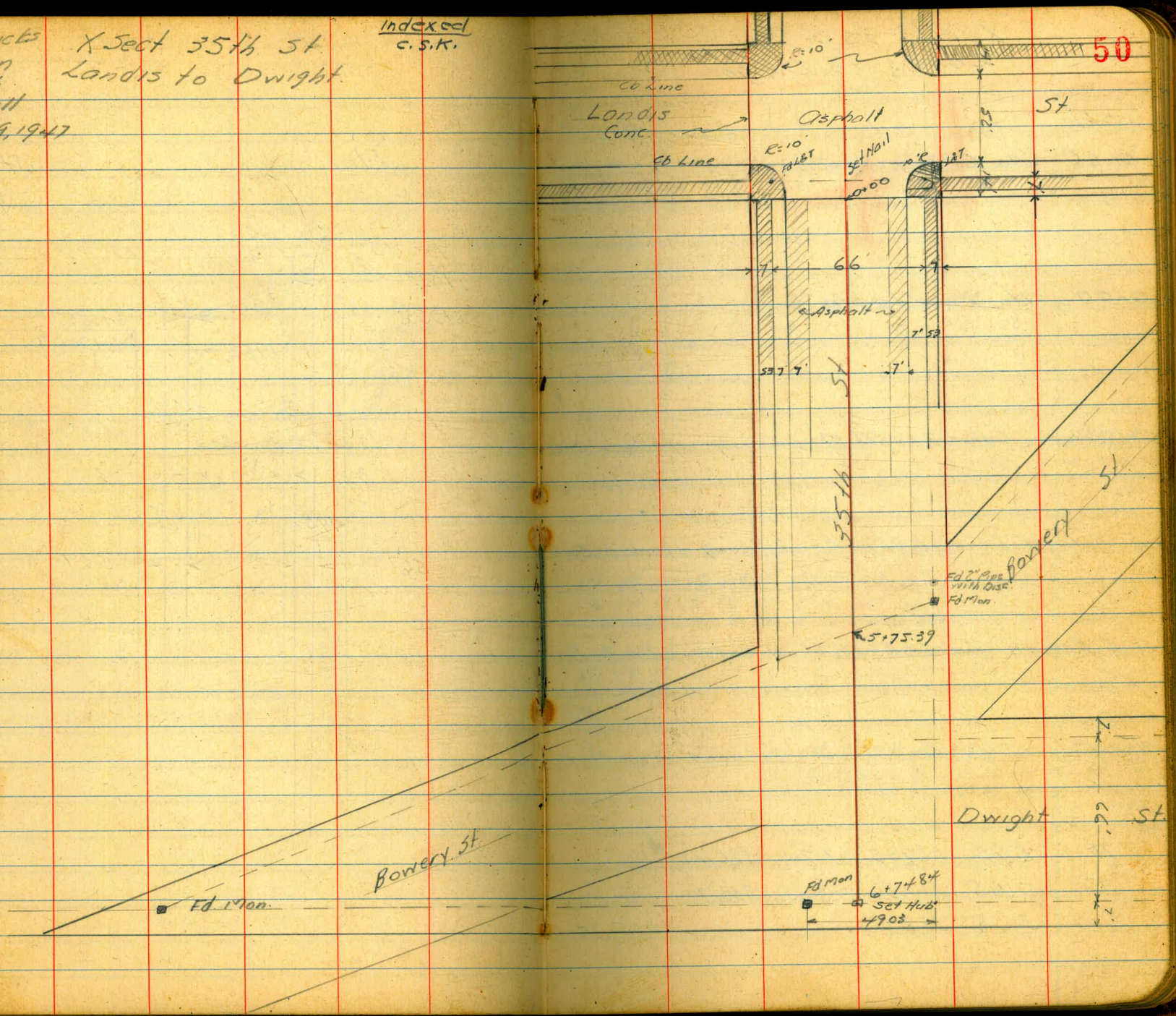
Replace Conc. Gut on Rt
from 6+82 to 6+95.35



Hendricks
 Hardin
 Smith
 Torrell
 July 29, 1947
 H.O.H.

X Sect 35th St
 Landis to Dwight

Indexed
 C.S.K.



X Sects 35th St
Landis to Dwight.

⊥

51

310. + H.1 - E. 10. B. 17

0-66 No. Cb Line Landis

0.43 1.00
1.20 1.40
Gut Cb.

15.08 15.05
1.20 1.40
Cb Gut

0.71 1.40 1.28 1.84 1.73 2.20 2.21 2.21 2.42 2.87 3.03 3.85 3.02 2.74 2.07 1.91 1.90
90 90 65 65 40 40 26 13 13 26 40 40 65 65 90 90
Cb. Gut Cb Gut Cb Gut Gut Cb Gut Cb Gut Cb

0-80 No Line Landis

Reduced 9-47
Mud Jar

1.21 2.00 1.89 2.16 2.73 3.55 3.11
26 26 13 13 26 26
Cb Gut Cb Gut Cb

SW Return Landis & 35th St. 24' Long 4 parts 6' Each

4.06 4.24 4.17 4.53 4.24 4.46 4.21 4.51 4.75
Cb Gut 6 6 12 12 18 18 24 24
So. Line Landis Cb Gut Cb G. Cb G. W Line 35th

SE Return Landis & 35th St. 24' Long 4 parts 6' Each

3.29 2.50 3.10 2.80 3.48 2.80 3.32 2.77 3.18 2.75
24 24 18 18 12 12 6 6 Gut Cb
So. Line Landis Cb G Cb 6 Cb E. Line 35th

NE Return Landis & 35th St 24' long 4 parts 6' Each

2.30 1.78 2.40 1.78 2.40 1.77 2.21 1.77 2.20 1.71
24 24 18 18 12 12 6 6 Gut Cb
E. Line Gut Cb Gut Cb Gut Cb No Line Landis 35th

NW Return Landis & 35th St. 24' Long 4 parts 6' Ea

3.07 3.85 3.18 3.75 3.12 3.70 3.10 3.71 3.11 3.58
Cb Gut West Line 35th 6 6 12 12 18 18 Cb G
Cb G Cb G Cb G N Line Landis

TP 2.93 329.35 7.94 326.42
T.P. 0.65 334.36 4.82 333.71
B.M. 3.28 338.53

335.25

N.W.B.P. Landis & 35th St.
N.W.B.P. Wilson & Landis
N.W.B.P. 36th & Landis

X Sects 35th Landis to Dwight

£

Sta 1 H.I. - Elev B.M.

0+50

324.99
10.44 0.20 0.27 0.09 0.3
26 26 19 13 13 19 26 26
Cb. Gut Cb. Gut Cb. Gut Cb.

TP 0.05 324.55 4.83 324.50

324.55

0+00 So. line Landis Edge of Paving

326.55 325.56 326.03 325.87 325.45 324.71 325.29
27.8 37.7 33.0 34.6 33.8 44.2 40.4
25.9 25.9 13 13 25.9 25.9
Cb Gut Cb Gut Cb Gut Cb.

2.9 12 125 0.82 16.56 16.00 10.45 10.03
90 90 140 140 140 140 90 90
Gut Cb Gut Cb Gut Cb Gut Cb.

0-14 So. Cb line Landis

226 270 273 316 340 341 325 343 433 424 428 7.7 7.53
65 65 40 40 26 13 13 26 40 40 65 65
Cb. Gut Cb Gut Cb Gut Cb Gut Cb.

0-27 So 1/4

0.63 1.54 2.11 2.68 3.07 2.74 2.99 3.28 3.61 3.83 6.82 9.89 15.71
140 90 65 40 26 13 13 26 40 40 65 90 140

329.33

B.M. 2.91 329.33 2.93 326.42

N.W.B.P. Landis & 35th St.

0-40 £ Landis

0.20 1.09 1.71 2.29 2.85 2.21 2.75 3.00 3.29 3.54 6.55 9.53 15.70
140 90 65 40 26 13 13 26 40 40 65 90 140

0-53 1/4

0.0 1.08 1.66 2.29 2.71 2.50 2.55 2.83 3.17 3.58 6.56 9.47 15.55
140 90 65 40 26 13 13 26 40 65 90 140

329.35

329.35

Sta + H.L. - Elev.

3+50

315.60	315.00	315.26	315.4	315.3	314.9	314.46	314.40	314.92
895	955	919	92	93	97	10.09	10.15	9.53
26	26	19	13		13	19	26	26
cb	Gut						Gut	cb

3+00

317.03	316.38	316.55	316.7	316.6	316.1	315.97	315.80	316.34
752	817	800	78	78	84	858	875	821
26	26	19	13		13	19	26	26
cb	Gut						Gut	cb

2+50

318.58	318.00	318.10	318.1	318.2	317.5	317.3	317.28	317.83
597	655	645	64	63	70	720	727	672
26	26	19	13		13	19	26	26
cb	Gut						Gut	cb

2+00

319.61	319.80	319.7	319.6	319.0	318.79	318.69	319.35
494	475	48	48	55	526	585	520
26	19	13		13	19	26	26
Gut	Gut					Gut	cb

1+50

321.87	321.29	321.29	321.2	321.1	320.5	320.20	320.07	320.76
268	325	320	33	34	40	435	448	379
26	26	19	13		13	19	26	26
cb	Gut						Gut	cb

1+00

323.36	322.84	322.52	322.8	322.7	322.0	321.77	321.61	322.24
129	121	123	17	12	25	228	224	221
26	26	19	13		13	19	26	26
cb	Gut						Gut	cb

0+89 to 0+97 No cb on Lt.

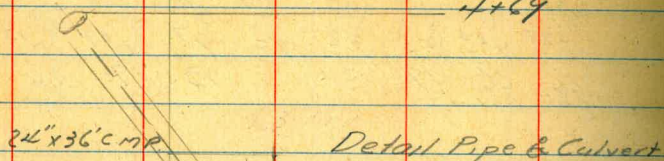
324.55

324.55

X Sects 35th St. Lands to Dwight

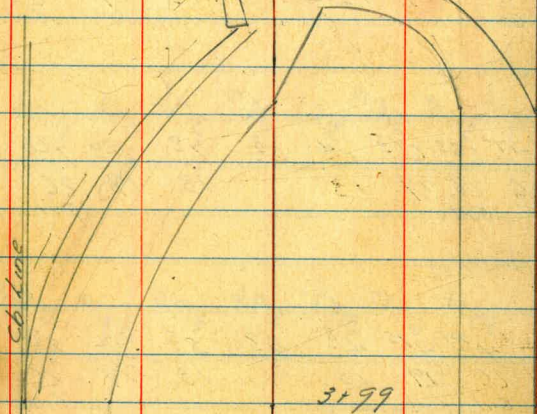
Sta + H.I. - Elev. B.M.

35th 4149



Detail Pipe & Culvert

353
4148.5
4145



Reduced by: Wm K. Lear

TP 1.29 314.91 10.93 313.62

4100

308.4	314.6	314.57	313.70	313.82	313.9	313.9	313.5	313.34	313.03
16.2	9.8	9.8	10.8	10.7	10.5	10.5	7.0	7.2	7.52
70	30	26	24	19	13	13	19	26	26
		Cb	Cb					Gut	Cb

should be: 11.0 11.2 11.52
13 19 26

313.93
10.52 314.61
26 26
Gut Cb

3199 End Conc. Cb onlt Beg Asphalt Bumper Cb

3175 End of Sidewalk onlt.

32455

Sta. T H.I. - Elev B.M.

5+18

278.0 270.6 262.2 270.4 272.5 273.9 277.7 286.1 294.4 300.8
 24° 31' - 24° 31' 31' 27' 28' 24' 15' 7' 12' 110° 110°
 78 61 54 45 26 13 13 26 40 80 100
 Wash

4+80

276.7 270.7 268.0 278.2 285.7 293.5 301.4 308.7 310.3 312.2 312.4 312.4
 25° 31' 34° 25° 8' 16' 8' 5' 0' +6' +8' +10' +10' +10'
 70 78 68 40 26 13 13 17 26 40 50
 Wash

TP. 0' 301.95 13.07 301.84

301.95

4+58

274.0 271.7 270.2 271.9 272.9 274.3 301.0 312.2 312.5 312.4 313.3
 26° 43' 44' 43° 37' 20' 13' 27' 2' 25' 15'
 100 80 75 70 50 26 13 13 26 40
 Wash

4+46

278.6 278.5 292.3 301.6 306.4 312.93 310.79 311.44 312.0 312.6 313.41
 29° 31' 21' 15' 8' 12' 4' 2' 2' 15'
 100 75 40 26 13 5 5 13 26 40
 H.W. FL.

4+43 End sidewalk on Rl

4+30 End Ch on Rl

276.10 278.4 298.8 304.0 307.8 313.3 313.48 312.06 312.21 312.2 312.4 312.11 312.73
 26° 16' 10' 7' 15' 11' 26' 27' 27' 27' 28' 28'
 100 79 40 33 26 13 11 8 13 19 26 26
 Ch Gut Gut Ch

314.91

314.91

X Sects 35th St. Landis to Dwight

Sta. + H.I. - Elev BM

5

6+71 L. Rock wall

6+68 Rock Wall & Picket Fence

6+41.84 & Dwight

TP 10.77 311.31 1.41 300.54

6+01.84 No. Line Dwight

5+80

5+47 Wash

301.95

306.0
305.5
305.0
304.5
304.0
303.5
303.0
302.5
302.0
301.5
301.0
300.5
300.0
299.5
299.0
298.5
298.0
297.5
297.0
296.5
296.0
295.5
295.0
294.5
294.0
293.5
293.0
292.5
292.0
291.5
291.0
290.5
290.0
289.5
289.0
288.5
288.0
287.5
287.0
286.5
286.0
285.5
285.0
284.5
284.0
283.5
283.0
282.5
282.0
281.5
281.0
280.5
280.1

315.6
313.1
311.8
309.1
307.7
304.3
298.1
281.8
275.1
268.3
260.7
257.5
260.2
261.5
261.5
261.5

314.6
313.2
309.8
300.1
290.8
279.4
273.7
267.5
264.3
257.1
259.0
262.0
266.0

294.8
284.8
278.7
272.6
260.2
262.2
260.0
263.7
262.6

272.3
267.1
265.7
265.5
265.0
272.5
282.3
287.3

311.31

301.95

X Sects 35th. St. Landis to Dwight

Sta. + HI - Elev B.M. \$

				4.10	
		2.26	327.65	327.55	
TP	6.80	329.91	1.16	323.11	
TP	13.03	324.27	0.07	311.24	

N.W.B.P. 36th & Dwight

314.6
+3.3
80

315.7
+4.4
100

311.5
+1.3
55

311.7
+0.4
40

310.6
+0.7
35

309.8
+1.5
26

309.2
+2.1
13

307.6
+3.7
5

307.9
+8.4
Wall

300.7
+10.6
1

291.3
+20.0
20

280.5
+30.8
40

268.0
+43.0
65

259.1
+52.2
95

6.81.84 So. line Dwight.

311.31

311.31

Levels at
Broadway & Kerrison

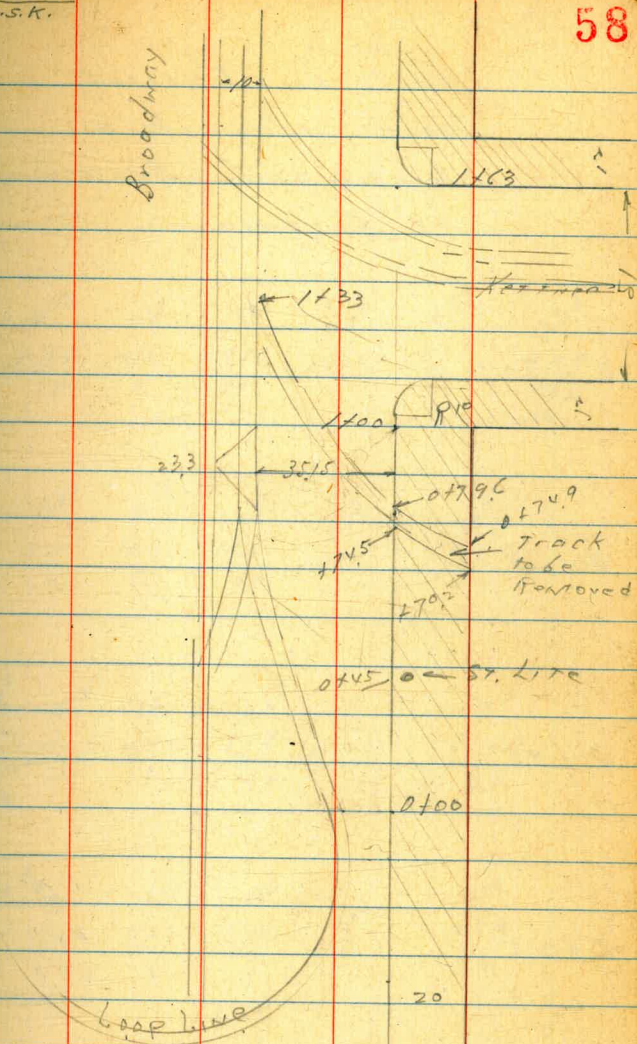
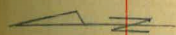
HOOPER
B-99
Roberts
9-19-47

NO 25001

Indexed
c.s.k.

58

Broadway



Curb = Baseline

Baseline
5' curb
Broadway

Rt 59

Levels on Paving
and Sidewalk on
Southside Broadway
at Kettner

0+70.7

11.03	11.07	11.06	10.73	10.37	10.08	10.28	10.32	10.34
340	336	337	370	406	435	415	411	409
396	382	378	15	6	97	70	70	195
RAIL	RAIL	RAIL						RAIL

0+63

10.95	11.01	10.96	10.62	10.08	9.58	10.08	10.33
348	345	347	381	435	485	435	410
394	373	353	15	6	97	20	20
RAIL	RAIL	RAIL					

0+45

10.72	10.71	10.72	10.62	10.37	9.87	9.25	9.91	10.14
371	372	371	381	406	456	518	452	429
448	215	348	29	15	6	97	20	20
RAIL		RAIL	RAIL					

0+25

10.33	10.25	10.26	10.21	10.19	10.11	9.51	9.05	9.90
410	398	407	422	424	432	492	538	453
448	415	30	248	191	14	6	97	20
RAIL			RAIL	RAIL				

0+00

9.98	9.99	9.53	9.58	8.74	9.35	9.58
445	444	490	495	569	508	485
448	30	15	103	97	20	20
RAIL		RAIL	RAIL			

SwBP
Broadway
Kettner

393 14.43

10.50

14.43

14202

11.69	11.24	11.16	11.04	10.75	10.55
2.74	3.19	3.27	3.39	3.68	3.88
35	122	2.8		10	20
Fail	313 MV 9456	err. M4. 5700			

1412 W C Kert.

11.63	11.10	10.76	10.50	9.98	10.49	9.88	10.49
2.80	3.33	3.67	3.93	4.45	3.94	4.55	3.94
35	10	0	10	10	10	20	20
Fail			Fail	95	06	91	06

1400 W L Kertner

11.51	11.01	10.55	10.02	10.46	10.59	10.69
2.92	3.40	3.88	4.41	3.97	3.84	3.74
35	10	0	95		10	20
Fail						

0790

11.38	10.92	10.48	10.11	10.32	10.43	10.58
3.05	3.51	3.95	4.37	4.11	4.00	3.85
35	10	0	95	06	10	20
Fail						

07794

11.20	10.80	10.52	10.41	10.30	10.39
3.23	3.63	3.91	4.02	4.13	4.04
35	10	0	1012	10	195
Fail			06. 97.		

07745

11.13	10.76	10.47	10.38	10.35	10.33
3.30	3.67	3.90	4.05	4.08	4.10
35	10	0	Fail	10	195
Fail			06. gutter		Fail

1443

1443

1463 A 06 line KATHEN

12.08	11.81	11.88	11.15	11.50	11.14	11.78
2.35	2.67	3.05	3.20	2.93	3.29	2.65
35	70		70	70	20	20
			95	66	97	26

1455

11.97	11.82	11.37	11.14	11.00
2.46	2.51	2.26	3.29	3.43
35	70		70	20
Fail				

1494

11.92	11.82	11.99	11.21	10.99
2.51	2.61	3.04	3.22	3.44
35	70		70	20

1443

11.91	11.74	11.50	11.29	11.14
2.52	2.69	2.93	3.14	3.29
35	70		70	20
Fail				

1435.2

11.86	11.63	11.50	11.28	11.10
2.57	2.80	2.89	3.15	3.33
35	70		70	20
Fail				

1443

1443

Cross Section Jennings
Bangor - 300' west.

10-28-47

W.O. 25001

Sommermeier
W. Moore
E. Sherman

Pueblo line = Base line

■ = Ed. Mon.

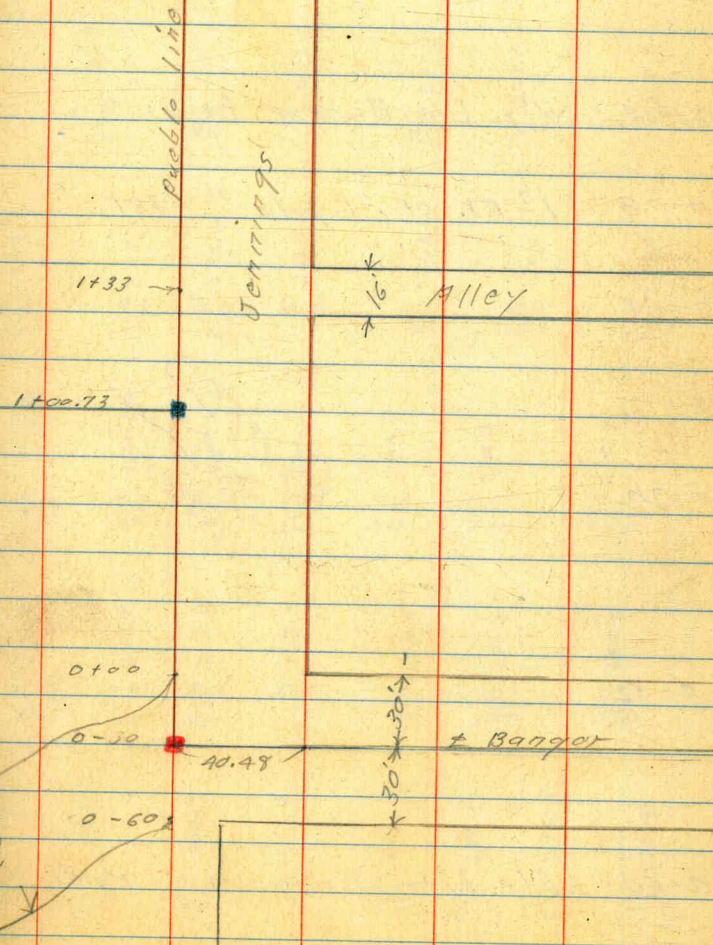
■ = Reset Mon. As per Tiesheet # 836

T.P.	4.83	276.76	3.12	271.93
Lucinda to Bangor N.E. to Tie Back Lat.	5.57	275.05	—	269.48

indexed
c.s.k.

62

← 37.76 → Bow Ave



Approx. 7.00 yds.
Lately dumped in street.

0+65 10' At. = Ctr. Pile of used brick

0+50

	271.3	271.4	271.2	271.1	270.5
	5.5	5.4	5.6	5.7	6.3
	<u>50</u>	<u>20</u>		<u>40</u>	<u>75</u>

0+00 = W'y. line Bangor to North

	271.9	272.2	272.1	271.5	270.1	270.2
	4.9	4.6	4.7	5.3	6.7	6.6
	<u>50</u>	<u>20</u>		<u>70</u>	<u>100</u>	<u>150</u>

0-08 1² Rt. = Ctr. P. pole # 3301

0-15

	272.1	272.1	272.0	272.2	271.6	270.4	270.0
	4.7	4.7	4.8	4.6	5.2	6.4	6.8
	<u>75</u>	<u>40</u>	<u>20</u>		<u>40</u>	<u>100</u>	<u>150</u>

PLOTTED
J. M. St. Louis
12-22-47

0-30

	272.6	272.6	269.4	271.1	271.3	270.3	269.9
	4.2	4.2	7.2	5.7	5.5	6.5	6.9
	<u>75</u>	<u>62</u>	<u>40</u>		<u>40</u>	<u>100</u>	<u>150</u>

0-32

	271.9	271.9	268.1	270.8	270.7	270.1	269.4
	4.9	4.9	8.7	6.5	6.1	6.7	7.4
	<u>100</u>	<u>80</u>	<u>62</u>		<u>40</u>	<u>100</u>	<u>150</u>

0-60 = Ely. Line Bangor to North

	270.7	267.2	269.3	271.1	272.3	271.7	270.5	270.8
	6.1	9.6	7.5	5.7	4.5	5.1	6.3	6.0
	<u>110</u>	<u>82</u>	<u>20</u>		<u>15</u>	<u>40</u>	<u>100</u>	<u>150</u>

276.76'

276.76'

Jennings

B.L.

64

2+10 Conts

2+10

2.72 267.79 11.69 265.07

1+90

1+50

1+25

1+00⁷³ = Pueblo Cor.

0+75

276.76

$\frac{2.9}{50}$
264.9

3.7
267.79
264.1

$\frac{7.9}{40}$
262.9

$\frac{20}{150}$
247.8

$\frac{7.3}{76}$
 $\frac{2.514}{80}$
 $\frac{2.4}{12}$
257.8

$\frac{12.5}{50}$
266.3

$\frac{9.5}{32}$
267.3

10.7
266.1

$\frac{12.5}{25}$
264.5

$\frac{12.7}{40}$
264.1

$\frac{12.6}{65}$
 $\frac{17.0}{150}$
259.8

$\frac{7.7}{50}$
269.1

$\frac{10.6}{15}$
266.2

10.8
266.0

$\frac{11.5}{25}$
265.3

$\frac{10.5}{40}$
266.3

$\frac{9.0}{65}$
267.8

$\frac{7.7}{50}$
269.1

$\frac{10.0}{20}$
266.8

10.4
266.4

$\frac{10.4}{14}$
267.4

$\frac{8.9}{40}$
267.9

$\frac{7.7}{50}$
269.1

$\frac{9.2}{23}$
267.6

8.94
267.82

$\frac{8.3}{15}$
268.5

$\frac{7.6}{40}$
269.2

$\frac{7.4}{75}$
269.4

$\frac{6.7}{40}$
270.1

6.9
270.5

$\frac{6.7}{40}$
270.1

276.76

Jennings

Orig B.M. 5.19 269.49 269.48
 6.09 274.68 4.03 268.59
 T.P. 12.62 272.62 0.14 260.00
 T.P. 12.45 260.14 0.56 247.69
 3+00

2+80

T.P. 5.00 248.25 12.51 243.25

2+55

T.P. 0.68 255.76 12.71 255.08

2+20

2+16 Cont.

2+16

267.79

B.L.

228.5
 $\frac{9.7}{50}$
 234.6
 $\frac{13.6}{18}$
 233.6
 14.6
 233.4
 $\frac{14.8}{27}$
 233.3
 $\frac{14.9}{40}$
 $\frac{13.3}{25}$

6.241.3
 $\frac{6.7}{50}$
 235.5
 $\frac{12.7}{12}$
 235.7
 12.5
 234.7
 13.5
 $\frac{12.5}{50}$
 $\frac{11.0}{45}$

248.25

245.5
 $\frac{10.3}{50}$
 242.9
 $\frac{12.9}{12}$
 241.1
 14.7
 $\frac{255.76}{12}$
 239.5
 $\frac{16.3}{12}$
 240.5
 $\frac{15.3}{30}$
 $\frac{15.6}{65}$

257.9
 $\frac{9.9}{75}$
 255.3
 $\frac{12.5}{65}$
 258.7
 $\frac{9.1}{55}$
 260.0
 $\frac{7.8}{35}$
 258.8
 $\frac{9.0}{20}$
 257.4
 $\frac{8.7}{40}$
 255.7
 $\frac{12.6}{45}$
 257.7
 $\frac{10.1}{50}$
 257.6
 $\frac{10.2}{65}$
 259.0
 $\frac{17.8}{70}$

259.5
 $\frac{8.2}{75}$
 262.1
 $\frac{5.7}{57}$
 260.0
 $\frac{7.8}{70}$
 249.9
 $\frac{17.9}{72}$

264.6
 $\frac{3.2}{50}$
 264.5
 $\frac{3.5}{40}$
 262.1
 $\frac{5.7}{39}$
 261.8
 $\frac{6.0}{7}$
 263.6
 $\frac{1.2}{7}$
 262.5
 $\frac{5.3}{10}$
 259.1
 $\frac{8.7}{15}$
 266.6
 $\frac{11.2}{44}$
 258.9
 $\frac{8.9}{50}$

267.79

Ash St

Location of Valves + M.H.'s on 5th
From "B" to Washington

1904
W.O. 21004
11-21-47
F.O.

26.1 S.M.H.
07 127 W.G.

St

096 W.G.
013 6 W.G.

H St S.M.H. 12' 0
39.2

Prop. Line 7
S.M.H. on line 25.5

0126 W.G. 33.8
011 1 W.G.
0138 3 W.G.
019 28.2 C.M.H.

W.G. = Water Gate
C.M.H. = Cleanout or St. Drain M.H.
S.M.H. = Sewer M.H.

0114 W.G.
02 C.M.H.

curb line
52'

07
S.M.H. 0
011 C.M.H. - 2x2
086 36 W.G.
57

B St

Cedar

265
292
14'
3
W.L.

Indexed
e.s.k.

26 S.M.H.

EL 14 W.G. St 66
30
1.0
30.5
Sewer box
55
7.6

This will be
curb lines - all
the way on 5th

096 W.G.

52.5

08 24 W.G.

Beech

St

S.M.H. 1 26

146.1

02 C.M.H.

W

Fish St

S.M.H. 41 12 0

Elm

st

26	1.8	S.M.H.
9	0.5	W.G.

Grape

st 67

26	1.5	S.M.H.
----	-----	--------

28.5

12	W.G.
----	------

Date

st

7	W.G.
2	

Fir

14'	W.G.
3.3	
W.L.	

14'	3'	W.G.	st
20'	24'		
4'		S.M.H.	

+
5

5
10

Cedar

st

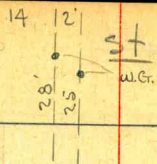
Elm

14	W.G.	st
31.7		

Ivy

S.M.H. 14

26'



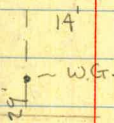
Kalmia

st 68

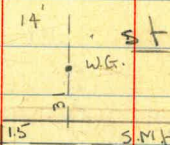
26'

15 S.M.H.

Haw thorn



26'



88'

15.1

W.G.

st
15

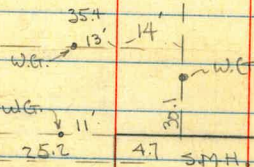
10

W.G.

88'

Juniper

35.4



25.2

4.7 S.M.H.

st

st
5

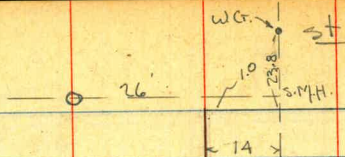
Grape

st.

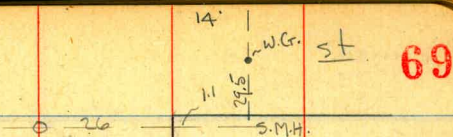
Juy

st

Maple

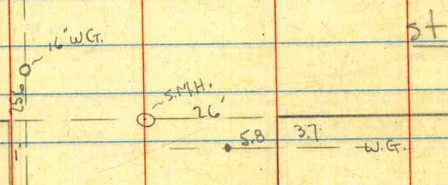


olive



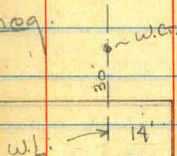
69

Laurel

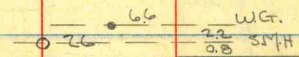


st

Nutmeg



st



st
5

st
5

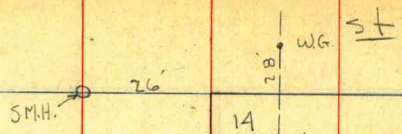
Kalmia

st

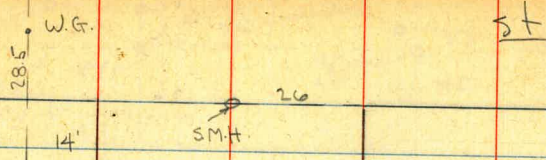
Maple

st

Quince

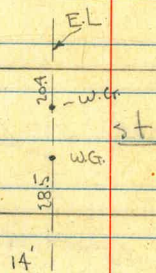
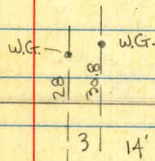


spruce

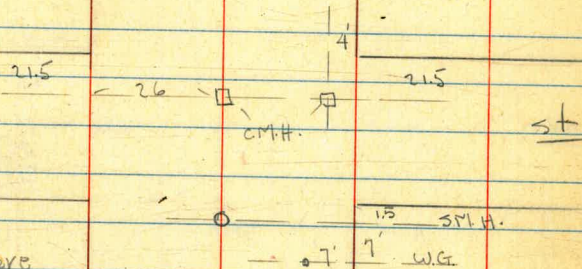


70

Palm



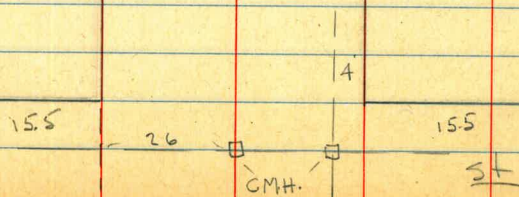
Redwood



Marked to Have
2-19-48 - 70

5 1/2

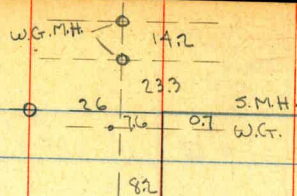
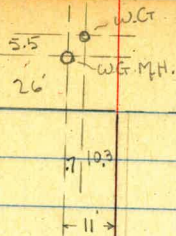
Olive



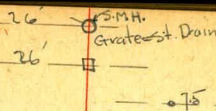
Quince

st

Upas



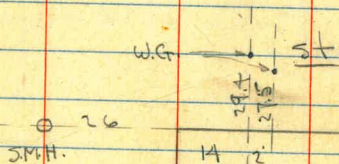
st Brookes
.60



st
71

1.5 W.G.

Thorn

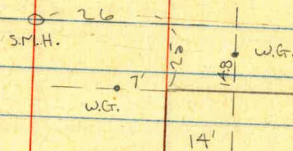


st
5

walnut



st
5



Ivy Lane
50'

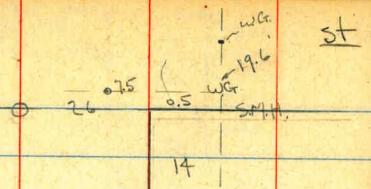
Spruce

st

Upas

st

Pennsylvania
60'

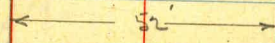


St

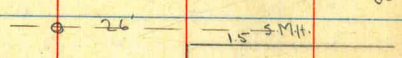
Robinson



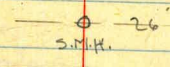
St
60' 72



Anderson Pl.
50'



Evans Pl.
50'



12.5
50



Brookes

St

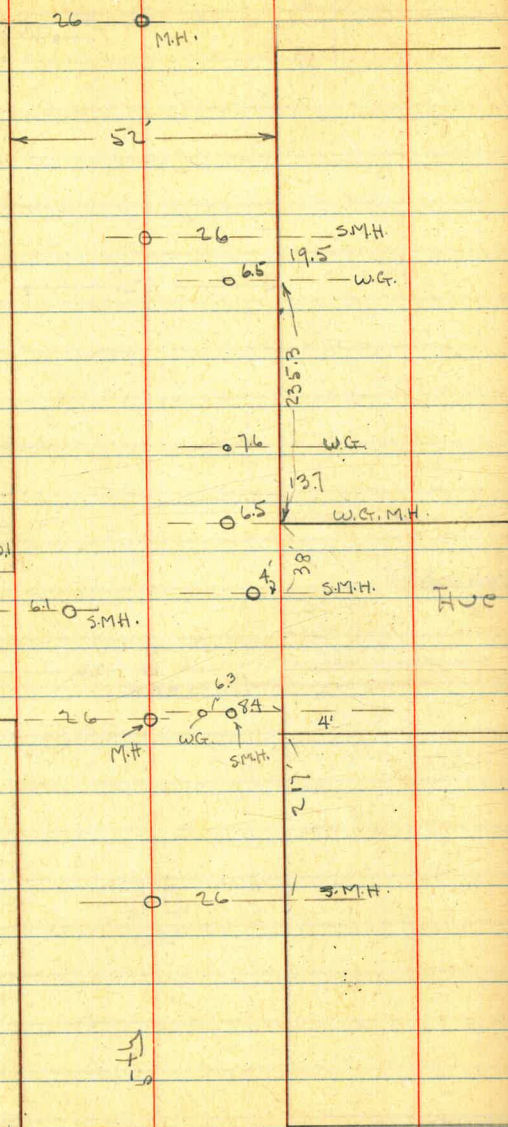
Pennsylvania

St

Washington

21

73



Univ.

Robinson

21

S.E. Cor inner edge	5.60	67.51	
S.E. Cor outer edge grate	5.41	67.70	
S.E. Cor End sidewalk	3.00	70.11	
Top of S.W. invert of pipe	4.52	68.59	
outer edge grate S.W.	2.22	70.89	
S.W. Cor	10.94	74.05	End of curb
outer edge grate at W ₁ cor	4.70	68.41	
W ₁ cor	3.00	70.11	End of curb
outer edge of grate at W ₁ cor	5.33	67.78	
W ₁ cor Capistrano & Webster	4.11	69.00	End of curb
B.M.	1.41	73.11	71.70

B.P.N.W
Poc & Capistrano

	12.60	60.51
top of end of pipe	9.87	63.24
	<u>2.73</u>	
	12.60	
top of junction box	4.30	68.81
73.11		

7/29/48

X-Section of Poe St.
from Capistrano to Chatsworth

76

McCoy
W. Moore
Allen
Melton

W.P. 25001

Void
see 1872

2400

Void

249

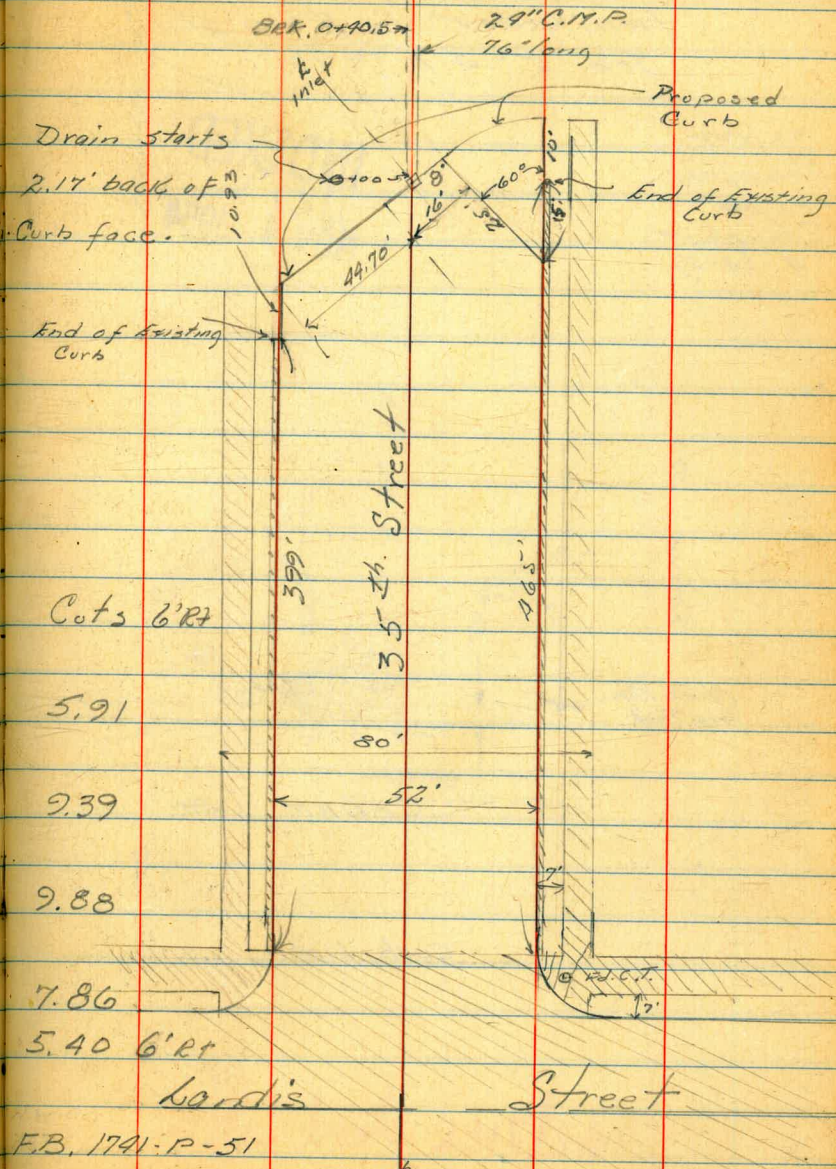
Grade stakes for Culvert
At End of 35th St.
Between Landis & Dwight

Johnson
Pope
Crawford
3-2849

W.O. #31245

End = 0+65.5

			0.13		
			335.25	N.W.B.P. 34th St.	
		3.01	335.38	Landis	
			0.03		
			333.71	N.W.B.P. Wilson & Landis	
		4.65	333.74		
T.P.	7.25	338.39	0.67	331.14	
			0.00		
			326.42	N.W.B.P.	
		5.39	326.42	35th & Landis	
T.P.	9.87	331.81	0.70	321.94	
T.P.	12.09	322.64	1.05	310.55	
T.P.	12.79	311.60	1.73	298.81	
T.P.	12.63	300.54	1.01	287.91	
				Elev. flow line	
				Cuts 6' RT	
0+65.5 = End		12.01	276.91	271.00	5.91
T.P.	7.24	288.92	12.10	281.68	
0+40.5 = BRK		4.39	289.39	280.00	9.39
T.P.	0.78	293.78	13.03	293.00	
0+30		9.40	296.63	286.75	9.88
T.P.	1.09	306.03	12.01	304.94	
0+10		8.84	306.11	300.25	7.86
0+00 = & inlet		4.55	312.40	307.00	5.40
	1.97	316.95	12.31	314.98	
	0.87	327.29		326.42	
				N.W.B.P. 35th & Landis	



FB. 1741-P-51

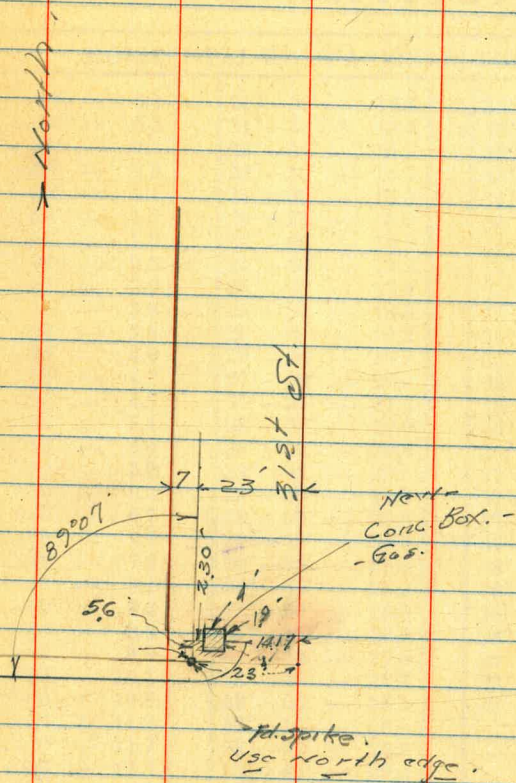
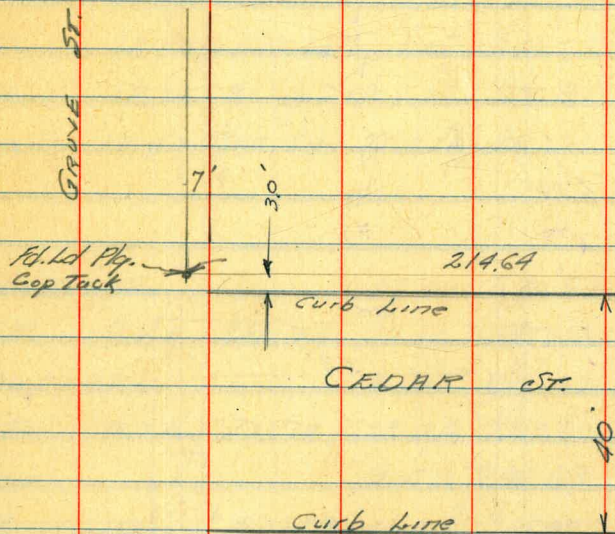
Location, New Conc. Box
NW. Cor 31st and Cedar St.

(For Cross Sections 31st St.
from Cedar to Elm St.
see P. 37 to 49)

79

Walker
Johnson
Pope
Crawford
4-24-49

INDEXED
NOV 4 1954



notes book 2315/36

IMPROVED TABLES AND INFORMATION

HORIZONTAL STADIA CORRECTIONS

2°—00' — 0.1	21°—00' — 12.8	33°—00' — 29.7
3°—00' — 0.3	21°—30' — 13.4	33°—15' — 30.1
4°—00' — 0.5	22°—00' — 14.0	33°—30' — 30.5
5°—00' — 0.8	22°—30' — 14.7	33°—45' — 30.9
6°—00' — 1.1	23°—00' — 15.3	34°—00' — 31.3
7°—00' — 1.5	23°—30' — 15.9	34°—15' — 31.7
8°—00' — 1.9	24°—00' — 16.5	34°—30' — 32.1
9°—00' — 2.5	24°—30' — 17.2	34°—45' — 32.5
10°—00' — 3.0	25°—00' — 17.9	35°—00' — 32.9
10°—30' — 3.3	25°—30' — 18.6	35°—15' — 33.3
11°—00' — 3.6	26°—00' — 19.2	35°—30' — 33.7
11°—30' — 4.0	26°—30' — 19.9	35°—45' — 34.1
12°—00' — 4.3	27°—00' — 20.6	36°—00' — 34.6
12°—30' — 4.7	27°—30' — 21.3	36°—15' — 35.0
13°—00' — 5.1	28°—00' — 22.0	36°—30' — 35.4
13°—30' — 5.5	28°—30' — 22.8	36°—45' — 35.8
14°—00' — 5.9	29°—00' — 23.5	37°—00' — 36.2
14°—30' — 6.3	29°—30' — 24.3	37°—15' — 36.6
15°—00' — 6.7	30°—00' — 25.0	37°—30' — 37.1
15°—30' — 7.2	30°—15' — 25.4	37°—45' — 37.5
16°—00' — 7.6	30°—30' — 25.8	38°—00' — 37.9
16°—30' — 8.1	30°—45' — 26.2	38°—15' — 38.3
17°—00' — 8.5	31°—00' — 26.5	38°—30' — 38.7
17°—30' — 9.0	31°—15' — 26.9	38°—45' — 39.1
18°—00' — 9.5	31°—30' — 27.3	39°—00' — 39.6
18°—30' — 10.1	31°—45' — 27.7	39°—15' — 40.0
19°—00' — 10.6	32°—00' — 28.1	39°—30' — 40.5
19°—30' — 11.2	32°—15' — 28.5	
20°—00' — 11.7	32°—30' — 28.9	
20°—30' — 12.3	32°—45' — 29.3	

Chains to Feet

1	66
2	132
3	198
4	264
5	330
6	396
7	462
8	528
9	594
10	660

Feet to Chains

100	1.515
200	3.030
300	4.545
400	6.060
500	7.575
600	9.090
700	10.606
800	12.121
900	13.636
1,000	15.151

TABLE X.
MIDDLE ORDINATES OF RAILS
Length of Rail (feet)

C	R	30	28	26	24	22	20	C	R	30	28	26	24	22	20
o /	Feet	Inch	Inch	Inch	Inch	Inch	Inch	o	Feet	Inch	Inch	Inch	Inch	Inch	Inch
0-20	17189	.08	.07	.06	.05	.04	.03	8	716.8	1.88	1.64	1.42	1.20	1.01	.84
0-40	8594	.16	.14	.12	.10	.08	.07	9	637.3	2.12	1.84	1.60	1.35	1.14	.94
1-0	5730	.24	.20	.18	.15	.13	.10	10	573.7	2.36	2.05	1.78	1.50	1.27	1.04
1-20	4297	.31	.27	.23	.20	.17	.13	11	521.7	2.59	2.26	1.95	1.65	1.39	1.15
1-40	3438	.39	.34	.29	.25	.21	.17	12	478.3	3.83	2.47	2.15	1.81	1.54	1.26
2-0	2865	.47	.41	.35	.30	.25	.20	13	441.7	3.05	2.66	2.30	1.96	1.66	1.36
2-20	2456	.55	.48	.41	.35	.29	.23	14	410.3	3.30	2.87	2.48	2.10	1.78	1.46
2-40	2149	.63	.55	.47	.40	.33	.27	15	383.1	3.54	3.08	2.68	2.26	1.91	1.57
3-0	1910	.71	.62	.53	.45	.38	.31	16	359.3	3.76	3.28	2.83	2.40	2.04	1.67
3-20	1719	.78	.68	.59	.50	.42	.35	17	338.3	4.00	3.48	3.02	2.57	2.16	1.78
3-40	1563	.86	.75	.65	.55	.46	.38	18	319.6	4.21	3.67	3.18	2.70	2.28	1.87
4-0	1433	.94	.82	.71	.60	.50	.42	19	302.9	4.45	3.89	3.36	2.86	2.41	1.98
4-20	1323	1.02	.89	.77	.65	.55	.45	20	287.9	4.70	4.09	3.55	3.00	2.54	2.09
4-40	1228	1.10	.96	.83	.70	.59	.48	22	262.0	5.16	4.44	3.84	3.30	2.80	2.29
5	1146	1.18	1.03	.89	.75	.63	.52	24	240.5	5.64	4.92	4.20	3.59	3.04	2.50
6	955.3	1.41	1.23	1.06	.90	.76	.62	26	222.3	6.07	5.29	4.58	3.88	3.29	2.70
7	819.0	1.65	1.44	1.24	1.05	.89	.73								

TABLE XI.
SHORT RADIUS CURVES

Radius Feet	Chord Feet	Central Angle	Deflection Angle	Deflection for 1 Foot
35	10	16-26	8-13	49.3
45	10	12-46	6-23	38.3
50	15	17-16	8-38	34.5
60	15	14-22	7-11	28.8
75	15	11-30	5-45	23.0
100	20	11-30	5-45	17.3
120	20	9-34	4-47	14.3
150	20	7-39	3-49	11.5
190	25	7-32	3-46	9.15
200	25	7-10	3-35	8.6
225	25	6-25	3-12	7.7
240	25	5-58	2-59	7.2
250	25	5-44	2-52	6.9
275	25	5-12	2-36	6.2
288	50	9-58	4-59	6.0
300	50	9-32	4-46	5.7
350	50	8-12	4-06	4.9
376	50	7-40	3-50	4.6
400	50	7-10	3-35	4.3
410	50	7-00	3-30	4.2

To find length of curve divide angle from P. C. to P. T. by central angle of chord, and multiply by length of chord.

TABLE XII.
INCLINED DISTANCE OF 100 FT. REDUCED TO HORIZONTAL

Slope	Horizontal Distance	Correction	Rise Per Foot	Slope	Horizontal Distance	Correction	Rise Per Foot
0°00'	100.000	0.000	0.000	8°00'	99.027	0.973	0.139
15'	99.999	0.001	0.004	15'	98.965	1.035	0.143
30'	99.996	0.004	0.009	30'	98.902	1.098	0.148
45'	99.991	0.009	0.013	45'	98.838	1.164	0.152
1 00	99.985	0.015	0.017	9 00	98.769	1.231	0.156
15	99.976	0.024	0.022	15	98.700	1.300	0.161
30	99.966	0.034	0.026	30	98.629	1.371	0.165
45	99.953	0.047	0.031	45	98.556	1.444	0.169
2 00	99.939	0.061	0.035	10 00	98.481	1.519	0.174
15	99.923	0.077	0.039	15	98.404	1.596	0.178
30	99.905	0.095	0.044	30	98.325	1.675	0.182
45	99.885	0.115	0.048	45	98.245	1.755	0.187
3 00	99.863	0.137	0.052	11 00	98.163	1.837	0.191
15	99.839	0.161	0.057	15	98.079	1.921	0.195
30	99.813	0.187	0.061	30	97.992	2.008	0.199
45	99.786	0.214	0.065	45	97.905	2.095	0.204
4 00	99.756	0.244	0.070	12 00	97.815	2.185	0.208
15	99.725	0.275	0.074	15	97.723	2.277	0.212
30	99.692	0.308	0.078	30	97.630	2.370	0.216
45	99.657	0.343	0.083	45	97.534	2.466	0.221
5 00	99.619	0.381	0.087	13 00	97.437	2.563	0.225
15	99.580	0.420	0.092	15	97.338	2.662	0.229
30	99.540	0.460	0.096	30	97.237	2.763	0.233
45	99.497	0.503	0.100	45	97.134	2.866	0.238
6 00	99.452	0.548	0.105	14 00	97.030	2.970	0.242
15	99.406	0.594	0.109	15	96.923	3.077	0.246
30	99.357	0.643	0.113	30	96.815	3.185	0.250
45	99.307	0.693	0.118	45	96.705	3.295	0.255
7 00	99.255	0.745	0.122	15 00	96.593	3.407	0.259
15	99.200	0.800	0.126	15	96.479	3.521	0.263
30	99.144	0.856	0.131	30	96.363	3.637	0.267
45	99.087	0.913	0.135	45	96.246	3.754	0.271

TABLE XIII.
MINUTES IN DECIMALS OF A DEGREE.

0 30"	.00833	10' 30"	.17500	20' 30"	.34167	30' 30"	.50833	40' 30"	.67500	50' 30"	.84167
1 00	.01667	11 00	.18333	21 00	.35000	31 00	.51667	41 00	.68333	51 00	.85000
30	.02500	30	.19167	30	.35833	30	.52500	30	.69167	30	.85833
2 00	.03333	12 00	.20000	22 00	.36667	32 00	.53333	42 00	.70000	52 00	.86667
30	.04167	30	.20833	30	.37500	30	.54167	30	.70833	30	.87500
3 00	.05000	18 00	.21667	23 00	.38333	33 00	.55000	43 00	.71667	53 00	.88333
30	.05833	30	.22500	30	.39167	30	.55833	30	.72500	30	.89167
4 00	.06667	14 00	.23333	24 00	.40000	34 00	.56667	44 00	.73333	54 00	.90000
30	.07500	30	.24167	30	.40833	30	.57500	30	.74167	30	.90833
5 00	.08333	15 00	.25000	25 00	.41667	35 00	.58333	45 00	.75000	55 00	.91667
30	.09167	30	.25833	30	.42500	30	.59167	30	.75833	30	.92500
6 00	.10000	16 00	.26667	26 00	.43333	36 00	.60000	46 00	.76667	56 00	.93333
30	.10833	30	.27500	30	.44167	30	.60833	30	.77500	30	.94167
7 00	.11667	17 00	.28333	27 00	.45000	37 00	.61667	47 00	.78333	57 00	.95000
30	.12500	30	.29167	30	.45833	30	.62500	30	.79167	30	.95833
8 00	.13333	18 00	.30000	28 00	.46667	38 00	.63333	48 00	.80000	58 00	.96667
30	.14167	30	.30833	30	.47500	30	.64167	30	.80833	30	.97500
9 00	.15000	19 00	.31667	29 00	.48333	39 00	.65000	49 00	.81667	59 00	.98333
30	.15833	30	.32500	30	.49167	30	.65833	30	.82500	30	.99167
10 00	.16667	20 00	.33333	30 00	.50000	40 00	.66667	50 00	.83333	60 00	1.00000

13.69
10 13
356
120
14.89
389
1789

$\frac{5.15}{50}$

$\frac{65}{100}$

$\frac{69}{150}$

38+3823
670
4540823

$\frac{2069}{1}$

8 | 2640 330
24
24
24

1256
439
479
2094

702
47
749

75
103