

1747



NATIONAL GEOGRAPHIC

WASHINGTON

1747

CITY ENGINEER'S OFFICE

MICROFILMED
DEC 29 1964

MADE IN U. S. A.

Our Leather Bound Engineers Note Books
are carried in the following rulings:

- No. 380 LEVEL BOOK. Left and Right Hand Page
the same as Left Hand Page
of this Book.
- No. 382 FIELD BOOK. Left Hand Page as in this
Book, Right Hand Page 4x4
to the inch, Center Line Red.
- No. 384 MINING TRANSIT
BOOK. Left Hand Page as in this
Book, Right Hand Page 8x8
to the inch, Center Line Red.
- No. 385 FIELD BOOK. Left Hand Page as in this
Book, Right Hand Page 8 ver-
tical and 4 horizontal lines to
the inch, Center Line Red.

We also carry the Note Books listed above,
bound in extra strong Fabri-Hide (otherwise
the same quality of book,) which can be fur-
nished at a somewhat lower price.

In ordering Fabri-Hide covered books, add
the letter "F" to catalog number.

THE FREDERICK POST CO.

ENGINEERING and DRAFTING SUPPLIES

P. O. Box 803

CHICAGO

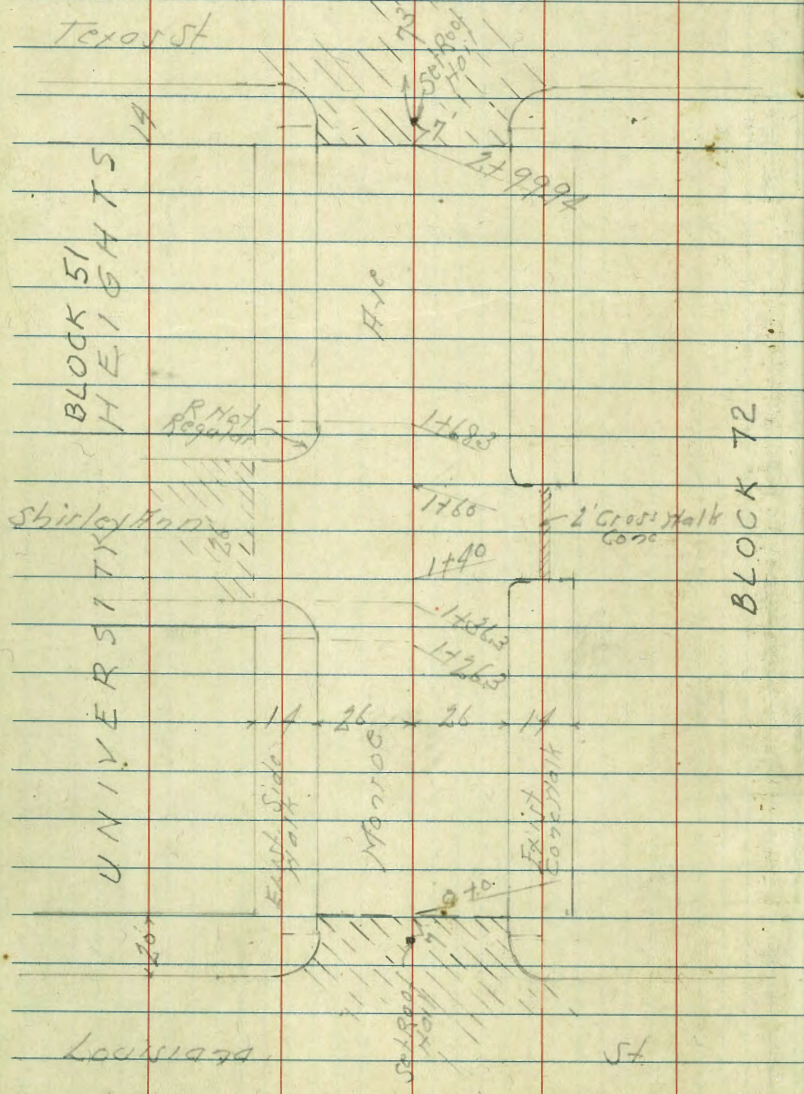
INDEXED

to page #67

Pages

1-12	X-Sect	Monroe - Louisiana to Oregon
13-21	" "	Alley - Blk 48 - Ocean Beach
22-31	" "	Collier Ave. + Alexia
32-34	" "	Alley Blk 220 - Pac Beach
35-40A	" "	Alley Blk 57 - Ocean Beach
46-51	" "	Alley Blk. 21 " "
53-59	" "	Lowell - Rosecrans to South.

Cross Section Monroe Ave
 Louisiana St to Oregon St
 Levels Page 3-12

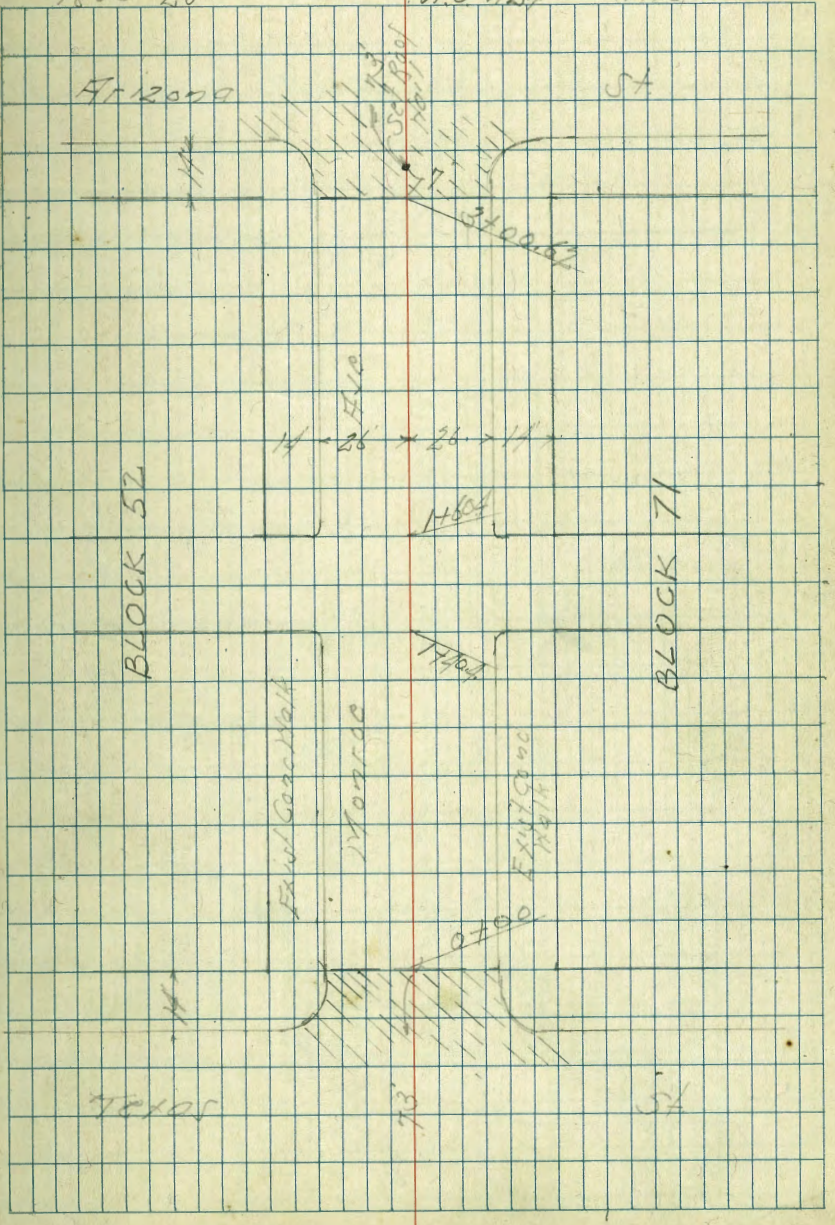


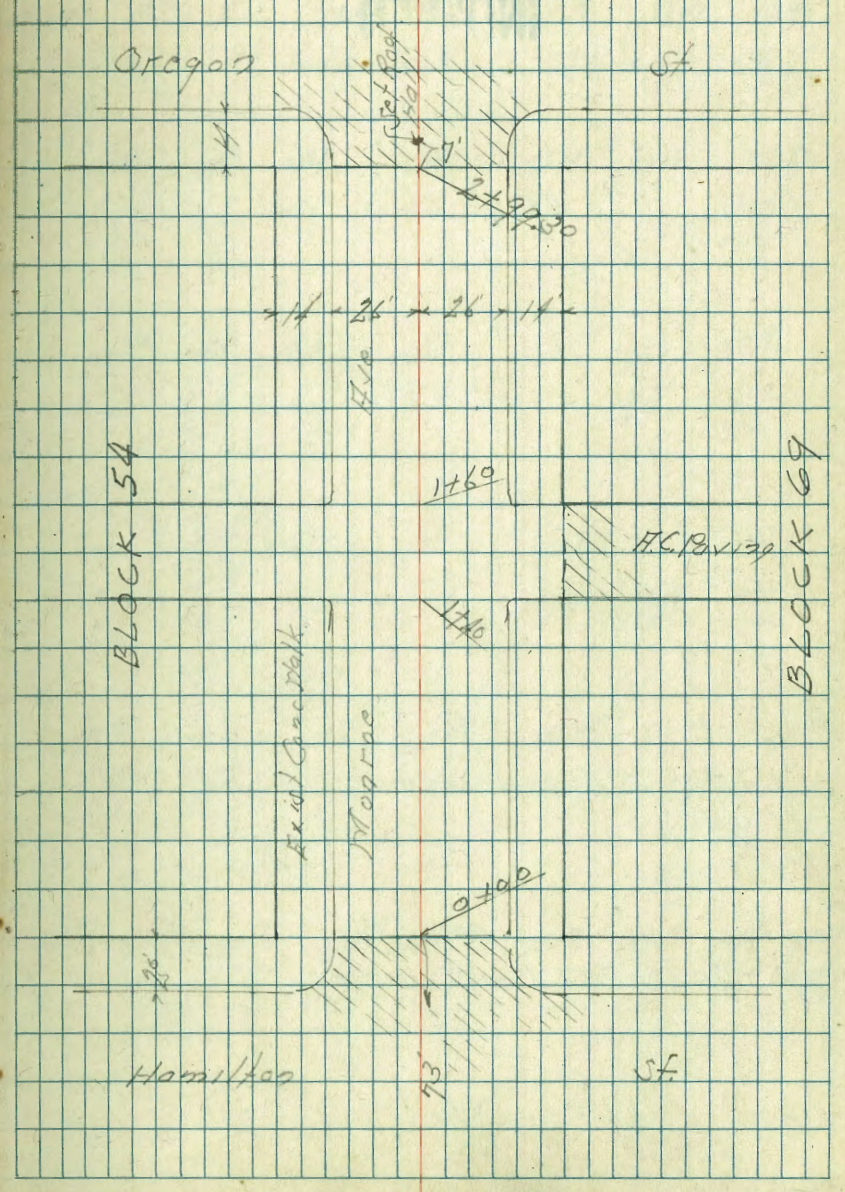
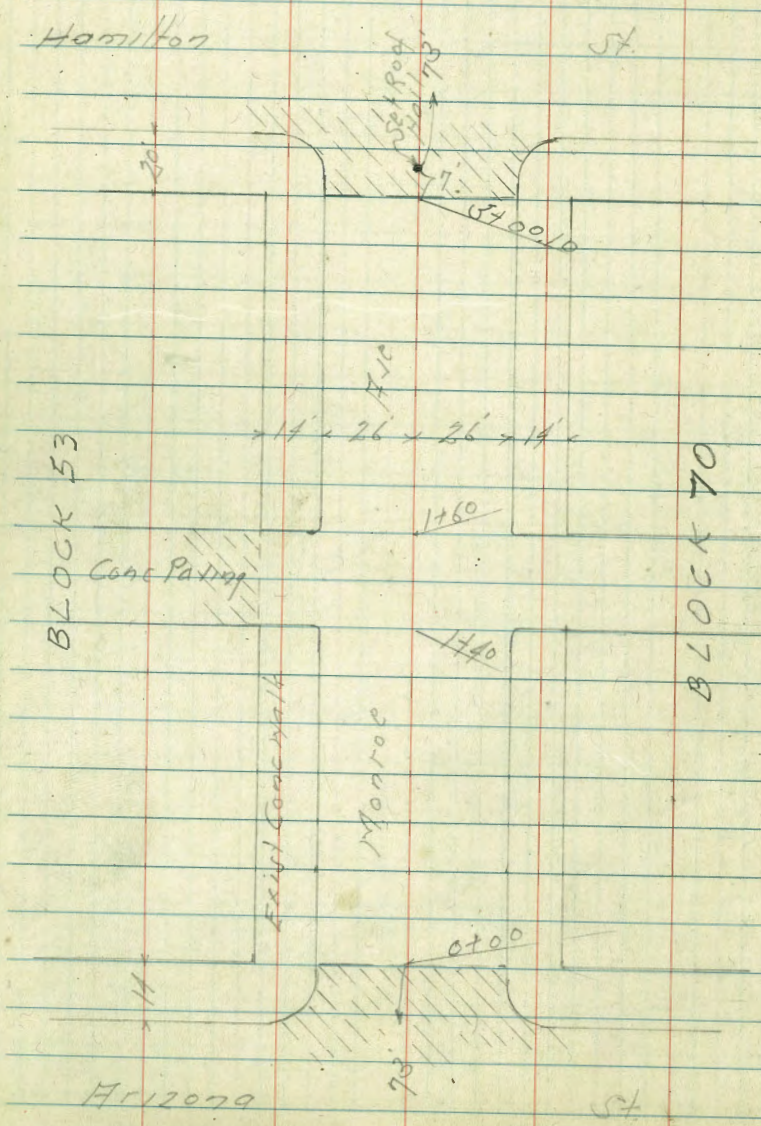
Indexed
 C.S.K.
 See F.B.
 #1503-26

INDEXED

Oct. 30-46
 5:00 PM
 McCoy
 Waddell
 Allen

No. 1124





Cross Section Monroe H.C.
Louisiana St to Oregon St.
Sketch Paper

INDEX

+363 = MCb Line Shirley Man

+27 = Cb BC on L1

1+0

+50

0+0 = F.L. Louisiana

0-20 = F.Cb Linc Louisiana

B.M. 363 342.59

Level Notes Reduced
and checked by Coburn
11/1/46

338.96
SE 80
Monroe
4/18/46

Lt. H

S

Pt. 5

3

339.04	338.44	337.9	336.1	338.1	337.8	337.5	337.84	
355 45-cb	4.5 40=50ft	4.7 26	4.5 13	4.5	4.8 13	5.1 25.9	4.25 25.9-cb	
338.53	337.9	338.0	338.0	337.6	337.4	337.85		
4.6 25.9	4.7 25.9	4.6 13	4.6	5.0 13	5.2 25.9	4.24 25.9		
338.46	337.9	337.8	337.7	337.6	337.4	337.87		
4.5 25.6-cb	4.7 25.6	4.8 13	4.9	5.1 13	5.2 25.9	4.24 25.9		
338.19	337.5	337.5	337.5	337.3	337.2	337.72		
4.10 25.7-cb	5.1 25.7	5.1 13	5.1	5.3 13	5.4 26	4.87 26		
337.80	337.21	337.50	337.49	337.23	337.01	337.44		
4.99 45-cb	5.29 28	5.09 13	5.0	5.38 13	5.38 26.50ft	5.15 25-cb		
337.21	337.33	337.18	337.09	336.24	336.82	336.74	336.76	337.35
4.88 40-cb	5.26 40=50ft	5.31 26	5.30 13	5.65	5.77 13	5.85 26	5.83 40=50ft	5.24 20-cb
				342.59 ✓				

270

+68.3

+63 = F. Cb of Shirley A 27

+60 = F. L. Alley to South

+50

+40 = F. L. Alley to South

34259

4

8

9

4

338.99	338.5	338.4	338.3	337.9	337.6	338.11
4.0	4.1	4.3	4.3	4.7	5.0	4.48
259.0	259	13		13	26.9	259.0
338.83	338.3	338.4	338.3	337.9	337.45	
4.76	4.3	4.3	4.3	4.7	5.4	
257.5	257	13		13	26	338.4
						257.0
339.07	338.49	338.1	338.4	338.3	337.9	337.45
4.5	4.0	4.5	4.3	4.3	4.7	5.4
40.0	40.0	26	13		13	26
						338.4
						257.0
338.56	338.1	338.3	338.3	337.9	337.44	338.02
4.0	4.5	4.3	4.3	4.7	5.4	4.5
40.0	26	13		13	26	26
						338.0
						257.0
338.77	338.1	338.2	338.33	337.9	337.6	338.0
4.82	4.5	4.4	4.26	4.7	5.0	4.6
40.0	26	13		13	26	40.0
						338.0
						257.0
338.61	338.1	338.1	338.1	337.8	337.5	337.82
4.98	4.5	4.5	4.5	4.8	5.1	4.77
40.0	26	13		13	26.1	26.1
						338.4
						257.0

342.59

338.4
40.0

Monroe H.C.

TP 1275 353.74 1.60 340.99

+50

0+0 = E.L. Texas St

0-14 = F.C. Line Texas St

3+13.9 = H.C. Line Texas

2+99.94 = W.L. Texas

2+50

34259

Lt.

L

Rt.

5

340.83	340.0	340.5	340.1	339.6	339.7	340.01
1.76 259.66	1.6 259	1.1 15	1.5	0.0 15	1.1 258	1.58 258.5
339.94	339.36	339.47	339.38	339.09	338.53	339.07
1.65 259.64	1.33 259.94	1.1 15	1.1	0.50 15	1.06 259.94	1.52 259.65
339.96	339.28	339.09	339.02	338.85	338.70	338.45
1.6 259.66	1.1 259.94	1.0 15	1.1	0.21 15	1.1 259	1.1 259.94
339.42	338.83	338.75	338.49	338.38	338.21	338.07
1.0 259.66	1.76 259.66	1.0 15	1.1	1.21 15	1.38 15	1.57 259
339.35	338.75	338.89	338.77	338.42	337.85	338.41
1.1 259.66	1.1 259.94	1.0 15	1.22	1.17 15	1.74 259.94	1.18 259.65
339.15	338.7	338.7	338.4	338.1	337.6	338.27
1.1 258.6	1.1 258	1.0 15	1.2	1.5 15	1.5 259	1.32 259.65

34259

+30

346.80	346.1	346.0	345.8	345.5	344.9	345.59
6.94 25.9	7.6 25.9	7.7 13	7.9	8.8 13	8.8 25.9	8.15 25.8

+20

345.99	345.4	345.2	345.0	344.9	344.3	344.60
7.75 26.0	8.7 26	8.5 13	8.7	8.8 13	9.1 26.8	9.1 25.8

2+0

345.07	344.4	344.2	343.9	343.6	343.3	343.77
8.67 26.8	9.5 26.8	9.5 13	9.8	10.1 13	10.1 26.8	9.97 26.8

+60.4 = E.L. Alley

343.69	343.49	342.9	342.9	342.6	341.9	341.5	342.45	342.55
10.03 26.8	10.75 26.8	10.8 26.5	10.8 13	11.1	11.8 13	12.3 26.7	12.7 25.7	14.0 26.8

+40.4 = W.L. Alley

342.74	342.47	342.2	342.3	342.1	341.4	340.7	341.39	341.63
11.00 26.8	11.27 26.8	11.5 26.2	11.4 13	11.6	12.8 13	13.0 26	12.35 26.55	13.11 26.0

+10

341.74	341.0	341.3	340.9	340.4	340.0	340.81
13.00 25.9	12.7 26.9	12.1 13	12.8	13.3 13	13.7 26.8	12.93 26.8

353.741

353.740

Monroe H.J.C.

+66.6 = FCB Line Arizona

+46.6 = $\frac{1}{2}$ Arizona

+14.6 = WCB Line Arizona

+100.62 = WL Arizona

TP 1130 363.81 ✓ 1.23 352.51

1075.817/477
Monroe
Arizona

+60

2440

353.74 ✓

LT S RT

7

355.52	355.00	354.71	354.66	354.39	353.85	353.34	353.30	353.94
8.29 40 CB	8.81 46 G4H	9.10 26	9.15 15	9.42	9.96 13	10.47 26	10.51 40 54	9.97 43 53
354.63	354.11	354.13	353.81	353.40	353.00	352.90		
9.18 40	9.70 26	9.68 13	10.00	10.41 13	10.81 26	10.91 40		
353.78	353.36	353.36	353.79	353.43	352.81	352.11	351.66	352.30
9.83 40 CB	10.45 46 G4H	10.45 26	10.02 13	10.38	11.00 13	11.70 26	12.15 40 54	11.51 43 53
353.81	352.99	353.08	352.83	352.27	351.60	352.32		
10.00 26 CB	10.83 26 G4H	10.73 13	10.98	11.51 13	12.21 26 54	11.49 26 53		
349.81	348.7	348.6	348.4	348.0	347.5	348.47		
3.98 239 CB	5.0 239	5.1 13	5.3	5.7 13	5.2 238	5.27 258 CB		
347.70	347.0	346.7	346.7	346.3	345.7	346.56		
6.04 239 CB	6.7 239	7.0 13	7.0	7.4 13	8.0 238	7.18 258 53		

353.74 ✓

Lt. Z Pt.

+80

365.90	364.8	364.7	364.9	364.4	364.0	364.82
7.80	8.9	9.0	8.8	9.3	9.7	8.88
28.06	26	13			25.8	23.8.06

TP 10.32 373.70 0.43 363.38 ✓

373.70 -

+60

363.76	362.5	362.5	362.6	362.1	361.5	362.75
0.05	1.3	1.3	1.2	1.7	2.3	1.06
25.06	26	13		13	23.8	23.8.06

+50

362.45	361.3	361.2	361.5	360.7	360.3	361.22
1.35	2.5	2.6	2.3	3.1	3.5	2.59
24.06	26	13		13	23.9	23.9.06

+40

361.06	360.1	359.9	360.2	359.5	358.7	359.96
2.85	5.7	3.9	3.6	4.3	4.9	4.85
26.06	26	13		13	23.9	23.9.06

+20

359.38	357.6	357.5	357.4	356.7	355.8	357.01
5.43	6.2	6.3	6.4	7.1	8.0	6.80
25.06	26	13		13	23.8	23.8.06

010 - F.L.H. 12020

355.54	354.81	355.04	354.91	354.30	353.41	354.05
8.27	9.00	8.77	8.90	9.51	10.40	9.76
26.06	25.8.06	13		13	26.06	26.06

363.81 ✓

363.81 -

TP 773 381.22 0.21 373.49 ✓

+90

2+0

+60 = EL. P/ly

+50 = L. P/ly

+40 = M. L. P/ly

1+0

373.70 ✓

373.23	372.5	372.7	372.7	372.3	372.0	372.57
0.77 25.8	1.3 25.8	1.0 13	1.0	1.8 13	1.7 25.9	1.15 25.9=CB
371.93	371.4	371.3	371.4	371.0	370.5	371.19
1.27 25.9	1.3 25.9	2.1 13	2.5	2.7 13	3.3 25.7	2.51 25.7=CB
370.93	370.68	370.70	369.9	370.0	370.0	369.5
2.77 40.35	1.22 25.8	3.00 26	3.8 26	3.7 13	3.7	4.2 13
						368.8
						369.73
						369.84
						4.86 40=CB ground
370.25	369.6	369.7	369.63	369.1	368.4	369.0
3.45 40.8/11/71	4.1 26	4.0 13	4.07	4.6 13	5.3 26	4.7 20
370.30	370.32	369.89	369.0	369.0	368.7	368.0
2.45 40	3.38 40	3.81 26	4.7 26	4.7 13	4.6	5.0 13
						368.51
						368.6
						368.90
						5.19 25.9
						5.7 25.9
						5.7 40=CB
367.94	366.6	366.7	366.9	366.3	365.8	366.30
5.76 25=CB	7.1 26	7.0 13	6.8	7.4 13	7.9 25.8	7.40 25.8=CB 17.5/11/71

373.70 ✓

Lt

X

Rx

+50

0+0 = F.L. Hamilton

0-20 = E.C. Line Hamilton

B.M. 598 375.24

+20.10 = W.C. Line Hamilton

2+00.10 = W.L. Hamilton

2+75

381.22

376.16	375.5	375.7	375.9	375.3	375.0	375.85		
5.06 269.43	5.7 269	5.57 13	5.57	5.9 13	6.2 269	5.37 269.46		
375.77	375.15	375.60	375.58	375.43	374.92	375.31		
5.45 269.43	6.07 269.43	5.67 13	5.64	5.79 13	6.30 269.43	5.91 269.46		
375.87	375.16	375.02	375.08	374.94	374.86	374.75	374.67	375.29
5.35 40=cb	6.06 40=cb	6.20 26	6.14 13	6.28	6.36 13	6.47 26	6.55 40=cb	5.93 40=cb
375.22	374.74	374.74	374.92	374.99	374.60	374.24	373.91	374.44
6.00 40=cb	6.48 40=cb	6.48 26	6.30 13	6.38	6.62 13	6.98 26	7.31 40=cb	6.78 40=cb
375.12	374.47	374.73	374.73	374.48	373.97	374.53		
6.16 269.43	6.75 269.43	6.49 13	6.49	6.71 13	7.25 269.43	6.49 269.43		
374.33	373.5	373.7	373.7	373.4	372.9	373.60		
6.89 269.43	7.7 269	7.5 13	7.5	7.8 13	8.3 269	7.63 269.43		

381.22

+50

377.75	377.1	377.2	377.4	377.2	376.9	377.74
$\frac{3.45}{259.65}$	$\frac{1}{259}$	$\frac{1.0}{15}$	$\frac{3.8}{15}$	$\frac{1.0}{15}$	$\frac{1.3}{28}$	$\frac{5.18}{26.66}$

+20

377.50	376.7	376.9	377.1	376.8	376.3	377.41
$\frac{3.72}{259.65}$	$\frac{1.5}{259}$	$\frac{1.3}{15}$	$\frac{1.1}{15}$	$\frac{1.1}{15}$	$\frac{1.9}{26}$	$\frac{3.81}{26.66}$

+60 = E.L. Alley

377.26	377.1	377.06	376.5	376.7	376.9	376.4	376.2	376.84	376.89	377.44
$\frac{3.91}{26}$	$\frac{1.1}{26}$	$\frac{1.6}{259}$	$\frac{1.7}{259}$	$\frac{1.5}{15}$	$\frac{1.3}{15}$	$\frac{1.8}{15}$	$\frac{5.0}{26}$	$\frac{1.38}{26.66}$	$\frac{1.23}{26}$	$\frac{5.78}{40.66}$

+50 = E.L. Alley

376.8	376.5	376.6	377.05	376.3	376.2	376.59
$\frac{1.1}{26}$	$\frac{1.7}{26}$	$\frac{1.6}{15}$	$\frac{1.17}{15}$	$\frac{1.9}{15}$	$\frac{5.0}{28}$	$\frac{4.63}{40.66}$

+40 = E.L. Alley

377.17	377.0	377.02	376.3	376.5	376.7	376.3	376.0	376.60	376.47	376.96
$\frac{1.95}{26}$	$\frac{1.2}{26}$	$\frac{1.2}{259}$	$\frac{1.9}{26}$	$\frac{1.7}{15}$	$\frac{1.5}{15}$	$\frac{1.9}{15}$	$\frac{5.2}{26}$	$\frac{4.67}{26.66}$	$\frac{4.55}{40.66}$	$\frac{4.36}{40.66}$

+10

376.60	375.8	376.1	376.3	376.0	375.68
$\frac{1.63}{259}$	$\frac{5.4}{259}$	$\frac{5.1}{15}$	$\frac{4.9}{15}$	$\frac{5.2}{15}$	$\frac{5.57}{259}$

27133 = W. C. of Oregon

2799301 = W. L. Oregon

38/22 ✓

378.34	377.82	377.88	378.22	378.32	378.24	377.88	377.67	378.30
288 40-cb	310 16-Gutter	334 26	300 13	290	298 13	334 26	357 10-Gutter	298 40-cb
378.22	377.62	378.12	378.27	378.10	377.62	378.30		
300 239-cb	360 239-Gutter	310 13	295	313 13	360 26-Gutter	293 26-cb		

38/22 ✓

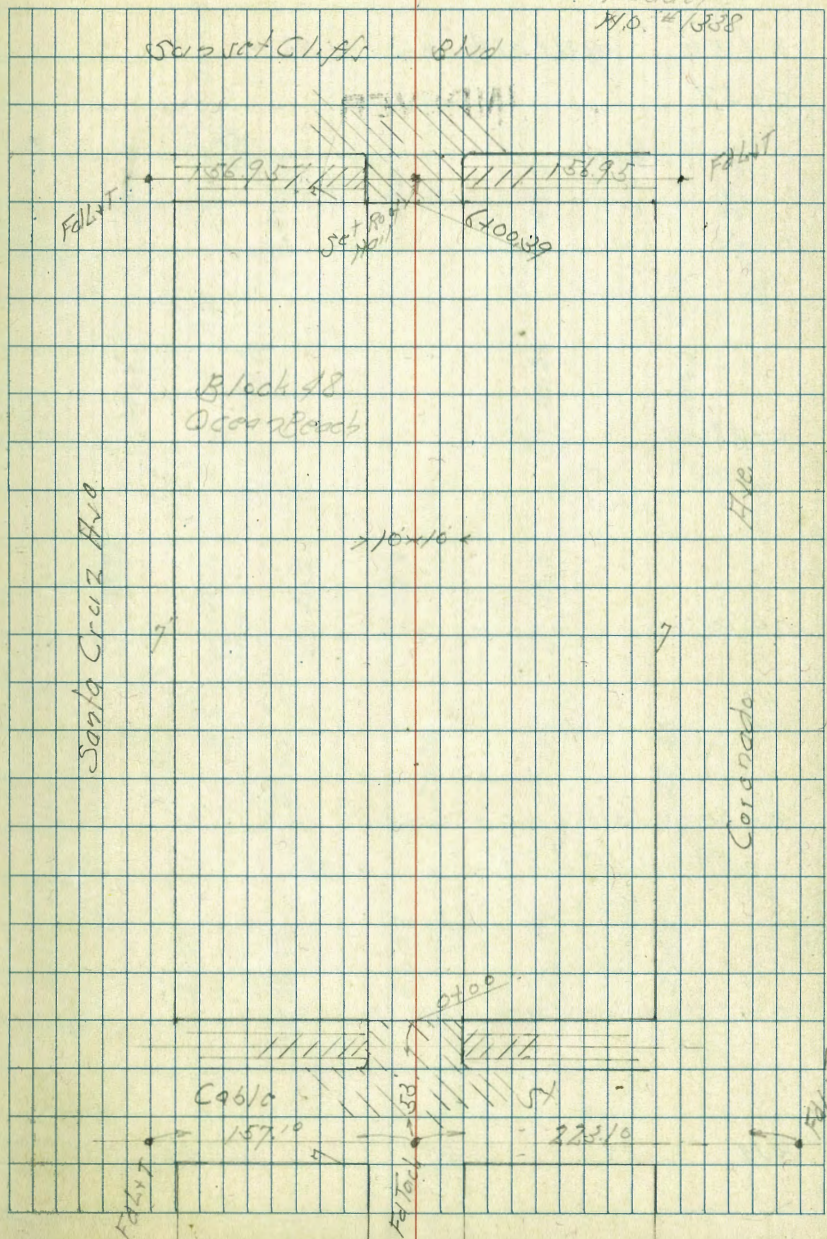
Cross Section Alley Block 48 Ocean Beach
 From Cable St to Sunset Cliff Blvd
 Levels next page

INDEXED

Indexed
 c.s.k.

Jan. 26-47
 S. 5507
 M. Col
 Waddel
 No. 21338

13



0+50 926 0/2 = NW 1/4 Pole

0+47

0+43

0+28

0+10

0+00 = East Line of Cable St

0-12 = East Curb Line of Cable St

BM

397

32.55

28.58

ST. RP
Coronado
Cable

29.63	29.65	29.0	27.5	29.80	29.62
29.91 13.1 = EM Garage	29.90 13.8 = EM Floor	29.79 16 = EM Floor	29.31 29.4 19.9 = EM Floor	29.75 34.25 19.9 = EM Floor	29.62 29.73 13.5 = EM Floor
28.99	28.66	28.5	28.0	27.33	27.33
28.99 13.6 = NW 1/4 Garage Floor	28.66 13.8 = NW 1/4 Floor	28.5 16 = NW 1/4 Floor	28.0 16 = NW 1/4 Floor	27.33 5.78 9.9 = SW 1/4 Garage	27.33 5.78 9.9 = SW 1/4 Garage
27.36	27.02	26.90	27.10	26.54	27.08
27.36 10 = SW 1/4 Garage	27.02 10 = SW 1/4 Garage	26.90 10 = SW 1/4 Garage	27.10 5.78 9.9 = SW 1/4 Garage	26.54 16 = SW 1/4 Garage	27.08 5.78 9.9 = SW 1/4 Garage
37.09	26.49	26.47	26.54	27.08	
37.09 13.6 = SW 1/4 Garage	26.49 10 = SW 1/4 Garage	26.47 10 = SW 1/4 Garage	26.54 16 = SW 1/4 Garage	27.08 5.78 9.9 = SW 1/4 Garage	
			32.55		

1714 97 1/2 1/2 = 1/4 Board Fence

1706

170 98 1/2 1/2 = 1/4 Board Fence

0498 9 1/2 1/2 = 1/4 Board Fence

0493

0468

0455

0451

TP 628 3627 256 2999

2755

4

8

12

15

31.7
46
12.4
Dirt Floor

31.4
49
10

31.1
53

31.6
48

31.2
55

31.45

31.33

483
178 = 1/2
Calc Floor

476 = 1/2
Calc Floor

31.45

31.24

30.8

30.1
58

30.6
61

30.23
60

482
178 = 1/2
Calc Floor

476 = 1/2
Calc Floor

30.14
61

60 = 1/2
Calc Floor

30.89
61

61 = 1/2
Calc Floor

31.14
61

61 = 1/2
Calc Floor

36.27

2+0 87 Rt of L - Sky Power Pole

1+94 9.7 Lt of L - Fly Tail Pole

1+84

1+75 10.5 Rt of L - Fly " "

1+55 10.4 Rt of L - Fly Pocket Fence

1+50 97 Lt of L - Fly Board Fence

1+45

1+29

TP 8.59 41.75 311 3316

1+26 10.7 Rt of L - Fly Board Fence
36.27

Lt.
245
10.5
34.30
conch wall

74
10
34.4

74
34.4

87
10
34.6

89
10
33.7

89
10
33.6
Fly Tail
Fly Tail

87
10
33.18

89
10
33.35

91
32.7

91
32.7

89
32.9

90
10
32.71

90
10
32.72

41.75

90
10
Fly Board
Fly Board

4101 9.4 ft of $\frac{1}{2}$ = Sky Board Pole

3199

3188

3162 99 ft of $\frac{1}{2}$ = 114 Tol Pole

3155

3150 102 ft of $\frac{1}{2}$ = Fly Board Fence

3139

5276

Lt

2

Rt

18

46.03

$\frac{5.93}{10.2}$ = 5.8148
Holt Top

45.9

$\frac{6.9}{10}$

45.1

$\frac{7.7}{10}$

45.0

$\frac{7.8}{10}$

45.19

$\frac{7.81}{10.2}$ = 7.657
Holt Top

42.75

$\frac{10.01}{18.8}$ = 5.3244
Cont Floor

42.1

$\frac{10.9}{10}$

41.5

$\frac{11.3}{10}$

42.3

$\frac{10.5}{10}$

41.6

$\frac{11.8}{10}$

41.2

$\frac{11.6}{10.7}$ = 10.841
Diff Floor

5276

INDEXED

End. Sack. 6400.39 4.54 60.19 ✓ 60.15 Page 20

6400.39 Additions put on orig notes P. 10

5+90

5+80

5+75

5+71 13⁸ Rt. = End Gar. East Ent.
Ctr. Gar. door is 19² Rt. & ANOY

5+52² 13² Rt. = Start from a Gar. East Ent

B.M. P. 20 10.56 64.73 — 54.17
Line 4

B.M. from Line 4 page 20 shown as read on
page 20 so as to check previous Notes
O.S.

Alley

	59.8	60.4	60.0	59.1	58.4
	4.9	$\frac{4.3}{10}$	$\frac{4.7}{13}$	$\frac{5.6}{15}$	$\frac{6.3}{30}$
	59.5	60.0	59.6	58.4	58.0
	5.2	$\frac{4.7}{10}$	$\frac{5.1}{13}$	$\frac{6.3}{15}$	$\frac{6.7}{30}$
	59.3	59.6	59.8	58.0	57.8
	5.4	$\frac{5.1}{6}$	$\frac{4.9}{10.3}$	$\frac{6.7}{12}$	$\frac{6.9}{15}$ $\frac{7.4}{30}$
	59.1	59.3	59.8	57.7	57.6
	5.6	$\frac{5.4}{6}$	$\frac{4.9}{12.3}$	$\frac{7.0}{13}$	$\frac{7.1}{19}$ $\frac{7.6}{30}$
	58.0	58.2	58.8	57.1	56.8
	6.7	$\frac{6.5}{7}$	$\frac{5.9}{10}$	$\frac{7.6}{13.2}$ $\frac{8.1}{30}$ Ctr. Gar.	$\frac{7.7}{30}$
	69.73				

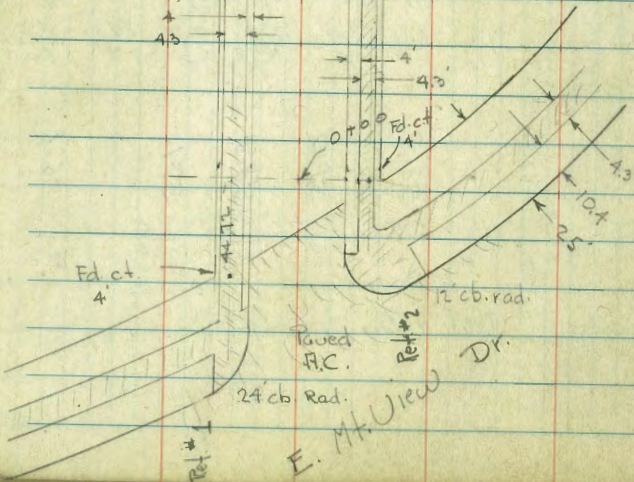
PC = 5+44.31

Conc. gutter
see Notes
for width

10' ← 30' → 10'

Collier Ave

4.3



-Sect. Collier Ave-

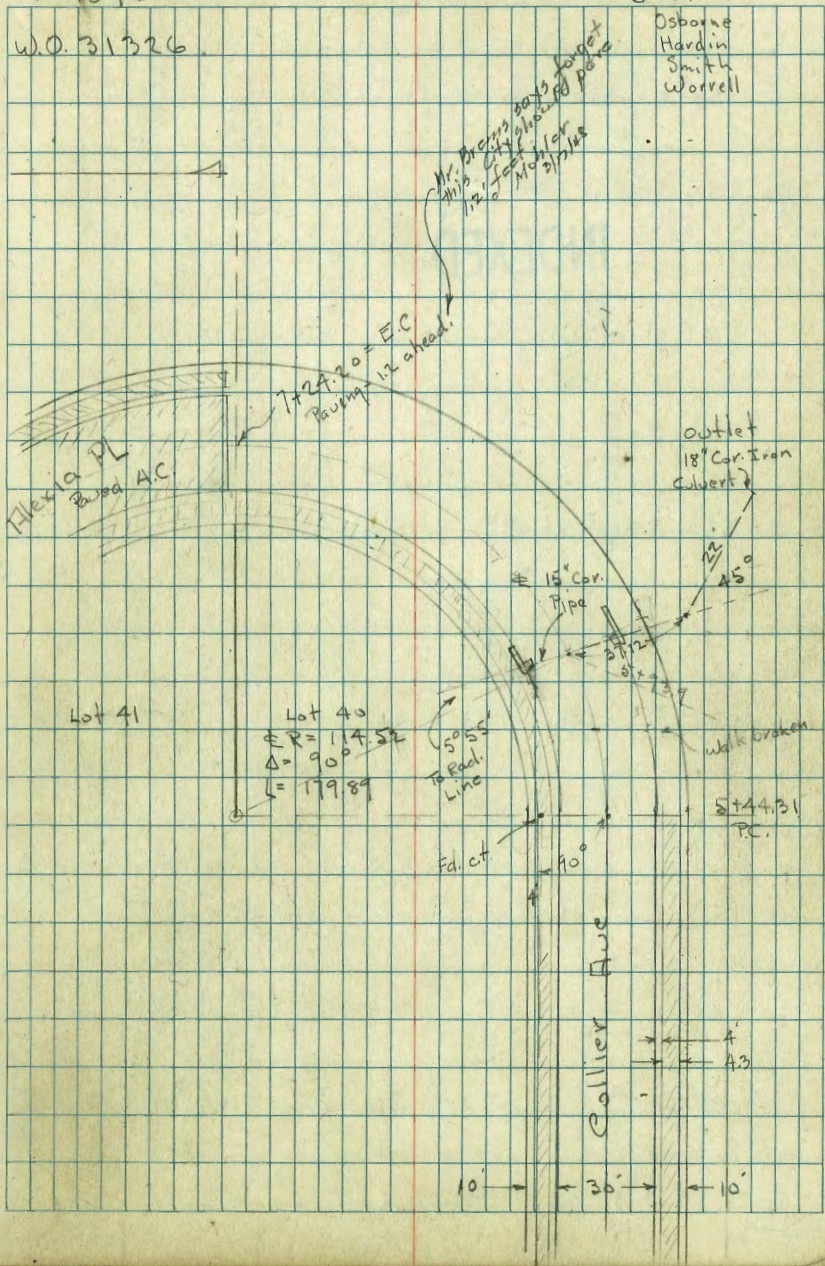
22

1072

5-14-15-47

W.D. 31326

Osborne
Hardin
Smith
Worrell



X-Section Collier Ave - 50' st. 10' cbs from
 E. Mt. View Dr. to Flexia Pl.
 Curbs + Walks in Most of way

0-23.5 = Φ + edge of pave

INDEXED

0-28 = Most Wly point of Ret. on Rt.

0-38 = Edge of A.C. paving at cb. on Lt.

0-57 = P.C. Ret on Lt.

0-75 = E.C. of 24' Rad Ret. on Lt.

0-88.6 = Φ Collier + Φ Mt View (sect at 90° to Φ Colliers)

B.M. 1.95 393.32 391.37 sub Collier + Mt. View

INDEXED
 C.S.K.

Lt = 2.

23

390.97	390.76	390.45	390.36	390.12	390.00	389.66	389.84	390.36
390.29	390.76	390.63	389.63	390.12	390.00	389.66	389.84	390.36
390.68	390.05	390.05	389.89	390.15	390.12	389.66	389.84	390.36
390.76	390.15	390.15	389.89	390.15	390.12	389.66	389.84	390.36
390.76	390.27	390.27	389.89	390.27	390.12	389.66	389.84	390.36
390.70	390.04	390.04	389.89	390.04	390.12	389.66	389.84	390.36
390.65	390.10	390.10	389.89	390.10	390.12	389.66	389.84	390.36
390.40	390.47	390.47	389.89	390.47	390.12	389.66	389.84	390.36
391.20	391.12	391.12	389.89	391.12	390.12	389.66	389.84	390.36

393.32

0+79 = Brk. in cb on Lt.

0+75

0+51 to 0+64 - Walk on Rt. in poor cond.

0+50

show cracks.

pretty poor Conc. Very little that dont

0+25 - Gut about 4" Thick with large rocks in it
in width - see sections - will show where gut is ok.
would have to be replaced or covered - seems to vary

Note: Conc. gutter on Both sides - in poor Cond

T.P. 0.31 391.68 195 391.37

0+00 = opp. E.L. Mt. View + S.L. Collier.

from 0-05 to 0+10 - walk on Lt. in poor Cond.

0-09 = Edge of AC. pave at cb on Rt.

0-16.8 = PC of 12' Rad. Ret. on Rt.

	Lt.	Rt.
4.02	4.386.87	
4.8	4.8	
Top	4.8	
3.31, 1/2	387.03	
14	14	
388.32	387.57	
3.32	3.78	
4.8	4.3	
388.98	387.93	
388.11	387.33	
388.49	387.18	
388.76	387.58	
388.88	387.38	
388.68	387.19	
388.57	386.08	
388.28	387.62	
389.04	387.62	
389.70		
389.18		
389.42		
389.82		
389.68		
389.55		
390.21		
389.17		
389.89		

2+00

2+99 = ± 11' Conc. Dr. on Lt.

2+75

2+66 = ± 11' Conc. Dr. on Rt.

2+50

2+28 to 2+32 - Broken gut. on Lt.

T.P. 0.99 379.42 13.25 378.43

2+25 - Conc. gut on Rt. in fair Cond. from here

2+23 = ± 9' Conc. Dr. on Rt.

2+11 - Brk. in cb. on Rt.

399 wall	4.90 cut	4.65 edge	4.4 c	4.5 c	4.5 c	4.5 c	4.7 edge	4.9 cut	4.8 cut
	382 15 walk	474 cut							
	376.43	374.52	374.77	375.02	374.92	374.92	374.70	374.96	375.24
	2.40 cut	3.21 cut	2.96 edge	2.7 c	2.7 c	2.8 c	3.02 c	3.32 cut	2.50 cut
	371.02	376.21	376.72	376.72	376.62	376.40	376.10	379.65	376.92
	0.99 top	1.01 cut	1.21 edge	0.9 c	1.0 c	1.0 c	1.1 edge	1.1 cut	1.1 cut
	378.69	377.88	378.21	378.52	378.42	378.42	378.16	377.80	378.57
	11.2 top	11.07 cut	11.27 edge	11.4 c	11.4 c	11.4 c	11.6 c	11.9 cut	11.07 cut
	380.45	379.61	379.91	380.28	380.28	380.08	380.08	379.73	380.61
	10.38 edge	10.91 cut	10.91 cut	10.91 cut	10.91 cut	10.91 cut	10.91 cut	10.91 cut	10.91 cut
	378.101	379.95	379.95	380.18	380.18	380.08	380.08	379.95	380.26
	10.38 edge	10.91 cut	10.91 cut	10.91 cut	10.91 cut	10.91 cut	10.91 cut	10.91 cut	10.91 cut

391.68

26

check starting B.M. 462 391.37 391.37

735 395.99 233 388.64

13.09 390.97 008 377.88

T.P. 13.16 377.96 0.52 364.80

7+75.40 = 50' ahead on \pm for profile (sect. Radial)
= End.

7+25.40 - To show A.C. Pav. at Gut. on Lt.

Have Covered the conc. gut. or removed it.

7+25.40 = \pm + End of Ext. A.C. pave + Beg. cb. + walk on Rt

7+22 - 66 Rt = \pm Sewer MH. 3.80 on Rim

7+11 = \pm 10' Conc. Dr. on Lt.

T.P. 4.39 365.32 5.57 360.93

7+00

6+75

6+50

14.8	359.40	0.1	360.07	1.9	360.79	4.1	361.17	3.9	361.72	1.1	361.72	2.0	362.82
1.5	358.41	0.2	359.27	1.9	359.95	4.1	360.24	4.0	360.67	1.1	360.91	3.8	362.32
2.3	358.79	1.3	359.37	2.3	360.12	1.2	360.20	1.2	360.82	4.1	361.27	1.0	362.32
1.0	359.00	0.0	359.20	0.0	360.20	1.2	360.20	1.2	361.20	4.0	361.32	2.8	362.52
1.3	359.20	0.0	359.70	0.0	360.20	1.2	360.20	1.2	361.20	4.0	361.32	2.8	362.52
1.5	359.36	0.5	359.80	0.5	360.40	1.2	360.40	1.2	361.20	4.0	361.32	2.8	362.52
1.0	359.20	0.0	359.20	0.0	360.20	1.2	360.20	1.2	361.20	4.0	361.32	2.8	362.52
1.4	358.90	0.4	359.80	0.4	360.90	1.2	360.90	1.2	361.20	4.0	361.32	2.8	362.52
1.8	358.40	0.5	359.20	0.5	360.00	1.2	360.00	1.2	361.20	4.0	361.32	2.8	362.52
1.7	358.50	0.2	359.50	0.2	360.60	1.2	360.60	1.2	361.20	4.0	361.32	2.8	362.52

Rods around Returns at Collier +
Mt. View.

4.62 395.99 391.37 = BM.

Ret #1 = N.E. Cor. 21.6 around - 4 parts - 5.4 each
50' N. of P.C. on cb. line of Mt. View

4.96 Top

5.59 gut.

25' N. 5.04 Top

5.66 gut.

P.C. = N. end = E. cb. Mt. View 4.98 Top

5.68 gut.

54 S. 4.97 Top

5.72 gut.

5.4 4.95 Top

5.73 gut.

5.4 4.96 Top

5.77 gut.

54 = E.C. on N. cb. Collier. 4.98 Top

5.81 gut.

Ret #2 = S.E. Cor. 27.7 around - 5 parts - 5.6 each

P.C. = E. end = S. cb. Collier 5.76 Top

6.42 gut.

5.6 W. 5.62 Top

6.29 gut.

395.99

5.6 5.58 Top

6.20 gut.

5.6 5.52 Top

6.16 gut.

5.6 5.51 Top

6.17 gut.

56 = P.C. = E. cb. Mt. View 5.48 Top

6.19 gut.

25' S. along cb. Mt. View 5.78 Top

6.40 gut.

50' S " " " 6.11 Top

6.74 gut.

Indexed
c.s.K.

Location of IMPRINTS.

Alley, Bk 270 Pacific Beach

Sketch F.B. 1424-42

Moore

Begg

Green

Roberts

8-26-47

W.O. 800.67

0487 end wire fence 10.9 LT

0455 9 Pt PP H 1310

04215 Bcg. Con. Packing Space in Pt.

0401 10.5 Lt Bcg. Wire Fence & Paved parking lot.
9.4 Lt Tel. J.P. #1305 & 477601 H.

0400 E. by Emanuel edge con pav.

B.M. S.W.
7' x 6' 0" 4.84 50.44 45.60
Garnet &
Emanuel
1424-47

LT = North

Pt. 32

INDEXED

46.77 3.07 13	46.75 3.09 10.4 A.C. Pav.	45.70 4.74 9.1	45.55 4.89 10 Con.	45.80 4.04 26.0 Con.
---------------------	------------------------------------	----------------------	-----------------------------	-------------------------------

46.44 4.30 20	45.93 4.51 9.7 A.C. Pav.	45.14 5.30 8.5	45.35 5.09 10 Con.	45.45 4.96 20.4 Con.
---------------------	-----------------------------------	----------------------	-----------------------------	-------------------------------

45.08 5.36 20	45.08 5.20 9.7 A.C. Pav.	44.67 5.82 8.7	44.49 5.95 10 Con.	44.70 5.74 26.4 Con.
---------------------	-----------------------------------	----------------------	-----------------------------	-------------------------------

44.44 6.03 10 68	44.03 6.41 10	43.63 6.81	43.95 6.69 9.9	44.07 6.47 9.9 66
---------------------------	---------------------	---------------	----------------------	----------------------------

50.44

2419 Lath
Beg. fence 10' RT,

2409 E door Sun. gar. Can. floor

T.P. 5.11 51.68 3.87 46.57

2402 E 1.8 Can. walk

2400 9.8 RT 11. end Lath fence

1474.5 9.3 RT H 1332

1450 9.5 Lt Tel. D 18256 T
pole

1425 E. edge Ramped drive on Lt.
end Can. on RT.

0496.5 W. edge Ramped drive to Park
Lot

0493.5

50.44

L

E

R

33

44.66
5.02
73

51.68

46.30
4.14
73

48.01
243
15.7
Top Lead
Platform

46.44
4.0
15.7
ground

48.01
243
15.7
Top leading
Platform

44.65
3.59
15.7
R.C.P.

46.06
4.38
10.9
R.C.P.

45.91
4.52
8

45.81
4.63
10.1
Can.

46.02
4.52
10.5
Can.

46.83
3.61
21
R.C.P.

45.73
4.71
10
R.C.P.

45.44
4.70
7.6

45.61
4.83
10
Can.

45.78
4.66
26.7
Can.

46.79
3.55
18

46.60
3.54
11.7
R.C.P.

45.54
4.90
8

50.44

check to B.M. SW 7' C.T. Gannet + Gresham 284 52.44 $\frac{52.42}{.02}$

T.P. 730 55.28 370 47.98

5+18 end wire fence 9' RT

4+50 94 Lt Tel Pole D18254 T

4+13 Beg. wire fence 9.8 RT

4+00 9 RT P.P. H 1376

3+83 E 4' CON. WALK

3+81 13.4 RT N.E. Cor. Bd. Dwelling

3+50 10 RT end Bd. fence, 413' RT = NW

3+00 10' RT. end Lath + Beg. Bd fence
92 Lt Tel. P. D18255 T

2+87 9' RT PP H 1354

2+50 S.M.H.

51.68

Lt

E

RT

34

$\frac{46.84}{4.18}$
13

$\frac{46.8}{4.18}$
13
ground

$\frac{46.9}{4.18}$
13
ground

$\frac{46.68}{4.18}$
11

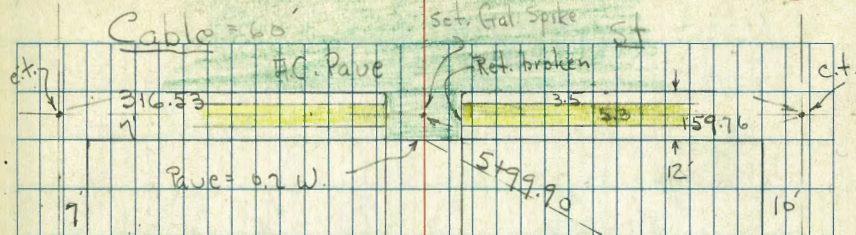
51.68

X-Section 20' Alley in Block 57
Ocean Beach

2036
W.O. 25001

2-13-48
Osborne
Hardin
Warrell
Rorer

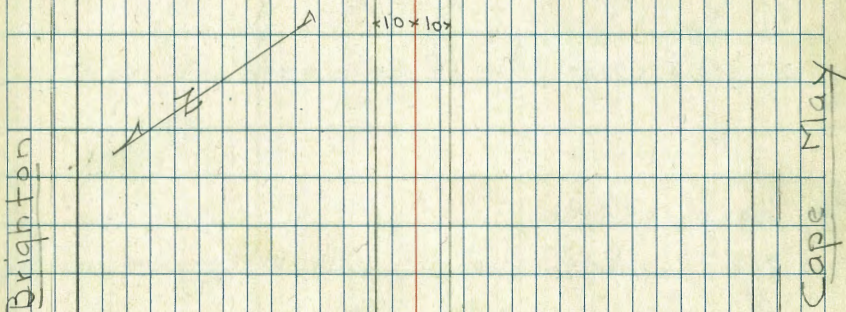
~~Indexed~~



Block 57
Ocean Beach
Map 279

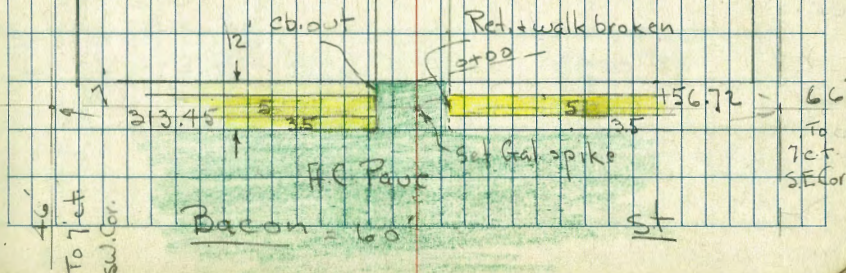
Brighton Ave

Brighton Ave



7

7



To 7th SW Cor.

To 7th SE Cor.

3+74 - 8.6 Lt. = Wly. Comb. Gar. + Shed - dirt floor

3+68 - 11' Rt. = ± 4.5' Conc. Step to Apt

3+50 - 11' Rt. = ± 4.3' Conc. Step. to Small apt

3+36 - 9.2 Rt. = Sly. P. pole # J.P.A. 4940

3+20 - 11.3' Rt. = ± 2.5' Conc. walk

3+00 = 12.6 Lt. = Sing. Gar. + Dirt floor

2+85 - 12" Rt. = ± Doub. Gar. - dirt floor.

2+69 - 15.6 Lt. = ± Sing. Gar. - dirt floor

2+63 - 17.1 Rt. = ± Doub. Gar. - Conc. floor

2+63 - 8.8 Lt. = end fence

2+50

2+40 - 17' Rt. = ± Small House - Conc. floor.

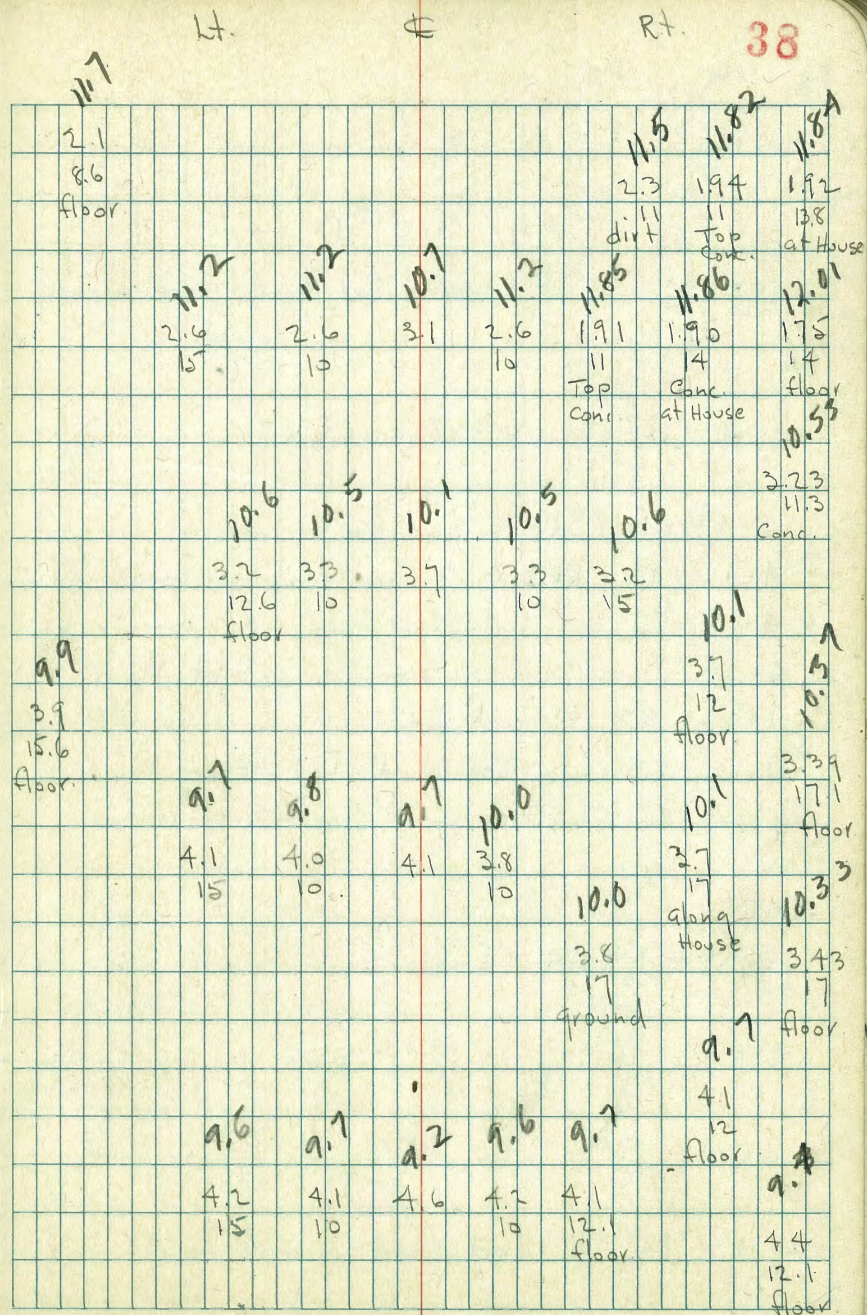
2+25 - 8.8 Lt. = Beg. Picket fence - 3' High

2+26 - 10' Rt. = Sly. P. pole # A 4960

2+17 = end 4 Car. Gar. on Rt.

2+00

1+75 = Beg. 4 Car. Gar. on Rt. - dirt floor



4+68 = 10.9 Rt. = \$ 4 Conc. Step to House

4+50 = 13.3 Lt. = Beg 5 Car Gar. - Conc. floor

4+46 = 11.5 Rt. = \$ 3.2 Conc. walk

4+43 = 16.1 Lt = \$ Sing. Gar. - dirt floor

4+41 = 13 Rt. = \$ 7 Conc. slab for garbage cans

4+37 = 5.7 Rt. = end 3 Car. Gar.

4+32 = 16 Lt. = \$ Sing. Gar. - dirt floor

4+26 = 8.7 Lt = end shed

4+12 = 8.3 Lt. = Beg Wood Shed - Board floor

4+11 = 15.8 Rt. = Beg. 3 Car. Gar. - Dirt floor

4+03 = 10.8 Rt. = \$ 4.5 Conc. Slab.

T.P. 6.99 18.19 2.56 11.20 = Nail in Pole 3+36

4+00

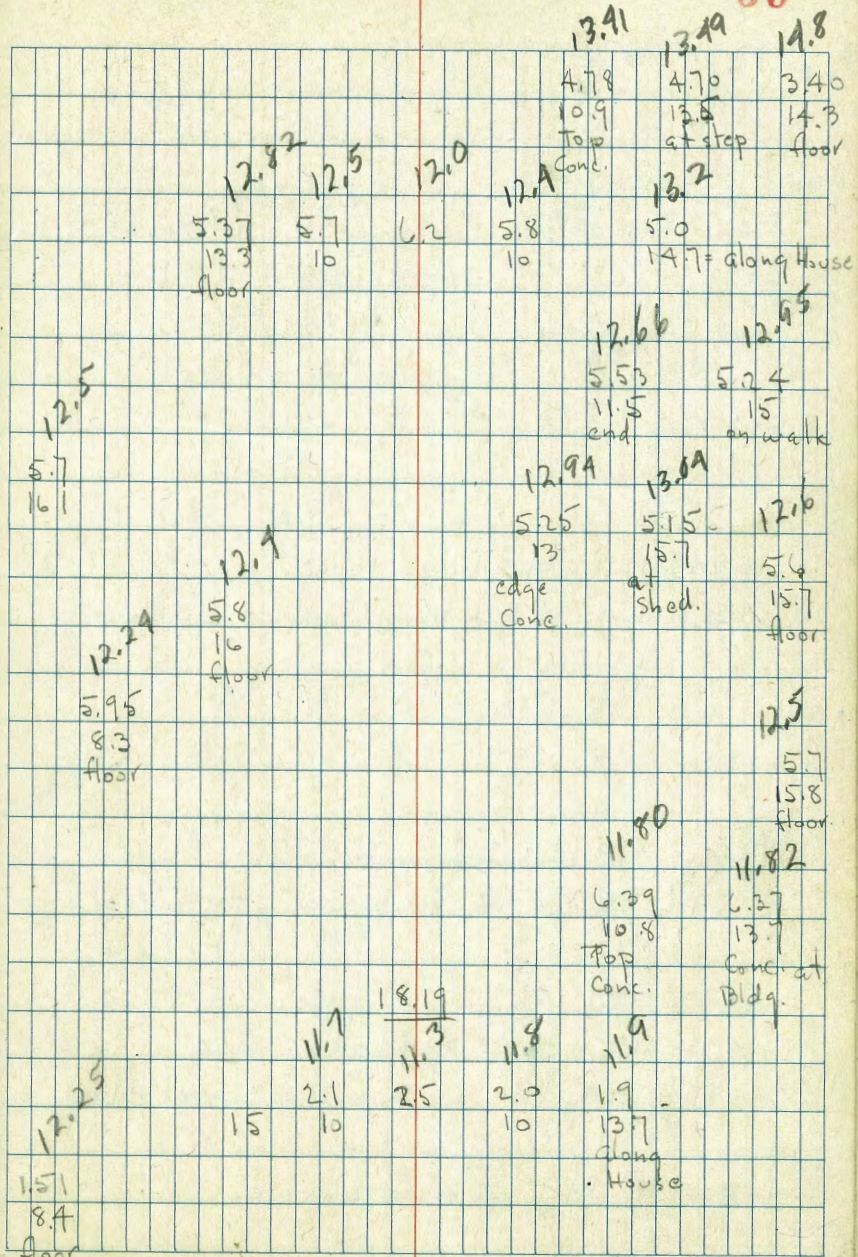
3+98 = 84 Lt. = end shed - board floor

Lt

E

Rt

39



check Starting B.M. 5.13 13.06 13.05

12' E. = W. cb. Cable

8.5' E. = outside of walk - on Rt.

13.66	13.14	13.54	13.04	12.98	12.91	13.37	12.80	13.27
4.53	5.05	4.65	5.15	5.21	5.28	4.82	5.39	4.92
50	50	10	10		10	10	50	50
Top	put	Top	put		put	Top	put	Top
		3 Rad				3 Rad	ok	
					13.21	13.43	13.64	13.57
					4.98	4.76	4.55	4.62
					9.9	9.9	10.4	15
					put	Top	end	walk
						broken cb	walk	
				18.19				

Alley in Block 48 - Ocean Beach
 Stake for Construction
 (See Page 13)

6-23-48 W.O. # 31338

Roberts
 Greer
 Rorer
 Map Dwg. No. 6870L

T.P. 6.55 38.55 0.62 32.00
 1+00

INDEXED

WK
 JAN 3 1949

0+80

0+60

0+40

0+20

0+00 Prop. Line at Cable St.

4.04 32.62

P.M. BR. Coromade and Cable 28.58

Lt.

£

Rt.

41

38.55

(2' Back)
 Prop. 31.13
 1.49
 0.45
 C-1.04

31.13
 1.49
 1.16
 C-0.33

(3' Back)
 Prop.

(3' Back)
 Prop. 30.52
 2.10
 1.19
 C-0.93

30.52
 2.10
 1.88
 C-0.22

(3' Back)
 Prop.

(3' Back)
 Prop. 29.79
 2.83
 2.43
 C-0.40

29.80
 2.82
 2.29
 C-0.53

(3' Back)
 Prop.

(4' Back)
 Prop. 28.96
 3.66
 3.10
 C-0.56

28.98
 3.64
 3.18
 C-0.46

(3' Back)
 Prop.

(4' Back)
 Prop. 28.01
 4.61
 3.73
 C-0.89

28.09
 4.59
 3.67
 C-0.88

(3' Back)
 Prop.

27.02
 5.60
 5.60
 0

27.10
 5.52
 5.52
 0

32.62

2+60

$$\begin{array}{r} 36.95 \\ 3\text{Back} \\ \text{Prop.} \\ 1.60 \\ 0.98 \\ \hline C-0.62 \end{array}$$

$$\begin{array}{r} 36.95 \\ 1.60 \\ 1.84 \\ \hline F-0.24 \end{array} \quad \begin{array}{l} 3\text{Back} \\ \text{Prop.} \end{array}$$

2+40

$$\begin{array}{r} 35.99 \\ 3\text{Back} \\ \text{Prop.} \\ 2.56 \\ 2.70 \\ \hline F-0.14 \end{array}$$

$$\begin{array}{r} 35.99 \\ 2.56 \\ 2.96 \\ \hline C-0.10 \end{array} \quad \begin{array}{l} 3\text{Back} \\ \text{Prop.} \end{array}$$

2+20

$$\begin{array}{r} 35.10 \\ 3\text{Back} \\ \text{Prop.} \\ 3.15 \\ 3.13 \\ \hline C-0.32 \end{array}$$

$$\begin{array}{r} 35.10 \\ 3.15 \\ 3.38 \\ \hline C-0.57 \end{array} \quad \begin{array}{l} 3\text{Back} \\ \text{Prop.} \end{array}$$

2+00

$$\begin{array}{r} 34.29 \\ 3\text{Back} \\ \text{Prop.} \\ 4.26 \\ 4.12 \\ \hline C-0.14 \end{array}$$

$$\begin{array}{r} 34.29 \\ 4.26 \\ 4.37 \\ \hline F-0.11 \end{array} \quad \begin{array}{l} 3\text{Back} \\ \text{Prop.} \end{array}$$

1+80

$$\begin{array}{r} 33.54 \\ 3\text{Back} \\ \text{Prop.} \\ 5.01 \\ 4.75 \\ \hline C-0.26 \end{array}$$

$$\begin{array}{r} 33.54 \\ 5.01 \\ 4.91 \\ \hline C-0.10 \end{array} \quad \begin{array}{l} 3\text{Back} \\ \text{Prop.} \end{array}$$

1+60

$$\begin{array}{r} 32.87 \\ 1.5\text{Back} \\ \text{Prop.} \\ 5.68 \\ 5.25 \\ \hline C-0.13 \end{array}$$

$$\begin{array}{r} 32.87 \\ 5.68 \\ 5.62 \\ \hline C-0.06 \end{array} \quad \begin{array}{l} 3\text{Back} \\ \text{Prop.} \end{array}$$

1+40

$$\begin{array}{r} 32.27 \\ 3\text{Back} \\ \text{Prop.} \\ 6.28 \\ 6.15 \\ \hline C-0.13 \end{array}$$

$$\begin{array}{r} 32.27 \\ 6.28 \\ 5.86 \\ \hline C-0.47 \end{array} \quad \begin{array}{l} 3\text{Back} \\ \text{Prop.} \end{array}$$

1+20

$$\begin{array}{r} 31.70 \\ 3\text{Back} \\ \text{Prop.} \\ 6.85 \\ 6.61 \\ \hline C-0.24 \end{array}$$

$$\begin{array}{r} 31.70 \\ 6.85 \\ 5.81 \\ \hline C-1.04 \end{array} \quad \begin{array}{l} 3\text{Back} \\ \text{Prop.} \end{array}$$
38.5538.55

4+20

T.P. 11.12 60.12 1.62 49.00

4+00

3+80

3+60

3+40

3+20

3+00

(Manhole - 11.52) $G = 38.77$
 11.85
 $C = 0.75$

3+00

I.P. 13.04 50.62 0.97 37.58

2+80

38.55

4.

4

RE.

43

0.2 Back
Prop. 47.29
12.83
11.32
C = 1.51

0.2 Back
Prop. 45.71
4.91
3.51
C = 1.40

3 Back
Prop. 44.23
6.39
6.34
C = 0.15

3 Back
Prop. 42.82
7.80
7.60
C = 0.20

3 Back
Prop. 41.50
9.12
9.35
F = 0.23

3 Back
Prop. 40.24
10.38
9.90
C = 0.48

3 Back
Prop. 39.07
11.55
11.36
C = 0.19

3 Back
Prop. 37.97
0.58
0.72
F = 0.14

47.20
12.92
12.83
C = 0.09

45.66
4.96
5.48
F = 0.52

44.19
6.43
6.34
C = 0.09

42.30
7.82
8.29
F = 0.47

41.49
9.13
9.65
F = 0.52

40.24
10.38
10.32
F = 0.30

39.07
11.55
11.11
C = 0.44

37.97
0.58
1.10
F = 0.52

60.12

50.62

38.55

5780

T.P. 5.65 64.58 1.20 58.92

5760

5740

5720

5700

4780

4760

4740

60.12

Lt.

C

Rt.

44

59.32
5.26
<u>4.07</u>
C-0.67

3' Back Prop.

64.58

59.16
5.42
<u>3.90</u>
C-0.02

3' Back Prop.

58.39
1.73
<u>0.67</u>
C+1.04

3' Back Prop.

58.18
1.94
<u>0.91</u>
C-1.03

3' Back Prop.

57.22
2.90
<u>2.13</u>
C+0.77

2' Back Prop.

56.78
3.14
<u>2.90</u>
C-0.24

3' Back Prop.

55.82
4.30
<u>2.68</u>
C+1.62

0.8' Back Prop.

55.57
4.55
<u>4.47</u>
C-0.06

3' Back Prop.

54.18
5.94
<u>4.88</u>
C-1.06

3' Back Prop.

53.95
6.17
<u>5.67</u>
C-0.49

3' Back Prop.

52.41
7.91
<u>6.44</u>
C-1.27

5' Back Prop.

52.22
7.90
<u>7.64</u>
C-0.26

3' Back Prop.

50.63
9.47
<u>8.44</u>
C-2.03

0.1' Back Prop.

50.50
9.62
<u>9.47</u>
C-0.15

3' Back Prop.

48.93
11.19
<u>10.48</u>
C-0.71

3' Back Prop.

48.81
11.31
<u>10.78</u>
C-0.53

3' Back Prop.

60.12

See page 20 this Book

2

S.E. B.P. Santa Cruz
and Sunset Cliffs

Check

10.41

54.17

= 54.23

6+00.39

Prop. Line Sunset Cliffs (Blacktop)

64.5860.15
4.43
4.43
060.06
4.52
4.52
064.58

Additional Notes

Alley B/K 21. Ocean Beach.

7-14-48 W.O.#31504

Sommermeier
McCoy
Milton

Original Notes

FB 1545
41

0+99 8³Lt. = End Conc. Apron

28 Lt. = Car. concrete floor

0+89^E 8³Lt. = start Conc. Apron to Sing Car.

0+82

0+79^E 9²Lt. = End picket fence

0+50 9²Lt. = start picket fence

also = 6" wide N.75. Conc. wall.

0+46 11²Rt. = End board fence.

0+07 10²Rt. = start board fence

0+00 Check cls. 1545
41

T.P. 1.83 139.15 9.55 137.82

Froude
Santa Cruz
N.E.R. 1545
41

0.82 147.37 — 146.55

SW

NE

NE

46

INDEXED
JUL 14 1948

129.77	129.03						
9.38 29 Car	10.12 89 Apron						
129.76	129.26						
7.39 28 Car. Floor	9.89 85 Apron						
129.09	130.6	130.1	129.8	130.2	129.5	128.9	
8.3 20	8.4 12	9.1 10	9.4	9.0 8	9.7 10	10.3 20	
136.5	134.6	132.5	133.5	132.1	131.9	131.2	
2.7 20	4.6 10	5.7 6	5.7	6.1 10	7.3 15	8.0 25	
				133.2	131.2	133.4	133.2
				6.0 11 Ord	8.0 11 Base wall	5.8 11 top wall	6.0 30 top wall
138.91			(137.95)		138.06		
0.24 10 cl. End					1.09 10 cl. End		
							139.15

Alley Blk. 21. O.B.

3+49 10° Lt. = End picket fence.

3+00 115° Lt. = start picket fence

T.P. 0.64 114.98 12.86 114.34

2+50

2+00 98° Lt. = Pole # P.A. 4630

1+70

1+50

1+34 10° Rt. = 18" N. 45. Conc. Walk

T.P. 0.75 127.20 12.70 126.45

1+00

139.15

47

111.6	110.5	109.9	109.9	109.7
$\frac{3.4}{20}$	$\frac{1.5}{10}$	$\frac{5.1}{6}$	5.1	$\frac{5.3}{10}$

114.98

116.3	115.0	113.9	113.3	113.4	113.0	113.0
$\frac{10.9}{25}$	$\frac{12.7}{10}$	$\frac{13.3}{4}$	$\frac{13.9}{10}$	$\frac{13.8}{10}$	$\frac{14.2}{11}$	$\frac{14.2}{25}$

119.1	118.5	117.5	117.3	116.9
$\frac{8.1}{25}$	$\frac{8.7}{10}$	9.7	$\frac{9.9}{10}$	$\frac{10.3}{25}$

120.5	120.3	119.9	119.6	119.7
$\frac{6.7}{25}$	$\frac{6.8}{10}$	7.3	$\frac{7.4}{10}$	$\frac{7.5}{25}$

123.2	122.2	121.6	121.8	121.6
$\frac{4.0}{20}$	$\frac{5.0}{10}$	5.6	$\frac{5.4}{10}$	$\frac{5.4}{25}$

123.55

$\frac{3.65}{10}$
walk

127.20

128.4	129.0	127.9	127.9	127.8	127.0
$\frac{10.8}{30}$	$\frac{10.2}{10}$	$\frac{11.3}{5}$	11.3	$\frac{11.4}{10}$	$\frac{12.2}{30}$

139.15

4+10 15th RT. = End same

4+01² 15th RT. = start Conc. Apron to Sing ^{Gar. - Conc. Floor.}

4+00 front along house.
10th Lt. = start 2" thick conc.

T.P. 0.65 103.12 12.51 102.47

3+80

3+69² 10th Lt. = End Conc. Apron, + Gar.

double Gar. Conc. floor.

3+54⁶ 10th Lt. = start Conc. Apron. to

3+50

114.98

102.0
1.12
15th
Apron.
Floor

102.18
9.74
15th
Apron
Gar. Floor

103.1
9.0
10th
Top front

103.0
0.1
10

101.8
1.3
5

101.5
1.6

102.1
1.0
10

103.12

105.6
9.4
20

104.9
10.1
10

103.8
11.2
5

103.2
11.8

103.8
11.2
10

103.9
11.1
20

105.78
9.20
105
Gar. floor.

105.20
9.78
105
Apron

105.82
9.16
105
Floor.

105.62
9.36
105
Apron

106.1
6.9
20

107.1
7.9
10

106.1
8.9
7

105.7
9.3

105.9
7.1
8

106.1
8.9
10

114.98

Alley 131k 21 O.B.

also = 4" wide N.Y.S. Concr. wall
 A+68 13' Lt. = start 4" concr. wall +

A+59 11' Lt. = start board fence.

Apron to Sing Gar.
 A+54 21' Lt. = 8' wide level concr.

A+48 Cont.

11¹/₂ Lt. = 5" wide N.Y.S. concr. wall.
 A+48 11¹/₂ Lt. = End board fence

A+35 = 8¹/₂ Lt. = 3¹/₂ wide N.Y.S. Concr. walk.

also 11¹/₂ Lt. = start board fence
 along house.

A+33 9¹/₂ Lt. = End 2" thick concr. grout.
 103.12

±

95.6

96.0 49

7.3	7.1
13.3	2.6
Base	0.1
102.71	

99.0	98.1	97.2	96.7	96.4	96.6	96.8	96.2
4.1	5.0	5.9	6.4	6.7	6.3	6.3	6.9
2.0	7.0	7	6	10	7.5	13.2	13.2
					top	Base	Base
					of wall	of wall	of wall

99.76	99.38	98.8	98.0	97.8	97.7
3.36	3.74	4.3	5.1	5.3	5.4
2.4	2.1	7.0	7.0	2.8	2.8
Bar floor	Apron				

100.5	99.6	99.0
2.6	3.3	4.1
2.4	11.2	17.2
top end	top	Base
of wall	walk	walk

99.5	99.5	99.5	98.4	98.0	98.1	98.1
2.6	3.6	3.6	4.7	5.1	5.0	5.0
7.4	7.0	6	7	10	20	20
Grout						

99.82	99.72
3.30	3.40
11.2	8.8
walk	walk

100.5	100.5	100.1	99.3	99.0	99.4	99.7	99.2
2.6	2.6	3.0	3.8	4.1	3.7	3.4	3.9
1.0	9.2	9	103.12	5	10	15	25
Grout	Grout						

5+39 10² Lt. = End Conc. Apron.5+28 10² Lt. = start Conc. Apron5+26 11² Rt. = start 15' High Hedge

5+00

N. + S. Conc. wall

also = west face 7" wide

4+99 11⁵ Rt. = End 7" wide Conc. wall4+98 11⁵ Lt. = End board fence.

4+80 Cont.

N. + S. Conc. wall

also East face 7" wide

start 7" wide conc. wall.

4+80 12⁵ Rt. = End 4" wide wall +4+73 13¹ Rt. = \pm 3' wide N. + S. Conc. walk

103.12

92.77

$$\begin{array}{r} 10.35 \\ 103 \\ \hline \text{Apron} \end{array}$$

93.09

$$\begin{array}{r} 10.03 \\ 102 \\ \hline \text{Apron} \end{array}$$

96.7

$$\begin{array}{r} 6.4 \\ 20 \\ \hline \end{array}$$

95.7

$$\begin{array}{r} 7.4 \\ 10 \\ \hline \end{array}$$

94.8

$$\begin{array}{r} 8.3 \\ 6 \\ \hline \end{array}$$

94.5

$$\begin{array}{r} 8.6 \\ 4 \\ \hline \end{array}$$

94.4

$$\begin{array}{r} 8.7 \\ 4 \\ \hline \end{array}$$

95.0

$$\begin{array}{r} 8.1 \\ 10 \\ \hline \end{array}$$

94.4

$$\begin{array}{r} 8.7 \\ 20 \\ \hline \end{array}$$

95.3

$$\begin{array}{r} 7.8 \\ 11.5 \\ \hline \text{End} \end{array}$$

94.2

$$\begin{array}{r} 8.9 \\ 17.6 \\ \hline \text{Base} \\ \text{Wall} \end{array}$$

96.5

$$\begin{array}{r} 4.6 \\ 1.5 \\ \hline \text{top} \\ \text{wall} \end{array}$$

94.4

$$\begin{array}{r} 8.7 \\ 12 \\ \hline \text{End} \end{array}$$

96.6

$$\begin{array}{r} 4.5 \\ 12.5 \\ \hline \text{top} \\ 7" \text{ wall} \end{array}$$

96.0

$$\begin{array}{r} 7.1 \\ 13 \\ \hline \text{End} \end{array}$$

96.3

$$\begin{array}{r} 6.8 \\ 20 \\ \hline \text{End} \end{array}$$

96.1

$$\begin{array}{r} 7.0 \\ 12.2 \\ \hline \text{End} \end{array}$$

94.2

$$\begin{array}{r} 8.9 \\ 12.2 \\ \hline \text{Base} \\ \text{wall} \end{array}$$

96.6

$$\begin{array}{r} 6.5 \\ 12.2 \\ \hline \text{top} \\ 5" \text{ wall} \end{array}$$

96.4

$$\begin{array}{r} 6.7 \\ 12.2 \\ \hline \text{End} \end{array}$$

96.6

$$\begin{array}{r} 6.5 \\ 12.2 \\ \hline \text{top} \\ \text{wall} \end{array}$$

96.15

$$\begin{array}{r} 6.97 \\ 13.1 \\ \hline \text{walk} \end{array}$$

103.12

Alloy BIK 21 O.B.

Check End. S. of.	5.63	85.33	(85.30)
5+98.85	$\frac{1545}{47}$		

5+83 11' HT. = End 15' High Hedge

T.P.	0.69	<u>90.96</u>	12.85	90.27
------	------	--------------	-------	-------

5+40

103.12

90.96

92.5	91.3	92.3	92.3	92.1
$\frac{10.6}{10}$	11.8	$\frac{10.8}{7}$	$\frac{10.8}{10}$	$\frac{11.0}{20}$

103.12

Cuts for Sewer L.A.T.

Blk. 57 O.B.

Moore
Begg
Merriman
Bunch
8-31-48

S.W.B.P.
Cape May
and
Cable

NO. 31389

5.07 18.12 13.05 P.36

T.P. 3.43 13.61 7.94 10.18

0400 E.L. Bacon

E.G.

#1 1410

2.51

11.10

5.67

19.28

INDEXED

FEB 1 1949

NK

#2 1460

3.34

10.27

4.62

18.23

#3 2160

4.74

8.87

3.72

17.33

T.P. 7.70 18.28 3.03 10.58

#4 5110

8.44

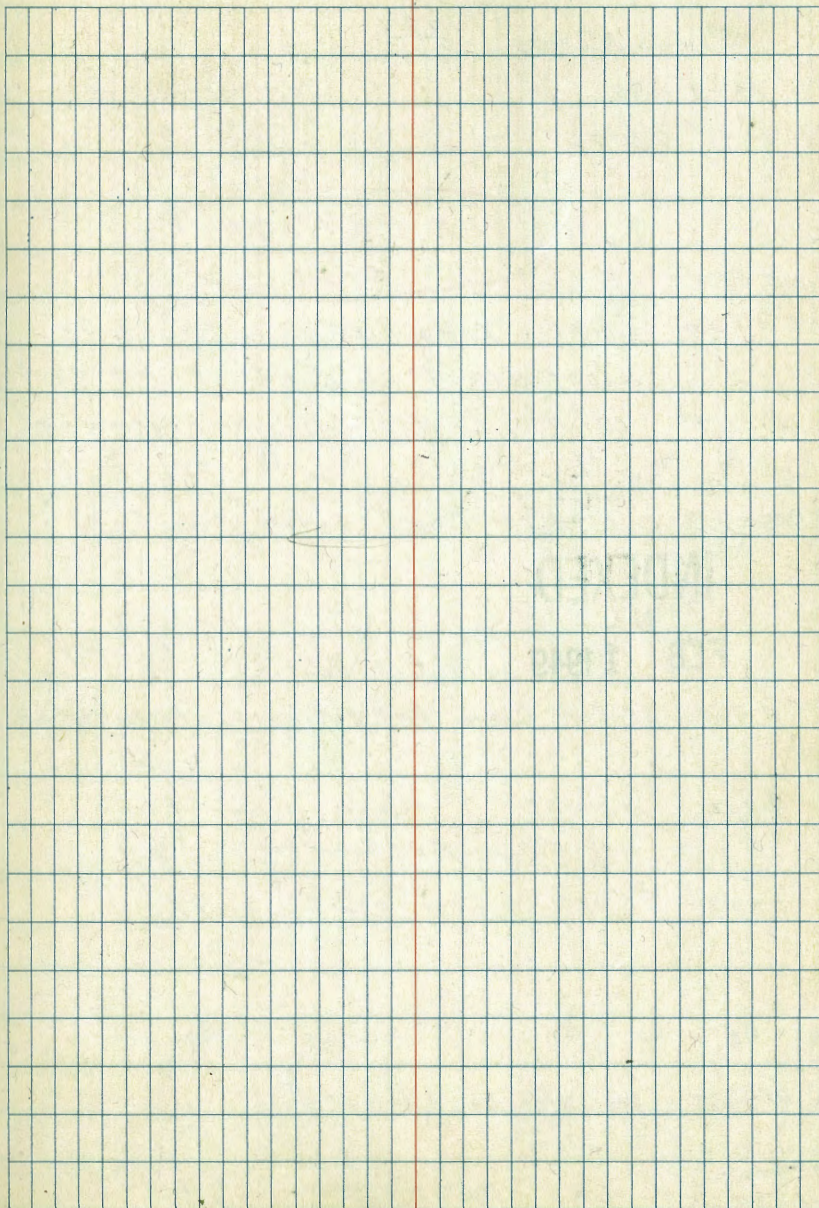
9.84

2.84

21.12

T.P. 5.19 18.85 4.62 13.66

check only B.M. 5.80 13.05 13.05



Additional Levels
Lowell Street.

Orig. Notes 1777
Gross

10-8-48

Sommermeier

W.O.# 22002

McCoy

Allen

Jones

SEE FB. 1777

6-21

0+50.

0+47 30' Rt. = Tree - 2" diam. trunk

also = start of E. + W. picket fence.

0+27⁵ 17⁵ Rt. = ± N. + S. picket fence

0+27 17' Lt } = Curb return E.C.

INDEXED

WK

FEB 1 1949

U.S. Govt.

0+14 35 Lt. = Curb to Filling Station drive

0+12 34³ Rt. = 3" trunk diam tree

(1777 for sketch)

0+08⁵ = Wly. Nose curb. Ret.

0+00 (P = Pavement)

0+00 - E } = 4143 12.96 — 8.53
1777
10

8.1

4.6
35

7.1

5.3
35

8.8

4.2
35

8.50

4.40
17
02

7.81

5.15
17
06

1.93

5.07
8E

7.90

5.06

1.72

5.24
8.5

7.31

5.65
17E
02

8.00

4.76
17E
02

8.14

4.84
23.2
Back
at curb

8.3

4.7
35

8.66

4.70
35
02

8.86

4.08
35
02

8.86

4.11
19
02

8.17

4.79
19
02

8.81

4.12
26.5
02

8.33

4.67
26.5
02

8.75

4.21
35
P

8.10

4.50
23
P

8.06

4.88
26.5
P

8.70

4.16
26.6
02

8.90

4.06
35
walk

8.90

4.06
edge
walk
35.3

12.96

1+16⁸ = 33² Lt = Mid Curve of Cb. Arc = 19°

1+10 30² Rt = Tree 2 1/2" Diam. trunk

1+07⁵ Lt = B.C. ^{Rt} Exist Cl.

1+00 27⁵ Lt = Exist Cl.

0+89⁵ 22² Lt = Cl. E.C.

0+79 30' Rt. = Tree - 4" Diam. trunk

0+67² = Mid Curve (Arc = 25°)

0+65 = Curb. B.C. Left.

6.69	5.96
6.27	7.00
33 ²	33 ²
Cl	Cl

6.86	6.08	5.92
6.10	6.88	7.04
31	31	17
Cl.	Cl	Cl

7.6	6.98	6.21
5.4	5.98	6.75
35	27 ⁵	27 ⁵
Cl.	Cl.	Cl

6.7
6.3
35

7.17	6.39	6.36
5.79	6.57	6.60
22 ²	22 ²	17
Cl	Cl	Cl

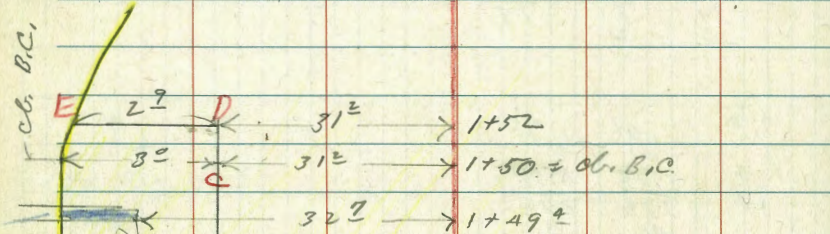
7.38	6.69	6.66
5.58	6.32	6.30
18 ⁵	18 ⁵	17
Cl	Cl	Cl

7.63	6.90
5.33	6.06
17	17
Cl	Cl

1+50 Cont.

1+50

1+38 30° Rt. = Tree 4" diam trunk



Fill pipes to U.S. Court. Gasoline tanks.

32' → 1+39.5

30' → 31' → 1+37

conc. slab on top of paug.

17° Rt. = ± 4' wide conc. walk

1+26 34' Lt. = Ch. E.C.

6.36

6.6
35

5.95	5.93	5.36	5.09	5.0
7.01	7.53	7.60	7.92	8.0
34E	34E	31E	31E	35
Ch	slab	TOP	A	
B.C.		Slab		

6.06

6.9
35

5.01	5.32	5.06	5.58	5.48
7.95	7.64	7.90	7.58	7.08
D	D	E	E	E
paug.	slab	G	slab	Ch

5.71	5.73	5.44	5.79	6.20
7.55	7.23	7.52	7.22	6.76
A	A	B	B	B
paug	slab	G	slab	Ch

6.48	5.75	5.96	5.62	6.05	6.36
6.48	7.71	7.50	7.34	6.91	6.80
34	34	17	17E	35	45
Ch	G		Back of walk		on walk
			± walk		

12.96

T.P. 5.19 7.37 10.78 2.18

2+23 30° RT. = Tree - 3" Diam. trunk.

2+13 17° Lt. = E.C. Existing cl.

2+00 18° Lt. = Mid Curve Exist cl.
Arc. = .254

2+05 18° Lt. = Pole # 4509234

2+00

1+95 30° RT. = Tree 2" Diam trunk

1+89 22° Lt. = B.C. Exist cl.

1+77 28° Lt. = E.C. Exist cl.

1+66 30° RT. = Tree 2" Diam trunk.

curb. Arc. = 27°

1+63 32° Lt. = Mid Curve - on Exist

12.96

3.19	3.12
9.17	9.84
17	17
cc	G

4.17	3.90
8.79	9.56
18°	18°
cc	G

5.4	4.19	3.42
7.6	8.77	9.54
35	18°	18°
	cc	G

A.3

8.7
35

4.60	3.86
8.36	9.10
22°	22°
cl	G

5.06	4.31
7.90	8.65
28°	28°
cc	G

5.47	4.70
7.19	8.26
32.7	32.9
cc	G

12.96

2+51 19' RT. = Ctr. pole # 2911

2+50² Cont.

32^E RT. = So. Corner meter box.

2+50² 26^E RT. = East Cor. Cone. meter box

See F.B. 1777
7

32^E RT. = West cor. box

2+45² 26^E RT. = N. cor. meter box

2+30² Cont.

2+30² 17^E RT. = start Black Plant mix. pave.

7.37

A.6

2.8
35

3.65	3.61	3.48
<u>3.72</u>	<u>3.76</u>	<u>3.89</u>
32 ^E	32 ^E	35
So. Cor	PAV	PAV.
Box		

2.55	3.57	3.64	0.14
<u>4.82</u>	<u>3.80</u>	<u>3.73</u>	<u>7.23</u>
17 ^E	26 ^E	26 ^E	Bottom
PAV.	PAV	E. Cor	of Box
		Box	

2.68	3.69	3.69	3.69	3.59
<u>4.69</u>	<u>3.68</u>	<u>3.73</u>	<u>3.68</u>	<u>3.28</u>
17 ^E	26 ^E	26 ^E	32 ^E	35
PAV	N. Cor	PAV	E. Cor.	1000
	Box		Box	PAV

3.32	3.46
<u>4.05</u>	<u>3.91</u>
35	45
PAV.	PAV.

A.8	3.32	2.65	2.79	2.80	2.10	2.49	3.05	3.06
<u>2.6</u>	<u>4.05</u>	<u>4.72</u>	<u>4.58</u>	<u>4.57</u>	<u>4.67</u>	<u>4.88</u>	<u>4.32</u>	<u>4.31</u>
35	17	17	8 ^E		8 ^E	17	17	17.5
	CL	C				C	CC	PAV

7.37

2+92 20³ Rt. = Δ in fence2+91 18^E Lt. = Ctr. pole # 450922H2+84 Rods on pavement
Rt. = Δ in fence

2+77 on pavement

2+74 on pavement

2+58

2+55^E 17' Rt. = End. Cb

7.37

1.91	2.3	2.71
<u>5.23</u>	<u>5.1</u>	<u>4.60</u>
17	19	35

1.67	2.11
<u>5.70</u>	<u>4.60</u>
17	17

1.76	2.29
<u>5.52</u>	<u>5.08</u>
17	35
pave	

1.86	2.41	2.62
<u>5.51</u>	<u>4.96</u>	<u>4.75</u>
17	35	45
pav	pav	pav

2.16	2.49	2.69
<u>4.91</u>	<u>4.88</u>	<u>4.68</u>
17	35	45
pav.	pav	pav

7.37

2+962 17' 4" check grates 6.12 1.25 ^{1.25 ok} 1.25 ✓ 1.77

3+70 Ely. line Scott.

3+46 = Ely Edge para. to RT.

3+35

3+18

in poor shape.
Paving on rt. of curb line is
Also = 1/4 N. & S. Picket fence.
2AE RT. = End picket fence

3+00 = Wly. line Scott.

7.37

0.1A 0.2
7.0 7.2
100 150
Ond Ond

0.25
7.12
150
Edge para.

0.60
6.77
150
Pav

0.72
6.65
150
Pav

3.1 2.0A 1.78
3.7 5.33 5.79
35 182 182
Cb. Q

3.09
4.28
150
Pav.

7.37

Add Notes - Lowell St. on E. cb.
of Rosecrans - See P. 53

10-29-48 - 7.0.

0-16 - Cont.

0-16 = E. cb. Line Rosecrans

+ E.L. Rosecrans
0+00 = Disk on E Lowell - P. 53

6.14 14.67

8.53 - P 53
Disk

Lt = N.

E

Rt = 60

10.11

9.49

8.05

8.65

4.56

5.18

6.62

6.02

112.8

112.8

110.2

110.2

Top

cut

cut

Top

9.15

9.17

8.97

8.91

8.72

8.39

9.00

4.92

5.50

5.70

5.76

5.95

6.33

5.67

6.28

6.28

17.

17.3

17.3

60.2

60.2

Top

cut

U. cb.

Side

Line

P.C.

Top

PE

cut

Line

Line

Line

cut

Top

Ref

19.67

Location + Elev. of 24" Culvert as Built.

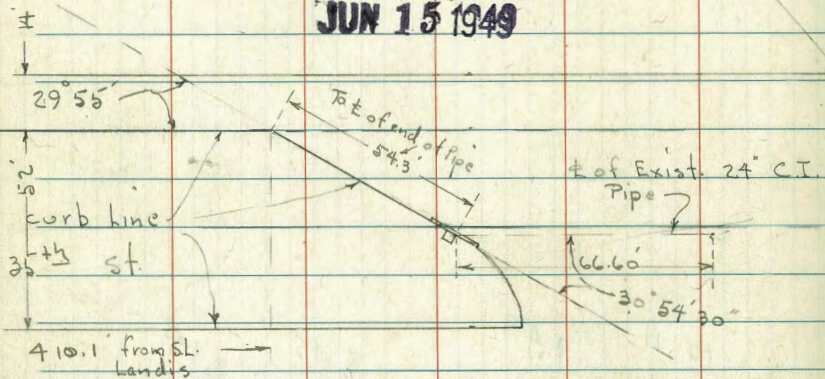
3642

6-14-49

W.O. 31245

Osborne
Hardin
Hatch
Shepard.

INDEXED
WK
JUN 15 1949



B.M. = N.W. B.P. Landis + 35 ± 1/4 326.42

Book 1741 - P 51

Top of cb. at S. Cor. of Box = E. of Inlet of Pipe

Elev. of Top of cb. 312.35

" " " " Grate 311.39

" " Flow line of Box = FL. of Inlet of Pipe 306.94

Flow line of Outlet of pipe = 272.26

X-Section Barrow Pit for 43rd St. Pav.
(Before Excavation)

10-26-49

Roberts

Osborne

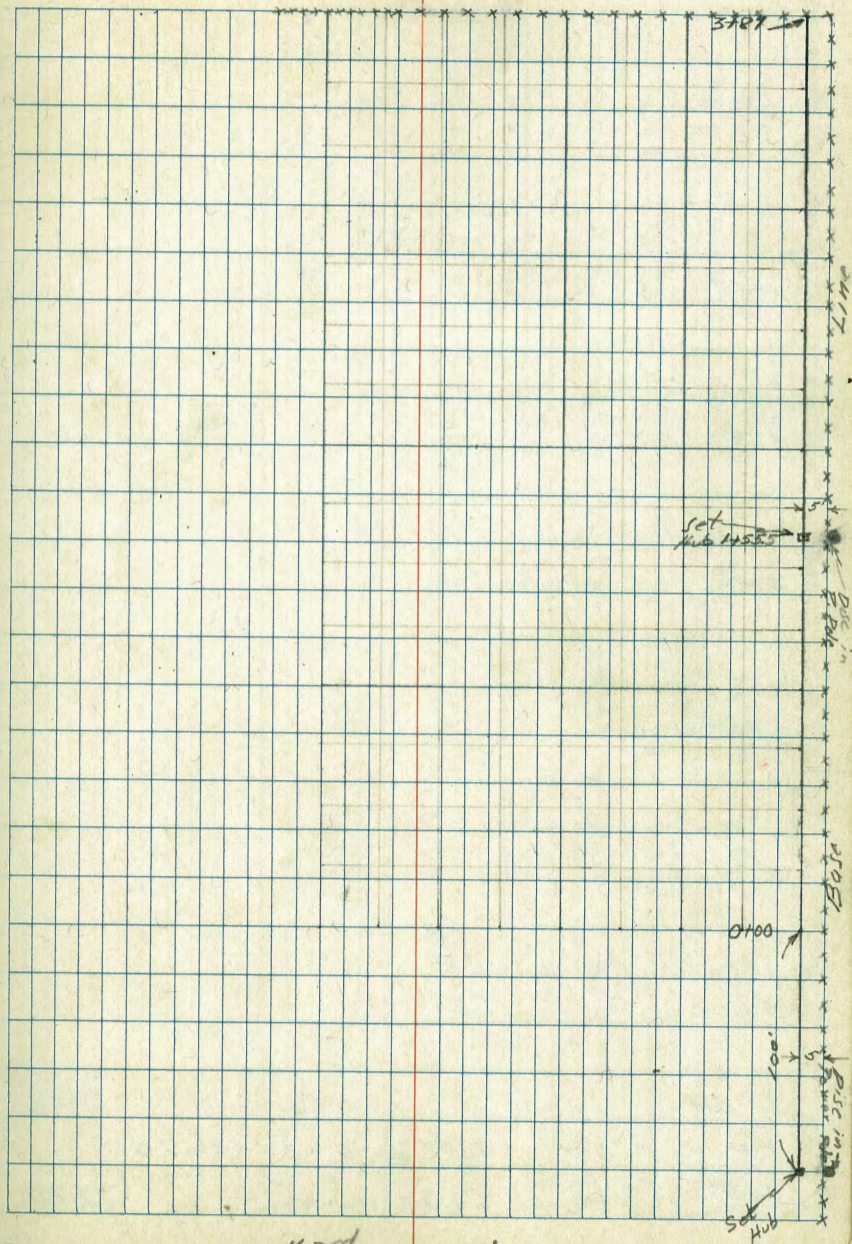
Hatch

Sheppard

(So. Boston & East 43rd)

INDEXED
W.K.
OCT 28 1949

62



43rd

St

1+50

88.7	88.9	90.5	90.8	91.3	92.0	92.4	92.7	93.0
8.5	7.8	6.2	5.9	5.4	4.7	4.3	2.5	2.9
150	125	100	75	50	25	7	5	2.9

1+25

87.6	87.8	89.8	90.3	90.8	91.4	91.9	92.1	92.8
9.2	8.9	6.9	6.4	5.9	5.3	4.8	3.6	3.4
150	125	100	75	50	25	7	5	3.4

1+00

86.6	87.0	88.8	89.3	90.5	91.0	91.5	92.4
10.1	9.7	7.9	6.8	6.2	5.7	5.2	4.3
150	125	100	75	50	25	6	4.3

0+75

86.0	86.1	87.8	88.2	88.8	90.1	90.8	91.6
10.7	10.6	8.9	7.5	6.9	6.0	5.7	5.1
150	125	100	75	50	25	6	5.1

0+50

85.1	85.4	86.6	87.6	88.1	89.1	90.0	90.9
11.6	11.3	10.1	9.1	8.0	7.0	6.7	6.0
150	125	100	75	50	25	6	5.8

0+25

84.1	84.3	84.8	85.1	85.3	86.5	87.0
13.0	12.4	11.9	10.6	9.4	8.2	6.7
150	125	100	75	50	25	6.7

0+00

82.1	82.3	83.4	84.4	85.6	87.0	88.1
14.6	14.4	13.3	12.3	11.1	9.7	7.6
150	125	100	75	50	25	7.6

S. I. B.M.		1.46		95.25
T.P.	6.01	96.71	0.42	90.70
B.M.	11.39	91.12		79.73

Nail in P.P. 1455.5

96.71

SW Cot. Boston A 134

Nail in Pole Sec. F.B. 1875 pg. 37

Lt.

3+50

89.0	89.7	89.1	91.4	91.7	91.9	90.7	86.2	A
77	8.0	8.6	9.3	9.5	9.7	10.5	10.5	10.3
150	125	100	75	50	25	5	5	

3+25

89.5	89.8	89.4	90.2	90.5	89.9	89.1	89.3	B
7.2	6.9	7.3	6.5	6.2	6.8	7.6	7.4	7.4
150	125	100	75	50	25	5	5	

3+00

89.8	89.9	90.9	91.1	92.4	91.5	91.3	92.3	B
6.9	6.8	5.8	5.0	4.5	5.2	5.4	5.4	5.4
150	125	100	75	50	25	5	5	

2+75

89.9	90.3	91.0	92.0	92.9	93.1	93.1	93.8	B
6.8	6.4	5.7	4.7	3.8	3.6	3.6	3.6	3.8
150	125	100	75	50	25	5	5	2.9

2+50

89.7	90.4	90.8	92.0	93.0	93.2	94.0	95.3	B
7.0	6.3	5.9	4.7	3.7	3.5	2.7	1.4	2.1
150	125	100	75	50	25	5	4	

2+25

89.3	90.4	91.7	92.7	93.7	93.1	94.4	95.3	B
7.4	6.3	5.5	5.0	4.4	3.6	2.3	1.4	1.6
150	125	100	75	50	25	5	4	

2+00

88.9	90.0	91.1	91.4	92.1	92.8	93.9	95.1	B
7.8	6.7	5.6	5.3	4.6	3.9	2.8	1.6	1.6
150	125	100	75	50	25	6	4	

1+75

88.7	89.6	90.4	90.9	91.8	92.3	93.1	94.8	B
8.0	7.1	5.8	5.8	4.9	4.2	3.6	1.9	2.0
150	125	100	75	50	25	7	5	

96.71

96.71

check

1.46 95.25 = 95.25

see Pg. 63

3+75

96.71

9.7	10.4	11.1	10.7	11.1	11.6	12.5	10.2
150	125	100	75	50	25	5	

96.71

3+50 = end.

3+25 = end payment of select Mat.

3+00

2+75

2+50

2+25

2+00

1+75

			88.1	87.4	87.2	87.0	86.7	86.4
			8.4	9.1	9.3	9.5	10.3	10.1
			100	75	50	25	5	
	89.4	89.4	90.1	89.8	89.7	89.1	89.3	
	7.1	7.1	6.4	6.7	7.3	7.4	7.2	
	100	80	65	45	25	5		
		90.9	91.2	91.7	90.5	89.9	90.1	91.3
		5.6	5.7	5.3	6.0	6.6	6.4	5.2
		100	75	55	45	25	6	5
	91.0	92.0	92.0	90.5	90.4	90.9	92.1	92.0
	5.8	4.5	4.8	6.0	6.1	5.6	3.4	2.7
	100	75	60	45	25	7	5	
		90.8	91.6	91.5	90.4	90.6	90.8	91.1
		5.7	4.9	5.0	6.1	5.9	5.7	2.4
		100	80	60	40	25	7	5
		91.2	91.4	91.3	90.7	90.4	90.8	90.9
		5.3	5.	5.2	6.3	6.1	6.1	1.7
		100	75	60	40	25	7	5
		91.1	91.4	91.1	89.8	89.9	89.8	91.8
		5.4	5.1	4.8	6.7	6.6	6.7	1.7
		100	75	60	40	25	7	5
	90.9	91.0	91.4	89.8	89.7	90.2	91.1	91.7
	5.6	5.6	5.1	6.7	6.8	6.3	2.4	1.8
	100	75	55	44	25	7	5	

96.51

2460

2459 15' RT to 6" cov block wall & to line \rightarrow IL

2450

2433 55 RT & double garage cov floor

2425

2423 EC curve in wall on Mt.

2410 18' LT & dead man

2400 18' RT & 6" cov block wall begin \rightarrow

2400 17' LT & 6" PPole # 3329

1492 34' LT & 13' cov drive

LT = SWly

R

RT = NEly

72

	137.7	141.2	149.5	154.0	153.6	154.4	154.8	154.9
	26 ²	32 ²	14 ²	9 ¹	10 ³	9 ⁵	9 ⁴	9 ⁰
	50	35	17	13	17	35	50	50
	136.2	144.4	155.1	154.6	154.4	154.6	153.9	153.5
	27 ²	19 ⁵	8 ²	9 ³	9 ⁵	9 ⁵	9 ⁴	9 ⁵
	50	35	17	13	17	35	50	50
	162.4	149.5	157.7	156.6	156.6	156.6	156.9	157.2
	21 ⁵	14 ⁴	6 ²	7 ³	7 ³	7 ³	7 ⁰	6 ¹
	50	35	22	17	10	17	53	80
	157.1	162.0	156.6	156.6	156.6	156.6	156.6	156.6
	68	30	30	30	30	30	30	30
	31	top	footing					
	152.0	169.9	161.8	160.7	160.6	160.1	161.9	162.1
	11 ⁹	4 ⁹	2 ¹	3 ³	3 ³	3 ⁸	2 ⁰	1 ⁸
	50	35	17	10	12	17	18	27
	158.2	157.95	159.4	160.7	160.6	160.1	161.9	162.1
	56	58	4	4	4	4	4	4
	49	49	3	3	3	3	3	3
	163.28	166.1	166.8	167.4				
	0 ⁵	12 ²	12 ²	12 ²	12 ²	12 ²	12 ²	12 ²
	50	35	35	35	35	35	35	35

163.57

BH starting

567

177⁸⁰

✓
177⁷⁹

TP4

9⁰⁰

183⁹²

084

174⁴⁹

TP3

12⁵⁰

175³³

104

162⁸³

3+70

3+35 F SMH

3+00

Note hand leveled here ^

Lt-Nwly

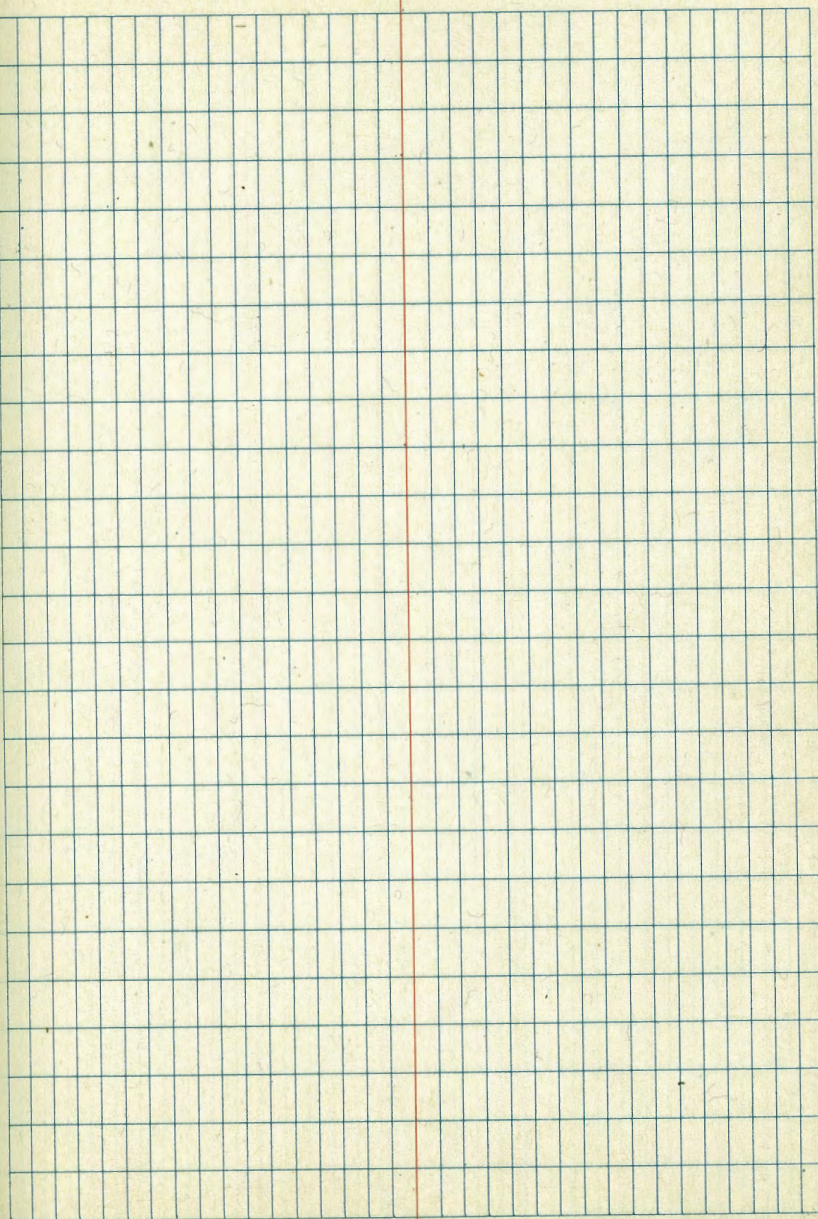
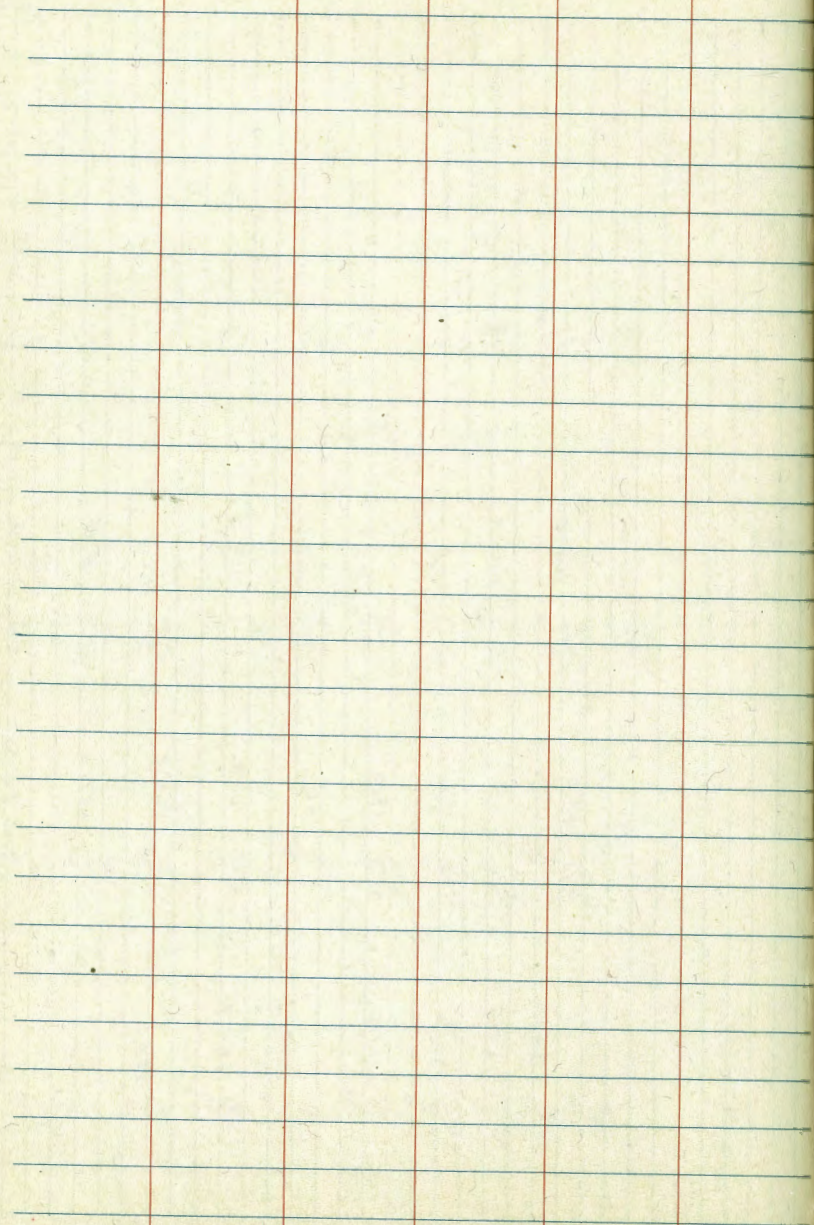
E

Rt-Nwly

73

101.0	104.4	126.3	108.1	108.8	109.1	112.5	112.8	115.5	118.4
62 ² 50	59 ⁵ 35	57 ⁶ 20	53 ⁸ 17	55 ¹	54 ⁸ 5	51 ⁴ 10	51 ² 17	48 ² 35	45 ⁵ 50
	108.7	110.9	116.1	118.0	118.6	121.3	122.9	127.2	129.2
	55 ² 50	53 ² 35	47 ⁸ 17	45 ² 11	45 ³ 5	42 ⁶ 10	41 ⁰ 17	36 ² 35	34 ² 50
117.6	122.2	128.5	130.9	131.6	134.2	134.9	138.7	140.5	
46 ⁰ 50	47 ² 35	35 ² 17	33 ⁰ 13	32 ⁰ 13	29 ⁷ 10	29 ⁰ 17	25 ² 35	23 ⁴ 50	

163⁸⁷

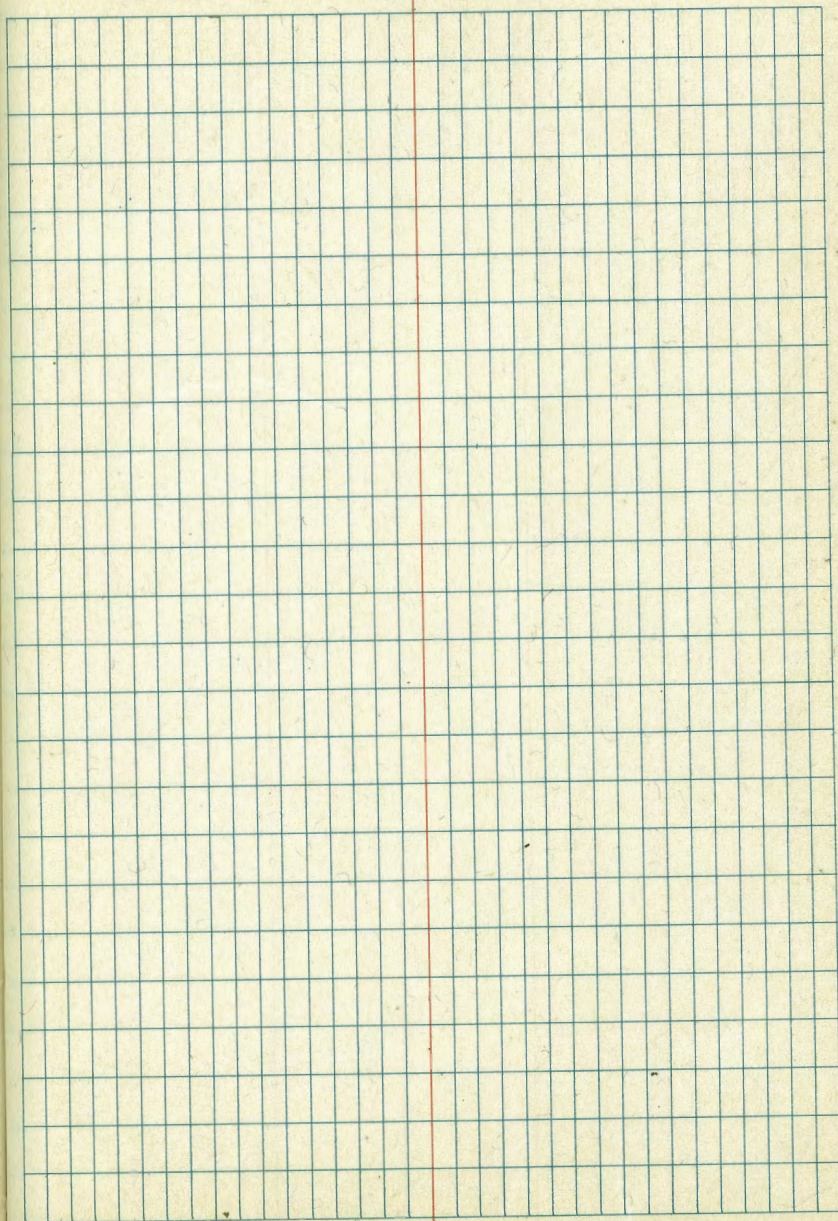
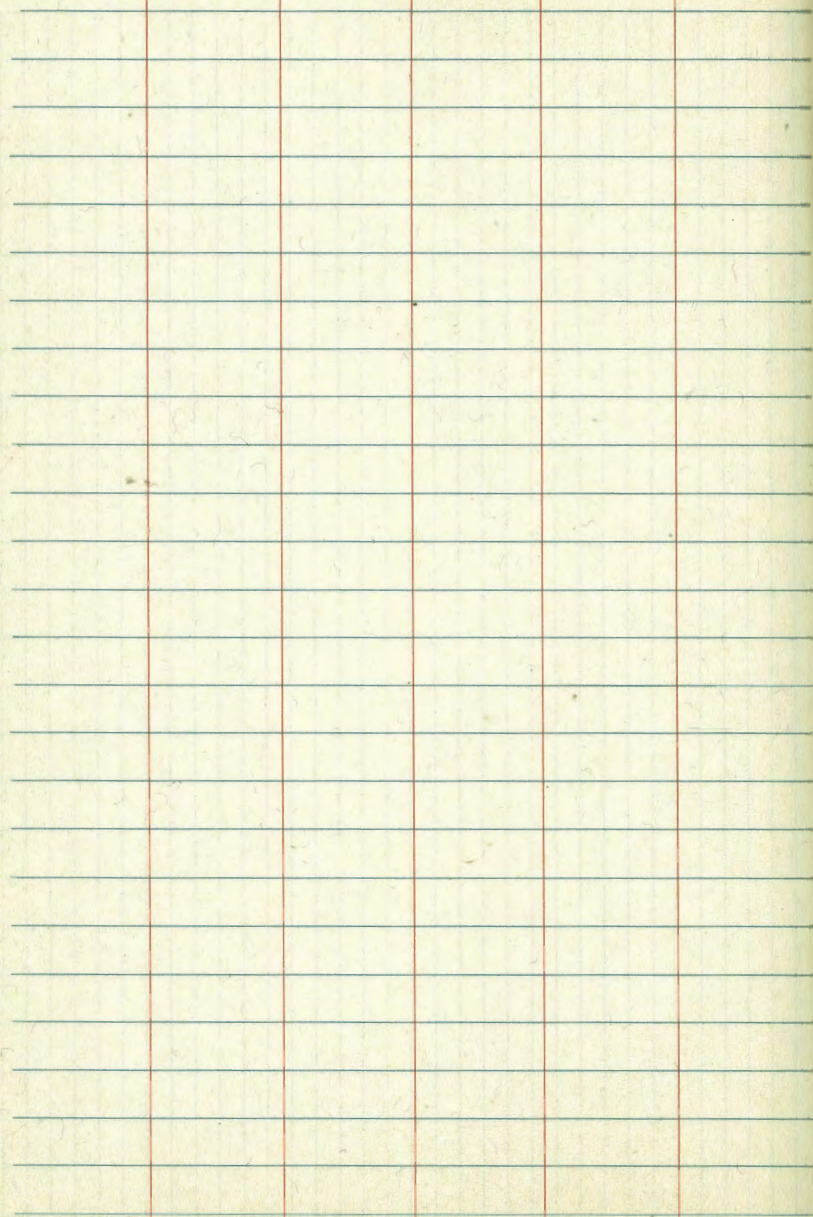


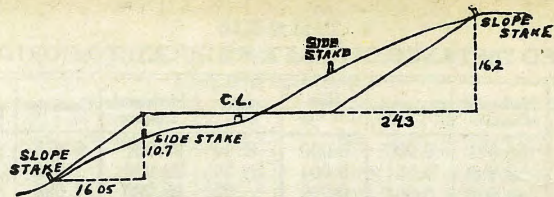
This page features horizontal blue lines for writing. It is divided into four vertical columns by three red margin lines. The columns are of varying widths, with the two inner columns being the narrowest and the two outer columns being the widest.

This page is a full grid of blue lines, with one vertical red margin line on the left side. The grid consists of 20 columns and 25 rows of small squares.

A page of aged, cream-colored paper with four vertical red margin lines and horizontal blue lines. The page is blank.

A page of aged, cream-colored paper with a grid of blue lines and a vertical red margin line. The page is blank.





DISTANCES FROM SIDE STAKES FOR CROSS-SECTIONING.

SLOPE 1 1/4 TO 1. ROADWAY OF ANY WIDTH.

	0	.1	.2	.3	.4	.5	.6	.7	.8	.9	
0	0 00	0 15	0 30	0 45	0 60	0 75	0 90	1 05	1 20	1 35	0
1	1 50	1 05	1 20	1 35	1 50	1 65	1 80	1 95	2 10	2 25	1
2	3 00	3 15	3 30	3 45	3 60	3 75	3 90	4 05	4 20	4 35	2
3	4 50	4 65	4 80	4 95	5 10	5 25	5 40	5 55	5 70	5 85	3
4	6 00	6 15	6 30	6 45	6 60	6 75	6 90	7 05	7 20	7 35	4
5	7 50	7 65	7 80	7 95	8 10	8 25	8 40	8 55	8 70	8 85	5
6	9 00	9 15	9 30	9 45	9 60	9 75	9 90	10 05	10 20	10 35	6
7	10 50	10 65	10 80	10 95	11 10	11 25	11 40	11 55	11 70	11 85	7
8	12 00	12 15	12 30	12 45	12 60	12 75	12 90	13 05	13 20	13 35	8
9	13 50	13 65	13 80	13 95	14 10	14 25	14 40	14 55	14 70	14 85	9
10	15 00	15 15	15 30	15 45	15 60	15 75	15 90	16 05	16 20	16 35	10
11	16 50	16 65	16 80	16 95	17 10	17 25	17 40	17 55	17 70	17 85	11
12	18 00	18 15	18 30	18 45	18 60	18 75	18 90	19 05	19 20	19 35	12
13	19 50	19 65	19 80	19 95	20 10	20 25	20 40	20 55	20 70	20 85	13
14	21 00	21 15	21 30	21 45	21 60	21 75	21 90	22 05	22 20	22 35	14
15	22 50	22 65	22 80	22 95	23 10	23 25	23 40	23 55	23 70	23 85	15
16	24 00	24 15	24 30	24 45	24 60	24 75	24 90	25 05	25 20	25 35	16
17	25 50	25 65	25 80	25 95	26 10	26 25	26 40	26 55	26 70	26 85	17
18	27 00	27 15	27 30	27 45	27 60	27 75	27 90	28 05	28 20	28 35	18
19	28 50	28 65	28 80	28 95	29 10	29 25	29 40	29 55	29 70	29 85	19
20	30 00	30 15	30 30	30 45	30 60	30 75	30 90	31 05	31 20	31 35	20
21	31 50	31 65	31 80	31 95	32 10	32 25	32 40	32 55	32 70	32 85	21
22	33 00	33 15	33 30	33 45	33 60	33 75	33 90	34 05	34 20	34 35	22
23	34 50	34 65	34 80	34 95	35 10	35 25	35 40	35 55	35 70	35 85	23
24	36 00	36 15	36 30	36 45	36 60	36 75	36 90	37 05	37 20	37 35	24
25	37 50	37 65	37 80	37 95	38 10	38 25	38 40	38 55	38 70	38 85	25
26	39 00	39 15	39 30	39 45	39 60	39 75	39 90	40 05	40 20	40 35	26
27	40 50	40 65	40 80	40 95	41 10	41 25	41 40	41 55	41 70	41 85	27
28	42 00	42 15	42 30	42 45	42 60	42 75	42 90	43 05	43 20	43 35	28
29	43 50	43 65	43 80	43 95	44 10	44 25	44 40	44 55	44 70	44 85	29
30	45 00	45 15	45 30	45 45	45 60	45 75	45 90	46 05	46 20	46 35	30
31	46 50	46 65	46 80	46 95	47 10	47 25	47 40	47 55	47 70	47 85	31
32	48 00	48 15	48 30	48 45	48 60	48 75	48 90	49 05	49 20	49 35	32
33	49 50	49 65	49 80	49 95	50 10	50 25	50 40	50 55	50 70	50 85	33
34	51 00	51 15	51 30	51 45	51 60	51 75	51 90	52 05	52 20	52 35	34
35	52 50	52 65	52 80	52 95	53 10	53 25	53 40	53 55	53 70	53 85	35
36	54 00	54 15	54 30	54 45	54 60	54 75	54 90	55 05	55 20	55 35	36
37	55 50	55 65	55 80	55 95	56 10	56 25	56 40	56 55	56 70	56 85	37
38	57 00	57 15	57 30	57 45	57 60	57 75	57 90	58 05	58 20	58 35	38
39	58 50	58 65	58 80	58 95	59 10	59 25	59 40	59 55	59 70	59 85	39
40	60 00	60 15	60 30	60 45	60 60	60 75	60 90	61 05	61 20	61 35	40
41	61 50	61 65	61 80	61 95	62 10	62 25	62 40	62 55	62 70	62 85	41
42	63 00	63 15	63 30	63 45	63 60	63 75	63 90	64 05	64 20	64 35	42
43	64 50	64 65	64 80	64 95	65 10	65 25	65 40	65 55	65 70	65 85	43
44	66 00	66 15	66 30	66 45	66 60	66 75	66 90	67 05	67 20	67 35	44
45	67 50	67 65	67 80	67 95	68 10	68 25	68 40	68 55	68 70	68 85	45
46	69 00	69 15	69 30	69 45	69 60	69 75	69 90	70 05	70 20	70 35	46
47	70 50	70 65	70 80	70 95	71 10	71 25	71 40	71 55	71 70	71 85	47
48	72 00	72 15	72 30	72 45	72 60	72 75	72 90	73 05	73 20	73 35	48
49	73 50	73 65	73 80	73 95	74 10	74 25	74 40	74 55	74 70	74 85	49
50	75 00	75 15	75 30	75 45	75 60	75 75	75 90	76 05	76 20	76 35	50

Computed by L. Leland Locke.

318.53
156.76

313.45
156.72

737
612

2553 8.10
165.5

11141
065
33705
66846
7242206
126
86

208
53
155
59
546

114 9699.79
150 40 5 line

24°48'

36

114.88
.0922

42

5°45'

32

103392

10590

0050

21

23

151.16

76

151.16

.005

150.40

75580

N time 20-45

111.41

06.49

111.41

12 14 24.78
5.3

9927 49.43

111.41

121

10090

450

10570

100269

44364

666846

7230

450

111.41

1123

9968

Heard

373-8502

22°20

53064

075

26820

37548

4023

5000

4762

38

53.62

409

4962