

1753

MICROFILMED

DEC 4 1964

CITY ENGINEER'S OFFICE
SAN DIEGO, CALIF.

MADE IN U. S. A.

1753

Our Leather Bound Engineers Note Books
are carried in the following rulings:

- No. 380 LEVEL BOOK. Left and Right Hand Page
the same as Left Hand Page
of this Book.
- No. 382 FIELD BOOK. Left Hand Page as in this
Book, Right Hand Page 4x4
to the inch, Center Line Red.
- No. 384 MINING TRANSIT
BOOK. Left Hand Page as in this
Book, Right Hand Page 8x8
to the inch, Center Line Red.
- No. 385 FIELD BOOK. Left Hand Page as in this
Book, Right Hand Page 8 ver-
tical and 4 horizontal lines to
the inch, Center Line Red.

We also carry the Note Books listed above,
bound in extra strong Fabri-Hide (otherwise
the same quality of book,) which can be fur-
nished at a somewhat lower price.

In ordering Fabri-Hide covered books, add
the letter "F" to catalog number.

THE FREDERICK POST CO.

ENGINEERING and DRAFTING SUPPLIES

P. O. Box 803

CHICAGO

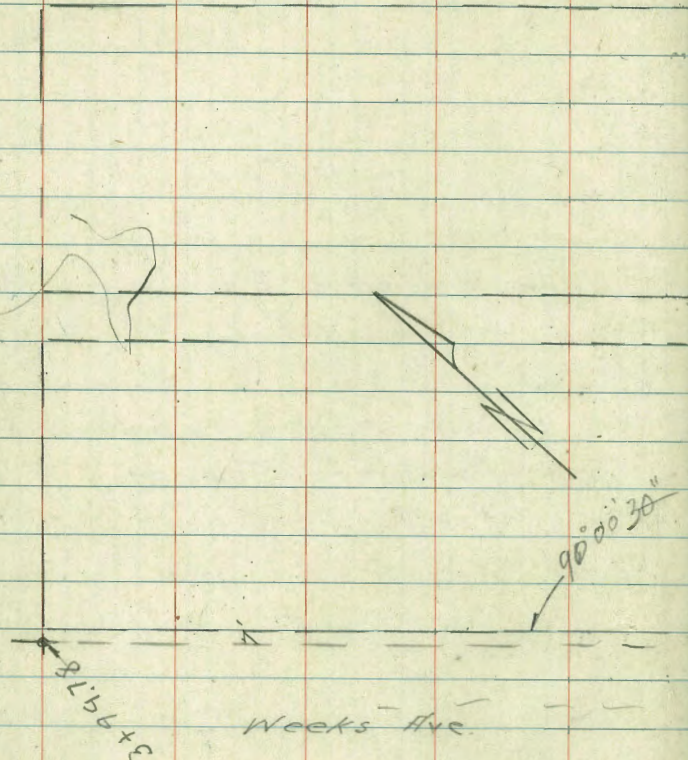
X sec Ardath Rd.	31-33
" " Hidden Valley Rd.	32-46
" " Alley Block 2 City Hts Annex	45-53
" " Alley Block A Redland Garden	54-62
" " Kansas & Madison	71-72
Alley BIK 200 Pacific Beach	73-74

Indexed
C.S.K.

1 sec Buena Ave, Naples Sly
Weeks " Cushman

C. Moore
S.W. 1/4 Sec 10
W.F.M.
E.B.
12-4-46

Dorcas Rd.



to Pueblo line W.O. #234

1



sec Buena Ave. 60 wide
 Sly Line Weeks add.
 to Naples Ave

24.1

0+00 - Sly Line of Weeks add. 7.6
 29.8 Lt. Beg. Bd. fence 50

0 - 50 22.9 24.0
 8.8 7.7
 65 55

0 - 50 22' LT P.P.

0 - 75

00 - 100

Sec B.M. 5.41 31.73 221 2632

T.P. 10.90 28.53 4.22 17.63

S.Ely Mon^{con} 5.66 21.85 16.19

NT=WLY

R7

2

24.2	25.5	25.2	25.4	25.8	24.8	24.0	23.3	23.9
7.5	6.7	6.5	6.3	5.9	6.9	7.7	8.0	7.8
37	30	23	15	4	15	15	30	50
24.9	25.2	25.1	24.6	24.7	24.7	24.7	24.7	24.9
6.8	6.5	6.6	7.1	7.0	7.0	7.0	7.0	6.8
40	30	23	15	15	15	30	30	50
23.8	24.5	24.6	24.6	24.7	24.9	25.2		
7.9	7.2	7.1	7.1	7.0	6.8	6.5		
80	24	30	15	15	15	30		
24.0	25.0	25.7	26.8	27.0	27.9			
7.7	6.7	6.8	5.4	4.7	3.8			
80	30	15	15	15	30			
31.73								
Wily T'Corr. Mon Buenos + Weeks								
Dorcas + Naples F.B. 1681-CX								

0+00 = N Ly Weeks Ave

00-4 29.3 LT. Beg. rail fence

Weeks

0+72.65 + 8ly Weeks Ave. 29.6 LT. end fence

0+70 21.5 LT. = P.P.

0+45

0+25

0+15

31.73

25.7	26.2	26.9	26.6	28.0	28.9	29.2
30	30	15	4.1	17	24	30
26.8	26.0	28.4	28.9	29.0		
4.9	5.7	3.3	2.8	2.7		
30	15	15	15	30		
27.6	28.3	29.9	28.0	28.9		
4.1	3.4	3.8	3.7	3.0	Tol. P.	2.4
30	22	15	15	22	23	30
26.8	26.8	27.1	26.9	27.3	27.3	
4.9	4.9	4.4	5.0	4.4	4.4	4.2
30	30	23	12	15	30	30
25.6	25.6	25.6	25.9	26.1	25.6	23.8
5.1	5.1	5.1	5.8	5.5	5.1	5.9
30	30	15	15	22	30	30
25.1	25.2	25.5	26.1	23.9	23.6	23.9
5.2	5.2	5.2	5.1	5.0	5.1	5.0
30	30	15	15	30	30	30

31.73

X-Sect. 20' Alley in Block 200 - Pacific Beach
Map 854 - Ties - sheets 1750 + 1619

681

12-17-46

W.O. 230

Osborne
Hardin
Worrell
Smith

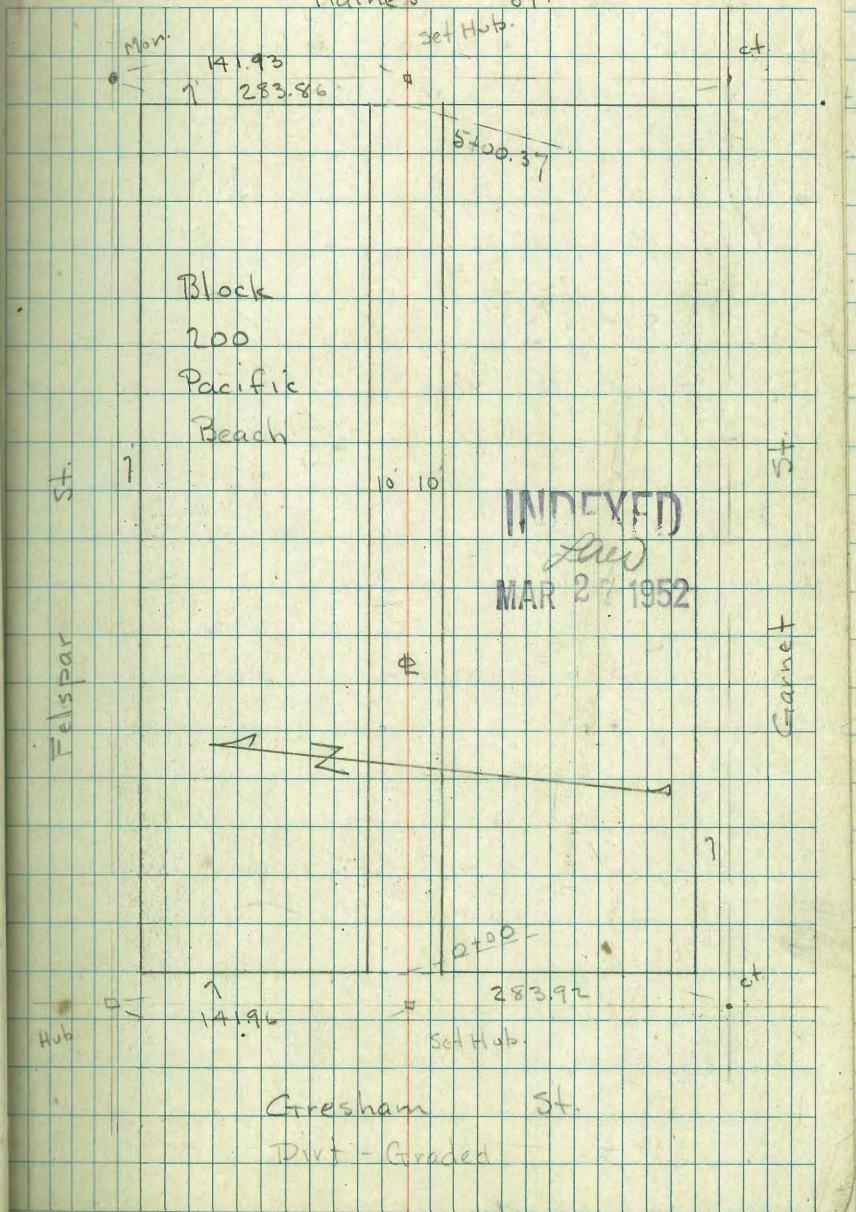
See Pages 73 + 74

indexed
O.S.R.

Dirt - Graded

7

Haines St.



2+48 - 8.5 Rt. = Φ P pole

2+48 - 8.3 Lt. = end fence + beg. 2 strand wire fence

2+30 = 14 Rt. = Φ Sing. Gar. - Conc. floor

2+22 - 9.9 Rt. = end fence

2+12 - 8.6 Lt. = beg. lath fence

2+05 - 9.9 Rt. = beg. board fence

2+02 - 36.3 Rt. = Φ Sing. Gar. - Dirt floor

2+00

1+95

1+75

1+55 - for excavation on Rt.

1+50

1+44 - E side Gar.

8.92
16
floor

62.73

9.44
116. apron

62.21

9.4
10

62.2

9.9
10

62.5

9.9
10

63.7

1.4
10

64.2

1.3
10

64.3

6.5
36.3
floor

65.1

116.4

9.6
10

62.0

9.3
10

62.3

9.1
10

63.1

1.6
10

64.0

1.4
10

64.2

9.6
10

62.0

9.4
10

62.2

9.4
10

63.2

1.7
10

63.9

1.5
10

64.1

-63.6

2.9
10

61.7

9.2
10

61.4

9.9
10

60.7

1.0
10

62.6

2.7
10

64.1

2.9
10

61.7

9.2
10

59.4

9.2
10

59.4

2.8
10

59.8

2.7
10

64.1

= 60.1

60.4
4
floor

65.61

9

5+20 P 74

check starting B.M. 12.48 52.44 52.42
 T.P. 0.85 64.92 11.54 64.07

5+10.37

← This walk gone.

5+03 - 8.9 ft. - end of Conc walk + E. side of N+S. walk

5+01 P 74

5+00.37 = W.L. Haines *End small house*

5+00.3 - P 74

4+87 11.5 Lt. = Φ Small House

4+86 - P 74

4+80 - 8.7 Lt. = ang in 1.5 walk

4+75 - P 74

4+75 - 9.5 Lt. - end fence

4+73 - P 74

4+71 = Beg Walk along House 1.5 wide + ang in slab

← This walk gone

4+56 = 11.9 Lt. = beg Conc slab

4+50

4+30 - 8.8 Lt. = beg picket fence

4+29 - 9.5 Lt. = Φ 2' Conc walk

4+26
 4+25.4 } P-74
 4+25

4+22 = Φ Sing. Gar. on Lt. - Conc. floor + apron

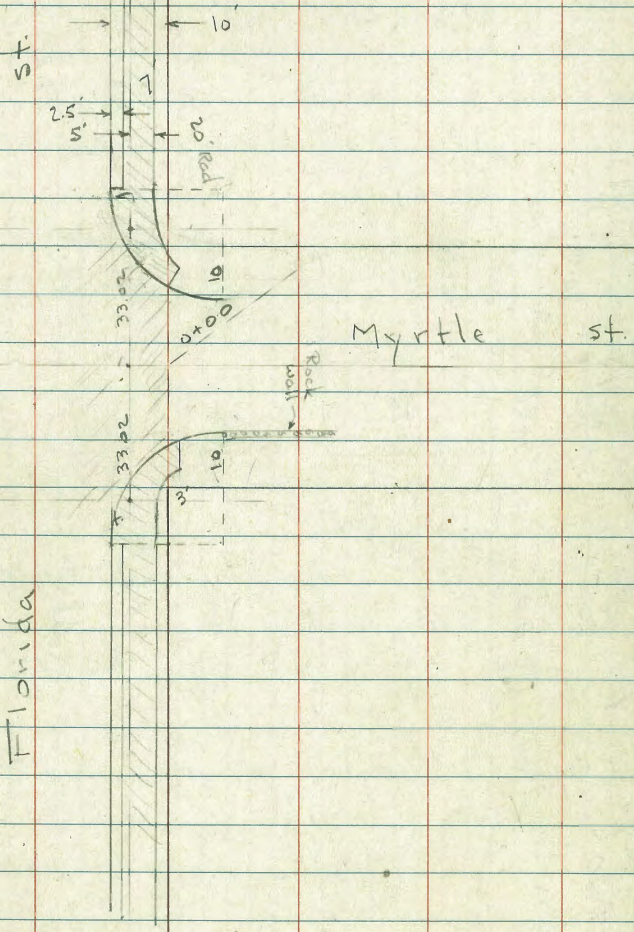
	70.81	70.77	70.79	70.77	70.6	70.3	70.3	68.5	68.1
	4.80 10	4.84	4.82 10.4	4.84	5.0	4.9 10	5.0	7.4 20	7.5 20
	on walk	8.9 = con. walk	edge walk	8.9 = edge walk					
	71.84	71.77	71.88	71.88	71.6	71.6	68.7	68.3	
	3.77 11.5	4.7	4.73 10	4.73	5.0	5.0 10	7.5 20	7.3 20	
	Door		8.7 on walk						
	71.02	71.01	71.02	71.02	71.6	71.5	68.6	68.8	67.9
	4.59 11.9	4.60	4.59	4.89	5.0	5.1 10	7.0 12	6.8 20	7.7 20
	Conc slab.	11.9 = ang in edge of slab	7.3 = edge walk						
	71.09	71.09	71.09	71.09	71.6	71.5	68.6	68.8	67.9
	4.52 10.5	4.52	4.52	4.52	5.0	5.1 10	7.0 12	6.8 20	7.7 20
	5 on walk								
	71.20	71.20	71.20	71.20	71.6	71.5	68.6	68.8	67.9
	4.41 10.4	4.41	4.41	4.41	5.0	5.1 10	7.0 12	6.8 20	7.7 20
	Door		apron						

75.61

X-Sept. Myrtle - Florida to Alabama

+ 20' Alley to N.

See p 18



Florida

Myrtle St.

114-47

716

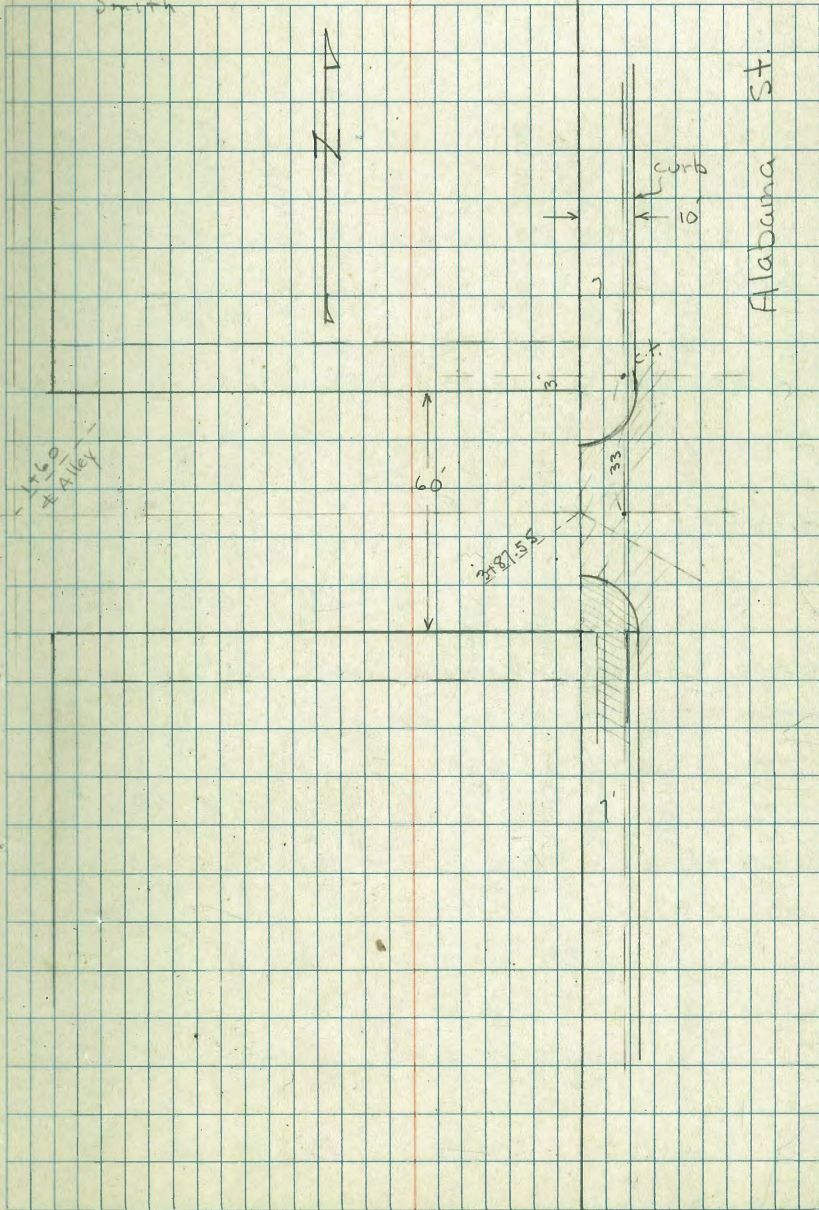
Indexed

C.S.K.

12

Osborne
Hardin
Worrell
Smith

W.O. 230



1160
+ Alley

Alabama St.

T.P. 12.05 233.40 0.00 221.35 Reg-opp. sta. 1485

1+68
 1+60 = Sewer M.H. 4.56 on Rim

1+50 = opp w.l. Alley

1+49 - 35 Rt = P. pole

1+30

1+05 - 29.5 Rt = N. end 8' Rock + Conc wall

0+91 - 28.3 Rt = end fence

T.P. 12.66 221.35 0.39 208.69

0+84 - 26.4 Rt = end Rock wall

bed.

0+79 - 26.4 Rt = Beg. N. side Rock + Conc wall for flower

Station	Left (L)	Right (R)
1+68	215.6	216.1
1+60 = Sewer M.H.	215.5	216.5
1+50 = opp w.l. Alley	215.3	216.5
1+49 - 35 Rt = P. pole	215.9	216.8
1+30	215.5	216.6
1+05 - 29.5 Rt = N. end 8' Rock + Conc wall	215.0	216.0
0+91 - 28.3 Rt = end fence	215.3	216.0
T.P. 12.66	219.9	212.5
0+84 - 26.4 Rt = end Rock wall	213.8	211.7
bed.	213.5	
0+79 - 26.4 Rt = Beg. N. side Rock + Conc wall for flower	213.2	213.3
	213.8	213.3
	213.5	
	213.2	
	213.9	
	213.3	
	213.2	
	213.8	
	213.3	
	213.2	
	213.9	
	213.3	
	213.2	
	213.8	
	213.3	
	213.2	
	213.9	
	213.3	
	213.2	
	213.8	
	213.3	
	213.2	
	213.9	
	213.3	
	213.2	
	213.8	
	213.3	
	213.2	
	213.9	
	213.3	
	213.2	
	213.8	
	213.3	
	213.2	
	213.9	
	213.3	
	213.2	
	213.8	
	213.3	
	213.2	
	213.9	
	213.3	
	213.2	
	213.8	
	213.3	
	213.2	
	213.9	
	213.3	
	213.2	
	213.8	
	213.3	
	213.2	
	213.9	
	213.3	
	213.2	
	213.8	
	213.3	
	213.2	
	213.9	
	213.3	
	213.2	
	213.8	
	213.3	
	213.2	
	213.9	
	213.3	
	213.2	
	213.8	
	213.3	
	213.2	
	213.9	
	213.3	
	213.2	
	213.8	
	213.3	
	213.2	
	213.9	
	213.3	
	213.2	
	213.8	
	213.3	
	213.2	
	213.9	
	213.3	
	213.2	
	213.8	
	213.3	
	213.2	
	213.9	
	213.3	
	213.2	
	213.8	
	213.3	
	213.2	
	213.9	
	213.3	
	213.2	
	213.8	
	213.3	
	213.2	
	213.9	
	213.3	
	213.2	
	213.8	
	213.3	
	213.2	
	213.9	
	213.3	
	213.2	
	213.8	
	213.3	
	213.2	
	213.9	
	213.3	
	213.2	
	213.8	
	213.3	
	213.2	
	213.9	
	213.3	
	213.2	
	213.8	
	213.3	
	213.2	
	213.9	
	213.3	
	213.2	
	213.8	
	213.3	
	213.2	
	213.9	
	213.3	
	213.2	
	213.8	
	213.3	
	213.2	
	213.9	
	213.3	
	213.2	
	213.8	
	213.3	
	213.2	
	213.9	
	213.3	
	213.2	
	213.8	
	213.3	
	213.2	
	213.9	
	213.3	
	213.2	
	213.8	
	213.3	
	213.2	
	213.9	
	213.3	
	213.2	
	213.8	
	213.3	
	213.2	
	213.9	
	213.3	
	213.2	
	213.8	
	213.3	
	213.2	
	213.9	
	213.3	
	213.2	
	213.8	
	213.3	
	213.2	
	213.9	
	213.3	
	213.2	
	213.8	
	213.3	
	213.2	
	213.9	
	213.3	
	213.2	
	213.8	
	213.3	
	213.2	
	213.9	
	213.3	
	213.2	
	213.8	
	213.3	
	213.2	
	213.9	
	213.3	
	213.2	
	213.8	
	213.3	
	213.2	
	213.9	
	213.3	
	213.2	
	213.8	
	213.3	
	213.2	
	213.9	
	213.3	
	213.2	
	213.8	
	213.3	
	213.2	
	213.9	
	213.3	
	213.2	
	213.8	
	213.3	
	213.2	
	213.9	
	213.3	
	213.2	
	213.8	
	213.3	
	213.2	
	213.9	
	213.3	
	213.2	
	213.8	
	213.3	
	213.2	
	213.9	
	213.3	
	213.2	
	213.8	
	213.3	
	213.2	
	213.9	
	213.3	
	213.2	
	213.8	
	213.3	
	213.2	
	213.9	
	213.3	
	213.2	
	213.8	
	213.3	
	213.2	
	213.9	
	213.3	
	213.2	
	213.8	
	213.3	
	213.2	
	213.9	
	213.3	
	213.2	
	213.8	
	213.3	
	213.2	
	213.9	
	213.3	
	213.2	
	213.8	
	213.3	
	213.2	
	213.9	
	213.3	
	213.2	
	213.8	
	213.3	
	213.2	
	213.9	
	213.3	
	213.2	
	213.8	
	213.3	
	213.2	
	213.9	
	213.3	
	213.2	
	213.8	
	213.3	
	213.2	
	213.9	
	213.3	
	213.2	
	213.8	
	213.3	
	213.2	
	213.9	
	213.3	
	213.2	
	213.8	
	213.3	
	213.2	
	213.9	
	213.3	
	213.2	
	213.8	
	213.3	
	213.2	
	213.9	
	213.3	
	213.2	
	213.8	
	213.3	
	213.2	
	213.9	
	213.3	
	213.2	
	213.8	
	213.3	
	213.2	
	213.9	
	213.3	
	213.2	
	213.8	
	213.3	
	213.2	
	213.9	
	213.3	
	213.2	
	213.8	
	213.3	
	213.2	
	213.9	
	213.3	
	213.2	
	213.8	
	213.3	
	213.2	
	213.9	
	213.3	
	213.2	
	213.8	
	213.3	
	213.2	
	213.9	
	213.3	
	213.2	
	213.8	
	213.3	
	213.2	
	213.9	
	213.3	
	213.2	
	213.8	
	213.3	
	213.2	
	213.9	
	213.3	
	213.2	
	213.8	
	213.3	
	213.2	
	213.9	
	213.3	
	213.2	
	213.8	
	213.3	
	213.2	
	213.9	
	213.3	
	213.2	
	213.8	
	213.3	
	213.2	
	213.9	
	213.3	
	213.2	
	213.8	
	213.3	
	213.2	
	213.9	
	213.3	
	213.2	
	213.8	
	213.3	
	213.2	
	213.9	
	213.3	
	213.2	
	213.8	
	213.3	
	213.2	
	213.9	
	213.3	
	213.2	
	213.8	
	213.3	
	213.2	
	213.9	
	213.3	
	213.2	
	213.8	
	213.3	
	213.2	
	213.9	
	213.3	
	213.2	
	213.8	
	213.3	
	213.2	

3+00 - 28.9 Lt = fence

2+80 - 30.9 Lt = Beg Lath fence

2+75

2+50

T.P. 12.58 245.75 0.23 233.17

2+25

2+00

1+70 = E.L. Alley

236.9	241.2	244.0	245.8	250.0
226.4	239.1	242.0	244.2	248.8
225.2	237.1	239.6	241.1	244.2
222.0	231.8	235.8	238.8	242.2
228.9	230.4	238.8	237.9	241.0
217.4	230.4	234.6	237.5	240.4
225.3	224.6	233.2	236.0	239.0
225.2	212.9	228.2	229.7	233.0
221.5	212.9	214.5	216.2	217.5
212.0	218.1	220.3	220.4	221.4
211.7				

Myrtle + Alabama
check B.M. N.W.R.P 4.68 251.50 251.50

3+97.55 = w. cb.

3+87.55 = W.L. Alabama + edge of H.C. pave

3+55

T.P. 11.67 256.18 1.24 244.51

3+40.5 - 56 Rt = 2 outlet 30" RC pipe

3+30 - 22 - 4 = end fence

3+25 - 242 Rt = fence

385 50%

	Lt.	Rt.
252.2	251.17	
+ 251.8	251.45	
+ 251.3	250.90	
+ 250.3	250.87	
+ 249.3	250.75	
+ 248.3	250.56	
+ 242.7	250.47	
+ 239.5	250.87	
+ 234.3		
+ 221.6		
+ 219.2		
+ 215.1		
+ 214.2		
+ 213.5		
+ 212.7		
+ 211.9		
+ 211.2		
+ 210.5		
+ 209.8		
+ 209.1		
+ 208.4		
+ 207.7		
+ 207.0		
+ 206.3		
+ 205.6		
+ 204.9		
+ 204.2		
+ 203.5		
+ 202.8		
+ 202.1		
+ 201.4		
+ 200.7		
+ 200.0		
+ 199.3		
+ 198.6		
+ 197.9		
+ 197.2		
+ 196.5		
+ 195.8		
+ 195.1		
+ 194.4		
+ 193.7		
+ 193.0		
+ 192.3		
+ 191.6		
+ 190.9		
+ 190.2		
+ 189.5		
+ 188.8		
+ 188.1		
+ 187.4		
+ 186.7		
+ 186.0		
+ 185.3		
+ 184.6		
+ 183.9		
+ 183.2		
+ 182.5		
+ 181.8		
+ 181.1		
+ 180.4		
+ 179.7		
+ 179.0		
+ 178.3		
+ 177.6		
+ 176.9		
+ 176.2		
+ 175.5		
+ 174.8		
+ 174.1		
+ 173.4		
+ 172.7		
+ 172.0		
+ 171.3		
+ 170.6		
+ 169.9		
+ 169.2		
+ 168.5		
+ 167.8		
+ 167.1		
+ 166.4		
+ 165.7		
+ 165.0		
+ 164.3		
+ 163.6		
+ 162.9		
+ 162.2		
+ 161.5		
+ 160.8		
+ 160.1		
+ 159.4		
+ 158.7		
+ 158.0		
+ 157.3		
+ 156.6		
+ 155.9		
+ 155.2		
+ 154.5		
+ 153.8		
+ 153.1		
+ 152.4		
+ 151.7		
+ 151.0		
+ 150.3		
+ 149.6		
+ 148.9		
+ 148.2		
+ 147.5		
+ 146.8		
+ 146.1		
+ 145.4		
+ 144.7		
+ 144.0		
+ 143.3		
+ 142.6		
+ 141.9		
+ 141.2		
+ 140.5		
+ 139.8		
+ 139.1		
+ 138.4		
+ 137.7		
+ 137.0		
+ 136.3		
+ 135.6		
+ 134.9		
+ 134.2		
+ 133.5		
+ 132.8		
+ 132.1		
+ 131.4		
+ 130.7		
+ 130.0		
+ 129.3		
+ 128.6		
+ 127.9		
+ 127.2		
+ 126.5		
+ 125.8		
+ 125.1		
+ 124.4		
+ 123.7		
+ 123.0		
+ 122.3		
+ 121.6		
+ 120.9		
+ 120.2		
+ 119.5		
+ 118.8		
+ 118.1		
+ 117.4		
+ 116.7		
+ 116.0		
+ 115.3		
+ 114.6		
+ 113.9		
+ 113.2		
+ 112.5		
+ 111.8		
+ 111.1		
+ 110.4		
+ 109.7		
+ 109.0		
+ 108.3		
+ 107.6		
+ 106.9		
+ 106.2		
+ 105.5		
+ 104.8		
+ 104.1		
+ 103.4		
+ 102.7		
+ 102.0		
+ 101.3		
+ 100.6		
+ 99.9		
+ 99.2		
+ 98.5		
+ 97.8		
+ 97.1		
+ 96.4		
+ 95.7		
+ 95.0		
+ 94.3		
+ 93.6		
+ 92.9		
+ 92.2		
+ 91.5		
+ 90.8		
+ 90.1		
+ 89.4		
+ 88.7		
+ 88.0		
+ 87.3		
+ 86.6		
+ 85.9		
+ 85.2		
+ 84.5		
+ 83.8		
+ 83.1		
+ 82.4		
+ 81.7		
+ 81.0		
+ 80.3		
+ 79.6		
+ 78.9		
+ 78.2		
+ 77.5		
+ 76.8		
+ 76.1		
+ 75.4		
+ 74.7		
+ 74.0		
+ 73.3		
+ 72.6		
+ 71.9		
+ 71.2		
+ 70.5		
+ 69.8		
+ 69.1		
+ 68.4		
+ 67.7		
+ 67.0		
+ 66.3		
+ 65.6		
+ 64.9		
+ 64.2		
+ 63.5		
+ 62.8		
+ 62.1		
+ 61.4		
+ 60.7		
+ 60.0		
+ 59.3		
+ 58.6		
+ 57.9		
+ 57.2		
+ 56.5		
+ 55.8		
+ 55.1		
+ 54.4		
+ 53.7		
+ 53.0		
+ 52.3		
+ 51.6		
+ 50.9		
+ 50.2		
+ 49.5		
+ 48.8		
+ 48.1		
+ 47.4		
+ 46.7		
+ 46.0		
+ 45.3		
+ 44.6		
+ 43.9		
+ 43.2		
+ 42.5		
+ 41.8		
+ 41.1		
+ 40.4		
+ 39.7		
+ 39.0		
+ 38.3		
+ 37.6		
+ 36.9		
+ 36.2		
+ 35.5		
+ 34.8		
+ 34.1		
+ 33.4		
+ 32.7		
+ 32.0		
+ 31.3		
+ 30.6		
+ 29.9		
+ 29.2		
+ 28.5		
+ 27.8		
+ 27.1		
+ 26.4		
+ 25.7		
+ 25.0		
+ 24.3		
+ 23.6		
+ 22.9		
+ 22.2		
+ 21.5		
+ 20.8		
+ 20.1		
+ 19.4		
+ 18.7		
+ 18.0		
+ 17.3		
+ 16.6		
+ 15.9		
+ 15.2		
+ 14.5		
+ 13.8		
+ 13.1		
+ 12.4		
+ 11.7		
+ 11.0		
+ 10.3		
+ 9.6		
+ 8.9		
+ 8.2		
+ 7.5		
+ 6.8		
+ 6.1		
+ 5.4		
+ 4.7		
+ 4.0		
+ 3.3		
+ 2.6		
+ 1.9		
+ 1.2		
+ 0.5		
+ 0.0		

X-Section 20' Alley in Block 259, U.H.Ts

1-16-47

F.O.

See P 12

W.O. 230

Fd. cross

x

160'

10'

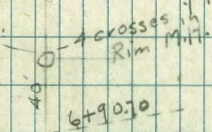
ct

7'

Florida St.

160'

Cypress



10 10

1

40'

1

ct

N

Alabama

set Hub

9+00

set

cross on MH Lid

Myrtle

See P 12 for sketch

X-Section 20' Alley in Blk 259

T.P. 5.26 222.29 4.65 217.03

2+00

1+90 - 10' Lt. = Φ 3' Conc. walk

1+50

1+35 - 10' Lt. = Φ P. pole

1+00

0+50

0+00 = N.L. Myrtle

P.M. 0.33 221.68 221.35

Lt = W.

Φ

Rt = E.

316.80	216.0	216.6	222.29	217.1	218.6	219.2
4.58 10' walk	0.1 0	0.1 0	0.1	0.1	0.1	0.1
217.7	216.8	216.5	216.6	219.2	222.3	
0.1 0	0.1 0	0.1 0	0.1	0.1	0.1	
Ground along Blk						
216.2	216.2	216.2	216.2	216.2	224.7	227.2
0.1 0	0.1 0	0.1 0	0.1 0	0.1 0	0.1 0	0.1 0
216.2	216.0	216.1	216.2	226.7	229.6	
0.1 0	0.1 0	0.1 0	0.1 0	0.1 0	0.1 0	
215.5	215.9	216.1	226.7	230.2		
0.1 0	0.1 0	0.1 0	0.1 0	0.1 0		
221.68						

4+08 - 4' Rt. = Sewer M.H. - Conc. Cover

4+07 - 9.4 Lt. = P. pole

4+00

3+53 - 10.1 Rt. = Beg. w. side 6" Conc. Wall

3+50

3+15 - 11.5 Rt. = Cov. Gar. Opening South - wood floor

3+12 - 9' Lt. = P. pole

3+00

2+68 - 10.5 Lt. = end 4" Conc. wall along path

2+64 - 10.5 Lt. = end 3" Conc. wall along path

2+50

2+13 - 9' Lt. = 16' Ev. tree

	Lt.		Rt.
	215.9	217.3	218.80
	216.0	217.4	219.9
	216.4	217.5	220.8
	216.0	217.7	220.4
	216.0	217.4	219.92
	216.0	217.6	219.41
	216.0	217.3	219.4
	215.8	216.9	219.4
	215.8	217.0	219.4
	215.8	217.3	219.4
	215.8	218.3	219.4
	215.8	219.3	219.4
	215.8	220.3	219.4
	215.8	221.3	219.4
	215.8	222.3	219.4

216.63
5.66
10
Top wall

216.47
5.88
10.88
Top wall

219.37
10.1
Top wall
219.41
5.58
10.58
floor

5+60

5+45

5+38 - 11' Lt. = # 18" Cypress

5+30

5+09 - 9.2 Lt. = # P pole

T.P. 4.77 219.71 7.35 214.94

4+88

4+50

4+48 - 10.4 Rt. end Conc. wall

4+20 - 15.5 Lt. = # House

385 50%

217.32	211.6	209.5	214.6	211.3	210.8	213.7	212.1
1.97	10.8	6.7	10.7	10.7	10.7	10.7	10.7
15.5	20	21	22	20	20	20	20
Floor		in creek	# Creek				
216.1	214.3	213.0	213.4	213.4	213.4	212.5	212.5
5.2	8.0	5.1	5.3	5.3	5.3	5.3	5.3
215.3	215.3	213.0	213.4	213.4	213.4	212.5	212.5
0	10	0	5	5	5	5	5
216.1	214.3	213.0	213.4	213.4	213.4	212.5	212.5
5.2	8.0	5.1	5.3	5.3	5.3	5.3	5.3
215.3	215.3	213.0	213.4	213.4	213.4	212.5	212.5
0	10	0	5	5	5	5	5
216.6	214.3	213.0	213.4	213.4	213.4	212.5	212.5
5.8	8.0	5.1	5.3	5.3	5.3	5.3	5.3
219.4	219.3	213.0	213.4	213.4	213.4	212.5	212.5
0.9	10	0	5	5	5	5	5
220.1	219.9	214.5	214.6	213.7	213.7	212.5	212.5
2.2	2.4	2.0	2.0	2.0	2.0	2.0	2.0
219.52	219.52	214.5	214.6	213.7	213.7	212.5	212.5
10.4	10.4	10.4	10.4	10.4	10.4	10.4	10.4
Top Wall	Top Wall						
222.29	222.29	222.29	222.29	222.29	222.29	222.29	222.29

2.9 5.7

Florida
 Check BM: SW. BP Cypress + 0.77 236.03 236.00
 12.57 236.80 0.05 224.23
 6+90.70

T.P. 11.47 224.28 6.90 212.81

6+50

6+25

6+08- 9.3 Lt. - ± P pole

6+00

5+75

Lt.

Rt.

218.8
 0.07
 0.0

218.2
 0.0

217.0
 0.0

213.8
 0.05

212.8
 0.05

212.9
 0.04

217.3
 0.0

A creek

217.3
 0.0

216.5
 0.0

213.6
 0.1

212.4
 0.3
 A creek

212.4
 0.3

219.3
 0.0

216.3
 0.0

215.7
 0.0

215.6
 0.0

213.2
 0.5

212.4
 0.0

212.1
 0.6
 A creek

212.2
 0.05

214.9
 0.8
 0.0

215.6
 0.1

214.9
 0.8
 0.0

212.1
 0.6

211.8
 0.9
 A creek

211.8
 0.9

211.8
 0.9

212.8
 0.9

214.3
 0.8
 0.0

215.0
 0.7
 0.4

211.6
 0.1
 0.10
 A creek

211.2
 0.5

211.5
 0.7
 0.10

214.3
 0.6
 0.20

212.8
 0.9
 0.0

219.71

3-14-47

indexed
c.s.k.

v.v. o. 230

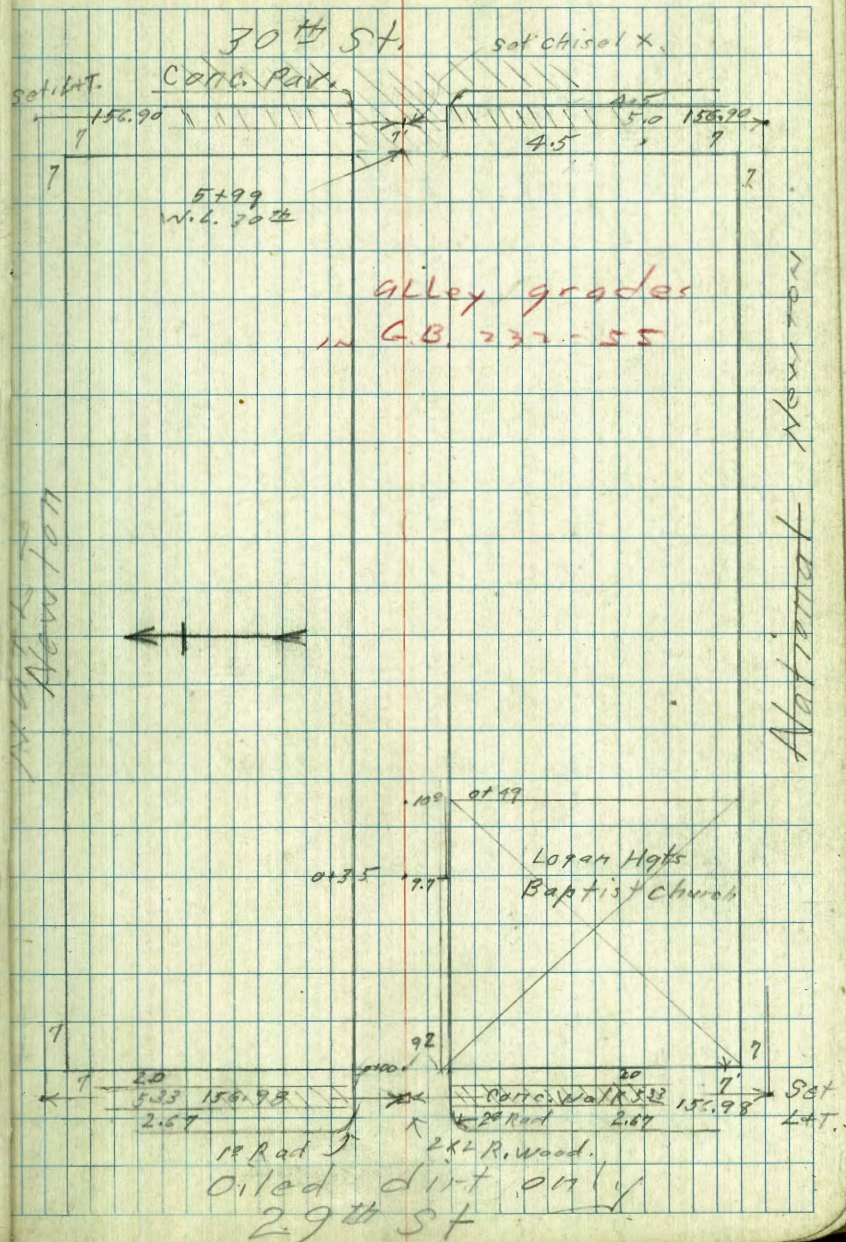
Cross section alley in
B.K. 9 - Reed & Hubbels Sub.
Tie pt. sheet 382

Sommermejer

W Moore

J. Green

X-sec. Alley B.K. 9 { Reed + 23
Hubbels



Alley BIK.9 - Reed & Hubbals.

Pages 23 thru 30

Lt
North

±

Rt
South

24

0+56 10² Rt. = start wooden shed
 0+50 8.9 Rt = ctr. 16" P. pole
 0+49 10² Rt = End stucco church } 9² Rt = 9.45.
 10² Lt = 10" tel. pole. } Meter + Series
 0+48 10² Lt = ctr. 9" tel. pole.

0+40

0+35 = .03 jog in Bldg. on Rt. (P.23)

0+10

0+08 11² Lt = start series wooden sheds +
 porches. No foundation. wood placi.

0+01² 4" down spout. roof drain 9² Rt.

0+00 start stucco church 9.7 Rt

0-10

NW.B.P. 29th
 Newton

8.69 62.61

53.92

59.1
 $\frac{3.5}{10}$ $\frac{6.7}{10}$ $\frac{3.8}{10}$ $\frac{3.9}{10}$ $\frac{3.5}{10}$

59.0
 $\frac{3.6}{10}$ $\frac{3.9}{10}$ $\frac{4.0}{10}$ $\frac{4.2}{10}$ $\frac{4.9}{10}$

58.5
 $\frac{4.1}{10}$ $\frac{4.7}{10}$ $\frac{5.2}{10}$ $\frac{5.7}{10}$ $\frac{4.8}{10}$

57.86
 $\frac{4.75}{10.1}$ $\frac{5.2}{10.1}$ $\frac{5.3}{10.1}$ $\frac{5.6}{10.1}$ $\frac{5.13}{10.1}$

57.70
 $\frac{4.71}{10.1}$ $\frac{5.6}{10.1}$ $\frac{5.8}{10.1}$ $\frac{4.9}{10.1}$ $\frac{5.12}{10.1}$

62.61

Lt.
N.

⊕

Rt.
S

25

1+75 10' Lt. = ctr. 9" Tel. pole

1+68 { 9' Rt. = N.E. cor. shed (End shed)
Start Wire Fence

1+50

1+49 { 9.9 Rt. = End board fence.
8.8 Rt. = N.W. cor. shed.
7' Rt. = ctr. 16" P. pole

1+31 10.9 Lt. = End board fence - 9.2 Rt. = start board fence.

1+24E 10.3 Lt. = start board fence.

1+22E 10.3 Rt. = E. 8.5 wide Conc. Apron.
12.6 Lt. = ⊕ 2.6 Conc. walk

1+155 9.2 Rt. = End Fence

1+12 9.2 Rt. = End shed - start board fence

1+02 = ⊕ 8.2 Apron + Gar. door

T.P. 4.66 63.70 3.57 59.04.

32.61

1+00 9.7 Rt. = N.W. cor. 12' long shed.

0+96.5 9.7 Rt. = start board fence
10.3 Rt. = End wood on shed

0+96.5 10.8 Lt. = End series wooden sheds
+ garages. No foundations. dirt floors.

0+90

62.61

59.1

4.6
10

58.8

4.9

58.8

4.9
6

57.0

4.7
8.8

59.38

4.32
12.6
walk

59.1

4.6
10

58.9

4.8
10

58.70

5.0
10

58.70

5.00
12.3
apron

58.71

4.99
14.4
Dirt floor

59.2

3.98
3.6
Dirt floor

59.56

4.14
2.7
apron

63.70

59.3

3.3
10

59.0

3.6

58.7

3.9
10

62.61

2+25 8⁷ Rt. = End lath fence

2+11 8⁸ Rt. = start Lath fence

2+10^E 12^E Rt. = \pm 2³ wide Conc. walk.

2+09 14.9 Rt. = End doub. gar. Conc. floor
13^o Rt. = End Conc. apron

2.00

1+99 10.4 Lt. = start comb. wire & board fence

1+95 14³ Lt. = \pm Sing. gar. dirt floor

1+90 12.8 Rt. = start Conc apron.
14.5 " " double gar. Conc. floor

1+88 8^E Rt. = End wire fence

63.70

Lt.
N.

14

Rt.
S.

26

58.4

5.3
10

58.4

5.3

58.3

5.4

58.0

5.7
10

58.45

5.2
12.5

58.43

5.27
13
12.47

57.65

5.25
14.7
Floor

58.6

5.1
10

58.5

5.2

58.4

5.3
10

58.9

4.8

58.34

5.31
11
12.8

58.56

5.14
14.1
14.5

63.70

11³ Rt. Start delapidated board fence
 3+16 11² Rt. = End board Bldg.
 3+12 13² Lt. = 6' doub. gar. dirt floor
 3+00
 +97 10² Lt. = End board fence
 2+97 9² Lt. = ctr. 9" Tol. pole
 2+96 11¹ Rt. = start board dwelling
 2+96 9² Rt. = End board fence
 2+76.5 10² Lt. = End shed. start board fence.
 2+75^E 9² Rt. = Start board fence
 2+50
 2+49 11² Lt. = start frame shed
 2+49 11² Lt. = End. board + wire fence
 2+48 11² Rt. End same
 2+28 11² Rt. = start board + bath. dwelling
 63.70

59.4
 4.3
 13.6

59.2
 4.5
 10

58.7
 5.0

58.4
 5.3
 7

58.3
 5.4
 10

58.3
 5.4
 10

58.2
 5.5

58.1
 5.6
 6

10"
 P.P.
 6.8

58.8
 5.9
 10

63.70

4+43 10² Rt. = \$ 3' wide conc. walk
(Broken up)

4+30 9² Rt. = End shed + start board fence.

4+25

4+23 9² Rt. = start board shed

4+22 9⁰ Lt. = ctr. 8" Tel. pole

3+99 10² Lt. = start board fence.

Also 7.8 Rt. End lath fence.

3+73 8¹ Rt. = ctr. 16" P. pole

3+62 16² Lt. = \$ Sing. Bar. conc. floor

T. P. 5.12 64.34 4.49 59.22

3+54.5 10² Lt. End board fence.

3+46 10¹ Lt. = ctr 8" tree stump

3+36 10¹ Lt. = start board fence

3+30 10² Lt. = \$ Sing. bar. dirt floor

+24 9² Rt. = start lath fence

3+24 End board fence 11² Rt

63.70

N.
Lt.

\$

So.
Rt.

28

157.9
10.2

8.85
10

8.85
10

1.85
5.0

5.85
9.7

59.21
4.49
15.7
Bar

59.01
4.69
13.4
R.P.P.

8.85
10

1.85
5.0
64.34

5.85
9

2.85
10

5.85
10

7.65
10.2

5.2
4.5

7.59.0
9

5.85.4
10

63.70

5+82 10² Rt = ^{start} ctr. 4' High 2' wide hedge

5+81 E 10 Rt = End Wire fence

5+56 12² Lt. = ctr. Sing. Gar. Conc. floor

5+43 E 9² Lt. = 9" Tel. pole

5+20 10¹ Rt. = start wire fence

5+11 14² Rt. = E double Gar. dirt floor

4+98 9² Rt. = ctr. 18" P. pole

4+90 10² Rt. = E. Sing Gar. dirt floor

4+82 10² Rt. = End fence

4+65

4+56 9² Lt. = End board fence

64.34

Lt
N

E

Rt.
S

61.20	60.5	59.9	59.7	59.6	
$\frac{3.14}{12.7}$	$\frac{3.8}{14}$	$\frac{4.4}{8}$	4.6	$\frac{4.9}{10}$	
$\frac{4.60.1}{10}$	$\frac{4.59.9}{8}$	4.5	$\frac{5.0}{10}$	$\frac{5.5}{14}$	58.8
					58.8
$\frac{5.9}{10}$	$\frac{4.6}{4}$	4.8	$\frac{5.1}{9}$	$\frac{5.9}{10}$	$\frac{5.5}{14.4}$
$\frac{6.5}{11}$	$\frac{4.7}{11}$	4.8	$\frac{5.1}{10}$	$\frac{5.0}{12}$	
					64.34

Indexed
c.siki

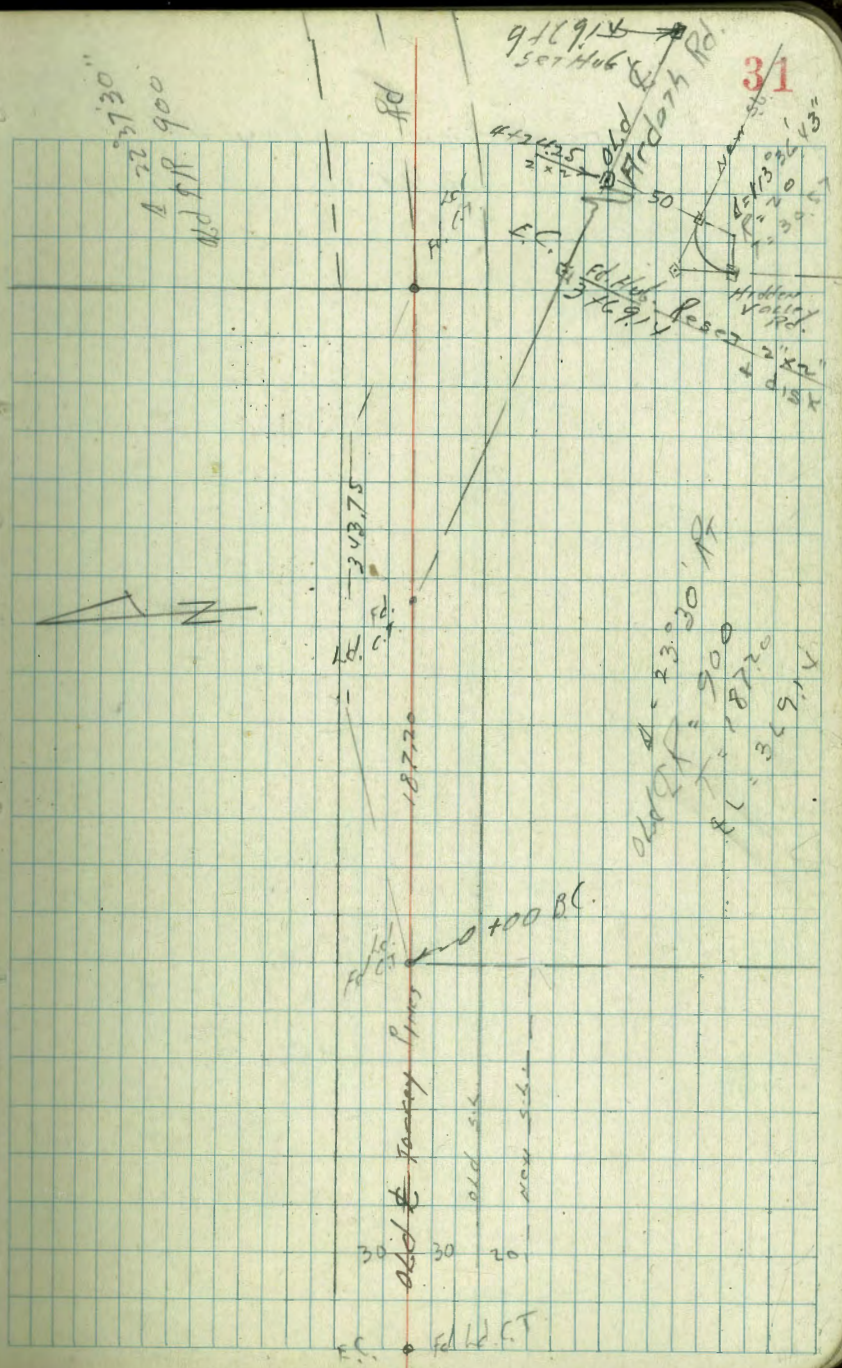
X sec Ardath Rd.
See 5846 L

Moore
Boyer
Green
Roberts
5-16-47

W.O. 80033

20' Con. Strip Pav. is now
an old E. Row. on
Terry Farm Rd.
see offsets, Level Notes

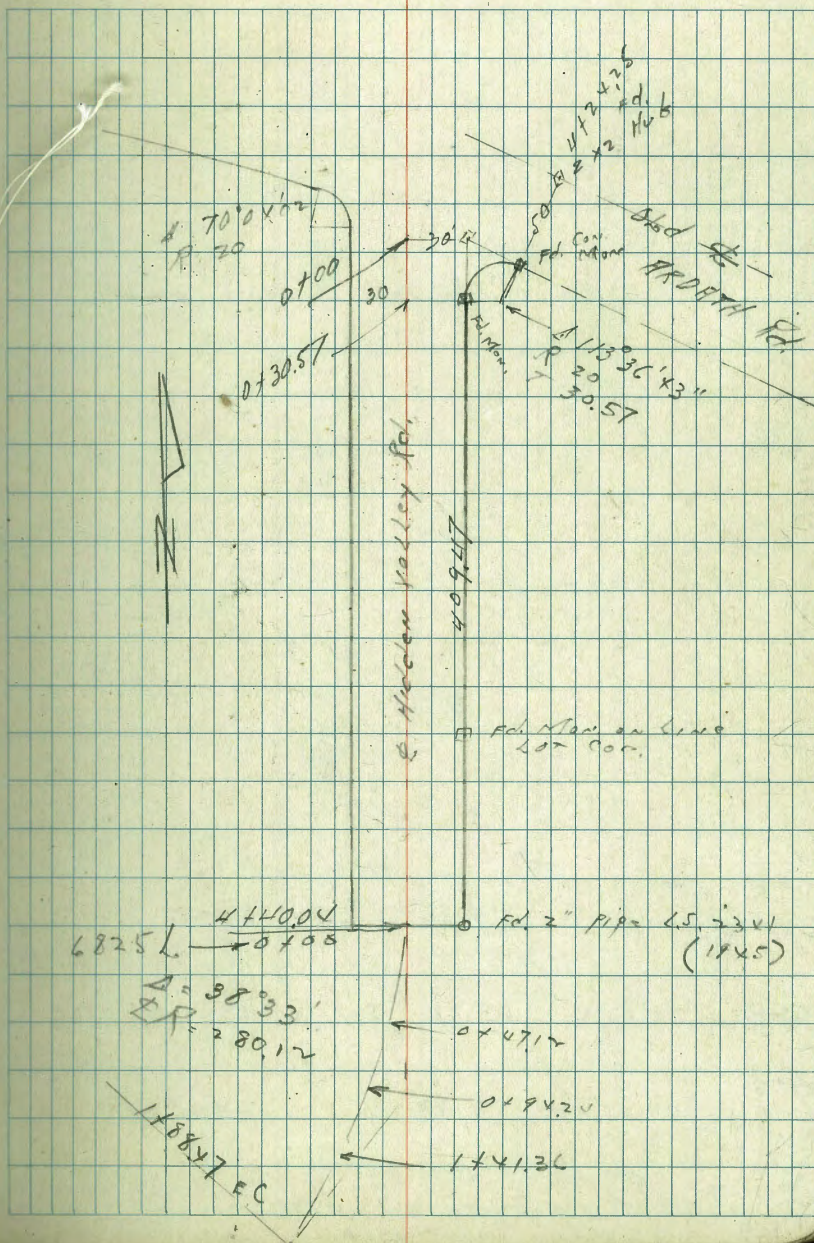
See FB. 2055



Xsec Hidden Valley Rd

5846 L

X10 20033 6825 L



X SEC ARDATH RD.
Sketch p. 31

T.P. & I.D. CT.				
0100	505	<u>59.30</u>	1.53	5425
O.C. RT.				
T.P.	506	55.78	5.11	5077
BM.				
SMALL	1.14	55.83		5469
BRASS PLUG				
N.E. COR.	La Jolla Shores Drive			
CURB	and Calle de la Playa			

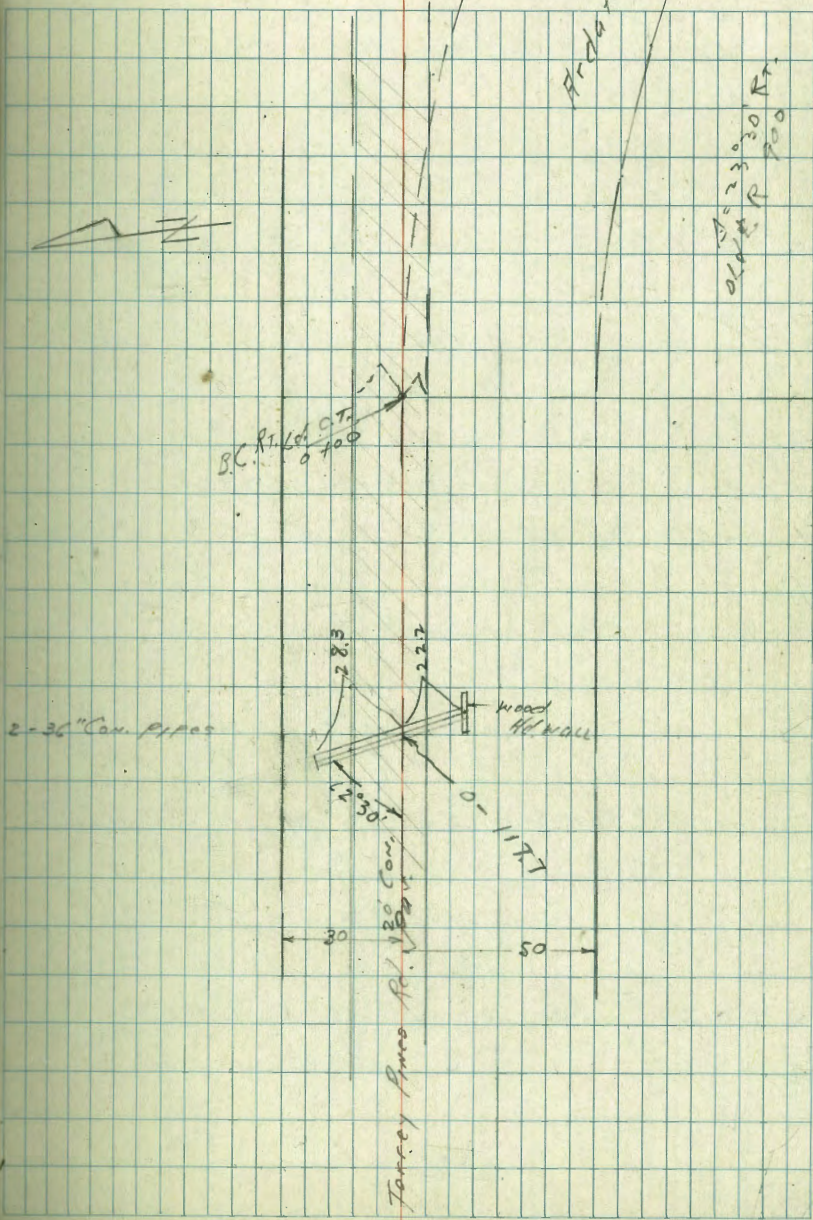
385 50%

LT = only

old
d
ROW

Ardash Rd

33



Andover Rd

0 + 50 1° 35.5' R

0 + 100 B.C. R.

0 - 50

0 - 41 TOL P 20.5 Pt 447305 H

- 0 - 47 PP + TOL P. P 60927 235.47

0 - 110 Sec at 90°

0 - 117.7 Sec at 42° 30' R. do 30" Cor. Pipe

E.P. = edge Pav.

0 - 117.7 Sec at 90°

59.30

Lt W.Lt

6.9	5.8	4.4	3.98	3.94	3.9	3.2	2.7	2.5	2.0	1.7	1.7	1.5	1.2	1.0	0.8	0.7	0.6
50	30	27	25	22	19	17	15	12	10	8	7	6	5	4	3	2	1
50.70	52.10	52.70	53.50	54.22	54.25	54.19	53.30	52.60	51.90	53.30	53.70	53.70	53.70	53.70	53.70	53.70	53.70
49.70	50.80	51.30	52.80	53.25	53.41	53.21	52.30	49.30	49.30	47.30	47.80	52.60	52.30	52.30	52.30	52.30	52.30
50	30	28	26	24	22	20	19	17	16	15	14	13	12	11	10	9	8
52.41	52.32	51.80	47.30	47.50	51.60	51.70	51.70	51.70	51.70	51.70	51.70	51.70	51.70	51.70	51.70	51.70	51.70
6.89	6.98	7.5	7.5	7.5	7.5	7.5	7.5	7.5	7.5	7.5	7.5	7.5	7.5	7.5	7.5	7.5	7.5
50	30	25	22	20	19	17	15	13	12	11	10	9	8	7	6	5	4
47.8	49.40	49.20	51.30	52.28	52.29	52.19	51.70	51.50	51.40	51.40	51.40	51.40	51.40	51.40	51.40	51.40	51.40
50	30	25	22	20	19	17	15	13	12	11	10	9	8	7	6	5	4
59.30	59.30	59.30	59.30	59.30	59.30	59.30	59.30	59.30	59.30	59.30	59.30	59.30	59.30	59.30	59.30	59.30	59.30

59.30

3 + 0 v

2 + 90

2 + 76 29 LT Tel. P 45 36.20 H

2 + 50 7° 57.46

1/5
6

2 + 00 6° 21.97 R

1 + 50 4° 46.48 R

T.P 7.90 64.80 2.40 56.90

1 + 35 8 v R Tel. P. 44 73.06 H

1 + 00 3° 10.99 R

59.30.

L

old
Fav.

R

35

57	55.10	57	56.40	49.7	60.77	47	42.10	19	62.90
56	56.30	56	57.00	49.7	60.58	48	61.50	20	62.70
55	57.50	55	59.00	49.7	60.40	49	57.80	21	59.60
54	57.40	54	59.12	49.7	56.90	50	57.80	22	57.40
53	57.17	53	59.14	49.7	56.90	51	51.80	23	61.70
52	57.16	52	58.90	49.7	59.50	52	61.90	24	62.30
51	57.10	51	56.10	49.7	60.30	53	61.80	25	62.30
50	57.10	50	56.20	49.7	60.30	54	61.70	26	60.30
49	55.10	49	57.10	49.7	58.80	55	60.00	27	59.70
48	55.10	48	58.30	49.7	58.80	56	59.40	28	59.70
47	56.50	47	57.10	49.7	58.80	57	59.40	29	59.70
46	56.50	46	57.80	49.7	58.80	58	59.40	30	59.70
45	55.50	45	57.80	49.7	58.80	59	59.40	31	59.70
44	56.10	44	57.80	49.7	58.80	60	59.40	32	59.70
43	56.40	43	56.40	49.7	58.80	61	59.40	33	59.70
42	54.30	42	56.40	49.7	58.80	62	59.40	34	59.70
41	54.90	41	56.40	49.7	58.80	63	59.40	35	59.70
40	55.10	40	56.40	49.7	58.80	64	59.40	36	59.70
39	55.20	39	56.40	49.7	58.80	65	59.40	37	59.70
38	55.20	38	56.40	49.7	58.80	66	59.40	38	59.70
37	55.20	37	56.40	49.7	58.80	67	59.40	39	59.70
36	55.20	36	56.40	49.7	58.80	68	59.40	40	59.70
35	55.20	35	56.40	49.7	58.80	69	59.40	41	59.70
34	55.20	34	56.40	49.7	58.80	70	59.40	42	59.70
33	55.20	33	56.40	49.7	58.80	71	59.40	43	59.70
32	55.20	32	56.40	49.7	58.80	72	59.40	44	59.70
31	55.20	31	56.40	49.7	58.80	73	59.40	45	59.70
30	55.20	30	56.40	49.7	58.80	74	59.40	46	59.70
29	55.20	29	56.40	49.7	58.80	75	59.40	47	59.70
28	55.20	28	56.40	49.7	58.80	76	59.40	48	59.70
27	55.20	27	56.40	49.7	58.80	77	59.40	49	59.70
26	55.20	26	56.40	49.7	58.80	78	59.40	50	59.70
25	55.20	25	56.40	49.7	58.80	79	59.40	51	59.70
24	55.20	24	56.40	49.7	58.80	80	59.40	52	59.70
23	55.20	23	56.40	49.7	58.80	81	59.40	53	59.70
22	55.20	22	56.40	49.7	58.80	82	59.40	54	59.70
21	55.20	21	56.40	49.7	58.80	83	59.40	55	59.70
20	55.20	20	56.40	49.7	58.80	84	59.40	56	59.70
19	55.20	19	56.40	49.7	58.80	85	59.40	57	59.70
18	55.20	18	56.40	49.7	58.80	86	59.40	58	59.70
17	55.20	17	56.40	49.7	58.80	87	59.40	59	59.70
16	55.20	16	56.40	49.7	58.80	88	59.40	60	59.70
15	55.20	15	56.40	49.7	58.80	89	59.40	61	59.70
14	55.20	14	56.40	49.7	58.80	90	59.40	62	59.70
13	55.20	13	56.40	49.7	58.80	91	59.40	63	59.70
12	55.20	12	56.40	49.7	58.80	92	59.40	64	59.70
11	55.20	11	56.40	49.7	58.80	93	59.40	65	59.70
10	55.20	10	56.40	49.7	58.80	94	59.40	66	59.70
9	55.20	9	56.40	49.7	58.80	95	59.40	67	59.70
8	55.20	8	56.40	49.7	58.80	96	59.40	68	59.70
7	55.20	7	56.40	49.7	58.80	97	59.40	69	59.70
6	55.20	6	56.40	49.7	58.80	98	59.40	70	59.70
5	55.20	5	56.40	49.7	58.80	99	59.40	71	59.70
4	55.20	4	56.40	49.7	58.80	100	59.40	72	59.70
3	55.20	3	56.40	49.7	58.80	101	59.40	73	59.70
2	55.20	2	56.40	49.7	58.80	102	59.40	74	59.70
1	55.20	1	56.40	49.7	58.80	103	59.40	75	59.70

59.30

Andark Rd

3+37

3+35

BM
Below 6 x 8 68.94

62.46

Set BM. 1/2" 58. spike Tol. P.
Newly Cor Andark Rd.
and Torrey Pines Rd.

2.34

62.46 ✓

3+06

64.80

50 63.54

40 63.34

30 62.94

22 59.14

18 63.24

22 63.54

22
1.00
57
16"
57
63.54

22
63.24

22
63.44

25
62.94

22
60.94

22
60.24

20
60.14

68.94

Andark Rd.

3+69.14 FC 50

50

Hidden Valley Rd

3+37

3+04

Broken down

16" hhd
stave
pipe down

1.8
50

2.4
22

2.3

64.80

5 + 00

T.P. 7.37 78.18 0.13 1881

4 + 50 Fence 2 x 67. 3.3
40

4 + 36 21 P. Guy Pole to P.P.

4 + 24.25 Rail fence 2 x 27. 3.5
50

4 + 00

3 + 69.14 E.C.

3 + 59

68.94

64.04
4.9
50

385 50%

50	63.74	64.84	64.94
27	63.24	64.34	64.64
22	60.94	63.84	64.84
20	63.14	64.24	64.34
16	64.14	63.64	64.84
10	62.84	63.24	65.14
5	63.54	63.64	64.94
2	63.94	63.54	64.24
1	63.74	64.64	65.14
0		64.14	65.04
		64.14	64.74

50	65.14	65.84	65.84
21	64.54	66.54	66.74
18	65.34	66.74	66.84
15	65.74	66.84	66.84
12	64.94	66.84	66.84
9	65.64	66.84	66.84
6	65.94	66.84	66.84
3	65.74	66.84	66.84
0	65.94	66.84	66.84
1	65.74	66.84	66.84
2	65.94	66.84	66.84
3	65.74	66.84	66.84
4	65.94	66.84	66.84
5	65.74	66.84	66.84
6	65.94	66.84	66.84
7	65.74	66.84	66.84
8	65.94	66.84	66.84
9	65.74	66.84	66.84
10	65.94	66.84	66.84
11	65.74	66.84	66.84
12	65.94	66.84	66.84
13	65.74	66.84	66.84
14	65.94	66.84	66.84
15	65.74	66.84	66.84
16	65.94	66.84	66.84
17	65.74	66.84	66.84
18	65.94	66.84	66.84
19	65.74	66.84	66.84
20	65.94	66.84	66.84
21	65.74	66.84	66.84
22	65.94	66.84	66.84
23	65.74	66.84	66.84
24	65.94	66.84	66.84
25	65.74	66.84	66.84
26	65.94	66.84	66.84
27	65.74	66.84	66.84
28	65.94	66.84	66.84
29	65.74	66.84	66.84
30	65.94	66.84	66.84

Lx

TOLD TO Lx

R

37

68.58
48.88
69.38
49.38
68.28
68.58
68.88
68.88
68.08
68.88
68.98
68.68

68.94

8

7x50

7+00

T.P 10.53 87.44 1.27 76.91

6+50

6+00

5+98 36' LT and fence

5+50

78.18

5.0	5.3	5.7	4.1	5.0	4.5	4.7	5.0	4.4	5.4
83.44	82.14	82.94	83.34	82.44	82.99	82.14	82.44	82.84	82.04
80	30	25	9	7	45	10	10	18	50
5.0	7.3	6.2	5.8	7.9	7.4	7.3	8.1	7.1	8.1
81.44	80.14	81.24	80.64	79.54	80.04	80.14	79.34	80.34	79.34
80	30	17	10	8	74	8	13	19	50
87	9.9	8.5	9.1	9.9	10.2	10.4	10.7	10.1	9.9
110	30	28	10	8	10.2	9	13	15	50
77.18	77.18	76.18	76.08	75.18	75.38	75.18	73.78	73.78	73.18
1.0	2.0	2.1	3.0	2.8	3.0	4.4	3.0	3.0	3.0
80	30	15	9	28	6	14	10	70	70
73.78	73.58	73.58	72.98	73.18	73.18	73.18	72.78	73.18	73.08
5.4	5.0	4.6	5.2	5.0	5.0	5.9	5.0	5.1	5.1
30	22	11	10	12	70	13	10	50	50
71.48	70.48	70.88	71.58	71.28	71.58	71.18	69.68	70.98	70.28
1.7	2.7	2.3	6.6	6.9	7.6	7.1	8.5	7.2	7.9
30	28	20	18	13	12	1	12	15	20
70.68	70.98	70.98	70.28	70.98	70.98	70.68	70.28	70.98	70.68
7.5	7.5	7.5	7.5	7.5	7.5	7.5	7.5	7.5	7.5
50	50	50	50	50	50	50	50	50	50

Note!
STORM
ditch on LT South
from valley to

776

3+67

3+65 30 L7 end Rail fence

3+50

132 198 R 8" di. pipe zone

720

3+00 29.8 R Rail fence

2+95 20.2 R P.P. P 61077
A.J. 1-55

2+50

75.49

5.5
35

6.9
35

7.3
35

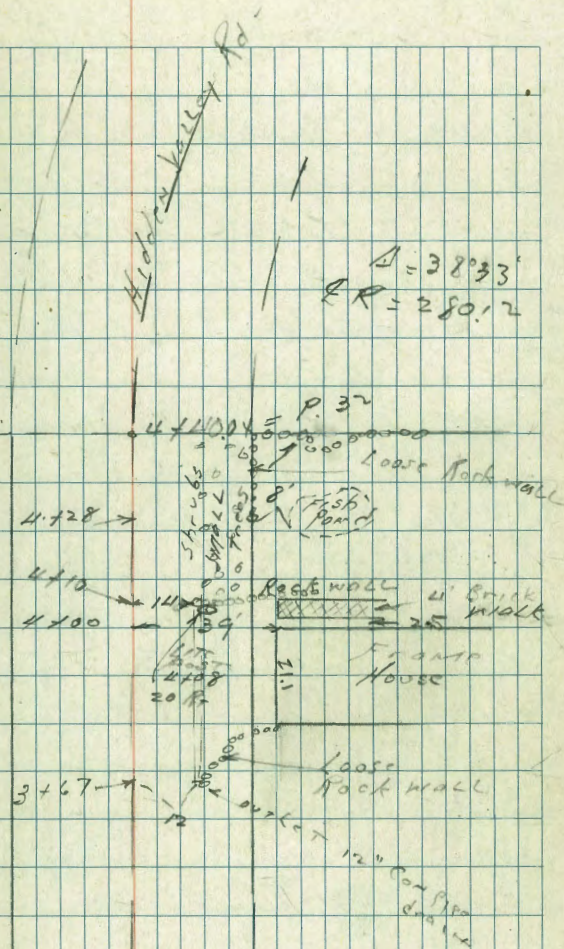
7.9
35

12.69	12.39	11.49	69.99	40.29	71.19	72.39	73.29	72.19	71.99	72.19
12.69	12.39	11.49	69.99	40.29	71.19	72.39	73.29	72.19	71.99	72.19
69.99	69.19	68.99	69.79	69.29	69.09	68.89	68.49	68.19	68.59	68.09
68.59	68.39	67.79	68.99	68.29	67.89	67.49	67.69	67.09	67.99	67.49
68.09	67.99	67.19	68.09	67.69	67.39	66.69	65.09	64.99	64.99	64.99
67.49	67.29	66.49	68.09	67.69	67.39	66.69	65.09	64.99	64.99	64.99
67.19	66.49	66.19	67.19	66.89	66.29	65.99	65.59	64.69	63.89	63.89
66.89	66.19	65.89	66.19	65.89	65.29	64.99	64.59	63.89	63.89	63.89
66.29	65.89	65.59	65.89	65.29	64.99	64.69	64.29	63.89	63.89	63.89
65.99	65.59	64.69	65.99	65.29	64.99	64.69	64.29	63.89	63.89	63.89
65.59	64.69	64.69	65.59	64.99	64.69	64.29	63.89	63.89	63.89	63.89
65.29	64.99	64.29	65.29	64.69	64.29	63.89	63.89	63.89	63.89	63.89
64.99	64.29	63.89	64.99	64.29	63.89	63.89	63.89	63.89	63.89	63.89
64.69	64.29	63.89	64.69	64.29	63.89	63.89	63.89	63.89	63.89	63.89
64.29	63.89	63.89	64.29	63.89	63.89	63.89	63.89	63.89	63.89	63.89
63.89	63.89	63.89	63.89	63.89	63.89	63.89	63.89	63.89	63.89	63.89

75.49

Location of Trees on Left

3783	17	LT	7" ^{di.}	Pepper Tree
3794	"	"	2"	Eucal.
4103	18	LT	3"	ACACIA
4720	16	LT	7"	"
4726	"	"	2"	Eucal.
4735	15	LT	3"	ACACIA
0705	14	LT	2"	"
0713	"	"	6"	"
0721	12	LT	4"	Eucal
0738	14	LT	2"	ACACIA
0744	13	"	2"	Eucal
0751	13	"	2"	ACACIA
0759	13	"	"	"
0771	16	"	"	"
0781	"	"	3"	Eucal



check to
 T.P. 0.19 B.M. 0.98 54.69 54.69
 T.P. 3.97 55.67 11.14 51.70
 SPIKE
 B.M. 0.28 62.84 62.46
 Below

check to # spike B.M. -
 P. 36 6.02 62.47 62.46
 T.P. 3.92 68.49 8.25 64.57
 T.P. 0.29 72.82 12.45 72.53
 T.P. 0.13 84.98 13.07 84.85

1 + 88.47 EC end per order

1 + 48 21.5 LT Tel. P 427428 H

1 + 41.4

0 + 94.2

T.P. 12.11 97.92 0.49 85.81

86.30

1/2 SPIKE Tel. P NW Cor Tarry Pines Rd.
 and Ardath P 36

105.92	174.12	94.12	96.12	95.92	96.12	96.12	93.22	91.42	89.52
18.0	3.8	3.0	1.8	1.0	1.0	1.3	2.7	1.5	1.2
30	10	14	12	14	10	20	25	30	30
100.12	91.42	90.52	90.72	91.42	91.52	90.82	91.82	91.72	86.82
2.5	0.5	7.5	7.2	1.5	6.5	7.1	1.1	1.1	1.1
30	24	12	8	10	15	17	20	30	30
96.92	85.32	85.32	86.52	86.22	85.92	87.22	86.52	86.02	84.42
10	12.6	12.5	11.0	11.7	12.0	10.7	11.4	11.9	13.1
30	11	7	0	11.7	15	20	28	30	30
									83.62
									143
									40

97.92

0 + 70.5 N. edge do gar Con. fl.

0 + 67.5 N edge Con apron

0 + 65 E 4' Con walk

0 + 63 S end con apron + do. gar.

0 + 60 E do. Bot gar, 19 wide disc Floor

0 + 50

358.26

4.16
13.9
900
Floor

4.7
14.353.80

4.16
12
900
Floor

4.87
10
Con. op

4.93
11
Walk

4.7
13.53.54

4.9
13.53.4

4.7
13.53.6

4.7
15.7
353.6

358.26

4.16
13.9
900
Floor

4.93
11
Walk

4.7
13.53.54

4.9
13.53.4

4.7
13.53.6

4.7
15.7
353.6

358.26

809. Picket
Fence
11

4.6
10.6
353.7

4.8
15.7
353.5

4.7
15.7
353.6

+ #1 -
 1+64 Secor bd Shed 11-2R
 beg bd fence 11-2R
 1+57 12.8 L of Single garage
 3.55 356.61
 TP 5.20 353.06

8² Lt to NE. ↗

1+50 9.0 L JPA 4070 306565H.
 10.8 R beg bd Shed
 10.5 R end Picket fence
 10.1 R PA 4071 PP
 9.8 Rt to NE. ↘

1+44 9.0 L 10' shed &
 5 line of 3' walk 9.6 L
 1+00 10.6 R end Picket end apron 9.6 L

0+90 garage 13.5 L

358.26

3.37
12.8

356.61

5.1
70

5.4
10

5.1
10

353.88

4.78
13.4

4.30
19.5

343.78

4.48
9.2

4.40
8.9

353.7

4.9
9

4.353.5

4.8
10

358.26

353.1

5.2
10

4.7
10

352.9

5.4
20

Picket
 fence
10.8

5.1
20

353.1

+95 7.9 Lt. apron & single garage ^{10.8L} 10' wide apron
 +89 10.5L end of Picket
 4.14 356.96
 3+55 TP. on 6R 3.79 352.82 352.83
 .01

2+75 10.6L } fence cont
 10.6R }

2+50 { 10.8R Picket fence cont.
 91' RT + N.E. }
 10.4R PP A4053
 11.1L Picket fence cont

2+30

2+16 11.0R beg. Picket

2+10 { 11.5L beg. Picket fence
 10.8R end of fence bk
 9.0L " " }

1+77 9.0L beg. bk fence

356.61

385 50%

3.99 352.97
 10.8 floor 4.14 352.48
 7.9 apron

3+55 on cuttings
 for construction
 = 3+72.5 const. sta.
 Clear out

356.96

* calculate new grade for
 grating

35	4.1	4.5	4.4	4.0
20	10	10	10	25
352.6	352.5	352.2	351.7	352.6
4.0	4.3	4.4	4.9	4.7
25	10	10	10	25
352.1	352.3	352.2	351.7	351.9
4.3	4.5	4.4	4.4	4.4
25	10	10	10	20
352.7	352.1	352.2	352.2	352.2
3.9	4.2	4.2	4.3	4.3
20	10	10	10	10

356.61

5+9867

N. Line University
curb on left Badly broken

+96 9.6 L TPlc D 28449 T

+65

+99 9.9 PPc A 4011

+36 9.4 L TPlc 82448 H.

5+25

5+00

4+99 11.2 R SE cor bd dwl

4+99 10 L end Picket

4+90 10 L by picket

4+82 16 L E. single garage conc floor 4+82

4+75 10.0 L end Picket

4+73 11.1 R NE cor bd dwl

358.90

355.25

3.65
10.1
6.8

4.5
20

5.4
25

6.0
25

5.4
16

354.96

3.95
10.1
9

4.2
10

4.9
10

5.5
10

3.0
10

354.83

4.07

4.5

5.0

5.4

5.8

355.04

3.96
10.0

4.5
10

5.0
10

4.9
10

5.7
10

355.12

3.47
10.0

4.3
20

4.9
25

4.9
25

5.5
11
base

52

cb = Temp.
B.M.

358.90

385 50%

T.P. 607 352.83 352.83
000

6+1367 Carb Line University

358.90

354.76	354.05	354.25	354.53	355.23
4.4	4.85	4.65	4.37	3.67
10	10	10	10	10
86	9		9	6
		358.90		

Alignment Alloys Block H
Redland Gardens

Levels next page

Indexes
C.S.K.

Indicator

- Lead & Tack Found
- Hub Set
- Nail Set
- × Corner Cross

Madison

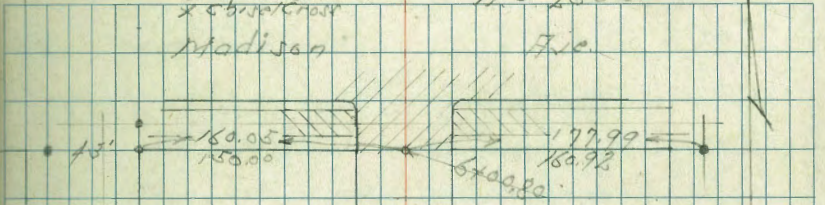
Sept. 4-47

Sisson
McCoy
Hill
Lamore

W.O. 25001

File

54



7-

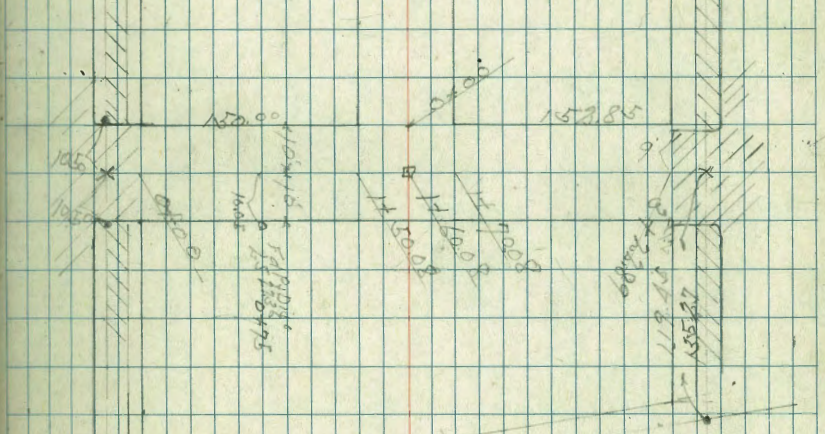
Block H
Redland Gardens

7-

16' x 16'

58' x 58'

El Cajon Drive



El Cajon Blvd.

8.10

8.95

457.40

H.M. BR
F. Carro
F. Carrillo
457.84

+32.89 - W.C. King El Cerrito Dr.

+275 10.5 Lt of $\frac{1}{2}$ - Fly 25 Hedge $\frac{1}{2}$

+22.89 - W.C. El Cerrito Dr.

3.10

+95 10.5 Lt of $\frac{1}{2}$ - Fly Stucco House Fly 11/2 - 25 Hedge

+75

+76 10.1 Lt of $\frac{1}{2}$ - Fly Par. Pak # 305199 H

2+50 10.5 Lt of $\frac{1}{2}$ - Fly Wire Fence Fly Stucco House

2+25

466.35

461.95

4.90
7-66

461.44

4.91
9-20-74

460.88

5.17
1-9-66

461.27

5.08
9-66

461.65

4.7
10

461.15

5.7
10

459.75

4.0
10

459.15

4.0
10

458.25

4.6
10

460.73

5.62

461.20

5.15

461.65

4.7

460.95

5.7

459.85

6.5

460.54

5.81
11-1-66

461.02

5.53
11-6-66

462.05

4.6
10

461.25

5.7
10

459.75

6.6
10

459.95

6.6
10

461.09

5.71
11-6-66

461.21

5.4
11-2-66

462.15

5.4
10

459.25

4.9
10

57

466.35

Cross Section North & South Alley
Block # Redland Gardens From East &
West Alley to Madison Ave.

Sketch Page 54

+25 103 Rt of $\frac{1}{2}$ - H/W Wire Fence

+80

+75 10 Rt of $\frac{1}{2}$ - H/W High Wire Fence & H/W Wire Fence
9 Lt of $\frac{1}{2}$ - H/W Power Pole # P 76269

+50

+25

+01 102 Lt of $\frac{1}{2}$ - H/W Wire Fence & Cobble Wall

0+0 = H/W Exposed Alley 10.5 Rt of $\frac{1}{2}$ - High Wire Fence

B 17 770 462.10 454.70

2 HWS
+60.08
+7.00
Page 55

St. F 58

126	455.80	15.11	
5	456.99	456.60	
57	456.10	457.20	
58	456.50	457.10	
59	456.40	456.80	
60	455.80	456.80	
61	456.00	456.10	
62	455.20	456.10	
63	455.00	455.10	
64	456.00	456.10	
65	455.20	455.60	
66	455.00	455.10	
67	455.20	455.10	
68	455.00	455.10	
69	455.20	455.10	
70	455.00	455.10	
71	455.00	455.10	
72	455.20	455.10	
73	455.00	455.10	
74	455.20	455.10	
75	455.00	455.10	
76	455.20	455.10	
77	455.00	455.10	
78	455.20	455.10	
79	455.00	455.10	
80	455.20	455.10	
81	455.00	455.10	
82	455.20	455.10	
83	455.00	455.10	
84	455.20	455.10	
85	455.00	455.10	
86	455.20	455.10	
87	455.00	455.10	
88	455.20	455.10	
89	455.00	455.10	
90	455.20	455.10	
91	455.00	455.10	
92	455.20	455.10	
93	455.00	455.10	
94	455.20	455.10	
95	455.00	455.10	
96	455.20	455.10	
97	455.00	455.10	
98	455.20	455.10	
99	455.00	455.10	
100	455.20	455.10	

462.40

LT-2

2

Rt-F 62

BT

1.10

463.48

St. Top of Hwy
Madison
463.48

TP

8.31

464.58

0.71

456.27

6+10.80 - Saul's Curb Line Madison

6+00.80 - S.L. Madison Hwy.

456.98

451.87

451.58

452.10

452.57

452.05

451.78

452.10

452.58

453.08

453.17

5.71
10.1 = 5.40
4.93
14.9 = 8.6

5.40
10.1 = 6.40
4.93
14.9 = 6.40

4.88
4.88

4.41
10.1 = 5.71
4.41
10.1 = 6.40

3.90
16.3 = 12.40

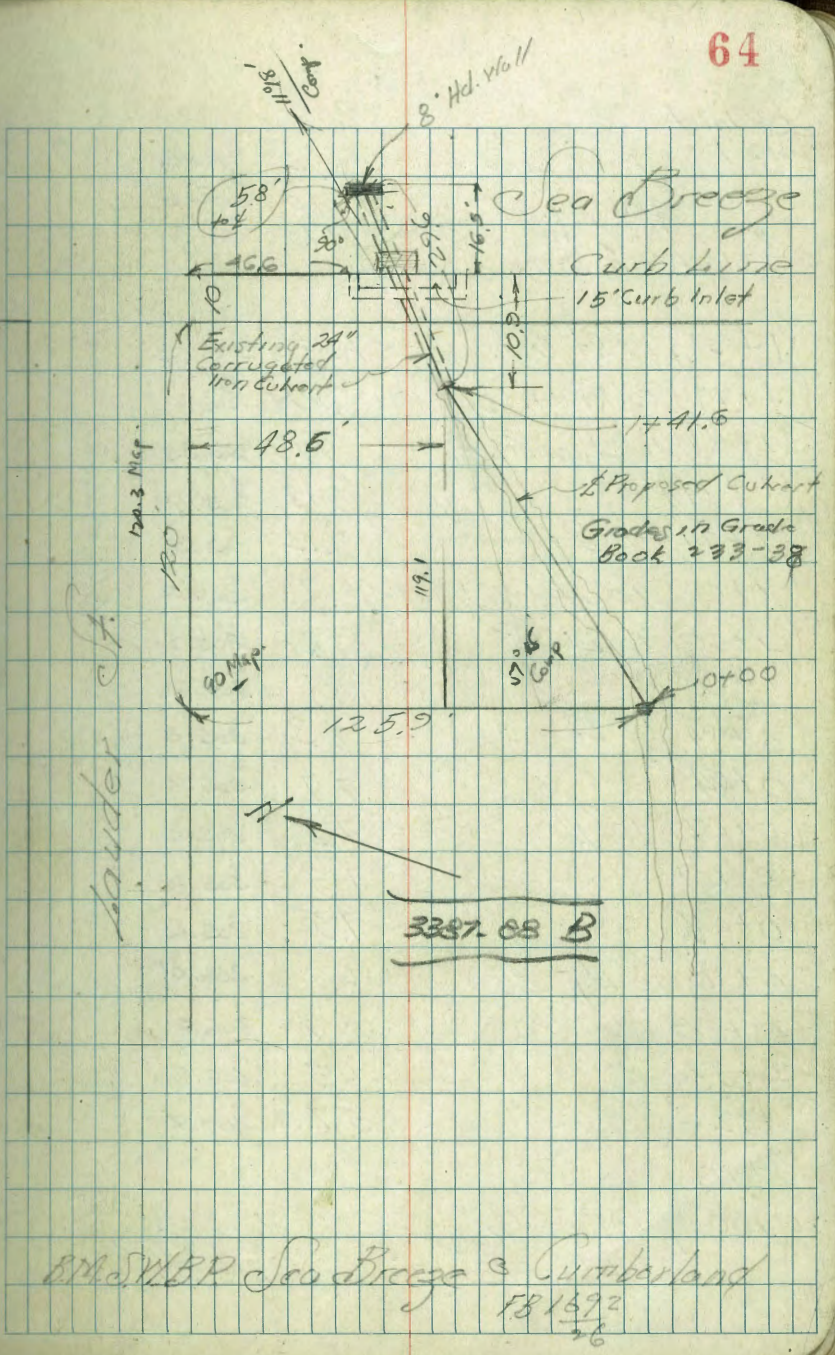
5.81
11.8 = 6.00
5.81 = 11.80 = 6.00
DRIVE

456.98

Walker
Hendricks
Baker
10-28-97

Survey - Proposed Culvert
Block 23 - Paradise Hills

		091 ✓	
		241.95	
Cbk. Starting BM	121	241.94 ✓	
TP 10.95	243.15	240	232.20
East end Pipe Flow Line	9.30	225.30	
N. Gut Grotting	4.69	229.91	
Wcb. Sea Breeze	3.68	220.92 ✓	
1+41.6 on Flow	10.70	223.90	
1+41.6 Ground E.Ditch	11.55	223.05	
1+16	11.9	223.2 ✓	
1+05 - Ditch	12.0	222.6	
0+70	13.1	221.5	
0+50	13.4	221.2	
(0+35) 6' Rt. in Ditch	14.1	220.5	
0+35	12.9	221.3	
(0+20) 7' Rt. in Ditch	14.8	219.8	
0+20	14.1	220.5	
0+00	15.5	219.1	
0-30	16.8	217.8	
TP 3.56	234.60	11.63	231.04 ✓
0.72	242.67 ✓		241.95



BM SWBP Sea Breeze @ Cumberland
181692
76

Cb Inlet
 No 1 Flow Line 1694 296.18
 " grating. = 12.70 300.22
 " curb = 11.13 301.39
 = 23.1' N Ncb Retention on E side Runcho

Notes Reduced 45-63. 58.6.65

10.29-97

Notes Reduced

(1+21) 10' Rt Gut. 1030 302.82
 (1+21) 10' Rt on Cb. 971 303.91
 (1+21) 10' Lt on Gut. 977 303.35
 (1+21) 10' Lt on Cb. 918 303.99
 1+21 - N Cb Retention 944 303.68
 (1+00) 10' Rt = West. 8.7 302.2
 (1+00) 10' Lt 79 305.2
 1+00 85 302.6
 (0+84) 10' Lt 73 305.8
 0+84 77 305.2
 (0+67) 10' Lt 73 305.8
 0+67 73 305.8
 0+63 75 305.6
 0+50 10' Lt. 67 306.2
 0+50 67 306.2
 0+33 63 306.8
 0+32 57 307.2
 0+20

0+00 going South
 3.13 313.12 ✓
 209.99 311
 309.99 313

Cb Inlet
 #2 Flow Line 1804 295.08
 " grating 1215 300.97
 " curb 1112 302.00

0+00 on Hub P-63

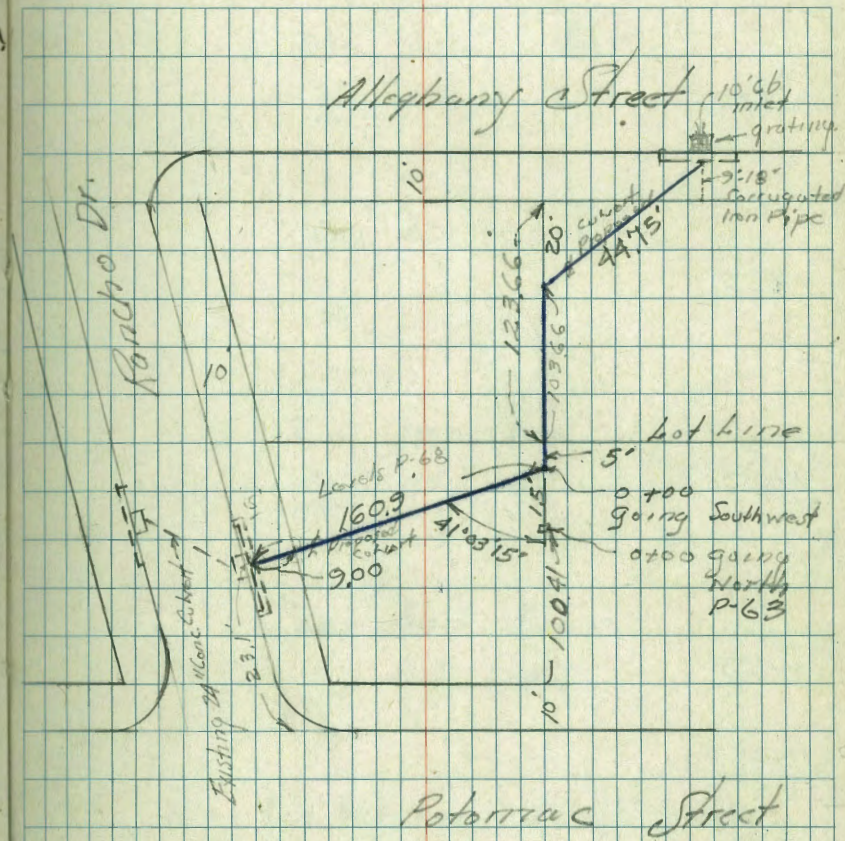
3/3/12 ✓

Allegheny & Rancho

Proposed Culvert

66

(Const
Grades in Grade Book 233-P.50)



0+00

Alleghany & Rancho Proposed.
 Cutcut Extension - Profile Levels.
 Cont. from P. 66

1+40

1+22

1+00

0+50

0+05

0+00

1.77

211.76

211.76

209.99 8 1/2 Mi. on Hub.
 349.77 5' Rt 0+00

Lt.

L

Rt.

67

2
303.5

83
10

2
303.6

82

2
303.8

84
10

2
306.1

57
10

2
305.8

60

2
305.6

62
10

2
307.2

46
10

2
307.8

44

2
307.5

43
10

2
308.9

29
10

2
309.0

28

2
309.2

24
10

2
310.8

14
10

2
310.2

14
6

2
309.8

20
3

2
310.1

17

2
310.5

13

2
310.6

12
10

2
310.5

15

2
310.9

09

grade book 233
37

1+61.88 = 15' cb inlet

1+60.2 = inside edge

1+55

1+50

211.76
311.76
-4

300.88	301.43	301.52	301.55	300.67	301.63
11.29	10.33	10.22	11.20	11.09	10.13
7.5	7.5	0.06	0.0	7.5	7.5
on Conc Gutter	on 15'	on 15'	on 15'	on Conc N.Y. road	on 15'
SAY end 15' cb inlet.				15' cb inlet	

301.6

10.2

301.6

301.6

301.68

10.2

10.2

10.08

301.8

302.1

302.1

10.9

9.7

9.7

211.76

311.76 ✓

Roberts
Moore
Chick
11-25-50
NO 62192

Re-Ro X Section Alley BIK 2
City Hts Annex #1

See pa. 45 This F.B.
Same Station used!

INDEXED
JUL 25 1950

510 10' Lt. Begin Conc. Cb.

4442 90' ^(R) to Center T Pole # 5052994

~~4402 Old P Pole still in.~~

72 Rt to NE. →

3799 78 Rt to Center P Pole # 4031

3 ^{← what tho?}
2+50 ^{This is Sta. 2+50}
23' Rt to Center 2425' Drain Box

T.P. 575 357.97X 6.36 352.22

0+50 10" Rt End Conc. Patio

0+38 10" Rt Begin Conc. Patio

0+0 98' Lt Curb End for check

BM 2.36 358.58X 356.22 NE P.H. 4425

Lt

Rt

Rt
69

353.4
4.6
10'
Dist

353.96
4.0
10'
Top
Cb

352.9
5.0
10'
Foot

351.25
6.72
2.2
7.9
Top
Grate

357.97X

353.75
4.6
10"
conc

353.98
4.6
10"
conc

353.88
4.70
10"
conc

354.08
4.50
12"
conc

353.67
4.9
9.0
26

E P. 1K

358.58X

385 50%

5796¹ 10' Lt End Bldg. Foundation 2¹/₂' vault

5766 Foundation of Bldg. changes from 16' to 2¹/₂' vault

5743² 9' Lt Facenter P.Pole 824484 ← Moved

102.46 Plans show Flow Elev.

5741 10' Lt End cb. & Begin Bldg. ← 1¹/₂' Foundation

5739 10' Lt Begin Conc. cb.

5722 10' Lt End cb.

357.97X

355.06
2.91
100
cb
114

355.42
2.55
100
cb → check

Source ↓

353.69 354.1 354.64
11' 39' 38.5
10' 10' 10'
Foot Sid. cb
Top

353.2' 354.28 353.7
41' 36.9 43
10' 10' 10'
Foot Top Top

357.17X

X-sec. Pave.

±

71

Kansas to Madison 9-8-50

Sommermeier

NO 20006

Johnson

Allen

Base line = ± Kansas

0+00 = 100' North of North line Madison

1+00 Nly line Madison

4.30	4.79	4.75	4.66	4.48	4.91	5.66
<u>26</u>	<u>26</u>	<u>21</u>	<u>13</u>		<u>13</u>	<u>26</u>
06	G					G

0+75

3.93	4.67	4.19	4.11	4.66	5.44
<u>26</u>	<u>26</u>	<u>13</u>		<u>13</u>	<u>26</u>
06	G				G

0+50

3.52	4.42	3.76	3.77	4.18	5.14
<u>26</u>	<u>26</u>	<u>13</u>		<u>13</u>	<u>26</u>
06	G				G

0+25

3.16	3.92	3.45	3.38	3.73	4.56
<u>26</u>	<u>26</u>	<u>13</u>		<u>13</u>	<u>26</u>
06	G				G

0+00

2.77	3.52	3.05	2.98	3.38	4.20
<u>26</u>	<u>26</u>	<u>13</u>		<u>13</u>	<u>26</u>
06	G				

382.37

T.P. 4.25 382.37 5.24 378.12

4.51 383.36 - 378.85

N.E. 7' L. + T. Kansas + Madison

S.E.R. Idaho + Madison

1+40 = $\frac{1}{2}$ Madison

$\frac{3.60}{90}$	$\frac{4.24}{65}$					
$\frac{4.69}{40}$	$\frac{4.92}{26}$	$\frac{5.05}{13}$	5.16	$\frac{5.51}{13}$	$\frac{5.89}{26}$	$\frac{5.60}{40}$

1+27 = Nly $\frac{1}{4}$ Madison

$\frac{3.62}{90}$	$\frac{4.25}{65}$					
$\frac{4.67}{40}$	$\frac{4.94}{26}$	$\frac{4.99}{13}$	5.05	$\frac{5.35}{13}$	$\frac{5.69}{26}$	$\frac{5.65}{40}$

1+14

1+14 = Nly of line Madison

$\frac{3.15}{90}$	$\frac{3.77}{90}$				
$\frac{3.62}{65}$	$\frac{4.32}{65}$	$\frac{4.17}{65}$		$\frac{5.70}{40}$	$\frac{5.39}{40}$
CC	G	CC, LC		G	CC
$\frac{4.72}{40}$	$\frac{4.83}{26}$	$\frac{4.82}{13}$	4.78	$\frac{5.16}{13}$	$\frac{5.68}{26}$
G	CC, P.I.				CC, P.I.

3.82.37

Additional Notes

Alley Bk 200 Pac. Beach

Sommeringer

5/29/52

B099

Bishop

Orig. notes - p. 7 to 11.

Direct elev. rod used

actual elevations are shown

3+00 - 10⁵ Ltr end apron

68.47	68.10	67.4	67.3	65.3
10 ⁵	10 ⁵	7 ²	10	30
at bldg	Apron	N. edge		
		Black top.		

2+90 10⁵ Lt. sly edge apron

68.47	68.05
14 ⁵	10 ⁵
Floor Car	Apron

2+73 10⁴ Ltr s. edge apron

68.45	67.98
14 ⁵	10 ⁴
Car floor	Apron

2+72 10⁴ Ltr s. edge Apron

67.85	67.44
14 ⁵	10 ⁴
Gar floor	Apron

2+57 5⁴ Rt. = start black top. Parking ^{lot.}
conc. floor

66.0	66.10	65.50
5 ⁴	10	30

2+50 10⁵ Lt start apron to A car. Car.

67.89	67.45
14 ⁵	10 ⁵
Floor Et.	Apron

1+25 Soil sample. E of alley

0+73 10² Lt. end Conc. apron

58.8A
10.8
Apron

0+57 10² Lt. = start Conc. apron to double ^{Gar.}

57.33	58.45
16 ⁵	10 ³
conc. Car. floor.	Apron

INDEXED

MAR 27 1952

Alley Blk 200
Pac. Beach

6987

74

5+20 10' rt. oiled parking lot.

70.5 68.9
10 30

5+01 8' Lt. & 2' wide Conc. walk

70.95 70.80 70.80
20 10 88
Foot walk →

5+00³ 9' Lt. = end house

4+86 = 19' Lt. = Jog in house

4+75 11' Lt. = start house

4+73 8' Lt. = 3' wide Conc. walk

70.12 70.90 70.85
20 10 8
Foot walk →

oil pave not good enough to meet

4+26 10' rt. = start oiled parking lot.

70.3 68.7
10 30

4+25⁴ 10' rt. = 8' wide Conc. block wall

70.5 81.2 Base
10' 10' below
Grad. at wall Top of wall 67.0

11' rt. = end Conc. parking lot
4+25 { 10' rt. = end F+W. Conc. wall

70.78 67.70 67.37
10' 11' 30
top wall pave, pave.

11' rt. = start Conc. parking yard wall
10' rt. = start 7" wide F+W. Conc.
3+74 { 5' rt. = end Black top paved lot.

68.9 68.4 70.71 67.51 67.05
5 10 10' 11' 30
Black top top of Conc. wall black

3+50 6' rt. = Nly edge paved lot.

69.4 69.00 67.00
6' 10 30

Roberts
Rorer
Moore
Morales
9-27-55
W.O.# 3177A

Re-X-Section Alley Block 2
City Hqs. Annex No. 1

See pg. 45 & 69

Lt

E

Rt 75

see next Page

INDEXED

SEP 30 1955

5+98.67 Nly Line University Ave.

4+99.9 Begin conc. Paving

T.P. 6.38 357.68 7.15 ^{351.30} on Grate of

0+26 92 4 & 24 conc walk

0+00 Sby Line Polk Ave.

BM 2.23 358.45 356.22 Top fire

355.10 2.58 10 cb	354.93 2.75 10 cut	354.82 2.86	355.10 2.58 10 cut	355.43 2.25 10 cb
353.35 4.53 10 conc	352.95 4.73 conc	353.18 4.50 10 conc		

357.68 π
Drain box Sta. 2+50 ← Note!

4.52 1.92 conc	4.40 92 conc	353.10 4.75 98 cb	353.56 4.89 98 cut	353.16 5.29	353.55 4.90 102 cut	353.65 4.80 102 cb
----------------------	--------------------	----------------------------	-----------------------------	----------------	------------------------------	-----------------------------

358.45 π
hydrant N.E. Corner ~~44th~~ & Polk

Believe the TBM on fire hydrant should be shown on plans to save time when construction actually begins.

check 2.33 356.22 = 356.22

T.P. 6.09 358.55 5.29 352.46

T.P. 2.89 357.75 1.29 354.86

BM 6.59 356.15 349.56 NWBP
45th

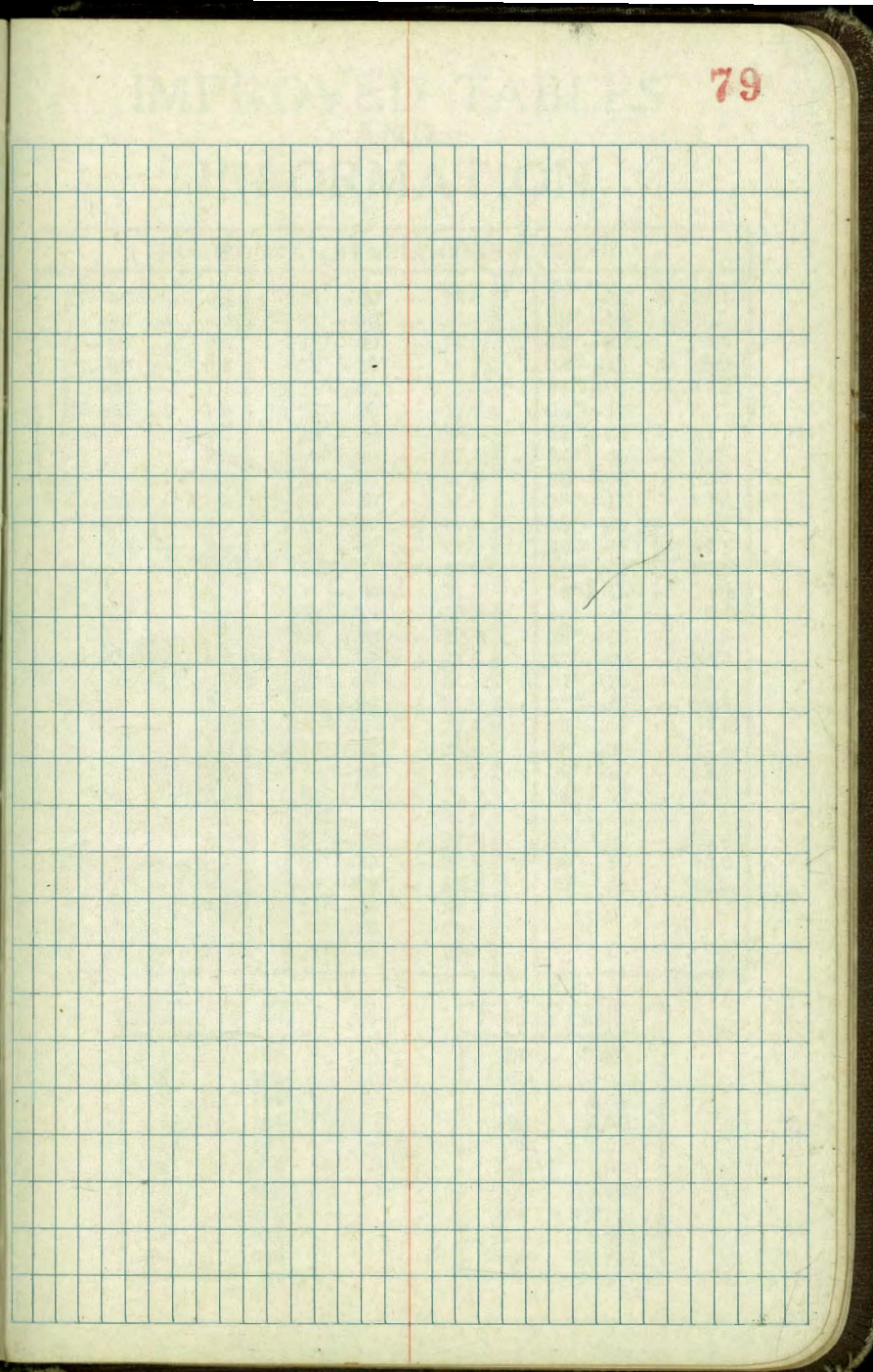
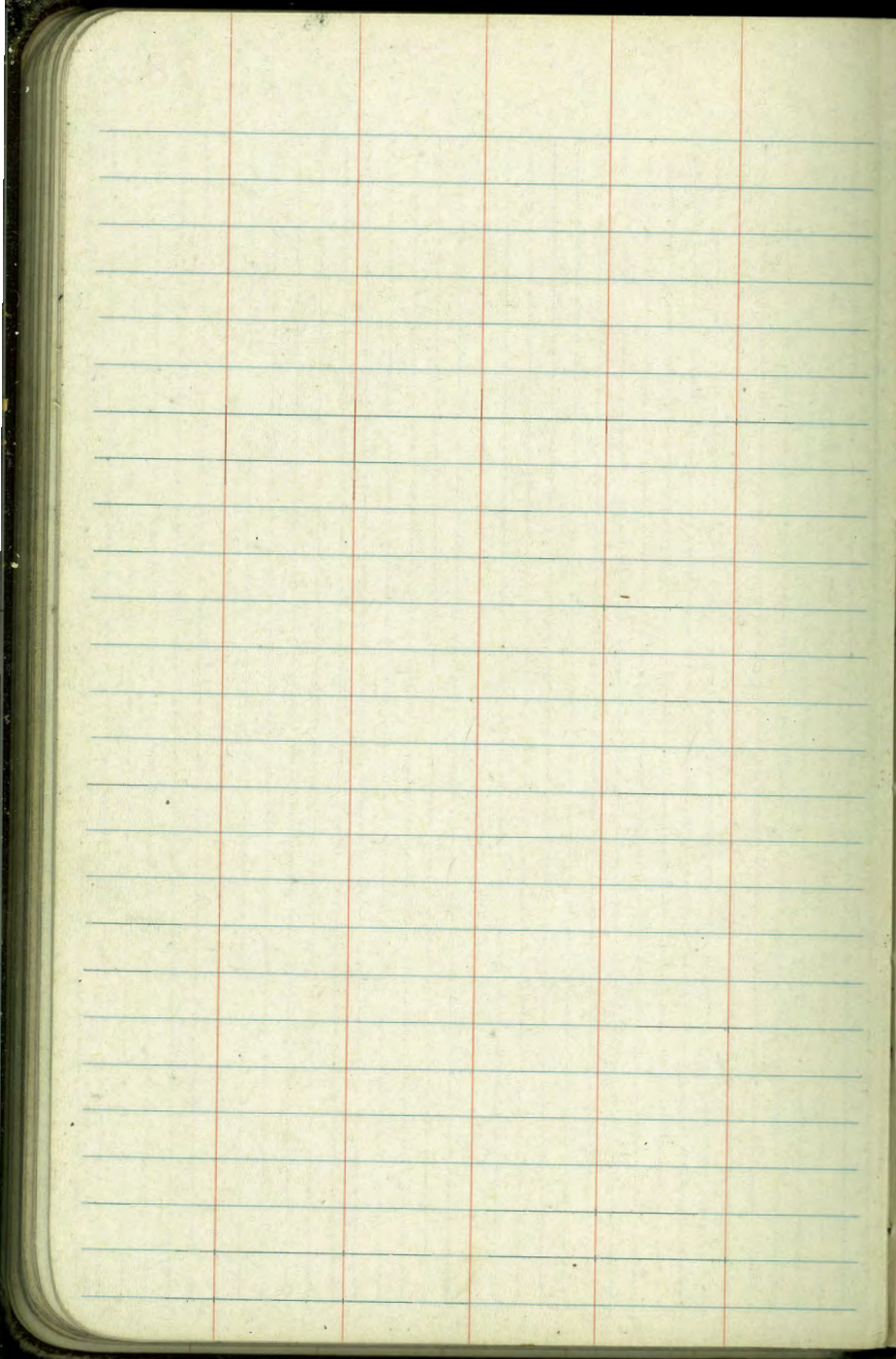
Top fire hydrant N.E. Cor. 44th & Park

E University

385 50%

This page features three vertical red margin lines that divide the page into four columns. The first column is the widest, followed by two narrower columns, and a final narrow column on the right. Horizontal blue lines are spaced evenly across the page, providing a grid for writing.

This page is a grid of graph paper with a vertical red margin line on the left side. The grid consists of 20 columns and 25 rows of small squares, created by blue lines. The margin line is positioned approximately one-fifth of the way from the left edge of the page.



IMPROVED TABLES AND INFORMATION

HORIZONTAL STADIA CORRECTIONS

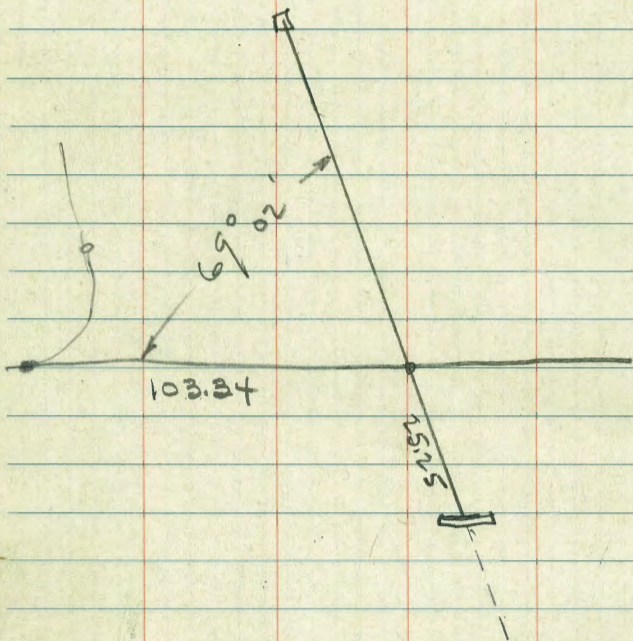
2°-00' — 0.1	21°-00' — 12.8	33°-00' — 29.7
3°-00' — 0.3	21°-30' — 13.4	33°-15' — 30.1
4°-00' — 0.5	22°-00' — 14.0	33°-30' — 30.5
5°-00' — 0.8	22°-30' — 14.7	33°-45' — 30.9
6°-00' — 1.1	23°-00' — 15.3	34°-00' — 31.3
7°-00' — 1.5	23°-30' — 15.9	34°-15' — 31.7
8°-00' — 1.9	24°-00' — 16.5	34°-30' — 32.1
9°-00' — 2.5	24°-30' — 17.2	34°-45' — 32.5
10°-00' — 3.0	25°-00' — 17.9	35°-00' — 32.9
10°-30' — 3.3	25°-30' — 18.6	35°-15' — 33.3
11°-00' — 3.6	26°-00' — 19.2	35°-30' — 33.7
11°-30' — 4.0	26°-30' — 19.9	35°-45' — 34.1
12°-00' — 4.3	27°-00' — 20.6	36°-00' — 34.6
12°-30' — 4.7	27°-30' — 21.3	36°-15' — 35.0
13°-00' — 5.1	28°-00' — 22.0	36°-30' — 35.4
13°-30' — 5.5	28°-30' — 22.8	36°-45' — 35.8
14°-00' — 5.9	29°-00' — 23.5	37°-00' — 36.2
14°-30' — 6.3	29°-30' — 24.3	37°-15' — 36.6
15°-00' — 6.7	30°-00' — 25.0	37°-30' — 37.1
15°-30' — 7.2	30°-15' — 25.4	37°-45' — 37.5
16°-00' — 7.6	30°-30' — 25.8	38°-00' — 37.9
16°-30' — 8.1	30°-45' — 26.2	38°-15' — 38.3
17°-00' — 8.5	31°-00' — 26.5	38°-30' — 38.7
17°-30' — 9.0	31°-15' — 26.9	38°-45' — 39.1
18°-00' — 9.5	31°-30' — 27.3	39°-00' — 39.6
18°-30' — 10.1	31°-45' — 27.7	39°-15' — 40.0
19°-00' — 10.6	32°-00' — 28.1	39°-30' — 40.5
19°-30' — 11.2	32°-15' — 28.5	
20°-00' — 11.7	32°-30' — 28.9	
20°-30' — 12.3	32°-45' — 29.3	

Chains to Feet

1	66
2	132
3	198
4	264
5	330
6	396
7	462
8	528
9	594
10	660

Feet to Chains

100	1.515
200	3.030
300	4.545
400	6.060
500	7.575
600	9.090
700	10.606
800	12.121
900	13.636
1,000	15.151



DIRECTIONS FOR USE OF TABLES

TABLE No. 1.

Distance of slope stake from side or shoulder stake for any width roadway, slope $1\frac{1}{2}$ to 1. If ground is nearly level, the cut or fill at side stake is located by the double entry method in left column and top row. The number in body of table in same row and column gives distance from side stake to slope stake. If ground is not level estimate the difference in elevation between the side stake and slope stake, lower target by this amount if cut, elevate if fill. Add this amount to cut or fill and find distance in table. Set up rod at this point, and line of sight should cut target. If it does not make the slight adjustment necessary.

TABLE No. 9.

To find Tangent and External for curve of any other degree, divide by degree of curve and add correction found in column of corrections.

Degree of curve with a given I may be found by dividing tangent, (or external), opposite I by given tangent, (or external).

The distance from a point on the tangent to the curve is very nearly the square of the tangent length divided by twice the radius.

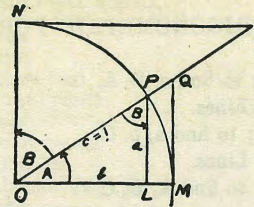


TABLE II
TRIGONOMETRIC FORMULÆ.

$$\angle A = \angle MOP \quad \angle B = \angle PON = \angle OPL$$

$$R = OB = c = 1$$

$$\sin A = \frac{a}{c} = \frac{a}{1} = a = \cos B = LP$$

$$\cos A = \frac{b}{c} = \frac{b}{1} = b = \sin B = OL$$

$$\tan A = \frac{a}{b} = \frac{MQ}{OM} = \frac{MQ}{1} = MQ = \cot B = MQ$$

$$\cot A = \frac{NT}{ON} = \frac{NT}{1} = NT = \tan B = NT$$

$$\sec A = \frac{OQ}{OM} = \frac{OQ}{1} = OQ = \csc B = OQ$$

$$\csc A = \frac{OT}{ON} = \frac{OT}{1} = OT = \sec B = OT$$

$$\text{vers } A = \frac{LM}{OF} = LM = \text{covers } B \#$$

$$\text{covers } A = \frac{OP - LP}{OP} = OP - LP = \text{vers } B$$

$$\text{exsec } A = PQ = \text{coexsec } B$$

$$\text{coexsec } A = PT = \text{exsec } B$$

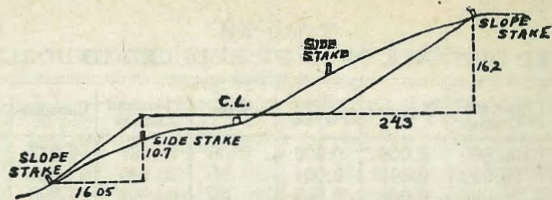
$$\sin \frac{1}{2} A = \sqrt{\frac{1 - \cos A}{2}} \quad \cos \frac{1}{2} A = \sqrt{\frac{1 + \cos A}{2}}$$

$$\sin 2A = 2 \sin A \cos A \quad \cos 2A = \cos^2 A - \sin^2 A$$

$$\text{Law of Sines} \quad \frac{\sin A}{a} = \frac{\sin B}{b} = \frac{\sin C}{c}$$

$$\text{Law of Cosines} \quad c^2 = a^2 + b^2 - 2ab \cos C$$

$$\text{Law of Tangents} \quad \frac{a+b}{a-b} = \frac{\tan \frac{1}{2}(A+B)}{\tan \frac{1}{2}(A-B)}$$



DISTANCES FROM SIDE STAKES FOR CROSS-SECTIONING.

SLOPE 1 1/4 TO 1. ROADWAY OF ANY WIDTH.

	0	.1	.2	.3	.4	.5	.6	.7	.8	.9	
0	0 00	0 15	0 30	0 45	0 60	0 75	0 90	1 05	1 20	1 35	0
1	1 50	1 65	1 80	1 95	2 10	2 25	2 40	2 55	2 70	2 85	1
2	3 00	3 15	3 30	3 45	3 60	3 75	3 90	4 05	4 20	4 35	2
3	4 50	4 65	4 80	4 95	5 10	5 25	5 40	5 55	5 70	5 85	3
4	6 00	6 15	6 30	6 45	6 60	6 75	6 90	7 05	7 20	7 35	4
5	7 50	7 65	7 80	7 95	8 10	8 25	8 40	8 55	8 70	8 85	5
6	9 00	9 15	9 30	9 45	9 60	9 75	9 90	10 05	10 20	10 35	6
7	10 50	10 65	10 80	10 95	11 10	11 25	11 40	11 55	11 70	11 85	7
8	12 00	12 15	12 30	12 45	12 60	12 75	12 90	13 05	13 20	13 35	8
9	13 50	13 65	13 80	13 95	14 10	14 25	14 40	14 55	14 70	14 85	9
10	15 00	15 15	15 30	15 45	15 60	15 75	15 90	16 05	16 20	16 35	10
11	16 50	16 65	16 80	16 95	17 10	17 25	17 40	17 55	17 70	17 85	11
12	18 00	18 15	18 30	18 45	18 60	18 75	18 90	19 05	19 20	19 35	12
13	19 50	19 65	19 80	19 95	20 10	20 25	20 40	20 55	20 70	20 85	13
14	21 00	21 15	21 30	21 45	21 60	21 75	21 90	22 05	22 20	22 35	14
15	22 50	22 65	22 80	22 95	23 10	23 25	23 40	23 55	23 70	23 85	15
16	24 00	24 15	24 30	24 45	24 60	24 75	24 90	25 05	25 20	25 35	16
17	25 50	25 65	25 80	25 95	26 10	26 25	26 40	26 55	26 70	26 85	17
18	27 00	27 15	27 30	27 45	27 60	27 75	27 90	28 05	28 20	28 35	18
19	28 50	28 65	28 80	28 95	29 10	29 25	29 40	29 55	29 70	29 85	19
20	30 00	30 15	30 30	30 45	30 60	30 75	30 90	31 05	31 20	31 35	20
21	31 50	31 65	31 80	31 95	32 10	32 25	32 40	32 55	32 70	32 85	21
22	33 00	33 15	33 30	33 45	33 60	33 75	33 90	34 05	34 20	34 35	22
23	34 50	34 65	34 80	34 95	35 10	35 25	35 40	35 55	35 70	35 85	23
24	36 00	36 15	36 30	36 45	36 60	36 75	36 90	37 05	37 20	37 35	24
25	37 50	37 65	37 80	37 95	38 10	38 25	38 40	38 55	38 70	38 85	25
26	39 00	39 15	39 30	39 45	39 60	39 75	39 90	40 05	40 20	40 35	26
27	40 50	40 65	40 80	40 95	41 10	41 25	41 40	41 55	41 70	41 85	27
28	42 00	42 15	42 30	42 45	42 60	42 75	42 90	43 05	43 20	43 35	28
29	43 50	43 65	43 80	43 95	44 10	44 25	44 40	44 55	44 70	44 85	29
30	45 00	45 15	45 30	45 45	45 60	45 75	45 90	46 05	46 20	46 35	30
31	46 50	46 65	46 80	46 95	47 10	47 25	47 40	47 55	47 70	47 85	31
32	48 00	48 15	48 30	48 45	48 60	48 75	48 90	49 05	49 20	49 35	32
33	49 50	49 65	49 80	49 95	50 10	50 25	50 40	50 55	50 70	50 85	33
34	51 00	51 15	51 30	51 45	51 60	51 75	51 90	52 05	52 20	52 35	34
35	52 50	52 65	52 80	52 95	53 10	53 25	53 40	53 55	53 70	53 85	35
36	54 00	54 15	54 30	54 45	54 60	54 75	54 90	55 05	55 20	55 35	36
37	55 50	55 65	55 80	55 95	56 10	56 25	56 40	56 55	56 70	56 85	37
38	57 00	57 15	57 30	57 45	57 60	57 75	57 90	58 05	58 20	58 35	38
39	58 50	58 65	58 80	58 95	59 10	59 25	59 40	59 55	59 70	59 85	39
40	60 00	60 15	60 30	60 45	60 60	60 75	60 90	61 05	61 20	61 35	40
41	61 50	61 65	61 80	61 95	62 10	62 25	62 40	62 55	62 70	62 85	41
42	63 00	63 15	63 30	63 45	63 60	63 75	63 90	64 05	64 20	64 35	42
43	64 50	64 65	64 80	64 95	65 10	65 25	65 40	65 55	65 70	65 85	43
44	66 00	66 15	66 30	66 45	66 60	66 75	66 90	67 05	67 20	67 35	44
45	67 50	67 65	67 80	67 95	68 10	68 25	68 40	68 55	68 70	68 85	45
46	69 00	69 15	69 30	69 45	69 60	69 75	69 90	70 05	70 20	70 35	46
47	70 50	70 65	70 80	70 95	71 10	71 25	71 40	71 55	71 70	71 85	47
48	72 00	72 15	72 30	72 45	72 60	72 75	72 90	73 05	73 20	73 35	48
49	73 50	73 65	73 80	73 95	74 10	74 25	74 40	74 55	74 70	74 85	49
50	75 00	75 15	75 30	75 45	75 60	75 75	75 90	76 05	76 20	76 35	50

Computed by L. Leland Locke.

2074 Prof

6063 C

6064 C

8.
4.25 3.55
4.01 3.37
 22
 3.15

N.W. 304 Nat. 64.91

1207
587
1804

4
175 192
 17