

755



—————

—————

1755

MICROFILMED

DEC 23 1964

CITY ENGINEER'S OFFICE
SAN DIEGO, CALIF.

MADE IN U. S. A.

1755

Our Leather Bound Engineers Note Books
are carried in the following rulings:

- No. 380 LEVEL BOOK. Left and Right Hand Page
the same as Left Hand Page
of this Book.
- No. 382 FIELD BOOK. Left Hand Page as in this
Book, Right Hand Page 4x4
to the inch, Center Line Red.
- No. 384 MINING TRANSIT
BOOK. Left Hand Page as in this
Book, Right Hand Page 8x8
to the inch, Center Line Red.
- No. 385 FIELD BOOK. Left Hand Page as in this
Book, Right Hand Page 8 ver-
tical and 4 horizontal lines to
the inch, Center Line Red.

We also carry the Note Books listed above,
bound in extra strong Fabri-Hide (otherwise
the same quality of book,) which can be fur-
nished at a somewhat lower price.

In ordering Fabri-Hide covered books, add
the letter "F" to catalog number.

THE FREDERICK POST CO.

ENGINEERING and DRAFTING SUPPLIES

P. O. Box 803

CHICAGO

INDEXED

*Completely
except page # 2 and*

Xscalley Blk 131 Manasse & Schiller	23
" " " 139 " "	31
" "F" St. 41 st to Morrison	40
Survey drain Pac. Beh. Dr. to Road East of Mission Blvd	44
Linda Vista Library Site	52
Lantana Dr., Euclid to Dwight	59
Dwight, Euclid to Lantana	70

X-Sect.

Sea Breeze from
N.I. Allegheny to S.I. lauder
Allegheny - Potomac
Schuyler - Albemarle
+ lauder - from W.C.B.
Sea Breeze to 400 E.

12-5-46

INDEXED
WK
APR 13 1949

Osborne
Hardin
Watrell
Smith

649

W.O. 140

Ranch Dr. I
30 ft
25' Hub.

25' Hub.

#

spike

west part

split cbs.

S.I.

split cbs.

Allegheny
conc strip

Potomac
Paved Conc.

Schuyler
Paved Conc.

Albemarle
paved conc

lauder
Paved Conc.

St.

St.

St.

St.

St.

St.

St.

St.

St.

St.

0+00
Ripe
L.S. 1500
curb

10' Rad
cross
in pipe
Knocked over
pipe
25'

10' Rad
in pipe
Knocked over
pipe
25'

10' Rad
in pipe
Knocked over
pipe
30'

10' Rad
in pipe
Knocked over
pipe
25'

0+00
Ripe
L.S. 1500
curb

10' Rad
cross
in pipe
Knocked over
pipe
25'

10' Rad
in pipe
Knocked over
pipe
25'

10' Rad
in pipe
Knocked over
pipe
30'

10' Rad
in pipe
Knocked over
pipe
25'

30'

40'

25'

30'

25'

3+60

3+60

3+60

3+60

3+60

Prod. East.

Prod. Straight thru -
See Book - Prelim. Ties - No Number
P. 3

0+00
9+17.27

0+00
13+29.16

D.I.

D.I.

10' Rad. on all Ret.

The image shows an open notebook with two pages. The left page is ruled with horizontal blue lines and has three vertical red margin lines. The right page is a grid with 20 columns and 20 rows of blue lines. A vertical red margin line is present on the right page, approximately one-third of the way from the left edge. The pages are cream-colored and show signs of age. The notebook is bound in the center, and the dark cover is visible at the edges.

X-Section Sea Breeze - from N.L.
 Alleghany to S.L. Lauder 50' st.
 10' cbs. - curbs only in on W. side.
 No walks

INDEXED

0+60

0+30 = S.L.

0+20 = S. cb. Alleghany

0+00 = Alleghany + Sea Breeze

0-20

0-30 = N.L. Alleghany

5.28 279.69

274.41

SW EP
 Alleghany
 + Sea Breeze

B. 1692-P2

Indexed
 C.S.K.

Lt = E

Rt. = W

3

275.0	47	275.7	276.0	276.6	277.2	277.5	277.7	276.5	273.1
274.2	26	275.7	276.0	276.6	277.2	277.5	277.7	276.5	273.1
273.1	25	274.9	275.3	276.0	277.1	277.5	277.7	276.5	273.1
273.1	24	273.9	274.3	275.1	277.1	277.5	277.7	276.5	273.1
272.9	23	273.8	273.9	274.6	277.1	277.5	277.7	276.5	273.1
273.65	22	274.45	273.63	274.77	277.1	277.5	277.7	276.5	273.1
273.3	21	274.1	273.63	274.77	277.1	277.5	277.7	276.5	273.1
274.25	20	274.1	273.63	274.77	277.1	277.5	277.7	276.5	273.1
	19	274.1	273.63	274.77	277.1	277.5	277.7	276.5	273.1
	18	274.1	273.63	274.77	277.1	277.5	277.7	276.5	273.1
	17	274.1	273.63	274.77	277.1	277.5	277.7	276.5	273.1
	16	274.1	273.63	274.77	277.1	277.5	277.7	276.5	273.1
	15	274.1	273.63	274.77	277.1	277.5	277.7	276.5	273.1
	14	274.1	273.63	274.77	277.1	277.5	277.7	276.5	273.1
	13	274.1	273.63	274.77	277.1	277.5	277.7	276.5	273.1
	12	274.1	273.63	274.77	277.1	277.5	277.7	276.5	273.1
	11	274.1	273.63	274.77	277.1	277.5	277.7	276.5	273.1
	10	274.1	273.63	274.77	277.1	277.5	277.7	276.5	273.1
	9	274.1	273.63	274.77	277.1	277.5	277.7	276.5	273.1
	8	274.1	273.63	274.77	277.1	277.5	277.7	276.5	273.1
	7	274.1	273.63	274.77	277.1	277.5	277.7	276.5	273.1
	6	274.1	273.63	274.77	277.1	277.5	277.7	276.5	273.1
	5	274.1	273.63	274.77	277.1	277.5	277.7	276.5	273.1
	4	274.1	273.63	274.77	277.1	277.5	277.7	276.5	273.1
	3	274.1	273.63	274.77	277.1	277.5	277.7	276.5	273.1
	2	274.1	273.63	274.77	277.1	277.5	277.7	276.5	273.1
	1	274.1	273.63	274.77	277.1	277.5	277.7	276.5	273.1
	0	274.1	273.63	274.77	277.1	277.5	277.7	276.5	273.1

2+06 = edge of Pave for 1/4 12.23

2+96.69 = N. curb

2+86.69 = PC - 10' Rad. curb. Ret. on Rt.

2+76.69 = N.L. Potomac

2+50

2+00

1+50

1+00

274.9	274.4	274.4	274.5	272.1
274.8	274.0	275.4	273.0	272.4
273.4	273.2	273.7	271.7	270.8
272.6	271.8	272.6	270.9	269.7
272.1	271.2	270.4	269.4	268.8
272.1	270.8	269.6	268.6	267.5
272.76	271.51	270.35	269.17	268.39
272.4	271.7	270.0	269.5	268.6
270.8	270.6	269.5	269.0	267.8

4+75

4+50

4+00

3+56.69 = S.L. Potomac.

3+46.69 = PC. 10' Rad. Ret. on R.

T.P. 5.39 273.30 11.78 267.91 s.w. BP. So
Proeze +
Potomac.

3+36.69 = S. cb. line

3+26.69 = edge of pave for 1/4 12.15

3+16.69 = # Potomac

271.8	271.5	271.2	270.8	269.7	269.9	268.8	268.3	267.8	267.8	267.56	267.37	267.97
270.5	270.1	269.9	269.7	269.7	269.9	268.6	268.0	267.6	267.8	267.56	267.37	267.97
268.7	268.3	268.8	268.6	268.6	268.0	267.6	267.0	267.6	267.8	267.56	267.37	267.97
267.8	267.7	267.8	267.6	267.6	267.0	266.6	266.0	266.4	267.8	267.56	267.37	267.97
267.89	267.8	267.8	267.6	267.6	267.0	266.6	266.0	266.4	267.8	267.56	267.37	267.97
267.89	267.8	267.8	267.6	267.6	267.0	266.6	266.0	266.4	267.8	267.56	267.37	267.97
267.89	267.8	267.8	267.6	267.6	267.0	266.6	266.0	266.4	267.8	267.56	267.37	267.97
267.89	267.8	267.8	267.6	267.6	267.0	266.6	266.0	266.4	267.8	267.56	267.37	267.97
267.89	267.8	267.8	267.6	267.6	267.0	266.6	266.0	266.4	267.8	267.56	267.37	267.97
267.89	267.8	267.8	267.6	267.6	267.0	266.6	266.0	266.4	267.8	267.56	267.37	267.97
267.89	267.8	267.8	267.6	267.6	267.0	266.6	266.0	266.4	267.8	267.56	267.37	267.97
267.89	267.8	267.8	267.6	267.6	267.0	266.6	266.0	266.4	267.8	267.56	267.37	267.97
267.89	267.8	267.8	267.6	267.6	267.0	266.6	266.0	266.4	267.8	267.56	267.37	267.97

279.69

24.9 = edge Conc. Pave

6 + 44.26 = N.L. Schwyler

6 + 00

8 + 75

T.P. 4.21 264.44 13.07 260.23

5 + 50

5 + 25

5 + 00

267.1	266.5	264.0	263.3	262.7	258.4	256.7	254.0
266.0	264.9	263.4	261.9	260.9	259.6	257.0	253.4
265.4	264.1	262.5	260.9	259.6	257.7	255.9	252.6
263.8	262.6	260.9	258.6	257.0	256.1	255.9	252.6
263.3	262.0	260.3	258.2	256.6	255.9	255.9	252.6
263.0	261.4	259.6	257.7	256.53	255.9	255.9	252.6
263.49	262.07	260.57	258.55	256.53	255.9	255.9	252.6
262.9	261.9	260.8	258.6	256.8	257.3	257.3	253.07
263.2	261.7	260.8	259.2	257.2	257.2	257.2	253.6
			259.1	256.9	256.9	256.9	253.6
			258.7	256.7	256.7	256.7	253.6

7+50

7+25

6+74.26 = S.L. Schuyler

T.P. 124 252.85 12.83 251.61 subt. sum. Schuyler

6+84.26 = S. cb. line

6+76.76 = edge of pave at 1/4 - 13.05

6+69.26 = ϕ

6+61.76 = edge of pave at 1/4 12.71

6+54.26 = N. cb. line

257.8	256.7	255.6	254.3	251.9	251.6	250.6	249.6	249.5	248.9	248.2	248.1
256.1	255.1	254.3	251.9	251.6	250.6	249.6	249.5	248.9	248.2	248.1	247.3
253.4	252.9	251.8	251.2	250.8	249.6	249.5	248.9	248.8	248.7	248.7	248.3
252.1	251.8	251.6	251.2	250.8	249.6	249.5	248.9	248.8	248.7	248.7	248.3
251.79	251.66	251.08	251.03	249.6	249.6	249.5	248.9	248.8	248.7	248.7	248.3
252.92	251.65	251.03	251.03	249.6	249.6	249.5	248.9	248.8	248.7	248.7	248.3

264.44

8+50

8+25

8+00

7+85

7+77.9 - 26.6 Rt. = E of outlet 24" Culvert

7+75 - 11.3 Lt. = inlet of 24" Corr. Iron Culvert
+ E of 8' x 10" Conc. Headwall

58	247.1	
40	245.1	
15	244.9	
11.3	244.06	
8.9		
5.22	247.63	
11.3	249.1	
3.8		
4.1	248.8	
4.4	248.5	
4.6	248.3	
4.67	248.18	
5.2	247.7	
8.3	244.6	
11.6	241.3	
10.9		

4.0	249.2	
2.8	247.1	
4.3	248.6	
3.7	249.2	
2.2	248.7	
5.1	248.2	
4.9	248.1	
4.8	248.01	
5.5	247.5	
5.9	246.0	
2.2	241.57	
2.6		
3.0		
3.6		
4.0		
4.4		
4.8		
5.2		
5.6		
6.0		
6.4		
6.8		
7.2		
7.6		
8.0		
8.4		
8.8		
9.2		
9.6		
10.0		

251.0		
250.2		
250.0		
249.8		
248.2		
247.9		
247.8		
247.87		
248.0		
249.0		
247.3		
247.9		
247.6		
247.79		
247.8		
249.6		
249.2		
249.2		

152 85

10+19.27 = S. cb line

10+09.27 = edge pave at 1/4 5.88

9+99.27 = F

9+89.27 = edge pave at 1/4 5.90

9+79.27 = N. cb line

9+69.27 = NL Albemarle

9+40

9+00

0	252.4	0	251.9	0	247.7	0	247.7
1	251.3	1	249.9	1	248.7	1	247.7
2	251.1	2	249.4	2	248.4	2	247.9
3	251.2	3	249.4	3	247.5	3	247.5
4	248.2	4	247.5	4	247.3	4	247.3
5	247.6	5	247.2	5	247.1	5	247.0
6	247.4	6	247.1	6	247.1	6	246.93
7	247.7	7	247.55	7	247.01	7	246.93
8	247.7	8	247.3	8	247.01	8	247.91
9	248.7	9	248.0	9	247.47	9	247.91
10	248.4	10	248.3	10	247.5	10	247.91

252.85

Rt.

Lt.

9+ edge pave
Ret. 10' Rad.

247.7 = edge pave

247.7 = edge pave
Ret. 10' Rad.

247.7 = edge pave
Ret. 10' Rad.

247.7 = edge pave
Ret. 10' Rad.

247.7 = edge pave
Ret. 10' Rad.

247.7 = edge pave
Ret. 10' Rad.

13+36.25 = edge pave at 1/4 9.18

13+28.76 =

13+21.24 = edge pave at 1/4 8.67

13+13.76 = N. cb. Line

13+03.76 = N.L. ladder

12+75

12+50

T.P. 2.56 240.87 12.85 238.31

12+00

243.2	240.0	238.4	235.5	234.9	232.2
243.2	239.8	238.0	235.1	234.9	232.0
243.2	239.2	237.7	234.8	234.2	232.0
241.2	237.2	236.7	234.6	233.0	231.8
241.1	237.0	234.9	233.6	232.7	232.4
242.00	237.05	235.79	233.50	232.26	232.07
241.9	237.6	236.0	234.0	232.87	
243.7	239.9	238.3	234.9		
244.3	240.9	239.3			

51.16

24.6 = edge conc.
Pave

24.6 = Top PC
Ret

check B.M. S.W.B.P. lauder
S.B. 8.90 231.97

13+53.76 = S.L. lauder

13+43.76

	Lt.	Ret.
235.0	234.4	
234.0	233.5	
232.1	232.0	
231.1	231.3	
231.30	230.9	
231.91	231.50	
240.87	231.8	

9.57 24.6 Top
9.57 24.6 PC. to Rad
9.57 24.6 Ret.
9.57 24.6 Top
9.57 24.6 PC. to Rad
9.57 24.6 Ret.

check BM.

18.97 294.41

3+60 = end.

3+20

2+80

2+40

288.3	289.6	290.5	291.4
40	40	40	40
287.8	289.3	290.2	291.9
40	40	40	40
287.8	289.1	290.5	291.6
40	40	40	40
287.7	288.7	290.1	291.3
40	40	40	40
287.7	288.8	290.2	291.2
40	40	40	40
287.8	289.1	290.4	291.2
40	40	40	40
287.6	289.5	291.0	291.6
40	40	40	40

293.38

X- Sect. Potomac - 80' st. - 20' cbs.
 Not Graded. From E.L. Sea Breeze to 360' E.

INDEXED

2+40

2+00

1+50

1+00

T.P. 12.54 289.61 275 277.07

0+50

0+00 = E.L. Sea Breeze

B.M. 11.41 279.32 269.71 sw. Potomac
+ S.B.

Lt. = N.

Rt. = S

285.9	285.9	285.4	284.5	283.8	284.1
283.8	283.8	283.2	283.4	281.8	281.8
282.0	282.0	281.5	280.8	279.2	278.8
279.7	279.4	278.9	278.2	277.4	277.4
276.8	276.1	275.8	275.4	274.4	274.3
272.5	272.0	271.8	271.5	270.8	
279.32					

check B.M. 14.26 267.90
 T.P. 121 282.16 13.06 290.95

3+60 = End.

3+20

T.P. 7.14 294.01 2.74 286.87

2+80

$$\begin{array}{r} 290.6 \\ 50 \\ \hline 285.6 \end{array}$$

$$\begin{array}{r} 289.9 \\ 40 \\ \hline 285.9 \end{array}$$

$$\begin{array}{r} 290.0 \\ 20 \\ \hline 288.0 \end{array}$$

$$\begin{array}{r} 290.3 \\ 57 \\ \hline 285.3 \end{array}$$

$$\begin{array}{r} 289.7 \\ 20 \\ \hline 287.7 \end{array}$$

$$\begin{array}{r} 289.5 \\ 40 \\ \hline 285.5 \end{array}$$

$$\begin{array}{r} 289.0 \\ 40 \\ \hline 285.0 \end{array}$$

289.61

X-Sect. Schuyler - 50' st. 10' obs.
Not Graded. from E.L. Sea Breeze to 360' E.

2+40

INDEXED

2+00

1+50

1+00

T.P. 10.56 273.69 0.95 263.13

0+50

0+00 = E.L. Sea Breeze

B.M. 12.47 264.08

251.61

SW Schuyler
+ S.B.

385 50%

Station	Reading	Correction	Adjusted Reading	Notes
2+40	269.9	0.8	268.4	
2+00	267.0	0.3	266.3	
1+50	265.5	0.2	264.4	
1+00	263.3	0.3	261.4	
T.P.	263.8	0.7	265.5	
0+50	262.2	0.3	262.2	
0+00	258.5	0.3	258.5	
B.M.	256.8	0.3	256.8	
	257.9	0.2	257.9	
	255.7	0.1	255.7	
	255.0	0.1	255.0	
	256.2	0.2	256.2	
	259.0	0.2	259.0	
	255.4	0.1	255.4	
	257.9	0.2	257.9	
	256.2	0.1	256.2	
	261.7	0.5	262.7	
	259.4	0.5	259.4	
	259.4	0.5	259.4	
	263.4	0.3	263.4	
	264.1	0.2	264.1	
	264.1	0.2	264.1	
	264.1	0.2	264.1	

Indexed
c.s.k.

17

H. = U

Pt. = S

check B.M. 10.53 251.61

T.P. 1.80 262.14 13.35 260.34

3+60 = end.

3+40

3+15 = Φ \pm Creek

3+05

2+90

2+65

5.0	272.2	5.0	270.8	5.0	264.7	5.0	263.6	5.0	262.4	5.0	261.2	5.0	260.8	5.0	260.8
3.5	271.5	2.5	271.4	2.5	264.7	2.5	263.6	2.5	262.4	2.5	261.2	2.5	260.8	2.5	260.8
2.5	268.6	2.5	269.8	2.5	266.6	2.5	265.6	2.5	264.6	2.5	263.6	2.5	262.6	2.5	261.6
6.9	266.8	5.5	269.0	4.5	267.1	3.5	268.1	2.5	269.1	1.5	270.1	0.5	271.1	0.5	272.1
2.5	269.0	2.5	267.6	2.5	266.6	2.5	265.6	2.5	264.6	2.5	263.6	2.5	262.6	2.5	261.6
2.5	265.4	2.5	267.6	2.5	266.6	2.5	265.6	2.5	264.6	2.5	263.6	2.5	262.6	2.5	261.6
2.5	268.8	2.5	262.1	2.5	266.6	2.5	265.6	2.5	264.6	2.5	263.6	2.5	262.6	2.5	261.6
2.5	271.0	2.5	266.5	2.5	266.6	2.5	265.6	2.5	264.6	2.5	263.6	2.5	262.6	2.5	261.6
2.5	271.2	2.5	268.7	2.5	266.6	2.5	265.6	2.5	264.6	2.5	263.6	2.5	262.6	2.5	261.6
2.5	271.5	2.5	269.6	2.5	266.6	2.5	265.6	2.5	264.6	2.5	263.6	2.5	262.6	2.5	261.6
2.5	272.5	2.5	271.1	2.5	269.3	2.5	267.9	2.5	266.5	2.5	265.1	2.5	263.7	2.5	262.3
0.6	273.1	4.0	269.5	4.0	267.3	4.0	265.9	4.0	264.5	4.0	263.1	4.0	261.7	4.0	260.3
5.6	266.1	5.6	266.1	5.6	266.1	5.6	266.1	5.6	266.1	5.6	266.1	5.6	266.1	5.6	266.1

273.69

check B.M. 10.51 247.51

T.P. 128 258.02 1302 256.74

3+60 = end. - 22.5 ft. of 2 1/2" water pipe.

3+20

269.6	267.3
268.1	266.7
267.6	264.7
266.0	263.7
265.2	261.3
263.5	
262.8	
262.0	
261.3	
262.2	

269.76

X-Sect. Lauder - 50 ft 10' cbs.

Not Graded - from E.L. Sea Breeze to 360° E.

INDEXED

1+20

1+05

0+95

0+65

0+25

0+00 = E.L. Sea Breeze

B.M. 12.82 244.79

231.97

s.w. lauder
+ B.D.

Indexed
C.I.K.

LT. = N

RT. = S

21

385 50%

237.7	237.2	236.6	235.9	235.7	233.8	232.0	235.5	235.6
1+20	1+05	0+95	0+65	0+25	0+00 = E.L. Sea Breeze	0+00 = E.L. Sea Breeze	0+00 = E.L. Sea Breeze	0+00 = E.L. Sea Breeze
237.7	237.2	236.6	235.9	235.7	235.5	233.8	232.0	235.5
237.7	237.2	236.6	235.9	235.7	235.5	233.8	232.0	235.5
237.7	237.2	236.6	235.9	235.7	235.5	233.8	232.0	235.5

244.79

check B.M.

18.00 231.98

3+60 = end

3+20

2+80

T.P. 7.64 149.98 2.45 242.34

2+40

2+00

1+60

40	239.3	+	241.5	40	246.7	-	248.6
25	238.8	+	240.4	25	246.5	+	248.0
5	238.0	+	240.0	5	246.2	+	247.2
5	238.2	+	239.7	5	243.7	+	247.8
5	236.4	+	237.9	5	242.8	+	248.1
5	237.5	+	239.4	5	243.1	+	247.4
5	237.4	+	238.2	5	243.6	+	247.3
5	236.3	+	236.8	5	243.7	+	247.3
5	234.4	+	239.5	5	246.5	+	247.4
5	234.7	+	239.7	5	243.6	+	247.4
5	237.0	+	238.1	5	243.7	+	247.4
40	237.1	+	241.6	40	243.6	+	247.4

244.79

INDEXED

1 sec alley 20' wide
Blk 131 Manasse - Schilber 209

W.O. 31212

Hooks

Boggs notes

Green Level

Roberts

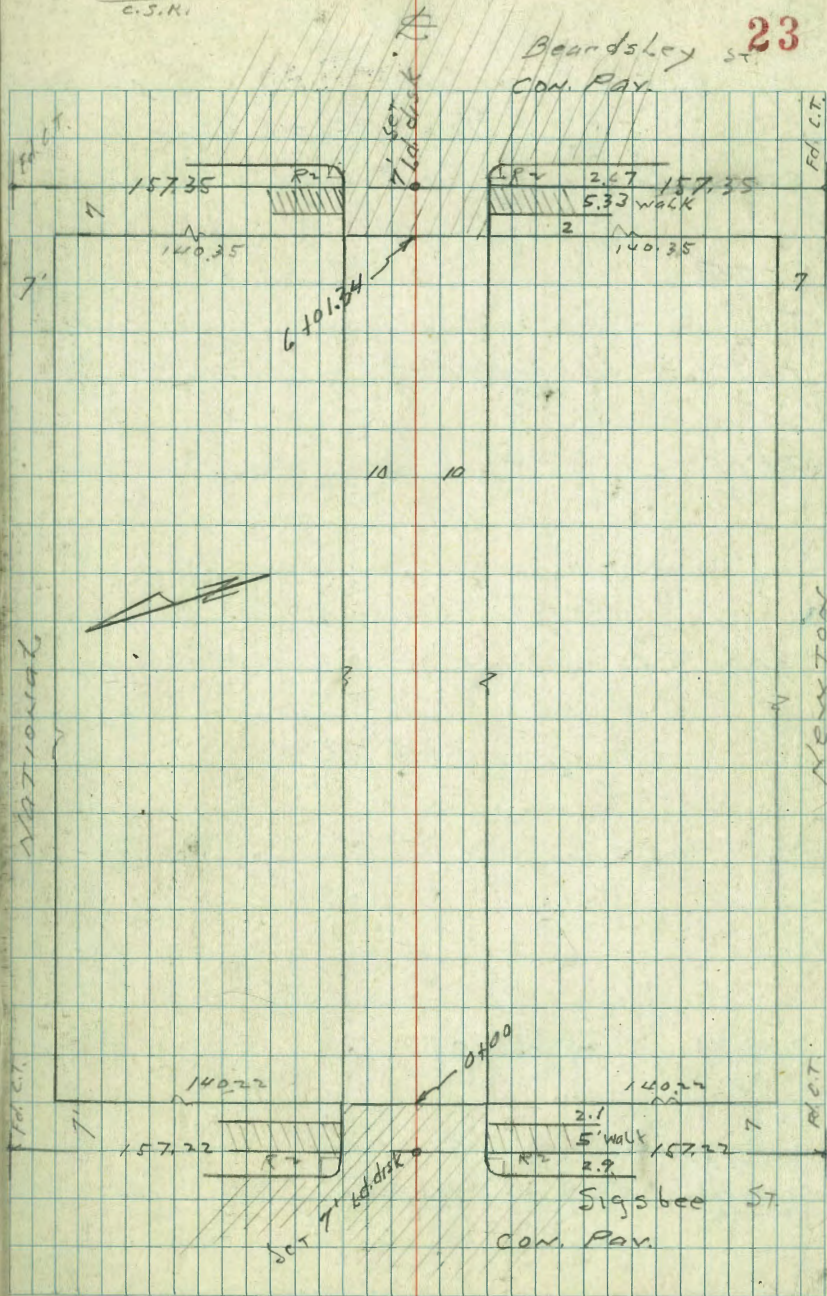
None!

all curb 8"

5-9-47

Indexed
c.s.k.

Beardsley St 23
CON. Pav.



0+48 10.2 R bag Picket

9.7 R P Pole PA 1718 Sta 52-11

0+47 10 L Tel Pole D11927T

0+25

+07 10.8 L Bag Picket

0+05

0+00 EL. Sigbee

0-10

0-30 S Sigbee

B.M. NEBP
National
Sigbee

0.69 24.63

23.94

24.53

1.25.0
1.6 2.8 3.1 3.2 2.0
10 8 8 10

21.5 20.3 20.0 20.0 20.4
3.1 4.3 4.6 4.6 4.2
10 8 9 10

20.32 20.08 19.68 19.97 20.07
4.31 4.55 4.95 4.86 4.56
10 10 9 9 8

21.32 20.24 19.55 19.30 19.10 19.70 19.31 18.00
3.91 4.39 5.08 5.39 5.58 4.93 7.72 6.17
100 65 13 100 100 60 100 100

20.01 19.15 19.28
4.62 5.45 7.35
10 100

X sec Alley Blk 131 M+S

1 +60 14.0L d Dbl Garage dirt floor

+51 9.1R Power Pole #1730

9.6R Fence contd

+50 9.7L Tel Pole 307285H

+47 10.3L Ret. wall 7 1/2 // to Alley

+25 10

INDEXED

+12 9.6R Picket L in

1 +04 10.2L 8" ret. wall 7 1/2 // to Alley

10.7R beg. Picket

1+00 10.5L end of Picket

+ 73 10.0R end of Picket

T.P 8.25 31.35 1.53 23.10

0 +50

24.63

7.1
14

L

R

Rt.

25

4.7
10

5.5
7

5.5
8

5.5
8

4.26.5
10

4.4
10

5.9
7

6.0
10

6.3
8

5.9
10

6.4
15
10 yard

5.7
12.2

6.3
10

6.7
7

6.7
7

6.9
7

6.6
10

0.23.7
10

1.5
8

1.22.9
7

1.6
8

0.23.9
8

0.23.9
10

24.63

X sec Alley Blk 121 Map
 3 + 50 { 9.7 NW cor board Dwelling
 9.7 end of board fence
 + 38 10.4 by board fence
 + 30 10.5 R NE cor iron bldg conc fdt

INDEXED

4 25 10.7 L 3' conc walk

 3 + 145 10.4 R ♀ Door 14' wide

 3 + 00 { 10.5 R NW cor corr iron bldg
 10.1 L beg board fence

 + 99 9.8 L Tel Pole 307286 H

 2 + 87 14.7 L ♀ Obl. garage conc floor

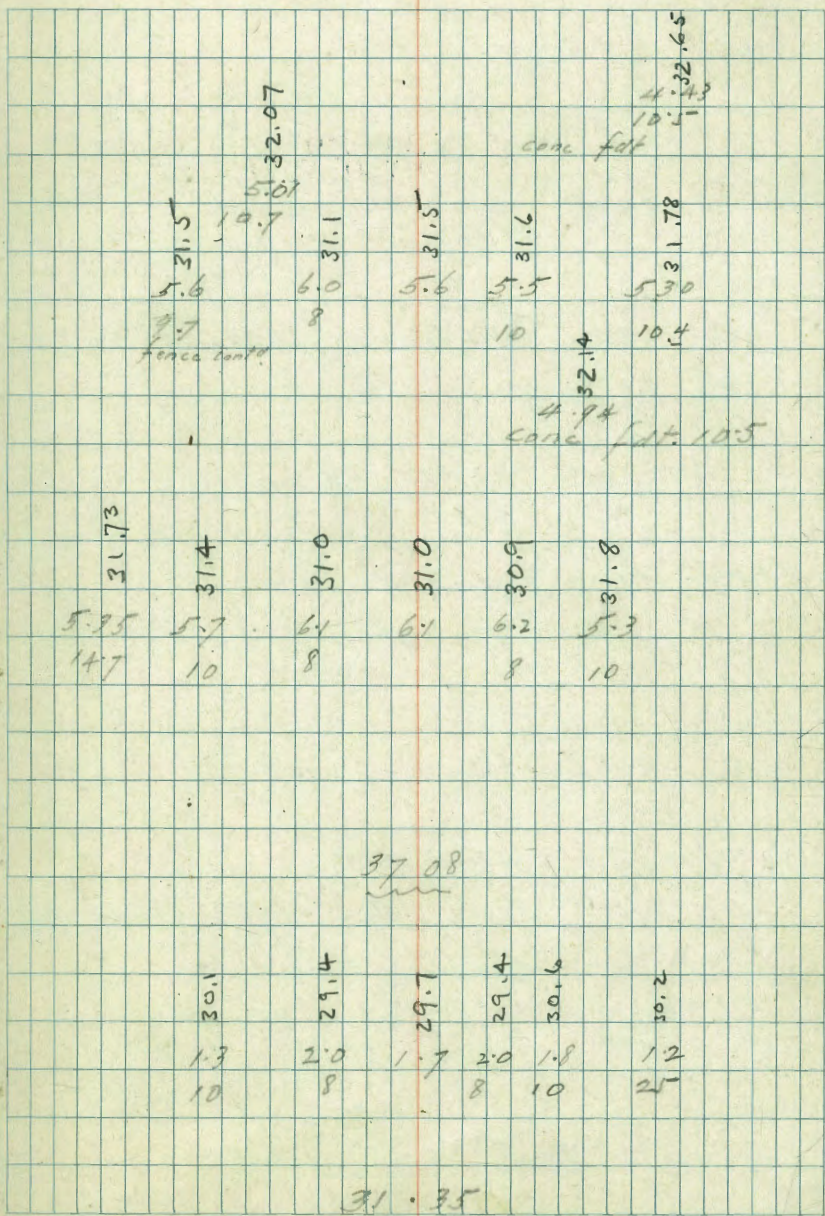
 + 76 9.9 R Power Pole A1756

IP 0 6.42 37.08 0.69 30.66
 N edge of MH
 2 + 71

2 + 50 { 9.8 L SE cor of garage
 10.8 R end of board fence

31.35

L ♀ RT



X Sec. Alley B/K 131 MeJ
+ H -

TP 3.56 26.86 3.78 33.20

5+50

+49 { 10.1 R
10.3 L beg. board fence

+49 10.3 L SE cor shed

+41 10.4 L SW cor shed

+39 10.1 L SE cor. Bd Shed

10.1 L SW cor. Board Shed

+20 10.0 L end of fence

+11 10.2 R NE cor shed big fence

10.1 R EW cor shed + end of fence

+51 9.8 R Pole Power A 1792

5+00 10.8 L fence contd

+64 { beg. board fence
10.4 R NE cor. shed

+60 10.5 L SE cor board beg fence board

37.08

L H R

29

3.7
10

3.4
10

3.3
10

3.3
10

3.2
8

3.1
10

3.3
8

3.4
8

3.1
8

3.2
8

3.3
8

3.3
8

3.3
10

3.3
10.4
gate

3.3
10

3.3
30
driveway

37.08

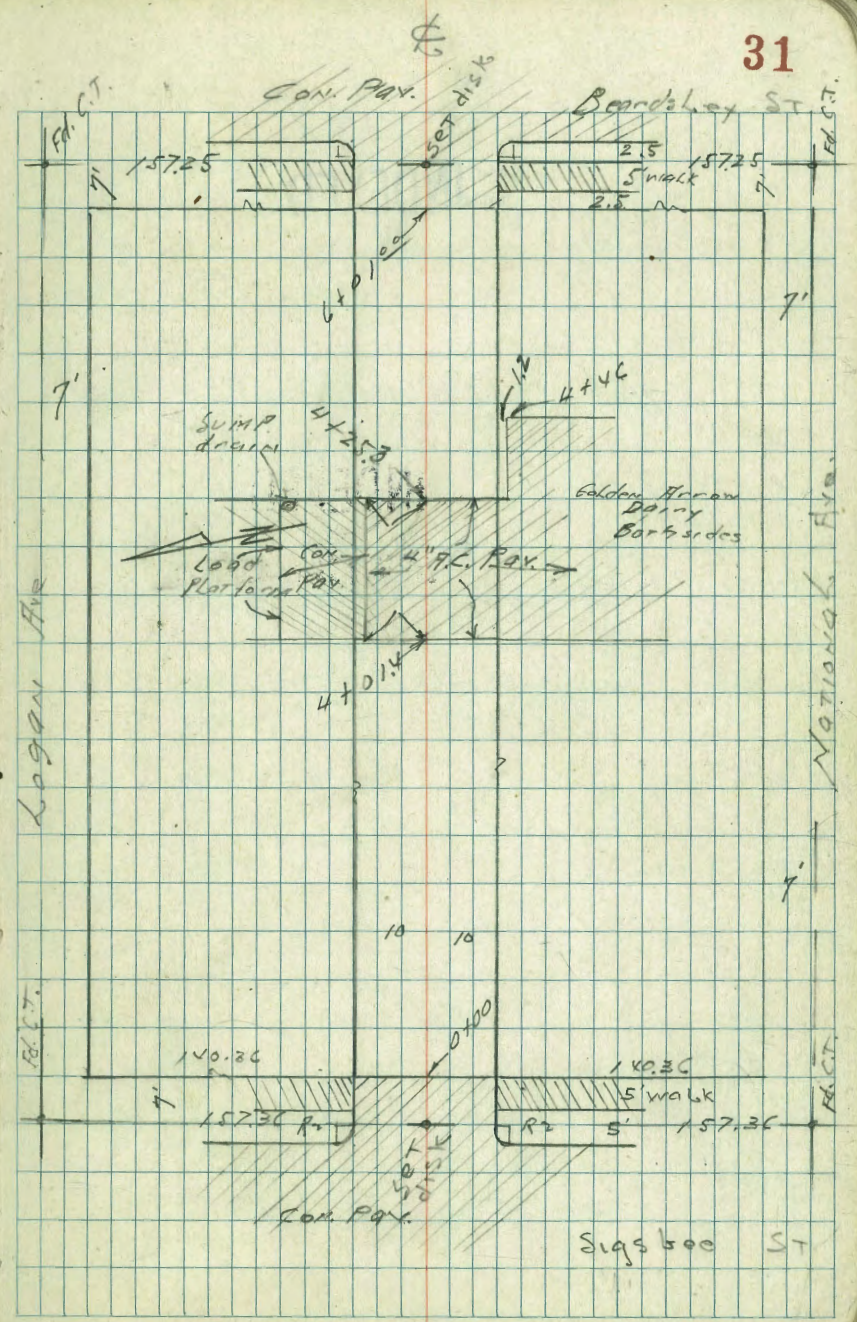
X sec alley 20' wide
 Blk. 139 Manasse Schiller

W.D. 31212

MOORE
 BEGG - notes
 Green
 Roberts Level

5-9-47

INDEXED
 WK
APR 13 1949



Alley Bk 139 M+S
+ H1 -

+83 10.6 R NW cor DWL
+79 10.7 R end bd fence
+75 10.6 L corr iron fence
+73 10.6 R bog board fence
+79 10.6 R NE DWL
+70 9.5 L $\frac{1}{2}$ Single garage dirt floor 11' wide
+64 9.7 L end bd fence
+51 10.8 R Power Pole A 1744
+50 10.4 R N.W. cor DWL
+50 9.4 L Tel Pole D10286 T

+33 10.6 L 2' conc walk

+20 34.0 R Conc Drive

2+00 10.8 R NE bd DWL

+90 10.6 L bog board fence
10.6 L SE cor Shed

1+75 10.6 L SW cor Shed

38.29

L

R

35.18
7.1
10.6

R

34

34.7
3.6
9.5

34.3
3.6
10.6

34.7
3.6
10

34.4
3.9
8

34.6
3.7

34.7
3.6
8

35.0
3.7
10

35.92
10.4 floor

34.1
4.2
10

34.3
4.0

34.4
3.9
10

34.00
4.2
3.4

30.1
4.2
10

34.1
4.2

34.3
4.0
10

34.0
4.3
10

33.6
4.7

33.9
4.4
10

38.29

INDEXED

+65 10 R NW cor Dwl
 +63 9.4 L end of fence SW cor Dwl conc fdt
 +62 8.7 L Tel Pole D10325T JP A1765
 +59 9.8 L { beg bd fence
 SE cor Dwl

 +50 10.2 R end of conc wall & fence

 +41 8.3 L conc apron 11.5 wide door of dwl 236
 +35 9.6 L end of fence + SW cor Dwl
 +32 10.3 R beg conc wall & bd fence
 +30 10.2 R E line conc drive
 +19 10.4 R open drain 3' from South
 +18 10.5 R W line conc drive

 TP 6.58 41.91 2.96 35.33
 +17 10.5 R NE
 +01 10.6 NW cor Dwl
 } 9.8 L beg. bd fence
 } 9.8 L end cor 1120
 7100 { 10.8 R NE cor Dwl

38.29

37.97
 39.4
 9.4
 10.4
 35.9
 6.0
 10
 6.35.92
 8.3
 6.2
 35.7
 6.1
 35.8
 5.9
 10
 37.01
 14.90
 10.2 wall

 5.82
 9.8
 6.18
 10.3
 6.18
 10.2

 41.91
 35.4
 2.9
 10
 35.2
 3.1
 2.9
 10
 36.0

 6.24
 6.4
 6.4
 35.67
 5.05
 6.4
 6.4
 6.4
 35.67
 36.86
 35

 6.67
 10.4
 35.65
 6.24
 10.5

Alley Bk 139 Mas
+ H1 -

5+08 10 L beg. cor iron fence
10.9 R beg. fence Picket
5+01 10 R Power Pole A1776 Sta 32-14

TP H.40 42.55, 3.76 38.15

5+00 $\frac{1}{2}$ Dirt Drive H.6L

+985 11.5 R $\frac{1}{2}$ 4.3' conc walk
+96 11.6 R Edge conc floor
+92 10.0 L end corr iron fence
+91 9.0 $\frac{1}{2}$ Tel. Pole JPA1775 D10384T

+76 11.8 R conc floor w line of

+74 10. L drainage from Yard

H+ 46

41.91

Lt \$ Rt

37

385 - 5096

38.5
38.5
38.0
37.9
38.2
3.4
3.4
3.9
4.0
3.7
14.6
10
9
10
10
28.55
3.4
33.6
11.6
38.80
11.5
37.60
37.7
37.6
37.8
38.58
4.3
4.1
3.53
11.7
9 rough conc floor
4.31
37.4
37.2
37.3
37.15
36.98
4.5
4.7
4.6
4.76
4.93
10
10
11.2
30 end
edge block per
41.91

Cross Sec. "F" St.
41st to Morrison

W.O. 31342

Semmermeyer
W Moore
Sherman
Lamore

8-28-47

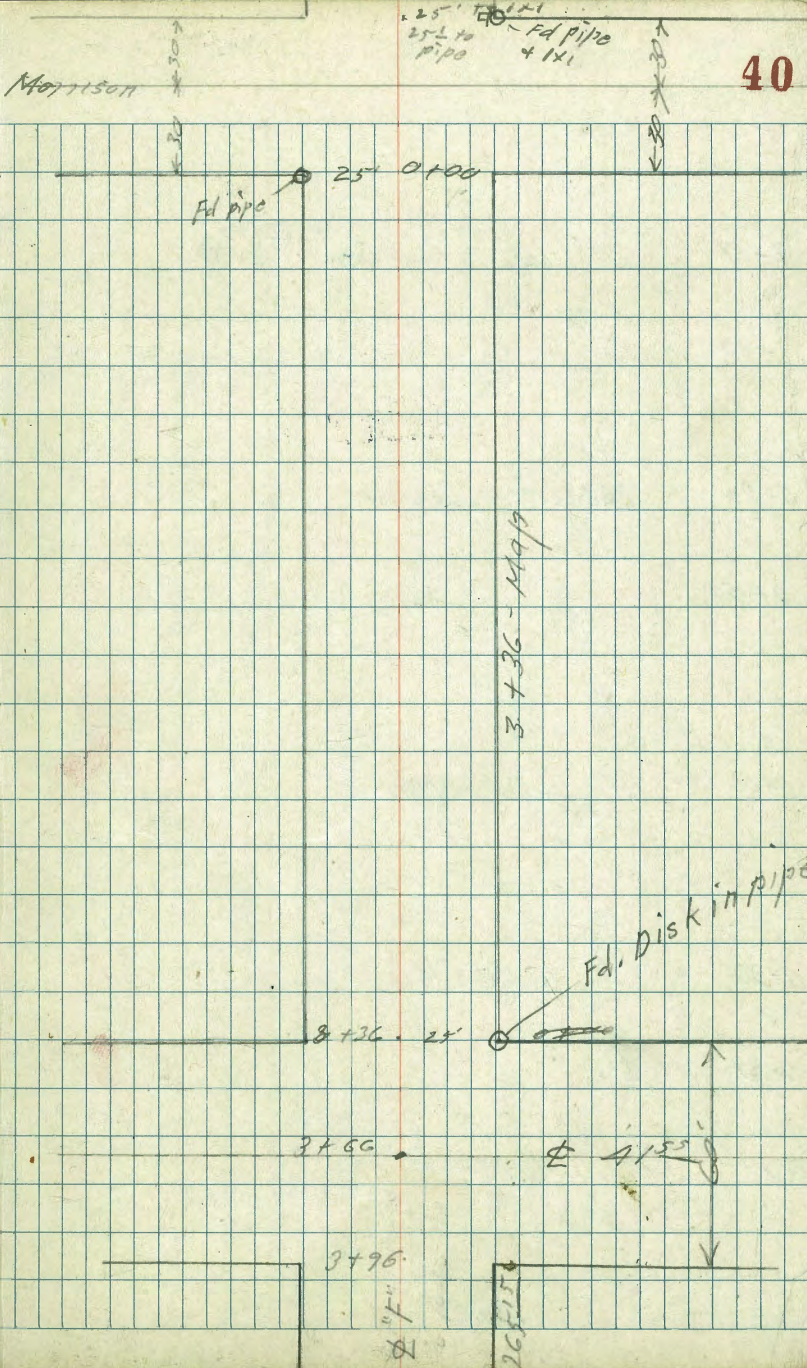
INDEXED

T.P. 6.02 136.45 5.09 130.43

B.M. = NWCP
At Market 10.13 135.52 — 125.39

Indexed
c.s.k.

Morrison



25' 0100'
25' to
pipe

Fd pipe
+ 1x1

40

3+36 - 1499

Fd. Disk in pipe

3+36 - 25'

3+50

4155

3+96

20' 30''

20' 30''

LEFT

±

RIGHT

1+17 20.8 LEFT TO POWER POLE 1-7 1/2 KIA ^{#272595}

1+00

0+95 20.2 LEFT TO DEADMAN

0+50

0+00 = West Line Morrison St

0-30 = ± Morrison St

0-30 ±

0-60 - East Line Morrison St

136.45

<u>129.2</u>	<u>129.6</u>	<u>129.9</u>	<u>130.3</u>	<u>130.7</u>	<u>130.9</u>	<u>131.0</u>	<u>131.2</u>	<u>132.5</u>
$\frac{73}{50}$	$\frac{69}{25}$	$\frac{66}{22}$	$\frac{62}{12}$	$\frac{64}{10}$	61	$\frac{55}{21}$	$\frac{46}{25}$	$\frac{40}{50}$

	<u>131.1</u>	<u>131.3</u>	<u>131.2</u>	<u>131.5</u>	<u>132.2</u>	<u>133.2</u>
	$\frac{54}{25}$	$\frac{52}{12}$	$\frac{53}{10}$	50	$\frac{43}{21}$	$\frac{37}{25}$

	<u>131.7</u>	<u>131.9</u>	<u>132.1</u>	<u>132.7</u>
	$\frac{48}{25}$	46	$\frac{44}{21}$	$\frac{33}{25}$

	<u>129.0</u>	<u>131.5</u>	<u>132.3</u>	<u>132.9</u>	<u>135.0</u>
	$\frac{75}{100}$	$\frac{50}{25}$	42	$\frac{36}{25}$	$\frac{15}{100}$

<u>131.8</u>	<u>131.9</u>	<u>131.5</u>	<u>132.8</u>	<u>132.7</u>
$\frac{47}{25}$	$\frac{46}{16}$	$\frac{50}{15}$	42	$\frac{38}{25}$

LEFT C RIGHT

2+66 = E of 41st St.

2+36 = East Line of 41st St MAP DIST.

2+00

1+75 25' LEFT = 3' WIDE CONC. WALK

1+61 END OF

1+46 25' LEFT + 25' R. START OF CONC. APERTS FOR DOUBLE GARAGES.
136.45

	<u>131.5</u>	<u>132.6</u>	<u>132.9</u>	<u>132.8</u>	<u>133.5</u>	
	5.0	3.9	3.6	3.7	3.0	
	100	25		25	100	
			<u>131.9</u>	<u>131.8</u>	<u>132.0</u>	<u>132.2</u>
		4.6	4.6	4.7	4.5	4.3
		25		12	17	25
	<u>131.1</u>	<u>130.4</u>	<u>130.6</u>	<u>130.9</u>	<u>131.6</u>	
	5.4	6.1	5.9	5.6	4.9	
	25	22	12		25	
		<u>130.95</u>	<u>129.9</u>	<u>130.3</u>		
		6.00	6.6	6.2		
		25	24			
		WALK	GROUND			
	<u>129.81</u>	<u>129.90</u>	<u>129.8</u>	<u>130.1</u>	<u>130.3</u>	<u>130.80</u>
	6.64	6.55	6.7	6.4	6.2	5.65
	35.5	25	15		25	35.5
	GARAGE FLOOR	APERT			APERT GROUND	GARAGE FLOOR
	<u>129.79</u>	<u>129.72</u>	<u>129.7</u>	<u>130.0</u>	<u>130.3</u>	<u>130.82</u>
	6.66	6.73	6.8	6.5	6.2	5.8
	35.5	25	15		25	25
	GARAGE FLOOR	EDGE OF APERT + GROUND			EDGE OF APERT	GARAGE FLOOR

Left

&

Right

ORIGINAL B.M.
PAGE 40

				- 0.02
				125.39
	10.17			125.37

T.P.	5.12	135.55	6.02	130.43
------	------	--------	------	--------

2496 = West Line of 41st St.

136.45

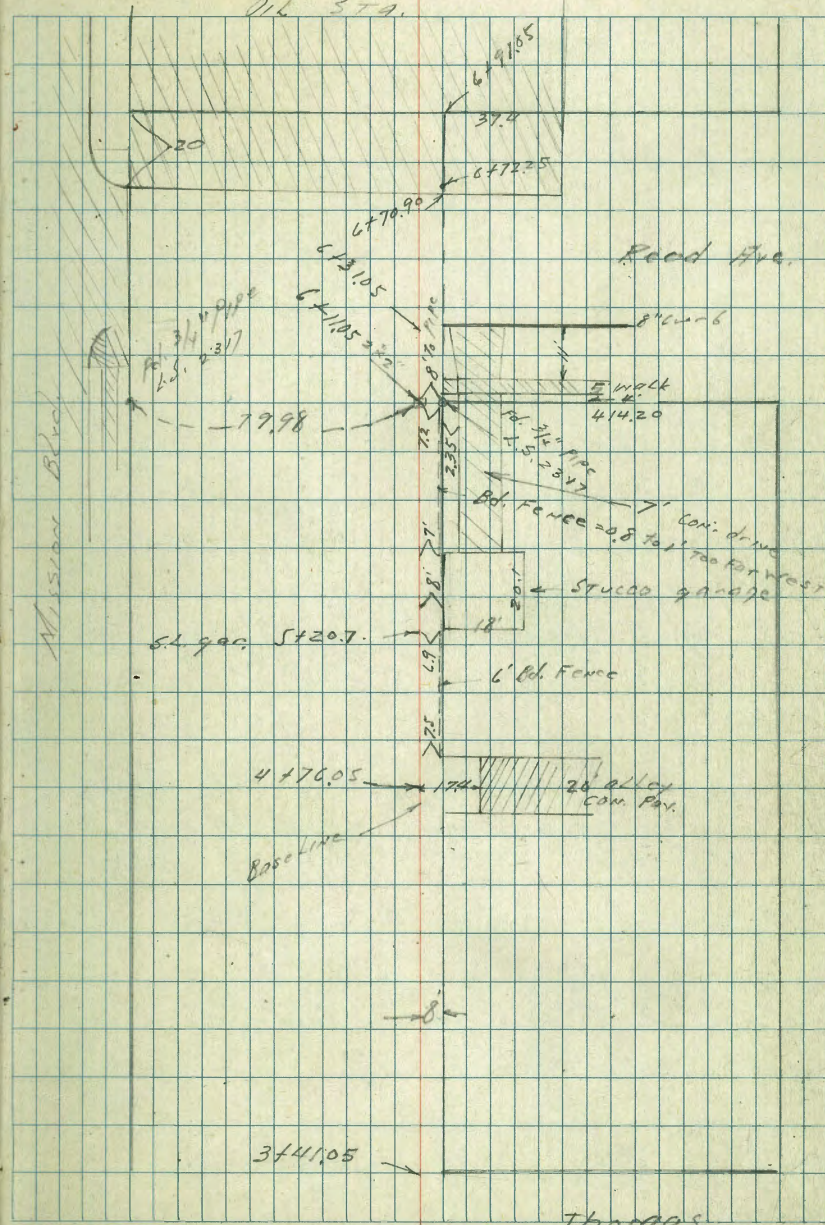
28	133.7
25	

27	133.8
----	-------

25	134.2
25	

Texaco

Oil STA.



Thomas

0+18

0+11.66 Wadge sdw

0+09 on sdw over T4. Cond.

0+00 N. of Pac. Beach Dr

0-25 S Pac. B. Drive

0-50.1 S. of Pacific Beach drive

E.M.
NEBP 5.92 4.19 -1.73
Mission Blvd
Pac. Beach Dr.

LT

E = Baseline P7

46

-1.1
5.3
10

-0.9
5.1

-1.3
5.5
7 = W side Pylaster

-1.46
5.5

-1.51
5.70

-1.68
5.87
TOP
CB
Per.

-1.66
5.85
BOT
Box

-2.65
6.84
grate

-1.31
5.50
gr

-1.73
5.72
CB

-1.50
5.69
TOP
curb

-2.07
6.26
currer

-1.67
5.86
Box

-1.38
6.57
TOP
grate

-4.62
7.81
BOT
Box

-1.57
5.74
TOP
CB

4.19

17445 Beg. Bd. Fence 2.5 Rt

174341 nrl alley

173591 9 alley

172841 sl alley

1700

0750

0736

419

27

8

47

$\begin{array}{r} -0.1 \\ 4.3 \\ \hline 8 \end{array}$

$\begin{array}{r} -0.4 \\ 4.6 \\ \hline 8 \end{array}$

$\begin{array}{r} 1.36 \\ 5.55 \\ \hline 8 \\ \text{Car} \end{array}$

$\begin{array}{r} -0.75 \\ 4.97 \\ \hline 8 \\ \text{Car} \end{array}$

$\begin{array}{r} -0.1 \\ 4.3 \\ \hline 8 \end{array}$

$\begin{array}{r} -0.5 \\ 4.7 \\ \hline 8 \end{array}$

$\begin{array}{r} 1.63 \\ 5.82 \\ \hline 8 \\ \text{Car} \end{array}$

$\begin{array}{r} 1.13 \\ 5.32 \\ \hline 8 \\ \text{Car} \end{array}$

8

$\begin{array}{r} 1.04 \\ 5.0 \\ \hline 8 \end{array}$

$\begin{array}{r} 1.45 \\ 5.22 \\ \hline 8 \\ \text{Car} \end{array}$

$\begin{array}{r} -0.67 \\ 5.02 \\ \hline 8 \\ \text{Car} \end{array}$

$\begin{array}{r} -0.05 \\ 4.8 \\ \hline 8 \end{array}$

$\begin{array}{r} 1.09 \\ 5.1 \\ \hline 8 \end{array}$

$\begin{array}{r} 1.44 \\ 5.6 \\ \hline 8 \end{array}$

$\begin{array}{r} 1.15 \\ 5.7 \\ \hline 8 \end{array}$ ← in yard

$\begin{array}{r} -0.07 \\ 4.9 \\ \hline 8 \end{array}$

$\begin{array}{r} 1.04 \\ 5.1 \\ \hline 8 \end{array}$

$\begin{array}{r} 1.10 \\ 5.2 \\ \hline 8 \end{array}$

$\begin{array}{r} 1.10 \\ 5.2 \\ \hline 8 \end{array}$

$\begin{array}{r} 1.04 \\ 5.0 \\ \hline 8 \end{array}$

$\begin{array}{r} 1.11 \\ 5.3 \\ \hline 8 \end{array}$

← ground SW Car Garage

419

3 + 61.05 E oliver

2 + 81.05 S 06 oliver

2 + 61.05 SL oliver

T.P. 4.85 3.68 5.36 - 1.17

2 + 50

2 + 06.5 7.7 Pt end Bd fence

2

7 + 50

4.19

	-0.82 4.50 90	-0.49 4.17 80 Pav	-1.3 4.50 8	-1.3 5.0	-1.42 5.10 17.9 Pav	-1.12 4.80 50 Pav			
	1.91 52.5 90 97	-0.51 4.19 80 06	-0.65 4.33 80 97	-1.12 4.2 8	-1.12 4.9	-1.43 5.11 17.9 50 Pav	-2.04 5.72 17.9 97	-1.80 5.48 50 97	-1.19 4.87 50 06
				-1.4 5.1 8	-1.3 5.0	-1.1 4.8 8			
					3.68				
			-1.8 5.0 8	-1.6 5.8	5.1 5.3 8				
			1.5 5.7 8	-1.9 5.1	5.1 5.3 8				
			0.2 4.4 8	-0.5 4.7	5.1 5.3 8				
					4.19				

L+

R

R

4+6605 SE alley

750

4

3+50

3+4105 N.L. Oliver

3+2105 N of Oliver

368

385 50%

$\frac{4.06}{4.38}$

$\frac{0.3}{4.0}$

$\frac{0.70}{4.38}$
17.4
Con.

$\frac{0.65}{4.33}$
50
Con.

$\frac{0.16}{4.3}$

$\frac{0.17}{4.4}$

$\frac{0.19}{4.5}$
8

$\frac{0.19}{4.6}$
20

$\frac{1.0}{4.7}$

$\frac{1.0}{4.7}$

$\frac{1.4}{5.1}$
8

$\frac{1.3}{5.0}$
20
Lamin

$\frac{1.4}{5.0}$

$\frac{1.2}{4.9}$

$\frac{1.7}{5.5}$
8

$\frac{1.1}{4.8}$
20
Lamin

$\frac{1.5}{5.2}$

$\frac{1.3}{5.0}$

$\frac{1.5}{5.3}$
8

$\frac{0.80}{4.48}$
70

$\frac{0.18}{3.86}$
80
26

$\frac{0.37}{4.05}$
80
97

$\frac{1.2}{4.9}$
8

$\frac{0.8}{4.5}$

$\frac{1.97}{5.05}$
17.9
97

$\frac{1.44}{5.12}$
17.9
06

$\frac{1.23}{4.91}$
50
06

$\frac{1.84}{5.52}$
50
97

3.58

6+11.05 SL Reed

F.P. 3.99 4.18 3.49 0.19

6+00

5+50

5+00

4+86.05 N alley

4+76.05 S alley

3.68

6+

6+

R+

50

x0.3
4.9
8

x0.0
4.2

-0.52
4.7
8

-0.44
4.5
8

11.5 ← wedge drive

4.18

x0.2
3.5
8

-0.1
3.8

-0.3
4.0
8

-0.3
4.0
8

-0.3
4.0

-0.4
4.1
8

-0.5
4.2
8

-0.5
4.7

-0.5
4.2
8

x0.5
4.2
8

-0.4
4.1

-0.169
4.31
17.4
Con

-0.68
4.30
50
Con

-0.6
4.3
8

-0.5
4.2

-0.96
4.04
17.4
Con

-0.9
4.58
50
Con

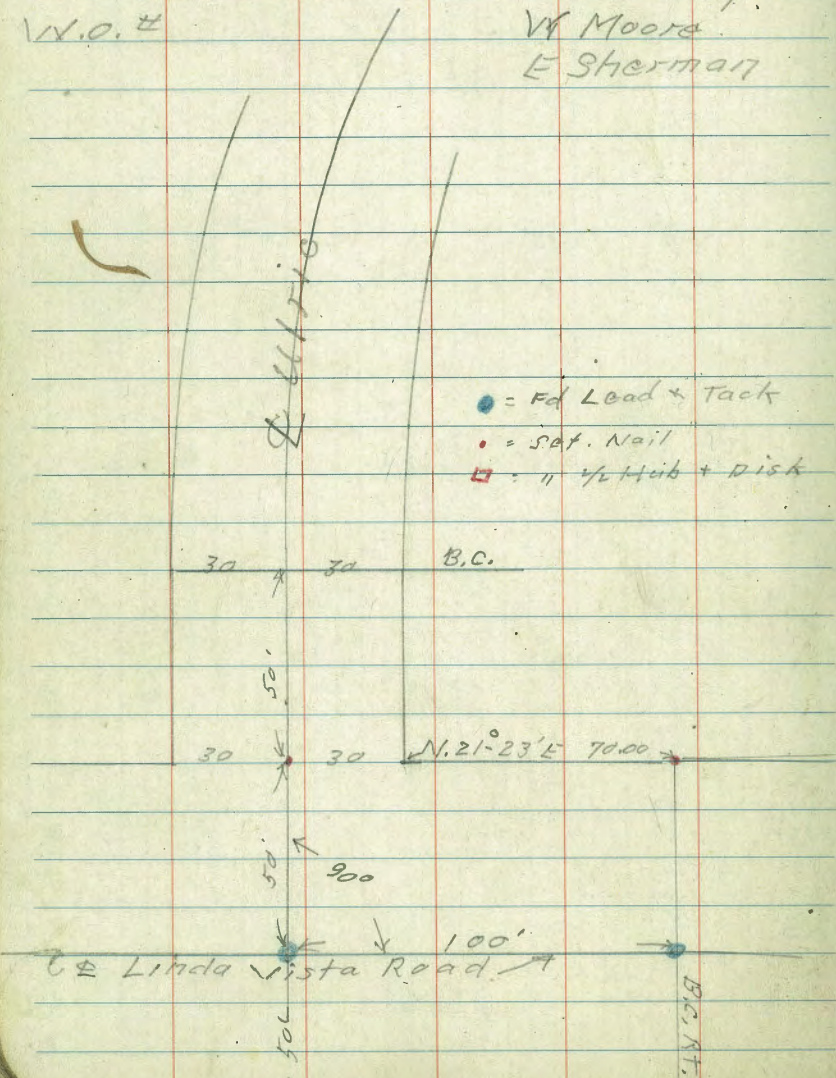
3.68

Linda Vista Library Site

INDEXED

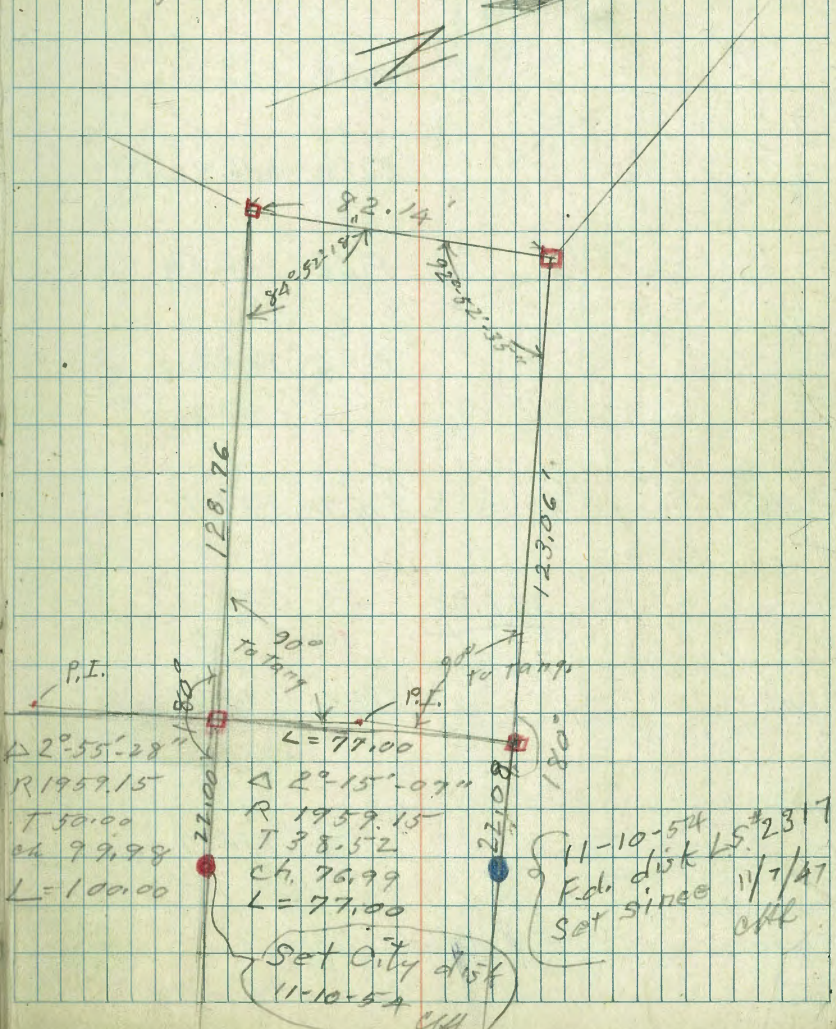
11-7-47
V.O.#

Sommermeier
W Moore
E Sherman



Indexed
VB

Set from National Housing Agency
Drawing # E-592 3/5/46



$\Delta 2^\circ 55' 28''$
 $R 1959.15$
 $T 50.00$
 $ch 99.98$
 $L = 100.00$

$\Delta 2^\circ 15' 07''$
 $R 1959.15$
 $T 38.52$
 $ch 76.99$
 $L = 77.00$

11-10-54
 Fds disk L.S. #2317
 Set since 11/7/47 off

Set City disk
 11-10-54

Set. B.M.

Set Bldg. Corners

7/7/50
OK

4.03	347.82	2/4 Hub
5.17	346.68	"
6.22	345.63	"
5.41	346.44	"
4.72	347.13	
5.13	346.72	
5.31	346.54	
5.53	346.32	

385 50%

Set. Elev. on Bldg. Cors.

53

wly cor. Lot
Nly " "
Ely " "
sly " "
wly. Cor. Bldg.
Nly. Cor Bldg.
Ely Cor. Bldg.
sly cor. Bldg.

chiseled \square in back of walk sly. Cor. Lot. ^{Library site}

Set. B.M.

5.69 346.16

4.12 351.85 - 347.73

Set. B.M. in el
Ely. Cor. Ulric +
Linda Vista Rd.

8.66 347.73

Finish Floor EL. = $\frac{351.85}{347.73}$
4.10 Rod

Top. Hyatt.
12' s.w. ly
from Ulric
N. wly. side
Marlay

022 356.39 - 356.17

This Elevation taken
from N.H.F. Data for
Linda Vista.

KOORE
B999

INDEXED

W.O. 3332

Green Check Elev. Inv.^s of Ex. M.H.^s
Roberts
12-2-47, 14 Blk. xx Ocean Beach

MMBP	7.08	<u>28.67</u>	21.19	Bermuda + Sunset cliffs
M.H. #1	RIM	4.96	23.71	
"	INV.	9.01	19.66	
T.P.	4.87	<u>30.27</u>	3.27	25.40
M.H. #2	RIM	3.85		
"	INV.	11.34	18.93	
" #3	RIM	8.57		
"	INV.	From M. March → 18.32	18.49 = Inv. Front East	
" #4	RIM	0.85		
"	INV.	10.20		
T.P.	6.33	<u>35.69</u>	0.91	29.36
M.H. #5	RIM	3.30		
"	INV.	13.72		

T.P. 2.11 34.50 3.30 32.39

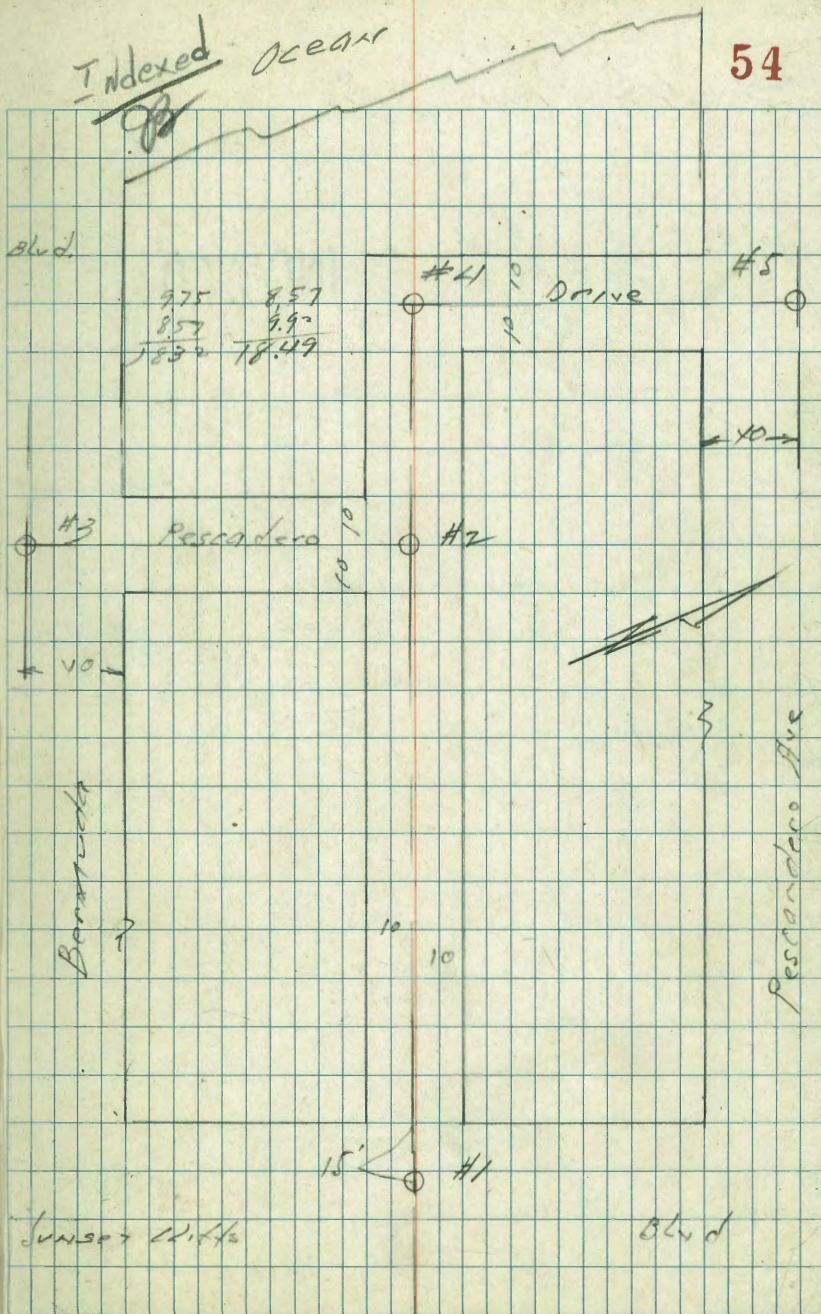
check to MMBP ^{Pescadero Ave} Sunset cliffs 6.38 28.12 $\frac{28.96}{28.13} = 0.01$

above T.P. BM. 2.03 30.15 6.38 28.12 $\frac{28.13}{28.06}$

check to Starting P.M. 8.96 21.19 $\frac{21.19}{0.00}$

Indexed Ocean

54



Walker
Hendricks
Secker
Williams
5-5-48

CROSS SECTION - BROOKES ST.

From Front to Albatross

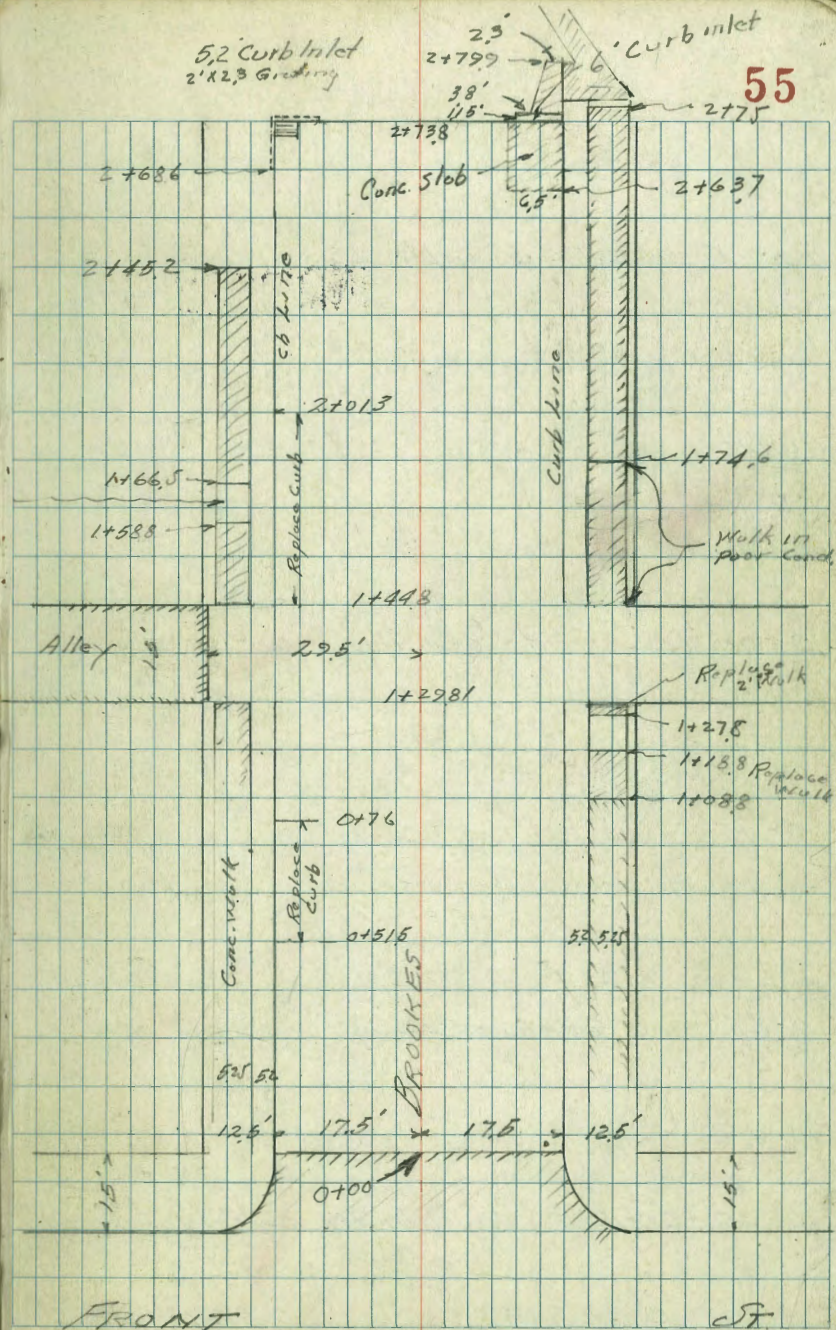
N.O. 31418

~~Indexed~~

INDEXED

Walk in Four
Cond.

Construct Alley cbs.



0+51.5 = Bag Bad Curb on Lt.

0+15

0+00 = W/ Front Section on Pw.

0-15

0-25 Section on Pwry

0-35 - L. Front Section on A.G. Pwry

4.20 257.58

252.78

251.43	251.91	251.35	251.5	251.7	251.5	251.7	250.84	251.63	251.79	251.83
515	522	523	51	59	61	62	674	595	579	574
29	227	175	175	70	61	70	175	175	227	291
Walk	Walk								Walk	Walk

253.17	253.25	253.07	252.2	252.3	252.4	252.3	251.7	252.54	252.7	252.7
441	436	454	54	53	52	53	59	502	470	491
29	227	175	175	70	52	10	175	175	227	291
Walk	Walk								Walk	Walk

253.44	253.5	253.29	252.65	252.90	252.99	252.76	252.30	252.77	252.91	253.03
414	425	432	433	468	459	482	528	481	467	455
29	227	175	175	875	875	875	175	175	227	291
Walk	Walk	cb						cb	Walk	Walk

254.17	253.66	253.52	252.90	252.89	253.15	253.24	253.01	252.56	252.49	252.79	253.52	254.2
441	432	436	468	469	443	434	457	504	509	479	406	355
70	70	30	30	175	875	875	875	175	30	30	80	80
cb.	cb.	cb							cb.	cb	cb	cb

254.58	253.53	253.23	253.44	253.46	253.33	253.06	253.20	254.23
300	408	435	414	410	425	452	438	385
80	30	175	875	410	875	175	30	20

254.8	253.57	253.47	253.72	253.72	253.57	253.46	253.71	254.38
278	371	411	386	386	401	412	387	320
70	30	175	875	875	875	175	30	70

BM WVK BR Bracker 2 Front FB 1305-14

2+33 to 2+42 = (Approach) Conc. Drive on Rt

2+01.3

1+47.4 = Elec Pole 18.6 Lt = N edge # p 251

1+44.8 = White Alley curb should be replaced on left 3to 1+44.8 to 2+01.3

1+37.3 = Alley

1+29.81 = East Line Alley

T.P. 4.64 254.64 7.58 250.00

1+00

0+76 = End Bad Cb on Lt
2.57.58

249.57	249.5	249.9	248.7	248.5	248.6	248.1	247.7	248.32	248.6	248.66
507	514	524	519	61	61	65	69	632	604	598
29	227	175	175	10	10	10	17.5	17.5	227	291
Walk	Wall	cb						cb	Wall	Wall
250.78	250.90	250.68	250.64	250.43	249.9	249.9	249.9	249.6	249.1	249.93
386	374	376	400	421	47	47	49	52	57	491
80	295	29	227	175	17.5	10	10	10	17.5	17.5
Pave	Need Conc. Paving		conc							026 145.1
250.64	250.7	250.0	250.1	249.96	249.6	249.1	249.5	250.2	251.1	252.0
400	384	46	45	466	50	55	51	47	32	26
80	295	17.5	10	Tim MB	10	17.5	18	30	46	58
Paving	Need Paving									80
251.09	251.16	251.09	250.6	250.17	250.1	250.1	249.7	249.3	249.94	250.07
360	348	355	358	387	45	45	49	53	470	457
80	295	29	227	175	17.5	10	10	17.5	17.5	227
Paving	Need Conc. Paving		cb						cb	
251.52	251.46	251.35	250.6	250.7	250.6	250.9	249.8	250.6	250.69	250.89
606	612	629	70	49	70	72	78	700	689	674
291	227	175	17.5	10	10	10	17.5	17.5	227	291
Wall	Wall	cb.						cb	Wall	Wall
251.85	251.00	251.2	251.1	250.8	250.6	251.11				
573	66	64	65	58	70	647				
17.5	17.5	10	10	10	17.5	17.5				
cb						cb				

257.58

2+73.8

2+68.6

2+63.7 = Reg. Conc. Slab on Rt

2+50

2+45.2 = End Conc. Walk on Lt. ^{Side}

2+37.5 = Conc Ramp

254.64

217.8 246.79 247.7 246.76 247.75 247.04 247.2 247.59 245.94 246.43 245.8 247.18
 679 785 690 788 689 76 74 70.5 870 771 884 787
 175 175 127 12.3 10 10 0 11 11 175 175
 Cb Grading Cb Gut Cb Cb Conc Cb Gut Cb

247.9 246.84
 670 776
 175 175
 Cb Gut

244.04 247.1 247.6 247.1 246.9 246.37 247.06 247.26 247.36
 660 75 70 70 7.5 7.80 827 758 738 728
 175 175 10 10 10 11 175 175 227 271
 Cb Cb Cb Cb on Conc Gut Cb Walk Walk
 slab conc.

248.77 246.7 247.7 247.7 247.6 247.2 246.7 247.29 247.95 247.78
 589 630 69 69 70 74 7.9 7.25 719 716
 241 175 175 10 10 175 175 227 271
 Walk Cb Walk Walk

247.19 247.75 247.76
 7.50 6.89 6.88
 175 227 271
 Gut Walk Walk

259.64 Drive

7. Sect. Lantana Dr.
Euclid to Dwight
#2499
W.O.: 31506

EC. 4+05.21

$$\Delta = 22^\circ$$

$$\pm R = 360.84$$

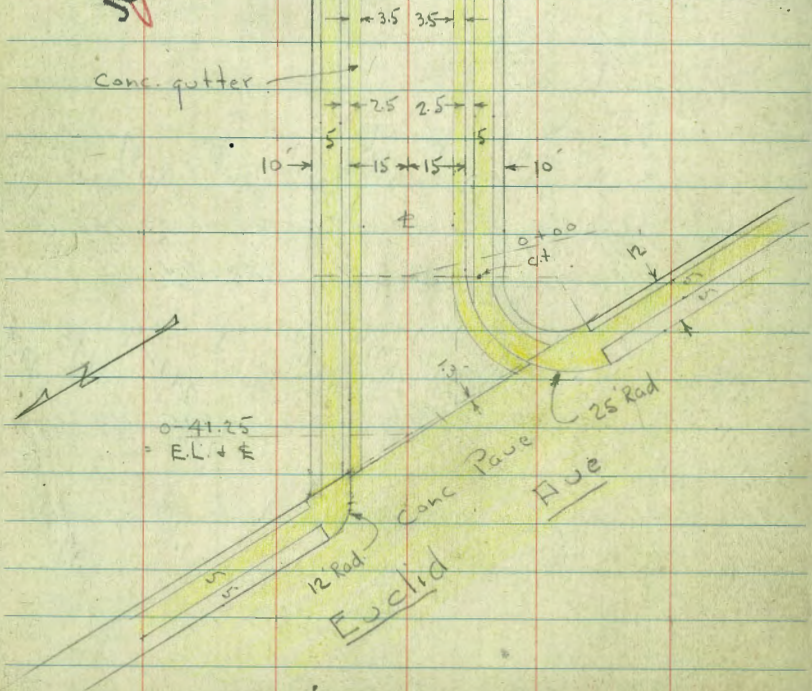
$$\pm L = 138.56$$

cb. - walk + gut.
Same around curve

Dr.

PC. - 2+66.65

~~INDEXED~~
JUL 20 1948



7-13-48
F. Osborne

EC. 10+29.77

$$\Delta = 45^\circ 26'$$

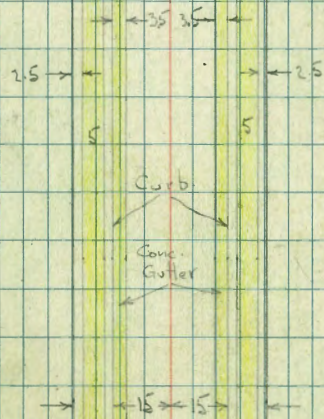
$$\pm R = 213.86$$

$$\pm L = 169.59$$

cb. - walk + gut.
Same around Curve

Lantana Dr

PC. - 8+60.20



EC. 4+05.21

No. 129 m &
See P.S. map
by Karl Jaeger

See 1797
64-66

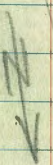
Lantana Dr.

Dwight St

(1997/64)
12+81.37
12+69.24
12+57.3

cross in M.H.

See P. 70



20 ← → 20

11+76.5
Lot .107

conc. Dr.

Private walk

0.3 over
9.3

at Back

Sub. line 7

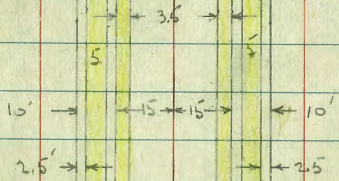
Conc. Strip Dr.

0.5 over

Drac

11+23

11+32.77 ±
Pathways



E.C. = 10+29.79

Levels around Returns - NE + SE.

Lantana + Euclid

INVERTED

5.84 346.30 340.46

NE BP.
Lantana
& Euclid

NE Return - 19.3 around - 3 parts - 6.4 each

Beg. at P.C. on Euclid 5.85 340.45 T = Top

6.28 340.02 g = gut

6.4 S 5.76 340.54 T

6.22 340.08 g

5.72 340.58 T

6.13 340.17 g

6.4 = EL. Euclid 5.61 340.69 T

6.10 340.20 g

S.E. Ret. - 25 Rad. - 51.4 around - 5 - 10.3 each

Beg. - P.C. on Lantana cb. 4.54 341.76 T

4.99 341.31 g

4.99 341.31 e = edge of conc gut.

10.3 W 4.55 341.75 T

4.99 341.31 g

5.00 341.30 e

4.55 341.75 T

5.09 341.21 g

5.09 341.21 e = end of gut.

10.3	4.66	341.64	T
	5.14	341.16	g
	4.65	341.65	T
	5.18	341.12	g
10.3 - EC. on Euclid cb.	4.78	341.52	T
	5.22	341.08	g

11+46 - 12.2 Rt. = Ang. Pt. in Conc walk
 11+44 - 12' Rt. = P. pole # 4893
 wall -
 11+43.3 - 17 Rt. = wly end of Ang. sect of 8" Conc.
 11+35 - 20.5 Lt. = SWly Cor. Private walk (see sketch)

T.P. 3.14 335.22 9.96 332.08

11+32.77 Cont.

No jog
see P. of S.
w/ Taylor

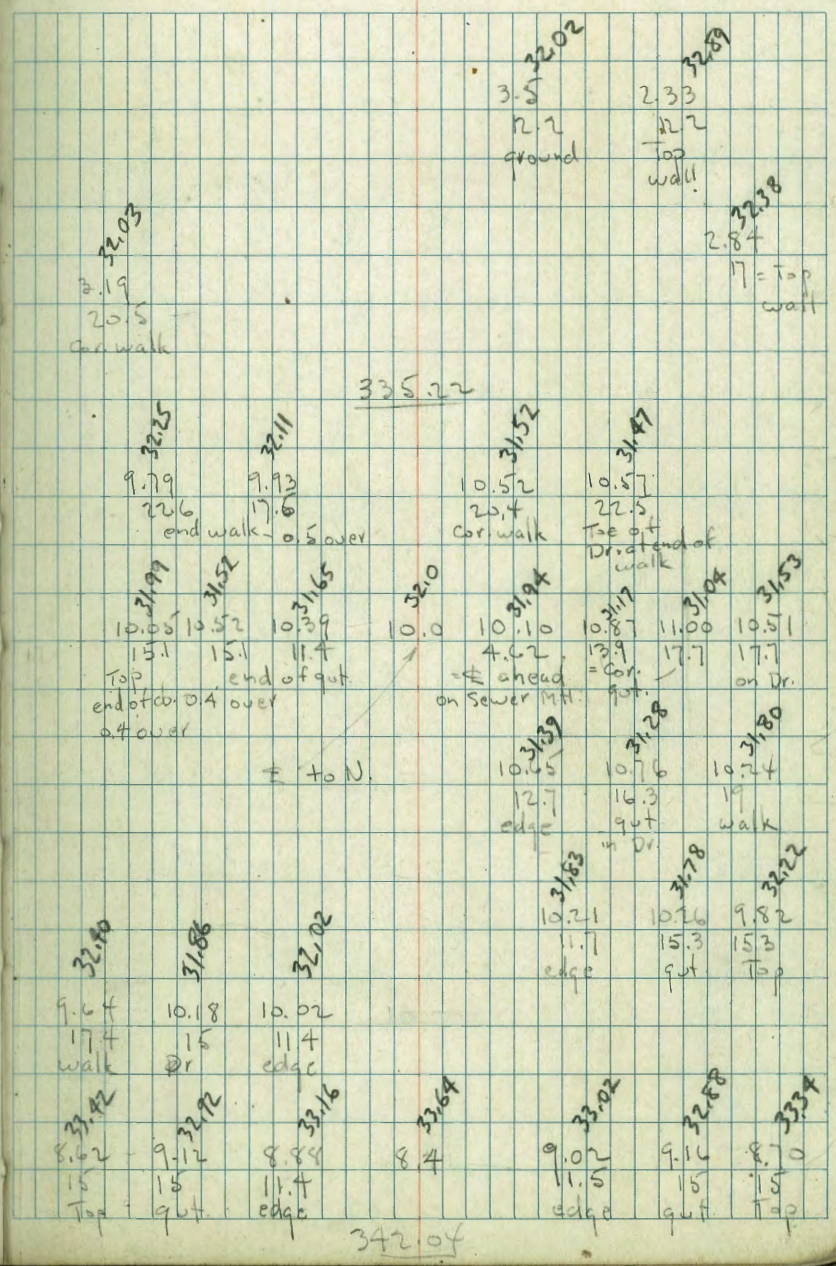
along Sub. Line
 11+32.77 = Sub. Line - Jog in #s - Sect. taken

11+31 = 8' Conc. Dr. on Rt

11+23 = P.C. of cb-cut + walk on Rt.

11+22 = 9' Conc. Dr. on Lt.

11+00



10" pipe
 12" pipe
 St. Drain M.H.
 2x2 Box

INDEXED
JUL 20 1948

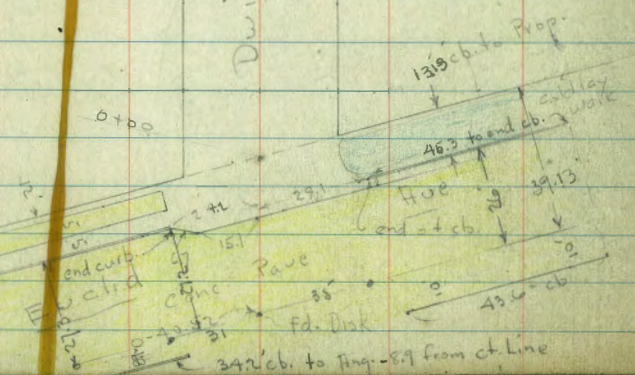
19.40
 1.7865
 Fd. Mon. T.P. 21 - P. 112
 M.H. in E. est. point as shown

← 20 → ← 20 →

Dwight

74° 56'

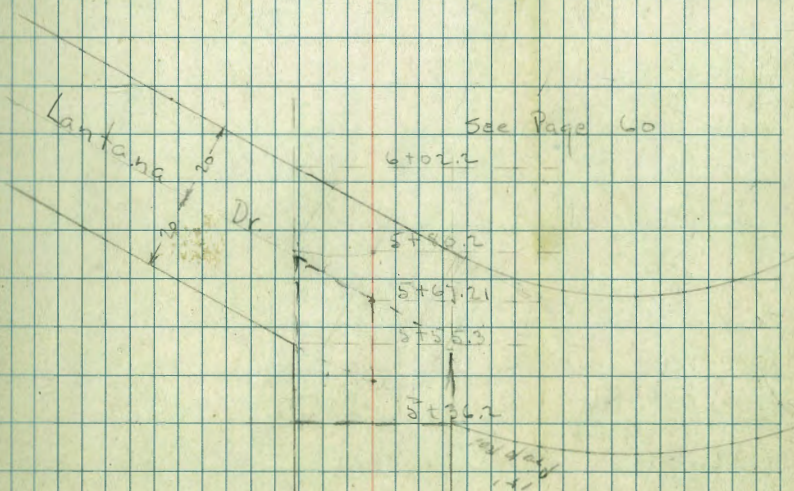
135 cb. to Prop.



X-Section Dwight - Euclid to Lantana Dr 70

2499
 W.O. 31506

7-15-48
 F. Osborne



← 20 → ← 20 →

Conc. Dr.
 Gravel



← 20 → ← 20 →

Dwight

Sections Normal to Euclid - at Dwight
 E.L. of Euclid = Base Line

INDEXED

1+00 = end

0+77.2 = end of cb + walk

0+71.4 = Jog in edge of Conc.

0+50 = Dwight

0+28 = end C.L. Walk

0+24.7 = end of cb. on Lt.

0+00 = 50' S. of Dwight at E.L. Euclid

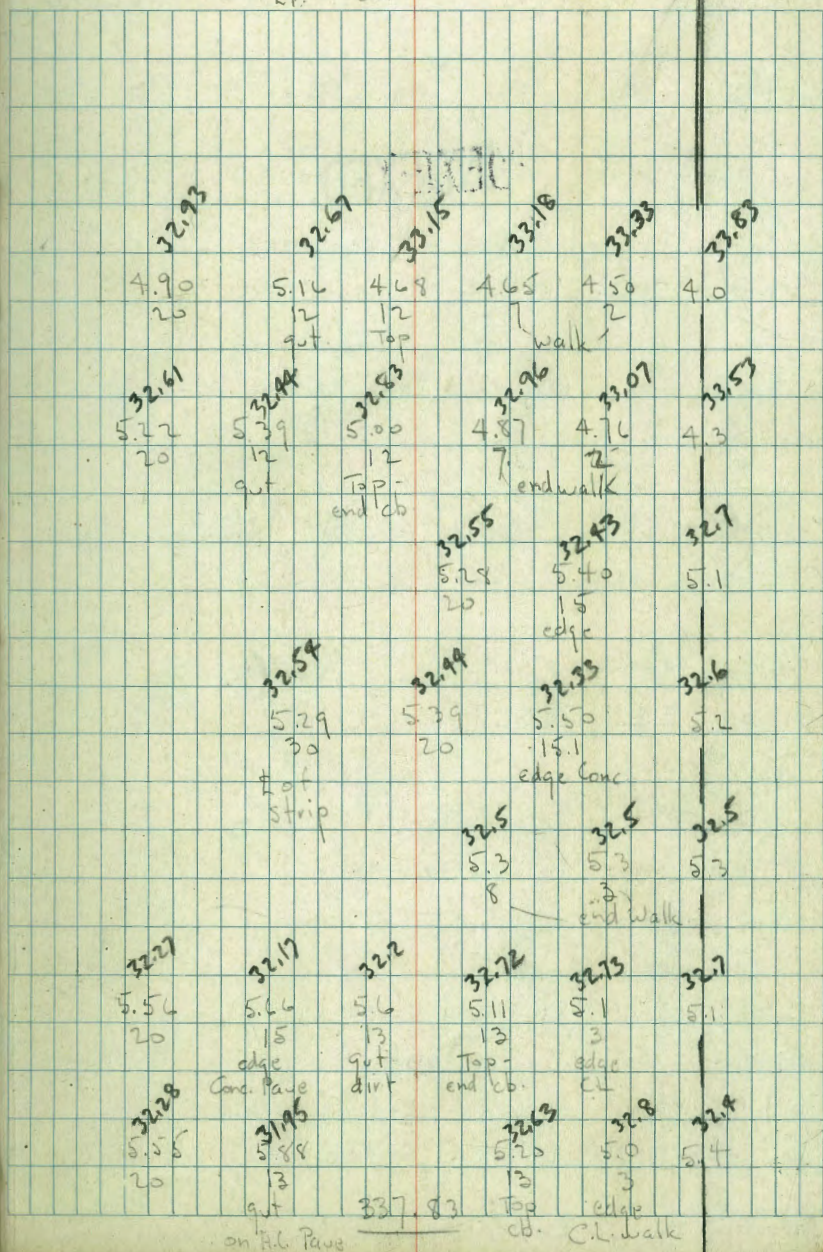
5.02

337.83

332.81

Lt. = W.

E.L. Euclid
 = Base Line
 71



X- Sect. Dwight - Euclid to Lantana

1+15 - 19.7 Rt = Beg. wire fence
1+00

INDEXED

0+95 - 19.6 Lt. = Beg. Wire fence
0+81 - 20.8 Rt. = E 11' Conc. Dr.

0+50

0+43 - 15.6 Rt. = E P. pole " P 4755

0+05 - opp. S.E. Cor

0+00 - E.L. Euclid at E

0-05 = opp N.E. Prop. cor.

0-05.7 - 29' Rt. = end of cb.

0-09.2 - 25.9 Lt. = Cor. - end of walk ? P. 71

0-13.6 - 24.6 Lt. = Cor. - end of walk for Rods.

0-18.6 - 23.2 Lt. = end of cb.

Lt. = N

E

Rt. = S

72

33.3	33.2	33.3	32.5	32.6	32.3	31.9	31.8
4.5 25	4.6 20	4.5 15	5.3 12	5.2	5.5 10	5.9 20	6.0 25
						32.11	31.99
						5.72 20.8 Dr.	6.34 35.8 at Dr.
33.9	33.5	32.7	32.9		32.7	32.3	32.0
3.9 25	4.3 20	5.1 2	4.9		5.1 10	5.5 20	5.8 25
32.4	33.2	32.7	32.8	32.8	32.6	32.4	
4.4 25	4.6 20	5.1 17	5.0 9	5.0	5.2 15	5.4 20	
32.5	33.0	32.5	32.7	32.6	32.5	32.3	
4.3 25	4.8 20	5.3 17	5.1 10	5.2	5.3 10	5.5 20	
		32.9	32.5	32.6	32.4	32.3	
		4.9 20	5.3 18	5.2	5.4 10	5.5 20	
		32.4	32.83			32.72	32.2
		5.39 23.2 9.4	5.00 23.2 Top cb.			5.11 2.8 Top	5.6 2.8 9.4
337.83 = P 71							

3+32 - 22.6 Lt. = \$ 3' Conc. walk

3+09 - 20.2 Lt. = end fence

3+00

2+65 - 20.9 Lt. = \$ 3.5' Conc walk

2+50

2+39 - 20.2 Lt. = Bag. Picket fence

2+12 - 20.7 Rt. = \$ 15' Conc. Dr.

2+07 - 18' Lt. = \$ Dead Man.

T.P. 5.41 337.77 5.47 332.36

2+00

1+85 - 18.7' Lt. = \$ P. pole

1+78.65 = Ang. Pt - Sect. on split. - 19.8 fence Rt. = end

1+73 - 20.3 Lt. = end fence

1+50

1+40 - 17.1 Lt. = \$ 13' Conc. Dr.

Lt.	\$	Rt.
34.78	34.96	
2.99	3.31	
32.6	22.6	
Walk	Walk	
34.8	34.4	
0.0	3.4	
25	20	
	5.0	
	13	
	32.8	
	5.0	
	32.8	
	5.2	
	10	
	32.6	
	5.5	
	20	
	32.3	
	5.6	
	5	
	32.2	
34.83	34.27	
2.94	3.50	
30.9	23.9	
Walk	Walk	
34.2	33.7	
25	20	
	5.3	
	2	
	32.5	
	5.4	
	10	
	32.4	
	5.6	
	10	
	32.2	
	5.8	
	20	
	31.5	
	6.3	
	25	
	31.5	
	7.0	
	20	
	31.7	
	7.07	
	20	
	30.7	
	Dr.	
33.2	33.5	
4.0	4.3	
25	20	
	5.3	
	15	
	32.6	
	5.2	
	10	
	32.4	
	5.4	
	10	
	31.9	
	5.9	
	10	
	31.4	
	6.4	
	20	
	31.3	
	6.5	
	25	
33.5	33.2	
4.3	4.6	
25	20	
	5.3	
	7	
	32.5	
	5.2	
	10	
	32.6	
	5.6	
	6.07	
	6.1	
	10	
	31.7	
	6.3	
	20	
	31.5	
	6.3	
	25	
	31.3	
	6.5	
	25	
33.3	33.5	
4.5	4.3	
25	20	
	5.3	
	17	
	32.3	
	5.3	
	13	
	32.5	
	5.6	
	32.2	
	5.9	
	10	
	31.9	
	6.3	
	20	
	31.5	
	6.3	
	25	
	31.4	
	6.4	
	25	
34.78	34.83	
4.55	5.00	
27.1	17.1	
Dr.	Dr.	
	337.83	

4+30

4+00

See sketch P. 70 M.H. below
 3+90 - 13' Lt. = \pm Outlet of 10" Steel pipe - from
 3+89 - 18.5' Lt. = end fence
 3+89 - 18.3' Lt. = \pm P. pole # P 4780
 3+86 - 21.1' Rt. = \pm 3.2 Conc. walk

3+80

3+68 - 24.6 Rt. = \pm 7' Conc. Dr.
 3+67 - 22.5 Lt. = \pm 3' Conc. walk
 3+54 - 13.4 Lt. = \pm St. Drain M.H. 4.14 on F.L. on Rim
 3+52 - 18.7 Lt. = Beg. Picket fence
 3+50

3+47 - 18.7 Lt. = \pm 7 Dr. - 2 - 2.2' Conc. strips

33.6	33.4	33.3	31.5		22.1	31.8	32.3	32.3
4.2 25	4.4 20	4.6 15	6.3 10		5.7	6.0 14	5.5 20	5.5 25
33.7		33.9	31.9		32.5	32.5	32.2	32.8
4.1 25		4.4 20	5.9 9		5.2	5.3 8	5.6 16	5.0 20
	31.05							
	FL pipe							
							22.70	32.58
						5.07 21.1 walk		5.19 31.1 walk
	34.2	33.6	32.6		32.8	32.9		32.9
3.6 25	4.2 20	5.2 10			5.0	4.9 8	5.2 15	4.9 25
	34.74	34.34					32.90	33.48
3.03	3.43					4.87 24.6 Dr		5.29 24.6 Dr
3.51 at Arch	22.5 Walk							
	34.5	34.2	32.9		33.0	32.7		32.8
3.3 25	3.6 20	4.9 11			4.8	5.1 10	5.1 20	5.0 25
	34.59	34.07						
3.18 Dr	3.7 Dr							
28.7	18.7							

337.77

5+67.2 = Φ Lantana Dr. = Sewer M.H.

5+55.3 = opp prop Cor. on Lt.
sta. are approx.

5+36.2 = opp Prop Cor. on Rt

T.P. 2.74 332.10 8.41 329.36

5+00

5+03 8.1 Lt. = Ely. of Dr. = Cor.

4+99 - 18' Lt. = end. in E. edge of Dr.

4+89 - 18' Lt. = Ang. in edge of Dr.

4+85 - 8.3 Lt. = Wly. of 18' Conc. Dr.

4+80 - 19' Rt. = end Wly. of Hedge

4+62 - 20' Rt. = Φ 3 Conc. walls

4+60

4+44 - 19' Rt. ^{beg.} = Wly. of 3' Hedge - 4' High

St.	#	Rt.
2510	24.6	23.76
7.1 20	7.5 10	8.34 on Rim
28.6	27.8	23.1
3.5 25	4.3 20	9.0 10
24.6	24.2	22.3
7.9 14	7.9 14	9.8 20
28.6	23.6	22.2
8.5 10	8.5 10	9.9 20
24.6	22.9	22.6
9.2 20	9.2 20	9.51 25
30.5	29.9	25.7
1.6 25	2.2 20	6.4 2
25.5	25.5	25.4
6.6 2	6.6 2	7.8 6
24.3	24.9	24.6
7.8 6	7.8 6	7.2 20
24.9	24.6	24.6
7.2 20	7.2 20	7.01 25
332.10	332.10	
28.87 25	32.2	29.1
28.87 25	31.5	29.4
30.0	30.0	29.9
7.5 5	7.5 5	8.7 14
8.77 10	8.77 10	8.4 20
8.9	8.9	7.9 5
31.44	31.25	
5.33	5.52	
26.6	26.6	
31.10	31.02	
6.6 18	6.6 18	
29.50	29.50	
8.27	8.27	
8.31 - cor.	8.31 - cor.	
32.9	32.6	31.1
4.7 25	5.2 20	6.7 14
31.7	30.3	31.1
6.1 5	7.1 5	6.7 14
31.0	31.0	31.1
6.8	6.8	6.7 14
32.1	31.75	31.87
4.7 20	6.02 20	6.0 20
32.4	32.4	6.0 20
5.7 25	5.7 25	6.0 20
337.77		

check B.M. in Pole - P. 69 4.30 327.74 327.72

.6 + 02.2 = Int. N.L. Dwight + E.L. Lantana

5 + 81 = 10.3 Rt. = \pm Dead Man.

5 + 80.2 = Int. S.L. Dwight + E.L. Lantana

6.4	25.5	7.9	24.2	9.3	22.8	14.1	18.0	17.3	18.5
20		20		2		20		20	25
13.5	22.6	8.9	23.2	9.5	22.6	14.1	18.0	17.3	18.5
10		10		2		20		20	25
8.5	23.6	7.9	24.2	9.5	22.6	13.1	19.0	14.7	17.4
10		10		10		20		25	

INDEXED

W.K.

AUG 30 1948

± Ext Drain
Ditch

Levels on Prop Drain Thru school
Yard - Wunderlin & 65th - See B. 1708-P. 3
Base Line = 105' E. of E.L. 65th - 0+00
= N.L. Wunderlin

77

2802
W.D. 60318

7.0 - 8-27-48

Cold Lay
Volley Ball
Court

18" R.C. Conc
Pipe
Buried

2+51

2+085

1+50.5
1+45

1+25

0+90 ± 2" water

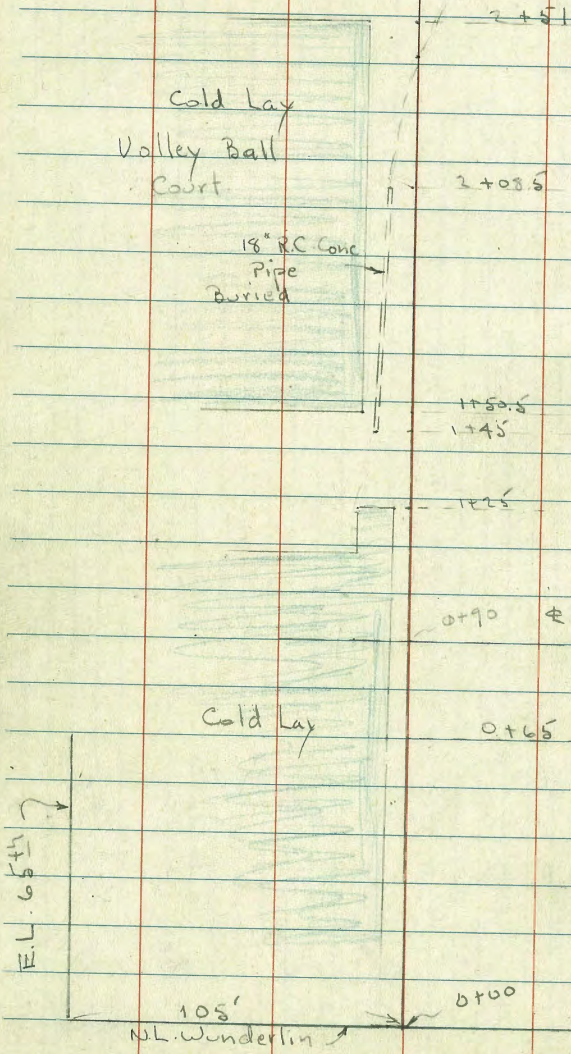
0+65

Cold Lay

E.L. 65th

105'
N.L. Wunderlin

0+00



Levels along Prop. Drain - See P. 77

2+51 - 12.4 Lt = Cor. C.L. Court

2+42 = Int. of \pm + \pm of Ditch

2+09.5 - 6.4 Lt = end = \pm inlet 18" Pipe

1+70

1+50.5 - 12.4 Lt = Cor. C.L. Court (Volley Ball)

1+45 - 8.9 Lt = \pm - Beg. 18" Conc. Culvert

1+23 = end of C.L. in Ditch

1+00

0+90 - 4.8 Rt = \pm Water Meter - 2" Line
Bldg. + S. to fence

0+65 - 5 Lt = edge of Cold bay around

B.M. 1.04 300.71 12.88 299.67
0.31 312.55 312.24

S.W. BT.
65th
+ Bwdy.

Lt

\pm

Rt

78

	12.4	12.4	6.4	12.4	8.9	4.8	5	
	298.8	299.5	297.7	298.7	293.5	294.6	293.5	293.5
	1.9	1.2	3.3	2.0	6.9			6.9
	12.4		7.0 Ditch	6.5	3.0			
	edge C.L.							
	298.5	296.44	297.2	296.61	294.0	293.7		
	2.2	4.23	3.5	4.1	6.7	7.0		
	12.2	6.4	2.3		9.7	7.5		
	edge C.L.	F.H. Inlet						
		298.3	294.6	293.8	293.6			
		2.4	6.1	6.9	7.1	7.1		
		12.4		2	10	10		
		edge C.L.						
	296.4	293.6	293.28	293.5	293.6			
	3.9	7.1	6.93	7.2	7.1			
	1.5	1.5	8.9		1.0			
	Top	Bot.	F.L. Outlet					
	Vert. bank							
	293.3	292.8	293.4	293.6				
	7.4	7.9	7.3	7.1				
	1.4	1.0	4					
	edge C.L.	\pm	edge C.L.					
		291.8	293.4	293.5	293.4			
		8.9	7.3	7.2	7.3			
	1.5	10.5	5.5		1.0			
	edge C.L.	\pm Warn edge C.L.						
	291.2	291.1	290.7	293.3	293.4	293.3		
	9.5	9.6	10.0	7.4	7.3	7.4		
	3.0	1.5	11	5		1.0		
	CL	\pm	edge C.L.					
		Cold bay						
		Drain						
				300.71				

1 + 70

307.0
+ 1.3

1.3

301.1
+ 0.4

298.4
2.3
14.4
Ditch

299.4
1.3
20

298.8
6.9
55
Toe

300.71

IMPROVED TABLES AND INFORMATION

HORIZONTAL STADIA CORRECTIONS

2°-00' — 0.1	21°-00' — 12.8	33°-00' — 29.7
3°-00' — 0.3	21°-30' — 13.4	33°-15' — 30.1
4°-00' — 0.5	22°-00' — 14.0	33°-30' — 30.5
5°-00' — 0.8	22°-30' — 14.7	33°-45' — 30.9
6°-00' — 1.1	23°-00' — 15.3	34°-00' — 31.3
7°-00' — 1.5	23°-30' — 15.9	34°-15' — 31.7
8°-00' — 1.9	24°-00' — 16.5	34°-30' — 32.1
9°-00' — 2.5	24°-30' — 17.2	34°-45' — 32.5
10°-00' — 3.0	25°-00' — 17.9	35°-00' — 32.9
10°-30' — 3.3	25°-30' — 18.6	35°-15' — 33.3
11°-00' — 3.6	26°-00' — 19.2	35°-30' — 33.7
11°-30' — 4.0	26°-30' — 19.9	35°-45' — 34.1
12°-00' — 4.3	27°-00' — 20.6	36°-00' — 34.6
12°-30' — 4.7	27°-30' — 21.3	36°-15' — 35.0
13°-00' — 5.1	28°-00' — 22.0	36°-30' — 35.4
13°-30' — 5.5	28°-30' — 22.8	36°-45' — 35.8
14°-00' — 5.9	29°-00' — 23.5	37°-00' — 36.2
14°-30' — 6.3	29°-30' — 24.3	37°-15' — 36.6
15°-00' — 6.7	30°-00' — 25.0	37°-30' — 37.1
15°-30' — 7.2	30°-15' — 25.4	37°-45' — 37.5
16°-00' — 7.6	30°-30' — 25.8	38°-00' — 37.9
16°-30' — 8.1	30°-45' — 26.2	38°-15' — 38.3
17°-00' — 8.5	31°-00' — 26.5	38°-30' — 38.7
17°-30' — 9.0	31°-15' — 26.9	38°-45' — 39.1
18°-00' — 9.5	31°-30' — 27.3	39°-00' — 39.6
18°-30' — 10.1	31°-45' — 27.7	39°-15' — 40.0
19°-00' — 10.6	32°-00' — 28.1	39°-30' — 40.5
19°-30' — 11.2	32°-15' — 28.5	
20°-00' — 11.7	32°-30' — 28.9	
20°-30' — 12.3	32°-45' — 29.3	

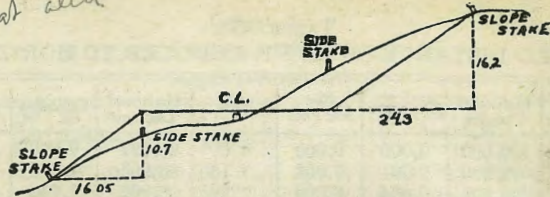
Chains to Feet

1	66
2	132
3	198
4	264
5	330
6	396
7	462
8	528
9	594
10	660

Feet to Chains

100	1.515
200	3.030
300	4.545
400	6.060
500	7.575
600	9.090
700	10.606
800	12.121
900	13.636
1,000	15.151

105 at elev



DISTANCES FROM SIDE STAKES FOR CROSS-SECTIONING.

SLOPE 1 1/4 TO 1. ROADWAY OF ANY WIDTH.

	0	.1	.2	.3	.4	.5	.6	.7	.8	.9	
0	0.00	0.15	0.30	0.45	0.60	0.75	0.90	1.05	1.20	1.35	0
1	1.50	1.65	1.80	1.95	2.10	2.25	2.40	2.55	2.70	2.85	1
2	3.00	3.15	3.30	3.45	3.60	3.75	3.90	4.05	4.20	4.35	2
3	4.50	4.65	4.80	4.95	5.10	5.25	5.40	5.55	5.70	5.85	3
4	6.00	6.15	6.30	6.45	6.60	6.75	6.90	7.05	7.20	7.35	4
5	7.50	7.65	7.80	7.95	8.10	8.25	8.40	8.55	8.70	8.85	5
6	9.00	9.15	9.30	9.45	9.60	9.75	9.90	10.05	10.20	10.35	6
7	10.50	10.65	10.80	10.95	11.10	11.25	11.40	11.55	11.70	11.85	7
8	12.00	12.15	12.30	12.45	12.60	12.75	12.90	13.05	13.20	13.35	8
9	13.50	13.65	13.80	13.95	14.10	14.25	14.40	14.55	14.70	14.85	9
10	15.00	15.15	15.30	15.45	15.60	15.75	15.90	16.05	16.20	16.35	10
11	16.50	16.65	16.80	16.95	17.10	17.25	17.40	17.55	17.70	17.85	11
12	18.00	18.15	18.30	18.45	18.60	18.75	18.90	19.05	19.20	19.35	12
13	19.50	19.65	19.80	19.95	20.10	20.25	20.40	20.55	20.70	20.85	13
14	21.00	21.15	21.30	21.45	21.60	21.75	21.90	22.05	22.20	22.35	14
15	22.50	22.65	22.80	22.95	23.10	23.25	23.40	23.55	23.70	23.85	15
16	24.00	24.15	24.30	24.45	24.60	24.75	24.90	25.05	25.20	25.35	16
17	25.50	25.65	25.80	25.95	26.10	26.25	26.40	26.55	26.70	26.85	17
18	27.00	27.15	27.30	27.45	27.60	27.75	27.90	28.05	28.20	28.35	18
19	28.50	28.65	28.80	28.95	29.10	29.25	29.40	29.55	29.70	29.85	19
20	30.00	30.15	30.30	30.45	30.60	30.75	30.90	31.05	31.20	31.35	20
21	31.50	31.65	31.80	31.95	32.10	32.25	32.40	32.55	32.70	32.85	21
22	33.00	33.15	33.30	33.45	33.60	33.75	33.90	34.05	34.20	34.35	22
23	34.50	34.65	34.80	34.95	35.10	35.25	35.40	35.55	35.70	35.85	23
24	36.00	36.15	36.30	36.45	36.60	36.75	36.90	37.05	37.20	37.35	24
25	37.50	37.65	37.80	37.95	38.10	38.25	38.40	38.55	38.70	38.85	25
26	39.00	39.15	39.30	39.45	39.60	39.75	39.90	40.05	40.20	40.35	26
27	40.50	40.65	40.80	40.95	41.10	41.25	41.40	41.55	41.70	41.85	27
28	42.00	42.15	42.30	42.45	42.60	42.75	42.90	43.05	43.20	43.35	28
29	43.50	43.65	43.80	43.95	44.10	44.25	44.40	44.55	44.70	44.85	29
30	45.00	45.15	45.30	45.45	45.60	45.75	45.90	46.05	46.20	46.35	30
31	46.50	46.65	46.80	46.95	47.10	47.25	47.40	47.55	47.70	47.85	31
32	48.00	48.15	48.30	48.45	48.60	48.75	48.90	49.05	49.20	49.35	32
33	49.50	49.65	49.80	49.95	50.10	50.25	50.40	50.55	50.70	50.85	33
34	51.00	51.15	51.30	51.45	51.60	51.75	51.90	52.05	52.20	52.35	34
35	52.50	52.65	52.80	52.95	53.10	53.25	53.40	53.55	53.70	53.85	35
36	54.00	54.15	54.30	54.45	54.60	54.75	54.90	55.05	55.20	55.35	36
37	55.50	55.65	55.80	55.95	56.10	56.25	56.40	56.55	56.70	56.85	37
38	57.00	57.15	57.30	57.45	57.60	57.75	57.90	58.05	58.20	58.35	38
39	58.50	58.65	58.80	58.95	59.10	59.25	59.40	59.55	59.70	59.85	39
40	60.00	60.15	60.30	60.45	60.60	60.75	60.90	61.05	61.20	61.35	40
41	61.50	61.65	61.80	61.95	62.10	62.25	62.40	62.55	62.70	62.85	41
42	63.00	63.15	63.30	63.45	63.60	63.75	63.90	64.05	64.20	64.35	42
43	64.50	64.65	64.80	64.95	65.10	65.25	65.40	65.55	65.70	65.85	43
44	66.00	66.15	66.30	66.45	66.60	66.75	66.90	67.05	67.20	67.35	44
45	67.50	67.65	67.80	67.95	68.10	68.25	68.40	68.55	68.70	68.85	45
46	69.00	69.15	69.30	69.45	69.60	69.75	69.90	70.05	70.20	70.35	46
47	70.50	70.65	70.80	70.95	71.10	71.25	71.40	71.55	71.70	71.85	47
48	72.00	72.15	72.30	72.45	72.60	72.75	72.90	73.05	73.20	73.35	48
49	73.50	73.65	73.80	73.95	74.10	74.25	74.40	74.55	74.70	74.85	49
50	75.00	75.15	75.30	75.45	75.60	75.75	75.90	76.05	76.20	76.35	50

Computed by L. Leland Locke.

+ 1.58

337.93

15.47

332.36

5.41

337.77

8.41

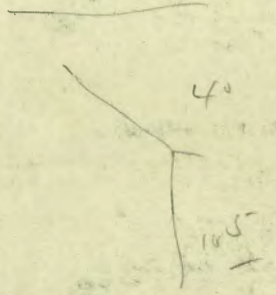
329.36

2.74

332.10

4.36

327.74



340.46

5.84

346.30

340.46

346.46

5.60

340.86

4.73

345.59

340.86

4.29

345.15

6.09

339.06

2.98

342.04

9.96

332.08

3.14

335.22

7.50

327.72

5.47

N. 38.65

43.62
+ 95

38.67

3849 = S
5.13

43.62
6.84

36.78

6.78
31.96 = grade

C. 4.82

(✓ 33)