

1759



1759

MICROFILMED

CITY ENGINEER'S OFFICE
SAN DIEGO, CALIF.

MADE IN U.S.A.

1759

Our Leather Bound Engineers Note Books
are carried in the following rulings:

- No. 380 LEVEL BOOK. Left and Right Hand Page the same as Left Hand Page of this Book.
- No. 382 FIELD BOOK. Left Hand Page as in this Book, Right Hand Page 4x4 to the inch, Center Line Red.
- No. 384 MINING TRANSIT BOOK. Left Hand Page as in this Book, Right Hand Page 8x8 to the inch, Center Line Red.
- No. 385 FIELD BOOK. Left Hand Page as in this Book, Right Hand Page 8 vertical and 4 horizontal lines to the inch, Center Line Red.

We also carry the Note Books listed above, bound in extra strong Fabri-Hide (otherwise the same quality of book,) which can be furnished at a somewhat lower price.

In ordering Fabri-Hide covered books, add the letter "F" to catalog number.

THE FREDERICK POST CO.

ENGINEERING and DRAFTING SUPPLIES

P. O. Box 803

CHICAGO

INDEXED

*to page # 77
except page # 1,*

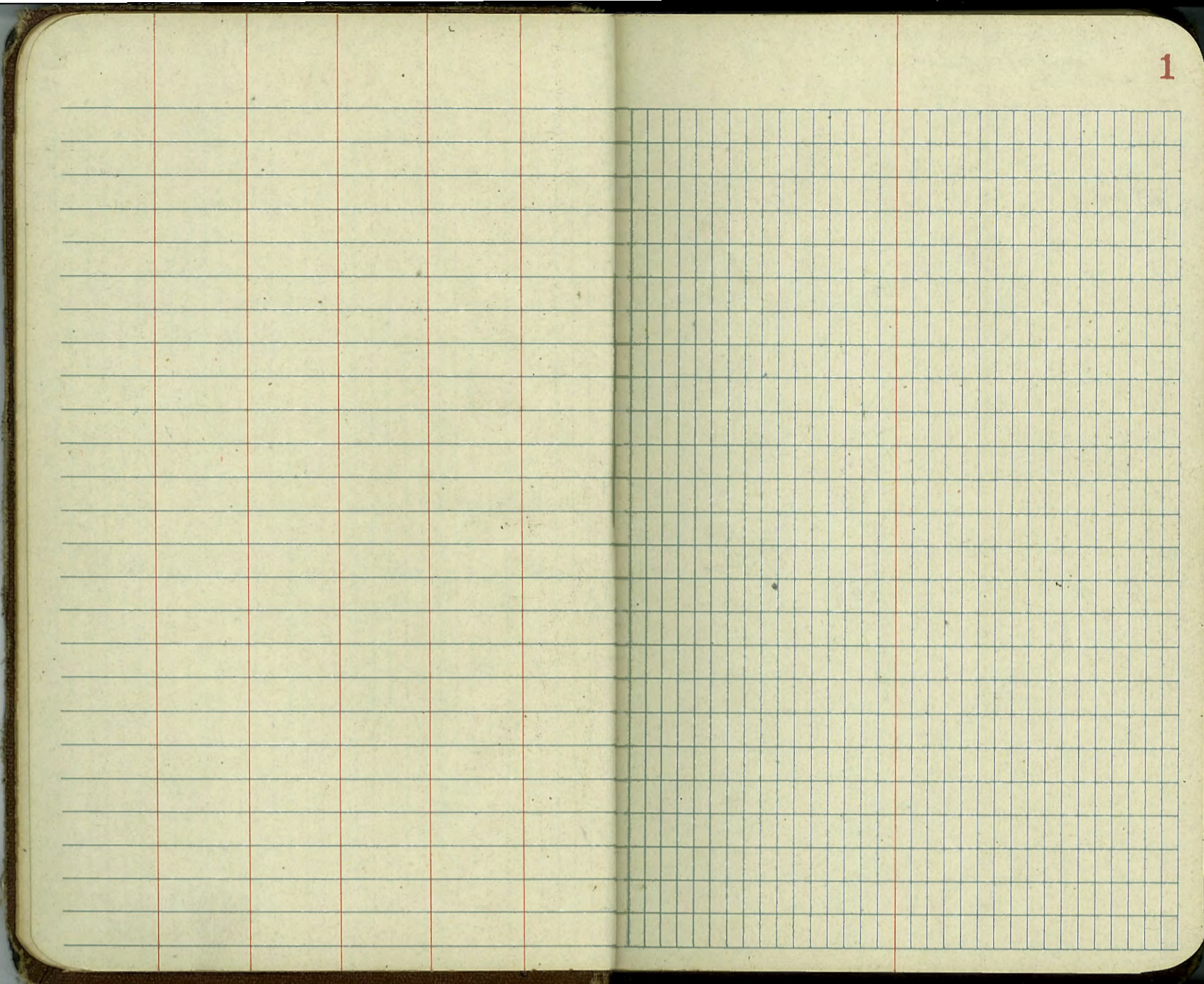
Cross Section Hartford

Cross Section Alley Block 1887 Minn. 27

Cross Sec, Dodson St. 28

Xsec Perry St. San Antonio to Bay 65

Prop. Sewer on Bangor at Lucinda 70

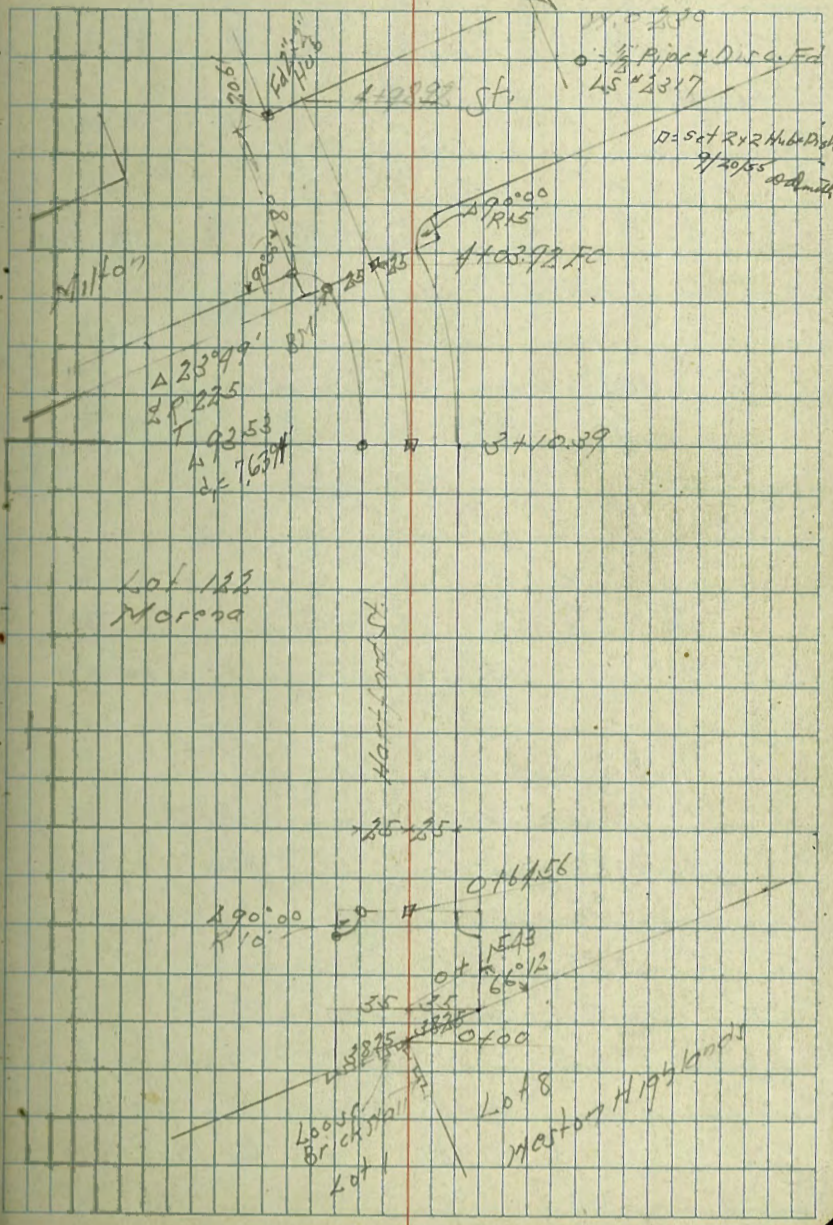


Cross Section Hartford
From South Line Lot 122 Maroon to
Milton St.
Level next page

Indexed
C.K.

Jan 2-97
Sisson
McCoy
Waddell
Allen

2



0+64.56 = Prop. FC Rt + Lt

0+54.56 = Prop. BC Rt + Lt

0+43 342 Rt + Lt = Fly Passer Pole

0+15.43

0+0 : S.L. Lot 122 Morona Taken on D129

140.3	142.2	142.9	143.8	144.9	144.6	144.7
9.5	7.4	6.7	6.8	5.5	5.8	4.9
138.9	140.6	142.5	143.6	144.1	144.1	144.0
10.9	9.0	7.1	6.0	5.5	5.5	5.5
137.6	139.7	141.9	142.6	143.2	143.4	143.7
10.8	9.9	8.8	7.0	6.4	5.9	5.9
136.7	138.4	140.5	142.0	143.1	143.4	142.0
10.9	10.8	9.1	7.6	6.5	6.2	5.6
30	3825	240	81	20	3825	50
	101306		14964			

10.36	149.64	0.86	139.28
12.67	140.14	0.10	127.47
12.50	127.57	0.06	115.07
12.59	115.13	1.25	102.54
11.59	103.79	0.39	92.20
12.53	92.49	0.12	79.96
12.69	80.09	0.33	67.40
B.M	1260	67.73	55.13

Frankfort
Napier

3+33 21.5 P/O of 2 = Ely Paper Pole

3+10.39 = R.C. Lt.

2+90

2+50

2+0

1+50

1+0

1964

Lt

Rt

Rt

4

191.1	192.1	193.5	193.6	192.7	191.6
8 10.5	7 10.5	8 10	8 10	6 10	8 10
192.8	194.8	194.8	194.8	194.1	193.2
5 10.5	5 10.5	5 10.5	5 10.5	5 10.5	5 10.5
193.7	194.6	195.6	195.2	194.7	193.7
5 10.5	5 10.5	5 10.5	5 10.5	5 10.5	5 10.5
195.0	195.9	196.7	196.3	195.6	194.7
4 10.5	5 10.5	2 10	3 10.5	4 10	4 10
195.5	196.5	196.9	196.3	195.9	195.1
4 10.5	5 10.5	2 10.5	3 10.5	3 10.5	4 10.5
196.3	196.8	196.7	196.3	195.7	195.7
5 10.5	5 10.5	5 10.5	5 10.5	5 10.5	5 10.5
197.2	197.5	197.2	196.0	195.3	194.9
4 10	4 10	4 10	3 10	4 10	4 10

1964

TP 0.27 129.85 11.94 129.58

4198.92 = H.L. Milton

BM 6.46 125.06
02 1/2 1920
 S.W. P.C. 1517
 Milton
 Hartford

4158.92 = S. Milton

4118.92 = S.L. Milton

4103.92 = F.C. 11° 54' 30"
 C = 3/12

TP 2.50 141.52 10.62 139.02

3+72.75 7° 56' 20"

C = 3/15

3+41.57 3° 58' 10"
 C = 3/15

149.64

123.1	126.7	129.0	130.8	134.2	138.0	139.3	141.2
184 80	188 70	190 25	199 75	209 69	219 75	221 25	223 70
127.5	131.0	133.8	134.4	137.1	139.3	140.2	142.8
146 70	145 70	147 25	151 75	154 71	158 75	158 25	163 25
132.3	135.0	135.8	138.4	140.5	143.2	144.1	146.8
192 70	195 25	197 75	201 75	203 31	207 20	211 27	216 25
126.5	128.1	132.2	141.0	141.7	141.7	143.9	144.7
187 70	185 25	194 75	204 86	209 79	209 79	217 27	219 25
139.7	140.8	141.9	143.1	143.7	144.1	145.1	146.7
199 70	200 25	207 75	205 25	209 75	205 25	210 25	210 70
141.52							
149.64							

BM 6.17 55.11

RRBP
From 10-14
FABRIC
55.13

2.73 61.28 12.36 58.55

0.58 70.91 12.62 70.33

0.47 82.95 12.00 82.48

1.79 94.48 12.66 92.69

0.78 105.25 12.65 104.57

TP 0.12 117.22 12.75 117.10

129.85

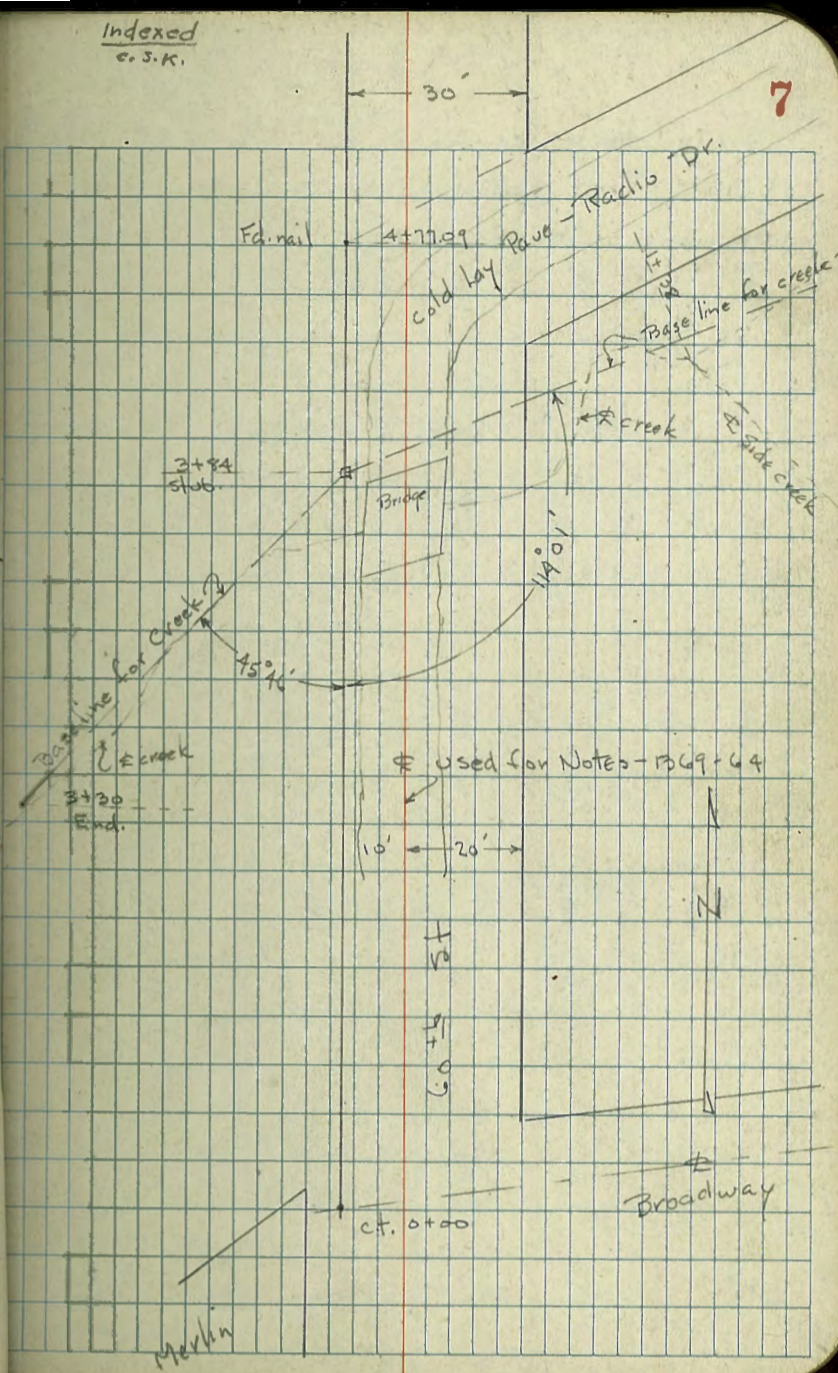
Additional levels on 60th St. Near
 Bridge + levels on creek - about 300'
 each way

2-13-47

770
 W.O. 254

Osborne
 Marden
 Smith
 Worrell

Indexed
 e.s.k.



A - Same as 1369-P64
See sketch.

Add Levels on 60th - old Notes

B. 1369-P64 - will take levels on same stations - Paving has been added since

3+50

T.P. 2.90 240.58 9.79 237.68

3+33 - 17.5 Rt = 7" Pepper

3+25 - 14.8 Rt = 8" Pepper

3+00

Pipe shown P. 67

2+75

2+50 =

B.M. 3.60 246.97

NE 60th
1369-P64

Station	Left	Right
3+50	238.3 0.0	238.7 0.0
3+33	219.5 0.0	220.0 0.0
3+25	219.2 0.0	229.1 0.0
3+00	233.0 0.0	236.1 0.0
2+75	237.3 0.0	240.3 0.0
2+50	239.9 0.0	242.2 0.0
B.M.	243.37	246.97

T.P. = stub at 4+00 4.63 235.95 ✓

4+60

235.8	238.0	237.3	237.8	237.7	237.8	237.8	237.1	237.9
3.5	3.4	3.5	3.2	2.9	2.8	2.7	3.5	5.7
20	0	0	0	0	0	0	40	60
					edge C			
					24.5B ✓			

2-14-47
7.0.

Levels on Creek Channel -

0+00 = stub on 3+77 - 60 th st. see sketch			
Line to W. - Down stream			
0+11	236.06 ✓	235.95	stub. 0+00
0+00 = stub - 3.5' N. of edge of Bridge abutment.	0.11	"	Top
3.5' Lt = edge abutment	0.0	236.1	
12' Lt = Φ Creek	15.5	220.6	
0+50			
Φ = Φ Creek	17.0	219.1	
10' Rt	17.0	219.1	
20' Rt	10.5	225.6	
15' Lt	16.8	219.3	
25' Lt	10.5	225.6	
T.P. 2.59	227.03	11.62	224.44
0+90			
Φ = Φ creek	9.5	217.5	
20' Rt = Toe	7.3	219.7	
15' Lt =	6.6	218.2	
1+30			
Φ = Φ Creek	9.8	217.2	
15' Lt	6.4	220.6	
15' Rt	6.1	220.9	

227.03 ✓

1+80		
Φ = Φ Creek	10.7	216.3
15' Lt.	9.6	217.2
18' Rt	10.0	217.0
2+30		
Φ	11.5	215.5
5' Lt = Φ Creek	11.5	215.5
23' Lt = Toe	11.5	215.5
15' Rt = "	9.7	217.3
2+80		
Φ	12.1	212.9
17' Lt = Φ Creek	13.2	213.8
32' Lt = Toe	12.9	212.1
10' Rt	9.2	217.8
3+30		
Φ	13.9	213.1
14' Lt = Φ Creek	14.1	212.9
25' Lt = Toe	13.4	213.6
10' Rt	12.9	212.1
End		

2-14-47
70.

Levels on Creek Channel - to East
= upstream

0+00 = See P. 11			
1.15	237.10	235.95 = stub	
0+21.7 = edge of wing wall - 09		236.2	Top
0+22 = Base wing wall			
⊕	16.0	221.1	
14' Rt. = ⊕ Creek	16.1	221.0	
0+50			
⊕ = ⊕ Creek	16.7	220.9	
13' Lt. = Toe	15.0	222.1	
20' Lt.	12.0	225.1	
12' Rt. = Toe	15.4	221.7	
20' Rt.	11.2	225.9	
0+95			
⊕	14.1	223.0	
17' Rt. = ⊕ Creek	16.1	221.0	
25' Rt.	13.6	223.5	
10' Lt.	12.0	225.1	
1+20			
⊕	6.2	230.9	
28' Rt. = ⊕ Creek	15.5	221.6	
36' Rt.	10.9	226.2	
1+38 = opp. Junction of Creek from S.E.			
25' Rt. = ⊕ Both creeks.	14.9	222.2	
50 to S.E. in ⊕ side creek	9.7	222.2	

T.P.	7.35	238.95	550	231.40
1+70				
⊕		15.1		223.8
0' Rt. = ⊕ Creek		16.5		222.9
25' Rt.		14.0		225.0
10' Lt.		11.5		227.9
3+20				
⊕ = ⊕ Creek		15.5		223.9
15' Rt.		12.3		226.6
10' Lt.		12.6		226.9
2+70				
⊕		13.5		225.4
7' Lt. = ⊕ creek		15.0		229.0
15' Lt.		12.6		226.9
10' Rt.		11.8		227.2
3+20				
⊕		12.1		226.8
10' Lt.		11.8		227.2
7' Rt. = ⊕ Creek		14.0		225.0
15' Rt.		9.4		229.6
end				

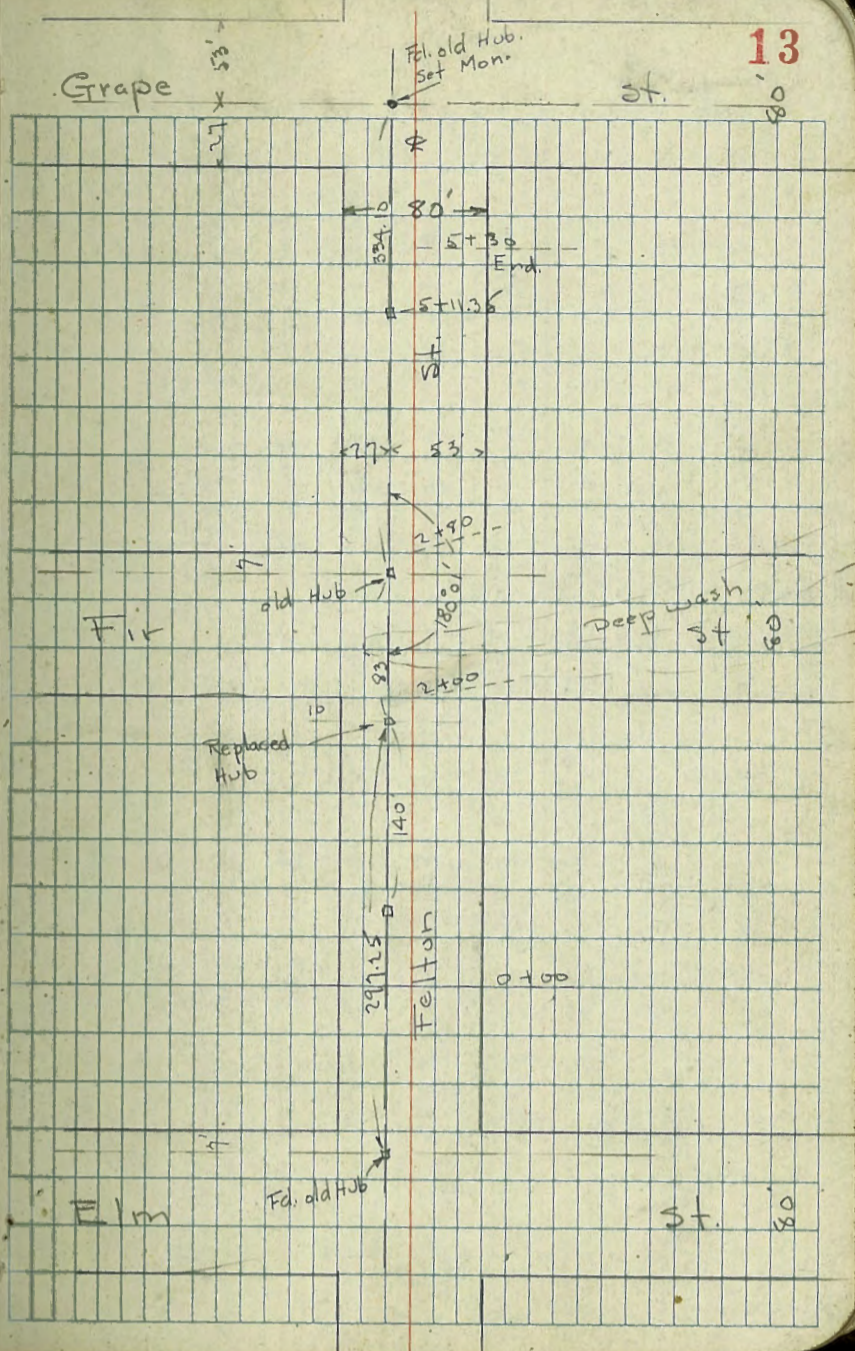
indexed
c.s. #1

X-Sect. Felton - 80' St. + 20' obs
200' from Fir - Both ways

3-11-47

Osborne
Hardin
Smith
Worrell

863
W.O. 210



X-Sect. Felton - 80' st 20' obs. 0+00
= 200' S. of S.L. Fir.

Lt. W.

Rt. = E.

1+20

1+00

0+90 - 39.5 Lt. = 6" Palm

0+73 - 39.5 Lt. = 18" Palm

0+67 - 60' Lt. = House

0+55

0+51 - 39.5 = 6" Palm

0+50

0+00

3.69

239.07

235.38

Mon. S.W.
Felton + Fir

0.0	232.2	0.0	237.1	0.0	238.1	0.0	238.6
0.1	231.6	0.1	237.7	0.1	237.2	0.1	237.8
0.2	231.1	0.2	235.6	0.2	237.2	0.2	237.8
0.3	229.1	0.3	233.2	0.3	233.9	0.3	236.3
0.4	228.8	0.4	232.4	0.4	231.7	0.4	234.0
0.5	227.3	0.5	231.3	0.5	232.7	0.5	233.0
0.6	226.3	0.6	230.7	0.6	232.2	0.6	232.4
0.7	227.5	0.7	230.9	0.7	231.6	0.7	232.2
0.8	226.8	0.8	230.5	0.8	230.3	0.8	231.2
0.9	226.5	0.9	230.3	0.9	229.2	0.9	229.2
1.0	226.5	1.0	230.3	1.0	229.2	1.0	229.2
+ 24.275 239.07							

4+15

3+90

3+86 - 2.9 Rt = end Conc wall

3+75 - 17.2 = W. end Eugenia Hedge 3' wide 8' High

3+70 - 4.6 Rt = Beg 5" Conc. wall

3+50 - 5.13 Rt = Small House

3+40 79.8 Rt = 12" Pepper

3+05

2+80 = NL Fir. - 443 Rt = Small House

	Lt		Rt	
4+15	51	243.6	46	239.7
3+90	51.6	242.7	40	235.3
3+86	51	242.6	34	240.9
3+75	51	241.3	26	236.8
3+70	51	241.1	10	234.3
3+50	51	240.4	20	233.6
3+40	51	238.9	16	228.1
3+05	51	236.7	8	224.1
2+80	51	234.9	4	224.1
	51	233.0	0	214.8
	51	231.1	0	207.7
	51	227.5	0	201.6
	51	224.7	0	192.2
	51	221.5	0	182.2
	51	218.6	0	172.2
	51	214.7	0	162.2
	51	210.7	0	152.2
	51	207.7	0	142.2
	51	204.7	0	132.2
	51	201.6	0	122.2
	51	198.6	0	112.2
	51	195.6	0	102.2
	51	192.6	0	92.2
	51	189.6	0	82.2
	51	186.6	0	72.2
	51	183.6	0	62.2
	51	180.6	0	52.2
	51	177.6	0	42.2
	51	174.6	0	32.2
	51	171.6	0	22.2
	51	168.6	0	12.2
	51	165.6	0	2.2
	51	162.6	0	0.2
	51	159.6	0	0.2
	51	156.6	0	0.2
	51	153.6	0	0.2
	51	150.6	0	0.2
	51	147.6	0	0.2
	51	144.6	0	0.2
	51	141.6	0	0.2
	51	138.6	0	0.2
	51	135.6	0	0.2
	51	132.6	0	0.2
	51	129.6	0	0.2
	51	126.6	0	0.2
	51	123.6	0	0.2
	51	120.6	0	0.2
	51	117.6	0	0.2
	51	114.6	0	0.2
	51	111.6	0	0.2
	51	108.6	0	0.2
	51	105.6	0	0.2
	51	102.6	0	0.2
	51	99.6	0	0.2
	51	96.6	0	0.2
	51	93.6	0	0.2
	51	90.6	0	0.2
	51	87.6	0	0.2
	51	84.6	0	0.2
	51	81.6	0	0.2
	51	78.6	0	0.2
	51	75.6	0	0.2
	51	72.6	0	0.2
	51	69.6	0	0.2
	51	66.6	0	0.2
	51	63.6	0	0.2
	51	60.6	0	0.2
	51	57.6	0	0.2
	51	54.6	0	0.2
	51	51.6	0	0.2
	51	48.6	0	0.2
	51	45.6	0	0.2
	51	42.6	0	0.2
	51	39.6	0	0.2
	51	36.6	0	0.2
	51	33.6	0	0.2
	51	30.6	0	0.2
	51	27.6	0	0.2
	51	24.6	0	0.2
	51	21.6	0	0.2
	51	18.6	0	0.2
	51	15.6	0	0.2
	51	12.6	0	0.2
	51	9.6	0	0.2
	51	6.6	0	0.2
	51	3.6	0	0.2
	51	0.6	0	0.2
	51	0.0	0	0.2

A

It

Rt

5+80 = S.L. Grape & Profile

385 50%

5+30

5+00

4+81 - 26.2 Lt = E. Popple

4+60

40	244.5	244.4	240.9	209.3
20	242.5	241.3	237.8	231.9
20	236.8	236.9	231.9	225.6
12	231.8	230.8	225.6	218.9
17	226.6	223.7	218.9	208.4
26	218.2	215.3	208.4	195.0
40	196.5	196.4	195.0	
20	244.27			

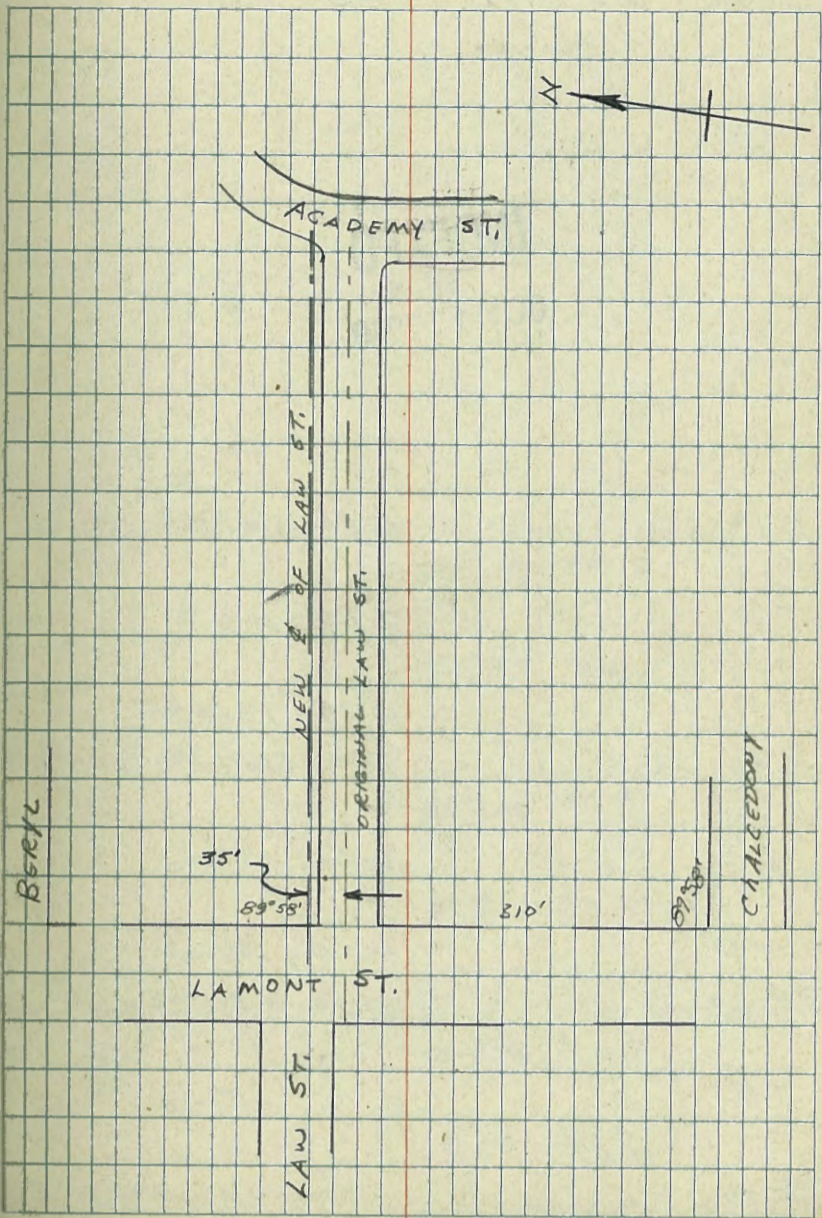
X SECTION LAW STREET
FROM LAMONT TO ACADEMY

INDEXED
M.K.
OCT 11 1949

3-6-47
MCCRAY
BAGLEY
GALLANAR

NOTES COPIED FROM

L.C. ANDERSON CO.
JOB # 389



Lamont Terrace
Bench Checks

Sta B.S HI Fs Elev.

INDEXED
N.K.
OCT 11 1949

Sta	B.S	HI	Fs	Elev.
BM			3.44	142.36 (12)
	2.09	145.80		
TP			11.80	143.71
	0.45	155.51		
TP			10.14	155.06
BM			3.07	162.13 (12)
	7.77	165.20		
TP			0.31	157.43
	10.54	157.74		
TP			0.20	147.20
BM-LET			5.04	142.36
	9.65	147.40		
TP			0.12	137.75
	11.84	137.87		
BM				126.03

LET 10'S 7' offset - SW cor Law & Lamont

LET 7' offset NE cor Beryl & Lamont

LET 10'S 7' offset Tack - S.W. Cor. Law & Lamont

LET 7' offset - S.E. cor Chalcidony & Lamont

Lamont Terrace
 Profile Low St.
 East from Lamont

Sta	BS	HI	FS	Elev.
+35				Top Wall
				E side drive & walk
+35				Bot Wall
+16				Bot Wall
+16				Top Wall
+100				Top of Wall
0+00				Top of Wall
0-00.5				Bottom of Wall
0-07				(sidewalk &)
0-20				Top GUTTER
0-20				GUTTER
0-40				& Lamont
	3.45	145.81		
BM			142.36	

Left	Right
44.48	44.48
44.08	44.08
43.58	43.58
43.18	43.18
42.78	42.78
42.38	42.38
41.98	41.98
41.58	41.58
41.18	41.18
40.78	40.78
40.38	40.38
39.98	39.98
39.58	39.58
39.18	39.18
38.78	38.78
38.38	38.38
37.98	37.98
37.58	37.58
37.18	37.18
36.78	36.78
36.38	36.38
35.98	35.98
35.58	35.58
35.18	35.18
34.78	34.78
34.38	34.38
33.98	33.98
33.58	33.58
33.18	33.18
32.78	32.78
32.38	32.38
31.98	31.98
31.58	31.58
31.18	31.18
30.78	30.78
30.38	30.38
29.98	29.98
29.58	29.58
29.18	29.18
28.78	28.78
28.38	28.38
27.98	27.98
27.58	27.58
27.18	27.18
26.78	26.78
26.38	26.38
25.98	25.98
25.58	25.58
25.18	25.18
24.78	24.78
24.38	24.38
23.98	23.98
23.58	23.58
23.18	23.18
22.78	22.78
22.38	22.38
21.98	21.98
21.58	21.58
21.18	21.18
20.78	20.78
20.38	20.38
19.98	19.98
19.58	19.58
19.18	19.18
18.78	18.78
18.38	18.38
17.98	17.98
17.58	17.58
17.18	17.18
16.78	16.78
16.38	16.38
15.98	15.98
15.58	15.58
15.18	15.18
14.78	14.78
14.38	14.38
13.98	13.98
13.58	13.58
13.18	13.18
12.78	12.78
12.38	12.38
11.98	11.98
11.58	11.58
11.18	11.18
10.78	10.78
10.38	10.38
9.98	9.98
9.58	9.58
9.18	9.18
8.78	8.78
8.38	8.38
7.98	7.98
7.58	7.58
7.18	7.18
6.78	6.78
6.38	6.38
5.98	5.98
5.58	5.58
5.18	5.18
4.78	4.78
4.38	4.38
3.98	3.98
3.58	3.58
3.18	3.18
2.78	2.78
2.38	2.38
1.98	1.98
1.58	1.58
1.18	1.18
0.78	0.78
0.38	0.38
0.00	0.00

Lot 10's 7' offset SW Cor Low & Lamont

Sta BS HI FS Elev

+50
4+00
+50
3+00
+90 10.90 127.73

5.74 138.63

T.P. 11.33 132.89

+50

+16

2+09 (END OF WALL)

+90

7.60 144.22

T.P. 9.19 136.62

1+50

145.81

Left

Right

385 50%

Left	Right
6 32.1	6 31.7
5 31.6	5 31.2
4 31.1	4 30.7
3 30.6	3 30.2
2 30.1	2 29.7
1 29.6	1 29.2
0 29.1	0 28.7
1 30.4	1 29.9
2 30.9	2 30.4
3 31.4	3 30.9
4 31.9	4 31.4
5 32.4	5 31.9
6 32.9	6 32.4
7 33.4	7 32.9
8 33.9	8 33.4
9 34.4	9 33.9
10 34.9	10 34.4
11 35.4	11 34.9
12 35.9	12 35.4
13 36.4	13 35.9
14 36.9	14 36.4
15 37.4	15 36.9
16 37.9	16 37.4
17 38.4	17 37.9
18 38.9	18 38.4
19 39.4	19 38.9
20 39.9	20 39.4
21 40.4	21 39.9
22 40.9	22 40.4
23 41.4	23 40.9
24 41.9	24 41.4
25 42.4	25 41.9
26 42.9	26 42.4
27 43.4	27 42.9
28 43.9	28 43.4
29 44.4	29 43.9
30 44.9	30 44.4
31 45.4	31 44.9
32 45.9	32 45.4
33 46.4	33 45.9
34 46.9	34 46.4
35 47.4	35 46.9
36 47.9	36 47.4
37 48.4	37 47.9
38 48.9	38 48.4
39 49.4	39 48.9
40 49.9	40 49.4
41 50.4	41 49.9
42 50.9	42 50.4
43 51.4	43 50.9
44 51.9	44 51.4
45 52.4	45 51.9
46 52.9	46 52.4
47 53.4	47 52.9
48 53.9	48 53.4
49 54.4	49 53.9
50 54.9	50 54.4

N R I M M. I.

W S I R T S T A 2+90

4.5' WALL & POLE

P. POLE # 931 - 5' RT 1+70

4.5' WALL & POLE

145.81

STA	BS	HI	FS	ELEV.
+80				
+70				
+66				
+50				
+40	FL MH	35' RT	11.58	113.83
+40	SRIM MH	35' RT	6.27	119.14
+30				
+20				
	4.93	125.41		
TP			9.65	120.48
+10				
+50				
+40	FL MH		14.90	
+40	SRIM MH	35' RT	9.23	
	2.54	130.13		
T.P.			11.04	127.59
+30				
				130.63

22

Left		Right	
29.0	27.0	27.0	27.0
28.6	27.8	27.8	27.8
28.2	27.4	27.4	27.4
27.5	26.4	26.4	26.4
27.1	25.3	25.3	25.3
27.1	24.9	24.9	24.9
27.1	22.9	22.9	22.9
26.8	21.2	21.2	21.2
26.9	20.3	20.3	20.3
26.3	20.0	20.0	20.0
26.5	19.6	19.6	19.6

Sta. B.S. HI FS Elev.

BM			1.17	142.37	R=142.36
	10.60	143.54			
TP			0.38	132.94	
	8.33	133.32			
TP			0.42	124.99	
+21 (APPOX ϕ LOT A)					
8+00		125.41			

L & T 10'S 7' offset - SW Cor Lot Lamont

SW	22.18	24.5
SE	22.38	24.1
SW	22.18	23.7
SE	21.98	23.4
SW	21.58	23.0
SE	21.28	22.6
SW	20.98	22.4
SE	20.78	22.1
SW	20.58	21.8
SE	20.38	21.5
SW	20.18	21.2
SE	19.98	20.9
SW	19.78	20.6
SE	19.58	20.3
SW	19.38	20.0
SE	19.18	19.7
SW	18.98	19.4
SE	18.78	19.1
SW	18.58	18.8
SE	18.38	18.5
SW	18.18	18.2
SE	17.98	17.9
SW	17.78	17.6
SE	17.58	17.3
SW	17.38	17.0
SE	17.18	16.7
SW	16.98	16.4
SE	16.78	16.1
SW	16.58	15.8
SE	16.38	15.5
SW	16.18	15.2
SE	15.98	14.9
SW	15.78	14.6
SE	15.58	14.3
SW	15.38	14.0
SE	15.18	13.7
SW	14.98	13.4
SE	14.78	13.1
SW	14.58	12.8
SE	14.38	12.5
SW	14.18	12.2
SE	13.98	11.9
SW	13.78	11.6
SE	13.58	11.3
SW	13.38	11.0
SE	13.18	10.7
SW	12.98	10.4
SE	12.78	10.1
SW	12.58	9.8
SE	12.38	9.5
SW	12.18	9.2
SE	11.98	8.9
SW	11.78	8.6
SE	11.58	8.3
SW	11.38	8.0
SE	11.18	7.7
SW	10.98	7.4
SE	10.78	7.1
SW	10.58	6.8
SE	10.38	6.5
SW	10.18	6.2
SE	9.98	5.9
SW	9.78	5.6
SE	9.58	5.3
SW	9.38	5.0
SE	9.18	4.7
SW	8.98	4.4
SE	8.78	4.1
SW	8.58	3.8
SE	8.38	3.5
SW	8.18	3.2
SE	7.98	2.9
SW	7.78	2.6
SE	7.58	2.3
SW	7.38	2.0
SE	7.18	1.7
SW	6.98	1.4
SE	6.78	1.1
SW	6.58	0.8
SE	6.38	0.5
SW	6.18	0.2
SE	5.98	0.0

125.41

Cross Section Alley Block 188

Mission Beach

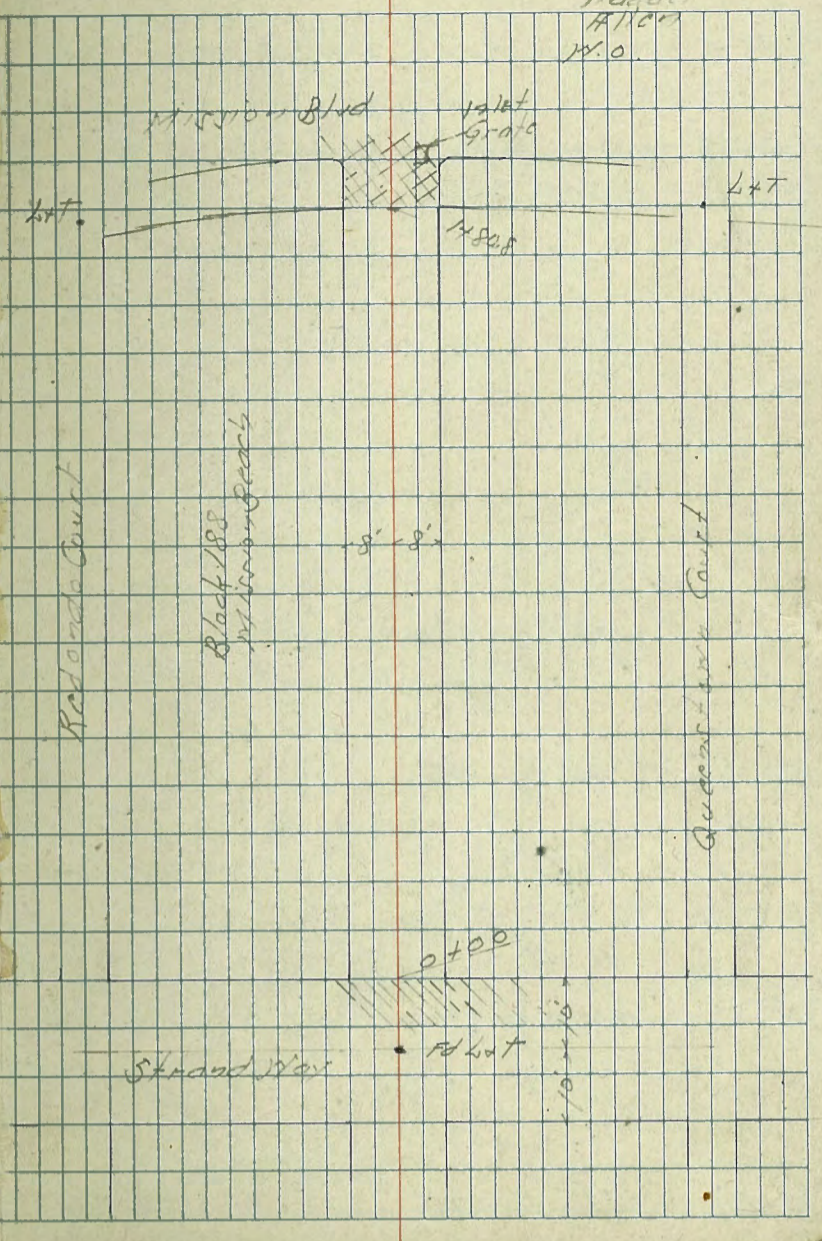
Levels Next Page

Plotted: a.m.

Indexed
c.s.k.

April 11-47 24

Sisson
McCoy
Haddel
Allen
W.O.



IP 4.13 5.83 11.21 1.20

checked - 4-13-50
7.0.

0+87 14' Rt. = 1/2" dia. concrete pole out

Note: Additional Notes
are shown as actual elev.

0+78.4

0+65

0+50-7.7 Rt. = # Tel. pole # 484242-H

0+29.5-9 Lt. = end Bldg.

4.5

0+25

Bottom of
found.

0+05-9 Lt. = Ben. Bldg.

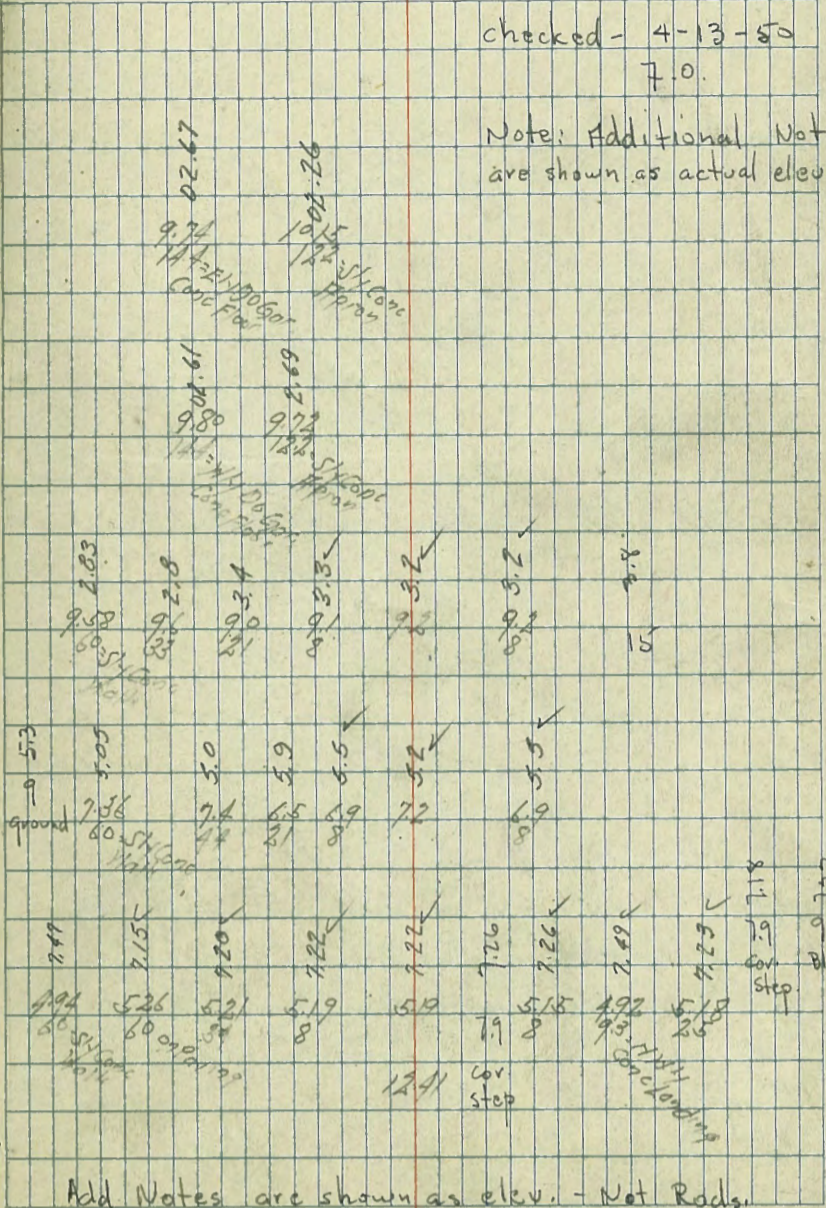
0+04.4-7.9 Rt. = end step - # P

-7.9 Rt. = Ben. Conc Step

0+00 - East Line of Street Wdg. = Fly Pavilion

IP 5.36 12.41 3.65 7.05

BM 2.62 9.70 7.08



Add Notes are shown as elev. - Not Rods.

1736.5

1728.5

1715.3 - 8.4 Lt. end New Conc. Slab at old one shown

1713

1706.7 - New apron on Door.

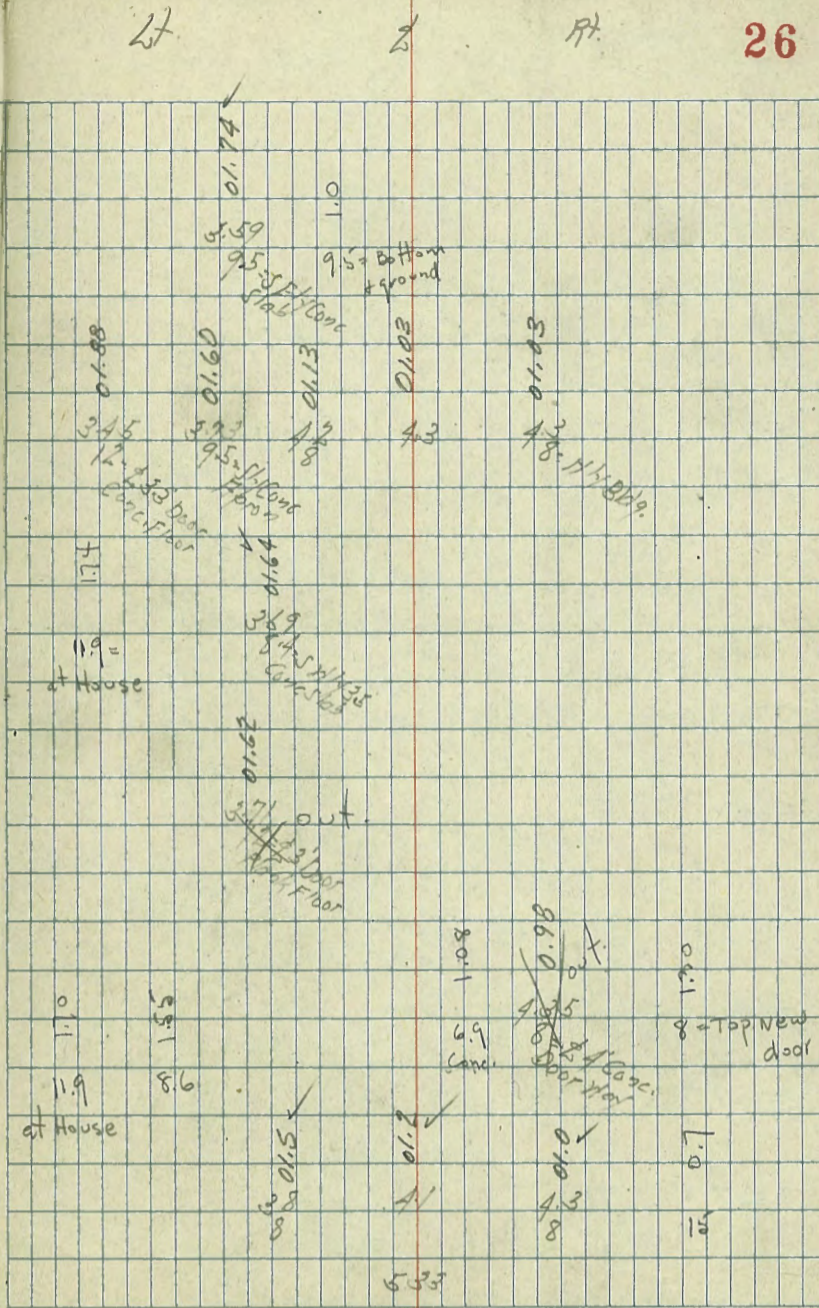
1702 - 8.6 Lt. = Beg. Conc. Slab along House

1702 - 8' Rt = Beg. Stucco Bldg. - Bottom of Foundation Below ground

1701 - 7.1 Rt. = P. Pole - # J.P.A 742

170

533



BM 567 -0.34

1791 = W.C. Line Mission Bldg

on Ely. of sewer M.H.

1788 = W.C. Case Paving Mt. Mission Bldg

1779 - 6.7' Rt. = E. of 2.5' Conc. Cone - Protecting Bldg.

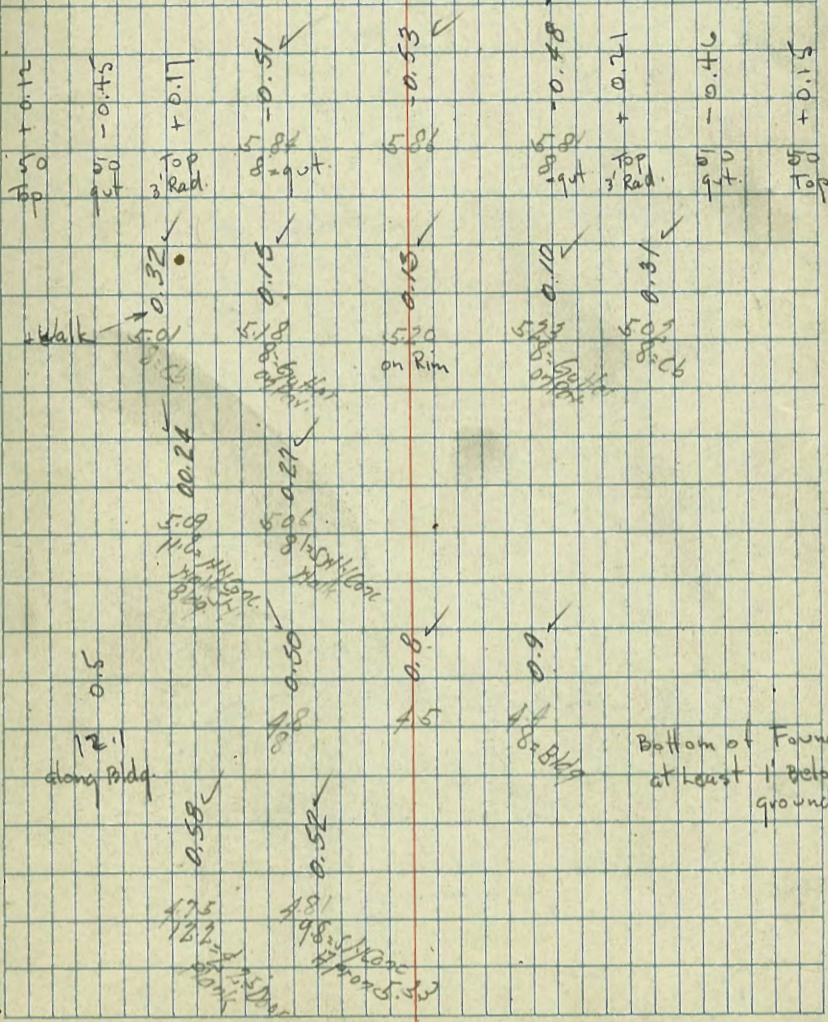
1736

1750

1777

5.33

5.80
W.C. Case
-0.36



Xsec. Dodson St. 80' wide
Island to Market

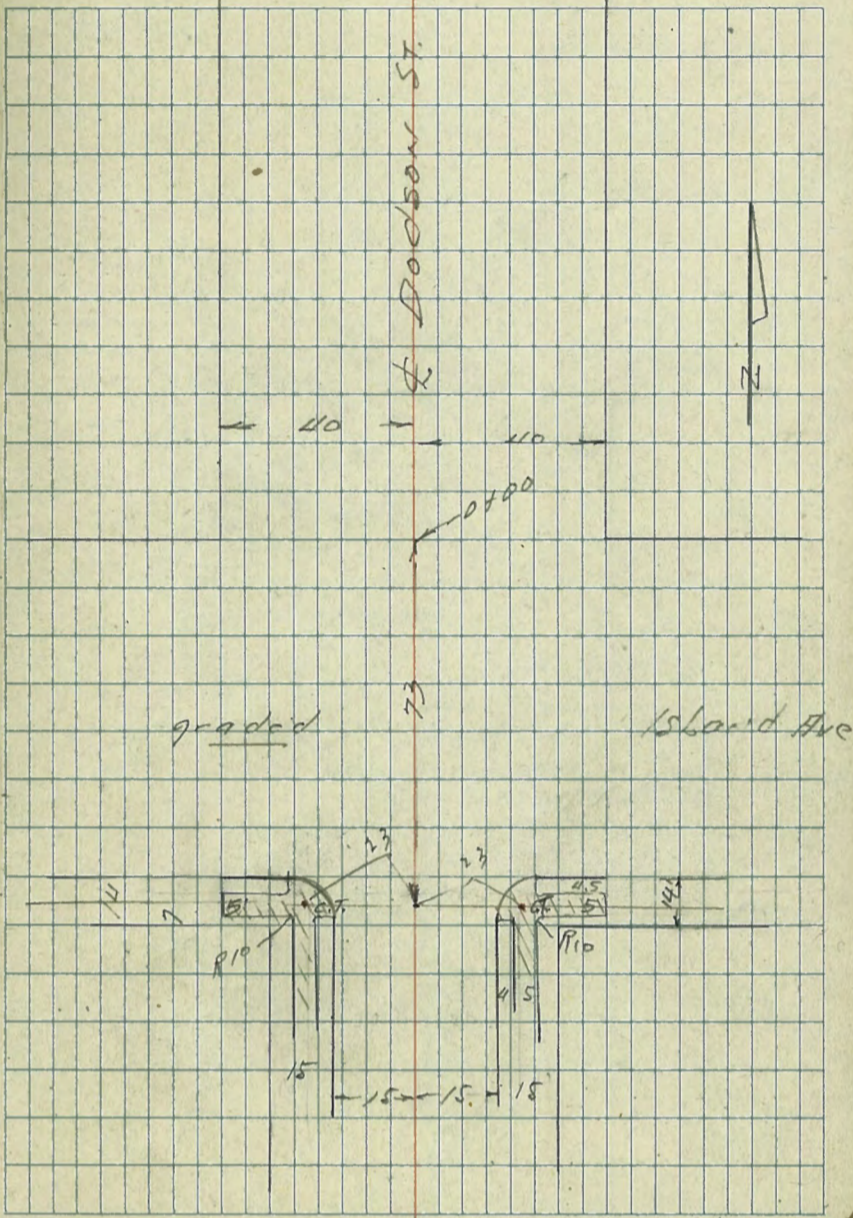
Plans
Begg
Green

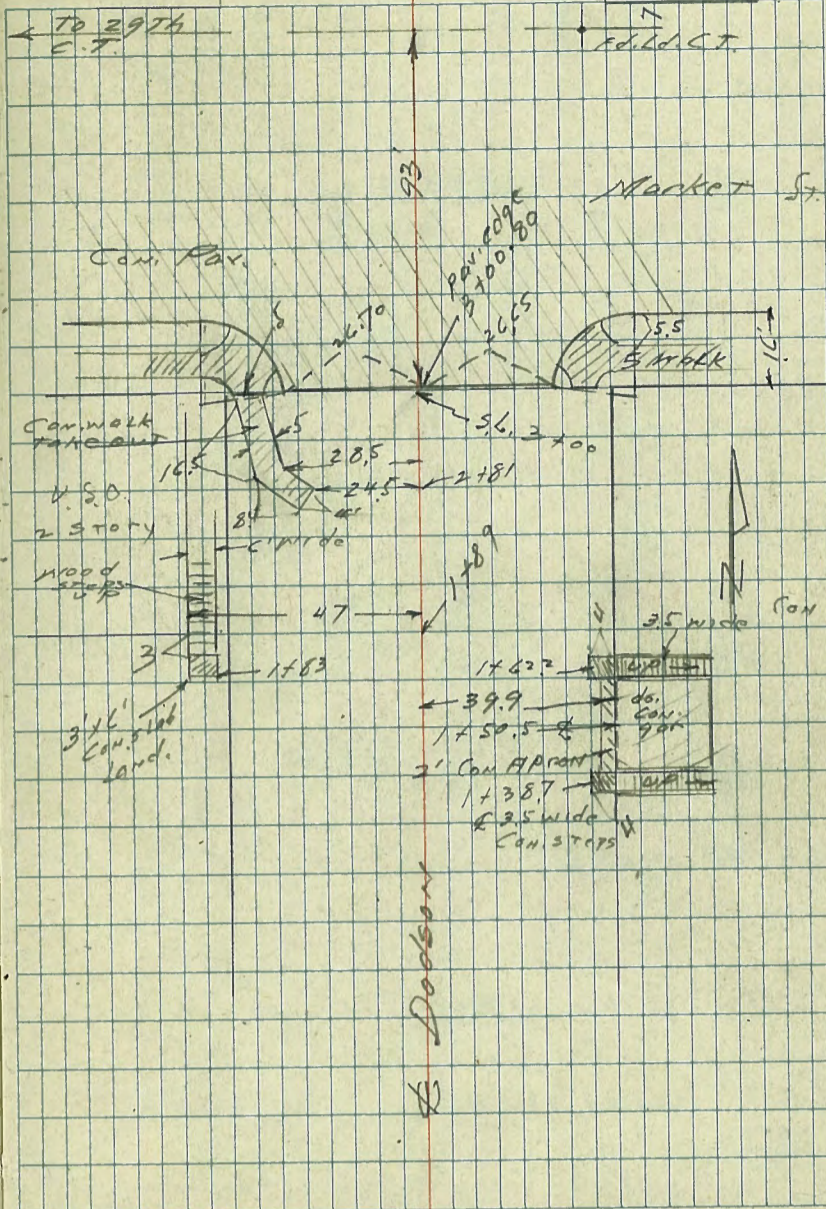
W.D. 230

4-15-47

L.B. 357-11

G.B. 105-55





4 sec. Dodson St
Island to Market

0-02

T.P. 11.34 141.58 3.24 130.24

0-00 u.l. Island

0-40 S Island

0-66

0-80

T.P. 11.36 133.48 1.74 122.12

SwBP
Island
and
both 10.03 123.86 113.83

LT = West

RT

	304	296	291	290	283	290	288	300	301
112	120	125	125	133	126	123	116	115	
50	34	25	13			27	34	20	
	129.3	129.1	128.9	128.3	141.5	128.9	128.6	129.1	129.5
50	5	5	4	5	14	5	17	30	5
	127.8			127.8	128.55			127.4	
		5	5	5	5	5	5	5	5
	127.95	127.95	127.95	127.95	127.95	127.95	127.95	127.95	127.95
		5	5	5	5	5	5	5	5
	127.8	126.5	126.5	126.8	127.6	126.7	127.0	127.2	127.92
5	5	5	5	5	5	5	5	5	5
5	5	5	5	5	5	5	5	5	5
				133.48					

1+13

8 135.0
1349

1+00

40

0+80

136.4
13
5 2

0+12 3' Com. stairs

0+50

0+66

141.58

136.9	47	6.0	135.6	27	5.0	133.4	135.8	136.4	136.4
135.6	40	30	132.1	28	5.5	132.1	133.6	134.6	134.6
132.1		9.5	129.7		8.0	131.0		132.5	132.5
129.7		11.9	130.2		8.1	130.9		131.9	131.9
130.2		11.4	129.5		8.7	130.5		131.1	131.1
129.5		12.1	129.8		9.1	130.6		131.1	131.1
129.8		11.8	130.3		9.5	131.3		131.6	131.6
130.3		11.3	131.5		9.7	133.4		132.6	132.6
131.5		10.1	133.4		10.0	136.9		134.1	134.1
133.4		8.7	138.8		10.5	137.2		137.5	137.5
138.8		2.4	139.5		10.5	141.1		141.1	141.1
139.5		2.1	145.7		10.5	145.6		145.6	145.6
145.7		13.9			11.5				

2+62

2+50

2+00

1+83 84 con slab stair land.

1+96 17' 1" P.P. Guy DM.

T.P. 11.06 143.47 9.17 132.41

1+76 17' 1" P.P. A 9-37

1+70

385 50%

133.0	10.5	10	133.0	10.5	10
134.4	9.1	18	134.4	9.1	18
133.4	10.1	10	133.4	10.1	10
135.0	8.5	13	135.0	8.5	13
133.5	10.1	8	133.5	10.1	8
132.3	11.2	7	132.3	11.2	7
132.8	11.2	12	132.8	11.2	12
132.4	11.1	19	132.4	11.1	19
133.0	10.5	22	133.0	10.5	22
134.6	8.9	32	134.6	8.9	32
137.9	5.5	37	137.9	5.5	37
140.2	3.3	40	140.2	3.3	40
141.3	2.2	45	141.3	2.2	45
132.8	8.8	6	132.8	8.8	6
134.7	6.9	24	134.7	6.9	24
135.8	5.8	10	135.8	5.8	10
133.6	8.0	7	133.6	8.0	7
132.2	9.5	5	132.2	9.5	5
132.1	9.5	9	132.1	9.5	9
132.5	9.1	21	132.5	9.1	21
133.4	8.7	24	133.4	8.7	24
136.1	5.5	34	136.1	5.5	34
141.1	0.5	40	141.1	0.5	40
142.6	1.0	42	142.6	1.0	42

133.1
133.4
134.2
139.7
139.7
33

141.98

over

Dodson

3+10 S. ch. line Market Valley
9/11/4

3+00.8 Par edge

3+00 Par edge S. L. Market

2+86

2+81

2+67

14347

11.22	4.80	11.60	10.81	10.20	9.17	9.12	9.12
40	40	40	20	20	20	40	40
132.25	131.7	131.9	132.16	133.3	133.80	134.35	134.55
132.82	132.22	132.90	133.41	133.9	134.20	134.82	135.11
10.65	11.25	10.57	10.6	9.60	9.27	8.60	8.60
133.2	132.7	132.8	133.4	134.3	135.0	135.5	136.3
10.5	10.51	10.7	10.9	9.7	8.5	8.0	8.0
40	30	27	18	25	27	30	38
133.4	133.85	133.74	133.8	133.3	133.8	135.1	135.3
10.1	9.4	9.33	9.7	10.5	9.7	8.8	8.7
40	30	20	26	17	13	15	50
133.4	133.90	133.1	133.2	133.7	134.5	137.1	138.8
9.8	9.57	10.4	10.3	9.8	9.0	8.8	8.8
40	20	18	14	25	25	60	60
133.7	133.8	133.1	133.1	133.5	134.3	137.0	138.8
9.8	9.7	10.4	10.4	10.0	9.7	8.8	8.8
40	20	17	10.4	13	22	40	40
			143.47				

REMOVE THIS

Check to N.W. B.P. on cb.
E and 3077 1.45 187.56 187.63
0.07

T.P. 12.43 189.01 0.52 176.38

T.P. 11.92 176.90 0.46 164.98

T.P. 12.86 165.44 0.68 152.58

T.P. 11.04 153.26 1.25 142.22

3108 Backup for elev. on
cross. of Ex. cb. River

143.47

4:30 PM

132.68	132.11	132.85	133.42	133.91	134.16	134.88
10.79	11.30	10.60	10.05	9.60	9.31	8.59
30.3	30.3	15	15	15	30.2	30.2
6	9				97	66

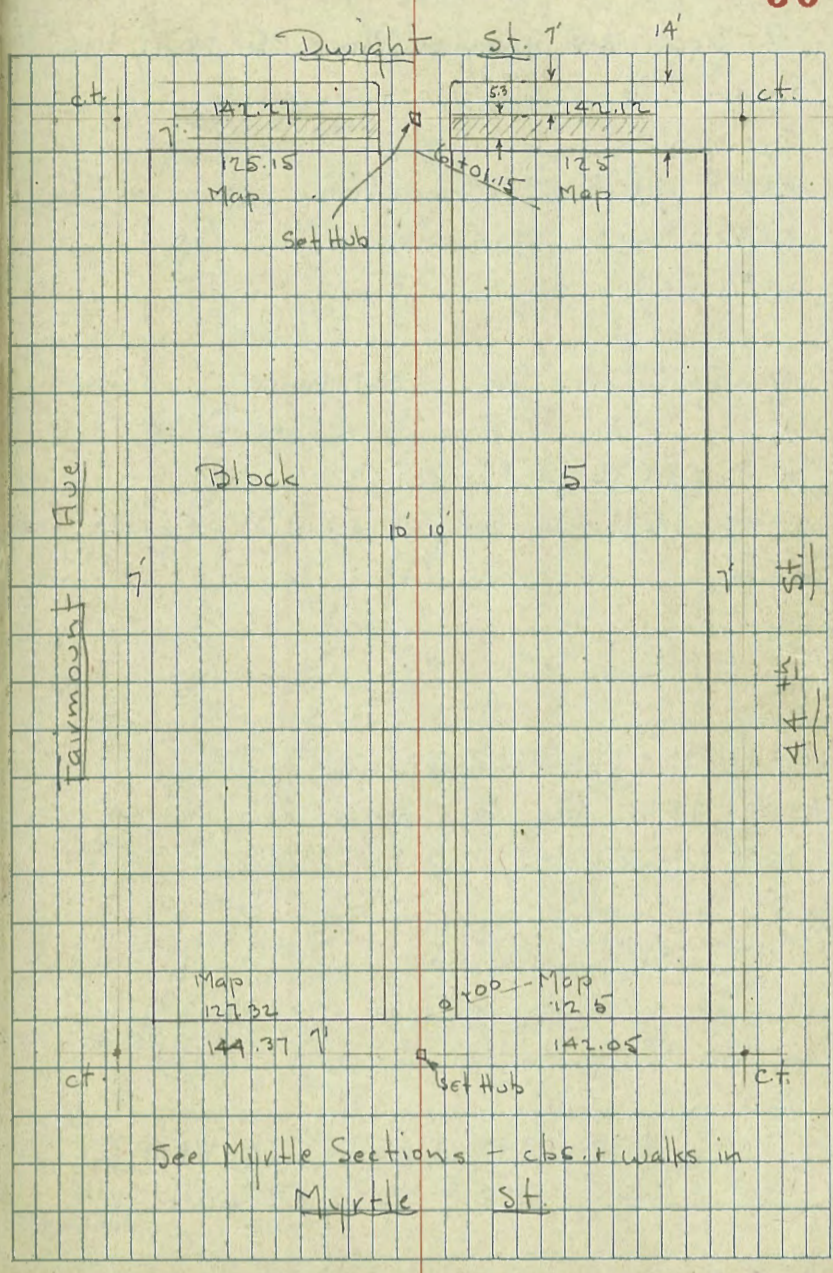
143.47

X- Sect. 20' Alley in Block 5 - in City Hts.
Annex #2 - Map 1028

1054
W.O. 31272

5-16-97
Osborne
Hardin
Smith
Worrell

See Book 1770 - P. 1 for other Notes



Ave Block 5
10' 10'
7' 7' 7' 7'
Fairmount St.
4'

Map 127.32 144.37 7'
100' Map 125 142.05
Set Hub

See Myrtle Sections - obs. & walks in
Myrtle St.

X-Sect. 20' Alley in Block 5 - City Hts.
Annex #2

0+89- 18.1 Rt = Sing. Gar. - Conc. floor

0+83- 9.6 Rt = end fence

0+70

0+65- 9.7 Rt = Beq. Picket fence

0+59- 10' Rt = Sing. Gar. - Conc. floor

0+53- 9.8 Rt = end fence

0+50- 8.9 Lt = Wly. Pipe J.P.A. 35.09 + 10' Lt = fence

0+35

0+10

0+00- 10.3 Lt = Beq. Picket fence

0+00- 9.8 Rt = Beq. Lath fence

0+00 = NL. Myrtle

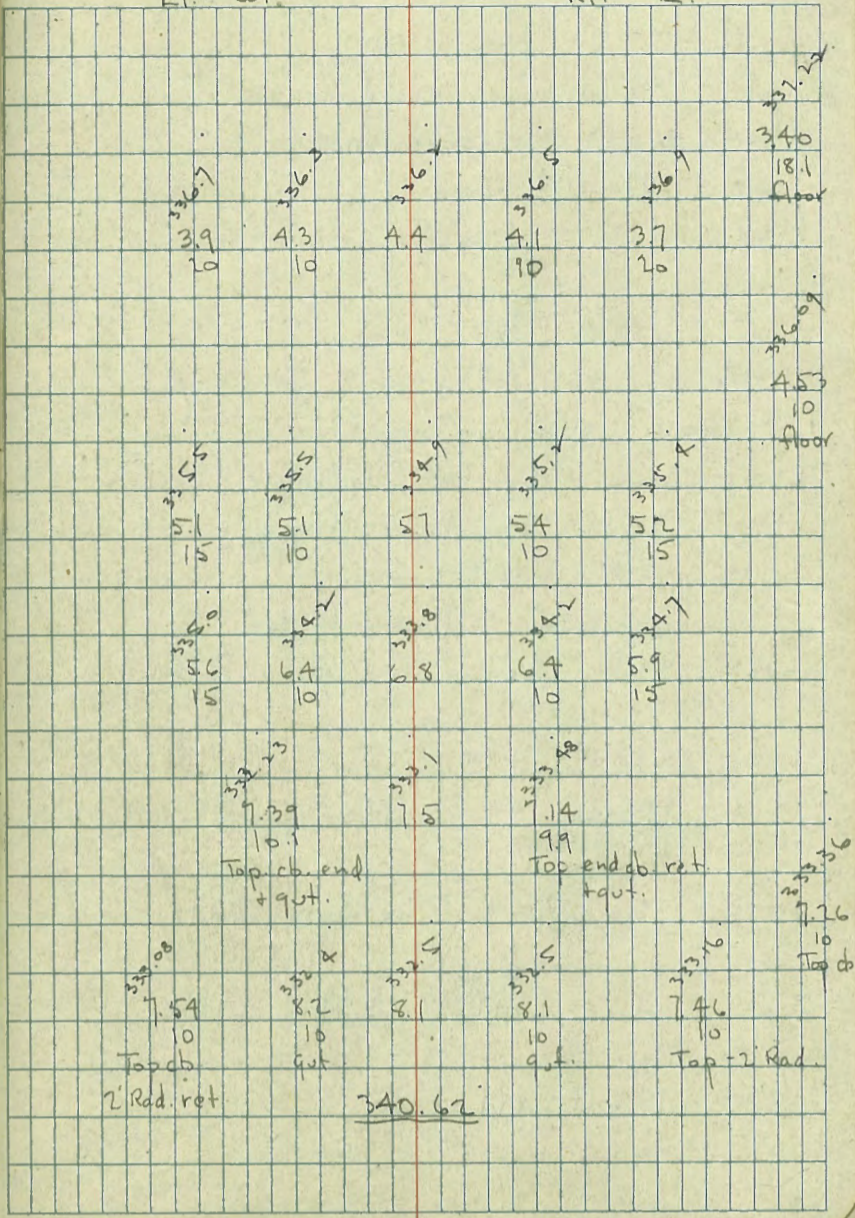
0-07 = Brk. in cb. on Rt.

0-14 = N. cb. Myrtle

8.78	340.62	6.25	331.84	swit. et. Myrtle + Highland
1.85	338.09	6.25	336.24	

Lt. = W.

Rt. = E.



- 1+76 = 9.7 Rt. = end shed.
- 1+64 = 10.2 Lt. = Beg board fence
- 1+63 = 9.7 Rt. = Beg. wood shed.
- 1+63 = 9.7 Rt. = end fence
- 1+58 = 14' Lt. = Φ Sing Gar. - dirt floor

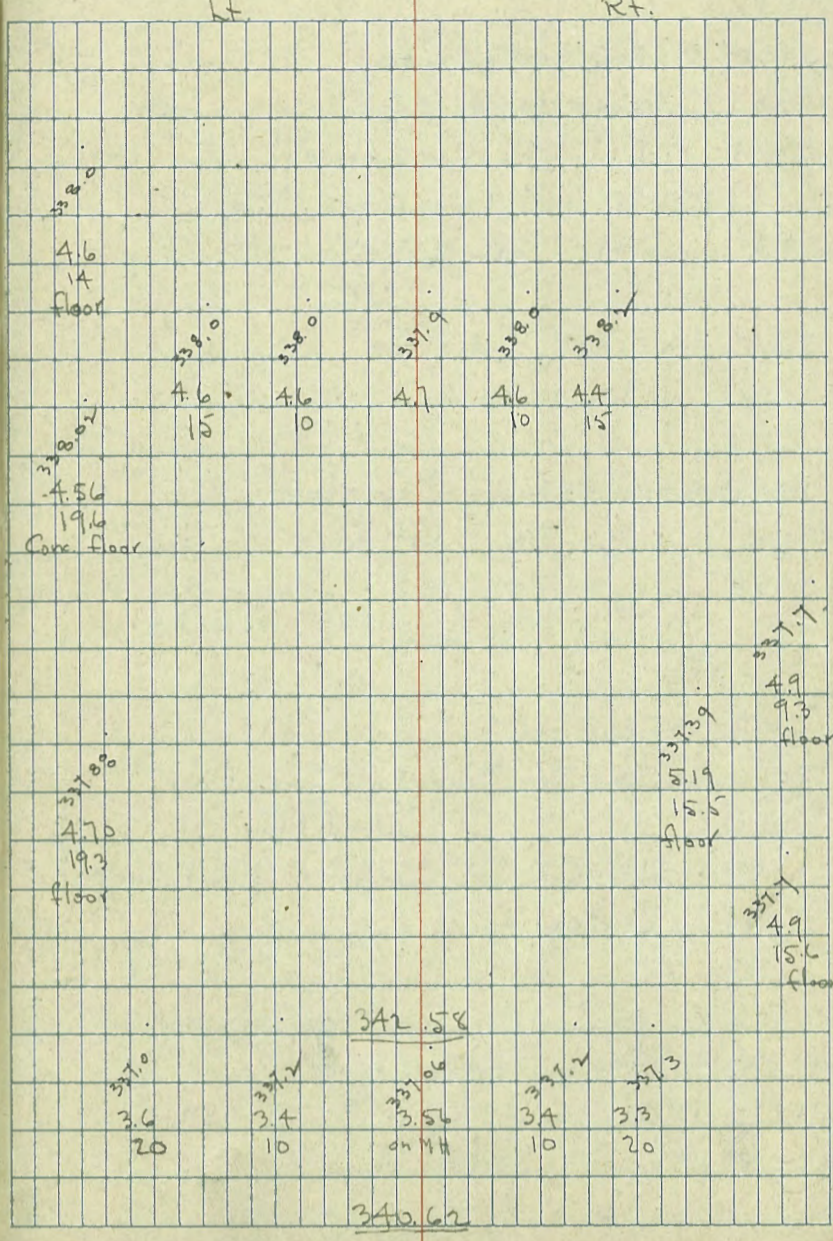
- 1+50
Cabinet shop) - Conc. floor
- 1+47 = 19.6 Lt. = N.E. Cor. Bldg (this end used as
- 1+46 = 9.3 Rt. = Beg. Picket fence
- 1+46 = 9.3 Rt. = N.W. Cor. shed.
side - old wood floor
- 1+26 = 9.3 Rt. = S.W. Cor. Sing Gar with shed on N.

- 1+16 = 15.5 Rt. = Φ Sing Gar - Conc. floor
- 1+06 = 19.3 Lt. = S.E. Cor. Bldg - Conc. floor

- 1+05 = 15.6 Rt. = Φ Sing Gar - Dirt floor

T.P. 5.50 342.58 3.54 337.08

- 1+00 = 10.2 Lt. = end fence
- 0+995 = Φ Sewer M.H. 3.56 on Rim



3+01 - 10' Rt. = Beq Lath fence
3+00 - fence = 10' Lt.
2+88 - 12.7 Rt. = House (small)

T.P. 5.94 245.79 2.73 399.85

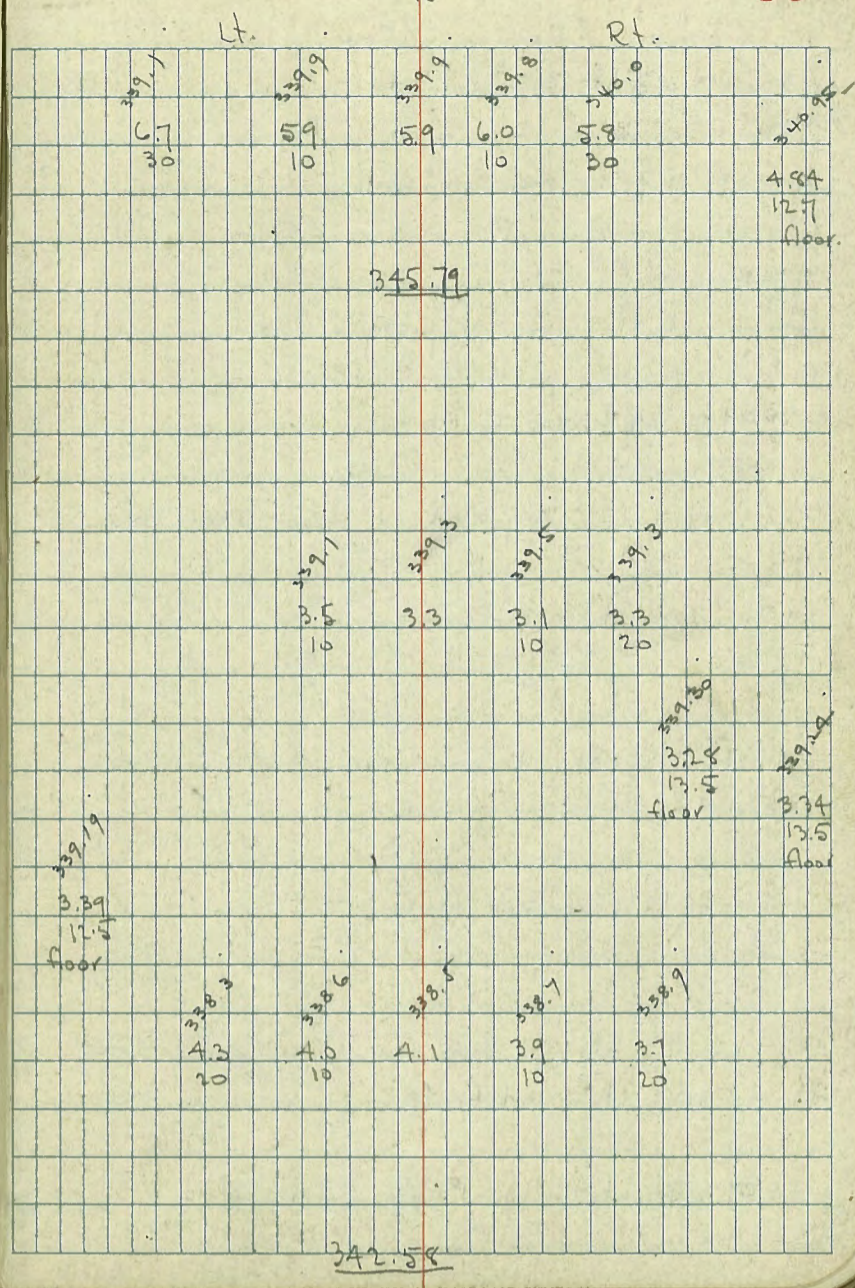
2+75 - 10.1 Rt. = end fence
2+63 - 10.2 Lt. = Beq. wire

2+59 - 12.6 Lt. = N.E. Cor. - Cab. shop.
2+51 - 10.1 Rt. = Beq. Picket fence
2+50

2+49 - 13.5 Rt. = end Dwb. Gar.
2+29 - 13.5 Rt. = Beq. Dwb. Gar. - Conc. floor
Wood floor

2+28 - 12.5 Lt. = S.E. Cor. Corrugated Cabinet Shop
2+28 - 9.8 Lt. = end fence

2+00
1+87 - 9.9 Lt. = Beq. picket fence
1+87 - 8.8 Lt. = Wly. P. pole # JPA. 3521
1+87 - 9.8 Lt. = end board fence



342.58

Conc. floor

4+69 - 10.7 Lt. = Beg 3 car stucco Gar. opening w.
 4+69 - 9.5 Lt. = E P. pole # PA. 3573
 4+69 - 10.7 Lt. = end Conc. wall

4+50

4+32 - 11' Lt. = end Gar. + beg 6" Conc. Wall - 5' High

4+09 - 28.2 Rt. = E House
 opening w. - Conc. floor.

4+01 - 11.2 Lt. = Beg Back of stucco 3 car Gar.

4+01 - 10.6 Lt. = end fence

4+00

3+59 - 10.4 Rt. = E Sing. Gar. - dirt floor

3+52 - 10.8 Rt. = end fence

3+51 - 9.9 Lt. = Beg wire fence

3+50

3+44 - 9.3 Lt. = E Sing. Gar. Conc. apron + floor.

3+34 - 10.1 Lt. = end fence

3+27 - 9.4 Lt. = Wly. P. Pole # PA. 3553

	Lt.		Rt.	
4+69	10.7			
4+69	9.5			
4+69	10.7			
4+50				
4+32	11'			
4+09	28.2			
4+01	11.2			
4+01	10.6			
4+00				
3+59	10.4			
3+52	10.8			
3+51	9.9			
3+50				
3+44	9.3			
3+34	10.1			
3+27	9.4			

Handwritten notes on grid:

- 4.48
- 10.7 floor
- 4.6
- 4.5
- 4.3
- 4.3
- 4.6
- 28.2 ground
- 11.2 floor
- 5.6
- 5.4
- 5.0
- 4.9
- 4.7
- 4.8
- 5.3
- 5.7
- 5.4
- 5.3
- 5.4
- 5.5
- 5.45
- 19.6 floor
- 9.3
- Gar.
- 345.79

5+95- 11.5 Rt. = 1/2" 16" Pepper
 5+91- 9.9 Lt. = Wly. P. pole # APA. 3595
 5+85

5+83- 11.4 Rt. = Sing. Gar - Conc. floor
 5+74- 9.7 Rt. = Ely. P. pole - A 3594

5+56- 11' Rt. = end wall

5+40

5+39- 10.8 Rt. = Req. 4" Conc. wall

5+35- 19.5 Lt. = Sing. Gar - Conc. floor

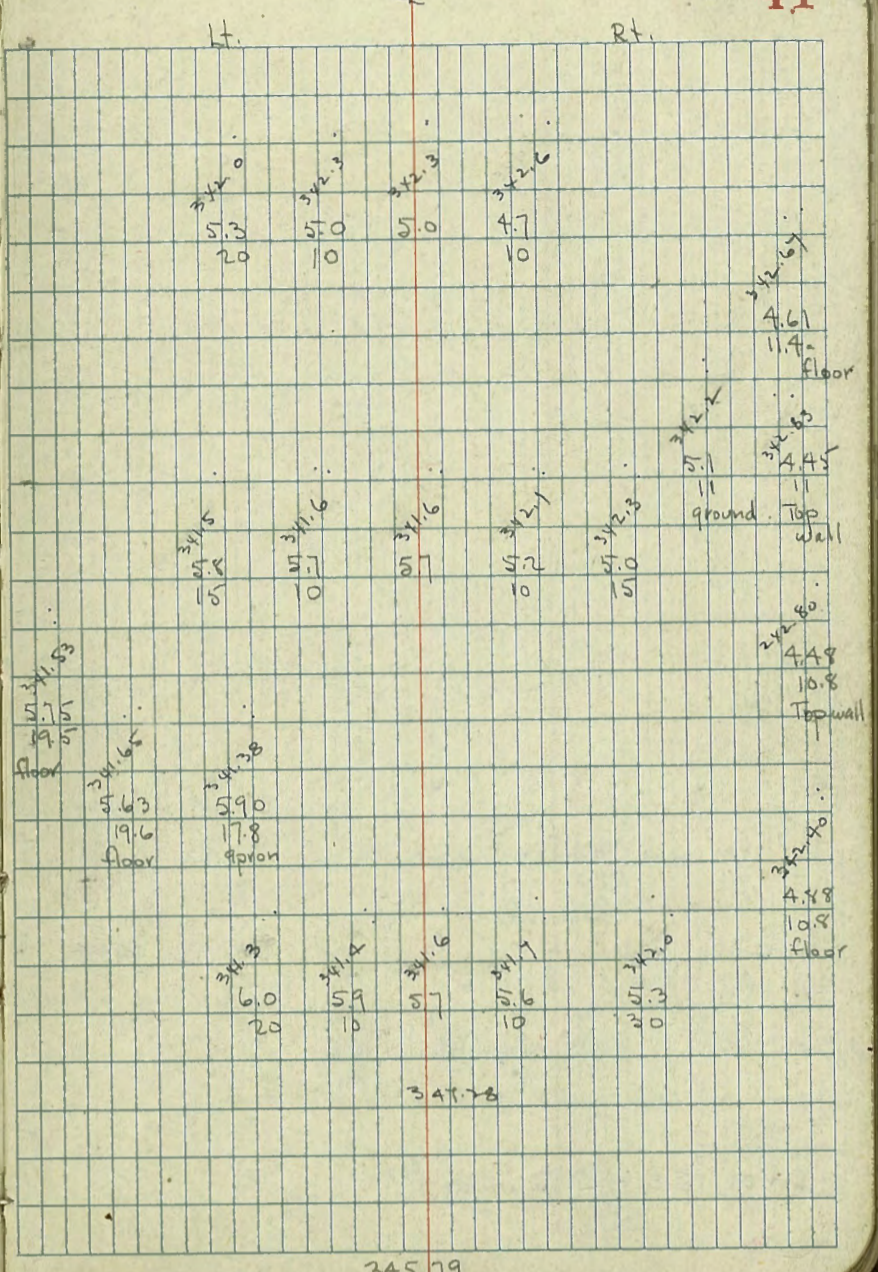
5+13 = Sing. Gar. on Lt. - Conc. floor + apron

5+08- 10.8 Rt. = Small shed - Conc. floor

5+00

T.P. 5.70 347.28 4.21 341.58

4+99- 10.5 Lt. = end 3 car Gar.



345.79

Lt.

Rt.

340.5	341.25	341.59	340.9	341.0	341.1	341.64	342.07	341.5
6.8	6.03	5.69	6.4	6.3	6.2	5.44	5.21	5.8
50	50	10	10	10	10	10	50	50
Ret	Topch	Top 2 Red	Ret	Ret	Top 2 Red	Top 2 Red	Top 2 Red	Ret
		Ret						
		5.47		5.5		5.16		
		9.9				9.8		
		Topch and				Top-end		
		Ret + aut.		347.28		+aut		

343.19 should be

I.P. for check - NW 7th ct. Dwight ^{+44th} 4.06 343.22 - Proved .03 High

check B.M. - NW Dwight + ^{Fairmount} 6.36 340.92 340.89

6 + 15 .15 = S. cb Dwight

6 + 01 .15 = S. L Dwight

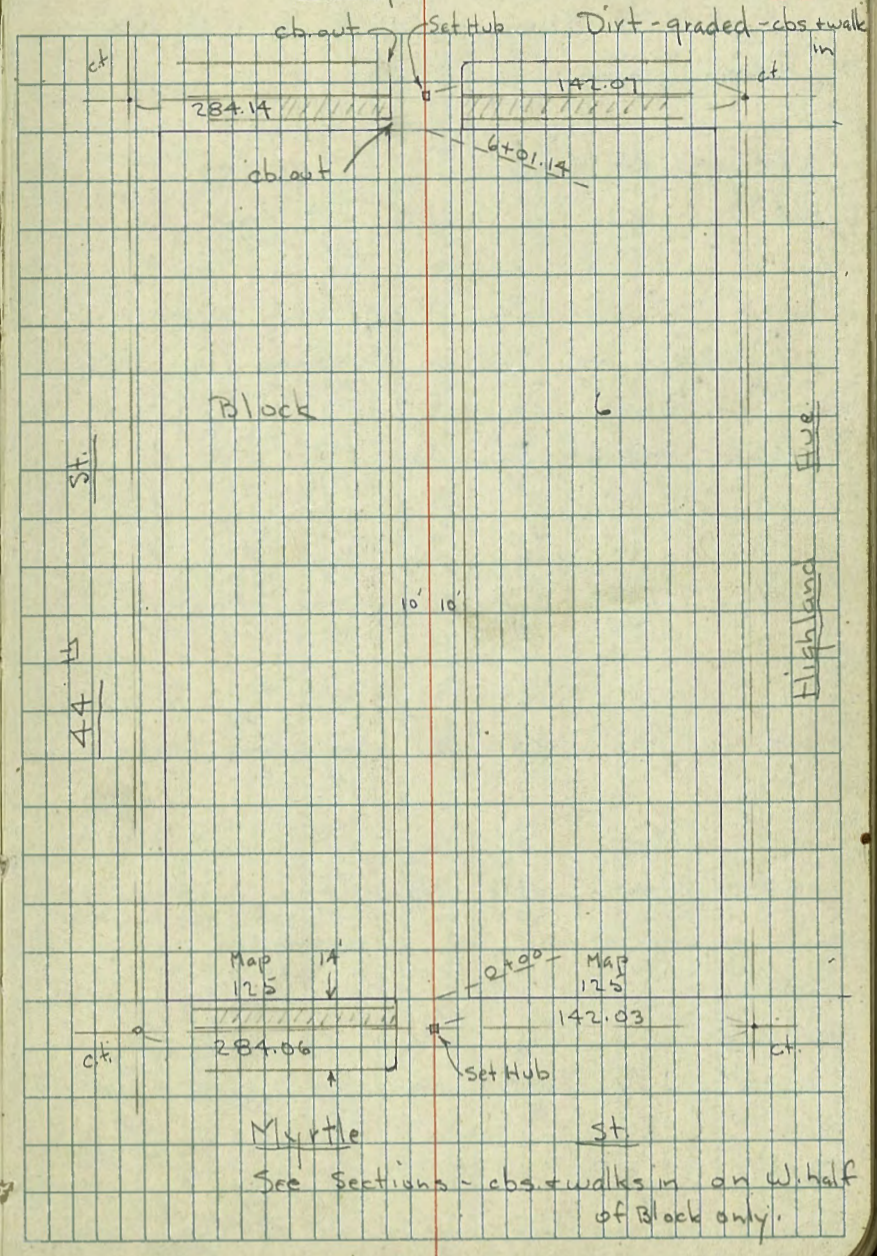
X-Section 20' Alley in Block 6 - City Hts.
 Annex # 2 - Map 1028

7.0.
 5-16-47

INDEXED
 C.S.R.

Dwight St.

43



St.

Highland Ave.

44

Map 125

Map 125

Myrtle St.

See Sections - obs + walks in on W. half of Block only.

See also page 78

X-Sect. 20' Alley in Block 6 - City Hts.

Annex # 2

0+80 = N. end Gar.

0+70

0+62 = 9.7 Lt. = Wly P pole # PA. 3511

0+61 = S. end Doub. gar. on Rt. - Conc. floor + apron

0+50 = end of pile on Lt.

0+45

0+05 = for dirt & rocks piled along fence

0+00 = N.L. Myrtle edge of paving now under coat
get gutters from plans

0-14 = N. cb. Myrtle

BM 6.55 342.79

SW corner

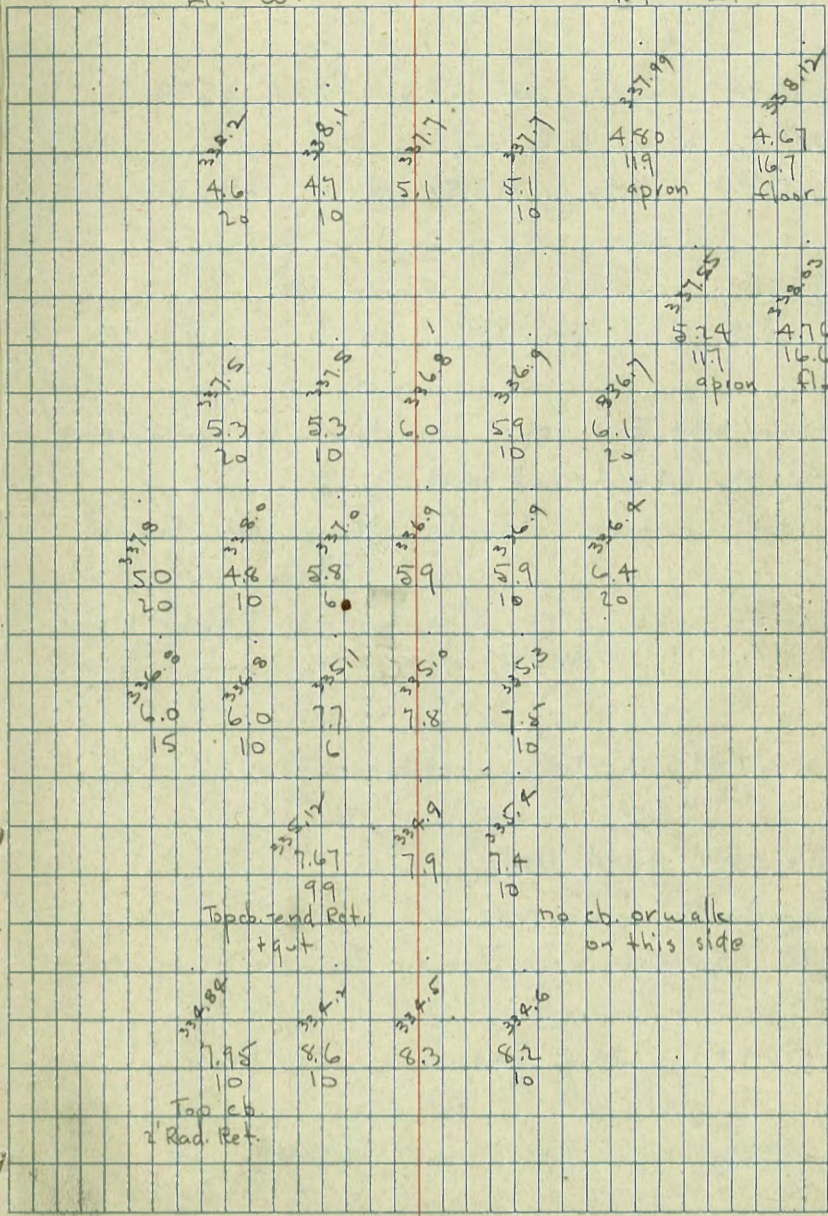
336.24 N.L. Myrtle + Highland

NW

375.

Lt. = W.

Rt. = E.



342.79

2+00 - 9.9 Lt. = Wly. P. pole # P.A. 3533

1+93 - 9.7 Lt. = N.E. Cor. House

T.P. 546 345.85 2.40 340.39

1+70

1+68 - 9.4 Rt. = Beg. 7" Conc. found. for board fence

1+68 - 9.6 Rt. = end fence

1+67 - 10.1 Lt. = S.E. Cor. House (conc. found.)

1+55 - 13.5 Lt. = Sing. Gar. - Dirt floor
Now conc floor + apron

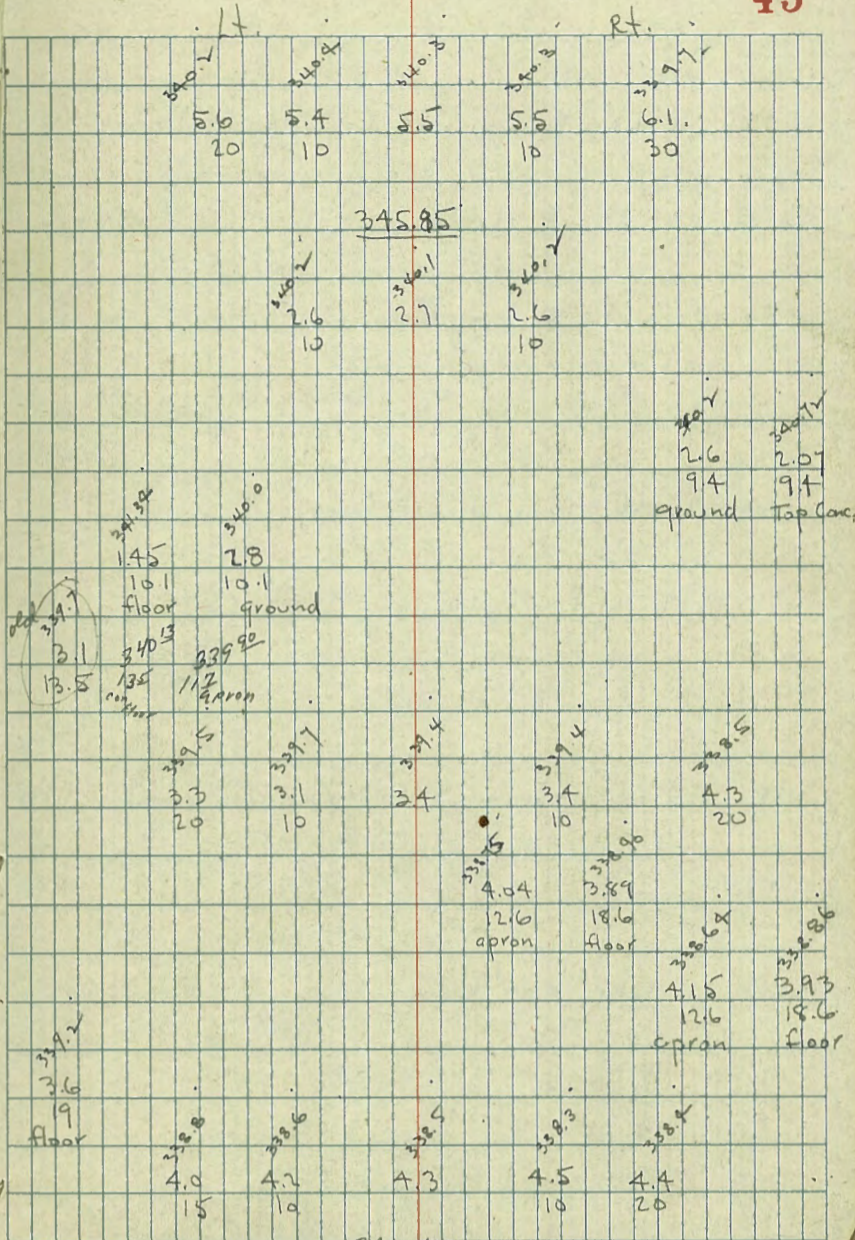
1+35 - 9.2 Rt. = Beg. picket fence

1+30 = N. end Gar.

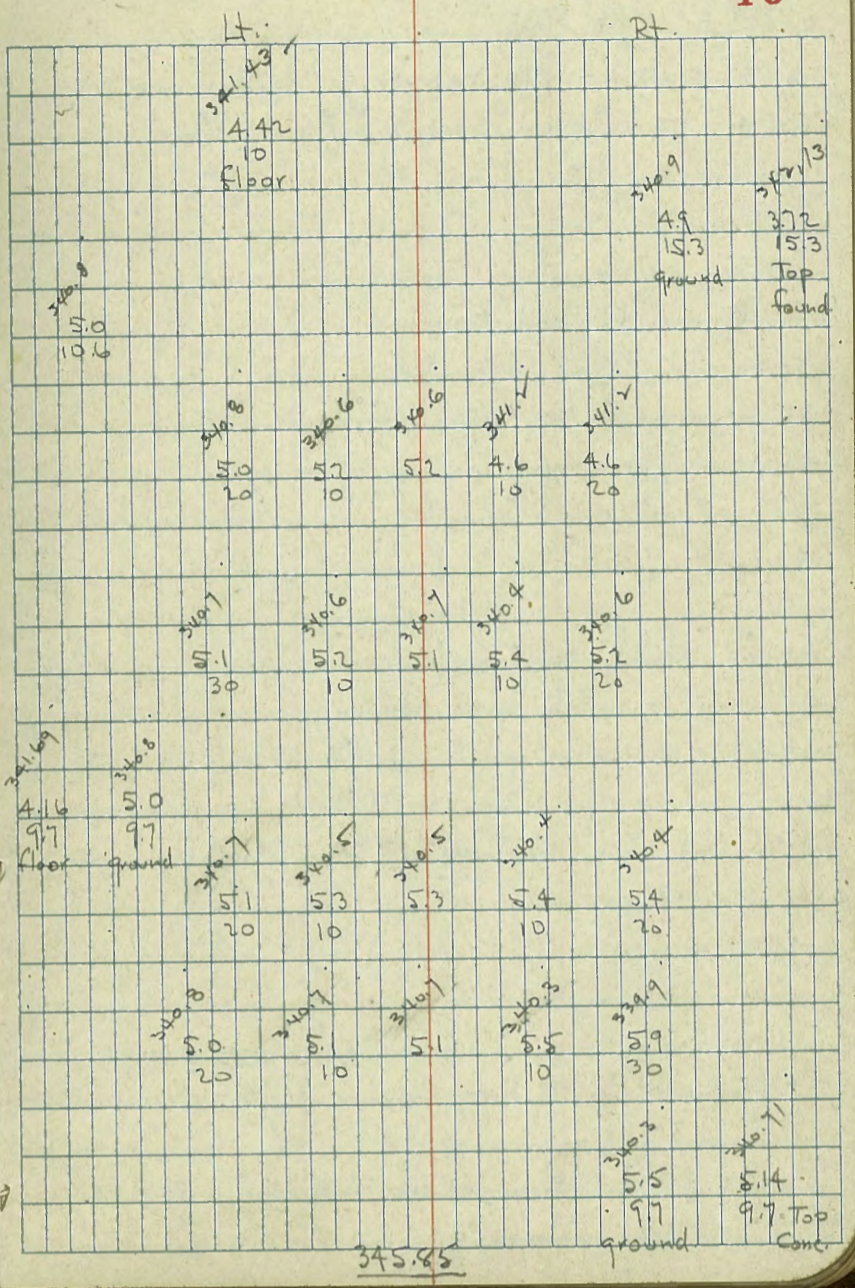
1+12 = S. end Doub. Gar. on Rt. - Conc. floor + apron

1+04 = 19' Lt. = Sing. Gar. - Dirt floor

1+00



about 3' out - ave
 doors are extend out in Alley to acomodate long car.
 3+81 - 10' Lt. = Sing Gar. Conc. floor - Note - The
 3+66 - 15.3 Rt. = Greenhouse - Conc. found + Dirt floor
 3+56 - 10.6 Lt. = Sing Gar. - Dirt floor
 3+51 - 10.5 Lt. = end picket fence
 3+50
 3+02 - 9.6 Lt. = Beq. picket fence
 3+01 - 9.9 Lt. = Wly. P. pole # P.A. 3553
 3+00
 2+98 - 9.6 Lt. = N.E. Cor. House
 2+81 - 9.7 Lt. = S.E. Cor. Small House (on piers)
 2+70
 2+51 - 10.2 Rt. = end fence
 2+30
 2+01 - 9.8 Rt. = Beq. Picket fence
 2+01 - 9.7 Rt. = end Conc. wall + fence



5+25 ¹⁶⁵ NW con 2 car garage con floor apron

5+34 16' NW con 2 car garage con floor apron

5+47 - 9.3 Lt. = #16" Pepper gone

5+24 - 9.9 Lt. = Wly. P. pole # PA 3587

5+30

5+01 - 10 Lt. = Beg. Picket fence

5+01 - 9.8 Lt. = end fence

5+00

4+52 - 10.1 Lt. = Beg. picket fence

4+51 - 10.3 Lt. = end fence

4+50

4+11 - 12.7 Lt. = # 18' Conc. slab

4+01 - 10' Lt. = Beg. wire fence

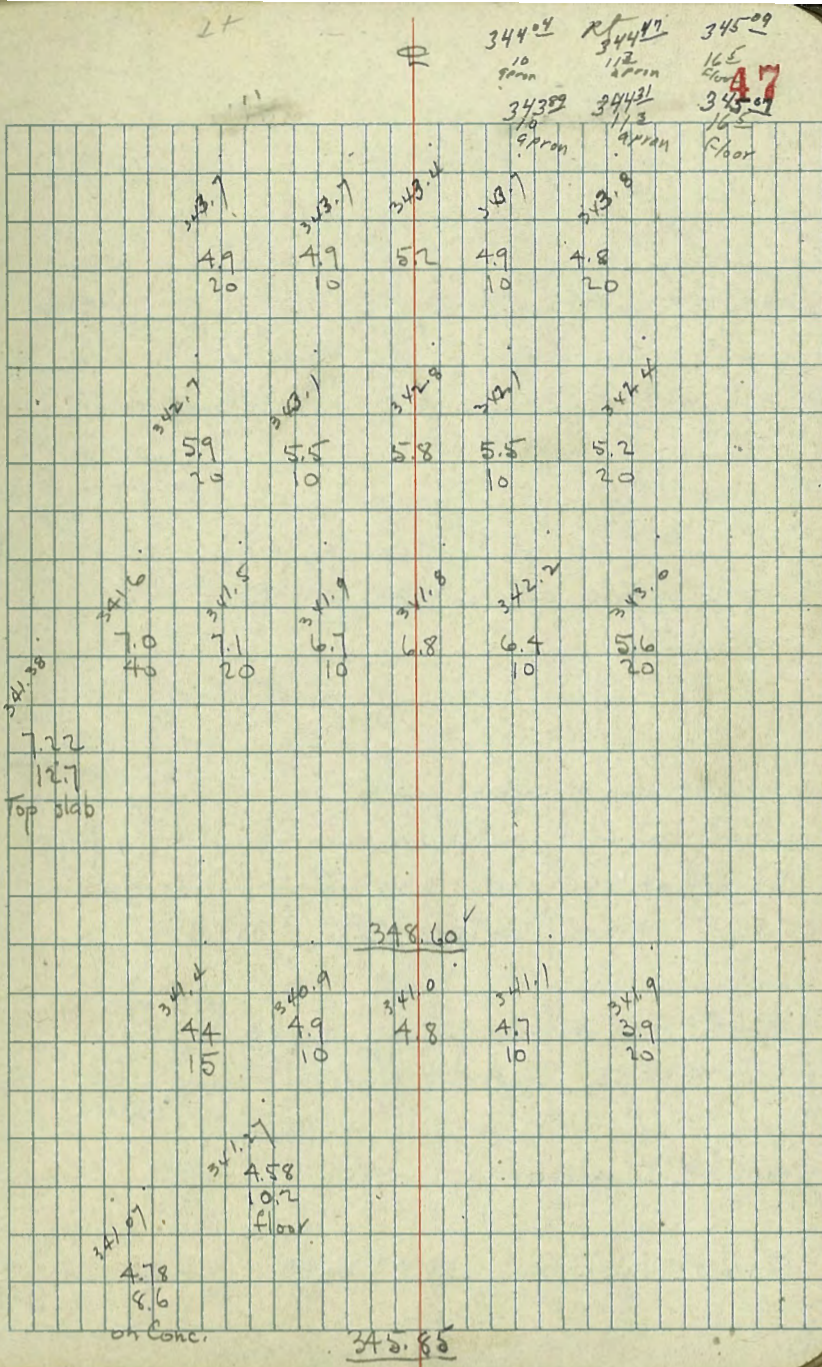
4+01 - 10' Lt. = Wly. P. pole RA. 3569

T.P. 7.29 348.60 4.54 341.31

4+00

3+95 - 10.2 Lt. = # Sing. Gar. Conc. floor - doors out in
alley - about 3' ave.

3+87 - 8.6 Lt. = Ely. of Conc. slab. 5.5' wide for
door bet. garages

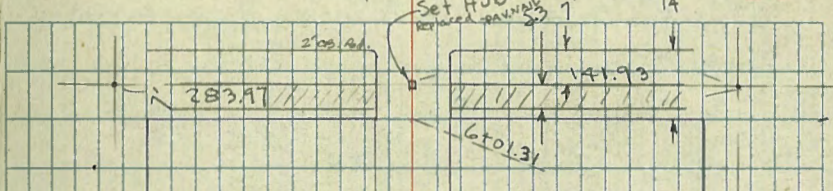


7.0.
5-19-47

Dirt graded - obs. & walks in
Dwight

Indexed
C.S.K.
49

X-Section 20' Alley in Block 7 - City Hts Annex
#2 - Map # 1028



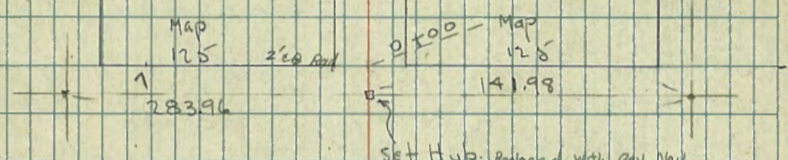
Hub

Block

7

Highland

14'
45'



obs. & walks in Myrtle

St.

See Sections

385 50%

X- Sect. 20' Alley in Block 7 - City Hts

Annex #2

0+62 - 15.1 Lt. = end Conc Slab

0+57 - 11.7 Lt. = Brk in edge (line) of Slab.

0+46 - 9.8 Rt = Beg. lath fence

walk - Slab extends N. to Gar.

0+36 - 10.6 Lt = S. end Conc. slab outside 2' Conc.

0+35

Note: All improvements checked
thru (L) NOW NON-EXIST.

0+10

0+00 = N.E. Myrtle

0-01.7 = end cb. on Lt. - Back of walls

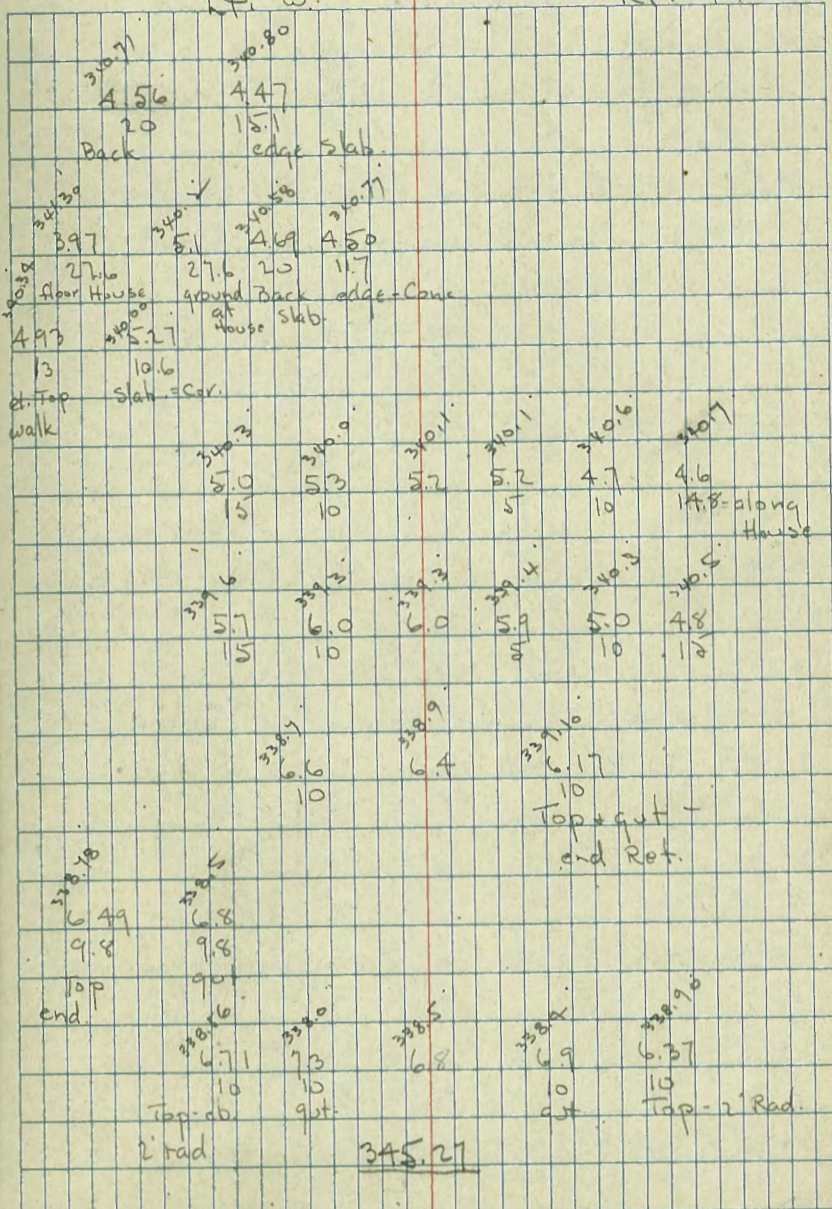
0-14 = N. cb. Myrtle

B.M. 9.03 345.27 336.24

7.0
5-19-47

Lt. - W.

Rt. = E. 50



2+01 - 9.9 Rt. = Beg Lath fence

2+00 - House on Lt. - Low

1+92 - 14.2 Rt. = Sing Gar. - Conc. floor

1+80 - 20.2 Lt. = Sing Gar. - Dirt floor

J.P. 7.34 349.82 2.79 342.48

1+50

1+39 = Doub Gar. on Rt. Conc floor + 14' apron

1+13 - 9.1 Lt. = end fence

1+14 - 9.3 Lt. = Beg Wire fence for chicken pen

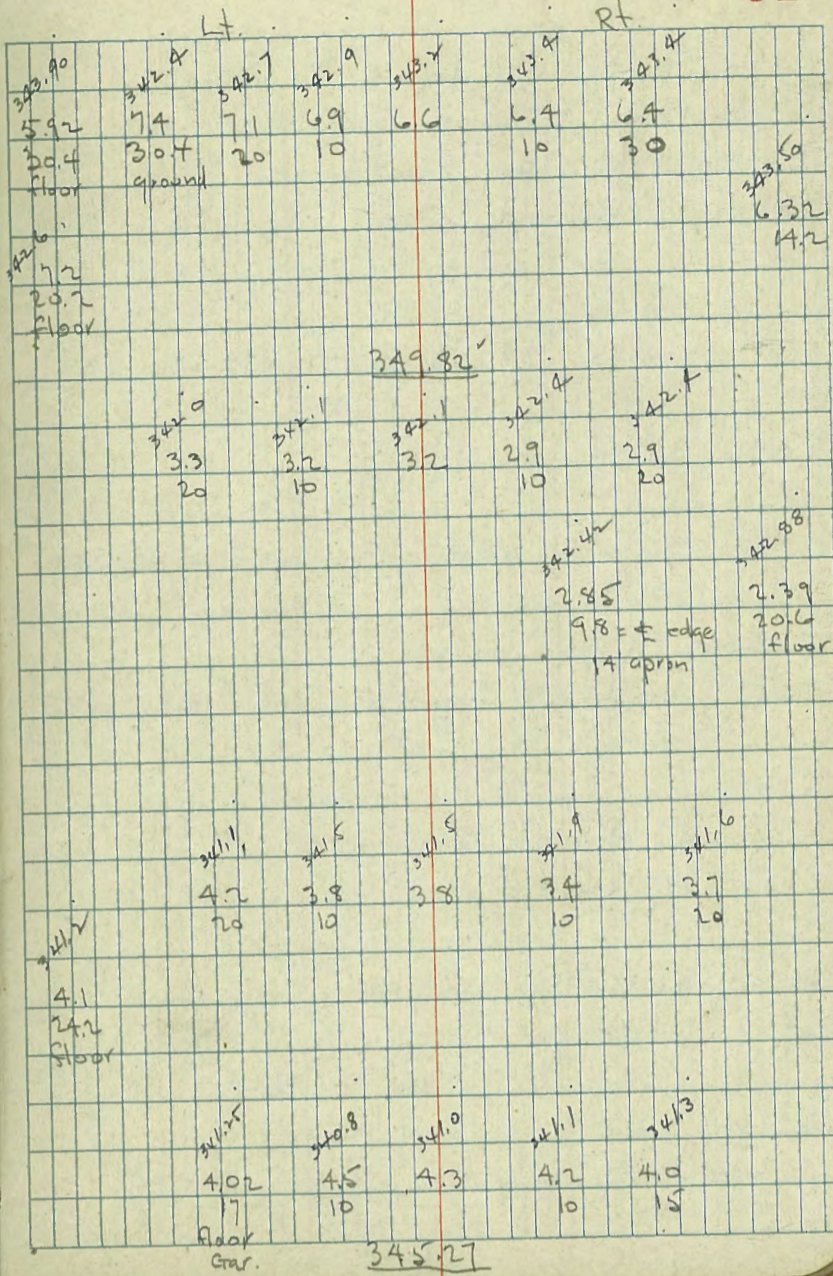
1+02 - 9.7 Rt. = end fence

1+00 -

0+98 - 24.2 Lt. = Sing Gar. - Dirt floor

0+79 - 9.7 Lt. = Wly P. pole - no #

0+70 = Lt. = Sing Gar. - Conc. floor



3+46 - 9' Lt. = Wly. P. pole # PA. 3555
 3+20 - 13.8 Lt. = E. Sing. Gar - dirt floor
 3+01 - 9.4 Rt. = Beq board fence
 3+01 - 9.5 Rt. = end fence
 3+00

T.P. 5.90 350.78 4.94 344.88

2+96 - N. end Gar. on Lt.
 2+78 - S. end Doub. Gar. on Lt. - Conc. floor + apron
 2+73 - 13.9 Rt. = House
 2+70 - 11.5 Lt. = E. Sing. Gar. - Conc. floor - opens w.
 2+60
 2+51 - 9.7 Rt. = beq. slat fence
 2+51 - 10.2 Rt. = end shed.
 2+40 - 10.1 Rt. = Beq. wood shed - Conc. floor
 2+40 - 10.1 Rt. = end fence
 2+20
 2+14 - 9.4 Lt. = Wly. P. pole - No # PA. 35 35

	Lt		Rt		
3+46	6.2	13.8	6.2	6.0	344.6
3+20	6.2	13.8	6.2	6.0	344.6
3+01	6.2	13.8	6.2	6.0	344.6
3+01	6.2	13.8	6.2	6.0	344.6
3+00	6.2	13.8	6.2	6.0	344.6
T.P.	5.90	350.78	4.94	344.88	350.78
2+96	5.00	16.2	5.14	13.7	344.6
2+78	4.95	16.2	5.26	12.1	344.6
2+73	5.90	13.9	5.90	13.9	344.6
2+70	5.90	11.5	5.90	11.5	344.6
2+60	5.90	11.5	5.90	11.5	344.6
2+51	6.2	9.7	5.7	10	344.6
2+51	6.2	10.2	5.7	10	344.6
2+40	6.2	10.1	6.4	10	344.6
2+40	6.2	10.1	6.4	10	344.6
2+20	6.2	10.1	6.4	10	344.6
2+14	6.2	9.4	6.4	10	344.6
					349.82

T.P.

6.06 353.06 278 347.00

5+10 = Sing. Gar. on Lt - Conc. floor + apron

5+01 - 99 Lt. = end fence

5+00

4+98 = N. end Conc. apron + Gar. on Rt.

4+83 = S. end Conc. apron to doub. Gar. on Rt.
Conc. floor.

4+74 - 83 Lt. = 4" Pepper

4+72 - 93 Lt. = Wly. P pole # P.A. 3577

4+64 - 11' Lt. = 1 Conc. walk

4+50

4+35 - 14 Rt. = Prop Gar. - Dirt floor

4+26 - 99 Lt. = Beq. wire fence

4+00

3+73 - 11' Rt. = end fence

3+50

	Lt.		Rt.	
4759	3.19	3.54		
4760	4.1	3.8	4.0	4.0
4761	4.2	10	4.0	4.2
4762			4.0	4.2
4763			4.0	4.2
4764			4.0	4.2
4765			4.0	4.2
4766			4.0	4.2
4767			4.0	4.2
4768			4.0	4.2
4769			4.0	4.2
4770			4.0	4.2
4771			4.0	4.2
4772			4.0	4.2
4773			4.0	4.2
4774			4.0	4.2
4775			4.0	4.2
4776			4.0	4.2
4777			4.0	4.2
4778			4.0	4.2
4779			4.0	4.2
4780			4.0	4.2
4781			4.0	4.2
4782			4.0	4.2
4783			4.0	4.2
4784			4.0	4.2
4785			4.0	4.2
4786			4.0	4.2
4787			4.0	4.2
4788			4.0	4.2
4789			4.0	4.2
4790			4.0	4.2
4791			4.0	4.2
4792			4.0	4.2
4793			4.0	4.2
4794			4.0	4.2
4795			4.0	4.2
4796			4.0	4.2
4797			4.0	4.2
4798			4.0	4.2
4799			4.0	4.2
4800			4.0	4.2

985 50%

350.78

check T.P. on Alley W. 8.23 344.83 344.83
P49

6+15.31 = S. cb. Dwight

6+08.31

6+01.21 = S.L. Dwight

5+95

5+92 = 15.2 Lt. = NE Cor House

5+59 = 14.8 Lt. = S.E. Cor. House

5+55 = 32.9 Lt. = # Sing Gar - Conc. floor

5+50

5+38 = 19.8 Lt. = # Sing Gar. - Conc. floor

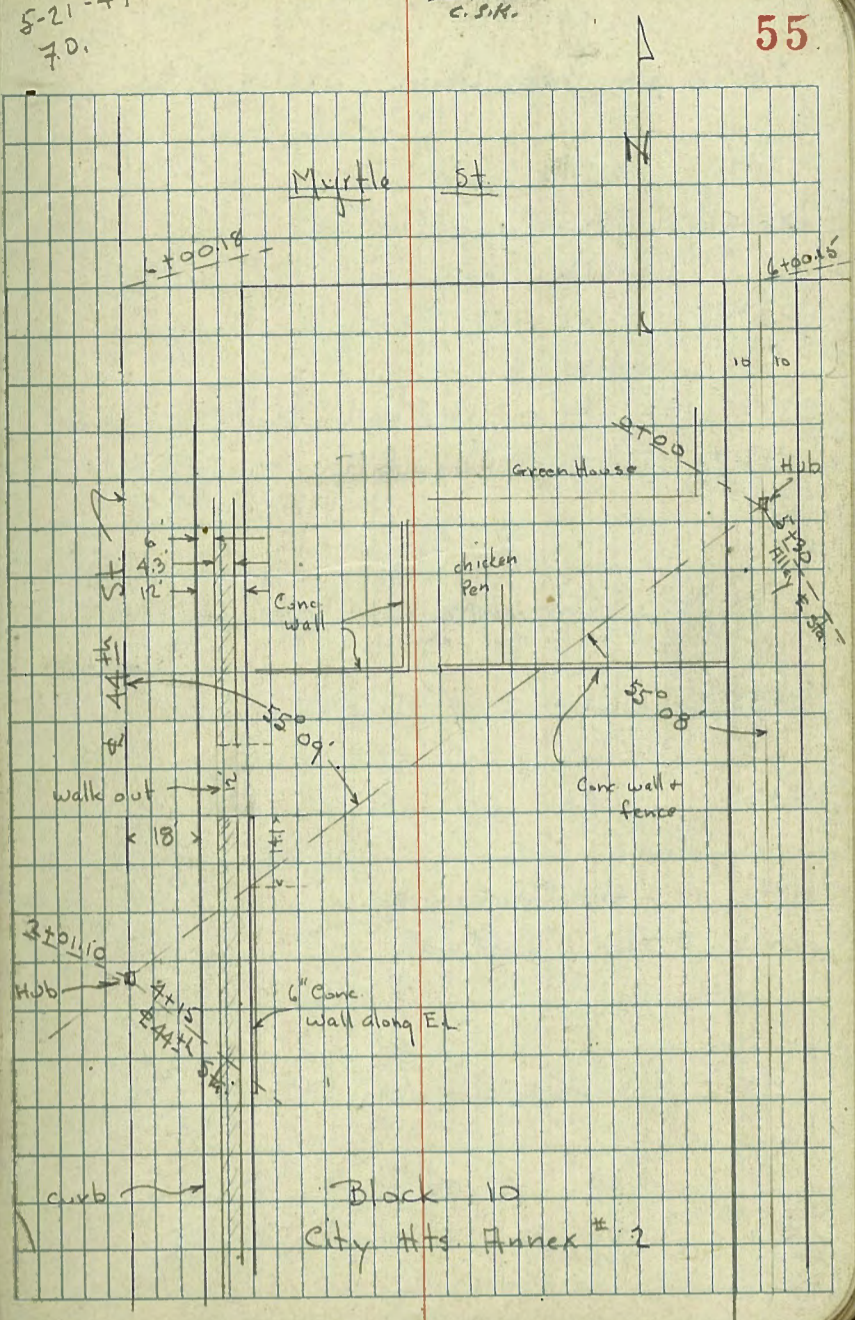
	Lt	#	Rt.						
5.81	6.0	5.70	5.9	5.8	5.8	5.56	5.8	5.43	
5.0	5.0	10	10	10	10	10	5.0	5.0	
Top	gut	Top-2 Rod	gut	gut	gut	Top-2 Rod	gut	Top	
		5.57	5.6	5.48					
		9.8-Top +	gut	10 = Top + gut					
		5.34	5.2	5.30					
		9.8-Top +	gut	10 = Top + Gut					
		end Ret.		end Ret.					
		5.0	4.9	5.1	5.0	5.0			
		20	10	10	20				
		4.08	5.7						
		14.8	14.8						
		floor	ground at						
			House						
		5.7	5.7	6.0	6.1	5.6			
		20	10	10	20				
		5.53							
		19.8							
		floor							

353.06

5-21-47
70.

Indexed
C.S.R.

Levels on Prop. Drain from low point
in 20' Alley in Block 10 - City Hts
Annex #2 To & 44th St.
See Sect. on 44th & Alley
W.O. 31272



Levels on Prop. Drain - Sketch P. 55

0+85 - 21.6 Rt. = Cor. 6" Conc wall

0+80

0+73 - 13.2 Rt. = end Conc. wall

0+70 = Top of Rubble fill

0+53 = 6" Conc wall - wire fence on top.

0+45 - 37 Lt. = 10" Tree

0+25

0+16 - 10.2 Rt. = Cor. Greenhouse

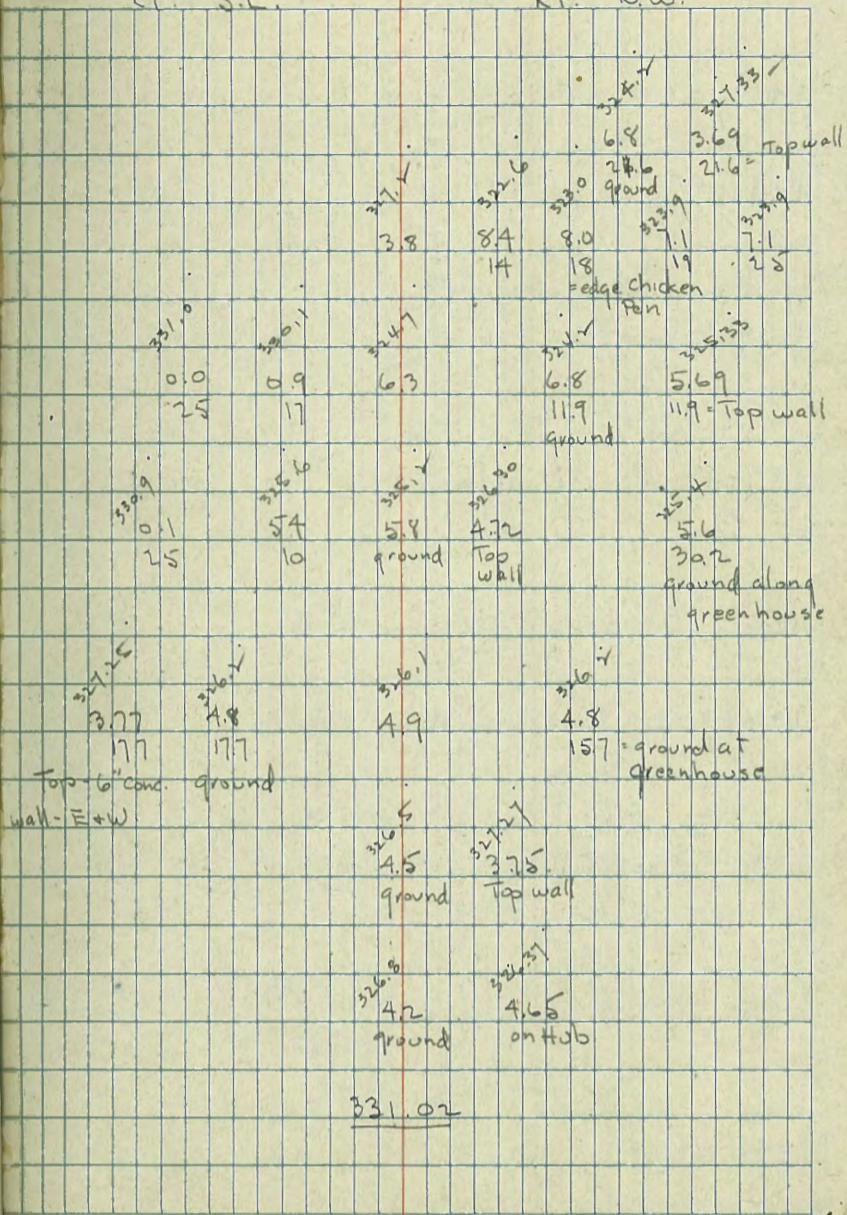
0+13 = E. edge 6" Conc. wall

0+00 = Hub. on Alley = Sta 5+30

	4.00	331.02	11.14	327.02	
B.M.	1.92	338.16		336.24	sw. 7 ft Highland Myrtle

Lt. = S.E.

Rt. = N.W.



check starting BM. 2.79 336.23 336.24
 T.P. 8.94 339.02 0.94 330.08

2+01.10 - ϕ 44th - on Hub. = end

1+90

1+79.3 - face cb.

1+72.1 - w. side walk

1+67 - E side of 4.3' Conc. walk

1+64 = ϕ 6" Conc. wall along E. b 44th

1+40 = Toe fill

1+36 - 17' Lt. = ϕ 4' Fig

1+30

1+00

	Lt.		Rt.	
	10.61	11.1	10.1	9.4
	4.3	4.3	10	10
	Top cb	gut		
	9.9	9.68	10.1	9.4
	15	Top cb.	gut.	10
				8.6
				20
				8.0
				20
				9.4 = walk
				9.22 = walk
	8.7	8.48	8.9	7.7
	10	Top wall	2	21
				Top cb.
	6.3	6.9	7.7	6.2
	20	10	5	5.8
				20
				5.2
				35
	5.6	7.1	5.5	5.4
	20	7		20
				4.3
				35
				4.5
				50
	2.5	3.4	4.2	5.1
	20	10		20
				3.4
				32
				ground
				Top wall

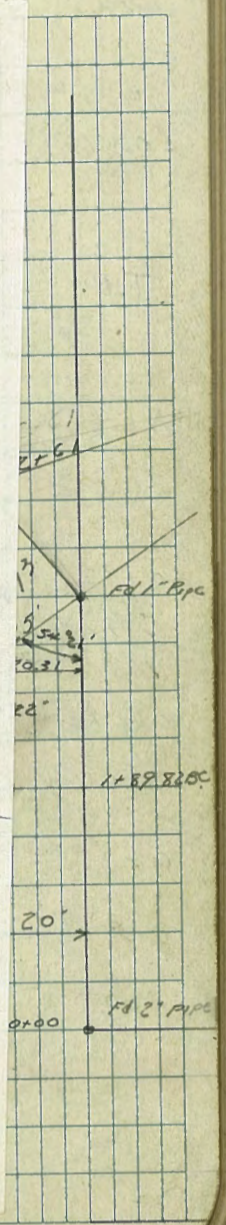
FD 2" Iron Pipe

Cross section Orton St ORTEN
From Galveston to N.L. Weston Highland

Hendricks
Hardin
Smith
Morrell
7-31-47
W.O.# 25001

INDEXED
W.K.
OCT 11 1949

To 1489 82 (BCS)
on & ORTEN as
opened (60' SW)
Thence S' only at Pt
Lis as a jog and
rose line the rest
of the way is
~~about~~ 25-15' Ely of
the main R of
Orten on & returned



T.P.	12.10	92.96	0.43	80.86
T.P.	12.64	81.29	0.30	68.65
B.P.	11.95	68.95		57°

Frankfort
Orten B.P. WCA Frankfort & Orten

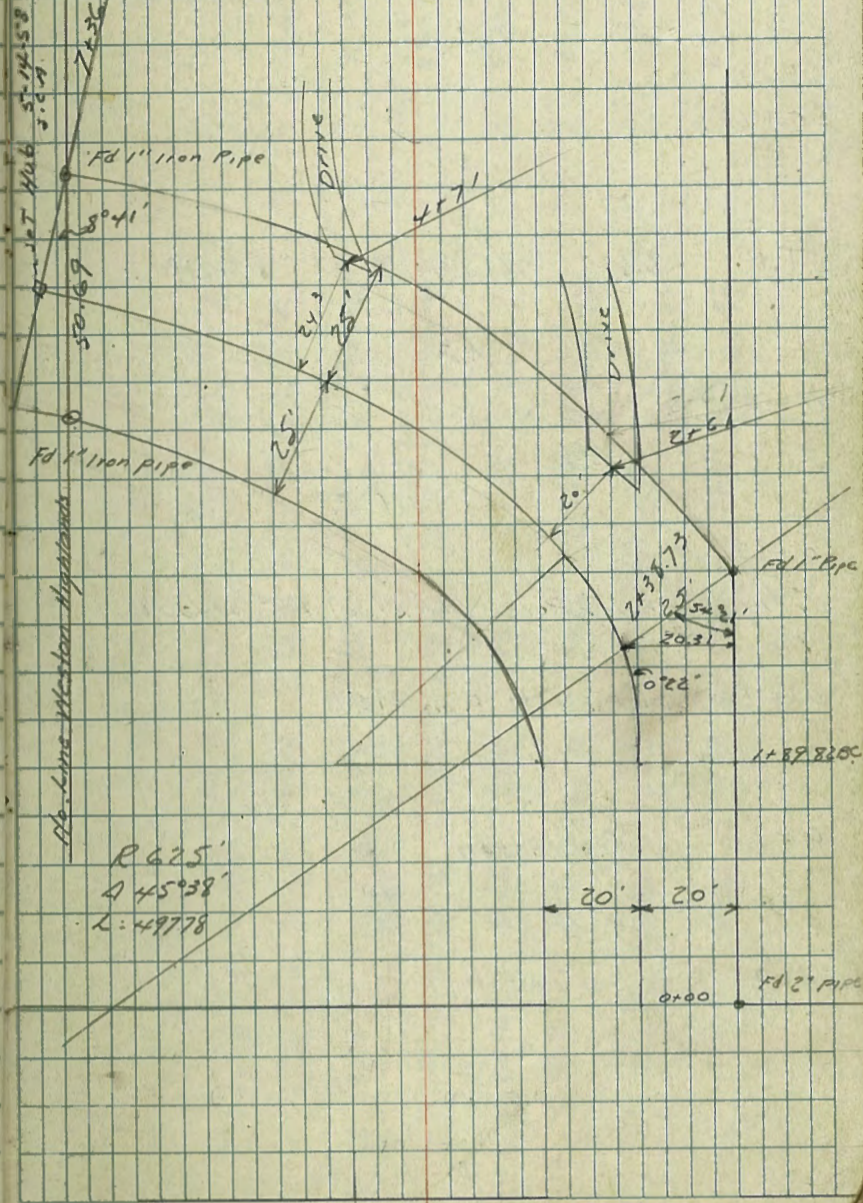
Cross section Orton St ORTEN
 From Galveston to N.L. Weston Highland.

Hendricks
 Hardin
 Smith
 Worrell
 7-31-47
 W.O.# 25001

D Fd 2" Iron Pipe

INDEXED - 8-4-47 - M.C.Q.

INDEXED
 W.K.
 OCT 11 1949



T.P.	12.10	92.96	0.43	80.86
T.P.	12.64	81.29	0.30	68.65
B.P.	11.95	68.95		57°00'
Frankfort Orton	B.P. NCA Frankfort & Orton			

Sta. + H1 - Elev
 2+39 Power pole 25' Rt of E # P 4497
 2+38.73 BC

91.89	91.19	89.09	91.79	91.69	91.29	88.59	91.69	92.89	93.79
118	125	145	119	120	124	151	120	100	98
40	22	17	10		10	20	25	28	40

T.P. 11.90 103.69 6.51 91.79

103.69

2+24 E. End Headwall 3.5 Lt.
 2+16 W. End Headwall 4.2 Lt
 2+20 5' Lt. E. End 24" Iron Culvert F.L.
 2+00

6.59	6.48	9.80	3.7	6.2	8.0	7.4	7.5	7.7	7.8	7.8	7.8	9.7
		99.60	4.0	2.0	1.6	1.0	1.0	1.0	2.0	3.0	4.0	

1+83 30' Rt E. End 24" Iron pipe F.L.
 1+65 W Line Driveway (Asphalt)

12.75	95.80	93.0	90.60	90.50	90.10	90.0	88.0	86.7	85.10
2.5	5.3	7.7	8.0	9.2	8.3	10.3	11.6	13.2	
4.0	2.0	7		1.0	2.0	2.5	3.7	4.0	

1+60

97.10	95.40	90.70	90.50	90.10	90.0	88.0	86.60
1.2	2.9	7.6	7.8	8.2	8.3	10.3	11.7
4.0	2.0	8	1.0	2.0	2.5	4.0	

1+57 E Power pole p 4457 19' Rt.
 1+50

97.10	95.80	90.90	90.50	90.10	89.50	88.10	86.40
0.7	2.5	7.4	7.8	8.2	8.8	10.2	11.9
4.0	2.0	7	1.0	2.0	2.6	4.0	

1+00

96.00	94.40	90.40	90.50	90.00	90.30	86.20			
2.3	3.9	7.9	8.0	8.3	7.1	12.1			
4.0	2.0	7	1.0	2.0	4.0				
T 98.30									

Sta + H.L. - Elev

3+50

6	98.29
10	97.59
20	95.09
30	98.09
40	97.69
6	97.59
10	97.89
20	98.09
25	102.09
40	105.29

3+41 End 24" Steel Pipe & Conc. H.W on Lt.

6	97.64
10	94.90
20	97.72
30	97.08
40	97.08

3+22 Beg 24" Steel Pipe & Conc. H.W on Lt.

6	97.03
10	93.59
20	92.59
30	94.99
40	94.69

3+00

6	94.79
10	94.39
20	92.59
30	94.99
40	94.69
6	94.59
10	94.69
20	94.69
30	97.49
40	100.39

2+61 \$ 7' Asphalt Drive 20' Rd

6	92.09
10	91.49
20	89.69
30	92.19
40	92.09
6	91.79
10	91.19
20	93.19
30	94.09

2+50

103.69

X. Sect. Order St.

Sta.	H.I.	-	Elev.	B.M.
5+00				
4+71	10'	Conc Drive	24.3 Rt	
4+70		End 24" steel Pipe & Conc. H.W. on Lt		
4+55		Beg 24" steel Pipe & Conc. H.W. on Lt		
TP.	12.73	115.85	0.57	103.12
4+50				
4+00				
3+96		Power Pole	25 Rt of C	H.P. 4549
			103.69	

104.85	11.9	40	103.30	12.55	13.5	103.12	12.73	16.1	103.09	0.16	40	100.89	7.8	40
104.55	11.7	25	103.30	12.29	13.5	103.12	102.49	16.1	102.49	1.2	25	100.59	2.5	28
104.35	11.4	18	99.56	12.29	13.5	99.41	102.39	16.1	102.39	1.3	20	97.59	6.1	20
101.35	11.1	11	103.27	12.58	13.5	103.09	99.19	16.1	99.19	4.5	13	97.39	6.3	18
104.85	11.0	7	103.27	12.58	13.5	103.09	102.5	16.1	102.5	1.4	7	100.19	5.4	8
104.85	11.0	10	103.95	12.58	13.5	103.09	102.79	16.1	102.79	3.6	10	100.09	3.6	20
104.85	11.0	10	103.95	12.58	13.5	103.09	102.39	16.1	102.39	3.5	25	100.29	3.5	23
105.05	10.8	25	107.95	12.58	13.5	103.09	102.39	16.1	102.39	5.4	25	102.29	1.5	25
108.25	7.6	20	107.95	12.58	13.5	103.09	103.19	16.1	103.19	4.0	27	102.29	1.5	25
110.25	5.4	40	106.19	12.58	13.5	103.09	106.19	16.1	106.19	4.0	40	105.49	1.0	40

X Sect's Orten St

Sta.	H.I.	Elev.
6+50		
6+41	Anchor for Pole 234 R1 E	
6+17	Power Pole 233 R1 E H 4575	
6+11	End 24" Steel Pipe & Conc HW on Lt & in wire fence 22.21 E	
6+03	8' Conc Drive 19.5 R1 E	
5+93	Beg 24" Steel Pipe & Conc HW on Lt. & Beg wire fence 22.6 Lt E	
5+50		115.85

Sta.	H.I.	Elev.
6+50	35	112.35
	45	111.35
	64	109.45
	65	109.25
	80	111.85
	112	111.65
	110	111.75
	122	112.45
	127	114.45
	140	117.45
6+41		
6+17		
6+11	58	110.05
	27	109.79
	18	106.12
	14	109.77
	11	110.55
	10	110.65
	21	110.65
	28	114.55
	40	116.95
6+03		
5+93	63	109.48
	22	105.31
	14	109.52
	8	107.75
	5	107.85
	22	107.75
	27	111.75
	40	114.75

Sta + HI - Elev B.M

B.M		10.32	57.02	57.00
TP	0.06	67.34	12.87	67.28
TP	0.53	80.15	12.70	79.62
TP	1.20	92.32	13.00	91.12
TP	1.41	104.12	13.14	102.71

7+36.51 E.C.

7+30 End wire fence 26' L & E

7+00

115.85

Q

B.P. on west curb Frankfurt & Q Orten

118.85	116.35	116.15	118.45	116.05	116.55	116.45	115.85	117.05
10 ¹⁰	10 ¹⁰	10 ¹⁰	10 ¹⁰	9 ⁰²	0 ⁰⁷	0 ⁰⁴	0 ¹⁰	1 ¹⁰
40	25	15	10	6		10	25	40

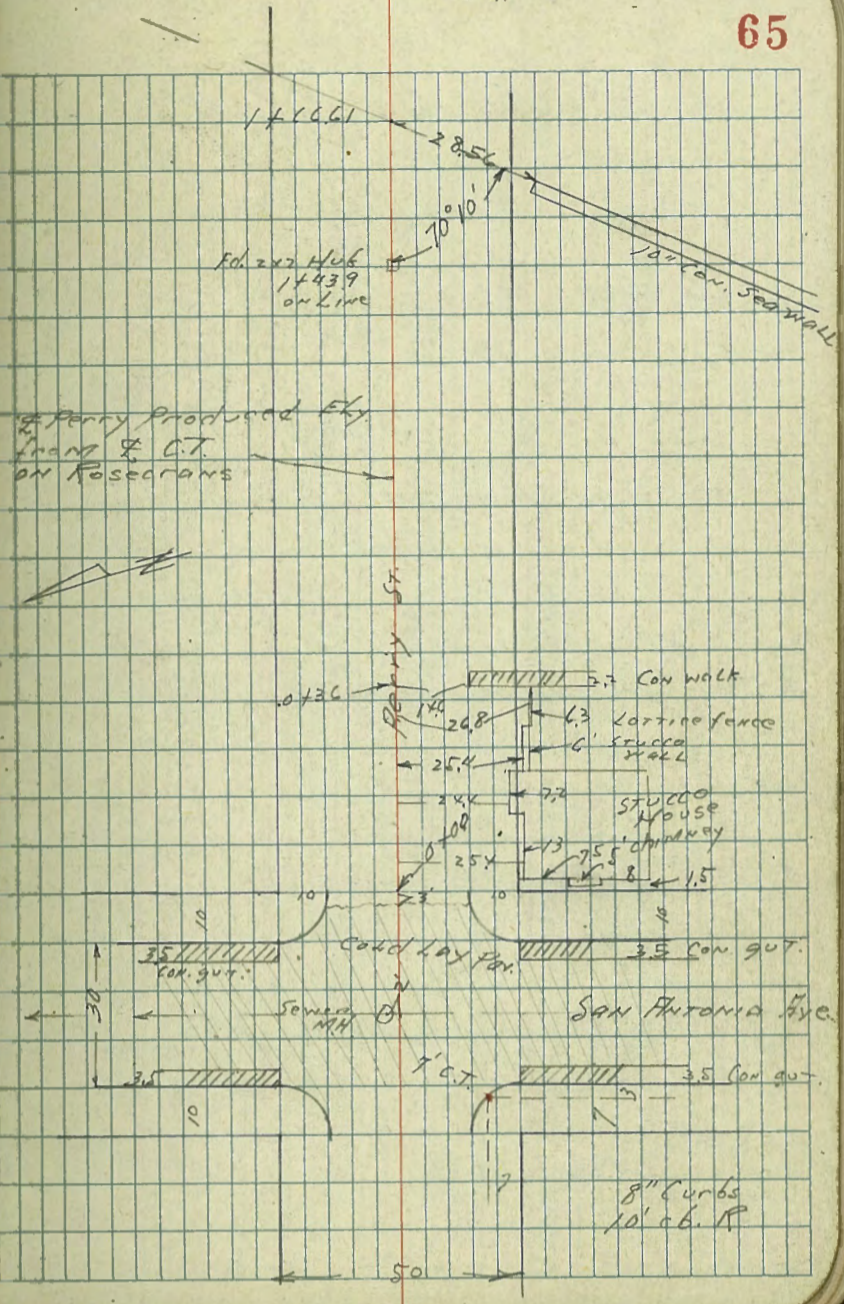
116.45	114.55	114.55	111.45	113.45	113.55	113.65	114.65	115.87	117.25
10 ¹⁰	1 ¹⁰	1 ¹⁰	4 ¹⁴	2 ¹⁴	2 ¹⁰	2 ¹⁰	3 ¹⁰	3 ¹⁰	1 ¹⁰
40	27	12	16	11	2	10	30	36	50

X sec Penny St
SAN ANTONIO to Bay

Moore
Perry
Roberts
9-18-47

W.O. 25001

Indexed
c.s.K.



LT = 1.230

0-10 E gut SAN ANTONIO

5.60 / 75 5.40 / 25 7.10 / 25 2.13 4.15

0-25 S SAN ANTONIO

4.77 / 75 4.51 / 25 11.16 / 25 4.31 / 25 2.52 / 25 2.95 / 25 4.75 / 25

0-40 W gut SAN ANTONIO

4.80 / 75 4.72 / 25 4.00 / 25 4.92 / 75

0-40 W. C6 SAN ANTONIO

1.00 / 75 3.95 / 25 2.83 / 1.0 3.20 / 25 1.11 / 75

0-50 W6 SAN ANTONIO

3.80 / 15 3.57 / 15 3.29 / 15

T.P. 707 3.30 6.83 10.90 3.53 SW: 707 Perry + SAN ANTONIO

6.83

SW BP OWENS SAN ANTONIO 3.26 14.43 11.17

5.60	5.40	7.10	2.13	4.15
4.77	4.51	11.16	4.31	2.52
4.80	4.72	4.00	4.92	
1.00	3.95	2.83	3.20	1.11
3.80	3.57	3.29		

1+63 24.8 Lt end wire fence

1+57 27.5 Rt end fence

1+40

1+33 27 Rt 14" Eucal

1+27 27' Rt 6" Tree

1+20 28' Rt Beg lattice fence

1+17 17 Rt end hedge

1+07 25 Rt 15" d. acacia

1+05 10.5 Rt Beg hedge

1+00 27.5 end rail fence

0+86 27.5 Rt Beg rail fence

T.P. 341 4.40 584 0.99

0+78 24.4 Rt E 16' wide garage dirt floor

6.83

68

	-1.3	-2.0	-2.2	-1.6	4.97
	5.7	6.4	6.6	6.0	3.43
	2.5		1.5	2.5	2.08
					Tot Wall
	0.5	0.6	0.4	0.4	0.6
	4.9	5.2	4.0	6.0	3.8
	2.5		1.5	2.5	2.5
	-0.2	0.4	0.4	10.5	
	4.6	4.8	4.0	4.0	
	2.5		1.5	2.5	
	0.0	1.0	0.3	0.0	
	4.4	4.5	4.1	4.1	10 ACASIA
	2.5		1.5	2.5	2.5
	0.4	4.40		0.3	
	6.4	1.0	0.1	-0.3	
	2.5	6.7	0.7	7.1	
		6.83	1.5	2.44	
				dirt floor	

check to starting BM, 3.60 11.17 11.17

^{sw}
7.75 11.24 14.77 0.87 3.53

2+00

1+85

1+71

4.40

8.3
-3.9
2.5

6.0
-2.2
2.5

6.3
-1.9
2.5

9.2
-4.8
2.5

7.2
-2.8
2.5

6.0
-2.2
2.5

10.5
-6.1
2.5

10.5
-3.9
2.5

6.8
-8.4
2.5

4.40

Levels proposed Sewer
on Bangor St.

Lucinda St 175'

BM SET

Bangor Harbor View 11.61 266.37 254.71

T.P. 919 275.15 .036 265.96

Set BM

N.E. 1767.R.P. 5.67 269.48 Bangor Lucinda

0.100 Top 6" vit. pipe 8.90 266.25

0.100 ground 5.1 270.1

0.125 5.3 269.9

0.150 5.3 269.9

1.100 4.8 270.4

1.150 3.9 271.3

1.174.88 Pueblo line 4.4 270.8

T.P. 122 266.42 9.95 265.70

Check to orig. BM. 11.71 254.71 254.71

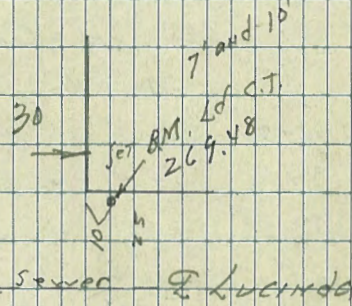
Moore
Begg
Roberts
9-18-47

indexed
C.S.K.

70

NO. 60141

Bangor St.



0.100

Jennings
Pueblo line

1.174.88

Walker Balboa Stadium
 Handrichs Cross Sections for Rest Rooms
 Becker on East Side of Stadium
 Johnson
 9-29-47 East edge Conc. Tike Wall = Base Line
 Sketch P-72
 0+97 18' Rt = 10" Acacia Tree
 0+94 174' Elec Pole C-1440
 0+80

(0+85) = 3 1/4" Hyd T. 8.6' Rt

INDEXED
 W.K.
 OCT 11 1949

0+60
 0+465 21.2' Rt 10" Acacia Tree
 0+40

0+20 = Beginning Hedge

0+00
 0-05 = 12" Acacia Tree 23.5' Rt

T.P. 996 165.52 11.17 155.56
 T.P. 019 166.73 13.05 166.54
 3.60 172.59 175.29

Rt. Cont. P-73

2.32	2.32	29	43	88	981	10.82
0	067	07	4	18	247	25
					cb	Gut

2.39	2.39	29	31	28	1070	11.77
0	067	08	27	20	268	27.0
					cb	Gut

2.42	2.42	29	33	10.0	1146	12.54
0	067	26	28	19.8	27	27.2
					cb	Gut

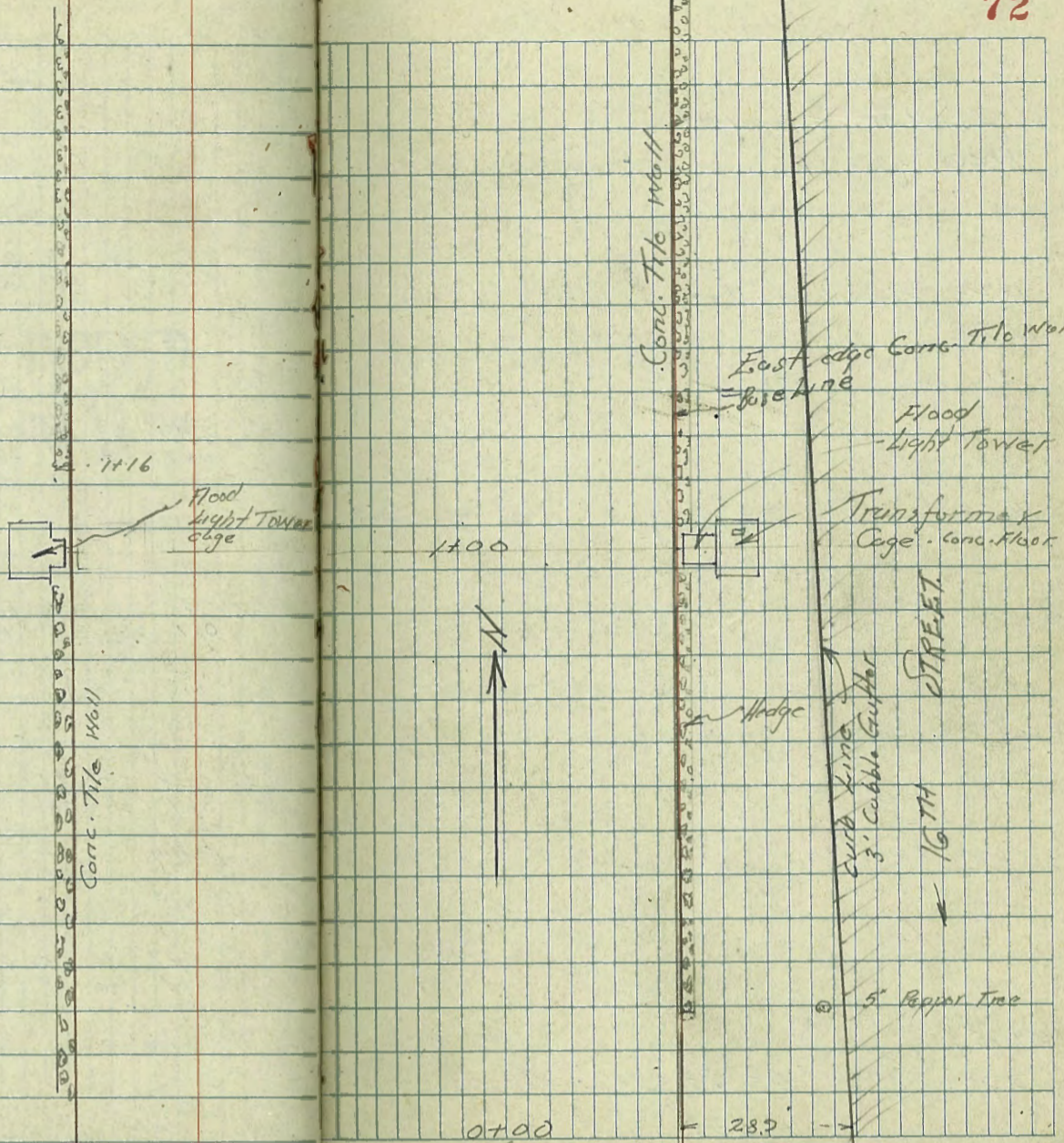
2.44	2.44	30	35	10.5	10.7	12.31	13.29
0	067	28	30	20	24	28.8	29
						5" Paper sack	Gut
						7/16	

2.47	2.47	31	35	46	11.2	13.36	14.38
0	067	26	28	50	21	28.9	29
						16.552	inch
							on Gut

BM Balboa Stadium North
 C.T. in Front North Ticket Office

2700

185



Cont. from P-71

1+45 11' Rt - 3/4" Hydrant

1+40

232	232	28	28	37	61	731	838
0	0.67	07	26	40	14	22	222
						0016	Ent

1+22 17' Rt 10" Ag. Tree

1+20

248	248	27	27	32	67	817	920
0	0.67	07	28	30	15	24	219
						00	Ent

1+043

241	241	67	73	882	987
0	56	136	22	287	24
				06	Ent

1+031

241	241	71	72	78
0	57	58	14	22

0+96

241	241	71	72	78
0	57	58	14	22

0+95

IP 3.75 165.65 362 161.90
 165.52
 2

241	39	69	78	924	1031
0	56	14	22	247=06	287
				16565	Ent.
				5	

West Side Stadium
X-Sections for Proposed Rest Rooms

0+97.5
0+97

112	29	53	16	07	07	010	010
27	21	13	3.0	26	07	067	0

0+80

114	64	16	07	07	015	035
25	12	28	26	07	067	00

0+60

112	33	14	06	06	030	030
22	7	28	26	07	067	00

0+56 4" Tree 4' Lt.

TP 2.50 163.19 2.41 153.69

16319

0+40

133	60	26	08	08	011	016
27	12.5	55	26	07	067	0

Top
Slope

0+32.7 9' Lt - 4" Acacia Tree

0+23 9' Lt - 3/4" Hyd.

0+20

138	76	16	08	08	022	022
29	15	28	26	08	07	0

Top

0+00

16310
K from P-74

151	67	13	07	07	025	025
32	14	28	26	08	07	0

Top

16310
P-74

1+63.5 = 3/4" Hyd. 7.5' Lt.

1+60

25	23	47	32	11	07	07	06	006
24	21	10	6	28	26	07	067	00

16335

TP 3.68 163.35 3.52 159.67

1+494 = 8" Poplar Tree 12' Lt.

1+40

15205	100	50	30	13	05	01	1006	1006
105	190	10	60	28	24	07	067	00
23								

Tree

1+20

1+20

111	102	46	08	08	008	008
26	19	95	27	07	067	00

Tree

1+04

94	61	95	05	01	010
225	15	26	07	067	00

1+03

1520	11	99	53	467	467	011	011
27	21	13	12	57	56	00	

0+97.5

112	99	53	467	467	011	011
27	21	13	12	57	56	00

16319

16319

West Side Balboa Stadium
 X-Sections - Proposed Rest Rooms

					201
chk. Starting BM	518				175.99
					176.01
TR 6.87	181.19	048			174.32
TR 12.93	174.80	148			161.87

2+00
 1+99 ± South edge Existing Toilets

165.65									
77	20	77	78	57	08	08	001	001	
20		19	16	13	40	07	067	00	

1+80

85	81	35	07	07	001	001
20	17	65	26	07	067	00

163.35

163.35

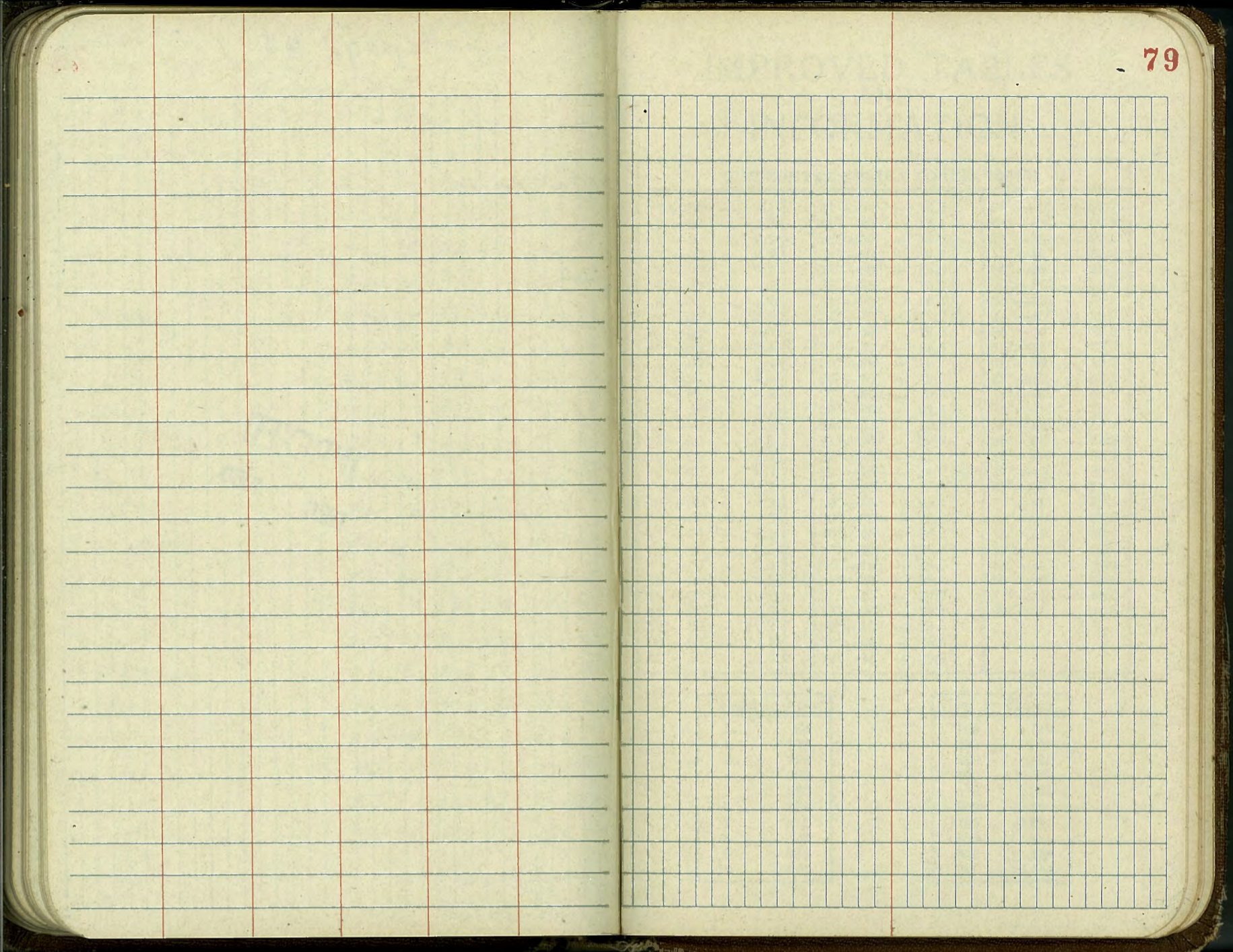
8-2350 Stake Water Main 6" CI
 Hendrix Alley B126 City Heights
 Colo Annex #2
 Greer (DWG 7755-L)
 Crawford
 W.O. # 31384

	345.19	345.20	
6+01.1 N.S. Line Dwyer	345.28	340.83	CH 45
5+80	344.72	340.70	CH 03
5+70	343.62	338.45	CH 17
4+80	342.96	338.20	CH 76
4+40	342.41	337.24	CH 17
4+00	341.63	336.76	CH 87
3+85 New service	341.83	340.62	CH 21
3+60	341.14	336.40	CH 03
3+25	341.40	336.32	CH 08
3+20 New service	341.41	340.30	CH 14
2+90	340.50	336.18	CH 32
2+55	340.49	336.04	CH 45
2+20	340.38	335.90	CH 48
1+80	340.56	335.56	CH 00
1+40	339.47	334.85	CH 62
1+00	338.44	334.02	CH 42
0+60	337.47	333.08	CH 39
0+20	335.97	331.77	CH 20
0+00 H. Line Myrtle	334.89	331.00	CH 79
BM		336.24	

CC Top of CH 6+01.1 (R. x 8)

INDEXED
 DEC 1950

7
 (344) 71287
 Highland & Myrtle



DIRECTIONS FOR USE OF TABLES

TABLE No. 1.

Distance of slope stake from side or shoulder stake for any width roadway, slope $1\frac{1}{2}$ to 1. If ground is nearly level, the cut or fill at side stake is located by the double entry method in left column and top row. The number in body of table in same row and column gives distance from side stake to slope stake. If ground is not level estimate the difference in elevation between the side stake and slope stake, lower target by this amount if cut, elevate if fill. Add this amount to cut or fill and find distance in table. Set up rod at this point, and line of sight should cut target. If it does not make the slight adjustment necessary.

TABLE No. 9.

To find Tangent and External for curve of any other degree, divide by degree of curve and add correction found in column of corrections.

Degree of curve with a given I may be found by dividing tangent, (or external), opposite I by given tangent, (or external).

The distance from a point on the tangent to the curve is very nearly the square of the tangent length divided by twice the radius.

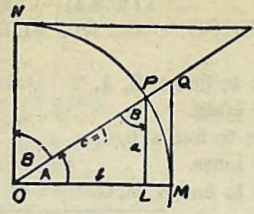


TABLE II
TRIGONOMETRIC FORMULÆ.

$$\angle A = \angle MOP \quad \angle B = \angle PON = \angle OPL$$

$$R = OB = c = 1$$

$$\sin A = \frac{a}{c} = \frac{a}{1} = a = \cos B = LP$$

$$\cos A = \frac{b}{c} = \frac{b}{1} = b = \sin B = OL$$

$$\tan A = \frac{a}{b} = \frac{MQ}{OM} = \frac{MQ}{1} = MQ = \cot B = MQ$$

$$\cot A = \frac{NT}{ON} = \frac{NT}{1} = NT = \tan B = NT$$

$$\sec A = \frac{OQ}{OM} = \frac{OQ}{1} = OQ = \csc B = OQ$$

$$\csc A = \frac{OT}{ON} = \frac{OT}{1} = OT = \sec B = OT$$

$$\text{vers } A = \frac{LM}{OP} = LM = \text{covers } B \#$$

$$\text{covers } A = \frac{OP - LP}{OP} = OP - LP = \text{vers } B$$

$$\text{exsec } A = PQ = \text{coexsec } B$$

$$\text{coexsec } A = PT = \text{exsec } B$$

$$\sin \frac{1}{2} A = \sqrt{\frac{1 - \cos A}{2}} \quad \cos \frac{1}{2} A = \sqrt{\frac{1 + \cos A}{2}}$$

$$\sin 2A = 2 \sin A \cos A \quad \cos 2A = \cos^2 A - \sin^2 A$$

$$\text{Law of Lines} \quad \frac{\sin A}{a} = \frac{\sin B}{b} = \frac{\sin C}{c}$$

$$\text{Law of Cosines} \quad c^2 = a^2 + b^2 - 2ab \cos C$$

$$\text{Law of Tangents} \quad \frac{a+b}{a-b} = \frac{\tan \frac{1}{2}(A+B)}{\tan \frac{1}{2}(A-B)}$$

67 15.1
70 32
14

TABLE VI (continued)
SINES, COSINES, TANGENTS, COTANGENTS (continued)

deg	sin 0'	tan 0'	sin 10'	tan 10'	sin 20'	tan 20'	sin 30'	tan 30'	sin 40'	tan 40'	sin 50'	tan 50'	deg
46	7193	1.0355	7214	1.0416	7234	1.0477	7254	1.0533	7274	1.0599	7294	1.0661	43
47	314	.0724	333	.0786	353	.0850	373	.0913	392	.0977	412	.1041	42
48	431	.1106	451	.1171	470	.1237	490	.1303	509	.1369	528	.1436	41
49	547	.1504	566	.1571	585	.1640	604	.1708	623	.1778	642	.1847	40
50	660	1.1918	7679	1.1988	7698	1.2059	7716	1.2131	7735	1.2203	7753	1.2276	39
51	771	.2349	790	.2423	808	.2497	826	.2572	844	.2647	862	.2723	38
52	880	.2799	898	.2876	916	.2954	934	.3032	951	.3111	969	.3190	37
53	986	.3270	8004	.3351	8021	.3432	8039	.3514	8056	.3597	8073	.3680	36
54	8090	.3764	107	.3848	124	.3934	141	.4019	158	.4106	175	.4193	35
55	192	.4281	208	.4370	225	.4460	241	.4550	258	.4641	274	.4733	34
56	290	.4826	307	.4919	323	.5013	339	.5108	355	.5204	371	.5301	33
57	387	.5399	403	.5497	418	.5597	434	.5697	450	.5798	465	.5900	32
58	480	.6003	496	.6107	511	.6212	526	.6319	542	.6426	557	.6534	31
59	572	.6643	587	.6753	601	.6864	616	.6977	631	.7090	646	.7205	30
60	660	1.7321	8675	1.7437	8689	1.7556	8704	1.7675	8718	1.7797	8732	1.7917	29
61	746	.8040	760	.8165	774	.8291	788	.8418	802	.8546	816	.8676	28
62	829	.8807	843	.8940	857	.9074	870	.9210	884	.9347	897	.9486	27
63	910	.9626	923	.9768	936	.9912	949	2.0057	962	2.0204	975	2.0353	26
64	988	2.0503	9001	2.0655	9013	2.0809	9026	.0965	9038	.1123	9051	.1283	25
65	9063	.1445	075	.1609	088	.1775	100	.1943	112	.2113	124	.2286	24
66	135	.2460	147	.2637	159	.2817	171	.2998	182	.3183	194	.3369	23
67	205	.3559	216	.3750	228	.3945	239	.4142	250	.4342	261	.4545	22
68	272	.4751	283	.4960	293	.5172	304	.5386	315	.5605	325	.5826	21
69	336	.6051	346	.6279	356	.6511	367	.6746	377	.6985	387	.7228	20
70	397	2.7475	9407	2.7725	9417	2.7980	9426	2.8239	9436	2.8502	9446	2.8770	19
71	455	.9042	465	.9319	474	.9600	483	.9887	492	3.0178	502	3.0475	18
72	511	3.0777	520	3.1084	528	3.1397	537	3.1716	546	.2041	555	.2371	17
73	563	.2709	572	.3052	580	.3402	588	.3759	596	.4124	605	.4495	16
74	613	.4874	621	.5261	628	.5656	636	.6059	644	.6470	652	.6891	15
75	659	.7321	667	.7760	674	.8208	681	.8657	689	.9136	696	.9617	14
76	703	4.0108	710	4.0611	717	4.1126	724	4.1653	730	4.2193	737	4.2747	13
77	744	.3315	750	.3897	757	.4494	763	.5107	769	.5736	775	.6382	12
78	781	.7046	787	.7729	793	.8430	799	.9152	805	.9894	811	5.0658	11
79	816	.1446	822	5.2257	827	5.3093	833	5.3955	838	5.4845	843	.5764	10
80	848	5.6713	853	5.7694	858	5.8708	863	5.9758	868	6.0844	872	6.1970	9
81	877	6.3138	881	6.4348	886	6.5606	890	6.6912	894	.8269	899	.9682	8
82	903	7.1154	907	7.2687	911	7.4287	914	7.5958	918	7.7704	922	7.9530	7
83	925	8.1443	929	8.3450	932	8.5555	936	8.7769	939	9.0098	942	9.2553	6
84	945	9.5144	948	9.7882	951	10.078	954	10.385	957	10.711	959	11.059	5
85	962	11.430	964	11.826	967	12.250	969	12.706	971	13.197	974	13.727	4
86	976	14.300	978	14.924	980	15.605	981	16.350	983	17.169	985	18.075	3
87	986	19.081	988	20.206	989	21.470	990	22.903	992	24.542	993	26.432	2
88	994	28.636	995	31.242	996	34.368	997	38.189	997	42.964	998	49.104	1
89	9998	57.290	9999	68.750	9999	85.940	9999	114.58	1.000	171.88	1.000	343.77	0
deg	60'	60'	50'	50'	40'	40'	30'	30'	20'	20'	10'	10'	deg
cos	cot	cos	cot	cos	cot	cos	cot	cos	cot	cos	cot	cos	cot

TABLE VII
RODS IN FEET, 10THS AND 100THS OF FEET

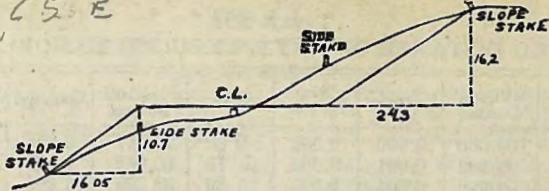
Rods	Feet	Rods	Feet	Rods	Feet	Rods	Feet	Rods	Feet
1	16.50	21	346.50	41	676.50	61	1006.50	81	1336.50
2	33.00	22	363.00	42	693.00	62	1023.00	82	1353.00
3	49.50	23	379.50	43	709.50	63	1039.50	83	1369.50
4	66.00	24	396.00	44	726.00	64	1056.00	84	1386.00
5	82.50	25	412.50	45	742.50	65	1072.50	85	1402.50
6	99.00	26	429.00	46	759.00	66	1089.00	86	1419.00
7	115.50	27	445.50	47	775.50	67	1105.50	87	1435.50
8	132.00	28	462.00	48	792.00	68	1122.00	88	1452.00
9	148.50	29	478.50	49	808.50	69	1138.50	89	1468.50
10	165.00	30	495.00	50	825.00	70	1155.00	90	1485.00
11	181.50	31	511.50	51	841.50	71	1171.50	91	1501.50
12	198.00	32	528.00	52	858.00	72	1188.00	92	1518.00
13	214.50	33	544.50	53	874.50	73	1204.50	93	1534.50
14	231.00	34	561.00	54	891.00	74	1221.00	94	1551.00
15	247.50	35	577.50	55	907.50	75	1237.50	95	1567.50
16	264.00	36	594.00	56	924.00	76	1254.00	96	1584.00
17	280.50	37	610.50	57	940.50	77	1270.50	97	1600.50
18	297.00	38	627.00	58	957.00	78	1287.00	98	1617.00
19	313.50	39	643.50	59	973.50	79	1303.50	99	1633.50
20	330.00	40	660.00	60	990.00	80	1320.00	100	1650.00

TABLE VIII
LINKS IN FEET, 10THS AND 100THS OF FEET

Links	Feet	Links	Feet	Links	Feet	Links	Feet	Links	Feet	Links	Feet
1	0.66	18	11.88	35	23.10	52	34.32	69	45.54	86	56.76
2	1.32	19	12.54	36	23.76	53	34.98	70	46.20	87	57.42
3	1.98	20	13.20	37	24.42	54	35.64	71	46.86	88	58.08
4	2.64	21	13.86	38	25.08	55	36.30	72	47.52	89	58.74
5	3.30	22	14.52	39	25.74	56	36.96	73	48.18	90	59.40
6	3.96	23	15.18	40	26.40	57	37.62	74	48.84	91	60.06
7	4.62	24	15.84	41	27.06	58	38.28	75	49.50	92	60.72
8	5.28	25	16.50	42	27.72	59	38.94	76	50.16	93	61.38
9	5.94	26	17.16	43	28.38	60	39.60	77	50.82	94	62.04
10	6.60	27	17.82	44	29.04	61	40.26	78	51.48	95	62.70
11	7.26	28	18.48	45	29.70	62	40.92	79	52.14	96	63.36
12	7.92	29	19.14	46	30.36	63	41.58	80	52.80	97	64.02
13	8.58	30	19.80	47	31.02	64	42.24	81	53.46	98	64.68
14	9.24	31	20.46	48	31.68	65	42.90	82	54.12	99	65.34
15	9.90	32	21.12	49	32.34	66	43.56	83	54.78	100	66.00
16	10.56	33	21.78	50	33.00	67	44.22	84	55.44	101	66.66
17	11.22	34	22.44	51	33.66	68	44.88	85	56.10	102	67.32

1063
169
231

26,65 E



DISTANCES FROM SIDE STAKES FOR CROSS-SECTIONING.

SLOPE 1 1/4 TO 1. ROADWAY OF ANY WIDTH.

	0	.1	.2	.3	.4	.5	.6	.7	.8	.9	
0	0.00	0.15	0.30	0.45	0.60	0.75	0.90	1.05	1.20	1.35	0
1	1.50	1.65	1.80	1.95	2.10	2.25	2.40	2.55	2.70	2.85	1
2	3.00	3.15	3.30	3.45	3.60	3.75	3.90	4.05	4.20	4.35	2
3	4.50	4.65	4.80	4.95	5.10	5.25	5.40	5.55	5.70	5.85	3
4	6.00	6.15	6.30	6.45	6.60	6.75	6.90	7.05	7.20	7.35	4
5	7.50	7.65	7.80	7.95	8.10	8.25	8.40	8.55	8.70	8.85	5
6	9.00	9.15	9.30	9.45	9.60	9.75	9.90	10.05	10.20	10.35	6
7	10.50	10.65	10.80	10.95	11.10	11.25	11.40	11.55	11.70	11.85	7
8	12.00	12.15	12.30	12.45	12.60	12.75	12.90	13.05	13.20	13.35	8
9	13.50	13.65	13.80	13.95	14.10	14.25	14.40	14.55	14.70	14.85	9
10	15.00	15.15	15.30	15.45	15.60	15.75	15.90	16.05	16.20	16.35	10
11	16.50	16.65	16.80	16.95	17.10	17.25	17.40	17.55	17.70	17.85	11
12	18.00	18.15	18.30	18.45	18.60	18.75	18.90	19.05	19.20	19.35	12
13	19.50	19.65	19.80	19.95	20.10	20.25	20.40	20.55	20.70	20.85	13
14	21.00	21.15	21.30	21.45	21.60	21.75	21.90	22.05	22.20	22.35	14
15	22.50	22.65	22.80	22.95	23.10	23.25	23.40	23.55	23.70	23.85	15
16	24.00	24.15	24.30	24.45	24.60	24.75	24.90	25.05	25.20	25.35	16
17	25.50	25.65	25.80	25.95	26.10	26.25	26.40	26.55	26.70	26.85	17
18	27.00	27.15	27.30	27.45	27.60	27.75	27.90	28.05	28.20	28.35	18
19	28.50	28.65	28.80	28.95	29.10	29.25	29.40	29.55	29.70	29.85	19
20	30.00	30.15	30.30	30.45	30.60	30.75	30.90	31.05	31.20	31.35	20
21	31.50	31.65	31.80	31.95	32.10	32.25	32.40	32.55	32.70	32.85	21
22	33.00	33.15	33.30	33.45	33.60	33.75	33.90	34.05	34.20	34.35	22
23	34.50	34.65	34.80	34.95	35.10	35.25	35.40	35.55	35.70	35.85	23
24	36.00	36.15	36.30	36.45	36.60	36.75	36.90	37.05	37.20	37.35	24
25	37.50	37.65	37.80	37.95	38.10	38.25	38.40	38.55	38.70	38.85	25
26	39.00	39.15	39.30	39.45	39.60	39.75	39.90	40.05	40.20	40.35	26
27	40.50	40.65	40.80	40.95	41.10	41.25	41.40	41.55	41.70	41.85	27
28	42.00	42.15	42.30	42.45	42.60	42.75	42.90	43.05	43.20	43.35	28
29	43.50	43.65	43.80	43.95	44.10	44.25	44.40	44.55	44.70	44.85	29
30	45.00	45.15	45.30	45.45	45.60	45.75	45.90	46.05	46.20	46.35	30
31	46.50	46.65	46.80	46.95	47.10	47.25	47.40	47.55	47.70	47.85	31
32	48.00	48.15	48.30	48.45	48.60	48.75	48.90	49.05	49.20	49.35	32
33	49.50	49.65	49.80	49.95	50.10	50.25	50.40	50.55	50.70	50.85	33
34	51.00	51.15	51.30	51.45	51.60	51.75	51.90	52.05	52.20	52.35	34
35	52.50	52.65	52.80	52.95	53.10	53.25	53.40	53.55	53.70	53.85	35
36	54.00	54.15	54.30	54.45	54.60	54.75	54.90	55.05	55.20	55.35	36
37	55.50	55.65	55.80	55.95	56.10	56.25	56.40	56.55	56.70	56.85	37
38	57.00	57.15	57.30	57.45	57.60	57.75	57.90	58.05	58.20	58.35	38
39	58.50	58.65	58.80	58.95	59.10	59.25	59.40	59.55	59.70	59.85	39
40	60.00	60.15	60.30	60.45	60.60	60.75	60.90	61.05	61.20	61.35	40
41	61.50	61.65	61.80	61.95	62.10	62.25	62.40	62.55	62.70	62.85	41
42	63.00	63.15	63.30	63.45	63.60	63.75	63.90	64.05	64.20	64.35	42
43	64.50	64.65	64.80	64.95	65.10	65.25	65.40	65.55	65.70	65.85	43
44	66.00	66.15	66.30	66.45	66.60	66.75	66.90	67.05	67.20	67.35	44
45	67.50	67.65	67.80	67.95	68.10	68.25	68.40	68.55	68.70	68.85	45
46	69.00	69.15	69.30	69.45	69.60	69.75	69.90	70.05	70.20	70.35	46
47	70.50	70.65	70.80	70.95	71.10	71.25	71.40	71.55	71.70	71.85	47
48	72.00	72.15	72.30	72.45	72.60	72.75	72.90	73.05	73.20	73.35	48
49	73.50	73.65	73.80	73.95	74.10	74.25	74.40	74.55	74.70	74.85	49
50	75.00	75.15	75.30	75.45	75.60	75.75	75.90	76.05	76.20	76.35	50

Computed by L. Leland Locke.

1115
V.3
C.81

40
20

25
15

80
20
5959

189
Δ 23° 49'
11° 54' 30"

89 26 30 NE