

1761

111

MICROFILMED

DEC 29 1964
CITY ENGINEERS OFFICE

SAN DIEGO

MADE IN U.S.A.

1761

522
4.80
14

Our Leather Bound Engineers Note Books
are carried in the following rulings:

- No. 380 LEVEL BOOK. Left and Right Hand Page
the same as Left Hand Page
of this Book.
- No. 382 FIELD BOOK. Left Hand Page as in this
Book, Right Hand Page 4x4
to the inch, Center Line Red.
- No. 384 MINING TRANSIT BOOK. Left Hand Page as in this
Book, Right Hand Page 8x8
to the inch, Center Line Red.
- No. 385 FIELD BOOK. Left Hand Page as in this
Book, Right Hand Page 8 ver-
tical and 4 horizontal lines to
the inch, Center Line Red.

We also carry the Note Books listed above,
bound in extra strong Fabri-Hide (otherwise
the same quality of book,) which can be fur-
nished at a somewhat lower price.

In ordering Fabri-Hide covered books, add
the letter "F" to catalog number.

THE FREDERICK POST CO.

ENGINEERING and DRAFTING SUPPLIES

P. O. Box 803

CHICAGO

INDEXED

WK

FEB 23 1949

to page # 76

Index

	Page
Survey drain Brooks and Hank to Ex. drain West of Raymond Way	13
BK "E" Plumbosa Park	17
Cross Sec. Catalina (Hill to Cañon)	37-50
" " Talbot { Catalina to Cañon	
" " Alley BK 4 Ocean Front Hdd.	51-55
" " Opal St. Cass to Bayard	56-61
Prop. Stor on Drain La Casada Ocean of Beacon	62-76

2-Sect. 20 Alley in Block 222
 Pac Beach - Map 854

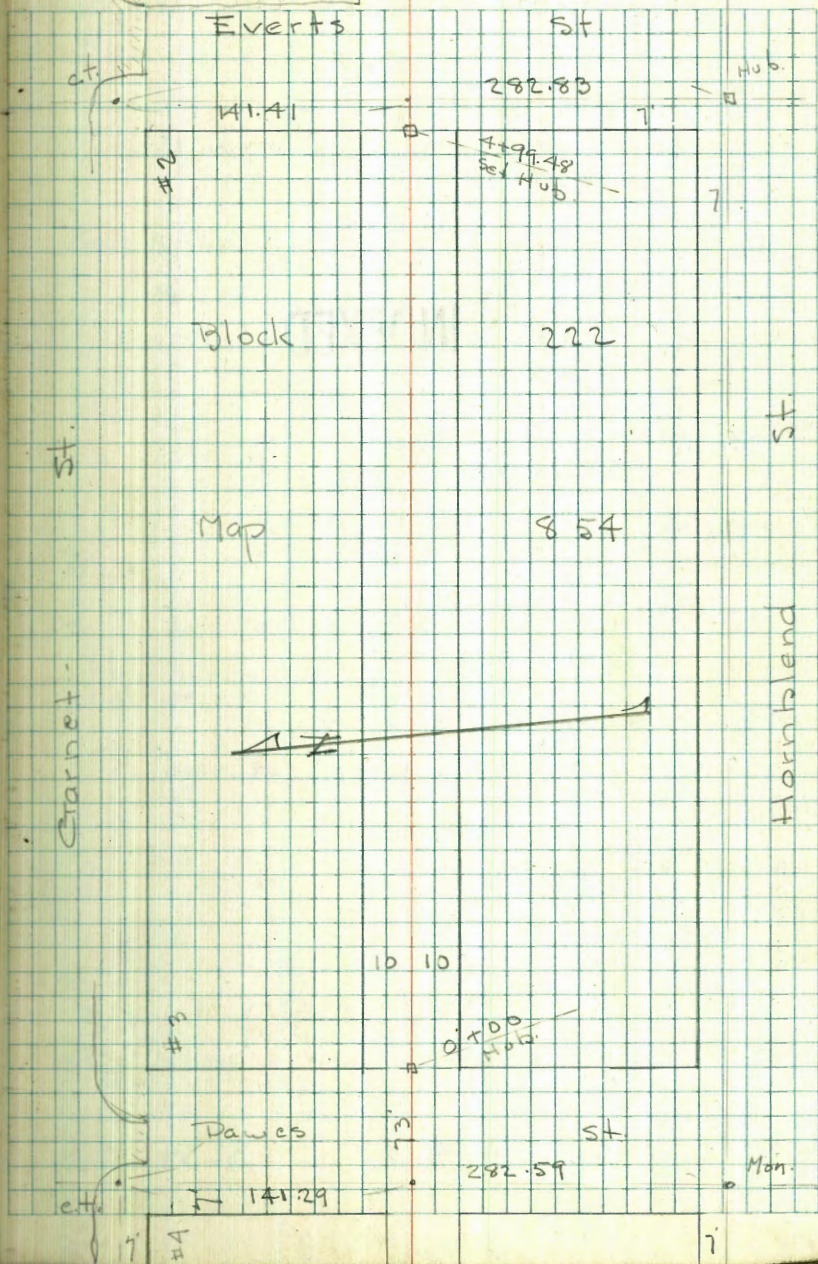
734
 W.O. 210

1-22-47

Osborne
 Hardin
 Smith
 Worrell

INDEXED

Indexed
 c-s-k
 # b s Alley
 c u w d
 10



4+49- 9.5 Lt = \pm P. pole
 4+42- 9.6 Rt = R Sing Gar - Dirt floor
 4+37- 9.9 Rt = end fence
 4+32- 8.6 Rt = \pm 3' Conc walk
 4+01- 7.1 Rt = \pm P. pole

4+00

3+99- 9.7 Rt = Beg Lath fence

3+50

T.P. 7.98 41.07 12.5 33.09

3+00 - 9.5 Lt = \pm P. pole

2+90- 7.3 Rt = \pm P. pole

2+50

2+00

1+75- 7.2 Rt = \pm P. pole

Lt.

$\begin{array}{r} 34.4 \\ 0.1 \\ \hline 0 \end{array}$

$\begin{array}{r} 33.8 \\ 1.3 \\ \hline 0 \end{array}$

$\begin{array}{r} 33.4 \\ 0.9 \\ \hline 0 \end{array}$

$\begin{array}{r} 32.9 \\ 1.4 \\ \hline 0 \end{array}$

$\begin{array}{r} 32.2 \\ 0.2 \\ \hline 0 \end{array}$

$\begin{array}{r} 34.4 \\ 0.1 \\ \hline 0 \end{array}$

$\begin{array}{r} 34.0 \\ 0.1 \\ \hline 0 \end{array}$

$\begin{array}{r} 33.4 \\ 0.9 \\ \hline 0 \end{array}$

$\begin{array}{r} 32.8 \\ 0.5 \\ \hline 0 \end{array}$

$\begin{array}{r} 32.1 \\ 0.2 \\ \hline 0 \end{array}$

$\begin{array}{r} 34.2 \\ 0.1 \\ \hline 0 \end{array}$

$\begin{array}{r} 33.8 \\ 1.3 \\ \hline 0 \end{array}$

$\begin{array}{r} 32.9 \\ 1.4 \\ \hline 0 \end{array}$

$\begin{array}{r} 32.6 \\ 1.1 \\ \hline 0 \end{array}$

$\begin{array}{r} 31.8 \\ 0.5 \\ \hline 0 \end{array}$

$\begin{array}{r} 34.3 \\ 0.8 \\ \hline 0 \end{array}$

$\begin{array}{r} 33.7 \\ 0.4 \\ \hline 0 \end{array}$

$\begin{array}{r} 32.9 \\ 0.4 \\ \hline 0 \end{array}$

$\begin{array}{r} 32.8 \\ 0.5 \\ \hline 0 \end{array}$

$\begin{array}{r} 31.8 \\ 0.5 \\ \hline 0 \end{array}$

$\begin{array}{r} 33.9 \\ 0.2 \\ \hline 0 \end{array}$

$\begin{array}{r} 33.6 \\ 0.7 \\ \hline 0 \end{array}$

$\begin{array}{r} 32.8 \\ 0.5 \\ \hline 0 \end{array}$

$\begin{array}{r} 32.3 \\ 0.0 \\ \hline 0 \end{array}$

$\begin{array}{r} 31.7 \\ 0.6 \\ \hline 0 \end{array}$

Rt.

$\begin{array}{r} 34.29 \\ 0.1 \\ \hline 0 \end{array}$

$\begin{array}{r} 33.9 \\ 0.7 \\ \hline 0 \end{array}$

$\begin{array}{r} 31.4 \\ 0.9 \\ \hline 0 \end{array}$

$\begin{array}{r} 30.2 \\ 0.0 \\ \hline 0 \end{array}$

$\begin{array}{r} 30.2 \\ 0.1 \\ \hline 0 \end{array}$

Vac. Lot

Vac. Lot

34.6
 9.6
 24.0 = floor

34.34

A

3

check B.M. NW. BP Everts 1.57 39.50 39.53 ✓

4+99.48 - W.L. Everts St.-9.8 Rt.=end fence

4+77.9.6 Rt.= Beg. Lath fence

4+77.9.8 Rt.= NE. Cor. House

4+52.9.8 Rt.= N.W. Cor. House - Conc. found.

4+50

Lt.

Rt.

26
0
35.8

26
0
35.5

26
0
35.6

26
0
35.0

26
0
35.1

26
0
34.5

26
0
34.7

26
0
34.8

26
0
35.1

26
0
34.3
ground at House

26
0
36.02
9.8
floor House

41.01

Levels around Returns on the
S. side of Garnet - at Everets and
Dawes. See Sketch for Numbers

4.26 43.76 39.50

Ret. # 1 - S.E. Cor. Everets and Garnet.

30' around - from prop. to prop. 6 parts 5' each

E. end - E.L. Everets + Top	3.70	40.06
S. curb Garnet	gut.	4.24 39.52
5' W.	Top	3.72 40.04
	gut.	4.28 39.48
5' - P.C. 10' Rad.	Top	3.74 40.02
	gut.	4.38 39.38
5'	Top	3.84 39.92
	gut.	4.48 39.28
5'	Top	4.00 39.76
	gut.	4.63 39.13
5'	Top	4.12 39.64
	gut.	4.72 39.04
5' - s.l. Garnet.	Top	4.16 39.60
	gut.	4.87 38.89

Ret. # 2 - S.W. Cor. 30' around 6 - 5'

S. end = S.L. Garnet	Top	5.23 38.53
	gut.	5.82 37.94

43.76

5' N	Top	5.21	38.55
	gut.	5.70	38.06
5'	Top	5.17	38.59
	gut.	5.62	38.14
5'	Top	5.05	38.71
	gut.	5.58	38.18
5' - P.C. 10' Rad.	Top	4.93	38.83
	gut.	5.56	38.20
5'	Top	4.88	38.88
	gut.	5.54	38.22
5' - W.L. Everets	Top	4.83	38.93
5' - S. curb Garnet.	gut.	5.50	38.26

4.63 37.17

32.54 NW Garnet + Dawes

Ret. # 3 = S.E. Cor. Garnet + Dawes - 30' around - 6 - 5'

E. end = E.L. Dawes + S. curb Garnet	Top	4.25	32.92
	gut.	4.77	32.40
5' W.	Top	4.29	32.88
	gut.	4.81	32.36
5' - P.C. 10' Rad.	Top	4.36	32.81
	gut.	4.86	32.31
5'	Top	4.48	32.69
	gut.	4.98	32.19

37.17

5' Top 4.49 32.68

gut 5.12 32.05

5' Top 4.56 32.62

gut 5.14 32.03

5' = S.L. Garnet Top 4.61 32.56

gut 5.16 32.01

Ret. #4 - S.W. Cor. - 30' around - 6-5' each

S. end = S.L. Garnet Top 5.58 31.59

gut 6.01 31.16

5' N. Top 5.51 31.66

gut 6.00 31.17

5' Top 5.34 31.79

gut 5.95 31.22

5' Top 5.29 31.88

gut 5.86 31.31

5' = P.C. to Rod. Top 5.22 31.95

gut 5.81 31.36

5' Top 5.17 32.00

gut 5.74 31.43

5' = W.L. Dawes Top 5.16 32.01

+ S.cb. Garnet. gut 5.71 31.46

X-Sect. on Linnet St. from \pm 80' Row
of Imperial - to South - See B. 1702
P. 74 - for sketch + Sect on Imperial

T.P. 5.86 173.41 0.12 167.55

0+72 = opp. PC on Rt. (Ret.)

INDEXED

WK

JAN 14 1949

0+57 = Used obs. as base line from Here

0+41.6 = Beg. cb + walk on Rt.

0+25 = Beg. cb_y on Lt. - 164 Lt. \pm F.H.

0+15 = Edge Conc. pave from Linnet

0+00 = \pm Row + \pm Tang. of Linnet

B.M. 6.39 167.67 161.28 on Bridge
Merlin

5-14-47
7.0

Lt = E. \pm

Rt. = W.

166.35	165.97	166.18	166.33	164.35	166.44	166.2
132	170	149	134	142	130	100
Top	put	put	put	put	put	put
165.05	164.65	164.83	164.89	164.72	164.55	165.10
26	30	28	278	29	3.17	1.6
put	put	put	put	put	put	put
166.3	165.82	169.61	169.17	169.38	169.42	169.67
14	385	4.06	4.10	4.25	4.40	4.72
25	93	153	153	25	75	17.7
walk	put	put	put	put	put	put
164.9	162.23	161.98	161.61	161.92	162.25	161.96
28	544	569	6.46	575	562	571
25	98	48	48	57	57	75
Back of walk	Top end of	put	put	put	put	put
161.43	161.43	161.43	161.53	161.63	161.61	161.55
6.74	6.2	6.09	6.07	6.07	6.06	6.17
20	20	20	20	20	20	20
161.52	161.52	161.52	161.52	161.52	161.52	161.52
6.15	6.17	6.19	6.19	6.19	6.19	6.19
20	15	15	15	15	15	15
167.67						

check starting B.M. 4.97 161.28
 I.P. 3.78 166.25 10.94 162.47

1+18.5 = P.C. S Rad Ret. on Rt. = S.F. Cor Thrus
 † Linnet = End.

1+13.5 = E. cb. Thrus St.

0+98 = Sewer M.H

0+90 = E.C. Ret. on Rt.

0+83 = about † Ret. on Rt.

168.96	168.67	168.83	168.84	168.77	168.66	169.13
4.45	4.34	4.58	4.57	4.64	4.76	4.38
1/5	1/5	1/5	1/5	1/5	1/5	1/5
Tap	put.				put.	Top P.C. Ret.
168.61	168.31	168.49	168.39	168.48	168.55	168.68
4.80	5.10	4.92	5.07	4.73	4.86	4.73
1/5	1/5	1/5	1/5	1/5	1/5	1/5
					put	Top P.C. Ret.
167.85	167.49	167.63	167.53	168.10	168.60	171.45
5.56	5.92	5.85	5.86	5.31	4.81	1.96
1/5	1/5	1/5	1/5	1/5	1/5	1/5
Top	put					
167.47	167.08	167.24	167.25	167.83	168.16	168.39
5.94	6.33	6.11	6.06	5.58	5.24	3.82
1/5	1/5	1/5	1/5	1/5	1/5	1/5
Top	put				put	Top P.C. Ret.
167.06	166.76	166.83	167.09	167.36	167.69	168.21
6.25	6.68	6.48	6.32	6.05	5.72	5.20
1/5	1/5	1/5	1/5	1/5	1/5	1/5
put.	put.			put.	put.	Top P.C. Ret.
			173.41			Mid. Ret.

P-10-A

"B" Line

Cont from P-9

232.70

0+96		6.8	
5' Lt.		4.8	
10' Lt.		4.8	
10' Rt.		2.0	
T.P.	11.99	251.32	0.37 232.33
1+33		8.9	
3' Lt.		7.9	
10' Lt.		6.5	
4' R.		2.1	
10' R.		10.1	
1+36	on Not. Ground	7.4	
1+55	= Top New Fill	2.6	
10' Lt.		0.8	
10' Rt.		3.9	
T.P.	13.09	263.78	0.63 250.69
1+65	on Fill.	10.2	
10' Lt.		2.6	
10' R.		11.2	
1+78	on Not. Ground	2.7	
1+98		8.1	
10' Lt.		7.2	
10' Rt.		8.6	
2+12		2.5	
10' Lt.		2.0	
10' R.		2.2	

Cont. P-11

10

Levels "A" Line

Location P-9

217.137 from P-9

0+00		13.21	
+30		2.1	
" 10' Rt.		12.4	
" 10' Lt.		5.0	
0+54		3.7	
" 10' Lt.		0.8	
" 10' Rt.		7.9	
T.P.	11.07	238.16 004	217.99
1+00		11.6	
" 10' Rt.		16.1	
" 10' Lt.		7.2	
1+24		7.1	
" 10' Lt.		+2.5	
10' Rt.		12.2	
T.P.	12.23	239.25 114	227.02
1+64		2.2	
10' Lt.		4.4	
10' Rt.		13.8	
1+77	on Not. Ground	6.3	Toe Fill
10' Lt.		+1.0	
10' Rt. Nat.		2.9	
T.P.	12.36	250.65 146	237.72
2+02	on Fill	6.6	3' Fill
10' Lt.		2.7	
10' Rt. Not Ground		14.5	

Cont. P-11-A

11-A

"A" Line

250.65

2+20	Nat. Ground	5.7		
10' Lt		2.2		
10' Rt		6.4		
8' Rt	= 8" Pine Tree			
2+29	4" Rt = 4" Pine "			
2+33	8" Dead Pine 1.5' Rt			
2+41	= Toe Fill	2.2		
10' Lt		+2.0		
10' Rt		3.3		
8' Rt	= 8" Pine Tree			
T.P.	12.27	261.88	1.04	249.61
2+54		3.2		
11' R		2.4		
4' Lt	on cb	1.59		
" "	" Gut Conc	2.28		
2+60	on cb.	1.47		
" "	" Gut	2.13		
2+64.54	on Conc. Pav.	2.00	257.88	
T.P.	13.03	273.53	1.38	260.50
Check starting	B.M. P. 9	7.12	266.41	
			266.43 - B.P.	
			0.02 error	

"B" Line
Cont. from P. 10-A

263.78

11

T.P.	8.65	262.12	3.31	260.47
2+21			4.0	
10' Lt			3.6	
10' Rt			4.4	
2+23 1/2	△ Rt		3.96	on Hub.
10' West			3.39	
2+60	on oil & Rock Pav.		5.5	
15' Rt			1.5	
7' Rt			9.0	
29' Rt	= Toe Slope		16.4	
10' Lt.	on oil & Rock		5.0	
3+00			7.9	
3' R			6.8	
9' R			10.6	
12' R			11.4	
15' R			13.9	
24' Rt.			18.5	
10' Lt.	on oil & Rock		7.8	
3+22.54	= SL Juniper ^{on Conc. Pav.}		2.30	
10' Lt.	on Conc. Pav.		8.79	
4.5' Rt.	on West edge grading		2.66	
6.5' Rt.	on cb		9.05	
" "	" Grating		9.85	
" "	" Flow Control		12.58	
26' Rt.	on Top "		31.55	

Cont. P. 12

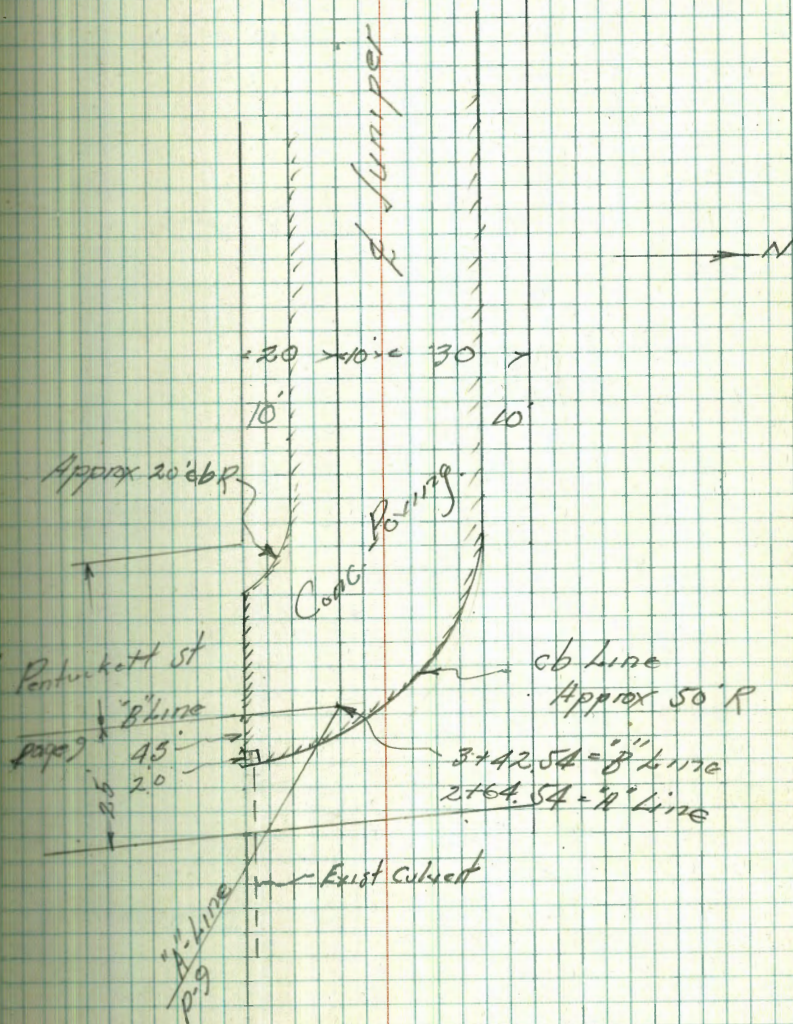
Approved
1/12/12

"8" line Cont. from P. 11

269.12

3+42.54 = 2+64.54 "A" line 2.24 259.88 ✓

12



Levels on
Proposed drain

INDEXED ✓

NW 8P	3.99	251.47	247.48	Brooks Jackson
T.P.	2.96	248.49	5.94	245.53 ✓
0 + 00	Top curb	5.62	242.87	
"	" grate	6.62	241.87	
"	FL Box and 24" Conn. I.P.	11.14	237.35	
T.P.	1.80	237.39	12.90	235.59 ✓
T.P.	0.45	225.39	12.45	224.94
0 + 88.88	A 25° 0' V L7	4.93	220.96	FL
"		4.9	220.5	ground
0 + 50		5.1	220.3	
0 + 69		12.1	213.3	
T.P.	1.30	214.47	12.22	212.17 ✓
0 + 74		2.7	211.8	
0 + 88		5.7	208.8	
1 + 07		12.8	201.7	
T.P.	1.06	203.15	12.38	202.09 ✓
1 + 08	washout	11.0	192.2	

203.15 ✓

15

1 + 18	8.3	192.8		
1 + 22	10.1	193.0		
1 + 23	13.5	189.6		
T.P.	0.42	191.03	12.74	190.41
1 + 29	1.0	190.0		
1 + 38	5.3	185.7		
1 + 39	WASH	8.0	182.0	
1 + 42	10.2	180.8		
1 + 45	8.4	182.6		
1 + 55	12.9	178.1		
T.P.	0.55	178.81	12.77	178.26
1 + 56	3.0	175.8		
1 + 64	5.3	173.5		
1 + 67	7.6	171.2		
1 + 83	14.1	162.7	9-23-47	
1 + 91	Toe FILL	14.9	158.9	SAMP
2 + 10	Shoulder	4.3	172.5	FALL
2 + 40		4.1	172.7	
2 + 57.86		5.46	173.35	St edge R.M. M.H.
"		29.06	149.75	FL
T.P.	13.08	190.91	0.95	177.86

over

190.44 ✓

T.P. 1299 203.75 0.21 190.73

T.P. 1237 215.83 0.26 203.46

T.P. 1271 228.46 0.08 215.75

T.P. 1178 240.13 0.11 228.35

T.P. 1295 252.83 0.25 239.88

T.P. 691 259.54 0.20 252.63

check to HEBP
Suzee + Goldfinch • 262 256.92 256.99
007

Short. N. + S. Alley BIKE
Plumosa Park

INDEX

conc. floor Ely. Ent.

1+66^E 9' AT = door of double gar.

1+60^E 11' 8" = End apron at garage

1+57^E ^{90° to} = End. w. Line of alley

1+57^E Intersect edge. conc apron

151.55

23

147.88
3.67

148.29
3.26
9

148.21
3.37
11.8

Section Not Needed
see 1+55^E

~~147.73
3.82
92.00~~

~~148.0
3.6
92.0~~

147.73
3.82

151.55

Start E+W Alley

Blk 2 Plumosa Park

INDEXED

0+62 10' Rt. End Apron + Gar. Start ^{walk} _{Coord.}

0+59-7³ Lt = 4 Dead T94

9² RT = End Conc Block Wall

0+45 ^{Gar.} 10' Rt. = start conc. Apron to double

T.P. 6.95 155.75 2.75 148.80

0+30- 9² RT = end Conc Slab + Begin Conc Block ^{Wall}

0+44 12' Rt. End 2' wide bridge OUT

0+24 10' Lt. = N.W. Cor (or end) Gar.

0+13⁵ 8² Lt. Ch. 5' tree out 6/6/57

OUT 12⁵ Rt. start Lucida hedge

0+05 10³ Lt. = N.E. Cor. Stucco Gar (East door)

N.+S. Alley (Point A page 17)

0+00 = E of E+W Alley at west line of

0-02⁵ 9² RT = Begin Conc Slab ^{Loc 1+37-page 22}

151.55 ^{From page 23}

Lt.

±

Rt

24

150.1

5.7
10

149.1

6.7
7

149.1

6.7

149.64

6.11
10

Apron
walk
out

150.05

5.70
20.4

Gar, Floor

149.03

6.72
70

Apron

148.1

9.9

9' Run

150.07

5.68
20.4

Gar Floor

148.4

9.9

Foot

155.75

9.9
148.70

9.9
Slab

148.1

9.9
Foot

148.2

9.9
Foot

154.0

9.9
Top wall

3.3
10
148.3

3.5
7
148.1

3.8
147.8

3.5
10
148.1

148.1

3.5
10

147.5

4.1
5

147.2

4.1

147.5

4.1
10

147.60

10.9
ON
Slab

148.2
10

147.8

9.9
147.5
ground

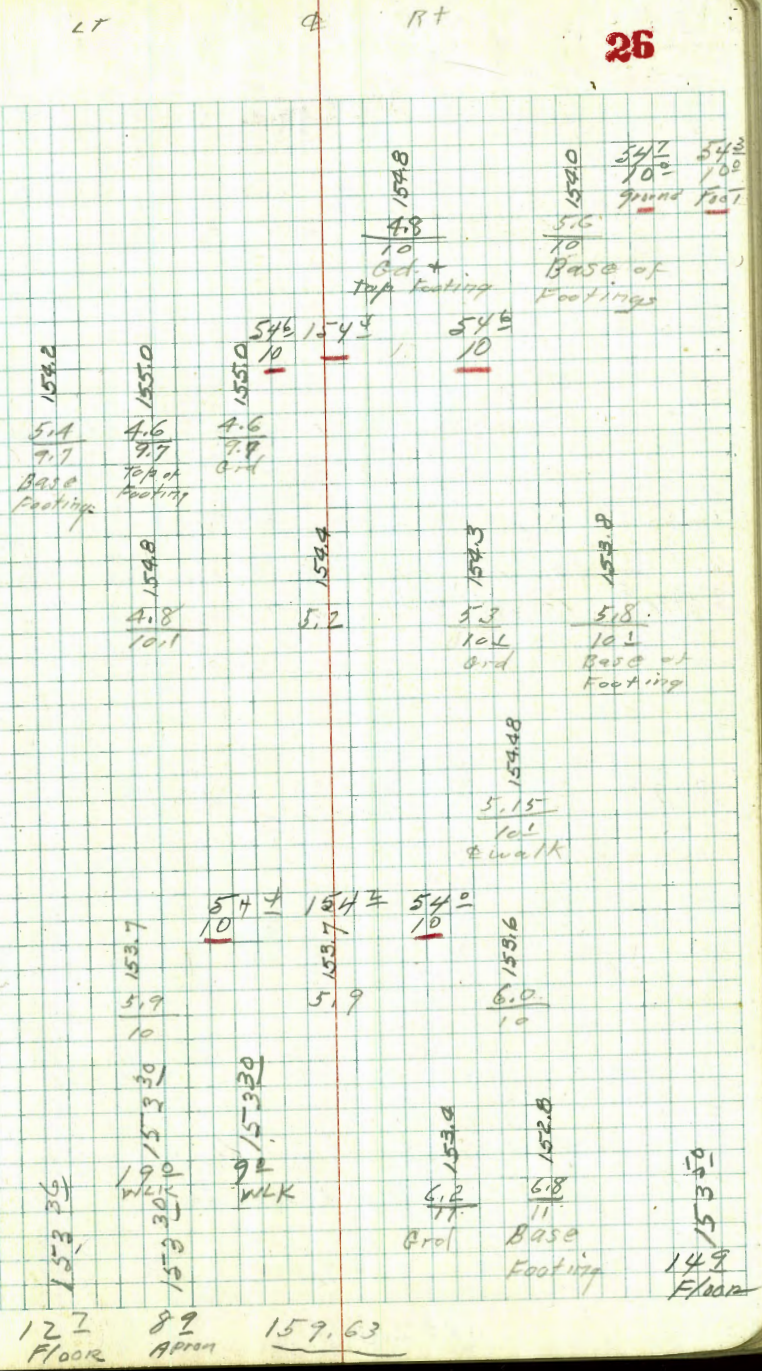
147.43

9.9
conc
slab

151.55

INDEXED

- 2+63⁹ 10° RT = Begin 6' Tile wall
- 2+64-9⁵ LT = 2" Shrub wall start conc. wall (6' High)
- 2+63 10 RT = Footing 10' At = End tile
- 2+54-9⁵ LT = 2 3" Shrub
- 2+50
- 2+39 Block wall (5' High) 11¹/₂ Lt = End Stucco Bldg
9⁷ Lt = wall footing 10² Lt = Conc. start
- 2+36³⁹ 10° RT = 2 17' tile wall
L taken on split
says valuable Tree - will call about it
- 2+097⁸ LT = 7' 49" Tree - Property owner
- 2+30⁵ 10° RT = thru tile wall
Conc walk 8' wide
- 2+28-2² LT = 2 Sewer Manhole - el rim = 154.49
- 2+25 { 10' Lt = start stucco Bldg
10' Lt = End board fence
- 2+09 { 9° Lt = P pole # P.H. 3668 Tree
7° Lt = 6" acacia
- 2+00
- 1+93 10° Lt = End stucco Bldg. start of board fence
- 1+72⁵ -9° LT = 2 4¹/₂ Conc wall
- 1+83 11¹/₂ RT = start 6' High tile wall
- 1+71-14² RT = 2 Single Car. Conc Floor
Conc Floor & Apron
- 1+70-8⁹ LT = end 2 Car Carriage
159.63



E. + W. Alley. BIK E

2+50
3+50

INDEXED

3+25 - 9' RT = Face 6" Tile wall

3+22 10' Lt. = Change in Footing Elev. at Base.

3+00 - 10' RT = Face Tile wall

10' Lt. = start Conc. Block wall (5' High)

2+91 10' Lt. = start wall Footing

2+91 10' Lt. = End Conc Apron to Double Bar.

2+75 10' Lt. = Start Conc. Apron to double Bar.

End
10' Lt. = Conc. Block wall 4' High

2+72 9' Lt. = Footing for wall

159.63

LT 1 2 RT

27

552
10
1550
4.6
10

1550
4.6

552
10
1552
4.7
10

1542
10
Footing

1552	1547	1551	1548	1548	1548
4.4	4.9	4.5	4.7	4.8	5.4
10.1	10	10	10	10	10.9
Top Footing	Base of Footing to west	Base of Footing to East	Base of Footing to East	Base of Footing to East	Base of Footing to East
1557.8	1551.7	1551.7	1551.8	1549.8	1546
3.85	4.28	4.28	4.8	3.0	
15	10	10	10	10	
Gar. Floor	Apron	Apron	Apron	Apron	
1557.6	1551.7	1551.8	1549.8		
3.87	4.96	4.8	3.0		
13.5	10	10	10		
Gar. Floor	Apron	Apron	Apron		
1552	1548	1548	1548		
4.4	4.7	4.8	4.8		
9.9	9.9	9.9	9.9		
Grid	Top Footing	Base Footing	Base Footing		

159.63

4+08-10⁶ RT = Begin 5' Conc Block Wall

INDEXED

4+00
 4+04-10² RT = end Lath House garage
 4+03 12³ Lt. = Start conc. apron to double board fence
 4+02 9⁵ Lt. = End Stat Fence
 (start Lath House fence)
 3+95 10⁶ RT = End Stucco Bldg. + T.P. 4.64 160.42 3.85 155.78
 3+75
 3+74^E 10⁵ RT = start stucco Bldg.
 (10⁰ RT = End Conc. wall. new (5' High)
 9⁸ RT = End Footing
 3+74 9³ Lt. start E.W. stat fence
 3+73 9⁷ Lt. = P. pole # P.A. 3680
 3+74-10⁰ RT = end 6' Tile Wall
 3+72^E 9¹ Lt. = End N.W.S. stat fence
 { 10⁰ Lt = Begin 5' board fence
 conc. block wall.
 3+72 10 Lt = End Footing. 10¹ Lt = End
 3+69 { 10¹ Lt = 3' wide Gate thru. wall
 8¹ Lt = 6' Long Brick step

159.63

Lt.

Rt.

Rt.

28

56¹ 53⁹
 10⁹ 10⁸
 Ground Foot

157.20	55.9	155.6	55.6
3.22	10	155.9	10
156.50		156.50	
3.94		155.9	
12.3		156.1	
15.6		4.3	
Gar. Floor		10	
Apron		160.42	
Ord		155.2	
		155.4	
		4.2	
		10	
		4.4	
		155.3	
		4.3	
		10	
		155.3	
		4.8	
		9.8	
		1.2	
		9.8	
		7.9	
		Ord.	
		Base Footing	
		Top Footing	
		155.2	
		10 ⁰	
		155.0	
		10 ⁵	
		ground	
		Footing	
		154.2	
		155.5	
		5.4	
		10	
		4.1	
		10	
		Ord	
		Base Footing	
		155.44	
		3.72	
		10.1	
		4.14	
		10	
		8.7	
		10	
		155.71	
		155.49	
		155.44	
		3.72	
		10.1	
		4.14	
		10	
		8.7	
		10	
		155.71	
		155.49	
		155.44	
		3.72	
		10.1	
		4.14	
		10	
		8.7	
		10	
		155.71	
		155.49	
		155.44	
		3.72	
		10.1	
		4.14	
		10	
		8.7	
		10	
		155.71	
		155.49	
		155.44	
		3.72	
		10.1	
		4.14	
		10	
		8.7	
		10	
		155.71	
		155.49	
		155.44	
		3.72	
		10.1	
		4.14	
		10	
		8.7	
		10	
		155.71	
		155.49	
		155.44	
		3.72	
		10.1	
		4.14	
		10	
		8.7	
		10	
		155.71	
		155.49	
		155.44	
		3.72	
		10.1	
		4.14	
		10	
		8.7	
		10	
		155.71	
		155.49	
		155.44	
		3.72	
		10.1	
		4.14	
		10	
		8.7	
		10	
		155.71	
		155.49	
		155.44	
		3.72	
		10.1	
		4.14	
		10	
		8.7	
		10	
		155.71	
		155.49	
		155.44	
		3.72	
		10.1	
		4.14	
		10	
		8.7	
		10	
		155.71	
		155.49	
		155.44	
		3.72	
		10.1	
		4.14	
		10	
		8.7	
		10	
		155.71	
		155.49	
		155.44	
		3.72	
		10.1	
		4.14	
		10	
		8.7	
		10	
		155.71	
		155.49	
		155.44	
		3.72	
		10.1	
		4.14	
		10	
		8.7	
		10	
		155.71	
		155.49	
		155.44	
		3.72	
		10.1	
		4.14	
		10	
		8.7	
		10	
		155.71	
		155.49	
		155.44	
		3.72	
		10.1	
		4.14	
		10	
		8.7	
		10	
		155.71	
		155.49	
		155.44	
		3.72	
		10.1	
		4.14	
		10	
		8.7	
		10	
		155.71	
		155.49	
		155.44	
		3.72	
		10.1	
		4.14	
		10	
		8.7	
		10	
		155.71	
		155.49	
		155.44	
		3.72	
		10.1	
		4.14	
		10	
		8.7	
		10	
		155.71	
		155.49	
		155.44	
		3.72	
		10.1	
		4.14	
		10	
		8.7	
		10	
		155.71	
		155.49	
		155.44	
		3.72	
		10.1	
		4.14	
		10	
		8.7	
		10	
		155.71	
		155.49	
		155.44	
		3.72	
		10.1	
		4.14	
		10	
		8.7	
		10	
		155.71	
		155.49	
		155.44	
		3.72	
		10.1	
		4.14	
		10	
		8.7	
		10	
		155.71	
		155.49	
		155.44	
		3.72	
		10.1	
		4.14	
		10	
		8.7	
		10	
		155.71	
		155.49	
		155.44	
		3.72	
		10.1	
		4.14	
		10	
		8.7	
		10	
		155.71	
		155.49	
		155.44	
		3.72	
		10.1	
		4.14	
		10	
		8.7	
		10	
		155.71	
		155.49	
		155.44	
		3.72	
		10.1	
		4.14	
		10	
		8.7	
		10	
		155.71	
		155.49	
		155.44	
		3.72	
		10.1	
		4.14	
		10	
		8.7	
		10	
		155.71	
		155.49	
		155.44	
		3.72	
		10.1	
		4.14	
		10	
		8.7	
		10	
		155.71	
		155.49	
		155.44	
		3.72	
		10.1	
		4.14	
		10	
		8.7	
		10	
		155.71	
		155.49	
		155.44	
		3.72	
		10.1	
		4.14	
		10	
		8.7	
		10	
		155.71	
		155.49	
		155.44	
		3.72	
		10.1	
		4.14	
		10	
		8.7	
		10	
		155.71	
		155.49	
		155.44	
		3.72	
		10.1	
		4.14	
		10	
		8.7	
		10	
		155.71	
		155.49	
		155.44	
		3.72	
		10.1	
		4.14	
		10	
		8.7	
		10	
		155.71	
		155.49	
		155.44	
		3.72	
		10.1	
		4.14	
		10	
		8.7	
		10	
		155.71	
		155.49	
		155.44	
		3.72	

E+W. Alley Bk. E

4+22

INDEXED

4+40

End garage
10ft start picket fence 15²Lt =

4+33¹

as to admit trailer to garage
Floor. Apron out. Dug down 90

4+29-

10²RT = Begin 4' picket fence

4+33

12³Lt = End Conc. Apron + Conc Floor
in Gar.

4+29-

10²RT = end conc. block wall 5' high
picket fence. out

4+28⁵

10⁷RT = End board fence start

4+25

12³Lt = start conc. Apron to ^{Gar.} Damb.

4+20

12⁴Lt = End Conc. Apron to ^{Gar} double

160.42

29

	Lt.	Rt.		
	$\frac{3.156.5}{16}$	$\frac{4.175.61}{10}$	$\frac{4.155.7}{10}$	
	$\frac{1551.9}{4.5}$	$\frac{1561.1}{4.3}$	$\frac{1551.8}{4.6}$	$\frac{1551.6}{4.8}$
	16 dirt in Gar.			10
	$\frac{1561.0}{4.4}$	$\frac{1561.3}{4.1}$	$\frac{1561.0}{4.4}$	$\frac{1561.0}{4.4}$
	16 dirt in Gar.			10
	$\frac{1571.1}{3.31}$	$\frac{1567.3}{3.29}$	$\frac{1561.4}{3.8}$	$\frac{1561.0}{4.4}$
	15.7 Gar Floor	12.3 Apron	10	10
				$\frac{1559}{10}$
				$\frac{107}{10}$
				<u>Ground</u>
				<u>Foot</u>
	$\frac{1571.4}{3.28}$	$\frac{1567.2}{3.70}$	$\frac{1561.2}{4.2}$	$\frac{1551.3}{4.1}$
	15.7 Gar Floor	12.3 Apron + Arch.		10
	$\frac{1572.9}{3.13}$	$\frac{1565.9}{3.83}$	$\frac{1561.2}{4.2}$	$\frac{1561.3}{4.1}$
	15.8 Gar Floor	12.4 Apron + Arch.		10

160.42

Top of T Alley BIK "E" Plumosa.
 Notes Brought up to date 6/6/57 park
 (N+S Alley) DIRECT ELECT ROD

T.P. 8.28 161.32 2.31 153.04
 0+03

INDEXFD

0+00 Cont.

92 LT=Begin 8" Conc Block Wall 5324 514 1572
 104 RT=Begin 8" Conc Block Wall Top Foot 99 99 99
 0+00 Sly. line Marylliss Dr.

0-12 Dirt (washed in on pav)

0-13 Cont.

0-13 S. Curb line Marylliss Dr.

3.84 155.35 8.91 151.51
 160.42

LT
 East

RT
 West

4.01
 2.51

31

1526.6	1538.8	1521.0	1522.2	1522.4	1523.9	1523.9
0.18	1.6	3.4	3.2	2.0	1.5	1.5
12	10	6		5	8	10
1526.6	1528.4	1510.7	1521.6	1521.6	1521.6	1521.6
2.8	1.28	9.95	2.8	2.8	2.8	2.8
10	10	10	10	10	10	10
Ord.	Ord.	Curb Curb	Ord.	Ord.	Ord.	Ord.
150.77	151.2	151.4	150.55	151.3	150.84	151.24
1.58	7.12	4.10	4.80	4.1	4.51	4.01
10	10	10	10	10	10	10
Ord.	Ord.	Ord.	Ord.	Ord.	Ord.	Ord.
150.4	150.5	150.5	150.5	150.5	150.5	150.5
3.0	1.9	1.9	1.9	1.9	1.9	1.9
10	10	10	10	10	10	10
1210.01	149.57	149.59	150.84	150.70	151.51	151.51
5.08	5.78	4.76	4.11	4.63	3.88	3.88
100	100	50	50	91.5	91.5	91.5
Ord.	Curb	Ord.	Curb	Ord.	Curb	Curb B.C.
1488.7	150.89	150.18	150.18	150.26	151.03	150.87
5.48	4.46	5.16	5.17	5.09	4.82	4.88
50	Top Rad.	10	10	10	Top Rad	50
Ord.	3' Rad	Ord.	Ord.	Ord.	3' Rad	Ord.

155.35

Blk. E. Plumosa Park

Long N + S. Alley

INDEXED

South Ent.

2+21 10² Rt. = End stucco Bar.

Hedge back of wall

2+17 9² Lt. = stoned faced rock wall

10² Rt. = start stucco Bar. ^{Entrance} South

2+01 10² Rt. = End Conc. Block wall

2+00

1+89- 10⁰ Lt. = 2 very Bushy Shrub

1+87^s 10² Lt. = End board fence

1+85^E 10² Rt. = Start 7' High Conc. block ^{Wall. Conc. footing}

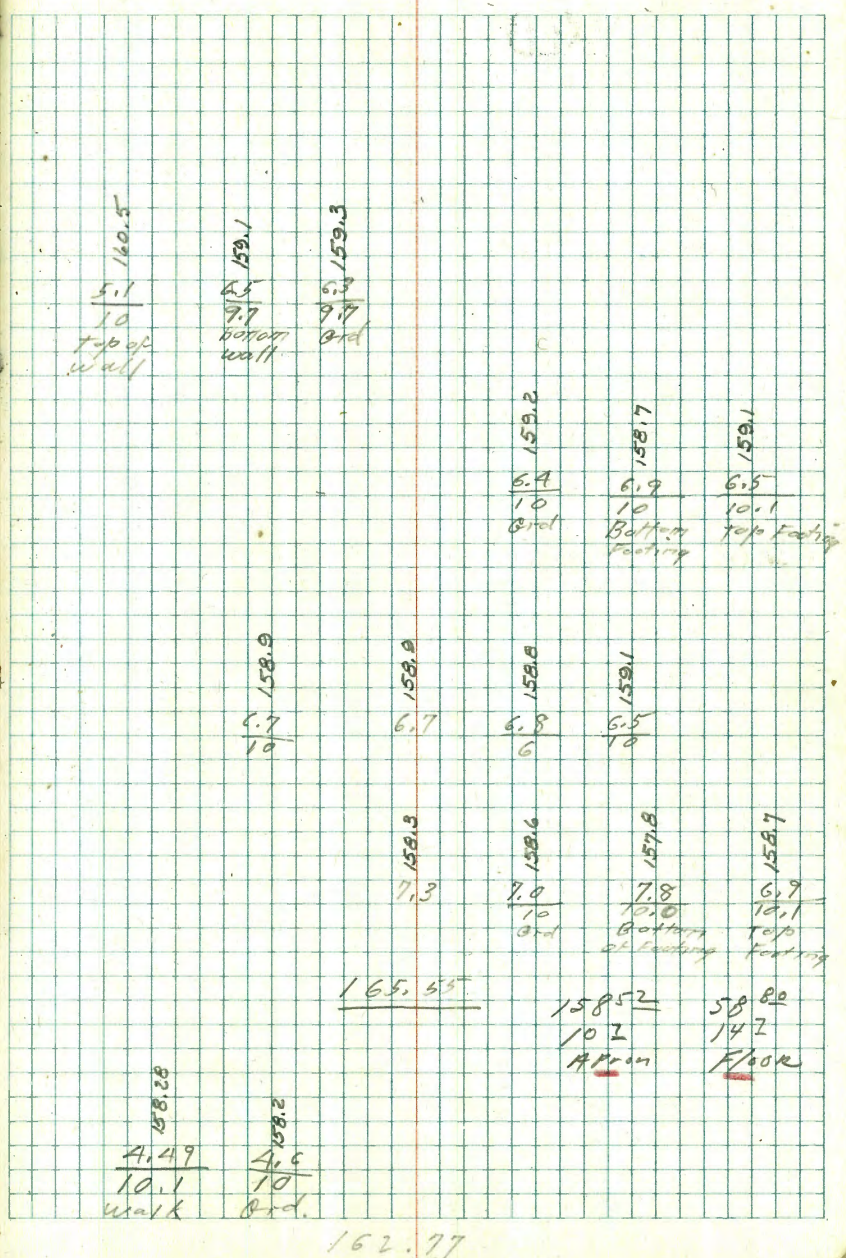
1+81- 10² Rt. = end ^{conc Apron} of car garage

TP ^{End} curb. 5.10 165.55 2.32 160.45
10' Rt 2+22.40

1+78 10² Lt. = 2' wide Conc. walk

162.77

34



2+55^t = E. Ch. line Lotus Dr

of paving Centig. to Lotus Dr.
2+42^e = Int. paving section on Edge

2+42⁹⁰ = N. Line Lotus Dr.

2+42¹⁵ = 90° to prop. cor. on East Line Alley

2+25

2+21 11° Rt. = Start 2' wide Hedge

165.55

24.
East

9

8+
West

85

159.91	160.40	159.85	159.76	159.65	159.65	159.28
6.14 10	5.15 10 Top. 15.40 10	5.70 10 10	5.79	5.90 10 Outer	5.90 10 10 Ch. Rel.	6.27 10 Outer
	160.64	160.56	159.98	160.23	160.45	
	4.91 9.9 10 Top. of End	5.17 10 10	5.57	5.37 10 10	5.10 10 10 Top curb End.	
	160.2	160.0	160.2	160.2		
	5.1 9.9	5.6	5.4 10			
160.7	160.0	160.2				
4.9 10 Top. wall	5.16 9.9 Bottom wall	5.4 9.9 Grid				
	159.5	159.6	159.7	160.0		
	6.1 9.9 10 Grid Base wall	6.0	5.9 10	5.5 10		

165.55

Long. Nit S. Alley.
Bik E Plamose park.

INDEXED

Orig. B.M.
S.W. Elliott
Narcisuss

- 0.02
157.14
5.64 157.16

SE. B.M.
Villa D.M.
Elliott

12.37 162.80 2.82 150.43 (150.35)

T.P. 3.04 153.25 9.55 150.21

T.P. 1.22 159.76 7.01 158.54

E.Cb line Lotus Dr. Conts

165.55

LT

RT

36

159.05
6.50
100
ck

158.99
7.06
100
B.M.

159.98
5.57
50
top. bk
ck

159.89
5.66
50
top. bk.

158.79
6.76
100
B.M.

159.37
5.18
100
ck

165.55

0+02. 295 = Ctr. P. pole #1040 + #600-6.6

0+00 - S. Lina Hill St.

0-12 Cont

0-12 =

0-30 Cont. paving 67 Rt. BC to south 17

0-30 = E Hill St.

264.45

7.5	5.9	7.6	7.35	6.8	6.65	6.85	5.0	4.0
40	22	19	13.2	EP	15	27	31	40
257.2	258.6	256.8	257.10	257.6	257.80	257.60	258.4	258.4
7.3	6.5	7.6	7.7	6.76	5.5	6.70	6.71	6.1
40	22	19	17	EP	14	24	34	37
257.2	258.0	256.8	257.2	257.6	257.90	257.2	257.4	258.4
5.0	2.4	2.34	6.71	6.32	5.75	5.15	5.59	1.12
23	17	12	EP	15	67	86	743	200
258.4	257.0	257.4	257.11	258.15	258.72	258.00	260.86	263.0
6.0	2.4	2.34	6.71	6.32	5.75	5.15	5.59	1.12
23	17	12	EP	15	67	86	743	200
258.4	257.0	257.4	257.11	258.15	258.72	258.00	260.86	263.0
7.3	6.5	7.6	7.7	6.76	5.5	6.70	6.71	6.1
40	22	19	17	EP	14	24	34	37
257.2	258.0	256.8	257.2	257.6	257.90	257.2	257.4	258.4
5.0	2.4	2.34	6.71	6.32	5.75	5.15	5.59	1.12
23	17	12	EP	15	67	86	743	200
258.4	257.0	257.4	257.11	258.15	258.72	258.00	260.86	263.0
7.3	6.5	7.6	7.7	6.76	5.5	6.70	6.71	6.1
40	22	19	17	EP	14	24	34	37
257.2	258.0	256.8	257.2	257.6	257.90	257.2	257.4	258.4
5.0	2.4	2.34	6.71	6.32	5.75	5.15	5.59	1.12
23	17	12	EP	15	67	86	743	200
258.4	257.0	257.4	257.11	258.15	258.72	258.00	260.86	263.0
7.3	6.5	7.6	7.7	6.76	5.5	6.70	6.71	6.1
40	22	19	17	EP	14	24	34	37
257.2	258.0	256.8	257.2	257.6	257.90	257.2	257.4	258.4
5.0	2.4	2.34	6.71	6.32	5.75	5.15	5.59	1.12
23	17	12	EP	15	67	86	743	200
258.4	257.0	257.4	257.11	258.15	258.72	258.00	260.86	263.0

264.45

2+00 of oil paving
Aprox. B.C. Lt. for east edge

1+50

1+31 28th Rt. 3 Ctr. P. pole # 1020

1+00

0+50

T. P. 4.86 262.56 6.75 257.70

Spaced approx 30' apart.

0+27 30' Rt. Start row situa diam palms

0+25

264.45

3.4	3.4	3.3	3.3	3.1	4.6	4.2	4.1	4.2
75	40	22	21	46	175	30	40	40
259.2	259.1	259.3	257.3	257.5	258.0	258.4	258.5	258.4
4.3	3.7	3.4	3.3	4.9	4.6	4.1	4.1	4.2
40	22	19	20	20	18	30	40	40
258.5	258.9	257.2	257.3	257.7	258.0	258.2	258.1	258.4
4.1	4.4	4.0	3.5	5.1	4.6	4.6	4.1	4.1
75	40	23	20	15.4	19	30	40	40
258.4	258.2	258.6	257.1	257.1	258.0	258.0	258.2	258.4
4.9	3.9	3.5	3.4	5.2	4.7	4.6	4.6	4.6
40	23	20	14.5	20	18	30	40	40
257.7	258.7	257.1	257.2	257.4	257.9	258.0	258.2	258.4
4.9	3.9	3.5	3.4	5.2	4.7	4.6	4.6	4.6
40	23	20	14.5	20	18	30	40	40
257.7	258.7	257.1	257.2	257.4	257.9	258.0	258.2	258.4
					<u>262.56</u>			
					6.7			
					19			
					E.P.			
					<u>264.45</u>			

Catalina
Hill to Cañon

T.P. # ¹⁷⁰⁹ 428 265.09 1.75 260.81
Talbot to Catalina

Mon. west Catalina + SS 1.06 261.50
approx & Talbot.

3733 ²⁴ = N. line Talbot

INDEXED

3700

2771 Cont.

2771

2750

2749 ⁸ Rt. = Chr. P. pole # 1000

2725

262.56

Lt.

Rt.

Rt. 41

$\frac{1.7}{40}$	$\frac{1.6}{30}$	$\frac{1.9}{14}$	$\frac{2.0}{12}$	$\frac{1.9}{19}$	$\frac{1.9}{18}$	$\frac{1.8}{22}$	$\frac{1.4}{25}$	$\frac{1.3}{40}$
260.9	261.0	260.7	260.6	260.7	260.7	260.8	261.2	261.3
EP	EP	EP	EP	EP	EP	EP	EP	EP
$\frac{3.0}{40}$	$\frac{2.5}{27}$	$\frac{2.0}{13}$	$\frac{2.5}{13}$	$\frac{2.7}{16}$	$\frac{2.4}{25}$	$\frac{2.0}{40}$		
259.6	260.1	260.0	260.1	259.9	260.2	260.6		
EP	EP	EP	EP	EP	EP	EP		
$\frac{2.5}{49}$	$\frac{5.0}{43}$			$\frac{3.5}{100}$				
260.1	257.6			259.1				
EP	EP			EP				
$\frac{4.9}{40}$	$\frac{3.0}{23}$	$\frac{3.0}{15}$	$\frac{3.2}{15}$	$\frac{3.1}{6}$	$\frac{3.3}{17}$	$\frac{2.9}{30}$	$\frac{3.0}{40}$	
257.7	258.5	258.8	259.4	259.5	259.3	259.7	259.6	
EP	EP	EP	EP	EP	EP	EP	EP	
$\frac{2.9}{40}$	$\frac{2.2}{29}$	$\frac{5.1}{26}$	$\frac{5.1}{24.4}$	$\frac{4.3}{13}$	$\frac{3.8}{7}$	$\frac{3.6}{18}$	$\frac{3.2}{30}$	$\frac{3.2}{40}$
259.7	260.2	257.5	257.5	258.3	258.8	259.0	259.4	259.8
EP	EP	EP	EP	EP	EP	EP	EP	EP
$\frac{2.7}{40}$	$\frac{5.2}{22}$	$\frac{5.1}{12.3}$	$\frac{4.3}{10}$	$\frac{4.0}{10}$	$\frac{3.9}{18}$	$\frac{3.9}{30}$	$\frac{3.7}{40}$	
259.7	259.9	257.6	258.3	258.6	258.7	259.1	258.9	
EP	EP	EP	EP	EP	EP	EP	EP	

262.56

T.P. 2.73 256.72 11.10 253.99

1+50

1+00

0+50

0+40

0+25

= 0+00

3+73.7A S. line Talbot

3+71 28³ Rt. = P. pole # 998

3+53.7A = 4 Talbot.

265.09

Approx. 30' apart

Start Row 3' to 4' palms

255.9	256.0	256.4	255.6	255.7	255.8	255.8	256.0	257.9	258.4
9.3	9.1	9.7	9.5	9.4	9.3	9.3	9.1	9.2	6.7
40	30	27	18	9	3	10	17	28	40
EP			EP			EP			
258.1	258.2	257.6	257.4	257.5	257.7	257.7	257.9	260.3	260.7
7.0	6.9	7.5	7.7	7.6	7.4	7.4	7.2	4.8	4.4
40	30	28	19	10	4	11	17	28	40
			EP			EP			
259.8	259.9	259.3	259.2	259.5	259.5	259.7	261.7	262.2	262.2
5.3	5.2	5.7	5.9	5.6	5.6	5.4	3.4	2.9	2.9
40	32	27	18	5	10	18	28	40	40
			EP		EP	EP			
260.4	260.4	259.9	260.0	260.0	260.2	260.2	260.3	261.7	262.4
4.7	4.7	5.2	5.1	5.1	4.9	4.9	3.4	2.7	2.7
40	32	29	22	10	11	19	27	40	40
			EP						
260.3	260.8	260.7	260.6	260.7	260.7	260.7	261.7	262.2	262.2
4.8	4.3	4.4	4.3	4.4	4.4	4.4	3.4	2.9	2.9
40	29	15	13	4	11	25	40	40	40
EP									
260.9	261.2	260.9	260.8	260.8	260.9	260.9	261.2	261.2	261.5
4.2	3.9	4.2	4.3	4.28	4.1	3.9	3.7	3.6	3.6
40	30	15	13	13	13	17	25	40	40
					EP				

4+00

3+88 = Start 20' wide good cond. A.C. Pav.

3+50

3+00

2+50

2+00

40	30	27	18	7	7	19	19	28	40
2.7	2.1	3.1	3.0	2.8	2.7	2.7	2.7	1.4	0.9
254.0	254.1	253.5	253.7	253.9	253.9	254.0	254.0	255.3	255.8
4.5	4.2	4.7	4.6	4.9	4.3	4.5	4.4	3.9	3.3
252.2	252.5	252.0	252.1	252.3	252.4	252.2	252.3	253.4	253.4
40	28	26	18	8	11	11	20	28	40
5.9	5.4	6.0	5.8	5.7	5.9	6.1	5.5	5.1	5.6
250.9	251.3	251.7	251.9	251.0	250.8	250.6	251.2	251.6	250.1
6.5	6.6	6.9	7.0	6.9	6.8	6.9	7.2	6.7	6.6
40	27	23	18	9	6	11	20	30	40
250.2	250.1	249.8	249.7	249.8	249.9	249.8	249.5	250.0	250.1
40	31	22	13	10.5	7.57	7.5	11	23	29
249.9	249.8	249.1	249.0	249.0	249.4	249.0	249.0	249.6	249.9
7.96	10.4	7.96	7.96	7.96	7.87	7.98	7.96	7.96	7.96
248.76	248.89	248.74	248.74	248.89	248.89	248.74	248.74	248.89	248.89

256.72

256.72

7+50

2. POSSIBLY 7+37.4
culvert - See P. 57

7+29.3 Int. 36" Corr. Iron Culvert. $\Delta = 90^\circ$

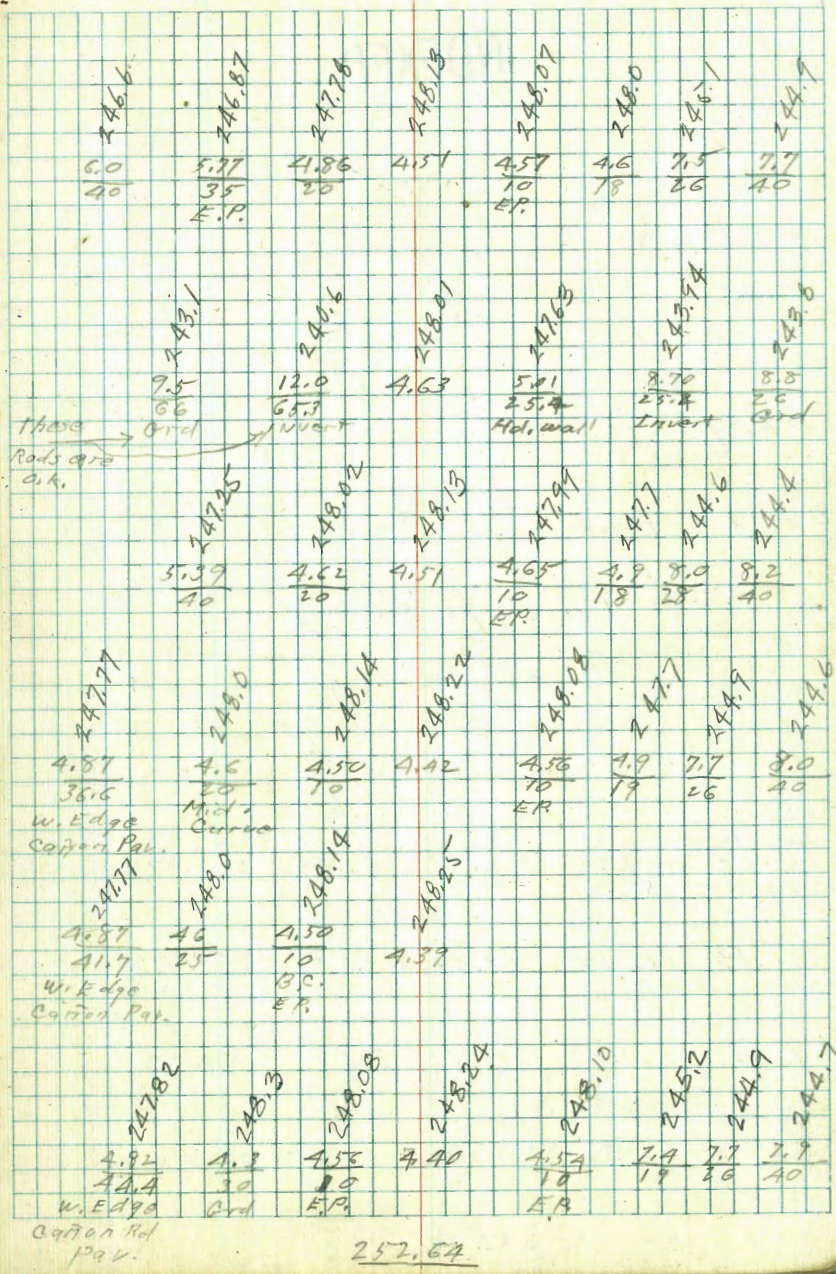
7+00

6+73

6+58 Paving into W. Edge Cañon paving
B.C. 15' Rad. from E. Edge Catalina

6+50

252.64



252.64

INDEXED

4+61⁸⁶ Int. Wk. Cañon Saline TalbotT.P. 4.68 239.99 12.34 235.31

4+50

4+00

3+93 18° Rk. = P. pole # 3725

3+50

3+25

T.P. 0.56 247.65 12.90 247.09

3+00

259.99

239.8	240.0	240.0	240.0	239.0	234.3	234.7	235.2	235.3	236.2	236.9
0.2	0.0	0.0	0.0	0.0	5.7	5.3	1.8	4.7	3.8	3.1
30	30	19	15	11	EP	237.99	EP	17	20	30
240.2	240.6	240.6	239.8	235.0	235.4	235.6	235.6	236.6	237.6	
1.4	1.0	1.0	1.2	1.6	1.2	1.0	1.0	1.0	1.0	
30	22	14	14	EP	EP	EP	18	20	30	
241.0	244.2	244.2	239.8	239.6	240.0	240.0	239.8	240.2	241.2	241.5
3.6	3.5	3.5	1.8	1.7	1.6	1.6	1.7	1.8	1.5	1.2
30	20	17	15	EP	EP	EP	EP	18	20	30
247.2	247.2	246.2	244.6	244.6	245.0	245.0	244.6	244.4	245.8	245.8
0.4	0.5	1.5	3.1	3.0	2.7	2.6	2.7	3.2	1.9	1.9
30	20	15	13	EP	7	7	EP	18	19	30
248.8	247.6	246.4	246.6	247.0	247.0	246.4	246.2	247.6	247.4	
1.2	0.0	1.3	1.0	0.6	0.6	1.3	1.4	0.1	0.2	
20	15	14	12	EP	7	EP	18	20	30	
250.1	250.2	250.2	248.3	248.8	248.9	248.3	248.2	249.3	249.4	249.1
9.8	9.8	9.8	11.7	11.2	11.1	11.7	11.8	10.7	10.0	11.9
30	20	19	13	8	EP	14	17	19	20	30

INDEXED

01-19 B.M.
Santa Barb
+ Catalina 3.78 260.64 260.65 0.01

± Mort. Talbot +
Catalina 3.82 260.80

T.P. 11.78 264.62 0.18 252.84

T.P. 13.09 253.02 0.06 239.93

on ± Cañon

5+37²⁷ = Tang. Line Cañon taken

taken on edge pav.

5+23 = W. Edge Cañon Road pav.

4+81²⁸ = W. Cañon taken at 90° to
Talbot

239.99

227.01	229.99	231.99	232.99	234.98	235.93	238.94
12.98	10.00	8.50	7.04	5.57	4.06	1.15
100	50	25	spike	25	50	100
226.68	229.99	231.99	233.98	234.73	236.82	239.27
13.31	10.15	8.58	6.91	5.26	3.77	0.72
100	50	25		25	50	100
237.6	239.99	232.99	232.99	233.98	235.94	236.2
0.9	0.1	3.1	1.1	6.2	5.2	4.6
70	20	15	13	62	14	20
		57			1.14	30
					on Burm Pav	on Burm Pav
					Dil pav	Cañon rd

239.99

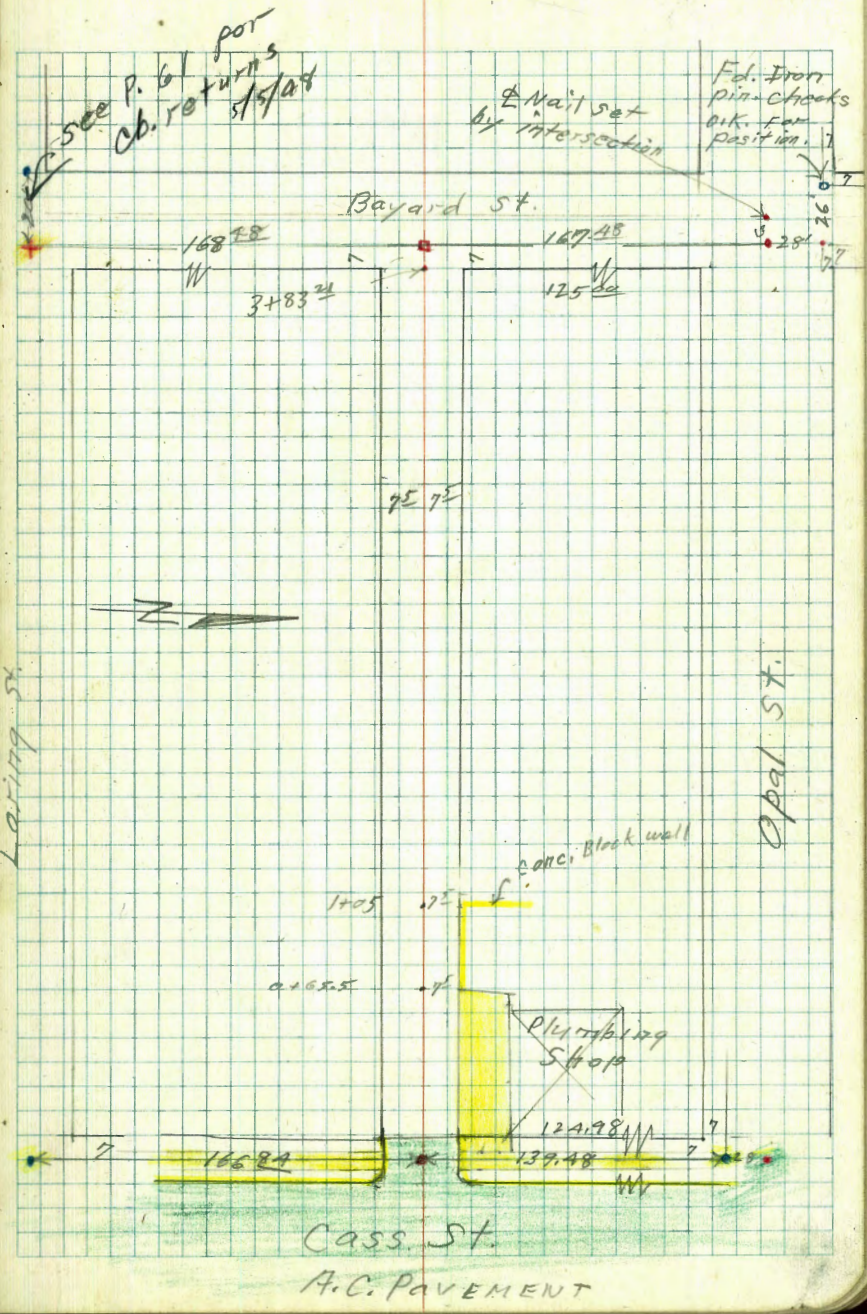
Alley B14 Ocean Front Add.
to Pacific Beach

Sommer Meyer
McCoy &
W. Moore
Sherman

4-14-48
W.O.# 25001

- = Rd. Lead + tack.
- = Set. Nail
- X = Out Cross
- = Set 2x2 Hub + Disk

INDEXED
APR 19 1948



Alley BIK A
Ocean Front Add. to Pacific Beach

INDEXED

0+30

0+00 Cont.

0

0+00 End A.C. Pav.

with curb.

0-04¹ 8' RT = Start Conc. slab level

0-11 7⁵ RT + 7⁵ LT = E.C. 3' Rad. Alley Cb. Return.

0-14 = W. Cb. line Cass. 10⁵ RT + 10⁵ LT = B.C. 3' Rad. alley return.

0-14¹ Wly gutter Cass on Pav.

Loringt Cass 10.95 101.22 - 90.27 SE.B.P.

94.9	96.2	96.4	96.7	96.76	97.29	98.25
4.3	5.0	4.8	4.5	4.46	3.93	3.66
75	75		75	75	75	75
				Core.	Core.	
				Edge	Core	Line of Bly.
			97.14	97.30	98.08	
			4.08	3.83	3.14	
			75	75	75	
			Edge	Core	Line of Bly.	
			96.3	96.96	96.74	97.11
4.9	4.26	4.48	4.11	3.86		
75	75		75	75		
End Cb.	Gutter		Gutter	End Cb.		
	+0.17		+0.17			
			96.80	96.74	97.50	
4.38	4.92	4.70	4.45	3.92		
75	75		75	75		
CB	Gutter		Gutter	CB		
			97.26	97.43	98.36	99.71
6.96	5.58	4.35	3.79	2.86	1.95	
100	50	100	100	50	100	
			96.60	96.65	97.72	99.10
7.58	6.23	4.96	4.77	4.57	3.50	2.12
100	50	75		75	50	100

101.22

INDXFED

1+66 7² Lt. End lath + start board Fence

1+50 7⁵ Lt. = start lath Fence.

1+13 8⁵ Lt. = End lath Fence.

1+05 7⁵ Rt. = End conc. block wall. ^{ground.} 7² High above
8² Lt. = start lath Fence - 7² Rt. = Face Footing
8⁵ Lt. = End. N+S. board Fence.

1+04 7² Lt. = Back P. pole # P.A. 968

1+00

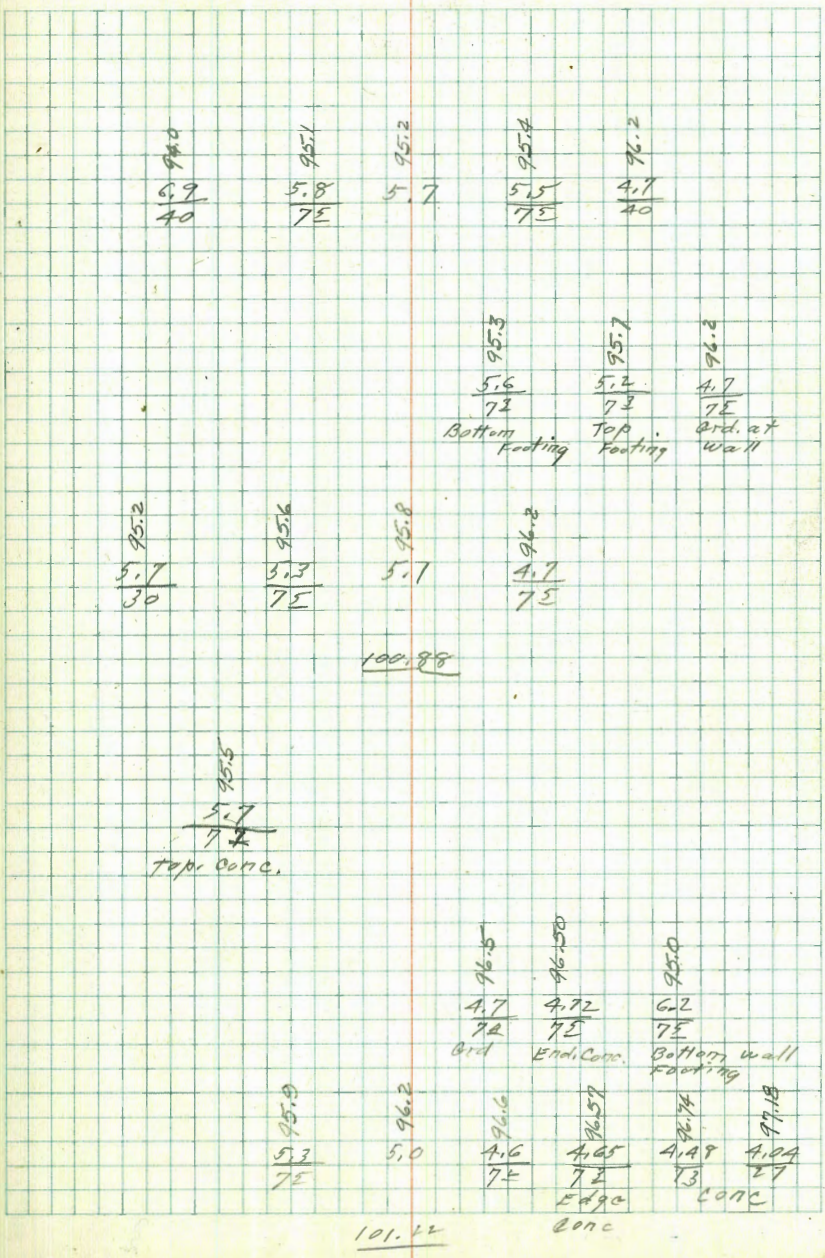
T.P. 5.08 100.88 5.42 95.80

0+7A 8² Lt. =
post. also N. End. N+S. board fence
7² Lt. = Face Conc. seat for fence

0+65⁵ 8" wide conc block wall. ^{above ground.} 6² High
7⁵ Rt. = End conc. slab. also = start

0+50

101.22



101.42

3+83 8²Lt. = End AXA post + wire fences

3+50

start. AXA post + wire fence.

3+28^E 8² Lt. = End picket fence. also =

3+14^E 8⁴ Lt. = Back side P. pole J.P.A. 920

3+00 8⁴ Lt. = Fence line

2+60

8² Lt. = Start picket fence.

2+50 8² Lt. = End stucco Bldg

2+3.4 work stop Bldg. on Rock + Conc. Foundation.
8² Lt. = End board fence + start stucco

2+00

10² Lt. = Back side P. pole P.A. 948.
7² Lt. = Fence line

100.88

91.9	92.8	93.3	93.7	93.8	94.5
7.0	8.1	7.6	7.2	7.0	6.4
40	9	75		75	40

92.3	93.2	93.6	93.6	93.8	94.7
8.6	7.7	7.3	7.3	7.1	6.2
40	70	75		75	40

92.7	93.9	94.7	94.8	95.2
8.2	7.0	6.2	6.1	5.7
40	75		75	40

95.3	95.0	95.2	95.2	95.3
7.6	5.9	5.7	5.7	5.6
8.2	8.5	7.5		7.5

Crk +
Bottom Foundation

93.9	95.4	95.2	95.0	95.2
7.5	5.8	5.7	5.9	5.7
8.2	8.4	7.5		7.5

Bottom
Foundation

93.5	94.3	94.3	94.5	95.8
7.4	6.6	6.6	6.4	5.1
40	75		75	40

100.88

Orig B.N. P. 52 11.07 $+ 0.01$
~~90.27~~
 90.28

Cass + Opal.

S.W. 7' Mt. 0.38 101.35 10.14 100.97 B.M. #1

S.E. B.P. Cass + 55 1.06 110.05

T.P. 12.09 116.11 1.86 99.02

T.P. $\frac{1}{2}$ Dist ~~8.51~~ S.S. 8.51 92.37 B.M. #2
 $8+90^{\circ}$

$4+03^{\circ}$ \neq Bayard.

3+96

$3+83^{\circ}$ = Ely. line Bayard

100+88

90.2	90.9	92.4	92.7	92.9	93.4	93.8
10.7	10.0	8.5	8.2	8.0	7.5	7.1
100	50	75		72	50	100

92.7	93.2	93.8
8.0	7.7	7.6
75		75

92.4	92.9	93.3	93.4	93.4	93.8
8.5	8.0	7.5	7.5	7.5	7.1
40	9	75		75	40

100+88

OPAL St.

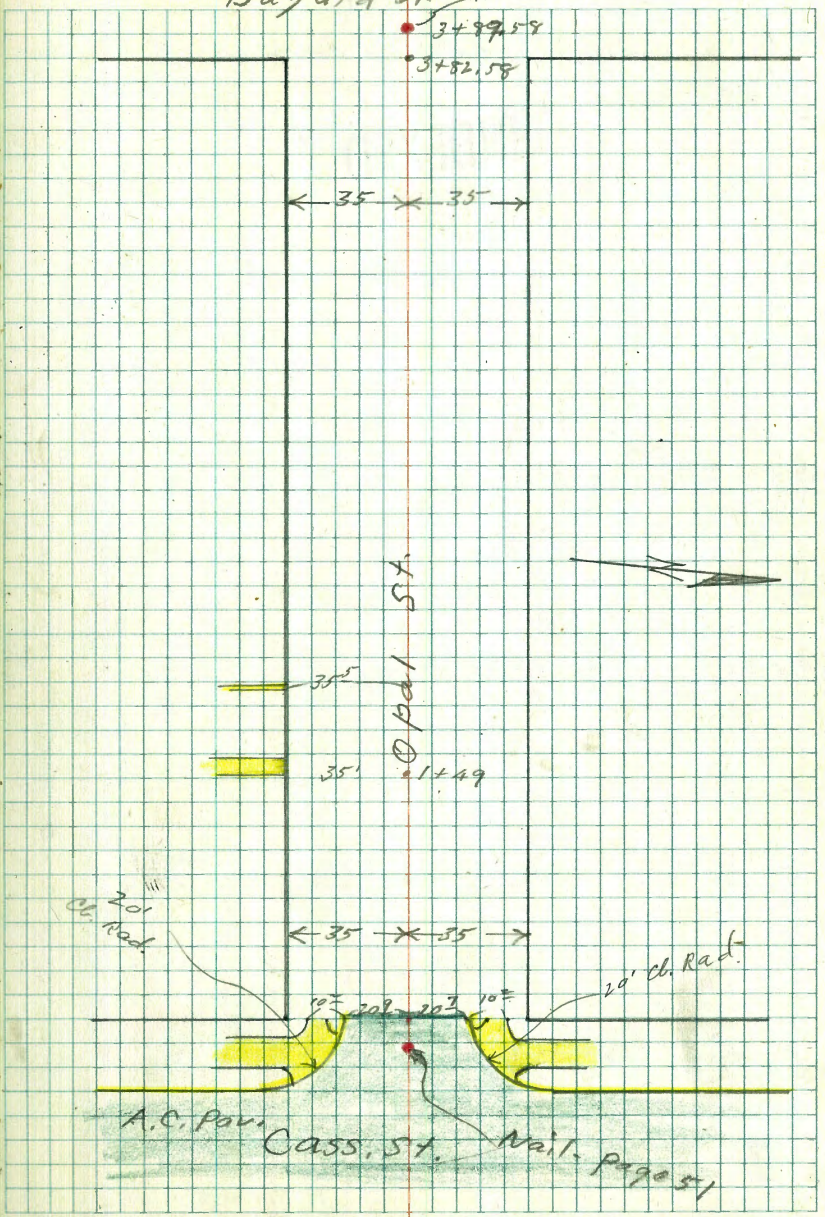
Cass to Bayard

Sommernayer
McCoy X
W Moore
Sherman

4-14-48
W.O. # 80100

INDEXED
APR 19 1948

Bayard St. Nail Page 51



INDEXED

2+50

2+00

1+68^E 35^E = ϕ N.+S. Conc. wall, 0.2 wide.

1+50

1+49 35' Lt. = ϕ 3rd Conc. walk

1+00

104.04

970	976	98.1	98.7	98.9	98.7	99.2	99.4	100.5
$\frac{7.0}{75}$	$\frac{6.4}{35}$	$\frac{5.9}{20}$	$\frac{5.3}{11}$	5.1	$\frac{5.3}{16}$	$\frac{4.8}{18}$	$\frac{4.6}{35}$	$\frac{3.5}{75}$

98.0	98.3	99.2	99.4	99.3	99.9	100.7
$\frac{6.0}{35}$	$\frac{5.7}{20}$	$\frac{4.8}{11}$	4.6	$\frac{4.7}{19}$	$\frac{4.1}{19}$	$\frac{3.3}{35}$

98.03	98.04	98.6
$\frac{5.11}{50}$	$\frac{5.00}{35.5}$	$\frac{5.4}{35.5}$
top of wall	top	Base of wall + ground.

99.0	99.3	100.1	100.1	100.9	101.3
$\frac{5.0}{35}$	$\frac{4.7}{20}$	3.9	$\frac{3.9}{17}$	$\frac{3.1}{19}$	$\frac{2.7}{35}$

98.89	98.19
$\frac{5.15}{55}$	$\frac{4.85}{35}$
on walk	End walk

96.6	99.5	100.1	100.7	101.2	102.5
$\frac{5.4}{75}$	$\frac{4.5}{35}$	$\frac{3.9}{16}$	3.3	$\frac{3.3}{18}$	$\frac{2.8}{20}$
					$\frac{1.5}{35}$

104.04

INDEXED

B.M.#2 Page 55

11.65

92.39

0.02

(92.37)

4+02E & Bayard.

$$\begin{array}{r} 92.5 \\ 10.5 \\ \hline 100 \end{array}$$

$$\begin{array}{r} 94.1 \\ 9.9 \\ \hline 95 \end{array}$$

$$\begin{array}{r} 94.4 \\ 9.6 \\ \hline 90 \end{array}$$

$$\begin{array}{r} 95.0 \\ 9.0 \\ \hline 20 \end{array}$$

$$\begin{array}{r} 95.3 \\ 8.7 \\ \hline 20 \end{array}$$

$$\begin{array}{r} 95.5 \\ 8.5 \\ \hline 35 \end{array}$$

$$\begin{array}{r} 97.0 \\ 7.0 \\ \hline 100 \end{array}$$
3+82⁵⁸ E. Lino Bayard
$$\begin{array}{r} 94.6 \\ 8.4 \\ \hline 35 \end{array}$$

$$\begin{array}{r} 95.0 \\ 9.0 \\ \hline 20 \end{array}$$

$$\begin{array}{r} 95.0 \\ 9.0 \\ \hline 11 \end{array}$$

$$\begin{array}{r} 95.3 \\ 8.7 \\ \hline 20 \end{array}$$

$$\begin{array}{r} 95.4 \\ 8.6 \\ \hline 20 \end{array}$$

$$\begin{array}{r} 96.1 \\ 9.9 \\ \hline 35 \end{array}$$
3+74 3A³ Rt. = 4' Conc. walk.
$$\begin{array}{r} 95.7 \\ 8.3 \\ \hline 35 \end{array}$$

$$\begin{array}{r} 95.6 \\ 8.4 \\ \hline 20 \end{array}$$

$$\begin{array}{r} 95.9 \\ 8.1 \\ \hline 11 \end{array}$$

$$\begin{array}{r} 96.2 \\ 7.8 \\ \hline 20 \end{array}$$

$$\begin{array}{r} 96.3 \\ 7.9 \\ \hline 20 \end{array}$$

$$\begin{array}{r} 97.3 \\ 6.7 \\ \hline 35 \end{array}$$

$$\begin{array}{r} 96.83 \\ 7.21 \\ 34.9 \\ \hline \text{walk} \end{array}$$

$$\begin{array}{r} 97.04 \\ 7.04 \\ 40 \\ \hline \text{on walk} \end{array}$$

3+50

3+49 16⁸ Rt. = Ctr. Water Meter Box

3+00

$$\begin{array}{r} 96.8 \\ 7.2 \\ \hline 35 \end{array}$$

$$\begin{array}{r} 96.7 \\ 7.1 \\ \hline 19 \end{array}$$

$$\begin{array}{r} 97.8 \\ 6.2 \\ \hline 15 \end{array}$$

$$\begin{array}{r} 97.4 \\ 6.6 \\ \hline 11 \end{array}$$

$$\begin{array}{r} 97.8 \\ 6.2 \\ \hline 20 \end{array}$$

$$\begin{array}{r} 97.5 \\ 6.5 \\ \hline 16 \end{array}$$

$$\begin{array}{r} 98.5 \\ 5.5 \\ \hline 30 \end{array}$$

$$\begin{array}{r} 98.5 \\ 5.5 \\ \hline 35 \end{array}$$
104.04104.04

Rods around N.E. Return - Cass
 & Loring - 3.14 around - 4 parts - 7.8 each
 20' Rad. Ret.

INDEXED

B.M.	6.74	97.01	90.27	SE BP Loring + Cass
Req. S. end - C.E. of E.L. Cass	5.41	91.60	T - Top	
	5.75	91.26	q - Gut	
7.8' N.	5.32	91.69	T	
	5.74	91.37	q	
" = E	5.18	91.83	T	
	5.60	91.41	q	
" = 3/4	4.91	92.10	T	
	5.37	91.64	q	
7.8' end - EC = UL Loring	4.69	92.32	T	
	5.16	91.85	q	

N.W. Ret. - 3.14 around - 4 parts - 7.8 - each

Req on RC = N. line Loring	4.47	92.54	T
20' Rad.	5.10	91.91	q
7.8' 1/4	5.01	92.00	T
	5.52	91.49	q
" = 1/2	5.47	91.54	T
	5.96	91.05	q
" = 3/4	5.45	91.16	T
	6.32	90.69	q

4-29-79
 7.0

N.W. Ret. - Cont.

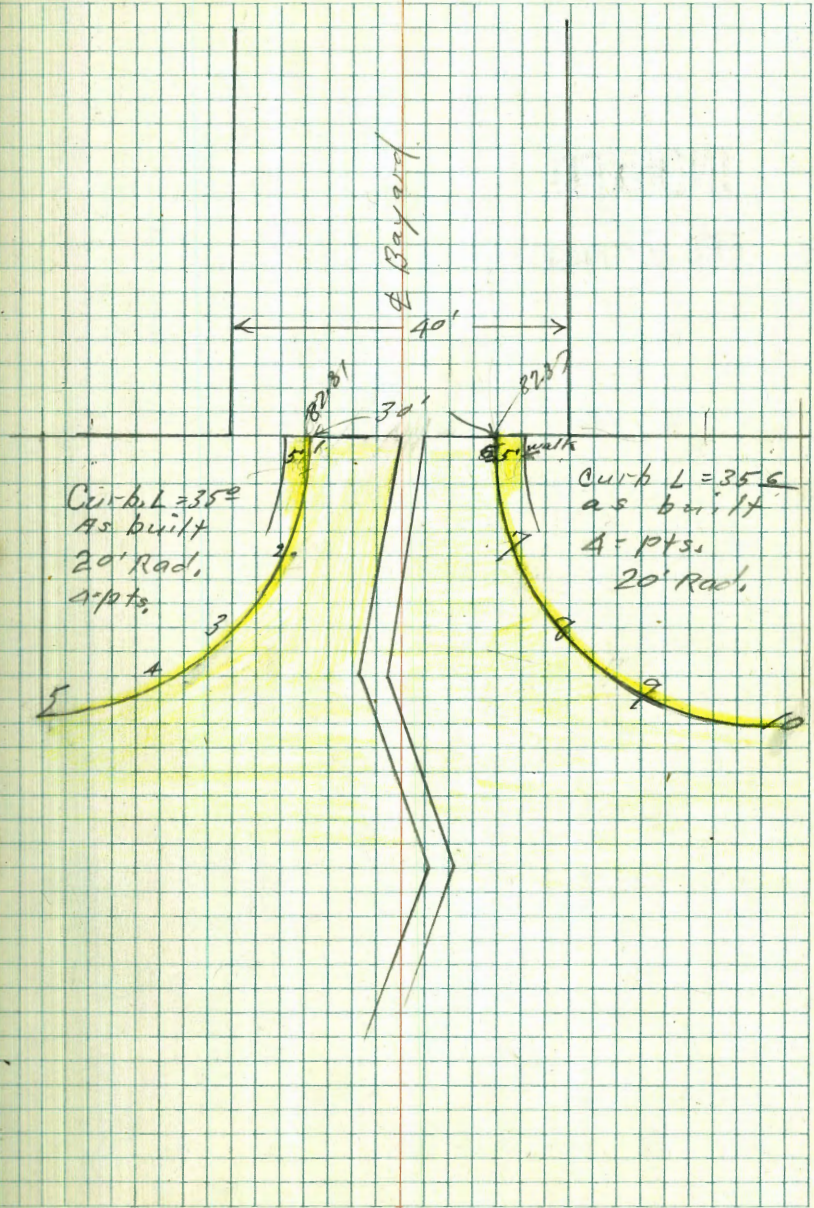
7.8' E.C. = C.W. of W.L. Cass	6.15
	6.60

Curb Returns
Bayard & Loring

Sommermeier
5-5-48

INDEXED
WK
FEB 23 1949

87.41	86.59	87.41	86.60	87.38	86.65
$\frac{7.40}{8}$	$\frac{8.22}{8}$	$\frac{7.40}{8}$	$\frac{8.21}{7}$	$\frac{7.43}{10}$	$\frac{8.16}{10}$
Cl.	Cont.	Cl.	Cont.	Cl.	Cont.
86.77	86.07	87.23	87.37	86.67	87.37
$\frac{8.04}{5}$	$\frac{8.74}{5}$	$\frac{7.58}{4}$	$\frac{7.44}{6}$	$\frac{8.14}{6}$	$\frac{7.44}{7}$
Cl.	Cont.	Bayard N. Line Loring	Cl.	Cont.	Cl.
87.31	86.65	87.20	86.67	87.12	86.34
$\frac{7.50}{1}$	$\frac{8.16}{1}$	$\frac{7.61}{2}$	$\frac{8.34}{2}$	$\frac{7.69}{3}$	$\frac{8.47}{3}$
Cl.	Cont.	Cl.	Cont.	Cl.	Cont.
86.44	86.18				
$\frac{7.87}{4}$	$\frac{8.63}{4}$				
Cl.	Cont.				
BM.#2 P.55	2.44	<u>9481</u>		9237	



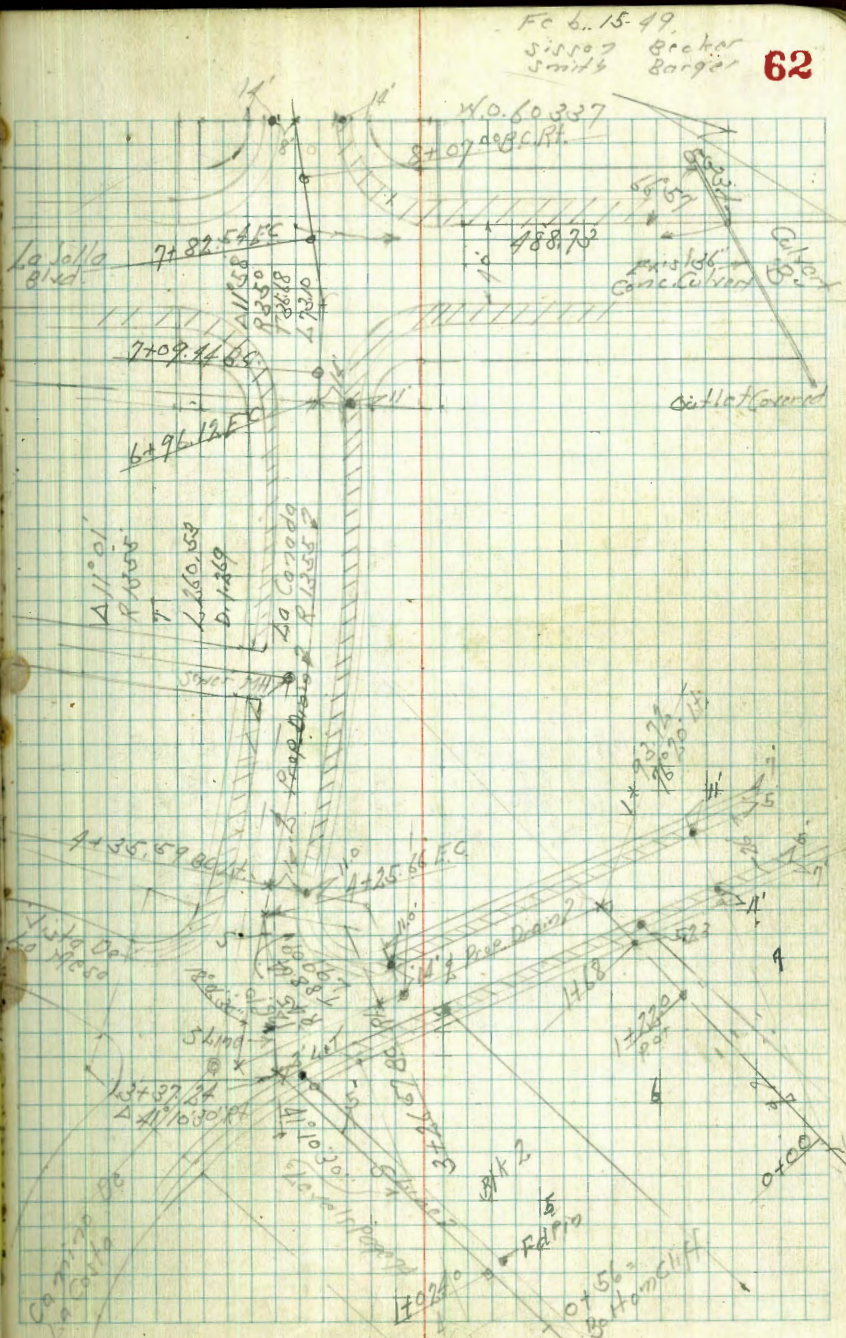
Proposed Storm Drain La Canada
Pacific Ocean to Beaumont Ave

Levels page 64-73

INDEXED
WK
FEB 23 1949

Indicators

- Lead + tack Found •
- x Chisel Cross Set x
- o Conc Nail o



Feb. 15 49
Sisco Becker
Smith Berger **62**

TP 11.39 54.84 126 43.45

INDEXED

+85 = N. Fly Heavy Brush

TP 10.99 44.71 0.57 33.72

+47 = S.W. Heavy Brush Not allowed to cut

+28 = P.L. 6' Cast Iron Over head Sander

+06

0 ± 0 = Bottom Cliff

0.18 34.29 12.85 34.11

1.65 46.96 14.85 45.31

4.02 57.16 1.92 52.14

1.19 58.06 12.54 56.87

5.30 69.41 14.81 66.11

BM 1.14 77.92 76.78

NERP
La Canada
La Jolla Blvd

LT

PT " 64

AA.3 41.2 36.6 43.1 44.5
2.4 3.15 8.1 1.4 0.2
15 10

Bottom
Sands

44.71

38.3 34.3 30.2 33.8
+4.0 0.0 4.6 0.5
10 4.0 4.6 Bottom
4.6

34.1 30.1 26.9 38.49 28.9 32.5
0.2 3.1 7.4 +4.30 5.4 2.0
2.8 5.8 10.0 8.3 10
Bottom
Sands
Top of Cl.
Comp. Pl.

20.4 21.5 27.7 36.3
13.4 13.0 6.5 +2.0
14.11 Bottom
7.5
10

00.3
39.0

34.29

706 12 ft. of 16 Solid Conc. Drive

270

+9372 Δ 76.20 ft.

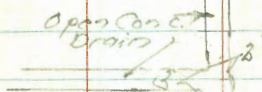
+80.5 = Curb Line of Camino de La Costa

+74 5.6 ft of 2" Power Pole # P5930
End of Walk

+58

TP 889 12.85 0.88 53.96

+46



1+12

57.84

57.87	57.83	57.39	58.34	58.78
498	502	546	4.19	4.32
18	18	18		13.5
Edge of Walk	cb	End		120 ft

58.29
4.52

57.31	57.72
5.54	6.12
0.26	0.26
cb	cb

58.5	57.9	56.63	57.7	56.6
1.3	1.9	6.22	5.1	6.2
1.5	5		5	10
		62.85		

Open Conc. Drain

53.8	53.47	52.19	53.9
1.0	1.43	1.65	0.9
15	10	10	10
Open Conc. Drain	Open Conc. Drain	Open Conc. Drain	

52.6	51.8	47.1	46.25	47.2	48.6
2.2	3.0	7.7	8.57	7.0	6.3
1.5	1.0		5.5	1.0	1.5
			Open Conc. Drain	Open Conc. Drain	

57.84

4 + 00.88

+ 76.11

+ 51.34

+ 46.6 20% of 1/2 = 1/4 Drive
TP 6.35 68.73 0.47 62.38

+ 26.57 B.C.R.H.

3 * 0

+ 56.5 13 1/2 of 1/2 = 1/4 Drive

2 + 50

62.85

62.15 63.31 62.23 62.17 62.07
460 542 650 600 586
30 21.6 16.5 16.5 21.6
Gut. Edg. Wall

63.73 63.74 62.07 62.51 62.64
500 532 686 622 609
20 18.5 18.5 22.5 22.5
Gut. Edg. Wall

63.10 62.90 61.84 62.27 62.42
512 577 687 646 631
22.8 17.8 17.8 22.8
Gut. Edg. Wall

62.21 62.71 62.01 61.49 62.04 62.27
0.61 0.14 0.84 1.16 0.81 0.63
13 13 17 14 19.3
Gut. Edg. Wall

60.93 60.97 60.99 61.03 60.96 61.28
1.97 1.98 2.16 1.82 1.99 1.57
18 13 13 13 13

58.80 58.30 59.14 59.14 59.44
3.97 4.47 3.66 3.71 3.41
18 13 13 13 13
Edg. Wall

62.83

+75 10' Rt of $\frac{1}{2}$ - $\frac{1}{2}$ 19' Conc. Drive

+50

+42.7 = Same as Man Hole on Lt.

+20 10' Rt of $\frac{1}{2}$ - $\frac{1}{2}$ 20' Conc. Drive

5+0

+77 20' Lt. of $\frac{1}{2}$ - $\frac{1}{2}$ Conc. Drive

+50

+35.59 - B.C. 16.1 Rt. of $\frac{1}{2}$ - $\frac{1}{2}$ Fire Hyd.

B.M.

325

65.48

Top Fire
Hyd SE
40 Canada
Camino de
La Costa

A+2566

64.25

64.61

64.29

64.77

4.48

4.12

4.44

3.96

20' Conc. Drive

10' Gut

10' CB

60.20

64.43

8.53

4.30

8.8

8.8

Flow

Same

Line

of

11/11/50

11/11/50

63.86

63.75

63.84

63.77

63.90

1.87

5.88

1.89

5.24

1.83

20

20

10

10

10

63.84

63.39

63.21

62.91

63.28

63.34

4.91

5.34

5.52

5.22

5.15

5.37

20

20

10

10

10

15

Flow
11/11/50

63.99

63.77

63.36

62.62

63.98

63.20

4.74

5.24

5.27

6.11

5.65

5.52

20

20

10

10

10

15

64.08

63.64

63.37

62.99

62.92

63.00

4.65

5.09

5.36

6.24

5.81

5.67

20

20

20

12

12

17

CB

Gut

CB

Gut

CB

Flow

11/11/50

+2685 = WCB Line of Florida

9 + 06 = CB BC Pt. Lt.

+62.69 FC

TP 11.53 90.77 0.50 79.24

+36.3 132' R/O 1/2 Gate Valve

+34.84 = Curve

8 + 07.00 = BC Pt.

7 + 98.4

8.77

7974

3.00

76.74

NEBP
La Jolla
Leica
76.78

79.74

84.33 6.41 26.5-C	83.87 6.00 21.5 Gut	83.51 7.20 6.7	83.17 7.00	83.71 7.06 23.8	84.34 6.48 23.4 Gut	84.84 5.93 38.2-CB FC
-------------------------	------------------------------	----------------------	---------------	-----------------------	------------------------------	-----------------------------

83.21 7.50 6.6-CB	82.65 8.12 6.6-Gut	82.87 7.90	82.97 7.90 23.3-Gut	83.38 7.99 23.3-CB
-------------------------	--------------------------	---------------	---------------------------	--------------------------

79.90 10.87 6.2 Gut	79.24 11.52 6.7-Gut	79.41 11.30	79.36 11.41 23.2-Gut	79.91 10.86 23.3-CB
------------------------------	---------------------------	----------------	----------------------------	---------------------------

90.77

77.70 2.04 7.7-CB	77.25 2.49 7.7-Gut	77.58 2.16	77.51 2.43 2.2-Gut	77.18 1.98 6.2-CB FC
-------------------------	--------------------------	---------------	--------------------------	----------------------------

77.27 2.47 7.8-CB	76.94 2.90 7.8-Gut	77.23 2.51	76.84 2.90 7.7-Gut	77.14 2.40 7.7-CB
-------------------------	--------------------------	---------------	--------------------------	-------------------------

77.06 2.48 2.7-CB	76.73 3.01 2.7-Gut	76.96 2.98	76.73 3.01 3.2-Gut	76.98 2.78 3.2-CB
-------------------------	--------------------------	---------------	--------------------------	-------------------------

LT

RT

+41

102.93 286 135 Fly	101.30 351 135 Fly	101.43 346	101.23 316 279 Fly	101.84 305 279 Fly
-----------------------------	-----------------------------	---------------	-----------------------------	-----------------------------

+24.78

100.91 398 27 Fly	100.28 461 24 Fly	100.50 439	100.35 454 224 Fly	100.89 400 224 Fly
----------------------------	----------------------------	---------------	-----------------------------	-----------------------------

12.10

99.27 542 7 Fly	98.66 623 7 Fly	98.81 608	98.44 645 232 Fly	97.06 587 222 Fly
--------------------------	--------------------------	--------------	----------------------------	----------------------------

11.50

95.69 920 7 Fly	95.03 986 7 Fly	95.21 968 104.80	94.83 1006 222 Fly	95.39 950 222 Fly
--------------------------	--------------------------	------------------------	-----------------------------	----------------------------

11.92 104.89 10.43 92.97 ✓
 LT RT
 16+99.7

+99.70 = Carb 1/2 lot RT + LT

95.5
79
82

92.22 1018 12 Fly	89.87 1358 7 Fly	93.15 1035 7 Fly	92.55 1385 7 Fly	92.11 1069	92.00 1170 232 Fly	92.99 1081 222 Fly	90.05 1325 222 Fly
----------------------------	---------------------------	---------------------------	---------------------------	---------------	-----------------------------	-----------------------------	-----------------------------

10+61.6 = Fly Conc + 1/4 HC Paving

91.8
116
35

92.1 113 22 Fly	89.56 1384 9 Fly	92.85 1055 9 Fly	92.91 1049 9 Fly	92.85 1057	92.79 1051 232 Fly	92.78 1062 232 Fly	87.96 1324 232 Fly
--------------------------	---------------------------	---------------------------	---------------------------	---------------	-----------------------------	-----------------------------	-----------------------------

103.40

103.40

23 11

+50

BM

11.06 105.74

NEART
to Canada
4800m

+13.5

1340

TP 12.00 116.80[✓] 109 103.80[✓]

+70.1

+65 3.9' Pl of $\frac{1}{2}$ = $\frac{1}{2}$ 2' x 2' S.D. Gas Flc MH.

+61.2 = 4' Exp 7' x 5' Bell System Man Hole

+59 6' ht of $\frac{1}{2}$ = $\frac{1}{2}$ 3' Gas Flc Man Hole.

12+57

104.89

4.

2

PT 72

108.44	107.83	107.98	108.00	107.74	108.36
8.36	8.97	8.82	8.80	9.06	8.41
5.05	5.94		5	25.2	25.05
				6.4	

105.72	104.94	105.23	105.35	105.0	105.49
11.08	11.86	11.57	11.25	11.80	11.31
2.5	6.5		1.5	24.7	24.7
	6.5				

105.05	104.20	104.53	104.57	104.14	104.75
11.75	12.09	12.27	12.32	12.66	12.55
10.56	7.4		1.5	21.5	21.05
				21.5	

102.97	102.79	102.97	103.03	102.76
1.92	2.10	1.92	1.86	2.13
1.0	3.0		3.0	5.0

95.87	102.44
9.52	2.45
0.1 = Bottom	6.7 = Rim
10.8	

102.83	102.22	102.22	102.31	102.37	102.29	102.73	102.85
2.06	2.67	2.67	2.58	2.52	2.0	2.06	2.04
12.16	1.5	2.0		2.0	5.0	5.75	5.75
							5.75

104.89

B.M.

4.13

76.79

NE BR
La Casade
& La Jolla
76.28

TP

6.03

80.92

4.16

74.89

Culvert B" South of La Casade on La Jolla Blvd

Culvert H"

TP

1.69

79.05

12.75

77.36

Culvert H Carbide lot S of La Casade on Florida

4.99

90.11

9.57

85.12

1.90

94.69

12.09

92.79

TP

0.58

104.83

12.55

104.25

14+0

11680

Lt.

St

PK 73

62.02

170.3

1/2 mi. Florida
36 Con. Pipe

72.01

7.04

1/2 Florida
Guthrie St

79.05

73.64

16.47

79.31

10.88

Florida
Box

81.88

8.23

Orange
Box

83.62

6.49

TOP
Curb

10' opening

90.11

112.81

3.97

15.06

112.13

4.07

1.55
Box

111.20

4.60

112.56

4.24

1.5

112.24

4.56

2.84

Florida
Curb

11680

Levels Proposed Storm Drain S Line
 Lot 4 Block 2 La Solla Hermosa

Sketch Page 62

TP 11.58 56.32 0.84 44.74

+17.5

INDEXED

WIK,
 AUG 2 1949

+10.5

+9.2

+8.3

+7.0

+5.9

0+56 = Bottom of Cliff

TP 303 45.58 1292 42.55

TP 099 55.47 1273 54.48

BM 173 67.61 65.48

03 W/S Rm
 W/H
 Rt 17 175
 1/2 TOP FIVE
 10 Corrado
 7 Corrado
 20 Corrado
 100 Corrado

LT

March 19 49
 F. S. Smith
 W. Smith Rt
 W. Becker
 W. Berger

74

42.1
 31.5
 10

42.2
 37.9

41.55
 32.05
 5
 07 Rm
 102 Rm

35.19
 10.39
 5 = FIVE

40.4
 35.2
 10

41.0
 46

41.56
 40.2
 8
 27 Cone
 5 Drain

37.6
 8.0
 10

39.0
 66

35.2
 10.4
 15
 4 Cone
 Drain

29.2
 16.1
 12
 1/2 W/S Cone
 Open Drain

28.9
 16.7
 10

28.9
 16.7

21.9
 23.7
 10

17.7
 27.9

74.3
 19.9

45.88

+75

61.8
7.7
1061.7
7.861.9
5.1
10

59.87

8.67

15

N.H. FC
Dra. 1/2

+50

59.7
6.8
1057.6
6.958.7
7.8
9

56.83

8.83

15

N.H. FC
Dra. 1/2

+25

6' RT of $\frac{1}{2}$ - $\frac{1}{2}$ 2 1/4 2.5 Hedge

2+15

2.5 RT of $\frac{1}{2}$ - $\frac{1}{2}$ Scrub55.6
10.9
1055.4
11.154.42
12.77

17.2

15

10

15

15

15

15

15

15

15

15

15

15

15

15

15

15

15

15

15

15

15

15

15

15

15

15

15

15

15

15

15

15

15

15

TP 10.98 66.54 0.76 55.56

6.8 RT of $\frac{1}{2}$ = 11.2 RT of Core + Brick Wall

+09

1.5 RT of $\frac{1}{2}$ = $\frac{1}{2}$ Scrub

2+02

2.5 RT of $\frac{1}{2}$ = $\frac{1}{2}$ 8' Tree 15' Spread

+89

52.7
5.6
1051.5
7.851.50
2.77
6.651.35
4.17
8.6

15

15

15

15

15

15

15

15

15

15

15

15

15

15

15

15

15

15

15

15

15

15

15

15

15

15

+58

47.2
9.1
1548.0
8.3
751.2
5.151.37
1.95
5.052.0
4.3
10

15

15

15

15

15

15

15

15

15

15

15

15

15

15

15

15

15

15

15

+30

43.5
12.8
1044.3
12.044.07
10.25
747.4
8.9
10

15

15

15

15

15

15

15

15

15

15

15

15

15

15

56.32

57.32

B.M.

1.04 6550

SET OFF H₂O
to Cal road
Campini
DeLoCosta
6548

+25.66 Δ 18° 06' 30" Rt.

63.39
2.85
10.07 PM

4+0

63.73
2.81
10.07 PM

63.28
3.22
10.07 PM

62.48
3.86
10.07 PM

+70

63.90
2.64
10.07 PM

63.42
2.92
10.07 PM

63.41
2.12
10.07 PM

+37.24 Δ 41° 10' 30" Rt.

63.45
2.89
10.07 PM

63.41
2.92
10.07 PM

63.49
3.05
10.07 PM

+35.14

taken on line of curb

64.11
2.92
10.07 PM

63.69
2.86
10.07 PM

63.59
2.95
10.07 PM

64.13
2.41
0.6.05

63.47
3.07
10.07 PM

64.03
2.51
10.07 PM

+29.9

63.9
2.6
10

64.27
2.27
10

64.02
2.52
10.05 TOP CURB

+27.5 41 Rt of S = 1/2 12" Power Pole #P 5950

with
no sign

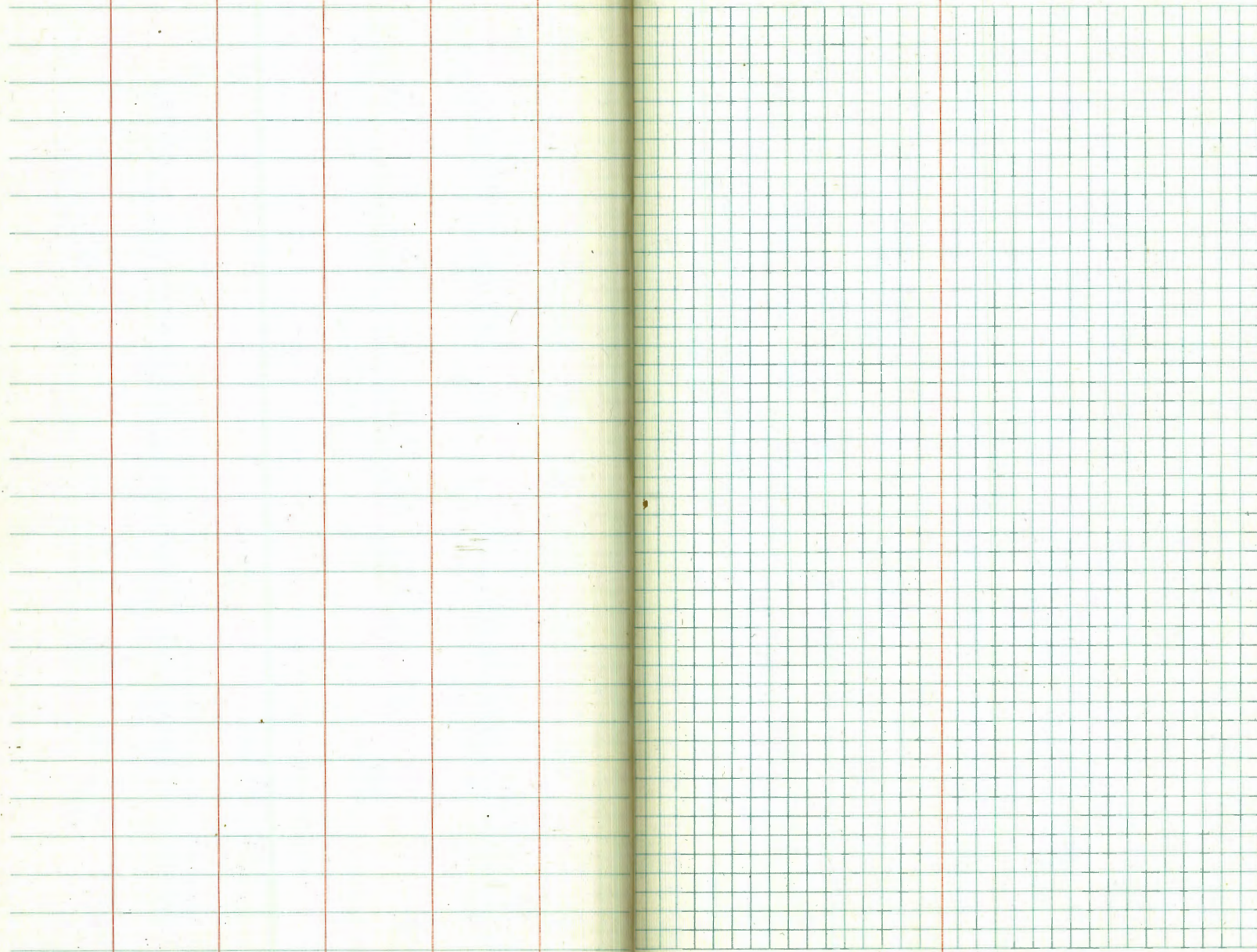
+22.5 C Rt of S = 8' FCC
+12 8' Rt of S = 24 28' Hed 91
3+0

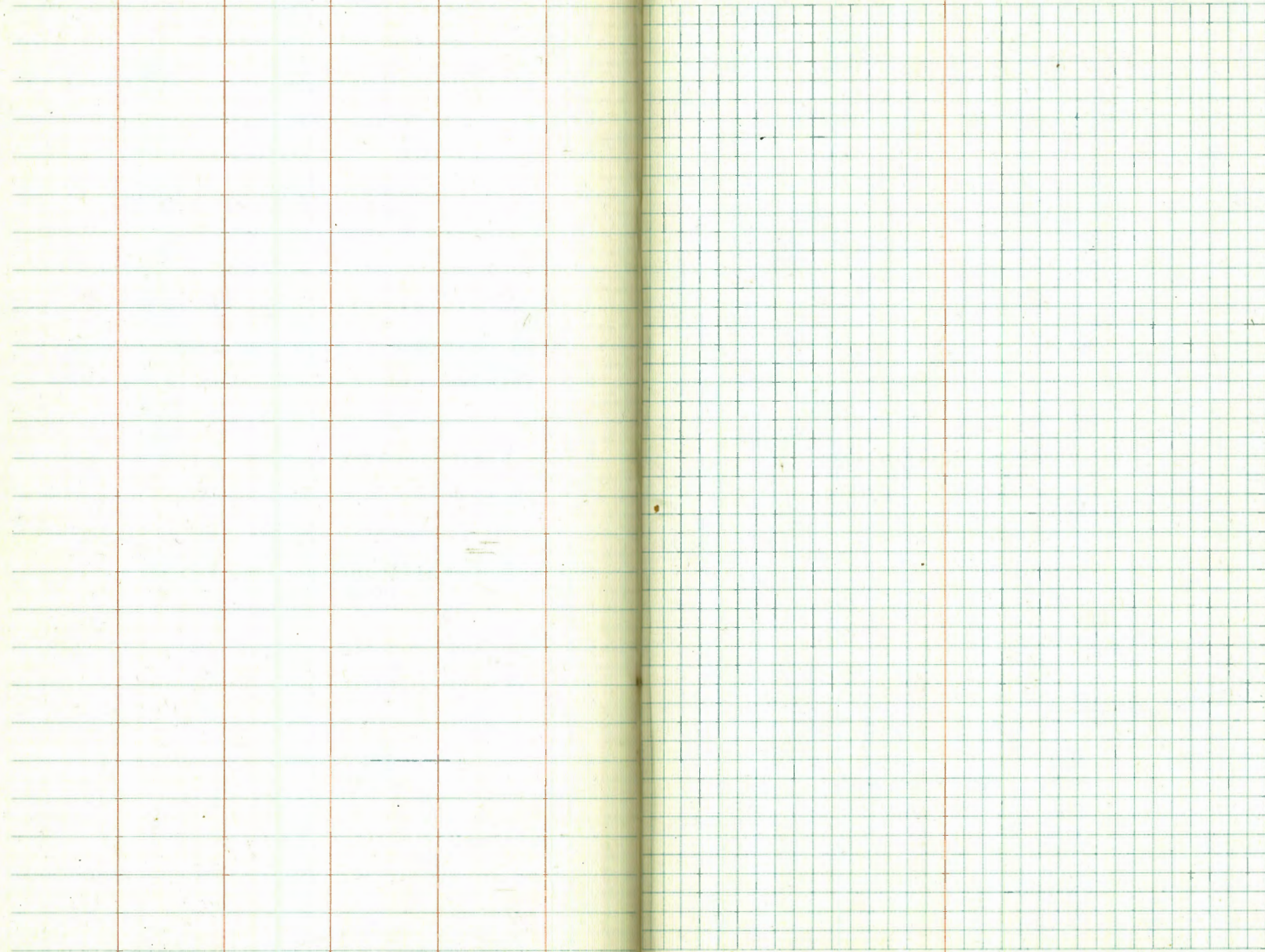
63.5
2.0
10

62.9
3.6
10

63.6
3.9
10

62.93
4.1
15 = 10.07 PM





NEB. P. Bayard - 8902

353
271

82

1 1 0
0 0 3 9
0 3 6 3 9
6 3 6 1

261.90
76

1377
836
2135

7.14