

1762

MICROFILMED
CITY ENGINEERS OFFICE

SAN DIEGO

0001-27
0003-24
3000-22

MADE IN U.S.A.

1762

Our Leather Bound Engineers Note Books
are carried in the following rulings:

- No. 380 LEVEL BOOK. Left and Right Hand Page
the same as Left Hand Page
of this Book.
- No. 382 FIELD BOOK. Left Hand Page as in this
Book, Right Hand Page 4x4
to the inch, Center Line Red.
- No. 384 MINING TRANSIT
BOOK. Left Hand Page as in this
Book, Right Hand Page 8x8
to the inch, Center Line Red.
- No. 385 FIELD BOOK. Left Hand Page as in this
Book, Right Hand Page 8 ver-
tical and 4 horizontal lines to
the inch, Center Line Red.

We also carry the Note Books listed above,
bound in extra strong Fabri-Hide (otherwise
the same quality of book,) which can be fur-
nished at a somewhat lower price.

In ordering Fabri-Hide covered books, add
the letter "F" to catalog number.

THE FREDERICK POST CO.

ENGINEERING and DRAFTING SUPPLIES

P. O. Box 803

CHICAGO

INDEXED
Completely

1-86 Cross Section Garnet St
37 " " Kendall Garnet South
38-54 La Mesa Galaxy Prop Servers
55-58 CALLE GARNET Cross Section 10125
69-73 Redwood - Herman to 32nd
74+75 " " " "
76-78 Drain " " "

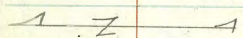
indexed
c.s.k.

Detail of Intersection

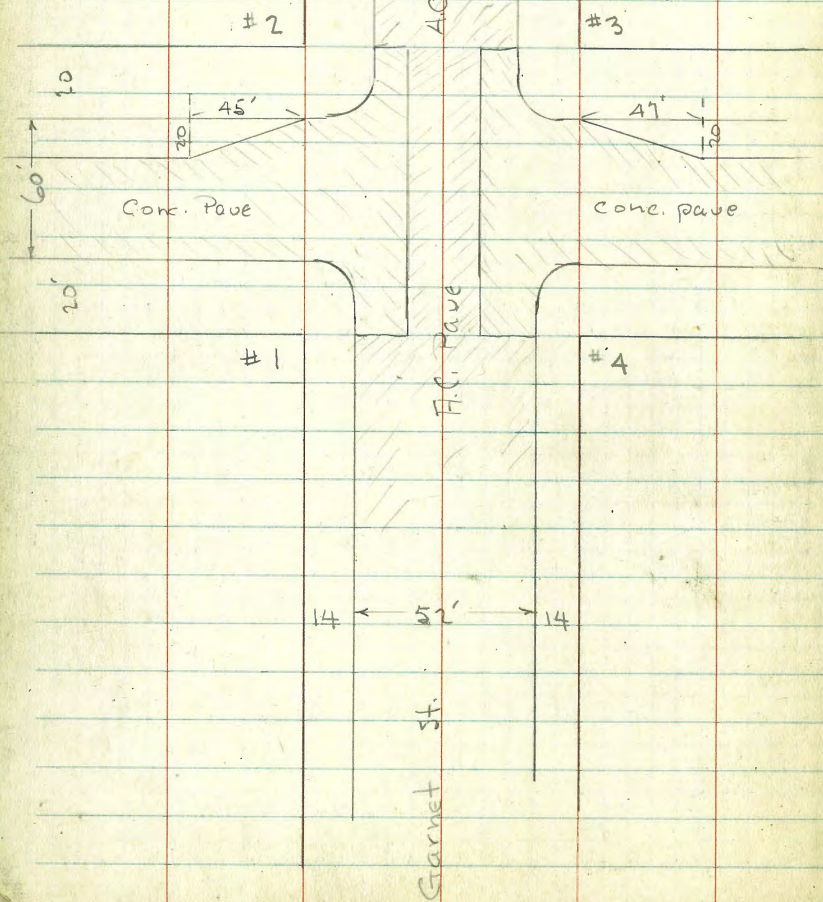
Garnet St

Ingraham

Returns are

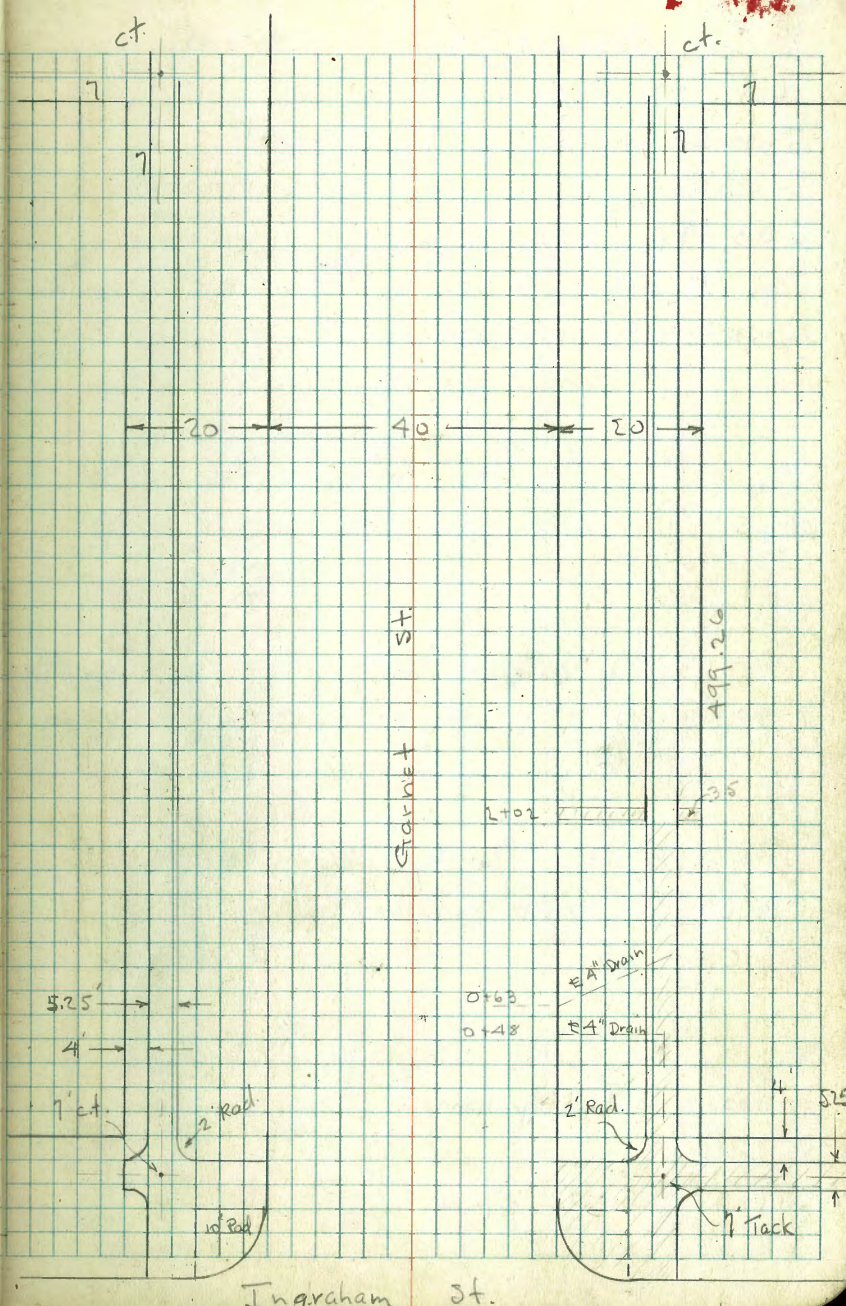


Numbered for
levels around.



Jewell St.

I 7



X-Sect Garnet - 80' St. + 20' cbs.
for 52' Roadway - from W.L.
Ingraham to E.L. Morrell

735

W.O. 31197

1-22-47

Osborne
Hardin
Smith
Worrell

0-50 = Φ Ingraham

0-65

0-80 = W.cb.

0-90 = P.C. 10' cb. Rad. Ref.

0-100 = W.L. Ingraham

B.M. 5.00 67.60

Notes reduced and checked 2/7/47

R.E. Coburn.

Bench Mark El. 62.60 = S.E.O.R.
Garnet and Ingraham.

63.40

A. 20

90 gut.

S.E.O.P.
Garnet &
Ingraham

62.60

Indexed
C.S.K.

Lt = N.

Rt. S.

63.95	62.15	62.64	62.38	62.36	62.18	62.17	62.11	61.94
3.65 90	4.44 40	4.96 20	5.22 10	5.24	5.42 10	5.43 20	5.49 10	5.66 90

63.85	63.03	62.64	62.48	62.45	62.27	62.14	61.93	61.83
3.75 90	4.57 40	4.96 20	5.16 10	5.16	5.33 10	5.44 20	5.67 40	5.77 90

63.36	62.78	62.62	62.39	62.48	62.50	62.34	61.86	61.75	61.74	62.14	61.89
4.24 40	4.90 40	4.98 26	5.01 20	5.12 10	5.10	5.26 10	5.74 20	5.88 26	6.16 40	5.46 40	6.21 90
Top end ref.	gut								gut	Top end Ref.	90-gut

63.13	62.78	62.69	62.51	62.53	62.40	61.96	61.91	62.40
4.47 26	4.82 26	4.91 20	5.09 10	5.07	5.20 10	5.64 20	5.69 26	5.70 26
Top P.C.	gut						gut.	Top-PC

62.18	62.83	62.77	62.61	62.62	62.45	62.22	62.05	62.60
4.42 26	4.77 26	4.83 20	4.99 10	4.78	5.15 10	5.38 20	5.55 26	5.00 26
Topcb.	gut						gut.	Top

67.60

12+38- 14.3 Rt. - 3" Acacia

12+28- 21.7 Rt. - W.M.

12+26- 24.5 Rt. - 8" Acacia

12+24- 23.5 Lt. - 16" Euc.

T.P. 5.22 72.61 3.88 67.39 2+99 N.cb.

2+02- 3.5 Conc. walk on Rt. - cb. to prep.

1+00 - Note: for convenience will leave out the Dist. under the walk shots unless changed

1+74- 23.4 Lt. - 18" Euc.

1+53

1+43- 11' Dirt Dr. on Rt. - not used.

1+30- 23.5 Rt. - 18" Euc.

1+28- E. side Drive

1+24- 24 Lt. - 16" Euc. Tree

1+00= W. side Conc. Dr. on Rt. + end of walk along Bldg.

0+79- 22 Rt. - W.M.

0+75- 23.5 Lt. - 14" Euc.

0+63- 4" C.I. Drain in ch. on R.H.

Lt.

Rt.

66.0	66.30	66.22	66.06	65.54	66.22	66.44	66.16	66.03	66.03	66.25
47	49	50.5	52.2	57.3	50.5	48.3	51.1	58.0	52.5	50.8
40	walk		20	20	10	10	20	20	110	walk
			Top	gut			gut	Top		5.02 walk
66.0	65.47	65.43	65.34	64.85	65.44	65.04	65.37	64.64	65.14	65.24
5.3	5.80	5.71	5.93	6.42	5.83	5.63	5.90	6.63	6.13	5.93
40	36	30.75	20	20	10		10	20	20	30.75
		walk	Top	gut				gut	Top	walk
										64.23
										64.96
										20
										gut on Dr.
										Back of Dr
										at walk
66.5	64.80	64.77	64.51	64.06	64.63	64.77	64.57	63.78	64.27	64.54
5.8	6.47	6.50	6.76	7.21	6.64	6.50	6.70	7.49	7.00	6.73
40	36	30.75	20	20	10		10	20	20	30.75
			Top	gut				gut	Top	walk
										64.57
										64.68
										63.13
										8.14
										20
										F.L. 4"
										Pipe

71.27

3+74- \$ 4.2' Conc. walk on Rt - cb to SL

3+64- 24.5 Rt = \$ 12" Pepper

3+55- \$ 11' Dirt Dr. - Not used

3+50

3+39- 24.3 Rt = \$ 14" Pepper

3+29- 21.7 Rt = \$ W.M.

3+25

3+24- 23.5 Lt = \$ 10" Acacia

3+13 - 24.5 Rt = \$ 12" Pepper

3+07- \$ 11' Dirt Dr. on Rt. - Not used

3+00

2+92 = \$ 11' Dirt Dr. on Rt. - Not used.

2+83- 24.5 Rt = \$ 18" Pepper

2+75

2+74- 24' Lt. = \$ 14" Euc.

2+74- 21.7 Rt = \$ W.M.

2+59- 24.3 Rt = \$ 24" Pepper

2+50

Lt.

Rt.

								67.84		68.09			
								4.77		4.52			
								20-cb		30.25			
										at walk			
68.1	68.04	67.98	67.81	67.34	67.93		68.10	67.80	67.21	67.72	67.94	68.00	68.3
4.5	4.57	4.63	4.80	5.27	4.68		4.51	4.81	5.40	4.89	4.67	4.61	4.3
40	walk		20	20	10			10	20	20	walk	40	
			Top	gut					gut.	Top			
67.9	67.81	67.74	67.60	67.03	67.77	67.97	67.66	66.97	67.46	67.71	67.75	68.2	
4.7	4.80	4.86	5.01	5.58	4.84	4.64	4.95	5.64	5.15	4.90	4.86	4.4	
40	walk		20	20	10		10	20	20	20	walk	40	
			Top	gut				gut.	Top				
67.9	67.69	67.61	67.45	66.71	67.54	67.77	67.55	66.81	67.33	67.56	67.71	68.0	
4.7	4.92	5.00	5.16	5.70	5.02	4.84	5.06	5.80	5.28	5.05	4.90	4.6	
40	walk		20	20	10		10	20	20	walk	40		
			Top	gut				gut.	Top				
67.6	67.43	67.38	67.15	66.71	67.41	67.61	67.32	66.66	67.16	67.34	67.43	67.9	
5.0	5.18	5.23	5.46	5.90	5.20	5.00	5.19	5.96	5.45	5.27	5.18	4.7	
40	walk		20	20	10		10	20	20	walk	40		
			Top	gut				gut.	Top				
67.3	67.08	67.05	66.87	66.38	67.17	67.38	67.03	66.78	66.91	67.16	67.24	67.5	
5.3	5.53	5.53	5.74	6.23	5.44	5.23	5.58	6.23	5.70	5.45	5.37	4.8	
40	walk		20	20	10		10	20	20	walk	40		
			Top	gut		2.61+		gut.	Top				

See P.9 to Cont. across int.

T.P. 4.09 72.83 3.87 68.74

apparently the
starting B.M. is
0.12 High.

5w BP
Jewell's
Garnet
68.63
Book

4+99.26 = W.L. Jewell

✓ 4+91-23 Rt. = ± 10" Pepper

✓ 4+74-24.2 Rt. = ± 26" Euc.

✓ 4+74-23.8 Lt. = ± 10" Euc.

4+50

✓ 4+29-21.8 Rt. = ± W.M.

✓ 4+27-21.7 Rt. = ± W.M.

✓ 4+25-24 Lt. = ± 6" Euc.

✓ 4+24-24.2 Rt. = ± 8" Acacia

4+20

✓ 3+90-24.3 Rt. = ± 14" Pepper

✓ 3+80-21.7 Rt. = ± W.M.

✓ 3+75-23.2 Lt. = ± 4" Euc.

69.36 69.26 69.26 69.04 68.58 69.04 69.16 68.95 68.36 68.82 68.97 69.06 69.0

3.25 3.35 3.35 3.57 4.08 3.57 3.45 3.66 4.25 3.79 3.64 3.55 3.6

40 walk 20 20 10 10 20 20 walk 40

Top gut Top

69.0 68.93 68.76 68.89 68.19 68.67 68.77 68.65 67.96 68.42 68.65 68.70 68.7

3.6 3.68 3.85 4.02 4.42 3.94 3.84 3.96 4.65 4.19 3.96 3.91 3.9

40 walk 20 20 10 10 20 20 walk 40

Top gut gut Top

68.7 68.89 68.40 68.19 67.77 68.35 68.54 68.28 67.55 68.07 68.25 68.34 68.7

3.9 4.12 4.21 4.42 4.84 4.24 4.07 4.33 4.96 4.54 4.36 4.27 3.9

40 walk 20 20 10 10 20 20 walk 40

Top gut gut Top

7.6 ✓

Levels around Returns at Ingraham

+ Garnet - See P. 1

B.M. 5.11 6771 62.60
Return # 1 - N.W. Cor 16' around - 3 parts 53

W. end. N. of Garnet - PC. Top 4.57 63.14

gut. 4.93 62.78

53 - E. Top 4.55 63.16

gut. 4.94 62.67

53 - Top 4.62 63.09

gut. 5.03 62.68

PC = N. end. Top 4.53 63.18

gut. 5.03 62.68

Ret. # 2 = N.E. Cor 15.7 - 5.2 each

PC = N. end. Top 4.55 63.16

gut. 5.05 62.66

5.2 S Top 4.61 63.10

gut. 5.07 62.64

5.2. Top 4.68 63.03

gut. 5.06 62.65

PC = E. end. Top 4.69 63.02

gut. 5.09 62.62

Ret. # 3 - S.E. Cor. - 15.7 - 5.2 each

PC = E. end. Top 5.23 62.48

gut. 5.73 61.98

5.2 S Top 5.25 62.46

gut. 5.78 61.93

6771

677

5.2 Top 5.33 62.38

gut. 5.87 61.84

PC = S. end. Top 5.48 62.23

gut. 4.04 61.67

Ret # 4 = S.W. Cor. - 15.7 - 5.2 each

PC = S. end. Top 5.48 62.23

gut. 6.22 61.49

5.2 N. Top 5.45 62.24

gut. 6.07 61.64

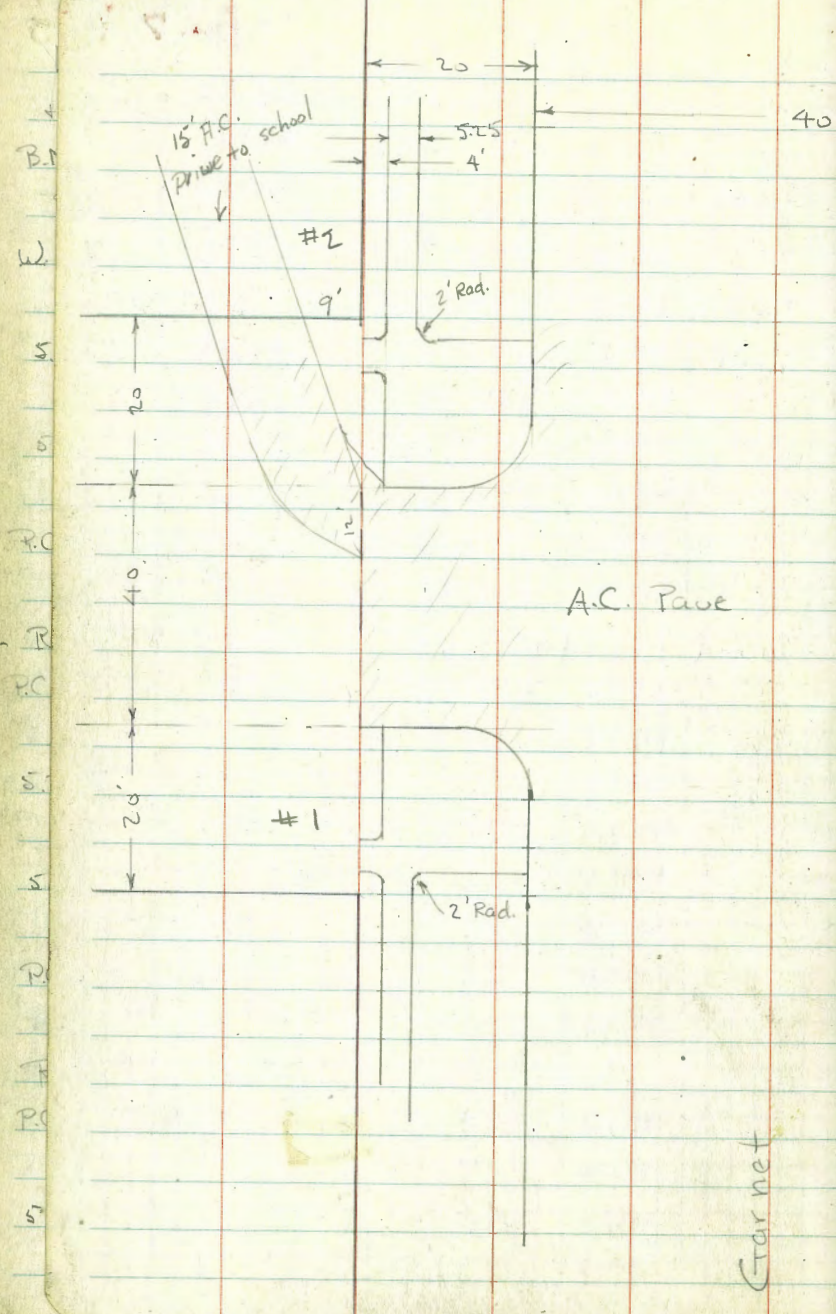
5.2. Top 5.32 62.39

gut. 5.92 61.79

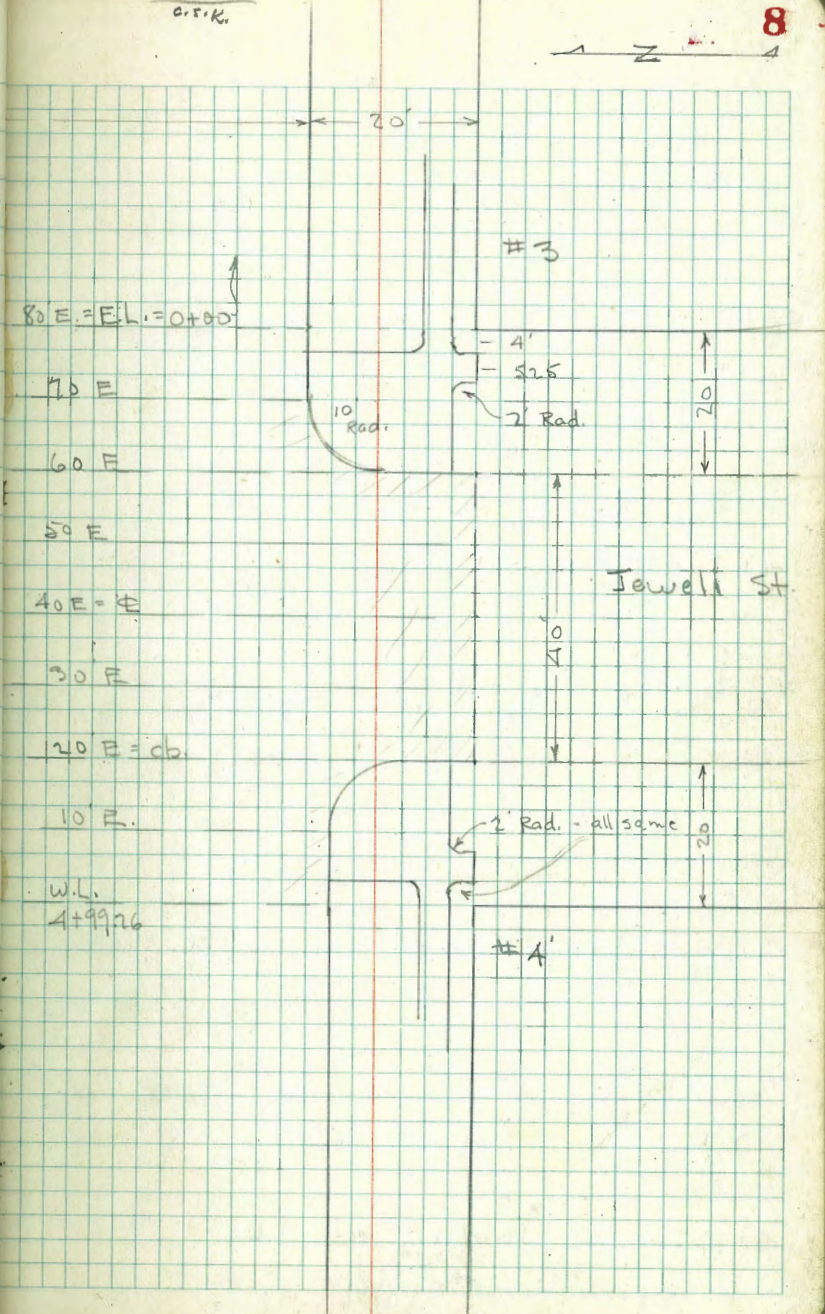
PC = W. end. Top 5.29 62.42

gut. 5.82 61.89

Detail - Int. Jewell + Garnet.



Indexed
C.R.K.



Garnet

X-Section Int. Jewell + Garnet

B. 60 E = E. cb.

	Lt.								Rt.	
	68.04	68.27	67.79	67.76	68.36	68.47	68.31	67.57	67.33	67.73
	4.79	4.56	5.04	5.07	4.47	4.36	4.52	5.26	5.50	5.10
	40 in	36 = top gut	20	20	10	10	10	20	40	40
	H.C. Drive end Ret								gut	Top end Ret

S. 50 E.

	68.26	68.08	67.88	68.45	68.64	68.54	68.28	68.03	67.89
	4.57	4.75	4.95	4.38	4.19	4.29	4.55	4.80	4.94
	40	30	20	10		10	20	30	40
	edge PaVe								

R. 40 E = Jewell

	68.57	68.24	68.06	68.65	68.79	68.72	68.53	68.36	68.24
	4.26	4.57	4.77	4.18	4.04	4.11	4.30	4.47	4.59
	40	30	20	10		10	20	30	40 = edge
	edge PaVe								

PC. 30 E.

	68.63	68.37	68.20	68.77	68.94	68.83	68.62	68.44	68.33
	4.20	4.46	4.63	4.06	3.89	4.00	4.21	4.39	4.50
	40	30	20	10		10	20	30	40
	edge of AC PaVe								

H. 20 E = W. cb. - See Ret. levels for PC. shots.

	69.04	68.49	68.27	68.91	69.07	68.88	68.31	68.09	68.60
	3.79	4.34	4.56	3.92	3.76	3.95	4.52	4.78	4.23
	40	40	20	10		10	20	40	40
	Top end gut Ret								Top end Ret

P. 10 E = PC. 10' Rad Ret.

	69.17	68.79	68.43	68.95	69.11	68.91	68.23	68.98	68.85
	3.66	3.84	4.40	3.88	3.72	3.92	4.60	4.15	3.98
	36	20	20	10		10	20	20	36 =
	Packet Ret								Top PC Ret
									gut Top back of Ret.

S. 4 + 99.26 = W.L. Jewell - Sect. P 6

72.83 = P. 6

Lt.

Rt.

80.E. = F.L. Jewell = 0+00 ahead See P. 13

70 E = PC 10' Rad

68.83	68.37	68.31	68.07	67.47	68.10	68.19	67.89	67.06	67.71	68.04	68.13	68.18
4.0	4.46	4.82	4.76	5.36	4.73	4.64	4.84	5.77	5.12	4.79	4.70	4.65
40	36	30.75	20	20	10	10	10	20	20	30.75	30	40 on
	walk		Top	got				got	Top	walk		walk
68.40	68.20	67.56	68.24	68.31	68.10	67.22	67.83	68.01				
4.43	4.63	5.27	4.59	4.52	4.73	5.61	5.00	4.82				
36	20	20	10		10	20	20	36 edge				
edge	Top-PC	got				got	Top-PC	Ret.				
Ret.												

72.834

Levels Around Returns at Jewell + Garnet.

See sketch P-8.

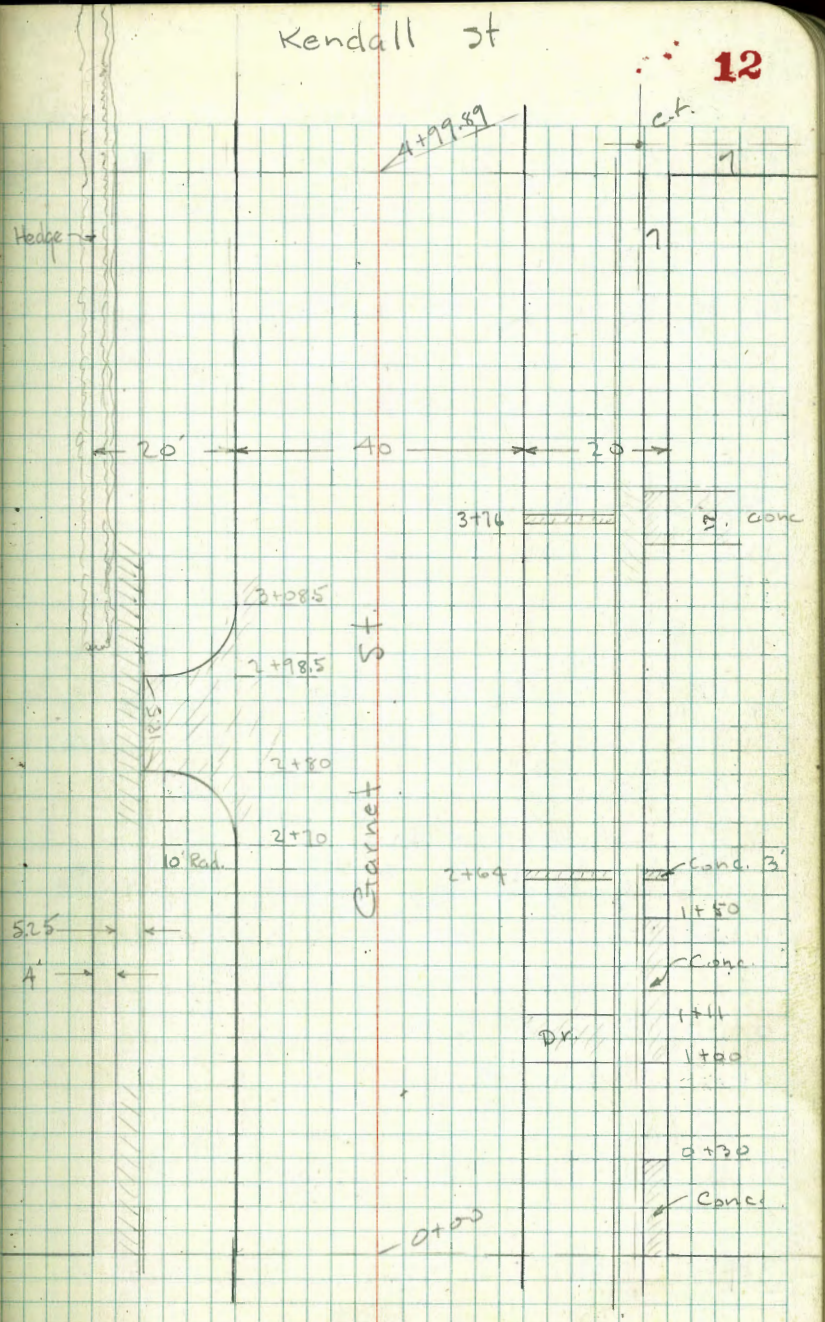
72.83 - P 10			
Return # 1 - N.W. Cor.	15.7	around	3 parts 5.2 each
W. end = P.C.	Top	3.81	69.02
	gut.	4.41	68.42
5.2 E	Top	3.85	68.98
	gut.	4.44	68.35
5.2	Top	3.90	68.93
	gut.	4.50	68.33
P.C. = N. end.	Top	3.81	69.02
	gut.	4.42	68.41
Ret. # 2' = NE Cor.	15.7	-	5.2
N. end = P.C.	Top	4.58	68.25
	gut.	5.12	67.71
5.2 S	Top	4.64	68.19
	gut.	5.24	67.59
5.2	Top	4.63	68.20
	gut.	5.28	67.55
P.C. = E. end.	Top	4.63	68.20
	gut.	5.27	67.56
Ret. # 3 = S.E. Cor.	15.7	-	5.2
E. end = P.C.	Top	5.01	67.82
	gut.	5.61	67.22
5.2 W.	Top	5.08	67.75
	gut.	5.53	67.30

72.83

5.2			
	Top	5.11	67.72
	gut.	5.80	67.33
P.C. = S. end	Top	5.10	67.73
	gut.	5.50	67.33
Ret # 4 - S.W. Cor.	15.7	-	5.2
S. end = P.C.	Top	4.72	68.61
	gut.	4.76	68.07
5.2 N.	Top	4.16	68.67
	gut.	4.70	68.13
5.2	Top	4.18	68.65
	gut.	4.66	68.17
P.C. = W. end	Top	4.15	68.68
	gut.	4.60	68.23

Kendall St

12



Jewell

X-Sect. Garnet - Cont Jewell to Kendall

Lt.

Rt.

2+00

67.6	67.50	67.46	67.22	66.69	67.27	67.28	67.02	66.38	66.96	67.11	67.30	67.2
4.5	4.54	4.60	4.84	5.37	4.79	4.78	5.04	5.08	5.10	4.95	4.76	4.9
40	walk		20	20	10		10	20	20	walk		40
			Top	gut				gut.	Top			

✓ 1+74 - 239 Lt. = ± 10" Acacia
1+50

67.8	67.68	67.61	67.41	66.87	67.42	67.49	67.08	66.60	67.43	67.31	67.48	67.52
4.3	4.38	4.45	4.65	5.19	4.64	4.57	4.98	5.46	4.93	4.75	4.58	4.54
40	walk		20	20	10		10	20	20	walk		40
			Top	gut				gut.	Top			end conc.

✓ 1+30 - 21.7 Rt. = ± W.M.

✓ 1+25 - 23' Lt. = ± 4" Acacia

✓ 1+15 - 22.1 Rt. = ± W.M.

1+06 = ± 11' Conc. Dr. on Rt.

66.86

5.20
20 = gut.

67.56

4.50
30.95
edge
walk

1+

1+00

68.1	67.72	67.89	67.70	67.06	67.62	67.75	67.48	66.83	67.26	67.63	67.71	67.84
4.0	4.14	4.17	4.36	5.00	4.44	4.31	4.58	5.23	4.70	4.43	4.35	4.21
40	walk		20	20	10		10	20	20	walk		40
			Top	gut				gut.	Top			onwalk

✓ 0+74 - 238 Lt. = ± 8" Acacia

✓ 0+59 - 259 Rt. = ± 4" Euc.

0+50

68.1	68.18	68.08	67.80	67.22	67.83	67.94	67.66	67.95	67.54	67.82	67.96	67.9
4.0	3.88	3.98	4.26	4.84	4.73	4.12	4.40	5.11	4.52	4.24	4.14	4.2
40	walk		20	20	10		10	20	20	walk		40
			Top	gut				gut.	Top			

✓ 0+31 - 25.5 Rt. = ± 10" Acacia

✓ 0+30 - 38.6 Lt. = ± 14" Cypress

✓ 0+05 - 21.4 Rt. = ± F.H.

0+00 = E.L. Jewel - Sect. P 10 =

B.M

3.32

72.06 ✓

68.74

72.06 ✓

3+08.5 = P.C. 10' Rad Ret. on Lt.

✓ 3+00 - 39' Lt. = \pm 4' Hedge 4' High
2+98.5 = E. side of Dr. on Lt.

2+92 - \pm 11" Dirt Dr. on Rt.

✓ 2+80 - 223 Rt = \pm W.M. S. side of walk
2+80 = W. side 18.5 Dr. on Lt. - A.C. pave back to

✓ 2+76 - 259 Rt = \pm 12" Acacia

2+70 = P.C. 10' Rad. Ret. on Lt. - Sketch P. 12

✓ 2+68 - 236 Rt = \pm 7" Acacia

2+64 - \pm 3" Conc. walk on Rt.

✓ 2+55 - 253 Rt = \pm 7" Acacia

2+50

✓ 2+25 - 26' Rt = \pm 8" Acacia

✓ 2+25 - 24' Lt. = \pm 8" Acacia

Lt. Rt.

67.9	67.10	66.96	66.80	66.74	66.87	66.92	66.73	66.05	66.56	66.73	66.88	67.1
42	49.6	51.0	51.6	51.2	51.9	51.2	53.3	4.01	5.50	5.33	5.18	5.0
40	Walk	20	20	10	10	10	10	20	20	20	Walk	40
			Top PC	cut				cut	Top			

66.99	66.76	66.88	66.97	66.70	66.09
5.07	5.60	5.18	5.09	5.36	5.97
30.75	20	10	10	10	20 in Dr.
Walk + end cb.					cut
+ edge pave					

67.08	66.85	66.97	67.05	66.78	66.13	66.70
4.98	5.61	5.09	5.01	5.28	5.93	5.36
30.75	20	10	10	10	20	20
Walk - end cb.					cut	Top
+ edge pave						

67.4	67.17	67.05	67.06	66.83	67.03	67.15	66.83	66.21	66.76
47	48.9	50.1	5.00	5.63	5.33	4.91	5.23	5.85	5.30
40	Walk	20	20	20	10	4.91	10	20	20
			Top PC	cut				cut	Top

66.76	66.96
5.30	5.19
20 - cb.	30.75 - walk

75	67.30	67.20	67.16	66.49	67.06	67.16	66.88	66.26	66.83	66.95	67.09	66.9
46	47.6	48.6	4.90	5.57	5.00	4.90	5.18	5.80	5.23	5.11	4.97	5.2
40	Walk	20	20	20	10	10	10	20	20	Walk	40	
			Top	cut				cut	Top			

72.06 ✓

for Int. - Sketch - P 16 - Levels - P. 17

4+99.89 = W.L. Kendall

✓ 4+75 - 24.8 Lt. = ± 8" Acacia

4+50

✓ 4+25 - 25.5 Rt. = ± 6" Acacia

✓ 4+24 - 24.2 Lt. = ± 5" Acacia

4+00

✓ 3+80 - 21.5 Rt. = ± W.M.

T.P. 4.84 71.20 5.74 66.32 ✓

3+76 = 2.2 Conc walk on Rt.

✓ 3+74 - 24' Lt. = ± 10" Acacia stump.

3+50

✓ 3+30 - 21.8 Rt. = ± W.M.

✓ 3+25 - 23.8 Lt. = ± 10" Acacia

Lt.

Rt.

67.0	66.40	66.30	66.12	65.61	66.06	66.26	65.91	65.72	65.87	66.10	66.14	66.0
42	4.82	4.92	5.08	5.39	5.14	4.94	5.29	5.28	5.33	5.10	5.06	5.2
40	walk		20	20	10		10	20	20	walk		40
			Top	gut.				gut.	Top			

67.1	66.54	66.45	66.32	65.79	66.36	66.50	66.20	65.56	65.99	66.28	66.37	66.5
4.1	4.66	4.75	4.88	5.41	4.84	4.70	5.00	5.64	5.21	4.92	4.83	4.7
40	walk		20	20	10		10	20	20	walk		40
			Top	gut.				gut.	Top			

67.4	66.80	66.76	66.61	66.00	66.58	66.67	66.44	65.71	66.20	66.44	66.54	66.5
3.8	4.40	4.44	4.57	5.20	4.62	4.53	4.76	5.49	5.00	4.76	4.66	4.7
	walk		20	20	10		10	20	20	walk		40
			Top	gut.				gut.	Top			

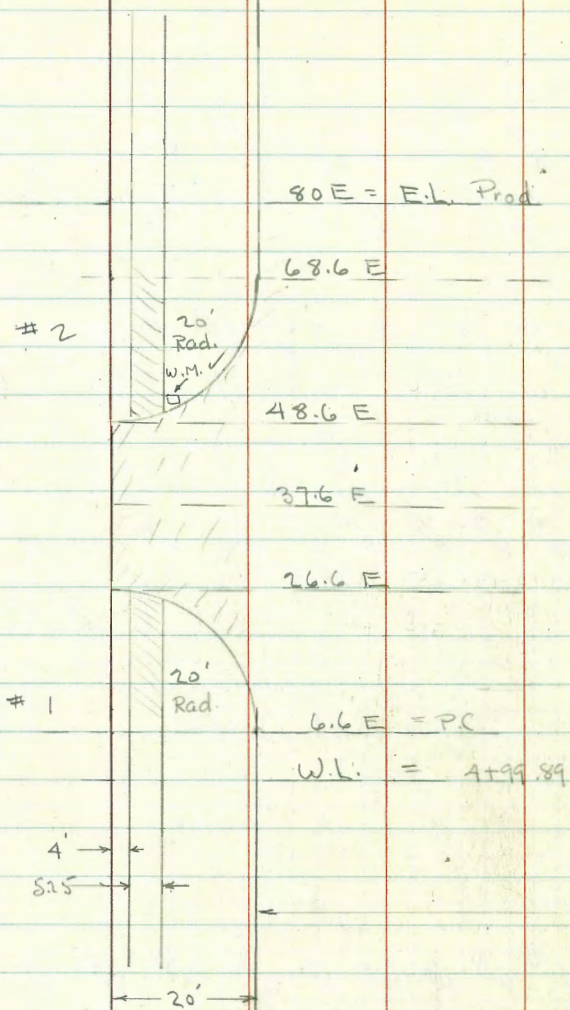
71.20 ✓

67.1	66.96	66.91	66.66	67.16	66.16	66.74	66.85	66.58	65.86	66.36	66.61	66.68	66.7
4.4	5.10	5.15	5.40	4.92	5.32	5.21	5.48	6.20	5.70	5.45	5.38	5.4	
40	walk		20	20	10		10	20	20	walk		40	
			Top	gut.				gut.	Top				

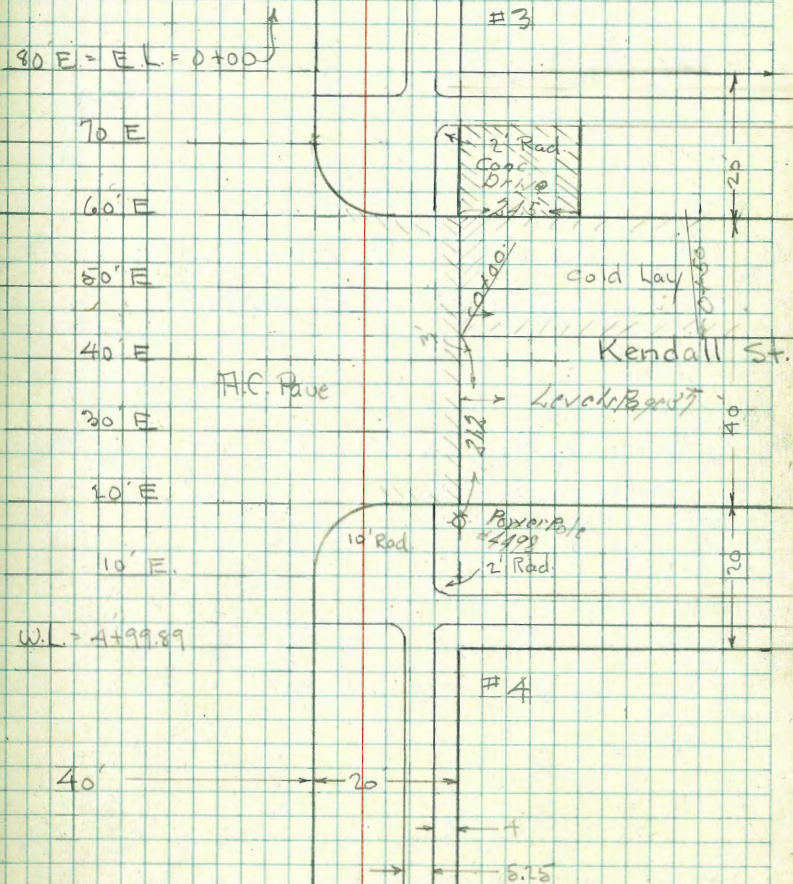
5.90 ✓

72.06 ✓

Detail - Int.
Kendall +
Garnet



Garnet St



81
Levels on Int. of Kendall + Garnet
Sketch P. 16

37.6 E. = Dr. on Lt.

30 E.

26.6 E. = W. side 22' AC Dr. on Lt.

20 E. = W. cb. to Rt.

10 E. = P.C. 10' Rad. Ret. on Rt.

6.6 E. = P.C. 20' Rad. Ret. on Lt.

W.L. Kendall = 4+99.89 - P. 15

	Lt.				Rt.			
66.33	65.91	65.83	65.94	66.07	65.88	65.50	65.16	64.86
4.87 40	5.29 30	5.67 20	5.24 10	5.13	5.32 10	5.10 20	4.04 30	4.34 40-edge Pave
66.15	65.86	65.88	65.99	66.10	65.86	65.46	65.09	64.69
5.05 40	5.24 30	5.62 20	5.21 10	5.10	5.34 10	5.74 20	6.11 30	6.51 40-edge Pave
66.40	66.08	65.82	65.57	66.01	66.13	65.99	65.43	64.61
4.80 40 Top end Ret.	5.12 40 gut	5.38 30	5.63 20	5.19 10	5.07	5.30 10	5.77 20	6.59 40 edge Pave
66.21	65.69	65.56	66.02	66.13	65.86	65.28	64.71	65.38 64.40 64.95 62.98
4.99 24.7 Top on Ret.	5.51 24.7 gut	5.64 20	5.18 10	5.02	5.34 10	5.92 20	6.49 30	5.82 30 gut Ret.
66.26	65.88	66.03	66.22	65.84	65.20	65.89	65.67	
4.94 20.1 Top on Ret.	5.62 20.1 gut	5.17 10	4.98	5.36 10	6.00 20	5.31 20	5.53 30-edge Ret.	
66.25	65.59	66.04	66.23	65.88	65.26	65.91		
4.95 20 Top-PC	5.61 20 gut	5.16	4.97	5.32 10	5.94 20 gut	5.29 20 Top		

1.20 - P. 15

T.P. SW. P.P. Kendall + Garnet 5.28 65.92

80' E. = E.L. Kendall = 0+00 ahead.

70 E. = PC. 10' Rad. Ret. on Rt.

68.6 E. = PC. 70' Rad. Ret. on Lt.

60' E. = E. cb. Kendall

50' E.

48.6 E. = E. side Dr. on Lt.

40 E. = Kendall

Notes:

64.82
Book

66.27	66.36	66.31	66.08	65.52	65.55	65.47	65.36	65.12	65.98	66.01	66.16	65.9
3.0	4.84	4.89	5.12	5.08	5.65	5.73	5.84	6.08	5.22	5.19	5.04	5.3
40	36	30.75	20	20	10	10	20	20	20	30.75	36	40
walk			Top	gut.				gut.	Top		walk	
64.1	65.50	65.48	65.40			65.18	64.94	65.88	65.64			
5.11	5.70	5.72	5.80			6.02	6.26	5.32	5.56			
20	20	10				10	20	20	36			
Top	gut.						gut.	Top-PC	Ret.			
66.37	66.30	66.12	65.52	65.48	65.44	65.12	64.93	65.86				
4.83	4.90	5.08	5.68	5.72	5.76	6.08	6.27	5.34				
36	30.75	20	20	10	10	20.2	20.2					
walk		Top	gut.			gut.	Top on					
		PC					Ret.					
66.15	65.60	65.56	65.60	65.32	64.96	64.64	65.37	64.38	64.90	62.96		
5.05	5.60	5.64	5.60	5.88	6.24	6.56	5.83	6.82	6.30	8.24		
22.1	22.1	10	10	20	20	30	30	40	40	90		
Top on	gut.					gut.	Top	gut.	Top	Top		
Ret.							PC 10'	Rad. Ret.		cb.		
66.31	65.98	65.94	65.78	65.87	65.62	65.29	64.93	64.68				
4.84	5.22	5.71	5.42	5.83	5.58	5.91	6.27	6.52				
32.3	32.3	20	10	10	20	20	30	40-edge				
Top on	gut.							Pave				
Ret.												
66.08	66.20	65.88	65.52	65.83	65.90	65.79	65.36	65.02	64.73			
4.72	5.00	5.32	5.68	5.37	5.30	5.50	5.44	6.18	6.47			
40	40	30	20	10		10	20	30	40-edge			
Top	gut.								Pave			
end Ret.												
64.36	65.85	65.53	65.91	66.06	65.84	65.80	65.18	64.84				
4.84	5.35	5.67	5.19	5.14	5.36	5.70	6.02	6.36				
40	30	20	10	10	10	20	30	40-edge				
				71.20 ✓				Pave				

Levels Around Returns at Kendall

+ Garnet - See Sketch P. 16

B.M.	5.04	70.96	65.92	5	See Page 18 SW Kendall + Garnet
Ret. #1 - N.W. Cor. 20' Rad. 31' - 5 parts				6.4'	
Wend	Top	4.72	66.24		
	gut.	5.38	65.58		
6.4 E.	top	4.72	66.24		
	gut.	5.40	65.56		
6.4	Top	4.79	66.17		
	gut.	5.33	65.63		
6.4	Top	4.70	66.26		
	gut.	5.22	65.74		
6.4	Top	4.58	66.38		
	gut.	4.96	66.00		
6.4 = N. end at N.E.	Top	4.53	66.43		
	gut.	4.87	66.09		
Ret. #2 = N.E. Cor. 30.8' around - 5 parts				6.15' each	
N. end	Top	4.48	66.48		
	gut.	4.76	66.20		
6.15 S.	Top	4.60	66.36		
	gut.	4.92	66.04		
6.15	Top	4.76	66.20		
	gut.	5.10	65.86		
6.15	top	4.77	66.19		
	gut.	5.29	65.67		

1-27-47
70.

19

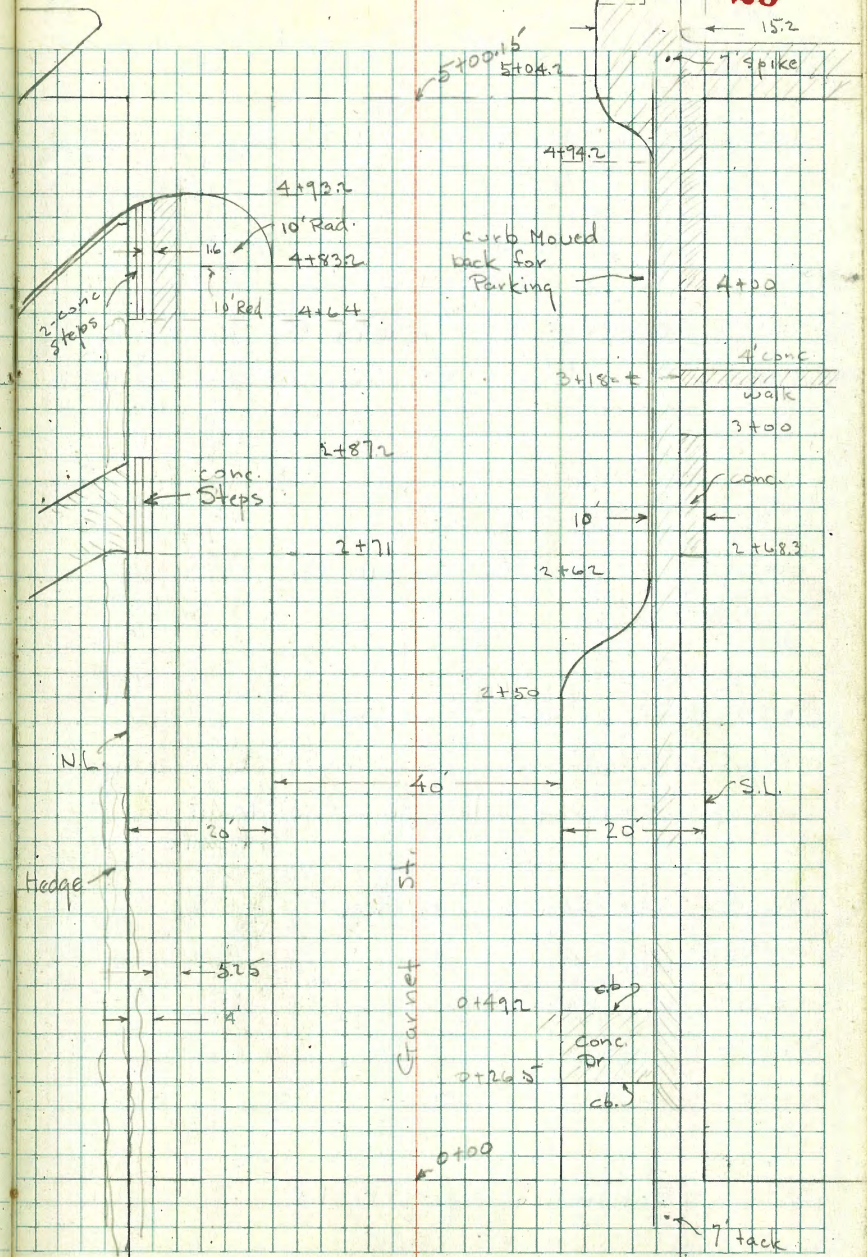
Lt.		70.96	Rt.
6.15	Top	4.82	66.14
	gut.	5.40	65.56
6.15 = P.C. N. ca Garnet	Top	4.85	66.11
	gut.	5.48	65.48
Ret. #3 = S.E. Cor. 16.1 - 3 parts - 5.35'			
E. end	Top	5.07	65.89
	gut.	6.01	64.95
5.35 W.	Top	5.16	65.80
	gut.	6.10	64.86
5.35	Top	5.35	65.61
	gut.	6.22	64.74
5.35 = E.C. = E. ab. Kendall	Top	5.60	65.36
	gut.	6.31	64.65
Ret. #4 = S.W. Cor. 15.9 - 3 parts - 5.3'			
S. end	Top	5.57	65.39
	gut.	6.26	64.70
5.3 N.	Top	5.38	65.58
	gut.	6.03	64.93
5.3	Top	5.20	65.76
	gut.	5.86	65.10
5.3 = E.C. = S. ab Garnet	Top	5.88	65.88
	gut.	5.75	65.21

Lamont St.

5' Rad. 20

Main Dr. To School - Coldlay

10' Cold lay walk to School



Kendall St.

St.

7- Sect. Garnet Cont - Kendall to hamonts

1+20 - 23.4 Lt = \$ 8" Acacia
1+00

0+76 - 23.7 Lt = \$ 10" Acacia

0+75 - 23.6 Rt = \$ 5" Acacia

0+50

0+49.2 = E. side Dr - 8' cb.

0+28 - 24.2 Lt = \$ 3" Acacia

0+26.5 - W. side - 22.7 Conc. Dr. 8" cb. along edge
from cb. to edge of walk - cb. + Conc. dr. all join edge
of walk.

0+25.5 - 24 Rt = \$ 4" Acacia

0+25

0+23 - 21.7 Rt = \$ W.M.

0+13 - 26 Rt = \$ 30" Palm

0+05 - 21.4 Rt = \$ F.H.

0+00 - E. Kendall - Sect. P. 18

1-27-47
7.0.

Lt

Rt.

21

66.5	66.51	66.47	66.24	66.70	66.01	66.08	66.81	66.31	66.85	66.04	66.16	66.1
2.5	4.45	4.49	4.72	5.26	4.75	4.88	5.15	5.45	5.11	4.92	4.80	4.9
40	walk		20	20	10	10	10	20	20	walk		40
			Top	gut				gut	Top			

68.1	66.46	66.37	66.20	66.62	66.59	66.02	65.74	65.26	65.87	66.03	66.13	66.2
2.9	4.50	4.59	4.76	5.34	5.27	4.94	5.22	5.70	5.09	4.93	4.83	4.8
40	walk		20	20	10	10	10	20	20	walk		40
			Top	gut				gut	Top			

65.86	65.23	66.04
5.10	5.73	4.92
20	20	30.75 - end
Top	gut in Dr.	cb. + edge Dr. + walk

65.87	65.22	66.01
5.09	5.74	4.95
20	20	30.75
Top cb	gut in Dr.	end cb. + Dr. + walk

68.1	66.39	66.37	66.14	66.56	66.81	65.91	65.66	65.22	65.86	66.01	66.14	66.0
2.9	4.57	4.44	4.82	5.40	5.15	5.05	5.30	5.74	5.10	4.95	4.82	5.0
40	walk		20	20	10	10	10	20	20	walk		40
			Top	gut				gut	Top			

20.96 - P. 19

3+00

2+79 - 31.7 Rt. - \$ W.M.

2+75 - 23.8 Lt. - \$ 10" Acacia

2+62 = E. RC. in cb. - New curb is along edge at walk

2+56 = middle of RC in cb. on Rt.

T.P. 5.92 74.35 ✓ 2.53 68.43 ✓

2+50 = P. RC. of cb. on Rt. - See sketch

2+25 - 23.5 Lt. - \$ 10" Acacia

2+24 - 25' Rt. - \$ 6" Acacia

2+00

1+76 - 33.7 Lt. - \$ 4" Acacia

1+50

1+26 - 24.1 Lt. - \$ 12" Acacia

1+24 - 24.3 Rt. - \$ 7" Acacia

Lt.

69.9	66.94	66.84	66.75	66.06	66.29	66.38	66.01	65.60	65.55	65.65	66.06	66.11	66.17
4.5	7.41	7.51	7.60	8.29	8.06	8.02	8.24	8.85	8.80	8.70	8.29	8.24	8.16
40	walk	20	20	20	10	10	20	20	20	20	30	30	40
				Top	gut					gut	Top	walk	

Rt.

66.60	66.00	66.21	66.29	66.06	65.51	65.69	65.93	66.04
7.75	8.35	8.14	8.06	8.29	8.84	8.66	8.42	8.31
10	20	10	10	20	20	30	30	36 = edge
Top	gut					gut	Top cb	walk
							E. RC.	

65.95	65.65
8.40	8.70
25.3	25.3
Top do	gut

74.35 ✓

69.0	66.82	66.71	66.55	65.97	66.21	66.30	65.93	65.55	65.91	65.97	66.13	66.3
2.0	4.14	4.25	4.4	4.99	4.75	4.66	5.03	5.41	5.05	4.99	4.83	4.7
40	walk	20	20	20	10	10	10	20	20	20	walk	40
			Top	gut					Top = RC.			
									of R.C.			

68.7	66.70	66.61	66.54	65.88	66.17	66.29	65.75	65.48	65.87	65.98	66.11	66.1
2.3	4.26	4.35	4.44	5.08	4.79	4.67	5.01	5.48	5.09	4.98	4.85	4.9
40	walk	20	20	20	10	10	10	20	20	20	walk	40
			Top	gut				gut	Top			

68.6	66.91	66.56	66.40	65.84	66.10	66.23	65.88	65.57	65.83	65.96	66.08	66.2
2.4	4.35	4.40	4.56	5.12	4.86	4.73	5.08	5.59	5.13	5.00	4.88	4.8
40	walk	20	20	20	10	10	10	20	20	20	walk	40
			Top	gut				gut	Top			

70.96 ✓

Levels around Returns at Int. of Lamont
+ Garnet - Sketch P 27

72.82 - P 25

Ret. # 1 at N.W. Cor. - 10' Rad. Ret. - 15.7 around
3-parts 5.2 each - N. part of Ret. - 10.7 around
to end - 2 parts 5.35 each.

W. end - N. ch Garnet Top 5.22 67.10

gut. 6.39 66.43

5.2 E. Top 5.67 67.15

gut. 6.32 66.50

5.2 Top 5.68 67.14

gut. 6.20 66.62

5.2 = PC Top 5.63 67.19

gut. 6.08 66.74

5.35 - N Top 5.51 67.31

gut. 5.93 66.89

5.35 - end Ret. Top 5.42 67.40

at Dr. gut. 5.60 67.22

Ret. # 2 = N.E. Cor. 16' Ret. 3 parts 5.33

N. end. = PC Top 5.68 67.14

gut. 6.30 66.52

5.33 S. Top 5.73 67.09

gut. 6.40 66.42

5.33 Top 5.72 67.10

gut. 6.37 66.45

5.33 = EC Top 5.72 67.10

gut. 6.32 66.50

Ret. # 3 - S.E. Cor. 16.4 - 3 parts 5.45

E. end = PC Top 6.83 65.99

gut. 7.28 65.54

5.45 W. Top 6.83 65.99

gut. 7.30 65.50

5.45 Top 6.82 66.00

gut. 7.35 65.47

5.45 = EC Top 6.84 65.98

gut. 7.38 65.44

Ret. # 4 = 5' Rad. on S.W. Ret. 7.8 around - 2 parts 3.9

S. end. = PC Top 6.87 65.95

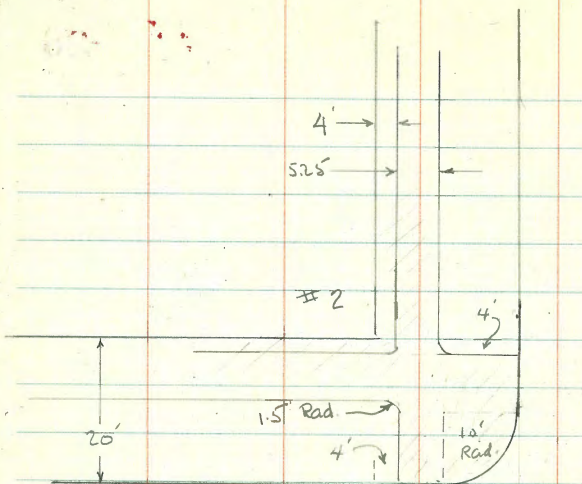
gut. 7.68 65.14

3.9 N Top 6.85 65.97

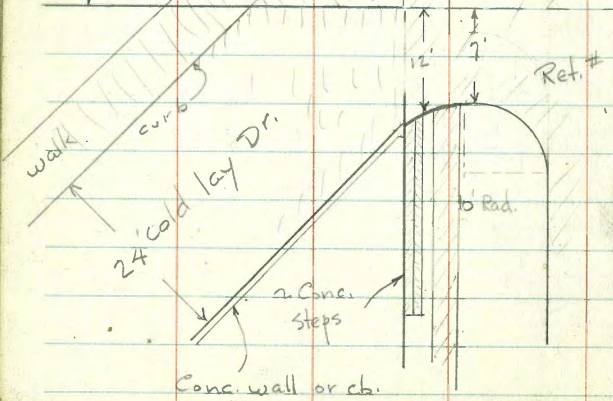
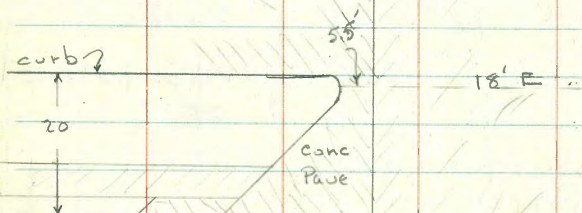
gut. 7.61 65.21

3.9 = EC Top 6.84 65.98

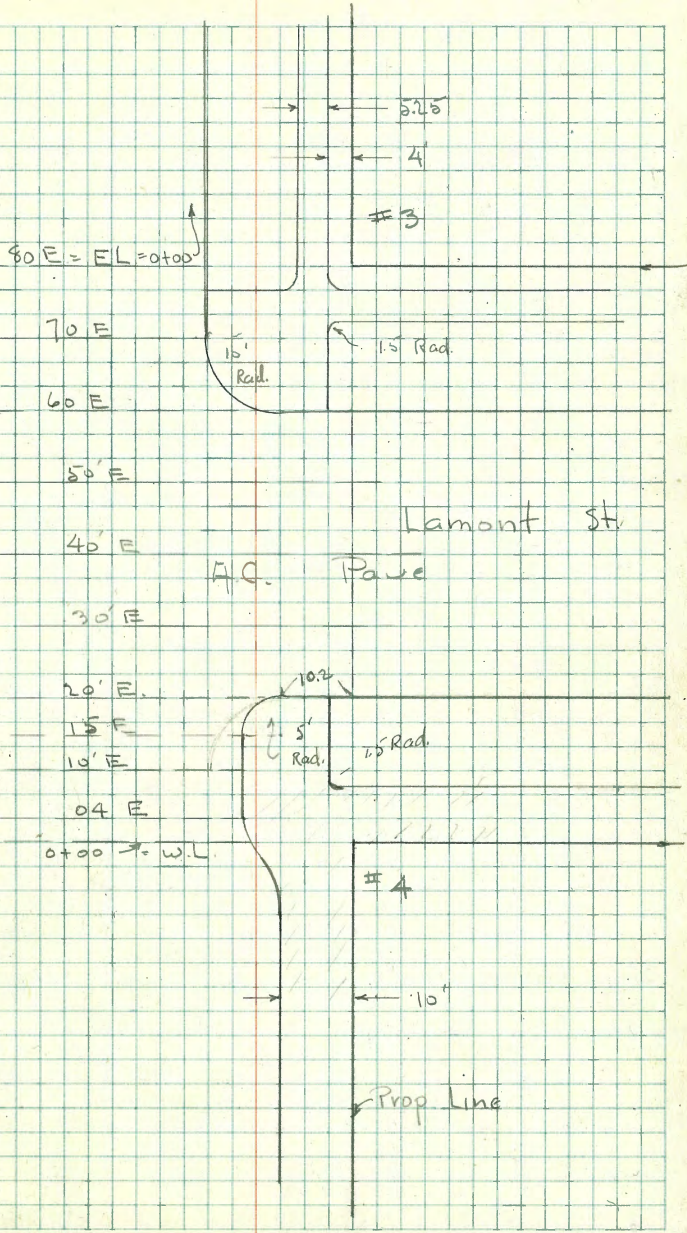
gut. 7.55 65.27



Conc. Pavement A.C. Pavement



Garnet



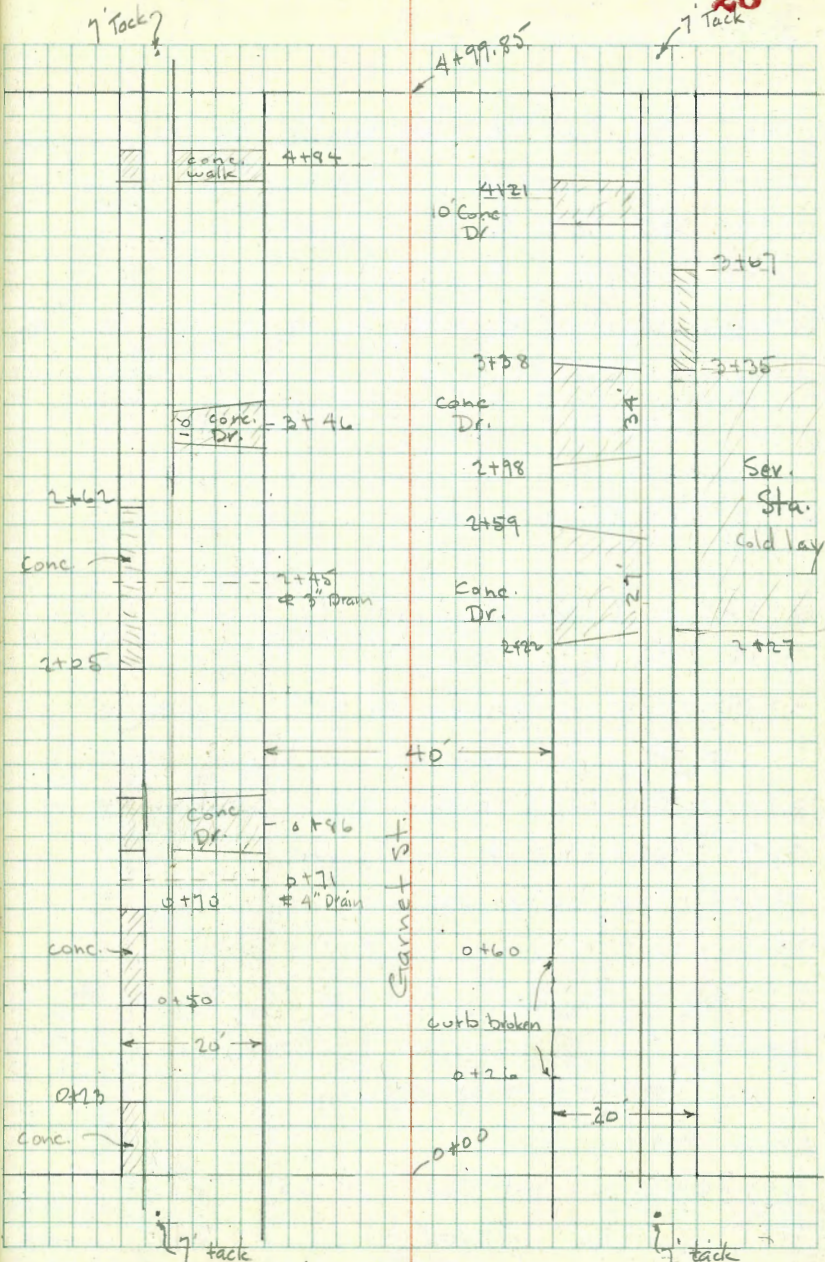
Lamont St.

A.C. Pavement

Prop. Line

7 Tack

7 Tack



2+95 - 25' Rt. = Φ 36" Palm
 2+80 - 22.8 Rt. = Φ W.M.
 2+55 - 21.7 Lt. = Φ W.M.
 2+50

on Lt. ch.
 2+45 = Φ 3" Gal. Drain pipe 5.85 67.38 = flow line

2+25
 Drives to Ser. Sta. 4' East.

Note: Owner States he wishes to move both
 2+22 = Beg. Conc. Dr. to Ser. Sta.
 2+21 - 22.5 Rt. = Φ W.M.
 2+04 - 21.8 Lt. = Φ W.M.

2+00
 1+95 - 25.7 Rt. = Φ 36" Palm

1+75
 1+70 - 25' Rt. = Φ 12" Pepper

1+50

Lt.

Rt.

68.05	68.06	67.96	67.80	67.36	67.46	67.48	67.08	66.47	66.95	67.07	67.1
5.18	5.17	5.27	5.43	5.87	5.77	5.75	6.15	6.76	6.28	6.16	6.1
40	walk		20	20	10	10	10	20	walk		40
			Top	cut.				cut in Dr.	Dr.		

68.25	68.13	68.03	67.81	67.26	67.47	67.46	67.05	66.47	67.17	67.7	67.1
4.98	5.10	5.20	5.42	5.97	5.76	5.77	6.18	6.74	6.04	6.06	6.1
40	walk		20	20	10		10	20	walk		40
			Top	cut.				cut in Dr.	Dr.		

68.2	68.04	67.96	67.79	67.24	67.43	67.41	66.94	66.48	66.89	67.03	67.05	67.0
5.10	5.19	5.27	5.44	6.01	5.80	5.82	6.29	6.80	6.34	6.20	6.18	6.2
40	walk		20	20	10		10	20	20	walk		40
			Top	cut.				cut.	Top			

67.9	67.93	67.86	67.63	67.17	67.35	67.26	66.86	66.23	66.73	66.90	66.97	67.2
5.3	5.30	5.37	5.60	6.06	5.90	5.97	6.37	7.00	6.50	6.33	6.26	6.0
40	walk		20	20	10		10	20	20	walk		40
			Top	cut.				cut.	Top			

67.7	67.79	67.72	67.59	67.07	67.21	67.25	66.73	66.15	66.66	66.66	66.83	67.0
5.5	5.44	5.5	5.64	6.16	6.02	5.98	6.50	7.08	6.57	6.57	6.40	6.2
40	walk		20	20	10		10	20	20	walk		40
			Top	cut.		73.23		cut	Top			

Int. - P-33

- 4+99.85 = w.L. Morrell
- 4+94 = 21.4 Rt = \$ F.H.
- 4+91 = 23.6 Rt = \$ 18" Pepper
- 4+84 = \$ 5.2 Conc walk on Lt.
- 4+80 = 21.7 Lt = \$ W.M.
- 4+59 = 24.5 Rt. = \$ 36" Palm
- 4+50
- 4+34 = 25.5 Rt. = \$ 4" Acacia
- 4+32 = 22 Rt. = \$ W.M.
- 4+21 = \$ 10 Conc. Dr. on Rt.
- 4+19 = 21.7 Lt. = \$ W.M.
- 4+02 = 21.7 Lt. = \$ W.M.

4+00

3+80 = 22 Rt. = \$ W.M.

I.P. 5.41 71.83 6.81 66.42

W.L. B.P. Morrell's Garnet C.C. 30 Book

3+50

3+46 = \$ 16 Conc. Dr. on Lt.

3+00

66.7	66.60	66.54	66.38	65.79	66.03	66.28	66.03	65.47	66.07	66.27	66.31	66.0
5.1	5.23	5.29	5.45	6.4	5.80	5.55	5.80	6.36	5.76	5.56	5.52	5.8
40	walk		20	20	10		10	20	20	walk		40
			Top	gut				gut.	Top			

67.0	66.91	66.86	66.63	66.19	66.42	66.55	66.25	66.78	66.35	66.48	66.52	66.3
4.8	4.92	4.98	5.20	5.64	5.41	5.28	5.58	6.05	5.48	5.35	5.31	5.5
40	walk		20	20	10		10	20	20	walk		40
			Top	gut				gut.	Top			

65.85
5.98
20
gut. in Dr.
66.51
5.32
30.75
Dr. at walk

67.3	67.23	67.13	66.87	66.46	66.57	66.83	66.46	65.95	66.45	66.71	66.77	66.7
4.5	4.62	4.70	4.96	5.37	5.26	5.00	5.37	5.88	5.38	5.12	5.06	5.1
40	walk		20	20	10		10	20	20	walk		40
			Top	gut				gut.	Top			

71.83

67.6	67.48	67.38	66.75	66.93	66.96	66.63	66.13	66.61	66.70	66.75	66.85
5.6	5.75	5.85	6.48	6.30	6.28	6.60	7.10	6.62	6.53	6.48	6.38
40	walk		20	10	10		20	20	walk		40
			Dr.	gut. in Dr			gut.	Top			

67.7	67.16	67.66	67.38	67.07	67.31	67.33	66.91	66.36	66.81	66.97	66.9
5.5	5.47	5.57	5.85	6.16	5.92	5.90	6.32	6.87	6.42	6.26	6.3
40	walk		20	20	10		10	20	walk		40
			Top	gut				gut. in Dr.			

Sections of Int. - Morrell + Garnet

60' E = E. cb

50' E

40' E = F

30' E

20' E = W. cb

10' E = PC. 10' Rad. Ret.

W.L. Morrell = 499.85 - P 31 for Sect.

1-29-47
20.

LT.

Φ

Rt.

33

65.88	65.05	64.54	64.99	64.51	64.50	65.01	65.19	64.99	64.44	64.16	64.58	64.18	64.66
59.5	6.78	7.29	6.84	7.32	7.33	6.82	6.64	6.84	7.39	7.67	7.25	7.65	7.17
80	40	40	30	30	20	10		20	20	30	30	40	40
Top cb.	Top	gut	Top PC	gut						gut	Top PC	gut	Top

65.20	65.05	64.78	65.21	65.41	65.23	65.05	64.87	64.71
6.63	6.78	7.05	6.62	6.42	6.60	6.78	6.96	7.12
40	30	20	10		10	20	30	40

65.64	65.37	65.04	65.46	65.65	65.52	65.40	65.27	65.19
6.19	6.46	6.79	6.37	6.18	6.31	6.43	6.56	6.64
40	30	20	10		10	20	30	40

65.97	65.61	65.24	65.62	65.83	65.66	65.56	65.43	65.32
5.84	6.22	6.59	6.21	6.00	6.17	6.27	6.40	6.51
40	30	20	10		10	20	30	40

64.40	66.59	66.00	66.33	65.79	65.48	65.84	66.01	65.78	65.46	65.30	65.97	65.71	65.90
44.3	5.24	5.83	5.50	6.04	6.35	5.99	5.82	6.05	6.37	6.53	5.86	6.46	5.93
80	40	40	30	30	20	10		10	20	30	30	40	40
Top cb.	Top	gut	Top PC	gut							Top PC	gut	Top and cb.

66.64	66.37	65.72	65.99	66.15	65.87	65.47	66.01	66.11
5.29	5.46	6.11	5.84	5.68	5.96	6.36	5.82	5.72
30	20	20	10		10	20	20	30 = Back of Ret.
Back of Ret.	Top PC Ret	gut				gut	Top PC	

11.83 - P 31

Levels around Returns - at Int. of Morrell
+ Garnet - Sketch P. 32.

71.83 - P. 34

Ret. #1 = N.W. Cor. 158 around - 3 parts 5.3 each.

W. end = N.W. Garnet = P.C. = Top	5.46	65.37
gut	6.11	65.72
5.3 E Top	5.50	66.33
gut	6.16	65.67
5.3 Top	5.52	66.31
gut	6.18	65.65
5.3 = E.C. Top	5.50	66.33
gut	6.06	65.77

Ret. #2 = N.E. Cor. - 158 - 3 - 5.3

N. end = P.C. Top	6.84	64.99
gut	7.32	64.51
5.3 S. Top	6.90	64.93
gut	7.42	64.41
5.3 Top	6.89	64.94
gut	7.43	64.40
5.3 = E.C. Top	6.89	64.94
gut	7.45	64.38

Ret. #3 = S.E. Cor. - 158 - 3 - 5.3

E. end = P.C. Top	7.20	64.63
gut	7.71	64.12

71.83

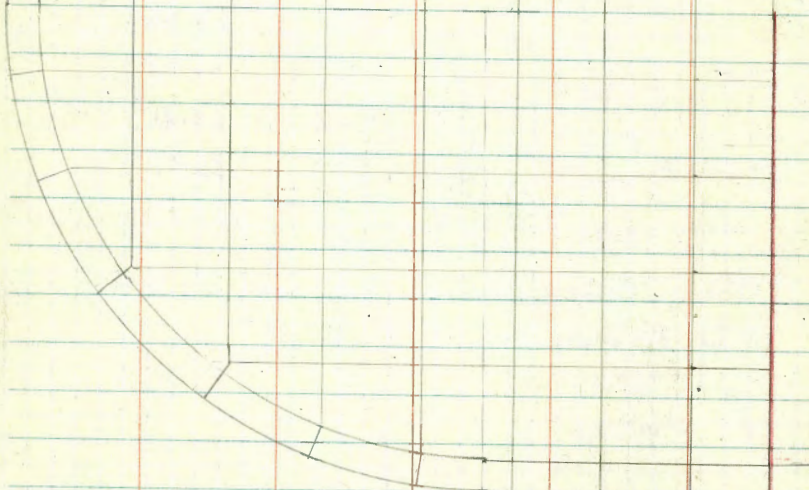
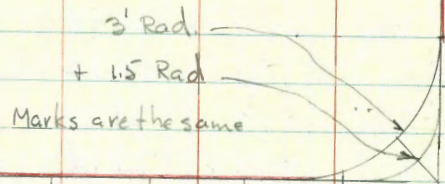
35

5.3 W. Top	7.21	64.62
gut	7.65	64.18
5.3 Top	7.25	64.58
gut	7.69	64.14
5.3 = E.C. Top	7.25	64.58
gut	7.65	64.18

Ret. #4 S.W. Cor. 16 - 3 parts 5.35

S. end = P.C. Top	5.87	65.94
gut	6.53	65.30
5.35 W. Top	5.90	65.93
gut	6.49	65.34
5.35 Top	5.85	65.98
gut	6.42	65.41
5.35 = E.C. Top	5.82	66.01
gut	6.36	65.47

Note: Double checked Between all B.M.'s
Note Differences -



Prop. Cor.
↙

See Int. Detail for
Rad. Here
↙

Typical Detail of Markings
on Returns - All are approx. the
Same - Note Det. of Intersections
for Rad. of Walk Corners. - some are
square as at Morrell.

Scale 1" = 4'

Edge of Ret. in Red.

↙ Back of curb

↙ Curb face

Cross Section Kendall
Garrett Ave to 50' South

Sketch Page 16

+50

+40

+30

+24.5 = S/L Conc Drive on East

+10

010 = S/L Garrett = N/L Conc Drive on East

BM

299

49.89

65.92

S.M.B.P.
Garrett
Kendall
page 18

June 30.47
S.M.B.P.
McCoy
H. 167
Williams
M.P.S. 197

INDEXED
JAN 22 1948

Notes Reduced 7-1-47
R. E. Coburn

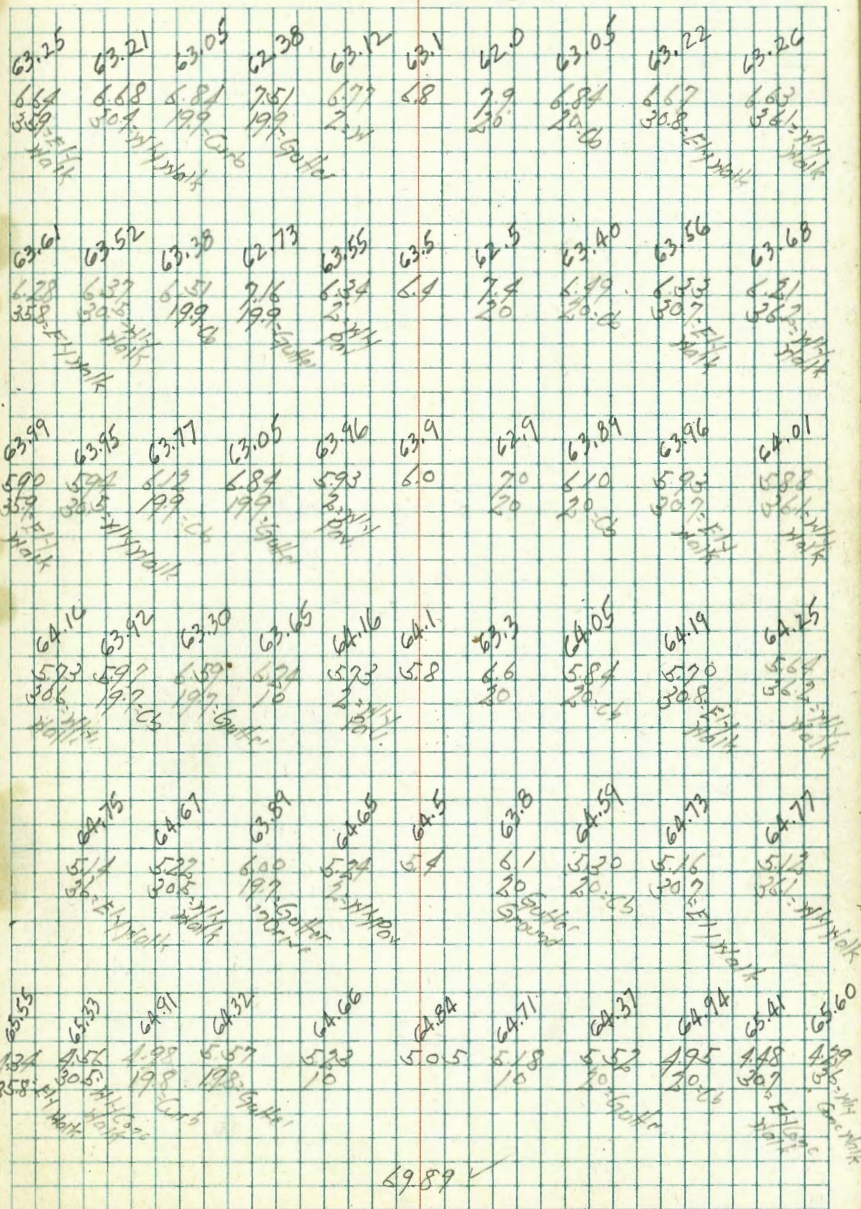
A.18

5.71
35.9

Lt. E

Z

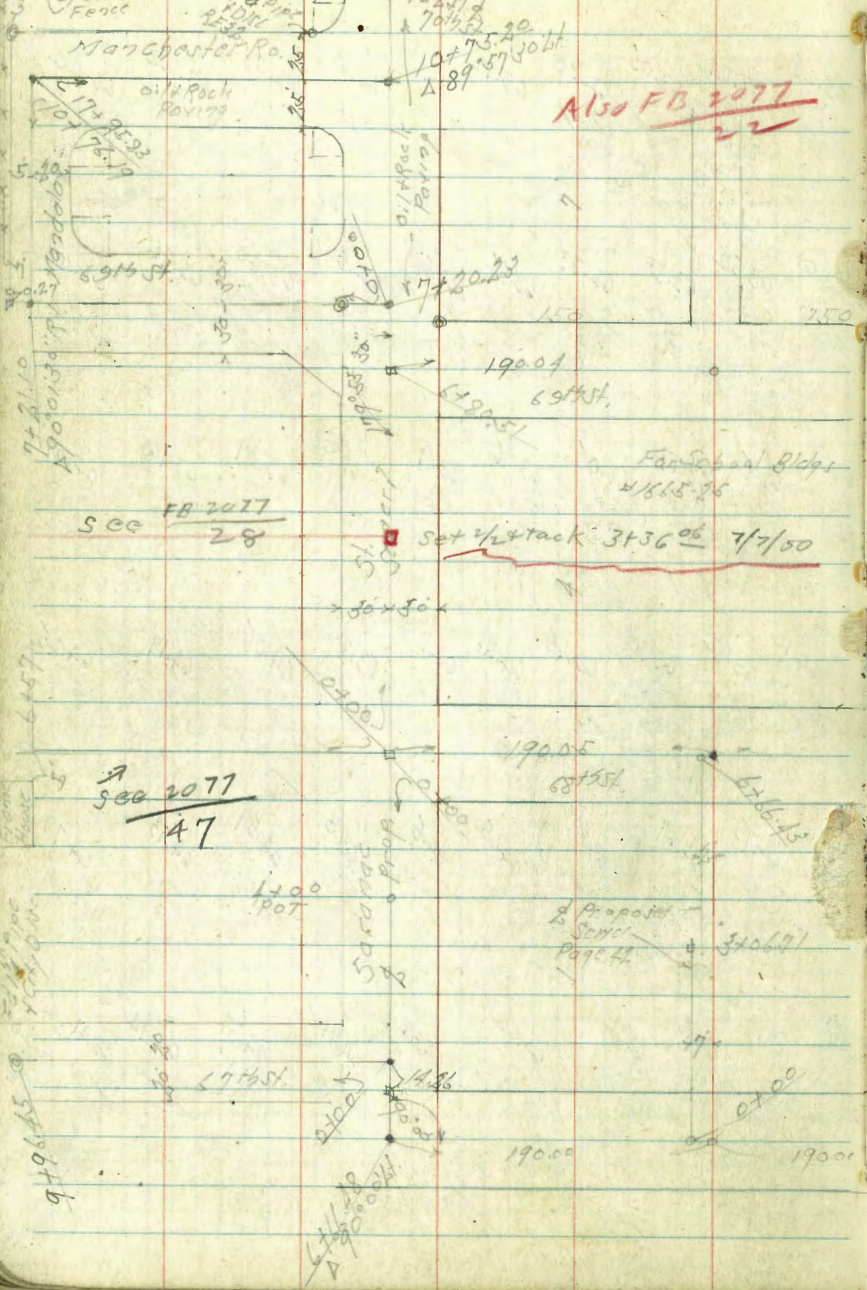
Rt. West 37



49.89 ✓

Alignment Proposed Sewer

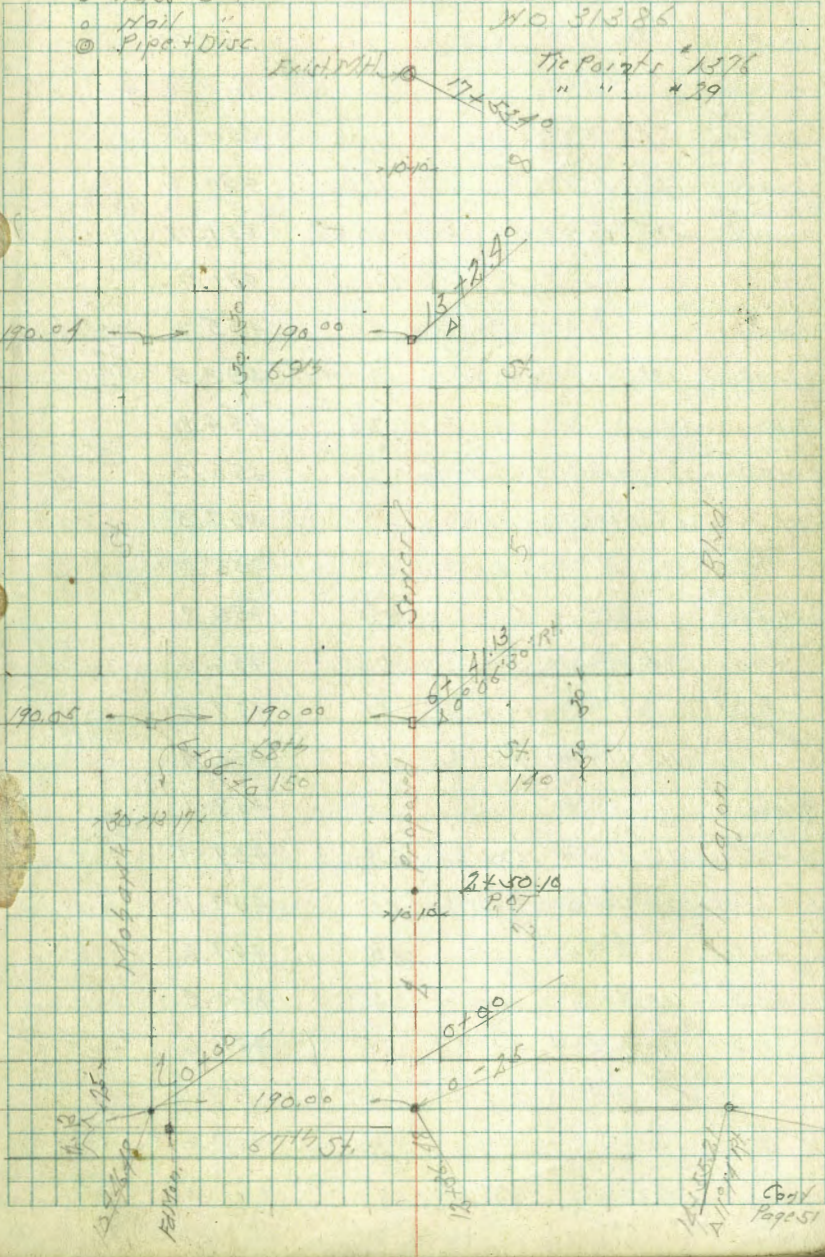
La Mesa Colony North of El Cajon East of 69th St.



Also FB 2077

- Indicates
- Hubs Found
 - Mass.
 - Hubs Set
 - Nail
 - ⊙ Pipe + Disc
- Indexed

Sept. 19-47
Sisson
McCoy
H167
NO. 31386



Tie Point 1376

Levels Proposed Sinner Alley
Blocks 2-5-8 La Mesa Colony

Sketch Page 38

B.M.	8.43	462.13	458.70	Stationary Tube on 2nd Floor
0-25-	67' 1/2	11.45	450.68	on 2nd Floor
0-30-	ELV AC Paving	11.5	450.6	
0+0-	52' 67' 1/2	11.4	450.7	
+15	13' 1/2 of 1/2 = 1/2 Garage	10.38	451.78	Stationary Tube on 2nd Floor
+50		10.4	451.7	
+86	113' 1/2 of 1/2 = 1/2 + 1/4	6.9	455.2	Stucco 1/2 dg on 2nd Floor
+91	121' 1/2 of 1/2 = 1/2 + 1/4	8.8	453.3	Garage Stationary Tube on 2nd Floor
+10		7.3	454.8	
+10	95' 1/2 of 1/2 = 1/2 + 1/4	6.9	455.2	Garage Stationary Tube on 2nd Floor
+26	65' 1/2 of 1/2 = 1/2 + 1/4	4.8	457.3	House on 2nd Floor
"	126 " " " = 1/2 + 1/4	6.7	455.4	House on 2nd Floor
+50		5.3	456.8	
+70	95' 1/2 of 1/2 = 1/2 + 1/4	5.5	456.6	Frame House on 2nd Floor
+75		4.1	458.0	
"	116' 1/2 of 1/2 = 1/2 + 1/4	3.2	458.9	Coll. House on 2nd Floor
2+0		4.0	458.1	
+18	38' 1/2 of 1/2 = 1/2 + 1/4	3.2	459.9	Frame House on 2nd Floor
"	123' 1/2 " " = 1/2 + 1/4	5.0	457.1	Coll. House on 2nd Floor
+50		3.0	459.1	
+54	14' 1/2 of 1/2 = 1/2 + 1/4	1.6	460.5	Stucco Court on 2nd Floor
+73	115' 1/2 of 1/2 = 1/2 + 1/4	0.5	461.6	Frame House on 2nd Floor
TP	3.37	462.93	2.57	459.56
3+0		5.5	459.4	
+52	91' 1/2 of 1/2 = 1/2 + 1/4	1.9	461.0	Frame House on 2nd Floor

462.93

3+50		4.0	458.9	Stucco Court on 2nd Floor
+68	1/4 of 1/2 = 1/4 + 1/4	1.8	461.1	Stucco Court on 2nd Floor
+74	105' 1/2 of 1/2 = 1/2 + 1/4	2.5	460.4	Stucco Court on 2nd Floor
4+0		4.9	458.0	
+20	15' 1/2 of 1/2 = 1/2 + 1/4	3.5	459.4	Frame House on 2nd Floor
+50		5.8	457.1	
+74	109' 1/2 of 1/2 = 1/2 + 1/4	7.8	455.1	Stucco House on 2nd Floor
+91	125' 1/2 " " = 1/2 + 1/4	5.73	457.20	on 2nd Floor Stucco Court
5+0		6.8	456.1	
+50		6.9	456.0	
TP	2.97	458.86	7.04	455.89
+84	16' 1/2 of 1/2 = 1/2 + 1/4	1.8	457.1	Double Stucco Court on 2nd Floor
"	82' 1/2 of 1/2 = 1/2 + 1/4	4.1	454.8	Garage Sta. on 2nd Floor
6+0		5.4	455.5	
+113	2' 1/2 of 1/2 = 1/2 + 1/4	3.91	454.95	on 2nd Floor
+97	14' 1/2 of 1/2 = 1/2 + 1/4	3.2	456.7	Stucco House on 2nd Floor
7+0		4.2	454.7	
"	48' 1/2 of 1/2 = 1/2 + 1/4	2.8	456.1	Coll. House on 2nd Floor
+12	7' 1/2 " " = 1/2 + 1/4	3.2	455.7	Frame House on 2nd Floor
+50		5.0	453.9	
"	37' 1/2 of 1/2 = 1/2 + 1/4	4.7	454.2	House on 2nd Floor
8+0		5.1	453.8	
"	33' 1/2 of 1/2 = 1/2 + 1/4	5.4	453.5	Stucco House on 2nd Floor
"	100' 1/2 " " = 1/2 + 1/4	2.9	456.0	Frame House on 2nd Floor

Oct. 29-47
S. 2007
M. 2007
11167
110 21886 **39**

458.86

8+50		45	454.4	
9+0		37	455.2	
+03	10' R of $\frac{1}{2}$ = 4' Clean	2.85	456.01	out on Top Stucco Courts
+50		27	456.2	
"	100' Lt of $\frac{1}{2}$ = $\frac{1}{2}$ x Sky	3.4	455.5	Stucco House on Floor
10+0		19	457.0	
TP	7.06 16399	193	456.93	
+08	102' Lt of $\frac{1}{2}$ = $\frac{1}{2}$ x Sky	5.8	458.2	Frame Ho. on Floor
+35	125' R of $\frac{1}{2}$ = NVCor	4.8	459.2	Stucco Courts on Floor
+50		6.3	457.7	
"	92' Lt of $\frac{1}{2}$ = $\frac{1}{2}$ x Sky	3.8	460.2	Frame Ho. on Floor
11+0		54	458.6	
+06	105' Lt of $\frac{1}{2}$ = $\frac{1}{2}$ x Sky	2.9	461.1	Stucco House on Floor
+28	125' R of $\frac{1}{2}$ = NVCor	4.8	459.2	Stucco Courts on Floor
+50		5.0	459.0	
"	103' Lt of $\frac{1}{2}$ = $\frac{1}{2}$ x Sky	2.5	461.5	Stucco House on Floor
12+0		5.0	459.0	
+10	87' R of $\frac{1}{2}$ = $\frac{1}{2}$ x Sky	5.8	458.2	Call. House on Floor
"	85' Lt " " = $\frac{1}{2}$ x Sky	1.5	462.5	Frame House on Floor
+50		4.8	459.2	
+62	100' Lt of $\frac{1}{2}$ = $\frac{1}{2}$ x Sky	1.0	463.0	Stucco House on Floor
13+0		5.0	459.0	
+21.40	= $\frac{1}{2}$ 69' x Sky	4.86	459.13	on Sub
+50		4.6	459.4	
TP	553 16476	476	459.23	

40

464.76

14+0		5.0	459.8	
"	102' R of $\frac{1}{2}$ = $\frac{1}{2}$ x Sky	6.6	458.2	Auto Shop on Floor
+50		5.0	459.8	
+57	105' Lt of $\frac{1}{2}$ = SFCor	3.1	461.7	Church on Main Floor
+75	95' R " " = $\frac{1}{2}$ x Sky	5.2	459.6	Frame House on Floor
15+0		4.8	460.0	
+50		4.7	460.1	
16+0		4.3	460.5	
TP	8.05 46848	433	460.43	
16+0	90' R of $\frac{1}{2}$ = NVCor	8.0	460.5	Frame House on Floor
+50		7.6	460.9	
17+0		7.0	461.5	
+53.40	= EX 201' MH	4.81	463.67	on Floor
"	" " "	10.69	457.79	Flax line
18+0		4.29	464.19	S. H. 89 Flax line 464.26

Levels Proposed Sameer Mohan St.
67th St to 68th St.

B.M.	3.84	454.52		450.68	on Hub 0-25 8th-2 P39
0+0	to 67th St	194		449.58	on Hub
+05'	= Fly A.C. Paving	195		449.57	
+50		4.0		450.5	
+55	50' Lt of 1/2 - 1/2 + 1/4	2.1		452.1	Stucco Ho on Floor
+63	51' R of 1/2 - 1/2 + 1/4	2.7		451.8	Garage + Galubron Floor
+85	72' Lt of 1/2 - 1/2 + 1/4	4.0		450.5	Garage + 1/4 on Floor
+10		3.2		451.3	
+39	70' Lt of 1/2 - 1/2 + 1/4	2.6		451.9	Garage + 1/4 on Floor
+50		1.9		452.6	
+10		0.2		454.3	
TP	6.55	460.79	0.28	454.24	
+08	53' Lt of 1/2 - 1/2 + 1/4	1.4		456.4	Frame House on Floor
+18	53' Lt " " " "	2.4		458.4	Frame Ho on Floor
+50		1.4		456.4	
+30		3.7		457.1	
+46	54' Lt of 1/2 - 1/2 + 1/4	2.1		458.7	Stucco House on Floor
+50		3.9		456.9	
+10		4.6		456.2	
+11	51' Lt of 1/2 - 1/2 + 1/4	3.8		457.0	Frame House on Floor
+50		5.3		455.5	
+92	53' Lt of 1/2 - 1/2 + 1/4	5.5		455.3	Stucco House on Floor
+10		6.6		454.2	
+50		7.7		453.1	
+54	51' Lt of 1/2 - 1/2 + 1/4	7.0		453.8	Stucco House on Floor

Oct. 28 47
S. McCoy
McCoy
File

41

		460.79			
5+97	51' Lt of 1/2 - 1/2 + 1/4	7.4		453.4	Stucco House on Floor
+10		8.0		452.8	
+50		8.5		452.3	
+66.10	to 68th St	8.76		452.03	on 1/2 Hub

Levels Proposed for Saranac St.
 And 67th St. to Alley Between E. Cajon & Amberst St.

Sketch Page 38. Also Page 51

BM	0.60	452.63		452.05	07 Hab M. Mohawk 48th St Page 11
BM	7.88	451.45	9.06	443.57	SE Prop. Co. Pipe & Dist. Rt
0+0	7/8 Saranac at 68th St	8.3		443.2	
+50		8.5		443.0	
+88	70' Pt of 1/2 - 1/2 x 1/4	8.7		443.9	Stucco House on Floor
1+0		8.2		443.3	
+50		7.2		444.3	
+74	49' Pt of 1/2 - 1/2 x 1/4	1.75		449.70	Frame Ho. on Floor
2+0		5.9		445.6	
"	81' Pt of 1/2 - 1/2 x 1/4	6.7		444.8	Stucco House on Floor
+20	51' Pt of 1/2 - 1/2 x 1/4	1.8		449.7	Frame Ho on Floor
+45	80' Pt " " - 1/2 x 1/4	4.3		447.2	Stucco Ho on Floor
+50		5.1		446.4	
+60	50' Pt of 1/2 - 1/2 x 1/4	0.8		450.7	Stucco Ho on Floor
+95	72' Pt " " - 1/2 x 1/4	2.9		448.6	Stucco Ho on Floor
3+0		3.8		447.7	
+20	54' Pt of 1/2 - 1/2 x 1/4	+1.5		453.0	Stucco Ho. on Floor
+50		2.4		449.1	
+70	53' Pt of 1/2 - 1/2 x 1/4	+2.0		453.5	Stucco Ho. on Floor
4+0		1.3		450.2	
+38	73' Pt of 1/2 - 1/2 x 1/4	+1.5		453.0	Calif. Ho on Floor
+50		1.8		449.7	
+60	54' Pt of 1/2 - 1/2 x 1/4	+1.0		452.5	Frame Ho. on Floor
5+0		2.7		448.8	

Nov 20. 47

Sisson
McCoy
Allen

43

451.45

5+33	58' Pt of 1/2 - 1/2 x 1/4	1.2		450.3	Stucco Ho on Floor
+50		4.1		449.1	
6+0		5.3		446.2	
+35	= Fly M.C. Paving	5.32		446.13	
+53	= Fly " " "	5.34		446.11	
+66.18	190° 00' 00"	6.34		445.11	07 Hab
TP	702	452.13	6.34	445.11	
+82	61' Pt of 1/2 - 1/2 x 1/4	4.8		447.3	House on Floor
7+0		5.8		446.3	
+06	= Oil Paving	5.7		446.4	
+37	45' Pt of 1/2 - 1/2 x 1/4	4.3		447.9	Stucco Ho on Floor
+50	on Paving	5.07		447.06	
8+0	" " "	4.58		447.55	
+12	55' Pt of 1/2 - 1/2 x 1/4	3.0		449.1	House on Floor
+50	on Pav	3.9		448.2	
+61	55' Pt of 1/2 - 1/2 x 1/4	2.6		449.5	Stucco House on Floor
9+0		3.32		448.81	
+10	51' Pt of 1/2 - 1/2 x 1/4	2.5		449.6	Stucco House on Floor
+50	on Pav	2.80		449.33	
10+0		2.72		449.41	
+20	49' Pt of 1/2 - 1/2 x 1/4	2.3		449.8	Stucco Ho on Floor
+46.18	= Mohawk	2.55		449.58	on Stucco
TP	5.93	455.31	2.55	449.58	
+57	45' Pt of 1/2 - 1/2 x 1/4	5.2		446.9	Stucco House on Floor

		45501		
10175	72 Rt of 1/2	1/2 x Ely	5.15	449.86
				House 07 Floor
1110	02 Paving		5.70	449.61
+20	50 Rt of 1/2	1/2 x Ely	5.0	450.3
				Stucco House 07 Floor
+50	02 Paving		5.52	449.79
+72	45 Rt of 1/2	1/2 x Ely	3.9	451.4
				Stucco House 07 Floor
1210	02 Paving		5.07	450.24
+15	85 Rt of 1/2	1/2 x Ely	2.6	452.7
				Frame House 07 Floor
+50	02 Paving		4.43	450.88
1310	02 "		3.58	451.73
+50	" "		2.90	452.41
"	109 Rt of 1/2	1/2 x Ely	1.0	454.3
				Frame House 07 Floor
B.M.	564	457.33	162	453.69
				S.W.B.P. E.C. 107 457.33 453.70
13188.7	1/4 Paving	El Cajon	4.20	453.1
1410			4.07	453.26
+25			3.68	453.65
+55.21	A 11' 14" R		3.06	454.27
				on rail
+72			3.18	454.15
1510			3.74	453.59
+12	1/4 Paving	El Cajon	3.91	453.42
+50			4.50	452.83
+65	45 Rt of 1/2	1/2 x Ely	3.53	453.80
				oil station toilet 07 floor
1610			5.16	452.17
+39.77	1/2 Alley to East		3.96	451.57

✓ Levels Proposed Server 6745

Saratoga St. to Fort Line of La Mesa Colony

Sketch Page 5 & 8

B.M.	7.22	452.33	445.11	on 2nd Hub
040	2' Saratoga 6745	6.48	445.85	676.48 Page 45 on 2nd Hub
+50	07 Oil Paving	6.13	446.20	
170		5.85	446.48	
+17	77 Rt of 1/2 x 1/4	2.75	449.58	Frame House on Floor
+50	07 Oil Pav	5.0	447.3	
270	" " "	4.4	447.9	
+50	" " "	4.0	448.3	
+59	59 Lt of 1/2 x 1/4	1.8	450.5	Stucco House on Floor
+84	34 Rt of 1/2 x 1/4	0.4	451.9	Frame Ho on floor
370	07 Oil Paving	3.7	448.6	
TP	5.02	453.65	3.70	448.63
+50	07 Oil Pav.	5.0	448.7	
+59	159 Lt of 1/2 x 1/4	6.2	447.5	Frame House on Floor
+84	54 Rt " " x 1/4	4.0	449.7	Frame House on Floor
470		5.1	448.6	
+30	53 Lt of 1/2 x 1/4	3.1	450.6	Frame Ho on Floor
+50		5.2	448.5	
+96	45 Rt of 1/2 x 1/4	4.2	449.5	Frame Ho on Floor
570		5.5	448.2	
+16	108 Lt of 1/2 x 1/4	5.3	448.4	Stucco Ho. on Floor
+50		6.1	447.6	
+86	45 Rt of 1/2 x 1/4	5.8	447.9	Frame Ho on Floor
"	124 Lt of 1/2 x 1/4	6.4	447.3	Stucco Ho. on Floor
670		6.8	446.9	

Nov. 21-47

453.65

TP	1.91	448.79	6.77	446.88	
6750			2.8	446.0	
+63	54 Lt of 1/2 x 1/4	0.4	448.4	448.4	Frame House on Floor
770			3.7	445.1	
+14	43 Rt of 1/2 x 1/4	4.1	444.7	444.7	Frame Ho on Floor
+50			4.0	444.8	
870			4.1	444.7	
+21	47 Lt of 1/2 x 1/4	2.4	446.4	446.4	Frame Ho on Floor
+50			4.3	444.5	
+77	50 Lt of 1/2 x 1/4	3.1	445.7	445.7	Stucco Ho on Floor
970			4.4	444.4	
+22	50 Lt of 1/2 x 1/4	2.9	445.9	445.9	Stucco Ho on Floor
+32	81 Rt " " x 1/4	3.5	445.3	445.3	Stucco Ho on Floor
+50			4.5	444.3	
+75	47 Lt of 1/2 x 1/4	2.4	446.4	446.4	Stucco Ho on Floor
+96.45			5.09	443.70	on Pipe + Drive
TP	5.94	452.86	1.87	446.92	
B.M.			7.74	445.18	on 4th 676.48 115.11

Levels Proposed Sewer
Saranac St And Manchester Road
East of 68th And North of Saranac

B.M.	8.43	452.00		443.57	St Prop Coy Pipe 40" dia. Page 73
0+0	= 68 th St. to South	9.2		442.8	
+50		8.2		443.8	
+89	68 Lt of $\frac{1}{2}$ - $\frac{1}{2}$ x SLY	5.3		446.7	Stocco Ho. 07 Floor
1+0		7.2		444.8	
+50		6.1		445.9	
+64	83 Lt of $\frac{1}{2}$ - $\frac{1}{2}$ x SLY	2.7		448.3	Francis Ho. 07 Floor
2+0		5.0		447.0	
+50		4.1		447.6	
3+0		4.0		448.0	
+50		4.4		447.6	
+64	15 Lt of $\frac{1}{2}$ - $\frac{1}{2}$ x SLY	5.1		446.9	Francis House 07 Floor
4+0		4.6		447.4	
+50		4.0		448.0	
"	15 Lt of $\frac{1}{2}$ - $\frac{1}{2}$ x SLY	3.6		448.4	Stocco Ho 07 Floor
5+0		3.0		449.0	
+50		1.6		450.4	
TP	12.36	462.78	1.58	450.42	
6+0			1.01	452.7	
+50			7.8	455.0	
+80.51	= 69 th to 50	6.5		456.73	07 Hub
7+0			4.6	458.2	
+20.23	= 69 th to 40 Reet Paving	3.20		459.58	07 Stub
+50		1.1		461.7	
TP	15.11	475.37	0.52	462.26	

Nov. 21-17
S. S. 07
McCoy
Hiler

46

475.37

8+0		9.8		465.6	
+03	46 Lt of $\frac{1}{2}$ - $\frac{1}{2}$ x SLY	7.1		468.0	Stocco Ho 07 Floor
+50		6.9		468.5	
"	49 Lt of $\frac{1}{2}$ - $\frac{1}{2}$ x SLY	4.2		471.2	Stocco Ho 07 Floor
9+0		5.6		469.8	
+50		4.8		470.6	
10+0		4.6		470.8	
+16	47 Lt of $\frac{1}{2}$ - $\frac{1}{2}$ x SLY	3.3		472.1	Stocco Ho 07 Floor
+50		4.5		470.9	
+95.20	= Manchester	4.2?		471.08	
"	50 E of Saranac	4.2		471.2	
"	100 E " "	4.3		471.1	
"	150 E " "	5.7		468.7	
"	195 E " "	8.7		466.7	
11+0		4.4		471.0	
+36	56 Lt of $\frac{1}{2}$ - $\frac{1}{2}$ x SLY	0.4		475.0	Stocco Ho 07 Floor
+50		5.0		470.4	
+73	46 Lt of $\frac{1}{2}$ - $\frac{1}{2}$ x SLY	5.1		470.3	Dr. George Stocco 07 Connection
12+0		5.5		469.9	
+50		6.0		469.4	
+76	40 Lt of $\frac{1}{2}$ - $\frac{1}{2}$ x SLY	5.3		470.1	Stocco Ho 07 Floor
13+0		6.6		468.8	
+50		7.1		467.3	
"	42 Lt of $\frac{1}{2}$ - $\frac{1}{2}$ x SLY	6.0		469.4	Stocco Ho 07 Floor

		475.37			
1410			7.5	467.9	
+26	40 Lt of $\frac{1}{2}$ $\frac{1}{2}$ x Fly		7.1	467.3	Stucco Ho
+32	67 Rt " " $\frac{1}{2}$ x Fly		5.6	469.8	on Floor con Block Ho. on Floor
TP	4.19	472.16	7.70	467.67	
+50			4.6	467.6	
1510			4.8	467.4	
+10	40 Lt of $\frac{1}{2}$ $\frac{1}{2}$ x Fly		3.6	468.6	Stucco House on Floor
"	52 Rt " " $\frac{1}{2}$ x Fly		1.8	470.4	Frame Ho on Floor
+50			4.7	467.5	
1610			5.0	467.2	
+50			5.2	467.0	
1710			5.3	466.9	
+33	48 Lt of $\frac{1}{2}$ $\frac{1}{2}$ x Fly		3.0	468.2	Stucco House on Floor
"	Rt " "		6.3	465.9	Ground
+30			5.6	466.6	
+95.83 = 10 + 7619 Mandalay			5.64	466.52	on Stub.
"	65 H x 14 E		1.3	470.9	Stucco Frame Ho on Floor

BM	0.82	471.90		471.08	on Stub on Floor Mandalay
BM			11.65	460.25	on Stub on Floor 460.34

✓ Levels Proposed Section 69 to St
And. Mandalay Road

Sketch Page 38

B.M	1.99	161.57	459.58	on St 03 7+30.33 on Floor
0+0	7 Jaranae	2.0	459.6	
+50		2.1	459.2	
+91	53 Pt of 1/2 - 2 x Fly	+2.0	463.6	Garage & Stationary Tab on Floor
+10		3.5	458.1	
+50		4.0	457.6	
2+0		4.1	457.5	
"	50 Lt of 1/2	6.7	454.9	Ground Core Black Ho. on Floor
+26	180 Lt of 1/2 - 2 x Fly	10.6	451.0	
+50		4.7	456.9	
3+0		5.0	456.6	
+25	167 Lt of 1/2 - 2 x Fly	9.0	452.6	House Under Const on Floor
+50		5.7	456.9	
+90	151 Lt of 1/2 - 2 x Fly	8.9	452.7	House on Floor
4+0		5.8	455.8	
+50		5.7	455.9	
5+0		5.4	457.2	
+10	150 Lt of 1/2 - 2 x Fly	7.6	454.0	Stucco Ho. on Floor
+50		5.6	456.6	
6+0		4.6	457.0	
+50		3.5	458.1	
+60	106 Lt of 1/2 - 2 x Fly	3.4	458.2	House on Floor
7+0		3.2	458.4	
+2110	A 90° of 1/30 Pt	3.10	458.47	on St 03
TP	10.54	169.01	458.47	

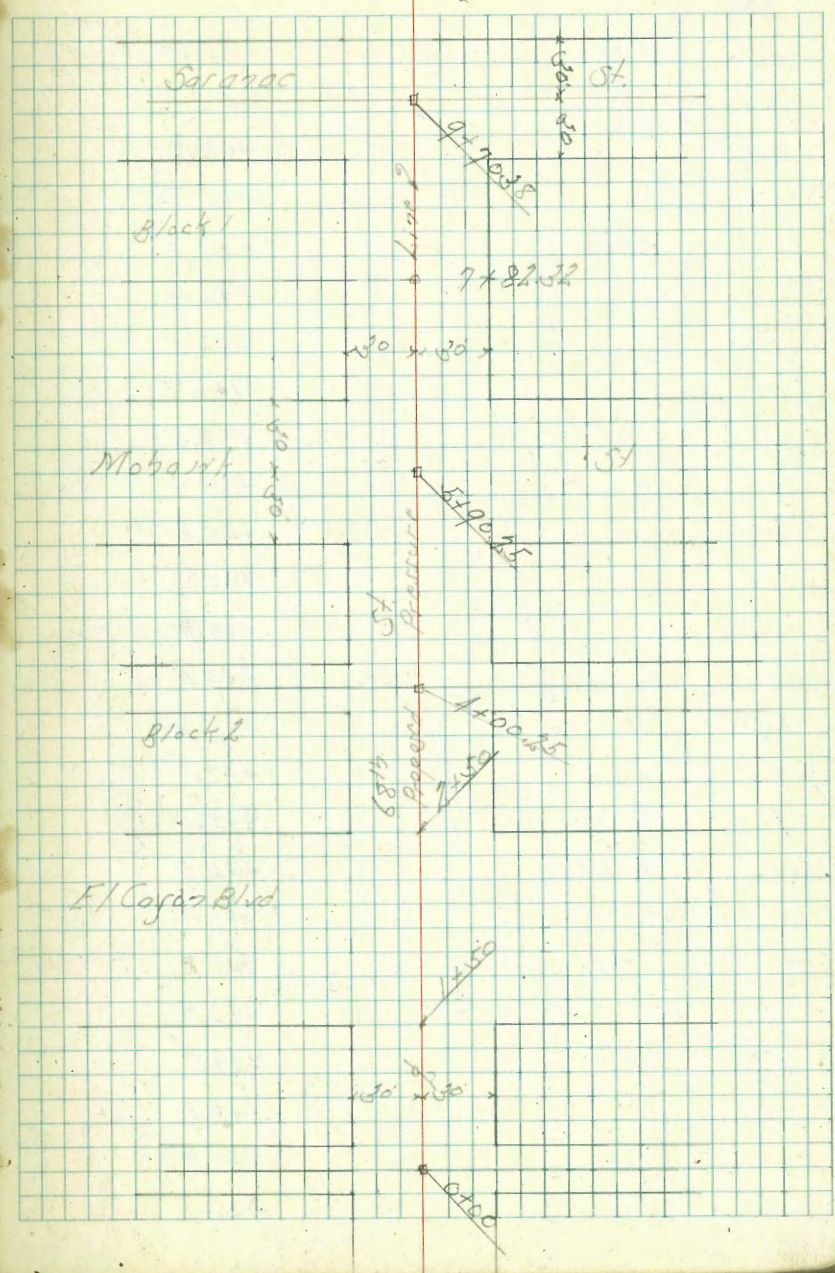
48

469.01

7+210	35 x 147 Pt	12.9	456.1	2 x Fly Stucco Ho. on Floor
" "	140 x 127 Pt	13.6	455.4	2 x Fly Stucco Ho. on Floor
7+50		10.3	458.7	
8+0		9.3	459.7	
+50		8.0	461.0	
9+0		7.0	462.0	
+50		5.7	463.3	
10+0		5.8	465.2	
+50		3.0	466.0	
+7619	17+95.23	2.50	466.51	on Floor 16.52 Page 17

Levels Proposed Pressure Line 68th St
 Saranac St to Alley South of El Cajon Blvd

BM	3.55	460.95	457.40	SW CP El Cajon 358th St
0+0	$\frac{1}{2}$ El Cajon Alley South of El Cajon	6.28	454.67	07 Hub + Disc
+50		5.7	455.3	
+10		5.2	455.8	
+150	$\frac{1}{2}$ by H.C. Parvizy	4.03	456.92	
2+0	$\frac{1}{2}$ El Cajon	3.20	457.75	
+50	$\frac{1}{2}$ by H.C. Parvizy	4.08	456.87	
3+0		4.6	456.35	
+50		5.2	455.8	
4+00.25	$\frac{1}{2}$ El Cajon Alley	5.91	455.04	02 Hub
+50		6.6	454.4	
5+0		7.0	454.0	
+50		8.0	453.0	
6+00.25	$\frac{1}{2}$ Mohawk	8.84	452.11	02 Hub
6+0		8.7	452.3	
+50		10.7	450.3	
7P	1.05	451.31	450.26	
7+0		2.8	448.5	
+50		4.1	447.2	
8+0		5.4	445.9	
+50		6.6	444.7	
9+0		7.5	443.8	
+50		8.0	443.3	
9+0.38	$\frac{1}{2}$ Saranac	8.43	442.88	02 Hub SF Prop Cor Pipe + Disc 443.57 Page 43
BM		7.66	443.65	



Levels Proposed Section P "Line"
 Mohawk St. West of 67th + Lots 52-53 + C
 La Mesa Colony State Page 51

827	2.51	452.09	449.58	on Hub Mohawk St 67th St Page 51 on Mail
0 + 0	2 67th St	2.70	449.39	
+07	W by Oil Paving	3.0	449.1	
+50		4.1	448.0	
1 + 0		5.9	446.2	
+17	33 Pt of 1/2 - 2nd St	6.5	445.6	50' x 20' of 1/2 Pt of 1/2 on 2nd St Floor
+50		6.6	445.5	
2 + 0		6.2	445.9	
+40	46 Pt of 1/2 - 2nd St	5.9	446.2	Stucco House on floor
+50		6.3	445.8	
+67.43	49' 36" Lt 1/2 Barryman Loop St	6.26	445.85	on Hub
3 + 0		6.2	445.9	
+50		9.2	442.9	
+65		12.5	439.6	
TP	5.05	444.63	439.58	
+89		10.1	434.5	
4 + 0		11.2	433.4	
"	50' Pt of 1/2	15.4	429.2	
"	50' Lt " "	7.7	436.9	
+32		10.3	434.3	
+50		7.8	436.8	
5 + 0		1.5	443.1	
+25		0.5	444.1	
"	50' Pt of 1/2	8.6	446.0	
"	50' Lt " "	+2.7	447.3	

Dec 2-17
 Sisson
 McCoy
 Hillen

52

444.63

5 + 50		21	442.5	
+737.0	Δ 56° 50' Lt	48.0	439.8	on Hub
6 + 0		36	441.0	
+50		2.4	442.2	
TP	399	447.84	0.78	443.85
7 + 0		5.1	442.7	
"	50' Pt of 1/2	16.1	431.7	
"	50' Lt " "	+1.2	449.0	
+50		6.9	440.9	
8 + 0		5.2	442.6	
"	50' Pt of 1/2	16.4	131.4	
"	50' Lt " "	+1.7	449.5	
+50		5.3	442.5	
9 + 00	Δ 48° 53' Lt	7.79	440.05	on Hub
"	50' Pt of 1/2 Taken on Sid	17.4	440.4	
"	40' Lt " " " "	1.2	446.6	
+50		3.3	444.5	
TP	7.27	453.81	1.80	446.04
10 + 0		5.9	447.4	Postponed Page 9 1/2 9 + 60
+50		5.0	448.3	
+81.24	POT	5.29	448.02	on Hub
11 + 0		7.0	446.3	
"	50' Pt of 1/2	14.2	439.1	
"	50' Lt " "	2.1	451.2	

453331			
4+10		48.	448.5
+50		5.2	448.1
+55		7.5	445.8
+70		5.5	447.8
+74	2' Lt of 2 1/2" Fly Tr		
+78	67' Lt of 2" SxI Cor	+2.1	455.4
12+0		6.6	446.7
+26	16 Rt of 2 1/2" Fly	8.3	445.0
+50		10.7	442.6
+62		12.1	441.2
+69		10.8	442.5
+85	= 1/4" o.i. + Rock Bar	13.2	440.1
IP	1.69	442.01	12.99
+87	37 Rt of 2" SxI Cor	5.9	436.1
"	138 Rt " " SxI Cor	7.1	434.9
12+0	o.i. + Rock	4.1	437.9
+10	= 1/4" Gutter Fl Cap	5.35	436.66
+38		4.55	437.46
+66	= 5" Gutter Fl Cap	5.37	436.64
14+0	o.i. + Rock	4.65	437.36
+04	30 Rt of 2" N.F. Cor	5.80	436.21
+48		4.9	437.1
+55		3.1	438.9
+84	36 Lt of 2" = 2" + 1/4"	+3.7	445.7
15+0		3.8	438.2

442.01			
15+15		4.0	438.0
+31	4' 8" of 2" Fly Saplic	6.53	435.48
+40.70	2 1/2" 28" Lt	6.52	435.49
"	50 Rt of 2" o.i. 50 Lt	11.8	430.2
"	50 Lt " " " "	+2.0	444.0
+70		6.5	435.5
16+0		6.5	435.5
IP	10.78	442.51	10.28
+50		5.5	437.0
17+0		5.5	437.5
"	50 Rt of 2"	12.9	429.6
"	27 Lt " " " "	2.0	440.5
+50		6.6	435.9
+66.52	1 59° 21' 30" Lt	7.33	435.18
18+0		5.0	437.5
+30		3.6	438.9
+50		3.8	438.7
+80		5.9	436.6
19+0		6.5	436.0
+21	= 1/4" Cap Bar	1.78	437.73
+39.09		1.39	438.13
3+39.39			438.15

See Page #4A for
Revised Line

438.15
1767-39

Levels Proposed Section Boxman Lane

McGowan + St. South

Sketch Page 51

BM	6.03	451.86	445.83	50 Hdb 2+6743 709 052
0+0	2 Mohan	6.6	445.9	
+50		5.5	446.4	
"	35 Rt of $\frac{1}{2}$ - $\frac{1}{2}$ + Ely	3.5	448.4	Frame House on floor
+83	21' Lt of $\frac{1}{2}$ - $\frac{1}{2}$ + N 1/4	1.6	450.3	Stucco Ho on floor
+140		5.0	446.9	
+05	29 Rt of $\frac{1}{2}$ - $\frac{1}{2}$ + Ely	3.6	448.3	Stucco House on floor
+50		4.3	447.6	
+60	29 Rt of $\frac{1}{2}$ - $\frac{1}{2}$ + Ely	3.2	448.7	Frame House on floor
2+0		3.4	448.5	
+50		3.7	448.2	
+70		3.2	448.7	
"	17' Lt of $\frac{1}{2}$ - N.W. Cor	0.1	451.8	Stucco House on floor
"	51' Lt " " - N.W. Cor	0.6	451.3	Calif. House on floor

Dec 3-47
Sisson
McCoy
Hiller

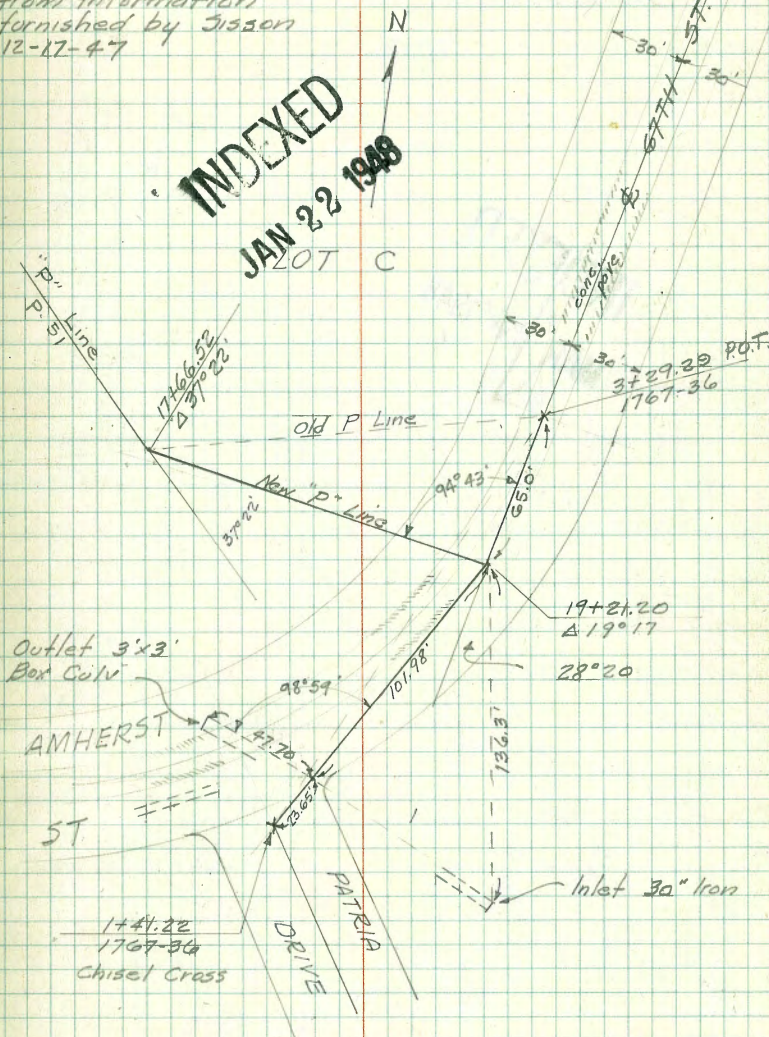
MO 31386

LEVELS "P" LINE REVISION LOT C LA MESA COLONY AND NEW LOCATION IN AMHERST ST. ALSO LOCATION OF CULVERTS.

B.M.	7.38	438.85		Chisel X & Patricia Drive
	47.70 N.Wly & Nly			
	Edge 3x3 Conc Box			
	Culv. Outlet.	-16.42	422.43	Flow Line
		12.40	426.45	Top H. Wall
		12.60	426.25	Top Culv.
	Inlet 30" Iron			
	Culv.	15.49	423.36	Flow Line
	"P" Line			
	17+66.52 $\Delta 37^{\circ}22''$	3.67	435.18	On Stub
	18+0	3.6	435.3	
	+50	4.3	434.6	
	+75	5.6	433.3	
	19+0	3.8	435.1	
	+04 Wly Conc. Pave	3.73	435.12	
	+20 Ely " "	3.67	435.18	
	+21.20	3.51	435.34	

Notes and Sketch entered by Gilson from information furnished by Jisson 12-17-47

INDEXED
JAN 22 1948
LOT C



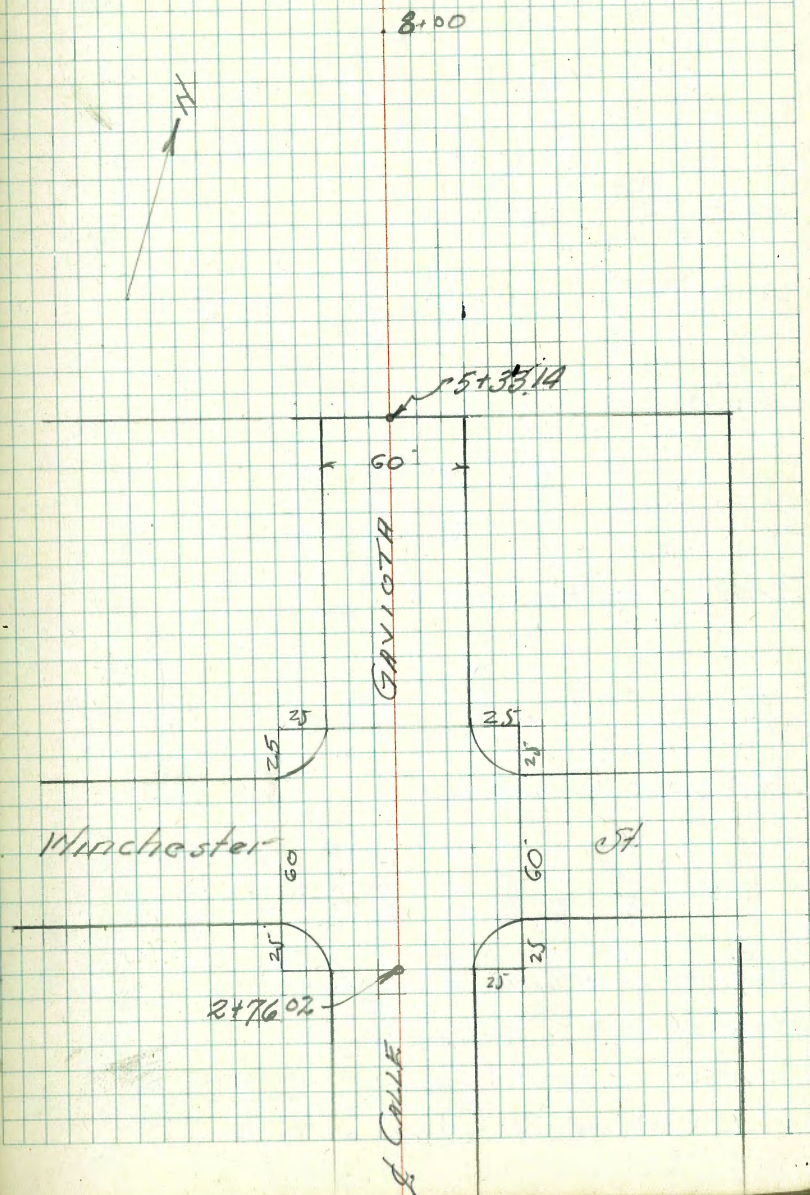
54A.

Walker
Becker
Williams
3-24-48

CROSS SECTION - CALLE GAVIOTA
From Winchester Street North
Additional sections FB-1692-79

INDEXED
MAR 25 1948

55



CALLE GAVIOTA X-Sections

4+50

4+35

4+00

3+61.02 = N. Hill Winchester

3+31.02 = S. Winchester

3+01.02 = South Lane Winchester

0+00 to 2+24 Cross Sections in FR 1692, p-79

T.P. 12.96 269.14 0.78 256.18
 12.84 256.96 244.12

4

36 40	35 34	40 30	40 22	47 9	42 4	43 9	37 14	40 30	42 40
R65.5	R65.6	R65.1	R64.7	R64.4	R64.9	R64.8	R65.4	R65.1	R64.9
5.5 10	5.5 10	5.0 20	5.0 20	4.1	3.9 30	3.8 30	2.8 40	2.8 40	
R63.6	R63.7	R64.6	R65.6	R66.8	R67.2	R68.0			
6.7 30	5.4 30	4.5 11	3.5	2.3 30	1.9 30	1.1 45			
R62.4	R61.8	R63.6	R65.8	R66.5	R67.6	R68.9			
7.4 30	6.5 30	3.3	2.6 13	1.5 30	0.2 15				
R62.0	R62.9	R65.3	R66.7	R67.7	R68.9				
7.5 50	6.2 30	5.8	4.4 16	3.4 30	0.2 45				
R61.6	R63.1	R64.4	R65.3	R66.5	R67.5	R68.5			
7.5 50	6.0 30	4.7 17	3.8	2.8 18	1.6 30	0.6 45			

EM. NY. Id. Plg (Water Service)
 SFA FREEZE & WINCHESTER

6+50

6+00

5+60

5+23.4 = 5.61

5+08

4+80

26914

H.

S.

Rt.

261.4

7.7
30

261.1

8.0
30

260.9

8.5
30

260.7

8.9
30

260.9

8.0
30

261.3

7.8
30

262.4

6.7
30

261.4

7.7
30

261.8

7.9
30

262.2

8.0
30

262.4

8.0
30

263.3

5.8
30

263.6

5.5

261.5

7.6
30

263.7

8.4

263.6

5.5

264.1

5.0

264.2

4.9

263.6

5.5

263.0

7.1

265.3

8.4

265.6

8.5
30

265.9

8.2
30

265.5

5.4
30

265.3

8.8
30

265.1

8.0

266.9

8.8
30

267.1

8.5
30

267.6

8.5
30

266.7

8.4
30

266.0

8.1
30

266.8

8.4
30

266.9

8.2
30

267.1

8.0

267.6

8.5
30

267.8

1.3
30

267.1

8.1
30

26914

CALLE GAVIOTA - X Sections

#

#

				002
	EDGEWATER			245.78
CHK B.M. SV. BR	JEN BREEZE	11.15		245.20
TP.	0.35	256.35	13.14	256.00

8+00

7+50

7+00

269.14

TR 1692 - P-26

261.9	262.3	263.3	264.7	266.6	267.9
50	50	50	50	50	50
48	48	49	49	49	49
50	50	50	50	50	50
261.9	262.3	263.3	264.7	266.6	267.9
50	50	50	50	50	50
49	49	49	49	49	49
50	50	50	50	50	50

269.14

Additions to Alley Block 47 Park Villas
 Begg W.O. 31352
 Sherman
 Bunch

(16.7 beg dbl garage
 2+31 11.7th end of Dwelling

+28 66 Lt PPlk PA 3535

+21 end garage on Rt

2+05 16.8 ft Beg garage dbl. dirt floor
 11.15 left beg dwelling core fct

L.P. 4.97 339.39 0.91 334.42

2+0

from 1+90 - 2.00 est 2 yds
 a load of ex material has been dumped at

1+00

0+00

4.98 335.13 330.35

Indexed
 JB

59

339.9

5.0
 10

339.9

5.0

339.9

5.0
 10

339.3

5.1
 10

339.2

5.2

339.0

5.4
 10

339.1

5.3
 16.8

339.0

5.4
 10

333.9

5.5

339.0

5.4
 10

339.2

5.2
 16.9

339-39

333.7

1.6

332.3

3.0

335.33

By SW Myrtle & 3rd BP

6-0 Skine DWght carb end on W

5-00

4+69 10-4R end garage

4+4R 10-3R beg garage opening to Bancraft

4+0

3+0

2+47 Nord of door 16-9

2+34 door dbl garage conc

339 39

333.33
6.86
7.0

336.5

2.9

336.2

2.2

336.1

3.3

335.0

4.4

334.55

334.3

334.4

334.5

4.84
16.9

5.1
7.0

5.0

4.9
1.0

334.51

4.88
4.92
16.7

339 39

lt. € Rt.

Dist. from New cb face at Paue elev. to edge of old Paue.

Lamont to Morrell - 0+00 = E.L. Lamont

0+00	6.2	6.0
1+00	6.1	6.0
2+00	6.1	6.0
3+00	6.05	6.0
4+00	6.05	6.1
5+00 = W.L. Morrell	5.95	6.05

Ingraham to Jewell

0+00 = E.L. Ingraham	6.0	6.1
1+00	6.0	6.1
2+00	6.05	6.1
3+00	5.95	6.1
4+00	6.0	6.2
5+00 = W.L. Jewell	6.0	6.1

Base in - just a poor average

7-15-48

= 7.0

lt. € Rt. **61**

Jewell to Kendall - Base in

0+00 = E.L. Jewell	6.0	6.1
1+00	6.0	6.1
2+00	6.05	6.05
3+00	6.05	6.15
4+00	6.05	6.1
5+00 = W.L. Kendall	6.05	6.1

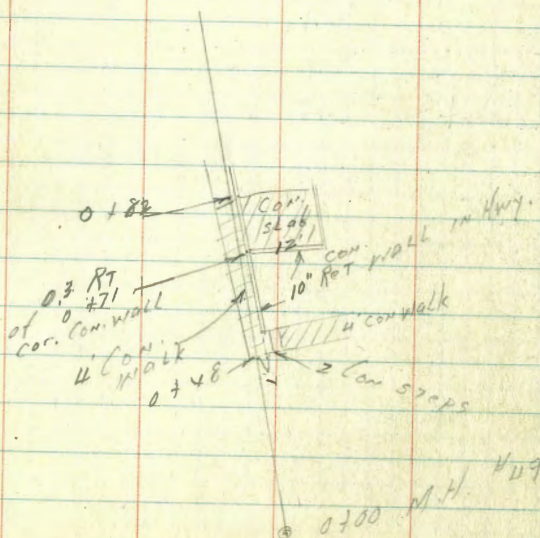
Kendall to Lamont

0+00 = E.L. Kendall	6.05	9.95	ok
1+00	6.0	9.95	No Base
2+00	6.0	9.9	
2+50 = end on Rt.	6.1	9.9	
3+00	6.1		
4+00	6.1		
5+00 = W.L. Lamont	6.15		

Sever to serve Lots 1-2-3
Block 1. Highland Village

Measure
B-99
Burch
7-30-48

N.O. 80112

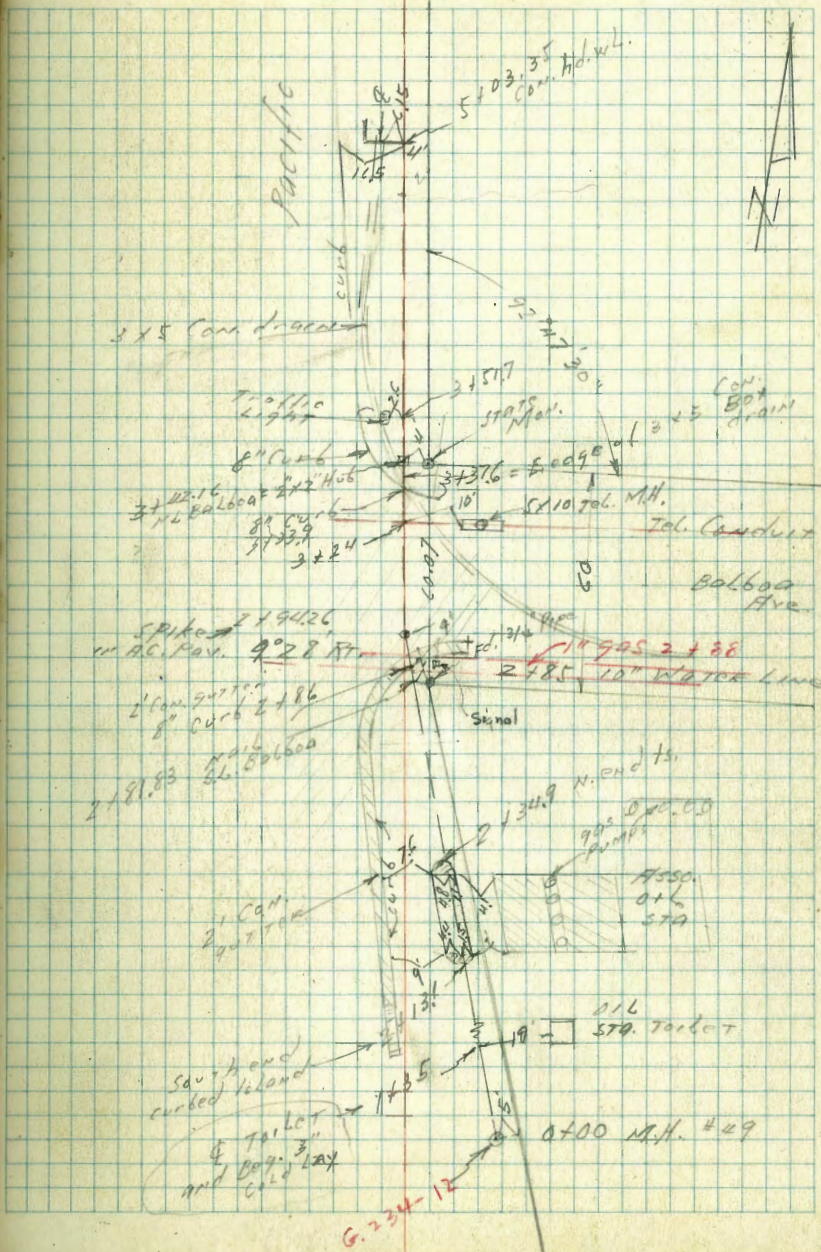


Indexed
c.s.Rt

5+54.8

B.C. Rt. STATE Mon.

62



545418 → FD. STATE
B.C. Mt. Mon.

outlet
drain → 540335 → Sheldon
Bar
Coffee
Shop

425 → 14

3" Pav.

2 x 5
con. Box
drain

AC
9
3195

CON

Union
512
510

→ Toilet

B.M. R.P. 21.02
Sand Gas Pump
Island

344216 → STATE Mon.
NACor Pacific
and
BAC 609

1 + 35 Beg. 5" Pax

+ 21

+ 28

1

0 + 82

0 + 48

0 + 45

0 + 00 = M.H. #49 Tank Sewer

BMBP 4.76 (25.78) 21.02

South end
gas pump
islandUNION OIL CO.
NE Cor Pacific + Balboa G.234-19.

27

\$

RT

17.86
7.92
18
Top board19.3
6.519.8
6.018.7
7.118.7
7.117.5
8.3
sdw17.0
8.8
sdw18.4
7.417.8
8.0

25.78

20.9
4.919 STA
Floor Toilet22.4
3.8
6.5
and26.5
+ 0.7
6.5
Floor Fl
C.A. 6.0

3/00

2 + 94.26 Δ 9° 28' N

2 + 86 Curb Port end 3" Pav.

1/50

2 + 134.9

4" curbed
Island

2 + 13.1

2

1/50

25.78

19.3
6.5

19.2
6.6
Pav

19.80 19.14
5.98 6.84
6.6 9.0

19.2
6.6

19.2 19.79
6.6 5.99
Pav. Top cb.

19.3 19.83
6.5 5.95
Pav Top cb.

19.1
6.7

19.1
6.7

25.78

5 + 03.35

5.52
16.5
Top and
Curb

5

4 + 50

4 + 00

3 + 95 3" Pav

T.P. BM 3.52 (24.54) 476 21.02

3 + 37.6 = Ely edge of 3x5 Con. Box drain

3 + 33.9 Curb Ret. Beg 3" Pav
Pav. betw. Ret. on Dalbog
1" Con Base
3" W. S.

3 + 24 Cross Tel. Cond. Call Tel. Co.

25.78

14.12
9.82
8
4.15
Under Fl. of
3x5 drain

18.2
6.3
18.98
15.4
Top
Curb

19.1
5.4
Pav

Pav

19.3
5.2
Pav

19.52
5.8
13
Top
Curb

20.2
4.3
Pav

20.58
3.94
4
Con. slab

20.2
4.3
Pav

21.1
3.4
3.5 Floor Joints
UNION OIL

(24.54)

20.5
1.3
Pav

19.57
6.21
Top of 3x5 Con.
drain

19.9
5.4
6.7

20.53
5.25
6

19.68
6.10
Pav

20.3
5.5
15 Pav
Tel M.H.

25.78

for depth
of conduit

Starting B.M.

352 21.02

5+54.18 Hwy BC Bz

19.5	15.2	17.0	19.4
5.0	9.3	7.5	5.1
15	6		8

5+20

19.7	15.5	16.54	19.9	21.44
4.8	9.0	8.0	4.6	3.10
16	6		4	68

Hwy. ditch
Entrant.

Floor E.L.
Shelden's
Toilet

24.5424.54

Location of Existing Underground
Lines in Road between S.D. High School
& Stadium

Exist. Shallow M.H. opp. Women's Toilet

INDEXED

W.K.

MAR 17 1950

Exist.

Unable to locate M.H. in this area

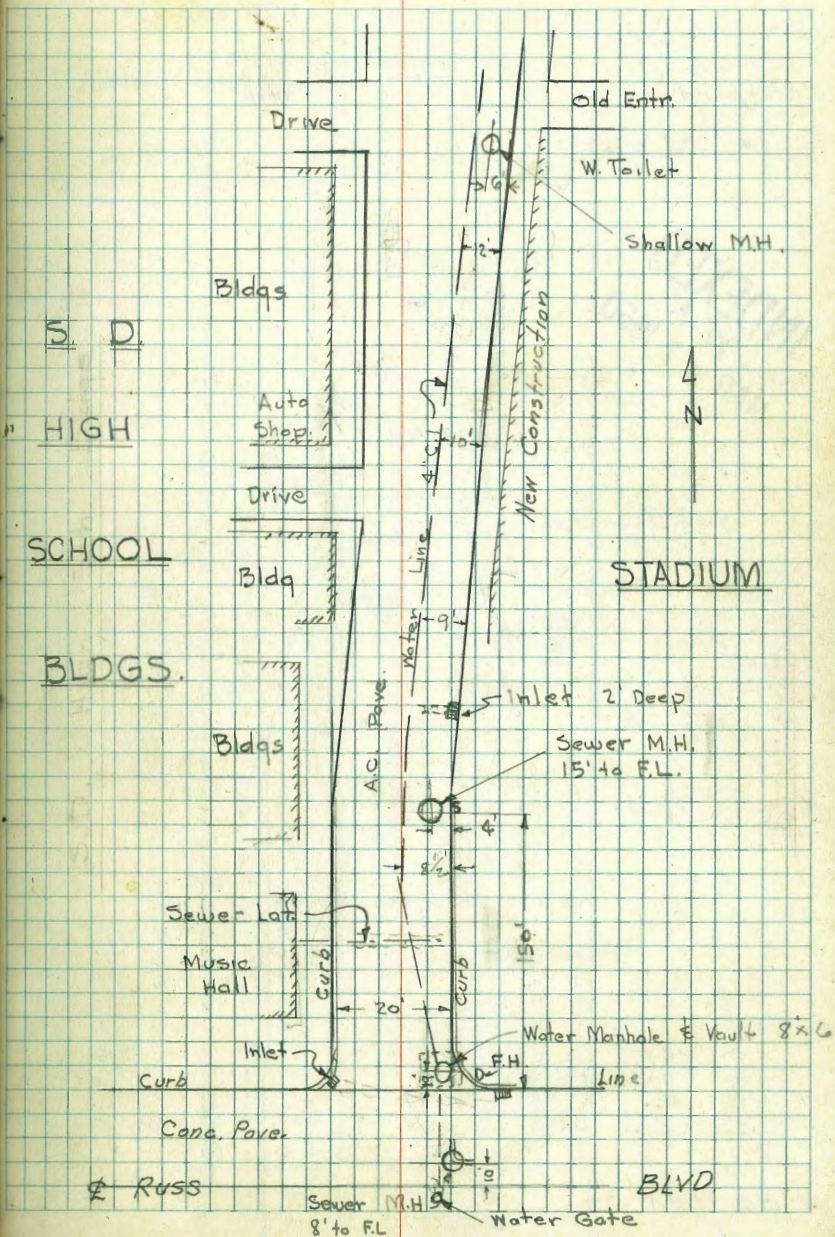
Uncovered M.H. 15' Deep to Flow Line

Trench Scar & Finder indicates C.I. Lateral

Water Meter Vault 8'x6' & Cover

Exist Sewer Manhole 8' Deep to Flow Line

Water Gate Valve



Redwood St.

Between 32nd + Herman

W.O. 20619

2-15-50

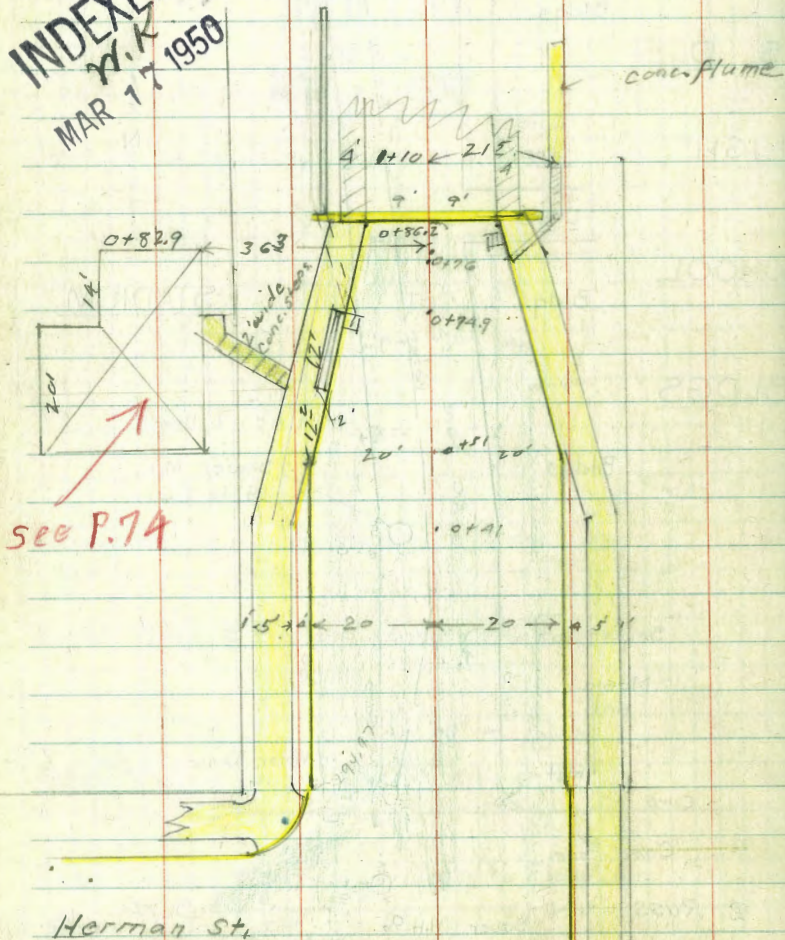
Sommermeier

Burch

Shepard

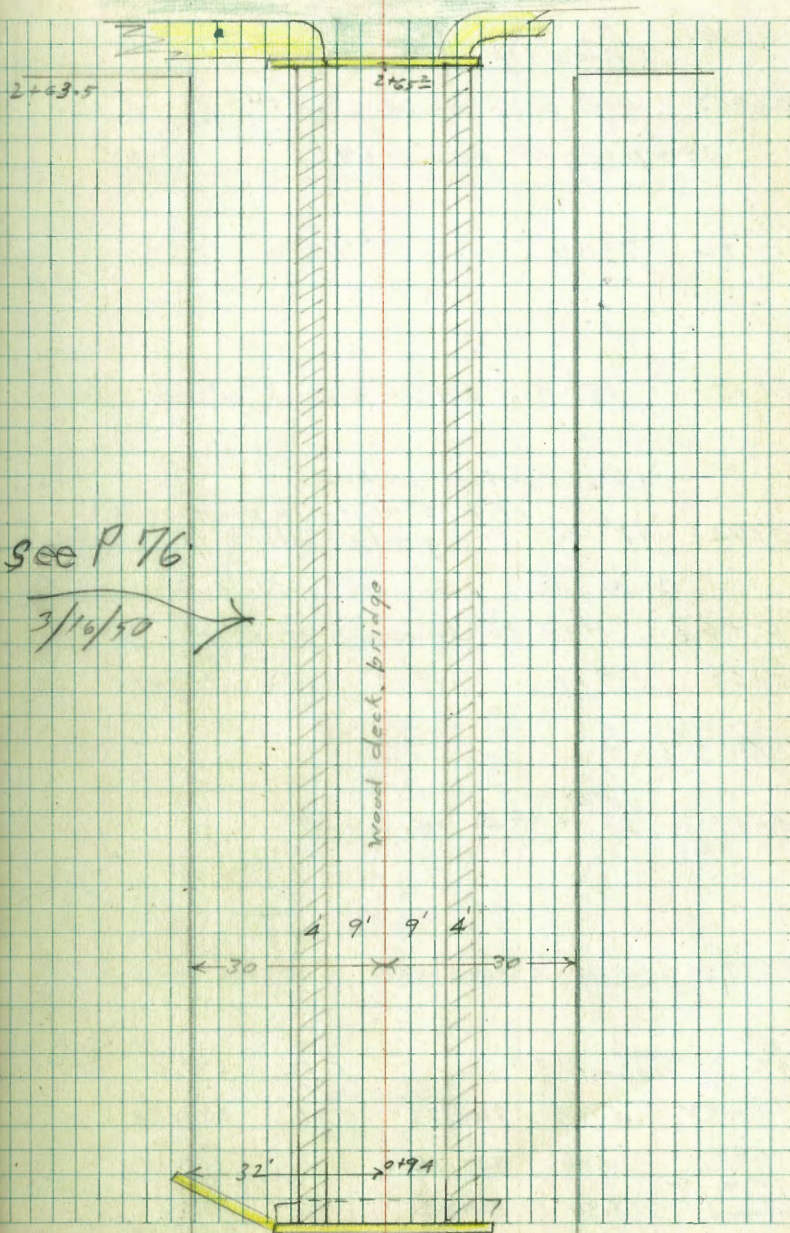
• = Fd 7' LTT.

INDEXED
N.K.
MAR 17 1950



32nd St.

69



8" wide top, Batter 4" to 1'
 0+86[±] = Wly. face head wall
see page 71 for 0+82.9

0+82 9[±] Rt. = Ctr. 2'x2' grate

0+79^E 13[±] Rt. = outlet box - of 10' cb. inlet

13[±] Lt. = outlet of box

0+74[±] 12[±] Lt. = end grate also = N.E. Corner
 of 2'x2' grate in pavement

Grate slants from gutter grade to walk grade.

0+67 (Had to squeeze this in)

0+63 - 16[±] Lt. = start. 2'x12' grate over Catch basin.

0+51 20' Lt } = Δ in curb
 20' Rt }

0+00 = Ely line Herman

N.E. 71					Set.
L+7. Herman					B.M.#1
& Redwood SS	5.52	295.21			
T.P. #V	5.89	300.73	10.31	294.84	
T.P.	0.00	305.15	5.71	305.15	
30th + Redwood	8.80	310.86	-	302.06	S.W.B.P.

301.88
 see 2060-34

187.5					
13.2	8.5	6.58	6.58	7.11	7.04
50	30	198	9 walk	9	8
		274	Head wall start wing wall	293.35	293.69
		294.15	10' top	293.66	293.66
				294.15	294.15
					294.06
					294.3
					292.5
					292.62
					293.69
					293.66
					294.15
					294.06
					294.3
					292.5
					292.62
					293.69
					293.66
					294.15
					294.06
					294.3
					292.5
					292.62
					293.69
					293.66
					294.15
					294.06
					294.3
					292.5
					292.62
					293.69
					293.66
					294.15
					294.06
					294.3
					292.5
					292.62
					293.69
					293.66
					294.15
					294.06
					294.3
					292.5
					292.62
					293.69
					293.66
					294.15
					294.06
					294.3
					292.5
					292.62
					293.69
					293.66
					294.15
					294.06
					294.3
					292.5
					292.62
					293.69
					293.66
					294.15
					294.06
					294.3
					292.5
					292.62
					293.69
					293.66
					294.15
					294.06
					294.3
					292.5
					292.62
					293.69
					293.66
					294.15
					294.06
					294.3
					292.5
					292.62
					293.69
					293.66
					294.15
					294.06
					294.3
					292.5
					292.62
					293.69
					293.66
					294.15
					294.06
					294.3
					292.5
					292.62
					293.69
					293.66
					294.15
					294.06
					294.3
					292.5
					292.62
					293.69
					293.66
					294.15
					294.06
					294.3
					292.5
					292.62
					293.69
					293.66
					294.15
					294.06
					294.3
					292.5
					292.62
					293.69
					293.66
					294.15
					294.06
					294.3
					292.5
					292.62
					293.69
					293.66
					294.15
					294.06
					294.3
					292.5
					292.62
					293.69
					293.66
					294.15
					294.06
					294.3
					292.5
					292.62
					293.69
					293.66
					294.15
					294.06
					294.3
					292.5
					292.62
					293.69
					293.66
					294.15
					294.06
					294.3
					292.5
					292.62
					293.69
					293.66
					294.15
					294.06
					294.3
					292.5
					292.62
					293.69
					293.66
					294.15
					294.06
					294.3
					292.5
					292.62
					293.69
					293.66
					294.15
					294.06
					294.3
					292.5
					292.62
					293.69
					293.66
					294.15
					294.06
					294.3
					292.5
					292.62
					293.69
					293.66
					294.15
					294.06
					294.3
					292.5
					292.62
					293.69
					293.66
					294.15
					294.06
					294.3
					292.5
					292.62
					293.69
					293.66
					294.15
					294.06
					294.3
					292.5
					292.62
					293.69
					293.66
					294.15
					294.06
					294.3
					292.5
					292.62
					293.69
					293.66
					294.15
					294.06
					294.3
					292.5
					292.62
					293.69
					293.66
					294.15
					294.06
					294.3
					292.5
					292.62
					293.69
					293.66
					294.15
					294.06
					294.3
					292.5
					292.62
					293.69
					293.66
					294.15
					294.06
					294.3
					292.5
					292.62
					293.69
					293.66
					294.15
					294.06
					294.3
					292.5
					292.62
					293.69
					293.66
					294.15
					294.06
					294.3
					292.5
					292.62
					293.69
					293.66
					294.15
					294.06
					294.3
					292.5

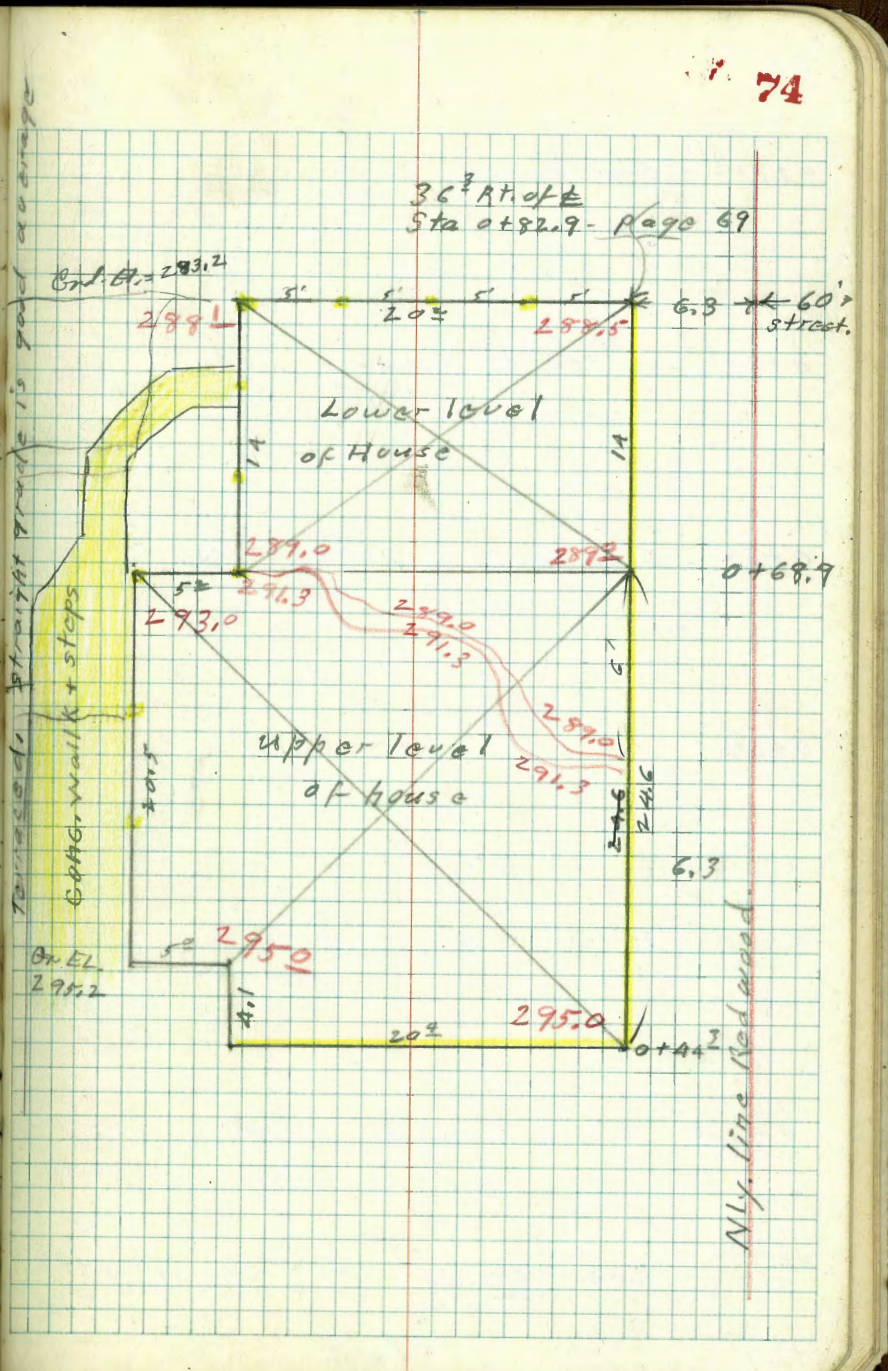
Addition levels
 Redwood St. (Orig. P. 69)
 3-16-50

Sommermeyer
 McCoy
 Allen

INDEXED
MAR 17 1950

Base line = Redwood St.
 yellow line indicates conc. foundation
 " " " " Piers or blocks.

Red figures = Grd EL. under house



0+82⁹ End house - 36²Lt.

13.0	8.1	8.1	6.4
<u>70</u>	56	46	36
			End.

0+73⁵ 36²Lt. - to doorway

290.32
+183
363
Floor

0+68⁹ Step down in floor level.

5.9	5.83	+0.2
<u>363</u>	363	363
End	Lower Floor	Upper Floor

0+67

1.89
36
4.7

↙ 0+50²

0+40 36²Lt. - to doorway

296.5
+0.2
363
Floor level

0+44³ start house 36²Lt

285.3
1.0
36
End

N.E. 71.
L.T. 1.04 296.25 - 295.21 BM#1
P70

296.25

Drain from proposed
Redwood St. fill to 32nd St.

□ = set 1/2 hub

INDEXED

MAR 17 1950

Line run to establish grade
of proposed culvert thru
proposed Redwood St. fill.

3/18/50

summer mayer

McCoy

Attor



EXIST 42"
CONC. CULVERT

3+95.5

2+20.0

Δ 45°-20' RT.

Δ turned
off line of
bridge stringers

2+35.5

0+00

APPROX
BRIDGE

T.R. 10.07 278.50 2.13 268.43

1+50

1+00

0+90

0+88

0+86

0+50

0+10

0+00 (W = bottom of wash)

M.H. Ritt
H305
P. 71

0.46 270.56 270.10

$$\begin{array}{r} 264.3 \\ 4.3 \\ \hline 10 \\ W \end{array}$$

$$\begin{array}{r} 264.3 \\ 4.2 \\ \hline 5 \\ W \end{array}$$

$$\begin{array}{r} 264.3 \\ 5.5 \\ \hline 2 \\ W \end{array}$$

$$\begin{array}{r} 260.6 \\ 10.0 \\ \hline 5 \\ W \end{array}$$

$$\begin{array}{r} 269.7 \\ 2.7 \\ \hline 264.3 \\ 4.2 \\ \hline 5 \\ W \end{array}$$

$$\begin{array}{r} 264.1 \\ 4.5 \\ \hline 264.5 \\ 6.1 \\ \hline W \\ 264.3 \\ 4.0 \\ \hline 260.3 \\ 6.3 \\ \hline 264.1 \\ 9.5 \\ \hline W \\ 261.5 \\ 9.1 \\ \hline 260.6 \\ 10.0 \\ \hline 5 \\ W \end{array}$$

3+39E = start 41" Conc. Culvert

3+39

3+25

3+00

2+50

2+20 Δ 45°-20' RT.

2+13

2+00

W
ST
9.3
R
6
9
0

278.50

4
272.65
5.85
I.E.
272.3
6.2
272.4
6.1
273.0
5.3
271.5
7.0
270.5
8.17
Hub
270.8
9.26
270.9
8.16
9.7
8.8

6.7
5.4
270.9
6.5

278.9
7.6
W
A
at split of Δ

68.74

3.31

72.05

5.74

66.31

3.64

69.95

NE. 7' Disk