

763

MSI

1763

MICROFILMED

DEC 20 1964

CITY ENGINEER'S OFFICE

MADE IN U.S.A.

Our Leather Bound Engineers Note Books
are carried in the following rulings:

- No. 380 LEVEL BOOK. Left and Right Hand Page
the same as Left Hand Page
of this Book.
- No. 382 FIELD BOOK. Left Hand Page as in this
Book, Right Hand Page 4x4
to the inch, Center Line Red.
- No. 384 MINING TRANSIT
BOOK. Left Hand Page as in this
Book, Right Hand Page 8x8
to the inch, Center Line Red.
- No. 385 FIELD BOOK. Left Hand Page as in this
Book, Right Hand Page 8 ver-
tical and 4 horizontal lines to
the inch, Center Line Red.

We also carry the Note Books listed above,
bound in extra strong Fabri-Hide (otherwise
the same quality of book,) which can be fur-
nished at a somewhat lower price.

In ordering Fabri-Hide covered books, add
the letter "F" to catalog number.

THE FREDERICK POST CO.

ENGINEERING and DRAFTING SUPPLIES

P. O. Box 803

CHICAGO

INDEXED
Completely *R.*

Storm Drain Levels

35 th & Tompkins	34
1500 Boston, 30 th to 39 th	42

Storm Drain Tompkins & 35th 74

Grades	77
Check Record of Survey Portion PL 1120	78

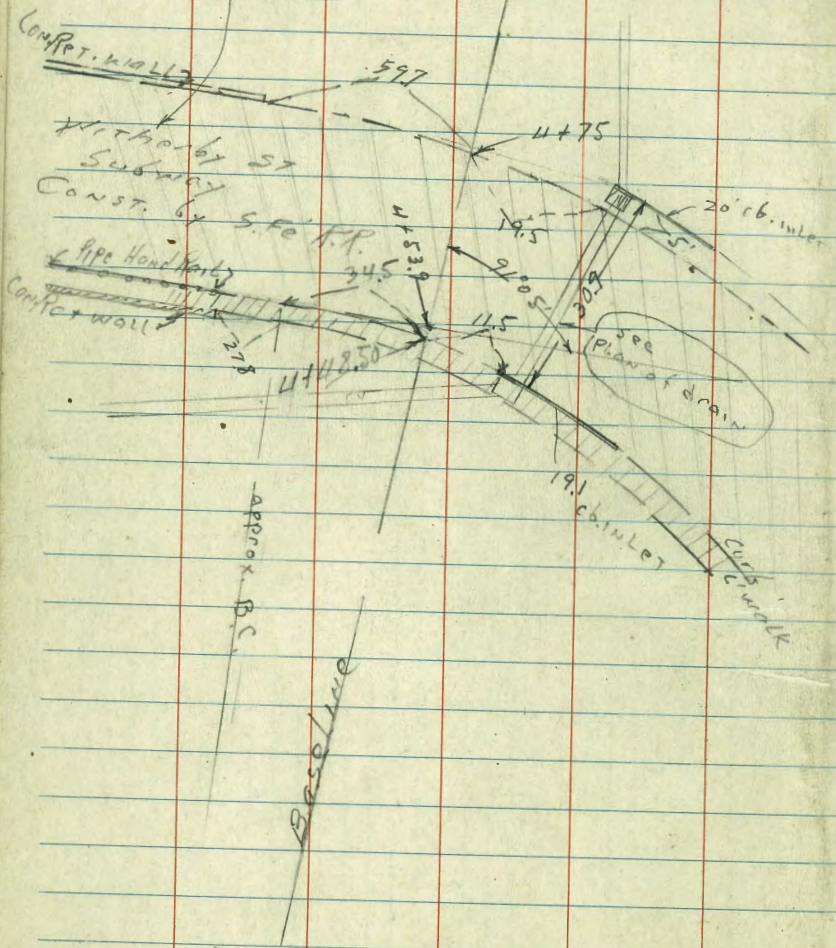
Indexed
C.S.K.

Maine
Beag
Gunter
Roberts
3-10-47

Hancock St EXT.
COURTS to ROSECRANS

INDEXED

See Plans

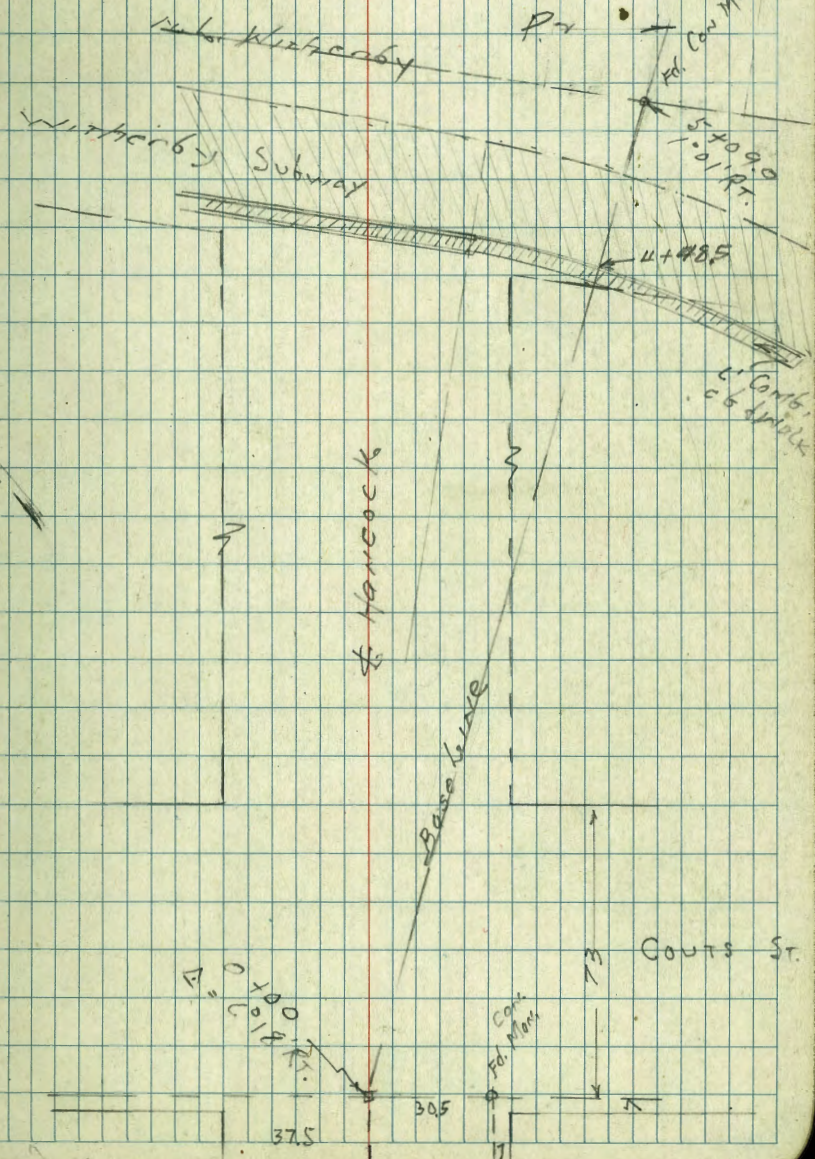


approx. P.C.

Baseline

W.O. #215

1



Hancock

Baseline

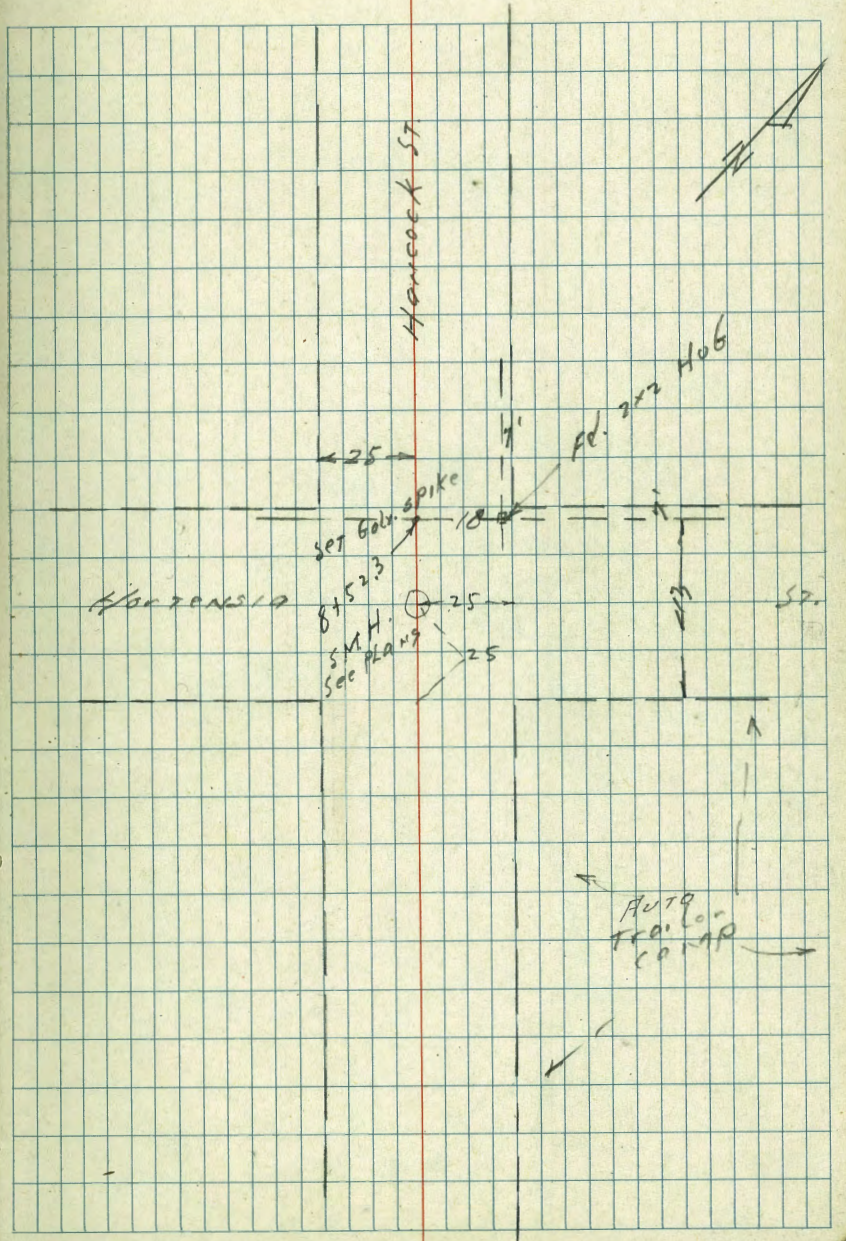
COURTS ST.

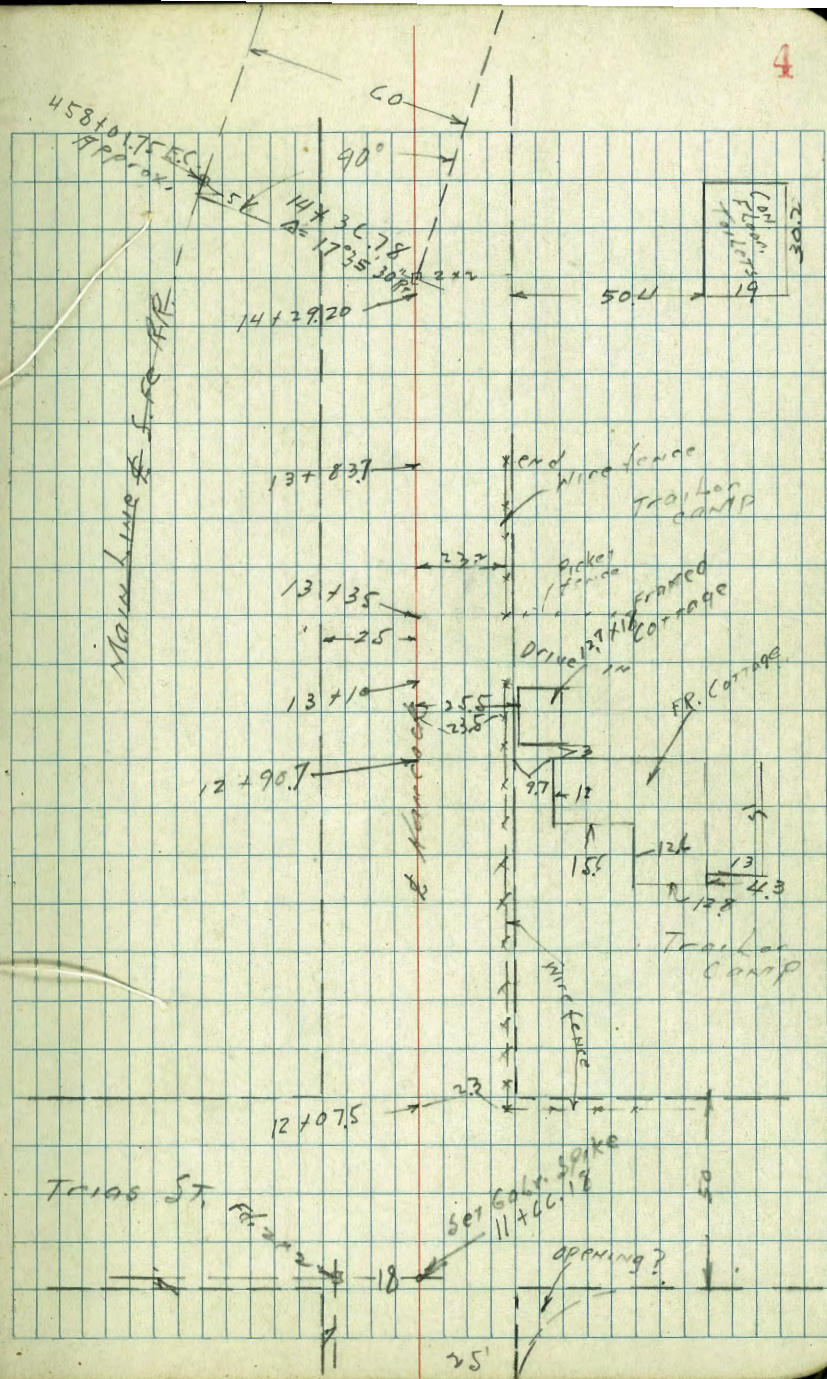
597
4475
4485
44850
278

375

305

CONSTR. BY S.F. R.P.





100' P/W check

170' S. E. R.F.

20 + 30

47.6

10.5

Twin Fr. Dwellings

Baseline

Maple St.

60

122.4

200 curb

Maple St.

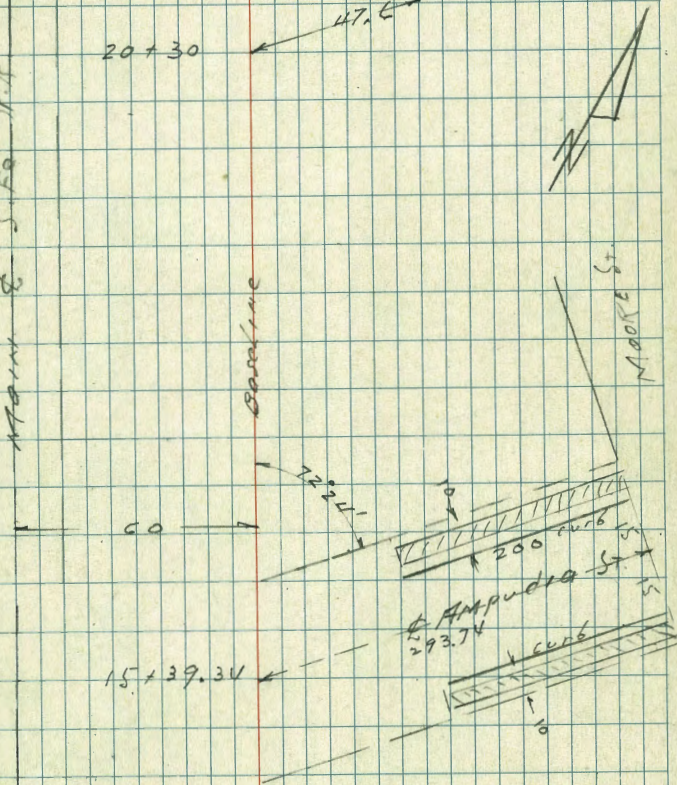
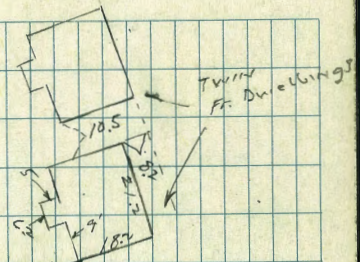
15 x 39.34

293.74

curb

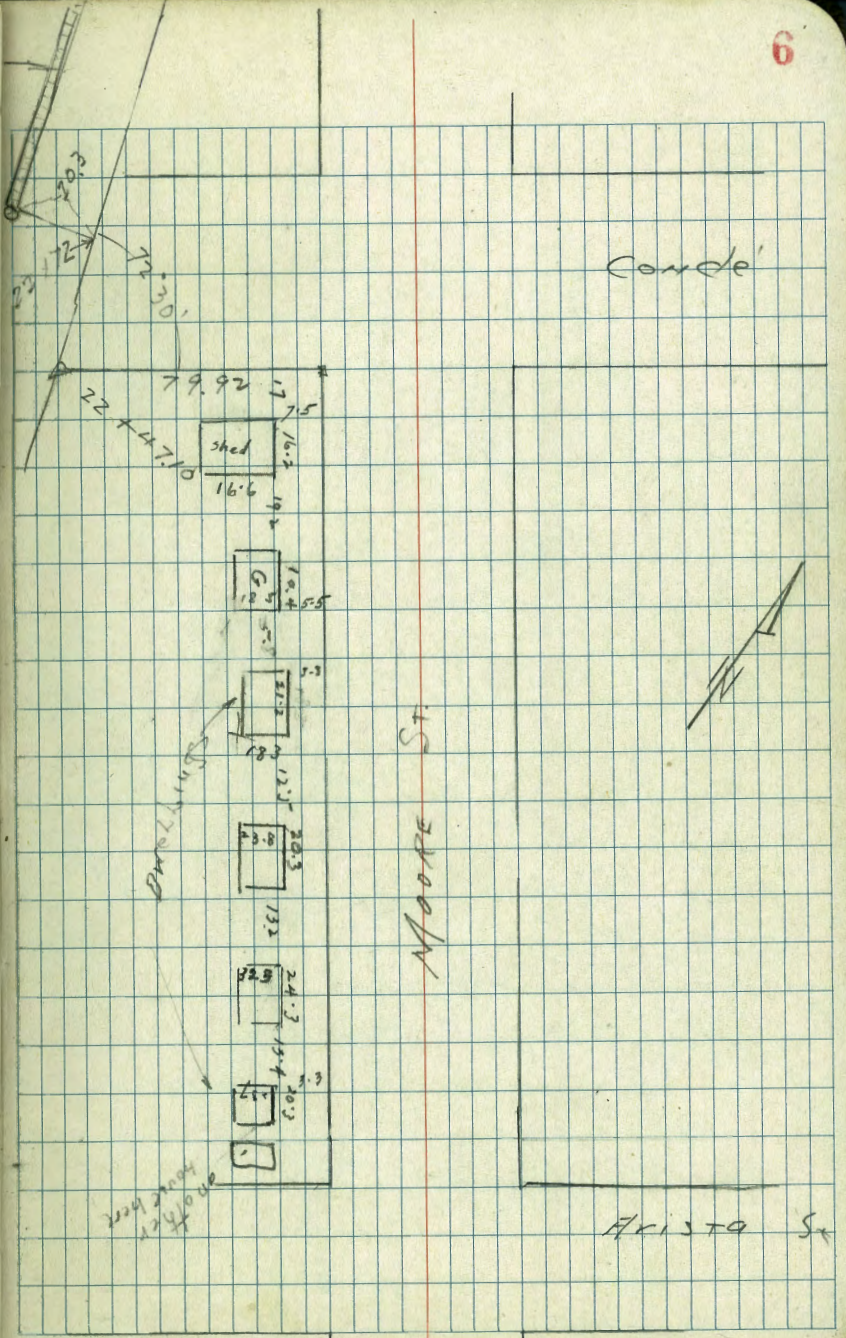
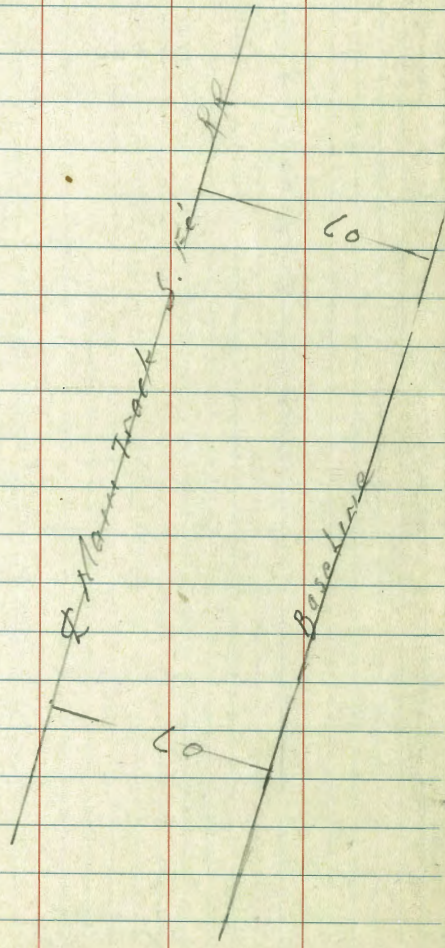
14 13078
17° 35' 30" R

385 50%



3.3 x 153.0
 FLUSH iron grates
 to SUMP drain
 CONSOIN
 CONSTY.

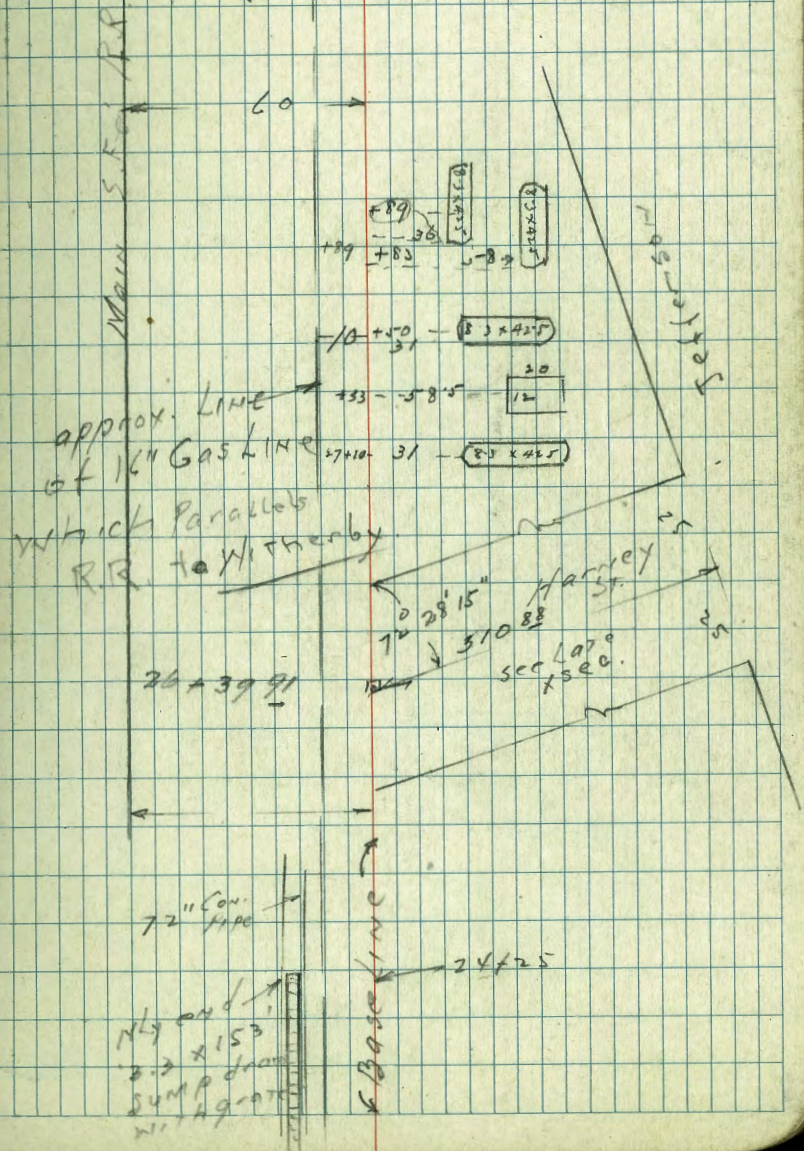
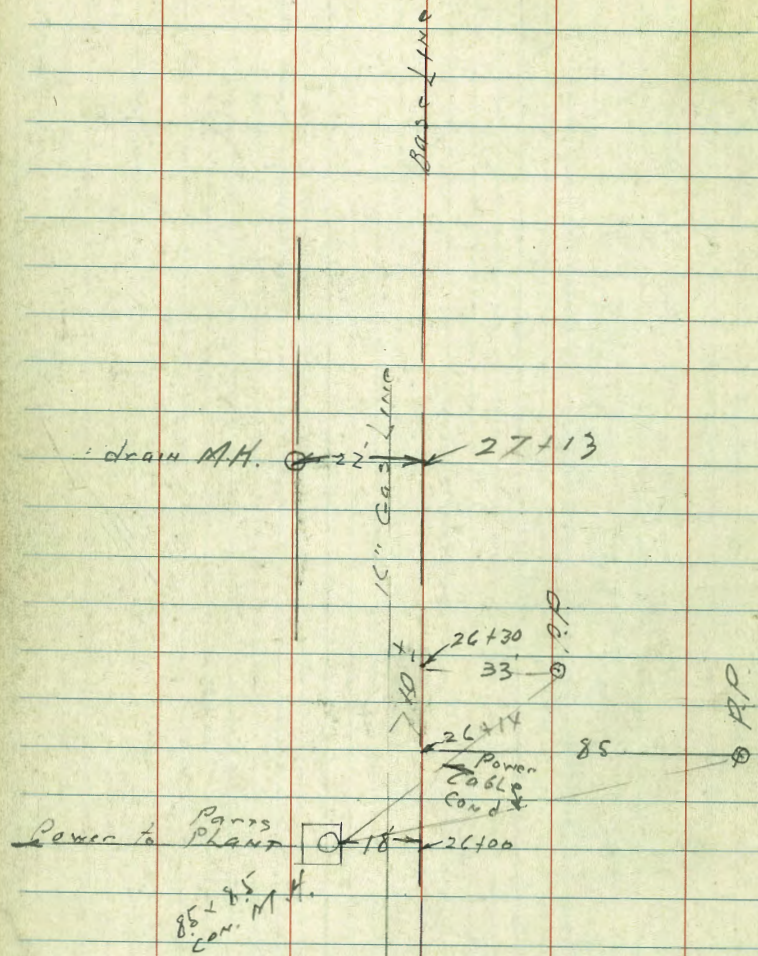
M.H. CLEAR
 OUT →



Comde'

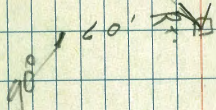
Moore St

Aristo St



5° 40' RT
D = 37 + 14.7

RR B.C.
Pd. Pipe



29 + 35

- 32 4 -

8.3 x 42.5

28 + 99

36



+ 80

67.5



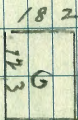
+ 60

31

8.3 x 42.5

28 + 43

61



RR B.C.

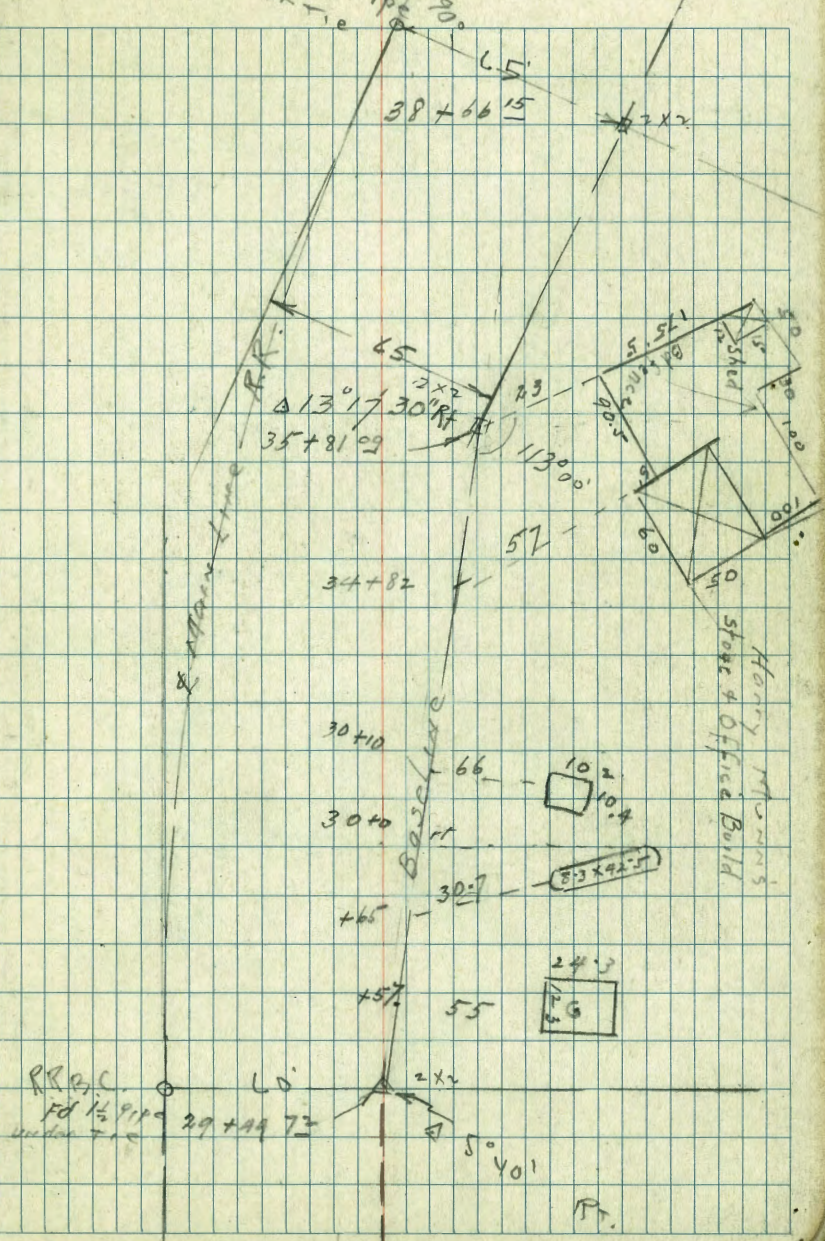
Baseline

NOTE: These 8.3 x 42.5 are covered in the next record

38+44.15
 15.5
 11' 0" wing wall
 28.7
 38+27
 22' 11" 1/2" iron con pipe
 Baseline
 35+81.09
 Clearcut M.H.
 34.3
 31+37
 29+44.72

9

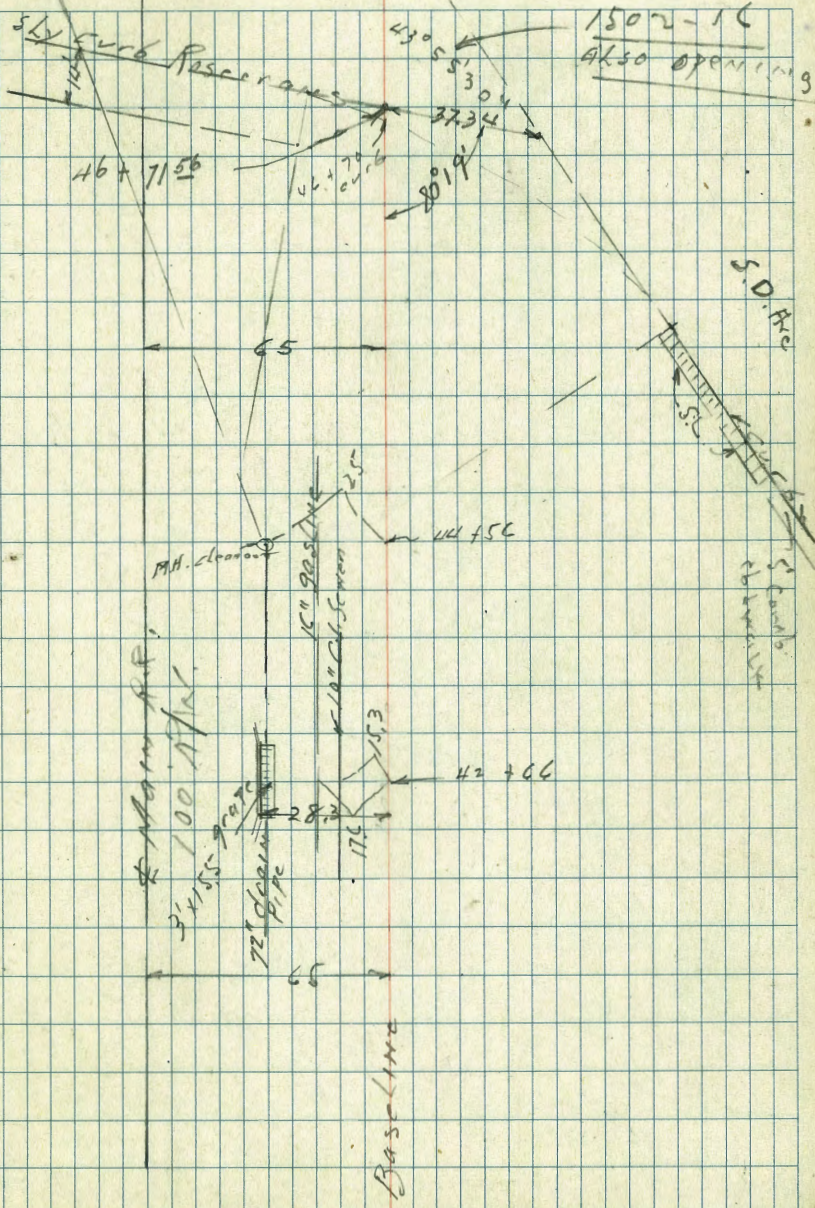
R.R. EC. Fd. 1/2" PIPE under tie



R.R. EC. Fd. 1/2" PIPE under tie

Harry Johnson's Store & Office Build

To SUMP See PLAN



41 + 59 10

66
49
10

66
49
10
1.50

33 + 89 9

66
49
30

66
49
30
Mason
418
07

Base Line

+ 47

6 + 00

5 + 00

TP

5.46

16.25

9.08

10.79

4 + 98

4 + 95

4 + 75

4 + 62

19.87

11.8

PP 174

$$\begin{array}{r} 3.9 \\ 2.9 \\ 5.0 \\ \hline 10.8 \\ \text{fence} \end{array}$$

$$\begin{array}{r} 6.5 \\ 2.5 \\ \hline 9.0 \\ \text{fence} \end{array}$$

$$\begin{array}{r} 3.9 \\ 2.9 \\ 5.0 \\ \hline 11.3 \end{array}$$

$$\begin{array}{r} 5.4 \\ 10.9 \end{array}$$

$$\begin{array}{r} 3.6 \\ 2.5 \\ \hline 12.7 \end{array}$$

$$\begin{array}{r} 4.0 \\ 2.5 \\ \hline 12.3 \end{array}$$

$$\begin{array}{r} 1.25 \\ 5.0 \\ \hline 15.20 \\ \text{curb} \\ \text{old Barnett crossing} \end{array}$$

$$\begin{array}{r} 2.9 \\ 5.0 \\ \hline 13.5 \end{array}$$

$$\begin{array}{r} 2.50 \\ 5.0 \\ \hline 13.8 \end{array}$$

$$\begin{array}{r} \text{PP} \\ 4.0 \end{array}$$
16.25

PP 274 TP 22.4

$$\begin{array}{r} 7.7 \\ 12.2 \\ 5.0 \\ \hline 24.9 \end{array}$$

$$\begin{array}{r} 7.9 \\ 12.2 \\ 2.5 \\ \hline 22.6 \end{array}$$

$$\begin{array}{r} 9.7 \\ 10.2 \end{array}$$

$$\begin{array}{r} 7.5 \\ 2.5 \\ \hline 12.4 \end{array}$$

$$\begin{array}{r} 6.2 \\ 5.0 \\ \hline 13.7 \end{array}$$

$$\begin{array}{r} 17.5 \\ 5.0 \\ \hline 22.5 \end{array}$$

$$\begin{array}{r} 15.5 \\ 2.5 \\ \hline 18.0 \end{array}$$

$$\begin{array}{r} 13.8 \\ 6.32 \\ \hline 20.12 \end{array}$$

$$\begin{array}{r} 17.45 \\ 2.1 \\ \hline 19.55 \\ \text{10 let} \end{array}$$

$$\begin{array}{r} 11.20 \\ 4.0 \\ \hline 15.20 \end{array}$$

$$\begin{array}{r} 10.1 \\ 5.0 \\ \hline 15.1 \end{array}$$

$$\begin{array}{r} 13.55 \\ 8.32 \\ \hline 21.87 \end{array}$$

+ 41 -

10 16 25.65

TP 0.76 1549

8+05

8+00

7+50

7+00

6+60

6+599

+52

PP 16 16 14

10.9

12.4

13.2

13.5

13.7

5.4
503.9
25

3.1

2.8
252.6
39

10.5

11.5

12.3

12.7

13.1

5.8
504.8
25

4.0

3.6
253.2
456.0
50

10.3

5.8
25

10.5

5.00

11.3

4.31
25

11.87

3.70
50

12.6

10.2

10.9

12.2

10.9

11.50

20.97

7.06

6.1
505.4
374.1
265.4
17

4.75

4.10
253.8
50

4.7

16.25

10+50

9.4
20
50

5.56 29.37

TP

1.84 23.81

10+0

9+50

9+11

9+00

8+58³⁰

19.43	11.8	6.6	5.8	5.9	5.1	5.0	4.0	3.4	
10.4	17.6	22.8		24.0	24.3	24.4	25.4	26.0	
7.7	11.7	23.8		24.1	23.6	23.8	24.5	24.2	
18	14	1.9	16	21	1.9	1.9	1.2	1.5	
50	28	24	4	12	14	16	50		
8.7	11.7	22.4		22.7		21.7			
17	14.0	33	3	4.0	3.9	4.0	2.7	2.9	
50	30	24	14	13		15	17	50	
PP 16.4									
11.6	13.1	15.0		15.20	15.49	15.5		16.2	
14.1	12.6	10.7		10.45	10.16	10.20		9.5	
50	34	28		13		15		50	
10.7									
8.7									
17.0									
7.8									
17.9									
18.3									
7.40									
18.2									
7.5									
68									
18.9									
7.2									
18.5									
267.65									

338 22.90
 TP 985 19.52

15

12+50

12+10

11+99

11+66¹⁸

11+00

29.37

385 50%

Coastal gooderite

14.4	17.7	21.4	23.4
15	11.7	8.0	6
50	25		24
15.8	19.1	22.9	25.4
13.6	10.3	6.5	4.0
50	25		25
			27.1

8.7

240

10.7

5.4

5.0

4.0

2.1

9.7

4.8

4.8

3.9

2.7

R. Paleolith

19.7

24.6

24.6

25.5

26.7

9.7

4.8

4.8

3.9

2.7

9.4

21.9

24.4

24.4

24.6

24.9

25.8

20.

7.5

5.0

5.0

4.8

4.5

3.6

1.8

50

28

12

10

15

19

50

29 37

7.18 19.94

TP 10.14 12.76

15+60

15 39.54 M Ampedant &

15+34

15

14+70

14+1678

14+00

13+50

22.90

			4.5	10.8	12.7	14.7	22.9	24.6	26.4	25.5
		18.4	12.1	10.2	8.2	0.0	+1.7	+3.5	+2.6	
		19.4	14		6	13	21	63	.81	
		ditch								
		4.9	10.8	11.6	11.9	14.1	20.9	23.9	25.9	25.5
		18.0	12.1	11.3	11.0	8.8	2.0	+1.0	+3.0	+2.4
		22	15	12		5	11	20	70	81
		6.2	6.4	11.4	11.5	16.9	19.6	22.4	22.4	PP. 31 PA
		16.5	11.5	11.4	6.0	33	65	80		
		20	10		25	55				
		ditch								
		6.2	11.3	11.5	12.1	15.1	17.5	20.7		
		16.7	11.6	11.4	10.8	7.8	5.4	22		
		20	10		10	25	50	75		
		ditch								
		6.9	10.0	12.2	13.3	16.4	19.3			
		16	12.9	10.7	9.6	6.5	3.6			
		50	26	22		25	50			
		PP Ampedant								
		10.1	14.2	17.8	20.9	22.4				
		12.8	8.7	5.1	2.0	0.5				
		50	25		26	50				
				22.90						

18

17+69

17+50

TP

17+00

16+50

16+19

16

19.94

6.29 13.87

12.36 7.57 ✓

6.17

4.77

1.37

1.77

1.87

19

1287 10

7.7 60 rail M.G. 17 H Tel Pole	9.1 40	12.5 25	12.1	12.0 27	7.5 33	1.0 50			
		2.07	2.27	2.47	6.47	13.07			
		11.8 25	11.6	11.4 20	7.4 25	0.8 14			
6.54	5.54	2.94	3.74	2.94	3.74	8.74	17.14	19.94	
13.2 22 Rail M.G.	5.2 23	17.0 23	16.2 12	17.0	16.2 12	11.2 21	2.8 50	0.0 61	
		3.19	4.34	4.74	5.74	7.94	15.14	18.04	23.9
		16.8 21	15.6 14	15.2	14.2 10	12.0 13	4.8 37	1.9 44	4.0 67
		15 H Tel Pole							
13.3 23 Rail Main Line	3.94	7.64	8.74	9.84	13.54	17.94	21.94	13.34	
	16.0 21	12.3 14	11.5	10.1 20	6.4 25	2.5 30	4.0 50	6.6 78	
			19.94						

23 + 12

23

+ 72 See Constrain Plans for 7" drain

+ 50

T.P. 111 7.43 8.33 6.37

+ 20 11.47 7.61 P.

22

+ 50

21 + 00

14.65

385 50%

	21	20
5.80	1.83	2.23
1.63	1.83	2.23
60	72	87
Top M, rail Emb		
15.8	9.9	6.0
FL Pipe	Top Pipe	TOP 5' end
	Bot Box	3.3 x 1.53
		iron grate
4.63	5.03	1.43
2.7	5.5	2.0
x1		Emb
Emb		
1.43	1.13	
60	30	
1.43	1.43	
30	50	
2.25	2.33	
2.25	2.33	
3.35	2.33	
4.05	2.53	
4.15	2.53	
10.0	10.5	
4.65	4.05	
10.0	4.15	
x0		
Emb		
4.65	1.15	
10.0	1.15	
x0		
Emb		
0.95	1.25	
13.7	1.25	
2.05	1.95	
12.0	1.95	
2.5	1.95	
3.65	8.95	
11.9	8.95	
2.0	11.35	
5.45	11.35	
8.25	11.35	
13.65	11.35	
15.15	11.35	
14.65	11.35	
14.65	11.35	

+50

+18 15' Lt Tel. P.

T.P. 12.75 14.11 6.07 1.36

25

+92

+75 = 80' R PP

+50

+25 N. end of Iron grades + Sunap Bois

24

+68 15 Lt Tel. P.

23 + 50

7.43

L7

9.61

1.21

Bl.

1.41

2.11

8.11

2.12

22

9.5

12.9

12.7

12.0

6.0

2.12

41

27

12.7

12.0

87

112

4.53

1.43

14.11

2.9

6.0

1.43

1.73

2.03

4.33

9.63

FM 6

2.9

30

1.43

1.73

2.03

4.33

12.5

4.53

1.33

1.63

1.73

2.23

4.43

2.9

30

1.63

1.73

2.23

12.5

FM 6

1.38

16.05
F.L.
PIPE

10.0
Bot. Box
TOP

6.05
2.2
TOP

4.63

0.43

1.33

1.43

2.03

2.13

2.8

1.0

1.33

1.43

2.03

2.13

4.63

0.43

1.43

1.63

2.03

2.33

2.8

1.0

1.43

1.63

2.03

2.33

FM 6

7.43

32 + 00

+ 85

drain
T.P. MH.

11.74 17.04 9.40 5.30

+ 50

31132 34317 drain MH. 9.40
obscure 24.50

R.M.
Fl. 72

+ 17

3~ 27 TEL.P. W.M.

31 + 00

+ 64

+ 50

14.70

15

5.54
11.5
50
EMG.

5.54
11.5
53
EMG.

5.50
9.7
50

5.10
9.6
50

5.30
9.4
50
EMG.

5.10
9.4
54

4.24
12.8
50
EMG.

4.20
10.5
30

2.80
11.9
32

2.30
11.4
50

1.70
13.0
55

5.74
11.3
20

5.00
9.7
6

2.90
11.8
50

3.30
11.4
50

3.50
11.2
50

91

5.34
11.7

17.04
12.10
6

2.90
11.8
50

3.70
10.7
50

14.70

2.64
12.4
12

11.10
13.6
10

2.90
11.8
50

4.00
10.7
50

3.70
11.0
50

2.94
12.1
50

3.0
11.7
50

6.10
8.0
73

6.0
8.7
55

4.30
10.4
30

20

6.04
11.0
29

8.10
6.6
71

13.90
11.0
83

12.30
12.4
79

11.00
13.7
42

10.44
6.4
86

8.10
6.6
71

19.4
15.0
97

17.2
12.5
50

17.3
12.6
85

20.14
13.1
90

19.1
15.0
85

19.4
15.0
97

17.2
12.5
50

17.3
12.6
85

25

20.14
13.1
90

19.1
15.0
85

19.4
15.0
97

17.2
12.5
50

17.3
12.6
85

25

20.14
13.1
90

19.1
15.0
85

19.4
15.0
97

17.2
12.5
50

17.3
12.6
85

25

20.14
13.1
90

19.1
15.0
85

19.4
15.0
97

17.2
12.5
50

17.3
12.6
85

25

20.14
13.1
90

19.1
15.0
85

19.4
15.0
97

17.2
12.5
50

17.3
12.6
85

25

20.14
13.1
90

19.1
15.0
85

19.4
15.0
97

17.2
12.5
50

17.3
12.6
85

25

20.14
13.1
90

19.1
15.0
85

19.4
15.0
97

17.2
12.5
50

17.3
12.6
85

25

20.14
13.1
90

19.1
15.0
85

19.4
15.0
97

17.2
12.5
50

17.3
12.6
85

25

20.14
13.1
90

19.1
15.0
85

19.4
15.0
97

17.2
12.5
50

17.3
12.6
85

25

20.14
13.1
90

19.1
15.0
85

19.4
15.0
97

17.2
12.5
50

17.3
12.6
85

25

20.14
13.1
90

19.1
15.0
85

19.4
15.0
97

17.2
12.5
50

17.3
12.6
85

10.5
TOP RAIL
M.L.

drain

EMG.

EMG.

TOP SUR

TOP SUR

TOP SUR

TOP SUR

TOP SUR

TOP SUR

TOP SUR

TOP SUR

TOP SUR

TOP SUR

TOP SUR

TOP SUR

TOP SUR

TOP SUR

TOP SUR

TOP SUR

TOP SUR

TOP SUR

TOP SUR

TOP SUR

TOP SUR

TOP SUR

TOP SUR

TOP SUR

TOP SUR

TOP SUR

TOP SUR

TOP SUR

TOP SUR

TOP SUR

TOP SUR

TOP SUR

TOP SUR

TOP SUR

TOP SUR

TOP SUR

TOP SUR

TOP SUR

TOP SUR

TOP SUR

TOP SUR

TOP SUR

TOP SUR

f 95 97' 19+ PP

f 75

f 60 29 27 W.V. Tol. P.

f 60

f 30

f 20

32 + 15

17.04

5.74

4.74

6.64

6.64

5.94

9.04

9.44

26

11.3
50
5.26

12.3
50

11.4
38

11.4

11.1
22

8.0
47

7.6
27

+ 3.2
87
Top Cut

6.54

7.04

10.24

16.34

17.04

10.5

10.0
34

6.8
53

9.7
41

0.0
80

5.64

4.64

7.74

10.24

13.84

14.44

16.44

11.4
52
5.26

12.4
40

9.3

6.8
21

4.3
41

2.6
50

0.6
80

9.74

10.94

12.94

15.74

9.3

10.94

12.94

15.74

5.24

7.54

10.84

13.04

16.04

20.44

11.0
20

9.5

10.84

13.04

16.04

+ 3.4
81

5.14

7.04

10.34

13.94

17.24

5.44

20.44

11.9
50

10.0

4.7
21

3.1
50

2.8
65

11.4
68

+ 3.4
87
Top Cut

17.04

+70

+35

T.P. 9.91 16.45 10.50 6.5v

+15 26 Lr w.v. Pole

+07 48 Pr P.Pole Guy P.

3v

+65

+40

33 + 16

17.04

10.6
+1
F.P. FM6.

117
32

15.23

9.6
18

17
32

15
48

+20
53

+3
65

+3.3
80

5.85

9.15

6.85

14.75

19.95

18.45

19.65

19.75

6.06

6.15

20.05

19.85

11.4

10.3
20

+3.6
28

+3.4
80

16.45

5.74

4.64

5.34

5.54

5.34

14.74

20.24

20.24

19.54

11.3
47

12.4
35

11.7
29

11.5

11.7
23

13.3
37

+3.2
44

+3.2
67

+3.5
80

5.44

5.94

7.54

13.04

9.44

19.44

19.54

5.74

4.74

5.84

5.64

5.94

9.04

8.04

20.24

20.34

11.3
51
FM6

12.4
42

11.7
32

11.5

11.7
23

13.3
37

+3.2
44

+3.2
67

+3.5
80

5.34

5.84

7.54

8.64

6.34

20.54

11.7

11.2
13

9.5
23

8.4
50

10.7
55

+3.5
70

19.54

17.04
2

CITY
SEWER
T.P. MH. RIM 7.10 13x2 1013 6.32

36

35 + 81.09 Δ 13' 2" 30" RT Sec. on SPLIT

+72 5.5 Lt. CITY Sewer MH. See Sewer Plans

+58 10' Lt. W.V. Pole

+50

35 + 40 19' Lt 7" drain MH. cleanout

35 + 00

16.45
2

LT

BL

RT

28

5.55	7.05	7.85	6.15	16.15	16.15
10.9	12.6	11.6	10.3	9.3	10.3
30	20		16	17	25
Emb					

5.75	6.25	16.45	16.65	
10.7	10.7	9.0	+ 0.2	
	14	23	100	

6.32

10.13 RIM MH. = Fd. RIM. Fd. Elev. 6.36
5.9

6.55	7.65	7.55	6.15	8.45	18.45	18.55
9.9	11.8	11.9	10.7	8.0	4.30	4.1
58	33	22		23	32	90

Top of Main Line

6.40

27.75
19 MH RIM

5.75	7.55	5.45	6.45	10.45	10.45	15.45	19.65	19.55
10.7	11.9	11.0	10.0	6.0	6.0	10	43.2	43.1
46	35		14	22	38	53	50	80

16.45

Lr.

PL.

R.T.

+52 20' Lr W.W. Tol. P.

+50

+27 Sand iron grate over SUM P 130x

38

+84 18' Lt Sewer 11.6 Rock see plan P.M. plugged up F.L. T

+50

+03 20' Lr W.W. Tol. P.

37

36 + 50

13.42

	5.12	0.42	1.52	2.12	3.42	
	8.3 -1	13.0 -7	11.9	11.3 -50	10.0 -100	
2579	18.92	13.39				
FL. of 72"	Top 72" P.P. Bot. Box	Top 91" P.P. Top 91" P.P.				
	5.12	1.02	1.72	1.72	4.72	
	8.0 -50	12.4 -20	11.7	11.7 -50	8.7 -100	
	5.22	1.62	2.12	2.32	3.62	7.12
	8.2 -50	11.8 -20	11.3	11.1 -27	9.8 -50	6.0 -100
	5.42	2.12	2.62	3.62	8.92	14.12
	8.0 -36	11.3 -18	10.8	9.8 -26	4.5 -50	9.0 -80
	6.52	3.12	3.42	3.52	12.42	16.42
	7.9 -34	10.3 -17	10.0	9.9 -12	1.0 -45	1.8 -60
						3.30 -95
			13.42			

+50

+45 10' LT PP

+36 20' LT. W.V. Tel. P.

41

+74 10' LT W.V. Tel. P.

+62 45' IP+ P. 10

+50

RIM 2.00

40 + 47 18.7' LT Sewer M.H. See Plan

filled full
water

Also
G.B. 1.52

T.P. 4.00 6.17 11.25 2.17

40

+73 20' LT W.V. Tel. P.

+50

39 + 00

1342

LT 5.17

3.27

1.97

1.97

P. 2.87

30

EMG. 5.17

2.67

2.67

2.77

3.07

EMG. 5.17

2.97

2.97

2.97

4.17

EMG. 5.17

2.52

2.52

2.22

4.72

EMG. 6.07

6.12

6.17

2.22

4.72

EMG. 6.07

6.12

6.17

1.72

4.02

EMG. 5.02

1.62

1.52

1.62

3.92

PP. EMG.

11.8

11.9

11.8

9.5

1342

145 10' LT 100
 118 18' LT WU Polo

V4

+50

V3

+94 10 LT R.P.
 +84 20 LT WU T.C. P.

+66

+50

H2

6.17

LT

BL

R

31

	5.07	1.84	1.87	1.57	1.87
	1.1	4.3	4.3	4.1	4.3
	50	20		50	100
	5.17	2.57	1.77	1.67	2.67
	1.0	3.6	4.4	4.5	3.5
	50	25		50	100
	5.17	1.87	1.27	1.57	1.07
	1.0	4.3	4.9	5.5	5.1
	54	17		50	100
	6.17	1.27	1.17	1.47	1.07
	1.0	4.9	5.0	4.7	5.1
	52	25		50	100
	6.17	1.47	1.37	1.77	1.67
	1.0	4.7	4.8	5.4	4.5
	41	20		50	100
	6.17				

1257

1178

6.7

F.L.

Bot

700 91470

78.1

700 P.P.

78.1

700 P.P.

78.1

700 P.P.

78.1

700 P.P.

78.1

700 P.P.

78.1

700 P.P.

78.1

700 P.P.

78.1

700 P.P.

78.1

700 P.P.

78.1

700 P.P.

78.1

700 P.P.

78.1

700 P.P.

78.1

700 P.P.

78.1

700 P.P.

78.1

700 P.P.

78.1

700 P.P.

78.1

700 P.P.

78.1

700 P.P.

78.1

700 P.P.

78.1

700 P.P.

78.1

700 P.P.

78.1

700 P.P.

78.1

700 P.P.

78.1

700 P.P.

78.1

700 P.P.

78.1

700 P.P.

745

416 + 00

795 10 LT P.P.

752 20 LT W.L. Pole

750

x 5

xx 756 = Consaic drain

750

7 P. 316 780 153 464

h.7

Lt

P.C.

P

320

7.9
5/9
5/0

3.9
3/9
2/5

3.0
K 8

3.0
4.8
1/9

5.5
7.3
3/0
2/2
sdw

5.94
1.80
073
W. Rail
Main Tr.

4.6
3/7
4/1
5.4
2.5
5/5

3.6
3/1
3/1
4.0
5/0
5/8

2.4
5/5
2.7
5/0

2.5
5/7
5/0
5/0
1.8
5/0

3.10
5/7
5/7
7.4
5/0
100

5.8
2.0
7/0
sdw.
approx 5 ft
of sdw.

4.3
3/5
5/0
5/6

3.8
5/0
5/0

2.80
5/0

2.3
5/5
5/0

2.10
1/5
1/7
0

4.64

21.70
0.5
K.L.
drain

3.10
2.5
M.H. Rim

5.55
5.3
Pallory

4.5
3.3
5/0
RMB

3.2
3/5
5/2

2.10
5/2
7.80
6.17
1/2

1.7
5/0
0

1.8
5/0
100

to BIV 13P
 check my Ret. of 331 4.49 4.67
 San Diego + Taylor 0.13

46 + 70 sly curb line

465 6.17 P.P.

456 20' LT W.W. Pale

46 + 57

7.80

385 .50%

AL

33

5.73

2.07

Tap 66

5.2

2.60

907

5.6

2.2

50

5.1

2.2

7

6.1

1.7

5.66

2.0

14

50

5.47

2.33

24.3

0.6

4.95

2.85

27.3

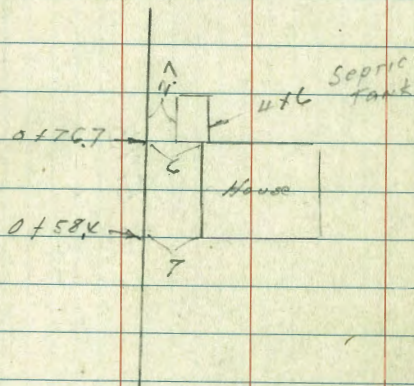
97

7.80

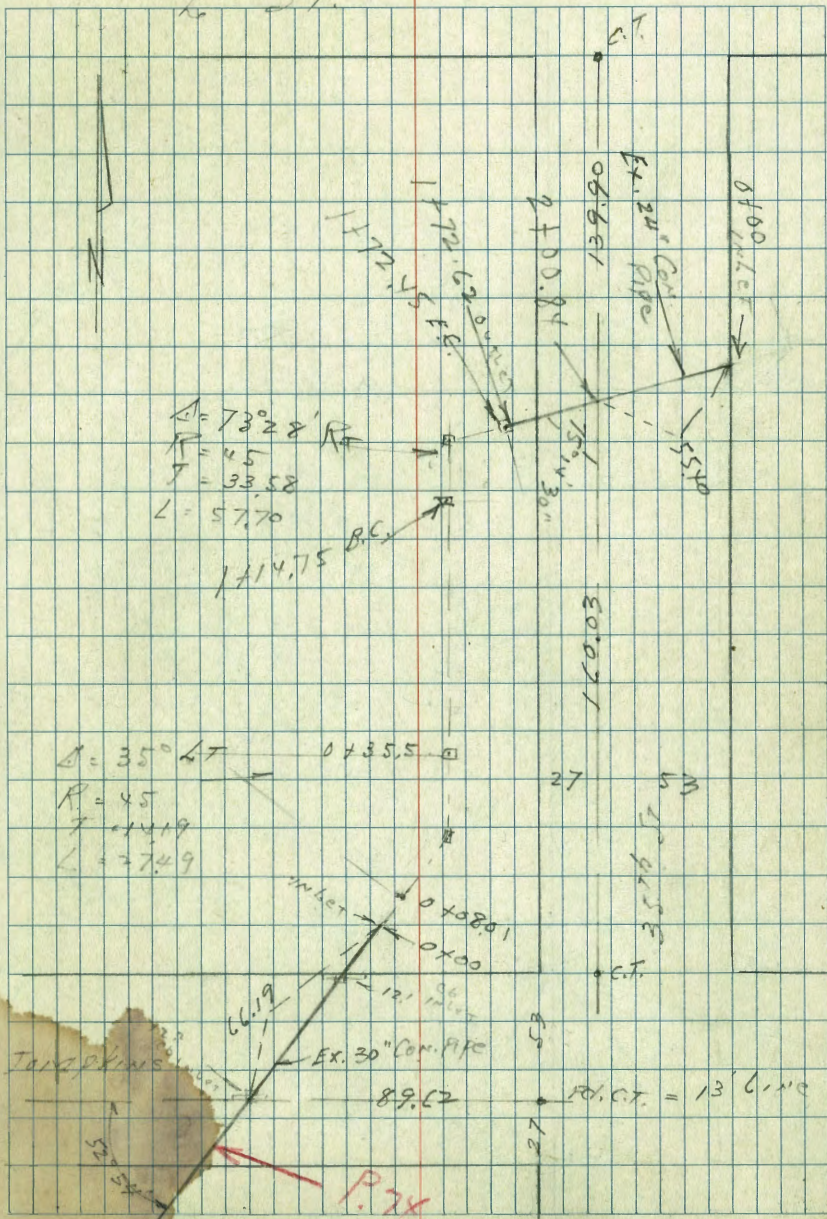
Storm drain on 3574
 N of Tompkins
 W.O. 21025

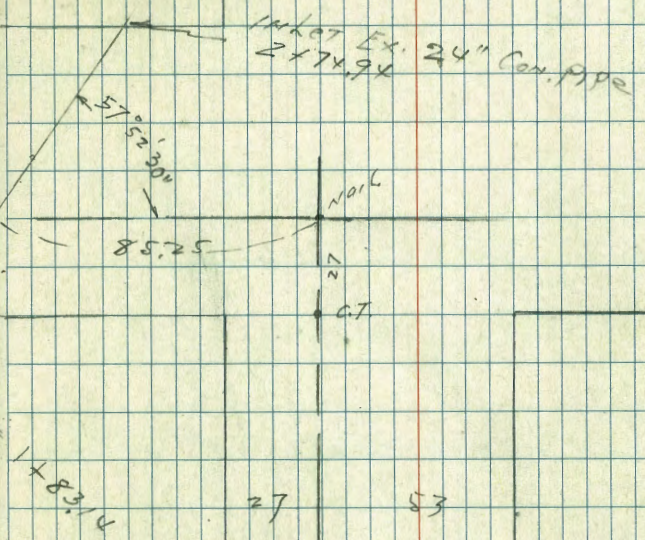
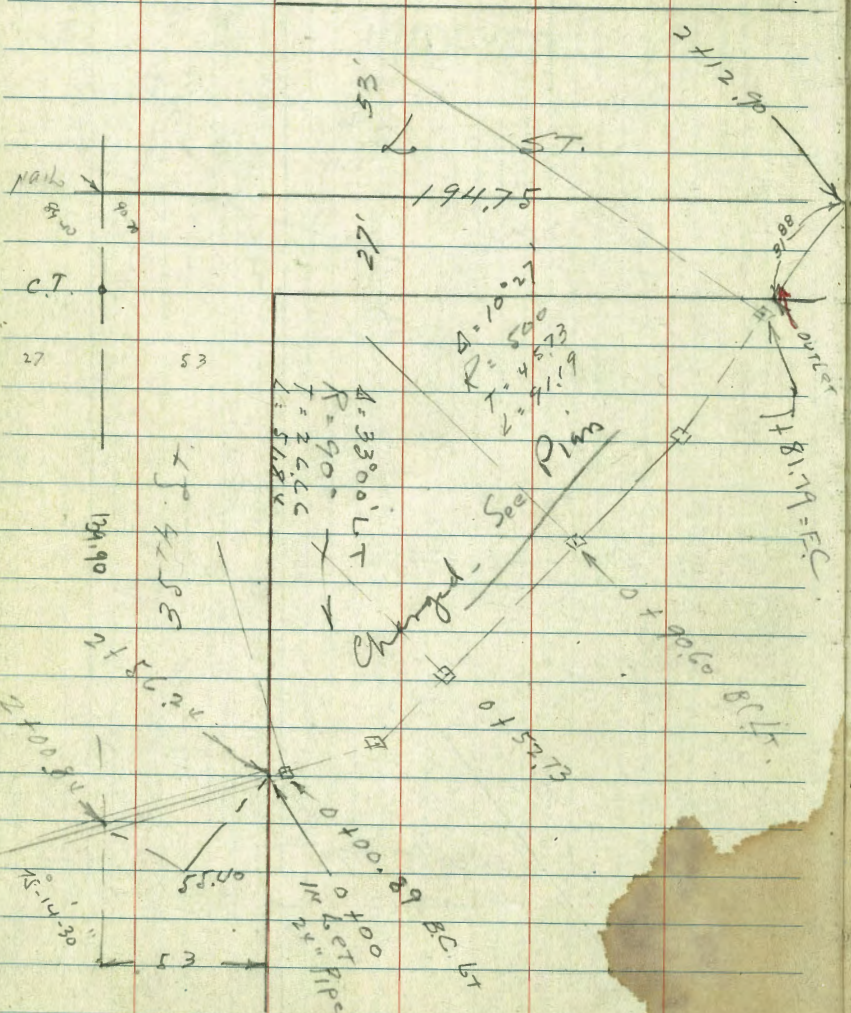
MOORE
 GREER
 ROBERTS
 8-14-47

INDEXED



ST.





Parabe St.

0438 2.5 Lt A wire fence

04355 F.C.

0432

040801 BC Lt

1' Lt angle wire fence

0400 inlet 30" pipe

4' Lt. old wire fence

0-6619

T.P. 139. 6516 9.44 63.77

T.P. 110 7321 12.89 72.11

B.M. B.P. 0.08 8500 84.92
and
Pardse

50.9	50.4	50.9
14.3	14.8	14.3
12		12

50.5	50.1	50.3
14.7	15.1	14.9
10		10

51.1	50.1	49.1	49.7
14.1	15.1	16.1	15.5
10	1		7

50.7	49.7	46.6	49.7
14.5	15.5	18.6	15.5
5	4	F.L.	4

13.09
22.07
F.L.
Bot. Box

13.17
11.99
TOP GRADE

6516 ✓

0+190

0+188

0+79.7

T.P. 12.31 7008 7.39 57.77

0+767

0+769 27 Lt 3" acacia

0+768 3.5 Rt 5" Fig

0+52

0+51 4' Lt end wire fence

0+50 2' Rt 8" acacia

0+46 2.8 4" acacia

0+44 2.5 Lt 6" d. acacia

65.16

Lt

57.9
12.7
17
999.66mm

56.8
13.3
12

56.2
10.7
8

53.2
12.0
10

51.2
13.0
8

R
57.5
12.6

55.7
14.4

54.0
15.1

54.5
10.7

53.5
11.7

51.8
13.4

R
58.1
12.0

56.0
14.1
10

54.4
15.7
2.7 septic
top tank

54.5
10.7
2

53.2
12.0
10

51.5
13.7
1.5

65.16 ✓

37

1772,62 outlet 24" P1

1772,45 E.C.

1743,6

1714,75 BC R7

1705

0799

7008

L

8

R

38

56.78
13.80
FL.

59.3 59.4 59.5 59.0 60.0
 $\frac{10.8}{11}$ $\frac{10.9}{2}$ 13.5 $\frac{11.1}{2}$ $\frac{9.5}{9}$

57.2 56.3 56.5
 $\frac{13.6}{15}$ 13.8 $\frac{13.6}{17}$

57.2 56.4 56.1
 $\frac{12.9}{11}$ 14.5 $\frac{14.0}{15}$

57.4 56.6 56.8
 $\frac{12.7}{9}$ 14.5 $\frac{14.3}{12}$

56.1 56.6 58.3
 $\frac{12.0}{16}$ 12.44 $\frac{11.8}{13}$

7008 ✓

1+13.4

1+06 3' LT Walnut
0+98 4' LT Peach } small
0+92 4' LT apricot }

0+90.6 BC LT 7' Rt Peach

0+5273 E.C.

0+51.5 cross E & W Bd. Fence

0+26.8

0+00.89 B.C. LT.

0+00 = inlet 24" Con. Pipe
2+56.24

T.P. 722 76.07 123 6885
7008

Lt 71.8 69.4 68.3 68.3 Rt 71.7 39
4.3 6.9 7.8 7.8 4.4
15 7 10 14

67.7 67.5 66.5 67.7 67.7 70.0
8.4 8.0 9.5 8.4 8.4 6.1
7 8 2 5 8 13

71.9 65.1 64.6 65.1 65.6 71.7
4.2 11.0 11.5 11.0 10.5 4.4
15 2 11.5 2 5 16

69.4 63.6 63.4 62.9 69.3
6.7 12.5 12.7 12.2 6.8
12 2 12.7 6 15

68.5 64.5 63.3 67.5
7.6 14.6 12.8 8.6
10 14.6 2 10

60.35 66.9
15.72 9.7
5.6

Top
Rock
below.

76.07 ✓

1783.14 over lot 24" Con PIPE

71.61
12.87
F.L.

1781.79 E.C.

72.5 75.9 73.0 72.4 76.5
7.0 8.6 11.5 11.1 8.0
10 5 ground 7 14

1759

73.9 72.5 73.0
10.6 12.0 11.5
10 11

1757 2' RT 3-12" Eucal } 2nd growth
1754 3 RT 12" di. Eucal } 819 stump

1736.2 cross H x S wire fence

74.1 72.5 69.7
10.4 12.2 14.8
10 13

T.P. 1023 84.48 182 74.25

84.48 ✓

1725

73.6 71.9 69.4 68.5 68.7 70.9
2.5 4.2 5.7 7.6 7.4 5.2
16 7 8 8 12 10

1718 1' Lt 10" di. Eucal.

76.07

76.07 ✓

check to orig. B.M. 4.68 84.93 84.92 ✓

2.7x.7x inlet 24" Con. Pipe
 N. L. 6 ST.
 West of Pardee

T.P. 5.53 89.61 0.40 84.08

84.48 ✓

11.35
12.20
 F.L.

89.61 ✓

Cross Section of Boston Ave

38th & 39th

No. 0000
Bc99
Green
Roberts
11-6-47.

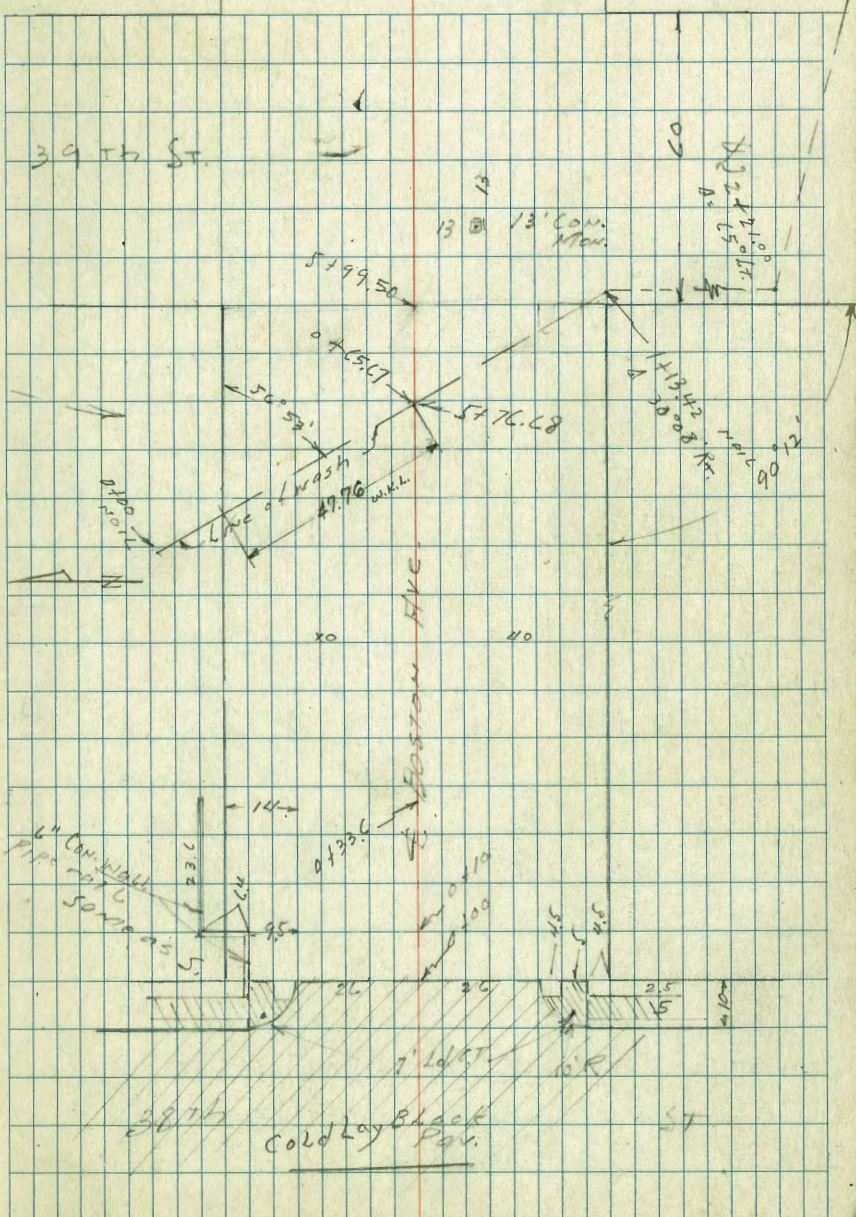
W.O. 31244

Please check
Sewer line

INDEXED

Indexed

3/00
42



0 + 82 & 8' Con. dr.

0 + 50

0 + 10

0 + 08 36.5 Lt. Thern + ...

0 + 00 E.L. 38th St

0 - 10 E. 36. Line 38th

0 - 30 E. 38th

T.P.					
Set B.M.	41.89	77.39	6.10	72.50	on
T.P.	441	78.60	6.12	74.19	
B.M. B.P.	3.78	80.31		76.53	Miller

78.0
44
40
dir
72.9
510
40
dir

73.77	73.70	72.79	71.89	72.29	72.39	73.19	73.59
3.67	3.69	4.0	5.5	5.1	5.0	4.2	3.8
50	35.5	55	23	21	24	28	30
Tap	Tap						
WALK	WALK						
73.64	72.69	72.40	72.07	72.20	72.21	72.07	71.96
375	470	499	527	519	518	537	533
35.5	35.5	26	20	3	13	22	20
Tap	WALK	66	97			97	68
WALK							WALK
72.68	72.18	72.43	71.99	71.95	71.88	71.78	71.63
471	521	496	524	524	551	561	576
75	75	60	60	26		26	60
66	97	66	97				97
		73.01		72.90		72.30	
		438		449		509	
		75		70		40	
					77.39		

N.E. Cd. C.T. 7' Pt. 38th + BOSTON AVE
SE by Cor. 38th + Wash. Ave

2+00 40 LT end picket + Reg rail fence

T.P. 0.86 69.23 9.02 68.37

1+87 3' Con walk on RT.

1+63 3' wide Con walk

+50 40 LT picket fence

1+00 Reg. picket fence 40.4 LT.

0+99 S. end 10" Con wall

77.39

64.93

65.29

66.69

10.7
45

72.04

5.35
40.4
TOP WALL

65.53

65.89

12.1
45

67.39

10.0
40

70.49

67.83

68.29

11.1
45

69.19

10.8
45

70.39

67.13

68.09

11.3
45

69.79

10.6
45

71.39

67.23

68.09

11.0
45

69.89

10.5
45

71.79

68.53

69.29

11.7
45

72.40

71.89

11.5
45

73.19

69.73

70.39

11.0
45

71.89

11.5
45

73.19

77.39

BOSTON

175 40 Lt Beg. wire fence

3150 end Lath fence 38.5 Lt

T.P. 0.50 50.85 12.88 56.35

3100 end wire + Beg Lath 39.5 Lt

2198.5 39.7 Ft end Lath fence

2197 23.6 Ft 8" dia Olive tree

2175

2174.5 24.8 Ft 6" dia Olive tree

2173 40 Ft Beg. Lath fence

2165 4 Sin. gar con Floor

2150 40 Lt end rail + Beg. wire fence

69.23

20	40	60	70	70	70	70	70	70
54.8	52.8	50.0	49.4	49.2	47.6	48.0	49.8	49.2
53.5	53.1	51.8	52.6	52.6	53.9	53.9	54.1	
55.7	57.6	58.3	57.6	57.6	59.0	57.9	57.1	60.6
11.6	10.9	11.6	11.6	10.7	10.7	11.3	9.8	9.5
60.3	60.5	60.5	61.1	61.1	62.7	62.7	63.3	
8.9	8.7	8.7	7.8	7.8	7.5	7.5	7.9	
61.3	62.1	63.3	63.7	63.5	64.7	64.7		
7.9	7.7	7.9	7.5	7.5	7.5	7.5	7.5	
69.23								

775

765

4750

4725

4711 59.6 P E 2.8 con walk

4700 40 LT end wire fence

56.85

8.2	8.3	9.1	8.6	9.1	9.9
45	40	21	18	10	50
49.7	49.5	48.6	48.6	48.0	45.8
41.1	42.0	42.2	42.0	41.0	41.1
51.0	50.9	49.9	49.3	48.2	46.1
45	40	35	25	15	22
53.6	53.2	52.3	51.2	50.3	49.2
45	40	25	22	15	10
54.9	54.5	51.9	50.5	48.2	47.3
45	40	25	20	15	13
42.53	42.9	42.1	42.1	42.53	42.53
14.32	14.4	14.7	14.7	14.32	14.32
59.6	59.6	59.6	59.6	59.6	59.6
43.6	43.6	43.6	43.6	43.6	43.6
43.3	43.3	43.3	43.3	43.3	43.3
56.85	56.85	56.85	56.85	56.85	56.85

Boston

5+99.5 w.l. 39th St

5+75

5+47 40 ft end picket fence

131 39.7 ft A in fence

5+28

T.P. 0.60 46.00 11.45 45.40

5+04

5+00 38 ft Beg. picket fence

4+98

56.85

50.0	49.5	48.9	48.8	38.3	34.9	32.5	31.1	31.2
+4.0 50	+3.5 40	+2.4 35	1.2 22	7.7	1.1 24	13.5 30	14.9 40	14.8 60
		45.6	43.8		33.7	40.8	41.2	40.7
		51.0 50	47.2 40	35.1	18.3 18	27.2 27	4.8 40	5.3 50
39.2	37.0	36.2	35.8	36.5	42.5	42.2	42.0	
6.8 60	9.0 50	9.8 40	10.2 31	9.5	6.5 24	3.8 40	4.0 50	
		38.8	39.4		43.4	41.3	40.6	
		7.2 60	5.0 40	5.7 19	2.6 20	4.7 60	5.5 50	
		42.7	43.4	45.4	45.2	41.6	40.8	
		14.1 50	13.4 40	11.5 27	11.0 17	15.2 40	16.0 50	
		46.1	46.5	49.6	46.3	47.3	46.8	46.7
		10.7 50	10.3 40	7.7 35	10.5 27	9.5 19	10.0 50	10.0 50

56.85

47

T.P. on
13' Com. Men.
39th + Boston

603 39.97

6 + 59.5 E.L. 39th

6 + 44.5

6 + 29.5 E 39th

46.00

55.9	55.4	53.1	47.3	43.0	38.3	32.5
+9.9	+9.4	+7.1	+1.3	0.0	7.7	13.4
50	40	20		23	50	20
56.0	55.7	54.8	49.1	39.5	33.4	
+10.0	+9.7	+8.6	+3.1	6.5	12.0	
50	40	20		40	70	
53.6	54.6	52.5	46.00	42.5	37.3	33.8
+9.6	+8.6	+7.5	0.0	3.5	9.7	12.2
50	20	28		18	40	25

46.00

Levels on line of drainage

at 39th + Boston

1+34 7 Rr to ctr. 24" Eucal.

1+17 5' Rr to ctr. 30" di. Eucal. Trce

INVERT

1+13.42 Δ 30°08' RT on split

0+93

0+65.47 (E Street)

0+42

0+00 See Sketch

13' Mon.
39th +
BOSTON

107

41.04

39.97

385 50%

Lt

R

R₇

49

39.1	38.8	31.7	31.6	34.7
0.9	0.2	0.3	0.4	0.3
35.9	34.2	33.4	33.6	
0.0	0.8	0.6	0.4	
37.9	36.1	34.9	34.4	
0.0	0.9	0.1	0.0	
39.7	39.9	36.1	35.2	
0.0	0.0	0.9	0.8	
37.0	36.5	36.6	36.6	
0.0	0.5	0.5	0.4	
37.9				

41.04

check to SWBP 2.81 83.03 93.05

T.P. 9.63 85.84 0.33 76.21

T.P. 12.64 76.54 0.56 63.90

T.P. 12.92 64.46 0.10 51.54

13' Mon
3976 and 51.64 39.97
Boston

3 + 00

2 + 57

2 + 21 65°00' LT. ON SPLIT

1 + 95 Cross sewer lat

1 + 90 7.5 Pt to ctr 18" Eucal

+ 71 7.5 Pt to ctr 36" di. Eucal

+ 51 7 Pt to ctr 24" Eucal

1 + 50

41.04

LT

R

R

50

3976 + Natl. Ave.

22.0
10
22.0

21.3
19.7
1.6

27.5
13.5
15

26.5
14.5
12

26.7
14.3
12.4

26.7
14.3
12.4

29.8
11.2
18.6

27.9
13.1
Ground

22.3
18.7
TOP LAT

31.4
9.6
12

30.4
10.6
3

29.0
12.0

32.5
8.5
9

41.04

Walker Curb & Gutter Levels
 Handricks NW 60th & Trojans
 Becker
 Williams
 2-9-48

INDEXED

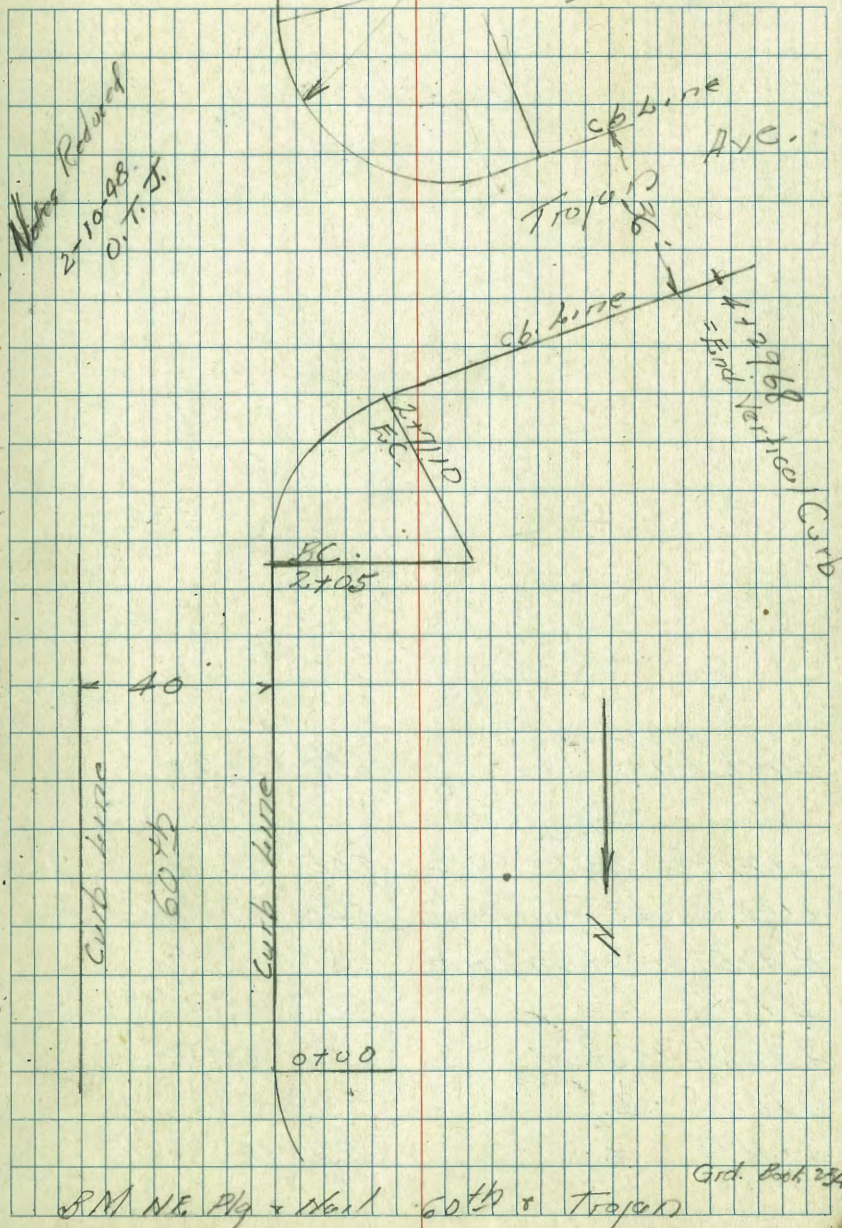
WK
 MAR 17 1949

3+05.03	6.04	437.24
3+05.03 Gult	6.65	436.63
2+85.03 in Drive	6.72	436.54
2+71.10 cb.	6.17	437.11
2+71.10 = E.G. Gult.	6.81	434.47
2+38.06 cb.	6.74	436.54
2+38.06 Gult	7.39	435.89
2+21.53 cb	7.19	436.09
2+21.53 Gult	7.82	435.76
2+05 cb	7.66	435.62
2+05 = E.G. Ret Gult	8.31	434.97
T.P. 11.08 <u>443.20</u>	2.78	432.20
1+55 cb.	2.18	432.30
1+55 Gult	2.69	431.99
1+05 cb.	5.46	429.02
1+05 Gult.	5.99	428.47
0+55 Gutter	9.33	425.15
0+55 in cb in Drive		
0+00 gutter	12.25	421.43
0+00 = on West cb 60th	12.40	422.08
T.P. 9.37 <u>434.48</u>	10.79	424.61
0.50	437.40	436.90

Curb levels
 in Grade Book
 234

51

Notes Reduced
 2-10-48
 O.T. S.



starting check BM	6.38	436.90
4 + 29.68 = ^{Top} Rolled curb	5.05	438.23
4 + 29.68 Gut = Transition	5.40	437.88
4 + 15.33 Gut. in DINE	5.83	437.45
4 + 01.15 cb	5.53	437.75
4 + 01.15 Gut.	6.16	437.12
3 + 31.15 cb.	5.93	437.35
3 + 31.15 Gut.	6.53	436.75

indexed
C.S.K.

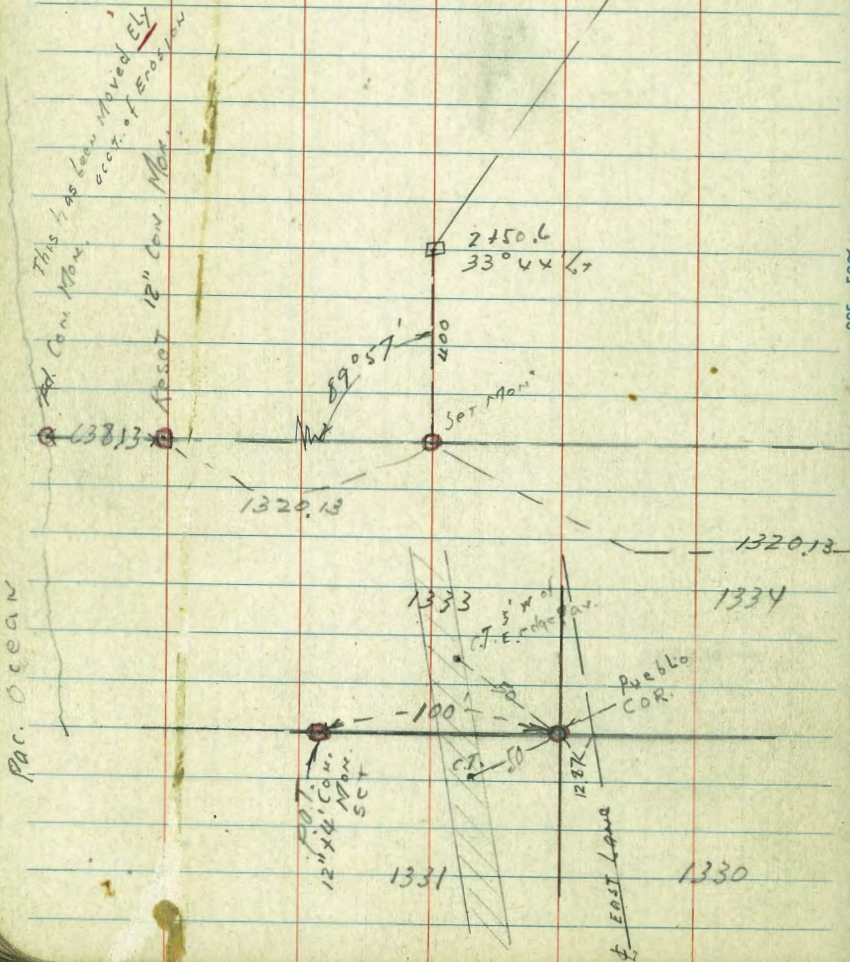
Survey Tenney Pines Park for
Camp Callan trapper Park

Moore
Begg
Green
Roberts

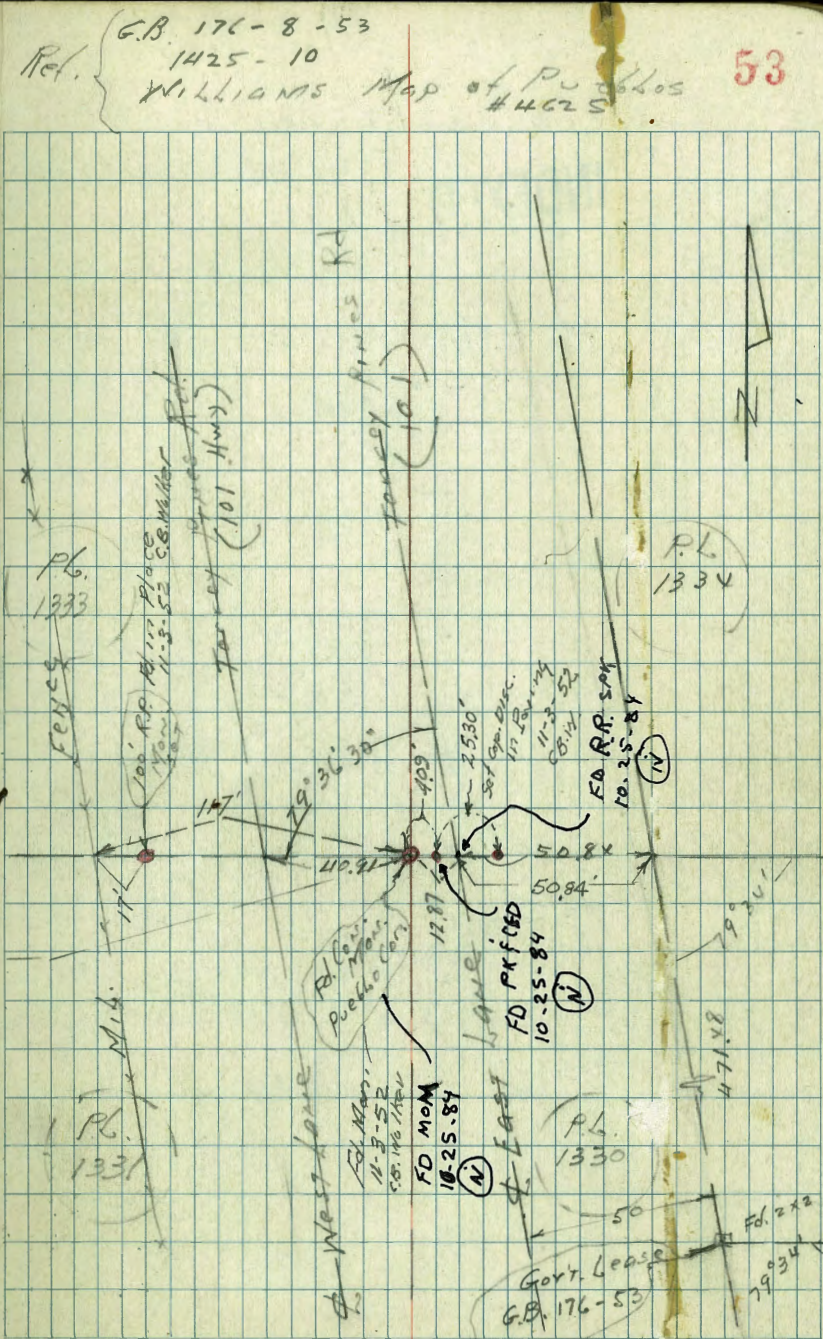
W.O. 90073 Plot 1333

INDEXED

P. 54



385 50%



CAMP Callan Trahan Camp

INDEXED

□ = 2" x 2" Hubs

● = CON. MARK

590.53

Distance ??

12+20.7

90° 03' 24" R

MIL. FENCE

B
40 N. 15' PAV. ALLEY

90° 03' 24" R

19.19

22.13

5+20.7

33° 41' 17" L

CC 2.65

30' Road

2+50.0

33° 44' 17" R

89° 57' 10" R

50.0

149.40

1320.13

82° 04' 10" R
110' S.L. ALLEY

821.37

S.L. 1333

5' S. of S.L. of
20' PAV. ALLEY

1815.38

1220.7

594.68

4.15

590.53

590.35

.18

54

13831

30

4,149.30

LD + DISK
E. edge of CON. FLUME

18 x 15.38

Δ = 82° 03' R

216.2

30' offset

MIL. FENCE

23+14.27

Δ = 6° 50' 30" R

88° 37' 10" R

88° 53'

30'

25+20.73

71° 01'

89° 52'

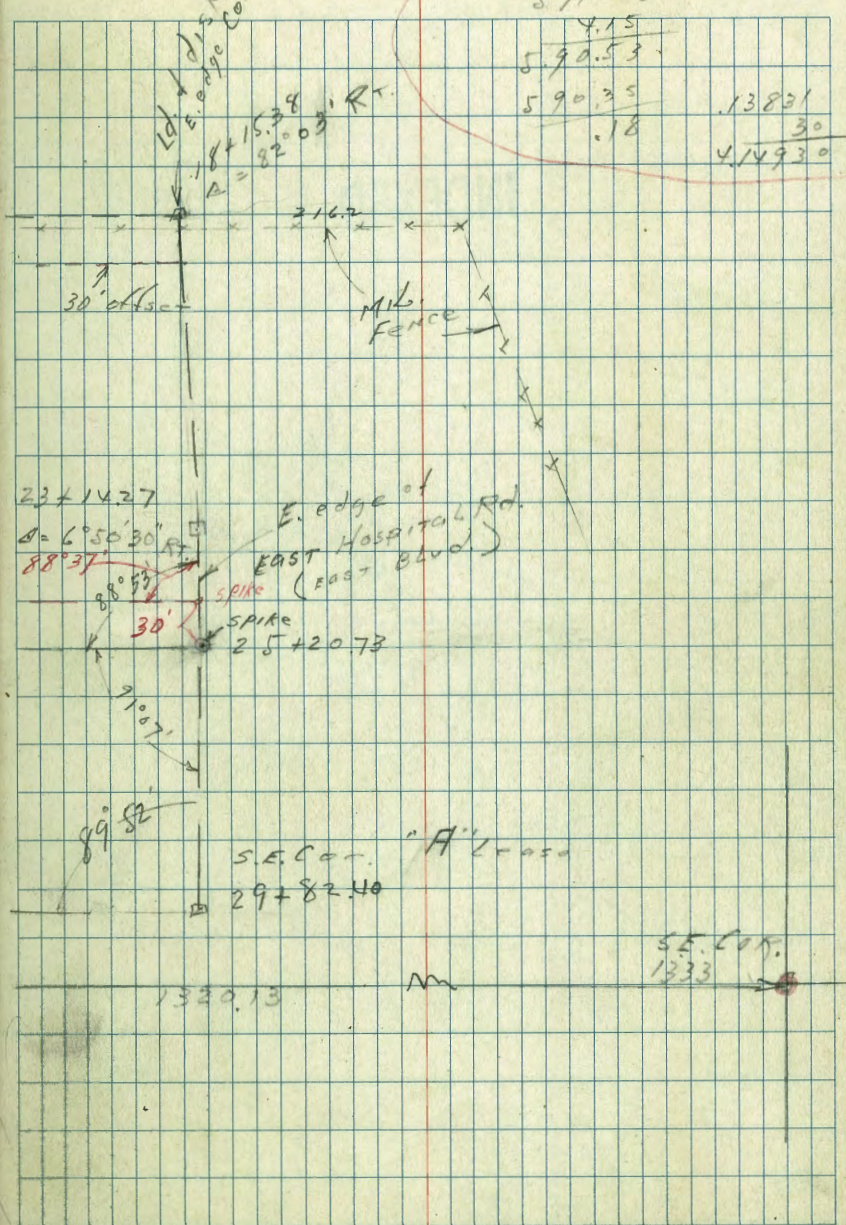
S.E. COR.

29+82.40

1320.13

S.E. COR.

1333



X-Sect. Dawes - From S.L. Emerald
to NL Diamond

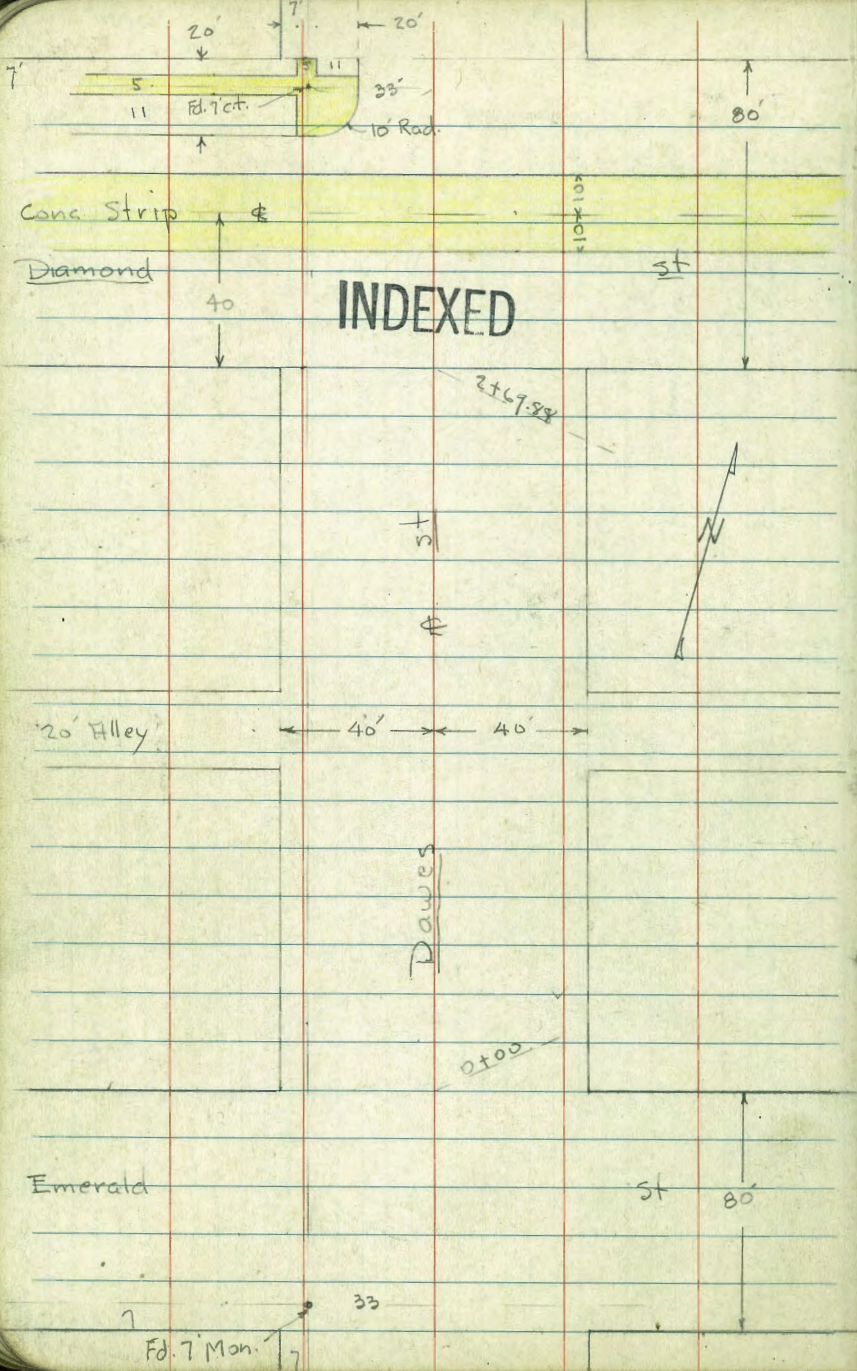
5-5-48

#2320

W.O. 21488

Osborne
Hardin
Warrell
Rarer

~~Indexed~~



X-Sect. Dawes - Emerald to Diamond
 80 st. - 20 cbs - Dirt Graded.

0-20 = N. cb

INDEXED

0-40 = #

0-57

0-60 = S. cb

0-66

0-68

0-80 = S.L. Emerald

2.18 54.17 10.98 51.99
 0.69 62.87 62.18

N.W. BR Dawes
 + Diamond
 N.E. spike - Dote
 Miss. + Dawes

Lt. = W. #

Rt. = E.

10 43.6	10 44.4	10 44.8	10 44.9	10 45.2	10 45.5	10 45.6	10 45.9
10 0.6	10 0.8	10 0.9	10 1.0	10 1.1	10 1.2	10 1.3	10 1.4
50 44.3	50 44.8	50 44.9	50 45.2	50 45.5	50 45.6	50 45.9	50 46.2
40 44.5	40 44.8	40 45.0	40 45.2	40 45.5	40 45.6	40 45.9	40 46.2
20 44.7	20 44.8	20 45.0	20 45.2	20 45.5	20 45.6	20 45.9	20 46.2
10 43.8	10 44.3	10 44.5	10 44.7	10 45.0	10 45.1	10 45.1	10 44.8
50 44.1	50 44.3	50 44.5	50 44.7	50 45.0	50 45.1	50 45.1	50 44.8
40 44.1	40 44.3	40 44.5	40 44.7	40 45.0	40 45.1	40 45.1	40 44.8
20 44.1	20 44.3	20 44.5	20 44.7	20 45.0	20 45.1	20 45.1	20 44.8
10 44.1	10 44.3	10 44.5	10 44.7	10 45.0	10 45.1	10 45.1	10 44.8
50 44.9	50 44.8	50 44.5	50 44.7	50 44.9	50 44.9	50 44.8	50 44.6
40 44.9	40 44.8	40 44.5	40 44.7	40 44.9	40 44.9	40 44.8	40 44.6
30 44.9	30 44.8	30 44.5	30 44.7	30 44.9	30 44.9	30 44.8	30 44.6
20 44.9	20 44.8	20 44.5	20 44.7	20 44.9	20 44.9	20 44.8	20 44.6
10 44.9	10 44.8	10 44.5	10 44.7	10 44.9	10 44.9	10 44.8	10 44.6
50 44.9	50 44.8	50 44.5	50 44.7	50 44.9	50 44.9	50 44.8	50 44.6
40 44.9	40 44.8	40 44.5	40 44.7	40 44.9	40 44.9	40 44.8	40 44.6
30 44.9	30 44.8	30 44.5	30 44.7	30 44.9	30 44.9	30 44.8	30 44.6
20 44.9	20 44.8	20 44.5	20 44.7	20 44.9	20 44.9	20 44.8	20 44.6
10 44.9	10 44.8	10 44.5	10 44.7	10 44.9	10 44.9	10 44.8	10 44.6
50 44.9	50 44.8	50 44.5	50 44.7	50 44.9	50 44.9	50 44.8	50 44.6
40 44.9	40 44.8	40 44.5	40 44.7	40 44.9	40 44.9	40 44.8	40 44.6
30 44.9	30 44.8	30 44.5	30 44.7	30 44.9	30 44.9	30 44.8	30 44.6
20 44.9	20 44.8	20 44.5	20 44.7	20 44.9	20 44.9	20 44.8	20 44.6
10 44.9	10 44.8	10 44.5	10 44.7	10 44.9	10 44.9	10 44.8	10 44.6
50 44.9	50 44.8	50 44.5	50 44.7	50 44.9	50 44.9	50 44.8	50 44.6
40 44.9	40 44.8	40 44.5	40 44.7	40 44.9	40 44.9	40 44.8	40 44.6
30 44.9	30 44.8	30 44.5	30 44.7	30 44.9	30 44.9	30 44.8	30 44.6
20 44.9	20 44.8	20 44.5	20 44.7	20 44.9	20 44.9	20 44.8	20 44.6
10 44.9	10 44.8	10 44.5	10 44.7	10 44.9	10 44.9	10 44.8	10 44.6
50 44.9	50 44.8	50 44.5	50 44.7	50 44.9	50 44.9	50 44.8	50 44.6
40 44.9	40 44.8	40 44.5	40 44.7	40 44.9	40 44.9	40 44.8	40 44.6
30 44.9	30 44.8	30 44.5	30 44.7	30 44.9	30 44.9	30 44.8	30 44.6
20 44.9	20 44.8	20 44.5	20 44.7	20 44.9	20 44.9	20 44.8	20 44.6
10 44.9	10 44.8	10 44.5	10 44.7	10 44.9	10 44.9	10 44.8	10 44.6
50 44.9	50 44.8	50 44.5	50 44.7	50 44.9	50 44.9	50 44.8	50 44.6
40 44.9	40 44.8	40 44.5	40 44.7	40 44.9	40 44.9	40 44.8	40 44.6
30 44.9	30 44.8	30 44.5	30 44.7	30 44.9	30 44.9	30 44.8	30 44.6
20 44.9	20 44.8	20 44.5	20 44.7	20 44.9	20 44.9	20 44.8	20 44.6
10 44.9	10 44.8	10 44.5	10 44.7	10 44.9	10 44.9	10 44.8	10 44.6
50 44.9	50 44.8	50 44.5	50 44.7	50 44.9	50 44.9	50 44.8	50 44.6
40 44.9	40 44.8	40 44.5	40 44.7	40 44.9	40 44.9	40 44.8	40 44.6
30 44.9	30 44.8	30 44.5	30 44.7	30 44.9	30 44.9	30 44.8	30 44.6
20 44.9	20 44.8	20 44.5	20 44.7	20 44.9	20 44.9	20 44.8	20 44.6
10 44.9	10 44.8	10 44.5	10 44.7	10 44.9	10 44.9	10 44.8	10 44.6
50 44.9	50 44.8	50 44.5	50 44.7	50 44.9	50 44.9	50 44.8	50 44.6
40 44.9	40 44.8	40 44.5	40 44.7	40 44.9	40 44.9	40 44.8	40 44.6
30 44.9	30 44.8	30 44.5	30 44.7	30 44.9	30 44.9	30 44.8	30 44.6
20 44.9	20 44.8	20 44.5	20 44.7	20 44.9	20 44.9	20 44.8	20 44.6
10 44.9	10 44.8	10 44.5	10 44.7	10 44.9	10 44.9	10 44.8	10 44.6

52.06 = Book e.c.
 54.17
 11729 - P. 5

1+46-29' Rt = \pm Tel. pole # 82429-H

1+45 = N.L. Alley

1+25 = 5' L 20' Alley

1+22 = 20.7 Lt = \pm P. pole # P4674

0+80

0+78 - 40' Lt = \pm 4.6 Conc. Walk

0+50 - 39.9 Lt = \pm 3' Conc. Walk

0+40

0+22-29' Rt = \pm Tel. pole # 82430-H

0+21 - 40' Lt = \pm 3' Conc. Walk

0+00 = N.L. Emerald

0-17

	Lt	Rt	Rt
50	45.8	48.5	48.5
40	45.7	48.4	48.4
30	45.6	48.3	48.3
20	45.5	48.2	48.2
10	45.4	48.1	48.1
0	45.3	48.0	48.0
50	46.7	49.1	49.1
40	46.6	49.0	49.0
30	46.5	48.9	48.9
20	46.4	48.8	48.8
10	46.3	48.7	48.7
0	46.2	48.6	48.6
50	47.1	49.1	49.1
40	47.0	49.0	49.0
30	46.9	48.9	48.9
20	46.8	48.8	48.8
10	46.7	48.7	48.7
0	46.6	48.6	48.6
50	47.5	49.5	49.5
40	47.4	49.4	49.4
30	47.3	49.3	49.3
20	47.2	49.2	49.2
10	47.1	49.1	49.1
0	47.0	49.0	49.0
50	47.9	49.9	49.9
40	47.8	49.8	49.8
30	47.7	49.7	49.7
20	47.6	49.6	49.6
10	47.5	49.5	49.5
0	47.4	49.4	49.4
50	48.1	50.1	50.1
40	48.0	50.0	50.0
30	47.9	49.9	49.9
20	47.8	49.8	49.8
10	47.7	49.7	49.7
0	47.6	49.6	49.6
50	48.5	50.5	50.5
40	48.4	50.4	50.4
30	48.3	50.3	50.3
20	48.2	50.2	50.2
10	48.1	50.1	50.1
0	48.0	50.0	50.0

30' N. = S. edge Conc. Pave. Strip

20' N. = S. cb

T.P. 7.03 59.02 2.18 51.99

2+69.88 = S.L. Diamond - 28.7 Rt. = \$ Tel. pole # 824184

2+47- 40 Lt = \$ 3' Conc. Walk

1+30

2+19- 40' Lt = \$ 3' Conc. Walk

1+92- 40' Lt = \$ 4' Conc. Walk

4+90

47.9	50.1	50.9	51.0	51.6	51.2	50.54
40	49.9	49.9	49.9	51.7	51.4	51.26
20	49.7	49.9	49.7	51.5	51.6	51.33
50	49.2	50.9	50.9	51.5	51.6	51.60
1	49.9	50.5	50.5	51.1	51.6	51.82
41	50.1	50.9	50.9	51.7	52.0	52.11
21	50.1	50.8	50.8	51.8	52.4	52.34
8	49.5	50.3	50.3	51.7	52.6	52.50
20	50.1	51.3	51.3	52.5	52.5	53.35
20	50.8	52.2	52.2	53.3	53.1	
40	50.6	52.5	52.5	53.1		
40	50.7	52.7	52.7	53.3		

House

54.17

Rt.

58

check Starting B.M.	0.63	62.18	62.18
T.P.	7.02	62.81	3.23 55.79

End.

80' N. = N.L Diamond - end. cb. on Lt. - See sketch

70' N. - 20' Lt. = PC 10' Rad.	7.05	Top cb.
N.W. Cor.		
Rod on \pm of 10' Rad - Ret on	7.08	Top cb.

60' N. = N. cb.	7.72	8.1
	90	90
	at edge	Top cut
	of Dr.	

50' N. = N. edge Pave

45' N. = \pm Diamond = \pm 20 Conc. Strip

652.15	652.07	652.5	652.6	652.7	654.1	654.5	654.5	654.6
20	20	18	10	18	20	30	40	40
end walk	Dr	end cb						
51.73	51.3	51.92	51.5	51.93	51.8	51.9	52.1	52.2
20	20	20	20	20	20	20	20	20
Top	Top	Top	Top	Top	Top	Top	Top	Top
PC	PC	PC	PC	PC	PC	PC	PC	PC
Rad	Rad	Rad	Rad	Rad	Rad	Rad	Rad	Rad
52.22	51.38	51.46	51.65	51.90	52.16	52.42	52.57	53.47
10	10	10	20	12	20	10	10	10
52.63	51.40	51.47	51.71	51.98	52.22	52.44	52.63	53.49
10	10	10	20	10	20	10	10	10
Top	Top	Top	Top	Top	Top	Top	Top	Top
PC	PC	PC	PC	PC	PC	PC	PC	PC
Rad	Rad	Rad	Rad	Rad	Rad	Rad	Rad	Rad
59.02								

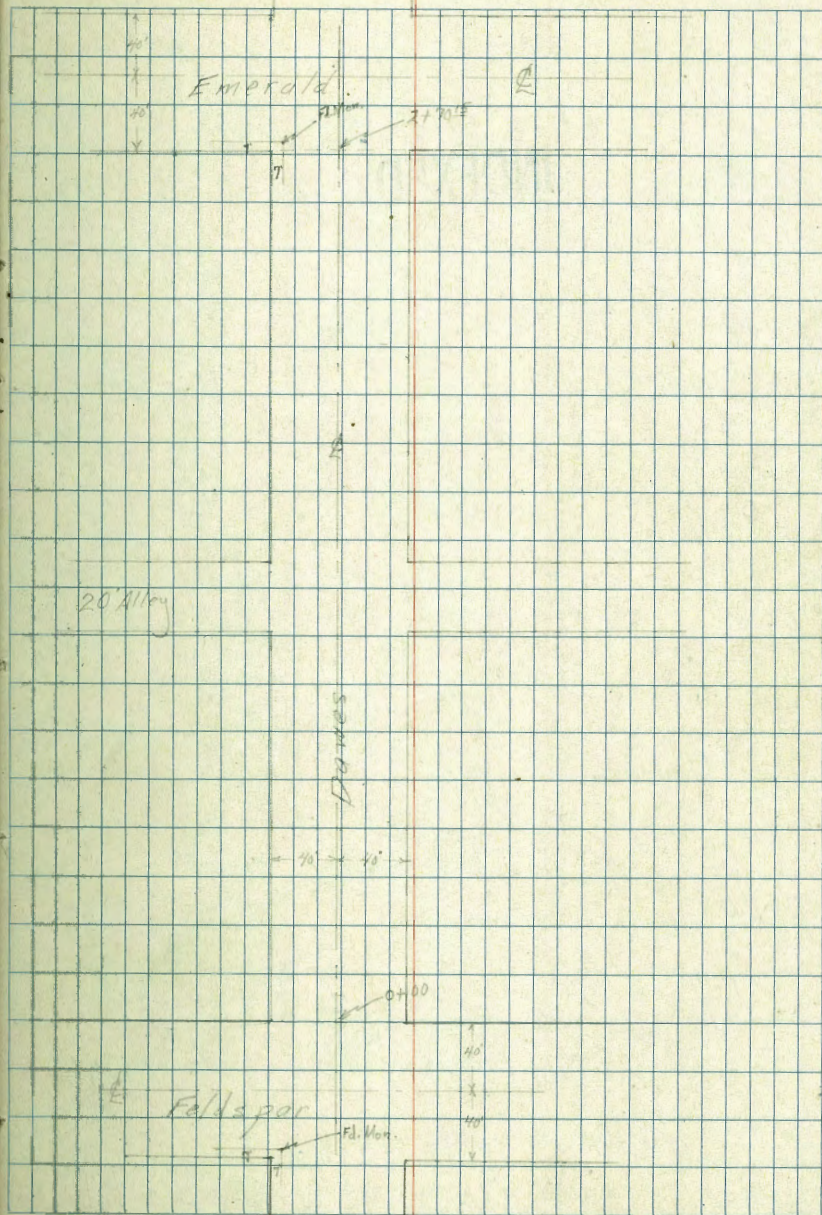
X-Sect Daves between Emerald
and Feldspar

6-29-47

W.O. 31563

Roberts
Greer
Racer

INDEXED



1709⁵ End Shingle Fence 36.4' Rt Begin Two car garage

1700 End House 36' Rt Begin Shingle Fence 36.4' Rt.

0790 Closed Porch 36' Rt + 40.2' Rt Sidewalk Ends

0775 Begin House (sw. cor.) 40.3' Rt.

0773 Tele. pole 30' Rt. #436678H

0771 Board Fence 36.4' Rt. (End) Sidewalk Begins

0750

0700 No. Line Feldspar

0-6 Board Fence 36.4' Rt (Begin)

49.68

Lt.

Rt. 62

Opening on Alley 36.4' Rt.

41.2	41.1	41.5	40.5	41.1	40.8	42.6	42.5
$\frac{81.5}{50}$	$\frac{81.6}{40}$	$\frac{82.2}{20}$	$\frac{9.4}{14}$	86	$\frac{89}{16}$	$\frac{71.30}{30}$	$\frac{72}{36}$

42.47
 $\frac{7.21}{26}$
(concl)

41.90

$\frac{41.78}{36.2}$
(concl)

39.8	40.0	40.4	39.3	40.1	39.8	40.6	41.7	41.5	41.7
$\frac{9.9}{50}$	$\frac{9.7}{40}$	$\frac{9.3}{20}$	$\frac{10.4}{14}$	96	$\frac{9.9}{17}$	$\frac{9.1}{18}$	$\frac{8.0}{31}$	$\frac{8.2}{40}$	$\frac{8.0}{30}$
39.0	39.1	39.5	38.5	39.2	39.0	40.6	40.6	40.7	40.7
$\frac{10.7}{50}$	$\frac{10.6}{40}$	$\frac{10.2}{20}$	$\frac{11.8}{15}$	105	$\frac{10.7}{17}$	$\frac{9.1}{14}$	$\frac{9.1}{40}$	9.8	50

49.68

X-Sect. MISSOURI St. from.

Gresham to Ingraham

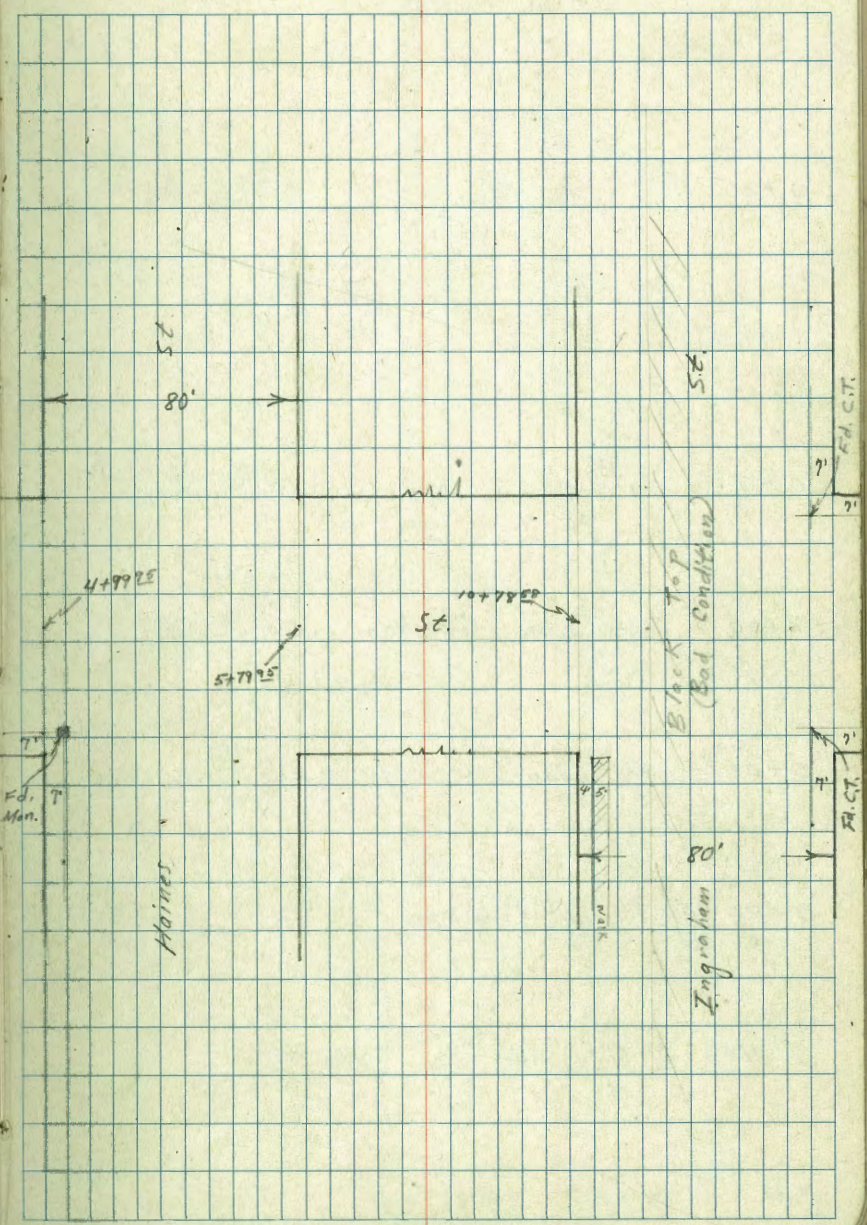
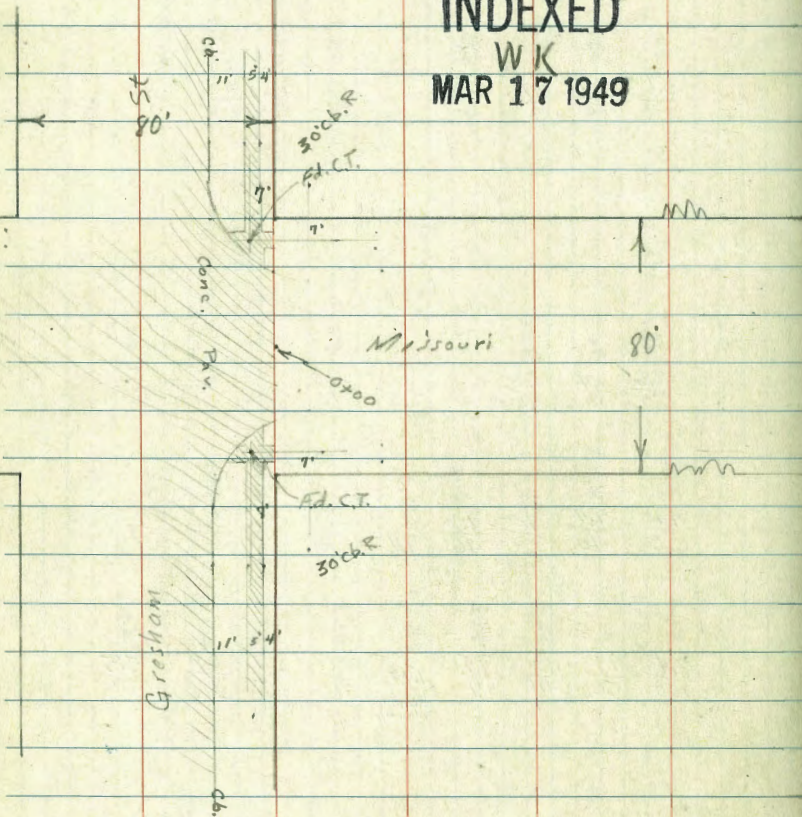
Roberts
W. Moore
Clark
3-15-49
W.D. 31521

TP. 20 GB 134

TP 1760, 1628, 1629 Map 948

INDEXED

W K
MAR 17 1949



Cont'd From Page 65

T.P. 7.11 87.18 3.24 80.07

2700

1795 40' Lt to 8' Conc Apron Single Garage

1754 40' Rt 3' conc. Walk

1734 40' Rt 75' Apron to Single Garage

1700

0751

0750

83.31

Lt.

€

Rt.

66

		81.6		81.3		80.5		80.0		79.5		78.3		76.0			
		$\frac{1.7}{50}$		$\frac{2.0}{40}$		$\frac{2.0}{20}$		3.3		$\frac{4.3}{20}$		$\frac{5.0}{40}$		$\frac{5.3}{50}$			
		82.70		81.33													
		$\frac{1.21}{60}$		$\frac{1.94}{40.4}$													
		81.5		81.0		80.4		79.9		79.0		78.4		76.47			
		$\frac{1.8}{50}$		$\frac{2.3}{40}$		$\frac{2.9}{20}$		3.4		$\frac{4.3}{20}$		$\frac{4.9}{40}$		$\frac{4.54}{50}$			
											78.89		77.94				
											$\frac{4.81}{40.2}$		$\frac{5.24}{66}$				
													66				
													66.39				
		81.2		80.9		80.6		80.1		79.8		79.1		78.3			
		$\frac{2.1}{50}$		$\frac{2.4}{40}$		$\frac{2.7}{20}$		$\frac{3.2}{17}$		3.5		$\frac{4.2}{20}$		$\frac{5.0}{40}$		$\frac{5.3}{50}$	
		81.2		81.0		80.9		80.1		79.4		78.7		76.3			
		$\frac{2.1}{50}$		$\frac{2.1}{40}$		$\frac{2.4}{20}$		3.2		$\frac{3.9}{20}$		$\frac{4.6}{20}$		$\frac{5.0}{40}$		$\frac{5.3}{50}$	
		81.2		81.0		80.9		80.1		79.4		78.3		78.4			
		$\frac{1.9}{50}$		$\frac{2.3}{40}$		$\frac{2.4}{20}$		3.2		$\frac{3.9}{20}$		$\frac{4.0}{20}$		$\frac{4.4}{40}$		$\frac{4.9}{50}$	

83.31

Cont'd From Page 68

Lt.

4

Rt.

69

5+59⁹⁵

5+39⁹⁵ 4 Haines

5+19⁹⁵

4+99⁹⁵ W. Prop. Line Haines

4+91 40' Lt. E 2 strip drive 7' overall 2' wide

4+70 40²' Lt 4 3' Walk

4+50 40²' Lt End of Picket Fence

4+32 40²' Lt 4 3' Walk

89.37

	84.7	84.5	84.0	83.6	83.1	82.5	82.3
	$\frac{47}{50}$	$\frac{49}{40}$	$\frac{54}{20}$	5.8	$\frac{6.3}{20}$	$\frac{6.9}{40}$	$\frac{7.1}{50}$
	84.8	84.7	84.2	83.7	83.3	82.7	81.7
	$\frac{3.6}{100}$	$\frac{4.7}{50}$	$\frac{5.2}{20}$	5.7	$\frac{6.1}{20}$	$\frac{6.7}{50}$	$\frac{7.7}{100}$
	84.5	84.5	83.9	83.4	83.0	82.7	82.7
	$\frac{4.9}{50}$	$\frac{4.9}{40}$	$\frac{5.5}{20}$	6.0	$\frac{6.4}{20}$	$\frac{6.7}{40}$	$\frac{6.7}{50}$
	84.7	84.5	83.9	83.4	83.3	82.7	82.4
	$\frac{4.9}{50}$	$\frac{5.7}{40}$	$\frac{5.5}{20}$	6.0	$\frac{6.1}{20}$	$\frac{6.7}{40}$	$\frac{7.0}{50}$
	84.8	84.82	84.10	84.51			
	$\frac{4.56}{50}$	$\frac{4.55}{50}$	$\frac{4.87}{20}$	$\frac{4.86}{40}$			
	E	W	E	W			
		84.49	84.26				
		$\frac{4.88}{50}$	$\frac{5.11}{40}$				
	84.4	84.0	83.5	83.3	82.2	81.7	81.3
	$\frac{5.0}{50}$	$\frac{5.4}{40}$	$\frac{5.9}{20}$	6.1	$\frac{6.7}{20}$	$\frac{7.3}{40}$	$\frac{7.6}{50}$
	83.46	83.46	83.10				
	$\frac{4.91}{50}$		$\frac{5.27}{40}$				
				89.37			

89.37

Cont'd From Page 70

9430 40' Lt & 2' Walk

9400

8793 40' Rt & 4' Walk

8783 37' Lt & 8' Drive

8769 41⁵' Lt & 2 strip Drive 2' wide 7' overall

8766 40' Rt & 4' Walk

T.P. 9.14 94.81 3.70 85.67

8750 41⁵' Lt & 3' Walk

8400

89.37

Lt.

4

Rt.

71

8740
7.41
50

86.8
87.0
50

86.4
87.4
40

85.8
87.0
20

85.5
9.3

84.6
10.2
20

84.1
10.7
40

84.0
10.8
50

86.81
87.0
50

86.21
86.0
37

86.48
87.33
50
E.

86.47
87.24
50
W.

86.25
87.56
42
E.

86.89
87.32
41.8
W.

82.85
10.96
40

83.8
10.87
50

94.81

86.05
3.32
50

86.03
3.34
42

86.0
3.37
40

85.3
4.1
30

84.7
4.5
20

84.2
5.2
20

83.8
5.6
40

83.7
5.7
50

85.6
3.9
50

85.4
4.0
40

85.2
4.2
30

84.8
4.6
20

84.0
5.4
20

83.4
6.0
40

83.3
6.1
50

89.37

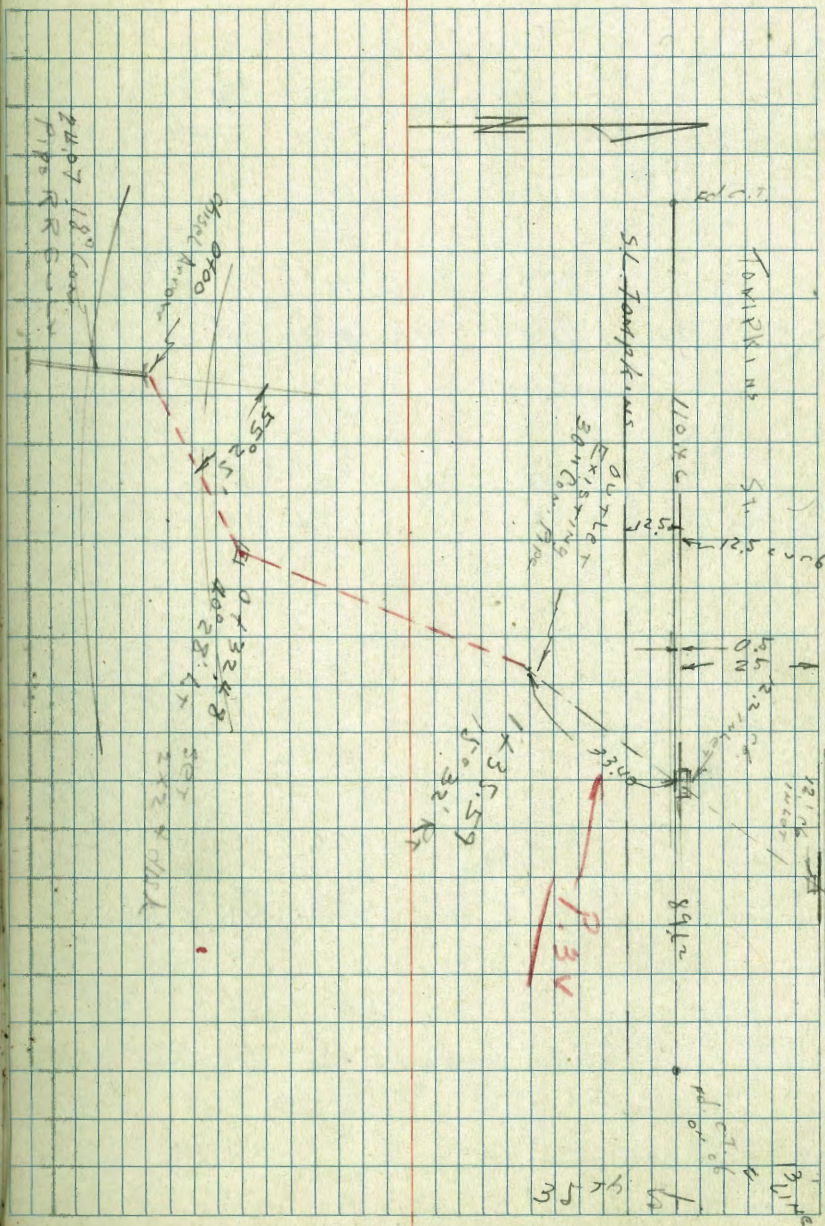
Survey Storm Drain on Tompkins West of 35th

Moore
Begg
Stewart
Crawford

W.D. 20620

1-9-50

INDEXED
N.K.
JAN 11 1950



0 + 50

0 + 32.48 Δ Sec. on Split

0 + 05

0 + 00 inlet R.R. culv

0 - 24.07 outlet of 18" R.R. culv

T.P. 10.31 44.53 5.88 34.22

BM. B.P.
N. Rail 10.57 40.10 29.57
Bridge
on Imperial
near 3475

6+

8

Rr

75

40.3	39.8	37.5	37.4	37.4	41.0	40.8
4.2	4.7	7.0	7.1	7.1	3.5	3.7
30	8	3		3	8	25

40.3	39.4	36.4	36.0	35.6
4.2	4.6	8.1	8.5	8.9
35	17	7		25

39.1	33.8	33.4	34.4	36.8	37.59
4.8	10.7	11.1	10.1	7.7	6.94
30	18	7		10	15 = 11 R.R. cul

34.12
10.41

31.86
12.67

44.53

P36

on low gate 1.3x 53.5 53.7

T.P. 10.59 54.49 0.63 43.90

1/35.9 outlet 30" Con. Pipe

1/10

0.80

4453

Notes Reduced. 1-12-50

0.4	0.5	3x9	0.5	x40
1	1	1hr.	2	10
4411	4410	41.04	4410	4911

2.3	1.5	3.7	3.7	4.24
24	10	3	2	10
422	430	408	408	429

5.0	5.5	5.4	5.1	2.5	13.0
25	2	4	4	10	12
4015	4019	3911	3514	4210	4715

4453 ✓

Grades 24" Conc Pipe Culvert.
North of Tompkins West of 35th St.

See Page 34

0 + 5062		50.55	2.14 6.05 02.09 16E
0 + 2581		48.57	10.12 8.17 01.66 70E48
0 + 0 = Inlet 24" Conc. Culk.		46.60	
BM 1209	58.69	46.60	07/17/07 EXIST. 24" Page 36

385 50%

Nov. 2-50.
H. Sisson
Garber
Rorer
Pallen

77

N.O. 20700
4038B Plan
5921 B Easement

→ 27 →

FL 50.55
0 + 50.62 → 41.61 ←

0 + 0
FL 46.60

FL 4 + T

Tompkins

5A

35th St.

Check Record of Survey No. Number
 F. Portion of P.L. 1120

T.H. Barkdull
 L.S. 2317

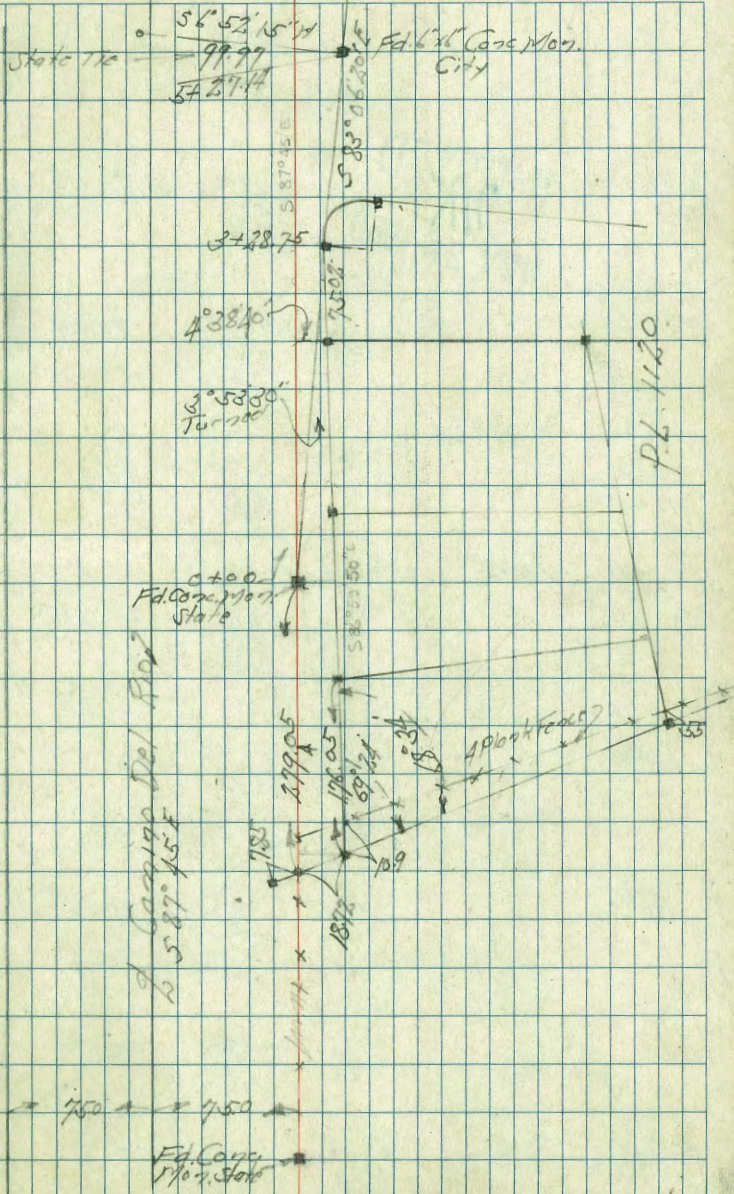
INDEXED
NOV 28 1950

Nov. 3-50
 H.S. Mason
 Garber
 Porter
 Pullen

N.O. 20735

Indicates

- $\frac{1}{2}$ " Iron Pin Found
- No L.S. Number



Access Road on Camino Del Rio

See Sketch Next Page.

			Finish S' Gr	South Curve Gravel	19.3 8.9 C107 8.9
+80			25.56	25.85	19.3 8.9 C107 8.9
+40			26.27	26.56	18.5 4.8 4.31 C050 32.2
2+0 = P.V.C.			26.66	26.95	18.3 4.7 1.57 1.02 C050 30.8
+60			26.89	27.18	17.9 3.4 4.30 4.20 C05 27.5
TP	10.9°	45.10	0.59	34.20	1.4 1.5 C059 34.9
1+20			27.12	27.41	1.4 1.5 C059 34.9
+80			27.34	27.63	7.3 5.2 C18 30.8
+40			27.57	27.86	6.9 4.6 C27 31.1
0+0 = 137+79.18			27.86	28.09	6.7 3.9 C28 31.8
B.M.			9.48	25.21	6.7 3.9 C28 31.8
B.M. #11	63.8	34.79		28.41	RR SPK R. F.u. 76' 6" 186-74
B.M. #10	58.7	51.8		25.31	57.45' 186-74

INDEXED
NOV 28 1950

Sheet 850 L cut Stage 1.1 Nov 25-50 Saturday 2 Grades
W.D. 20735 Fill 1/2" F.S. 550 - Racer
Garber Puller South Curve
S' Finish S' Gr

+43	10° 14'				
+40	9° 56.90'		19.34	19.87	9.3
+60	6° 07.72'		19.51	19.96	10.3 F12 21.1
+60	2° 18.94'		19.68	20.05	11.1 F12 21.1
5+20 = P.V.C.			19.85	20.14	9.0 10.5 F15 21.3
+80			20.19	20.48	8.7 10.2 F15 21.3
+40			20.86	21.15	8.0 9.3 F15 21.0
TP	5.89	29.9	12.69	33.80	14.3 5.2 C18 35.8
4+0			21.87	22.16	14.3 5.2 C18 35.8
TP	4.54	36.49	13.15	31.95	14.3 5.2 C18 35.8
+60			22.20	23.44	14.3 5.2 C18 35.8
3+20			24.54	24.83	20.3 6.2 C14.1 33.5

15.10 31.18

Access Road on Camino Del Rio

IMPROVED TABLES AND INFORMATION

25

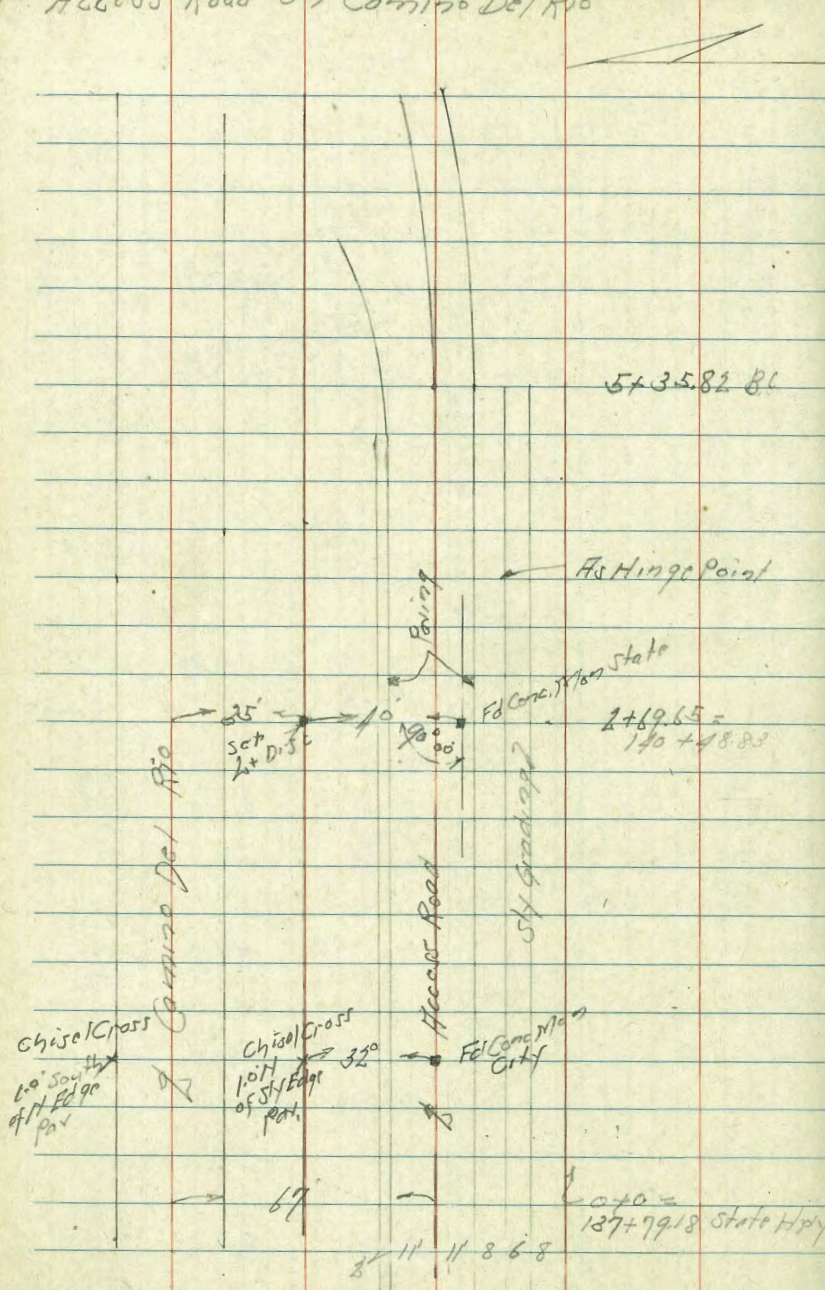
HORIZONTAL STADIA CORRECTIONS					
2°-00'	—	0.1	21°-00'	—	12.8
3°-00'	—	0.3	21°-30'	—	13.4
4°-00'	—	0.5	22°-00'	—	14.0
5°-00'	—	0.8	22°-30'	—	14.7
6°-00'	—	1.1	23°-00'	—	15.3
7°-00'	—	1.5	23°-30'	—	15.9
8°-00'	—	1.9	24°-00'	—	16.5
9°-00'	—	2.5	24°-30'	—	17.2
10°-00'	—	3.0	25°-00'	—	17.9
10°-30'	—	3.3	25°-30'	—	18.6
11°-00'	—	3.6	26°-00'	—	19.2
11°-30'	—	4.0	26°-30'	—	19.9
12°-00'	—	4.3	27°-00'	—	20.6
12°-30'	—	4.7	27°-30'	—	21.3
13°-00'	—	5.1	28°-00'	—	22.0
13°-30'	—	5.5	28°-30'	—	22.8
14°-00'	—	5.9	29°-00'	—	23.5
14°-30'	—	6.3	29°-30'	—	24.3
15°-00'	—	6.7	30°-00'	—	25.0
15°-30'	—	7.2	30°-15'	—	25.4
16°-00'	—	7.6	30°-30'	—	25.8
16°-30'	—	8.1	30°-45'	—	26.2
17°-00'	—	8.5	31°-00'	—	26.5
17°-30'	—	9.0	31°-15'	—	26.9
18°-00'	—	9.5	31°-30'	—	27.3
18°-30'	—	10.1	31°-45'	—	27.7
19°-00'	—	10.6	32°-00'	—	28.1
19°-30'	—	11.2	32°-15'	—	28.5
20°-00'	—	11.7	32°-30'	—	28.9
20°-30'	—	12.3	32°-45'	—	29.3
21°-00'	—	12.8	33°-00'	—	29.7
21°-30'	—	13.4	33°-15'	—	30.1
22°-00'	—	14.0	33°-30'	—	30.5
22°-30'	—	14.7	33°-45'	—	30.9
23°-00'	—	15.3	34°-00'	—	31.3
23°-30'	—	15.9	34°-15'	—	31.7
24°-00'	—	16.5	34°-30'	—	32.1
24°-30'	—	17.2	34°-45'	—	32.5
25°-00'	—	17.9	35°-00'	—	32.9
25°-30'	—	18.6	35°-15'	—	33.3
26°-00'	—	19.2	35°-30'	—	33.7
26°-30'	—	19.9	35°-45'	—	34.1
27°-00'	—	20.6	36°-00'	—	34.6
27°-30'	—	21.3	36°-15'	—	35.0
28°-00'	—	22.0	36°-30'	—	35.4
28°-30'	—	22.8	36°-45'	—	35.8
29°-00'	—	23.5	37°-00'	—	36.2
29°-30'	—	24.3	37°-15'	—	36.6
30°-00'	—	25.0	37°-30'	—	37.1
30°-15'	—	25.4	37°-45'	—	37.5
30°-30'	—	25.8	38°-00'	—	37.9
30°-45'	—	26.2	38°-15'	—	38.3
31°-00'	—	26.5	38°-30'	—	38.7
31°-15'	—	26.9	38°-45'	—	39.1
31°-30'	—	27.3	39°-00'	—	39.6
31°-45'	—	27.7	39°-15'	—	40.0
32°-00'	—	28.1	39°-30'	—	40.5

Chains to Feet

1	66
2	132
3	198
4	264
5	330
6	396
7	462
8	528
9	594
10	660

Feet to Chains

100	1.515
200	3.030
300	4.545
400	6.060
500	7.575
600	9.090
700	10.606
800	12.121
900	13.636
1,000	15.151



52° 54'

99.62

66.19

31244

9.9 Long

6.4 Jng

23.6

179 60

88 55

91 05