

1767



1767

1767

11575

MICROFILMED

DEC 29 1964

CITY ENGINEER'S OFFICE

MADE IN U. S. A.

Our Leather Bound Engineers Note Books  
are carried in the following rulings:

- |                                 |  |
|---------------------------------|--|
| No. 380 LEVEL BOOK.             | Left and Right Hand Page<br>the same as Left Hand Page<br>of this Book.  |
| No. 382 FIELD BOOK.             | Left Hand Page as in this<br>Book, Right Hand Page 4x4<br>to the inch, Center Line Red.                                    |
| No. 384 MINING TRANSIT<br>BOOK. | Left Hand Page as in this<br>Book, Right Hand Page 8x8<br>to the inch, Center Line Red.                                    |
| No. 385 FIELD BOOK.             | Left Hand Page as in this<br>Book, Right Hand Page 8 ver-<br>tical and 4 horizontal lines to<br>the inch, Center Line Red. |

We also carry the Note Books listed above,  
bound in extra strong Fabri-Hide (otherwise  
the same quality of book,) which can be fur-  
nished at a somewhat lower price.

In ordering Fabri-Hide covered books, add  
the letter "F" to catalog number.

**THE FREDERICK POST CO.**  
*ENGINEERING and DRAFTING SUPPLIES*  
P. O. Box 803 **CHICAGO**

Page

2-7 - X-Sept. 34<sup>th</sup> - Boston to National8-10 " " 35<sup>th</sup> At Meade Ave11-13 " " 39<sup>th</sup> " " "

14-16 " " Central Ave " "

17-19 " " 41<sup>st</sup> " " "

21-29 Mead High Tide Sly Minor Beach

30-33 " " " Pacific Beach

64-68 X-sec. Alley Bk 188 Pac. Beach

X-Section 34<sup>th</sup> from Boston to National.

# 885

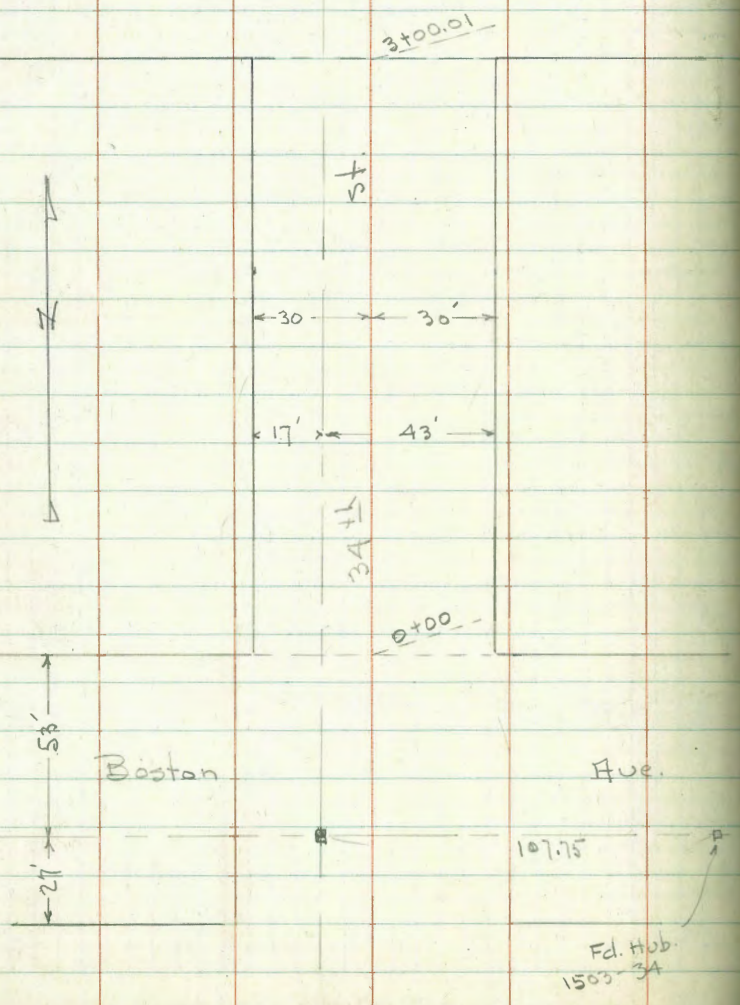
3-31-47

W.O. 230

Osborne  
Hardin  
Smith  
Worrell

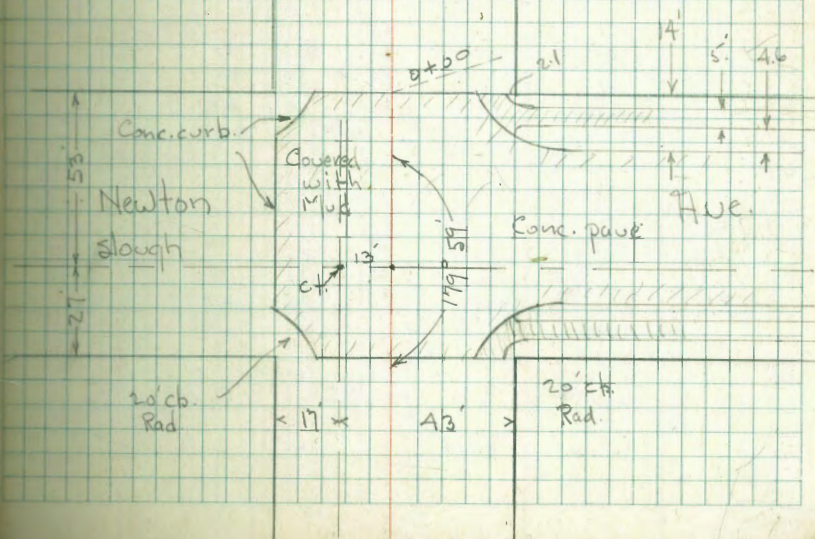
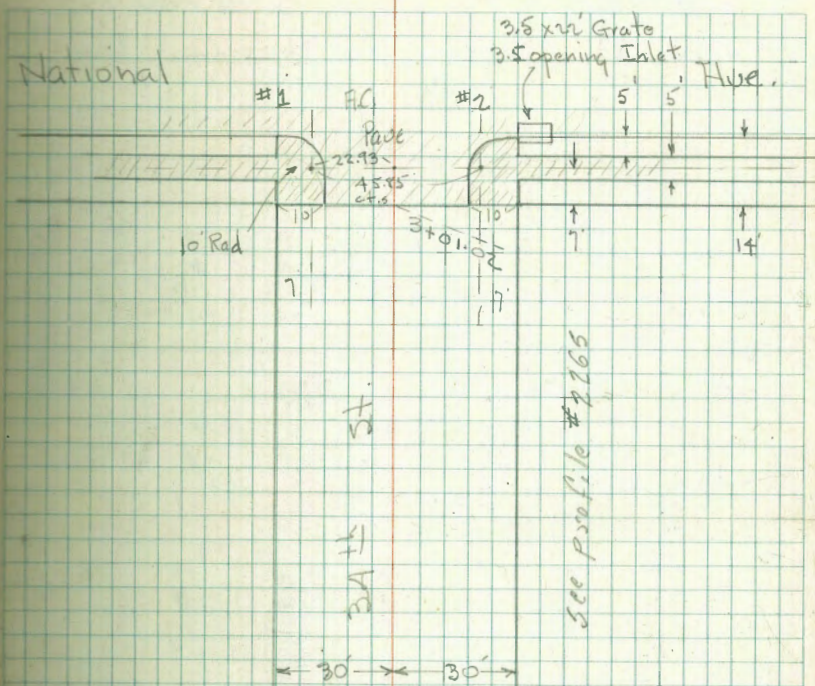
Newton

Hue.



indexed  
c.s.k.

2



X-Section 34<sup>th</sup> - 60' St. ± 10' curbs  
 from S.L. Boston to National Ave.

Lt = W.

Rt = E.

0+00 = U.L. Boston

0+78.8 = ± Sewer M.H. 2.22 on Rim

0-14 = N. cb.

0-40 = ±

0-66 = S. cb.

0-80 = S.L. Boston

6.09	9.18	8.59	3.09	S.E. & P. Nat + 34 <sup>th</sup>
1.86	8.68		6.82	

$\frac{4.9}{40}$	$\frac{4.9}{30}$	$\frac{4.2}{20}$	$\frac{4.7}{20}$	$\frac{4.3}{20}$	$\frac{4.2}{30}$	$\frac{4.1}{40}$
	$\frac{4.6}{30}$	$\frac{4.0}{20}$	$\frac{4.6}{20}$	$\frac{4.5}{20}$	$\frac{3.4}{20}$	
	$\frac{5.3}{30}$	$\frac{4.5}{20}$	$\frac{4.1}{20}$	$\frac{4.5}{20}$	$\frac{3.8}{20}$	
	$\frac{3.4}{30}$	$\frac{3.5}{20}$	$\frac{3.6}{20}$	$\frac{3.6}{20}$	$\frac{3.6}{20}$	
	$\frac{3.4}{30}$	$\frac{3.6}{20}$	$\frac{3.6}{20}$	$\frac{3.4}{20}$	$\frac{3.1}{20}$	

9.18

11.6 N: = 30' Lt. = end 20' Rad. curve

T.P 3.74 6.83 6.09 3.09

3+00.01 = S.L. Newton = edge Conc. pave

2+99 - 22.3 Lt. = P. pole

2+50

2+00 - 59' Rt. = Large 2 story Bldg.

1+50

1+39 - 22.3 Lt. = P. pole

1+00

0+50

0+15 - 22.5 Lt. = P. pole

	Lt				Rt			
	4.99	5.61						
	30	30						
Top co.								
end curve								
	1.84	1.22						
	2.01	1.93						
	2.25	2.11						
Top								
end 20' Rad.								
	1.44	1.44						
	1.72	1.72						
	6.83	6.83						
	1.85	1.85						
	1.96	1.96						
	2.01	2.01						
	2.57	2.57						
	2.88	2.88						
	3.2	3.2						
	2.4	2.4						
	2.5	2.5						
	2.4	2.4						
	2.9	2.9						
	3.3	3.3						
	3.7	3.7						
	4.0	4.0						
	4.47	4.47						
	3.1	3.1						
	3.4	3.4						
	3.5	3.5						
	3.9	3.9						
	3.4	3.4						
	3.6	3.6						
	3.7	3.7						
	3.9	3.9						
	3.9	3.9						
	3.8	3.8						
	3.9	3.9						
	4.5	4.5						
	4.6	4.6						
	4.6	4.6						
	4.6	4.6						
	9.18	9.18						

0+50

0+20

80' N. = U.L. Newton = 0+00 ahead. = edge Conc. Pavement

68.5' N. = 30' Lt. = end 20' Rad. curb

66' N. = N. cb.

40' N. = A

14' N. = S. cb.

	It.	A	Rt
1.87	1.6	1.96	2.14
4.96 30 Top cb.	4.92 21 Top end curve	4.87 0 Ret.	4.83 100 cb Ret.
1.09	1.91	1.96	2.50
4.94 30 Top cb.	5.32 21 Top end curve	4.87 0 Ret.	4.70 21 Top Ret.
1.41	1.51	1.96	2.68
4.42 20 Top cb.	5.13 10 Top end curve	4.87 0 Ret.	4.20 21 Top Ret.
1.82	1.86	1.96	2.8
4.91 30 Top cb.	4.97 0 Ret.	4.87 0 Ret.	4.0 30 Top Ret.
2.10	2.16	2.16	3.1
4.47 20 Top cb.	4.2 40 Top end curve	4.87 0 Ret.	4.7 40 Top Ret.
2.35	2.36	2.36	3.6
4.49 30 Top cb.	5.32 21 Top end curve	4.87 0 Ret.	4.2 20 Top Ret.
2.68	2.66	2.66	3.6
4.15 40 Top Ret.	4.92 21 Top end curve	4.87 0 Ret.	4.0 30 Top Ret.
3.21	3.21	3.21	3.6
4.62 40 Top Ret.	4.92 21 Top end curve	4.87 0 Ret.	4.0 30 Top Ret.
4.42	4.42	4.42	3.6
4.96 30 Top cb.	5.32 21 Top end curve	4.87 0 Ret.	4.0 30 Top Ret.

3 + 15.02 = S. cb.

3 + 01.02 = S.L. National - edge A.C.

3 + 00 - 22' Lt. =  $\Phi$  P. pole

2 + 50

2 + 00

1 + 81 - 53.5 Rt. =  $\Phi$  Double Gar. under House  
Dirt floor? - Not used - behind fence

T.P. 5.64 9.97 2.58 4.33

1 + 50

1 + 48 =  $\Phi$  Sewer. M.H. 1.74

Rim

1 + 39 - 21.6 Lt. =  $\Phi$  P. pole

1 + 22 - 35.5 Rt. =  $\Phi$  3' Palm

1 + 00

4.84 80	4.01 30	4.76 30	4.68 20	4.544 53	4.27 20	4.39 30	3.32 30
5.13	5.96	5.21	5.29	5.44	5.70	5.58	6.65
3.76.27	5.88	5.50	5.76	5.94	5.95	5.77	6.89
Cor. Ret.	Top end Ret.	Top end Ret.	Top end Ret.	Top end Ret.	Top end Ret.	Top end Ret.	Cor. Ret.
1.5.3	4.19	5.50	5.76	5.94	5.95	5.77	6.89
1.1	1.4	4.1	4.1	4.4	4.9	6.2	
8.3 40	8.6 30	9.1 20	9.1 20	9.4	9.9	10.2	
2.4	2.3	2.3	2.9	3.8	3.4	4.3	
4.4 40	4.5 30	4.5 20	3.9 10	3.8	3.4	4.3	
2.1	2.2	1.9	2.3	3.6	4.1	3.8	
4.7 40	4.6 30	4.9 20	4.5 10	3.2	4.1	3.8	
2.1	2.2	1.9	2.3	3.6	4.1	3.8	
2.8 40	4.0	4.7	4.7	4.3	4.9	6.2	
6.83							4.3



Elev. around Returns at National -

34<sup>th</sup> - See sketch P. 2.

9.97 - P. 6

Ret. # 1 = S.W. Cor. Nat. + 34<sup>th</sup> - 20' around 4-5' parts

N. end - W.L. 34<sup>th</sup> + S. cb. Nat. 4.05 Top cb.

gut 4.77

5' s.

Top 4.04

gut. 4.71

Top 4.06

gut. 4.56

Top 4.09

S.L. Nat.

gut. 4.47

Ret. # 2 = S.E. Cor. - 20' around - 4-5' parts.

S. end = S.L. Nat. + E. cb. 34<sup>th</sup> 3.44 Top cb.

gut. 4.20

5' N.

Top 3.39

gut. 4.16

Top 3.37

gut. 4.16

Top 3.37

gut. 4.13

Top 3.32

E.L. 34<sup>th</sup>

gut. 4.39

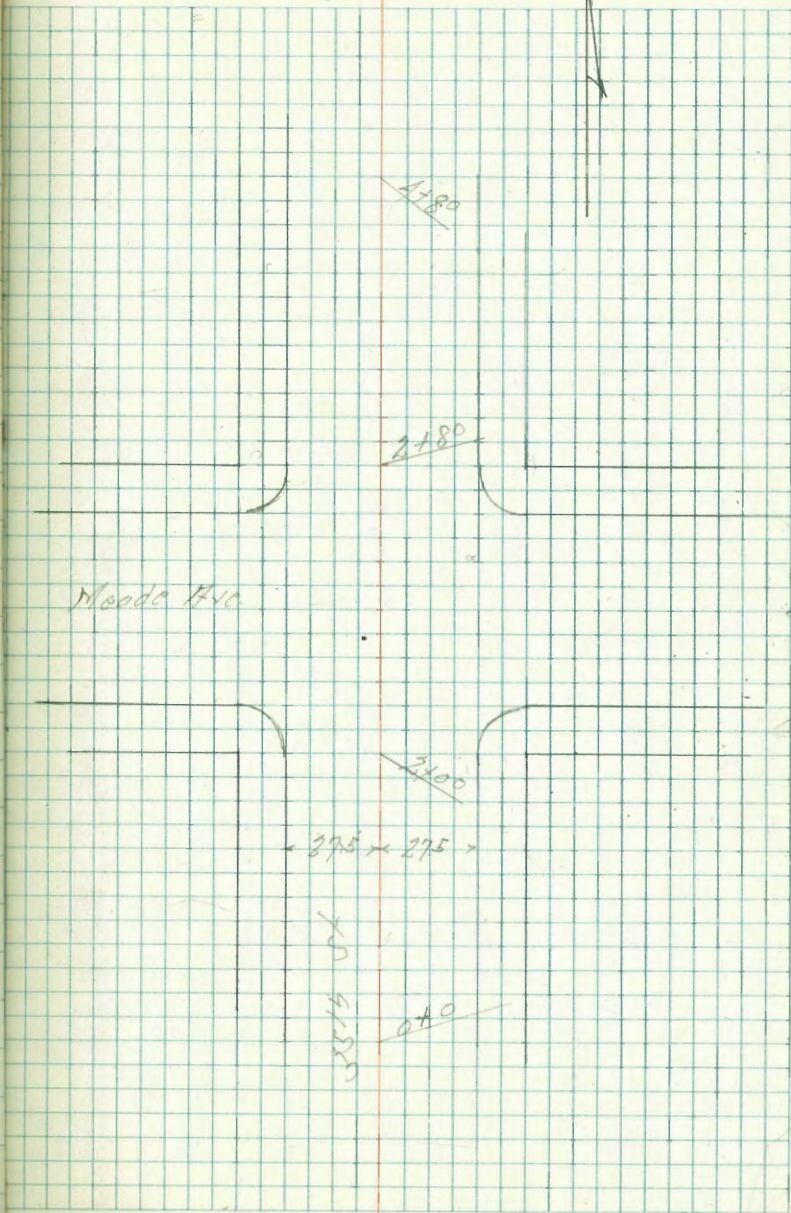
Cross Section 3375 St. 200' North + South  
of Meade F.V.C.  
Level: Next Page

W.O. 60108

Indexed  
C.S.K.

April 17, 47  
Sisson  
McCoy  
Hill  
Bocher

8



63155X

Lt. W

Pt. F

9

2+0 = S.L. Meade Fla.

1+50

1+0

0+50

0+0 = 200 South of S.L. Meade

BM 4.81 391.98

387.17

N.W. 8P  
1900  
1768-2

6.25 27.5	385.44	6.00 27.5	385.159	6.20 27.5	386.18	6.10 27.5	386.78
6.25 27.5	384.88	6.10 27.5	385.19	6.25 27.5	385.75	6.30 27.5	386.16
6.25 27.5	385.34	6.25 27.5	385.72	6.40 27.5	386.40	6.50 27.5	386.74
6.30 27.5	385.65	6.50 27.5	386.02	6.60 27.5	386.68	6.70 27.5	386.93
6.45 27.5	385.53	6.60 27.5	385.92	6.75 27.5	386.65	6.85 27.5	386.86
6.50 27.5	384.90	6.75 27.5	385.31	6.90 27.5	386.04	7.00 27.5	386.34
6.55 27.5	386.23	7.00 27.5	385.86	7.10 27.5	386.52	7.20 27.5	386.90

391.98

387.50

1+80 = 200 North of N.L. Meade H.c.

4+40

4+0

5+50

3+0

2+80 = 1/2 Meade H.c.

391.98

47.4

Pt. F

10

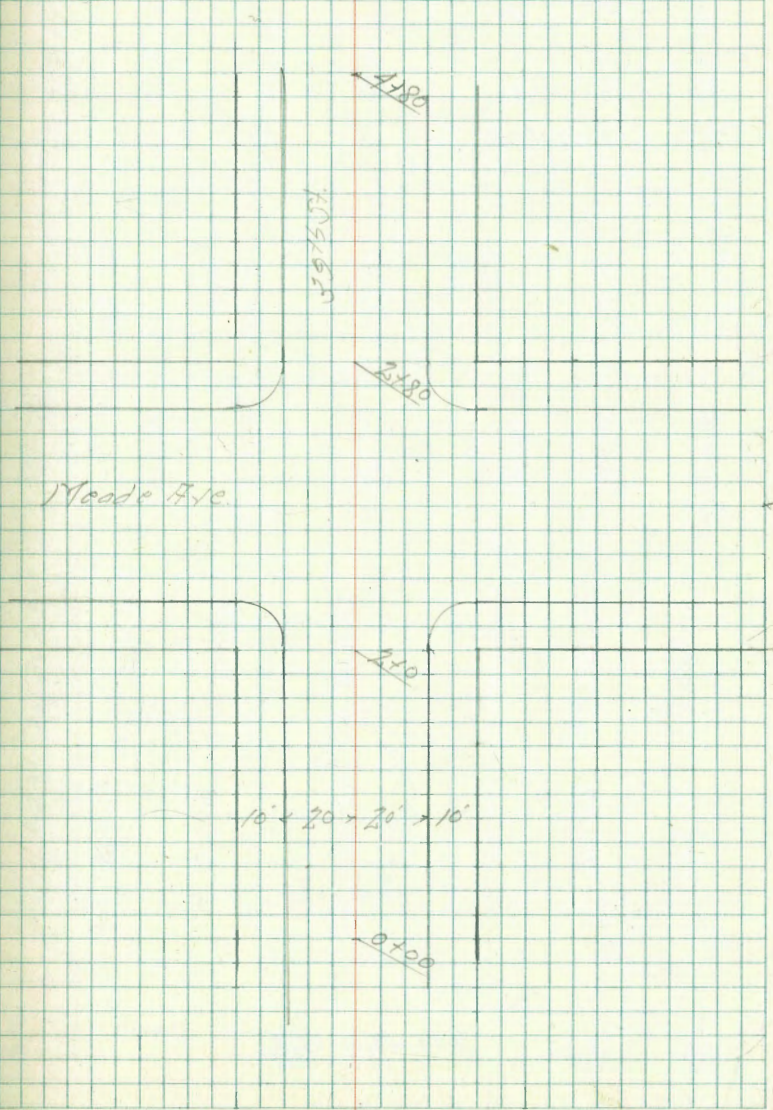
388.30	387.30	387.67	387.34	387.17	387.34	387.61	387.29	386.73	387.03
368 275 Sub	412 275 Sub	423 275	464 275	481 275 Sub	464 275	439	469 275	423 275 Sub	495 275 Sub
387.66	387.37	387.16	386.83	386.71	387.48	387.61	387.36	386.81	387.33
412 275 Sub	410 275 Sub	481 275	461 275	481 275 Sub	459 275	439	461 275	461 275	495 275 Sub
387.65	387.35	387.16	387.48	387.34	387.48	387.61	387.36	386.81	387.33
412 275 Sub	410 275 Sub	481 275	461 275	481 275 Sub	459 275	439	461 275	461 275	495 275 Sub
388.85	388.53	388.27	387.95	388.27	387.95	387.61	387.29	386.73	387.03
412 275 Sub	410 275 Sub	481 275	461 275	481 275 Sub	459 275	439	461 275	461 275	495 275 Sub
388.55	388.09	387.60	387.36	387.29	387.36	387.61	387.36	386.81	387.33
412 275 Sub	410 275 Sub	481 275	461 275	481 275 Sub	459 275	439	461 275	461 275	495 275 Sub
387.50	387.20	387.31	387.58	387.91	387.58	387.61	387.36	386.81	387.33
412 275 Sub	410 275 Sub	481 275	461 275	481 275 Sub	459 275	439	461 275	461 275	495 275 Sub

391.98

Cross Section 39th St  
200' North + South of Meade Ave  
Levels next page

Indexed  
e.s.r.

W.O. 60108



3915 St

2+0 = S. Meade Ave

1+50

1+0

0+50

0+00 = 200' South of S. Meade Ave

B.M.

588

373.63

369.75

N. W. R. P.  
Meade Ave  
4.27

L. H.

\*

R. E.

12

446 10 10	369.17	446 10 10	369.17	446 10 10	369.17
507 10 10	369.56	507 10 10	369.56	507 10 10	369.56
463 10 10	369.00	463 10 10	369.00	463 10 10	369.00
463 10 10	369.10	463 10 10	369.10	463 10 10	369.10
483 10 10	369.80	483 10 10	369.80	483 10 10	369.80
525 10 10	369.38	525 10 10	369.38	525 10 10	369.38
467 10 10	369.96	467 10 10	369.96	467 10 10	369.96
527 10 10	369.42	527 10 10	369.42	527 10 10	369.42
507 10 10	368.79	507 10 10	368.79	507 10 10	368.79
463 10 10	368.73	463 10 10	368.73	463 10 10	368.73
472 10 10	368.90	472 10 10	368.90	472 10 10	368.90
510 10 10	368.55	510 10 10	368.55	510 10 10	368.55
463 10 10	368.54	463 10 10	368.54	463 10 10	368.54
463 10 10	368.54	463 10 10	368.54	463 10 10	368.54
507 10 10	368.44	507 10 10	368.44	507 10 10	368.44
463 10 10	368.55	463 10 10	368.55	463 10 10	368.55
463 10 10	368.10	463 10 10	368.10	463 10 10	368.10
527 10 10	368.79	527 10 10	368.79	527 10 10	368.79
463 10 10	368.54	463 10 10	368.54	463 10 10	368.54
463 10 10	368.79	463 10 10	368.79	463 10 10	368.79
507 10 10	368.54	507 10 10	368.54	507 10 10	368.54
463 10 10	368.54	463 10 10	368.54	463 10 10	368.54
507 10 10	368.54	507 10 10	368.54	507 10 10	368.54
463 10 10	368.54	463 10 10	368.54	463 10 10	368.54
507 10 10	368.54	507 10 10	368.54	507 10 10	368.54
463 10 10	368.54	463 10 10	368.54	463 10 10	368.54
507 10 10	368.54	507 10 10	368.54	507 10 10	368.54
463 10 10	368.54	463 10 10	368.54	463 10 10	368.54
507 10 10	368.54	507 10 10	368.54	507 10 10	368.54
463 10 10	368.54	463 10 10	368.54	463 10 10	368.54
507 10 10	368.54	507 10 10	368.54	507 10 10	368.54
463 10 10	368.54	463 10 10	368.54	463 10 10	368.54
507 10 10	368.54	507 10 10	368.54	507 10 10	368.54
463 10 10	368.54	463 10 10	368.54	463 10 10	368.54

373.63

4+80 = 200' North of H.L. Meade

4+50

4+0

5+50

5+0

3+80 = H.L. Meade FHC

227 20 200rb	371.36	227 20 200rb	371.14	227 20 200rb	370.76	227 20 200rb	370.25	227 20 200rb	369.80	227 20 200rb	369.72	227 20 200rb	371.36
229 20 200rb	370.69	229 20 200rb	370.49	229 20 200rb	370.01	229 20 200rb	369.46	229 20 200rb	369.26	229 20 200rb	369.16	229 20 200rb	370.69
242 20 200rb	371.21	242 20 200rb	370.96	242 20 200rb	370.49	242 20 200rb	370.03	242 20 200rb	369.64	242 20 200rb	369.45	242 20 200rb	371.21
221 20 200rb	371.42	221 20 200rb	371.10	221 20 200rb	370.60	221 20 200rb	370.25	221 20 200rb	369.82	221 20 200rb	369.70	221 20 200rb	371.42
264 20 200rb	371.29	264 20 200rb	370.94	264 20 200rb	370.47	264 20 200rb	370.08	264 20 200rb	369.61	264 20 200rb	369.48	264 20 200rb	371.29
268 20 200rb	370.95	268 20 200rb	370.61	268 20 200rb	370.17	268 20 200rb	369.69	268 20 200rb	369.16	268 20 200rb	369.07	268 20 200rb	370.95
203 20 200rb	371.60	203 20 200rb	371.34	203 20 200rb	370.83	203 20 200rb	370.23	203 20 200rb	369.69	203 20 200rb	369.57	203 20 200rb	371.60
373.63													

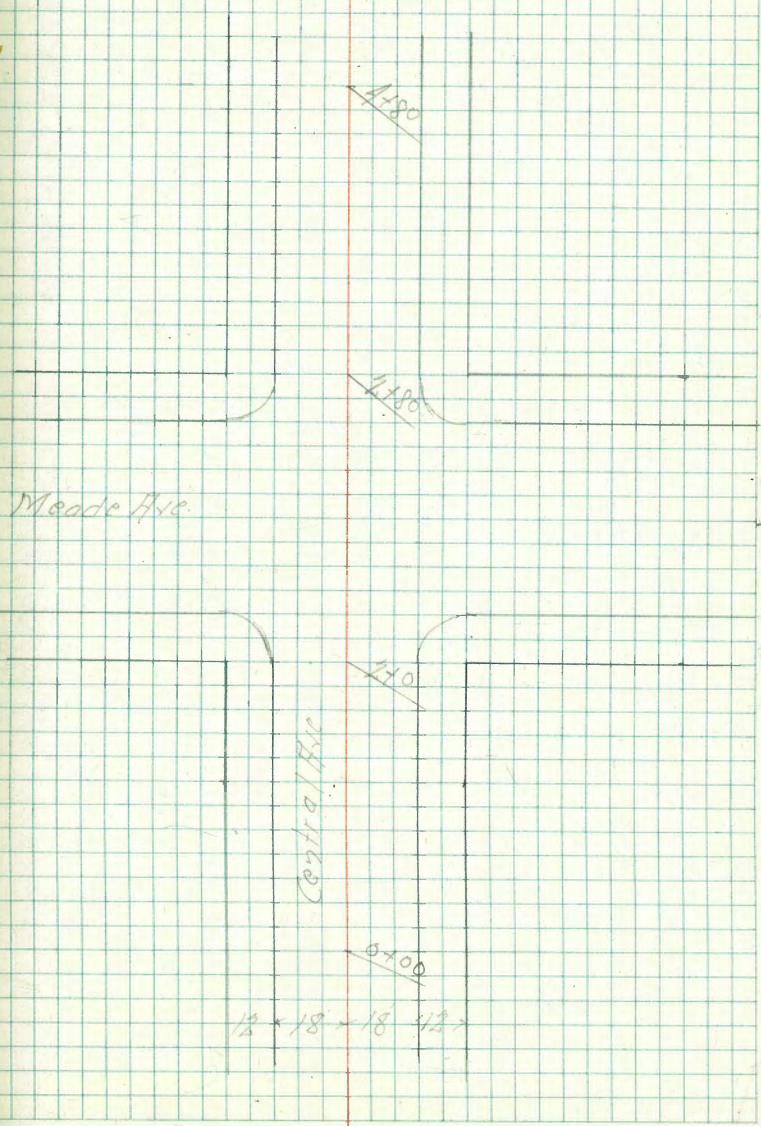
Cross Section Central Ave  
200' North & South of Meade Ave

Levels Next Page

Indexed  
C.S.K.

W.O. 60108

14



12 \* 18 = 18 1/2



2+0 = S.L. Meade Elev.

1+50

1+0

0+50

0+00 = 200' South of S.L. Meade Elev.

BM

378

372.68

368.70

NOT BP  
Meade's  
Control

4.42	18	367.90	367.10	4.98	18	367.10	367.52	5.16	18	367.34	5.36	18	366.87	5.81	18	366.17	5.00	9	366.68	6.43	18	366.25	5.80	18	366.18	5.81	18	367.26
5.09	18	367.35	367.14	5.51	18	366.86	366.86	5.88	18	366.65	6.03	18	366.65	6.03	18	366.17	6.00	9	366.17	6.43	18	366.25	5.80	18	366.18	5.81	18	367.59
4.81	9	367.58	367.39	5.29	9	367.14	367.14	5.51	9	366.87	5.81	9	366.87	5.81	9	366.17	6.00	9	366.17	6.43	18	366.25	5.80	18	366.18	5.81	18	367.84
4.80	9	367.59	367.39	5.29	9	367.39	367.17	5.51	9	366.87	5.81	9	366.87	5.81	9	366.17	6.00	9	366.17	6.43	18	366.25	5.80	18	366.18	5.81	18	367.88
5.10	9	367.39	367.16	5.57	9	367.16	366.91	5.77	9	366.68	6.00	9	366.68	6.00	9	366.17	6.00	9	366.17	6.43	18	366.25	5.80	18	366.18	5.81	18	367.58
5.38	18	366.99	366.79	5.59	18	366.79	366.49	6.19	18	366.25	6.43	18	366.49	6.19	18	366.17	6.00	9	366.17	6.43	18	366.25	5.80	18	366.18	5.81	18	367.30
4.91	18	367.34	367.12	5.58	18	367.12	366.83	5.75	18	366.18	5.80	18	366.83	5.75	18	366.17	6.00	9	366.17	6.43	18	366.25	5.80	18	366.18	5.81	18	367.77

4+80 = 200' north of N.L. Meade Ave

4+50

4+0

3+50

3+0

2+80 = N.L. Meade Ave

4+80	36P.72	36P.76	36P.80	36P.84	36P.88	36P.92	36P.96	36P.100
4+50	36P.74	36P.78	36P.82	36P.86	36P.90	36P.94	36P.98	36P.102
4+0	36P.76	36P.80	36P.84	36P.88	36P.92	36P.96	36P.100	36P.104
3+50	36P.78	36P.82	36P.86	36P.90	36P.94	36P.98	36P.102	36P.106
3+0	36P.80	36P.84	36P.88	36P.92	36P.96	36P.100	36P.104	36P.108
2+80	36P.82	36P.86	36P.90	36P.94	36P.98	36P.102	36P.106	36P.110

372.68

Cross Section 41st St.  
300' North & South of Meade Ave.

Levers next page

Indexed  
c.s.k.

April 17-47

Sisson

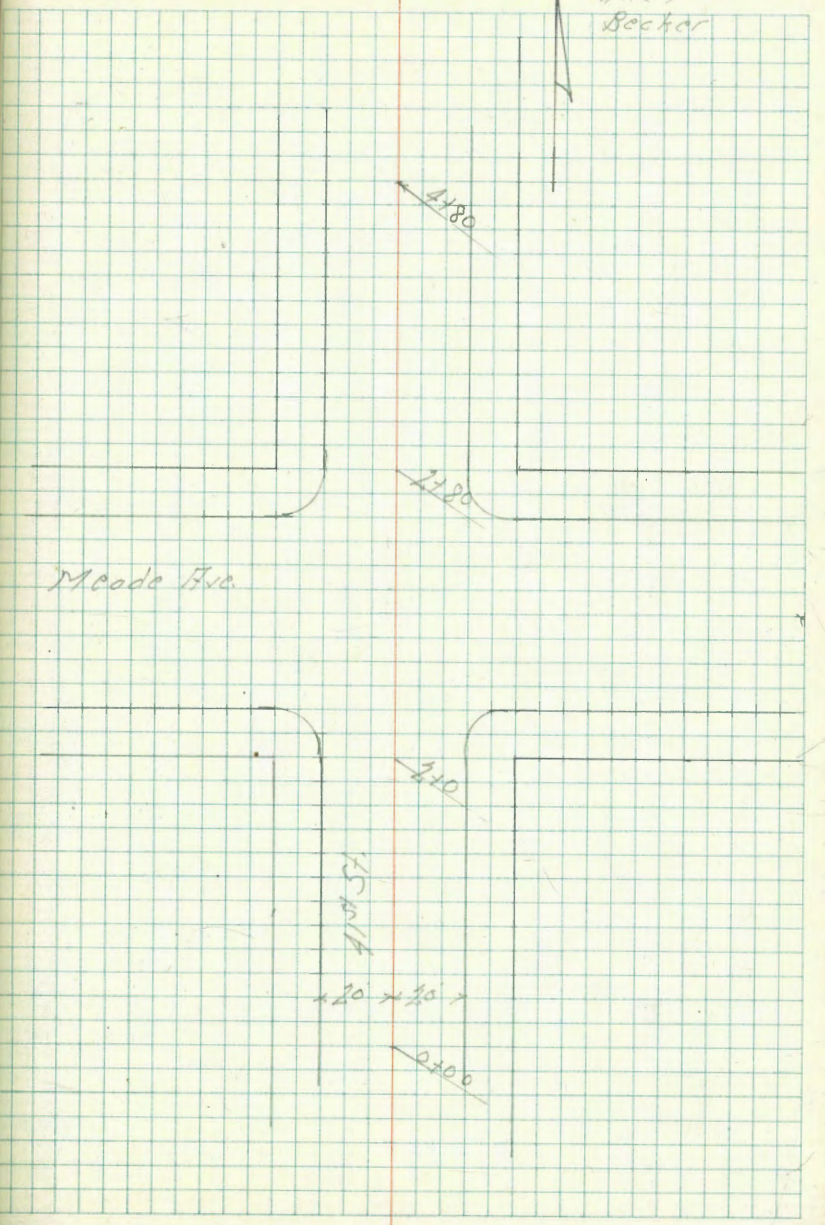
14<sup>th</sup> Col

11107

17

Becker

Meade Ave.



41st St

20 x 20

2x20

2+0 = South Line of Meade Ave

1+50

1+0

0+50

0+00 = 200' South of S.L. Meade Ave

BM 418 372.88 368.70  
N.W. BP  
Mcade &  
Central Ave

6.11 20	367.38	367.77	5.25 10	367.63	5.19 10	367.69
6.50 20	367.38	366.57	5.52 10	367.36	5.42 10	367.46
5.99 20	366.89	366.26	5.84 10	367.04	5.82 10	367.05
6.51 20	366.37	365.91	6.14 10	366.74	6.12 10	366.76
6.98 20	365.90	365.55	6.52 10	366.36	6.52 10	366.36
7.33 20	365.55	365.91	6.18 10	366.70	6.18 10	366.76
6.88 10	366.00	366.36	6.58 10	366.30	6.58 10	366.36
6.13 20	366.75	367.15	6.13 20	367.15	6.13 20	367.15
5.38 20	367.22	367.50	5.38 20	367.22	5.38 20	367.22
4.94 20	367.87	368.14	4.94 20	367.87	4.94 20	367.87

4+80 = 200' North of H.A. Meade

4+50

4+0

4+50

4+0

4+80

5.17  
20

367.68  
Curb

5.20  
10

367.66

5.22  
20

367.58

5.23  
10

367.61

5.24  
20

367.69

5.25  
20

367.48  
Gutter

5.26  
10

367.35

5.28  
20

367.19

367.20

5.29  
10

367.23

5.28  
10

367.73

5.35  
10

367.73

5.35  
10

367.58

367.151

5.35  
10

367.53

4.90

367.93

4.95

367.80

5.08

367.75

367.72

5.20

367.68

4.90  
10

367.83

4.95  
10

367.75

5.12  
10

367.45

5.22  
10

367.58

5.26  
10

367.52

5.18  
20

367.73  
Gutter

5.15  
20

367.57

5.31  
20

367.38

5.50  
20

367.31

5.59  
20

367.27

4.92  
10

368.05  
Curb

4.83  
10

367.98

4.90  
20

367.90

5.02  
20

367.85

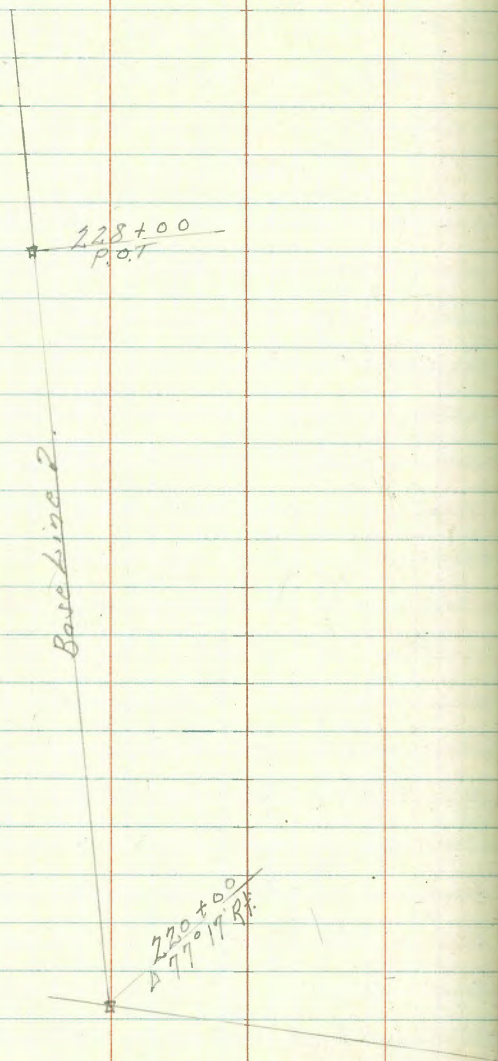
5.02  
20

367.85

Blank ledger page with horizontal blue lines and vertical red lines.

Blank grid page with a vertical red margin line and a blue grid.

Survey Mean High Tide Line of Pacific Ocean  
 Between North End of Mission Bay Bridge  
 And Capistrano Place Mission Beach



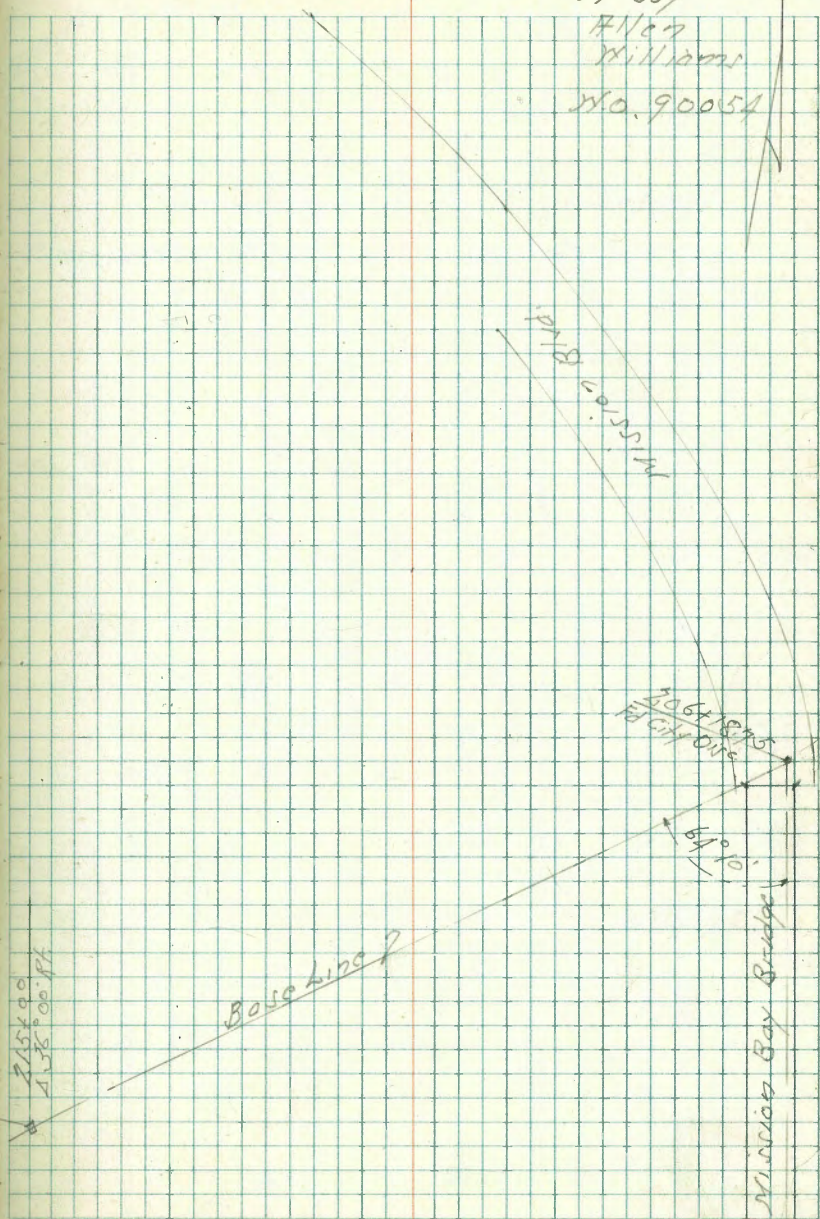
Indexed  
 C.S.R.

June 10-47 21

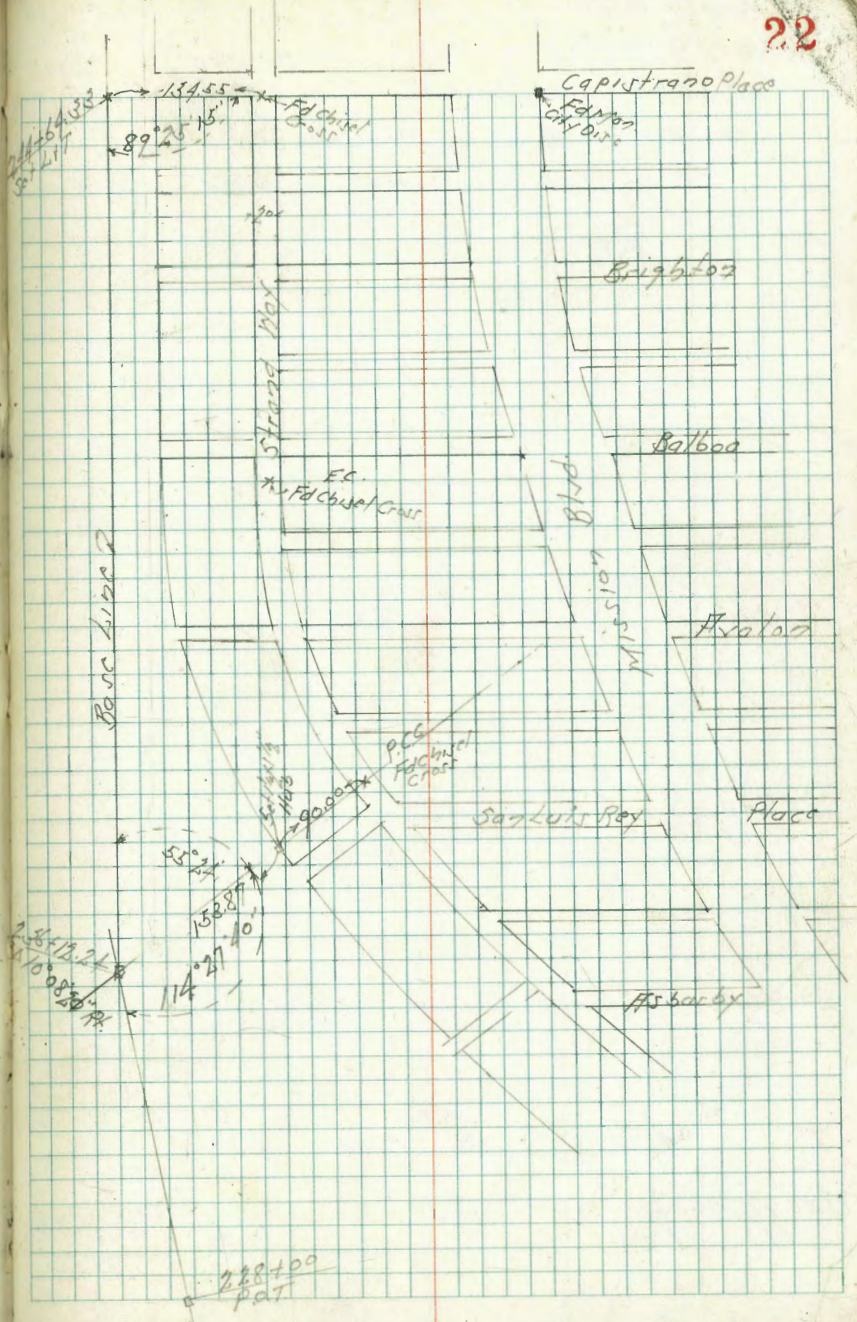
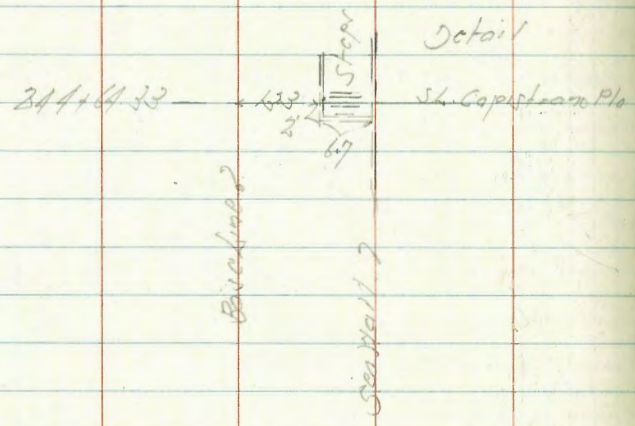
Sisson  
 McCoy

Allen  
 Williams

No. 90054



Fd. L + T South  
 of S End of Bridge



228100  
PAT



Levels Mean High Tide Line of Pacific Ocean  
Between North End Mission Bay Bridge  
And Capistrano Place Mission Beach

U.S.C. & G.S. datum Mean High Tide is 4.91

All outs are right angles to Baseline Except  
where noted

210+0

209+0

208+0

207+0

205+71 = N.E. Corner Mission Bay Bridge

TP 4.76 13.33 5.30 8.57

U.S.C. & G.S. Datum

B.M. 6.05 13.87 7.82

N.E. Corner  
Mission Bay  
San Diego, Cal.  
1663-58

June 11-47

S. 1100  
McCoy T.  
1711 1/2 Rod.  
with 100 ft chain

23

Lt. South

Rt. North

4.91

8.42  
2.5

13.0

4.91

8.42  
2.5

12.7

4.91

8.42  
2.5

11.4

4.91

8.42  
10'

7.2

4.91

8.42  
10'

6.9

13.33

This B.M. used as 7.80 \* 1007-66

U.S.C. & G.S. Datum

216+0

215+0 A. 36° 00' Pt. Taken on split of k.

214+0

TP 2.84 11.40 5.77 7.56

213+0

212+0

211+0

تصویر

L B Pt

4.91

8.49

3.58

5.6

4.91

8.49

3.58

6.40  
on H<sub>2</sub>O

4.91

8.49

3.58

5.5

11.40

4.91

8.49

3.58

6.9

4.91

8.49

3.58

6.7

4.91

8.49

3.58

7.3

13.33

223+0

222+0

221+0

TP 5.57 13.33 261 7.76

220+0 A 77° 17' Pt Taken on Split of A

219+0

218+0

217+0

11.40

Lt

4.91  
8.42  
9.3

B

53

Pt

4.91  
8.42  
9.6

41

4.91  
8.42  
9.6

7.2

13.33

4.91  
6.49  
7.96.49  
10.494.91  
6.49  
7.9

10

4.91  
6.49  
7.9

4.9

4.91  
6.49  
7.9

53

11.40

TP 5.62 1590 305 10.28

229+0

228+0 P.O.T

227+0

226+0

225+0

224+0

305

LT

R

RT

4.91  
8.42  
2

81

4.91  
8.42  
25

670/165

4.91  
8.42  
48

54

4.91  
8.42  
72

46

4.91  
8.42  
90

46

4.91  
8.42  
100

47

305

Lt

~~S~~

Rt

235+0

4.91  
10.99  
5.6

5.2

234+0

4.91  
10.99  
3.1

7.6

233+0

4.91  
10.99  
1.1

9.400 R.P.P.P.P

232+0

11.5

4.91  
10.99  
9

231+0

11.9

4.91  
10.99  
10

230+0

11.6

4.91  
10.99  
9

15.90

15.90

June 12-47  
Start 237+0

28

Lt.

\$

Rt.

240+98 1' Rt. of  $\frac{1}{2}$  = S.W. Cor. Sea Wall

240+0

4.91  
13.05  
25

83

239+0

4.91  
13.05  
35

50

238+0

4.91  
13.05  
50

59

59

237+0

4.91  
13.05  
63

65

63

TP 6.23 17.96 4.17 11.73 on  $\frac{1}{2}$  Hub 236+12.24

17.96

236+12.24  $\Delta$

4.91  
10.99  
69

59  
50

4.17 on Hub

236+0

4.91  
7.99  
64

46

42

15.90

17.96 on Hub 15.90

Lt. Sp. Rt.

24416433 = South Line Capistrano Produced from East.

4.91  
12.37  
10460  
803.96  
84  
Tank

20 = 1/4 Sec Hall

24410

4.91  
12.37  
8351  
15

47

24310

4.91  
12.37  
5747  
22

49

24210

4.91  
12.37  
3361  
10

60

B.M. 114 17.28 1.82 16.14

B.P. South  
End of Sec  
Hall  
16.14  
#1662-73

17.28

24110

4.91  
12.37  
27

93

17.96

17.96

Survey Mean High Tide Line of Pacific Ocean  
 Between Thomas Ave & Emerald St  
 Pacific Beach

362+00 P.O.T

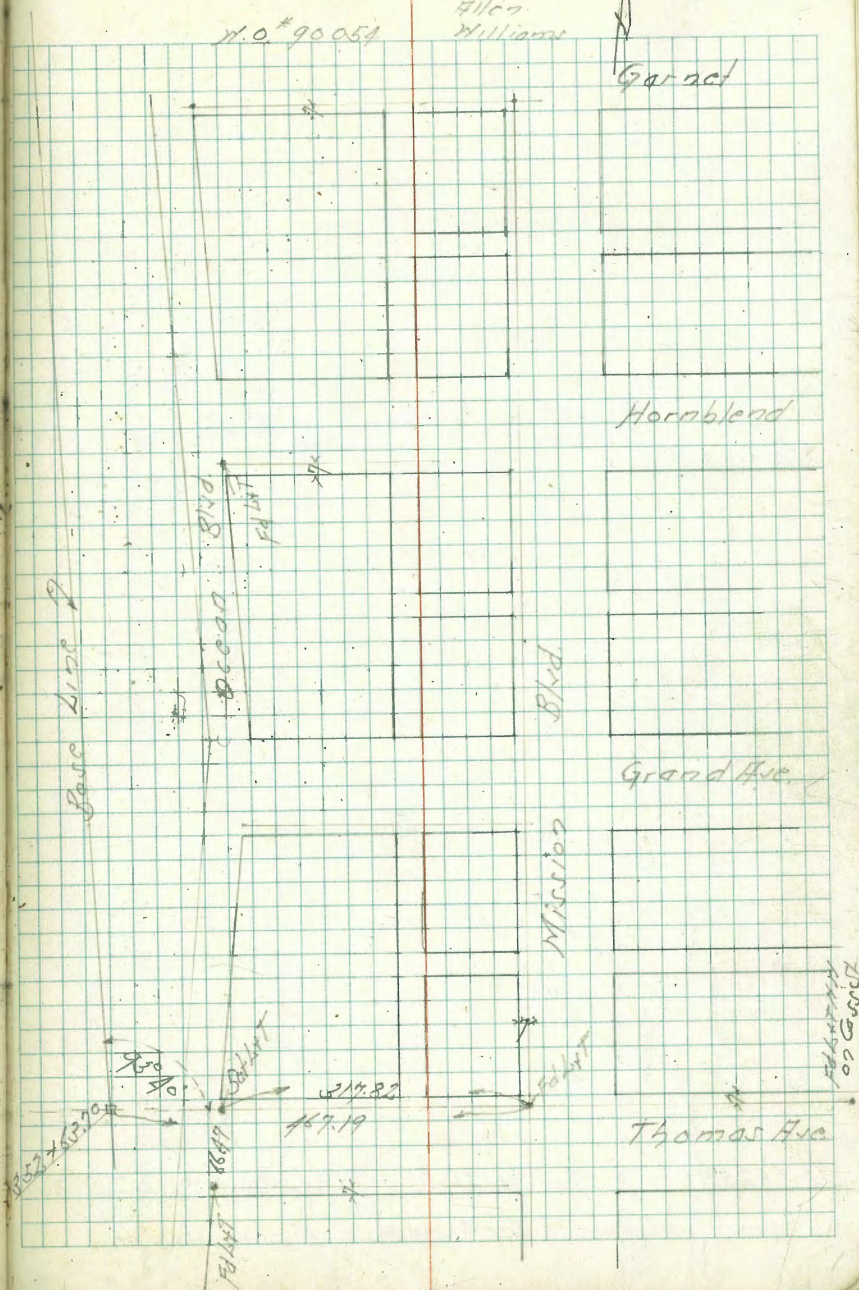
352+63.7° Nem Sta. 7407-14

Indexed  
 C.S.K.

June 13-47  
 Sisson  
 McCoy  
 Allen  
 Williams

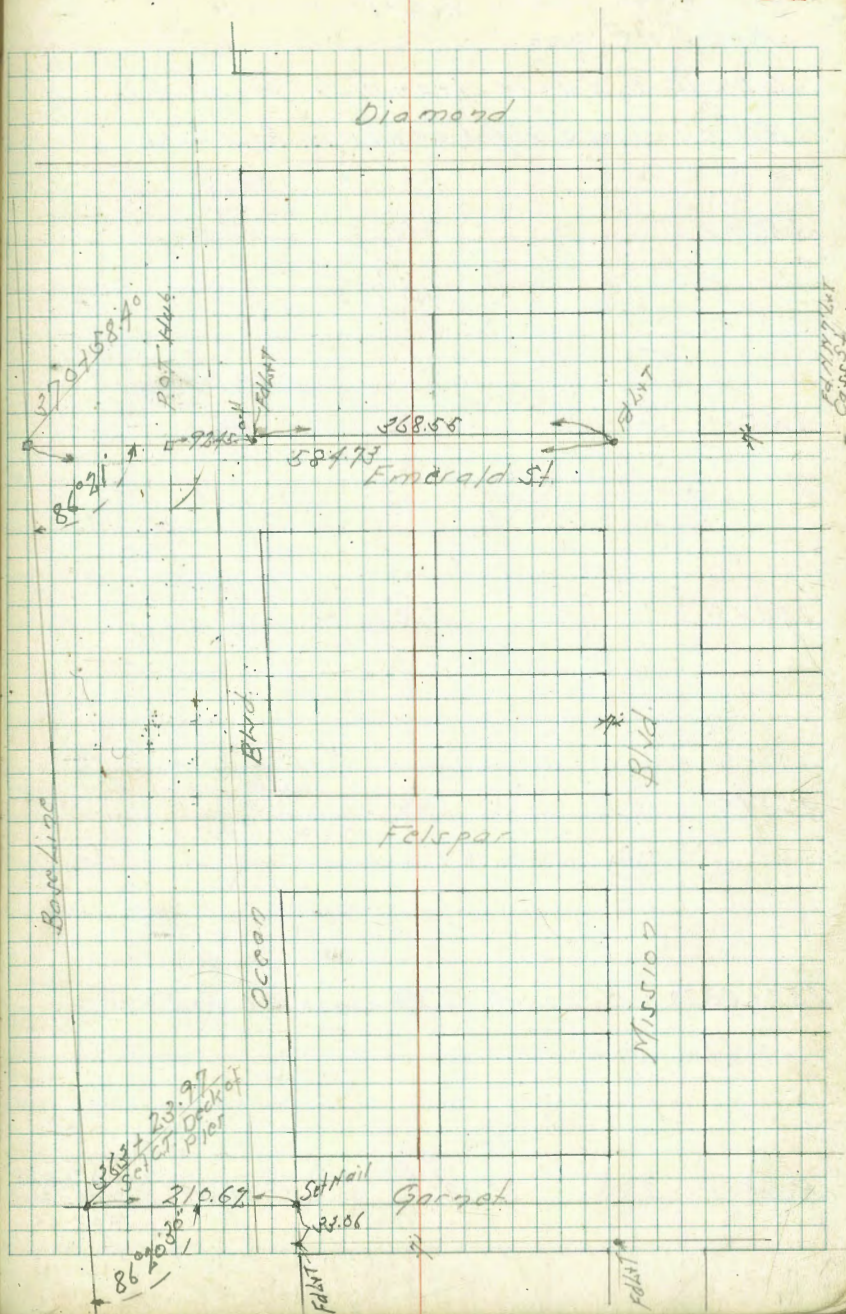
30

H.O. #90054

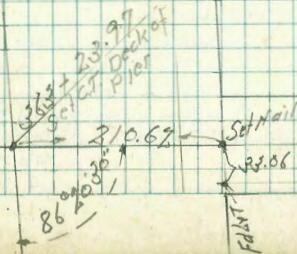




370+58.40



363+23.97 =  $\frac{1}{2}$  Garnet St to East. Also of Crystal Pier  
 Note: - Sec #1554.50 For Crystal Pier



Levels Mean High Tide Line of Pacific Ocean  
 Between Thomas Ave. & Emerald St.  
 Pacific Beach

U.S.C. & G.S. datum Mean High Tide is 4.91

All cuts are right angles to beach line

356 + 0

355 + 0

354 + 0

353 + 0

352 + 62.70 = N 7' line of Thomas Ave. to East

B.M.

2.90

16.99

14.09

NFBP  
 Thomas &  
 Ocean Blvd.  
 1407-66

U.S.C. & G.S. datum

15.99

June 13-47  
 Survey  
 McCoy &  
 William Red  
 Williams Chain

32

4.91

4.91  
 12.08  
 71

85

4.91  
 12.08  
 70

80

4.91  
 12.08  
 65

82

4.91  
 12.08  
 35

94

4.91  
 12.08  
 35

87

Lt = W

~~B~~

362+0 P.97

4.91

7.63

21

60

361+0

4.91

7.63

31

53

360+0

4.91

7.63

36

51

359+0

4.91

7.63

38

49

358+0

4.91

7.63

40

45

TP 3.79 12.54 8.24 8.75

12.54

357+0

4.91

12.08

59

83

16.99

16.99

11.21

B

368+0

4.91

10.18

23

79

367+0

4.91

10.18

40

76

366+0

4.91

10.18

33

77

365+0

4.91

10.18

21

86

364+0

4.91

10.18

12

93

TP

4.00

15.09

1.45

11.09

15.09

362+0

4.91

7.63

7

72

12.54

12.54

Cont Opp Page

TP	0.93	26.21	9.06	25.28
----	------	-------	------	-------

WFCB End  
Garret +  
Ocean Blvd  
B'out.

TP	1.11	24.34	9.00	23.23
----	------	-------	------	-------

BM	0.75	42.23	5.58	41.48
----	------	-------	------	-------

H.F.B.P.  
Diamond  
Ocean Blvd  
11.40

TP	3.90	47.06	1.32	45.16
----	------	-------	------	-------

TP	12.97	44.48	0.42	31.51
----	-------	-------	------	-------

TP	12.76	31.93	0.31	19.17
----	-------	-------	------	-------

TP	12.73	19.48	8.34	6.75
----	-------	-------	------	------

370+5840 P.O.T. = N 7' line Emerald St. to East

370+0

369+0

15.09

61.11

BM

7.30 14.10

H.F.B.P.  
Diamond  
Ocean Blvd  
14.09

TP	3.54	21.40	8.33	17.86
----	------	-------	------	-------

26.21 Bl. Ford. Opp Page

4.91
10.18
33

8.34  
to Hub

4.91
10.18
39

8.5

4.91
10.18
35

8.2

15.09

July 8, 1947 Proposed Sewer Blocks  
 Hendricks 3, 6, & 9 La Mesa Colony  
 vt. Moore  
 Sherman  
 N.O. #31408

Indexed  
 C.S.K.

36

Cont'd Page 37

Fd Hub

Fd Hub

68th St.

590.09

Sarano

Mohant

El Cajon Blvd

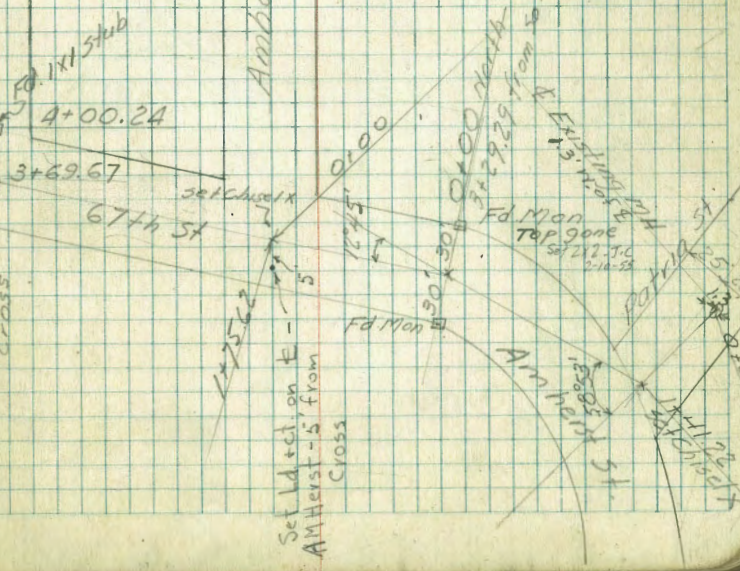
30' 30'

367.19

23  
 390.19

Amberst St.

784730"



set 2x2 Hub By Intersection  
 1+90.03  
 7+39.27 from West

set 2x2 Hub  
 190.03

set Chisel  
 30.57  
 4+00.24  
 3+69.67  
 67th St

Set location E-  
 AMHerst - 5 from  
 Cross

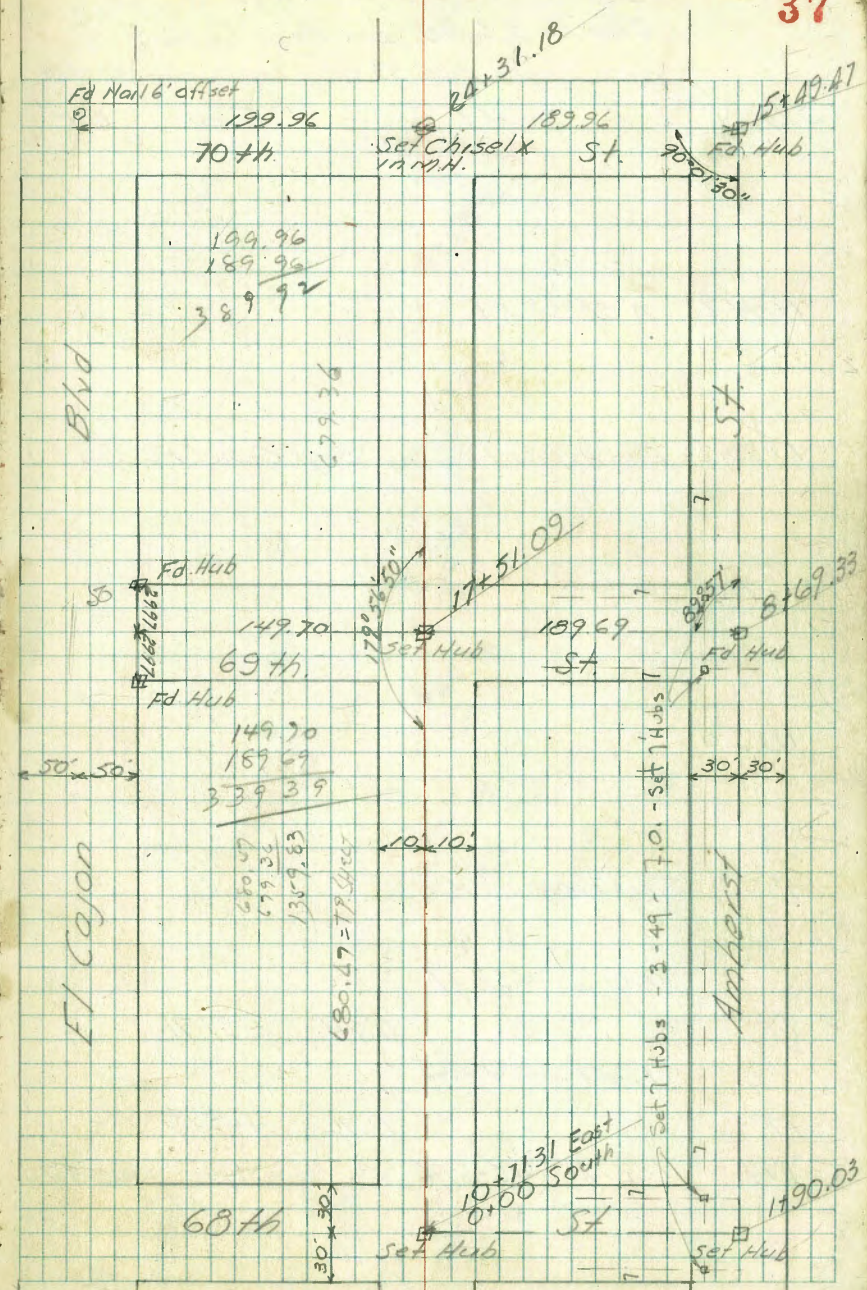
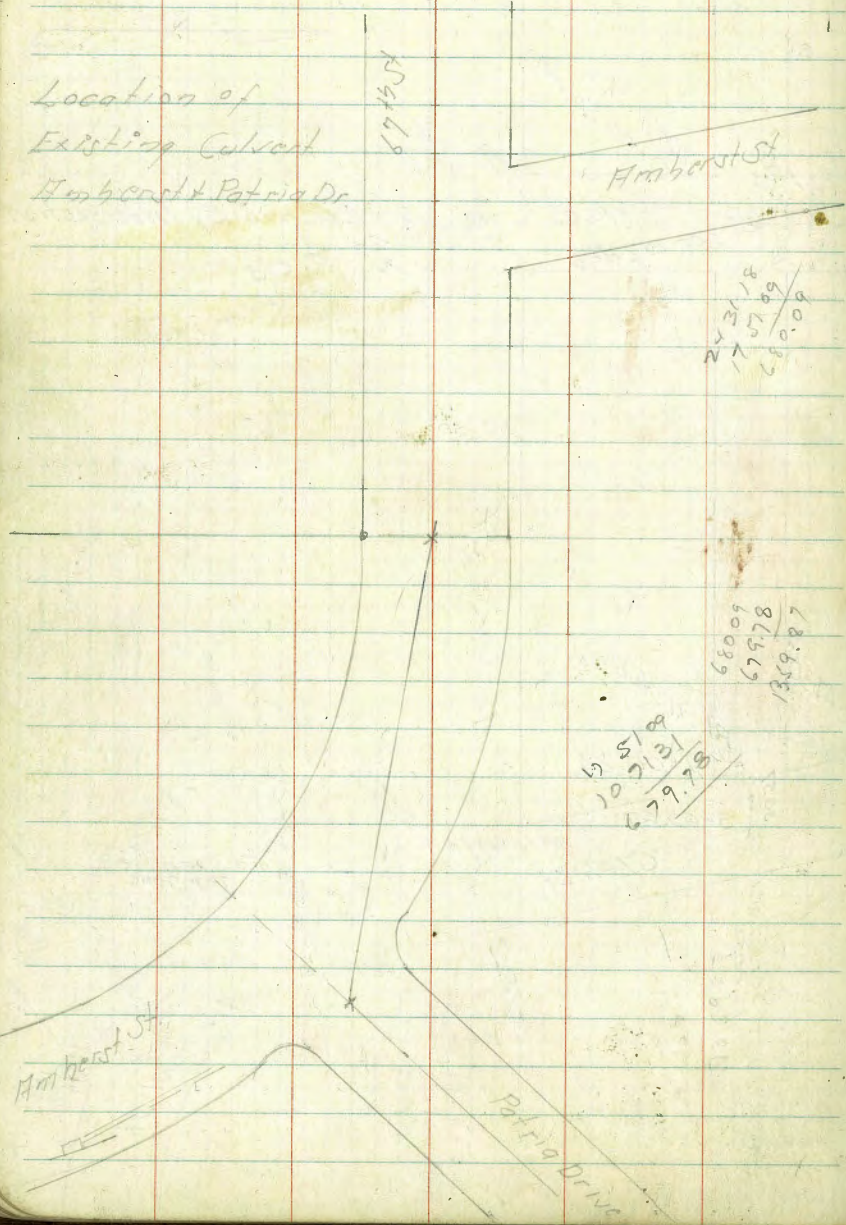
Fd Man  
 TOP gone  
 set 2x2 T.C  
 2-14-53

Amberst St

set 2x2  
 11+22  
 13  
 0+00

Proposed Sewer Blocks  
3, 6, & 9 La Mesa Colony Contd.

Location of  
Existing Culvert  
Amberst & Patria Dr.



Levels Proposed Sewer

Blocks 3, 6, & 9 La Mesa Colony

See Pages 36 & 37 this book for sketch

Sta. + H.I. - Elev. B.M.

1+41.22  $\Delta$  58°53' RT

1+30.20 End Asphalt Paving Beg. Conc. Paving

1+00

0+50

0+00 Existing MH

0.06 437.77

TP 6.94 437.71

11.47 444.65

TP 11.76 443.18

B.M. 1.24 454.94 453.70

431.52

6.25

432.13

5.64

433.13

4.64

434.98

2.79

426.29

11.48

FL

436.90  
0.87  
Rim

S.W.B.P. 67th & El Cajon



Levels proposed Sewer Blocks  
 36, & 9 La Mesa Colony Cont'd.

Sta + H.I. - Elev B.M.

1+00

0+50

0+00  
 3+29.29 Δ 12°45' Lt.

3+00

10.87 4+6.94

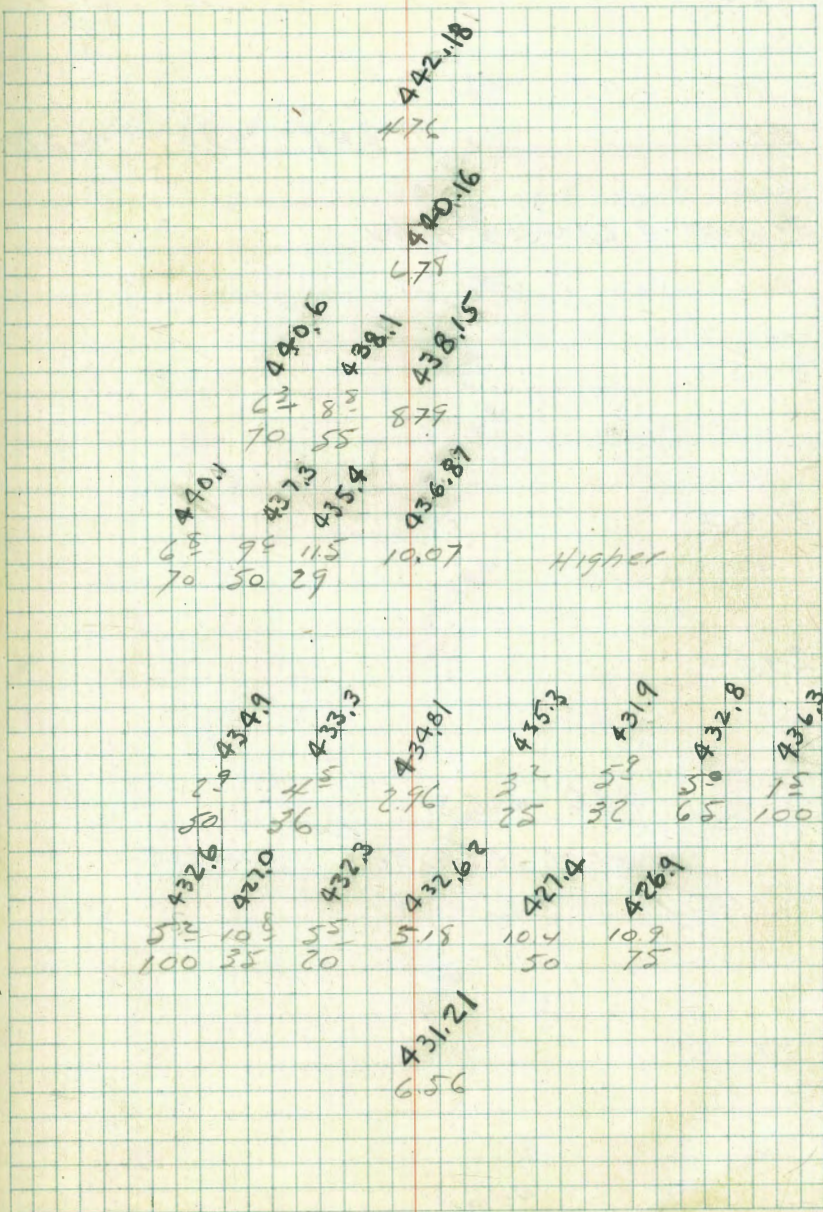
TP 1.70 436.07

2+50

1+95 Edge of Paving

1+58.8 Edge of Paving

437.77



Levels Proposed Sewer Blocks

3, 6, & 9 La Mesa Colony Cont'd.

Sta + H1 - Elev B.M.

2.07 455.77

B.M. 2.07 453.74 453.70

3+69.67 E 67th St & Alley

3+50

3+00

2+50

9.36 455.81

TP on rock 14' LI Sta 2+18 0.49 446.45

2+00

1+50

446.94

±

5+1 B.P. 67th & El Cajon

451.61

4.20

451.09

4.72

449.62

6.19

447.86

7.95

445.92

1.02

444.08

2.86

Levels Proposed Sewer  
 Blocks 3, 6, & 9 La Mesa Colony

Sta + H.I. - Elev 15M.

6+40

TP. 4.41 48.03 2.15 453.62

6+00

5+50

5+00

4+50

4+00.24 & Alley on Prop Line

3  
2

4+77.77 Edge of Paving

455.77

Higher on Left

5.5	952.5	5.5	951.9	5.5	952.9
6.6		6.6		6.6	
118		118		118	
Gr.		Gr.		Fl.	
5.5	952.7	5.5	949.9	5.5	951.3
106		106		106	
Gr.		Gr.		Fl.	
3.7	952.1	3.7	950.8	3.7	951.9
5.5		5.5		5.5	
117		117		117	
Ground		Ground		Fl.	
7.7	951.1	7.7	949.9	7.7	951.1
6.4		6.4		6.4	
117		117		117	
Ground		Ground		Fl.	
5.5	950.7	5.5		5.5	
5.5	950.8	5.5	950.5	5.5	
5.5		5.5		5.5	
4.4	951.33	4.4		4.4	
4.4		4.4		4.4	

Levels Proposed Sewer  
 Blocks 3, 6 & 9 La Mesa Colony Cont'd.

Sta + H1 - Elev

9+00  
 8+50  
 8+00  
 7+50  
 7+33  
 7+25  
 7+00

458.03

Higher on left

453.2	451.7	453.1
104	64	112
Gr	Gr	Fl
452.6	451.6	453.1
114	64	102
Gr	Gr	Fl
452.6	451.8	453.3
57	60	112
Gr	Gr	Fl
453.3	451.3	452.3
117	67	117
Gr	Gr	Fl
453.5	451.3	452.3
114	67	110
Gr	Gr	Fl
454.1	451.1	451.9
119	67	113
Gr	Gr	Fl

Levels Proposed Sewer  
 Blocks 3, 6, & 9 La Mesa Colony Contd  
 Sta. + H.I. - Elev.

12+00

11+50

11+01.31 E. Line 68th St.

10+71.31 @ 68th St. on hub

10+41.31 W Line 68th St.

10+00

TP. 6.34 ↓ 459.64 4.73 458.30

9+50

458.03

455.4  
4.73

454.6  
4.10

455.1  
4.73

452.7  
6.4  
100

454.6  
4.03

454.4  
4.10

454.6  
4.10

453.4  
4.73

Levels Proposed Sewer Blocks  
3, 6, & 9 La Mesa Colony Cont'd.  
Sta. + H.I. - Elev.

15+50

15+00

14+50

14+00

13+50

T.P. 6.14 462.00 3.78 45586

13+00

12+50

45964

4576	8	4555.1
4574	105	4562
4571	95	4571
4571	62	4558
4570	100	4570
4570	93	4572
4567	95	4577
4558	96	4558
4556	96	4558

Levels Proposed Sewer Blocks  
 3, 6, & 9 La Mesa Colony C&H.

Sta.      +      H.L.      -      Elev

TP.      9.66      ↓      164.31      7.38      454.65

17+51.09      &      69th St.

17+21.09      W PL      69th St.

17+00

16+50

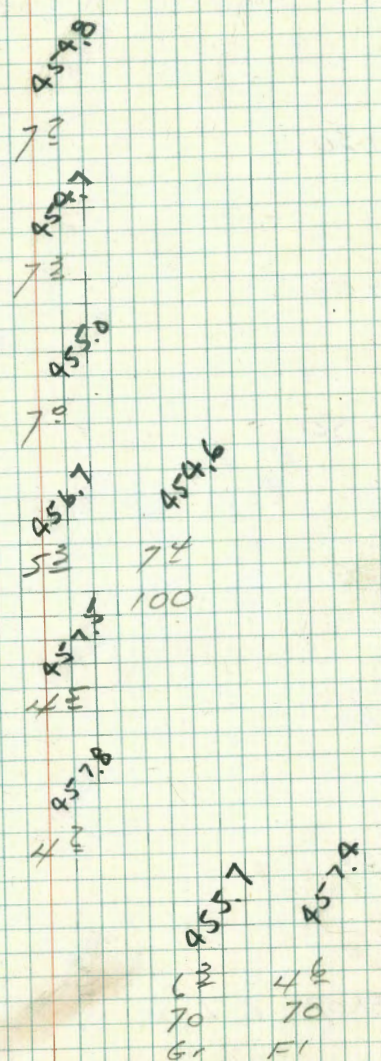
16+25

16+00

15+80.

46200

& Hub 69th St & Alley



Levels Proposed Sewer Blocks  
 3, 4, & 9 La Mesa Colony Cont'd.

Sta + H.I. - Elev.

20+35 on top of Existing 8" Sewer pipe

20+30

20+00

19+50

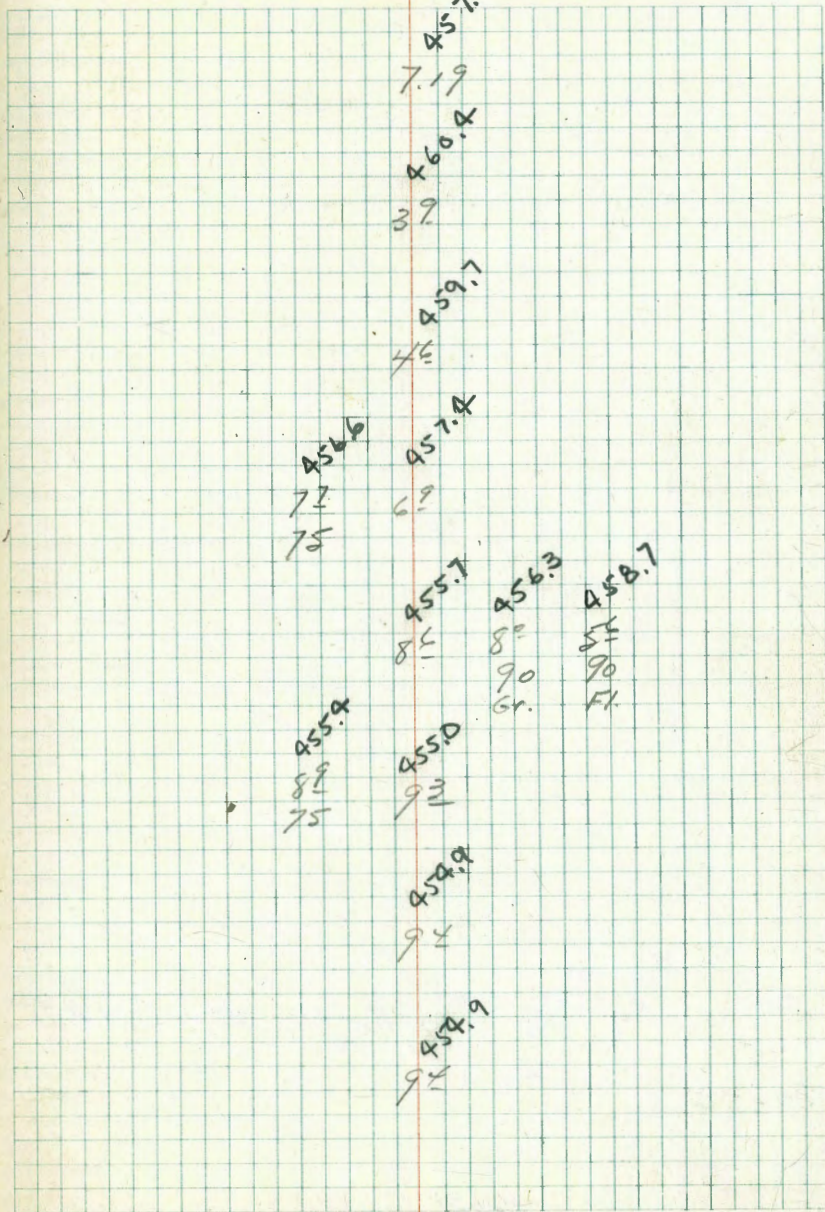
19+00

18+50

18+00

17+81.09 E Line 69th St

464.31





Levels Proposed Sewer Blocks  
 3, 4, & 9 La Mesa Colony. Cont'd

Sta.      t      H.L.      -      Elev. B.M.

B.M.

7.54    456.77    456.75

20+50

464.31

SWBP 69th & El Cajon

460.3	460.6	458.8	459.8
LP	32	54	41
100		100	100
		61	71

Levels Proposed Sewer Blocks

3.6 & 9 La Mesa Colony

From & Alley 68th Between El Cajon & Amherst

to Amherst. Amherst 68th to 70th St.

Sta. + H.I. - Elev. 13.17

1+90.03 & Amherst

1+84 Edge of Asphalt paving

1+80

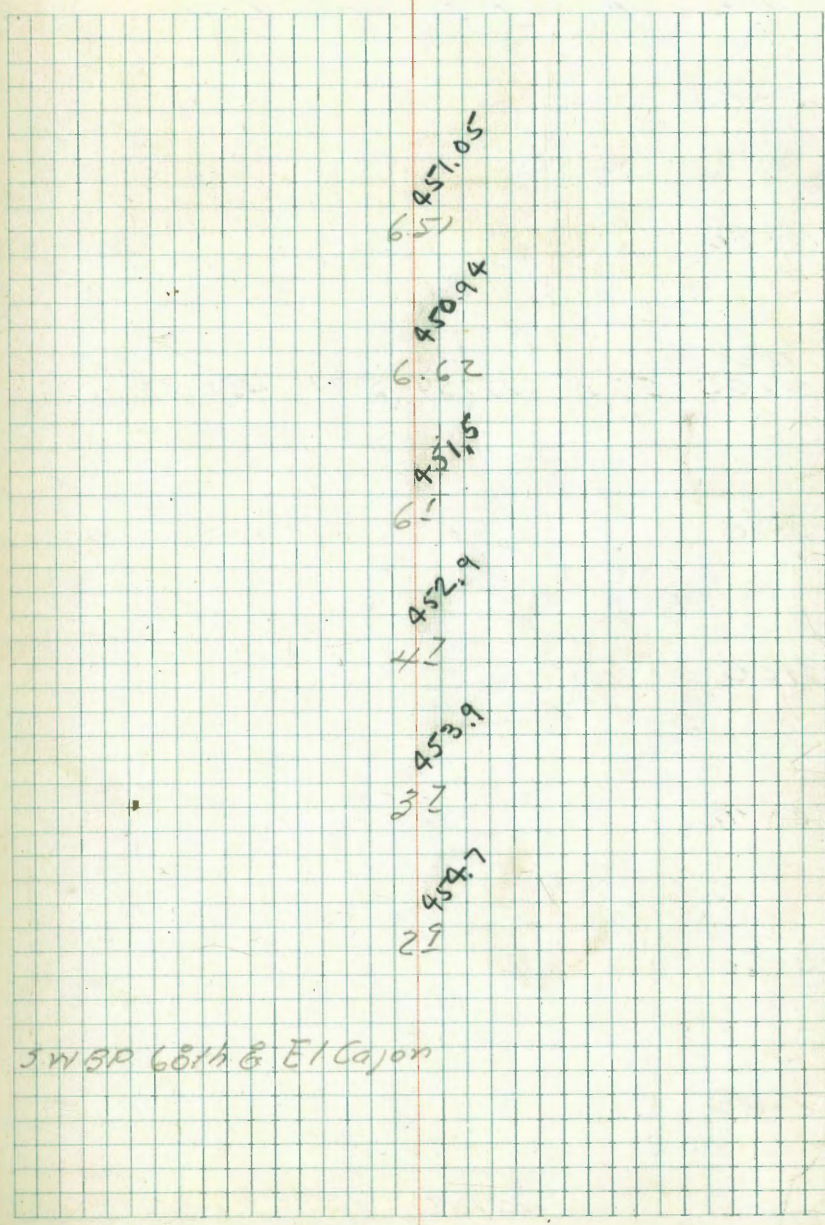
1+00

0+50

0+00 & Alley 68th St.

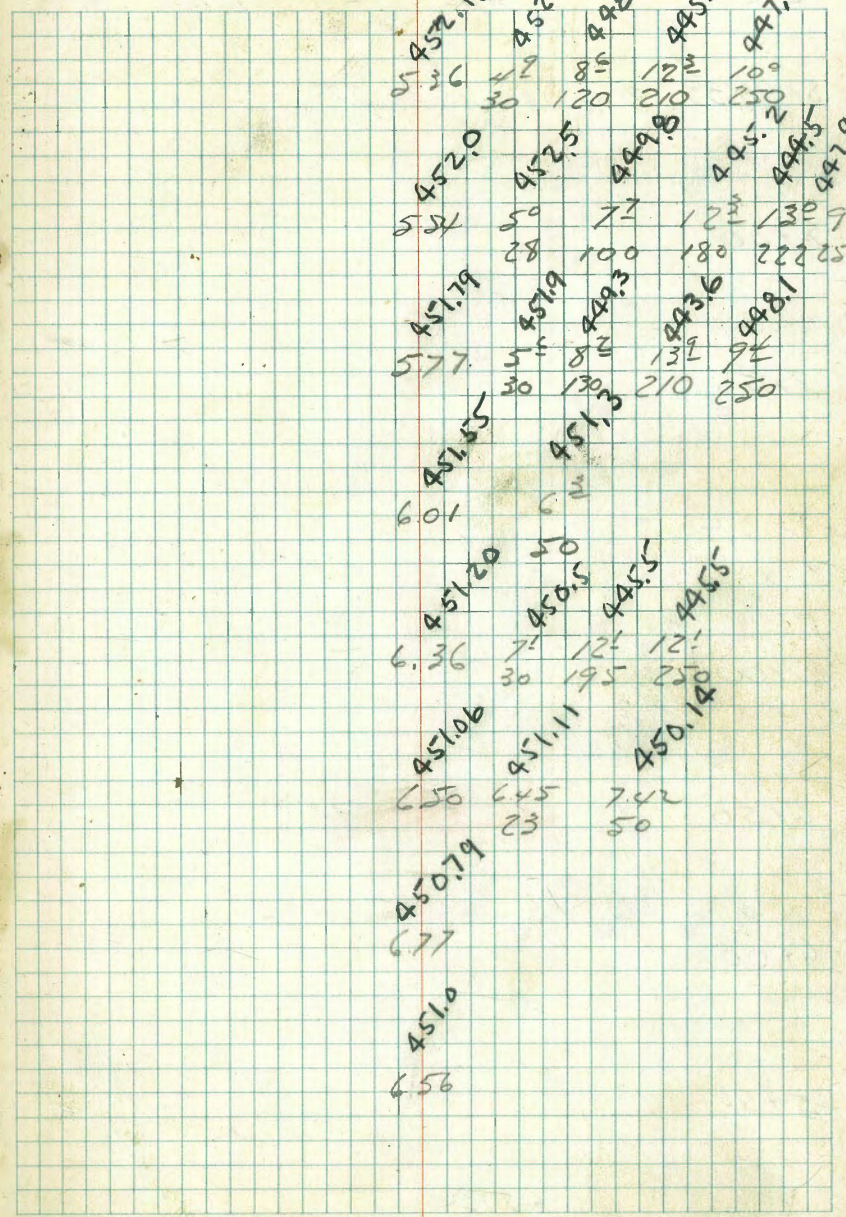
0+00 0.16 457.52 457.40

SWBP 68th & El Cajon



Levels Proposed Sewer Blouts  
 3,6,8,9 La Mesa Colony Cont'd.

Sta	H.I.	Elev.
5+00		
4+50		
TP.		
4+00	5.75	457.54
	5.77	451.79
3+50		
3+00		
2+90	E Olive St (Approx)	
2+50		
2+00		
		457.56



Levels Proposed Sewer Blocks  
 3, 6, & 9 La Mesa Colony Contd.

Sta.      +      H.I.      -      Elev.      B.M.

8+39.33 W Line 69/4 St.

8+00

7+50

7+12

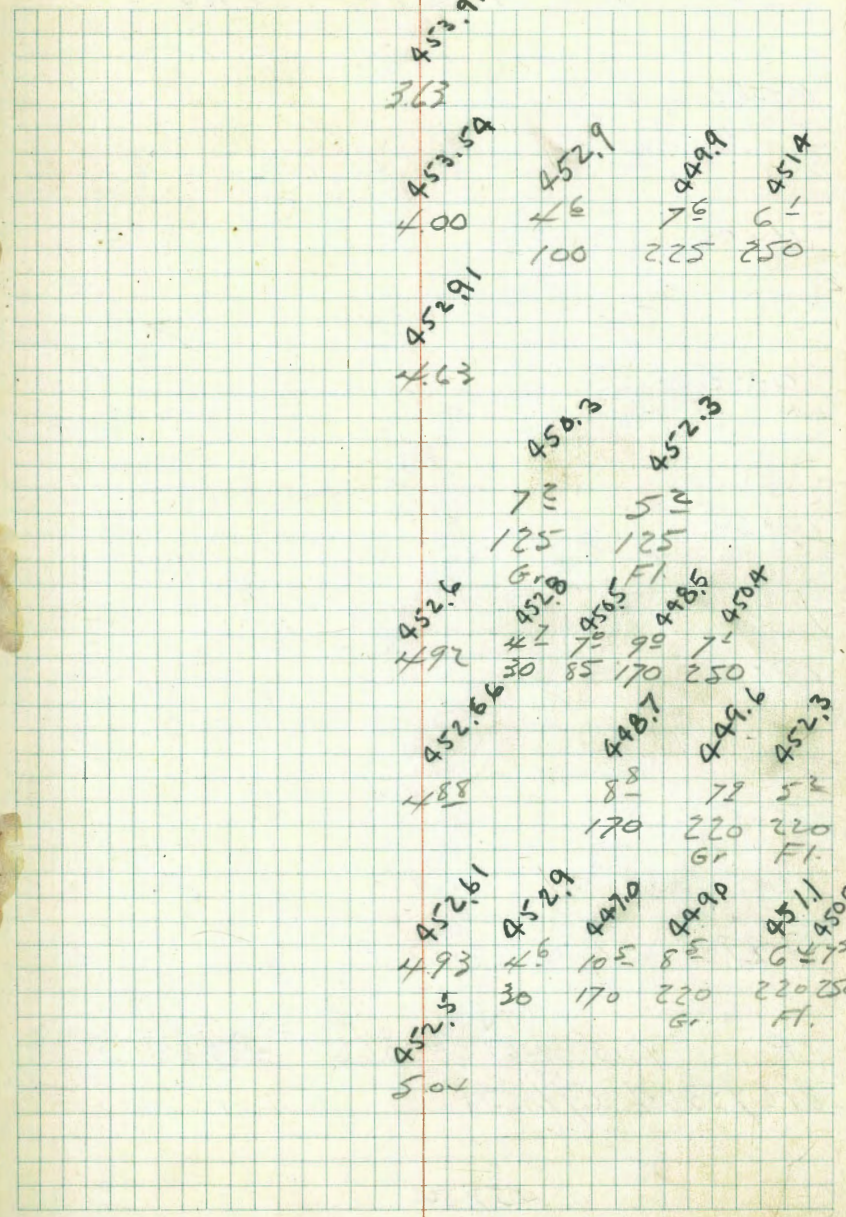
7+00

6+50

6+00

5+50

457.24



Levels Proposed Sewer Blocks  
3, 6, 8, 9 La Mesa Colony Cont'd

Sta + H.I. - Elev

11+50

11+00

10+80

10+50

10+00

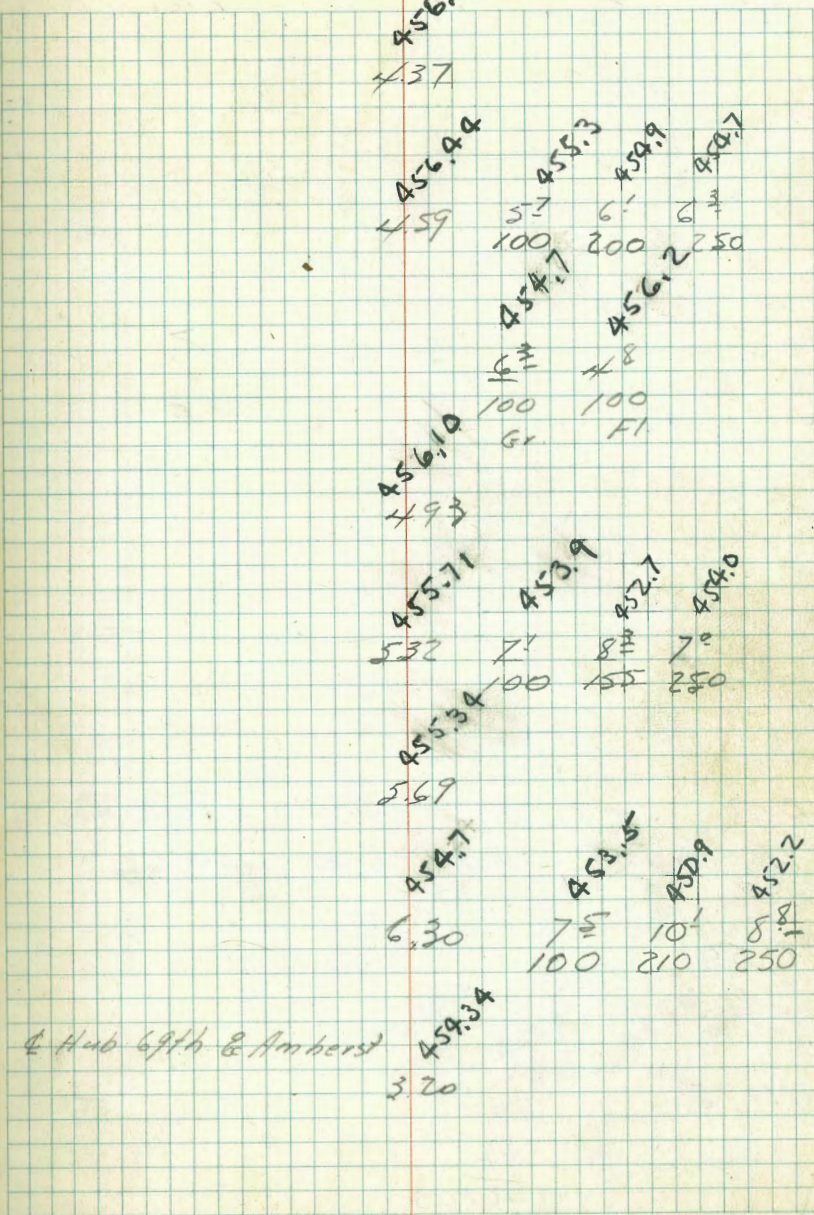
9+50

8+99.33 E. Line 69th St.

T.P. 7.15 461.03 3.66 453.88

8+69.33 @ 69th St.

457.34



Levels Proposed Sewer Blocks  
3, 6, & 9 La Mesa Colony Cont'd

Sta. + H.I. - Elev. B.M.

B.M. 3.65 456.76 456.75  
T.P. 5.79 460.41 6.41 454.62

12+50

11+95

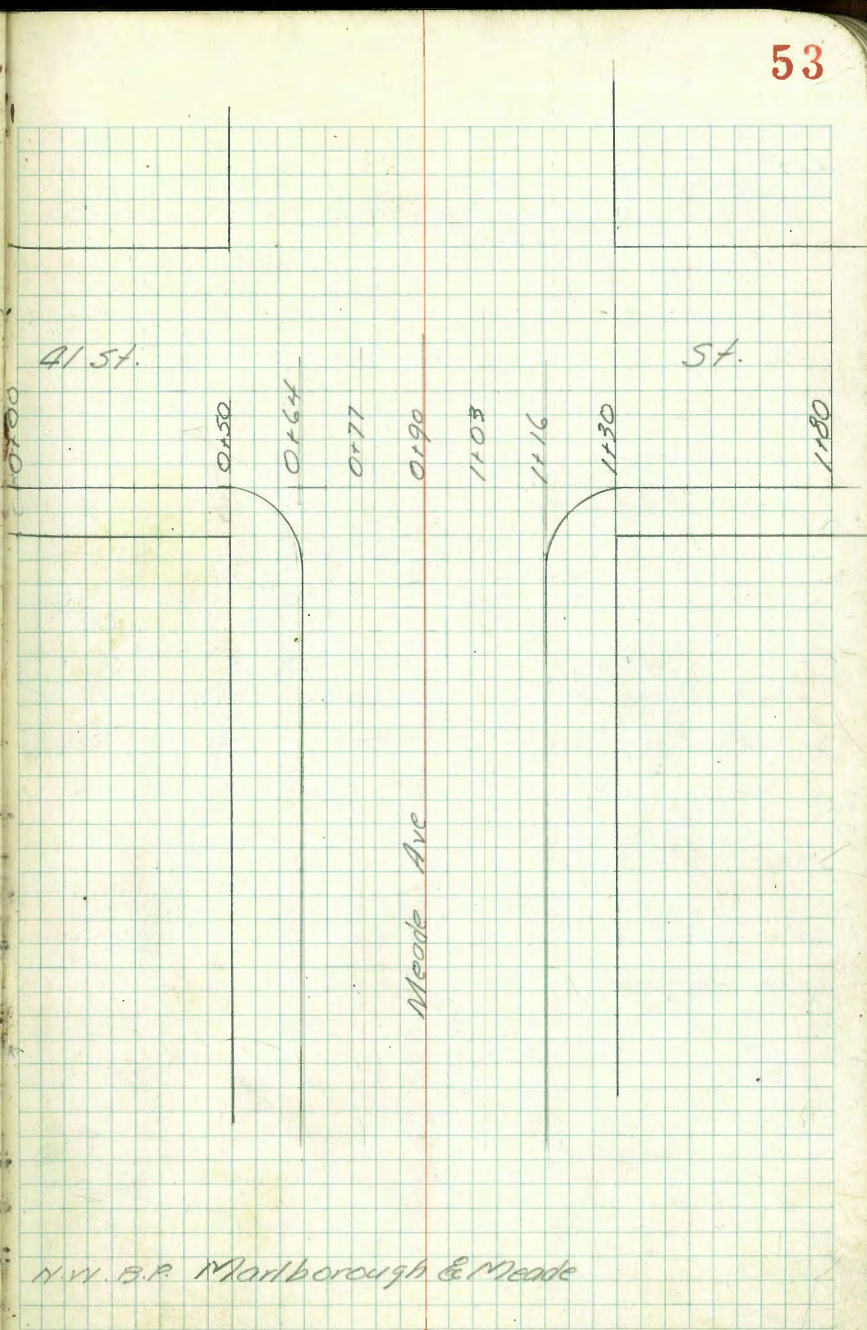
46103

SWBP 69th & El Cajon

456.99  
456.87  
456.55  
455.92  
455.70  
455.58  
455.20  
456.9  
H<sup>10</sup>  
H<sup>15</sup>  
H<sup>20</sup>  
H<sup>25</sup>  
H<sup>30</sup>  
H<sup>35</sup>  
H<sup>40</sup>  
H<sup>45</sup>  
H<sup>50</sup>  
H<sup>55</sup>  
H<sup>60</sup>  
H<sup>65</sup>  
H<sup>70</sup>  
H<sup>75</sup>  
H<sup>80</sup>  
H<sup>85</sup>  
H<sup>90</sup>  
H<sup>95</sup>  
H<sup>100</sup>  
H<sup>105</sup>  
H<sup>110</sup>  
H<sup>115</sup>  
H<sup>120</sup>  
H<sup>125</sup>  
H<sup>130</sup>  
H<sup>135</sup>  
H<sup>140</sup>  
H<sup>145</sup>  
H<sup>150</sup>  
H<sup>155</sup>  
H<sup>160</sup>  
H<sup>165</sup>  
H<sup>170</sup>  
H<sup>175</sup>  
H<sup>180</sup>  
H<sup>185</sup>  
H<sup>190</sup>  
H<sup>195</sup>  
H<sup>200</sup>  
H<sup>205</sup>  
H<sup>210</sup>  
H<sup>215</sup>  
H<sup>220</sup>  
H<sup>225</sup>  
H<sup>230</sup>  
H<sup>235</sup>  
H<sup>240</sup>  
H<sup>245</sup>  
H<sup>250</sup>  
Gt. Fl.

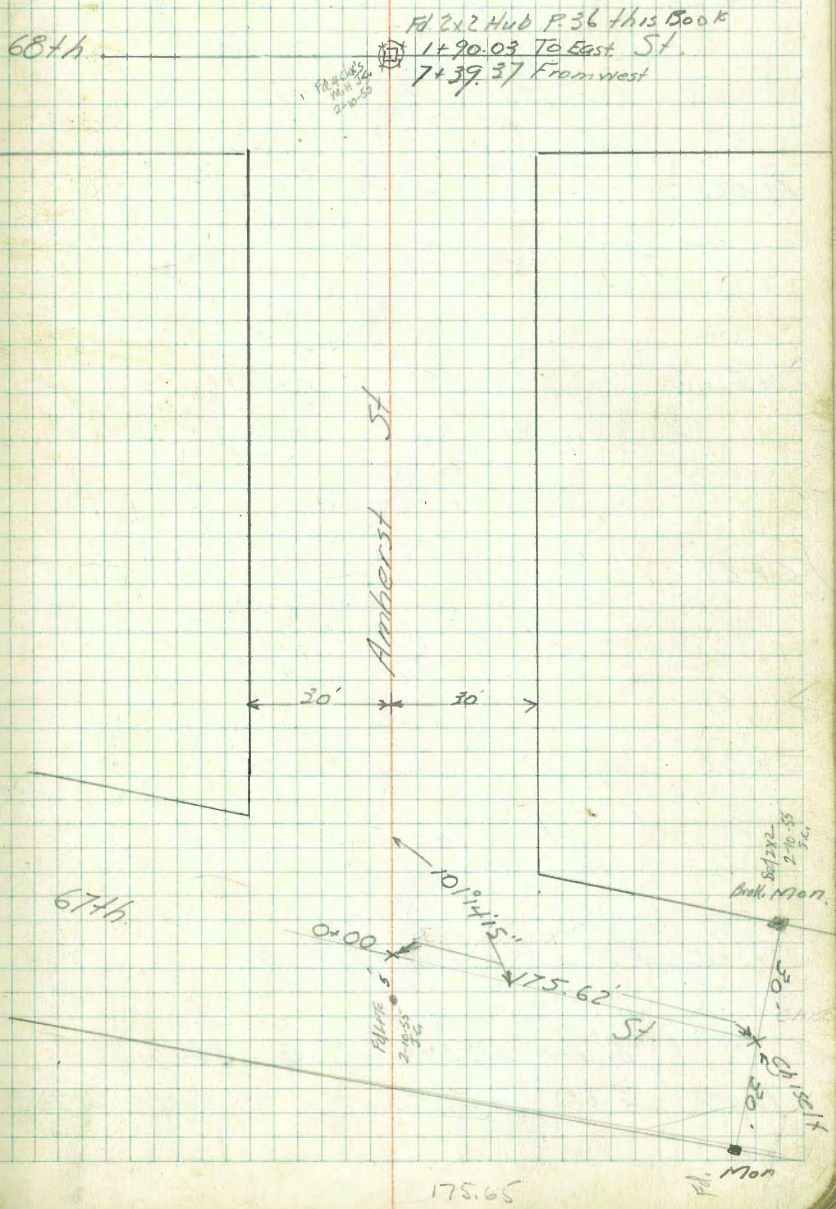
Hendricks Levels for Change in Dip  
 Moore across Meade St. on 41st St.  
 Sherman  
 July 1947

Sta.	+	H.I.	-	Elev. Grade	Elev. Existing Grade	Fills
B.M.		6.55				366.04
1180		6.01		366.58	366.58	0.0
1130		5.66		367.19	366.93	0.26
1116		5.55		367.21	367.04	0.17
1103		5.52		367.22	367.07	0.15
0190		5.45		367.24	367.14	0.10
0177		5.40		367.26	367.19	0.07
0164		5.37		367.27	367.22	0.05
0150		5.30		367.29	367.29	0.00
0100		5.29		367.30	367.30	0.00
B.M.	6.55	372.59				366.04



Hendricks Proposed Sewer Blocks 3, 6, & 9  
 Hardin La Mesa Colony, Amherst St.  
 Smith 67th to 68th St.  
 Worrell  
 W.O.# 31408  
 Aug. 11, 1947

Indexed  
 8-12-47 m2





Levels Proposed Sewer on  
Amberst St. 67th to 68th St.

Sta	+ H.I.	-	Elev	B.M.
1+00				
0+50				
0+21				
0+08	Edge of Conc. Reg Asp. Pav.			
0+00	@ Amberst @ 67th St			
	↓			
T.P.	8.24	453.14	12.60	444.90
B.M.	3.80	457.50		453.70

947.95	4484
5.9	1/16
946.28	
686	
945.07	
8.0	
944.80	
8.3	
944.96	
8.18	

S.W. B.P. 67th @ El Cajon

Levels proposed Sewer Amherst St  
67th St. to 68th St. Contd.

Sta.	+	H/I	-	Elev. B.M.
TP	5.45	455.68	2.91	450.23

4+00

3+50

3+00

2+50

2+00

1+50

453.14

2

450.14

449.99

449.78

449.34

448.78

448.40

449.8

447.6

Levels Proposed Sewer Amherst St.  
67th. to 68th. St. Cont'd.

Sta. + H.I. - Elev. -

7+00

6+50

6+00

5+50

5+00

4+50

455.68

451.16  
452  
451  
451.0

451.18  
451  
451

450.98  
450  
450  
449.7

450.80  
450  
450

450.68  
450  
450  
450.6

450.47  
450  
450

Levels proposed Sewer Amherst St  
67th St to 68th St

£

51.05

Sta + 4.1 - Elev BM

BM & Nail 4+00 3.95 451.73 451.79  
7139.37 & Amherst & 68th St  
45568

See P 49 This Book

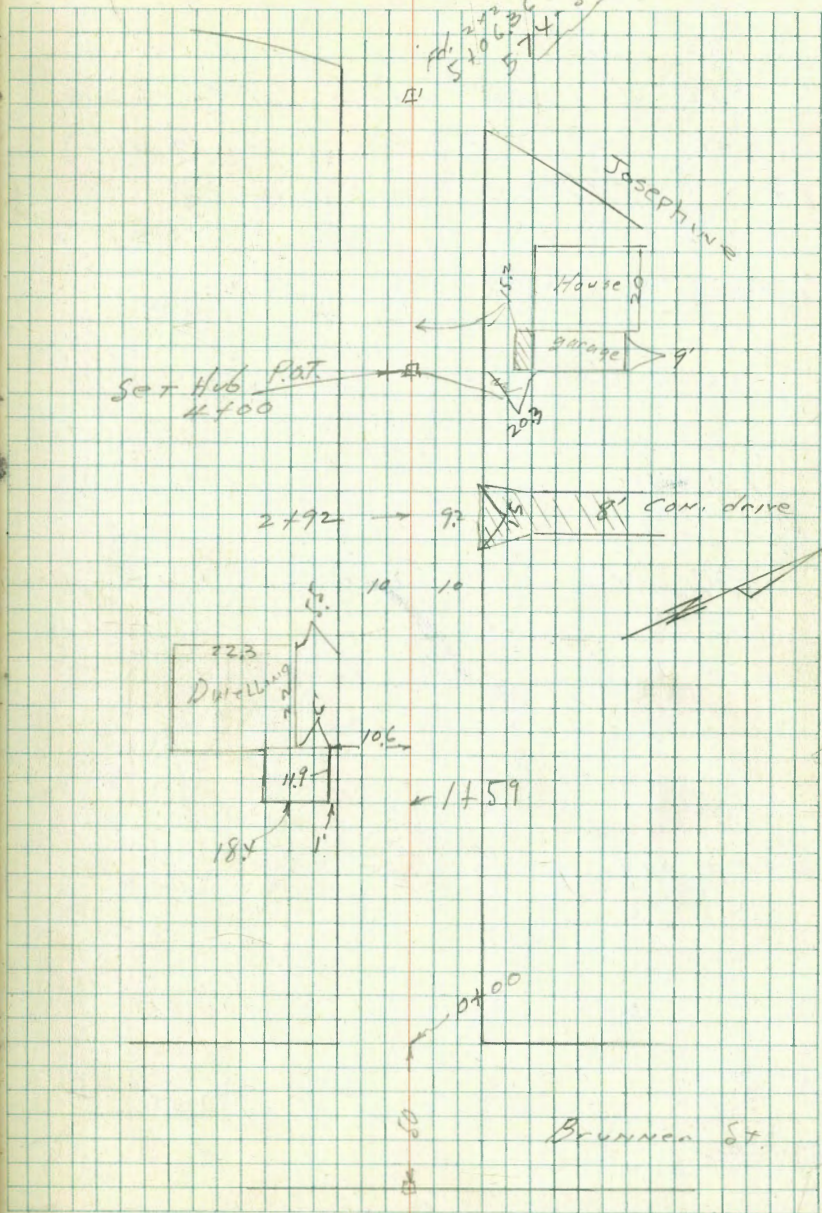
RE- Used alley  
Blk C Silver Terrace  
See sketch F.B. 574-52

Moore  
Begg  
Roberts  
9-17-47.

W.D. 31216

Indexed  
c.s.k.

59



1439 9.4 Lt. NW. Cor. Dwelling  
 +32 8.4 Lt N edge 'ix' Con. chimney  
 +12 8.4 Lt N edge 'xi' Con. chimney  
 +06 11.2 Rt. Beg. wire fence (2 wire)  
 1404 9.3 Lt N.E. Cor. of Dwelling

1400 9.2 Lt end wire fence

+95 10.4 Rt P.P. O.T. 2-7

+50

+37 8.2 Lt NW Cor chick shed & Beg. wire fence

+30 8.5 Lt N.E. Cor. chick shed

0400 W.L. Brunner

T.P. 937 152.02 0.33 142.65

BM. Hub 540636 12.66 142.98 130.32  
 574-52

LT

1439	9.4	146.8	147.0	146.7	147.4	147.9	149.6
+32	8.4	146.8	147.0	146.7	147.4	147.9	149.6
+12	8.4	146.8	147.0	146.7	147.4	147.9	149.6
+06	11.2	146.8	147.0	146.7	147.4	147.9	149.6
1404	9.3	146.8	147.0	146.7	147.4	147.9	149.6
1400	9.2	146.8	147.0	146.7	147.4	147.9	149.6
+95	10.4	146.8	147.0	146.7	147.4	147.9	149.6
+50		146.8	147.0	146.7	147.4	147.9	149.6
+37	8.2	146.8	147.0	146.7	147.4	147.9	149.6
+30	8.5	146.8	147.0	146.7	147.4	147.9	149.6
0400		146.8	147.0	146.7	147.4	147.9	149.6
T.P.	937	152.02	0.33	142.65	150.02		
BM. Hub	540636	12.66	142.98	130.32			
574-52							

2+92 ♀ 8' Con drive

2+76 10 Pt. end wire mesh fence

2+50

2+00 Beg. of wire mesh fence 10 Pt  
End 2 wire fence

1+97 ♀ 2.5 Cow walk

1+71

1+50

1+43 9.4 Lt ♀ 8' shed

152.02

140.3  
11.7  
20

141.9  
10.1  
10

142.2  
9.8  
8

142.6  
9.4  
8

144.05  
7.97  
9.2

144.7  
7.85  
10

145.30  
6.72  
20

61

141.0  
11.0  
20

142.5  
9.5  
10

142.8  
9.2  
7

143.0  
9.0  
10

144.6  
7.4  
10

145.8  
6.2  
10

142.3  
9.7  
18

143.3  
8.7  
10

144.0  
8.0  
10

145.5  
6.5  
10

146.7  
5.7  
20

143.34  
8.5  
12.8

145.9  
5.1  
10.6  
Floor  
EL.

144.8  
7.1  
10

145.4  
6.1  
10

146.6  
5.2  
10

148.0  
4.0  
20

145.0  
7.0  
15

145.6  
6.4  
10

146.5  
5.5  
10

146.3  
5.7  
10

147.8  
5.2  
7

148.0  
4.0  
10

149.2  
2.8  
20

152.02

4+30

4+04.5 20.3 ft <sup>2</sup> comparison  
Six garage 9' wide

4+00

3+75

T.P. 1.85 144.37 9.50 142.52

3+50 9.8 ft Beg. Rail fence  
end wire fence

3+40

3+09 10.1 ft Beg wire fence

3+00 9.8 ft P.P. J.P.A. 5036  
tol. 82692 H

152.02

6

8

17

62

$\frac{57}{20} \overline{) 1382.4}$

$\frac{4.8}{10} \overline{) 46.6}$

$\frac{4.2}{10} \overline{) 140.2}$

Rail  
Fence  
 $\frac{9.7}{10}$

$\frac{3.1}{10} \overline{) 140.8}$

$\frac{3.5}{20} \overline{) 141.0}$

127  
152  
apron

142.60

143.33

1.00  
20.3  
Six garage  
comparison

$\frac{57}{20} \overline{) 137.4}$

$\frac{4.8}{10} \overline{) 40.8}$

$\frac{4.2}{10} \overline{) 141.6}$

Rail  
Fence  
 $\frac{9.7}{10}$

$\frac{3.1}{10} \overline{) 142.4}$

$\frac{3.5}{20} \overline{) 142.4}$

$\frac{57}{20} \overline{) 100.0}$

$\frac{4.8}{10} \overline{) 141.3}$

$\frac{4.2}{10} \overline{) 141.9}$

$\frac{1.3}{9} \overline{) 145.7}$

$\frac{0.9}{10} \overline{) 143.5}$

$\frac{0.0}{20} \overline{) 144.4}$

144.37

$\frac{11.7}{18} \overline{) 214.08}$

$\frac{10.4}{10} \overline{) 111.6}$

$\frac{9.9}{8} \overline{) 142.1}$

$\frac{9.7}{10} \overline{) 142.3}$

$\frac{8.6}{7} \overline{) 145.4}$

$\frac{8.2}{10} \overline{) 143.5}$

$\frac{7.2}{20} \overline{) 144.8}$

152.02



check to orig. B.M. 818 130.32 130.32

5406.36 E.L. Josephine

4790 9.7 P.P. J.P. 5603 82691-H

4789 9.7 P.T. end Rail fence

T.P. 1.98 138.50 7.85 136.52

4760

144.37

		9.1289		
		9.6		
		Siding		
		alley		
		1321		
		6.4		
		20		
		10.1		
		133.0		
		5.4		
		133.1		
		8.52		
		130.3		
		71		
		131.4		
		13.5.2		
		5.3		
		10		
		133.2		
		5.3		
		20		
		138.50		
		137.4		
		7.2		
		137.2		
		7.2		
		137.2		
		6.8		
		10		
		137.6		
		6.0		
		20		
		137.9		
		144.37		

Cross Section  
Alley BIK 188 Pacific Beach

W.O. 25001

12-12-47

Sommarmeyer  
W Moore  
Esherman

■ = Fd. Men. T.P. book #20

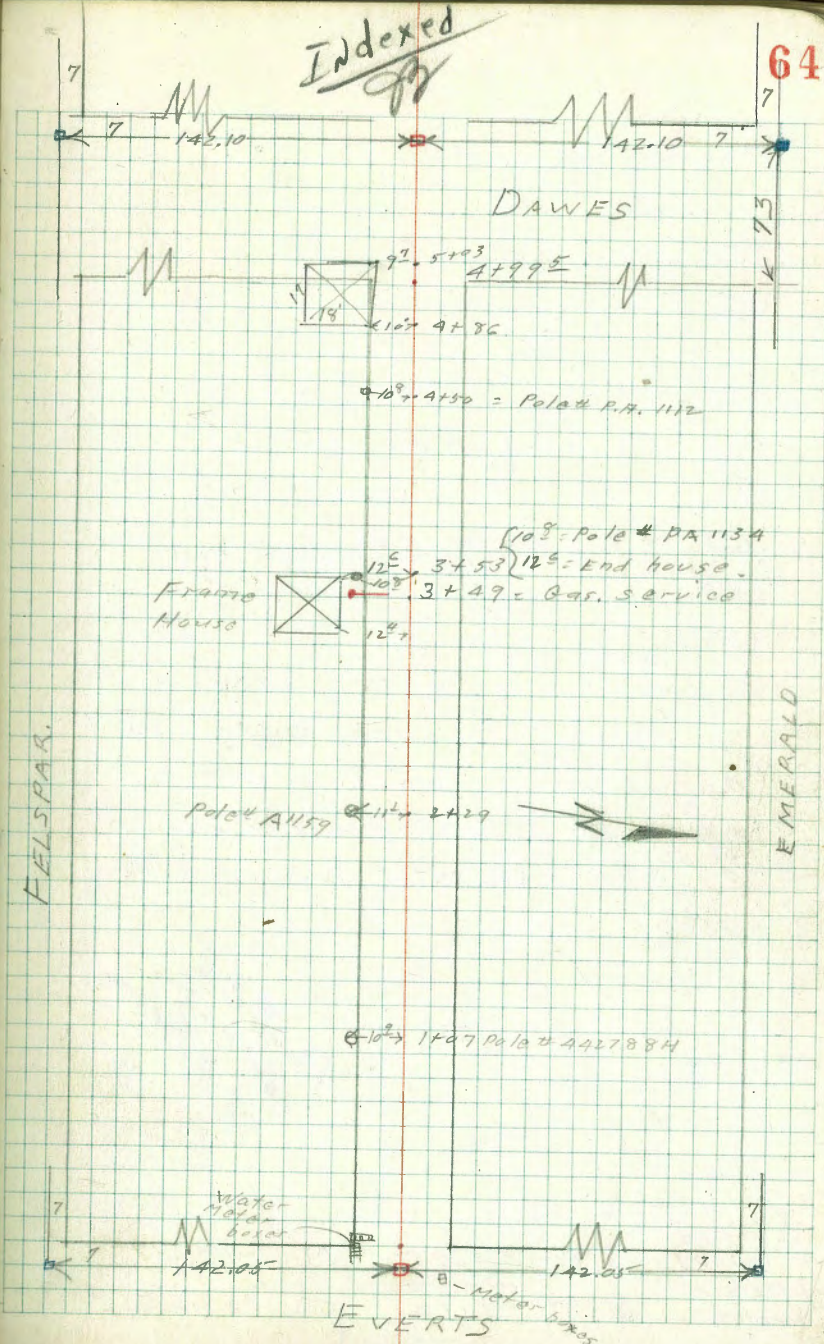
□ = Fd. Hub. v v v

◻ = Set Hub + disk

• = " Nail

Indexed  
JD

64



H1107  
BIK 188 P.B

65

1+07 10<sup>2</sup> Lt. = Pole # 442788M

1+00

0+50

0+49 11<sup>2</sup> Lt. = End same

0+33 11<sup>2</sup> Lt. = start board shed

0+25 10' Rt. = End wire fence  
7.5 Lt. = ctr. water meter box

0+01 9.5 Lt. = " " " "  
9.8 Lt. = " " " "

0+00

0-01 10<sup>2</sup> Rt. = start wire fence

0-01 10' Lt. = ctr. water meter box

0-03 10' Lt. = ctr. water meter box

0-04 10' Lt. = ctr. water meter box

0-08 8<sup>2</sup> Rt. = ctr. water meter box.

0-09 8<sup>2</sup> Rt. = ctr. meter box (water)

0-15

0-19

0-40 =  $\frac{1}{2}$  Everts

2 x 2 H4507

disk 0-07

Everts +

Garret

5.86 53.75<sup>✓</sup> 1.33 48.39

10.19 49.72<sup>✓</sup> - 39.53 N.W.R.R.

PROTECTED  
12-17-47  
F.M. Starbuck

47.0	48.0	48.2	48.4	48.9
$\frac{6.7}{50}$	$\frac{5.7}{10}$	5.5	$\frac{5.3}{10}$	$\frac{4.8}{50}$
	42.9	48.2	48.5	
	$\frac{5.8}{10}$	5.5	$\frac{5.2}{10}$	
46.9	47.7	48.5	48.9	49.1
$\frac{6.8}{100}$	$\frac{6.0}{50}$	$\frac{5.2}{10}$	4.8	$\frac{4.6}{10}$
				$\frac{4.1}{50}$
				$\frac{2.3}{100}$
47.1	48.0	48.9	49.8	51.5
$\frac{6.6}{100}$	$\frac{5.7}{50}$	4.8	$\frac{3.9}{50}$	$\frac{2.2}{100}$
	49.2	48.9	49.8	
	$\frac{5.5}{50}$	5.7	$\frac{4.7}{50}$	$\frac{3.8}{100}$
46.8	47.4	48.9	49.8	50.9
$\frac{6.9}{100}$	$\frac{6.1}{50}$	4.8	$\frac{3.9}{50}$	$\frac{2.8}{100}$

53.75<sup>✓</sup>

3+49 11<sup>2</sup>Lt. = Gas. Service riser  
 3+45 39¢ House  
 3+25 12<sup>4</sup>Lt. = start frame house  
 3+14 12<sup>4</sup>Lt. = End shed + start board Fence  
 3+04 12<sup>4</sup>Lt. = start. Frame shed  
 2+89 15<sup>2</sup>Lt. = End Gar. door.

85.5¢

2+82 15<sup>2</sup>Lt. = start Sing Gar. door  
 2+81<sup>5</sup> 11<sup>2</sup>Lt. = End same  
 2+53 11<sup>5</sup>Lt. = start lath fence  
 T.P. 3.33 49.76 7.32 46.43

2+50

2+29 11<sup>1</sup>Lt. = Pole # A1158  
 2+00 9<sup>2</sup>Lt. = End picket fence  
 1+98 9<sup>2</sup>Lt. = 3"x4" clothes line pole  
 9<sup>5</sup>Lt. = 3"x4" clothes<sup>vine</sup> pole  
 1+79 9<sup>2</sup>Lt. = 2<sup>5</sup> wide conc. walk

1+50 9<sup>2</sup>Lt. = start picket fence

53.75

46.0	46.0	46.1	46.2	46.4
3.71	3.8	3.7	3.6	3.4
15.3	15.2	10		10
Gar. Floor				
46.04	46.0	46.2	46.2	46.4
3.72	3.8	3.6	3.6	3.4
15.3	15.2	10		10
Gar. Floor				
			49.76	
	46.2			
	7.1			
	10			
		46.8		
		47.2		
		6.9		
		10		
46.0	47.51	47.3	47.7	47.7
6.90	6.44	6.4	6.0	6.0
30	7.9	7.8		10
87	walk			
walk				
	47.3			
	6.4			
	10			
		47.7		
		6.0		
				47.9
				10
				57.8
				10

53.75

5+03 9<sup>7</sup> Lt. = End Frame gar. + shed,  
 garage door  
 4+99<sup>5</sup> = E. line Dawes also approx ± 4' wide

4+92

4+86 10' Lt. = start Frame shed + garage  
 dirt floor

4+64 12<sup>1</sup> Lt. = ± double Gar. dirt floor

4+50 10<sup>8</sup> Lt. = pole # RA. 112

4+00

3+90

12<sup>6</sup> Lt. = End Frame house

3+53 10<sup>8</sup> Lt. = Back Edge Pole # RA 1134

49.76

42.8  
 $\frac{2.0}{10}$   
 Dirt floor  
 43.3  
 $\frac{6.5}{6}$   
 43.4  
 6.4  
 43.7  
 $\frac{6.1}{10}$   
 44.2  
 $\frac{5.6}{10}$

42.8  
 $\frac{2.0}{10}$   
 43.7  
 $\frac{6.1}{6}$   
 43.9  
 6.1  
 43.8  
 $\frac{6.0}{10}$

44.3  
 $\frac{5.5}{12.1}$   
 Approx EL.  
 Future Cont. floor  
 43.9  
 $\frac{5.3}{12}$   
 44.0  
 5.8  
 44.0  
 $\frac{5.8}{12}$   
 44.2  
 44.0  
 $\frac{5.18}{12}$

42.7  
 $\frac{2.1}{10}$   
 43.9  
 $\frac{5.9}{10}$   
 44.0  
 5.8  
 44.2  
 $\frac{5.6}{10}$   
 45.0  
 $\frac{4.8}{10}$

43.5  
 $\frac{6.3}{10}$   
 44.6  
 $\frac{5.2}{10}$   
 44.9  
 4.9  
 44.7  
 $\frac{5.1}{10}$   
 45.7  
 $\frac{4.3}{10}$

44.1  
 $\frac{5.7}{10}$   
 45.2  
 $\frac{4.6}{10}$   
 45.2  
 4.6  
 45.2  
 $\frac{4.6}{10}$   
 46.0  
 $\frac{3.8}{10}$

45.2  
 $\frac{4.6}{12.6}$   
 Approx.  
 Floor level  
 45.4  
 $\frac{4.4}{10}$   
 45.7  
 4.1  
 45.6  
 $\frac{4.2}{10}$   
 49.76

N.W.B.P.  
Dawas &  
Garnet. 8.31  $\frac{0.01}{32.54}$  - B.M. 32.55

TIP. 2.53 40.86 11.43 38.33

5+39<sup>5</sup> = £ Dawas

5+25

5+21

49.76

	$\frac{39.9}{9.9}$ <small>100</small>	$\frac{40.9}{8.9}$ <small>50</small>	$\frac{42.1}{11}$	$\frac{42.4}{7.4}$	$\frac{41.5}{7.4}$	$\frac{43.1}{6.7}$ <small>50</small>	$\frac{44.1}{5.7}$ <small>100</small>
	$\frac{39.5}{10.3}$ <small>100</small>	$\frac{40.5}{9.3}$ <small>50</small>	$\frac{41.6}{8.2}$ <small>50</small>	$\frac{41.7}{8.1}$	$\frac{41.8}{8.0}$ <small>10</small>	$\frac{42.6}{7.2}$ <small>50</small>	$\frac{43.7}{6.1}$ <small>100</small>
	$\frac{40.6}{8.2}$ <small>100</small>	$\frac{41.6}{8.2}$ <small>50</small>	$\frac{42.5}{7.3}$ <small>10.</small>	$\frac{42.0}{7.8}$	$\frac{42.4}{7.4}$ <small>10</small>	$\frac{44.2}{5.6}$ <small>50</small>	$\frac{45.0}{4.8}$ <small>100</small>

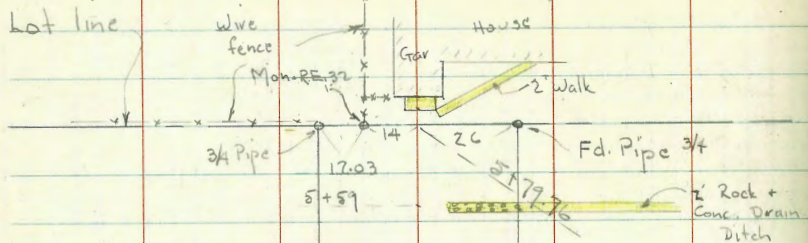
49.76

X-Section Missouri St from Lamont  
East to end at Lot Line

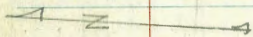
# 2169  
W.O. 25001

4-29-48  
Osborne  
Hardin  
Worrell  
Rorer

~~Indexed~~



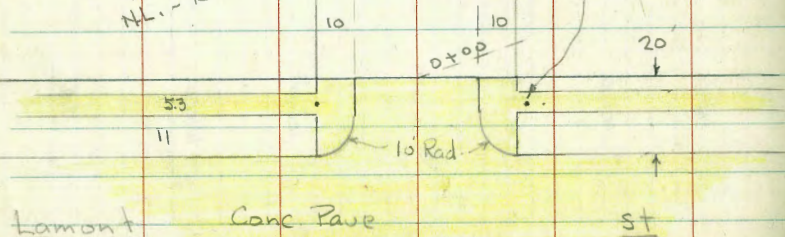
Lot 50



Fd. Tact on  
ML. - NG

Missouri

Fd. Tact 3' Back



X-Section Missouri - from Lamont E			
52' st.	- 10' cbs.	- Rough Graded.	
Rods around S.E. + N.E. Returns			
26' around	- 4 parts	- 6.5 each	- 10' Rad.
S.E. Ret.	-	<u>120.83</u>	
Req. - P.C.	- on SL Missouri	4.73	T = Top
		5.42	q = gut.
6.5 - N		4.59	T
		5.35	q
		4.57	T
		5.22	q
		4.59	T
		5.18	q
6.5 = end	- E.L. Lamont	4.54	T
		5.16	q
N.E. Ret.			
Req. - E.L. Lamont		3.94	T
		4.59	q
6.5		3.92	T
		4.58	q
		3.94	
		4.64	
	3.81	120.83	1.45
			117.02
B.M.	12.44	118.47	106.03

SW.P.  
Diamond  
+ Lamont.

<u>120.83</u>	
4.00	T
4.72	q
3.99	T
4.63	q
6.5 = end - P.C. - W.L. Missouri	
<u>120.83</u>	



Begin Reg. Sections of Missouri

1+50

1+00

0+75 = 15 W. of E. Doub Gar on Lt. - Conc. floor

0+50

0+485 = 121 Rt. = Nly. Pipe # P-1911

0+25

0+00 = E.L. Lamont = edge Conc. Pave

0-10 = E. cb.

0-40 = E. Lamont

117.01	117.01	117.01	117.01	117.01	117.01	117.01	117.01	117.01	117.01
116.89	116.89	116.89	116.89	116.89	116.89	116.89	116.89	116.89	116.89
116.84	116.84	116.84	116.84	116.84	116.84	116.84	116.84	116.84	116.84
116.80	116.80	116.80	116.80	116.80	116.80	116.80	116.80	116.80	116.80
116.04	116.04	116.04	116.04	116.04	116.04	116.04	116.04	116.04	116.04
115.91	115.91	115.91	115.91	115.91	115.91	115.91	115.91	115.91	115.91
115.57	115.57	115.57	115.57	115.57	115.57	115.57	115.57	115.57	115.57
115.47	115.47	115.47	115.47	115.47	115.47	115.47	115.47	115.47	115.47
116.10	116.10	116.10	116.10	116.10	116.10	116.10	116.10	116.10	116.10
116.29	116.29	116.29	116.29	116.29	116.29	116.29	116.29	116.29	116.29
116.45	116.45	116.45	116.45	116.45	116.45	116.45	116.45	116.45	116.45
117.03	117.03	117.03	117.03	117.03	117.03	117.03	117.03	117.03	117.03
117.13	117.13	117.13	117.13	117.13	117.13	117.13	117.13	117.13	117.13
118.03	118.03	118.03	118.03	118.03	118.03	118.03	118.03	118.03	118.03
116.53	116.53	116.53	116.53	116.53	116.53	116.53	116.53	116.53	116.53
115.23	115.23	115.23	115.23	115.23	115.23	115.23	115.23	115.23	115.23
113.93	113.93	113.93	113.93	113.93	113.93	113.93	113.93	113.93	113.93
114.73	114.73	114.73	114.73	114.73	114.73	114.73	114.73	114.73	114.73
119.28	119.28	119.28	119.28	119.28	119.28	119.28	119.28	119.28	119.28
118.31	118.31	118.31	118.31	118.31	118.31	118.31	118.31	118.31	118.31
117.23	117.23	117.23	117.23	117.23	117.23	117.23	117.23	117.23	117.23
116.43	116.43	116.43	116.43	116.43	116.43	116.43	116.43	116.43	116.43
115.53	115.53	115.53	115.53	115.53	115.53	115.53	115.53	115.53	115.53
114.63	114.63	114.63	114.63	114.63	114.63	114.63	114.63	114.63	114.63
113.03	113.03	113.03	113.03	113.03	113.03	113.03	113.03	113.03	113.03
112.33	112.33	112.33	112.33	112.33	112.33	112.33	112.33	112.33	112.33
114.73	114.73	114.73	114.73	114.73	114.73	114.73	114.73	114.73	114.73
115.53	115.53	115.53	115.53	115.53	115.53	115.53	115.53	115.53	115.53
116.43	116.43	116.43	116.43	116.43	116.43	116.43	116.43	116.43	116.43
117.23	117.23	117.23	117.23	117.23	117.23	117.23	117.23	117.23	117.23
118.31	118.31	118.31	118.31	118.31	118.31	118.31	118.31	118.31	118.31
119.28	119.28	119.28	119.28	119.28	119.28	119.28	119.28	119.28	119.28
120.83	120.83	120.83	120.83	120.83	120.83	120.83	120.83	120.83	120.83

120.83 - P. 70

4+75

4+50

4+03.5 - 17.4 Rt - Uly. P. pole # P-1983

4+00

2+78.5 - 9.8 Lt -  $\pm$  11' Conc. Dr. to Gar-way back

T.P. 2.13 114.35 8.71 112.12

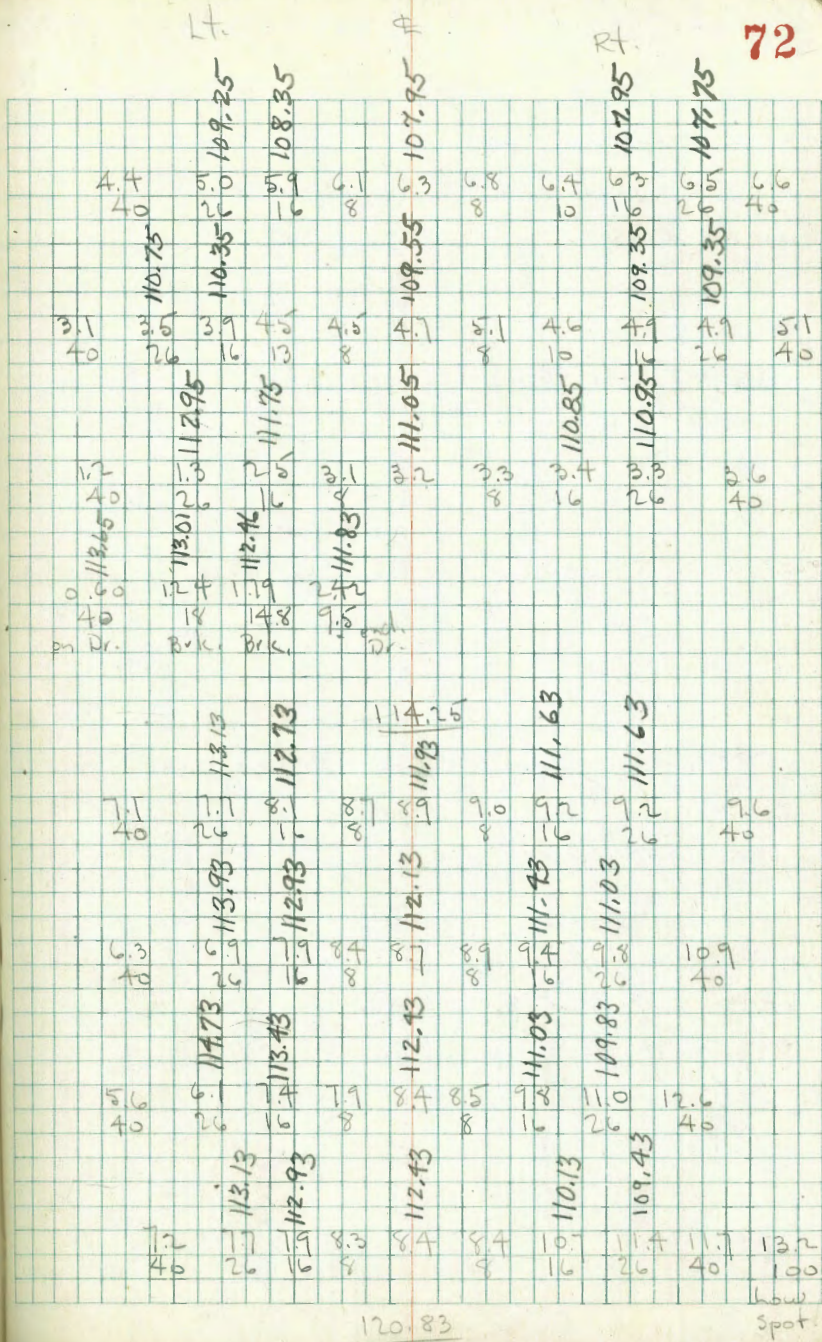
2+50

2+00

2+66.5 - 13.4 Rt - Uly. P. pole # P' 1957

2+50

2+00



Spot

check BM - Sw. 7 ct. Chalcedony + admont 126.00 1.43 126.31 126.00  
 10.72 127.74 117.02 = T.P. - P.70  
 check Starting BM. 12.40 106.04  
 T.P. 5.96 118.44 1.77 112.48  
 Floor of House (in sketch) 10.90

5+87 = Door Sing. Gar

5+84 = Wly. Conc. apron to Sing. Gar. = See sketch

5+81 = 19' Rt = ± 8" Elm

5+79.76 = 'end Missouri' st. at lot line

5+59 = 8' Rt. = N. end of 2' Rock + Conc. Drain ditch

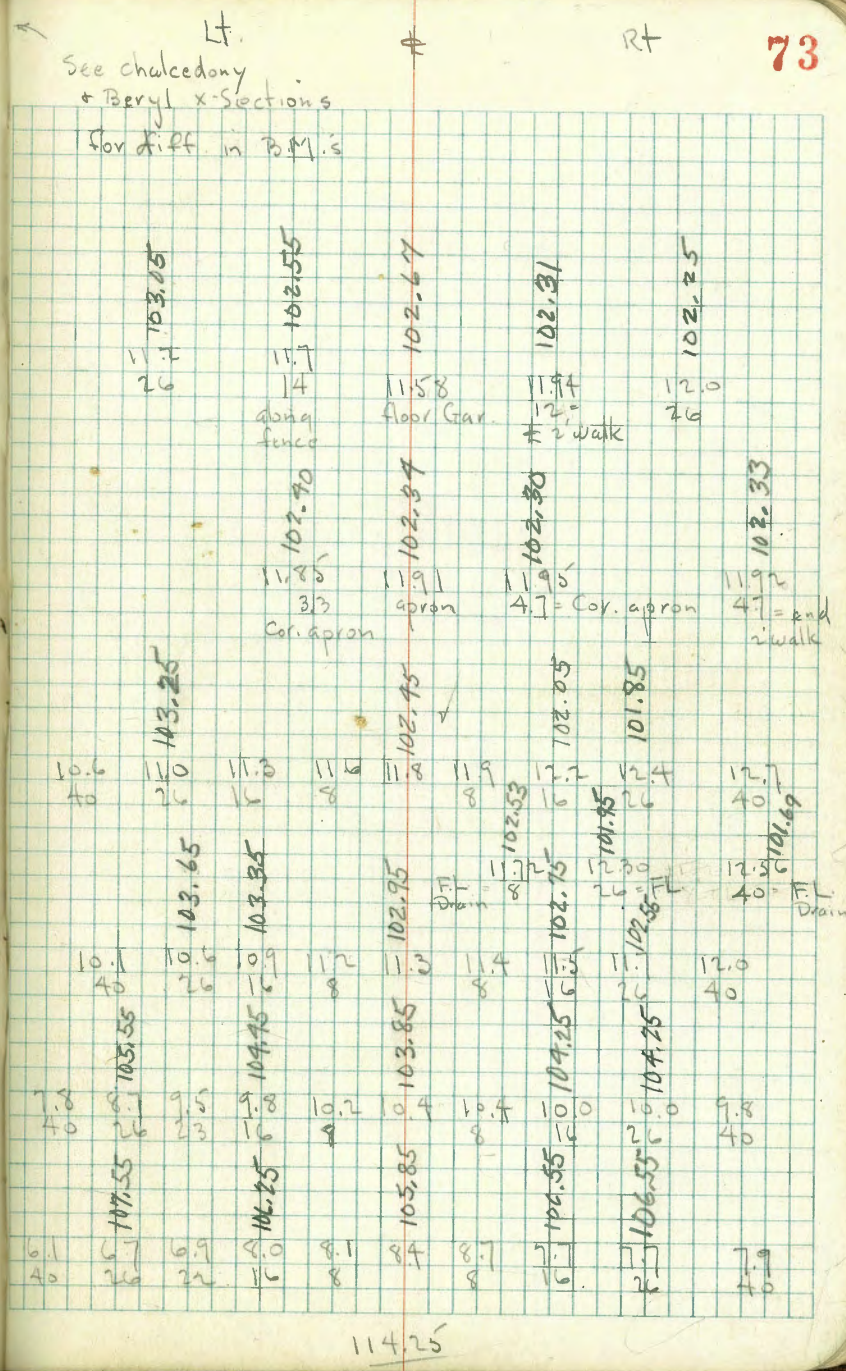
5+50

5+49 = 25' Rt. = ± 12" Palm

5+30 = 7.5 Rt. = Beg. Lawn

5+25

5+00



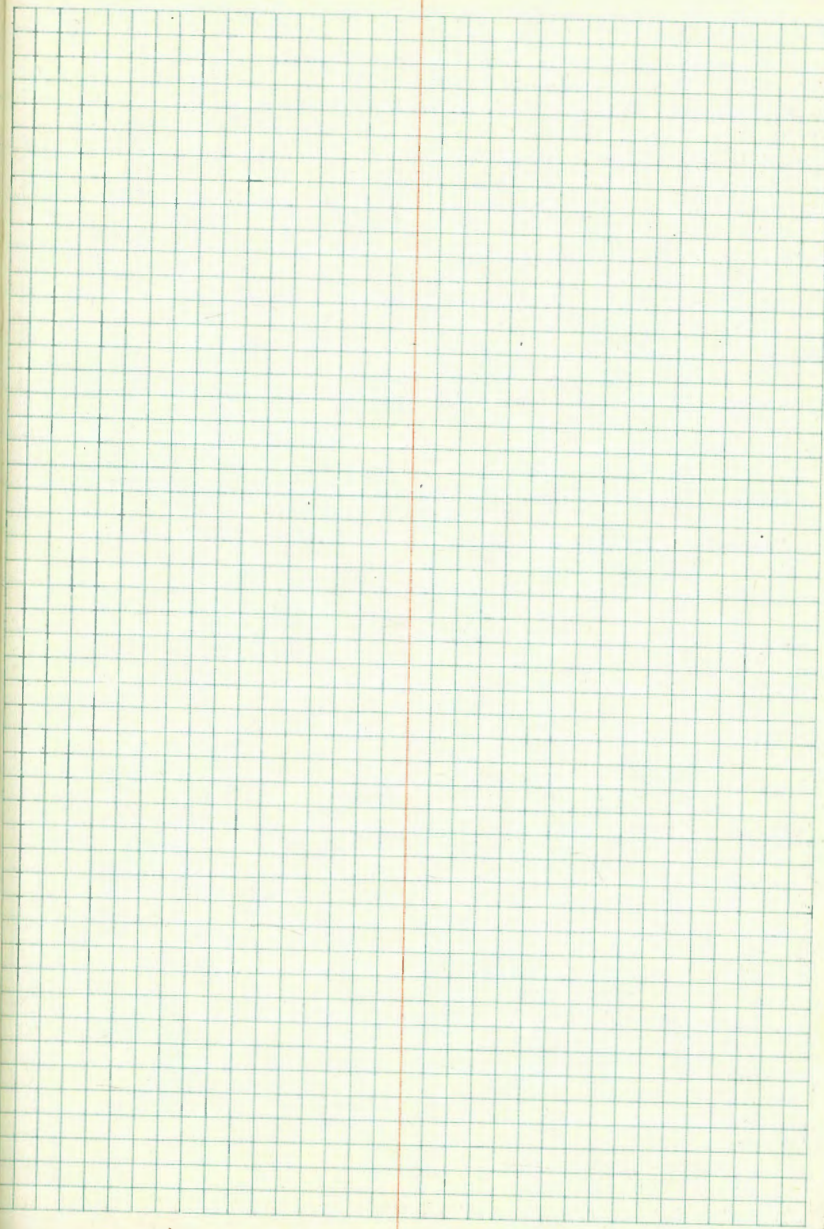
A page with horizontal blue lines and four vertical red margin lines, creating a ledger-style layout. The page is otherwise blank.

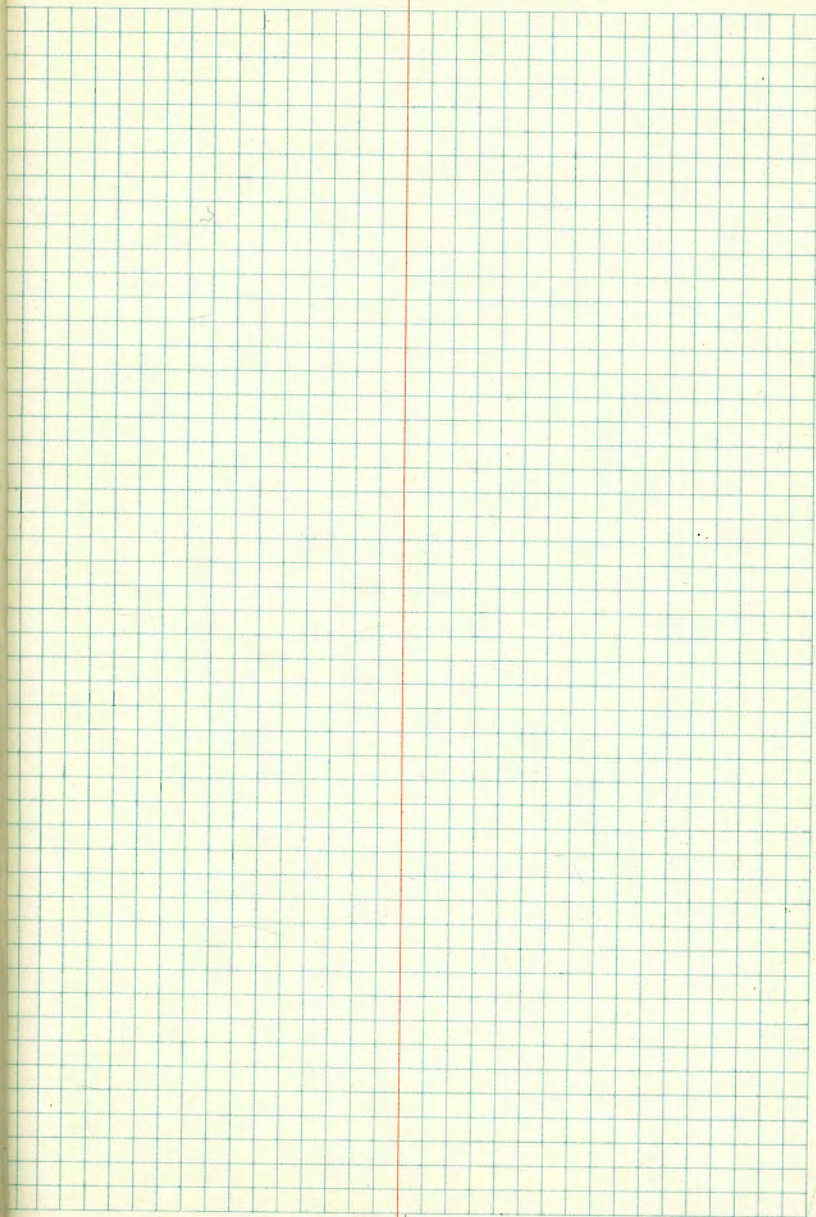
A page with a full grid of blue lines and a vertical red margin line on the left side. The page is otherwise blank.

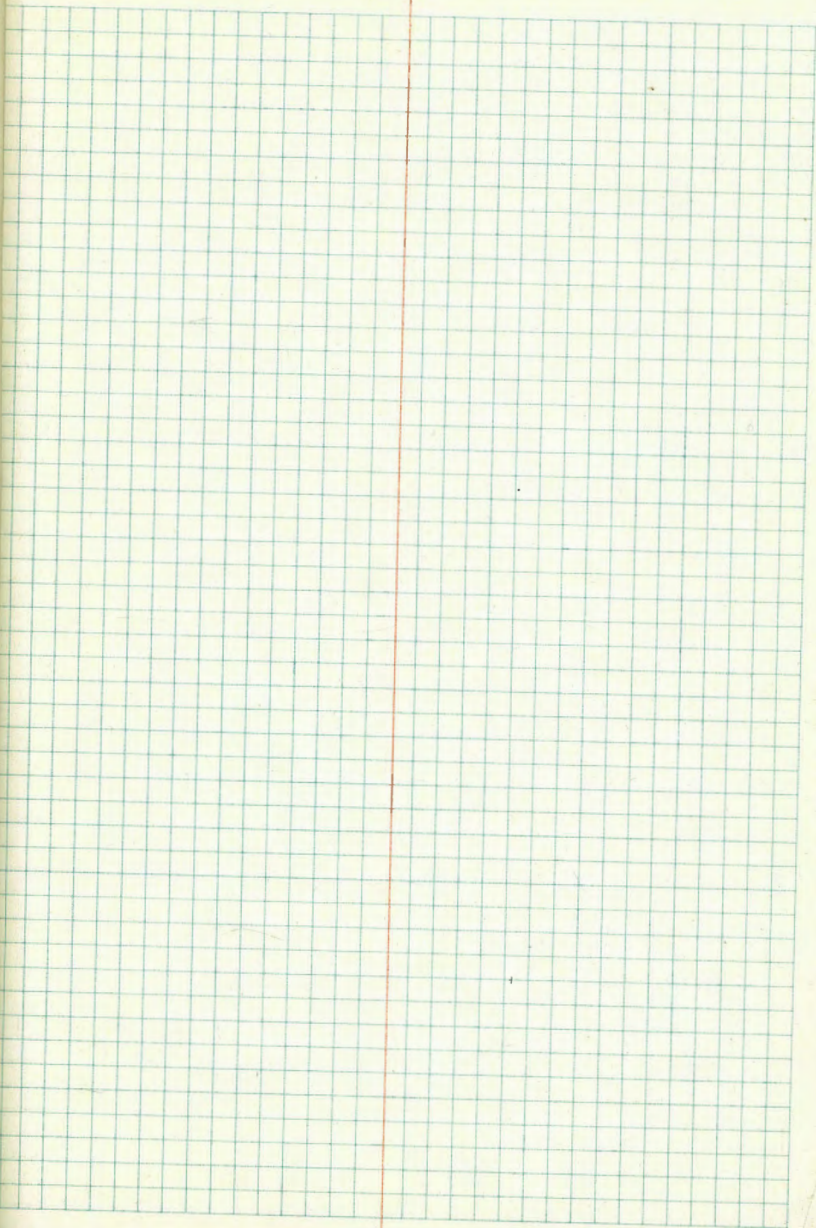
111

A ledger page with horizontal blue lines and vertical red lines forming columns. There are 5 vertical red lines, creating 6 columns of varying widths. The columns are approximately 10%, 15%, 20%, 20%, 20%, and 15% of the page width from left to right.

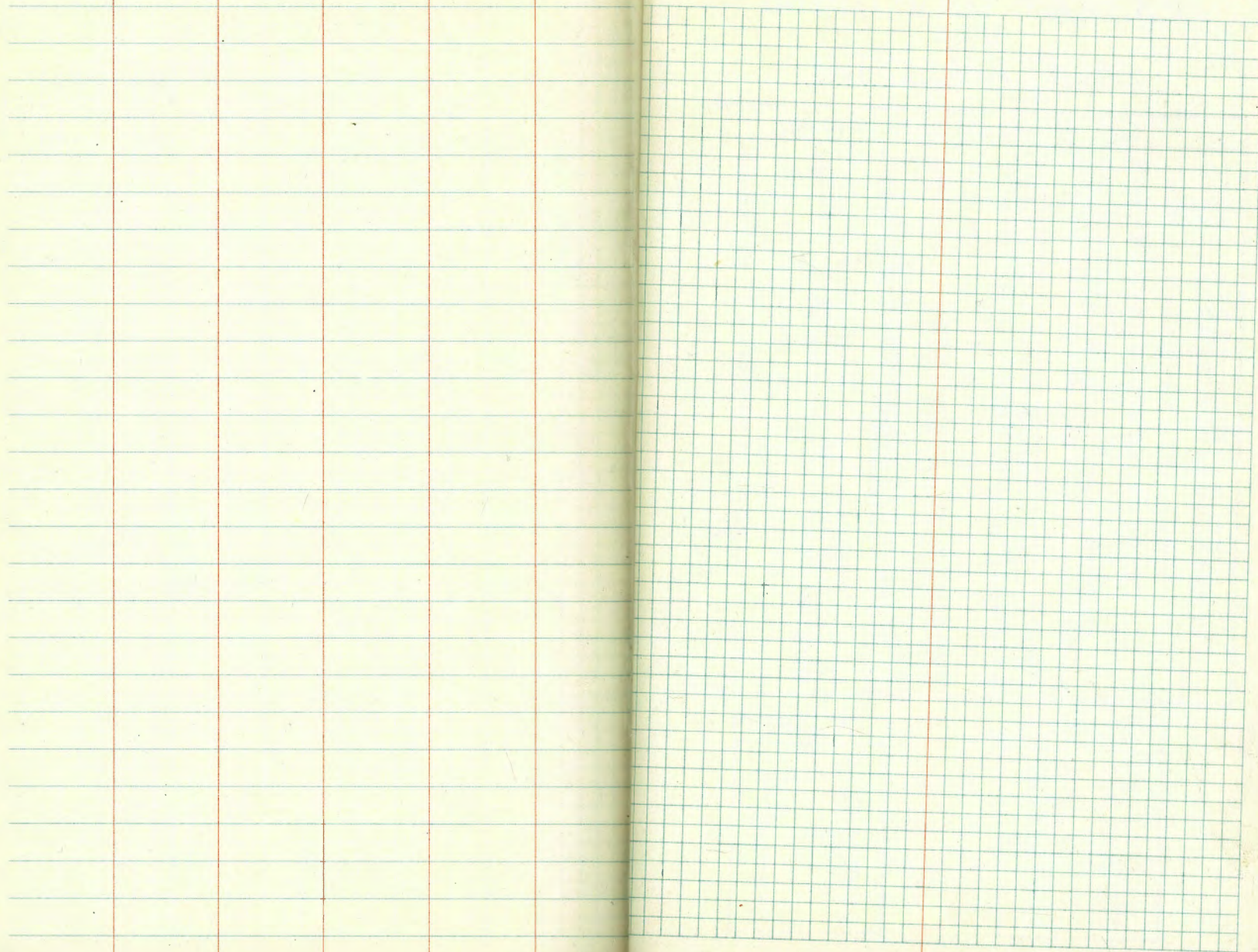
A graph page with a grid pattern. The grid consists of 20 columns and 20 rows of small squares. A vertical red line is drawn on the right side of the grid, approximately 15 columns from the left edge.











# IMPROVED TABLES AND INFORMATION

159  
119

## HORIZONTAL STADIA CORRECTIONS

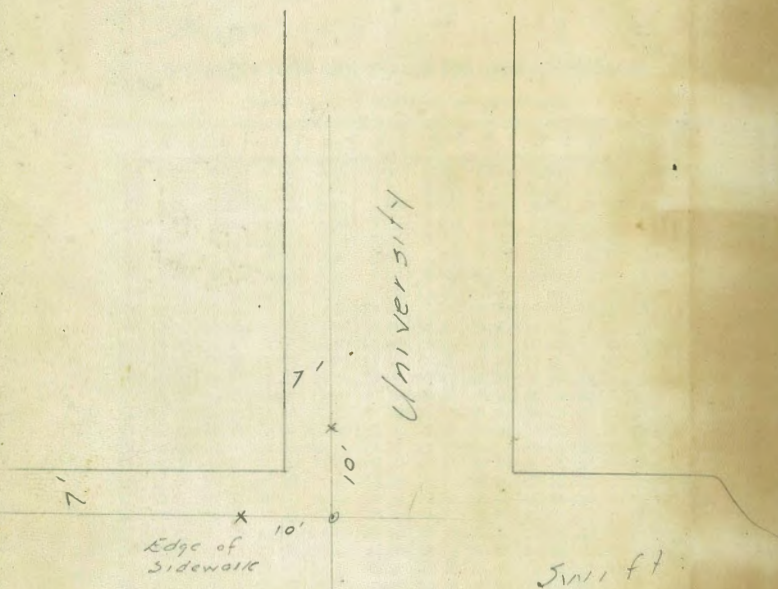
2°—00' — 0.1	21°—00' — 12.8	33°—00' — 29.7
3°—00' — 0.3	21°—30' — 13.4	33°—15' — 30.1
4°—00' — 0.5	22°—00' — 14.0	33°—30' — 30.5
5°—00' — 0.8	22°—30' — 14.7	33°—45' — 30.9
6°—00' — 1.1	23°—00' — 15.3	34°—00' — 31.3
7°—00' — 1.5	23°—30' — 15.9	34°—15' — 31.7
8°—00' — 1.9	24°—00' — 16.5	34°—30' — 32.1
9°—00' — 2.5	24°—30' — 17.2	34°—45' — 32.5
10°—00' — 3.0	25°—00' — 17.9	35°—00' — 32.9
10°—30' — 3.3	25°—30' — 18.6	35°—15' — 33.3
11°—00' — 3.6	26°—00' — 19.2	35°—30' — 33.7
11°—30' — 4.0	26°—30' — 19.9	35°—45' — 34.1
12°—00' — 4.3	27°—00' — 20.6	36°—00' — 34.6
12°—30' — 4.7	27°—30' — 21.3	36°—15' — 35.0
13°—00' — 5.1	28°—00' — 22.0	36°—30' — 35.4
13°—30' — 5.5	28°—30' — 22.8	36°—45' — 35.8
14°—00' — 5.9	29°—00' — 23.5	37°—00' — 36.2
14°—30' — 6.3	29°—30' — 24.3	37°—15' — 36.6
15°—00' — 6.7	30°—00' — 25.0	37°—30' — 37.1
15°—30' — 7.2	30°—15' — 25.4	37°—45' — 37.5
16°—00' — 7.6	30°—30' — 25.8	38°—00' — 37.9
16°—30' — 8.1	30°—45' — 26.2	38°—15' — 38.3
17°—00' — 8.5	31°—00' — 26.5	38°—30' — 38.7
17°—30' — 9.0	31°—15' — 26.9	38°—45' — 39.1
18°—00' — 9.5	31°—30' — 27.3	39°—00' — 39.6
18°—30' — 10.1	31°—45' — 27.7	39°—15' — 40.0
19°—00' — 10.6	32°—00' — 28.1	39°—30' — 40.5
19°—30' — 11.2	32°—15' — 28.5	
20°—00' — 11.7	32°—30' — 28.9	
20°—30' — 12.3	32°—45' — 29.3	

### Chains to Feet

1 .....	66
2 .....	132
3 .....	198
4 .....	264
5 .....	330
6 .....	396
7 .....	462
8 .....	528
9 .....	594
10 .....	660

### Feet to Chains

100 ....	1.515
200 ....	3.030
300 ....	4.545
400 ....	6.060
500 ....	7.575
600 ....	9.090
700 ....	10.606
800 ....	12.121
900 ....	13.636
1,000 ....	15.151



106.03  
12.44  
 118.47  
1.45  
 117.02  
3.81  
 120.83  
8.71  
 112.12  
2.13  
 114.25

126.00

32.57  
 NW

17  
 82

91.42

42.91  
18.25  
 61.16

369.67  
175.62  
 194.05

451.8  
65  
 458.3  
457.6  
 7