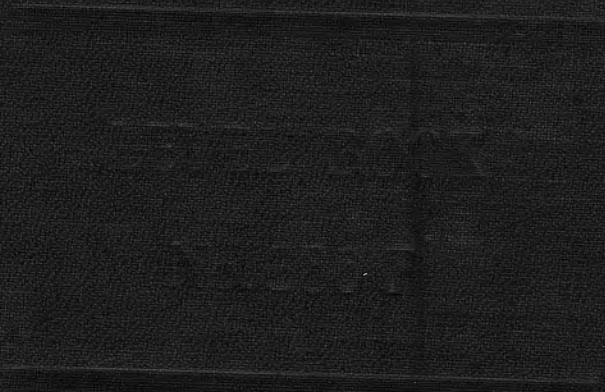


1770



MICROFILMED

DEC 29 1964

MADE IN U. S. A.

3,83  
11 21  
15,14

**Our Leather Bound Engineers Note Books  
are carried in the following rulings:**

- |                                     |                                                                                                                 |
|-------------------------------------|-----------------------------------------------------------------------------------------------------------------|
| <b>No. 380 LEVEL BOOK.</b>          | Left and Right Hand Page the same as Left Hand Page of this Book.                                               |
| <b>No. 382 FIELD BOOK.</b>          | Left Hand Page as in this Book, Right Hand Page 4x4 to the inch, Center Line Red.                               |
| <b>No. 384 MINING TRANSIT BOOK.</b> | Left Hand Page as in this Book, Right Hand Page 8x8 to the inch, Center Line Red.                               |
| <b>No. 385 FIELD BOOK.</b>          | Left Hand Page as in this Book, Right Hand Page 8 vertical and 4 horizontal lines to the inch, Center Line Red. |

We also carry the Note Books listed above, bound in extra strong Fabri-Hide (otherwise the same quality of book,) which can be furnished at a somewhat lower price.

In ordering Fabri-Hide covered books, add the letter "F" to catalog number.

**THE FREDERICK POST CO.**

*ENGINEERING and DRAFTING SUPPLIES*

**P. O. Box 803**

**CHICAGO**

Culvert detail - Myrtle - 1  
X- Sec. Myrtle - Fairmount - 45<sup>th</sup> 4 - 18  
X- Sec. 44<sup>th</sup>, Thorn to Myrtle 19 - 25  
X- Sec. 20' Alley in BIK. 1, City Heights Annex #2 26 - 31  
X- Sec. 20' Alley, BIK. 10, City Heights Annex #2 32 - 39  
X- Sec. 20' Alley, BIK. 9, City Heights Annex #2 40 - 45  
X- Sec. Thorn - 100' ea. way from 44<sup>th</sup> 46 - 47  
X- Sec. 41<sup>st</sup> - S. of Dwight to N. Landis 48 - 50  
X- Sec. 41<sup>st</sup> - 4 Also sections Dwight 51 - 59  
X- Sec. Landis - Alley E 41<sup>st</sup> to Alley W 41<sup>st</sup> 60 - 61  
X- Sec. 20' Alley in BIK. 75, Univ. Hts 62 - 66  
X- Sec. 20' Alley in BIK. 101, Univ. Hts. 67 - 73  
Easement, lots 422 + 423, Unit #3, Talmadge Park 74 -  
Culvert Monroe + Aldine Drive 75 - 77

Detail of Culverts

Curb face



N



12" Cor. Iron Pipe Culvert

8" Cor. I Culvert

Myrtle st.

Fairmount

6" Conc Walls



6" Conc Walls

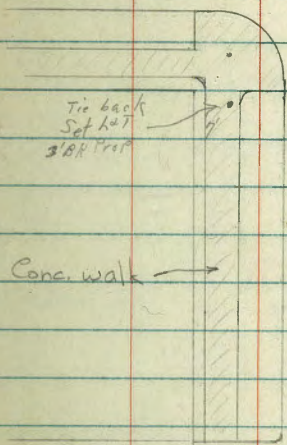


Walls slope down to end

Conc floor

44<sup>±</sup>

st 60' wide



Tie back Set A+T 3/8" Prof

Conc. walk

st

2+7/2.50

4.3

6'

7'

5.5'

Dirt - Graded

1" reb. broken out

52'

7'

5.5'

4'

Myrtle

14'

Ø 100

12" Cor Iron

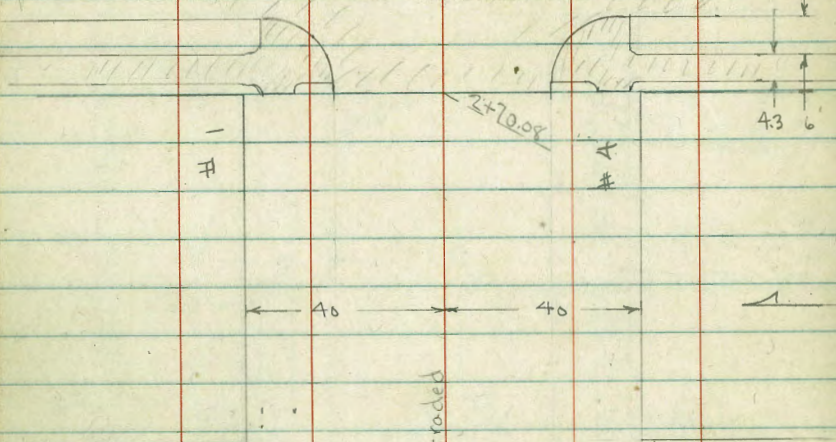
See Detail

Fairmount

4' 3.2'

Highland Ave = 65 wide

A.C. Pave



20' Alley

Dirt-Graded

cutb in poor Cond.

0+84

Setback 7' in back 3' BK Prop.

See Detail for Inlets - P.3

44'±

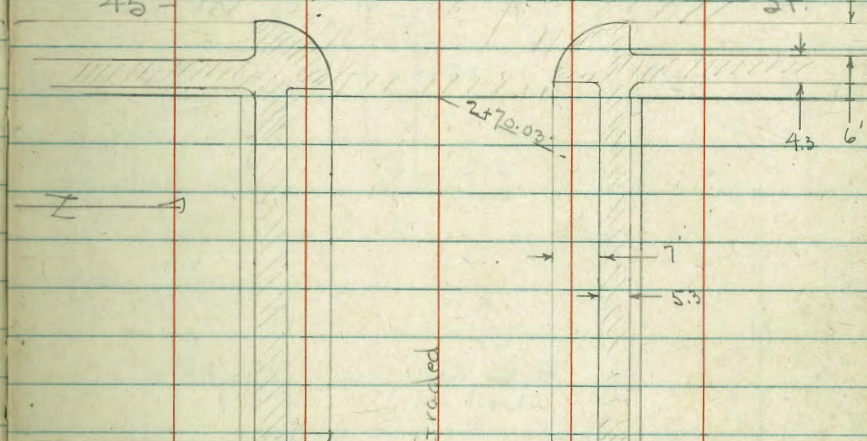
St. - 60 wide

45th

A.C. Pave

60' wide

St.



Dirt-Graded

cutb out

cutb out

20' Alley

#2

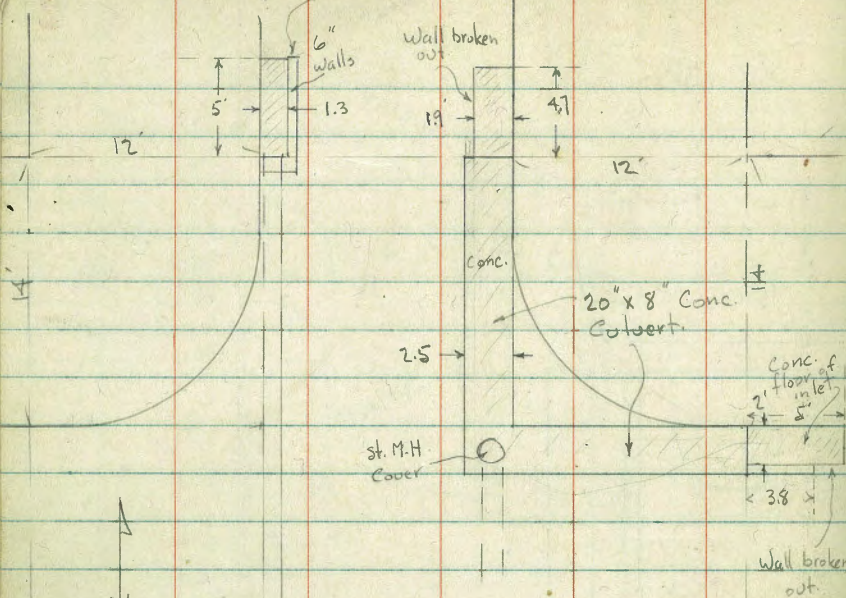
#3

A.C. Pave

Highland Ave 65 wide

4.3 6'

Walls slope down to end.

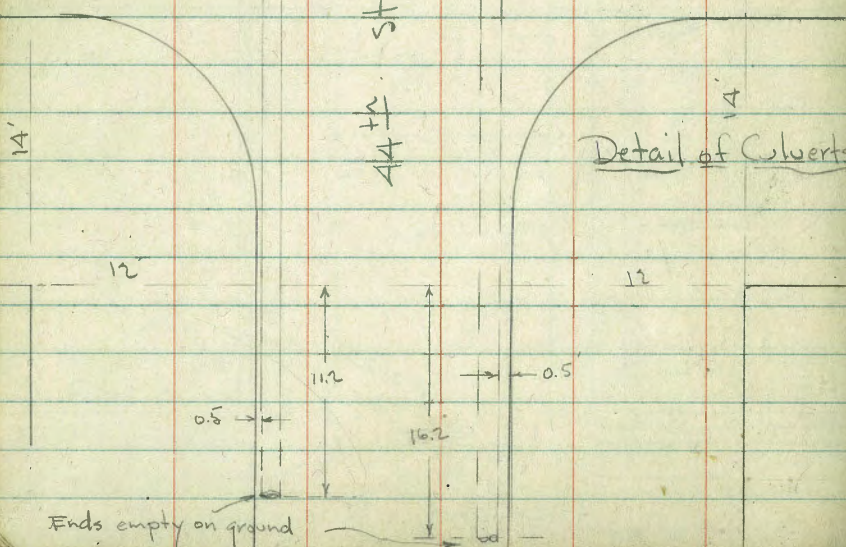


Notes Reduced -  
5-14-47 - Whevry

12" Cor. Iron Culvert

Myrtle

Detail of Culverts



Ends empty on ground

X-Section Myrtle St. - from #  
Fairmount to 50' E. of E.L. 45<sup>th</sup>  
80' st. 14' cbs. - Curbs + walk in most  
of way - See sketch - Dirt - Graded  
# 1054 - W.O. 31272  
0+00 = E.L. Fairmount Ave. = edge of AC pave

0-10 = F. curb

0-20

0-30 = # Fairmount - on AC Paving

T.P. # 3	3.09	336.30		333.21	
check B.M. NW Fairmount + Dwight	1.41	340.90		340.89	
T.P. # 3	9.10	342.31	3.49	333.21	
T.P. # 2	2.38	336.70	6.24	334.32	
Set. B.M. SW. 7' ct Myrtle + Highland	4.32	336.24			
T.P. # 1	8.21	340.56	1.20	332.35	NW Thorn
B.M.	10.96	333.55		322.59	+ Highland.

Lt.	#	Rt
322.65	321.70	322.08
321.74	321.15	329.74
330.65		
367	4.60	4.22
257	13	13
Top	got =	got =
cb.	FL 8" pipe	FL 8" pipe
323.52	322.68	321.78
323.02	322.58	322.46
278	362	452
90	44.7	40
Top	Topcb	got =
got	got =	got =
	end inlet	FL inlet
322.35	322.46	322.35
331.96	331.65	331.30
4.24	4.65	5.00
13	13	26
got =	got =	got =
Top	Top	Top
FL 12" pipe	FL 12" pipe	FL 12" pipe
329.22	330.49	329.17
7.08	5.81	7.13
40	40	44.7
got =	got =	got =
Top	Topcb	got =
FL 12" pipe	FL 12" pipe	FL 12" pipe
328.16	328.16	328.16
8.14	8.14	7.57
90	90	90
got =	got =	got =
Top	Top	Top
FL 12" pipe	FL 12" pipe	FL 12" pipe
333.35	332.56	332.32
2.92	3.74	3.98
90	40	26
333.34	332.53	332.23
2.96	3.72	4.07
90	40	26
331.66	330.96	330.47
4.64	5.34	5.83
26	26	40
328.65	328.65	328.65
7.65	7.65	7.65
90	90	90
331.59	330.96	330.61
4.71	5.34	5.69
26	26	40
329.06	329.06	329.06
7.24	7.24	7.24
90	90	90

Lt R Rt

1+47.2 = E. Side Alley

333.51	333.17	332.5	332.7	332.5	332.0	331.5	331.89	332.03
279	3.13	3.8	3.6	3.8	4.3	4.8	4.41	4.27
40	25.7	25	13		13	26.3	26.3	40
Top & gut end Ret.	Top cb 2 Rad. Ret.	gut				gut	Top cb 2 Rad. Ret. (Poor Cond)	Top & gut end Ret.

1+27.2 = W side 20' Alley

333.25	333.08	332.4	332.5	332.2	331.7	331.3	331.48	331.6	331.83
3.05	3.22	3.9	3.8	4.1	4.6	5.0	4.82	4.7	4.47
40	25.7	25.7	13		13	26.3	26.3	40	40
Top cb & gut end Ret.	Top-2 Rad Ret.	gut				gut	Top cb 2 Rad. Ret. (Poor Cond)	Top cb end Ret.	Top cb end Ret.

1+00  
0+82 = E 12' Dirt Drive on Lt. - curb broken out

333.00	332.98	332.5	332.3	332.1	331.5	331.0	331.55	
3.30	3.32	3.8	4.0	4.2	4.8	5.3	4.75	
33 on edge walk	25.8	25.8	13		13	26.3	26.3	
	Top	gut				gut	Top	

0+75

332.90	332.3	332.3	332.0	331.4	330.8	331.30
3.40	4.0	4.0	4.3	4.9	5.5	5.00
25.7	25.7	13		13	26.3	26.3
Top	gut				gut	Top

0+50

332.74	332.1	332.2	332.0	331.3	330.6	331.13
3.51	4.2	4.1	4.3	5.0	5.7	5.17
25.7	25.7	13		13	26.3	26.3
Top	gut				gut	Top

0+25

332.76	331.9	332.0	331.8	331.1	330.4	330.88
3.54	4.4	4.3	4.5	5.2	5.9	5.42
25.6	25.6	13		13	26.4	26.4
Top	gut				gut	Top

0+04.7 = opp ends of curb inlets

332.65	331.86	331.9	331.8	331.2	329.35	330.67
3.67	4.44	4.4	4.5	5.1	6.45	5.63
25.7	25.7	13		13	26.3	26.3
Top cb	gut = FL end inlet				gut = FL end inlet	Top cb

336.30



30' E. = #

12' E. = W. cb. - See Sections of 44<sup>th</sup> for Culvert.

2+72.50 = W.L. 44<sup>th</sup>

2+35

2+00

1+92 = 9' Conc. Dr. on Lt.

1+75

Lt.

+

Rt.

333.62	333.6	333.2	333.2	333.2	333.0	332.6
2.68	2.7	3.1	3.1	3.1	3.3	3.7
40	26	13		13	26	40
edge pave						

333.99	332.34	333.0	333.1	333.2	333.1	332.8	332.3	332.90
2.81	3.96	3.3	3.2	3.1	3.2	3.5	4.0	3.40
40	40	26	13		13	26	40	40
Top cb.	gut. fl.	Conc. Culvert					gut.	Top cb.

333.40	332.9	332.9	333.2	332.9	332.5	332.91
2.90	3.4	3.4	3.1	3.4	3.8	3.39
25.8	25.8	13		13	26.1	26.1
Top	gut.				gut.	Top

333.29	332.8	333.0	333.0	332.7	332.1	332.60
3.01	3.5	3.3	3.3	3.6	4.2	3.64
25.8	25.8	13		13	26.2	26.2
Top	gut.				gut.	Top

333.26	332.7	332.9	332.8	332.4	331.8	332.24
2.06	3.6	3.4	3.5	3.9	4.5	4.06
25.7	25.7	13		13	26.2	26.2
Top	gut.				gut.	Top

333.49	332.73					
2.81	3.57					
33	25.8					
walk	gut.					

333.14	332.5	332.7	332.7	332.1	331.5	332.04
3.16	3.8	3.6	3.6	4.2	4.8	4.26
25.8	25.8	13		13	26.2	26.2
Top.	gut.				gut.	Top

336.30

0+50

these sections Reversed - Wherry -

333.59 Lt.	333.1	333.6	333.8	333.5	333.9 Rt.	334.07
596	6.5	6.0	5.8	6.1	6.2	5.48
26 Top	26 gut.			13	25.8 gut.	25.8 Top

0+25

333.34	333.1	333.3	333.4	333.3	333.2	333.78
6.21	6.5	6.3	6.2	6.3	6.4	5.77
26.1 Top	26.1 gut.	13		13	25.8 gut.	25.8 Top

2+05 = opp end Conc. inlet

332.53	332.58	332.2	332.2	333.0	332.8	332.11
6.02	6.97	6.4	6.4	6.6	6.8	6.44
25.9 Top	9.1 = F.L. inlet			13	26	26

60' E = E.L. 44' = 0+00 ahead

333.48	332.39	333.49	333.3	333.3	333.1	332.9	333.05
6.07	7.16	6.06	6.3	6.3	6.5	6.7	6.50
25.8 Top cb.	25.8 gut.	23.5 Cor. Conc.	13		13	26 gut.	26 Top

F.L. Conc. Culvert 339.55

T.P. 6.02 339.55 2.77 333.53

48' E. = E. cb. + E. side of Conc. Top

333.45	332.29	333.56	333.55	333.2	333.3	333.1	332.8	332.4	332.90
2.85	4.01	2.74	2.75	3.1	3.0	3.2	3.5	3.9	3.40
40 Top cb.	40 gut. F.L. Conc. Culvert	26 edge Conc.	23.5 edge Conc. Top	13		13	26 gut.	40 Top cb.	40

46.75 E. = 4" M.H. for Cleanout

4.15 = flow line - 20"x8" Culvert + beg. 12" Cor. Iron Pipe  
24.7" E. M.H.

45.5' E. = 2.5' out. from E. cb. = W. side 2.5' Conc. Top of 20" x 8" Culvert.

333.03	333.55
2.87	2.75
40 N. end Top	23.5 Cor. Conc.

336.30



53' E = E.cb

42.75

32.5 E = #

22.25 E

12' E = W.cb.

T.P. on BM. 7.28 343.52 3.31 336.24

(Wly 1' of pave in poor Cond.)

2+70.08 = W.L. Highland Ave. edge A.C. pave

2+67-273 Rt = P. pole # 1449

2+35

337.08 6.44 40 Top	336.67 Lt. 6.85 40 put	336.57 6.95 26	336.50 7.02 13	336.56 7.02 13	336.38 7.14 13	336.21 Rt. 7.31 26	336.05 7.47 40 put	336.59 6.87 40 Top
336.97 6.55 40	336.81 6.71 26	336.71 6.81 13	336.66 6.86 13	336.65 6.87 13	336.61 6.91 26	336.52 7.00 40		

337.12 6.40 40	336.88 6.64 26	336.80 6.72 13	336.74 6.78 13	336.68 6.84 13	336.64 6.88 26	336.53 6.99 40
----------------------	----------------------	----------------------	----------------------	----------------------	----------------------	----------------------

336.70 6.82 40	336.46 7.06 26	336.35 7.17 13	336.27 7.25 13	336.37 7.15 13	336.23 7.29 26	336.11 7.41 40
----------------------	----------------------	----------------------	----------------------	----------------------	----------------------	----------------------

336.55 6.97 40 Top	336.21 7.31 40 put	336.08 7.44 26	335.98 7.54 13	335.95 7.57 13	335.81 7.71 13	335.74 7.78 26	335.57 7.95 40	336.01 7.43 40
-----------------------------	-----------------------------	----------------------	----------------------	----------------------	----------------------	----------------------	----------------------	----------------------

343.52

336.7 2.9 40 Cor. Ret	336.63 2.92 39.3 Top	336.29 3.26 25.8 Top	335.98 3.57 25.8 put	335.99 3.56 13 end Ret.	336.21 3.34	336.05 3.50 13	335.77 3.78 25.9 put	336.06 3.49 25.9 Top	336.30 3.26 39.3 Cor. Ret	335.9 3.7 40 end Ret.
--------------------------------	-------------------------------	-------------------------------	-------------------------------	----------------------------------	----------------	----------------------	-------------------------------	-------------------------------	------------------------------------	--------------------------------

336.6 3.0 40	336.2 3.4 28	335.4 4.2 25	335.4 4.2 13	335.5 4.1	335.3 4.3 13	335.0 4.6 26	335.7 3.9 28	335.5 4.1 40
--------------------	--------------------	--------------------	--------------------	--------------	--------------------	--------------------	--------------------	--------------------

339.55



30' E = #

	LT.					RT
	340.51	340.37	340.12			339.91
	3.71 40	3.85 26	3.97 13	4.10	4.19 13	4.31 26
						4.45 40

21' E.

	340.45	340.39	340.10			339.80
	3.77 40	3.83 26	3.97 13	4.12	4.26 13	4.42 26
						4.60 40

12' E = w. cb.

	340.42	340.13	340.11	340.12	339.99	339.19	339.62
	3.80 40 Top	4.09 40 gut	4.11 26	4.10 13	4.23	4.39 13	4.71 26
						5.03 40 gut	4.41 40 Top

T.P. # 6    4.34    344.22    3.64    339.88

2+70.03 = w.l. 45<sup>th</sup> - edge AC. pave

	340.35	339.76	339.89	344.22	339.96	339.82	339.23	339.86
	3.17 25.9 Top	3.76 25.9 gut	3.63 13	3.56	3.70 13	4.29 13	25.9 gut	3.66 25.9 Top

2+68 - E 4' Broken cb. on Rt.

2+52 - 1' Broken cb. on Lt.

2+35

	339.82	339.1	339.3	339.5	339.2	338.7	339.40
	3.70 25.8 Top	4.4 25.8 gut	4.2 13	4.0	4.3 13	4.8 25.9 gut	4.12 25.9 Top

2+00

	339.44	338.7	338.9	339.0	338.7	338.2	339.07
	4.08 25.8 Top	4.8 25.8 gut	4.6 13	4.5	4.8 13	5.3 26 gut	4.45 26 Top

1+79 = # 11' Conc. Dr. on Lt. Rods on 1+75

1+75

	338.32	338.65	338.7	338.9	338.6	338.1	338.73
	4.20 33 on walk	4.87 25.8 gut-on Drive	4.8 13	4.6	4.9 13	5.4 26 gut	4.79 26 Top

343.52

0+50 = end

60' E = E.L. 45<sup>±</sup> - 0+00 ahead

48' E = E cb.

39' E.

LT

RT

338.89

5.09	5.52	5.25	5.33	5.64	6.00	5.62
26	26	13		13	26	26
Top	gut				gut	Top

339.71

4.36	4.97	4.57	4.51	4.69	5.09	4.82
26	26	13		13	25.9	25.9
Top	gut				gut	Top

339.81      339.45      339.52      339.70

4.41	4.77	4.70	4.57	4.52	4.71	5.10	5.31	4.76
40	40	26	13		13	26	40	40
Top	gut						gut	Top

340.16      340.03      339.95      339.71      339.56

4.06	4.19	4.24	4.27	4.36	4.51	4.66
40	26	13		13	26	40

344.22

Sections - 100' N. + S. of Prop. lines  
of Myrtle - on 45<sup>th</sup>

Lt = W

Rt = E.

⊕

1+00 = 100' N. = end

2.57	3.09	2.61	2.46	2.81	3.71	3.11
18	18	9		9	18	18
Top	gut				gut	Top

0+50

3.19	3.73	3.23	3.15	3.56	4.32	3.77
18	18	9		9	18	18
Top	gut				gut	Top

0+00 = N.L. Myrtle

3.80	4.09	3.77	3.71	4.06	4.37	4.41
18	18	9		9	18	18
Top	gut				gut	Top

Going North

Lt = E

⊕ For Rads  
Below

Rt = W

1+00 = 100' S. = end

6.42	7.04	6.43	6.15	6.38	6.84	6.34
18	18	9		9	18	18
Top	gut				gut	Top

0+50

5.54	6.14	5.52	5.24	5.44	5.94	5.46
18	18	9		9	18	18
Top	gut				gut	Top

0+00 = S.L. Myrtle

4.76	5.31	4.66	4.44	4.60	5.03	4.41
18	18	9		9	18	18
Top	gut				gut	Top

Going South

344.22 P. 12



Rods Around Returns at N.W. + S.W.  
Corners - Myrtle + 45<sup>th</sup>

344.22 - P 12

N.W. Ret. - 22' around	4 parts	5.5' each.
N. end - N.L. Myrtle + Wch. 45 <sup>th</sup>	3.79	Top
	4.09	gut
S.S.S	3.81	Top
	4.10	gut
S.S	3.80	Top
	4.17	gut
S.S	3.84	Top
	4.29	gut.
S.S = W. end - W.L. 45 <sup>th</sup>	3.83	Top
	4.43	gut
<hr/>		
S.W. Ret. - 22' around	4 parts	- 5.5
W. end - W.L. 45 <sup>th</sup> + Sch Myrtle	4.35	Top
	4.96	gut
S.S.E	4.44	Top
	4.78	gut
S.S	4.37	Top
	4.87	gut
S.S	4.40	Top
	4.91	gut.
S.S = S. end - S.L. Myrtle	4.42	Top
	5.04	gut

Sections - 100' N. + S. of Prop lines  
of Myrtle - on Highland

Lt. = W

Rt. = E.

1+00 = 100' N. = end

3.07	3.61	2.72	2.25	2.54	3.28	2.69
20.5	20.5	10.25		10.25	20.5	20.5
Top	gut				gut	Top

0+50

3.93	4.43	3.51	3.07	3.34	3.99	3.40
20.5	20.5	10.25		10.25	20.5	20.5
Top	gut				gut	Top

0+00 = N.L. Myrtle  
Going North

4.93	5.14	4.70	4.26	4.41	4.70	4.30
20.5	20.5	10.25		10.25	20.5	20.5
Top	gut				gut	Top

Lt. = E

Rt. = W

1+00 = 100' S. = End.

6.96	7.58	6.93	6.75	7.12	8.05	7.44
20.5	20.5	10.25		10.25	20.5	20.5
Top	gut				gut	Top

0+50

5.87	6.46	5.80	5.65	6.05	6.86	6.30
20.5	20.5	10.25		10.25	20.5	20.5
Top	gut				gut	Top

0+00 = S.L. Myrtle  
B.M. 5.15 341.39  
Going South

336.24 sw 7 ct.  
Highland +  
Myrtle

4.73	5.35	4.89	4.85	5.25	5.84	5.31
20.5	20.5	10.25		10.25	20.5	20.5
Top	gut		341.39		gut	Top

Rods around Returns at Myrtle +  
Highland

341.39 - P. 15

N.W. Ret = No. 1 - See sketch - 22' ground - 4 parts - 5.5

W. end = N. cb Myrtle + W.L. Highland 5.10

5.41

Top  
gut

S.S.E 5.01

Top

5.37

gut

S.S 4.86

Top

5.28

gut

S.S 4.82

Top

5.21

gut

S.S = N. end = N.L. Myrtle

4.83

Top

5.15

gut

N.E. Ret = No. 2 - 22' - 4 parts - 5.5

N. end = N.L. Myrtle 4.90

4.71

Top  
gut

S.S.S 4.33

4.77

Top  
gut

4.36

Top

4.72

gut

4.39

Top

4.73

gut

S.S = E. end = E.L. Highland

4.35

Top

4.69

gut

341.39

S.E. Ret = No. 3 - 22' - 4 parts - 5.5

E. end = E.L. Highland 4.73

Top

5.06

gut

S.S.W. 4.72

Top

5.11

gut

4.68

Top

5.19

gut

4.75

Top

5.25

gut

S.S = S. end = S.L. Myrtle

4.73

Top

5.35

gut

S.W. Ret = No. 4 - 22' - 4 parts - 5.5

S. end = S.L. Myrtle 5.30

Top

5.84

gut

S.S.N.

5.23

Top

5.76

gut

5.18

Top

5.70

gut

5.22

Top

5.60

gut

S.S = W. end = W.L. Highland

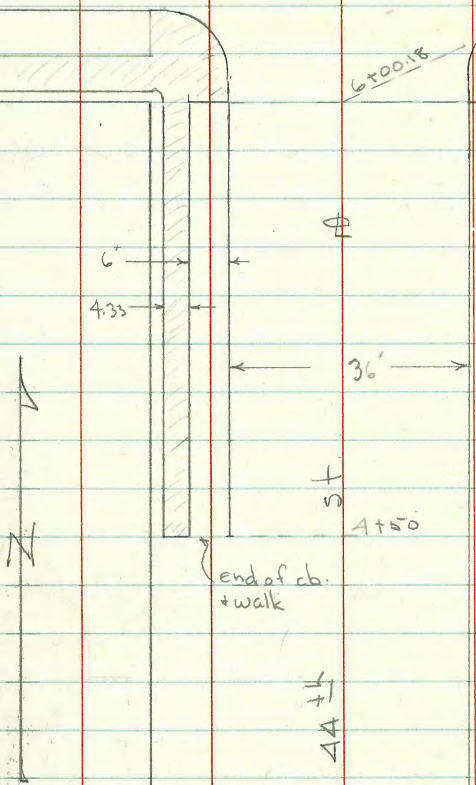
5.33

Top

5.62

gut

Myrtle St. 80' st.

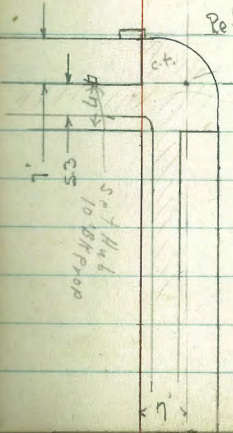


6+00.18

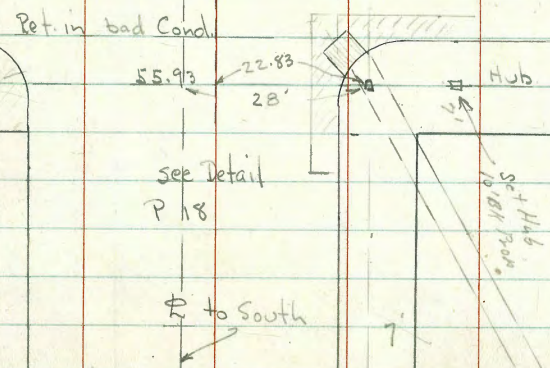
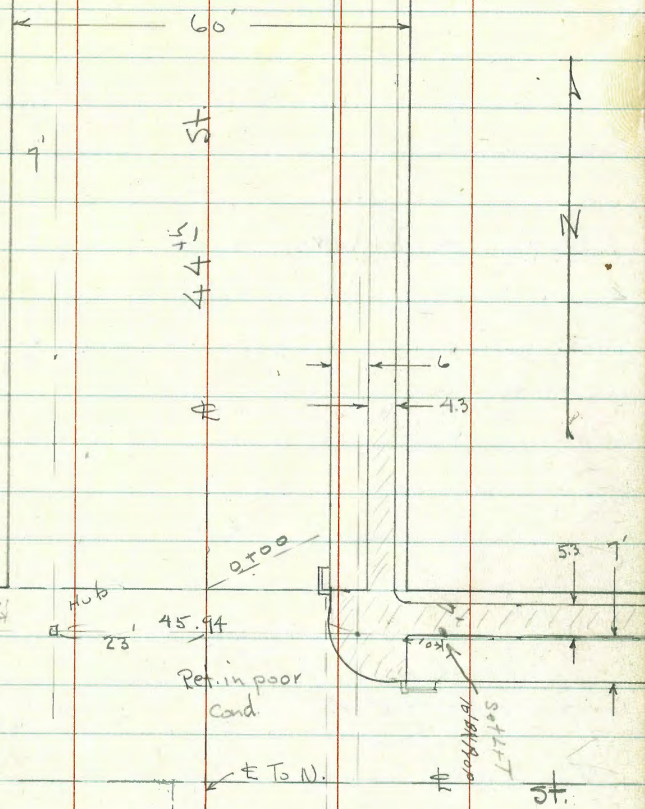
st  
4+50  
4+4

Sunken cb.  
+ walk (see Notes)

80' st.  
Thorn

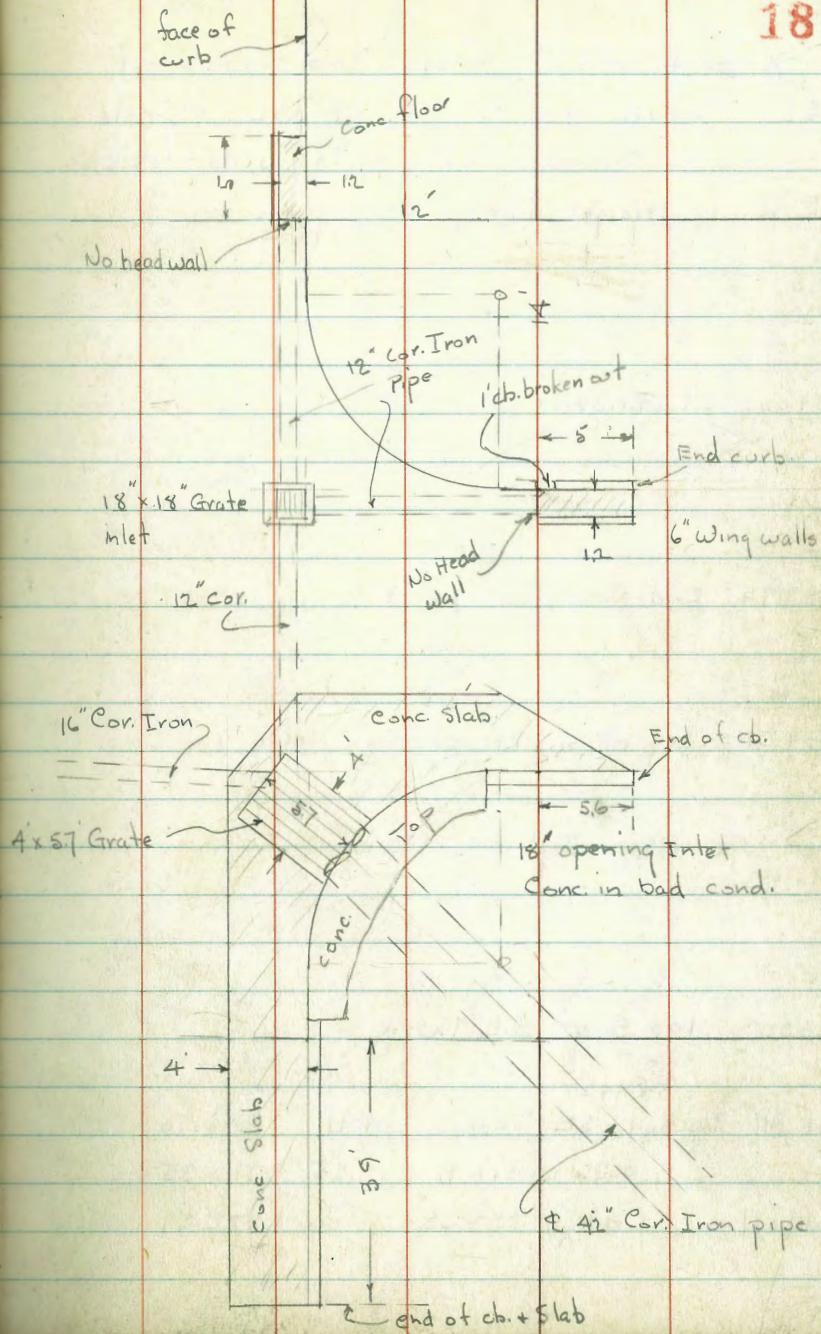
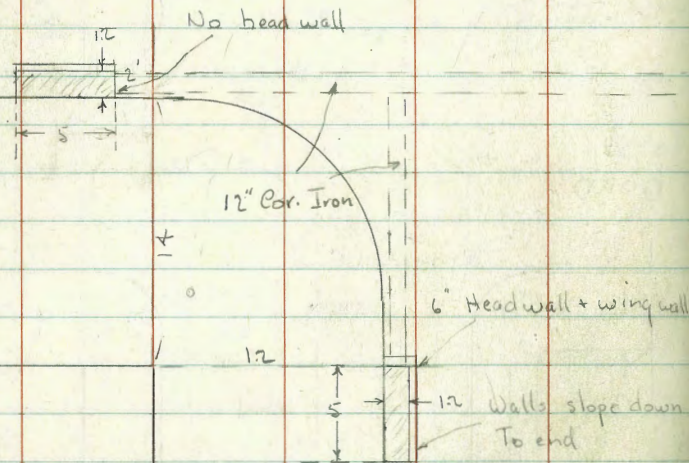
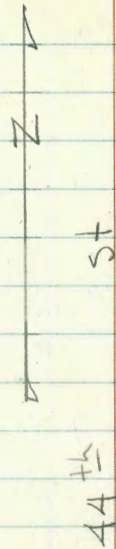


Set Hub  
10' to 10' from  
7' to 10'



Detail of Inlets

Thorn st.



X-Sept 44<sup>th</sup> from 100' South of  
 S.L. Thorn to 100' N. of N.L. Myrtle  
 South of Thorn - 44<sup>th</sup> is 70' wide - 12' cbs.  
 E.L. is straight Thru. - 10' jog on W.

1+00 = S.L. Thorn

0+95 = End Conc. inlet on Lt.

0+61 = Beg. cb. on Rt. - Poor Cond. (see Detail)

0+50

0+00 = 100' S. of S.L. Thorn

Set. B.M. - Top Hyd. - S.E. - Thorn 4.41 306.70  
 0.76 311.11 13.25 310.35 New High  
 B.M. 1.01 323.60 322.59 Thorn

Indexed  
 e.s.k.

Lt. = W.

Rt. = E

19

304.13	303.00	303.9	303.9	303.5	303.07	302.90	303.94
6.88	8.11	7.2	7.2	7.6	8.09	8.21	7.17
22.9	21.9	11.5		11.5	18.7	22.5	22.5
Topcb + Hed wall	Gut = flow Line Culvert				edge Conc. Slab	Gut	Top
303.34	304.19						
7.77	6.92						
22.9	22.9						
Topcb	Gut = flow line inlet.						
				303.28	303.12		304.26
				7.83	7.99		6.75
				18.7	22.5		22.5
				Cor. Conc. slab	Gut on Conc.		Top cb.
304.17	304.0	304.2	304.1	303.7	304.4	305.0	304.9
6.34	7.1	6.9	7.0	7.4	7.7	6.1	6.2
23	23	11.5		11.5	22	27	35
Top	Gut.						
305.21	304.8	304.7	304.9	304.4	303.5	304.7	304.1
5.90	6.6	6.4	6.2	6.7	7.6	6.4	7.0
23	23	11.5		11.5	22	26	35
Top	Gut						

311.11

Lt.

Rt.

±

66' N. = N. cb. line

4.2	6.0	5.8	6.8	6.8	6.8	6.9	7.00	6.74	7.92	6.42	7.44	3.5
90	30	23	18	9		9	8	30	30	35	35	80
							on Conc. Cor. Box	Topcb.	F.L. Culvert	FL. Inlet		

65' U. = 16.8' Rt. = ± 18" x 18" Inlet

7.03	8.55
16.8	16.8
Top	FL. Inlet
	12" pipe
	+ Conc. Bottom

53' N.

6.5	6.7	7.0	7.1	7.0	7.0	6.8
30	18	9		9	18	30

40' N. = ± (Note ± Joags 5' E. Here - for this Sect. will use ± 44" to N. (66' St.))

4.2	6.1	6.3	6.6	6.9	7.0	7.2	7.3	7.2	6.9	4.6
90	40	30	18	9	5	9	18	30	30	80
					± To South					

18' N. = N. edge Conc. slab at inlet on Rt. for profile

7.99	7.63
23	31.7
Cor. Conc.	E. Cor.

14' N. = S. cb.

4.15	4.9	6.36	7.22	6.57	7.78	6.70	6.9	7.1	7.6	8.18	8.11	7.66	6.65	7.40	6.44
85	85	42	42	37	37	35	23	11.5	11.5	19.5	23	35	35	40.6	40.6
Top	gut.	Topcb.	FL. Inlet	gut.	FL. Culvert	gut.			edge Conc.		gut.	Top	gut.	Top	end.

13' N. = opp. ends of 12" & 16" Culverts in Box at Inlet on S.E. Cor.

10.34	10.14	13.18
21.2	22.5	25
FL. 16" pipe from W.	FL. 12" pipe from N.	FL. 42" Pipe + Box

0+75

0+70 = ± 9.5 Conc. Dr. on Rt.

0+50

0+43 = Low side - curb

0+42 = Brk. in cb. - pushed up by Tree

0+37 = ± 9 Conc. Dr. on Rt.

0+21 = Brk. in cb. on Rt.

0+05 = End. Conc. Inlet. on Rt.

80' N. = UL. Thorn = 0+00 ahead.

Station	305.9	306.0	305.3	305.5	305.8	305.9	306.1	306.5
0+75	5.2 30	5.1 21	5.8 17	5.6 9	5.3 9	5.2 9	5.0 17.8 gut	4.55 17.8 Top
0+70							5.10 17.8 gut on Dr.	4.54 24 = walk
0+50	305.8 5.3 30	305.6 5.5 21	304.7 6.4 17	305.0 6.1 9	305.3 5.8		305.4 5.7 9	305.4 5.17 17.8 gut Top
0+43						306.03 5.08 17.7 Top cb.	305.81 5.30 17.7 = Top cb.	
0+42							305.8 5.8 17.7 = gut on Dr.	305.99 5.17 24 = on Walk
0+37								
0+21	305.6 5.5 30	305.4 5.6 21	304.5 6.6 17	304.7 6.4 9	304.8 6.3	304.8 6.3 9	304.4 6.7 17.7 gut	304.96 6.5 17.7 Top
0+05							305.51 7.54 17.7 gut = Fil. Inlet	304.46 6.65 17.7 Top cb.
80' N.	305.2 5.9 30	305.0 6.1 23	304.3 6.8 18	304.4 6.7 9	304.5 6.6	304.5 6.6 9	304.25 7.86 17.7 gut = Fil. Culvert	304.31 6.80 17.7 Top ch.

311.11



2+75  
 2+74 } curbin poor cond. on Rt.  
 2+55 }

2+51 - 22.3 Lt. = \$ 10" Acacia

2+50

2+47 - 2' Walk broken on Rt.

2+25

T.P. 12.72 321.89 1.94 309.17

2+00

1+98 - 22.1 Lt. = \$ 8" Acacia

1+82 - 30.3 Lt. = \$ 3.3 Conc walk

1+75

1+51 - 22' Lt. = \$ 6" Acacia

1+50

1+25 - 58.8 Lt. = \$ House

1+00

	313.4	313.4	311.7	312.0	312.2	312.1	311.8 Rt	312.26
	8.5	8.5	10.2	9.9	9.7	9.8	10.1	9.63
	30	25	16	9	9	9	gut	17.8
								Top
	311.8	311.2	310.6	310.7	311.0	310.9	310.7	310.9
	10.1	10.7	11.3	11.2	10.9	11.0	11.2	10.97
	30	21	16	9	9	9	gut	17.8
								Top
	310.6	310.2	309.8	309.8	309.9	309.7	309.8	309.9
	11.3	11.7	12.3	12.1	12.0	12.0	12.1	11.92
	30	21	16	9	9	9	gut	17.8
								Top
	309.5	309.3	308.6	308.9	309.1	309.1	308.9	309.25
	1.6	1.8	2.5	2.2	2.0	2.0	2.2	1.86
	30	19	16	9	9	9	gut	17.7
								Top
	308.98	308.7	308.0	308.1	308.4	308.3	308.3	308.61
	2.2	2.4	3.1	3.0	2.7	2.8	2.8	2.50
	30	21	17	9	9	9	gut	17.6
								Top
	308.1	308.2	307.3	307.6	307.9	307.8	307.7	308.14
	3.0	2.9	3.8	3.5	3.2	3.3	3.4	2.97
	30	21	17	9	9	9	gut	17.6
								Top
	306.4	306.7	305.3	306.3	306.5	306.6	306.4	306.4
	4.7	4.4	5.3	4.8	4.6	4.5	4.7	4.7
	30	21	17	9	9	9	gut	17.8
								Top
								4.7
								58.8
								58.8
								ground
								floor
								311.11

5+00

326.53	326.0	326.5	326.4	326.1	325.9	326.5
7.61	8.1	7.6	7.7	8.0	8.7	7.62
18	18	9		9	17.7	17.7
Top	Gut			Gut	Gut	Top ch (leaning out)

4+89 = Brk. in curb on Rt. (grade)

4+75

325.04	324.5	325.0	324.5	324.5	324.1	324.89	17.8
9.10	9.6	9.1	9.3	9.6	10.0	9.25	Top
18	18	9		9	17.9	17.9	
Top	Gut			Gut	Gut	Top	

4+69 = end walk on Rt. in poor cond.

4+50 to 4+58 = Walk in poor Cond. on Lt.

4+50

321.6	322.67	322.54	322.38	322.0	323.0	322.9	322.7	322.5	322.2	11.02
10.5	10.47	10.60	10.76	11.1	10.8	11.2	11.4	11.6	11.02	
30	28.4	24.1	18	18	9		9	17.9	17.9	
Cor. Walk	Cor. Walk	Top	Gut					Gut	Top	

T.P. 12.40 334.14 0.15 321.74

4+20 - Low - sunken cb. on Rt.

322.2	322.1	320.9	321.2	321.0	321.0	320.5	320.97
10.3	10.2	1.0	0.7	0.9	0.9	1.4	0.92
30	22	18	9	9	9	17.8	17.8
						Gut	Top

4+18 - Beg. sidewalk on Rt. in poor Cond.

4+00

321.0	320.8	319.8	319.9	319.8	319.7	319.5	320.01	319.47
0.9	1.1	2.1	2.0	2.1	2.2	2.4	1.88	2.42
30	22	17	9	9	9	17.7	17.7	17.7
							Top	Top

3+90 = Brk. in curb (grade)

3+50

318.2	317.9	316.6	316.6	316.5	316.5	316.2	316.93	317.47
3.7	4.0	5.3	5.3	5.4	5.4	5.7	4.96	2.42
30	22	17	9	9	9	17.7	17.7	17.7
						Gut	Top	Top

3+00

2+99 - 222 Lt. = 10" Acacia

314.2	314.0	313.3	313.5	313.6	313.5	312.7	313.88
7.7	7.9	8.6	8.4	8.3	8.4	8.2	8.01
30	21	16	9	9	9	17.7	17.7
						Gut	Top

321.89

Next page

See P. 6+7 for Sect. across Myrtle.

T.P. 5.27 338.08 1.33 332.81

6+00.18 = S.L Myrtle

5+89 = Outlet 12" Cor. Iron Culvert pipe on Lt.

5+84 = Outlet 12" Cor. Iron Culvert pipe on Rt.  
See sketch P. 3

5+75

5+73 to 5+88 - cb. on Rt. in poor cond.

5+62 to 5+75 - cb. in poor Cond. (on Lt.)

5+57 = 11' Conc. Dr. on Rt. (will be replaced by a new Drive Down the Hill.)

5+50

5+49 = 3 Broken cb. on Lt.

5+25

5+08 = 2 Broken cb. on Lt.

Lt.		Rt.
332.91		338.08
123	332.3	332.16
18	1.8	332.3
Top	gut	9
332.19		332.5
19.5	330.80	332.5
17.9	3.34	1.6
Top cb.	FL pipe	17.8
		gut.
		332.91
		1.23
		17.8
		Top
		331.69
		2.45
		16.8 = F.L.
		Pipe
		331.91
		2.22
		17.8 Top
		cb.
331.40		331.1
2.74	330.8	331.1
18	3.3	3.0
Top	gut	9
		331.1
		3.0
		330.8
		3.3
		17.7
		gut
		331.39
		2.75
		17.7
		Top
		332.69
		4.25
		17.6
		gut on Dr.
		330.47
		3.67
		23.8 =
		walk
329.77		329.7
4.37	329.1	329.7
18	5.0	4.9
Top	gut	17.6
		gut
		329.79
		4.35
		17.6
		Top cb (leaning)
329.13		327.7
6.01	327.5	327.7
18	6.6	6.4
Top	gut	9
		327.5
		6.6
		17.6
		Top cb
		(leaning out)
		334.14

Sections 100' N. of N.L. Myrtle.

Lt.

Rt.

Check BM Tct. SW. Highland + Myrtle  
T.P. 1.83 336.25 336.24

1+00 = 100' N. = end

0+50

0+15

0+05

0+00 = N.L. Myrtle

336.10

198  
18  
Top

335.42

266  
18  
put

2.13  
9

336.05

193

2.13  
9

335.44

264  
18  
put

2.07  
18  
Top

306.01

334.97

311  
18  
Top

334.31

377  
18  
put

3.35  
9

334.88

320

3.35  
9

334.17

391  
18  
put

334.77

331  
18  
Top

333.99

409  
18  
Top

333.24

484  
18  
put

4.27  
9

333.99

409

333.64

439  
9

333.14

494  
18  
put

333.81

421  
18  
Top

333.66

442  
18  
Topcb.

332.71

537  
18  
put = FL  
Inlet

4.72  
13

333.66

442  
9

333.71

437

333.59

449  
9

4.76  
13

332.44

564  
18  
put = FL  
inlet

333.60

448  
Topcb

333.50

458  
18  
Top

332.39

569  
18  
put = FL  
Drain

333.59

449  
9

333.64

444

333.58

450  
9

332.30

578  
18  
put = FL  
Drain

333.47

461  
18  
Top

338.08 - P. 24

X-Sect. 20' Alley in Block 11  
 City Hts. Annex # 2

# 1054 (also Alleys Blks 5-2-47  
 W.O. 31272 10-9-5-6-7)

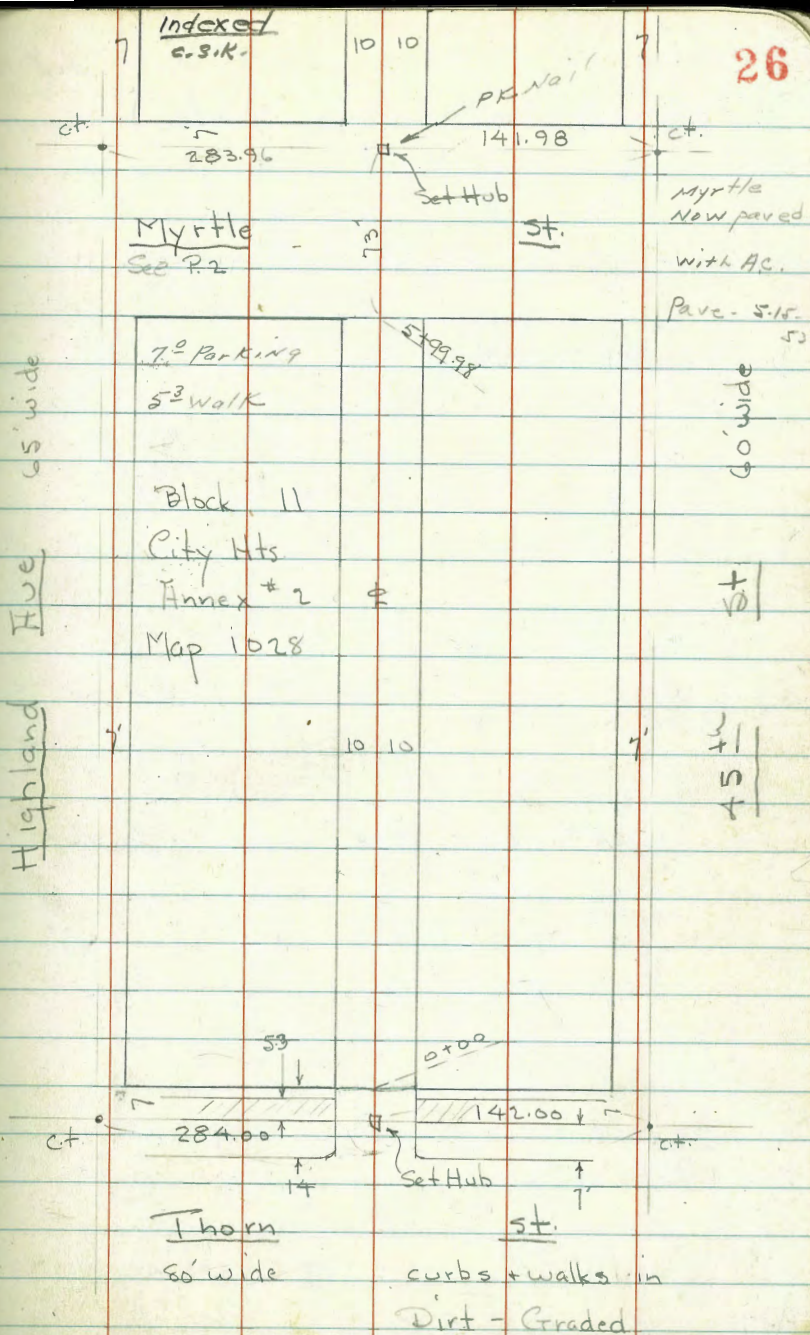
Osborne  
 Hardin  
 Smith  
 Worrell

Ties - T.P. Sheet 3638

Distances shown are measured, unless  
 shown otherwise

Myrtle paved - A.C.

5-15-53 S.O.A.



X-Sect. 20' Alley in Block 1

55-47  
70.

Lt. = W.

±

Rt = E.

1+00 - 9.5' Rt. - Fly Tbl. pole # 416144 H

330.5	330.7	330.5	330.8	331.0
4.6	4.4	4.6	4.3	4.1
20	10		10	20

0+95 - 9.7 Lt. = Wty P. pole # A 3333  
0+70

329.9	329.8	329.7	330.2	330.0
5.2	5.3	5.4	4.9	5.1
20	10		10	20

0+40

329.4	329.1	328.4	328.5	328.8	329.2
5.7	6.0	6.7	6.6	6.3	5.9
20	10	7	6.6	10	20

0+10

328.3	328.2	327.1	325.9	325.7	326.1	328.6	328.5
6.8	6.9	8.0	9.2	9.4	9.0	6.5	6.6
20	13	10	8	9.4	3	10	20

0+00 = N.L. Thorn

325.7	324.98	325.1	324.7	325.8	325.2	326.7
9.4	10.14	10.0	10.4	9.3	9.88	8.4
15	9.9	9.9	10.4	10	10	15
	Top-end cb.	Dirt		dirt	Top cb. end Ret.	

0-03 - To show Dirt over cb.

325.0	324.90	324.7	325.12
10.1	10.22	10.4	10.00
15	10		10
	Top + gut.		Top + gut.

0-14 = N cb Thorn

324.5	324.4	324.13	324.11	324.14	324.3	324.97	325.37	324.7
10.6	10.98	10.49	11.0	10.7	10.8	10.15	9.75	10.4
50	50	10	10	10	10	10	50	50
	Top	Top	gut		gut	Top-cb	Top	gut.
						2 Red Ret.		

Check on B.M. NW. Thorn + <sup>45<sup>th</sup></sup> 8.64 326.48 326.48  
 B.M. 12.53 335.12 322.59 335.12

2+51 - 9.3 Rt = Ely Tol. pole # 416143 H  
 2+50 - 9.0 Lt = end wire fence + Beg. picket fence  
 2+50 - 9.9 Rt = N.W. Cor. Gar.  
 2+50

opens to E (45<sup>th</sup>)

2+25 - 9.9 Rt = S.W. Cor. Double Gar - Dirt floor.

2+20 - 9.4 Lt = fence

2+01 - 9.7 Lt = Beg. wire fence

2+01 - 9.5 Lt = Uly. P. pole # A 3351

2+00

1+98 - 10.8 Lt = N.E. Cor. Gar.

1+81 - 10.7 Lt = S.E. Cor. Sing. Gar. Conc. floor - opens  
 To South

1+50

1+43 = 9.3 Lt = 13' Sing. Gar. Dirt floor - Conc. foundation

1+42 = 1/2 Sing. Gar. on Rt. Conc + apron

1+36 - 10.1 - Lt = end Conc slab.

1+36 - 9.3 Lt = end fence

1+15 - 10 Lt = Beg. 6' Conc. slab - for clothes lines

1+01 - 9.2 Lt = Beg. picket fence - posts set in  
 Conc.

Lt. Rt.

332.8  
 2.3  
 30

333.2  
 1.9  
 10

333.1  
 2.0

333.1  
 2.0  
 10

333.0  
 2.1  
 20

332.7  
 2.4  
 9.9 - Dirt floor.

332.1  
 3.0  
 20

332.1  
 3.0  
 10

332.8  
 2.8

332.5  
 2.6  
 10

332.8  
 2.3  
 20

332.93  
 2.69  
 10.7  
 Conc. floor

331.8  
 3.3  
 20

331.6  
 3.5  
 10

331.4  
 3.7

331.7  
 3.4  
 10

331.7  
 3.4  
 20

331.6  
 3.5  
 10.1  
 Conc.

332.52  
 2.60  
 9.3  
 Top Conc  
 found.

331.7  
 3.4  
 9.3 = ground

331.58  
 3.54  
 11.2  
 apron

331.12  
 3.40  
 13.2  
 floor.

331.41  
 3.71  
 10  
 Conc.

335.12

3+66 - 9.6 Rt = Beg Picket fence  
 3+60 - 9.8 Rt = Sing Gar - Dirt floor  
 3+50 - 8.9 Lt = Beg Lath fence  
 3+50 - 9.8 Rt. end. shed. (dirt floor)  
 3+49 - 9.4 Lt. = end Board fence  
 3+39 - 8.6 Lt. = Wly. P pole # P.A 3405  
 3+38 - 9.4 Lt = Beg Board fence  
 3+38 - 8.8 Lt = end Board fence  
 3+23 - 8.1 Lt = Beg High Board fence  
 3+23 - 8.1 Lt = end Gar Bldg  
 3+21 - 9.6 Rt = Beg shed  
 3+15 - 11.6 Rt = Sing Gar. Dirt floor

3+08 - 9.3 Rt = end lath fence  
 opens w. to Highland

3+02 - 8.4 Lt = S.E. Cor Sing Gar - Conc. floor -

3+02 - 8.6 - Lt = end picket fence

3+00 - 9.3 Rt. Beg. Lath fence

3+00 - 9.6 Rt = end picket fence

2+67 - 10' Rt = Beg picket fence

2+60 - 10.1 Rt = Sing Gar - Dirt floor.

T.P. 8.23 341.29 2.06 333.06

Lt

±

Rt.

7.58

29

334.6

334.2

334.1

333.9

334.3

333.6

334.3

7.0  
9.8  
floor

6.7  
20

7.1  
10

7.2

7.4  
9.5

7.0  
10

7.7  
30

333.71

7.58

8.4  
Conc. floor

333.5

333.5

333.5

333.5

333.3

7.8  
20

7.8  
10

7.8

7.8  
10

8.0  
30

333.3

8.0  
11.6 - Dirt  
floor

333.5

7.8  
10.1  
floor

341.29

335.12



5+00 - 9.9 Lt = fence

4+80 = € 3' Conc. walk to House on Lt.

4+64 - 10' Lt = Beg. picket fence

4+55 - 15.2 Lt = € Sing. Gar. - Dirt floor

4+50

4+48 - 14.7 Lt = € 22' Conc. walk along N. side Bldg.

4+47 = N. end Gar + Apts.

Conc. floor + 4 apron.

4+03 = Send. 4 Car. Gar. + Apts. above - on the Lt  
Gar. + Apt.

4+01 - 14.8 Lt = € 18' Conc. walk along S. side of

4+00 - 10' Lt = end lath fence

4+00 - 9.8 Rt. = end shed

3+97 - 9.9 Lt = Cor. frame (below)

3+80 - 9.6 Lt = Cor. frame for prop Bldg. (behind fence)

3+76 - 9.7 Rt. = Beg. shed - wood floor

3+76 - 9.7 Rt. = end picket fence

	€						Rt.
	337.84	336.5	336.41				
	3.45	4.8	4.88				
	20	20	13.2				
	floor House	ground at House	walk				
	335.7	335.8	335.8				
	5.6	5.8	5.5				
	15.2	20	10				
	floor						
	335.5	335.8	335.8				
	5.8	5.5	5.5				
	20	10	10				
	335.52	335.8	335.8				
	5.77	5.77	5.77				
	14.7 = walk	14.7 = walk	14.7 = walk				
	335.69	335.8	335.8				
	5.60	5.80	5.80				
	17.6	14.7	14.7				
	floor	apron					
	335.22	335.51	335.21				
	5.72	5.72	6.08				
	17.6	17.6	4.8				
	gar. floor	gar. floor	apron - Conc.				
	6.07	6.07	6.07				
	14.8 = walk	14.8 = walk	14.8 = walk				
	335.0	335.0	334.9				
	6.3	6.3	6.4				
	20	10	10				
	335.0	334.9	334.9				
	6.3	6.4	6.4				
	20	20	20				
	334.70	334.70	334.70				
	6.59	6.59	6.59				
	9.7	9.7	9.7				
	floor	floor	floor				
	341.29	341.29	341.29				

Myrtle  
check BM - S.W. 7' ct. Highland 7.24 336.24 336.24

6 + 13.98 = S. cb. Myrtle - See Sections P 10

6 + 01.68 = end of cb. ret on Lt.

5 + 99.98 = S.L. Myrtle

5 + 82 - 10' Lt = ang. in edge of Dr.

T.P. 5.10 343.48 2.91 338.38

5 + 72 - 10' Lt = Beg edge Conc Dr. - elev 61

5 + 72 - 9.9 Lt = NE Cor. Paub. Gar. - Conc. floor (opening N)

5 + 52 - 9.8 Lt = end picket fence

5 + 52 - 9.8 Lt = S.E. Cor. Gar.

5 + 50

5 + 42 - 13.2 Rt. = Sing. Gar. - Conc. floor

5 + 18 - 9.9 Lt. = 2' Brick + Conc. walk

5 + 01 - 9.1 Lt. = wly. p. pole # PA. 34 55

5 + 00

Lt. Rt.

337.98 337.6 337.9 338.0 338.44  
5.50 5.9 5.6 5.5 5.04  
10 10 10 10 10  
Top gut. gut. Top 2' Rad.  
2' Rad.

338.38 338.3 338.1 338.5 338.66  
5.10 5.2 5.4 5.0 4.82  
9.9 9.9 9.9 9.9 9.9  
Top gut. gut. Top

338.29 338.4 338.1 338.5 338.66  
5.19 5.1 5.4 5.0 4.82  
14.7 10 9.8 9.8  
edge Cor. curb gone gut. Top  
Dr.

343.48  
338.41 338.31 337.9 338.0 338.1  
2.82 2.92 3.4 3.3 3.2  
floor Gar 10 : 13.1 = ground along House  
Conc. Drive 10

337.17 337.5 337.4 337.1 337.1  
3.6 3.8 3.9 3.6 3.6  
20 10 10 15 337.85  
4.24 3.44  
9.9 13.2  
walk floor

336.4 336.4 336.6 336.4 336.8 336.5 336.7  
4.5 4.9 4.7 4.9 4.5 4.8 4.6  
40 20 10 10 10 20 40

341.29

X-Sect. 20' Alley in Block 10 - City Hts.  
 Annex # 2 - Map 1028 5-5-47  
 F.O.

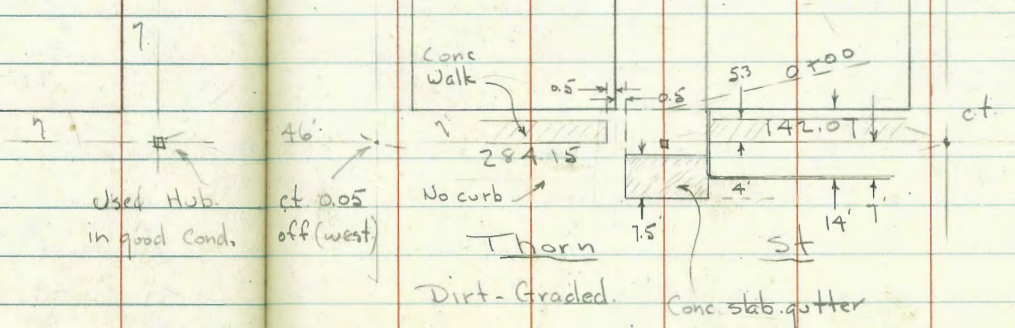
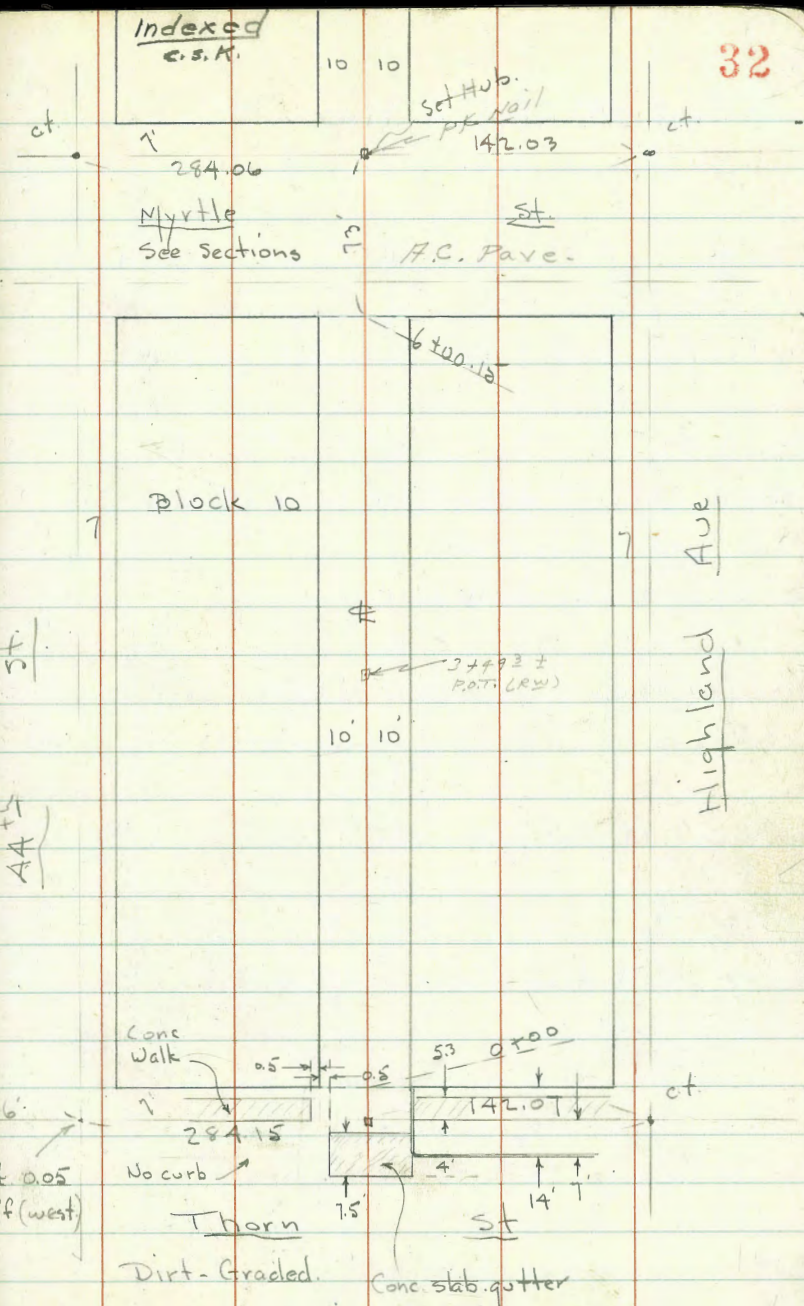
Notes Reduced 5-22-47-  
 Wherry-

Myrtle St pave A.S.  
 5-15-53-

14' curbs on Myrtle.

7' parking

5' walk.



X-Sect. 20' Alley in Block 10

I.P. 9.43 325.47 7.42 316.04

0+15 - 10.2 Rt = end Conc. wall - at Gar.

0+00 = N.L. Thorn - 10.1 Rt = Beg 7" Conc wall

0-01.7 = N. edge walk on Lt

0-07 = S. edge Conc walk (no cb on Lt)

0-10.5 = N. edge Conc. Slab

0-14 = N. cb Line Thorn - Conc. gutter

0-18 = S. edge Conc. slab for gutter

B.M. 0.87 323.46 322.59

F

33

Lt = W

Rt = E

	313.7	314.8	315.6	316.1	316.9	317.58	318.8
	9.8 20	8.7 10	7.9 6	7.4	6.6 10	5.88 10.2 Top wall	4.7 20
	312.9	313.8	314.3	314.7	314.97	317.39	317.88
	10.6 20	9.7 10	9.2 7	8.8	8.57 10.1 Top cb + gut. end Ret.	6.07 10.1 Top wall	5.58 20 Top wall
313.24	10.22						
10.5							
Cor. walk	310.47	310.18	310.7			314.70	
	12.99 50	10.28 10.5 Cor. walk	9.8			8.76 10 cb + gut.	
	313.08		313.62	314.16	314.59		
	10.38 9.5 Cor. Conc.		9.84	9.30 10 gut = edge Conc	8.87 10 Top		
	313.5	312.7	312.61	313.36	313.90	314.54	316.98
	14.0 50 in graded gut	10.8 10 edge Conc. gut.	10.85 9.5	10.10	9.56 10 gut	8.92 10 Top Rad Ret.	6.48 50 Top gut
		313.01	313.59	314.22			
		10.45 9.5 Cor. slab	9.87	9.24 10 Cor. slab			

323.46

1+25

Lt. Rt.  
 319.6 319.2 319.1 319.7 320.84 321.0  
 5.9 6.3 6.4 5.8 4.63 4.5  
 20 10 9.5 9.5 Top wall 15  
 ground

1+00 - 9.8 Rt. = Beg. 10" Conc. wall + wire fence

+9.9 Rt. = end wall  
 1+00 - 8.9 Lt. = Wly. P. pole # P.A. 3325

316.4 317.2 317.8 317.7 317.8 318.74 320.01 320.9  
 9.1 8.3 7.7 7.8 7.7 6.73 9.8 Top wall 4.6  
 20 10 6 9.9 9.9 9.8 Top wall To N. 20  
 6.1 20 = High yard  
 20 = Low yard.  
 9.8 Top wall To South

0+94 = N. end Doub. Gar. on Lt.

0+75 - 8.9 Rt. = 3.4' Conc. steps + walk

0+74 = S. end Doub. Gar. on Lt. - Conc. floor + apron

316.52 316.42 314.3 317.87 318.57  
 8.95 9.05  
 15.5 floor 11.5 apron  
 314.54 316.45 314.3 317.87 318.57  
 8.93 9.02 8.2 7.60 6.90  
 15.8 floor 11.8 = apron 8.9 ground 8.9 Top bot. step 10 Top step  
 floor

0+70

0+40

0+35 - 10' Rt. = Beg. 7" Conc. wall = base for Board fence

0+30 - 10.5 Rt. = Sing. Gar. - Conc. floor

0+21 - 27.8 Lt. = House

0+20 - 10.8 Rt. = Sing. Gar. - Conc. floor.

314.5 316.3 316.7 317.2 317.9 318.8 319.3  
 11.0 9.2 8.8 8.3 8.1 6.7 6.2  
 20 10 7 10 10 15  
 ground Top wall  
 314.7 316.1 316.3 316.8 317.2 319.7  
 10.8 9.4 9.2 8.7 8.3 6.30  
 20 10 7 10 10  
 ground Top wall  
 315.97 312.8 317.44 319.13  
 11.50 12.7 10.5 floor 6.34  
 27.8 27.8 floor 10 Top wall  
 317.24 318.25  
 10.8 floor

325 47

2+40 - 9.8 Lt. = Beg. wire fence

2+30

2+16 - 9.9 Rt. = Beg. wire fence

2+16 - 9.2 Rt. = end shed

2+09 - 9.6 Lt. = Wly. P. pole P.A. 3363

2+00 - 10 Rt. = Beg. shed.

1+82 - 15.2 Lt. = Sing. Gar. - Dirt floor

1+75

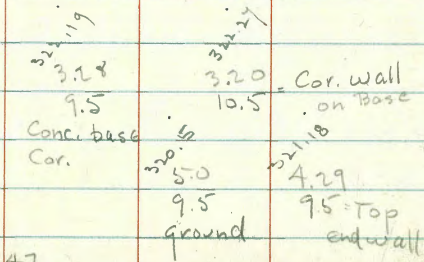
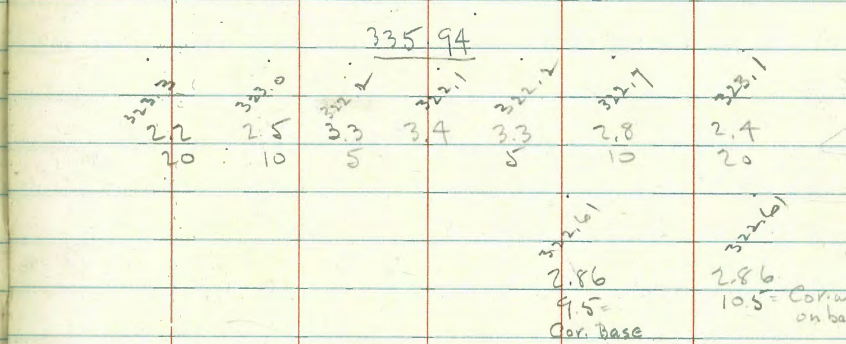
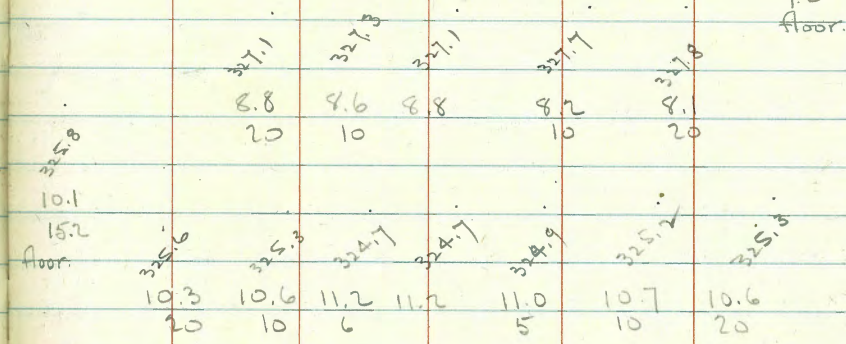
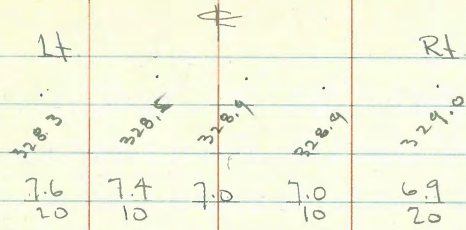
T.P. 10.50 335.94 0.03 325.44

1+50 - 9.7 Rt. = end wire fence

1+49 - N. side Base

1+45 = S. side Brick incinerator with Conc. base

1+31 - 9.5 Rt. = end Conc. wall (fence continues)



325.47

T.P. 3.50 336.78 2.66 333.29

4+00-10 Rt. = end wire fence + bea board fence

3+90-119 Lt. =  $\Phi$  Small House

3+70

3+63-121 Rt. =  $\Phi$  Doub. Gar. - Conc. floor opening to E. (Highland)

3+50-142 Rt = Beq wire fence

3+40

88 Lt. =

3+24 = 1/2 N.E. Cor. Gar. along shed below (dirt floor

3+04-8.8 Lt. = S.E. Cor. shed along Gar. on Conc. foundation

3+04-9.8 Lt. = end picket fence

3+01-9.7 Lt. = Wly. P. Pole # PA. 3399

3+00

2+99-10.1 Rt. = end shed.

2+97-9.5 Lt. =  $\Phi$  2.3 Conc. walk

2+82-10.1 Rt. = end wire fence + Beq Chicken shed. Wood floor.

2+87-10 Rt =  $\Phi$  2' Conc. walk

2+68-9.5 Lt. = end wire + beq picket fence

2+60

Lt.	$\Phi$	Rt.
334.48 1.46 11.9 floor	332.8 3.1 2.6 20	333.2 2.7 2.6 10
332.1 2.8 11.9 ground	331.3 2.6 10	332.9 2.7 2.5 10
332.1 3.7 20	331.5 3.4 10	332.8 3.1 2.5 10
331.8 4.1 20	331.8 4.1 10	331.9 4.0 3.7 10
331.6 4.3 8.8 floor	331.6 4.3 8.8 floor	332.2 3.7 10
331.82 4.12 8.8 Top conc ground	330.9 5.0 8.8 ground	331.3 4.6 10
330.65 5.29 9.5 walk	330.6 5.3 20	331.0 4.9 10
331.6 6.3 20	330.7 5.2 10	331.3 4.6 10
331.6 6.3 20	330.9 6.0 10	330.4 5.5 10
331.82 4.12 8.8 Top conc ground	330.9 5.0 8.8 ground	331.3 4.6 10
330.65 5.29 9.5 walk	330.6 5.3 20	331.0 4.9 10
331.6 6.3 20	330.7 5.2 10	331.3 4.6 10
331.6 6.3 20	330.9 6.0 10	330.4 5.5 10

335.94

331.33  
4.6  
10  
walk





5+97 - 10.7 Lt. = N.E. Cor. Gar. - Conc. found + floor +

5+92 = 10.7 Rt. = Beg. Conc. wall

T.P. 5.64 339.52 2.90 333.88

5+88

5+80 - 9.7 Lt. = Beg. Conc. found for Gar.

5+80 - 9.7 Lt. = end Conc. wall + fence

5+71 - 14' Rt. = S.W. Cor. House - rooms (conc. floor.) in basement.

5+70

5+50

5+40 - 9' Lt. = Beg. 6" Conc. wall + picket fence

5+40 - 10' Lt. = end Conc. wall + fence

Lt.	Rt.
5.00 10.7 Top found + floor Gar.	5.3 10.7 ground 7.9 10.7 ground Topwall

334.25 2.43 10 Top found.	333.0 3.8 10 ground	331.0 5.8 5 ground	330.9 5.9 7	330.8 6.0 10	330.3 6.5 14' along House	330.0 6.8
------------------------------------	------------------------------	-----------------------------	-------------------	--------------------	---------------------------------	--------------

333.0 3.8 20	332.6 4.2 10	332.9 4.9 9.4 Top wall	331.3 5.5 9.4 along wall	329.2 7.6 4	329.0 7.8 10	329.1 7.7 10	329.3 7.5 14' ground at House 7.6 20	326.8 9.96 14 conc. floor
--------------------	--------------------	---------------------------------	-----------------------------------	-------------------	--------------------	--------------------	--------------------------------------------------	------------------------------------

331.1 5.7 18	331.0 5.8 10	330.8 5.9 9.2 Top wall along wall	329.3 7.5 9.2 along wall	327.4 9.4 4	327.2 9.6 7	327.2 9.6 10	327.7 9.1 10	328.4 8.4 25
--------------------	--------------------	--------------------------------------------	-----------------------------------	-------------------	-------------------	--------------------	--------------------	--------------------

330.1 6.1 11.5 ground Top wall	330.26 6.52 17.5 Top-w. end wall	327.5 9.3 17.5 ground To South	330.18 6.60 9 Top wall
--------------------------------------------	----------------------------------------------	--------------------------------------------	---------------------------------

336.78

Lt.

Rt.

check BM. 7' at Myrtle + Highland 3.27 336.25 336.24

6+14.15 = S. cb. Myrtle

6+10

6+03 = 10.7 Rt. end Conc. wall + edge of Conc. walk along Myrtle

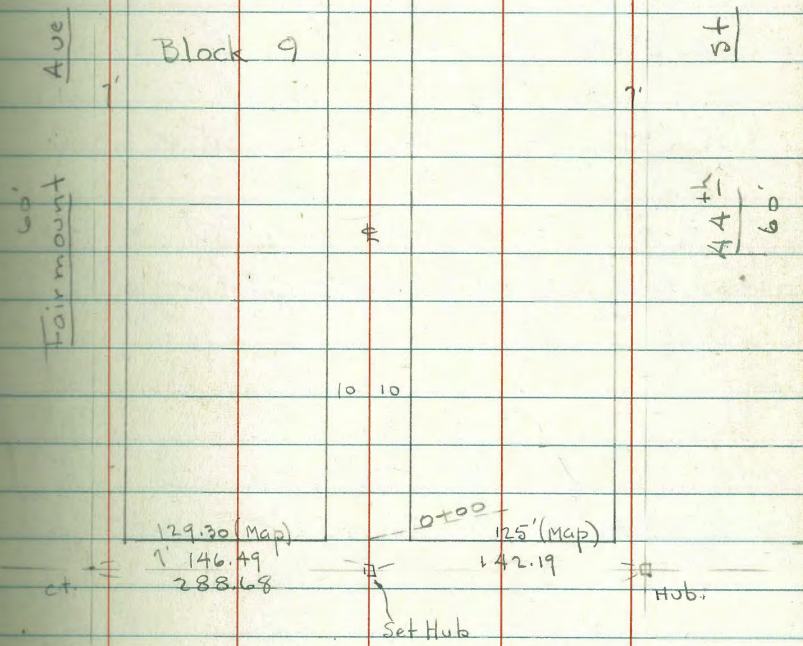
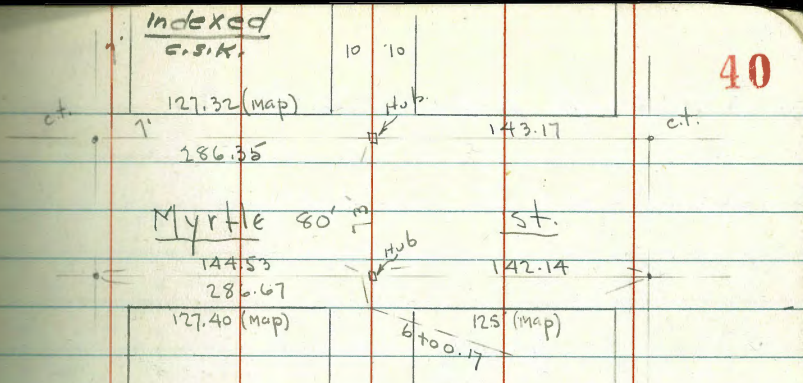
6+00.15 = S.L. Myrtle

5+97 - 14.5 RT = N.W. Cor. House

Station	Height	Level	Notes
334.91	5.11	10	Top 2' Rad.
334.0	5.5	10	put
334.3	5.2		
334.4	5.1	10	
334.98	5.04	9.9	Top of cb.
334.0	5.5	9.9	put
334.2	5.3		
334.4	5.1	10	
334.11	5.4	10.7	ground
334.63	4.89	10.7	Top end wall + walk
334.69	4.83	9.8	Top cb. end Ret.
334.11	5.4	9.8	ground
333.3	6.2	5	
333.1	6.4		
333.3	6.2	6	
333.7	5.8	10	Top wall
334.62	4.98	10.7	Top wall
334.9	5.1	15	
334.9	5.1	14.5	ground
335.08	4.44	14.5	upper floor level
339.52			

χ-Sect 20' Alley in Block 9 - City Hts.  
 Annex #2 - Map # 1028

S-6-47  
 7.0.



Thorn St 80' wide  
 Dirt-Graded  
 No cbs. or walks on N. side

X-Sect 20' Alley in Block 9.

0+35 - 11.3 Lt. = S.E. Cor. House

0+30

0+12 - 11.2 Rt. = S.W. Cor. House

0+12 - 2.5 Rt. = Beg. Lath Fence

I.P. 8.14 326.27 1.58 319.13

0+10 - 7.4 Rt. = end Conc wall

0+08 - 3.9 Rt. =  $\phi$  6" Water pipe - exposed 45° fitting

0+00 = N.L. Thorn - 7.3 Rt. = Beg. 6" Conc. wall

0-07

0-13 - 13.4 Lt. = Wly. Tel. pole D 29060T

0-14 = N. ch. Thorn

B.M. 13.01 319.71

bp Hyd. St.  
Thorn +  
44<sup>th</sup>

306.70

$\phi$

Rt. = E. 41

H. = W.

320.69	319.5							
5.58	6.8							
11.3	11.3							
floor	ground							
320.3	320.0	319.8	319.5	317.1	317.3	318.1	317.7	
6.0	6.3	6.9	8.8	9.2	9.0	8.2	8.6	
20	12	8	5	3	3	10	11	along House

			326.27					
319.9	319.9	314.6	314.3	314.3	316.1	316.38	316.4	316.4
+ 0.2	0.2	5.1	5.4	5.4	3.6	3.33	3.3	3.3
20	12	6		3	7.4	7.4	10	18
					ground	Top wall		
							5.10	314.61
							3.9 = Top pipe	

314.6	315.3	313.3	312.8	312.9	312.8	314.39	314.35	314.14
3.1	4.4	6.4	6.9	6.8	6.9	5.32	5.36	5.57
20	10	7		5	7.3	9.3	10	20
					ground	Top wall	Top Wall	

313.6	313.2	312.0	311.1	310.6
6.1	6.5	7.7	8.6	9.1
20	10		10	20

314.5	312.2	311.5	311.0	308.6
5.2	7.5	8.2	8.7	11.1
50	10		10	50

319.71

T.P. 4.47 330.57 0.27 326.10

1+50 - 9.6 Lt. = Beg. wire fence

1+49 - 9.8 Rt. = Beg. 6" Conc. wall

1+48

1+29 - 9' Lt. = 5" Hoasia

1+26 - 12.3 Lt. = N. end Doub. Gar. opens N. - conc floor.

1+25

1+07 - 12.1 Lt. = S. end Doub. Gar. Conc. floor

1+02

0+97 - 9' Rt. = End fence - + Beg. excavation on Rt.  
old fence along top of bank

0+76 - 14.8 Lt. = E. Sing. Gar. Conc floor (opens West)  
back

0+68 - 9.8 Lt. = Wly. p. pole P.H. 3323

0+65 - 11.4 Lt. = N.E. Cor. House

0+60 - 8.2 Rt. = fence

0+42 - 11.6 Rt. = N.W. Cor. House

322.40  
3.87  
12.3  
floor.

321.06  
5.21  
14.8  
floor.

11  
along house

326.27

Lt.

Rt.

330.57

322.0

4.3  
9.8  
ground

322.39

2.88  
9.8  
Top  
wall

322.6

3.7  
20

322.5

3.8  
10

322.2

4.1  
5

322.2

4.1  
5

322.1

4.2  
10

315.7

10.6  
14

311.0

15.3  
20

310.0

16.3  
40

321.3

4.0  
10

321.3

5.0  
5

321.8

5.0  
5

320.7

5.6  
9

314.3

12.0  
13

310.3

16.0  
20

308.1

19.2  
40

321.2

4.1  
20

322.0

4.3  
10

321.4

4.9  
6

320.9

5.4  
5

321.0

5.3  
5

320.1

6.2  
10

314.6

11.7  
13

310.8

15.5  
20

308.2

18.1  
40

321.6

4.7  
20

321.4

4.9  
10

320.8

5.5  
5

320.9

5.4  
5

319.5

6.8  
10

314.0

8.5  
20

315.9

10.4  
30

320.0

6.3  
11

320.1

6.2  
10

319.4

6.9  
5

319.9

6.9  
5

318.5

7.8  
10

316.8

9.5  
20

317.9

2.4  
11.6

ground

318.63

7.64  
11.6

floor

3+00

2+60

2+41 - 15.7 Rt = Sing. Gar. Conc. floor

2+25

2+20 - 10.5 Rt = 33 Brick + Conc walk - to house

2+03 - 10.1 Lt = Wly. P. pole # P.A. 3353

2+00 - 10.6 Rt = end Picket fence

1+99 - 9.9 Lt = end wire fence

1+98 - 10.6 Rt = end Conc wall

1+79 - 34.2 Rt = House

1+68 - 10' Rt = Beg 6" Conc. wall - for fence

1+58 - 9.8 Rt = end wall + beg picket fence

1+55

326.8 20	327.0 10	327.0 10	326.9 10	325.0 20	325.0 30
326.3 20	326.0 10	325.9 10	325.9 10	324.0 15	
325.0 40	325.3 20	325.4 10	325.0 10	324.9 10	324.6 20
			324.78 5.79 10.5 Top walk	324.2 6.4 34.6 ground	324.2 5.54 34.6 floor
324.8 20	324.8 10	323.9 10	323.7 10	323.2 20	
			323.65 6.92 10.6 Top wall	322.7 7.9 34.2 ground	323.06 7.51 34.2 = floor
			322.52 7.05 9.8 = Top wall	322.5 7.09 9.8 = Top wall	322.5 8.1 9.4 20
323.0 20	323.0 10	322.4 8.2	322.5 8.1 9.8 ground	321.7 8.1 9.4 20	321.7 8.9 30
			330.57		

5+00

329.8	329.2	328.2	328.3	326.7
8 Lt.			Rt.	
3.0	2.6	4.6	4.5	6.1
20	10		10	20

4+77- 10.3 Lt. = Wly. P. pole # P.A. 3463

4+50

329.1	328.6	327.7	327.4	325.5
3.7	4.2	5.1	5.4	7.3
20	10		10	20

4+44- 14.7 Lt. = Sing. Gar. - Dirt floor

4+34- = Sing. Gar. on Lt. - Conc. floor + apron

4+18- 23.7 Lt. = Sing. Gar. - Conc. floor + apron

4+00

3+92- 24.5' Lt. = Sing. Gar. - Conc. floor

T.P. 5.06 332.79 2.84 327.73

3+50

3+49- 9.2 Lt. = Wly. P. pole # J.P.A. 3423

3+47- 14.5 Lt. = N.E. Cor. Gar.

(Now used as residence) also Apts. above  
3+28- 16.5 Lt. = S.E. Cor. 2 car Gar. Conc. floor -

3+18- 20.1 Lt. = Sing. Gar. - Conc. floor

328.8	324.38	324.19				
4.0	3.41	3.60				
14.7	23.4	21 = apron				
floor	floor					
329.40	329.06					
3.39	3.73					
23.7	21.2					
floor	apron					
328.9	328.5	328.0	328.3	327.9	323.9	
3.9	4.3	4.8	4.5	4.9	8.9	
20	10		10	17	30	
328.77						
4.02						
24.5						
floor						
	332.79					
	328.2	328.1	327.9	327.8	327.1	
	2.4	2.5	2.7	2.8	3.5	
	20	10		10	20	
327.81						
2.76						
16.5						
floor						
	327.77					
	2.86					
	16.5 = floor					
327.55						
3.02						
20.1						
floor						
conc						

See Book 1759 - P. 36 for Rest  
of Notes.

Check B.M. 7 <sup>th</sup> ct Myrtle +	Highland	1.93	336.23	336.24
T.P.	6 45	338.16	1.08	331.71

6 + 14.17 = S. cb.

6 + 0.8

6 + 00.17 = S.L. Myrtle

5 + 75

5 + 50

Lt.

Rt.

45

331.51	331.4	331.6	331.5	331.89
1.28	1.4	1.2	1.3	0.90
10	10	10	10	10
Top 2' Rad.	gut.		gut.	Top 2' Rad.

331.75	331.6	331.91
1.04	1.2	0.88
9.8		10.2
Top + gut		Top + gut

331.83	331.6	331.1	332.03
0.96	1.2	1.7	0.76
9.8	9.8	10.2	10.2
Top + end Ret.	gut		gut + Top + end Ret.

330.5	332.8	332.1	330.3	332.6
2.3	3.0	3.1	2.5	5.2
20	10		10	25

330.5	332.6	332.0	332.2	332.5
2.3	3.2	3.8	3.6	6.3
20	10		10	25

332.79



Indexed  
C.S.Kr.

46

X-Sect. Thorn - 100' Each way  
from 44<sup>th</sup> - 80' st - 14' cbs.

W.O. 31385

6-5-47

Osborne  
Hardin  
Worrell

Going West. - 0+00 = W.L. 44<sup>th</sup> to the South  
(10' W. of W.L. to the N.)

curb and walk in on S. side to Alley

1+00 = 100' W = end.

0+60 - 26.8 Rt. = Tel. guy pole = 416.42 H

0+25

0+00 = W.L. 44<sup>th</sup> to S.

B.M.

5.10

311.80

306.70

S.E. Hyd.  
P 19

lt = S. #

Rt. = N.

309.48	308.5	309.3	309.5	309.5	309.2	310.0	310.3
2.22	3.3	2.5	2.3	2.3	2.6	1.8	1.5
26	26	13		13	20	26	40
Top	gut.						

307.47	306.6	307.2	307.4	307.3	307.5	308.1
4.33	5.2	4.6	4.4	4.5	4.3	3.7
26	26	13		13	26	40
Top	gut.					

305.66	304.8	305.9	305.9	305.9	306.0	306.5
6.14	7.0	6.1	5.9	5.9	5.8	5.3
26	26	13		13	26	40
Top	cb.	gut.				

304.43	304.8	305.0	304.9	305.1	305.0
7.37	7.0	6.8	6.9	6.7	5.8
26	13		13	26	40
Top	cb				
+ gut.					
		311.80			

Thorn - Going E. 100' from E.L. 44<sup>th</sup>

⊕ Lt. = N. Rt. = S. 47

0+00 = E.L. 44<sup>th</sup> (both sides)

Walk only in on N. Side to Alley  
Walk only Begins at 0+79 on S.

1+00 = 100' E. = end

0+79 = Beg. S. Walk only on S.

0+55

0+25

0+05 = opp. end of cb. on N. + 6 Back of end at S.

0+00 = E.L. Thorn

311.6	311.55	311.48	311.2	310.2	310.3	310.2	310.0	309.8	310.5	310.2	310.86	310.9
0.2	0.25	0.32	0.6	1.6	1.5	1.6	1.8	2.0	1.3	0.98	0.92	0.9
40	38.2	32.8	26	15	13		13	24	26	33.1	38.1	40
		walk									walk	
310.1	310.05	310.03	309.6	308.7	308.7	308.5	308.5	311	311	309.57	309.61	309.1
1.7	1.75	1.77	2.2	3.1	3.1	3.3	3.3	3.7	3.1	2.23	2.19	2.1
40	38.2	32.9	26	24	13		13	25	26	33	38	40
		walk								end walk		
308.4	308.26	308.31	307.9	307.3	307.1	306.9	306.8	306.5	306.3	307.6		
3.4	3.44	3.49	3.9	4.5	4.7	4.9	5.0	5.3	4.5	4.2		
40	38.2	32.9	26	25	13		13	23	26	40		
		walk										
306.8	306.48	306.41	306.3	305.1	305.9	305.0	305.1	304.7	305.9	306.3		
5.0	5.32	5.39	5.5	6.7	5.9	6.4	6.7	6.8	7.1	5.9	5.5	
40	38.2	32.9	26	24	20	13		13	23	26	40	
		walk										
305.5	305.35	305.38	304.69	304.69	305.1	304.5	304.4	304.1	303.72	304.68	305.3	
6.3	6.45	6.52	7.11	8.11	6.7	7.3	7.4	7.7	8.08	7.12	6.5	
40	38.2	32.9	25.8	25.8	21	13		13	25.9	25.9	40	
		walk	Top of cb.	Top of Conc. Fl. inlet					gut = end Conc slab.	cb. 0.6 ahead.		
305.1	305.07	304.41	303.25	304.3	304.2	304.0	303.49	303.48	303.46	304.9		
6.7	6.73	7.39	8.55	7.5	7.6	7.8	8.31	8.32	7.34	6.9		
40	38.1	25.8	25.8	18		13	22.9	25.8	25.8	40		
		Top of cb.	gut = Fl. Inlet				edge Conc. gut.	Top of slab	Top of cb. from Inlet			
Back of walk	end Ret.											
							311.80	P. 46				
								See sketch P. 18				

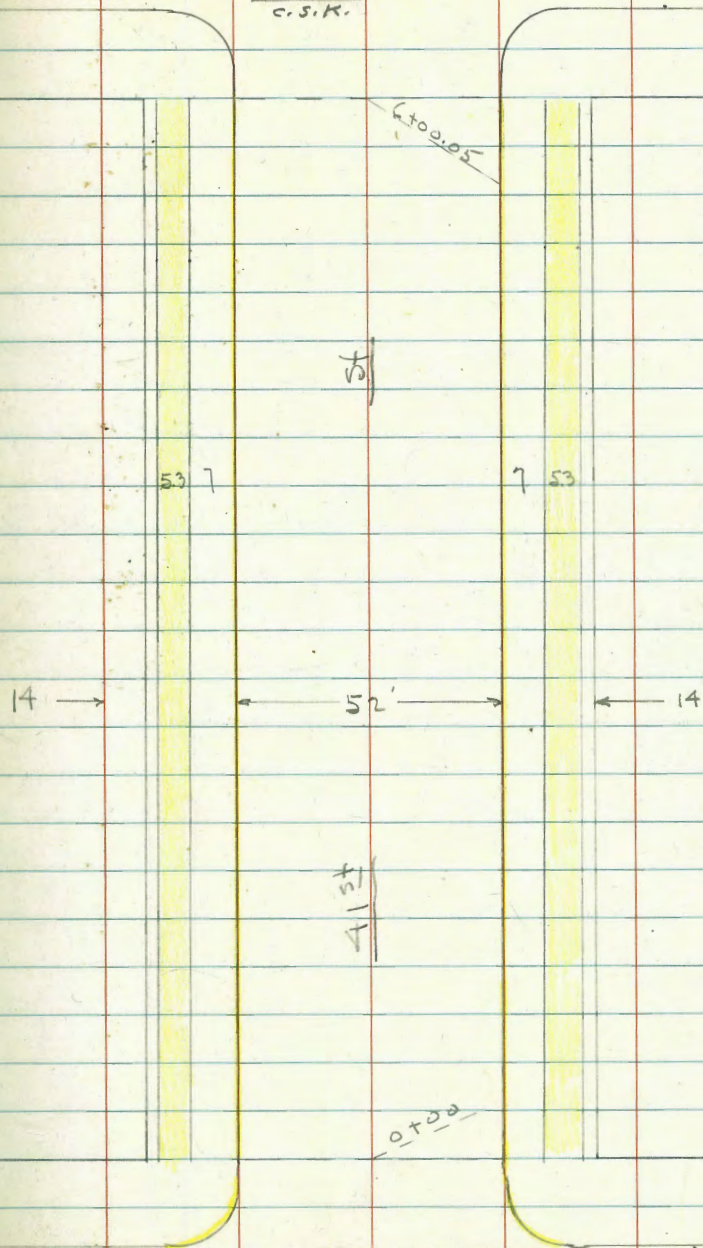
X-Sect. 41<sup>st</sup> St. - 80 St. - 14' curbs  
from 175' S of S.L. Dwight to 175'  
N. of W.L. Landis

Landis

See T. 50 for Int.  
Indexed  
C.S.K.

st

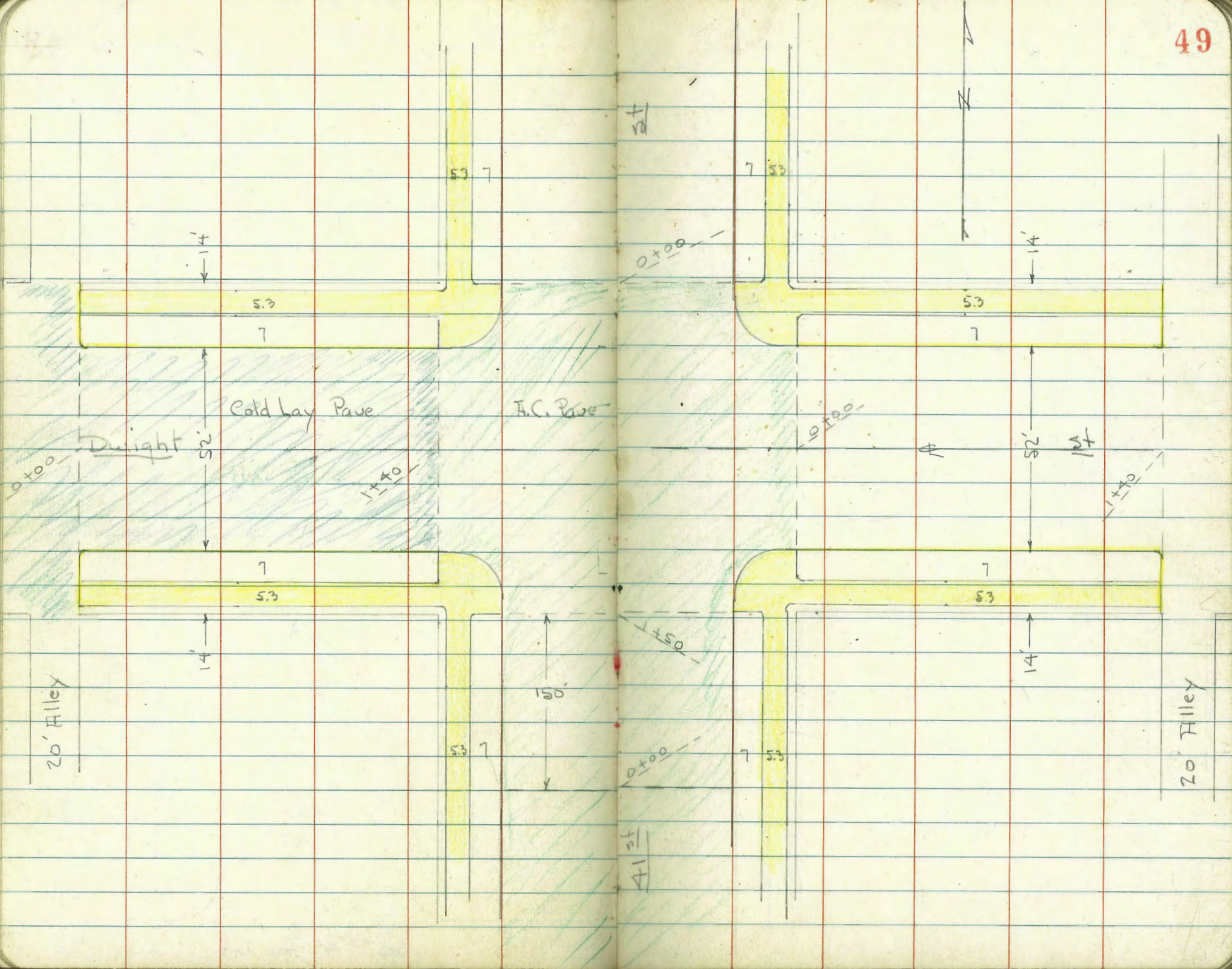
48



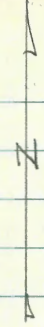
Dwight

See P. 49 for Int.

st



AC Pave

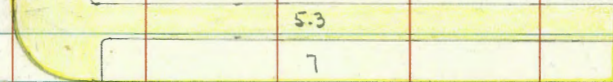
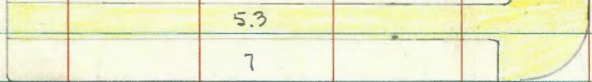


20' Alley

5.3 7

5/1

7 5.3



0+00

0+00

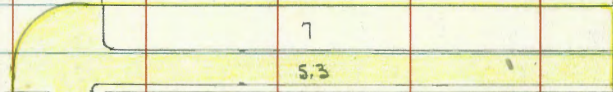
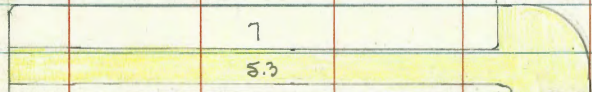
Landis

1+40

0+00

R

1+40



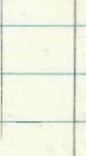
5.3 7

41 21

7 5.3

5+00.05

20' Alley



X-Sect. 41<sup>st</sup> - from 150' S. of S.L. Dwight  
 To 150' N. of N.L. Landis. Also  
 Sections on Dwight Both ways to Alley

Begin Levels on Dwight from E.L.  
 of Alley W. of 41<sup>st</sup> to W.L. of Alley  
 to E. of 41<sup>st</sup> - 80' st 14' cbs.

Indexed  
 C.S.M.

Lt. = N

X-Sect. Dwight

51

Rt. = S.

Cont. P. 52

See 41<sup>st</sup> Sections for Int.

1+40 = W.L. 41<sup>st</sup> = end Cold Lay Pav + Beg. H.C. Pav

330.49	329.94	329.86	329.53	330.09
4.08	4.65	4.64	4.71	4.81
26	26	13	13	26
Top	gut.			gut.
				Top

1+00

330.16	329.98	330.22	329.97	330.09
4.09	4.59	4.32	4.37	4.68
26	26	13	13	26
Top	gut.			gut.
				Top

0+50

330.42	329.97	330.22	330.27	329.90	329.48	329.95
4.15	4.60	4.35	4.30	4.67	5.09	4.62
26	26	13		13	26	26
Top	gut.			gut.	gut.	Top

0+00 = E.L. of Alley to W.

330.41	330.23	330.03	330.16	330.14	329.96	329.35	329.67	329.16	329.95
4.16	4.24	4.54	4.41	4.43	4.61	5.22	4.90	5.0	4.62
40.5	26	26	13		13	26	26	38.2	38.2
Top-endcb	Top	gut.				gut.	Top	gut.	Top
gut.	2' Rad.	Rt.				2' Rad.	2' Rad.		end
									Rt.

B.M. 4.02 334.57

330.55 N.W. BT.  
 Dwight + 41<sup>st</sup>

334.57

Lt.

Rt.

end.

1+40 = WL Alley

330.72	330.49	330.0	330.3	330.7	330.0	329.5	329.89	329.7	329.94
3.85	4.08	4.6	4.3	4.4	4.6	5.1	4.8	4.9	4.63
40	26	26	13		13	26	26	40	40
Top	Top	gut.				gut.	Top	gut.	Top
Ret.	Ret.					Ret.	Ret.	Ret.	Ret.

1+02 = 8' Conc. Dr. on Rt.

329.39	329.83
5.18	4.69
26	33
Dr.	walk

0+90

330.21	329.9	330.0	330.0	329.7	329.3	329.75
4.28	4.7	4.6	4.6	4.9	5.3	4.82
26	26	13		13	26	26
Top	gut.				gut.	Top

0+86 = 9' Conc. Dr. on Lt.

330.27	329.87
4.20	4.70
33	26
walk	Dr.

0+40

330.10	329.4	329.8	329.7	329.4	329.1	329.64
4.47	5.2	4.8	4.9	5.2	5.5	4.93
26	26	13		13	26	26
Top	gut.				gut.	Top

0+00 = E.L. 41<sup>st</sup> - edge of A.C. Pave

329.94	329.41	329.45	329.36	329.16	329.09	329.57
4.63	5.16	5.12	5.21	5.71	5.78	5.00
26	26	13		13	26	26
Top	gut.			gut.	gut.	Top

334.57

Rods around Returns - 41<sup>st</sup> + Dwight

H.I. = 334.57 - P. 53

N.W. Ret. - 24' around - 4 parts - 6' each

Beg. W.L. 41<sup>st</sup> 4.08 T = Top 6' - W.

4.65 q = gut

6' E. = 1/4 4.08 T

4.63 q

1/2 = 1/2 4.07 T

4.64 q

" 4.11 T

4.78 q

6' end = N.L. Dwight. 4.06 T

4.74 q

N.E. Ret. - 24' around - 4 - 6'

Beg. N.L. Dwight 4.56 330.01 T

5.20 329.37 q

6 S 4.56 330.01 T

5.23 329.34 q

6 = 1/2 4.61 329.96 T

5.24 329.33 q

4.62 329.95 T

5.20 329.37 q

6' end = E.L. 41<sup>st</sup> 4.63 329.94 T

5.16 329.71 q

Redwood  
Survey 3-28-50

S.E. Ret. - 24' around - 4 - 6'

Beg. E.L. 41<sup>st</sup> 5.00 329.57 T

5.49 329.08 q

5.03 329.54 T

5.50 329.07 q

6' 5.06 329.51 T

5.60 328.97 q

6' 5.05 329.52 T

5.63 328.94 q

6' end = S.L. Dwight. 5.05 329.52 T

Redwood 3-28-50 5.70 328.87 q

S.W. Ret. - 24' around - 4 - 6'

Beg. S.L. Dwight 4.55 T

5.12 q

6 N. 4.49 T

5.12 q

" 4.46 T

5.06 q

" 4.45 T

5.08 q

6' end = 4.48 T

5.04 q



Req. Levels on 41<sup>st</sup> - 80<sup>st</sup>. 14' cbs.  
 0+00 = 150' S. of S.L. Dwight.  
 See P. 49 for sketch.

Lt. = W.

Rt. = E.

54

14' N. = S. cb.

330.09	329.53						
4.48	5.04	5.03	5.07	5.19	5.33	5.62	5.49
10	40	26	13		13	26	40
Top	gut.					gut.	Top

1+50 = S.L. Dwight

330.02	329.45						
4.55	5.12	5.08	5.18	5.35	5.70	5.05	
26	26	13		13	26	26	
Top	gut.						

1+25

329.86	329.11						
4.72	5.40	5.31	5.38	5.58	6.03	5.40	
26	26	13		13	26	26	
Top	gut.				gut.	Top	

1+00

5.15	5.85	5.67	5.74	5.94	6.29	5.71	
26	26	13		13	26	26	
Top	gut.				gut.	Top	

0+50

5.86	6.50	6.38	6.42	6.66	7.06	6.45	
26	26	13		13	26	26	
Top	gut.				gut.	Top	

0+00 - on F.C. Paue

6.59	7.22	7.08	7.11		7.29	7.71	7.10
26	26	13			13	26	26
Top	gut.					gut.	Top

334.57 - P. 51



2+50

Lt.	Rt.
333.14 6.79 26 Top	332.5 7.4 26 gut.
332.4 7.5 13	332.9 7.2 13
332.6 7.3 13	332.2 7.5 26 gut
	333.10 6.83 26 Top

T.P. 7.53 339.93 2.17 332.40

2+00

Lt.	Rt.
332.64 1.93 25.9 Top	331.8 2.8 25.9 gut.
332.11 2.46 25.9 Top	331.5 3.1 25.9 gut.
	332.1 2.5 13
	331.7 2.9 13
	331.6 3.0 13
	331.2 3.4 25.9 gut.
	332.57 2.00 25.9 Top
	331.84 2.73 25.9 Top

1+13 = 9' Conc. Dr. on Rt.

1+13 - End. cb broken on Lt.

331.77 2.80 25.9 Top cb.	330.89 3.68 25.9 Dr.
	331.47 3.10 33 walk

1+00

331.67 2.90 33 walk	330.8 3.8 26 in Dr.
	331.0 3.6 13
	331.1 3.5
	331.0 3.6 13
	330.6 4.0 25.9 gut.
	331.24 3.33 25.9 Top

0+90 = Beg. cb broken out for Drive - Dirt.

331.44 3.12 25.9 Top cb.
-----------------------------------

0+50

331.06 3.51 25.9 Top	330.4 4.2 25.9 gut.
	330.4 4.2 13
	330.5 4.1
	330.4 4.2 13
	330.1 4.5 25.9 gut.
	330.62 3.95 25.9 Top

334.57

5+00

335.68

4.25

26  
Top

Lt.

335.0

4.9

26  
gut.

E

335.4

4.5

13

335.5

4.4

13

335.5

4.4

13

Rt.

335.4

4.5

25.9

336.10

3.83

25.9

4+50

335.15

4.78

26  
Top

334.6

5.3

26  
gut.

334.8

5.1

13

334.9

5.0

13

334.9

5.0

13

334.9

5.2

26  
gut.

335.31

4.56

26  
Top

4+00

334.66

5.27

26  
Top

334.0

5.9

26  
gut.

334.2

5.7

13

334.4

5.5

13

334.3

5.6

13

334.1

5.8

26  
gut.

334.86

5.07

26  
Top

3+92 = € 10' Conc. Dr. on Lt.

334.18

5.15

33  
walk

334.12

5.81

Dr.

3+50

334.14

5.79

26  
Top

333.3

6.6

26  
gut.

333.8

6.1

13

333.8

6.1

13

333.7

6.2

13

333.6

6.3

26  
gut.

334.25

5.68

26  
Top

3+42 = € 16' Conc. Dr. on Lt.

334.17

5.76

33  
walk

333.59

6.34

26  
Dr.

3+00

333.62

6.31

26  
Top

332.8

7.1

26  
gut.

332.1

6.8

13

332.2

6.7

13

332.1

6.8

13

332.1

6.8

26  
gut.

333.57

6.26

26  
Top

2+70 = € 8' Conc. Dr. on Lt.

332.45

6.48

33  
walk

332.73

7.20

25.9  
Dr.

339.93

Lt.      #      Rt.

40' N = #

336.6	336.9	337.1	337.2	337.4	337.6	337.7
3.3	3.0	2.8	2.7	2.5	2.3	2.2
40	26	13	13	26	26	40

27' N.

336.4	336.9	337.0	337.1	337.3	337.3	337.4
3.5	3.0	2.9	2.8	2.6	2.6	2.5
40	26	13	13	13	26	40

14' N. = S. cb.

336.70	335.9	336.5	336.9	337.0	337.0	336.7	336.6	337.29
3.23	4.0	3.4	3.0	2.9	2.9	3.2	3.3	2.64
40 Top	40 gut	26	13	13	13	26	40 gut	40 Top

6+00.05 = S.L. Landis

336.94	336.2	336.6	336.8	336.3	336.4	337.23
3.19	3.7	3.3	3.1	2.1	3.5	2.70
25.9 Top	25.9 gut	13	13	13	25.8 gut	25.8 Top

5+75

336.49	335.9	336.2	336.5	336.5	336.1	336.93
3.44	4.0	3.7	3.4	3.4	3.8	3.00
25.9 Top	25.9 gut	13	13	13	25.9 gut	25.9 Top

5+57 = + 9 Conc. Dr. on Lt.

336.43	335.72
3.50	4.21
33 walk	25.9 Dr.

5+50

336.22	335.6	336.0	336.2	336.1	335.9	336.65
3.71	4.3	3.9	3.7	3.8	4.0	3.28
25.9 Top	25.9 gut	13	13	13	26 gut	26 Top

337.93

check starting B.M. 5.37 330.56 330.55  
 T.P. 3.56 335.93 7.56 332.37  
 on BM 2.69 337.24 41<sup>st</sup> Landis

Lt.

←

Rt.

1+50 = end.

336.82 336.17 337.18 336.59 337.18  
 3.11 3.76 3.04 2.75 2.86 3.34 2.75  
 26 26 13 26 13 26 26  
 Top 9ut. Top 9ut. Top

1+00

336.99 336.40 337.40 336.76 337.45  
 2.94 3.53 2.85 2.53 2.63 2.17 2.48  
 26 26 13 26 13 26 26  
 Top 9ut. Top 9ut. Top

0+50

337.11 336.55 337.52 336.88 337.47  
 2.82 3.38 2.72 2.41 2.55 3.05 2.46  
 26 26 13 26 13 26 26  
 Top 9ut. Top 9ut. Top

0+25

337.20 336.58 337.51 336.99 337.58  
 2.73 3.35 2.70 2.42 2.45 2.94 2.35  
 26 26 13 26 13 26 26  
 Top 9ut. Top 9ut. Top

80' N. = N.L. Landis = 0+00 ahead = Beg.

AC Paue

337.22 336.58 337.29 337.61 337.50 337.06 337.67  
 2.71 3.35 2.64 2.32 2.43 2.87 2.26  
 26 26 13 26 13 26 26  
 Top 9ut. Top 9ut. Top

66' N. = N.cb.

337.21 336.7 336.7 337.2 337.4 337.4 337.2 337.3 337.13  
 2.72 3.7 3.2 2.7 2.5 2.5 2.7 2.6 2.20  
 40 40 26 13 26 13 26 40 40  
 Top 9ut. Top 9ut. Top

53' N.

336.9 336.9 337.1 337.3 337.4 337.6 337.6  
 3.5 3.0 2.8 2.6 2.5 2.3 2.3  
 40 26 13 26 13 26 40

339.93

X-Sect. Landis - 80' st. 14' cbs. from  
 E.L. of Alley W. of 41<sup>st</sup> to W.L. of  
 Alley E. of 41<sup>st</sup> - See sketch - P. 50  
 Rod on  $\$$  of Returns on W. Side of 41<sup>st</sup>  
 See P. 58 for Int.

1+40 = W.L. 41<sup>st</sup>

1+00

0+75 =  $\$$  10' Conc. Dr. on Lt.

0+50

0+35 =  $\$$  10' Conc. Dr. on Lt.

0+00 = E.L. of 20' Alley - W. of 41<sup>st</sup>

B.M. 496 342.20

337.24 NW 41<sup>st</sup>  
 + Landis end ret.

8-21-47  
 70

Indexed  
 C.S.K.

Cont. Next Page

60

Lt = N.

Rt = S.

337.71

493  
 Top -  $\$$  Ret.  
 NW Cor.

337.20

5.00	6.0	58	56		
25.7	25.7	13			
Top	gut.				

335.21

6.99	7.7	76	74	78	
25.9	25.9	13		13	
Top	gut.				

8.14  
 33  
 walk

9.87  
 25.9  
 Dr.

332.74

9.48	10.2	10.0	98	10.1	10.7
26	26	13		13	26
Top	gut.				gut.

10.15  
 33  
 walk

331.40  
 10.80  
 26  
 Dr.

330.42

11.78	11.95	12.7	12.4	12.0	12.1
40	26	26	13		13
Top gut.	Top gut.	gut.			

Top gut.  
 end ret.

330.25  
 Top  
 Rod.

330.2

342.20

336.65

5.52  
 Top -  $\$$  Ret.  
 SW Cor.

5.7	6.2	5.49
3	25.9	25.9
	gut.	Top

334.91

8.2	7.19
26	26
gut.	Top

332.42

9.78	9.78
26	26
gut.	Top

330.26

12.2	11.94	11.80
26	26	40
gut.	Top	Top - cbt
	2 Rod.	gut. - end Ret.

x-Sect. Landis - Cont.

Lt.

±

Rt

61

1+40 = W.L. of 20' Alley

1.76  
40  
Top & gut  
end Ret.

340.14

2.06 2.6  
25.7 25.7  
Top 2 Rod. gut

2.6 2.5 2.6  
13 13

3.1 2.58 2.16  
2.6 2.6 4.0  
gut. Top 2 Rod. Top & gut

339.62

0+90 = ± 10' Conc. Dr. on Lt.

2.78  
33  
walk

3.41  
25.7  
Dr. = gut.

3.5 3.4 3.8  
13 13

4.1 3.25  
2.6 2.6  
gut. Top

338.85

0+45 = ± 9' Conc. Dr. on Lt.

3.56  
33  
walk

4.22  
25.7  
Dr.

0+40

338.38  
3.82  
25.7  
Top

4.5  
25.7  
gut

4.3 4.2 4.5  
13 13

5.0 4.24  
2.6 2.6  
gut. Top

337.96

0+00 = E.L. 41<sup>st</sup>

337.72  
4.48  
25.7  
Top

4.9  
25.7  
gut

4.6 4.4 4.8  
13 13

5.6 4.89  
2.6 2.6  
gut. Top

337.31

Rods on ± of Returns on E. side 41<sup>st</sup>

337.67  
4.53  
Top & Ret.  
N.E. Cor

337.26  
4.94  
Top & Ret.  
S.E. Cor.

342.20



X-Section 20' Alley in Block 75 - Univ. Hts.

# 1503

W.O. 31385 + 25001

Levels - Next page

9-4-47 Notes Reduced - Wherry-

Indexed  
C.S.K.

8-21-47

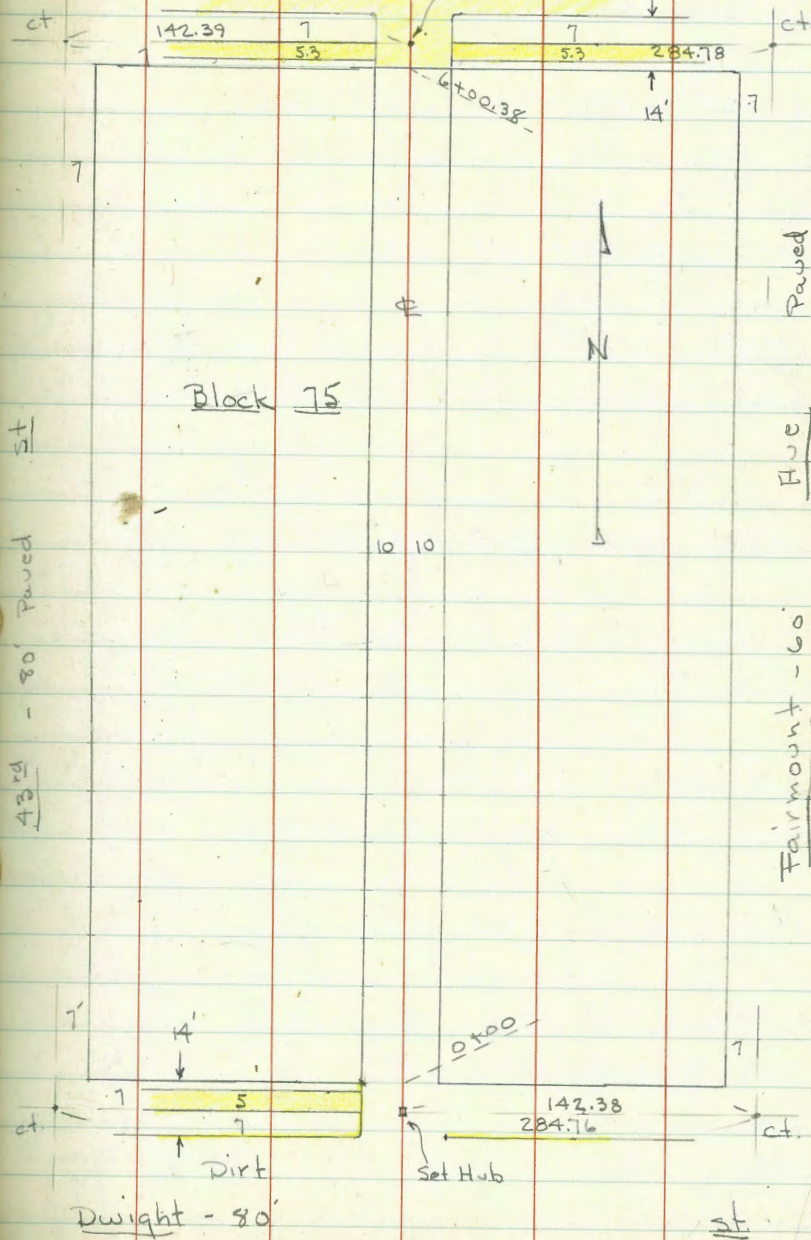
Osborne  
Hardin  
Smith  
Warrell

Landis - 80

Conc. Pavc  
Set Id. ct.

st

62



X-Sect. 20' Alley in Block 75

Lt. = W

±

Rt. = E.

0+85- 10.6 Rt. = Beg. 6" Conc. wall

0+75- 10.6 Rt. = end wall

0+63 - 10.6 Rt. = Beg. Cor. 6" Conc. wall

0+58 - 21.3 Lt. = ± Sing. Gar. Wood floor

0+50 - 10' Lt. = ± 4" Cypress

0+29 - 10.1 Lt. = Ely 20" Palm

0+25

0+14 - 10.1 Lt. = end wall

0+00 - 10.3 Lt. = Beg. 6" Conc. wall

0+00 = N.L.

See Dwight sections

0-14 = N. cb Dwight

B.M. 4.00 344.89

340.89

N.W. Dwight + Fairmount

341.1  
3.8  
20  
341.65  
3.24  
21.3  
floor

340.1  
4.8  
10  
340.6  
4.3  
10

339.7  
5.2  
7  
339.8  
5.1  
6

339.4  
5.5  
5  
339.5  
5.4  
5

339.2  
5.7  
10  
339.7  
5.2  
10

340.67  
4.22  
10.6  
Top wall

339.9  
5.0  
11  
340.0  
4.9  
20

340.99  
4.40  
10.6  
Top wall

341.3  
5.1  
20  
340.62  
4.27  
10.6  
Top Cor. wall

341.0  
3.9  
13.4  
ground at House

340.7  
4.2  
10  
340.0  
4.9  
7

339.7  
5.2  
10  
339.7  
5.2  
10

339.9  
5.0  
20  
339.9  
5.0  
20

341.43  
3.43  
10.1  
Top wall

340.23  
4.66  
9.9  
Top end Ret.

339.9  
5.0  
9.9  
gut.

339.8  
5.1  
10  
340.1  
4.8  
10

340.1  
4.7  
20  
340.2  
4.7  
20

340.07  
4.82  
10  
Top 1' Red Ret.

339.4  
5.4  
10  
339.5  
5.4  
10

339.5  
5.4  
10  
339.5  
5.4  
10

339.5  
5.4  
10  
339.5  
5.4  
10

339.5  
5.4  
10  
339.5  
5.4  
10

339.5  
5.4  
10  
339.5  
5.4  
10

339.5  
5.4  
10  
339.5  
5.4  
10

340.07  
4.82  
13  
Top-end cb (broken out)

344.89

2+26 -  $\pm$  Doub. Gar. on Lt. - Conc. floor + apron

2+25

T.P. 8.30 350.86 2.33 342.56

2+00 - 10.1 Lt. = WLy. P. pale P.A. 3433

1+75

1+65 - 15' Rt. =  $\pm$  Doub. Gar. - Conc. floor

1+50 - 10.1 Rt. = end fence

1+25

1+00 - 10.5 Rt. = Beg. Board fence

1+00 - 10.6 Rt. = end Conc. wall

1+00 - 10.2 Lt. = WLy. P. pale # P.A. 3617

0+94 -  $\pm$  Sing. Gar. on Lt. - Conc. floor + apron

Lt.	$\epsilon$	Rt.
7.22 192 floor	7.53 15 apron	343.3 342.7 342.2
7.6 15	8.2 10	8.7 7
341.9	341.0	340.3
3.0 15	2.4 10	4.2 5
341.9	341.0	340.3
3.0 15	3.9 10	4.6 7
341.0	340.8	339.7
3.9 15	4.1 10	5.2 5
340.1	339.3	339.4
4.8 15	5.6 10	5.5 10
340.5	340.4	339.6
4.4 15	4.5 10	5.3 7
341.39	340.95	339.8
3.50 16 floor	3.94 14 apron	338.8
		340.50
		339.8
		339.5
		Top wall
		340.17
		4.72 15 floor
		341.5
		341.5
		342.3
		341.9
		8.6 10
		9.0 15
		9.0 7
		9.0
		350.86 ✓
		340.8
		340.6
		340.7
		340.6
		340.8
		341.5
		341.5
		3.4 10
		3.4 15
		4.1 5
		4.3
		340.7
		340.3
		340.7
		4.6 10
		4.2 15
		340.17
		4.72 15 floor
		339.5
		5.4 20
		339.6
		6.1 10
		6.3 20
		339.8
		339.5
		5.1 11
		5.4 20
		344.89

4+60 - 16' Rt. = Sing Gar. - Conc. floor

4+50

4+32 - 47' Lt. = Sing Gar. - Conc. floor

4+17 - 47' Lt. = Sing Gar. - Conc. floor

4+00 - 9.8 Lt. = Wly. P. pole # P.A. 3665

3+88 - 22.3# = Doub. Gar. - Dirt floor

3+50

3+25

3+00 - 11' Lt. = end fence

3+00 - 9.6 Lt. = Wly P. pole # P.A. 3647

2+75

2+56 - 10' Lt. = Beg. board fence

2+50

Lt.

Rt.

Rt.

346.54  
4.32  
47  
44.3 floor  
47 floor  
346.1  
4.8  
40

347.1  
3.8  
20  
347.2  
3.7  
10  
347.1  
3.8  
347.2  
3.7  
10  
347.3  
3.6  
30

347.52  
3.34  
16  
floor

346.7  
4.2  
15  
346.5  
4.4  
10  
346.2  
4.7  
10  
346.2  
4.7  
15

345.4  
5.5  
15  
345.6  
5.3  
10  
345.6  
5.3  
10  
345.7  
5.2  
10  
345.5  
5.4  
15  
345.5  
5.4  
40

346.4  
4.5  
22.3  
floor

344.9  
6.0  
15  
345.2  
5.7  
10  
345.3  
5.6  
10  
345.4  
5.5  
10  
345.3  
5.6  
15

344.5  
6.4  
15  
344.5  
6.4  
10  
344.6  
6.3  
10  
344.7  
6.2  
10  
344.7  
6.2  
15

344.2  
6.7  
15  
344.0  
6.9  
10  
344.3  
6.6  
10  
344.0  
6.9  
10  
344.1  
6.8  
15

343.5  
7.4  
15  
343.3  
7.6  
10  
343.0  
7.9  
10  
343.4  
7.5  
10  
343.4  
7.5  
15

350.86

check starting B.M. 3.71 340.91 340.89  
 T.P. 0.09 344.62 8.53 344.53

6 + 14.38 = S. cb. Landis

T.P. 5.12 353.06 6.01 347.94

6 + 00.38 = S.L. Landis = edge Conc. Pave

5 + 95 - 10.7 Lt. = Cor. Gar. opens N. - Conc. floor

5 + 75

5 + 50

5 + 49 - 15.3 Lt. = Sing. Gar. - Dirt floor

5 + 45 - 13.5 Rt. = Sing. Gar. Dirt floor

5 + 24 - 15.3 Lt. = Sing. Gar. Conc. floor

5 + 22 = Sing. Gar. on Rt. Conc. floor + apron

T.P. 5.58 353.95 2.49 348.37

5 + 06 - 10.1 Rt. = 8' shed - Dirt floor

5 + 03 - 9.8 Lt. = Wly. P. pole # P.A. 3683

5 + 00

4 + 91 - 15.2' Lt. = Sing. Gar. - Dirt floor

	Lt.	Rt.		66
347.30	347.41	347.97	347.48	347.44
5.76	5.65	5.09	5.58	5.62
50	25	10	10	5.61
gut.	gut.	Top 1 Rad	gut.	gut.
			353.06	347.45
	348.24	348.21	347.73	347.92
	5.69	5.74	6.22	5.14
	9.7	9.7	6.05	5.63
	Top	gut.	9.7	5.63
	end Ret.		gut.	gut.
349.15				348.05
4.80				5.90
10.7				9.7
floor				Top-end ret.
	349.2	349.0	348.9	349.1
	4.7	4.9	5.0	4.8
	15	10		10
				13.2
				ground along House
	348.5	348.5	348.7	349.0
	5.4	5.4	5.2	4.9
	15	10		10
348.5				349.0
5.4				4.9
15.3				15
floor				
	348.29			
	5.66			
	15.3			
	floor			
				348.9
				5.0
				12.8
				floor
				348.57
				5.43
				11
				apron
				348.76
				5.19
				14
				floor
				348.2
				2.7
				10.1
				floor
				347.9
				348.0
				347.8
				348.0
				348.1
				2.8
				15
				350.86

X-Sect. 20' Alley in Block 101 - Univ. Hts

8-22-47

# 1503

7.0

W.O. 31385 + 25001

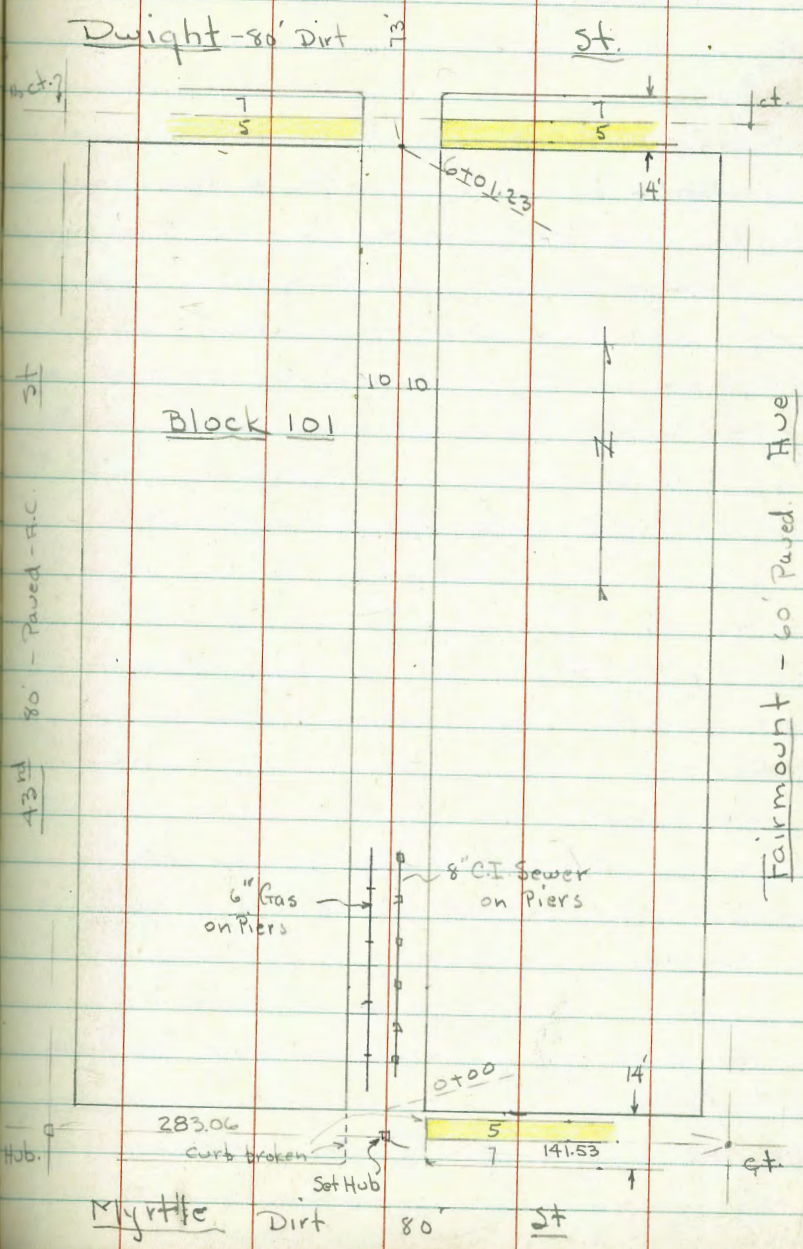
9-4-47 - Notes Reduced Wherry

Indexed  
C.S.K.

7'

Hub - Sec P. 62

67



X- Sect. 20 Alley in Block 101

0+10.5 - 1.7 Rt =  $\pm$  Conc. pillar =  $\pm$  Both ways  
 Batter on sides = 0.8 in 5' - 10" thick through out width  
 for Gas pipe - Top = 1 across pipe - 10" along pipe

Top = 1 across pipe - 0.8' along pipe

Note: Conc. Pillars for Sewer - Base = 32 x 32

0+07.5 - 1.7 Rt =  $\pm$  8" cast Iron Sewer pipe - out of ground

0+04 - 4.1 Lt = Beg. 6" Gas pipe - out of ground

0+01 - 11 Rt = Beg. Picket fence

T.P. 3.70 326.49 10.06 322.79

0+00 = N.L.

0-03 -

0-12 - To show ground

0-14 = N. cb. line Myrtle - Both cbs. broken down  
 See Myrtle - Sections

B.M. 0.85 332.85 332.00 NW. B.P. Myrtle  
 Fairmount

Lt. = W.

$\pm$

Rt. = E.

68

318.5  
 8.0  
 1.7  
 ground at  
 base of pillar

320.67  
 5.82  
 1.7  
 Top pipe

322.06  
 4.43  
 Top pipe

		326.49		
324.4	323.41	324.0	324.7	324.59
8.4	9.44	8.8	8.1	8.26
10	9.2		5	10.5
on ground	Top-end Ret.			Top + gut. end Ret.
	325.0	325.4	325.7	
	7.8	7.4	7.1	
	10		10	
	325.0	325.4	325.8	
	7.8	7.4	7.0	
	10		10	
323.79	323.8	324.5	325.0	325.67
9.06	9.0	8.3	7.8	7.18
9.0	9.0		10.6	10.6
Top 1' Rad. Ret.	gut.		gut.	Top 1' Rad. Ret.
		332.85		

0 + 94.5 - 1.5 Rt. =  $\Phi$  Pillar

0 + 89.5 - 4.3 Lt. =  $\Phi$  Pillar

0 + 82.5 - 1.6 Rt. =  $\Phi$  Pillar

0 + 75 - 8.2 Lt. = Req. Conc. 1' wall - fence on top

0 + 70.5 - 1.6 Rt. =  $\Phi$  Pillar

0 + 64.5 - 4.2 Lt. =  $\Phi$  Pillar

0 + 60

0 + 58.2 - 1.6 Rt. =  $\Phi$  Pillar

0 + 50 - 8.8 Lt. = Req board fence

0 + 46.5 - 1.6 Rt. =  $\Phi$  Pillar

0 + 40

0 + 39 - 4.3 Lt. =  $\Phi$  Pillar

0 + 34.5 - 1.6 Rt. =  $\Phi$  Pillar

0 + 25

0 + 22.5 - 1.7 Rt. =  $\Phi$  Pillar

0 + 13.5 - 4' Lt. =  $\Phi$  Gas Pillar

Lt.

$\Phi$

Rt.

69

313.2  
13.3  
4.3  
Base

312.4  
14.1  
4.2  
Base

311.0  
15.5  
4.3  
Base

311.3  
15.2  
2.5

311.3  
9.2  
4  
Base

315.1  
11.4  
2.5  
313.7  
12.8  
10  
318.20  
8.2  
103  
8.2  
314.2  
14.0  
6  
312.5  
11.3  
6  
315.2  
10.5  
10  
316.0  
9.6  
16  
316.9  
7.6  
2.5

315.0  
11.5  
2.5  
313.1  
13.4  
10  
312.3  
14.2  
8  
312.0  
14.5  
10  
314.9  
11.6  
20  
317.2  
9.3

314.7  
11.8  
2.5  
311.1  
15.4  
10  
311.1  
15.4  
10  
313.8  
12.7  
10  
314.7  
11.8  
12  
314.7  
11.8  
20  
316.7  
9.8  
2.5

312.2  
14.3  
10  
312.7  
13.8

313.6  
12.9  
1.7  
Base

312.3  
13.2  
1.5  
Base  
313.3  
13.2  
1.6  
Base  
312.3  
14.2  
1.6  
Base  
311.8  
14.7  
1.6  
Base  
311.1  
15.4  
1.6  
Base

311.1  
15.4  
1.6  
Base  
317.9  
8.6  
2.5

326.49









check BM = N.W. Fairmount <sup>Dwight +</sup> 399 340.89  
 I.P. 490 344.88 4.83 339.98

6 + 15.23 = S. cb

6 + 08.23 = Brk in cb. Both sides

6 + 01.23 = S.I. Dwight

5 + 80

5 + 69 - 9.8 Lt. - end fence

5 + 63 - 11.5 Rt. = N.W. Car. Gar. - Conc. floor - opens North

339.65	339.2	339.3	339.4	339.73
5.60 10 Top Rad.	5.6 10 gut.	5.5	5.4 10 gut.	5.08 10 Top Rad.
339.88		339.6		339.89
4.93 9.9 Top gut.		5.2		4.92 9.0 Top gut.
339.96		339.8		339.51
4.85 Top gut. 9.75 end Ret.		5.0		5.24 10 Top gut. - end Ret.
340.1	340.1	339.9	339.8	338.96
4.7 11.4 ground at House	4.7 10	4.9	5.0 10	5.85 15 on Conc Dr.
				338.75 6.06 11.5 floor
		344.81		

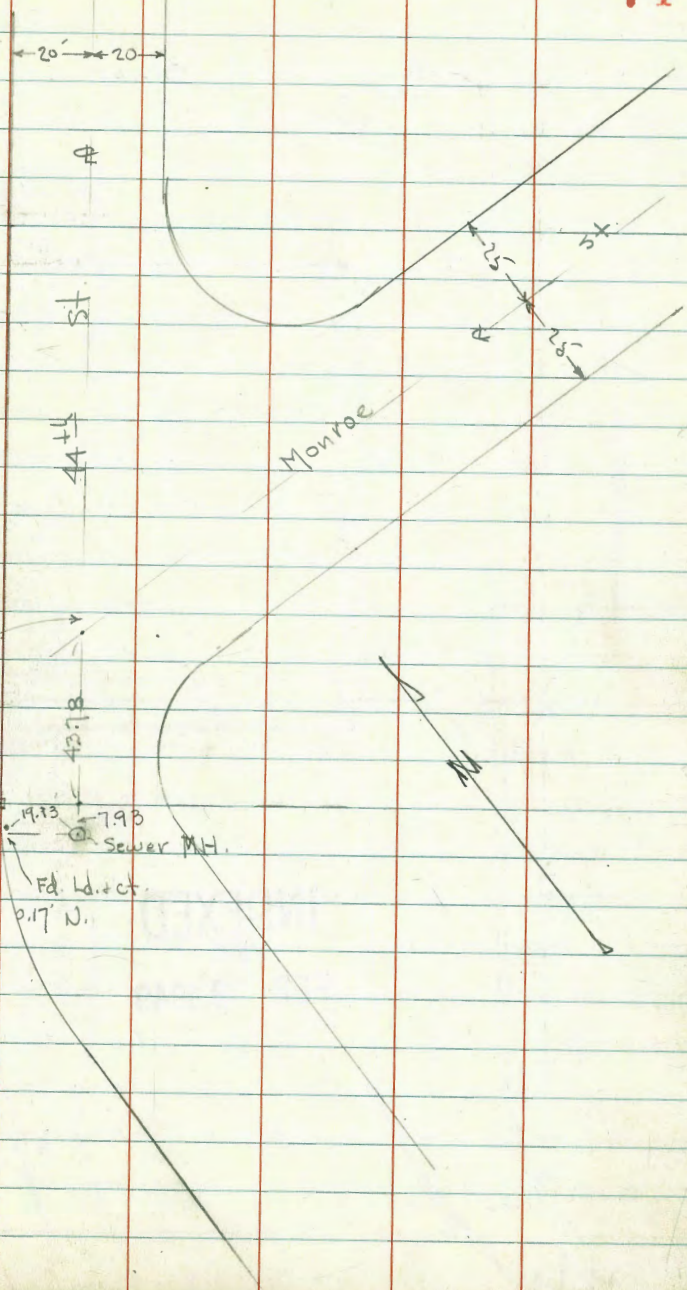
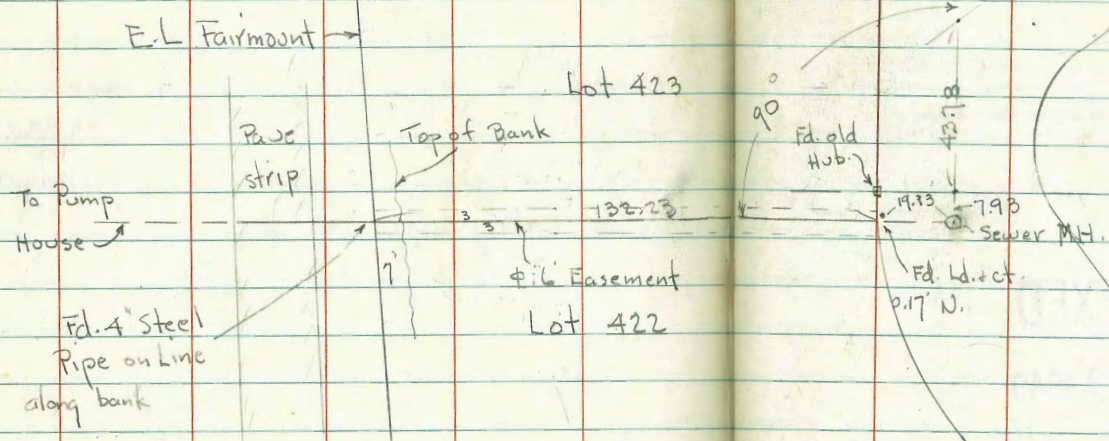
Location of 6' Easement - along  
Lot line Between Lots 422 + 423 - Unit  
# 3 - Talmadge Park - Map 1900

W.O. 19070

1-14-48

Osborne  
Hardin  
Warrell

INDEXED  
JAN 14 1948





# Elevations of Culvert

Aldine Dr. & Monroe

Detail on P. 75.

Sommermeier  
McCoy  
Jones

2-1-49 Location on P. 77

## INDEXED

H = Invert 36" pipe at intake

G = Intersection of Monroe + Culvert lines

F = Top of grate - on curb line

E = Bottom of box + Top of 2' stand pipe

D = Invert 36" pipe

C = Grate on curb line

B = Bottom of box top of 2' stand pipe

Point A = Invert 36" pipe

328.45  
319.14  
5.81  
15.1A  
G  
H  
Pave

can not get.  
326.09  
318.07  
315.83  
325.83  
327.75  
8.17  
6.19  
18.43  
8.43  
6.51  
A  
B  
C  
D  
E  
F

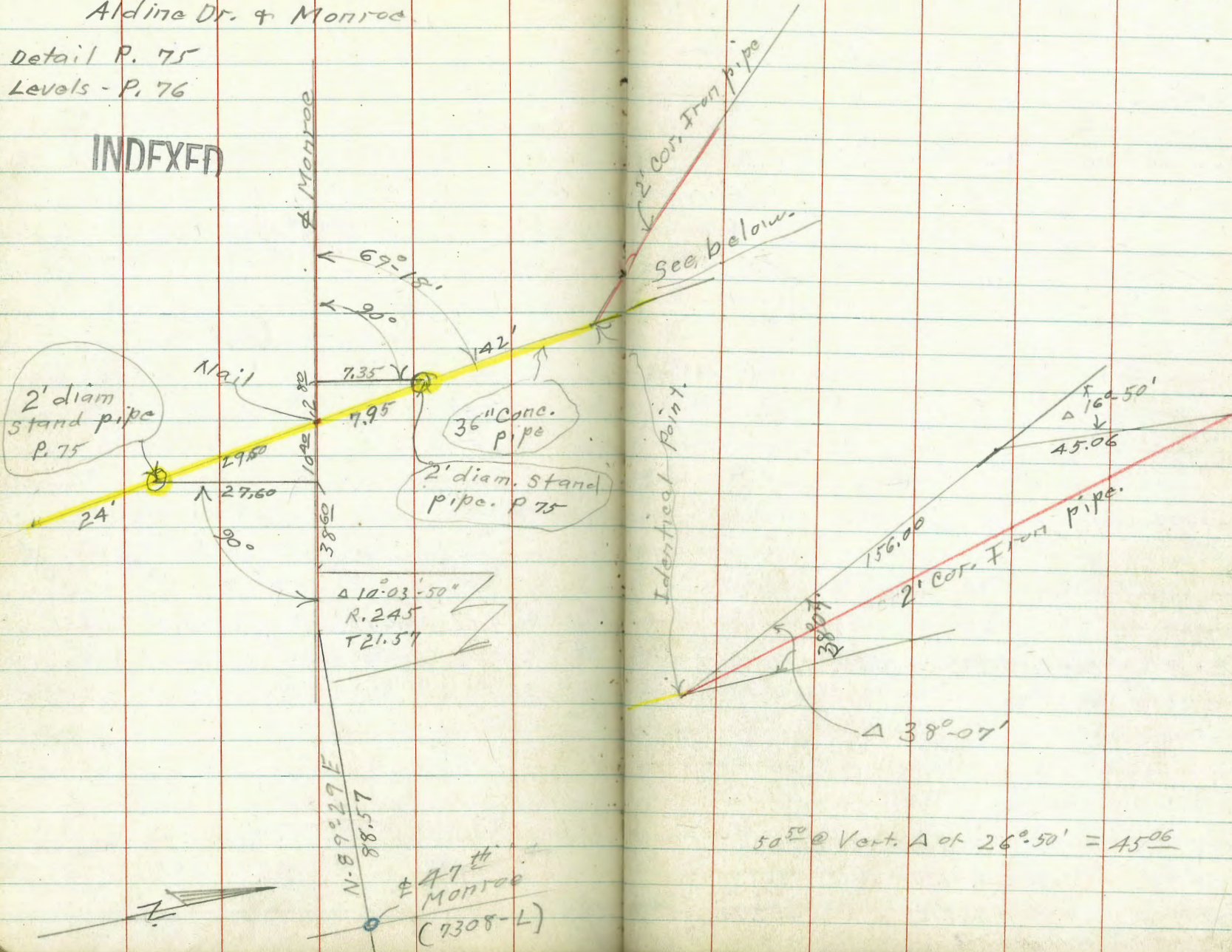
334.26

T.P.	5.31	<u>334.26</u>	9.85	328.95
S.E.B.A 47 <sup>th</sup> + Monroe	0.86	<u>338.80</u>	-	337.94

Location Culvert  
Aldine Dr. & Monroe

Detail P. 75  
Levels - P. 76

INDEXED

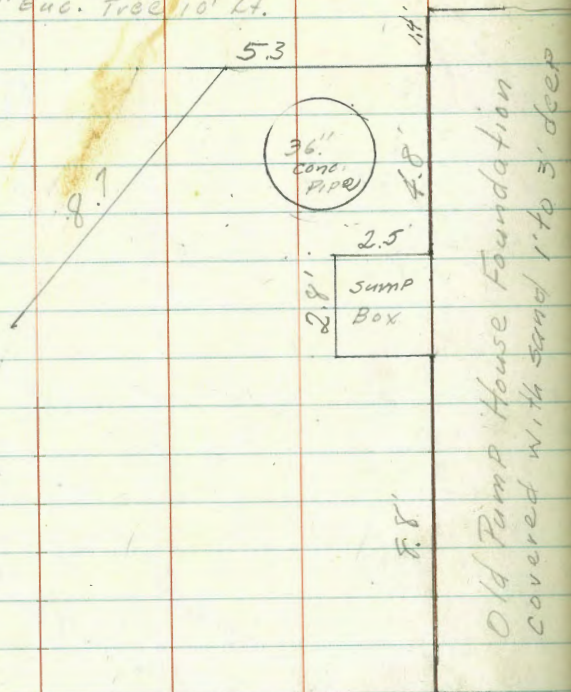




Extension Drain Aldme Dr. & Mooroe

9-22-53 W.D. 21182

ch. BM			1.41	337.94
TP	8.82	339.35	0.77	330.53
0+40	18" Enc. Tree 10' Lt.			
			5.3	
0+30				
0+16.8				
0+15				
0+07.9				
0+05				
0+03 =	Batter Point on Wng Wall 74 Rt. Elev. 322.96			
0+00 =	End of Existing 36" conc. Pipe (H-Page 75)			
T.P.	2.32	331.30	10.18	328.98
BM	1.22	339.16		337.94



Old Pump House Foundation covered with sand 1' to 3' deep

Popo Pullen Olow

£

78

332.3	321.4	323.6	320.7	319.6	322.3	324.5
+1.0 38	69 15	7.7 9	10.6	11.7 14	9.0 22	6.8 26
332.3	323.4	322.0	319.4	325.1		
+1.0 27	7.9 15	9.3	11.9 13	6.2 2.1		
		323.16	322.16			
		8'4"	8'4"			
		SO. End Foundation Wall	SO. SWCOR Foundation			
331.2	324.1	325.9	324.5	323.16	319.9	325.0
01 30	7.2 18	5.4 11	6.8 10	8.14 Foundation Part	11.4 9'	6.3 19
				323.49	323.49	
				7.91 TOP Box	7.81 SW. cor. Box	
				326.6	323.49	321.3
				4.9 12	7.81 1.9'	10.0 9.3
				Ground	TOP Sump Box	0.6 West Edge Box
				East Edge Sump Box	Ground	0.6' End wing wall
331.0	326.3	327.5	323.45	322.94	322.94	322.94
0.3 31	5.0 20	2.8 14	7.85 2.9	8.36 2.9	8.36 TOP of Foundation Wall	8.35 TOP of Foundation Wall
				319.02	319.02	
				1.22 2.9	1.22 Invert	1.23 2.7
				BM =	47th & Mooroe	



# IMPROVED TABLES AND INFORMATION

## HORIZONTAL STADIA CORRECTIONS\*

2°-00' — 0.1	21°-00' — 12.8	33°-00' — 29.7
3°-00' — 0.3	21°-30' — 13.4	33°-15' — 30.1
4°-00' — 0.5	22°-00' — 14.0	33°-30' — 30.5
5°-00' — 0.8	22°-30' — 14.7	33°-45' — 30.9
6°-00' — 1.1	23°-00' — 15.3	34°-00' — 31.3
7°-00' — 1.5	23°-30' — 15.9	34°-15' — 31.7
8°-00' — 1.9	24°-00' — 16.5	34°-30' — 32.1
9°-00' — 2.5	24°-30' — 17.2	34°-45' — 32.5
10°-00' — 3.0	25°-00' — 17.9	35°-00' — 32.9
10°-30' — 3.3	25°-30' — 18.6	35°-15' — 33.3
11°-00' — 3.6	26°-00' — 19.2	35°-30' — 33.7
11°-30' — 4.0	26°-30' — 19.9	35°-45' — 34.1
12°-00' — 4.3	27°-00' — 20.6	36°-00' — 34.6
12°-30' — 4.7	27°-30' — 21.3	36°-15' — 35.0
13°-00' — 5.1	28°-00' — 22.0	36°-30' — 35.4
13°-30' — 5.5	28°-30' — 22.8	36°-45' — 35.8
14°-00' — 5.9	29°-00' — 23.5	37°-00' — 36.2
14°-30' — 6.3	29°-30' — 24.3	37°-15' — 36.6
15°-00' — 6.7	30°-00' — 25.0	37°-30' — 37.1
15°-30' — 7.2	30°-15' — 25.4	37°-45' — 37.5
16°-00' — 7.6	30°-30' — 25.8	38°-00' — 37.9
16°-30' — 8.1	30°-45' — 26.2	38°-15' — 38.3
17°-00' — 8.5	31°-00' — 26.5	38°-30' — 38.7
17°-30' — 9.0	31°-15' — 26.9	38°-45' — 39.1
18°-00' — 9.5	31°-30' — 27.3	39°-00' — 39.6
18°-30' — 10.1	31°-45' — 27.7	39°-15' — 40.0
19°-00' — 10.6	32°-00' — 28.1	39°-30' — 40.5
19°-30' — 11.2	32°-15' — 28.5	
20°-00' — 11.7	32°-30' — 28.9	
20°-30' — 12.3	32°-45' — 29.3	

### Chains to Feet

1 .....	66
2 .....	132
3 .....	198
4 .....	264
5 .....	330
6 .....	396
7 .....	462
8 .....	528
9 .....	594
10 .....	660

### Feet to Chains

100 ....	1.515
200 ....	3.030
300 ....	4.545
400 ....	6.060
500 ....	7.575
600 ....	9.090
700 ....	10.606
800 ....	12.121
900 ....	13.636
1,000 ....	15.151

31 20  
837  
2296

MICROFILMED  
DEC 29 1964