

1774



P-62-only

2 + 99.87
1 + 49.93

MICROFILMED

DEC 29 1964

MADE IN U.S.A.

1774

CITY ENGINEER

**Our Leather Bound Engineers Note Books
are carried in the following rulings:**

- | | |
|---------------------------------|--|
| No. 380 LEVEL BOOK. | Left and Right Hand Page
the same as Left Hand Page
of this Book. |
| No. 382 FIELD BOOK. | Left Hand Page as in this
Book, Right Hand Page 4x4
to the inch, Center Line Red. |
| No. 384 MINING TRANSIT
BOOK. | Left Hand Page as in this
Book, Right Hand Page 8x8
to the inch, Center Line Red. |
| No. 385 FIELD BOOK. | Left Hand Page as in this
Book, Right Hand Page 8 ver-
tical and 4 horizontal lines to
the inch, Center Line Red. |

We also carry the Note Books listed above,
bound in extra strong Fabri-Hide (otherwise
the same quality of book,) which can be fur-
nished at a somewhat lower price.

In ordering Fabri-Hide covered books, add
the letter "F" to catalog number.

THE FREDERICK POST CO.

ENGINEERING and DRAFTING SUPPLIES

P. O. Box 803

CHICAGO

2-54 Druckers Sub. Cross Section ✓

35-48 Cross Sec. Alley Meade - Madras Ohio + Illinois

49 Levels Prop. Sutter Lot 23 Tommaso Sub

50 Cross Sec. Jefferson - Rosecrans
to Gaines

57 " " Alley BIK 375 Old Town
Sammichsens Sub

71-76 - ARCHER ST. from La Jolla Mesa Dr. to W'y term.

Fd. 2" x 2" Hub

Williams
660.39

30 30

Fd. 2" x 2" Hub

Comulus

2+8926

25'

329'

Existing
8" Conc. Pipe Culvert

60° 21'

Clavis

25

Fd. Conc. Man

Prince

25'

660.40
Rec. FB 572
46

Fd. 2" x 2" Hub

Flow
Channel

201112 st
25'

660.40
Rec. FB 572
46

0+00
Fd. RR. Spike in Paving
with chisled cross
FB 572
46

2318

X



Liberty St. - X-Sections

Lt

¢

Rt.

5

5+00

~~-1.1~~
49
50

~~-1.1~~
49
25

~~-1.2~~
50
50

~~-1.1~~
49
25

~~-1.2~~
50
50

4+50

~~-1.4~~
52
50

~~-1.3~~
51
25

~~-1.3~~
51
51

~~-1.4~~
52
25

~~-1.3~~
51
50

4+00

~~-1.5~~
53
50

~~-1.5~~
53
25

~~-1.3~~
51
51

~~-1.3~~
51
25

~~-1.4~~
52
50

3+50

~~-1.2~~
50
50

~~-1.5~~
53
25

~~-1.1~~
55
55

~~-1.2~~
50
25

~~-1.4~~
52
50

3+00

~~-1.4~~
52
50

~~-1.4~~
52
25

~~-1.6~~
54
54

~~-1.8~~
56
25

~~-1.7~~
55
50

2+50

~~-1.8~~
56
50

~~-1.7~~
55
25

~~-1.5~~
53
53

~~-1.5~~
53
25

~~-1.5~~
53
50

3.75
2

3.75
2

Walker
Handricks
Becker
Johnson
6-3-47

CROSS SECTION - VENUS ST.
from Clovis to Camulos
Sketch P-2

Lt

2

Rt

Indexed
e.s.k.

7

2+00

-2.2	-2.1	-2.2	-2.2	-2.4
52 50	51 25	52	52 25	54 50

1+50

Plotted
A.M.

-1.9	-2.0	-2.2	-2.3	-2.5
49 50	50 25	52	53 25	55 50

1+00

-2.6	-2.4	-2.4	-2.3	-2.5
56 50	54 25	54	53 25	55 50

0+50

-1.9	-2.0	-2.3	-2.4	-2.0	-2.3
58 50	50 25	53 19	54	50 25	53 50

0+25 = Fly Line Clovis St.

-2.1	-2.3	-2.3	-2.4	-2.4
57 50	53 25	53	54 25	54

0+00 = Sub. line

x from P-6
2.98
3

-2.4	-2.0	-2.4	-2.2
54 25	599 on Hub 2.98	54 0	52 25

Wall
Horn
Beck
Jot
6-

Venus St.

X-Sections

5+50

2+ 5+00

1+5 4+50

1+ 4+00

0+ 3+50

0+2 3+00

0- 2+50

2.98

Lt

C

Rt

8

-1.4
4.4
50

-1.7
4.7
25

-1.7
4.7

-2.0
5.0
25

-2.0
5.0
50

-1.7
4.7
50

-1.8
4.8
25

-1.9
4.9

-1.8
4.8
25

-2.1
5.1
50

-1.9
4.9
50

-1.8
4.8
25

-2.0
5.0

-2.1
5.1
25

-2.1
5.1
50

-1.8
4.8
50

-2.0
5.0
25

-1.9
4.9

-2.1
5.1
25

-2.1
5.1
50

-1.7
4.7
50

-2.0
5.0
25

-2.1
5.1

-1.9
4.9
25

-1.8
4.8
50

-1.5
4.5
50

-1.8
4.8
25

-2.2
5.2

-2.2
5.2
25

-2.0
5.0
50

-2.0
5.0
50

-2.0
5.0
25

-2.1
5.1

-2.3
5.3
25

-2.3
5.3
50

2.98

VENUS ST.

X. Sections

Lt

±

Rt

9

on Hub at 00 2-7

Cont P10

T.P.

5.92

2.91

5.99

- 3.01

6+20.10 = ELY. line Camulos street

1.3
4.3

1.8
4.8
2.5

1.8
4.8

2.0
5.0
2.5

1.8
4.8
5.0

6+60.10 = ELY. line Camulos street

1.3
4.3
5.0

1.6
4.6
2.5

1.8
4.8

1.9
4.9
2.5

1.8
4.8
5.0

6+30.10 = WLY line Camulos st

1.3
4.3
5.0

1.5
4.5
2.5

1.8
4.8

1.9
4.9
2.5

1.9
4.9
5.0

6+00

2.98

1.4
4.4
5.0

1.6
4.6
2.5

1.8
4.8

1.8
4.8
2.5

1.9
4.9
5.0

2.98

Walker
Hendricks
Becker
Johnson
6-3-47

MARR STREET - CROSS SECTIONS
from Clovis St. to Camulus St
Sketch P-2

Lt

1

Rt

Indexed
C.S.R.

10

2+00

-2.2
5.1
50

-2.1
5.0
25

-2.0
4.9
25

-2.0
4.9
25

-1.9
4.8
50

1+50

Plotted
A.M.

-2.5
5.4
50

-2.3
5.2
25

-2.3
5.2
25

-2.3
5.3
25

-2.2
5.1
50

1+00

-2.6
5.5
50

-2.4
5.3
25

-2.5
5.4
25

-2.2
5.1
25

-2.1
5.0
50

0+50

-2.7
5.6
50

-2.6
5.5
25

-2.2
5.1
25

-2.3
5.2
25

-2.4
5.3
50

0+25 = Fly line

Clovis Street

-2.8
5.7
50

-2.6
5.5
25

-2.6
5.5
25

-2.4
5.3
25

-2.4
5.3
50

0+00 = Sub. line

* from P. 9
2.91

-2.8
5.7
25

-3.19
5.10
0.46
2.91

-2.8
5.7
0

-2.3
5.2
5

-2.5
5.1
25

Mars St.

X-Section 10125

Lt

C

Rt

11

5+00

-1.4	-1.6	-1.5	-1.3	-1.3
43	45	44	42	42
50	25		25	50

4+50

-1.9	-1.9	-1.5	-1.6	-1.5
48	48	44	45	44
50	25		25	50

4+00

-2.0	-2.0	-2.0	-1.9	-1.9
49	49	49	48	46
50	25		25	50

3+50

-2.2	-2.1	-1.9	-2.1	-2.0
51	50	48	50	49
50	25		25	50

3+00

-2.2	-2.2	-2.1	-2.1	-1.7	-2.0
51	51	50	50	46	42
50	25		25	38	50

2+50

2.91

-2.2	-2.1	-2.0	-1.8	-2.0
51	50	49	47	49
50	25		25	50

2.91

Mars St.

X-Sections

Lt

2

Rt.

12

0+00 on Hub P-10

Cont. P-13

T.P. 7.31 4.12 6.10 -3.19

6+90,30 = Ely Line Cumulus

-0.9	-0.8	-0.7	-0.8	-0.8
3.8	3.7	3.6	3.7	3.7
50	25		25	50

6+60,30 = E Cumulus

-0.9	-0.9	-1.0	-0.8	-1.1
3.8	3.8	3.9	3.7	4.0
50	25		25	50

6+30,30 = WLY Line Cumulus Street

-1.0	-0.9	-1.0	-0.9	-0.9
3.9	3.8	3.9	3.8	3.8
50	25		25	50

6+00

-1.1	-0.9	-1.0	-0.8	-1.0
4.0	3.8	3.9	3.7	3.9
50	25		25	50

5+50

2.91

-1.4	-1.3	-1.3	-1.2	-1.1
4.3	4.2	4.2	4.1	4.0
50	25		25	50

2.91

Walker
Hendricks
Becker
Johnson
6-3-47

WILLIAMS STREET

X-Sections
from Clavis to Camulos st.

Lt.

℄

Rt.

13

Indexed
e.s.f.

1+50

-1.9	-1.6	-1.5	-2.6	-2.6	-1.5	-1.4	-1.8
6.0	5.7	5.6	6.7	6.7	5.6	5.5	5.9
50	25	12	8	6.7	10	25	50

1+15

Plotted
A.M.

-1.7	-1.8	-2.6	-2.2	-1.4	-1.6	-1.7
5.8	5.9	6.7	6.3	5.5	5.7	5.8
50	25	13	6.3	6	25	50

0+80

-1.6	-1.9	-2.5	-2.7	-1.6	-1.7	-1.9
5.7	6.0	6.6	6.8	5.7	5.8	6.0
50	25	22	9	5.7	25	50

0+50

-1.8	-1.7	-2.5	-2.7	-1.8	-1.6	-1.8
5.9	5.8	6.4	6.8	5.9	5.7	5.9
50	29	25	9	5.9	25	50

0+25 = E.L.S. Line Clavis

-1.7	-2.1	-2.8	-1.9	-1.7	-1.9	-1.8
5.8	6.2	6.9	6.0	5.8	6.0	5.9
50	25	10	6.0	8	25	50

0+00 = Sub. line

x from 10-12
4.12
3

-1.9	-2.0	-3.4	-2.7	-2.58	-2.3	-2.1	-1.9
6.0	6.1	7.5	6.8	6.70	6.4	6.2	6.0
25	20	17	7	on 7.6 4.12	0	5	25

Williams St.

Lt.

C

Rt.

14

4+50

X-Sections

-1.0	-0.8	-0.7	-0.9	-1.6
5.1	4.9	4.8	5.0	5.7
50	25		25	50

4+00

-1.1	-1.1	-1.0	-1.1	-1.6	-1.5
5.2	5.2	5.1	5.2	5.7	5.6
50	25		25	35	50

3+50

-1.5	-1.4	-1.0	-1.1	-1.5	-1.5	-1.7
5.6	5.5	5.1	5.2	5.6	5.6	5.8
50	25		15	20	25	50

3+00

-1.7	-1.3	-1.2	-1.6	-1.0	-2.0
5.8	5.4	5.3	5.7	5.1	6.1
50	25		25	41	50

2+50

-1.8	-1.9	-1.3	-1.5	-2.2	-2.9	-2.2	-1.6
5.9	6.0	5.4	5.6	6.3	7.0	6.3	5.7
50	25		6	13	25	38	50

2+12

-1.9	-1.5	-1.4	-2.5	-2.2	-1.4	-1.7
6.0	5.6	5.5	6.6	6.3	5.5	5.8
50	25		6	18	25	50

2+00

-1.9	-1.5	-1.6	-2.8	-1.8	-1.5	-1.3	-1.7
6.0	5.6	5.7	6.8	6.9	5.6	5.4	5.8
50	25	6		5	16	25	50

4.12

4.12

Williams St.

X Sections

0+00 on Hub P-13

Cont. P-16

TP 6.88 4.30 6.70 -2.58

6+90.39 = Fly. Line Camulos St.

6+60.39 = Fly. Line Camulos St.

6+30.39 = Fly. Line Camulos St.

6+00

5+50

5+00

4.12

Lt

£

Rt.

15

4.30

-0.2 0.2 0.0 -0.1 -0.6
4.3 4.3 4.1 4.2 4.7
50 25 25 25 50

-0.6 -0.4 -0.4 -0.3 -0.4 -1.3
4.7 4.5 4.5 4.4 4.5 5.4
50 25 25 25 25 50

-0.5 +0.1 -0.4 -0.2 -0.3 -1.1 -0.3 -0.2
4.6 4.0 4.5 4.3 4.4 5.8 5.0 4.2
50 25 25 25 32 31 41 50

-0.5 -0.5 -0.2 -0.6 -1.5 -0.8 -0.3
4.6 4.6 4.3 4.7 5.6 4.9 4.4
50 25 18 25 40 50

-0.5 -0.9 -0.8 -0.6 -1.2 -0.5 -0.7
4.6 4.8 4.9 4.7 5.3 4.6 4.8
50 25 29 18 25 29 50

-0.9 -0.8 -0.7 -1.0 -1.5
5.0 4.9 4.8 5.1 5.0
50 25 25 25 50

4.12

Walker
Hendricks
Becker
Johnson
6-3-47

PRINCE STREET

X- Sections
from Clovis to Ollie Sts.

Note: L = Subdivision Line = Base for Lts + Rts

2+00

1+50

1+00

0+50

0+25 = Fly Line Clovis St.

0+00 = Sub. line

π from P-15
4.30

Lt

L
= Sub.
Line

Rt

16

Indexed
C.S.M.

-1.4	-1.5	-1.7	-1.8	-1.4
5.7 50	5.8 25	6.0	6.1 25	5.7 50

-1.5	-1.8	-2.3	-1.6	-1.4
5.8 50	6.1 25	6.6	5.9 25	5.7 50

-1.7	-1.9	-1.7	-1.8	-1.9
6.0 50	6.2 25	6.0	6.1 25	6.2 50

-2.1	-2.3	-2.1	-2.5	-2.2
6.4 50	6.6 25	6.4	6.8 25	6.5 50

-2.0	-2.0	-2.4	-2.3	-2.4
6.3 50	6.3 25	6.7	6.6 25	6.7 50

-2.1	-2.0	-2.2	-2.5	-2.5
6.4 50	6.3 25	6.53 on Mon	6.8 25	6.8 50

-2.2

4.30

Prince Street

X-Sections

Lt.

¢

Rt.

17

5+50

-1.0	-1.3	-1.3	-1.7	-2.7	-3.5	-4.2	+0.4	+0.3
53	56	56	69	70	78	85	39	40
	25		17	25	25	58	65	75
			Bank Slough	Slough	Slough	Slough	Bank	

5+00

-0.9	-1.3	-0.9	-1.8	-2.6	-3.1	-4.1	-0.9	-0.8
52	56	52	61	63	74	84	52	52
50	25		21	23	25	63	72	80
			Bank Slough	Slough	Slough	Top Bank	Bank	

4+50

+0.2	-0.5	-0.9	-1.1	-1.2	-2.8	-4.0	+3.7	-1.1
4.1	4.8	5.7	5.4	5.5	7.1	8.3	8.0	5.4
50	25		25	3	36	50	76	89
					Slough	Slough	Top Bank	Bank

4+00

-0.7	-0.6	-0.7	-0.7	+1.0	-2.3	+3.2	+3.8	-1.6
50	4.9	5.0	5.6	5.3	6.1	7.5	8.1	5.9
50	25		25	35	39	50	102	118
				Bank	Slough	Slough	Top Bank	Bank

3+50

-1.1	-0.9	-1.0	-0.9	-1.3
5.4	5.2	5.2	5.2	5.6
50	25		25	50

3+00

-0.8	-0.9	-1.5	-1.3	-1.0
5.1	5.2	5.8	5.6	5.3
50	25		25	50

2+50

4.30

-1.2	-1.1	-1.2	-1.0	-1.2
5.5	5.4	5.5	5.3	5.5
50	25		25	50

4.30

Prince Street
X-Sections

8+50						10.1 4.9 50	10.5 5.5 25	10.4 5.4	10.5 5.5 50	10.0 2.5 50	10.0 2.5 50	10.3 5.3 74	10.3 5.3 80
8+00						10.8 5.8 50	10.1 5.1 25	11.0 6.0 50	11.2 6.2 50	11.0 6.0 50	11.4 6.4 50	11.4 6.4 50	11.1 6.1 50
7+50						11.2 6.2 50	10.6 5.6 25	11.0 6.0 50	11.5 6.5 50	11.0 6.0 50	11.5 6.5 50	11.8 6.8 50	12.1 7.1 50
6+20.40 = ELY Camulos						10.2 5.2 50	10.9 5.9 25	10.5 5.5 50	10.6 5.6 50	11.0 6.0 50	11.3 6.3 50	11.2 6.2 50	11.2 6.2 50
6+60.40 = W Camulos						11.2 6.2	11.3 6.3 25	10.2 5.2	10.4 5.4 50	11.0 6.0 50	11.1 6.1 50	10.7 5.7 50	10.7 5.7 60
TR	6.04	4.99	5.35	-1.05	6+60.40 % Nub					4.99			
6+30.40 = WLY Camulos						10.9 5.2 50	11.9 6.2 44	11.5 5.8 25	10.9 5.2 8	11.1 5.4 18	11.8 6.1 25	11.6 5.9 46	11.2 5.5 52
6+00						11.0 5.3 50	11.5 5.8 25	11.6 5.9 50	11.6 5.9 14	11.1 5.4 17	11.1 5.4 25	11.8 6.1 48	11.2 5.5 57
										4.30			

4.30

Prince Street

X-Sections

Lt.

0

Rt

19

11+10 - Int. channel Bank

51.07	51.03	51.01	51.36	51.42	51.47	51.42
50.50	50.18	51.00	50.12	50.25	50.50	50.100
		44.46	44.46	44.46	44.46	44.46
			Slough	Slough	Slough	Slough

10+50

51.04	51.04	51.03	51.04	51.03	51.12	51.39
50.50	50.50	50.30	50.25	50.30	50.22	50.25
						44.46
						NA Top Slough

10+00

51.04	51.04	51.04	51.00	51.05	51.16	51.05
50.50	50.50	50.40	50.20	50.25	50.40	50.50
						44.46
						NA Top Slough

9+50

51.06	51.06	51.05	51.10	51.05	51.19	51.12
50.50	50.50	50.50	50.20	50.25	50.45	50.50
						44.46
						NA Top Slough

(7+00) Additional Elev. on Rt

51.44	51.44	51.44	51.44	51.44	51.44	51.44
50.40	50.40	50.40	50.40	50.40	50.40	50.40
						44.46
						NA Top Slough

9+20

51.55	51.55	51.55	51.55	51.55	51.55	51.55
50.50	50.50	50.50	50.50	50.50	50.50	50.50
						44.46
						NA Top Slough

4.99

X-Sections

11+88

9.7 10.0 55	8.5 9.5 55	8.2 9.2 25	8.2 9.2	6.9 7.9 25 Toe Bk.	3.0 4.0 50 Bk	2.5 3.5 50	2.5 3.5 60
-------------------	------------------	------------------	------------	-----------------------------	------------------------	------------------	------------------

11+58

5.7 6.0 Slough	8.7 9.7 25 Slough	8.3 9.3 25 Slough	8.3 9.3 25 Slough	8.3 9.3 50 Slough
----------------------	----------------------------	----------------------------	----------------------------	----------------------------

11+48

9.2 6.0 Slough	9.2 2.5 Slough	9.7 2.5 Slough	8.3 5.0 Slough	8.3 6.0 Slough
----------------------	----------------------	----------------------	----------------------	----------------------

11+35

5.7 5.5	5.7 3.0 Bank	8.3 2.5 Toe	9.7 inch.
------------	--------------------	-------------------	--------------

11+30

5.7 5.0	5.7 2.5	8.3 2.0 Toe ch.	9.2 1.5 Ch.	9.7 2.5 10 ch.	9.2 7.5 Slough
------------	------------	-----------------------	-------------------	----------------------	----------------------

11+17 = Int. NLY Toe Channel

4.99
3

5.7 5.0	5.3 2.5	5.1 8.1 Bank	8.2 2.5 Toe ch.	9.2 2.5 Slough	9.7 5.0 Slough	9.2 10.0 Slough
------------	------------	--------------------	-----------------------	----------------------	----------------------	-----------------------

Prince St.

X-Sections

Section on Diag = Along Eaving.
 13+12 = Int. WLY edge Easting Eaving.
 13+01 = Elec Pole #108 12' Rt.

T.P 5.12 7.58 2.53 2.46

on R.R. Sp. 13+20.80

12+95.8 = WLY. Line Ollie St.

12+50

12+20

12+06

11+97 = Int ELY. Botk ch

4.99

1.68	1.98	2.13	2.26	2.38
5.90	5.60	5.45	5.32	5.20
100	50	50	50	100
Par.	Par.	Par.	Par.	Par.

2.4	2.5	2.2
2.6	2.5	2.8
50	25	

2.8	2.9	2.7	2.6	2.7
2.2	2.1	2.3	2.4	2.3
50	25		25	50

4.1	3.9	3.6	x2.1	x2.4	x2.8	x2.8
9.7	8.9	8.6	2.9	2.6	2.2	2.2
100	50	40	25		25	50
Slough	Slough	Toe	Top Bank			

4.1	3.9	3.3	x2.6	x3.2	x2.6
9.7	8.9	8.3	2.4	2.0	2.1
100	50	25		25	50
Slough	Slough	Toe	Top Bank		

4.7	3.6	3.4	3.2	x2.0	x2.4	x2.5
9.7	8.6	8.4	8.2	3.0	2.6	2.5
100	50	25		20	25	50
			4.99			

Prince St.

X- Sections

X Cont P-23
7.58

13 + 11.3 Diag. Section on E Existing Pav

2.44
5.14
100
Pav

2.64
4.94
50
Pav

2.79
4.79
Pav

2.94
4.64
50

3.19
4.39
100 Pav.

13 + 20.80 = 25'E WL Ollie
Diag. Section Parallel Pav
on Existing Pav

2.09
5.49
100
Pav

2.27
5.31
50
Pav

2.46
5.12
Pav

2.51
5.07
50
Pav

2.67
4.21
100
Pav

7.58
?

7.58
?

Ollie St. X-Sections
 from Prince to
 sketch p-2

Note: L & Rts are from Sub Line

Sub Line

1+63

-4.2	-3.6	+1.0	2.1	2.5	2.2
11.8	11.2	5.8	5.5	5.1	5.4
In	38	25		25	30
Slough	Top	Top Bank			

1+50

-4.3	-3.8	+1.1	1.7	2.1	2.4	1.9
11.9	11.4	6.5	5.9	5.5	5.2	5.7
60	50	35	25		25	50
In Slough	Top	Bank ch.				

Plotted
 a.m.

1+00

2.7	2.1	2.4	2.0	1.56
4.9	4.9	5.2	5.6	6.02
65	25		25	53
E Bank ch.				Par. edge

0+56

3.0	2.4	2.2	1.40	2.07
4.6	5.1	5.4	5.68	5.51
50	25		22	25
			Par. Edge	Par

0+25 - NLY Line Prince St.

5.1	2.6	2.08	2.59
5.0	5.0	5.50	4.99
		9	25
		Edge Par	Par

0+00 = Sub Line on Prince St
 Cont. from p-22

7.58

2.46
 5.12
 7.58

Ollie Street.
X-Sections

2+05 = Int Toe NLY edge ch.

2+89, 26 Diag. See sketch p-3
32.5' Ft = on Flow of 18" Conc. Culvert.

(2+68)

2+75

2+28 = Sly Toe Channel

1+96 = Int. of Bank of Existing channel

7.58

24

0.8	0.6	+0.2	-0.8	-3.6	-A.A	-3.6	+2.7
6.8	7.0	7.4	8.4	11.2	12.0	11.7	4.5
50	25	11	4	25	25	50	65
			Bank	Toe	inch.		

-A.70
1228
32.5
Flow Line 18" Conc. Pipe

0.9	0.9	-0.9	-3.3
6.7	6.7	8.5	10.9
60	42	30	25
			Toe Bank

-A.3	-A.A	+3.1	+3.2
11.9	12.0	4.5	4.4
	25	42	50
	Toe Bank	Bank	

-A.0	-A.6	-A.1	+2.1	+2.7
11.6	12.2	11.7	5.5	4.9
50	25		25	50

-A.6	-A.5	-A.0	+2.5	2.3	2.3
12.2	12.1	11.6	5.1	5.3	5.3
50	25	20	25	25	50
		Toe	7.58		

Ollie St.
X-Sections

Indexed

C.S.K.

25

chk. B.V. Nail Study Power Pole
Venus & Ollie St FB 572-P-52 3.90

0.04 FM
1.08 = FB 572-52
1.04

See FB 589

For Sections Beyond 4+00

12 Conc.
Flow 60" Pipe
Culvert

5+07 186.2 RT on Diag. see sketch P-2

5.33

5.50

10.27

10.44

186.2

Flow

on Flow 60" Pipe

Flow 60" Pipe

4.24

TP. 4.36 4.94 7.00 0.58

4+00

0.3	0.5	0.5	0.8	0.6	-3.9	-4.6
7.3	7.1	7.1	6.8	7.0	11.5	12.2
50	25		25	42	50	90
				Bank ch	Toe	ch.

3+80

0.5	0.5	0.5	0.6	3.5	4.6
7.1	7.1	7.1	7.0	11.1	12.2
35	25		25	35	75
			Bank	Toe	ch.

3+60

0.6	0.7	0.5	x 1.3	3.2	4.6
7.0	6.9	7.1	6.3	10.8	12.2
50	25		18	25	60
			Bank	Toe	Bupt
					inch

3+26

7.58

0.6	0.4	x 0.3	-3.1	-4.2	-4.6	x 2.7
7.0	7.2	7.3	10.7	11.8	12.2	4.9
50	25		9	25	55	65
			Toe	ch.	inch	Toe

Walker
Hendricks
Becker
Johnson
6-3-47

CROSS SECTION - LOUIS ST.

from Prince to Midway Dr.
Note Subdivision Line = Base for Lts. Rts. ^{And}

26
indexed
S.F.K.

1+00

Plotted
A.M.

Lt.	2.0	2.1	2.0	1.9	1.8
	5.2	5.1	5.0	4.9	4.8
	50	25		25	50

0+50

Lt.	2.0	2.1	2.1	2.0	2.1
	5.0	5.1	5.1	5.0	5.1
	50	25		25	50

0+25 = NLY Line Prince

Lt.	2.1	1.9	2.0	2.2	2.3
	5.1	4.9	5.0	5.2	5.3
	50	25		25	50

0+00 = Sub Line

Lt.	2.2	2.2	2.2	2.2	2.2
	5.2	5.2	5.2	5.2	5.2
	50	25		25	50

0-25

Lt.	2.5	2.5	2.5	2.4	2.4
	5.5	5.5	5.5	5.4	5.4
	50	25		25	50

0-50

5.22 2.99

+ 2.23

M1012 P-16

Lt.	2.5	2.5	2.5	2.5	2.5
	5.5	5.5	5.5	5.5	5.5
	50	25		25	50

2.99

Clavis Street

X Sections

Lt

\$
Sub
Line

Rt.

27

2+61

-1.9	-1.9	-3.3	3.5	-2.9	-2.8	-2.8
4.9	4.9	6.3	6.5	5.9	5.8	5.8
50	25	10		6	25	50

Slough

chk \$ Hub

5.56

2+50 = \$ Williams

-3.1	-3.1	-2.3	-1.9
6.1	6.1	5.3	4.9
50	25		25

Slough Slough

2+40

-2.6	-1.9	-2.1	-1.7	-1.7
5.6	4.9	5.1	4.7	4.7
50	25		25	50

2+25

-2.2	-2.0	-1.9	-1.9	-1.6
5.2	5.0	4.9	4.9	4.6
50	25		25	50

2+00

-2.0	-1.9	-2.0	-1.8	-1.6
5.0	4.9	5.0	4.8	4.6
50	25		25	50

1+50

2.99

-2.1	-2.1	-2.0	-2.0	-2.0
5.1	5.1	5.0	5.0	5.0
50	25		25	50

2.99

Clavis Street

X-Sections

Lt

℄

Rt.

28

4+75.5700
chk & Hub

6.17

4+75 = SLY Line Meets on Rt

4+50

4+00

3+50

3+00

2+75

2.99
3

-2.5	-2.6	-2.5	-2.4	
5.5	5.6	5.5	5.4	
50	25		25	

-2.5	-2.4	-2.4	-2.4	-2.3
5.5	5.4	5.4	5.4	5.3
50	25		25	50

-2.5	-2.4	-2.4	-2.2	-2.2
5.5	5.4	5.4	5.2	5.2
50	25		25	50

-2.2	-2.1	-2.0	-2.1	-2.1
5.2	5.1	5.0	5.1	5.2
50	25		25	50

-2.0	-1.7	-1.8	-1.6	-1.6
5.0	4.7	4.8	4.6	4.8
50	25		25	50

-1.8	-1.8	-1.9	-2.2	-2.0
4.8	4.8	4.9	5.2	5.0
50	25		25	50

2.99
3

Clavis Street

X-Sections

Lt

2

Rt

29

7+00

-2.2	-2.3	-2.2	-2.3	-3.4
5.2	5.3	5.2	5.3	5.3
50	25		25	50

6+50

-2.0	-2.2	-2.5	-2.0	-2.1
5.3	5.2	5.5	5.6	5.7
50	25		25	50

6+00

-2.6	-2.7	-2.8	-2.7	-2.1
5.6	5.7	5.8	5.2	5.7
50	25		25	50

5+50

-2.0	-2.1	-2.1	-3.3	-3.1	-2.9	-2.6
5.8	5.7	5.7	6.3	6.1	5.9	5.6
50	25	20	12		25	50

5+25 = NLY Line Mars St. on Rt.

-2.6	-3.0	-2.9	-2.0
5.6	6.0	5.9	5.6
50	25		25

5+00

-2.8	-2.6	-2.8	-2.5
5.8	5.6	5.8	5.5
50	25		25

2.99

2.99

Clovis Street X-Sections

30

8+20

-2.0	-1.7	-1.8	-1.8	-2.5	-2.5
$\frac{5.3}{50}$	$\frac{5.0}{25}$	5.1	$\frac{5.1}{25}$	$\frac{5.8}{27}$	$\frac{5.8}{50}$

8+08

-2.9	-3.1	-2.9	-2.7	-2.7
$\frac{6.2}{50}$	$\frac{6.4}{25}$	6.2	$\frac{6.0}{25}$	$\frac{6.0}{50}$

7+92

~~8+00~~

-2.4	-2.0	-1.9	-2.6	-2.7
$\frac{5.7}{50}$	$\frac{5.3}{25}$	5.2	$\frac{5.9}{25}$	$\frac{6.0}{50}$

7+75 = NLY Line Venus St

-2.1	-2.0	-2.0	-2.4	-2.5	-2.5
$\frac{5.4}{50}$	$\frac{5.3}{25}$	$\frac{5.3}{2}$	5.7	$\frac{5.8}{25}$	$\frac{5.8}{50}$

7+50 = S Venus St

-2.2	-2.2	-2.4	-2.2
$\frac{5.5}{50}$	$\frac{5.5}{25}$	5.7	$\frac{5.4}{25}$

7+50 on Hub

I.P.

G29

* Corrected
3.28

5.98

-3.01 P-9

-2.99

3.28

7+25

2.99

-2.2	-2.3	-2.3	-2.3
$\frac{5.2}{50}$	$\frac{5.3}{25}$	5.3	$\frac{5.3}{25}$

2.99

Clavis Street
X. Sections

Lt

\$

Rt

31

10+25 - NLY line Liberty on Rt

-1.7	-2.3	-2.0	-2.5	-3.7	-1.9	-2.0
5.0	5.6	5.3	5.8	7.0	5.2	5.2
5.0	2.5		2.2	2.6	3.2	5.0

10+00 end Liberty on Rt 6.38

-2.4	-3.2	-3.4	-2.7
5.7	6.5	5.7	6.0
5.0	2.5		2.5

9+75 - SLY line Liberty on Rt

-2.0	-2.3	-2.4	-2.3	-2.3
5.3	5.6	5.7	5.6	5.6
5.0	2.5		2.5	5.0

7+50

-2.3	-2.3	-2.3	-2.1	-2.1
5.6	5.6	5.6	5.4	5.4
5.0	2.5		2.5	5.0

7+00

-2.2	-2.2	-2.0	-2.2	-2.3
5.5	5.5	5.3	5.5	5.6
5.0	2.5		2.5	5.0

8+50

3.28

-2.3	-2.2	-2.1	-2.3	-2.0
5.6	5.5	5.4	5.6	5.3
5.0	2.5		2.5	5.0

3.28

Cross Sections

Slows Street

Lt.

±

Rt.

32

12+33

-1.1	-0.5	+2.7	+3.0	+2.9	-1.4	-1.3
84	78	46	43	44	87	86
50	25	18		26	31	50

T.P.

5.17

7.32

11.3

2.15

7.32

12+20

-3.3	-3.8	-2.9	-1.7	-1.7	-1.6	-1.4
63	71	62	50	50	49	47
50	25	5	5		25	50
Slough	Slough	Slough				

11+68

-3.0	-4.0	-2.6	-1.9	-1.7	-1.7	-1.6
63	73	59	51	50	50	49
75	50	25	23		25	50

11+50

-3.7	-3.7	-2.4	-1.9	-1.5	-1.4	-1.7
70	70	57	52	48	47	50
90	50	35	25		25	50
Slough	Slough					

11+00

-2.5	-2.0	-1.6	-1.7	-1.8
53	53	49	50	51
50	25		25	50

10+50

-1.9	-1.9	-2.2	-2.2	-3.5	-1.8	-2.1
52	52	55	55	68	51	54
50	25		15	20	26	50

3.28

3.28

Glenn Street

Lt.

Rt

33

Cont. p. 34

X. Sections

chk starting B.M. P-4	4.59	1.95	1.92	0.03 Error
T.P.	4.56	6.51	3.76	1.95
T.P.	3.95	5.71	5.56	1.76
13+02.7 =	Midway Drive			

13+09.7

1.87	2.11	2.18	1.55	1.65	2.19	1.44	2.06
585	521	514	577	577	513	588	526
50	50	25	25	0	0	25	250
cut	cb	cb	cut	cut	cb	cut	cb

12+69.7 = E Ingram = Midway Dr.
on hd P1g = 549

1.59	1.84	1.68	1.83	1.80	1.80	1.78
573	548	544	549	552	552	554
100	50	25	25	25	50	100
Pay.	Pay.	Pay.	Pay.	Pay.	Pay.	Pay.

12+42.7 Cont.

1.83	1.26	1.37	2.04
549	606	595	528
100	100	100	100
cb	cut.	cut.	cb

12+49.7 = sly cb Line Ingram = Midway

2.18	1.55	2.24	1.61	1.77	1.55	2.16	1.47	2.09
514	577	508	571	555	577	516	585	523
50	50	25	25	25	25	25	50	50
cb	cut.	cb.	cut	Pay	cut	cb	cut	cb

12+39.7 = sly Edge East Pay. Ingram = Midway

2.1	2.2	2.16	1.33	1.78	1.44	2.05	2.3	2.2
52	51	516	579	554	588	527	50	51
50	25	15	15	15	15	15	25	50
		cb	cut. Pay	Pay	cut.	cb		

7.32

7.32

Clavis St.

X. Sections

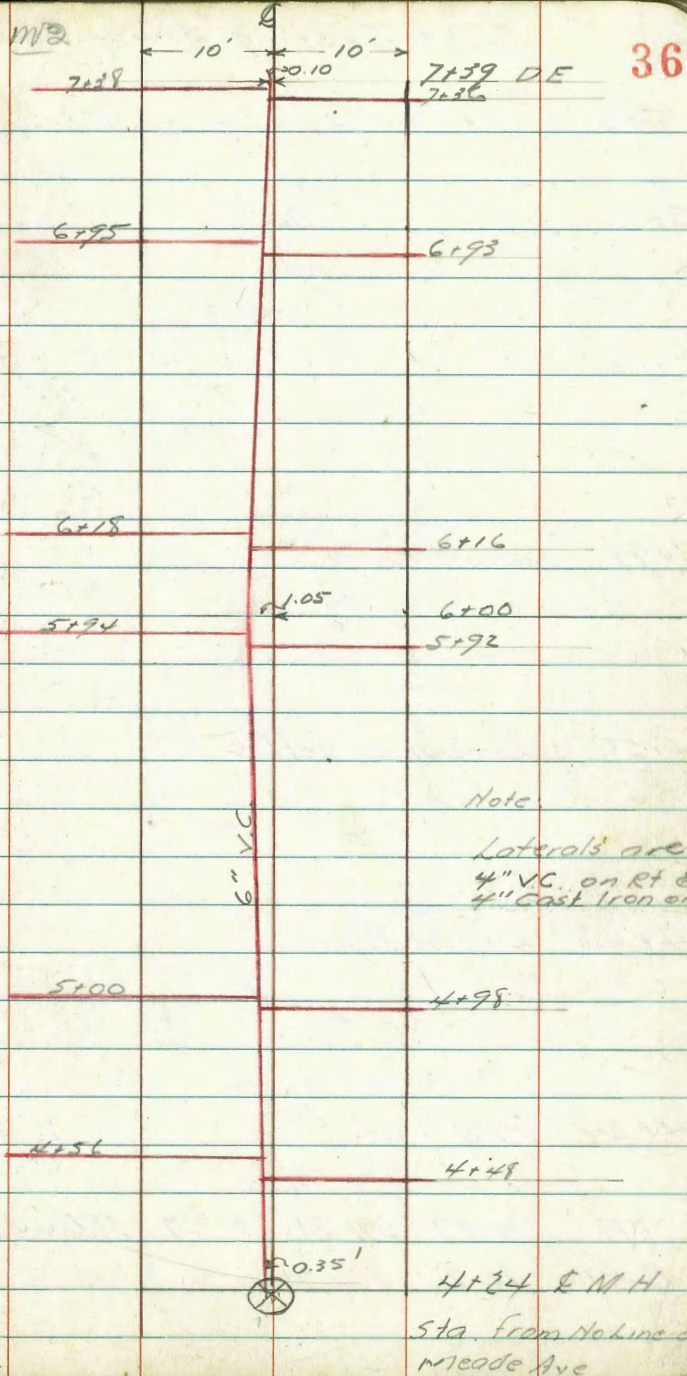
34

Hd. wall	Cut	Midway	West Pt. Loma	0.03
Chk BM	Bress	Plg	5.77	2.90
TP	5.85	8.58	3.78	2.87
	<u>6.51</u>			

Elevs. & Location of Existing Sewer
 & Laterals in Alley Meade to Madison
 Between Ohio & Illinois
 Hendricks
 Hardin
 Smith
 Worrell
 Aug. 13, 1947

Levels Next Page

INDEXED
 8-15-47



Levels Existing Sewer & Laterals

Sta + HI - Elev BM

5+50

380.62

10.59

FL

Main

5+00

382.98 382.5

8.23 8.86

9.5 2

FL FL

Lat Lat

4+98 Lateral on Rt.

379.73 381.60 382.04

11.48 9.61 9.17

FL 2 11.5

Main FL FL
Lat Lat

4+56 Lateral on Left.

381.58 381.06

9.63 10.15

9.5 1

FL FL

Lat Lat

4+48 Lateral Right

378.86 381.25 382.40

12.35 9.96 8.81

FL 2 11.5

Main FL FL
Lat Lat

4+24 M.H.

384.56 377.81

6.65 13.40

Rim FL

TP. 4.77 391.21 3.27 386.44

B.M. 10.76 389.71

378.95 SEBP 30th & Monroe

Sta + H.I. - Elev B.M.

6+50

382.15

906

FL
MAIN

6+18 Lateral on Lt

383.05 382.41

8'6" 8'0"

10.5 2

FL FL

Lot

6+16 Lateral on Rt

382.15 382.45

906 875

2 11.5

FL FL
Lot

6+00

381.44

977

FL
MAIN

5+94 Lateral on Lt

383.05 382.18

8'6" 9'0"

9' 2

FL FL

Lot

5+92 Lateral on Rt.

39121

381.79 382.53

942 868

2 11.5

FL FL
Lot.

Sta. 4.1 - Elev. B.M.
 B.M. 10.53 378.95 378.95 SE BP 30th & Monroe

TP 2.59 389.48 4.32 386.89 383.70

7+29 Dead End 7.51

FL
Main

7+38 Lateral on Lt.

383.83 383.85

7.38 7.36

10 2

FL FL

Lot.

7+36 Lateral on Rt.

383.91 384.22

7.30 6.99

2 11.5

FL FL Lot.

7+00

382.90

8.31

FL
Main

6+95 Lateral on Lt.

382.90 382.95

8.31 8.26

6 2

Lot FL FL

6+93 Lateral on Rt.

391.21

383.18 383.29

8.08 7.92

2 11

FL FL

Lot.

X Sects Alley Meade to Madison
Bet Ohio & Illinois

40

Sta + HI - Elev BM

0+65 Power Pole 8941 & PA 4409

0+50
478 48 47 47 49 34
10 10 5 10 20
Foundation
of Wall

0+20
550 57 59 54 49 41
10 10 5 10 20
Foundation
of Wall

0+00 Edge of Asphalt Paving & Beg Conc Wall R/Lt
335 604 614 617 576 545
10 10 10 9.9 9.9
Top Wall Cb Gut Gut Cb

0-14 North Cb Line Meade
805 855 696 739 613 660 635 608 563 575 540 515 476
100 100 50 50 10 10 10 10 24 24 50 100
Cb Gut Cb Gut Cb Gut Gut Cb Gut Cb Gut Gut Cb
Beg Drive

0-40 & Meade
850 738 650 626 606 516 404
100 50 10 10 50 100

T.P. 10.55 383.73 0.58 373.18

B.M. 7.96 373.76 365.80 SEBP Meade & 30th

Sta + HI - Elev

1156.2 Beg Garage 11.7 Lt. E & End walk 10' Lt. E

624

10

Walk

1152 End Ramp to Garages: Beg 4.2' Walk 10' Lt. E

624 630 646 653 660 670 680
 14.8 10 10 10 15 20
 Gar. Fl. Ramp

1105

69 73 79 89 613 64
 10 6 10 15 20

1104 Beg Ramp to Garages 10' Lt. E

624 679
 14.8 10
 Gar. Fl. Ramp

TP 7.14 387.86 301 380.72

0179 Beg Apt House 10' Lt. E

0175 End Conc. Wall 10' Lt. E Beg 3.7 Walk 10' Lt. E

395 411 420 32 37 31
 10 10 5 10 20
 Wall

383.73

Sta. t H.I. - Elev B.M.
 P.A. 4439
 2100 Power Pole 8.8 Lt. & End Board Fence & Conc. Found
 10' Lt. &

468 50 54 56 58
 10 10 10 20
 Foundation

1192 Reg. Conc. Foundation under fence 10' Lt.

469
 10
 Foundation

1186 End Board Fence 10' Lt. &

1181 & 10' Garage Conc. Floor & Ramp

583 587
 11 10
 Fl. Ramp

1176 End Board Fence 10' Lt. &

1166 End Garage 11.7 Lt. & Reg. Board Fence 10' Lt. &

581
 11.7
 Gar. Fl.

387.86

Sta t H.1 - Elev.

3+25 End Picket fence 10.3' Rt of L

TP 690 390.88 3.88 38398

3+12 Power Pole 81 Lt L PA 4459
Beg Board fence 10.8 Lt L

3+00 End Wire fence Beg Picket fence 10' Rt L

4 ⁶	4 ⁵	4 ⁶	4 ³	3 ⁸
20	10		10	20

2+74 End Board Fence 10.4 Lt L

2+50

4 ⁷	4 ⁷	5 ¹	4 ⁹	4 ³
20	10		10	20

2+38 Beg Board Fence 10' Lt L

2+02 Beg Wire Fence 11' Rt L

387.86

Sta. + H1 - Elev.

4+50

385.4

55	55	55	54	53
20	10		10	20

4+26 & Power Pole 9' Lt. P.A. 4469

4+00

384.4

62	65	65	64	63
20	10		10	20

3+73 End Picket Fence 10' Lt. &

3+50

65	72	72	70	65
20	10		10	20

3+48 End Board Fence Beg Picket fence 9.9 Lt. &

390.88

5+9 + H.1 - Elev

5+97 Beg Apts & Garages 148 Lt &

4³⁶
188
Foundation

5+50

385.8
50⁵⁰ 5¹ 5⁰ 5⁰
20 10 10 20

5+41 & Power Pole 9.1 Lt & A 4501

5+225 End Apts & Garages 146 Lt &

5⁰⁷
18.6
Foundation

5+00

385.6
5³ 5³ 5³ 5³ 5²
15 10 10 204+78.5 Beg. Apt. House & Underneath Garages 146 Lt
Floors Not Paved. Shots Taken on Conc Found.
Finish Floor Garages to be 4" above.

39088

5⁰⁸
18.6
Foundation

Sta + H1 - Elev

7+55 Beg Apt & Garages 151 Lt. &

4⁹⁶
19.1
Foundation

7+00

386.4
5² 5⁵ 5⁶ 5³ 5²
20 10 10 20

6+71 £ Power Pole 8.7 Lt. & # A-4515

TP. 4.94 392.00 3.82 387.06

6+50

386.4
4⁵ 4⁶ 4⁵ 4⁶ 4⁵
20 10 10 20

6+41 End Apts & Garages 148 Lt. &

4⁴²
18.8
Foundation

6+00

386.2
4⁵ 4⁴ 4⁷ 4⁷ 4⁷
15 10 10 20

390.88

Sta. + HI - Elev.

8+93.9 Jo. Cb Line Walton Pl. Conc. Paving

534 581 530 566 554 474
50 50 96 96 10
Cb Gut Cb Gut

TP. 508 392.51 4.57 28743

8+50

480 487 494
10 10

8+05.70 Beg. Asphalt paving Power Pole 8.6 ft. E
Beg. Gar. 9.9 ft. E Beg. Gar. 11.6 ft. E

PA 4531
466 478 447 445
10 10 11.6
Ramp Gar. Fl.

8+00

53 52 51 50 50
20 10 10 20

7+59.5 End Apt. House & Garage

497
19.1
Foundation

7+50

386.9
49 51 51 51 49
15 10 10 20

392.00

Sta. + HI - Elev. B.M.

B.M. 13.28 365.79 365.80 SEBP 30th & Meade Starting B.M.

B.M. 0.00 379.07 11.34 379.07 378.95 SEBP 30th & Monroe

TP. 3.19 390.41 5.29 387.22

9+50

5.4 5.7 4.92
9 10

9+175 No. Cb Line Walton Pl.

5.24 5.63 5.20 5.45 5.25
50 50 9.6 9.6
Cb Gut Cb Gut

9+057 E Walton Pl

392.51

5.51 5.37 5.36 4.75
50 9.6 10
100g Conc.

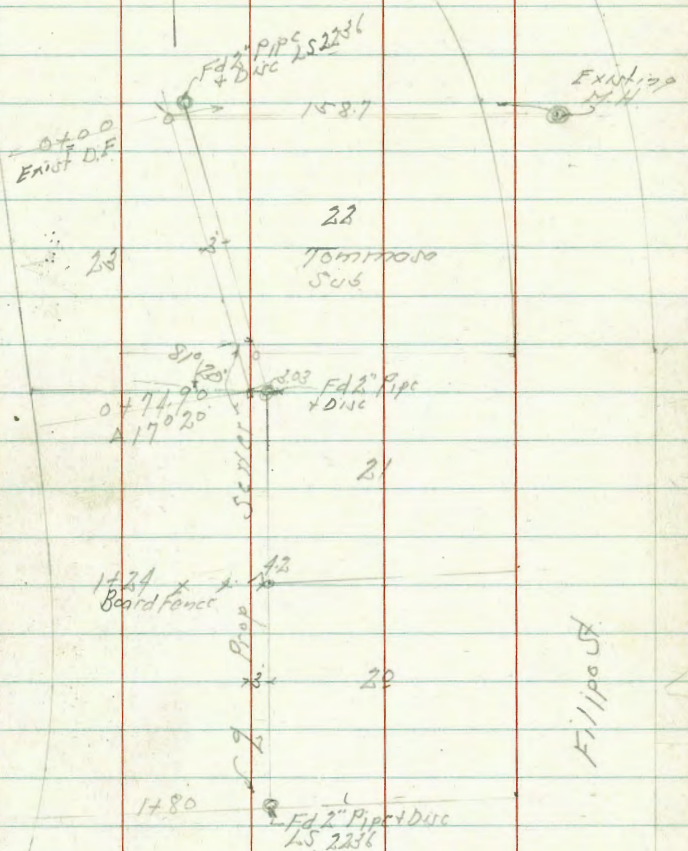
Proposed Sewer Lot 23 Tommoro Sub.
 And Portion Lot 24 La Mesa Colony

Nov. 25-17
 Sisson
 M.C. Coy
 Files
 No. 60214

Indexed

BM	6.20	458.66	452.46	SW RP El Cajon Palmdale
TP	7.21	463.81	2.06	456.60
0-158.7	= Exist. MH	7.02	456.79	on Rim
"	Flow Line	13.27	450.54	
0+0	= Exist. Dead End	5.70	458.11	Top
"	Check P/lon For T ₂₁₁ Flow Line ?	8.49	455.32	
"		4.2	459.6	Ground
+50		4.4	459.4	
+74.90	Δ 17°20' Rt	4.51	459.30	
+82	1' Rt of 2" Eugenia			
+95	28' Rt of 3" Lemon Tree			
+10		4.4	459.4	
"	63' Rt of 2" 1/2 + Fly	1.9	461.9	From House on floor
+0.3	1' 1/4 of 2" Rose Bush			
+0.6	3' Rt " " = 3" Lemon Tree			
+20		4.4	459.4	
+50		4.4	459.4	
"	53' Rt of 2" 1/2 + Fly	1.3	462.5	From House on floor
+61	15' Rt of 2" Pipe Clothier Part Coat			
+80		3.6	460.2	

Sewer Drive

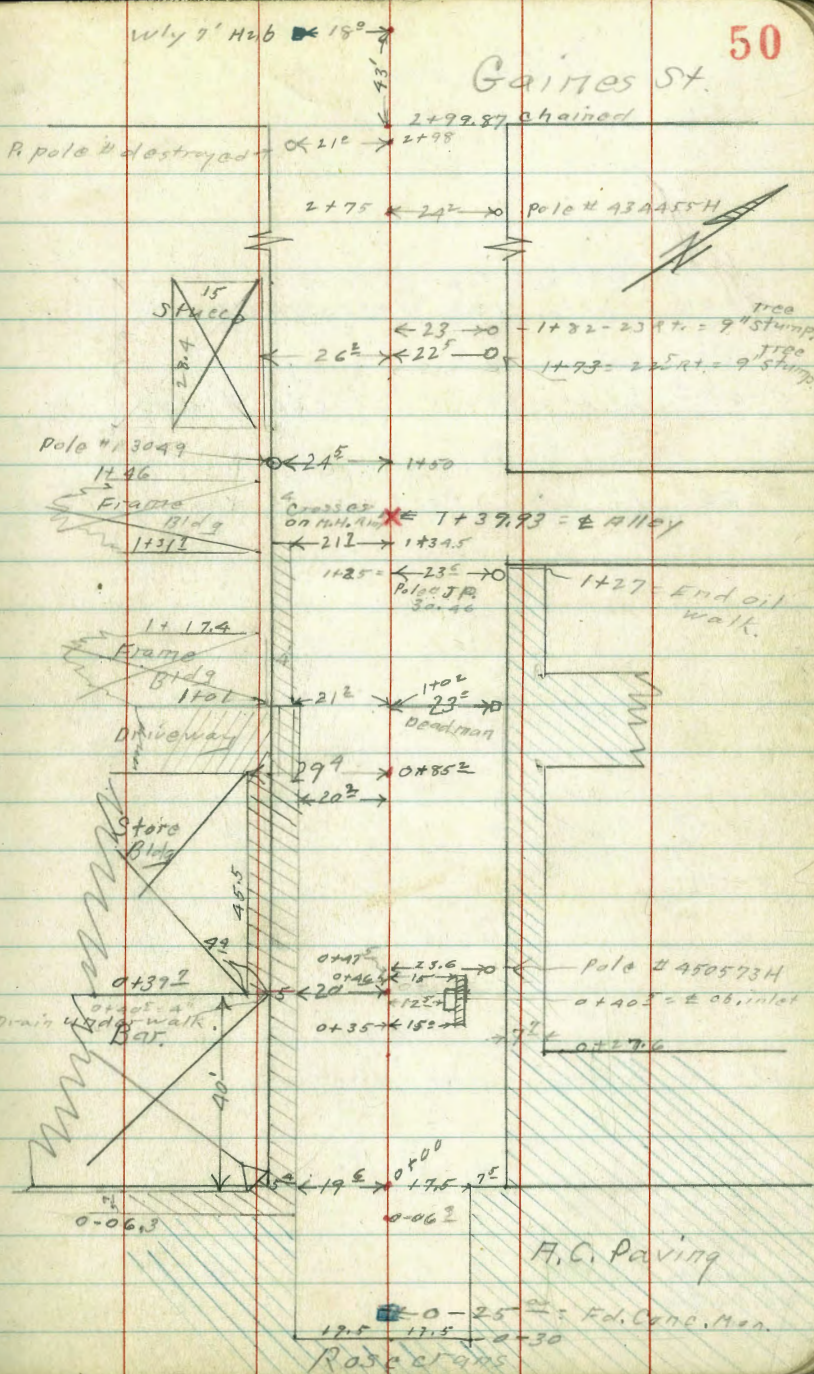


Filippo St

Cross Sec. Jefferson Indexed
 ROSECRANS - WLY.

V.O. #25001

12-9-47
 Satterthwaite
 W Moore
 E Sherman



17E 1/4 = 509.17 Pav.
 0+00 = Wly line Rose crans

4.21	4.24	4.6	5.1	5.5	5.5	5.0	4.8	4.6
25	19E walk	19E	10	15	17E Pav	25	25	50
4.56	4.33	4.0	3.5	3.1	3.1	3.6	3.8	4.0

0-00³ 25' Lt = start stucco Bldg.

0-06³ 19E Lt = start Conc. walk. (See P-50)

4.27	4.27	4.27	4.6	5.4	5.1	5.0	4.9	4.8
50 To walk & Pav	25 walk & Pav	19E walk	19	14	17E Pav	25	50	50
4.28	4.28	4.30	4.0	3.4	3.2	3.5	3.6	3.8

0-10

4.4	4.4	4.5	4.7	5.3	5.3	5.2	5.0	5.0
50	25	19E Pav	19	17E Pav	25	50	50	50
4.12	4.2	4.1	3.9	3.4	3.3	3.4	3.6	3.6

0-17

4.5	4.6	4.7	5.1	5.3	5.2	4.9	4.7	4.7
50	25	19E Pav	50	17E Pav	25	50	50	50
4.11	4.0	3.9	3.5	3.3	3.4	3.7	3.7	3.7

see page 50 on Paving

0-30 = End good pav on Rose crans

4.2	4.4	4.3	4.3	4.2	4.2	4.3	4.3	4.3
25	25	15	15	15	15	15	15	15
4.2	4.4	4.3	4.3	4.2	4.2	4.3	4.3	4.3

T.P. 4.32 8.57 5.06 4.25

8.57

X in walk
 0-06-20' Lt.

N.W.B.P.
 Congress
 Pacific Blvd

5.06 7.31 — 4.25

0+46	15' Rt. = End curb inlet	4.61 3.96 294	4.47 4.10 25	4.32 4.25 20 walk	3.9 4.7 7	3.6 5.0	3.13 5.44 15 Out	4.15 4.42 15 top oc.	3.8 4.8 17	4.1 4.5 25 par	4.2 4.9 30 par
0+40 ^E	Point.				4.35 4.22 25		4.0 4.6 25 par	4.2 4.4 30 par			
0+40 ^E	20° Lt. = outlet 4" drain also edge of walk 12° Rt. = Edge curb inlet walk	4.35 4.22 20 walk	4.378 4.78 20 invert 4" drain	4.2 4.4 192	3.9 4.7 7	3.6 5.0	3.20 5.37 12.5	3.07 5.50 15 out oc.	4.12 4.45 15 top oc.	4.0 4.6 17	4.0 4.4 30 par
0+35	= start curb inlet 15° Rt.	4.37 4.20 25	4.38 4.19 192 walk	4.4 4.2 19.5	3.9 4.7 7	3.6 5.0	3.06 5.57 15 Out	4.08 4.49 15 top oc.	4.0 4.6 16	4.0 4.6 25 par	4.2 4.4 30 par
0+32		4.47 4.10 25	4.43 4.14 198 walk	4.9 4.2 192	3.9 4.7 7	3.6 5.0	3.1 5.35 14	4.0 4.6 18	4.0 4.6 25 par	4.2 4.4 30	
0+15		4.44 4.13 25	4.39 4.18 198 walk	4.3 4.3 19	4.0 4.6 7	3.6 5.0	2.7 5.9 10	3.7 4.9 20	3.9 4.7 24.2 par.	4.1 4.0 25 par.	4.2 4.4 30
		8.57				8.57					

1+00² Cont.

4.2	4.0	9.01	4.07
4.9	5.1	5.06	5.00
50	25.2	25.2	24.4
on	Drive	Edge	
Drive	bit	Ramp	

1+00² 20⁴Lt.: End ramp into drive

4.04	3.81	0.1	4.0	3.7	3.2	4.2	4.0	3.9	4.0
5.03	5.26	5.0	5.1	5.4	5.9	4.9	5.1	5.2	5.1
21.4	20.4	20.4	7		15	18	25	29	75
	Edge	Ord					par	on	Drive
	Ramp								

0+85³ Cont.

4.2	4.27	4.36
4.9	4.87	4.71
30	25.2	24.4
on	Edge	
drive	Ramp	

0+85³ 20²Lt.: start conc. Ramp at drive

4.20	3.99	4.1	4.10	3.7	2.1	4.1	4.0	4.0
4.87	5.08	5.0	5.1	5.1	6.0	5.0	5.1	5.1
21.2	20.2	20	7		15	18	25	29
	Edge	Ord					par	
	drive							

0+85³ 20²Lt.: End walk

4.71	4.44	4.04	4.1	4.0	3.7	3.1	4.1	4.0	4.0
4.36	4.63	4.93	5.0	5.1	5.4	6.0	5.0	5.1	5.1
29.2	25	20.2	20	7		15	18	25	29
		walk						par	

T.P. 4.92 9.07 4.42 4.15

0+48

8.57

4.47	4.31	4.3	3.9	3.6	3.4	3.8	4.1
4.10	4.26	4.3	4.7	5.0	5.4	4.8	4.5
25	20	19.9	7		12	17	25
	walk						par

2+50

4.8
50

4.8
25

4.7
15

5.1
3.7

5.7
15

5.0
17

4.7
25

4.6
50

2+00

5.0
75

4.4
25

4.5
15

5.1
3.7

5.5
15

3.3

4.9
17

4.4
25

4.4
50

1+93

26th Lt. = E double doors to stucco Bldg.

4.35

4.43
26.2
Door sill

4.7
26

4.7
25

4.6
15

4.2

5.1
8.78

5.6
15

3.2

5.0
17

3.8

4.7
25

4.4
50

T.P

4.34 8.78 4.63 4.44

1+93 = Wly. side alley to Rt.

5.1
25

4.0

4.3
15

5.4
3.7

5.0
15

5.1
18

4.1
5.0
25

Nail in Pole
J.R. 3046
Sta H25-235M

4.63 4.44 BM#1

1+34^E Cont.

4.07

5.00
25

End walk

1+34^E 212 Lt. = End cone walk

4.1

5.18
25

3.89

4.2

4.9
21.7
Grid

5.0
7

4.1

5.4
3.7

6.1
15

3.0

4.0

5.1
20

3.8

5.3
25

9.07

9.07

Jefferson

#

56

T. P.

4.34 4.44

299.87 = Ely line Gaines

8.78

$\frac{4.8}{50}$
4.0

$\frac{4.8}{25}$
3.0

$\frac{5.1}{15}$
3.7

$\frac{5.7}{15}$
3.1

$\frac{5.3}{17}$
3.5

$\frac{5.4}{25}$
3.4

$\frac{5.1}{50}$
3.7

8.78

1+23^E 9' Lt. = 8" tree.

1+19 8' Lt. = 6" ~~tree~~ shrub.

1+14 8² Lt. = 12" pepper tree.

1+09 8⁵ Lt. = 10" pepper tree

1+02
1+97 10⁰ Rt. = 8' wide Cold lay walk

1+02 10.9 Rt. = start Corridor Bldg

0+80

0+76 8⁰ Lt. = Face 1' pepper tree stump.

0+72 11⁰ Rt. End same.

0+60 11⁰ Rt. = start picket fence

0+55 10' Lt. = Ctr 10' x 20' Lantana bush

0+40 10⁵ Rt. = End picket fence.

0+30 9⁵ Lt. = Line of board fence.

0+28 10² Rt. = start picket fence

0+16 11⁶ Rt. = Face gas meter

10' Lt. = start board fence.

0+00 - Nly. line Jefferson

	4.0	5.1	5.7	3.8	3.9
	4.7	5.1	5.2	5.1	5.0
	10	5		10	20
				Brick + Cold lay	
	4.3	4.1	5.8	5.4	3.7
	4.6	4.8	5.1	5.5	5.2
	20	10	5	10	10
			3.7	5.5	3.6
			5.0	5.4	5.3
			10		10
					5.2
					20
	4.2	4.2	4.3	5.1	5.8
	4.7	4.7	4.6	5.0	5.1
	15	10	5	10	20
			4.1	5	5.8
			4.1	5.0	5.1
			10		10

Alley BIK 375 Old Town

4

61

Orig B.M.

4.13

0.01
4.25
4.26

Spike & Congress
W. T. Raines
FB 1705 P. 62

5.10

0.02
3.27
3.29 3.27

Same El. as ground.

3 + 13² = Edge paving on Congress

839

5.33	5.15	5.02	5.03	5.04	4.88	4.76
100	50	10		10	50	100

839

Cass

st

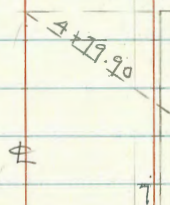
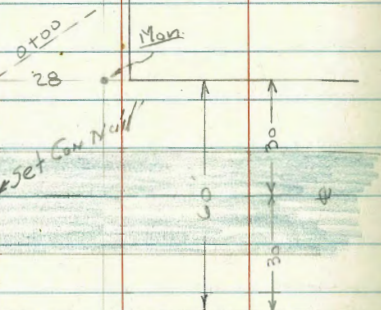
S 00 F.B. 215A - P 2

Also P 71
This book

Mission Blvd.
Cold Lay Strip

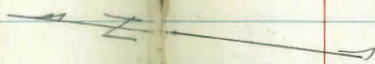
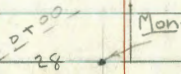


st



Fircher

W.L. of Add.



st

#

Mon.

7

11.19.12



Fircher

ORIGINAL

#

RT

Cass + Archer
check B.M. S.W. Mon.

0.78 163.04

Sec 1662
P. 47

= end.

10 + 85 - 41.7 RT = £ Conc. Porch

163.82

162.12

1.7
41.7
ground

163.60

0.22
41.7
Top
Porch

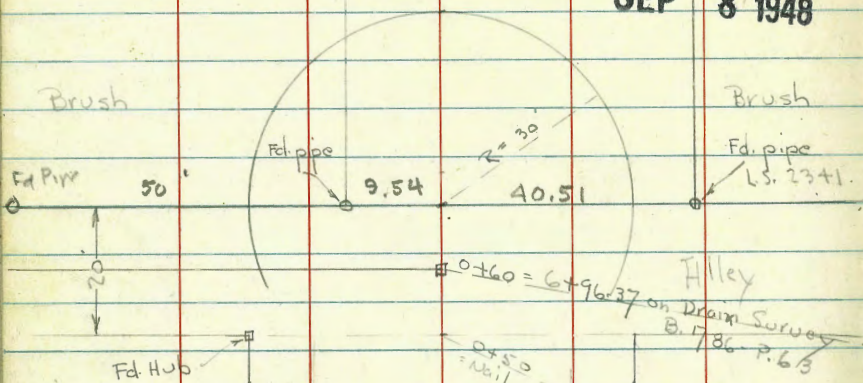
INDEXED

SEP 8 1948

WK

67

X-sect - Whitefield - 100' N. of end of Pavement



2689

W.O. 25.001

9-7-48

Osborne
Hardin
Decker
Hatch

Lot 1
Block C
Map # 1535

Edge of Bank ?

0+12.92 = Hub

ward Fence ?

Dirt

0+04.3

Pile

0+05.1

Fd. Hub
12" RC. Pipe

4.5

3' x 3' Box - outside
Filled up

10'

20'

20'

10'

HC. Pave

Whitefield

X-Sect. Whitefield - end of Pave to 100' N

0+06.6 - 17.4 Rt = # of inlet of 24" Iron pipe culvert - Poor Cond.

0+00

0-05 = end of Pave - Note: Pave + cb was probably in to 0+00 but has been broken down and is covered by pile of dirt

0-05.8 - Cont

also # of 12" R.C. Pipe out of box

0-05.8 = # 3' Box on Lt. - 2' wide (outside) + Iron lid.

on Rt. outside Meas.

0-06.6 = # 3' Box Inlet - 2' wide - Iron Lid - Box Broken + Bottom filled with dirt - outlet covered and abandoned.

0-32 = on A.C. Pave

1.74 180.46 12.81 178.72

B.M. 1.08 191.53

NW Soledad + Whitefield

Lt

Rt

Rt

10x 40	6.9 30	4.56 20	5.55 20	5.12 17	4.82 10	4.56 10	4.66 10	4.76 20	4.23 20	3.5 20
149.66	173.52	175.90	174.91	175.34	175.64	175.90	175.81	175.71	176.23	176.96
11.9 40	168.56	171.16	174.46	175.52	176.56	175.06	173.70	175.56	176.66	176.96
7.07 21.4	7.27 21.4	4.47 20	5.54 20	5.54 20	4.72 20	4.12 20	4.72 20	4.12 20	2.92 20.2	2.32 20.2
173.39	173.19	175.99	174.92	175.74	175.74	176.34	175.74	176.34	177.54	178.14
174.76	178.15	177.64	178.07	178.15	177.99	178.15	177.99	178.15	178.14	178.66
2.7 30	2.31 19.8	2.82 19.8	2.39 10	2.31 180.46	2.41 10	2.92 20.2	2.32 20.2	1.8 30		

892 = flowline
21 = end of pipe
see sketch for location

6.76
17.4 = FL. on C.L. Drain

Top of Broken cb.

Top Iron Lid

Top cb

1+25 = end

1+00

T.P. 0.09 154.80 13.20 154.71

0+70 = U.L. Alley

0+50 = S.L. 20' Alley

T.P. 0.10 167.91 12.65 167.81

0+30

0+27.4 - 15.8 Rt. = \pm end of Iron pipe - ^{ground} above

0+12.92 = Hub. 5.84 174.62 on Hub

0+10

23.0
50
139.80

14.1
50
149.81

12.3
50
155.21

21.1
50
159.36

15.8
50
164.66

19.2
30
143.00

16.2
30
157.51

10.4
30
157.81

19.0
30
161.46

11.4
30
169.06

18.0
20
147.00

15.1
20
157.81

10.1
20
157.81

17.1
20
163.36

6.5
20
173.96

17.2
10
145.80

14.2
10
153.71

9.4
10
158.51

15.3
12
165.16

5.6
10
174.86

17.3
20
145.60

13.7
20
154.21

9.3
20
158.61

15.9
12
167.91

5.7
10
175.76

15.5
20
145.80

13.4
20
154.51

8.8
16
159.11

16.6
16
161.96

5.4
10
175.06

16.9
10
146.60

13.5
10
159.21

7.4
10
160.51

16.4
10
169.06

6.0
10
174.96

137.90

17.0
10
146.60

13.5
10
159.21

8.4
10
159.51

17.0
10
163.46

9.9
10
170.56

180.46

0+50	0.93	158.84	158.51
0+70		153.86	4.98
Pipe 40.51 E		154.36	4.50
50 E		154.4	4.38
Pipe 90.51 E		154.86	4.00
100 E		155.0	3.80
Pipe 8.5 W		153.44	5.42
30' W		151.8	6.98
59.5 W		148.0	10.85

CROSS SECTION - ARCHER ST.
 from Hwy Termination
 in Buena Vista Tract
 & La Lapolla Mesa Drive

Wb 31602

Sketch Trs - P. 62

(Joint Sample 2750 on L)

0+20 = End Drive on Rt.

0+12 = Beg. Conc. Drive on Rt.

0+02

0+00 = Hwy line Buena Vista Tract
 0-00.8 = East end Exist. Pav. Sec. on Pav.

0-10.8 = Section on Existing Pav.

0-20.8 Section on Exist. As. Paving

T.P. 2.53 118.48 9.67 115.95
 2.34 125.62 12.328

Walker
 Pope
 R. Sission
 11-3-50

L

71

INDEXED

MAR 30 1951

114.1	114.0	112.9	111.7	111.9	111.2	111.07	110.37	
44	45	56	68	66	73	74	81	
45	40	35	20	20	35		55	
Layer	Layer	Layer						
						110.93	110.24	
						755	824	
						35	55	
						Drive	Drive	
113.4	112.4	111.3	110.4	110.0	110.0	110.2	110.1	
51	61	72	81	85	85	83	84	
45	35	23	20		20	30	50	
111.31	110.90	110.37	109.81	109.61	109.45	109.21	108.61	108.01
717	758	811	867	887	903	927	987	1047
60	50	35	20		20	35	50	65
114.33	110.75	110.22	109.77	109.40	109.15	108.87	108.39	107.78
715	773	826	871	908	930	961	1009	1070
65	50	35	20		20	35	50	65
110.97	110.49	110.33	109.99	109.64	109.40	109.13	108.86	109.36
751	799	815	849	884	908	935	962	912
39	39	35	20		20	35	48	48
cb	Ent.						Ent.	cb.

11848

La Lapolla Mesa Dr.
 B. D. J. Conc. Mission Blvd & Archer P. 63

TP 12.25 128. ²⁰ 17 2.53 115.95

1+00

115.4	115.4	114.8	114.3	114.4	113.8	113.2	112.8
31	31	37	42	41	47	53	57
40	35	18	13		20	35	45
at fence							

0+96.5 = 2.5' Conc. Walk

112.83	112.81
565	567
35	50
Walk	Walk

0+93 = End Drive on Rt.

112.85	112.88
563	560
35	50
Drive	Dr = Gar. Floor

0+89 = Garage on Lt. DIRT DRIVE

115.98	
2.50	
585	
Gar. Floor	
112.83	112.89
565	559
35	50
Drive	Dr = Floor

0+85 = Beg. Conc. Drive on Rt.

0+50

114.5	114.0	113.4	112.9	112.8	112.2	111.5	111.4
4.0	4.5	5.1	5.6	5.7	6.3	7.0	7.1
45	35	17	14		20	35	45
Lawn							

0+46 = End Drive

114.65	114.33	113.95
383	415	453
50	38	34.8
Floor		

0+38 = Beg. Conc. Drive on Lt.

114.65	114.25	113.77
383	423	471
50	38	34.8
Garage Floor		

11848

11848

Archer St.

71.0
58.5

2+42.5 = End Drive

121.15 119.34
7.95 8.86
56 35
Drive Drive
5 Floor

2+34.5 = Beg. Drive on St.

121.14 119.20
7.06 9.00
56 35
Drive Drive
2 Floor of Garage

2+77.5 = End Drive

115.33 115.47 115.34
12.87 12.73 12.86
35 38 49
Drive Drive Drive

2+09.5 ^{Beg.} Drive on Pt.

115.08 115.23 115.33
13.12 12.97 12.87
35 38 49
Drive Drive Brk.
at Garage

2+00

118.6	118.5	117.4	116.6	116.8	116.2	114.6	114.2
96	97	10.2	11.6	11.4	12.0	13.6	14.0
45	35	12	10		14	35	45

1+50

117.0	116.7	116.2	115.6	115.9	115.7	115.1	114.2	113.9
11.2	11.5	12.0	12.6	12.3	12.5	13.1	14.0	14.3
45	35	13	10		13	20	35	45

1+34.5 = 2' Conc. Walk

117.28 116.87
10.92 11.33 20
49 35
Walk Driv

Archer St.

3+16 = 2

Conc. Walk on Lt

	Lt.			
	122.73	122.27		2
	5.47	5.93		
	43.8	33.8		
	Walk	Walk		

Rt.

74

3+11 = East Edge Conc. Drive on Rt.

119.37	118.64
8.83	9.56
35	50
DRIVE	DRIVE & Garage

3+00

122.1	121.7	120.4	119.9	119.9	118.7	118.83	118.54
6.1	6.5	7.8	8.3	8.3	9.5	9.37	9.66
40	35	15	10		27	35	50
						DRIVE	DRIVE

2+96 = W edge Conc. Drive on Rt.

273	250	118.61	118.41
50	35	9.59	9.73
DRIVE	DRIVE	35	50
& Floor		DRIVE	DRIVE & FLOOR
Garage			

2+54 = 2 3' Conc. Walk

120.82	120.75	119.81
7.38	7.45	8.39
62	54	35

2+50

120.2	119.6	117.9	118.1	116.8	117.3	116.8
8.0	8.6	10.3	10.1	11.9	10.9	11.9
45	35	11		26	35	45

2+40 = 2 3' Conc. Walk

116.68	116.18
11.52	12.02
35	53
Walk	Walk
20	
12.87	
5	

Anchor St.

Rt.

75

4+24.5 = East edge Conc Drive on Lt

Lt.
126.70 125.83
150 237
45 35
DRIVE DRIVE

122.03

121.69

4+23.5

4+15.5 = Reg. Conc Drive on Lt

126.73 125.81
147 239
45 35
DRIVE DRIVE

617

651

355
DRIVE

50 DRIVE
Floor Garage

4+08.5 = West edge Conc Drive on Rt

121.92

121.58

628

662

355
DRIVE

50
DRIVE
Floor Garage

4+04 = 4' Conc Walk

126.70 125.84
150 236
45 35
Walk Walk

4+00

126.4	125.5	124.0	123.4	123.3	121.8	121.4
18	2.7	4.2	4.8	4.7	64	68
45	35	15	11		35	45
LAWN	LAWN				LAWN	LAWN

3+73 = E edge Conc Drive

121.07

120.71

713

749

35
DRIVE

45
DRIVE

3+65 = W edge Conc Dr.

121.04

120.75

716

745

35
DRIVE

45
DRIVE

3+50

123.7	123.2	122.2	121.7	121.5	120.5	120.9	121.07
4.5	5.0	6.0	6.5	6.7	7.7	7.3	7.13
45	35	14	11	20	30	35	45
				128.77		LAWN	WALK

Archer St.

Chk. starting BM

493

123.28
123.24
7

5+099 = 2' to 10th Mesa Drive

4+94 = WLY Edge Exist. AC. Paving

4+85 2' Pole 34' RT # P-5298

4+799 = WLY Lower Leopalle Mesa Drive

4+78 = 4' Conc. Walk

4+77 = 3' Conc. Walk on RT

4+75 2' Fire Hydr. 24' RT

4+50

128.17

LT

R

R

76

127.23 126.53 125.87 124.40 123.02 122.45 121.90

0.97 1.67 2.33 3.80 5.18 5.75 6.30
65 50 35 35 35 50

125.92 125.24 124.79 123.53 122.02 121.45 120.85

2.28 2.96 3.41 4.67 6.18 6.75 7.35
65 50 35 35 50 65

124.9 124.4 123.5 122.5 122.0

3.3 3.8 4.7 5.7 6.2
50 25 35 50

126.3 125.6 124.0 123.6 122.7 123.0 122.4

1.2 2.6 4.2 4.6 5.5 5.2 5.8
50 35 20 22 35 50

126.59

2.61
3.55
4.44

123.29

4.91
35

127.0 127.1 125.8 124.0 123.0 123.0 122.7

1.2 1.1 2.4 4.2 5.2 5.2 5.5
45 37 35 20 20 35 Lower Lower

128.77

IMPROVED TABLES AND INFORMATION

HORIZONTAL STADIA CORRECTIONS

2°-00' — 0.1	21°-00' — 12.3	33°-00' — 29.7
3°-00' — 0.3	21°-30' — 13.4	33°-15' — 30.1
4°-00' — 0.5	22°-00' — 14.0	33°-30' — 30.5
5°-00' — 0.8	22°-30' — 14.7	33°-45' — 30.9
6°-00' — 1.1	23°-00' — 15.3	34°-00' — 31.3
7°-00' — 1.5	23°-30' — 15.9	34°-15' — 31.7
8°-00' — 1.9	24°-00' — 16.5	34°-30' — 32.1
9°-00' — 2.5	24°-30' — 17.2	34°-45' — 32.5
10°-00' — 3.0	25°-00' — 17.9	35°-00' — 32.9
10°-30' — 3.3	25°-30' — 18.6	35°-15' — 33.3
11°-00' — 3.6	26°-00' — 19.2	35°-30' — 33.7
11°-30' — 4.0	26°-30' — 19.9	35°-45' — 34.1
12°-00' — 4.3	27°-00' — 20.6	36°-00' — 34.6
12°-30' — 4.7	27°-30' — 21.3	36°-15' — 35.0
13°-00' — 5.1	28°-00' — 22.0	36°-30' — 35.4
13°-30' — 5.5	28°-30' — 22.8	36°-45' — 35.8
14°-00' — 5.9	29°-00' — 23.5	37°-00' — 36.2
14°-30' — 6.3	29°-30' — 24.3	37°-15' — 36.6
15°-00' — 6.7	30°-00' — 25.0	37°-30' — 37.1
15°-30' — 7.2	30°-15' — 25.4	37°-45' — 37.5
16°-00' — 7.6	30°-30' — 25.8	38°-00' — 37.9
16°-30' — 8.1	30°-45' — 26.2	38°-15' — 38.3
17°-00' — 8.5	31°-00' — 26.5	38°-30' — 38.7
17°-30' — 9.0	31°-15' — 26.9	38°-45' — 39.1
18°-00' — 9.5	31°-30' — 27.3	39°-00' — 39.6
18°-30' — 10.1	31°-45' — 27.7	39°-15' — 40.0
19°-00' — 10.6	32°-00' — 28.1	39°-30' — 40.5
19°-30' — 11.2	32°-15' — 28.5	
20°-00' — 11.7	32°-30' — 28.9	
20°-30' — 12.3	32°-45' — 29.3	

Chains to Feet

1	66
2	132
3	198
4	264
5	330
6	396
7	462
8	528
9	594
10	660

Feet to Chains

100	1.515
200	3.030
300	4.545
400	6.060
500	7.575
600	9.090
700	10.606
800	12.121
900	13.636
1,000	15.151

R 3049

2+44.3 = end.

$$\begin{array}{r} 2+44.3 \\ \underline{3.8} \\ 2+48.1 \end{array}$$

$$\begin{array}{r} 1269.6 \\ \underline{29.9} \\ 1239.7 \end{array}$$

123.28

$\underline{33.1}$

126.59

123.28

$\underline{6.90}$

130.18

$\underline{3.16}$

127.02

$\underline{13.15}$

146.13

$\underline{6.96}$

139.17

$\underline{12.72}$

151.89

$\underline{0.95}$

150.94

$\underline{12.88}$

163.82

1228 <5

8.92.9

$\underline{8.23.6}$

9.67.5

$\underline{11.8}$

9.057

302

23+

262