

1779



MICROFILMED

DEC 29 1964

MADE IN U. S. A.

1779

CITY ENGINEER

Our Leather Bound Engineers Note Books
are carried in the following rulings:

- No. 380 LEVEL BOOK. Left and Right Hand Page
the same as Left Hand Page
of this Book.
- No. 382 FIELD BOOK. Left Hand Page as in this
Book, Right Hand Page 4x4
to the inch, Center Line Red.
- No. 384 MINING TRANSIT
BOOK. Left Hand Page as in this
Book, Right Hand Page 8x8
to the inch, Center Line Red.
- No. 385 FIELD BOOK. Left Hand Page as in this
Book, Right Hand Page 8
vertical and 4 horizontal lines to
the inch, Center Line Red.

We also carry the Note Books listed above,
bound in extra strong Fabri-Hide (otherwise
the same quality of book,) which can be fur-
nished at a somewhat lower price.

In ordering Fabri-Hide covered books, add
the letter "F" to catalog number.

THE FREDERICK POST CO.

ENGINEERING and DRAFTING SUPPLIES

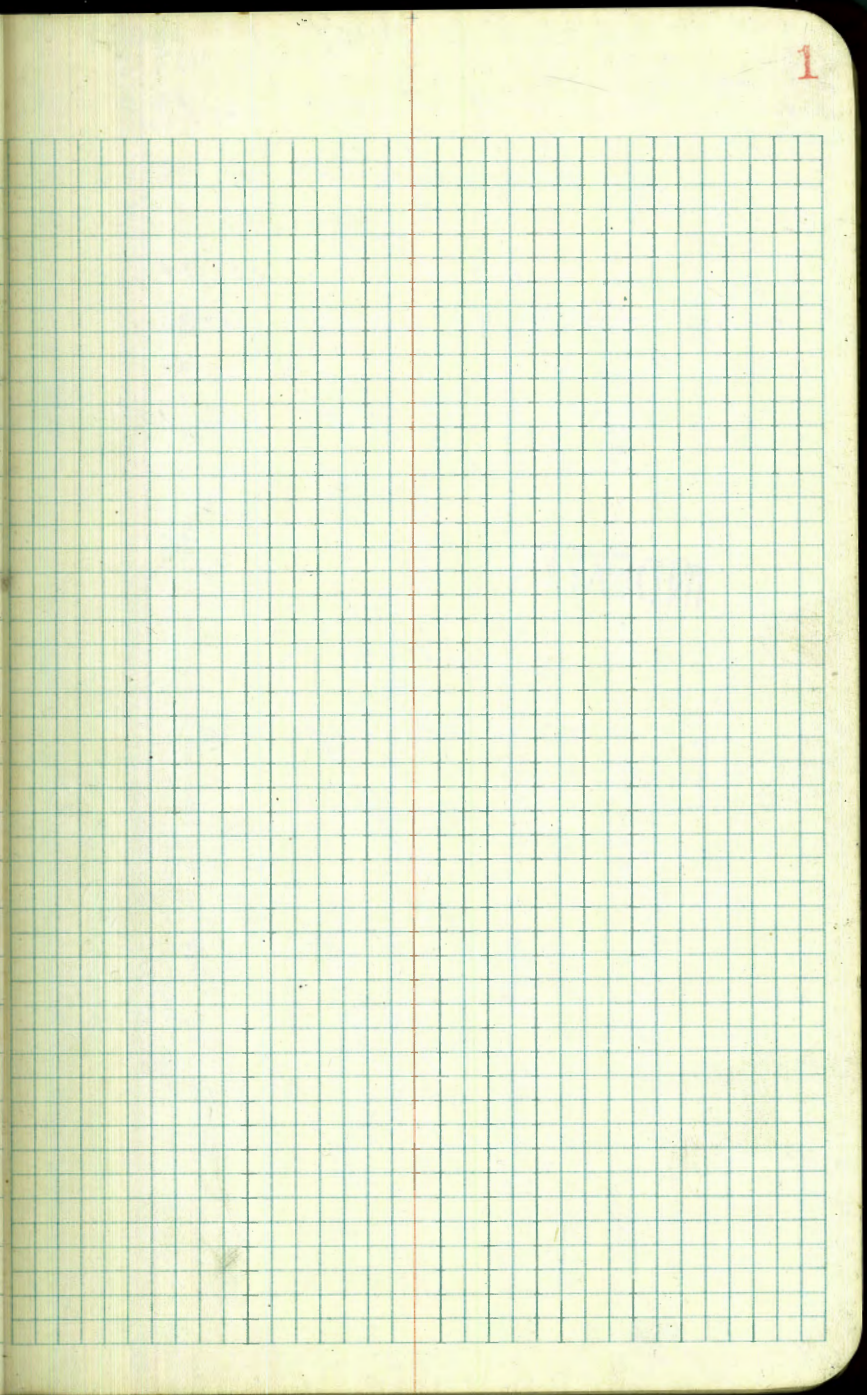
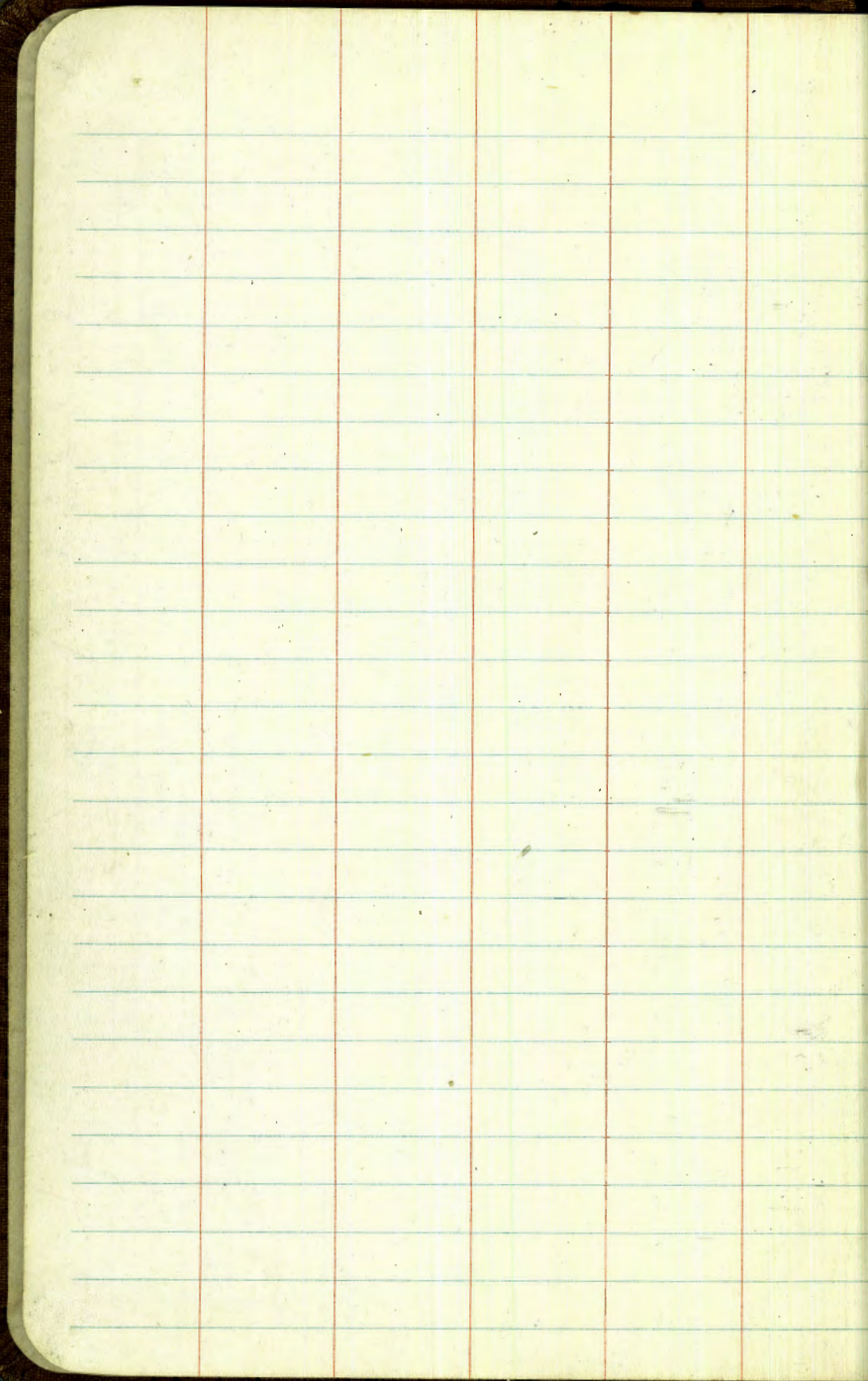
P. O. Box 803

CHICAGO

Completely.
INDEXED
WK

FEB 24 1949

Xsec Morrison	Market to Hilltop	10
"	41st	16
"	42nd	22
"	Toyne	" W.Ly 62093 32
"	Derby	" " " 27
"	Morrison -	" to Hilltop 44-60
"	Keats - Plum	to W.L. Roseville 61-65
"	Winton Ave	University to Wightman 67-73
"	Wightman	Winton to East 74-75
Elev. Man Hole inverts Manree at Menlo + at Aldine Dr.		} 80



Cont from P. 2

327.07 ✓

T.P	2.46	316.78	12.75	314.32
0+00 Flare Line			10.04	306.78
1' Lt			10.1	306.7
7' Lt			5.6	311.2
3' R			10.5	306.3
7' R			4.0	312.8
to Ground			10.6	306.2
0+20			11.2	305.6
5' Lt			11.2	308.6
8' Lt			6.6	310.2
7' R			5.7	311.1
3' R			11.2	305.6
0+40				
L			13.3	303.5
2' R			13.3	303.5
9' R			4.3	312.5
6' Lt			13.3	303.5
8' Lt			6.6	310.2
0+80				
φ			15.1	301.7
2' R			15.1	301.7
6' R			9.3	307.5
10' R			5.4	311.9
7' Lt			15.1	301.7
10' Lt			8.5	308.3

316.78 ✓

in 1106' L

3' R

8' R

10' Lt

- 1450 L

2' Lt

10' Lt

10' R

T.P

12.47 329.02 ✓

11.11 329.14 ✓

2+00 R

2' Lt

10' Lt

10' R

15.8

17.2

13.6

11.5

18.9

19.0

17.0

16.6

- 0.23

0.99

1.19

301.3

299.58

303.2

305.3

297.9

297.8

299.8

300.2

316.55

328.03 ✓

337.95 ✓

337.94 starting
error +.01 12.17

295.7

296.8

297.0

295.0

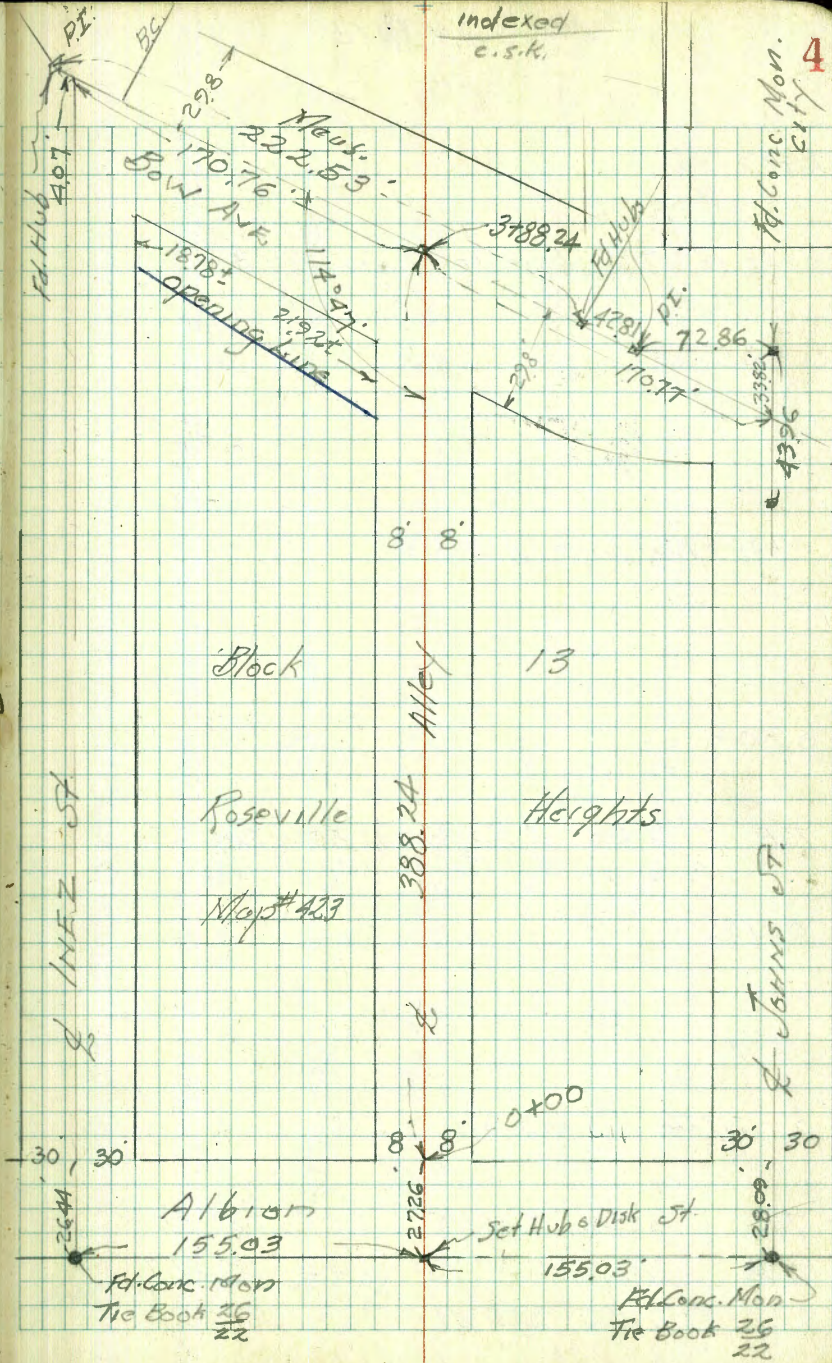
Notes Reduced. G. P. 07

3

Walker
 Hendricks
 Becker
 Johnson
 6-6-47

CROSS SECTION Alley Blk. X13
 Roseville Heights Map #423
 Between Inez And Johns St.
 from Albion to Bow Ave.
 X-Sections P-5

INDEXED



Alley 81K 13

0+52

0+40 to 0+75 Four Trees on Rt 13 from $\frac{1}{2}$ *Acacia 4000.*

0+2.5

0+00 = ~~Elm~~ *Albion*

0-06

T.P. 8.60 254.85 3.50 246.25

0-12

0-2726 on Hub 3.50

T.P. 12.42 249.75 0.37 237.33

T.P. 13.13 237.70 0.44 224.57

8.92 225.01 216.09

Lt.

247.95

248.75

249.55

249.35

250.15

250.95

251.75

252.55

253.35

254.15

254.95

255.75

256.55

257.35

258.15

258.95

259.75

260.55

261.35

262.15

262.95

263.75

264.55

265.35

266.15

266.95

267.75

268.55

269.35

270.15

270.95

271.75

272.55

273.35

274.15

274.95

275.75

276.55

277.35

278.15

278.95

279.75

280.55

281.35

282.15

282.95

283.75

284.55

285.35

Rt.

249.85

250.65

251.45

252.25

253.05

253.85

254.65

255.45

256.25

257.05

257.85

258.65

259.45

260.25

261.05

261.85

262.65

263.45

264.25

265.05

265.85

266.65

267.45

268.25

269.05

269.85

270.65

271.45

272.25

273.05

273.85

274.65

275.45

276.25

277.05

277.85

278.65

279.45

280.25

281.05

281.85

282.65

283.45

284.25

285.05

285.85

286.65

287.45

5

B.M. NW B.P. Tolbot & Concord St.

Alley Blk #13
Rosedale Hts

T.P 0.08 213.44 12.62 213.36
1+68

INDEXED

1+55

T.P -0.08 225.98 12.50 226.06

1+32

T.P 1.12 238.56 11.74 237.44

1+17

0+97

0+80

T.P 5.33 249.18 11.00 243.85
2.54.85

12.0	213.98	18.0	211.98 Lt	9.0	216.98	7.6	218.38	7.0	218.98	6.0	219.98	6.0	218.28	6.8	219.16
10.5	215.48	12.0	213.98	12.0	213.98	8		2.5	218.98	2.5	219.98	2.7	218.28	2.5	219.16
9.7	219.28	9.8	216.18	9.8	216.18										
2.5	221.78	2.5	223.98	2.5	223.98										
2.5	228.96	2.5	231.36	2.5	235.66										
4.3	234.26	4.3	240.48	4.3	244.78										
2.0	243.18	2.0	249.98	2.0	254.28										
5.2	246.48	5.2	253.98	5.2	259.28										
4.9	247.28	4.9	254.98	4.9	260.28										
1.8	249.38	1.8	256.38	1.8	261.18										
2.2	249.78	2.2	257.98	2.2	262.18										
1.8	244.78	1.8	250.78	1.8	255.78										
2.7	247.38	2.7	253.38	2.7	258.38										
2.5	244.28	2.5	251.28	2.5	256.28										
2.5	241.28	2.5	248.28	2.5	253.28										

on Pipe 82 ft of 1 1/2" LS #229

Alley Blk #13 Roseville Hts

X-Sections

T.P. 0.22 184.24 11.75 183.32
2+75

INDEXED

T.P. 4.72 195.07 12.28 190.35
2+88

T.P. 4.72 195.07 12.28 190.35
2+10

T.P. 1.76 202.63 12.57 200.87
2+25

T.P. 1.76 202.63 12.57 200.87
2+00

1+85

213.44

14.
80 187.07
47
21 185.97
28 185.27
10.2 184.87
16.1 184.97,
10.4 184.67 17.
10.5 184.57
11.1 183.97 2

191.17
43 190.67
59 189.17
66 188.47
66 188.47
23 187.57
8.0 187.07
4.0

195.43
7.2 195.43
5.0 7.0 195.43
8.7 193.93
2.4 193.23
9.7 192.07
9.7 192.93
8.0 192.13
10.5 192.13
4.0 191.23

198.03
46 198.03
50
24 201.23
5.3 197.33
5.1 197.53
5.4 197.23
5.4 197.23
5.4 197.03
5.6 197.03

205.44
8.0 205.44
5.0
9.2 204.24
2.2
7.9 205.54
8
6.5 206.94
5.0 207.54
8
5.2 208.24
2.6
6.0 207.14
4.0
0.3 213.14
4.0 213.14

209.84
5.6 209.84
5.0
3.5 209.94
8
2.7 210.74
1.6 211.84
8
0.2 212.54
1.6
2.5 213.14
4.0 213.14

213.44

INDEXED

3+31

3+22

3+18

3+14 = Int. N Bank of Wash

3+02

2+86

184.24

140 50	168 30	168 15	58 8	1.8	4.1 8	11 20
170.24	167.44	167.44	178.44	179.44	180.14	182.84
	14.9 50		16.8 25	16.3 in wash	4.4 5	2.5 20
	170.24		167.44	167.94	179.84	181.74
	13.0 50		12.0 8	16.3 in wash	16.0 8	4.5 20
	171.24		172.24	164.94	168.24	179.74
	118 30	8.9 29	68 29	5.1	15.1 8	15.3 12
	173.14	175.34	177.44	179.14	169.14	168.94
	179.94	180.44	178.44	179.74	179.74	179.94
	4.3 20	3.8 22	4.1 8	4.5	4.5 8	13.0 22
	183.24	183.24	183.14	182.84	183.44	183.24
	1.0 20	1.0 22	1.0 20	1.4	0.8 8	1.0 20
	184.24			184.24	179.74	170.34
					Bank	Bank
					in wash	in wash
					183.04	181.74
					1.2 20	Top of Bank of Wash

Indexed
C.S.K.

Xsec Morrison St
Market to Hilltop

Mason
Begg
Green
Roberts

INDEXED

313 x 2

7-25-47

Sketch

Ref. F.B. 1608-13-21

Location & Levels, New L.M.P.M.T.S.

St. only bladed, don't think

any change in ydgs.

+39 $\frac{1}{2}$ Doorway Garage

+28 angle incore 24.9 $\frac{1}{2}$ SW cor bldg

0+25 angle incore

0+00 Beg. con. paved at st. yard on RT

NWBP

111 St

Market

1608-21

241

127.80

125.39

LT

e

RT

10

12/15/58

6.22

21.4

skirt

12/13/58

6.72

21.6

12/13/58

6.52

23.3

23.3

12/17/58

6.07

24.9

12/12/55

5.85

24.9

floor

12/12/58

6.78

25

2
31
31

12/20/57

7.30

22.5

12/20/58

7.00

25.0

12/12/58

6.30

30.5

127.80

+

H1

-

+ 74 } 24.9 end wire
 22.5L end Picket
 + 485 22.2L ϕ 2.6 conc walk
 4 + 41 22.6L beg Picket
 + 76 24.3R end lath beg wire
 + 50 24.3R end wire beg lath
 + 14 24.5R end Picket beg wire
 3 + 00 24.4R beg Picket

2 + 42 40.1 ϕ 2' walk conc

T.P. 7.41 132.09
 3.12 124.68

0 + 87 25.7 end wire fence
 1 + 51 25.6R beg wire fence
 1 + 40 24.4R end picket
 1 + 00 24.6R fence beg picket

0 + 52 end of conc NW cor Bldg

127.80

Lr

R

P+

11

126.79

5.30
22.8

124.13

7.96
40

132.09

121.71
6.09
21.3
Apr 11

121.95
5.85
24.9

127.80

+ H1 -

Lt

¢

R7

12

0 + 42 15.5R 7' wide conc drive

134.29
6.20
13
26

134.29
6.20
13
26

134.29
6.55
20

133.85
6.94
15.5

0.2

TP 9.16 140.79
0.46 131.63

140.79

0 + 00 N line F St

6 + 18 27.3 L 4' conc walk 2-4 wide

131.30
0.79
30.4

131.32
0.77
27.3 L

6 + 06 24.3R 3' wide (WALK?) ↓

131.77
1.32
24.3

131.06
1.03
35

5 + 76 24.7R 6' conc blk wall west end

129.85
2.21
24.7
24.6

129.21
2.88
35

+ 52 24.6R 3' walk

5 + 31 24.7R 8' wide conc drive

129.00
3.05
24.7

129.19
2.95
35

137.09

132.09

2+60 15.1 R ϕ 7.0 drive conc
 2+20 25.8 L beg cyrena hedge
 2+16 24.8 L ϕ drive 7.5 wide
 2+12 25 L end lat^h

TP 10.73 149.98
 154 139.25

1+98 15.5 R ϕ conc drive 6.8 wide
 1+86 25 R end wire fence
 +70 25 L beg lat^h fence

+66 15.2 L ϕ conc drive 8.3 wide

+41 24.8 R end of Picket beg wire or conc wall

1+33 14.8 R ϕ 13 conc drive

1+09 24.8 R ϕ 2.4 conc walk

0+87 24.6 R beg conc wall + picket

140.79

17

$\frac{10.76}{35}$
 $\frac{10.39.22}{35}$

$\frac{10.71}{24.8}$
 $\frac{10.39.27}{24.8}$

$\frac{9.93}{15.1}$
 $\frac{140.95}{15.1}$

$\frac{8.65}{20}$
 $\frac{141.33}{20}$

$\frac{8.56}{25}$
 $\frac{141.42}{25}$

$\frac{8.14}{30}$
 $\frac{141.84}{30}$

$\frac{8.00}{35}$
 $\frac{141.98}{35}$

149.98

138.59

139.09

139.26

139.73

$\frac{2.20}{15.5}$
 $\frac{1.70}{19.8}$

$\frac{1.57}{25}$
 $\frac{1.26}{30}$

$\frac{0.8}{35}$
 $\frac{0.91}{35}$

$\frac{137.79}{305}$
 $\frac{35}{35}$

$\frac{137.76}{303}$
 $\frac{25}{25}$

$\frac{137.58}{321}$
 $\frac{17.0}{17.0}$

$\frac{137.35}{344}$
 $\frac{15.2}{15.2}$

136.76

137.13

137.21

137.28

$\frac{4.07}{14.5}$
 $\frac{3.67}{20}$

$\frac{3.58}{25}$
 $\frac{3.51}{30}$

137.04

$\frac{3.75}{24.9}$

140.79

4+65 24.3 L $\frac{1}{2}$ 7.5 conc drive

4+18 15.6 R $\frac{1}{2}$ 6.8 conc walk

4+15 24.2 L 7.5 conc walk

TP 11.94 161.15
0.77 149.21

3+65 22.5 L $\frac{1}{2}$ 7.5 conc drive
15.4 R $\frac{1}{2}$ conc drive 7.0

3+18 15.3 R $\frac{1}{2}$ 7.4 drive conc

3+15 24.8 L $\frac{1}{2}$ 7.5 conc drive

2+65 25.1 L $\frac{1}{2}$ 7.4 drive conc

2+61 25.8 L end conc

149.98

14

8 152.15
3.94
3.5

152.13
7.02
24.3

149.12
12.03
15.6

149.48
11.67
20

149.58
11.57
25

149.98
11.25
149.80
11.25
3.5

149.01
12.14
3.5

148.81
12.34
24.2

161.15

4.4 145.55
3.5

145.67
3.31
22.5

145.00
3.29
15.4

136.49
3.49
20

146.67
3.31
25

146.88
3.10
25

146.99
3.29
146.70
146.88
146.15
3.5

143.08
6.90
3.5

143.08
6.70
24.8

143.00
6.48
15.3

143.00
6.0
20

144.12
5.86
25

144.12
5.74
20

140.95
9.03
3.5

141.02
8.96
25.1

149.98

+

#1

-

L

E

T

15

T.P. 3.48 157.67 157.69
03

5+59 25.5 L end picket approx S Line

5+39 25 L $\frac{1}{2}$ 3' walk

5+115 24.5 L beg picket

A+89 21.38 $\frac{1}{2}$ 3' walk
161.15

SE 7' hub Hill top & Morrison

Hill top

156.64
4.51
25

153.26
7.39
21.3

161.15

153.67
7.48
30

+ H1 -

+70 30 R ϕ core drive

3+54 50 L 7 1/2 c

3+35 34 Lt. ϕ 3' conc walk

3+19 29.5 R ϕ 7.5 core drive

3+14 31.5 L end of wire

3+00

T.P. 5.37 135.67 178 130.30

+695 30.5 R 7 1/2' ϕ core drive - Pav. Gar. way back

2+43-298' Rt. = ϕ 3' Conc. Walk - Hqs. to N.

2+50

2+17-299 Rt. = ϕ 8' Conc Dr. to Sing. Gar. - Conc. floor

2+15 31.3 Lt. end pocket peg wire

2+00

1+94-287 Rt. = ϕ 3.5 Conc. walk 132.08

Lt

134.02

2.75

30

133.5

2.8

30

132.7

3.0

12

131.9

2.9

30

131.8

3.9

15

131.7

4.0

15

130.8

4.4

30

134.53
at
Porch

134.09
133
24

130.09
5.63
29.5

129.46
5.21
40

132.9

2.8

30

132.3

3.4

26

132.0

3.7

12

131.0

4.7

7

130.9

4.8

48

130.5

5.2

20

129.5

6.2

30

135.67

129.33

131.8

0.3

30

131.0

1.1

10

130.4

1.7

6

130.3

1.8

8

129.33

2.75

30.5

Dk.

129.5

2.6

22

128.83

2.95

25

129.5

2.6

30

128.30

2.98

Dk.

128.72

2.98

walk

127.06

2.70

House

128.21

58.5

floor

127.5

4.6

30

127.1

5.0

40

130.2

1.9

30

129.5

2.1

7

128.4

3.7

6

128.5

3.6

36

127.9

4.2

20

128.3

3.9

23

127.5

4.6

30

127.1

5.0

40

132.08

walk \rightarrow 28.7

127.6

at Porch

48.5
at Porch

127.00

17

+ 41 -

1133 148.85

T.P. 1.50 137.52

+12 30.4L end pucket leg wire

2+07 30.2R

+56 30.1R 4'5' conc drive

1+06 30R R 4'7.5' conc drive

+78 30 L 4' con walk

+29 30 R 3' walk conc

0+0 30.2L beg pucket

old notes good for yardwork

new notes for walks & drives

6.75 139.02

T.P. 3.40 132.27

135.67

L

£

R

20

137.16

1.86

30.2

3.46 135.56

30.1

11.87 139.15

30

133.76

5.26

30

132.80

6.17

30 R

139.02

135.67

BM 2.61 152.94 152.95

30.2 L end of wire fence

5+41 28.8 R 3' walk

5.36 29 L guy pole 467743H

8.25 155.55

FP 1.55 147.30

5+06 30.2 R 7.5 conc drive

4+56 30.2 7.5 conc drive

4+06 30.1 R 7.5 conc drive

3+56 30.1 R 7.5 conc drive

3+06 30 R 7.5 conc drive

+55 30.2 7.5 drive

147.85

2 Mar Hill 156 4 4 154

149.21
6.34
38.8

155.55

146.80
13.05
30.2

145.09

37.6
30.2

143.42

54.3
30.1

142.09
6.76
30.1

140.92
1.93
30.8

139.02
9.89
30.2

148.85

INDEXED

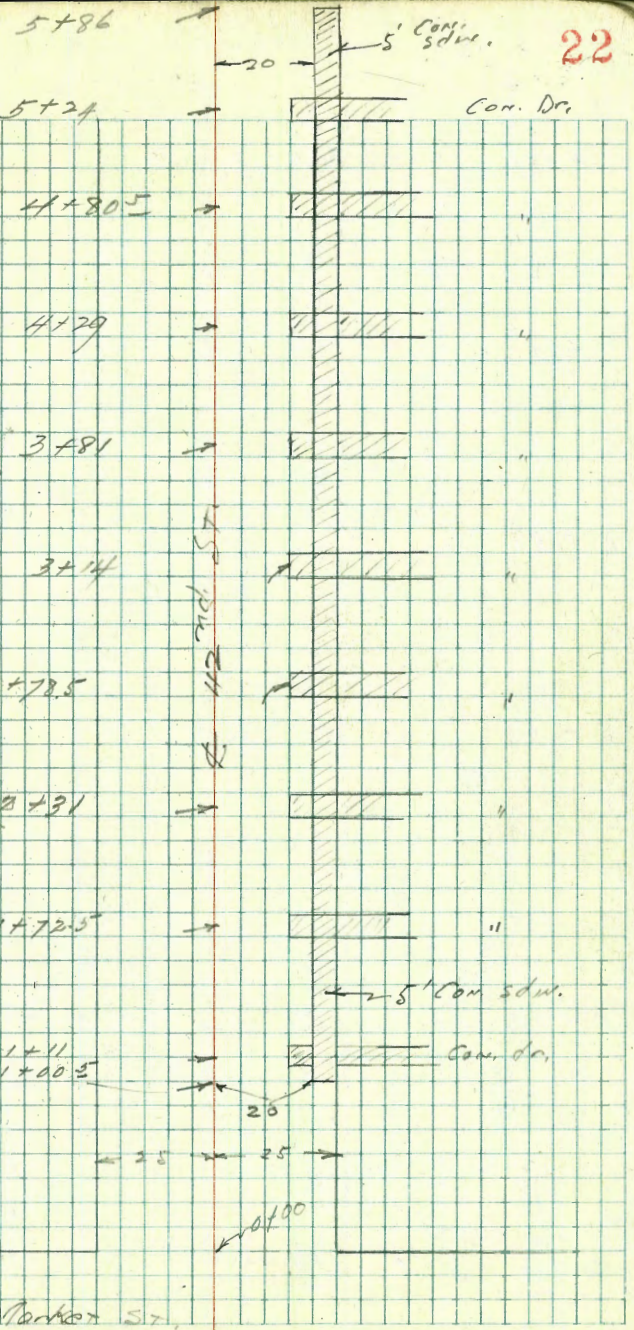
NO. 31342

Re-xsec. 42nd St. Ferrydge
Market to FST.

Meese
Bc99
Green
Roberts
2-28-47

Rel. FB. 1608-13-27.

~~42nd F to Hilltop~~
NOT much change in ydqe.
Re-xsec anyway



PE. 1300 42nd.

1+005 beg core walk

0+95 7.2
35

0+88

0+50

0+25

0+09 16.7 L Tel pole 938 2844

0+00 N.L. Market

SW
S.W. B.P.
Market 3.95 138.71 128.76
+ 42nd.
1608-27

LT

125.8	126.2	127.2	127.3	127.8	127.8	127.8	128.60	128.71
6.9 25	6.5 16	5.0 13	5.4 10	4.9	4.9	4.9	4.11 20	4.00 25
							Walk	
127.8	127.5	127.3	127.8	127.8	127.8	128.3		
4.9 25	5.2 12	5.4 10	4.9	4.9	5.0 14	4.4 25		
127.6	127.7	127.5	127.8	128.1	128.6			
5.1 25	5.0 13	5.2 11	4.9	4.6 15	4.4 25			
128.2	128.1	128.0	128.2	128.2	128.8	129.1		
4.5 25	4.6 15	4.7 12	4.5	4.5 16	4.9 15	3.6 33		
129.38	129.31		129.17		129.90	129.98		
3.97 22.5	3.41 17.5		3.54 26		3.81 17.5	3.77 22.5		
Walk					Walk			
			132.71					

P7 23

+ H1 -

add out →

+50 25 L beg lath fence
 2+31 15.5R 47' conc drive -to Doub. ^{Gar. Back}
 Note: Setback of Houses = 45 out.
 2+00 23.8L end wire fence
 1+725 15.5R 47' conc drive ^{Gar. -back to Doub.}
 1+63 25.2R end picket
 1+50 23.5L beg wire fence
 1+40
 1+15 25.2R beg picket
 1+11 15.3R 47' conc drive ^{No Gar. yet}
 1+025 17.1L P.P.6 P77184
 132.71

5.1
30

6.0
30

6.4
30

6.7
30

127.6	127.7	127.0	127.8	128.6	128.610	128.5	129.33	129.53	
50	50	57	49	41	41	42	338	377	
25	25	21	20	14	14	15	20	25	
127.7	127.2	128.7	128.5	128.6	128.5	128.93	129.38	129.48	130.05
5.0	5.5	4.0	4.2	4.1	4.2	3.78	3.33	3.23	3.50
25	21	14	13	14	14	15.5	20	25	30
127.8	127.3	128.8	128.3	128.3	128.3	129.1	129.39	129.41	130.11
4.9	5.4	3.9	4.4	4.4	4.4	3.6	3.32	3.30	3.50
25	20	14	12	14	14	16	20	25	30
126.6	127.3	128.0	127.8	128.1	128.1	128.96	129.24	129.41	130.11
6.1	5.4	4.7	4.9	4.6	4.6	4.25	3.45	3.30	3.50
25	17	14	12	13	13	15.5	20	25	30
						walk			
126.8	126.6	127.9	127.7	127.9	128.1	128.5	128.94	129.01	130.11
6.3	6.1	4.8	5.0	4.8	4.6	4.2	3.77	3.70	3.50
25	20	13	10	14	14	20	20	25	30
126.2	126.0	127.8	127.6	127.9	128.04	128.61	128.73	129.38	130.11
6.5	6.7	4.9	5.1	4.8	4.67	4.10	3.98	3.70	3.50
25	20	14	10	15.3	20	25	25	30	30

132.71

+97 26.5 L beg conc wall 8"

2 + 70

+61 2H 5R end of Picket

2 + 35

2 + 13 15.4R 4 walk

2 + 125 15.8L 46.8 conc drive

149.70
150.25
35 Dr.
40 Brk.

2 + 00

1 + 75

155.41

3.07	26.5	26.5	26.5	26.5	26.5	26.5	26.5	26.5	26.5
151.6	150.4	150.4	150.4	150.4	150.4	150.4	150.4	150.4	150.4
3.8	5.0	5.3	5.5	5.4	5.7	5.0	4.9	3.7	
25	24	15	13		13	15	23	25	
150.8	149.0	148.8	149.5	149.6	149.4	150.1	150.2	151.7	
5.0	5.3	5.6	5.7	5.8	6.0	5.3	5.2	3.7	
25	22	15	13		13	15	22	25	
149.88	149.72	149.56	149.56	149.82	149.92	150.17	151.57	151.56	
3.33	5.69	3.85	3.85	5.59	5.47	5.24	3.89		
25	20.3	15.8	15.8	15.4	22.9	23	26		
149.4	149.4	148.8	149.0	149.0	149.7	149.7	151.4		
6.0	6.0	6.6	6.4	6.4	5.7	5.7	4.0		
25	15	13		13	15	23	25		
148.7	148.0	147.9	148.0	148.5	148.2	149.2	150.9		
6.7	7.0	7.5	7.0	6.9	6.2	6.2	4.5		
25	15	13		12	15	23	25		

155.41

+ #1

153.91
+8
Bk

+87 15.3 L ϕ conc drive 7.2

4 +50

4 +95 17.7 L P Pole 76735

4 +23-25.6' Rt. E 8.5 Conc Dr. to Sing Gear. - Conc. floor

+11 26 R end barb wire

4 +00

3 +69 2.7 L end conc wall

+61 26 R barb wire beg

3 +50

3 +27 26.6 L Top of bottom step 3.2 wide

3 +00

15541

152.87	152.71	152.34				
2.54 25	2.70 20	3.07 15	151.6	151.8	151.8	151.9
3.2 25	3.9 17	3.8 15		3.6	3.6 15	4.0 25
151.6	151.1	151.2	151.1	151.1	151.07	151.09
3.8 25	4.3 15	4.2	4.3 15	4.3 15	25.6 Dy	4.6 25
3.09 Top Wall	2	ground.				
150.7	150.5	150.6	150.7	150.7	150.7	150.9
4.7 25	4.9 14	4.8	5.0 13	4.7 16	5.0 25	
152.63	152.51	151.25				
36.2 at Bk	29 top step	4.16 2.6				
152.4	150.6	150.8	150.4	150.1	150.7	150.7
30 26	48 25	5.0 17	5.2 13	5	5.3 13	4.7 15
						4.7 23
						4.2 25
			15541			

5 + 50

5 + 25 25.3 L beg Packet

5 + 00

4 + 81 25.3 L $\frac{1}{2}$ 8' conc Dr. to Doub Grav. way back.

4 + 60

6.57 142.40

T.P.

6.99 135.83

4 + 32 25.3 L = 8' Dr. - 2' + 3' Conc Strips - to Doub Grav way back
4 + 32 25.3 R $\frac{1}{2}$ dbl rib " " " " " " " "

4 + 00

142.82

	T		R	R
	$\frac{6.4}{25}$	$\frac{5.1}{25}$	$\frac{5.7}{25}$	$\frac{5.5}{25}$
	136.5	136.5	136.7	136.9
	$\frac{6.1}{25}$	$\frac{6.7}{25}$	6.6	$\frac{6.2}{25}$
	135.8	135.7	135.8	136.2
	$\frac{40.3}{25}$	$\frac{7.18}{25}$		$\frac{5.5}{25}$
	135.3	135.22		136.9
	$\frac{7.2}{25}$	$\frac{7.2}{25}$	$\frac{6.7}{25}$	$\frac{5.6}{25}$
	135.2	135.2	135.7	136.3
	$\frac{124.43}{25}$	$\frac{8.08}{25}$	7.2	$\frac{5.90}{25}$
	134.74	134.74	135.82	136.92
	$\frac{8.2}{25}$	$\frac{8.3}{25}$	7.6	$\frac{6.9}{25}$
	134.6	134.5	135.2	135.9
	$\frac{137.85}{25}$	$\frac{137.1}{25}$		$\frac{137.85}{25}$
	137.85	137.1		137.3
				137.3

142.82

+ H1 -
 7+20
 6+60
 T.P. 5.09 144.38 3.11. 139.29

6+25.3
 6+20.9? N Line of sub division

6+12.5 24.6 L + 4 dbl rib 7' drive - 2-2' Conc. Steps

6+00

5+82 24.7 L 3.4 corr walk

5+75 25.3 L end Picket

5+56 25.2 L 2' walk

142.40

36

L R
 2.5 191.9
 190.9 25
 4.7 2.5
 140.1 4.7
 141.38
 25 R 3/4" Pipe
 139.1 139.9
 3.3 3.0
 25 15
 139.39 139.11
 138.4 3.29
 2.2 24.6
 2.6 Dr.
 138.3 138.2
 4.0 4.1 4.2 3.9
 25 15 15 15
 137.9 137.89 137.2 137.5 137.8 138.5
 35.9 24.7 5.2 4.9 4.6 3.9
 Walk at step walk walk
 136.71 136.72 5.68
 49.8 25.2
 Walk at Porch walk
 142 40

Indexed
C.S.K.

INDEXED

Re. & sec. Derby St.
Market Nly to N.E. of
Maccison's Mancene Park

Mean 110.3135
8-99
Green
To 6025
7-30-47
+ 85

0+80 - 27.7 ft. = N.E. Cor. New Bldg.

0+60

Note:
These are
Elev's

129.00

130.2

27.7 27.7
Top of ground
Sill at
Back Door

0+30

0+05

0+00

BM

10.12 124.89

T.P.

4.94 135.01 7.33 130.07

SW B.P.

Market 8.64 137.40

128.76

+ 4.2 incl.

L = West

17. 37

127.3	127.9	133.6	132.4	132.8	133.5	133.3	132.8	129.6
7.7 40	7.6 32	1.4 25	2.6 17	2.2	1.3 15	1.7 23	2.6 25	5.4 26
126.8	126.8	130.1	130.0	130.5	131.5	131.3	130.6	126.9
8.2 40	8.2 31	4.9 25	5.0 18	4.5	3.5 15	3.7 23	4.4 25	8.8 27
126.3	126.4	128.2	127.3	127.4	128.0	128.0	125.4	125.2
8.7 25	8.6 29	6.8 25	7.7 15	7.6	7.0 15	7.0 24	9.6 30	9.3 25
		126.2	125.0	124.8	124.6	125.1	124.9	
		8.8 25	10.0 15	10.2	10.4 9	9.9 15	10.1 25	
126.0	124.9	124.19	124.09	124.09	123.68	123.28	123.6	
9.0 25	10.22 15 C6	10.82 15 9	10.92	10.92	11.33 15 9	10.77 15 C6	10.4 25	
			135.01					
			N.W. cor. Derby & Market this square 2 of return					

+

H1

-

{ 25.4L Wall
 24.5L step 3' Walk
 3 + 34 25 R end Picket beg cobble wall

141.18

33.7
 walk at
 Porch

+13 25.0L beg cone wall - Note. Top elev. was wrong.

3 + 07 25.0L ϕ 105 cone drive - No Car.

{ 25.0L end Picket
 3 + 005 21.6R ϕ 2' cone walk with steps

2 + 87 25.2R beg Picket

+75 25 R end of cobble wall

+53 25 R 3' cone walk

2 + 50 24.5L beg Picket

144.67

L

10

R

39

140.81	140.36	139.8	139.9	138.7	137.0	135.30	135.15	135.13
383 4.31	4.9	5.3	6.0	7.1	9.37	9.2	9.4	
25.4 25	24.5	15		17	25	25	30	
Wall	Step	140.84	139.9	139.9	137.0	135.30	135.15	135.13
		139.82	140.84	139.9	137.0	135.30	135.15	135.13
141.21	139.82	140.84	139.9	139.9	137.0	135.30	135.15	135.13
	Top Wall	25	25	25	25	25	25	25
		4.70	4.70	4.70	4.70	4.70	4.70	4.70
3L	25	25	25	25	25	25	25	25
end of								
Private								
Lawn								
140.8	139.7	139.7	139.7	137.8	136.95	136.59	135.72	135.72
4.5	5.0	5.0	6.0	6.9	8.22	8.28	8.95	8.95
25	20	20		19	21.6	23	23	23
					135.65	135.72	135.72	135.72
					135.70	135.72	135.72	135.72
					8.97	8.97	8.97	8.97
					30	30	30	30
					384 = walk	384 = walk	384 = walk	384 = walk
					at Porch	at Porch	at Porch	at Porch
140.7	139.9	139.8	137.8	136.9	136.0	136.0	136.0	136.0
4.0	4.9	5.9	6.9	8.3	8.7	8.7	8.7	8.7
25	21		15	25	30	30	30	30
					135.90	135.90	135.90	135.90
					8.38	8.38	8.38	8.38
					25 walks	25 walks	25 walks	25 walks
					37.7	37.7	37.7	37.7
					walk at	walk at	walk at	walk at
					Porch	Porch	Porch	Porch
140.8	139.7	139.00	137.7	136.9	136.0	136.0	136.0	136.0
4.7	5.0	5.7	7.0	8.3	8.7	8.7	8.7	8.7
25	15		15	25	30	30	30	30
					135.90	135.90	135.90	135.90
					8.38	8.38	8.38	8.38
					25 walks	25 walks	25 walks	25 walks
					37.7	37.7	37.7	37.7
					walk at	walk at	walk at	walk at
					Porch	Porch	Porch	Porch
					144.67	144.67	144.67	144.67

10-18-49 Check Top F Hyd BIA
 Moore S.E. Cor. F and Denby sts
 Handin
 Sisson

W O 23544

Lt

R 43

S.W.B.P. v2
 Market 6.99 135.75 128.76 P.37
 T.P. 3.65 136.41 2.99 132.76
 check to B.M. Chisel square P.37
 check to N.W. Return 11.53 124.88 124.89
 Market + Denby 00
 T.P. 7.40 143.49 0.32 136.09
 check to S.E. F Hyd F + Denby 4.39 139.10 MKd.
 T.P. 0.65 137.07 7.07 136.42
 check to orig. 8.31 128.76 128.76

139.36
 0.26

INDEXED
 W.K.
 OCT 19 1949

T.P. 4.05 139.29 139.29
 00

77.00

143.34

500 p 36

139.29
 39
 25

139.0
 43

137.6
 57
 15
 WASH

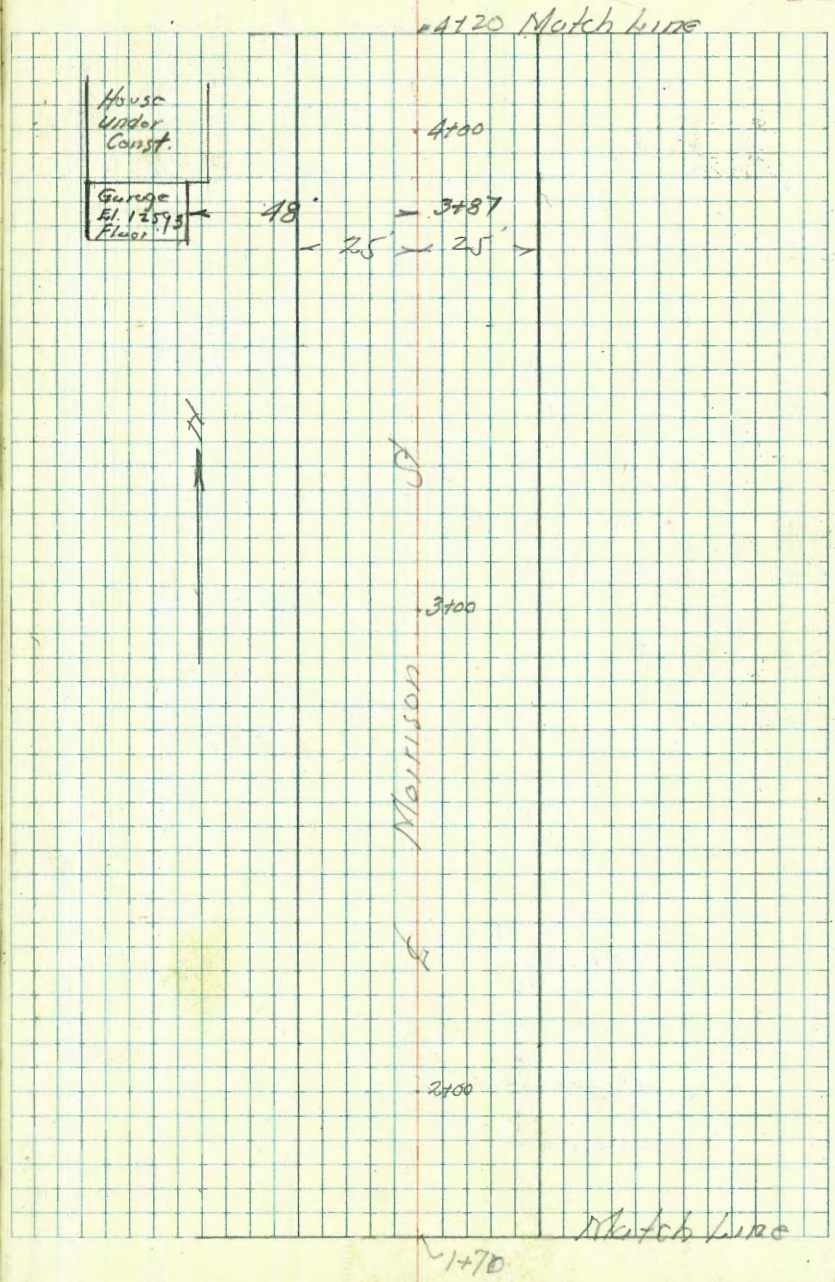
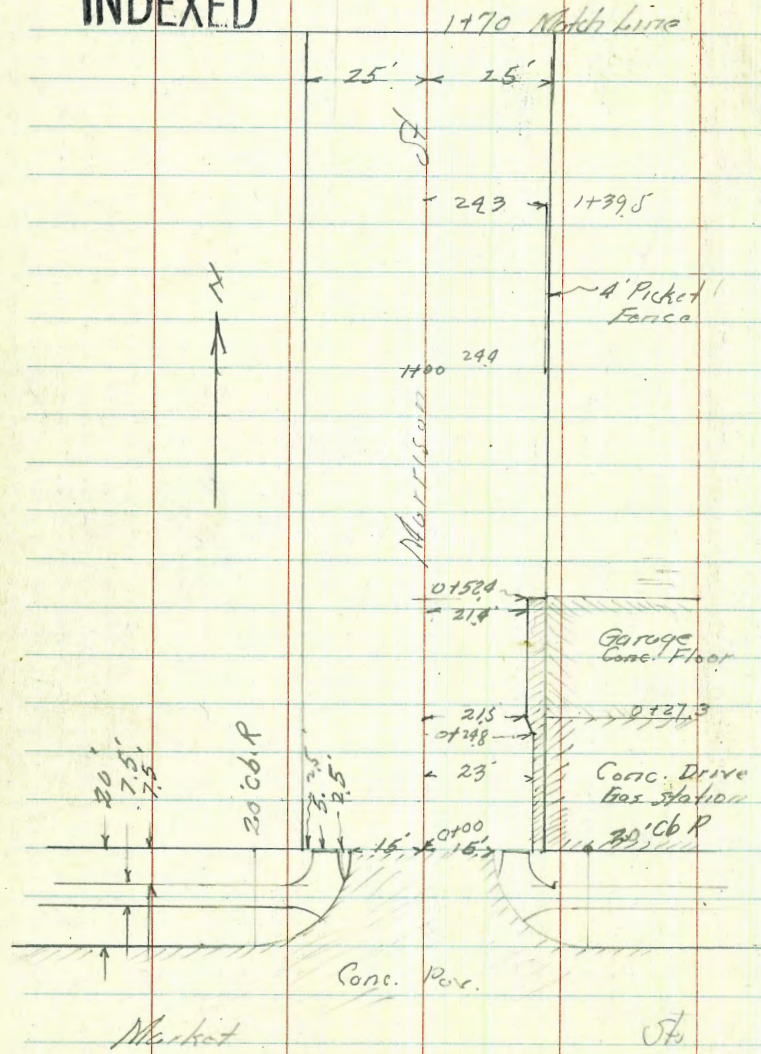
137.9
 57
 25

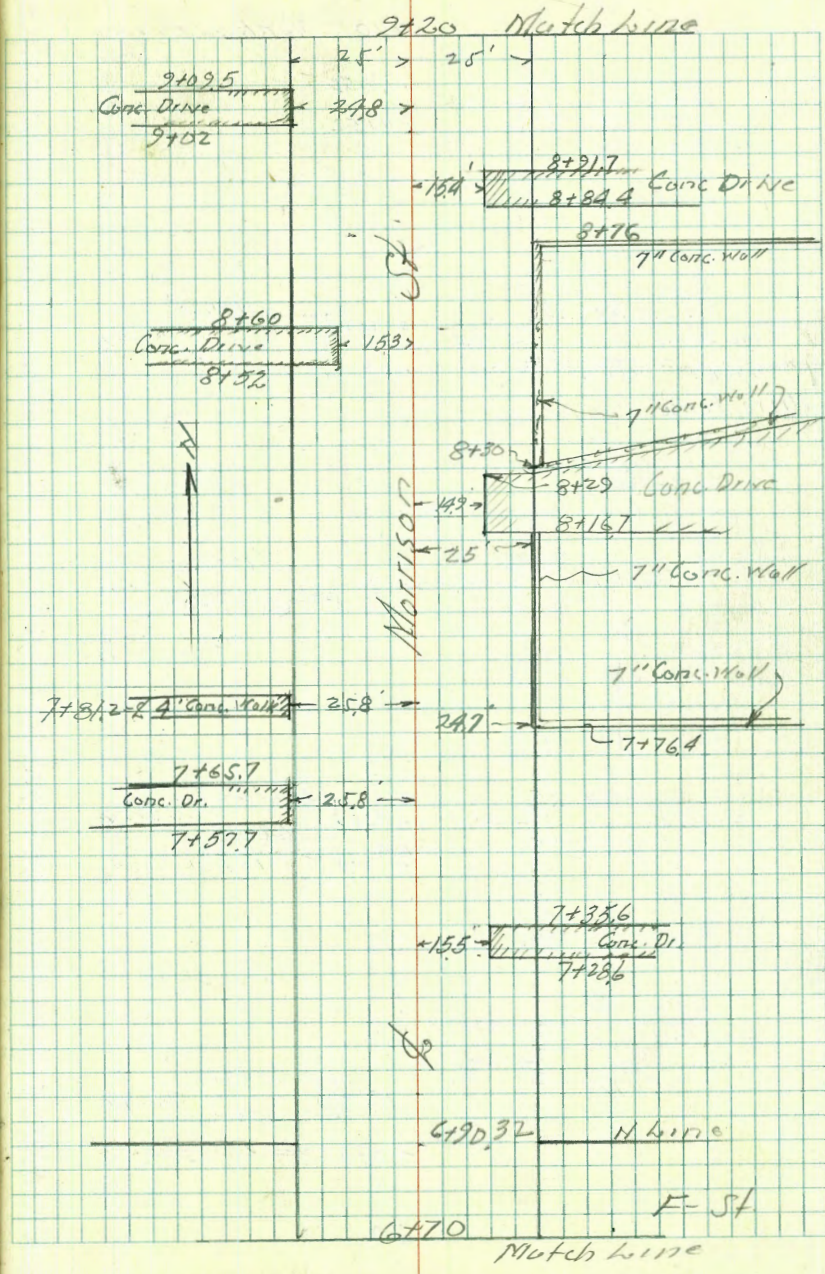
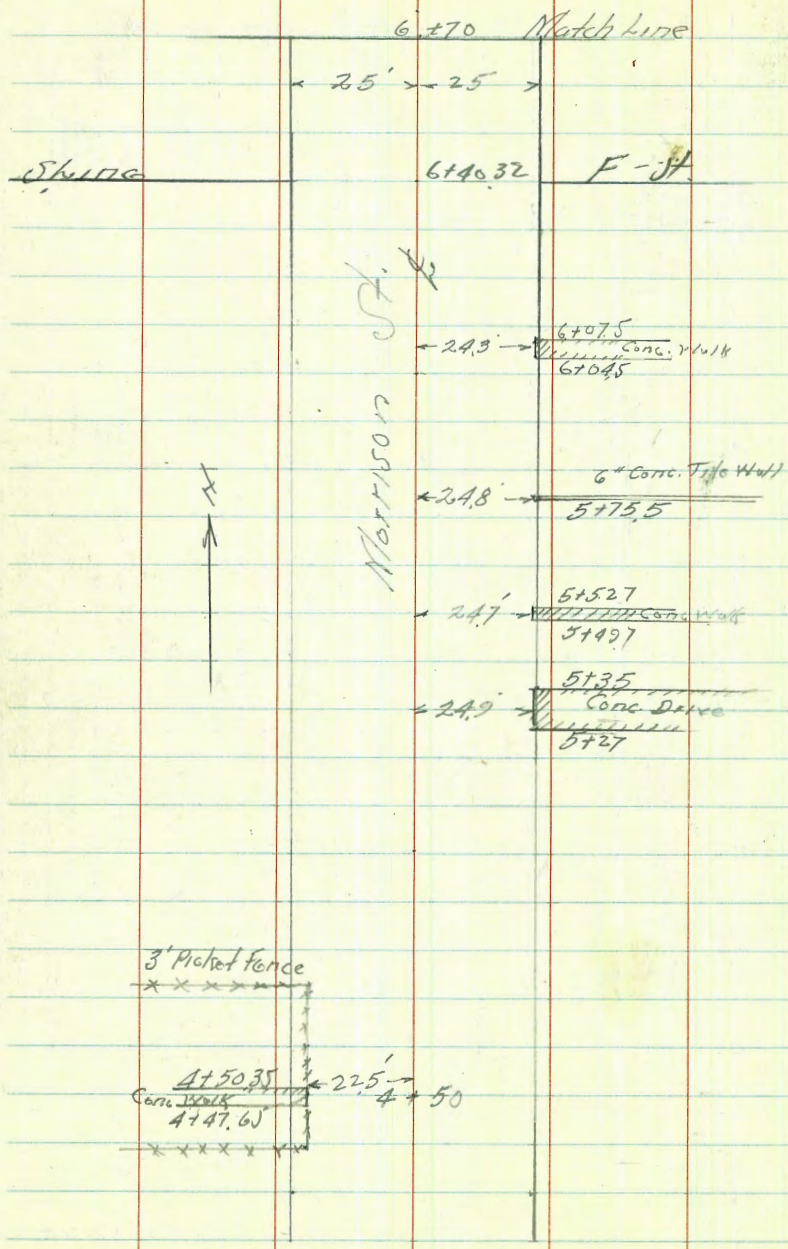
143.34

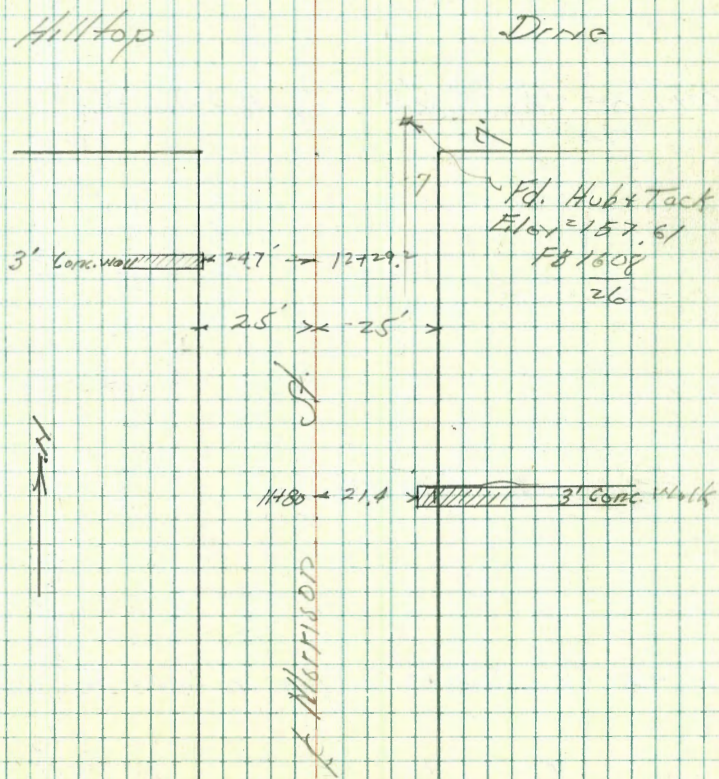
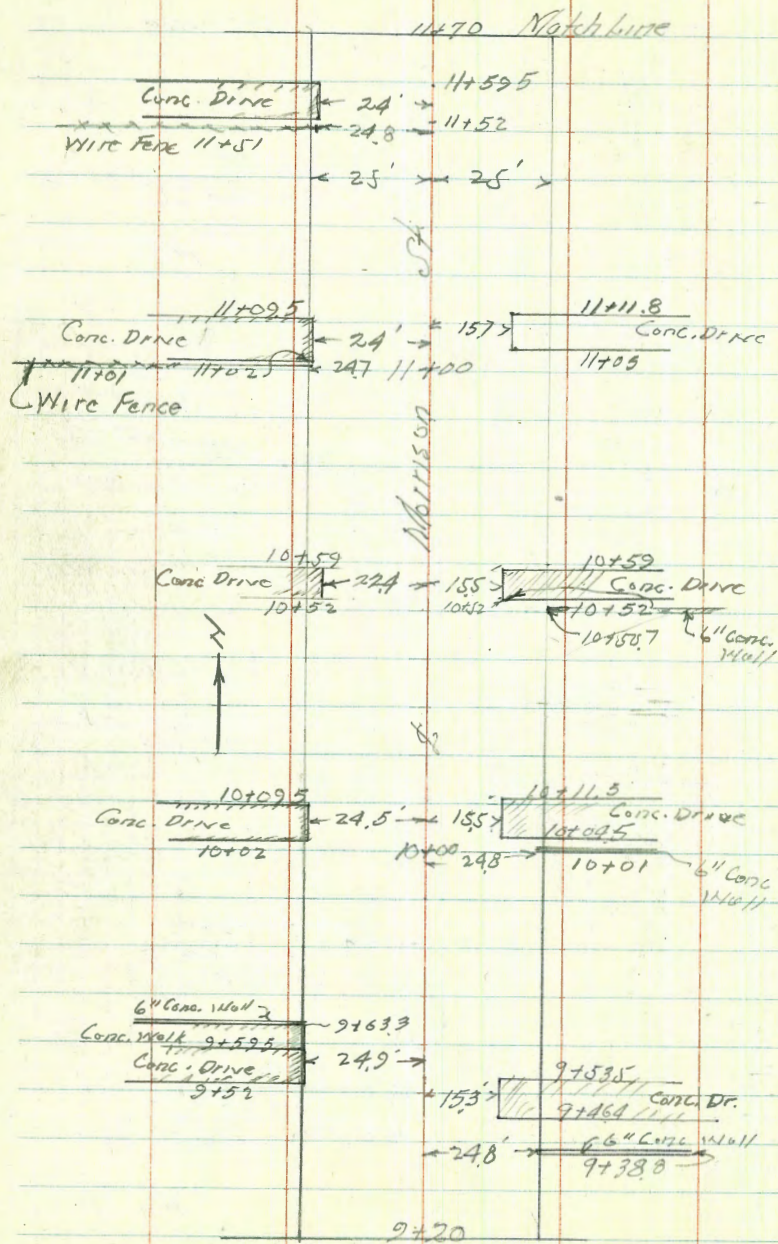
Walker
Hedricks
Secker
Johnson
10-8-97

RE-CROSS SECTION - MORRISON ST.
From Market to Hilltop Drive
original X-Sections FB 1608-21-26-13

INDEXED







INDEXFD

TP 506 129 56 2.15 124.50

1+25

1+00

0+27.5

0+52.4

0+28
0+27.3

0+24.8

126.65

122.4	122.8	123.2	123.5	123.8	124.0	123.8	124.2	124.3	124.6	124.8	124.8
39 35	39 27	35 25	32 22	29 15	27 13	29 12	25	24 15	21 23	19 25	19 25
	122.7	123.1	123.7	123.7	123.3		123.7	123.5	123.7	123.9	123.9
40 35	36 25	30 15	30 15	30 15	34 12		30	33 13	30 15	28 25	34 25
							123.62				
							303				
							ON RIM MARK				
		122.2	122.2	121.9	121.1	121.6	121.6	121.6	121.75	121.95	
		45 40	45 25	48 15	56 12	51	51	51	490 23	470 288	
									Conc. Dome	Conc. Dome of Bld.	
	122.8	123.1	121.3	120.7	120.7	120.2	120.7	120.6	121.0	121.34	121.90
	39	34 28	34 25	60 15	60 14	65 12	60 11	61 11	57 15	531 215	475 249
									Conc. Dome	Conc. Floor	
									121.25	121.71	121.77
									540 29	484 30	488 30
									Conc. Dome	Conc. Dome	Conc. Dome

126.65

7+57.7 = South edge Conc. Drive

7+50

7+35.6 = N edge Conc Drive

7+29.266 Lt. = ± 3.5 Conc. Walk

7+28.6 = South edge Conc Dr

Gar - Conc floor.

7+07- 26.7 Lt. = # 8 Conc. Dr. to Sing

7+00

6+90.32 = N.W. F-S

6+80.32

140.76

135.34 Lt.
44.8 floor
Car.
542 259 on Drive
547 259 on Drive

134.7
134.7
134.6
134.0
134.4

134.70
38.7 ft Porch
26.6 Walk

132.80
26.7 Dr.
133.4
132.9
132.9
132.6
133.0

133.2
76 7.8
25 25
132.7
8.1 8.9
25 18
132.5
8.9
15
132.4
8.0

131.9
8.2 8.8
75 25
132.0
8.7 8.5
25 15
132.1
8.2
15

135.29 Lt.
542 259 on Drive
547 259 on Drive

133.80
6.86 6.56
15.7 20.1 on Drive
133.73 134.16
70.3 62.6
15 12.5
on Drive on Drive on Drive

133.0
7.8 7.7
18 23
133.1
7.1 7.1
25 25

132.6
8.2 7.9
13 15
132.9
8.0
25
132.8
8.1
25

132.1
8.3 8.4
15 25
132.5
8.3 8.4
25 25

140.76

135.29 Lt.
542 259 on Drive
547 259 on Drive

134.2
134.6
134.9
135.2

133.80
6.86 6.56
15.7 20.1 on Drive
133.73 134.16
70.3 62.6
15 12.5
on Drive on Drive on Drive

133.0
7.8 7.7
18 23
133.1
7.1 7.1
25 25

132.6
8.2 7.9
13 15
132.9
8.0
25
132.8
8.1
25

132.1
8.3 8.4
15 25
132.5
8.3 8.4
25 25

8+91.2 = N edge Conc. Drive

8+84.4 = South edge Conc Drive

8+76 = N end Conc. Wall

8+60 = N edge Conc Drive

8+52 bag. Conc Drive

8+50

8+30 - Bag. Conc. Wall

140.76

138.64
210
154

139.14
162
20

139.28
148
25

139.75
101
30

140.01
47.5
40

138.95
231
154
on Drive

138.98
178
20
on Drive

139.14
162
25

139.64
112
30
on Drive

139.95
0.83
40

137.75
301
25

137.78
298
25

137.64
312
172

137.92
334
152

137.68
308
35
on Drive

137.69
307
25
on Drive

137.65
331
122
on Drive

137.21
355
162
on Drive

137.8
30
35

137.4
34
25

137.2
26
15

136.9
39
13

137.5
33

137.3
35
15

137.8
30
17

138.0
28
25

137.92
264
251
on Wall

138.3
25
26

138.3
35
36

137.3
35
25
on Ground

138.25
253
25
on Wall

140.76

12+72

12+61.46

12+51.46 = Skins Hilltop Drive

12+29.2 247' Lt = 3' Conc. Walk

12+01 242' Lt Wire Fence E & W

12100

11+80 = 3' Conc Walk on Rt

T.P 11.53 163.57 081 152.04

11+59.5 = N edge Conc Drive on Lt
152.85

159.4	159.8	160.4	159.8	159.3	158.9	158.5	158.5	158.9	158.7	157.7
42 75	38 48	32 35	28 51	13 15	4.7	5.1 15	5.1 22	4.7 25	4.9 35	5.9 75
158.6	158.4	158.5	158.5	158.1	158.2	157.9	158.3	158.3	157.9	156.6
50 75	5.2 35	5.1 25	5.1 18	5.5 15	5.4	5.7 13	5.3 15	5.3 25	5.7 35	7.0 75
157.8	157.9	157.8	157.6	157.3	157.6	157.5	158.0	157.9	156.5	155.9
58 75	5.7 35	5.8 25	6.4 15	6.3 13	6.0	6.1 15	5.6 17	5.7 25	7.1 30	8.2 75
		156.74		156.59						
		6.83 34.7		6.98 24.7						
	155.1	155.0	154.9	154.5	154.6	154.3	155.0	155.1	154.5	153.9
	8.5 35	8.6 25	8.7 18	9.1 15	9.0	9.3 14	8.6 16	8.5 25	9.1 31	9.2 35
									153.71	153.61
									9.86 21.2	9.96 31.4
		152.23		152.21	163.57					
		0.62 34		0.64 24						
					152.85					

$$\begin{array}{r} 0.03 \\ 157.69 - FB \ 1608 \\ 596 \ 157.61 \quad \underline{26} \end{array}$$
 Chk. SE 7' Hub Morrison Hilltop

13+11.5

12+96

12+94

12+75

163.57

0.6	163.0	2.4	161.2	3.6	160.0	3.5	160.1
75		76		75		75	
1.9	161.7	2.6	161.0	3.5	160.1	3.6	160.0
35		36		35		35	
2.2	161.4	3.4	160.2	3.8	159.8	3.9	159.7
25		25		25		25	
2.5	161.1	3.8	159.8	4.0	159.6	4.2	159.4
15		15		15		15	
2.7	160.9	4.2	159.4	4.4	159.2	4.7	158.9
2.8	160.8	4.5	159.1	4.9	158.7	5.2	158.4
15		15		15		15	
2.8	160.8	4.8	158.8	5.2	158.4	5.4	158.2
25		25		25		25	
2.9	160.7	5.0	158.6	5.4	158.2	5.7	157.9
35		35		35		35	
4.3	159.3	5.8	157.8	6.3	157.3	6.7	157.0
37		37		37		37	
4.9	158.7	6.3	157.3	6.9	156.8	7.5	156.5
73		73		73		73	

163.57

X-Sect. Keats - Plum to W.L. of Sub.
70' + 50' st. - Base line = ϕ of 70' st.

INDEXED

1+29.33.6 Rt. = end - Nly. Hedge

T.P. 3.06 115.16 13.22 112.10

1+05-- 33.9 Rt. = Beg Nly. of 6' Hedge - 8' High

1+00

0+60

0+30

0+00 = W.L. Roseville

0-25 - for Profile

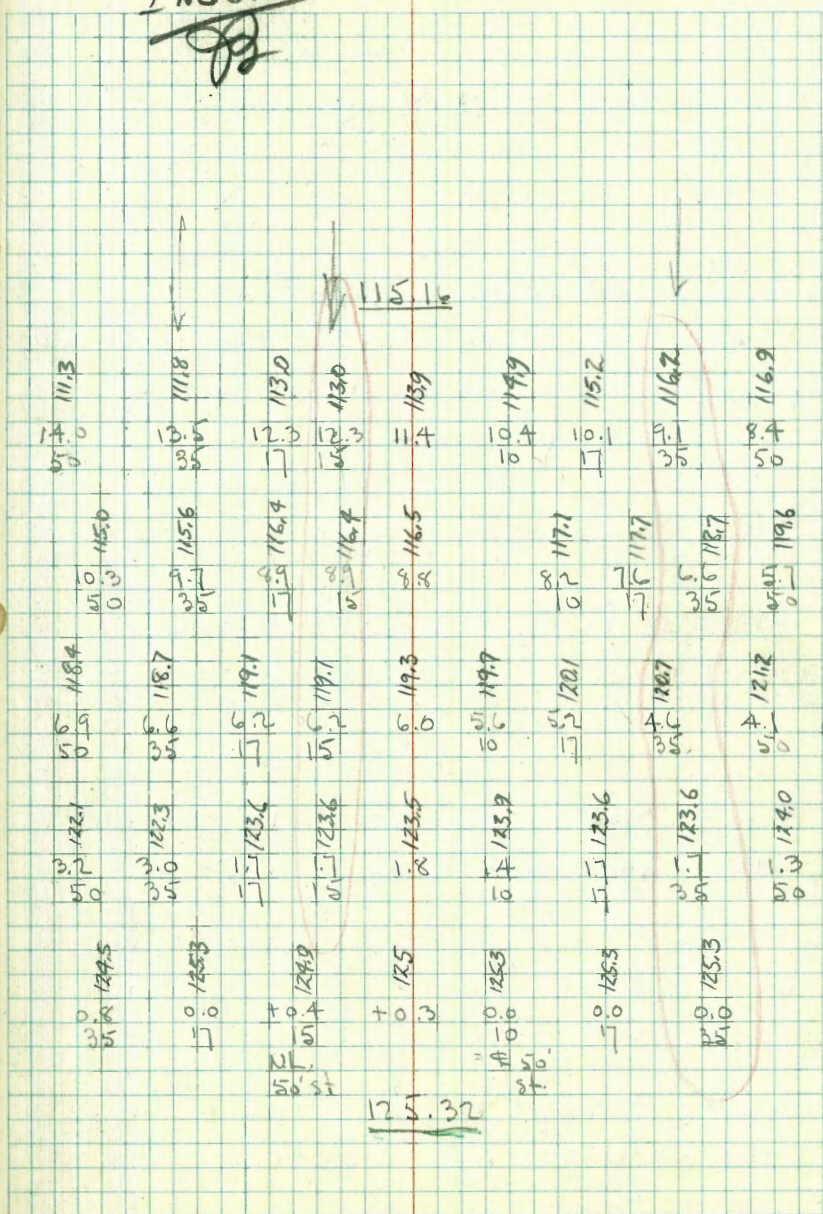
13.22	125.32	0.05	112.10
13.14	112.15	0.40	99.01
12.19	99.41		87.22

S.W.B.P.
Plum +
Lowell

Lt. = N.

Rt. = S. 62

Indexed
JS



check starting B.M.	7.46	87.20	87.22
0.56	94.66	9.95	94.10
I.P.	0.95	104.05	12.06
			103.10

35' E. = Φ Plum. = end.

H. 1. FS

99103	101153	102180	103197	104215	107207	105215	109664	111107
14.13	13.63	11.36	10.08	9.11	8.09	7.01	5.52	4.09
85	60	35	17		17	35	60	85
				on Rim				
				Sewer M.H.				

115.16

INDEXED

Rods around Returns - Plum + Keats.

Ret # 1 = N.W. - See sketch - 4' around - 4 parts - 10.25 each

Req. on W. end = W.L. Plum.	9.37	T = Top
	9.94	g = guts
10.25 E.	10.25	T
" = E	10.79	g
	11.22	T
"	11.71	g
"	12.15	T
	12.66	g
10.25 = P.C. - 25' N. of N.L. Keats	13.17	T
	13.72	g

Ret. # 2 = S.W. - 4' around - 4 - 10.25 each

Req. - W. end = W.L. Plum	7.19	T
	7.80	g
10.25 E.	6.84	T
	7.34	g
" = E	6.26	T
	6.80	g
"	5.52	T
	6.13	g
10.25 = P.C. - 25' S. of S.L. Keats	4.96	T
	5.54	g

Cross Section Winona Ave.
University Ave. to 850' South

Levels Page 57

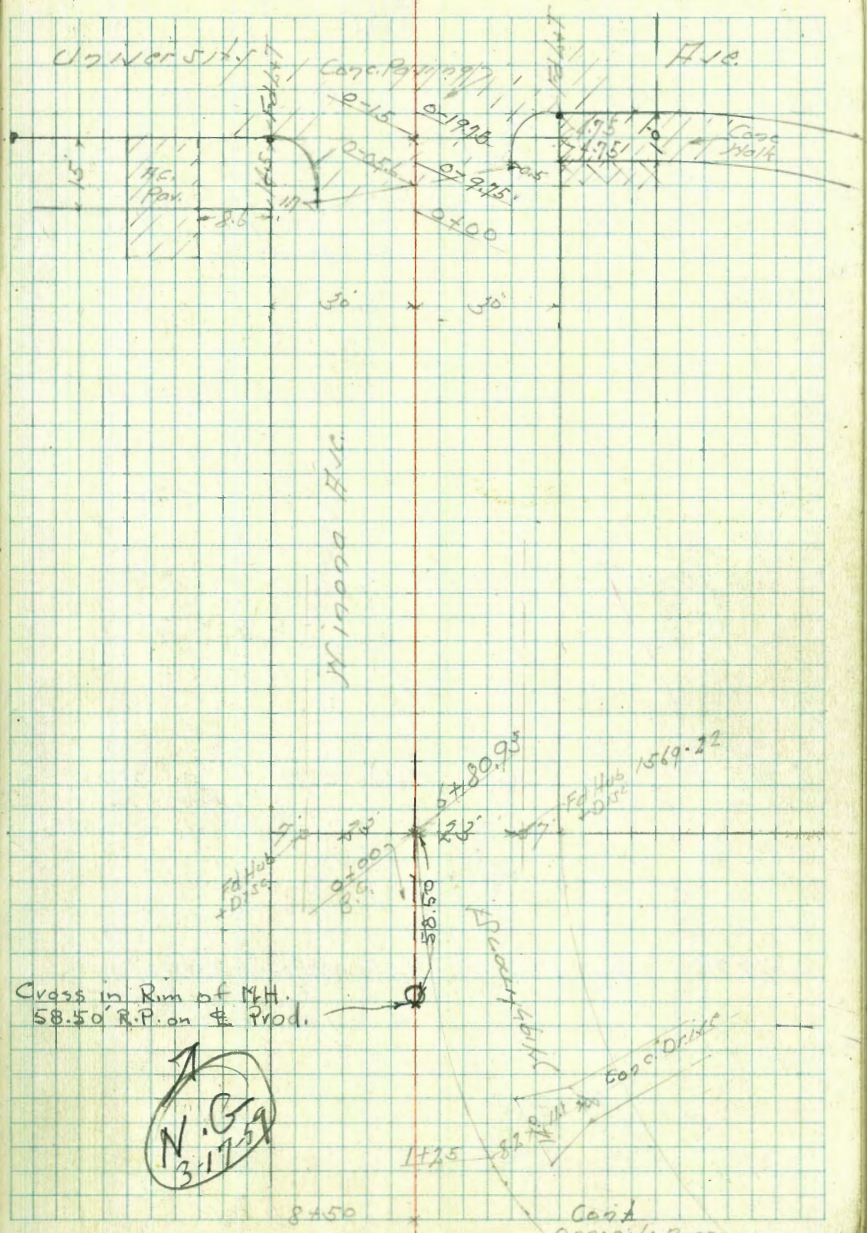
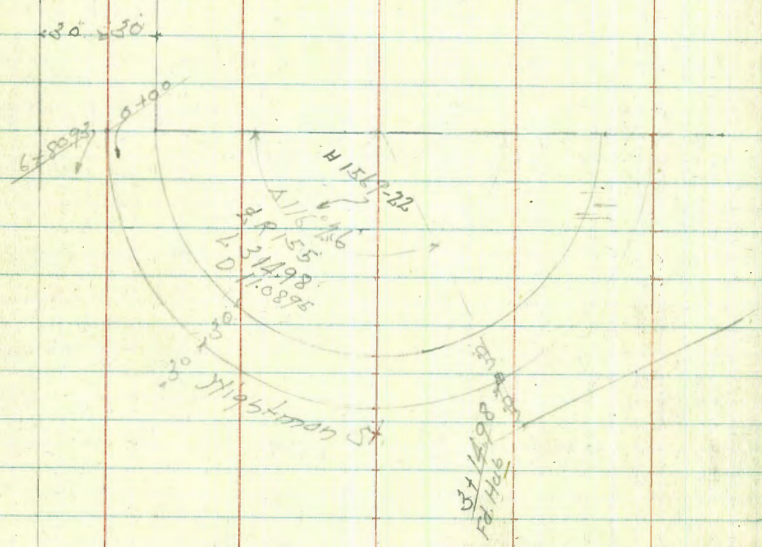
T.P.S. 3645

INDEXED
FEB 10 1948

Feb. 5 '48
Sisson
Filer
Smith
Johnson
M.O. 31215

Winona Ave.

← Brit. Ford opposite Page



0+27

0+53

0+87

0+93

0+98

1+18

1+19

33 Rt of 1/2 - 18" Popper Tree

33792

331.27	331.49	332.8	333.46
330.8	331.7	332.18	333.6
330.4	331.7	333.1	333.4
330.0	331.2	333.1	333.5
330.1	331.3	333.0	333.6
330.2	331.4	333.1	333.4
329.9	331.4	333.2	333.4
329.6	331.2	333.2	333.4
329.9	331.6	333.3	333.9
329.9	331.5	334.2	333.9
327.9	332.7	334.7	
327.1	332.1	324.7	

Handwritten notes on the right page include: "Lt.", "Rt.", "33792", and "33791". There are also some scribbles and small numbers scattered throughout the grid.

Lt.

Rt.

Rt.

68

INDEXED

2+30

2+16

2+08

1+75

1+50

22 ft of 2" of 12" Pepper Tree

1+32

33792

Lt.

Lt.

Rt.

47	333.0	332.89	332.79
45	333.0	332.8	332.79
30	333.0	332.8	332.79
47	333.2	332.8	332.79
44	333.5	332.5	332.5
49	333.0	332.7	332.1
48	332.9	332.5	331.9
46	333.3	332.7	332.0
47	333.4	332.65	332.2

Handwritten notes on the grid include: "22 ft of 2" of 12" Pepper Tree", "33792", and various scribbles and corrections.

33792

6780.93 = BC 0244 to 2196, 0.10

6750

JP 2.25 316.88 13.20 314.63

640

5763

5750

570

32783

326.5	324.9	324.4	317.8	314.3
326.1	324.33	322.4	316.6	313.4
325.7	324.81	320.2	314.6	312.6
323.8	321.5	316.5	312.9	310.5
323.8	321.1	316.4	312.2	310.0
323.7	321.0	316.2	311.8	309.5
323.4	320.5	315.8	311.7	309.5
322.2	318.9	314.8	309.6	308.1
321.2	317.4	313.0	308.4	305.4
317.6	314.4	311.0	309.6	300.2

32783

X-Sect. Int. of 42nd + F. St - 100' each way.
 See P. 27 - for 42nd Sections.
 E. + W.

Lt = W. Φ

Rt = E 76

INDEXED
 WK
 FEB 24 1949

50' N. = N.L. F. St.

40' N. = N. cb.

25' N. = Φ

10' N. = S. cb.

617059 S.L F-P. 27-

779 144.73

136.94

S.E. 7' Hub.

9.2	7.8	6.5	5.9	5.4	5.2	4.4	3.3	2.8	2.4
100	50	25	15		13	21	28	50	100
		ground.							

9.6	8.4	7.5	6.4	5.9	5.7	5.2	4.5	4.0	3.1
100	50	25	15		12	14	28	50	100

9.7	8.4	7.6	7.0	6.7	6.5	6.1	5.5	5.1	4.0
100	50	25	15		13	16	25	50	100

10.0	8.5	8.0	7.4	7.4	7.4	6.7	6.5	5.8	5.7
100	50	25	15		13	16	25	50	100

10.7	8.4	8.0	7.9	7.9	7.9	7.5	6.7	6.2	
100	50	25	15		13	16	25	50	

144.73

X-Sect. Int. of 42nd + Hilltop
 100' each way - E + W. - See P. 31.

INDEXED
 WK
 FEB 24 1949

60' N. = N.L. Hilltop = end.

50' N. = N. cb.

30' N. = \neq

10' N. = S. cb.

S.L. Hilltop

6.45 159.67

153.02

Lt. = W.

\neq

Rt. = E.

77

2.3	3.5	4.5	4.7	4.8	4.8	4.8	4.5	4.8
100	50	25	15		15	25	50	100

3.0	3.9	4.7	5.0	4.9		5.2	5.3	5.2	5.1
100	50	25	15			15	25	50	100

3.9	4.7	4.7	5.0	5.2	5.6	5.9	5.8	5.7
100	50	25	15		15	25	50	100

3.9	4.4	5.2	5.9	6.2		6.8	6.1	5.8	5.6	4.7
100	50	25	15			11	15	25	50	100

4.5	4.7	5.8	6.3	6.7	6.9	6.4	6.6	6.1	5.9
100	50	25	15		11	15	25	50	100

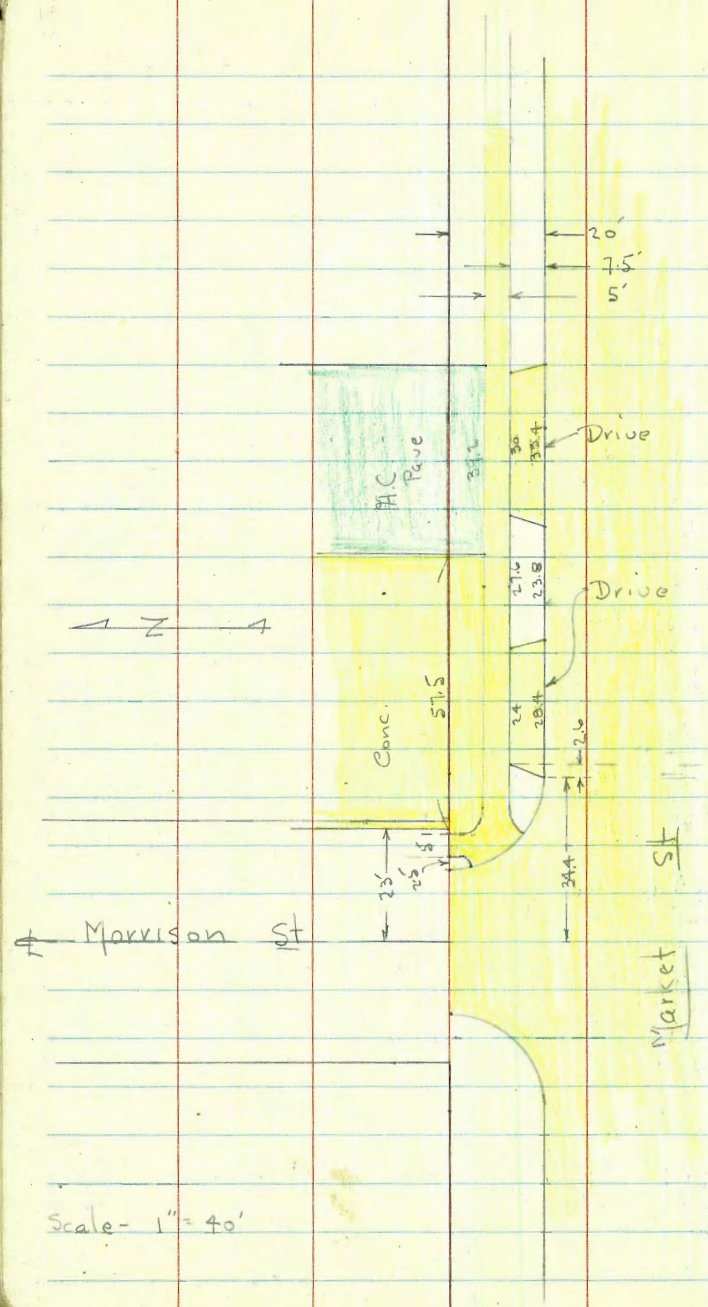
159.67

Levels on Drives to Ser. Sta.
at N.E. Cor. Market + Morrison;
See P. 44 for Reg. Sections + Sketch.

Levels - P 79

W.O. 31342

4-2-48
7.0.



Scale - 1" = 40'

Levels on Drives to Ser. Sta.

± of Morrison as Base Line
outs along Line of Market

0+00 = U.L. Market - end

0-07.5 = Line of N. edge of Walk

0-12.5 = Line of S. edge of Reg. walks.

0-20 Cont.

0-20 = N. cb. Market.

180 127.19

125.39 now 4th + Market.

±

Rt.

0.44	5.62	5.63	5.42	4.85	4.00	3.13
25	30.4	50	73.3	80.6	100	119.8
Prop	Brk.		Brk	edge		edge
Cor-on Conc				conc.		AC.

6.45	5.90	4.69	3.95	3.22
27.5	50	80.6	100	119.8
PC Walk		end Conc	Walk	Walk +
Curve		Beq. H.C.	AC.	end of
		along Walks		AC.

6.21	5.93	5.53	4.40	3.98	3.28
37	50	61	88.5	100	118.5
on Walk		end	Beq.	walks	end
Beq.		Dr.	Dr.		Dr.

3.79	3.28
120	120
gut	Top = end of Dr.

6.96	6.43	6.41	5.99	5.40	5.06	4.54	4.56
34.4	34.4	50	62.8	62.8	86.6	86.6	100
gut.	Top	in Dr.	gut.	Top	gut	Top	in
Beq				end Dr.		Beq	Dr.
Dr.		127.19				Dr.	

2-23-49
W.O. 60264

Monroe.

Manhole elevations.

Monroe + Menlo

Sommersayer
178 Coy
Allen

" + Aldine Dr.

S.E. B.P. Monroe + Menlo

343.62

0.54

344.16 $\pi^{\#1}$

344.16 $\pi^{\#1}$
5.32

338.84 = El. M.H. Approx. Ely line
Menlo + π Monroe.

INDEXED

WK

FEB 24 1949

344.16 $\pi^{\#1}$

11.67

332.49

2.36

334.85 $\pi^{\#2}$

334.85 $\pi^{\#2}$

12.06

322.79 = El. M.H. Approx. π Monroe Ave
opposite pump house at
Aldine Dr.

Elev.: invert at π M.H.

80
510
6.96
12.06

IMPROVED TABLES AND INFORMATION

HORIZONTAL STADIA CORRECTIONS

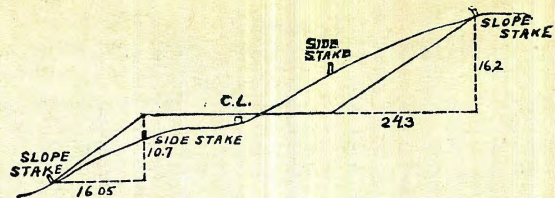
2°-00'	0.1	21°-00'	12.8	33°-00'	29.7
3°-00'	0.3	21°-30'	13.4	33°-15'	30.1
4°-00'	0.5	22°-00'	14.0	33°-30'	30.5
5°-00'	0.8	22°-30'	14.7	33°-45'	30.9
6°-00'	1.1	23°-00'	15.3	34°-00'	31.3
7°-00'	1.5	23°-30'	15.9	34°-15'	31.7
8°-00'	1.9	24°-00'	16.5	34°-30'	32.1
9°-00'	2.5	24°-30'	17.2	34°-45'	32.5
10°-00'	3.0	25°-00'	17.9	35°-00'	32.9
10°-30'	3.3	25°-30'	18.6	35°-15'	33.3
11°-00'	3.6	26°-00'	19.2	35°-30'	33.7
11°-30'	4.0	26°-30'	19.9	35°-45'	34.1
12°-00'	4.3	27°-00'	20.6	36°-00'	34.6
12°-30'	4.7	27°-30'	21.3	36°-15'	35.0
13°-00'	5.1	28°-00'	22.0	36°-30'	35.4
13°-30'	5.5	28°-30'	22.8	36°-45'	35.8
14°-00'	5.9	29°-00'	23.5	37°-00'	36.2
14°-30'	6.3	29°-30'	24.3	37°-15'	36.6
15°-00'	6.7	30°-00'	25.0	37°-30'	37.1
15°-30'	7.2	30°-15'	25.4	37°-45'	37.5
16°-00'	7.6	30°-30'	25.8	38°-00'	37.9
16°-30'	8.1	30°-45'	26.2	38°-15'	38.3
17°-00'	8.5	31°-00'	26.5	38°-30'	38.7
17°-30'	9.0	31°-15'	26.9	38°-45'	39.1
18°-00'	9.5	31°-30'	27.3	39°-00'	39.6
18°-30'	10.1	31°-45'	27.7	39°-15'	40.0
19°-00'	10.6	32°-00'	28.1	39°-30'	40.5
19°-30'	11.2	32°-15'	28.5		
20°-00'	11.7	32°-30'	28.9		
20°-30'	12.3	32°-45'	29.3		

Chains to Feet

1	66
2	132
3	198
4	264
5	330
6	396
7	462
8	528
9	594
10	660

Feet to Chains

100	1.515
200	3.030
300	4.545
400	6.060
500	7.575
600	9.090
700	10.606
800	12.121
900	13.636
1,000	15.151



DISTANCES FROM SIDE STAKES FOR CROSS-SECTIONING.

SLOPE 1 1/2 TO 1. ROADWAY OF ANY WIDTH.

	0	.1	.2	.3	.4	.5	.6	.7	.8	.9	
0	0 00	0 15	0 30	0 45	0 60	0 75	0 90	1 05	1 20	1 35	0
1	1 50	1 05	1 80	1 95	2 10	2 25	2 40	2 55	2 70	2 85	1
2	3 00	3 15	3 30	3 45	3 60	3 75	3 90	4 05	4 20	4 35	2
3	4 50	4 65	4 80	4 95	5 10	5 25	5 40	5 55	5 70	5 85	3
4	6 00	6 15	6 30	6 45	6 60	6 75	6 90	7 05	7 20	7 35	4
5	7 50	7 65	7 80	7 95	8 10	8 25	8 40	8 55	8 70	8 85	5
6	9 00	9 15	9 30	9 45	9 60	9 75	9 90	10 05	10 20	10 35	6
7	10 50	10 65	10 80	10 95	11 10	11 25	11 40	11 55	11 70	11 85	7
8	12 00	12 15	12 30	12 45	12 60	12 75	12 90	13 05	13 20	13 35	8
9	13 50	13 65	13 80	13 95	14 10	14 25	14 40	14 55	14 70	14 85	9
10	15 00	15 15	15 30	15 45	15 60	15 75	15 90	16 05	16 20	16 35	10
11	16 50	16 65	16 80	16 95	17 10	17 25	17 40	17 55	17 70	17 85	11
12	18 00	18 15	18 30	18 45	18 60	18 75	18 90	19 05	19 20	19 35	12
13	19 50	19 65	19 80	19 95	20 10	20 25	20 40	20 55	20 70	20 85	13
14	21 00	21 15	21 30	21 45	21 60	21 75	21 90	22 05	22 20	22 35	14
15	22 50	22 65	22 80	22 95	23 10	23 25	23 40	23 55	23 70	23 85	15
16	24 00	24 15	24 30	24 45	24 60	24 75	24 90	25 05	25 20	25 35	16
17	25 50	25 65	25 80	25 95	26 10	26 25	26 40	26 55	26 70	26 85	17
18	27 00	27 15	27 30	27 45	27 60	27 75	27 90	28 05	28 20	28 35	18
19	28 60	28 65	28 80	28 95	29 10	29 25	29 40	29 55	29 70	29 85	19
20	30 00	30 15	30 30	30 45	30 60	30 75	30 90	31 05	31 20	31 35	20
21	31 50	31 65	31 80	31 95	32 10	32 25	32 40	32 55	32 70	32 85	21
22	33 00	33 15	33 30	33 45	33 60	33 75	33 90	34 05	34 20	34 35	22
23	34 50	34 65	34 80	34 95	35 10	35 25	35 40	35 55	35 70	35 85	23
24	36 00	36 15	36 30	36 45	36 60	36 75	36 90	37 05	37 20	37 35	24
25	37 50	37 65	37 80	37 95	38 10	38 25	38 40	38 55	38 70	38 85	25
26	39 00	39 15	39 30	39 45	39 60	39 75	39 90	40 05	40 20	40 35	26
27	40 50	40 65	40 80	40 95	41 10	41 25	41 40	41 55	41 70	41 85	27
28	42 00	42 15	42 30	42 45	42 60	42 75	42 90	43 05	43 20	43 35	28
29	43 50	43 65	43 80	43 95	44 10	44 25	44 40	44 55	44 70	44 85	29
30	45 00	45 15	45 30	45 45	45 60	45 75	45 90	46 05	46 20	46 35	30
31	46 50	46 65	46 80	46 95	47 10	47 25	47 40	47 55	47 70	47 85	31
32	48 00	48 15	48 30	48 45	48 60	48 75	48 90	49 05	49 20	49 35	32
33	49 50	49 65	49 80	49 95	50 10	50 25	50 40	50 55	50 70	50 85	33
34	51 00	51 15	51 30	51 45	51 60	51 75	51 90	52 05	52 20	52 35	34
35	52 50	52 65	52 80	52 95	53 10	53 25	53 40	53 55	53 70	53 85	35
36	54 00	54 15	54 30	54 45	54 60	54 75	54 90	55 05	55 20	55 35	36
37	55 50	55 65	55 80	55 95	56 10	56 25	56 40	56 55	56 70	56 85	37
38	57 00	57 15	57 30	57 45	57 60	57 75	57 90	58 05	58 20	58 35	38
39	58 50	58 65	58 80	58 95	59 10	59 25	59 40	59 55	59 70	59 85	39
40	60 00	60 15	60 30	60 45	60 60	60 75	60 90	61 05	61 20	61 35	40
41	61 50	61 65	61 80	61 95	62 10	62 25	62 40	62 55	62 70	62 85	41
42	63 00	63 15	63 30	63 45	63 60	63 75	63 90	64 05	64 20	64 35	42
43	64 50	64 65	64 80	64 95	65 10	65 25	65 40	65 55	65 70	65 85	43
44	66 00	66 15	66 30	66 45	66 60	66 75	66 90	67 05	67 20	67 35	44
45	67 50	67 65	67 80	67 95	68 10	68 25	68 40	68 55	68 70	68 85	45
46	69 00	69 15	69 30	69 45	69 60	69 75	69 90	70 05	70 20	70 35	46
47	70 50	70 65	70 80	70 95	71 10	71 25	71 40	71 55	71 70	71 85	47
48	72 00	72 15	72 30	72 45	72 60	72 75	72 90	73 05	73 20	73 35	48
49	73 50	73 65	73 80	73 95	74 10	74 25	74 40	74 55	74 70	74 85	49
50	75 00	75 15	75 30	75 45	75 60	75 75	75 90	76 05	76 20	76 35	50

Computed by L. Leland Locke.