

1780



MICROFILMED

DEC 20 1964

MADE IN U.S.A.

1780

**CITY ENGINEER**

Our Leather Bound Engineers Note Books  
are carried in the following rulings:

- |                                 |  |
|---------------------------------|--|
| No. 380 LEVEL BOOK.             | Left and Right Hand Page<br>the same as Left Hand Page<br>of this Book.  |
| No. 382 FIELD BOOK.             | Left Hand Page as in this<br>Book, Right Hand Page 4x4<br>to the inch, Center Line Red.                                    |
| No. 384 MINING TRANSIT<br>BOOK. | Left Hand Page as in this<br>Book, Right Hand Page 8x8<br>to the inch, Center Line Red.                                    |
| No. 385 FIELD BOOK.             | Left Hand Page as in this<br>Book, Right Hand Page 8 ver-<br>tical and 4 horizontal lines to<br>the inch, Center Line Red. |

We also carry the Note Books listed above,  
bound in extra strong Fabri-Hide (otherwise  
the same quality of book,) which can be fur-  
nished at a somewhat lower price.

In ordering Fabri-Hide covered books, add  
the letter "F" to catalog number.

**THE FREDERICK POST CO.**

*ENGINEERING and DRAFTING SUPPLIES*

**P. O. Box 803**

**CHICAGO**

1-10 Cross Section Amalfi Place Torrey Place Road Fly  
11-13 " " Wilson Ave North of D St 1954  
12-14 " " D St 1954 at Wilson to 36th St  
18 " " Superior 38th to 39th  
27 " " Santa Rita Place

54 X-sect. Draper at Marine

61-72 X-sect. Alley - Adams to Lucille Drive  
between 49th & Winona

Cross Section Amalfi Place  
 Torrey Pines Road to Hillside Drive  
 Alignment & Sketch #597-25 #150 + P17-Page 42

0-25 P.O.C.

0-50 P.O.C.

0-75 P.O.C.

0-100 P.O.C.

0-125 P.O.C.

0-150 P.O.C.

B.M.

9.22

109.93

100.71

097.47  
 040 P.O.C.  
 04150  
 Torrey Pines  
 #597-25

Indexed  
 C.S.K.

June 5-47

5:30 PM

File #

5111044

1

Li. = 11

Station	Left Side	Right Side	Profile	Notes
0+00	7.9 149 102.00	7.5 102.40	8.0 157 101.91	
0+25	6.5 149 103.46	6.0 103.71	6.4 148 103.53	15' - 6" Gut
0+50	5.0 151 104.93	4.6 105.26	5.0 149 104.88	15' - 6" Gut
0+75	3.6 151 106.29	3.3 106.54	3.8 149 106.13	15' - 6" Gut
0+100	2.1 152 107.80	2.3 107.57	2.7 146 107.14	15' - 6" Gut
0+125	1.4 148 108.59	1.5 108.41	1.8 146 108.06	15' - 6" Gut
0+150	1.1 148 109.18	1.2 109.18	1.5 148 109.13	15' - 6" Gut
B.M.		109.93		

Pf. 5 H.O. 25001

7.90

7.51 - Curb

5.97

4.8 - Curb

4.67

4.49 - Curb

3.46

3.49 - Curb

2.14

2.14 - Curb

1.45

1.45 - Curb

140.

+72.28 - EC, 11° 47' 30"

+54.21 P.O.C. 8° 50' 37"

TP 21.05 99.57 12.41 97.52

+36.14 P.O.C. 5° 53' 45"

+18.07 P.O.C. 2° 56' 52"

o + o - P.C. Hmalfi - 9+15553 EC Torrey Pines Road

109.93

L.H

2

R.H

2

92.71	92.30	93.12	93.55	94.5	101.1	106.1
1.98	1.47	6.45	1.02	5.7	1.95	4.65
11.50	11.90	27.5	11.50	11.50	11.50	35.5
	94.92	94.52	95.26	95.06	95.96	95.83
	1.5	5.05	1.5	1.1	1.1	5.7
	96.54	96.07	96.50	96.82	96.70	97.02
	5.08	5.50	5.07	2.75	2.87	2.55
	11.50	11.50	11.50	11.50	11.50	11.50
	99.02	97.60	99.57	98.05	97.78	98.16
	11.91	12.33	11.88	11.5	11.77	11.77
	19.1	19.1	11.50	11.50	11.50	11.50
	99.01	97.60	99.42	97.42	99.08	97.46
	10.92	10.92	10.51	10.85	10.47	10.47
	15.9	15.9	14.3	14.3	14.3	14.3
	100.51	100.71	100.71	100.30	100.1	100.70
	9.42	9.22	9.63	9.43	9.43	9.43
	11.50	11.50	11.50	11.50	11.50	11.50
	106.0	106.0	106.0	106.0	106.0	106.0

109.93

Amalfi Place

+50						
TP	140	88.71	1226	87.31	85.95	
+25						
2+0						
1+75						
1+50						
1+25						

99.57

13.62  
66-904-11

12.53  
88.3-cb  
12.91  
88.3-gutter  
12.32  
87.6

11.61  
77.6-cb  
12.02  
77.1-90A

7.58

8.77  
55.5-cb

		86.2	87.5	88.6	86.3	86.1
		86.34	88.2	88.4	87.7	87.5
		87.06	87.38	88.5	88.6	87.5
		88.14	88.17	88.53	88.6	88.6
		88.75	89.74	89.53	89.8	89.7
		89.63	89.74	89.53	89.8	89.7
		90.40	91.46	90.02	90.8	90.7
		91.26	91.79	90.02	90.8	90.7
		92.4	92.4	92.8	92.8	92.8
		99.0	99.0	99.0	99.0	99.0
		103.2	102.1	102.1	102.1	102.1

99.57

LT

ST

RT

2 x 75

150

125

TP

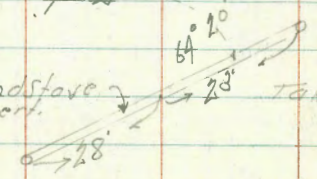
7.64

90.20

6.15

82.56

+18.5 16" Wood Stake  
Pipe Culvert



Taken on Dig

3 x 0

+94

275 ft of 2 1/2" Tel Pole # 448207 H.

2 x 75

88.71

528  
500  
28

528  
500  
28

528  
500  
28

528  
500  
28

528  
500  
28

528  
500  
28

528  
500  
28

528  
500  
28

528  
500  
28

528  
500  
28

528  
500  
28

528  
500  
28

528  
500  
28

528  
500  
28

528  
500  
28

528  
500  
28

528  
500  
28

528  
500  
28

528  
500  
28

528  
500  
28

528  
500  
28

528  
500  
28

528  
500  
28

528  
500  
28

528  
500  
28

528  
500  
28

528  
500  
28

528  
500  
28

528  
500  
28

528  
500  
28

528  
500  
28

528  
500  
28

528  
500  
28

528  
500  
28

528  
500  
28

528  
500  
28

528  
500  
28

528  
500  
28

528  
500  
28

528  
500  
28

528  
500  
28

528  
500  
28

528  
500  
28

528  
500  
28

528  
500  
28

528  
500  
28

528  
500  
28

528  
500  
28

528  
500  
28

528  
500  
28

528  
500  
28

528  
500  
28

528  
500  
28

528  
500  
28

88.71

+25 4.10.67

5+0 1.50

+85 215 ft of 1/2 Elyte Pole # 448208 H

+80 1/2 BC LT

+50

TP 12.26 100.71 1.85 88.55

+25

+21 18 ft of 1/2 Cluster of Messia Trees

4+0

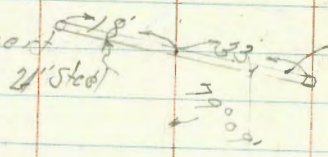
90.20

LT	S	RT
55.974	55.974	55.974
55.971	55.971	55.971
55.972	55.972	55.972
55.973	55.973	55.973
55.974	55.974	55.974
55.975	55.975	55.975
55.976	55.976	55.976
55.977	55.977	55.977
55.978	55.978	55.978
55.979	55.979	55.979
55.980	55.980	55.980
55.981	55.981	55.981
55.982	55.982	55.982
55.983	55.983	55.983
55.984	55.984	55.984
55.985	55.985	55.985
55.986	55.986	55.986
55.987	55.987	55.987
55.988	55.988	55.988
55.989	55.989	55.989
55.990	55.990	55.990
55.991	55.991	55.991
55.992	55.992	55.992
55.993	55.993	55.993
55.994	55.994	55.994
55.995	55.995	55.995
55.996	55.996	55.996
55.997	55.997	55.997
55.998	55.998	55.998
55.999	55.999	55.999
56.000	56.000	56.000

90.20



+534 = Culvert  
 21" Steel  
 14" Wood Stave Pipe



+50					
TP	8.51	113.18	6.34	104.67	0.72 Mon 6+31.90
6+31.90 = F.C.		14° 12'			
6+0		11° 12.64'			
+75		8° 52'			
TP	11.42	111.01	1.12	99.59	
5+50		6° 31.32'			
		100.71			

93.7	94.9	96.5	96.8	105.5	106.3	105.0	104.1
202 50	183 25	167 21	164 18. out/pt Flow	79	77	79	88 50
104.2	105.4	104.6	105.5	104.67	106.3	107.7	109.0
103.3	103.4	100.9	101.9	102.0	102.0	110.2	114.3
100.6	99.3	99.5	100.2	100.2	100.2	108.6	114.5
98.4	97.0	97.6	97.4	97.4	104.2	108.7	112.5
100.71			100.71				



7 9+0 4°50.23'

7 7+5 2°58.62'

7 7+50 1°07'

7 8+0 35.00 = 8.0 6'

7 7P 598 127.23 242 121.25

7 8+18

6 7+92

123.67

121.72  
116.8  
115.7  
121.3  
120.5  
117.8  
120.8  
121.24  
121.0  
121.0  
121.8  
124.1  
127.0

121.14  
121.8  
121.1  
121.8  
120.8  
121.24  
121.0  
121.8  
124.1  
127.0

121.12  
122.1  
115.4  
122.0  
123.3  
125.7  
124.8  
127.3  
127.0

120.29  
120.40  
121.0  
120.6  
121.0  
121.9  
124.1  
127.0

120.33  
121.72  
121.0  
121.0  
121.0  
121.9  
124.1  
127.0

123.67

10 + 23

10 + 10 = 11' 4" Curb on Rt

9 + 86.86 = FC 11° 18'

+58 = Beg of 5' Curb on Rt.

+50

8° 53.46

+44 15 ft of 3' Fly Paper Pole H P 1891

9 + 25

6° 41.85

127.23

Lt	5'	5'	Rt	9'
	114.8	118.7	121.8	121.8
	121.3	121.1	121.4	121.4
	121.7	121.4	121.9	121.9
	122.1	121.9	122.1	121.9
	122.1	121.8	121.8	121.8
	122.1	121.7	121.7	121.7
	122.1	121.6	121.6	121.6
	122.1	121.5	121.5	121.5
	122.1	121.4	121.4	121.4
	122.1	121.3	121.3	121.3
	122.1	121.2	121.2	121.2
	122.1	121.1	121.1	121.1
	122.1	121.0	121.0	121.0
	122.1	120.9	120.9	120.9
	122.1	120.8	120.8	120.8
	122.1	120.7	120.7	120.7
	122.1	120.6	120.6	120.6
	122.1	120.5	120.5	120.5
	122.1	120.4	120.4	120.4
	122.1	120.3	120.3	120.3
	122.1	120.2	120.2	120.2
	122.1	120.1	120.1	120.1
	122.1	120.0	120.0	120.0
	122.1	119.9	119.9	119.9

127.23

7.34 / 19.59  
17.44 / 19.59  
13.77 / 19.59  
8.93 / 19.59  
7.34 / 19.59

120.30  
120.30  
120.30  
120.30  
120.30

120.8  
120.8  
120.8  
120.8  
120.8

120.5  
120.5  
120.5  
120.5  
120.5

121.2  
121.2  
121.2  
121.2  
121.2

6.08  
6.08  
6.08  
6.08  
6.08

17.71  
17.71  
17.71  
17.71  
17.71

121.11  
121.11  
121.11  
121.11  
121.11

6.08  
6.08  
6.08  
6.08  
6.08

17.71  
17.71  
17.71  
17.71  
17.71

121.2  
121.2  
121.2  
121.2  
121.2

6.08  
6.08  
6.08  
6.08  
6.08

17.71  
17.71  
17.71  
17.71  
17.71

Amalfi Place

Wt

Z

Rt

10

BIM 5.70 96.28

HMB  
1000  
+ V.A.  
96.28

TP 1.46 101.98 10.89 100.52

TP 0.65 111.41 12.65 110.76

10+92.3 Taken on Diagonal  
= South Curb Line Hillside Dr to West

16.4  
100  
5.7

111.46

115.21

116.5

122.1

123.4

5.8

10+92.59 B.C. on Rt. 12.2 ft off = FH/Post on Rail

16.4  
100  
5.7

120.5

122.0

122.5

123.4

123.5

124.0

5.7

5.7

10+56.38 B.C. on Wt

119.1

123.2

123.7

124.1

123.9

124.0

TP 3.03 123.41 6.85 120.38

8.1

15.0

10.0

5.1

5.0

5.1

10+43

120.38

6.85

124.0

127.23

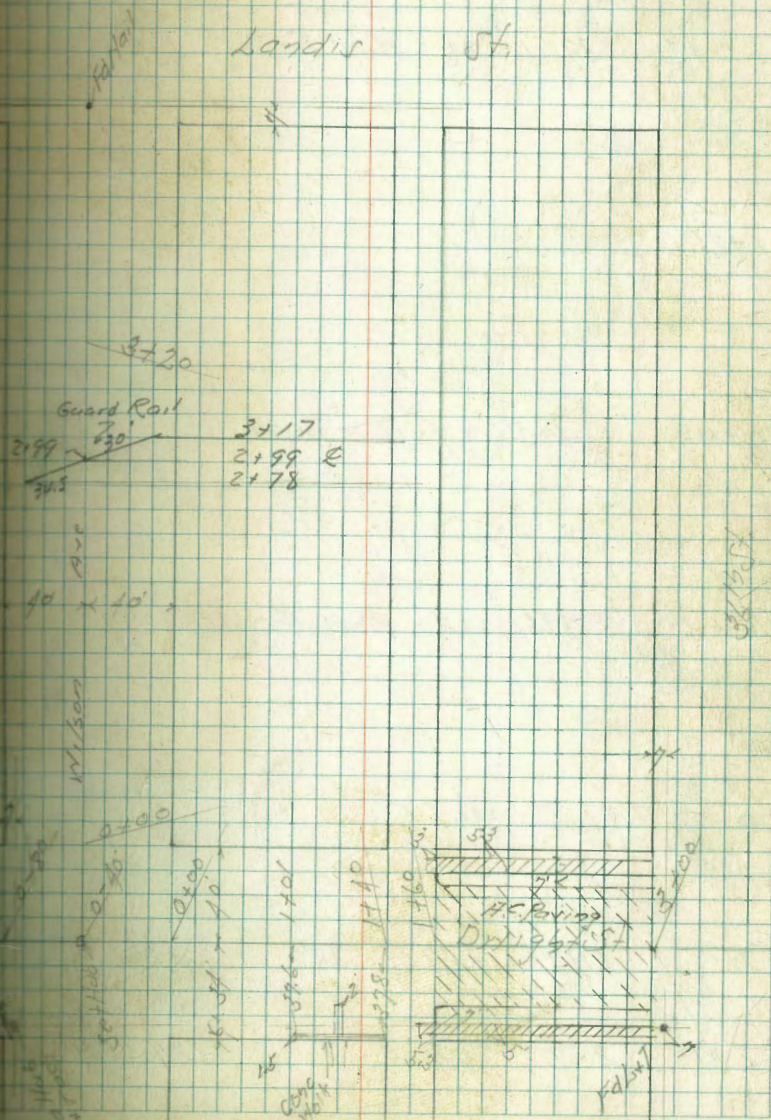
127.23

Cross Section Wilson Ave.  
Dwight St to 320 North Also Dwight St.  
From Wilson St. to 36th St.

Indexed  
c.s.k.

June 9-47  
Sisson  
Allen  
Williams  
H.O. 31026

11





2+20

3+0 38.9 Rt of  $\frac{1}{2}$  = N/W Picket Fence

2+81

+65 38.5 Rt of  $\frac{1}{2}$  = S/W Picket Fence

+50 39.5 Lt of  $\frac{1}{2}$  = W/W Wire Fence

2+46

2+30 38.5 Rt of  $\frac{1}{2}$  = N/W Wire Fence

2+11 39.1 Lt of  $\frac{1}{2}$  = Wire Fence

1+90 38' Rt of  $\frac{1}{2}$  = S/W Wire Fence

1+80 39.1 Lt of  $\frac{1}{2}$  = Wire Fence

329.24

Stake	North	West	East	South
2+20	314.1	305.7	324.7	324.7
3+0	319.5	312.9	325.13	326.2
2+81	323.0	323.7	325.5	326.0
+65	323.0	323.7	325.5	326.0
+50	323.0	323.7	325.5	326.0
2+46	323.0	323.7	325.5	326.0
2+30	323.0	323.7	325.5	326.0
2+11	323.0	323.7	325.5	326.0
1+90	323.0	323.7	325.5	326.0
1+80	323.0	323.7	325.5	326.0

329.24



Cross Section Dr 194 St.  
 Wilson Ave. to 58th St.  
 Sketch Page 11

June 10-47  
 5:20 PM  
 H. H. Wilson  
 Lt. H

Pt: 5

14

0+00 - East Line of Wilson Ave.

6.9	6.9	6.9	6.9	6.9	6.9	6.9
323.5	323.2	323.1	323.2	323.1	323.0	323.1
323.5	323.2	323.1	323.2	323.1	323.0	323.1

0-14 - East Curb Line of Wilson

6.9	6.9	6.9	6.9	6.9	6.9	6.9
323.5	323.2	323.1	323.2	323.1	323.0	323.1
323.5	323.2	323.1	323.2	323.1	323.0	323.1

0-40 - W. Wilson Ave.

6.9	6.9	6.9	6.9	6.9	6.9	6.9
323.5	323.2	323.1	323.2	323.1	323.0	323.1
323.5	323.2	323.1	323.2	323.1	323.0	323.1

0-66 - West Curb Line of Wilson

6.9	6.9	6.9	6.9	6.9	6.9	6.9
323.5	323.2	323.1	323.2	323.1	323.0	323.1
323.5	323.2	323.1	323.2	323.1	323.0	323.1

0-80 - W. L. Wilson Ave

6.9	6.9	6.9	6.9	6.9	6.9	6.9
323.5	323.2	323.1	323.2	323.1	323.0	323.1
323.5	323.2	323.1	323.2	323.1	323.0	323.1

BM 7.00 323.27

323.27

00246  
 Dr 194  
 Wilson  
 Page 12

323.27

1+60 = Wly H.C. Parking

+40 = W.L. Alley

+38 27.2 ft of 2.5ly Pow + Tal Palo # p 3325

+16

1+0

+88

0+50

330.27

60	326.1	60	326.1
61	326.5	61	326.5
62	326.9	62	326.9
63	327.3	63	327.3
64	327.7	64	327.7
65	328.1	65	328.1
66	328.5	66	328.5
67	328.9	67	328.9
68	329.3	68	329.3
69	329.7	69	329.7
70	330.1	70	330.1
71	330.5	71	330.5
72	330.9	72	330.9
73	331.3	73	331.3
74	331.7	74	331.7
75	332.1	75	332.1
76	332.5	76	332.5
77	332.9	77	332.9
78	333.3	78	333.3
79	333.7	79	333.7
80	334.1	80	334.1
81	334.5	81	334.5
82	334.9	82	334.9
83	335.3	83	335.3
84	335.7	84	335.7
85	336.1	85	336.1
86	336.5	86	336.5
87	336.9	87	336.9
88	337.3	88	337.3
89	337.7	89	337.7
90	338.1	90	338.1
91	338.5	91	338.5
92	338.9	92	338.9
93	339.3	93	339.3
94	339.7	94	339.7
95	340.1	95	340.1
96	340.5	96	340.5
97	340.9	97	340.9
98	341.3	98	341.3
99	341.7	99	341.7
100	342.1	100	342.1

4+

8+

9+

15

330.27

DW 1964 St.

Lt.

L

Rt.

16

BM

2.71

327.56

11.11.84  
DW 1964  
36145  
327.56

3+0 = 11.11.84 St.

750

2+0

330.27

327.52	327.86	327.21	327.18	327.09	326.63	327.13
272 258 -14	241 228 -13	206 193	209	218 13	214 209 -5	214 209 -5
324.79	324.29	326.62	326.59	326.37	325.99	326.49
248 238 -10	298 258 -40	255 23	268	290 13	228 218 -10	278 268 -10
	325.62	325.96	325.94	325.71	325.19	325.69
	465 258 -207	151 13	463	465 15	208 26 -182	458 26 -432

330.27

Hendricks  
Hardin  
Smith  
Worrell  
Aug 6, 1947  
NO# 31022

Additional X Sect's Wilson Ave  
from 320' to Dwight to 400' H.

Sta. + H.L. - Elev. B.M.

TP 5.78 323.25 323.25

4+10 MH 20' Rt 5.78

-4+08 Toe

3+84 Toe of Slope

3+65

TP 9.44 329.03 10.26 319.59

3+40

3+20

B.M. 6.58 329.85 323.25

see p12-13 for sects in Back

Hub Dwight & Wilson

27'	32'	31'	32'	30'	32'	30'	25'
60	40	26	13	13	13	40	60

291.0	292.8	293.0	294.5	295.3	296.0	296.5	307.0
38'	36'	36'	34'	33'	33'	32'	22'
70	40	26	13	13	13	26	60

299.6	292.9	298.5	303.0	307.3	308.4	310.6	311.7
39'	36'	30'	26'	21'	20'	18'	17'
75	43	26	13	13	13	26	60

289.0	295.3	307.8	311.3	317.6	321.4	326.9	327.0
40'	40'	31'	28'	12'	8'	20'	29'
97	64	40	26	13	13	30	40

287.2	289.8	300.2	310.5	318.7	324.8		
47'	40'	29'	19'	11'	5'		
90	70	50	26	13			

Hub & Dwight & Wilson

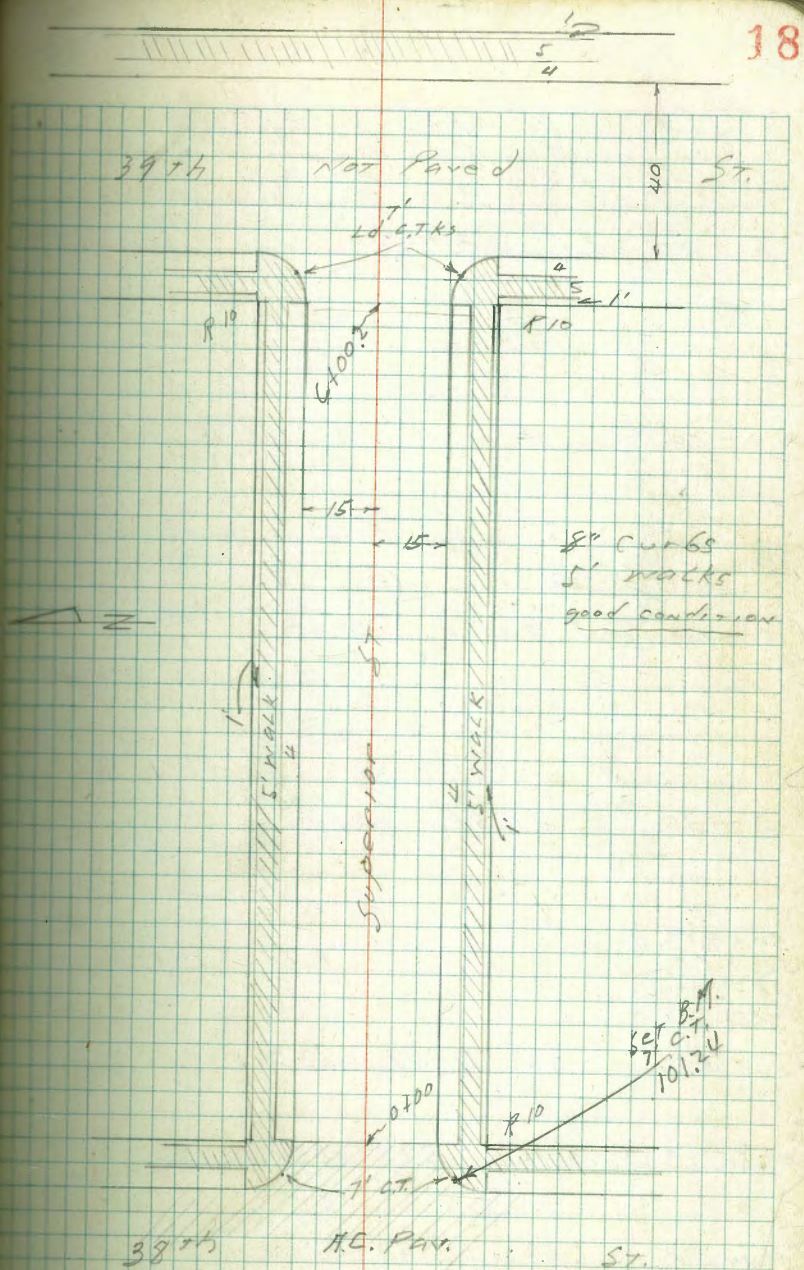
Fence Corner

indexed  
C.S.K.

2 sec Superior St.  
38th to 39th

Moore  
Begg  
Roberts  
Green  
9-24-47.

W.O. 313.97



H<sub>1</sub>

0-100 E.L. 3874

0-10 E.C. 3874

0-10 E. 947100 3874

0-30 9 3874

Set B.M.  
S.E. 7' C.T.  
3874 and  
Superior

T.P. 0.56 110.05 7.23 109.49

T.P. 10.72 116.72 1.58 106.00

MYBP  
on church  
steps 6.15 107.58 101.43

LT = North

E

R<sub>7</sub>

19

8.82	9.12	9.00	8.78	8.88	9.20	8.79
15	15	75		75	15	15
101.23	100.93	101.00	101.24	101.17	100.85	101.26
9.82	8.80	8.80		8.86	10.93	
100.61	101.25			101.17		
99.93	100.60	100.81	101.16	100.81	100.57	99.12
10.72	9.45	7.24	8.89	9.24	9.68	10.93
50	25	75	15	15	25	50
100.45	100.86	100.95		100.31		99.52
9.60	9.19	9.10		9.73	11.18	
50	25			25	50	

El. 10124 In Feb. 1818 - P 20

3974 and Franklin

T.P. 7.39 116.88 0.56 109.49

1708 E 8' wide drive thru c6

1700

0780

0760

0740

0710

110.05

L7

R

R7

20

2 1/2 107.93

2 1/2 107.21

3 5/8 105.00

7 7/8 102.15

2 1/2 107.4

2 1/2 106.6

4 1/8 105.6

5 1/8 104.3

8 1/4 101.7

2 5/8 107.6

2 5/8 106.7

3 3/8 105.8

5 1/2 104.5

7 9 102.2

3 3/8 107.05  
15  
drive  
return

3 3/8 106.9

4 1/8 106.1

5 1/8 105.1

8 3/4 103.8

8 5/8 101.8

2 1/2 107.74  
19  
walk

2 1/2 107.97

3 3/8 106.66

4 1/8 106.05

5 1/8 104.70

7 9/2 102.18

2 1/2 107.85

2 1/2 107.20

110.05

2 + 20

2 + 00

1 + 945 F 8' drive

1 + 80

1 + 60

1 + 40

116.88

4.61  
5 112.27

5.12  
5 111.60

5.33  
5 111.6

5.10  
5 110.9

5.71  
5 111.4

5.8  
5 111.1

5.55  
5 111.4

5.2  
5 110.7

5.08  
5 111.80

5.84  
5 111.06

5.98  
5 110.90

5.11  
5 110.2

5.110.4

5.109.7

5.110.26

6.72  
5 110.16

5.109.5

7.2  
5 109.7

7.9  
5 109.0

7.2  
5 109.60

7.4  
5 109.39

8.2  
5 108.7

7.9  
5 109.0

8.5  
5 108.4

8.03  
5 108.85

6.55  
5 110.23

5.85  
5 110.93

5.90  
5 110.98

drive  
507700

work

116.88



3 + 20

3 + 00

2 + 95.3  $\varnothing$  8.4 drive on LT

2 + 80

2 + 60

2 + 41

$\varnothing$  drive on LT

116.88

LT

3.3  
15  
103.57

3.3  
15  
103.57

3.3  
15  
103.57

3.3  
15  
103.57

3.3  
15  
103.57

3.3  
15  
103.57

103.76

3.3  
15  
103.57

WALK

3.9  
15  
103.0

3.9  
15  
103.0

3.9  
15  
103.0

3.9  
15  
103.0

3.9  
15  
103.0

3.9  
15  
103.0

3.9  
15  
103.0

drive

4.0  
15  
102.9

4.0  
15  
102.9

4.0  
15  
102.9

4.0  
15  
102.9

4.0  
15  
102.9

4.0  
15  
102.9

4.0  
15  
102.9

116.88

4.2  
15  
102.5

4.2  
15  
102.5

4.2  
15  
102.5

4.2  
15  
102.5

4.2  
15  
102.5

4.2  
15  
102.5

4.2  
15  
102.5

4.3  
15  
103.0

4.3  
15  
103.0

4.3  
15  
103.0

4.3  
15  
103.0

4.3  
15  
103.0

4.3  
15  
103.0

4.3  
15  
103.0

22

4150

4100

T.P.

1.88

112.99  
~~113.02~~

6.77  
~~5.74~~

111.11  
~~111.14~~

Please correct  
H.I. 5 front  
base on.

See P. 26 for check  
This should have  
been 5.77

3194.4 9 8' dr. on RT

3180

3160

3140.7 9 8' dr. on RT.

116.88

LT

2.78  
15 110.01

2.78  
15 111.71

4.45  
15 112.43

3.95  
15 112.93

3.60  
15 113.28

5.0  
15 109.2

5.0  
15 111.0

5.1  
15 112.8

4.5  
15 112.4

4.2  
15 112.7

110.88

3.7  
15 109.3

2.0  
15 111.0

112.99  
~~113.02~~

5.1  
15 111.8

5.5  
15 112.4

4.7  
15 112.7

1.7  
15 108.8

1.7  
15 110.6

6.0  
15 110.83

1.5  
15 111.4

5.0  
15 111.9

4.5  
15 112.34

1.4  
15 109.42

1.7  
15 111.26

5.0  
15 111.52

4.86  
15 112.02

4.42  
15 112.46

3.90  
15 112.98

111.60

113.03

23

E 3975

W. 6. 3974

6+00.2 w, h, 3975

5+50

5+00

4+55 2 10' drive on Pt.

113.02

Lt

2.6  
2.4  
2.2

105.6

8.0  
8.25  
8.5

105.0

8.28  
8.5  
8.75

104.71

6.5  
7.0  
7.5

106.46

4.76  
5.0  
5.25

108.23

8.25  
8.5  
8.75

104.74

8.5  
9.0  
9.5

100.4

7.5  
8.0  
8.5

105.7

5.4  
5.7  
6.0

107.6

8.5  
9.0  
9.5

104.5

8.5  
9.0  
9.5

104.4

7.0  
7.5  
8.0

105.7

4.4  
4.7  
5.0

107.0

8.5  
9.0  
9.5

103.7

8.5  
9.0  
9.5

103.8

7.7  
8.0  
8.5

105.3

4.4  
4.7  
5.0

107.0

8.5  
9.0  
9.5

104.8

8.5  
9.0  
9.5

103.8

7.7  
8.0  
8.5

105.3

4.4  
4.7  
5.0

107.0

8.5  
9.0  
9.5

104.17

8.5  
9.0  
9.5

104.17

7.7  
8.0  
8.5

105.89

4.4  
4.7  
5.0

107.68

8.5  
9.0  
9.5

103.1

8.5  
9.0  
9.5

104.17

7.7  
8.0  
8.5

105.89

4.4  
4.7  
5.0

107.68

8.5  
9.0  
9.5

103.77

8.5  
9.0  
9.5

103.77

7.7  
8.0  
8.5

105.89

4.4  
4.7  
5.0

107.68

109.47

3.1  
3.2  
3.3

19

Walt

112.99  
113.02

P. 26 check TURNING PTS.

check to starting B.M. 4.17 101.47 101.43  
OPV

T.P. 4.20 107.64 9.58 103.44

E. 66. 3954

E. gutter 39th ST.

11302

73  
55  
105.7  
689  
106.10

25  
104.9  
20  
105.29

4  
104.6  
294  
105.05

25  
8.9  
1104.1  
8.28  
25  
104.71

58  
9.0  
104.0  
51.58  
26  
104.41

11302

check of T.P.S.  
P. 19 to P. 25

new B.P.

Franklin	6.17	107.60		101.43
T.P. Rock	11.09	117.08	1.61	105.99
T.P. Rock	1.32	110.80	7.40	109.48

check to S.E. 7' CT.

3874 + Franklin Superior		9.50	101.24	101.24
-----------------------------	--	------	--------	--------

T.P. Rock	8.36	117.84	1.32	109.48		
T.P. "	1.32	112.43	6.73	116.11	P. 23	
T.P. "	3.22	106.62	9.03	103.40	103.44	P. 25

check to starting B.M.		5.18	101.44	101.43
				<u>0.01</u>

# Santa Rita Place

W.O. # 31143  
Oct. 3, 1947

Sommermejer  
vs Moore  
L Sherman

□ = Hub Found  
● = L+T or L+Disk found

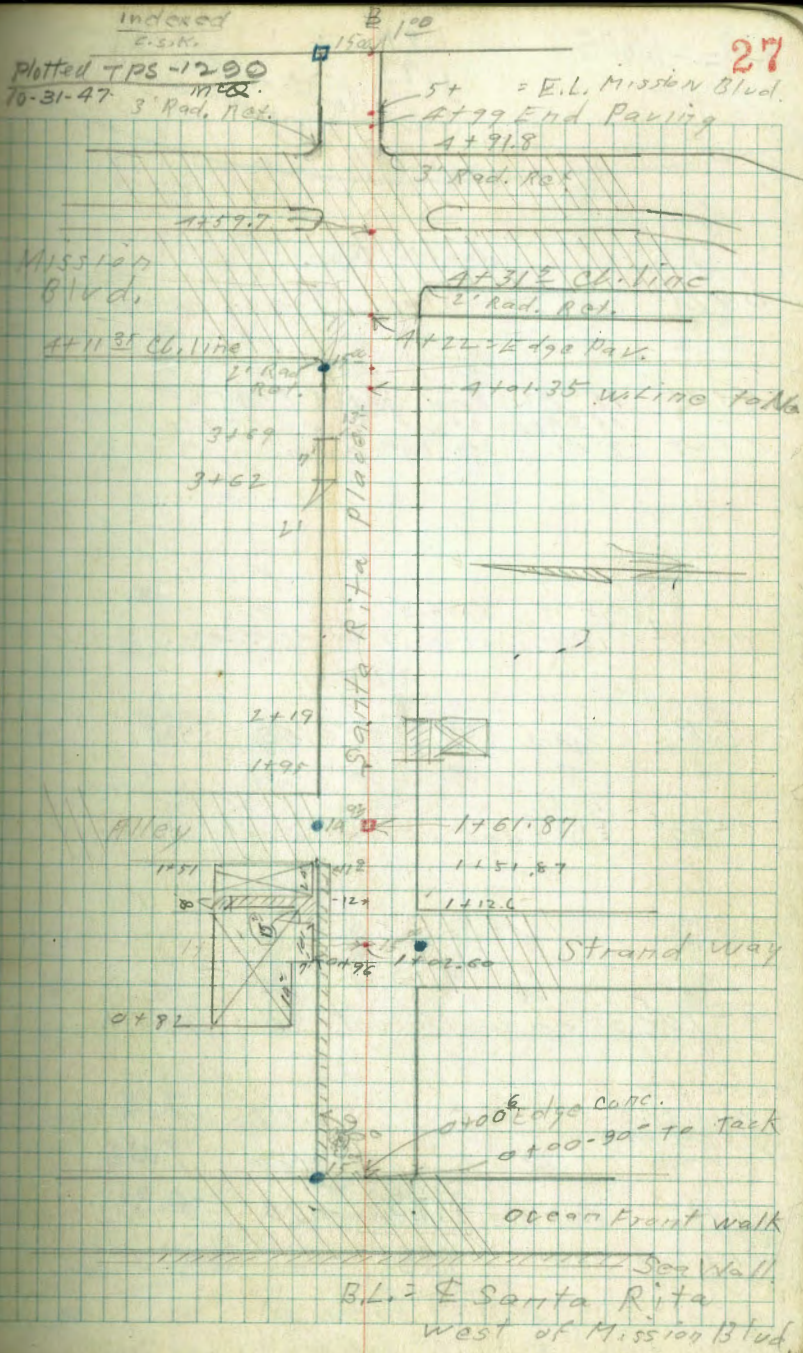
▣ = Hub set  
• = Nail

All distances chained

SANTA RITA

161.87  
102.60  
59.27

0+00 = 15' South of L+T, in walk,  
as shown on opposite page



BM = -11805

1.81  
1.73  
3.54

(sub's not from orig. mss.)  
for correct elev.

double Cor.

0 + 1A<sup>1</sup> 14<sup>2</sup> RT = start cone. Apron to

0 + 1A 15<sup>2</sup> RT = End board Fence.

15<sup>2</sup> RT = start board fence.

0 + 07 9<sup>2</sup> LT = str. 18" palm.

0 + 00<sup>7</sup> 15<sup>2</sup> LT = Bank edge  
12<sup>2</sup> LT = start 3' wide E.W. concrete walk

T.P. 3.64 8.69 4.68 5.05

0 + 00<sup>6</sup> Fly. Edge esca walk

0 - 10<sup>5</sup> on walk at sea wall.

B.R. Sea Wall  
+ York Ct.  
B.P. N. End Sea wall  
at P.B. Drive

S.S. 2.57 7.16  
(350' side shot) 2.67 7.06

T.P. 10.03 9.73 4.78 -0.3

N.E.R.  
Pacific Drive  
+ Mission Blvd.

W1079 Elev. in  
bench book. Should be -1.73  
use -1.73

L+

R+

28

5.09	4.78	4.79	5.19	4.99	8.7	3.66	5.03
$\frac{2.6}{20}$	$\frac{3.21}{15}$	$\frac{3.90}{12}$	$\frac{3.5}{8}$	3.7	$\frac{8.7}{15}$	$\frac{3.66}{14.4}$	$\frac{9.58}{15.5}$
4.67	4.62	4.76	4.72	4.74	8.69	4.81	4.73
$\frac{5.06}{101}$	$\frac{5.11}{50}$	$\frac{4.97}{15}$	4.97	4.97	$\frac{4.97}{15}$	$\frac{4.92}{50}$	$\frac{5.00}{100}$
4.61	4.57	4.63	4.60	4.60	4.65	4.64	4.64
$\frac{5.12}{100}$	$\frac{5.16}{50}$	$\frac{5.10}{15}$	5.13	$\frac{5.13}{15}$	$\frac{5.08}{50}$	$\frac{5.09}{100}$	
				9.73			

0+68<sup>E</sup> 15<sup>2</sup>Rt. =  $\frac{1}{2}$  2<sup>E</sup> wide N. + S. Conc walk

4.02  
15.7  
walk  
4.67

0+62 16<sup>2</sup>Rt. =  $\frac{1}{2}$  Sing. Gar. dirt floor

1.69  
4.0  
15.7

0+56 17<sup>2</sup>Rt. End picket fence

0+55 14<sup>2</sup>Rt. = P. pole # 706

4.86

4.85

4.89

4.89

0+50

3.83  
15  
walk

3.84  
12  
walk

3.8

3.8  
15

0+43 17<sup>2</sup>Rt. = End board + start picket fence

0+33<sup>2</sup> 16<sup>2</sup>Rt. = start board fence

0+33 15<sup>2</sup>Rt. = End Conc. Apron + Gar.

5.14  
3.54  
15  
Apron

5.22  
3.47  
16.5  
Gar floor

0+31

5.05  
3.64  
15  
walk

5.04  
3.65  
12  
walk

4.99

5.09

3.6  
15

8.69

8.69



0+86

0+85 14' Rt. - P. pole # 708.

0+84 15' Lt. = Start rock + Grout wall.

0+83 15' Lt. = CTR. 1' (N+S) x 2' (E+W) x 2' (Above Ord)  
Conc. Block.

0+82 22' Lt. = Start Stucco Bldg.

0+78 15' Lt. = \$ 6' wide N+S. board walk.

0+70 15' Rt. = Start Stucco Bldg

8.69

Lt

±

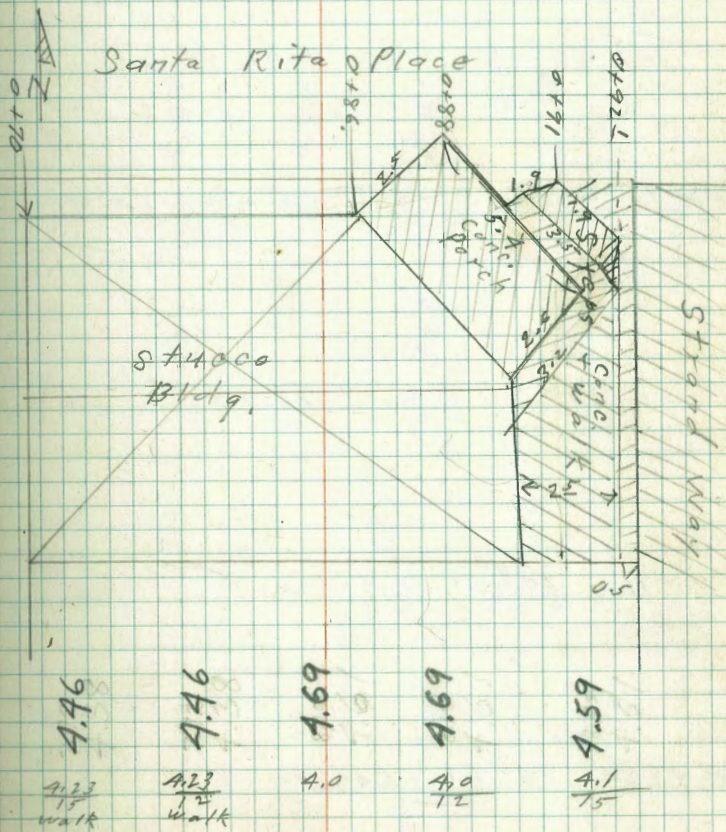
Rt

30

4.2	3.01
16.2	16.3
Ord	Top porch

4.49

5.68



8.69

1+10<sup>E</sup> 15' Lt. =  $\Phi$  3' walk (conc.)

1+02<sup>S</sup> =  $\Phi$  Strand way

0+96<sup>E</sup> 15' Lt. = start Conc. porch

0+96 15' Lt. = End rock + grout wall

0+92<sup>S</sup> = W.L. Strand way 14' Rt. = Edge pav.

0+92<sup>L</sup> 16' = Cor. of steps

0+91 14' Rt. cor. steps

0+88 14<sup>S</sup> Rt. = Cor. porch

8.69

5.17  
15  
walk

3.70

4.99  
15  
walk

4.10

4.59  
15  
walk

3.71

4.98  
12  
walk

4.04

4.65  
12  
walk

3.79

4.9

4.09

4.6

3.69

5.0  
10

3.86

4.83  
14.9  
pav.

3.39

5.30  
14.9  
pav.

3.88

4.81  
14.9  
conc.

3.89

4.8  
14.8  
conc.

4.29

4.4  
14.5  
conc.

3.31

5.38  
10  
pav.

3.54

5.15  
10  
pav.

3.88

4.81  
16.9  
Bottom of steps  
(on conc.)

4.02

4.67  
14.9  
Bottom of Bottom  
step, on conc.

5.63

3.06  
14.6  
on porch

8.69

19<sup>2</sup> Rt. = end board fence.  
1+70 14<sup>2</sup> Rt. = P. pale # P. 717 also

Edge alley pav  
1+61<sup>87</sup> = E Alley to North 14<sup>2</sup> Lt.

1+57<sup>6</sup> - 8<sup>3</sup> Lt. = Ctr. 4'x4' Gas Co. Valve box

End Conc. (E+W) walk.  
1+51<sup>87</sup> = W. Line Alley to North.

T. P. 3.97 5.65 7.01 11.8  
5.79

1+51 15<sup>2</sup> Lt. = End stucco Bldg.

here on  
E+W Walk widens out front  
1+23 = 4' wide N+S walk 14<sup>2</sup> Lt.

1+17 16<sup>2</sup> Rt. = start board fence.

1+12.6 = E.L. Strand Way.

8.69

1.66	1.29	1.00	0.99	1.35	1.65	2.25
3.59 100	4.36 50	2.65 15	4.65 14.7 pav.	4.3	4.0 12	3.4 13
		1.65				
		4.0 8.3 Ctt. box				
2.03	1.80	1.56	1.54	4.59	1.75	2.05
3.62 100	3.85 50	4.02 15.4 E+W walk	4.11 10.6 start pav	4.26 11.8 walk	3.9	3.6 10
					5.65	
					<u>5.65</u>	
					3.01	3.07
					5.68 12 E+W walk.	5.62 14.9 E+W walk
						4.88 10.9 stop on N+S walk
		3.44	3.46	3.59	3.49	3.52
		5.25 12 walk	5.28 12 walk	5.11 8.69	5.20 14.9 pav	5.17 50 pav
						5.38 100 pav
						3.71

1+92 16<sup>5</sup> RT = End Conc Apron + Double Gar.

1+84 14<sup>8</sup> Lt. = ± 3' wide N+S Conc walk

1+73 15<sup>3</sup> Rt = start Conc. Apron + double Gar.

1+71<sup>2</sup> Cont.

1+71 87 14<sup>2</sup> Lt. = Paving 15<sup>3</sup> Lt. = Start E+W. Conc.  
Black wall.  
E. line of Alley to North

1+71<sup>±</sup> 15<sup>3</sup> Rt. = ± 3' N+S. Conc. walk.

5.65

0.92  
4.73  
16.5  
Apron

4.21  
1.44  
18.5  
Gar floor

1.58  
4.07  
14.9

0.93

4.72  
15.7  
Apron

1.17  
4.48  
17.7  
Gar floor

1.90  
3.75  
100

1.91  
4.24  
50

1.02  
4.63  
17  
Plat  
and

0.65

1.55

1.04

1.55

0.75

0.75

4.05

5.0  
4.8  
15.2  
Base  
and

4.1

15

4.1

4.9

4.7

4.6  
15

8rd  
Pav  
8rd

8rd

8rd

0.93

1.17

1.23

4.72  
15.7  
walk  
and

4.48  
17.7  
walk

4.42  
20  
walk

5.65

2+22 14<sup>2</sup> Lt. = End board fence

Apron to double gar.  
Also 15<sup>6</sup> Rt. = start Conc. walk +

2+20 15 Rt. = P. pole # P 747

18<sup>6</sup> Rt = End double Gar. Conc. Floor

2+19 10<sup>6</sup> Rt. = End conc. walk + apron (No gar)

2+02 18<sup>6</sup> Rt = start double Gar. Conc. Floor

Also 15<sup>2</sup> Lt. = start board fence.

1+98 14<sup>2</sup> Lt. = End Conc. Block wall

+ Gar. apron. Very poor shape

1+95 10<sup>6</sup> Rt. = start Corner Combination walk

5.65

Lt.

Rt.

Rt.

34

4.5  
15  
1.15

5.4  
9  
-0.25

60  
-0.35

5.4  
15  
0.25

0.35

5.30  
15.6  
Conc

-0.05

5.7  
10.2  
Apron

1.84  
18.6  
Gar. Floor

0.81

0.25

5.1  
10.2  
Apron

0.80

1.83  
18.6  
Gar. Floor

0.25

5.4  
14.9  
Approx bottom  
of footing

1.35

5.1  
14  
0.25

0.05

5.6

0.35

5.3  
10.2  
Apron  
Edge

0.86

4.78  
18.6  
Back edge  
Apron

5.65

2+71<sup>E</sup> 20<sup>2</sup> Rt. =  $\phi$  3' wide Conc. walk

2+50<sup>S</sup> 15<sup>8</sup> Rt. =  $\phi$  1<sup>5</sup> wide<sup>Conc.</sup> walk (N+S)

2+45<sup>S</sup> = 16' Rt. =  $\phi$  3' wide N+S conc. walk

End double Gar.

2+44 16 Rt. = End Conc. Apron. 20' Rt. =

2+28 19.7 Rt. = start double Gar.

2+23

5.65

L.S.

R.S.

35

-0.05  
5.7  
20

-0.05  
5.7  
15

-0.65  
6.3  
10

-0.75  
6.4

-0.16  
6.11  
20.7  
walk

-0.25  
5.7  
15

-0.24  
5.89  
15.9  
walk

-0.05  
9.70  
10  
walk

0.07

5.58  
16

0.37

5.28  
19  
Floor

0.13

5.32  
15.7  
Edge  
Apron

0.72

5.23  
19.7  
Edge Floor

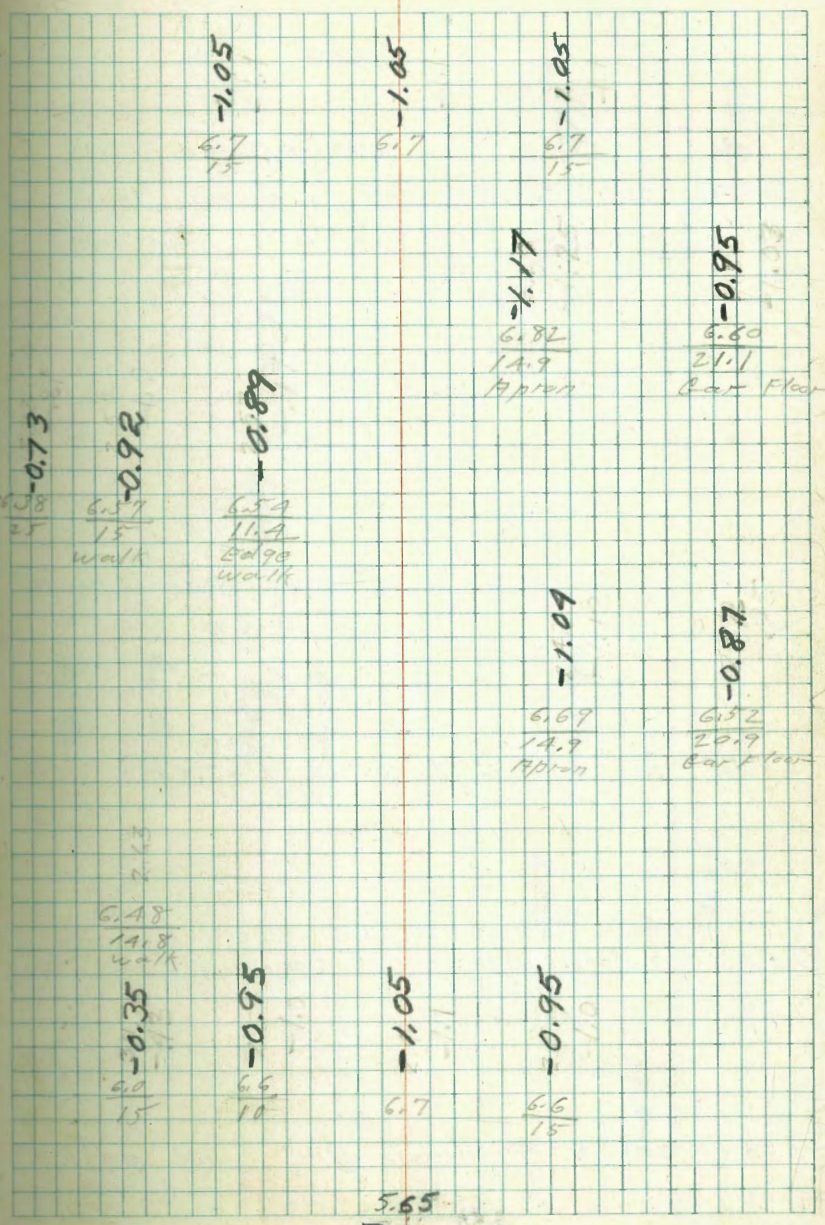
0.05

5.6  
15

-0.35  
6.0  
5.65

	BS	HT	FS	Elev
T.P.	4.82	3.91	6.56	- .91
3746			15' Rt. = P. pole = T.P.	773
3730				
3720 <sup>E</sup>			14' Rt. = End Conc. Apron to double Bar.	
3709 <sup>E</sup>			11' Lt. = 4' wide N+S. Conc. walk.	
3702 <sup>E</sup>			14' Rt. = start Conc. apron to double Bar.	
2799			14' Lt. = 2' N+S. Conc. walk.	
2780				

5.65



5.65

car garage

3+90 20<sup>6</sup> Rt. = End conc apron to A

3+69 End same

3+62 13<sup>1</sup> Lt = start 2' wide Meter Box about 2' deep.

3+55 15<sup>L</sup> Lt. = ± 2' wide N+S. Conc. walk.

3+53 20<sup>8</sup> Rt. = Start Conc. Apron to A Car

3+51 20<sup>8</sup> Rt. = ± 4' wide N+S. Conc walk

3.91

4.67  
20.6  
Apron  
~~-0.76~~

4.49  
22.6  
Gar. Floor  
~~-0.58~~

4.62  
13.1  
~~-0.71~~

4.75  
13.1  
on Box  
~~-0.84~~

4.63  
15.1  
walk  
~~-0.74~~

4.7  
7.5  
~~-0.79~~

4.6  
12  
~~-0.69~~

5.0  
10  
~~-1.09~~

5.1  
~~-1.19~~

5.1  
15  
~~-1.19~~

4.79  
20.8  
Apron  
~~-0.88~~

4.63  
22.8  
Gar. Floor  
~~-0.72~~

4.75  
20.8  
walk  
~~-0.84~~

3.91



A+15 10' Lt = Jog (or Δ) in paving

+1135 Cont.

15 Lt. Start A.C. Pav.

A+1135 Cb. line Mission Blvd. to North

A+0135 W.L. Mission Blvd. to North

3+99 15<sup>2</sup> At - P. pole # 437846

3+94<sup>5</sup> 20<sup>5</sup> At. E E N+S Rough 3' Conc. Slab.

3+91<sup>5</sup> 20<sup>5</sup> Rt. - 3' wide N+S. Conc. walk

391

Lt.

E

Rt.

-1.55	-2.07	-1.46
5.16	5.98	5.37
100	100	50
St.	Pav.	Top of St.

-1.93	-1.22	-1.67	-1.29	-0.89
5.85	5.13	5.58	5.12	4.8
15	15	15	15	15
St.	Top of St.	Pav		

-1.19	-1.29	-1.39	-0.89
5.10	5.2	5.3	4.8
15	15		15
Top of St.	Ord		

11.9 = 6'

1.41 = 6'

4.7  
20.6

4.67  
20.6

391

A+63<sup>E</sup> East side of center strip on Pav

5.24	5.11	4.95	4.68	4.58
100	50		50	100
-1.33	-1.20	-1.09	-0.77	-0.67

A+59<sup>E</sup> west side center strip on Pav

5.26	5.08	4.78	4.68	4.41
100	50		50	100
-1.35	-2.07	-0.87	-0.77	-0.50

+31<sup>E</sup> Cont

4.87	4.95	4.57
50	100	100
cl.	pav.	cl.
-0.66	-1.04	-0.60

A+31<sup>E</sup> = W. Cl. line to south

5.68	5.62	5.37	5.23	5.13	4.80	5.04
100	50	15		15	15	50
pav	pav			pav	cl	pav
-1.77	-1.71	-1.46	-1.32	-1.22	-0.89	-1.13

A+24<sup>E</sup> st. cl. on so.

4.79	4.68
15	15
pav	cl.
-0.88	-0.75

prop. line to so.  
10' L.H. = Δ in paving edge + also

A+22 start. M. Blvd. paving

5.60	5.23	5.20	4.99	4.73
25	15	10		15
		Δ		pav
-1.69	-1.32	-1.29	-1.08	-0.82

3.91

3.91

0719 B.M  
P99028

5.63 -1.72 -1.73  
0.01

5+50

5+133 = End of Alley

5+135 E.L. Mission Blvd

4+99 End paving

4+919 Cont.

4+919 = E.Ch. line Mission Blvd

3.91

Lt.

±

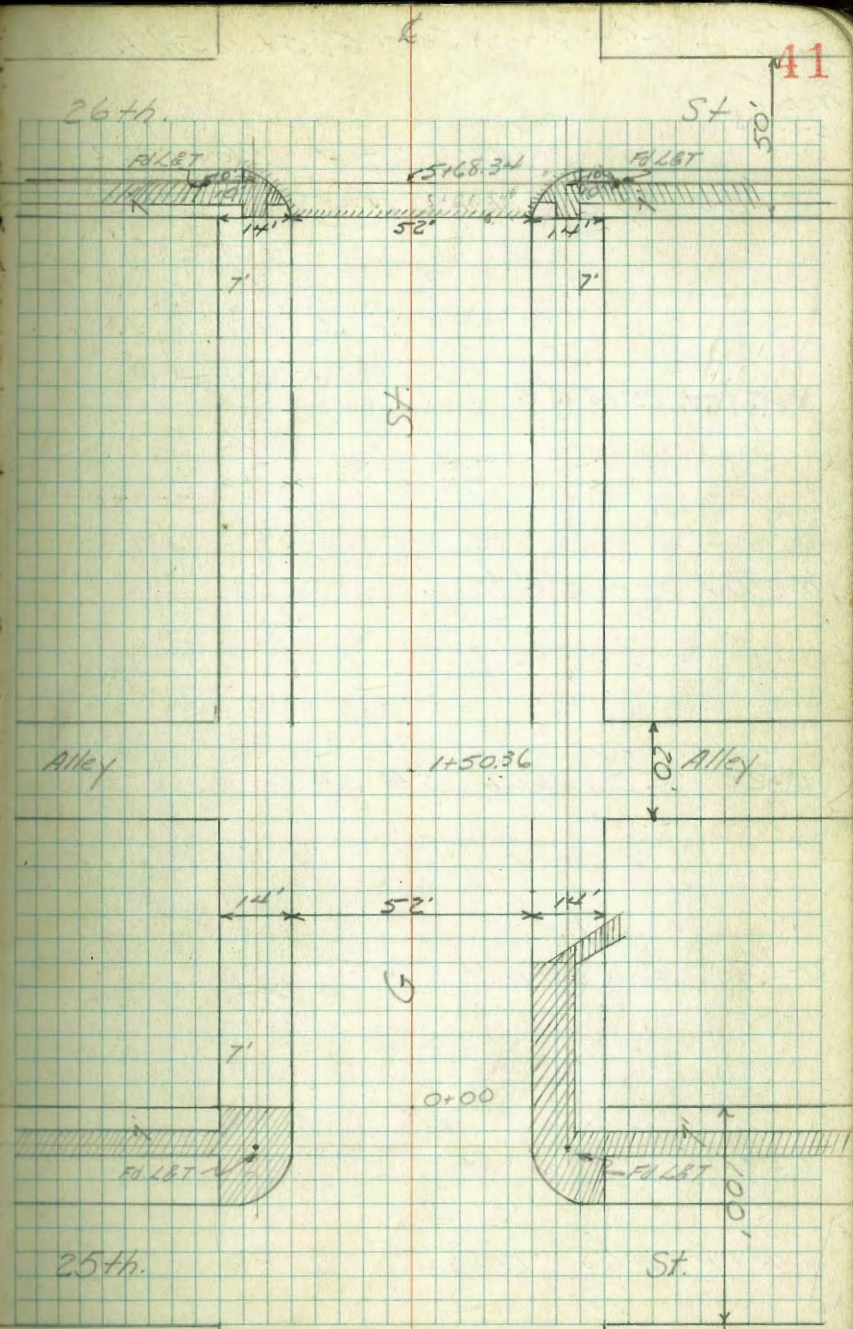
Rt.

40

-1.29	-1.39	-1.09	-1.19	-1.09	-1.09
5.2 15	5.3 15	5.0 7.5	5.1 7.5	5.0 7.5	5.0 7.5
-1.29	-1.19	-1.19	-1.19	-1.19	-1.23
5.20 15.3 Curb End	5.1 15.3	5.1 7.3	5.1	5.1 0.7	5.16 0.8 End Cl.
-1.30	-1.47	-1.48	-1.58	-1.56	-1.24
5.21 15.3 Cl.	5.38 15.3 pav	5.39 7.3 E Alley	5.49	5.49 0.8 pav	5.15 0.8 Curb
-1.40	-1.66	-1.35	-1.65	-1.04	-1.20
5.31 100 100 %	5.57 100 pav	5.26 50 Cl.	5.56 50 pav	4.95 50 topl.	5.11 100 pav
-1.41	-1.55	-1.41	-1.37	-1.39	-1.19
5.32 Top 31 Rad Ret	5.26 15.3 pav	5.32 7.3 ±	5.28	5.30 0.8 Curb Alley Cl. line	5.10 Top Cl. 3' Rad Ret
			<u>3.91</u>		

2-5-48 X Section "G" St. 25th. to 26th  
 Hendricks  
 Becker  
 Nelson  
 W.O.# 25001

INDEXED  
 FEB 10 1948



Walker  
Hendricks  
Becker  
Nelson  
2-6-88  
JHG

Levels - X Sect. G. St 25th to 26th

0+00 Req. Conc. Wall on Lt. - E Line 25th St

~~Ret. 25th & G.~~

~~Ret. 25th & G.~~

0-20 E. Curb line 25th St

0-35 E/4 25th St

0-50 E 25th St

B.M. 3.68 17586

172.18

Station	Dist	Width	Material	Elev	Notes
172.9	32	30	30	172.9	
172.60	45	40	40	172.60	
172.99	40	40	26	172.99	
172.20	26	26	26	172.20	
171.58	42	42	12.5	171.58	
171.13	42	42	12.5	171.13	
170.73	51	51	12.5	170.73	
170.22	50	50	12.5	170.22	
169.73	63	63	26	169.73	
169.83	63	63	26	169.83	
170.31	53	53	26	170.31	
170.28	53	53	26	170.28	
172.01	37	45	40	172.01	
171.34	37	45	40	171.34	
172.07	45	45	40	172.07	
171.29	45	45	40	171.29	
172.02	38	40	40	172.02	
171.23	38	40	40	171.23	
171.92	30	40	40	171.92	
171.28	30	40	40	171.28	
173.69	27	30	30	173.69	
172.86	30	40	40	172.86	
172.21	30	40	40	172.21	
171.42	40	40	40	171.42	
171.03	40	40	25	171.03	
170.72	51	51	25	170.72	
170.95	51	51	25	170.95	
170.72	51	51	25	170.72	
169.60	62	62	25	169.60	
169.20	62	62	25	169.20	
169.22	52	60	40	169.22	
167.38	52	60	40	167.38	
168.15	43	43	90	168.15	
173.81	20	30	30	173.81	
172.35	30	40	40	172.35	
171.91	30	40	25	171.91	
171.59	42	42	12.5	171.59	
171.22	46	46	12.5	171.22	
170.72	51	51	12.5	170.72	
170.40	51	51	25	170.40	
169.98	58	58	40	169.98	
168.15	77	77	90	168.15	

170.87 25th & G

42

0+50

0+45 Beg. Garage 39.8 ft. of E

0+43 E 3' Conc. Stairway 38.5 ft. E

0+41.5 End Conc. Wall 40' ft. E

0+30

0+15

17586

168.70	168.95	168.81	168.59	168.30	168.13	147.95	167.48	167.65	169.98	169.22
76	77	78	79	80	81	82	83	84	85	86
40	40	40	40	40	40	40	40	40	40	40
Conc Ft.										
76	77	78	79	80	81	82	83	84	85	86
40	40	40	40	40	40	40	40	40	40	40
76	77	78	79	80	81	82	83	84	85	86
40	40	40	40	40	40	40	40	40	40	40
76	77	78	79	80	81	82	83	84	85	86
40	40	40	40	40	40	40	40	40	40	40
76	77	78	79	80	81	82	83	84	85	86
40	40	40	40	40	40	40	40	40	40	40

168.78  
168.98  
39.8  
Conc Ft.

169.99  
169.87  
38.5  
Wall

170.07  
170  
Top Wall

174.0	173.71	171.96	170.65	170.17	170.16	169.10	169.34	168.75	168.91	168.72	169.02	169.14	169.84	169.49
19	20	21	22	23	24	25	26	27	28	29	30	31	32	33
45	40	40	38	35	35	30	29	26	26	26	30	35	38	38
Wall														
173.6	173.07	172.38	171.96	171.61	171.16	170.99	170.55	169.96	169.49	169.62	169.65	170.00	170.15	170.49
21	22	23	24	25	26	27	28	29	30	31	32	33	34	35
40	40	40	38	35	35	30	29	26	26	26	30	35	38	38
Wall														







2+76

T.P. 1.64 134.87 13.05 133.23

2+58

2+41

2+20

T.P. 0.20 146.28 6.27 146.08

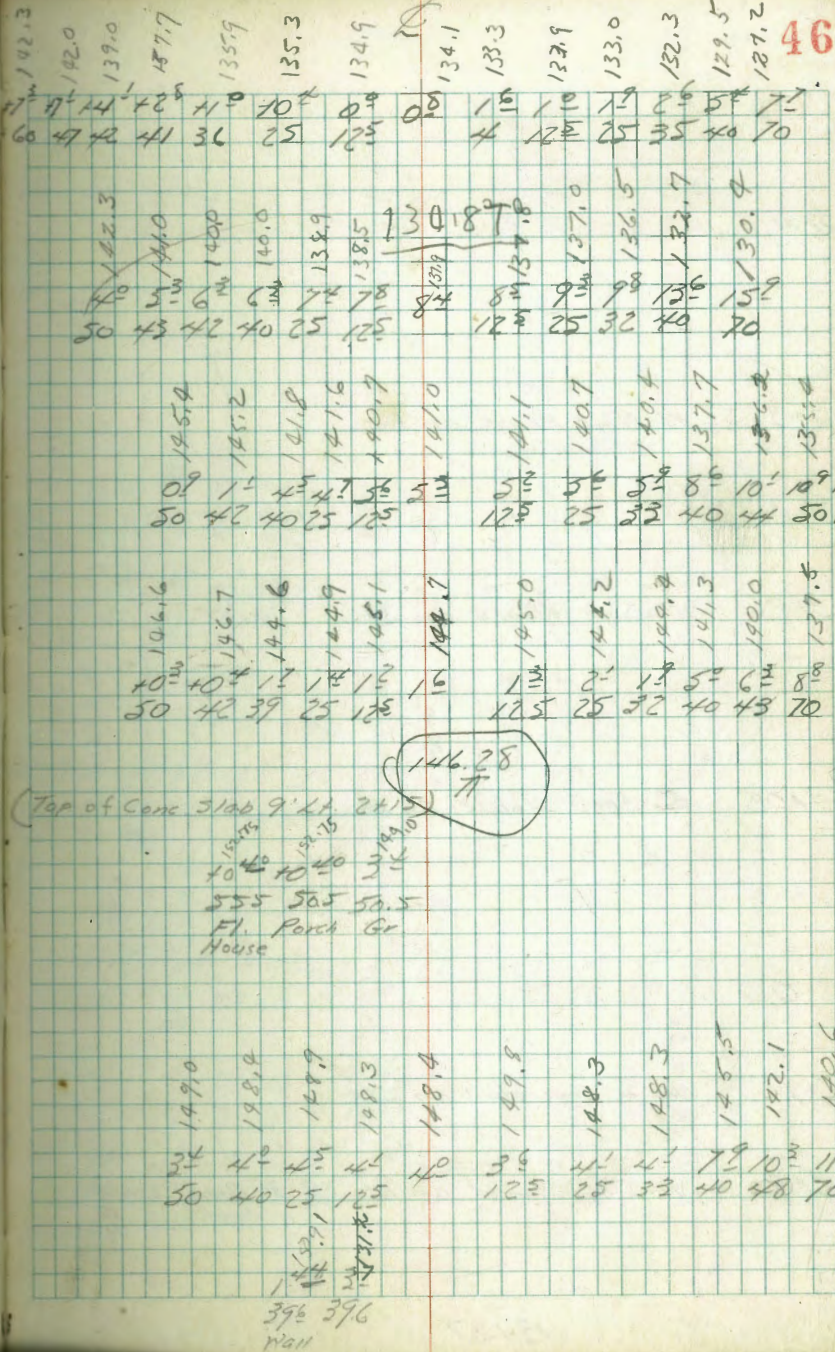
2+01 to 2+21.5 House on Lk.

2+10 3' Dia Palm tree 28' L.H. E

2+00

1+97.5 End Conc Ret. Wall 39.6 L.H. E

152.35



3+44

130.9  
40.47  
66 41 40 25  
64  
125 25 40 50  
127.6  
128.3  
128.5  
128.8  
128.5

3+38.5 W. Edge House on Rt.

131.62  
132.05  
131.3  
131.07  
130.0  
129.5  
129.9  
127.7  
126.8  
126.8  
126.8  
126.2  
124.5  
127.6  
126.8  
126.8  
126.2  
124.5  
Gr. Floor  
50 50 50 50  
7 7 7 7

3+26 W. Edge House on Lt.

131.8  
131.4  
131.2  
132.70  
132.4  
131.6  
129.8  
128.2  
127.5  
126.8  
127.2  
126.5  
125.4  
124.1  
137.8  
135.4  
135.2  
132.70  
132.4  
131.6  
129.8  
128.2  
127.5  
126.8  
127.2  
126.5  
125.4  
124.1  
57 51 41 40 36 24 125 74 71 84 95 101.8  
57 51 41 40 36 24 125 74 71 84 95 101.8  
Floor Wall

3+08 E. Edge House on Lt.

133.7  
133.46  
133.1  
131.6  
130.9  
129.3  
128.7  
128.2  
127.7  
126.8  
125.2  
124.1  
133.7  
133.46  
133.1  
131.6  
130.9  
129.3  
128.7  
128.2  
127.7  
126.8  
125.2  
124.1  
51 41 40 25 19 125 67 67 78 85 95 101  
51 41 40 25 19 125 67 67 78 85 95 101  
Wall

3+00

2+92 Beg 4" Conc. Wall on Lt.

137.9  
136.2  
134.77  
134.4  
134.1  
132.0  
130.8  
130.1  
130.3  
130.0  
129.5  
126.0  
124.3  
137.9  
136.2  
134.77  
134.4  
134.1  
132.0  
130.8  
130.1  
130.3  
130.0  
129.5  
126.0  
124.3  
57 57 40 40 25 123 41 48 44 42 54 89 101.6  
57 57 40 40 25 123 41 48 44 42 54 89 101.6  
Floor Wall Wall

2+90 W. Edge House on Lt. & 3' Conc. Wall

3+63 \$ 2' Conc. Walk Rt.

3+61 E. Edge House on Rt.

3+59

3+56 \$ Ditch on Lt.

3+54 End Wall on Lt.

3+52 E Edge House on Lt.

3+51 \$ 3.3 Conc. Wall

13487

13487	131.05	524	329			
50	130.9	61	61			
			Landing			
50	131.74	50	50			
Gr. Floor						
66	130.5	25	40			
40	130.5	45	50			
25	129.2	125	130.7			
125	129.1	125	130.7			
51	129.3	51	130.6			
125	130.0	125	130.6			
25	130.1	25	130.6			
45	130.4	45	130.6			
125	130.6	125	130.6			
130.00						
50	129.3	50	129.3			
61	128.9	61	128.9			
40	128.7	40	128.7			
33	129.2	33	129.2			
21	129.1	21	129.1			
25	128.7	25	128.7			
125	129.3	125	129.3			
125	130.0	125	130.0			
25	130.1	25	130.1			
45	130.4	45	130.4			
125	130.6	125	130.6			
41	129.7	41	129.7			
40	129.7	40	129.7			
33	128.5	33	128.5			
30	129.1	30	129.1			
25	129.1	25	129.1			
125	128.4	125	128.4			
50	129.1	50	129.1			
51	129.8	51	129.8			
125	129.8	125	129.8			
25	129.9	25	129.9			
47	130.3	47	130.3			
40	130.3	40	130.3			
49.0		49.0				
40		40				









B. 17. 6.60 171.99 171.99

S. VI. Ret 26th & G" B.C. on G St.

N. VI Ret 26th & G. B.C. on G St.

17859

S. VI Ret 26th & G"

173.86

473

CB

EC

26th

173.82

517

Gut

173.79

480

CB

①

173.37

522

Gut

173.42

487

Gut

①

173.19

540

CB

173.92

427

CB

BC

G St.

173.08

551

Gut

171.77

682

CB

BC

G St

171.29

730

Gut

171.93

686

CB

①

171.55

702

Gut

171.95

664

CB

①

171.55

708

Gut

171.95

664

CB

EC

26th



Xsec. DRAPER ST.

Moose Marine ST to Peach St.

BC99

Green

Roberts

3-8-41

W.O. # 31444

INDEXED

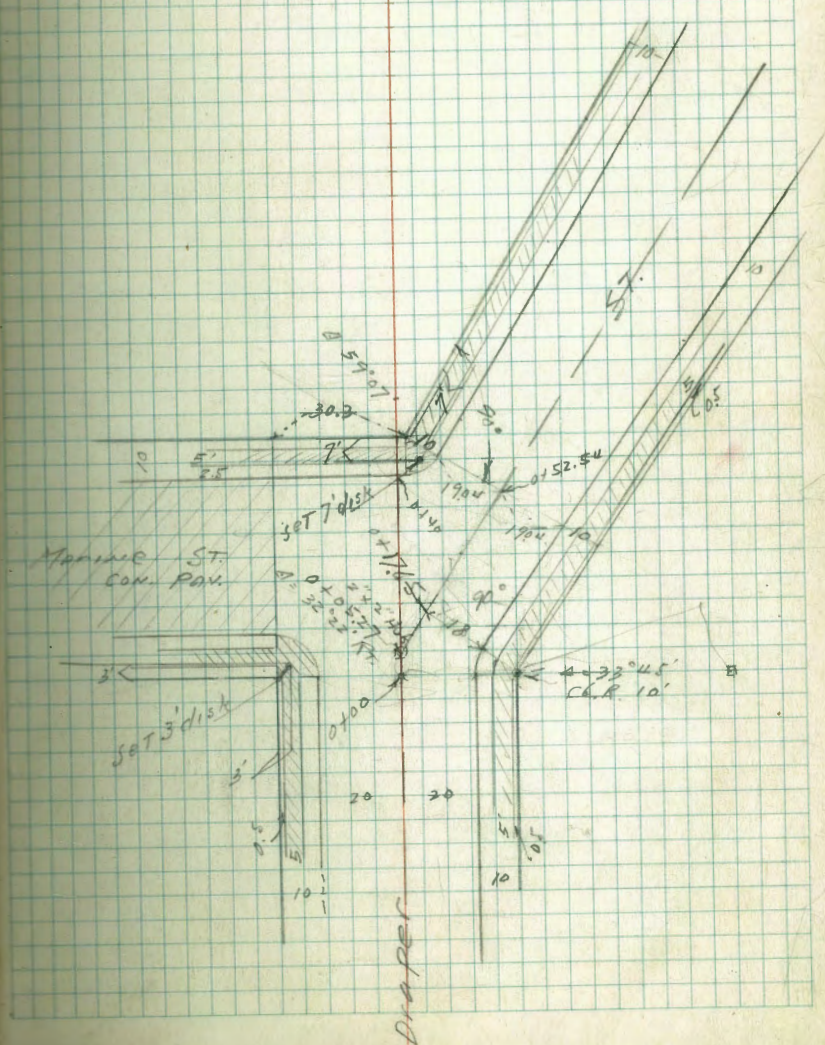
MAR 8 1948

□ = 2" x 2" Hubs set

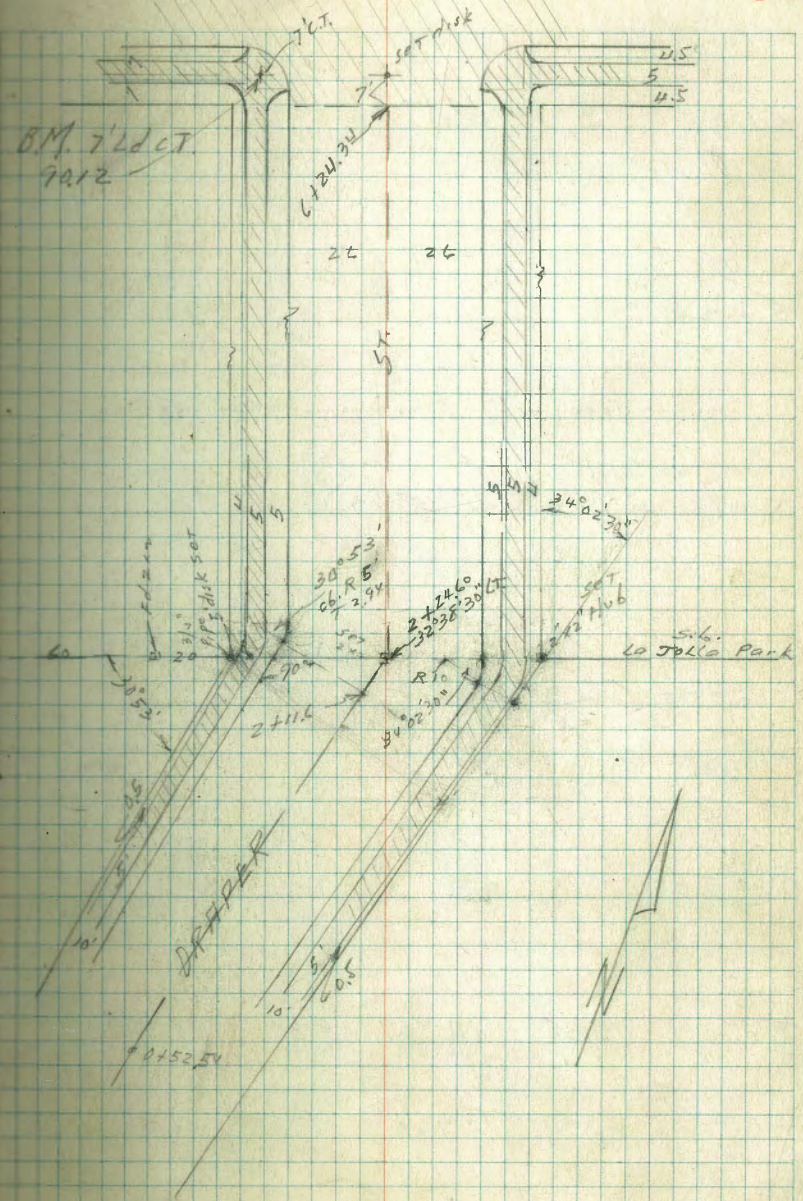
• = City disks set

Sidewalk & Curb OK.

Xsec of Roadway for Paving



Park  
 con. Pav. ST. 1 wide  
 80' wide  
 14' curbs





Drapen

Lt 60

0 + 52.54

0 + 17.65 Cont. in Drapen  
90° off Fwd.T.

0 + 50 N. CB Machine on Lt

0 + 50 = N. gut Machine on Lt.

0 + 40

104.69

Lt

Baseline

Rt

57

100.54

4.82  
20.5

100.54

4.92  
19.04

100.54

8.44  
80  
cb

100.54

9.08  
80  
par

100.54

8.85  
80  
par.

100.54

5.3  
20.5

100.54

5.2  
19.04

100.54

5.75  
80  
cb

100.54

6.30  
80  
par

100.54

6.12  
80  
par.

100.54

4.6

100.54

4.9

100.54

5.0

100.54

5.19  
80  
cb

100.54

5.7

100.54

5.4

100.54

4.9  
20.5

100.54

5.2  
19.04

100.54

5.4  
18

100.54

5.19  
80  
cb

100.54

5.7  
80  
par

100.54

5.4  
80  
par.

100.54

4.15  
20.5

100.54

4.43  
19.04

100.54

4.15  
18

100.54

4.15  
80  
cb

100.54

4.15  
80  
par

100.54

4.15  
80  
par.

104.69

6.6 from  
400 M

7.8 from  
400  
16.5 on

2 + 50

2 + 31.4

319    102.80    5.08    99.61

2 + 24.60 = S.L. L. Tolla Park sec. at 90°  
32° 38' 30" LT.    front Fwd. T.

2 + 11.6    B.C. Curb on LT.

2 + 00

17.50

104.69

LT

Baseline

RT

58

99.56  
2.24  
26  
06

99.81  
2.40  
26

99.71  
3.1  
26

100.2  
2.2  
26

100.86  
1.94  
26  
06

100.50  
2.30  
26  
06

99.4  
2.4  
26

100.2  
2.6  
26

100.7  
2.1  
26

101.53  
1.47  
26  
06

100.50  
4.19  
276  
06

99.4  
5.3  
276

99.8  
4.9  
13

102.80  
100.3  
4.4  
13

100.4  
4.3  
13

100.9  
3.8  
26

101.58  
3.21  
26  
06 F.C.

100.52  
4.17  
23.8  
06

99.4  
5.3  
23.8

100.3  
4.4  
13

100.5  
4.2  
23.8

101.33  
3.36  
22.8

100.55  
4.26  
23.5  
06

99.4  
5.3  
23.5

100.3  
4.4  
13

100.4  
4.3  
23.7

101.24  
3.45  
22.6  
06

100.04  
4.25  
22  
06

99.1  
5.2  
22

100.3  
4.4  
13

100.1  
4.2  
21.8

100.85  
3.54  
21.3  
06

104.69

Draper

R

59

4 + 50

4 + 15.7

10'  
drive thru ab

4 + 00

3 + 50

3 + 00

2 + 11.3 P of 13' drive thru curb

102.80

94.80  
94.00  
26

95.85

95.22  
15.7  
35.5

96.07  
95.73  
26

97.10  
96.76  
26

97.6  
97.2  
26

98.9  
98.2  
26

99.98

99.22  
7.82  
26

99.52  
99.17  
26

99.64  
99.29  
26

99.76  
99.41  
26

99.3  
98.95

99.58  
99.23

99.71  
99.36

99.83  
99.48

99.8  
99.4  
26

99.95  
99.6  
26

99.72  
99.37

99.84  
99.49

95.48  
95.12  
26

96.85  
96.5  
26

98.08  
97.73  
26

98.6  
98.25  
26

99.94

99.59  
99.24  
26

100.62

100.27  
99.92  
26

100.72

100.37  
100.02  
26

102.80

Drapen

check to SEBP

Pearl + Eads 2.24 102.16

T.P. 7.90 104.40 0.90 96.50

set B.M. SW. 7' CT.

Pearl + Drapen 7.28 90.12

6 + 3834 S.c.b. Pearl

6 + 2434 SL Pearl ST

6 + 00

T.P. 5.57 97.40 10.97 91.83

5 + 50

5 + 00

102.80

L+

102.18 FBK 1650-58

102.42 IN 1649-5

Reduced from  
USC 45

83.24	83.3	83.45	83.87	84.24	84.45	84.06
7.45	8.10	7.95	7.43	7.16	6.95	6.34
40	40	26		26	40	26
06	97				97	06

80.02	80.57	80.09	80.50	80.51	80.34	81.00
7.38	7.83	7.31	6.90	6.89	7.04	6.40
26	26	13	26	19	26	26
06	Pay	Pay	Pay	Pay	Pay	06

80.57	80.0	80.9	80.8	81.61
6.73	7.4	6.5	6.6	5.79
26	26		26	26
06				06

82.10	81.4	82.00	82.10	82.95
10.70	11.4	10.8	10.7	9.85
26	26		26	26
06				06

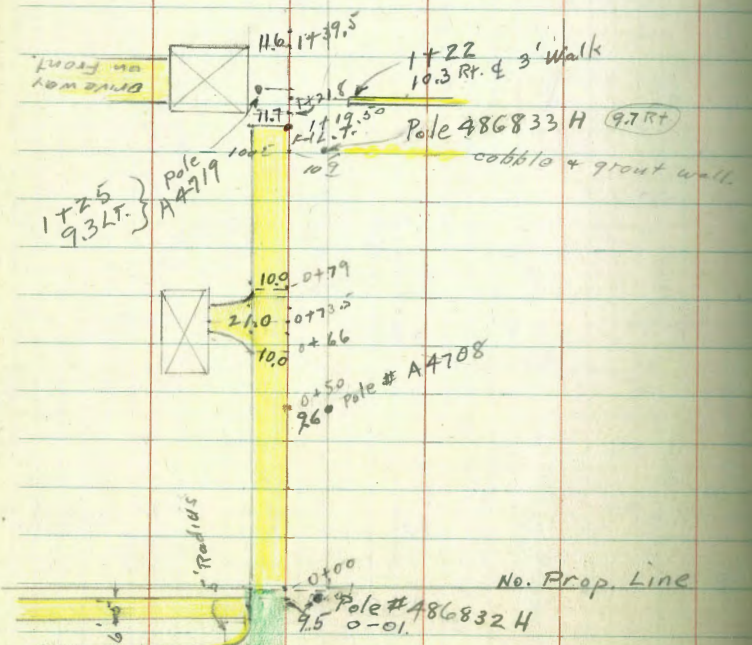
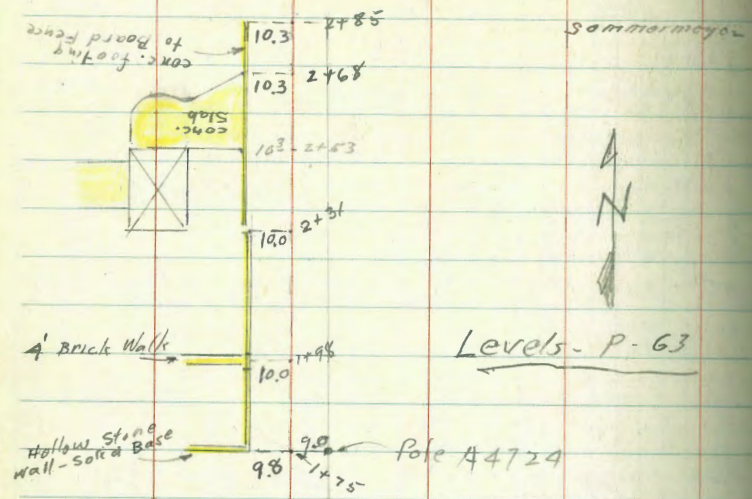
83.51	83.6	83.2	83.5	84.24
9.29	10.2	9.6	9.3	8.50
26	26		26	26
06				06

102.80

R 60

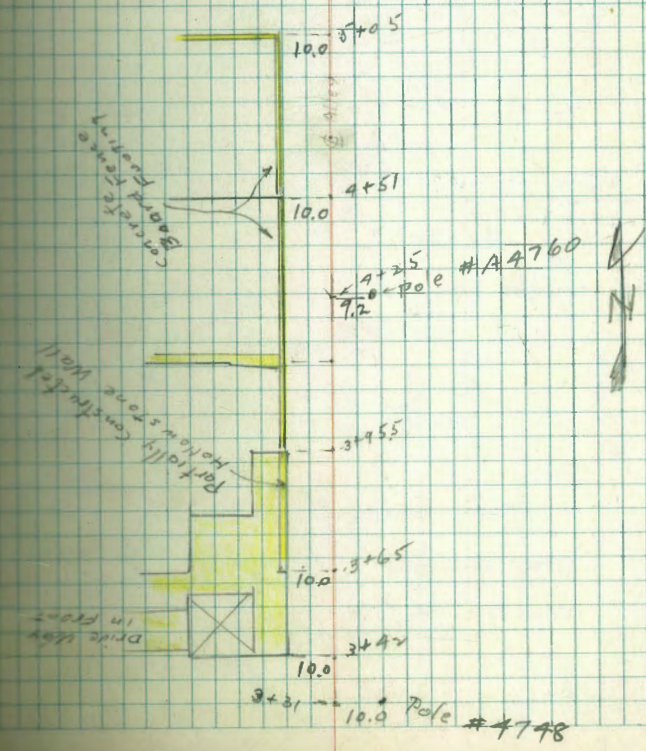
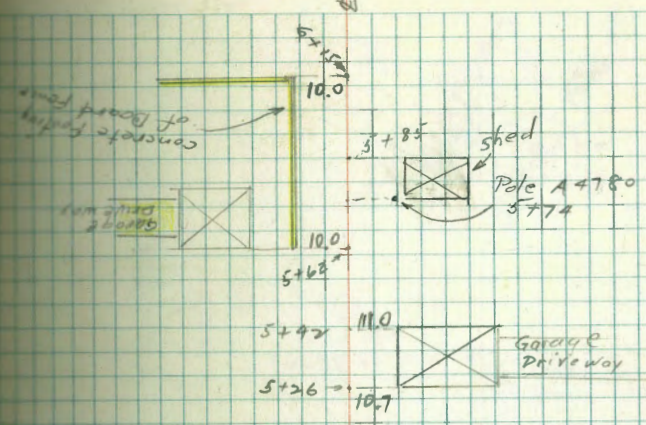
8/7/48

(cont. Next page)  
Alley Between 49th + Wilson  
(Adams to Lucille Drive)

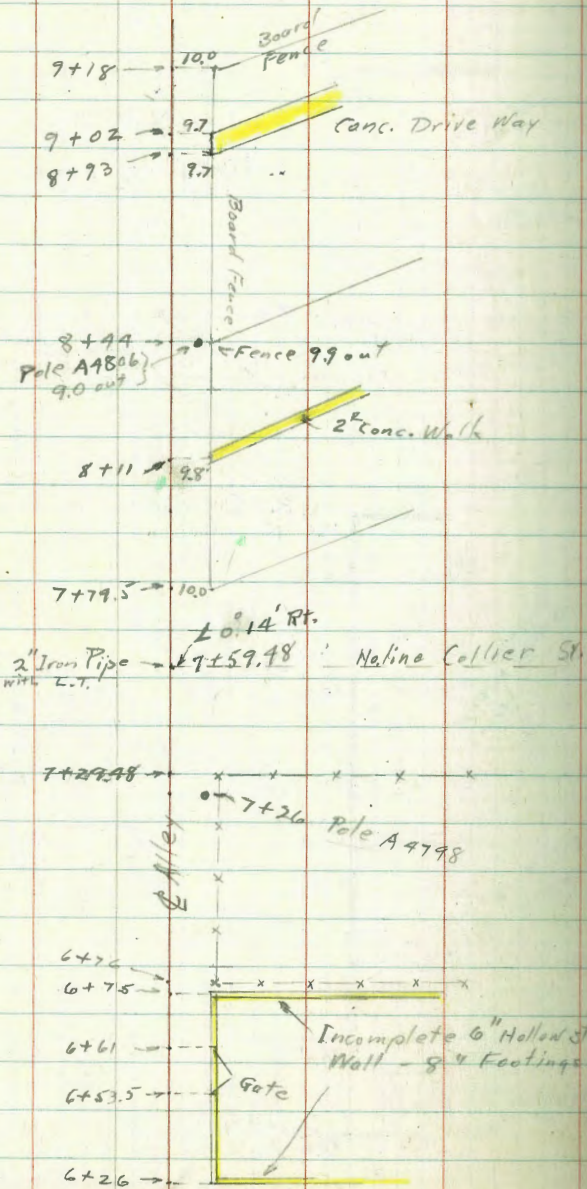


Adams St.

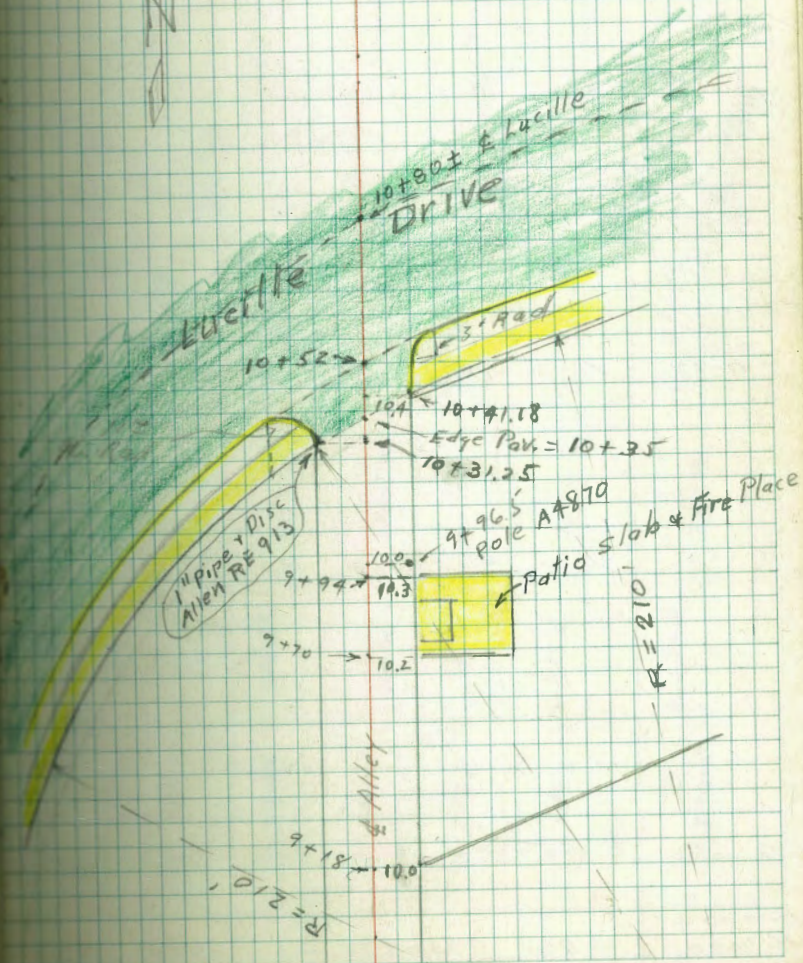
(cont next page)







INDEXED  
JUN 8 1948



6/7/48

X-Section Alley Between  
49th + Winona from Adams  
to Lucille Drive  
(Sketch Pg 61 + 62)

Sommerville  
McCoy &  
Moore  
Sherman

0+15

0+00 = N. line Adams = start. Conc. pav.

0-00<sup>1</sup> End Black pav.

0-01 9<sup>th</sup> St. = Pole # 486832H

0-07 10' LT. = Cl. E.C.

0-12 15' LT. = Cl. B.C.  
N. cl. line Adams top. cl.

0-12<sup>1</sup> = N. gutter line Adams

0-16

0-30 E Adams

Adams +  
Winona

4.74 394.07

— 389.33 NEBP

386.4  
389.4

4.7  
50

386.4

7.7  
50

386.4

7.7  
50

386.4

7.7  
50

386.4

7.7  
50

386.4

7.7  
50

386.4

7.7  
50

386.4

7.7  
50

386.4

386.78  
389.2

4.9  
50

386.78

7.19  
50

386.78

7.19  
50

386.78

7.19  
50

386.78

7.19  
50

386.78

7.19  
50

386.78

7.19  
50

386.78

7.19  
50

386.78

386.71  
389.97

7.10  
50

386.71

7.36  
50

386.71

7.36  
50

386.71

7.36  
50

386.71

7.36  
50

386.71

7.36  
50

386.71

7.36  
50

386.71

7.36  
50

386.71

386.33  
389.58

7.49  
50

386.33

7.74  
50

386.33

7.68  
50

386.33

7.63  
50

386.33

7.63  
50

386.33

7.63  
50

386.33

7.63  
50

386.33

7.63  
50

386.33

387.9  
390.7

5.2  
50

387.9

3.7  
50

387.9

3.7  
50

387.9

3.7  
50

387.9

3.7  
50

387.9

3.7  
50

387.9

3.7  
50

387.9

3.7  
50

387.9

387.9  
390.7

3.4  
50

387.9

3.3  
50

387.9

3.3  
50

387.9

3.3  
50

387.9

3.3  
50

387.9

3.3  
50

387.9

3.3  
50

387.9

3.3  
50

387.9

387.9  
390.9

3.2  
50

387.9

3.0  
50

387.9

3.0  
50

387.9

3.0  
50

387.9

3.0  
50

387.9

3.0  
50

387.9

3.0  
50

387.9

3.0  
50

387.9

63

INDEXED  
JUN 8 1948

394.07



2+31<sup>L</sup> of conc. wall.  
10<sup>3</sup>Lt.: start board fence on top

2+31 10<sup>4</sup>Lt.: End Conc. block wall

2+00

1+98 4' wide E.W. walk  
10<sup>2</sup>Lt.: 4' wide opening in wall  
picket fence,  
10<sup>2</sup>Rt.: End board fence start  
block wall. 9'Rt.: Pole # A4724

1+75 9<sup>2</sup>Lt.: start footing for conc.

1+50

1+39<sup>E</sup> 11<sup>2</sup>Lt.: N.E. cor. Stucco Cor.

1+25 9<sup>3</sup>Lt.: pole # A 4719  
9<sup>3</sup>Rt.: Guy pole also.

1+22 10<sup>3</sup>Rt.: 3' wide Conc. walk.

395.75

392.02	391.3	391.5			
2.72 101 Top wall	4.4 102 Base wall	4.2 102 Grid			
396.4	391.1	391.4			
+0.7 101 Top wall	4.6 10 Base footing	4.3 10 Grid			
391.2	391.1	390.8	390.8	391.2	391.2
4.5 30	4.6 10	4.9		4.5 10	4.5 30
396.1	390.4	390.8	391.6		
10.4 49 Top wall	5.3 7.8 Bottom wall	4.9 4.8 Grid	4.59 10		
391.4	390.6	390.4	390.4		
1.9 10	5.1 10	5.3			
391.4	390.5	390.4	390.2	390.4	390.4
4.3 10 Top wall	4.3 8	5.3	5.3 10		
390.1	390.4	390.4	390.2	390.4	390.4
5.2 11.5 Top wall	4.3 7.2 Bottom wall	5.3	5.5 10		
390.55					
			5.40 10.3 8 walk		

395.75

lath chicken yard  
3+75 10<sup>1</sup> Lt. = End wire fence + start

3+65 wire fence.

3+51 10<sup>1</sup> Lt. = End lath fence. start

(Future patio) wall  
3+42 10<sup>1</sup> Lt. = start. Conc. slab + footing

3+31 9<sup>0</sup> Rt. = Pole # RA748 fence.

3+00 10<sup>1</sup> Lt. = End picket, start lath

board fence.  
2+85 10<sup>2</sup> Lt. = End Conc. wall. also = End

2+68<sup>1</sup> 10<sup>2</sup> Lt. = start Conc. wall

2+68 10<sup>2</sup> Lt. = End Conc. slab.

2+53<sup>1</sup> 10<sup>3</sup> Lt. = start 3" thick Conc. slab.

2+53 10<sup>3</sup> Lt. = End Conc. wall.

392.00	392.15	392.4	392.4	392.4	393.1
1.75	3.6	3.3	3.3	3.3	2.5
10	10	10	10	10	10
392.17	392.1	392.2	392.0	392.2	
1.78	3.6	3.5	3.7	3.5	
10	10	10	10	10	
392.25	391.7	391.9	391.7	391.9	392.1
3.50	4.0	3.8	4.0	3.8	3.6
10	10	10	10	10	10
392.25	391.5	391.8			
3.50	4.2	3.9			
10	10	10			
391.7	391.4	391.7			
3.50	4.3	4.0			
10	10	10			
392.05	391.8				
3.78	3.9				
10	10				
391.3	391.8	391.4			
4.4	3.9	4.3			
10	10	10			

5+05 topped by board fence.  
10' Lt. = End 4" wide Conc. wall

5+00

4+51<sup>L</sup> topped with board fence.  
10' Lt. = start 4" Conc. wall

4+51 topped with board fence.  
10' Lt. = End 4" wide Conc. wall.

4+25 9<sup>1</sup>/<sub>2</sub> Rt. = Pole # A 4760

4+00

+ start wire fence

3+99 10' Rt. = End lath chicken yard  
with board fence.

3+95<sup>E</sup> 10' Lt. = start 4" wide Conc. wall topped

T.P. 5.64 398.43 2.96 392.79

3+95<sup>E</sup> 10' Lt. = End Conc. slab,

395.75

4.25 10.1 Top wall	5.4 10.1 Base	5.1 10.1 Grid	393.94	393.0	393.3
4.8 30	392.6	5.1 10	393.37	392.5	393.3
5.06 10.1 Top wall	5.9 10.1 Base	5.3 10	393.1	392.1	393.1
4.34 10.1 Top wall	5.6 10.1 Base	5.3 10	393.1	393.1	393.2
5.5 20	393.1	5.6 10	392.9	392.9	393.2
5.1 10 Top wall	5.2 10 Base wall	5.4 10 Grid	393.29	392.5	393.0
393.15 2.40 10 Top slab	3.1 10 Base	4.8 10 Grid	392.6	392.9	393.0

395.75

6+26 11<sup>o</sup> Rt. = start Conc. block wall.  
10<sup>o</sup> Rt. = End board fence

T.P. 5128 399.30 4.41 394.02  
topped by board fence.

6+15 10<sup>o</sup> Lt. = End 4" wide Conc. wall

6+00

5+85 10<sup>o</sup> Rt. = start board fence.  
11' Rt. = End frame Bldg.

11<sup>o</sup> Rt. = S.W. Cor. Frame Bldg, East. Ent.  
10<sup>o</sup> Rt. = End stat fence

5+74 9<sup>o</sup> Rt. = Pole # A 4780  
topped with board fence.

5+62 10<sup>o</sup> Lt. = start 4" wide Conc. wall

5+50

10<sup>o</sup> Rt. = start slat fence.

5+42 11' Rt. = End (N.W. Cor.) Frame shed.

W foundation. East entrance  
S.W. Cor. Frame shed, dirt floor

5+26 10<sup>o</sup> Rt. = End wire fence also =

398.43

394.35  
4.9  
10  
Top wall

393.7  
4.7  
10  
Base

394.0  
4.4  
10  
Base

399.30

393.9  
4.5  
10

393.8  
4.6

393.9  
4.5  
10

393.8  
4.6  
10

394.5  
4.8  
11  
Base

393.8  
5.5  
11  
Base

390.83  
8.47  
11  
Top wall

398.43

7+952 10' Rt. = start board fence  
 T.P. 6.30 400.12 5.48 393.82

7+59<sup>48</sup> on 2" pipe @ Alley + N. line Collier

7+59<sup>48</sup> - N. line Collier

7+29<sup>48</sup> = S. line Collier. Also = <sup>10' Rt.</sup> End cyclone wire fence

7+26 9' Rt. = Pole # A 4798

7+00

6+76 10' Rt. = start cyclone wire fence

6+75 10' Rt. = End conc. block wall

6+58 = 10' Rt. = 8' wide <sup>conc.</sup> drive thru wall

6+50

399.30

5.2 10	5.1 10	5.0 10	5.2 10	5.3 50	5.2 100
394.1	394.2	394.3	394.1	394.0	394.1
5.2 20	5.0 10	5.0 10	5.2 10	5.2 50	5.6 100
394.3	394.3	394.3	394.3	394.1	393.7
4.8 10	5.1 10	5.2 10	5.3 10	5.3 30	
394.5	394.2	394.1	394.0	394.0	
			5.0 10	5.5 10.7 0.250	0.32 10.1 10.1
			394.3	393.8	394.36
			394.4	4.9 10.5 0.1	4.94 12.5 drive
			394.2		
5.5 10	5.7		5.1 10		
393.0	393.9		394.2		

399.30



board fence.  
set in Conc. also = start

9+18 10<sup>th</sup> Rt. = End board fence - posts

9+02 9<sup>th</sup> Rt. = End Conc. Apron

9+00

to Sing Bar.

8+93 9<sup>th</sup> Rt. = start Conc. Apron

8+50

(posts set in Conc.)

9<sup>th</sup> Rt. = start board fence with

9<sup>th</sup> End board fence also

8+44 9<sup>th</sup> Rt. = pole # A4806

8+11 9<sup>th</sup> Rt. = 2<sup>nd</sup> wide Conc. Walk

8+00

400.12

70

4.8  
20  
395.3

5.1  
10  
395.0

5.1  
395.0

5.1  
9.2  
395.0  
End

5.13  
9.2  
394.98  
Apron

4.95  
4.0  
395.12  
At. Bar.

394.91

5.3  
20  
394.8

5.4  
10  
394.7

5.2  
394.9

5.1  
10  
395.0

5.2  
30  
394.9

5.11  
9.2  
395.01  
Apron

5.49  
9.8  
394.63  
walk

5.0  
30  
395.1

5.0  
10  
394.8

5.0  
394.5

5.7  
10  
394.4

5.7  
30  
394.4

400.12

10+31<sup>2</sup> 10<sup>th</sup> Lt. = start Alloy Cl. & A.C. Pass.

394.91  
4.39  
10.05  
10  
66

394.70  
4.60  
10  
10  
10

395.0  
4.3  
10

395.20  
4.1  
10

10+25

395.3  
4.0  
10

395.2  
4.1  
10

395.5  
4.8  
10

T.P. 4.38 399.30 5.20 394.72

399.30

10+21 9<sup>th</sup> Rt. = dead man

395.9  
4.2  
20

395.4  
4.7  
10

395.2  
4.9  
10

395.3  
4.8  
10

395.3  
4.8  
10

10+00

9+65<sup>5</sup> 10<sup>th</sup> Rt. = pole # A4870

9+94 10<sup>th</sup> Rt. = End Conc. Slab. 3" thick

395.4  
4.7  
10  
Conc Slab

9+70 10<sup>th</sup> Rt. = start Conc. Slab. 3" thick

395.3  
4.8  
10

395.1  
5.0  
10

395.1  
5.1  
10

395.4  
4.7  
10  
Conc. Slab  
394.9  
5.2  
10

394.9  
5.2  
10

9+50

400.12

S.E.B.P.  
Estrella +  
Adams

5.42 379.96

372.1

T.P. 2.50 385.38 8.23 382.88

NEBR Adams

+ Nina 1.77 391.11 6.19 389.34

381.5

T.P. 4.04 395.53 6.46 391.49

T.P. 6.50 397.95 7.85 391.45

10+80<sup>+</sup> = E Lucille (taken along E)

395.04  
4.25  
100  
394.65  
4.65  
5.25  
50  
394.05  
5.25  
50  
392.72  
6.58  
100

(Along gutter)

10+52<sup>+</sup> = S gutter line Lucille Dr.

394.19  
5.10  
75  
394.30  
5.10  
15  
394.20  
5.10  
15  
393.96  
5.34  
136  
393.32  
5.98  
50

(taken along curb)

10+52<sup>+</sup> = Cb. line Lucille Dr.

394.78  
4.52  
75  
394.83  
4.47  
30  
394.64  
4.66  
13.6  
394.00  
5.30  
50

10+41<sup>2</sup> 10<sup>0</sup> Rt. = End board fence

A.C. Pave

10+41<sup>1</sup> 9<sup>0</sup> Rt. = Start alley Cb. + edge

394.55  
4.75  
394.63  
4.67  
4.82  
10  
394.20  
4.1  
10  
394.02  
4.48  
4.82  
10

10+35 = Edge pave. on E

399.30

399.30

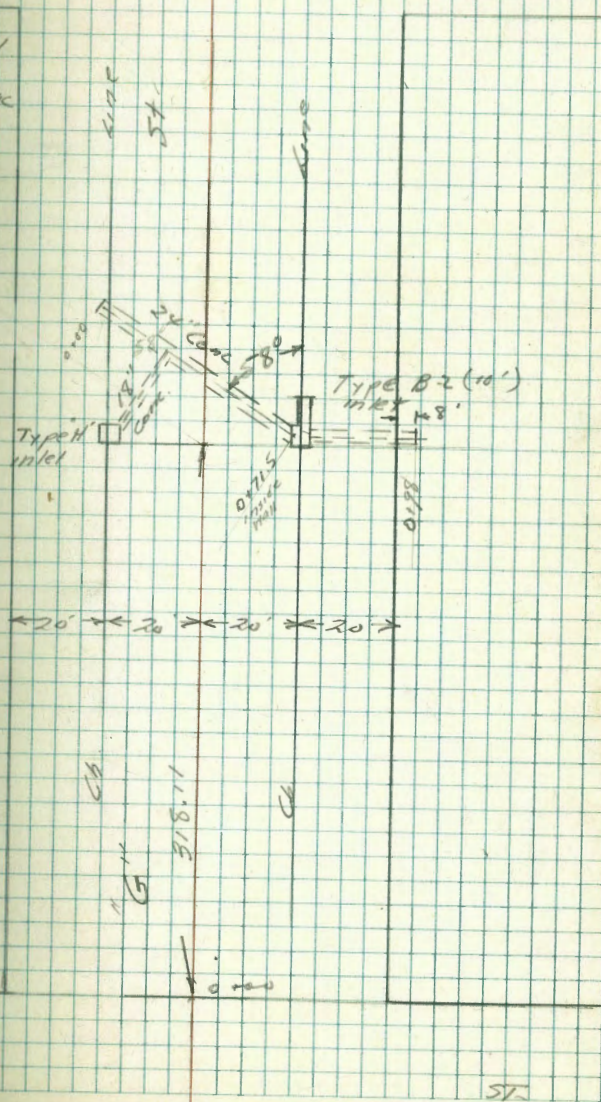
8-23-50 State Cb Inlets & Drain  
 Hendricks "G" St. Bet. 25th & 26th  
 Lots  
 Greer (Dwg. 7783 L)

Crawford  
 NO# 31220

		Elev. of Stake	Elev. Grade	Cut or Fill	26th
		694	130.08	130.11	
3+29.11	Cb Inlet	9.66	127.36	130.63	F357
3+29.41	K1	10.30	126.72	130.67	F355
3+18.11					
3+22.61	Cb Inlet	8.64	128.38	131.64	F353
3+18.11		K1	8.05	128.97	131.64
0+98	End 24" conc	11.32	125.70	124.73	C082
0+71.5		9.85	127.17	125.63	C152
0+47.66		9.56	127.46	126.44	C153
0+23.88		8.69	128.33	127.25	C105
0+00	Begin 24" conc pipe	6.88	130.14	128.06	C229
TP	0.96	137.02	1289	136.06	
TP	0.28	148.95	1263	148.67	
TP	0.21	161.30	13.20	161.09	
BA7	2.11	174.29			1725

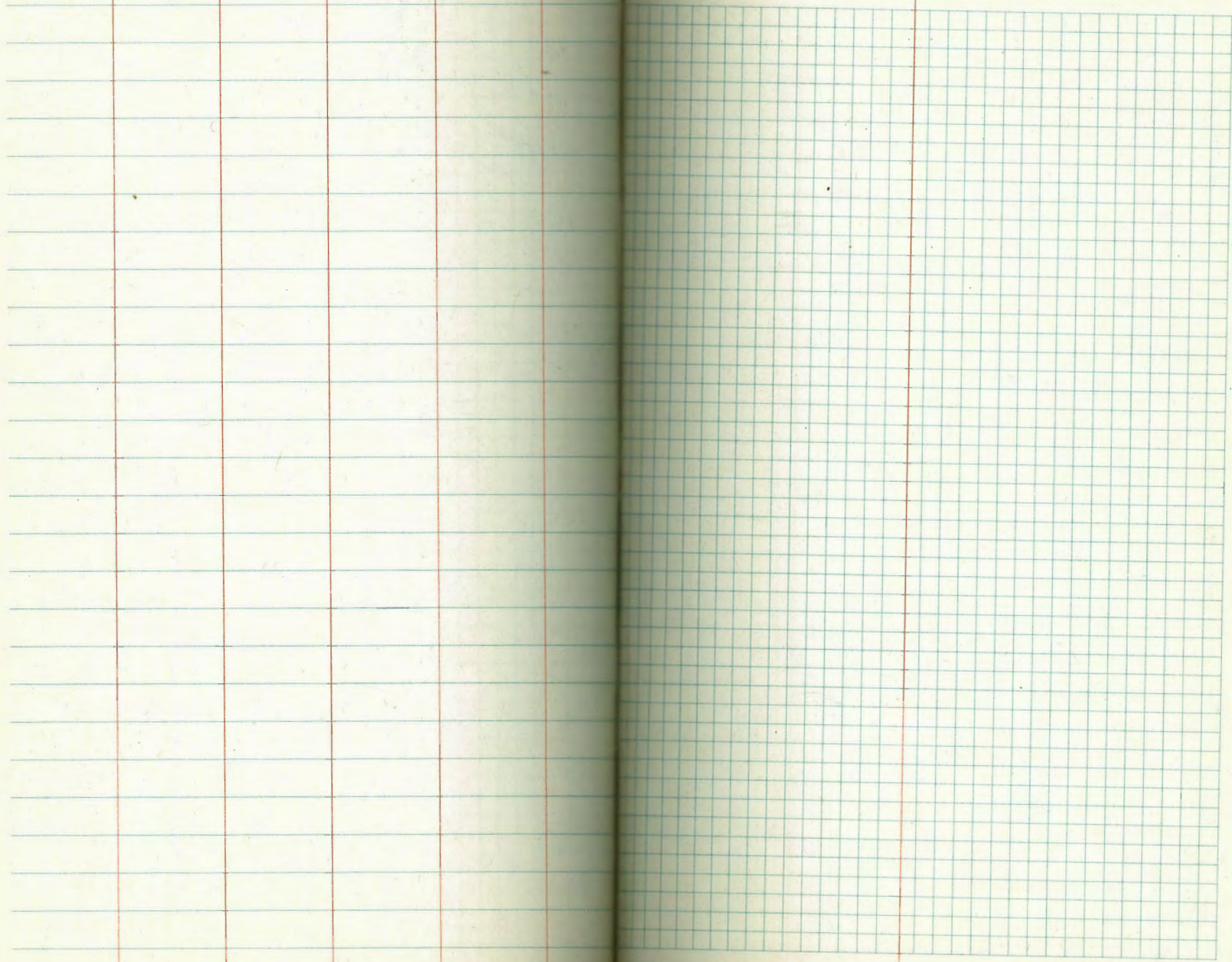
INDEXED  
 DEC 1950

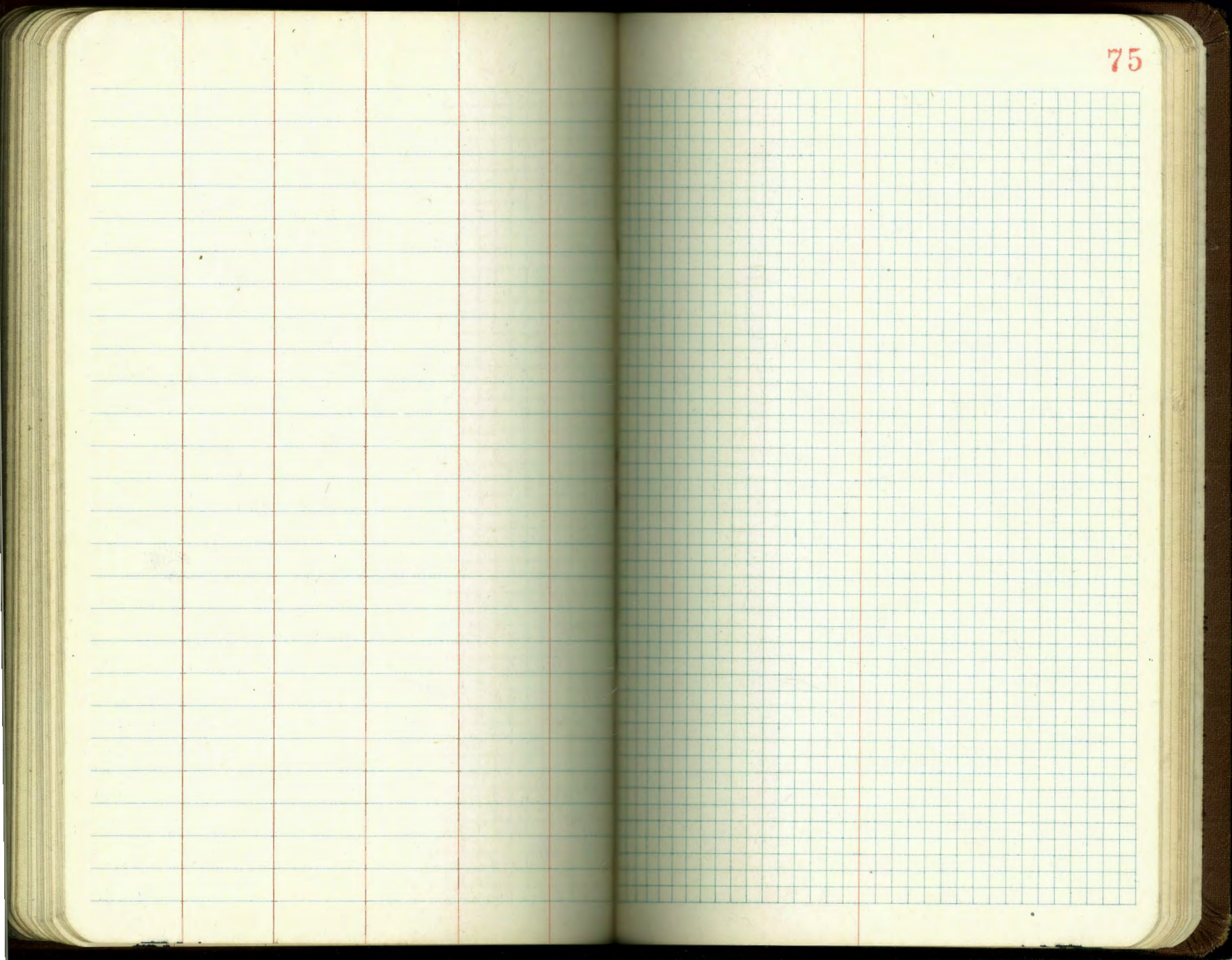
73



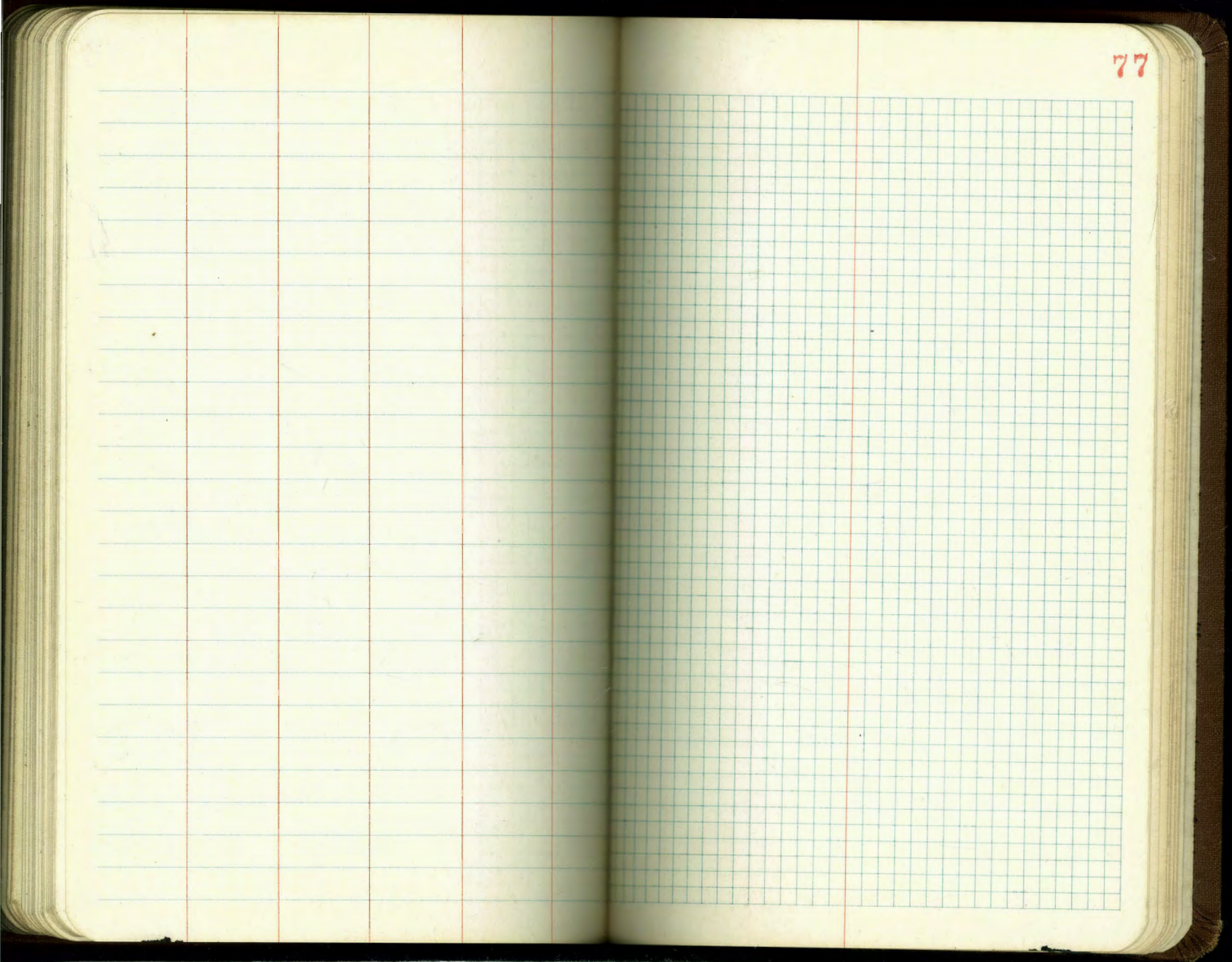
25th

ST













A ledger page with horizontal blue lines and vertical red lines forming columns. The page is divided into five columns by four vertical red lines. The columns are of varying widths, with the second and third columns being the widest. The page is otherwise blank.

A graph page with a green grid pattern. The grid consists of small squares, approximately 15 squares wide and 25 squares high. A vertical red line is drawn near the right edge of the grid, creating a narrow column on the right side. The page is otherwise blank.

## DIRECTIONS FOR USE OF TABLES

TABLE No. 1.

Distance of slope stake from side or shoulder stake for any width roadway, slope  $1\frac{1}{2}$  to 1. If ground is nearly level, the cut or fill at side stake is located by the double entry method in left column and top row. The number in body of table in same row and column gives distance from side stake to slope stake. If ground is not level estimate the difference in elevation between the side stake and slope stake, lower target by this amount if cut, elevate if fill. Add this amount to cut or fill and find distance in table. Set up rod at this point, and line of sight should cut target. If it does not make the slight adjustment necessary.

TABLE No. 9.

To find Tangent and External for curve of any other degree, divide by degree of curve and add correction found in column of corrections.

Degree of curve with a given  $I$  may be found by dividing tangent, (or external), opposite  $I$  by given tangent, (or external).

The distance from a point on the tangent to the curve is very nearly the square of the tangent length divided by twice the radius.

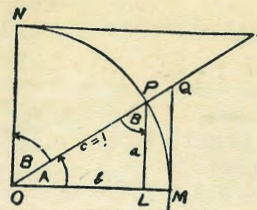
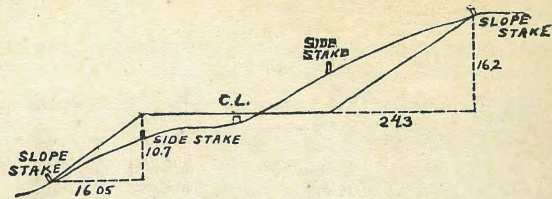


TABLE II  
TRIGONOMETRIC FORMULÆ.

$$\begin{aligned} \angle A &= \angle MOP & \angle B &= \angle PON = \angle OPL \\ R &= OB = c = 1 \\ \sin A &= \frac{a}{c} = \frac{a}{1} = a = \cos B = LP \\ \cos A &= \frac{b}{c} = \frac{b}{1} = b = \sin B = OL \\ \tan A &= \frac{a}{b} = \frac{MQ}{OM} = \frac{MQ}{1} = MQ = \cot B = MQ \\ \cot A &= \frac{NT}{ON} = \frac{NT}{1} = NT = \tan B = NT \\ \sec A &= \frac{OQ}{OM} = \frac{OQ}{1} = OQ = \csc B = OQ \\ \csc A &= \frac{OT}{ON} = \frac{OT}{1} = OT = \sec B = OT \\ \text{vers } A &= \frac{LM}{OP} = LM = \text{covers } B \# \\ \text{covers } A &= \frac{OP - LP}{OP} = OP - LP = \text{vers } B \\ \text{exsec } A &= PQ = \text{coexsec } B \\ \text{coexsec } A &= PT = \text{exsec } B \\ \sin \frac{1}{2} A &= \sqrt{\frac{1 - \cos A}{2}} & \cos \frac{1}{2} A &= \sqrt{\frac{1 + \cos A}{2}} \\ \sin 2A &= 2 \sin A \cos A & \cos 2A &= \cos^2 A - \sin^2 A \\ \text{Law of Lines} & \frac{\sin A}{a} = \frac{\sin B}{b} = \frac{\sin C}{c} \\ \text{Law of Cosines} & c^2 = a^2 + b^2 - 2ab \cos C \\ \text{Law of Tangents} & \frac{a+b}{a-b} = \frac{\tan \frac{1}{2}(A+B)}{\tan \frac{1}{2}(A-B)} \end{aligned}$$

58.05  
20.  
38.05



DISTANCES FROM SIDE STAKES FOR CROSS-SECTIONING.

SLOPE  $1\frac{1}{2}$  TO 1. ROADWAY OF ANY WIDTH.

	0	.1	.2	.3	.4	.5	.6	.7	.8	.9	
0	0 00	0 15	0 30	0 45	0 60	0 75	0 90	1 05	1 20	1 35	0
1	1 50	1 65	1 80	1 95	2 10	2 25	2 40	2 55	2 70	2 85	1
2	3 00	3 15	3 30	3 45	3 60	3 75	3 90	4 05	4 20	4 35	2
3	4 50	4 65	4 80	4 95	5 10	5 25	5 40	5 55	5 70	5 85	3
4	6 00	6 15	6 30	6 45	6 60	6 75	6 90	7 05	7 20	7 35	4
5	7 50	7 65	7 80	7 95	8 10	8 25	8 40	8 55	8 70	8 85	5
6	9 00	9 15	9 30	9 45	9 60	9 75	9 90	10 05	10 20	10 35	6
7	10 50	10 65	10 80	10 95	11 10	11 25	11 40	11 55	11 70	11 85	7
8	12 00	12 15	12 30	12 45	12 60	12 75	12 90	13 05	13 20	13 35	8
9	13 50	13 65	13 80	13 95	14 10	14 25	14 40	14 55	14 70	14 85	9
10	15 00	15 15	15 30	15 45	15 60	15 75	15 90	16 05	16 20	16 35	10
11	16 50	16 65	16 80	16 95	17 10	17 25	17 40	17 55	17 70	17 85	11
12	18 00	18 15	18 30	18 45	18 60	18 75	18 90	19 05	19 20	19 35	12
13	19 50	19 65	19 80	19 95	20 10	20 25	20 40	20 55	20 70	20 85	13
14	21 00	21 15	21 30	21 45	21 60	21 75	21 90	22 05	22 20	22 35	14
15	22 50	22 65	22 80	22 95	23 10	23 25	23 40	23 55	23 70	23 85	15
16	24 00	24 15	24 30	24 45	24 60	24 75	24 90	25 05	25 20	25 35	16
17	25 50	25 65	25 80	25 95	26 10	26 25	26 40	26 55	26 70	26 85	17
18	27 00	27 15	27 30	27 45	27 60	27 75	27 90	28 05	28 20	28 35	18
19	28 50	28 65	28 80	28 95	29 10	29 25	29 40	29 55	29 70	29 85	19
20	30 00	30 15	30 30	30 45	30 60	30 75	30 90	31 05	31 20	31 35	20
21	31 50	31 65	31 80	31 95	32 10	32 25	32 40	32 55	32 70	32 85	21
22	33 00	33 15	33 30	33 45	33 60	33 75	33 90	34 05	34 20	34 35	22
23	34 50	34 65	34 80	34 95	35 10	35 25	35 40	35 55	35 70	35 85	23
24	36 00	36 15	36 30	36 45	36 60	36 75	36 90	37 05	37 20	37 35	24
25	37 50	37 65	37 80	37 95	38 10	38 25	38 40	38 55	38 70	38 85	25
26	39 00	39 15	39 30	39 45	39 60	39 75	39 90	40 05	40 20	40 35	26
27	40 50	40 65	40 80	40 95	41 10	41 25	41 40	41 55	41 70	41 85	27
28	42 00	42 15	42 30	42 45	42 60	42 75	42 90	43 05	43 20	43 35	28
29	43 50	43 65	43 80	43 95	44 10	44 25	44 40	44 55	44 70	44 85	29
30	45 00	45 15	45 30	45 45	45 60	45 75	45 90	46 05	46 20	46 35	30
31	46 50	46 65	46 80	46 95	47 10	47 25	47 40	47 55	47 70	47 85	31
32	48 00	48 15	48 30	48 45	48 60	48 75	48 90	49 05	49 20	49 35	32
33	49 50	49 65	49 80	49 95	50 10	50 25	50 40	50 55	50 70	50 85	33
34	51 00	51 15	51 30	51 45	51 60	51 75	51 90	52 05	52 20	52 35	34
35	52 50	52 65	52 80	52 95	53 10	53 25	53 40	53 55	53 70	53 85	35
36	54 00	54 15	54 30	54 45	54 60	54 75	54 90	55 05	55 20	55 35	36
37	55 50	55 65	55 80	55 95	56 10	56 25	56 40	56 55	56 70	56 85	37
38	57 00	57 15	57 30	57 45	57 60	57 75	57 90	58 05	58 20	58 35	38
39	58 50	58 65	58 80	58 95	59 10	59 25	59 40	59 55	59 70	59 85	39
40	60 00	60 15	60 30	60 45	60 60	60 75	60 90	61 05	61 20	61 35	40
41	61 50	61 65	61 80	61 95	62 10	62 25	62 40	62 55	62 70	62 85	41
42	63 00	63 15	63 30	63 45	63 60	63 75	63 90	64 05	64 20	64 35	42
43	64 50	64 65	64 80	64 95	65 10	65 25	65 40	65 55	65 70	65 85	43
44	66 00	66 15	66 30	66 45	66 60	66 75	66 90	67 05	67 20	67 35	44
45	67 50	67 65	67 80	67 95	68 10	68 25	68 40	68 55	68 70	68 85	45
46	69 00	69 15	69 30	69 45	69 60	69 75	69 90	70 05	70 20	70 35	46
47	70 50	70 65	70 80	70 95	71 10	71 25	71 40	71 55	71 70	71 85	47
48	72 00	72 15	72 30	72 45	72 60	72 75	72 90	73 05	73 20	73 35	48
49	73 50	73 65	73 80	73 95	74 10	74 25	74 40	74 55	74 70	74 85	49
50	75 00	75 15	75 30	75 45	75 60	75 75	75 90	76 05	76 20	76 35	50

Computed by L. Leland Locke.

159.46  
188  
5.876  
29380  
2.00  
2

59.07

~~040256~~  
05.27  
12.38  
17.65  
34.89  
52.54

173

979  
43  

---

1022

26  
42  

---

668  
26