

1789

1789

MICROFILMED

DEC 29 1964

MADE IN U. S. A.

Our Leather Bound Engineers Note Books are carried in the following rulings:

- No. 380 LEVEL BOOK. Left and Right Hand Page the same as Left Hand Page of this Book.
- No. 382 FIELD BOOK. Left Hand Page as in this Book, Right Hand Page 4x4 to the inch, Center Line Red.
- No. 384 MINING TRANSIT BOOK. Left Hand Page as in this Book, Right Hand Page 8x8 to the inch, Center Line Red.
- No. 385 FIELD BOOK. Left Hand Page as in this Book, Right Hand Page 8 vertical and 4 horizontal lines to the inch, Center Line Red.

We also carry the Note Books listed above, bound in extra strong Fabri-Hide (otherwise the same quality of book,) which can be furnished at a somewhat lower price.

In ordering Fabri-Hide covered books, add the letter "F" to catalog number.

THE FREDERICK POST CO.

ENGINEERING and DRAFTING SUPPLIES

P. O. Box 803

CHICAGO

INDEXED

to page # 74

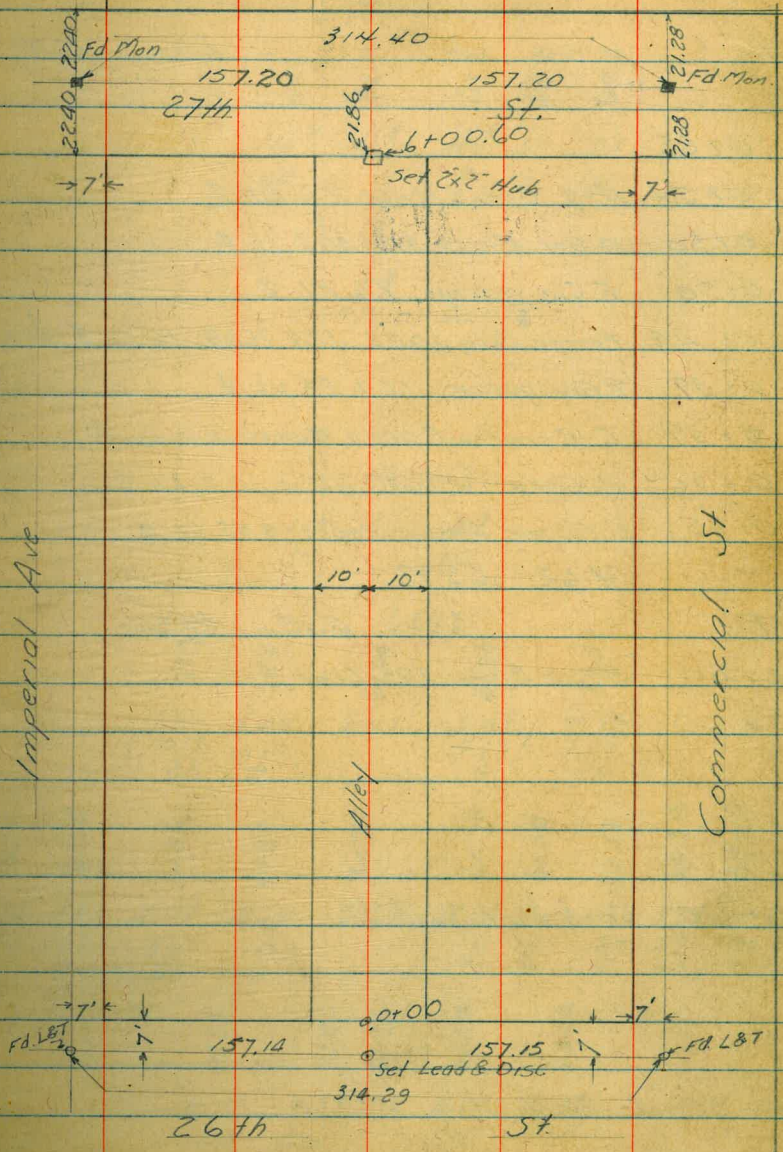
Index

Page 2-8 X Sects Alley Block 44 Hensley's Add /
17-29 Alleys Blks. 108-111-116 M.B.
30-38 Ampudia - Whitman to Sunset

July 11, 1947
Hendricks
W Moore
Sherman
N.O. # 31232

X Sect's Alley Block 40
Hensley's Add

INDEXED
WIK
JAN 27 1949



Levels for Alley Block 44
Hensley's Add. Contd.

Sta.	H.I.	-	Elev.	B.M.				
8+00	Beg Board Fence	9.9	Rt of Φ		60.4	60.8	60.9	61.0
3+00					55	5'	5"	49
					20	10	10	15
12+86	Φ garage	14.5	Rt Φ	Dirt Floor			61.2	
							47	
2+50						60.8	60.8	60.7
						5'	5'	5"
						10	10	20
2+00					60.8	60.5	60.6	60.9
					5'	5'	5"	49
1+99	Power Pole A 2634	9.7	Rt Φ	to Back Edge	20	10	10	20
1+80	Beg Board Fence	10.4	Lt Φ					
1+80	Power Pole JPA 2631	10.3	Lt Φ	to Back Edge				
1+75	E. Cor. Frame House	10.3	Rt of Φ		60.7	60.7	60.9	60.8
1+50					5"	5"	5"	5'
					20	10	10	
1+40	W. Cor. Frame House	10.0	Rt Φ					
1+37	E. Cor. Frame House	10.3	Rt Φ					
1+19	W. Cor. Frame House	10.3	Rt Φ					
1+19	End Board Fence	10'	Rt Φ				60.70	
1+13	End Conc Ramp	10.9	Lt Φ				5.22	
1+06.5	Φ garage	Conc Floor	14.6	Lt Φ			(60.91)	
1+00	Beg. Conc Ramp	11.0	Lt Φ				5.01	
1+00	E. Cor. Brick Bldg	10.2	Lt Φ				(60.67)	
							5.25	
0+69	Power Pole P.H. 2612	9.7	Rt Φ	to Back Edge	10		60.6	60.8
							5.2	5'
							10	10

65.92

HI = 65.92

Levels for Alley Block 44
Hensley's Add Cont'd

Sta + H.I. - Elev B.M.

14+25 ^{8"} Beg Cont' wall 10.4 Rt &

14+25 End Board fence 10.4 Rt &

14+18 & Garage Dirt Floor 10.0 Lt &

14+11 End Fence 10.3 Lt &

5.54 67.03 ✓

TP 4.43 61.49 ✓

14+00 Power Pole D 7699 P 9.7 Lt & to Back edge

13+77 Power Pole A 2660 8.8 Rt & to Back edge

3150

13+49 Beg Board fence 10.9 Lt &

13+49 E Cor. Frame Bldg 10.9 Lt &

13+25 W Cor. Frame Bldg 11.0 Lt &

13+25 End Board Fence 11.0 Lt &

13+02 Power Pole 415693 M 9.8 Lt & to Back edge

13+01 Power Pole A 2640 9.4 Rt & to Back edge

65.92

64.41

262

61.3

57

HT = 67.03

61.6

61.4

61.3

61.3

4²
10

4⁵
10

4⁵
10

4⁶
20

61.3

61.3

61.2

61.0

61.0

4⁴
20

4⁹
10

4⁷

4⁸
10

4⁹
20

HT = 65.92

Levels for Alley Block 44
Hensley's Add Contd.

Sta	Desc	H.L.	Elev	B.M.	℄
5+07	W Cor. Frame House	10.8	Lt. ℄		
5+00					62.1 49 10
5+00	End Conc. wall Beg Bldg	10.5	Rt. ℄		62.0 62.1
5+06	End Conc. Walk	10.7	Lt. ℄		(64.61) 242 Top Wall (62.41) 462
4+99	Beg. Conc. Walk	10.5	Lt. ℄		(62.26) 477
4+94	Dead Man to Pole	83	Rt. ℄		
4+76	Power Pole A 2672	90	Rt. ℄ to Back edge		
4+75	End Frame Bld. Beg. Wire Fence	10.3	Lt. ℄		
4+60					62.3 47 10
4+45	End Board Fence Beg. Frame Bldg	10.3	Lt. ℄		61.9 51 5
4+30					61.7 53 10
4+25	Board Fence	10.2	Rt. ℄		61.7 61.6 61.4 62.1
					54 5 49 10

6703

HT = 6703

Levels for Alley Block 44
Hensley's Add. Cont'd

Sta + H1 - Elev B.M.

5.61 69.26

TP 3.38 63.65 ^{Hub & Alley} Sta 6+0060

6+0060 W. Line 27th St.

64.5	63.9	63.9	64.0
2.5	3.1	3.1	3.0
10	7		10

6+00 E. Cor. Bldg. 10.6 Rt. E

63.6	63.2	63.1	63.4
------	------	------	------

5+75 End Wire fence 10.2 Lt. E

3.4	3.8	3.9	3.6
10	7		10

5+70.5 Man Hole & Alley

63.20
3.83
Rim

62.6	62.6	62.6
------	------	------

5+50.

4.4	4.4	4.4
10		10

5+40 Dead Man to Pole 9.4 Lt. E

5+27 Power Pole D7700T 9.8 Lt. E Back edge

HI- 6703

5+26 Beg Wire Fence 10.3 Lt. E

5+25 E. Cor. Frame House 10.3 Lt. E

6703 /

Levels for Alley Block 44
Hensleys Add.

5 Sta. + H-1 - Elev. B.M.

5	B.M.		5.18	63.97	63.92	H.V. BP 26th & Imperial			
5		3.56	69.15						
	TP.		3.67	65.59					
5	6+22.46					64.6	64.5	64.46	64.35
						42	48	4.80	4.91
						50		11	50
								Beg oil Paving	
5	6+12.60					64.1	63.7	63.71	63.77
						52	54	5.55	5.49
						50		11	50
								Beg oil Paving	
5	6+10.60	Cb. Line 27th St.				64.8	64.2	64.2	64.1
						45	51	51	52
						50	10	10	50

6926 ✓

HI = 6926

Walker Proposed Sewer Extension
 Becker 17, Alley West of Park Blvd
 Johnson At Cypress St.
 7-21-47

INDEXED

B.M. J.L.B.P. ✓

Cypress
 - Herbert 8.90 299.39 290.49 ✓

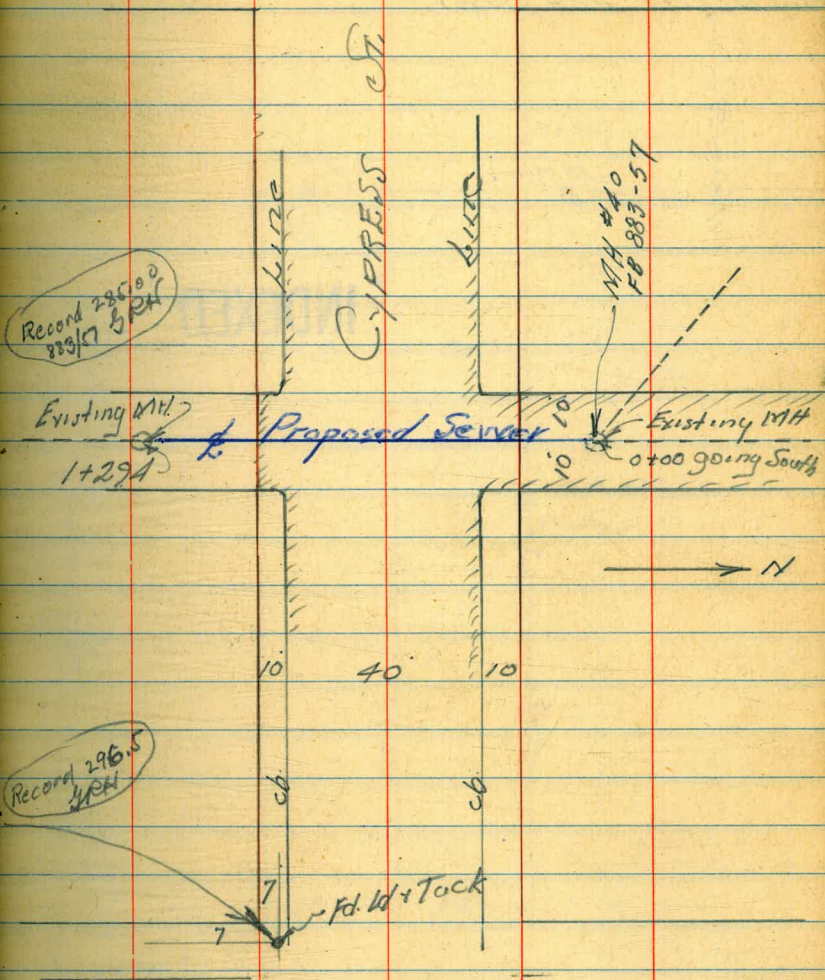
6	0+00 on Rim MH	5.44	293.95	
	" "Concrete Floor MH	13.94	285.45	MH # 40
	" on Flow of Invert	14.21	285.18	←
16	0+35 = N Line Cypress	5.54	293.85	on Park
	+45 = N Gut	5.69	294.70	
5	+65 = L Cypress	5.74	294.15	
	+85 = S. Gut.	5.93	293.46	
5	+95 = S Line Cypress	5.75	293.64	
	Existing MH			Flush Tank
	1+294 = Rim	3.42	295.97	
	" on Top Sewer Pipe	7.52	291.87	
	" " Approx. Flow =	8.12	291.27	
	Park Blvd + Cypress			
	chk. S.M. 7' Tuck	2.78	296.61	

HERBERT

INDEXED
 O.S.R.

ST.

9

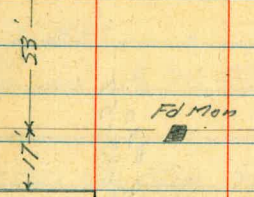


PARK

BLVD.

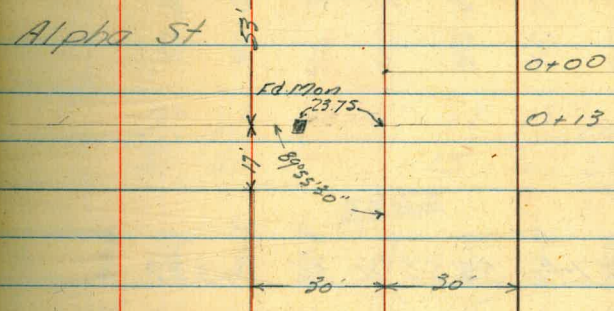
Hendricks X Sects 40th St. Alpha to Gamma
Hardin
Smith
Worrell
Aug 12, 1947 NO# 25001

Indexed M.C.R.
8-13-47



INDEXED

39th St

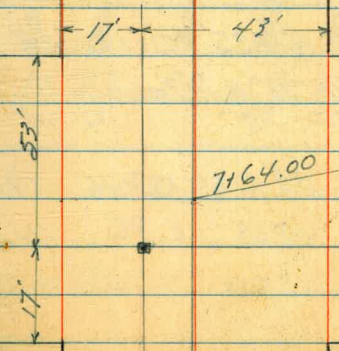


0+00
0+13



40th St

7456.40
Fd Mon



Gamma

7164.00 ST

Levels X Sects 40th St. Alpha to Gamma

Sta + H.I. - Elev BM

1150

46.5
46.6
46.3
46.4
45.8
45.7
45.5
90 89 90 91 97 98 100
50 30 15 15 30 50

T.P. 1174 55.53 0.56 43.79

41.6
41.3
41.2
42.8
42.2
41.9
42.9
43.0
42.8
28 31 32 15 25 25 15 15
50 30 23 15 18 25 30 50

1100

Notes Reduced
8-19-47
D.D. Cannon

0+53

36.9
37.2
37.1
37.2
37.4
37.2
37.4
36.2
36.2
75 72 73 76 70 62 60 80
50 20 15 15 23 30 50

0+40 So Line Alpha Power pole 25' R.R. # 1402

34.9
34.9
35.4
35.4
35.5
35.5
35.4
33.8
95 95 90 90 81 89 90 100
50 30 25 15 15 30 50

T.P. 1144 44.35 0.10 32.91

32.2
30.0
30.0
30.0
30.3
30.8
30.1
08 30 30 30 27 27 29
50 30 15 15 30 50

0+00 E 40th St & Alpha

T.P. 13.17 33.01 0.04 19.84

33.01

T.P. 5.24 19.88 2.96 14.64

B.M. 6.54 17.60 11.06

SEBP Alpha & 38th St

Levels North St. Alpha to Gamma Cont'd

Sta + HI - Elev BM

2740

TP 12.37 67.85 0.05 55.48

2787

2755 Beg Board fence on Rt. 28 R.R.

2730

2716 Guy to Pole 23.5 R.R.

2700

1797 Power Pole 23.7 R.R. H. 1415

1780

55.53

60.5-
74.6⁸
50 30 15

61.1
50⁰⁰
15

62.1
51¹⁵
15

62.9^A
6⁰⁰
15

61.6
6¹⁵
25

61.5
6¹⁵
30

61.6
6¹⁵
50

62.9

55.1
0.4
50

54.7
0.8
30

54.9
0.16
15

67.8
35.0
0.5
15

55.3
0.15
30

55.5
0.0
50

55.5
0.0
50

53.0
2.5
50

52.9
2.6
30

53.3
2.2
15

53.3
2.2
15

52.9
2.6
15

52.5
3.0
30

52.7
2.10
50

50.8
4.7
50

50.5
5.0
30

50.4
5.1
15

50.1
5.4
15

50.7
4.8
15

51.1
4.4
30

51.3
4.2
44

48.7
6.8
50

49.8
5.7
30

49.8
5.7
15

49.1
6.4
15

49.0
6.5
15

48.9
6.6
30

49.3
6.5
50

48.3
7.0
50

48.2
7.3
30

48.4
7.1
15

48.2
7.3
15

47.7
7.8
15

47.5
8.0
30

47.4
8.1
50

55.53

Levels 40th St Alpha to Gamma
Contd.

4

Sta + H.L. - Elev B.M.

5+83 Beg gar 32' RT of E Conc Fl

5+63 End Board fence 34' RT of E

5+50

T.P. 13.38 80.92 0.31 67.54

5+00

4+50

4+00

3+70

6785

67.7	67.5	67.5	67.5	67.9	67.5	67.2
13 ²	13 ⁴	13 ⁴	13 ⁴	13 ⁰	13 ⁴	13 ²
50	30	15	15	30	30	50
66.8	66.9	67.1	66.9	67.4	66.9	67.1
1 ¹	1 ⁰	0 ⁸	1 ⁰	0 ⁵	1 ⁰	0 ⁸
50	30	15	15	30	30	50
66.7	66.7	66.8	66.5	66.6	66.6	66.7
1 ²	1 ²	1 ¹	1 ⁴	1 ³	1 ³	1 ²
50	30	15	15	30	30	50
66.3	66.0	65.7	65.9	66.3	66.5	66.5
1 ¹	1 ⁹	2 ²	2 ⁰	1 ⁶	1 ⁴	1 ⁴
50	30	15	15	30	30	50
63.6	63.9	64.3	64.6	65.0	65.0	65.3
4 ³	4 ⁰	3 ⁶	3 ³	2 ²	2 ⁹	2 ⁶
50	30	15	15	30	30	50

68.43

12.49

32
Conc Fl

80.92

67.85

Sta. + H.I. - Elev B.M.

B.M. 10.89 74.05 74.02

TP 0.75 84.94 9.20 84.19

7+87

7+67

7+64 & Gamma

93.39

5.01 13' Men 41st & Gamma

88.7	89.2	90.1	90.1	90.0	88.9	87.6	86.2	84.0
4.7	4.0	3.3	3.3	2.4	4.5	5.8	7.0	9.4
100	50	30	15		15	30	50	100

87.9	88.6	88.6	88.4	88.2	87.8	87.1	86.0	84.0
5.5	4.8	4.8	5.0	5.2	5.6	6.3	7.4	9.4
100	50	30	15		15	30	50	100

87.8	88.6	88.9	88.0	86.4	87.3	84.6	84.7	83.8
5.6	4.8	4.5	5.4	7.0	6.1	8.8	8.7	9.4
100	50	30	15		15	30	50	100

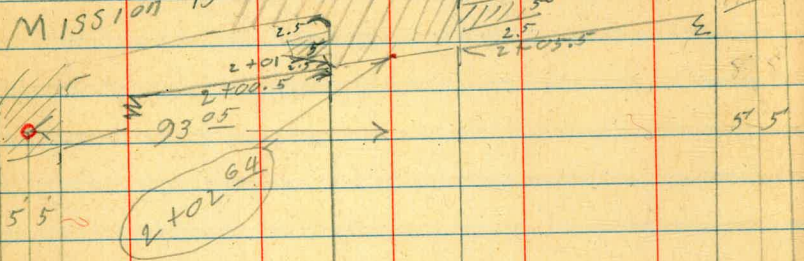
93.39

Alleys BIKs 108-111+116
Mission Beach

2+42.8

Center strip

Mission Blvd.



Kennebeck Ct.

BIK 116

BIK 116

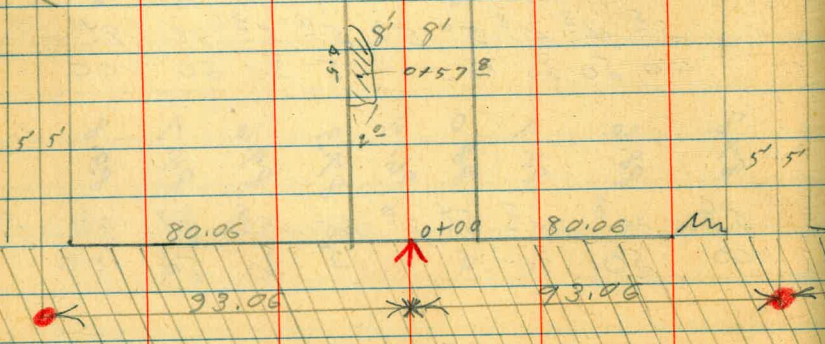
Jersey Ct.

BIK 111

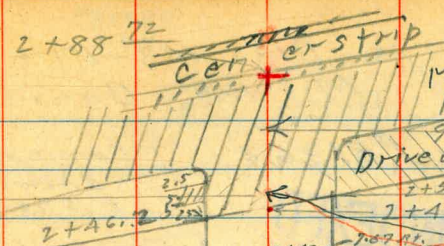
BIK 111

Santa Barbara Place

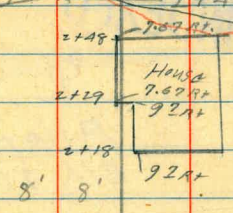
Cut cross R.R. 20' x 20'



Strand Way
100.03



- Pol disk
- 11 L+T
- Set nail
- + 11 chisel cross
- ▲ 11 " point



No. L+T.
split block
for line

16

x-sec. Alleys, BIKs 108-111 + 116
Mission Beach

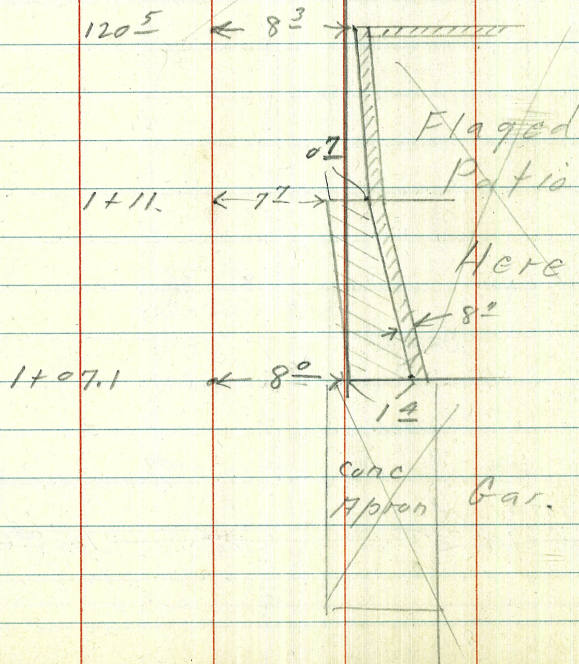
Work Order #31363

INDEXED

Sommermeier
W Moore
E Sherman
10-1-47

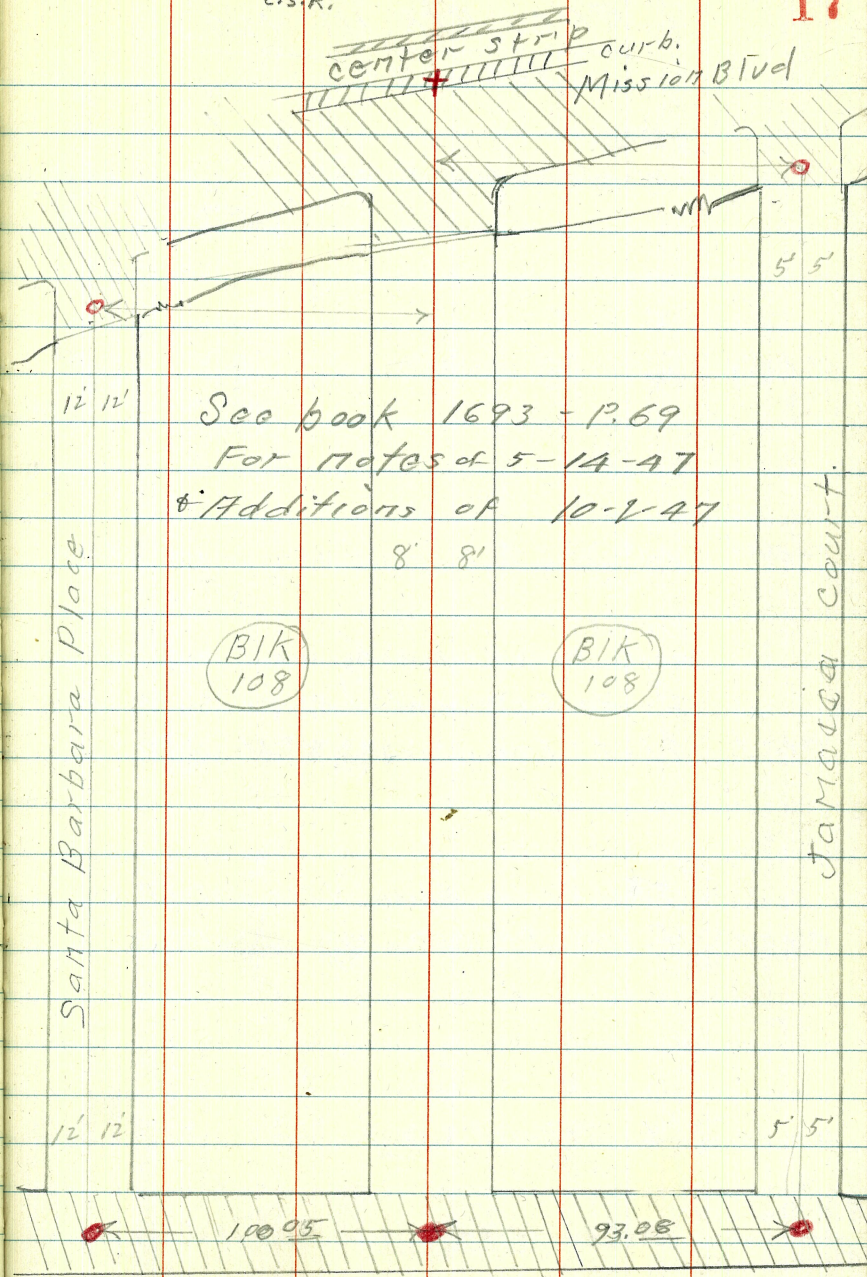
♀
Alley
BIK 216

Detail for notes
on Page 26



Indexed
C.S.K.

17



See book 1693 - P. 69
For notes of 5-14-47
& Additions of 10-1-47
8' 8'

Alley BIK III M.B.
16" Wide

0+25 8th Lt. End. of walk. + wall.

0+21

0+06^E 14th Rt. = Φ Sing. Car. dirt floor

side. Walk faced up into wall of alley
2nd wide E+W. walk approx 5" thick

0+03 7th Lt. = End apron 8th Lt. = start of

7th Lt. = Edge apron. (See sketch P. 16)

0+00 = E. line Strand way also

0-10 = Φ Strand way

B.P. Sea wall + Santa Barbara Pl. 3.61 10.64

7.03

Lt. North

Φ

Rt. South

18

5.89
4.75
on walk
8.05

5.93
4.71
on walk
8.0

5.99
4.65
8.0

5.91
4.73
8.0

5.60
5.04
5.0

4.7
5.9
8
Bottom of wall

5.2
5.4
7.9
Bottom of wall
also ground

5.96
4.68
7.9

5.73
4.91
7.8

5.45
5.19
5.0

10.64

4.6
6.0
8
Crd

4.4
6.2

5.35
5.29

5.37
5.27

4.3
6.3
6

5.76
4.88
8

5.45
5.19
8

4.7
5.9
8

5.91
4.93
5.0

5.89
5.05
5.0

5.0
5.6
2.0

5.64
5.0
14.5

0+50

$\frac{7.3}{8}$ 5.3

7.7

$\frac{7.7}{8}$ 2.9

$\frac{7.3}{8}$ 5.3

0+38 8³ Rt. = start conc. Apron + Double Bar.

6.81
8.3
Apron

5.94
6.70
11.4
Apr.

0+35 8² Lt. = Apron 10² Lt. = start Gar. doors

6.74
10.8
conc Floor

6.88
8.2
conc.

to double bar.

0+31 8² Lt. = start comb walk + Apron

4.30
6.44
8.1
conc.

4.0
6.6
8

3.8
6.8

3.7
6.9
7

4.0
6.6
8

4.6
6.0
15

conc. slab.

0+30 8¹ Lt. End board fence +

5.53
5.11
8.1
on slab

About 2 to 3" thick.

cons. etc. (2' wide north & south)

start rough conc. slab for trash

0+25¹ 8¹ Lt. = start board Fence also

10.64

4.75
8.1
top
slab.

10.64

10th Lt. = start Ex-Bar. Now dwelling
 1+54 8.7 Lt. start conc. apron

-0.26
 5.58
 10.1
 Apron
 Bidg.

-0.37
 5.70
 8.7
 Apron

-0.1
 5.4
 8.9
 Ord

1+50
 T.P. 3.84 5.33 9.15 1.49

-0.1
 5.4
 8

0.0
 5.3
5.33

0.1
 5.2
 8

1+03^E 8th Rt. = P. pole # P.A. 7A2

1+00

9.07
 9.9
 80

110
 9.6
 8

9.10
 9.6

113
 9.3
 8

112
 9.4
 20

0+65 = 8th Lt. = End conc slab 7.9 Rt. = End Picket fence

0+60 8th Lt. = End picket fence

0+55^E 7th Rt. = start picket fence

0+54^E 8th Lt. = start picket fence

conc. patio slab.

0+53^E 8th Rt. = End Conc. Apron & start of

2.8
 7.8
 75

2.4
 8.2
 8

2.2
 8.4

2.6
 8.0
 79

3.00
 7.34
 8.3
 slab

3.57
 7.27
 8.3

3.76
 6.88
 11.4 Bar floor

0+51^E 8th Lt. = End Apron. 10th Lt. = Car.

10.64

3.84
 6.80
 10.7
 Car Floor.

3.68
 7.02
 8.2

10.64

2+29 $\left. \begin{array}{l} 7.67 \text{ Rt.} \\ 9.7 \text{ Rt.} \end{array} \right\} \text{Jog in House (see } \overset{\text{see}}{\text{Page 16)}})$

-0.1	-0.0	-0.1	-0.1	-0.1
$\frac{5.4}{20}$	$\frac{5.3}{8}$	5.4	$\frac{5.4}{7.6}$	$\frac{5.4}{7.7}$
			Brd.	Brd.

2+18 9² Rt. = start Stucco House

2+00

-0.1	0.0	0	-0.1	-0.2
$\frac{5.4}{20}$	$\frac{5.3}{8}$	5.3	$\frac{5.4}{8}$	$\frac{5.5}{20}$

1+96 8¹ Rt. = P. pole + R766

1+78^E 8² Lt. = ± 2' wide Conc Walk.

0.1
-
 $\frac{5.19}{8.8}$

1+7A 10² Lt. = End Bldg.

-0.25	-0.41	0	-0.1	-0.2	0.0	0.1
$\frac{5.58}{10.1}$	$\frac{5.74}{8.7}$	$\frac{5.3}{8.7}$	5.4	$\frac{5.5}{6}$	$\frac{5.3}{8}$	$\frac{5.2}{20}$
Apron at Bldg	Apron	Brd.				

5+6A 8² Lt. = End Conc. Apron

1+59 = 10^L Lt. = ± old Gar. door

-0.27
 $\frac{5.60}{10.1}$

5.33

5.33

BIR III.

orig B.M. 55 3.79 7.03 check
 T.P 6.36 10.82 0.87 4.46

2+50 ± } 2nd Rt. = old sump.
 Taken along M.B. curb line
 W. Cb. line Mission Blvd

2+50⁷⁵ 8th Rt. = start Conc. curb + pav.

2+48⁷⁵ Int. Conc. pav. on E Hwy

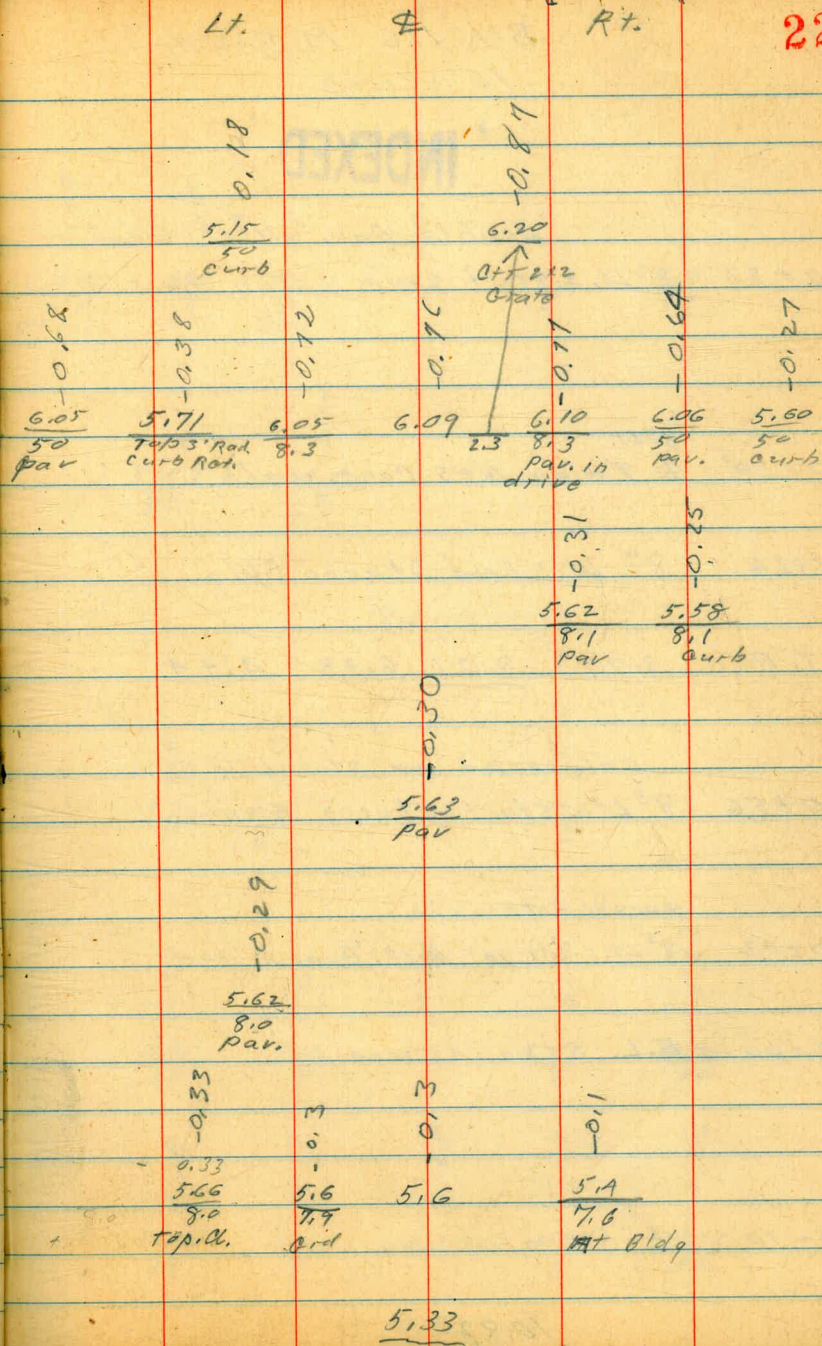
2+48 7th Rt. = End stucco House

2+46⁷⁵ 8th Lt. = start Conc. pav

2+46.25 = 8th Lt. = start Conc. curb

5.33

22



BIK 116 M. Beach
16' wide

INDEXED

double car. 11² Lt. Car

0+33 8^o Lt. = start conc. apron for

4.20	4.15	4.1	4.0	3.9	4.5
$\frac{4.01}{11.8}$	$\frac{4.06}{8}$	$\frac{4.1}{8}$	4.2	$\frac{4.3}{8}$	$\frac{3.7}{2.0}$
11 Car.	Car.	Grd.			

0+29⁵ = 8^o Lt. 7' wide NTS Conc. walk.

4.53	4.2
$\frac{3.68}{8}$	$\frac{4.0}{8}$
	Grd.

0+26 8^o Lt. = End Stucco Bldg.

T.P 3.77 8.21 6.38 4.44

8.21

Entrance on strand way.

0+56 8^o Lt. = start stucco Garage.

5.0	5.6	5.4	5.5
$\frac{4.8}{8}$	$\frac{5.2}{6}$	5.4	$\frac{5.3}{8}$

garage entrance.

0+02 8^o Lt. = ctr 10" post. Guard for

5.51	5.66	5.33	5.73	5.86
$\frac{5.31}{50}$	$\frac{5.6}{8}$	5.47	$\frac{5.07}{8}$	$\frac{4.96}{50}$

0+00 = E.L. Strand way.

0-10 = 8 Strand way

5.34	5.39	5.45	5.44	5.56
$\frac{5.58}{50}$	$\frac{5.43}{8}$	5.37	$\frac{5.38}{8}$	$\frac{5.26}{50}$

10.82

10.82

0+62 9^A Lt. = ± 2^Σ wide N.S. Walk

2.53
5.68
9.4
± walk

0+60

2.5
5.7
8
2.4
5.7
8
4.2
5.8
8

Apt. over garage

0+58 8^o Lt. = ± wooden stairs to

3.87
4.54
8.0
on bottom step

0+57⁸ = ± 4^Σ x 2' irregular conc. step (Page 16)

4.94
8.0
Back of step
3.32
4.89
6.1
top of step
5.3
6.1
Ord

0+56⁷ 8¹ Lt. = End Conc. Apron 11^A Lt. =

End Gar.

4.16
4.05
11.4
At Gar
3.70
4.50
8.1
Apron
5.0
7
Ord.

0+45 11³ Lt. = ± 16' doub. doors to Gar.

4.21
4.00
11.3
Base Floor

8.21

8.21

double Bar.

0+78 10' Lt. = start Conc Apron +

	1.01	0.78	0.9
	7.20	7.43	7.3
	12.6	10	10
Bar Floor			Grd

0+91 6.8 Rt. = start Conc. Apron + Double Bar.

	1.1	1.2	1.5	1.3	1.35	1.67
	7.1	7.0	6.7	6.9	6.86	6.54
	25	12	8		7.7	10.3
					Apron	Bar Floor

0+89 8° Lt. = End^{con} Apron + 3 car. Bar.

	2.67	2.54	1.92	1.7	1.4
	5.54	5.67	6.29	6.5	6.8
	12.1	12	8	8	6
Floor	Apron	Apron	Grd	Grd	

0+82 8° Rt. = End Conc. Apron + double Bar.

	2.0	1.8	1.6	1.8	2.09	2.71
	6.2	6.4	6.6	6.4	6.17	5.50
	8	6		8	8.8	13.2
					Apron	Bar Floor

0+65⁵ 8° Lt. = start conc. Apron + 3 car Bar.

	2.64	2.54	2.99
	5.57	5.67	5.73
	12.1	12	8
Bar Floor		Apron	

0+64⁷ 8⁷ Rt. = start conc Apron + Double Bar

	2.41	2.80
	5.80	5.41
	8.7	13.2
	Apron	Bar Floor

Double Car.

1+17 10² Lt = End Conc. Apron. +

0.96	0.24
3.31	4.03
12.8	10.2
Car Floor	Apron

1+11 Cont.

0.96
3.31
8.4
Top wall

1+11 8.4 Rt. = Δ in wall
7.7 Rt = End of slab

0.4	0.5	0.5	0.1	0.42	0.42
3.9	3.8	4.2	3.85	3.85	
8	7.7	7.7	7.7	8.4	
	Ord	Bottom slab	Top slab	on slab	

1+07¹ Cont.

0.44
3.83
8.4
on slab

0.99
3.28
8.4
top wall

1+07¹ Board fence on top of wall
8⁴ Rt = start 8" wide conc. wall } See page 17
7¹ Rt = start conc. slab

T.P. 2.42 4.27 6.36 1.85

0.7	0.4	0.1
3.6	3.83	4.2
7.7	7.7	7.7
Ord.	on slab	Bottom of slab

face 8" conc. wall. 10³ Rt = End Double Car

1+07 6⁸ Rt = End Conc. Apron. ~~9~~ Rt =

0.10	1.66
7.51	6.55
6.8	10.3
Apron	Car. Floor

8.21

8.21

1479^E 11^LRt. = £ 38' wide Conc. Walk.
$$\begin{array}{r} -0.13 \\ 4.40 \\ 11.1 \\ \hline \text{walk + Grd.} \end{array}$$
1473 8^o Lt. = End Conc. apron to Doub. Bars
$$\begin{array}{r} -0.5 \\ 4.8 \\ 20 \\ \hline \end{array} \quad \begin{array}{r} -0.7 \\ 5.0 \\ 8 \\ \hline \end{array} \quad \begin{array}{r} -0.4 \\ 4.7 \\ \hline \end{array} \quad \begin{array}{r} -0.22 \\ 4.49 \\ 8 \\ \hline \text{Apron} \\ + \text{Grd.} \end{array} \quad \begin{array}{r} 0.34 \\ 3.93 \\ 11 \\ \hline \text{Bar Floor} \end{array}$$

Double Bar.

1454^E 8^o Rt. = start Conc. Apron to
$$\begin{array}{r} -0.22 \\ 1.49 \\ 8 \\ \hline \text{Apron} \end{array} \quad \begin{array}{r} 0.37 \\ 3.90 \\ 11.0 \\ \hline \text{Bar Floor} \end{array}$$
1451 11^o Rt. = £ 57' Conc. walk
$$\begin{array}{r} 4.46 \\ 11 \\ \hline \text{walk} \end{array}$$
1443 8^o Rt. = £ 9^E wide Level conc.

Apron. to single garage

$$\begin{array}{r} -0.2 \\ 4.5 \\ 20 \\ \hline \end{array} \quad \begin{array}{r} -0.4 \\ 4.7 \\ 8 \\ \hline \end{array} \quad \begin{array}{r} -0.3 \\ 4.6 \\ \hline \end{array} \quad \begin{array}{r} -0.19 \\ 4.46 \\ 8 \\ \hline \text{Grd. +} \\ \text{Apron} \end{array} \quad \begin{array}{r} 0.38 \\ 3.89 \\ 11 \\ \hline \text{Bar Floor} \end{array}$$
1429 7^o Rt. = P. pole # P.A. 7481420^E 8^o Lt. = End Wall + board fence.
$$\begin{array}{r} 0.3 \\ 3.9 \\ 8.3 \\ \hline \text{Grd} \end{array} \quad \begin{array}{r} 0.1 \\ 4.2 \\ 8.3 \\ \hline \text{Bottom} \\ \text{wall} \end{array} \quad \begin{array}{r} 0.96 \\ 3.31 \\ 8.3 \\ \hline \text{Top wall} \end{array}$$

4.27

4.27

2+01^L 10' Rt. = End conc. walk

2+0-0.29
4.56
10.1

2+01 8³ Lt. = start paving

-0.45
4.72
8.3
pav

-0.5
4.8
8.2
Ord

-0.5
4.8

0.3
4.6
8

2+00⁵ 8³ Lt. = start curb.

-0.47
4.74
8.3
top. Ch.

start walk.

1+98 10' Rt. = Brk in grade @ End Apron,

80.0
-0.1
4.35
10.1
Apron +
walk

0.23
4.04
12.1
Gar. Floor.

1+90

-0.5
4.8
8

0.3
4.6

1.0
4.4
8

Apron + double Gar. + walk.

1+83³ 10' Rt. = start conc. comb. walk +

-0.04
4.31
10.1
Apron

0.23
4.04
12.1
Gar. Floor.

AMPUDIA

X- Sec. Whitman to Sunset.

W.O. 25001

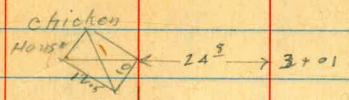
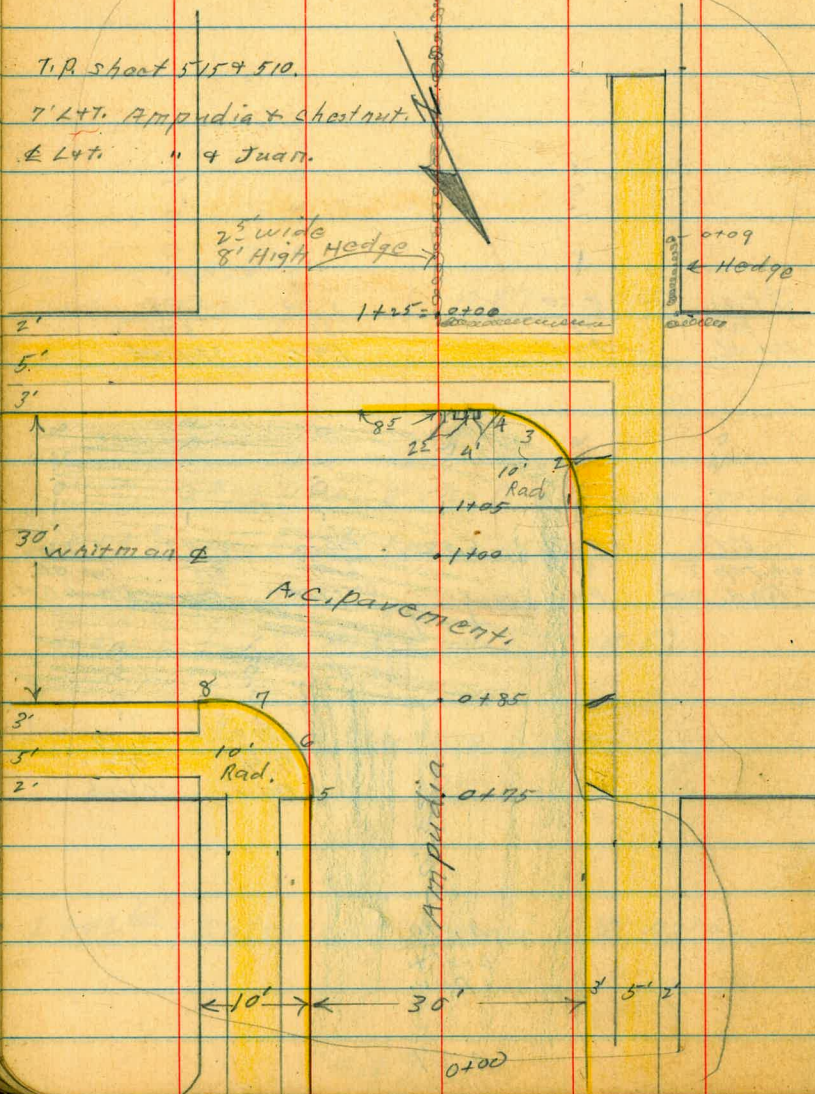
5/5/48

Summer Meyer
Mc Coy
W Moore
Sherman
End hedge.

T.P. shoot 5159 510.

7' L.T. Ampudia & shoot out.

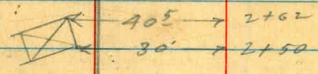
4' L.T. " & Juan.



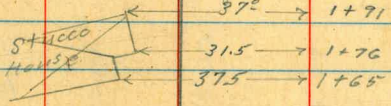
INDEXED

MAY 10 1948

2+79 38
2+75 52 20" Culvert.



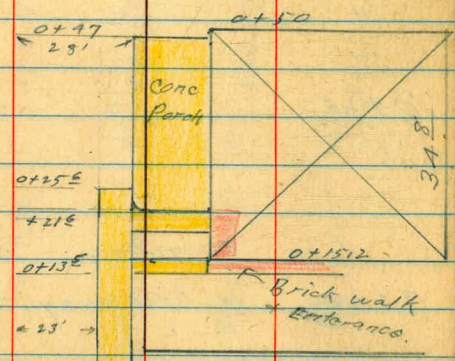
40' → 2+62
30' → 2+50



37' → 1+71
31.5 → 1+70
37.5 → 1+65

INDEXED

MAY 10 1948



whj line Whitman

Ampudia

0+85 Cont.

3.49	229.98				
$\frac{100}{100}$					
	223.90				
9.57					
$\frac{15}{100}$ Ob. E.C.					
	223.01				
10.46					
$\frac{15}{100}$					
	222.87				
10.60					
$\frac{1}{4}$					
	222.76				
10.71					
$\frac{1}{4}$					
	222.47				
11.00					
$\frac{1}{4}$					
	222.04				
11.43					
$\frac{1}{4}$ In drive					

0+85 Nly. Cb. line Whitman. Top. of Cb.

224.02					
9.45					
$\frac{10}{100}$ Ob. B.C.					
	223.35				
10.12					
$\frac{1}{4}$					
	223.40				
10.27					
$\frac{1}{4}$					
	223.27				
10.20					
$\frac{1}{4}$					
	222.94				
10.53					
$\frac{1}{4}$					
	222.38				
11.09					
$\frac{1}{4}$					
	223.01				
10.46					
$\frac{1}{4}$ Ob.					

0+75 Nly line Whitman. also Ob. B.C. on Ct.

425.80					
7.67					
$\frac{1}{4}$ Ob.					
	225.14				
8.23					
$\frac{1}{4}$ Ob.					
	225.22				
8.25					
$\frac{1}{4}$					
	225.09				
8.38					
$\frac{1}{4}$					
	225.75				
8.72					
$\frac{1}{4}$					
	224.23				
9.24					
$\frac{1}{4}$ Ob.					
	224.85				
8.62					
$\frac{1}{4}$ Ob.					

0+50

227.70					
5.77					
$\frac{1}{4}$ Ob.					
	227.03				
6.44					
$\frac{1}{4}$ Ob.					
	227.16				
6.31					
$\frac{1}{4}$					
	227.11				
6.36					
$\frac{1}{4}$					
	226.75				
6.92					
$\frac{1}{4}$					
	226.12				
7.35					
$\frac{1}{4}$ Ob.					
	226.12				
7.35					
$\frac{1}{4}$ In drive					

0+25

Ob = gutter. Cb = curb.

0+100 30' Roadway - 7E quarters

229.51					
3.96					
$\frac{1}{4}$ Ob.					
	228.96				
4.51					
$\frac{1}{4}$ Ob.					
	229.01				
4.96					
$\frac{1}{4}$					
	228.96				
4.51					
$\frac{1}{4}$					
	228.61				
4.86					
$\frac{1}{4}$					
	228.07				
5.40					
$\frac{1}{4}$ Ob.					
	228.57				
4.80					
$\frac{1}{4}$ Ob.					

0+100 = 75' N. Fly from N. Fly, line Whitman

233.47

SERR
Ampudia x
Whitman
8.38 233.47 — 225.09

AMPUDIA

1400 Cont

4.16
100
229.31

6.13
75
337.34

8.27
50
225.20

1400 ♀ Whitman

10.22
25
222.25

10.91
15
222.56

11.14
1/4
222.33

11.16
222.31

11.44
1/4
222.03

11.72
G.
221.75

11.00
G.
222.47

+92^E Cont.

8.07
100
222.40

6.08
75
227.39

8.15
50
225.32

0+92^E = Nly. 1/4 Whitman

10.00
25
222.341

10.65
15
222.82

10.87
1/4
222.60

10.95
222.22

11.29
1/4
222.18

11.56
G.
222.91

10.84
G.
222.63

0+85^L Cont.

4.18
100
229.29

6.20
75
227.27

8.15
50
225.32

0+85^L Nly Gutter line Whitman

10.10
25
223.37

10.46
15
223.01

10.60
1/4
222.87

10.71
222.76

11.00
1/4
222.47

11.43
G.
222.04

233.47

AMPUDIA

1+15 Cont.

$\frac{4.29}{100}$ 229.18
 $\frac{6.28}{75}$ 227.19
 $\frac{8.39}{50}$ 225.08

1+15 sly cb. line Whitman

$\frac{10.43}{25}$ 223.04
 $\frac{10.65}{15}$ 222.82
 $\frac{10.77}{85}$ 222.70
 $\frac{10.93}{22}$ 222.54
 $\frac{10.99}{22}$ 222.48
 $\frac{11.09}{65}$ 222.38
 11.13 Ground
 $\frac{23}{65}$ 222.38
 23 w. Edge walk

1+19 Cont

$\frac{4.77}{100}$ 228.48
 $\frac{7.01}{75}$ 226.46
 $\frac{9.05}{50}$ 224.42

2nd Rt = c grate

1+14² sly gutter line Whitman

$\frac{11.05}{25}$ 222.42
 $\frac{11.47}{15}$ 221.98
 $\frac{11.77}{85}$ 221.70
 $\frac{11.93}{22}$ 221.54
 $\frac{11.98}{22}$ 221.49
 $\frac{15.13}{65}$ 218.34
 $\frac{12.08}{65}$ 221.39
 8 End d. in lot.
 25 Bottom of box
 End d. in lot.

1+07^E Cont.

$\frac{4.46}{100}$ 229.01
 $\frac{6.48}{75}$ 226.59

1+07^E sly 1/4 Whitman.

$\frac{8.57}{80}$ 224.90
 $\frac{10.40}{25}$ 222.87
 $\frac{11.12}{15}$ 222.28
 $\frac{11.46}{14}$ 222.01
 $\frac{11.62}{14}$ 221.85
 $\frac{11.74}{14}$ 221.73
 $\frac{11.88}{14.5}$ 221.57
 $\frac{11.80}{14.5}$ 221.67
 8
 $\frac{221.40}{11.87}$ 221.71
 $\frac{11.76}{11.87}$ 221.71
 cl
 in drive

1+05 15' Rt. = cb. B.C.

233.47

AMPUDIA

0+09 24' Rt. = End 1⁵ wide 2' high hedge

T.P. 3.12 224.44 12.15 221.32

S.Wly Cl. Ret. (sketch - P. 30)

N.E. Cl. Ret. (see sketch P. 30)

1+25 Cont. 24' Rt. = start 1⁵ wide - ^{hedge} 2' high

= 0+00
1+25 = Sly. line Whitman

also = start 2⁵ wide 8' high hedge on E.

1+24 = E Rt. = line of 2⁵ wide - 8' high hedge

1+23 = Sly. Edge E + W. walk

233.47

	221.72	221.61	221.65	221.56	222.53	221.46	222.41	221.43
11.75 1 Drive	11.86 1 Cut	11.82 2 Drive	11.91 2 Cut	11.14 3 Cl	12.01 3 Cut	11.06 4 Cl	12.04 4 Cut	
224.02	223.36	223.92	223.22	223.89	223.29	223.90	223.37	
9.45 5 Cl	10.11 5 Cl	9.55 6 Cl	10.25 6 Cut	9.58 7 Cl	10.18 7 Cut	9.57 8 Cl	10.10 8 Cut	
				11.4 25 Ord	222.1			
223.22	223.92	226.2	222.0	222.16	222.1	222.1	222.1	
10.25 25	10.3 25	7.3	11.5 18 Ground	11.31 18 Edge walk	11.26 23 Edge walk	11.9 23 Ord		
222.56	222.90	222.56	222.29	223.26	222.29	222.29		
10.25 25	10.57 15	10.91	11.18 15	11.21 18 Junction of walks	11.18 23			

0+48^E on Φ = End 2^E wide - 8' high hedge.

0+47^E

0+47 23' Rt. = End Conc. porch.

0+25^E 18' Rt. to 23' Rt.
End Conc. N. + S. walk.

0+23^E 23' Rt. = start conc. porch.

0+21^S Cont.

0+21^E

0+15^E 31² Rt. = N.E. Cor. House (2 story)

224.44

#

221.4	220.7	219.8	220.0	220.3	219.2	219.1
$\frac{3.0}{25}$	$\frac{3.7}{12}$	$\frac{4.6}{7}$	4.4	$\frac{4.1}{21}$	$\frac{5.2}{25}$	$\frac{5.3}{31}$
221.4	220.7	219.8	220.0	220.3	220.68	220.76
$\frac{3.0}{25}$	$\frac{3.7}{12}$	$\frac{4.6}{7}$	4.4	$\frac{4.1}{21}$ ground	$\frac{4.4}{23}$ S.E. cor porch	$\frac{3.86}{23}$ porch at house
				4.0	4.16	4.13
				18 Ord.	18 walk End	23 walk End
				220.54	220.78	220.81
				3.90	3.45	3.45
				23 Conc. walk	23 porch	25 porch
					3.44	3.44
					31.4	31.2
				3.47	3.01	
				31 walk	31.4 porch	
	222.5		220.8			
	$\frac{1.9}{25}$	3.6	220.63	220.71	220.73	
			3.81	3.73	3.71	
			18 Edg walk	23 Edg walk	25 walk	
				7.2	35' Etw walk	

224.44

AMPUDIA

1+91 37' Lt. = S.W. Cor. House
T.P. 0.69 208.26 12.66 206.57

1+76 31' E Lt. = House

1+65 37' E Lt. = N.W. Cor House

1+25 45' Rt = Bottom of wash

1+18 33' Rt. = outlet 24" iron culvert

Lot. Corn 3/4" dia
T.P. 90' S.E.
S. Lino Whitman
25' Lt. &

0+96

0+65

0+53

0+50

31'2 Rt. = End. (S.E. Cor) House,
12' Rt. = ctr. 3' diam palm.

224.44

218.6
0.6
37.5
At house

219.7
0.5
32

219.2
5.0
25

203.8
15.4

187.4
31.8
25

168.9
50.3
55

152.7
66.5
76
Bottom
of wash

224.6
+57.4
80

223.4
+4.4
55

211.6
7.6
25

196.0
23.2

182.2
39.0
25

166.7
52.5
45

177.9
41.8
32
Ground

172.9
46.4
33
Invert

219.23

220.9
10.5
60

224.6
10.7
55

226.5
7.7
42

227.0
4.4
25

206.8
18.6

195.4
27.0
25

191.4
33.0
40

193.8
30.6
75

225.8
+1.4
70

225.4
+1.0
60

218.0
6.4
38

221.4
3.0
25

221.1
3.3
12

220.9
4.5

210.2
14.2
25

209.6
14.8
50

221.5
2.2
25

220.7
3.7
11

219.8
4.6
8

219.5
4.9

218.5
5.9
12

217.5
6.9
25

213.4
7.0
40

224.44

Ampudia

T.P. 0.27 183.58 12.35 183.31

Foundation. Sets 45° to street line

chicken shed conc floor

3+01 24⁸ Lt. = West corner 10' x 12⁵'

can be moved

2+95 = ctr. Temporary chicken shed.

2+90 2⁵ Rt. = ctr. 5' diam. palm.

2+80 21⁵ Rt. = ctr. 4' diam. palm tree

2+79 3⁸ Rt. = E outlet 24" culvert.

2+75³ = Cross 24" corr. iron culvert.

T.P. 0.17 195.66 12.77 195.49

2+62 40⁵ Lt. = S.W. cor. garage

conc piles

2+50 30' Lt. = N.W. Cor. Frame garage 01

2+10

208.26

E

185.24
+ 17.94

10.42
24⁸
Floor

12.6
25
Base of
Foundation

196.6
~~140.7~~

193.7
~~206.3~~

185.0
197.6

10.7
25

180.1
~~172.7~~

15.6
25

173.7
~~186.3~~

22.0
47

26.5
60

186.16
~~178.5~~

7.5
3⁸
top pipe

189.76
~~202.4~~

5.9
6
Along
Culvert line
Top of pipe

187.86
~~200.5~~

12.8
top pipe
195.66

0.208.3
40

215.3
+ 7.0
38

218.3

0.200.2
25

198.2
0.1
25

198.1

161
25

191.2
8.0

199.2

23.7
25

190.4
17.8
25

172.6

28.8
48

181.0
27.3
55

179.5

32.7
60

175.6

208.26

orig B.M.		2.09	225.06	(225.09)
T.P.	10.19	227.15	1.59	216.98
T.P.	12.91	218.57	1.31	205.66
T.P.	11.08	206.97	0.28	195.89
T.P.	12.91	196.17	0.32	183.26

grade as from 3+25 to 3+50
 To bottom E. & W. wash. Same % of
 grade continues west about 100'

3+50

14.6	18.7	22.6	29.3	30.9
50	25		25	50
175.2	170.5	171.99	169.2	166.1

3+25

So rim M.H. (Sewer)

8.4	13.1	11.59	14.4	17.5
25	2	Ord	Ord	25
182.9	182.7	178.9	173.0	167.5

3+02

a section at 3+00

too much junk in the way for

07	0.7	4.7	10.6	16.1
26	25		23	50
183.58				

183.58

X-Sect. Quince - Menlo to Euclid - for
Grade Est. only - Canyons & Heavy Brush.

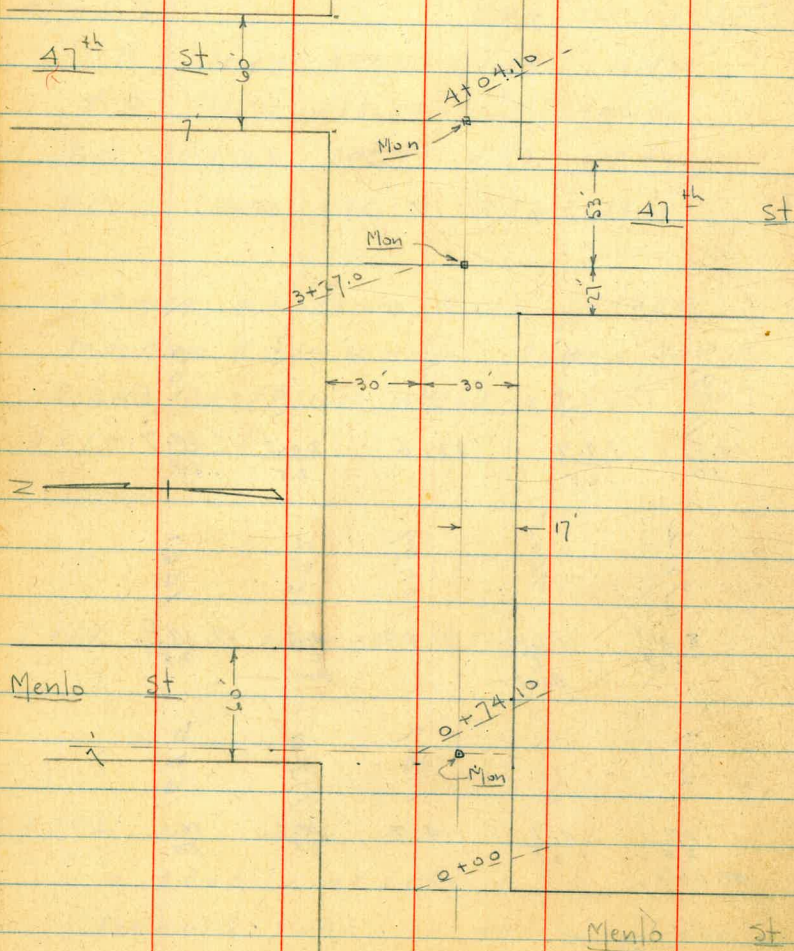
2382

W.O. 25001

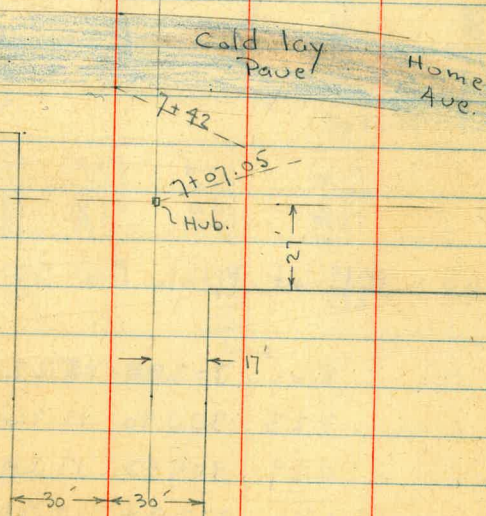
7-6-48

Osborne
Hardin
Worrell
Oakley

INDEXED
JUL 6 1948



Euclid Ave



Profile 3302

X-Sect. Quince - from E.L. Menlo to the South to Euclid - Heavy brush and Canyons - will show allouts as Plus or Minus from the \pm elev.

T.P. 0.59 291.97 12.42 291.38

INDEXED

2+00

1+50

1+00

0+50

0+00 = E.L. of Menlo to S.

8.62	303.80	5.22	295.18	-7 Mon - Menlo to N.
3.23	300.40	12.26	297.17	
0.29	309.43	13.20	309.14	
1.31	322.34	12.38	321.03	
0.45	333.41		332.96	N.W. B.P. - Thoms + Chamoune

example =

- 0.7	291.20			
+ 0.0	292.00	291.40		
- 0.0	294.10	293.50	292.10	291.70
+ 0.0	297.30	296.60	293.50	292.10
- 0.0	297.80	296.60	293.50	292.10
+ 0.2	302.1	301.9	301.7	290.3
- 0.2	303.80	301.9	301.7	290.3
+ 0.2		19	- 0.2	- 11.6
- 0.2			20	30
			Top bank	
			Top bank	
			288.20	

T.P. 0.30 228.50 12.38 228.20

5+00

T.P. 0.09 240.58 13.14 240.49

T.P. 0.03 253.63 13.03 253.60

4+50

T.P. 0.08 266.63 12.69 266.55

4+20

4+00

T.P. 0.09 279.24 12.82 279.15

3+50

3+00

2+50

228.34 4

-11.4
40

230.18

-9.0
30

239.18 4

0.8

249.08

+9.3
30

4

250.58

+10.8
40

41

240.58

-5.253.53
30

259.13

+5.3
30

-5.6
30

-4.207.54
40

-1.326.34
30

266.63

9.6
6

+1.3
30

+2.6
30

+3.0
40

277.37

280.87

-0.3
40

-2.286.47
40

-2.1
30

281.17

-2.4
30

-2.289.07
30

279.24

284.17

7.8

2.6

+2.5
30

286.67

+1.5
30

281.07

287.37

+3.2
40

+1.9
40

291.97

7+30 = Top bank

H.I.

From Here on all rods Read by Level = - from

T.P. 8.96 223.84 0.57 214.84

7+20 = Toe of fill

6+90

6+50

6+00 = Bottom of #

5+75

T.P. 0.19 215.45 13.24 215.26

5+50

Lt.

#

Rt.

5
30 218.24

7
30 216.74

9
30 214.74

213.00	219.90	215.45	229.80	236.80
- 8.4 40	- 7.9 30	- 6.7 40	+ 8.0 30	+ 10.0 40
- 5.0 30	- 5.0 20	- 1.0 10	+ 5.2 30	+ 5.2 40
210.45	219.45	217.45	220.35	212.45
+ 3.1 40	+ 2.1 30	+ 1.1 20	+ 4.8 30	+ 0.2 40
210.35	209.35	209.25	210.25	212.05
+ 2.5 40	+ 2.4 30	+ 1.1 20	+ 0.6 30	+ 0.9 30
206.55	206.45	207.05	203.45	203.15
+ 1.0 40	+ 0.9 30	+ 0.9 20	- 0.5 30	- 4.3 30
207.25	207.15	206.25	205.75	201.95
+ 0 30	+ 0 20	+ 0 10	- 0 30	- 4.3 30
223.84	223.84	223.84	210.15	201.55
5 30	7 30	9 30	9 30	9 30
218.24	216.74	214.74		

228.50

Lt

Rt

Rt

w. of Int.

Pipe in E. side of old found.

Set B.M. on top of 1/2" 5.86 217.98

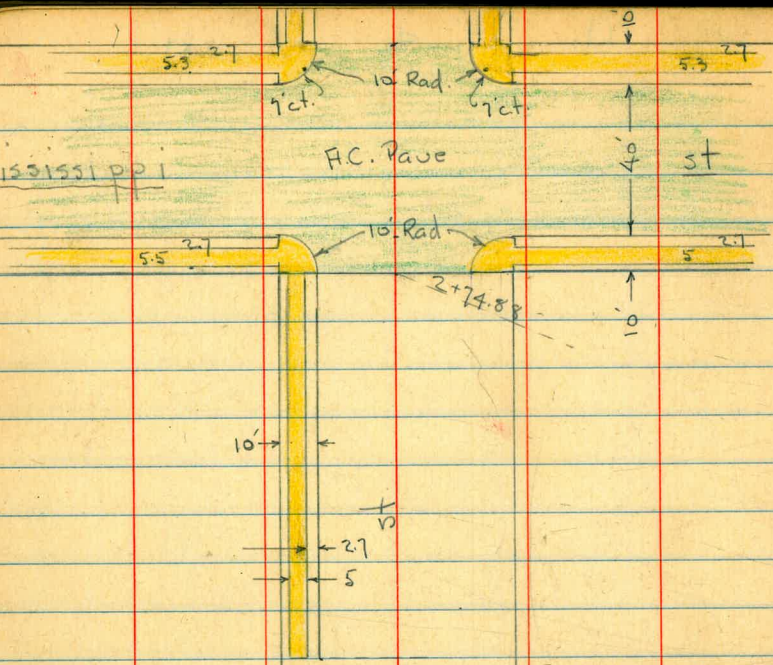
7+65 = E. edge

7+54 = 4

7+42 = edge of Cold Lay Strip

	220.59	219.48	217.81	216.29	215.31
	3.25 50	4.30 30	6.03	7.55 30 on edge	8.53 50-1' E. of edge - Rod on Edge
	220.32	219.16	217.40	215.73	214.78
	3.52 50	4.68 30	6.44	8.10 30	9.10 50 50-1' E. of edge
219.37	218.12	216.41	214.76	213.74	
4.47 50	5.72 30	7.43	9.08 30	10.10 50	
			223.84		

Mississippi



A.C. Pavc

st

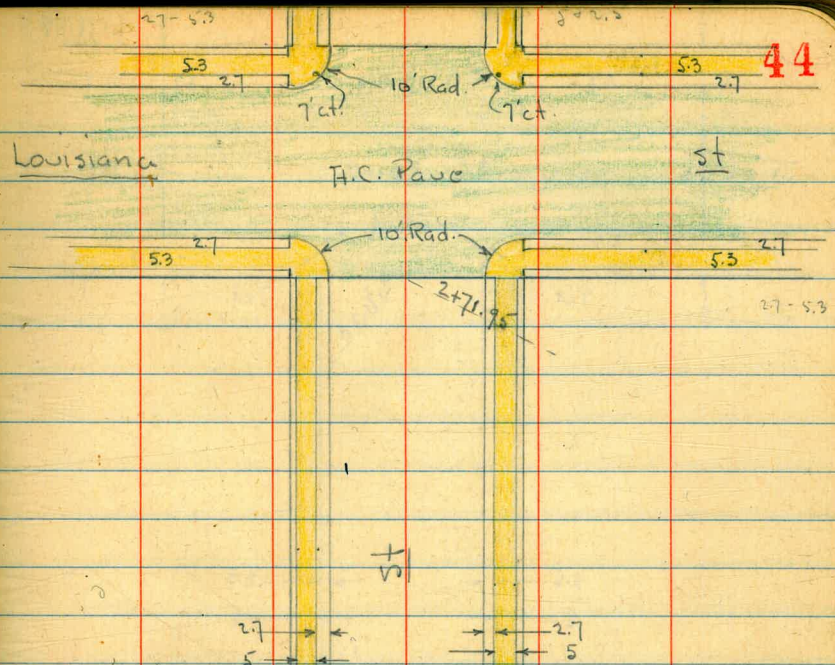
Dwight

Alabama

st

A.C. Pavc

Louisiana



A.C. Pavc

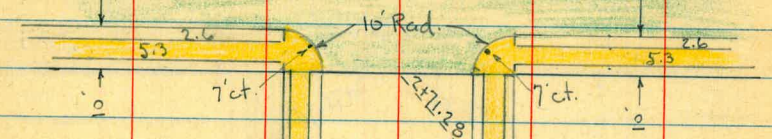
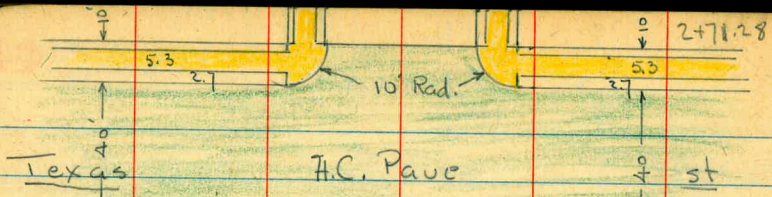
st

Dwight

Mississippi

st

44



0100

Louisiana

st

X-Section Dwight St. from Alabama
to Texas - 60' st. - 10' cbs. - See sketch
W.O. 31521

1-18-49

Osborne
Hardin
Hatch

0-10 = E. cb.

INDEXED
WK
JAN 27 1949

0-20

0-30 = E

0-40

0-50 -

gutter

0-50 = w. cb. of Alabama - Top of curb

check B.M. - NE. Alabama	+ Dwight - Plug gone	6.95	255.94	255.96
T.P.		0.26	262.89	12.88
check B.M.		0.04	275.51	7.78
check B.M.		2.81	283.25	10.40
B.M. - Texas		0.48	290.84	290.96
	+ Dwight Plug gone			

Lt.

#

Rt.

46

8.20	8.92	6.94	7.61	7.35	7.11	7.05	7.12	7.28	7.64	6.93	7.92	7.26
50	50	30	30	30	30	30	30	30	30	30	30	30
Top	Top	Top	Top	Top	Top	Top	Top	Top	Top	Top	Top	Top
254.67	253.77	255.95	255.28	255.54	255.78	255.84	255.77	255.77	255.57	255.81	255.96	254.97
254.19	255.23	255.30	255.43	255.75	255.77	255.71	255.68	255.62	255.55	255.53	255.38	255.35
254.19	255.30	255.53	255.62	255.68	255.64	255.62	255.55	255.55	255.55	255.55	255.38	255.35
8.14	7.81	7.56	7.52	7.54	7.60	7.51	7.61	7.51	7.61	7.51	7.61	7.51
50	30	20	10	10	10	20	30	30	30	30	30	30
253.64	254.85	254.94	255.01	255.02	255.02	255.02	255.02	255.02	255.02	255.02	255.02	255.02
9.25	8.06	7.93	7.88	7.87	7.87	7.87	7.87	7.87	7.87	7.87	7.87	7.87
50	30	20	10	10	10	10	10	10	10	10	10	10
Dr.			Dr.									
253.64	254.85	254.94	255.01	255.02	255.02	255.02	255.02	255.02	255.02	255.02	255.02	255.02
7.43	7.42	7.41	7.41	7.41	7.41	7.41	7.41	7.41	7.41	7.41	7.41	7.41
50	30	20	10	Top	10	20	30	30	30	30	30	30
255.96	255.47	255.48	255.48	255.48	255.48	255.48	255.48	255.48	255.48	255.48	255.48	255.48

SE. Mississippi + Dwight
SE. Louisiana + Dwight

1+55 = Φ of 22' Conc. Dr. on Lt.

1+50 - 30' Rt. = Beg 6" Conc. wall

1+41 - 20' Lt. = Beg. cb. + walk

1+27 - 21.7 Rt = Φ 14" P. pole # P 2149

1+29 - 30.2 Rt = end of wall

1+00

T.P. 13.10 275.73 0.26 262.63

0+75 - 30.2 Rt = end Conc. + Beg. Rock + Conc. wall

0+50

0+06 - 30.2 Rt = Beg. 6" Conc. wall

0+00 = E.L. of Alabama = edge of Φ C. Pave + end of

Φ of Returns

Lt. Φ Rt.

226.73
22.7
walk
20 = Dr.
266.00
9.73

9.90	9.96	10.06	10.6	10.8	10.6	10.8	11.2	10.24.8	9.24.8	6.24.4	266.08
27.7	22.7	20	20	10	10	10	15	20	30	50	265.1
End of walk	Top	Top	gut.							Divt Alley	9.65
27.16	243.1	242.7	241.8	242.2	242.4	242.1	241.7	242.4	242.9	242.9	30.2
4.1	12.6	13.0	13.9	13.5	13.3	13.6	14.0	13.3	12.8	11.75	30.2
32	30	20	18	10	10	10	15	20	30	30.2	Top
Top of Bank	Bot of Bank										

275.73

4.5	3.0	3.5	4.1	3.9	3.7	3.9	4.7	3.25.2	3.25.3	2.14	262.29
34	30	20	17	10	10	10	15	20	30	30.2	30.2
Top of Bank	Bottom of Bank									Top wall	Top

6.60	6.86	7.45	7.09	6.95	7.0	7.0	7.45	6.25.7	6.25.1	6.25.7	262.89
80	20	20	10	10	10	10	10	20	20	30	262.89
Top	Top	gut.						Top	Top	Top	
NE. Ret.								S.E. Ret.			

♂ Returns

50' E = E. cb.

40' E. = 1/4

30' E. = ♀

20' E = 1/4

10' E = w. cb.

♀ Returns

2+71.95 = w.l. Louisiana = edge of A.C. Pave

	4.	#	Rt.
	280.94 3.82 Top	280.36 4.41 cut.	280.43 4.33 Top
		N.E. Return.	S.E. Return
	281.34 3.42 70 Top	280.67 4.09 70 cut.	280.99 3.80 30 Top
	280.70 3.19 70	280.40 4.36 30 cut.	280.28 4.48 20
	280.63 4.06 30	280.53 4.23 10	280.24 4.52 10
	280.75 4.01 30	280.61 4.27 10	280.31 4.55 10
	280.85 3.91 70	280.74 4.32 20	280.11 4.65 10
	280.55 4.21 30	280.63 4.18 10	280.94 4.82 20
	280.44 4.32 20	280.53 4.23 10	280.87 4.89 30
	280.28 4.18 10	280.61 4.15 09 MH	280.46 4.30 30
	280.24 4.52 10	280.87 4.39 10	280.53 5.23 70
	280.14 4.52 10	280.30 4.46 20	280.19 4.57 70
	280.05 4.71 20	280.25 4.51 30	
	280.98 4.18 30	280.98 4.18 30	
	280.65 5.11 70	280.65 5.11 70	
	280.71 4.05 70 Top	280.23 4.53 70 cut.	280.50 4.26 30 Top
	280.96 4.80 30 cut.	280.96 4.80 30 cut.	280.96 4.80 30 cut.
	279.95 4.81 20	279.95 4.81 20	279.95 4.81 20
	279.77 4.99 10	279.77 4.99 10	279.77 4.99 10
	279.70 5.06 10	279.70 5.06 10	279.70 5.06 10
	279.62 5.14 10	279.62 5.14 10	279.62 5.14 10
	279.52 5.24 20	279.52 5.24 20	279.52 5.24 20
	279.45 5.31 30 cut.	279.45 5.31 30 cut.	279.45 5.31 30 cut.
	279.99 4.77 30 Top	279.99 4.77 30 Top	279.99 4.77 30 Top
	279.12 5.04 70 cut.	279.12 5.04 70 cut.	279.12 5.04 70 cut.
	279.68 5.08 70 Top	279.68 5.08 70 Top	279.68 5.08 70 Top
	280.48 4.24 Top	280.48 4.24 Top	280.48 4.24 Top
	279.86 4.90 cut.	279.86 4.90 cut.	279.86 4.90 cut.
	280.53 4.23 20 Top	280.53 4.23 20 Top	280.53 4.23 20 Top
	279.84 4.92 20 cut.	279.84 4.92 20 cut.	279.84 4.92 20 cut.
	279.99 4.77 10	279.99 4.77 10	279.99 4.77 10
	280.05 4.71 10	280.05 4.71 10	280.05 4.71 10
	279.81 4.95 10	279.81 4.95 10	279.81 4.95 10
	280.00 4.76 Top	280.00 4.76 Top	280.00 4.76 Top
	279.31 5.15 cut.	279.31 5.15 cut.	279.31 5.15 cut.
	279.99 4.77 20 Top	279.99 4.77 20 Top	279.99 4.77 20 Top
		284.76	

± of Returns

2+71.28 = W.L. Texas - edge of H.C. Pav

2+50

2+25

2+15 = ± 12' Conc. Dr. on Rt.

2+00

1+75

1+50

Lt

±

Rt

53

Station	Lt	±	Rt
2+71.28	289.83 4.25 Top S.W. Ret.	289.45 4.26 10	288.99 4.81 Top S.W. Ret.
2+50	289.85 4.32 19.9 Top	289.38 4.26 10	288.93 4.51 10
2+25	288.84 4.06 19.9 Top	288.1 5.6 19.9 Top	288.48 5.2 10
2+15	287.63 6.0 19.9 Top	287.1 6.6 19.9 Top	287.0 6.3 10
2+00	286.51 7.19 20 Top	286.1 7.6 20 Top	286.0 7.7 20 Top
1+75	285.76 7.94 20 Top	285.2 8.5 20 Top	285.69 8.6 20 Top
1+50	284.9 8.63 20 Top	284.9 8.8 20 Top	284.98 8.72 19.9 Top
		293.70	

check D.M. - E.F. Texas 2.35 290.35 290.36

⊕ Returns

60' E - E.L. Texas = end.

50' E - E. cb.

40' E = 1/4

30' E = ⊕

20' E = 1/4

10' E = w. cb

	Lt.	±	Rt.
290.83	2.27	3.45	3.290.35
	Top	gut.	Top
		N.E.	S.E.
		Ret	Ret
290.88	2.92	3.49	3.290.88
	20	20	19
	Top	gut	gut
291.64	2.06	2.87	3.291.64
	70	30	20
	Top	Top	Top
290.97	2.73	3.44	3.290.97
	70	30	20
	gut.	gut.	gut.
290.21	2.83	3.47	3.290.21
	30	30	30
	Top	Top	Top
290.26	3.44	3.64	3.290.26
	30	10	20
	gut.	gut.	gut.
290.13	3.07	3.64	3.290.13
	20	20	20
	Top	Top	Top
290.48	3.42	3.45	3.290.48
	10	10	10
	Top	Top	Top
290.25	3.45	3.71	3.290.25
	10	10	10
	Top	Top	Top
289.99	3.71	3.89	3.289.99
	10	10	10
	Top	Top	Top
290.35	3.290.35	3.290.35	3.290.35
	Top	Top	Top
289.60	3.290.35	3.290.35	3.289.60
	Top	Top	Top
290.88	2.92	3.49	3.290.88
	20	20	19
	Top	gut	gut
291.64	2.06	2.87	3.291.64
	70	30	20
	Top	Top	Top
290.97	2.73	3.44	3.290.97
	70	30	20
	gut.	gut.	gut.
290.21	2.83	3.47	3.290.21
	30	30	30
	Top	Top	Top
290.26	3.44	3.64	3.290.26
	30	10	20
	gut.	gut.	gut.
290.13	3.07	3.64	3.290.13
	20	20	20
	Top	Top	Top
290.48	3.42	3.45	3.290.48
	10	10	10
	Top	Top	Top
290.25	3.45	3.71	3.290.25
	10	10	10
	Top	Top	Top
289.99	3.71	3.89	3.289.99
	10	10	10
	Top	Top	Top
290.35	3.290.35	3.290.35	3.290.35
	Top	Top	Top
289.60	3.290.35	3.290.35	3.289.60
	Top	Top	Top
290.88	2.92	3.49	3.290.88
	20	20	19
	Top	gut	gut
291.64	2.06	2.87	3.291.64
	70	30	20
	Top	Top	Top
290.97	2.73	3.44	3.290.97
	70	30	20
	gut.	gut.	gut.
290.21	2.83	3.47	3.290.21
	30	30	30
	Top	Top	Top
290.26	3.44	3.64	3.290.26
	30	10	20
	gut.	gut.	gut.
290.13	3.07	3.64	3.290.13
	20	20	20
	Top	Top	Top
290.48	3.42	3.45	3.290.48
	10	10	10
	Top	Top	Top
290.25	3.45	3.71	3.290.25
	10	10	10
	Top	Top	Top
289.99	3.71	3.89	3.289.99
	10	10	10
	Top	Top	Top
290.35	3.290.35	3.290.35	3.290.35
	Top	Top	Top
289.60	3.290.35	3.290.35	3.289.60
	Top	Top	Top
290.88	2.92	3.49	3.290.88
	20	20	19
	Top	gut	gut
291.64	2.06	2.87	3.291.64
	70	30	20
	Top	Top	Top
290.97	2.73	3.44	3.290.97
	70	30	20
	gut.	gut.	gut.
290.21	2.83	3.47	3.290.21
	30	30	30
	Top	Top	Top
290.26	3.44	3.64	3.290.26
	30	10	20
	gut.	gut.	gut.
290.13	3.07	3.64	3.290.13
	20	20	20
	Top	Top	Top
290.48	3.42	3.45	3.290.48
	10	10	10
	Top	Top	Top
290.25	3.45	3.71	3.290.25
	10	10	10
	Top	Top	Top
289.99	3.71	3.89	3.289.99
	10	10	10
	Top	Top	Top
290.35	3.290.35	3.290.35	3.290.35
	Top	Top	Top
289.60	3.290.35	3.290.35	3.289.60
	Top	Top	Top

cont.

Lt = North

Rt = South

0+80
 0+64.5 7 1/2 Lt End 5' high board fence
 0+60 9 1/2 Rt NE cor Frame House
 0+50
 0+45 11 1/2 Lt SE cor frame House
 0+45 7 1/2 Lt End rock-con wall 12" Begin 5' high Board F
 0+35.5 6' Rt E power pole # PA 3555
 0+33 7 1/2 Rt NE cor chimney
 0+30 10 1/2 Lt SE cor brick chimney
 0+28 11 1/2 Rt End picket fence also NW cor brick chimney
 0+25 10 1/2 Lt SW cor brick chimney
 0+23.5 9 3/4 Rt NW cor. Frame House

392.7	392.3	392.1	392.3	392.3	392.2
30	32	31	22	22	30
25	15	5	12	15	15
392.7	392.0	392.1	392.3	392.3	392.2
28	32	31	22	22	30
25	15	5	12	15	15
392.41	392.1	392.4			
28	32	28			
25	15	12			
Top wall	Best starting	7 1/2 dirt			
391.8	391.8	392.70	392.3	392.1	392.5
34	34	23	22	22	22
10	8	7E	12	15	9
		Top wall			

395 1/3

cont.

1743 10^{ft} LT SW cor screen porch

1740²² Eline N+S Alley

1739 8^o RT Begin 5' wire fence past 4x8 in con

1732²² 7^{ft} LT Begin 5' wire fence Sewer MH on E rim ^{X int. o}

1725²² Whine N+S Alley

1724 8^{ft} LT E single garage con floor + apron

1723 6^{ft} RT E power pole # PA 3575

1716⁵ 9^{ft} RT NE cor garage opens East Alley ^{N+S}

1700 9^{ft} RT NW cor garage opens Easterly Alley ^{N+S}

6797 13^{ft} LT E single garage not used con floor

T.P. 4^{ft} 396.48 2^{ft} 392.27 ^{466 2nd rock}

392.08
440
Floor

LT E RT

57

390.9
56
25

390.9
56
75

390.9
66
75

391.1
54
75

389.91
65
27
diff

391.4
51
75

391.1
54
75

391.60
488
115
Floor

391.47
50
85
Floor

391.7
48
75

392.1
44
75

391.9
46
5

391.7
48
75

392.1
44
75

392.5
40
25

391.70
478
13

396.48

79 cont

2495⁴⁴ & 36th ST 120 392¹⁹ v page Nail in Bk Int Allys

2477⁴⁴ W curb line 36th ST edge AC paving

2466⁵ End 12" wide con wall

2465⁴⁴ W line 36th ST edge AC paving & curb ret.

2465⁴⁴ 7' Lt End 4' Lath Fence

2453⁵ 8th RT Begin 12" wide con wall

7.P. 2⁸⁸ 393³⁹ 591 390⁵¹

2447⁵ 9th RT NE cor house

2447⁵ 6th Lt Begin 4' Lath Fence

2447⁵ 8th Lt SE cor garage. Not curb & dwelling

2445

388.42	388.12	388.30	388.61
427	527	529	478
388.46	388.09	388.08	388.19
423	520	513	464
388.90	388.66	388.61	388.75
449	423	428	459
388.80	388.00	388.80	390.51
447	427	427	432
388.77	388.77	388.77	391.05
447	427	427	432
390.3	390.3	390.0	390.4
62	63	65	61
8	4	75	9
396 ⁷⁸			

North & South Alley 81K 42
Normal Hts

Lt=West ♀

Rt=East

0+53 7th Lt Begin 4 Picket Fence

0+53 8th Lt NE cor Frame House

0+50

392.8
392.9
48 42 45 46
75 75 75 74

0+26 6th Lt E 2x4 Ariell

0+19 6th Lt End E 4' wide Hedge, Begin Lath Fence

0+105 8th Lt SE cor Frame House

0+00 7th Lt E Hedge 4' wide Begins

0+00 N Prophine Madison edge AC paving

return curb broken on west

392.5
392.48
392.41
392.56
392.36
392.55
51 52 502 529 508 53
25 72 curb 72 curb 72 curb 25

0-12 N curb line Madison

392.50
392.06
392.35
391.92
391.86
391.75
392.16
391.41
391.88
513 557 528 521 567 588 547 622 525
50 curb 50 curb 72 curb 72 curb 72 curb 75 curb 50 curb 50 curb

0-30 E Madison Ave

BM 381 39763

39982

1/4 NE cor
Madison + Wilson

South & North Alley

39763

cont.

393.70 Lt
 93
 92
 Floor
 393.2
 393.0
 392.8
 393.2
 393.3
 39
 41
 43
 38
 20
 75
 75
 20

27085 92 Lt & Rear garage opens westerly con floor

2700 79 Lt End 5' Board fence

1497 58 Lt & power pole # none

TP 437 397.07 493 392.20

1456

393.0
 46
 15
 393.0
 46
 75
 392.8
 48
 75
 392.9
 42
 75
 393.0
 46
 75
 393.0
 46
 75

1400 84 Lt Begin 5' Board fence

1400 63 Lt & Power pole # PA 4611

0494 113 Lt & single garage

0493 143 Rt & single garage dirt floor

0484 78 Rt End Lath. fence

0471 75 Lt End 4' picket fence

392.9
 42
 12
 393.13
 45
 112
 Floor
 392.9
 42
 143
 Floor

397.63

3150 7th Begin 4' wire fence

3150 7th NE cor 3 car garage

3145 10th single garage con floor opens East

3130 7th SE cor 3 car garage ^{con floor} opens South then to West

3130 7th End 3' picket fence

3101 7th Begin 3' picket fence

3100

2198 5th LTR power pole # pp 4645

21805 10th Lt & Rth con wall

2150 7th Lt End combine 8" con wall + 5' fence lath

2116 7th Lt Begin combine 8" con wall + 5' fence lath

LT

392.1

391.9

391.9

392.2

392.2

52

52

52

42

42

70

75

75

75

70

392.84

418

75

floor

392.75

422

109

floor

392.8

392.7

392.4

392.4

392.6

42

42

42

42

45

75

75

75

75

75

392.83

424

75

walk

392.5

392.5

392.0

392.3

392.2

392.6

392.8

46

46

42

42

42

46

42

75

75

75

75

75

75

80

394.07

320

392.8

433

74

76

76

top wall
begin

top wall
begin

397 67

5152 6° Lt & power pole # PA 4669

5151 8° Rt Begin 3' picket fence

5150

5130

5134 13° Rt NW cor workshop + house

T.P. 329 396⁰⁰ 436 392.11

5102 74° Lt End 4' picket fence Begin 4' wire fence

5100

4775 72° Lt Begin 4' picket fence

4750 72° Lt End 5' solid board fence

4701 62° Lt End 4' wire fence Begin 5' solid board fence

4700 55° Lt & power pole # PA 4655

Lt E Rt

391.9	391.8	391.9	392.0	392.0
42	42	42	42	42
20	75	75	75	20

392.1	392.1	392.1	392.3	392.0
32	32	32	32	40
25	75	75	75	20

571.37
413
132
R_{floor}

396⁰⁰

392.6	392.1	391.9	391.9	391.9
46	50	52	52	52
21	75	75	75	25

391.8	392.0	391.7	391.7	391.5
52	51	54	54	54
25	75	75	75	25

392.0	391.9	391.9	392.1	391.9
51	52	52	50	52
20	75	75	75	25

39707

LT C RT

JP.

381

392.8

 ✓ Page 59
 Nail in P.P. 1/4
 Int of Tall

6+5078 South Propline of East+West Alley

6+50 68 RT End 5' wire fence

6+49 16' LT NE cor combine house + garage con floor

6+27 16' LT SE cor combine house + garage con floor
opens on this alley East

6+26 9' LT End 3' picket fence

6+15 88 LT Begin 3' picket fence

6+10 15' LT E single garage con floor

6+06 8' LT End 3' picket fence

6+00 17' RT End 3' picket fence, Begin 5' wire fence

6+00 8' LT End 4' wire fence Begin 3' picket fence

5+81 7' RT E of 12' along line + 4' wide con slab for incinerator

5+70 6' LT E Dead man Anchor

392.15

385
16'
floor385
16'
floor

391.95

400
154
floor

392.3

37
20

391.8

42
75

391.6

44
75

391.5

45
75

391.7

48
20

391.54

44
77
con396⁰⁰

D. Smith
W. Moore
J. Clark

X Sec Alleys BIK 43

Normal Hts

West & East Alley

INDEXED

WK

MAY 18 1949

0775

0766 14' Lt & double garage 20' long on floor broken

0765 7' at Begin 4' picket fence

0750

0720

0700 E Prop line 26th St edge AC paving

0-12 E curb line 26th St

BM TP 204 394²³

392¹⁹

Nail in Posts
Int Alley 0119

West & East Alley

Sketch in FB 1369-72

distances checked

Wott 3/062
May 16 1949

65

Lt = North

Rt = South

389.12	389.00	389.13	389.1	388.8	388.4
54	54	42	54	54	55
142	142	75	75	75	25
Floor	Floor				

54
142
Floor

389.4	389.3	389.1	388.9	389.0
48	42	54	52	52
75	75		75	75

388.9	389.2	389.1	389.1	389.6
52	53	51	51	46
75	75		75	25

388.6	388.36	388.23	388.19	388.33	388.56	388.7
56	57	60	60	59	57	55
75	75	75	75	75	75	75
Mid	Mid	Mid	Mid	Mid	Mid	Mid

388.24	387.73	388.41	387.94	387.76	387.80	388.20	387.99	388.51
59	65	58	62	64	64	65	64	52
50	50	75	75	75	75	75	50	50
Mid	Mid	Mid	Mid	Mid	Mid	Mid	Mid	Mid

394²³

cont.

- 1759 82 Lt End 4' wire fence
- 1740¹⁷ East Propert North-South Alley
- 1732⁶⁷ E N+S Alley M.H.
- 1725⁵ ✓ 55 Lt E Power pole # none
- 1725¹⁷ West Propert line of T North-South Alley
- 1724⁵ 78 Rt End 4' picket fence
- 1713 7⁶ Lt E con ^{14'} apron + double garage con floor
- 1704 72 Lt E trunk End cypress hedge 4' south + 1' North of ^{trunk}
- 1702 82 Lt End 6' lattice fence Begin 4' wire fence
- 1700
- 0785 72 Lt to trunk of 5' wide 13' high ^{4' south 1' North of} cypress hedge
- 0783 8' Lt Begin 6' lattice fence

LT RT

387.5	387.5	387.3	387.36	387.4
62	62	69	687	68
20	75	75	0' Hub	75
			387.17	
			0' rim	
			7	
			94	
387.4	387.4	387.8	387.5	387.7
68	68	64	67	65
15	75	75	75	75
				388.25
				598
				74
				4' rim
				388.01
				562
				376
				floor
388.1	388.5	388.3	388.2	388.2
61	52	59	60	60
25	75	75	75	25

394 23

66

cont.

LT

E

RT

67

2+575 9th SE cor House

2+34 9th LT SW cor House

2+34 7th LT End 3' picket fence

2+30

2+21 7th RT Begin 3' picket fence

2+12 7th LT Begin 3' picket fence

2+06 7th LT SE cor 3 car garage + apt. con floor + apron

2+00

1+765 7th LT SW cor 3 car garage + apt con floor + apron

TP 3rd 390⁵⁸ 6th 387³⁶ on Hub 2nd Int Alloys 5th

1+70

386.0	386.5	386.5	386.6	386.7
46	41	41	40	39
15	75	75	75	15

386.51

386.46

402
163
Floor

412
72
Apron

386.51

386.50

386.8

386.8

386.7

402
163
Floor

408
75
Apron

387

387

387

386.56

386.71

402
163
Floor

387
72
Apron

386.7

386.8

390⁵⁸

387.0

386.6

75
20

75
75

72
72

73
75

76
2.0

394²³

LT

E

RT

TP 04

322 387³⁶

Had Int H
8/14/43 Equip

2+95³⁴ E Cherokee St

385.63
495
50
510
385.48

385.30
528
47

2+77³⁴ W curb line Cherokee st.

386.01
385.39
385.19
385.30
385.25
385.19

385.19

385.44

385.09

385.60

2+65³⁴

W Prop Cherokee St edge Al paving

return broken on R

2+65³⁴

72 At End 3' picket fence

386.1
385.91
385.83
385.62
385.66
385.84

385.66

385.84

385.8

390⁵⁸

North + South Alley B/LK 43
Normal HTs

0710

0700

Begin broken Cold Bay

0700

N prop line Madison Edge AC paving

0-17

Northerly walk

0-12

N curbline Madison Ave

0-30

Madison Ave

BM,

046

394^{RB}

393^{RB}

7/27 NE cor
36th + Madison

7/27 NE cor
Madison + Wilson

391

390⁴⁷

Lt - West

4

Rt = East

69

389.6
42
25

388.8

55
25

386.5

58

9

387.64

66
12

387.52

62
12

387.34

68
12

389.5

42
25

387.12

72
12

389.7

46
25

387.19

72
12

388.9

54
12

388.7

56
25

388.24

66
25

387.74

64
25

387.54

67
25

386.90

72
25

386.76

72
25

386.44

72
25

386.93

72
25

385.51

82
25

386.05

82
25

388.54

57
50

387.26

70
50

386.01

82
50

394^{RB}

cont.

1400

0791

40[±] RT & single garage con floor open West to Alley

TR

45[±]

39457

42[±]

38922

0775

J

7[±] Lt & power pole # none

0762[±]

9[±] RT NW cor single garage opens South dirt floor

J

6[±] Lt rough con. appon

0758

11[±] Lt & single garage

0750

0747

9[±] RT SW cor single garage opens South dirt floor

0725

0716

32[±] RT & double garage dirt floor

70

Lt

389.9

42
20

389.6

50
75

Rt

389.7

42
75

389.9

42
75

RT

389.7

42
20

539
40[±]
Floor

39457

389.8

45
25

390.1

42
75

390.1

42

390.0

42
75

40[±]

42
62
9000

390.04

42
184
Floor

389.78

45
94
Floor

389.6

42
25

389.9

44
75

390.1

43

390.0

42
75

390.0

42
25

389.0

52
32
Floor

39428

cont.

Lt E Rt

- 2+50^S 8²Rt Begin 4' wire fence.
- 2+50
- 2+48 8⁵Rt NW cor single garage opens South
- 2+40 20²Lt E single garage con floor
- 2+28 24²Rt SW cor single garage broken con floor ^{opens South}
- 2+08 22²Lt E single garage con floor
- 2+04 7³Rt-E con ribbon Drive garage 63²Rt con floor ^{open to back into lot}
- 2+00 8¹Lt End 5' picket fence.
- 2+00 ✓ 6⁵Lt E Power Pole # A 4637
- 1+50 8⁶Lt Begin 5' picket fence

389.7
389.4
389.3
389.4
389.17

42 52 52 52 54
20 75 75 75 25

389.78

42
20^E
floor

389.69

48^E
22^E
floor

389.6

50
20

389.6

50
20

389.4

50
20

389.6

50
20

389.6

50
20

394.57

389.20

53^E
72
drive

389.6

50
20

389.6

50
20

389.6

50
20

389.6

50
20

389.6

50
20

389.26

53^E
84
floor

389.56

50^E
84
drive

389.6

50
20

389.6

50
20

389.6

50
20

389.6

50
20

389.50

60^E
63^E
floor

389.6

50
20

389.6

50
20

389.6

50
20

389.6

50
20

389.6

50
20

cont,

TR, 349 393 22 404 389 23 Lath Sta. 404

3465 7² RT End Shed Begin 5' Board Fence

3450 7² RT End one wooden shed begin another with 4" con. base wall floor

3449 7² LT End 6' wire fence Begin 5' Board Fence

3449 1 5² LT E power pole none

3400

2499 7⁴ LT End 4' Lath Fence, Begin 6' wire fence

2499 8⁴ RT End 4' wire fence Begin wooden shed dirt floor

2484 22² LT E single garage con floor

2475 7³ LT Begin 4' Lath Fence

2473 8⁴ LT NE cor single garage opens South

2456 8⁶ LT SE cor single garage opens South con floor

LT \$ RT

72

393 22

389.6	389.6	389.3	389.4	389.1	389.95	389.3
50	50	53	53	55	463	53
20	75	53	74	74	74	20
			Small	Finishing	Top wall	
389.9	389.6	389.5	389.4	389.3		
50	50	51	53	53		
			75	at floor		
				389.3		
				53		
				at floor		
				389.3		
				53		
				at floor		

390.19
438
224
Floor

389.63
494
35
Floor

394 51

cont

5750 72 Rt End 4' wire fence

5725

5704 85 Lt & 5" drain in wall

5700 85 Lt Begin 8" con wall fence 7' 1/2 con yard Behind

5700 75 Lt End both green house dirt floor

4750 75 Lt End 5' Board fence Begin both green house dirt floor

4751 ✓ 62 Lt E power pole # A 4655

4750 75 Rt End 3' wire fence Begin 4' wire fence

4725 72 Rt End 4' wire fence Begin 5' wire fence

4701 72 Rt End 4' Board fence Begin 7' wire fence

4700

Lt Rt

388.91	388.35	388.3	388.0	388.4	388.2	387.9	387.8
100	250	42	42	48	50	50	54
100	250	42	42	48	50	50	54
100	250	42	42	48	50	50	54
388.91	390.00	388.7	388.0	388.7	388.9	388.6	388.4
100	250	45	44	51	43	42	42
100	250	45	44	51	43	42	42
100	250	45	44	51	43	42	42
389.1	389.1	388.9	389.0	389.9	389.0	389.0	
100	20	44	44	43	42	42	
100	20	44	44	43	42	42	
100	20	44	44	43	42	42	
389.4	388.9	389.1	389.2	389.3			
20	43	44	40	39			
20	43	44	40	39			
20	43	44	40	39			

393.22

cont

Lt.

E

Rt

74

TP 84

585

387 32

387 25 82 52 63
Hub Int. Allyn
81K 43 Fms

6150⁶⁷ South prop line of East West T alley

54 384.8
7K 57 384.5
75 387.4

6149.5 ↓ 62 Lt E Power pole # PA 3621

50 388.2
7K 54 386.0
56 387.6
75 387.5
75 387.0
50 386.6

6100

5169 72 Lt E anchor cable

-

5167 76 Lt E anchor cable

388.6
46 24 390.75
20 84 57 46 387.5
84 75 388.6
52 388.0
75 388.0
25 387.8
50 387.2

5150 84 Lt End con wall 8" x Fence 7' high + con yard behind

46 24
20 84

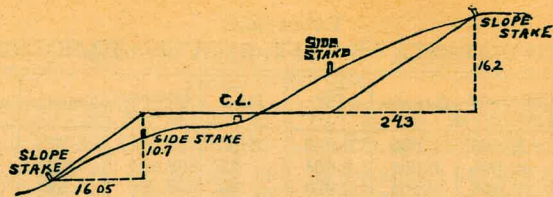
5150 73 Lt E power pole # A 4667

84 75
52 75

393 22

78

332.96 = N.W. Chamoune + Thorn



DISTANCES FROM SIDE STAKES FOR CROSS-SECTIONING.

SLOPE 1 1/4 TO 1. ROADWAY OF ANY WIDTH.

	0	.1	.2	.3	.4	.5	.6	.7	.8	.9	
0	0 00	0 15	0 30	0 45	0 60	0 75	0 90	1 05	1 20	1 35	0
1	1 50	1 65	1 80	1 95	2 10	2 25	2 40	2 55	2 70	2 85	1
2	3 00	3 15	3 30	3 45	3 60	3 75	3 90	4 05	4 20	4 35	2
3	4 50	4 65	4 80	4 95	5 10	5 25	5 40	5 55	5 70	5 85	3
4	6 00	6 15	6 30	6 45	6 60	6 75	6 90	7 05	7 20	7 35	4
5	7 50	7 65	7 80	7 95	8 10	8 25	8 40	8 55	8 70	8 85	5
6	9 00	9 15	9 30	9 45	9 60	9 75	9 90	10 05	10 20	10 35	6
7	10 50	10 65	10 80	10 95	11 10	11 25	11 40	11 55	11 70	11 85	7
8	12 00	12 15	12 30	12 45	12 60	12 75	12 90	13 05	13 20	13 35	8
9	13 50	13 65	13 80	13 95	14 10	14 25	14 40	14 55	14 70	14 85	9
10	15 00	15 15	15 30	15 45	15 60	15 75	15 90	16 05	16 20	16 35	10
11	16 50	16 65	16 80	16 95	17 10	17 25	17 40	17 55	17 70	17 85	11
12	18 00	18 15	18 30	18 45	18 60	18 75	18 90	19 05	19 20	19 35	12
13	19 50	19 65	19 80	19 95	20 10	20 25	20 40	20 55	20 70	20 85	13
14	21 00	21 15	21 30	21 45	21 60	21 75	21 90	22 05	22 20	22 35	14
15	22 50	22 65	22 80	22 95	23 10	23 25	23 40	23 55	23 70	23 85	15
16	24 00	24 15	24 30	24 45	24 60	24 75	24 90	25 05	25 20	25 35	16
17	25 50	25 65	25 80	25 95	26 10	26 25	26 40	26 55	26 70	26 85	17
18	27 00	27 15	27 30	27 45	27 60	27 75	27 90	28 05	28 20	28 35	18
19	28 60	28 65	28 80	28 95	29 10	29 25	29 40	29 55	29 70	29 85	19
20	30 00	30 15	30 30	30 45	30 60	30 75	30 90	31 05	31 20	31 35	20
21	31 50	31 65	31 80	31 95	32 10	32 25	32 40	32 55	32 70	32 85	21
22	33 00	33 15	33 30	33 45	33 60	33 75	33 90	34 05	34 20	34 35	22
23	34 50	34 65	34 80	34 95	35 10	35 25	35 40	35 55	35 70	35 85	23
24	36 00	36 15	36 30	36 45	36 60	36 75	36 90	37 05	37 20	37 35	24
25	37 50	37 65	37 80	37 95	38 10	38 25	38 40	38 55	38 70	38 85	25
26	39 00	39 15	39 30	39 45	39 60	39 75	39 90	40 05	40 20	40 35	26
27	40 50	40 65	40 80	40 95	41 10	41 25	41 40	41 55	41 70	41 85	27
28	42 00	42 15	42 30	42 45	42 60	42 75	42 90	43 05	43 20	43 35	28
29	43 50	43 65	43 80	43 95	44 10	44 25	44 40	44 55	44 70	44 85	29
30	45 00	45 15	45 30	45 45	45 60	45 75	45 90	46 05	46 20	46 35	30
31	46 50	46 65	46 80	46 95	47 10	47 25	47 40	47 55	47 70	47 85	31
32	48 00	48 15	48 30	48 45	48 60	48 75	48 90	49 05	49 20	49 35	32
33	49 50	49 65	49 80	49 95	50 10	50 25	50 40	50 55	50 70	50 85	33
34	51 00	51 15	51 30	51 45	51 60	51 75	51 90	52 05	52 20	52 35	34
35	52 50	52 65	52 80	52 95	53 10	53 25	53 40	53 55	53 70	53 85	35
36	54 00	54 15	54 30	54 45	54 60	54 75	54 90	55 05	55 20	55 35	36
37	55 50	55 65	55 80	55 95	56 10	56 25	56 40	56 55	56 70	56 85	37
38	57 00	57 15	57 30	57 45	57 60	57 75	57 90	58 05	58 20	58 35	38
39	58 50	58 65	58 80	58 95	59 10	59 25	59 40	59 55	59 70	59 85	39
40	60 00	60 15	60 30	60 45	60 60	60 75	60 90	61 05	61 20	61 35	40
41	61 50	61 65	61 80	61 95	62 10	62 25	62 40	62 55	62 70	62 85	41
42	63 00	63 15	63 30	63 45	63 60	63 75	63 90	64 05	64 20	64 35	42
43	64 50	64 65	64 80	64 95	65 10	65 25	65 40	65 55	65 70	65 85	43
44	66 00	66 15	66 30	66 45	66 60	66 75	66 90	67 05	67 20	67 35	44
45	67 50	67 65	67 80	67 95	68 10	68 25	68 40	68 55	68 70	68 85	45
46	69 00	69 15	69 30	69 45	69 60	69 75	69 90	70 05	70 20	70 35	46
47	70 50	70 65	70 80	70 95	71 10	71 25	71 40	71 55	71 70	71 85	47
48	72 00	72 15	72 30	72 45	72 60	72 75	72 90	73 05	73 20	73 35	48
49	73 50	73 65	73 80	73 95	74 10	74 25	74 40	74 55	74 70	74 85	49
50	75 00	75 15	75 30	75 45	75 60	75 75	75 90	76 05	76 20	76 35	50

Computed by L. Leland Locke.

6+0060
2186
52246

6915
518
6397

850
877

850
544
1394

544
877
1421

95
34
129.8

487

46755
83
243.48
13
777.03

7777.00
13
7764

524
568