

1791

A357-B

1791

MICROFILMED

13165

DEC 29 1964 847

6318

MADE IN U. S. A.

925

45

1175

Our Leather Bound Engineers Note Books are carried in the following rulings:

- No. 380 LEVEL BOOK. Left and Right Hand Page the same as Left Hand Page of this Book.
- No. 382 FIELD BOOK. Left Hand Page as in this Book, Right Hand Page 4x4 to the inch, Center Line Red.
- No. 384 MINING TRANSIT BOOK. Left Hand Page as in this Book, Right Hand Page 8x8 to the inch, Center Line Red.
- No. 385 FIELD BOOK. Left Hand Page as in this Book, Right Hand Page 8 vertical and 4 horizontal lines to the inch, Center Line Red.

We also carry the Note Books listed above, bound in extra strong Fabri-Hide (otherwise the same quality of book,) which can be furnished at a somewhat lower price.

In ordering Fabri-Hide covered books, add the letter "F" to catalog number.

THE FREDERICK POST CO.

ENGINEERING and DRAFTING SUPPLIES

P. O. Box 803

CHICAGO

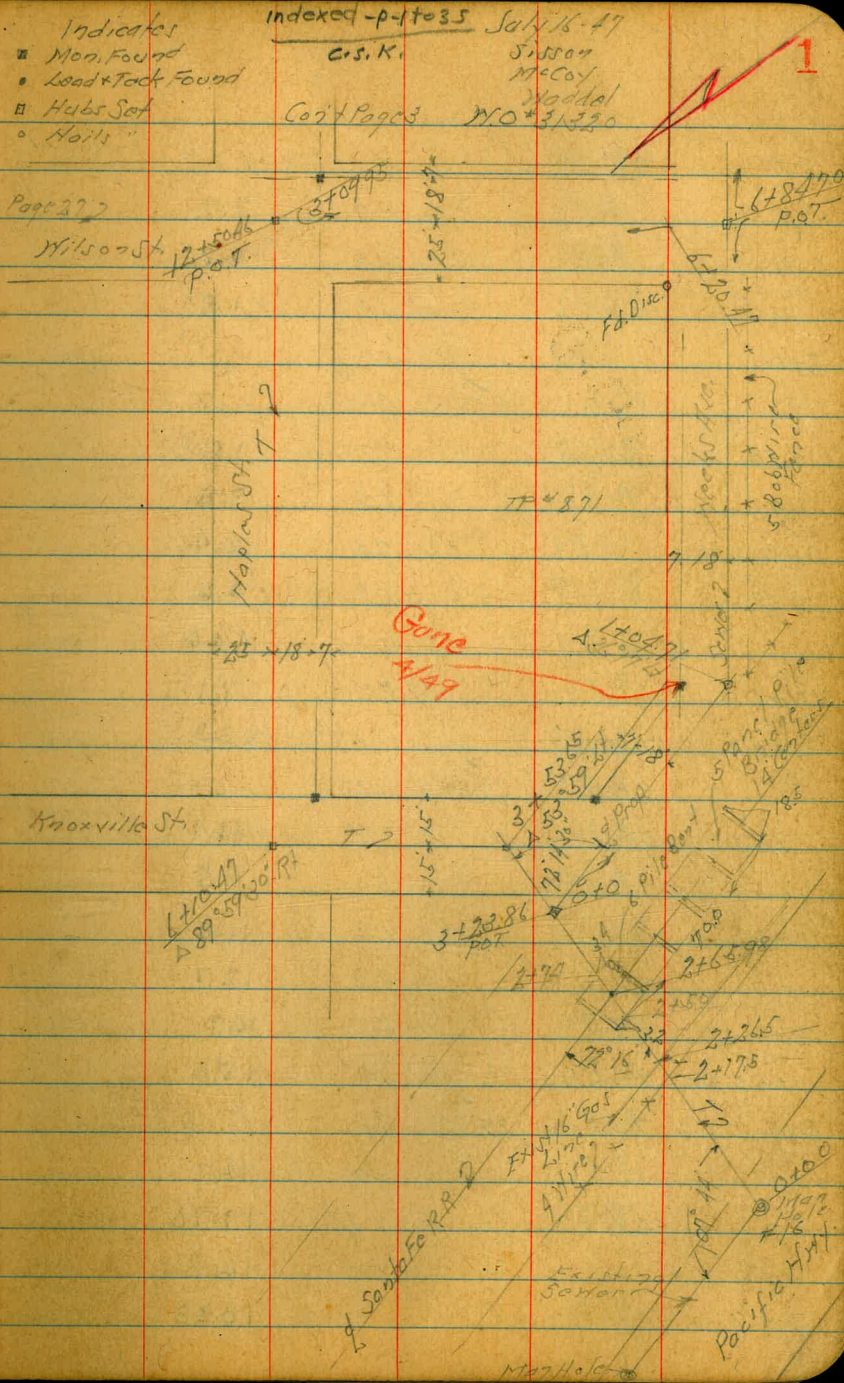
INDEXED
Completely

See G.B. 246 + 252 + F.B. 1544

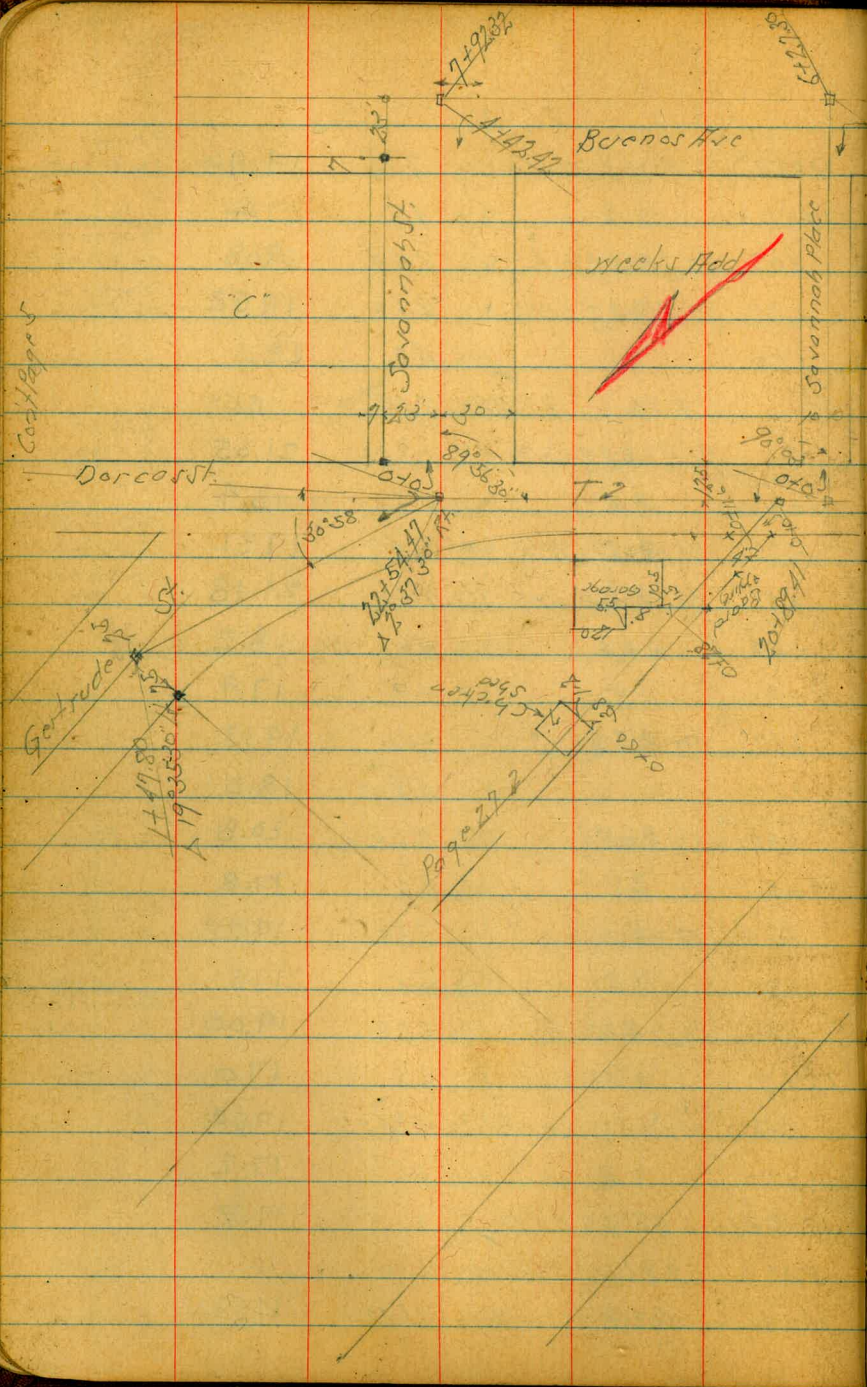
- ✓ 1-9 Levels Proposed Serice Knoxville-Naples + Dorcas Str
- ✓ 10 " " " Excervien + Plainview Road
- ✓ 11 " " " Monitor Rd. Oarstad to Plainview
- ✓ 12-13 " " " Hilda + Elevation Dorcas to Oarstad
- ✓ 15 " " " Crown St. Elevation to Monitor
- ✓ 16 " " " Ellsworth " "
- ✓ 17 " " " Monitor Hilda to Oarstad
- ✓ 18 " " " Excervien Dorcas to Oarstad
- ✓ 20-21 " " " Morena Blvd Buenos + Blanca
- ✓ 22 " " " Savannah St Dorcas to Cushman
- ✓ 23 " " " Savannah Place " "
- ✓ 24-25 " " " Dorcas Naples Pl. + Cushman
- ✓ 26 " " " Cushman Place
- ✓ 28-29 " " " Knoxville + Morena Blvd Dorcas ^{Naples to}
- ✓ 30 " " " Savannah St Knoxville to Morena
- ✓ 31 " " " ^{VEGA ST} Highland Savannah to Weeks Pl.
- ✓ 32 " " " Block E Boulevard Hts
- ✓ 33 " " " Gertrude Dorcas to Viola
- ✓ 34 " " " Viola - Gertrude + Lillian ^{Naples Pl}
- ✓ 35 " " " Dorcas + Weeks ^{Naples Pl} Buato Cushman
- ✓ 47-48 " " " Corolla Tract.

Proposed Satter Boulevard Gardens
And Overlook Heights T. Line

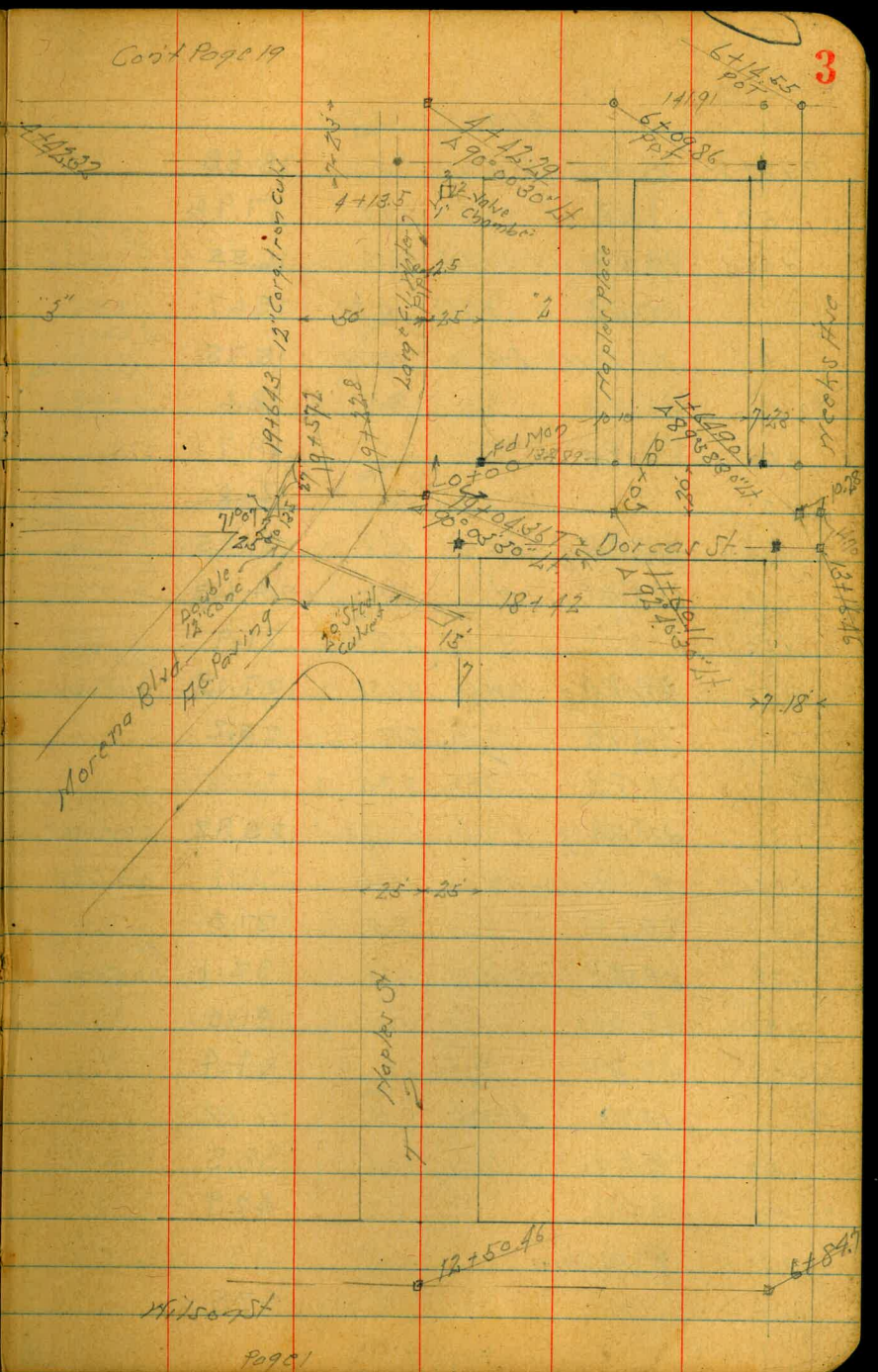
BM	1.81	9.66	7.85	8 P.I. 0.57 Pac. Co. 0.81 Pacific Hwy
0+00	Exist. M.H. #16	7.95	1.71	0.7 P.I. 0.12
"		15.09	-5.43	Invert
+50		8.6	1.1	
1+0		8.0	1.7	
+43	INVEYED	9.3	.4	
+54		5.7	4.0	
+68		5.7	4.0	
+77		8.9	.8	
2+0			8.9	.8
+26.5	Exist. 18" Gard. line	10.56	-0.90	Top Pipe
+42		8.1	1.6	
+50		4.4	5.3	
T.P.	5.13	6.11	8.68	0.98
+60.6	Bottom Stringer	7.0.58	6.69	
+75		4.8	1.3	
+84		4.9	1.2	
+91		7.6	-1.5	
3+0		5.1	.7	
+53.65	$\Delta 53^{\circ} 59' 11''$	5.20	.91	0.7 Hub
4+0		5.1	1.0	
+50		4.5	1.6	
5+0		4.5	1.6	
+50		4.3	1.8	
6+0		3.9	2.2	
+10.47	$\Delta 89^{\circ} 59' 30''$	3.7	2.4	



6.11		22.12							
BM		4.05	2.06	02 Mon Knoxville Naples	13.83	106 Rt of 1/2 - NY	2.16	19.96	Frame House on Floor
+50		3.9	2.2		14.10		4.7	17.4	
+70		3.9	2.2		+07	40 Lt of 1/2 - 2	3.04	19.08	Stucco Ho. on Floor
+50		4.3	1.8		+34	48 Rt of 1/2 - NY	2.60	19.52	Stucco Ho. on Floor
8+0		5.0	1.1		+50		4.0	18.1	
TP	8.35	9.81	4.65		TP	4.10	22.78	344	18.68
+50		8.2	1.6		+81	91 Rt of 1/2 - NY	1.73	21.05	House on Floor
+92	83 Lt of 1/2 - NY	6.0	3.8	Stucco Ho. on Floor	+50		4.4	18.4	
+70		7.4	2.4		+26	26 Lt of 1/2 - NY	3.47	19.31	Courts From on Floor
+49		5.2	4.6		+41	49 Rt of 1/2 - NY	1.60	21.18	Stucco House on Floor
"	12 Lt of 1/2 - NY	5.35	4.46	Frame Ho. on Floor	+50		4.6	18.2	
10+0		2.7	7.1		16+0		4.9	17.9	
+05	51 Lt of 1/2 - 2	1.48	8.33	Frame Ho. on Floor	+37	92 Rt of 1/2 - 2	3.65	19.13	Coll. House on Floor
TP	9.02	17.51	1.32		+50		4.8	18.0	
+34	52 Lt of 1/2 - NY	7.82	9.69	Frame Ho. on Floor	+92	50 Rt of 1/2 - 2	2.00	20.8	Frame Ho. on Floor
+50		8.0	9.5		17+0		5.0	17.8	
11+0		6.3	11.2		+15	44 Rt of 1/2 - 2	3.50	19.28	Frame Ho. on Floor
+50		4.8	12.7		+50		5.5	17.3	
12+0		3.2	14.3		+90	26 Lt of 1/2 - NY	2.78	19.00	Frame Court on Floor
+50.46	28 W. 1500 St	1.9	15.6		18+0		5.8	17.0	
BM	7.44	22.12	2.83	SE Mon Naples	+38	44 Rt of 1/2 - NY	5.24	17.54	Stucco Store on Floor
13+0		5.9	16.2		+50		5.6	17.2	
"	44 Lt of 1/2 - 2	4.42	17.70	Stucco House on Floor	19+0.436	1 90° or 30 Lt	5.1	17.7	
+50		5.3	16.8		BM	9.71	25.90	6.59	16.19
+57	40 Lt of 1/2 - 2	3.74	18.38	Stucco House on Floor	18+42	15 Rt of 1/2 = outlet 30' Street Culvert	11.32	14.58	House



Cont Page 19



2590

19+22.8	Edge of Pav	7.02	18.88
+57.2	"	7.94	17.96
+64.3	27' Pt of $\frac{1}{2}$ = 1st Lt	9.35	16.55
"	13.5' Lt " = 2nd Lt	10.23	15.67
"	16' Lt off $\frac{1}{2}$ End Do.	10.15	15.75
20+0		7.3	18.6
+50		6.2	19.7
21+0		5.1	20.8
+14	13' Lt of $\frac{1}{2}$ = NEH	4.65	21.25
+19	26' Rt " " = $\frac{1}{2}$	1.27	24.63
+50		4.0	21.9
+59	27' Pt of $\frac{1}{2}$ = SWH	4.25	27.15
22+0		2.7	23.2
TP	12.65 36.30	2.25	23.65
+31	33' Lt of $\frac{1}{2}$ = $\frac{1}{2}$	10.38	25.92
+54.47	$\frac{1}{2}$ Savannah	11.10	25.20
23+0		8.5	27.8
+32	49' Pt of $\frac{1}{2}$ = NEH	4.20	32.1
+50		5.2	31.0
24+0		1.9	34.4
TP	12.89 49.08	0.11	36.19
+50		10.6	38.5
25+0		6.2	42.9
+30.11	$\frac{1}{2}$ Bioccala	3.47	45.61
+50		1.1	47.5

12" Core Gully
Culvert
Front
10' vent
12" Core Gully
12' vent
14' core of Do.

Front House
02 Floor
From Ho
02 Floor
Calif Ho
02 Floor

From Ho
02 Floor
From Ho
02 Floor
From Ho
02 Floor

02 Stab

4908

TP	12.15	61.14	0.09	48.99
26+0			9.0	52.1
+70.6	= Edge oil + Rock Pav.		8.15	52.99
+50	02 " "		4.18	56.96
TP	12.98	74.02	0.10	61.04
27+0	02 oil + Rock Pav.		11.27	62.75
+50	" " "		4.75	69.27
TP	9.83	83.31	0.54	73.48
+89	48' Lt of $\frac{1}{2}$ = $\frac{1}{2}$		0.10	83.21
28+0	02 oil + Rock Pav.		7.60	75.71
BM	12.97	90.91	5.37	77.94
+33	41' Lt of $\frac{1}{2}$ = $\frac{1}{2}$		3.33	87.58
+50	02 oil + Rock Pav.		9.30	81.61
+79	25' Pt of $\frac{1}{2}$ = $\frac{1}{2}$		3.70	87.21
29+0	02 oil + Rock		4.05	86.86
TP	13.02	103.49	0.44	90.47
+31	79' Lt of $\frac{1}{2}$ = $\frac{1}{2}$		9.56	93.93
+50	02 oil + Rock		11.23	92.26
+87	44' Pt of $\frac{1}{2}$ = $\frac{1}{2}$		3.12	100.36
30+0	02 oil + Rock		5.63	98.36
TP	12.56	115.81	0.24	103.25
+50			11.94	103.87
31+0			5.6	110.2
+27	117' Lt of $\frac{1}{2}$ = $\frac{1}{2}$		9.62	106.19
TP	12.93	126.44	3.30	113.51

From Ho
02 Floor
NEBP
Hildat
Bot car
77.37
Calif Ho
02 Floor

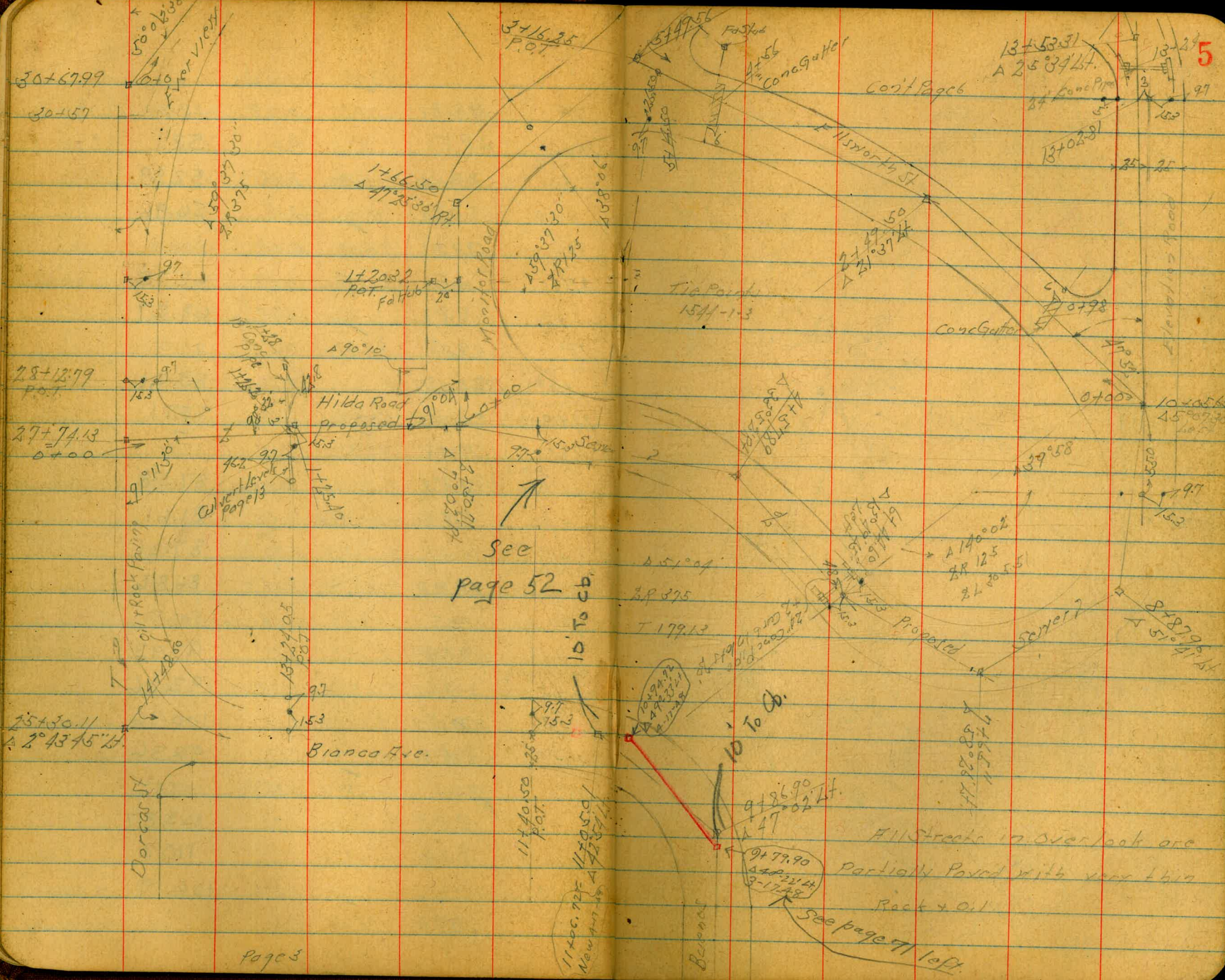
Stucco House
02 Floor

Single House
02 Floor

Stucco House
02 Floor

From Ho
02 Floor
North of Pile
18' Lt 31.20

Cont Page 8



page 3

See page 71 left.

All Streets in overlook are
partially paved with very thin
Rock & Oil

5

30+67.99
30+57

3+16.25
P.O.T

13+53.31
A 25 34 26.4

1+66.50
A 47 25 30.84

78+12.79
P.O.T

27+74.13
0+00

25+30.44
A 2 43 45.21

Bianca Ave.

See
page 52

10' to C.B.

10' to G.

11400.72
Newman
A 12 25 30

Bianca

9479.90
A 47
A 4 21 24
3-1742

All Streets in overlook are
partially paved with very thin
Rock & Oil

13+53.31
A 25 34 26.4

13+02.81

Tie Point
1541-1-3

Hilda Road
Proposed

Dorcas St

Cont Page 6

Proposed

Survey 7

Call next layout
page 13

Proposed

Dorcas St

Dorcas St

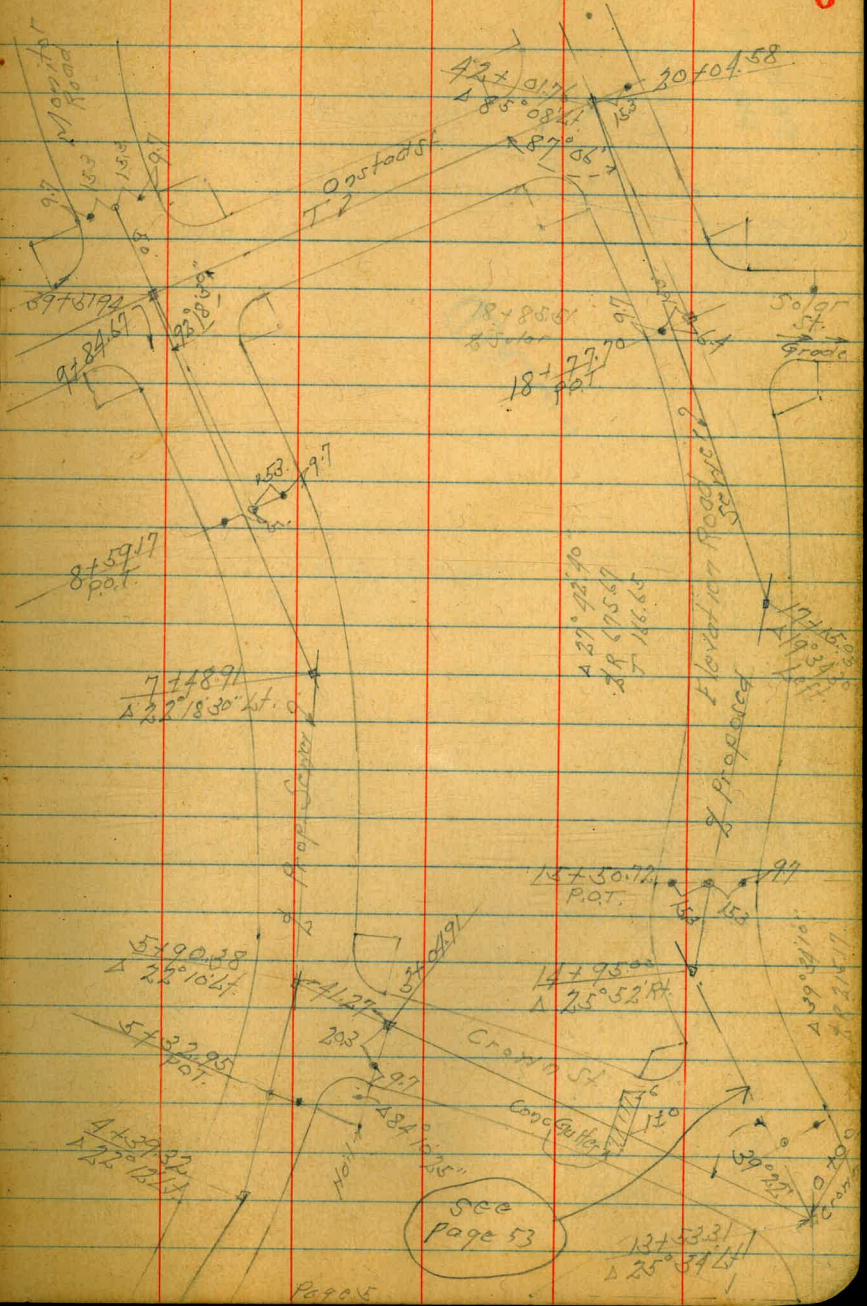
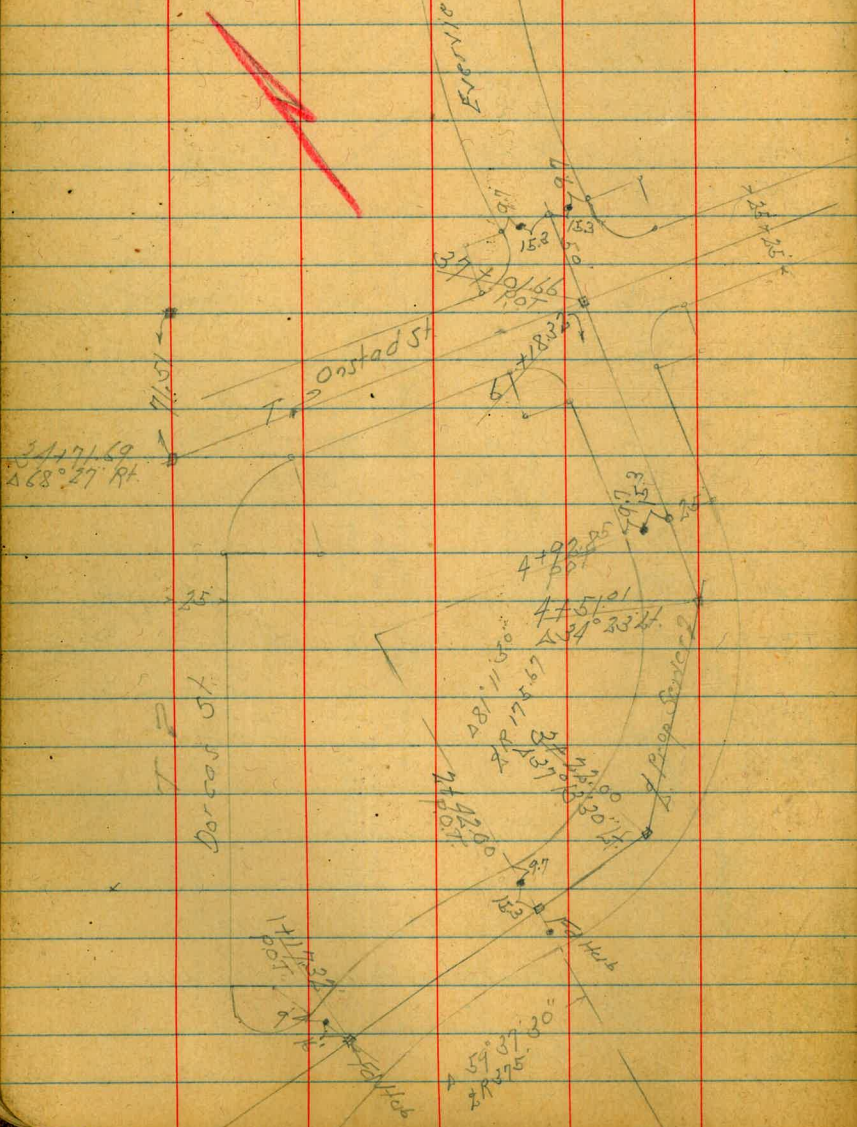
Dorcas St

Dorcas St

Dorcas St

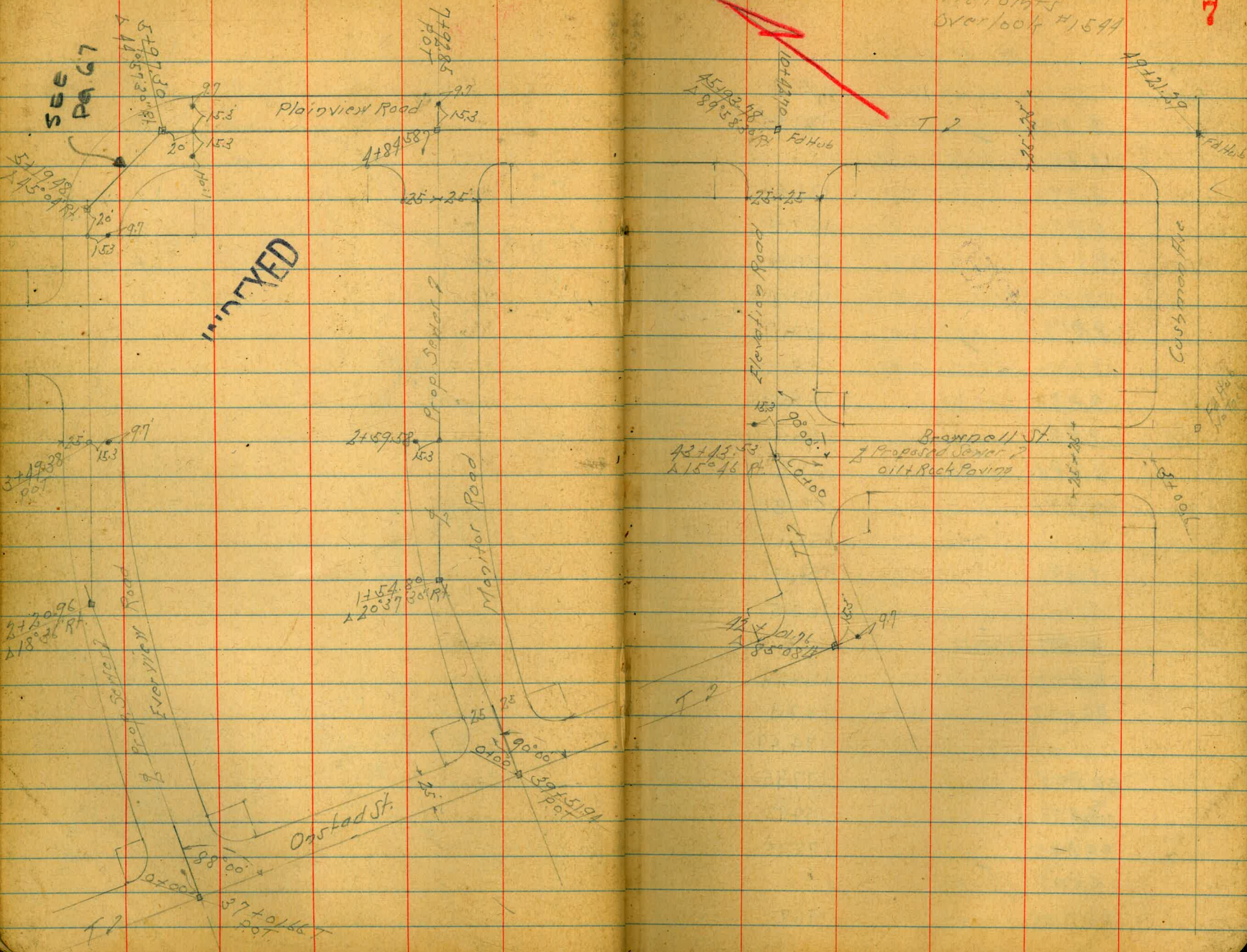
Overlook Hts
Tic Point #1511

Cont Page 7



Tie Points
Overlook #1544

7



126.44 8¹/₂ Ford Page 4

31+50		10.5	115.9	
32+0		5.0	121.4	
TP	12.80	139.05	0.19	126.25
+50		12.3	126.8	
33+0		6.9	132.2	
+50		0.8	138.3	
"	22 1/2 of 2	1.1	137.7	
"	45 " "	34.4	104.7	176 Barron Rd
TP	12.73	151.25	0.53	138.52
34+0		6.4	144.9	
+50		0.1	151.2	
TP	12.70	163.89	0.06	151.19
+7169	468 27 ft	10.03	153.86	on Hub
+886	2 1/2 oil + Road Pav.	8.8	155.1	
35+0		7.2	156.7	
+50		1.1	162.5	
TP	12.69	176.35	0.22	163.16
+50	53 ft of 2 Ely	12.17	164.18	Frame House on Floor
36+0		8.5	167.9	
"	42 ft of 2	1.86	174.49	Stucco House on Floor
+44	45 ft " "	+1.50	177.85	Frame Ho on Floor
"	27 ft " "	1.42	174.92	Stucco Ho on Floor
+50		3.6	172.75	
TP	7.95	184.20	0.10	176.25
37+0166	1/2 Everman Road	7.42	176.78	on Hub

184.20

July 22-47

Sisco
McCoy
Weddel
Hisco

8

8M	E 200	6.58	177.62	HWBP Stucco Conc Parch on stadt Everman 177.64
37+50		5.4	178.8	
+87	27 ft of 2 Ely	4.29	179.91	Stucco House on Floor
38+0		4.6	179.6	
+50		5.2	179.0	
39+0		6.3	177.9	
+5194	1/2 Barron Rd	6.21	177.99	on Hub
40+0		4.3	179.9	
TP	12.07	196.90	0.07	184.12
+50		12.0	184.9	
41+0		7.0	189.9	
+50		2.6	193.3	
42+0176	1/2 Elevation Road	2.50	194.40	on Hub
8M		2.36	194.54	1 1/2 Ely of Elevation Rd on stadt
+50		0.2	196.7	
TP	11.50	208.33	0.07	196.83
+60	47 1/2 of 2	10.09	198.24	Frame House on Floor
43+0		9.3	199.0	
+05	16 1/2 of 2	7.85	200.48	Single House on Floor
443.57	1/2 Bronnall to Ford	7.60	200.73	on Hub
+90	38 ft of 2	4.13	204.20	Stucco House on Floor
44+0		5.7	202.6	
"	45 ft of 2 SW Cor	3.33	205.00	Stucco Ho on Floor
+50		4.3	204.0	
+87	16 ft of 1/2	2.70	205.63	Stucco Ho on Floor

208.32

45+0			3.0	205.3	
+50			1.8	206.5	
493.78	= 7/2 Plainview Rd.		1.60	206.73	07 Hub
46+0			0.9	207.4	
7P	10.59	218.51	0.41	207.92	
+50			9.1	209.4	
+57	40 ft of 1/2 = 1/2		8.37	210.14	Stucco Ho. (07 Floor)
+94	44 ft = 1/2 Garage		9.00	209.51	Sta. Fabr (07 Conc Floor)
47+0			7.6	210.9	
"	40 ft of 1/2 = 1/2 Garage		5.68	212.83	07 Conc Floor
+50			5.8	212.7	
48+0			4.7	213.8	
"	53 ft of 1/2 = Entrance		2.67	215.84	Stucco Ho (07 Floor)
+30	40 ft of 1/2 = Garage		4.52	213.99	Stationary (07 Conc Floor)
+50			5.2	213.3	
+58	48 ft of 1/2 = 1/2		2.40	216.11	Stucco Ho (07 Floor)
49+0	= Fly Oil & Rock Pav.		6.2	212.2	
BM			3.14	215.37	Top of 1/2 rd Cyn. Plais View Curbman

Note: From Sta 34 + 83.6 to 49+0
oil & Rock Pav 129

Levels Proposed Senter ExerView Road
 End Plain View Road - Oostad St to Elevation Road

Alignment Sketch Page 7

BM	10.58	188.22	177.64	177.8P 50' on porch Oostad St ExerView
0+00	37+01.66 T	11.41	176.81	on Hub
+50	02 oil + Rock Pav.	9.5	178.7	
+10		7.6	180.6	
+42	40 ft of 2" Garage	6.95	181.27	Sta. Tabr on Conc. Floor
+50		6.1	182.1	
+10		5.1	182.6	
+20.96	A 18° 36' Rt	5.62	182.60	on Hub
"	54' Rt of 2"	+1.7	189.9	Stucco Ho. on Floor
+50		5.7	182.5	
+70	45' Rt of 2"	+2.1	190.3	Stucco Ho. on Floor
+10		7.3	180.9	
+50		8.9	179.3	
+75	46' Rt of 2"	2.8	185.4	Stucco Ho. on Floor
+10		8.5	179.7	
+27	40' Rt of 2"	0.30	187.9	Stucco Ho. on Floor
+50		7.0	181.2	
+70	40 ft of 2"	3.82	184.40	Stucco Ho. on Floor
+75	45' Rt of 2"	0.60	187.62	Stucco Ho. on Floor
+10		4.2	183.9	
719.48	A 45° 04' Rt	3.04	185.18	on Hub
TP	12.91	197.45	3.68	184.54
+50		9.9	187.6	
+97.20	A 44° 57' 30" Rt	5.84	191.61	on Hub
+150		3.2	194.3	

INDEXED

197.45

710	1.7	195.8	
+50	0.8	196.7	
TP	10.60	207.57	0.48
+92.85	2" Monitor	10.17	197.40
8+0		9.9	197.7
+50		9.0	198.6
781	40' Rt of 2" Garage	8.10	199.47
9+0		8.0	199.6
+50		6.6	201.0
"	50' Rt of 2"	10.6	197.0
10+0		3.5	204.1
+42.70	2" Elevation Road	0.81	206.76
Notes: This Line 0+0 to 10+42.70 Very 45' oil + Rock Paving			

Levels Proposed Senior Monitor Road
Onsted St to Plainview Road

Alignment Sketch Page 7

BM	12.87	190.86		177.99	Stucco House on Garage Floor Page 8
+100	39' Lt of	12.87		177.99	
+11	50' Lt of	10.61		180.25	
+50		10.3		180.6	
+10		6.9		184.2	
+0.5	38' Lt of $\frac{1}{2}$ Garage	4.61		186.25	Sta. Tube on Conc. Floor ✓
+14	57' Rt " " "	3.13		187.73	Sta. Tube on Conc. Floor ✓
+54.80	20' 27' 30" Rt	3.88		186.98	on Herb ✓
TP	10.02	200.42	0.46	190.40	Sta. Tube on Conc. Floor ✓
+91	46' Rt of $\frac{1}{2}$ Garage	10.66		189.76	on Conc. Floor ✓
+20		10.2		190.2	
+36	47' Rt of $\frac{1}{2}$ Garage	6.32		194.1	Stucco House on Floor ✓
+46	40' Lt " " Garage	6.96		193.46	Sta. Tube on Conc. Floor ✓
+50		7.4		193.0	
+70	65' Rt of $\frac{1}{2}$ Garage	7.88		192.54	Sta. Tube on Conc. Floor ✓
+30		5.4		195.0	
+18	44' Rt of $\frac{1}{2}$ Garage	2.94		197.48	Sta. Tube on Conc. Floor ✓
"	46' Lt " " "	5.24		195.18	Sta. Tube on Conc. Floor ✓
+50		4.03		196.1	
+69	67' Rt of $\frac{1}{2}$ Garage	2.36		198.06	Sta. Tube on Conc. Floor ✓
+10		4.4		196.0	
+50		3.7		196.7	
+81.58	$\frac{1}{2}$ Plainview	3.05		197.37	on Herb 7+92.85 197.40 Page 10

INDEXED

Levels Proposed Senior
Brownell St. Elevation Road to

July 22-47

Cushman Ave. Alignment Page 7

11

BM	6.08	206.81		200.73	on Herb 437 43.53T Page 8
+0	43' 43.53T	6.08		200.73	
+50		6.2		200.6	
+10		6.5		200.3	
+50		5.5		201.3	
"	50' Lt of $\frac{1}{2}$ Garage	11.0		195.8	on Ground ✓
+20		4.3		202.5	
+50		3.1		203.7	
+83	58' Rt of $\frac{1}{2}$ Garage	4.70		202.11	Stucco House on Floor ✓
"	50' Lt " " Garage	4.37		210.5	Stucco House on Floor ✓
+200.6	N.W. Cushman Ave.	2.0		204.8	

INDEXED

Levels Proposed Sewer Hills Road +
Elevation Road Dorcas St to Onsted St.

Alignment + Sketch, Page 5

BM	513	83.07		77.94	N.E. 8P Hills Rd + Dorcas Page 4
0+0	= 37+74 1/2		10.5	72.6	
+50			10.2	72.9	
1+0			8.6	74.5	
+28			6.2	76.9	
"	42.8 ft of 1/2 = 1/2 lat	16.0		67.1	Invert 18" Conc. Pipe ✓
"	50 Rt. "	19.8		63.3	Ground ✓
+50			0.8	79.3	
TP	12.54	95.50	0.11	82.96	
2+0			9.0	86.2	
+50 71	= 70' RT Monitor		1.94	93.56	07 Hub
TP	12.74	107.78	0.46	95.04	
3+0			8.8	98.98	
"	40 Rt of 1/2		16.0	91.8	
+50			4.4	103.4	
4+0			1.4	106.4	
"	40 Rt of 1/2		12.1	94.7	
TP	2.71	110.91	0.58	107.20	
+57.89	Δ 53° 32' Rt		2.23	108.68	07 Hub
5+0			2.3	108.6	
"	40 Rt of 1/2		12.1	98.8	
+25	45 ft of 1/2		+10.9	121.8	Stucco House 07 Floor to 07 Garage under no Hub marking ✓
+50			4.1	106.8	
"	Rt of 1/2		16.6	94.3	
6+0			4.9	106.0	

INDEXED

July 28-47
S. W. W.
M. C. W.
H. L. W.
12

6+39.8	= 117 Rt of 1/2	110.91	10.61	100.30	Bottom Box Curb 1/2 lat
"	137 ft "		9.90	101.01	Bottom Box Curb 1/2 lat ✓
+44.60	Δ 13° 49' Rt		5.4	105.5	
TP	12.99	118.93	4.97	105.94	07 Lat 100 ft 07 1/2 67 446 RR
7+0			11.8	107.1	
"	50 Rt of 1/2		22.2	96.7	✓
+50			8.1	110.8	
+62	24 Rt of 1/2 = S.E. 1/4		16.0	102.9	Stucco House 07 Basement Floor
+65.11	Δ 58° 26' Lt		6.94	111.99	07 Hub
8+0			3.4	115.5	
"	50 Rt of 1/2		11.5	107.4	✓
+16	35 Rt " = N.W. 1/4		5.4	113.5	Stucco House 07 Basement Floor ✓
TP	12.77	131.38	0.52	118.61	
+50			9.5	121.9	
+65	50 Lt of 1/2		4.20	133.4	Frame Ho. 07 Floor ✓
+87.96	Δ 31° 41' Lt		5.25	126.03	07 Hub
9+0			8.9	127.5	
"	24 Rt of 1/2 = S.W. 1/4		8.7	122.7	Stucco House 07 Basement Floor
TP	11.96	142.89	0.45	130.93	
+50			9.9	133.0	
10+05.65	Δ 5° 07' 30" Lt		5.27	137.62	07 Hub
+17	31 Rt of 1/2 = N.W. 1/4		11.9	131.0	Stucco House 07 Basement Floor ✓
+50			2.1	140.8	
TP	10.87	153.44	0.32	142.57	
11+0			9.6	143.8	

153.44

117.50			6.6	146.8	
" "	37' Lt of $\frac{1}{2}$ - $\frac{1}{2}$		6.5	146.9	Sta. To be on concrete
+63	37' Rt " " $\frac{1}{2}$ Cor.		5.1	148.3	Stationary Table on concrete floor
121.0			5.4	150.0	
" "	37' Rt of $\frac{1}{2}$ - $\frac{1}{2}$		2.47	150.97	Stucco House on floor
+50			0.6	152.8	
TP	11.74	164.96	0.22	153.22	
+75	30' Lt of $\frac{1}{2}$ - $\frac{1}{2}$		5.4	159.6	Stucco House on floor
131.0			9.9	155.1	
+24	15.5' Rt of $\frac{1}{2}$ -Edge		15.47	149.49	Conc Box curb 6" high on concrete
" "	12.5' Lt of $\frac{1}{2}$ "		13.84	151.12	Conc Box curb 6" high on concrete
+53.31	$\Delta 25^\circ 31'$ Lt		7.81	157.15	on floor
" "	40' Rt of $\frac{1}{2}$		18.5	146.5	✓
141.9			5.5	159.5	
+50			2.8	162.2	
TP	13.00	176.76	0.20	164.76	
+95.00	$\Delta 25^\circ 52'$ Rt		11.76	165.00	on floor
151.0			11.4	165.4	
" "	40' Rt of $\frac{1}{2}$		16.0	160.8	✓
+50			7.5	169.3	
161.0			3.2	173.6	
" "	40' Rt of $\frac{1}{2}$		9.5	167.3	✓
TP	11.98	188.38	0.35	176.10	
+50			10.4	178.0	
" "	40' Lt of $\frac{1}{2}$ - $\frac{1}{2}$		2.25	186.13	Stucco House on floor

188.38

171.0			6.5	181.9	
" "	40' Rt of $\frac{1}{2}$		13.7	174.7	✓
+150.5	$\Delta 19^\circ 31' 30''$ Lt		5.57	182.81	on floor
+50			3.4	185.0	
181.0			0.8	187.6	
+0.1	24' Rt of $\frac{1}{2}$ -Cor		6.20	182.18	Stucco House on concrete floor
TP	9.05	197.29	0.14	188.24	
+50			7.8	189.5	
191.0			6.7	190.6	
+0.2	35' Lt of $\frac{1}{2}$ - $\frac{1}{2}$		+0.65	197.94	Stucco House on floor
+50			5.3	192.0	
+6.1	40' Rt of $\frac{1}{2}$ -NWLY		10.45	186.84	Stucco House garage under on concrete floor
201.0458	121.01787"		2.87	194.42	
BM			2.73	194.55	Lat E of elevation 200 ft high 194.87 Page 8
	18" Culvert Sta 1+262	Hilda Road			April-18-48 S. 5507
					Sketch Page 5
BM	342	81.36		77.94	N.E. BP Hilda Dorcas
1+262	46.2' Rt of $\frac{1}{2}$ on Diap	21.26	60.10		Invert + out let of 18" Conc pipe

Check Levels Hilda + Elevation Road
Dorcas St to Ousted St.

BM	12.36	90.30		77.94	NEBP Hilda + Dorcas
TP	12.003	102.999	0.304	89.996	
BM			9.44	93.56	on Hub Hilda 770710
TP	10.660	113.254	0.405	102.594	
BM			7.817	105.937	247 15874 614460
TP	12.817	123.631	2.440	110.814	
TP	12.772	136.248	0.155	123.476	
TP	12.740	148.838	0.150	136.098	
BM			11.220	137.618	on Hub Elevation Elevation
TP	12.306	160.813	0.321	148.507	
BM			3.665	157.148	on Hub Elevation Dorcas St
TP	12.607	173.07	0.350	160.463	
TP	12.840	185.482	0.428	172.642	
TP	12.528	197.788	0.212	185.26	
BM			2.232	194.566	247 F004 Elevation Ousted 194.54 Peg 2

INDEXED

Levels Proposed Section Crosscut
Elevation Road to Monitor Road

Alignment + Sketch Page 6

BM	12.81	169.96	157.15	07 Hub 13+53.31 Elevation Road Page 13
0+00	= 13+53.31 Elev Road	12.8	157.2	
+44	4' Lt of $\frac{1}{2}$ = $\frac{1}{2}$	9.71	160.25	Garage 4 Stationary Tabs 07 Core Floor
+50	07 oil + Rock Paving	10.91	159.05	
+70	= Sly 6' Core Gutter	9.33	160.63	
+80	07 oil + Rock	7.4	162.6	
+10		6.1	163.9	
"	45' Lt of $\frac{1}{2}$ = $\frac{1}{2}$	7.20	162.76	Steecco Ho. ✓ 07 Floor
+22	100' Lt of $\frac{1}{2}$ = $\frac{1}{2}$ Garage	14.50	155.46	Stationary ✓ Tabs on Core Floor
+50		4.6	165.4	
+55	37' Lt of $\frac{1}{2}$ = $\frac{1}{2}$	6.10	163.86	Garage 4 ✓ Stationary Tabs 07 Core Floor
+70		2.9	167.1	
+46.18	= 5+90.38 Monitor	1.65	168.91	

July 30-47
Sutton
McCoy
7/16/47

15

~~INDEXED~~

Levels Proposed Barrier Elevation at 4 St.
Elevation Road to Monitor Road

INDEXED

16

Alignment & Sketch Page 5

B.M.	863	146.25	139.62	on Hub 10' 05.65 Elev. Road Page 12
0+0	10' 05.65 Elev. Road	86	137.7	
+50		70	139.3	
1+0	on Conc. Gutter	65	139.8	
+50		59	140.4	
+81	16' Lt of $\frac{1}{2}$ = $\frac{1}{2}$	397	142.28	Garage Under House on Conc. Floor Stg. Table
+93	37' Lt of $\frac{1}{2}$ = 1/4	1430	131.95	Stucco House on Basement Floor Stg. Table
2+0	on on Rock Pav	51	141.2	
+07	46' Lt of $\frac{1}{2}$ = 5/4	149	131.4	Stucco House on Basement Floor Stg. Table
+99.50	6' 21" 37' Lt	445	141.8	on Hub Front House on Floor
+54	36' Rt of $\frac{1}{2}$ = 5/4	+467	150.92	Stucco House on Basement Floor Stg. Table
+62	43' Lt of $\frac{1}{2}$ = 5/4	132	133.1	
3+0		43	142.0	
"	43' Rt of $\frac{1}{2}$ = $\frac{1}{2}$	+47	151.0	Stucco House on Floor
+09	47' Lt of $\frac{1}{2}$ = 5/4	132	133.1	Stucco House on Basement Floor Stg. Table
+45	48' Rt of $\frac{1}{2}$ = $\frac{1}{2}$	+45	150.8	Frame Ho on Floor
+50		43	142.0	
4+0		44	141.9	
+50		49	141.4	
+56	5' Sly & Conc. Gutter	457	141.68	
+67	48' Lt of $\frac{1}{2}$ = 5/4	125	133.8	Stucco House on Basement Floor Stg. Table
5+0		46	141.7	
+99.56	= 34' 16.25 Monitor	624	140.01	on Hub

Levels Proposed Seven Monitor Road
Hilda Road to Oostadst.

Alignment + Sketch Page 5, 55 & 56

Station	Level	Distance	Grade	Height	Notes	Station	Level	Grade	Height	Notes
BM	12.53	106.09		93.56	on Hub 2450.71 Hilda	57.24	30 Lt of $\frac{1}{2}$		168.22	
0+0	2450.71	Hilda Road	12.5	93.6		+50			164.0	Garage Stationary Table on Conc Floor
+40			8.0	98.1		+53	32 Lt of $\frac{1}{2}$		163.82	Garage Stationary Table on Conc Floor
+75			2.5	103.6		TP	12.86	180.52	167.86	
TP	12.36	118.17	0.28	105.81		+90.38	$\Delta 22^{\circ} 10'$		168.90	on Hub 168.91 P15
1+0			10.7	107.5		6+0			172.0	
"	40 Lt of $\frac{1}{2}$		21.0	97.2	Ground	+50			175.8	
+30			5.6	112.6		7+0			179.0	
TP	12.82	130.69	0.30	117.87		"	40 Lt of $\frac{1}{2}$		175.2	Ground
+66.50	$\Delta 47^{\circ} 25'$	30' R1	12.38	118.31	on Hub	+12	10' R1 of $\frac{1}{2}$		185.9	Garage Stationary Table on Conc Floor
"	40 Lt of $\frac{1}{2}$	on Split	21.0	109.7	Ground	+48.91	$\Delta 22^{\circ} 18'$		179.07	on Hub
2+0			6.5	124.2		"	40 Lt of $\frac{1}{2}$		176.4	Ground
TP	12.83	140.17	0.35	130.34		8+0			177.4	
+50			10.9	132.3		+50			175.9	
"	40 Lt of $\frac{1}{2}$		12.5	130.7		TP	4.82	180.89	176.07	
3+0			4.6	138.6		9+0			176.0	
+16.25	54.49.56	1/4 curve	3.16	140.01	on Hub 140.01 Page 16	"	40 Lt of $\frac{1}{2}$		168.6	Ground
TP	12.94	155.93	0.18	142.99		+50			176.4	
+50			12.7	143.2		+84.67	39+51.94 T		178.00	on Hub 177.99 Page 8
+88	26 Lt of $\frac{1}{2}$		7.67	148.67	Garage Stationary Table on Conc Floor					
1+0			7.8	148.1						
+39.32	$\Delta 22^{\circ} 12'$		3.68	152.25	on Hub					
+50			2.5	153.4						
TP	12.59	168.22	0.20	155.63						
5+0			9.6	158.6						

INDEXED

Levels Proposed Seyer Evervick Road
Dorcas St. to Ostad St.

12

Alignment + Sketch Page 5 + 6

BM	5.48	118.99	113.57	
0+00	30+6799 T	12.78	106.21	
+17		11.4	107.6	
+50		5.5	113.5	
+71	1140.11 Rock Pav	0.5	118.5	
TP	12.89	131.44	0.44	118.55
1+0	27 oil + Rock Pav	7.2	124.2	
TP	12.75	143.86	0.33	131.11
+50		9.5	134.4	
2+0		8.2	140.7	
TP	12.84	156.30	0.40	143.41
+50		12.5	143.8	
3+0		10.4	145.9	
"	40 ft of Z	18.7	137.6	✓
+22.00	Δ 27° 13' 30" Lt	9.50	146.80	on Hub
+50		8.2	148.1	
4+0		4.3	152.0	
"	50 ft of Z	10.2	146.1	✓
TP	12.55	168.62	0.23	156.07
+51.01	Δ 34° 23' Lt	9.72	158.89	on Hub
5+0		5.1	165.5	
"	50 ft of Z	6.2	162.4	✓
TP	12.54	180.31	0.65	167.97
+31	31 ft of Z = L	10.77	169.74	on Hub
+50		9.5	171.0	

INDEXED

July 30 47
S. 5507
M. C. V.
File 9

18

180.51

175.7

48

175.7

372

176.79

on Hub

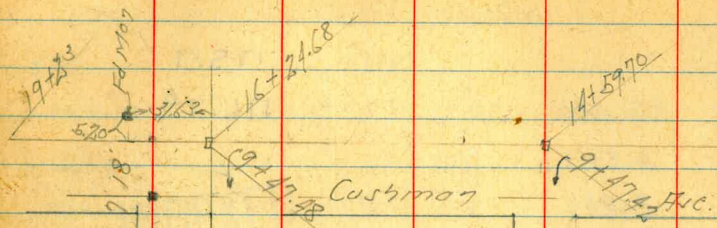
BM

2.87

177.64

NW 8P Jo.
for Case Parcb
Ostad
Evervick
177.64
Page 8

Cor. 001
Sta. 766
on Corner



7.33 x 30

Savannah St
& Prop. Survey 2

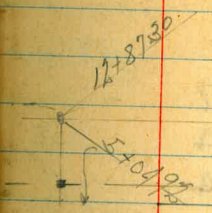
Savannah Place

Hecks Add.



7.23 x 30

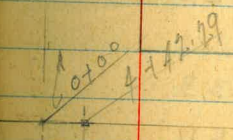
10/10



Maple Place #2

Morena Blvd
FC Pav 1929

Maple Place



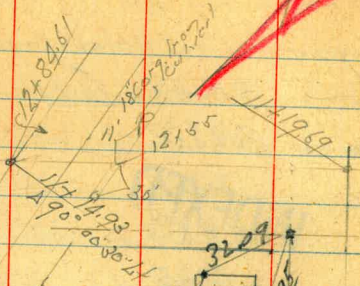
Morena

125

125

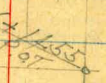
10/10

125



Tacks in corner
of
Double Car

Hecks Ave
& Prop. Survey 2



10/10

Levels Proposed Senter Mariana Blvd.

Buenos Ave. + Bianca Hic.

Alignment + Sketch Pages 3-5

BM	10.25	26.44	16.19
0+0	= 7+04.36 T ¹	8.7	17.7
+50		7.0	19.4
1+0		7.0	19.4
+36	41 Rt of 1/2	4.9	21.5
+50		6.9	19.5
2+0		6.7	19.7
"	76 Rt of 1/2	4.25	22.19
+50		6.5	19.9
3+0		6.2	20.2
+09	58 Rt of 1/2	4.0.5	26.9
+31	71 Lt " " "	2.3	24.1
+50		6.0	20.4
+57	46 Rt of 1/2	4.0.3	26.7
+80	61 Lt of 1/2	3.45	22.99
4+0		5.8	20.6
+12.29	98°00'30" W Buenos	5.71	20.73
5+0	07 Oil + Rock Pav.	4.1	22.3
TP	7.32 29.73	4.03	22.41
+50		6.4	23.3
"	41 Lt of 1/2	4.57	25.16
6+0		5.8	23.9
"	55 Lt of 1/2	4.35	25.38
+27.30	1/2 Savannah Place	5.41	24.32
+50	07 Rock + Oil Pav	5.0	24.7

INDEXED

St. Mor.
Dorcast
Mariana Blvd
Page 2

Frame House
07 Floor

Shingle
House
07 Floor

Stucco House
07 Floor

Frame Ho.
07 Floor

Frame Ho.
07 Floor

gldg
07 Floor

Frame
House
07 Floor

Stucco House
07 Floor

29.73

6+50	42 Rt of 1/2	3.03
+9.3	42 Rt of 1/2	2.33
7+0	07 Oil + Rock Pav	4.2
+37	42 Rt of 1/2	2.07
+50		3.5
+92.32	1/2 Savannah St.	2.32
8+0	07 Oil + Rock Pav.	2.0
TP	12.24 41.86	0.11
+50		10.8
9+0		6.4
+50		1.6
TP	12.07 53.76	0.17
+86.90	179°02' W	10.60
10+0		9.7
+50		7.2
+88	18 Lt of 1/2	15.6
11+0		5.2
+105.01	172°54' W	5.08
+50		5.3
+62	33 Lt of 1/2	13.65
12+0		5.8
+50		5.8
13+0		5.5
TP	3.26 51.71	5.31
+38	SW 1/4 Rock + Oil Pav	3.3

July 31-47
Sister
McCoy
Files

20

Stucco House
07 Floor

Stucco House
07 Floor

Frame House
07 Floor

07 Hub

07 Hub

Stucco House
07 Basement
Floor

07 Hub

Frame House
07 Basement
Floor

48.0

48.3

48.45

48.4

51.71

13+38

46.67 0/2 2

9/2

42.59

Garage
Sto. Tubs
to Cost Floor

+5.0

29

48.8

+78

28

489

14+0

43

474

+48.60

25+30 11 T

6.08

45.63

05 Herb
45.61 PA

Levels Proposed Server Savan on St.
Dorcas St to Cushman Ave.

Alignment & Sketch Page 3-19

BM	836	33.56	25.20	07 Hub 22+54.97T Page 4	6+50	39	31.6
0+0	22+54.97T	8.4	25.2	Calif. House 07 Floor	+80	40 Rt of 2 = 2	31.39
+11	42 Rt of 2 = 2	6.60	26.96	07 Floor	7+0		33.7
+50		7.6	26.00		+50		35.2
+65	55 Lt of 2 = 2	1.05	32.51	Franchetto 07 Floor	"	50 Rt of 2 = 2	33.94
1+0		8.7	26.9		TP	69.8	33.91
+37	50 Lt of 2 = 2	0.73	32.83	Franchetto 07 Floor	+50	34 Lt of 2 = 2	34.01
+50		6.3	27.3			S Fly	41.7
+96	50 Lt of 2 = 2	0.70	32.86	Shingletto 07 Floor	8+0		36.2
2+0		6.1	27.5		+42	43 Rt of 2 = 2	35.26
+28	51 Lt of 2 = 2	0.60	32.96	Franchetto 07 Floor	+50		36.7
+50		6.1	27.46		9+0		37.2
+80	44 Lt of 2 = 2	0.75	32.81	Franchetto 07 Floor	+47.48	Cushman Ave	37.57
3+0		6.3	27.3				07 Hub
TP	824	35.59	27.25				
+46	48 Lt of 2 = 2	3.10	32.39	Calif. House 07 Floor			
+50		8.3	27.2				
4+0		8.4	27.1				
+34	Edge Oil & Rock Pav	8.2	27.3				
+42.43	1/2 Buenos Ave	8.07	27.42	07 Hub			
+50	Edge Oil & Rock Pav	8.1	27.4				
5+0		8.2	27.3				
+50		7.4	28.1				
6+0		5.8	29.7				
+25	39 Rt of 2 = 2	6.45	29.04	Calif. House 07 Floor			

INDEXED

49
35.59

22

Franchetto
07 Floor ✓

Franchetto
07 Floor ✓

Franchetto
07 Floor ✓

Shingletto House
07 Floor ✓

07 Hub

Levels Proposed Saxon Savannah Place
Dorcas St. to Cushman Ave.

Alignment + Sketch Pages + 19

BM	8.83	25.02	16.19	35.19	35.19
0+0	= 20+89.41	4.54	20.48	20.48	20.48
+50		4.3	20.7	20.7	20.7
+10		4.5	20.5	20.5	20.5
+50		4.3	20.7	20.7	20.7
+78	36' R to 1/2 = 2	2.9	22.1	22.1	22.1
2+0		4.0	21.0	21.0	21.0
+50		3.3	21.7	21.7	21.7
3+0		2.8	22.2	22.2	22.2
TP	7.08	29.48	26.2	22.40	22.40
+50		6.5	23.0	23.0	23.0
4+0		6.1	23.4	23.4	23.4
+32	- Edge of Pav. to Pav	5.55	23.93	23.93	23.93
+42.32	= 2' Buckles	5.14	24.34	24.34	24.34
+57	= Edge of R. Pav. to 1/2	5.70	23.78	23.78	23.78
5+0		5.3	24.2	24.2	24.2
+50		5.1	24.4	24.4	24.4
+62	73' R to 1/2 = 4" G.I.	5.15	24.33	24.33	24.33
6+0		4.8	24.7	24.7	24.7
+0.3	50' R to 1/2 = 2	3.40	26.08	26.08	26.08
+50		4.1	25.5	25.5	25.5
7+0		3.3	26.2	26.2	26.2
+50		2.6	26.9	26.9	26.9
"	55' R to 1/2 = 2	3.35	26.13	26.13	26.13
+90	10' R to 1/2 = 2	+0.9	30.4	30.4	30.4

INDEXED

S.F. May
Dorcas St
at Cushman Ave
Page 2

Frame
8' dia
on floor

Clear out
top
sewer gas station

Frame Ho.
on floor

Frame Ho.
on floor

Callif. Ho.
on floor

29.48

TP	5.04	32.96	1.56	27.92	27.92
8+0			5.3	27.7	27.7
+0.7	48' R to 1/2 = 2		4.80	28.16	28.16
+50			4.6	28.4	28.4
9+0			4.2	28.8	28.8
+47.92	= 14+59.70	Cushman	4.52	28.44	28.44

Frame Ho.
on floor

on floor

Aug. 1-17
S. S. 807
McCoy
#1167

Levels Proposed Sewer Dorcas St.
Naples Place + Custman Ave.

Alignment & Sketch Page 5 x 19

Station	Notes	Value 1	Value 2	Value 3	Notes	Value 4	Value 5	Value 6	Value 7	Notes
BM	6.89	23.08	16.19	SE Man Dorcas + Naples Bldg Page 2	6.10	= Edge Paving	7.10	23.53		
+40	= 18' 0" of 5/8" T	5.38	17.70	on Hub	+09.86	= 2' Buena	6.91	23.72	on Hub	
+11	4' R of 1/2" 6" Cypress Tree				+20	= Edge Paving	7.10	23.53		
+50		6.2	16.9		+50		7.2	23.4		
+32	4' R of 1/2" 6" Cypress Tree				7.10		7.6	23.0		
+60	4' " " " 6" " "				"	17' R of 1/2" 2	3.78	26.85	Bldg on Conc Floor	
+69	3' " " " 12" " "				TP	8.73	31.60	7.76	22.87	
+70		6.4	16.7		7.10	100' R of 1/2" Fly	1.0	30.6	Stucco Bldg on Floor	
+18	2.3' R of 1/2" 2	4.77	18.31	Shack on Floor	+50	11.51	8.2	23.4		
+50		6.7	16.4		TP	2.09	26.35	7.94	23.66	
+60.11	4' 92° 40' 30" Lt	6.65	16.43	on Hub	+85	81.2' of 1/2" Fly	4.15	22.20	Stucco Frame House on Floor	
+20		6.4	16.7		8.10		3.5	22.9		
+50		5.4	17.7		+14	25' R of 1/2" 2	0.75	25.6	Future Co. Bldg on Conc Floor	
+65	110' R of 1/2" = Extrance 308	20.00		Cabinet Shop on Conc Floor	+50	10.25	5.1	21.3		
+340		4.0	19.18		9.10		5.3	21.1		
TP	9.78	30.63	22.2	20.85	+32	1' Lt of 1/2" 2	4.81	21.54	Conc Block Bldg on Conc Floor	
+35	80' R of 1/2" 2	2.25	28.38	House on Floor	+50	2.25	5.4	21.0		
+50		9.0	21.3		+85	11' Lt of 1/2" 2	4.73	21.62	Conc Block Bldg on Conc Floor	
+65	16' Lt of 1/2" = 2" Sewer	7.90	22.73	Class cut on Tap	10+0		5.6	20.8		
+40		5.7	24.9		+50		5.3	21.1		
+20	9' R of 1/2" 2	2.70	27.93	Frame House on Floor	+58	11' R of 1/2" 2	3.1	24.3	Frame House on Floor	
+50		4.7	25.9		+77	= Edge of Paving	6.00	20.35		
+340		5.3	25.3		11+0	on " " "	5.72	20.63		
+10	25' R of 1/2" Fly	4.0	26.6	Call House on Floor	+14.93	= Edge of 90° 300' 30" Lt	6.00	20.35		
+50		6.0	24.6		TP	7.91	28.54	5.72	20.63	

INDEXED

2854

11+50		7.9	20.6
12+0		7.3	21.2
+35	35 Rt of 1/2 = 1/2	5.40	23.14
+56		6.3	22.2
+59	30 Rt of 1/2 = 1/2	5.68	22.86
13+0		5.1	23.4
+09	30 Rt of 1/2 = 1/2	4.54	24.00
+50		4.0	24.5
"	43 Rt of 1/2 = 1/2	1.42	27.12
+83	46 Lt " " = 1/2	0.80	27.74
14+0		2.6	25.9
"	43 Rt of 1/2 = 1/2	+0.15	26.69
+40	44 Rt " " = "	+1.60	30.14
+50		0.5	28.0
TP	12.14 39.98	0.70	27.84
+39.70	1/2 Savannah Place	11.52	28.46
15+0		9.5	30.5
+42	45 Rt of 1/2 = 1/2	3.70	36.28
+50		6.6	33.4
+81	46 Rt of 1/2 = 1/2	2.36	37.62
16+0		3.6	36.4
+24.68	1/2 Savannah St	2.47	37.51
+43	47 Rt of 1/2 = 1/2	+1.1	41.1
+50		0.8	39.2
TP	10.44 49.77	0.65	39.23

Frame Ho.
07 Floor

Stucco Rtg.
07 Floor

Bldg
07 Conc Floor

Stucco Ho
07 Floor

Single Ho
07 Floor

Stucco Ho
07 Floor

Stucco Ho
07 Floor

Frame Ho
07 Floor

Stucco House
07 Floor

07 Hub

Stucco House
07 Floor

48.00
49.77

17+0		7.1	42.7
+28	25 Rt of 1/2 = 1/2	2.44	47.33
+50		1.7	48.1
BM	12.67	50.18	37.51
TP	12.90	62.86	49.96
18+0		7.9	55.0
+50		0.4	62.5
"	50 Rt of 1/2	5.4	57.5
TP	12.91	75.75	62.84
19+0		4.3	71.5
"	50 Rt of 1/2	11.3	64.5
+23		0.0	75.8

Single Ho
07 Floor

07 Hub
16+24.68

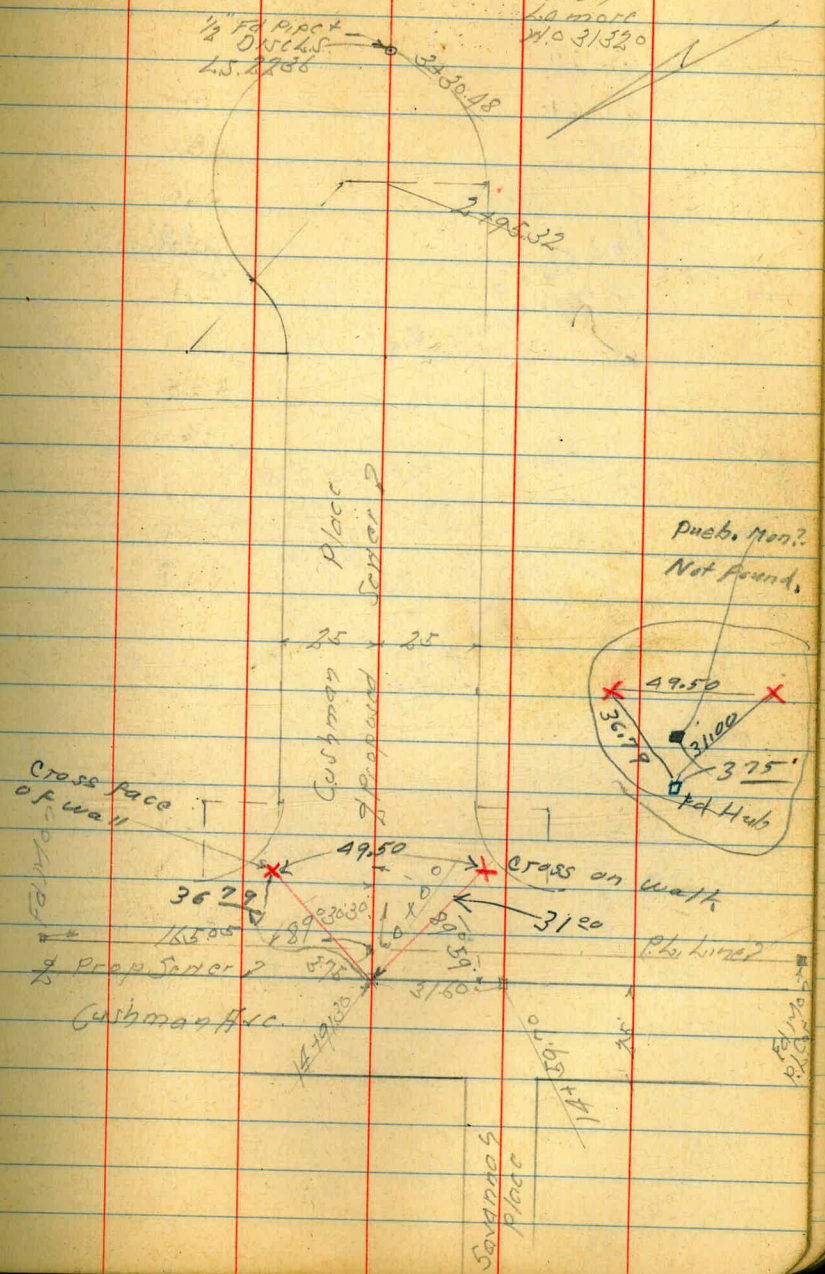
✓

✓

INDEXED

B.M.	767	32.13	28.46	27 Hub 145990 Cushman Page 25 27 Hub
-0+00	14+9/130	Cushman	6.15	29.98
+50			6.6	29.5
+40			8.0	28.1
+50			8.7	27.4
+80	52 Rt of 1/2	-2	8.74	27.39
+80	47 Lt " "	" "	0.80	35.33
+70			8.5	27.8
+41	41 Rt of 1/2	-2	3.90	32.23
+50			5.7	30.4
+83	41 Rt of 1/2	-2	7.7	28.4
+70			4.4	31.7
+50.48			3.94	32.19

Aug 8-97
Sisson
Vic Coy
Allen
Liamatt
No 31320

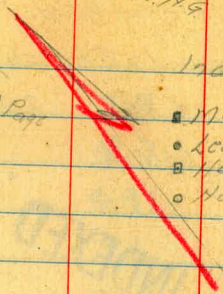


Ed. Ppr. 8/20/56. H.S.

Indicator

- Men Found
- Lead & Tech Found
- Hub & Set
- Nail

Cont Page 10



Lillian St.

Man. Out

12x200

40x90

5+1170

Barcaud

Savanna St

7+79.50
Δ 10/57.00 Pt.

447.59
1829.28

5784.00
Δ 57.59 30 Pt.

5409.03

Moreno Blvd.

Proposed Sewer

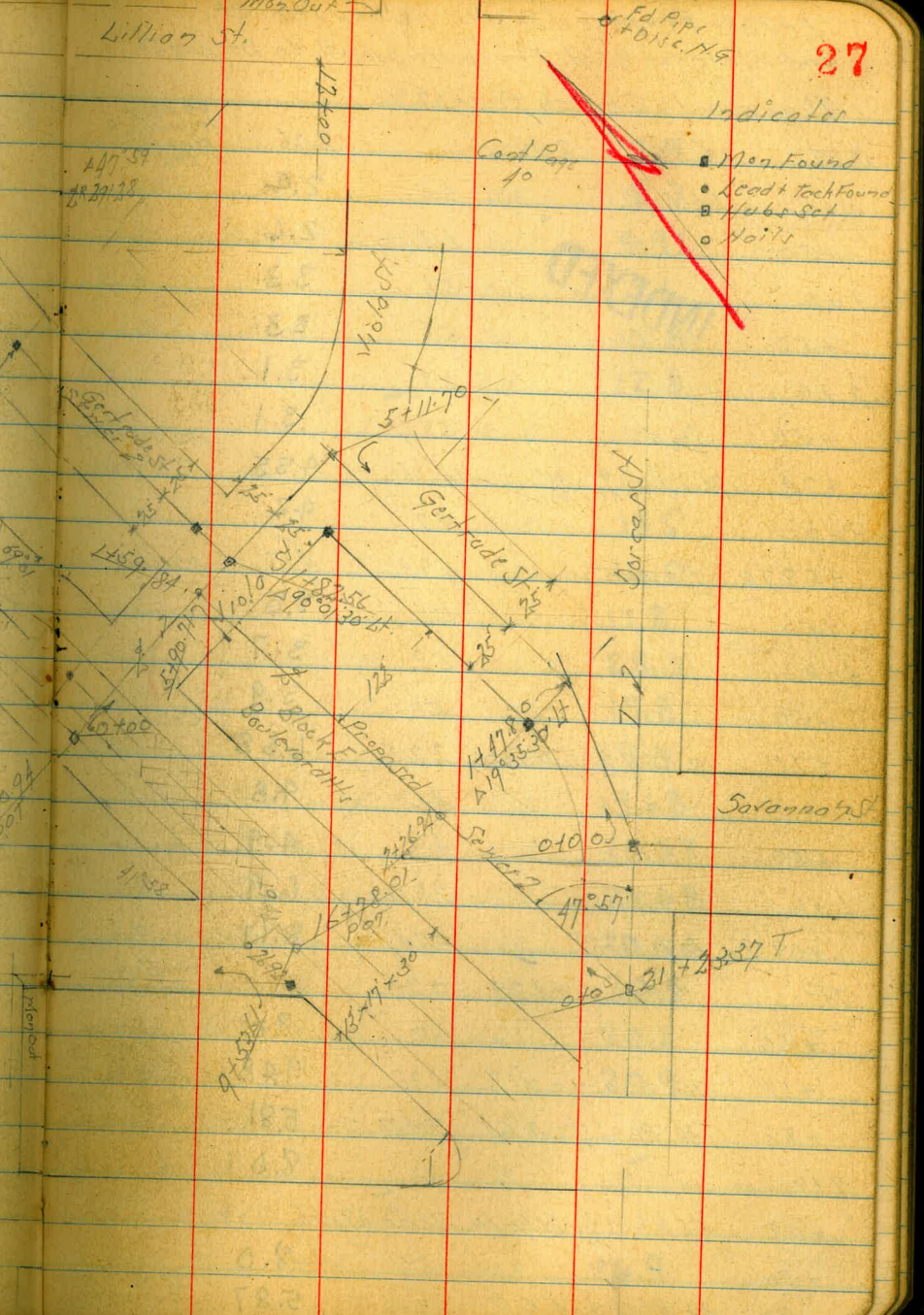
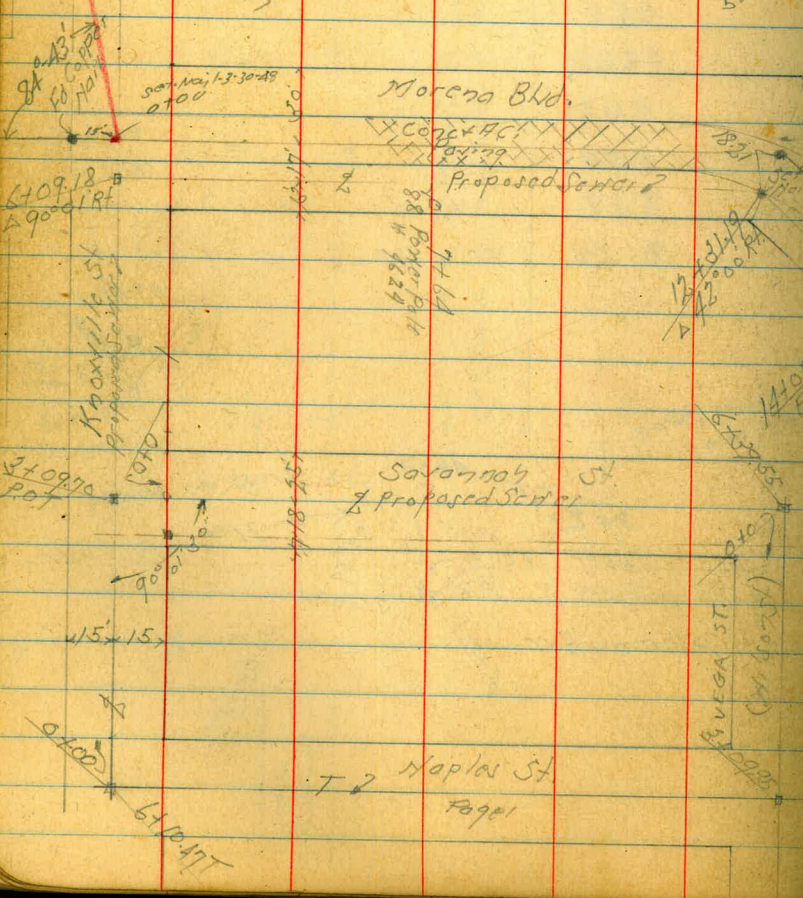
Savanna St
Proposed Sewer

Haplan St
Page 1

1+61.67 =

Id % = 1484.61 Page 12

Level - P. 77



Levels Proposed Saver Knoxville St.
 And Moreno Blvd. From Hopkins St to Dorcas St.

Alignment & Sketch page 27

Aug. 15 47
 S. S. 007
 M. C. 001
 F. 100

28

BM	6.85	8.91	2.06	07 Mon Knoxville + Hopkins Page 2	840	13.23	5.3	7.9	
+50	641049T	6.5	2.4		+50		4.5	8.7	
+50		6.5	2.6		+56	100 Rt of 1/2 - NY Cor	8.32	4.91	Laundry Bldg. 07 Floor
+10		5.6	3.3		940		3.6	9.6	
+50		5.6	3.3		+50		2.4	10.8	
+20		5.8	3.1		1040		0.4	12.8	
+50		5.8	3.1		TP	1173	2481	0.15	13.08
+74	71 Lt of 1/2 - 1/2	4.36	4.55	07 Nancy Bldg 07 Floor	+07	14 Rt of 1/2 - NY Power Pole	" 4654		
+30		4.7	4.2		+50		10.3	14.5	
+09.70	1/2 Savanah	4.73	4.18	07 Hub	1140		8.8	16.0	
+50		5.1	3.8		+50		7.0	17.8	
+40		5.2	3.7		+68	54 Lt of 1/2 - 1/2	+0.5	25.3	From Hub 07 Floor
+50		5.0	3.9		+80	11 Rt of 1/2 - 1/2	5.0	19.8	Calif. House 07 Floor
+71	19 Rt of 1/2 - NY Cor	2.23	6.68	07 Court 07 Floor	1240		5.5	19.3	
540		4.1	4.8		+05	Edge Cap of H.C. Paving	5.13	19.68	
+50		4.0	4.9		+2119	A 12° 00' Pt	4.24	20.57	07 Nail
640		3.0	6.9		+59	Edge Paving	4.13	20.68	
+09.18	A 90° 01' Pt	0.74	8.17	07 Hub	+82	19 Rt of 1/2 - 1/2	4.15	20.66	01 Station 07 Floor
TP	5.06	13.23	0.74	07 Hub 5409.18	1340		3.9	20.9	
+50		5.0	8.2		+28	90 Rt of 1/2 - 1/2	4.6	20.2	Calif House 07 Floor
+56	103 Lt of 1/2 - 1/2	3.75	9.48	From House 07 Floor	+50		3.9	20.9	
+83	34 Rt of 1/2 - 4" C.I.	7.42	5.81	Saver Pipe Top Cleanout	190	25 Rt of 1/2 - NY Power	" 1711		
740		5.3	8.0		1410091	1/2 Via 10 St	3.81	21.00	07 Hub
+03	55 Rt of 1/2 - NY 10' Acacia Tree				TP	5.67	26.67	3.81	21.00
+50		5.3	8.0		+45	50 Lt of 1/2 - 1/2	+0.2	26.9	From Hub 1410091 07 Floor
+94	33 Rt of 1/2 - 4" C.I.	7.36	5.87	Saver Clean Out on Top					

INDEXED

14+50		5.9	20.8	
+77	40' Rt of $\frac{1}{2}$ - $\frac{1}{2}$	7.0	19.7	Calif House 07 Floor
+91	59' Lt " " = $\frac{1}{2}$	+1.5	28.2	Frame Ho. 07 Floor
15+0		6.3	20.4	
+38	72' Lt of $\frac{1}{2}$ - $\frac{1}{2}$	+0.9	27.6	Frame Ho. 07 Floor
+50		6.5	20.2	
+51	25' Rt of $\frac{1}{2}$ - Ely Power Pole #4734			
+67	35' Rt of $\frac{1}{2}$ - $\frac{1}{2}$	5.2	21.5	Shingle Ho. 07 Floor
+77	67' Lt of $\frac{1}{2}$ - $\frac{1}{2}$	0.0	26.7	Shingle Ho. 07 Floor
16+0		7.0	19.7	
+06	47' Rt of $\frac{1}{2}$ - Ely 12" Acacia Tree			
+50		7.0	19.7	
+78.01	= $\frac{1}{2}$ Savannah St	7.29	19.38	07 Hub
TP	496 24.34	7.29	19.38	07 Hub 16+78.01
+78.01	77' Lt of $\frac{1}{2}$ - $\frac{1}{2}$	+2.2	26.5	Stucco Ho. 07 Floor
17+0		5.2	19.1	
+10	3' Rt of $\frac{1}{2}$ - Ely Power Pole #4752			
+50		5.1	19.2	
+56	47' Rt of $\frac{1}{2}$ - Ely 10" Acacia Tree			
+63	52' Rt of $\frac{1}{2}$ - $\frac{1}{2}$	4.93	19.41	Calif House 07 Floor
+89	72' Lt of $\frac{1}{2}$ - $\frac{1}{2}$	1.03	23.31	Frame Ho. 07 Floor
18+0		5.3	19.0	
+36	73' Lt of $\frac{1}{2}$ - $\frac{1}{2}$	1.65	22.69	Frame Ho. 07 Floor
+50		5.7	18.64	
+52	2' Rt of $\frac{1}{2}$ - Ely Power Pole #4770			

18+63	73' Lt of $\frac{1}{2}$ - $\frac{1}{2}$	2.31	22.03	Frame House 07 Floor
+96	81' " " " "	2.72	21.61	Frame Ho. 07 Floor
19+0		5.6	18.7	
+29	34' Rt of $\frac{1}{2}$ - $\frac{1}{2}$	4.55	19.79	Frame Ho. 07 Floor
+50		6.0	18.3	
+88	75' Lt of $\frac{1}{2}$ - $\frac{1}{2}$	3.20	21.14	Calif House 07 Floor
20+0		6.0	18.3	
B.M.		8.15	16.21	St Mary Dorcast Manor 18.19 Page 2

Levels Proposed Saver Savanmas St.
 Knoxville St to Marcano Blvd
 Sketch Page 27

BM	9.12	13.30	4.18	07 Hub 2+0970 Knoxville	20.50			
010	3+0970	Knoxville	9.12	4.18	9+5361 - 16+7801	Marcano	1.14	19.36
+50			9.7	3.6	511			07 Hub 19.38 Page 29
1+0			10.0	3.3				
+50			10.1	3.2				
2+0			10.2	3.1				
+50			10.2	3.1				
3+0			10.3	3.0				
+50			9.9	3.4				
4+0			9.0	4.3				
+50			7.4	5.9				
"	50' Lt of 1/2		8.9	4.4				
5+0			5.3	8.0				
+50			2.7	10.6				
"	50' Lt of 1/2		6.9	6.4				
6+0			0.4	12.9				
TP	763	20.50	0.43	12.87				
+39.55	1/2 Wilson St		6.27	14.23				07 Hub
7+0			5.2	15.3				
+22	56' Lt of 1/2		4.03	16.47				Call House 07 Floor
+50			4.2	16.3				
+66	24' Lt of 1/2		2.90	17.6				Corp. Iron Bldg 07 Floor
8+0			3.1	17.4				
+50			2.1	18.4				
9+0			1.4	19.1				

INDEXED

VED

Levels Proposed Sewer ^{Vega} ~~W. Bay St.~~
 From Savannah St. to Weeks Ave

Sketch pages 1+27

BM	719	21.42	14.23	1	on Hub 6+39.55 Savannah Page 30
0+0	6+39.55 Savannah	7.19	14.23		
+50		8.4	13.0		
1+0	INDEXED	9.8	12.1		
"	50 R/O $\frac{1}{2}$	10.3	11.1	Ground	
+50		8.4	13.0		
2+0		7.9	13.5		
"	50 R/O $\frac{1}{2}$	9.0	12.4	Ground	
+50		7.0	14.4		
3+0		5.9	15.5		
70995	2 Napier St	5.85	15.57	12+50.46T on Hub	
+50		5.2	16.2		
4+0		3.9	17.5		
+50		3.2	18.2		
5+0		3.1	18.3		
+13	37 R/O $\frac{1}{2}$ = $\frac{1}{2}$	0.60	20.82	Frame House on floor	
+24	16 L/O $\frac{1}{2}$ = $\frac{1}{2}$	1.10	20.32	Stucco on floor	
+50		3.9	17.5		
6+0		7.1	14.3		
72047	W. L. Weeks Ave	8.3	13.1		

Levels Proposed Set in Easement
Block F Boulevard Heights

Sketch Page 27

BM	6.08	26.56	30.48	07 Hub 207 89 117 Block Page 23
0+0	= 21+22 397	5.30	21.26	07 Hub
+11.6	Picket & White F + 1/2	4.5	22.1	
+13	Conc	5.2	21.4	
+50	INDEXED	4.8	21.8	
TP	7.63	30.28	3.91	22.65
0+83	1.5' Lt of 1/2 - 3' Fruit Tree			
0+97	7' Lt " " - 1/2" Palm Tree			
1+0	1.5' Lt of 1/2 Board	7.5	22.8	
+27	1.5' Lt of 1/2 - 8' Guava Bush			
+26	1.5' Lt of 1/2 - 4' " " "			
+11.3	F + 1/2 White Fence			
+50		6.4	23.9	
+56	4.2' Lt of 1/2 - S.E. Garage			
+90	1' Lt " " - N.E. " Also 1/2 High Board Fence			
2+0		6.2	24.1	
+15	1.4' Lt of 1/2 - N.W. High Board Fence			
+50		5.2	25.1	
+66	3.8' Lt of 1/2 - S.E. Car Calif. Bldg No. Plumbing			
2+0		3.7	26.6	
+16	3.7' Lt of 1/2 - N.E. Car Calif. Bldg			
+50		3.0	27.3	
TP	10.41	38.40	2.29	27.99
+95	3.7' Lt of 1/2 - S.E. Car Garage			
1+0		9.5	28.9	

Aug 18. 47
Sisson
M.C. Coy **32**

38.40

4+05	3.7' Lt of 1/2 - N.W. Garage Also 1/2 High Board Fence			
+41	3.9' Lt of 1/2 - N.W. High Board Fence Also 1/2 Garage			
+50		8.2	30.2	
+59	3.6' Lt of 1/2 - N.W. Garage Also 1/2 Picket Fence			
5+0		7.4	31.0	
+16	3.9' Lt of 1/2 - N.W. Picket Fence Also 1/2 White Fence			
+48	3.2' Lt of 1/2 - N.W. White Fence Also S.E. Car Garage			
+50		8.1	30.3	
+65.5	3.5' Lt of 1/2 - N.E. Car Garage			
190.71	- 1/2 Violant	9.2	29.1	
BM		7.86	30.84	07 Hub 17 82 56 Violant

Levels Proposed Senior Gertrude St
Dorcas St to Viola St

Sketch Page 27

INDEXED

BM	12.03	3725	2520	on Hub 22.54.197 Page 4
0+0	1/2 Savannah & Dorcas	12.03	25.20	
+07		11.8	25.4	
+13	1/2 of 1/2 = Fly Tel Pole	N° number		
+50		8.5	28.7	
+100		8.0	29.2	
+07		8.5	28.7	
+17.80	Δ 19035 30'ht	6.50	30.73	on Hub
2+0		5.0	32.2	
+50		3.3	33.9	
TP	7.03	42.79	1.47	35.16
+53	69 Rt of 1/2	11.4	2.53	40.26
+91	59 Rt	1.10		41.69
3+0		7.1		35.7
+50		5.2		37.6
1+0		3.3		39.6
TP	7.78	48.57	2.00	40.79
+09	49 Rt of 1/2	8	+28	51.4
+50		6.8		41.8
5+0		5.1		43.5
+170	1/2 of Viola St	5.33	43.24	on Hub
TP	2.83	38.41	12.99	35.58
BM		7.56	30.85	on Hub 1-8-56 Viola Page 32

Levels Proposed Senior Gertrude St
North of Lillian St

INDEXED

33

BM	4.98	64.00	59.02	on Hub 7-7-56 25.7 page 34
0+0	7+79.50.5	4.98	59.02	
+50		5.5	58.7	
"	50'ht of 1/2	15.0	49.0	
"	50' Rt	+2.0	66.0	
1+0		4.5	59.5	
"	50'ht of 1/2	10.8	53.2	
+50		3.1	60.9	
"	50'ht of 1/2	9.5	54.5	
+70	Top Cut Bertram St	3.0	61.0	
+72		2.30	41.0	
		4.40		
		1.10		
		3.10		
		5.00		
		6.20		
		11.40		
		8.40		
		6.00		
		4.00		

Levels Proposed Service Violated Road
 Gertrude St + Lillian St
 Sketch Page 32

BM	12.21	53.21		21.00	07 Hub 19+00.94 1st Floor Page 38 07 Hub
+100	14+00.94	Morena Blvd	12.21	21.00	
+107	Edg. Pav 179		11.81	21.37	
+127	"		11.83	21.38	
+150			10.7	22.5	
+170			8.3	24.9	
+150			4.8	28.4	
+82.56	$\Delta 90^\circ 01' 30''$	61	2.34	30.87	07 Hub 30.81 P. 32
240			2.1	31.1	
TP	12.13	45.00	0.34	33.87	
+38	77 Rt 1/2	1/2	1.51	50.1	From House 07 Floor
+50			10.6	34.4	
870			7.1	37.9	
+50			4.0	41.0	
470			0.2	44.8	
"	50 Lt 1/2		10.0	35.0	Ground
TP	12.89	57.33	0.56	44.44	
+50			7.4	49.9	
+65	53 Rt 1/2	1/2	11.1	68.4	From House 07 Floor
570			4.2	53.1	
109.03	P.O.T.		4.09	53.24	07 Mon
+50			3.1	54.2	
+72	29 Lt 1/2	1/2	9.74	47.59	String Base 07 Floor
+80	61 Rt 1/2	N.Y.	4.86	65.9	Stucco House 07 Floor
+84.00	$\Delta 55^\circ 59' 50''$	Rt	2.11	55.22	07 Hub

INDEXED

					57.33
140					2.2
704	57 Rt 1/2	1/2	12.3	45.0	Stucco House 07 Floor
750			0.7	56.6	
TP	6.65	63.31	0.77	56.56	
770			5.1	58.1	
"	44 Rt 1/2	N.W. Pav Pole	11.41		
+107	55 Rt 1/2	1/2	11.8	58.6	Stucco Tree
+50			4.6	59.02	
+79.50	$\Delta 101^\circ 53' 20''$	Rt	4.19	59.02	07 Hub 07 N.E. Mon Gertrude Lillian
BM	12.93	73.23	2.91	60.50	
870			13.3	59.9	
+50			8.5	64.7	
970			3.8	69.4	
+101	53 Rt 1/2	1/2	0.35	72.88	Calif. House 07 Floor
TP	12.52	83.11	0.64	72.59	
+50			11.2	73.9	
"	41 Rt 1/2	1/2	10.33	74.78	Garage Sto. 10' 6" 07 Conc Floor
1070			6.8	78.3	
+50			3.4	81.7	
1170			2.9	82.2	
"	55 Rt 1/2	1/2	3.90	81.21	Calif. House 07 Floor
+50			5.2	79.9	
1770			2.5	76.6	
TP	6.51	79.54	12.08	78.03	
BM	5.85		1.56	77.98	N.F. BP Hilda + Oscar 77-94 Page 4

Cont Page 39

Levels Proposed Sewer Dorcas St
 And Streets Fr. Maple Place to Cushman Ave
 Alignment + Station Page 18 + 19

No. 31320
 Aug 20-77
 S. S. 184
 Mo Coy
 35

B.M.	712	23.55	16.43	07 Hub 1st Col Dorcas St Page 24	6765	31 R/O 1/2 = 2	3.31	28.06	Corp. Metal Bldg on Floor
0+0	1468.11 Dorcas St	712	16.43		7+0		3.1	28.3	
+50		6.9	16.9		+50		4.5	26.9	
1+0		6.5	17.1		+76	46 R/O 1/2 = 2	4.05	27.32	Frame House on Floor
+50		7.4	16.2		8+0		5.8	25.6	
16496	189° 58' 30" L	8.08	15.47	07 Hub	+50		7.2	24.2	
2+0		7.6	16.0		+54	45 R/O 1/2 = 2	5.60	25.77	Calif House on Floor
"	50 R/O 1/2	10.3	13.3	Ground	TP	139 2498	7.69	23.68	
+50		4.6	19.0		9+0		3.6	22.4	
3+0		1.6	22.0		+50		4.0	21.0	
718	39 R/O 1/2 = 2	1.52	22.03	Frame House on Floor	10+0		4.3	20.7	
+50		0.3	23.3		+50		4.3	20.7	
TP	8.00 31.37	0.18	23.37		11+0		5.0	20.0	
+60	39 R/O 1/2 = 2	9.0	22.37	Calif House on Floor	+19.69		5.2	19.8	Nail
4+0		8.3	23.07						
+21	55 R/O 1/2 = 2	9.4	22.0	Comp. House on Floor	B.M.	4.51 24.82	4.67	20.31	on Nail 11+14.93 Maple St 5556 on 24 20.35 Page 24
+50		8.5	22.9						
5+0		8.3	23.1		11+50		4.5	20.3	
+50		6.8	24.6		12+0		3.0	21.8	
+58	43 R/O 1/2 = 2	3.13	28.24	Frame House on Floor	7.33		2.9	21.9	
6+0		4.3	27.1		7.55	91 Culvert	4.4	20.4	
+0.5	Edge of Pavement	4.57	26.80		"	11 R/O 1/2 =	6.05	18.77	outlet 18" Flow Line
71455	1/2 Buerger	4.48	26.89	on Nail	"	30 R/O 1/2 =	5.91	18.91	12" lot 18" Flow Line
+25	Edge of Pavement	4.79	26.58		+62		4.45	20.37	
+50		4.9	28.7						

INDEXED

Levels Proposed Sewer Naples Place #2

Buenos Ave to Cushman Ave

Sketch Page 19

Station	Notes	Value 1	Value 2	Value 3
B.M.		6.17	26.90	20.73
0+0	1/2 Buenos Ave	6.02	20.88	11.42.29
+50		5.89	21.01	07 Hwy
1+0		5.80	21.10	11.42.29
+50		5.70	21.20	Buenos Ave
2+0		5.56	21.34	Page 20
+09	Edge Paving	5.55	21.35	07 Paving
+50		5.52	21.6	" "
3+0		4.6	22.3	" "
+50		3.7	23.2	" "
4+0		3.6	23.3	" "
+32	46' Rd / 1/2 - HF Cap	3.80	23.1	6.5x4.79
+50		3.4	23.5	7.0x6.0
5+0		3.8	23.1	07 Paving
+04.92	- 25' E of 1/2 Cushman	3.8	23.1	

Sept 29 1947
S. S. Coy
M. C. Coy
H. C. Coy

36

Levels Proposed Sewer Mchks Are
 Knoxville St. to Dorcas St.
 Sketch pages 1 & 3

Sept. 30. 17
 Simon
 McCoy
 filed

BM	4.01	4.92	✓	on Hub 3153.65 page 1	16.90			
0+0 = 3+22.86 T		4.66	0.91		9+0	50 ft of 1/2	9.0	7.9
+50		4.4	0.26	on Hub	+50		5.2	11.6
1+0 7/8 = 36° 17' A		5.48	0.5		"	79 ft of 1/2 SW 1/4	+2.3	19.2
+50		4.5	-0.56	on Hub	10+0		5.9	11.0
2+0		4.7	.4		"	50 ft of 1/2	9.2	7.6
+50		4.7	.2		+50		8.8	8.1
3+0		4.7	.2		+7.5		9.4	7.5
+50		4.8	.1		11+0		8.2	8.6
4+0		4.9	0		"	50 ft of 1/2	10.8	6.1
+50		5.2	-0.3		+50		5.9	11.0
5+0		5.5	-0.6		12+0		5.5	11.4
+50		5.5	-0.6		"	50 ft of 1/2	9.0	7.9
6+0		5.7	-0.8		+50		4.5	12.4
+50		5.9	2.0		13+0		5.2	13.7
TP	12.25	16.90	0.27	4.65	"	50 ft of 1/2	6.4	10.5
+84.70	1/2 Wilson	10.13	6.77	on Hub	+81/16 = 20' Max FL Dorcas		2.07	14.83
7+0		5.8	11.1		BM		1.44	15.46
+50		4.2	12.7					
+9.4	46 ft of 1/2 SW 1/4	+2.7	19.6	Stucco House on Floor ✓				
8+0		3.8	13.1					
"	50 ft of 1/2	10.6	6.3					
+4.5	46 ft of 1/2 SW 1/4	+2.2	19.1	Stucco House on Floor ✓				
+50		5.8	13.1					
9+0		4.9	12.0					

Frame House
on Floor

on Hub 11490
Dorcas St
1597799200

Levels Proposed Section Block 2 + Solar St
Overlook Hts

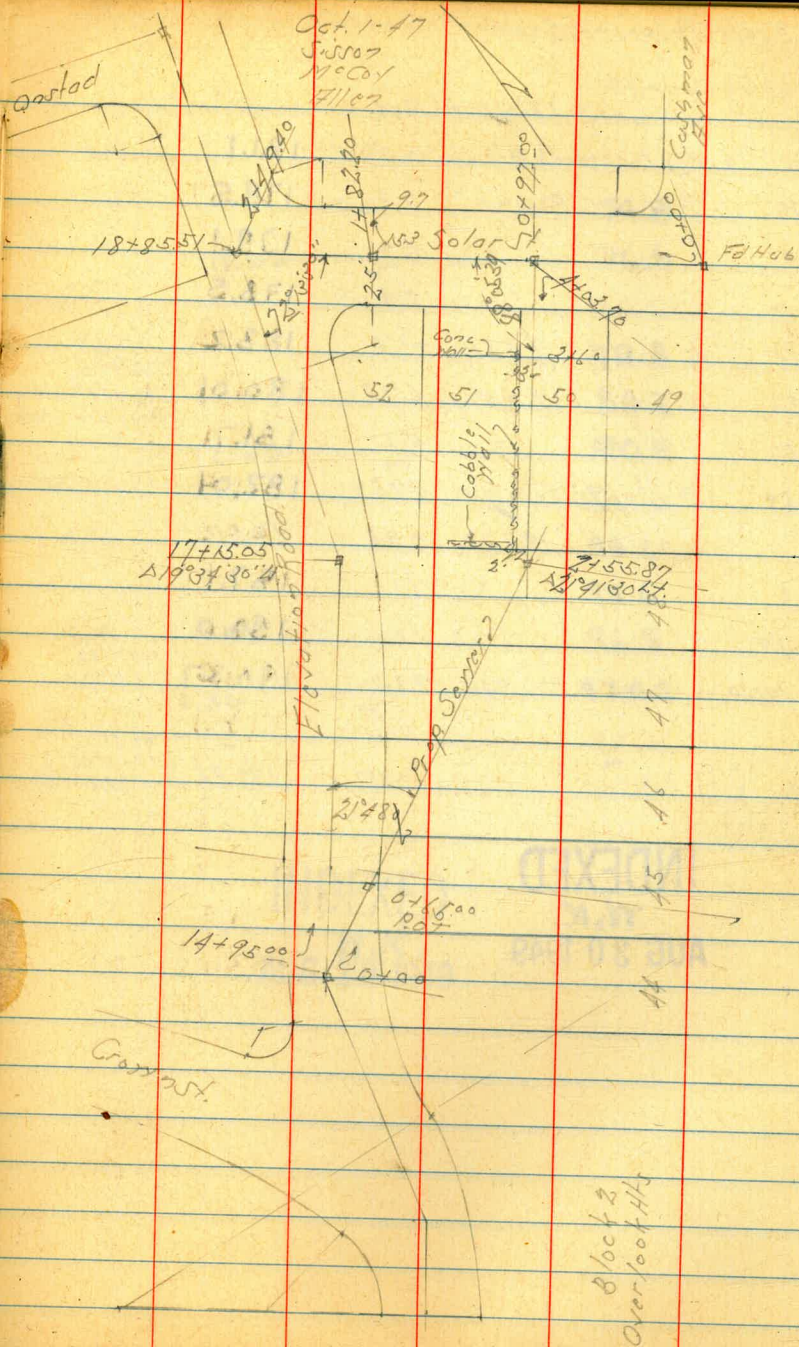
BM	9.57	174.57	165.00	
0+0	= 14+95.0° Elev Ro	9.57	165.00	
+386	= Gutter	7.53	167.04	
"	= Top Curb	6.88	167.69	
+70	= Top Fill	4.6	170.0	
1+0		8.0	166.6	
+50		10.5	164.1	
+75	= Top Fill	11.2	163.4	
2+0		11.5	163.1	
755.87	A	10.75	163.82	
3+0		7.2	167.4	
+50		3.6	171.0	
+60		2.5	172.1	
+77	8' R of 1/2 = Outlet	0.86	173.71	
TP	12.30	186.76	0.11	174.46
+87	4.5' L of 1/2 = Fly Power Pole	1815		
+88.6	= Top Cb	8.04	178.72	
"	Gutter	8.79	178.02	
4+0.370	= 1/2 Solar St	8.38	178.38	

47 Hub
14+95.00
Elev. Road
Page 13

07 Stub

12" Conc
Culvert
Flank Ht

07 Stub



Block 2
Overlook Hts

Levels Proposed Sewer Solar St.

Sketch Page 38

186.76 Bl Ford

0+0	= Fly over creek Hts	5.70	181.1	02 Hub
+39	= Fly. P.C. Paving	7.3	179.5	
+50		7.7	179.1	
1+0		8.3	178.5	
+13	45 ft of 2" = 2" + 5 ft	7.4	188.2	
+30	40' Ht " " = 2" + 11 ft	6.75	180.01	
+30		5.1	181.7	
+39	29' Ht of 2" Fly	4.75	182.01	
TP	7.30	193.21	0.85	185.91
2+0		61	187.1	
+29		32	190.0	
+19.10	= 18+85.51 Elev. Road	2.84	190.37	02 Stub

B.M.		10.37	182.84	02 Stub 17+1505 182.81 Page 12
------	--	-------	--------	--------------------------------------

INDEXED

W.K.

AUG 30 1949

Levels Prop. Sewer Lillioy St
Viola to Dorcas

Oct 14-47 39

Cont From Page 34 Sketch Page 40

79.20 Bl Back Page 40

12+50	8.00	41	74.8	
13+0	11.66	26	76.6	
TP	12.88	90.46	0.46	78.71
+50	5.4	106	79.8	
14+0		57	84.7	
+50	12.60	02	90.2	
TP	12.60	102.78	0.22	90.18
+70		86	94.2	
15+0		72	95.6	
+29	Edg P.C. Paving	6.3	96.5	
+54.03	25+29.59 Dorcas St	5.33	97.45	02 Stub
TP	6.86	108.97	0.67	102.11
B.M.	1.86	2.74	106.23	02 Stub 0+0 Elev. View + Dorcas 106.21 Page 18

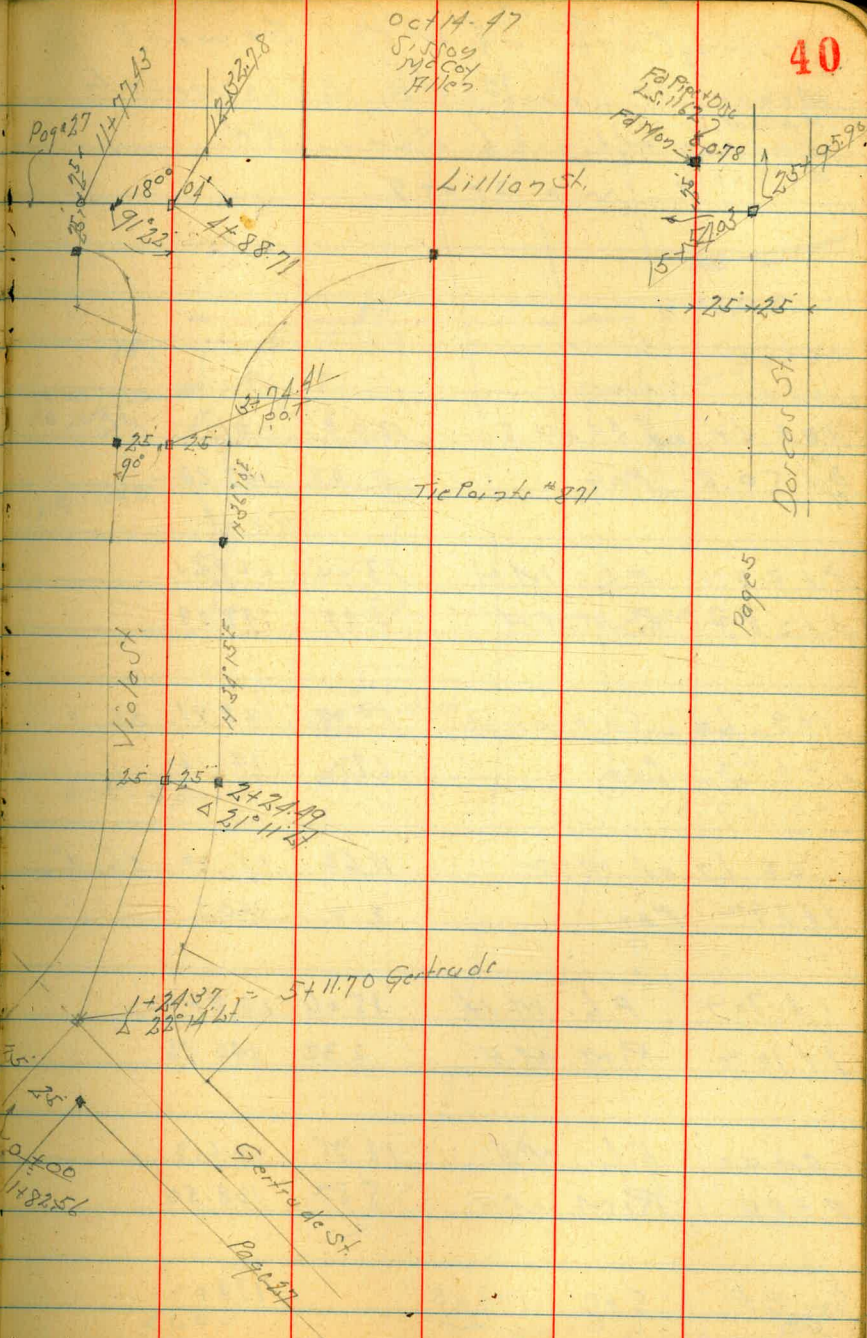
INDEXED

W.K.

AUG 30 1949

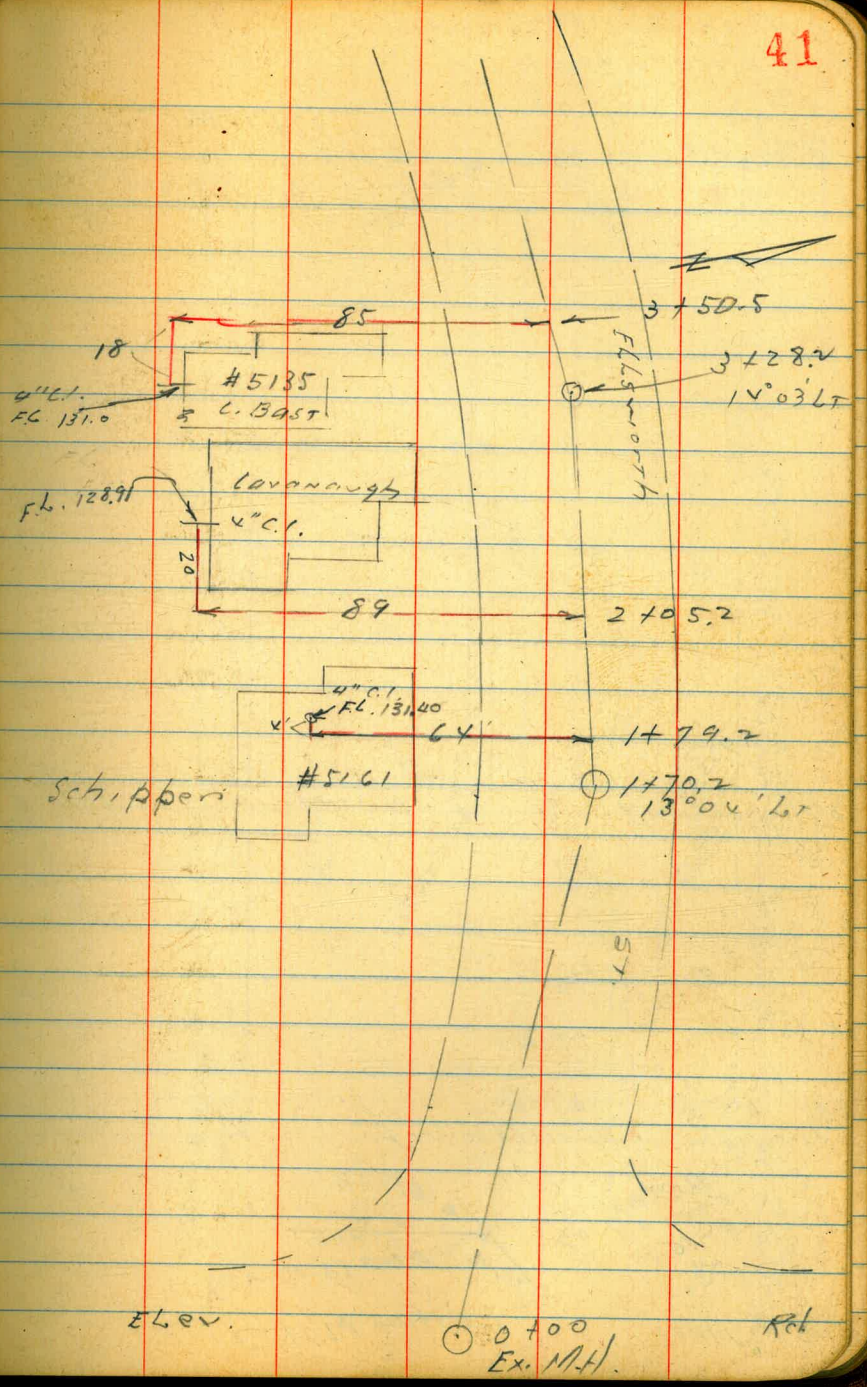
Levels Proposed by
Viola St. Gertrude St. to Lillian St.

BM	12.62	43.49		30.87	07 Hub 1+82.56 Page 34
0+0	= 1+82.56		12.62	30.87	
+50			8.2	35.3	
1+0			3.0	40.5	
+24.37	$\Delta 22^\circ 14'$		0.25	43.26	07 Hub
TP	12.17	55.43	0.23	43.26	
+50			9.0	46.4	
2+0			10	51.4	
+24.49	$\Delta 21^\circ 11'$		10.1	54.42	07 Hub
TP	11.95	67.28	0.10	55.33	
+50			10.7	56.6	
3+0			6.9	60.4	
+50			3.1	64.2	
TP	12.00	79.20	0.08	67.20	
+94	$\Delta 21^\circ 11'$		6.7	72.5	Stucco Ho 67.570.1
4+0			7.5	67.7	
+50			7.7	71.5	
+88.71	= 12+33.78 Lillian	4.18		75.02	07 Hub



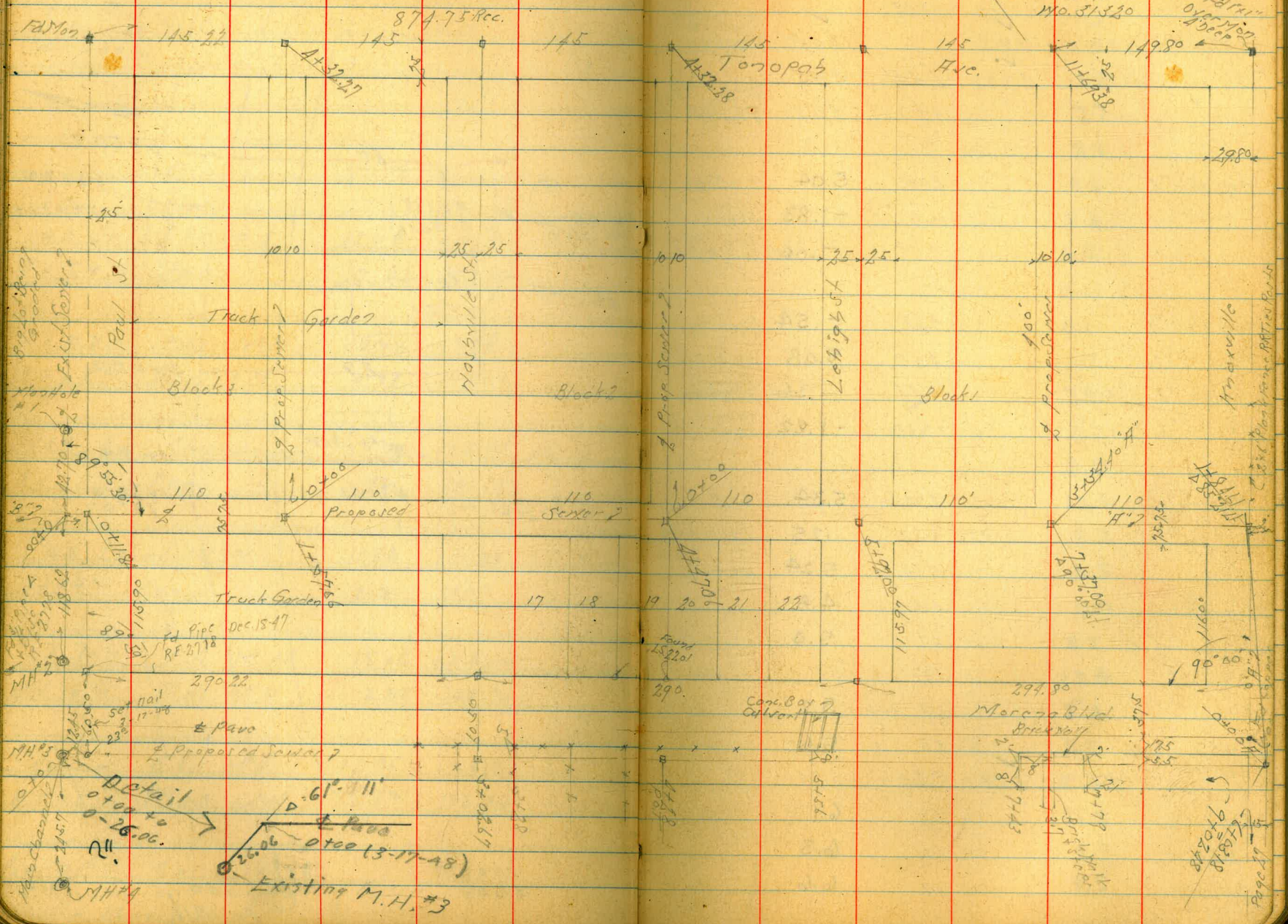
10-11-49 Elev. of 4" C.I. Sewers
 Moore on S. side Ellsworth
 Handley
 Steam Wkly of Elev. Rd.
 51330 W.O. 20009

103' Lt. of 3+50.5	120.8	131.0	C.W. BOST FL. 4"
3+50.5 Pav	0.88	142.20	
3+28.2 FL. MH	13.44	129.64	
3+28.2 Rim MH	0.99	142.09	
109' Lt. Cavanaugh	14.17	128.91	FL. 4"
2+05.2 Pav	1.92	141.16	
68' Lt of 1+79.2	11.68	131.40	FL. 4"
1+79.2 Pav.	2.2	140.9	
1+70.2 F.L. M.H.	15.06	128.02	
1+70.2 Rim M.H.	2.32	140.76	
0+00 F.L. M.H.	11.95	126.13	
0+00 Rim M.H.	5.52	138.56	
Sw BP Sol	14308	13802	
ELLSWORTH and Elev. Rd.			



Alignment Proposed Sewers
Corella Tract.

Oct. 16-47
S. 5507
McCoy
7/100
Mo. 81330
42
8/11/47
9/15/47



Detail
 + 61° 11'
 + Pavo
 + Pavo
 - 26.06 - + 26.00
 Existing M.H. #3

294.90
 Merced Blvd
 Bridge
 175
 95

8/11/47
 9/15/47
 8/11/47
 9/15/47
 8/11/47
 9/15/47
 8/11/47
 9/15/47
 8/11/47
 9/15/47

Marxville
 Clark Max... PAT...
 8/11/47
 9/15/47

Levels Proposed Sewer East + West Alley
 Blocks 1-2-3 And North + South Alley Block 1

Oct. 17-17
 S. J. 507
 McColl
 Allen

Corella Tract Sketch Page 12

BM	1.28	11.92	10.04	BP Top of H. W. (Coc) Began March 1917 Took into Creek	1229	5.61	6.68	on Hub	
J.P.	3.60	9.08	6.44	5.48	5+0	5.1	7.2		
BM #1		4.00	5.08	Chase/Cross City of Richmond H. W. (Coc) Began 4 Feet St.	+50	4.6	7.7		
					6+0	4.1	8.2		
Man Hole #3		4.04	5.04	on Rim	+15	2.7	9.6		
" "		10.91	-1.83	Invert Main Channel	+23	7.0	5.3		
" "		9.14	-1.06	Invert Channel to MH #4	+39	Bottom Creek	7.9	4.4	
					+54	6.1	11.2		
Man Hole #4		9.62	-.54	Invert	+62	4.2	8.1		
" " #2		4.00	5.08	on Rim	7+0	4.6	7.7		
" " #2		9.44	-.36	Invert to North	+37.00	A 90° curve	4.49	7.80	on Hub
" " #2		10.30	-1.22	Invert to South	TP	8.18	15.98	4.49	7.80
					+50	8.0	8.0		
Man Hole #1		3.74	5.34	on Rim	+60	88 ft of 1/2" x 1/4"	5.4	10.6	Frame House on Floor ✓
" " "		8.83	.25	Invert	8+0	7.8	8.2		
+40		3.84	5.24	on Hub	+50	7.7	8.3		
+50		4.3	4.8		+63	77 ft of 1/2" x 1/4"	5.0	11.0	Stucco House on Floor ✓
1+0		4.1	5.0		+77	7.7	8.3		
+57.06		3.97	5.11	on Hub	+92	2.6	13.4		
2+0		3.9	5.2		9+17	Bottom Creek	11.0	5.0	
+50		3.5	5.6		+85	" "	10.5	5.5	
TP	6.55	1229	3.34	5.74	+23	77 ft of 1/2" x 1/4"	7.35	8.63	Stucco House on Floor
3+0		6.2	6.1		+50	4.5	11.5		
+50		6.0	6.3		+66	7.5	8.7		
4+0		5.7	6.6		10.00	7.5	8.5		

Levels Proposed Survey N x S Hill v
Block 2

44

15.98

10 + 23	82 1/2 of 1/2 = 1/2 + FH	7.30	8.68	Conc. Brick House on Floor
+ 50		7.2	8.8	
11 + 0		7.2	8.8	
+ 20	84 1/2 of 1/2 = 1/2 + FH	4.10	11.88	Frame House on Floor
+ 50		6.9	9.1	
+ 69.38 = PL to Topopah Ave		6.40	9.58	075406
TP		8.55	7.43	075406 4 + 32.28 Blocks

8.11	3.90	10.58	6.68	07 H06 4 + 17.06 Page 43
0.10	11.470%	3.90	6.68	
7.19	66 1/2 of 1/2 = 1/2 + FH	2.05	8.53	Stucco House on Floor
+ 50	S.E.	3.4	7.18	
1 + 0		3.6	6.98	
7.31	75 1/2 of 1/2 = 1/2 + FH	2.20	8.38	Stucco House on Floor
+ 50		3.9	6.7	
2 + 0		4.1	6.5	
+ 50		4.3	6.3	
3 + 0		4.3	6.3	
+ 50		4.1	6.5	
4 + 0		3.7	6.9	
7.32.28	PL. Line Topopah Ave S. 1/4	7.41	07 H06	

INDEXED
W.K.
AUG 30 1949

Levels Proposed Server A + S Alley
Block 3 Cordillo Tract
Sketch Page 42

BM	10.03	15.14	5.11
+0 = 1457.06 Ex Alley	10.03	5.11	
+50	97	5.4	
1+0	99	5.2	
+50	97	5.4	
2+0	97	5.4	
+50	99	5.2	
3+0	96	5.5	
+40	87	6.4	
+50	72	7.9	
4+0	19	13.2	
+3227 - Pl. Line Teropab	012	15.02	

INDEXED
W.K.
AUG 30 1949

BM 7.69 7.45

07 Hub
1457.06
Ex Alley
Page 42

07 Hub
1432.88
Ex Alley
Page 42

Levels Proposed Server "B" Line

Oct. 20-47
S. S. 50
McCoy
Alto

BM #1	792	13.00	5.08
+0 = Exch. Server Paul St	7.77	5.23	
+50	7.0	6.0	
1+0	6.2	6.8	
+50	5.4	7.6	
2+0	5.0	8.0	
+50	4.4	8.6	
+91	27 1/2 of 2 - 2 1/4 x 1/4	2.2	10.8
3+0	3.8	9.2	
+39	2.0	9.7	
+50	1.9	11.1	
+64	17 1/2 of 2 - 2 1/4 x 1/4	1.5	11.5
+85 = 3 Wire Cross Fence	1.3	11.7	
4+0	1.7	11.3	
+06 = Base Cobble Wall	2.0	11.0	
" Top "	0.45	12.55	
+31 = 5 Ply Frame House	+2.6	15.6	

Chase/Conr
00 1/4 R. 177
1/2 W. Morgan
Rd / St
Page 43

Shingle House
on Floor

Shingle House
on Floor

on Floor

Sketch page 12

Station	Description	Dist	Elev	Notes	Station	Description	Dist	Elev	Notes
BM #1	5.62	10.70	5.08	Chisel/ Cross on MH Rim 1/2" Maroon Paul	3428	Picket Fence	12.18		
0+00	Exist MH #3				446	NW 2.5' Conc Walk Extends 4' to edge			Stacco Hour on floor
+50		5.7	5.0		-17	3 1/2' Rto of 1/2' x 1 1/4' 436	7.88		
+87	3 Wire Cross Fence				+59		48	7.4	
1+0		5.3	5.4		470	= Picket Fence			
+05	28 Rto of 1/2' x 1 1/4'	4.70	6.0	Frame House on floor	+94	28 Rto of 1/2' x 1 1/4' 315	9.03		Frame House on floor
+50		5.0	5.7		+96	4 Rto of 1/2' x 1 1/4' 26' Palm Tree			
+67	= Picket Fence Extends 5' Half				4+0		43	7.9	
+68	4' Rto of 1/2' = 10" Tree				+07	5 1/2' W of 1/2' - 5 1/2' Power Pole #433			
+80	28 Rto of 1/2' = 2 1/4' x 1 1/4' 395	6.95		Frame House on floor	+08	W of wire Fence			
+88	= Picket Fence				+24	7' High Picket Fence Extends 4 1/2' to edge			
2+0	= Picket Fence Conc Box 458	6.12		on Conc	TP	488	13.18	3.88	8.30
+12	28 Rto of 1/2' = 2 1/4' x 1 1/4' 335	7.35		Frame House on floor	+35	6' Rto of 1/2' = 2 1/4' Lemon Tree			
+33	= Picket Fence Conc Box 457	6.13		on Conc	+42	27 Rto of 1/2' = 2 1/4' x 1 1/4' 214	10.8		Frame House on floor
+50		4.8	5.9		+45	6 1/2' Rto of 1/2' = 2 1/4' 2" Orange Tree			
+59	= Picket Fence Extends 4 1/2' Half				+50		51	8.1	
+68	28 Rto of 1/2' = 2 1/4' x 1 1/4' 332	7.38		Galat House on floor	+56	15' Rto of 1/2' = 2 1/4' 8" Fruit Tree			
+70	4 1/2' W of 1/2' - 5 1/2' Power Pole #4398				+80	8' Rto of 1/2' = 2 1/4' 6" Avocado "			
474	3 1/2' W of 1/2' - 5 1/2' 8" Tree				5+0	8' Rto of 1/2' = 2 1/4' 3 Fruit Tree 4.8	8.4		
+87	5 3/4' Rto of 1/2' = 1 1/4' 10' Escalier Tree				+17	4' Lt of 1/2' = 5 1/2' 12" Escalier Tree			
+88	= Picket Fence				+28	5' W of 1/2' = 5 1/2' 7' High Picket Fence			
3+0		4.0	6.7		429		4.0	9.2	
+07	28 Rto of 1/2' = 2 1/4' x 1 1/4' 320	7.7		Stacco House on floor	436		3.1	10.1	
"	28 Rto of 1/2' = 1 1/4' 25' Flag Stone Wall				+45		8.3	4.9	
TP	4.42	12.18	3.91	7.76	+56	8' Lt of 1/2' = 2 1/4' x 5 1/2' Conc Box on floor	9.80	3.38	on Bottom

1318				1346			
BM		3.11	10.07	BPTop 11/4 Hx Core Box Culvert Morse Tee 10.04	7+51 = wly Brick Walk	7.37	6.09
5+68		8.3	4.9		+52 1/2 ft of 1/2 = 2 1/2 Hx	5.00	8.46
+77		4.3	8.9		+71 9/16 ft of 1/2 = 2 1/2 Palm Tree		
+80	1/2 = 24" Hedge Extends 55 ft of 1/2				+79 Ground	7.4	6.1
+84	5.5' Lt of 1/2 = Sly Power Pole # done				" Top Brick Wall	5.50	7.96
6+0		4.5	8.7		8+0	6.0	7.4
"	22 ft of 1/2 = 1/2 + 1/4 4.57		8.61	Frametho 07 Floor	+50	6.5	6.9
+02	2 Lt of 1/2 wly 24" Hedge				+56 3/4 ft of 1/2 = Nly Power Pole # 1598		
+04	8' Rt of 1/2 = 12" Palm Tree				+70	5.6	7.9
+09		4.7	8.5		9+02/8 = 6+03/8	6.18	7.28
+15	3 1/2 ft of 1/2 = Sly 4.25 x 5.50 5/8" Valve Chamber				BM	5.22	8.23
+17		5.9	7.3				07 Hub 6+03/8 Kodv. 1/2 8.17
+30	9' ft of 1/2 = 12" Palm Tree						
+47.5	Extends 4 1/2 ft of 1/2 = Waver Wire Fence	6.6	6.6				
"	2' Lt of 1/2 = 1/2 24" Hedge						
+50		4.6	8.6				
7+0		4.3	8.9				
+13.5	= wly 0.1 x Rock Pav 4.54		8.64				
+32.5	= " " " " 4.60		8.58				
"	= Waver Wire Fence Extends 14 ft of 1/2						
+34.5	= Nly 24" Hedge						
TP	4.21	13.46	3.93	9.25			
+37		4.2	9.3				
+43 = Top Brick Wall		4.31	9.25				
" Ground		5.8	7.7				

Levels Proposed Senior Knoxville St + East + West

Alley Block - Carella Tract "A" List

Sketch Page 42

BM	6.48	13.76	7.28	07 Hub 970248
0+0	= 970248	6.48	7.28	
+11	= Sly FC Pavl. 79	5.10	8.66	
+23	= Alley "	5.00	8.76	
+50		5.2	8.6	
+96	57 1/2' of 1/2" Fly Tel Pavl. F. 1/2"			
+10		5.6	8.2	
+50		5.3	8.5	
+84.61	Δ 85° 21' 1/2"	4.79	8.97	02 Hub
+20		4.6	9.2	
+50		5.5	8.3	
+30		5.7	8.1	
+34.40	= 7+27.00 East Alley	5.99	7.82	02 Sly 1 7.80 Page 43

INDEXED
W.K.
AUG 30 1949

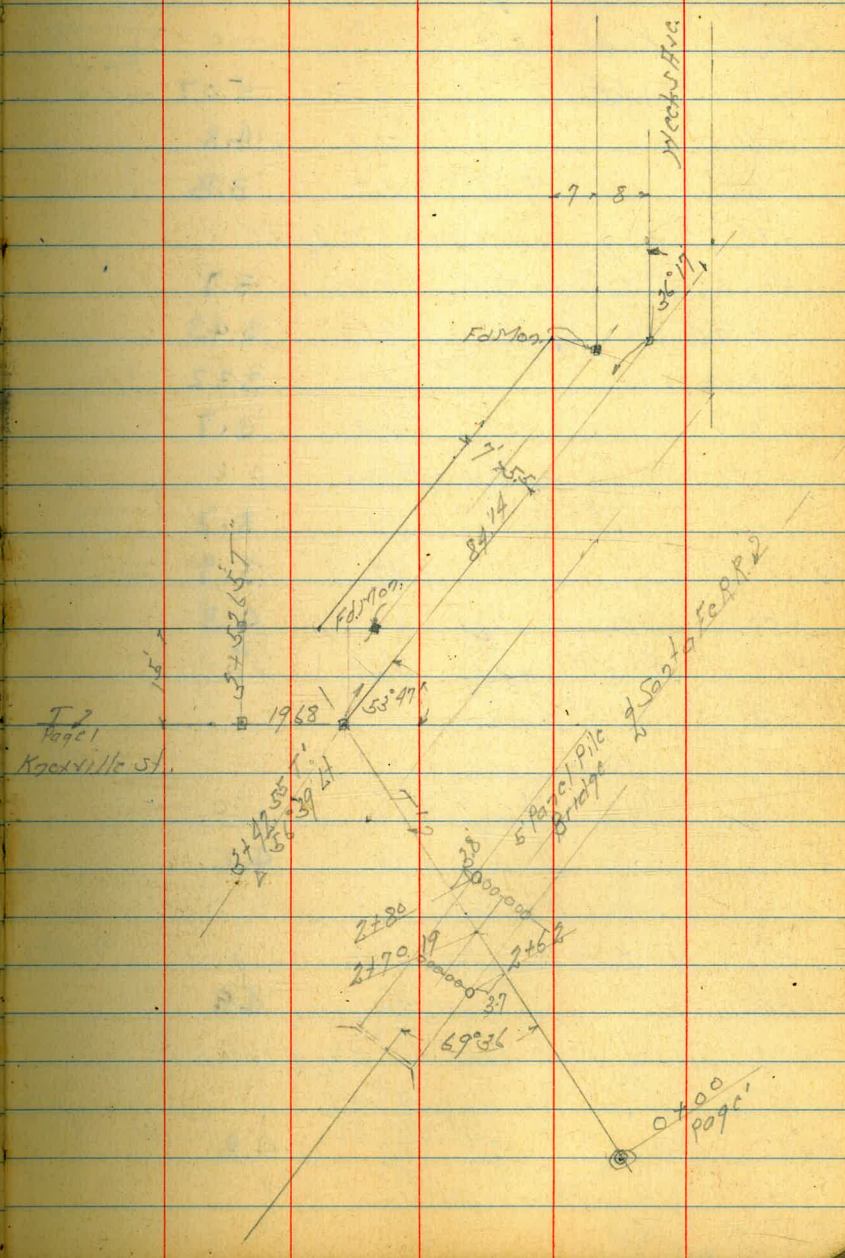
48

Levels Proposed Satter Line Change

T Line

BM	158	9.43	✓	7.95	BP FC6x8 T Scale 80 Face 1/16"
040	Existing MH #16	7.72	✓	1.71	07 Run
+50		8.4		1.0	
+92		8.6		.8	
1+06		6.9		2.5	
+20		7.4		2.0	
+30		8.8		.6	
+45		9.0		.4	
+50		8.1		1.3	
+58		5.2		4.2	
+68		5.0		4.4	
+78		9.0		.4	
2+0		8.9		.5	
+43		7.9		1.5	
+46		9.9		- .5	
+57		10.0		- .6	
+60		8.5		.9	
+62	37' 4 1/2" S4 Pile		✓		
TP	421	5.19	✓	8.45	0.98
+80	38' 11" of 1/2" = 14 Pile				
3+0		4.6		.6	
+42.55	Δ 51° 39'	4.64		.55	07 Stake
3+53.65		4.27		0.98	07 Stake 09 Face

Dec 17-47
Sims
McCoy
#164
49



Levels Proposed Sewer South of
 Moreno Blvd East of Paul St.
 SEE Pg. 79 ALSO.

Dec. 19-47
 Sisson
 McCoy
 Hill
 50.

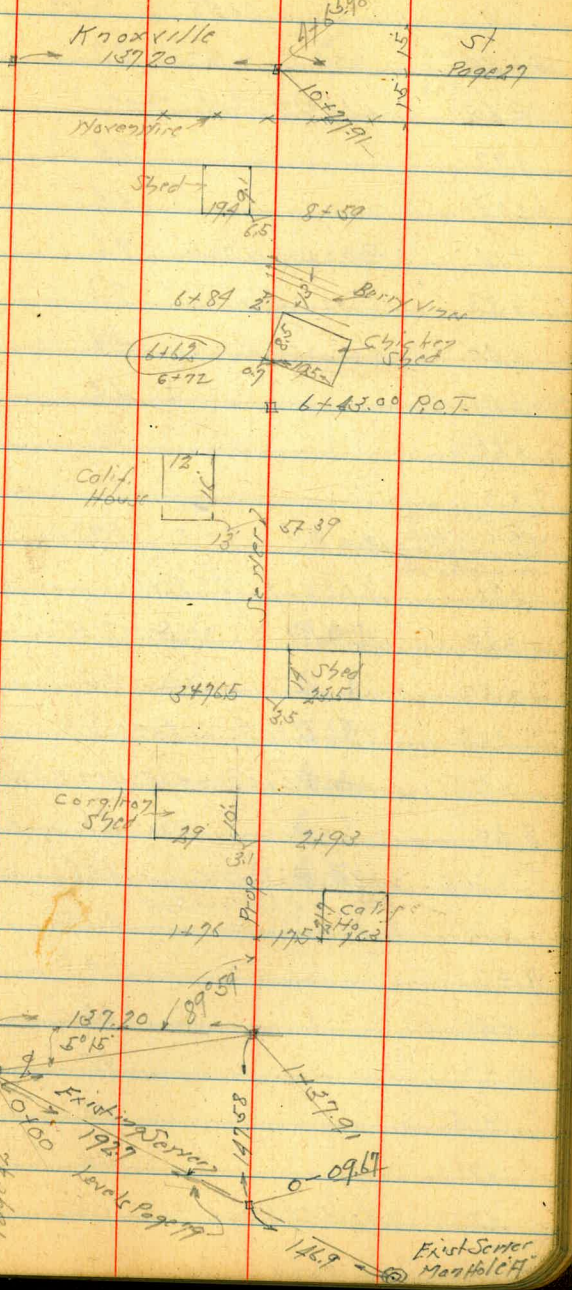
BM #1	304	8.12	5.08	
0+0	Front MH #2	305	5.07	02 R.M.
+40		3.3	4.8	
+55		4.3	3.8	
+84	1/2 x 1/2 Porter Pole # C 4300			
1+0		4.4	3.7	
+37.91	A	4.69	3.43	02 N.H.S.
+70		4.8	3.32	
2+0		4.4	3.7	
+13	7 Wire Barb N+S Fence			
+50		4.4	3.7	
3+0		4.2	3.9	
+50		3.8	4.3	
TP	8.80 1547	3.45	4.67	
+73	Wire Fence N+S			
+95	Picket " " "			
	11 R/ of 1/2" x 1/4" Lath Fence			
4+0		8.9	4.6	
+13	Picket Fence N+S			
+41	1/2" x 1/4" Lath Fence Part Concrete Base			
+50		8.6	4.9	
+52	11 R/ of 1/2" x 1/4" Lath Fence Also Picket N+S			
+72	3/4" Water Pipe N+S			
5+0		8.7	4.8	
+53	Wave 7 Wire Fence N+S			

Michael Cross
 July 1947
 Moreno Blvd
 Page 43

Paul St.
 26
 Fd Pipe 26
 R/S 26
 1/2" x 1/4" Lath
 Fence

Moreno Blvd

Existing Sewer
 1927
 10' x 10"
 Level Page 79
 Page 43



5+50		8.2	5.3	BM					025406 9+02.48 H. W. Stone Blvd Knoxville 928-Page 97
+63	1.4 ft of 2-2 9" Tree								
+97		7.3	6.2						
6+03		4.4	9.1						
+14	= Bottom of 1/4 West	9.6	3.9						
+33	" Fly "	9.3	4.2						
+40		4.4	9.1						
+45		4.5	9.0						
+50		7.2	6.3						
7+0		7.9	5.6						
TP	3.08 9.63 6.92	6.55		BM	0.52	10.56		10.09	8P Top of 1/4 H. W. Stone Blvd Knoxville Tennessee
+20	9' ft of 1/2 12" Tree								
+40	4.5 ft " " 1" Pear Tree			6+43	4		1.35	9.01	025406
+50		4.5	5.1	"	15 ft of 1/2		4.5	6.1	
+58	3.8 ft of 1/2 3" Pear Tree			"	56 " " "		5.3	5.3	
+73	H x S Cyclone Fence 9' High			"	100 " " "		6.0	4.6	
8+0		4.6	5.0	"	150 " " "		5.9	4.7	
+365	1/4 AC Paving	4.08	5.55	"	200 " " "		6.1	4.5	
+53	Also H x S Cyclone Fence Fly " " "	3.75	5.88						
9+0		4.5	5.1						
+50		4.8	4.8						
10+0		4.7	4.9						
+13		4.1	5.5						
+22		5.4	4.2						
+279/	= 4+6598 Knoxville St	5.42	4.21						025406

963

Additional data Right of Station 6+43

April 16-48

025406
5/2/48
File
Johnston

SUMMERMEYER.

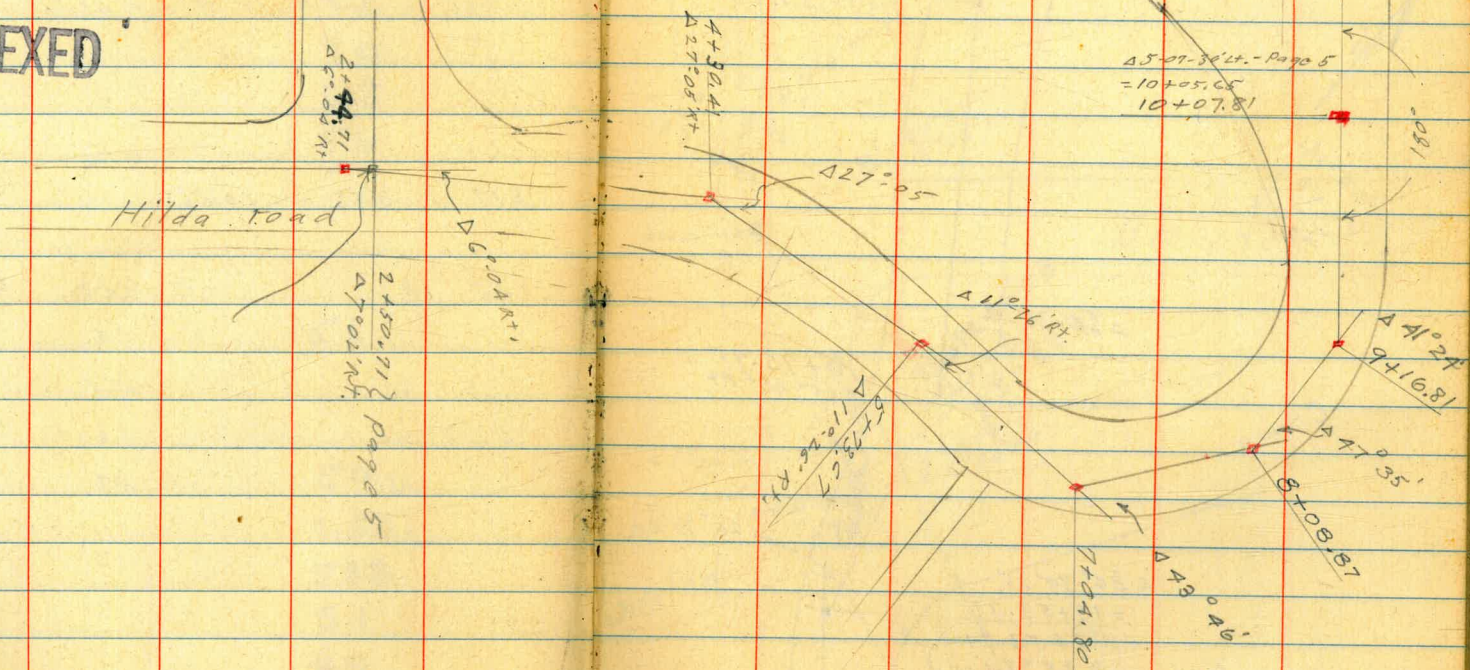
1-23-48

PROPOSED
RELOCATION OF SEWER
ON HILDA RD. & ELEVATION RD.
SEE Pg. 5, +6, +7.

52

Not to scale

INDEXED



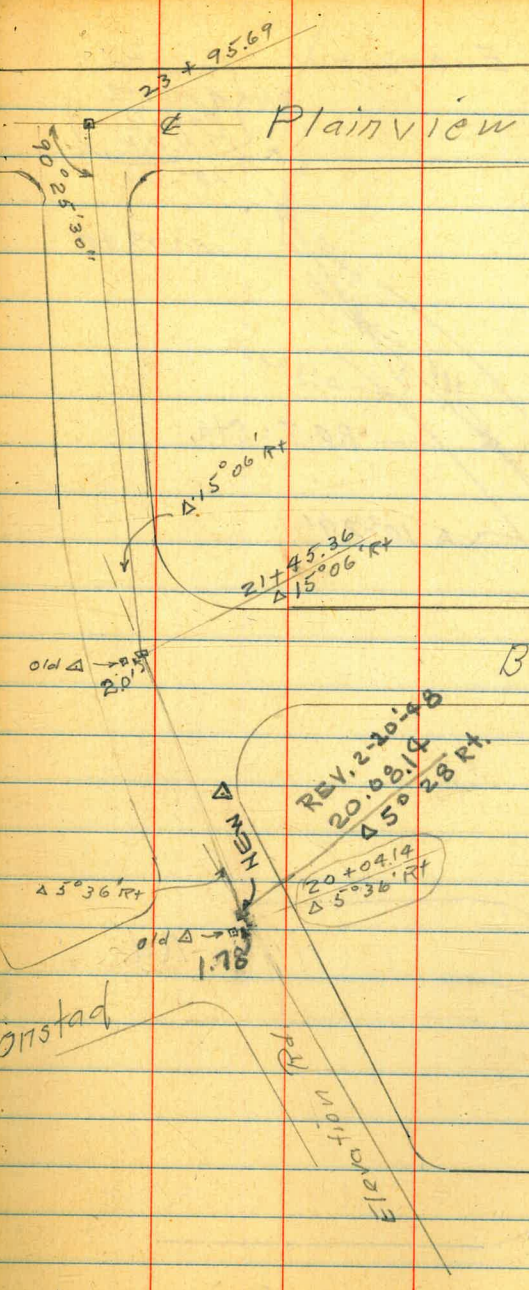
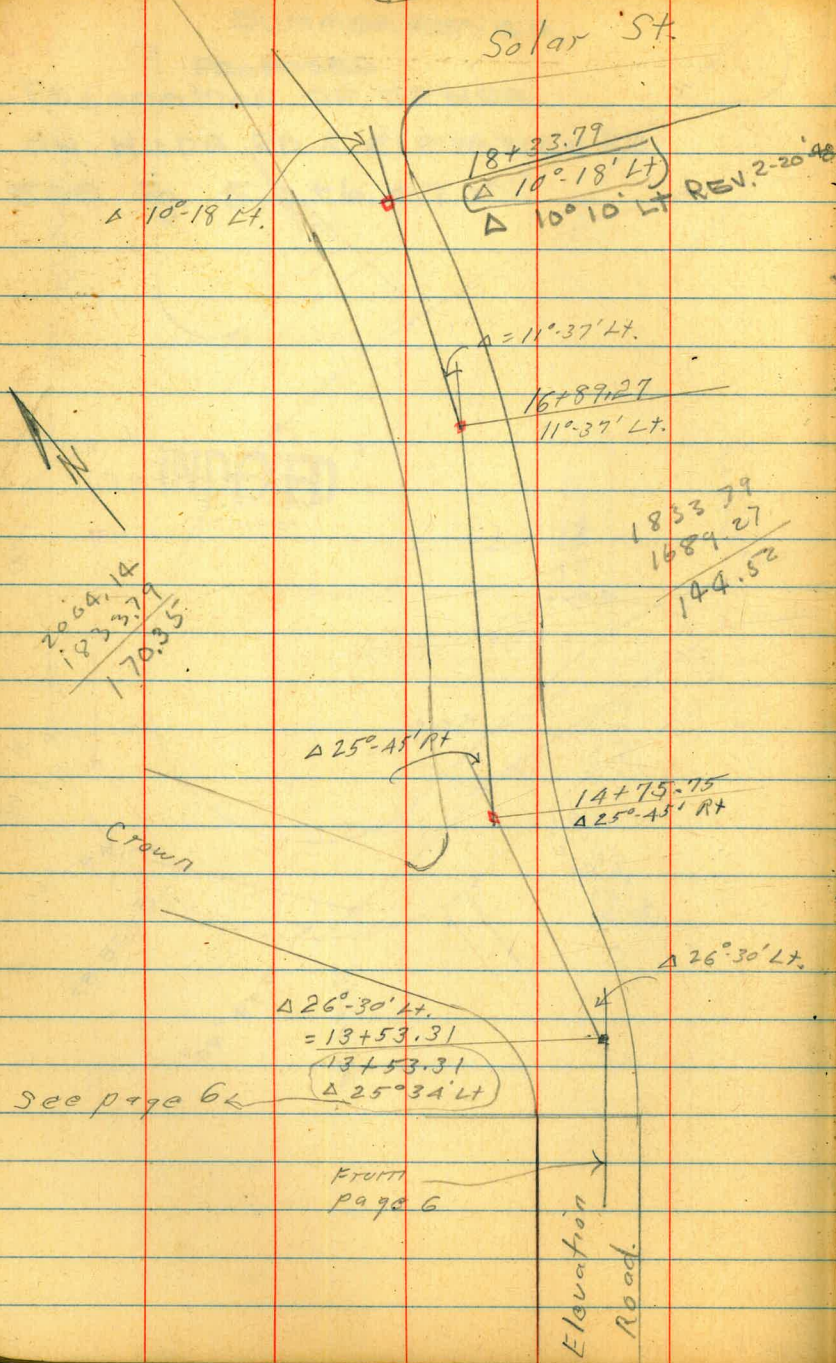
Solar St.

Plainview

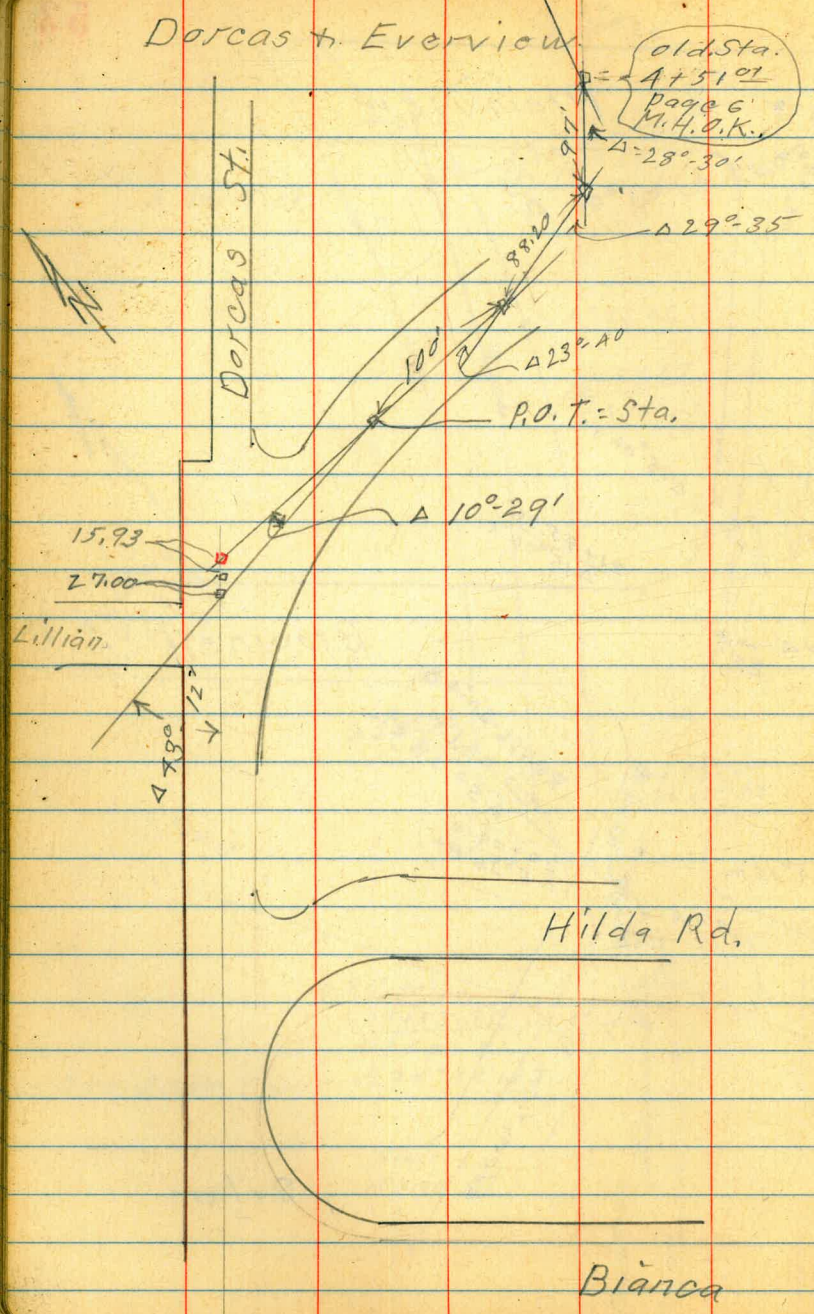
Brownell

Onstad

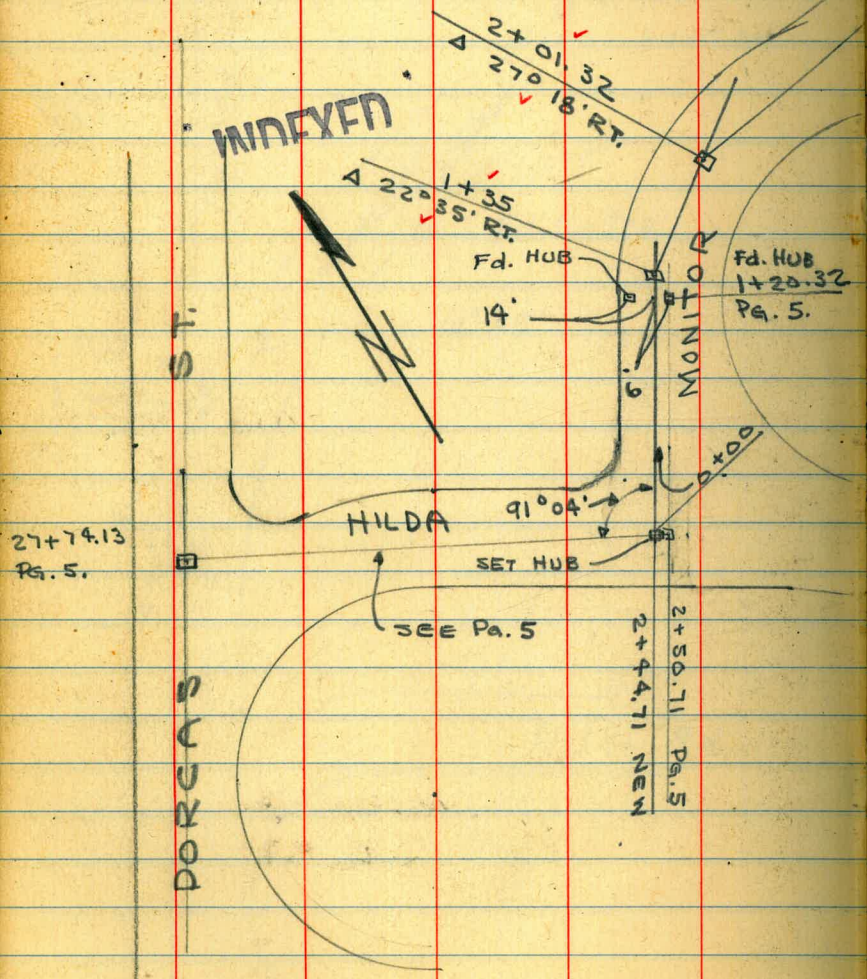
Solar



Dorcas to Everview



PROPOSED RELOCATION OF SEWER.
 1-16-48 SEWER ON MONITOR RD. FROM
 HILDA RD TO PLAINVIEW RD.
 ALSO EVER VIEW RD



SPIKE
 RD. $4+22.68$
 $\Delta 26^{\circ}01' \text{ LT.}$

ELLSWORTH ST

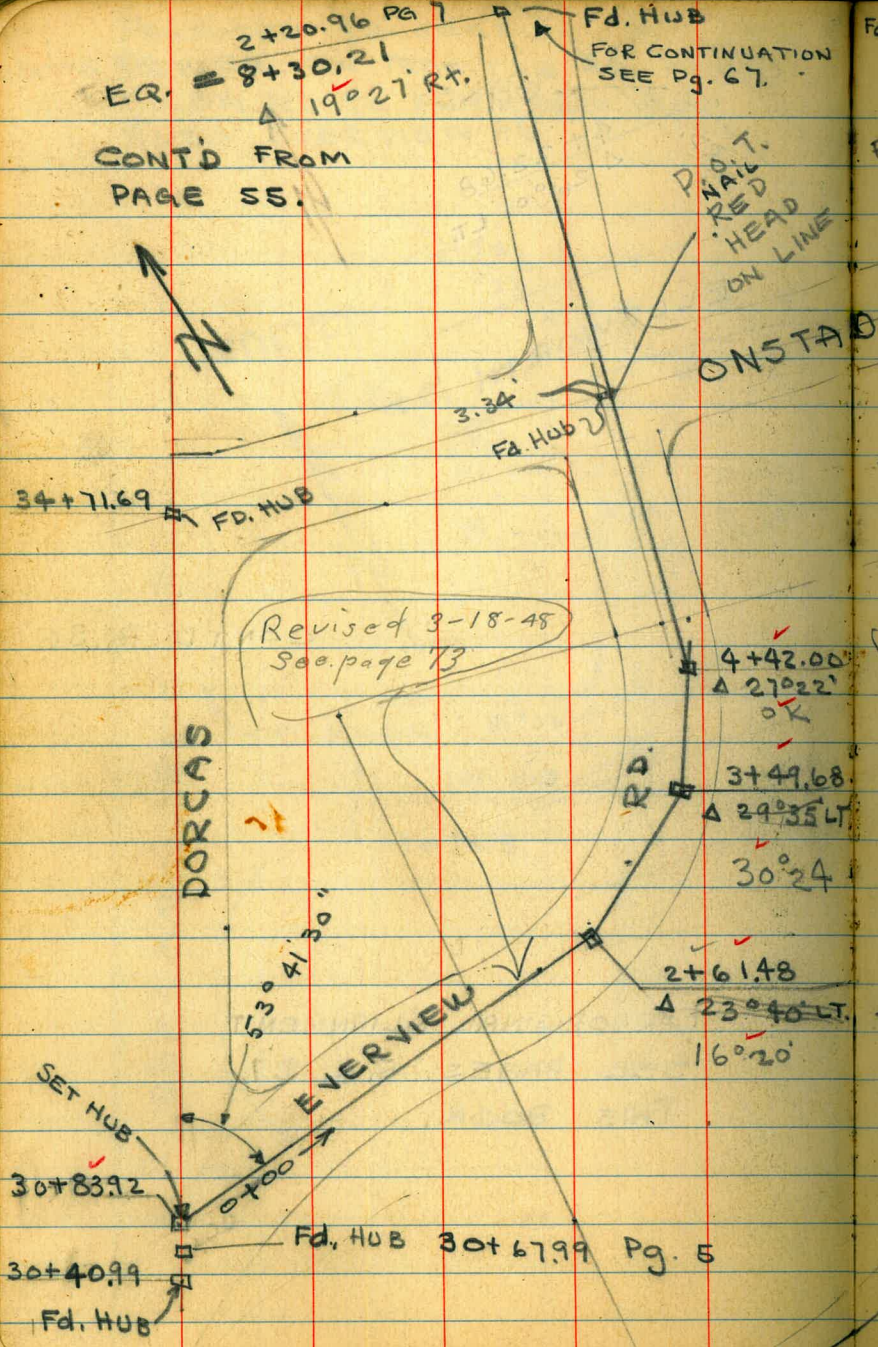
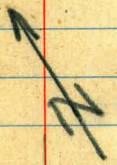
Fd. HUB
 $1+20.32$
 Pa. 5.

CONT'D Pa. 56

FOR ORIGINAL ALIGNMENT
 SEE PAGES 5, 6, & 7.
 THIS BOOK.

EQ. = 2+20.96 Pg 7
8+30.21
19°27' Rt.
Fd. HUB
FOR CONTINUATION
SEE Pg. 67.

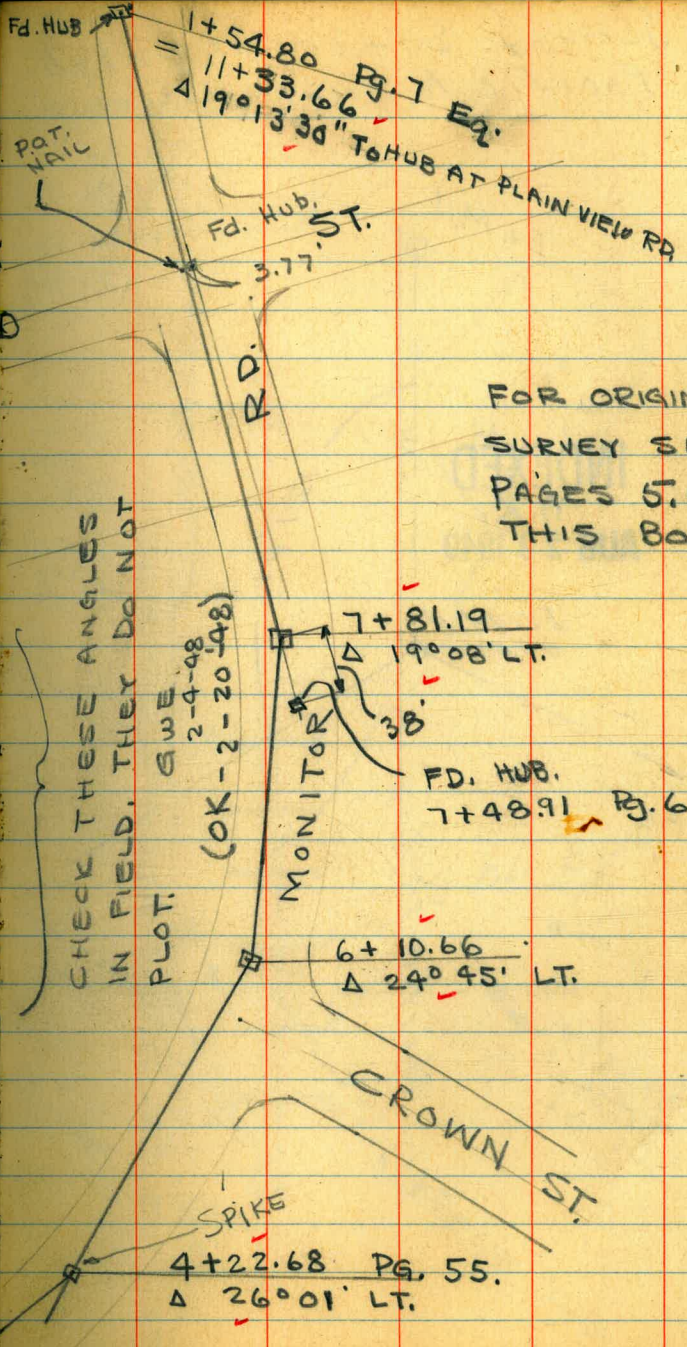
CONT'D FROM
PAGE 55.



Fd. HUB
= 1+54.80 Pg. 7 Eq.
11+33.66
19°13'30" To HUB AT PLAIN VIEW RD.
Fd. Hub. ST.
3.77

FOR ORIGINAL
SURVEY SEE
PAGES 5, 6, & 7
THIS BOOK.

CHECK THESE ANGLES
IN FIELD. THEY DO NOT
PLOT. GWE
(OK - 2-20-48)



Survey Sewer at Lehigh
Pacific to Knoxville

W.O. 31320

Ref. P. 49

Moore
Boags
Greer
Roberts
1-27-48

Ex. M.H.

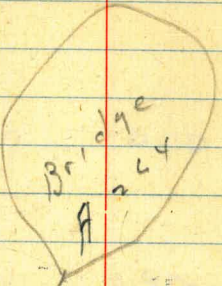
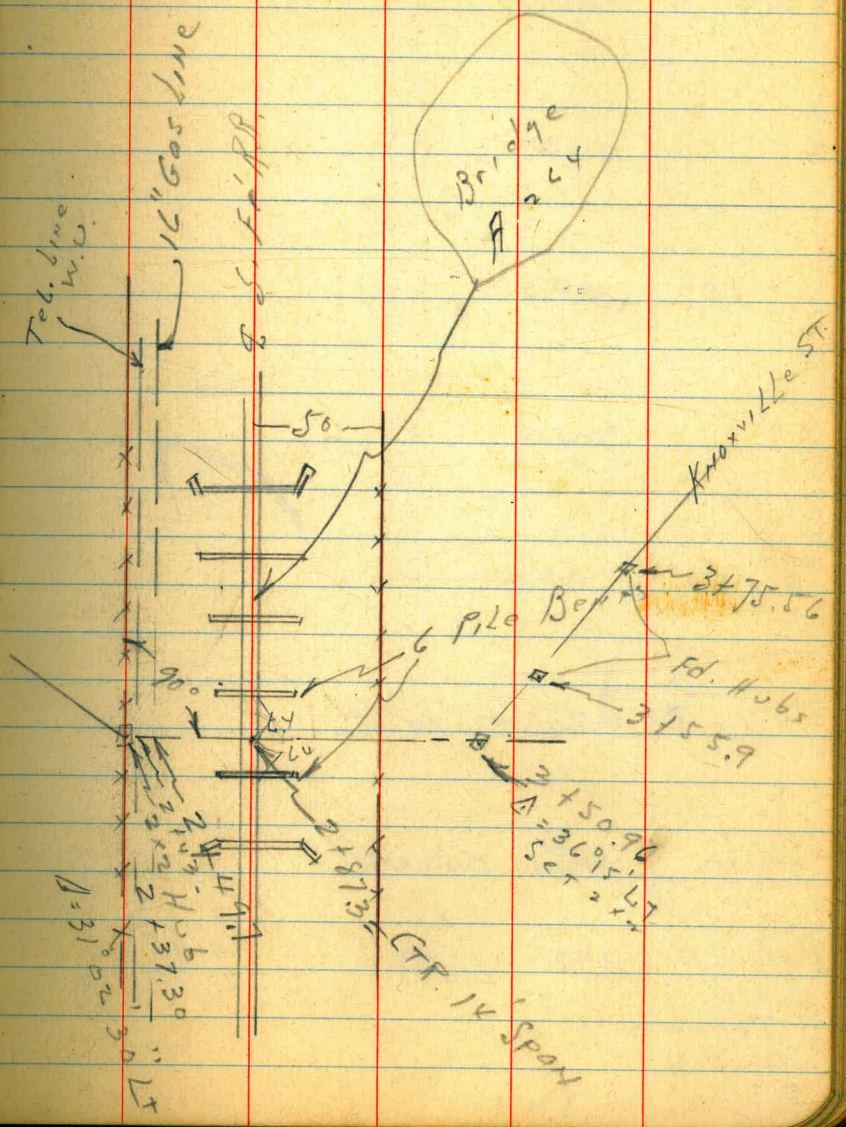
INDEXED
W.K.
AUG 29 1949

Ex. M.H.
0100



Exy Pacific Hwy

121' 00"



Knoxville ST.

2475.56

Fd. Hubs

3155.9

+50.96
3695.67
3224.71

GTF 16 Spax

3102
3730
30

2 + 43 gnd. at Tel. Line

2 + 37.3 Δ Pt. Lt.

2

750

1

0 + 50

0 + 100 Inv. MH.

0 + 100 ATNA Ex MH.

BM. BP 3.98 11.83 7.85

E. C 6
♀ Tecolote
Bridge

Pac. Hwy - P. 49

58

Pole
100 ±

♀

118 .00

Pole
10 ±

114 .20

119 -0.10

118 0.40

117 0.60

109 0.90

1720 -5.37

1014 1.69

1183

3+25 Bot. Wire

+2.2

59

3+25 Tol. of W.U. Line

$\frac{Polo}{125}$

11.7
gd

.10 $\frac{Polo}{40}$

3

11.6

.20

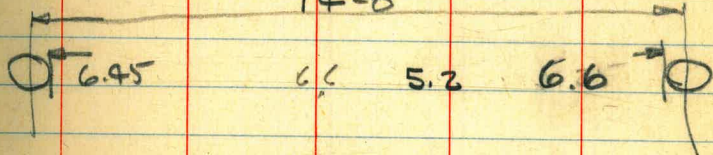
2+87.3 Top Rail, Track has been

183

10.00

14'-0"

2+87.3 Bot. of steel girders



6.6

5.2

6.6

2+87.3 ground ^{Soft} Mud

$\frac{12.1}{11.83}$

- .30

2+49.7 Top 16" Gas Line

13.8

- 2.0

11.83

1.97

2+49.7 gd. at 16" Gas

11.8

.00

2+43 Bot.

+2.3

14.1

$3 + 75.56$

10,9 .90

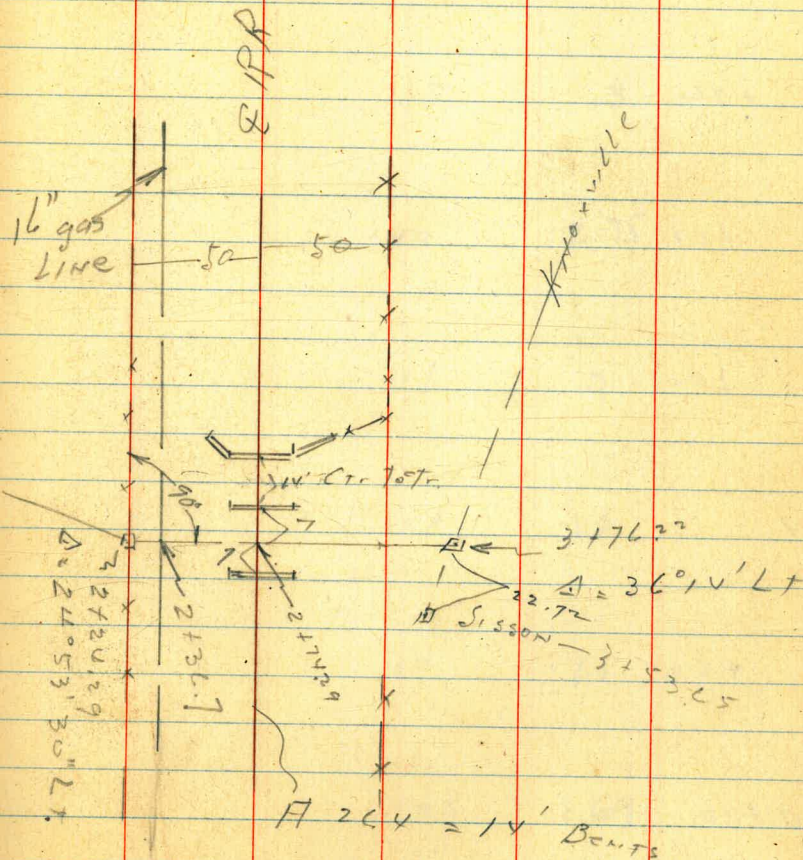
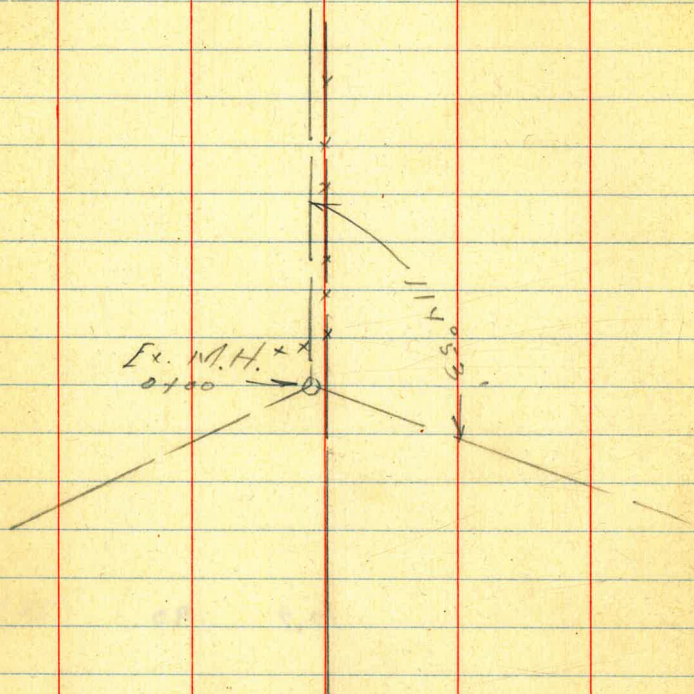
 $3 + 55.9$

11,3 150

 $3 + 50.96 = \Delta LT$

11,2 160

#4 change from P59
 CS-20
 1-29-48.



272429 = Δ

LT

2

62

11.1

.7

2

11.7

1.0

72

11.5

.3

73

9.0

2.75

750

11.1

.7

1

10.8

1.0

750

10.7

1.1

0700

10.6

1.69

BM. B.P.
Eck 9
Tecalora
Bridge
Pac. H.

3.90

11.75

7.85

3

Lt 11.0 0.8

2 + 74.29

11.1 0.7

164

11.0 0.8

160

12.7 -1.1

156

12.7 -1.1

152

10.7 1.1

2 + 36.7 16" gas pipe ^{TOP} 1306

Top 16" 12.82 -1.07 1306 Top 16" Line -1.31

7 + 36.7 92 d

92 d 10.6 1.2 10.8 1.0

11.75

②

3+76.22 Δ

10.8

1.0

3+50

11.7

1.1

Morano + Paul St. Sayer Grader

BM #1	5.27	10.45	5.08	COND Cross M. R. M. H. Co. + Paul St Page 42
0+0	= Existing MH	12.21	-1.76	Flow Line 11.36 5.26 65.77 07.87
0+11			-0.72	11.17 5.40 65.77
0+23.3			-0.67	11.12 5.10 65.62
0+35			-0.62	11.07 5.07 65.66
0+53	= MH		-0.55	11.00 5.55 65.75

W.O. 60239

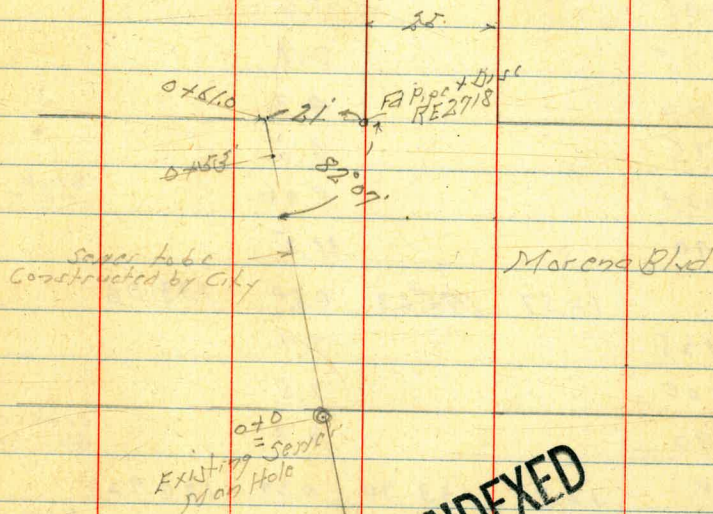
Feb 17-48 65

S. J. Johnson
H. H. Smith
John H. ...

Staker off rd 1/4 S.E. 1/4

W.O. 60239

Paul St



INDEXED
FEB 18 1948

2/20/48

Profile levels Proposed
 Sewer on Everview from
 30+83.92 on Dorcas (See Pg 56)

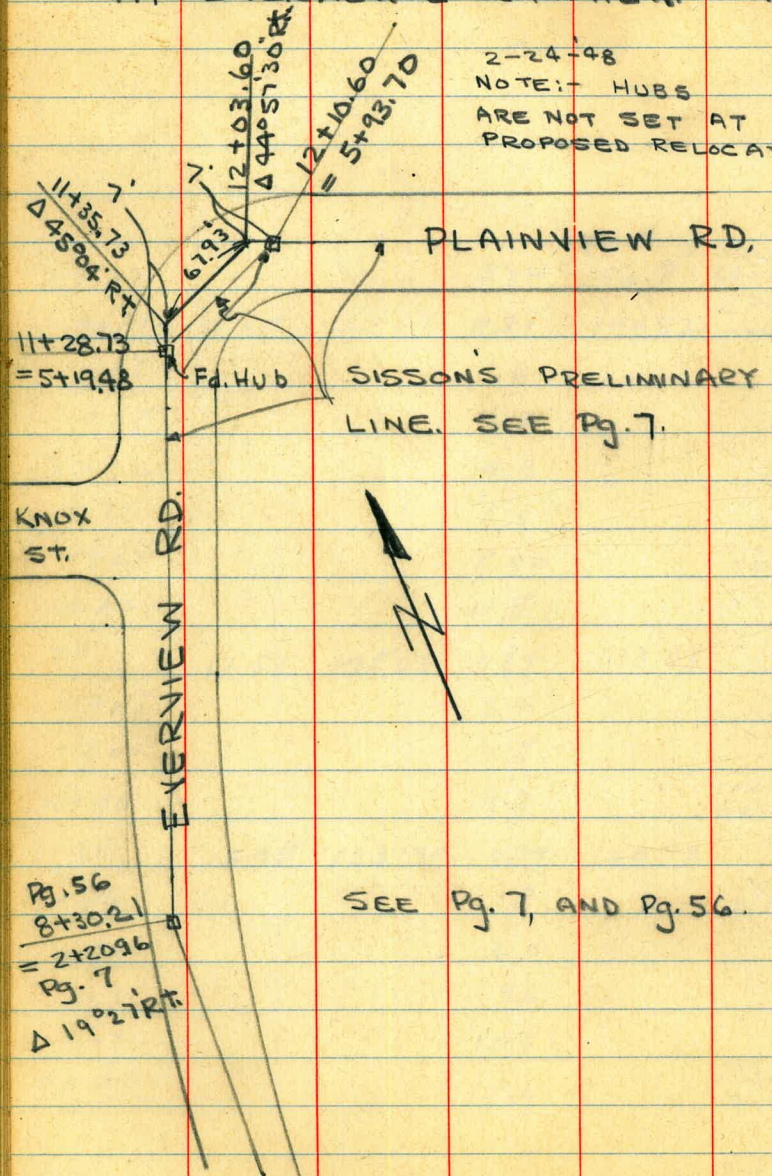
66

3+22			3.36	(146.80) 146.81	old L.P.P. Stub.
+61.48	5.35	150.17	0.81	144.82	L.P.P. 23' 40" L. Hub.
+45			1.6		
+25			2.7		
2+00			4.3		
+75			6.5		
+62.1			8.06		Stub P.O.T.
1+40			11.5		
TP	12.57	145.63	0.84	133.06	
+25			2.4		
1+00			7.5		
0+90			9.7		crosses Gas line
TP.	12.98	133.90	0.39	120.92	
+69			1.9		Edge of oil. Tank.
+50			6.0		
+23			9.6		
+17			12.5		
0+00			13.09		New stub = 30+83.92 (Pg. 56)
BM	7.80	121.31		113.51	High Vel. Pole 18' 11' 31" + 20 Pg. 4.

2-24-48 G.W.E.

PROPOSED RELOCATION OF SEWER AT EVERVIEW & PLAINVIEW ROAD.

2-24-48
NOTE: HUBS
ARE NOT SET AT
PROPOSED RELOCATION



SEE Pg. 7, AND Pg. 56.

Location Water main etc.
Doreas St.

Sketch - Page 3

- 27+00 1st Lt. = Φ water trench
{ 15th Rt. = Face of curb
26+47 19th Lt. = Pole # JP. 1310
26+30 1st Lt. = Φ Water trench
26+00 1st Lt. = Φ Water line
25+30 21st Lt. = Pole # 219A
{ 1st Rt. = Φ Water line
24+13 14th Lt. = Face pole # 434282H
24+11 6th Rt. = Ctr. 10" tree
23+28 4th Rt. = Ctr. Gate cover
22+63⁵ 7th Lt. = ^{face} Pole # 434231H
22+54⁰⁷ = Δ 2^o 37' 30" Rt.
22+25 12th Rt. = End Conc. post + wire fence
22+18 9th Lt. = Φ 6' Bone walk.
22+0 7th Rt. = Φ Water line
21+64 10th Lt. = End shed
{ 10th Lt. = start shed
21+43 7th Lt. = Face Pole # 434280H
21+0 12th Rt. = start conc. post + wire fence
20+48 7th Lt. = Φ Water line.
20+12 8th Lt. = Face T. Pole # 434279H
19+93 8th Lt. = deadman
19+63 7th Rt. = Ctr. Gate cover.
19+04.36 1/2 Hub. Morena + Doreas. (P. 3)

68

27+64² Cross gas main up Hilda St.

27+62 18th Lt. = Pole # 434281H

3/9/48

Location of Gas - Everview
From Dorcas
(Sketch Pg 56)

2 + 6148	2 x 2 Hub = L Lt.	16.8 Lt = Curb
2 + 51	8.9 = Gas	16.6 Lt = Curb.
2 + 20		18.6 to P.R.C. of Curb
2 + 16	9.1 Lt = Gas	18.8 = Curb
1 + 81	11.0 Lt = Gas	19.3 = Curb.
1 + 62.1 (Approx)	Stub = P.O.T.	18.1 Lt = Curb
1 + 37	5.5' Lt = Gas	15.0' Lt = Curb.
1 + 01	1.2 Lt = Gas.	9.2 Lt = Curb.
0 + 94	8.1 Lt Curb B.C.	
0 + 92	Intersection with Gas	
0 + 74	2.2 Ft Gas line 1.5' Lt Curb	
0 + 69	Edge of Oil	
0 + 56	2' Ft Edge of Oil 7.2 Ft Gas line	
30 + 83.92 = 0 + 00	2 x 2 Hub - Dorcas + Everview	

3/17/48

Location Gas on Dorcas (Sketch P. 3)

69

27 + 64 ²	= Cross gas line up Hilda St.
27 + 25	10' Lt = gas line
26 + 70	9 ⁵ Lt = gas line
26 + 10	9 ⁵ Lt = gas line
25 + 50	9 ⁶ Lt = gas line
25 + 21	10 ⁵ Lt = start stub end gas line
~~~~~	
23 + 16	13 ² Lt = gas line
23 + 09	4 ² Lt = gas line
23 + 04	= Approx crossing of gas line
23 + 02	1 ² Rt. = gas line
22 + 80	1 ² Rt. = gas line
22 + 54 ¹¹ Δ	1 ⁵ Rt. = gas line
22 + 17	1 ⁶ Rt. = gas line
21 + 75	1 ⁸ Rt. = gas line stub end

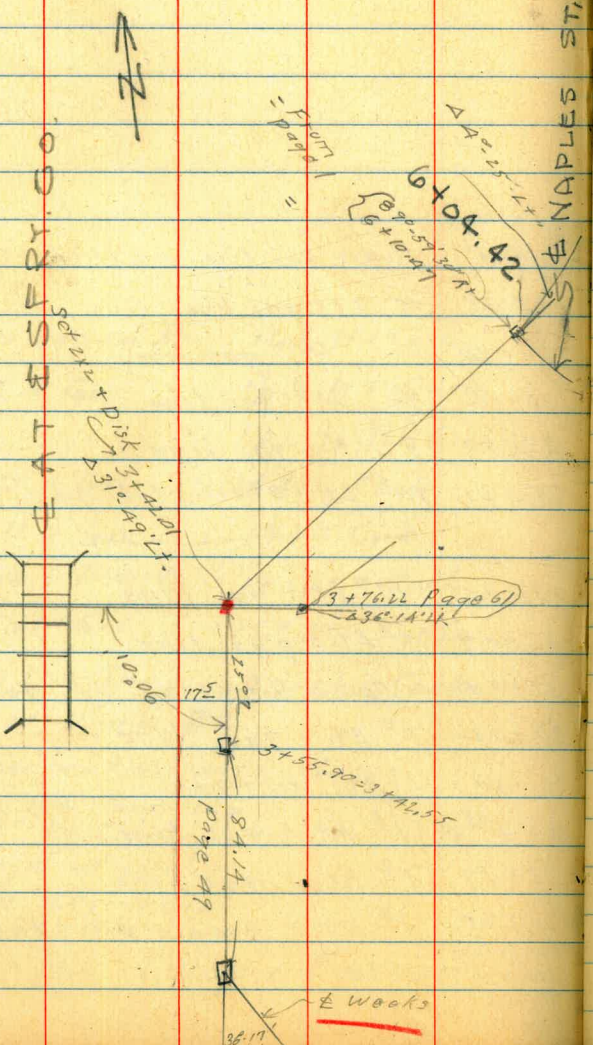
2x2 Dorcas  
& Morena  
1940-436  
page 3.



SEE PAGE 1.

3-9-48  
W.O. 31508

Sommarmeyer  
McCoy  
McMurry  
E Sherman



B.M.	5.39	6.30	—	0.91	Stub, 3+53.65 page 1
3+42.01	$\Delta 31^{\circ} 49' 42''$ (on Hub)	5.86	0.44		
+50		5.7	.6		
A+00		4.3	2.0		
+50		4.2	2.1		
5+00		4.4	1.9		
+50		4.2	2.1		
6+00		3.9	2.4		
6+04.42	$\Delta 42^{\circ} 55' 21''$	3.9	2.4		
6+04.42 New 4		3.9	2.4		
6+10.47 old P. 1					

3-17-48

71

Water + Gas main location  
also New Alignment. Prop. sewer.

Buenos + Dorcas.

Mains located with pipe finder.

SKETCH Pg. 5.

$\Delta$ 49° 33' Lt.	6.4 Rt. = Cl.
10+94.72	2.8 Rt. = Water
10+87	10.5 Rt. = Cl.
	7.5 Rt. = Water
10+65	7.5 Lt. = Gas
	15.8 Rt. = Cl.
10+62	15.3 Rt. = Water
	12.2 Rt. = Cl.
10+43	17.7 Rt. = Water
10+32	4° Lt. = Gas
	22.1 Rt. = Cl.
10+18	15.8 Rt. = Water
	17 Rt. = Cl.
9+93	8.7 Rt. = Water
	12.4 Rt. = Cl.
$\Delta$ = 40° 21' Lt.	3.2 Rt. = Water
NEW $\Delta$	
9+79.90 =	

Profile & Pavement

3-17-48

72

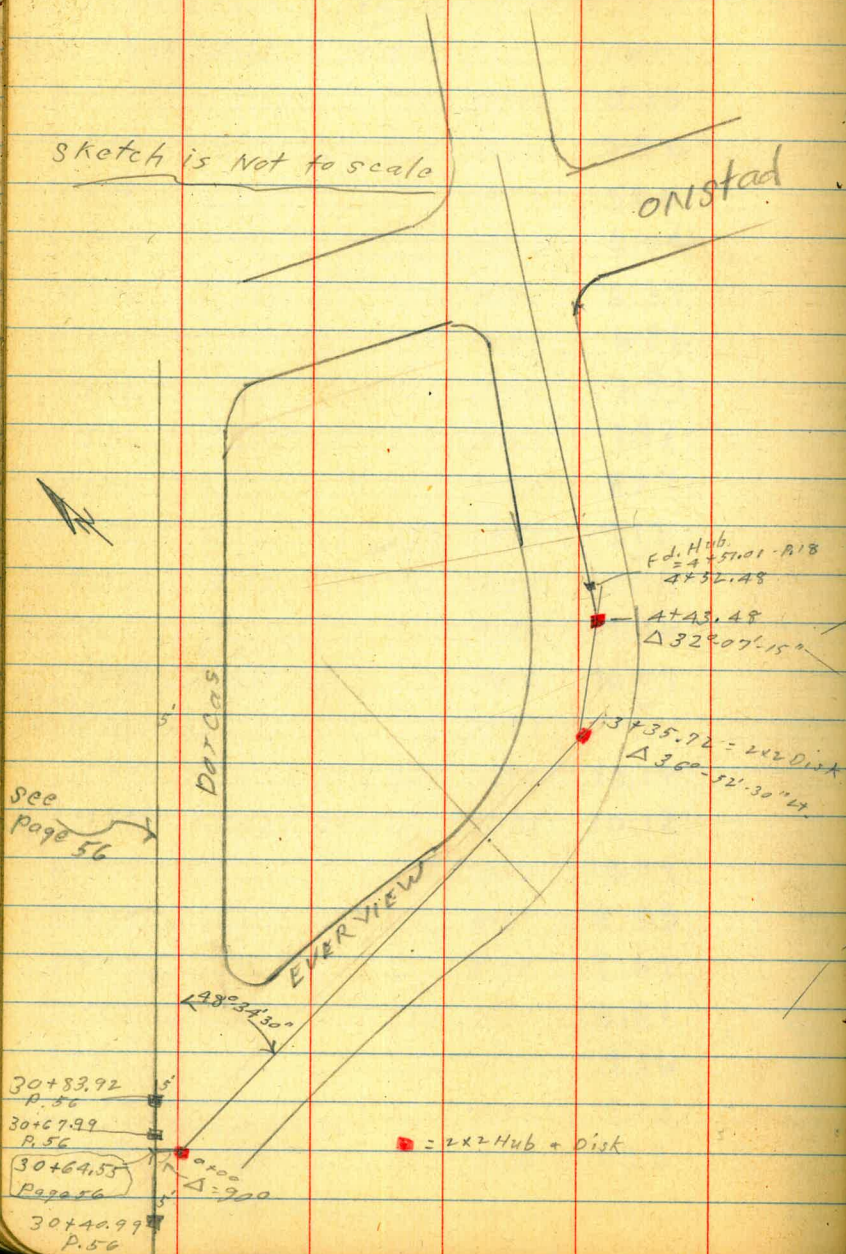
Morena - Paul to Knoxville

& Pavement is out North of & Prop sewer.

B.M. #1 P. 46	5.72	10.80		5.08	
0+00			5.42	5.38	
+50			5.24	5.56	
1+00			4.98	5.82	
+50			4.76	6.04	
2+00			4.43	6.37	
+50			3.98	6.82	
3+00			3.39	7.41	
+50			2.83	7.97	
4+00			2.23	8.57	
+50			1.63	9.17	
T.P.	5.38	14.11	2.07	8.73	
5+00			4.35	9.76	
+37.8	N. Edge Bridge		4.02	10.09	
check B.P. Tealote bridge			4.08	10.03	(10.04)
+50			3.97	10.14	
+67.1	S. Edge bridge		3.93	10.18	
6+00			4.02	10.09	
+50			4.23	9.88	
7+00			4.42	9.69	
+50			4.60	9.51	
8+00			4.75	9.36	
+50			4.98	9.13	
8+74.7 = Copper spike					
8+89.2			5.16	8.95	
& Pavement Apex & Prop. Sewer line					

Sketch is Not to scale

ONstad



EVER VIEW  
Darcas to Onstad - Revised 4/13/48  
Sketch. P. 73

A+51.01 Page 18					
A+52.48 =	New P.O.T.	2.72	158.90	on Hub.	
A+43.48	$\Delta 32^{\circ} 07' - 15''$	3.89	157.73	on Hub	
T.P.	7.14	<u>161.62</u>	1.65	154.48	
+20			1.65	154.48	
A+00	<b>INDEXED</b>	3.89	152.24		
+70		6.55	149.58		
3+35.72 =	$\Delta 36^{\circ} 52' - 30 \text{ Lt.}$	8.59	147.54	on Hub	
3+00		10.16	145.97		
+70		11.35	144.78		
T.P.	12.94	156.13	0.63	143.19	
+35			0.82	143.00	
2+00			3.05	140.77	
1+70.37	9' N. + 406. Spike P.O.T.	6.19	137.63		
+40		10.84	132.98		
T.P.	12.85	<u>143.82</u>	0.01	130.97	
1+15			3.11	127.87	
+70			8.72	122.26	
T.P.	12.61	<u>130.98</u>	0.74	118.37	
+65			1.72	116.79	
38	OIL PAVE	7.02	111.49		
+35		9.2	109.3		
+10		11.8	106.7		
0+00 P 73	2+4+ Disk P. 73	12.78	105.73		
= 5 ⁵ R+ (at 30 ⁹ ) to 30+64.55 P 56					
		12.30	<u>118.51</u>	106.21	442-30467.99 AG-18+56

DORCAS St. Line change 3/22/48

Levels - page 76

Summermaster  
McCoy  
W Moore  
ESTERMAN

■ = Pk. old hub  
■ = Hub set 3-17-48

LAND DISC.

$\Delta 1^{\circ}44' RT.$   
8+69.60

Hilda Rd  
page 5

Not. to scale

$0^{\circ}24' Lt.$   
6+25.76

Bianca Ave.  
P.5

INDEXED

$\Delta 6^{\circ}21'30'' RT.$   
3+50.40

Savannah St.

P.3  
4⁰⁰

$\Delta 3^{\circ}12' Lt.$   
1+85.82

Savannah place

P.3  
350

$93^{\circ}20'30''$   
RT. 1100

750

$\Delta 86^{\circ}39'30'' Lt.$

Martha

P.12+50.46  
P.3

18+94.86 page 3  
17+94.36  
P.3  
0+00

34+770.7  
old stationing  
page 6

$\Delta 68^{\circ}27' RT.$   
34+71.69  
page 6

onstad

15+69.36 New  
 $\Delta 68^{\circ}27' RT.$

48-35

Everyview  
page 73

11+60.25  $\Delta 1^{\circ}58' Lt.$

see page 73  
for ties at  
this point.

30+67.99  
P.72

$\Delta 1^{\circ}44' RT.$   
8+69.60

Hilda Rd.

## Levels Dorcas St.

Sketch p. 75

B.M. - Mon.	Dorcas + Merano	8.67	24.86	-	16.19	Mon. is S.W. Not S.E.
0+00	on dist		7.53		17.33	
0+00	Grd.		7.3		17.6	
+22	W. Edge Pav		6.00		18.86	
+55 ^{ft}	E. " "		6.97		17.89	
+75			6.2		18.7	
1+00			5.9		19.0	
+40			5.1		19.8	
1+85.32	Grd.		4.0		20.9	
$\Delta 90^{\circ} 21' 14''$ (Page 75)	on dist Hub.		4.27		20.59	
2+00			3.6		21.3	
+50			2.7		22.2	
3+00			1.2		23.7	
T.P.	14.93	36.11	0.68		24.18	
3+50.40	Grd		10.6		25.5	
$\Delta 0^{\circ} 21' 30''$ Rt	on dist in $\frac{1}{2}$		10.63		25.48	
4+00			8.0		28.1	
+50			4.8		31.3	
5+00			1.4		34.7	
T.P.	12.63	48.49	0.25		35.86	
5+50			9.9		38.6	
6+00			5.6		42.9	
6+25.76	$\Delta 0^{\circ} 24' 44''$ Grd.		3.3		45.2	
	Dist in $\frac{1}{2}$		3.30		45.19	

76

		48.49			
6+50			1.0		47.5
T.P.	13.03	61.02	0.50		47.99
7+00			8.6		52.4
+07	start oil pave.		7.9		53.1
+50			3.4		57.6
T.P.	13.00	73.72	0.30		60.72
8+00			10.4		63.3
+35			5.8		67.9
8+69.60	$\Delta 1^{\circ} 44' 14''$ Rt (on dist)		1.35		72.37
T.P.	13.24	86.74	0.22		73.50
9+00			10.5		76.2
+40			5.8		80.9
+80			1.5		85.2
T.P.	12.29	98.75	0.28		86.46
10+20			7.2		89.6
+60			4.8		94.0
11+00			0.1		98.7
T.P.	12.67	111.00	0.42		98.33
+30			8.9		102.1
11+60.25	$\Delta 1^{\circ} 58' 24''$ on dist		5.20		105.80
+80	End of Rock & oil		2.6		108.4
12+00			0.2		110.8
T.P.	13.11	123.91	0.20		110.80
12+40			8.4		115.5
+80			3.9		120.0

Dorcas

		123.91			
T.P.	12.24	135.81	0.34	123.57	
13+20			11.5	124.3	
+60			7.2	128.6	
14+00			2.9	132.9	
T.P.	12.82	148.33	0.30	135.51	
+40			10.7	137.6	
+80			5.4	142.9	
15+20			0.1	148.2	
T.P.	11.61	159.33	0.61	147.72	
15+50			7.4	151.9	
15+69.36	Δ 68°-27' Rt.				
= 34177.07	old line				
see page 75.	on disk		5.08	154.25	
check of					
34+71.69	page 8	(153.86)	5.43	153.90	-0.04

B.R. Bridge		Knoxville Levels		3/30/48	77
Tealote Creek	3.56	13.60	✓	10.04	B.M. #1.
0+00	& Morenas	on para		4.63	8.97
	& Knoxville to west				
+10 ²	Edge Para			4.90	8.70
+30				5.1	8.5
+50				5.3	8.3
+74	68 Lt. Pale	Toll Co			
		& No. #.			
+96	4 ² Ft. = deadman				
+100				5.6	8.0
+30				4.9	8.7
+60	Ground			4.3	9.3
+61 ⁶⁷	Δ 5 ² = 20' Lt			4.3	9.3
or					
7672 ²	Map				



Paul St.

3/30/48

B.M.#1 P.A.C.	✓	✓		
4.46	9.54	—	5.08	
0+00	Page 75R7 (on Pav.)	4.13	5.41	
+10 ^E	Edge Pav.	4.35	5.19	
+25		4.6	4.9	
+AL	4 th RT - dead man			
+50		5.1	4.4	
+61 ^E	^{ctr.} 4 th RT - Pole # J2204			
1+00		4.9	4.6	
+30		4.8	4.7	
+60 ^E		4.7	4.8	

78

← Tonopah

Ed Mon.

12^E

12^E

12^E

12^E

1+60.90

12^E 12^E

90° 02' →

12^E

0+00

42° 30'

33° 30'

M.H.H.3  
P.A.L.

Levels Proposed Sewer South of  
 Moreno Blvd West of Paul St.  
 Sketch 50

BM #1 826 18.34 ✓ 508  
 Archive/Cross  
 by R. H. H.  
 Moreno  
 Paul Poyals

April 18-18  
 J. S. S. O.  
 Smith  
 Hill  
 Sehn  
 W.O. 31508

79

0 - 09.67 - P.I. Existing Sewer 10.52 282 on stub

0 + 0 10.2 3.1

+50 10.1 3.2

1 + 0 9.8 3.5

+37.91 06.1 9.93 341 on stub

EXT. M.H. # 1469 SW 0-09.69 10.60 2.74 on R. H.

15.50 -2.16 Invert

5/24/48 Add. Notes So. of Marens E. of Paul.  
See Page 50.

6+71.0	= Prop. M.H.			
Page 50				
	0.47	10.51	—	10.04 B.A. #1 P. 77
6+71.0		5.00		5.5
7+00		5.3		5.2
+30		5.8		4.7
7+68	Nly. Cor. Bldg. Grd.	5.7		4.8
"	Top. End. Perm	4.08		6.43
"	Prop. floor level	3.00		7.51

Summer Meyer  
McCoy  
W. Moore  
Sherman

## IMPROVED TABLES AND INFORMATION

HORIZONTAL STADIA CORRECTIONS					
2°-00'	—	0.1	21°-00'	—	12.8
3°-00'	—	0.3	21°-30'	—	13.4
4°-00'	—	0.5	22°-00'	—	14.0
5°-00'	—	0.8	22°-30'	—	14.7
6°-00'	—	1.1	23°-00'	—	15.3
7°-00'	—	1.5	23°-30'	—	15.9
8°-00'	—	1.9	24°-00'	—	16.5
9°-00'	—	2.5	24°-30'	—	17.2
10°-00'	—	3.0	25°-00'	—	17.9
10°-30'	—	3.3	25°-30'	—	18.6
11°-00'	—	3.6	26°-00'	—	19.2
11°-30'	—	4.0	26°-30'	—	19.9
12°-00'	—	4.3	27°-00'	—	20.6
12°-30'	—	4.7	27°-30'	—	21.3
13°-00'	—	5.1	28°-00'	—	22.0
13°-30'	—	5.5	28°-30'	—	22.8
14°-00'	—	5.9	29°-00'	—	23.5
14°-30'	—	6.3	29°-30'	—	24.3
15°-00'	—	6.7	30°-00'	—	25.0
15°-30'	—	7.2	30°-15'	—	25.4
16°-00'	—	7.6	30°-30'	—	25.8
16°-30'	—	8.1	30°-45'	—	26.2
17°-00'	—	8.5	31°-00'	—	26.5
17°-30'	—	9.0	31°-15'	—	26.9
18°-00'	—	9.5	31°-30'	—	27.3
18°-30'	—	10.1	31°-45'	—	27.7
19°-00'	—	10.6	32°-00'	—	28.1
19°-30'	—	11.2	32°-15'	—	28.5
20°-00'	—	11.7	32°-30'	—	28.9
20°-30'	—	12.3	32°-45'	—	29.3
			33°-00'	—	29.7
			33°-15'	—	30.1
			33°-30'	—	30.5
			33°-45'	—	30.9
			34°-00'	—	31.3
			34°-15'	—	31.7
			34°-30'	—	32.1
			34°-45'	—	32.5
			35°-00'	—	32.9
			35°-15'	—	33.3
			35°-30'	—	33.7
			35°-45'	—	34.1
			36°-00'	—	34.6
			36°-15'	—	35.0
			36°-30'	—	35.4
			36°-45'	—	35.8
			37°-00'	—	36.2
			37°-15'	—	36.6
			37°-30'	—	37.1
			37°-45'	—	37.5
			38°-00'	—	37.9
			38°-15'	—	38.3
			38°-30'	—	38.7
			38°-45'	—	39.1
			39°-00'	—	39.6
			39°-15'	—	40.0
			39°-30'	—	40.5

Chains to Feet	
1	66
2	132
3	198
4	264
5	330
6	396
7	462
8	528
9	594
10	660

Feet to Chains	
100	1.515
200	3.030
300	4.545
400	6.060
500	7.575
600	9.090
700	10.606
800	12.121
900	13.636
1,000	15.151



# 6" VC = 3.50 LIN. FT.  
 " 8" VC = 4.00  
 " 10" VC = 4.50  
 NHS = 200⁰⁰ EA.

152.13  
 45.85  
 95.3  
 87.99  
 50.55  
 157.90  
 161.62  
 37.2  
 157.90

157.90

106.21  
 12.52  
 118.51  
 14  
 118.37  
 12.61  
 130.98  
 1  
 130.97  
 12.85  
 143.82  
 63  
 143.19  
 12.94  
 156.13  
 1.65  
 154.48  
 7.14  
 161.62

1411  
 510  
 9.95  
 1260  
 895  
 365

267  
 8  
 272

9869  
 7+92.32  
 946

9179.90  
 1 14.82  
 10194.72  
 1406.72

3195.72 = Δ

43  
 914  
 23  
 6+80.7

24.71 = Hob  
 To  
 Pipe  
 Wash - 37 m = Hob  
 11.08  
 1.09

17-N

48°34'-50"