

EUGENE DIETZGEN CO.

DRAWING MATERIALS, MATHEMATICAL and
SURVEYING INSTRUMENTS

Chicago New York San Francisco New Orleans Pittsburg Toronto

Distances from Center of Roadway for Cross-Sectioning
Roadway 16 feet wide. Side Slopes 1 on 1.
For Single Track Embankment.

H	0	.1	.2	.3	.4	.5	.6	.7	.8	.9	H
0	8.0	8.1	8.2	8.3	8.4	8.5	8.6	8.7	8.8	8.9	0
1	9.0	9.1	9.2	9.3	9.4	9.5	9.6	9.7	9.8	9.9	1
2	10.0	10.1	10.2	10.3	10.4	10.5	10.6	10.7	10.8	10.9	2
3	11.0	11.1	11.2	11.3	11.4	11.5	11.6	11.7	11.8	11.9	3
4	12.0	12.1	12.2	12.3	12.4	12.5	12.6	12.7	12.8	12.9	4
5	13.0	13.1	13.2	13.3	13.4	13.5	13.6	13.7	13.8	13.9	5
6	14.0	14.1	14.2	14.3	14.4	14.5	14.6	14.7	14.8	14.9	6
7	15.0	15.1	15.2	15.3	15.4	15.5	15.6	15.7	15.8	15.9	7
8	16.0	16.1	16.2	16.3	16.4	16.5	16.6	16.7	16.8	16.9	8
9	17.0	17.1	17.2	17.3	17.4	17.5	17.6	17.7	17.8	17.9	9
10	18.0	18.1	18.2	18.3	18.4	18.5	18.6	18.7	18.8	18.9	10
11	19.0	19.1	19.2	19.3	19.4	19.5	19.6	19.7	19.8	19.9	11
12	20.0	20.1	20.2	20.3	20.4	20.5	20.6	20.7	20.8	20.9	12
13	21.0	21.1	21.2	21.3	21.4	21.5	21.6	21.7	21.8	21.9	13
14	22.0	22.1	22.2	22.3	22.4	22.5	22.6	22.7	22.8	22.9	14
15	23.0	23.1	23.2	23.3	23.4	23.5	23.6	23.7	23.8	23.9	15
16	24.0	24.1	24.2	24.3	24.4	24.5	24.6	24.7	24.8	24.9	16
17	25.0	25.1	25.2	25.3	25.4	25.5	25.6	25.7	25.8	25.9	17
18	26.0	26.1	26.2	26.3	26.4	26.5	26.6	26.7	26.8	26.9	18
19	27.0	27.1	27.2	27.3	27.4	27.5	27.6	27.7	27.8	27.9	19
20	28.0	28.1	28.2	28.3	28.4	28.5	28.6	28.7	28.8	28.9	20
21	29.0	29.1	29.2	29.3	29.4	29.5	29.6	29.7	29.8	29.9	21
22	30.0	30.1	30.2	30.3	30.4	30.5	30.6	30.7	30.8	30.9	22
23	31.0	31.1	31.2	31.3	31.4	31.5	31.6	31.7	31.8	31.9	23
24	32.0	32.1	32.2	32.3	32.4	32.5	32.6	32.7	32.8	32.9	24
25	33.0	33.1	33.2	33.3	33.4	33.5	33.6	33.7	33.8	33.9	25
26	34.0	34.1	34.2	34.3	34.4	34.5	34.6	34.7	34.8	34.9	26
27	35.0	35.1	35.2	35.3	35.4	35.5	35.6	35.7	35.8	35.9	27
28	36.0	36.1	36.2	36.3	36.4	36.5	36.6	36.7	36.8	36.9	28
29	37.0	37.1	37.2	37.3	37.4	37.5	37.6	37.7	37.8	37.9	29
30	38.0	38.1	38.2	38.3	38.4	38.5	38.6	38.7	38.8	38.9	30
31	39.0	39.1	39.2	39.3	39.4	39.5	39.6	39.7	39.8	39.9	31
32	40.0	40.1	40.2	40.3	40.4	40.5	40.6	40.7	40.8	40.9	32
33	41.0	41.1	41.2	41.3	41.4	41.5	41.6	41.7	41.8	41.9	33
34	42.0	42.1	42.2	42.3	42.4	42.5	42.6	42.7	42.8	42.9	34
35	43.0	43.1	43.2	43.3	43.4	43.5	43.6	43.7	43.8	43.9	35
36	44.0	44.1	44.2	44.3	44.4	44.5	44.6	44.7	44.8	44.9	36
37	45.0	45.1	45.2	45.3	45.4	45.5	45.6	45.7	45.8	45.9	37
38	46.0	46.1	46.2	46.3	46.4	46.5	46.6	46.7	46.8	46.9	38
39	47.0	47.1	47.2	47.3	47.4	47.5	47.6	47.7	47.8	47.9	39
40	48.0	48.1	48.2	48.3	48.4	48.5	48.6	48.7	48.8	48.9	40

Example—If point is 22.6 ft. above grade, how far should it be from center line to be a slope stake point? Ans. from Table 30.6. For same slopes but other widths of roadbed, correct above figures by one-half difference in width of roadbed; thus in example above, for 20 ft. roadbed distance will be $30.6 + (20 - 16) \div 2$ or 2 ft. added to $30.6 = 32.6$. For slopes of 1 on 1½ see inside of back cover.
Copyright, 1914, by Eugene Dietzgen Co.

130
1793

INDEXED

to page # 76

This Field Book is manufactured of a High Grade 50% Rag Paper having a WATER RESISTING SURFACE, and is sewed with Bing Special Enamel Waterproof thread.

Made in U. S. A.

27.75
6.85
20.90

Chic

H

0
1
2
3
4
5
6
7
8
9
10
11
12
13
14
15
16
17
18
19
20
21
22
23
24
25
26
27
28
29
30
31
32
33
34
35
36
37
38
39
40

7.01
6.85
Hub. 0.16 E
7.34 from E

1

5/3

1/e

Lilly

Ex
to be
of road
examp
30.6

INDEX

1

- Page 2 to 16 X Sects. Poe & Quimby Sts
and along private property
Lots 3, 4, 9 & 10 Block 137 Roseville
- 17-22 - X-Sect. Alley - Blk 2 - Berkley Hts.
- 23-25 Re-Cross Section ^{Portion of} P.E. St
- 26-31 Cross Sec Alley Blocks 147 U.V.
- 32-33 Proposed Survey Habo 55 Birch Alley Blk 19 City Hts.
- 53-60 X-Sec. Del Monte { Santa Barbara
T. Guizot
- 77 Establish BPBM - Jaramacha Road

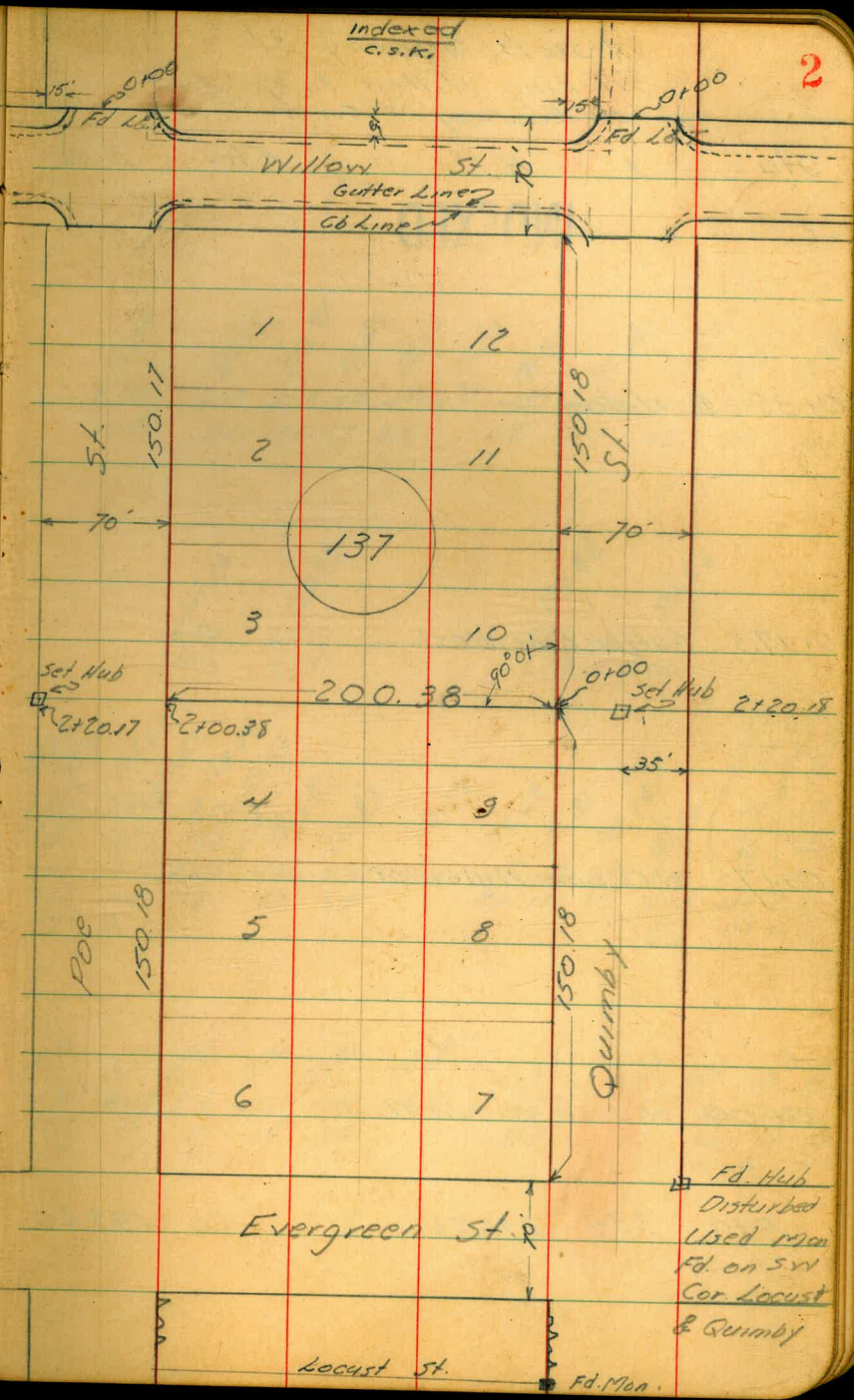
July 21, 22, 1947
 Hendricks
 W. Moore
 Sherman
 WO# 25001

X Sects. Poe & Quimby Sts.
 W. Line Willow St. to 270' East.
 & X Sects. of Private Property
 Lots 3, 4, 9, & 10 Block 137 Rossville
 Sub Division Lema Portal

INDEXED

(Level Next Page)

Note: Re Cross Section Portion
 of Poe St see P. 23-25



X Sects. Quimby St
 W Line Willow to 270' East
 34' Roadway 18' Curbs

Sta + H.I. - Elev. B.M.

INDEXED

0+35 & Willow

0+19.5 Gutter Line West

0+17 W.Cb Line Willow St.

0+00 W Line Willow St.

B.M. 3.34 176.54

173.20

167.94 170.37 170.91 171.43 171.60 171.74 171.97 172.14 172.51 172.93 174.55
 8.70 6.17 5.63 5.4 4.74 4.80 4.57 4.40 4.03 3.61 1.99
 100 50 35 17 8.5 8.5 17 35 50 100

167.84 170.04 173.48 174.56
 8.70 6.50 3.06 1.98
 100 615 623 100

170.64 169.87 167.68 170.82 168.49 171.21 171.68 171.87 172.07 172.23 172.36 172.74 172.96 173.23 173.14 174.02 174.36
 5.90 8.80 8.05 4.80 4.67 4.47 4.31 4.3 3.80 3.58 3.21 2.88 1.42 2.18
 615 100 Gut 100 60 171.68 171.87 172.07 172.23 172.36 172.74 172.96 100 100 Gut
 667 5.72 5.33 4.80 4.67 4.47 4.31 4.3 3.80 3.58 3.21 2.88 100 100 Gut
 615 45 35 17 8.5 8.5 17 35 44.3 623 623
 Gut 50 Gut Line Gut Line Gut Cb.

172.21 172.14 171.39 171.80 172.09 172.23 172.37 172.33 172.49 173.16 173.24
 4.33 4.42 5.15 4.74 4.45 4.31 4.22 4.21 4.05 3.38 3.20
 329 25 25 17 8.5 8.5 17 24.7 24.7 320
 SW Cb G 17 8.5 17 G Cb SW

S.W. B.P. Quimby & Willow

X Sects. Quimby St Cont'd

Sta + H.I. - Elev B.M.

1+435 Beg Ret Wall RL

1+00

0+70 East Line Willow St.

0+52 East Cb Line Willow St

0+495 Gutter Line East

176.54

166.0 166.5 166.6 166.0 165.9 166.2 165.8 166.4 166.2 165.5 167.17 168.48
 105 109 99 105 105 103 107 107 103 110 92 35
 50 35 30 24 17 14 15 17 21 21 35
 Gr Ret Wall 164.8

168.8 169.2 169.4 168.9 168.8 169.3 169.2 170.2 171.7 172.1
 77 73 75 75 77 73 73 63 48 48
 50 35 28 23 17 15 16 35 42

170.97 171.13 170.41 170.88 171.21 171.41 171.45 171.44 171.36 172.14 172.40
 557 541 613 550 533 513 509 500 513 420 412
 33 254 254 17 85 85 17 245 245 32.5
 S.W. Cb Gut Gut Cb S.W.

169.63 166.93 167.73 170.85 171.08 171.27 171.35 171.51 174.77 173.96 173.15
 CR 961 881 100 100 100 100 100 100 100 100 100
 Cb Gut Cb Cb Cb Cb Cb Cb Gut Cb Cb
 767 662 626 568 546 527 519 503 460 446 428
 61.6 44.8 35 17 85 85 17 35 44.7 59.7
 Gut Gut Cb Cb Cb Cb Cb Cb Gut Cb Cb
 BC Pipe Pipe Pipe Pipe Pipe Pipe Pipe Pipe Pipe Pipe Pipe
 168.87 169.92 170.28 171.94 172.09 172.36

167.22 169.22 172.61 176.23
 932 732 323 221
 100 616 597 100

X Sects. Quimby St Contd.

5

Sta # H.I. - Elev. 13 M.

2100

161.1	160.7	160.6	160.6	160.2	160.4	161.4	161.6
45	50	51	51	55	53	43	41
50	35	17		17	19	20	35

1180

162.2	162.1	162.0	162.0	161.6	162.6	162.9
35	36	37	37	41	31	28
50	35	17		16	17	35

T.P. 1.60 165.66 12.48 164.06

1170

164.1	163.7	163.8	164.0	163.5	164.2	165.1
124	128	122	125	120	123	114
50	35	17		17	19	35

1167

164.5	164.0	164.2	164.2	163.6	164.1	164.5
120	125	123	123	129	124	120
50	35	17		17	21	35

Rail Wall
7' High

1155 ♀ Garage on Rt.

164.48	164.55
12.06	11.99
35	41
Ramp	Floor.

176.54

X Sects Quimby St Contd.

Sta 1 H1 - Elev 1517

2135

157.2 156.8 157.3 157.9 157.5 156.7
 8.5 8.9 8.4 7.8 8.2 9.0
 50 35 17 17 35

21338 E. Edge Driveway

156.90 157.23
 8.7 8.4
 35 24.5

2132 Power Pole on Rt 20' Back Edge P-3243

157.27 159.74 157.48
 8.3 5.9 8.8
 35 30 30
 Drive Top of wall Driveway

21225 8" Cons. Wall on Lt & Beg Driveway

2120.18 Lot Line 4, 9, 3, & 10

159.5 159.2 159.0 158.3 158.1 157.99 158.3 157.3
 6.2 6.5 6.7 7.4 7.6 7.7 7.4 8.1
 50 35 32 29 17 Hab 17 35

2108

160.8 160.2 159.7 159.4 159.2 158.5
 4.9 5.5 6.0 6.3 6.5 7.2
 50 35 17 17 35
 End Wall
 8' High

16566

X Sect's Quimby St Contd.

Sta + H1 - Elev B.M

See next page for
Continuation of Levels.

2175

152.5	152.5	151.7	150.0	149.4	148.7	148.5
13 ³	13 ⁴	14 ⁰	15 ⁷	16 ³	17 ⁰	17 ³
50	35	25	17		17	35

2160

154.1	154.3	153.2	153.2	152.2	152.7	152.7
11 ⁸	11 ⁴	12 ⁵	12 ⁵	13 ⁵	13 ⁰	13 ⁰
50	35	17		17	35	36 House

16566

X Sect's along Lot Lines
 3, 4, 9, 8, 10 Block 137 Roseville
 H 1 - Elev. B.M.

Sta

01505 End Ret. Wall Rt. & Beg. Conc. Ramp & Gar.

INDEXED
 WIK
 NOV 30 1948

01354 & 3.5' Walk

TR 478 162.01 8.43 157.23

0119 End Conc. Driveway on Lt.

01025 Beg. Conc. Driveway on Lt.

0100 S Line Quimby

16566 Carried from
 preceding page

147.7 156.3 157.2 157.2 157.60 158.11
 14³ 57 4⁸ 4⁸ 4⁴ 3⁹⁰
 28 18 8 12.4 16.5
 Gar. Fl.

145.76 156.36 156.49
 16²⁵ 5⁶⁵ 5⁵⁸
 40 14² 10.7
 B.M. of
 Stairway

153.46 154.35 155.82 156.66 157.1 157.6
 12²⁰ 12²¹ 9³⁷ 9⁰⁰ 8⁵ 8¹
 26 23²³ 10⁵ 8⁸ 12
 Gar.
 Floor

153.51 153.30 155.92 156.39 156.76
 12¹⁵ 12³⁵ 9²⁷ 8²
 26 23¹² 10⁶ 8⁵
 Gar.
 Floor

152.8 156.7 157.3 158.5
 12² 9⁰ 8⁴ 7³
 25 11 12
 Ret Wall
 8' High

Levels Cont'd

Sta. + H1 - Elev. B.M.

0+73 } End walk on Rt. Beg Ret. Wall on Rt.
 } End Garage & Ramp Beg Ret. Wall on Lt

0+68.3 End Garage & Ramp on Rt. Beg sidewalk on

0+57.2 Beg. Garage on Lt.

0+58.2 End Walk Beg Conc. Ramp on Lt.

0+52.7 Beg. Conc. Walk on Lt.

16201

157.02 160.37 156.72 157.66 157.93 160.09 158.19 166.91
 4.89 164 5.29 4.55 4.28 1.92 3.82 14.72
 183 126 126 125 145 145 165 29.5
 Top of Wall Ramp Wall Top of stairs

157.64 158.19
 4.37 3.82
 125 166
 Gar. Fl

157.05 156.66
 4.25 5.25
 185 125

156.45 156.63
 5.56 5.38
 184 125

156.38 156.61
 5.63 5.40
 184 125

Sta + HI - Elev

1120.8 End Ramp & Gar on Rt. Beg Walk

157.48
4.53
12.7
Ramp

157.66
4.35
14.5
Gar Fl.

1102.5 Beg Conc Ramp Rt.

157.52
4.49
12.7
Ramp

157.66
4.35
14.5
Gar Fl.

1101 End Con. Ret Wall Rt. Beg Gar Rt

157.81
4.20
14.5
Gr. for Wall

160.11
1.90
14.5

0184.5 4.35 Conc Walk

156.73
5.28
16.7

156.73
5.28
12.8

0175

162.01

150.1
11.9
35

151.2
11.8
26

156.8
5.2
13

157.3
4.7
9

157.1
4.2

158.0
4.9
14

160.13
1.88
14

160.2
1.8
16

165.4
1.37
23

167.0
1.5
30

170.0
1.8
45

Wall

Sta + H.I. - Elev
 T.P. 1293 16274 12.20 14981

2+00.38 H Line Poe St.

1+60

1+70

1+50

1+31 End Brick Ret Wall on Lt.

1+25.4 End Conc Walk on Rt.

16201

on Hub 5 Line Poe St & Lot Line

138.8	155.6	155.6	156.4	172.4	172.5
23 ²	6 ⁴	6 ⁴	5 ⁶	+10 ⁴	+10 ⁵
41	12		7	30	47

144.6	154.6	156.6	156.2	171.5	172.0
17 ⁴	7 ⁴	5 ⁴	5 ⁸	+9 ⁵	+10 ⁰
40	21	13	3	27	50

145.5	154.6	156.9	156.5	157.1	169.0	171.3	172.4
16 ⁵	7 ⁴	5 ¹	5 ⁵	4 ²	+7 ⁰	+9 ³	+10 ⁴
40	23	14	6	29	37	47	

145.7	151.2	153.7	155.8	160.42	157.2	156.8	157.5	167.9	154.5 ⁴
16 ³	10 ⁸	8 ³	6 ²	5 ²	4 ⁸	5 ²	4 ⁵	+5 ⁹	+7 ⁵
48	33	25	21	13	13	12	12	27	37

Wall

157.48	157.67	154.37
+5 ³	+2 ⁴	+7.64
12.7	14.3	27

Top of
Stairway

Sta. + H.I. - Elev. B.M.

B.M. 653 177.82 177.79

TP. 10.21 184.35 0.42 174.14

TP. 12.12 174.56 0.30 162.44

162.74

SWBP Poc & Willow

X Sects Poe St W. Line Willow
to 270' East.

Sta. + H.1 - Elev B.M.

0+49.5 Gutter Line on East

INDEXED

0+35 ϕ Willow

0+19.5 Gutter Line

0+17 W Cb Line Willow

0+00 W Line Willow

B.M. 2.87 180.66 177.79

176.99	178.54	175.32	170.21
357	212	534	1045
100	60	60.2	100

176.98	178.67	179.04	179.10	179.00	178.83	178.61	178.31	177.42	175.46	169.76
358	129	62	55	66	83	205	235	324	530	1020
100	50	35	17	85		85	17	363	563	100

176.70	177.74	174.16	169.05
325	222	659	1161
100	61	60.9	100

177.22	176.45	178.36	177.56	178.30	178.59	178.80	178.70	178.57	178.35	178.04	176.86	175.82	173.97	168.91	168.67
344	421	22	310	236	207	18	209	221	255	380	484	659	1175	1022	
100	100	61	61	44	35	17	85	85	17	35	45.2	60.9	100	100	
Cb.	Gut	Cb	Gut									Gut	Gut	Cb	

179.23	179.18	178.99	178.40	178.37	178.27	178.05	177.78	177.41	178.15	178.25
143	148	217	226	229	239	261	288	325	251	241
331	242	242	17	85		85	175	247	247	31.7
S.W.	Cb	Gut.						Gut	Cb.	S.W.

S.W. B.P. Poe & Willow

Sta + H1 - Elev 18.77

1120 Power Pole 24⁵-Rt. of ♀ 026505T

181.4	180.9	180.6	177.4	176.1	176.4	178.2	176.9	176.1	174.8
4 ⁵	5 ⁰	5 ³	8 ⁵	9 ⁸	9 ⁵	7 ²	9 ⁰	9 ⁸	11 ¹
50	35	27	20	17	3		17	35	50

1+00 Dead Man for Pole 24.5Rt ♀

181.0	180.79	180.75	180.7	179.9	179.8	177.6	182.3	181.3	180.7	179.6
4 ⁸	5 ²	5 ⁵	5 ²	6 ⁰	8 ¹	8 ³	3 ⁵	4 ⁵	5 ²	6 ³
50	41	37	35	21	15	2		17	35	50

Walk

0+75

180.5	180.3	180.28	180.19	180.2	179.5	179.0	185.3	184.5	183.6	183.0
5 ²	5 ⁵	5 ⁵	5 ²	5 ⁷	6 ⁴	6 ⁹	0 ⁵	1 ⁴	2 ³	2 ⁹
50	35	31	27	26	17		2	17	35	50

Sidewalk

T.P. 5.82 185.91 0.57 180.09

0+70 East Line Willow

180.12	180.08	179.32	179.32	179.25	179.14	178.95	178.72	178.44	179.17	178.93
0 ⁵⁴	0 ⁵⁸	1 ³⁴	1 ³⁴	1 ⁴¹	1 ⁵²	1 ²¹	1 ⁵⁴	2 ²²	1 ⁴⁹	1 ⁷³
33.4	24.8	24.8	17	8 ⁵		8 ⁵	17	25	25	33.4

Srv. Cb. Gut Gut Cb. Srv

0+52 Cb Line on East

177.59	176.79	178.33	179.04	179.25	179.29	179.19	179.03	178.80	178.54	177.77	177.01	175.11	175.90
3 ⁰⁷	3 ⁸⁹	2 ³³	1 ⁶²	1 ⁴¹	1 ³⁷	1 ⁴⁷	1 ⁶³	1 ⁵⁶	2 ¹³	2 ⁸⁹	3 ⁶²	5 ⁵⁵	4 ⁷⁶
100	100	60	44	35	17	8 ⁵		8 ⁵	17	35	44	60	60.2

Cb. Gut Gut Gut Cb. Gut Cb. Gut Cb.

180.66

Sta + H.I. - Elev B.M.

2105

TP. 0.42 16145 12.74 161.03

1180

1170

TP. 0.49 17377 12.63 173.28

1147

1134

185.91

159.6	158.8	158.6	156.8	155.6	153.6	152.6
18	27	28	47	58	78	87
35	27	17		17	35	50

172.4	172.3	172.0	171.6	168.4	162.0	160.2	159.1
14	15	18	27	54	117	135	147
50	35	17	8		14	35	50

172.4	172.5	172.5	172.3	164.6	162.4	161.2
14	13	13	15	9	11	12
50	35	17		14	35	50

172.7	172.5	173.0	173.8	174.2	175.1	174.9	170.6	170.1	168.6	167.1
13	13	12	12	11	10	11	15	15	17	18
40	35	27	23	17		5	13	17	35	50

177.5	177.3	176.6	174.9	174.8	173.5	172.7	171.5
8	8	9	11	11	12	13	14
40	35	23	17		17	35	50

X Sect's Poe St. Contd.

Sta + H.I. - Elev BM

TP 0.62 14977 14981
2+75

2+55

TP 0.62 150.39 11.68 14977 149.81

2+27

2+20.17 On Lot Line 3, 4, 9, 810

161.45

Hub 50 Line Poe on Lot Line (p. 11 this Book)

134.9 132.9 131.8 130.5 130.3 129.6 129.7
15 17 18 19 20 20 20
50 35 17 17 35 50

143.5 140.2 139.0 138.0 137.7 137.5 136.2
6 10 11 12 12 12 14
50 35 17 17 35 50

Hub 50 Line Poe on Lot Line 3, 4, 9, 810 (see p. 11 this Book)

155.6 155.8 156.4 154.0 148.4 147.6 147.0
5 5 6 7 13 13 14
35 17 9 20 35 50

155.6 156.0 156.4 154.6 154.6 151.4 149.8 148.8
5 5 5 6 6 10 11 12
35 17 9 10 18 35 50

University

INDEXED

Indexed

Ave

Fd. ct.

10' closing?

Block Z

Berkley Hts.

Map 1131

No Houses this side

Brush

N

Set Hub

Fd. old Hub.

300.22

Rough graded.

Rd.

160.11

Dirt

25 x 25

20'

20'

Hue

Fd. Hub

Shiloh

Fd. ct.

ST

300.25

Fd. old Hubs

Brush

.16 E

.16 S

0 x 00

15' 7.5'

↓

↓

↑

↑

Set Hub

Dirt - Rough graded.

27.75 x 27.75

SZ

160.12

Rex

Fd. Hub.

See 1553 - P.-1 for ties

X-Sect. 15' Alley in Blk. 2 - Berkley Hts.

1968

12-31-47

W.O. 25001

Osborne
Hardin
Worrell

Sections checked = \checkmark - \leftarrow thus are same - 5-3-49 - 7.0.

New improvements - See P. 70

0+00 = F.L. 52nd

0-10 = Top of Bank

0-17 = Edge of Rdwy.

0-27.75 = \pm 52nd - graded Roadway

4.72	338.89	1.74	334.17	Hub - 0+00 \pm Alley + E.L. 52 nd
8.66	335.91	0.13	327.25	N.W. P.P. 52 nd
11.81	327.38		315.57	+ Univ.

18

H. = U. \pm

Rt. = S.

1-2-48

334.1	334.3	334.3	334.3	334.5
4.8	4.6	4.6	4.6	4.4
25	7.5		7.5	25

333.9	334.1	334.1	334.1	334.2
4.0	4.8	4.8	4.8	4.7
25	7.5		7.5	25

325.3	328.4	329.0	329.4	330.9
13.6	10.5	9.9	9.8	8.0
40	7.5		7.5	40

325.4	328.5	329.0	329.6	331.2
13.5	10.4	9.9	9.3	7.7
40	7.5		7.5	40

338.89

T.P. 7.28 322.60 10.62 315.32

1+55 - see P. 70

1+41 - 3.7 Rt. = Φ W.M. - ~~wood~~ ^{Now Conc.} box

1+54 - 7' Rt. = Nly. 10' Pepper

1+35 - 5.6' Rt. = fence

1+02 - 5.6' Rt. = Φ W.M. (box) = Water Meter.

1+00

T.P. 0.02 325.94 12.97 325.92

0+89 - 6.5 Rt. = Nly. P. pole # PA. 52 14

0+88 - 8.3 Rt. = Beq wire fence

0+75

0+50

0+25

10310.0	14311.6	13312.9	17313.6	Rt.
15	7.5	0	7.5	12313.9
10315.4	10315.4	10315.6	17316.4	15
10.5	10.5	0.3	9.5	9.0
15	7.5		7.5	15

3322.34	3322.5	3322.9	3323.4	3323.7
3.6	3.4	0	2.5	2.2
15	7.5		7.5	15

326.7	327.5	328.3	328.8	319.6
12.2	11.4	10.6	10.1	11.3
15	7.5		7.5	15

329.4	330.5	330.8	331.3	332.1
15	8.4	1	7.6	6.8
2.5	7.5		7.5	2.5

332.7	333.6	333.8	333.9	334.2
5.2	5.3	1	5.0	4.7
2.5	7.5		7.5	2.5

338.89

3+39 - 10' Rt. = end wall + fence

3+30 ✓ House on Rt.

3+22 - 7.9 Rt. = W.M.

2+91 - 8' Rt. = beg 6" wall for Picket fence

Rest of Sections are O.K.

2+90 ✓ 6' Rt. = Nly. P. pole # 5250

2+60 ✓ o.k. except #

2+30 ✓

under Univ. Ave

2+02 = # Waterway to 40" RC. Culvert

New

1+90 ✓ - o.k.

1+8 - 6.8 Rt. = End. fence

Lt.

#

Rt.

20

318.4

4.2

15

6.6

15

10.3

15

14.3

15

306.4

16.2

40

m wash

10308.7

15

320.6

2.0

7.5

9.9

7.5

9.7

7.5

13.9

7.5

15307.6

15.2

7.5

13309.6

7.5

320.7

1.9

7.5

4.9

8

3/3.8

8

13308.8

8

1307.8

14.8

7.5

12310.4

2

320.9

1.7

7.5

3.7

7.5

7.7

7.5

12309.8

7.5

14307.9

14.7

7.5

11311.0

7.5

321.2

1.4

15

3.1

15

6.4

15

11.4

15

308.3

14.3

15

10311.8

8

322.75

+0.15

15

3.1

15

3/6.2

15

311.2

15

308.3

14.3

15

10311.8

8

108

10

Top

total

3795

110

8

Top wall

322.60 ✓

5+39 - 7.7' Rt. = end wire fence

wire fence

5+08 - 8' Rt. = end wall + fence - Beg.

4+75 ✓

4+55 ✓

4+40 - 8' Rt. = Beg. 6" Conc. wall for board fence

4+39 - 7.4' Rt. = Nly. P. pole # A 5276

4+30 ✓

3+99 - 8.5' Rt. = ± W.M.

3+90 ✓

T.P. 71.55 333.80 0.35 322.25

3+60 ✓

Lt.

±

Rt.

326.4

7.4

15

323.2

10.6

15

325.7

8.1

15

325.7

8.1

15

322.6

11.2

15

319.8

2.8

15

327.1

6.7

15

324.3

9.5

15

326.9

7.9

15

326.5

7.3

15

322.9

10.9

15

321.8

0.8

15

328.3

5

15

326.0

7.8

15

327.8

0

15

327.0

6.8

15

323.7

10.1

15

321.9

0.7

15

329.1

4.7

15

326.4

7.4

15

328.2

5.5

15

327.9

5.9

15

324.0

1.8

15

322.0

0.6

15

329.29

4.51

15

327.4

6.19

15

329.18

4.62

15

328.4

5.4

15

324.8

9.0

15

322.2

0.4

15

329.4

4.4

15

327.8

6.0

15

329.1

1.7

15

328.9

4.9

15

329.2

4.60

15

ground. Topwall

322.60

✓ = checked 5-3-49- 7.0.

of Univ. B.1553-P.28
 Check et. - \$ Shiloh + 10 line 6.05 317.84 317.82
 T.P. 1.37 323.89 11.34 322.52

10' E. = W. cb - not graded = end.

5 + 89.83 = WL Shiloh ✓

T.P. 6.79 333.86 6.73 327.07 ^{Hub} WL Shiloh

5 + 65 ✓

5 + 40 ✓

Lt. P Rt.

22

325.2	326.6	327.4	328.4	330.4
8.7	7.3	6.5	5.5	5.6
25	7.5	6	7.5	2.6
325.1	326.9	327.7	328.5	330.5
8.8	7.0	6.2	5.4	4.4
25	7.5	6	7.5	2.5
		333.86		
6 327.0	5 327.9	5 328.4	4 329.3	4 329.7
15	7.5	7.4	7.5	1.1
5 328.6	5 329.5	3 330.1	3 330.2	3 330.5
15	7.5	3.7	3.6	1.3
		333.80		

5-14-48
Hendricks
Walker
Becker
Williams

Re 8 sects of Poe St.
from Willow St East.
(Original notes Page 13 this book)

1+66

1+47

1+34

1+20

1+00

0+75

B-17 4.32 182.11

177.19

INDEXED
MAY 17 1948

177.3	177.3	176.0	175.1	173.9	173.8	174.0	173.5	172.7
4.8	4.8	6.1	7.0	8.2	8.2	8.1	8.6	9.4
35	29	22	18	5	5	10	10	25
180.8	180.6	176.0	174.7	174.6	174.6	177.7	173.5	172.7
1.3	1.5	6.1	7.4	7.5	4.4	4.4	4.4	4.4
35	29	18	15	2	2	10	10	25
180.7	180.4	176.6	176.6	176.6	182.3	180.1	180.1	180.1
1.2	1.7	5.5	5.5	10.5	10.5	10.5	10.5	10.5
37	27	15	2	2	2	10	10	25
Walk	Walk	Walk	Walk	Walk	Walk	Walk	Walk	Walk
1.8	2.1	3.1	3.0	2.0	2.0	2.0	2.0	2.0
180.21	180.0	177.0	179.1	180.1	180.1	180.1	180.1	180.1
27	24	17	3	3	3	3	3	3
Walk	Walk	Walk	Walk	Walk	Walk	Walk	Walk	Walk

SWBP Poe & Willow

2+17.3 Power Pole E 36506T 24.3RT

2+06.5 End 0.7 Conc. Ret. Wall

2+05

1+98

1+83.5 Beg Conc. 0.7 Ret. Wall 35' Lt.

1+80

TP 0⁹⁵ 172.46 10.60 171.51

1+70

182.11

172.5	166.9	166.7	170.2	171.3	171.8	171.7	171.9	177
96	15 ²	15 ⁴	11 ⁹	10 ⁸	10 ³	10 ⁴	10 ⁷	17 ⁷
50	42	33	26	21	11	3	16	06
0 ⁰	5 ⁹	6 ⁰	2 ⁵	1 ²	1 ³	10 ³	10 ³	14 ³
50	42	30	21	11	13	10 ³	10 ³	06
172.5	166.6	166.5	170.0	171.3	171.2	162.2		
35	35	35	27	19	7	13	06	
Gr. Wall	Gr	Gr	Gr	Gr	Gr	Gr	Gr	
172.5	166.6	166.5	170.0	171.3	171.2	162.2		
35	35	35	27	19	7	13	06	
Gr. Wall	Gr	Gr	Gr	Gr	Gr	Gr	Gr	
6 ⁰	6 ³⁰	9 ⁷	6 ⁰	5 ²	5 ³	9 ²	15 ²	
4 ²	4 ²	4 ²	4 ²	4 ²	4 ²	4 ²	4 ²	
166.8	166.16	163.8	166.5	167.3	167.2	163.3	157.3	
35	35	35	27	10	10	8	06	
Wall	Wall	Wall	Wall	Wall	Wall	Wall	Wall	
6 ³⁰	13 ⁵	5 ⁷	5 ⁸	5 ⁸	5 ⁸	17 ⁰	17 ⁴	
166.16	152.0	144.8	146.7	140.5	145.1			
50	27	35	6 ³⁰	6 ³⁰	6 ³⁰			
166.16	156.2	156.4	166.16	166.16	166.16			

Contd from P-24

Lt

E

Pt.

25

12.07 160.39 160.42

(P. 11)

Check End Brick Wall opp 1+31 on Lot line
x sects P-11 this Book

2+2017 same

2+16 Edge Horn Fill

172.46

16	16	95	10	15	17	17	19
29	29	14	12	6	5	10	15
166.4	166.4	163.0	162.1	156.9	152.5	154.6	152.6

18 W 154.2

Hardin
Decker
Allen

x sec Alley
Between Howard & Polk

Block 147 Univ
Texas Hgts
Louisiana

26

8-25-48

W.O. 25001

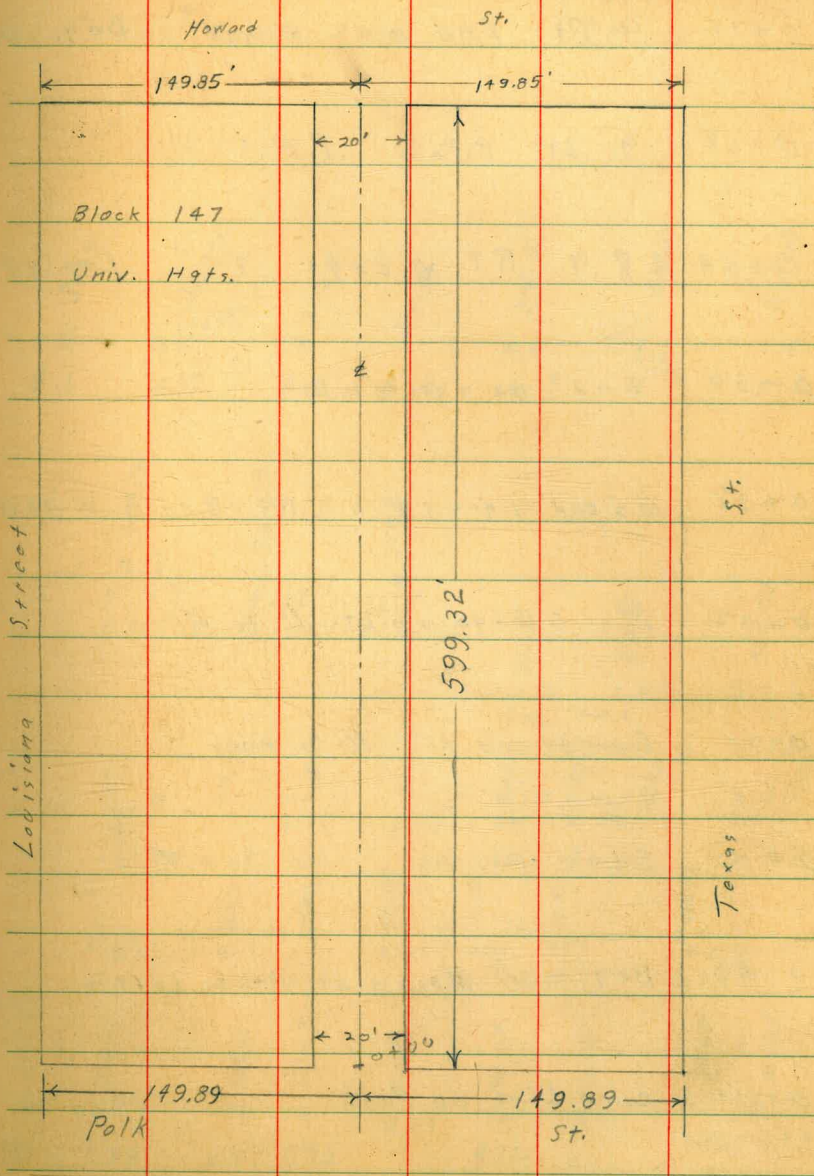
INDEXED

W.K.

AUG 26 1948

Notes Reduced
3 Sept 48
J.E. Hampton

	3.40	315.79	2.17	312.39	Nail in Pole E. Side Alley
T.P.	1.60	314.56	12.19	312.96	
	0.20	325.15		324.95	S.E. B.P. Texas Polk



0+74 9. Rt End wire Fence Beg. Board Fence 4" Conc. Fdn

0+68 9. Lt P. Pole P.A. 41 11

0+54 8.9 RR W Edge 30" Ecalyp tus

0+50 End garage on Lt

0+38 10.5 end garage on Rt Begin Wire Fence

0+32 2 car Garage on Lt. // To Alley

0+20 2 car Garage on Rt // To Alley

0+00 Edge Paving

0-05 Begin // Apron on Rt & Left

0-14 curb Line on Polk

Lt. $\Sigma 315.79$ Rt. 311.95 27

15	9.2	7	4.5	4.5	8.1	15.
5.1	4.18	4.9	4.9	4.8	3.8	3.6
9.8	5.83	4.12	9.	4.2	1.98	2.36
309.96	310.7	311.61	310.9	310.9	311.0	312.0
310.09	310.81	310.61	310.83	311.0	312.81	313.43
5.70	4.98	5.18	4.96	4.2	3.80	2.52
310.19	310.81	310.43	310.78	311.50	311.87	312.76
5.60	5.6	5.36	5.01	4.24	3.82	3.03
307.55	309.21	310.04	310.71	311.47	311.59	312.04
307.26	309.21	310.04	310.71	311.47	311.59	312.04
5.24	7.53	5.88	5.75	5.08	4.32	4.20
307.55	307.26	309.21	310.04	310.71	311.47	311.59
6tr 30	cb	12	10	5.08	10	1206
424	7.53	5.88	5.75	5.08	4.32	4.20

$\Sigma 315.79$

1+50

1+40 9.8 Lt End Board Fence conc. Fdn.

1+11 14.8 Rt 20' Garage Prom

4.76 315.66 4.89 310.90

T.P. 315.79

1+01

1+00 10' Lt Begin Board Fence conc Fence

0+98.9 9.5 Rt End Bd. Fence

0+89.7 9.4 Rt Beg. conc Fdn

0+82.3 9.2^{Rt} End conc. Fdn.

311.3
20 10 310.8
4.4 4.9 4.9 4.6 20 312.2
9.5

311.4
9.8 9.8 311.2
4.26 4.5
14.8 312.31
Gar Floor 19.6
2.95 2.37

315.66

15 311.0
5.8 5.6 11 310.2 10 311.0 4.9 310.9 10 312.0 15 312.8
15 311.0 on wall 10 311.0 4.8 310.9 3.8 312.0 15 312.8
4.8 4.36 4.8 4.9 3.8 3.0
9.5 on Fdn 311.91 3.88

315.79

TP 6.37 318.27 3.76 311.90

31566

4+00

312.26

312.0

3+75 10" 10.1 Lt Bsq. conc. Fdn. Ditt Wall 3.4 3.66

3+50

3+32 8.4 Lt P. Pole P.A. 4153

3+00

2+50

2+13 48. Lt Garage No Apron

2+10 8.8 Lt P. Pole P.A. 1429

2+00

Lt.

±

Rt.

20 312.4 101 312.31
 3.3 3.35 on wall 3.5 312.2 10 312.6
 20 311.3 10 311.4 311.3 10 311.6 20 311.8
 4.4 4.3 4.4 4.1 3.9

15 311.4 10 311.4 311.2 10 311.7 15 312.1
 4.3 4.3 4.5 4.0 3.6
 310.99 15 311.1 10 311.2 311.0 10 311.3 15 311.6 25 312.4
 4.6 4.5 4.7 4.4 4.1 2.3
 48" on floor
 4.67

311.2 310.9 311.0 311.3 312.7
 20 10 10 20
 4.5 4.8 4.7 4.4 3.0
 315.66

5+00

4+84 13.3 Lt Sing Car Garage with Apron

4+75 9.5 Rt Bag Woven Wire Fence

4+74 8.8 Lt P. Pole P.A. 4177

4+68 9.8 Rt Sing Car Garage Brick Floor

4+62 9.9 Rt End Woven Wire Fence

4+50

4+45^a 7 Rt Bag Woven Wire Fence

4+34 10 1/2 Lt End conc. wall

4+30 11 Lt Sing car Garage Dirt Floor

314.7
 15 Lt 10 314.7
 3.6 3.6 3.8
 314.7
 13 Floor 10.1 Apron
 3.55 3.80
 Rt 10 314.5
 3.8 15 314.7
 3.6

313.90
 9.8 on Floor
 4.37

313.1 313.3 313.3 313.6 313.6
 20 10 10 20
 5.2 5.0 5.0 4.7 4.7

10.1 312.65
 5.62
 11 312.5
 5.8

318.27

30

3.65 317.96

321.61 check Bliss B.M. 0.07 Lat

Check B.M. S.E. Texas Howard

Prop + 14'

Prop + 14'

599.32 Prop Line at

5+92 8' Lt 10' Pole

5+70

4.30 321.61 0.96 317.31

T.P. 318.27

5+52 10.Rt End Picket Fence

5+25 9.5 Rt End woven wire Fence
Begin Picket Fence

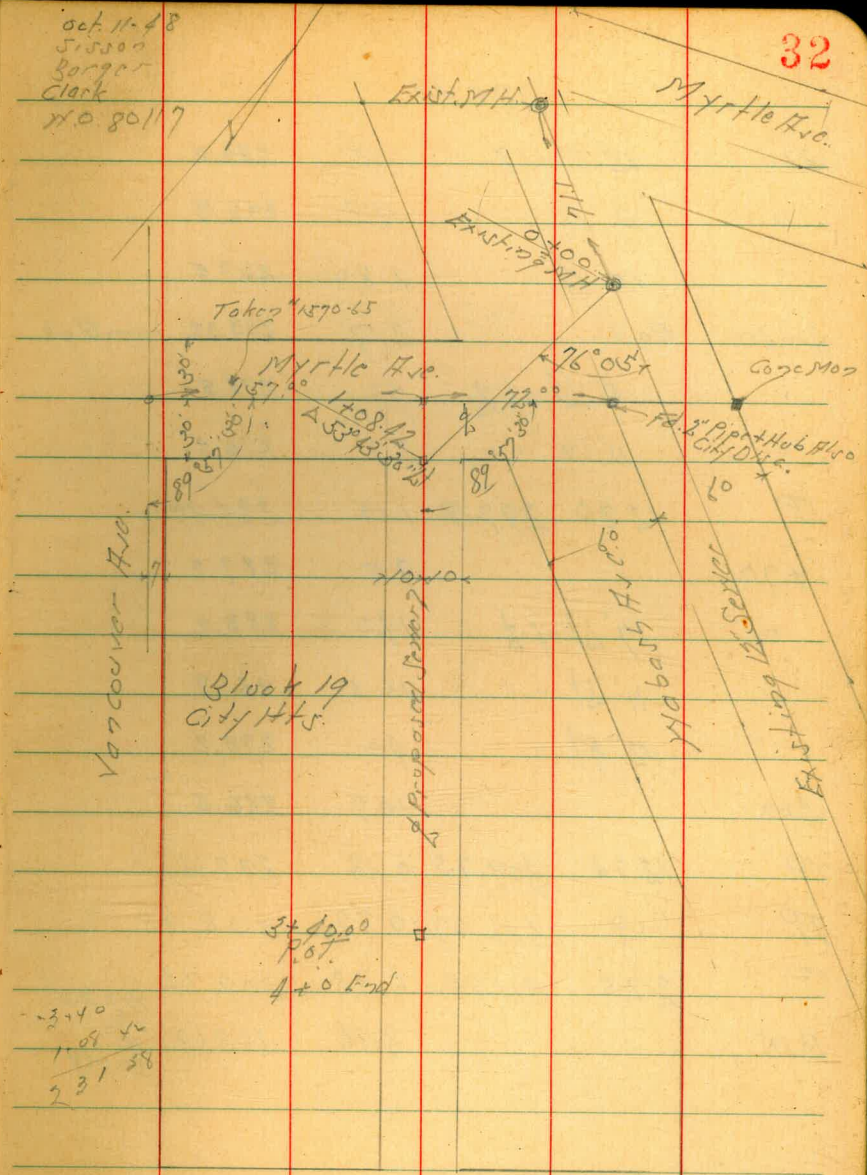
320.71 TOP CURB 50 0.90	320.71 Gutter 12 0.90	318.19 TOP CURB 10 3.34	317.58 Gutter 10 3.75	317.27 Gutter 10 4.80	316.87 Gutter 10 4.85	315.92 Gutter 10 4.85	315.85 TOP CURB 10 4.85	316.48 TOP CURB 50 4.85	314.25 Gutter 50 4.85	315.36 TOP CURB 50 4.85
318.27 TOP CURB 9.8 3.34	317.86 Gutter 9.8 3.75	316.81 TOP CURB 9.8 4.80	316.76 Gutter 10.1 4.85	316.76 TOP CURB 10.1 4.85	316.76 TOP CURB 10.1 4.85	316.76 TOP CURB 10.1 4.85	316.76 TOP CURB 10.1 4.85	316.76 TOP CURB 10.1 4.85	316.76 TOP CURB 10.1 4.85	316.76 TOP CURB 10.1 4.85
13. 3.0	10 3.4	10 3.4	10 3.4	10 3.4	10 3.4	10 3.4	10 3.4	10 3.4	10 3.4	10 3.4
318.6	318.2	317.4	317.2	317.2	317.2	317.2	317.2	317.2	317.2	317.2
315.8	315.6	315.4	315.5	315.5	315.5	315.5	315.5	315.5	315.5	315.5
15 2.5	10 2.7	10 2.9	10 2.8	10 2.8	10 2.8	10 2.8	10 2.8	10 2.8	10 2.8	10 2.8
					X 321.61					
					X 318.27					

Levels Proposed Sewer
 Myrabath Ave + Alley Block 19 City Heights

BM	237	240.86	238.49	0.28 Hts 19.40 1832.20
0+00 =	Exist M.H.	5.75	235.11	0.2 R10
"	Invert	12.89	227.97	
+25		5.3	235.6	
+27 =	Fly + Bottom Mast	8.6	232.3 231.7 W.K.	
+61 =	M.H.	9.5		
+65		7.3	233.6	
TP	1274	248.52	5.08	235.78
+08.42	153° 43' 30" L	12.45		236.07 0.7 H66
+50		7.0		241.5
+75		1.1		247.1
TP	1260	260.96	0.16	248.36
240		10.6		250.4
"	15' Lt of L	15.0		246.0
"	15' Rl " "	4.9		255.1
+50		1.5		258.5
TP	1264	273.18	0.42	260.54
TP	1257	285.17	0.26	272.92
240		10.0		275.5

INDEXED
OCT 14 1948

Oct 11-8
 Sisson
 Berger
 Clark
 No. 80117



285.49

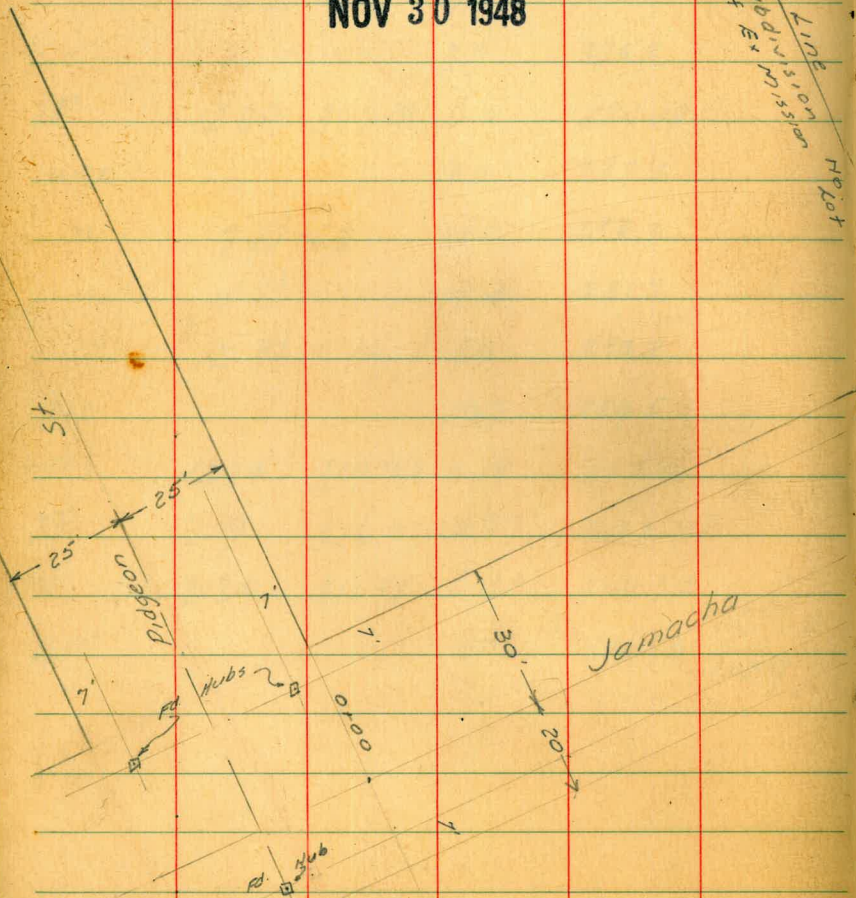
3+0	15' R of Z	1.5	284.0	
"	3' L " "	12.8	272.7	
"	15' L " "	1.80	267.5	
3+40	P.O.T.	2.17	283.32	on 5/45
"	5' L of Z	7.0	278.5	
"	" " " "	8.7	276.8	
TP	12.80	297.19	1.10	284.89
+70		9.5	287.7	
"	7' L of Z	14.0	283.2	
"	11' L " "	15.3	281.9	
"	12' R " "	4.0	293.2	
4+0		10.7	286.5	
TP	12.74	309.75	0.18	297.01
TP	7.09	316.07	0.77	308.98
TP	2.25	311.99	6.33	309.74
BM		8.36	303.63	HFBP 790.04 Hile 303.69

11.23.48
Hendricks
Bramby
Greer
Rorer
W.O.#25001

X Section Jamacha Road
Pidgeon to Lisbon
Reference books
TP 12, FB 1558, GB 226

INDEXED
WK
NOV 30 1948

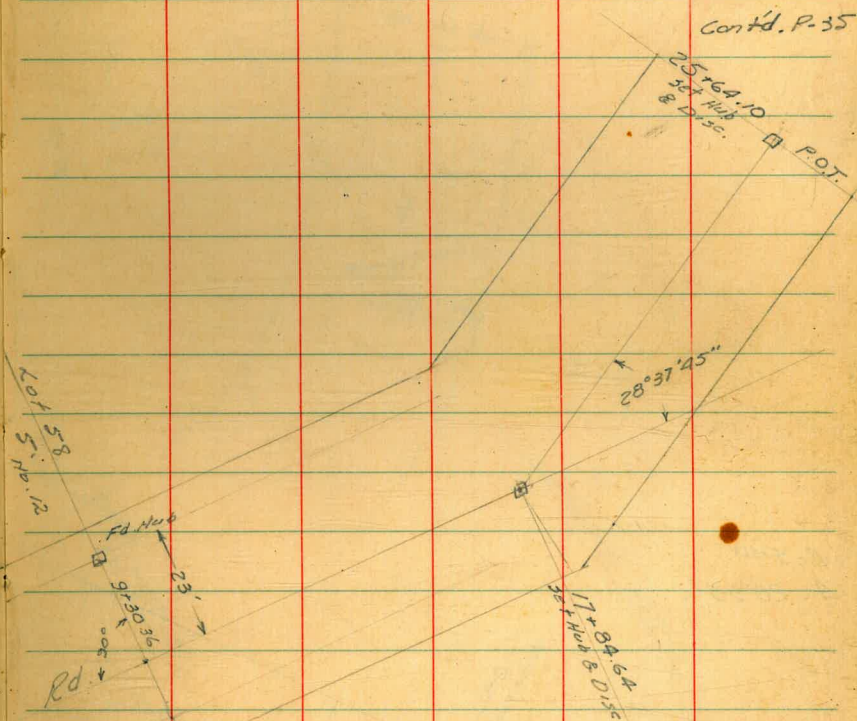
E LINE
SUBDIVISION
OF EX
MISSION
No. Lot



SEE ALSO PAGE - 65

34

Cont'd. P. 35



25' 64.10
3rd Hub
& Disc.

P.O.T.

28° 37' 45"

Fd. Hub

9-30-36

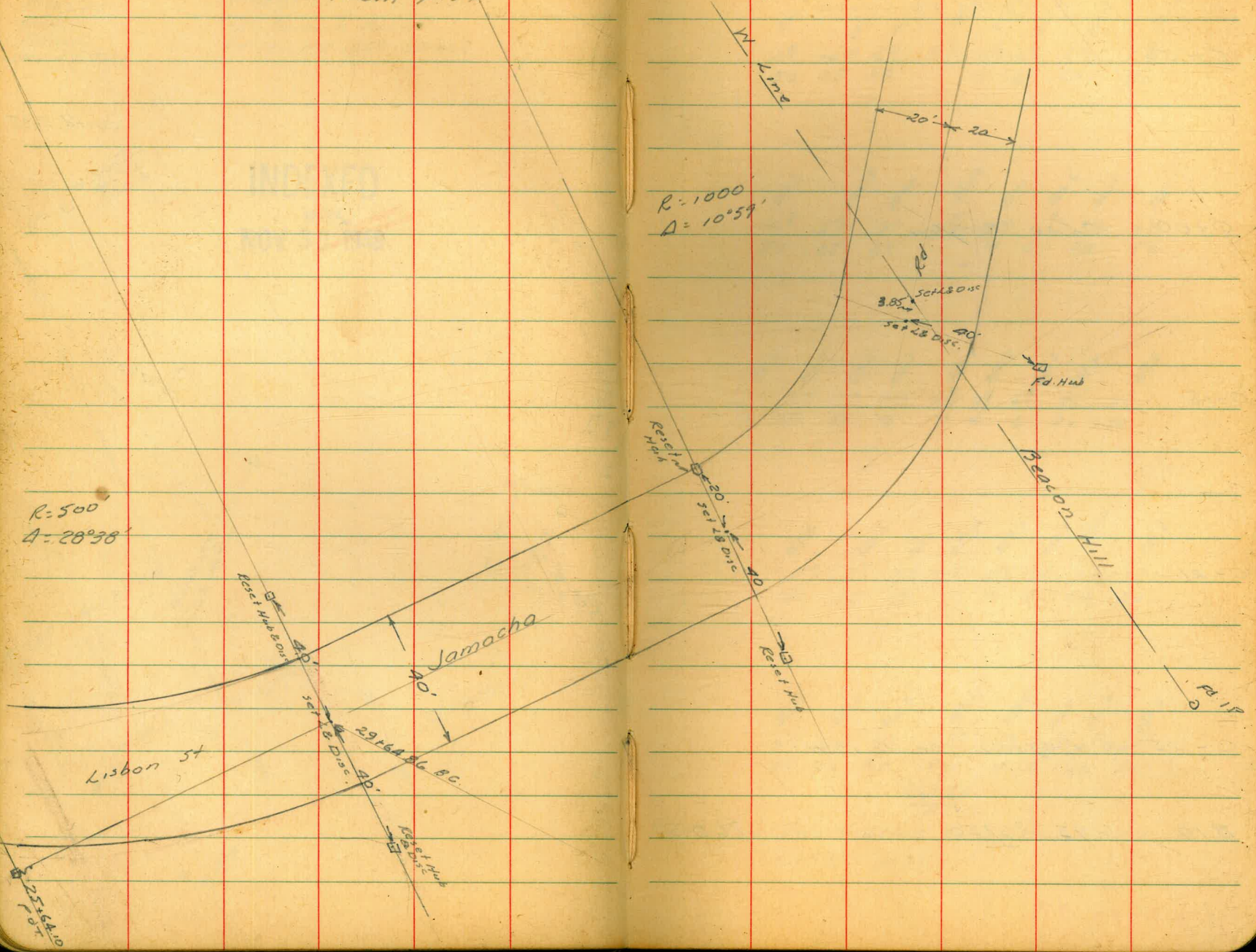
Rd.

17' 84.64
3rd Hub & Disc.

Contd. from p. 34

R=500
A=28°38'

R=1000
A=10°59'



29164 86 80.

Lisbon St

Jamacha

Bedford Hill

R.I.P.

Fid. Conc. Mon.

L.I.P.S.

Fid.

Set 28 Disc.

20'

Set 28 Disc.

40'

Fid. Hub

Resist. Hub

20'

Set 28 Disc.

40'

Resist. Hub

Levels Jamacha Rd
Pidgeon to Lisbon

0+50

0+100 Elme Pidgeon

0-18

0-21

0-25 & Pidgeon Sewer M.H.

B.M 6.95 267.50

260.55

See page 77.

36

264.7
28 X 50
263.1 X 25
6.5 23
261.0
260.7
6.8 5
6.9 6
261.5 20
6.2 261.3 50
6.1 261.0

263.3
X 50
5.3 25
262.3 22
7.1 260.4
7.5 260.0
7.2 260.1
6.9 260.6
7.4 260.1
7.4 260.1

263.3
X 50
5.3 30
262.2
7.0 23
7.4 15
260.5
260.1
7.8 259.7
7.8 259.7
6.9 260.6
7.1 260.4
7.1 259.8

262.3
5.2 50
6.2 25
7.2 15
7.8 260.1
7.8 259.7
7.8 259.7
7.1 260.4
7.1 260.4
7.1 259.8

262.3
5.2 50
6.5 30
7.2 20
7.8 260.3
7.8 259.67
7.8 259.6
7.1 260.1
7.1 260.4
7.8 259.7

267.50

Nail in Pole # 73018 so side Jamacha & Pidgeon
GB 236 p. 73

T.P. 8.08 273.60 1.98 265.52

3+00

2+59 Power Pole # 73019 19.3 RT

2+54 Tel Pole # 406844-H 26.3 LT

2+50

2+00

1+50

1+20 Tel Pole # 84279-H 26.8 LT

1+00

267.50

266.1
10.6 0.4 2.1
50 24 19

267.1
18 17 15 16 2.1 2.1
268.17
268.8
269.0
269.9
269.4
269.4

0.5 266.4 266.6 264.8 264.6 264.6 264.6 265.3 265.1 264.7
28 22 21 2.9 2.9 2.8 2.4 2.8 2.8

266.7 265.8 263.5 263.5 263.5 262.6 262.3 263.9
0.9 1.1 1.0 1.0 1.0 2.9 3.3 3.6
50 27 23 X 6 20 50

266.1 265.0 262.6 262.6 262.8 263.7 263.2 262.9
1.4 2.5 4.9 4.9 4.7 3.3 4.3 4.5
50 26 22 X 6 20 15

265.9 264.2 261.8 261.7 261.7 261.6 261.0 261.7
1.6 3.3 5.7 5.7 5.8 4.9 5.5 5.8
50 26 22 X 6 20 50

267.50

5+02 Tel Pole # 92449H 26³ Lt

5+00

272.4	269.0	268.5	268.4	268.5	269.7	268.0	267.4	265.9
13	5.5	5.1	5.1	5.1	5.8	5.5	6.2	7.7
50	8	17		4	5	14	20	50

4+50

270.8	269.1	268.0	267.8	268.1	267.6	267.2	266.3
2.8	4.5	5.6	5.5	5.5	5.8	6.4	7.2
50	18	16		4	11	20	50

4+34 R34 Cong WALK 18.3 Lt

270.56	268.65
3.0	4.2
50	83

4+16 Power Pole # 78955 18.9 Rt

4+00

269.6	268.4	267.6	266.9	266.8	266.9	267.3	266.5	266.0
4.0	5.2	5.8	6.7	6.4	6.7	6.3	7.1	7.5
50	29	18	16		3	4	20	50

3+50

268.1	267.1	266.0	266.3	266.4	266.6	266.5	266.0	265.3	265.4
5.5	6.5	7.5	7.2	7.3	7.0	7.1	7.0	7.9	8.2
50	20	17	7	2	3	9	14	20	50

273.60

273.60 ✓

Levels Jamacha Rd Cont'd

7+50

7+40 Dead Man 26.6 Lt & 19.6 Rt

7+25 Tel. Pole #192450 H 26.2 Lt

7+07 Power Pole #73021 18.4 Lt

7+00

6+50

6+00

5+60 Power Pole #73020 18.5 Lt

5+50

27360

39

271.9	269.0	267.9	267.8	267.8	268.2	268.0	268.6
17	21	21	21	21	21	21	21
50	22	21	21	21	21	21	21

272.0	269.7	268.2	267.7	267.5	267.7	267.7	265.0
16	21	20	21	21	21	21	21
50	22	20	21	21	21	21	21

271.3	269.3	268.5	267.9	267.9	268.3	267.8	266.6
22	21	19	21	21	21	21	21
50	21	19	21	21	21	21	21

272.2	269.5	269.5	268.4	268.4	268.2	267.5	266.3
12	21	19	21	21	21	21	21
50	21	19	21	21	21	21	21

271.8	269.4	268.7	268.7	268.7	267.6	267.0	265.6
18	21	17	17	17	20	20	21
50	19	17	17	17	14	20	21

27360

9+00

270.8	269.6	267.8	267.6	267.4	268.8	269.0	267.6	266.6
55	57	68	70	71	57	65	70	72
50	22	21	4	8	11	20	35	

8+81 End. Conc. Drive on Rt. 12.7 Rt.

267.82	267.14
173	74
127	20

8+60 Beg. Conc. Drive on Rt. 12.2 Rt.

267.41	267.37
164	78
122	20

8+50

270.1	269.4	267.8	267.8	267.8	268.8	268.2	267.2	266.6
32	53	68	68	68	52	64	74	90
50	23	22	5	9	12	20	43	

T.P. 6.76 274.55 5.81 267.79

274.55 ✓

8+00

270.7	269.4	267.9	267.6	267.3	268.7	267.6	266.4	265.6
29	42	53	60	63	49	60	72	80
50	24	23	7	9	12	20	45	

273.60

273.60 ✓

9+60

9+31

9+29.5 Sewer 17H.

BM. 4.02 274.77 3.80 270.75 270.75

9+26 @ 5' Flat bottom Ditch to Right

9+23

274.55

270.11 269.1 268.0 267.0 267.8 268.2 269.5 268.0
 4.7 5.7 6.8 7.0 7.0 6.5 5.3 6.8 8.0 266.8
 50 27 17 4 6 18 26 50

270.5 269.2 268.0 267.8 267.7 268.7 269.3 267.6 266.7
 4.3 5.6 6.8 7.0 7.0 6.6 5.5 7.3 8.1
 50 22 19 4 12 19 30 50

267.79

6.98

Rim

274.77

Nail in Pole # 271219 GB 226 P-73

270.4 269.4 268.0 267.8 268.4 266.0 266.2
 4.2 5.2 6.6 6.8 5.2 5.5 9.2
 50 22 21 11 20 50

270.4 269.4 268.0 267.6 267.4 269.4 268.6 268.0 266.4
 4.2 5.2 6.6 6.8 7.2 5.2 5.8 6.6 8.2
 50 22 21 7 9 11 20 50

274.55

11+50

T.P 10.53 280.61 469 270.08

11+00

10+50

10+34 Tel Pole # 410566 H 25.3 Lt

10+24 Dead Man to Pole 19.3 Rt

10+03 Power Pole # 271219 18.8 Lt

10+00

274.77

270.1	272.5	271.7	271.2	271.2	272.0	272.3	271.3	270.2
75	81	89	94	94	86	83	93	104
50	21	17		3	5	9	46	50

280.61 ✓

Top Slope Channel

271.7	271.2	270.9	269.8	270.3	270.6	271.5	271.1	270.7
34	35	39	50	45	43	33	37	41
50	25	19	15		4	17	20	50

271.2	270.4	268.4	268.8	268.9	269.8	270.4	270.6
36	44	64	60	60	50	44	40
50	30	16		4	7	20	37

269.7	269.5	268.0	268.2	269.8	268.5	268.1
51	53	68	65	50	63	67
50	21	15		18	28	50

274.77 ✓

13+52 Tel Pole # 410567 H 252' Lt.

13+50

13+00

12+70

12+35

12+00

271.2	278.2	277.3	276.0	276.5	276.1	277.8	276.8	276.9	276.9	273.7
14	24	33	46	41	45	48	38	47	57	69
50	20	20	16	7		3	5	32	45	50

278.0	276.7	276.4	276.5	276.4	276.4	276.2	276.5	272.5	270.5	269.6
26	37	47	61	63	63	54	51	81	101	110
44	40	20	16		2	3	13	30	38	50

Top slope Channel

277.2	276.8	276.4	276.7	276.7	276.8	274.8	272.9	269.4	269.6	269.9
34	38	53	67	69	68	58	77	112	150	150
50	37	20	16		2	4	21	37	41	47

Top slope Channel
Ditch

276.9	276.5	274.6	274.1	273.0	273.0	272.0	274.0	274.3	273.9	269.4	269.6	269.0
43	51	60	65	76	76	75	65	63	62	110	117	150
48	31	27	19	16		2	4	8	14	27	31	38

Top slope Channel
Ditch

275.3	273.3	272.5	272.3	272.3	272.2	273.4	272.6	269.0	268.3
53	73	81	83	83	74	72	80	116	123
46	18	16		2	2	14	21	35	37

Top slope Channel
Ditch

280.61

280.61 ✓
↓

16+00

284.8	283.6	282.2	281.9	281.3	282.1	282.5	281.6	280.0
4.3	5.2	6.8	7.1	7.7	6.9	6.5	7.4	9.0
50	16	13		8	11	14	42	50

15+50

284.0	282.7	280.9	280.9	280.8	280.5	281.3	281.4	279.5	277.9
5.0	6.3	8.1	8.1	8.3	8.5	7.7	7.6	9.5	11.1
50	18	13	3	6	8	14	41	50	

15+00

283.4	281.3	279.9	279.9	279.8	279.7	280.4	280.4	276.9
5.5	7.0	9.1	9.1	9.3	9.3	8.6	8.5	12.1
50	18	13	3		5	8	15	50

14+50

282.4	281.0	279.0	279.4	279.0	278.9	279.3	279.1	276.4
6.8	8.0	10.0	9.8	10.0	10.3	9.7	9.9	12.5
50	18	15	5		5	7	15	50

TP 977 289.04 1.34 279.27

14+00

280.7	281.0	279.8	279.9	278.2	277.8	277.4	278.1	277.9	274.7
+0.1	10.4	0.8	2.7	2.4	2.8	3.3	2.4	2.7	5.9
50	41	20	15	7		4	6	14	50

280.61

289.04
17.082

17+84.64 $28^{\circ} 37' 45''$
L. Lt. (Rt. Ls to Back Line)

	288.7	287.4	286.4	286.2	286.3	286.4	286.1
03	15	26	28	27	36	49	
50	31	25	7		19	50	

17+70 Dead Man to Pole 22' Lt.
Tel Pole # 410568 H 27.321

	286.0	286.9	286.1	286.8	286.2	286.0	284.0
1.0	21	29	22	28	40	50	
50	23	20		12	22	50	

17+27

	286.9	286.5	284.2	284.5	284.7	286.3	283.2
21	25	4.0	4.4	4.11	2.7	5.8	
50	17	13		12	14	50	

17+00

	286.7	286.3	286.4	284.0	283.5	283.5	284.3	282.1
23	23	26	50	5.5	5.5	4.7	6.9	
50	37	18	13		7	10	50	

16+50

	286.0	284.5	283.2	282.7	282.1	283.0	281.6
30	4.5	5.5	6.3	6.9	6.0	7.2	
50	18	15		8	12	50	

28904

28904 ✓

20+00

298.2	297.2	295.5	294.9	294.3	294.0	294.0	292.4
0	1	2	2	3	2	4	5
50	26	23	14	3	1	25	50

19+50

296.1	294.6	292.7	292.8	292.1	292.3	292.3	291.6	290.7
2	3	5	5	6	4	4	6	7
50	26	23	14	4	1	25	50	50

19+00

293.3	292.9	290.0	290.0	289.4	290.6	290.7	289.2	289.7
4	5	8	8	8	7	7	9	9
50	26	22	14	3	1	25	50	50

18+50

291.2	289.8	287.9	287.5	288.4	288.6	287.8	286.3
7	8	10	10	9	9	10	11
50	26	23	4	2	13	50	50

18+00

288.7	287.84	285.7	286.4	286.9	286.8	285.7	286.2
9	10	12	11	11	11	12	13
50	28	23	6	4	25	50	50

298.24

T.P. 12.15 278.24 2.75 286.09

289.04

on & Hub 17+84.64

289.04

22+50

306.3	305.7	303.3	303.8	302.9	304.4	304.0	302.1	300.1
2.2	3.8	6.2	5.7	6.5	5.5	5.5	7.4	9.4
50	32	29	21	7	5		25	50

22+00

304.6	304.1	301.5	301.8	301.1	302.6	302.3	300.7	298.5
4.9	5.4	8.0	7.7	8.4	6.9	7.2	5.8	11.0
50	30	28	19	5	2		25	50

21+50

302.6	302.0	300.0	299.7	300.7	300.5	298.9	297.4
6.9	7.5	9.5	9.8	8.8	9.0	10.5	12.5
50	29	25	6	4		25	50

21+14 Tel Pole # 410569H 273.4

21+00

301.0	300.7	298.6	298.5	298.1	299.1	299.4	297.0	295.6
8.5	8.8	10.3	11.0	11.4	10.4	10.5	12.5	13.2
50	27	24	16	5	3		25	50

20+50

299.8	299.2	297.2	297.4	297.1	297.7	297.6	295.3	293.8
9.7	10.3	12.3	12.5	11.8	12.0	14.2	15.2	
50	27	24	13	4	3		25	50

TP. 12.01 30952 0.73 297.51

298.24 ↓

3095.21

298.24

24+00

307.6	309.0	307.2	307.4	307.2	307.4	308.1	306.1	308.0
5.2	8.8	10.6	10.3	10.5	10.4	9.6	11.6	14.7
50	22	18	10		1	3	15	50

23+88

307.0
10.8

23+77

307.0	308.6	306.8	307.0	306.8	307.8	306.0	302.6
5.7	9.2	10.9	10.7	10.9	10.0	11.7	15.3
50	24	21	12	2		10	50

TP. 10.57 317.75 2.34 307.18

23+50

311.3	308.0	306.3	307.1	306.2	307.1	307.2	304.4	302.1
11.8	1.8	9.2	3.0	3.2	2.4	2.1	5.1	7.2
50	26	23	16	4	2		25	50

23+00

309.0	307.2	305.1	305.3	304.6	205.6	304.2	301.4
0.5	2.3	4.4	4.2	4.9	2.9	6.3	8.1
50	30	27	20	6	3	25	50

309.52

309.52

26+50

316.4	314.6	310.8	311.0	311.0	311.8	310.4	309.6
16	52	69	68	68	69	76	82
50	8	6		14	15	27	50

26+00

315.8	312.4	310.2	310.4	310.2	311.0	308.6	308.0
19	55	75	74	76	67	91	97
50	9	7		13	15	40	50

25+50

315.6	311.6	309.6	309.6	309.6	310.6	308.8	307.4
22	61	82	81	81	72	89	103
50	12	9		11	13	23	50

25+00

314.6	310.8	309.0	309.0	309.0	309.8	308.2	306.9
52	70	88	87	88	79	95	112
50	14	12		9	10	18	50

24+53 Tel. Pole 410570 H. 25' H.

24+50

314.2	309.6	308.0	308.4	308.2	309.2	307.0	304.6
26	82	97	94	95	86	108	131
50	17	14		6	7	25	50

317.75

317.75
✓

28+22 Edge of Asp Paving

317.9 317.0 313.4 314.0 315.9 314.3 310.6 309.2 308.0
 60 62 55 49 50 46 81 92 109
 41 20 20 6 Pav. 9 17 26 50
 Pav.

28+00

313.4 312.9 312.4 312.9 314.2 314.7 314.7 314.6 311.4 309.3 308.0
 55 60 65 60 43 42 42 43 77 96 109
 50 43 35 37 27 7 10 16 26 50
 Paving Paving

27+77

314.4 315.6 315.5 315.1 314.7 311.4 309.3 308.4
 27 33 34 38 42 75 96 105
 50 35 19 10 17 27 50
 Edge Pav

TP 5.23 318.92 4.06 313.69

318.92 ✓

27+45

317.0 316.5 316.8 315.6 313.6 314.0 313.6 313.8 313.6 311.0 308.6
 03 10 12 41 42 38 42 40 42 67 92
 (50 24) 31 25 22 13 9 12 16 50
 Paving

27+28 Tel Pole # 429341 H. 252 Lt.

27+00

319.4 316.0 315.2 312.4 312.4 311.8 311.8 311.8 312.0 310.4 309.1 ✓
 17 17 25 56 54 59 59 59 57 73 86
 55 49 35 11 7 6 13 14 27 50

317.75

317.75 ✓

291 314.08 314.11
 TP. 2.91 311.99 4.84 314.08

29+6486 AC.

29+00

31892

On Hub 40' H 29+6486 = (36+23.47 68 196-24)

Nail in Tel. Pole # 429341 H Lisbon E. Jamacha Rd

313.4	309.7	309.8	311.1	311.4	311.1	311.0
5.5	7.2	9.1	7.86	7.5	6.8	6.8
22	17	13	Disc.	13	19	26

311.9	310.5	310.6	311.4	312.0	311.4	315.7	311.3	309.8	309.1
6.0	8.4	8.4	7.7	6.5	6.5	5.5	7.5	9.1	9.8
25	20	15	9		9	13	18	27	50
			Pay		Pay				

31892

Levels Jamachard Contd.

£

52

INDEXED
DEC 10 1948

X-Sec. Del Monte { Santa Barbara
To Guizot

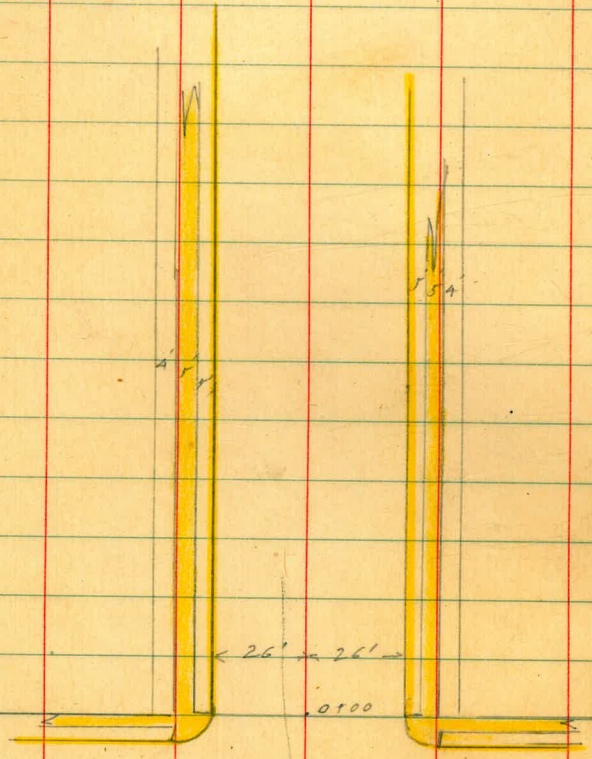
12-10-48

W.O. 31629

INDEXED
WK

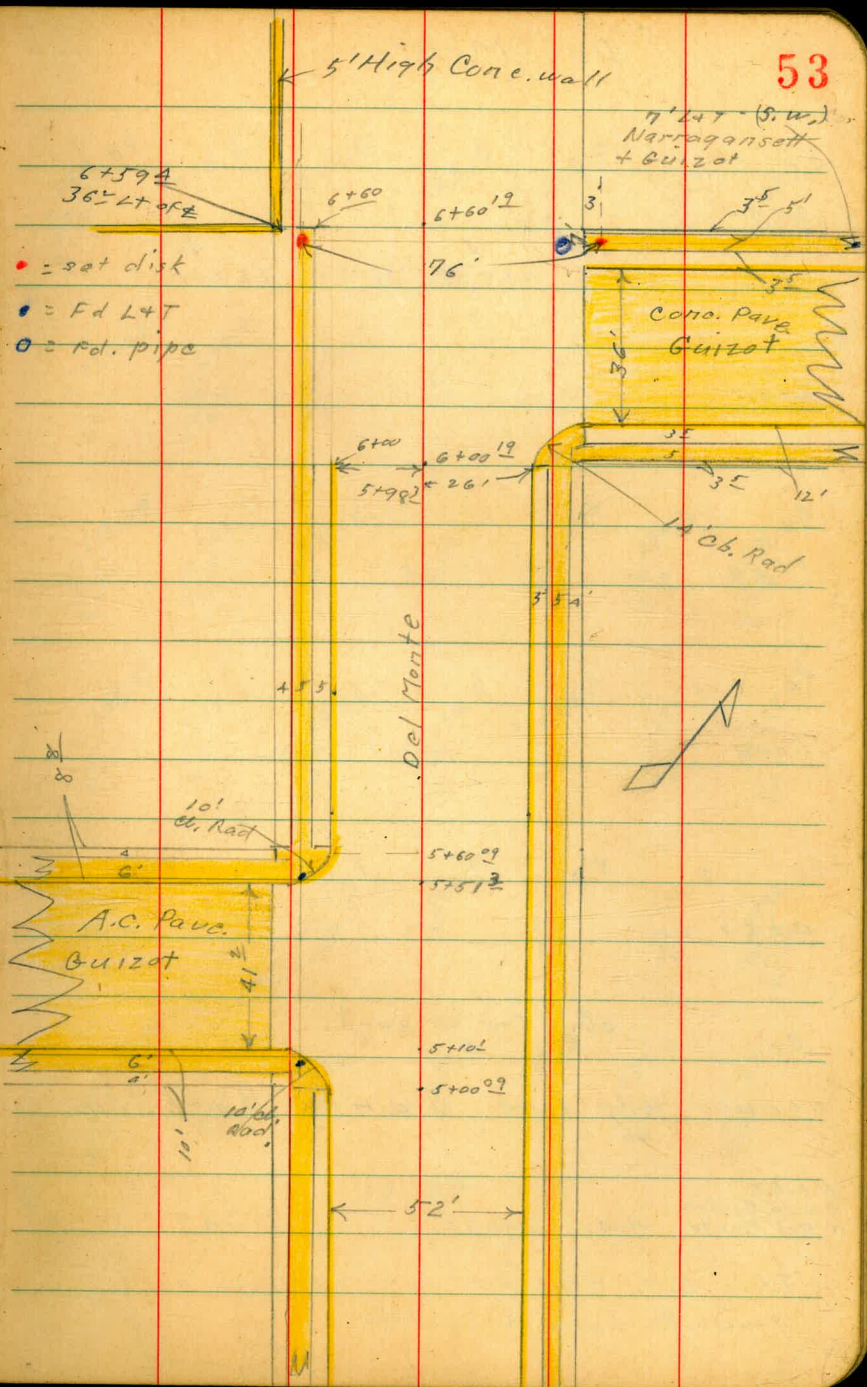
DEC 10 1948

Sommermeier
M^cCoy
Allen
Jones



Santa Barbara

53



Del Monte

- = set disk
- = Fd L4T
- = fd. pipe

2+50
 T.P. 0.95 ✓
~~229~~ 229.95 12.90 229.00 ✓

2+00

1+50

1+00

0+50

cb = Top of curb.

0+00 = wly line Santa Barbara

N.E. B.P.
 Santa Barbara
 + Del Monte 4.41 241.90 — 237.49 ✓

This B.M. checks as 237.12 on
 Santa Barbara X-Section

228.89
 1.06
 26
 cb

228.2
 1.8
 26
 cb

228.6
 1.3
 13

228.6
 1.4
 13

228.0
 2.0
 13

227.2
 2.7
 26
 cb

227.81
 2.14
 26
 cb

229.95

230.91
 10.99
 26
 cb

230.3
 11.6
 26

230.5
 11.4
 13

230.4
 11.5
 13

229.7
 12.2
 13

229.1
 12.8
 26
 cb

229.78
 12.12
 26
 cb

233.04
 8.86
 26
 cb

232.1
 7.8
 26

232.5
 7.4
 13

232.4
 7.5
 13

231.9
 10.0
 13

231.2
 10.7
 26

231.88
 10.02
 26
 cb

235.13
 6.77
 26
 cb

234.3
 7.6
 26

234.5
 7.7
 13

234.5
 7.7
 13

234.1
 7.9
 13

233.5
 8.4
 26

233.85
 8.05
 26
 cb

237.16
 4.74
 26
 cb

236.2
 5.7
 26

236.5
 5.7
 13

236.4
 5.5
 13

235.9
 6.0
 13

235.3
 6.6
 26

235.84
 6.06
 26
 cb

239.03
 2.87
 26
 cb

238.3
 3.6
 26

238.2
 3.7
 13

237.9
 4.0
 13

237.3
 4.4
 13

237.0
 4.9
 26

237.78
 4.12
 26
 cb

241.90

5+07² 29¹ Lt. = Top ab. Ctr. of ReturnT.P. S.W.B.P.
Guizot &
Del Monte

5.19	223.27	11.87	218.08	(217.98)
------	--------	-------	--------	----------

5+00⁰⁹ 26¹ Lt. = Curb. B.C.
East line Guizot to south.

4+50

4+00

3+50

3+00

229.95

219.26
1.01
29¹
06

223.27

219.30	218.6	218.8	218.8	218.2	217.8	218.35
10.65	11.3	11.1	11.2	11.8	12.2	11.60
26	26	13		13	26	26
06.80.						06

221.17	220.2	220.4	220.4	219.8	219.2	219.79
8.78	7.7	7.5	7.6	10.1	10.7	10.16
26	26	13		13	26	26
06.						06

223.00	222.2	222.4	222.2	221.8	221.2	221.80
6.95	7.7	7.5	7.7	8.2	8.7	8.15
26	26	13		13	26	26
06						06

224.90	224.2	224.8	224.6	223.8	223.0	223.05
5.05	5.8	5.2	5.4	6.1	6.9	6.90
26	26	13		13	26	26
06.						IN DRIVE

226.87	226.4	226.8	226.7	226.0	225.0	225.05
3.08	3.6	3.1	3.2	3.9	4.9	4.90
26	26	13		13	26	26
06.						in drive

229.95

5+41 39² Lt. = N. edge pavement

5+30² = 4 Pavement Guizot to south

5+32⁰⁹ = 4 Guizot

5+20⁴ 39² Lt. = ^{North} N. Edge of pavement

5+10¹ } 39⁴ Lt. = start A.C. Paving
= Ely curb line Guizot to South

223.27

#

56

218.36
4.91
39²
pave.

220.60	219.76	218.76	218.2	218.1	218.1	217.4	216.8	217.55
2.67	3.51	4.51	5.1	5.2	5.2	5.9	6.5	5.72
80	60	39 ²	26	13		13	26	26
		pave						Cl
		+ Ord.						

219.07
4.20
39²
pave

221.51	220.91	220.67	220.12
1.76	2.36	2.60	3.15
80	80	60	60
Cl	pave.	Cl	pave

219.57	219.04	219.02
3.70	4.23	4.25
40	40	39 ⁶
Cl	pave	pave.

219.31	218.9	218.4	218.6	218.5	217.9	217.5	217.50
3.96	4.4	4.9	4.7	4.8	5.4	5.8	5.77
36	36	26	13		13	26	26
Cl. P.C.							14 Drive

223.27

5+98² 26' Rt. = Curb Ret. B.C.

215.80
7.47
26
cc.

5+61^E 26' Lt. = Curb Ret. E.C.

218.11
5.16
26
cc.

5+60⁰⁹ Wly. line Guizot to south.

218.10 216.9 217.2 217.2 216.6 216.1 216.78
5.17 6.4 6.1 6.1 6.7 7.2 6.49
26.15 26 13 13 13 26 26
cc. cc. cc. cc. cc. cc.

5+54⁵ 29' Lt. = Center of Cb. return.

218.13
5.14
29
cc.

Cont.

219.97 219.55 219.20 218.76 218.36 217.88
3.30 3.72 4.07 4.51 4.91 5.39
80 90 60 60 40 40
cc Pav. cc Pav. cc. Pav.

5+51³ } * 36' Lt. = Curb. Ret. B.C.
= Wly. Cb. line of Guizot to south

217.86 218.16 217.1 217.5 217.4 216.8 216.4 216.5
5.41 5.11 6.2 5.8 5.9 6.5 6.9 6.90
398 36 26 13 13 13 26 26
Pave cc. cc. cc. cc. cc. cc. cc.
+ B.C. in drive
End.

223.27

223.27

6+19¹⁹ = 40⁷ Rt. = Start Conc. Pave

214.73
8.54
49.7
Pave

31' Lt. = Nly edge E. + W. walk
40⁹ Rt. = Start Conc. Pave. (Quizot to N.)

6+10¹⁹ = Ely curb line 0" to south.

213.39 214.11
7.88 7.16
80 80
Pav. Cl.
216.59 216.5 216.0 216.0 215.9 215.5 214.9 214.78 215.52
6.68 6.8 7.3 7.3 7.4 7.8 8.4 8.49 7.75
31 27 26 13 13 26 40.9 40.9
Walk Pav. + Grd. Cl. E.C.

6+01^E 30^E Rt. = ctr. of cl. Ret.

215.59
7.68
30.5
cl

6+00¹⁹ 31' Lt. = N. Edge. E. + W. walk.
Ely. line Quizot to North.

216.73 216.3 216.2 216.3 215.6 215.2 215.78
6.54 7.0 7.1 7.0 7.7 8.1 7.49
31 26 13 26 13 26 26.4
cl

6+00 26' Lt. = End Exist cl.

216.59
6.68
26
cl.

6+54⁷ 40' RT. = S.W. Cor. existing walk

6+49⁷ 40' RT. = S.E. Cor. existing walk

Cont.

6+46¹⁹ } 40' RT. = S. end N+S. curb.
Wly. Cl. Guizot to North.

6+37¹⁹ 40² RT. = S. end pave.

6+29¹⁹ } 40⁵ LT. = S. end pave.
Guizot to north
3' LT. = N edge E.W. Cono. walk.

223.27

216.45
6.82
40
walk

214.35
8.92
40
walk

212.05
11.22
85
pave

10.57
85
cl

212.68

215.9
7.4

215.4
7.9
13

214.6
8.7
26

213.69
7.58
40
pave

214.27
9.00
40
cl.

214.18
9.09
403

216.50
6.77
31
walk

216.5
6.8
30

216.2
7.1
26

215.9
7.4
13

215.7
7.6

215.2
8.1
13

214.9
8.4
26

214.6
8.7
40

214.60
8.67
405
pave

213.03
10.24
85
pave

223.27

N.E.B.P.
 Santa Barbara (orig B.M.)
 + Del Monte

-0.02
 237.51 237.49

T.P.	11.70	↓ 241.46	0.54	↓ 229.76	
S.W.B.P. Guizot + Del Monte	12.22	↓ 230.30	5.19	↓ 218.08	(217.98)

6+60¹⁹ = wly. line Guizot to north.

217.5	216.8	216.6	216.2	215.7	215.0	215.7
$\frac{5.8}{40}$	$\frac{6.5}{26}$	$\frac{6.7}{19}$	7.1	$\frac{7.6}{13}$	$\frac{8.3}{26}$	$\frac{7.6}{40}$

6+59⁸ 31' Lt. = End of exist walk

217.20
 6.07
 31
 walk

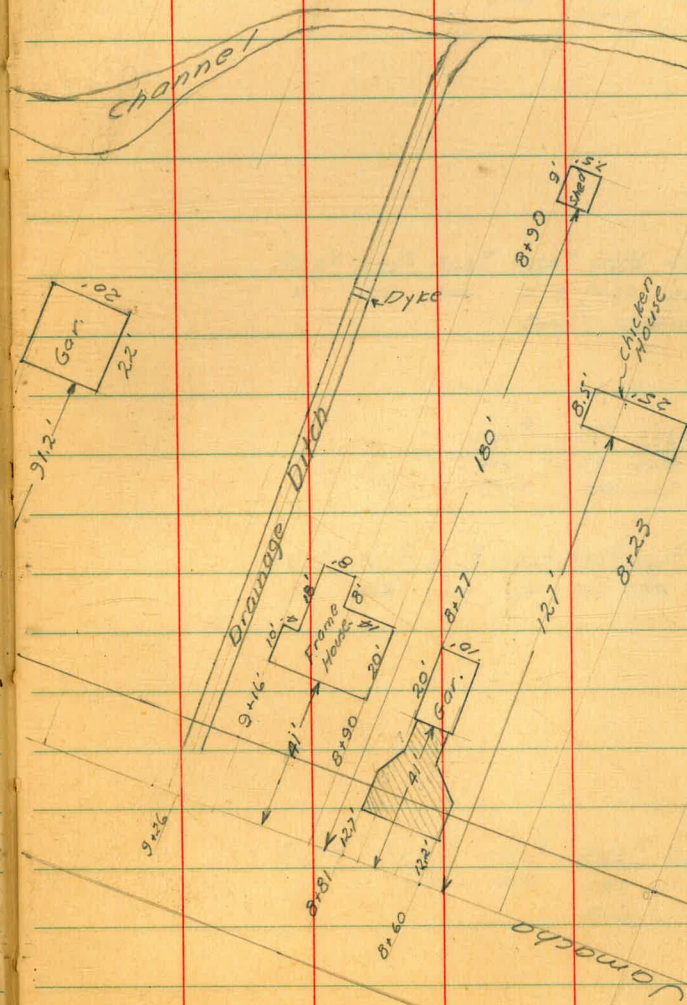
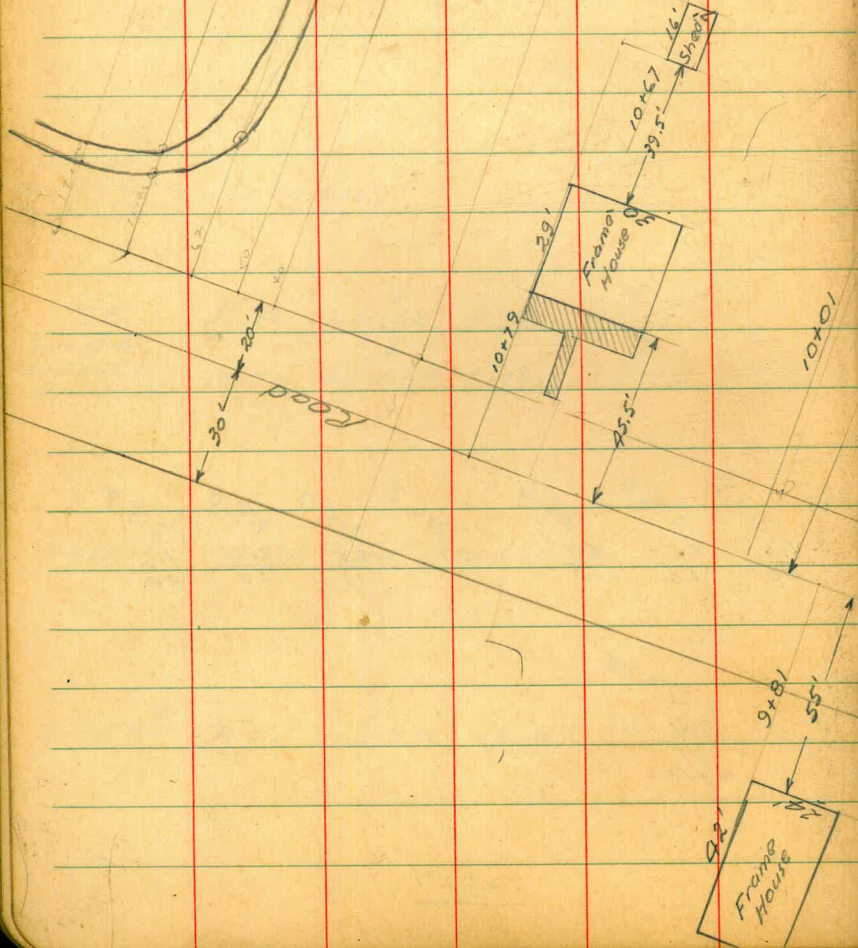
223.27

223.27

1-4-49
Hendricks
Bramby
Greer
Rorer
W025001

Additional Notes to Show
Drainage Area Jamacha Rd.
(See P. 34-35 of this Book)

INDEXED
WK
JAN 7 1949



9+23

267 ⁶	265 ⁴	265 ³	263 ⁰	259 ⁷	259 ⁵	262 ⁰
	100	146	206	(212	217	219
			Bank	Channel		

9+00

267 ⁵	265 ⁰	263 ⁷	262 ⁴	259 ⁴	259 ⁰	263 ⁰
£	100	200	215	(220	225)	227
			Bank	Channel		Bank

262 ⁵	258 ⁶	258 ⁶	265 ²
216	(223	228)	240
Bank	Channel		Bank

8+50

267 ⁸	265 ⁵	264 ⁷	264 ³	263 ⁸	261 ⁷	260 ⁶	262 ⁷	263 ⁴
£	43	100	150	166	186	189	192	209

8+00

267 ⁶	265 ⁰	264 ³	262 ⁵	258 ³	258 ⁷	262 ¹
£	45	100	192	(198	206)	208
			Bank	Channel		Bank

10+50

268 ⁸	267 ⁷	267 ⁶	261 ⁷	262 ⁴	265 ⁵
£	100	123	(152)	160	165
		Bank	Channel		Bank

10+00

268 ³	267 ²	266 ¹	264 ⁰	262 ⁸	262 ⁷	261 ⁶	260 ⁵	263 ⁷
£	100	115	130	140	145	(150)	171	182
			Bank				Channel	

9+60

267 ⁸	266 ³	264 ⁰	262 ⁸	258 ⁷	258 ⁶	262 ⁵
£	100	184	192	200	204	206
			Bank		Channel	

9+31

267 ⁸	265 ²	265 ¹	263 ³	259 ⁵	259 ⁴	262 ²
	100	140	204	(210)	214	216
			Bank		Channel	Bank

9+26

267 ⁸	263 ⁴	263 ³	265 ⁸	265 ⁹	262 ⁵	259 ³	259 ²	262 ²
	100	138	139	142	146	204	216	218

11+80

11+63

11+50

11+40

11+00

4

268° 64
266°
182 163
Bank

271° 271° 272° 272° 268° 264° 264° 268° 268° 267° 263° 268°
2 4 25 31 (41 46) 49 100 133 (146 161)
Bank Channel Bank Bank Channel

268°
201
Bank

271° 271° 272° 272° 264° 264° 264° 267° 267° 262° 262°
3 5 38 (57 66 126) 144 155 (172 179)
Bank Channel Bank Bank Channel

271° 271° 268° 267° 266° 268° 267° 262° 262° 269°
46 75 100 113 126 178 (184 190) 217
Bank Bank Channel Bank

271° 271° 272° 271° 267° 266° 262° 262° 267°
4 7 50 100 182 (195 208) 211
Bank Channel Bank

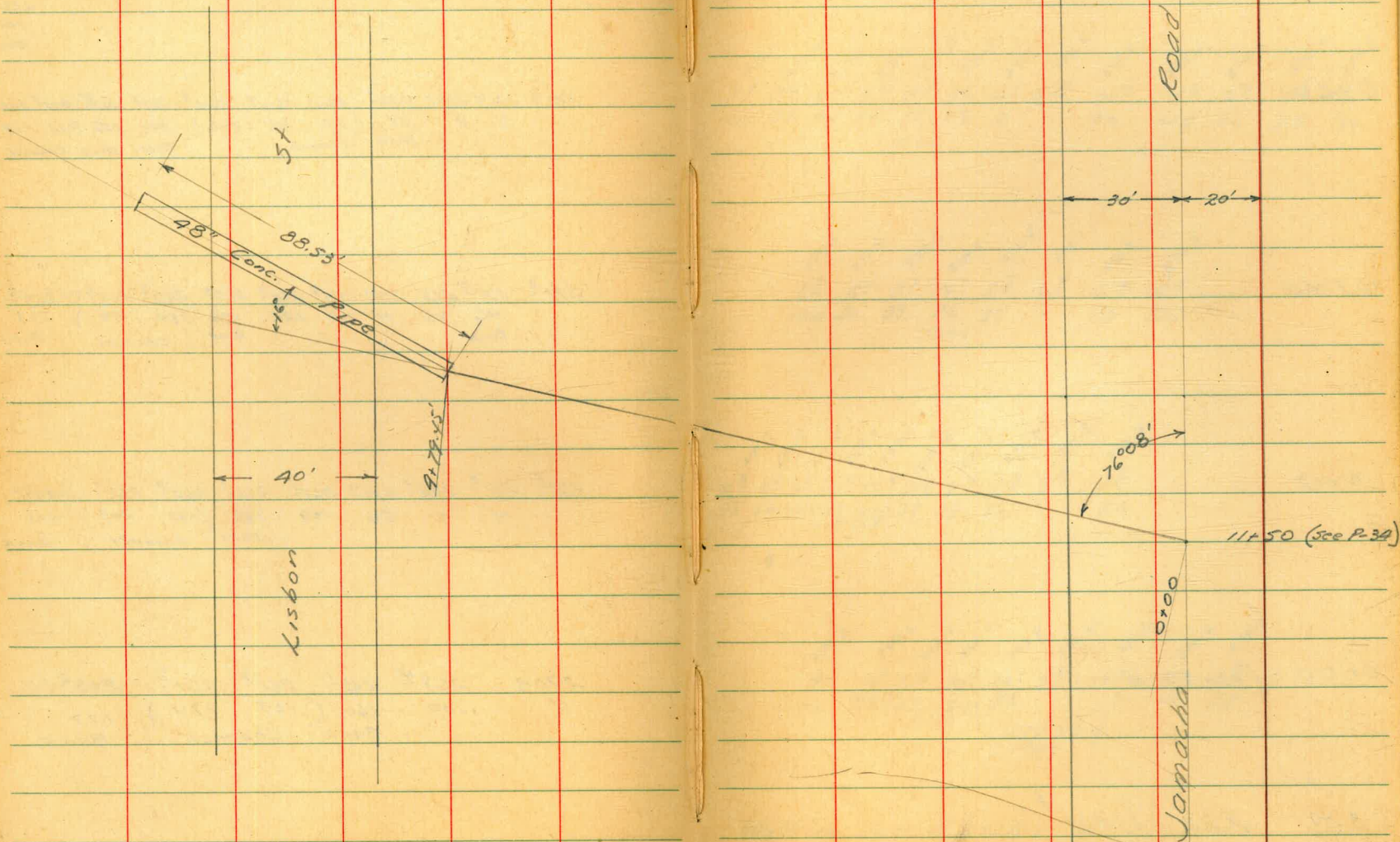
270° 268° 265° 261° 261° 265°
4 100 160 (167 174) 177
Bank Channel Bank

1-5-49
Hendricks
Bramby
Greer
Rorer

X Sects for Drainage Area
from Jamacha Rd to Lisbon St.
(See P-34 this book
for further Reference)

INDEXED

65



Levels for Drainage Area
 Jamacho Rd to Lisbon St
 (Sketch P-65)

1+00

272.5 272.7 272.0 273.4 273.3 271.4 273.7 274.8 275.1 276.8 278.6
 75 73 80 65 67 85 63 50 49 32 14
 90 50 40 31 24 21 18 22 50 86
 Ditch

66

0+60

272.1 272.4 271.6 272.6 270.3 272.9 273.9 274.6 275.6 275.4 274.6 275.4 275.8
 79 75 84 74 92 71 61 54 44 45 54 45 42
 100 55 45 34 21 28 2 20 45 50 75 80
 Ditch

0+40

271.8 271.6 272.3 270.0 272.5 272.1 272.6 272.9
 83 84 77 100 75 69 64 61
 100 50 39 26 33 12 50
 Ditch

0+17

271.7 271.5 271.6 269.4 269.4 272.4 272.1 272.2 271.8 272.4
 83 85 85 105 105 76 77 78 80 75
 95 50 45 (43 40) 37 29 16 50
 Ditch

0+00 = (11+50 R.V.)

270.6 269.6 268.7 268.7 269.9 271.2 271.4 272.6 272.7
 94 104 113 113 101 88 55 74 73
 70 58 (57 54) 53 9 13 27
 Ditch
 279.971
 7

B.M. 9.22 279.97
 7

270.75

Nail in Pole # 271219 GB 226 P-73

3100

2150

TP 8.22 284.01 4.18 27579

1195 & Ditch.

1175 Bank of Ditch

1116

27997

270.6 275.4 274.5 274.2 274.2 274.1 277.5 278.4 282.7
 5.4 8.5 8.5 7.8 9.8 7.8 6.5 5.5 0.5
 50 34 22 5 Ditch 3 26 50 94

277.4 276.5 274.0 276.1 274.6 272.5 275.3 278.4 282.7
 6.5 8.5 10.8 8.9 9.2 11.5 8.7 5.5 0.5
 50 33 20 4 2 Ditch 2 50 95

284.01
 274.4 274.6 274.4 272.8 275.3 274.1 272.4 274.8 277.3 279.8
 2.5 5.5 5.5 7.2 4.2 5.2 7.5 5.5 2.1 0.2
 100 50 26 18 6 3 Ditch 3 45 70

275.0 274.2 272.7 274.2 274.5 274.6 274.5 277.4 280.4
 5.0 5.8 7.2 5.8 5.5 7.2 5.5 2.5 10.2
 100 38 21 11 7 3 50 88
 Ditch

272.4 273.1 272.3 272.6 271.4 272.8 274.1 274.4 276.9 279.3 278.5
 7.5 6.2 7.7 6.2 8.5 6.2 5.9 5.5 2.1 2.7 1.5
 100 44 34 22 18 14 14 38 50 70
 Ditch

27997
 7

5+01 Shoulder Lisbon St

T.P. 12.83 296.21 0.63 283.38

4+79.45 Outlet 48" Conc Pipe

4+15

3+84

3+60

28401

292.5
3.7

296.21 ✓

284.7 280.7 279.05 280.6 280.9 283.0
10.3 3.3 4.9 3.2 3.1 1.0
20 2 FL. 2 21 50

282.8 279.1 280.1 277.2 281.0 283.5
1.2 4.9 3.9 4.8 3.0 0.5
50 20 21 50 82

292.2 278.5 278.1 278.4 277.9 278.3 277.7 279.9 282.9
1.8 5.5 5.9 5.5 6.1 5.7 6.3 4.1 0.1
50 30 25 7 4 6 50 90

280.9 277.4 277.3 276.2 277.4 279.4 282.7
3.1 6.5 6.7 7.8 6.5 4.5 1.3
50 32 4 Ditch 4 50 80

28401 ↓

B.M.		12.60	270.75	270.75
------	--	-------	--------	--------

T.P.	0.30	283.35	13.16	283.05
------	------	--------	-------	--------

546798	Inlet 48" Concr Pipe			
--------	----------------------	--	--	--

5450	No Shoulder Lisbon			
------	--------------------	--	--	--

5439	Edge Paving			
------	-------------	--	--	--

5426	R Paving			
------	----------	--	--	--

5408	Edge Paving Lisbon			
------	--------------------	--	--	--

296.21

CK Starting B.M.

PB

Notes Reduced 1-15-59

		70.68
		15.53
		FX

		292.9
		12.11

		292.6
		3.15

		292.9
		11.11

		291.9
		11.11

		296.21
		1

Additional Sections for New improvements

in Alley - Blk. 2 - Berkley Hts. - Sec P. 18

2+87- 6.7 Rt. = \pm Conc. W.M.

2+86- 17.4' Rt. = N.E. Cor. House

2+64- 17.3' Rt. = N.W. Cor. House - Conc. found

T.P. 1443 325.55 2.68 314.12

INDEXED

WK
MAY 4 1949

2+02 - \pm Wash

1+89- 6.5 Rt. = \pm P. pole # PA. 5220

1+88- 6.6 Rt. = end fence

1+80 - 10.2' Lt. = S.E. Cor. shop

1+55

*Notes Reduced and Plotted
Profile 3228
McLaren*

Conc. floor.

1+44- 10.2' Lt. = S.W. Cor. Cabinet shop -

1.95 316.80 10.54 314.85

0.88 325.39 12.60 324.51

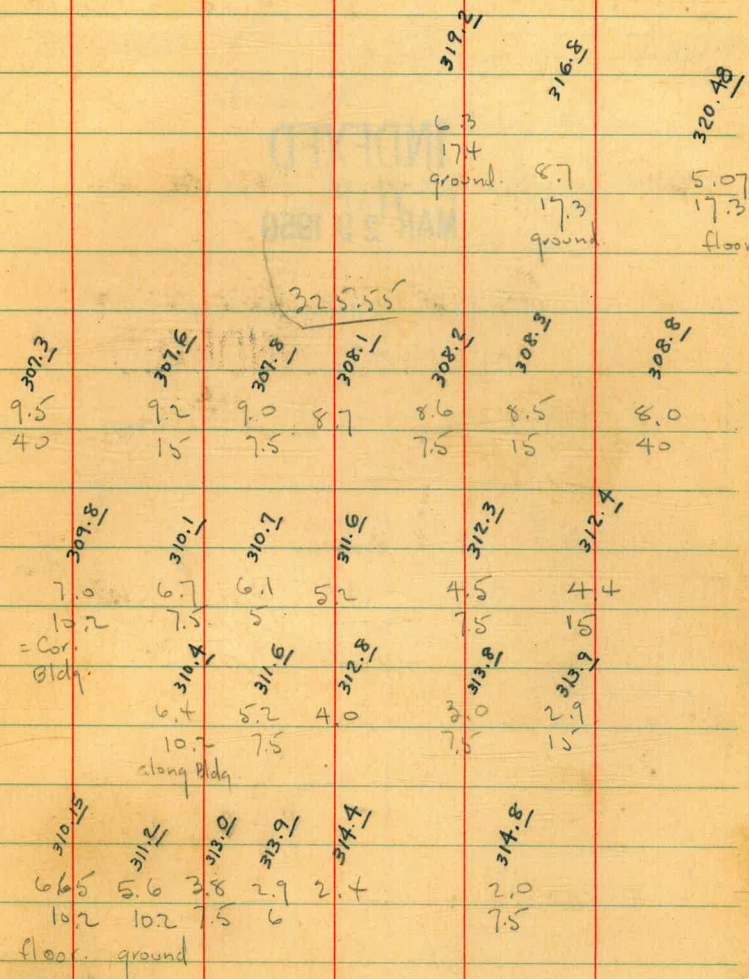
2.94 337.11 334.17 = 0700 Hub
P. 18

Lt.

\pm

Rt

10



309.3
9.5
40

307.6
9.2
15

307.8
9.0
7.5

308.1
8.7

308.2
8.6
7.5

308.5
8.5
15

308.8
8.0
40

319.2
6.3
17.4
ground. 8.7
17.3
ground

320.48
5.07
17.3
floor

325.55

309.8
7.0
10.2
= Cor. Bldg.

310.1
6.7
7.5

310.7
6.1
5

311.5
5.2
7.5

312.5
4.0

312.8
3.0
7.5

312.3
4.5
7.5

312.4
4.4
15

310.5
6.5
10.2
floor.

311.5
5.6
10.2

313.0
3.8
7.5

313.9
2.9
6

314.4
2.4

314.8
2.0
7.5

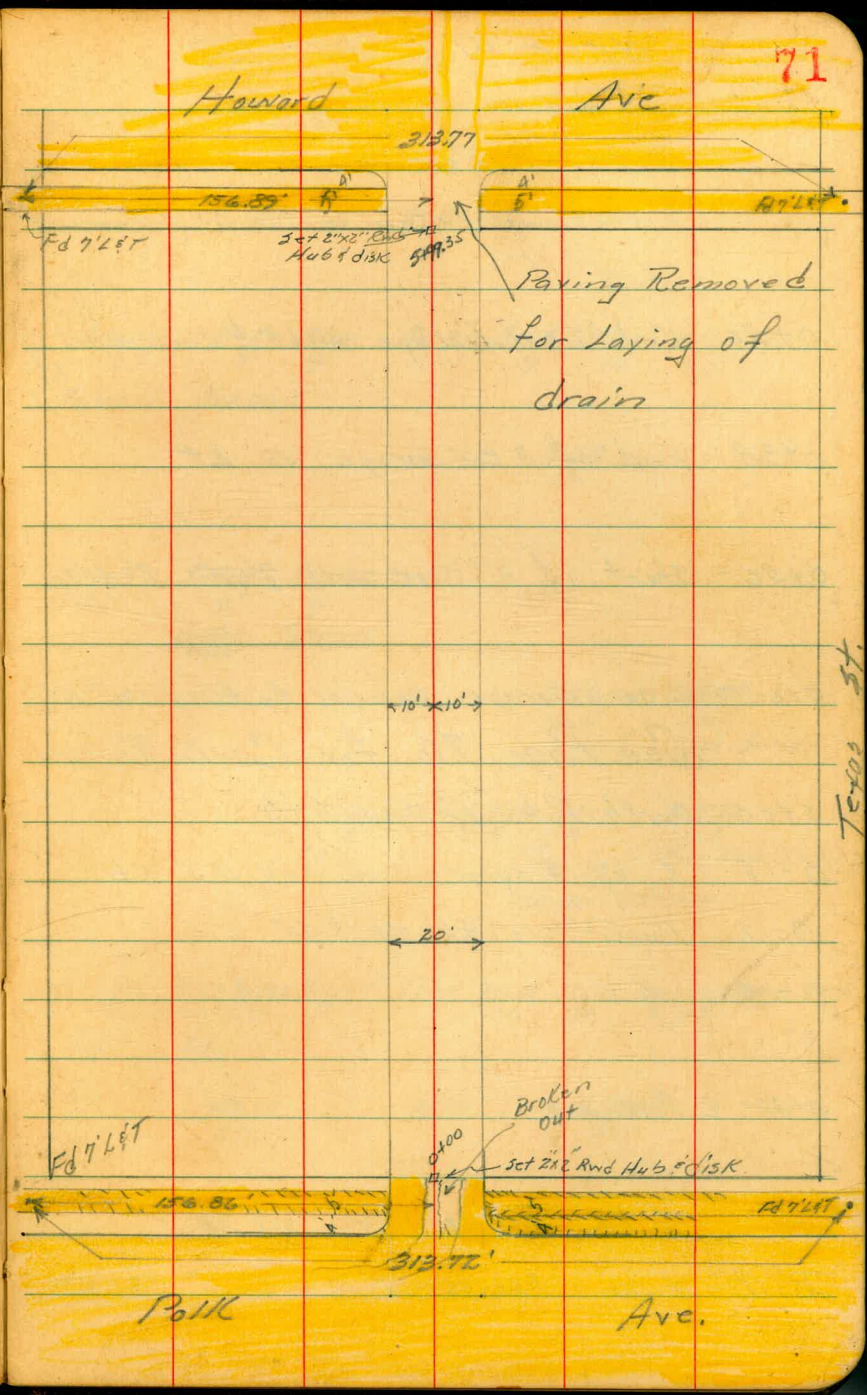
316.80

Johnson
Greer
Bunch
9-28-50
W.O. 31619

7-sect. Alley BIK 147
University Heights

INDEXED
W.K.
MAR 29 1950

Louisiana St



71

Howard Ave

313.77

156.85

Fd 7/25

Set Zinc Rwd Hub & Disk 599.35

Paving Removed
for Laying of
drain

10' x 10'

20'

Fd 7/25

Polk Ave

Ave.

Broken out

Set Zinc Rwd Hub & Disk

0100

313.77

Texas St

45cat Alley BIK 147

University Heights

Note!!! Readings are true

Elevations taken with self reading

Red.!!!

0+50 End 2 car Garage onlt $\frac{1}{2}$ Conc. wall 9'
lt.

310.44	311.69	311.4	311.2	311.3	312.1	311.8
27	9'	9'		7'	10	25
Top wall	Top wall					

0+38 = End of 2 car Garage 10' RT

311.9
10

0+32 = Start of 9" Conc. wall 9' lt. 2' deep

309.9	309.9	311.68
26	9'	9'
	Bottom Floor.	Top wall

0+20 = 2 car Garage parallel to Alley 10.5' RT

See Page 76 for Curb Returns

311.6	313.79
10.5	10.5
Ground	Conc. drive

0+00 = North P.L. of Polk Ave

310.80	310.60	310.4	311.58	311.27	312.92
cb	G	G	G	cb	10.5
10		10			Top Conc. Drive
			311.17		
			center of box		
			3.5'		

0-1 = $\frac{1}{2}$ of 4' square conc. box 3.5' RT

0-12 = Power Pole 9.5' RT @ 45°

0-19

308.27	307.55	309.63	308.92	310.07	310.4	311.42	312.90	313.33	313.85	314.34	314.89
cb	G	cb	G	10		10	30	G	35	G	cb
50		28									50

0-40 = $\frac{1}{2}$ Polk Ave:

308.08	311.40	314.87
50		50

1.68 315.52 12.51 313.84

B.M. 1.40 326.35 324.95

S.E.B.P. Polk @ 74.95

Lt

E

Rt

72

4 sect of Alley 147
University Heights

2+10 = Power Pole 9' Lt P.A. 9128

2+00

1+73 = End 3 car Garage 10.1 Lt

1+50

Start Combination Sidewalk & Garage Ramp

1+46 = End 9" conc. wall 10.2' Lt

16' wide 19.3' Garage Floor

1+11 = 2 car Garage 14.5' to ramp Rt.

T.P. 5.11 315.85 9.78 310.79

1+00. start 9" conc wall 10.2' Lt

0+98 = End 9" conc. found. 9.5' Rt

0+74 = Start 9" conc found. 9' Rt

0+68 = Power Pole 9.3' Lt # P.A. 4111

0+54 = 2' Tree 9.9 Rt to center

Lt

±

Rt

73

310.1 311.1 311.3 310.9 311.5 314.0
50 20 10 10 30

311.23 311.11
13 10.1
Floor Ramp

311.1 311.0 311.5 313.0
10 10 30

10.6 Lt

311.20 311.39
10.6 10.2
Top wall

312.71 313.30
14.5 19.3
Ramp Floor

308.0 310.0 311.0 311.2 311.1 310.6 310.7 312.0 313.0
35 25 15 10.2 10 7' 10 25
Top wall DIRT

311.8 311.86
9.5 9.5
Dirt Top Found

311.6 311.90
9' 9'
Ground Top wall

315.52
^

4-sect - Alley BIK 147

University Heights

4+44 = Start 5' wire fence 9.6' Lt

4+30 = End Single Car Garage 10.8' Lt

T.P. 7.53 320.61 2.77 31308

4+00

3+98

3+50 = End 9" conc. wall

3+32 = Power Pole 9' Lt + P.A. 9152

3+16 = Start 9" conc. wall 10.3' Lt

3+00

2+50

2+17 = 9' Conc. Drive 16.8' Lt.

Lt.

&

Rt.

74

312.6
10.2'

313.5 312.3 312.8 312.0 313.5
40 10 10 40

313.5 312.3 312.8 312.2 312.0
40 10 10 40

311.5 312.61 311.6 311.7 312.3 312.6
32 10.3 10.3 10 40
Top Wall Ground

312.37 311.3
10.3 10.3
Top Wall Ground

311.1 311.5 311.5 311.9 312.5
60 10 10 25

311.2 311.5 310.9 311.4 313.7
40 10 10 38

311.01 311.08
52 16.8'
Floor

315.85

X-sect Alley BIK 147

University Heights

5.37 317.91

E13/F04
FB1781-73

Lt &

RT

75

6+13.35 = So. Cb line Howard Ave

320.90
Cb

S.E.B.P. Texas Howard
320.89 out 317.50 317.75 out 315.80 316.44 314.92 315.55
G Cb G 10 G Cb G Cb
45 13 13 48

T.P. 7.38 323.28 4.71 315.90

5+99.35 = South P.L. Howard Ave

P.L. Hub 5799.35 (See F.B. 1781-73 ^{by Survey} 4-4-50)

(covered by 4' of) 316.50 316.73 316.57
Cb Dirt Cb Former
10 10 Gutter

5792 = Power Pole 8.8' Lt

5752 = End fence 9.8' RT

5750 fence 9.8' RT
conc. walk 10.3' Lt

319.5 318.04 317.5 316.3 316.3 316.0
30 10.3 10 10 30
Walk

5+00 fence 9.7' RT

316.0 314.7 314.4 314.5 315.0
30 10 10 30

4+83 = Single Car Garage Floor 13.7' Lt
Ramp 10.4' Lt

314.63 314.44
13.7 10.4
Floor Ramp

4+74 = Power Pole 9.5' Lt (No Number)

4+68 = Single Car Garage 9.8' RT

313.85
9.8'

4+50

314.1 313.1 313.7 313.6 314.1
40 10 10 35

320.61
^

4-sect. Alley 147
University Heights

76

Note: Intersection of Alley & Polk & Alley & Howard are Torn out
due to Laying of Drain.

3-28-50

H.E.J.

North West Return - 3' Radius

310.74 310.17
Cb G

B.C.
in alley

310.32 310.00
Cb G

Center
Return

309.87 309.79
Cb G

E.C.
on Polk

North East Return - 3' Radius

311.94 311.45
Cb G

B.C.
in alley

311.68 311.55
Cb G

Center
Return

311.80 311.74
Cb G

E.C.
on Polk

Levels to establish BM
on Jarracha Road and

wly line

BPBM in Nly Curb Jarracha Road

± 215' wly of intersection Jarracha rd
and Porter st.

Also set Chisel Square on SE cor 3' walk

N.W. cor Jarracha Road + Pidgeon st

Address = 6988 Jarracha Road - Elev = 261.37

TP ₄		260		270.75	Nail in pole # 271219- Page 41
TP ₃ BPBM	2.91	273.35	2.91	270.44	BP-
TP ₂	4.91	273.35	5.06	268.44	
TP ₁	5.81	273.50	0.72	267.69	
BM	7.86	268.41		260.55	Nail in pole # 73018 So. Side Jarracha rd + Pidgeon Page 26.
	+	-		elev	

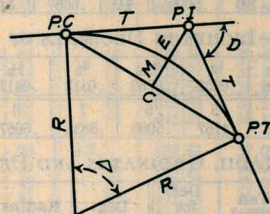
(and ± 215' Wly Jarracha Rd + Porter st

BP in Nly Curb Jarracha Rd + ~~Porter~~ NWly line of

Hermantle Manor.

DIETZGEN'S RAILROAD CURVE AND REDUCTION TABLES

Copyright, 1914, by Eugene Dietzgen Co., New York City



CURVE FORMULAS

- Radius— $R = \frac{50}{\sin \frac{D}{2}}$ (1) Degree of Curve— D and $\sin \frac{D}{2} = \frac{50}{R}$ (2)
 Tangent— $T = R \tan \frac{\Delta}{2}$ (3) Length of Curve— $L = 100 \frac{\Delta}{D}$ (4)
 Middle ordinate— $M = R(1 - \cos \frac{\Delta}{2})$ (5) $= R \text{vers } \frac{\Delta}{2}$ (6)
 External— $E = T \tan \frac{\Delta}{4}$ (7) $= R \div \cos \frac{\Delta}{2} - R$ (8) $= R \text{exsec } \frac{\Delta}{2}$ (9)
 Long Chord— $C = 2 R \sin \frac{\Delta}{2}$ (10) Δ —Central Angle

EXPLANATION AND USE OF TABLES

Stations.—Given P. I.—Sta. 161+60.35 to find Sta. of P. C. and P. T. $\Delta = 62^\circ 10'$ $D = 8^\circ 20'$. From Table IV for 1° curve $T = 3454.1$ and $\div 8\frac{1}{3} = 414.49$ ft. From Table V correction—.36 or $T = 414.85$ ft. P. C.—Sta. P. I.— $T = 157 + 45.50$. Also from (4) $L = 746.00$ and P. T.—Sta. P. C. + $L = 164 + 91.50$.

Offsets.—Tangent offsets vary (approximately) directly with D and with square of the distance. Thus tangent offset for Sta. 158 on above curve is 2.16 ft. found as follows. From Table III tangent offset for 100 ft. = 7.27 ft. Distance = 158—Sta. P. C. = 54.50, hence offset = $7.27 (54.50 \div 100)^2 = 2.16$ ft. Also square of any distance divided by twice the radius equals (approximately) the distance from tangent to curve. Thus $(54.50)^2 \div (2 \times 688.26) = 2.16$ ft.

Deflections.—Deflection angle = $\frac{1}{2} D$ for 100 ft., $\frac{1}{4} D$ for 50 ft., etc. For c ft. = (in minutes) $.3 \times C \times D^\circ$ or = defl. for 1 ft. from Table III $\times C$. For Sta. 158 of above curve = $.3 \times 54.5 \times 8\frac{1}{3} = 136.2'$ or $2^\circ 16.2'$, or = $2.50 \times 54.5 = 136.2'$ from Table III. For Sta. 159 deflection angle = $2^\circ 16.2' + 8^\circ 20' \div 2 = 6^\circ 26.2'$, etc.

Externals.—May be found in similar manner to tangents. Thus E for curve above is 115.37. For from Table IV for 1° curve $E = 960.6$ for $8^\circ 20' = 960.6 \div 8\frac{1}{3} = 115.27$ and from Table V correction—.10 or $E = 115.37$ ft. Or suppose $\Delta = 32^\circ$ and E is measured and found to be 42 ft. What is D ? From Table IV $E = 230.9$ and $\div 42 = 5.5$ or $D = 5^\circ 30'$.

DISTANCES FROM CENTER OF ROADWAY FOR
CROSS-SECTIONING.

Roadway 16 feet wide. Side Slopes 1 on 1½

For Single Track Embankment.

H	0	.1	.2	.3	.4	.5	.6	.7	.8	.9	H
0	8.0	8.2	8.3	8.5	8.6	8.8	8.9	9.1	9.2	9.4	0
1	9.5	9.7	9.8	10.0	10.1	10.3	10.4	10.6	10.7	10.9	1
2	11.0	11.2	11.3	11.5	11.6	11.8	11.9	12.1	12.2	12.4	2
3	12.5	12.7	12.8	13.0	13.1	13.3	13.4	13.6	13.7	13.9	3
4	14.0	14.2	14.3	14.5	14.6	14.8	14.9	15.1	15.2	15.4	4
5	15.5	15.7	15.8	16.0	16.1	16.3	16.4	16.6	16.7	16.9	5
6	17.0	17.2	17.3	17.5	17.6	17.8	17.9	18.1	18.2	18.4	6
7	18.5	18.7	18.8	19.0	19.1	19.3	19.4	19.6	19.7	19.9	7
8	20.0	20.2	20.3	20.5	20.6	20.8	20.9	21.1	21.2	21.4	8
9	21.5	21.7	21.8	22.0	22.1	22.3	22.4	22.6	22.7	22.9	9
10	23.0	23.2	23.3	23.5	23.6	23.8	23.9	24.1	24.2	24.4	10
11	24.5	24.7	24.8	25.0	25.1	25.3	25.4	25.6	25.7	25.9	11
12	26.0	26.2	26.3	26.5	26.6	26.8	26.9	27.1	27.2	27.4	12
13	27.5	27.7	27.8	28.0	28.1	28.3	28.4	28.6	28.7	28.9	13
14	29.0	29.2	29.3	29.5	29.6	29.8	29.9	30.1	30.2	30.4	14
15	30.5	30.7	30.8	31.0	31.1	31.3	31.4	31.6	31.7	31.9	15
16	32.0	32.2	32.3	32.5	32.6	32.8	32.9	33.1	33.2	33.4	16
17	33.5	33.7	33.8	34.0	34.1	34.3	34.4	34.6	34.7	34.9	17
18	35.0	35.2	35.3	35.5	35.6	35.8	35.9	36.1	36.2	36.4	18
19	36.5	36.7	36.8	37.0	37.1	37.3	37.4	37.6	37.7	37.9	19
20	38.0	38.2	38.3	38.5	38.6	38.8	38.9	39.1	39.2	39.4	20
21	39.5	39.7	39.8	40.0	40.1	40.3	40.4	40.6	40.7	40.9	21
22	41.0	41.2	41.3	41.5	41.6	41.8	41.9	42.1	42.2	42.4	22
23	42.5	42.7	42.8	43.0	43.1	43.3	43.4	43.6	43.7	43.9	23
24	44.0	44.2	44.3	44.5	44.6	44.8	44.9	45.1	45.2	45.4	24
25	45.5	45.7	45.8	46.0	46.1	46.3	46.4	46.6	46.7	46.9	25
26	47.0	47.2	47.3	47.5	47.6	47.8	47.9	48.1	48.2	48.4	26
27	48.5	48.7	48.8	49.0	49.1	49.3	49.4	49.6	49.7	49.9	27
28	50.0	50.2	50.3	50.5	50.6	50.8	50.9	51.1	51.2	51.4	28
29	51.5	51.7	51.8	52.0	52.1	52.3	52.4	52.6	52.7	52.9	29
30	53.0	53.2	53.3	53.5	53.6	53.8	53.9	54.1	54.2	54.4	30
31	54.5	54.7	54.8	55.0	55.1	55.3	55.4	55.6	55.7	55.9	31
32	56.0	56.2	56.3	56.5	56.6	56.8	56.9	57.1	57.2	57.4	32
33	57.5	57.7	57.8	58.0	58.1	58.3	58.4	58.6	58.7	58.9	33
34	59.0	59.2	59.3	59.5	59.6	59.8	59.9	60.1	60.2	60.4	34
35	60.5	60.7	60.8	61.0	61.1	61.3	61.4	61.6	61.7	61.9	35
36	62.0	62.2	62.3	62.5	62.6	62.8	62.9	63.1	63.2	63.4	36
37	63.5	63.7	63.8	64.0	64.1	64.3	64.4	64.6	64.7	64.9	37
38	65.0	65.2	65.3	65.5	65.6	65.8	65.9	66.1	66.2	66.4	38
39	66.5	66.7	66.8	67.0	67.1	67.3	67.4	67.6	67.7	67.9	39
40	68.0	68.2	68.3	68.5	68.6	68.8	68.9	69.1	69.2	69.4	40

Example—If point is 22.6 ft. above grade, how far should it be from center line to be a slope stake point? Ans. from Table 41.9. For same slopes but other widths of roadbed correct above figures by one-half difference in width of roadbed; thus in example above for 20 ft. roadbed distance will be 41.9 + (20 - 16) ÷ 2 or 2 ft. added to 41.9 = 43.9. For slopes of 1 on 1 see inside of front cover.

MADE IN U.S.A.

10.14
237
78
14145
1298
7264

1 x 8

1025
18
845

1007
258
521
28305
1328
24977
27075

100
862
14145
1168
14977

17779
287
180.66

88
35
105

2017
29
150

2678
51
2727
72

417945
85.53
56798

2170 15
9007

42
35
B