

1795

Journal of  
the

Rev. Mr. [illegible]

at [illegible]

1640

# EUGENE DIETZGEN CO.

DRAWING MATERIALS, MATHEMATICAL and  
SURVEYING INSTRUMENTS

Chicago New York San Francisco New Orleans Pittsburg Toronto

Distances from Center of Roadway for Cross-Sectioning  
Roadway 16 feet wide. Side Slopes 1 on 1.  
For Single Track Embankment.

| H  | 0    | .1   | .2   | .3   | .4   | .5   | .6   | .7   | .8   | .9   | H  |
|----|------|------|------|------|------|------|------|------|------|------|----|
| 0  | 8.0  | 8.1  | 8.2  | 8.3  | 8.4  | 8.5  | 8.6  | 8.7  | 8.8  | 8.9  | 0  |
| 1  | 9.0  | 9.1  | 9.2  | 9.3  | 9.4  | 9.5  | 9.6  | 9.7  | 9.8  | 9.9  | 1  |
| 2  | 10.0 | 10.1 | 10.2 | 10.3 | 10.4 | 10.5 | 10.6 | 10.7 | 10.8 | 10.9 | 2  |
| 3  | 11.0 | 11.1 | 11.2 | 11.3 | 11.4 | 11.5 | 11.6 | 11.7 | 11.8 | 11.9 | 3  |
| 4  | 12.0 | 12.1 | 12.2 | 12.3 | 12.4 | 12.5 | 12.6 | 12.7 | 12.8 | 12.9 | 4  |
| 5  | 13.0 | 13.1 | 13.2 | 13.3 | 13.4 | 13.5 | 13.6 | 13.7 | 13.8 | 13.9 | 5  |
| 6  | 14.0 | 14.1 | 14.2 | 14.3 | 14.4 | 14.5 | 14.6 | 14.7 | 14.8 | 14.9 | 6  |
| 7  | 15.0 | 15.1 | 15.2 | 15.3 | 15.4 | 15.5 | 15.6 | 15.7 | 15.8 | 15.9 | 7  |
| 8  | 16.0 | 16.1 | 16.2 | 16.3 | 16.4 | 16.5 | 16.6 | 16.7 | 16.8 | 16.9 | 8  |
| 9  | 17.0 | 17.1 | 17.2 | 17.3 | 17.4 | 17.5 | 17.6 | 17.7 | 17.8 | 17.9 | 9  |
| 10 | 18.0 | 18.1 | 18.2 | 18.3 | 18.4 | 18.5 | 18.6 | 18.7 | 18.8 | 18.9 | 10 |
| 11 | 19.0 | 19.1 | 19.2 | 19.3 | 19.4 | 19.5 | 19.6 | 19.7 | 19.8 | 19.9 | 11 |
| 12 | 20.0 | 20.1 | 20.2 | 20.3 | 20.4 | 20.5 | 20.6 | 20.7 | 20.8 | 20.9 | 12 |
| 13 | 21.0 | 21.1 | 21.2 | 21.3 | 21.4 | 21.5 | 21.6 | 21.7 | 21.8 | 21.9 | 13 |
| 14 | 22.0 | 22.1 | 22.2 | 22.3 | 22.4 | 22.5 | 22.6 | 22.7 | 22.8 | 22.9 | 14 |
| 15 | 23.0 | 23.1 | 23.2 | 23.3 | 23.4 | 23.5 | 23.6 | 23.7 | 23.8 | 23.9 | 15 |
| 16 | 24.0 | 24.1 | 24.2 | 24.3 | 24.4 | 24.5 | 24.6 | 24.7 | 24.8 | 24.9 | 16 |
| 17 | 25.0 | 25.1 | 25.2 | 25.3 | 25.4 | 25.5 | 25.6 | 25.7 | 25.8 | 25.9 | 17 |
| 18 | 26.0 | 26.1 | 26.2 | 26.3 | 26.4 | 26.5 | 26.6 | 26.7 | 26.8 | 26.9 | 18 |
| 19 | 27.0 | 27.1 | 27.2 | 27.3 | 27.4 | 27.5 | 27.6 | 27.7 | 27.8 | 27.9 | 19 |
| 20 | 28.0 | 28.1 | 28.2 | 28.3 | 28.4 | 28.5 | 28.6 | 28.7 | 28.8 | 28.9 | 20 |
| 21 | 29.0 | 29.1 | 29.2 | 29.3 | 29.4 | 29.5 | 29.6 | 29.7 | 29.8 | 29.9 | 21 |
| 22 | 30.0 | 30.1 | 30.2 | 30.3 | 30.4 | 30.5 | 30.6 | 30.7 | 30.8 | 30.9 | 22 |
| 23 | 31.0 | 31.1 | 31.2 | 31.3 | 31.4 | 31.5 | 31.6 | 31.7 | 31.8 | 31.9 | 23 |
| 24 | 32.0 | 32.1 | 32.2 | 32.3 | 32.4 | 32.5 | 32.6 | 32.7 | 32.8 | 32.9 | 24 |
| 25 | 33.0 | 33.1 | 33.2 | 33.3 | 33.4 | 33.5 | 33.6 | 33.7 | 33.8 | 33.9 | 25 |
| 26 | 34.0 | 34.1 | 34.2 | 34.3 | 34.4 | 34.5 | 34.6 | 34.7 | 34.8 | 34.9 | 26 |
| 27 | 35.0 | 35.1 | 35.2 | 35.3 | 35.4 | 35.5 | 35.6 | 35.7 | 35.8 | 35.9 | 27 |
| 28 | 36.0 | 36.1 | 36.2 | 36.3 | 36.4 | 36.5 | 36.6 | 36.7 | 36.8 | 36.9 | 28 |
| 29 | 37.0 | 37.1 | 37.2 | 37.3 | 37.4 | 37.5 | 37.6 | 37.7 | 37.8 | 37.9 | 29 |
| 30 | 38.0 | 38.1 | 38.2 | 38.3 | 38.4 | 38.5 | 38.6 | 38.7 | 38.8 | 38.9 | 30 |
| 31 | 39.0 | 39.1 | 39.2 | 39.3 | 39.4 | 39.5 | 39.6 | 39.7 | 39.8 | 39.9 | 31 |
| 32 | 40.0 | 40.1 | 40.2 | 40.3 | 40.4 | 40.5 | 40.6 | 40.7 | 40.8 | 40.9 | 32 |
| 33 | 41.0 | 41.1 | 41.2 | 41.3 | 41.4 | 41.5 | 41.6 | 41.7 | 41.8 | 41.9 | 33 |
| 34 | 42.0 | 42.1 | 42.2 | 42.3 | 42.4 | 42.5 | 42.6 | 42.7 | 42.8 | 42.9 | 34 |
| 35 | 43.0 | 43.1 | 43.2 | 43.3 | 43.4 | 43.5 | 43.6 | 43.7 | 43.8 | 43.9 | 35 |
| 36 | 44.0 | 44.1 | 44.2 | 44.3 | 44.4 | 44.5 | 44.6 | 44.7 | 44.8 | 44.9 | 36 |
| 37 | 45.0 | 45.1 | 45.2 | 45.3 | 45.4 | 45.5 | 45.6 | 45.7 | 45.8 | 45.9 | 37 |
| 38 | 46.0 | 46.1 | 46.2 | 46.3 | 46.4 | 46.5 | 46.6 | 46.7 | 46.8 | 46.9 | 38 |
| 39 | 47.0 | 47.1 | 47.2 | 47.3 | 47.4 | 47.5 | 47.6 | 47.7 | 47.8 | 47.9 | 39 |
| 40 | 48.0 | 48.1 | 48.2 | 48.3 | 48.4 | 48.5 | 48.6 | 48.7 | 48.8 | 48.9 | 40 |

Example—If point is 22.6 ft. above grade, how far should it be from center line to be a slope stake point? Ans. from Table 30.6. For same slopes but other widths of roadbed, correct above figures by one-half difference in width of roadbed; thus in example above, for 20 ft. roadbed distance will be 30.6 + (20 - 16) ÷ 2 or 2 ft. added to 30.6 = 32.6. For slopes of 1 on 1½ see inside of back cover.  
Copyright, 1914, by Eugene Dietzgen Co.

130

96.93 = Top H. of S.E. 1795

INDEXED  
to page # 75

This Field Book is manufactured of a High Grade 50% Rag Paper having a WATER RESISTING SURFACE, and is sewed with Bing Special Enamel Waterproof thread.

Made in U. S. A.

Index

1

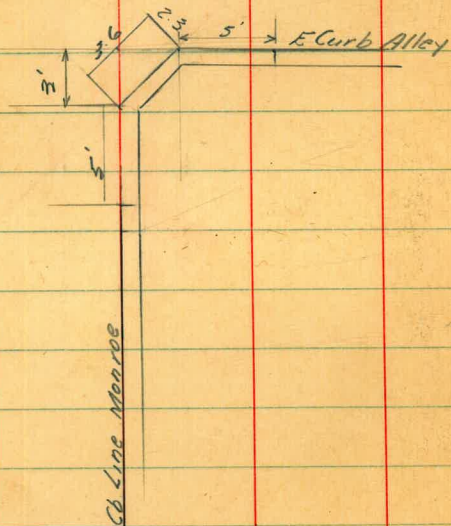
P 2-9 X Sects Alley Block 56 Univ 4th

31 Sewer Profile 28<sup>th</sup> + Colton - Main

P-77 SURVEY INT. 41<sup>ST</sup> + EPSILON

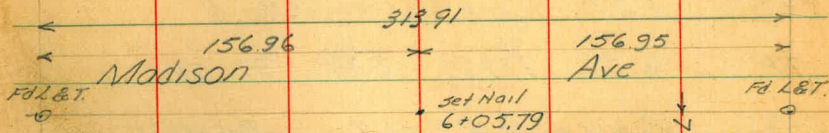
July 23, 1947 X Sect Alley Block 56  
 Hendricks  
 W Moore  
 Sherman  
 Lamore  
 No# 1284

Detail Drop Inlet  
 E Line of Alley



Indexed  
 c.s.K.

2

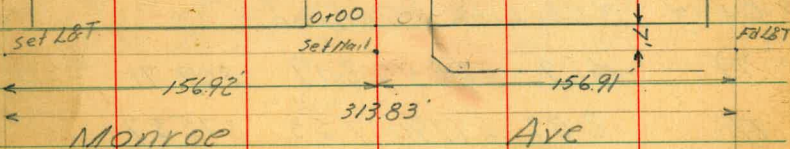


SD

ST

Idaho

Utah



X Sect. Alley Block 56 Univ. Hts.

| Sta  | F. H1                                  | -             | Elev    | B.M.   |
|------|--|---------------|---------|--------|
| 1400 | End Picket fence 10° Rt &              |               |         |        |
| TP   | 6.32                                   | <u>377.83</u> | 2.89    | 371.51 |
| 0185 | Power Pole 92 Lt &                     |               | PA 4521 |        |
|      | (outside Edge)                         |               |         |        |
| 0165 |  |               |         |        |
| 0150 | Beq. Picket fence 99 Rt &              |               |         |        |
|      | End Conc. Patio Lt.                    |               |         |        |
| 0130 | End House & Beq. Picket fence 10° Lt & |               |         |        |
|      | Conc. Patio                            |               |         |        |
| 0104 | Beq House 100 Lt &                     |               |         |        |
| 0100 |  |               |         |        |
| 0-14 | N. Cb. Line Monroe                     |               |         |        |
| TP   | 4.69                                   | <u>374.40</u> | 8.19    | 369.71 |
| TP   | 2.33                                   | 377.90        | 7.53    | 375.57 |
| B.M  | 4.25                                   | 383.10        |         | 378.85 |

|                 |                 |                 |                 |                 |
|-----------------|-----------------|-----------------|-----------------|-----------------|
| 5 <sup>10</sup> | 5 <sup>10</sup> | 0.871.54        | 6 <sup>10</sup> | 6 <sup>10</sup> |
| 15              | 10              |                 | 10              | 15              |
| 372.6           | 372.2           | 371.5           | 371.5           | 371.6           |
| 2 <sup>6</sup>  | 2 <sup>9</sup>  | 3 <sup>3</sup>  | 2 <sup>0</sup>  | 2 <sup>1</sup>  |
| 20              | 10              |                 | 10              | 15              |
| 371.8           | 371.5           | 371.1           | 371.4           | 371.3           |
| 3 <sup>02</sup> | 3 <sup>06</sup> |                 |                 |                 |
| 13              | 10              |                 |                 |                 |
|                 | Patio           |                 |                 |                 |
| 3 <sup>02</sup> | 3 <sup>02</sup> | 100             | 3 <sup>00</sup> | 3 <sup>00</sup> |
| 10              | Patio           |                 |                 |                 |
| 371.1           | 371.1           |                 |                 |                 |
| 10              | 15              |                 |                 |                 |
| 370.21          | 370.14          | 370.00          | 370.17          | 370.21          |
| 4 <sup>19</sup> | 4 <sup>26</sup> | 4 <sup>40</sup> | 4 <sup>23</sup> | 4 <sup>19</sup> |
| 99              | 99              |                 | 99              | 99              |
| Cb              | Gut             |                 | Gut             | Cb              |
| 373.24          | 372.50          | 371.79          | 370.17          | 370.03          |
| 1 <sup>16</sup> | 1 <sup>20</sup> | 3 <sup>41</sup> | 4 <sup>23</sup> | 4 <sup>37</sup> |
| 100             | 52              | 52              | 12              | 12              |
| Cb.             | Gut             | Cb              | Gut             | Cb              |
| 369.52          | 369.32          | 369.23          | 368.25          | 367.19          |
| 5 <sup>08</sup> | 5 <sup>17</sup> | 6 <sup>15</sup> | 5 <sup>21</sup> | 4 <sup>21</sup> |
| 100             | 100             | 134             | 134             | 50              |
| Grote           | FL.             | Gut             | Cb.             | Gut             |
| 370.19          | 369.73          |                 |                 |                 |
| 4 <sup>19</sup> | 4 <sup>19</sup> |                 |                 |                 |
| 50              | 50              |                 |                 |                 |
| Cb              | Gut             |                 |                 |                 |

S.E.B.P. Madison & Idaho

X Sects. Alley Block 56 Univ Hts

Sta + H.L. - Elev 1317.

1199 Power Pole PA 4533 9.7 Lt. E

1197 Beg. Conc Walk & House 15.9 Rt. E

1196 End Board fence 10.4 Lt. E

1188 End Picket fence 11.6 Rt. E

11671 E 3' Conc Walk 9.7 Lt. E

11656 End Conc Ramp & Gar on Rt. Beg. Board fence  
10.7 Lt.

1150 Beg Picket fence 10.3 Rt. E

11494 End Ramp & Garage Beg another Ramp & Gar.

11405 Beg Conc Ramp 9.7 Lt. E

1135 End Picket fence 10.5 Lt. E Beg Garage 10.7 Lt.

377.83

4<sup>23</sup> 373.6  
13<sup>5</sup> 374.00  
Gr Walk Walk  
at House

4<sup>27</sup> 373.46  
15 97  
4<sup>28</sup> 373.19  
10 97  
373.04  
4<sup>29</sup> 372.86  
10 97  
Gar. Fl. Gar. Fl. Ramp Ramp  
4<sup>30</sup> 372.93  
5 372.74  
5 372.3  
4<sup>31</sup> 372.9  
10 15  
4<sup>32</sup> 373.11  
372.75 372.66  
3 0.9 5.17  
10.7 97  
Gar. Fl. Ramp

Sta. + H.I. - Elev. B.M.

2+35 Power Pole 944 E PA4555

2+00 End picket fence 10.2 Rt. of E

TP 463 380.81 1.65 376.18

2+62 Beg. Picket fence 10.2 Rt of E

2+50

2+37 Beg Wire fence 12.2 Lt E

2+21 End House & Porch 13.6 Rt

2+15 End Walk 13.6 Rt of E Beg stairway to porch

2+00

377.83

375.2  
5<sup>4</sup> 375.0  
15 10 6<sup>2</sup> 374.6  
10 5<sup>8</sup> 375.0  
15 5<sup>14</sup> 375.4

Nail in Power Pole PA4555

34 374.4  
15 10 35 374.3  
36 374.0  
31 374.7  
15 374.8

20.0  
12.6  
375.83

374.1  
37 374.0  
14 10 4<sup>5</sup> 373.3  
42 373.1 36.8  
46 13.6 36.5  
10 373.2 16.1  
13 4<sup>2</sup> 373.6

X Sects. Alley Block <sup>56</sup> Univ Hts.

340 + H.1 - Elev 13.71

4+00 Beg Board fence 9.8 Lt. of E

3+99 End wire fence on H 10.8

3+79 Beg Picket fence 9.9 Rt. of E

3+74 G Garage Dirt floor 13.4 Lt. E

3+62 G Gar. Dirt floor 13.5 Rt. E

3+57 End wire fence Beg gar Rt. B. G. R. E

3+50

3+39 Beg wire fence W. Rt. E

380.81

|    |       |     |     |     |
|----|-------|-----|-----|-----|
|    | 376.3 |     |     |     |
| 45 | 376.0 |     |     |     |
| 15 |       | 5.2 |     |     |
| 10 |       |     |     |     |
|    |       |     | 4.8 |     |
|    |       |     | 10  |     |
|    |       |     |     | 4.6 |
|    |       |     |     | 15  |

|      |       |
|------|-------|
|      | 376.0 |
| 48   |       |
| 13.5 |       |
| 13.5 |       |

|     |       |
|-----|-------|
| 10  | 375.6 |
| 10  | 375.4 |
| 100 | 375.0 |
| 10  | 375.1 |
| 15  | 375.0 |



Sects Alley Block 56 Univ. Hts

Sta + H.I. - Elev. B.M.

4+78 End Board fence Beg Gar. 10.0 R/E

4+72 Power Pole 9.7 Lt of # JPA 4577

4+59 Beg Board fence 9.6 R/E

4+53 of Gar. Dirt floor

4+50

4+40 of Gar. Dirt floor 14.3 Lt of \*

4+31 End Board fence Beg Gar. 14.3 Lt of

4+23 of Board fence 9.1 Lt of

4+20 End Picket fence 9.8 Lt of

380.81

376.6  
 4<sup>12</sup>  
 15  
 376.6  
 4<sup>2</sup>  
 10  
 376.0  
 4<sup>18</sup>  
 10  
 376.4  
 4<sup>16</sup>  
 10  
 376.6  
 4<sup>12</sup>  
 15  
 376.5  
 4<sup>11</sup>  
 14.3

519 +  
 5177 End Wire fence 10.4 Rt. of E  
 5176 End House 9.5 Lt. E  
 51585 Beg House 9.5 Lt. E  
 5150  
 5149 Beg Wire fence 9.1 Lt. E  
 5129 End Board fence 10.4 Lt. E  
 5117 Beg Board fence 10.6 Rt. of E  
 5100 Beg Board fence 11.1 Lt. E  
 4188 E Gar Dirt floor 9.8 Rt. of E

380.81

|       |       |       |       |       |
|-------|-------|-------|-------|-------|
| 30    | 30    | 20    | 20    | 20    |
| 15    | 10    | 10    | 10    | 10    |
| 377.8 | 377.6 | 377.2 | 377.3 | 377.4 |

|       |       |       |       |       |
|-------|-------|-------|-------|-------|
| 34    | 38    | 4     | 4     | 4     |
| 15    | 10    | 10    | 10    | 10    |
| 377.4 | 377.2 | 376.5 | 376.7 | 376.8 |

98  
 10  
 376.2

X Sects Alley Block 56 Univ. Hts.

Sta + H.I. - Elev B.M.

BM 4.53 478.91 478.85

6+1279 50 Cb Line Madison

TP 4.69 383.44 2.06 378.75

5+199.2 Edge of Paving

380.81

SE. BP Idaho & Madison

|        |         |        |        |        |         |        |        |        |
|--------|---------|--------|--------|--------|---------|--------|--------|--------|
| 479    | 530     | 500    | 541    | 541    | 547     | 492    | 503    | 508    |
| 378.65 | 378.14  | 378.40 | 378.03 | 378.03 | 377.97  | 378.52 | 377.91 | 378.36 |
| 50     | 50      | 99     |        | 99     | 99      | 50     | 50     |        |
| Cb     | Gut     | Cb     | Gut    | Gut    | Cb      | Gut    | Cb     |        |
|        | 2' Rad. | 3      |        |        | 2' Rad. |        |        |        |
|        | 378.75  | 378.43 | 378.28 | 378.49 | 378.64  |        |        |        |
|        | 206     | 238    | 253    | 232    | 215     |        |        |        |
|        | Cb      | Gut    | Gut    | Gut    | Cb      |        |        |        |

Indexed  
C.S.M.

X- Sect Chamoune - Myrtle to Dwight

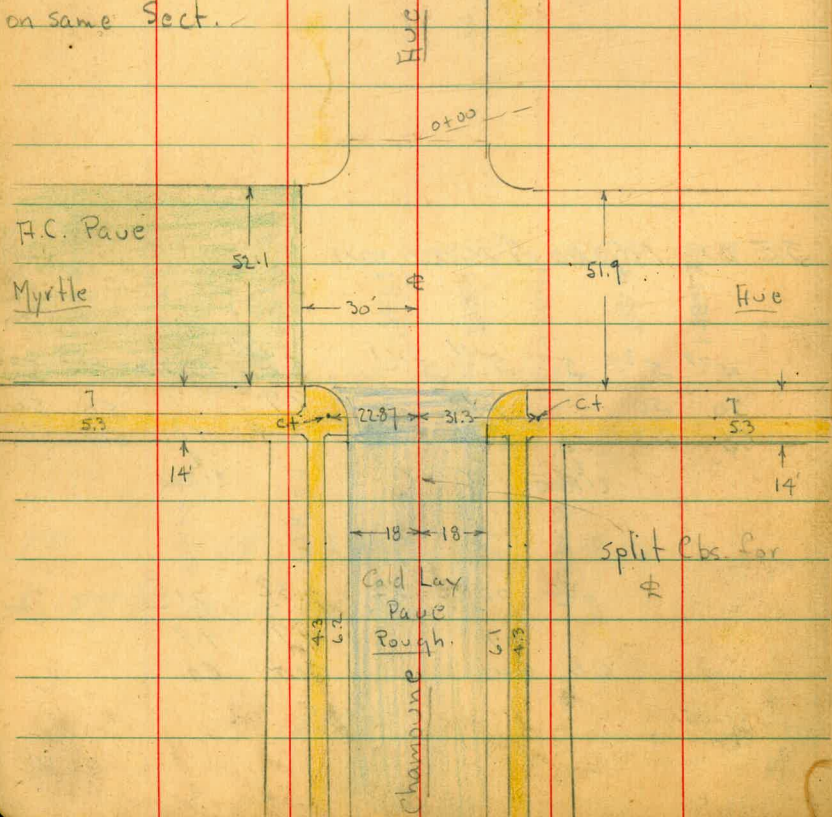
# 2008

W.O. 31303

1-26-48

Osborne  
Hardin  
Worrell

Note: for Sections will not take the .5ft jog  
into consideration - take cb. lines to E + to W.  
on same Sect.

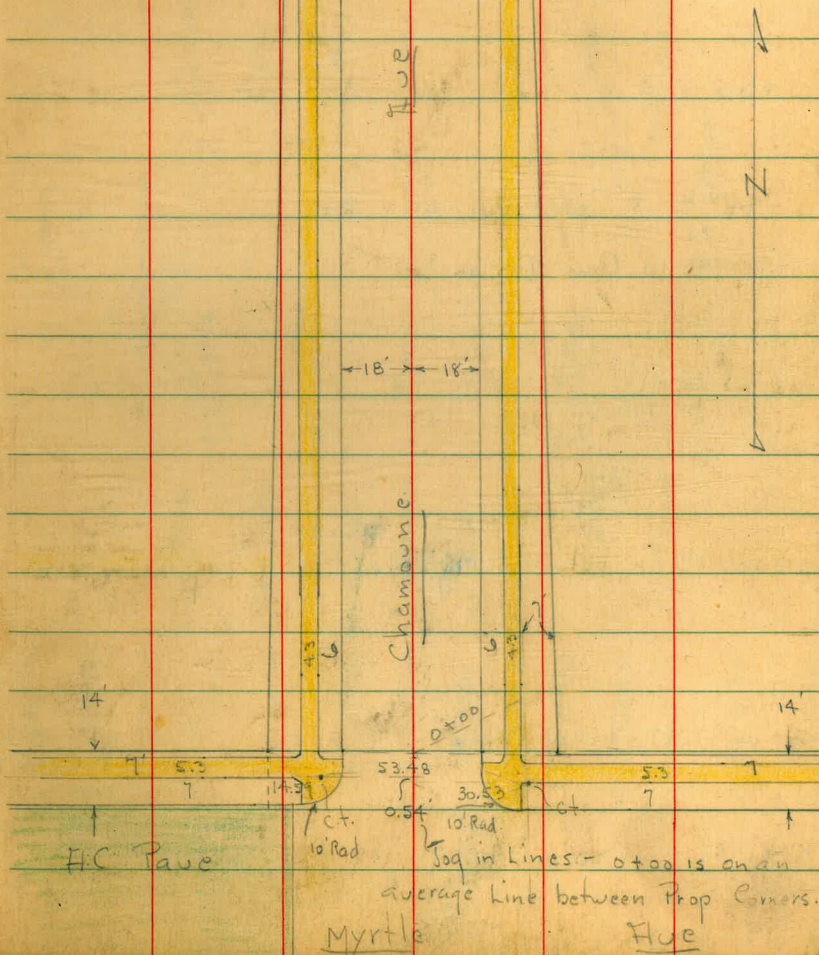


Dwight

H.C. Pavc

5ft 10

Note: used split of  
curbs for E + W.  
S.L. Dwight



Jog in Lines - 0.5ft  
average line between Prop. Corners.

X-Sect. Chamoune - Myrtle to  
 Dwight - 36' Rdwy - Prop. lines  
 Variable width.  $\Phi$  used is  $\Phi$  of Rdwy.

1+42 =  $\Phi$  10' Conc. Dr. on Lt. + Rt.

1+00

0+94 =  $\Phi$  8' Conc. Dr. on Rt.

0+91 =  $\Phi$  10' Conc. Dr. on Lt.

0+50

0+00 = Ave. N.L. of Myrtle - 0.54 jog between  
 Lines

0-14 = N. cb. Myrtle

BM. 4.20 340.09 335.89 NW. Cor.

334.62  
 336.17  
 3.47 3.92  
 87.5 87.5  
 Top gut

|        |        |            |        |       |       |       |       |          |       |        |       |        |
|--------|--------|------------|--------|-------|-------|-------|-------|----------|-------|--------|-------|--------|
| 335.81 | 335.74 | 335.57     | 335.50 | 335.3 | 335.2 | 334.9 | 334.4 | 334.89   | 334.3 | 334.76 | 333.0 | 333.47 |
| 4.28   | 4.63   | 4.51       | 4.72   | 5.1   | 4.8   | 4.9   | 5.2   | 5.7      | 5.26  | 5.9    | 7.1   | 6.6    |
| 37.53  | 37.53  | 30         | 30     | 18    | 9     | 9     | 18    | 29       | 37.53 | 37.53  | 77.5  | 77.5   |
| Top    | gut    | Top        | gut    |       |       |       |       | Top      | gut   | Top    | gut   | Top    |
| =W.L.  |        | E. edge of |        |       |       |       |       | 10' Rad. |       | E.L.   |       |        |
|        |        | Dr. Pavc   |        |       |       |       |       | Ret.     |       |        |       |        |

340.09

H. W.

$\Phi$

Rt. - E.

11

|        |          |          |        |
|--------|----------|----------|--------|
| 335.75 | 334.31   | 333.65   | 334.29 |
| 4.94   | 5.18     | 6.46     | 5.60   |
| 24     | 17.9-Dr. | 17.9-Dr. | 24-    |
| walk   |          |          | walk   |

|        |       |       |        |
|--------|-------|-------|--------|
| 335.79 | 334.6 | 333.9 | 334.37 |
| 4.9    | 5.5   | 5.2   | 5.7    |
| 18     | 18    | 17.9  | 17.9   |
| Top    | gut   | gut   | Top    |

|        |        |        |        |
|--------|--------|--------|--------|
| 335.46 | 334.69 | 333.86 | 334.42 |
| 4.63   | 5.40   | 5.13   | 5.47   |
| 24     | 17-Dr. | 17.8   | 24     |
| walk   |        |        | walk   |

|        |       |       |        |
|--------|-------|-------|--------|
| 335.58 | 334.8 | 334.5 | 334.64 |
| 4.6    | 5.3   | 5.8   | 5.45   |
| 18     | 18    | 17.9  | 17.9   |
| Top    | gut   | gut   | Top    |

|        |       |       |       |
|--------|-------|-------|-------|
| 335.86 | 335.0 | 334.7 | 334.3 |
| 4.3    | 5.1   | 5.4   | 5.2   |
| 18     | 18    | 9     | 9     |
| Top    | gut   |       | Top   |

2+70

2+57 = ± 11' Conc. Dr. on Lt.

2+50

2+45 = ± 9' Dirt Dr. - <sup>on Rt.</sup> Dr. Sect. in cb.

2+42 = ± 10' Conc. Dr. on Lt.

2+10 = ± 10' Dirt Dr. - Dr. Sect. in cb. - Not used

2+00

1+94 = ± 10' Conc. Dr. on Rt.

1+60 = ± 10' Conc. Dr. on Lt.

1+50

|  | 4                       | #                       | Rt.                      |
|--|-------------------------|-------------------------|--------------------------|
|  | 6.333.94<br>18<br>Top   | 6.333.2<br>18<br>Top    | 6.333.6<br>9<br>Top      |
|  | 5.334.28<br>24<br>walk  | 6.333.54<br>18<br>Dr.   | 6.333.7<br>9<br>Top      |
|  | 6.334.08<br>18<br>Top   | 6.333.5<br>18<br>Top    | 6.333.4<br>9<br>Top      |
|  | 6.334.36<br>24<br>walk  | 6.333.69<br>18<br>Dr.   | 6.333.8<br>9<br>Top      |
|  | 6.334.46<br>18<br>Top   | 6.334.1<br>9<br>Top     | 6.333.6<br>9<br>Top      |
|  | 5.335.03<br>24<br>walk  | 6.334.0<br>1<br>Top     | 6.333.1<br>9<br>Top      |
|  | 5.334.83<br>17.9<br>Top | 6.333.9<br>18<br>Top    | 6.333.14<br>18-01<br>Top |
|  | 5.334.3<br>17.9<br>Top  | 6.334.36<br>17.9<br>Dr. | 6.333.51<br>18<br>Top    |
|  | 5.334.7<br>9<br>Top     | 6.334.4<br>1<br>Top     | 6.333.71<br>24<br>walk   |
|  | 5.334.1<br>9<br>Top     | 6.334.06<br>18<br>Top   | 6.333.8<br>24<br>walk    |
|  | 5.334.4<br>9<br>Top     | 6.334.3<br>17.9<br>Dr.  | 6.333.9<br>18<br>Top     |
|  | 5.334.1<br>9<br>Top     | 6.334.4<br>1<br>Top     | 6.333.7<br>18<br>Top     |
|  | 5.334.7<br>9<br>Top     | 6.334.1<br>9<br>Top     | 6.333.4<br>18<br>Top     |
|  | 5.334.05<br>17.9<br>Top | 6.334.05<br>17.9<br>Top | 6.333.7<br>18<br>Top     |

340.09

4+50

4+20

4+17 = # 17 Conc. Dr. on Rt.

3+90

3+71 = # 10 Conc. Dr. on Rt.

3+60

T.P. 2.8.7 334.63 8.33 331.76

3+30

3+00

5.73  
18.2  
Top

4.20  
18  
Top

3.76  
18  
Top

2.81  
18  
Top

7.32  
18.1  
Top

6.64  
18  
Top

6.328.2  
18.2  
Cut

5.328.1  
18  
Cut

4.330.1  
18  
Cut

3.331.1  
18  
Cut

8.0  
18.1  
Cut

7.3  
18  
Cut

6.328.5  
9

5.329.6  
9

3.330.7  
9

3.0  
9

7.7  
9

7.0  
9

6.328.6  
0

4.329.7  
9

3.330.8  
8

2.9  
9

7.6  
9

6  
9

6.328.2  
9

5.329.3  
9

4.330.4  
9

3.331.4  
9

7.9  
9

5.2  
9

7.327.4  
17.9  
Cut

5.328.70  
17.9  
Dr.

4.329.6  
17.9  
Dr.

3.330.6  
19.0  
Dr.

8.6  
18  
Cut

7.8  
18  
Cut

6.328.15  
17.9  
Top

5.328.61  
17.9  
Dr.

4.330.16  
18  
Top

3.331.7  
18  
Top

7.87  
18  
Top

4.2  
18  
Top

340.09

Dwight + Chamoune

check B.M. - B.P. - N.W.

10.61 324.02 324.00

See Plans for Dwight - Pave

6+01.52 - S.L. Dwight - edge HC Pave - New

5+80

5+40

5+00

Lt.

±

Rt.

14

|        |        |        |        |        |        |        |
|--------|--------|--------|--------|--------|--------|--------|
| 523.94 | 323.30 | 323.35 | 323.10 | 322.95 | 322.61 | 323.00 |
| 10.69  | 11.33  | 11.28  | 11.44  | 11.70  | 12.02  | 11.63  |
| 18     | 18     | 9      |        | 9      | 18     | 18     |
| Top    | put.   |        |        |        | put.   | Top    |

|        |       |       |       |       |       |        |
|--------|-------|-------|-------|-------|-------|--------|
| 324.65 | 323.0 | 324.0 | 324.0 | 323.0 | 322.0 | 323.68 |
| 9.9    | 10.7  | 10.6  | 10.6  | 10.8  | 11.7  | 10.95  |
| 18     | 18    | 9     |       | 9     | 18    | 18     |
| Top    | put.  |       |       |       | put.  | Top    |

|        |       |       |       |       |       |        |
|--------|-------|-------|-------|-------|-------|--------|
| 325.94 | 325.2 | 325.4 | 325.5 | 325.0 | 324.4 | 325.00 |
| 9.6    | 9.4   | 9.7   | 9.3   | 9.6   | 10.2  | 9.63   |
| 18     | 18    | 9     |       | 9     | 18    | 8      |
| Top    | put.  |       |       |       |       |        |

|        |       |       |       |       |       |        |
|--------|-------|-------|-------|-------|-------|--------|
| 327.22 | 326.6 | 326.0 | 326.0 | 326.5 | 325.8 | 326.40 |
| 7.4    | 8.0   | 7.7   | 7.7   | 8.1   | 8.8   | 8.23   |
| 18     | 18    | 9     |       | 9     | 18    | 18     |
| Top    | put.  |       |       |       | put.  | Top    |

334.63





Sec P. 17. for Rods around Returns.

0-1+50 = end

0-1+00

| L        | #       | RT      |
|----------|---------|---------|
| 7.20     | 7.4     | 7.1     |
| 18       | 18      | 9       |
| Top      | put     |         |
| 6.334.81 | 6.334.3 | 6.334.4 |
| 6.06     | 6.6     | 6.334.2 |
| 17.9     | 17.9    | 9       |
| Top      | put     |         |
| 6.334.67 | 6.334.5 | 6.334.8 |
| 7.20     | 7.4     | 7.1     |
| 18       | 18      | 9       |
| Top      | put     |         |
| 6.334.81 | 6.334.3 | 6.334.4 |
| 6.06     | 6.6     | 6.334.2 |
| 17.9     | 17.9    | 9       |
| Top      | put     |         |
| 6.334.56 | 6.334.3 | 6.334.2 |
| 7.20     | 7.4     | 7.1     |
| 18       | 18      | 9       |
| Top      | put     |         |
| 6.334.81 | 6.334.3 | 6.334.4 |
| 6.06     | 6.6     | 6.334.2 |
| 17.9     | 17.9    | 9       |
| Top      | put     |         |
| 6.334.56 | 6.334.3 | 6.334.2 |
| 7.20     | 7.4     | 7.1     |
| 18       | 18      | 9       |
| Top      | put     |         |
| 6.334.81 | 6.334.3 | 6.334.4 |
| 6.06     | 6.6     | 6.334.2 |
| 17.9     | 17.9    | 9       |
| Top      | put     |         |
| 6.334.56 | 6.334.3 | 6.334.2 |

340.87

Rods around Returns - Prop. to Prop.

|   |      |        |          |  |
|---|------|--------|----------|--|
| SW. Ret. 30.2 around - 4 parts - 7.5 Each |      |        |          |  |
| 340.87 - P. 16                            |      |        |          |  |
| Beg - S. end = S.L. Myrtle                | 5.93 | 334.94 | T = Top  |  |
|   | 6.6  | 334.3  | q = gut. |  |
| 7.5 - N.                                  | 6.04 | 334.83 | T        |  |
|   | 6.6  | 334.3  | q        |  |
| " = $\Phi$                                | 5.93 | 334.94 | T        |  |
|   | 6.6  | 334.3  | q        |  |
|   | 6.01 | 334.86 | T        |  |
|   | 6.5  | 334.4  | q        |  |
| 7.5 = End = W.L. Chamoune                 | 6.04 | 334.83 | T        |  |
|   | 6.40 | 334.47 | q        |  |
| N.W. Ret. 29.8 around - 4 - 7.5 each      |      |        |          |  |
| Beg. W. end = W.L. Chamoune               | 5.05 | 335.82 | T        |  |
|   | 5.40 | 335.47 | q        |  |
| 7.5 E                                     | 5.10 | 335.77 | T        |  |
|   | 5.50 | 335.37 | q        |  |
| " = $\Phi$                                | 5.09 | 335.78 | T        |  |
|   | 5.6  | 335.3  | q        |  |
| "   | 5.06 | 335.81 | T        |  |
|   | 5.8  | 335.1  | q        |  |

|  |      |        |   |  |
|--|------|--------|---|--|
| 7.5 = End - N.L. Myrtle                | 5.01 | 335.86 | T |  |
|  | 5.8  | 335.1  | q |  |
| N.E. Ret. - 29.4 around - 4 - 7.3 each |      |        |   |  |
| Beg - N. end = N.L. Myrtle             | 6.04 | 334.83 | T |  |
|  | 6.4  | 334.5  | q |  |
| 7.3                                    | 5.98 | 334.89 | T |  |
|  | 6.5  | 334.4  | q |  |
| " = $\Phi$                             | 6.03 | 334.84 | T |  |
|  | 6.6  | 334.3  | q |  |
| "                                      | 6.05 | 334.82 | T |  |
|  | 6.6  | 334.3  | q |  |
| 7.3 = end = E.L. Chamoune              | 6.11 | 334.76 | T |  |
|  | 6.7  | 334.2  | q |  |

See P. 18

S.E. Ret. 302 around - 4-7.5 each

Beg. E. end = E. Chamoune 7.08 333.79 T

7.7 333.2 q

7.5 W 7.09 333.78 T

7.6 333.3 q

" = E 7.02 333.85 T

7.5 333.4 q

" 7.01 333.86 T

7.6 333.3 q

7.5 = end = S.L. Myrtle 6.98 333.89 T

7.4 333.5 q

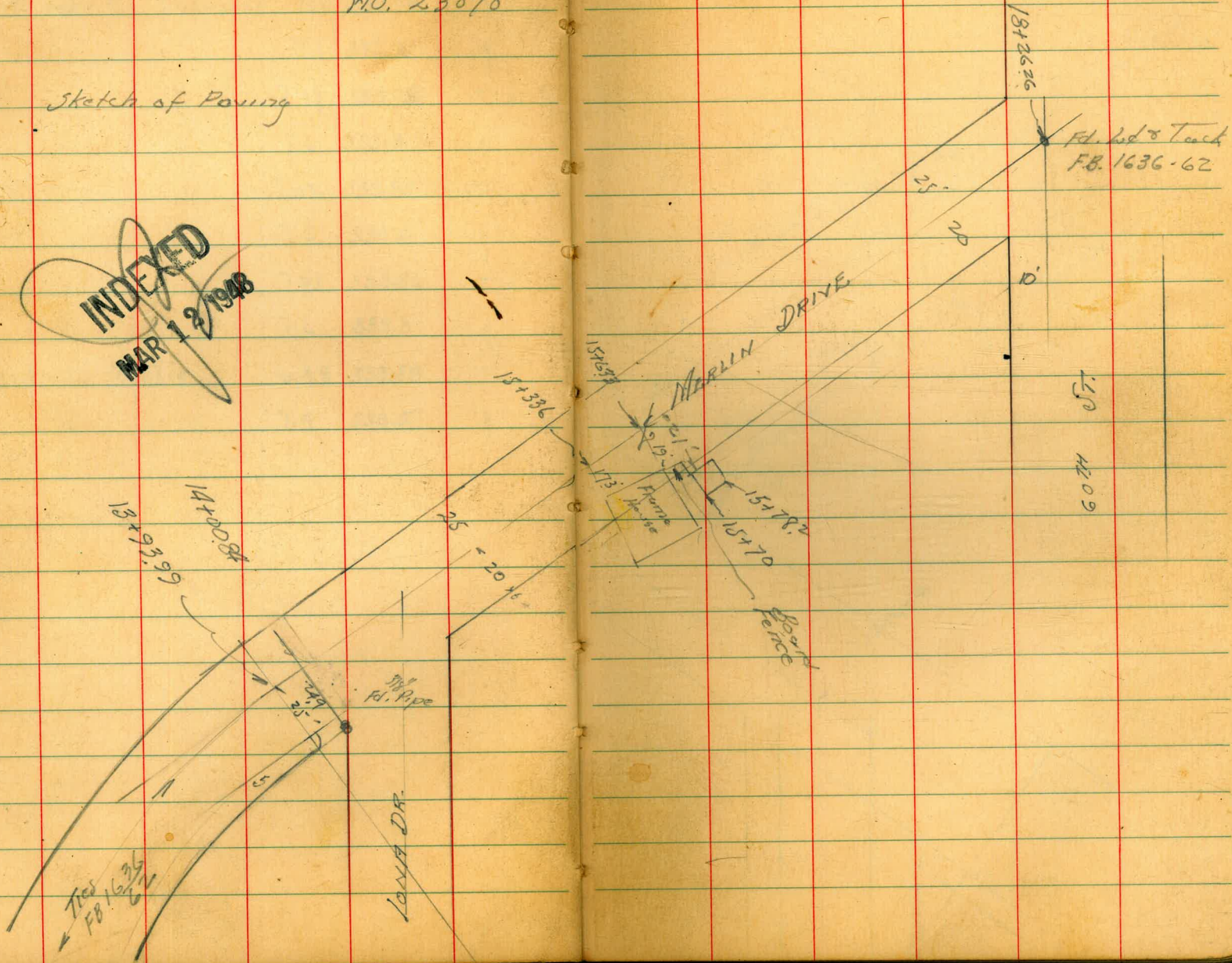
Walker  
Becker  
Williams  
5-11-48

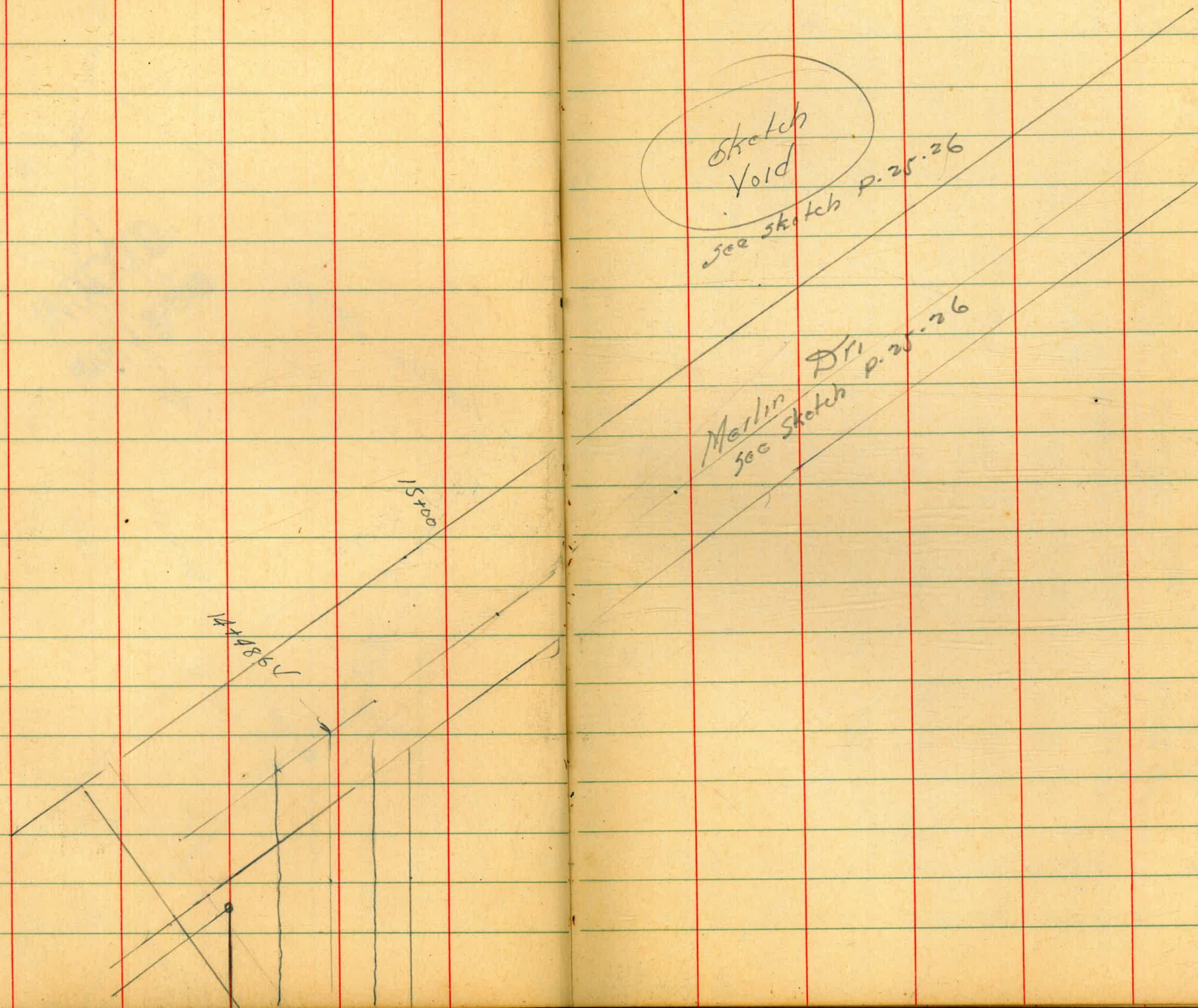
CROSS SECTION - MERLIN DRIVE  
FROM LONA to 60th St.

NO. 23070

Sketch of Paving

**INDEXED**  
MAR 12 1948





Merlin Drive Cross Sections

14+43.4 = 1/2 Iowa Dr. Sec. Parallel to Iowa Dr.

14+32 = Int. West edge Pav. Sec. Parallel to Iowa Dr.

14+18.20 = White Iowa Dr. Sec. Diag. on West line Iowa

14+00.84

13+54

13+00

TR 4.27 288.24 5.80 283.97  
7.64 289.77 282.13

|   |           |             |          |                             |             |                         |                           |                   |                   |                    |                    |
|---|-----------|-------------|----------|-----------------------------|-------------|-------------------------|---------------------------|-------------------|-------------------|--------------------|--------------------|
| 278.7                                       | 280.3     | 282.7       | 283.2    | 283.41                      | 283.40      | 283.47                  | 283.46                    | 283.64            | 283.82            | 283.70             | 284.56             |
| 95<br>58                                    | 79<br>40  | 55<br>30.44 | 50<br>29 | 183<br>10<br>N edge<br>Pav. | 484<br>Pav. | 477<br>15<br>Pav.       | 478<br>3.44<br>60<br>Pav. | 460<br>80<br>Pav. | 442<br>80<br>Pav. | 454<br>88<br>Pav.  | 468<br>120<br>Pav. |
| 278.8                                       | 280.5     | 282.7       | 282.2    | 282.73                      | 282.67      | 283.17                  | 282.79                    | 283.13            | 283.53            | 284.85             |                    |
| 94<br>47                                    | 77<br>36  | 55<br>30.44 | 60<br>9  | 551<br>8<br>N edge<br>Pav.  | 557<br>Pav. | 547<br>15<br>Pav.       | 545<br>30.44<br>Pav.      | 511<br>50<br>Pav. | 471<br>77<br>Pav. | 639<br>106<br>Pav. |                    |
| 278.7                                       | 280.4     | 282.6       | 281.8    | 281.9                       | 282.1       | 283.8                   | 284.2                     |                   |                   |                    |                    |
| 95<br>47                                    | 78<br>36  | 54<br>30.44 | 64<br>17 | 63                          | 61<br>24    | 44<br>30.44<br>N.W. Cor | 40<br>40                  |                   |                   |                    |                    |
| 277.2                                       | 278.3     | 280.3       | 280.9    | 280.9                       | 280.5       | 281.5                   | 282.1                     | 283.8             | 284.2             |                    |                    |
| 110<br>35                                   | 99<br>30  | 79<br>25    | 73<br>24 | 73<br>15                    | 77<br>18    | 70                      | 67<br>14                  | 61<br>21          | 44<br>25          | 40<br>30           |                    |
| 276.2                                       | 278.5     | 278.8       | 279.0    | 278.6                       | 279.1       | 278.8                   | 279.3                     | 279.4             | 281.4             | 281.4              |                    |
| 120<br>34                                   | 97<br>29  | 94<br>25    | 92<br>17 | 86<br>15                    | 91          | 94<br>11                | 89<br>14                  | 88<br>22          | 68<br>25          | 68<br>30           |                    |
| 276.9                                       | 276.9     | 276.4       | 276.8    | 276.6                       | 277.0       | 276.9                   | 278.8                     | 278.8             |                   |                    |                    |
| 113<br>25                                   | 113<br>20 | 118<br>15   | 114      | 116<br>10                   | 112<br>12   | 113<br>21               | 94<br>22                  | 89<br>25          |                   |                    |                    |
| 288.24                                      |           |             |          |                             |             |                         |                           |                   |                   |                    |                    |
| on 3/8" Iron Pipe S.E. Merlin & Iowa        |           |             |          |                             |             |                         |                           |                   |                   |                    |                    |
| 8th St. & Broadway & 60th St. E8 1369<br>64 |           |             |          |                             |             |                         |                           |                   |                   |                    |                    |





Merlin Dr. Cross Sections

18+20.17 Cont.

18+20.17 = Int. <sup>West</sup> cb 60th Sec. Diag. Parallel to 60th

18+14.08 = W. line 60th Sec. on line 60th

18+00 (Elec. Pole) 17+98 15' int P-77843

17+87

17+71.5 Pole Anchor 7.5' rt.

17+60

17+40 = Pit in Pav.

28746  
7

| Station | Notes | Depth | Notes                | Station | Notes | Depth | Notes |
|---------|-------|-------|----------------------|---------|-------|-------|-------|
| 281.64  |       | 582   | cb                   | 283.81  |       | 265   | cb    |
| 280.84  |       | 615   | cut                  | 283.81  |       | 50    | cut   |
| 282.64  |       | 482   | 24 on cb             | 284.58  |       | 181   | cb    |
| 281.75  |       | 371   | 24 Conc. Pav.        | 285.14  |       | 232   | cut   |
| 281.89  |       | 557   | 15.5 Pav.            | 285.14  |       | 75    | cut   |
| 282.87  |       | 459   | Pav.                 | 285.99  |       | 148   | cb    |
| 282.56  |       | 190   | 19.2 Topd.           | 285.29  |       | 217   | on cb |
| 281.71  |       | 578   | 19.2 Conc. Gut at cb |         |       |       |       |
| 282.5   |       | 531   | 16 Wedge Black Pav.  |         |       |       |       |
| 283.20  |       | 426   | on base 9 Pav.       |         |       |       |       |
| 283.79  |       | 367   | End Black Pav.       |         |       |       |       |
| 284.15  |       | 391   | 15.2 on Conc. Pav.   |         |       |       |       |
| 284.92  |       | 304   | 23.6 on gut on Pav.  |         |       |       |       |
| 285.24  |       | 222   | 29.6 on cb           |         |       |       |       |
| 281.7   |       | 58    |                      |         |       |       |       |
| 282.3   |       | 52    |                      |         |       |       |       |
| 283.06  |       | 440   |                      |         |       |       |       |
| 283.50  |       | 376   |                      |         |       |       |       |
| 283.5   |       | 40    |                      |         |       |       |       |
| 283.5   |       | 40    |                      |         |       |       |       |
| 286.6   |       | 39    |                      |         |       |       |       |
| 288.9   |       | 14    |                      |         |       |       |       |
| 289.0   |       | 15    |                      |         |       |       |       |
| 289.0   |       | 15    |                      |         |       |       |       |
| 281.6   |       | 59    |                      |         |       |       |       |
| 282.5   |       | 50    |                      |         |       |       |       |
| 283.35  |       | 411   |                      |         |       |       |       |
| 283.83  |       | 367   |                      |         |       |       |       |
| 285.9   |       | 16    |                      |         |       |       |       |
| 288.5   |       | 110   |                      |         |       |       |       |
| 289.0   |       | 115   |                      |         |       |       |       |
| 289.0   |       | 115   |                      |         |       |       |       |
| 281.5   |       | 60    |                      |         |       |       |       |
| 282.6   |       | 49    |                      |         |       |       |       |
| 283.83  |       | 363   |                      |         |       |       |       |
| 284.30  |       | 208   |                      |         |       |       |       |
| 285.8   |       | 17    |                      |         |       |       |       |
| 286.5   |       | 10    |                      |         |       |       |       |
| 288.8   |       | 113   |                      |         |       |       |       |
| 290.5   |       | 130   |                      |         |       |       |       |
| 291.5   |       | 140   |                      |         |       |       |       |
| 281.7   |       | 58    |                      |         |       |       |       |
| 282.9   |       | 46    |                      |         |       |       |       |
| 284.13  |       | 333   |                      |         |       |       |       |
| 284.63  |       | 283   |                      |         |       |       |       |
| 286.0   |       | 15    |                      |         |       |       |       |
| 286.5   |       | 10    |                      |         |       |       |       |
| 289.0   |       | 15    |                      |         |       |       |       |
| 289.5   |       | 20    |                      |         |       |       |       |
| 289.5   |       | 20    |                      |         |       |       |       |
| 290.1   |       | 26    |                      |         |       |       |       |

Merlin Dr. Cross Sections  
 Sketch P 25-26

chk Starting BM.

5.33 282.13

18+3843 = <sup>diag.</sup> 60th Sec. on 60th

287.46

4

4

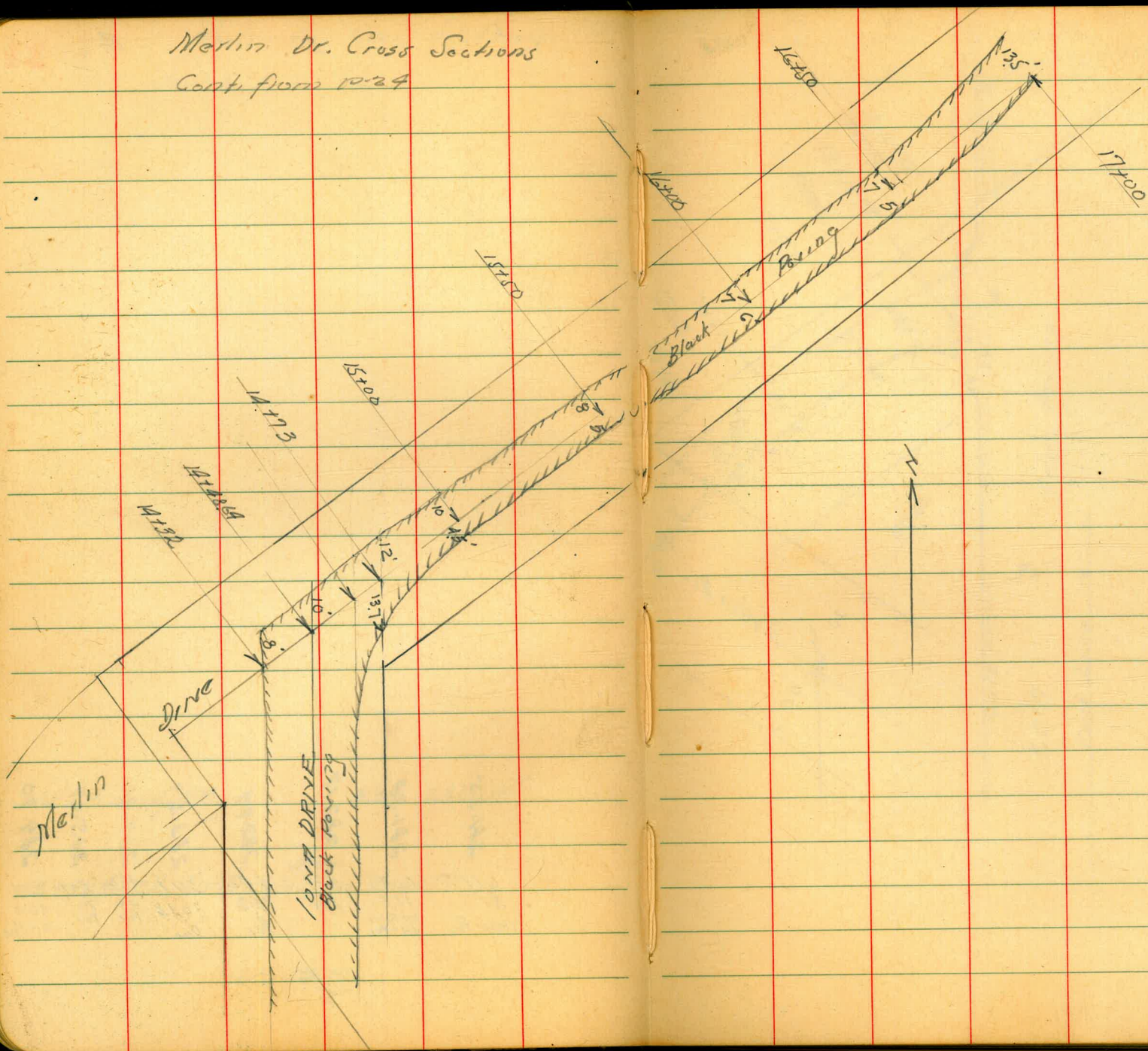
4

24

|           |                     |        |        |        |        |        |         |
|-----------|---------------------|--------|--------|--------|--------|--------|---------|
| 281.35    | 281.38              | 282.17 | 282.94 | 283.69 | 284.41 | 285.09 | 284.90  |
| 611       | 608                 | 599    | 452    | 377    | 305    | 237    | 256     |
| 31        | 177                 | 152    | 152    | 3044   | 46     | 70     | 100     |
| Nudge Pt. | on Run<br>MH = Pvc. | Pvc.   | Pvc.   | Doc    | Pvc    | Pvc.   | on Pvc. |

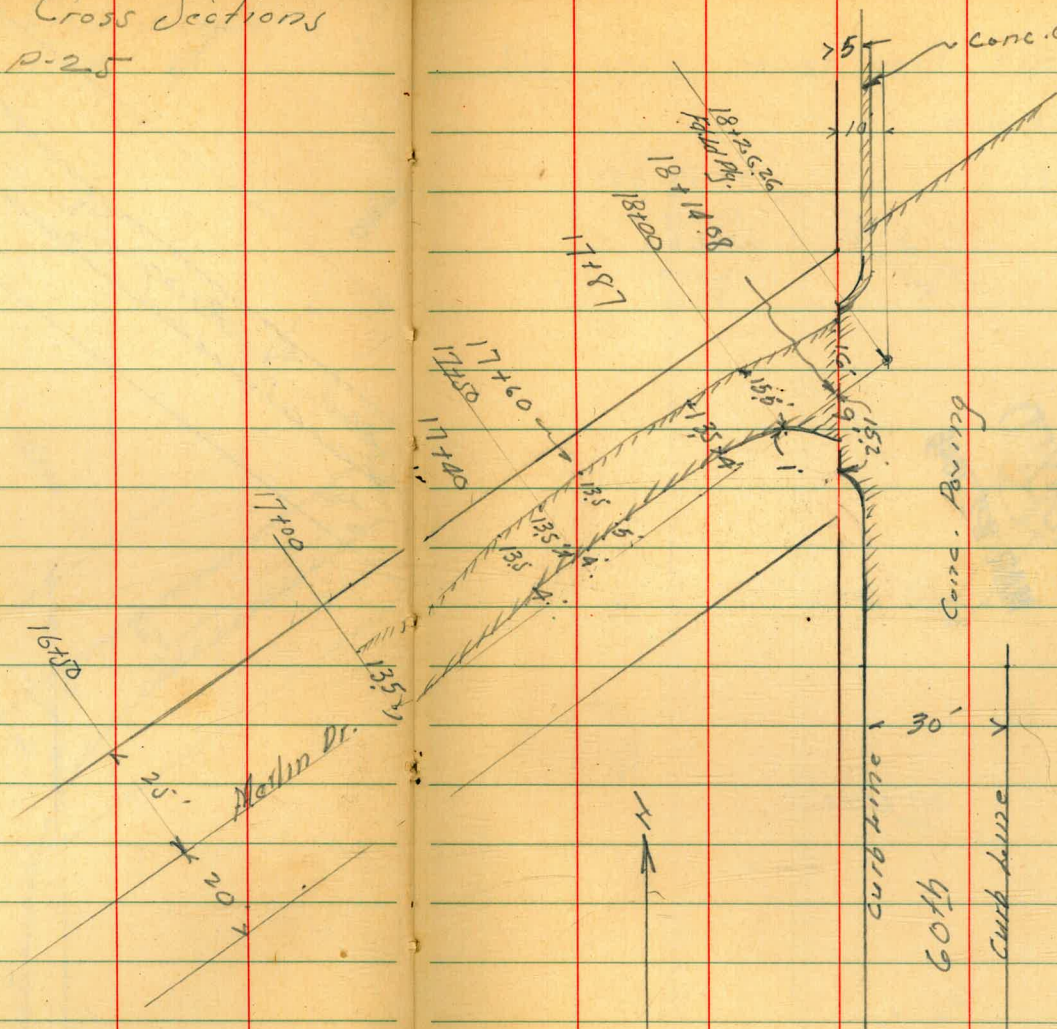
287.46

Merlin Dr. Cross Sections  
Cont from 10-24



25

Merlin Dr Cross Sections  
Cont from p. 25



Location - Prop. Sewer - along W.L.

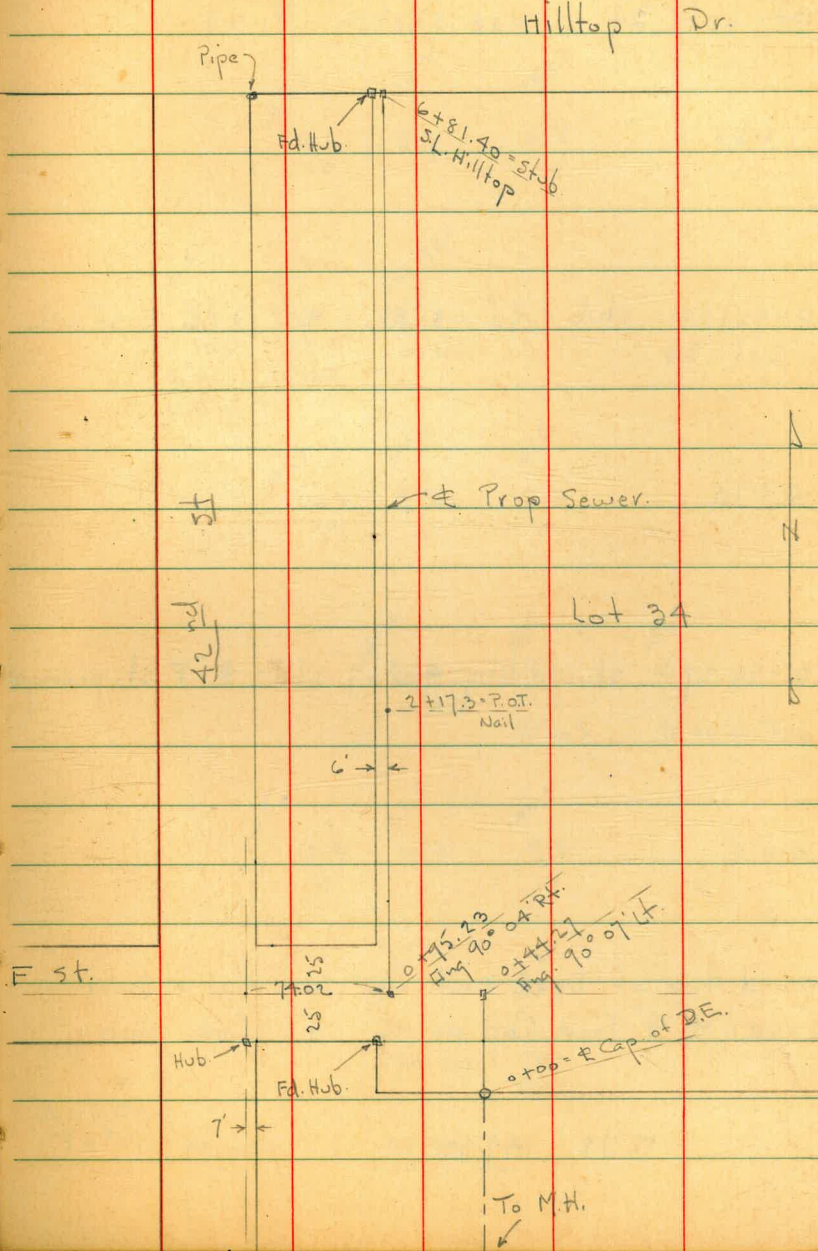
Lot 34 -

W.O. 21342

3-19-48

Osborne  
Hardin  
Worroll  
Rorer

INDEXED  
MAR 22 1948



Levels on Prop. Sewer along W. line  
of lot 34 - See sketch - P. 27.

L+50

0+95.23 = stub = 90° 04' Rt. =  $\pm$  F + 6' E. of W.L.  
Lot. 34.

0+70

0+44.27 = stub = Ang 90° 07' Lt. =  $\pm$  F st. prolonged

0+15

around top of Dead End. - 4" Conc. Pipe in Riser  
0+100 =  $\pm$  9" Iron Cap in 16" dia. Conc. slab

12.98    149.92

136.94

S.E. 7th Job.  
42' ± F

Lt

$\pm$

Rt.

28

144.0  
5.9  
10

144.1  
5.7  
10

144.1  
5.8  
10

100.5  
9.4  
10 W  
90° to  
U. Tang

139.8  
10.1  
10.5  
90° to E.

140.74  
9.18  
on Stub.

139.9  
10.0  
10

140.6  
9.3

141.9  
8.5  
10

141.13  
8.74  
on Stub.

141.5  
8.7  
10  
90° to S.

141.8  
8.1  
10  
90° to W. Tang.

139.5  
10.4  
10

139.9  
10.0

140.1  
9.8  
10

138.42  
11.50  
Top Cap.

138.30  
11.62  
Top  
Conc.

149.92

4+50

4+00

3+82- 4.9 Lt. - end fence

3+57- 6.6 Lt. - Ely. P. pole # J.P. 78713

3+50

3+37- 18.5 Lt. - C.I. Vent - Sewer at back of House

3+00 - 5.8 Lt. - fence

2+81- 6.5 Lt. - 9 Wash shed. - wood floor

2+70

2+32- 6.5 Lt. - Reg. Lath fence

T.P. 5.16 154.73 0.35 149.57

2+30 in Conc.

2+05- 2' Rt. - wly of 4x4 Clothes Line Post

2+00

1+95- 6.3 Lt. - Ely. P. pole # J.P. 170555

1+59- 9.4 Lt. - S.Ely. Cor. Sing. Gar. - Conc floor

| Lt    | #     | Pt.   |
|-------|-------|-------|
| 149.0 | 149.4 | 148.1 |
| 5.7   | 6.3   | 6.6   |
| 10    |       | 10    |

|       |       |       |                    |
|-------|-------|-------|--------------------|
| 149.2 | 149.4 | 148.1 | 146.3              |
| 5.5   | 6.3   | 6.6   | 8.4                |
| 10    |       | 10    | 10 - lowest ground |

|       |       |       |
|-------|-------|-------|
| 150.2 | 149.3 | 149.1 |
| 4.5   | 5.4   | 5.6   |
| 10    |       | 10    |

|        |        |       |
|--------|--------|-------|
| 152.26 | 150.6  | 149.7 |
| 19.7   | 4.1    | 5.0   |
| floor  | 18.5   |       |
| House  | ground |       |

|        |        |       |       |       |
|--------|--------|-------|-------|-------|
| 151.66 | 150.9  | 151.1 | 150.8 | 149.8 |
| 3.07   | 3.6    | 4.3   | 4.9   |       |
| 6.5    | 10     |       | 10    |       |
| floor  | ground |       |       |       |

|       |       |       |
|-------|-------|-------|
| 150.8 | 150.6 | 150.0 |
| 3.9   | 4.1   | 4.7   |
| 10    |       | 10    |

154.73

|       |       |       |       |
|-------|-------|-------|-------|
| 149.8 | 149.6 | 149.7 | 149.3 |
| 1.1   | 0.3   | 0.2   | 0.6   |
| 10    | 6     |       | 10    |

|       |       |       |
|-------|-------|-------|
| 147.7 | 147.8 | 147.5 |
| 2.2   | 2.1   | 2.4   |
| 10    |       | 10    |

|        |        |
|--------|--------|
| 144.65 | 149.92 |
| 5.27   |        |
| 9.4    |        |
| floor  |        |

s.w. 42<sup>nd</sup> + Hilltop  
 Check B.M. - Nail in Pole 1.70 154.82 154.82

6+81.40 = stub on S.L. Hilltop = end.

6+79 - 7.5 Lt =  $\pm$  Dead Man.

6+57 - 7.9 Lt = Ely. P. pole # J.P. 78711

6+50.

6+00

5+75 = 11 Lt = Ely. Prop Cesspool - for New House

5+66 = 6.2 Lt = end slab.

5+50

5+32 - 6.2 Lt = S.E. Cor. Conc. slab - Patio

5+06 - 7 Lt = Ely. P. pole # J.P. 78712

5+00

T.P. 7.94 156.52 6.15 148.58

4+86 - 4.6 Lt = Ely. 12 Pepper.

Lt.  $\pm$  Rt

154.3 154.0 153.8  
 2.2 2.52 2.7  
 10 10

153.6 152.7 152.6 152.1  
 2.9 3.8 3.9 4.4  
 10 4 10

151.8 151.3 151.1  
 4.7 5.2 5.4  
 10 10

151.08 151.60 151.4 151.0 150.6 150.0  
 2.92 5.1 5.5 5.9  
 26 26 11  
 5.44 Floor House ground 3 150.1  
 6.2 150.98 5.54 6.2 6.4 6.5  
 6 6  
 Top Slab ground 1 150.0  
 6.4 10

150.96 150.1 150.0  
 5.56 6.4  
 6.2  
 Top Slab 149.9 149.3 149.0  
 6.6 7.2 7.5  
 10 10

156.52

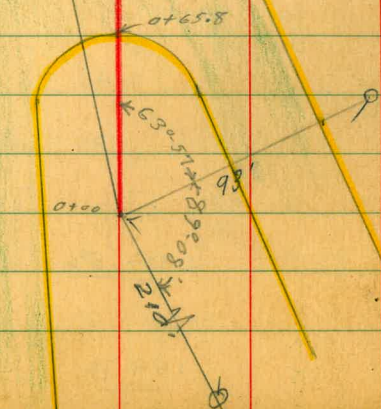
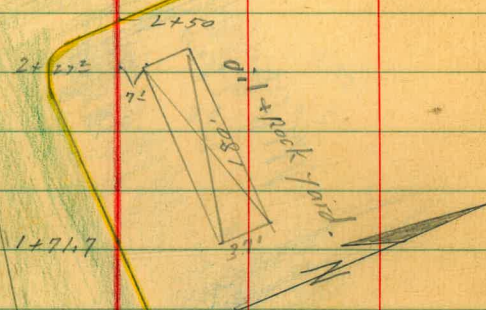
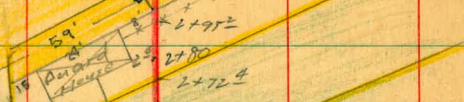
154.73



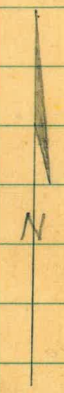
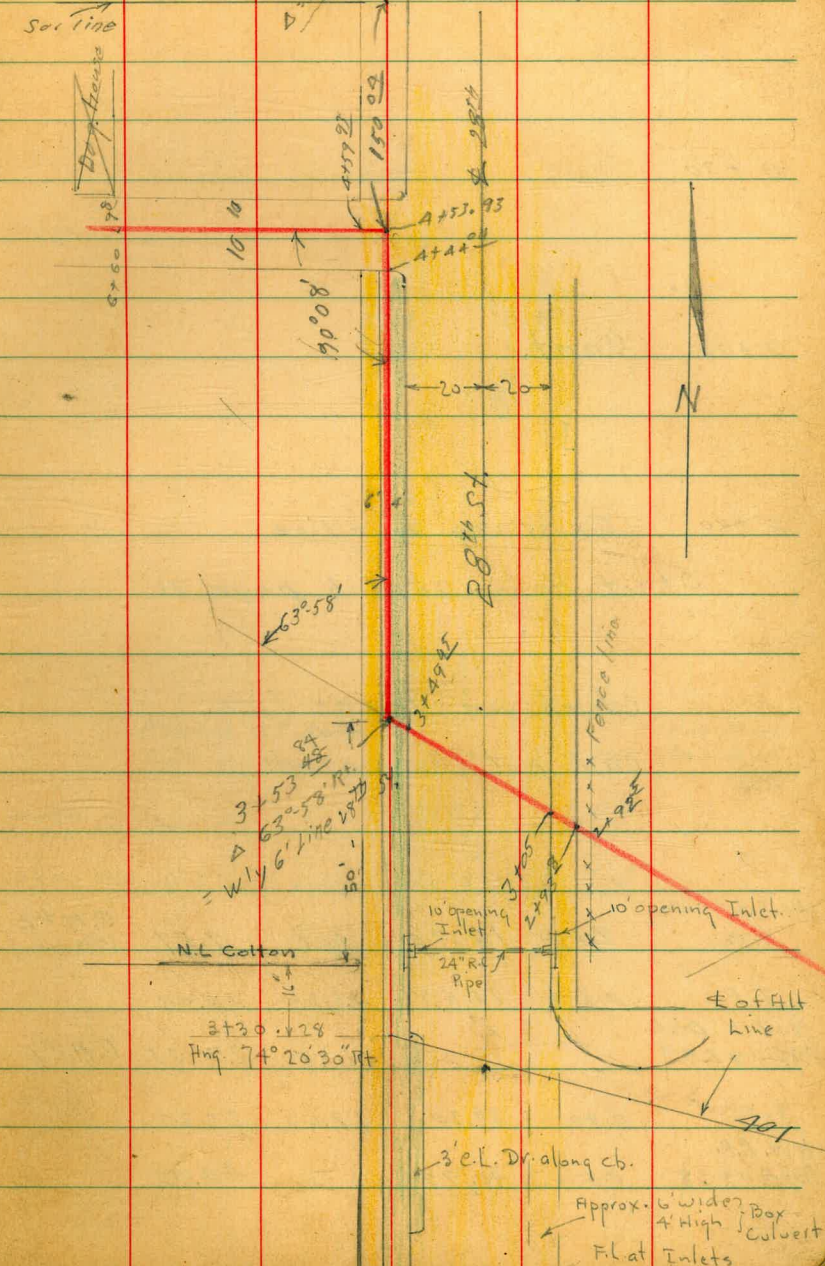
Sommermeier  
 W Moore  
 E Sherman  
 4/8/48

W.C. 31203

INDEXED  
 APR 13 1948



Main St. N.E. 71/47. 31  
 Main 28th  
 56' set lead disk



Approx. 6' wide, 4' High Box Culvert. Fil at Inlets

Colton. + 28<sup>th</sup>  
Sewer profile

0+30

0+00 Cont.

0+00 = Existing L in line

Start here. sketch page 31

check on lower line.  
can not be used.

|                         |      |       |       |       |        |
|-------------------------|------|-------|-------|-------|--------|
| Nail + gate             |      |       |       |       | B.M.#2 |
| T.P.                    | 7.13 | 16.70 | 7.01  | 7.57  | (Temp) |
| T.P.                    | 0.58 | 16.58 | 13.20 | 16.00 |        |
| N.W. 8' Disk            |      |       |       |       |        |
| Main + 28 <sup>th</sup> |      |       | 1.85  | 27.35 | B.M.#1 |
| T.P.                    | 0.90 | 29.20 | 12.67 | 28.30 |        |
| N.W. B.P.               |      |       |       |       |        |
| Boston + 28             | 0.54 | 40.97 | -     | 40.43 |        |

32

11.5  
5.2

8.38      11.4  
8.22      5.3  
Invert      ~~8~~  
Eig.      Grd.

9.13  
7.57  
top pipe

Paving at gate  
South of guard house 7.13      9.57      Too low  
Can not use

0+00 Invert      8.32      8.38  
3  
0+00 top of 8" V.C. pipe      7.57      9.13  
16.20

1+71<sup>e</sup> gutter10.84  
5.86

1+35

10.85  
5.85

1+00

10.95  
5.75

0+65.9 paving (in gutter)

11.32  
5.38

0+65.8 Top Bl.

11.86  
4.84

0+65

11.9  
7.8

16.70

2+49<sup>4</sup> End. oil + rock.11.6  
5.1

2+30

15.5  
1.22+27<sup>2</sup> P.O.T. 7<sup>2</sup> Rt. = Com. Bldg. <sup>this is lowest</sup> Bldg. near line15.6  
1.1  
15.9  
0.8  
7.1  
9.4  
19.9  
+3.2  
7.1  
Floor level

2+23

15.5  
1.2

2+00

13.6  
3.11+72<sup>6</sup> oil + rock11.2  
5.51+71<sup>3</sup> top. cl.11.22  
5.48

16.70

T.P. 10.31 19.88 7.13 9.57 B.M. 02 P.32

2+72<sup>5</sup> = Fence line

2+80 2<sup>6</sup> Lt. = Corr guard house

2+72<sup>4</sup> Top of

2+72<sup>3</sup> Gutter

2+62

2+50<sup>2</sup> Gutter (A.C. Pav.)

2+50 = Top of

16.70

|             |      |      |
|-------------|------|------|
| 10.70       | 11.6 | 11.6 |
| 6.00        | 5.1  | 5.1  |
| 2.6         | 2.5  |      |
| Floor level |      |      |

11.97  
4.73

11.50  
5.20

11.45  
5.25

11.12  
5.58

11.58  
5.12

16.70

3453<sup>84</sup><sub>42</sub> 63°-58' RT.

13.05  
6.83

3449<sup>45</sup> Top cl.

12.83  
7.05

3449<sup>9</sup> Gutter

12.26  
7.62

4272

12.13  
7.75

3405<sup>1</sup> Gutter, Conc. pave.

11.31  
8.57

3405 Top East Cl.

11.87  
8.01

2493<sup>8</sup> = E. edge conc. walk

11.85  
8.03

19.88

T.P. 9.0A 27.60 1.32 18.56  
 A+95 9' RT. = Pole # R27A9 (Tel. Co.)  
 A+90 = End Cold lay

18.5  
 1.4

A+59<sup>23</sup> = End Coro. pave. start cold lay

17.87  
 2.01

A+53<sup>23</sup> = E Alley Δ 89°-52' Lt.

17.57  
 2.31

A+44<sup>2</sup> paving

17.32  
 2.56

A+44<sup>24</sup> = Face Alley Ob.

17.52  
 2.36

A+41 2' RT. = Ob. pole # 1352

A+00

15.24  
 4.64

3+89 2<sup>5</sup> RT. = E water meter box

3+54 { 6' Lt. = W. edge walk  
 1' Lt. = E. Edge walk  
 4' RT. = Face Ob.

19.88

019 B.M. 0.00 40.43

B.M. #1 R.32 13.08 40.43 0.25 27.35

5+72 5<sup>th</sup> Rt. = 2" Water line

5+65

Far enough for sewer

Also: Cross. 2" Iron pipe line

5+60 9<sup>th</sup> Rt. S.E. Cor. Dog Kennel Bldg

5+50

5+23 4<sup>th</sup> Rt. = General Ord. level

5+09 16<sup>th</sup> Rt. = S.W. Cor. Cafe

27.60

±

38

17.5  
10.1

18.9  
8.7

|                 |      |        |              |
|-----------------|------|--------|--------------|
| 13.6            | 18.8 | 21.5   | 23.1         |
| 14 <sup>0</sup> | 8.8  | 6.1    | 4.5          |
| 10              |      | 7.9    | 7.9          |
|                 |      | 17+0ld | Approx Floor |

|      |      |      |      |      |      |
|------|------|------|------|------|------|
| 10.1 | 16.0 | 19.6 | 25.2 | 23.0 | 23.2 |
| 17.5 | 11.6 | 8.0  | 2.4  | 4.6  | 4.4  |
| 10   | 10   |      | 10   | 20   | 30   |

|      |      |      |      |      |
|------|------|------|------|------|
| 11.3 | 17.5 | 23.6 | 21.6 | 21.7 |
| 16.3 | 10.1 | 4.0  | 6.0  | 5.9  |
| 10   | 10   |      | 4    | 10   |

|      |      |        |       |       |
|------|------|--------|-------|-------|
| 20.1 | 20.1 | 21.09  | 21.23 | 21.9  |
| 7.5  | 7.5  | 6.51   | 6.37  | 5.7   |
|      | 10   | 10.4   | 16.3  | 10.4  |
|      | Ord  | Coffin | 97    | Cafe  |
|      |      | walk   | Bldg  | Floor |



Levels on Alternate Line - 28<sup>th</sup>

Colton - Sketch - P 31

W.O. 31203

4-14-48

7.0

2+50

| Lt.                            | E                           | RT.                |
|--------------------------------|-----------------------------|--------------------|
| 9.75<br>6.00<br>9.9<br>Top cb. | 9.23<br>6.52<br>9.9<br>gut. | 9.51<br>6.18<br>10 |

2+00

|                               |                           |                    |
|-------------------------------|---------------------------|--------------------|
| 10.06<br>5.69<br>8<br>Top cb. | 9.51<br>6.24<br>8<br>gut. | 9.68<br>6.07<br>10 |
|-------------------------------|---------------------------|--------------------|

1+50

|                    |               |                     |
|--------------------|---------------|---------------------|
| 9.96<br>5.79<br>10 | 10.17<br>5.58 | 10.19<br>5.56<br>10 |
|--------------------|---------------|---------------------|

1+00

|                     |               |                     |
|---------------------|---------------|---------------------|
| 10.23<br>5.52<br>10 | 10.33<br>5.42 | 10.67<br>5.08<br>10 |
|---------------------|---------------|---------------------|

0+56.3' t at cb face

|                     |                      |                       |
|---------------------|----------------------|-----------------------|
| 10.55<br>5.20<br>10 | 11.42<br>4.33<br>Top | 10.85<br>4.90<br>gut. |
|---------------------|----------------------|-----------------------|

0+00 = Same as P. 31 + 32

B.M. = Nail in 6.18 15.75  
Grate - P 32 9.57

15.75

3+65- 1.6 Rt. = Wly. P. pole # 1384

3+47.6 = opp. & 10' opening cb. inlet on Rt.

of 28<sup>th</sup> = 16' S. of N.L. Colton

3+30.28 = Ang. 74° 20' 30" Rt. = Root. nail on W.G. Line

3+26.3 = W. cb. 28<sup>th</sup> - outs along cb.

for Dr.

3+22.2 = Gut. - edge of Coldlay Roll along cb.

3+05.5 = ± 28<sup>th</sup> - outs along &

also about 6' wide  
+ 4' High Box Culvert - for F.L. See Inlets - U.S.

2+84.5 = E. cb. Line 28<sup>th</sup> - outs along cb. line

2+64 = 7' Rt. = P.C. of Cb. Ret

Lt

&

Rt

40

|       |       |       |         |           |
|-------|-------|-------|---------|-----------|
| 10.71 | 10.61 | 10.60 | 10.65   | 9.65      |
| 5.04  | 5.14  | 5.15  | 5.10    | 6.10      |
| 6.1   | 1.1   |       | 4       | 4         |
|       | walk  |       | Top cb. | Top Grate |

|       |                       |       |
|-------|-----------------------|-------|
| 10.45 | 10.37                 | 10.42 |
| 5.30  | 5.38                  | 5.33  |
| 6.1   | 1.1 at 90° to forward | Tamp. |
|       | walk                  |       |

|      |      |         |                    |         |         |                    |           |                     |         |       |       |       |
|------|------|---------|--------------------|---------|---------|--------------------|-----------|---------------------|---------|-------|-------|-------|
| 9.97 | 9.59 | 10.06   | 9.63               | 10.24   | 10.31   | 9.68               | 10.39     | 9.65                | 6.48    | 10.65 | 10.53 | 11.53 |
| 5.78 | 6.16 | 5.49    | 6.12               | 5.51    | 5.44    | 6.07               | 5.36      | 6.10                | 9.27    | 5.10  | 4.82  | 4.40  |
| 50   | 50   | 40.5    | 40.5               | 10      | Top cb. | 2.3                | 23        | 18.6                | FL 18.6 | 40    | 40    | 40    |
| Top  | gut  | Top cb. | gut                | Top cb. |         | gut                | Top Grate | Box Top             | Top cb. | gut   | Top   | Top   |
|      |      |         | at end of CL Drive |         |         | at end of CL Drive |           | ± 10' opening Inlet |         |       |       |       |
|      |      |         |                    |         | 9.87    |                    |           |                     |         |       |       |       |
|      |      |         |                    |         | 5.88    |                    |           |                     |         |       |       |       |

|      |      |       |       |       |       |       |
|------|------|-------|-------|-------|-------|-------|
| 9.71 | 9.99 | 10.15 | 10.11 | 10.29 | 10.41 | 11.07 |
| 6.04 | 5.76 | 5.60  | 5.54  | 5.46  | 5.34  | 4.68  |
| 50   | 30   | 10    |       | 10    | 26    | 40    |
|      |      |       |       |       | Blk.  |       |

|          |           |      |      |      |      |       |      |       |       |               |           |
|----------|-----------|------|------|------|------|-------|------|-------|-------|---------------|-----------|
| 8.72     | 9.53      | 8.33 | 9.61 | 9.09 | 9.92 | 10.01 | 9.09 | 10.24 | 9.62  | 10.65         | 2.18      |
| 16.03    | 6.22      | 7.22 | 6.14 | 6.66 | 5.83 | 5.74  | 6.06 | 5.51  | 6.13  | 5.10          | 13.57     |
| F.L. Box | 14.8      | 44.8 | 33   | 33   | 10   |       | 15   | 15    | 30    | 30            | Flow line |
|          | Top Grate | Top  | gut  |      |      |       | gut  | Top   | Top   | Top           | Top cb.   |
|          |           |      |      |      |      |       |      | PC    | Grate | ± 10' opening | Inlet     |
|          |           |      |      |      |      |       |      |       |       |               |           |
|          |           |      |      |      |      |       |      |       |       |               |           |

|         |      |       |      |             |
|---------|------|-------|------|-------------|
| 9.75    | 9.26 | 9.57  | 9.67 | 10.09       |
| 6.00    | 6.49 | 6.18  | 6.08 | 5.66        |
| 13.1    | 13.1 | 15.75 | 7    | 7           |
| Top cb. | gut. |       | gut. | Top cb. PC. |

L

E

Rt.

41

3+96.28 = 3+53.84 on 1<sup>st</sup> Line = Ang. Pt.

3+70

|       |      |       |       |       |
|-------|------|-------|-------|-------|
| 13.16 | 1304 | 13.03 | 12.87 | 12.30 |
| 2.59  | 2.71 | 2.72  | 2.88  | 3.46  |
| 6.1   | H    |       | 4     | 4     |
| walk  |      |       | Top   | cut.  |

|       |       |       |       |       |
|-------|-------|-------|-------|-------|
| 11.80 | 11.70 | 11.67 | 11.59 | 10.98 |
| 3.96  | 4.05  | 4.08  | 4.16  | 4.77  |
| 6.1   | H     |       | 4     | 4     |
| walk  |       |       | Top   | cut.  |

15.75

X-Section Diamond - from Lamont to  
E.L. Morrell

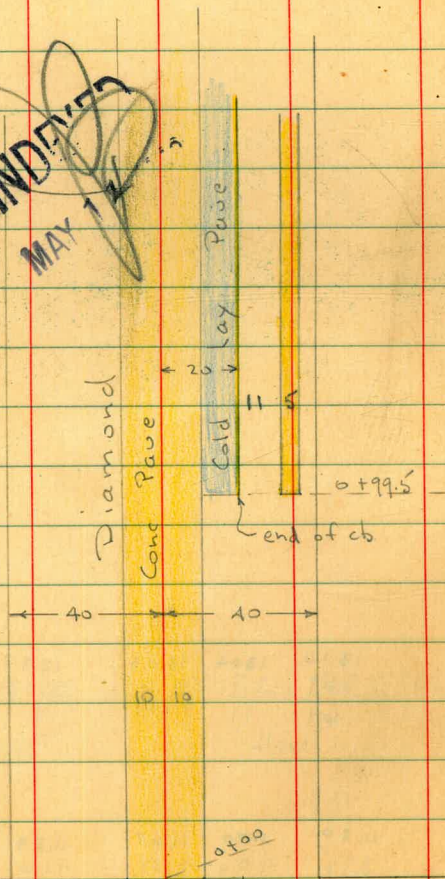
# 2329

W.O. 21372

5-10-48

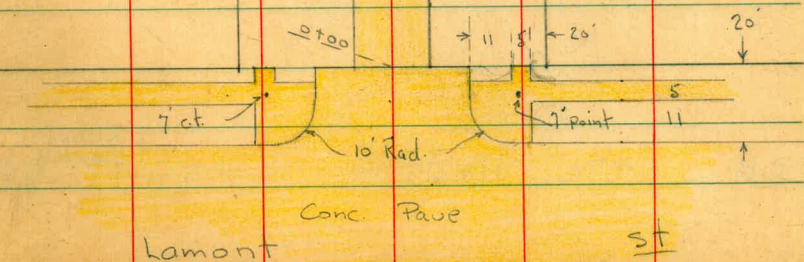
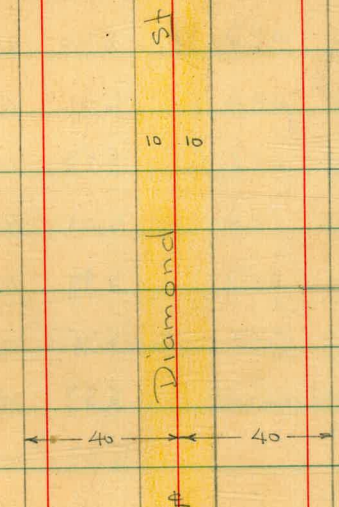
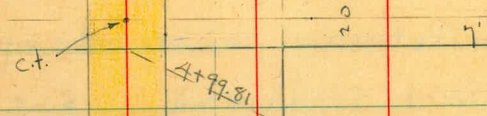
Osborne  
Hardin  
Worrell  
Rorer

**INDEXED**  
MAY 12 1948



Morrell St

Morrell St



Lamont

St

110.63

Rods around Returns - Diamond + Lamont.  
 S.E. Return - 36.2 around - 5 parts - 7.2 each  
 Beg. S. end = S.L. Diamond 5.64 104.99 T = Top  
 6.22 104.41 q = gut.  
 7.2 N. 5.61 105.02 T  
 6.16 104.47 q  
 5.60 105.03 T  
 6.06 104.57 q  
 5.53 105.10 T  
 6.01 104.62 q  
 5.49 105.14 T  
 5.95 104.68 q  
 7.2 = end = E.L. Lamont 5.57 105.06 T  
 5.87 104.76 q

B.M. 4.72 110.63

105.91

S.W.B.P.  
Diamond +  
Lamont.

110.63

N.E. Ret. - 35.6 around - 5 - 7.1 each  
 Beg E. end = E.L. Lamont 4.64 105.99 T  
 5.43 105.20 q  
 7.1 4.53 106.10 T  
 5.36 105.27 q  
 " 4.42 106.21 T  
 5.34 105.29 q  
 " 4.40 106.23 T  
 5.26 105.37 q  
 " 4.51 106.12 T  
 5.19 105.44 q  
 7.1 = end = N.L. Diamond 4.49 106.14 T  
 5.03 105.60 q

1322 - P.46

110.63



For 14" Steel pipe to E.

2+02 - 16.7 Rt. = ± 2.5 x 2.3 Box + grate = inlet

1+97 - 22.5 Rt. = ± P. pole # P 1931

1+95 - 40' Lt. = ± 8' Conc. Dr.

1+93 - 40' Lt. = ± 7' Conc. Dr.

1+84 - 25.4 Lt. = ± 8" Palm

1+80

1+72 - 40' Rt. = ± 3' Conc. walk

1+61 - 25.4 Lt. = ± 6" Palm

1+50

1+38 - 25.5 Lt. = ± 8" Palm

1+16 - 25.5 Lt. = ± 8" Palm

1+06 - 39' Lt. = ± 9' Cold lay Dri. - Gar. back

1+00

0+99 - 22.4 Rt. = ± P. pole # P 1917

0+98 - 37' Lt. = end wall

|  | Lt.         | ±           | Rt.                      |
|--|-------------|-------------|--------------------------|
|  | 1.51 109.13 | 5.1 105.02  | 103.83                   |
|  | 51          | 40          | 6.80                     |
|  |             |             | 103.89                   |
|  |             |             | 7.74                     |
|  |             |             | 16.7 = Flow line of Pipe |
|  |             |             | Top Grate                |
|  |             |             | 104.42                   |
|  |             |             | 6.21                     |
|  |             |             | Dr.                      |
|  |             |             | 6.04                     |
|  |             |             | Dr.                      |
|  | 1.5 109.1   | 5.1 105.1   |                          |
|  | 50          | 36          |                          |
|  | 40          | 20          |                          |
|  |             |             | 6.14                     |
|  |             |             | 104.47                   |
|  |             |             | 104.49                   |
|  |             |             | 6.22                     |
|  |             |             | 104.41                   |
|  |             |             | 6.17                     |
|  |             |             | 104.4                    |
|  |             |             | 5.5 104.8                |
|  |             |             | 5.5 105.0                |
|  |             |             | 5.6 105.0                |
|  |             |             | 5.5 105.11               |
|  |             |             | 5.4 104.79               |
|  |             |             | 40                       |
|  |             |             | 6' walk                  |
|  |             |             | 5.5 105.0                |
|  |             |             | 50                       |
|  | 1.9 108.7   | 5.2 105.4   |                          |
|  | 40          | 35          |                          |
|  |             |             | 5.1 104.9                |
|  |             |             | 5.1 104.73               |
|  |             |             | 5.1 104.76               |
|  |             |             | 5.9 104.65               |
|  |             |             | 5.1 104.8                |
|  |             |             | 5.1 105.1                |
|  |             |             | 50                       |
|  |             |             |                          |
|  | 1.9 108.7   | 4.27 106.36 |                          |
|  | 50          | 39 = Dr.    |                          |
|  | Dr.         |             |                          |
|  | 2.5 108.1   | 4.7 105.9   |                          |
|  | 50          | 35          |                          |
|  | 40          | 20          |                          |
|  |             |             | 5.6 104.07               |
|  |             |             | 5.6 104.98               |
|  |             |             | 5.7 104.93               |
|  |             |             | 5.9 104.7                |
|  |             |             | 4.6 106.0                |
|  |             |             | 40                       |
|  |             |             | 5.1 105.5                |
|  |             |             | 5.2 105.4                |
|  | 4.8 105.8   |             |                          |
|  | 37          |             |                          |
|  | ground.     |             |                          |

110.63







check Starting B.M.

5.01 105.92 105.91

T.P. 8.76 110.93 9.63 102.17

80' E. = E.L. Morrell - Prod. = 0+00 ahead  
See P. 49

67.4 E - 40.1 Lt. = ± 2' Conc Walk + step

60' E = E. cb.

40' E = ±

20' E = W. cb

17.5 E - 39.5 Lt. = ± Guy Pole

0.5 E. of W.L.

4+99.81 = W.L. Morrell - Prod.

|     |     |     |     |      |      |      |      |      |
|-----|-----|-----|-----|------|------|------|------|------|
| 4.3 | 4.4 | 5.1 | 7.1 | 7.36 | 7.29 | 7.42 | 7.53 | 7.52 |
| 50  | 40  | 36  | 20  | 10   |      | 10   | 20   | 40   |

|      |          |           |           |
|------|----------|-----------|-----------|
| 3.70 | 4.07     | 4.43      | 4.43      |
| 52.2 | 42.2     | 40.1      | 40.1      |
| walk | Top-walk | Bot. step | Bot. step |

|     |     |     |     |      |      |     |      |         |      |
|-----|-----|-----|-----|------|------|-----|------|---------|------|
| 3.8 | 5.8 | 5.2 | 7.0 | 7.06 | 7.16 | 7.2 | 8.4  | 7.8     | 8.6  |
| 50  | 40  | 20  | 10  |      |      | 20  | 40.2 | 40.2    | 6.8  |
|     |     |     |     |      |      |     | 9.4  | Top     | Top  |
|     |     |     |     |      |      |     |      | end cb. | 9.20 |

|     |     |     |     |       |       |       |       |      |
|-----|-----|-----|-----|-------|-------|-------|-------|------|
| 4.2 | 5.6 | 6.5 | 6.8 | 6.9   | 6.9   | 7.0   | 7.0   | 7.0  |
| 50  | 40  | 20  | 10  | 6.8   | 6.8   | 6.8   | 6.8   | 6.8  |
|     |     |     |     | 95.97 | 96.00 | 95.90 | 95.79 | 95.3 |
|     |     |     |     |       |       |       |       |      |

|       |       |       |        |        |        |       |       |       |        |        |
|-------|-------|-------|--------|--------|--------|-------|-------|-------|--------|--------|
| 5.976 | 5.971 | 6.966 | 6.9623 | 6.9626 | 6.9618 | 7.958 | 6.959 | 7.950 | 6.9592 | 7.9517 |
| 50    | 40    | 20    | 10     | 5      | 10     | 17    | 20    | 39.9  | 39.9   | 6.8    |
|       |       |       |        |        |        |       |       | 9.4   | Top    | Top    |
|       |       |       |        |        |        |       |       |       | end cb |        |

|     |     |     |     |       |       |       |       |
|-----|-----|-----|-----|-------|-------|-------|-------|
| 4.4 | 5.3 | 6.9 | 6.3 | 6.25  | 6.3   | 6.966 | 6.961 |
| 50  | 40  | 20  | 10  | 6     | 5     | 20    | 40    |
|     |     |     |     | 96.47 | 96.55 | 96.47 | 96.6  |
|     |     |     |     |       |       |       |       |

|     |     |     |      |      |      |       |       |     |     |
|-----|-----|-----|------|------|------|-------|-------|-----|-----|
| 4.3 | 5.3 | 5.9 | 6.26 | 6.16 | 6.24 | 6.966 | 5.975 | 5.1 | 5.3 |
| 50  | 40  | 20  | 10   | 6    | 10   | 17    | 20    | 40  | 50  |
|     |     |     |      |      |      |       |       |     |     |

102.80

Add Sections on Diamond - E. of  
Morrell -

W.O. 31372

5-19-48  
7.0.

0+75

0+74 - 26.2 Lt. = ± 30" Palm

0+50

0+48.5 - 22.7 Rt. = ± P. pole # 429329-H

0+41 - 38.5 Rt = ± 6.5 Dr. - 2 = 2' Conc strips

0+27 - 37.4 Lt. = ± 2.8 Conc. step + walk

0+25

0+10 - 22 Rt = ± F.H.

0+17 - 38.6 Rt. = ± 3 Conc walk

0+00 = E.L. Morrell Prod.

2.42 99.40

96.98

4.

#

Rt.

49

5.6 95.8  
50

5.9 93.5  
40

6.1 93.3  
20

5.9 93.51  
10  
edge

5.9 93.57  
50

6.0 93.39  
10  
edge

6.2 93.2  
20

5.8 93.6  
25

6.9 92.5  
40

5.7 92.2  
50

5.9 95.5  
50

5.9 95.5  
40

4.8 94.6  
20

5.1 94.22  
10  
edge

5.2 94.20  
20

5.3 94.09  
10  
edge

5.4 94.0  
20

5.9 94.4  
25

5.6 93.8  
40

5.7 93.7  
50

1.3 98.03  
49.4

1.7 97.68  
38.8 =  
Top = walk

2.2 97.20  
37.4 Top  
of bbt  
step

4.9 94.50  
38.6  
Dr.

5.0 94.32  
48.5  
Dr.

1.5 97.9  
50

1.8 97.6  
40

2.1 96.3  
30

4.3 95.1  
20

4.5 94.84  
10  
edge

4.8 94.84  
56

4.6 94.76  
10  
edge

4.5 94.9  
20

4.4 95.00  
40

4.5 94.9  
50

4.5 94.85  
38.6  
walk

4.5 94.87  
54.4  
at porch

99.40

2+00 - See sketch P-42

1+50 = Rods on cb. - walk

0+99.5 = Beg cb + walk in on Rt

0+96 = 26.4 Lt = ± 30" Palm

0+89.5 = 40' Lt = ± 8.5' Conc. Dr.

Lt      Lt      Rt

|        |       |       |       |       |        |       |        |          |        |       |
|--------|-------|-------|-------|-------|--------|-------|--------|----------|--------|-------|
| 6.934  | 6.930 | 6.929 | 6.928 | 6.928 | 6.9271 | 6.925 | 6.9252 | 6.9265   | 6.9270 | 6.926 |
| 50     | 40    | 20    | 10    | 6     | 10     | 20    | 20     | 31       | 36     | 40    |
|        |       |       | edge  |       | edge   | gut   | Top    | (end of) | walk   |       |
| 93.45  | 93.29 |       |       |       |        |       |        |          |        |       |
| 59.5   | 6.11  |       |       |       |        |       |        |          |        |       |
| 60     | 40    |       |       |       |        |       |        |          |        |       |
| on Dr. | Dr.   |       |       |       |        |       |        |          |        |       |

99.40

90.76  
8.64  
20  
gut

91.72  
9.64  
20  
Top

91.30  
8.10  
20  
Top

91.42  
7.98  
31  
walk

91.46  
7.94  
36

X-Section Emerald St. between  
Cass and Everts

6-28-48

Roberts  
Greer  
Rosen

INDEXED  
WK  
DEC 30 1948

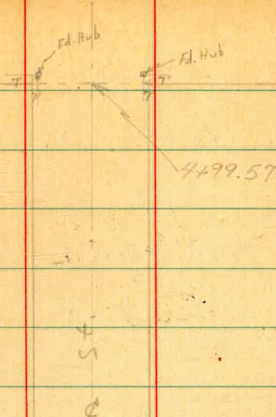
NO 31563

SEE FB 2108  
9

7-26-50

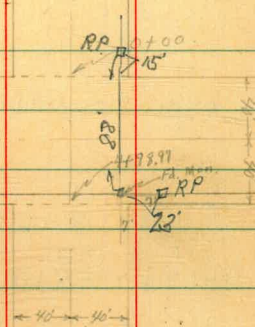
Everts

St. 51

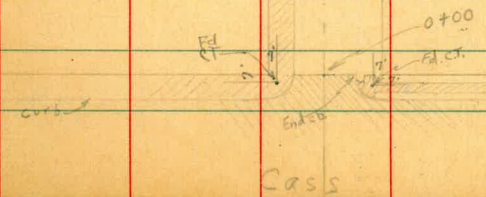


Daves

FAHBY  
7-26-50  
Diamond



End of  
Sidewalk



Cass

St.

X-Sect Emerald - Cass to Events

80' St. Dirt Graded

0+49 Driveway to Park Lot (End)

0+18 Driveway to Park Lot (Begin)

0+00 Prop. Line Cass

0-14 Curb Line Cass

0-40 E Cass

2.96 42.98

T.P. 1.06 47.77 7.75 40.02

T.P. 1.29 55.91 9.20 46.71

T.P. 0.62 62.80 8.18 54.62

B.M. NE Spike in Pole Ma & Dawes (1763 pg 56) 62.18

Lt.

E

Rt.

52

|  |  |  |                        |  |  |                        |  |  |
|--|--|--|------------------------|--|--|------------------------|--|--|
|  |  |  | 32.66                  |  |  | 38.24                  |  |  |
|  |  |  | $\frac{332}{(C.A.C.)}$ |  |  | $\frac{412}{(C.A.C.)}$ |  |  |
|  |  |  | 33.36                  |  |  | 38.55                  |  |  |
|  |  |  | $\frac{360}{(C.A.C.)}$ |  |  | $\frac{445}{(C.A.C.)}$ |  |  |
|  |  |  | 37.24                  |  |  | 38.24                  |  |  |
|  |  |  | $\frac{374}{40}$       |  |  | $\frac{474}{73}$       |  |  |
|  |  |  | 38.08                  |  |  | 38.15                  |  |  |
|  |  |  | $\frac{400}{26}$       |  |  | $\frac{485}{13}$       |  |  |
|  |  |  | 38.30                  |  |  | 37.93                  |  |  |
|  |  |  | $\frac{469}{26}$       |  |  | $\frac{595}{13}$       |  |  |
|  |  |  | 38.24                  |  |  | 37.69                  |  |  |
|  |  |  | $\frac{474}{73}$       |  |  | $\frac{529}{26}$       |  |  |
|  |  |  | 38.15                  |  |  | 38.18                  |  |  |
|  |  |  | $\frac{485}{13}$       |  |  | $\frac{480}{26}$       |  |  |
|  |  |  | 37.93                  |  |  | 38.18                  |  |  |
|  |  |  | $\frac{595}{13}$       |  |  | $\frac{480}{26}$       |  |  |
|  |  |  | 37.69                  |  |  | 38.22                  |  |  |
|  |  |  | $\frac{529}{26}$       |  |  | $\frac{476}{13}$       |  |  |
|  |  |  | 38.18                  |  |  | 40.05                  |  |  |
|  |  |  | $\frac{480}{26}$       |  |  | 2.93                   |  |  |
|  |  |  | 38.15                  |  |  | $\frac{360}{700}$      |  |  |
|  |  |  | $\frac{480}{26}$       |  |  | 37.38                  |  |  |
|  |  |  | 38.22                  |  |  | $\frac{385}{50}$       |  |  |
|  |  |  | $\frac{476}{13}$       |  |  | 477                    |  |  |
|  |  |  | 38.22                  |  |  | $\frac{409}{36.5}$     |  |  |
|  |  |  | $\frac{476}{13}$       |  |  | 447                    |  |  |
|  |  |  | 38.22                  |  |  | $\frac{447}{50}$       |  |  |
|  |  |  | $\frac{476}{13}$       |  |  | 409                    |  |  |
|  |  |  | 38.22                  |  |  | $\frac{447}{50}$       |  |  |
|  |  |  | $\frac{476}{13}$       |  |  | 427                    |  |  |
|  |  |  | 38.22                  |  |  | $\frac{447}{50}$       |  |  |
|  |  |  | $\frac{476}{13}$       |  |  | 482                    |  |  |
|  |  |  | 38.22                  |  |  | $\frac{447}{50}$       |  |  |
|  |  |  | $\frac{476}{13}$       |  |  | 37.80                  |  |  |
|  |  |  | 38.22                  |  |  | 37.44                  |  |  |
|  |  |  | $\frac{476}{13}$       |  |  | $\frac{531}{26}$       |  |  |
|  |  |  | 38.22                  |  |  | $\frac{566}{36.5}$     |  |  |
|  |  |  | $\frac{476}{13}$       |  |  | 498                    |  |  |
|  |  |  | 38.22                  |  |  | $\frac{589}{50}$       |  |  |
|  |  |  | $\frac{476}{13}$       |  |  | 5.18                   |  |  |
|  |  |  | 38.22                  |  |  | $\frac{518}{50}$       |  |  |
|  |  |  | $\frac{476}{13}$       |  |  | 669                    |  |  |
|  |  |  | 38.22                  |  |  | $\frac{573}{700}$      |  |  |
|  |  |  | $\frac{476}{13}$       |  |  | 37.05                  |  |  |
|  |  |  | 38.22                  |  |  | $\frac{37.05}{100}$    |  |  |

42.98

T.P. 757 48.93 1.62 41.36

2+50

2+33 @ Driveway 9' Wide

2+00

1+50

1+00 Driveway to Park Lot (End)

0+69 Driveway to Park Lot (Begin)

0+50

42.98

Lt.

Rt. 53

|      |      |      |       |      |      |      |
|------|------|------|-------|------|------|------|
| 42.2 | 41.7 | 41.1 | 48.93 | 40.9 | 41.6 | 41.1 |
| 0.8  | 1.3  | 1.9  | 4.3   | 2.1  | 1.4  | 1.9  |
| 40   | 26   | 23   | 1.7   | 26   | 28   | 40   |

|       |       |
|-------|-------|
| 42.24 | 41.97 |
| 3.74  | 1.01  |
| 50.2  | 40.2  |

|      |      |      |      |      |      |      |
|------|------|------|------|------|------|------|
| 41.1 | 40.6 | 40.3 | 40.6 | 40.1 | 40.8 | 40.8 |
| 1.9  | 2.4  | 2.7  | 2.4  | 2.9  | 2.2  | 2.2  |
| 40   | 26   | 25   | 24   | 26   | 28   | 40   |

|      |      |      |      |      |      |
|------|------|------|------|------|------|
| 40.6 | 40.0 | 39.9 | 39.5 | 40.2 | 40.1 |
| 2.4  | 3.0  | 3.1  | 3.5  | 2.8  | 2.9  |
| 40   | 29   | 31   | 26   | 28   | 40   |

|        |        |      |      |      |
|--------|--------|------|------|------|
| 40.15  | 39.35  | 39.3 | 38.7 | 39.1 |
| 2.80   | 3.63   | 3.7  | 4.3  | 3.9  |
| 40     | 26     | 27   | 25   | 26   |
| (conc) | (conc) |      |      | 40   |

|        |        |
|--------|--------|
| 39.87  | 39.09  |
| 3.11   | 3.19   |
| 40     | 26     |
| (conc) | (conc) |

|       |       |       |      |      |      |      |
|-------|-------|-------|------|------|------|------|
| 39.85 | 39.43 | 38.78 | 38.8 | 38.3 | 38.2 | 38.5 |
| 3.4   | 3.55  | 4.2   | 4.2  | 4.7  | 4.8  | 4.5  |
| 40    | 26    | 26    | 42   | 20   | 25   | 40   |

42.98

4+50 R. Sidewalk 2.5' Wide

4+12 R. Sidewalk 3.2' Wide

4+00

3+50

3+36 R. Sidewalk 3' Wide

3+02.5 R. Sidewalk 1.6' Wide

3+00

48.93

|                  |                 |                 |                 |
|------------------|-----------------|-----------------|-----------------|
| 45.43            | 45.2            | 44.5            | 43.7            |
| $\frac{380}{40}$ | $\frac{37}{40}$ | $\frac{42}{25}$ | $\frac{52}{21}$ |
| (cont)           |                 |                 |                 |

44.61  
 $\frac{432}{40}$

|                 |                 |                 |
|-----------------|-----------------|-----------------|
| 44.0            | 43.7            | 43.1            |
| $\frac{49}{40}$ | $\frac{52}{24}$ | $\frac{58}{22}$ |

|                 |                 |                 |
|-----------------|-----------------|-----------------|
| 43.4            | 43.3            | 42.5            |
| $\frac{55}{40}$ | $\frac{56}{24}$ | $\frac{64}{21}$ |

43.33  
 $\frac{560}{298}$

42.69  
 $\frac{624}{303}$

|                 |                 |                 |
|-----------------|-----------------|-----------------|
| 42.6            | 42.2            | 41.8            |
| $\frac{63}{40}$ | $\frac{67}{24}$ | $\frac{71}{23}$ |

42.1  
68

48.73

44.4  
45

43.6  
53

42.9  
600

41.5  
26

|                 |                 |                 |
|-----------------|-----------------|-----------------|
| 43.5            | 44.6            | 44.1            |
| $\frac{54}{26}$ | $\frac{43}{28}$ | $\frac{48}{40}$ |

|                 |                 |                 |
|-----------------|-----------------|-----------------|
| 42.9            | 42.8            | 43.3            |
| $\frac{60}{26}$ | $\frac{51}{28}$ | $\frac{56}{40}$ |

|                 |                 |                 |
|-----------------|-----------------|-----------------|
| 42.2            | 42.9            | 42.4            |
| $\frac{64}{26}$ | $\frac{60}{28}$ | $\frac{65}{40}$ |

|                 |                 |                 |
|-----------------|-----------------|-----------------|
| 41.5            | 42.3            | 41.9            |
| $\frac{74}{26}$ | $\frac{66}{28}$ | $\frac{70}{40}$ |



1+50

1+45.5 & Driveway 65' Wide

1+00

T.P. 10.22 56.42 2.73 46.20

0+50

0+00 }  
5+78.97 } East Line Dawes

5+38.97 & Dawes

4+98.97 West Line Dawes

48.93

|                 |                 |                 |                 |                 |                 |                 |
|-----------------|-----------------|-----------------|-----------------|-----------------|-----------------|-----------------|
| 48.5            | 48.3            | 47.8            | 47.8            | 47.0            | 47.5            | 46.7            |
| $\frac{79}{40}$ | $\frac{81}{22}$ | $\frac{86}{20}$ | $\frac{84}{21}$ | $\frac{84}{19}$ | $\frac{89}{21}$ | $\frac{97}{40}$ |

|                 |                 |                 |                   |                 |                 |                 |
|-----------------|-----------------|-----------------|-------------------|-----------------|-----------------|-----------------|
| 48.4            | 48.2            | 47.0            | 56.42             | 46.2            | 46.8            | 46.1            |
| $\frac{85}{40}$ | $\frac{87}{23}$ | $\frac{89}{20}$ | $\frac{47.1}{18}$ | $\frac{37}{19}$ | $\frac{31}{22}$ | $\frac{28}{40}$ |

|                 |                 |                 |      |                 |                 |                 |
|-----------------|-----------------|-----------------|------|-----------------|-----------------|-----------------|
| 47.1            | 46.3            | 46.0            | 45.9 | 45.4            | 46.1            | 46.4            |
| $\frac{18}{40}$ | $\frac{26}{21}$ | $\frac{29}{20}$ | 30   | $\frac{35}{17}$ | $\frac{28}{20}$ | $\frac{25}{40}$ |

|                 |                 |      |                 |                 |  |  |
|-----------------|-----------------|------|-----------------|-----------------|--|--|
| 46.1            | 45.8            | 45.4 | 45.0            | 44.6            |  |  |
| $\frac{28}{40}$ | $\frac{31}{20}$ | 35   | $\frac{39}{20}$ | $\frac{43}{40}$ |  |  |

|                 |                 |      |                 |                 |                 |
|-----------------|-----------------|------|-----------------|-----------------|-----------------|
| 45.5            | 44.4            | 44.9 | 44.2            | 44.5            | 46.6            |
| $\frac{34}{40}$ | $\frac{45}{20}$ | 40   | $\frac{47}{26}$ | $\frac{24}{29}$ | $\frac{23}{40}$ |

48.93

Rt. 55

3786<sup>5</sup> ⊕ Driveway 8' Wide

51.37

3773 ⊕ Sidewalk on Rt. 3' Wide

$\frac{505}{37 \text{ Rt}}$

3750

3700

2768 ⊕ Driveway 2-2' Strips 7' overall

2750

2718<sup>5</sup> ⊕ Sidewalk 3' Wide

2700

56.42

Lt.

⊕

Rt.

56

53.88

$\frac{254}{30}$

53.61

$\frac{2.81}{30}$

52.9

$\frac{3.5}{40}$

52.6

$\frac{3.8}{23}$

51.8

$\frac{4.6}{21}$

52.0

$\frac{4.4}{14}$

51.5

$\frac{4.9}{17}$

52.0

$\frac{4.4}{19}$

50.8

$\frac{5.5}{40}$

52.2

$\frac{4.2}{40}$

51.9

$\frac{4.5}{24}$

52.7

$\frac{5.7}{27}$

51.1

$\frac{5.3}{53}$

52.9

$\frac{5.5}{20}$

52.7

$\frac{5.7}{40}$

51.29

$\frac{4.63}{39.8}$

51.2

$\frac{5.2}{70}$

52.9

$\frac{5.5}{27}$

49.6

$\frac{4.8}{27}$

49.9

$\frac{6.5}{65}$

49.5

$\frac{6.9}{19}$

50.0

$\frac{6.4}{23}$

49.7

$\frac{6.7}{40}$

52.58

$\frac{5.84}{40}$

50.2

$\frac{6.2}{40}$

49.9

$\frac{6.5}{24}$

48.9

$\frac{4.5}{27}$

48.9

$\frac{7.5}{75}$

48.4

$\frac{8.0}{19}$

48.8

$\frac{7.6}{20}$

48.6

$\frac{7.8}{40}$

56.42

TP 7.61 4881

Surveyors Pipe  
NE Everts +  
Emerald

5+39.51 E Everts

4+99.51 West Line Everts

51.91

4+72 E Sidewalk on Rt. 3.5' Wide

43.1  
38.6 R/L

4+50

4+25.8 E Sidewalk 3' Wide

4+06 E Driveway 2-2' Strips 7' Overall

4+00

3+96 E Driveway 2-2' Strips 7' Overall

56.42

It.

4

Rt. 57

54.0  
24  
40  
53.6  
28  
20  
53.1  
33  
52.6  
38  
20  
52.0  
44  
40

54.2  
22  
40  
53.7  
27  
23  
53.2  
22  
53.7  
37  
52.5  
39  
20  
52.2  
42  
40

53.7  
27  
40  
53.4  
30  
23  
52.6  
38  
21  
52.5  
39  
52.0  
44  
18  
52.3  
41  
20  
51.6  
48  
40

53.83  
259  
202

53.74  
268  
20.2

53.5  
29  
40  
52.8  
36  
23  
52.4  
40  
27  
52.2  
42  
51.8  
46  
18  
52.1  
43  
20  
51.2  
52  
40

51.49  
493  
368

56.42

|       |      |       |      |       |         |             |
|-------|------|-------|------|-------|---------|-------------|
| Check | 7.38 | 63.88 | 1.67 | 62.21 | = 62.18 | starting BM |
| T.P.  | 9.39 | 58.20 | 1.70 | 56.50 |         |             |

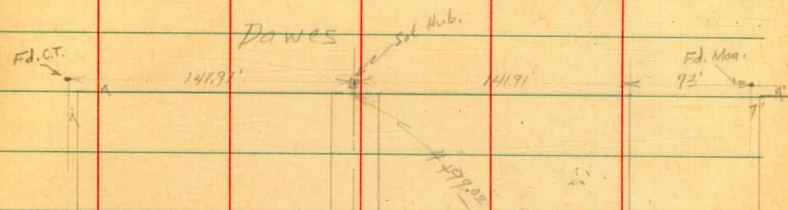
X-sect Alleys in Blocks 158  
and 159 Pacific Beach

6-30-48

W.O. 31563

Roberts  
Greer  
Rorer

**INDEXED**  
WK  
**DEC 30 1948**



Diamond

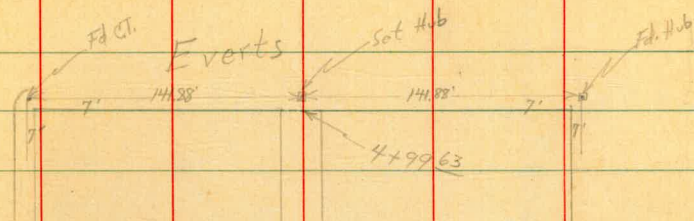
Block 158

25' Alley

Emerald



Cass



Diamond

Block 159

20' Alley

Emerald

Daves

Hub

0400

X-sect Alley Block 158 Pacific Beach

0+50.5 99' Rt = P. Pole # JPA 1020, # 444425H

0+36 10.1' Rt. = End Bldg 10' Rt. = Begin Bd. Fence

0+30 10.1' Lt. = End Bldg. & Begin Wire Fence (Begin

0+25

0+00 10.1' Rt = Begin Bldg. 10.2' Lt = Begin Bldg.

0-14 Curb Line Cass

0-40  $\phi$  Cass

0.01 45.97

T.P. 4.04 52.85 6.89 45.96

B.M. Surveyors Pipe NE. Everett and Emerald (Sigs. 57) 48.81

| Station | Notes   | 41.9                          | 42.0                | 42.06                                  |
|---------|---|-------------------------------|---------------------|--|
| 0+50.5  | 99' Rt = P. Pole # JPA 1020, # 444425H          | 41                            | 40<br>10            | 39.1<br>10.1<br>(Conc. Apron)          |
| 0+36    | 10.1' Rt. = End Bldg 10' Rt. = Begin Bd. Fence  |                               |                     | 42.08<br>3.99<br>10.1<br>(Conc. Apron) |
| 0+30    | 10.1' Lt. = End Bldg. & Begin Wire Fence (Begin | 42.42                         |                     |  |
|         | conc. base 11.7' Lt.)                           | 3.55<br>11.7<br>(Conc. Apron) |                     |  |
| 0+25    |   | 42.2                          | 41.9                | 42.0                                   |
|         |   | 40<br>10                      | 40<br>10            |  |
| 0+00    | 10.1' Rt = Begin Bldg. 10.2' Lt = Begin Bldg.   | 41.76<br>42.1<br>10<br>8      | 41.60<br>43.1<br>10 | 41.31<br>41.36                         |
|         |   | 4.96                          | 4.66<br>10          | 4.61<br>10<br>8                        |
| 0-14    | Curb Line Cass                                  | 42.32<br>3.65<br>50<br>5      | 41.70<br>4.33<br>13 | 41.24<br>39.15                         |
|         |   | 41.64<br>4.97<br>13           | 41.00<br>4.77<br>10 | 40.54<br>5.34<br>10                    |
|         |   | 40.98<br>4.78<br>10           | 40.63<br>5.43<br>13 | 40.54<br>4.73<br>13                    |
|         |   | 5.19                          | 4.79                | 5.43<br>50                             |
|         |   | 42.13                         | 41.60               | 40.28                                  |
|         |   | 3.84<br>10                    | 4.37<br>25          | 5.69<br>50                             |
| 0-40    | $\phi$ Cass                                     | 41.8                          | 40.81               |  |
|         |   | 4.79                          | 5.6                 |  |
|         |   | 45.97                         |                     |  |

2+495 End. Fence 10.9 Lt.

2+00 9.2 Rt = P.P. 10<sup>th</sup> A1040 10.2 Rt = Begin Bd. Fence

1+57 11' Lt. = End Conc. Base

1+50

1+00

0+80 19' Rt. = End Fence and apron

T.P. 6.51 49.14 3.34 42.63

0+70  $\angle$  pt. Fence and apron 10.1' Rt.

45.97

62

Lt.

C

Rt.

45.1

45.1

44.8

44.5

44.3

$\frac{4.0}{20}$

$\frac{4.0}{10}$

4.3

$\frac{4.6}{10}$

$\frac{4.8}{20}$

44.2

44.1

43.8

43.9

43.7

$\frac{4.9}{15}$

$\frac{5.0}{10}$

5.2

$\frac{5.2}{10}$

$\frac{5.4}{20}$

43.48

5.6

$\frac{11}{10}$   
(Conc. Base)

43.42

43.1

43.0

42.9

42.7

$\frac{5.72}{11}$

$\frac{6.0}{10}$

6.1

$\frac{6.2}{10}$

$\frac{6.4}{20}$

$\frac{11}{10}$   
(Conc. Base)

43.0

42.4

42.3

42.2

42.0

$\frac{6.1}{15}$

$\frac{6.7}{10}$

6.8

$\frac{6.9}{10}$

$\frac{7.1}{20}$

42.03

$\frac{7.4}{19}$

(Conc. apron)

42.12

$\frac{3.35}{10.1}$

49.14

45.97



3+00 9.1' Rt. = P. Pole #A1060

T.P. 5.75 51.70 3.19 45.95

2+99 10.8' Lt. = 2' Sidewalk

2+968 10.8' Lt. = End. Conc. Apron. 14.8' Lt. = End. 4car Garage

2+92 2' 4th Portal of 4car garage

2+74 10.4' Rt. End Board Fence

2+63 2' 1st Portal of 4Car Garage

2+52<sup>E</sup> 10.9' Lt. = Beg. Conc. Apron. 14.9' Beg. Garage (4car)

2+51<sup>E</sup> 10.9' Lt. = 2' Sidewalk

49.14

Lt.

2'

Rt.

45.8

$$\frac{5.9}{20}$$

45.69

$$\frac{3.45}{10.8}$$

(conc.)

45.78

3.36

$$\frac{14.9}{(conc.)}$$

45.76

3.38

$$\frac{14.9}{(conc.)}$$

45.77

3.37

$$\frac{14.9}{conc.}$$

45.76

3.38

$$\frac{20.9}{(conc.)}$$

45.6

$$\frac{6.1}{10}$$

45.5

$$\frac{6.2}{10}$$

45.4

$$\frac{6.3}{10}$$

45.3

$$\frac{6.4}{10}$$

51.70

45.69

3.15

$$\frac{10.8}{(conc.)}$$

45.69

3.45

$$\frac{10.9}{(conc.)}$$

45.68

3.46

$$\frac{10.9}{(conc.)}$$

49.14

4+64 10.2' Rt. Begin 5' Apron for 3 car garage 10' Lt. = Begin 5' Apron for 3 car

4+51 15.2' Rt. = 3.6' Sidewalk 15' Lt. = 3.8' Sidewalk

4+50

4+00 9.1' Rt. = P. Pole # PA1080 10.8' Lt. = End Lath Fence

3+50 10.9' Lt. = Begin Lath Fence

3+49.5 10.1' Rt. = End Picket Fence

3+24.5 10.6' Rt. = begin Picket Fence

3+14 10.8' Rt. = Double Garage Dist Floor  
51.70

Garage

| 4+                                 | 3+                           | 2+                             | 1+                                   | 0+               |
|------------------------------------|------------------------------|--------------------------------|--------------------------------------|------------------|
| 48.77                              | 48.23                        | 47.77                          | 47.99                                |                  |
| $\frac{2.93}{15}$<br>(conc. Floor) | $\frac{3.47}{10}$<br>(conc.) | $\frac{3.93}{10.2}$<br>(conc.) | $\frac{3.71}{15.2}$<br>(conc. Floor) |                  |
| 48.39                              | 48.19                        | 47.60                          | 47.46                                |                  |
| $\frac{3.31}{20}$<br>(conc)        | $\frac{3.51}{15}$<br>(conc.) | $\frac{4.10}{15.2}$<br>(conc.) | $\frac{4.24}{20}$<br>(conc)          |                  |
| 48.2                               | 47.7                         | 47.2                           | 47.1                                 |                  |
| $\frac{3.5}{20}$                   | $\frac{4.0}{15}$             | 4.0                            | $\frac{4.3}{10}$                     | $\frac{4.6}{20}$ |
| 47.2                               | 47.3                         | 46.9                           | 47.1                                 | 46.6             |
| $\frac{4.5}{20}$                   | $\frac{4.4}{10}$             | 4.8                            | $\frac{4.6}{10}$                     | $\frac{5.1}{20}$ |
| 46.4                               | 46.2                         | 46.1                           | 45.8                                 | 45.9             |
| $\frac{5.3}{20}$                   | $\frac{5.5}{10}$             | 5.6                            | $\frac{5.9}{10}$                     | $\frac{5.8}{20}$ |
|                                    |                              |                                | 45.7                                 |                  |
|                                    |                              |                                | $\frac{6.0}{10.8}$                   |                  |
|                                    |                              | <u>51.70</u>                   |                                      |                  |

5+39<sup>02</sup> ♀ Dawes5+29<sup>5</sup> 4<sup>5</sup> Lt. = Center of Sq. MH. (Ball Tubs)

5+26

5+20

5+18<sup>5</sup> 12<sup>5</sup> Rt. = P.P. do # 946744+99<sup>02</sup> W.P. Prop. Line Dawes4+93<sup>5</sup> End of Conc. Aprons and 3 Car Garages (2+3 Rt)4+78<sup>5</sup> ♀ of Center Garages of 3 car garages (4+1 Rt)51.70

Lt.

R

Rt.

49.3  
 $\frac{2.4}{20}$ 49.1  
 $\frac{2.6}{20}$ 48.8  
2948.6  
 $\frac{3.1}{20}$ 48.3  
 $\frac{3.4}{20}$ 48.67  
 $\frac{3.03}{4.5}$ 48.8  
 $\frac{2.9}{20}$ 48.8  
 $\frac{2.9}{20}$ 48.3  
3447.7  
 $\frac{4.0}{20}$ 47.5  
 $\frac{4.2}{20}$ 49.3  
 $\frac{2.4}{20}$ 48.9  
 $\frac{2.8}{20}$ 48.7  
3048.4  
 $\frac{3.3}{20}$ 48.9  
 $\frac{2.3}{20}$ 49.1  
 $\frac{2.6}{20}$ 48.6  
 $\frac{3.1}{20}$ 48.0  
3747.8  
 $\frac{3.9}{20}$ 47.4  
 $\frac{4.3}{20}$ 49.06  
 $\frac{2.44}{20}$   
(conc. Floor)48.62  
 $\frac{3.98}{20}$   
(conc)47.86  
 $\frac{3.88}{20}$   
(conc)48.06  
 $\frac{3.64}{20}$   
(conc. Floor)48.00  
 $\frac{2.70}{20}$   
(conc. Floor)48.43  
 $\frac{3.27}{20}$   
(conc)47.82  
 $\frac{3.88}{20}$   
(conc)48.07  
 $\frac{3.63}{20}$   
(conc. Floor)51.70

X-Seat Alley Block 159 Pacific Beach

Lt.

Rt.

66

1750 10.4'Rt = End Wire Fence 10'Lt = End Board Fence

|                 |                 |                 |                 |                 |
|-----------------|-----------------|-----------------|-----------------|-----------------|
| $\frac{73}{20}$ | $\frac{74}{10}$ | $\frac{77}{10}$ | $\frac{78}{10}$ | $\frac{80}{20}$ |
| 48.4            | 49.3            | 49.0            | 48.9            | 48.7            |

1700 10'Rt = Begin Wire Fence

INDEXED  
WK  
DEC 30 1948

|                 |                 |                 |                 |                 |
|-----------------|-----------------|-----------------|-----------------|-----------------|
| $\frac{80}{20}$ | $\frac{83}{10}$ | $\frac{84}{10}$ | $\frac{84}{10}$ | $\frac{86}{20}$ |
| 48.7            | 48.4            | 48.3            | 48.3            | 48.1            |

0750 10.1'Lt. = Begin Board Fence

|                 |                 |                 |                 |                 |
|-----------------|-----------------|-----------------|-----------------|-----------------|
| $\frac{71}{20}$ | $\frac{75}{20}$ | $\frac{81}{10}$ | $\frac{82}{10}$ | $\frac{89}{20}$ |
| 49.6            | 49.2            | 48.6            | 48.5            | 47.8            |

0749 9.2'Rt = Joint Pole # J2A1110 #460305H

0700 E. Prop. Line Dawes

|                 |                 |                 |                 |                 |
|-----------------|-----------------|-----------------|-----------------|-----------------|
| $\frac{70}{20}$ | $\frac{75}{10}$ | $\frac{77}{10}$ | $\frac{81}{10}$ | $\frac{86}{20}$ |
| 49.7            | 49.2            | 49.0            | 48.6            | 48.1            |

0-11 10.9'Lt. = P. Pole # R2429H

|                 |                 |                 |                 |                 |
|-----------------|-----------------|-----------------|-----------------|-----------------|
| $\frac{67}{20}$ | $\frac{71}{10}$ | $\frac{76}{10}$ | $\frac{81}{10}$ | $\frac{85}{20}$ |
| 50.0            | 49.6            | 49.1            | 48.6            | 48.2            |

0-23

T.P. 8.17 56.68 3.19 48.51

|                 |                 |                 |                 |                 |
|-----------------|-----------------|-----------------|-----------------|-----------------|
| $\frac{81}{20}$ | $\frac{83}{10}$ | $\frac{85}{10}$ | $\frac{87}{10}$ | $\frac{88}{20}$ |
| 48.6            | 48.4            | 48.2            | 48.0            | 47.9            |

51.70

56.68

51.70

4+00

3+74<sup>5</sup> 9.5' Lt = End Board Fence Begin Wire Fence

3+52 8.4' Rt = P. Pole # JPA1170 # 446848A

3+50

3+24<sup>8</sup> 10' Lt = Begin Board Fence

T.P. 6.54 61.56 0.66 56.02

3+00

2+50

2+01 9' Rt = P. Pole # PA1140

2+00

56.68

Lt  
56.5

$\frac{51}{20}$

Rt  
56.4

$\frac{52}{20}$

C  
56.4

$\frac{52}{20}$

Rt  
56.1

$\frac{55}{20}$

Rt  
55.8

$\frac{58}{20}$

55.5

$\frac{61}{20}$

55.8

$\frac{58}{20}$

55.6

60

55.2

$\frac{64}{20}$

54.9

$\frac{67}{20}$

54.6

$\frac{21}{20}$

54.5

$\frac{22}{20}$

~~54.6~~  
54.5

22

54.2

$\frac{25}{20}$

53.8

$\frac{29}{20}$

54.1

$\frac{26}{20}$

54.0

$\frac{27}{20}$

53.5

22

53.1

$\frac{36}{20}$

53.1

$\frac{36}{20}$

51.7

$\frac{50}{20}$

51.8

$\frac{49}{20}$

51.5

52

51.4

$\frac{53}{20}$

50.8

$\frac{59}{20}$

56.68

5725

5720

5701 7±' RE = P. Pde #446847H #JPA 1198

479963 W. Prop. Line Events

4750

4745 9.8' Lt. to Conc. Slab (End) 12.9' Lt. to Bldg

4734  $\phi$  of Door of Bldg. moved on slab

4725 10.2' Lt. = End. Wire Fence and Concrete Slab

61.56

|    |    |    |    |    |
|----|----|----|----|----|
| 47 | 48 | 49 | 53 | 56 |
| 20 | 70 | 70 | 70 | 20 |

|    |    |    |    |    |
|----|----|----|----|----|
| 34 | 37 | 43 | 43 | 44 |
| 20 | 70 | 70 | 70 | 20 |

|    |    |    |    |    |
|----|----|----|----|----|
| 35 | 36 | 38 | 41 | 45 |
| 20 | 70 | 70 | 70 | 20 |

|    |    |    |    |    |
|----|----|----|----|----|
| 43 | 45 | 46 | 46 | 51 |
| 20 | 70 | 70 | 70 | 20 |

|      |        |
|------|--------|
| 421  | 420    |
| 129  | 58     |
| conc | (conc) |

|        |        |
|--------|--------|
| 418    | 424    |
| 122    | 122    |
| (conc) | (conc) |

|        |
|--------|
| 425    |
| 102    |
| (conc) |

61.56

check 5.57 48.79 = 48.81 <sup>Start. BM</sup>

T.P. 1.70 54.36 8.90 52.66

5139<sup>63</sup> Events

61.56

$\frac{32}{50}$

$\frac{36}{25}$

$\frac{39}{25}$

$\frac{45}{25}$

$\frac{52}{50}$

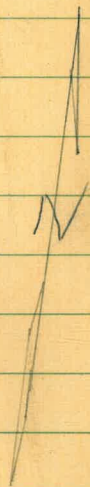
61.56

D Smith  
W Moore  
J Clark

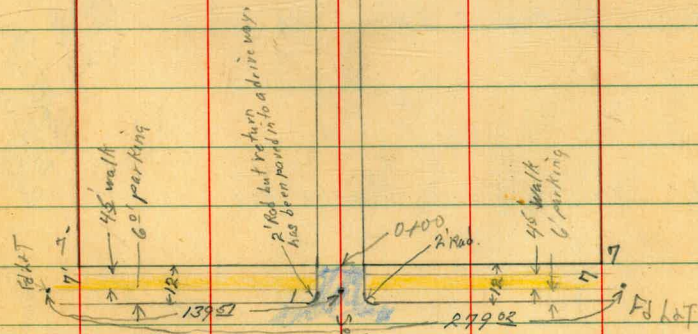
Cross Section Alley B/R. 3  
West Teralta

INDEXED

WK  
JUN 8 1949



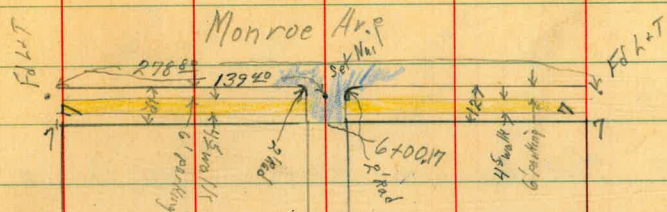
3rd.



AC Paving  
Concrete

Meade Ave

WO# 25001  
June 7, 1949 70



Bancroft



X Sec Alley Bk 3 West Toralta

6+50

0+49 7<sup>5</sup>LT Begin apron into garages + apts con floor

0+29 6<sup>3</sup>LT End E hedge

0+25 7<sup>5</sup>LT SE cor garages + apts

0+25 8<sup>2</sup>RT NW cor garage opens onto Mead

0+06 5<sup>6</sup>LT Power Pole # P27264T

0+06 8<sup>4</sup>RT SW cor garage con floor opens on Mead southerly

TP 6<sup>8</sup> 385<sup>35</sup> 6<sup>7</sup> 379<sup>54</sup>

0+00 North prop line Meade Ave

0+00 6<sup>3</sup>LT Begin E 3' wide 6' high hedge

0-12 North curb line Meade Ave

TP 4<sup>24</sup> 385<sup>21</sup> 5<sup>82</sup> 380<sup>97</sup>

BM 4<sup>40</sup> 386<sup>72</sup> 382<sup>39</sup>

SE BP 32<sup>nd</sup>  
Monroe

Reduced  
Platted  
McLennan  
Profile 2944  
9/15/49  
J. Barrett

Wot 25001

71

LT=West RT=East June 7 1949

|        |        |       |       |       |       |
|--------|--------|-------|-------|-------|-------|
| 380.53 | 380.16 | 380.3 | 379.8 | 379.9 | 379.8 |
| 482    | 509    | 51    | 56    | 55    | 56    |
| 92     | 75     | 75    | 75    | 75    | 15    |
| Floor  | 8' 10" | dirt  |       |       |       |

|       |       |       |
|-------|-------|-------|
| 380.1 | 379.4 | 379.5 |
| 53    | 60    | 52    |
| 75    | 75    | 75    |

|       |        |        |                   |        |        |        |
|-------|--------|--------|-------------------|--------|--------|--------|
| 379.4 | 378.99 | 378.74 | 385 <sup>35</sup> | 378.61 | 378.76 | 378.61 |
| 58    | 62     | 64     | 66                | 66     | 64     | 66     |
| 25    | 75     | 72     | 73                | 72     | 72     | 25     |
|       | 94     | 94     | 94                | 94     | 94     |        |

|        |        |        |        |        |        |        |
|--------|--------|--------|--------|--------|--------|--------|
| 378.70 | 378.30 | 378.21 | 378.15 | 378.62 | 378.60 | 378.01 |
| 62     | 62     | 70     | 70     | 69     | 70     | 72     |
| 50     | 75     | 75     | 75     | 30     | 30     | 30     |
| 94     | 94     | 94     | 94     | 94     | 94     | 94     |

385<sup>21</sup>

cont.

2+50 7<sup>th</sup> Lt end 5' wire fence Begin 6' Board fence

2+00 7<sup>th</sup> Lt Begin 5' high wire fence

2+00 6<sup>th</sup> Lt & Power Pole # JPA 4433

1+50

1+01 7<sup>th</sup> Lt end of con brick wall runs L to h/n

1+01 6<sup>th</sup> Lt & Power Pole # JPA 4417

1+00

0+90 19<sup>th</sup> Rt & double garage con floors

0+77<sup>5</sup> 13<sup>th</sup> Rt End con block wall

0+71 7<sup>th</sup> Lt End apron 9<sup>th</sup> Lt to NE cor garage & apt

0+55 9<sup>th</sup> Rt Begin 4<sup>th</sup> con block wall

72

|       |       |       |       |       |
|-------|-------|-------|-------|-------|
| Lt    |       | R     |       | Rt    |
| 381.7 | 381.5 | 380.9 | 380.8 | 381.0 |
| 32    | 32    | 45    | 46    | 44    |
| 15    | 75    | 75    | 75    | 15    |

|       |       |       |       |       |
|-------|-------|-------|-------|-------|
| 381.0 | 380.9 | 380.6 | 380.6 | 380.5 |
| 44    | 45    | 48    | 48    | 49    |
| 15    | 75    | 75    | 75    | 15    |

|       |       |       |       |       |
|-------|-------|-------|-------|-------|
| 380.3 | 380.0 | 380.0 | 379.9 | 380.2 |
| 54    | 54    | 54    | 55    | 52    |
| 15    | 75    | 75    | 75    | 15    |

|       |       |       |       |       |
|-------|-------|-------|-------|-------|
| 380.0 | 380.3 | 380.0 | 380.1 | 380.0 |
| 54    | 54    | 54    | 53    | 54    |
| 15    | 75    | 75    | 75    | 15    |

|        |        |         |         |          |
|--------|--------|---------|---------|----------|
| 380.44 | 380.13 | 379.74  | 379.8   | 384.39   |
| 49     | 52     | 54      | 92      | 93       |
| 15     | 75     | 192     | Footing | 92       |
| Foot   | Apron  | 160     | 379.8   | Top wall |
|        |        | 379.8   | 379.8   | 384.39   |
|        |        | 92      | 92      | 92       |
|        |        | Footing | Footing | Top wall |
|        |        | 385.35  | 385.35  | 385.35   |

cont.

4400 8<sup>th</sup> RT Begin 5<sup>th</sup> con block wall

TP<sub>3</sub> 5<sup>th</sup> 387.42 304 382.31

4400 6<sup>th</sup> L&E Power pole # PA 4467.

3498 10<sup>th</sup> RT NW cor Bldg

4<sup>th</sup> L&E Begin 5<sup>th</sup> wire fence

3462 10<sup>th</sup> RT SW cor Bldg

3450

3461 6<sup>th</sup> L&E Power Pole # 15209H

3470

2488 7<sup>th</sup> L&E End 6' Board Fence

Lt

R

RT

RT

RT

RT

73

382.6

382.5

382.1

382.0

381.5

22  
15

22  
15

32  
15

34  
15

32  
15

382.6

382.5

382.1

382.1

381.1

381.0

22  
15

22  
15

32  
15

32  
15

42  
15

44  
15

381.6

382.2

382.2

382.2

381.0

382.40

381.1

32  
15

32  
15

32  
15

32  
15

44  
15

295  
102

43  
15

381.8

382.0

382.1

381.7

381.2

32  
15

34  
15

33  
15

37  
15

42  
15

42  
15

381.7

381.5

381.6

381.5

381.2

32  
15

32  
15

38  
15

32  
15

42  
15

42  
15

385.35

cont

5152 75<sup>th</sup> Lt NE cor garage con floor opens Monroe

con floor.

5151 94<sup>th</sup> Rt SW cor double garage 2 garage to Monroe

5150

5136 75<sup>th</sup> Lt SE cor garage con floor opens on Monroe North

5139 73<sup>rd</sup> Lt End rail fence

5101 6<sup>th</sup> Lt E Power B/c # 5 PA 4489

5100 7<sup>th</sup> Lt Begin Board rail 3 1/2' fence

5150 7<sup>th</sup> Lt end Lattice 5' fence

4193 73<sup>rd</sup> Lt E 8' con back porch 2 steps

4150 65<sup>th</sup> Lt End 5' wire fence Begin 5' lattice fence

4150 8<sup>th</sup> Rt End 5' Block wall

383.22

Lt

Rt

Pt

74

42

75

Floor

383.0

382.8

382.9

383.1

382.83

45  
94  
Floor

44  
75

46  
75

45  
75

43  
75

383.1

383.0

382.7

382.6

382.6

43  
75

44  
75

42  
75

48  
75

48  
75

383.60

382

72

Top bottom  
Step

383.1

382.8

382.7

382.7

382.0

43  
75

46  
75

42  
75

50  
75

54  
75

381.3  
82  
Facing

382.1  
82  
91

381.20  
82  
top  
wall

387.42

cont.

LT

±

RT

75

BM

503

382.32

382.32  
SEOP 32nd  
Monroe

6712<sup>17</sup> South curbline Monroe Ave

6700<sup>17</sup> South Prop Monroe Ave

5791 92<sup>RT</sup> NW cor of garage + garage Bldg

5791 6<sup>3</sup> Lt & Power Pole # JPA 4497

5790

5795

5766 94<sup>RT</sup> north end door to double garage

381.05  
380.69  
380.74  
380.28  
380.10  
380.05  
380.42  
379.38  
379.80

637 123 668 714 732 737 700 804 762  
50 50 75 75 75 75 50 50  
Curb 24 Curb 24 Curb 24 Curb 24 Curb 24 Curb 24

381.0 380.72 380.47 380.17 380.32 380.52 380.4  
64 620 685 725 75 688 70  
15 75 75 75 75 75 75  
86 94 94 94

382.54 382.3 382.3 381.7 381.5 381.5 381.9  
488 54 54 52 52 52 55  
90 75 6 4 75 76  
East 1/4  
Curb

382.81 382.72 382.4 382.7 382.7  
461 42 50 42 42  
88 95 75 75 75  
East 1/4  
Curb

382.92

450  
94  
Floor

387.42

BM

Levels on 10" concrete Sewer

on North side Loring St.

10-14-49

76

7791 4<sup>th</sup> MH East near old RR shoring int.

Top 12" pressure Line

7781 where pipe is exposed

INDEXED  
W.K.  
OCT 18 1949

14<sup>62</sup>  
Top 10" con pipe

24<sup>44</sup>

TP 7<sup>00</sup> 74<sup>44</sup> 13<sup>0</sup> 67<sup>44</sup>

74<sup>44</sup>

TP 12<sup>22</sup> 68<sup>41</sup> 23<sup>9</sup> 55<sup>49</sup>

5748 3<sup>rd</sup> MH East on existing 10"

19<sup>3</sup>  
rim

12<sup>46</sup>  
FL

96<sup>3</sup>

3754 where pipe is approx 7' cover and now uncovered

12<sup>16</sup>  
Top 10" con pipe

11<sup>31</sup>

2772 2<sup>nd</sup> MH East on existing 10"

9<sup>46</sup>  
rim

13<sup>24</sup>  
FL

11<sup>28</sup>

0400 1<sup>st</sup> MH <sup>existing</sup> on 10" East of New pump Sta.

8<sup>43</sup>  
rim

15<sup>15</sup>  
FL

13<sup>29</sup>

BM 11<sup>88</sup> 58<sup>08</sup>

56<sup>3</sup>

52<sup>45</sup>

10<sup>31</sup>

47<sup>21</sup>

SEBP  
Loring + Ocean  
SE fire Hydr.  
GRSS painted  
Const Bench 2 walk to ocean

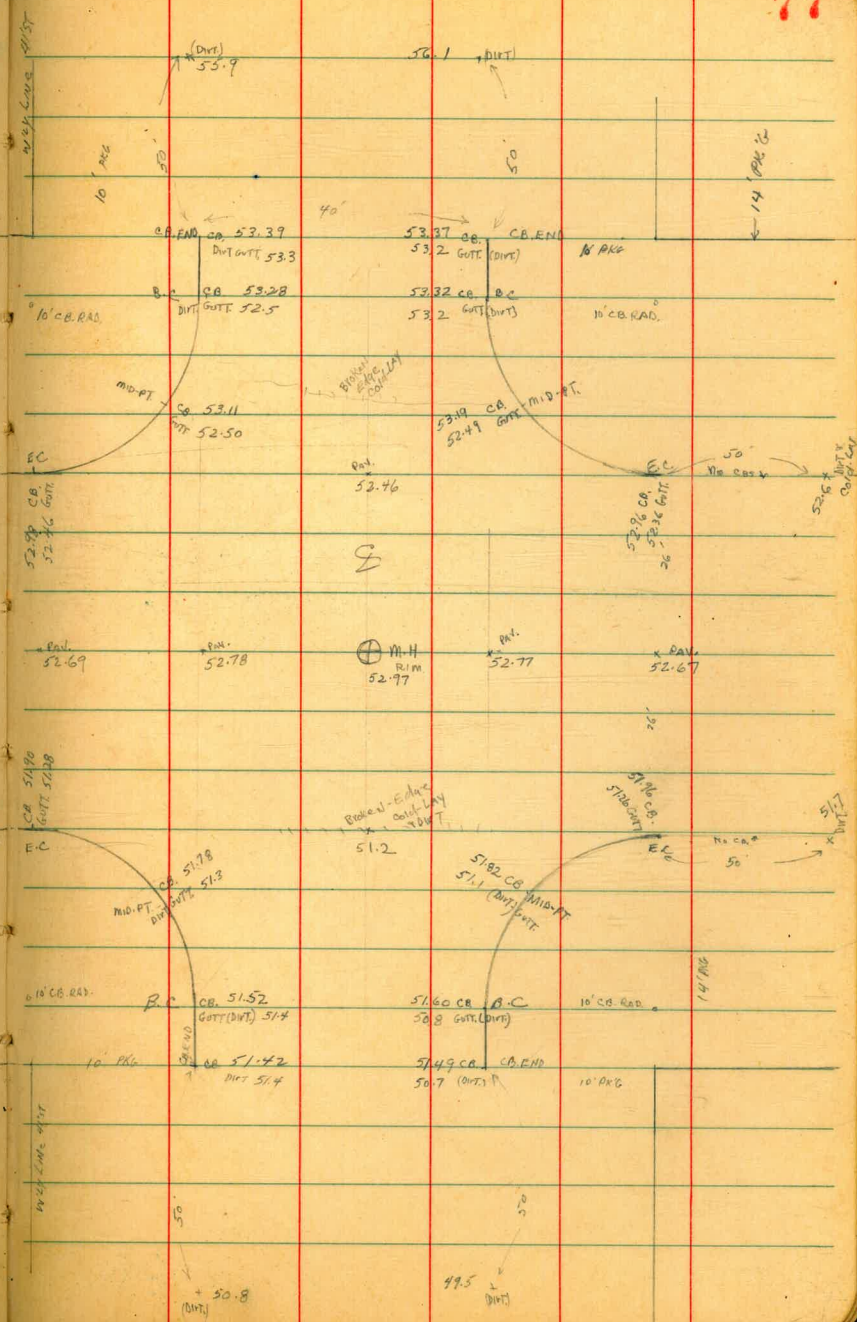
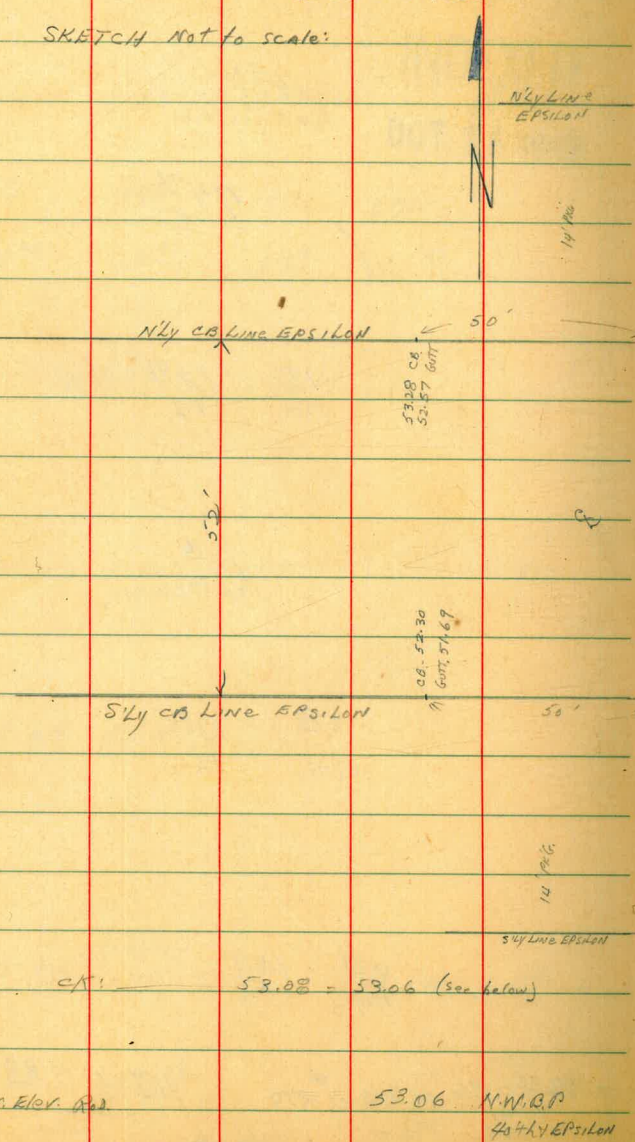
→ 46<sup>00</sup> = Elev on D sheet #1270 = HI 57<sup>88</sup> (using this)

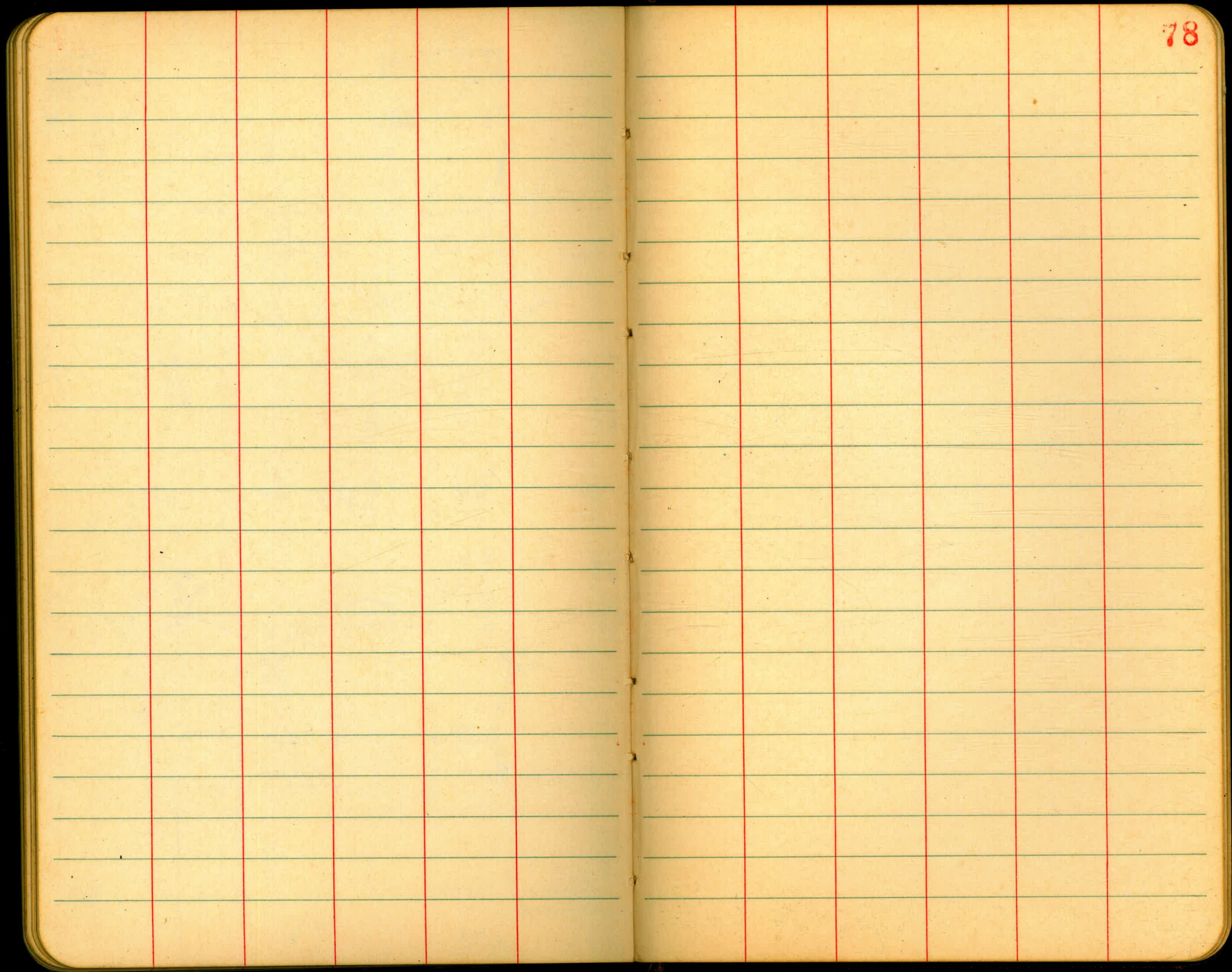
58<sup>08</sup>

Clark  
Shepherd  
Brunner  
Presley  
W.O. 21074  
1-29-53

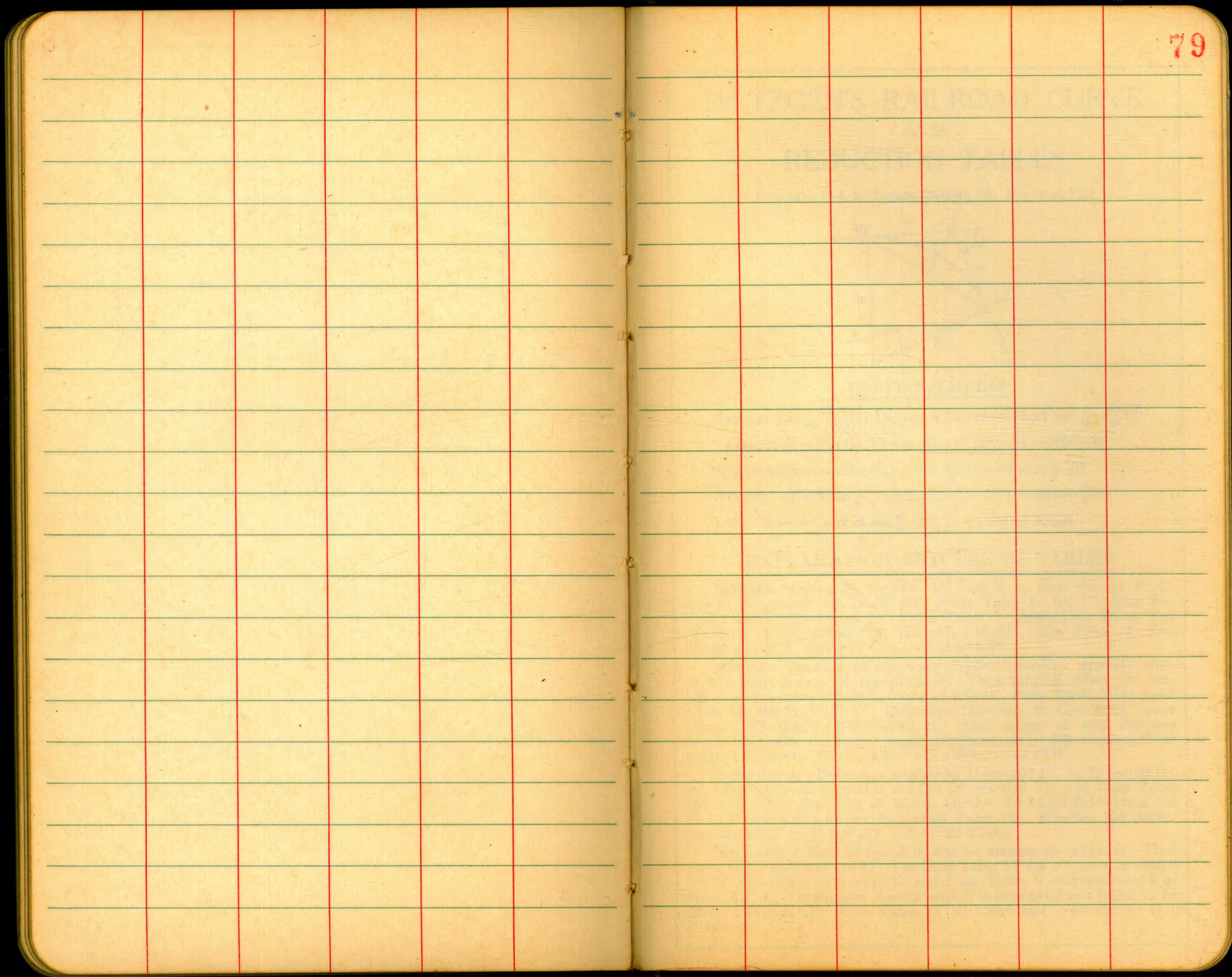
SURVEY 41ST EPSILON  
INDEXED  
LOW  
JAN 30 1953

SKETCH NOT TO SCALE:



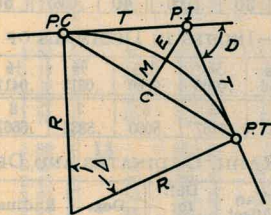






# DIETZGEN'S RAILROAD CURVE AND REDUCTION TABLES

Copyright, 1914, by Eugene Dietzgen Co., New York City



### CURVE FORMULAS

Radius— $R = \frac{50}{\sin. \frac{D}{2}}$  (1) Degree of Curve— $D$  and  $\sin. \frac{D}{2} = \frac{50}{R}$  (2)

Tangent— $T = R \tan \frac{\Delta}{2}$  (3) Length of Curve— $L = 100 \frac{\Delta}{D}$  (4)

Middle ordinate— $M = R(1 - \cos. \frac{\Delta}{2})$  (5)  $= R \text{vers} \frac{\Delta}{2}$  (6)

External— $E = T \tan \frac{\Delta}{4}$  (7)  $= R + \cos. \frac{\Delta}{2} - R$  (8)  $= R \text{exsec} \frac{\Delta}{2}$  (9)

Long Chord— $C = 2 R \sin. \frac{\Delta}{2}$  (10)  $\Delta$ —Central Angle

### EXPLANATION AND USE OF TABLES

**Stations.**—Given P. I.—Sta. 161+60.35 to find Sta. of P. C. and P. T.  $\Delta=62^\circ 10'$   $D=8^\circ 20'$ . From Table IV for  $1^\circ$  curve  $T=3454.1$  and  $+8\frac{1}{2}=414.49$  ft. From Table V correction—.36 or  $T=414.85$  ft. P. C.—Sta. P.I.— $T=157+45.50$ . Also from (4)  $L=746.00$  and P. T.—Sta. P. C. +  $L=164+91.50$ .

**Offsets.**—Tangent offsets vary (approximately) directly with  $D$  and with square of the distance. Thus tangent offset for Sta. 158 on above curve is 2.16 ft. found as follows. From Table III tangent offset for 100 ft.—7.27 ft. Distance—158—Sta. P. C.—54.50, hence offset— $7.27 (54.50 \div 100)^2=2.16$  ft. Also square of any distance divided by twice the radius equals (approximately) the distance from tangent to curve. Thus  $(54.50)^2 \div (2 \times 688.26)=2.16$  ft.

**Deflections.**—Deflection angle— $\frac{1}{2} D$  for 100 ft.,  $\frac{1}{4} D$  for 50 ft., etc. For  $c$  ft.—(in minutes)  $.3 \times C \times D^\circ$  or—defl. for 1 ft. from Table III  $\times C$ . For Sta. 158 of above curve— $.3 \times 54.5 \times 8\frac{1}{2}=136.2'$  or  $2^\circ 16.2'$ , or— $2.50 \times 54.5=136.2'$  from Table III. For Sta. 159 deflection angle— $2^\circ 16.2' + 8^\circ 20' \div 2=6^\circ 26.2'$ , etc.

**Externals.**—May be found in similar manner to tangents. Thus  $E$  for curve above is 115.37. For from Table IV for  $1^\circ$  curve  $E=960.6$  for  $8^\circ 20'=960.6 \div 8\frac{1}{2}=115.27$  and from Table V correction—.10 or  $E=115.37$  ft. Or suppose  $\Delta=32^\circ$  and  $E$  is measured and found to be 42 ft. What is  $D$ ? From Table IV  $E=230.9$  and  $+42=5.5$  or  $D=5^\circ 30'$ .

136.94  
12.98  

---

149.92  
0.35  

---

149.57  
5.16  

---

154.73  
6.15  

---

148.58  
7.94  

---

156.52  
1.70  

---

154.82

105.91  
472  

---

110.63  
6.45  

---

104.18  
4.04  

---

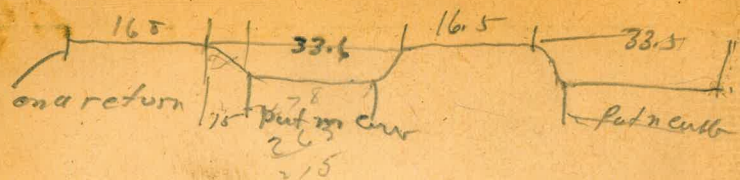
108.22  
11.24  

---

96.98  
5.82  

---

102.80



5.430  
 4.039  
 1.391

1.391  
 4.746  
 6.137

Beg Ret 16.8 to beginning of Drive  
 Drive way Top to Top = 33.6  
 Drive way to Drive way 16.5  
 Drive way 33.5 long  
 Drive way thin concrete and no curb

DISTANCES FROM CENTER OF ROADWAY FOR CROSS-SECTIONING.

Roadway 16 feet wide. Side Slopes 1 on 1 1/2  
For Single Track Embankment.

374.4  
 2.89  
 371.51

| H  | 0    | .1   | .2   | .3   | .4   | .5   | .6   | .7   | .8   | .9   | H  |
|----|------|------|------|------|------|------|------|------|------|------|----|
| 0  | 8.0  | 8.2  | 8.3  | 8.5  | 8.6  | 8.8  | 8.9  | 9.1  | 9.2  | 9.4  | 0  |
| 1  | 9.5  | 9.7  | 9.8  | 10.0 | 10.1 | 10.3 | 10.4 | 10.6 | 10.7 | 10.9 | 1  |
| 2  | 11.0 | 11.2 | 11.3 | 11.5 | 11.6 | 11.8 | 11.9 | 12.1 | 12.2 | 12.4 | 2  |
| 3  | 12.5 | 12.7 | 12.8 | 13.0 | 13.1 | 13.3 | 13.4 | 13.6 | 13.7 | 13.9 | 3  |
| 4  | 14.0 | 14.2 | 14.3 | 14.5 | 14.6 | 14.8 | 14.9 | 15.1 | 15.2 | 15.4 | 4  |
| 5  | 15.5 | 15.7 | 15.8 | 16.0 | 16.1 | 16.3 | 16.4 | 16.6 | 16.7 | 16.9 | 5  |
| 6  | 17.0 | 17.2 | 17.3 | 17.5 | 17.6 | 17.8 | 17.9 | 18.1 | 18.2 | 18.4 | 6  |
| 7  | 18.5 | 18.7 | 18.8 | 19.0 | 19.1 | 19.3 | 19.4 | 19.6 | 19.7 | 19.9 | 7  |
| 8  | 20.0 | 20.2 | 20.3 | 20.5 | 20.6 | 20.8 | 20.9 | 21.1 | 21.2 | 21.4 | 8  |
| 9  | 21.5 | 21.7 | 21.8 | 22.0 | 22.1 | 22.3 | 22.4 | 22.6 | 22.7 | 22.9 | 9  |
| 10 | 23.0 | 23.2 | 23.3 | 23.5 | 23.6 | 23.8 | 23.9 | 24.1 | 24.2 | 24.4 | 10 |
| 11 | 24.5 | 24.7 | 24.8 | 25.0 | 25.1 | 25.3 | 25.4 | 25.6 | 25.7 | 25.9 | 11 |
| 12 | 26.0 | 26.2 | 26.3 | 26.5 | 26.6 | 26.8 | 26.9 | 27.1 | 27.2 | 27.4 | 12 |
| 13 | 27.5 | 27.7 | 27.8 | 28.0 | 28.1 | 28.3 | 28.4 | 28.6 | 28.7 | 28.9 | 13 |
| 14 | 29.0 | 29.2 | 29.3 | 29.5 | 29.6 | 29.8 | 29.9 | 30.1 | 30.2 | 30.4 | 14 |
| 15 | 30.5 | 30.7 | 30.8 | 31.0 | 31.1 | 31.3 | 31.4 | 31.6 | 31.7 | 31.9 | 15 |
| 16 | 32.0 | 32.2 | 32.3 | 32.5 | 32.6 | 32.8 | 32.9 | 33.1 | 33.2 | 33.4 | 16 |
| 17 | 33.5 | 33.7 | 33.8 | 34.0 | 34.1 | 34.3 | 34.4 | 34.6 | 34.7 | 34.9 | 17 |
| 18 | 35.0 | 35.2 | 35.3 | 35.5 | 35.6 | 35.8 | 35.9 | 36.1 | 36.2 | 36.4 | 18 |
| 19 | 36.5 | 36.7 | 36.8 | 37.0 | 37.1 | 37.3 | 37.4 | 37.6 | 37.7 | 37.9 | 19 |
| 20 | 38.0 | 38.2 | 38.3 | 38.5 | 38.6 | 38.8 | 38.9 | 39.1 | 39.2 | 39.4 | 20 |
| 21 | 39.5 | 39.7 | 39.8 | 40.0 | 40.1 | 40.3 | 40.4 | 40.6 | 40.7 | 40.9 | 21 |
| 22 | 41.0 | 41.2 | 41.3 | 41.5 | 41.6 | 41.8 | 41.9 | 42.1 | 42.2 | 42.4 | 22 |
| 23 | 42.5 | 42.7 | 42.8 | 43.0 | 43.1 | 43.3 | 43.4 | 43.6 | 43.7 | 43.9 | 23 |
| 24 | 44.0 | 44.2 | 44.3 | 44.5 | 44.6 | 44.8 | 44.9 | 45.1 | 45.2 | 45.4 | 24 |
| 25 | 45.5 | 45.7 | 45.8 | 46.0 | 46.1 | 46.3 | 46.4 | 46.6 | 46.7 | 46.9 | 25 |
| 26 | 47.0 | 47.2 | 47.3 | 47.5 | 47.6 | 47.8 | 47.9 | 48.1 | 48.2 | 48.4 | 26 |
| 27 | 48.5 | 48.7 | 48.8 | 49.0 | 49.1 | 49.3 | 49.4 | 49.6 | 49.7 | 49.9 | 27 |
| 28 | 50.0 | 50.2 | 50.3 | 50.5 | 50.6 | 50.8 | 50.9 | 51.1 | 51.2 | 51.4 | 28 |
| 29 | 51.5 | 51.7 | 51.8 | 52.0 | 52.1 | 52.3 | 52.4 | 52.6 | 52.7 | 52.9 | 29 |
| 30 | 53.0 | 53.2 | 53.3 | 53.5 | 53.6 | 53.8 | 53.9 | 54.1 | 54.2 | 54.4 | 30 |
| 31 | 54.5 | 54.7 | 54.8 | 55.0 | 55.1 | 55.3 | 55.4 | 55.6 | 55.7 | 55.9 | 31 |
| 32 | 56.0 | 56.2 | 56.3 | 56.5 | 56.6 | 56.8 | 56.9 | 57.1 | 57.2 | 57.4 | 32 |
| 33 | 57.5 | 57.7 | 57.8 | 58.0 | 58.1 | 58.3 | 58.4 | 58.6 | 58.7 | 58.9 | 33 |
| 34 | 59.0 | 59.2 | 59.3 | 59.5 | 59.6 | 59.8 | 59.9 | 60.1 | 60.2 | 60.4 | 34 |
| 35 | 60.5 | 60.7 | 60.8 | 61.0 | 61.1 | 61.3 | 61.4 | 61.6 | 61.7 | 61.9 | 35 |
| 36 | 62.0 | 62.2 | 62.3 | 62.5 | 62.6 | 62.8 | 62.9 | 63.1 | 63.2 | 63.4 | 36 |
| 37 | 63.5 | 63.7 | 63.8 | 64.0 | 64.1 | 64.3 | 64.4 | 64.6 | 64.7 | 64.9 | 37 |
| 38 | 65.0 | 65.2 | 65.3 | 65.5 | 65.6 | 65.8 | 65.9 | 66.1 | 66.2 | 66.4 | 38 |
| 39 | 66.5 | 66.7 | 66.8 | 67.0 | 67.1 | 67.3 | 67.4 | 67.6 | 67.7 | 67.9 | 39 |
| 40 | 68.0 | 68.2 | 68.3 | 68.5 | 68.6 | 68.8 | 68.9 | 69.1 | 69.2 | 69.4 | 40 |

Example—If point is 22.6 ft. above grade, how far should it be from center line to be a slope stake point? Ans. from Table 41.9. For same slopes but other widths of roadbed correct above figures by one-half difference in width of roadbed; thus in example above for 20 ft. roadbed distance will be 41.9 + (20 - 16) + 2 or 2 ft. added to 41.9 = 47.9. For slopes of 1 on 1 see inside of front cover.