

EUGENE DIETZGEN CO.

DRAWING MATERIALS, MATHEMATICAL and
SURVEYING INSTRUMENTS

Chicago New York San Francisco New Orleans Pittsburg Toronto

Distances from Center of Roadway for Cross-Sectioning
Roadway 16 feet wide. Side Slopes 1 on 1.
For Single Track Embankment.

H	0	.1	.2	.3	.4	.5	.6	.7	.8	.9	H
0	8.0	8.1	8.2	8.3	8.4	8.5	8.6	8.7	8.8	8.9	0
1	9.0	9.1	9.2	9.3	9.4	9.5	9.6	9.7	9.8	9.9	1
2	10.0	10.1	10.2	10.3	10.4	10.5	10.6	10.7	10.8	10.9	2
3	11.0	11.1	11.2	11.3	11.4	11.5	11.6	11.7	11.8	11.9	3
4	12.0	12.1	12.2	12.3	12.4	12.5	12.6	12.7	12.8	12.9	4
5	13.0	13.1	13.2	13.3	13.4	13.5	13.6	13.7	13.8	13.9	5
6	14.0	14.1	14.2	14.3	14.4	14.5	14.6	14.7	14.8	14.9	6
7	15.0	15.1	15.2	15.3	15.4	15.5	15.6	15.7	15.8	15.9	7
8	16.0	16.1	16.2	16.3	16.4	16.5	16.6	16.7	16.8	16.9	8
9	17.0	17.1	17.2	17.3	17.4	17.5	17.6	17.7	17.8	17.9	9
10	18.0	18.1	18.2	18.3	18.4	18.5	18.6	18.7	18.8	18.9	10
11	19.0	19.1	19.2	19.3	19.4	19.5	19.6	19.7	19.8	19.9	11
12	20.0	20.1	20.2	20.3	20.4	20.5	20.6	20.7	20.8	20.9	12
13	21.0	21.1	21.2	21.3	21.4	21.5	21.6	21.7	21.8	21.9	13
14	22.0	22.1	22.2	22.3	22.4	22.5	22.6	22.7	22.8	22.9	14
15	23.0	23.1	23.2	23.3	23.4	23.5	23.6	23.7	23.8	23.9	15
16	24.0	24.1	24.2	24.3	24.4	24.5	24.6	24.7	24.8	24.9	16
17	25.0	25.1	25.2	25.3	25.4	25.5	25.6	25.7	25.8	25.9	17
18	26.0	26.1	26.2	26.3	26.4	26.5	26.6	26.7	26.8	26.9	18
19	27.0	27.1	27.2	27.3	27.4	27.5	27.6	27.7	27.8	27.9	19
20	28.0	28.1	28.2	28.3	28.4	28.5	28.6	28.7	28.8	28.9	20
21	29.0	29.1	29.2	29.3	29.4	29.5	29.6	29.7	29.8	29.9	21
22	30.0	30.1	30.2	30.3	30.4	30.5	30.6	30.7	30.8	30.9	22
23	31.0	31.1	31.2	31.3	31.4	31.5	31.6	31.7	31.8	31.9	23
24	32.0	32.1	32.2	32.3	32.4	32.5	32.6	32.7	32.8	32.9	24
25	33.0	33.1	33.2	33.3	33.4	33.5	33.6	33.7	33.8	33.9	25
26	34.0	34.1	34.2	34.3	34.4	34.5	34.6	34.7	34.8	34.9	26
27	35.0	35.1	35.2	35.3	35.4	35.5	35.6	35.7	35.8	35.9	27
28	36.0	36.1	36.2	36.3	36.4	36.5	36.6	36.7	36.8	36.9	28
29	37.0	37.1	37.2	37.3	37.4	37.5	37.6	37.7	37.8	37.9	29
30	38.0	38.1	38.2	38.3	38.4	38.5	38.6	38.7	38.8	38.9	30
31	39.0	39.1	39.2	39.3	39.4	39.5	39.6	39.7	39.8	39.9	31
32	40.0	40.1	40.2	40.3	40.4	40.5	40.6	40.7	40.8	40.9	32
33	41.0	41.1	41.2	41.3	41.4	41.5	41.6	41.7	41.8	41.9	33
34	42.0	42.1	42.2	42.3	42.4	42.5	42.6	42.7	42.8	42.9	34
35	43.0	43.1	43.2	43.3	43.4	43.5	43.6	43.7	43.8	43.9	35
36	44.0	44.1	44.2	44.3	44.4	44.5	44.6	44.7	44.8	44.9	36
37	45.0	45.1	45.2	45.3	45.4	45.5	45.6	45.7	45.8	45.9	37
38	46.0	46.1	46.2	46.3	46.4	46.5	46.6	46.7	46.8	46.9	38
39	47.0	47.1	47.2	47.3	47.4	47.5	47.6	47.7	47.8	47.9	39
40	48.0	48.1	48.2	48.3	48.4	48.5	48.6	48.7	48.8	48.9	40

Example—If point is 22.6 ft. above grade, how far should it be from center line to be a slope stake point? Ans. from Table 30.6. For same slopes but other widths of roadbed, correct above figures by one-half difference in width of roadbed; thus in example above, for 20 ft. roadbed distance will be $30.6 + (20 - 16) \div 2$ or 2 ft. added to 30.6 = 32.6. For slopes of 1 on 1½ see inside of back cover.
Copyright, 1914, by Eugene Dietzgen Co.

1806

INDEXED

to page #74

This Field Book is manufactured of a High Grade 50% Rag Paper having a WATER RESISTING SURFACE, and is sewed with Bing Special Enamel Waterproof thread.

Made in U. S. A.

Pages

- 1-11 X sec alley Blk 44 ocean
Beach 1 to 11
" Pescadero Dr.
12-20 X-Sect "T" Alleys - Block 108 - Univ Hts.
21-27 " Alley Blk "B" Riviera Villas
28-37 " " " 67 Univ. Hgts
39-41 Subdivision City Property Gibbs Airport
42 X-Sec. Dwight Boundary to Nile
49-52 Poe St. Locust to Evergreen
55-64 Alley Blk. 62 Ocean Beach

Cross section alley
 Blk 44 Ocean Beach and
 Pescadero Drive

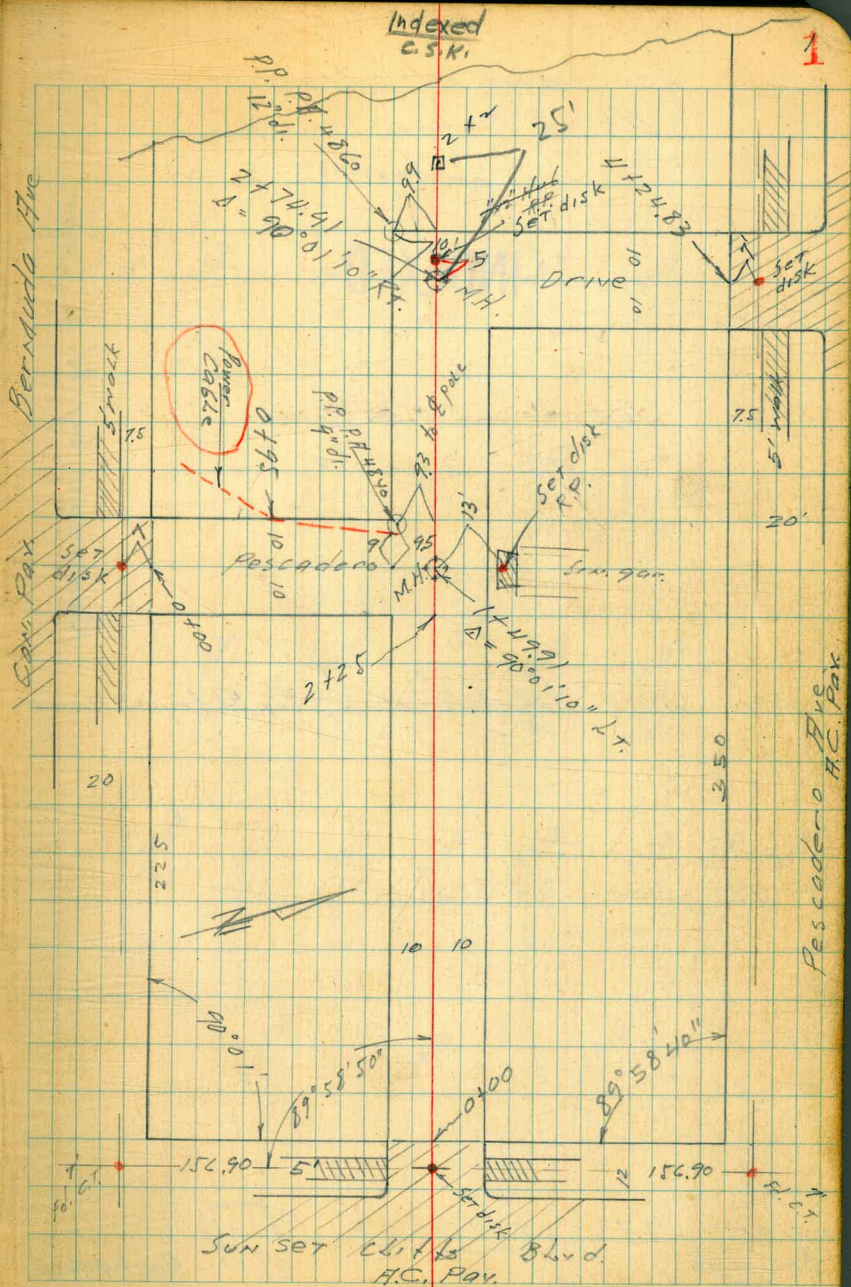
MOORE
 BEGG
 GREEN

W.O. 31332

10-24-47

See also F.B. 519-38

INDEXED



X sec E + W alley
Blk 44 Ocean Beach

INDEXED

0 + 50

0 + 45 101 Lt end Bl fence

0 + 25

0 + 00 W Sunset Cliffs Blvd, Reg. Bl. fence 101 Lt.

0 - 12

0 - 30

NW BP 7.73 28.84
Bermuda
and
Sunset Cliffs
Blvd.

21.11
21.19 - Rechecked
See pg. 11

Reduced by W.K. Lear

LT = South

±

R7

2

Indexed
circ.

INDEXED

23.61
 $\begin{array}{r} 523 \\ 122 \\ \hline \end{array}$
Can walk

23.5
 $\begin{array}{r} 5.3 \\ 10 \end{array}$

23.5
 $\begin{array}{r} 5.3 \\ 10 \end{array}$

24.0
 $\begin{array}{r} 4.8 \\ 10 \end{array}$

27.3
 $\begin{array}{r} 1.5 \\ 23 \end{array}$

23.7
 $\begin{array}{r} 5.1 \\ 10 \end{array}$

23.6
 $\begin{array}{r} 5.2 \\ 10 \end{array}$

23.7
 $\begin{array}{r} 5.1 \\ 10 \end{array}$

26.6
 $\begin{array}{r} 1.2 \\ 18 \end{array}$

23.94
 $\begin{array}{r} 4.90 \\ 10 \\ 06 \end{array}$

23.71
 $\begin{array}{r} 5.13 \\ 10 \\ Par. \end{array}$

23.75
 $\begin{array}{r} 5.89 \\ 10 \\ Par. \end{array}$

24.07
 $\begin{array}{r} 4.77 \\ 10 \\ Par. \end{array}$

24.33
 $\begin{array}{r} 4.51 \\ 10 \\ 06 \end{array}$

23.00
 $\begin{array}{r} 584 \\ 50 \\ 06 \end{array}$

22.39
 $\begin{array}{r} 445 \\ 50 \\ 91 \end{array}$

23.72
 $\begin{array}{r} 512 \\ 13 \\ 06 \end{array}$

23.16
 $\begin{array}{r} 508 \\ 13 \\ 91 \end{array}$

23.46
 $\begin{array}{r} 538 \\ 13 \\ 91 \end{array}$

23.66
 $\begin{array}{r} 518 \\ 13 \\ 91 \end{array}$

24.26
 $\begin{array}{r} 458 \\ 13 \\ 06 \end{array}$

24.37
 $\begin{array}{r} 407 \\ 50 \\ 91 \end{array}$

24.95
 $\begin{array}{r} 389 \\ 50 \\ 06 \end{array}$

23.07
 $\begin{array}{r} 577 \\ 50 \end{array}$

24.13
 $\begin{array}{r} 4.71 \end{array}$

25.14
 $\begin{array}{r} 3.70 \\ 50 \end{array}$

28.84

Note: Add 0.08 to All Elev's
pgs. 2 to 10 incl.

1163 E de gar. Con, 1st Loor, Level

1750

1730 E Singar, Con apron 8' wide

1725 9.5 Lt. P.P. P.H. 4820

1722 17.5 Ft end Bd. fence

T.P. 201 2933 1.52 27.32 ✓
TOP picket

1400

0775 11 Lt end wide fence

0774 Beg. Bd Fence 17.3 Ft

0771 11 Lt N.W. Cor. Shed f, Beg. wide fence

0763 E Singar, f Con. apron 10' wide

0761 16.9 Lt N.E. Cor. Shed

0755 E Singar f Con apron 8' wide

2884

17

17

28.31
1.02
30

33

23.8
5.5
20

24.0
5.3
10

24.3
5.0

25.1
4.7
10

27.2
2.1
20

24.52

4.81
13.8
Con gar.

24.25

5.08
12.0
Apron

2933

22.9
5.9
20

23.8
5.0
10

24.2
4.0
0

24.1
4.7

24.2
4.0
0

25.7
3.1
10

27.7
1.1
17

28.28

4.50
9.9
Apron

28.11

0.73
27.5
gar. Con. Ft

23.80

5.04
14.0
gar

23.64

5.20
12.7
Apron

2884

116

115

113

112

112

T.P. TOP pick 2135 & Pescadero Dr. to South

110 2129 10 ft end Fence

017

017 2125 = E.L. Pescadero Dr. 10 ft Beg. Bd. Fence

017

0163

2100

0161

0155

1170 & Singan & Car apron 8' wide

29.33

L

&

R

4

Singan, Car apron 11' wide

27.16
2.17
1.9
apron

27.58
1.75
15.9
900 Coll. PL

25.7
3.6
10

25.9
3.4

26.2
1.0
6

26.6
2.7
10

24.3
5.0
17

24.6
4.7
10

24.9
4.4

25.3
4.0
7

26.2
3.1
10

27.2
2.1
18

24.12
5.21
192
900

24.08
5.25
18
apron

29.33

Indexed
c.s.R.

Xsec. Pescadero Drive

0+30 S.C. No. gar. Con Floor apron

0+28 2' Con Walk

0+26 10 Lt. end Lattice Fence

0+18 also Beg. Lattice Fence
10.4 Lt NE Cor Dwelling

0+00 N.L. Bermuda 10.3 Lt. S.E. Cor.
Stucco Dwelling

0-20

0-40 2' Bermuda

4.31
BN BP
Bermuda 5.10 26.21 21.11
Sunset Clift
Blvd.

L = West

R

5

23.98
2,23
10.7
gar.

23.68
2,53
98
Con apron

INDEXED

23.55
2.5
10.2

23.3
2.9
10

23.0
3.2

22.9
3.3
10

22.2
4.0
20

22.65
3.5
10

22.50
3.7
9.9
P

22.06
4.5
P

22.35
3.8
10
P

22.60
3.0
10
6

22.55

8.6
40
6

21.89

4.3
40
9

22.41

3.8
13
6

21.79

4.4
13
9

21.73

4.4
13
7

21.61

4.6
13
9

22.71

4.0
13
6

21.39

4.8
40
9

22.01

4.2
40
6

21.86

4.3
40

21.59

4.6

21.43

4.7
40

26.21

1+5991 = NW Pescadero Dr. to South

1+55 10.1 RT Beg Bd fence

1+4991 A 90° 01' 10" Lt.

1+3991 = S.L. alley to East

T.P. 5.61 30.87 0.95 25.26

0+95

0+55 E of 9' Con. Base for ice Machine

0+495 N.L. do. 990, + 490m

26.21

Lt

E

RT

6

26.3
4.6
10

26.5
4.4

26.1
4.1
10

26.5
4.4
10

26.37
4.50
M.H.M

25.9
5.0
10

26.3
4.6
10
ground

24.1
5.8
9
Top
Cable

25.9
5.0

25.7
5.2
10

30.87

22.5
3.7
10
Top
Power
Cable

22.4
1.8
10

24.3
1.9

24.1
2.1
10

24.0
2.2
13

23.0
3.2
20

24.74
1.47
11.7

23.97
2.24
10.3
990

23.71
2.50
9.4
approx

23.2
3.0

23.0
3.2
10

22.4
3.8
18

26.21

2+64.91 = E.L. Pescadero Dr. to North

2+40

2+17 10.1 Rt Beg. Picket fence

2+07 E do, 990 Con Floor + apron is level

1+97 10.1 Rt end Picket fence

1+93 E 2' Con. walk

1+90 end wire + Beg Picket fence

1+74.5 end Bd Fence + Beg wire

1+73 E 3' Con walk

30.87

Lt = South

E

Rt

7

29.00
1.9
10

22.00
1.0
10
9.8

228.6
1.3

26.9
2.0
10

Con Picket
10 Fence

27.5
3.4
20

27.5
3.4
20

27.7
1.2

28.4
2.5
10

27.04
3.03
13.7
apron

27.94
2.93
15.7
apron

26.1
4.8
15

26.3
4.6
10

26.6
4.3

26.9
4.0
0

27.54
3.33
10
Walk

10 Rt

10 Rt

26.91
3.96
10

30.87

10' High
3+25 Beg. ^ Lark Fence 10 LT,

10. Rr Beg. Picket Fence
3+20 N End Con apron + garage

3+00

2+90 10.2 Rr end Picket + Beg. Con. apron + doc garage

T.P. 6.76 35.86 1.77 29.10

2+84.91 = 10' W of A = Sec. on Mt Pescadero Dr. to North

2+74.91 = A 90° 01' 10" Rr

30.87

Lr

8

Rr

8

29.78
6.08
10.2
apron
30.20
5.66
18.4
90.0

29.8
6.1
10

29.4
6.5

29.90
5.96
10.2
apron

30.20
5.66
18.4
90.0

20.00
5.86
10.2
apron

30.20
5.66
18.4

35.86

30.3
0.6
10

30.2
0.7

29.8
1.1
10

29.2
1.7
10

29.37
1.50
M.H.R.M.

29.00
1.9
10

30.87

4709 10 Rt end Picket Fence

4700

3780 E Sin gar.

3769 E Sin. gar. con apron 11' wide

3761 E 3' Con Walk

3758 10.1 Lt end Lath Fence

3750

3586

Lt

L

Rt

9

31.9
41.0
10

31.3
41.1

31.7
41.2
10

32.2
31.7
28

31.98
3.88
10.9
garage

31.38
4.48
7.2
apron

30.97
4.94
9.9

31.1
4.8
10

30.5
5.4

30.6
5.3
10

35.86

check to T.P. ^{top} Picket P.3 4.08 27.31 27.32

T.P. 2.79 31.39 6.76 29.10

¢ Pescadero Ave

S. C. Live Pescadero Ave

4 + 24.83 = S. L. Pescadero Ave

35.86

32.66
3.20
40

32.28
3.58

31.39
4.47
60

32.93
2.93
40
66

32.15
3.71
40
97

32.50
3.30
13
66

31.84
4.02
13
P

31.66
4.20
P

31.51
4.35
13
P

32.14
3.72
13
66

31.04
4.82
40
97

31.76
4.10
40
66

32.74
3.12
10
66

32.43
3.13
10
P

32.08
3.78
P

32.24
3.62
10
P

32.41
3.45
10
66

35.86

check levels on alley
Blk 44 Ocean Beach

NW BP 1.07 2930 28.13 = ^{corrected} Elev.

0.700 on alley, w. Sunset Cliff Blvd.

S TOP curb	5.19	24.01	✓
S Pav	5.39	23.81	
C "	5.37	23.83	
N "	5.06	24.14	✓
N TOP curb	4.80	24.40	

check to ^{NW BP} Bermuda + Sunset Cliff Blvd 8.01 21.19 21.11 = _{0.08}

See P 54 this Book
for further EL's

Moore
Begg
Green
Roberts

INDEXED

Pescadero + Sunset Cliffs Blvd.

24.02
23.83
23.82 } Elev. FB. 519 p 38
24.15
24.39

old Elev. in office B.M. Blk
Suggest Corr. of 0.08 to Elev. 21.19
Beg. on P. 2 this Blk.

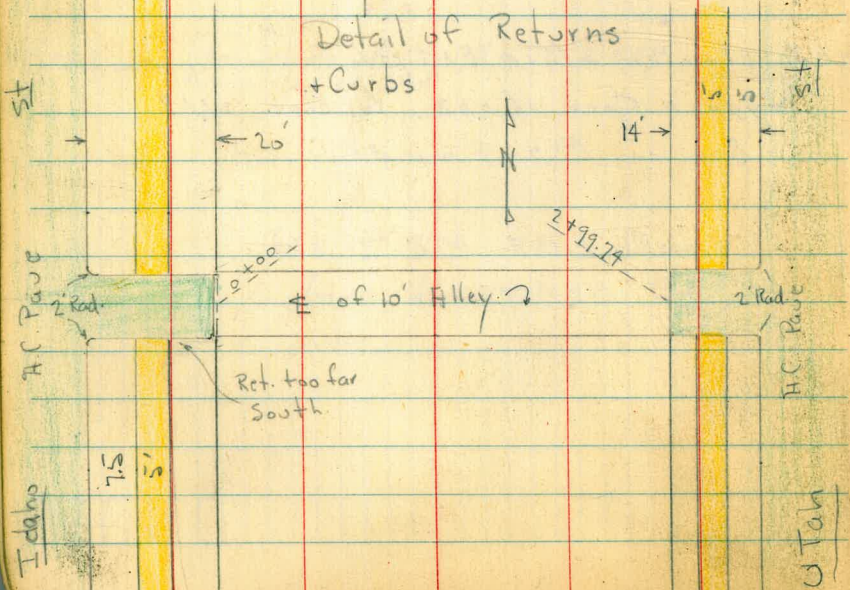
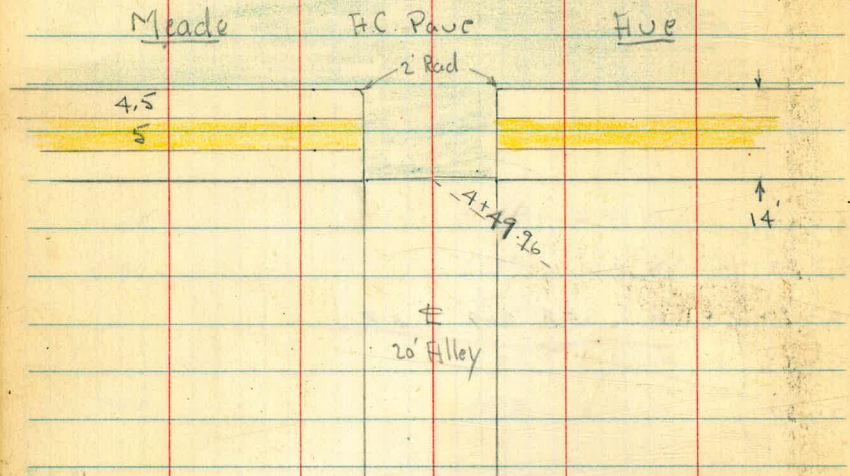
X-Sect "T" Alleys in Block 108 - Univ Hts

1956

W.O. 31359

12-24-26-47

Osborne
Hardin
Worrell

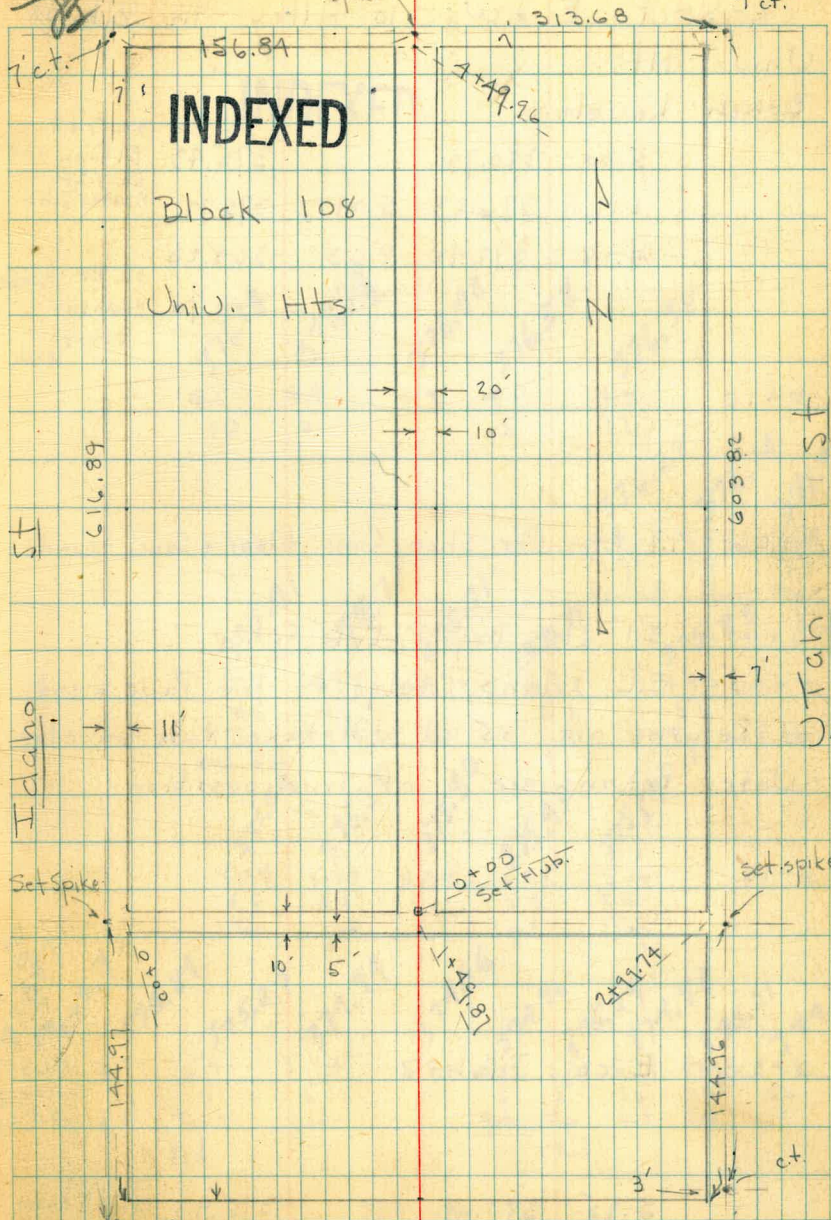


Indexed Meade

Set. Gal.
Spike

Hue

12



EL Ca on Blvd.

X- Sect. E. + W. 10' Alley in Blk. 108 Univ. Hts.

Bench Levels -

5.30	380.73		375.43	SE 7' ct. El Cajon + Idaho
1.11	376.83	5.01	375.72	SE 7' ct. Meade + Idaho
4.28	372.48	8.63	368.20	
		5.78	366.70	SE BP - Meade + Kansas 366.78 = book

0+10

0+06 - 7.7 Rt. = Cor. Shop - Conc. floor + Conc. found.

0+00 - 5.1' Lt. = Beg. Picket fence

0+00 = E.L. Idaho - Edge of H.C. Pave + end of Returns are 0.5' W. Will take Rods on edge
- Note: Returns are S. of True position

0-10

0-20 - E. cb. Idaho

5.25	380.68		375.43	SE 7' ct. El C. + Idaho
------	--------	--	--------	----------------------------

INDEXED

376.18	376.29	376.48	376.58	376.38
4.5 10	4.4 5	4.2	4.1 5	4.3 7.7
375.91	375.71	375.71	375.77	376.28
4.77 4.5 Top	4.97 4.5 gut.	4.97	4.91 5.5 gut.	4.4 7.7 ground
375.69	375.29	375.30	375.43	376.1A
5.14 4.4 Top	5.39 4.4 gut.	5.38	5.25 5.4 gut.	4.85 5.5 Top-end Ret.
375.09	374.97	374.96	374.96	375.57
5.71 5.0 gut.	5.36 2.5 Top	5.79 2.5 gut.	5.41 5 Top 2'	5.74 5 gut.
374.96	374.96	374.96	374.96	374.90
5.72 5 gut.	5.72 5 Top	5.39 5 gut.	5.78 2.5 gut.	5.47 2.5 Top
374.85	375.21	374.85	374.85	374.85
5.83 5.0 gut.	5.83 5.0 gut.	5.83 5.0 gut.	5.83 5.0 gut.	5.83 5.0 gut.
380.68				

T.P. on Hub 3.85 379.06 5.47 375.21

N.L. 10' Alley
± 20' Alley
0+00

1+59.87 = E.L. Alley

1+49.87 = ± Alley to Lt = on Sewer M.H.

1+40 - 5' Rt. = fence

1+39.87 = W.L. of N. + S 20' Alley on Lt.

1+38.5 - 4.2 Rt. = Sly. P. pole # PA. 2822

1+26 - 10.8 Rt. = ± of 5.5 Conc. Slab. by House

1+23 - 5.4 Rt. = Beg. picket fence

1+00

0+87 - 6.5 Rt. = ± of 11.2' wing of House

0+79 - 8.7 Lt. = end picket fence

0+69 - 19' Rt. = ± Sing Gar. - Conc. floor

0+60 - 19' Rt. = ± Sing Gar. - Conc. floor

0+51 - 4.4 Rt. = Sly. P. pole # PA. 2808

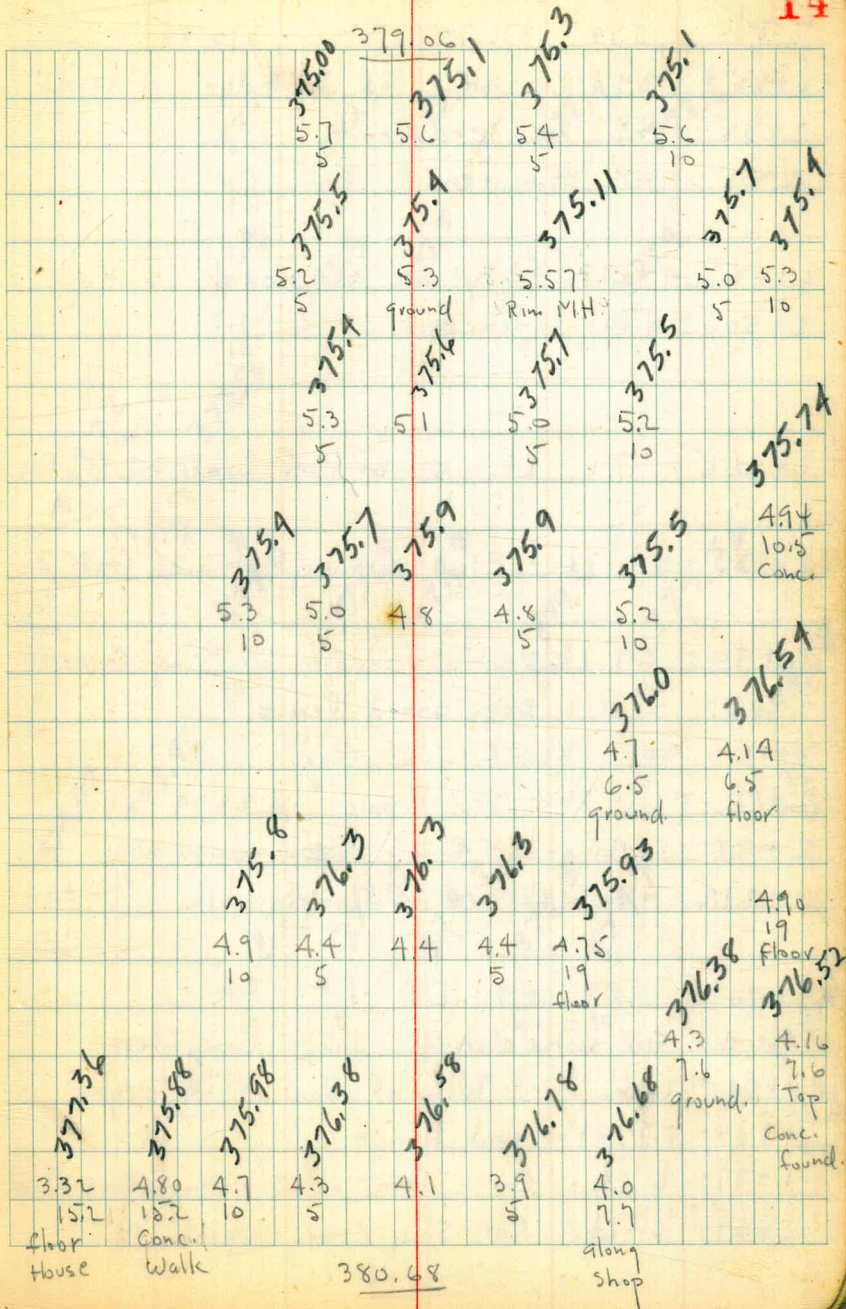
0+49 - 7.6 Rt. = end shop

0+30 - 15.2 Lt. = House

Lt.

Rt.

14



T.P. 5.88 376.73 8.21 370.85

2+85- 39 Rt. = Nly. of 3' Hedge - 6' High

2+85- 49 Rt. = end fence

2+75- 49 Rt. = fence

2+68- 44 Lt. = Sly. of 35 Hedge - 6' High

2+50 - 5' Rt. = fence

2+42.5 = 7.2 Lt. = ϕ of 13.5 Conc. Slab. for Gar.

2+36 - 5.7' Lt. = Fly. = opening of Sing. Gar. Conc. floor

2+20 - 5.7' Lt. = Wly. of Sing. Gar.

2+18- 5' Rt. = Beg. board fence

2+18- 20' Rt. = Fly of Gar.

2+17- 5.1' Rt. = Sly. Pole # A 2834

2+08 15.9' Lt. = ϕ 2.5 Conc. walk

1+97.2 = 16.1' Lt. = ϕ 2.5 Conc. walk

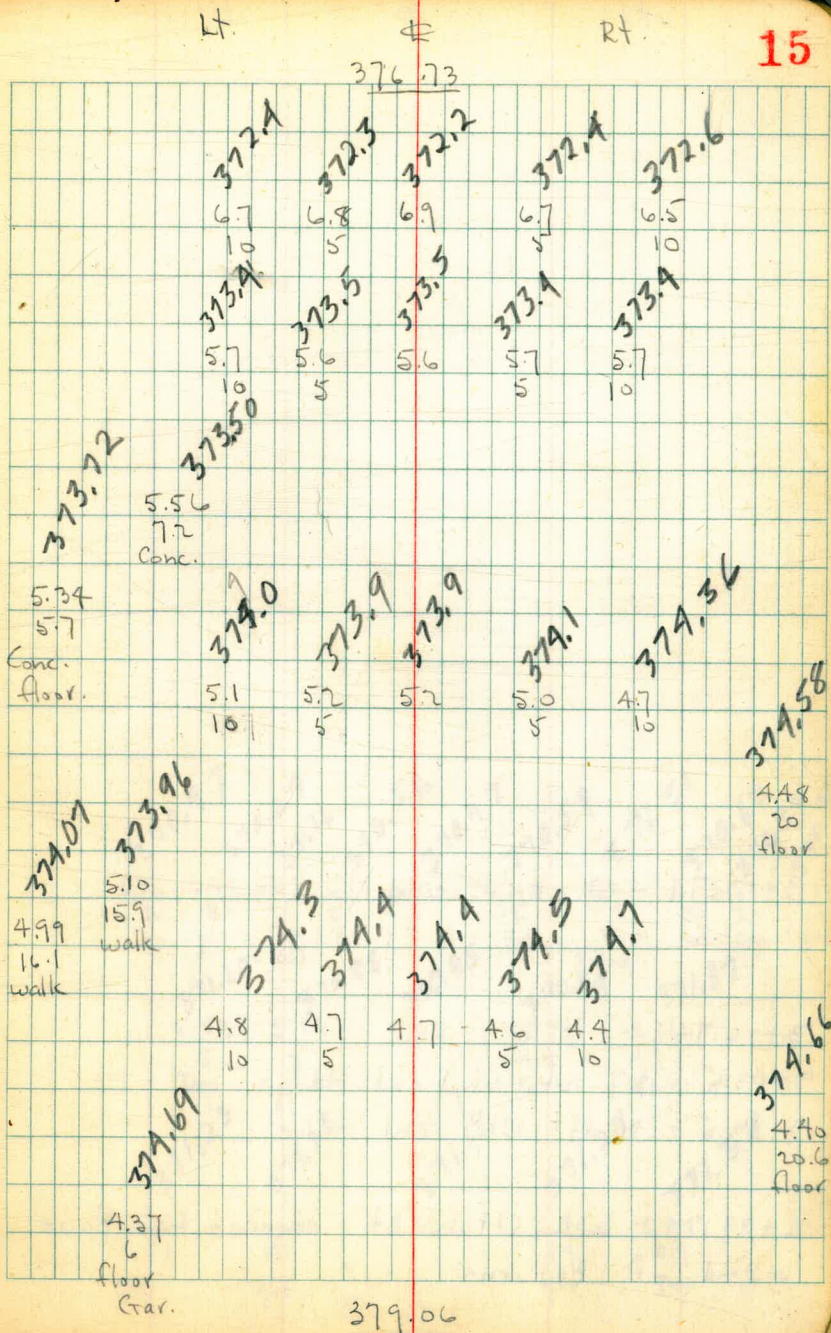
1+90 used for upholstering shop - Conc. floor.

1+80 - 20.6' Rt. = Wly. of Row of Garages

1+80- 5.7' Rt. = end fence

1+77- 6' Lt. = Cor. - front of Sing. Gar. - Conc. floor

1+61- 6' Lt. = Cor. Sing. Gar. - opens E.



3+13.74 = w. cb. = end.

2+06.74

3+03.5 - 3.7 Lt. = Sly. end Hedge

3+03.5 - 3.8 Rt. = Nly. -end Hedge

2+99.74 = WL Utah st. = edge of A.C. Pavement
+ end of Returns.

370.97	370.29	371.16	370.56	370.97	370.59	371.51	370.69	371.39	370.61
5.76	6.44	5.57	6.17	6.26	6.14	5.42	6.04	5.34	5.77
30	30	5	5	5	5	5	30	30	60
Top	gut.	Top	gut.	gut.	gut.	Top	gut.	Top	gut.
		Rad.				Rad.			
371.20	370.85	370.85	370.85	370.94	371.37				
5.53	5.88	5.88	5.79	5.36					
5	5		4.8	4.8					
Top	gut.		gut.	Top					
371.23	371.13	371.18	371.27	371.38					
5.50	5.60	5.55	5.46	5.35					
5.1	5.1		1.9	4.9					
Top	gut.		gut.	Top					
		376.73							

X-Sect. 20' N.+S. Alley in Block 108
Univ. Hts.

1+17- 15.9 Rt. = \oplus House - Conc. found.
1+07- 10.7 Lt. = \oplus of Rear of Shed - Conc. floor

1+00

0+70

0+60 - 11.6' Lt. = \oplus Sing. Crav. - Conc. floor

0+50 - 9.7' Lt. = end fence

0+46 - 10.9 Rt. = N.W. Cor. House

0+27 - 11' Rt. = \oplus 3' opening to under House

0+24 - 9.3' Lt. = Wly P. pole # D 30820T

0+16 - 11' Rt. = S.W. Cor. House - Conc. found.

0+01 - 10.1 Lt. = Beg Wire fence

0+00 = N.L. 10' E+W. Alley

4.10 379.31

375.21

= Hub. 0+00
 \oplus 20' + N.L.
10' Alley

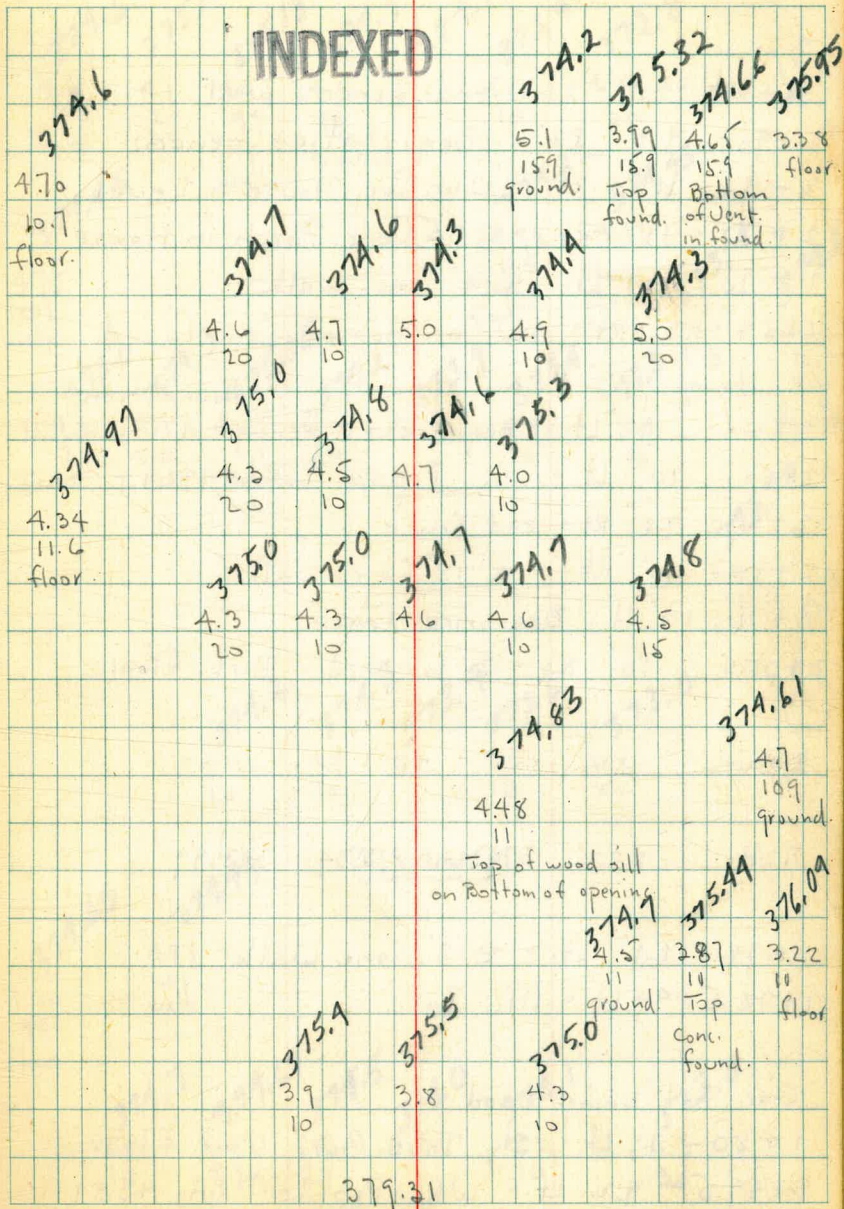
Lt. = w.

\oplus

Rt. = E.

17

INDEXED



3
 2+00 - 9.9 Lt. = end fence & wall
 2+90 - 9.3 Rt. = Beg. Lattice fence
 2+90 11' Rt. = N.W. Cor. House - Level.
 2+77 - 11' Rt. = \pm 11.5 Conc. Porch in House
 2+70 - 10.1 Lt. = \pm 4' Conc. walk
 2+54 - 12.3 Rt. = SW Cor. House - Conc. found.
 foundation
 2+50 - 10' Lt. = Beg. Picket fence - 4" Conc. wall
 2+50 - 10' Lt. = Wly. P. pole # PA. 4361
 2+50 - 9.8 Rt. = end fence
 2+18 - 10' Rt. = \pm 18" Conc. walk
 2+11 - 10' Rt. = Beg. wire fence
 2+05.5 - 10' Rt. = \pm 10' shed - Dirt floor

2+00

T.P. 5.23 379.20 5.34 373.97

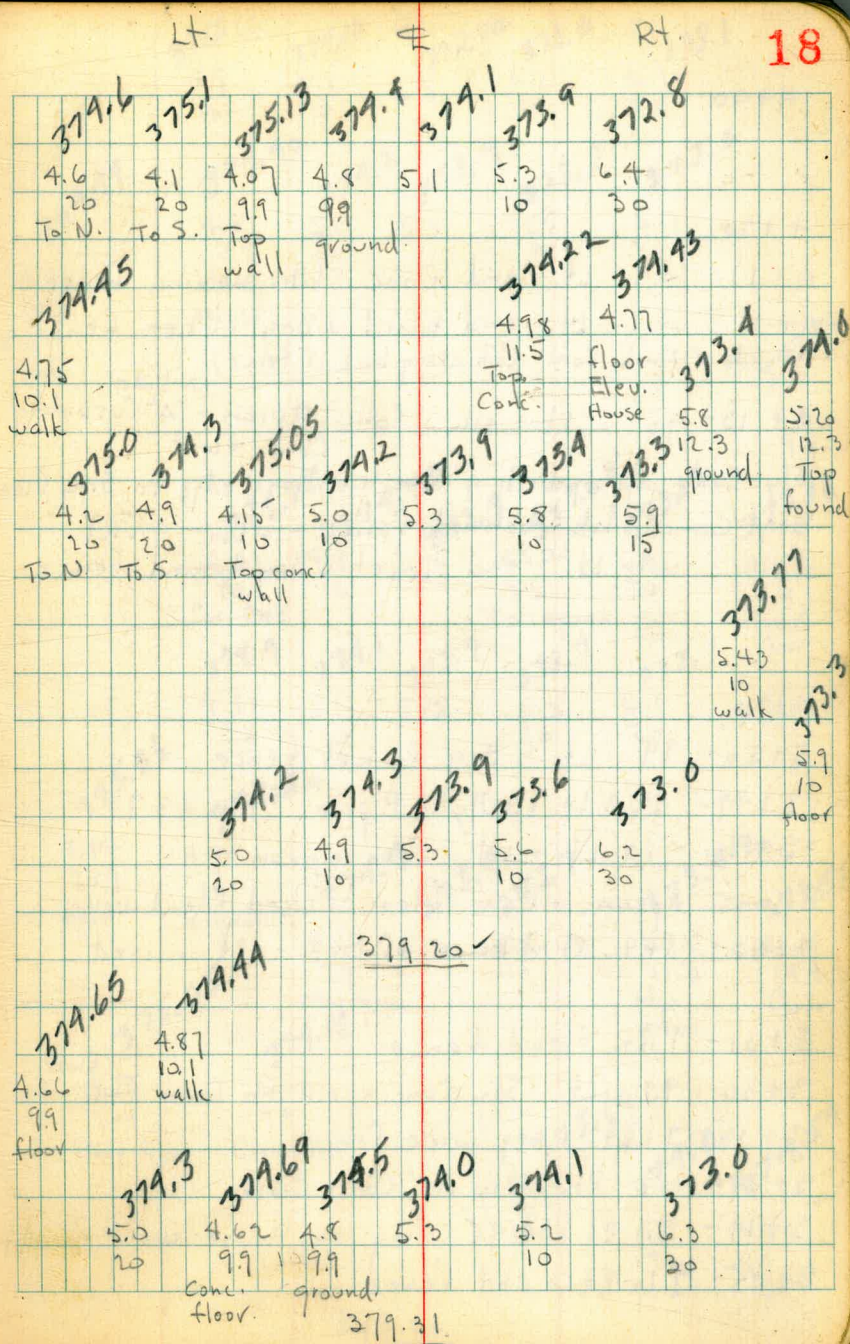
1+78 - 10.1' Lt. = \pm 3' Conc. walk

1+72.5 = 9.9 Lt. = Wly. Gar.

Gar. not being used.

1+50 - 9.9 Lt. = Sly. Doub. Gar. - Conc. floor

1+49.5 = 9.2 Lt. = Wly. P. pole # PA. 4351



4+40

4+20

4+17 - 10.3 Lt. = end Conc. Slab. behind fence

4+14 = 10.1 Lt. = end board + Beg picket fence
(8" wide 1" Thick Conc. Slab along back of fence)

4+13 - 9.5' Rt. = Nly. Conc. Apron - 4" Curb along
N. side
Conc. floor.

Sly. Conc. apron with 4" Conc. cb. along edge to Sing Gar.

Beg Conc. Slab. behind fence - also - 9.5' Rt. =

4+00 - 10.1 Lt. = end Picket + Beg. board fence -

3+70

3+50 - 9.9 Lt. = Beg. Picket fence

3+49 - 12.3 Lt. = Wly. P. pole # PA. 4371

3+46 - 10' Lt. = Nly. Conc. apron

Conc. apron + Conc. floor - Used for Living

3+40 - 14.4 Rt. = Back of Gar. - old unused

3+31 - 9' Rt. = end fence

3+30 - 9.9 Lt. = Sly. Conc. apron to Doub. Gar. ^{floor} Conc

3+15 - 9.1 Rt. = Beg. wire fence

3+28 - 10.2 Rt. = Nly. 18" Conc. walk

3+11 - 9.1 Rt. = 9.5' Wing to House - wood. found

3+05 - 9.1 Rt. = end fence

374.5 Lt.

4.9
14.2

374.10

5.1
10

372.70

6.5
10

373.0

6.2
10

Rt. 373.1

6.1
20

19

374.49

4.71
10.3
Cor.
Slab.

374.90

4.8
14.2
along
house

374.2

5.0
10

373.9

5.3

373.7

5.5
10

373.5

5.7
20

373.86

5.34
9.5

374.78

4.42
10.2
Cor. slab

374.10

4.8
10

373.9

5.3

373.68

5.52
9.5
Cor. apron

373.19

6.01
20
on
apron

373.06

6.14
28.6
floor
Gar.

374.9

4.8
20

374.1

5.1
10

373.9

5.3

373.7

5.5
10

373.1

6.1
20

375.06

4.14
21.9
floor.

374.96

4.74
10
Cor. apron

374.9

4.80
9.9
edge apron

373.9

5.3

373.7

5.5
10

373.42

5.78
11.3
edge
apron

373.56

5.64
14.4
floor.

375.05

4.15
21.9
floor Gar.

374.18

5.02
9.9
Cor. apron

373.69

5.51
10.2
walk

374.0

5.2
9.1
ground.

374.59

4.61
9.1
floor

379.20

T.P. 3.99 372.54 5.84 366.70 366.70^{P.B}
 8.60 368.55

check over Hole - B.P. gone 1.82 375.33 SE. Meade + Idaho

check B.M. 1.42 375.73 375.72

5+63.96 = S. cb

Returns end on S.L. - Rods on edge of pave
 0.4 N. in the \$ and at Rt. - at S.L. on Lt.
 4+49.96 = S.L. Meade - Edge of H.C. pave is

T.P. 5.12 377.15 7.17 372.03 ✓

Lt.

\$

Rt.

20

SE B.P.
 Meade + Kansas

P. 13
 SE. 7'ct. Meade + Idaho

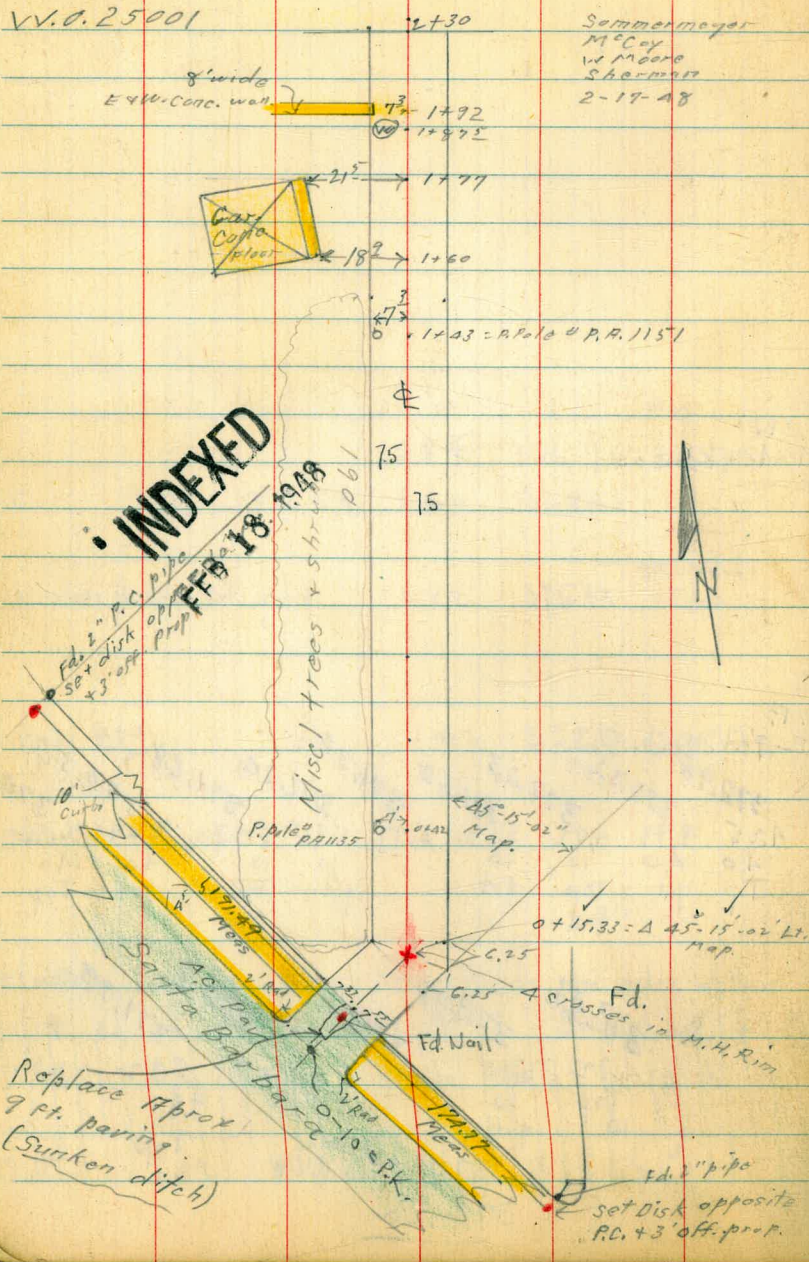
372.90	372.32	372.23	371.62	371.38	371.20	371.68	370.50	370.99
4.25	4.83	4.92	5.53	5.77	5.95	5.47	6.64	6.16
Top	cut	Top	cut	cut	Top	Top	cut	Top
		1' Rod.			1' Rod.	2' Rod.		

372.43	372.06	371.70	371.70	371.93
4.72	5.09	5.45	5.45	5.22
Top	10	9.9	9.9	9.9
10	cut	edge	edge	Top.
		377.15 ✓	pave	
		379.20		

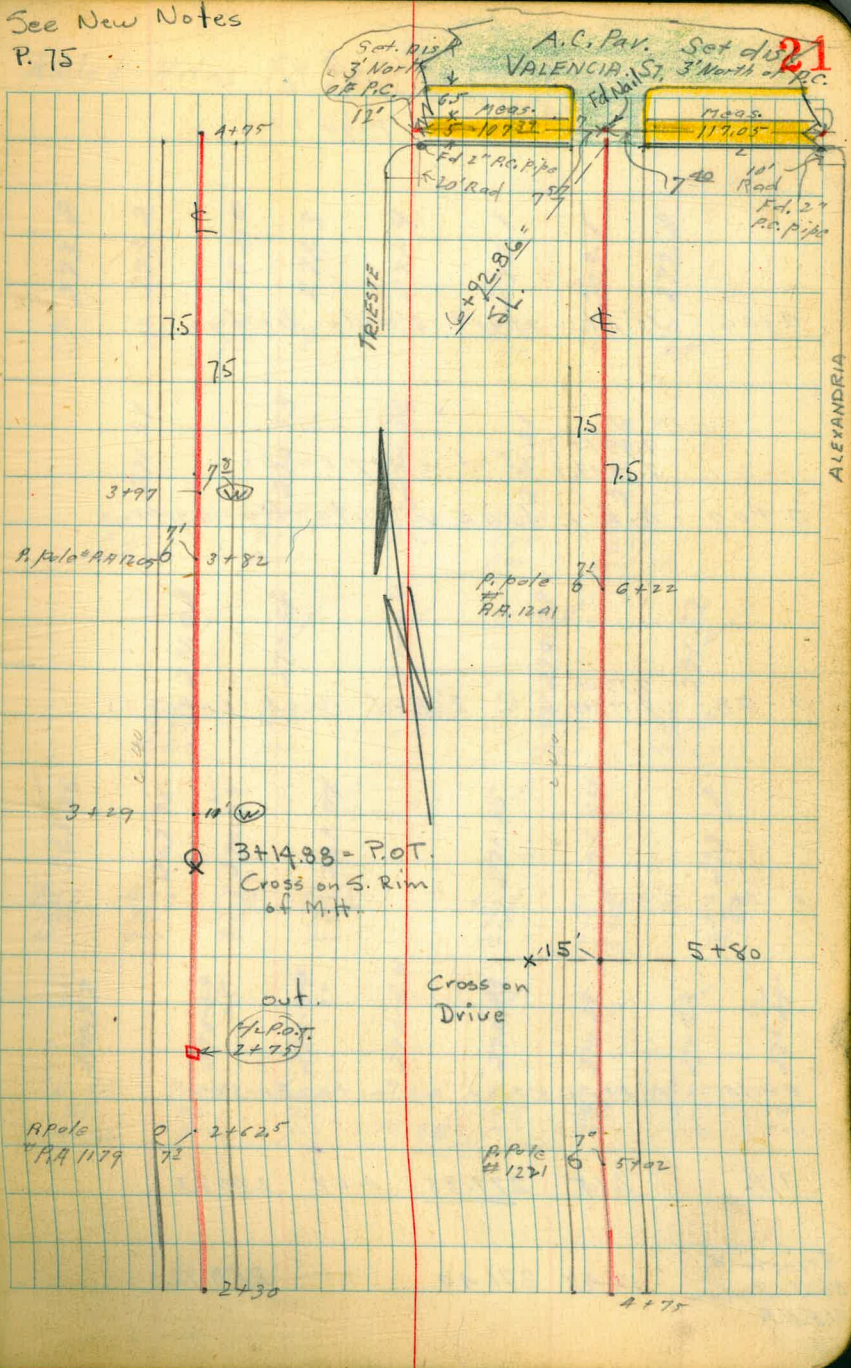
ALLEY BIK "B" RIVIERA VILLAS

Cross Section

V.V.O. 25001



See New Notes
P. 75



Levels
 Alley Bk. B
 Riviera Villas
 sketch. page 22

0+06 11' Lt.: start. 2' wide hedge

7.3744 }
 7.5587 } = End alley curbs

0+00 = N. Ely. line Santa Barbara

0-08 7.3744 }
 7.5587 } E.C. 2' Rad. Curb returns

0-10 Cont.

0-10 = N. Ely CA line Santa Barbara

T.P. 7.15 279.88 0.67 270.73

Trieste &
 Santa Barbara
 N.E.B.P. 12.48 271.40 — 258.72

Added Notes FB #1800-43

INDEXED

22

273.0	273.2	272.0	271.3	271.4	272.1	273.1	272.0
4.1 25	4.7 10	5.9 75	6.6 5	6.5	5.8 75	4.8 9	5.1 25
	271.31	270.93	270.96	271.21	271.66		
	6.57 7.37 End cl.	6.95 7.37 par	7.02 par	6.67 7.55 par	6.22 7.55 End cl.		
	271.00	270.50	270.64	270.90	271.52		
	6.80 7.37 cl. E.C.	7.30 7.37 par	7.24 par	6.90 7.55 par	6.36 7.55 cl. E.C.		
261.56	267.91	270.04	269.77	271.85	271.54	272.10	
9.32 100 84	9.77 100 par	7.81 50 04	8.47 50 par	6.03 50 80	6.34 100 par.	5.70 100 04	
270.97	270.89	270.77	270.64	270.83	270.88	271.53	271.37
6.91 95 cl. AC.	7.49 95 par.	7.44 75 par.	7.24 277.88	7.05 72 par	7.00 92 par	6.35 92 cl. AC.	6.67 50 par

1+50

1+43 7³ Lt. = P. pole # P.A. 1151

T.P. 11.45 288.43 0.90 276.98

1+00

0+50

7⁶ Lt. = End. 2' wide hedge

0+42 7⁰ Lt. = P. pole # P.A. 1135

0+20 6³ Lt. = Ctr. dead man

0+18⁴⁵ 7⁵ Lt. = Δ 45°-15' Lt. in Wly. line

11⁰ Lt. = Δ in hedge

0+15³⁰ Taken on split of Δ

0+12²⁰ 7⁵ Lt. = Δ 45°-15' Lt. in Wly. line

277.88

23

280.7
 $\frac{7.7}{2.5}$

280.4
 $\frac{8.0}{7.5}$

280.4
 $\frac{8.0}{5.5}$

279.7
 $\frac{8.7}{5}$

279.5
 $\frac{8.9}{5}$

279.6
 $\frac{8.8}{7.5}$

280.8
 $\frac{7.6}{1.3}$

281.0
 $\frac{7.4}{2.5}$

288.43

278.4
 $\frac{40.5}{2.5}$

277.8
 $\frac{0.1}{7.5}$

276.9
 $\frac{1.0}{5.5}$

276.5
 $\frac{1.4}{1.4}$

276.5
 $\frac{1.4}{7.5}$

277.8
 $\frac{0.1}{1.4}$

278.3
 $\frac{40.9}{50}$

275.9
 $\frac{2.0}{20}$

275.3
 $\frac{2.6}{7.5}$

274.2
 $\frac{3.7}{5.5}$

273.9
 $\frac{4.0}{4.0}$

273.9
 $\frac{4.0}{7.5}$

275.0
 $\frac{2.9}{7.5}$

273.4
 $\frac{4.5}{10}$

271.7
 $\frac{6.2}{7.5}$

272.4
 $\frac{5.5}{5.5}$

272.9
 $\frac{5.0}{6}$

273.4
 $\frac{4.5}{7.5}$

274.2
 $\frac{3.7}{2.5}$

273.4
 $\frac{4.5}{10}$

271.7
 $\frac{6.2}{7.5}$

271.8
 $\frac{6.1}{6.1}$

272.3
 $\frac{5.6}{6}$

273.1
 $\frac{4.8}{7.5}$

277.88

2+62^E 7³ Lt. = P. pole # R.F. 1179

2+50

6.75 294.55 0.63 287.80

2+15

2+00

1+92 7³ Lt. = 8" wide Conc. (F+M) wall.

1+91^E 8^L Lt. = End board fence

1+89^S 6^L Lt. = water meter box.

1+84 7² Lt. = start board fence

1+77 21^E Lt. = End Conc apron to double ^{Gar.}

1+60 18² Lt. = start conc. apron to double ^{Garage}

288.43

286.7	286.7	286.7	286.5
$\frac{7.9}{7.5}$	$\frac{7.9}{7.5}$	$\frac{8.1}{7.5}$	
294.55	294.55	294.55	
283.5	284.9	284.8	284.6
$\frac{4.9}{50}$	$\frac{3.5}{7.5}$	$\frac{3.6}{7.5}$	$\frac{3.8}{7.5}$
282.9	283.6	282.7	282.8
$\frac{5.5}{50}$	$\frac{4.8}{7.5}$	$\frac{5.7}{7.5}$	$\frac{5.6}{7.5}$
282.2	281.6	281.6	283.8
$\frac{6.2}{7.3}$	$\frac{5.10}{7.2}$	$\frac{6.8}{7.3}$	$\frac{4.6}{7.5}$
Ground	top of wall	Base wall	
281.80	281.83	281.5	281.5
$\frac{6.62}{23.5}$	$\frac{6.60}{21.5}$	$\frac{6.9}{7.5}$	$\frac{6.9}{7.5}$
Gar. Floor	End Apron		
280.8	280.8	281.1	282.9
$\frac{6.58}{20.9}$	$\frac{6.69}{18.9}$	$\frac{7.16}{7.5}$	$\frac{5.5}{7.5}$
Gar. Floor (Conc.)	Apron		
280.3	280.3	281.5	281.4
$\frac{8.1}{7.5}$	$\frac{8.2}{7.5}$	$\frac{7.0}{7.5}$	$\frac{7.0}{7.5}$
288.43	288.43	288.43	

4+50

4+00

3+97 7^s Rt. = Ctr. Water Meter box

3+82 7^L Lt. = P. pole # P.A. 1205

3+70

3+29 11' Rt. = Ctr. water meter box

3+00

2+75 282 Hub. + Dist
P.O.T. 6.64 287.91 B.M. #1

294.55

285.2

$\frac{9.4}{50}$

284.5

$\frac{10.1}{50}$

281.9

$\frac{12.7}{50}$

282.1

$\frac{12.5}{50}$

286.8

$\frac{7.8}{50}$

288.4

$\frac{6.2}{75}$

286.4

$\frac{8.2}{75}$

285.3

$\frac{9.3}{75}$

289.7

$\frac{4.9}{75}$

290.0

$\frac{4.6}{75}$

288.9

$\frac{5.7}{75}$

286.8

$\frac{1.8}{75}$

285.9

$\frac{8.7}{75}$

289.9

$\frac{4.7}{75}$

289.4

$\frac{5.2}{75}$

289.0

$\frac{5.6}{75}$

286.8

$\frac{7.8}{75}$

286.2

$\frac{8.4}{75}$

289.8

$\frac{4.8}{75}$

289.2

$\frac{5.4}{75}$

292.6

$\frac{8.0}{50}$

291.0

$\frac{3.6}{18}$

289.9

$\frac{4.7}{17}$

290.9

$\frac{3.7}{15}$

289.2

$\frac{5.4}{50}$

291.3

$\frac{3.3}{10}$

292.0

$\frac{2.6}{50}$

290.7

$\frac{3.9}{50}$

294.55

T.P. on Nail
6+90⁰ 3.35 292.63 13.03 289.28

6+88

6+76 7¹/₂ Lt. = 8" Diam. tree

6+60

6+51 6⁰ Lt. = 4" ^{diam.} tree

6+44 6⁸/₁₆ Lt. = ctr. deadman

6+35

6+22 7¹/₂ Lt. = P. pole # P.A. 12A1

6+00

5+50 2x2 @ P.O.T. 7.90

T.P. 9.62 302.31 1.86 292.69

5+02 7⁰/₁₆ Lt. = P. pole # P.A. 12A1

5+00

294.55

292.6	294.9	291.6	290.4	290.2	294.6	291.8	296.4	295.9
9.7 50	7.4 9	10.7 75	11.7 4	12.1	7.7 5	10.5 75	5.9 10	6.9 50
292.9	296.4	294.1	292.7	292.4	292.6	293.5	297.8	296.9
7.4 50	5.9 10	8.2 75	9.6 4	9.9	9.7 5	8.8 75	4.5 11	5.4 50
293.0	296.4	295.6	294.6	294.3	294.1	295.0	297.7	297.5
7.3 50	5.9 11	6.7 75	7.7 4	8.0	8.2 6	7.3 75	4.6 11	4.8 50
	295.3	295.8	295.3	295.5	296.8	297.4		
	7.0 50	6.5 75	7.0	8.3 75	5.5 11	4.9 50		
	290.0	294.2	294.4	294.3	296.1	297.0		
	12.3 50	8.1 75	7.9	8.0 75	6.2 17	5.3 50		
	288.1	292.2	292.0	292.0	292.9	294.6		
	6.9 50	2.4 75	2.6	2.6 75	1.7 10	0.0 40		

294.55

Check End East cl.
 Alloy BIK
 73rd 0100
 sec F.B. 1757-37

Added Notes FB#1800-43

3.46 289.17

7+05^L Cont.

7+05^L Cont.

7+05^L = Sly. Cl. V.

7+03^L - ^{73rd} 7th St. } - Cl. B.C. on 2' Rod Return.

6+93^L = Sly line

Alloy obs.
 = start. H.O. Par. +

6+93^L Sly line

292.63

288.2	289.10	289.10	289.10	289.10	289.10	289.10	289.10	289.10	289.10
4.4 2.5	3.53 7.5 Cl. E.C.	4.16 7.5 par	3.98 7.5 par	3.56	3.10 7.5 par	3.00 7.5 par	2.31 7.5 par	2.31 7.5 par	2.31 7.5 par
290.0	289.20	289.20	289.20	289.20	289.20	289.20	289.20	289.20	289.20
2.6 7.5	3.35 7.5 Cl. B.C.	3.79 7.5 par	3.52	3.03 7.5 par	2.39 7.5 Cl. B.C.	2.39 7.5 Cl. B.C.	2.39 7.5 Cl. B.C.	2.39 7.5 Cl. B.C.	2.39 7.5 Cl. B.C.
289.8	289.51	289.51	289.51	289.51	289.51	289.51	289.51	289.51	289.51
2.8	3.12 7.5 Cl.	3.40 7.5 par	3.27	2.82 7.5 par	2.14 7.5 Cl.	2.14 7.5 Cl.	2.14 7.5 Cl.	2.14 7.5 Cl.	2.14 7.5 Cl.
290.9	289.81	289.81	289.81	289.81	289.81	289.81	289.81	289.81	289.81
1.7 7.5	3.12 7.5 Cl.	3.40 7.5 par	3.27	2.82 7.5 par	2.14 7.5 Cl.	2.14 7.5 Cl.	2.14 7.5 Cl.	2.14 7.5 Cl.	2.14 7.5 Cl.
291.1	289.63	289.63	289.63	289.63	289.63	289.63	289.63	289.63	289.63
1.5 2.5	3.12 7.5 Cl.	3.40 7.5 par	3.27	2.82 7.5 par	2.14 7.5 Cl.	2.14 7.5 Cl.	2.14 7.5 Cl.	2.14 7.5 Cl.	2.14 7.5 Cl.
	289.37	289.37	289.37	289.37	289.37	289.37	289.37	289.37	289.37
	8.26 7.5 Cl.	8.95 7.5 par	8.95	2.30 7.5 par	1.67 7.5 Cl.	2.51 7.5 par	1.67 7.5 Cl.	2.51 7.5 par	1.67 7.5 Cl.
	289.60	289.60	289.60	289.60	289.60	289.60	289.60	289.60	289.60
	3.10 7.5 par	3.10 7.5 par	3.10	3.10 7.5 par	3.10 7.5 par	3.10 7.5 par	3.10 7.5 par	3.10 7.5 par	3.10 7.5 par
	290.33	290.33	290.33	290.33	290.33	290.33	290.33	290.33	290.33
	2.30 7.5 par	1.67 7.5 Cl.	2.51 7.5 par	1.67 7.5 Cl.	2.51 7.5 par	1.67 7.5 Cl.	2.51 7.5 par	1.67 7.5 Cl.	2.51 7.5 par
	290.96	290.96	290.96	290.96	290.96	290.96	290.96	290.96	290.96
	2.30 7.5 par	1.67 7.5 Cl.	2.51 7.5 par	1.67 7.5 Cl.	2.51 7.5 par	1.67 7.5 Cl.	2.51 7.5 par	1.67 7.5 Cl.	2.51 7.5 par
	289.53	289.53	289.53	289.53	289.53	289.53	289.53	289.53	289.53
	3.10 7.5 par	3.10 7.5 par	3.10	3.10 7.5 par	3.10 7.5 par	3.10 7.5 par	3.10 7.5 par	3.10 7.5 par	3.10 7.5 par
	289.63	289.63	289.63	289.63	289.63	289.63	289.63	289.63	289.63
	3.00 7.5 par	3.00 7.5 par	3.00	3.00 7.5 par	3.00 7.5 par	3.00 7.5 par	3.00 7.5 par	3.00 7.5 par	3.00 7.5 par
	290.31	290.31	290.31	290.31	290.31	290.31	290.31	290.31	290.31
	2.31 7.5 Cl. E.C.	2.31 7.5 Cl. E.C.	2.31	2.31 7.5 Cl. E.C.	2.31 7.5 Cl. E.C.	2.31 7.5 Cl. E.C.	2.31 7.5 Cl. E.C.	2.31 7.5 Cl. E.C.	2.31 7.5 Cl. E.C.

292.63

Cross Sec. Alley BIK 67
University Hqts.

6-17-48

W.O. 25001

Sommermeier
W Moore
W Duncan

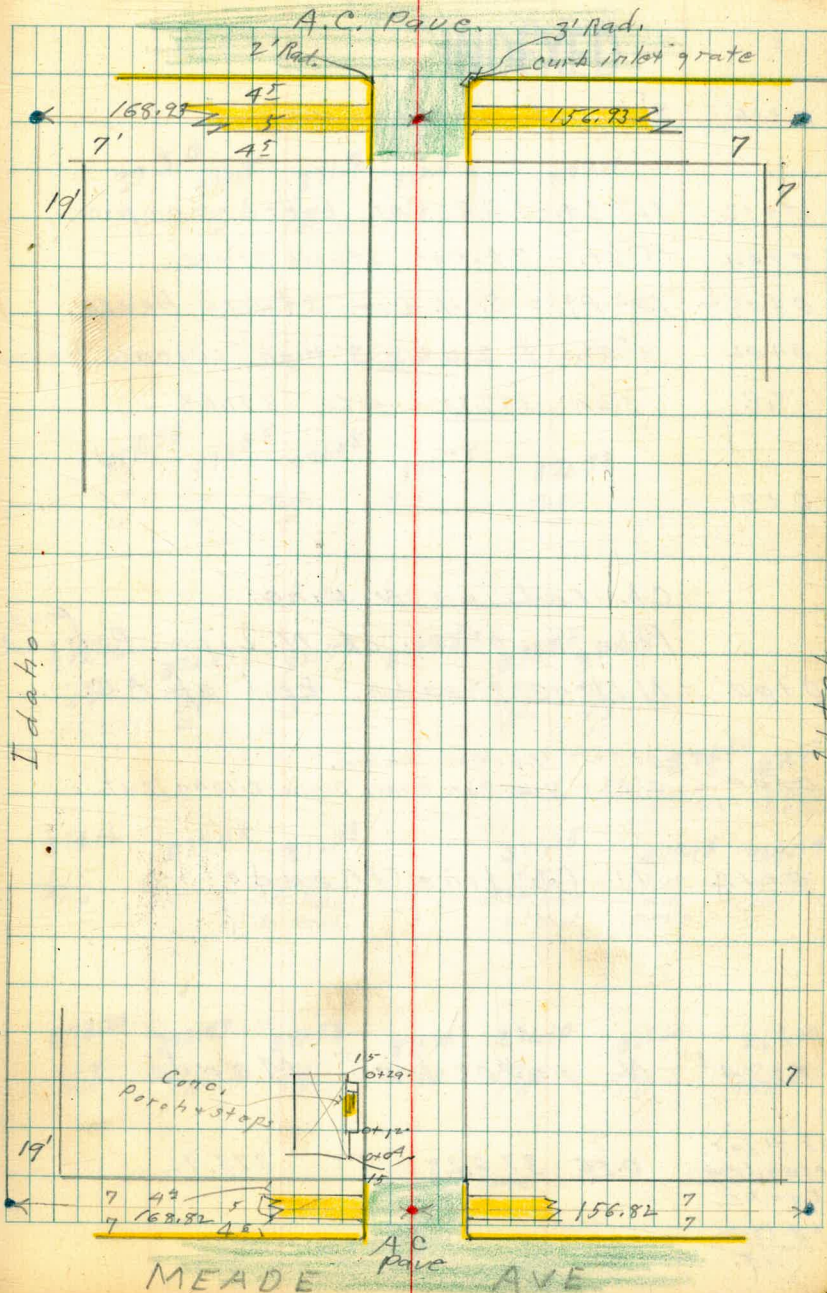
• = set Nail

• = Fd. L&T.

INDEXED
JUN 18 1948

Monroe Ave

28



Levels Alley BIK 67
Univ. Hgts

0+16 8^SRT = \pm Large Vine
0+12 11^o Lt. = S.E. Cor. porch. on pier
0+04 15' Lt. = S.E. Cor. stucco house.
0+03^E 10^L RT. = S.W. Cor. stucco house
0+02 8^SRT = \pm 2' wide 3' High Eugenia hedge
T.P. 5.64 377.32 4.60 371.68

0+01

Cb. Ends on N. Line.

Pave is 0^e so. of N. Line. ^{pave.} Rodson A

0+00 = N. line Meade. End of A.C.

0+00^E 6^SRT = N.E. Cor. same.
2^RRT = N.W. Cor. Conc. Drain Clean out.

0-14 = N. Cb. line Meade

0-14^L = N. gutter line Meade

SE 7' Lt.
Meadeq Idaho.
FB 1806
13

0.56 376.28 — 375.72

INDEXED

29

373.0
4.3
11

372.8
4.5
10

371.9
5.4
5

372.0
5.3

372.1
5.2
10

377.32

373.38
3.9
13

372.58
3.7
10

371.88
4.2
5

371.78
4.5

371.78
4.5
10

372.46
3.82
7.2
26.

372.09
4.2
7.2
2

371.85
4.23
5

371.75
4.53

371.58
4.70
9.9
8

371.67
4.61
9.9
26.

371.68
4.60
N.W. Cor.

371.67
4.61
N.E. Cor.

374.16
2.12
100

373.03
3.25
50

372.13
4.15
Ctr. Ret.
2' Rad

371.75
4.53
Ctr. Ret.
2' Rad

370.13
6.15
50
Drive

369.54
6.74
100

373.61
2.67
100

372.47
3.81
50

371.53
4.25
10

371.30
4.98

371.10
5.18
10

370.13
6.15
50

369.00
7.28
100

7

376.48

Alley BIK 67. Univ. Hqts

conc. Apron to Sing. Car.

0+49 11^e Rt. = End Comb walk +

0+46 10ⁱ Lt. = End Conc. Apron to Sing Car.

0+45 - 15^e Rt. = ~~E~~ Sing Car. Conc. Floor

along side of house.

vine. Vine grows into Alley

0+39 11^e Rt. = 8" diam trunk Trumpet

0+37^E { 11ⁱ Lt. = start. Conc. Apron to Sing Car
10^e Rt. = N.W. Cor. stucco house
8^e Rt. = End v wide - 3' high hedge.
11^e Rt. = start Comb walk + Car. Apron

15 Lt. = N. E. Cor. house

0+29 11^o Lt. = End porch + Rail.

steps run N.W.S.

0+27^E 12ⁱ Lt. = End Conc. steps to porch

Conc. partial porch.

0+18 12ⁱ Lt. (under porch) = start

377.32

INDEXED

372.63
4.67
11^e
Apron

372.88
4.44
15^e
Car. floor

373.97
3.35
12ⁱ
Car. Floor

373.36
3.96
10ⁱ
Apron

372.76
4.56
11^e
Apron

372.91
4.41
15^e
Car. Floor

373.95
9.37
19.9
Car. Floor

373.29
4.08
11
Apron

373.1
4.12
10

372.9
4.9

372.7
4.6
10

372.8
4.50
11.6
Conc.

372.9
4.4
12ⁱ
Base

373.22
4.10
12ⁱ
N.E. Cor.
Bottom step

7
377.32

Alley BIK 67 Unit. Hqts

0+86 { 10th Rt. = Car. Conc floor.
9th Rt. = start Conc. Apron to Sing Bar.

0+85 10th Rt. = End 1st fence.

0+82⁵ 20th Lt. = Φ 3rd Bar.

0+75 9.9 Lt. = Pole PA14415

0+67 20th Lt. Φ 2nd Bar.

0+58⁵ 20th Lt. = Φ 1st Bar.

0+55 10th Rt. = start 1st fence
4 Car Bar.

0+52⁵ 16th Lt. = start Conc. Apron to

0+51² 16th Lt. = Φ 2nd Conc. walk.

0+50 11th Lt. = Φ E.W. picket fence.

7
387.32

Φ

31

INDEXED

372.92

4.9
10

372.3

5.0

371.8

5.5
9
Grid

371.5

5.8
9
Apron

371.75

5.7
10
Floor

373.94

3.38
20.3
Bar

373.53

3.79
16.3
Apron

374.04

3.28
20.5
Bar

373.56

3.76
16.2
Apron
& Grid

372.5

4.8

372.1

5.2
10

371.6

5.7
30

373.99

3.33
20.3
Bar

373.51

3.81
16.3
Apron

373.99

3.33
20.2
Bar

373.52

3.80
16.3
Apron

373.52

3.80
16.3
walk

7
387.32

1+86 Σ 10° RT. = Φ 2' wide conc. walk

1+75 9° RT. = start 1st fence.
9° RT. = End board fence

0+50

1+49 9° Lt. = Pole # PA. 4431

1+16 12° Lt. = start board fence

1+00 9° RT. = start board fence

0+97 10° RT. = End Gar.
9° RT. = End Conc. Apron. to Sing Gar.

0+95 Σ { 20° Lt. = End Gar.
A car. Gar.
162 Lt. = End Conc. Apron to

0+91 20° Lt. = Φ 4th Gar.

387.32

INDEXED

370.93

$\frac{6.39}{10}$
walk

372.8
 $\frac{4.5}{10}$

372.2
 $\frac{5.1}{10}$

371.6
5.7

371.5
 $\frac{5.8}{8}$

371.0
 $\frac{6.3}{10}$

370.8
 $\frac{6.5}{10}$

372.6
 $\frac{4.7}{10}$

372.9
 $\frac{4.9}{10}$

372.3
5.0

372.1
 $\frac{5.2}{10}$

371.7
 $\frac{5.6}{10}$

372.6
 $\frac{4.7}{10}$

372.3
5.0

371.8
 $\frac{5.5}{9}$
Apron

371.5
 $\frac{5.80}{9}$
Apron

371.77
 $\frac{5.55}{10}$
Floor.

373.53

$\frac{3.79}{162}$
Apron

373.96

$\frac{3.36}{20.2}$
Gar

373.53

$\frac{3.79}{162}$
Apron

387.32

Alley Bk. 67 Univ. Hgts

T.P. ^{End} _{of wall}	4133	375.46	6.19	371.13
2+50 ^E	{	10' Rt. = N. Edge Conc. walk.		
		92 Rt. = End Lath Fence		
2+48	{	12' Lt. = End board Fence		
		92 Lt. = pole gone Marked 4447 in chalk		
2+44	{	12' Rt. = End Barages		
		10' Rt. = End Apron also: S. Edge walk		
		92 Rt. = start Lath Fence.		
2+32 ^E	12 ^E	Rt. = 5 th Car.		
2+22 ^E	12 ^E	Rt. = 4 th Car.		
2+13	12 ^E	Rt. = 3 rd Car.		
2+03	12 ^E	Rt. = 2 nd Car.		
1+93	12 ^E	Rt. = 1 st Car.		
		5 Car. car.		
		10' Rt. = start Conc. Apron to		
1+88	92	Rt. = End Lath Fence		

7
387.32

INDEXED

371.04	370.75	370.69
6.28 10	6.57 11.5	6.63 13
371.04	371.04	
6.28 10 Apron + walk	6.28 12.5 walk	
370.98	371.05	
6.34 10 Apron	6.27 12.5 Floor	
371.1	370.9	370.93
5.9 10	6.2	6.39 10 Apron
	6.4 10 End	6.30 12.5 Floor
370.96	371.04	
6.36 10 Apron	6.28 12.5 Floor	
370.96	371.04	
6.36 10 Apron	6.28 12.5 Floor	
370.94	371.02	
6.38 10 Apron	6.30 12.5 Floor	
371.52	371.22	371.12
5.8 10	6.1	6.2 10 End.
		370.95
		6.37 10 Apron
		371.02
		6.30 12.5 Bldg
	7	
	387.32	

3+06 14^E Rt. = Φ 6th Gar.

2+97 14^E Rt. = Φ 5th Gar

11^E Lt. = End porch on piers

2+89 14^E Rt. = Φ 4th Gar.

2+80 14^E Rt. = Φ 3rd Gar

Piers on top of ground.

2+73 11^E Lt. = start porch + steps on Piers.

2+71 14^E Rt. = Φ 2nd Gar.

2+66^E 14^E Lt. = start. (S.E. Cor.) Frame house

2+62 14^E Rt. = Φ 1st Gar

2+57 14^E Rt. = S.W. cor Bldg.

4 Apron to 7 Car Gar. (Conc.)

2+51^L 10⁹ Rt. = start Comb. walk

2+51 10' Rt. = Φ 4" wide E.+W. Conc. Wall

375146

INDEXED

371.9
4.1
20

371.0
4.5
10

370.8
4.7

370.58
4.86
11.0
Apron

370.56
4.88
10.9
Apron +
Grd.

370.57
4.87
10.9
Apron

370.55
4.87
10.9
Apron

370.55
4.91
10.9
Apron

370.52
4.74
10.9
Apron

371.7
3.8
20

371.2
4.3
10

371.0
5.5

370.8
4.7
10

370.55
4.91
10.9
Cor. walk
+ Apron

370.8
4.7
10
Grd.

370.2
5.3
10
Base
wall

370.76
4.70
14.5
Gar Floor

370.79
4.72
14.5
Gar Floor

370.70
4.76
14.5
Floor

370.73
4.73
14.5
Floor

370.71
4.72
14.5
Floor

370.70
4.76
14.5
Gar Floor

370.69
4.77
15
walk

371.13
4.33
10
top
wall

375146

4+00

3+94 13^E Rt. = Φ of Middle Car.

Floor, no Apron

3+79 13^E Rt. = start 3 Car Car. Conc.

3+75 11^E Rt. = End picket fence

3+63 9^E Lt. = start picket fence

New store house. Not used as Car.

3+57 11^E Lt. = Φ Sing. Car. Dirt Floor.

3+50

3+49^E 9^E Lt. = Pole # P.A. 1A61

3+26 { apron to 7 car Car.
11^E Rt. = End. Comb. walk +
11^E Rt. = start picket fence

3+19 14^E Rt. = End Bldg

3+14 1A^E Rt. = Φ 7th Car.
375.46

INDEXED

370.84

4.62
135 Floor.

370.3

5.2
20

370.5

5.0
10

370.A

5.1

370.3

5.2
10

370.5

5.0
135

370.81

4.65
135
Floor

370.3

5.2
11.5
Bottom of
door

370.5

5.0
11.5
Grid

370.6

4.9
20

370.6

4.9
10

370.7

4.8

370.7

4.8
10

370.3

5.2
20

370.51

4.89
11.5
End
walk + Apron

370.60

4.86
20
on walk

370.18

4.68
14.5
at Bldg

370.59

4.87
11
Apron

370.79

4.67
14.5
Floor

375.46

(3rd E+W - A'N+S) top level
5+98^E 4' Rt. = Ctr. Drain clean out box.

T.P. 8.10 377.87 5.69 369.77

5+75

5+62 10^E Rt. = End lath fence.

5+51 9^E Lt. = End lath fence
10^E Rt. = End board fence, start lath fence

5+50

5+18 10 Lt. = End wire fence start lath

5+00 10^E Rt. = End wire fences + start
10^E Lt. = Line of fence

4+71 9^I Lt. = Pole # P.A. 4477

4+50 10^I Rt. = start wire fence
10^I Lt. = start wire fence
9^E Lt. = End wire fence

4+28^E 9^I Lt. = start wire fence

No Apron.

4+10 13^E Rt. = End 3 car Gar. Conc. floor

4+00 9^E Lt. = End picket fence

375.46

INDEXED

369.76

36

8.11
A
Ctr. Box

377.87

370.4 370.4 370.4 370.1 370.1
 $\frac{5.1}{12}$ $\frac{5.1}{10}$ 5.1 $\frac{5.4}{10}$ $\frac{5.4}{12}$

370.4 370.6 370.4 370.1 369.9
 $\frac{5.1}{20}$ $\frac{4.9}{10}$ 5.1 $\frac{5.4}{10}$ $\frac{5.6}{20}$

369.6 369.8 369.8 370.1 370.5
 $\frac{5.9}{20}$ $\frac{5.7}{10}$ 5.7 $\frac{5.4}{10}$ $\frac{5.0}{20}$

369.7 369.9 369.9 370.0 370.4
 $\frac{5.8}{20}$ $\frac{5.6}{10}$ 5.6 $\frac{5.5}{10}$ $\frac{5.1}{20}$

370.8¹

4.65
13^E
Floor

370.3 370.4 370.2 370.5 370.7
 $\frac{5.2}{20}$ $\frac{5.1}{10}$ 5.3 $\frac{5.0}{10}$ $\frac{4.8}{13^{E}}$

375.46

Alley BIK 67 Univ Hqts

orig B.M.
Page 29

5.83 375.72

375.72
OK

T.P. 4.48 381.55 2.08 377.07

Hole in Cl. No B.P.

S.E. Idaho + Monroe SS.

3.16 375.99

375.99

T.P. 3.15 379.15 1.87 376.00

6+14⁵⁸ = S. gutter line

6+14⁵

6+06⁹ 9⁹ RT. = start cl. in lot.

Reds on Pav. & obs.

start o.l. ser. of S. line.

6+00⁵⁸ = S. Line Monroe Curbs & Pav.

377.87

INDEXED

37

372.26
5.01
100

369.35
8.52
43

369.02
8.85
10

368.97
8.90

368.77
9.10
10
0.77 into

369.21
8.66
50

369.57
8.30
100

372.96
4.91
100

369.93
7.24
43

369.47
8.40
Ctr. obs.
Rat

369.57
8.30
Ctr. obs.
Rat

369.78
8.09
50
Drive

370.11
7.76
100

369.5A
8.37
92
obs.

369.20
8.67
92
Pav

369.11
8.76

368.97
8.90
92
Pav

369.70
8.17
92
obs.

369.6
8.27
92
Obs. End

369.56
8.31
92
Pav

369.68
8.19
5

369.76
8.11

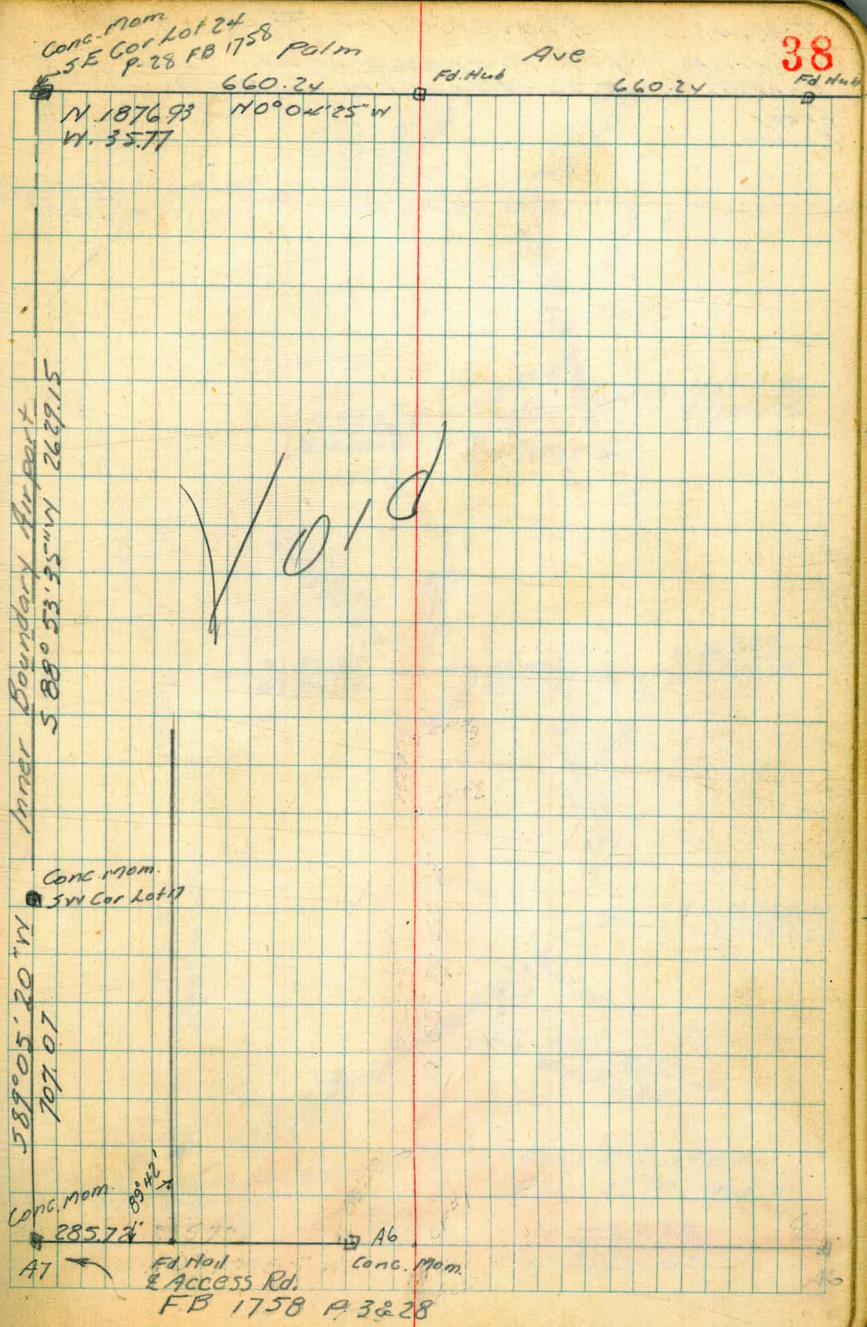
369.77
8.10
4

369.78
8.09
92
Pav

369.85
8.02
92
Obs. End

377.87

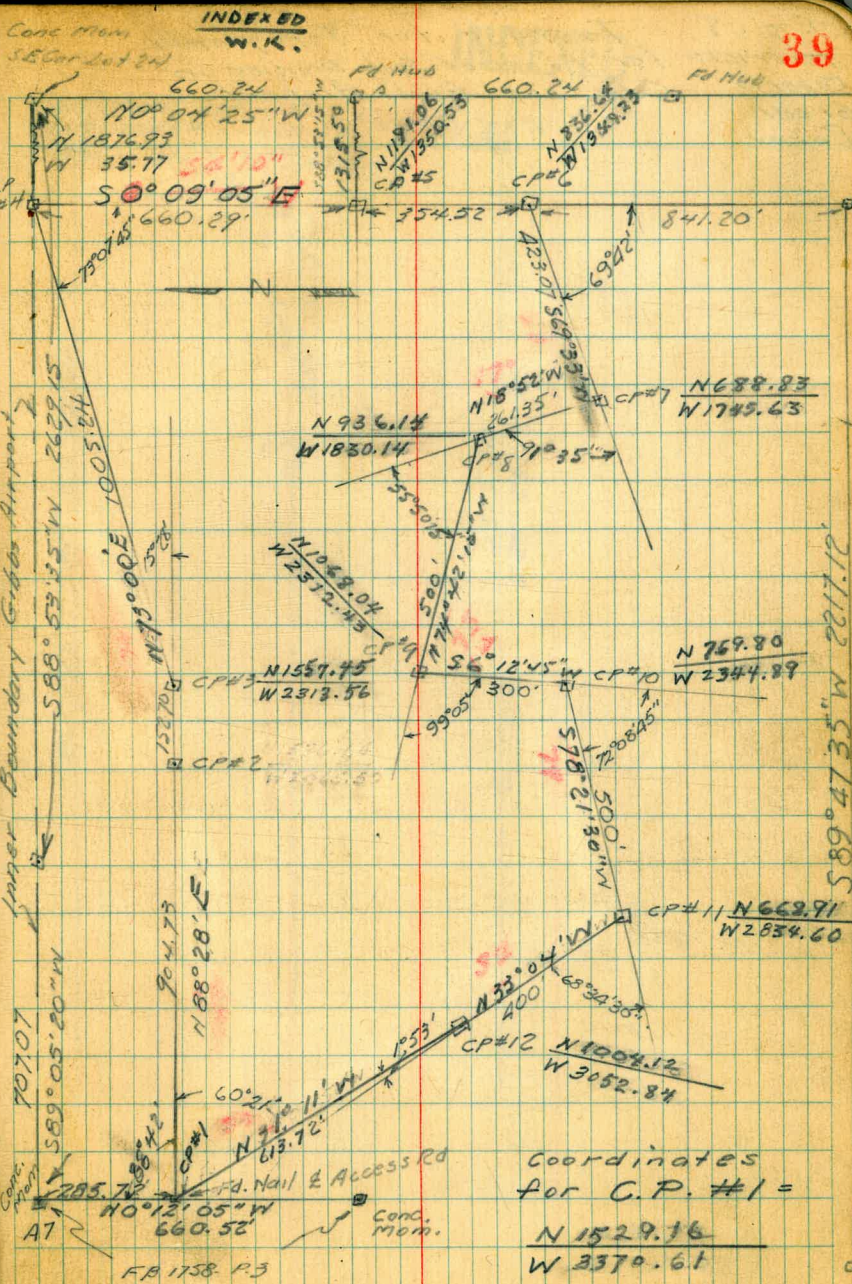
7-26-48 Topography
 Traverse for a Proposed
 Hendricks Subdivision on City Land at
 Roberts Gibbs Airport
 Greer
 Rorer



7.26.48
Hendricks
Roberts
Greer
Korer

Traverse for Topography
for Proposed Subdivision in
City Property Gibbs Airport

N 1851.25
W 1352.25

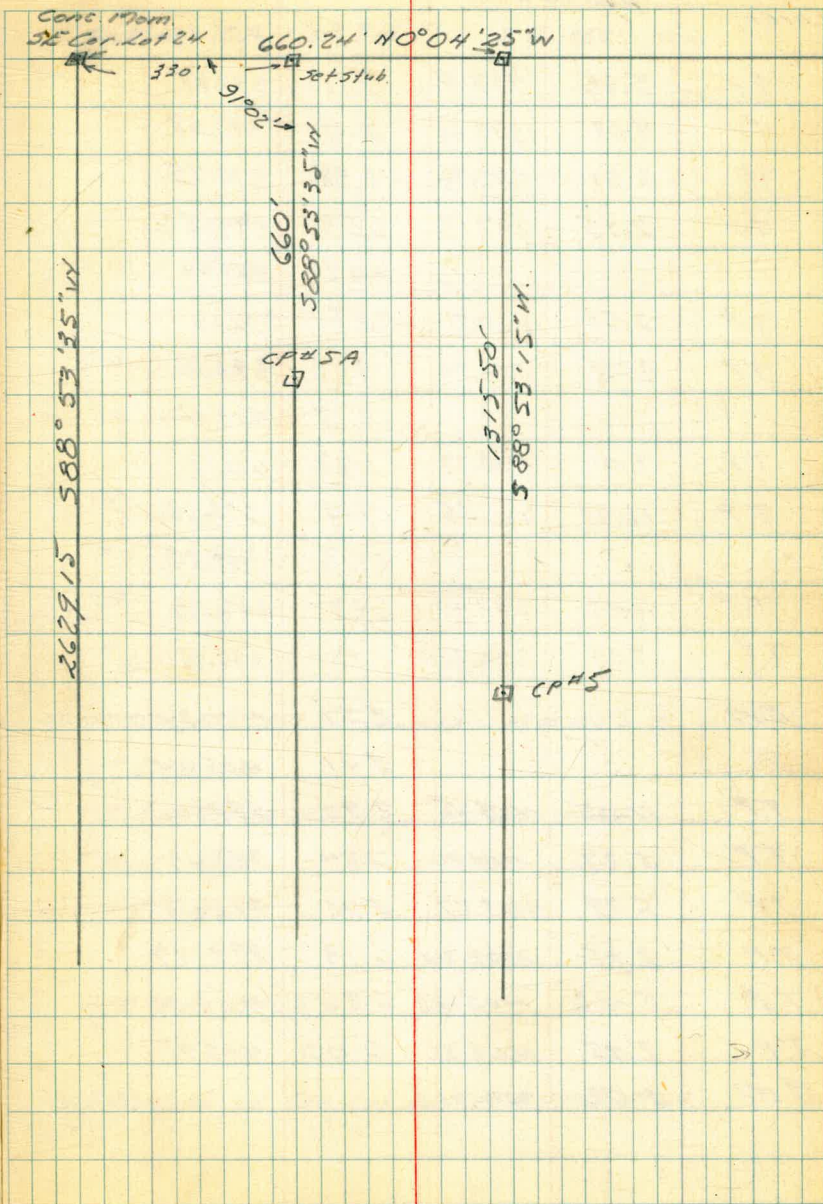


7-27-48
Hendricks
Roberts
Greer
Rorer

Traverse for Topography
for Proposed Sub Division in
City Prop. Gibbs Airport.

INDEXED

40



Hendricks
 Roberts
 Greer
 Lorer

Levels for Topography
 Proposed City Sub Division

INDEXED

41

			2.74	400.40	400.36
TP	5.66	403.44	2.18	397.48	
TP	9.08	399.66	2.18	390.58	
TP	2.01	392.76	6.38	390.75	
TP	2.95	397.13	6.53	394.18	
			4.97	395.94	
TP	2.58	400.71	3.87	398.13	
TP	3.78	402.00	9.95	398.22	
			3.15	405.12	
TP	7.10	408.27	1.38	406.17	
TP	10.92	402.55	4.17	391.63	
			6.53	389.27	
TP	3.42	395.80	6.29	393.13	
TP	2.94	399.42		396.48	
B.M			8.51	400.34	400.36
			3.41	405.44	
TP	11.05	408.85	2.90	397.80	
TP	5.27	400.70	7.84	395.43	
TP	5.79	403.27	5.76	396.48	
TP	2.95	402.24	6.13	399.29	
TP	3.42	405.42	6.86	402.00	
TP	2.95	408.86	6.00	405.91	
B.M	5.02	411.91			406.89

Conc. Mon. SW Cor. Lot 17 FB 1958 P-10

C.P.#12 stub

C.P.#11 stub

C.P.#10 stub

C.P.#9 stub

C.P.#8 stub

C.P.#7 stub

C.P.#6 stub

C.P.#5

Conc. Mon. SW Cor. Lot 17 FB 1958 P-10

C.P.#3 stub

C.P.#3A Hub No. Edge Access Road

C.P.#4 Hub

C.P.#5 Hub

C.P.#5A stub

Conc. Mon. SE Cor. Lot 2A FB 1958 P-10

X-Sec. DWIGHT St.
Boundary to Nile

W.O. 31453

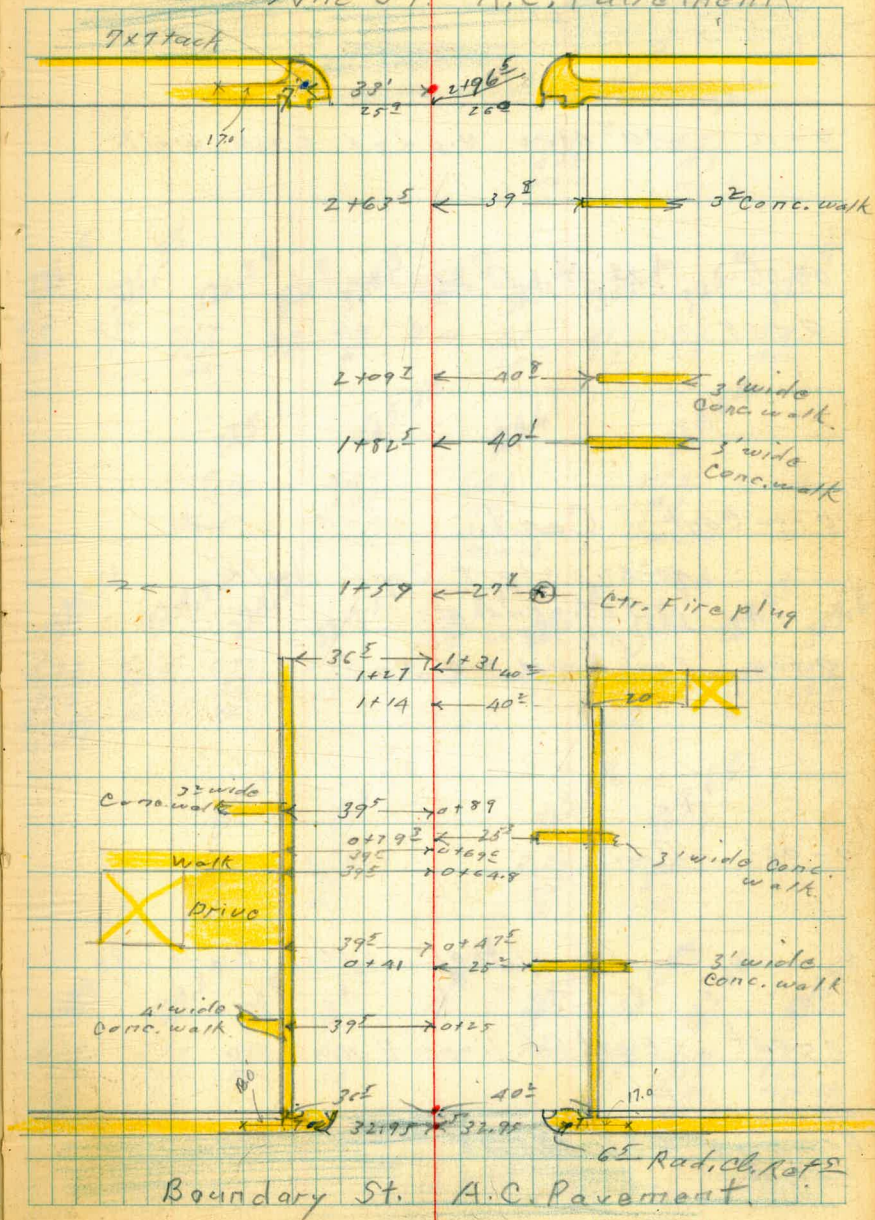
11-18-48

Sommermeier
McCoy
Allen
Jones

INDEXED
WK
NOV 19 1948

42

Nile St. A.C. Pavement



0+11. 40° Rt. = N. Edge F+W. walk

0+06 27° Rt to Deadman

0+05

0+00 Cont Cont.

40° Rt. = start Conc. walk.

26' { Lt. = End cl.
Rt. = End cl.

0+00 End Exist A.C. Pav.

0-06^E Cont.

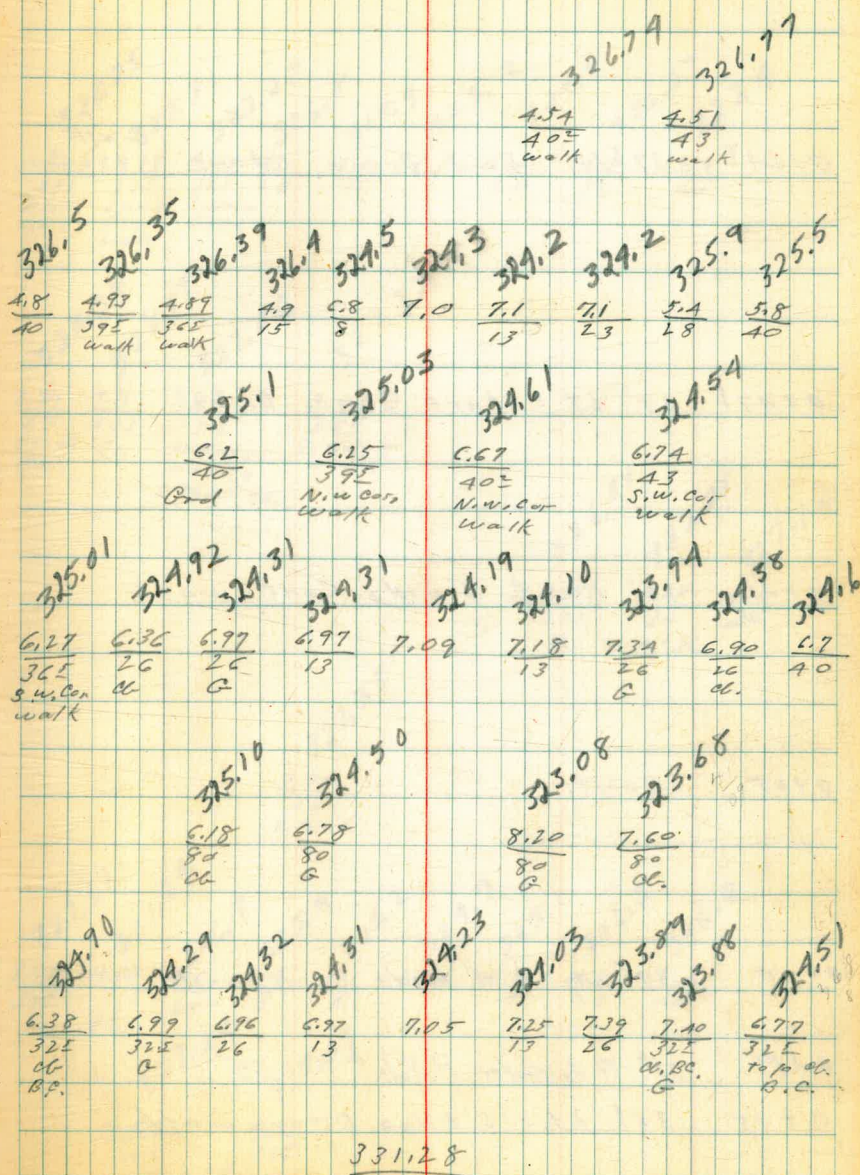
G = gutter, cl = curb

0-06^E East Cl. line Boundary

N.E. B.P.
Boundary +
Dwight.

6.36 331.28 — 324.92

This is shown
in X-sec.
Alley
Between
Lands +
Dwight.



Dwight.

0+64^E = 39^E Lt. = End Drive start walk N. + S. Conc.

0+47^E 39^E Lt = start Conc. Drive.

0+41 25^E Rt. = 3' wide Conc. walk

0+25 Cont.

0+25 39^E Lt. = 4' wide Conc. walk

0+19 26^E Rt to Center P. Pole # P3355

0+15 36^E Lt. = S. Edge E + W walk

44

328.25
327.31
327.27
326.8
325.9
325.2
324.9
326.5
327.4

3.03	3.97	4.01	4.5	5.4	6.1	6.4	4.8	3.9
192	39E	36E	26	12		20	28	40
10 ft	End Dr.	S. Edge						
walk	start	walk						
	walk							

326.39
326.17
327.36
327.32

2.89	3.11	3.92	3.96
67	492	39E	36E
Dr.	Dr.	N. Edge	S. Edge
		walk +	walk
		start Dr.	

326.51
327.08
327.12

4.97	4.20	4.10
25 ^E	34	40

≠ walk

327.38
3.90
40
≠ walk

327.51
327.24
326.7
325.9
325.2
324.9
325.1
326.5
326.9

3.92	4.04	4.6	5.4	6.1	6.4	6.2	4.8	4.4
39E	36E	25	8	6		19	29	40
walk								

327.24
327.09

4.04	4.19
39E	36E
walk	

331.28

Dwight

1+27 40° RT. = End Conc. Dr.

1+14 40° RT. = End. (N.E. cor). E+W. walk
40° RT. = start Conc. Dr.

1+00

± N.+S. walk

39° LT. = N. Edge E+W. walk and

0+89 36° LT. = S. line E.+W. walk

0+79² 25° RT. = ± 3' Conc. walk

Edge
N. ~~line~~ E.+W. walk

0+69⁶ 39° LT. = End N.+S. walk, also =

45

326.31	326.71		
4.97	4.57		
40°	60°		
Dr.	Gar. Floor		
326.48	326.50	326.53	326.70
4.80	4.78	4.75	4.58
40°	40°	43°	60°
Dr.	walk	Gar. Floor	Gar. Floor

327.3	327.19	327.29	326.4	325.1	324.9	324.6	326.0	326.8
4.0	4.07	4.04	4.7	5.9	6.4	6.7	5.3	4.5
40	395	385	28	17	6.4	21	28	40
	walk	walk						

327.37	327.33	327.33
3.91	3.95	3.95
40	395	365

325.85	327.67	327.32	327.33
5.43	4.21	3.96	3.95
253	342	40	40
			N. edge
			E+W. walk

328.2	327.30	327.31	327.29
3.10	3.88	3.97	3.99
50	40	395	365
		End	S. Edge
		N.+S. walk	E+W. walk

331.28

Dwight.

2+09² 40⁸ = $\frac{1}{2}$ 3' wide Conc. walk

T.P. 1.34 323.30 9.32 321.96

1+82^E 40' Rt. = $\frac{1}{2}$ 3' wide Conc. walk

1+59 27² Rt. = Ctr. Fire Hydr.

1+47

1+37 29² = s. side Palo* P 3375

1+32

1+31 36^E Lt. = End (S. E. Cor.) E. + W. Walk

331.28

4

46

322.06
322.10
 $\frac{1.24}{40^E}$
 $\frac{120}{50}$
on walk

323.30

320.9
321.7
322.2
322.4
322.5
322.5
323.2
323.5
323.5
323.8
 $\frac{10.4}{60}$ $\frac{9.6}{40}$ $\frac{7.1}{27}$ $\frac{8.9}{12}$ $\frac{8.8}{17}$ $\frac{8.8}{30}$ $\frac{7.8}{40}$ $\frac{7.0}{40}$ $\frac{7.0}{50}$
walk

324.18

$\frac{2.10}{27^2}$
Base of Hydr.

324.2
324.3
324.5
324.4
324.5
324.5
324.3
324.3
 $\frac{7.1}{60}$ $\frac{7.0}{40}$ $\frac{6.8}{20}$ $\frac{6.9}{15}$ $\frac{6.8}{15}$ $\frac{6.8}{40}$ $\frac{7.0}{75}$

326.8
326.6
325.7
325.1
324.6
324.5
325.4
325.7
325.9
 $\frac{4.5}{50}$ $\frac{4.7}{40}$ $\frac{5.6}{27}$ $\frac{6.2}{15}$ $\frac{6.7}{24}$ $\frac{6.8}{31}$ $\frac{5.9}{40}$ $\frac{5.6}{50}$ $\frac{5.4}{50}$

326.74

326.75

$\frac{4.54}{39^E}$ $\frac{4.53}{36^E}$
walk

331.28

Dwight

$2+10^E$ Cont.

$2+10^E$ Wly. Cl. line Nile

$2+96^E$ Cont.

$2+96^E$ = start A.C. Pav.
25' 21" + 26' 11" = start curbs

$2+80$

$2+63^E$ 39' Rt. = ± 3

$2+37$

323.30

			317.78	317.27 \pm		319.09	316.52 \pm
			$\frac{5.52}{70}$	$\frac{6.03}{70}$		$\frac{7.21}{90}$	$\frac{6.78}{90}$
			cc	cc		cc	cc
			317.92	316.96	316.84	316.82	316.65
			$\frac{5.88}{40}$	$\frac{6.39}{40}$	$\frac{6.46}{26}$	$\frac{6.42}{13}$	$\frac{6.48}{13}$
			cc	cc			
			317.1	317.3		316.69	316.10
			$\frac{5.9}{40}$	$\frac{6.00}{38}$		$\frac{6.61}{38}$	$\frac{7.2}{40}$
			Ornl	Back Edge walk		Back Edge 5' walk	
			316.97	316.68	316.90	316.92	316.74
			$\frac{6.33}{25.9}$	$\frac{6.62}{25.9}$	$\frac{6.40}{13}$	$\frac{6.38}{13}$	$\frac{6.56}{13}$
			cc + grd.	cc		Pave + Ornl	cc + Ornl
			317.2	316.9	316.7	316.4	316.8
			$\frac{6.1}{40}$	$\frac{6.4}{26}$	$\frac{6.6}{25}$	$\frac{6.9}{25}$	$\frac{6.5}{40}$
			317.1	317.1	317.1	317.1	317.1
			$\frac{4.9}{60}$	$\frac{4.9}{75}$	$\frac{5.6}{40}$	$\frac{5.6}{15}$	$\frac{5.9}{15}$
			cc	cc			
			317.6	317.7	317.7	317.4	317.4
			$\frac{5.88}{39}$	$\frac{5.87}{40}$	$\frac{4.77}{45}$	$\frac{5.7}{15}$	$\frac{5.6}{26}$
			cc	cc	cc	cc	cc
			317.6	317.7	318.5	319.3	
			$\frac{5.88}{39}$	$\frac{5.87}{40}$	$\frac{4.77}{45}$	$\frac{4.8}{40}$	$\frac{4.0}{10}$
			cc	cc	cc	cc	cc

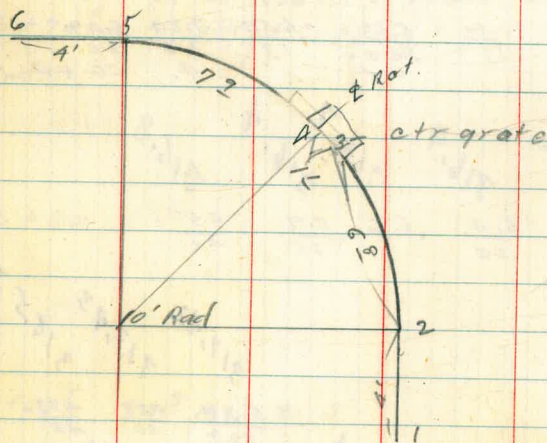
323.30

N.E.B.P.
Nile + Dwight

6125 317.05 317.05

316.60	317.58	316.92	317.50	316.96	317.42
$\frac{6.70}{7}$ G	$\frac{5.72}{7}$ cc	$\frac{6.38}{7}$ G	$\frac{5.80}{5}$ cc	$\frac{6.34}{6}$ G	$\frac{5.88}{5}$ cc
316.68	316.97	316.72	317.19	316.58	317.56
$\frac{6.62}{1}$ G	$\frac{6.33}{1}$ cc	$\frac{6.58}{2}$ G	$\frac{6.11}{2}$ cc	$\frac{6.72}{3}$ G	$\frac{5.74}{3}$ cc
				grate	

Nile St.



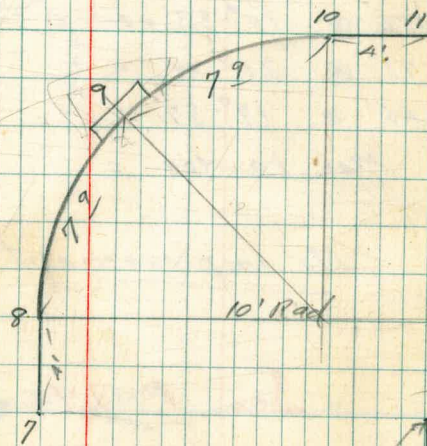
323.30

Curb Returns Nile & Dwight

316.01	316.52
$\frac{7.29}{11}$ G	$\frac{6.28}{11}$ cc
316.06	316.77
$\frac{7.24}{7}$ G	$\frac{6.49}{7}$ cc
316.06	316.77
$\frac{7.26}{8}$ G	$\frac{6.59}{8}$ cc
315.69	316.62
$\frac{7.61}{9}$ grate	$\frac{6.68}{9}$ cc
315.99	316.64
$\frac{7.31}{10}$ G	$\frac{6.66}{10}$ cc

Nile St.

Dwight



S.W. Prop.

323.30

X Sec. Pee St. Locust to Evergreen
for grade

1-20-49

W.D. 25001

Sommermeier
McCoy
Jones

● = Ed. Conc. Men.

■ = set Hub.

INDEXED

WK

JAN 24 1949

Both sides of Pee chained out
for stationing.

over all distance chained as follows

Level Chained 85.05

97.56' @ 10°-33' vert. Δ = 95.91

100.73' @ 20°-00' " " 94.66

99.65' @ 17°-37' " " 94.99

Mon. to Mon. = 370.60

No improvements in block

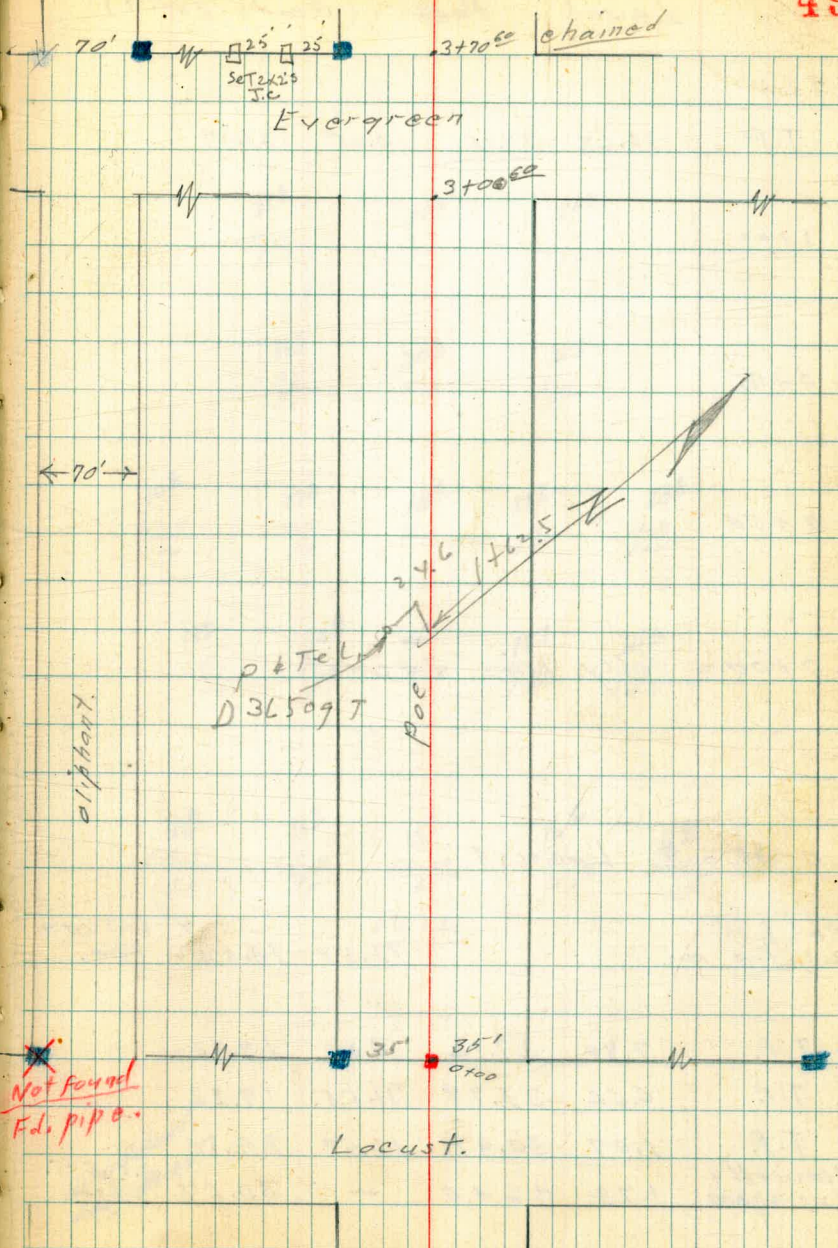
See P. 74

for extra levels

2-2-50

CSM

49



T.P. 12.68 39.15 0.65 26.47

1+00

0+75

0+50

0+00 = Wly line Locust.

0-35 = ϕ Locust

Set B.M.
S.W. by Prop. Man.

12.58 14.54

✓ LOCUST +
Poe.

T.P. 7.80 27.12 6.66 19.32

T.P. 6.66 25.98 11.55 19.32

T.P. 1.07 30.87 12.60 29.80

Newell + Evergreen 1.73 42.40 - 40.67

S.E. L + T.
8230
21

21⁵
5.6
35

24²
7.1
35

24²
2.5
35

19³
7.2
35

20²
6.3
35

21³
5.4
35

16³
10.9
100

17²
7.9
35

18⁵
8.6
35

19³
7.4
35

23²
3.2
100

14²
13.1
100

14²
12.3
35

16⁴
10.7
35

17³
9.4
35

21⁵
5.5
100

12²
14.3
135

13¹
13.4
35

15¹
12.0
35

16⁵
10.6
35

21⁵
5.7
135

27.12

Notes Reduced
Cal. 1-29-49

T.P.	12.61	<u>74.12</u>	1.27	61.51
2+20				
2+10				
T.P.	12.23	<u>62.78</u>	0.77	50.55
2+00				
1+80				
1+75				
T.P.	12.63	<u>51.32</u>	0.46	38.69
1+55				
1+25				

39.15

52 ⁶	52 ⁶	53 ⁴		
$\frac{4.2}{35}$	$\frac{10.2}{35}$	$\frac{9.7}{35}$		
47 ⁸	48 ⁵	49 ²		
$\frac{15.0}{35}$	$\frac{14.3}{35}$	$\frac{13.8}{35}$		
	<u>62.78</u>			
44 ³	46 ²	47 ¹	49 ¹	50 ⁵
$\frac{6.4}{100}$	$\frac{4.6}{35}$	$\frac{4.2}{35}$	$\frac{2.2}{35}$	$\frac{0.8}{100}$
40 ⁴	42 ²	43 ²		
$\frac{10.9}{35}$	$\frac{9.1}{35}$	$\frac{7.4}{35}$		
36 ¹	40 ⁸	42 ¹		
$\frac{15.2}{35}$	$\frac{10.5}{35}$	$\frac{9.2}{35}$		
	<u>51.32</u>			
34 ²	35 ⁵	35 ²		
$\frac{5.0}{35}$	$\frac{3.7}{35}$	$\frac{2.0}{35}$		
26 ¹	29 ²	28 ²		
$\frac{13.1}{35}$	$\frac{10.2}{35}$	$\frac{10.5}{35}$		

39.15

Poe. St.

Orig B.M. Page 50		6.96	40.70	40.67
T.P.	3.41	47.66	11.75	44.25
T.P.	0.84	56.00	12.16	55.16
T.P.	0.57	67.32	12.38	66.75
T.P.	0.35	79.13	12.84	78.78
N.W. Mon. Olipphant + Evergreen	1.12	91.62	11.45	90.50

T.P. 3.83 101.95 10.99 98.12

3 + 70.00 = Wly. line Evergreen.

S. Wly prop. Mon. Evergreen + Poe 3.29 105.82 13M #2

3 + 35.00 = Φ Evergreen

T.P. 12.18 109.11 1.19 96.93

3 + 00.00 Ely. Evergreen

T.P. 12.46 98.12 0.63 85.66

2 + 75

T.P. 12.67 86.29 0.50 73.62

2 + 50

74.12

105^B
3.3
35

108^B
0.8

107^B
+ 1.7
35

89^B
19.8
35

94^B
14.6
35

97^B
12.0
109.11

98^B
10.3
35

95^B
14.0
35

84^B
13.9
35

85^B
12.3
98.12

85^B
12.6
35

72^B
12.0
35

75^B
10.6
86.29

75^B
11.3
35

64^B
9.5
35

65^B
8.7

65^B
8.2
35

CONTINUED PAGE 74 74.12

Check Survey (RE. 2718) J. COVERT
 Fd. CT. 1st pt.
 Lots 9-10 BLK 81 Pac. Beach

Moore
 Beeg
 Sherman
 D. Sisson
 3-25-49

INDEXED
 APR 4 1949
 W.K.

W.O. 60135

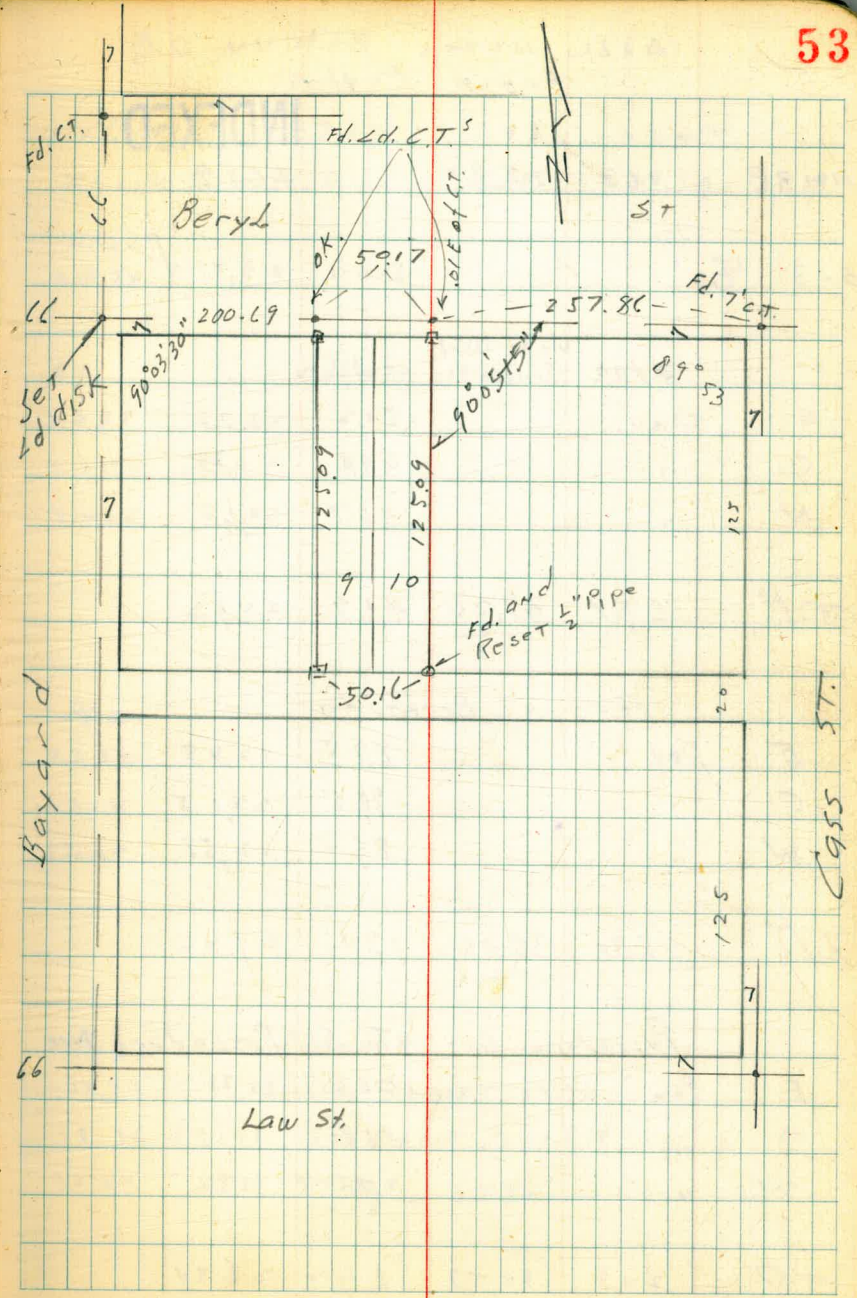
Survey checks O.K.

66

7

284.18

Fd. CT.



1955 ST.

Add. Notes BLK 440 OB
From P. 11

INDEXED

NWBP 763 28.82 21.19

0-3 $\text{\textcircled{E}}$ 5.00 23.82 ✓

00 0400 W. L. Blvd
Sunset Cl, 97 Alley

S Pav, 50.2 23.79

C " 499 23.83

N " 467 24.15

T.P. 6.57 31.20 4.19 24.63

0400 N. L. Bermuda

E Pav 875 22.45

C " 905 22.15

W " 862 22.58

T.P. 5.90 35.36 174 29.44

Pescadero Dr. 97 S. L. Pescadero Ave

E Pav 3.03 32.33

C " 318 32.18

W " 2.86 32.50

T.P. 2.13 30.57 6.92 28.44

30.57

T.P. 445 27.07 7.95 22.42
Check to orig. P.M. 5.88 21.19 21.19

PLAN
23.74

PLAN

23.85

23.75

24.15

PLAN

22.50

22.14

22.60

PLAN

Page 10

32.36

32.24 + 0.08 32.32

32.36 ?

32.08 + 0.08 32.16 ✓

32.54

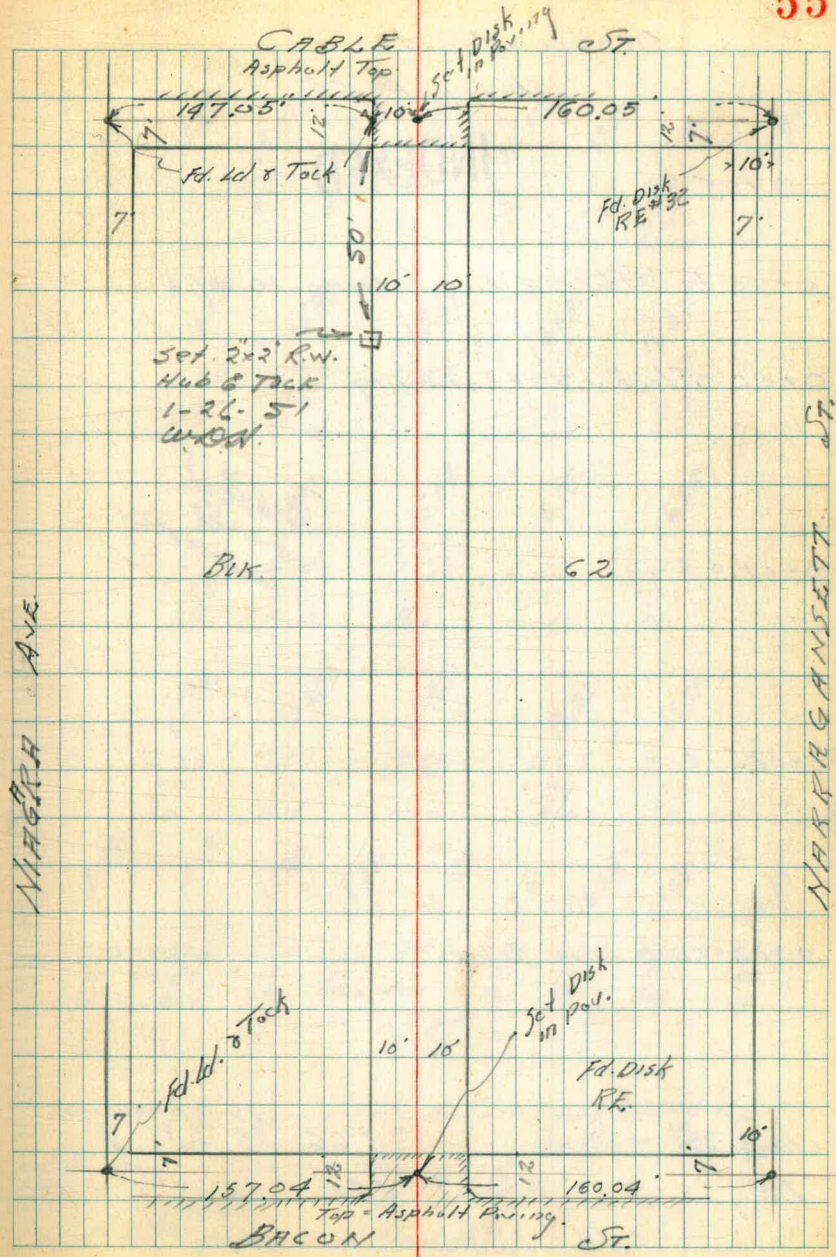
32.43
0.08 = 32.51

CROSS SECTION ALLEY Bk. 62

Vlcker OCEAN BEACH
 Johnson Between Niagara & Herrigansett
 Prop to cross from Bacon to Cable st
 4-1-49
 W.O. 31448

INDEXED
 WK
 APR 4 1949

INDEXED
 JAN 29 1951



Cross Section Alley 81k. 62
 Ocean Beach
 Sketch P. 55

INDEXED

0105

0100 to 0169 = 4' Picket Fence 10.6 Rt

0100 = E.L. Bacon = End Paving

0-01.0

Reduced
 4-5-49
 C. Lawrence

0-08.5

0-12 = curb line Bacon

Check B.M.

3.66

19.80 = Record.

19.21

T.P.

9.89

22.87

4.84

12.98

chk. old Rec.
 High B.M. Book

6.77

17.82

11.95

Lt.

R.

Rt.

56

18.17. 4.7 15	18.37. 4.5 10	18.37. 4.5 9	16.27. 6.6 6	16.07. 6.8 6	16.37. 6.5 9	17.07. 5.8 10	17.08. 5.8 10.6 0.4 Fence	17.97. 4.9 12					
16.14. 5.73 9.9 Cb.	15.98. 6.94 9.9 Cb.	15.54. 7.23 9.9 Cb.	16.08. 6.79 9.9 Cb.	16.39. 6.48 9.9 Cb.	16.44. 5.73 9.9 Cb.	15.93. 6.94 9.9 Cb.	15.58. 7.23 9.9 Cb.	16.05. 6.82 9.9 Cb.	16.38. 6.49 9.9 Cb.				
15.94. 6.93 9.9 Cb.	15.60. 7.27 9.9 Cb.	15.42. 7.45 9.9 Cb.	16.22. 6.65 9.9 Cb.	15.78. 7.09 9.9 Cb.	15.37. 7.53 50 Cb.	14.69. 8.18 50 Cb.	15.83. 7.04 11 Cb.	15.27. 7.60 10 Pav.	15.32. 7.55 10 Pav.	15.52. 7.35 11 Cb.	16.18. 6.67 11 Cb.	15.99. 6.88 50 Cb.	16.69. 6.18 50 Cb.

22.87

NW B.P. Narragansett & Bacon - curb hoisted up
 by Palm Tree
 B.M. N.E. Bacon = Newport
 B.P. NW ?
 S.E. = Ed.
 B.M. N.E. Bacon = Newport

Alley 51k62
Ocean Beach

INDEXED

1718 = 1/2 Cur. on Rt. Dirt Floor.

1700

0+73.5 = Beg 3 Car Garage on Rt

0+72 = Beg. Conc. Apron to 3 Car Garage Conc. Floor

T.P. 3.98 23.37 348 12.39
16"

0+62.6 = Elec Pole 10 ft. #4986 P.A.

0+50

0+25

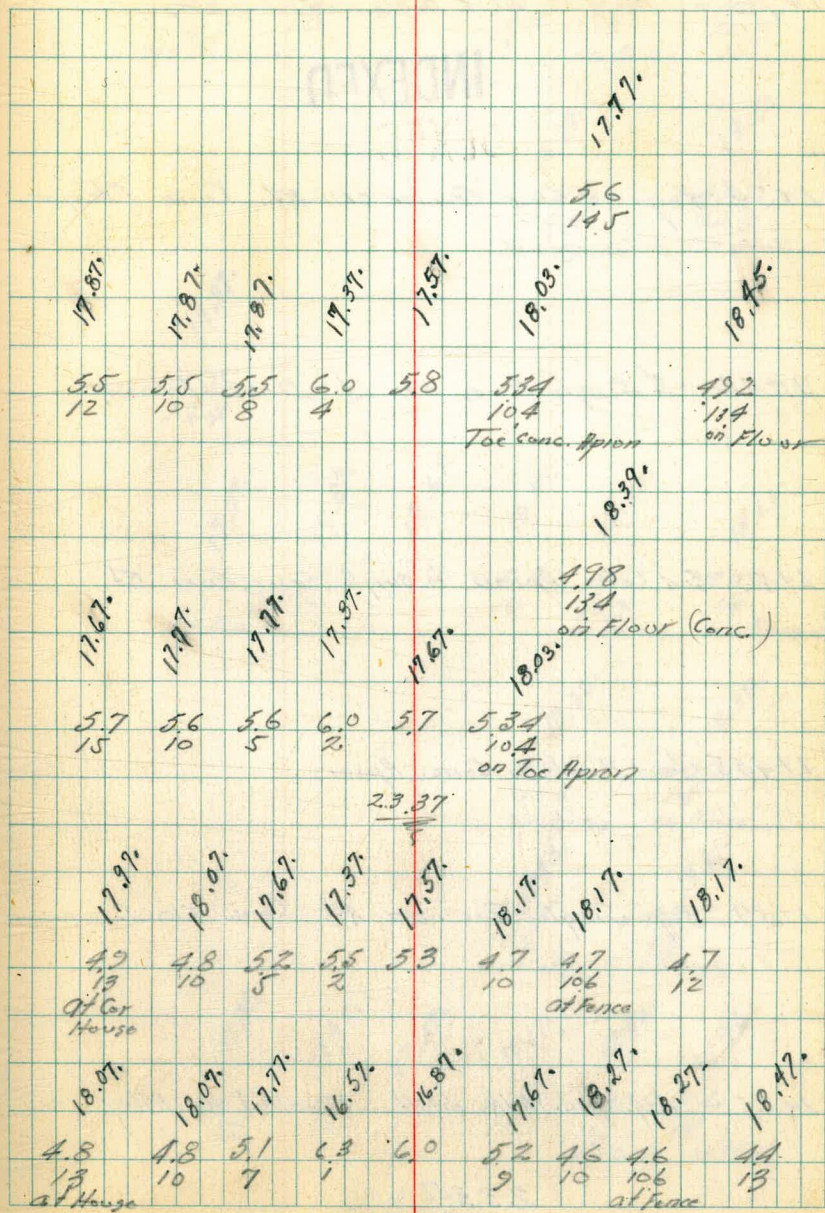
22.87

Lt.

S

Rt.

57



1470

Alley Blk. 62.
Ocean Bluffs.

INDEXED

1454 = Beg. 4 Cur Gar. on Rt. Conc Floor

1744 = 2 Single Gar. on Lt. Dirt Floor

1750 = End Conc Apron to Single Gar. on Rt

17405 = Low Point in Conc. Apron

1739 = Beg. Single Gar. on Rt. Conc. Floor.

17252 = Beg. Conc. Walk on Rt. Parallel to Alley

2337

18.17.

52
11.5
91 Fence

18.17.

52
10

17.87.

5.5

18.17.

52
10

18.13.44

494
19

18.52.

183
20.3
on Apron Floor

58

18.37.

500
188
Toe Apron

18.52.

185
20.3
on Floor

17.87.

5.5
12.4

17.77.

5.6
11
of Fence

17.87.

5.5
10

17.67.

5.7

18.07.

5.3
10

18.25.

5.12
10.9
on Apron

18.50.

5.07
14
on Apron

18.32.

5.05
10.6
on Apron

18.38.

4.99
14
on Floor

18.43.

4.94
10.6
on Walk

18.11.

4.96
13
on Walk

17.77.

5.6
12

17.97.

5.4
10

17.37.

60

18.17.

5.2
10

18.48.

4.89
10.5
on Walk

18.46.

4.91
14
on Walk

2337

Alloy Bk. 62.
Ocean Beach

INDEXED

2+19 = Gun on Lt. Dirt Floor

2+09 = Gun on Lt. Dirt Floor

2+25 = Bag # Car Gun on Lt. Dirt Floor

2+034 = Bag # Car Gun on Rt. Conc. Floor And Conc. Apron

2+00

1+91 = Elec Pole #A4964 9.8' Rt.

1+90

2.3.37

Lt.

Rt.

Apr.

59

18.37.
5.0
11.7

18.17.
5.2
11.7

18.27.
5.1
11.2

18.27.
5.1
10

18.27.
5.1

18.54.
483
288
Toe Apron

18.73.
464
103
Floor

18.36.
501
93
on Apron

18.75.
462
10.8
Floor

18.07.
5.3
11.2
7' Fence

18.07.
5.3
10

18.07.
5.3

18.27.
5.1
10

18.57.
5.0
13

18.41.
496
19
Toe
Apron

18.56.
481
203
Floor

2.3.37

Alley BIK 62
Occur Bands

3+15 = 3' Conc. Walk on Rt.

INDEFIN

3+12 to 3+26 = 5' Board Fence 9.8' Rt

3+23.5 = Elec. Pole # PA 4944 8.9' Rt-L

3+07 = 4' Gar on Rt. Dirt Floor

3+00 = 6' East. Sewer MH.

2+75.3 = End 4 Cur Gar. on Lt. - 2.5' Conc. Walk on Rt.

2+56 = 4' Gar. on Rt. Dirt Floor

2+48 = End 4 Cur Gar. on Rt. Conc. Floor.

2.337

Lt.

L

Rt.

60

18.85'
4.52
10.9
as walk

18.57'
4.8
14
Floor

18.87'

18.67'

18.64'

18.97'

18.97'

18.97'

4.5
12

4.7
10

4.73
as Firm
MH.

4.4
10

4.4
14

4.4
20

18.77'

18.77'

18.57'

18.98'

18.83'

18.95'

4.6
10.6
Gar.
Dirt Floor

4.6
10

4.8

4.39
10
as Walk

4.54
14
as walk

4.42
17
as walk

18.97'

18.47'

18.47'

18.57'

4.9
10.8
Floor.

4.9
10

4.9

4.8
10.2
Floor

18.78'

18.88'

4.59
9.5
Toe Apron

4.49
10.4
Floor.

2.337

Alley B/k. 62
Ocean Beach

4+02 = 2 25' Conc Walk on Rt 14.6 Rt

INDEXED

4+00 = Seg. 33' Conc. Tile Walk 14.6 Rt.

TP 8.03 27.29 4.11 19.26

3+86 = 2 16" Acacia Tree 10.8 Lt. = Lt.

3+81 = 2 35' Conc Walk on Lt.

3+70

3+42.5 = 2 Gur. on Lt.

3+40 = 2 6" Acacia Tree 2 Rt.

3+34 = 2 Gur. on Lt. Dirt Floor

2337

Lt

Rt

Rt

61

19.29.	19.39.	19.29.	19.59.	19.79.
8.0 13.8	7.9 10	8.0	7.7 10	7.50 14.6

19.79.
7.50
14.6

27.29

19.52.

3.85
11.5
on walk

19.17.	19.27.	19.17.	19.27.	18.97.	18.97.	19.37.
9.2 15	4.1 10	4.2	4.1 8.7 at fence	4.4 10	4.4 11	4.0 2.5 in yard

18.97.

4.4
15.6
Dirt floor

18.97.	18.97.	18.87.	19.07.	19.07.
4.4 16.4 Dirt Floor	4.4 10	4.5 3.3 37	4.3 10	4.3 10.8 at house

Alley Bk 62
Ocean Beach

5706 = End 2' Conc. Wall

INDEXED

5704 = End 3' Cur Gur. on Lt.

4798 = Pole Anchor 9.5' Rt.

4776 = Beg. 3' Cur Garage on Lt. Conc. Floor

4776 9.5' Rt = Elec. Pole # PA 4924

4776 = End Cottage on Rt. Conc. Floor

4767 = E. 3.7' Conc. Wall

4750 = Beg. Conc. Slab for Garage on Rt. ^{Now Cottage}

4750 = End 3.3' Conc. Tile Wall on

4744.5 to 4749.5 = 5.3' Board Fence 2.1 Lt.

4737 = End Gur. on Lt. ^{Wood} Floor

4717 = End Gur. on Lt. Dirt Floor.

2729

62

21
20.07.
7.22 7.23
18 12.1
on wall 017 Wall

20.12.
7.17 7.21
13.9 12.1
Floor Apron

20.08.
7.2 7.3
10 7

20.09.
7.2 6.8
7 10

19.99.
6.7
15

20.09.
20.49.
20.59.

20.14.
7.18 7.24
14 12.1
Floor Apron

20.05.
7.3 7.6
10 10

19.99.
7.1 7.1
10 15

19.69.
20.19.
20.19.

20.26.
7.03 7.00
10.2 14.3
Conc. Wall Floor

19.69.
7.6 7.8
9.8 10
at Fence

19.89.
7.4 7.09
10 14.3
on slab.

19.59.
7.7 7.8
13.8

19.19.
8.1 11.8

2729

Alloy Bk 62

Ocean Beach

5469 = Find 2 Car Gun on Lt. Conc. Floor

INDEXED

54635 = Tel. Pole, 461147-H 10.1 Rt

5451 = Reg. 2 Car Gun Conc. Floor

5450 = ^{Elec. #} Pole PA 9212 10.1 Rt

5445 = 25' Conc. Walk

5444

5416 = Reg. 3 Car Gun Conc. Floor ^{And} Apron

2729

Lt

L

Rt

63

22.09.
530
145
Floor

21.99.
530
145
Floor

21.59.
57
10

20.99.
6.3

21.19.
6.1
8

21.69.
58
10

21.29.
55
15

20.84.
645
18
Walk

20.86.
643
121
Walk

20.99.
63
10

20.99.
6.3

20.99.
6.3
7

21.29.
6.0
10

21.59.
57
15

20.94.
638
141
Floor

20.84.
645
121
Apron

20.94.
638

20.79.
650

20.79.
65

20.29.
70

20.29.
70
10

20.49.
68
15

638
143
Floor

650
123
Apron

65
10

70
10

68
15

2729

Alley Blk. 62

Ocean Beach

INDEXED

chk. SF. BP. Cable + Nooga 7.35 17, 94 ✓OK

6+12.08 = NAY Curb Cable st

6+0.85

6+00.08 = NAY Line Cable st

5+95

5+64 to 6+00 = Picket Fence 10' Lx

5+75

27.29

Lt.

L

Rt.

64

20.92.	19.91.	20.80.	20.28.	20.30.	20.76.	21.03.	20.84.	21.92.
687 50 cb	7.38 50 Curt.	6.49 11 cb.	7.01 10 Curt.	6.99	6.83 10 Curt.	6.76 11 cb.	6.45 50 Curt.	5.87 50 cb.
			20.86. 6.43 98 cb.	20.49. 6.80 98 Curt.	20.34. 6.95 10. Curt.	20.71. 6.58 10.05 Curt.	21.10. 6.19 10.05 cb.	
				21.19. 6.10 98 Curt.	20.85. 6.34 98 Curt.	20.63. 6.66 10.05 Curt.	20.97. 6.32 10.05 Curt.	21.15. 6.14 10.05 cb.
	21.89. 5.4 13		21.79. 5.5 10	21.29. 6.0 10	20.89. 5.7 10	20.79. 6.5 10	20.99. 5.5 10	21.79. 5.5 10
								21.89. 5.4 10
				21.99. 5.3 10	21.59. 5.9 10	21.19. 6.1 10	21.49. 5.8 10	21.99. 5.3 10
								22.19. 5.1 15

at House 27.29

X-Sect. 20 Alley in Block
238 Pacific Beach

3485

W.O. 31633

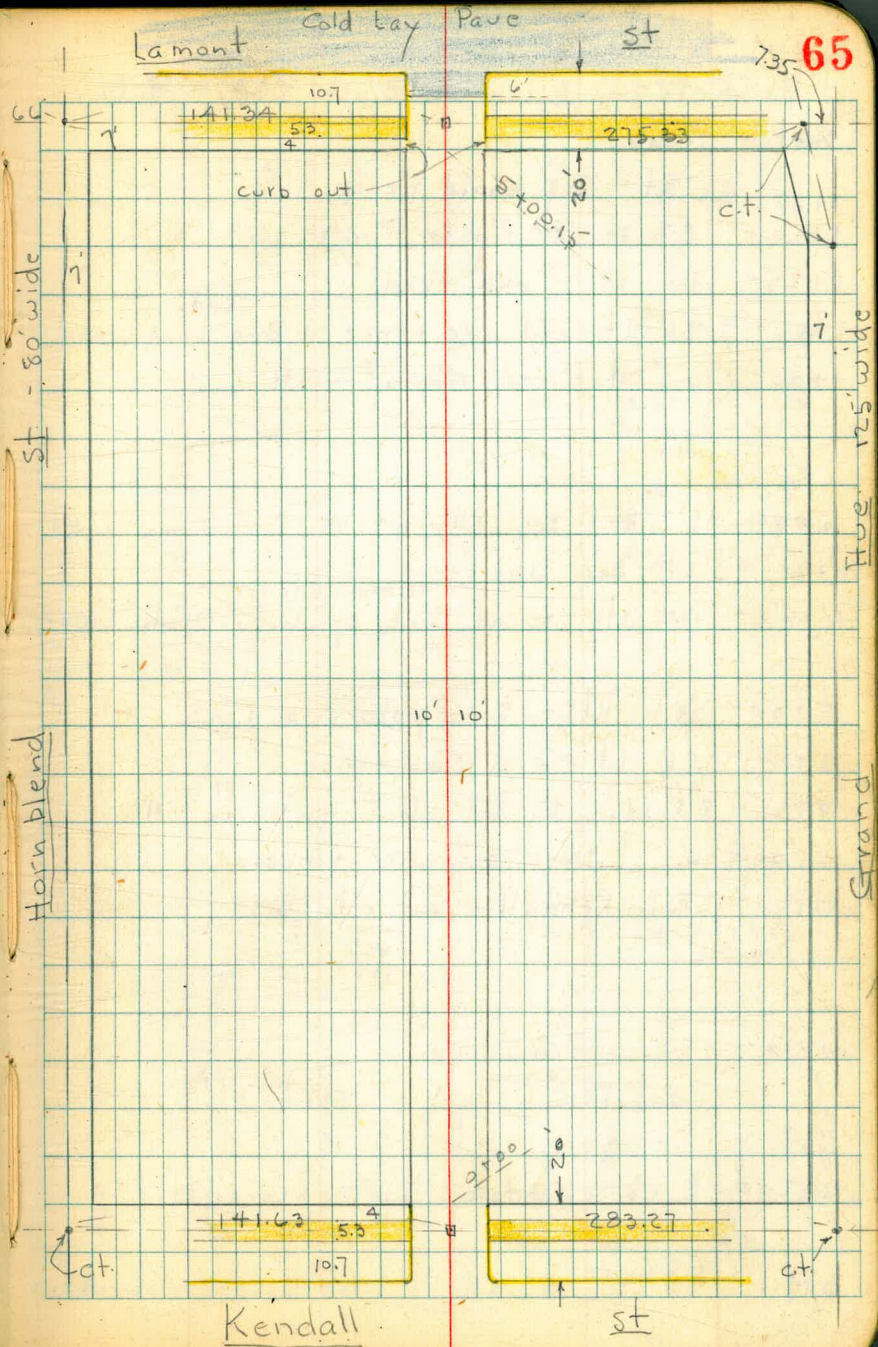
INDEXED
WK
MAY 16 1949

5-12-49

Osborne
Hardin
Hatch
Shepard

Levels - P. 66

cty



X-Sect. 20' Alley in Block 238 - P.B.
 sketch P. 65

1+50- 9.6' Lt. = Beg. board fence
 1+50- 8.7' Rt. = P. pole # A 1820
 1+25- 9.6' Lt. = end shed.
 1+00- 9.6' Lt. = end wire fence + Beg. low wood
 1+00- 10.5' Rt. = end Nly. f. wall

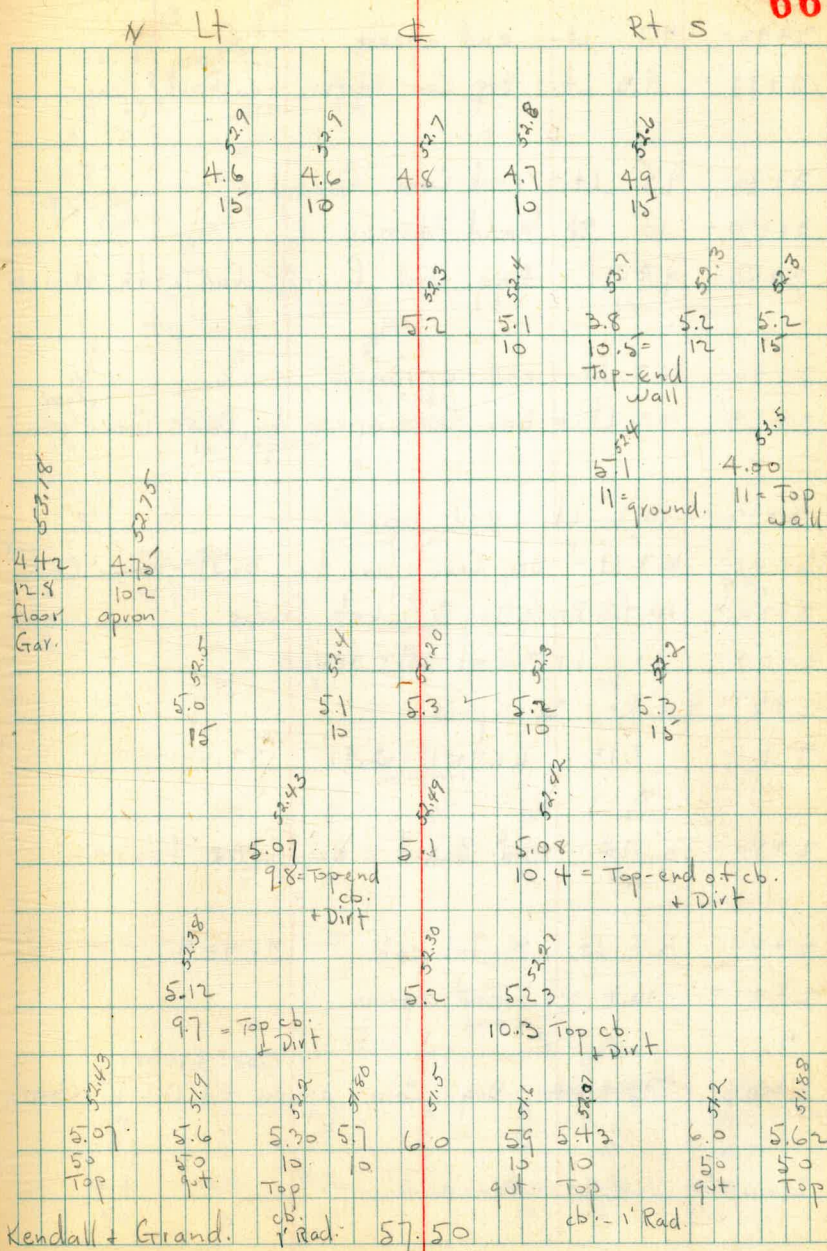
0+81- 11' Rt. = Beg. Nly. of 18" Rock + Conc. wall
 0+70- 9.6' Lt. = Beg. wire fence
 0+60- 10.2' Lt. = E of Conc. apron to Doub. Gar.

0+50- 8.6' Rt. = P. pole # A 1810
 0+50- Lt. = end wire fence
 0+25- 8.8' Lt. = Tel. pole # 464046 - H
 0+00- 11' Lt. = Beg. wire fence
 0+00 = E.L. Kendall = end of cb.s

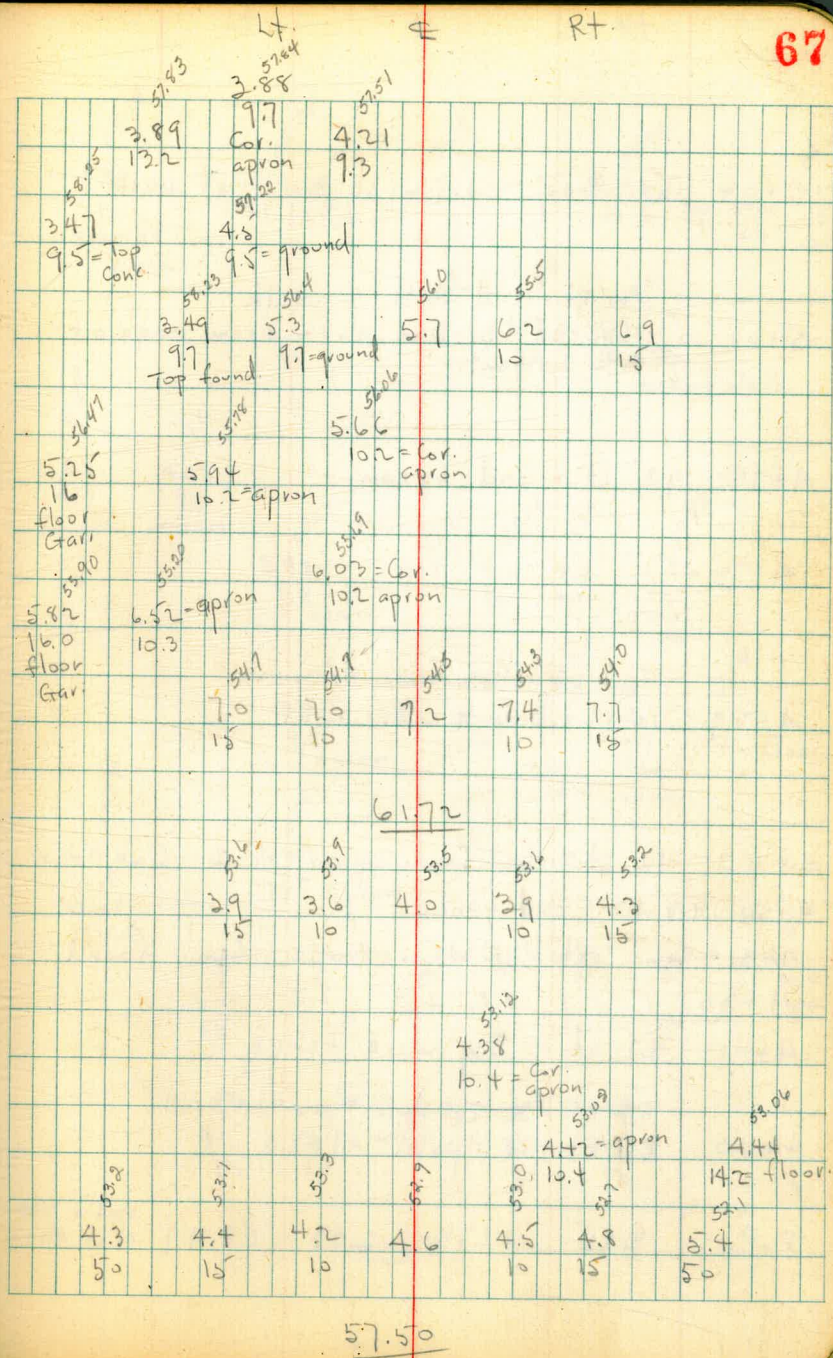
0-10-

0-20 = E.cb. Kendall - Dirt - Graded.

B.M. 5.99 57.50 51.51 - M.W.B.P.



- 3+93- 9.7' Lt. = end apron
 3+78- 9.3' Lt. = Beg. Conc. apron to Doub. Gar. ^{Conc. floor}
 3+70- 9.5' Lt. = end Conc. found.
 3+50- 10' Rt. = end fence
 3+50- 9.7' Lt. = Beg. Conc. found. for bath House
 3+46- 10.2' Lt. = end apron
 3+28- 10.2' Lt. = Beg. Conc. apron to Doub. Gar. ^{floor} - Conc.
 3+22- 10.2' Lt. = end apron
 3+05- 10.3' Lt. = Beg. Conc. apron to Doub. Gar. ^{floor} - Conc.
 3+50^{0.57} 10.4' Rt. = Beg. Picket fence
 3+00- 10' Lt. = end wire fence
 2+87- 9.4' Rt. = P. pole
 T.P. 8.13 6.172 2.91 53.59
 2+50- 10' Lt. = end Board + Beg. wire fence
 2+33- 8.4' Lt. = P. Tel. pole # 46 40 47 - H
 2+21- 10.4' Rt. = end apron
 2+03- 10.4' Rt. = Beg. Conc. apron to Doub. Gar. ^{Conc. floor.}
 2+00- 10.2' Lt. = fence



5+04.15 = Beg. curbs (at Back of walk

- 10' Rt. = end wall walk
5+00.15 = curbs broken out from edge of W.L. Lamont.

4+79- 9.8' Lt. = end apron

4+73

4+69- 11.7 Rt. = N.E. Cor. House
10' Rt. = Beg. 4" Conc. wall

4+50- 10' Lt. = Beg. Conc. apron to 3 Car. Gar.

4+50- 9.8' Lt. = end fence

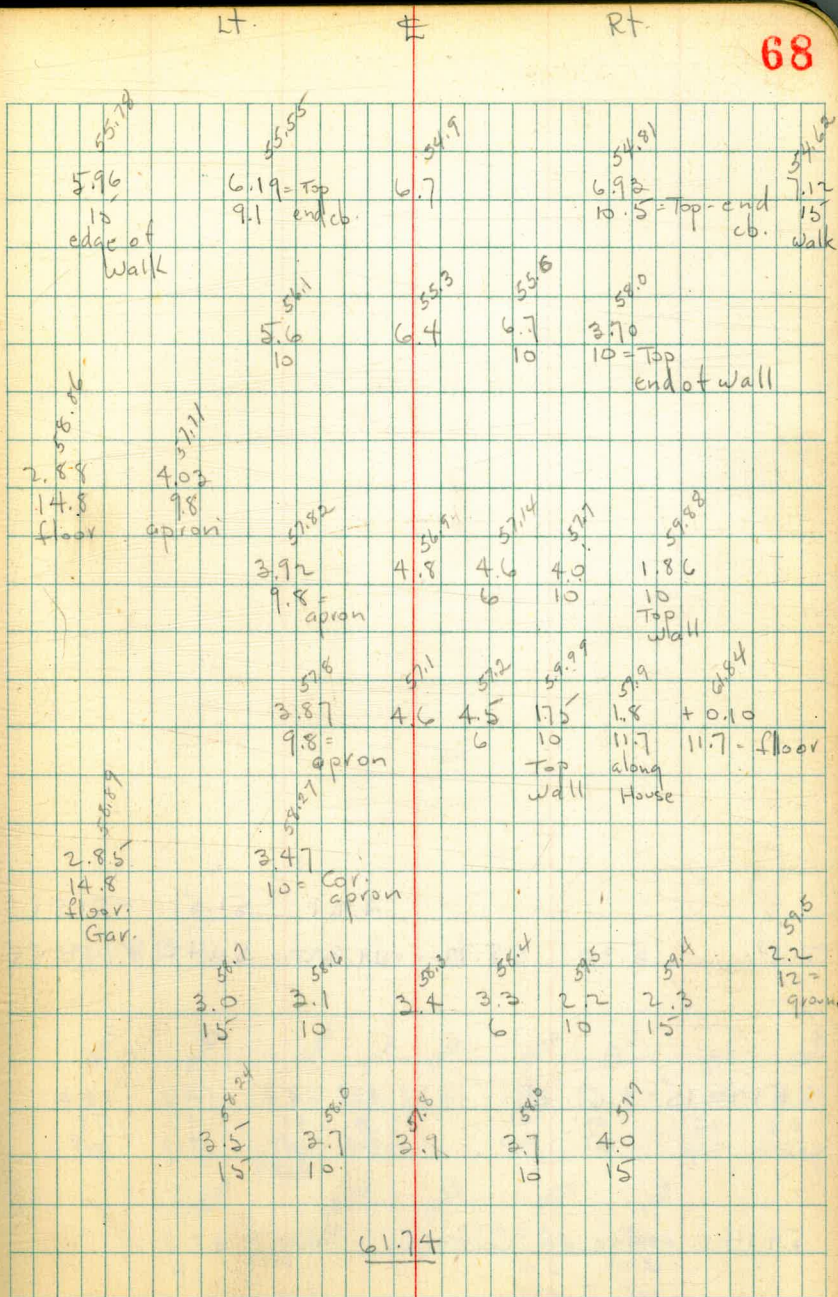
4+31- 12' Rt. = N.W. Cor. House - Conc. found.

4+30

4+01- 9.7 Lt. = Beg wire fence

- 8.9' Lt. = \pm Tel. pole # 464048-H
4+00 - 8.6 Rt. = \pm P. pole # A1880

T.P. 3.25 6.174 3.23 58.49
Mail in Pole - Rt. at 4+00



T.P. 5.30 55.72 11.32 4.21 51.51 - 51.51 50.42 - 50.55 = N.W.B.P. Lamont & Grand.

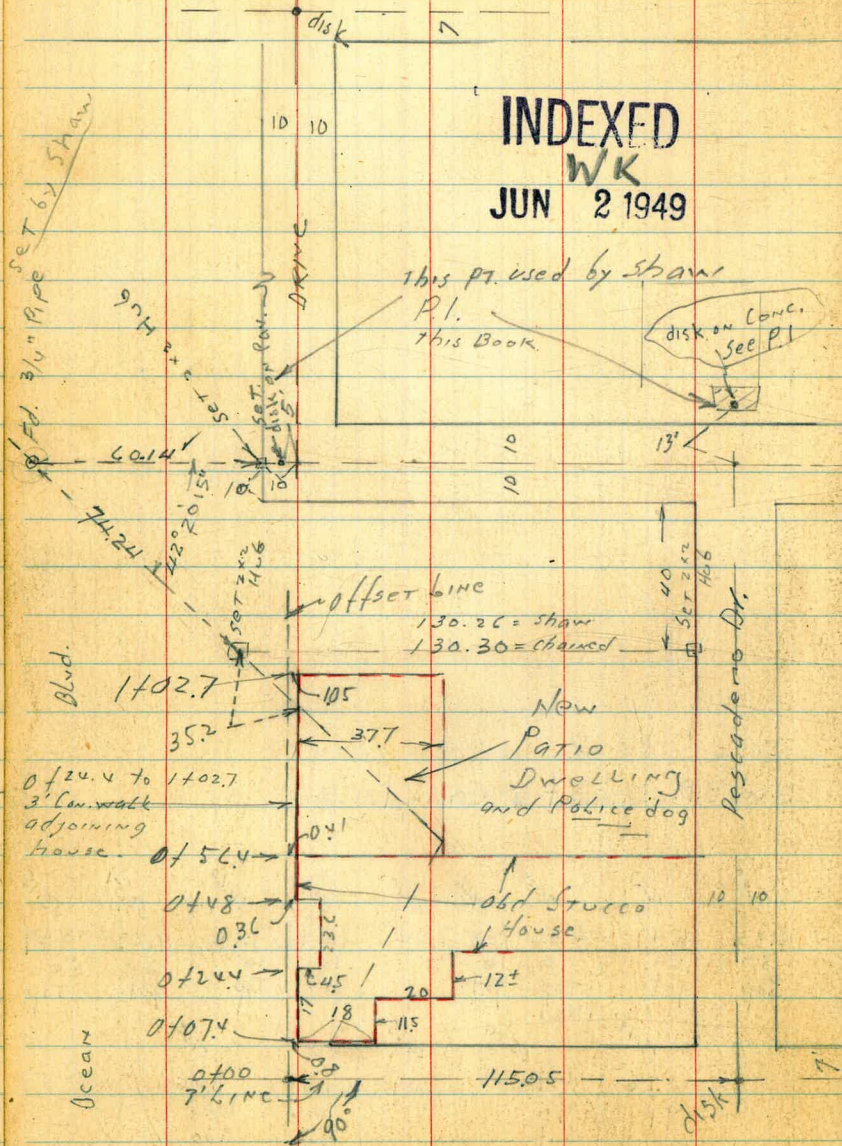
5+20.15 = w. cb.

5+14 = edge of Cold Bay Pavc

5489	5427	5538	5466	5410	5390	5468	5251	5215
4.85	5.47	6.26	7.08	7.64	7.84	7.14	9.23	8.59
50	50	10	10	10	10	10	50	50
Top	gut.	Top	gut.	gut.	gut.	Top	gut.	Top
	5549	5504	5465	5424	5465	5465		
	6.26	6.70	7.09	7.50	7.06	7.06		
	9.1	9.1		10.6	10.6	10.6		
	Top	gut.		gut.	Top	Top		

61.74

Check Survey of $\frac{7-8}{44}$ Ocean Beach
 Lt. Shaw L.S. 2001



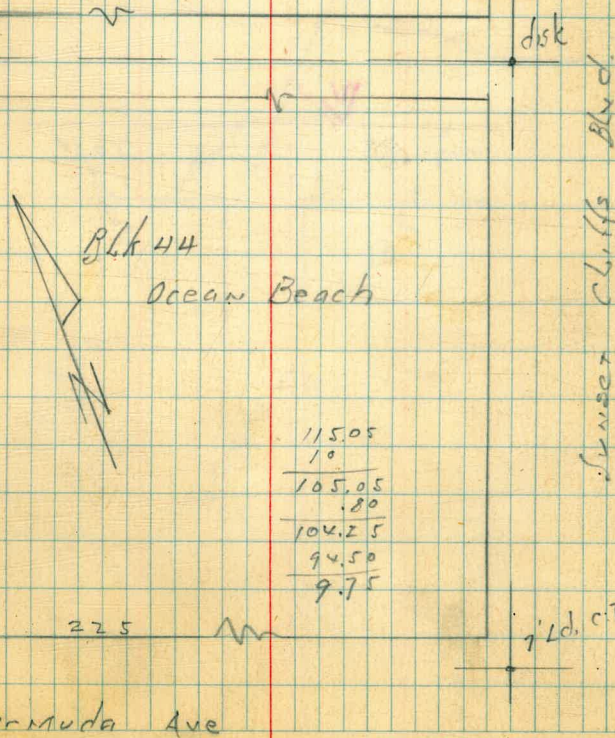
Moore
 5099
 Sherman
 515504 W.O. ? 21001
 5-25-49.

70

Pescadero Ave

7' Ld. Ct.

Location of Houses at
 E. 6. Ocean Blvd.
 Lots 9 to 12 Blk 44 Ocean Beach



115.05
10
105.05
.80
104.25
94.50
9.75

Pescadero Ave

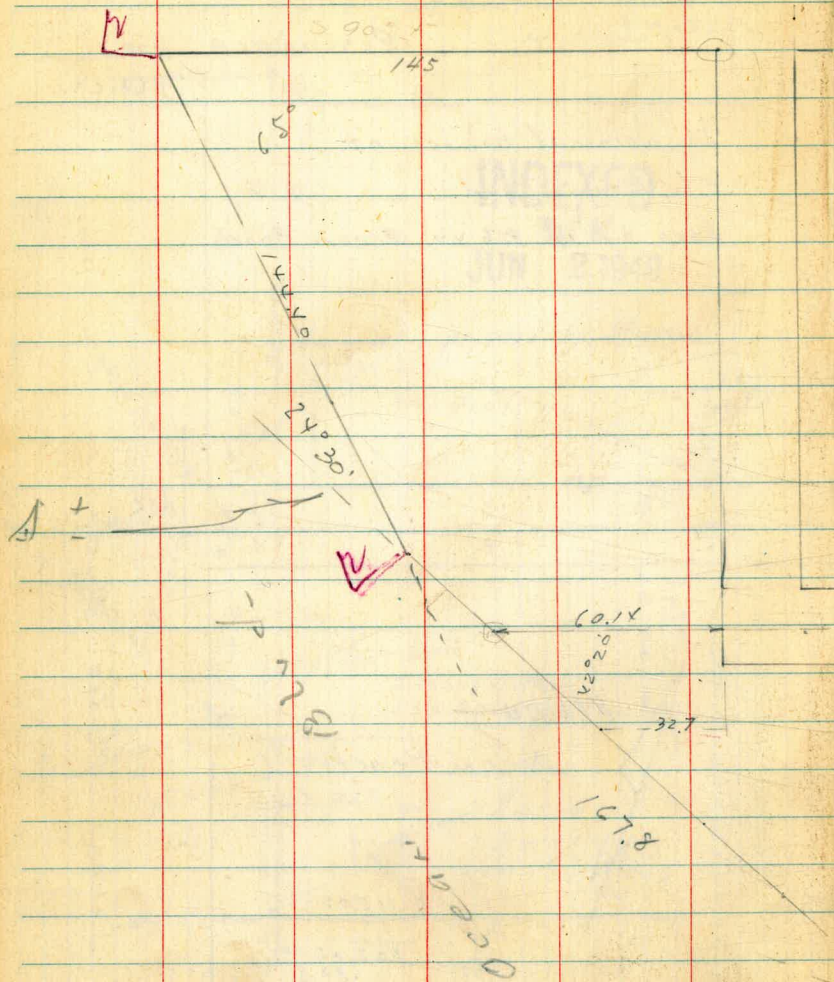


XV

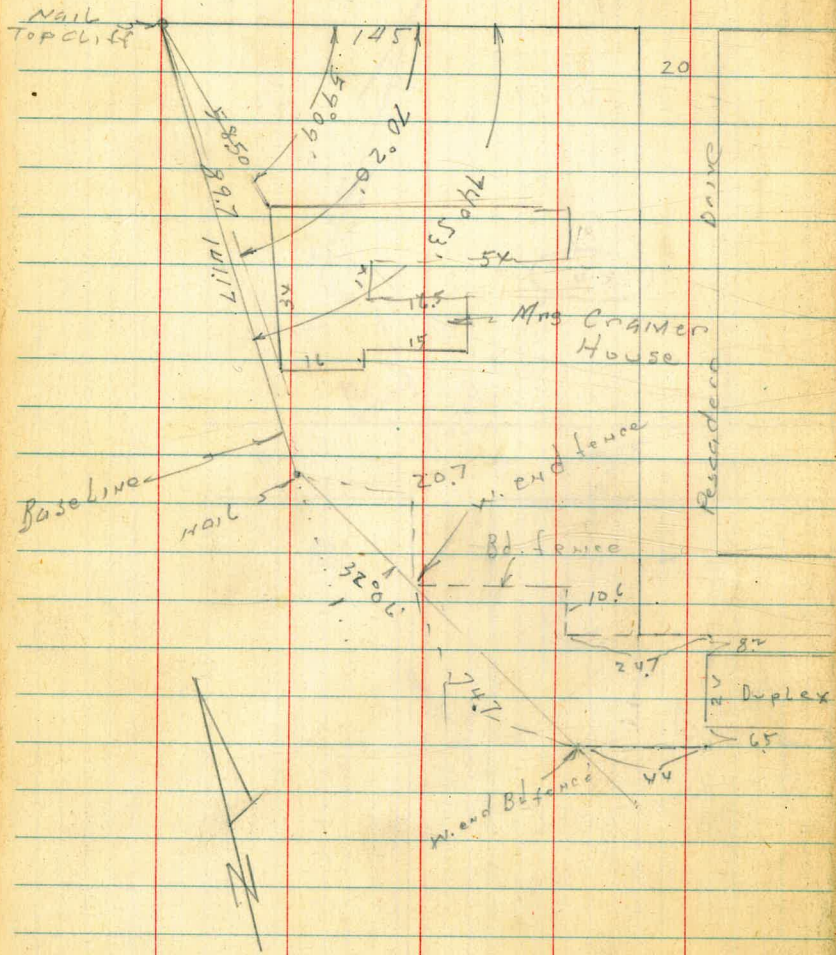


57.8
76°30'
94.50

Bermuda



LOCATION of Houses etc.
Blk 44 Ocean Beach

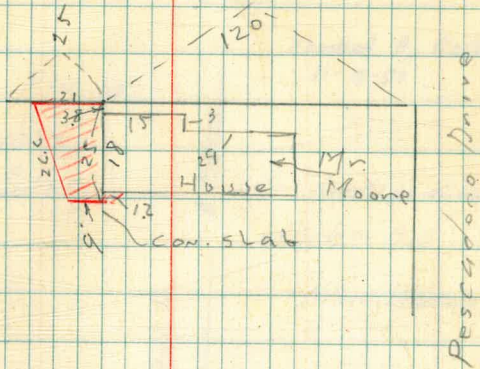


WD 20006

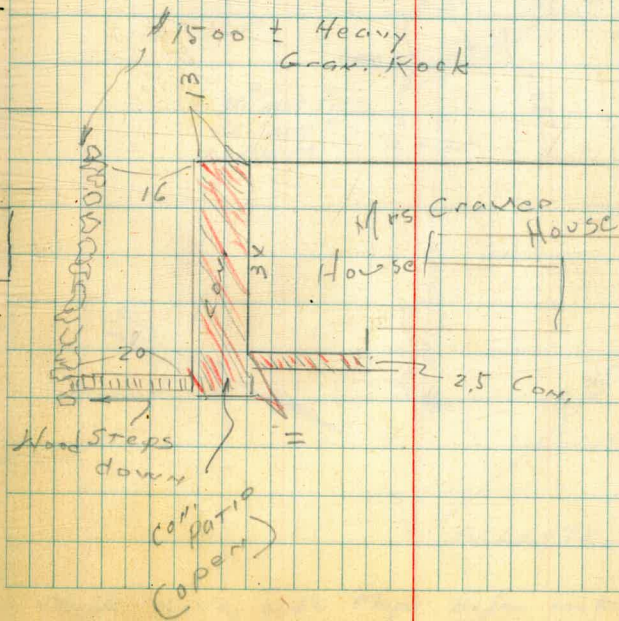
72

Moore
Begg
Merriman
Crawford

2-2-50



Blk 44
Ocean Beach



Garber Nov. 8, 51
Shepard & Warm-Clear
Bruener
Bryson

INDEXED

73

NOV 9 1951

T.P. 3244

1556

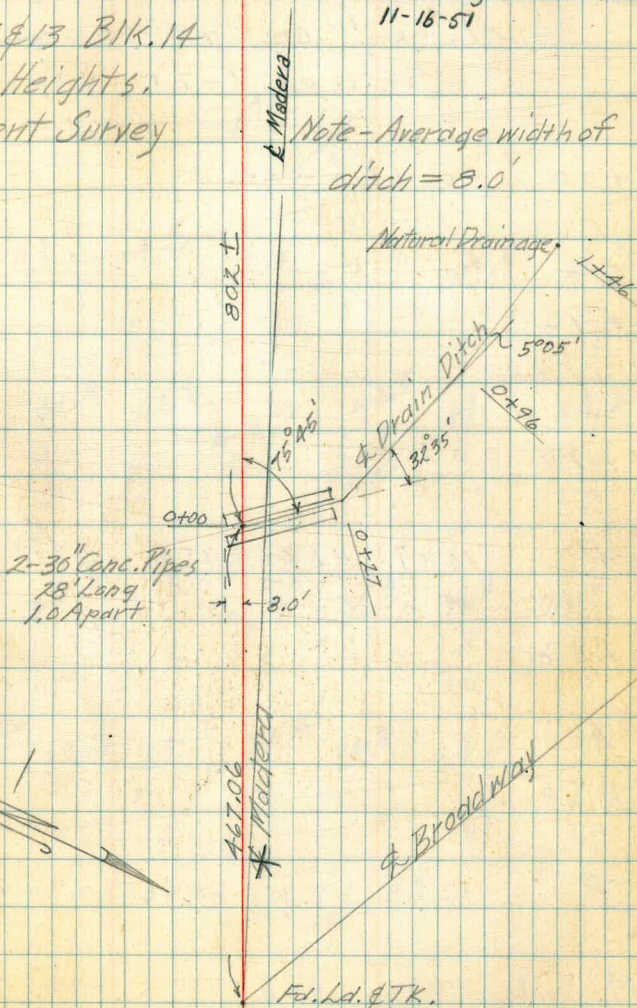
~~Brooklyn~~

Fd. Granite Boulder
Ld. & TK.

W.O. 20891
Lots 6-7 & 13 BIK. 14
Encanto Heights,
Easement Survey

Checked By Garber (cont.)
11-16-51

Note - Average width of
ditch = 8.0'



Check survey with Maps before making drawing.

2-2-50

Moore Add. Levels on
BC99 Poe St. Between
Shenandoah Locust & Evergreen

From P. 49
Note: only change
since 1-20-49

2+00 No change

1+96

1+80

T.P. 10.47 48.64 158 38.17

1+58

1+50

T.P. 12.53 39.75 026 27.22

BM Swly 12.94 27.48

Cor. Mon.
Poe and

Locust P. 50

SEE ALSO
PAGE 49

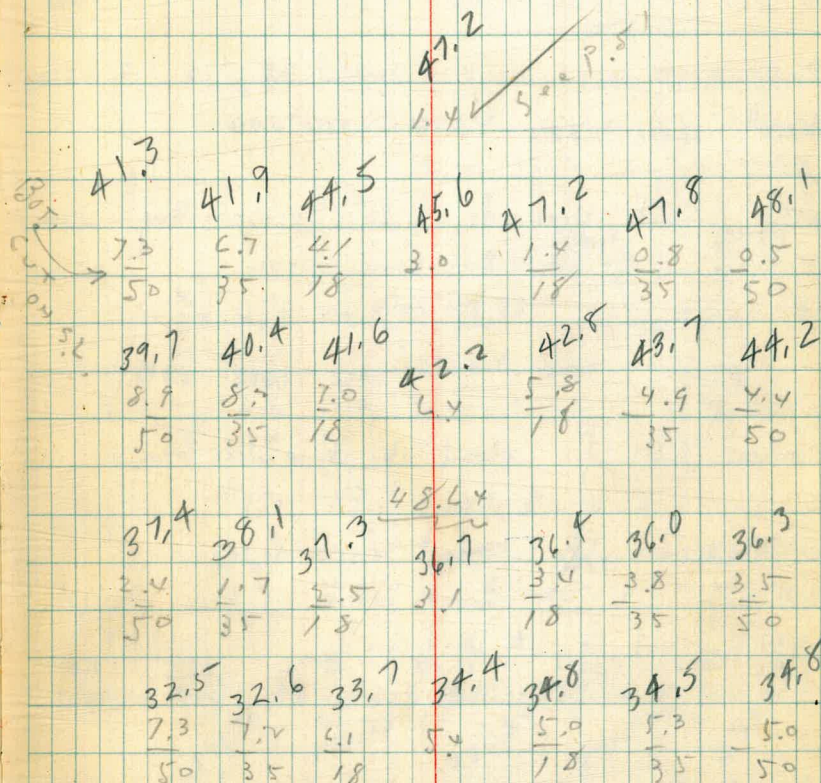
LT

S

RT

74

W/O, 25020



1.2

X-Sect. 15 Alley in Block B - Riviera

W.O. 32328 - 5-31-57 7.0

1+17 - 14.8 Rt = S.W. Cor. of Gar. - for apron

1+12.7 - 8' Rt = Beg. 6" Brick wall

1+02.5 - 9.2 Rt = Ang in edge of apron

T.P. 1.04 287.78 = Spike in P. pole

Beg. Actual Elev. Here

1+00

0+93 - 7.7 Lt = Near side of 30° Cypress + Begin wire

0+82 - 10.9 Rt = Beg Conc apron

T.P. +12.17 288.82 - 0.64 276.65

0+50

0+43 - 5.6 Lt = Wood cb. 1" + wire fence

0+42 - 6.5 Lt = P. pole # P.A. 1135

0+40 - 7.7 Lt = end of Hedge

0+25 - 7.8 Lt = of Trunk = Cypress Hedge

0+21.8 - 5.9 Lt = Deadman

0+15.33 = of Sewer MH = Ang Pt. - Sect. on split

0+00 - Pavc in poor shape Near 2-Layers - 1" Thick

0+00 = N.L. of Santa Barbara

Set B.M. on 5.02 272.27 Nly. Cross

T.P. = P.K. = 0+10 6.62 277.29 - 0.88 270.67

B.M. = N.E. B.P. 1269 271.55 258.92

Trieste + Santa Barbara
- P. 22

Villas - See sketch - P. 21

75

INDEXED

JUN 13 1957

Actual Elev. Shown from Here on.

Lt	+	Rt
		81.02 14.8 = floor
		77.0 77.3 79.27
		edge of 7.7 7.85 8.91 top wall 8
		7.2 = Conc. 7.2 = Brk.
		278.2 277.2 276.4 276.5 276.62 278.91
		10.6 11.6 12.4 12.3 12.20 10.41
		7.5 5.7 7.5 7.5 9.4 = 17.5 =
		276.22 277.69 Brk
		12.60 10.13
		10.9 20.2 Brk = slab
		288.82 273.4 = Slab to E
		275.3 275.1 274.1 273.8 273.4 275.5
		2.0 2.2 3.0 3.5 3.3 1.8
		7.5 6 5.6 7.5 15
		by cb.
		274.2 272.3 272.6 273.1 274.6
		3.1 5.0 4.7 4.2 2.7
		7.5 4 7.5 15
		274.1 273.1 271.3 272.27 273.1 273.1
		3.2 4.2 5.5 5.02 4.2 4.2
		15 9 6 6 15
		271.30 270.93 270.89 271.26 271.61
		5.99 6.36 6.40 6.03 5.62
		Top 7.37 on Top 7.55 = Top
		got. AC got.
		of M.H. 0+15.33
		277.29

Elev. Rod Broke - Had to Start with Philly Rod

3+40

3+20

3+15.8 - 0.7 Lt. = \pm Sewer M.H. 290.08' = on Cross

3+00

2+85.5 - 7' Lt. = end apron

2+84 - 13.3 Rt. = end apron

2+69 - 7' Lt. = Beg. Conc. apron

2+66 - 13.3 Rt. = Beg. Conc. apron

2+62.2 - 6.8' Lt. = \pm P. pole # P.A. 1179

2+60

2+30

2+01.9 - 7.6 Rt. = \pm Wly. of 12' Conc. footing for Conc. Block wall

2+00

1+67 - 22' Lt. = \pm Doub. gar. - Conc. floor

1+60

1+49.8 - 7.5 Lt. = End fence - 52' Lt. = end board

1+42.5 - 6.6' Lt. = \pm P. pole # P.A. 1151

1+42 - 8' Rt. = end wall \pm 7.6 Rt. = Beg. Rock & Conc. wall

1+30 - 7.6 Lt. = fence

Lt.

\pm

Rt.

76

86.8 88.2 88.2 88.4 90.7
15 7.5 7.5 15

87.6 88.7 89.8 89.8 89.4 90.2
15 7.5 4 7.5 15

87.1 88.0 88.6 88.8 89.2
15 7.5 7.5 15

85.02 87.90
37.5 = Brk. 7 = Conc.

84.84 87.44
37.5 Conc.
Brk.

88.46 88.53
13.3 = Conc. 18.5 = floor

88.12 88.53
13.3 Conc. 18.5 = floor
gar.

87.2 87.2 86.8 86.7 87.2
15 7.5 7.5 13

85.7 85.7 85.2 85.3 85.5
15 7.5 7.5 13

82.7 84.33
7.6 Bottom Top 7.9 = Block wall

83.6 83.5 83.0 83.1 83.5 84.09
15 7.5 7.5 7.6 = Top wall 15 on Conc. slab

81.85
22 floor. 81.5 80.8 80.3 80.4 81.5 81.7
15 7.5 7.5 7.6 Top of Rock 10

\pm planting

78.96 = Bottom 79.4 80.34
7.6 = edge of 8 Top wall
Footings 9. Top wall
& Rock

80.0 79.7 78.8 78.1 78.3 78.6 79.32
7.5 6 5.5 7.5 8 Top wall

By. board

5+85- 10.4' Lt. = end apron
 5+82.5- 8.9 Rt. = end Gar.
 5+80
 5+63.5- 9' Rt. = end A.C. & Beg. Back of Garage
 5+62- 10.4 Lt. = Beg. Conc. apron
 5+40

 5+35- 9.2' Rt. = Beg. A.C. apron
 5+16- 7.7 Lt. = end apron

 5+03- 7.8 Lt. = Beg. Conc. apron
 5+02- 6.5 Lt. = ϕ P. pole # P.A. 1221 = B.M. = 292.36 = spike
 5+00
 4+76.5- 11.4 Lt. = Cor. of apron
 4+66- 23 Lt. = Cor. of Conc. apron - on skew.

 4+60
 4+41.5- 7.7 Lt. = end apron
 4+19- 7.9 Lt. = Beg. Conc. apron

 4+10
 3+98.5- 7.4 Lt. = ϕ of 5" Acacia
 3+82.5- 6.5' Lt. = ϕ P. pole # P.A. 1205
 3+75.3- 7' Lt. = end apron

 3+59- 7' Lt. = Beg. Conc. Apron

Lt. ϕ Rt. 77

93.60	94.87				
31.5	16.4 = Conc.				
- Brk					
94.79	94.9	95.1		95.6	95.6
10.4	7.5			7.5	8.9 =
Conc.					by Gar.
93.22	94.51		95.20	96.00	
31	10.4		9 =	15 = A.C.	
- Brk	Conc.		A.C.		
92.9	93.5	93.7	94.1	94.43	95.53
15	7.5		7.5	9 =	15 = A.C.
				A.C.	
			94.31		96.53
			9.2		26.4 = floor
92.54	92.47		A.C.		of gar.
13.7 = floor.	7.7 = Conc.				
92.54	92.40				
14 = floor.	7.8 = Conc.				
90.8	91.6	91.4	91.7	92.9	
15	7.5		7.5	15	
		88.59			
		11.4			
	88.58	= Cor.			
	2.3	= Cor.			
88.6		88.8	89.0	89.3	90.2
15		7.5		7.5	15
	87.93				
	7.7				
86.58	Conc.	87.59			
17.7		7.9 = Conc.			
floor of					
gar.	87.1	87.1	87.0	87.2	91.0
	8	7.5		7.5	15
	by fence				
84.33	85.46	85.49	86.0	86.1	90.2
15	7.5	7 = Conc.		7.5	15
	Conc.				
	82.00	85.95			
	33.7	7 = Conc.			
	By gar.				

Set B.M. in Pole - w. side 289.44 = spike

7+04.86 = S. cb. Line.

Note: St. Now Marked "La Paloma" St.

Conc. Slab is back of cb. + Level

6+92.8 = SL. of Valencia St. = Beg. cbs. + A.C. pave

6+92 - 7.8' Rt. = end Gar.

6+79.1 - 7.9 Lt. = end wall - Edge of Conc. Cont. on.

6+70.5 - 7.9 Lt. = end Conc. Block wall + Beg. Low Conc. wall along slab

6+68 - 7.7 Rt. = end wall + Beg. Gar.

6+67.8 = ± 4" Drain thru wall 91.88 = I.E.

6+61.3 = ± of 4" Drain thru wall 92.74 = I.E.

6+54.8 - 7.9 Lt. = Beg. 8" Conc. Block wall

6+54.6 = ± of 4" Drain thru wall 93.31 = I.E.

6+50

6+47.1 = ± 4" Drain thru wall 93.80 = I.E.

6+44 - 6.5 Lt. = ± Dead man

6+40.7 = ± of 4" Drain 94.27 = I.E.

6+33.2 = ± of 4" Drain thru wall - 94.73 = I.E.

6+22 - 7.5 Rt. = Beg. 6" Conc. Base for Conc. block wa

6+21.5 - 6.3 Lt. = ± Pipe # PA. 1241

6+20

85.82	85.18	89.23	88.68	89.09	89.48	90.27	90.34	91.03
Top	40 got.	Top = ± 2' Rad.	7.5 got.		7.5 got.	Top = ± 2' Rad.	30 got.	Top

89.54	89.19	89.46	89.87	90.50
Top cb.	7.6 got.	on A.C.	7.4 got.	Top cb.

89.72	89.72
15 on Conc.	7.9 = Top Conc. Slab

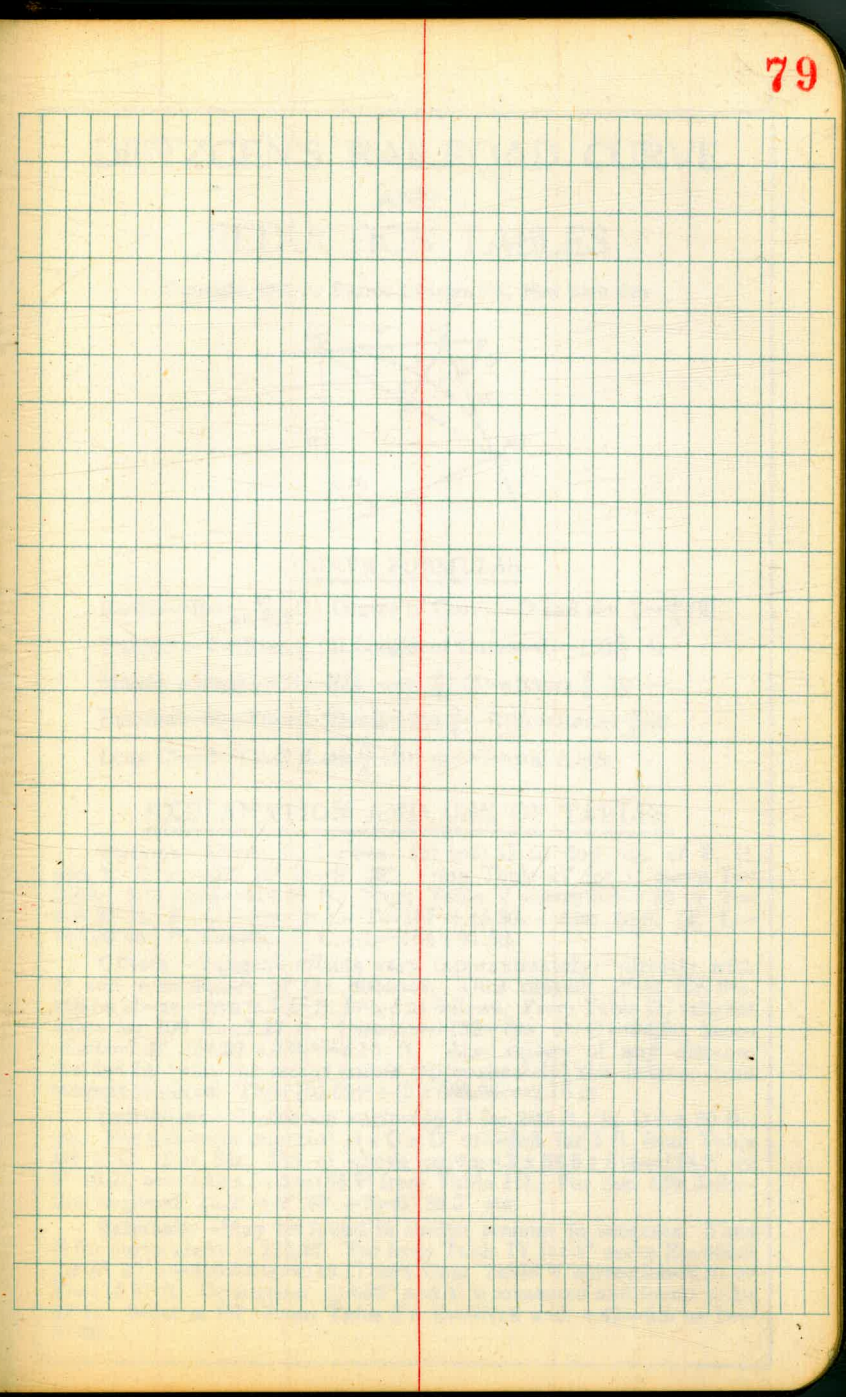
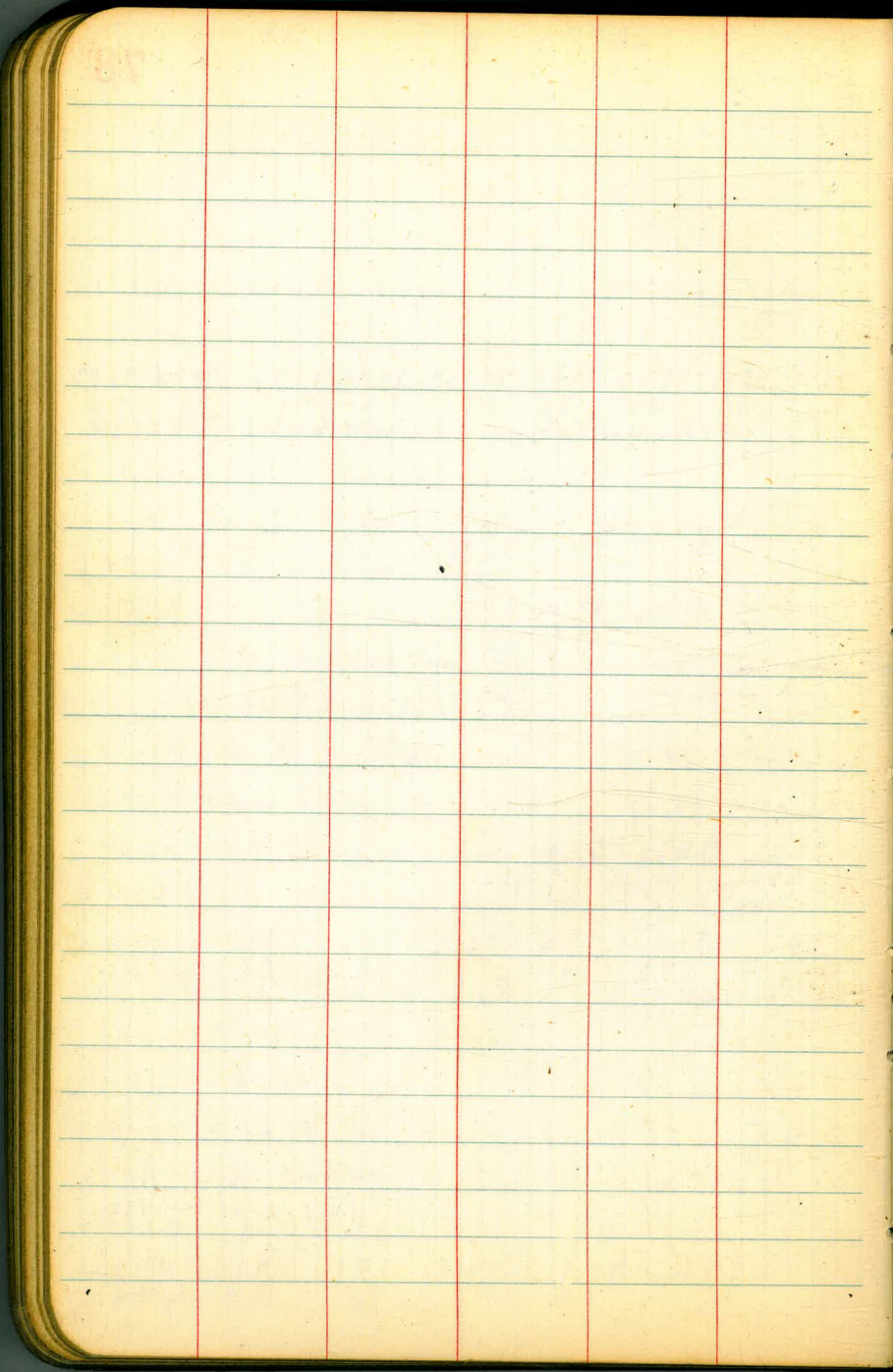
91.35	92.0
7.7 Bottom	91.

90.33	94.65	93.4
8.6 Conc. Slab.	Top wall	7.9 - 91.

94.6	94.5	93.5	93.2	93.2	93.2
8 by fence	7.5	4	7.5	7.5	7.7 = by wall

94.80	95.2	96.47
7.5 Bottom	91.	Top

94.6	94.9	94.9	95.1	97.1
15	7.5		7.5	12.5 = by fence



Cont. Mon ~ 400.36 1758 P10
 SW Cor. Lot 17

Chisel x
 Freeway & Access Road 39191 1798 P10

State B17. 415.78

CPT# 21 402.82

SE Cor. Lot 24 406.89

50.55 = NW. Lamont + Grand.

675 | 1.03 0000
 2700
 103000
 127

44
 72
 86
 387
 3956

44
 132

4102
 1100
 7952

DISTANCES FROM CENTER OF ROADWAY FOR
 CROSS-SECTIONING.

Roadway 16 feet wide. Side Slopes 1 on 1 1/2
 For Single Track Embankment.

H	0	.1	.2	.3	.4	.5	.6	.7	.8	.9	H
0	8.0	8.2	8.3	8.5	8.6	8.8	8.9	9.1	9.2	9.4	0
1	9.5	9.7	9.8	10.0	10.1	10.3	10.4	10.6	10.7	10.9	1
2	11.0	11.2	11.3	11.5	11.6	11.8	11.9	12.1	12.2	12.4	2
3	12.5	12.7	12.8	13.0	13.1	13.3	13.4	13.6	13.7	13.9	3
4	14.0	14.2	14.3	14.5	14.6	14.8	14.9	15.1	15.2	15.4	4
5	15.5	15.7	15.8	16.0	16.1	16.3	16.4	16.6	16.7	16.9	5
6	17.0	17.2	17.3	17.5	17.6	17.8	17.9	18.1	18.2	18.4	6
7	18.5	18.7	18.8	19.0	19.1	19.3	19.4	19.6	19.7	19.9	7
8	20.0	20.2	20.3	20.5	20.6	20.8	20.9	21.1	21.2	21.4	8
9	21.5	21.7	21.8	22.0	22.1	22.3	22.4	22.6	22.7	22.9	9
10	23.0	23.2	23.3	23.5	23.6	23.8	23.9	24.1	24.2	24.4	10
11	24.5	24.7	24.8	25.0	25.1	25.3	25.4	25.6	25.7	25.9	11
12	26.0	26.2	26.3	26.5	26.6	26.8	26.9	27.1	27.2	27.4	12
13	27.5	27.7	27.8	28.0	28.1	28.3	28.4	28.6	28.7	28.9	13
14	29.0	29.2	29.3	29.5	29.6	29.8	29.9	30.1	30.2	30.4	14
15	30.5	30.7	30.8	31.0	31.1	31.3	31.4	31.6	31.7	31.9	15
16	32.0	32.2	32.3	32.5	32.6	32.8	32.9	33.1	33.2	33.4	16
17	33.5	33.7	33.8	34.0	34.1	34.3	34.4	34.6	34.7	34.9	17
18	35.0	35.2	35.3	35.5	35.6	35.8	35.9	36.1	36.2	36.4	18
19	36.5	36.7	36.8	37.0	37.1	37.3	37.4	37.6	37.7	37.9	19
20	38.0	38.2	38.3	38.5	38.6	38.8	38.9	39.1	39.2	39.4	20
21	39.5	39.7	39.8	40.0	40.1	40.3	40.4	40.6	40.7	40.9	21
22	41.0	41.2	41.3	41.5	41.6	41.8	41.9	42.1	42.2	42.4	22
23	42.5	42.7	42.8	43.0	43.1	43.3	43.4	43.6	43.7	43.9	23
24	44.0	44.2	44.3	44.5	44.6	44.8	44.9	45.1	45.2	45.4	24
25	45.5	45.7	45.8	46.0	46.1	46.3	46.4	46.6	46.7	46.9	25
26	47.0	47.2	47.3	47.5	47.6	47.8	47.9	48.1	48.2	48.4	26
27	48.5	48.7	48.8	49.0	49.1	49.3	49.4	49.6	49.7	49.9	27
28	50.0	50.2	50.3	50.5	50.6	50.8	50.9	51.1	51.2	51.4	28
29	51.5	51.7	51.8	52.0	52.1	52.3	52.4	52.6	52.7	52.9	29
30	53.0	53.2	53.3	53.5	53.6	53.8	53.9	54.1	54.2	54.4	30
31	54.5	54.7	54.8	55.0	55.1	55.3	55.4	55.6	55.7	55.9	31
32	56.0	56.2	56.3	56.5	56.6	56.8	56.9	57.1	57.2	57.4	32
33	57.5	57.7	57.8	58.0	58.1	58.3	58.4	58.6	58.7	58.9	33
34	59.0	59.2	59.3	59.5	59.6	59.8	59.9	60.1	60.2	60.4	34
35	60.5	60.7	60.8	61.0	61.1	61.3	61.4	61.6	61.7	61.9	35
36	62.0	62.2	62.3	62.5	62.6	62.8	62.9	63.1	63.2	63.4	36
37	63.5	63.7	63.8	64.0	64.1	64.3	64.4	64.6	64.7	64.9	37
38	65.0	65.2	65.3	65.5	65.6	65.8	65.9	66.1	66.2	66.4	38
39	66.5	66.7	66.8	67.0	67.1	67.3	67.4	67.6	67.7	67.9	39
40	68.0	68.2	68.3	68.5	68.6	68.8	68.9	69.1	69.2	69.4	40

Example—If point is 22.6 ft. above grade, how far should it be from center line to be a slope stake point? Ans. from Table 41.9. For same slopes but other widths of roadbed correct above figures by one-half difference in width of roadbed; thus in example above for 20 ft. roadbed distance will be 41.9 + (20-16) * 2 or 2 ft. added to 41.9 = 43.9. For slopes of 1 on 1 see inside of front cover.