

W. W. BROWN
1887

ENGINEERS'
LEVEL BOOK

No. 410F

EUGENE DIETZGEN CO.

DRAWING MATERIALS, MATHEMATICAL and
SURVEYING INSTRUMENTS

Chicago New York San Francisco New Orleans Pittsburg Toronto

Distances from Center of Roadway for Cross-Sectioning
Roadway 16 feet wide. Side Slopes 1 on 1.
For Single Track Embankment.

H	0	.1	.2	.3	.4	.5	.6	.7	.8	.9	H
0	8.0	8.1	8.2	8.3	8.4	8.5	8.6	8.7	8.8	8.9	0
1	9.0	9.1	9.2	9.3	9.4	9.5	9.6	9.7	9.8	9.9	1
2	10.0	10.1	10.2	10.3	10.4	10.5	10.6	10.7	10.8	10.9	2
3	11.0	11.1	11.2	11.3	11.4	11.5	11.6	11.7	11.8	11.9	3
4	12.0	12.1	12.2	12.3	12.4	12.5	12.6	12.7	12.8	12.9	4
5	13.0	13.1	13.2	13.3	13.4	13.5	13.6	13.7	13.8	13.9	5
6	14.0	14.1	14.2	14.3	14.4	14.5	14.6	14.7	14.8	14.9	6
7	15.0	15.1	15.2	15.3	15.4	15.5	15.6	15.7	15.8	15.9	7
8	16.0	16.1	16.2	16.3	16.4	16.5	16.6	16.7	16.8	16.9	8
9	17.0	17.1	17.2	17.3	17.4	17.5	17.6	17.7	17.8	17.9	9
10	18.0	18.1	18.2	18.3	18.4	18.5	18.6	18.7	18.8	18.9	10
11	19.0	19.1	19.2	19.3	19.4	19.5	19.6	19.7	19.8	19.9	11
12	20.0	20.1	20.2	20.3	20.4	20.5	20.6	20.7	20.8	20.9	12
13	21.0	21.1	21.2	21.3	21.4	21.5	21.6	21.7	21.8	21.9	13
14	22.0	22.1	22.2	22.3	22.4	22.5	22.6	22.7	22.8	22.9	14
15	23.0	23.1	23.2	23.3	23.4	23.5	23.6	23.7	23.8	23.9	15
16	24.0	24.1	24.2	24.3	24.4	24.5	24.6	24.7	24.8	24.9	16
17	25.0	25.1	25.2	25.3	25.4	25.5	25.6	25.7	25.8	25.9	17
18	26.0	26.1	26.2	26.3	26.4	26.5	26.6	26.7	26.8	26.9	18
19	27.0	27.1	27.2	27.3	27.4	27.5	27.6	27.7	27.8	27.9	19
20	28.0	28.1	28.2	28.3	28.4	28.5	28.6	28.7	28.8	28.9	20
21	29.0	29.1	29.2	29.3	29.4	29.5	29.6	29.7	29.8	29.9	21
22	30.0	30.1	30.2	30.3	30.4	30.5	30.6	30.7	30.8	30.9	22
23	31.0	31.1	31.2	31.3	31.4	31.5	31.6	31.7	31.8	31.9	23
24	32.0	32.1	32.2	32.3	32.4	32.5	32.6	32.7	32.8	32.9	24
25	33.0	33.1	33.2	33.3	33.4	33.5	33.6	33.7	33.8	33.9	25
26	34.0	34.1	34.2	34.3	34.4	34.5	34.6	34.7	34.8	34.9	26
27	35.0	35.1	35.2	35.3	35.4	35.5	35.6	35.7	35.8	35.9	27
28	36.0	36.1	36.2	36.3	36.4	36.5	36.6	36.7	36.8	36.9	28
29	37.0	37.1	37.2	37.3	37.4	37.5	37.6	37.7	37.8	37.9	29
30	38.0	38.1	38.2	38.3	38.4	38.5	38.6	38.7	38.8	38.9	30
31	39.0	39.1	39.2	39.3	39.4	39.5	39.6	39.7	39.8	39.9	31
32	40.0	40.1	40.2	40.3	40.4	40.5	40.6	40.7	40.8	40.9	32
33	41.0	41.1	41.2	41.3	41.4	41.5	41.6	41.7	41.8	41.9	33
34	42.0	42.1	42.2	42.3	42.4	42.5	42.6	42.7	42.8	42.9	34
35	43.0	43.1	43.2	43.3	43.4	43.5	43.6	43.7	43.8	43.9	35
36	44.0	44.1	44.2	44.3	44.4	44.5	44.6	44.7	44.8	44.9	36
37	45.0	45.1	45.2	45.3	45.4	45.5	45.6	45.7	45.8	45.9	37
38	46.0	46.1	46.2	46.3	46.4	46.5	46.6	46.7	46.8	46.9	38
39	47.0	47.1	47.2	47.3	47.4	47.5	47.6	47.7	47.8	47.9	39
40	48.0	48.1	48.2	48.3	48.4	48.5	48.6	48.7	48.8	48.9	40

Example—If point is 22.6 ft. above grade, how far should it be from center line to be a slope stake point? Ans. from Table 30.6. For same slopes but other widths of roadbed, correct above figures by one-half difference in width of roadbed; thus in example above, for 20 ft. roadbed distance will be $30.6 + (20 - 16) \div 2$ or 2 ft. added to $30.6 = 32.6$. For slopes of 1 on 1½ see inside of back cover.

Copyright, 1914, by Eugene Dietzgen Co.

1826

CITY ENGINEERS OFFICE

INDEXED

to page # 74

56.88

This Field Book is manufactured of a High Grade 50% Rag Paper having a WATER RESISTING SURFACE, and is sewed with Bing Special Enamel Waterproof thread.

Made in U. S. A.

INDEX

Pages 1

College Ave Extension Cross Section	2-25
Peck Place Opening in Lot G	} 62
La Mesa Colony	
Alley Blk 3 La Jolla Park	- 52
Tyrion St. (Marine St) 1/2	- 58
Prop. Drain Blk 203+200 Mission Beach	72+73
" " " 204+199 " "	74+75

Walker
 Hendricks
 Becker
 Johnson
 1-5-48

CROSS SECTION - COLLEGE AVE. EXT.
 from El Cajon Blvd. to Meade Ave

Page 2-25

INDEXED

JAN 17 1948

US. C & G
 6.12 HIGHER

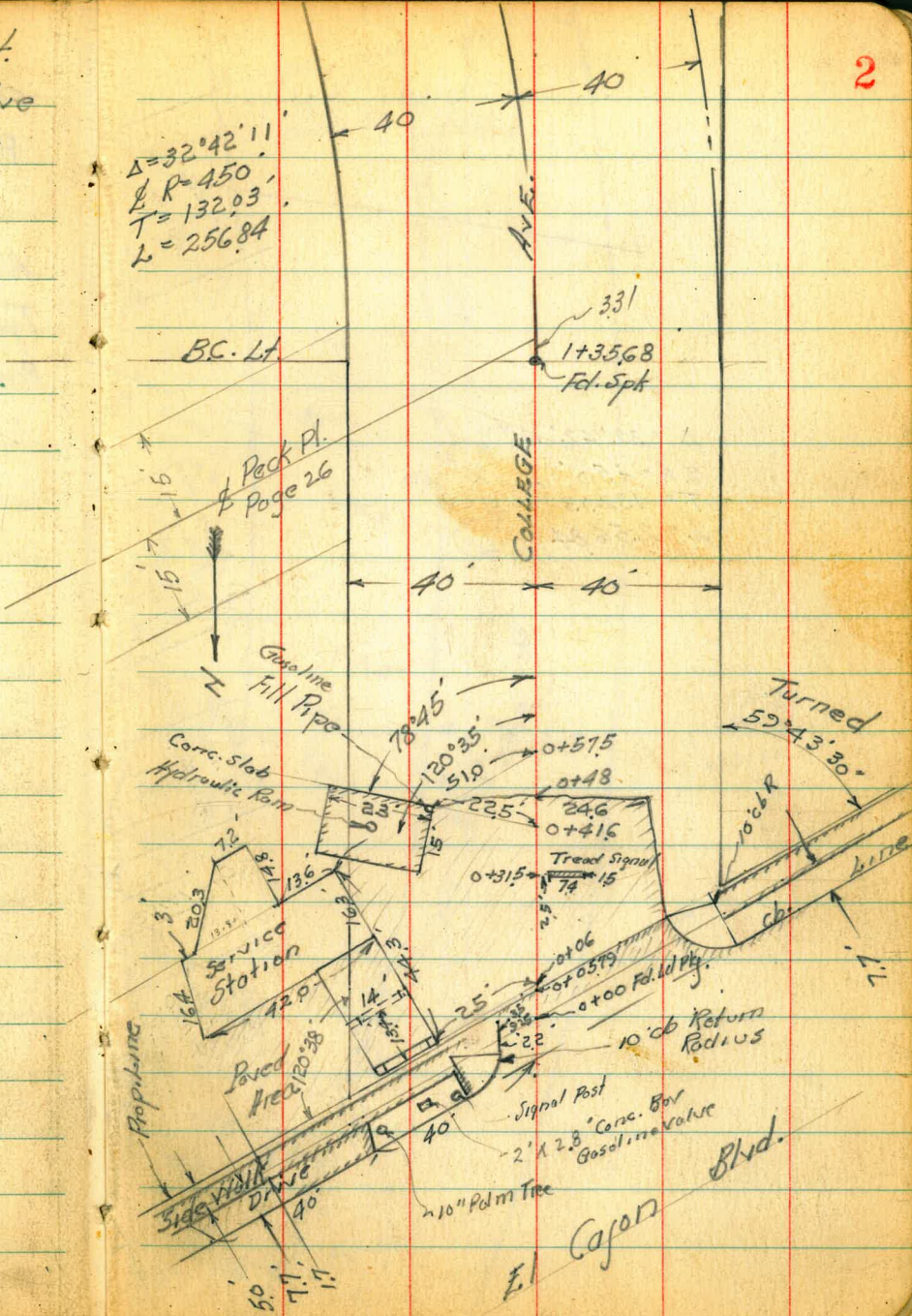
$$\Delta = 32^{\circ}42'11''$$

$$R = 450'$$

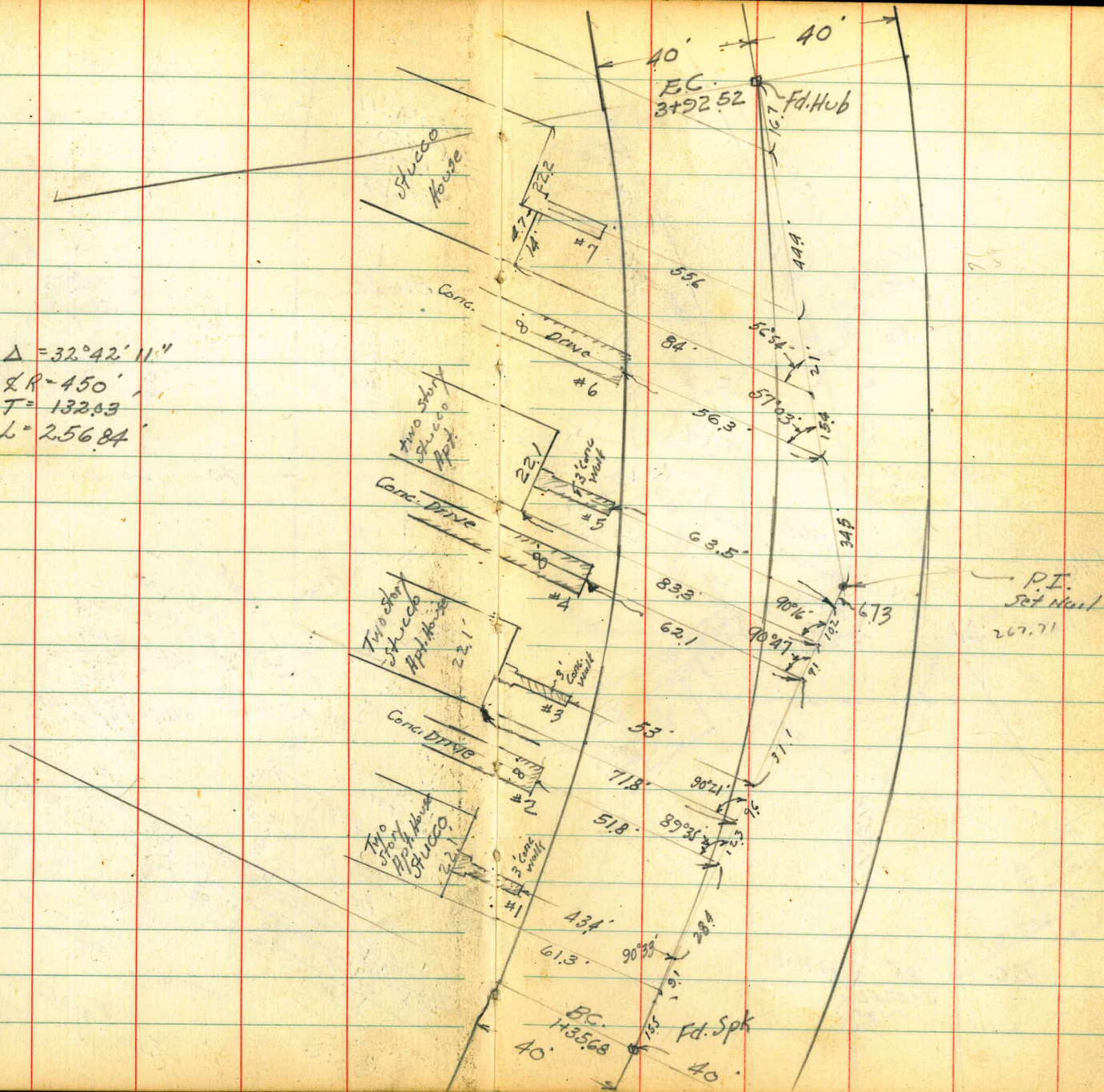
$$T = 132.03'$$

$$L = 256.84'$$

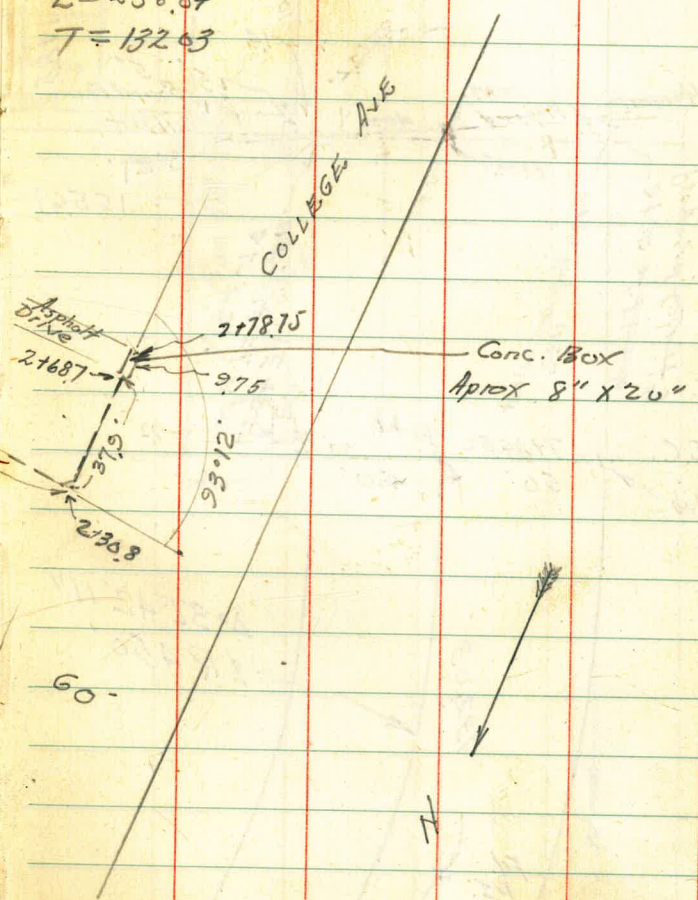
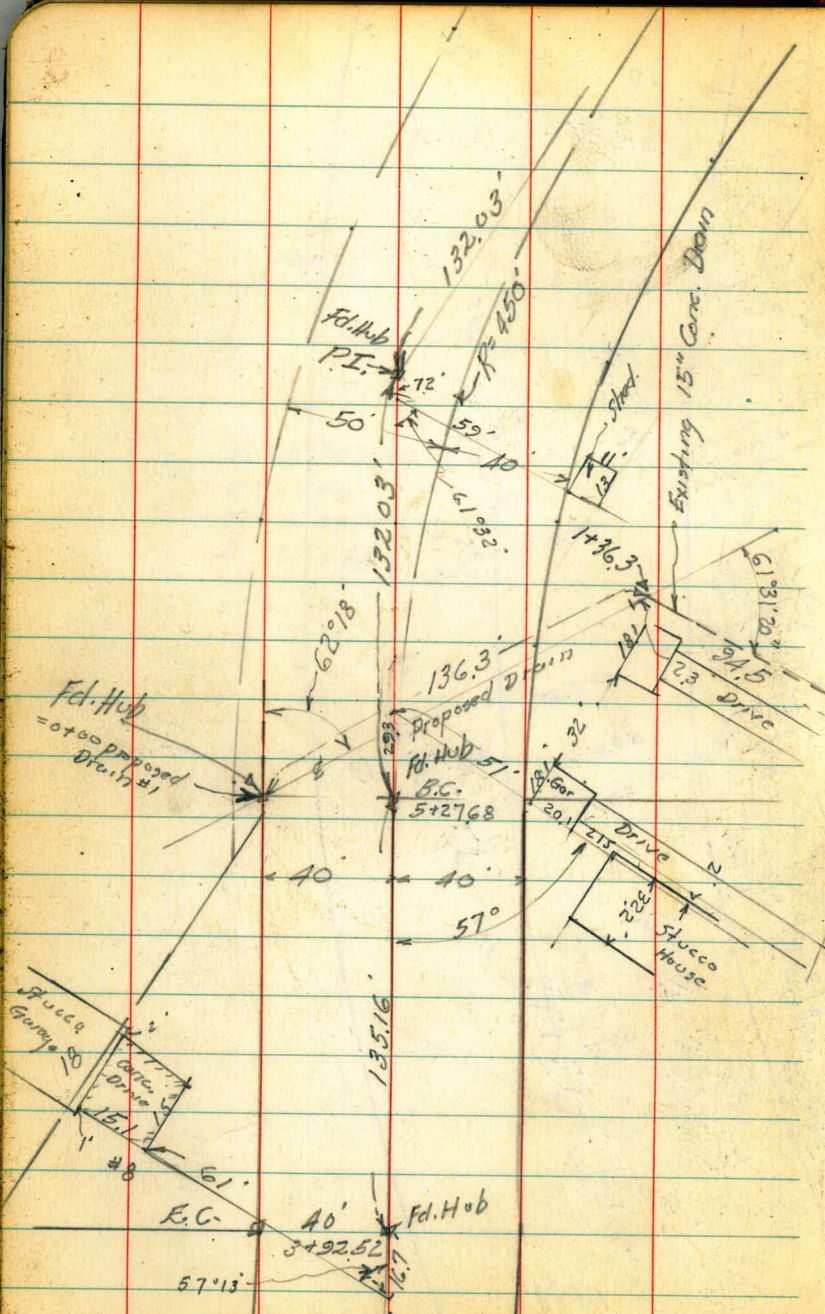
2

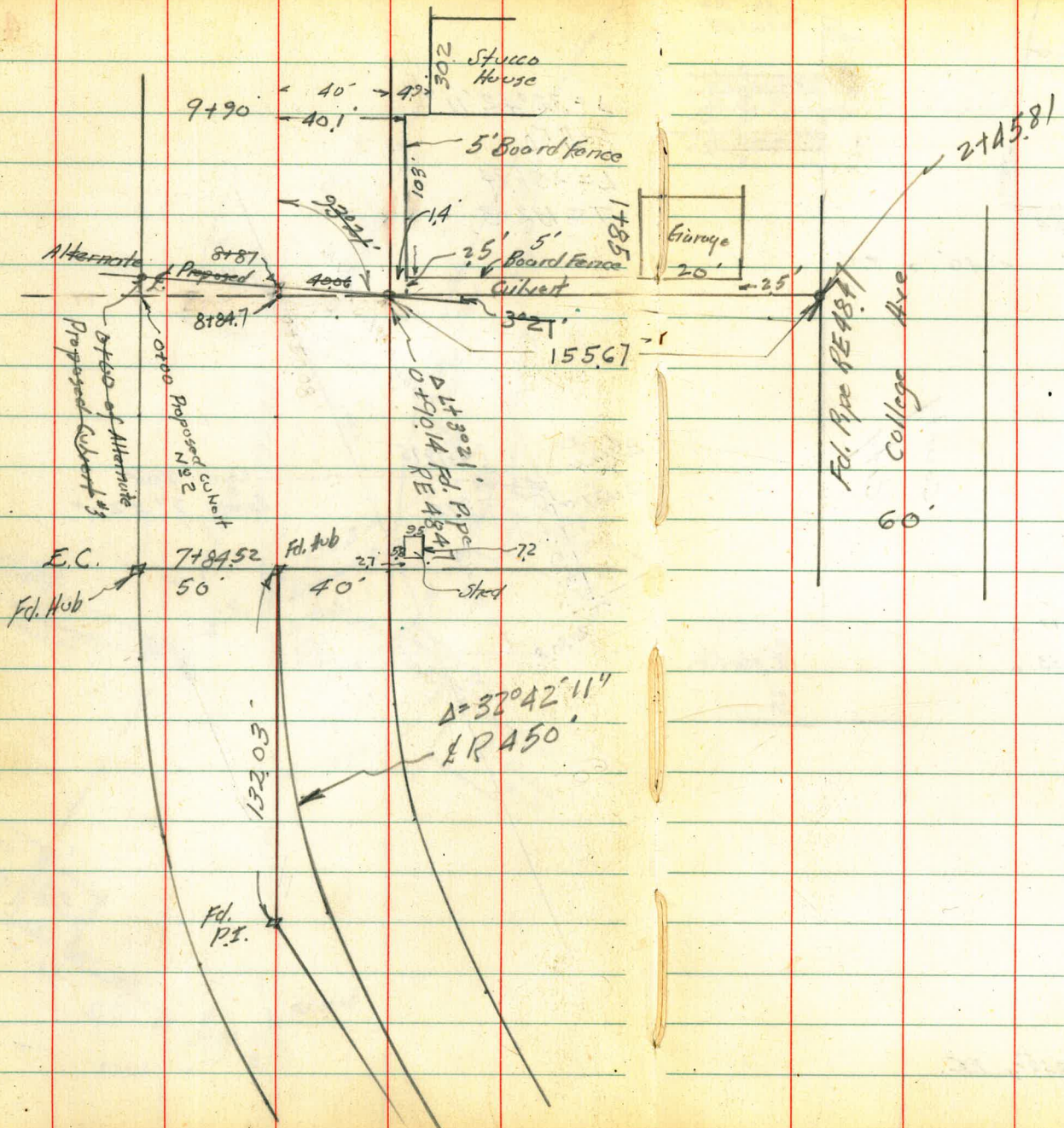


$\Delta = 32^\circ 42' 11''$
 $R = 450'$
 $T = 132.83$
 $L = 256.84'$



$\Delta = 32^{\circ} 42' 11''$
 $R = 450'$
 $L = 256.84$
 $T = 132.03$





Data - Road Survey #1081

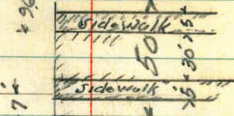
$\Delta = 24^{\circ} 20' 50''$
 $R = 2000'$
 $T = 431.45'$
 $L = 849.88'$

1225'

13129.54

50' ← 40' → 30'

Elev. Pk
1761.54



County
City

P.O.T. 10+77.77
P.O.T. 10+59.53

Estelle Street

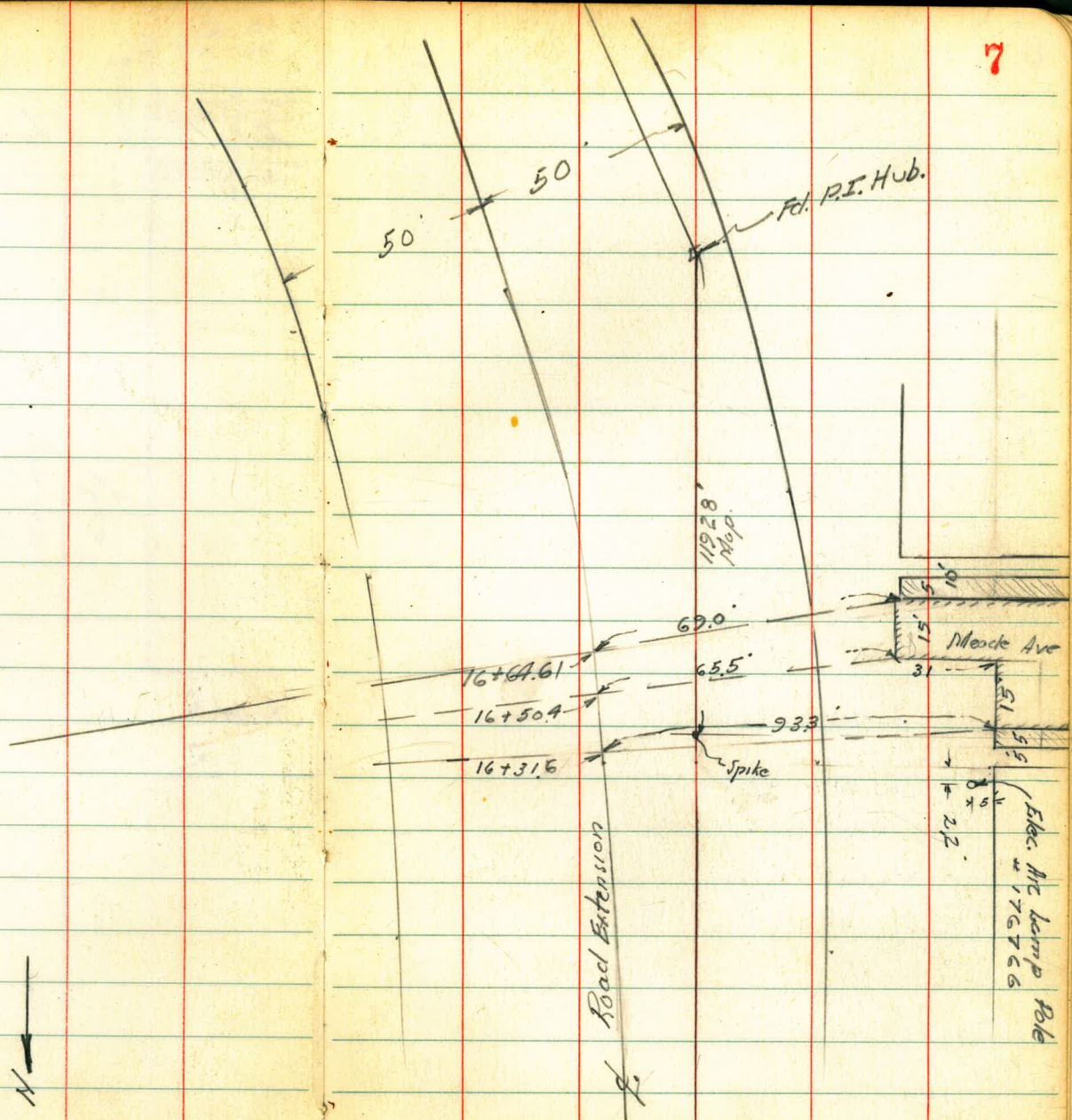
25' 25'

718452 EC.

Adelgide Street.



$\Delta = 24^{\circ}20'50''$
 $R = 2000'$
 $T = 431.45$
 $L = 849.88$



Light
0+05 Signal Post 369 Rt = diag. Parallel to El Cajon
0+038 = South edge Sidewalk - diag. Sec.

0-02 - North edge Sidewalk diag. Sec.

0-088 Cont.

0-088 = South CB Line El Cajon diag. Sec.

16.8 Lt - Signal Post

0-06.5 Elec. 526 Rt on diag. Parallel to El Cajon.

0-2.3 = diag. Section on Pav

0-47.2 = Approx E El Cajon
Section diag. Along E
Existing Pav.

487 470.14

465.27

Lt	S	Rt.
464.21		
593	593	593
96.3	96.3	96.3
Walk	Walk	Walk
464.64		
525	544	596
218	93	93
Walk	cb	Gut.
464.89		
592	573	580
93	20	396
Gut.	20	Gut.
464.18		
464.32		
464.41		
464.34		
464.97		
464.97		
517	517	517
396	396	46.3
Gut.	Gut.	cb. Ret.
464.12		
602	599	593
96.3	189	93
Walk	Walk	cb
464.55		
533	551	601
189	93	93
Walk	cb	Gut
464.81		
593	579	584
93	20	371
cb	20	Gut.
464.63		
464.13		
464.21		
464.55		
464.96		
464.94		
464.92		
520	522	522
46	46.3	
Walk	Walk	
464.12		
589	643	659
80	80	96.3
cb	Gut.	Gut.
464.25		
643	659	633
80	96.3	463
Gut.	Gut.	Gut.
463.71		
659	633	574
96.3	463	75
Gut.	Gut.	Gut.
463.81		
574	518	577
75	75	96.3
Gut.	cb	Gut in Drive
464.40		
464.96		
464.37		
464.53		
561	631	546
40	40	162
Gut	cb	Gut
464.83		
631	610	608
40	93	6.02
Gut	Gut	20
464.68		
610	608	592
40	93	46.3
Gut	Gut	Gut
464.04		
608	602	586
93	20	493
Gut	20	EC. Ret
464.06		
602	592	587
93	20	493
Gut	20	Gut
464.12		
592	586	587
20	46.3	493
Gut	Gut	EC. Ret
464.92		
586	587	528
46.3	493	493
Gut	Gut	EC.
464.28		
587	528	528
493	493	96.3
Gut	Gut	Walk
464.27		
528	517	497
493	46.3	96.3
Gut	Gut	Walk
464.86		
517	497	497
46.3	96.3	
Gut	Walk	
464.85		
517	497	497
46.3	96.3	
Gut	Walk	
464.86		
517	497	497
46.3	96.3	
Gut	Walk	
464.97		
517	497	497
46.3	96.3	
Gut	Walk	
465.17		
497	497	497
96.3	96.3	
Walk	Walk	

470.14

B.M. B.P. NW El Cajon & College

0+31.5 Conc. Tread Signal

T.P. 237 467.03 548 464.66

0+23.3 Section Rt Δ to L = Rt Δ to SW E/Cujara

0+05.8 Section Rt Δ to L

0+23.3 = Section Rt Δ to L = Rt Δ to SW. Cor. Et Cujara

0+06 kts. on
diag. Distances

Sec. Parallel with Et Cujara

0+05 = South edge Eusting Standard Bearing

470.14

0-054 37.9' Lt. of 10" Plumosa Palm Tree

0-054 2.54' Lt. on diag. = 2' x 28' Conc. Box. (Gasoline Valve)

464.19
281
25
Conc.
Tread
464.33
270
9.9
Conc.
Tread

467.03

465.16 464.85 464.73 464.69 464.29 464.29 464.31 464.18 464.9 464.87 464.92
498 529 541 545 585 589 583 576 52 527 522
40 37 28 20 7 14 25 35 39.4 40
Conc. Flow Oil Station
Flux
Pore
Edge oil. Pav
Walk
Walk

464.98 465.06 465.09 464.96 464.87 464.34 464.31
516 508 505 518 527 580 583
50 40 33 32 21.3 77 80
Pav. Pav. Conc. Flow
Job Pumps
Pav. Pav.

464.85 465.21 465.21 464.96 465.09 465.22 465.22
529 493 493 518 514 492 492
40 39.3 37.2 37.1 27.1 27 25
Conc. Conc. Conc. Conc. Conc.
Slab Job Slab Slab Slab

464.36 464.72 464.90 464.79 464.43 464.20 464.27 464.40 464.29 464.94 464.96 465.02
578 542 529 535 571 592 5.87 5.74 5.85 520 518 512
90 463 18.3 13.3 10 9 20 33.6 33.6 46.3 56.3
Pav. Pav. Walk Pav. Pav. Pav. Pav. Pav. Pav. Pav. Pav.
470.14
Gd of cb Rd
ES Rd
Pav. Pav.

T.P.
1+60.3 2.51 465.71 3.83 463.20

Next Pole
1+96
32.1' Ht.

1+26 Elec. Pole # P-7070 32.1' Ht.

1+35.68 = 86. Lt.

1+23.8 = 4" Sewer MH

1+00

0+75

0+50 4" Light Pole 23.5' Lt.

Conc. Slab With Hydraulic Ram see sketch for location

0+48 End Oil & Rock Paving.

467.03

461.0
6.9
70
461.6
5.4
50
462.0
5.0
40
461.9
5.1
30
461.0
5.4
26
461.7
5.3
461.7
5.3
25
461.8
4.0
461.8
5.2
50
461.8
5.2
85

462.04
499
99
Pitt MH

461.9
5.1
70
462.3
4.7
58
462.9
4.1
40
462.6
4.9
17
462.5
4.5
462.4
4.6
20
462.9
4.1
24
463.0
4.0
34
462.8
4.2
40
462.5
4.5
60

464.5
2.5
50
464.0
3.0
40
463.5
3.5
22
463.2
3.9
17
463.0
4.0
463.1
3.9
17
463.0
4.0
22
463.2
3.8
32
463.2
3.8
40
463.1
3.9
45
97 Bl.

464.42
2.61
NW
Gr
Conc.
4 464.36
2.67
NE
Gr
Conc.
464.30
2.73
SE
Gr
Conc.
464.35
2.68
SW
Gr
Conc.

464.1
2.9
40
464.3
2.7
20
464.37
2.66
21
463.63
3.40
6
Pav.
463.78
3.25
463.92
3.11
14
Pav.
463.89
3.14
24.6
Edge
Pav.
463.7
3.3
33
463.8
3.2
396.07
Blk.

South edge Conc. Drive No 4

North edge Conc. Drive No 4

E. Walk No. 3

South edge Conc. Drive No 2

North edge Conc. Drive No 2

E. Walk No. 1

1+50

1+50

465.71

4

5

17

12

457.55
8.16
15' East
on Drive

458.13
7.58
West end
Drive

457.92
7.79
15' East
on Drive

458.06
7.25
West edge
Drive

460.14
5.57
15
on Loading

459.42
6.29
13
Walk

459.52
6.19
West edge
Walk

459.78
5.93
15' East
on Drive

459.85
5.86
West edge
Drive

460.02
5.69
15' East
on Drive

460.21
5.50
West edge
on Drive

460.08
4.53
13' East
on Walk

461.13
4.58
West edge
on Walk

460.7	460.6	461.3	461.7	461.4	461.4	461.1	461.6	461.5	461.3	461.2
5.0	4.1	4.4	4.0	4.3	4.3	4.6	4.1	4.2	4.4	4.5
80	30	40	32	29		27	33	40	50	80

465.71 ✓

T.P. 0.55 454.96 11.30 459.41

3+00 Cont.

3+00

2+50

2+00

South edge Conc. Drive No 6

North edge Conc. Drive No 6

Corc. Walk No 5

46571

H

L

H

13

453.5
122
55

454.3
114
60

454.7
110
70

Ground of Conc. Tile Wall

456.0
97
57

456.1
96
50

456.2
95
40

456.2
95
35

455.8
99
30

455.8
99
16

455.9
98

455.1
10.1
12

456.0
97
18

455.3
10.4
29

454.1
11.6
33

454.4
11.3
40

454.0
11.7
50

458.2
7.5
65

458.5
7.2
50

458.5
7.2
40

458.1
7.6
34

458.2
7.5
16

458.3
7.4

458.1
7.6
13

457.8
7.9
30

457.2
8.5
37

458.0
7.7
40

458.3
7.4
30

458.4
7.3
56

Ground of Wall Conc. Tile

459.87
58
60

459.8
59
40

459.8
59
35

459.6
61
32

460.1
56
12

459.8
59
28

459.8
59
40

460.2
55
50

460.3
54
70

on Drive

454.92

11.49
15 East
on Drive

454.99

10.72
West end
Drive

454.24

11.47
15 East
on Drive

455.21

10.50
West end

457.58

8.19
14.5 East
on Landing

457.17

8.34
13 East
on Walk

457.24

8.47
West end
Walk

46571

TR 394 447.08 11.82 443.14

4+20

3+92.52° E.C.

No 8

South edge Conc. Drive

No 8

North edge Conc. Drive

No 7

E Conc. Walk

3+50

454.96

3+22 39 H. Elev. 270530

454.96

14

L

R

14

446.65	446.8	447.2	446.7	446.8	446.3	445.7	446.5	444.9	444.5	443.5	443.4
831	82	78	83	82	80	93	85	101	105	115	116
55	40	28	26	16	7	10	15	28	40	65	85
on Drive											

449.0	449.6	449.7	448.8	449.4	448.9	448.1	448.9	447.7	445.9		
60	54	53	52	56	61	69	61	67	73	91	
58	40	29	25	18	9	13	20	40	70		
Ground at House											

446.67	446.67	446.51	447.09		
829	829	845	792		
16'E	15'E	11'E	West end		
on Floor	on Drive	on Drive	Drive		
Cork					

446.73	446.79	447.51		
823	817	745		
16'E	16' East	West end		
Cork Floor	on Drive	Corc. Drive		
Garage				

452.65	451.63	452.08		
231	333	288		
17.5	16' East	West end		
on Conc. Landing	on Walk	Walk		

452.3	452.6	453.0	453.2	454.3	452.8	452.2	451.7	451.9	452.7	451.7	450.6	449.9	450.0
27	24	20	18	27	22	28	33	31	28	33	44	51	50
69	40	38	31	26	13		6	10	12	25	40	50	57

454.96

Proposed Drain #1 Cont.

Levels Proposed Drain #1 See sketch P-4

6+00

5+50

5+27.68 - B.C. Pt.

4+85

4+50

447.08

Station	Elevation	Notes
4+50	443.5	36 65
4+50	443.5	36 46
4+50	443.8	33 31
4+50	444.4	27 26
4+50	443.5	36 21
4+50	444.0	31 17
4+50	443.9	3.2 14
4+50	443.4	3.7 16
4+50	443.7	3.4 32
4+50	443.1	4.0 40
4+50	442.5	4.6 40
4+50	442.0	5.1 65
4+50	441.7	5.4 80
4+85	440.7	6.4 150
4+85	439.7	7.4 75
4+85	439.4	7.7 50
4+85	440.0	7.1 40
4+85	440.9	6.2 25
4+85	441.0	6.1 20
4+85	440.9	6.2 16
4+85	440.5	6.6 16
4+85	441.0	6.1 18
4+85	439.7	7.4 40
4+85	438.4	8.7 45
4+85	439.4	7.7 60 ± Ground of House
5+27.68 - B.C. Pt.	441.8	5.3 100
5+27.68 - B.C. Pt.	440.1	7.0 75
5+27.68 - B.C. Pt.	439.1	8.0 50
5+27.68 - B.C. Pt.	438.91	8.17 40
5+27.68 - B.C. Pt.	438.2	8.9 25
5+27.68 - B.C. Pt.	437.4	9.68 on Hub
5+27.68 - B.C. Pt.	437.7	9.1 2.1
5+27.68 - B.C. Pt.	437.6	9.5 18
5+27.68 - B.C. Pt.	438.2	8.9 22
5+27.68 - B.C. Pt.	437.3	9.8 25
5+27.68 - B.C. Pt.	437.1	10.0 42
5+27.68 - B.C. Pt.	437.3	9.8 74
5+27.68 - B.C. Pt.	437.21	9.87 Gar. Floor Concrete
5+50	442.1	5.0 75
5+50	440.8	6.3 50
5+50	440.1	7.0 40
5+50	439.8	7.3 22
5+50	439.2	7.9 12
5+50	438.2	8.9 25
5+50	437.4	9.7 11
5+50	436.8	10.3 25
5+50	436.5	10.6 40
5+50	436.8	10.3 50
5+50	436.7	10.4 75
5+50	436.7	on lawn 177 Back yard
6+00	445.7	1.4 70
6+00	444.5	2.6 50
6+00	442.9	4.2 25
6+00	442.1	5.0 12
6+00	441.1	6.0 60
6+00	439.1	8.0 18
6+00	436.9	10.2 40
6+00	436.2	10.9 65
6+00	435.5	11.6 65
6+00	435.54	Req. Conc. L.P. - Patch Work
6+00	436.0	11.1 174
6+00	435.9	11.7 1700
6+00	436.6	10.5 1700
6+00	437.1	10.7 0764
6+00	436.4	10.7 0780
6+00	437.0	10.1 0740
6+00	435.8	11.3 1780
6+00	435.9	11.2 1780
6+00	435.1	12.0 27908
6+00	433.8	13.3 27308
6+00	433.2	13.9 27687
6+00	433.1	14.0 27785

8+40

T.P. 2.63 442.54 7.17 439.91

8+15

7+84.52 = E.C.

7+50

7+00

6+75

6+50

447.08

H

445.0	444.6	445.6	442.7	444.4	439.5	435.7	437.2	436.4	435.5	435.1	434.8
2.1	2.5	3.5	4.4	6.7	7.6	8.4	9.9	6.1	7.0	7.4	7.7
80	70	50	37	18	33	40	35	40	50	75	75
446.4	445.1	443.0	441.73	440.6	438.7	436.6	435.6	435.6	435.6	435.6	435.6
0.7	2.0	4.1	5.35	6.5	8.4	10.5	11.5	11.5	11.5	11.5	11.5
70	30	20	20	20	40	80	100	100	100	100	100
448.1	446.6	446.0	444.1	442.4	441.6	439.7	438.5	437.3	435.9	435.9	435.9
1.0	0.5	1.1	3.0	4.7	5.5	7.4	8.6	9.8	11.2	11.2	11.2
70	50	40	30	17	40	80	75	75	100	100	100
449.1	447.6	446.6	445.2	443.1	441.9	439.8	438.5	437.3	437.3	437.3	437.3
2.0	0.5	0.5	1.9	4.0	5.2	7.3	8.6	9.8	11.2	11.2	11.2
70	50	40	20	40	19	32	40	75	75	75	75
449.5	448.7	446.5	445.1	443.3	442.1	440.4	438.8	437.1	437.4	436.8	436.8
2.4	1.6	0.6	2.0	3.8	5.0	6.7	8.3	10.0	9.7	10.3	10.3
70	50	40	20	17	28	40	75	75	75	75	75
448.8	446.7	444.4	442.9	440.9	437.7	437.1	437.4	436.8	436.8	436.8	436.8
1.7	0.4	2.7	4.2	6.2	9.4	10.0	9.7	10.3	10.3	10.3	10.3
70	50	19	4.2	19	40	60	75	75	75	75	75

442.54

16

447.08

9+50

T.P. 11.72 448.78 5.48 437.06

2+25

2+00

8+84.7 Cont.

8+84.7 = 1/2 Proposed Cutrock No 2

8+65

442.54

4

4

4

17

442.2	6.6	80
440.0	8.8	50
439.2	9.6	42
437.8	11.0	18
437.2	11.6	11
436.5	12.3	4
436.2	12.6	15
436.8	12.0	19
436.0	12.8	40
435.2	13.6	43
434.9	14.9	55

448.78

441.7	0.8	100
438.4	4.1	50
436.7	5.8	22
435.9	6.6	17
435.1	7.4	14
434.1	8.4	21
433.6	8.9	30
434.5	8.0	35
434.1	8.4	20
433.9	8.6	50
433.7	8.8	75

Fence

438.8	3.7	100
437.8	4.7	73
436.7	5.8	50
436.7	6.8	43
435.3	7.2	24
434.3	8.2	14
434.0	8.5	8
433.7	8.8	20
432.9	9.6	28
434.4	9.1	36
434.0	8.5	40
433.6	8.9	50
433.5	9.0	75

= South edge channel

430.6	11.9	11
430.2	12.3	12
429.4	13.1	17
428.1	14.4	19

Ditch

438.7	3.8	100
437.5	5.0	50
436.5	6.0	24
435.5	7.0	19
435.0	7.5	7
434.4	8.1	22
433.4	9.1	31
433.0	9.5	40
433.25	9.29	40
432.8	9.7	50
432.2	10.3	80

S Channel

on Pape RE 4897

438.9	2.6	80
439.1	3.4	50
438.0	4.5	23
437.3	5.2	12
436.3	6.2	13
436.5	7.0	13
436.1	6.4	30
435.2	7.3	40
435.2	7.3	50
434.5	8.0	75

442.54

10+74.53 - South cb Estelle St.

10+59.53 Cont.

10+59.53 - S. Estelle St. on Mt.

10+50

10+34.53 - N. Hume Estelle St. on Mt.

10+20

9+81

448.78

4451.2	4448.8	4446.7	4444.8	4443.7	4441.4	4440.5	4440.2	9938.9
+2.4	0.0	2.1	4.0	5.1	7.4	8.3	8.6	7.9
80	80	23	40	13	25	35	40	70
								Ground

437.07	435.7
11.71	13.10
25	120
0.7	0.7
Revi	Boying

4449.6	4447.5	4445.8	4444.8	4443.7	4442.4	4441.1	4440.7	439.6	438.49
+0.8	1.3	3.0	4.0	5.1	6.4	7.7	8.1	9.2	10.29
80	50	20	40	11	24	40	49	56	70
									on Estelle Passage

4448.8	4448.1	4446.8	4445.6	4444.4	4442.7	4441.4	439.1
0.0	0.7	2.0	3.2	4.4	6.1	7.4	2.7
80	65	50	26	44	20	40	70

4448.1	4447.1	4445.7	4444.0	4442.8	4441.6	4441.1	4441.1	440.5	439.8	438.7
0.7	1.7	3.1	4.8	6.0	7.2	7.7	7.7	8.3	9.0	10.1
80	63	50	20	60	17	20	36	40	43	70

4447.2	4446.6	4445.3	4444.2	4442.7	4441.5	4440.6	439.8	439.5	439.1	439.5
1.6	2.2	3.5	4.6	6.1	7.3	8.2	9.0	9.3	9.7	9.3
80	72	61	50	26	7.3	20	33	40	45	45
									of House	of House
									at	"Bottom
									House	6" Vert

4444.0	4442.1	4441.0	4439.8	4438.3	4437.4	4436.7	4436.6	4436.4
4.8	5.7	7.8	9.0	10.5	11.4	12.1	12.2	12.4
80	50	24	9.0	20	38	40	50	60

448.78

18

11+36

11+24

11+00

TP 12.20 460.04 0.5A 447.84

10+91.5 65' RT. Elec Pole # 176768

10+88

10+79.53 = South edge Side walk Estelle St. 111 RT. South Side

10+74.53 Cont.

448.78

51	79	85	91	93	105	112	12.5	13.8	141	14.8
80	67	50	40	26	13		20	40	58	70
454.9	453.0	451.5	450.9	450.7	449.5	448.8	447.5	446.2	445.9	445.2

56	80	86	90	106	111	106	133	126	148	15.7
80	62	50	40	23	14		22	40	30	70
454.4	452.0	451.4	451.0	449.4	448.9	449.4	446.7	446.4	445.2	444.3

71	80	91	92	98	124	13.5	143	137	144	15.5
80	74	63	50	30	17		19	30	40	58
452.6	452.0	450.9	450.8	449.2	447.6	446.5	445.7	446.3	445.6	444.5

460.04

71	78	79	80	85	88	90	95	100	105	110
80	50	31	20	10	3	5	23	40	65	70
452.4	450.6	449.7	448.8	446.3	445.3	444.2	445.2	445.1	442.0	

72.8	70.8	60	69	75	78	76	79	79	70	70
80	50	40	28	22	14	14	29	40	70	70
451.6	448.0	448.8	447.9	447.3	446.0	445.2	444.3	441.2	439.05	436.13

1036	989	1318	120	120	120	120	120	120	120	120
70	70	70	70	70	70	70	70	70	70	70
438.42	438.89	435.60	436.07	436.07	436.07	436.07	436.07	436.07	436.07	436.07

448.78

12+7A

461.9	462.0	461.0	459.0	459.6	458.7	460.0	459.7	456.6	455.6	455.4	456.1	455.7	455.4
61	63	73	93	87	96	83	86	11.7	12.7	12.9	12.3	12.6	12.9
80	72	61	50	40	29	16		17	27	34	38	40	70

12+56

461.5	461.9	461.4	459.3	458.6	457.0	456.7	455.4	454.6	454.3	455.0	454.7	454.6	454.0
68	64	69	90	97	113	116	129	117	140	133	136	137	143
80	74	62	50	26	19		18	23	32	37	40	80	70

468.34

T.P. 10.10 468.34 1.80 458.74

(12+13) Additional Section (Not in regular order but ok)

458.8	459.0	458.4	457.5	455.5	453.8	453.2	452.6	452.5	451.1	450.9	450.9	450.9	450.3
12	10	16	25	45	62	68	74	75	89	91	91	91	97
80	67	42	31	13		12	27	35	40	50	60	60	70

12+32

460.0	459.0	457.7	457.4	456.4	456.7	456.5	454.8	453.6	452.7	451.9	451.3	450.5	450.5
00	10	23	26	26	23	35	52	66	73	81	87	95	95
80	50	42	44	18	13		13	30	40	53	67	80	80

12+08 = Elec. Pole 6.54' RT # 176767

12+00 6.54' RT = Elec. Pole # 176767

11+89.9 = Pole Anchor 6.54' RT

459.2	458.2	457.9	456.2	454.4	452.7	451.4	452.3	452.3	450.5	449.2			
08	18	21	22	56	73	84	77	77	95	10.8			
80	75	38	50	23		16	27	37	40	70			

11+61

445.7	445.7	453.9	454.5	454.5	453.4	450.9	451.	449.5	447.9	446.9	446.4		
27	43	61	55	55	66	91	90	10.5	12.1	13.1	13.6		
80	65	50	42	26	16		17	26	40	50	70		

460.04

460.04

97 fence

South edge 5' Walk South Side Adelaide

South cb Adelaide

E. Paving Adelaide Distances out are from E. Semi Turn to Same

North Curb Adelaide St. outs are from E. Semi Turn

Approx. Right Angles to Semi Turn.

This and Above Sections: Distances out from E. Semi Turn

North edge Sidewalk Adelaide St. (North Side Adelaide)

13+29 SA B.C. Lt.

13+08

468.34

57	55	57	58	84	97	102	101	100	101	102
80	70	65	50	44	22	9	18	26	40	70
462.6	469.6	461.6	461.4	469.5	459.9	458.6	458.1	458.2	458.3	458.2

468.34

H

L

H

21

458.60	457.32	456.89	456.72
9.74	11.02	11.45	11.62
70	120	120	120
Walk	Walk	Par	Top cb.
458.05	457.79	456.01	456.30
10.29	10.55	10.33	10.24
70	81	70	120
Par	cb.	cb.	cb.
Drive Way	cb.	cb.	cb.
458.13	456.89	458.01	456.72
10.21	11.45	10.33	11.62
70	120	70	120
Par	Par	cb.	Top cb.
457.54	458.01	456.73	456.72
10.85	10.33	11.61	11.62
70	70	121' ft of Semi turn on Walk	120
out	cb.	out	Top cb.
458.13	456.73	456.73	456.72
10.21	11.61	11.61	11.62
70' ft of turn on Walk	121' ft of Semi turn on Walk	121' ft of Semi turn on Walk	120

462.5	461.1	460.9	460.0	460.1	461.0	459.2	458.7	458.5	457.8
5.8	7.2	7.4	8.3	8.20	7.3	9.1	9.6	9.8	10.5
80	71	50	24	on Hub	9	22	40	66	70

15+08.5 15' RA Pole Anchor 22.3' RA Gray Pole

15+00

14+50

14+23

14+02
~~14+05~~

13+75

13+50

168.34

14

2

FF

22

459.9	459.9	460.6	461.2	462.3	462.3	462.0	462.7	464.0
84	84	77	71	60	60	63	56	43
80	80	24	71	20	40	50	60	70

462.1	461.9	461.8	463.4	464.2	463.4	463.8	463.4	464.0
62	64	65	49	41	49	45	49	49
80	50	20	49	20	32	50	70	70

463.1	462.1	461.8	463.1	464.5	462.4	462.0	462.2	463.2	462.5	462.5	462.6	463.6	462.4
52	62	65	52	38	59	63	61	51	58	58	57	47	59
80	75	64	50	29	16	8	14	30	40	50	59	70	70

444.7	462.2	461.9	462.1	461.6	461.0	461.7	461.8	461.9	462.03
36	61	64	62	67	73	66	65	69	631
80	66	50	32	18	26	40	67	73	73

or around
on Func. Drive
from north

462.7	461.4	461.0	463.8	463.4	461.2	460.7	460.5	461.7	461.9	462.0	460.3	460.5	458.8
56	69	73	46	49	71	7.6	7.8	6.1	6.4	6.3	80	7.8	2.5
80	59	50	30	12	5	9	17	30	40	52	58	70	70

461.8	462.1	460.6	460.7	460.2	460.1	460.4	459.4	459.4	458.1	458.15
65	62	77	76	81	82	79	89	89	10.2	10.09
80	74	50	35	19	20	40	50	70	70	70

on Pole

468.34

16+22 Cont.

16+22

T.R. 2.88 463.08 2.24 460.20

16+00

15+75

15+50

T.R. 2.12 462.44 8.02 460.32

15+28

468.34

437.4	435.1	439.1	443.5	452.5	454.4	455.2	455.9	456.2
257	280	240	196	10.6	8.7	7.9	7.2	6.9
95	80	30	27		10	27	40	50
442.4	440.6	444.8	443.5	448.3	453.0	455.1	456.0	458.5
200	218	206	189	141	74	7.3	6.4	3.9
100	80	50	43	23	4	24	50	66
446.9	449.7	451.2	442.5	444.6	451.5	456.4	458.1	459.8
15.5	12.7	11.2	9.9	7.8	6.9	6.0	4.3	2.6
80	50	36	23	7	5	25	50	61
451.6	453.9	455.0	452.9	458.2	459.4	461.1	462.0	463.0
10.8	8.5	7.1	5.5	4.2	3.0	1.3	0.4	0.6
80	50	32	12	25	50	70		80
457.5	457.0	457.7	458.5	460.0	460.9	461.8	462.3	462.9
10.8	11.3	10.6	9.8	8.3	7.1	7.5	6.5	6.0
80	67	50	23	20	41	50	63	70

468.34

Top Fire Hyd.
N.W. Meade
+ Road Extension

463.08

462.44

T.D. 0.96 452.26 11.78 451.30

16+64.61

16+64.61 Radial to South
thence West on South cb Meade

16+50.4 Cont.

16+50.4 Section
Radial to Pw. thence West on Meade

16+31.6

16+31.6 This Section Radial to a point 933 ft of L
Thence along North cb Meade Ave

463.08

4

8

AT 24

424.8	423.1	432.9	438.1	446.4	449.4	452.8	454.1	454.7	454.60	453.03	454.60
383	400	302	250	167	137	103	90	84	848	805	848
100	77	50	36	16	20	20	33	50	68	69	69
		432.1	429.1	446.4	449.4	452.8	454.1	454.7	454.60	453.03	454.60
	31.0		340								
	100		69						edge	cb.	Gut
									Pw.	Pw.	Pw.
433.8	435.5	440.1	449.6	449.8	451.7	453.4	454.4	455.1	455.41	457.04	460.21
299	276	290	135	133	114	97	87	80	767	604	281
50	46	31	18	12	17	17	32	50	655	965	1465
										on Pw. Pw.	
					457.27		460.46		459.97		
					581		662		311		
					North		143.3		143.3		
					edge Walk		4 feet W of		out		
					933 ft		on cb.				
433.9	437.8	437.1	442.9	450.5	452.4	454.2	454.9	455.5	455.8	457.17	456.81
292	313	260	202	126	107	89	82	76	73	591	627
95	75	50	23	8	12	12	27	50	64	933	933
										cb	Gut
											Pw.

463.08

0.05 diff.

418.66

FB 1589 P-49

SM Brass Plg. NW Estelle & 60th

T.P. 12.88 418.71

T.P. 1.47 431.59 12.91 430.10

T.P. 1.55 443.01 12.99 441.46

T.P. 0.55 454.45 12.71 453.90

T.P. 2.67 466.61 0.53 463.94

T.P. 13.08 464.47 0.87 451.39

17+20

16+92

16+73 Cont.

16+73

452.26

415.8	415.4	421.8	426.1	430.8	440.7	443.4	446.3	447.5	449.3	452.3
365	369	305	262	215	117	89	60	48	30	0
88	76	60	50	39	11		70	40	50	75
420.3	419.8	422.3	427.3	433.9	444.1	447.0	448.3	448.6	449.7	449.9
320	325	300	250	184	82	53	40	37	27	24
32	71	66	50	32	13		23	38	41	50
		425		421.7		421.7				
		265		30.6		30.6				
		107		94		73				
429.8	432.7	439.8	443.5	447.6	448.0	451.1	453.8	454.6	455.3	456.7
22.5	19.6	12.5	8.8	4.7	4.2	1.2	1.5	+2.3	+3.0	+4.4
50	42	26	17	7		15	41	55	69	74

452.26

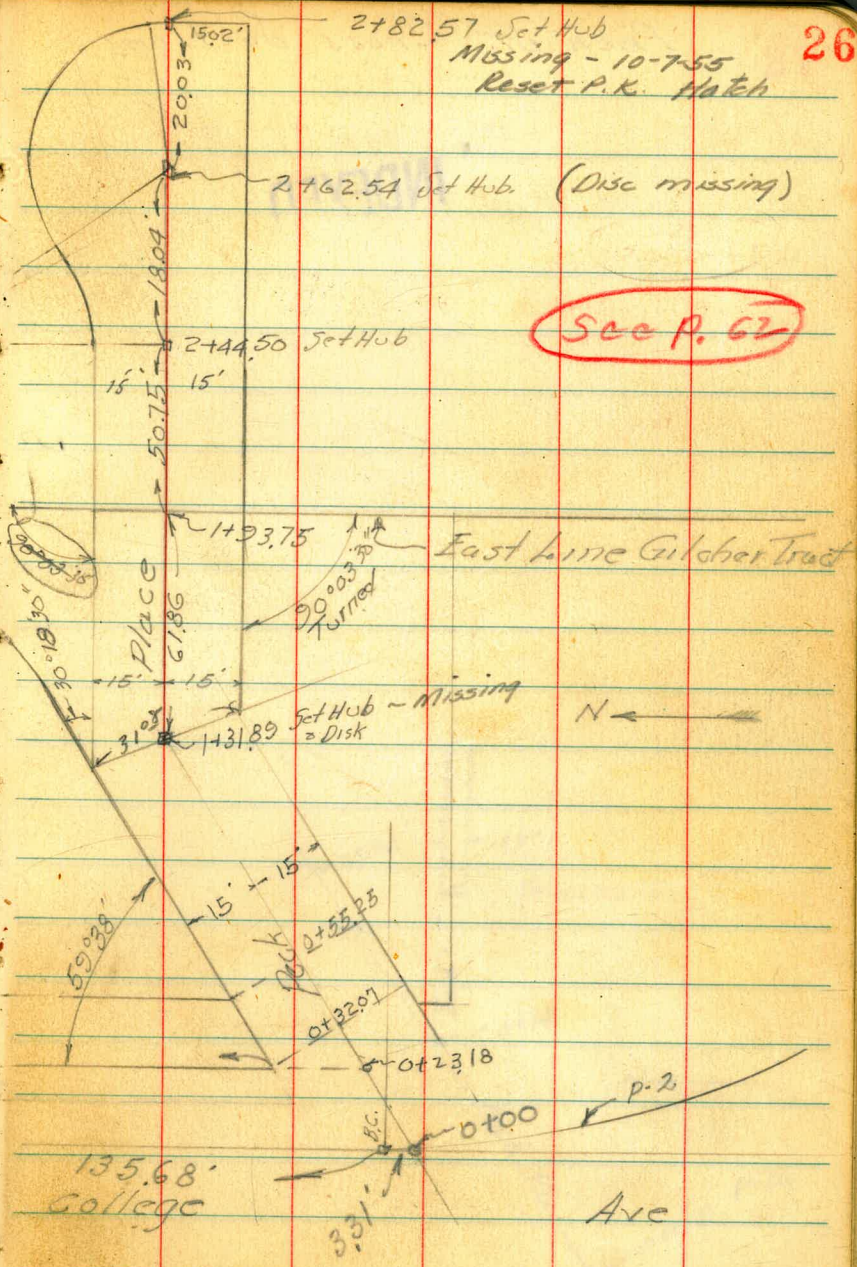
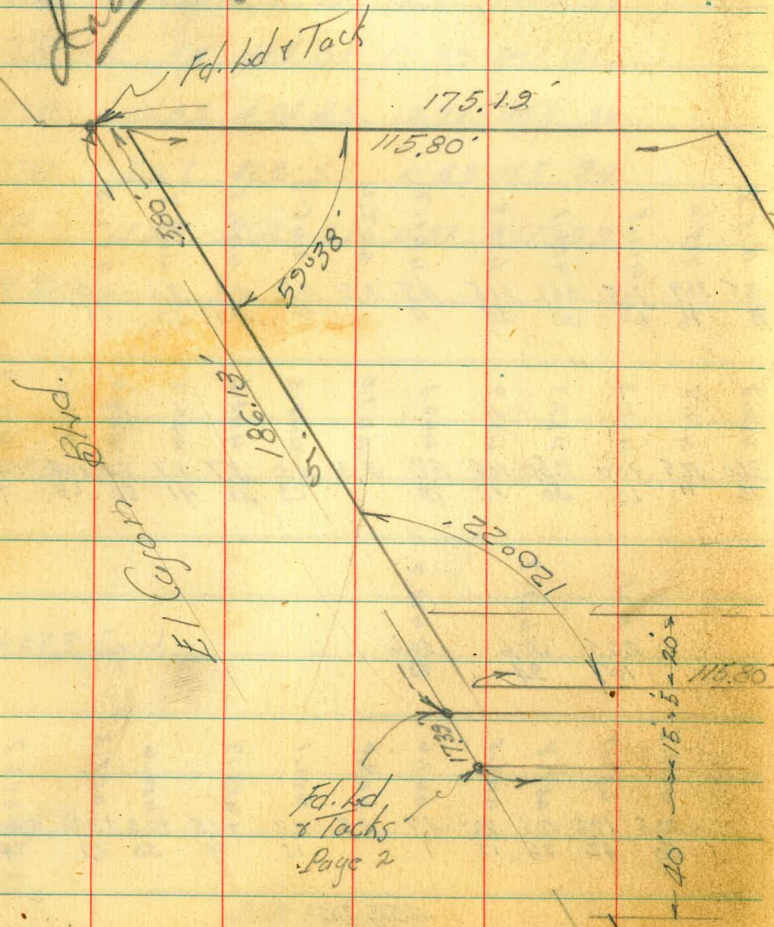
Walker
Hendricks
Becker
Williams
3-2-48

CROSS SECTION - PECK PLACE
from College Ave
to East End. NO. 25001

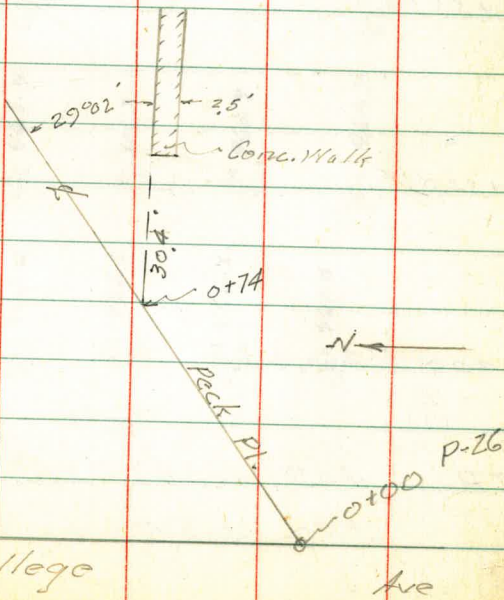
Stations are &

~~Indexed~~

INDEXED



INDEXED



Peck Pl. Cross Sections

INDEXED

1+31.89 = Δ R4

1+00

0+74

0+55.25

0+32.07

0+00 P.26 = sketch

TP 403 463.92 868 459.89

330 468.57 465.27

4

4

4

28

463.0	462.6	462.4	462.4	461.9	461.6	461.4	461.39	460.9	460.22
21 25	21 14	25 8	2.83 on Hub	3.3 15	3.5 25	3.70 34	3.70 34	3.70 34	3.70 34
13	13	7	2.3	2.5 15	2.53 Walk 15t	3.0 25	2.53 Walk 15t	3.0 25	3.70 34
0 25	0 25	1.8 15	2.1	2.3 15	2.6 25	2.6 25	2.6 25	2.6 25	2.6 25
0.6 25	1.3 15	2.6	2.2 15	2.5 25	2.5 25	2.5 25	2.5 25	2.5 25	2.5 25
1.4 25	1.5 15	1.8	2.0 15	2.2 15	2.2 25	2.2 25	2.2 25	2.2 25	2.2 25
1.6 25	1.9 15	2.3	2.6 15	2.9 25	2.9 25	2.9 25	2.9 25	2.9 25	2.9 25

463.92

B.M. NW 1/8 P. E. / Canyon College

Peck Pl. Cross Sections

(1+46 Page 11)
chk Nwt in Pole

0.01
463.20
0.71 463.21

2+82.57 = End

INDEXED

2+57 = A Porch to Frame House

2+53.3 18' Lt - 1/8" Accacia Tree

2+44.5

2+23 = 16' Rt 10" Accacia Tree

2+00

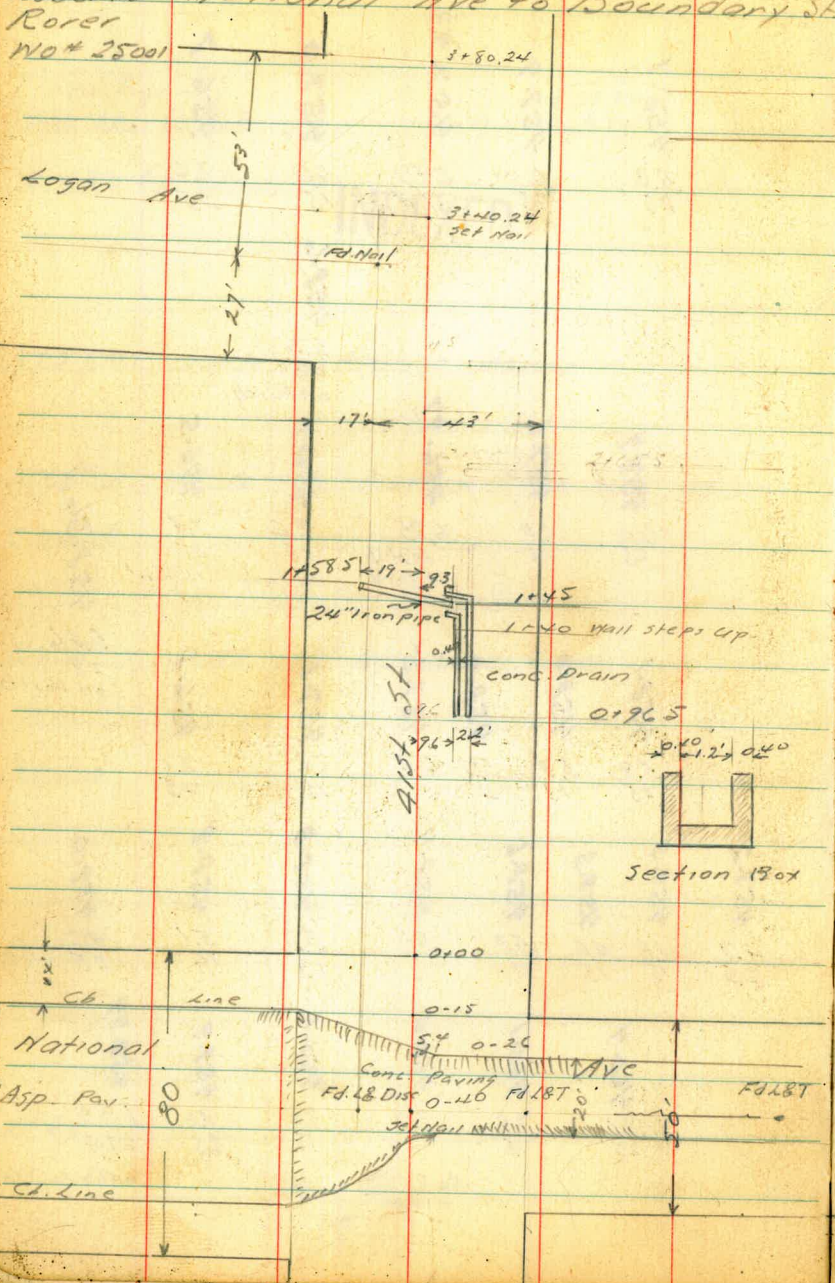
1+88

1+60

463.92

458.1	457.9	457.43	457.0	456.7
5.8 25	6.0 15	6.49 on Hub	6.9 15	7.2 35
			458.6	
			5.3 28 on Porch	
457.9	457.6	456.97	456.7	456.5
6.0 25	6.3 15	6.95 on Hub in yard	7.2 15 in yard	7.4 25 in yard
				458.56
458.1	458.0	458.0	457.5	456.8
5.8 25	5.9 15	5.9 4	6.4	6.8 15
				7.1 25
459.2	459.3	459.3	458.4	458.8
4.7 25	4.6 15	4.6 13	5.3 11	5.5
				5.6 13
				5.1 16
				4.9 25
	460.4	460.1	460.0	460.1
	3.5 25	3.8 15	3.9	3.8 15
				4.0 25
				3.93 27.4
			463.92	on Corro. Walk

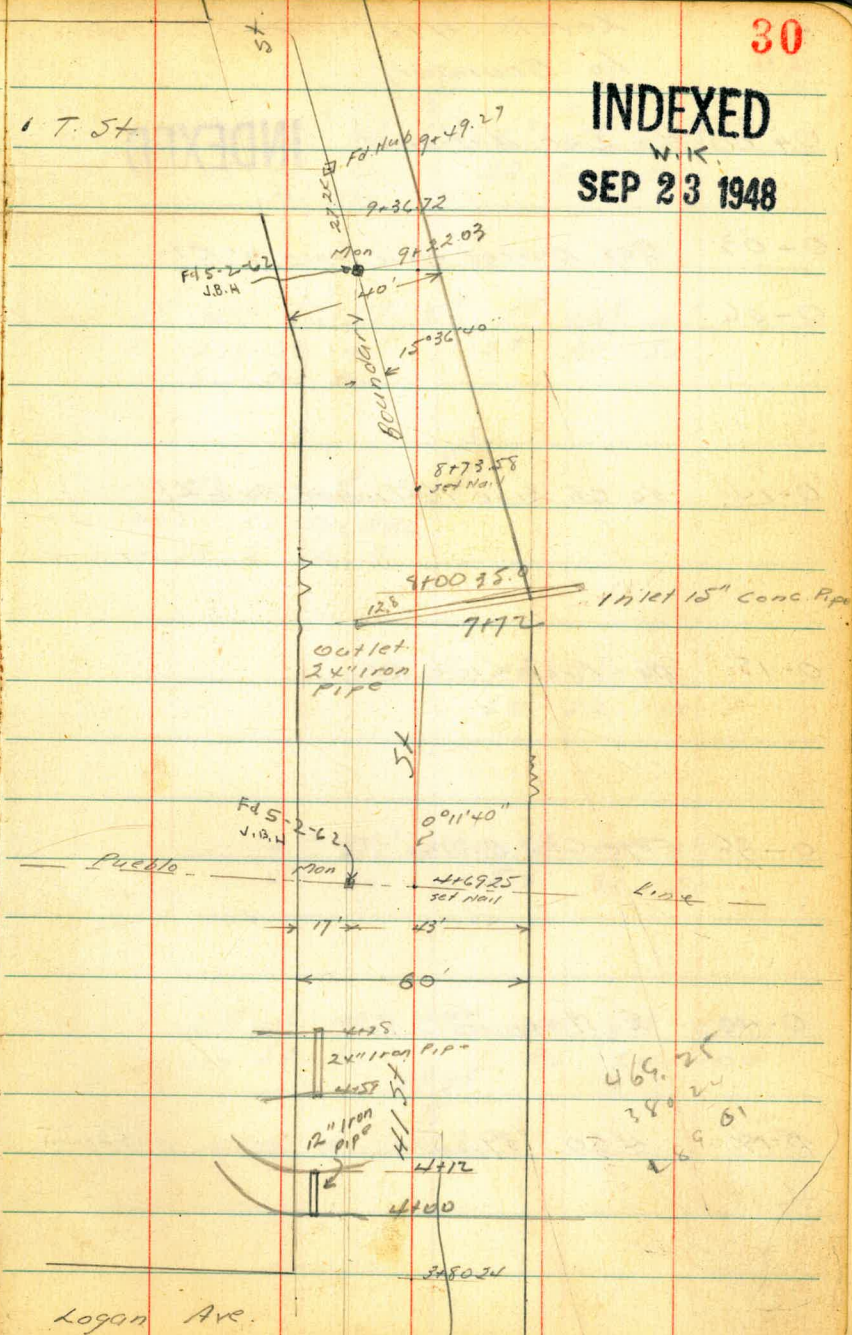
920-48 X Sect. 41st St
 Hendricks
 Roberts National Ave to Boundary St
 Rorer
 No # 25001



Section Box

INDEXED
 W.K.
 SEP 23 1948

1 T. 5+



469.25
 380.20
 269.61

Levels 41st ~ National Ave
to Boundary

INDEXED
0+00 No Line National **INDEXED**

³⁴⁰
2⁴ 3¹ 5² 5⁴ 5⁷ 5⁹ 6⁹ 11⁶ 12³
50 32 25 21 6 22 30 50
Pay Pay

0+03 Beg. Barbed wire fence 7' Rt

0+06

35¹ 44² 5⁴ 5⁷ 5⁹ 7² 10⁸ 11⁹
50 296 23 4 27 32 50
Sw Pay Pay

0+14 No Cb Line National Ave Lt

³³⁸⁵
15¹ 2⁰ 37² 44⁴ 4⁹ 5² 6⁰
100 100 50 50 296 296
Cb. G Cb. G Cb. G

0+15 No-Prop Line Rt.

6⁰ 7² 8¹ 9²
20 50 100

0+26 Edge Conc Paving Rt

4⁵ 5⁰³ 6²² 6⁴² 7⁴² 8²⁶
50 30 54 30 50

0+40 E National Ave

2¹⁷ 4⁵¹ 5²⁴ 6⁴⁴ 7⁴⁰ 8³⁸ 9⁸²
100 50 30 3985 20 50 100

B.M. 460 39.85

35.25

NVBP 41st & National

1+40 Break in Wall 10' RT

1+04 M.H. 0.5 RT.

T.P. 9.75 40.78 8.82 31.03

1+00

0+96.5 Beg Conc Box Drain (open on top) 9.6 RT

0+81

0+36

0+12

0+05

39.85

11⁸⁸ 11⁴² 13¹¹9²⁷ 10⁰ 10⁰ 11²
7² RIM MAN FL

40.78

7² 8¹ 8¹ 8¹ 9⁰
30 25 19 5
PAY PAY11⁶ 12³⁹
9⁶ 10⁷
TOP WALL FL7² 8¹ 8¹ 8¹ 9⁰ 11⁵ 11⁹ 12⁰
32 19 13 6 7 30 50
PAY PAY4⁸ 5² 6⁰ 6⁹ 10⁰ 11⁹ 12³
30 19 6 7 30 50
PAY PAY0⁵ 0⁹ 5² 5⁵ 5⁷ 6⁰ 10⁰ 11³ 11⁹
50 32 25 20 6 9 30 50
PAY PAY0⁸ 1³ 5² 5⁴ 5⁶ 5⁹ 6⁷ 11⁵ 12⁰
50 32 25 20 6 18 30 50
PAY PAY

39.85

2+10

57	57	85	84	84	84	74	57	55	65
50	28	23	15	3		10	25	37	50
				Pay	Pay				

33

2+00

58	60	88	88	87	88	85	75	75	89
50	29	23	15	3		10	16	35	50
				Pay	Pay				

1+86

63	65	91	91	91	91	91	110	118
43	29	24	16	3		17	30	50
				Pay	Pay			

1+98 End Barbed Wire Fence 9.6 Rt.

1+58.5 24" Iron Pipe 19' Lt.

1198

19

Fl.

1+50

55	85	95	95	91	103	116	120
50	30	15	5		9	11	23
				Pay	Pay		

1+41 Power Pole #920 17.9' Lt.

1+40 Guy Pole 6.6 Rt.

1+45 Beg 24" Iron Pipe 9.3 Rt.

12.95

9.3

Fl.

40.78

40.78

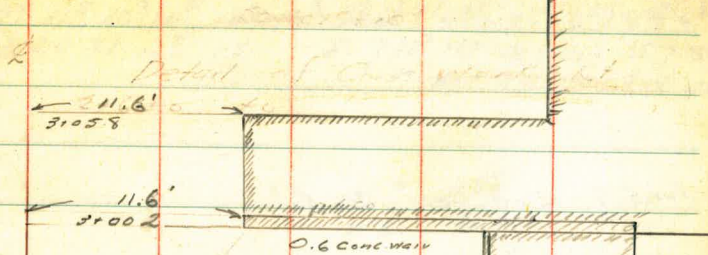
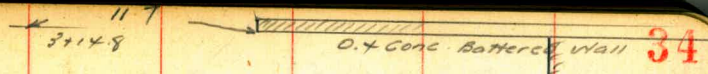
2+62.8 E. of ... 11.81.

2+64.0 E. of ... 11.81.

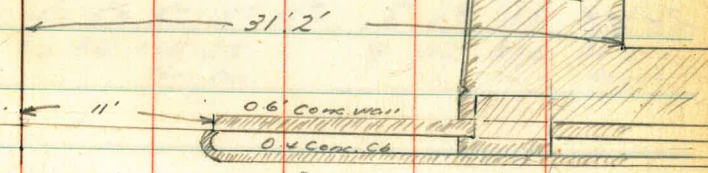
2+58

2+28

4078



Detail of Conc. Work
 Rt. 2+64 to 3+14.8
 Scale 1" = 10'



4 ⁹	4 ⁸	6 ³	6 ¹	6 ²	5 ⁸	3 ²	4 ²	5 ⁴
50	28	25	14	3.5	7	30	50	
				Pay.	Pay.			

5 ²	5 ⁴	7 ²	7 ⁷	7 ⁶	7 ²	5 ⁰	5 ²	5 ⁵
50	28	24	16	3	9	30	50	
				Pay.	Pay.			

4078

3714.8 Ret Wall Rt

35

7'	9'	11'	10'	10'	10'	9'	6'	7'	6'	9'	6'	6'			
50	37	24	21	14	15	5	7	11	11	7	26	26	35	35	
											Wall	3-W	Wall	3-W	Wall

3705.8 End conc Dr. Rt.

10'	988
11.6	317

3701 Power Pole # P-900 20.8 Lt.

3700.24 So. line Logans ~ Ret Wall on Rt.

7'	7'	10'	12'	11'	12'	11'	11'	10'	10'	9'	10'	12'	9'
50	45	33	25	21	14	2		8	11.6	11.6	11.6	31.8	
					Pay	Pay				CB	3-W	CB	

2190

9'	10'	12'	12'	13'	12'	10'	10'	10'	10'	10'	10'	10'
50	35	30	14	2		6	24.3	24.3	24.6	31.6		
			Pay	Pay								

T.P. 11.50 50.21 2.07 38.71

50.21

2169

40	40	56	54	54	46	15	18	155	164
50	30	26	14	25		9	22	23.3	31.2
			Pay	Pay					House

2465.5 & 0.6 Conc Ret Wall 11' Rt.

17'	20'
11	30

2463.8 & 0.4 Conc. Ch 11' Rt.

32'	37'
11	30

4078

4078

4+12 End 12" pipe 248 Lt.

4x5

2x8

FL

x140

280

50.7

4+08 & 12' Conc. Drive 30.7 Lt.

4+08 & 12' Conc.

4+00 Beg 12" Iron pipe 248 Lt.

27 32 48 51 38 36 37 37 19 +13 +40 +35
 50 30 248 21 12 1 2 5 25 43 50
 FL Pav

3+80.24 No line Logan.

46
 45 59 68 50 48 47 48 31 05 11
 42 25 22 16 14 Pav 3 14 28 50
 Pav

3+75

52 52 63 70 52 51 50 52 39 44
 50 47 24 21 18 14 Pav 5 15 50
 Pav

3+40.24 & Logan

235
 78 91 89 80 78 77 77 77 52 51
 47 30 21 19 14 05 3 6 50
 Pav Pav

3+16 Guy Pole 21' Rt.

50.21

50.21

5+00

116	13	10 ⁸	11 ²	11 ⁴	10 ⁸	9	3 ²	10 ⁷
50	24	18	13	Pay	4	6	30	50
				Pay				

4+78 End 24" Iron Pipe 23.1 Lt

14.03
23.1
FL

4+69.25 Int Pueblo Line $\angle 0^{\circ}11'40''$ PL

1170	11 ⁸	12	12 ²	12 ⁵	12 ³	9 ²	5 ⁰	1 ¹	11 ⁷
50	306	23	13	Pay	4	6	19	29	50
				DRIVE					

4+66 & 11' Conc Drive 30.6 Lt

1196
306

T.P. 1297 62.63 0.55 49.66

62.63
T

4+59 Beg 24" Iron Pipe 22.9 Lt

192
22.9
FL

4+40

0 ⁵	2 ⁰	3 ⁰	1 ²	1 ²	1 ²	0 ⁸	+28	+9 ⁵	+11 ⁹
4+27	23	18	12	Pay	4	6	30	50	

4+47.5 Power Pole #850 17.6 Lt

50.21

50.21
T

7+72 24" Iron PIPE 12.8 Lt.

7+50

7+20 Power Pole #76-0 17.1 Lt

7+00

TP 1296 68.78 6.81 5582

6+75

6+30

6+00

5+95 Power Pole # P-800 17.8 Lt.

5+50

62.63

38

15⁸⁰

12.8

14 ⁵	16 ¹	14 ⁵	14 ²	14 ²	14 ¹	14 ¹	10 ⁹	10 ⁹	10 ⁷
50	37	19	12	11	10	2	30	37	47
				Pay		Pay			

7⁵ 10⁵
50 32

15 ¹	16 ¹	14 ⁵	14 ²	14 ¹	14 ²	12 ³	12 ⁷	12 ⁴	11 ²
50	24	18	14		3	5	12	15	20
					6878				

10 ³	10 ²	8 ⁴	8 ²	8 ⁰	8 ⁰	7 ⁵	6 ²	4 ⁸	2 ¹	2 ⁵	1 ⁰	
50	39	19	15	1		2	4	20	26	32	38	40
				Pay								

9 ²	10 ⁴	9 ¹	8 ²	8 ²	8 ⁰	7 ⁸	7 ⁵	4 ⁰	0 ⁵	+1 ⁵	+1 ⁹
50	42	23	20	15	1		3	7	23	40	50
				Pay	Pay						

10 ⁰	11 ¹	9 ⁹	7 ⁸	8 ⁴	8 ⁶	8 ²	4 ²	0 ²	+0 ⁵	+1 ²
50	44	24	19	14		3	8	25	32	45
				Pay						

10 ⁴	12 ⁰	11 ¹	9 ²	9 ⁹	9 ⁷	9 ²	6 ⁷	2 ⁹	0 ⁰
50	24	24	19	13	10	5	7	30	50
				Pay	Pay				

62.63

9100

11 ²	10 ⁷	0 ³	2 ⁸	3 ³	2 ²	3 ³	3 ⁴	6 ⁸	9 ⁶	10 ⁰
50	30	22	18	18		8	12	24	29	50
				Pay		Pay				

8+73.58 ← 15° 36' 40" Lt. Rt. to Back Top

0 ²	0 ⁹	1 ⁵	5 ⁵	5 ⁵	5 ⁹	6 ⁰	6 ⁰	10 ²	10 ³	10 ²
50	30	24	17	15		4	10	26	30	50
						Pay				

8+58 Power Pole # P-720 18' Lt

8+50 10" Pepper Tree 20' Rt.

4 ¹	6 ⁶	7 ³	8 ⁶	8 ⁶	9 ⁰	9 ²	9 ⁶	10 ⁹	11 ⁰	10 ⁹
50	30	16	12	10		6	14	18	30	50
				Pay		Pay				

8+43 Dead Man Top pole 14.5 Lt.

8+32 24" Pepper Tree 25' Rt.

8+24

9 ²	10 ⁷	11 ⁹	11 ⁵	11 ²	11 ⁷	12 ⁰	11 ⁵	11 ⁴	
50	30	17	15	8	6	3	5	30	50
				Pay	Pay	Pay			

TP 0.77 69.33 0.22 68.56

Nail in Power Pole # P-700 Lt. 9.45+

8100 Inlet 15" Conc. Pipe 35' Rt.

12 ²	12 ³	12 ⁸	12 ⁷	12 ⁸	12 ²	12 ⁰	12 ⁴	12 ³	12 ³
50	20	9			4	22	32	35	36
		Pay			Pay		FL		50

7+81 8" Pepper Tree 25' Rt.

68.78

68.78

INDEXED
FEB 24 1949

B.M.		340		77.20
T.P.	243	80.60	0.08	78.17
T.P.	11.58	78.25	6.38	66.67
T.P.	3.73	73.05	0.01	69.32

NWBP Teak & 40th St.

9+45 Power Pole # P-700 207' Lt.

9+3672 So. Line T St. (Parallel to T')

0±	07	1 ²	14	1 ⁹	2 ⁰	2±	4 ⁸	9 ⁰	9 ¹
50	28	22	14		4	15	25	32	50
			PAV.		PAV.				

9+15

+0 ⁸	+0 ⁷	+0 ³	1 ¹	2±	2 ⁴	2 ⁷	2 ⁷	5 ⁸	9±	9 ⁸
50	30	25	19	16		5	13	23	30	50
						PAV.		PAV.		

69.33
68.78

69.33
68.78

Moore & Sec Soledad Rd.
Begg
Sherman
Bunch
10-22-48.

5199 L
POT
(X)

W.O. 90058

INDEXED
WK
FEB 24 1949

Ed. 11" E
127457.28

Ed. 0' 0" d
11" 4" E
RESERVA
Rm Hawk

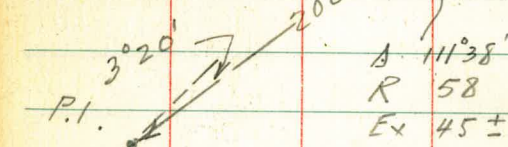
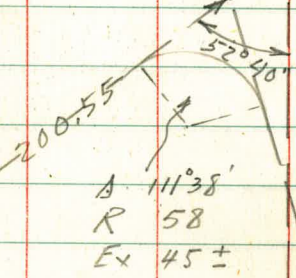
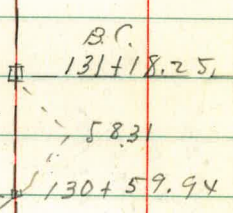
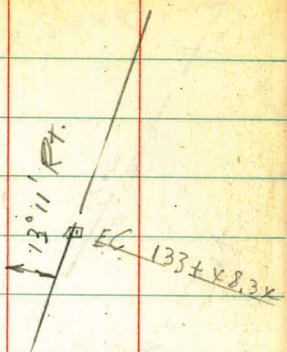
129+23.54
Pueblo
LINE

Pueblo Lot
1265

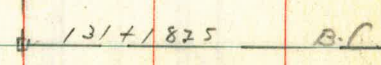
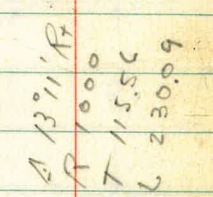
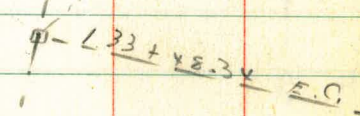
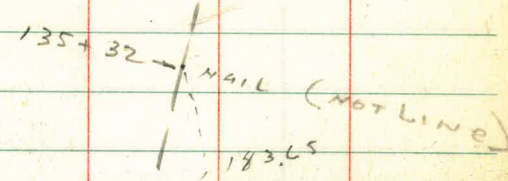
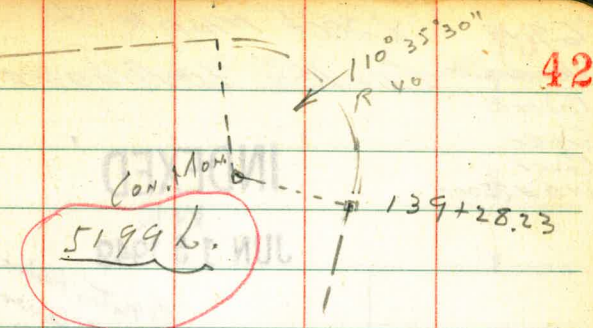
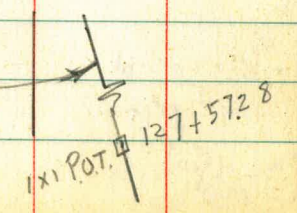
d = 110.23'
EP = 400
L = 770.67
d. 4.2972

FB. 1291-70

Ed. P.I. Com. Mar.
31' 0" 8' LT.



To North
La Jolla



69-49

X Sect Maple St.

Hendricks

Curlew to Albatross

Roberts

Greer

Rover

WO #25001

INDEXED

WK

JUN 15 1949

notes Reduced
McClaren 6/27/49 3872
Plotted Profile
June 30-49
McClaren

Brant

2139.98

Ed. Man.

43

40'

Curlew

40'

5+

0+00

40'

40'

5+

Maple

\longleftarrow T \longrightarrow

FD 1" I.P.
LS2236

Conc. Ch 8" x 8"

FD 0014

15' x 15'

15' x 15'

15' x 15'

15' x 15'

15' x 15'

15' x 15'

15' x 15'

15' x 15'

15' x 15'

15' x 15'

15' x 15'

15' x 15'

15' x 15'

15' x 15'

15' x 15'

15' x 15'

15' x 15'

15' x 15'

15' x 15'

15' x 15'

15' x 15'

15' x 15'

15' x 15'

15' x 15'

15' x 15'

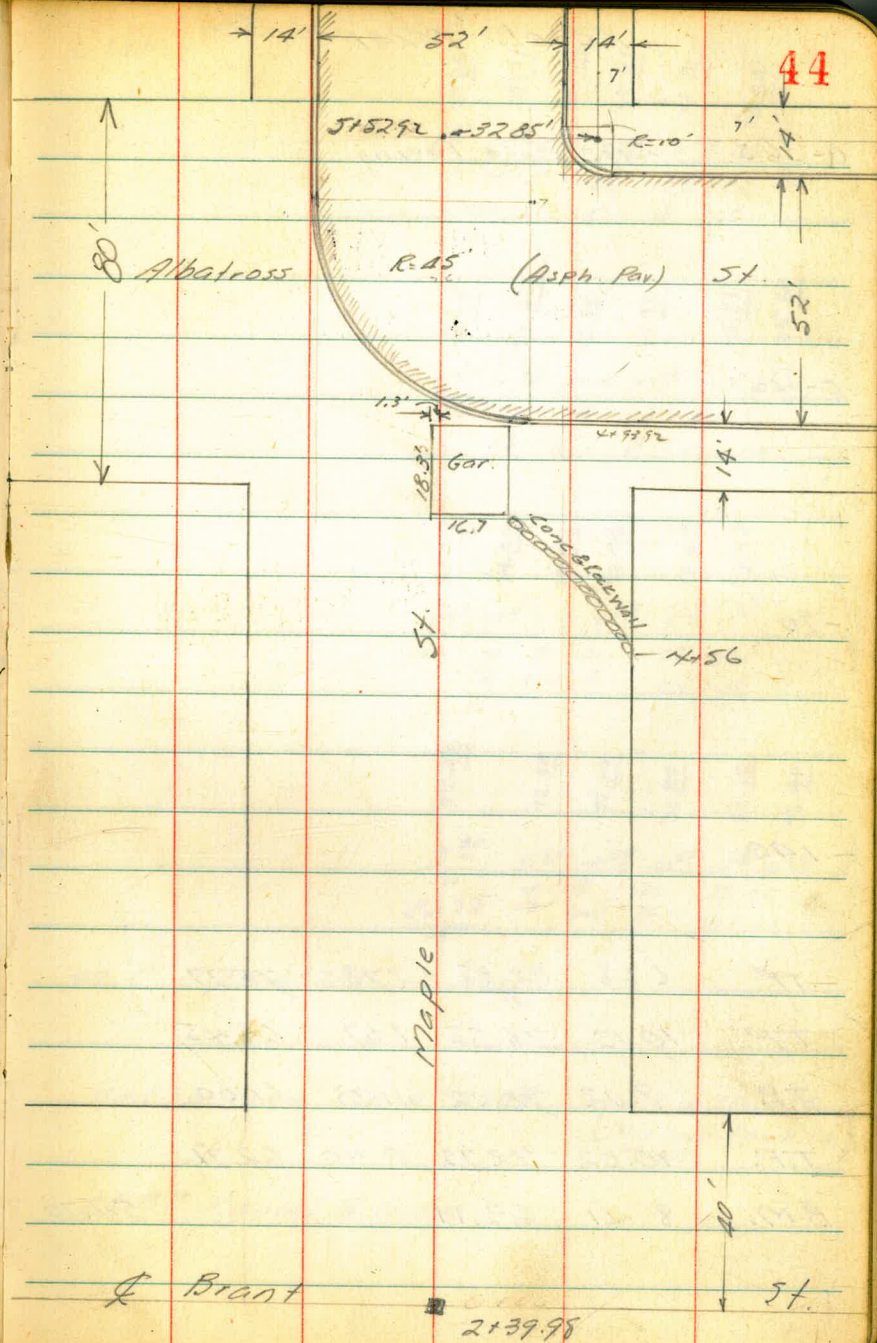
6-9-49

Hendricks
Roberts
Greer
Rorer
W/O #25001

X Sect Maple St.
Curlew to Albatross

INDEXED

WK
JUN 15 1949



Levels Maple St.

L=N

0-36.5 Edge Conc Paving

0-40

-90

-140

TP	6.58	<u>82.35</u>	2.78	75.77
TP	10.10	78.55	1.67	68.45
TP	9.12	70.12	11.73	61.00
TP	10.02	72.73	0.40	62.71
B.M.	8.41	63.11		54.70

75.85
 6.58
 75.71
 6.97
 75.38
 7.34
 75.01
 7.03
 75.320
 7.1
 75.64
 45

75.75
 6.10
 75.62
 7.04
 75.31
 7.43
 74.92
 7.14
 75.21
 75.53

74.08
 8.27
 74.00
 8.15
 73.69
 8.16
 73.46
 8.19
 73.67
 8.18
 73.97
 8.38

72.45
 9.90
 72.40
 9.85
 72.10
 10.25
 71.80
 10.55
 72.10
 9.95
 72.40

on 1" Pipe LS2236 0.40

Nail in Power Pole # 2585

(N. Side State St.)
 Prolongation S. Cb
 Maple

SEBP Laurel & India

Levels Maple St

0470

0450

T.P. 12.06 95.04 0.37 81.98

0434

0400 E Line Curlew

0-36

82.35

L = Z

90.8	86.7	82.6	81.4	82.9	85.3	85.2	87.2	94.5	104.7	111.9	16
8.3	12.4	13.6	12.6	9.7	9.0	7.1	0.5	1.7	1.7	+16.2	
75	58	47	38	12	13	14	26	26	79		

85.2	83.9	81.0	79.6	79.5	80.9	82.6	83.4	86.2	89.7	92.8	100.7
9.0	11.1	14.0	15.4	15.5	14.1	12.4	11.6	8.8	5.1	2.2	+5.7
53	45	38	28	7	5	19	21	26	50	60	

95.04

78.7	80.8	80.8	84.3	89.0	90.7	98.9
1.5	1.5	1.5	+2.0	+1.4	+1.6	1.0
5	25	29	44	63		

90.3	84.0	80.0	77.6	76.7	77.0	77.4	85.8	88.3
+5.0	+1.2	2.1	4.7	5.5	5.3	4.9	+3.5	+6.0
50	35	18	4	16	25	37	43	52

91.3	88.7	84.6	80.5	76.8	75.80	75.70	75.36	75.08	75.37	75.69	75.87
+9.0	+6.4	+2.1	1.8	5.5	6.65	6.9	7.27	6.98	6.55	6.08	
43	38	24	8	1	5	4	5	20	35	36	44

82.35

Levels Maple St.

1+95

T.P. 12.27 118.62 0.53 106.35

1+63

T.P. 12.27 106.88 0.43 94.61

1+38 24" Euc 55' 4"

1+22

1+18

95.04

L - N

Q

R = 547

94.7	95.2	97.8	101.5	106.3	107.6	112.7	114.3	115.8	122.4	124.7	127.6	132.8
23 ¹	23 ²	20 ⁸	17 ¹	12 ³	11 ⁰	5 ²	4 ³	2 ⁸	13 ⁸	+6 ¹	+12 ¹⁰	
56	47	44	23	12	8	4		6	22	21	56	

87.6	87.7	91.8	93.0	94.8	96.6	104.4	111.3	116.4	117.4	125.4		
19 ²	19 ²	13 ⁹	12 ¹	10 ³	2 ⁵	14 ⁴	10 ⁵	40 ⁵	40 ⁵			
96	50	37	23	21			20	44	70			

86.2	85.2	85.0	90.2	90.6	92.4	94.4	100.6	104.4	114.4	119.5		
8 ¹	7 ⁰	10 ⁰	4 ⁸	4 ²	2 ⁶	0	16	15	16	8	124 ⁵	
68	36	24	9	8			20	56	75			

91.9

88.7	84.5	84.5	88.8	89.4	92.4	94.8	102.9	104.2	118.4			
6 ³	10 ²	10 ⁵	6 ²	5 ¹⁶	2 ⁶	0 ¹⁰	19 ³	+23 ⁴				
73	59	26	13			3	15	44	81			

95.04

Levels Maple St

T.P. 11.99 148.99 0.18 137.00

2192

2170

2+45 Beg Low Euc Trees 23' Lt

213998 & Brant =

T.P. 12.83 137.19 2.15 124.35

T.P. 8.66 126.50 0.78 117.84

2125

12" Euc 3' Lt. 16" Euc 15' Lt.

2117 20" Euc 20' Rt. 34" Euc 34' Rt

2108

118.62
X

L-N

R = S 48

118.8
124.2
129.6
136.7
144.8
154.1
156.0

18 75 0 15 +75 +169 +198

58 22 20 41 53

116.6
120.7
131.1
133.4
133.7
142.4
142.8
153.4

20.5 65 61 3 19 25 +52 +162

56 27 10 6 30 56

101.6
107.5
112.3
118.0
124.4
130.5
133.4
137.6
142.7
144.9

35 29 70 19 12 8 67 31 100 15 16 +77

71 53 24 22 21 50 60

137.8

On Men & Brant & Maple St.

100.6
106.7
107.2
116.0
117.9
119.6
124.3
127.9
134.0
136.3
142.8

18 117 26 0 1 +10 +7 +9 15 +172 +24

58 42 7 6 25 31 37 40 54

94.4
97.6
100.8
105.2
106.9
112.6
117.3
123.2
130.2
131.1
138.7

24 24 21 17 13 11 6 10 13 +45 +125 +201

63 52 45 42 21 13 10 19 41 63

118.62
X

4405

149.1
122 280
2

4400

133.7 141.6 142.3 147.5 146.4 131.1 131.9 132.5 146.1 150.9 158.2 162.8 166.3
28 20 14 12 30 29 29 15 10 3 1 1 1
59 43 17 6 5 7 9 13 20 40 48

T.P. 13.19 161.80 0.38 148.61

3480

128.5 131.3 136.8 124.6 132.1 145.1 150.4 158.2 159.7 167.8 168.0
20 17 22 24 16 9 3 14 19 18 19
60 40 20 16 10 17 38 51 56

3476 End Row Eye Trees 24' Lt.

125.0 128.4 128.5 116.9 133.8 142.2 148.3 157.0 158.6 159.0 166.8 167.1
24 20 32 15 12 1 0 7 8 10 17 8 18
69 42 30 17 16 36 41 57 52

3464

116.7 120.5 123.2 124.7 130.3 134.5 138.8 140.6 154.4 154.6 157.3 158.2 158.2
32 28 25 24 18 14 10 8 15 15 19 19
63 51 45 38 29 14 5 23 37 41 42

3422

14899

14899

Maple St

4475

4472 30" Magnolia Tree 25' Rt.
outlet 12" Iron Pipe Rt. 18'

TP 8⁴⁰ 18320 0.11 174.80

4459

4456 Beg Conc. & Rock Wall 40' Rt.

TP 13.15 174.91 0.04 161.76

4438

4430 3-24" Euc Trees 11, 17, & 22' Rt.

4426

161.90
/

L = N

157.7	159.0	160.7	166.2	173.0	176.0	175.9	176.9	177.8	178.1	178.4
31.5	24.2	17.0	10.2	7.2	7.2	6.3	5.4	5.1	4.9	4.9
66	44	27	14	5		14	14	40	50	50

R = S

50

Gr. Wall
174.7
8.9
18
FX.

169.5	173.6	183.26	173.4	172.2	167.3
5.4	1.3	1.1	1.7	7.6	
10	7		6	10	

148.1	155.8	156.2	167.3	169.6	169.6	161.6	167.9	172.9	174.4	177.5	175.9
26	18.7	7.6	5.1	5.1	13.1	7.0	2.0	0.5	12.5	11.0	11.0
60	39	12	7	10	12	30	40	40	44		

Gr. Wall

147.4	152.4	153.7	159.2	161.3	157.4	160.2	163.7	167.8	169.6
4.4	9.4	2.5	0.4	1.5	1.9	1.9	1.9	1.9	1.9
56	45	18		3	10	29	45		

147.5	149.7	153.3	156.2	156.9	143.9	157.3	160.7	166.8	169.4
4.3	8.5	5.5	4.9	17.9	4.4	1.1	1.0	1.0	1.0
48	27	15		1	7	26	46		

161.80
/

Maple St. Cont'd

B.M.		14.07	156.60	180.51
TP	0.60	170.67	13.19	170.07
TP	1.37	183.26	1.21	181.89

5+1992 ♀ Albatross

4+9392 W Co. Line Albatross

183.20
✓

L = N

♀

R = S

51

INDEXED
PAGE 2 OF 111

SE Top Hydt. Brand & Laurel

36	19	45	55	41	39	38
33	27	217	217	26	50	
		cb.	G			

183	107	85	65	45	38	49	54	45	67	54	58	50
50	30	29	22	16	6	19	19	20	41	41	30	30
						6	cb.	G	G	cb.	G	cb.
							18c.		inlet			

183.20

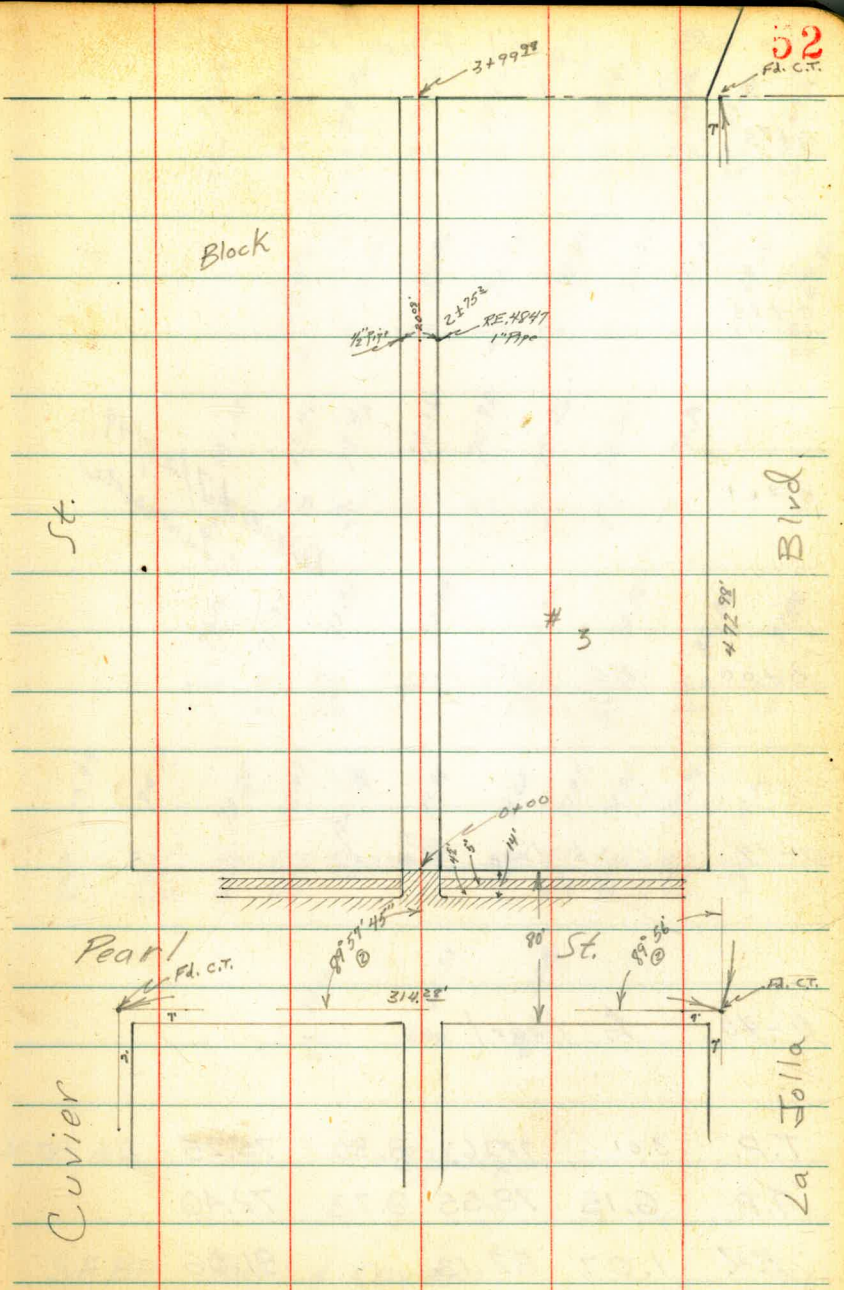
inlet
12" Pipe

Roberts
Greer
Gregory
Rorer
7-15-49
W.O.# 31347

X-Section Alley Block 3
La Jolla Park

T.P. 2162

INDEXED
W.K.
JUL 19 1949



Cont'd From Page 52

0+73

0+35

0+21

0+00

PL. Pearl

0-14

Curb Line Pearl

0-40

£ Pearl

T.P. 3.01 78.26 3.30 75.25 Pole PA

T.P. 6.15 78.55 9.73 72.40

B.M. 1.07 82.13 81.06

Revised 7/28/49
C. Lawrence

4

75.16.
3.1
12

74.82.
3.7
10

75.96.
4.3
6

74.16.
4.1
7

73.96.
4.3
7

74.86.
4.9
8

74.06.
4.2
10

70.86.
7.3
19

69.26.
9.1
24

69.96.
8.3
20

73.96.
4.0
13

73.56.
4.7
8

73.46.
4.8
9

73.26.
5.0
9

73.86.
4.4
9

73.26.
5.0
10

71.86.
6.4
16

69.16.
8.1
24

69.66.
8.6
30

74.32.
3.94
20
27

73.96.
4.86
10
27

73.96.
4.8
9

73.16.
5.1
7

72.96.
5.3
7

73.26.
5.0
9

72.56.
5.7
12

70.76.
7.5
20

74.06
4.70
26

72.35
4.91
10
26

72.93
5.33
10
26

72.44
5.82
10
26

72.38
5.74
10
26

72.18
5.74
10
26

72.26
6.0
12

71.46
6.4
26

71.99
3.27
50
26

74.18
3.98
50
26

73.28
4.99
12
26

72.67
5.59
12
26

72.54
5.72
10

71.98
6.28
10

71.62
6.64
10

71.49
6.77
12
26

72.05
6.21
12
26

69.76
8.50
50
26

70.35
7.97
50
26

74.40
3.86
50

72.22
6.04
50

70.01
8.25
50

7473

7826

SEBP Pearl & Cuvier

Cont'd From Page 53

1750

1746 End Double Garage 11' RT

1726 Begin Double Garage 10' RT

1713 1/2 Single Garage 14' Lt

1711 9' RT Power Pole #PA7472

1700

0786 1/2 Single Garage - 12' RT

0775

78.26

Lt.

76.56.

74.16.

75.76.

75.52.

75.16.

75.46.

74.76.

54

1.7
20

2.1
10

2.5
9

2.7

2.8
6

2.8
10

3.5
20

74.86.
3.00
12
Floor

74.67.
3.57
10
Floor

75.89

75.40.

2.37
14
Floor

2.36
10
Conc.
Apron

75.26

74.56

74.76

74.56

74.16

74.96

3.0
12

3.7
8

3.5

3.7
10

4.1
13

5.3
42

73.76.

73.80

4.48
9
Conc.
Apron

4.46
12
Floor

75.26.

74.26.

74.06.

74.16

73.76.

74.56.

73.96.

74.76.

3.0
12

4.0
9

4.2
6

4.1

4.3
7

3.9
8

4.8
14

5.5
23

5.7
31

78.26

Cont'd From Page 54

Lt

\$

Rt 55

2+18 16²Rt & Single Garage

2+00 End Double Garage 14¹Lt

1+80 Begin Double Garage 14¹Lt

1+66 & Single Garage 14⁵Lt

T.P. 538 $\frac{82.02}{\wedge}$ 1.62 76.64

1+56 11¹Lt & 3⁵Walk

1+54^E 10¹Rt & 2¹Walk

78.26

77.08

4.94
14.1
Floor

77.02

5.00
14.1
Floor

76.93

5.29
14.5
Floor

77.01

1.35
2.0
conc

76.66

5.36
18.2
conc
Apron

76.95

5.57
18.2
conc
Apron

76.80

5.92
17
conc
Apron

76.81

1.75
1.1
conc

76.52

5.7

76.95

5.57

82.02

75.42

6.60
12.2
conc
Apron

76.22

5.8
18

75.62

4.4
12

75.29

2.97
10.1
conc

75.97

6.55
18.2
Floor

75.62

6.5
17

77.99

3.77
2.0
conc

78.26

Cont'd From Page 55

Lt

L

Rt

56

2+88 12⁵/₈ Rt & Double Garage

78.00

77.85

4.9
12²/₈
Floor
Wood

77.82

2+70 End 4 Car Garage 20¹/₂ Lt

462
20¹/₂
Floor

417
18²/₈
conc
Apron

77.80

2+61¹/₂ Manhole

462
MH

77.92

77.84

77.54

77.12

77.14

76.92

76.62

76.12

2+50

410
20¹/₂
Floor

418
17²/₈
conc

45
10

49
8

49

51
10

54
11

59
20

2+40 9³/₈ Rt Power Pole # PA 7445

77.86

77.53

2+33 20¹/₂ Lt Begin 4 Car Garage

416
20¹/₂
Floor

469
17²/₈
Rough
conc
Apron

2+34 16¹/₂ Rt & Single Garage

75.92

76.17

610
17²/₈
conc
Apron

545
16²/₈
Floor

82.02

82.02

Cont'd From Page 56

Check		0.14	81.06 = 81.06
T.P.	6.99	81.20	0.65 74.21
Check	8.57	74.86	8.57 66.29 = 65.06
T.P.	2.39	74.86	9.55 72.47

3499²⁵ End of Alley

3497 11' Rt Power Pole # PA7453

3472 2 Double Garage 16' x 16'

3450

3455 10' Rt Power Pole # PA7437

3444 12' Rt 2 Singl Garage

3400

82.02
↑

At K Rt 57
Starting B.M.

NE.B.P. Penn & La Jolla Blvd.

80.42	80.42	80.02	79.62	79.62
1.6 20	1.6 10	2.0	2.4 8	2.4 20
79.72	79.22	79.92	79.42	78.72
2.3 20	2.7 10	3.1 7	3.0 10	3.3 8
78.82	78.52	77.92	78.02	77.82
3.2 20	3.5 10	4.1 7	4.0 10	4.2 10
78.82	78.52	77.92	78.02	77.82
3.2 20	3.5 10	4.1 7	4.0 10	4.2 10
78.82	78.52	77.92	78.02	77.82
3.2 20	3.5 10	4.1 7	4.0 10	4.2 10

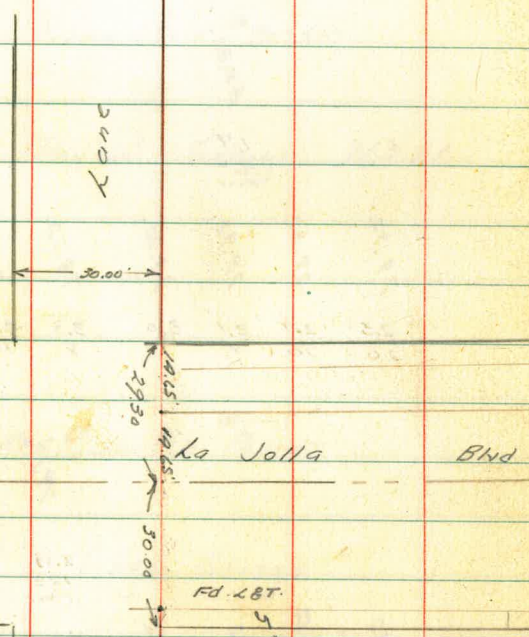
82.02
↑

7-18-49
Hendricks
Roberts
Greer
Rorer
No# 51347

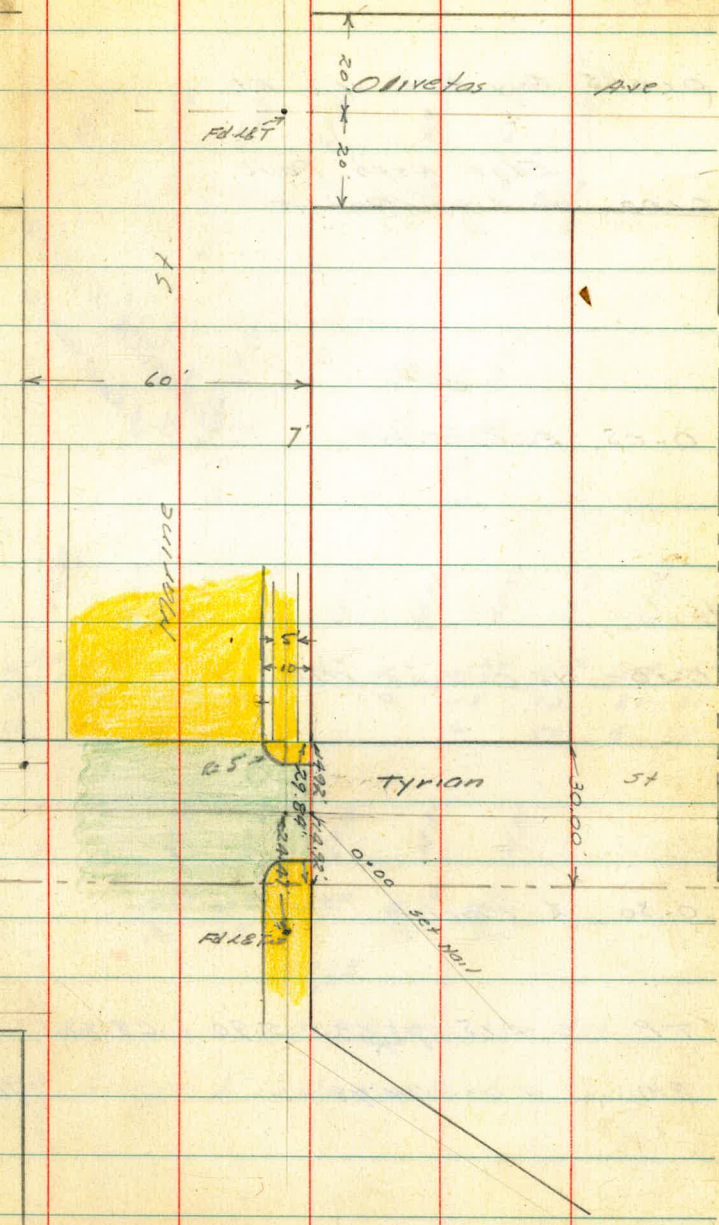
X Sect. Tyrion St
Marine St. to Dead End

INDEXED
W. K.
JUL 19 1949

construct on notes
G 259/13



0.00



Levels Tyrion St.

0+01.5 Guy Pole 11' Rt.

Edge Asph. Pave.

0+00 No. Line Marine

0-05 ECCb Reto

0-10 No. Ch. Line Marine

0-30 & Marine

TP. 4.75 73.63 5.90 68.58

BM 4.60 74.78 70.15

Reduced 7/28/49
at Lawrence

				69.11.						
				68.76.						
				68.57.						
				68.87.						
				69.14.						
				69.50.						70.16.
				68.77.						
				68.54.						
				68.82.						
				69.05.						
				69.41.						
				67.33.						
				66.49.						
				68.69.						
				68.37.						
				68.75.						
				68.79.						
				68.96.						
				68.99.						
				69.54.						
				69.49.						
				70.08.						
				67.30.						
				67.44.						
				67.94.						
				5.13.						
				5.18.						
				8.4.						
				4.57.						
				4.44.						
				4.09.						
				4.4.						
				3.55.						
				50.						
				50.						
				15.						
				15.						
				10.						
				10.						
				10.						
				15.						
				15.						
				31.						
				31.						
				66.13.						
				69.05.						
				69.23.						
				69.45.						
				69.87.						
				7.0.						
				4.61.						
				4.40.						
				4.8.						
				3.76.						
				70.						
				15.						
				10.						
				30.						
				73.63.						

3W 7' Let LaJolla Blvd & Marine Ave

NEBP Center & LaJolla Blvd

0+61 12" Palm 15' Rt.
 & 3.5' Conc. Walk 15.9' Lt.

69.24
 69.44
 69.63
 4.9 4.57 5.0
 18.8 15.9 15.9
 61

0+50

68.53
 68.63
 68.53
 68.73
 69.13
 69.53
 69.93
 70.13
 5.1 5.0 5.1 4.9 4.5 4.1 3.7 3.5
 18 14 10 8 11 14 20

0+42 12" Palm 8.7 Rt.

0+29 & 3.5' Conc. Walk 15.9 Lt.

69.26
 68.92
 4.37 4.21
 18.8 15.9

0+20

68.63
 68.53
 68.83
 68.93
 68.93
 69.73
 69.73
 5.0 5.1 4.8 4.7 4.7 3.9 3.9
 19 15 9 7 8 15

0+19 12" Palm 8.7 Rt.

0+06 6" Tree 16.8 Lt.

B.17 3.46 70.17 70.18

01995 End Conc Slab Beg Porch

01965 Beg Conc Slab to Porch of House

0182 Power Pole A 7408 13.5' x 1'

73.63
↑

HERP Lajolla & Genter

67.35	68.03	68.12	68.25	68.27	68.53	68.83
6.3	5.6	5.51	5.28	5.36	5.1	4.8
20	13	5.2	0.3	15	25	

68.16	68.30	68.32
5.47	5.33	5.21
5.2	0.3	

73.63
↑

Peck Place

Extention of easement

10-21-49
W.O.# 27092

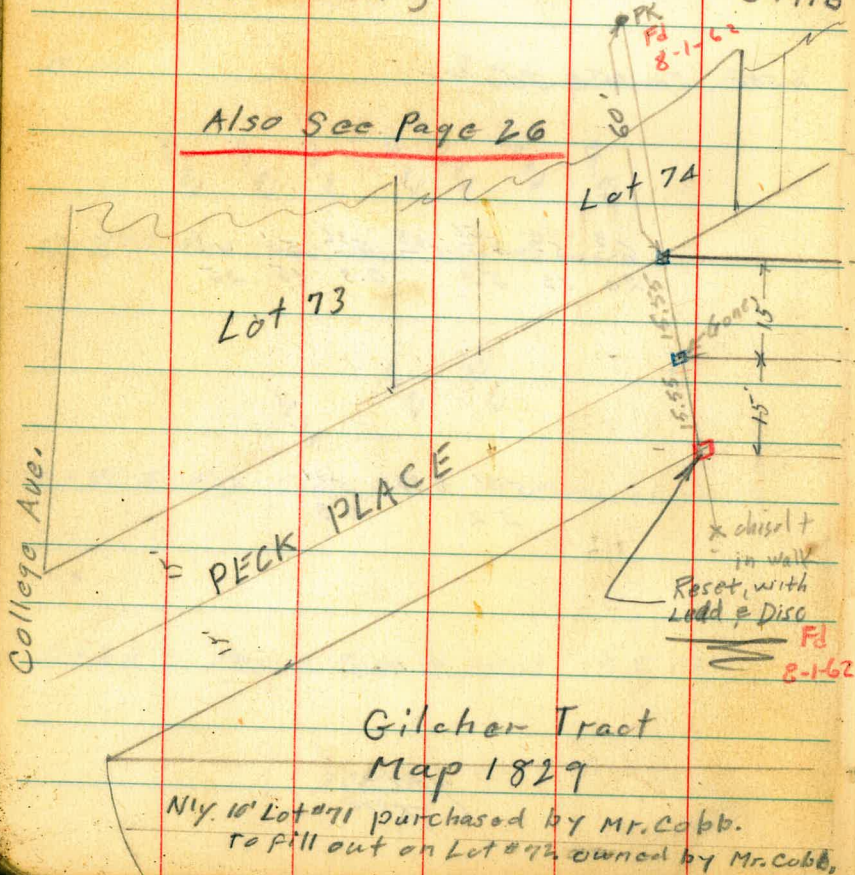
INDEXED
W.K.
OCT 24 1949

Sommermeier
Allen
Rorer

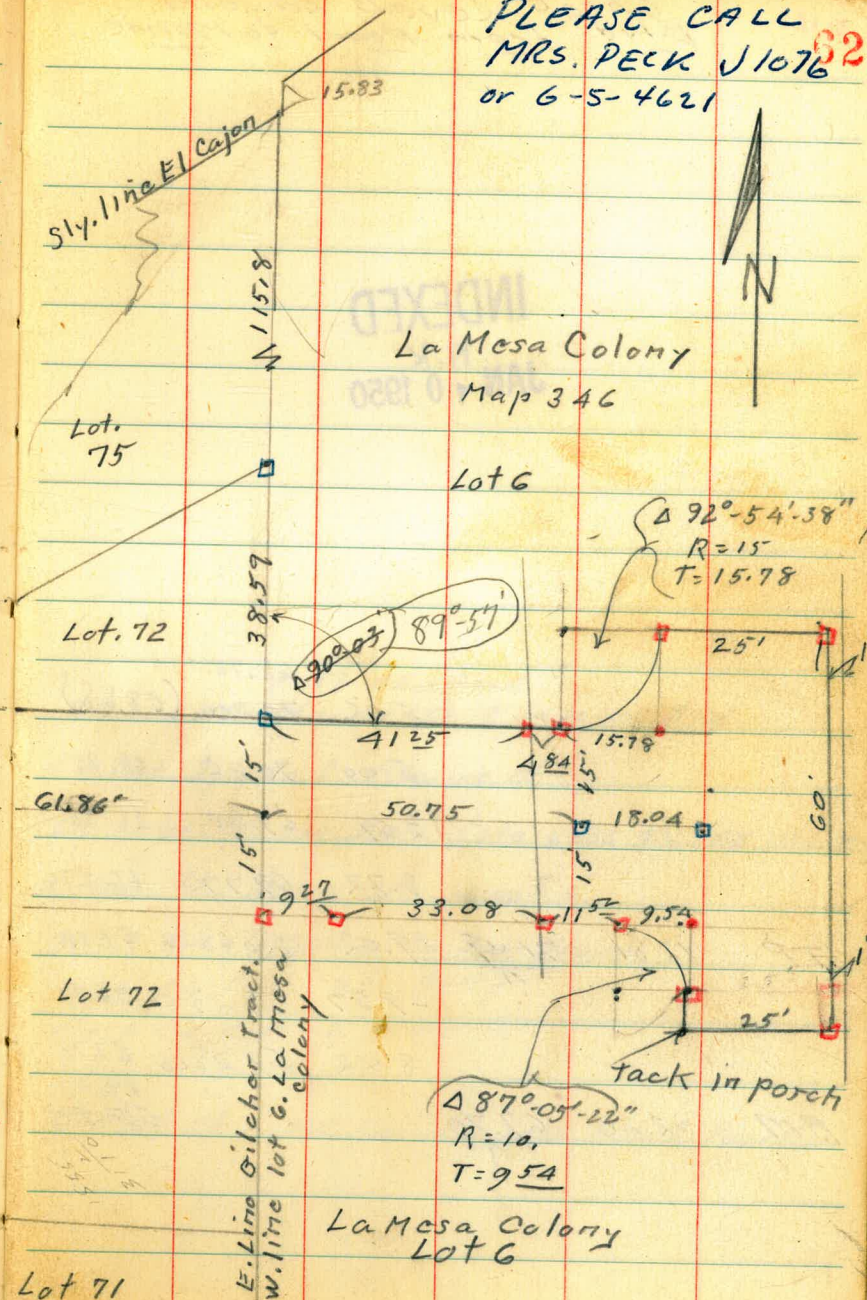
□ = Fd 1/2 + disk (shown on P. 26)

• = set stub + tack } as per sheet # 3797B
 □ = set 1/2 + disk

Also See Page 26



PLEASE CALL
MRS. PECK J1076⁶²
or 6-5-4621



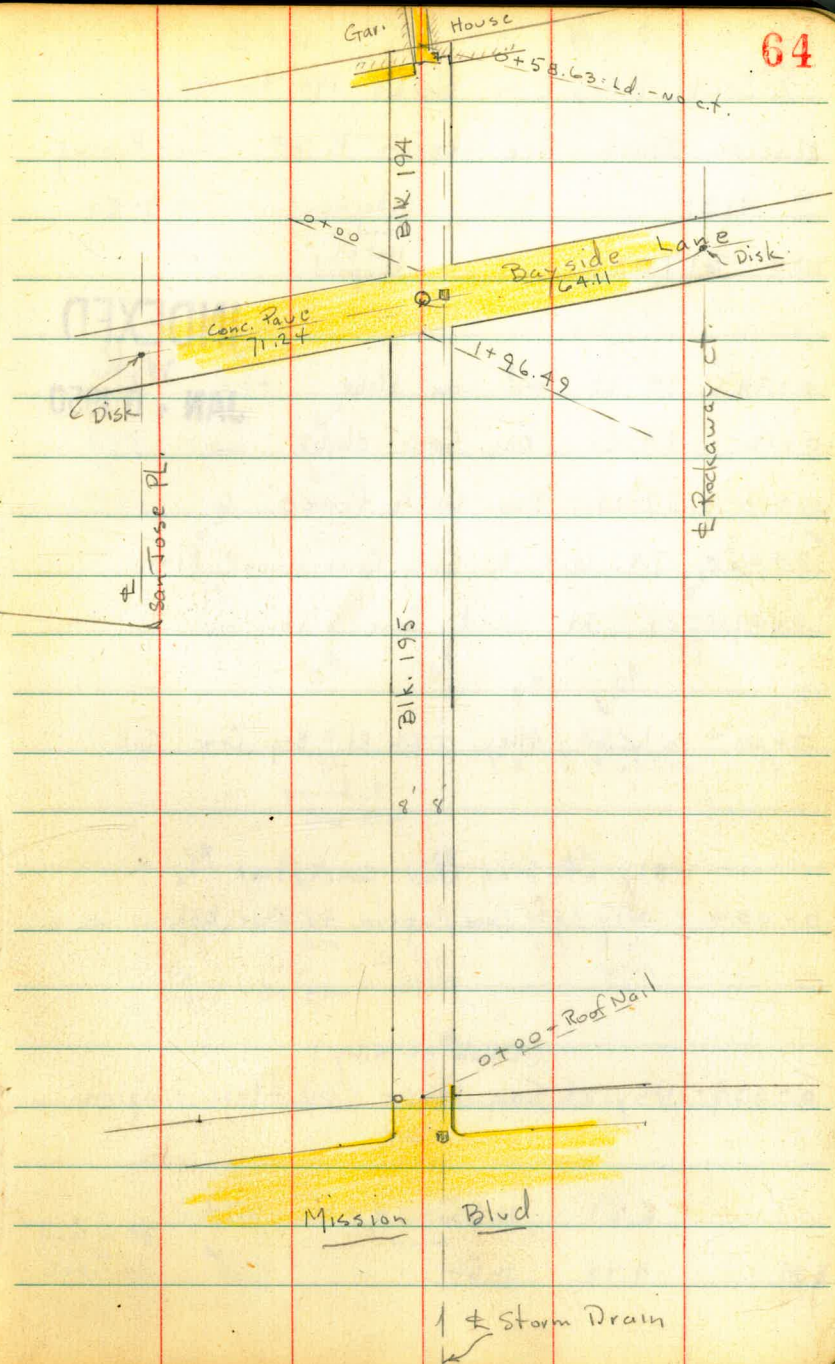
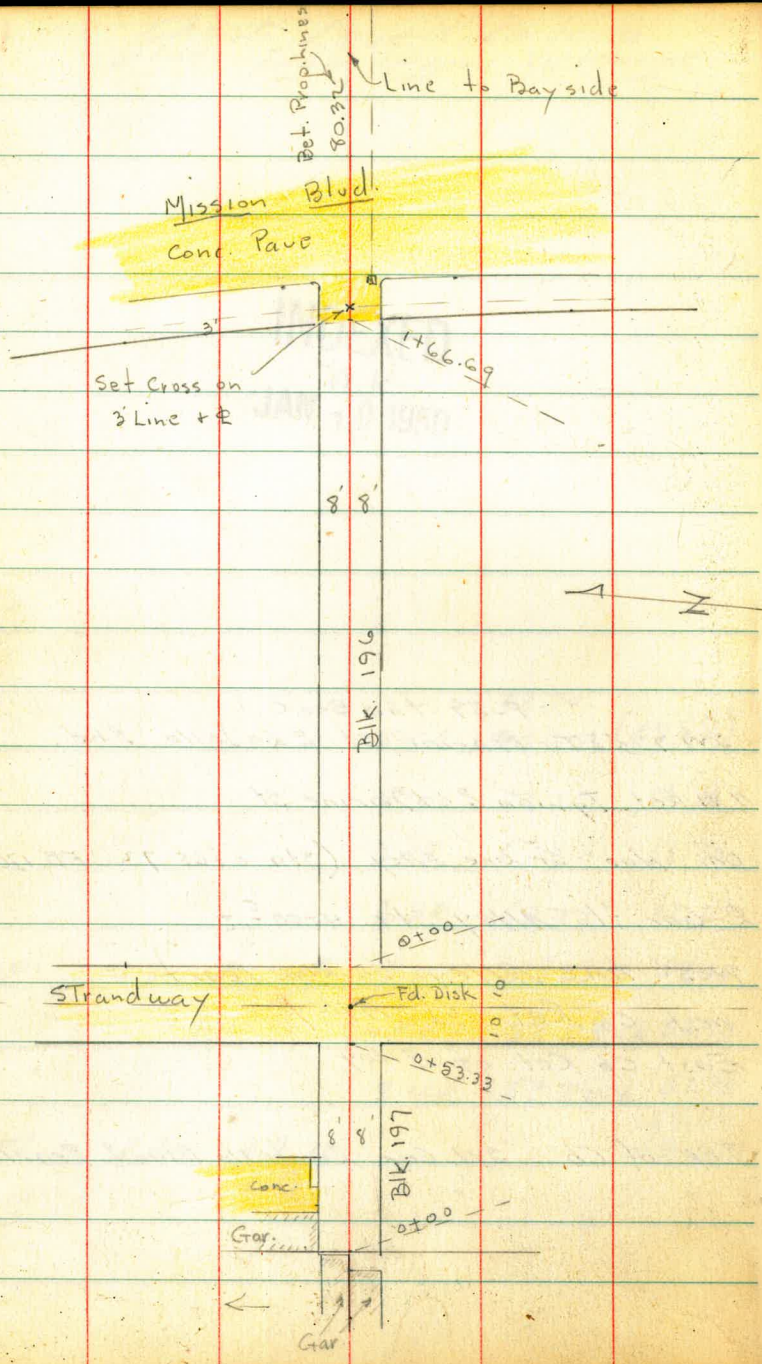
Check Levels La Jolla
Blvd from Pearl to Marine

INDEXED
W.K.
JAN 10 1950

			68.70	
	5.06	70.20	(68.88)	
	5.00	70.26	68.76	
	3.69	67.80	66.30	
	3.72	67.77	66.27	
TP.	12.81	71.49	58.68 ca. 57.18	
		"	-9.57	58.23 ca. 56.73
			8.42	59.28 ca. 57.78
				69.00
BM.	2.20	67.70		65.50

63

P. 59 this Book
SW 7' CRT. Marine St. & La Jolla Blvd.
NW Ret Tyron & Marine St.
On Hub So. line Alley (Sta. 0+65.72 FB 1764 P. 2)
& Cor. fl. Alley Sta. 4+00 E+
West line Alley So. line Pearl
West Cb. Ret. of Alley
East Cb. Ret. of Alley
Top of Cb. SW Cor. La Jolla Blvd. & Pearl



X-Sect. Alley: in Blocks 194 to 197 inc.

Mission Beach - See sketch P. 64 - for Paving.

4131

Osborne
Hardin
Hatch
Shepard

1-9-50

W.O. 31703

INDEXED
W.K.
JAN 10 1950

0+24 - 9.8 Lt. = end Conc. slab.

0+12 - 8.4 Lt. = Beg. Conc. slab.

0+10 - 7.7 Lt. = Beg. Lath fence

0+05 - 7.8 Lt. = $\frac{1}{2}$ Sing. Gar. - Conc. floor

0+09 - 9' - Rt. = end Conc. slab

0+00 = Wly. of Alley. - 8.6 Rt. = Beg. Conc. slab.

sly. of Sing. Gar. Conc. floor

0-00.4 = Wly. of Conc. apron to Gar. below $\frac{1}{2}$

(S. Half of Alley)

0-03.9 = Wly. of Sing. Gar. - Conc. floor & apron

5.21

11.95

4.82

6.74

B.M.

4.48

11.56

7.08

P.P. in Wall
San Jose

Lt. = N. 2 - Rt. = S.

65

6.32
5.63
15
Conc.

6.21
5.74
9.8
Conc.

6.21
5.71
8.4
Conc.

6.21
5.74
7.8
floor.

5.9
6.0
7.6
ground at
Gar. door

5.8
6.1
6.3
8.

5.6
6.02
5.93
8.6 = Conc.

6.12
5.83 = Conc.
9
5.67
6.08
T8

6.04
5.91
7.7
Wly.
Gar.

6.01
5.94
0.6
sly.
Gar. floor

5.96
6.19
on Gar.
apron

5.72
6.23
8.9 = S. cor.
apron

5.7
6.24
Floor
Gar.

11.95

0+27 - 8.2 Lt. = \$ 27 Conc. Walk

0+20 - 8.1 Lt. = wly of 27' Conc walk

20' E = E.L. Strandway + Pave + = 0+00 ahead.

10' E. = \$

0+53.33 = w.L. Strandway + edge of Conc. Pave

0+52 - 8.2 Rt. = \$ P pole - # P-3792

0+51 - 9.7 Rt. = Cor. Gar.

0+50 - 7.7 Lt. = end fence

0+34 - 9.6 Rt. = Cor. Gar. (opens on Strandway)

0+25

Lt.	\$	Rt.	
6.07 5.98 15	6.03 5.92 walk - 12		
6.03 5.92 15	6.03 5.92 8.1 = walk	6.4 5.5 8	6.3 5.6 11.6 = along House
6.74 5.21 30	6.95 5.00 8	6.98 4.97 8	7.00 4.95 30
6.48 5.47 30	6.71 5.24 8	6.72 5.23 8	6.71 5.19 30
6.79 5.16 30	7.05 4.90 8	7.04 4.91 8	7.05 4.87 30
			7.11 4.84 9.7 Bot. - footing 6.63 5.32 9.6 = Bottom of footing
7.2 4.7 15	6.6 5.3 8	6.5 5.4 8	7.3 4.6 9.7 ground 6.9 5.0 9.6 = ground. 7.0 4.9 15
		11.95	

1+04- 6.3' Rt. = Doorway in Bldg (step) 2.5 wide

T.P. 3.00 5.56 9.39 2.56

1+00- 6.9' Rt. = P. pole # PA-742

0+98- 8.2' Rt. = Ely. Conc. apron

0+85- 7.6' Lt. = end Conc. slab at Door of Sing. Gar. opens w. Conc. floor

0+80- 8.4' Rt. = wly. Conc. apron to Doub. Gar. - Dirt floor.

0+77- 8.4' Rt. = 2.7' Conc. walk

0+76- 7.6' Lt. = end Conc. apron + Beg. Slab.

0+71- 10' Rt. = Sing. Gar. - Dirt floor

0+60- 10.2' Rt. = Sing. Gar. - Dirt floor

0+51- 7.4' Lt. = Beg. Conc. apron to Doub. Gar.

0+50- 7.9' Rt. = end Wood apron

0+40- 7.9' Rt. = wly. of Wood apron to Doub. Gar. - Wood floor

2.05
3.51
6.3
5.56 edge Conc
2.29
3.27
8
Door - Conc.

2.97
9.03
8.2
Cor. Conc.
3.11
8.84
11.6 = Back + Gar.

3.34
8.61
15
Conc.
3.21
8.74
8.1
floor
Gar.
at Cor.
3.21
8.74
7.6 = Cor. slab.

3.35
8.60
15
Conc.
3.36
8.59
7.6
edge Conc.
3.3
8.6
8
3.35
8.60
8.4
apron
3.15
8.80
11.6 + Gar.

3.53
8.43
13.6
edge
conc.
3.51
8.38
7.6 = apron
Conc.
3.61
8.34
8.4
walk
3.8
8.1
10
floor

4.94
7.21
10.9
floor
4.68
7.27
7.4 = apron
5.26
6.69
7.9 = apron
5.24
6.71
9.8 = floor

5.5
6.4
9.6
along house
5.5
6.4
8
11.95
5.5
6.5
7.9
wood apron
5.50
6.45
9.7 = floor Gar.

Buried to protect Bldg. - which begins 7.8 Lt.
 conc. Covered by Cold lay - + 7.2 Lt = ± 12" Water Heater.
 0+00 = E.L. of Mission Blvd. + edge of Pavc

2.1 W = 6.4' Rt = ± 22 x 2.5 M.H. = clean out for
 Drain

10' W. = E. cb. of Mission - Sect. along cb. line

10' E. = W. cb. of Mission - Sect. along cb. line

Sect. along w.l.

1+66.49 = w.l. Mission Blvd. + edge of Conc. Pavc

1+66 = 0.2 Rt = ± Sewer M.H. 5.34 on Rim

1+53 = 7.8' Lt = Cor. Wood Bldg.

1+25

1+07 = 8.4' Lt = ± Sing Gar. Conc. floor

	Lt.	±	Rt.	
	.19	.54	x.88	.65
	5.73	6.10	4.64	6.21
	7.8	7.8	7.2	6.27
	Top	gut	Top	CL. gut
			Heater	7.7
				7.7
				Top
				.82
				6.38
				6.4 = Top
	.35	.69	.94	.75
	5.91	6.25	5.90	6.31
	30	30	11	8
	Top	gut	Top	gut
			3 Rad.	± 2' grate
				gut
				PC.
	x.14	.43	.14	.46
	5.42	5.99	5.39	6.02
	30	30	11	8
	Top	gut.	Top	gut
			PC.	3 Rad.
				± 2' grate
				gut
				Top = PC.
				gut.
				Top
	.48	.39	.19	.23
	5.08	5.17	5.39	5.33
	8.7 = floor	7.8	7.4	7.2
	Cor.	Top	gut	Top conc. slab
	Bldg.	end cb.		along Bldg.
				To 3' w.l.
	4.7			
	7.8			
	ground			
	at Cor.	1.9	2.2	1.8
		3.6	3.3	3.7
		15	8	
				1.6
				3.9
				8.1
				along
				Bldg.
		2.29		
		3.27		
		8.4		
		floor		
			5.56	

1+43- 8.6' Lt. = Φ 1.7' Conc. walk
 1+41- 7.7' Lt. = end apron
 1+37- 14.3' Rt. = Φ Sing. Gar. - Dirt floor
 1+32- 7.7' Rt. = end fence
 1+30- 7.9' Lt. = end fence + 7.4' Lt. = Beg. Conc. apron
 1+21- 7.9' Lt. = Beg. Board fence
 1+07- 8' Rt. = Beg. Lath fence
 T.P. 3.00 4.06 4.50 1.06

1+00
 0+99- 7.8' Rt. = Φ P. pole - # J.P.A. 818
 3-water Heaters Buried on Lt. - s' edge on line
 0+79- 8.1' Lt. = Φ 2' Conc. walk
 0+52- 8' Rt. = end Bldg. + wly. of 5' Conc. walk
 0+50
 0+42- 7.8' Lt. = end of Bldg. + wly. of 2.7' Conc. walk
 0+34- 7.7' Lt. = Φ 3' Doorway in Bldg.
 0+06- 7.7' Rt. = end of cb.

LT	Φ	Rt	69
4.76 15' walk	4.75 8.6		
8.9 Gar.	7.7 = apron		4.7 14.3 floor
4.77 8.8 floor	7.9 = apron		
	4.06		
6.6 9.1 along House	6.7 8	6.5 8	6.4 15
6.24 15.1 at Porch	8.1 walk		6.21 8 walk (Level)
5.79 7.8 Top walk (Level)	5.76 7.7 Door.	6.2 7.7 ground	5.74 = floor. 8.1 = Beg. Bldg.
		6.3 7.7 gut	
		7.7 Top	

0+18- 7.3' Rt. = fence

0+05- 9' Rt. = fence

0+02- 7.3' Rt. = Φ P. pole # P.A. 850

= 0+00 ahead.

Rods on Conc.

16.28 E = E.L. = 0.2 E. of edge of Conc. Pavc

8.14' E = Φ = on W. Rim of Sewer M.H.

Sect. along W.L.

1+96.49 = W.L. Bayside \downarrow edge of Conc. Pavc

1+90- 9' Rt = Φ Sing. Gar. - Dirt floor

1+80

1+50

70

Lt

Φ

Rt

-9	-7	-8	-8	-8
4.9	4.7	4.8	4.8	4.8
15	8		8	15

-1.52	-1.50	-1.74	-1.60	-1.50
5.58	5.56	5.80	5.66	5.56
30	8.14		8.14	30

-1.73	-1.73	-1.77	-8A	-1.82	-1.71
5.79	5.79	5.83	4.90	5.88	5.77
30	8.14	Rim of M.H.	6.2 = Φ + wly. of 2' grate	8.14	30

-1.51	-1.54	-1.76	-1.60	-1.50
5.57	5.60	5.82	5.66	5.56
30	8.14 = N.L.		8.14 = S.L.	30 = Conc.

-1.0
5.0
9 = floor

-1	-9	-1A	-9	-9
4.7	4.9	5.4	4.9	4.9
15	9		8	8.9 = along house

-6	-1	-10	-10	-8
4.6	4.7	5.0	5.0	4.8
10 along Gar.	8	4.0 C	8	14 = along Gar.

San Jose + Bayside

check B.M. - N.E. B.P.

5.34 - 1.28

Book 1427
P. 70

0+58.63 = Ld. in Conc. = end of Alley:

0+54.1 = Wly. of Conc. walk

0+54- 0.8 Lt. = Cor. Gar.

floor - opens w. - Normal to Bayside

0+52- 0.9 Lt. = Sly. of Conc. apron. to Sing. Gar. Conc.

0+40- 10.9 Rt. = Sing. Gar. - Dirt floor

0+30 8.6 Rt. = Fly. 2.1 Brick walk

Lt

±

Rt

71

-1.27

⁻⁵ 4.5	^{-1.2} 4.48	^{-1.2} 4.48	^{-3.9} 4.45	⁻² 4.2	^{+1.93} 2.13
1.4 along Gar.	0.9 = edge of conc.		2.3 = edge conc.	4.7 = along House	4.7 = floor

^{-1.1}
4.23
0.8
floor

^{-5.2}
4.58
0.5
Cor. walk

^{+0.6}
^{-1.9}
4.55
4 =
Cor.

⁻¹
4.7
8.1 = Cor.
ground House

^{-1.6}
4.52
8
along
edge

^{-5.8}
4.64
0.9
Cor.

⁻⁰
⁺⁰
4.9
10.9 = floor

⁻⁰
4.8
13.3
along
House

^{-1.9}
4.9
8

^{-1.0}
5.0
4.06

^{-1.1}
5.1
8

^{-1.06}
5.12
8.6
walk

^{-9.6}
5.02
15

Proposed Storm Drain

Ely, Side Mission Blvd.

From Alley B/K. 203 to alley B/K. 200 M.B.

Sammer Meyer
Allen
Bunch

2-16-50

Levels P-73

1+32.8 = Face curb Ret.

1+23.2 = E Alley

1+15.8 ditch

1+55.5 = Face curb Ret.

INDEXED
M.K.
MAR 17 1950

0+82.2 = 0.3 Rt. = 1/4 post for 2 Hour parking s' 199

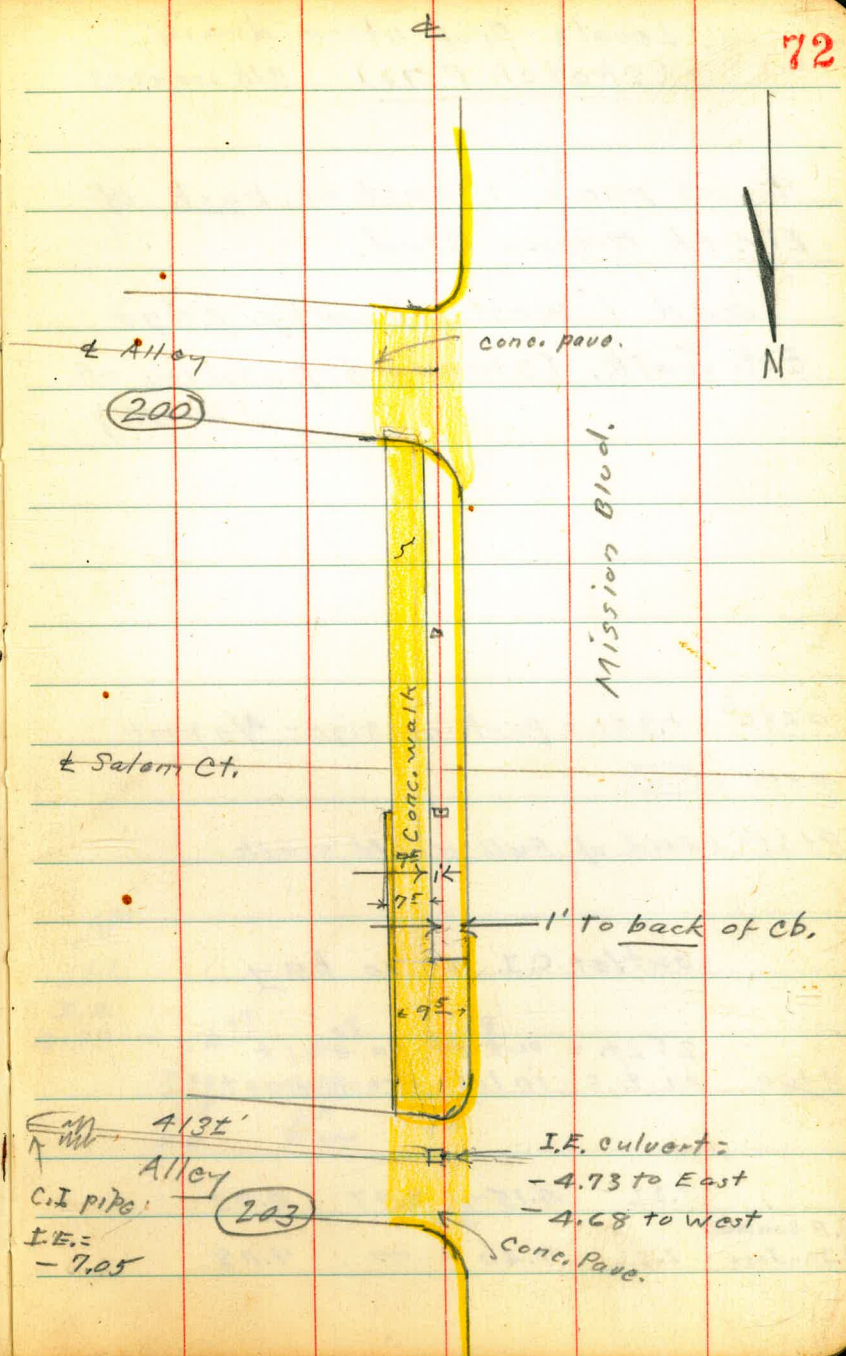
0+55 = water meter box on line

0+31 = End Full width conc. walk

0+05 = Face curb ret.

0+00 = E.W. on Wly side Exist catch basin

0-10.7 = Face



413E'

Alley

203

C.I. pipe
I.E. =
-7.05

I.E. culvert:
-4.73 to East
-4.68 to West
Conc. Pave.

Mission Blvd.

Salem Ct.

Conc. pave.

Alley

N

1' to back of Cb.

Conc. walk

Levels Prop. storm drain
(Sketch P 72) B/LK 200+203

℄ as run = 1' east of back of
Fly. Cb. Mission Blvd.

and 1' west of wly. edge
Est. walk. (standard position of
walk)

0+82² 0.3 Rt. = parking sign - 1/4 post

0+55 = (W)

0+31² = End of full width walk

outlet C.I. 12" in bay

0+00 2E Lt. = outlet to east
on ℄ = inlet from west

3.22 4.15 8.47 0.93

B.P. seawall

R San Jose 2.32 9.40 — 7.08

73

-7.05
11.1
I.E.
413[±]

-A.73	-0.83	-A.68
8.88	4.98	8.83
2E	2E	I.E.
I.E.	grate	

4.15

Proposed Storm Drain
W. side Mission Blvd.

From alley BIK. 20A to alley BIK. 199

Sommermayor
Alley
Bunch

2-16-50

Levels - P. 75

1+33[±] = Face Curb Ret.

1+27[±] = ± E.W. on west edge sump.

1+25[±] 9' ± Rt. = Ctr. M.H.

1+16[±] = Face Cb. Ret.

0+58[±] = start full width conc. walk.

0+31[±] on E = parking sign - 4/4 post.

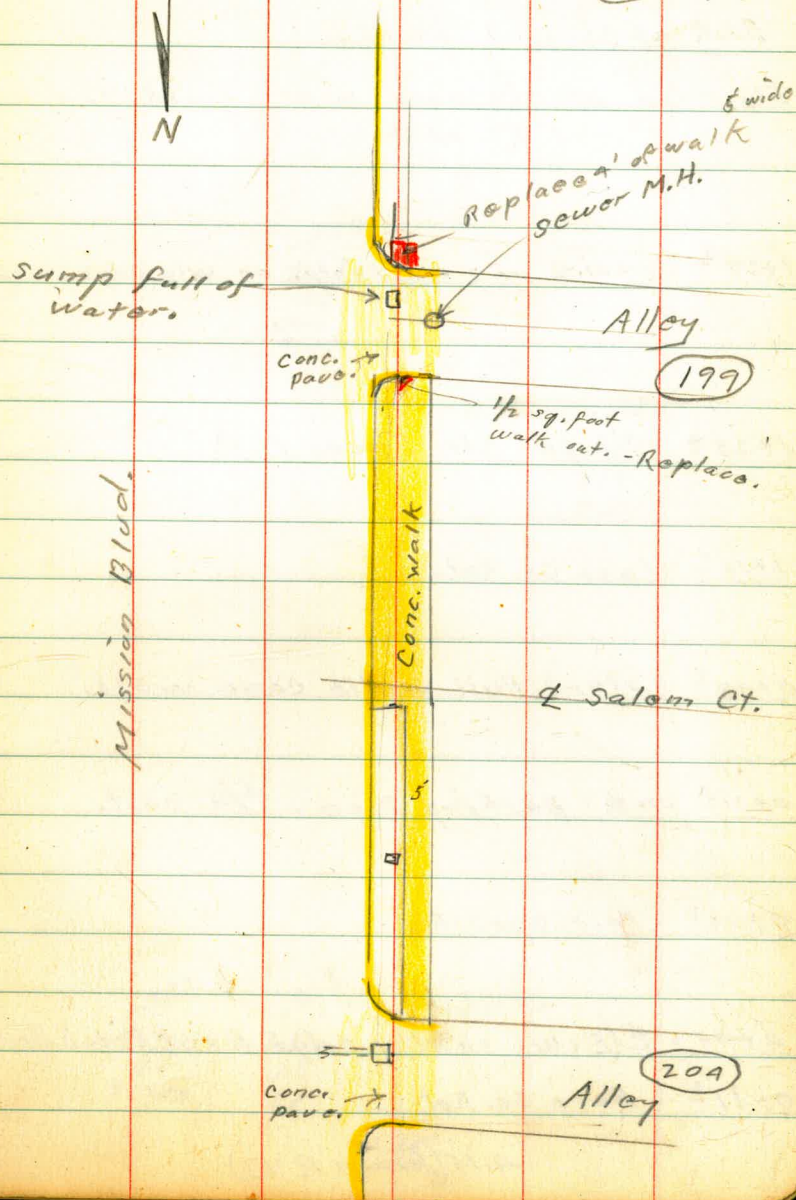
0+06[±] = Face Curb Ret.

0+00 = ± E.W. on W. side edge. Exist. catch basin

0-11[±] = face curb Ret.

Walk shown in red should be replaced.
Balance of walk as good as most
of walk in Mission Reach. **74**

Ed 2/21/50



Levels - Prop. storm drain Blks { 199 M.B.,
204
Sketch - P. 74

4

75

Back of Cb is 1' Lt. of \pm

Ely. edge of standard west walk is
1' Rt. of \pm .

1+27^S = E+W. \pm of Exist Sump. on Wly edge sump.

-0.63
4.78
1^S
ctr.
grate

1+25^E - 9' \pm Rt. = Ctr. Sewer M.H.

-1.93
6.08
9' \pm
I.E.

1+16^S = Face Cb. Ret.

0+58^S = start Full width conc. walk.

0+31^L on \pm = parking sign - A/A post.

0+06^E = Face curb Ret.

0+00 = \pm (E+W) on Wly edge Exist Catch Basin

0-11^E = Face Cb. Ret.

-0.56
4.71
2^S
grate

3.19
7.34
2^S
I.E.

check

4.15

4.15 (from P. 73)

76

27

78

87

79

TABLE I.—MINUTES IN DECIMALS OF A DEGREE.

Table with 10 columns and 10 rows showing minutes in decimals of a degree. Values range from 0.0167 to 1.0000.

TABLE II.—INCHES IN DECIMALS OF A FOOT.

Table with 10 columns and 2 rows showing inches in decimals of a foot. Values range from 0.0052 to 0.0729.

TABLE III.—RADI, ORDINATES AND DEFLECTIONS.

Large table with 10 columns and multiple rows showing radii, ordinates, and deflections for various angles from 0 to 30 degrees.

NOTE. Chord Deflection=2 times tangent deflection.

TABLE IV.—TANGENTS AND EXTERNALS TO A 1° CURVE.

Table with 9 columns and multiple rows showing tangents and externals for a 1-degree curve. Includes handwritten annotations at the top right.

9.46
 656.76
 54
 27
 21

(1038)

1200

419
 38
 457

05120
 33110

28257
 13184
 15068

26254
 13184
 30668

1179
 2409
 471

515292
 59000
 4939337

863) 150000
 863
 6370
 6051
 3190
 2589
 6010

1800
 5070
 5100
 4100
 5000

DISTANCES FROM CENTER OF ROADWAY FOR
 CROSS-SECTIONING.

Roadway 16 feet wide. Side Slopes 1 on 1½
 For Single Track Embankment.

H	0	.1	.2	.3	.4	.5	.6	.7	.8	.9	H
0	8.0	8.2	8.3	8.5	8.6	8.8	8.9	9.1	9.2	9.4	0
1	9.5	9.7	9.8	10.0	10.1	10.3	10.4	10.6	10.7	10.9	1
2	11.0	11.2	11.3	11.5	11.6	11.8	11.9	12.1	12.2	12.4	2
3	12.5	12.7	12.8	13.0	13.1	13.3	13.4	13.6	13.7	13.9	3
4	14.0	14.2	14.3	14.5	14.6	14.8	14.9	15.1	15.2	15.4	4
5	15.5	15.7	15.8	16.0	16.1	16.3	16.4	16.6	16.7	16.9	5
6	17.0	17.2	17.3	17.5	17.6	17.8	17.9	18.1	18.2	18.4	6
7	18.5	18.7	18.8	19.0	19.1	19.3	19.4	19.6	19.7	19.9	7
8	20.0	20.2	20.3	20.5	20.6	20.8	20.9	21.1	21.2	21.4	8
9	21.5	21.7	21.8	22.0	22.1	22.3	22.4	22.6	22.7	22.9	9
10	23.0	23.2	23.3	23.5	23.6	23.8	23.9	24.1	24.2	24.4	10
11	24.5	24.7	24.8	25.0	25.1	25.3	25.4	25.6	25.7	25.9	11
12	26.0	26.2	26.3	26.5	26.6	26.8	26.9	27.1	27.2	27.4	12
13	27.5	27.7	27.8	28.0	28.1	28.3	28.4	28.6	28.7	28.9	13
14	29.0	29.2	29.3	29.5	29.6	29.8	29.9	30.1	30.2	30.4	14
15	30.5	30.7	30.8	31.0	31.1	31.3	31.4	31.6	31.7	31.9	15
16	32.0	32.2	32.3	32.5	32.6	32.8	32.9	33.1	33.2	33.4	16
17	33.5	33.7	33.8	34.0	34.1	34.3	34.4	34.6	34.7	34.9	17
18	35.0	35.2	35.3	35.5	35.6	35.8	35.9	36.1	36.2	36.4	18
19	36.5	36.7	36.8	37.0	37.1	37.3	37.4	37.6	37.7	37.9	19
20	38.0	38.2	38.3	38.5	38.6	38.8	38.9	39.1	39.2	39.4	20
21	39.5	39.7	39.8	40.0	40.1	40.3	40.4	40.6	40.7	40.9	21
22	41.0	41.2	41.3	41.5	41.6	41.8	41.9	42.1	42.2	42.4	22
23	42.5	42.7	42.8	43.0	43.1	43.3	43.4	43.6	43.7	43.9	23
24	44.0	44.2	44.3	44.5	44.6	44.8	44.9	45.1	45.2	45.4	24
25	45.5	45.7	45.8	46.0	46.1	46.3	46.4	46.6	46.7	46.9	25
26	47.0	47.2	47.3	47.5	47.6	47.8	47.9	48.1	48.2	48.4	26
27	48.5	48.7	48.8	49.0	49.1	49.3	49.4	49.6	49.7	49.9	27
28	50.0	50.2	50.3	50.5	50.6	50.8	50.9	51.1	51.2	51.4	28
29	51.5	51.7	51.8	52.0	52.1	52.3	52.4	52.6	52.7	52.9	29
30	53.0	53.2	53.3	53.5	53.6	53.8	53.9	54.1	54.2	54.4	30
31	54.5	54.7	54.8	55.0	55.1	55.3	55.4	55.6	55.7	55.9	31
32	56.0	56.2	56.3	56.5	56.6	56.8	56.9	57.1	57.2	57.4	32
33	57.5	57.7	57.8	58.0	58.1	58.3	58.4	58.6	58.7	58.9	33
34	59.0	59.2	59.3	59.5	59.6	59.8	59.9	60.1	60.2	60.4	34
35	60.5	60.7	60.8	61.0	61.1	61.3	61.4	61.6	61.7	61.9	35
36	62.0	62.2	62.3	62.5	62.6	62.8	62.9	63.1	63.2	63.4	36
37	63.5	63.7	63.8	64.0	64.1	64.3	64.4	64.6	64.7	64.9	37
38	65.0	65.2	65.3	65.5	65.6	65.8	65.9	66.1	66.2	66.4	38
39	66.5	66.7	66.8	67.0	67.1	67.3	67.4	67.6	67.7	67.9	39
40	68.0	68.2	68.3	68.5	68.6	68.8	68.9	69.1	69.2	69.4	40

Example—If point is 22.6 ft. above grade, how far should it be from center line to be a slope stake point? Ans. from Table 41.9. For some slopes but other widths of roadbed correct above figures by one-half difference in width of roadbed; thus in example above for 20 ft. roadbed distance will be $41.9 + (20 - 16) \div 2$ or 2 ft. added to 41.9 = 43.9. For slopes of 1 on 1 see inside of front cover.

MADE IN U.S.A.