

DEETGEN
1887

ENGINEERS'
LEVEL BOOK

No. 410F

EUGENE DIETZGEN CO.

DRAWING MATERIALS, MATHEMATICAL and
SURVEYING INSTRUMENTS

Chicago New York San Francisco New Orleans Pittsburg Toronto

Distances from Center of Roadway for Cross-Sectioning
Roadway 16 feet wide. Side Slopes 1 on 1.
For Single Track Embankment.

H	0	.1	.2	.3	.4	.5	.6	.7	.8	.9	H
0	8.0	8.1	8.2	8.3	8.4	8.5	8.6	8.7	8.8	8.9	0
1	9.0	9.1	9.2	9.3	9.4	9.5	9.6	9.7	9.8	9.9	1
2	10.0	10.1	10.2	10.3	10.4	10.5	10.6	10.7	10.8	10.9	2
3	11.0	11.1	11.2	11.3	11.4	11.5	11.6	11.7	11.8	11.9	3
4	12.0	12.1	12.2	12.3	12.4	12.5	12.6	12.7	12.8	12.9	4
5	13.0	13.1	13.2	13.3	13.4	13.5	13.6	13.7	13.8	13.9	5
6	14.0	14.1	14.2	14.3	14.4	14.5	14.6	14.7	14.8	14.9	6
7	15.0	15.1	15.2	15.3	15.4	15.5	15.6	15.7	15.8	15.9	7
8	16.0	16.1	16.2	16.3	16.4	16.5	16.6	16.7	16.8	16.9	8
9	17.0	17.1	17.2	17.3	17.4	17.5	17.6	17.7	17.8	17.9	9
10	18.0	18.1	18.2	18.3	18.4	18.5	18.6	18.7	18.8	18.9	10
11	19.0	19.1	19.2	19.3	19.4	19.5	19.6	19.7	19.8	19.9	11
12	20.0	20.1	20.2	20.3	20.4	20.5	20.6	20.7	20.8	20.9	12
13	21.0	21.1	21.2	21.3	21.4	21.5	21.6	21.7	21.8	21.9	13
14	22.0	22.1	22.2	22.3	22.4	22.5	22.6	22.7	22.8	22.9	14
15	23.0	23.1	23.2	23.3	23.4	23.5	23.6	23.7	23.8	23.9	15
16	24.0	24.1	24.2	24.3	24.4	24.5	24.6	24.7	24.8	24.9	16
17	25.0	25.1	25.2	25.3	25.4	25.5	25.6	25.7	25.8	25.9	17
18	26.0	26.1	26.2	26.3	26.4	26.5	26.6	26.7	26.8	26.9	18
19	27.0	27.1	27.2	27.3	27.4	27.5	27.6	27.7	27.8	27.9	19
20	28.0	28.1	28.2	28.3	28.4	28.5	28.6	28.7	28.8	28.9	20
21	29.0	29.1	29.2	29.3	29.4	29.5	29.6	29.7	29.8	29.9	21
22	30.0	30.1	30.2	30.3	30.4	30.5	30.6	30.7	30.8	30.9	22
23	31.0	31.1	31.2	31.3	31.4	31.5	31.6	31.7	31.8	31.9	23
24	32.0	32.1	32.2	32.3	32.4	32.5	32.6	32.7	32.8	32.9	24
25	33.0	33.1	33.2	33.3	33.4	33.5	33.6	33.7	33.8	33.9	25
26	34.0	34.1	34.2	34.3	34.4	34.5	34.6	34.7	34.8	34.9	26
27	35.0	35.1	35.2	35.3	35.4	35.5	35.6	35.7	35.8	35.9	27
28	36.0	36.1	36.2	36.3	36.4	36.5	36.6	36.7	36.8	36.9	28
29	37.0	37.1	37.2	37.3	37.4	37.5	37.6	37.7	37.8	37.9	29
30	38.0	38.1	38.2	38.3	38.4	38.5	38.6	38.7	38.8	38.9	30
31	39.0	39.1	39.2	39.3	39.4	39.5	39.6	39.7	39.8	39.9	31
32	40.0	40.1	40.2	40.3	40.4	40.5	40.6	40.7	40.8	40.9	32
33	41.0	41.1	41.2	41.3	41.4	41.5	41.6	41.7	41.8	41.9	33
34	42.0	42.1	42.2	42.3	42.4	42.5	42.6	42.7	42.8	42.9	34
35	43.0	43.1	43.2	43.3	43.4	43.5	43.6	43.7	43.8	43.9	35
36	44.0	44.1	44.2	44.3	44.4	44.5	44.6	44.7	44.8	44.9	36
37	45.0	45.1	45.2	45.3	45.4	45.5	45.6	45.7	45.8	45.9	37
38	46.0	46.1	46.2	46.3	46.4	46.5	46.6	46.7	46.8	46.9	38
39	47.0	47.1	47.2	47.3	47.4	47.5	47.6	47.7	47.8	47.9	39
40	48.0	48.1	48.2	48.3	48.4	48.5	48.6	48.7	48.8	48.9	40

Example—If point is 22.6 ft. above grade, how far should it be from center line to be a slope stake point? Ans. from Table 30.6. For same slopes but other widths of roadbed, correct above figures by one-half difference in width of roadbed; thus in example above, for 20 ft. roadbed distance will be $30.6 + (20 - 16) \div 2$ or 2 ft. added to 30.6 = 32.6. For slopes of 1 on 1½ see inside of back cover.
Copyright, 1914, by Eugene Dietzgen Co.

1827

CITY ENGINEERS OFFICE

INDEXED

to page #75

This Field Book is manufactured of a High Grade 50% Rag Paper having a WATER RESISTING SURFACE, and is sewed with Bing Special Enamel Waterproof thread.

Made in U. S. A.

104-40
52-22.8-45
80-80

Cross Sec. Locust	Dickens to Barrison	1 to 18
Sewer Profile	BIK-136 City Hqts " 147 " "	22-31
X-Sect. State - Palm to 250' N.		32-35
Cross Section Clinton St.	27 th to 28 th	36-50
" "	Cam del Oro La Jolla Harbor	51-58
Survey Lots 33-34 & 2	Cunningham Add.	59
X-Sect. Gamma - 39 th to 43 rd		60-75

Cross section Locust St.
Dickens to Garrison

1-5-48
W.O. 31461

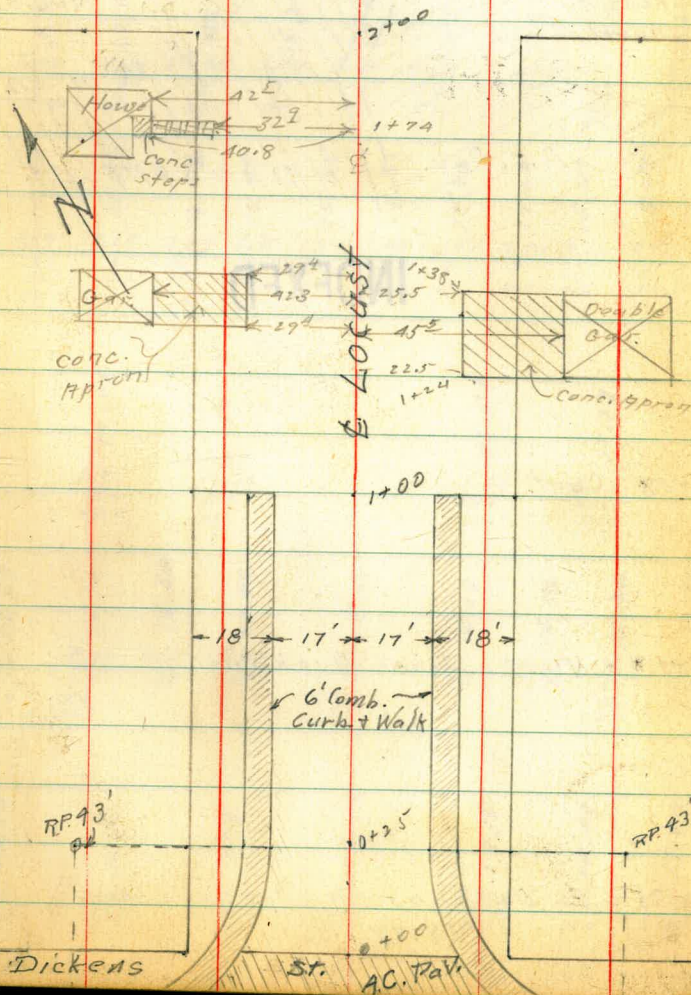
Sommermejer
W McCoy &
W Moore
E Sherman

INDEXED

~~INDEXED~~

10' Tie back L.H.T. Locust & Dickens S.W. Locust	SS	2.12	16.67	set B.M.	
S.E. 7' Mon Locust & Emerson	7.12	<u>18.79</u>	4.04	11.67	Set B.M.
S.W.B.P. Fenelon Locust	3.69	15.71	2.48	12.02	set B.M. old plug
S.W.B.P. Locust & Garrison	1.97	14.50	-	12.51	

Emerson St.



Locust St.

Continued on P. 5

1+01 30³Lt. = Pole # 1324
32.3 Lt. = start picket fence
25²Kt. = start picket fence

1+00 End of existing curbs + walks

INDEXED

0+68 End of driveway on RT.

0+50

of curb

0+48 + 0+68 taken to show grade

0+48 start of drive on RT.

0+25 = Curb, E.C.

0+00 = Edge paving

18.79

4

3

13.37	13.1	13.3	13.2	12.8	12.9	12.76
5.42	5.2	5.5	5.6	6.0	5.9	6.03
17	17	7		10	17	17
Curb						Curb
End						End.

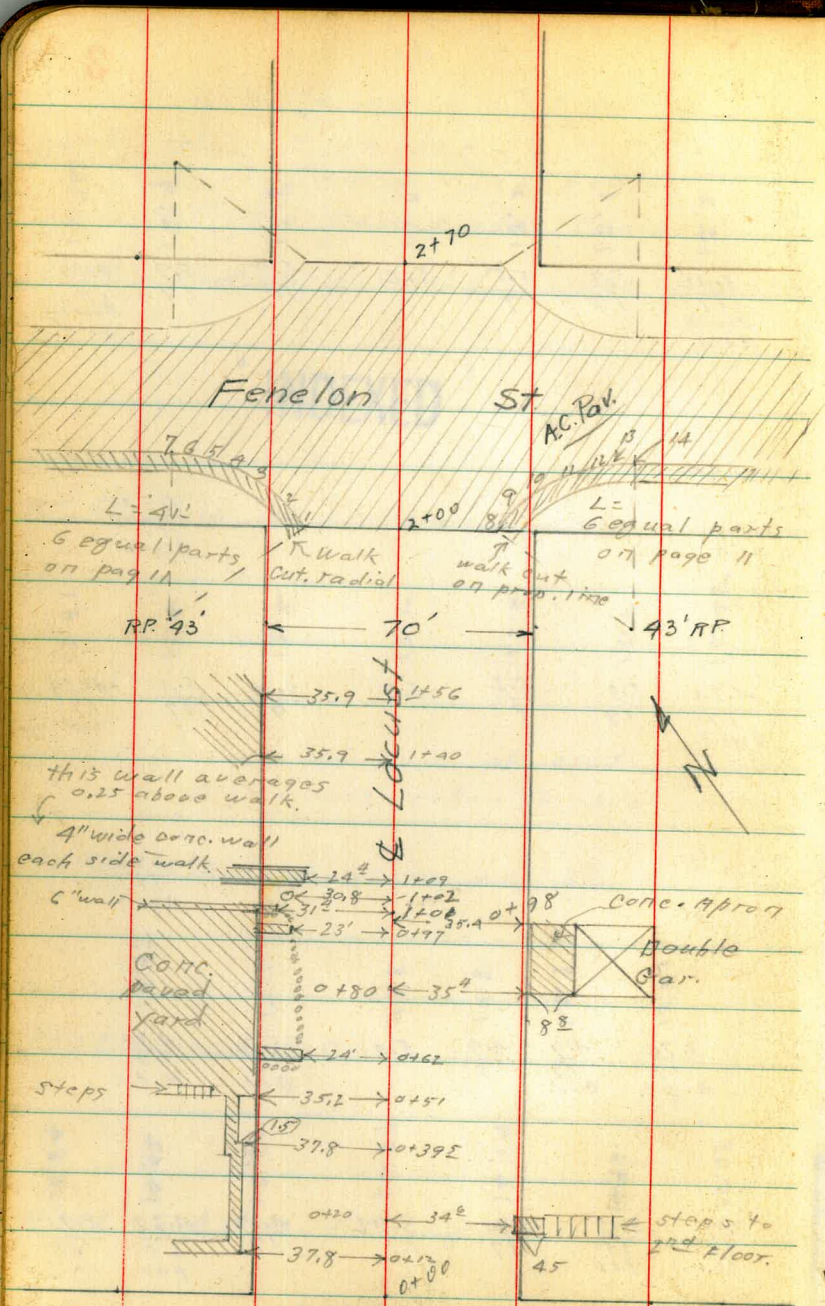
14.45	13.5	13.6	13.5	13.4	13.4	13.41
4.34	5.3	5.2	5.3	5.4	5.1	5.38
17	17	7		9	17	17
Curb						in drive

4.88
17
Curb

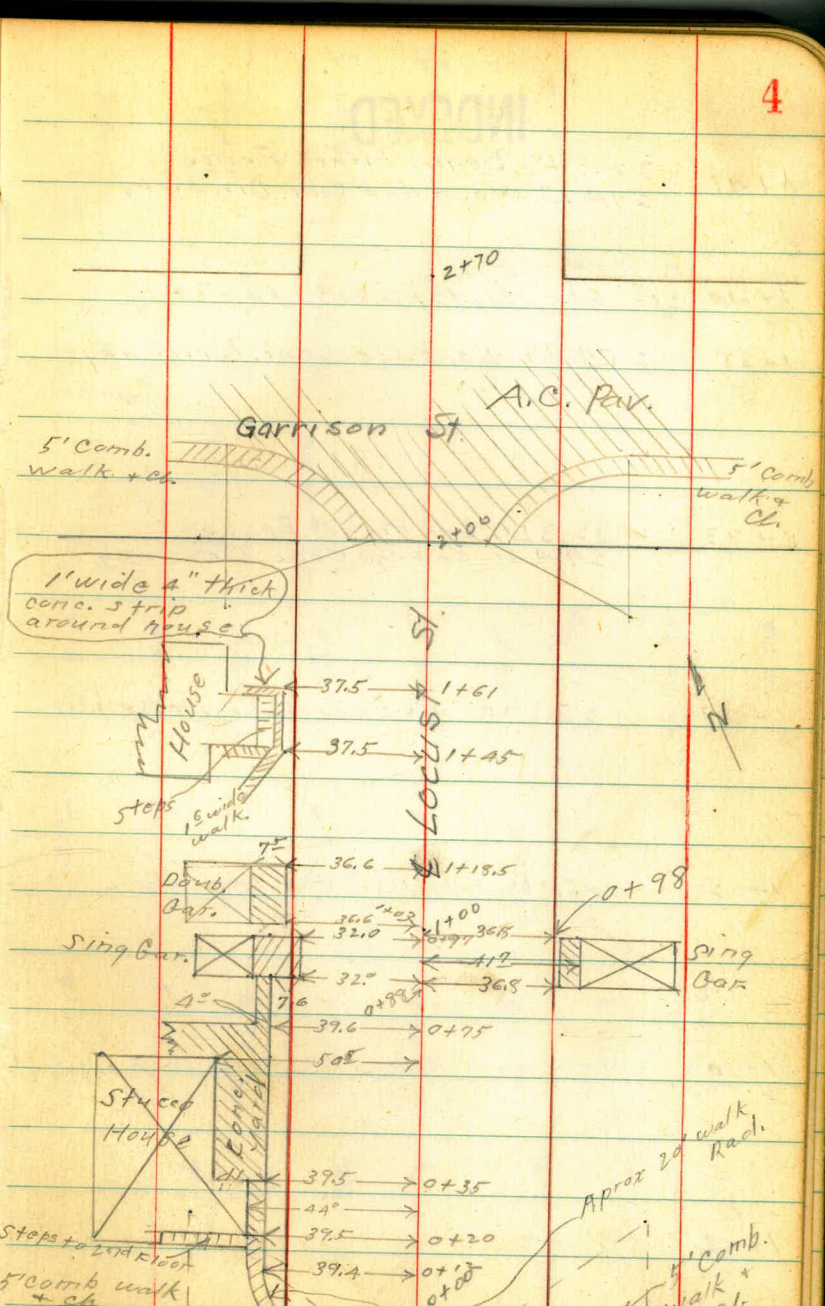
15.03	13.9	13.9	13.8	13.6	14.43
3.76	4.9	4.9	5.0	5.2	4.36
17	17	9		17	17
C.E.C.	Curb			Curb	C.E.C.

15.48	14.96	14.99	14.87	14.60	14.42	14.84
3.91	3.83	3.80	3.92	4.19	4.27	3.95
25	25	17		17	25	25
cc.	pav				pav	cc.

18.79



Emerson St.



Fenelon St.

R=43
L=412
6 equal parts
Levels page 12

Locust St.

INDEXED

1+41 32.3 Lt. Begin Picket Fence
29.4 Lt. No. Edge Conc. Driveway

1+40 25.2 Rt. start picket fence

1+38 25.4 Rt. No. Edge Conc. Driveway

1+33 32.3 Lt. End Picket Fence
29.4 Lt. So Edge Conc. Driveway

1+29 25.3 RT So Edge Conc. Drive way

1+22 25.3 RT End Picket Fence

1+10

1+02

18.79 From page 3

14.75
4.04
423
Gar.
4.59
35
14.20
13.95
4.84
29.4
approx

14.20
13.6
12.7
4.59
35
on drive
5.2
20
6.1
14
6.0
8.1
12.8
12.8
6.0
6.3
11
12.5
6.07
25.4
D-110
12.72
6.08
35
12.71
5.92
45.5
Gar.

14.77
4.02
423
Rt. Gar.
4.47
35
14.32
4.73
29.4
approx

14.4
4.4
35
13.8
5.0
19
12.9
5.9
15
13.0
5.8
8
13.0
5.8
12.5
6.3
12
6.06
25.3
Edge
approx
12.73
6.04
35
12.75
5.93
45.5

14.4
4.4
35
13.9
4.9
18
12.8
6.0
15
13.0
5.8
8
13.0
5.8
12.6
6.2
12
5.06
14
12.7
5.9
35

14.4
4.4
35
14.0
4.8
19
12.9
5.9
15
13.1
5.7
8
13.1
5.7
12.8
6.0
12
13.3
5.5
17
13.4
5.4
35

14.6
4.2
35
13.6
5.2
18
13.1
5.7
16
13.2
5.6
9
13.2
5.6
12.9
5.9
12
13.6
5.2
17
13.5
5.3
35

18.79

INDEXED

2+22

2+18

32.8 Rt. = End picket Fence.
 2+00 = S.L. Emerson 25.2 Rt. = End picket Fence.

1+7A Cont.

40³ Lt. = End same & start steps
 to house

brick + conc. walk

1+7A 32⁹ Lt. = Start of 12 wide E+W.

T.P.V. 4.28 16.99 6.08 12.71

1+42

18.79

13.4	12.74	10.6	9.8	
3.6	4.6	6.3	7.2	
100	35	35	100	
13.7	12.8	11.5	11.2	12.1
3.3	4.1	5.5	5.8	4.9
100	35	23	17	35
13.7	12.8	12.1	11.4	12.5
3.3	3.8	4.9	5.6	4.5
60	35	78	16	18
14.01	13.67	13.49		
2.98	3.32	3.50		
40.8	35	32.9		
walk	walk	walk		
13.3	12.3	12.4	12.2	11.8
3.7	3.7	4.6	4.8	5.2
32	18	16	8	11
			16.99	
12.2	12.8	12.4		
4.6	5.2	6.2	6.0	6.4
35	17	14	8	12
			18.79	
13.8	12.6	12.8	13.2	12.8
5.2	6.2	6.0	5.6	6.0
17	14	8	15	35

Locust

T.P. 4.15 17.18 3.34 13.03

0+20 34^s Rt. = E End 3' wide conc walk

Page-4

INDEXED

see page 4

0+12 37.8 Lt. = S.E. Cor. 2¹/₂ wide walk

0+00 = Nly line Emerson
2+70 =

T.P. 4.67 16.37 5.31 11.68

2+52 = Nly. cb. line Emerson

2+47

2+35 \neq Emerson

16.99

\neq

7

13.32							
3.05	3.4	3.4	4.5	4.6	4.8	5.5	
37.8	37	35	16		13	35	
walk							

13.4							
3.0	3.5	4.3	4.6	4.8	5.7	6.0	
50	35	11		11	35	50	
			16.87				

3.5	4.8	5.1	5.5	6.0	7.4	7.9	
100	35		20	35	100	100	

3.8	4.5	5.2	6.4	7.7	9.2		
100	35		35	100			

3.4	4.5	5.2	6.2	7.3	9.7		
100	35		35	100			

16.99

5.09	11.28	11.55
34.6	4.82	39.1
walk	walk at	steps

11.6	10.9
4.8	5.5
13	35

11.6	10.7
4.8	5.7
11	35

11.5	11.0
5.5	6.0
20	35

10.6	9.2
6.4	7.7
35	100

10.8	9.7
6.2	7.3
35	100

INDEXED

0+97 23' Lt. = Φ 2" wide E. & W. conc. walk

0+95 25' Lt. = Erid 2' wide N & S hedge

0+80 35' ART = S.W. Cor' conc. Apron to
double bar.

0+63 25' Lt. = start. 2' wide 4' high N. & S.
Conc. walk.

0+62 24" Lt. = Φ 2" wide conc. E & W.

0+60 25' Lt. = Φ East + west. 2' wide
4' High hedge

0+58 35" Lt. = East edge conc. yard.

0+51 39" Lt. = S.E. cor. paved yard.
N.E. Cor. walk to south.

393 Lt. = { S.E. cor walk to North.
Jog in walk (See page 4)

0+39⁵ } 378 Lt. = { Jog in conc. walk.
{ N.E. Cor. walk to south

17.18

	12.91	12.9	12.4	11.8	11.4	11.2	10.8	10.92	10.99
	4.27	4.3	4.8	5.4	5.8	6.0	6.4	6.26	6.19
	35.2	35	24	16		12	35	35.4	45.5
	conc.							Apron	Bar
		12.90		12.59					
		4.28		4.59					
		35		24					
	12.91	12.9	12.6	11.8	11.5	11.3	10.6	10.2	
	4.27	4.3	4.6	5.4	5.7	5.9	6.6	7.0	
	35.2	35	24	14		12	35	50	
			13.15	12.95					
		4.03		4.23					
		39.3		35.7					
				Aprox. E1					
				corner broken					
	3.91	3.76							
	39.3	37.8							
	walk	walk							

17.18

Looust St.

INDEXED

T.P. 5.14 16.72 5.60 11.58

1+35

1+09 24.4 Lt. = Φ 3' walk with 0.3 wide curb walls.

1+02 30.8 Lt. = Pole # 1376

1+01 31⁴ Lt. = Φ 6" wide E. & W. Corro. wall

1+00⁸ 35² Lt. = N.E. Cor. paved yard

1+00

0+99 25' Lt. = Φ 2' wide E. & W. Hedge

0+98 35⁴ Rt. = N.W. Cor. Conc. Apron to double Gar.

17.18

9

Φ

4.5 35	5.1 24	5.4 16	5.5	5.9 11	5.6 13	6.6 35	8.2 65
12.7	12.1	11.8	11.7	11.3	11.6	10.6	9.0

4.84 35 walk	5.10 24.4 Φ walk	12.08					
--------------------	-----------------------------	-------	--	--	--	--	--

3.80 35 top wall	3.84 31.4 top wall	4.8 31.4 Base wall	12.9				
---------------------------	-----------------------------	--------------------------	------	--	--	--	--

12.91	41.27	35.2					
-------	-------	------	--	--	--	--	--

4.6 35	4.8 25	5.5 17	5.8	6.0 10	5.8 12	6.5 35	7.3 50
12.6	12.4	11.7	11.4	11.2	11.4	10.7	9.9

10.97

6.21
35.4
Apron

17.18

16.01
6.21
44.5
at Gar

INDEXED

2+00 = Sly. line Fenelon (on paving)

1+85

1+75

1+56 35⁹ Lt = End drive to paved yard + double Gar.

1+40 Cont.

paved yard + double Gar.

1+40 35⁹ Lt = start drive way to

16.72

12.5	11.98	11.47	11.38	11.30	10.86	10.66	11.12	11.4
4.2 35	4.74 24.8 ob	5.25 24.8 pav	5.34 17	5.52	5.86 17	6.06 24.8 pav	5.60 24.8 ob	5.3 35
	3.5 35	4.9 14	5.0	5.0	5.0 10	4.6 13	5.5 35	
	3.6 35	4.7 17	4.8	4.9	4.9 11	4.5 13	5.6 35	6.2 50
13.70	13.55	12.40						
3.02 53 HT Gar.	3.37 44.4	4.32 35.9						
	3.05 53 HT Gar.	3.39 44.4				8.2 65		
12.27	12.1	11.8	11.7	11.4	11.7	10.8		
4.45 35.9 Edge conc	4.6 35	4.9 13	5.0	5.3 10	5.0 17	5.9 35		

16.72

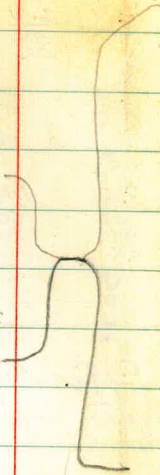
Locust

INDEXED

Rods taken by number

See sketch Page 4-Right
Fenelon & Locust.

N.W. and N.E. Curb returns



2+52 Cont.

2+52 = Nly. Curb Fenelon

2+35 = E Fenelon

T.P. NWBP
Fenelon
+ Locust

4.10 16.13 4.69 12.03
16.72

	50.60	50.12	5.10.69	4.97						12
	5.33 13 pav	5.01 13 cl	5.11 14 pav	4.97 19 cl						
	11.35 4.78 7 pav	11.83 4.30 7 cl	7.59 6.54 8 pav	10.17 5.96 8 cl	9.87 6.26 9 pav	10.40 5.73 9 cl	10.07 6.06 10 pav	10.66 5.47 10 cl	10.33 5.90 11 pav	10.90 5.23 11 cl
	12.69 3.44 1 pav	13.20 2.93 1 cl	12.40 3.23 2 pav	13.86 3.27 2 cl	12.13 4.00 3 pav	12.66 3.47 3 cl	11.91 4.22 4 pav	12.40 3.73 4 cl	11.69 4.44 5 pav	12.17 3.96 5 cl
	14.92 1.21 100 cl	14.40 1.73 100 pav	13.20 2.73 60 cl	13.20 2.93 60 cl	10.16 5.97 60 cl	8.40 7.73 100 pav	9.40 7.13 100 cl			
	12.69 3.44 60 pav	11.68 4.45 35	11.08 5.05 17	10.91 5.42	10.39 5.74 17	10.20 5.73 35	9.59 6.54 60 pav			
	14.61 1.52 100	11.95 4.38 35	11.21 4.92 17	10.77 5.96	10.58 5.55 17	10.35 5.98 35	8.51 7.32 100			
				16.77						
					16.13					

INDEXED

0+19 43° Lt. = Φ Conc. steps, 4 wide

0+12 cont.

0+12

see page 4 right.

0+00 cont.
35' Lt. = Edge 3⁵ Conc. walk

0+00 =
2+70 = Nly. Line Fenelon

16.13

13.94
2.19
43.0
Bottom
of steps.
on walk

13.85
2.28
39.5
walk

13.84
2.29
42.9
Back Edge
walk

13.77
2.36
39.4
walk
E.C.

11.2
4.9
35

11.3
4.8
50

13.6
2.5
39

13.4
2.7
35

13.2
2.9
31

11.7
4.4
17

11.3
4.8

11.1
5.0
10

11.3
4.8
13

10.6
5.5
28

11.0
5.1
29

12.73
3.40
35
walk

12.6
3.5
35
Grd.

11.83
4.30
25
EC

11.55
4.78
25
par

11.28
4.85
17

11.13
5.00

16.13

INDEXED

0+75 Cont.

0+75

0+35 Cont.

0+35

see sketch
 page X

= S.E. cor paved yard.

0+20 39⁵ Lt. End conc. walk also

16.13

INDEXED

	13.54	13.44	9.2	8.5
	2.59	2.69	6.9	7.6
	43.6	37.6	35	45
3+9 in 80170		Edge conc.		

	12.9	11.7	10.9	10.6	10.8	9.9	9.4
	2.8	3.2	4.4	5.2	5.5	5.3	7.2
	3.9	35	18	9	10	31	21.5

	14.04	13.83	10.5	10.5
	2.09	2.30	5.6	5.6
	50.5	44	35	39
At House		dog in conc at house		At House

	130	12.0	11.4	11.1	11.3	11	10.4
	2.41	2.6	3.1	4.1	5.0	4.8	6.4
	39.5	39	35	17	9	11	29.5
conc							30

	13.91	13.54
	2.22	2.35
	44	37.5
At House		

16.13

INDEXED

\$

15

0498 Cont.

7.45
7.68 7.99 7.82
36.8 41 41.7
Apr 07 Pt
+Ord Drive Car

0498 36.8 Rt = End Conc. Apron to

simp Car

3.0 / 3.1
3.0 / 35
4.2 / 18
4.6 / 19
5.4
5.7 / 8
5.6 / 10
7.1 / 25
7.6 / 35

0497 32 Lt = End Conc. Apron

2.60 / 13.53
4.1 / 18.63
Car Floor
3.19 / 12.94
3.2 / 16.14
Apron

0488 Cont.

2.56 / 13.57
4.1 / 17.67
Car Floor
2.76 / 15.37
37.6 / 53.03
N.E. paved yard
7.66 / 45.37
36.8 / 82.17
Apron +Ord Drive Pt Car

0488 36.8 Rt = Start Conc. Drive
39.6 Lt = N.E. Cor paved Yard
32 Lt = Start Conc Drive

12.99
3.14 / 32 Apron
12.7 / 32
11.8 / 19
11.5 / 18
10.9
10.4
8.9 / 25
8.5 / 35

16.13

16.13

Lacust
INDEXED

(page 4)

strip (or walk) around house

1+45 37.5 Lt. = start 1' wide conc

1+40 Cont.

1+40

1+18⁵ 36⁶ Lt. = End Conc. Apron to double garage.

1+05

to double Gar.

1+03 36.6 Lt. = start Conc. apron

16.13

INDEXED

37.5
S.E. Cor
2040.

3.33

12.80

7.1

8.3
60

3.4	4.1	5.0	5.5	5.7	5.5	5.7	6.2
35	22	18		8	10	28	35
12.7	12.0	11.1	10.6	10.4	10.6	10.4	9.9

2.37	2.76	3.05
44.1	38.1	36.6
13.76	13.37	13.08

3.2	4.2	4.6	5.5	5.8	5.6	6.2	6.6
35	18	17		8	10	35	45
12.9	11.9	11.5	10.6	10.3	10.5	9.9	9.5

2.41	2.83	3.20
44.1	38.1	36.6
13.72	13.30	12.93

16.13

Locust St.

S.W.B.P.
Evergreen
Garrison
Check B.M.

INDEXED

1.71 30.11 30.10

T.P. 8.70 31.82 0.84 23.12

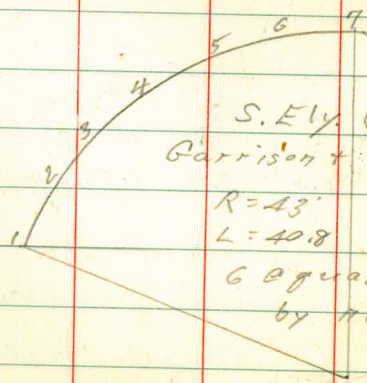
S.W.B.P.

T.P. 11.44 23.76 2.70 12.52 (S.A. 12.51)

Garrison + Locust.

2+19 Cont.

2+18 = Sly Curb Garrison



2+00

15.22

4.

18

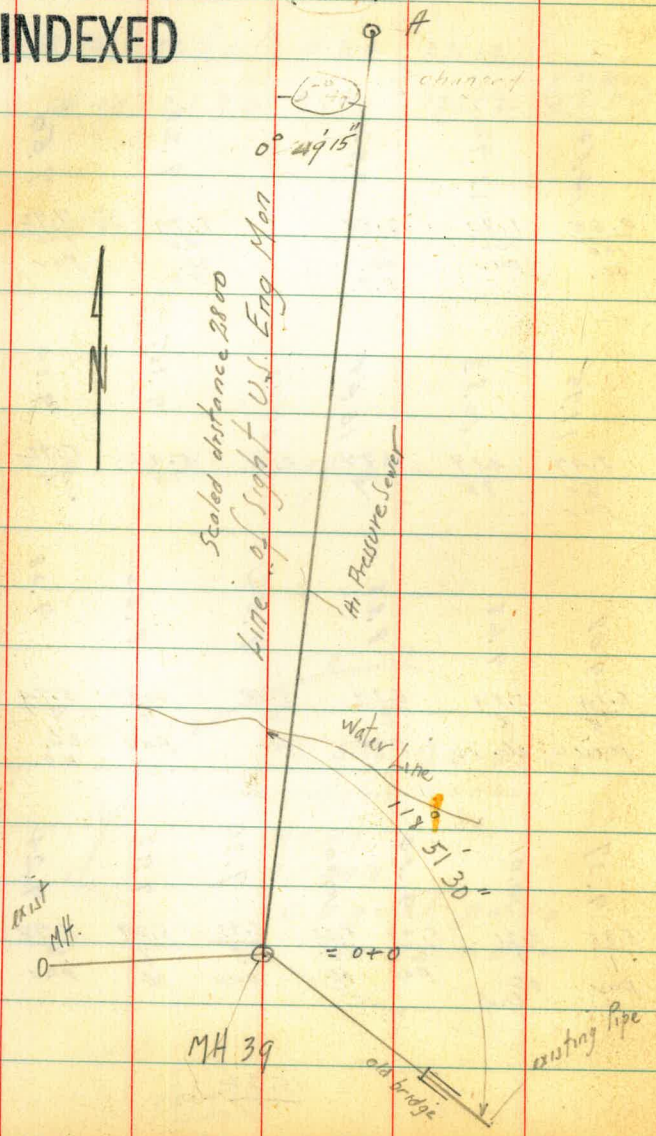
0.68 100 ce.	1.30 100 pav	2.80 60 cl. E.C.	5.29 60 cl. E.C.	7.72 100 pav	7.13 100 cl.
14.64	13.92	12.42	9.38	7.50	8.09
11.75	10.83	10.95	9.75	9.30	8.54
3.47 60 pav	4.29 35	4.77 17	5.11 17	5.47 35	6.61 60 pav
9.08	9.68	8.88	7.52	8.62	9.28
6.14 5 pav	5.54 5 cl.	6.34 6 pav	5.70 6 cl.	6.60 7 pav	5.94 7 cl. E.C.
9.37	10.01	9.34	9.30	9.93	9.24
5.85 1 pav	5.21 1 cl. end.	5.89 2 pav	5.22 2 cl.	5.72 3 pav	5.29 3 cl.
9.30	9.24	9.82	9.24	9.82	9.82
5.10 4 cl.					

15.22

Proposed Hi Pressure Line Across

Begg 7/19/24 WD 60218
 Sherman
 Bunch

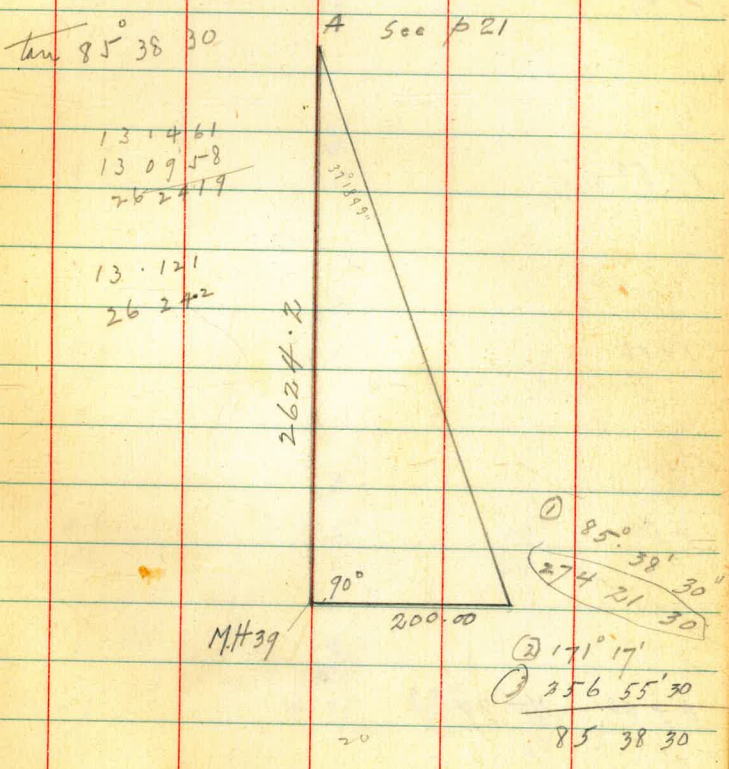
INDEXED



INDEXED
 C.S.K.

Mission Bay

Triangulation



Levels on Proposed H₁ pressure

INDEXED

Sewer crossing Mission Bay

20

+0.8	-2.6	4.8	-4.8
7.4	10.8	13.0	13.0
6.0	5.0		3.0

water edge

water edge

2+32

7.9	6.9	10.1	11.8
5.0			5.0

bank

2+00

7.0	7.8		8.1
-----	-----	--	-----

1+50

6.0	7.0		7.4
-----	-----	--	-----

1+00

5.4	5.5		6.6
5.0			5.0

+50

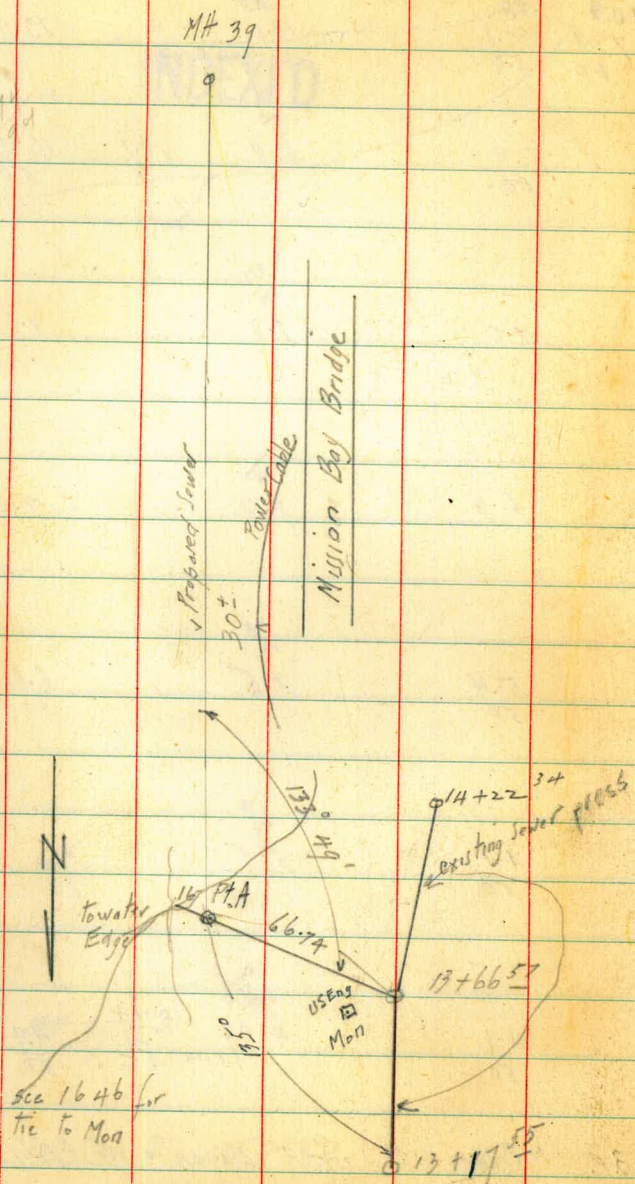
4.1	5.5		5.4
5.0			5.0

0+00 MH 39

4.1	4.07	8.74	4.9
5.0	prim	FL	5.0

1.67 8.15
 6.48

B.P. NE cor 115 S. of RR Bacon - West Pt Lema Blvd



	+	H.I.	-	
US Eng Mon		554	5.13	0.41 Mon.

+0.5

$$26+9074 =$$

$$13+6657$$

5.0

	-2.5	-0.4	+0.7
+50	8.0	5.9	4.8
	50		35

$$26+24 = \text{A. L. P.A.}$$

	8.7	-2.8
--	-----	------

26+04

6.73

5.54

H.I.

10.4 water edge

-1.19

B.P.N.E. cor
Mission Blvd
San Diego Pt
1646/74

X-See. Alley BIK. 136 City Hqts. =

+ Thru BIK 147. City Hqts
12-13-48
W.O. 31544

Sommermeier
McCoy
Alley
Jones

T.P. sheet 3523

6+0533 - correct stationing

5+3933

1572'

N. line Quince.

5+3933

5+9933

■ = Fd. Men

□ = set 1x10" x 2"

3+84.75

BIK
136

10' 10"

2+0733

0+26.35

St. Redwood

0+00 = 66' 50.4'

S. line Redwood

S.L. Redwood

S. line 1572'

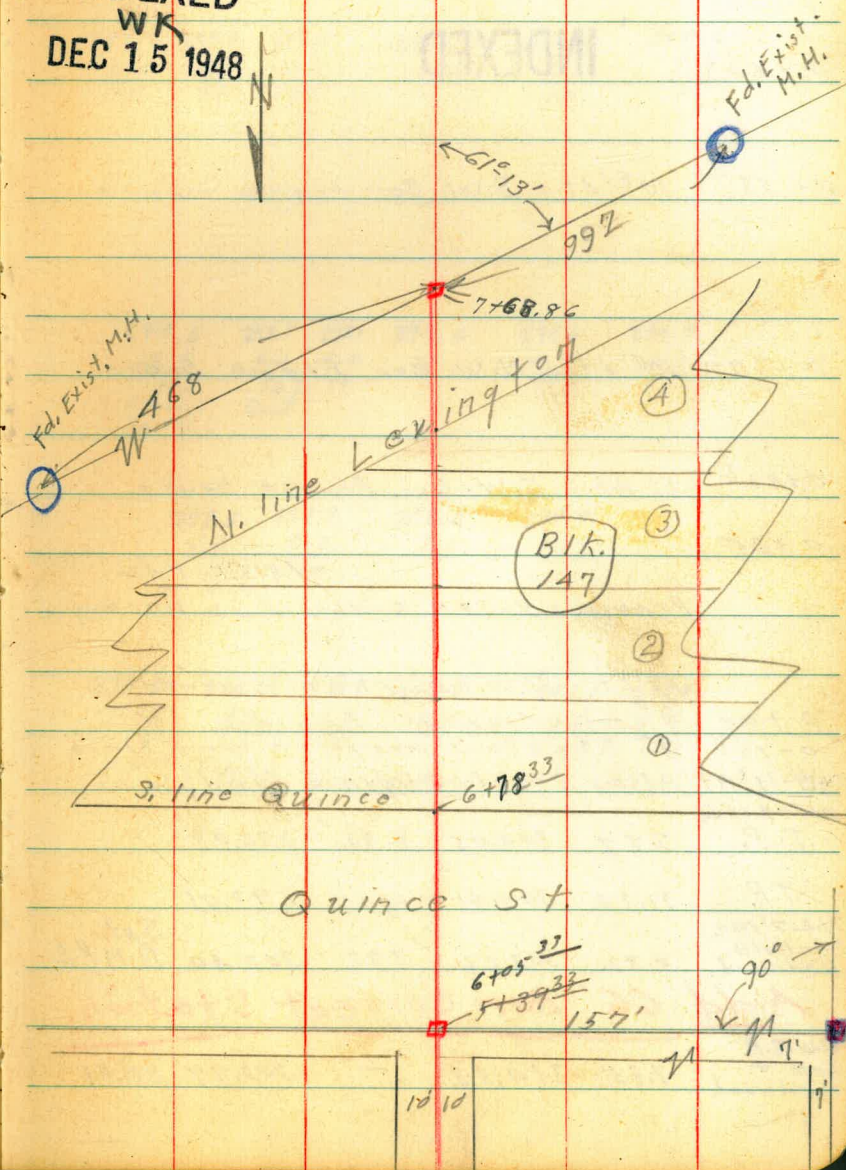
Production west

Redwood to Quince to Lexington
(Thru Block 147.)

22

INDEXED

WK
DEC 15 1948



Alley BIK 136 + Prop. Red W.
Thru. BIK 147. City Hgts.

INDEXED

0+60

0+55¹ 10⁶' Lt. = S.W. Cor. frame house.

0+37^E 10³' Lt. = N.W. Cor. Frame house

0+32^E 17' Lt. = S.W. Cor. Frame house.

0+25

FB1331-PAV
Previous x-sec. Redwood is unchanged

17' Lt. = N.W. Cor. Frame house

0+00 9⁸ Rt. = line of fence

0-18^E 9⁸ Rt. = start 4x4 post + wire fence

0+8-11' Rt Also = start Eugenia Hedge

circled stubs

T.P. 7.97 304.05 8.33 296.08

T.P. 11.36 304.41 10.17 293.05

N.E. 7' Mon.
Central +
Redwood.

0.82 303.22 7.92 302.40 Set.
B.M. #2

Add 66' for correct station.

N.W. B.P.
A.M. +
Redwood

7.35 310.32 - 302.97 B.M. #1

291.1	297.8	299.3	299.5	300.0	300.2
12.0	6.3	4.8	4.6	4.1	3.9
100	65	10		10	25

299.5	298.1	298.1	299.0	299.6	299.7
4.6	6.0	6.0	5.1	4.5	4.4
10 ²	10 ²	10		10	25
Floor level	Grd				

297.5	297.9	298.5	299.4
6.6	6.2	5.6	4.7
17	10		10
At House			

298.90	294.2	294.8	296.1	297.1	297.4
5.15	9.9	9.3	8.0	7.0	6.7
17	17	10		10	20
Floor level	Grd				
			304.05		

Alley BIK 126 City Hqts

3 Nails
P. Palo "A3021"
10' RT. 3794

6.36 273.24

Set.
BM#3

INDEXED

3+45 50' Lt. = North rim Canyon

T.P. 0.56 279.60 12.51 279.04

3+00 190 Lt. = Rim of Canyon

2+50

T.P. 0.39 291.55 12.89 291.16

2+00

1+50

108 Rt. = End post & wire fence.

1+34 11" Rt. = end hedge

1+00 95' Lt. = Canyon rim

304.05

24

277.3	276.3	274.6	274.5	274.7
2.3	3.5	5.0	5.1	1.9
85	50	10	<u>279.60</u>	10

276.3	278.7	281.1	281.2	281.3	283.3
15.3	12.9	14.5	10.4	10.3	8.3
170	100	10		10	100

286.6	287.1	287.4
5.0	4.5	4.2
10	<u>291.55</u>	10

288.0	293.5	293.3	293.4	293.2	294.8
16.1	10.6	10.8	10.7	10.9	7.3
185	135	10		10	100

297.2	297.1	297.4
6.9	7.0	6.7
10		10

298.4	298.8	299.5	299.3	299.8	300.1
5.7	5.3	4.6	4.8	4.3	4.0
75	75	10		10	25

304.05

Alley Bk. 136 - City Hqts.

T.P. 0.15 243.07 12.74 242.92

INDEXED

4+90 34' Lt. = Bottom N.W.ly + S.E. ly. wash

239.8	228.3	237.3	240.6	243.4	246.4	255.7
16.8	17.4	18.4	15.1	12.3	7.2	0.0
60	34	26	10		10	45

4+50 E = bottom N.W. ly. - S.E. ly. wash

256.3	242.1	240.5	240.4	247.2	255.7
+0.6	13.6	15.2	15.3	9.4	0.0
35	22	10		10	28

255.66

T.P. 0.25 255.66 12.23 255.41

4+49 57' Rt. = N.E. Cor. small house

264.6	268.9
3.0	+1.3
57	57
Grid	Floor level

(4+20)?
4+20 Soil side house. cess pool somewhere to
98' Lt. = soil pipe sewer outlet at

259.3	265.6	254.2	254.2	255.8	254.3	249.7	263.6	272.6	272.6
8.3	2.0	13.4	13.4	11.8	13.3	17.9	4.0	+5.0	+5.0
98	30	18	10		10	16	27	50	60
Top 4" C.I. pipe				267.64		Bottom N.W. ly. S.E. ly. wash			

T.P. 0.40 267.64 12.36 267.24

10' Rt. = Rim of canyon

3+93 90' Lt. = N.W. Cor. Frame house

266.1	268.2	269.5	271.6
13.5	11.4	10.1	5.0
90	10		10
Floor level			

3+88 E = North rim canyon

266.5	267.6	270.6	270.8	272.2	272.1	271.0
13.1	12.0	7.0	8.8	7.4	7.5	8.6
90	15	12	10		10	50

279.60

279.60

Alley BIK 136 - City Hgts.

4

26

T.P. 1.05 208.50 12.30 207.45

6+35

INDEXED

207.2 209.0 211.5
12.6 10.8 8.2
10 10

T.P. 0.20 219.75 11.58 219.55

219.75

6+12³³ = S. Line Quince

220.1 222.4 224.8
11.0 8.7 6.3
10 10

6+10

223.2 223.9 226.0
7.9 7.2 5.1
10 10

T.P. 0.34 231.13 12.28 230.79

231.13

1 X 15 tub.
5+39²³ 4

6.61 236.46 ^{set} B.M.#4

is unchanged
Previous X-Sec. of Quince

5+32²³ = N. Line Quince

235.0 237.4 239.9
8.1 5.7 3.2
10 10

243.07

243.07

BK 147 City Hqts.

INDEXED

Check M.H. Rim

1323
33

8.88 199.62 (199.63)

See F.B. 1323 - P 33

7402⁸⁶ D61° 13' RT.
Exist M.H. Rim 99' to S.W. (Page 22)

199.62

8.88

-Rim M.H. Sealed.

Set B.M. on Hub.

5.88

B.M. #5

7402⁸⁶ on page 22
Intersect 12" line as shown

202.62

5.88

on Hub

G+60

208.50

204.4	204.4	204.7	204.8	204.8	211.5
4.1	4.1	3.8	3.7	3.7	+3.0
50	10		10	16	40

208.50

27

Sewer Line Change
B/K 136-City Hgts

INDEXED

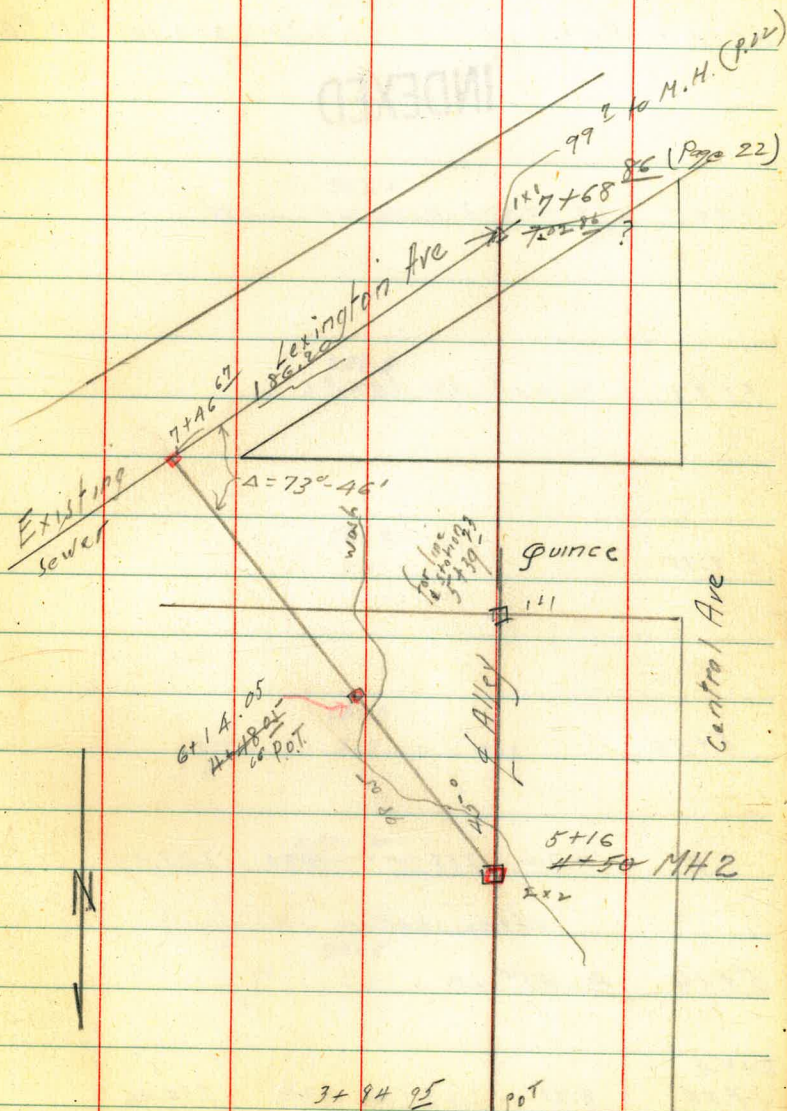
WK

JAN 5 1949

12/29/48

28

Bugg
Sherman
Burch



B. line Page 28
 BIK 136 - City Hgts

29

an. BM
 #6

0.66 224.76

6+1A^o

P.O.T.

9.60

224.10

B.M. #6

INDEXED

6+05

17' Rt. = bottom of wash

5+87

Wash Δ to Rt.

5+75

5+50

T.P.

0.30

233.70

11.79

233.40

along bottom of wash

5+16

Δ 45° Lt.

BM #1

R26

8.73

245.19

— 23646

4

224.1

$\frac{9.4}{10}$

9.6

$\frac{12.2}{10}$

227.1

$\frac{2.1}{10}$

6.6

$\frac{11.8}{17}$

223.5

19.2

226.2

7.5

231.0

$\frac{0.0}{7}$

2.7

$\frac{0.0}{6}$

233.70

241.8

$\frac{1.8}{1}$

3.4

245.19

ES

"B" Line
B/K 136 City Hgts

+

30

~~Cl. H. rim (P. 224 28) 285 2nd of A 7+46⁶⁷ (Boat on A 1st)~~

7+46⁶⁷ = Δ 106° 14' RT. same as ord. 07 stub.

208.26
6.46

INDEXED

7+30

208.2
6.5

7+20

207.5
7.2

7+16 Bottom of wash

204.7
16.0

6+93

206.6
 $\frac{7.7}{11}$ 8.1 $\frac{8.4}{10}$

T.P. 1.54 214.72 11.58 213.18

214.72

6+50

211.0
 $\frac{14.1}{10}$ 13.8 $\frac{13.4}{10}$

224.76

224.76

"B" line
BIK 136 City Hgts.

INDEXED

202.62

Check
7402.86 (P27) (Actual sta = 7+68.86)

T.P. 2.45 208.14 9.03 205.69

214.72

202.62
5.42
on Hub

208.14

7-Sect. State - Palm to 250' N.

50' St. - 10' cbs. - Not Graded

3243

W.O. 25001

2-28-49

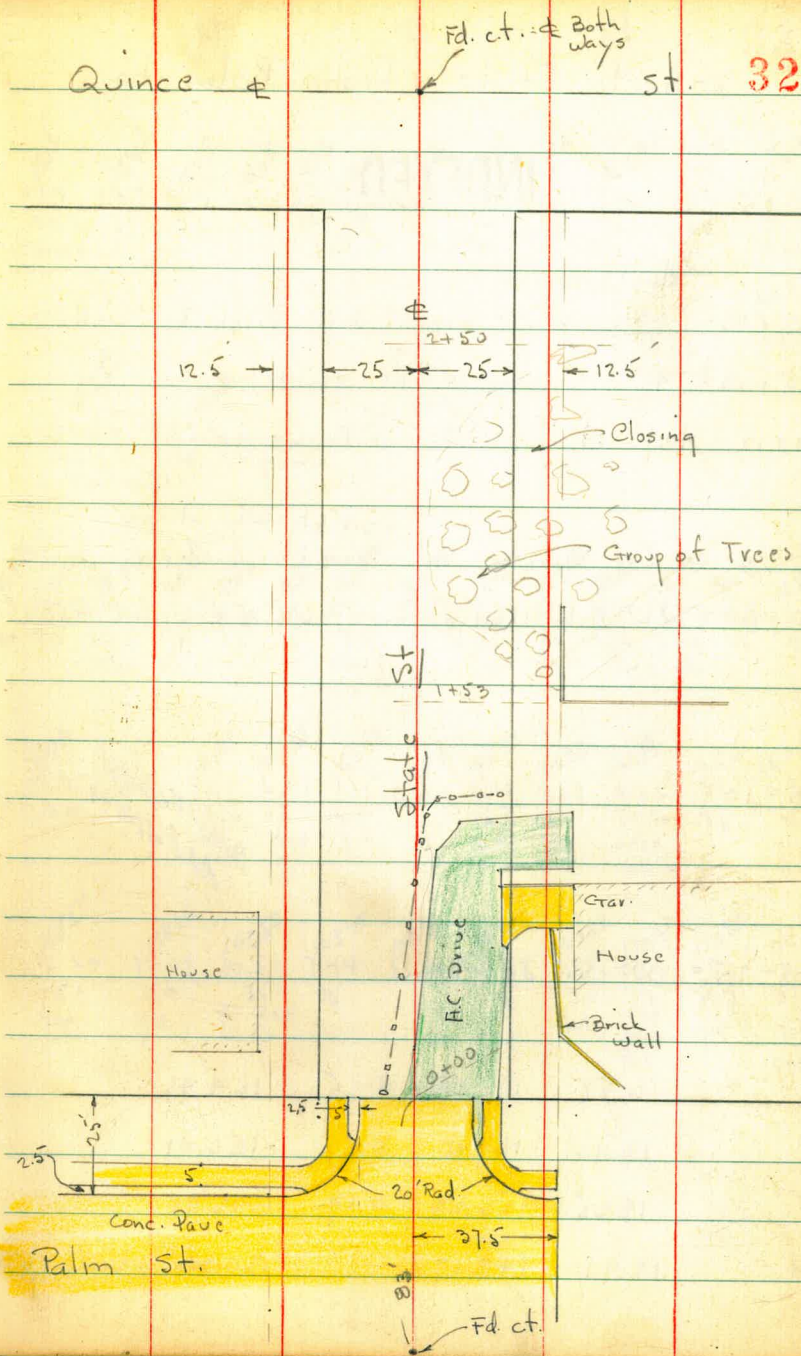
Osborne
Hardin
Hatch
Shepard

INDEXED

WK
MAR 1 1949

Quince #

St. 32



X- Sect. State - from Palm to

250' N.

INDEXED

0+25

along House

0+16- 37.2 Rt. = Cor. of High Brick Ret wall

0+12 = ± = W. edge of H.C. pave

0+12 - 40.7 Lt. = S.E. Cor. of Frame House

+ 3.8 Lt. = Wly. at Conc

for Private Dr - 21.4 Rt. = E. edge - joins walk

0+00 = U.L. Palm = edge Conc Pave + Beg. H.C. Pave

0-10

*Notes Reduced
MS 4/11/49*

0-25 = N. cb. of Palm

6.58 171.04 4.65 164.46

12.10 169.11 0.22 156.01

12.25 156.23 0.19 142.98

BM. 12.91 143.17 130.26 S.W.B.P.

Lt.

±

Rt.

33

1514 19.9 40.8 at House	1541 16.9 35	1545 16.5 26	1604 10.6 20	1613 9.7 12	1638 7.2 8	1642 6.3	16424 6.30 1.6 edge A.C.	16525 5.79 15	16592 5.12 22.2 Ely edge A.C.	1658 5.2 25	1681 2.9 36.7 at wall
15249 1858 40.7 = floor House	1518 19.2 40.7 = ground					1645 6.53 on edge			1681 2.9 37.2 ground		1622 +8.40 37.2 = Top Wall

1592 11.7 40	1601 10.9 25	1642 6.73 22.5	16424 6.70 17.5	1643 6.71 15	1632 7.41 15	16428 6.76 3.9	16445 6.58 edge A.C. Pave	1647 6.34 15	16513 5.91 15	16523 5.81 17.5	1651 5.73 22.5	16624 4.7 25	1672 3.2 40
		Cor. Walk						gut. Top		Cor. Walk			

1598 11.2 40	1622 8.1 28	1642 7.01 22.6	16423 6.81 15.7	16369 7.35 15.7	1648 6.20	16526 5.08	16647 4.57	1668 4.25	1668 22.6	1674 3.6	1692 +2.0 40
		edge walk	Top	gut.		gut.	Top cb.	edge walk			

16814 12.20 50 Top	15835 12.69 50 gut.	16052 10.52 35 = P.C. Ret in Dr.	16360 7.44 15	16544 5.60	16716 2.88 15	16920 1.14	17021 0.83 35 Top Ret.	17027 0.77 37.7 gut.	17064 0.40 37.7 Top end cb.
-----------------------------	------------------------------	--	---------------------	---------------	---------------------	---------------	------------------------------------	-------------------------------	---

171.04

Colombia + Palm

0+87- 26' Lt. = ± 8' Pepper Tree

0+77- 33' Lt. = ± 8" Tree

T.P. 0.23 158.95 12.32 158.72

0+75

0+72- 10.5' Rt. = Cor. H.C. Pavc

0+65- 6.5' Rt. = Hng. in edge of H.C. pavc

0+64- 40' Lt. = ± Sing. Grav. - Dirt floor

0+59- 22.8 Rt. = Cor. H.C. Pavc - ext. to E.

0+55.3 - 22.7 Rt. = edge H.C. + Nly of Conc. Dr. - 6" Conc.
wall along N. edge

0+50 = Sing. Grav. on Rt. - Conc. floor. (Under House)

0+47.7- 40.4 Lt. = N.E. Cor. House

0+44- 35.4 Rt. = end of Brick wall at sly. Conc. Dr.

0+40- 22.2 Rt. = edge of H.C. = Jsq.

0+39- 23.6 Rt. = edge of H.C. at sly. of Conc. Dr.

34

Lt.

±

Rt.

158.95

150 ²	150 ⁹	151 ³	155 ¹	162 ⁴	164 ⁵	165 ³	166 ³	167 ⁰³
20.8	20.1	19.7	15.9	8.6	6.5	5.1	4.7	4.01
40	25	18	11		3	15	25	40.4 Cor. H.C.

150²
20.3
40
floor.

166²
5.05
10.5
Cor.

165⁸
5.27
6.5

166⁵
4.55
25

167¹⁴
3.90
40.4
E. edge

166⁸⁸
4.16
22.8 Cor.

167⁴⁹
3.55
41.1 = Cor.

166⁰²
4.22
22.7
edge

165⁰⁷
1.97
35
Conc. Dr.

169²⁰
1.34
35
Top Conc. wall

167¹⁴
3.9
35
ground To N.

151 ¹	151 ⁵	156 ⁴	157 ³	164 ⁵	165 ³	165 ⁵⁸	166 ⁷⁴	167 ⁰⁷	169 ⁰³	169 ⁸⁸
19.9	19.5	14.6	13.8	6.4	5.7	5.46	4.30	3.87	2.01	1.15
40	25	20	14	5		4.8 edge H.C.	22.4 edge H.C. ↓ Conc.	25	35.2 Bnk.	41.1 = floor. Grav.

151¹
19.9
40.4
ground.

169⁰⁰
2.04
35.4
Conc. Dr.

170⁰⁵
0.99
35.4
Top wall

166⁵⁴
4.50
22.2 = H.C.
+ Conc.

166⁴⁹
4.55

23.6 = AC.
+ Conc.

171.04

check starting B.M. 13.16 130.25 130.26

T.P. 0.04 143.41 12.75 143.37

2+50 = end. = ± Wash

T.P. 10.55 156.12 6.02 145.57

2+00

1+75 - 37.5 Rt. = end wall

1+55 - Beg. Group of Trees + shrubs on Rt. of ±

1+53 - 37.5 Rt. = Cor. 8' Conc wall

T.P. 5.37 151.59 12.73 146.22

1+26 - 24 Lt = ± P. pole # P 2930

1+25

1+00

154 ²	151 ²	150 ⁶	147 ²	152 ²	155 ²	155 ⁶
1.8	4.2	5.5	9.0	3.8	1.0	+0.5
40	25	15	± Wash	15	25	40

156.12

145 ⁴	141 ⁴	137 ⁴	145 ²	148 ²	150 ²	151 ⁴
8.2	10.5	14.2	6.3	3.6	1.5	+0.2
40	25	17	± Wash	15	25	40

136 ²	134 ²	131 ²	135 ²	142 ²	144 ²	146 ⁸	147 ⁵	150 ⁶	151 ⁶
15.4	17.5	17.4	16.4	8.9	6.7	4.8	3.1	0.99	0.0
50	25	22	15	15	15	25	37.5	37.5	50
		± Wash				ground		Top	Wall

131 ²	132 ²	131 ⁴	138 ³	140 ⁹	142 ²	147 ⁴	150 ⁶	147 ²
20.4	18.9	17.2	13.3	11.0	8.7	4.7	0.99	2.9
45	25	15	15	15	25	37.5	37.5	40
± Wash					Wash	ground	Top	Wash

151.59

126 ⁸	134 ²	138 ⁴	141 ²	143 ⁴	145 ²	147 ⁸	149 ²	152 ²
32.2	24.8	20.6	17.8	15.6	13.7	11.2	9.7	6.8
89	65	40	25	15	15	15	25	40
± Wash								

143 ²	146 ²	148 ⁶	152 ²	150 ²	155 ⁶	157 ³
15.7	12.1	10.4	6.0	2.1	3.4	1.7
40	25	15	15	15	25	40

158.95

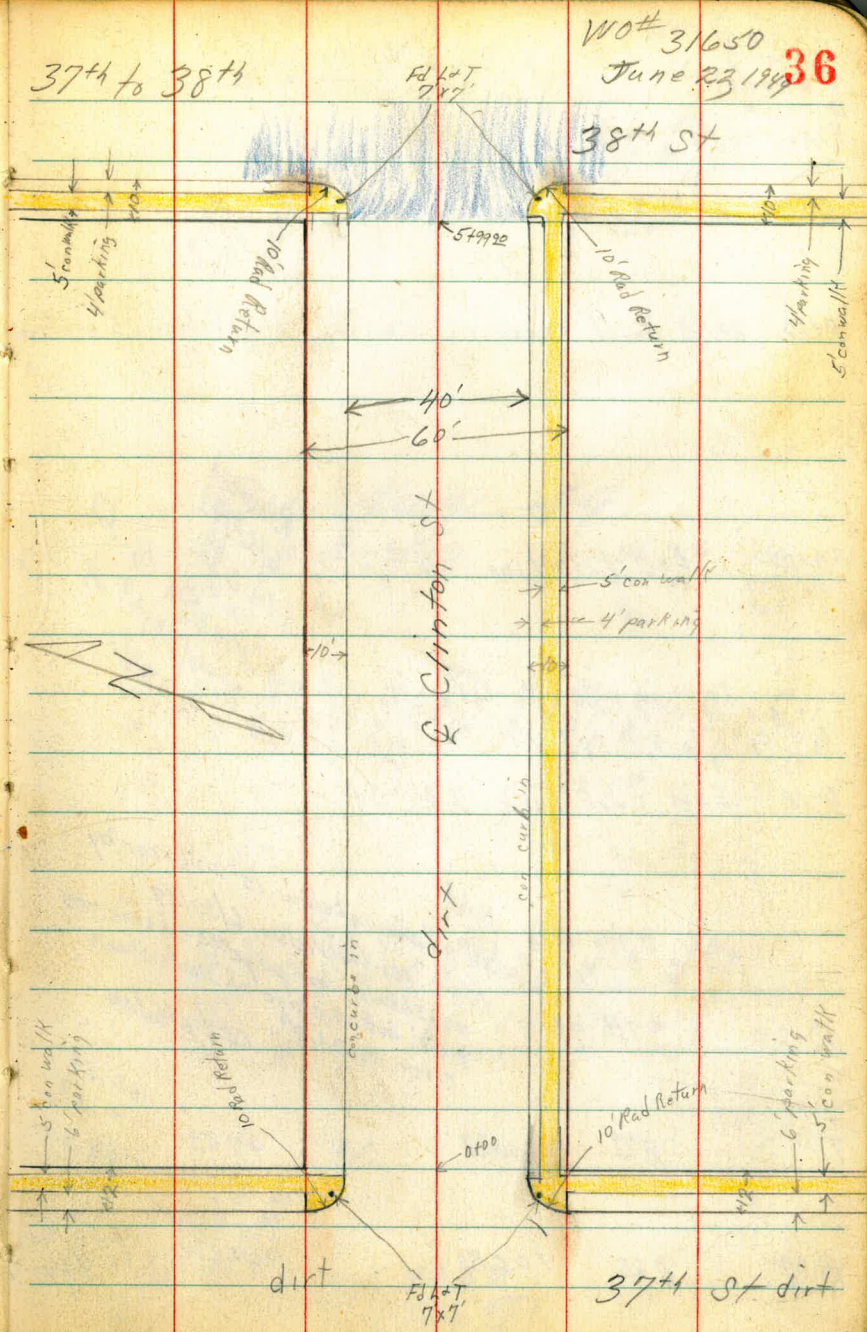
D. Smith
 W. Moore
 J. Clark
 F. Acuna

Cross Section Clinton St

INDEXED

W.K.
 JUN 23 1949

- concrete
- AC paving



D. Smith
V. Moore
D. Clark
F. Acuna

X Sec Clinton St
37th to 38th

0+45 20' RT & 8' con drive

0+10 20' AT & 11' con drive changes to (2) ribbon, 5' of curb

0+00 East Prop line 37th St

Reduced
6/24/49
cgl
corrected to .67
6/30/49
cgl

0-12 East curb line 37th St

Note!!
BM as shown below is in error by
0.69' per Gabrielson 6/30/49
as shown on page 44. Closure was
0.67' but average of shots shows
error as 0.69'. *red 6/30/49*

0-20 & 37th St

TP 279 10029 720 9750

100.29
- .67

99.62

BM 662 10520 9858

SE 100.44
38' 4" imperil

Lt=North

W/O # 31650
6-22-49 **37**
Rt=South

95.83
95.80
95.84
95.81
95.80
95.77

379 378 442
30 25 20

95.04
95.01
94.19
94.16

451 483
20 24

See page 44

X

38	408	43	42	50	52	55	496	483	46
30	20	20	10		10	20	20	24	30
	94.21	94.4				94.4	curb	walk	

96.19	95.12	95.58	95.22	95.11	94.92	94.72	94.02	93.82	93.79	93.53	93.72	93.69	93.47	93.44
303	32	404	44	42	42	56	52	506	62	65	65	65	65	65
50	30	20	30	20	20	20	30	30	30	50	50	50	50	50
	94.4	94.4	94.4	94.4	94.4	94.4	94.4	94.4	94.4	94.4	94.4	94.4	94.4	94.4

96.32	95.72	95.52	95.02	94.82	94.42	94.02	93.12	93.09
339	32	44	46	52	56	65	65	65
50	30	20	20	20	30	50	50	50
	94.4	94.4	94.4	94.4	94.4	94.4	94.4	94.4

Readjusted to
70 Aug 45

99.62
100.29

cont.

1733 Lt 2 11' curb opening and 2' wide ribbon drive

TP 623 105⁰⁰ 2⁰² 98²⁷

1700

105.00
- 1.67

104.33

04975 E 1/2 con walk on ht

0483 End broken out curb on ht for drive (dirt)

0475 Begin broken out curb on ht for drive (dirt)

04645 End broken out curb on Lt for drive (dirt)

04525 Begin broken out curb on Lt for drive (dirt)

0450

38

199.13
99.10
198.03
98.00
191.57
91.54
E RT

520 630 626
30 24 20

104.33
105⁰⁰

98.62 98.59	97.72 97.69	97.31 97.28	96.72 96.69	96.82 96.79	96.82 96.79	96.52 96.49	96.02 95.99	96.79 96.76	97.05 97.02	97.22 97.19
10	12	23	22	28	28	31	36	283	257	24
30	28	20	20	10	20	10	20	20	24	30
			94				94	Curb	Walk	

120 183 193 236 97.23
30 282 281 20
0.50p on walk curb

97.12 97.09	96.96 96.93	96.95 96.92	95.82 95.79	95.82 95.79	95.52 95.49	95.02 94.99	95.72 95.69	95.72 95.69	95.90 95.87	96.12 96.09
25	36	36	38	38	41	46	388	372	35	
30	20	20	10	30	10	20	20	24	30	
	Curb		94			94	Curb	Walk		

99.62
100.29

cont

2+25

2+125 Lt & 3' con walk

2+100

1+75 Lt & 20 con drive 2 con ribbons 2' wide

1+56 Rt & 9' dirt drive

1+50

99.93. 99.90	99.13. 99.09	98.45. 98.90	98.83. 98.80	98.93. 98.90	98.73. 98.70	98.32. 98.30	98.27. 98.24	98.30. 98.27	99.93. 99.90
42	52	52	55	54	56	60	50	50	44
30	20	20	10	10	10	20	20	24	30
	curb	cut				cut	curb		

99.13. 99.10	99.04. 99.01	99.01. 98.98
520	522	532
30	24	20
		curb

X

See page 44

18	539	63	58	51	52	63	55	530	50
30	20	20	10	10	10	20	20	24	30
	curb	cut				cut	curb		

99.33. 99.30	98.58. 98.55	98.15. 98.12	98.13. 98.10	98.23. 98.20	97.93. 97.90	97.63. 97.60	98.49. 98.46	98.58. 98.55
50	575	618	62	61	64	625	524	500
30	24	20	10	10	10	20	20	24
						cut	curb	

97.43. 97.40	98.15. 98.12
-----------------	-----------------

99.93. 99.90	98.83. 98.80	98.21. 98.18	97.53. 97.50	97.23. 97.20	97.23. 97.20	620	618	97.93. 97.90	97.87. 97.84	97.95. 97.92	98.33. 98.30
42	55	612	68	66	66	600	618	643	658	60	
30	21	20	20	10	6	10	10	20	20	24	30
		curb	cut					curb			

104.33
105.00

cont

3113 Lt & 3' con walk

$\frac{100.16}{100.13}$	$\frac{99.69}{99.66}$	$\frac{99.61}{99.58}$	$\frac{99.45}{99.42}$	R	PT
47	44	42	48		
29	29	24	20		

3100

$\frac{100.13}{100.10}$	$\frac{99.63}{99.60}$	$\frac{99.42}{99.39}$	$\frac{99.23}{98.90}$	$\frac{99.23}{99.20}$	$\frac{99.23}{99.20}$	$\frac{99.23}{98.70}$	$\frac{99.39}{99.36}$	$\frac{99.57}{99.54}$	$\frac{99.73}{99.70}$
47	42	42	54	51	42	51	51	42	46
30	28	20	20	10	10	20	20	24	30

2794 Lt & 9' drive dirt

$\frac{100.94}{100.91}$	$\frac{99.43}{99.40}$	$\frac{98.71}{98.68}$
339	42	50
288	288	20

2796 28' Lt End con brick & wall

$\frac{99.55}{99.52}$	$\frac{99.27}{99.26}$	$\frac{98.83}{98.80}$	$\frac{99.23}{99.20}$	$\frac{99.33}{99.30}$	$\frac{99.13}{99.10}$	$\frac{98.73}{98.70}$	$\frac{99.31}{99.28}$	$\frac{99.42}{99.39}$	$\frac{100.13}{100.10}$
39	24	20	20	50	52	56	50	42	42
25	24	20	20	10	10	20	24	30	

2775 Lt & 3' con walk

$\frac{101.08}{101.05}$	$\frac{99.55}{99.52}$	$\frac{99.27}{99.26}$	$\frac{98.83}{98.80}$	$\frac{99.23}{99.20}$	$\frac{99.33}{99.30}$	$\frac{99.13}{99.10}$	$\frac{98.73}{98.70}$	$\frac{99.31}{99.28}$	$\frac{99.42}{99.39}$	$\frac{100.13}{100.10}$
485	498	504	55	51	50	52	56	50	42	42
39	24	20	20	20	10	10	20	24	30	

2761 28' Lt Begin con brick & wall

$\frac{101.08}{101.05}$	$\frac{99.55}{99.52}$	$\frac{99.27}{99.26}$	$\frac{98.83}{98.80}$	$\frac{99.23}{99.20}$	$\frac{99.33}{99.30}$	$\frac{99.13}{99.10}$	$\frac{98.73}{98.70}$	$\frac{99.31}{99.28}$	$\frac{99.42}{99.39}$	$\frac{100.13}{100.10}$
485	498	504	55	51	50	52	56	50	42	42
39	24	20	20	20	10	10	20	24	30	

2757 Rt & 10' dirt drive

$\frac{99.33}{99.30}$	$\frac{99.24}{99.21}$	$\frac{98.53}{98.50}$	$\frac{99.03}{99.00}$	$\frac{99.13}{99.10}$	$\frac{98.83}{98.80}$	$\frac{98.53}{98.50}$	$\frac{99.23}{99.20}$	$\frac{98.38}{98.35}$	$\frac{99.42}{99.39}$	$\frac{100.13}{100.10}$
50	509	58	53	52	54	58	50	52	46	46
30	20	20	10	10	10	20	20	24	30	

2750

$\frac{99.33}{99.30}$	$\frac{99.24}{99.21}$	$\frac{98.53}{98.50}$	$\frac{99.03}{99.00}$	$\frac{99.13}{99.10}$	$\frac{98.83}{98.80}$	$\frac{98.53}{98.50}$	$\frac{99.23}{99.20}$	$\frac{98.38}{98.35}$	$\frac{99.42}{99.39}$	$\frac{100.13}{100.10}$
50	509	58	53	52	54	58	50	52	46	46
30	20	20	10	10	10	20	20	24	30	

2743E Lt & 3' con walk

$\frac{99.39}{99.36}$	$\frac{99.27}{99.24}$	$\frac{99.23}{99.19}$	$\frac{104.33}{105.00}$	$\frac{98.38}{98.35}$	$\frac{99.42}{99.39}$	$\frac{100.13}{100.10}$
494	506	51		52	46	46
30	24	20		24	30	

cont

4755 RT R 9' con drive

4750

4720E LT Easterly of 2 drives (2 ribbons) curb in all the way

4704 LT Westerly of 2 drives (2 ribbons) curb in all the way

4700

3754 LT R 3' con walk

3750

LT

R

99.18
99.21
100.03
100.06

41

100.13
100.10
99.83
99.80
99.63
99.60
99.83
99.80
99.73
99.70
99.13
99.10
99.81
99.78
100.03
100.05
100.03
100.00

42 440 42 45 45 46 52 452 425 43
30 20 20 10 10 20 20 24 30
curb 94t curb

100.31
100.28
100.04
100.01
99.89
99.86
42 43 44
30 24 20

100.25
100.22
99.97
99.94
99.82
99.79
408 436 451
30 24 20
curb

X

See page 44

35 43 452 42 44 48 50 55 460 453 45
30 27 20 20 10 10 20 20 24 30
curb 94t curb

100.07
100.04
99.75
99.72
99.01
99.58
426 458 472
30 24 20
100.53
100.52
99.83
99.80
99.60
99.57
99.13
99.10
99.93
99.90
99.53
99.50
99.23
99.20
99.83
99.80
99.73
99.55
99.64
99.61
99.93
99.90

38 45 472 52 42 48 51 55 425 469 44
30 26 20 20 10 10 20 20 24 30
curb 94t curb

104.33
105.00

cont

5799⁹⁰ West prop 38th St Begin A.C. paving

TP 5th 105⁶⁷ 4⁴⁴ 100⁵⁶

5750

105.67
- .67
105.00

5738 Lt 2 14⁵ drive dirt (not long enough for (2) garages as used)

5705 Lt E 9⁵ drive unused dirt

5700

4761⁵ Lt E 3' con walk bad shape

42

Lt E Rt

See Page 44

X	46	468	5 ¹⁶	420	4 ²⁵	420	522	468	458	44
	30	20	20	10		10	20	20	24	30
		carb	94				94	carb		

105⁰⁰

100.53 100.150	100.15 100.12	99.63 99.60	99.90 99.83	105 ⁶⁷	100.03 100.10	99.83 99.90	99.83 99.70	100.07 100.04	100.13 100.10	100.43 100.40
38	418	42	44	44	44	42	42	42	42	39
30	20	20	10		10	20	20	24	30	
	carb	94				94	carb			

99.44
99.41

489
20

99.37
99.34

426
20

100.33
100.30

100.01
99.98

99.63
99.60

99.83
99.80

100.03
100.00

99.83
99.80

99.53
99.50

100.05
100.02

100.06
100.03

100.33
100.30

40	432	47	44	43	44	48	428	427	40
30	20	20	10		10	20	20	24	30
	carb	94				94	carb		

X See page 44

397	440	441
30	24	20
		carb

104.33
105⁰⁰

cont.

LT

£

RT

43

BM starting

708

9859

9858 ✓
SE Hyd 38th
Imperial

6+29³⁰ £ 38th st

6+09³⁰ West curb line 38th st

$\frac{99.23}{99.20}$	$\frac{98.66}{98.63}$	$\frac{100.26}{100.23}$	$\frac{99.55}{99.52}$	$\frac{99.90}{99.87}$	$\frac{100.83}{100.80}$	$\frac{99.23}{99.20}$	$\frac{99.69}{99.66}$	$\frac{100.21}{100.18}$	$\frac{99.47}{99.44}$	$\frac{99.95}{99.92}$
558	467	437	402	404	413	431				
50	30	20		20	30	50				
577	634	474	545	510	467	507	531	402	553	505
50	50	30	30	20		20	30	30	50	50
94	94	94	94				94	94	94	curb
	BC							BC		

105 00
105 67

6/29 McGov
W Moore
Acuna

Re-check of Levels Pg 37 X-sect. Clinton St. (See Pg 44 for Bench Check)

0+00

East Line 37th

2+00

TP

3.97 103.14 5.22 99.67

4+00

4+61.5

5+99.90 West Line 38th - Edge Paving.

SE Fire Plug
485 + Imperial
38th

6.98 104.89 9.54

(98.58)

TP

0.79 107.95 12.25 106.66

97.91

SEBP
39th +

Imperial

0.53 118.91

✓ 118.38

$\begin{array}{r} 95.84 \\ 30 \\ \hline 99.34 \\ 99.31 \end{array}$	$\begin{array}{r} 95.53 \\ 20 \\ \hline 98.89 \\ 98.86 \end{array}$	$\begin{array}{r} 98.89 \\ 20 \\ \hline 98.89 \\ 98.86 \end{array}$	$\begin{array}{r} 98.89 \\ 10 \\ \hline 98.89 \\ 98.86 \end{array}$	$\begin{array}{r} 98.89 \\ 8 \\ \hline 98.89 \\ 98.86 \end{array}$	$\begin{array}{r} 98.89 \\ 10 \\ \hline 98.89 \\ 98.86 \end{array}$	$\begin{array}{r} 98.89 \\ 10 \\ \hline 98.89 \\ 98.86 \end{array}$	$\begin{array}{r} 98.89 \\ 20 \\ \hline 98.89 \\ 98.86 \end{array}$	$\begin{array}{r} 98.89 \\ 20 \\ \hline 98.89 \\ 98.86 \end{array}$	$\begin{array}{r} 98.89 \\ 20 \\ \hline 98.89 \\ 98.86 \end{array}$
$\begin{array}{r} 100.79 \\ 30 \\ \hline 99.79 \\ 99.76 \end{array}$	$\begin{array}{r} 100.29 \\ 30 \\ \hline 99.29 \\ 99.26 \end{array}$	$\begin{array}{r} 99.79 \\ 20 \\ \hline 99.79 \\ 99.76 \end{array}$	$\begin{array}{r} 99.79 \\ 20 \\ \hline 99.79 \\ 99.76 \end{array}$	$\begin{array}{r} 99.79 \\ 20 \\ \hline 99.79 \\ 99.76 \end{array}$	$\begin{array}{r} 99.79 \\ 20 \\ \hline 99.79 \\ 99.76 \end{array}$	$\begin{array}{r} 99.79 \\ 20 \\ \hline 99.79 \\ 99.76 \end{array}$	$\begin{array}{r} 99.79 \\ 20 \\ \hline 99.79 \\ 99.76 \end{array}$	$\begin{array}{r} 99.79 \\ 20 \\ \hline 99.79 \\ 99.76 \end{array}$	$\begin{array}{r} 99.79 \\ 20 \\ \hline 99.79 \\ 99.76 \end{array}$
$\begin{array}{r} 100.35 \\ 30 \\ \hline 99.35 \\ 99.32 \end{array}$	$\begin{array}{r} 99.91 \\ 20 \\ \hline 99.91 \\ 99.88 \end{array}$	$\begin{array}{r} 99.91 \\ 20 \\ \hline 99.91 \\ 99.88 \end{array}$	$\begin{array}{r} 99.91 \\ 20 \\ \hline 99.91 \\ 99.88 \end{array}$	$\begin{array}{r} 99.91 \\ 20 \\ \hline 99.91 \\ 99.88 \end{array}$	$\begin{array}{r} 99.91 \\ 20 \\ \hline 99.91 \\ 99.88 \end{array}$	$\begin{array}{r} 99.91 \\ 20 \\ \hline 99.91 \\ 99.88 \end{array}$	$\begin{array}{r} 99.91 \\ 20 \\ \hline 99.91 \\ 99.88 \end{array}$	$\begin{array}{r} 99.91 \\ 20 \\ \hline 99.91 \\ 99.88 \end{array}$	$\begin{array}{r} 99.91 \\ 20 \\ \hline 99.91 \\ 99.88 \end{array}$
$\begin{array}{r} 100.39 \\ 30 \\ \hline 99.39 \\ 99.36 \end{array}$	$\begin{array}{r} 100.30 \\ 30 \\ \hline 99.30 \\ 99.27 \end{array}$	$\begin{array}{r} 99.81 \\ 20 \\ \hline 99.81 \\ 99.78 \end{array}$	$\begin{array}{r} 100.07 \\ 30 \\ \hline 99.07 \\ 99.04 \end{array}$	$\begin{array}{r} 100.24 \\ 30 \\ \hline 99.24 \\ 99.21 \end{array}$	$\begin{array}{r} 100.09 \\ 30 \\ \hline 99.09 \\ 99.06 \end{array}$	$\begin{array}{r} 99.35 \\ 20 \\ \hline 99.35 \\ 99.32 \end{array}$	$\begin{array}{r} 100.20 \\ 30 \\ \hline 99.20 \\ 99.17 \end{array}$	$\begin{array}{r} 100.10 \\ 30 \\ \hline 99.10 \\ 99.07 \end{array}$	$\begin{array}{r} 100.49 \\ 30 \\ \hline 99.49 \\ 99.46 \end{array}$

(104.89)

Recheck Levels
Page 37

(Note: 8/10/49 See Pg 46
for New recheck)

SE BP
South Look
& Imperial

6.67

(97.91)
97.95

TP, 8.93 109.59 7.48 95.66

TP 7.47 103.14
from Pg 44

97.59
11.24
6

8/10/49

Recheck of Benchmarks
on Imperial - from
39th to South lookMcCoy
Allen
RorerNote: Elevations and descriptions
of BMs are as used by Sisson

INDEXED

W.K.
AUG 12 1949SEBP
39th + Im-
perial
TP #1

2.550 121.560

(Sisson)
119.010

TP #2

1.840 114.570 8.830 112.730

Chisel \square BM
SE Curb Ret.
38th - Imp.

5.860 102.141 9.861

[New]
96.281Top Fire Hyd
SE 38th +
Imperial

3.58

(98.58)
98.56

TP #3

6.045 104.024 4.162 97.979

(SEBP Missing)
SE 7' L + Tack
37th + Imp.

4.695 104.637 4.082

99.942

SEBP
South look
+ Imp.

6.042

(Sisson)
98.56
98.575SE 7' L + Tack
37th + Imp

1.496 101.938 4.695

99.942

TP #4

0.950 91.253 11.135 90.303

TP #5

10.085 91.023 10.315 80.938

TP #6

1.920 87.343 5.600 85.423

TP #7

12.871 98.725 1.489 85.554

(cont. across page)

NW 7' L + Tack
Harding
+ 38th

70.10

98.725

104.885 0.850

chisel \square SE
38th + Imp

8.490

See Recheck
Below

46

97.875

(96.281)

96.395

8/11/49

Recheck of Circuit from
38th to 37th - Harding - 38th
Imperial.Chisel \square
38th + Imp.
SE Curb Ret.

5.95 107.23

96.28
98.56

TP #3

5.77 103.74 3.67

4.26 97.97

Top Fire Hyd
38th + Imp.

3.77

SE 7' L + Tack
37th + Imp.

1.27 101.20 3.81

99.93

TP #4

0.32 90.61 10.91 90.29

TP #5

10.08 91.01 9.68 80.93

(TP #6)
side shot

5.60 85.41

TP

11.20 100.09 2.12 88.89

NW 7' Tack
Harding
+ 38th

2.32

97.77

TP

7.03 106.18 0.54 99.55

Chisel \square
SE Curb Ret
38th + Imp.

10.31

96.27 +
checkNote: Could not find SW. 13' Mon. Harding
and 37th.

37th to Clinton
Cb. Checks at Intersections

37th So. Line Clinton

37th - So Curb Line Clinton

37th - No. Curb Line of Clinton

37th + No. Line Clinton

37th + Imperial - So. Line Imp.

SET Tack 11.50 101.44 99.94
37th + Imp
See 7546

East

West

47

94.44	95.20 -1.63 94.57	94.5	94
7.0	62.494.50		94.76 -1.63 94.13
18.0	18.0		6.6
Gut	Cb B.C.		18.0 18.0 Cb. Gut

94.74	95.30 -1.63 94.67		94.92 -1.63 94.29
6.7	61.794.60		7.2
Gut.	30.0 Cb E.C.		30.0 30.0 Cb. Gut

95.54	96.20 -1.63 95.57		95.54 -1.63 94.91
5.9	52.494.50		6.3
Gut.	30.0 Cb E.C.		18.0 18.0 Cb. Gut

95.84	96.22 -1.63 95.59	95.5	95
5.6	52.495.02		95.80 -1.63 95.17
Gut.	Cb B.C.		5.6
18.0	18.0		18.0 18.0 Cb. Gut

98.99	99.63 -1.63 99.00		99
2.45	1.899.93		99.22 -1.63 99.27
18.0	18.0		2.17
Gut.	Cb. E.C.		18.0 18.0 Cb. Gut

(101.44)

Curb Checks on 37th
at Harding

So. Prop. Line Harding

So. Ch. Line Harding

No. Curb Line Harding

No. Line Harding

TP#5
P9.96

4.71

85.65

80.94

East

±

West

48

77.35
80.31
~~79.08~~
6.3
18.0
Gut

5.34
18.0
Cb. B.C.

80.05
80.32
5.6
30
Gut

5.33
30
Cb. E.C.

80.65
81.24
5.0
30
Gut

4.41
30
Cb. E.C.

80.95
4.7
18.0
Gut.

81.24
1.63
80.66
7
A. 59
B.C.C.

77.74
80.23
~~79.11~~
5.71
18.0

78.75
6.9
18.0

79.93
79.25
5.72
18.0
Cb

6.4
18.0
Gut.

80.99
80.15
5.76
18
Cb

5.5
18
Gut.

80.88
1.63
80.25
80.18
80.55
4.7
18.0
Cb.

5.1
18.0
Gut.

(85.65)

Ch. Checks on 38th
at Harding

No. Prop. Line

No. Ch. Line

No. Alley Ch. B.C. (3' Rad.)

South Curb Line

So. Alley Ch. B.C. (3' Rad.)

So. Line Harding

(See Pg 46)
NWT & Judo
Harding +
38th

7.01 10478

197.77
Pg. 46

West £ East

97.32

97.79

98.82

98.45

7.46
20
Gut.

6.99
20
Cb. B.C.

5.76
20
Cb.

6.33
20
Gut.

97.00

97.69

98.75

98.30

7.78
30
Gut.

7.09
30
Cb. EC

6.03
20
Cb.

6.48
20
Gut.

96.91

97.72

98.76

98.33

7.87

7.06
30
Cb. EC

6.02
20
Cb. B.C.

6.45
20
Gut.

97.35

97.77

98.72

98.33

7.43
20
Gut.

7.01
20
Cb. B.C.

6.06
20
Cb. B.C.

6.45
20
Gut.

98.78

98.38

6.00
20
Cb.

6.40
20
Gut.

(104.78)

8/10/49

McCoy
Allen
RorerCheck Cbs on 38th
at Superba + Imperial

West

E

East

50

So. Line 38th Imperial?

96.01

96.42

96.29

95.84

8.77 8.36
Gut Cb BC8.99 8.94
20 20
Cb BC Gut

100.21

100.92

100.22 100.2

101.58

100.88

100.69

4.57 3.86
20 20
Gut Cb BC3.20 4.09
20 20
Cb Gut

So Line Clinton

100.32

100.85

100.22

101.87

101.17

101.26

4.46 3.9
20 20
Gut Cb BC2.91 3.52
20 20
Cb Gut

No. Line Superba

99.30

99.73

99.03

100.67

99.97

100.03

5.48 5.0
20 20
Gut Cb4.11 4.71
20 20
Cb Gut

So. Line Superba St

98.88

99.69

100.55

99.76

5.90 5.09
20 20
Gut Cb4.23 5.02
20 20
Cb GutNW 7 1/4 Sec.
Harding
+ 38th

7.01

104.78

Pg 76

97.77

104.78

10-31-49

Moore & sec of Cam. del Oro
Begg
Sherman from w.6. of La Jolla Shores
Suson
to ELY TERMINATION

INDEXED

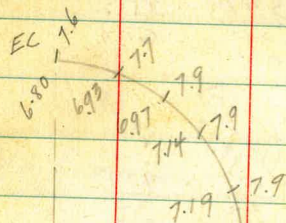
W.K.
JAN 4 1950

W.O. 25020

BM Camino Del Cerrada

La Jolla Shores Drive US CG 42.94
Disc on Curb S.W. cor

49
190
20
2



R=35

W.W.
5 PANTS

CAMINO del Oro

SW Ret.
5 PANTS

Drive

Baseline CONT'd
& ST. P. 54

30

30



2 3/4" Pipe
R.E. 27

90°

0+00 = F.G.
1+50

16" CI WATER

La Jolla Shores Drive

107

0+70 set disk

18' Con. Pav.

See Survey
Wider

CAMINO del Oro

90°

0+20

8" curb

20

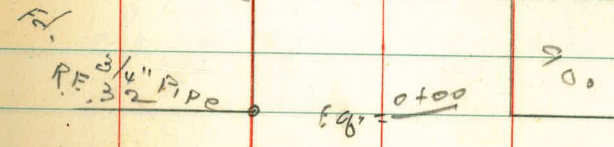
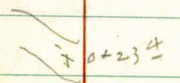
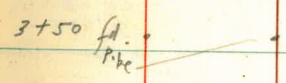
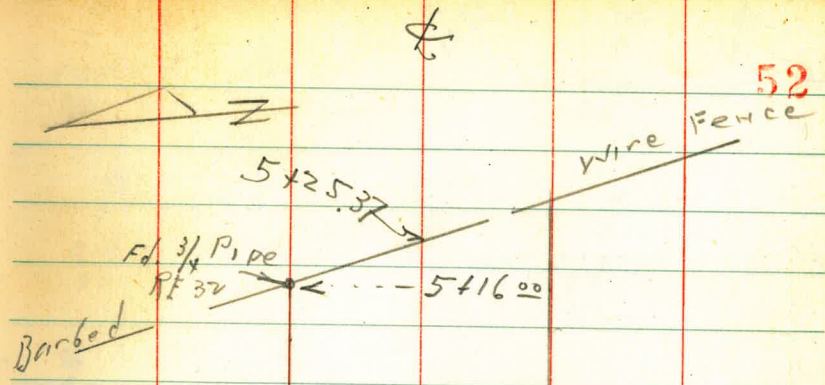
0+00
Ed. Mon.

9.87

66.R. 35

5

0.05



La Jolla Shores Dr.

+70 $\frac{1}{2}$ Par

+61 edge of conc Par West

0 +194 curb line

2751
658
cb
109.5

0 +00 Prop W Line La Jolla Drive

checked by
J.M.F.
2-11-50

-1650

4.82	34.09	5.40	29.27
0.85	33.82	11.63	33.82
BM	2.51	45.45	42.94

^{29 05} 5.04 80	^{29 07} 5.00 30	^{29 27} 4.82	^{29 40} 4.69 30	^{29 57} 4.52
--------------------------------	--------------------------------	--------------------------	--------------------------------	--------------------------

53

^{28 95} 5.14 80	^{28 29} 5.10 30	^{29 19} 4.90	^{29 32} 4.77 30	^{29 43} 4.66 80
--------------------------------	--------------------------------	--------------------------	--------------------------------	--------------------------------

^{27 01} 7.1 109.5 Ec See Sketch	^{27 4} 7.7 59.5 50 Ec See Sketch	^{27 10} 7.1 13	^{27 1} 7.0 40.3 Ec Ret	See Sketch	^{27 1} 7.0 90.3	^{27 01} 6.08 66 903
--	--	-------------------------------	--	------------	--------------------------------	---------------------------------------

^{26 23} 7.16 cb	^{26 23} 7.8 28.4	^{26 8} 7.3 13	^{26 9} 7.2	^{26 7} 7.4 9	^{27 40} 6.69 cb
--------------------------------	---------------------------------	------------------------------	------------------------	-----------------------------	--------------------------------

see sketch for Elev Return p 51

^{26 23} 7.43 24.2 9	²⁷ 8.4 24.2 9	^{26 2} 7.9 13	^{26 3} 7.8	^{26 1} 8.0 5.3 9	^{27 20} 6.89 cb
---------------------------------------	-----------------------------------	------------------------------	------------------------	------------------------------------	--------------------------------

34.09

Set BM of Paving Camino del Oro

Camino Del Cellada

521² W. Dbl. gar & drive

0+254 E. edge of 4' walk

1750" E. Line La Jolla Shores
0+00

1+32 22.5 Lt 5189 90 H Pole

0+99

0+96 corr. iron pipe 24"
See Survey for this Pipe

5.77 35.04 4.82 29.27

0+79 E. edge Pole

35.04
~~34.59~~

54

2.05	289	3.3	37	3.3	7.0
45.3	30	30		30	60
floor	29.8				

3.06	362	4.2	4.6	4.6	4.5
42	30	30		30	60
	walk				

4.7	49	5.0	5.0	5.0	5.0
60	30		30	30	60

5.4	5.3	5.4	5.3	5.3
60	30		30	60

12.4	8.8	5.9	5.8	6.6	6.6
107	80	30		30	30

BM disc

5.20
80

5.12
30

35.04
A 11
35.04
~~34.09~~

4.78
30

4.56
80

29.53

21+00

51	81	81
39	38	38
8.0	8.7	8.7
30		30

1+50

51	36	36
36	36	36
11.0	11.1	11.2
30		30

12.73 47.46 0.31 34.73
~~33.78~~

47.46

1+20 Power Pole P61613 21.5 Lt

1+00

51	51	51	51	51
30	30	30	30	30
1.5	1.3	1.3	1.1	1.0
60	30		30	60

0+68.2 29.8 Lt edge drive E

35.04

~~34.89~~

51	51
30	30
1.98	2.37
45.5	29.8
	<u>35.04</u>
	34.89

3+50

58.42

TP. 11 21 ~~59.42~~ 0.25 47.21

3+00

2+82 Pole 6161 21.8 Lt

2+74 E

2+60 W ~~2~~ Dbl. gor

2+50

47.46

31 48	51 47	47.6 47.6	47.6 47.6	47.6 47.6
10.1	10.9	10.8	10.8	10.8
60	30		30	60

58.42

~~59.42~~

44.6 29	44.6 29	44.6 29	44.6 29	44.6 29
60	30		30	60

44.21
2.65
60.1

44.21
2.65
68.8

42.21 5.17	51 6.0	41.21 6.3	31 6.2
51.2 walk	30	47.46	

566

	72.05 ^v		44.80
7.25	<u>73.05</u>	2.71	65.80

5+25³⁷ Section on Diagonal. on
Pueblo line

5+00

	67.51 ^v		58.33
9.18	<u>68.51</u>	0.09	<u>59.33</u>

4+50

4+00

58	42
<u>59.42</u>	

57

⁶⁵ 3.6 30	⁷⁰ 2.0	⁷¹ 0.8 30	⁷² 1.76
----------------------------	----------------------	----------------------------	-----------------------

72.05
<u>73.05</u>

2x2 hub
city Marked
control pt 36
Sta 14+00

⁶¹
6.4
North line

⁶⁵
2.1

⁶²
0.4
South Line
rail

⁶¹ 6.4 30	⁶² 5.4	⁶⁴ 3.3 30
----------------------------	----------------------	----------------------------

67	51 ^v
<u>68.51</u>	

⁵⁶ 1.8 30	⁵⁶ 1.5	⁵⁶ 1.5 30
----------------------------	----------------------	----------------------------

⁵¹ 6.6 30	⁵¹ 6.5	⁵² 6.4
	<u>59.42</u>	
	58.42	

			42.42
	50.02	7.60	42.92 42.94
0.40	51.52	10.16	49.62
	59.78		50.12
0.49	60.78	12.76	59.29
			60.89
	73.05		

Camino Del Cellada

Survey Lots 33 + 34 Block 2
Cunningham Addition

INDEXED

W.K.
MAR 8 1950

Denotes

• 2"x2" Hub Set

• Lead + Disc

B.D. Phelps Moved 2 Disc. 0.59 H
to Check Book

3141 Palm

R.F. # 1534

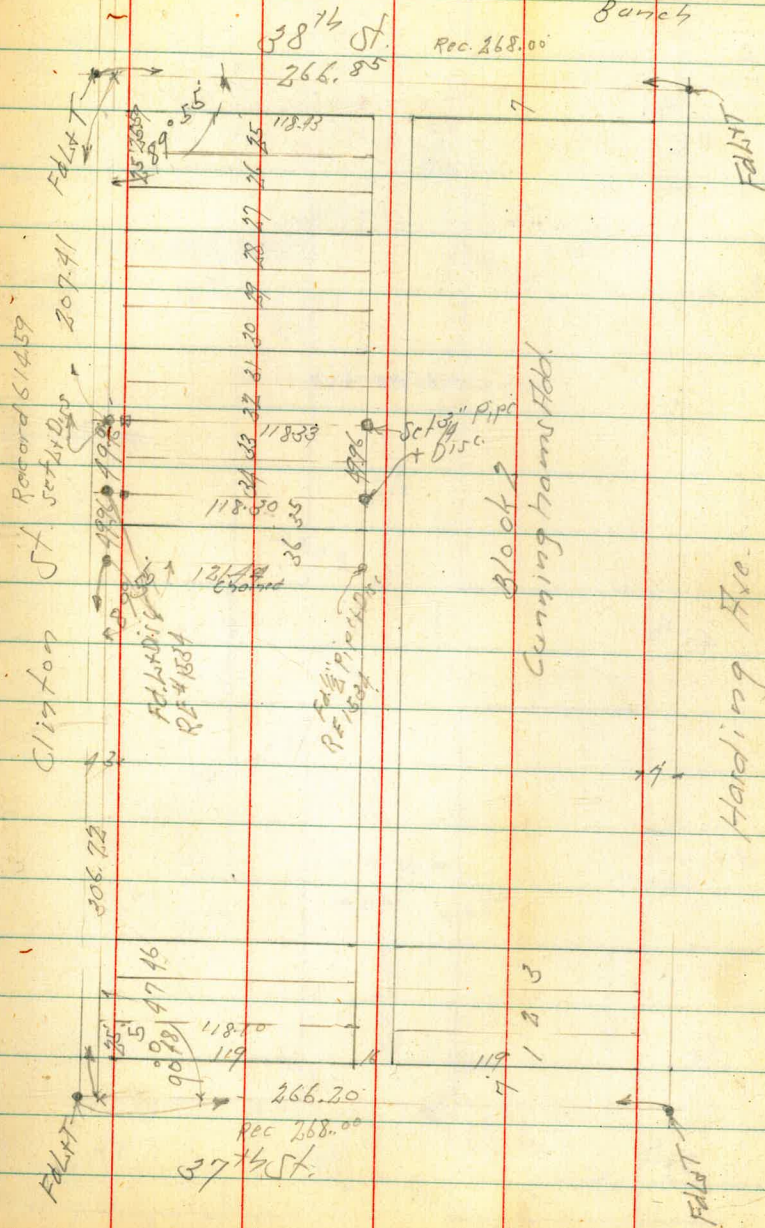
434 Union Bldg

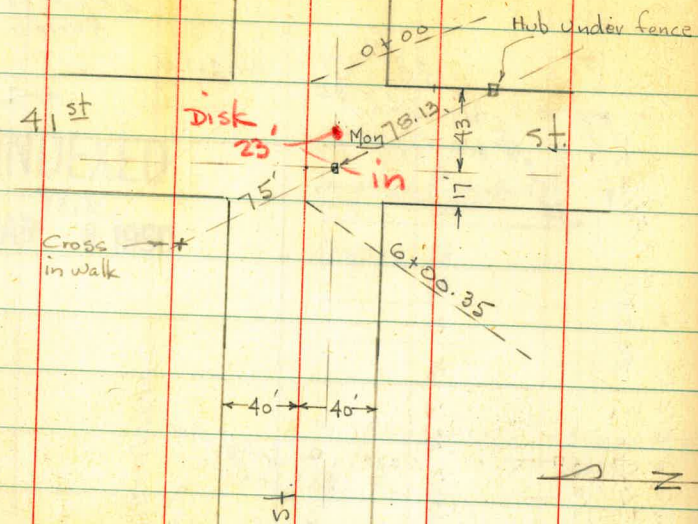
F9-2075

W.O. 22 009

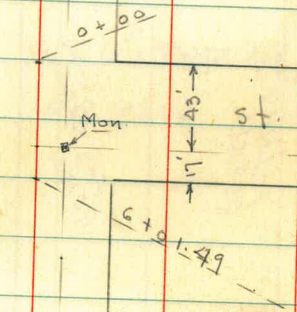
March 2-50
H. Sisson
D. Smith
E. Chavez
Bunch

59

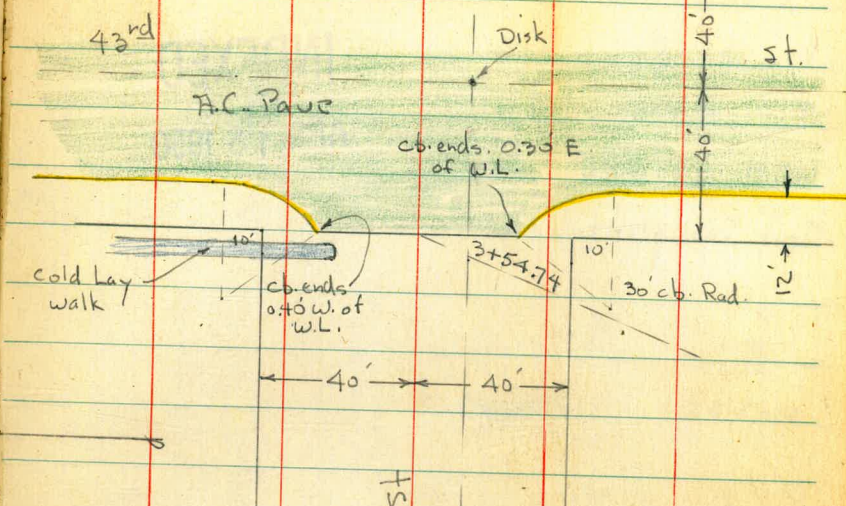
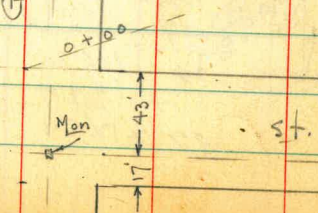




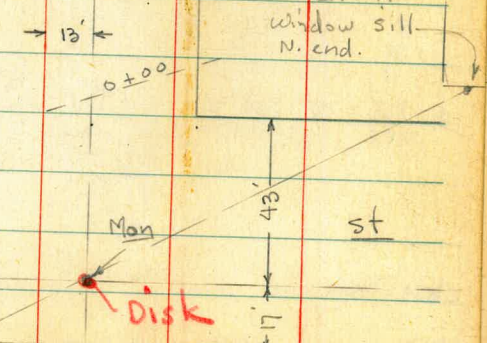
40th



39th



Gamma



Cross in Dr.

X-Sect Gamma - from 39th to 42nd

80' st. Rough Graded.

4404

W.O. 31665

INDEXED

W.K.
APR 18 1950

Soil Samples taken - W.L. 40th + E.L. 42nd

0+50

0+00 = E.L. 39th

0-12

0-30 = + 39th = Dirt Graded.

Check B.M.

B.M. 11.05 57.06

See P. 75 Before Reducing -

5.31 51.75 51.76 =

46.01 S.E. B.P.

Lt. = N

#

Rt. = S

61

54.5	54.3	53.7	53.4	52.9	53.0	52.9	52.7	53.0	52.8	53.0
2.6	2.8	3.4	3.7	4.2	4.1	4.2	4.4	4.1	4.3	4.1
50	40	20	10	7		15	25	30	40	50
55.8	54.9	55.9	52.8	51.9	51.8	51.5	51.3	51.9	51.2	50.6
1.3	2.2	3.2	4.3	5.2	5.3	5.1	5.8	5.2	5.9	6.5
140	90	40	20	8		20	24	28	40	90
56.2	53.6	52.5	52.1		51.7	51.3	51.1	50.1		49.7
1.9	3.5	4.6	5.0		5.4	5.8	6.0	7.0		7.4
140	90	40	20			20	40	90		140
54.7	53.6	52.2	51.8		51.5	51.2	51.0	50.1		49.4
2.4	3.5	4.9	5.3		5.5	5.9	6.1	7.0		7.7
140	90	40	20		Rm of Sewer	25	40	90		140
					M.H.					
					57.06					

Nail in S.E. Pole - Gamma + 39th - Book 1521 - P. 43

Delta + 39th

Gamma

5+50-

5+20

4+90 - 39.8' Lt. fence

T.P. 13.02 93.34 0.27 80.32

4+60

4+38 - 38.4' Lt. = 25' Conc. walk

4+30

4+25 - 40.1' Lt. = end wall + 39.9' Lt. = Beg. Pickett fence

4+00

	Lt.						Rt.		
	12.7	15.2	16.4	19.1	24.5	24.7	24.8	28.7	31.0
	20.6	18.1	16.9	14.2	8.8	8.6	8.5	4.6	2.3
	60	40	30	12		15	25	30	40
									60

	12.9	15.0	16.2	18.8	23.1	23.2	23.5	27.0	28.0
	20.4	18.3	17.1	14.5	10.2	9.9	9.5	5.8	5.3
	60	40	30	13		15	25	30	40
									60

	73.3	16.3	18.8	18.8	21.7	21.3	21.8	21.8	25.0
	28.0	17.3	14.5	14.5	11.7	12.0	11.6	11.6	8.3
	60	40	28	20	9		15	26	30
									40
									60

93.34

	12.7	15.1	17.3	20.0	20.9	19.0	18.8	20.59	20.2
	7.9	5.5	3.3	0.6	1.7	1.6	1.8	0.0	0.4
	60	40	24	11		15	26	30	40
									60

	12.44	11.94	13.54
	8.15	8.65	7.05
	floor	56.4	38.4
		walk at	walk
		House	

	11.2	12.9	13.8	15.9	16.2	15.5	15.3	15.0	16.9
	9.4	7.7	6.8	4.7	4.4	5.1	5.3	5.6	3.7
	60	40	18	15	8		15	25	30
									40
									55

	68.7	11.42	12.4	10.8	11.6	11.7	11.6	11.6	13.2
	11.9	9.17	10.6	10.1	9.0	8.9	9.0	9.0	7.4
	60	40.1	40	20	8		12	24	30
		Top wall							40
									50

64.9

90.2

84.4

80.0

80.0

16.1

12.4

Gamma

3+50

3+30 = ± Sewer M.H.

85.05

8.55

on Rim

3+00 - 40.1' Lt. = Ely. of 3' Conc. walk

2+83 - 40.1' Lt. = ± 3.5' Conc. walk

2+56 - 40' Lt. = ± 8' Conc. Dr.

2+50

2+00

1+76 - 40.6 Rt. = end fence

1+50

Dr. and curves to E.

1+41 - 29.5' Rt. = Nly. of 2' Conc. walk - starts at

1+37 - 21' Rt. = ± 8' Conc. Dr.

77.6
16.0
50
Lt. 79.8
13.8
40
81.0
12.6
30
83.7
9.9
13
84.1
9.5
84.2
9.4
13
87.6
6.0
2
Rt. 89.0
4.6
40
89.4
4.2
50
86

80.79
81.45
81.2
82.6
85.7
86.3
86.5
89.5
91.1
91.6
12.91
12.15
12.4
11.0
7.9
7.3
7.1
4.1
9.1
91.6
50
40.1
40
25
10
7.3
13
24
40
2.0
50

84.67
81.69
82.96
8.93
56.7
11.19
53.7
10.64
40.1
11.44
6.0
9.46
40.14
84.14
House
Dr.
Dr.

82.4
84.2
84.8
88.1
88.3
88.5
91.4
92.0
93.1
11.2
9.4
8.8
5.5
5.3
5.1
2.2
1.6
0.5
60
40
30
10
50
12
30
40
50

82.3
84.3
84.9
88.6
88.3
88.7
90.7
92.4
93.2
11.3
9.3
8.7
5.0
5.3
4.9
2.0
1.2
0.4
60
40
30
10
15
32
40
60

79.9
81.8
84.6
85.2
86.9
87.2
88.0
90.87
91.29
91.67
13.7
11.8
9.0
8.4
6.7
6.4
5.6
2.73
2.31
1.93
60
40
22
12
6
15
35
40
50
walk
walk
± walk
± walk

93.60
90.6
90.6
91.28
5.00
3.00
2.32
21
40
50
Dr.
Dr.
Dr.

Gamma 41st

0+52 - 38.8' Rt. - end fence

0+50 - 40.2' Lt. - Beg. wire fence

60' E. = E.L. 41st = 0+00 ahead

58.5' E. - 38.9' Rt. - Beg. Picket fence

30' E. = 41st = Sewer MH.

8' E. - 42.7' Rt. = P. pole # J.P. 1600

4.21 79.85

75.64 = Nail in pole

will cont. with our Datum.

S.E. B.P. - 39th + Deta 6.71 46.01 46.01

T.P. 2.60 52.72 12.95 50.12

T.P. 0.52 63.07 11.28 62.55

T.P. 0.31 73.83 12.73 73.52

TP 3.63 86.25 2.07 82.62

Turn back to check starting B.M.

check B.M. - 13' Mon. 10.61 74.08 74.02

check - Nail in S.W. pole 9.05 75.64 75.57

6+00.35 = w.L. 41st

Lt.

#

Rt.

68

73.7	73.9	74.1	75.0	75.0	75.2	75.9	76.5	77.2
6.2	6.0	5.8	4.9	4.9	4.7	4.0	3.4	2.7
50	40	30	15	10	10	30	40	50

60.3	61.3	73.1	73.9	74.1	74.9	75.3	75.9	77.9
10.6	8.6	6.8	6.0	5.8	5.0	4.6	4.6	2.0
140	90	40	20	20	20	40	50	100

60.4	70.1	71.8	72.9	74.1	74.95	75.2	75.5	76.3
10.5	9.8	9.1	7.0	5.44	5.0	4.7	4.4	1.6
140	90	40	20	on Rim	20	40	50	100

79.85

- B. 1542 - P. 63

66.5	70.2	72.0	73.0	73.8	74.5	74.7	74.8	75.1	75.6	76.7
16.2	14.5	11.9	11.7	10.9	10.2	10.0	9.9	9.6	9.1	6.0
140	90	40	30	14	84.69	13	30	40	50	100

3+24- 36.6 Lt. - ± 3' Conc. walk + Beg. Rock + Conc. cb.
 3+18- 40' Rt. = ± 3.5' Conc. walk
 3+10.6 = ± Sewer M.H. 6.35 on Rim
 3+00

2+93- 39.8 Rt. = ± 8' Conc. Dr.

2+50

2+18- 39.0 Rt. = ± 3.5' Conc. walk

2+00

T.P. 7.44 83.31 3.98 75.87

1+50 = Beg. oil Pavc strip - rough

1+44- 37.7' Lt. = ± 8' Conc. Dr.

1+00- 40.2 Lt. = end fence

	15.48 Lt.	15.31	15.34 ±		Rt.	
	7.83	8.00	7.97		77.12	
	50	50	36.6		6.19	6.07
			walk to		40	50
			walk		walk	walk
	74.6	14.5	15.5		16.7	16.1
	8.7	8.8	7.8		16.3	16.1
	50	40	24		6.6	6.6
			15		6.8	6.6
			edge		9	25
					edge	40
					16.91	16.1
					6.40	6.28
					39.8	50
					Dr.	Dr.
	12.9	12.9	13.4		15.8	15.9
	10.4	10.4	9.9		7.5	7.4
	50	40	23		7.0	7.1
			15		7.2	40
			edge		8	6.8
					edge	50
					76.66	77.14
					6.45	6.17
					39	51.8
					walk	± porch
	12.6	13.0	13.8		15.8	16.2
	10.7	10.3	9.5		7.5	7.1
	50	40	25		7.3	40
			15		8	6.7
			edge		edge	50
					83.31	
	13.6	14.1	14.4		15.5	15.6
	6.3	5.8	5.5		4.4	4.1
	50	40	30		4.1	4.3
			14		8	4.1
			edge		edge	25
			oil		15.8	17.1
					15.6	17.5
					4.1	2.8
					2.8	2.4
					40	50
	14.24	14.93	14.76		5.09	
	5.11	4.92	5.09		37.7 = Dr.	
	50	40	30			
			Dr.			
	14.7	14.4	14.6		15.4	15.3
	5.2	5.5	5.3		4.5	4.6
	50	40	30		15	4.1
					15.8	16.1
					15	16.1
					3.8	3.2
					30	40
					11.9	11.9
					2.5	2.5
					50	50
					79.85	

Gamma

5+50 - on Prop. Dr. on Lt. - Headers in 398
50
Prop. Top

5+00 - 40.2' Rt. = end wall

4+62 - 40.1' Rt. = Beg. 6" Conc. wall

4+50

4+26 - 29.8' Lt. = ± 3' Conc. walk

4+00

3+95 - 40.5' Rt. = ± 8' Conc. Dr.

3+82 - 39' Lt. = end wall

3+51 - 39.9' Lt. = Beg. 4" Conc. wall = base for fence

3+50

3+43 - 36.6' Lt. = end cb. + 40.9' Lt. = ± 2.5' Conc. walk

79.0	79.1	79.3	79.9	80.6	80.3	80.4	80.1	Rt.	81.7	81.2	82.3
4.3	4.18	4.5	4.7	5.0	4.9	5.2	8.6	10.1	11.0	11.0	10
50	40	40	25	14	10	25	40	50			
		ground		edge		edge					

77.7	77.5	77.2	77.6	78.1	78.2	78.0	75.7	74.7	76.07	74.4
5.6	5.8	6.1	5.7	5.2	5.1	5.3	7.6	8.6	7.24	8.9
50	40	33	21	14	10	25	40	40.2	50	
				edge		edge			Top wall	

							76.2	76.65		
							7.1	6.66		
							40.1	40.1		
								Top		

70.2	70.5	71.6	71.3	71.8	70.0	71.9	71.2	71.9	76.7
5.1	4.9	5.7	6.0	5.5	5.3	5.4	6.1	6.4	6.6
50	40	35	25	14	10	21	40	50	
				edge		edge			

78.11	77.91	77.85	77.29	77.29					
5.20	5.40	5.46	6.02	29.8					
50	40	37.5	29.8	Brk					
		walk	walk						

77.2	76.8	76.8	77.2	77.6	77.4	77.7	77.4	76.4
6.1	6.5	6.5	6.1	5.7	5.9	5.6	5.9	6.0
50	40	25	16	9	20	40	50	
			edge		edge			

						5.86	5.85
						40.5	50
						Dr.	Dr.

75.1	75.4	76.6	76.1				
7.60	7.9	6.70	7.2				
39.9	39.9	39	39				
		Top	ground				

75.4	75.3	76.0	76.7	77.2	76.9	76.3	77.1	77.3
7.9	8.0	7.3	6.6	6.1	6.4	7.0	6.2	6.0
50	40	25	17	10	25	40	50	
			edge		edge			

75.58	75.47						
7.73	7.84						
50	40.9						
walk	walk						

Gamma

0+50

0+41 - 40.3 Rt. = ± 8' Conc. Dr

0+09 - 41' Lt. = ± 8' Conc. Dr.

0+05 - 20.3 Rt. = ± F.H.

60' E. = E.L. of 42nd + 0 too ahead.

40' E.

30' E. = ± on Sewer M.H.

6+00.55 = w.L. 42nd

5+75

Top Hyd.
T.P.

5.21 86.34 2.18 81.13

85.4	84.7	83.3	81.7	80.8	80.6	80.5	77.4	76.8	71
0.9	1.6	3.0	7.6	7.5	7.7	7.8	8.9	9.5	
50	40	26	13	16	25	40	50	50	
			edge		edge				
84.73	83.42					17.30	16.35		
1.6	2.92					9.04	9.99		
50	41					40.3	56		
Dr.	Dr.					Dr.	Dr.		
85.1	84.2	82.8	80.6	80.7	80.6	77.1	77.2	72.0	65.2
1.2	0.2	2.1	3.5	7.7	7.6	7.7	8.6	9.1	14.3
140	90	40	25	12	16	30	40	90	140
				edge		edge			
85.1	84.9	83.3	82.0	81.5	80.6	78.5	78.2	77.2	71.1
1.2	1.4	3.0	4.3	7.8	7.7	7.8	8.1	9.1	14.6
140	90	40	25	11		14	30	40	90
				edge		edge			
81.5	80.5	80.7	80.6	80.4	80.8	80.4	80.9	80.9	81.0
4.8	6.8	7.6	7.7	7.9	7.54	7.9	7.4	8.4	15.3
140	90	40	30	12		12	25	40	90
				edge	on Rim	edge			
82.1	81.4	80.4	80.8	80.4	80.4	80.2	80.2	80.9	80.7
4.2	4.9	5.9	7.5	7.9	7.9	8.1	8.1	9.4	15.6
140	90	40	20	10		10	25	40	90
				edge		edge			
80.6	80.0	80.9	80.3	80.3	80.2	75.8	74.4	73.4	
5.7	6.3	7.4	8.0	8.0	8.1	10.5	11.9	12.9	
50	40	25	14		10	25	40	50	
			edge		edge				
						86.34			
						83.31			

3+40

3+20

2+96 - 39.1 Rt. = ± 7' Dr. - 2-2' Conc. Strips

2+80

2+73 - 40' Rt. = ± 7.5' Conc. Dr.

2+59 - 39.7 Lt. = ± 7' Conc. Dr.

2+40

2+18 - 39.9 Lt. = end wall

2+00

T.P. 5.55 84.69 7.20 79.14

Lt.

±

Rt.

83.9	83.8	81.5	76.8	75.9	75.9	75.1	71.1	71.1	71.0
0.8	0.9	3.2	7.9	8.8	8.8	9.6	7.6	7.6	7.7
55	50	40	28	16	16	20	24	40	50
				edge		edge			

84.0	84.0	81.5	77.6	76.3	76.8	76.8	76.5	76.1	71.2	71.2	71.1
0.7	0.7	3.2	7.1	8.4	7.9	7.9	8.2	8.6	7.5	7.5	7.6
55	47	40	31	14	9	9	11	7	25	40	50
				edge				edge			

83.7	81.4	78.9	77.7	77.8	77.2	71.2	71.2	71.2	71.2	71.2	71.0	71.0
1.0	3.3	5.8	7.0	6.9	7.5	7.5	7.5	7.5	7.5	7.5	7.8	7.8
50	40	34	15	9	16	30	40	40	40	40	50	50
			edge		edge							

83.79	83.40	81.03	77.2	76.15	76.15	76.15	76.15	76.15	76.15	76.15	76.15	76.15
0.90	1.29	3.66	7.48	7.94	7.94	7.94	7.94	7.94	7.94	7.94	7.94	7.94
75	57	39.7	40	55	55	55	55	55	55	55	55	55
Floor	Dr.	Dr.	Dr.	Dr.	Dr.	Dr.	Dr.	Dr.	Dr.	Dr.	Dr.	Dr.
Crav.												

83.0	82.0	78.7	78.5	78.7	78.0	77.0	77.1	76.8	76.8
1.7	2.7	6.0	6.2	6.0	6.7	7.7	7.6	7.9	7.9
50	40	21	15	16	16	25	40	50	50
			edge		edge				

82.8	82.60	81.69	81.1	79.3	79.1	78.7	77.3	76.1	75.5
1.9	2.9	3.0	3.6	5.4	5.6	6.0	7.4	8.6	9.2
50	39.8	39.8	34	16	15	25	40	40	50
				edge	edge	edge			

86.34

check B.M. - Nail in Pole	5.27	75.63	75.64
---------------------------	------	-------	-------

4.53	80.90	6.81	76.37
------	-------	------	-------

I.P.	2.07	83.18	3.59	81.11
------	------	-------	------	-------

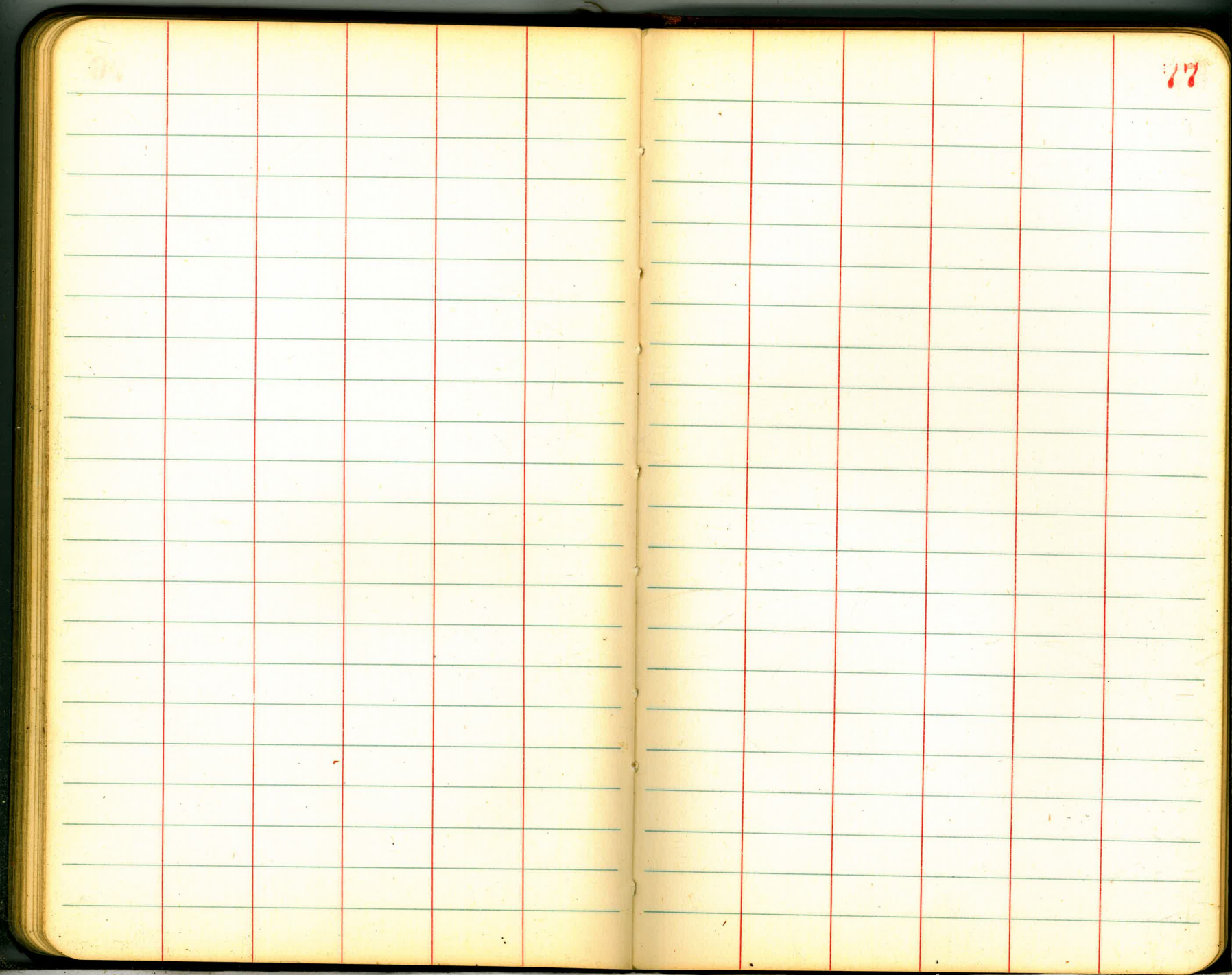
check B.M. - N.W.B.P.	6.79	77.90	77.95
-----------------------	------	-------	-------

43rd + Gamma

S.W. 41st + Gamma - P. 68

Set From 43rd Const.

84.69



77

3+07.55

5-98
374.75
10.13 25

199.7
186.29
28.5

29.31
28.97

61405
9819
7112.24

DISTANCES FROM CENTER OF ROADWAY FOR
CROSS-SECTIONING.

Roadway 16 feet wide. Side Slopes 1 on 1½
For Single Track Embankment.

H	0	.1	.2	.3	.4	.5	.6	.7	.8	.9	H
0	8.0	8.2	8.3	8.5	8.6	8.8	8.9	9.1	9.2	9.4	0
1	9.5	9.7	9.8	10.0	10.1	10.3	10.4	10.6	10.7	10.9	1
2	11.0	11.2	11.3	11.5	11.6	11.8	11.9	12.1	12.2	12.4	2
3	12.5	12.7	12.8	13.0	13.1	13.3	13.4	13.6	13.7	13.9	3
4	14.0	14.2	14.3	14.5	14.6	14.8	14.9	15.1	15.2	15.4	4
5	15.5	15.7	15.8	16.0	16.1	16.3	16.4	16.6	16.7	16.9	5
6	17.0	17.2	17.3	17.5	17.6	17.8	17.9	18.1	18.2	18.4	6
7	18.5	18.7	18.8	19.0	19.1	19.3	19.4	19.6	19.7	19.9	7
8	20.0	20.2	20.3	20.5	20.6	20.8	20.9	21.1	21.2	21.4	8
9	21.5	21.7	21.8	22.0	22.1	22.3	22.4	22.6	22.7	22.9	9
10	23.0	23.2	23.3	23.5	23.6	23.8	23.9	24.1	24.2	24.4	10
11	24.5	24.7	24.8	25.0	25.1	25.3	25.4	25.6	25.7	25.9	11
12	26.0	26.2	26.3	26.5	26.6	26.8	26.9	27.1	27.2	27.4	12
13	27.5	27.7	27.8	28.0	28.1	28.3	28.4	28.6	28.7	28.9	13
14	29.0	29.2	29.3	29.5	29.6	29.8	29.9	30.1	30.2	30.4	14
15	30.5	30.7	30.8	31.0	31.1	31.3	31.4	31.6	31.7	31.9	15
16	32.0	32.2	32.3	32.5	32.6	32.8	32.9	33.1	33.2	33.4	16
17	33.5	33.7	33.8	34.0	34.1	34.3	34.4	34.6	34.7	34.9	17
18	35.0	35.2	35.3	35.5	35.6	35.8	35.9	36.1	36.2	36.4	18
19	36.5	36.7	36.8	37.0	37.1	37.3	37.4	37.6	37.7	37.9	19
20	38.0	38.2	38.3	38.5	38.6	38.8	38.9	39.1	39.2	39.4	20
21	39.5	39.7	39.8	40.0	40.1	40.3	40.4	40.6	40.7	40.9	21
22	41.0	41.2	41.3	41.5	41.6	41.8	41.9	42.1	42.2	42.4	22
23	42.5	42.7	42.8	43.0	43.1	43.3	43.4	43.6	43.7	43.9	23
24	44.0	44.2	44.3	44.5	44.6	44.8	44.9	45.1	45.2	45.4	24
25	45.5	45.7	45.8	46.0	46.1	46.3	46.4	46.6	46.7	46.9	25
26	47.0	47.2	47.3	47.5	47.6	47.8	47.9	48.1	48.2	48.4	26
27	48.5	48.7	48.8	49.0	49.1	49.3	49.4	49.6	49.7	49.9	27
28	50.0	50.2	50.3	50.5	50.6	50.8	50.9	51.1	51.2	51.4	28
29	51.5	51.7	51.8	52.0	52.1	52.3	52.4	52.6	52.7	52.9	29
30	53.0	53.2	53.3	53.5	53.6	53.8	53.9	54.1	54.2	54.4	30
31	54.5	54.7	54.8	55.0	55.1	55.3	55.4	55.6	55.7	55.9	31
32	56.0	56.2	56.3	56.5	56.6	56.8	56.9	57.1	57.2	57.4	32
33	57.5	57.7	57.8	58.0	58.1	58.3	58.4	58.6	58.7	58.9	33
34	59.0	59.2	59.3	59.5	59.6	59.8	59.9	60.1	60.2	60.4	34
35	60.5	60.7	60.8	61.0	61.1	61.3	61.4	61.6	61.7	61.9	35
36	62.0	62.2	62.3	62.5	62.6	62.8	62.9	63.1	63.2	63.4	36
37	63.5	63.7	63.8	64.0	64.1	64.3	64.4	64.6	64.7	64.9	37
38	65.0	65.2	65.3	65.5	65.6	65.8	65.9	66.1	66.2	66.4	38
39	66.5	66.7	66.8	67.0	67.1	67.3	67.4	67.6	67.7	67.9	39
40	68.0	68.2	68.3	68.5	68.6	68.8	68.9	69.1	69.2	69.4	40

Example—If point is 22.6 ft. above grade, how far should it be from center line to be a slope stake point? Ans. from Table 41.9. For same slopes but other widths of roadbed correct above figures by one-half difference in width of roadbed; thus in example above for 20 ft. roadbed distance will be 41.9 + (20-16) ÷ 2 or 2 ft. added to 41.9 = 43.9. For slopes of 1 on 1 see inside of front cover.