

1870

DEETJEN
1870

ENGINEERS'
LEVEL BOOK

No. 410F

EUGENE DIETZGEN CO.

DRAWING MATERIALS, MATHEMATICAL and
SURVEYING INSTRUMENTS

Chicago New York San Francisco New Orleans Pittsburg Toronto

Distances from Center of Roadway for Cross-Sectioning

Roadway (feet) wide. Side Slopes 1 on 1.

For Single Track Embankment.

MICROTYPE

H	0	1	.2	.3	.4	.5	.6	.7	.8	.9	H
0	8.0	8.1	8.2	8.3	8.4	8.5	8.6	8.7	8.8	8.9	0
1	9.0	9.1	9.2	9.3	9.4	9.5	9.6	9.7	9.8	9.9	1
2	10.0	10.1	10.2	10.3	10.4	10.5	10.6	10.7	10.8	10.9	2
3	11.0	11.1	11.2	11.3	11.4	11.5	11.6	11.7	11.8	11.9	3
4	12.0	12.1	12.2	12.3	12.4	12.5	12.6	12.7	12.8	12.9	4
5	13.0	13.1	13.2	13.3	13.4	13.5	13.6	13.7	13.8	13.9	5
6	14.0	14.1	14.2	14.3	14.4	14.5	14.6	14.7	14.8	14.9	6
7	15.0	15.1	15.2	15.3	15.4	15.5	15.6	15.7	15.8	15.9	7
8	16.0	16.1	16.2	16.3	16.4	16.5	16.6	16.7	16.8	16.9	8
9	17.0	17.1	17.2	17.3	17.4	17.5	17.6	17.7	17.8	17.9	9
10	18.0	18.1	18.2	18.3	18.4	18.5	18.6	18.7	18.8	18.9	10
11	19.0	19.1	19.2	19.3	19.4	19.5	19.6	19.7	19.8	19.9	11
12	20.0	20.1	20.2	20.3	20.4	20.5	20.6	20.7	20.8	20.9	12
13	21.0	21.1	21.2	21.3	21.4	21.5	21.6	21.7	21.8	21.9	13
14	22.0	22.1	22.2	22.3	22.4	22.5	22.6	22.7	22.8	22.9	14
15	23.0	23.1	23.2	23.3	23.4	23.5	23.6	23.7	23.8	23.9	15
16	24.0	24.1	24.2	24.3	24.4	24.5	24.6	24.7	24.8	24.9	16
17	25.0	25.1	25.2	25.3	25.4	25.5	25.6	25.7	25.8	25.9	17
18	26.0	26.1	26.2	26.3	26.4	26.5	26.6	26.7	26.8	26.9	18
19	27.0	27.1	27.2	27.3	27.4	27.5	27.6	27.7	27.8	27.9	19
20	28.0	28.1	28.2	28.3	28.4	28.5	28.6	28.7	28.8	28.9	20
21	29.0	29.1	29.2	29.3	29.4	29.5	29.6	29.7	29.8	29.9	21
22	30.0	30.1	30.2	30.3	30.4	30.5	30.6	30.7	30.8	30.9	22
23	31.0	31.1	31.2	31.3	31.4	31.5	31.6	31.7	31.8	31.9	23
24	32.0	32.1	32.2	32.3	32.4	32.5	32.6	32.7	32.8	32.9	24
25	33.0	33.1	33.2	33.3	33.4	33.5	33.6	33.7	33.8	33.9	25
26	34.0	34.1	34.2	34.3	34.4	34.5	34.6	34.7	34.8	34.9	26
27	35.0	35.1	35.2	35.3	35.4	35.5	35.6	35.7	35.8	35.9	27
28	36.0	36.1	36.2	36.3	36.4	36.5	36.6	36.7	36.8	36.9	28
29	37.0	37.1	37.2	37.3	37.4	37.5	37.6	37.7	37.8	37.9	29
30	38.0	38.1	38.2	38.3	38.4	38.5	38.6	38.7	38.8	38.9	30
31	39.0	39.1	39.2	39.3	39.4	39.5	39.6	39.7	39.8	39.9	31
32	40.0	40.1	40.2	40.3	40.4	40.5	40.6	40.7	40.8	40.9	32
33	41.0	41.1	41.2	41.3	41.4	41.5	41.6	41.7	41.8	41.9	33
34	42.0	42.1	42.2	42.3	42.4	42.5	42.6	42.7	42.8	42.9	34
35	43.0	43.1	43.2	43.3	43.4	43.5	43.6	43.7	43.8	43.9	35
36	44.0	44.1	44.2	44.3	44.4	44.5	44.6	44.7	44.8	44.9	36
37	45.0	45.1	45.2	45.3	45.4	45.5	45.6	45.7	45.8	45.9	37
38	46.0	46.1	46.2	46.3	46.4	46.5	46.6	46.7	46.8	46.9	38
39	47.0	47.1	47.2	47.3	47.4	47.5	47.6	47.7	47.8	47.9	39
40	48.0	48.1	48.2	48.3	48.4	48.5	48.6	48.7	48.8	48.9	40

Completely
INDEXED
W K
FEB 23 1949

This Field Book is manufactured of a High Grade 50% Rag Paper having a WATER RESISTING SURFACE, and is sewed with Bing Special Enamel Waterproof thread.

Made in U. S. A.

Example—If point is 22.6 ft. above grade, how far should it be from center line to be a slope stake point? Ans. from Table 30.6. For same slopes but other widths of roadbed, correct above figures by one-half difference in width of roadbed; thus in example above, for 20 ft. roadbed distance will be $30.6 + (20 - 16) \div 2$ or 2 ft. added to 30.6 = 32.6. For slopes of 1 on 1½ see inside of back cover.

Copyright, 1914, by Eugene Dietzgen Co.

1-42 Santa Barbara { ALSO F.B. 1872
" " 1854
60-64

Alley Blk 2 Sunset Grove } 55-69
" A Ocean View }

X Sect. Alley Blk 97. Mission Beach 70-79

INDEXED

W.K.

SEP 20 1948

McCoy
W. Modye

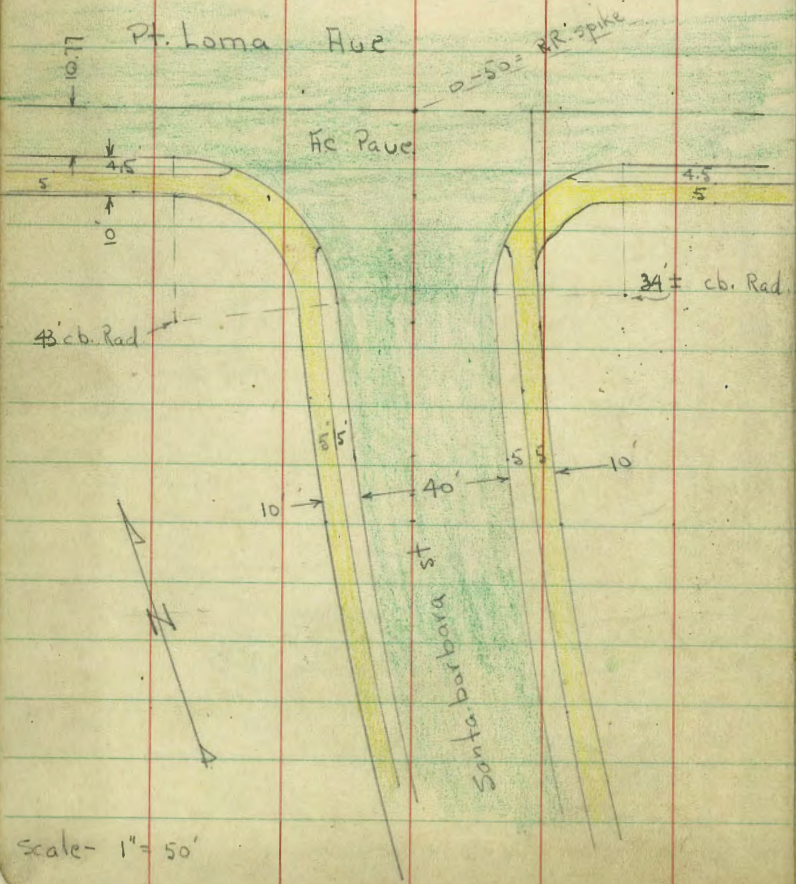
See P. 79 - for Add. Sections

Indexed

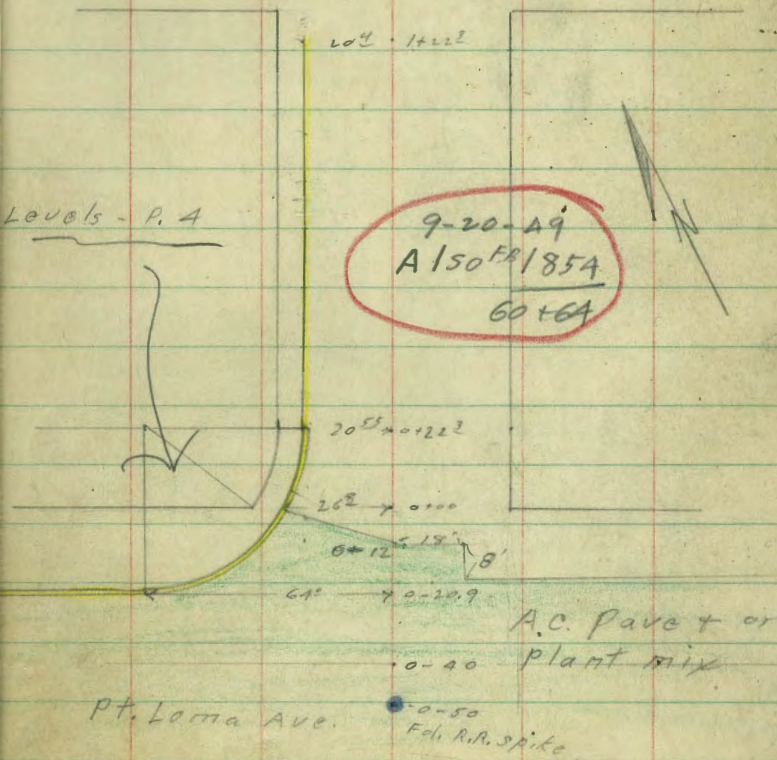
W.K.

X-SECT Santa Barbara
Pt. Loma Ave to Harragansett

90901



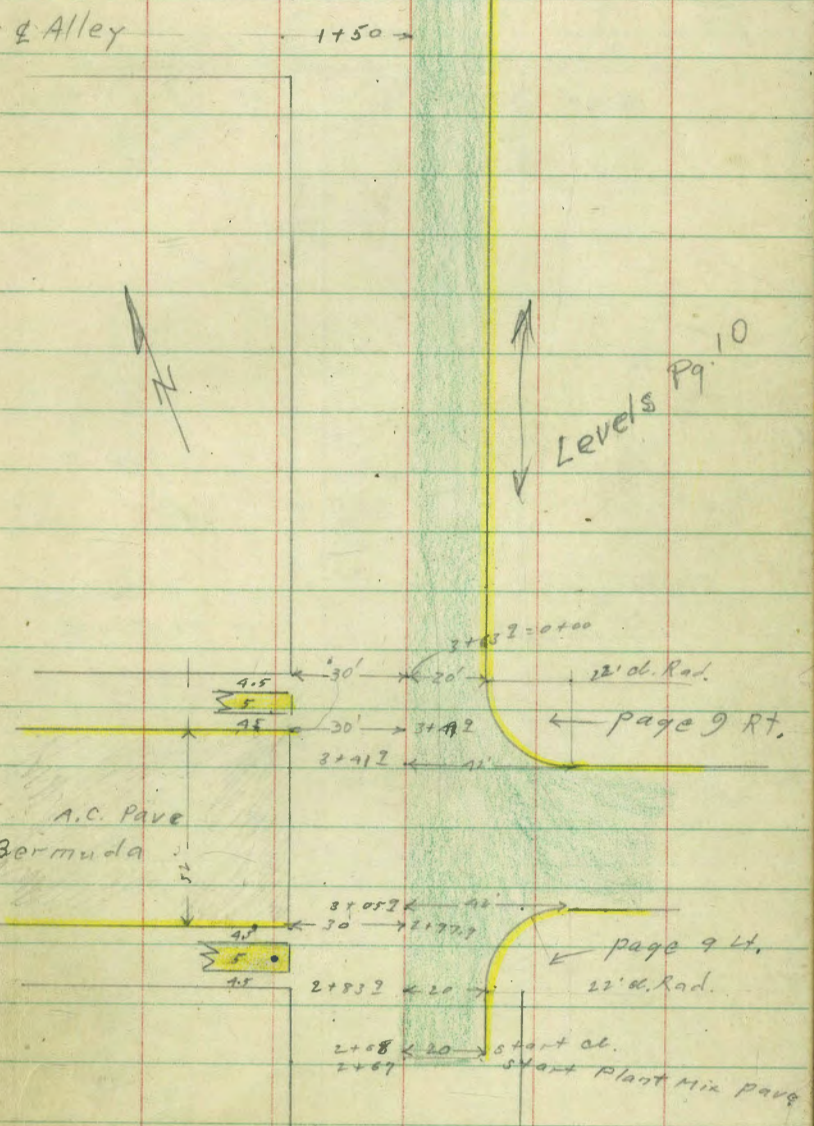
Scale - 1" = 50'

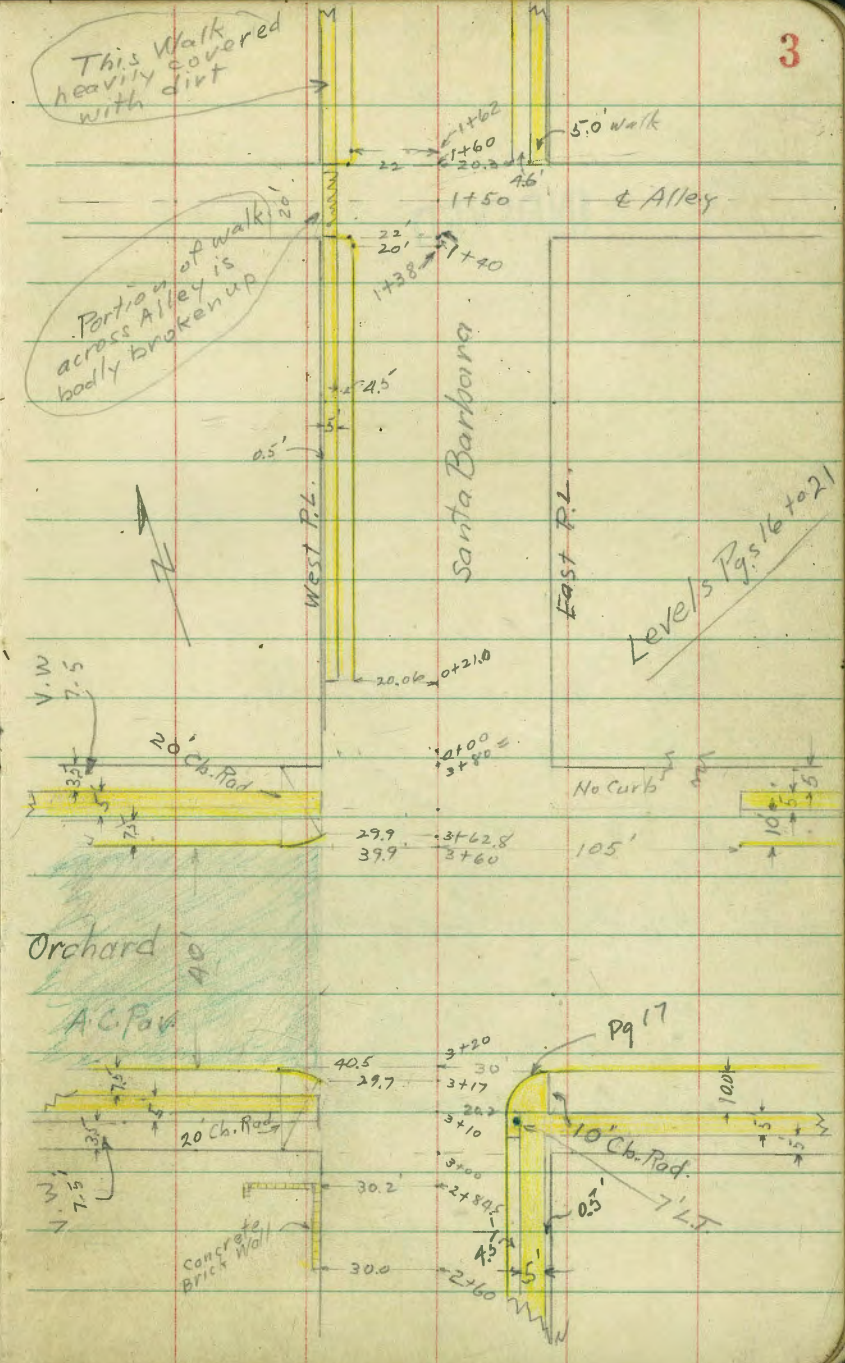
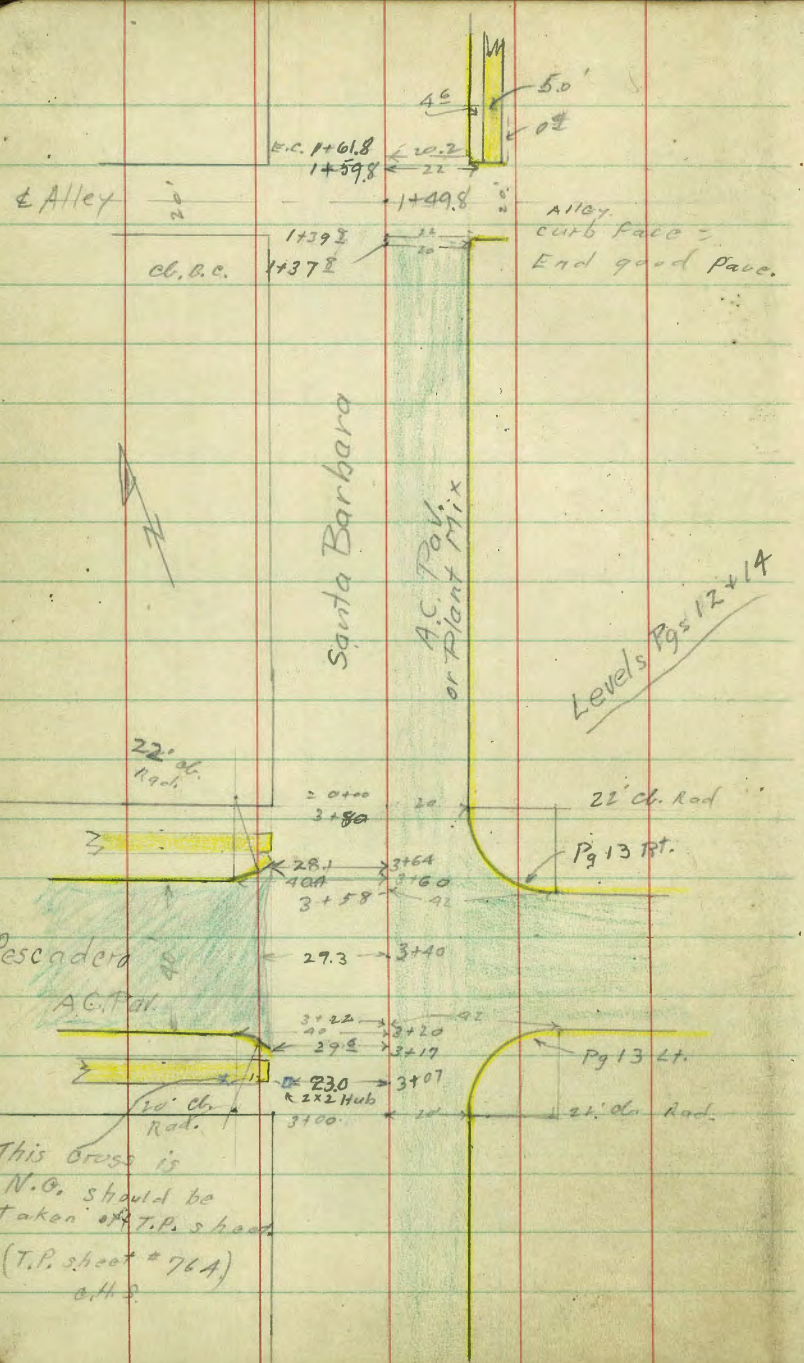


Pt. Loma Ave.

0-50
Fol. R.R. spike

SW. BP Coronado	240.10
SE BP	254.12
SW BP Santa Cruz	Foot 255.91
NE BP Del Monte	237.44
SW. BP Navragansett.	218.67





Santa Barbara

Sketch - P. 1

INDEXED

T.P. 10.57 192.83 -12.33 182.26
B.M.#1

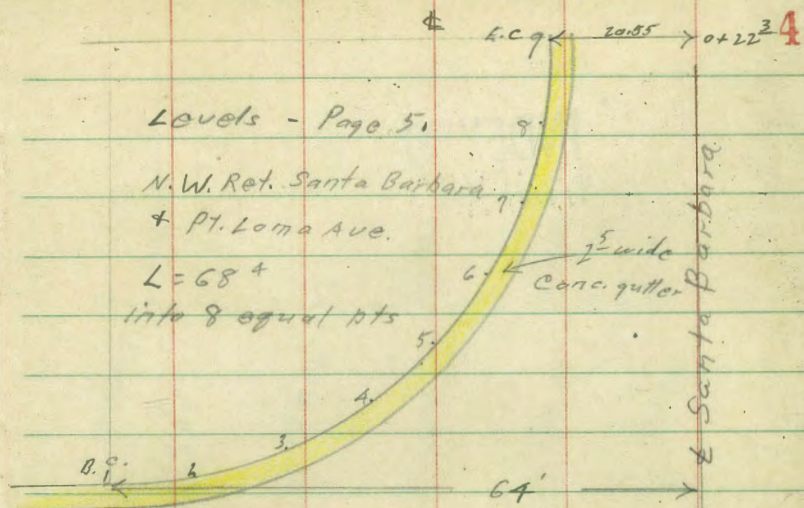
0-20³ Cont.

0-20³ = N. ob. line to west

0-40 = \pm (Approx) Pt. Loma Ave.

Santa Barbara
Pt. Loma • 12.33 194.59 - 182.26

S.W.O.A. =
B.M.#1



15.71 100 00	16.67 100 02	17.90 11.29 64 Top of B.C.	197.30	199.99 +0.4 75	198.29 +3.7 100						
182.32	183.99	185.00	185.96	186.77	188.12	189.18	191.89	191.91			
12.27 64 0	10.60 50	9.59 40	8.63 30	7.82 20	6.7	5.41 20	4.70 30	2.68 50			
178.37	182.61	184.07	185.07	185.96	186.72	187.98	189.05	189.81	191.78	194.79	198.09
16.22 100 64	11.98 50	10.52 40	9.52 30	8.67 20	7.87	6.71	5.54 20	4.78 30	2.81 50	+0.2 75	+3.5 100

194.59

INDEXED

0-12 = 507 ft in ^{North Edge} paving (see P-1)

to cl.
 E.G.: edge of gutter. Radial
 G: gutter at curb
 cl = curb top.
 by number. - (see P-1.)
 & Pt. Loma Ave
 N.W. Ref. Santa Barbara

19283

187.47	186.51	186.86	188.91	189.08
5.36	6.32	5.97	5.24	6.16
8	8	8	9	9
cl	G	EG	cl	G
			E.C.	G
				E.B. = End Conc. gutter.

187.04	186.07	186.33	187.34	186.35	186.66
5.79	6.76	6.50	5.49	6.48	6.17
6	6	6	7	7	7
cl	G	EG	cl	G	EG

183.97	184.35	185.83	184.86	185.13	186.55	185.58	185.88
8.86	8.48	7.00	7.97	7.70	6.28	7.25	6.25
3	3	1	4	4	5	4	5
G	E.G.	cl	G	EG	cl	G	EG

183.31	183.32	182.57	184.16	183.18	183.26	184.93
7.52	10.51	10.29	8.67	7.65	7.37	7.90
1	1	1	2	2	2	3
cl.	G	E.G.	cl	G	EG	cl
cl.						

19283

INDICES

1+00

191.65
10.82
205
cb.

190.87
11.6
202

191.7
10.8
11

192.3
10.2
11

192.6
7.9
11

192.4
10.1
17

195.2
7.3
30

T.R 9.74 202.47 0.10 192.73

202.47

0+50

189.02
3.81
202
cb.

188.5
4.3
202
cb.

189.5
3.3
10

190.3
2.5

190.5
2.3
13

190.2
2.6
17

191.4
1.4
21

192.7
0.1
30

0+22² Cont.

187.59
5.24
205
cb.

186.67
6.10
202
cb.

194.9
4.1
37

199.6
6.8
50

0+22³ = B.C. cb.

186.99
5.89
188
E.C.

187.7
5.4
185
cb.

188.2
4.6
11

189.2
3.6

189.7
3.1
11

189.4
3.4
17

190.6
2.2
21

192.7
0.1
30

0+00 Cont.

187.13
26.8-Top
cb.

186.16
26.8-90+

197.3
4.5
36

198.6
6.0
30

0+00 = N. Line Pt. Loma Ave

186.99
6.34
232

186.88
5.95
20

187.8
5.0
10

188.7
4.1

189.2
3.6
12

189.0
3.3
18

190.1
2.7
20

190.7
2.1
28

191.5
1.3
30

192.83

192.83

Edge & gutter
+ End yard
Pave

Santa Barbara.

2+30 22⁵ Rt. = ± 18" diam. palm

2+20 Cont.

INDEXED

2+20

2+05 22⁵ Rt. = ± 18" diam. Palm.

1+70 Cont.

1+70

T.P. Nail
Pole # P1444

6.92 207.63 1.76 200.71

1+40 Approx $\frac{1}{2}$ Alley to west.

1+31² 24³ (to west side of pole)
Lt. = pole # P1436

1+22³ 20³ Lt. = End exist. ch.

202.47

196.9
 $\frac{10.7}{40}$
206.9
 $\frac{0.7}{58}$
207.7
 $\frac{10.1}{50}$

198.5
 $\frac{9.1}{30}$
198.7
 $\frac{8.9}{21}$
197.1
 $\frac{10.5}{19}$
197.6
 $\frac{10.0}{12}$
198.3
9.3
198.6
 $\frac{9.0}{14}$
198.3
 $\frac{9.3}{20}$
199.6
 $\frac{8.0}{27}$
201.7
 $\frac{5.7}{30}$

192.2
 $\frac{15.4}{50}$
202.7
 $\frac{4.7}{34}$
205.9
 $\frac{5.7}{56}$

197.9
 $\frac{12.7}{30}$
195.2
 $\frac{12.4}{20}$
199.7
 $\frac{12.9}{18}$
195.2
 $\frac{12.4}{12}$
195.8
11.8
195.9
 $\frac{14.7}{12}$
195.8
 $\frac{11.8}{19}$
198.1
 $\frac{25}{25}$
199.9
 $\frac{2.2}{50}$

189.7
 $\frac{17.3}{100}$
192.7
 $\frac{7.8}{30}$
193.3
 $\frac{2.2}{21}$
192.0
 $\frac{10.5}{19}$
207.63
199.0
 $\frac{2.5}{11}$
199.7
7.8
194.6
 $\frac{7.7}{12}$
199.3
 $\frac{8.2}{18}$
196.3
 $\frac{6.2}{26}$
197.9
 $\frac{4.6}{30}$
201.7
 $\frac{0.8}{37}$

191.9
 $\frac{40.0}{30}$
192.7
 $\frac{9.8}{21}$
192.53
 $\frac{9.64}{20.2}$
192.0
 $\frac{10.5}{20.4}$
192.9
 $\frac{9.6}{12}$
193.5
7.1
193.7
 $\frac{2.8}{11}$
193.5
 $\frac{9.0}{16}$
196.7
 $\frac{5.8}{30}$
200.6
 $\frac{1.9}{56}$
203.5
 $\frac{4.0}{50}$

202.47

7

INDEXED

S.W.B.P.

Bermuda + Santa B. 12.59 200.91

2+97⁹ Cont. on long rods.
Gun used as hand level
(Quinn, 10' to 15' diam. T. rods from)

2+97⁹ = S. of line to west

2+83⁹ = S.L. Bermuda
20' Rt. = Ch. B.C.

8.80 213.50 2.93 204.70

2+81 23' Lt. = ctr. 2' diam. Palm

2+68 Cont.

2+68 = Start good oil pave. on Rt.
also 20' Rt. = start exist. ch.

2+55 22⁵ Rt. = ctr. 2' diam. Palm

2+54 23' Lt. = ctr. 2' ^{diam} Palm

2+42 23 Lt. = Pole # P.1444

207.63

193.5
20.00
100
26.

192.95
20.55
100
C

201.25
12.25
30
26.00

203.65
9.85
25
top. 00

200.50
12.92
30
Cutter

201.0
12.5
30
Ord.

201.5
12.0
21

202.0
11.50

202.47
11.97
10

202.61
10.87
20

203.02
10.48
25
B. at 00

201.2
12.3
30

201.8
11.7
22

200.9
12.6
19

201.65
11.85

201.94
11.56
10

201.97
11.53
20
C

202.57
10.93
20
Ch.
B. 0

213.50

203.9
3.7
30

208.8
+1.2
38

210.9
+2.8
50

199.4
8.0
40

200.6
7.0
30

201.2
6.4
20

200.9
7.2
15

201.01
6.62

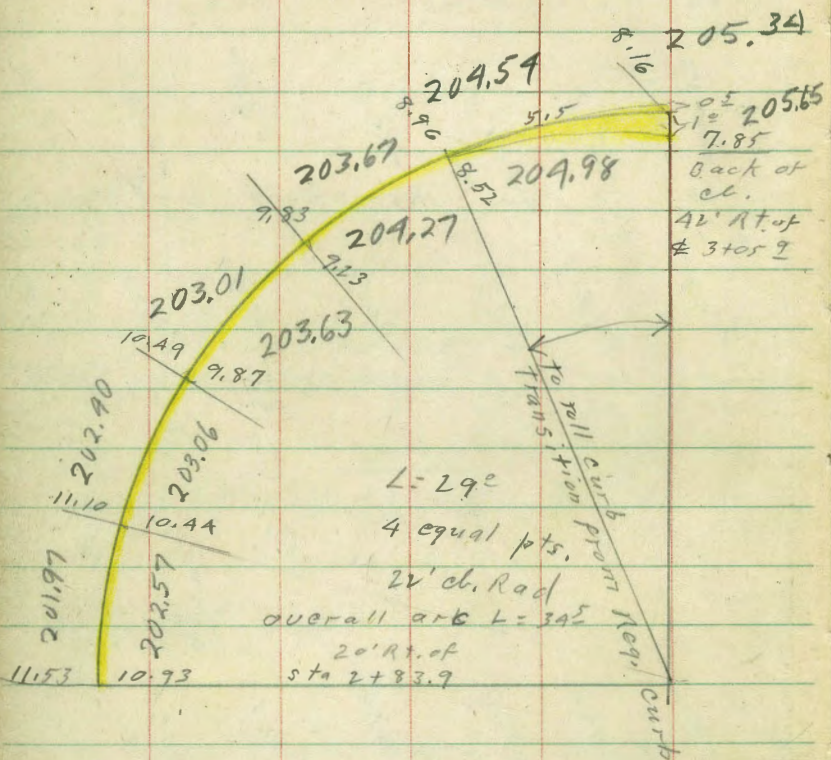
201.5
6.30
10

201.18
6.15
20
C

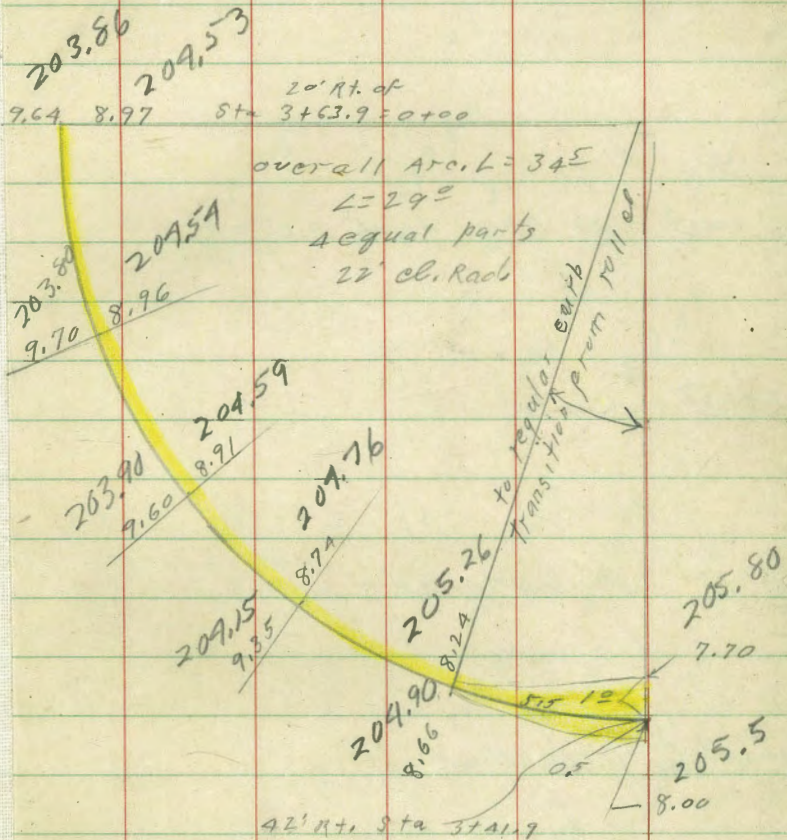
201.89
5.70
20
CC

207.63

INDEXED



213.50



213.50

3+41² Cont.

205.5	205.8	213.42	213.16
8.00	7.70	0.08	0.34
42	42	94	94
B	B. ob.	C.	B. ob.

3+41² 42' At. = curb B.C.

201.97	202.89	203.18	203.49	204.20
12.03	10.66	10.32	10.01	9.30
30		70	20	30

3+23² Cont.

205.59	213.41
7.71	0.03
42	95

3+23² = Bermuda (Gun used for long reds)

193.79	201.37	202.20	202.57	202.9	203.23	204.12
19.71	12.13	11.3	10.98	10.60	10.27	9.38
100	30	10		10	20	30
	edge					
	pave					

3+05² Cont. B.C. = Back of ab

205.34	205.65	213.25	213.50
8.16	7.85	0.25	0.00
42	42	95	95
B.	B. ob.		B. ob.

(see page 9)

3+05² 42' At. = cl. E.C.

200.92	202.18	202.59	202.86	203.75
12.58	11.32	10.91	10.64	9.75
30		10	20	30
pave.				
edge				

213.50

213.50

11.53
201.97
11.53

Santa Barbara

1+50 cont.

INDEXED

1+50 & Alley to west

1+41 23rd Lt. = Pole # P. 1474

1+00

T.P. 12.42 222.46 3.46 210.04

0+50

0+01 23rd Lt. = Pole # J.P. 1452

- 0+00

3+63² = N. line Bermuda
20' Rt. = ab. E.C.

+49² Cont (Gun used for long rods)

3+49² = N. Ch. to west.
30' Lt. = Exist. ab.

213.50

205.56
16.9
100

211.5 212.5 212.9 212.9 213.46 213.61 214.3 214.33
11.0 10.0 10.1 9.6 9.00 8.85 8.72 8.13
30 22 17 11 10 10 20 20
ab

210.2 210.0 209.5 210.04 210.06 210.26 210.88
12.3 12.5 13.0 12.42 12.40 12.20 11.58
30 22 16 22.46 10 20 20
ab

206.7 207.2 206.6 206.0 206.59 206.76 206.85 207.14
6.8 6.3 6.7 7.5 6.91 6.74 6.65 6.02
50 30 29 18 10 10 20 20
ab

203.1 202.7 203.14 203.79 203.86 204.52 205.30
10.4 10.8 10.06 9.71 9.64 8.95 8.2
30 18 10 10 20 20
ab, E.C.

199.92 193.70 202.02 201.36 201.5 202.70 203.02 203.87 204.6 204.62 203.90
18.08 19.80 8.90
100 100 25
ab 2 rep ab

11.48 12.14 12.0 10.8 10.48 10.13 9.88 9.60
30 30 30 10 10 10 20 25
ab, end. Para 2nd 20 25
ab

213.50

INDEXED

220 Cont. Gun used for long rods

3+20 = cl. line to west.

3+17 19^E Lt. = Erid cl. (Page 3 Lt.)

22^E Lt. = Pole # P1498

3+00 = S line Pescadero

T.P. 11.21 232.94 0.73 221.73

2+50 Cont.

2+50

2+00

1+90 23^E Lt. = 2' diam. Palm. C Ctr. tree
222.46

212.82 212.27 Lt 218.99 217.86[#] Rt 225.54 12

20.12 20.67 14.50 15.08 7.40
130 130 90 80 315 cl.
cl. cl. cl. cl.

223.03 222.41 223.20 224.2 224.59 224.80 224.91

9.91 10.53 9.74 8.8 8.35 8.14 8.03 7.84
40 40 295 19 10 20 315
cl. E.P. Para pave G. G. G. G. G. G.

223.7 223.08 223.76

9.2 286 2.18
295 295 295
Gnd pave cl.

224.2 224.7 223.1 223.2 223.71 223.93 223.98 224.54

8.8 8.3 7.8 7.7 7.23 9.01 9.00 8.41
30 21 19 15 10 20 20
232.94 C cl. cl. cl.

216.5 216.0

6.0 4.5
55 40

221.0 220.8 219.7 219.7 220.38 220.51 220.45 221.07

1.5 1.7 2.8 2.8 2.08 1.95 2.01 1.39
30 22 19 10 10 20 20
cl. cl. cl. cl. cl. cl.

216.8 217.2 216.6 215.9 216.3 216.86 216.93 217.08 217.67

5.7 5.3 5.2 6.6 6.2 5.60 5.53 5.38 4.79
30 27 20 18 12 10 10 20 20
G. G. G. G. G. G. G.

222.46

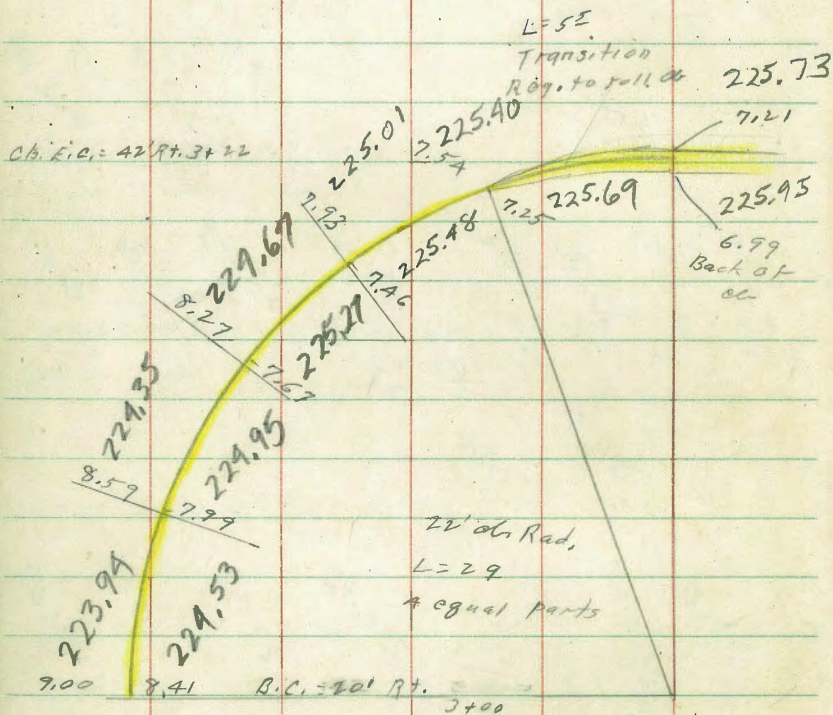
Santa Barbara

T.P.R.R. spike

Pole # P1498 6.78 231.65 8.07 224.87

INDEXED

S.E. Ch. Ret. Pescadero + Santa B.

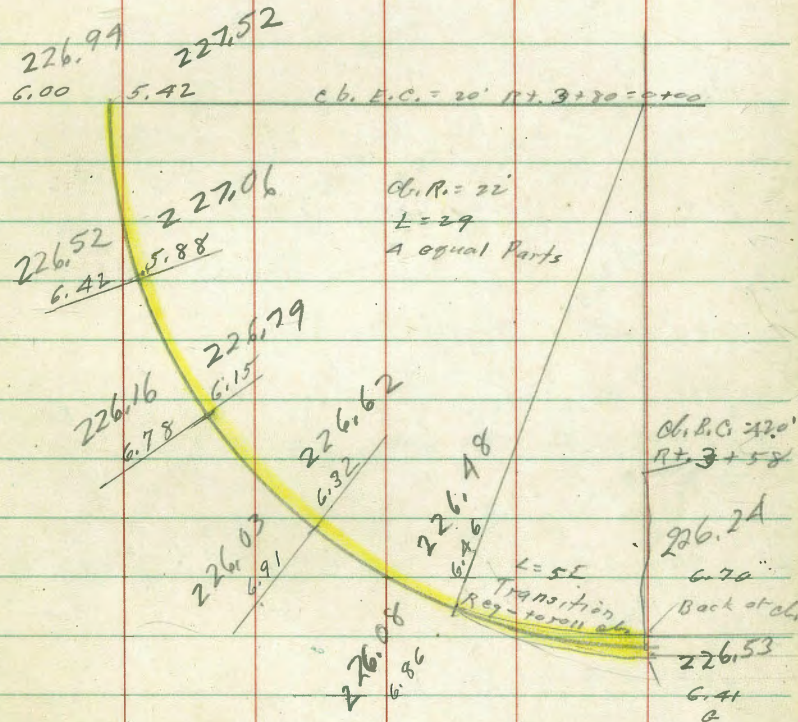


overall arc. = 34.5

x 232.94

13

N.E. Ch. Ret. Pescadero + Santa Barbara.



overall arc. = 34.5

x 232.94

7/26/48
McCoy
Allen &
W. Moore
Melton

Santa Barbara

Sketch Pg 3 Lt.

±0+00

INDEXED

3+80 No line Pescadero

3+64 End Ch. to West -

+60 (cont)

+60 No. Ch. line to west.

+58 (cont.) No. Gutter line to East

3+58 Ch. No. Gutter Line to East

+40 ± Pescadero (Gun used for long rods)

+22 continued

3+22 = Gutter line to east

T 231.65

14

Lt

±

Rt.

226.6 226.0 226.6 226.83 227.04 227.93 227.51 227.45

5.1 5.7 5.1 4.82 4.61 4.72 4.14 4.22

30 19 12 10 10 19.9 Gut. 19.9 C&EC 30

225.09 224.33 225.0

6.56 7.32 6.7

28.1 28.1 28.1

Ch. Pav. Ground

17.79 18.31 12.28

130 130 80 C&EC

218.61 223.84 223.21 224.29 225.95 225.94 226.13 226.09 226.01 226.55

12.84 7.81 8.94 7.36 6.2 5.71 5.52 5.56 5.64 5.10

80 40.4 40.4 28.5 11 10 20 32.5 Gut. 32.5 Ch.

226.51 230.89 226.01 231.16

5.14 0.76 0.49

42 EC Back C&EC 130 Gut. Back C&EC

224.31 225.43 225.86 226.07 226.09 226.00 226.24

7.34 6.2 5.79 5.58 5.61 5.65 5.41

28.6 11 10 20 20 30 72 EC Gut

219.72 222.01 224.02 224.9 225.35 225.51 225.63 225.87 231.16

18.52 17.93 26.4 16.3 6.8 6.30 6.14 6.02 5.78 0.49

130 80 30 29.3 17 10 20 30 130

Edge Pav.

223.32 224.3 224.70 225.95 230.86 230.83

5.70 1.09 0.82

42 EC Back C&EC 130 Gut. Back C&EC

224.90 224.99 225.15 225.73

8.33 7.4 6.95 6.75 6.66 6.50 5.92

29.5 18 10 20 30 72

Edge Pav.

T 231.65

Santa Barbara
Sketch Pg 3 Lt.

+52 22.4 Lt. Pole # P1524

+39.8 Continued

INDEXED

+39.8 So. Line Alley (Gun used for long rods)

+37.8 B.C. Alley Cb. Return So Line to East

+37 22.0' Lt 15" Palm

+10 22.5' Lt 18" Palm

+00

+84 22' Lt 10" Palm

+57 22' Lt 8" Palm

+050

T.P. 9.72 241.07 0.30 231.35

+13 22.3 Lt. Pole # JP.1502 combinator

+003 22.0 Lt 2' Palm

T 231.65

15

	LT.	E	RT.	
	214.5		237.3	
	22.6		237.73	
	130		241.9	245.0
			3.8	3.34
			29.9	29.9
			Gr.	Cb.
			80	130
	226.7	227.1	237.2	237.2
14.9	6.4	3.9	3.9	5.7
80	50	30	23	16
				4.45
				4.2
				4.28
				9.2
				3.53
				20
				G
				20
				Cb.
				4.39
				3.50
				20
				G.
				20
				Cb.
				231.1
				231.1
				231.0
				233.3
				233.16
				233.99
				233.95
				231.66
				231.6
				231.1
				7.3
				6.7
				8.1
				7.8
				7.31
				7.08
				10
				20.0
				G.
				20.0
				Cb.
				30
				5.0
				3.0
				231.2
				231.9
				230.9
				229.5
				229.8
				230.15
				230.35
				230.37
				231.08
				232.0
				9.9
				9.2
				14.2
				11.6
				11.3
				14.92
				10.72
				10
				10.70
				9.99
				19.9
				Cb.
				30
				241.07

Santa Barbara

(Sketch Pg 3 Rt.)

+89.5 30.2' Lt End 6" Concrete Brick Wall

+60 30.0' Lt 6" Wall - Conc. Brick

+50

INDEXED

2+00

+89 22.5' Lt. 15" Palm

TP 9.57 250.44 0.20 240.87

+63 22.4' Lt. 18" Palm Tree

+61.8 Alley Cb. EC. to East.

+59.8 Continued

1+59.8 No. Line of Alley

+241.07

(Sketch Pg 3 Lt.)

TR4

16

249.79 Lt
245.6 E
245.0

0.70 4.8 5.4
30.2 30.2 30.2
Top Wall Gr. Bottom Wall

249.71 245.1 244.8
0.73 4.7 5.6

245.2 245.2 244.0 244.6 245.0 245.0
Top Wall Gr. Bottom of Wall

5.2 5.2 6.4 5.8 5.4 5.4 9.33 4.2
30 24 16 8 54 20.2 20.2 30
9 CA

238.1

240.7

239.9

240.4

240.8

241.2

242.15

242.36

242.9

12.3 9.7 10.5 10.0 9.6 9.2 8.27 8.0
50 30 16 9 20.2 20.2 29.8 30
Gut. Cb. Back of Walk

+250.44

238.3

239.11

2.8 1.96
20.2 20.2
Gut. Cb. EC

239.12 242.9 246.1
1.95 (+1.8) (+5.0)

238.0 234.2 239.0 238.0
30.5 80 130
Cb. Cb. Cb.

13.4 3.2 2.5 3.8 3.4 3.1 2.9 2.8 2.04 2.3
80 30 23 16 9 20 22 22 30.5
EC. Cb. Gr. End Cb

+241.07

Santa Barbara

(sketch pg 3 RT.)

+20 Continued (Gun used for long rods)

+20 So. Ch. Line

INDEXED

+17 End Ch. on West

3+10 Cb. BC. on East 10' Radius (See sketch →)

SE. BP Orchard + Santa Barbara

5.82 255.90 0.36 50.08 (check) 250.08

3+00 South Line of Orchard

+99 21.9 Lt Pole # J.P. 1548

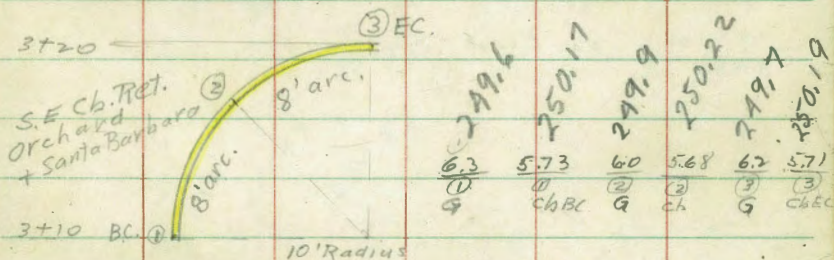
.+96 22.8' Lt 16" Palm

2+95

T 25044

17

240.97	240.37	245.49	249.99	246.7	246.49
19.93	15.53	10.41	11.00	9.2	8.11
130	130	80	80	130	130
cb.	cb.	cb.	cb.	cb.	cb.
249.06	248.5	249.34	249.6	249.9	249.7
6.84	7.40	6.56	6.3	5.9	6.2
70.5	70.5	29.8	20	20	30
cb.ec.	Gut	Edge Pav.			Gr. Pav. cb.
249.5	249.88	249.22			
6.4	6.02	6.68			
29.7	29.7	29.7			
Gr.	cb. End	Gut.			



247.8	249.3	249.9	249.9	249.0	249.9	250.1	250.7	250.3
2.6	1.1	1.0	2.0	1.7	1.4	0.50	0.3	0.1
50	30	22	18	10	30.2	20.2	30	50
					G	cb.		

247.3	249.9	249.0	249.9	248.3	248.9	249.7	249.6
3.1	1.5	1.4	2.5	2.1	2.0	1.7	0.80
50	30	22	16	10			20.2
							cb.

T 25049

Santa Barbara
(Sketch pg. 3 Rf.)

SEBP
Orchard +
Santa Barbara

8.02 258.10 5.82 250.08

+21 Beg in Ch. & Walk on Lt.

INDEXED

+07 23 SLPdo # J.P. 1550

+04 27.0 Rt 15" palm

=0+00 No. Line Orchard
3+80

+628 End Ch. to West on North Side Orchard

+60 Cont.

3+60 No. Cl. line of Orchard

3+40 ♀ Orchard

7 255.90

257.3
259.1
252.93 Lt
252.23
257.6
251.8
251.7
251.5
256.7
253.2
256.3
257.3
257.3

16 15 347 367 43 41 42 44 39 27 (+0.4) (+1.4)
50 33 296 201 201 13 19 20 30 32 40
Back of Walk Ch G

233.10
253.0
252.1
251.9
251.5
251.1
251.2
251.8
252.5
252.5

28 29 38 45 44 47 41 26 0.5 (+0.3)
50 38 30 18 19 19 20 30 32 50

251.9 252.1 251.4 251.5 251.2 251.8 252.5 252.5
40 38 45 44 47 41 34 34
50 30 18 18 20 30 50

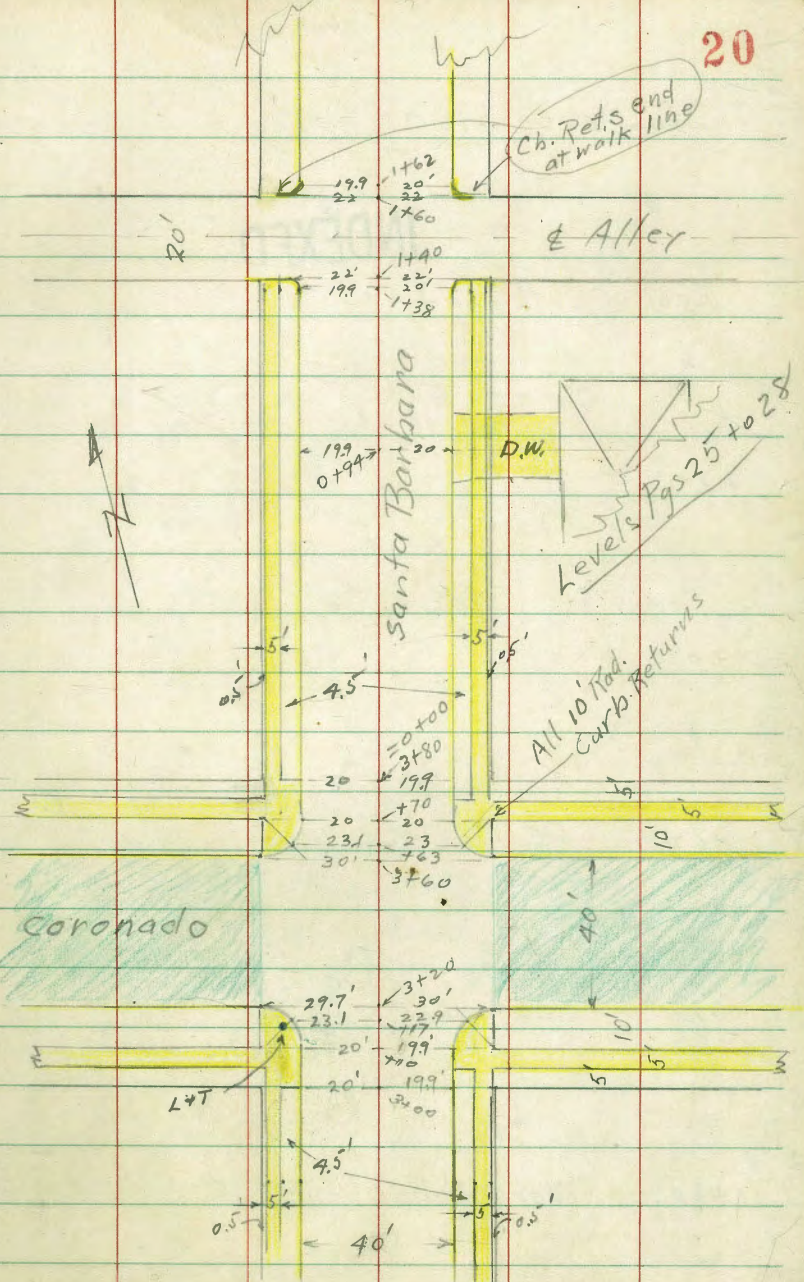
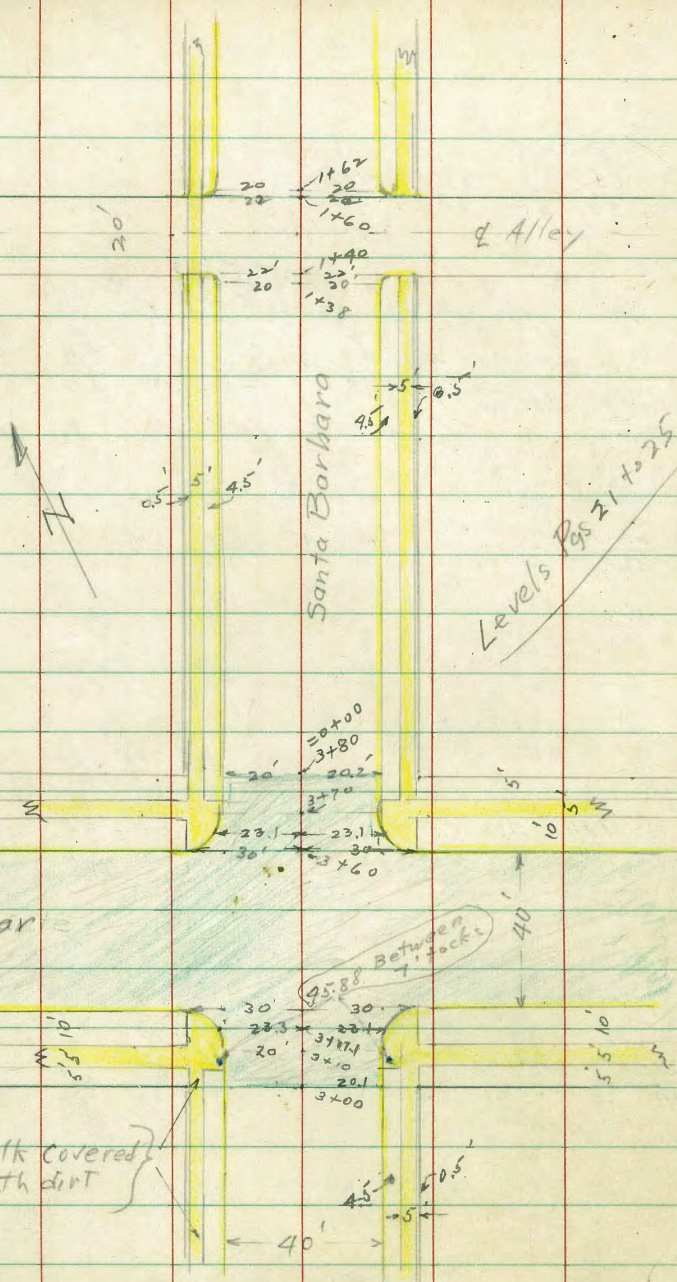
251.70
251.49
250.85
242.25
242.05
247.3
246.8
247.38

13.15
13.85
8.53
9.1
8.57
130 Ch. 130 Ch. 130 Ch.
Gr. Gr. Gr. Gr. Gr.

246.7 251.06 250.43 250.42 250.9 251.1 250.8 250.5 248.7 247.8 249.52
9.20 4.84 5.47 5.08 5.0 4.8 5.1 5.4 7.2 8.1 7.38
80 39.9 39.9 29.9 18 18 20 30 80 105 105
Gr. EC G G G G G G Gr. Gr. Gr. Gr. Gr. Ch. Ch.

241.56 246.13 246.26 250.3 250.7 250.6 250.3 248.7 246.6
14.34 9.77 5.64 5.6 5.2 5.3 5.6 7.2 9.3
130 80 29.9 23 20 30 80 130
Edge of Pl. Pl.

↑ 255.90



SWAP
 Del Mar +
 Santa Barbara 6.62 256.97 7.75 (250.36)
 250.35

INDEXED

+50 Continued

+50

2+00

+62 E.C. Ch. Rot. to West

+60 Continued. (Note: Walk on West Heavily covered with dirt from alley (+60) to So. P.L. Del Mar.)

1+60 North Alley line

T 258.10

253.6
 250.9
 257.6
 4.5
 30
 7.13
 29.9
 30
 6.5
 253.0
 251.90
 251.25
 250.9
 251.1
 251.0
 250.6
 250.3
 250.8A
 251.3
 5.1 6.20 6.35 7.2 7.0 7.1 7.5 7.8 7.26 6.8
 29.5 29.5 20.1 20.1 17 17 20.2 20.2 29.9
 Dirt Back dirt edge cover walk
 Ch Gr. Gr. Ch Gr. Ch
 255.4
 253.8
 253.18
 253.3
 252.1
 251.1
 252.79
 252.5
 2.7 4.3 4.92 5.2 5.7 5.7 6.0 6.7 5.81 5.6
 30 28 20.1 20.1 14 12 20.3 20.3 30
 Ch Gr. Ch Gr. Ch Gr. Ch
 40.5
 250.3
 255.0
 254.27
 253.9
 253.0
 252.6
 251.30
 251.8
 251.4
 251.4
 (+2.4) (+1.2) 3.1 3.83 4.7 5.1 5.5 4.80 4.3 2.7 3.3
 6.5 33 30 20 20 20.3 20.3 30 36 50
 Ch EC Gr. Gr. Gr. Ch EC. Ch
 254.5
 256.9
 254.9
 252.1
 250.8
 248.10
 3.6 1.7 3.2 5.4 7.3 10.0
 130 80 30 30 80 130
 254.34
 254.1
 254.35
 254.3
 253.5
 252.1
 252.7
 253.32
 253.50
 253.5
 3.72 3.70 3.75 3.8 25 3.5 25 25 252.7 253.32 253.50 253.5
 29.5 24 22 22 20 5.0 5.4 4.78 4.60 4.6
 Back End of Ch EC G 20.3 20.3 29.9 29.9
 Edge walk Ch EC G gr. Ch. Ch. Walk Begins
 T 258.10

INDEXED

+40 £ Del Mar

+20 Coat

+20 So Ch. line Del Mar

+17.1 Mid point Ch Returns. RT. + Lt.

+10 Ch. BC.5 RT + Lt.

+200 So. P.L. Del Mar - Begin AC Paving

T 256.97

Lt

£

RT.

22

216	4.74	7.84	8.18	8.27	8.35	8.55	8.71	8.95	12.77
130	80	30 PL.	20	10		10	20	30 PL.	130
249.81	252.2	249.1	248.79	249.70	248.62	248.92	248.26	248.02	249.20
255.73	255.66	253.09	252.62			244.59	245.64		
1.24	1.91	3.88	7.35			12.38	11.93		
130 Cb.	130 G	80 Cb.	80 G			130 G	130 Cb.		
250.35	249.71	249.47	249.34	249.22	248.96	248.79	248.53	249.16	
8.62	7.26	7.50	7.62	7.75	8.01	8.19	8.44	7.81	
30 Cb. EC.	30 G	20	10		10	20	30 G	30 Cb. EC.	
250.31	249.73	249.29	248.79	249.31					
6.66	7.34	7.68	8.18	7.66					
23.3 Cb.	23.3 G		23.1 G	23.1 Cb.					
250.29	249.68	249.60	249.49	249.21	248.98	249.92			
6.68	7.29	7.37	7.48	7.76	7.98	7.55			
20 Cb. BC.	30 G	10		10	20.1 G	20.1 Cb.			
251.6	250.58	250.33	249.67	249.81	249.76	249.38	249.14	249.59	249.75
5.9	6.39	6.64	7.30	7.16	7.21	7.59	7.83	7.38	7.22
296 Dir. Cover	296 Back of Walk	20 Cb	20 G	10		10	20.1 G	20.1 Cb	27.6 Back of Walk

T 256.97

Santa Barbara (Sketch pg 20 Lt.)

INDEXED

+60 Continued

+60 North Alley Line (See Note for Sta. 1+40)

+40 Continued

+40 So. Alley line (Note: Curb on West on So. Alley line ends of walk which is laid continuously across Alley. Same on East except no walk across Alley)

+38 Alley Cb. B.C. Lt. + Rt 2' Radius

1+00

T 248.82

24

Lt.	±	Rt
249.6	241.3	242.4
70.8	4.5	8.3
80	30	80

293.81	243.73	243.73	243.6	242.7	241.9	242.3	242.58	242.70
5.01	5.09	5.09	5.2	6.1	6.1	6.9	6.5	6.24
29.5	24.5	22	22	20	20	20	22	22
Back of walk	East Cb.	Cb. EC	Gn			Gn	Cb	Back
	246.6	244.5	243.1	241.3				
	0.0	4.3	5.7	7.5				
	80	30	30	80				

244.48	244.36	244.32	244.0	243.1	243.2	242.3	242.6	243.26	243.39
4.34	4.46	4.50	4.8	5.4	5.6	6.5	6.2	5.59	5.43
24.5	24.5	22	22	20	20	22	22	22	29.5
Back of walk	East Cb	Cb. EC	Gn			Gn	Cb. EC	Back of walk	
	244.27	243.9	242.9	243.79					
	4.5	5.8	6.4	5.3					
	20	20	20	20					
	Cb. EC	G	G	Cb. B.C.					

244.6	245.6	245.4	244.2	244.5	244.6	243.9	243.4	244.32	244.5	243.8
70.8	3.2	3.40	4.6	4.3	4.2	4.9	5.4	4.50	4.3	5.0
4.5	30	20	20	10	10	13	20	20	30	50
		Cb	G				G	Cb		

T 248.82

Santa Barbara Sketch p 920 Lt.

+17

Split of 10' Rad. Curbs Ret. RT + LT

INDEXED

+10

B.C.s Lt + Rt.

3+00

South P. Line of Coronado

2+70

S.W. BP
Coronado
& S.B.

7.21 247.31 8.72

(240.10)
240.10

+43

2+00

1+62

Ch. B.C.s. RT. + Lt. North side of Alley

T 248.82

239.93 LT 239.5

239.97 239.5 239.4 239.3

239.91 239.1 238.9 239.14

240.81 240.48

240.24 239.7 239.6 239.4 239.21

240.81 240.48

240.57 240.62 240.1 240.3 240.2 239.7 239.3 239.63 239.75 239.8

241.4 241.29 241.07 240.6 240.9 240.3 239.7 240.06 240.14 240.32

242.6 242.30 241.4 241.8 241.6 241.2 240.7 241.28 241.4

243.62 242.6 241.9 242.59

5.20 6.2 6.9 6.28

20 20 30 20

Cb. B.C. G G Ch. B.C.

T 248.82

25

7/30/48
McCoy
W. Moore
Allen
Melton

(Sketch Pg. 20 TM.)
Santa Barbara

INDEXED

1+40 South Alley Line

1+38 Alley Ch. Ret. B.C.s

+94 1/2 16' Conc. Driveway + Garage Rt

0+50

T.P. Ch. 50
side drive way
on East 0+75

7.76 251.08 3.99 243.32

= 0+00 North Prop. Line Coronado
3+80

Σ 247.31

2515
+0.4
100
246.01
5.07
24.5
End
Cb.

2508
0.3
80
245.99
5.09
22
Cb
EC

27
244.58
2.5
50
245.9
5.2
22
G

246.26
9.82
29.5
245.5
5.7
19.9
G

245.58
5.50
24.5
End
Cb.

245.7
5.7
30
245.3
5.8
20
G

246.8
4.3
50
245.5
5.6
22
G

245.8
27
5.3
80
245.3
5.8
22
Cb EC

245.9
5.12
19.9
Cb B.C.

245.4
5.7
19.9
G

245.1
4.0
20
G

245.5
5.63
20
Cb B.C.

244.5
6.6
30
Cb

249.10
6.98
19.9
Cb

243.28
7.8
19.9
G

243.5
7.6
12

243.9
7.7
10

243.3
7.8
10

243.0
8.1
20
G

243.05
8.03
Edge

243.72
7.36
29.5
Back
of Walk

245.26
5.82
41.7
Floor
Gar.

242.28
8.80
19.9
Cb

241.6
9.5
19.9
G

241.8
9.3
12

241.6
9.5
13

241.6
9.5
13

241.3
9.8
20
G

241.87
9.21
20
Cb

240.5
6.8
30

240.55
6.74
29.5
Back
Walk

240.32
6.99
20
Cb

240.7
7.2
20

240.0
7.3
19.9
G

51.08
7.8
19.9
G

239.6
7.50
19.9
Cb.

240.17
7.14
29.5
Back
Walk

240.2
7.1
30

Σ 247.31

Santa Barbara

(continued pg. 30)

INDEXED

+50

+22

T.P.

+100

+62

Alley Curb B.C.s.

+60

Continued

+60

North Alley Line

Σ 251.08

(Sketch pg 20+29)

£ 3' walk + Steps (see sketch pg 29)

8.62 259.39 0.31 250.77

252.97
6.98 8.0 8.9 7.9 8.0 8.4 7.90
19.9 19.9 13 11 20 20
Cb G

251.13 251.22 250.79
2.96 7.59 8.17 8.60
38.5 30 29.5 20
Top Bottom Back of Cb +
of step Step Work End of Walk

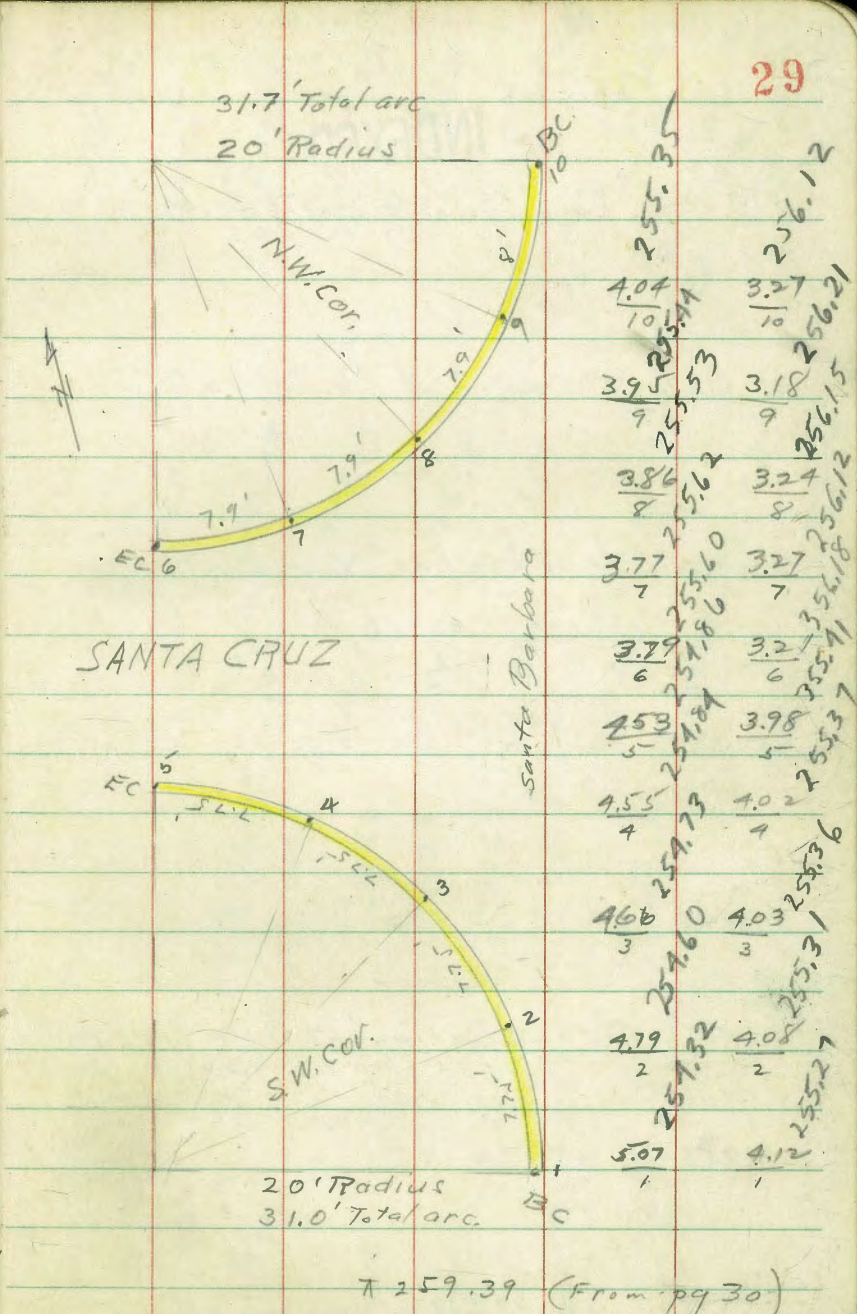
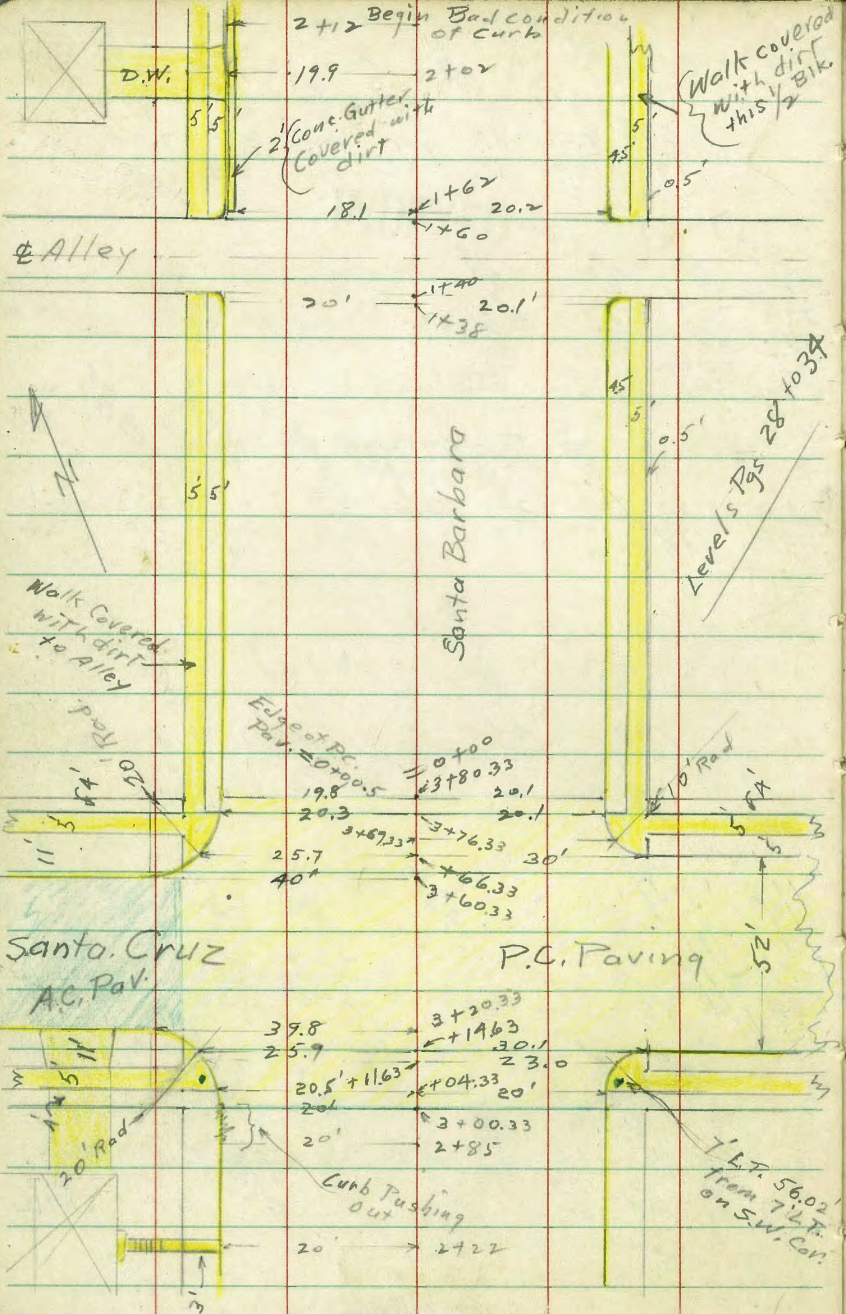
250.1 249.55 248.5 248.9 390 248.7 248.4 248.95 250.0
1.0 1.83 2.6 2.2 2.4 2.7 2.13 1.1
30 19.9 19.9 12 13 20 20 30
Cb G

247.32 246.5 246.2 246.89
3.76 7.6 7.9 7.19
19.9 19.9 20 20
Cb B C G Cb B C

252.7 251.6 249.1 247.7 247.15 246.79 247.1 246.9 245.8 245.3
1.3 4.5 2.0 3.4 3.93 7.29 4.0 4.2 5.3 5.8
100 80 50 30 24.5 24.5 30 50 80 100

247.2 246.8 246.3 246.6 246.7 246.5 246.1 246.3 246.80
3.90 4.3 4.8 4.5 4.4 4.6 5.0 4.8 4.28
22 22 19.9 13 13 20 22 22
Cb EC G G G G G G Cb EC

Σ 251.08



Santa Barbara (sketch pg 29.)

+60.33 Continued

INDEXED

+60.33 No Curb Line to West

+90.33 Continued

+90.33 Santa Cruz

+20.33 Curb line to West (cont)

3+20.33 So Ch. Line Santa Cruz to West

↑ 259.39

RT 31

259.43
4.56 5.17 3.72 4.26 3.21
130 130 80 80 40
Cb G Cb G Cb

255.60 255.65 255.36 255.54 255.63 255.16
3.79 3.74 3.84 3.85 3.95 4.09 4.30 4.58 4.90
40 30 30 20 10 10 20 20 30
G Act. P.C. P.C. P.C. P.C. P.C. P.C. P.C. P.C.

259.27 259.91 255.13 250.92 259.54 242.41
5.12 4.48 4.26 8.97 9.85 11.95
130 100 80 80 100 130

255.43 255.56 255.53 255.46 255.33 255.19 259.99 259.76 259.40 253.05
3.96 3.72 3.86 3.93 4.06 4.20 4.40 4.63 4.94 6.34
50 30 30 20 10 10 10 20 30 50

259.29 255.67 255.00 259.33 255.41
5.11 5.18 5.06 3.98
130 130 80 80 39.8
Cb G Cb G Cb EL

259.91 259.91 259.17 259.52 259.22 253.83
4.52 4.45 4.48 4.51 4.62 4.87 5.17 5.56
39.8 30 20 10 10 20 30
G End P.C. P.C. P.C. P.C. P.C. P.C. P.C.

↑ 259.39

INDEXED

0+50

0+00.5 Edge of P.C. Paving

T.P. 1.57 253.85 7.11 250.28

= 0+00 No P.L. of Santa Cruz
3+80.33

3+76.33 Cb. BC. to Rt. + Line of Back of
Walk on Santa Cruz to Lt.

+69.33 Mid point of Curb Ret. to Rt

+66.33 Cont.

3+66.33 N. Curb line to East + Mid-point of
20' Rad. Ch Return to W.

SE BP
Del Monte
+ Santa Cruz

5.27 259.39 5.27 259.12
X 259.39

Lt. E Rt

253.99 252.9 252.5 252.5 252.1 251.7 251.58
0.41 1.5 1.4 1.4 1.8 2.2 1.27
19.8 19.8 12 13 20.1 20.1
Cb. G Cb. G Cb. G Cb. G

256.31 256.5 256.12 255.35 X 253.85
308 2.9 3.27 4.04 4.08 4.21 4.52 4.74 4.79 4.16
30 30 19.8 17.8 10 10 20.1 20.1 29.5
Back of Walk Cb BC G Cb Cb Edge of Walk

256.39 256.17 255.91 255.35 255.18 254.67 254.52 255.17 255.95
3.00 3.22 3.98 4.04 4.21 4.47 4.87 4.22 39.4
30 20.3 20.3 10 10 20.1 20.1 29.5
Bk. + Walk Cb G Cb BC Back of Walk

256.15 255.53 255.50 255.96 255.28 255.05 254.74 254.41 255.20 253.06
3.24 3.86 3.89 3.92 4.11 4.34 4.65 4.98 4.19 6.33
25.7 25.7 20 10 10 20 30 30 100 100
Cb G Cb G Cb G Cb G Cb BC G

X 259.39

Santa Barbara

Sketch Pg 29

2+12 Beginning Bad Condition of Curbonht.

INDEXED

2+02 £ 20' Driveway
D.W. = Drive Way

+62 Cb Return B.Cs. of No. Alley line
Begin 2' Concrete Gutter on West.
Gr. = Ground E.G. = Edge 2' conc. Gut.

+60 cont.

+60 cont.

1+60 No. Line of Alley

T 253.85

Lt.

£

Rt

34

249.10
4.75
54.5
Top of
Trench +
Gulf Floor

241.16 244.08 249.10 249.16 249.19 249.23 249.22 249.27 249.6A 246.6

9.69 9.77 9.87 9.69 9.5 9.6 9.7 10.2 9.21 7.3

30 19.9 19.9 18.1 11 11 20.1 20.1 29.6

Back D.W. G. E.G. G Ch. Dirt
walk Edge Trench walk Cover

246.4 246.3A 247.20 246.21 245.75 246.88

7.5 7.51 6.5 7.64 8.1 6.97

18.1 18.1 20.1 26.1 20.2 20.2

Gr. E.G. Ch.BC G G Ch.BC

250.2 249.9 250.1 249.9

3.7 7.0 3.8 5.0

100 50 80 100

247.93 247.31 247.2 246.6 246.6 246.8 246.95 247.08 249.0

6.7 6.54 6.7 7.3 7.3 7.1 6.90 6.77 5.9

25 22 22 30 101 244 244 27.9 30

Gr. Ch.BC Gr. Ch. End Back walk

25.21 25.3 248.1 247.53 246.5 246.3 245.9 246.4 246.9A

1.8 1.6 5.8 6.30 7.4 7.6 8.0 7.5 6.91

80 50 30 30.1 11 20 22 22

Back Ch.EC
walk

T 253.95

Santa Barbara (sketch pg 36 Lt.)

+1160 Mid-points 10' Rad. Cb. Returns Rt + Lt.

INDEXED

+07.3 End 2' Conc. Gutter to Left

3+0460 Cb. B.C. Rt + Lt

+00.60 Cont

3+0060 So Prop. Line Del Monte

Fire Plug Del Monte + S.B. 1.20 243.54 11.51 242.34

2+50

T 253.85

239.01 238.59 238.8 239.36 35

4.53 5.0 4.7 4.18

22.9 22.9 22.9 22.9

Mid pt. G Mid point Cb. Ret.

239.00 237.96 238.09 239.0

4.54 5.58 5.50 4.5

20.6 20.6 18.3 18.3

Cb G EG Gr

239.21 239.01 238.01 238.17 239.0 239.4 239.1 239.52 239.73 239.8

4.34 4.53 5.53 5.37 4.5 4.4 4.02 3.81 3.7

30.3 20.3 20.3 18.3 18.3 20 20 29.5 30

Back Edge Walk Cb B.C. (Broken) Back Edge Walk

239.82 239.36 239.39

3.77 4.18 4.15

34.1 31.3 30.3

Nest Edge Private Back Edge Walk

239.2 238.38 239.3 239.5 239.5 239.3 239.70 239.93 241.5

4.33 5.31 4.3 5.16 4.2 4.0 4.2 3.84 3.61 3.0

20.3 20.3 18.3 18.3 12 12 20 20 29.5 30

Cb G Gr EG

242.06 241.10 241.25 243.54 241.9 241.9 241.7 241.9 242.21 243.9

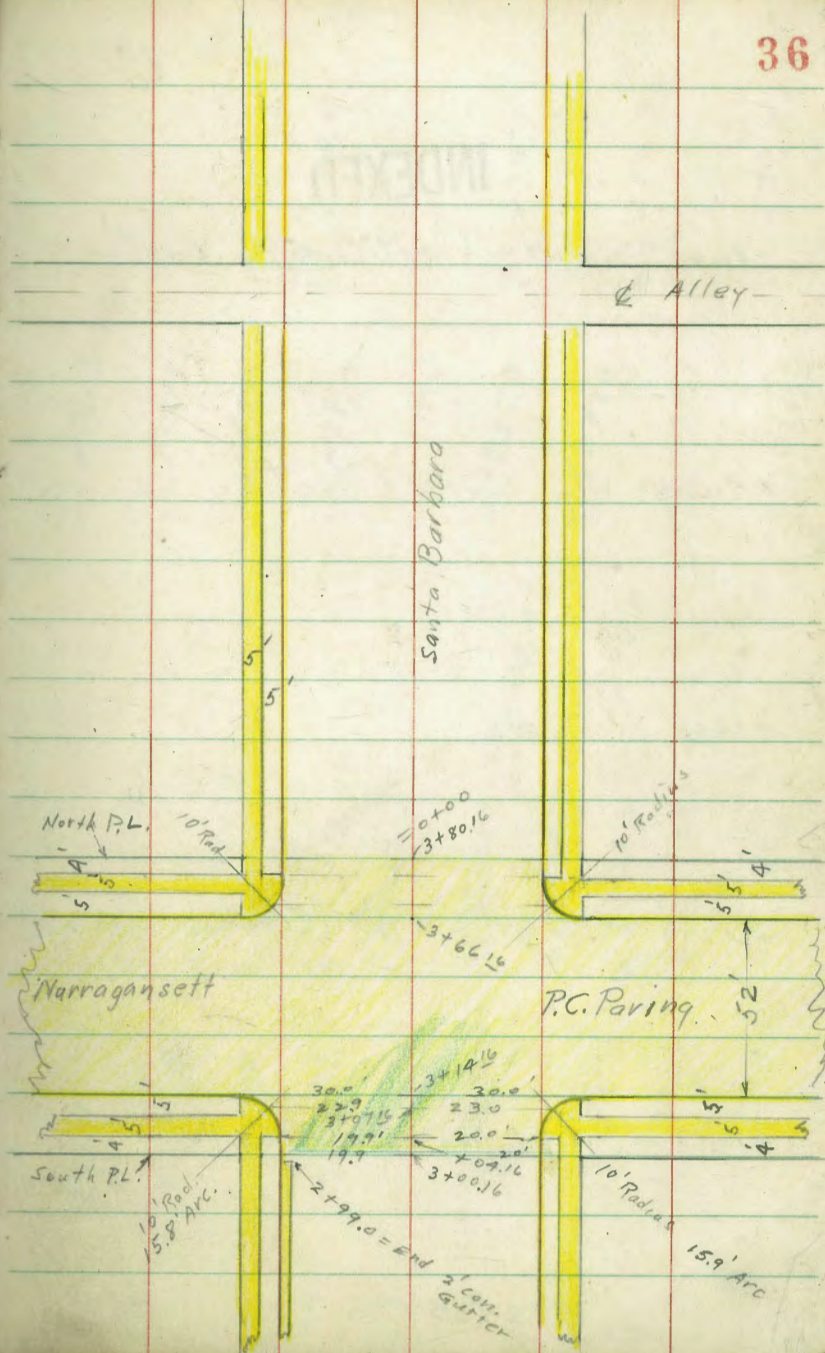
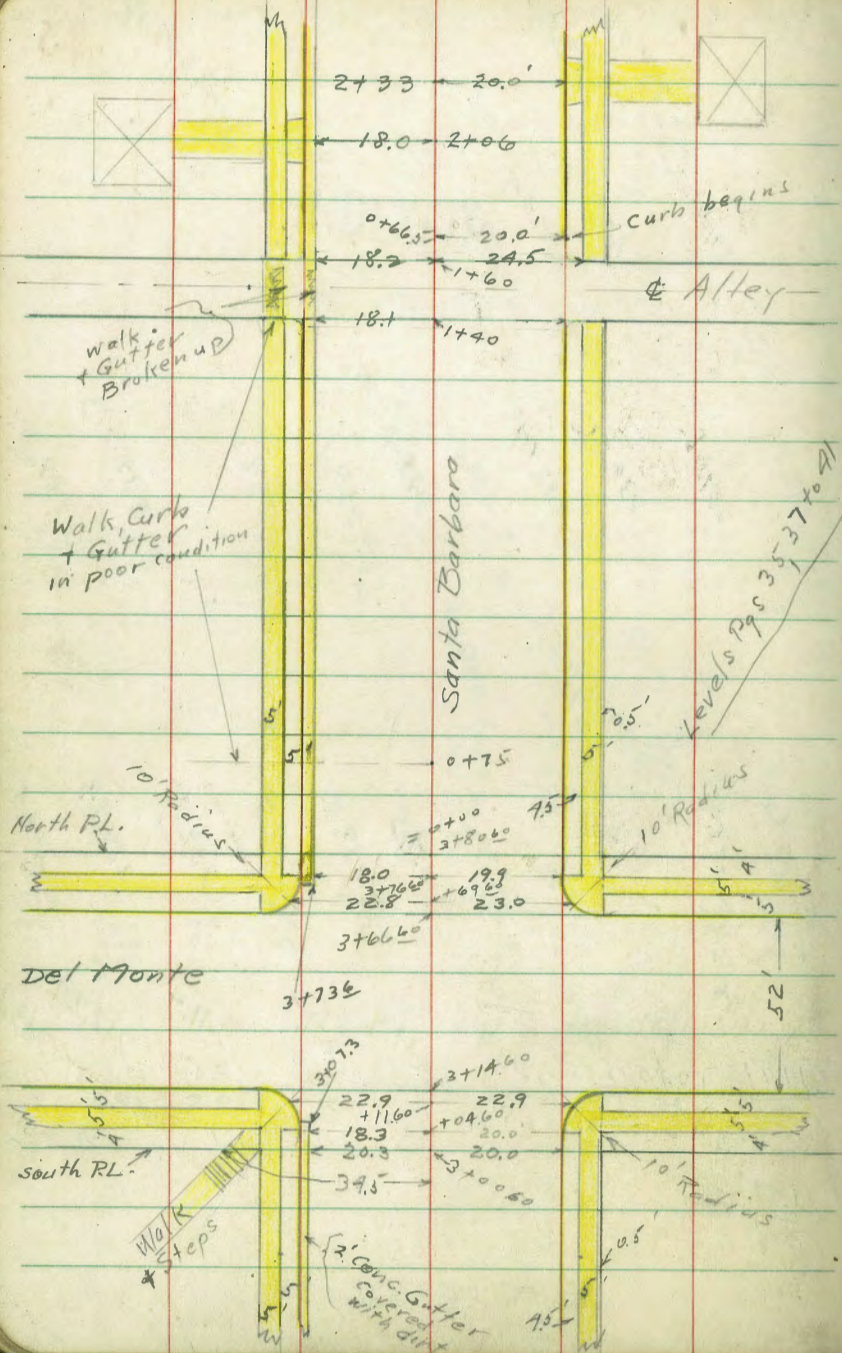
11.74 12.70 12.55 15.0 15.0 12.2 12.5 11.53 10.0

20 20 18 10 10 12 19.9 19.9 30

Cb. G EG

11.99 242.31 30.1

T 253.85



INDEXED

+40.60 Cont. (Vert. Curve to East)

+40.60 $\frac{1}{2}$ Del Monte

+14.60 Cont.

+14.60 Cont. (Vert. Curve to East)

3+14.60 So. Cb. line Del Monte

T 243.54

Lt

$\frac{1}{2}$

Rt

37

239.9
 $\frac{9.1}{130}$

239.1
 $\frac{4.4}{80}$

239.3
 $\frac{4.2}{100}$

239.2
 $\frac{4.3}{130}$

236.3
 $\frac{7.2}{80}$

237.7
 $\frac{5.8}{30}$

237.9
 $\frac{5.6}{20}$

238.0
 $\frac{5.5}{10}$

238.0
 $\frac{5.5}{10}$

237.9
 $\frac{5.6}{10}$

237.9
 $\frac{5.6}{20}$

238.1
 $\frac{5.4}{30}$

238.0
 $\frac{5.0}{50}$

235.06
 $\frac{8.48}{130}$
Cb.

239.2
 $\frac{9.3}{130}$
G

237.09
 $\frac{6.45}{80}$
Cb.

236.1
 $\frac{7.4}{80}$
G

238.84
 $\frac{3.08}{50}$
G

239.86
 $\frac{3.68}{50}$
Cb.

239.3
 $\frac{4.2}{80}$
G

240.33
 $\frac{3.21}{80}$
Cb.

239.6
 $\frac{3.19}{100}$
G

238.96
 $\frac{4.58}{30}$
Cb.

238.1
 $\frac{5.4}{30}$
G

238.5
 $\frac{5.0}{20}$

239.0
 $\frac{4.5}{10}$

239.6
 $\frac{4.5}{10}$

239.0
 $\frac{4.5}{10}$

238.7
 $\frac{4.8}{20}$

238.6
 $\frac{4.9}{30}$
G

239.42
 $\frac{4.1}{30}$
Cb.

T 243.54

INDEXED

+73.6 Begin 2' Conc. Gutter on West.
 Note: Gutter covered with dirt
 and not in good condition

+6960 Mid-points 10' Rad. Cl. Refurms Rt+Lt

+6660 Cont.

+6660 Cont.

3+6660 No. Cb. line Del Monte

π 243.54

Lt.

±

Rt

237.71
 5.83
 Cb

236.76
 6.78
 20.6
 G

236.93
 6.61
 78.1
 E.G.

237.71
 5.83
 22.8
 Cb. Mid
 Pt. of Ref

236.9
 6.6
 22.8
 G

236.6
 6.9
 23.0
 G

237.55
 5.99
 23.0
 Cb Mid
 Pt. of Ref

238.0
 5.5
 100
 G

238.73
 7.81
 100
 Cb

238.1
 5.4
 130
 G

238.8
 4.70
 130
 Cb.

233.76
 9.78
 130
 Cb.

233.2
 10.3
 130
 G

235.71
 7.77
 80
 Cb

235.2
 8.3
 80
 G

237.2
 6.3
 50
 G

238.09
 5.45
 50
 Cb

237.7
 5.8
 80
 G

238.99
 5.05
 80
 Cb

237.70
 5.84
 30
 Cb EC.

236.8
 6.7
 30
 G

236.9
 6.6
 20

237.0
 6.5
 10

237.0
 6.5
 10

236.9
 6.6
 10

236.8
 6.7
 20

236.9
 6.6
 30
 G

237.69
 5.85
 30
 Cb EC.

π 243.54

Santa Barbara

Sketch pg 36 Lt

INDEXED

1+00

0+75 West Walk from 0+15 to 1+60 (Cracked up)

0+50 West Curb + gutter from 0+00 to 1+40
in rather bad shape. Gutter covered
with dirt

NEBP
Del Monte
+ S. Barb.

0.04 237.46 6.12

(237.44)

237.42

= 0+00
+ 80.60

+ 76.60 Cont

3+76.60 Cb, B.C.s. Rt + Lt

T 243.54

Lt

231.06	231.06	230.5	230.6
640.74	70.69	6.9	7.2
20	10	10	20
Cb	G		Cb

Rt

230.3	231.2
7.2	6.34
20	20
G	Cb

39

239.25	233.19	233.33	233.2	233.7	233.7	233.6	234.29
321	4.27	4.13	3.7	3.8	3.8	3.9	3.17
20.1	20.1	18.4	10	10	10	19.9	19.9
Cb	G	EG				G	Cb

237.56	237.39	236.39	236.5	237.46	236.2	236.7	237.28	237.5	237.6	
598	6.11	7.11	7.00	7.1	7.2	7.3	7.3	6.26	5.99	5.9
30	20	20	18.0	10	10	10	20	20	29.5	30
Back of Walk	Cb	G	EG				G	Cb	Back of Walk	

237.7	237.93
5.8	5.61
30	30
G	Back of Walk

237.64	236.67	236.78	236.5	236.5	236.9	236.9	237.1	237.84	236.0
5.86	6.87	6.76	7.0	7.0	7.1	7.1	6.13	5.66	5.5
20	20	18.0	10	10	10	19.9	19.9	29.5	30
Cb	B.C.	G	EG			G	Cb	Back of Walk	

T 243.54

INDEXED

+66.5 Begin Curb on RT

Note: Walk to Lt. from 1460 to 3400
Heaved up from roots of 5 Pa/ms.

+60

+60 North Line of Alley (No Cb. Returns)

Note: 5' Walk and 3' conc. Gutter
Across Alley (1490 to 1460) Broken up

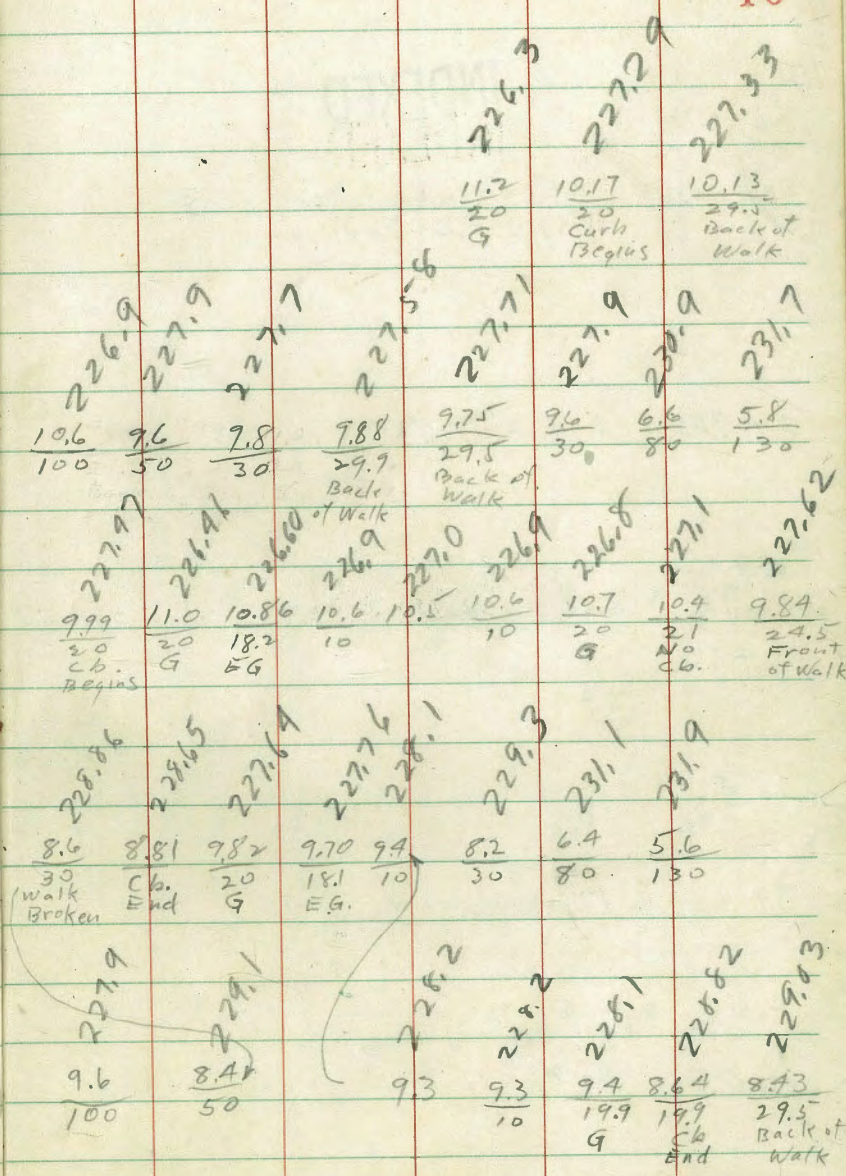
+90 Cont.

1490

South Line of Alley (No Cb. Returns)
Walk on Lt. Broken up

† 237.46

† 237.46



Santa Barbara
Sketch pg 36 Rt

INDEXED

3700.16 South Prop Line Narragansett
Begin P.C. Paving

2799.0 End 2' Gutter

S.W.B.P.
Narragansett
+ S. Barb. 5.28 223.98 8.96 (218.67)
+50 218.70

(Sketch Pg 36 Lt)

+33 $\frac{ft}{\text{}} \pm 17$ Driveway + Garage to Rt.

2706 \pm of 15 ft Driveway to left
D.W. = Driveway

T.P. 0.89 227.66 10.69 226.77
 \uparrow 237.46

219.19 219.00 218.98 218.87 219.16 219.29 219.28 219.51 220.29
4.79 4.98 5.50 5.11 4.82 4.69 4.70 4.17 3.69
30 19.9 19.7 10 10 10 20 20 29.6
Back 30 10 10 10 10 20 20 29.6
Walk 10 10 10 10 10 10 10 10

219.09 218.30 218.47
4.89 5.68 5.51
19.9 19.7 18
Cb G E.G.

222.21 221.30 222.398 222.1 222.2 221.4 222.58
5.39 6.36 6.28 5.6 5.3 5.5 6.3 5.08
20 20 18.0 10 10 10 20 20
Cb G E.G. G Cb

222.71 223.63 225.16
7.95 7.03 2.50
20 29.5 2.50
Edge Back Walk Floor
D.W. Edge Garage

225.52 224.89 223.69 223.85 224.3 224.5 224.9 224.3 225.0 225.09
2.14 2.82 3.97 3.81 3.4 3.2 3.3 3.4 2.66 2.62
44.5 30 20 18.0 10 10 10 20 20 27.5
Floor Back G. EG G Cb 27.5
Gar. Walk Edge EG G Cb Back of
D.W. D.W. D.W. Walk

\uparrow 227.66

INDEXED

(Continued in Book 1872)

SW 1/3 P.
Narragansett
+ S.B.

5.28

218.70

+14.16 Cont.

+14.16 South Ch. Line Narragansett

+07.16 Mid-point of Ch. Returns 174 + Lt (10' Rod)

3+04.16

T 223.98

217.31
216.56
217.88
217.13

6.67	7.92	6.10	6.85
130	130	80	80
Ch	G	Ch	G

218.69
218.01
218.31
218.61
218.84

5.29	5.98	5.67	5.37	5.14
30	30	20	10	
Ch Ec.	G			

218.69
218.18
219.22
219.75

5.29	5.80	4.76	4.23
27.9	22.9	23.0	23.0
Ch.	G	G	Mid-Point
Mid Pt.			Return
Return			(15.8' Arc)
(15.8' Arc)			(15.9' Arc)

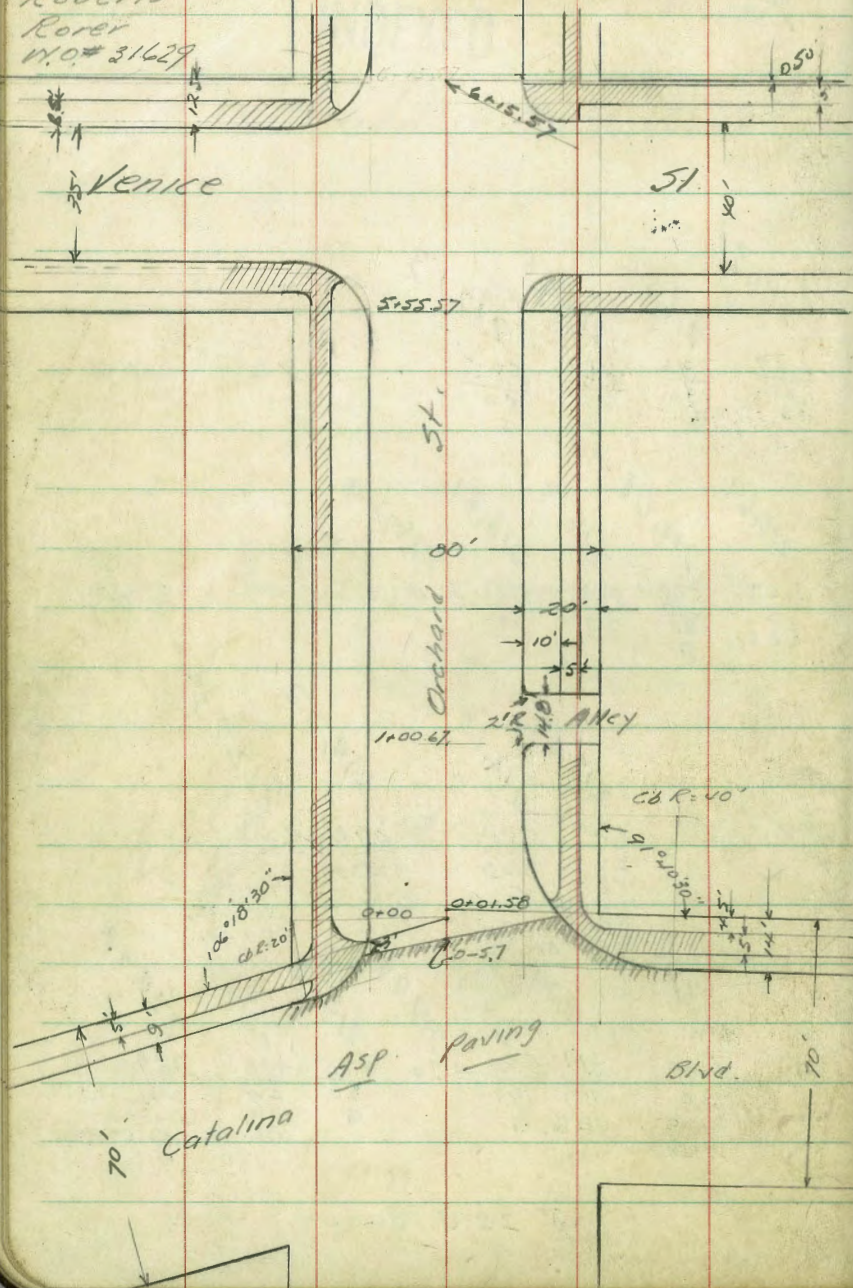
218.98
218.79
218.38
219.06
219.23
219.80
220.09

5.00	5.79	5.60	4.72	4.75	4.18	3.89
30	19.9	19.9		20	10	29.6
Back	Ch Bc.	G		G	Ch	Back
Walk					Bc.	Walk

T 223.98

9.16.48
Hendricks
Roberts
Rorer
W.O.# 31629

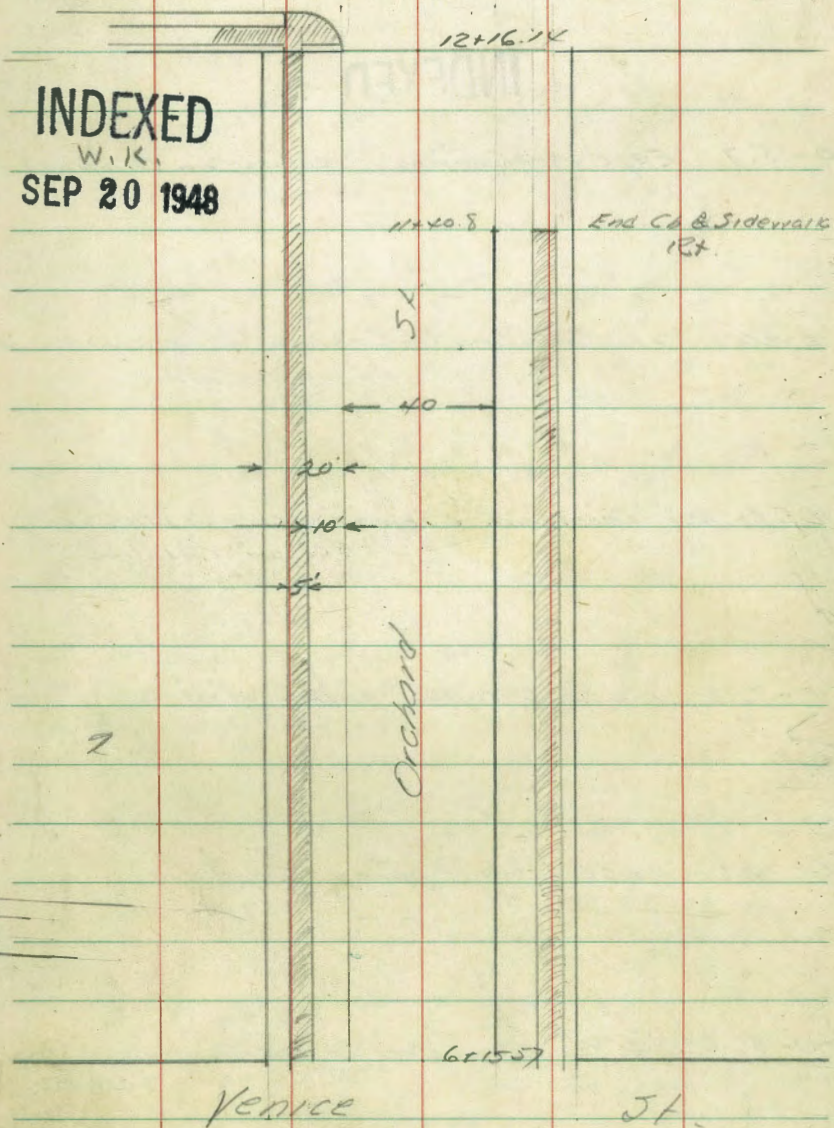
X Sect. Orchard St.
Catalina to Santa Barbara



Santa Barbara St.

43

INDEXED
W.K.
SEP 20 1948



Levels Orchard St
Catalina to Santa Barbara

INDEXED

0-5.7 Edge Asph paving section on Diagonal

H.VI Cb. Ret. Catalina & Orchard (Length = 284.4 ft)
BC on Catalina

H.E. Cb. Ret. Catalina & Orchard (Length = 61.0 ft)
BC on Catalina

0-9.0 No Cb Catalina going West

0-12.8 No Cb Catalina going East

0-36.6 ± to Catalina section taken parallel to Catalina

BM 5.23 201.73 196.50

196.89
K 84 550 554 583 625 567
228 228 15 298 298
C6 G G

195.91 196.47 196.01 196.59 196.22 196.79 196.3 196.08 196.6 197.19
582 525 572 574 551 494 54 455 51 454
G C6 G C6 G C6 G C6 G C6
BC (1) (2) (3) EC

196.66 195.9 196.41 195.83 196.23 195.73 195.99 195.46 195.80 195.16 195.63 194.85 195.44 194.58
507 58 529 59 520 574 627 533 657 610 658 629 7.5
C6 G C6 G C6 G C6 G C6 G C6 G C6 G
EC (1) (2) (3) (4) (5) BC

197.03 196.45 196.56 195.95 196.47 195.91 196.02 196.12
470 528 517 528 526 582 571 561
100 100 50 50 355 358 20.8
C6 G C6 G C6 G
BC

195.91 195.40 194.72 194.68 195.44 193.75 194.69
582 633 701 7.5 629 775 704
20 50 58 58 100 100
G C6 G C6
BC

196.02 195.58 195.35 195.23 194.75 193.87 192.95
571 656 38 650 688 786 878
100 50 20.8 20 50 100

20173
NWV BP Catalina & Orchard

1+00.67 5. Line Alley

0+78.67 B.C. 2' Alley Ret. Radius

0+60 & 10' Conc Drive 20' Lt

0+50

0+40 & 10' Conc Drive 19' Lt

0+01.58 No Prop Line Catalina RT on Diag.

0+00 No Prop Line Catalina on Lt on Diag.

20173

LT ♀ RT

148.77 197.9 197.7 147.3 197.6 198.15 198.3 198.41

396 38 40 44 41 355 34 332

20 20 20 22 22 40 40

 G G G G G G

197.1 198.02

45 371

20 20

G G

198.23 197.5 197.3

350 423 44

20 20 20

Dirt

197.95 197.2 196.7 196.5 197.12

378 45 50 52 44

20 20 20 20

G G G G

197.58 197.19

385 454

30 199

196.3 195.9 195.6 196.13

54 58 62 590

16 273 273

 G G

197.03 196.4 196.3

470 53 54

215 215

G G

20173

2+46 \$10.5' Conc Drive 20' Lt.

201.31
0x2 1.8 10
30 20 20
Drive Dist
200.55
200.7

2+00

200.29
144 20 20 249
20 20 20
Cb Drive

1+975 \$10.5' Conc Drive 20' Rt.

199.17 199.91
255 182
20 30

1+65 \$12' Conc Drive 20' Lt.

199.88
185 248 27
30 20 20
Drive
199.25
199.0

1+50

199.50
223 30 31 3K 3C8
20 20 20 20
Cb Cb
198.7 198.6 198.3 199.05

1+10 \$9' Conc Drive 19.8 Lt.

198.99 198.24
27K 249
30 198

1+15.47 No Line Alley

198.35 198.1 198.0 197.6 197.8 198.46 198.2 198.79
328 36 37 K 39 327 35 39K
20 20 20 22 22 40 40
Drive G Cb G Cb

20173

20173

2+25

3+00

2+96.5 R 9.5 Conc. Drive 20' Rt.

2+83

2+74.0 R M.H.

2+645 R 9 Conc. Drive 20' Rt.

2+50

TP 12.32 213.41 0.64 201.09

20173

204.74
 8.7 9.5 9.4 9.5 8.65
 20 20 20 20
 Ob

202.32 202.6 202.3 202.96
 11.9 10.8 11.1 10.5
 20 20 20
 Drive

202.18 201.90
 11.23 10.5
 20 20

202.14 201.8 202.0 201.7 202.26
 11.27 11.6 11.4 11.7 11.5
 20 20 20 20
 Ob

201.72
 11.69
 Rim
 E

200.91 201.65
 12.50 11.75
 20 20

200.66 200.8 201.0 200.6 201.10
 12.75 12.6 12.4 12.8 12.31
 20 20 20 20
 Drive Ob

213.41

4+46.5 & 11.5 Conc Drive Rt.

4+46 & 9' Conc Drive Lt.

4+00

3+75

3+64.5 & 10' Conc Drive on Rt.

3+62 & 12' Conc Drive Lt.

3+46.5 & 10' Rt
& 12' Lt Conc Drives Lt & Rt

213.41

209.5 209.97 210.71 48
39 344 220
20 20 20
DRIVE

210.50 209.86 209.3
221 355 441
20 20 20
DRIVE

208.13 206.8 207.0 206.9 208.01
528 65 65 65 540
20 20 20 20
Cb Cb

206.80 205.7 205.8 205.8 206.76
661 77 76 76 665
20 20 20 20
Cb Cb

205.3 205.64 206.39
81 777 702
20 20 20

206.28 205.80 205.2
712 751 81
20 20 20

205.46 204.79 204.5
795 862 89
20 20 20

204.6 204.78 205.40
88 863 801
20 20 20

213.41

5+58.57 30. P Line Venice

5+45.57 B.C. C6 Rel Lt

5+15 E 11 Conc Drive Rt

T.P. 9.75 222.44 0.72 212.69

5+05

4+97 E 9 Conc Drive Lt

4+64 E 12' Conc Drive Rt

4+55

213.41

215.94 214.6 215.0 215.2 215.1 214.8 216.13

6.50 7.5 7.4 7.2 7.3 7.6 6.31

215 20 11 10 20 20

C6

215.64 214.5 214.5 214.6 214.6 214.2 215.61

6.80 7.9 7.9 7.8 7.8 6.83

20 20 11 10 20 20

C6

217.6 213.49 214.18

7.8 8.95 8.6

20 20 20

Dir Drive

213.36 222.44

+0.95 212.07

20 20 20 20

C6

213.18 212.48 211.7

0.23 0.92 1.7

20 20 20

210.5 210.86 211.60

3.9 2.55 1.8

20 20 20

210.96 209.6 209.8 210.1 210.90

2.4 3.8 3.6 3.3 2.51

20 20 20 20

C6

213.41

S.W. Ch. Ret. Venice & Orchard Length = 31.4' Spts
BC on Orchard

216.60
5-84 216.34 216.49 216.0 216.34 215.8 216.16 215.4 215.90 214.6 215.64 214.5
Cb. G Cb G Cb G Cb G Cb G Cb G
EC (4) (3) (2) 0 BC

6+15.57 No. Line Venice

218.86 218.0 218.2 217.9 218.57
3-8 4-2 4-2 4-5 3-7
215 215 20 20
Cb G Cb

6+05.57 No. Ch. Line Venice on Rt.

217.7 217.4 217.3 218.43 217.4 218.55
4-7 5-0 5-1 4-0 5-0 3-8
20 20 30 40 40
G Cb G Cb
BC

6+03.07 No. Cb. Line Venice on Rt. (1.5' Roll Type Cb & Gutter)

218.05 217.82 217.6 217.7
4-7 4-2 4-5 4-7
40 40 20
G

5+85.57 & Venice G & MH

217.2 216.9 217.09 216.6 217.0
5-2 5-5 5-5 5-5 5-1
40 20 Rim MH 20 40

5+68.07 50 Cb. Line Venice on Rt. (1.5' Roll Type Cb & Gutter)

216.60 216.34 216.2 215.9 215.9
5-84 6-10 6-3 6-5 6-1
40 40 40 20
Cb. G Gut

5+65.57 50 Cb Line Venice on Rt.

215.8 215.6 215.4 215.7 216.42 215.8 216.53
6-6 6-8 7-0 6-7 6-7 6-5 6-1
10 20 30 30 40 40
G Cb G Cb

222.44

222.44

7+50

7+00

T.P. 1233 233.84 0.93 221.51

6+74.5 & 8' Conc. Drive Rt.

6+50

H.W. Cb Ret Venice & Orchard Length = 31.4 5pts
B.C on Venice

H.E. Cb Ret Venice & Orchard Length = 16.3 3pts
B.C on Venice

J.E. Cb Ret Venice & Orchard Length = 16.3 3pts
B.C on Orchard.

222.44

51

226.09	224.9	225.1	225.0	226.12
725	89	87	88	772
20	20		20	20
Cb			Cb	Cb

223.25	222.14	222.3	222.6	223.38
1059	117	115	112	1046
20	20		20	20
Cb			Cb	Cb

233.84	221.45	222.07
T	0.99	0.97
	20	20

220.54	219.5	219.8	219.6	220.49
170	29	26	28	195
20	20		20	20
Cb			Cb	Cb

217.8	218.05	217.6	218.16	217.6	218.39	217.9	218.66	218.1	218.91	218.3	219.04
46	43	45	42	48	45	42	42	43	41	40	
G	Cb	G	Cb	G	Cb	G	Cb	G	Cb	G	Cb
BC	①		②		③		④		EC		

218.57	217.9	218.39	217.7	218.34	217.4	218.42	217.3
387	44	45	47	40	50	42	51
Cb	G	Cb	G	Cb	G	Cb	G
EC		②		①		BC	

214.8	216.12	215.2	216.23	215.5	216.34	215.6	216.40
75	63	72	62	69	60	68	60
G	Cb	G	Cb	G	Cb	G	Cb
BC		①		②		EC	

222.44

7406 11' Conc Drive Rt.

7400

TP. 12.52 24590 0.46 233.38

8455 8' Conc Drive Rt.

8450

8406.5 12' Conc Drive Rt.

7495

7465 6' Conc Drive Rt.

233.84

234.32 235.07 52
11.58 10.83
20 30

234.61 233.5 233.9 233.8 233.9 234.58
11.29 12.4 12.0 12.1 12.9 11.32
20 20 11 20 20
Cb Cb

24590 231.1 231.36 232.14
27 24.5 170
20 20 20

231.68 230.6 230.8 230.9 230.8 231.68
21.6 22 30 29 30 21.6
20 20 10 20 20
Cb Cb

228.3 228.70 229.42
55 51.4 44.2
20 20 30
Dirt Drive

228.59 227.5 227.7 227.6 228.63
52.5 63 61 62 52.1
20 20 20 20
Cb Cb

226.62 226.45 225.90 225.4
72.2 72.8 79.4 84
30 25 20 20
DriveDirt

233.84

10+53 & 14' Conc. Drive Lt.

10+45

10+00

9+72 & 7' Conc. Drive Lt.

9+56 & 11' Conc. Drive Rt.

9+45

9+26.5 & 11' Conc. Drive Lt.

24590

243.87
203 270
30 20

243.23 242.6 242.7 242.4 241.25
267 233 232 235 265
20 20 20 20
Ch Ch

240.52 239.7 239.9 239.7 240.57
538 63 60 62 533
20 20 20 20
Ch Ch

239.02 238.41 238.3
688 749 76
30 20 20

237.2 237.38 238.02
87 552 788
20 20 30

237.34 236.6 236.5 236.5 237.29
856 939 95 861
20 20 20 20
Ch Ch

236.31 235.60 235.5
959 30 10x
30 20 20

24590

B.M

4.11 250.02 250.08

12+16.14 50 Line Santa Barbara

12+00

11+67

11+40.8 End Cb on Rt

11+24 & 9' Conc. Drive Rt.

11+00

T.P. 9.21 254.13 0.98 244.92

245.90

J.W.B.P. Santa Barbara & Orchard

250.11	249.6	250.2	250.5	251.2	251.6
4 ⁰²	4 ⁵	3 ⁹	3 ⁶	2 ⁹	2 ⁵
20	20		19	24	24
cb					

249.84	249.1	249.6	249.8	250.8	251.0
4 ³⁹	5 ⁰	4 ⁵	4 ³	3 ³	3 ¹
20	20		19	23	31
cb					

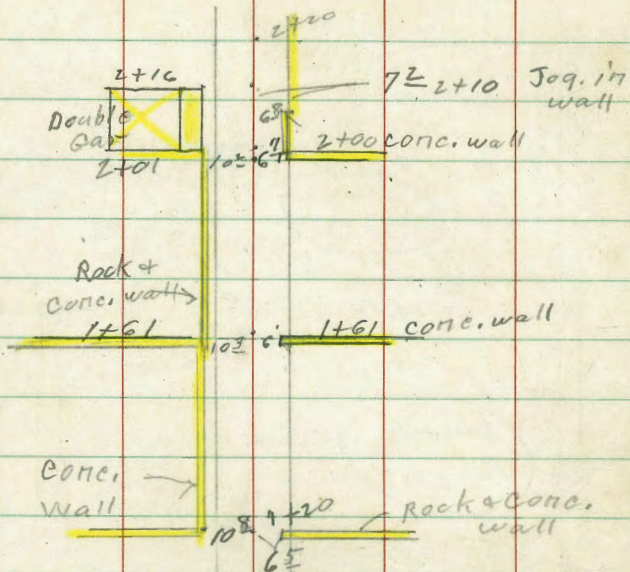
249.19	248.4	248.6	248.6	249.5	249.7
4 ²⁴	5 ²	5 ⁵	5 ⁵	4 ⁶	4 ⁴
20	20		20	22	28
cb					

248.43	247.7	247.6	247.6	248.45
5 ⁷⁰	6 ⁴	6 ⁵	6 ⁵	5 ⁶⁸
20	20		20	20
cb				cb

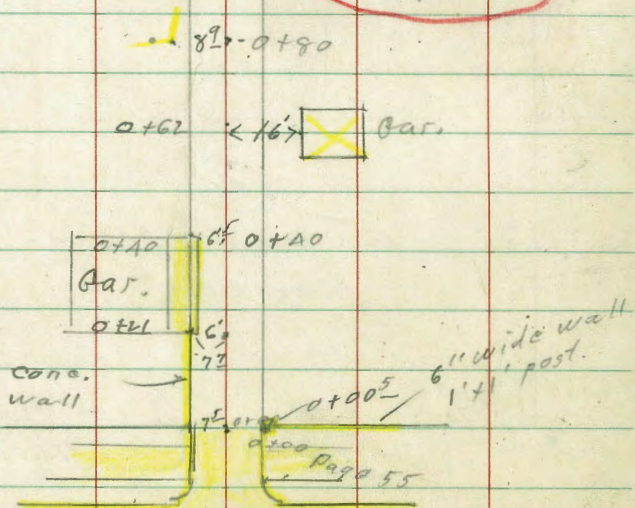
247.20	247.90
6 ⁹³	6 ²³
20	30

246.51	245.7	245.7	245.6	246.45
7 ⁶²	8 ⁴	8 ⁴	8 ⁵	7 ⁶⁸
20	20		20	20
cb				cb

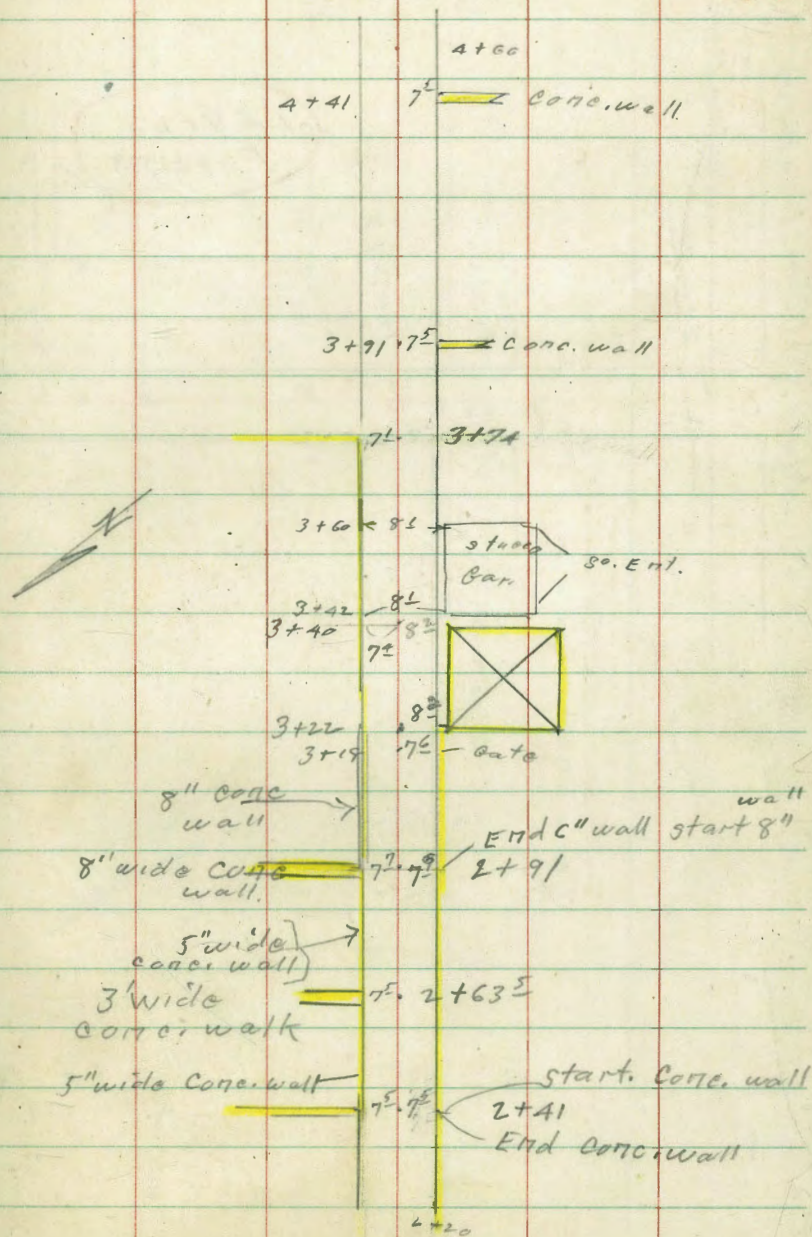
254.13
11



Levels
Page 62



GUIZOT - Conc. Pavement.



N. Ely. + S. Wly. alley BIK 2.
Sunset Grove

Long Branch to Main.

T.P. Corp
walk. 213RT
2+65.5

110 134.35 13.17 133.25 B.M.#2

0+37

sketch. Pa 55+57

0+32

INDEXED

0+21 212 H. = start stucco house

0+00 - End conc. pav. = Nly. line Long branch

0-07 = chisel. cross 5.57 140.85 = B.M.#1

0-10 Nly. curb line Long branch

T.P. Venice + Brighton 5.79 146.42 11.19 140.63
151.26 S.W.B.P.
0.47 151.82 - 151.35

W

#

E.

58

140.7	140.7	137.2	139.1	133.8	133.7	133.1
5.6	5.6	9.1	12.2	12.5	12.6	13.2
25	10	75	6		75	21.9
						At house

141.0	140.8	137.3	135.9	139.9	137.8	132.2	137.7
5.3	5.5	9.0	10.9	11.4	11.5	8.1	8.9
25	10	75	6		75	13	21.9
							At house

142.6	141.7	141.39	140.88	140.93	141.06	139.93
3.7	4.6	4.94	5.45	5.40	5.27	6.14
22	75	72		72	72	25
	Ord.			0	0	

144.19	143.64	141.89	141.15	140.71	140.28	140.70	137.72	138.26
2.14	2.67	4.24	5.15	5.62	6.05	5.63	8.61	8.07
50	50	75	75	75	75	85	50	50
06	P	Cl.	P	Pav	P.	Cl.	P.	Cl.
		Ret.				Ret.		

146.42
146.33 - 0.09 correction
See pg 69

N. + S. Alley

1707²⁵

± Hub.
1707.28

± Alley to west.

No Good
Reset Hub 5.58 128.77 B.M. # 3

0+99⁹⁸ = Sly. line Alley to west

0+80

0+64-21⁹ L4 = ± 3' wide Conc. walk

0+57 21⁹ Rt. = ± Gar. door.

0+47 21⁹ Rt. = ± Gar. door.

134.35

W

129.5
4.8
75

130.9
3.4
75

131.8
+05
25

132.7
1.6
75

129.0
5.3

129.8
4.5

131.9
2.4

129.3
5.0
75

129.3
5.0
75

131.7
2.6
75

132.76
1.5
21.9
Ord.

132.2
2.1
21.2
Ord.

132.7
1.6
21.9
Ord.

129.3
5.0
75

129.3
5.0
75

132.5
1.8
25

133.19
1.07
21.9
± walk

132.39
1.87
21.9
Conc. Floor

132.67
1.59
21.7
Floor - Conc.

134.35
134.26

59

2+1A²⁸ - S. Line MUIT.

6.9 50 Ord	8.88 75 oc.	9.27 75 Par.	9.82 75 Par.	9.75 75 Par.	9.63 75 oc.	11.7 50 Ord
115.61	113.63	113.24	112.69	112.76	102.88	110.81

2+08

2.8 25	2.2 75	5.8	5.4 75	4.6 10	4.5 25
119.7	120.3	116.7	117.1	117.9	118.0

T.P. 0.18 122.60 11.93 122.42

122.60

122.51

1+93

15.3 25	14.4 75	10.4	13.7 75	13.6 25
118.96	119.9	119.9	120.6	120.7

1+50

8.2 25	9.1 75	9.6	10.1 75	10.5 25
126.1	125.2	124.7	124.2	123.8

1+1A²⁸ - Nly. line alley to west.

5.0 75	5.4	6.0 75	6.8 25
129.3	128.9	129.3	127.5

134.35134.35
134.26

2+24⁹⁵ Cont.

2+24⁹⁵ - Sly ob. line Muir

2+21⁹⁵ cross in Pave 10.06

113.27

7.24	12.03
50	50
top. of	of

119.66	113.95	112.76	112.36	111.99	112.61	109.86
7.85	9.06	9.75	10.15	10.52	9.90	12.67
50	85	75		75	85	50
Pav.	Ct. Ret	P.		Pav	Ct. Ret	P.

112.45

10.06

122.51

Ely + Wly. Alley { BIK 2 Sunset Grove
 + " A Ocean View

Sketch P. 55 to 57 10-7-48

B.W. = base of wall
 T.W. = Top " "

INDEXED

7' Lt. = End Conc. wall.

double bar.

0+21 6' Lt. = start Conc. Apron to

N. + S.
 6" wide Conc. wall

0+00⁵ 7' Lt. = 1/2 1x1 conc. post. ends

7' Lt. = start Conc. wall.

0+00 = End Conc. pavement.

0-10 = Ely of. Guizot.

SE. 7' Lt.

Lang brand
 + Guizot

1.40

92.83

-

91.43

90.18
 2.65
 142
 Bar
 Floor

89.02
 3.81
 72
 on Apron

88.9
 3.4
 76
 T.W.

87.2
 5.6
 76
 B.W.

88.9
 3.9
 76
 Ord

88.62
 4.21
 6
 Ord
 +
 Apron

89.7
 8.1
 75
 Ord

89.9
 7.9
 75
 Base
 post

89.8
 3.0
 75
 Top
 post

89.07
 3.76
 85
 Top
 wall

86.3
 4.5
 75
 top of
 wall

87.3
 8.5
 75
 Base
 of wall

88.73
 8.10
 75
 dc.

89.68
 8.15
 75
 pavc.
 + Ord

89.71
 8.12

89.17
 7.66
 75
 pav.

85.61
 7.22
 75
 dc.

89.19
 10.69
 50
 dc

89.55
 11.28
 50
 P.

89.49
 8.34
 85
 Top
 Ctr. 2'
 Rot.

89.01
 8.82
 75
 P.

89.96
 8.37

87.82
 8.01
 75

85.99
 7.59
 85
 Ctr.
 2' Rad
 Rot.

87.19
 5.69
 50
 P

87.70
 5.13
 50
 dc

92.83

E+W. Alley

1+00

0+97 8¹/₂ Lt. = End rock wall.

0+80 8¹/₂ Lt. = start rock & conc. wall

0+62 16' RT = ~~16~~ Sing. Bar. Conc. floors
No Apron.

0+50

T.P. 11.85' 103.05 1.63 91.20

0+40 6¹/₂ Lt. = End Conc. Apron to
double bar.

92.83

98.9	97.8	98.0	98.5	99.7	63
4.7	5.3	5.1	4.6	3.4	
30	75		75	30	

97.9	96.2	96.3
5.7	6.9	6.8
9	89	89
T.W.	B.W.	Ord

96.6	95.9	95.2
6.5	7.7	7.9
9	89	89
T.W.	B.W.	Ord

95.25
7.80
16
Bar. Floor
& Ord.

91.9	92.1	92.0	92.9	92.9	93.65
11.2	11.0	11.1	10.6	10.2	9.7
25	75		5	75	20

103.05

91.38	90.93	90.43
2.45	2.10	2.10
148	8	65
Bar. Floor	on apron	

92.83

E+W. Alley

2+00 Cont.

also = west face 1' wide N+S. Conc. wall
10² Lt. = End Conc. + rock wall.

2+00 6² Rt. = start Conc. wall

1+61 Cont.

6⁵ Rt. = \pm N, + S, Rock + Conc. wall

wide N. + S. wall (P. 56)

start, Rock + Conc. wall - also = \pm 8"

1+61 10² Lt. = End Conc. wall also =

1+50

T.P. 12.23 114.81 0.47 102.58

1+20

6⁵ Rt. = \pm Rock + Conc. wall,
10² Lt. = start Conc. wall.

103.05

14

113.8	109.1	\pm	117.6	117.8
$\frac{1.0}{25}$	$\frac{5.7}{25}$		$\frac{+3.0}{8}$	$\frac{+3.0}{25}$
T.W.	West on wall		Ord	Ord.

113.8	109.0	112.8	112.7	112.9	113.2	113.0	117.8
$\frac{1.0}{10}$	$\frac{5.8}{10}$	$\frac{2.0}{10}$	$\frac{3.1}{7.5}$	1.9	$\frac{1.5}{6.2}$	$\frac{1.8}{6.2}$	$\frac{+3.0}{6.2}$
T.W.	B.W.				Ord	B.W	T.W.

108.7
6.1
102
T.W.
(N+S. wall)

103.4	107.1	103.4	106.8	108.0	112.5
$\frac{11.4}{102}$	$\frac{7.1}{102}$	$\frac{11.4}{102}$	$\frac{8.0}{10}$	$\frac{6.8}{6.5}$	$\frac{2.3}{6.5}$
B.W. to East	B.W. to East	B.W. to West	Ord.	B.W. + Ord.	T.W.

103.9	104.9	105.9	105.4	105.4	106.8	107.6
$\frac{10.9}{25}$	$\frac{10.9}{71}$	$\frac{8.9}{70.3}$	$\frac{9.4}{7.5}$	$\frac{9.4}{7.5}$	$\frac{8.0}{7.5}$	$\frac{7.2}{2.5}$
	inside At wall					

102.7	99.9	100.9	101.1	100.9	103.1
$\frac{0.4}{10.2}$	$\frac{3.2}{10.2}$	$\frac{2.2}{10.2}$	$\frac{2.0}{6.5}$	$\frac{2.2}{6.5}$	$\frac{0.0}{6.5}$
T.W.	B.W	Ord	Ord	B.W	T.W

103.05

2+50

118.9

 $\frac{7.5}{7.5}$

119.3

2.1

119.6

 $\frac{6.8}{7.5}$

2+41 Cont.

120.9

 $\frac{5.5}{7.5}$
T.W.
To west

129.8

 $\frac{1.6}{7.5}$
T.W.
To East

2+41

Conc. wall.

7^E Rt. = End Conc. wall also = Start
7^E Lt. = start Conc. wall. 5" wide.

125.8

 $\frac{0.6}{7.5}$
T.W.

117.0

 $\frac{9.4}{7.5}$
B.W.

118.3

 $\frac{8.1}{7.5}$
End

118.9

 $\frac{7.5}{7.5}$
End.

118.1

 $\frac{8.3}{7.5}$
B.W.
to west

119.3

 $\frac{8.1}{7.5}$
B.W.
to East

T.P.

114.67 126.38 0.10 114.71126.38

2+16

double Bar. (P.56)

10^E Lt. = End Conc. Apron to

113.98

1.3314.2
Bar. Floor

119.26

0.5510.2
Apron

2+10

Jog in wall. 6^E Rt. = wall to east.
Bar.

113.98

1.3314.2
Bar. Floor

113.29

1.5710.2
Apron

2+01

10^E Lt. = Start Conc. Apron to double

114.81

114.81

Frame Bldg.

8th Rt. = start foundation for3+22 7th Rt. = End Conc. wall.3+18 7th Rt. = gate thru wall

T.P. 12.20 138.47 0.11 126.27

2+91 Cont.

7th Rt. = End 6" wide wall + start
8" wide wall. ^{8" wide wall.}
8" wide wall. ^{conc.}2+91 7th Lt. = End 5" wide wall, start2+63^E 7th Lt. = 3' wide Conc. walk
Thru wall.126.38

127.8	126.7	133.6 ⁷	127.5
10.7	11.8	4.8	11.0
7 th	7 th	7 th	8 th
Ord	B.W.	T.W.	Base
to west		to west Foundation	

126.4	126.7	127.1	128.0 ^A
12.1	11.8	11.4	10.1
7 th		7 th	7 th
stop thru gate			

138.47

125.3	127.0	126.3	132.0 ^A
1.1	10.6	0.1	6.0
T.W.	T.W.	7 th	7 th
To East	to west	to west	To East

122.9	122.0 ^A	123.5	123.7	124.1	122.9	123.9
3.5	4.0	2.9	2.7	2.3	3.5	2.5
B.W.	B.W.	Ord		7 th	7 th	7 th
To East	to west	Ord		Ord	B.W.	B.W.
					to west	to east

120.35
6.03
7 th
4 walk

126.38

E. + W. Alloy

4+41 7⁵ Rt. = ϕ 6" ^{wide} Nts. Conc. wall.

4+00

3+91 7⁵ Rt. = ϕ 6" wide Conc. wall.

3+74.

3+60 8² Rt. = End same
south entrance

3+48 8¹ Rt. = start stucco base.

7⁴ Lt. = Pace of wall

3+40 8² Rt. = End Foundation.

ϕ

	138.0	137.5	139.0 ⁷
	0.5	1.0	+0.5
	75	75	75
	Ord	B.W.	T.W.

	135.5	135.0	135.9	136.0	136.8
	4.0	3.5	3.6	2.5	1.7
	15	75		75	15

	139.6	139.6	140.1
	3.9	4.5	+2.2
	75	75	75
	Ord	B.W.	T.W.

	132.4	130.8	132.3	132.7	133.8
	5.8	7.7	6.2	5.8	4.7
	75	75	75	75	75
	T.W.	B.W.	Ord		

	127.8	128.7	129.1	129.8	129.8	129.0
	10.7	9.8	9.4	8.7	8.7	9.5
	75	75		75	85	85
	B.W.					Base Foundation

138.47

E+W. Alley

See. P. 69

Alley & Inter-
 6+23.03 Section on 1/2 10.68 128.67 128.77
 BM#3 P. 59 Page 59

6+15 5

6+00

5+50

5+00

T.P. 2nd Rot.

4+17E 3.22 139.35 2.34 136.13

4+50

138.47

±

68

129.5
 $\frac{9.7}{75}$ 129.5
 $\frac{9.3}{5}$ 120.1
 $\frac{8.5}{75}$ 130.9

128.95
 $\frac{10.4}{25}$ 131.1
 $\frac{8.3}{75}$ 130.7
 $\frac{8.7}{6}$ 130.9
 $\frac{7.4}{75}$ 132.0
 $\frac{4.9}{25}$ 139.5

136.8
 $\frac{2.6}{25}$ 133.7
 $\frac{5.7}{75}$ 134.0
 $\frac{5.4}{5}$ 134.3
 $\frac{5.1}{75}$ 135.6
 $\frac{3.8}{25}$ 136.0

133.3
 $\frac{6.1}{25}$ 136.3
 $\frac{3.1}{75}$ 136.7
 $\frac{2.7}{6}$ 137.3
 $\frac{1.3}{75}$ 134.1
 $\frac{0.0}{20}$ 139.1

139.35

136.8
 $\frac{1.7}{25}$ 137.0
 $\frac{1.5}{9}$ 137.8
 $\frac{0.7}{75}$ 137.5
 $\frac{1.0}{6}$ 134.1
 $\frac{0.3}{75}$ 139.5
 $\frac{+1.0}{10}$ 141.6
 $\frac{+3.1}{25}$

138.47

S.E. 7' x 7' E. + W. Alley + 0.03 S.E. 7' x 7' = 91.43
 Longbranch + Quizot 10.12 91.46 page 62
 T.P. 7.56 101.58 12.99 100.02
 T.P. 0.27 113.01 11.85 102.74
 T.P. 1.10 124.59 13.27 123.49
 T.P. 0.12 136.56 12.87 136.44
 10.43 149.31 - 138.88 T.P. # 1
 (Below)

INDEXED

Benchmarks on Quizot + Longbranch
 and Venice + Brighton do not agree
 by 109 or .10 - correct π on N. + S.
 Alley to agree with E. + W. alley
 See above check levels

see page 68.

orig. B.M. (p 58)

S.W. B.P.
 Venice + Brighton 2.77 151.26 151.35

T.P. 9.21 154.03 1.58 144.82

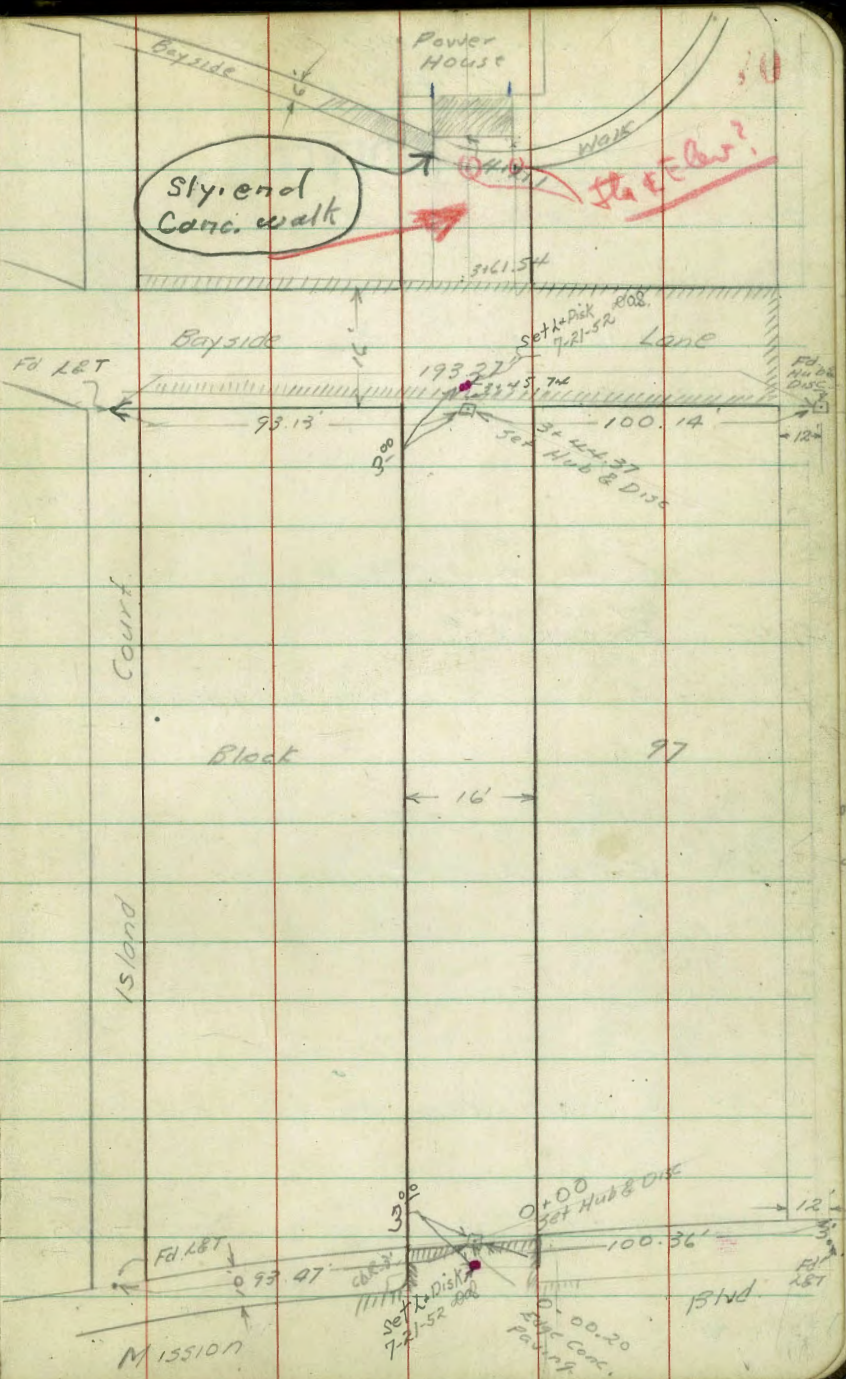
T.P. 7.52 146.40 0.47 138.88 T.P. # 1
 - Nail in Fence 139.35

2-21-49
 Hendricks
 S. Bramby
 Greer
 Rorer
 No # 25001

X Sect. Alley Block 97
 Mission Beach

INDEXED
 WK
 FEB 23 1949

Existing Conc. walk ends at Nly.
 Edge conc. slab this also =
 Nly. Paco pump house produced to west.
 C.H.S. 14/13/50



Levels Alley Block 97
Mission Beach

INDEXED

E Line Mission Blvd.

0+00 End Cbs Rt & Lt

Reduced
2-23-48
Dunnington

0-0020 Edge Conc Paving

Beg Cb on Rt.

0-07 EC Cb Ret on Lt

0-10 East Ch Line Mission Blvd

0-24 & East Strip Paving

B-47 4.57 2.84

-1.73

-1.62	-1.6	-1.63	-1.60
446	44	467	464
8.2		7.85	7.85
		G	Cb

-1.19	-1.62	-1.70	-1.63	-1.60	-1.71
47	446	452	467	464	455
20	8.2		7.85	7.85	20
	620		G	Cb	

-1.73	-1.76	-1.92	-1.90	-1.99	-1.67	-1.92
457	460	476	474	483	471	47
20	8.1	8.1		8	8	20
	Cb	G		G	Cb	

-1.75	-1.91	-1.74	-1.97	-1.76	-1.98	-1.96	2.00	-2.03	-2.06	-2.11	-1.99	-2.14	-1.96
49	425	458	481	462	482	482	484	487	490	493	488	495	480
50	50	25	25	11	11	8		8	25	41	41	G	Cb
	Cb	G	Cb	G	Cb	G				G	Cb	50	50

-1.52	-1.53	-1.51	-1.54	-1.54	-1.58	-1.67
436	437	435	438	438	442	451
50	25	8		8	25	50
				254		

R L&T 3' West of W. Line Mission Blvd. & Ventura Pl.

(Sta. 2+97 FB 1804 P. 58)

01835 Bcy Conc. Drive on Lt

-0.96
380
17.8

-1.90
424
8.15

0175

-1.5
43
18

-2.2
50
8

-2.3
51
8

-1.7
45
8

-1.0
38
18

0174.4 Power Pole # PA 812 7.2 RT

-2.2
50
20

-2.2
50
8

-2.0
48
7.70

-1.48
432
20

-0.94
328

0144 End Conc Paving Area to Ser. 516 on Rt

0127 End Cons. Wash Rack on RT

-2.1
49
20

-2.0
48
8

-1.1
45
8

-1.30
44
8

-1.21
405
18

0107 Bcy Conc Wash Rack 8' Rt.

-1.57
441
8

-1.44
428
8

-1.61
445
18

-1.44
428
18

Pav. Rack Pav. Rack

284

284
1

1+42.2 Beg. Conc. Ramp to Garage on Lt.

-1.04	-1.64
4.5	4.75
11	8.05
Fl.	Ramp

1+35

-1.6	-1.9	-2.0	-1.4	-1.1
4.9	5.0	5.1	4.5	4.3
12	8		8	20

1+32.8 End Conc. Ramp to Garages on Lt.

-1.46	-1.72
4.58	4.84
14	8
Fl.	Ramp

1+08 Beg. Conc. Ramp to Garages on Lt.

-1.46	-1.76
4.60	4.88
14	8.05
Fl.	Ramp

TP. 4.88 $\frac{3.12}{1}$ 4.60 -1.76 $\frac{3.12}{1}$

1+00.50 End Conc. Drive on Lt.

-0.94	-1.74	-2.2	-2.0	-1.1
3.78	4.58	5.0	4.6	3.9
17.7	8.15		8	19

2106 & Double Garage 17.5 Lt

2100

1194.5 & 2' Conc Walk 12.5 Lt

1194. Beg. Conc Bldg. 8.05 Rt.

1165

1164 Power Pole #PA830 7.1' Rt.

11629 End Conc Ramp to Gar. onlt.

31.2

-1.02

4.14

13.5

Lt.

-1.00	.11	.15	.16	.11
4.12	4.2	4.5	4.7	4.8
13.5	13.5	8		8
Fl.				

-1.35

-1.36

4.47

4.48

20

12.5

.17	.18	.20	.13	.10
4.8	4.9	5.1	4.4	4.2
16	8		8	20

-1.01

-1.47

4.12

4.79

11

7.95

Fl.

Ramp

2.12
7

2+54 Power Pole # 848 6.8 RI

2+50

Req. Conc. Pat 10 on Lt. (10' Lt)
2+425 End Conc. Ramp to Gar. on Lt

2+29 Break in Ramp to Gar. on Lt

2+244 Req Conc Ramp to Gar on Lt

2+24 End Conc Bldg 81 Rt

3.12
/

-1.12	-1.05	-1.1	-1.1	-0.9	-0.1	-0.3
424	417	422	422	420	33	34
20	10.2	8		5	8	17
	Cox					

-1.02	-1.15	-1.22
414	427	434
14	10	8.1
Fl.	Fl.	Ramp

-1.02	-1.13
414	425
14	8
Fl.	Ramp

-0.75	-0.76
387	390
13.5	8.1

3.12
/

Cont'd from P 75

3417 8' Rt End 6' high 6' wide con block wall

^{5.70}
+1.54
8
Top Rating
1.2
49

34143 End Conc Ramp to Gar on Lt

1.3

3407 8' Rt Begin 6' high 6' con block wall

+1.39
8
Top Rating
50

T.P. 4.53 3.66 3.99 -0.87

3402.2 End Conc Ramp to Gar on Rt

3400

2486 Beg Conc Ramp to Gar on Rt

2484 Beg Conc Ramp to Gar on Lt

3.12

76

-0.85 +1.03

4.51 4.69
20 9.1

3.66

-0.65 -0.59

377 371
8 10
Ramp Fl

-0.93 1.04 +1.1 +1.0 -0.65
4.05 4.14 4.2 4.2 3.77
11.3 9.1 8 8
Fl. Ramp

-0.66 -0.56

380 368
8.05 10
Ramp Fl

-0.86 -1.04
4.0 4.6
111 9.05

3.12

Cont'd from p-76

3+53.62 R. Paving

3+45.74 West Edge Conc. Paving

3+44.37 W. Line Bayside Lane

3+34.2 End Conc. Ramp on Rt.

3+17.8 Beg. Conc. Ramp to Car on Rt.

366

£

77

2.07	1.92	1.85	1.72	1.44
5 ²¹	5 ²⁸	5 ³¹	5 ³⁸	5 ⁴¹
20	8	8	8	30

1.87	1.70	1.77	1.48	1.20
5 ²⁴	5 ²⁸	5 ³³	5 ³⁸	5 ⁴⁴
20	8	8	8	30

1.5	1.7	1.72	1.4	1.2
5 ²²	5 ²⁸	5 ³³	5 ³⁸	5 ⁴⁴
20	8	Hub	8	14

-0.47	-0.32
4 ¹³	5 ²³
11.1	14
Ramp	Fl.

-0.48	-0.34
4.14	4.20
11.1	14
Ramp	Fl.

366

B.M. 6.36 -1.73 -1.73

T.P. 4.30 4.63 5.32 0.33

4+28.5 Beg Power House

4+21.07 Beg Conc Slab to Power House

4+15.1 Beg Conc Side Walk Lt. (8.3 Lt.)

3+70

3+61.54 East Edge Conc Paving Bay side kerse

3+59 Power Pole # P 3213 9.5 Rt.

366

T

CK. Starting B.M.

-1.19

4.85

-0.45

4.41

8.3

SW

-1.23

4.89

8.3

-1.24

4.90

9.7

-1.20

4.86

9.7

-0.53

4.9

8.3

SW

-1.1

4.8

8.3

Gr

-1.2

4.9

20

-1.3

5.0

8

-1.5

5.3

4

-1.2

4.9

8

-0.7

4.8

8

-0.6

4.3

30

-1.83

5.49

20

-1.67

5.33

8

-1.74

5.40

8

-1.50

5.16

8

-1.24

4.88

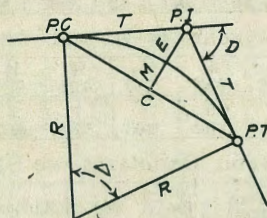
30

366

T

DIETZGEN'S RAILROAD CURVE AND REDUCTION TABLES

Copyright, 1914, by Eugene Dietzgen Co., New York City



CURVE FORMULAS

- Radius= $R = \frac{50}{\sin \frac{D}{2}}$ (1) Degree of Curve= D and $\sin \frac{D}{2} = \frac{50}{R}$ (2)
- Tangent= $T = R \tan \frac{\Delta}{2}$ (3) Length of Curve= $L = 100 \frac{\Delta}{D}$ (4)
- Middle ordinate= $M = R(1 - \cos \frac{\Delta}{2})$ (5) $= R \text{vers} \frac{\Delta}{2}$ (6)
- External= $E = T \tan \frac{\Delta}{4}$ (7) $= R \div \cos \frac{\Delta}{2} - R$ (8) $= R \text{exsec} \frac{\Delta}{2}$ (9)
- Long Chord= $C = 2 R \sin \frac{\Delta}{2}$ (10) Δ = Central Angle

EXPLANATION AND USE OF TABLES

Stations.—Given P. I. = Sta. 161 + 60.35 to find Sta. of P. C. and P. T. $\Delta = 62^\circ 10'$ $D = 8^\circ 20'$. From Table IV for 1° curve $T = 3454.1$ and $\div 8\frac{1}{3} = 414.49$ ft. From Table V correction = .36 or $T = 414.85$ ft. P. C. = Sta. P. I. - $T = 157 + 45.50$. Also from (4) $L = 746.00$ and P. T. = Sta. P. C. + $L = 164 + 91.50$.

Offsets.—Tangent offsets vary (approximately) directly with D and with square of the distance. Thus tangent offset for Sta. 158 on above curve is 2.16 ft. found as follows. From Table III tangent offset for 100 ft. = 7.27 ft. Distance = $158 - \text{Sta. P. C.} = 54.50$, hence offset = $7.27 \div (54.50 \div 100)^2 = 2.16$ ft. Also square of any distance divided by twice the radius equals (approximately) the distance from tangent to curve. Thus $(54.50)^2 \div (2 \times 688.26) = 2.16$ ft.

Deflections.—Deflection angle = $\frac{1}{2} D$ for 100 ft., $\frac{1}{4} D$ for 50 ft., etc. For c ft. = (in minutes) $.3 \times C \times D^\circ$ or = defl. for 1 ft. from Table III $\times C$. For Sta. 158 of above curve = $.3 \times 54.5 \times 8\frac{1}{3} = 136.2'$ or $2^\circ 16.2'$, or $= 2.50 \times 54.5 = 136.2'$ from Table III. For Sta. 159 deflection angle = $2^\circ 16.2' + 8^\circ 20' \div 2 = 6^\circ 26.2'$, etc.

Externals.—May be found in similar manner to tangents. Thus E for curve above is 115.37. For from Table IV for 1° curve $E = 960.6$ for $8^\circ 20' = 960.6 \div 8\frac{1}{3} = 115.27$ and from Table V correction = .10 or $E = 115.37$ ft. Or suppose $\Delta = 32^\circ$ and E is measured and found to be 42 ft. What is D ? From Table IV $E = 230.9$ and $\div 42 = 5.5$ or $D = 5^\circ 30'$.

DISTANCES FROM CENTER OF ROADWAY FOR
CROSS-SECTIONING.

Roadway 16 feet wide. Side Slopes 1 on 1½
For Single Track Embankment.

H	0	.1	.2	.3	.4	.5	.6	.7	.8	.9	H
0	8.0	8.2	8.3	8.5	8.6	8.8	8.9	9.1	9.2	9.4	0
1	9.5	9.7	9.8	10.0	10.1	10.3	10.4	10.6	10.7	10.9	1
2	11.0	11.2	11.3	11.5	11.6	11.8	11.9	12.1	12.2	12.4	2
3	12.5	12.7	12.8	13.0	13.1	13.3	13.4	13.6	13.7	13.9	3
4	14.0	14.2	14.3	14.5	14.6	14.8	14.9	15.1	15.2	15.4	4
5	15.5	15.7	15.8	16.0	16.1	16.3	16.4	16.6	16.7	16.9	5
6	17.0	17.2	17.3	17.5	17.6	17.8	17.9	18.1	18.2	18.4	6
7	18.5	18.7	18.8	19.0	19.1	19.3	19.4	19.6	19.7	19.9	7
8	20.0	20.2	20.3	20.5	20.6	20.8	20.9	21.1	21.2	21.4	8
9	21.5	21.7	21.8	22.0	22.1	22.3	22.4	22.6	22.7	22.9	9
10	23.0	23.2	23.3	23.5	23.6	23.8	23.9	24.1	24.2	24.4	10
11	24.5	24.7	24.8	25.0	25.1	25.3	25.4	25.6	25.7	25.9	11
12	26.0	26.2	26.3	26.5	26.6	26.8	26.9	27.1	27.2	27.4	12
13	27.5	27.7	27.8	28.0	28.1	28.3	28.4	28.6	28.7	28.9	13
14	29.0	29.2	29.3	29.5	29.6	29.8	29.9	30.1	30.2	30.4	14
15	30.5	30.7	30.8	31.0	31.1	31.3	31.4	31.6	31.7	31.9	15
16	32.0	32.2	32.3	32.5	32.6	32.8	32.9	33.1	33.2	33.4	16
17	33.5	33.7	33.8	34.0	34.1	34.3	34.4	34.6	34.7	34.9	17
18	35.0	35.2	35.3	35.5	35.6	35.8	35.9	36.1	36.2	36.4	18
19	36.5	36.7	36.8	37.0	37.1	37.3	37.4	37.6	37.7	37.9	19
20	38.0	38.2	38.3	38.5	38.6	38.8	38.9	39.1	39.2	39.4	20
21	39.5	39.7	39.8	40.0	40.1	40.3	40.4	40.6	40.7	40.9	21
22	41.0	41.2	41.3	41.5	41.6	41.8	41.9	42.1	42.2	42.4	22
23	42.5	42.7	42.8	43.0	43.1	43.3	43.4	43.6	43.7	43.9	23
24	44.0	44.2	44.3	44.5	44.6	44.8	44.9	45.1	45.2	45.4	24
25	45.5	45.7	45.8	46.0	46.1	46.3	46.4	46.6	46.7	46.9	25
26	47.0	47.2	47.3	47.5	47.6	47.8	47.9	48.1	48.2	48.4	26
27	48.5	48.7	48.8	49.0	49.1	49.3	49.4	49.6	49.7	49.9	27
28	50.0	50.2	50.3	50.5	50.6	50.8	50.9	51.1	51.2	51.4	28
29	51.5	51.7	51.8	52.0	52.1	52.3	52.4	52.6	52.7	52.9	29
30	53.0	53.2	53.3	53.5	53.6	53.8	53.9	54.1	54.2	54.4	30
31	54.5	54.7	54.8	55.0	55.1	55.3	55.4	55.6	55.7	55.9	31
32	56.0	56.2	56.3	56.5	56.6	56.8	56.9	57.1	57.2	57.4	32
33	57.5	57.7	57.8	58.0	58.1	58.3	58.4	58.6	58.7	58.9	33
34	59.0	59.2	59.3	59.5	59.6	59.8	59.9	60.1	60.2	60.4	34
35	60.5	60.7	60.8	61.0	61.1	61.3	61.4	61.6	61.7	61.9	35
36	62.0	62.2	62.3	62.5	62.6	62.8	62.9	63.1	63.2	63.4	36
37	63.5	63.7	63.8	64.0	64.1	64.3	64.4	64.6	64.7	64.9	37
38	65.0	65.2	65.3	65.5	65.6	65.8	65.9	66.1	66.2	66.4	38
39	66.5	66.7	66.8	67.0	67.1	67.3	67.4	67.6	67.7	67.9	39
40	68.0	68.2	68.3	68.5	68.6	68.8	68.9	69.1	69.2	69.4	40

Example—If point is 22.6 ft. above grade, how far should it be from center line to be a slope stake point? Ans. from Table 41.9. For same slopes but other widths of roadbed correct above figures by one-half difference in width of roadbed; thus in example above for 20 ft. roadbed distance will be 41.9 + (20 - 16) ÷ 2 or 2 ft. added to 41.9 = 43.9. For slopes of 1 on 1 see inside of front cover.

MADE IN U.S.A.