

1874

DIARY

NOTES

DEVELOPMENT

NOTE

EUGENE DIETZGEN CO.

DRAWING MATERIALS, MATHEMATICAL and
SURVEYING INSTRUMENTS

Chicago New York San Francisco New Orleans Pittsburg Toronto

Distances from Center of Roadway for Cross-Sectioning
Roadway 16 feet wide. Side Slopes 1 on 1.
For Single Track Embankment.

MICROFILMED
DEC 30 1964

H	0	.1	.2	.3	.4	.5	.6	.7	.8	.9	H
0	8.0	8.1	8.2	8.3	8.4	8.5	8.6	8.7	8.8	8.9	0
1	9.0	9.1	9.2	9.3	9.4	9.5	9.6	9.7	9.8	9.9	1
2	10.0	10.1	10.2	10.3	10.4	10.5	10.6	10.7	10.8	10.9	2
3	11.0	11.1	11.2	11.3	11.4	11.5	11.6	11.7	11.8	11.9	3
4	12.0	12.1	12.2	12.3	12.4	12.5	12.6	12.7	12.8	12.9	4
5	13.0	13.1	13.2	13.3	13.4	13.5	13.6	13.7	13.8	13.9	5
6	14.0	14.1	14.2	14.3	14.4	14.5	14.6	14.7	14.8	14.9	6
7	15.0	15.1	15.2	15.3	15.4	15.5	15.6	15.7	15.8	15.9	7
8	16.0	16.1	16.2	16.3	16.4	16.5	16.6	16.7	16.8	16.9	8
9	17.0	17.1	17.2	17.3	17.4	17.5	17.6	17.7	17.8	17.9	9
10	18.0	18.1	18.2	18.3	18.4	18.5	18.6	18.7	18.8	18.9	10
11	19.0	19.1	19.2	19.3	19.4	19.5	19.6	19.7	19.8	19.9	11
12	20.0	20.1	20.2	20.3	20.4	20.5	20.6	20.7	20.8	20.9	12
13	21.0	21.1	21.2	21.3	21.4	21.5	21.6	21.7	21.8	21.9	13
14	22.0	22.1	22.2	22.3	22.4	22.5	22.6	22.7	22.8	22.9	14
15	23.0	23.1	23.2	23.3	23.4	23.5	23.6	23.7	23.8	23.9	15
16	24.0	24.1	24.2	24.3	24.4	24.5	24.6	24.7	24.8	24.9	16
17	25.0	25.1	25.2	25.3	25.4	25.5	25.6	25.7	25.8	25.9	17
18	26.0	26.1	26.2	26.3	26.4	26.5	26.6	26.7	26.8	26.9	18
19	27.0	27.1	27.2	27.3	27.4	27.5	27.6	27.7	27.8	27.9	19
20	28.0	28.1	28.2	28.3	28.4	28.5	28.6	28.7	28.8	28.9	20
21	29.0	29.1	29.2	29.3	29.4	29.5	29.6	29.7	29.8	29.9	21
22	30.0	30.1	30.2	30.3	30.4	30.5	30.6	30.7	30.8	30.9	22
23	31.0	31.1	31.2	31.3	31.4	31.5	31.6	31.7	31.8	31.9	23
24	32.0	32.1	32.2	32.3	32.4	32.5	32.6	32.7	32.8	32.9	24
25	33.0	33.1	33.2	33.3	33.4	33.5	33.6	33.7	33.8	33.9	25
26	34.0	34.1	34.2	34.3	34.4	34.5	34.6	34.7	34.8	34.9	26
27	35.0	35.1	35.2	35.3	35.4	35.5	35.6	35.7	35.8	35.9	27
28	36.0	36.1	36.2	36.3	36.4	36.5	36.6	36.7	36.8	36.9	28
29	37.0	37.1	37.2	37.3	37.4	37.5	37.6	37.7	37.8	37.9	29
30	38.0	38.1	38.2	38.3	38.4	38.5	38.6	38.7	38.8	38.9	30
31	39.0	39.1	39.2	39.3	39.4	39.5	39.6	39.7	39.8	39.9	31
32	40.0	40.1	40.2	40.3	40.4	40.5	40.6	40.7	40.8	40.9	32
33	41.0	41.1	41.2	41.3	41.4	41.5	41.6	41.7	41.8	41.9	33
34	42.0	42.1	42.2	42.3	42.4	42.5	42.6	42.7	42.8	42.9	34
35	43.0	43.1	43.2	43.3	43.4	43.5	43.6	43.7	43.8	43.9	35
36	44.0	44.1	44.2	44.3	44.4	44.5	44.6	44.7	44.8	44.9	36
37	45.0	45.1	45.2	45.3	45.4	45.5	45.6	45.7	45.8	45.9	37
38	46.0	46.1	46.2	46.3	46.4	46.5	46.6	46.7	46.8	46.9	38
39	47.0	47.1	47.2	47.3	47.4	47.5	47.6	47.7	47.8	47.9	39
40	48.0	48.1	48.2	48.3	48.4	48.5	48.6	48.7	48.8	48.9	40

Example—If point is 22.6 ft. above grade, how far should it be from center line to be a slope stake point? Ans. from Table 30.6. For same slopes but other widths of roadbed, correct above figures by one-half difference in width of roadbed; thus in example above, for 20 ft. roadbed distance will be $30.6 + (20 - 16) \div 2$ or 2 ft. added to $30.6 = 32.6$. For slopes of 1 on 1½ see inside of back cover.
Copyright, 1914, by Eugene Dietzgen Co.

F.B. 1874

City Engineers
San Diego

INDEXED

to page # 74

This Field Book is manufactured of a High Grade 50% Rag Paper having a WATER RESISTING SURFACE, and is sewed with Bing Special Enamel Waterproof thread.

Made in U. S. A.

INDEX

P

Gibbs Airport

" " Check Hards Runway "B" 2-11

" " " " " "A" 12-23

" " " " " "F" 24-29

" " Restake Portion Runway "B" 30-40

"B" Runway to Grader from 24100 to 26100 41-43

" " " " " 27100 to 37100 44-46

"A" Runway - Restake Portion 130100 to 145100 54

Cross Section Triggs St. Juan to East P. 70-74

Check Levels Lt 011- Rough Grades
 "B" Runway
 Station 250 200 150 75

Note: For Grade Stakes
 See P.B. 1860

INDEXED
 W.K.
 JAN 24 1950

10150	404.9	404.6	404.5	403.2
	3.7	4.0	4.1	5.9
10700	404.8	404.7	404.2	403.9
	3.8	3.9	4.4	4.7
9450	404.50	404.50	404.10	403.90
	9.1	4.1	4.5	4.7
9700	404.20	404.30	404.20	403.80
	4.4	4.3	4.4	4.8
B.M.	ON E. Hub	5.73	408.60	402.87
AT 10100				

	75	150	200	250
403.0	402.8	402.8	403.0	403.2
5.6	5.8	5.8	5.6	5.4
402.9	402.90	402.70	403.30	403.70
5.7	5.7	5.9	5.3	4.9
403.30	402.70	402.80	402.70	403.60
5.3	5.9	5.8	5.9	5.0
403.50	402.70	402.50	403.40	403.40
5.1	5.9	6.1	5.2	5.2
		408.60		

Station	Check Levels			
	250	200	150	75
14+00	406.6	405.7	404.8	404.2
	2.6	2.9	3.8	4.4
13+50	406.0	406.0	405.3	404.0
	2.6	2.6	3.3	4.6
13+00	405.5	405.5	405.0	403.9
	2.7	2.7	3.6	4.7
12+50	405.7	405.7	405.1	404.2
	2.9	2.9	3.5	4.4
12+00	405.5	406.0	405.1	404.3
	3.1	2.6	3.5	4.3
11+50	405.2	405.2	404.9	404.3
	3.4	3.4	3.7	4.3
11+00	405.1	404.8	404.6	403.7
	3.6	3.8	4.0	4.9

Station	B ^o Runway				
	75	150	200	250	2
	404.0	404.1	405.2	405.5	406.2
	4.6	4.5	3.9	3.1	3.4
	404.0	403.9	404.2	404.9	405.1
	4.6	4.7	4.4	3.7	3.5
	403.7	403.7	403.8	404.2	404.6
	4.9	4.9	4.8	4.4	4.0
	403.5	403.6	404.0	403.7	403.9
	5.1	5.0	4.6	4.9	4.7
	403.3	403.3	403.8	403.5	403.8
	5.3	5.3	4.8	5.1	4.8
	403.5	403.2	403.2	403.3	403.4
	5.1	5.4	5.4	5.3	5.2
	403.3	403.0	402.9	403.3	403.1
	5.3	5.6	5.7	5.3	5.5

408.60

Station	250	200	150	75
17+00	406.6 3.9	405.8 4.7	405.3 5.2	405.4 5.1
16+50	406.4 4.1	405.2 5.3	404.8 5.7	405.1 5.4
16+00	406.3 4.2	405.6 4.9	405.1 5.4	405.0 5.5
15+50	406.2 4.3	405.4 5.1	404.9 5.6	404.8 5.7
15+00	406.3 4.2	406.4 4.1	405.3 5.2	404.8 5.7
14+50	406.3 4.2	405.8 4.7	405.3 5.2	404.3 6.2
14+00	T.P. 6.48 410.47 4.61 403.99			
	R. Hub			

8" Runway	75	150	200	250
	405.1 5.4	406.5 4.0	406.3 4.2	406.8 3.7
	405.3 5.2	406.2 4.3	405.8 4.7	406.2 4.3
	405.3 5.2	406.1 4.4	406.2 4.3	406.2 4.3
	404.7 5.8	406.3 4.2	406.1 4.4	406.1 4.4
	404.4 6.1	406.2 5.3	405.5 5.0	405.5 5.0
	404.1 6.4	404.9 5.6	405.6 4.9	405.2 5.3
	405.4 5.1			
	410.47			

Station	250	200	150	75	Hub	75	150	200	250	
20+00	407.4 6.1	407.3 6.2	406.8 6.7	406.8 6.7		406.5 7.0	406.9 6.6	407.2 6.3	407.6 5.9	408.1 5.4
19+50	407.5 6.0	406.9 6.6	406.6 6.9	406.3 7.2		406.2 7.3	406.7 6.8	407.1 6.4	407.2 6.5	407.7 5.8
19+00 T.P.	7.33	413.46	4.39	406.13	Hub					
19+00	407.3 3.2	406.9 3.6	406.3 4.2	406.1 4.4		406.2 4.3	406.3 4.2	406.6 3.9	407.2 3.3	407.4 3.1
18+50	407.2 3.3	406.8 3.7	406.8 3.7	406.4 4.1		405.8 4.7	406.2 4.3	406.7 3.8	406.9 3.6	407.2 3.3
18+00	407.0 3.5	406.9 3.6	406.7 3.8	406.0 4.5		405.8 4.7	406.1 4.4	406.3 4.3	406.8 3.7	407.1 3.4
17+50	406.8 3.7	406.7 3.8	406.0 4.5	405.6 4.9		405.8 4.7	406.3 4.3	406.6 3.9	406.5 4.0	406.6 3.9
										410.47

13" Kurnioy

R+

Sta	Check levels on Rough Grades				"8" Runway					5
	250	200	150	75	75	150	200	250		
23+50	408.9 4.6	408.6 4.9	408.5 5.0	407.1 4.4	409.6 3.9	409.6 3.9	409.6 3.9	409.3 4.2	409.4 4.1	
23+00	408.8 4.7	408.4 5.1	408.2 5.3	408.7 4.8	409.0 4.5	408.9 4.6	408.9 4.6	408.7 4.8	408.9 4.6	
22+50	408.6 4.9	408.3 5.2	408.0 5.5	408.3 5.2	408.6 4.9	408.4 5.1	408.4 5.1	408.4 5.1	408.9 4.6	
22+00	408.3 5.2	408.2 5.3	407.7 5.8	407.6 5.9	408.3 5.2	408.3 5.2	408.2 5.3	408.1 5.4	408.2 5.3	
21+50	408.0 5.5	407.8 5.7	407.4 6.1	408.0 5.5	408.0 5.5	408.0 5.5	407.5 6.0	407.8 5.7	408.1 5.4	
21+00	408.0 5.5	407.8 5.7	407.3 6.2	407.2 6.3	407.9 5.6	407.7 5.8	407.6 5.9	407.8 5.7	408.2 5.3	
20+50	407.9 5.6	407.6 5.9	406.9 6.6	406.6 6.9	407.2 6.3	407.1 6.4	407.5 6.0	407.6 5.9	408.0 5.5	

413.46

"B" Runway - check levels Lt

Station	250	200	150	75	Lt
27+00	411.1 83	411.1 83	410.9 85	411.0 84	
26+50	410.6 98	410.7 87	410.3 91	410.6 88	
26+00	409.8 96	409.8 96	410.0 94	410.5 89	
25+50	410.0 94	409.4 10.0	410.2 92	410.2 92	
25+00	409.5 99	409.2 10.2	409.4 10.0	409.8 96	
T.P.	843	419.38	2.51	410.95	29150 to Hub
29+50	410.2 3.3	409.5 4.0	410.0 3.5	410.1 3.4	
24+00	409.9 3.6	409.2 4.3	409.1 4.4	409.8 3.7	
		413.46			

RT

Station	75	150	200	250	RT
27+00	411.4 80	411.8 76	411.5 76	411.6 78	411.4 80
26+50	411.0 84	411.5 410.5 79	411.6 78	411.5 79	411.7 77
26+00	411.1 83	412.38 - Point 70.2	411.6 78	411.2 82	410.9 85
25+50	411.5 79	412.7 67	411.3 81	410.8 86	411.0 84
25+00	411.1 83	411.4 80	410.7 87	410.3 91	410.9 85
T.P.					412.38
29+50	411.0 2.5	410.6 2.9	410.5 3.0	410.3 3.2	410.5 3.0
24+00	410.3 3.2	410.0 3.5	409.8 3.7	409.8 3.7	409.8 3.7
			413.46		

Check barrels - 18" Runway
L.L.

17.

7.

52

	150	200	150	75		75	150	200	250
30+50	414.0 54	415.1 43	415.1 43	415.9 35	413.8 56	412.7 67	412.4 70	412.1 73	411.8 76

30+00	414.3 51	413.6 58	414.5 49	415.1 43	413.8 56	412.4 70	412.2 72	411.9 75	411.8 75
-------	-------------	-------------	-------------	-------------	-------------	-------------	-------------	-------------	-------------

29+50	413.1 63	413.3 61	413.8 56	414.3 51	413.4 60	413.0 64	412.1 73	411.46 722 (Reset)	411.6 78
-------	-------------	-------------	-------------	-------------	-------------	-------------	-------------	--------------------------	-------------

29+00	412.5 69	413.5 59	413.8 56	413.5 59	413.1 63	413.9 55	412.9 65	412.1 73	411.3 81
-------	-------------	-------------	-------------	-------------	-------------	-------------	-------------	-------------	-------------

28+50	413.3 61	412.6 68	413.0 64	414.0 54	413.5 59	413.4 60	413.1 63	411.7 77	411.3 81
-------	-------------	-------------	-------------	-------------	-------------	-------------	-------------	-------------	-------------

28+00	411.9 75	411.9 75	412.1 73	412.5 69	412.5 69	413.2 62	412.7 67	411.8 76	412.2 72
-------	-------------	-------------	-------------	-------------	-------------	-------------	-------------	-------------	-------------

27+50	411.4 80	411.5 72	411.5 72	412.1 73	411.7 77	412.4 70	412.7 67	412.9 65	411.5 79
-------	-------------	-------------	-------------	-------------	-------------	-------------	-------------	-------------	-------------

41938

41938

Runway
Check Levels - Rough Grades

Left

Flt

8

	250	200	150	75
34+00	418.8 38	418.1 45	418.3 43	418.1 45

	75	150	200	250
	417.3 53	416.0 66	415.2 74	414.7 79
				414.4 82

33+50	417.8 48	417.5 51	417.3 53	417.1 55
-------	-------------	-------------	-------------	-------------

	416.8 58	415.7 69	415.1 75	414.0 86	413.9 87
--	-------------	-------------	-------------	-------------	-------------

33+00	417.0 66	415.5 71	416.6 60	415.5 71
-------	-------------	-------------	-------------	-------------

	416.3 63	414.8 78	414.0 86	414.4 82	413.2 94
--	-------------	-------------	-------------	-------------	-------------

32+50 on stake

T.P. 7.62 422.56 4.44 414.94

32+50	414.7 47	414.6 48	414.7 47	415.4 40
-------	-------------	-------------	-------------	-------------

	414.94 4.44	414.1 53	413.3 61	413.1 63	413.1 63
--	----------------	-------------	-------------	-------------	-------------

32+00	413.8 56	414.6 48	415.2 42	415.1 43
-------	-------------	-------------	-------------	-------------

	414.8 4.9 ?	413.6 58	412.9 65	413.8 66	412.6 68
--	-------------------	-------------	-------------	-------------	-------------

31+50	414.1 53	414.4 50	415.2 42	415.5 39
-------	-------------	-------------	-------------	-------------

	415.2 40	414.3 51	412.9 65	412.4 70	412.3 71
--	-------------	-------------	-------------	-------------	-------------

31+00	413.9 55	414.9 45	415.2 42	416.7 27
-------	-------------	-------------	-------------	-------------

	414.1 53	413.0 64	412.7 67	412.0 74	412.4 70
--	-------------	-------------	-------------	-------------	-------------

419.38

Check Levels - B-Ronway

	250	200	150	75
38+50	408.1 25.	407.4 10.2	407.2 10.4	409.7 7.9
38+00	407.8 2.8	407.6 10.0	408.3 2.3	410.0 7.6
TP	5.95	417.58	10.23	411.63
				37+50
37+50	409.6 13.0	409.5 13.1	408.4 14.2	409.9 12.7
37+00	411.9 10.7	411.5 11.1	409.9 12.7	411.0 11.6
36+50	412.6 10.6	411.6 11.0	412.2 10.4	413.6 9.0
36+00	412.5 10.1	413.0 9.6	414.1 8.5	417.9 4.7
35+50	414.0 8.6	415.5 7.1	417.2 5.4	419.2 3.4
35+00	416.8 5.8	418.1 4.5	418.5 4.1	418.7 3.9
34+50	418.7 3.9	418.8 3.8	418.7 3.9	418.2 4.4

422.56

FA

9

	5	75	150	200	250
	410.7 6.9	411.3 6.3	412.9 4.7	415.2 2.4	415.3 2.3
	410.9 6.7	411.8 5.8	414.1 3.5	416.7 0.9	417.2 0.4
					417.58
	411.63 10.23	413.7 8.9	416.4 6.2	417.9 4.7	418.3 4.3
	413.3 9.3	416.6 6.0	418.5 4.1	418.8 3.8	418.4 4.2
	416.9 5.7	418.4 4.2	418.5 4.1	418.0 4.6	419.2 3.4
	418.9 3.7	419.0 3.6	418.5 4.1	418.6 4.0	418.4 4.2
	419.0 3.6	418.3 4.3	418.1 4.5	418.6 4.0	417.7 4.9
	418.6 4.0	418.0 4.6	417.2 5.4	417.1 5.5	416.0 6.6
	418.9 3.7	416.5 6.1	415.6 7.0	415.5 7.1	414.9 7.7

422.56

B- Runway Check Levels

LF

FF

	350	200	150	75	8	75	150	200	350
42+00	410.2 45	409.4 53	409.5 52	407.7 7.0	407.7 7.0	406.1 8.6	405.0 9.7	404.9 9.8	404.5 10.2
41+50	409.6 57	409.1 56	409.0 57	407.5 7.2	406.4 8.3	404.7 10.0	406.5 8.2	404.7 10.0	404.4 10.3
41+00	406.5 82	406.5 82	407.9 68	407.1 7.6	405.9 8.8	404.5 10.2	405.2 9.5	404.0 8.7	406.0 8.7
T.P	8.01	414.71	10.88	406.70	414.00	2 sub.	414.71		
40+50	408.5 9.1	407.4 10.2	406.4 11.2	406.5 11.1	406.70 10.88	405.0 12.6	406.3 11.3	407.2 10.4	407.6 10.0
40+00	409.4 82	408.7 89	407.0 10.6	406.1 11.5	406.3 11.3	406.2 11.4	408.4 9.2	409.9 7.7	409.2 8.4
39+50	410.0 76	409.1 85	407.2 10.4	406.3 11.3	406.9 10.7	408.8 8.8	411.0 6.6	410.9 6.7	409.8 7.8
39+00	408.3 93	408.1 95	406.8 10.8	407.6 10.0	409.7 7.9	411.2 6.4	412.0 5.6	412.8 4.8	411.9 5.7
		417.58							

Check Levels - B²-Runway

250 200 150 75

75 100 200 250

FB1860-2

Check B.M. & Non 46+00

003
411.20
3.54 411.17

	412.2	411.7	411.6	411.0
45+00	25	30	31	37

	411.4	410.6	411.4	411.2	410.3
	33	41	33	35	44

	411.8	411.3	411.0	410.5
44+50	29	34	37	42

	410.6	410.3	409.9	410.9	410.8
	41	44	48	38	39

	411.0	412.3	411.2	410.4
44+00	37	24	35	43

	409.1	409.9	409.9	410.4	409.7
	56	48	48	43	50

	411.7	413.0	410.6	410.2
43+50	30	27	41	45

	409.6	409.5	409.5	409.2	409.4
	51	52	52	55	53

	411.5	410.2	409.6	410.1
43+00	32	45	51	46

	408.6	407.3	407.7	407.5	407.2
	61	74	70	72	75

	410.9	409.7	408.9	409.1
42+50	38	50	58	53

	407.6	406.2	406.7	406.0	406.0
	71	85	80	87	87

41471

41471
-6

Check Levels Runway "A"

250 200 150 75

75 150 200 250 300

For Rough Grade Stakes See FB 1860

110+50

405.98 405.80 405.79 405.57 405.53 405.61 ✓
 5.94 6.12 6.13 6.35 6.39 6.31

110+00

INDEXED
 NK
 JAN 24 1950

405.32 405.55 405.61 405.15 405.30 405.48 ✓
 6.60 6.37 6.31 6.77 6.62 6.44

109+50

404.92 405.27 405.21 405.19 405.36 405.40 ✓
 7.02 6.65 6.71 6.78 6.56 6.52

109+00

404.44 404.57 404.71 404.86 405.11 405.42 ✓
 7.48 7.35 7.21 7.06 6.81 6.50

6.60 411.92
 F.B. 1750-PP. 71

411.92

B.M. Sta. 110+00 & Hub
 Runway "A"

405.32

Check Levels - Runway A

250 200 150 75

75 150 200 250 300

113+00 408.77 409.38 409.23 408.81
4.83 4.22 4.37 4.79

408.54 407.48 406.64 406.57 406.36 ✓
5.06 6.12 6.96 7.09 7.24

112+50 408.76 408.85 408.60 408.32
4.84 4.75 5.10 5.28

408.38 407.22 407.15 406.71 406.15 ✓
5.22 6.38 6.45 6.89 7.45

112+00 407.96 407.79 407.57 407.58
5.64 5.86 6.03 6.02

407.41 407.02 406.91 406.59 405.90 ✓
6.19 6.58 6.69 7.01 7.70

111+50 406.82 406.71 406.70 406.81
6.78 6.89 6.90 6.79
292.6

406.95 406.68 406.28 406.06 405.91 ✓
6.65 6.92 7.38 7.54 7.69

111+50 T.P. 6.65 413.60 4.97 406.95

413.60

111+00 405.44 405.81 406.33
8.14 7.79 7.27
200.6

406.43 406.25 405.98 405.75 405.69 405.76
5.49 5.67 5.94 6.17 6.23 6.16

HZ. from Above 413.60
This Portion

411.92

Check Levels Runway A

250 200 150 100

T.P. 473 412.16 617 407.43

115+50 408.19 408.99 409.11 408.59
5.41 4.66 4.49 5.01

115+00 408.78 408.99 408.88 408.77
4.82 4.61 4.72 4.83

114+50 408.92 409.13 408.90 408.66
4.68 4.47 4.70 4.94

114+00 408.70 408.99 409.30 408.79
4.90 4.61 4.30 4.86

113+50 408.55 409.26 409.61 409.11
5.05 4.34 3.99 4.49

413.60

75 150 200 250

407.43 406.71 406.07 405.87 405.62
6.17 6.89 7.53 7.73 7.98

407.35 406.57 405.84 405.67 404.18
6.25 7.03 7.76 7.93 8.42

407.67 407.01 406.06 405.97 405.10
5.93 6.59 7.54 8.13 8.50

407.95 406.92 406.12 405.56 404.92
5.65 6.68 7.48 8.04 8.68

408.24 407.09 406.21 405.77 405.55
5.36 6.56 7.39 7.83 8.05

Check Levels - Runway "A"

250 200 150 75

75 150 200 250

15

118400 406.25 406.92 406.64 406.98
5.91 5.74 5.52 5.18

407.06 407.83 407.66 407.92 406.88
5.10 4.33 4.50 4.74 5.28

117450 406.81 406.97 407.33 407.55
5.35 5.19 4.83 4.61

407.40 407.78 407.38 406.98 406.60
4.76 4.38 4.78 5.18 5.56

117400 407.61 407.56 407.82 407.92
4.55 4.60 4.34 4.24

407.27 407.70 407.19 407.16 406.24
4.39 4.46 4.97 5.00 5.92

116450 408.46 408.76 408.59 408.14
3.70 3.40 3.57 4.02

407.85 407.41 406.83 406.51 405.99
4.31 4.75 5.33 5.65 6.17

116400 408.20 408.99 409.13 408.53
3.96 3.17 3.03 3.63

407.71 406.98 406.32 406.20 405.76
4.45 5.18 5.84 5.96 6.40

412.16
2

Check Levels - Runway "A"

250 200 150 75

120+50 406.04 406.06 406.43 406.97
6.12 6.10 5.73 5.19

120+00 405.88 405.85 406.07 406.37
6.28 6.31 6.09 5.79

119+50 405.62 405.85 405.94 406.29
6.54 6.31 6.22 5.87

119+00 405.58 405.99 405.84 406.19
6.58 6.17 6.32 5.97

118+50 405.91 406.19 406.00 406.46
6.25 5.97 6.16 5.70

412.16

75 150 200 250

16

407.14 408.75 408.16 408.36 407.81
5.02 4.41 4.00 3.80 4.35 ✓

406.80 407.48 408.22 408.41 407.52
5.36 4.68 3.94 3.75 4.64 ✓

406.54 407.29 408.23 408.00 407.37
5.62 4.87 3.93 4.16 4.79 ✓

406.52 407.11 408.11 407.69 407.23
5.64 5.05 4.05 4.97 4.93 ✓

406.58 407.22 407.89 407.54 406.99
5.58 4.94 4.27 4.62 5.17 ✓

?

Check Levels - R. Burroy "A"

250 200 150 75

5,69 415.99 = cont p-18

FB 1750-PP.71

B.M. Sta. 134+00 410.30 & Hub 134+00

Cont. on p-92

123+00

407.98 408.46 409.13 409.94 409.61
556 5.08 4.41 3.60 3.93 ✓

122+50

407.31
6.23

407.79 408.49 409.36 409.62 408.87
5.75 5.05 4.18 3.92 4.57 ✓

122+00

?
407.33
6.21

407.66 408.33 409.18 409.22 408.50
5.88 5.21 4.36 4.32 5.04 ✓

121+50

406.42 406.77 406.98
7.12 6.77 6.56

407.40 408.06 408.90 408.77 408.34
6.16 5.48 4.64 4.77 5.20 ✓

T.B.M. 5.88 413.54 4.52 407.66 407.66* & Hub Sta. 122+00

121+00

406.37 406.12 406.16 407.00
5.79 6.54 6.00 5.16

407.32 408.28 408.56 408.55 408.12
4.84 3.88 3.60 3.61 4.04 ✓

412.16
2

RT

75 150 200 250

17

Check Levels
Runway A

Lt

250 200 150 75

411.90 411.70 411.09 410.85

134+00 4.09 4.23 4.90 5.14

412.16 411.37 411.66 410.99

133+50 3.83 4.62 4.83 5.50

412.32 411.51 411.37 410.53

133+00 3.67 4.38 4.62 5.46

413.32 411.63 411.26 411.51

132+50 2.67 4.36 4.73 4.48

412.08 411.97 411.34 410.77

132+00 3.91 4.02 4.65 5.22

415.99 - cont. from p. 18

Rt

18

75 150 200 250

410.30 411.15 411.34 411.57 411.86 ✓

5.69 4.84 4.65 4.42 4.13

410.23 410.55 410.36 411.76 411.75 ✓

5.76 5.44 5.03 4.23 4.24

410.13 410.37 410.87 411.11 411.51 ✓

5.86 5.62 5.12 4.88 4.48

410.20 410.32 410.55 411.07 411.57 ✓

5.79 5.67 5.44 4.92 4.82

410.16 410.04 410.66 410.94 411.32 ✓

5.83 5.95 5.33 5.05 4.67

415.99

Check Levels Runway "A"

250 200 150 75

411.55 411.48 411.59 411.69

136+50 4.44 4.51 4.40 4.30

411.46 411.34 412.44 412.59

136+00 4.53 4.75 3.55 3.40

412.99 411.55 410.86 410.25

135+50 3.50 4.44 5.13 5.04

411.61 411.13 411.24 410.79

135+00 4.38 4.86 4.75 5.20

411.51 412.29 411.48 410.75

134+50 4.48 3.70 4.51 5.24

415.99

75 150 200 250

411.94 412.42 412.66 412.95 413.89 ✓

4.05 3.57 3.33 3.04 2.10

?

412.00 411.62 412.11 412.50 413.83 ✓

3.79 4.37 3.88 3.49 2.16

411.05 411.22 411.86 412.15 412.15 ✓

4.94 4.77 4.3 3.84 3.84

410.97 411.05 411.78 411.81 412.46 ✓

5.12 4.94 4.21 4.18 3.53

410.58 410.83 411.17 411.65 412.16 ✓

5.41 5.16 4.82 4.34 3.83

415.99

Check Levels - Runway "A"

250 200 150 75 75 150 200 250

417.16 417.48 417.88 419.50

~~418.97~~ 418.99 419.40 418.43 418.85 419.58 ✓

139+00 7.22 6.70 6.30 4.68

5.21 4.78 5.75 5.33 4.60

419.79 415.62 416.71 418.17

417.75 418.04 417.40 417.79 418.55 ✓

138+50 9.44 8.56 7.47 6.01

6.43 6.14 6.78 6.39 5.65

413.47 413.59 414.33 415.57

416.78 416.40 416.92 416.71 417.23 ✓

138+00 10.71 10.59 9.85 8.61

7.40 7.78 7.26 7.47 6.95

412.36 412.32 412.96 414.09

414.24 415.16 414.46 414.90 415.28 ✓

137+50 11.82 11.86 11.22 10.09

9.94 9.02 9.72 9.28 8.20

424.18

T.P. 11.46 424.18 3.27 412.72 137+00 & Hub

411.98 411.85 411.99 412.31

412.72 412.85 412.52 414.42 414.50 ✓

137+00 4.01 4.14 4.00 3.68

3.27 2.14 2.46 1.57 1.49

415.99

415.99

Check Levels - Runway "A"

250 200 150 75

75 150 200 250

421.79 421.45 420.21 418.33

417.62 417.55 417.69 417.70 417.29 ✓

141+50 2.39 2.73 3.97 5.85

6.56 6.63 6.19 6.48 6.83

421.71 421.11 420.36 418.35

418.60 418.65 419.22 419.19 419.28 ✓

141+00 2.97 3.07 3.82 5.83

5.58 5.53 4.96 4.99 4.90

420.96 420.42 419.99 418.78

419.60 419.83 420.34 420.74 420.17 ✓

140+50 3.72 3.76 4.19 5.30

4.58 4.35 3.84 3.44 4.01

418.99 419.44 419.58 419.78

420.03 420.05 420.50 420.66 ✓

140+00 5.19 4.74 4.60 4.40

420.38 3.80 4.15 4.13 3.68 3.52

417.80 418.52 419.03 419.50

419.82 419.75 419.61 419.54 420.41 ✓

139+50 6.38 5.66 5.15 4.68

4.36 4.43 4.57 4.64 3.77

424.18

424.18

Check barrels - Runway "A"

250 200 150 75

250 200 150 75

144+00 417.62 417.27 416.84 416.30
 9.85 5.70 5.63 6.17

415.71 415.08 414.80 414.32 414.64 ✓
 6.76 7.39 7.67 8.15 7.83

143+50 418.42 418.08 418.04 417.09
 4.05 4.39 4.93 5.43

416.44 416.11 414.95 416.01 414.68 ✓
 6.03 6.36 7.52 6.46 7.79

143+00 419.82 418.42 418.07 417.44
 2.65 4.05 4.40 5.03

417.27 415.55 415.34 414.81 414.84 -
 5.70 6.92 7.13 7.66 7.63

142+50 420.25 419.55 418.94 417.95
 2.72 2.92 3.53 4.52

417.31 416.17 416.52 415.38 415.20 -
 5.16 6.30 5.95 7.02 7.27

422.47

T.P. 5.41 422.47 7.12 417.06 142+00
 \$ Hub

142+00 422.05 421.65 420.51 418.61
 2.13 2.53 3.67 5.59

417.06 417.30 416.40 416.33 414.17 -
 7.12 6.88 7.78 7.85 8.01

424.18

424.18

Check Levels - Runway 'A'

250 200 150 75

75 150 200 250

146+00 Set B.M. on Monument 7.15 415.33

5.77 422.98 416.71 422+16.15

4 Hubs

FB 1750-PP-61

B.M.

5.77

0.01
416.71
416.70 422+16.5

Intersection Runway #1 & #3

145+00 416.64 416.30 416.10 415.58
5.83 6.17 6.37 6.89

415.02 414.47 414.19 414.01 414.00
7.45 8.00 8.33 8.46 8.47

144+50 417.00 416.64 417.16 415.87
5.87 5.83 5.31 6.60

415.41 414.95 414.37 414.38 414.02
7.06 7.52 8.10 8.09 8.45

422.97

422.97

Check levels - Turnway "F"

Lt.
50

±

Rt. 24
50

7+10.96 F.C.

414.56

415.92

6.47

5.11

7+00

415.63

415.89

6.40

5.14

INDEXED
MK
JAN 24 1950

INDEXED
JAN 24 1950

1+75

414.45

415.78

6.58

5.25

1+50

415.64

414.97

5.39

6.06

1+23.69 B.C.

415.32

414.85

5.71

6.18

0+75

415.69

415.85

5.34

5.18

421.03

B.M. 5.70 421.03

415.33 ±

Concrete Monument - Station 146+00

Check Levels - Taxiway "F"

5+25

T.P. 6.57 425.47 2.13 418.90

4+75

4+25

3+75

3+25

2+75

2+25

47
50

418.68

6.79

417.52

3.51

416.08

4.95

414.99

6.04

414.81

6.22

415.71

5.32

414.59

6.44

6.

425.47

24 25
50

420.03

5.44

418.90

2.13

417.41

3.62

416.30

4.73

415.67

5.36

415.40

5.63

415.58

5.45

421.03

Check Levels - Taxiway "F"

8+75

8+25

7+75

7+25

6+75

6+25

5+75

LT
50

415.61

9.86

416.38

9.09

418.34

7.13

420.24

5.73

420.43

5.09

420.28

5.19

419.81

5.66

6

RT 26
50

418.67

6.80

418.67

6.80

420.12

5.34

420.49

4.98

421.11

4.36

421.58

3.99

422.08

3.39

425.47
F

Check Levels - Taxway "F"

51
50

737 27
50

This book P.P.S
Sta. 32+50 Runway "B" 8.69 ^{0.06} 414.94 $\frac{1}{2}$ Hub 415.00

10+75

415.93

418.90

7.76

4.79

415.69

419.40

8.00

4.29

10+25

T.P. 4.22 423.69 6.00 412.47

~~423.69~~

415.03

419.47

9+75

10.44

6.00

415.49

419.34

9.98

6.13

9+25

~~425.47~~

Check Levels - 'T' Runway "F"

15+01.28 B.C.

B.C.

12+51.28

12+26.28

11+76.28

11+26.28

11+01.28

B.M. 8.89 423.83

414.94

& Hub

LT

50 25

&

RT

25 50

28

416.33

415.20

7.50

8.63

418.58

418.10

5.25

5.73

418.58

418.44

5.25

5.39

418.71

418.37

5.12

5.46

418.19

418.66

5.64

5.17

416.41

418.69

7.42

5.14

423.83

Sta. 32+50 Runway "B"

Check Levels To runway "F"

50 25 2 25 50

	F.B. 1860 - P.P. 17		0.03	check
Sta. 3900	Runway "B"	5.23	418.63	Hub
			418.60	

16+51.78 B.C.

415.91 414.28

7.92 9.55

16+26.78

415.21 415.25

8.62 8.58

15+76.78

417.02 414.70

6.81 9.13

15+26.78

416.15 415.16

7.68 8.67

423.83

Walker
Allen
Gregory
Brunkh

"B" Runway
Restake Rough Grades
for Stations as shown

9-25-48

cont P-31

42+00

412.55
412.85
2.68

412.55
412.50
2.68

41+00

412.66
412.66
2.57

412.66
412.66
2.57

40+00

412.77
412.77
2.46

412.77
412.77
2.46

39+00

412.88
412.88
2.35

412.88
412.88
2.35

38+00

412.99
412.99
2.24

412.99
412.99
2.24

37+50

413.04
413.04
2.19

3.25 415.23
413.76

414.88
~~414.88~~

B.M. Sub 37+00 250' RT "B" Runway

415.23

INDEXED
WK
JAN 24 1950

INDEXED

Wolter
Allen
Gregory
Blank

"B" Runway

Set Grades for Rough Grading

9-25-48 from 37+50 to 45+00

Cont. from P-30

			001	
chk stub	150.4	40+00	8.26	406.96 ^{FB 1860}
				406.97 ^{P-19}

Cont on P-35

45+00

44+00

43+00

415.23

L	¢	RT
80'		80'

31

000	0.00
<u>412.22</u>	<u>412.22</u>
412.22	412.22
3.01	3.01

412.33	412.33
<u>412.33</u>	<u>412.33</u>
2.90	2.90

412.44	412.44
<u>412.44</u>	<u>412.44</u>
2.79	2.79

415.23

"A" Runway
Check Levels - Rough Grade

250 200 150 75

128+00 408.33 ✓
581

7.P 5.83 414.14 5.20 408.31
408.34

125+00 408.91 ✓
4.63

124+00 408.19 408.96 409.15 ✓
5.35 4.58 4.39 ✓

124+00 408.98 408.87 409.50 ✓
4.56 4.67 4.81

123+00 408.22 409.30 409.67 409.68 ✓
5.32 4.24 3.87 3.86

91354

32

E 75 150 200 250

250 240 150

Lf

411.27 411.04 411.68

2.87 3.10 2.46

131+00

410.24 410.76 410.88

3.90 3.38 3.26

130+50

409.60 409.79 409.67

4.54 4.35 4.47

130+00

409.42 409.44 409.21

4.72 4.70 4.93

129+50

409.05 409.02 408.65

5.09 5.12 5.42

129+00

408.77 408.38

5.37 5.76

128+50

414.14

Rt.

33

75 8 75

411.03 410.42 409.50

3.11 3.72 4.64

410.46 409.73

3.68 4.41

409.80 409.48

4.34 4.66

409.21

4.93

~~4.93~~

250 200 100

20' 15' 10'

34

411.70 412.28 411.72

244 186 242

186 242

914.14

410.54 410.62 409.66 410.11

3.60 3.52 4.48 4.03

414.14

131.50

131.50

Restake Partion as shown for Rough Grades

77'4" E 77'14"

Station

F 0.67 F 0.97 F 0.35

413.35 414.12 413.35
412.68 413.15 413.00
5.16 4.69 4.84

35+00

F 0.78 F 0.62 F 0.13

413.40 414.17 413.40
412.62 412.55 413.27
5.22 5.29 4.57

34+50

F 0.33 F 1.30 C 0.70

413.46 414.23 413.46
413.13 412.93 414.16
4.71 4.91 3.68

34+00

F 0.25 F 1.24 C 0.51

412.52 414.29 413.52
413.27 413.05 414.03
4.57 4.79 3.81

33+50

C 2.21 C 0.09 C 1.55

413.57 414.34 413.57
415.78 414.43 415.12
2.56 3.41 2.72

33+00

C 1.99 C 0.94 C 0.44

412.63 414.40 413.63
415.62 415.34 414.07
2.22 2.50 3.77

32+50

3.19 417.84

414.65

B.M. 200.82 34+00 on stub

417.84

"B" Runway - Rough Grades
Reset Portion as shown

38+00

33+00 200' RT

chk stub

346

001
414.39
414.38

37+50

37+00

36+50

36+00

35+50

417.84

M

S

Ft.

76

77

413.78

413.99

413.00

484

F 0.8'

F 0.60

F 0.41

413.07

413.84

413.07

412.26

413.24

412.66

5.58

4.60

5.18

F 0.80

F 0.71

F 0.35

413.13

413.90

413.13

412.33

413.19

412.78

5.51

4.65

5.06

F 0.55

F 0.59

C 0.09

413.18

413.95

413.18

412.63

413.36

413.27

5.21

4.98

4.87

F 0.84

F 0.51

F 0.22

413.24

414.01

413.24

412.40

413.50

413.02

5.44

4.34

4.82

F 0.68

F 0.79

F 0.68

413.29

414.06

413.29

412.61

413.27

412.61

5.23

4.57

5.23

"B" Runway - Rough Grades
Restake Partion as shown

Cont. on P-38

27+50

27+00

28+50

28+00

27+50

27+00

2.76 415.75

412.99

Cont. from P-40

Lt.

\$

37

80'

F 1.17 ✓

413.62

412.45 ✓

39

F 1.56 ✓

413.52

411.96 ✓

379

F 1.71 ✓

413.42

411.71 ✓

404

F 2.22 ✓

413.28

411.06 ✓

469

F 2.48 ✓

413.13

410.65 ✓

510

F 3.49 ✓

412.93

409.44 ✓

631

\$

F 1.87 ✓

414.42

412.55 ✓

370

F 2.32 ✓

414.32 ✓

412.00 ✓

375

F 2.90 ✓

414.22

411.31 ✓

444

F 3.51 ✓

414.08

410.57 ✓

518

F 3.93 ✓

413.93

410.00 ✓

575

F 3.67 ✓

413.73

410.06 ✓

562

415.75

37

80'

F 1.87 ✓

413.62

411.75 ✓

20

F 1.43 ✓

413.52

412.09

366 ✓

F 1.10 ✓

413.42

412.32 ✓

343

F 1.38 ✓

413.28

412.00 ✓

375

F 2.05 ✓

413.13

411.04 ✓

471

F 2.24 ✓

412.93

410.69 ✓

506

"B" Runway - Rough Grades

Restake - Portions

Cont P-39

32+50

32+00

31+50

31+00

30+50

T.P. 5.85 417.97 3.63 412.12

30+00

Cont From P-37
415.75

4

80

F 0.08 ✓

413.60

413.52

445

C 0.18 ✓

413.65

413.83 ✓

414

C 0.21 ✓

413.69

413.90 ✓

407

Grade ✓

413.71

413.72 ✓

425

F 0.14 ✓

413.70

413.56 ✓

441

F 0.12 ✓

413.67

413.55

230

80 ✓

F 0.18 ✓

414.40

414.22 ✓

375

F 1.24 ✓

414.45

415.21 ✓

478

F 1.55 ✓

414.49

412.94 ✓

503

F 2.37 ✓

414.51

412.14 ✓

583

F 2.38 ✓

414.50

412.12 ✓

595

417.97

F 2.33 ✓

414.47

412.10

96

415.75

87 38

80

F 1.43 ✓

413.60

412.17 ✓

580

F 0.37 ✓

C 0.37 ✓

413.65

413.28 ✓

469

F 1.34 ✓

F 1.64 ✓

413.69

412.35 ✓

562

F 2.45 ✓

413.71

411.26 ✓

671

F 2.16 ✓

413.70

411.54 ✓

643

F 1.42 ✓

413.67

412.25 ✓

350

"B" Runway - Rough Grades

Reckhe Portion

H.

L

RA

F81860-17

CHK 33+00 150' RT

34+00

284

001
415.12
415.13

33+50

33+00

41797
3

F023-

C080-

414.23
414.00
3.97

413.43
414.22
375

F023-

F023-

F067-

413.49
413.26
4.71

414.29
414.06
3.91

413.49
412.82
5.15

C013-

F055-

F075-

413.54
413.67
4.30

414.34
413.79
4.18

413.54
412.78
5.18

41797
3

"B" Runway

H

Ft.

40

80

8

80

Cont on P-37

26+50

F 3.72 ✓

F 3.70 ✓

F 2.94 ✓

412.72
409.00
675

413.52
409.82
593

413.72
409.78
597

26+00

F 3.56 ✓

F 3.83 ✓

F 1.00 ✓

412.48
408.92
683

413.28
409.45
63

413.48
411.48
427

25+50

F 3.38 ✓

F 1.41 ✓

C 0.46 ✓

412.23
408.85
690

413.03
411.62
413

412.23
412.69
306

25+00

F 1.68 ✓

F 1.96 ✓

F 0.60 ✓

411.98
410.30
545

412.78
410.82
493

413.02
411.42
433

41575
T P-38

Walker
Allen
Granby
F. Gregory
10-13-48

"B" Rumney - Rough Grades
from 24+00 to 36+00

29+00

28+00

27+00

26+00

25+00

24+00

INDEXED
MK
JAN 24 1950

8.42 416.73 408.31

6

41

F 0.82 ✓

414.22
413.40
3.33

F 0.92 ✓

414.08
413.16
3.37

F 1.00 ✓

412.73
412.73
4.00

F 0.74 ✓

413.28
412.54
4.19

F 1.91 ✓

412.78
411.37
5.36

F 2.03 ✓

412.28
410.28
6.48

B.M. on Stake 22+00 "B" Rumney

46.73

"B" Runway - Rough Grades

2

42

28+00

F 0.73

419.12

413.79

4.70

F 0.27

414.23

413.96

4.53

34+00

F 0.62

414.34

413.72

4.77

33+00

F 1.17

414.15

413.28

5.21

32+00 = EVC

F 1.62

414.51

412.89

3.60

418.49

31+00

F 1.21 ✓

414.47

413.26

3.47

TP 523 418.49 3.47 413.26

30+00

416.73

416.73

7

"B" Runway Rough Grades

FB1860-50
 Chk 37+00 250'4. 002
411.95 6.04 411 93

37+00

T.P 4.48 417.97 500 413.99

36+00

418.49
 $\frac{4}{2}$

41990

F 0.31

41401
 413.70
 4.79

418.49
 $\frac{4}{2}$

10-20-48

"B" Runway Rough Grades
from 24+00

Station

26+00

25+00

24+00

23+00

22+00

21+00

chk 20+00 to

3.71 416.86

10.41

406.46
406.45

407.15

INDEXED
M
JAN 24 1950

44

2

F 0 47 ✓

413.28'

412.81'

4.05

F 0 50

412.78'

412.28'

4.58

F 0 52

412.28'

411.86'

5.20

F 0 55 ✓

411.78'

411.21'

5.65

F 0 85

411.28'

410.43'

6.43

F 2 02

410.78'

408.76'

8.10

416.86

B.M. on Stake 20+50 "B" Runway FB 1860
73

3" Runway
Rough Grades (Re-stake)

32+00

31+00

30+00

29+00

T.P. 5.29 419.09 3.01 413.85

28+00

27+00

416.86

45

2

F 0.44

414.45
414.01
5.08

F 0.45

414.51
414.06
5.03

F 0.44

414.47
414.03
5.06

F 0.41

414.32
413.91
5.18

419.09
5

F 0.43

414.08
413.85
3.01

F 0.28

413.73
413.45
3.91

416.86

"B" Runway
Rough Grades

INDEXED
M
JAN 24 1950

37+00

36+00

66+35+00

526.413.83

34+00

33+00

419.09

L

46

F.O. 37

413.96

413.53

556

F.O. 29

414.01

413.72

537

F.O. 29

414.12

413.83

526

F.O. 21

414.23

414.02

507

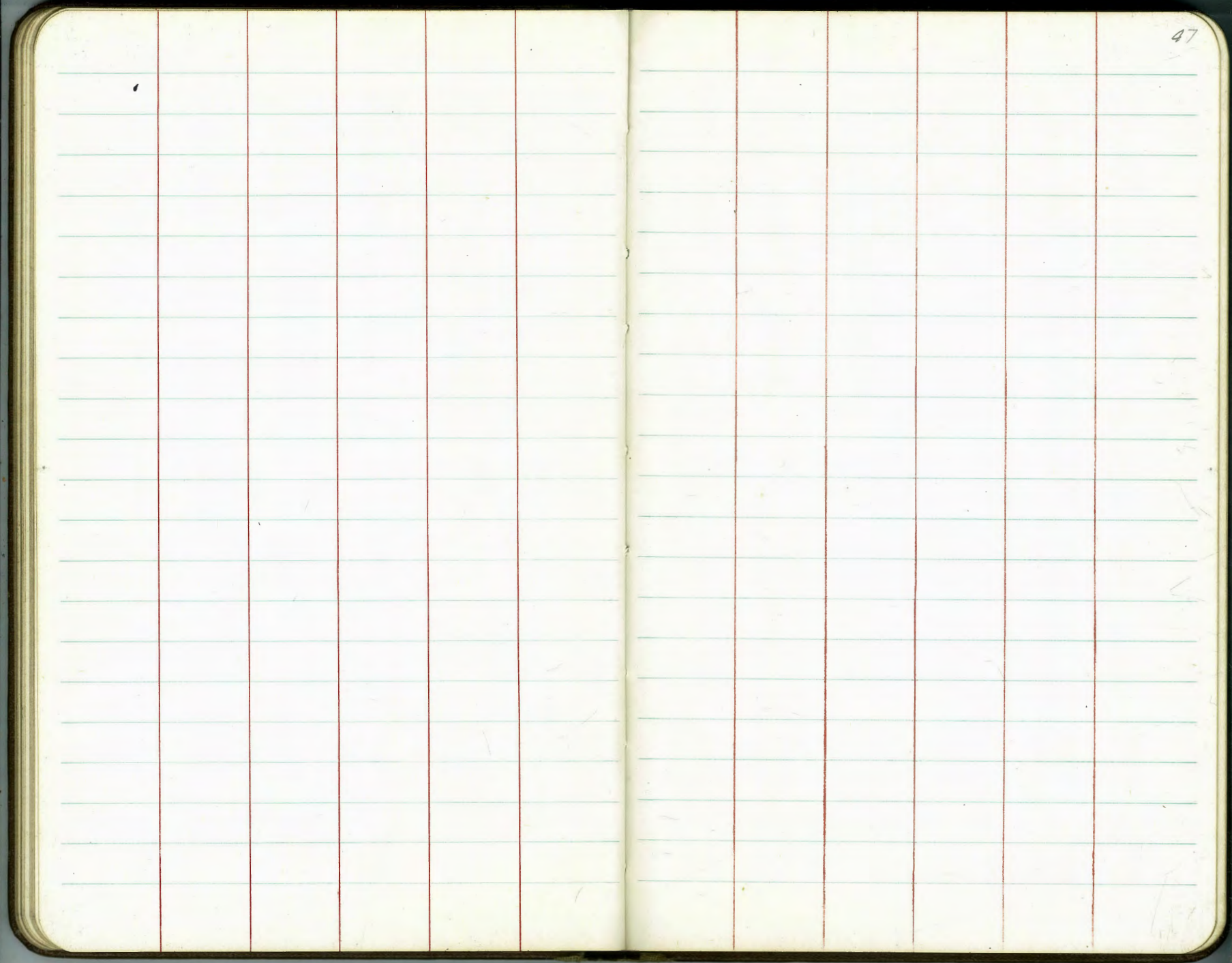
F.O. 15

414.34

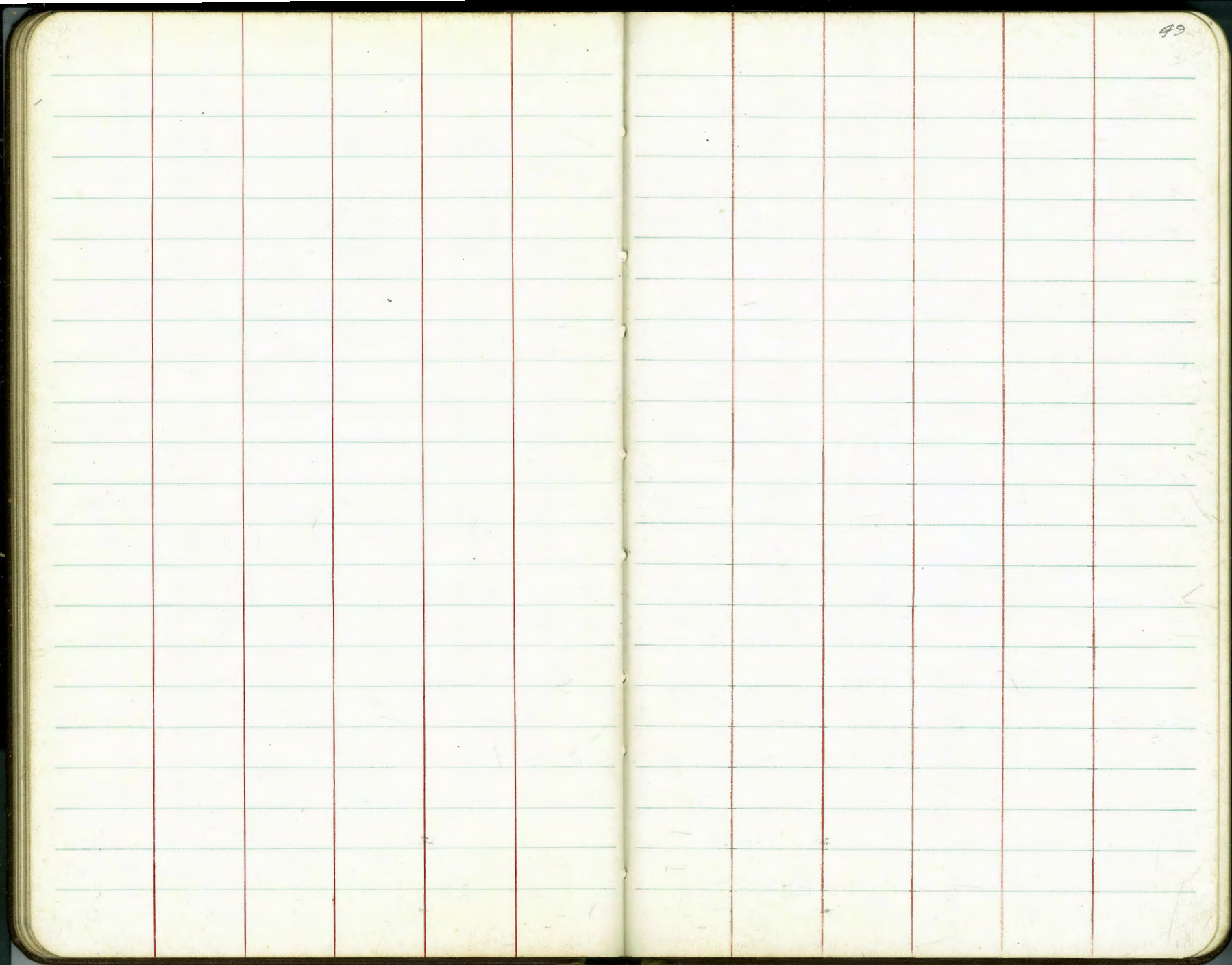
414.19

496

419.09



The image shows an open notebook with two facing pages. Both pages are cream-colored and feature light blue horizontal ruling. Vertical red lines create margins on both sides of each page. The right page has the number '48' written in the top right corner. The notebook is placed on a white surface, and the dark cover is visible at the edges.



Walker
Allen
F. Grogan
Brady

"N" Runway - Rough Grades
Restake Portion
from 130+00 to 145+00

A. 50
80

Station

132+50

132+00

131+50

131+00

130+50

130+00

F 0.94 - F 4.91 - F 3.05 -

412.40 - 413.20 - 412.40 -
411.46 - 408.29 - 409.35 -
2.71 5.88 4.82

F 1.52 - F 4.55 - F 3.20 -

412.24 - 413.04 - 412.24 -
410.72 - 408.49 - 409.04 -
3.45 5.68 5.13

F 1.36 - F 4.18 - F 3.27 -

412.08 - 412.88 - 412.08 -
410.72 - 408.70 - 408.81 -
3.45 5.47 5.36

F 1.08 - F 4.33 - F 2.96 -

411.92 - 412.72 - 411.92 -
410.84 - 408.39 - 408.96 -
3.33 5.78 5.21

F 1.11 - F 4.27 -

411.76 - 412.56 - 408.79 -
410.65 - 408.29 - 5.98
3.52 5.88

F 1.65 - F 2.87 -

411.60 - 412.40 -
409.95 - 409.53 -
4.22 4.64 4.73

5.86 414.17
408.31

414.17

"A" Runway - Rough Grades

Restake - Portion

Station

136+00

135+50

135+00

134+50

134+00

133+50

TR 6.13 414.66 5.64 408.53

133+00

414.17

Station	Left	Right	Right
	80		80
	F 121 ✓	F 4.51 -	F 2.56 -
	413.52 ✓	414.32 ✓	413.52 ✓
	412.31 -	409.81 -	410.96 -
	2.35	4.85	3.70
	F 220 ✓	F 5.01 ✓	F 2.72 -
	413.36 ✓	414.16 ✓	413.36 ✓
	411.16 -	409.15 -	410.64 -
	3.50	5.51	4.62
	F 233 -	F 4.99 -	F 2.86 -
	413.20 ✓	414.00 ✓	413.20 ✓
	410.87 -	409.01 -	410.34 -
	3.79	5.65	4.32
	F 203 ✓	F 5.13 -	F 2.53 -
	413.04 ✓	413.84 ✓	413.04 ✓
	411.01 -	408.71 -	410.51 -
	3.65	5.95	4.15
	F 190 -	F 5.19 -	F 2.07 -
	412.88 ✓	413.68 ✓	412.88 ✓
	410.98 -	408.49 -	410.81 -
	3.68	6.17	3.85
	F 209 ✓	F 4.87 -	F 2.68 -
	412.72 ✓	413.52 ✓	412.72 ✓
	410.63 -	409.25 -	410.04 -
	4.03	5.41	4.62
	F 195 ✓	F 4.83	F 3.05 ✓
	412.56 ✓	413.36 ✓	412.56 ✓
	410.61 -	408.53 -	409.51 -
	3.56	5.64	4.66
		414.17	

"A" Runway - Rough Grades

Restake Portion

Station

139+00

138+50

138+00

T.P.

7.92

422.21

0.37

414.29

137+50

137+00

136+50

414.66

H.
80

S

H.
80

52

C 2.13

414.48
416.61
5.60

C 0.86

414.32
415.18
7.03

C 1.40

414.16
415.56
6.65

F 0.13

414.00
413.87
0.79

F 1.23

413.84
412.61
2.05

F 1.56

413.68
412.12
2.54

C 2.32

415.28
417.60
4.61

C 0.36

415.12
415.38
6.83

F 0.67

414.96
414.29
7.92

422.21

F 2.97

414.80
411.83
2.83

F 3.46

414.64
411.18
3.98

F 4.59

414.48
409.89
4.77

C 2.59

414.48
417.07
5.14

C 1.54

414.32
415.86
6.35

F 0.33

414.16
413.83
8.38

F 0.38

414.00
413.62
1.04

F 1.62

413.84
412.22
2.94

F 2.14

413.68
411.54
3.12

414.66

"A" - Runway - Rough Grades
 Restake Portions

Station

142+00

141+50

141+00

140+50

140+00

139+50

422.21

H
80

L

H
80

53

C 1.53 -

415.44 ✓
 416.97 -
 3.24

C 1.54 -

415.28 ✓
 416.82 -
 5.39

C 2.01 -

415.12 ✓
 417.13 -
 5.08

C 0.99 -

419.26 ✓
 415.95 -
 6.26

C 1.61 -

414.80 ✓
 416.41 -
 5.80

C 2.46 -

414.64 ✓
 417.10 -
 5.11

F 0.15 -

416.24 ✓
 416.09 -
 6.12

F 0.14 -

416.08 ✓
 415.94 -
 6.27

F 0.22 -

415.92 ✓
 415.70 -
 6.51

C 0.46 -

415.76 ✓
 416.22 -
 5.99

C 1.39 -

415.60 ✓
 416.99 -
 5.22

C 2.51 -

415.44 ✓
 417.95 -
 4.26

C 0.17 -

415.44 ✓
 415.61 -
 6.60

C 0.45 -

415.28 ✓
 415.73 -
 6.48

C 0.80 -

415.12 ✓
 415.92 -
 6.29

C 1.72 -

414.96 ✓
 416.68 -
 5.53

C 2.65 -

414.80 ✓
 417.45 -
 4.76

C 2.90 -

414.64 ✓
 417.54 -
 4.67

422.21

"A" Runway - Rough Grades
Reshake Portions

Station

			0.04	
	FB 1860.2		415.33	
	Chk. Man 146+00	9.98	415.29	
145+00				
144+50				
144+00				
143+50				
143+00				
TR	3.44	419.77	5.88	416.33
142+50				

422.21

H.

E

R.

54

F 1.78	F 4.03	F 1.68
416.40	417.20	416.40
414.62	419.17	414.72
5.15	6.60	5.05
F 1.77	F 3.39	F 1.65
416.24	417.84	416.24
414.47	413.65	414.59
5.30	6.12	5.18
F 1.10	F 2.66	F 1.59
416.08	416.88	416.08
414.98	414.22	414.49
4.79	5.55	5.28
F 0.40	F 1.80	F 0.82
415.92	416.72	415.92
415.52	414.72	415.10
4.25	4.85	4.67
C 0.72	F 0.79	F 0.07
415.76	416.56	415.76
416.48	415.77	415.63
3.29	4.00	4.08
	419.77	
C 1.38	F 0.67	F 0.33
415.60	416.40	415.60
416.98	416.33	415.27
5.23	5.88	6.24

422.21

Walker
Johnson
Stonby
Allen
10-15-48

LAND AREA - GRADES
Gibbs Airport -
From Base line East

0 5 E
100 200

INDEXED
JAN 24 1950

23.00 N

F056 ✓ F058 ✓ F062 ✓
407.55 408.18 408.81
406.99 ✓ 407.62 ✓ 408.19 ✓
7.97 7.34 6.77

22.700 N

F010 ✓ F083 ✓ F1.27 ✓
407.34 407.96 408.58
407.24 ✓ 407.13 ✓ 407.31 ✓
7.72 7.83 7.65

22.100 N

C058 ✓ C021 ✓ F002 ✓
407.13 407.77 408.44
407.71 ✓ 407.98 ✓ 408.62 ✓
7.25 6.98 6.34

22.000 N

C069 ✓ C024 ✓ C020 ✓
406.92 407.56 408.20
407.61 ✓ 407.80 ✓ 408.40 ✓
7.35 7.16 6.56

19.00 N

C040 ✓ F012 ✓ C006 ✓
406.71 407.32 407.73
407.15 ✓ 407.10 ✓ 407.79 ✓
7.81 7.86 7.17

8.07 414.96

406.89

F 500 E 400 E 300 E 200 E 100

F024 ✓ C017 ✓ C068 ✓ F004 ✓ F004 ✓
409.44 410.07 410.70 411.33 411.96
409.20 ✓ 410.24 ✓ 411.38 ✓ 411.29 ✓ 411.92 ✓
5.76 4.72 3.58 3.67 3.04

F047 ✓ C071 ✓ C112 ✓ F041 ✓ F029 ✓
409.20 409.82 410.44 411.06 411.68
408.73 ✓ 410.53 ✓ 411.56 ✓ 410.65 ✓ 411.39 ✓
6.23 4.93 3.40 4.91 3.67

C071 ✓ F001 ✓ C017 ✓ F044 ✓ F030 ✓
409.05 409.59 410.23 410.97 411.61
409.76 ✓ 409.68 ✓ 410.50 ✓ 410.53 ✓ 411.31 ✓
5.20 5.38 4.46 4.43 3.65

F001 ✓ C014 ✓ C022 ✓ F095 ✓ F012 ✓
408.84 409.48 410.12 410.76 411.40
408.83 ✓ 409.62 ✓ 410.34 ✓ 409.81 ✓ 411.28 ✓
6.13 5.34 4.62 5.15 3.68

F003 ✓ F024 ✓ C044 ✓ F049 ✓ F083 ✓
408.24 408.75 409.36 409.77 410.28 Cont. P. 58
408.21 ✓ 408.51 ✓ 409.70 ✓ 409.78 ✓ 409.95 ✓
6.75 6.45 5.26 5.68 5.51

414.96

BM. on Cox Map SE. Cox lot 24 FB 1750-2

LAND AREA GRADES
from Base Line East

0 East E
100 200

F0.62 ✓ F0.72 ✓ C0.11 ✓
408.79 409.82 409.85
408.17 408.60 409.96
831 788 652

29+00

F0.62 ✓ C0.12 ✓ C1.37 ✓
408.59 409.72 409.65
407.97 409.24 411.02
851 724 596

2800 N

C0.23 ✓ C0.42 ✓ C0.76 ✓
408.38 408.88 409.38
408.61 409.30 409.94
787 718 654

27+00 N

TR 7.37 416.48 5.85 409.11 ✓

C0.93 ✓ C0.23 ✓ C0.73 ✓
408.17 408.70 409.23
409.10 408.93 409.96
586 603 500

26+00 N

C0.99 ✓ C0.71 ✓ F1.02 ✓
407.96 408.53 409.10
408.95 409.24 408.08
601 572 688

25+00 N

F0.47 ✓ F0.89 ✓ F0.83 ✓
407.75 408.35 408.95
407.28 407.46 408.12
768 750 684

24+00 N

41496

E East E E E
300 400 500 600 700

C0.35 ✓ C1.19 ✓ C0.12 ✓ F0.53 ✓ F0.55 ✓
410.38 410.91 411.44 411.97 412.50
410.73 412.10 411.56 411.44 411.95
575 438 422 504 453

C2.05 ✓ C1.59 ✓ F0.26 ✓ F0.49 ✓ C0.51 ✓
410.18 410.71 411.24 411.77 412.30
412.23 412.30 410.98 411.28 412.81
425 418 550 520 367

C2.21 ✓ C0.68 ✓ F0.28 ✓ F0.51 ✓ F0.37 ✓
409.88 410.38 410.88 411.38 411.88
412.09 411.06 410.60 410.87 411.51
422 542 588 561 497

41648

C1.45 ✓ C0.38 ✓ F0.55 ✓ F0.75 ✓ F0.58 ✓
409.76 410.29 410.82 411.35 411.88
411.21 410.67 410.27 410.60 411.30
375 429 467 436 366

F0.93 ✓ F0.94 ✓ F0.78 ✓ F0.10 ✓ F0.67 ✓
409.67 410.24 410.81 411.38 411.95
408.74 409.30 410.03 411.28 411.28
622 566 493 368 368

F0.73 ✓ C0.19 ✓ C1.24 ✓ C1.09 ✓ C0.76 ✓
409.55 410.15 410.75 411.35 411.95
408.82 410.34 411.99 412.44 412.71
614 462 297 252 225

41496

LAND AREA - GRADES

0 100 200 300

0.07 Error

Water line

check 44150 FB1861-10

414.93
3.67 414.86 C 0.12

35+00N

409.85 410.45 411.05 411.85
409.62 410.22 410.82 411.42
8.89 8.09 7.45 7.06
F 0.21 C 0.29 C 0.23 C 0.23
Grade Grade Grade

F 0.16 F 0.82 F 0.16

409.60 410.12 410.64
409.44 409.30 410.48
2.09 2.33 8.05

34+00N

F 0.12 F 0.78 F 0.32

409.42 409.92 410.42
409.30 409.14 410.10
2.23 2.39 8.43

33+00N

TP 4.21 418.53 2.16 414.32

F 0.55 F 1.41 F 1.18

409.31 409.81 410.31
408.70 408.40 409.13
7.72 8.08 7.35

32+00N

F 1.55 F 1.37 F 0.29

409.21 409.71 410.21
407.66 408.34 409.92
8.82 8.14 6.56

31+00N

F 1.21 F 1.06 F 0.89

409.00 409.50 410.00
407.79 408.44 409.11
8.67 8.04 7.87

30+00N

416.98
2

East of Base Line 57

300 400 500 600 700

C 1.37 } 3500N
2.25 E }
352'E
411.42 = Grade
413.33 } 3400N
C 1.19 }
3.52 E }

C 0.26 C 2.83 C 3.17

411.16 411.26 411.96
411.42 411.04 411.13
7.11 4.49 4.10
460'
E
= Old Line

F 0.53 C 1.86 C 3.08 C 3.08 C 3.31 C 4.55

410.92 411.42 411.82 411.72 411.22 410.82
410.39 413.28 414.90 414.80 414.53 415.37
8.14 5.25 3.63 3.73 4.00 3.16 2.40
430'E
5'K
680'E
5'K
5'K Line

418.53

F 0.06 C 2.24 C 1.98 C 1.34 C 1.22 C 2.19

410.81 411.31 411.81 412.31 412.53 412.12
410.75 413.55 413.79 413.65 413.75 414.91
2.73 2.93 2.69 2.83 2.73 2.17
694'E
700'E

F 0.37 C 2.47 C 1.04 C 0.16 C 1.03

410.71 411.21 411.71 412.21 412.71
410.34 413.68 412.75 412.87 413.74
6.14 3.80 3.73 4.11 2.74

F 0.28 C 3.14 C 0.98 C 0.16 F 0.14

410.50 411.00 411.50 412.00 412.50
410.22 413.14 412.48 412.16 412.36
6.26 3.34 4.00 4.32 4.12

11648
7

LAND AREA GRADES

East of Base Line

800'E 900 1000E

F011 ✓ C035 ✓ F074 ✓
 412.55 413.15 413.75
 412.44 413.50 413.01
 617 511 560

2400N

F010 ✓
 414.35
 414.25
 436

C006 ✓ C067 ✓ F008 ✓
 412.59 413.22 413.93
 412.68 413.89 413.85
 596 472 526
 939E

2300N

C026 ✓ C080 ✓ C036 ✓
 412.30 413.92 413.11
 412.58 413.72 413.47
 605 489 514
 927E

2200N

C008 ✓ C037 ✓ C012 ✓
 412.25 412.89 413.21
 412.33 413.26 413.33
 628 535 528
 950E

2100N

F082 ✓ C008 ✓
 412.04 412.68
 411.20 412.76
 741 585

2000N

700'E
 - Cont. on P. 55
 F033 ✓ C014 ✓
 410.79 411.20
 410.46 411.34
 815 727
 880E

19+00N

9.16 418.61 409.45

LAND AREA GRADES - East of Base Line

800E 900E 1000E 1050E 1100E

2900N

C027 ✓ C101 ✓ C239 ✓
 413.03 413.56 414.09
 413.30 414.57 416.48
 9.19 7.92 6.01

C323 ✓ C181 ✓ F065 ✓
 414.35 414.00 413.60
 417.58 415.81 412.95
 4.91 6.68 9.54
 Bk 11.75E

2800N

F007 ✓ C079 ✓ C253 ✓
 412.83 413.36 413.89
 412.76 414.15 416.42
 2.73 8.34 6.07

C183 ✓ F006 ✓
 414.42 414.55
 416.25 414.49
 6.24 8.00
 11.25E

2700N

C019 ✓ C116 ✓ C247 ✓
 412.38 412.88 413.38
 412.57 414.04 413.85
 3.92 8.45 6.64

C240 ✓ C081 ✓
 413.88 414.03
 416.28 414.84
 6.21 7.65
 11.90E

TP

9.91 422.49 6.03 412.58

422.49

2600N

C015 ✓ C092 ✓ C103 ✓
 412.43 412.96 413.49
 412.58 413.88 414.52
 6.03 4.73 4.09

C135 ✓ C058 ✓
 414.52 414.16
 415.37 414.74
 3.24 3.87
 11.90E

2500N

F014 ✓ C076 ✓ C022 ✓
 412.52 413.09 413.66
 412.38 413.85 413.88
 6.23 4.76 4.73

C071 ✓ C027 ✓
 414.23 414.46
 414.94 414.73
 3.67 3.88
 11.40E

41861

LAND AREA GRADES

East of Base Line 800'E 900'E 1000E 1100E 1200E 1300E 1310E

(See P-68 for Redox Portion)

500' RT ^{FS} 1860-45
 Check 40+00 957 010
 413.02
 412.92
 C422 ✓ C535 ✓
 411.89 410.67
 415.51 ✓ 416.62 ✓
 688 587

3200N

31+00N }
 } See P-68 for Redox

	Grade	<u>C435</u>	<u>C388</u>	<u>C590</u>	<u>C243</u>
	413.21	413.31	412.51	411.51	410.53
	413.21	413.66	416.39	417.41	412.96
	928	888	610	508	953
		820	900E		
		E			

30+00

	F018 ✓	<u>C204</u> ✓	<u>C188</u> ✓	<u>C301</u> ✓	<u>C202</u> ✓	<u>F133</u> ✓	<u>E030</u> ✓	<u>C045</u> ✓
	413.00	413.50	413.78	413.35	412.38	411.41	410.44	410.35
	412.82	415.54	415.66	416.36	414.90	410.08	410.74	410.80
	967	695	689	613	829	1241	1175	1169
			956'E					
			8rk					

422.49

Walker
Johnson
Branby
Pepe

Land Area - Grades - West of Base Line

11243	200	300
C0 ¹¹ ✓	C0 ⁴¹ ✓	F0 ⁸⁰ ✓
406.96	406.35	405.65
407.07	406.76	404.85

24+00	3.80	9.11	6.02
F0 ²²	F1 ²⁴ ✓	F0 ⁹⁷ ✓	
406.76	406.15	405.45	
406.54	404.91	404.98	

23+00	4.33	5.96	5.89
C0 ²⁵	F0 ⁴⁹	C0 ⁰⁸	
406.33	405.94	405.24	
406.80	405.45	405.36	

22+00	4.07	5.42	5.51
C0 ⁸² ✓	C2 ¹¹ ✓	F0 ⁷⁸ ✓	
406.34	405.73	405.03	
407.16	407.84	409.65	

21+00	3.71	3.03	6.22
F0 ²³ ✓	F0 ⁴² ✓	F0 ¹² ✓	
406.13	405.52	404.82	
405.90	405.10	404.70	

20+00	4.27	5.77	6.17
C-0.76 ✓	C0.30 ✓	C-0.70 ✓	
405.92	405.31	404.61	
406.68	405.61	405.31	

19+00	4.19	5.26	5.56
		0.02	19+00 N
	3.70	407.15	6+00 E
		407.17	

3.98 410.87

406.89

400	532.43	600	700
F1 ³¹ ✓	F0 ⁴⁶ ✓	C0 ¹⁴ ✓	C0 ⁴³ ✓
404.95	404.02	403.55	402.85
403.09	402.56	402.69	402.28

7.83	7.31	7.18	7.59
F2 ¹² ✓	F1 ⁰² ✓	F1 ¹¹ ✓	F0 ⁹⁴ ✓
404.75	403.82	402.35	402.65
402.63	402.80	402.74	401.71

8.24	8.07	8.63	9.16
F1 ⁵⁷ ✓	F0 ¹⁹ ✓	F2 ⁰⁹ ✓	F1 ⁹⁷ ✓
404.54	403.61	402.13	402.42
402.97	402.42	401.09	400.96

7.90	7.95	9.33	9.91
F1 ⁷⁶ ✓	F0 ⁴⁶ ✓	F0 ⁴⁰ ✓	F1 ⁸⁹ ✓
404.33	403.40	402.92	402.23
402.57	402.94	402.53	400.34

8.30	7.93	8.34	10.53
F-0 ⁴¹ ✓	C1 ⁰⁴ ✓	C-0 ⁸⁴ ✓	C0 ⁹⁴ ✓
404.12	403.19	402.72	402.02
403.71	404.23	403.56	402.96

7.16	6.64	7.31	7.91
F-0 ⁴⁰ ✓	C-1 ³⁷ ✓	C-1 ⁶⁰ ✓	C0 ⁶⁰ ✓
403.91	402.98	402.51	401.81
403.51	404.35	404.11	402.41

7.36	6.52	6.76	8.46
F.B.1874			
P-55			

B.M. on Conc. Men S.E. Cor. Lot 24 F.B. 1750-2

Land Area - Grades - West of Base line

	112.43	200	300
	FO ³⁹ ✓	FO ⁹³ ✓	FO ⁸⁶ ✓
	408.00	407.39	406.69
	407.66	406.96	405.83
29+00N	4.91	5.61	6.74

	FO ¹⁴ ✓	FO ⁹⁴ ✓	F1 ⁴⁵ ✓
	407.80	407.19	406.49
	407.66	406.25	405.04
		406.18	
28+00N	4.91	6.32	7.53

	C-0 ³² ✓	FO ⁷⁰ ✓	F1 ¹¹ ✓
	407.59	406.98	406.28
	407.91	406.28	405.17
27+00N	4.66	6.29	7.40

	T.P. 3.45	412.57	1.75	409.12	26+00N
				0400	
		C-0 ⁸⁷ ✓	C-0 ⁶⁹ ✓	FO ⁸⁶ ✓	
		407.38	406.77	406.07	
		408.25	407.46	405.21	
26+00N		2.62	3.41	5.66	

	C-0 ⁶⁵ ✓	C-0 ⁵² ✓	FO ⁹⁰ ✓
	407.17	406.56	405.86
	407.82	407.08	404.96
25+00N	3.05	3.79	5.91

410.87

	400	532.43	600	700
	C-0 ⁴⁴ ✓	C-7 ⁵⁰ ✓	C-3 ⁰² ✓	C-3 ⁷⁵ ✓
	405.99	405.06	404.59	403.89
	406.43	407.56	407.61	407.64
	6.13	5.01	4.76	4.93

	FO ²² ✓	C-2 ⁰³ ✓	C-2 ⁶⁹ ✓	C-2 ⁶⁷ ✓
	405.79	404.86	404.39	403.69
	405.57	406.89	407.08	406.36
	7.00	5.68	5.49	6.21

	FO ⁹¹ ✓	C-1 ³² ✓	C-2 ⁴⁰ ✓	C-2 ⁶⁸ ✓
	405.58	404.65	404.18	403.48
	404.67	405.97	406.58	406.16
	7.90	6.60	5.99	6.41

412.57

	F1 ⁵⁵ ✓	Grade ✓	C-1 ²³ ✓	C-2 ⁵² ✓
	405.37	404.44	403.97	403.27
	403.82	404.44	405.20	405.80
	7.05	6.43	5.67	5.07

	FO ²¹ ✓	C-0 ¹⁵ ✓	C-0 ⁶⁰ ✓	C-1 ⁶³ ✓
	405.16	404.23	403.76	403.06
	404.95	404.48	404.36	404.69
	5.92	6.39	6.51	6.18

410.87

Land Area - Grades - West of Base Line

112.43 | 200 | 300
 C-0³³ | FO⁴⁷ | FO⁵²
 408.95 | 408.44 | 407.86
 409.28 | 407.97 | 407.34

34+00 N

2.39 | 3.70 | 4.33

C-0³⁷ | FO³⁸ | FO⁷⁹
 408.79 | 408.30 | 407.74
 409.16 | 407.92 | 404.95

33+00 N

2.51 | 3.75 | 4.72

C-0⁴⁴ | FO⁵⁴ | F1⁴³
 408.65 | 408.14 | 407.55
 409.09 | 407.60 | 406.12

32+00 N

2.58 | 4.07 | 5.55

FO⁰⁶ | FO⁹⁰ | F1³²
 408.51 | 407.97 | 407.35
 408.45 | 407.07 | 406.03

31+00 N

3.22 | 4.60 | 5.69

T.P.

3.48

411.67

438

0.02
 408.17 29+00 N
 408.19 0+00 P.56

F-1⁷² | FO²⁹ | FO⁹⁰
 408.21 | 407.60 | 406.90
 406.49 | 406.66 | 406.00
 5.08 | 5.71 | 6.57

30+00 N

412.57

400 | 532.43 | 600 | 700
 FO²³ | C-0⁷⁰ | C-0¹³ | C-0³⁰ | FO²⁰
 407.28 | 406.51 | 406.12 | 406.00 | 405.64 ✓
 407.05 | 407.21 | 406.25 | 406.30 | 405.44

4.62 | 4.44 | 5.42 | 5.37 | 6.23
 6.20 | 7.00
 BK

FO³² | FO⁰⁴ | FO³² | FO⁶⁷
 407.18 | 406.44 | 406.06 | 405.50
 406.86 | 406.40 | 405.74 | 409.82 ✓

4.81 | 5.27 | 5.93 | 6.89

FO⁸³ | FO³¹ | FO⁵⁸ | F1⁰⁰
 406.96 | 406.17 | 405.77 | 405.18
 406.13 | 405.86 | 405.19 | 409.18 ✓

5.59 | 5.81 | 6.98 | 7.99

FO⁷² | FO⁰⁴ | C-0²⁴ | C-0³⁹
 406.73 | 405.91 | 405.48 | 404.85
 406.01 | 405.87 | 405.72 | 405.21 ✓

5.66 | 5.80 | 5.95 | 6.43

411.67

FO¹¹ | C-1²³ | C-1⁸⁷ | C-1⁹²
 406.20 | 405.27 | 404.80 | 404.10
 406.09 | 406.50 | 406.67 | 406.02 ✓

6.48 | 6.07 | 5.90 | 6.55

412.57

CHK stub 2.37 ^{0.00} 409.30 33+00 N 0+00

C-0⁰⁴ F0⁰¹ C-0⁵⁵ C-0⁶⁸
 410.16 409.63 408.85 408.06
 410.20 409.62 409.40 408.74

36+00 1.97 2.05 2.27 2.93
 0+39 0+48.2 100 230 300

F0⁰¹ F0⁰³ F0⁰⁷
 409.03 408.61 408.00
 409.02 408.58 407.93

35+00 N 2.65 3.09 3.74
 133 200 300

411.67

P.57

C-1⁰⁸ C-1⁰⁸ C-0⁷⁹
 407.32 406.85 406.20
 408.40 407.93 406.99

3.27 3.74 4.68
 420 500 606

C-0²⁷ C-0⁶⁹ C-0⁷¹ C-0⁵⁴
 407.38 406.67 406.00 405.79
 407.65 407.36 406.83 406.71 406.33

4.02 4.31 4.84 4.96 5.34
 400 513 600 620 700

411.67

Land Area - Grades - West of Baseline

800 ✓ 900 ✓ 1000 ✓ 1100 ✓
 FO⁵³ F1¹⁵ FO⁷⁵ C0⁶⁰
 401.95 401.25 400.55 399.85
 401.42 400.10 399.80 400.45 ✓

23100 N 3.76 5.08 5.38 4.73
 T.P. 3.47 405.18 3.07 401.71 700 W

F1²⁸ F1⁶⁶ C0²⁵ C0⁴³
 401.73 401.03 400.33 399.63
 400.45 399.37 400.58 400.06 ✓

22100 N 4.33 5.41 4.20 4.72

F1³³ F1⁵⁸ F2⁵¹ C0⁰¹
 401.53 400.83 400.13 399.43
 400.20 399.25 397.67 399.44 ✓

21400 N 4.58 5.53 7.16 5.34

C0⁰⁴ F1⁷⁴ F1⁸⁹ F2⁶²
 401.32 400.62 399.92 399.22
 401.45 398.88 398.03 396.60 ✓
 401.36 ✓

20100 N 3.43 5.90 6.75 8.18

FO³⁷ FO²⁸ F1⁰⁰ F1⁶²
 401.11 400.41 399.71 399.01
 400.74 400.13 398.71 397.39 ✓

19400 N 4.09 4.65 6.07 7.39
 237 404.78 402.41 700 W

1200 ✓ 1300 ✓ 1400 ✓ 1500 ✓
 C0⁷⁴ C0⁹³ FO⁰² aut.
 399.15 398.20 399.35
 399.89 399.13 399.33

5.29 6.05 5.85
 138K 405.18
 P-60

C0⁷⁷ C0²⁹ C1¹⁷
 398.93 398.24 397.70
 399.70 398.53 398.87 398.46 397.77
 397.43

5.08 6.25 5.91 6.32 4.01
 1350 1400 1420

C0⁰⁷ C0⁰⁶ C0³⁷ FO²⁵
 398.73 398.03 397.20 398.90
 398.80 398.07 397.57 398.45 ✓

5.98 6.69 7.21 6.33
 138K 1490

FO⁶⁸ F0¹¹ C0¹¹
 398.52 397.82 396.40 398.00
 398.84 397.71 396.51 ✓
 397.84 ✓

6.94 7.07 8.27 1480

F2⁸⁹ FO⁰⁵ FO²¹ C1²⁵ FO¹⁵
 398.31 397.61 397.54 395.80 395.80 396.10
 395.42 397.56 397.33 397.12 397.15 395.95
 396.40

9.36 7.22 7.45 8.08 7.63 8.33
 1310 1330 1450 1480
 88K
 404.78

800 900 1000 1100

1200 1300 1400

C 1.14 ✓
~~C 1.44~~ F0 42 ✓ F0 97 ✓
 402.78 402.08 401.38 400.79
 407.22 401.66 400.91 400.38 ✓
 403.92

F0 76 ✓ F0 19 ✓
 400.20 401.50
 400.96 401.31 ✓

27400 1.79 6.85 7.60 8.13
 BRK

7.55 7.20
 11.50 12.00 ✓
 BRK

CK Stub 2.34 ^{e.o.l} 406.16 27400 N
 406.17 700 W
 T.P. 4.62 408.51 1.29 403.89 27400 N
 800 W

408.51

C 1.03 ✓ C 0 11 ✓ C 0 09 ✓ F0 20 ✓
 402.57 401.87 401.17 400.47
 403.60 401.98 401.26 400.27 ✓

C 1.03 ✓ C 0 13 ✓
 399.70 401.00 } 12 X 12 ✓
 400.73 401.13 ✓

26400 N 1.58 3.20 3.92 4.91
 BRK

4.45 4.05
 12.45

C 0 56 ✓ C 0 97 ✓ C 0 63 ✓ F0 40 ✓
 402.36 401.66 400.96 400.26
 404.92 404.63 401.59 399.86 ✓

C 0 68 ✓ F0 45 ✓ in Ditch
 399.20 399.50
 399.88 399.05

25400 N 0.26 0.55 3.59 5.32
 BRK

5.30 6.13
 BRK 12.20

C 0 55 ✓ C 0 33 ✓ F0 28 ✓ F0 78 ✓
 402.15 401.45 400.75 400.05
 402.70 401.78 400.97 399.27 ✓

C 0 58 ✓ F0 26 ✓
 398.70 399.50
 399.28 399.24 ✓

24400 N 2.48 3.40 4.71 5.91
 BRK

5.90 5.79
 BRK

405.18

Land Area - Grades - West of Base Line

800 ✓ 900 ✓ 1000 ✓ 1100 ✓
 FO⁸⁵ FO⁶⁶ FO¹⁰¹ FO⁹³
 404.59, 404.00, 403.40, 403.61
 403.74, 403.34, 403.30, 403.18
 32+00 4.58 4.98 5.02 5.19

FO³² FO⁴⁹ CO⁰² FO¹³
 404.21, 403.58, 402.94, 402.50
 403.88, 403.09, 402.96, 402.37
 5.45
 31+00N 4.44 5.23 5.36 10.70
 0.02 31+00N
 T.P. 3.06 408.32 3.25 405.24 700W

CO⁵⁶
 403.40, 402.70
 403.96
 30+00N 4.55

C¹⁻⁰⁵ CO⁶⁵ FO³⁶
 403.19, 402.49, 401.79
 404.29, 403.19, 401.43, 401.08
 29+00N 4.27 5.37 7.08 7.43

CO⁶¹ FO²⁶ CO⁹⁸
 402.99, 402.29, 401.59
 403.60, 402.03, 402.57
 28+00N 4.91 6.48 5.99
 408.51

1200 ✓ 1300 ✓ 1400 ✓ 1500 ✓
 FO⁷¹ FO⁷¹ FO²⁵ CO⁴⁹ CO⁶⁷
 403.82, 404.03, 404.24, 404.45, 404.59
 403.11, 403.32, 403.99, 404.94, 405.26
 5.81 5.00 4.32 3.38 3.06
 1547

FO³⁷ FO⁵⁸ FO³⁹ CO¹¹ C¹⁻⁰⁴ C²⁻¹²
 402.58, 402.85, 403.12, 403.39, 403.66, 403.92
 402.21, 402.27, 402.73, 403.50, 404.70, 406.05
 6.11
 11.00 6.05 5.59 4.82 3.62 2.27
 7600

408.32

C³⁻⁸¹
 404.20 404.35
 408.01
 0.50
 1700W 1740W
 31+00N 31+00N

CO⁰⁹
 401.05
 401.14
 7.37
 1110

CO²² FO⁰⁹
 400.70, 401.80
 400.92, 401.65, 401.75
 7.59 6.86 6.76
 1127 1200 1210
 BRK
 408.51

Land Area - Grades - West of

800 900 1000 1100

Base line

1200 1300 1400 1500

67

CK stub

3.48

0.01
404.83 33+00 N
409.84 700 W

P-62

CO³⁶ CO¹⁵

405.53, 405.29,
405.89, 405.44

35+00

2.43

2.88

887

CO⁵⁸ CO⁴⁵ CO⁰⁵ FI⁰⁵

405.19, 404.75, 404.90, 405.06,
405.77, 405.20, 404.85, 404.01

34+00 N

2.55

3.12

3.37

4.31

FO³⁹ CO¹⁰ CO²⁶ FO¹⁹

404.94 - 404.38, 404.25, 404.36,
404.55, 404.48, 404.31, 404.17

33+00 N

3.77

3.84

3.81

4.15

9282K
1000
408.32

FO²⁰ FI⁵¹ FI⁴⁵ FI³⁰

404.50, 404.64, 404.78, 404.82,
403.60, 403.13, 403.32, 403.52

4.72

5.19

4.99

4.80

1100

1200

1300

1320

408.32

LAND AREA
Check Levels

684

				0.03 404.18 404.21	700 W 3200 N P-62 2900 N 700 W P-61
TR	0.75	408.43	1.83	407.68	
TR	7.79	409.51	4.16	401.72	
	3.47	405.88		402.41	
TR	chk Sub. 8.36	412.98	9.04	404.18	3200 N 700 W P-62
TR	4.27	413.22	1.77	408.95 408.96	on stake 2500 N 000 P-56
	3.84	410.73		406.89	

on stake
700 W 3300 N

BM 1980 N 700 W P-60

Land Area - East of Base Line
Restake Portion

F1.17 C0.34

411.51 410.53
410.34 410.87
8.20 8.37
1000E 1100E

31+00N

C-1.84 F-1.62 F1.16

413.50 413.78 413.35
415.34 412.10 412.19
5.90 7.08 7.05
900E 950E 1000E
DVK

30+00N

F0.60 F0.77 C0.11 C0.29

412.38 411.91 410.44 410.25
411.78 410.64 410.55 410.64
7.46 8.60 8.69 8.60
1100E 1200E 1300E 1310E

F0.02 F0.34

414.00 413.60
413.98 413.26
5.26 5.98
1100E 1135

29+00N

2.75 ^{5.91} 416.28 416.49 C1C

1000E
29+00N

5.94 419.24

413.30

800E
B.M - 29+00N P-58A

Land Area - East of Base Line

Check Grades

409.68 410.28 410.68 409.58
 33+00N 7.5 6.9 6.5 7.6
 100E 200E 300E 400E

410.78 410.08
 32+00N 7.8 7.1 6.9 6.1
 100E 200E 300E 400E

410.98
 31+00N 7.9 7.2 6.3 6.2
 100E 200E 300E 400E

409.18 409.68 410.48 411.48
 30+00N 8.0 7.5 6.7 5.7
 100E 200E 300E 400E

409.48 409.88 410.28 411.08
 29+00N 7.7 7.3 6.9 6.1
 100E 200E 300E 400E

409.28 410.38 412.18 411.48
 28+00N 7.9 6.8 5.0 5.7
 100E 200 300 400

0.00
 410.60
 6.58 410.60 CK
 6.12 417.18 411.06

409.28 409.24 409.94 411.38
 7.9 7.9 7.2 5.8
 480E 500E 600E 680E

410.78 410.38 411.58 412.08 411.28 410.44
 6.9 6.8 5.6 5.1 5.9 6.3
 500E 600E 640E 700E 800E 900E
 28E

410.58 410.68 414.08 413.28 412.68
 6.6 6.5 4.1 3.9 4.5
 500E 600E 700E 820E 900E

410.78 410.68 412.08 412.78 413.28
 6.9 6.5 5.1 4.9 3.8
 500E 600E 700E 800E 900E

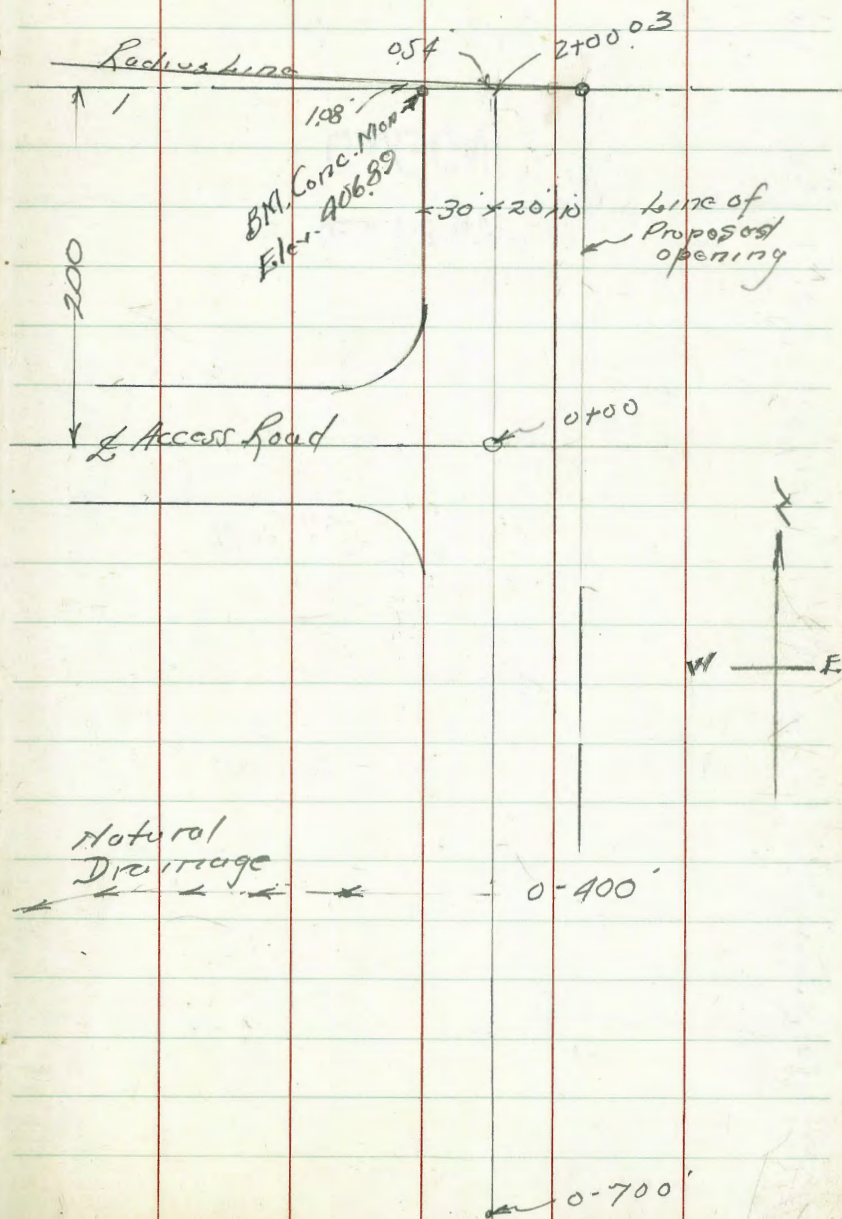
411.28 411.58 415.58 415.98
 5.9 5.6 1.6 1.2
 500E 600 1000E 1050E

409.78 415.78 414.98 413.88
 7.4 1.40 2.20 3.3
 500 1000E 1100E 1123E

500E
 27+00N P-56
 400E
 B.M. 27+00N - P-56

Walker
Johnston
Pogo
Riley
10-21-48
2
Station
To Determine Drainage
for Access Road on South Side
of Parking Area - Gibbs Airport

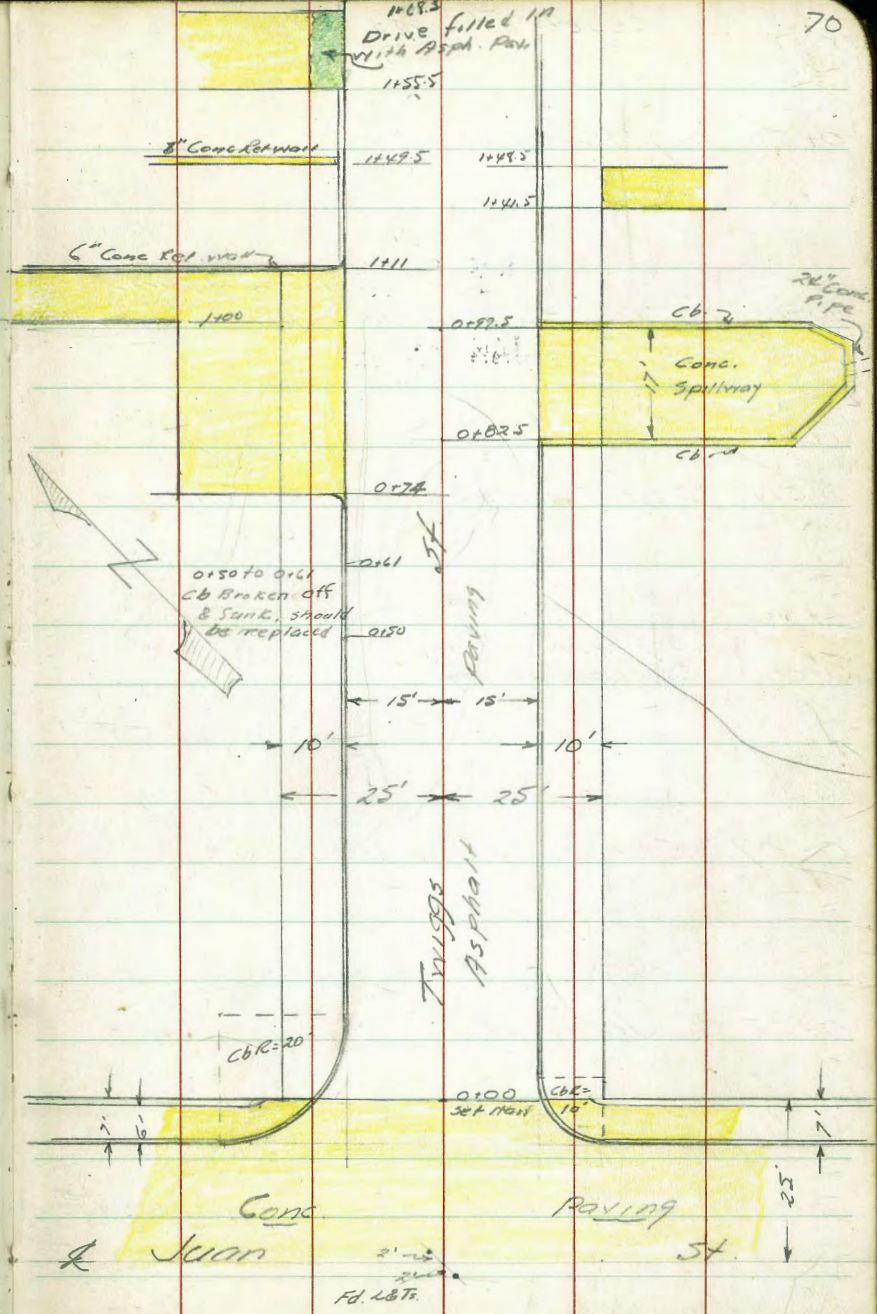
0-700'	6.1	406.8
0-600'	6.8	406.1
0-500'	7.8	405.1
(0-400) 300' West	11.1	401.8
(0-400) 200' West	10.3	402.6
(0-400) 100' West	9.0	403.9
0-400 = bore Point to West 83		404.6
0-320	8.3	404.6
0-300	8.2	404.7
0-200	7.2	405.7
0-100'	6.5	406.4
0+00 = Access Road	6.3	406.6
1+00	5.8	407.1
2+00	5.8	407.1
5.96	412.85	406.89



1-19-50
 Hendricks
 Johnson
 Greer
 Cota
 No. 20551

X Sect. Triggs St.
 Juan St to 200' Easterly

INDEXED
 W.K.
 JAN 24 1950



Levels Twigg's St

0+50 Beg Broken Cb on H.

L = 31.5 ~ 4 parts

11 Ely. Cb Ret Twigg's & Juan BC on Juan

L = 15' 2 parts

5 Ely. Cb Ret Twigg's & Juan BC on Juan

Beg. Rep. Paving.
Edge Conc Paving

0+00

0-07 Easterly Cb line Juan

0-25 E Juan St.

TP 10.99 52.83 0.03 41.84
BM 13.19 41.87 2868

48.4	48.33	47.63	46.51	46.72	47.22		
25	15	15	15	15	15		
684	641	608	606	574	574	553	497
G	G	G	G	G	G	G	G
BC							EC
Juan							Twigg's
48.46	49.22	48.81	48.93	48.34	48.26		
397	361	332	320	349	397		
G	G	G	G	G	G		
BC							EC
Juan							Twigg's
45.7	46.91	47.22	46.88	47.04	47.65	48.36	48.51
75	522	522	522	522	514	467	402
50	293	198	198	15	15.6	15.6	22
SW	Cb.	G	G	G	G	Cb.	SW
43.08	42.66	43.60	45.24	46.30	45.99	46.72	47.64
980	105	723	760	647	684	591	519
100	100	50	50	35	35	15	15
Cb	G	Cb	G	Cb	G	G	Cb.
42.60	45.06	46.32	46.77	47.65	48.30	48.77	49.98
10	723	671	604	528	453	406	285
100	50	25	15	15	25	50	100

52.83 ✓
SW 2 L&T San Diego Ave. & Twigg's

0+91. Conc. Spillway

TP 5.06 54.16 3.78 49.10
 $\frac{54.16}{7}$

0+82.5 Beg Conc Cb & Slope 15' Rt

0+80 Cb. Breaks up on Rt. to meet Conc. Cb
 from Rt

0+74 Beg Conc Dr. on Lt.

0+72 End Cb Beg Conc. Flare to Drive

0+61 End Broken Cb on Lt.

5283
 $\frac{5283}{1}$

47.05	48.88	48.64	47.10	47.2	49.83	48.17
5.1	5.8	5.52	5.06	4.95	4.32	1.98
35.5	17	15	15	50	147.5	
Fl.	G	Conc.	G	Conc	Fl 24"	Conc Pipe
			54.16	↓		
West Rim MH			0+91.3			

48.90	48.70	48.81	48.89	49.19	49.85	49.27	49.86	49.64	49.11
3.93	4.3	4.52	3.94	3.64	2.88	3.55	2.85	3.2	2.72
30	17	15	15	15	25	25	25	40	40
Dr.	Conc. Dr.		G	G	Cb. G	Cb. G	Cb. G	Cb.	Cb.

49.05	49.45
3.28	3.30
15	15
G	Cb.

48.28	48.61	48.24
3.98	4.30	4.62
30	17	15
Dr.	Dr.	Conc. Dr.

48.57	48.07	48.64	48.99	49.48
4.2	4.76	4.7	3.84	3.35
15	15	15	15	15
Cb	G	G	G	Cb.

48.52	47.83
4.31	5.00
15	15
Cb	G

5283
 $\frac{5283}{1}$

Twiggs St. Cont'd.

£

TP. 12.73 64.95 ↓ 1.94 52.22

1+4.5 £ 7' Conc Dr. Rt.

1+25

1+12.5 Beg. Ch. on Lt.

1+11 End Conc Dr. on Lt. Beg. Conc Ret. Wall

0+99.5 End. Conc Ch. & Spillway on Rt.

0+91.3 £ Sewer MH

54.16
X

12.43
52.45
1.73
15
25
42
Conc.

52.8
14 17
36 27
52.5
33
19
50.9
35
15
51.4
36
15
50.02
36
15
50.53
36
15
50.68
34
15
51.26
220
15
15
6
6

49.60
4.58
15
15
Cb.
G

50.81
33
35
49.37
4.79
35
50.76
34
23
49.43
4.73
23
49.45
4.71
17
50.45
5.32
15
49.81
4.35
15
49.96
4.20
15
50.56
35
15
50.76
32
25
Well Dr. Well Dr.
6
6

49.29
4.87
35.5
49.26
4.70
17
48.90
5.32
15
49.36
4.80
15
49.49
4.57
6
49.99
4.2
15
50.10
4.95
15
50.59
3.25
50
Cb.
Cb.

50.49
49.10

54.16
X

B.17.		2.46	28.69	28.68
B.17.	8.94	31.15	4.79	22.21
T.P.	6.75	27.00	10.20	20.25
T.P.	2.42	30.45	13.03	28.03
TP.	0.03	41.06	12.96	41.03
TP.	1.82	53.99	12.78	52.17

SW 7' 1/2 T San Diego & Twigg's
 SW 1/4 San Diego Ave & Mason

2+00

62.20	61.95	61.95	62.28	62.75
27.25	30.00	30.00	22.67	22.10
15	15	15	15	15
Ch	G	G	G	Ch

1+75

57.42	56.25	57.06	57.02	57.43
7.53	8.20	7.87	7.93	7.57
15	15	15	15	15
Ch	G	G	G	Ch

1+62 4 1/2" Conc Drive on Lt.

58.60	58.47	58.30	58.82	58.48	58.79	58.58	58.14
6.35	6.48	8.65	10.33	10.47	10.16	10.27	9.88
40	34	18	15	10	15	15	15
Fl.					G	G	Ch

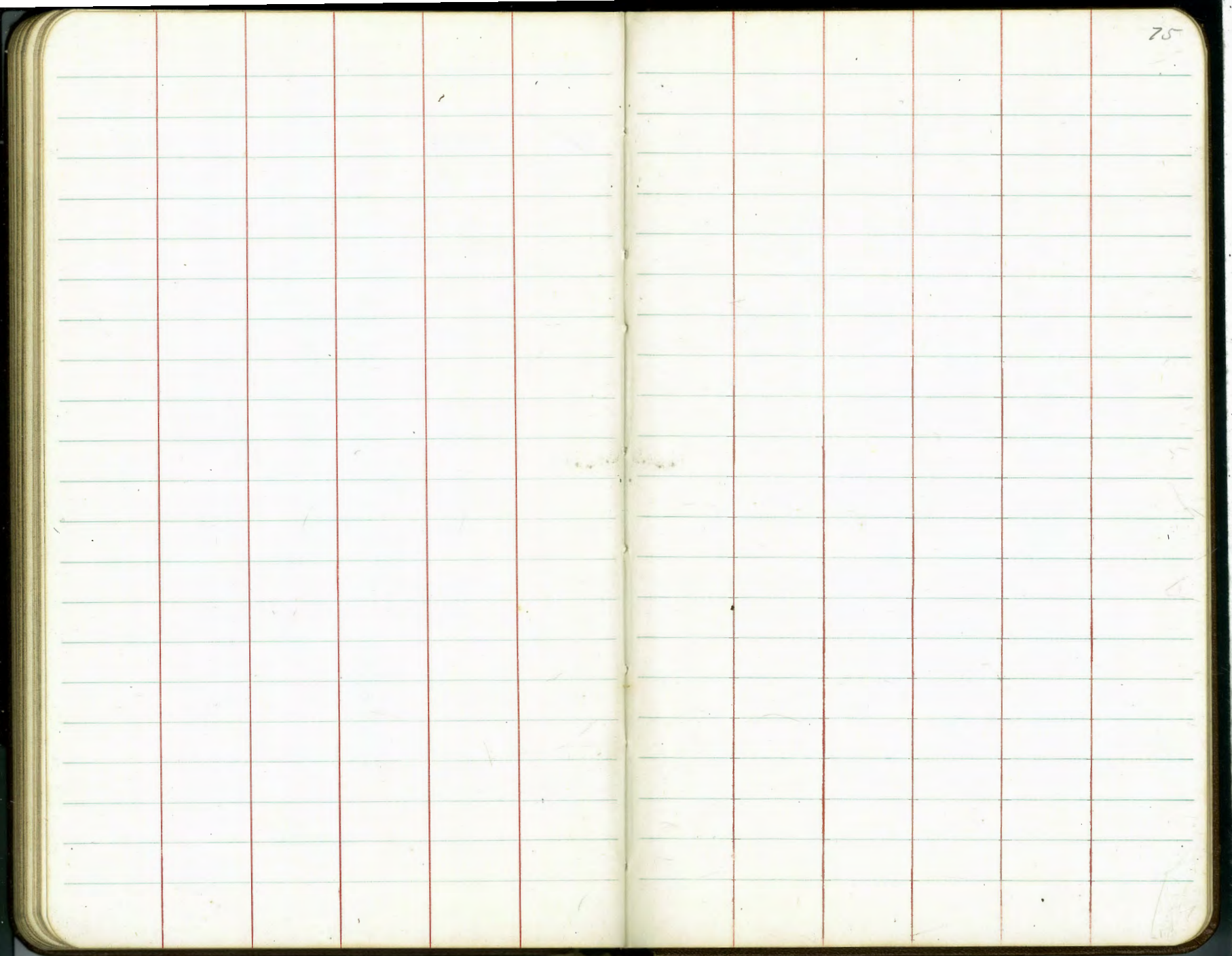
1+95 Reg. 8" Conc Ret. Wall Lt.

58.14	58.55	58.71	58.6	58.98	58.51	58.79	58.50
6.1	11.2	7.24	11.23	11.87	12.21	12.02	11.45
35	35	21	21	15	15	15	15
Wall	G	Wall	G	Ch	G	G	Ch

64.95
 1

64.95
 1

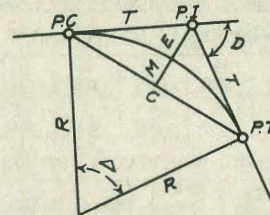
Notes Reduced 1-27-50



The image shows an open notebook with two facing pages. Both pages are cream-colored and feature light blue horizontal ruling. Vertical red lines create margins on both sides of each page. The right page is numbered '76' in the top right corner. The notebook is bound in the center, and the pages appear slightly aged. The notebook is placed on a white surface.

DIETZGEN'S RAILROAD CURVE AND REDUCTION TABLES

Copyright, 1914, by Eugene Dietzgen Co., New York City



CURVE FORMULAS

Radius= $R = \frac{50}{\sin \frac{D}{2}}$ (1) Degree of Curve= D and $\sin \frac{D}{2} = \frac{50}{R}$ (2)

Tangent= $T = R \tan \frac{\Delta}{2}$ (3) Length of Curve= $L = 100 \frac{\Delta}{D}$ (4)

Middle ordinate= $M = R(1 - \cos \frac{\Delta}{2})$ (5) $= R \text{vers} \frac{\Delta}{2}$ (6)

External= $E = T \tan \frac{\Delta}{4}$ (7) $= R \div \cos \frac{\Delta}{2} - R$ (8) $= R \text{exsec} \frac{\Delta}{2}$ (9)

Long Chord= $C = 2 R \sin \frac{\Delta}{2}$ (10) $\Delta =$ Central Angle

EXPLANATION AND USE OF TABLES

Stations.—Given P. I.—Sta. 161+60.35 to find Sta. of P. C. and P. T. $\Delta = 62^\circ 10'$ $D = 8^\circ 20'$. From Table IV for 1° curve $T = 3454.1$ and $\div 8\frac{1}{2} = 414.49$ ft. From Table V correction=.36 or $T = 414.85$ ft. P. C.—Sta. P.I.— $T = 157 + 45.50$. Also from (4) $L = 746.00$ and P. T.—Sta. P. C. + $L = 164 + 91.50$.

Offsets.—Tangent offsets vary (approximately) directly with D and with square of the distance. Thus tangent offset for Sta. 158 on above curve is 2.16 ft. found as follows. From Table III tangent offset for 100 ft.=7.27 ft. Distance= $158 - \text{Sta. P. C.} = 54.50$, hence offset= $7.27 (54.50 \div 100) = 2.16$ ft. Also square of any distance divided by twice the radius equals (approximately) the distance from tangent to curve. Thus $(54.50)^2 \div (2 \times 688.26) = 2.16$ ft.

Deflections.—Deflection angle= $\frac{1}{2} D$ for 100 ft., $\frac{1}{4} D$ for 50 ft., etc. For c ft.—(in minutes) $.3 \times C \times D^\circ$ or=defl. for 1 ft. from Table III $\times C$. For Sta. 158 of above curve= $.3 \times 54.5 \times 8\frac{1}{2} = 136.2'$ or $2^\circ 16.2'$, or= $2.50 \times 54.5 = 136.2'$ from Table III. For Sta. 159 deflection angle= $2^\circ 16.2' + 8^\circ 20' \div 2 = 6^\circ 26.2'$, etc.

Externals.—May be found in similar manner to tangents. Thus E for curve above is 115.37. For from Table IV for 1° curve $E = 960.6$ for $8^\circ 20' = 960.6 \div 8\frac{1}{2} = 115.27$ and from Table V correction=.10 or $E = 115.37$ ft. Or suppose $\Delta = 32^\circ$ and E is measured and found to be 42 ft. What is D ? From Table IV $E = 230.9$ and $\div 42 = 5.5$ or $D = 5^\circ 30'$.

Roadbed

279

19100 150' RT

22100 75' RT

26150 75' RT

32100 2'

39150 200' RT

45100 75' RT

700 17.26
22100 5.18
12.08

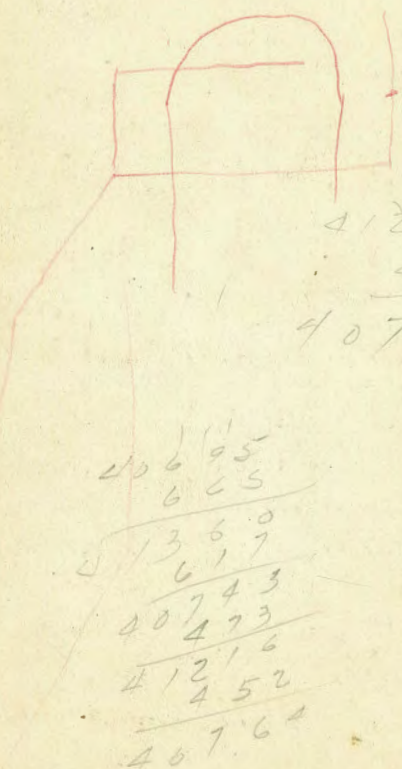
11.28

28000 5.87

6000 17.05

5.18

11.87



DISTANCES FROM CENTER OF ROADWAY FOR
CROSS-SECTIONING.

Roadway 16 feet wide. Side Slopes 1 on 1 1/2
For Single Track Embankment.

H	0	.1	.2	.3	.4	.5	.6	.7	.8	.9	H
0	8.0	8.2	8.3	8.5	8.6	8.8	8.9	9.1	9.2	9.4	0
1	9.5	9.7	9.8	10.0	10.1	10.3	10.4	10.6	10.7	10.9	1
2	11.0	11.2	11.3	11.5	11.6	11.8	11.9	12.1	12.2	12.4	2
3	12.5	12.7	12.8	13.0	13.1	13.3	13.4	13.6	13.7	13.9	3
4	14.0	14.2	14.3	14.5	14.6	14.8	14.9	15.1	15.2	15.4	4
5	15.5	15.7	15.8	16.0	16.1	16.3	16.4	16.6	16.7	16.9	5
6	17.0	17.2	17.3	17.5	17.6	17.8	17.9	18.1	18.2	18.4	6
7	18.5	18.7	18.8	19.0	19.1	19.3	19.4	19.6	19.7	19.9	7
8	20.0	20.2	20.3	20.5	20.6	20.8	20.9	21.1	21.2	21.4	8
9	21.5	21.7	21.8	22.0	22.1	22.3	22.4	22.6	22.7	22.9	9
10	23.0	23.2	23.3	23.5	23.6	23.8	23.9	24.1	24.2	24.4	10
11	24.5	24.7	24.8	25.0	25.1	25.3	25.4	25.6	25.7	25.9	11
12	26.0	26.2	26.3	26.5	26.6	26.8	26.9	27.1	27.2	27.4	12
13	27.5	27.7	27.8	28.0	28.1	28.3	28.4	28.6	28.7	28.9	13
14	29.0	29.2	29.3	29.5	29.6	29.8	29.9	30.1	30.2	30.4	14
15	30.5	30.7	30.8	31.0	31.1	31.3	31.4	31.6	31.7	31.9	15
16	32.0	32.2	32.3	32.5	32.6	32.8	32.9	33.1	33.2	33.4	16
17	33.5	33.7	33.8	34.0	34.1	34.3	34.4	34.6	34.7	34.9	17
18	35.0	35.2	35.3	35.5	35.6	35.8	35.9	36.1	36.2	36.4	18
19	36.5	36.7	36.8	37.0	37.1	37.3	37.4	37.6	37.7	37.9	19
20	38.0	38.2	38.3	38.5	38.6	38.8	38.9	39.1	39.2	39.4	20
21	39.5	39.7	39.8	40.0	40.1	40.3	40.4	40.6	40.7	40.9	21
22	41.0	41.2	41.3	41.5	41.6	41.8	41.9	42.1	42.2	42.4	22
23	42.5	42.7	42.8	43.0	43.1	43.3	43.4	43.6	43.7	43.9	23
24	44.0	44.2	44.3	44.5	44.6	44.8	44.9	45.1	45.2	45.4	24
25	45.5	45.7	45.8	46.0	46.1	46.3	46.4	46.6	46.7	46.9	25
26	47.0	47.2	47.3	47.5	47.6	47.8	47.9	48.1	48.2	48.4	26
27	48.5	48.7	48.8	49.0	49.1	49.3	49.4	49.6	49.7	49.9	27
28	50.0	50.2	50.3	50.5	50.6	50.8	50.9	51.1	51.2	51.4	28
29	51.5	51.7	51.8	52.0	52.1	52.3	52.4	52.6	52.7	52.9	29
30	53.0	53.2	53.3	53.5	53.6	53.8	53.9	54.1	54.2	54.4	30
31	54.5	54.7	54.8	55.0	55.1	55.3	55.4	55.6	55.7	55.9	31
32	56.0	56.2	56.3	56.5	56.6	56.8	56.9	57.1	57.2	57.4	32
33	57.5	57.7	57.8	58.0	58.1	58.3	58.4	58.6	58.7	58.9	33
34	59.0	59.2	59.3	59.5	59.6	59.8	59.9	60.1	60.2	60.4	34
35	60.5	60.7	60.8	61.0	61.1	61.3	61.4	61.6	61.7	61.9	35
36	62.0	62.2	62.3	62.5	62.6	62.8	62.9	63.1	63.2	63.4	36
37	63.5	63.7	63.8	64.0	64.1	64.3	64.4	64.6	64.7	64.9	37
38	65.0	65.2	65.3	65.5	65.6	65.8	65.9	66.1	66.2	66.4	38
39	66.5	66.7	66.8	67.0	67.1	67.3	67.4	67.6	67.7	67.9	39
40	68.0	68.2	68.3	68.5	68.6	68.8	68.9	69.1	69.2	69.4	40

Example—If point is 22.6 ft. above grade, how far should it be from center line to be a slope stake point? Ans. from Table 41.9. For same slopes but other widths of roadbed correct above figures by one-half difference in width of roadbed; thus in example above for 20 ft. roadbed distance will be 41.9 + (20 - 16) * 2 or 2 ft. added to 41.9 = 43.9. For slopes of 1 on 1 see inside of front cover.

MADE IN U.S.A.